



QUARTERLY STATEMENT

As of March 31, 2016
of the Condition and Affairs of the

PROGRESSIVE CHOICE INSURANCE COMPANY

NAIC Group Code.....155, 155 (Current Period) (Prior Period)	NAIC Company Code..... 44288	Employer's ID Number..... 62-1444848
Organized under the Laws of OH	State of Domicile or Port of Entry OH	Country of Domicile US
Incorporated/Organized..... September 17, 1990	Commenced Business..... November 30, 1990	
Statutory Home Office	6300 WILSON MILLS ROAD, W33..... CLEVELAND OH US 44143-2182 (Street and Number) (City or Town, State, Country and Zip Code)	
Main Administrative Office	6300 WILSON MILLS ROAD, W33..... CLEVELAND OH US 44143-2182 440-461-5000 (Street and Number) (City or Town, State, Country and Zip Code) (Area Code) (Telephone Number)	
Mail Address	P.O. BOX 89490..... CLEVELAND OH US 44101-6490 (Street and Number or P. O. Box) (City or Town, State, Country and Zip Code)	
Primary Location of Books and Records	6300 WILSON MILLS ROAD, W33..... CLEVELAND OH US 44143-2182 440-395-4460 (Street and Number) (City or Town, State, Country and Zip Code) (Area Code) (Telephone Number)	
Internet Web Site Address	PROGRESSIVE.COM	
Statutory Statement Contact	MARY BETH ANDREANO (Name) FINANCIAL_REPORTING@PROGRESSIVE.COM (E-Mail Address)	440-395-4460 (Area Code) (Telephone Number) (Extension) 440-603-5500 (Fax Number)

POLICYHOLDER SERVICES AND CLAIMS REPORTING -- 1-800-PROGRESSIVE (1-800-776-4737)

OFFICERS

Name	Title	Name	Title
BRIAN JACOB GURA	PRESIDENT	MICHAEL ROBERT UTH	SECRETARY
DANIEL JOSEPH WITALEC	TREASURER		

OTHER

SCOTT EDWARD COLEMAN	(ASST. TREASURER)	JOHN ALLEN CURTISS JR.	(VICE PRESIDENT)
KAREN ANN KOSUDA	(ASST. SECRETARY)	MARIANN WOJKUN MARSHALL	(VICE PRESIDENT)

DIRECTORS OR TRUSTEES

JOHN ALLEN CURTISS JR.	BRIAN JACOB GURA	CHRISTINE ANN JOHNSON	SANJAY MAHESH VYAS
DANIEL JOSEPH WITALEC			

State of..... OHIO
County of..... CUYAHOGA

The officers of this reporting entity being duly sworn, each depose and say that they are the described officers of said reporting entity, and that on the reporting period stated above, all of the herein described assets were the absolute property of the said reporting entity, free and clear from any liens or claims thereon, except as herein stated, and that this statement, together with related exhibits, schedules and explanations therein contained, annexed or referred to, is a full and true statement of all the assets and liabilities and of the condition and affairs of the said reporting entity as of the reporting period stated above, and of its income and deductions therefrom for the period ended, and have been completed in accordance with the NAIC Annual Statement Instructions and Accounting Practices and Procedures manual except to the extent that: (1) state law may differ; or, (2) that state rules or regulations require differences in reporting not related to accounting practices and procedures, according to the best of their information, knowledge and belief, respectively. Furthermore, the scope of this attestation by the described officers also includes the related corresponding electronic filing with the NAIC, when required, that is an exact copy (except for formatting differences due to electronic filing) of the enclosed statement. The electronic filing may be requested by various regulators in lieu of or in addition to the enclosed statement.

(Signature) BRIAN JACOB GURA 1. (Printed Name) PRESIDENT (Title)	(Signature) KAREN ANN KOSUDA 2. (Printed Name) ASSISTANT SECRETARY (Title)	(Signature) SCOTT EDWARD COLEMAN 3. (Printed Name) ASSISTANT TREASURER (Title)
Subscribed and sworn to before me This 6TH day of MAY, 2016	a. Is this an original filing? b. If no: 1. State the amendment number 2. Date filed 3. Number of pages attached	Yes [X] No []

PROGRESSIVE CHOICE INSURANCE COMPANY

ASSETS

	Current Statement Date			4
	1	2	3	December 31 Prior Year Net Admitted Assets
	Assets	Nonadmitted Assets	Net Admitted Assets (Cols. 1 - 2)	
1. Bonds.....	8,088,107		8,088,107	8,239,307
2. Stocks:				
2.1 Preferred stocks.....			0	
2.2 Common stocks.....			0	
3. Mortgage loans on real estate:				
3.1 First liens.....			0	
3.2 Other than first liens.....			0	
4. Real estate:				
4.1 Properties occupied by the company (less \$.....0 encumbrances).....			0	
4.2 Properties held for the production of income (less \$.....0 encumbrances).....			0	
4.3 Properties held for sale (less \$.....0 encumbrances).....			0	
5. Cash (\$.....0), cash equivalents (\$.....0) and short-term investments (\$.....0).....			0	
6. Contract loans (including \$.....0 premium notes).....			0	
7. Derivatives.....			0	
8. Other invested assets.....			0	
9. Receivables for securities.....			0	
10. Securities lending reinvested collateral assets.....			0	
11. Aggregate write-ins for invested assets.....	0	0	0	0
12. Subtotals, cash and invested assets (Lines 1 to 11).....	8,088,107	0	8,088,107	8,239,307
13. Title plants less \$.....0 charged off (for Title insurers only).....			0	
14. Investment income due and accrued.....	41,171		41,171	48,778
15. Premiums and considerations:				
15.1 Uncollected premiums and agents' balances in the course of collection.....			0	
15.2 Deferred premiums, agents' balances and installments booked but deferred and not yet due (including \$.....0 earned but unbilled premiums).....			0	
15.3 Accrued retrospective premiums (\$.....0) and contracts subject to redetermination (\$.....0).....			0	
16. Reinsurance:				
16.1 Amounts recoverable from reinsurers.....			0	
16.2 Funds held by or deposited with reinsured companies.....			0	
16.3 Other amounts receivable under reinsurance contracts.....			0	
17. Amounts receivable relating to uninsured plans.....			0	
18.1 Current federal and foreign income tax recoverable and interest thereon.....			0	
18.2 Net deferred tax asset.....			0	
19. Guaranty funds receivable or on deposit.....			0	
20. Electronic data processing equipment and software.....			0	
21. Furniture and equipment, including health care delivery assets (\$.....0).....			0	
22. Net adjustment in assets and liabilities due to foreign exchange rates.....			0	
23. Receivables from parent, subsidiaries and affiliates.....			0	
24. Health care (\$.....0) and other amounts receivable.....			0	
25. Aggregate write-ins for other than invested assets.....	0	0	0	0
26. Total assets excluding Separate Accounts, Segregated Accounts and Protected Cell Accounts (Lines 12 through 25).....	8,129,278	0	8,129,278	8,288,085
27. From Separate Accounts, Segregated Accounts and Protected Cell Accounts.....			0	
28. Total (Lines 26 and 27).....	8,129,278	0	8,129,278	8,288,085

DETAILS OF WRITE-INS

1101.			0	
1102.			0	
1103.			0	
1198. Summary of remaining write-ins for Line 11 from overflow page.....	0	0	0	0
1199. Totals (Lines 1101 thru 1103 plus 1198) (Line 11 above).....	0	0	0	0
2501.			0	
2502.			0	
2503.			0	
2598. Summary of remaining write-ins for Line 25 from overflow page.....	0	0	0	0
2599. Totals (Lines 2501 thru 2503 plus 2598) (Line 25 above).....	0	0	0	0

PROGRESSIVE CHOICE INSURANCE COMPANY
LIABILITIES, SURPLUS AND OTHER FUNDS

		1 Current Statement Date	2 December 31 Prior Year
1.	Losses (current accident year \$.....0).....		
2.	Reinsurance payable on paid losses and loss adjustment expenses.....		
3.	Loss adjustment expenses.....		
4.	Commissions payable, contingent commissions and other similar charges.....		
5.	Other expenses (excluding taxes, licenses and fees).....	4,638	4,370
6.	Taxes, licenses and fees (excluding federal and foreign income taxes).....	27,570	23,921
7.1	Current federal and foreign income taxes (including \$.....0 on realized capital gains (losses)).....	2,686	31,913
7.2	Net deferred tax liability.....	12,601	13,876
8.	Borrowed money \$.....0 and interest thereon \$.....0.....		
9.	Unearned premiums (after deducting unearned premiums for ceded reinsurance of \$.....0 and including warranty reserves of \$.....0 and accrued accident and health experience rating refunds including \$.....0 for medical loss ratio rebate per the Public Health Service Act).....		
10.	Advance premium.....		
11.	Dividends declared and unpaid:		
	11.1 Stockholders.....		
	11.2 Policyholders.....		
12.	Ceded reinsurance premiums payable (net of ceding commissions).....		
13.	Funds held by company under reinsurance treaties.....		
14.	Amounts withheld or retained by company for account of others.....		
15.	Remittances and items not allocated.....		
16.	Provision for reinsurance (including \$.....0 certified).....		
17.	Net adjustments in assets and liabilities due to foreign exchange rates.....		
18.	Drafts outstanding.....	1,474,122	1,782,919
19.	Payable to parent, subsidiaries and affiliates.....	470,894	526,425
20.	Derivatives.....		
21.	Payable for securities.....		
22.	Payable for securities lending.....		
23.	Liability for amounts held under uninsured plans.....		
24.	Capital notes \$.....0 and interest thereon \$.....0.....		
25.	Aggregate write-ins for liabilities.....	661,935	454,031
26.	Total liabilities excluding protected cell liabilities (Lines 1 through 25).....	2,654,446	2,837,455
27.	Protected cell liabilities.....		
28.	Total liabilities (Lines 26 and 27).....	2,654,446	2,837,455
29.	Aggregate write-ins for special surplus funds.....	0	0
30.	Common capital stock.....	2,650,000	2,650,000
31.	Preferred capital stock.....		
32.	Aggregate write-ins for other than special surplus funds.....	0	0
33.	Surplus notes.....		
34.	Gross paid in and contributed surplus.....	1,555,228	1,555,228
35.	Unassigned funds (surplus).....	1,269,604	1,245,402
36.	Less treasury stock, at cost:		
	36.10.000 shares common (value included in Line 30 \$.....0).....		
	36.20.000 shares preferred (value included in Line 31 \$.....0).....		
37.	Surplus as regards policyholders (Lines 29 to 35, less 36).....	5,474,832	5,450,630
38.	Totals (Page 2, Line 28, Col. 3).....	8,129,278	8,288,085

2501.	ESCHEATABLE PROPERTY.....661,935454,031
2502.
2503.
2598.	Summary of remaining write-ins for Line 25 from overflow page.....00
2599.	Totals (Lines 2501 thru 2503 plus 2598) (Line 25 above).....661,935454,031
2901.
2902.
2903.
2998.	Summary of remaining write-ins for Line 29 from overflow page.....00
2999.	Totals (Lines 2901 thru 2903 plus 2998) (Line 29 above).....00
3201.
3202.
3203.
3298.	Summary of remaining write-ins for Line 32 from overflow page.....00
3299.	Totals (Lines 3201 thru 3203 plus 3298) (Line 32 above).....00

PROGRESSIVE CHOICE INSURANCE COMPANY
STATEMENT OF INCOME

	1 Current Year to Date	2 Prior Year to Date	3 Prior Year Ended December 31
UNDERWRITING INCOME			
1. Premiums earned:			
1.1 Direct..... (written \$.....0).....			
1.2 Assumed..... (written \$.....0).....			
1.3 Ceded..... (written \$.....0).....			
1.4 Net..... (written \$.....0).....	0	0	0
DEDUCTIONS:			
2. Losses incurred (current accident year \$.....0):			
2.1 Direct.....			
2.2 Assumed.....			
2.3 Ceded.....			
2.4 Net.....	0	0	0
3. Loss adjustment expenses incurred.....			
4. Other underwriting expenses incurred.....	9,195	9,135	21,849
5. Aggregate write-ins for underwriting deductions.....	0	0	0
6. Total underwriting deductions (Lines 2 through 5).....	9,195	9,135	21,849
7. Net income of protected cells.....			
8. Net underwriting gain (loss) (Line 1 minus Line 6 + Line 7).....	(9,195)	(9,135)	(21,849)
INVESTMENT INCOME			
9. Net investment income earned.....	35,535	71,837	224,970
10. Net realized capital gains (losses) less capital gains tax of \$.....0.....			45,828
11. Net investment gain (loss) (Lines 9 + 10).....	35,535	71,837	270,798
OTHER INCOME			
12. Net gain or (loss) from agents' or premium balances charged off (amount recovered \$.....0 amount charged off \$.....0).....	0		
13. Finance and service charges not included in premiums.....			
14. Aggregate write-ins for miscellaneous income.....	(726)	(176)	2,890
15. Total other income (Lines 12 through 14).....	(726)	(176)	2,890
16. Net income before dividends to policyholders, after capital gains tax and before all other federal and foreign income taxes (Lines 8 + 11 + 15).....	25,614	62,526	251,839
17. Dividends to policyholders.....			
18. Net income, after dividends to policyholders, after capital gains tax and before all other federal and foreign income taxes (Line 16 minus Line 17).....	25,614	62,526	251,839
19. Federal and foreign income taxes incurred.....	2,686	16,709	43,690
20. Net income (Line 18 minus Line 19) (to Line 22).....	22,928	45,817	208,149
CAPITAL AND SURPLUS ACCOUNT			
21. Surplus as regards policyholders, December 31 prior year.....	5,450,630	6,632,109	6,632,109
22. Net income (from Line 20).....	22,928	45,817	208,149
23. Net transfers (to) from Protected Cell accounts.....			
24. Change in net unrealized capital gains or (losses) less capital gains tax of \$.....0.....			
25. Change in net unrealized foreign exchange capital gain (loss).....			
26. Change in net deferred income tax.....	1,274	4,885	10,372
27. Change in nonadmitted assets.....			
28. Change in provision for reinsurance.....			
29. Change in surplus notes.....			
30. Surplus (contributed to) withdrawn from protected cells.....			
31. Cumulative effect of changes in accounting principles.....			
32. Capital changes:			
32.1 Paid in.....			
32.2 Transferred from surplus (Stock Dividend).....			
32.3 Transferred to surplus.....			
33. Surplus adjustments:			
33.1 Paid in.....			
33.2 Transferred to capital (Stock Dividend).....			
33.3 Transferred from capital.....			
34. Net remittances from or (to) Home Office.....			
35. Dividends to stockholders.....			(1,400,000)
36. Change in treasury stock.....			
37. Aggregate write-ins for gains and losses in surplus.....	0	0	0
38. Change in surplus as regards policyholders (Lines 22 through 37).....	24,202	50,702	(1,181,479)
39. Surplus as regards policyholders, as of statement date (Lines 21 plus 38).....	5,474,832	6,682,811	5,450,630

DETAILS OF WRITE-INS			
0501.			
0502.			
0503.			
0598. Summary of remaining write-ins for Line 5 from overflow page.....	0	0	0
0599. Totals (Lines 0501 thru 0503 plus 0598) (Line 5 above).....	0	0	0
1401. INTEREST EXPENSE ON INTERCOMPANY BALANCES.....	(726)	(176)	(1,005)
1402. MISCELLANEOUS OTHER INCOME.....			3,895
1403.			
1498. Summary of remaining write-ins for Line 14 from overflow page.....	0	0	0
1499. Totals (Lines 1401 thru 1403 plus 1498) (Line 14 above).....	(726)	(176)	2,890
3701.			
3702.			
3703.			
3798. Summary of remaining write-ins for Line 37 from overflow page.....	0	0	0
3799. Totals (Lines 3701 thru 3703 plus 3798) (Line 37 above).....	0	0	0

PROGRESSIVE CHOICE INSURANCE COMPANY
CASH FLOW

	1 Current Year to Date	2 Prior Year To Date	3 Prior Year Ended December 31
CASH FROM OPERATIONS			
1. Premiums collected net of reinsurance.....			
2. Net investment income.....	48,352	115,283	303,253
3. Miscellaneous income.....	(726)	(176)	2,890
4. Total (Lines 1 through 3).....	47,626	115,107	306,143
5. Benefit and loss related payments.....			
6. Net transfers to Separate Accounts, Segregated Accounts and Protected Cell Accounts.....			
7. Commissions, expenses paid and aggregate write-ins for deductions.....	5,278	7,547	12,907
8. Dividends paid to policyholders.....			
9. Federal and foreign income taxes paid (recovered) net of \$25,839 tax on capital gains (losses).....	31,913	43,252	80,868
10. Total (Lines 5 through 9).....	37,191	50,799	93,775
11. Net cash from operations (Line 4 minus Line 10).....	10,435	64,308	212,368
CASH FROM INVESTMENTS			
12. Proceeds from investments sold, matured or repaid:			
12.1 Bonds.....	253,235	2,882,287	5,279,278
12.2 Stocks.....			
12.3 Mortgage loans.....			
12.4 Real estate.....			
12.5 Other invested assets.....			
12.6 Net gains or (losses) on cash, cash equivalents and short-term investments.....			
12.7 Miscellaneous proceeds.....		19,625	
12.8 Total investment proceeds (Lines 12.1 to 12.7).....	253,235	2,901,912	5,279,278
13. Cost of investments acquired (long-term only):			
13.1 Bonds.....	107,246	2,719,828	2,719,828
13.2 Stocks.....			
13.3 Mortgage loans.....			
13.4 Real estate.....			
13.5 Other invested assets.....			
13.6 Miscellaneous applications.....			
13.7 Total investments acquired (Lines 13.1 to 13.6).....	107,246	2,719,828	2,719,828
14. Net increase or (decrease) in contract loans and premium notes.....			
15. Net cash from investments (Line 12.8 minus Line 13.7 and Line 14).....	145,989	182,084	2,559,450
CASH FROM FINANCING AND MISCELLANEOUS SOURCES			
16. Cash provided (applied):			
16.1 Surplus notes, capital notes.....			
16.2 Capital and paid in surplus, less treasury stock.....			
16.3 Borrowed funds.....			
16.4 Net deposits on deposit-type contracts and other insurance liabilities.....			
16.5 Dividends to stockholders.....			1,400,000
16.6 Other cash provided (applied).....	(156,424)	(546,382)	(1,671,808)
17. Net cash from financing and miscellaneous sources (Lines 16.1 through 16.4 minus Line 16.5 plus Line 16.6).....	(156,424)	(546,382)	(3,071,808)
RECONCILIATION OF CASH, CASH EQUIVALENTS AND SHORT-TERM INVESTMENTS			
18. Net change in cash, cash equivalents and short-term investments (Line 11 plus Line 15 plus Line 17).....	0	(299,990)	(299,990)
19. Cash, cash equivalents and short-term investments:			
19.1 Beginning of year.....	0	299,990	299,990
19.2 End of period (Line 18 plus Line 19.1).....	0	0	0

Note: Supplemental disclosures of cash flow information for non-cash transactions:

20.0001			
---------------	--	--	--

NOTES TO FINANCIAL STATEMENTS

1. Summary of Significant Accounting Policies

A. Accounting Practices

The accompanying statutory-basis financial statements of Progressive Choice Insurance Company (the "Company") were prepared on the basis of accounting practices prescribed or permitted by the Ohio Department of Insurance ("DOI").

The Ohio DOI requires insurance companies domiciled in the state of Ohio to prepare their statutory-basis financial statements in accordance with the National Association of Insurance Commissioners' ("NAIC") *Accounting Practices and Procedures Manual* subject to any deviations prescribed or permitted by the Ohio DOI. No deviations from NAIC statutory accounting practices ("NAIC SAP") were used in preparing these statutory-basis financial statements as illustrated in the table below:

Description	State of Domicile	2016	2015
Net income			
(1) Net income, state basis	OH	\$ 22,928	\$ 208,149
(2) Effect of state prescribed practices			
(3) Effect of state permitted practices			
(4) Net income, NAIC SAP basis (1-2-3=4)	OH	\$ 22,928	\$ 208,149
Surplus			
(5) Policyholders' surplus, state basis	OH	\$ 5,474,832	\$ 5,450,630
(6) Effect of state prescribed practices			
(7) Effect of state permitted practices			
(8) Policyholders' surplus, NAIC SAP basis (5-6-7=8)	OH	\$ 5,474,832	\$ 5,450,630

C. Accounting Policies

6. Loan-backed securities

Loan-backed and structured securities are accounted for as prescribed by Statement of Statutory Accounting Principles No. 43R, Loan-backed and Structured Securities. These securities are generally stated at amortized cost as determined by the estimated value of future cash flows. Prepayment assumptions for loan-backed and structured debt securities are obtained from available market data, broker/dealers, and/or internal estimates, and are consistent with current interest rate and economic trends. See Note 5.D.

D. Going Concern

Management continuously monitors the Company's financial results and compliance with regulatory requirements and found no reason to expect the Company to not continue as a going concern.

2. Accounting Changes and Corrections of Errors

No significant change

3. Business Combinations and Goodwill

No significant change

4. Discontinued Operations

No significant change

5. Investments

D. Loan-Backed Securities

1.

The sources used to determine prepayment assumptions are derived from updated cash flows from widely utilized reputable industry sources. The Company's portfolio managers review the available cash flow data and prepayment assumptions and make adjustments based on current performance indicators on the underlying assets (e.g., delinquency rates, foreclosure rates, and default rates), credit support (via current levels of subordination), and historical credit ratings.
2.

Intent to Sell or Inability to Hold Securities with a Recognized Other-Than-Temporary Impairment

Not applicable
3.

As of March 31, 2016, the Company has not recorded an other-than-temporary impairment for loan-backed and structured debt securities during the current year.
4.

As of March 31, 2016, the Company had \$31,383 of gross unrealized losses in the Company's loan-backed and structured debt securities. The Company currently does not intend to sell the loan-backed and structured debt securities and determined that it is more likely than not that the Company will not be required to sell these securities for the period of time necessary to recover their cost basis. If the Company's strategy was to change and these securities were determined to be other-than-temporarily impaired, the Company would recognize a write-down in accordance with the Company's stated policy.

As of March 31, 2016, the composition of fair value and gross unrealized losses on loan-backed and structured debt securities by the length of time that individual securities have been in a continuous unrealized loss position is as follows:

Description	Amount
a. Aggregate amount of unrealized losses	
1. Less than twelve months	\$ 8,102
2. Twelve months or longer	23,281
Total	\$ 31,383
b. Aggregate fair value of securities with unrealized losses	
1. Less than twelve months	\$ 314,889
2. Twelve months or longer	310,343
Total	\$ 625,232

NOTES TO FINANCIAL STATEMENTS

5.	<p>Under SSAP No. 43R, the Company analyzes its structured debt securities to determine if the Company intends to sell, or if it is more likely than not that the Company will be required to sell, the security prior to recovery and, if so, the Company writes down the security to its current fair market value with the entire amount of the write-down recorded as a realized loss. To the extent that it is more likely than not that the Company will hold the debt security until recovery (which could be maturity), the Company determines if any of the decline in value is due to a credit loss (i.e., where the present value of cash flows expected to be collected is lower than the amortized cost basis of the security) and, if so, the Company recognizes that portion of the impairment as a realized loss.</p>
E.	<p>Repurchase Agreements and/or Securities Lending Transactions</p> <p>Not applicable</p>
I.	<p>Working Capital Finance Investments</p> <p>Not applicable</p>
J.	<p>Offsetting and Netting of Assets and Liabilities</p> <p>Not applicable</p>
6.	<p>Joint Ventures, Partnerships and Limited Liability Companies</p> <p>No significant change</p>
7.	<p>Investment Income</p> <p>No significant change</p>
8.	<p>Derivative Instruments</p> <p>No significant change</p>
9.	<p>Income Taxes</p> <p>No significant change</p>
10.	<p>Information Concerning Parent, Subsidiaries, Affiliates and Other Related Parties</p> <p>No significant change</p>
11.	<p>Debt</p> <p>B. Federal Home Loan Bank Agreements</p> <p>Not applicable</p>
12.	<p>Retirement Plans, Deferred Compensation, Postemployment Benefits and Compensated Absences and Other Postretirement Benefit Plans</p> <p>A. Defined Benefit Plan</p> <p>Not applicable</p>
13.	<p>Capital and Surplus, Dividend Restrictions and Quasi-Reorganizations</p> <p>No significant change</p>
14.	<p>Contingencies</p> <p>G. All Other Contingencies</p> <p>The Company is named as defendant in various lawsuits arising out of its insurance operations. All legal actions relating to claims made under insurance policies are considered by the Company in establishing its loss and LAE reserves. The Company transferred 100% of the policy liabilities with regard to all binders, riders, policies and contracts of insurance issued by the Company and therefore has no exposure to litigation expense on this business.</p> <p>The following is a discussion of a potentially significant pending case at March 31, 2016. The Company does not consider a loss from this case to be probable and is unable to estimate a range of loss, if any, at this time.</p> <p>As of March 31, 2016, there was one case consolidated into multi-district proceedings alleging that the Company improperly steers automobile repair work to certain auto body repair shops and challenging the labor rates the Company pays to auto body repair shops.</p>
15.	<p>Leases</p> <p>No significant change</p>
16.	<p>Information about Financial Instruments with Off-Balance Sheet Risk and with Concentrations of Credit Risk</p> <p>No significant change</p>
17.	<p>Sale, Transfer, and Servicing of Financial Assets and Extinguishments of Liabilities</p> <p>B. Transfer and Servicing of Financial Assets</p> <p>Not applicable</p> <p>C. Wash Sales</p> <p>The Company had no wash sales of securities with a NAIC rating of 3 or below during the reporting period.</p>
18.	<p>Gain or Loss from Uninsured Plans and the Uninsured Portion of Partially Insured Plans</p> <p>No significant change</p>
19.	<p>Direct Premiums Written / Produced by Managing General Agents / Third Party Administrators</p> <p>No significant change</p>

PROGRESSIVE CHOICE INSURANCE COMPANY

NOTES TO FINANCIAL STATEMENTS

20. Fair Value Measurements

A. Inputs Used for Assets and Liabilities Measured at Fair Value in the Company's Financial Statements

1. Fair Value Measurements by Levels 1, 2 and 3

The Company categorizes its financial instruments, based on the degree of subjectivity inherent in the method by which they are valued, into a fair value hierarchy of three levels, as follows:

Level 1 - Inputs are unadjusted, quoted prices in active markets for identical instruments at the measurement date (e.g., active exchange-traded equity securities).

Level 2 - Inputs (other than quoted prices included within Level 1) that are observable for the instrument either directly or indirectly. This includes: (i) quoted prices for similar instruments in active markets, (ii) quoted prices for identical or similar instruments in markets that are not active, (iii) inputs other than quoted prices that are observable for the instruments, and (iv) inputs that are derived principally from or corroborated by observable market data by correlation or other means.

Level 3 - Inputs that are unobservable. Unobservable inputs reflect the Company's subjective evaluation about the assumptions market participants would use in pricing the financial instrument.

The Company's management evaluated whether the market was distressed or inactive in determining the fair value of the Company's securities and reviewed certain market level inputs to evaluate whether sufficient activity, volume, and new issuances existed to create an active market. Based on this evaluation, management concluded that there was sufficient activity in determining the fair market value of the Company's securities.

As of March 31, 2016, the Company did not measure and report any securities at fair value on the balance sheet. All bonds were carried at amortized cost.

2. Roll forward of Level 3 Items

Not applicable

3. Policy on Transfers Into and Out of Level 3

At the end of each reporting period, the Company evaluates whether or not any event has occurred or circumstances have changed that would cause an instrument to be transferred into or out of Level 3.

4. Inputs and Techniques Used for Level 2 and Level 3 Fair Values

See Note 20.A above.

5. Derivative Fair Values

Not applicable

B. Other Fair Value Disclosures

Not applicable

C. Fair Values for all Financial Instruments by Levels 1, 2, and 3

The table below represents the fair value of all financial instruments at March 31, 2016, however, not all financial instruments are reported at fair value in the Company's financial statements.

Type of Financial Instrument	Aggregate Fair Value	Admitted Assets	Level 1	Level 2	Level 3	Not Practicable (Carrying Value)
Bonds	\$ 8,170,394	\$ 8,088,107	\$ 2,816,395	\$ 5,353,999	\$ --	\$ --
Cash equivalents	--	--	--	--	--	--
Common stock	--	--	--	--	--	--
Preferred stock	--	--	--	--	--	--
Short-term investments	--	--	--	--	--	--
Total	\$ 8,170,394	\$ 8,088,107	\$ 2,816,395	\$ 5,353,999	\$ --	\$ --

D. Financial Instruments for Which it is Not Practicable to Estimate Fair Values

Not applicable

21. Other Items

No significant change

22. Events Subsequent

Subsequent events have been considered through May 6, 2016 for the statutory statement that was available for issuance by May 15, 2016. There were no subsequent events to report.

The Company does not write health insurance and therefore has no premiums subject to assessment under section 9010 of the Affordable Care Act for either the current or prior years.

23. Reinsurance

No significant change

24. Retrospectively Rated Contracts and Contracts Subject to Redetermination

F. Risk-Sharing Provisions of the Affordable Care Act

The Company does not write health insurance.

25. Changes in Incurred Losses and Loss Adjustment Expenses

No significant change

PROGRESSIVE CHOICE INSURANCE COMPANY

NOTES TO FINANCIAL STATEMENTS

26.

Intercompany Pooling Arrangements

No significant change
27.

Structured Settlements

No significant change
28.

Health Care Receivables

No significant change
29.

Participating Accident and Health Policies

No significant change
30.

Premium Deficiency Reserves

No significant change
31.

High Deductibles

No significant change
32.

Discounting of Liabilities for Unpaid Losses and Unpaid Loss Adjustment Expenses

No significant change
33.

Asbestos and Environmental Reserves

No significant change
34.

Subscriber Savings Accounts

No significant change
35.

Multiple Peril Crop Insurance

No significant change
36.

Financial Guaranty Insurance
- B.

Schedule of Insured Financial Obligations at the End of the Period

Not applicable

PROGRESSIVE CHOICE INSURANCE COMPANY
GENERAL INTERROGATORIES

PART 1 - COMMON INTERROGATORIES

GENERAL

- 1.1

Did the reporting entity experience any material transactions requiring the filing of Disclosure of Material Transactions with the State of Domicile, as required by the Model Act?

Yes [☐] No [☒]
- 1.2

If yes, has the report been filed with the domiciliary state?

Yes [☐] No [☐]
- 2.1

Has any change been made during the year of this statement in the charter, by-laws, articles of incorporation, or deed of settlement of the reporting entity?

Yes [☐] No [☒]
- 2.2

If yes, date of change:
- 3.1

Is the reporting entity a member of an Insurance Holding Company System consisting of two or more affiliated persons, one or more of which is an insurer? If yes, complete Schedule Y, Parts 1 and 1A.

Yes [☒] No [☐]
- 3.2

Have there been any substantial changes in the organizational chart since the prior quarter end?

Yes [☐] No [☒]
- 3.3

If the response to 3.2 is yes, provide a brief description of those changes.

- 4.1

Has the reporting entity been a party to a merger or consolidation during the period covered by this statement?

Yes [☐] No [☒]
- 4.2

If yes, provide name of entity, NAIC Company Code, and state of domicile (use two letter state abbreviation) for any entity that has ceased to exist as a result of the merger or consolidation.

1	2	3
Name of Entity	NAIC Company Code	State of Domicile

5.

If the reporting entity is subject to a management agreement, including third-party administrator(s), managing general agent(s), attorney-in-fact, or similar agreement, have there been any significant changes regarding the terms of the agreement or principals involved? If yes, attach an explanation.

Yes [☐] No [☒] N/A [☐]

- 6.1

State as of what date the latest financial examination of the reporting entity was made or is being made.

12/31/2012
- 6.2

State the as of date that the latest financial examination report became available from either the state of domicile or the reporting entity. This date should be the date of the examined balance sheet and not the date the report was completed or released.

12/31/2012
- 6.3

State as of what date the latest financial examination report became available to other states or the public from either the state of domicile or the reporting entity. This is the release date or completion date of the examination report and not the date of the examination (balance sheet date).

08/06/2013

- 6.4

By what department or departments?
OHIO
- 6.5

Have all financial statement adjustments within the latest financial examination report been accounted for in a subsequent financial statement filed with Departments?

Yes [☐] No [☐] N/A [☒]
- 6.6

Have all of the recommendations within the latest financial examination report been complied with?

Yes [☒] No [☐] N/A [☐]
- 7.1

Has this reporting entity had any Certificates of Authority, licenses or registrations (including corporate registration, if applicable) suspended or revoked by any governmental entity during the reporting period?

Yes [☐] No [☒]
- 7.2

If yes, give full information:

- 8.1

Is the company a subsidiary of a bank holding company regulated with the Federal Reserve Board?

Yes [☐] No [☒]
- 8.2

If response to 8.1 is yes, please identify the name of the bank holding company.

- 8.3

Is the company affiliated with one or more banks, thrifts or securities firms?

Yes [☐] No [☒]
- 8.4

If the response to 8.3 is yes, please provide below the names and location (city and state of the main office) of any affiliates regulated by a federal regulatory services agency [i.e. the Federal Reserve Board (FRB), the Office of the Comptroller of the Currency (OCC), the Federal Deposit Insurance Corporation (FDIC) and the Securities Exchange Commission (SEC)] and identify the affiliate's primary federal regulator].

1	2	3	4	5	6
Affiliate Name	Location (City, State)	FRB	OCC	FDIC	SEC

- 9.1

Are the senior officers (principal executive officer, principal financial officer, principal accounting officer or controller, or persons performing similar functions) of the reporting entity subject to a code of ethics, which includes the following standards?

Yes [☒] No [☐]

(a)

Honest and ethical conduct, including the ethical handling of actual or apparent conflicts of interest between personal and professional relationships;

(b)

Full, fair, accurate, timely and understandable disclosure in the periodic reports required to be filed by the reporting entity;

(c)

Compliance with applicable governmental laws, rules and regulations;

(d)

The prompt internal reporting of violations to an appropriate person or persons identified in the code; and

(e)

Accountability for adherence to the code.
- 9.11

If the response to 9.1 is No, please explain:

- 9.2

Has the code of ethics for senior managers been amended?

Yes [☐] No [☒]
- 9.21

If the response to 9.2 is Yes, provide information related to amendment(s).

- 9.3

Have any provisions of the code of ethics been waived for any of the specified officers?

Yes [☐] No [☒]
- 9.31

If the response to 9.3 is Yes, provide the nature of any waiver(s).

FINANCIAL

PROGRESSIVE CHOICE INSURANCE COMPANY
GENERAL INTERROGATORIES

PART 1 - COMMON INTERROGATORIES

- 10.1 Does the reporting entity report any amounts due from parent, subsidiaries or affiliates on Page 2 of this statement?
- 10.2 If yes, indicate any amounts receivable from parent included in the Page 2 amount:
- Yes [] No [X]
- \$ 0

INVESTMENT

- 11.1 Were any of the stocks, bonds, or other assets of the reporting entity loaned, placed under option agreement, or otherwise made available for use by another person? (Exclude securities under securities lending agreements.)
- 11.2 If yes, give full and complete information relating thereto:
12. Amount of real estate and mortgages held in other invested assets in Schedule BA:
13. Amount of real estate and mortgages held in short-term investments:
- 14.1 Does the reporting entity have any investments in parent, subsidiaries and affiliates?
- 14.2 If yes, please complete the following:
- Yes [] No [X]
- \$ 0
- \$ 0
- Yes [] No [X]

- 14.21 Bonds
- 14.22 Preferred Stock
- 14.23 Common Stock
- 14.24 Short-Term Investments
- 14.25 Mortgage Loans on Real Estate
- 14.26 All Other
- 14.27 Total Investment in Parent, Subsidiaries and Affiliates (Subtotal Lines 14.21 to 14.26)
- 14.28 Total Investment in Parent included in Lines 14.21 to 14.26 above

1 Prior Year-End Book/Adjusted Carrying Value	2 Current Quarter Book/Adjusted Carrying Value
\$ 0	\$ 0
0	0
0	0
0	0
0	0
0	0
0	0
\$ 0	\$ 0
\$ 0	\$ 0

- 15.1 Has the reporting entity entered into any hedging transactions reported on Schedule DB?
- 15.2 If yes, has a comprehensive description of the hedging program been made available to the domiciliary state?
- If no, attach a description with this statement.
- Yes [] No [X]
- Yes [] No []

16. For the reporting entity's security lending program, state the amount of the following as of current statement date:

- 16.1 Total fair value of reinvested collateral assets reported on Schedule DL, Parts 1 and 2:
- 16.2 Total book adjusted/carrying value of reinvested collateral assets reported on Schedule DL, Parts 1 and 2:
- 16.3 Total payable for securities lending reported on the liability page:
- \$ 0
- \$ 0
- \$ 0

17. Excluding items in Schedule E-Part 3-Special Deposits, real estate, mortgage loans and investments held physically in the reporting entity's offices, vaults or safety deposit boxes, were all stocks, bonds and other securities, owned throughout the current year held pursuant to a custodial agreement with a qualified bank or trust company in accordance with Section 1, III - General Examination Considerations, F. Outsourcing of Critical Functions, Custodial or Safekeeping Agreements of the NAIC *Financial Condition Examiners Handbook*?
- Yes [X] No []

- 17.1 For all agreements that comply with the requirements of the NAIC *Financial Condition Examiners Handbook*, complete the following:

1 Name of Custodian(s)	2 Custodian Address
CITIBANK, N.A.	338 GREENWICH STREET NEW YORK, NY 10013

- 17.2 For all agreements that do not comply with the requirements of the NAIC *Financial Condition Examiners Handbook*, provide the name, location and a complete explanation:

1 Name(s)	2 Location(s)	3 Complete Explanation(s)
NONE		

- 17.3 Have there been any changes, including name changes, in the custodian(s) identified in 17.1 during the current quarter?
- Yes [] No [X]

- 17.4 If yes, give full and complete information relating thereto:

1 Old Custodian	2 New Custodian	3 Date of Change	4 Reason
NONE			

- 17.5 Identify all investment advisors, broker/dealers or individuals acting on behalf of broker/dealers that have access to the investment accounts, handle securities and have authority to make investments on behalf of the reporting entity:

1 Central Registration Depository	2 Name(s)	3 Address
NONE		

- 18.1 Have all the filing requirements of the *Purposes and Procedures Manual of the NAIC Investment Analysis Office* been followed?
- Yes [X] No []

- 18.2 If no, list exceptions:

SCHEDULE F - CEDED REINSURANCE

Showing All New Reinsurers - Current Year to Date

1	2	3	4	5	6	7
NAIC Company Code	ID Number	Name of Reinsurer	Domiciliary Jurisdiction	Type of Reinsurer	Certified Reinsurer Rating (1 through 6)	Effective Date of Certified Reinsurer Rating

NONE

SCHEDULE T - EXHIBIT OF PREMIUMS WRITTEN

Current Year to Date - Allocated by States and Territories

States, Etc.		1 Active Status	Direct Premiums Written		Direct Losses Paid (Deducting Salvage)		Direct Losses Unpaid	
			2 Current Year to Date	3 Prior Year to Date	4 Current Year to Date	5 Prior Year to Date	6 Current Year to Date	7 Prior Year to Date
1.	Alabama.....AL	N						
2.	Alaska.....AK	N						
3.	Arizona.....AZ	N						
4.	Arkansas.....AR	N						
5.	California.....CA	N						
6.	Colorado.....CO	N						
7.	Connecticut.....CT	N						
8.	Delaware.....DE	N						
9.	District of Columbia.....DC	L						
10.	Florida.....FL	N						
11.	Georgia.....GA	L						
12.	Hawaii.....HI	N						
13.	Idaho.....ID	N						
14.	Illinois.....IL	E						
15.	Indiana.....IN	N						
16.	Iowa.....IA	N						
17.	Kansas.....KS	L						
18.	Kentucky.....KY	N						
19.	Louisiana.....LA	L						
20.	Maine.....ME	N						
21.	Maryland.....MD	N						
22.	Massachusetts.....MA	N						
23.	Michigan.....MI	N						
24.	Minnesota.....MN	N						
25.	Mississippi.....MS	N						
26.	Missouri.....MO	N						
27.	Montana.....MT	N						
28.	Nebraska.....NE	N						
29.	Nevada.....NV	N						
30.	New Hampshire.....NH	N						
31.	New Jersey.....NJ	N						
32.	New Mexico.....NM	N						
33.	New York.....NY	N						
34.	North Carolina.....NC	N						
35.	North Dakota.....ND	L						
36.	Ohio.....OH	L						
37.	Oklahoma.....OK	N						
38.	Oregon.....OR	N						
39.	Pennsylvania.....PA	L						
40.	Rhode Island.....RI	N						
41.	South Carolina.....SC	N						
42.	South Dakota.....SD	N						
43.	Tennessee.....TN	L						
44.	Texas.....TX	L						
45.	Utah.....UT	N						
46.	Vermont.....VT	N						
47.	Virginia.....VA	N						
48.	Washington.....WA	N						
49.	West Virginia.....WV	L						
50.	Wisconsin.....WI	N						
51.	Wyoming.....WY	N						
52.	American Samoa.....AS	N						
53.	Guam.....GU	N						
54.	Puerto Rico.....PR	N						
55.	US Virgin Islands.....VI	N						
56.	Northern Mariana Islands.....MP	N						
57.	Canada.....CAN	N						
58.	Aggregate Other Alien.....OT	XXX	0	0	0	0	0	0
59.	Totals.....	(a)....10	0	0	0	0	0	0

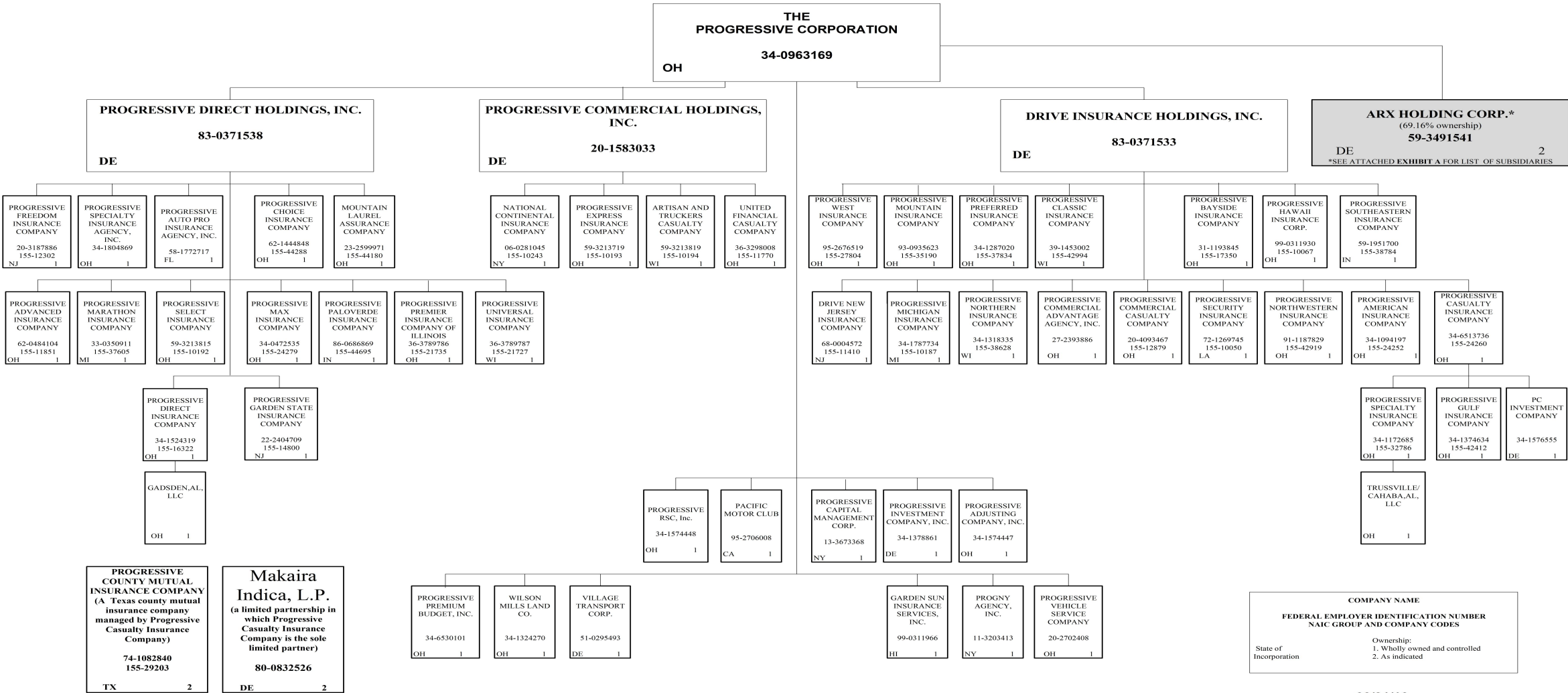
DETAILS OF WRITE-INS							
58001.	XXX						
58002.	XXX						
58003.	XXX						
58998. Summary of remaining write-ins for Line 58 from overflow page.....	XXX	0	0	0	0	0	0
58999. Totals (Lines 58001 thru 58003+ Line 58998) (Line 58 above).....	XXX	0	0	0	0	0	0

(L) - Licensed or Chartered - Licensed Insurance Carrier or Domiciled RRG; (R) - Registered - Non-domiciled RRGs; (Q) - Qualified - Qualified or Accredited Reinsurer;
(E) - Eligible - Reporting Entities eligible or approved to write Surplus Lines in the state; (N) - None of the above - Not allowed to write business in the state.
(a) Insert the number of L responses except for Canada and Other Alien.

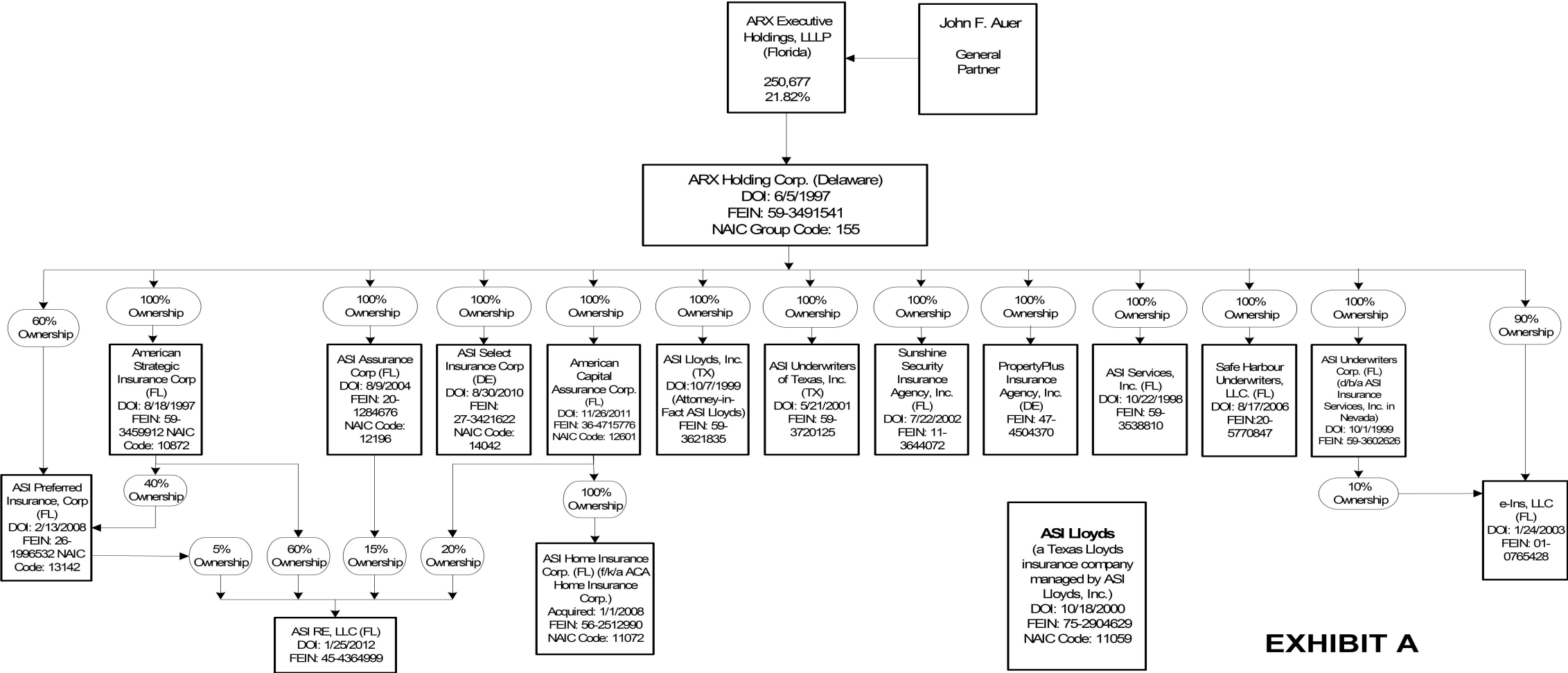
SCHEDULE Y – INFORMATION CONCERNING ACTIVITIES OF INSURER MEMBERS OF A HOLDING COMPANY GROUP

PART 1 – ORGANIZATIONAL CHART

Q11



SCHEDULE Y – INFORMATION CONCERNING ACTIVITIES OF INSURER MEMBERS OF A HOLDING COMPANY GROUP
PART 1 – ORGANIZATIONAL CHART



Q11.1

SCHEDULE Y

PART 1A - DETAIL OF INSURANCE HOLDING COMPANY SYSTEM

1	2	3	4	5	6	7	8	9	10	11	12	13	14	15
Group Code	Group Name	NAIC Company Code	ID Number	Federal RSSD	CIK	Name of Securities Exchange if Public Traded (U.S. or International)	Name of Parent, Subsidiaries or Affiliates	Domiciliary Location	Relationship to Reporting Entity	Directly Controlled by (Name of Entity/Person)	Type of Control (Ownership, Board, Management, Attorney-in-Fact, Influence, Other)	If Control is Ownership Provide Percentage	Ultimate Controlling Entity(ies)/Person(s)	*
Members														
.....	The Progressive Corporation.....	00000.....	34-0963169..	0000080661	NYSE.....	The Progressive Corporation.....	OH.....	UIP.....	Board, Management.....	Board.....	The Progressive Corporation..	1, 3.....
.....	The Progressive Corporation.....	00000.....	83-0371533..	Drive Insurance Holdings, Inc.....	DE.....	NIA.....	The Progressive Corporation.....	Ownership.....	...100.000	The Progressive Corporation..	1, 3.....
0155...	The Progressive Corporation.....	11410.....	68-0004572..	Drive New Jersey Insurance Company.....	NJ.....	IA.....	Drive Insurance Holdings, Inc.....	Ownership.....	...100.000	The Progressive Corporation..	1, 3.....
0155...	The Progressive Corporation.....	24252.....	34-1094197..	Progressive American Insurance Company.....	OH.....	IA.....	Drive Insurance Holdings, Inc.....	Ownership.....	...100.000	The Progressive Corporation..	1, 3.....
0155...	The Progressive Corporation.....	17350.....	31-1193845..	Progressive Bayside Insurance Company.....	OH.....	IA.....	Drive Insurance Holdings, Inc.....	Ownership.....	...100.000	The Progressive Corporation..	1, 3.....
0155...	The Progressive Corporation.....	24260.....	34-6513736..	Progressive Casualty Insurance Company.....	OH.....	IA.....	Drive Insurance Holdings, Inc.....	Ownership.....	...100.000	The Progressive Corporation..	1, 3.....
.....	The Progressive Corporation.....	00000.....	34-1576555..	PC Investment Company.....	DE.....	NIA.....	Progressive Casualty Insurance Company....	Ownership.....	...100.000	The Progressive Corporation..	1, 3.....
0155...	The Progressive Corporation.....	29203.....	74-1082840..	Progressive County Mutual Insurance Company.....	TX.....	IA.....	Progressive Casualty Insurance Company....	Management.....	The Progressive Corporation..	2, 3.....
0155...	The Progressive Corporation.....	42412.....	34-1374634..	Progressive Gulf Insurance Company.....	OH.....	IA.....	Progressive Casualty Insurance Company....	Ownership.....	...100.000	The Progressive Corporation..	1, 3.....
0155...	The Progressive Corporation.....	32786.....	34-1172685..	Progressive Specialty Insurance Company.....	OH.....	IA.....	Progressive Casualty Insurance Company....	Ownership.....	...100.000	The Progressive Corporation..	1, 3.....
.....	The Progressive Corporation.....	00000.....	Trussville/Cahaba, AL , LLC.....	OH.....	NIA.....	Progressive Specialty Insurance Company....	Ownership.....	...100.000	The Progressive Corporation..	1, 3.....
0155...	The Progressive Corporation.....	42994.....	39-1453002..	Progressive Classic Insurance Company.....	WI.....	IA.....	Drive Insurance Holdings, Inc.....	Ownership.....	...100.000	The Progressive Corporation..	1, 3.....
0155...	The Progressive Corporation.....	10067.....	99-0311930..	Progressive Hawaii Insurance Corp.....	OH.....	IA.....	Drive Insurance Holdings, Inc.....	Ownership.....	...100.000	The Progressive Corporation..	1, 3.....
0155...	The Progressive Corporation.....	10187.....	34-1787734..	Progressive Michigan Insurance Company.....	MI.....	IA.....	Drive Insurance Holdings, Inc.....	Ownership.....	...100.000	The Progressive Corporation..	1, 3.....
0155...	The Progressive Corporation.....	35190.....	93-0935623..	Progressive Mountain Insurance Company.....	OH.....	IA.....	Drive Insurance Holdings, Inc.....	Ownership.....	...100.000	The Progressive Corporation..	1, 3.....
0155...	The Progressive Corporation.....	38628.....	34-1318335..	Progressive Northern Insurance Company.....	WI.....	IA.....	Drive Insurance Holdings, Inc.....	Ownership.....	...100.000	The Progressive Corporation..	1, 3.....
0155...	The Progressive Corporation.....	42919.....	91-1187829..	Progressive Northwestern Insurance Company.....	OH.....	IA.....	Drive Insurance Holdings, Inc.....	Ownership.....	...100.000	The Progressive Corporation..	1, 3.....
0155...	The Progressive Corporation.....	37834.....	34-1287020..	Progressive Preferred Insurance Company.....	OH.....	IA.....	Drive Insurance Holdings, Inc.....	Ownership.....	...100.000	The Progressive Corporation..	1, 3.....
0155...	The Progressive Corporation.....	10050.....	72-1269745..	Progressive Security Insurance Company.....	LA.....	IA.....	Drive Insurance Holdings, Inc.....	Ownership.....	...100.000	The Progressive Corporation..	1, 3.....
0155...	The Progressive Corporation.....	38784.....	59-1951700..	Progressive Southeastern Insurance Company.....	IN.....	IA.....	Drive Insurance Holdings, Inc.....	Ownership.....	...100.000	The Progressive Corporation..	1, 3.....
0155...	The Progressive Corporation.....	27804.....	95-2676519..	Progressive West Insurance Company.....	OH.....	IA.....	Drive Insurance Holdings, Inc.....	Ownership.....	...100.000	The Progressive Corporation..	1, 3.....
.....	The Progressive Corporation.....	00000.....	27-2393886..	Progressive Commercial Advantage Agency, Inc.....	OH.....	NIA.....	Drive Insurance Holdings, Inc.....	Ownership.....	...100.000	The Progressive Corporation..	1, 3.....
.....	The Progressive Corporation.....	00000.....	20-1583033..	Progressive Commercial Holdings, Inc.....	DE.....	NIA.....	The Progressive Corporation.....	Ownership.....	...100.000	The Progressive Corporation..	1, 3.....
0155...	The Progressive Corporation.....	10194.....	59-3213819..	Artisan and Truckers Casualty Company.....	WI.....	IA.....	Progressive Commercial Holdings, Inc.....	Ownership.....	...100.000	The Progressive Corporation..	1, 3.....
0155...	The Progressive Corporation.....	10243.....	06-0281045..	National Continental Insurance Company.....	NY.....	IA.....	Progressive Commercial Holdings, Inc.....	Ownership.....	...100.000	The Progressive Corporation..	1, 3.....
0155...	The Progressive Corporation.....	12879.....	20-4093467..	Progressive Commercial Casualty Company.....	OH.....	IA.....	Drive Insurance Holdings, Inc.....	Ownership.....	...100.000	The Progressive Corporation..	1, 3.....
0155...	The Progressive Corporation.....	10193.....	59-3213719..	Progressive Express Insurance Company.....	OH.....	IA.....	Progressive Commercial Holdings, Inc.....	Ownership.....	...100.000	The Progressive Corporation..	1, 3.....
0155...	The Progressive Corporation.....	11770.....	36-3298008..	United Financial Casualty Company.....	OH.....	IA.....	Progressive Commercial Holdings, Inc.....	Ownership.....	...100.000	The Progressive Corporation..	1, 3.....
.....	The Progressive Corporation.....	00000.....	83-0371538..	Progressive Direct Holdings, Inc.....	DE.....	UDP.....	The Progressive Corporation.....	Ownership.....	...100.000	The Progressive Corporation..	1, 3.....
0155...	The Progressive Corporation.....	44180.....	23-2599971..	Mountain Laurel Assurance Company.....	OH.....	IA.....	Progressive Direct Holdings, Inc.....	Ownership.....	...100.000	The Progressive Corporation..	1, 3.....
0155...	The Progressive Corporation.....	11851.....	62-0484104..	Progressive Advanced Insurance Company.....	OH.....	IA.....	Progressive Direct Holdings, Inc.....	Ownership.....	...100.000	The Progressive Corporation..	1, 3.....
.....	The Progressive Corporation.....	00000.....	58-1772717..	Progressive Auto Pro Insurance Agency, Inc.....	FL.....	NIA.....	Progressive Direct Holdings, Inc.....	Ownership.....	...100.000	The Progressive Corporation..	1, 3.....
0155...	The Progressive Corporation.....	44288.....	62-1444848..	Progressive Choice Insurance Company.....	OH.....	RE.....	Progressive Direct Holdings, Inc.....	Ownership.....	...100.000	The Progressive Corporation..	1, 3.....
0155...	The Progressive Corporation.....	16322.....	34-1524319..	Progressive Direct Insurance Company.....	OH.....	IA.....	Progressive Direct Holdings, Inc.....	Ownership.....	...100.000	The Progressive Corporation..	1, 3.....
.....	The Progressive Corporation.....	00000.....	Gadsden, AL, LLC.....	OH.....	NIA.....	Progressive Direct Insurance Company.....	Ownership.....	...100.000	The Progressive Corporation..	1, 3.....
0155...	The Progressive Corporation.....	12302.....	20-3187886..	Progressive Freedom Insurance Company.....	NJ.....	IA.....	Progressive Direct Holdings, Inc.....	Ownership.....	...100.000	The Progressive Corporation..	1, 3.....

Q12

SCHEDULE Y

PART 1A - DETAIL OF INSURANCE HOLDING COMPANY SYSTEM

Q12.1

1	2	3	4	5	6	7	8	9	10	11	12	13	14	15
Group Code	Group Name	NAIC Company Code	ID Number	Federal RSSD	CIK	Name of Securities Exchange if Public Traded (U.S. or International)	Name of Parent, Subsidiaries or Affiliates	Domiciliary Location	Relationship to Reporting Entity	Directly Controlled by (Name of Entity/Person)	Type of Control (Ownership, Board, Management, Attorney-in-Fact, Influence, Other)	If Control is Ownership Provide Percentage	Ultimate Controlling Entity(ies)/Person(s)	*
0155...	The Progressive Corporation.....	14800.....	22-2404709..				Progressive Garden State Insurance Company.....	NJ.....	IA.....	Progressive Direct Holdings, Inc.....	Ownership.....	...100.000	The Progressive Corporation..	1, 3.....
0155...	The Progressive Corporation.....	37605.....	33-0350911..				Progressive Marathon Insurance Company.....	MI.....	IA.....	Progressive Direct Holdings, Inc.....	Ownership.....	...100.000	The Progressive Corporation..	1, 3.....
0155...	The Progressive Corporation.....	24279.....	34-0472535..				Progressive Max Insurance Company.....	OH.....	IA.....	Progressive Direct Holdings, Inc.....	Ownership.....	...100.000	The Progressive Corporation..	1, 3.....
0155...	The Progressive Corporation.....	44695.....	86-0686869..				Progressive Paloverde Insurance Company.....	IN.....	IA.....	Progressive Direct Holdings, Inc.....	Ownership.....	...100.000	The Progressive Corporation..	1, 3.....
0155...	The Progressive Corporation.....	21735.....	36-3789786..				Progressive Premier Insurance Company of Illinois.....	OH.....	IA.....	Progressive Direct Holdings, Inc.....	Ownership.....	...100.000	The Progressive Corporation..	1, 3.....
0155...	The Progressive Corporation.....	10192.....	59-3213815..				Progressive Select Insurance Company.....	OH.....	IA.....	Progressive Direct Holdings, Inc.....	Ownership.....	...100.000	The Progressive Corporation..	1, 3.....
	The Progressive Corporation.....	00000.....	34-1804869..				Progressive Specialty Insurance Agency, Inc.....	OH.....	NIA.....	Progressive Direct Holdings, Inc.....	Ownership.....	...100.000	The Progressive Corporation..	1, 3.....
0155...	The Progressive Corporation.....	21727.....	36-3789787..				Progressive Universal Insurance Company.....	WI.....	IA.....	Progressive Direct Holdings, Inc.....	Ownership.....	...100.000	The Progressive Corporation..	1, 3.....
	The Progressive Corporation.....	00000.....	99-0311966..				Garden Sun Insurance Services, LLC.....	HI.....	NIA.....	The Progressive Corporation.....	Ownership.....	...100.000	The Progressive Corporation..	1, 3.....
	The Progressive Corporation.....	00000.....	95-2706008..				Pacific Motor Club.....	CA.....	NIA.....	The Progressive Corporation.....	Ownership.....	...100.000	The Progressive Corporation..	1, 3.....
	The Progressive Corporation.....	00000.....	11-3203413..				PROGNY Agency, Inc.....	NY.....	NIA.....	The Progressive Corporation.....	Ownership.....	...100.000	The Progressive Corporation..	1, 3.....
	The Progressive Corporation.....	00000.....	34-1574447..				Progressive Adjusting Company, Inc.....	OH.....	NIA.....	The Progressive Corporation.....	Ownership.....	...100.000	The Progressive Corporation..	1, 3.....
	The Progressive Corporation.....	00000.....	13-3673368..				Progressive Capital Management Corp.....	NY.....	NIA.....	The Progressive Corporation.....	Ownership.....	...100.000	The Progressive Corporation..	1, 3.....
	The Progressive Corporation.....	00000.....	34-1378861..				Progressive Investment Company, Inc.....	DE.....	NIA.....	The Progressive Corporation.....	Ownership.....	...100.000	The Progressive Corporation..	1, 3.....
	The Progressive Corporation.....	00000.....	34-6530101..				Progressive Premium Budget, Inc.....	OH.....	NIA.....	The Progressive Corporation.....	Ownership.....	...100.000	The Progressive Corporation..	1, 3.....
	The Progressive Corporation.....	00000.....	34-1574448..				Progressive RSC, Inc.....	OH.....	NIA.....	The Progressive Corporation.....	Ownership.....	...100.000	The Progressive Corporation..	1, 3.....
	The Progressive Corporation.....	00000.....	20-2702408..				Progressive Vehicle Service Company.....	OH.....	NIA.....	The Progressive Corporation.....	Ownership.....	...100.000	The Progressive Corporation..	1, 3.....
	The Progressive Corporation.....	00000.....	51-0295493..				Village Transport Corp.....	DE.....	NIA.....	The Progressive Corporation.....	Ownership.....	...100.000	The Progressive Corporation..	1, 3.....
	The Progressive Corporation.....	00000.....	34-1324270..				Wilson Mills Land Co.....	OH.....	NIA.....	The Progressive Corporation.....	Ownership.....	...100.000	The Progressive Corporation..	1, 3.....
	The Progressive Corporation.....	00000.....	80-0832526..				Makaira Indica, LP.....	CA.....	NIA.....	Progressive Casualty Insurance Company....	Other.....		The Progressive Corporation..	1, 3, 4...
	The Progressive Corporation.....	00000.....	59-3491541..				ARX Holding Corp.....	DE.....	NIA.....	The Progressive Corporation.....	Ownership.....	...69.160	The Progressive Corporation..	5.....
0155...	The Progressive Corporation, ARX Interest...	12601.....	20-5107413..				American Capital Assurance Corp.....	FL.....	IA.....	ARX Holding Corp.....	Ownership.....	...100.000	The Progressive Corporation..	1, 3, 5...
0155...	The Progressive Corporation, ARX Interest...	11072.....	56-2512990..				ASI Home Insurance Corp.....	FL.....	IA.....	American Capital Assurance Corp.....	Ownership.....	...100.000	The Progressive Corporation..	1, 3, 5...
	The Progressive Corporation, ARX Interest...	00000.....	45-4364999..				ASI RE, LLC.....	FL.....	NIA.....	American Capital Assurance Corp.....	Ownership.....	...20.000	The Progressive Corporation..	1, 3, 5...
	The Progressive Corporation, ARX Interest...	00000.....	45-4364999..				ASI RE, LLC.....	FL.....	NIA.....	ASI Preferred Insurance Corp.....	Ownership.....	...5.000	The Progressive Corporation..	1, 3, 5...
	The Progressive Corporation, ARX Interest...	00000.....	45-4364999..				ASI RE, LLC.....	FL.....	NIA.....	American Strategic Insurance Corp.....	Ownership.....	...60.000	The Progressive Corporation..	1, 3, 5...
	The Progressive Corporation, ARX Interest...	00000.....	45-4364999..				ASI RE, LLC.....	FL.....	NIA.....	ASI Assurance Corp.....	Ownership.....	...15.000	The Progressive Corporation..	1, 3, 5...
0155...	The Progressive Corporation, ARX Interest...	13142.....	26-1996532..				ASI Preferred Insurance Corp.....	FL.....	IA.....	American Strategic Insurance Corp.....	Ownership.....	...40.000	The Progressive Corporation..	1, 3, 5...
0155...	The Progressive Corporation, ARX Interest...	13142.....	26-1996532..				ASI Preferred Insurance Corp.....	FL.....	IA.....	ARX Holding Corp.....	Ownership.....	...60.000	The Progressive Corporation..	1, 3, 5...
0155...	The Progressive Corporation, ARX Interest...	10872.....	59-3459912..				American Strategic Insurance Corp.....	FL.....	IA.....	ARX Holding Corp.....	Ownership.....	...100.000	The Progressive Corporation..	1, 3, 5...
0155...	The Progressive Corporation, ARX Interest...	11059.....	75-2904629..				ASI Lloyds.....	TX.....	IA.....	ASI Lloyds, Inc.....	Management.....		The Progressive Corporation..	1,3,5,6...
0155...	The Progressive Corporation, ARX Interest...	12196.....	20-1284676..				ASI Assurance Corp.....	FL.....	IA.....	ARX Holding Corp.....	Ownership.....	...100.000	The Progressive Corporation..	1, 3, 5...
0155...	The Progressive Corporation, ARX Interest...	14042.....	27-3421622..				ASI Select Insurance Corp.....	DE.....	IA.....	ARX Holding Corp.....	Ownership.....	...100.000	The Progressive Corporation..	1, 3, 5...
	The Progressive Corporation, ARX Interest...	00000.....	59-3538810..				ASI Services Inc.....	FL.....	NIA.....	ARX Holding Corp.....	Ownership.....	...100.000	The Progressive Corporation..	1, 3, 5...
	The Progressive Corporation, ARX Interest...	00000.....	20-5770847..				Safe Harbour Underwriters, LLC.....	FL.....	NIA.....	ARX Holding Corp.....	Ownership.....	...100.000	The Progressive Corporation..	1, 3, 5...
	The Progressive Corporation, ARX Interest...	00000.....	59-3621835..				ASI Lloyds, Inc.....	TX.....	NIA.....	ARX Holding Corp.....	Ownership.....	...100.000	The Progressive Corporation..	1, 3, 5...

SCHEDULE Y

PART 1A - DETAIL OF INSURANCE HOLDING COMPANY SYSTEM

1	2	3	4	5	6	7	8	9	10	11	12	13	14	15
Group Code	Group Name	NAIC Company Code	ID Number	Federal RSSD	CIK	Name of Securities Exchange if Public Traded (U.S. or International)	Name of Parent, Subsidiaries or Affiliates	Domiciliary Location	Relationship to Reporting Entity	Directly Controlled by (Name of Entity/Person)	Type of Control (Ownership, Board, Management, Attorney-in-Fact, Influence, Other)	If Control is Ownership Provide Percentage	Ultimate Controlling Entity(ies)/Person(s)	*
.....	The Progressive Corporation, ARX Interest....	00000.....	59-3720125..	ASI Underwriters of Texas, Inc.....	TX.....	NIA.....	ARX Holding Corp.....	Ownership.....100.000	The Progressive Corporation..	1, 3, 5....
.....	The Progressive Corporation, ARX Interest....	00000.....	11-3644072..	Sunshine Security Insurance Agency, Inc.....	FL.....	NIA.....	ARX Holding Corp.....	Ownership.....100.000	The Progressive Corporation..	1, 3, 5....
.....	The Progressive Corporation, ARX Interest....	00000.....	59-3602626..	ASI Underwriters Corp.....	FL.....	NIA.....	ARX Holding Corp.....	Ownership.....100.000	The Progressive Corporation..	1, 3, 5....
.....	The Progressive Corporation, ARX Interest....	00000.....	01-0765428..	e-Ins, LLC.....	FL.....	NIA.....	ARX Holding Corp.....	Ownership.....90.000	The Progressive Corporation..	1, 3, 5....
.....	The Progressive Corporation, ARX Interest....	00000.....	01-0765428..	e-Ins, LLC.....	FL.....	NIA.....	ASI Underwriters Corp.....	Ownership.....10.000	The Progressive Corporation..	1, 3, 5....
.....	The Progressive Corporation, ARX Interest....	00000.....	47-4504370..	PropertyPlus Insurance Agency, Inc.....	DE.....	NIA.....	ARX Holding Corp.....	Ownership.....100.000	The Progressive Corporation..	1, 3, 5....

Asteris	Explanation
1	Schedule Y Part 1A is a common schedule for all companies of The Progressive Corporation, however column 10 requires specific relationship information relative to the reporting entity.
2	Progressive County Mutual Insurance Company is a Texas county mutual insurance company that is controlled, but not owned by Progressive Casualty Insurance Company.
3	None of the companies that are part of The Progressive Corporation are Federally chartered or insured institutions and therefore, do not have Federal RSSD numbers.
4	Makaira Indica, LP is a limited partnership in which Progressive Casualty Insurance Company is the sole limited partner.
5	Effective April 1, 2015, The Progressive Corporation purchased a majority ownership share in the ARX Holding Corp., which now consists of ARX Holding Corp. and 16 subsidiaries.
6	ASI Lloyds is a Texas Lloyds insurance company that is managed, but not owned by ASI Lloyds, Inc.

PROGRESSIVE CHOICE INSURANCE COMPANY
PART 1 - LOSS EXPERIENCE

Lines of Business	Current Year to Date			4 Prior Year to Date Direct Loss Percentage
	1 Direct Premiums Earned	2 Direct Losses Incurred	3 Direct Loss Percentage	
1. Fire.....			0.0	
2. Allied lines.....			0.0	
3. Farmowners multiple peril.....			0.0	
4. Homeowners multiple peril.....			0.0	
5. Commercial multiple peril.....			0.0	
6. Mortgage guaranty.....			0.0	
8. Ocean marine.....			0.0	
9. Inland marine.....			0.0	
10. Financial guaranty.....			0.0	
11.1. Medical professional liability - occurrence.....			0.0	
11.2. Medical professional liability - claims-made.....			0.0	
12. Earthquake.....			0.0	
13. Group accident and health.....			0.0	
14. Credit accident and health.....			0.0	
15. Other accident and health.....			0.0	
16. Workers' compensation.....			0.0	
17.1 Other liability-occurrence.....			0.0	
17.2 Other liability-claims made.....			0.0	
17.3 Excess workers' compensation.....			0.0	
18.1 Products liability-occurrence.....			0.0	
18.2 Products liability-claims made.....			0.0	
19.1, 19.2 Private passenger auto liability.....			0.0	
19.3, 19.4 Commercial auto liability.....			0.0	
21. Auto physical damage.....			0.0	
22. Aircraft (all perils).....			0.0	
23. Fidelity.....			0.0	
24. Surety.....			0.0	
26. Burglary and theft.....			0.0	
27. Boiler and machinery.....			0.0	
28. Credit.....			0.0	
29. International.....			0.0	
30. Warranty.....			0.0	
31. Reinsurance-nonproportional assumed property.....	XXX	XXX	XXX	XXX
32. Reinsurance-nonproportional assumed liability.....	XXX	XXX	XXX	XXX
33. Reinsurance-nonproportional assumed financial lines.....	XXX	XXX	XXX	XXX
34. Aggregate write-ins for other lines of business.....	0	0	0.0	
35. Totals.....	0	0	0.0	

DETAILS OF WRITE-INS

3401.			0.0	
3402.			0.0	
3403.			0.0	
3498. Sum. of remaining write-ins for Line 34 from overflow page.....	0	0	0.0	XXX
3499. Totals (Lines 3401 thru 3403 plus 3498) (Line 34).....	0	0	0.0	

PART 2 - DIRECT PREMIUMS WRITTEN

Lines of Business	1 Current Quarter	2 Current Year to Date	3 Prior Year Year to Date
1. Fire.....			
2. Allied lines.....			
3. Farmowners multiple peril.....			
4. Homeowners multiple peril.....			
5. Commercial multiple peril.....			
6. Mortgage guaranty.....			
8. Ocean marine.....			
9. Inland marine.....			
10. Financial guaranty.....			
11.1 Medical professional liability - occurrence.....			
11.2 Medical professional liability - claims made.....			
12. Earthquake.....			
13. Group accident and health.....			
14. Credit accident and health.....			
15. Other accident and health.....			
16. Workers' compensation.....			
17.1 Other liability-occurrence.....			
17.2 Other liability-claims made.....			
17.3 Excess workers' compensation.....			
18.1 Products liability-occurrence.....			
18.2 Products liability-claims made.....			
19.1 19.2 Private passenger auto liability.....			
19.3 19.4 Commercial auto liability.....			
21. Auto physical damage.....			
22. Aircraft (all perils).....			
23. Fidelity.....			
24. Surety.....			
26. Burglary and theft.....			
27. Boiler and machinery.....			
28. Credit.....			
29. International.....			
30. Warranty.....			
31. Reinsurance-nonproportional assumed property.....	XXX	XXX	XXX
32. Reinsurance-nonproportional assumed liability.....	XXX	XXX	XXX
33. Reinsurance-nonproportional assumed financial lines.....	XXX	XXX	XXX
34. Aggregate write-ins for other lines of business.....	0	0	0
35. Totals.....	0	0	0

DETAILS OF WRITE-INS

3401.			
3402.			
3403.			
3498. Sum. of remaining write-ins for Line 34 from overflow page.....	0	0	0
3499. Totals (Lines 3401 thru 3403 plus 3498) (Line 34).....	0	0	0

SUPPLEMENTAL EXHIBITS AND SCHEDULES INTERROGATORIES

The following supplemental reports are required to be filed as part of your statement filing. However, in the event that your company does not transact the type of business for which the special report must be filed, your response of NO to the specific interrogatory will be accepted in lieu of filing a "NONE" report and a bar code will be printed below. If the supplement is required of your company but is not being filed for whatever reason, enter SEE EXPLANATION and provide an explanation following the interrogatory questions.

	Response
1. Will the Trusteed Surplus Statement be filed with the state of domicile and the NAIC with this statement?	<div>NO</div>
2. Will Supplement A to Schedule T (Medical Professional Liability Supplement) be filed with this statement?	<div>NO</div>
3. Will the Medicare Part D Coverage Supplement be filed with the state of domicile and the NAIC with this statement?	<div>NO</div>
4. Will the Director and Officer Insurance Coverage Supplement be filed with the state of domicile and the NAIC with this statement?	<div>NO</div>

Explanation:

1.

The data for this supplement is not required to be filed.
2.

The data for this supplement is not required to be filed.
3.

The data for this supplement is not required to be filed.
4.

The data for this supplement is not required to be filed.

Bar Code:



PROGRESSIVE CHOICE INSURANCE COMPANY
Overflow Page for Write-Ins

NONE

PROGRESSIVE CHOICE INSURANCE COMPANY
SCHEDULE A - VERIFICATION

Real Estate

	1	2
	Year to Date	Prior Year Ended December 31
1. Book/adjusted carrying value, December 31 of prior year.....0
2. Cost of acquired:		
2.1 Actual cost at time of acquisition.....		
2.2 Additional investment made after acquisition.....		
3. Current year change in encumbrances.....		
4. Total gain (loss) on disposals.....		
5. Deduct amounts received on disposals.....		
6. Total foreign exchange change in book/adjusted carrying value.....		
7. Deduct current year's other-than-temporary impairment recognized.....		
8. Deduct current year's depreciation.....		
9. Book/adjusted carrying value at end of current period (Lines 1+2+3+4-5+6-7-8).....00
10. Deduct total nonadmitted amounts.....		
11. Statement value at end of current period (Line 9 minus Line 10).....00

NONE

SCHEDULE B - VERIFICATION

Mortgage Loans

	1	2
	Year to Date	Prior Year Ended December 31
1. Book value/recorded investment excluding accrued interest, December 31 of prior year.....0
2. Cost of acquired:		
2.1 Actual cost at time of acquisition.....		
2.2 Additional investment made after acquisition.....		
3. Capitalized deferred interest and other.....		
4. Accrual of discount.....		
5. Unrealized valuation increase (decrease).....		
6. Total gain (loss) on disposals.....		
7. Deduct amounts received on disposals.....		
8. Deduct amortization of premium and mortgage interest points and commitment fees.....		
9. Total foreign exchange change in book value/recorded investment excluding accrued interest.....		
10. Deduct current year's other-than-temporary impairment recognized.....		
11. Book value/recorded investment excluding accrued interest at end of current period (Lines 1+2+3+4+5+6-7-8+9-10).....00
12. Total valuation allowance.....		
13. Subtotal (Line 11 plus Line 12).....00
14. Deduct total nonadmitted amounts.....		
15. Statement value at end of current period (Line 13 minus Line 14).....00

NONE

SCHEDULE BA - VERIFICATION

Other Long-Term Invested Assets

	1	2
	Year to Date	Prior Year Ended December 31
1. Book/adjusted carrying value, December 31 of prior year.....0
2. Cost of acquired:		
2.1 Actual cost at time of acquisition.....		
2.2 Additional investment made after acquisition.....		
3. Capitalized deferred interest and other.....		
4. Accrual of discount.....		
5. Unrealized valuation increase (decrease).....		
6. Total gain (loss) on disposals.....		
7. Deduct amounts received on disposals.....		
8. Deduct amortization of premium and depreciation.....		
9. Total foreign exchange change in book/adjusted carrying value.....		
10. Deduct current year's other-than-temporary impairment recognized.....		
11. Book/adjusted carrying value at end of current period (Lines 1+2+3+4+5+6-7-8+9-10).....00
12. Deduct total nonadmitted amounts.....		
13. Statement value at end of current period (Line 11 minus Line 12).....00

NONE

SCHEDULE D - VERIFICATION

Bonds and Stocks

	1	2
	Year to Date	Prior Year Ended December 31
1. Book/adjusted carrying value of bonds and stocks, December 31 of prior year.....8,239,30610,762,372
2. Cost of bonds and stocks acquired.....107,2462,719,828
3. Accrual of discount.....5,35731,800
4. Unrealized valuation increase (decrease).....		
5. Total gain (loss) on disposals.....	71,667
6. Deduct consideration for bonds and stocks disposed of.....253,2355,279,278
7. Deduct amortization of premium.....10,56767,083
8. Total foreign exchange change in book/adjusted carrying value.....		
9. Deduct current year's other-than-temporary impairment recognized.....		
10. Book/adjusted carrying value at end of current period (Lines 1+2+3+4+5-6-7+8-9).....8,088,1078,239,306
11. Deduct total nonadmitted amounts.....		
12. Statement value at end of current period (Line 10 minus Line 11).....8,088,1078,239,306

SCHEDULE D - PART 1B

Showing the Acquisitions, Dispositions and Non-Trading Activity
During the Current Quarter for all Bonds and Preferred Stock by NAIC Designation

	1	2	3	4	5	6	7	8
NAIC Designation	Book/Adjusted Carrying Value Beginning of Current Quarter	Acquisitions During Current Quarter	Dispositions During Current Quarter	Non-Trading Activity During Current Quarter	Book/Adjusted Carrying Value End of First Quarter	Book/Adjusted Carrying Value End of Second Quarter	Book/Adjusted Carrying Value End of Third Quarter	Book/Adjusted Carrying Value December 31 Prior Year
BONDS								
1. NAIC 1 (a).....	8,239,306	107,246	253,235	(5,210)	8,088,107			8,239,306
2. NAIC 2 (a).....					0			
3. NAIC 3 (a).....					0			
4. NAIC 4 (a).....					0			
5. NAIC 5 (a).....					0			
6. NAIC 6 (a).....					0			
7. Total Bonds.....	8,239,306	107,246	253,235	(5,210)	8,088,107	0	0	8,239,306
PREFERRED STOCK								
8. NAIC 1.....					0			
9. NAIC 2.....					0			
10. NAIC 3.....					0			
11. NAIC 4.....					0			
12. NAIC 5.....					0			
13. NAIC 6.....					0			
14. Total Preferred Stock.....	0	0	0	0	0	0	0	0
15. Total Bonds and Preferred Stock.....	8,239,306	107,246	253,235	(5,210)	8,088,107	0	0	8,239,306

(a) Book/Adjusted Carrying Value column for the end of the current reporting period includes the following amount of non-rated short-term and cash equivalent bonds by NAIC designation:
NAIC 1 \$.00; NAIC 2 \$.00; NAIC 3 \$.00; NAIC 4 \$.00; NAIC 5 \$.00; NAIC 6 \$.00.

QSI02

Sch. DA - Pt. 1
NONE

Sch. DA - Verification
NONE

Sch. DB - Pt. A - Verification
NONE

Sch. DB - Pt. B - Verification
NONE

Sch. DB - Pt. C - Sn. 1
NONE

Sch. DB - Pt. C - Sn. 2
NONE

Sch. DB - Verification
NONE

PROGRESSIVE CHOICE INSURANCE COMPANY

SCHEDULE E- VERIFICATION

Cash Equivalents

	1	2
	Year To Date	Prior Year Ended December 31
1. Book/adjusted carrying value, December 31 of prior year.....0299,990
2. Cost of cash equivalents acquired.....599,957
3. Accrual of discount.....53
4. Unrealized valuation increase (decrease).....
5. Total gain (loss) on disposals.....
6. Deduct consideration received on disposals.....900,000
7. Deduct amortization of premium.....
8. Total foreign exchange change in book/ adjusted carrying value.....
9. Deduct current year's other-than-temporary impairment recognized.....
10. Book/adjusted carrying value at end of current period (Lines 1+2+3+4+5-6-7+8-9).....00
11. Deduct total nonadmitted amounts.....
12. Statement value at end of current period (Line 10 minus Line 11).....00

Sch. A - Pt. 2
NONE

Sch. A - Pt. 3
NONE

Sch. B - Pt. 2
NONE

Sch. B - Pt. 3
NONE

Sch. BA - Pt. 2
NONE

Sch. BA - Pt. 3
NONE

SCHEDULE D - PART 3

Show all Long-Term Bonds and Stock Acquired During the Current Quarter

1	2	3	4	5	6	7	8	9	10
CUSIP Identification	Description	Foreign	Date Acquired	Name of Vendor	Number of Shares of Stock	Actual Cost	Par Value	Paid for Accrued Interest and Dividends	NAIC Designation or Market Indicator (a)
Bonds - U.S. Government									
912828 VS 6	US TREASURY NOTE 2.500% 08/15/23.....		02/24/2016....	CSFBdirect.....		107,246	100,000	69	1.....
0599999. Total Bonds - U.S Government.....						107,246	100,000	69	XXX
8399997. Total Bonds - Part 3.....						107,246	100,000	69	XXX
8399999. Total Bonds.....						107,246	100,000	69	XXX
9999999. Total Bonds, Preferred and Common Stocks.....						107,246	XXX	69	XXX

(a) For all common stock bearing the NAIC market indicator "U" provide: the number of such issues:.....0.

SCHEDULE D - PART 4

Show All Long-Term Bonds and Stock Sold, Redeemed or Otherwise Disposed of During the Current Quarter

1	2			3	4	5	6	7	8	9	10	Change in Book/Adjusted Carrying Value					16	17	18	19	20	21	22
												11	12	13	14	15							
CUSIP Identification	Description			F o r e i g n	Disposal Date	Name of Purchaser	Number of Shares of Stock	Consideration	Par Value	Actual Cost	Prior Year Book/Adjusted Carrying Value	Unrealized Valuation Increase/ (Decrease)	Current Year's (Amortization)/ Accretion	Current Year's Other-Than-Temporary Impairment Recognized	Total Change in B./A.C.V. (11+12-13)	Total Foreign Exchange Change in B./A.C.V.	Book/Adjusted Carrying Value at Disposal Date	Foreign Exchange Gain (Loss) on Disposal	Realized Gain (Loss) on Disposal	Total Gain (Loss) on Disposal	Bond Interest / Stock Dividends Received During Year	Stated Contractual Maturity Date	NAIC Designation or Market Indicator (a)
Bonds - U.S. Special Revenue and Special Assessment																							
20775B	RB	4	CONNECTICUT STATE HSG FIN AUTH HSG MTG 5.000% 05/15/31.....	.	03/04/2016.	Call 100.0000.....80,00080,00084,50081,610(1,610)(1,610)80,00001,211	11/15/2019....	1FE.....
83712T	BZ	3	SOUTH CAROLINA STATE HSG FIN 5.000% 07/01/27.....	.	02/01/2016.	Call 100.0000.....10,00010,00010,80610,333(333)(333)10,0000292	01/01/2022....	1FE.....
83755G	4F	1	SOUTH DAKOTA STATE HSG 5.750% 11/01/36.....	.	01/01/2016.	Call 100.0000.....60,00060,00063,79260,289(289)(289)60,0000575	05/01/2016....	1FE.....
882750	LZ	3	TEXAS STATE HSG & CMNTY 5.000% 07/01/29.....	.	03/01/2016.	Call 100.0000.....70,00070,00074,49972,255(2,255)(2,255)70,00002,021	08/01/2023....	1FE.....
3199999. Total Bonds - U.S. Special Revenue and Special Assessment.....							220,000220,000233,597224,4870(4,487)0(4,487)0220,0000004,099	XXX	XXX
Bonds - Industrial and Miscellaneous																							
07387A	GH	2	BSARM 2005-12 25A1 2.015% 05/25/53.....	.	03/01/2016.	Paydown.....12,06114,4849,0039,0033,0583,05812,061066	05/25/2053....	1FM.....
576433	UF	1	MARM 2004-13 3A1 2.812% 02/21/54.....	.	03/01/2016.	Paydown.....19,67119,67119,15121,394(1,722)(1,722)19,671098	02/21/2054....	1FM.....
65535V	BZ	0	NAA 2003-A3 A1 5.500% 08/25/33.....	.	03/01/2016.	Paydown.....1,5031,5031,5071,518(15)(15)1,503017	08/25/2033....	1FM.....
3899999. Total Bonds - Industrial and Miscellaneous.....							33,23535,65829,66131,91501,32101,321033,235000181	XXX	XXX
8399997. Total Bonds - Part 4.....							253,235255,658263,258256,4020(3,166)0(3,166)0253,2350004,280	XXX	XXX
8399999. Total Bonds.....							253,235255,658263,258256,4020(3,166)0(3,166)0253,2350004,280	XXX	XXX
9999999. Total Bonds, Preferred and Common Stocks.....							253,235	XXX263,258256,4020(3,166)0(3,166)0253,2350004,280	XXX	XXX

(a) For all common stock bearing the NAIC market indicator "U" provide: the number of such issues:.....0.

Sch. DB - Pt. A - Sn. 1
NONE

Sch. DB - Pt. B - Sn. 1
NONE

Sch. DB - Pt. D - Sn. 1
NONE

Sch. DB - Pt. D - Sn. 2
NONE

Sch. DL - Pt. 1
NONE

Sch. DL - Pt. 2
NONE

PROGRESSIVE CHOICE INSURANCE COMPANY
SCHEDULE E - PART 1 - CASH

Month End Depository Balances

1	2	3	4	5	Book Balance at End of Each Month During Current Quarter			9
					6	7	8	
Depository	Code	Rate of Interest	Amount of Interest Received During Current Quarter	Amount of Interest Accrued at Current Statement Date	First Month	Second Month	Third Month	*
Open Depositories								
CITIBANK..... NEW YORK, NY								XXX
0199999. Total Open Depositories.....	XXX	XXX00000	XXX
0399999. Total Cash on Deposit.....	XXX	XXX00000	XXX
0599999. Total Cash.....	XXX	XXX00000	XXX

SCHEDULE E - PART 2 - CASH EQUIVALENTS

Show Investments Owned End of Current Quarter

1	2	3	4	5	6	7	8
Description	Code	Date Acquired	Rate of Interest	Maturity Date	Book/Adjusted Carrying Value	Amount of Interest Due & Accrued	Amount Received During Year

NONE