



QUARTERLY STATEMENT  
AS OF MARCH 31, 2016  
OF THE CONDITION AND AFFAIRS OF THE  
ALL AMERICA INSURANCE COMPANY

NAIC Group Code	0036 (Current Period)	0036 (Prior Period)	NAIC Company Code	20222	Employer's ID Number	34-0935740
Organized under the Laws of	Ohio		State of Domicile or Port of Entry	OHIO		
Country of Domicile	United States of America					
Incorporated/Organized	04/12/1961		Commenced Business	08/01/1961		
Statutory Home Office	800 SOUTH WASHINGTON STREET (Street and Number)		VAN WERT, OH, US 45891-2357 (City or Town, State, Country and Zip Code)			
Main Administrative Office	800 SOUTH WASHINGTON STREET (Street and Number)					
	VAN WERT, OH, US 45891-2357 (City or Town, State, Country and Zip Code)		(419)238-1010 (Area Code) (Telephone Number)			
Mail Address	P.O. BOX 351 (Street and Number or P.O. Box)		VAN WERT, OH, US 45891-0351 (City or Town, State, Country and Zip Code)			
Primary Location of Books and Records	800 SOUTH WASHINGTON STREET (Street and Number)					
	VAN WERT, OH, US 45891-2357 (City or Town, State, Country and Zip Code)		(419)238-1010 (Area Code) (Telephone Number)			
Internet Web Site Address	WWW.CENTRAL-INSURANCE.COM					
Statutory Statement Contact	THAD RYAN EIKENBARY (Name)		(419)238-5551-2437 (Area Code)(Telephone Number)(Extension)			
	TEIKENBARY@CENTRAL-INSURANCE.COM (E-Mail Address)		(419)238-7626 (Fax Number)			

OFFICERS

Name	Title
FRANCIS WALWORTH PURMORT III	PRESIDENT
STEPHEN KEITH MOORE	SECRETARY
THAD RYAN EIKENBARY	TREASURER

OTHERS

SCOTT ALLEN ETZLER, VICE PRESIDENT #  
TRINTIN CHAD GLEN, CHIEF ACTUARY  
PATRICK JOHN JACKSON, VICE PRESIDENT  
JANA LOU RINGWALD, VICE PRESIDENT

BENJAMIN SCOTT FAUROUTE, VICE PRESIDENT  
MICHAEL PATRICK GUTH, SR. VICE PRESIDENT  
STEVEN MANSFIELD, VICE PRESIDENT  
TODD EDWARD SIMPSON, VICE PRESIDENT

JAMES FREDERICK GLASSER, VICE PRESIDENT  
CYNTHIA MARIE HURLESS, VICE PRESIDENT  
TIMOTHY LEE RAUCH, VICE PRESIDENT  
JOHN EWING WHITE, SR. VICE PRESIDENT

DIRECTORS OR TRUSTEES

EDWARD RAY BUHL  
STEPHEN KIETH MOORE  
DENNIS DALE STRIPE

JOSIE LEE COVINGTON II  
EDWARD JOSEPH NOONAN  
JOHN EWING WHITE

THOMAS B KEARNEY  
FRANCIS WALWORTH PURMORT III

State of Ohio  
County of Van Wert ss

The officers of this reporting entity, being duly sworn, each depose and say that they are the described officers of said reporting entity, and that on the reporting period stated above, all of the herein described assets were the absolute property of the said reporting entity, free and clear from any liens or claims thereon, except as herein stated, and that this statement, together with related exhibits, schedules and explanations therein contained, annexed or referred to, is a full and true statement of all the assets and liabilities and of the condition and affairs of the said reporting entity as of the reporting period stated above, and of its income and deductions therefrom for the period ended, and have been completed in accordance with the NAIC Annual Statement Instructions and Accounting Practices and Procedures manual except to the extent that: (1) state law may differ; or, (2) that state rules or regulations require differences in reporting not related to accounting practices and procedures, according to the best of their information, knowledge and belief, respectively. Furthermore, the scope of this attestation by the described officers also includes the related corresponding electronic filing with the NAIC, when required, that is an exact copy (except for formatting differences due to electronic filing) of the enclosed statement. The electronic filing may be requested by various regulators in lieu of or in addition to the enclosed statement.

(Signature)	(Signature)	(Signature)
FRANCIS WALWORTH PURMORT III	STEPHEN KEITH MOORE	THAD RYAN EIKENBARY
(Printed Name)	(Printed Name)	(Printed Name)
1.	2.	3.
PRESIDENT	SECRETARY	TREASURER
(Title)	(Title)	(Title)

Subscribed and sworn to before me this	a. Is this an original filing?	Yes[X] No[ ]
5th day of May, 2016	b. If no,	
	1. State the amendment number	
	2. Date filed	
	3. Number of pages attached	

(Notary Public Signature)

ASSETS

		Current Statement Date			4
		1	2	3	
		Assets	Nonadmitted Assets	Net Admitted Assets (Cols. 1 - 2)	December 31 Prior Year Net Admitted Assets
1.	Bonds .....	225,800,978		225,800,978	225,977,412
2.	Stocks:				
2.1	Preferred stocks .....				
2.2	Common stocks .....	231,177	229,198	1,979	1,979
3.	Mortgage loans on real estate:				
3.1	First liens .....				
3.2	Other than first liens .....				
4.	Real estate:				
4.1	Properties occupied by the company (less \$.....0 encumbrances) .....				
4.2	Properties held for the production of income (less \$.....0 encumbrances) .....				
4.3	Properties held for sale (less \$.....0 encumbrances) .....				
5.	Cash (\$.....199,101), cash equivalents (\$.....0) and short-term investments (\$.....13,088,837) .....	13,287,938		13,287,938	9,663,487
6.	Contract loans (including \$.....0 premium notes) .....				
7.	Derivatives .....				
8.	Other invested assets .....				
9.	Receivables for securities .....				
10.	Securities lending reinvested collateral assets .....				
11.	Aggregate write-ins for invested assets .....				
12.	Subtotals, cash and invested assets (Lines 1 to 11) .....	239,320,093	229,198	239,090,895	235,642,878
13.	Title plants less \$.....0 charged off (for Title insurers only) .....				
14.	Investment income due and accrued .....	2,456,149		2,456,149	2,391,817
15.	Premiums and considerations:				
15.1	Uncollected premiums and agents' balances in the course of collection .....	4,680,809	49,802	4,631,008	5,334,656
15.2	Deferred premiums, agents' balances and installments booked but deferred and not yet due (including \$.....29,880 earned but unbilled premiums) .....	23,327,633	3,600	23,324,033	23,924,087
15.3	Accrued retrospective premiums (\$.....0) and contracts subject to redetermination (\$.....0) .....				
16.	Reinsurance:				
16.1	Amounts recoverable from reinsurers .....	441,871		441,871	294,938
16.2	Funds held by or deposited with reinsured companies .....				
16.3	Other amounts receivable under reinsurance contracts .....				960,000
17.	Amounts receivable relating to uninsured plans .....				
18.1	Current federal and foreign income tax recoverable and interest thereon .....				
18.2	Net deferred tax asset .....	5,614,888	933,339	4,681,549	4,643,293
19.	Guaranty funds receivable or on deposit .....	15,932		15,932	19,980
20.	Electronic data processing equipment and software .....				
21.	Furniture and equipment, including health care delivery assets (\$.....0) .....				
22.	Net adjustments in assets and liabilities due to foreign exchange rates .....				
23.	Receivables from parent, subsidiaries and affiliates .....	659,334		659,334	2,249,189
24.	Health care (\$.....0) and other amounts receivable .....				
25.	Aggregate write-ins for other-than-invested assets .....	340,549		340,549	322,690
26.	TOTAL assets excluding Separate Accounts, Segregated Accounts and Protected Cell Accounts (Lines 12 to 25) .....	276,857,258	1,215,939	275,641,319	275,783,528
27.	From Separate Accounts, Segregated Accounts and Protected Cell Accounts .....				
28.	TOTAL (Lines 26 and 27) .....	276,857,258	1,215,939	275,641,319	275,783,528
DETAILS OF WRITE-INS					
1101.	.....				
1102.	.....				
1103.	.....				
1198.	Summary of remaining write-ins for Line 11 from overflow page .....				
1199.	TOTALS (Lines 1101 through 1103 plus 1198) (Line 11 above) .....				
2501.	EQUITIES & DEPOSITS IN POOLS & ASSOCIATIONS .....	340,549		340,549	322,690
2502.	.....				
2503.	.....				
2598.	Summary of remaining write-ins for Line 25 from overflow page .....				
2599.	TOTALS (Lines 2501 through 2503 plus 2598) (Line 25 above) .....	340,549		340,549	322,690

LIABILITIES, SURPLUS AND OTHER FUNDS

		1	2
		Current Statement Date	December 31, Prior Year
1.	Losses (current accident year \$.....10,386,637) .....	51,440,013	49,533,395
2.	Reinsurance payable on paid losses and loss adjustment expenses .....		
3.	Loss adjustment expenses .....	19,054,294	19,279,378
4.	Commissions payable, contingent commissions and other similar charges .....	1,878,592	3,375,887
5.	Other expenses (excluding taxes, licenses and fees) .....	2,832,785	3,273,454
6.	Taxes, licenses and fees (excluding federal and foreign income taxes) .....	906,292	982,900
7.1	Current federal and foreign income taxes (including \$.....0 on realized capital gains (losses)) .....	1,139,673	871,332
7.2	Net deferred tax liability .....		
8.	Borrowed money \$.....0 and interest thereon \$.....0 .....		
9.	Unearned premiums (after deducting unearned premiums for ceded reinsurance of \$.....20,427,515 and including warranty reserves of \$.....0 and accrued accident and health experience rating refunds including \$.....0 for medical loss ratio rebate per the Public Health Service Act) .....	49,226,813	50,172,014
10.	Advance premium .....	935,227	717,681
11.	Dividends declared and unpaid:		
11.1	Stockholders .....		
11.2	Policyholders .....	50,916	55,371
12.	Ceded reinsurance premiums payable (net of ceding commissions) .....	618,880	793,342
13.	Funds held by company under reinsurance treaties .....		
14.	Amounts withheld or retained by company for account of others .....	(150)	(112)
15.	Remittances and items not allocated .....		
16.	Provision for reinsurance (including \$.....0 certified) .....		
17.	Net adjustments in assets and liabilities due to foreign exchange rates .....		
18.	Drafts outstanding .....		
19.	Payable to parent, subsidiaries and affiliates .....		
20.	Derivatives .....		
21.	Payable for securities .....	500,000	705,907
22.	Payable for securities lending .....		
23.	Liability for amounts held under uninsured plans .....		
24.	Capital notes \$.....0 and interest thereon \$.....0 .....		
25.	Aggregate write-ins for liabilities .....	57,872	57,929
26.	TOTAL liabilities excluding protected cell liabilities (Lines 1 through 25) .....	128,641,206	129,818,475
27.	Protected cell liabilities .....		
28.	TOTAL liabilities (Lines 26 and 27) .....	128,641,206	129,818,475
29.	Aggregate write-ins for special surplus funds .....		
30.	Common capital stock .....	5,250,000	5,250,000
31.	Preferred capital stock .....		
32.	Aggregate write-ins for other than special surplus funds .....		
33.	Surplus notes .....		
34.	Gross paid in and contributed surplus .....	9,302,000	9,302,000
35.	Unassigned funds (surplus) .....	132,448,113	131,413,052
36.	Less treasury stock, at cost:		
36.1	.....0 shares common (value included in Line 30 \$.....0) .....		
36.2	.....0 shares preferred (value included in Line 31 \$.....0) .....		
37.	Surplus as regards policyholders (Lines 29 to 35, less 36) .....	147,000,113	145,965,052
38.	TOTALS (Page 2, Line 28, Col. 3) .....	275,641,319	275,783,527
DETAILS OF WRITE-INS			
2501.	Reserve for Escheats .....	57,872	57,929
2502.	.....		
2503.	.....		
2598.	Summary of remaining write-ins for Line 25 from overflow page .....		
2599.	TOTALS (Lines 2501 through 2503 plus 2598) (Line 25 above) .....	57,872	57,929
2901.	.....		
2902.	.....		
2903.	.....		
2998.	Summary of remaining write-ins for Line 29 from overflow page .....		
2999.	TOTALS (Lines 2901 through 2903 plus 2998) (Line 29 above) .....		
3201.	.....		
3202.	.....		
3203.	.....		
3298.	Summary of remaining write-ins for Line 32 from overflow page .....		
3299.	TOTALS (Lines 3201 through 3203 plus 3298) (Line 32 above) .....		

STATEMENT OF INCOME

		1	2	3
		Current Year to Date	Prior Year to Date	Prior Year Ended December 31
UNDERWRITING INCOME				
1.	Premiums earned			
1.1	Direct (written \$.....10,772,396)	10,554,942	9,630,012	39,923,051
1.2	Assumed (written \$.....22,582,751)	23,527,952	21,532,993	89,066,455
1.3	Ceded (written \$.....10,772,396)	10,554,942	9,630,011	39,923,051
1.4	Net (written \$.....22,582,751)	23,527,952	21,532,994	89,066,455
DEDUCTIONS:				
2.	Losses incurred (current accident year \$.....15,508,335)			
2.1	Direct	2,130,591	5,178,936	17,784,941
2.2	Assumed	14,211,159	13,736,898	44,676,658
2.3	Ceded	2,130,590	5,178,936	17,784,941
2.4	Net	14,211,160	13,736,898	44,676,658
3.	Loss adjustment expenses incurred	1,589,467	2,019,415	6,843,533
4.	Other underwriting expenses incurred	7,895,961	6,944,113	31,221,240
5.	Aggregate write-ins for underwriting deductions			
6.	TOTAL underwriting deductions (Lines 2 through 5)	23,696,587	22,700,426	82,741,431
7.	Net income of protected cells			
8.	Net underwriting gain or (loss) (Line 1 minus Line 6 + Line 7)	(168,635)	(1,167,433)	6,325,024
INVESTMENT INCOME				
9.	Net investment income earned	1,901,314	1,882,645	7,673,747
10.	Net realized capital gains (losses) less capital gains tax of \$.....(185,268)	(344,070)	2,261	21,101
11.	Net investment gain (loss) (Lines 9 + 10)	1,557,244	1,884,906	7,694,848
OTHER INCOME				
12.	Net gain or (loss) from agents' or premium balances charged off (amount recovered \$.....0 amount charged off \$.....22,513)	(22,513)	(17,416)	(65,322)
13.	Finance and service charges not included in premiums	102,806	103,264	402,994
14.	Aggregate write-ins for miscellaneous income	(11,239)	(9,300)	(37,562)
15.	TOTAL other income (Lines 12 through 14)	69,054	76,548	300,110
16.	Net income before dividends to policyholders, after capital gains tax and before all other federal and foreign income taxes (Lines 8 + 11 + 15)	1,457,663	794,021	14,319,982
17.	Dividends to policyholders	24,470	130,502	85,492
18.	Net income, after dividends to policyholders, after capital gains tax and before all other federal and foreign income taxes (Line 16 minus Line 17)	1,433,193	663,519	14,234,490
19.	Federal and foreign income taxes incurred	453,610	81,107	2,993,736
20.	Net income (Line 18 minus Line 19) (to Line 22)	979,583	582,412	11,240,754
CAPITAL AND SURPLUS ACCOUNT				
21.	Surplus as regards policyholders, December 31 prior year	145,964,946	134,697,701	134,697,701
22.	Net income (from Line 20)	979,583	582,412	11,240,754
23.	Net transfers (to) from Protected Cell accounts			
24.	Change in net unrealized capital gains or (losses) less capital gains tax of \$.....5,510	10,232	30,848	(48,327)
25.	Change in net unrealized foreign exchange capital gain (loss)			
26.	Change in net deferred income tax	(40,279)	47,862	(135,930)
27.	Change in nonadmitted assets	85,523	8,977	210,747
28.	Change in provision for reinsurance			
29.	Change in surplus notes			
30.	Surplus (contributed to) withdrawn from Protected cells			
31.	Cumulative effect of changes in accounting principles			
32.	Capital changes:			
32.1	Paid in			
32.2	Transferred from surplus (Stock Dividend)			
32.3	Transferred to surplus			
33.	Surplus adjustments:			
33.1	Paid in			
33.2	Transferred to capital (Stock Dividend)			
33.3	Transferred from capital			
34.	Net remittances from or (to) Home Office			
35.	Dividends to stockholders			
36.	Change in treasury stock			
37.	Aggregate write-ins for gains and losses in surplus			
38.	Change in surplus as regards policyholders (Lines 22 through 37)	1,035,059	670,099	11,267,244
39.	Surplus as regards policyholders, as of statement date (Lines 21 plus 38)	147,000,005	135,367,800	145,964,946
DETAILS OF WRITE-INS				
0501.				
0502.				
0503.				
0598.	Summary of remaining write-ins for Line 5 from overflow page			
0599.	TOTALS (Lines 0501 through 0503 plus 0598) (Line 5 above)			
1401.	MISCELLANEOUS INCOME	(11,239)	(9,300)	(37,562)
1402.				
1403.				
1498.	Summary of remaining write-ins for Line 14 from overflow page			
1499.	TOTALS (Lines 1401 through 1403 plus 1498) (Line 14 above)	(11,239)	(9,300)	(37,562)
3701.				
3702.				
3703.				
3798.	Summary of remaining write-ins for Line 37 from overflow page			
3799.	TOTALS (Lines 3701 through 3703 plus 3798) (Line 37 above)			

STATEMENT AS OF **March 31, 2016** OF THE **ALL AMERICA INSURANCE COMPANY**

CASH FLOW

		1	2	3
		Current	Prior	Prior
		Year	Year	Year Ended
		To Date	To Date	December 31
Cash from Operations				
1.	Premiums collected net of reinsurance .....	23,946,758	21,700,007	90,447,818
2.	Net investment income .....	2,053,007	2,076,359	8,496,702
3.	Miscellaneous income .....	69,055	76,548	300,112
4.	TOTAL (Lines 1 to 3) .....	26,068,819	23,852,914	99,244,632
5.	Benefit and loss related payments .....	12,451,474	10,445,876	45,266,314
6.	Net transfers to Separate Accounts, Segregated Accounts and Protected Cell Accounts .....			
7.	Commissions, expenses paid and aggregate write-ins for deductions .....	10,761,034	10,162,971	36,664,192
8.	Dividends paid to policyholders .....	28,924	18,903	79,205
9.	Federal and foreign income taxes paid (recovered) net of \$.....0 tax on capital gains (losses) .....		202,927	2,336,693
10.	TOTAL (Lines 5 through 9) .....	23,241,432	20,830,678	84,346,404
11.	Net cash from operations (Line 4 minus Line 10) .....	2,827,387	3,022,236	14,898,228
Cash from Investments				
12.	Proceeds from investments sold, matured or repaid:			
12.1	Bonds .....	6,368,456	9,960,650	39,811,679
12.2	Stocks .....			
12.3	Mortgage loans .....			
12.4	Real estate .....			
12.5	Other invested assets .....			
12.6	Net gains or (losses) on cash, cash equivalents and short-term investments .....			
12.7	Miscellaneous proceeds .....	(205,907)	4,506,221	175,702
12.8	TOTAL investment proceeds (Lines 12.1 to 12.7) .....	6,162,549	14,466,871	39,987,380
13.	Cost of investments acquired (long-term only):			
13.1	Bonds .....	6,937,386	11,916,668	53,566,347
13.2	Stocks .....			
13.3	Mortgage loans .....			
13.4	Real estate .....			
13.5	Other invested assets .....			
13.6	Miscellaneous applications .....			
13.7	TOTAL investments acquired (Lines 13.1 to 13.6) .....	6,937,386	11,916,668	53,566,347
14.	Net increase (or decrease) in contract loans and premium notes .....			
15.	Net cash from investments (Line 12.8 minus Line 13.7 and Line 14) .....	(774,837)	2,550,203	(13,578,967)
Cash from Financing and Miscellaneous Sources				
16.	Cash provided (applied):			
16.1	Surplus notes, capital notes .....			
16.2	Capital and paid in surplus, less treasury stock .....			
16.3	Borrowed funds .....			
16.4	Net deposits on deposit-type contracts and other insurance liabilities .....			
16.5	Dividends to stockholders .....			
16.6	Other cash provided (applied) .....	1,571,902	483,426	(250,589)
17.	Net cash from financing and miscellaneous sources (Line 16.1 through 16.4 minus Line 16.5 plus Line 16.6) .....	1,571,902	483,426	(250,589)
RECONCILIATION OF CASH, CASH EQUIVALENTS AND SHORT-TERM INVESTMENTS				
18.	Net change in cash, cash equivalents and short-term investments (Line 11, plus Lines 15 and 17) .....	3,624,452	6,055,865	1,068,673
19.	Cash, cash equivalents and short-term investments:			
19.1	Beginning of year .....	9,663,485	8,594,812	8,594,812
19.2	End of period (Line 18 plus Line 19.1) .....	13,287,938	14,650,677	9,663,485

Note: Supplemental Disclosures of Cash Flow Information for Non-Cash Transactions:

20.0001				
---------	--	--	--	--

**Notes to Financial Statement**

**NOTES TO FINANCIAL STATEMENTS**

---

**1. Summary of Significant Accounting Policies**

**A. Accounting Practices**

The financial statements of All America Insurance Company are presented on the basis of accounting practices prescribed or permitted by the Ohio Insurance Department.

The Ohio Insurance Department recognizes only statutory accounting practices prescribed or permitted by the State of Ohio for determining and reporting the financial condition and results of operations of an insurance company, for determining solvency under the Ohio Insurance Law. The National Association of Insurance Commissioners' (NAIC) *Accounting Practices and Procedures* manual - Version effective January 1, 2001, (NAIC SAP) has been adopted as a component of prescribed or permitted practices by the State of Ohio. The Commissioner of Insurance has the right to

**B. Use of Estimates in the Preparation of the Financial Statements**

The preparation of financial statements in conformity with Statutory Accounting Principles requires management to make estimates and assumptions that affect the reported amounts of assets and differ from those estimates.

**C. Accounting Policy**

Premiums are earned over the terms of the related insurance policies and reinsurance contracts. Unearned premium reserves are established to cover the unexpired portion of premiums written. Such reserves are computed by pro rata methods for direct business and are based on reports received from ceding companies for reinsurance.

Expenses incurred in connection with acquiring new insurance business, including such acquisition costs as sales commissions, are charged to operations as incurred. Expenses incurred are reduced for ceding allowances received or receivable.

In addition, All America Insurance Company uses the following accounting policies:

- (1) Short-term investments are stated at amortized cost.
- (2) Bonds not backed by other loans are stated at amortized cost using the interest method.
- (3) Common stocks are stated at market value except investments in stocks of uncombined
- (4) Preferred stocks are stated at market value except qualified sinking fund preferreds which are stated at amortized cost.
- (5) All America Insurance Company has no mortgage loans on real estate.
- (6) Loan-backed securities are stated at amortized cost. Prepayment assumptions for loan-backed bonds and structured securities are obtained from dealer surveys. These assumptions are consistent with the current interest rate and economic environment. The prospective adjustment method is used to value these securities.
- (7) Central Mutual Insurance Company owns 100% of the common stock of All America Insurance Company, a property and casualty insurance company. Central Mutual Insurance Company owns 100% of Security Central, a holding company. Stocks held in all subsidiaries are carried at their Admitted Asset Equivalent.
- (8) All America Insurance Company has no investments in joint ventures, partnerships or limited liability companies.
- (9) All America Insurance Company owns no derivatives.
- (10) All America Insurance Company anticipates investment income as a factor in the premium.
- (11) Unpaid losses and loss adjustment expenses include an amount determined from individual case estimates and loss reports and an amount, based on past experience, for losses incurred but not reported. Such liabilities are necessarily based on assumptions and estimates and while management believes the amount is adequate, the ultimate liability may be in excess of or less than the amount provided. The methods for making such estimates and for establishing the resulting liability are continually reviewed and any adjustments are reflected in the period determined.

**D. Going Concern**

- (1) a. No principal conditions or events have occurred to raise substantial doubt about Central Mutual's ability to continue as a going concern.
- b. N/A
- c. N/A
- (2) N/A
- (3) N/A
- (4) N/A

Notes to Financial Statement

5. Investments

D. Loan-Backed Securities - NONE

- 1. N/A
- 2. N/A
- 3. N/A
- 4. N/A
- 5. N/A

E. Repurchase Agreements and/or Securities Lending Transactions – NONE

9. Income Taxes

As of March 31, 2016:

ALL AMERICA INSURANCE COMPANY  
Income Tax Disclosures Required under SSAP 101  
AS OF MARCH 31, 2016

Note 9 - Income Taxes

A. The components of the net deferred tax asset/(liability) at December 31 are as follows:

	December 31, 2016			December 31, 2015			Change		
	Ordinary	Capital	Total	Ordinary	Capital	Total	Ordinary	Capital	Total
(a) Gross deferred tax assets	5,740,053	0	5,740,053	5,766,729	0	5,766,729	(26,676)	0	(26,676)
(b) Statutory valuation allowance adjustments	0	0	0	0	0	0	0	0	0
(c) Adjusted gross deferred tax assets (a1 - 1b)	5,740,053	0	5,740,053	5,766,729	0	5,766,729	(26,676)	0	(26,676)
(d) Deferred Tax Assets Nonadmitted	933,339	0	933,339	997,275	0	997,275	(63,936)	0	(63,936)
(e) Subtotal Net Admitted Deferred Tax Asset (1c - 1d)	4,806,714	0	4,806,714	4,769,454	0	4,769,454	37,260	0	37,260
(f) Deferred Tax Liabilities	98,854	26,312	125,165	84,387	41,775	126,161	14,467	(15,463)	(996)
(g) Net admitted deferred tax asset/(Net Deferred Tax Liability) (1e - 1f)	4,707,860	(26,312)	4,681,548	4,685,067	(41,775)	4,643,292	22,793	15,463	38,256

SSAP 101, paragraphs 11.a., 11.b., and 11.c.:	December 31, 2016			December 31, 2015			Change		
	Ordinary	Capital	Total	Ordinary	Capital	Total	Ordinary	Capital	Total
(a) Federal Income Taxes Paid in Prior Years Recoverable Through Loss Carrybacks	6,530,476	0	6,530,476	4,516,144	0	4,516,144	2,014,332	0	2,014,332
(b) Adjusted Gross Deferred Tax Assets Expected to be Realized (Excluding The Amount of Deferred Tax Assets From 2(a) above) After Application of the Threshold Limitation. (The Lesser of 2(b)1 and 2(b)2 Below)	(1,848,927)	0	(1,848,927)	127,149	0	127,149	(1,976,076)	0	(1,976,076)
1. Adjusted Gross Deferred Tax Assets Expected to be Realized Following the Balance Sheet Date	(1,848,927)	0	(1,848,927)	127,149	0	127,149	(1,976,076)	0	(1,976,076)
2. Adjusted Gross Deferred Tax Assets Allowed per Limitation Threshold	XXX	XXX	21,198,264	XXX	XXX	20,346,560	XXX	XXX	851,704
(c) Adjusted Gross Deferred Tax Assets (Excluding the Amount of Deferred Tax Assets From 2(a) and 2(b) above) Offset by Gross Deferred Tax Liabilities	125,165	0	125,165	126,161	0	126,161	(996)	0	(996)
(d) Deferred Tax Assets Admitted as the Result of Application of SSAP No. 101. Total (2(a) + 2(b) - 2(c))	4,806,714	0	4,806,714	4,769,454	0	4,769,454	37,260	0	37,260

	2016 Percentage	2015 Percentage
(a) Ratio Percentage Used to Determine Recovery Period and Threshold Limitation Amount	1635%	1635%
(b) Amount of Adjusted Capital and Surplus Used to Determine Recovery Period and Threshold Limitation in 2(b)2 Above	135,643,733	135,643,733

Impact of Tax Planning Strategies	December 31, 2016			December 31, 2015			Change		
	Ordinary	Capital	Total	Ordinary	Capital	Total	Ordinary	Capital	Total
(a) Adjusted Gross DTAs (% of Total Adjusted Gross DTAs)	0.0%	0.0%	0.0%	0.0%	0.0%	0.0%	0.0%	0.0%	0.0%
(b) Net Admitted Adjusted Gross DTAs (% of Total Net Admitted Adjusted Gross DTAs)	0.0%	0.0%	0.0%	0.0%	0.0%	0.0%	0.0%	0.0%	0.0%
(c) Does the Company's tax-planning strategies include the use of reinsurance?	Yes No X								

B. Unrecognized DTLs  
Not applicable

Notes to Financial Statement

ALL AMERICA INSURANCE COMPANY  
Income Tax Disclosures Required under SSAP 101  
AS OF MARCH 31, 2016

Note 9 - Income Taxes (continued)

C. Current Tax and Change in Deferred Tax

1. Current income tax

	2016	2015	Change
(a) Federal	268,341	2,920,123	(2,651,782)
(b) Foreign	0	0	0
(c) Subtotal	268,341	2,920,123	(2,651,782)
(d) Federal income tax on net capital gains	0	11,661	(11,661)
(e) Utilization of capital loss carryforward	0	0	0
(f) Other	0	0	0
Federal and foreign income taxes incurred	268,341	2,931,784	(2,663,443)

2. Deferred income tax

	2016	2015	Change
(a) Ordinary:			
(1) Discounting of unpaid losses	1,346,180	1,315,893	30,287
(2) Unearned premium reserve	3,508,967	3,559,903	(50,936)
(3) Non-Qualifying Pension	0	0	0
(4) SPP Equalization Plan	0	0	0
(5) Post Retirement Expenses	866,215	866,215	0
(6) Charitable Contribution Deduction Carryforward	0	0	0
(7)			0
(8)			0
(9) Net operating loss carry-forward	0	0	0
(10) Tax credit carry-forward			0
(11) Other (including items <5% of total ordinary tax assets)			0
(12) Other assets – nonadmitted	18,691	24,718	(6,027)
(99) Subtotal	5,740,053	5,766,729	(26,676)
(b) Statutory valuation allowance adjustment			0
(c) Nonadmitted	933,339	997,275	(63,936)
(d) Admitted ordinary deferred tax assets (2a99-2b-2c)	4,806,714	4,769,454	37,260
(e) Capital			
(1) Investments - Other than temporary impairments (OTTI)	0	0	0
(2) Net capital loss carry-forward			0
(3) Real estate			0
(4) Other (including items <5% of total capital tax assets)			0
(99) Subtotal	0	0	0
(f) Statutory valuation allowance adjustment			0
(g) Nonadmitted			0
(h) Admitted capital deferred tax assets (2e99-2f-2g)	0	0	0
(i) Admitted deferred tax assets (2d+2h)	4,806,714	4,769,454	37,260

3. Deferred tax liabilities:

	2016	2015	Change
(a) Ordinary:			
(1) Employee Benefit Trust Fund	0	0	0
(2) Discount on Salvage and Subrogation	38,918	38,918	0
(3) Acquisition Expense - Advanced Premiums	59,936	45,469	14,467
(4) Tax/Book Depreciaton	0	0	0
(5)			0
(6)			0
(7)			0
(99) Subtotal	98,854	84,387	14,467
(b) Capital			
(1) Investments - Unrealized capital gains - net	26,312	41,775	(15,463)
(2)			0
(3)			0
(99) Subtotal	26,312	41,775	(15,463)
(c) Deferred tax liabilities (3a99+3b99)	125,166	126,162	(996)



STATEMENT AS OF **March 31, 2016** OF THE **ALL AMERICA INSURANCE COMPANY**

Notes to Financial Statement

ALL AMERICA INSURANCE COMPANY

Income Tax Disclosures Required under SSAP 101

AS OF MARCH 31, 2016

Note 9 - Income Taxes (continued)

D. Reconciliation of Federal Income Tax Rate to Actual Effective Rate

The significant items causing a difference between the statutory federal income tax rate and All America's effective income tax rate are as follows:

	2016	Effective Tax Rate
Provision computed at statutory rate	436,774	35.0%
Change in nonadmitted assets	6,027	0.5%
Tax exempt income deduction	(408,128)	-32.7%
Proration of tax exempt investment income	61,219	4.9%
Disallowed other permanent non-deductible items	6,571	0.5%
Accrued dividend from 100% owned affiliate	0	0.0%
Dividends received deduction	0	0.0%
AMT Credit Utilized	0	0.0%
Other	207,021	16.6%
Totals	309,484	24.8%
Federal and foreign income taxes incurred	268,341	21.5%
Change in net deferred income taxes	41,143	3.3%
	309,484	24.8%

**Notes to Financial Statement**

**ALL AMERICA INSURANCE COMPANY**  
**Income Tax Disclosures Required under SSAP 101**  
**AS OF MARCH 31, 2016**

**Note 9 - Income Taxes (continued)**

E. Operating Loss and Tax Credit Carryforwards

- (1) At March 31, 2016, the Company had no in unused operating loss carryforwards available to offset against future taxable income.
- (2) The following is income tax expense for 2016 and 2015 that is available for recoupment in the event of future net losses:

Year	Amount
2016	\$268,341
2015	<b>\$2,931,784</b>

- (3) The Company did not have any protective tax deposits under Section 6603 of the Internal Revenue Code.

F. Consolidated Federal Income Tax Return

- (1) The Company's federal income tax return is consolidated with the following entities:

Central Mutual Insurance Company (Parent)  
CAFCO, Inc.  
Central Insurex Agency  
Security Central

- (2) The method of allocation among companies is subject to a written agreement, approved by the Board of Directors. It is agreed among the companies that the tax liability of the subsidiaries shall be determined as if each was filing an individual tax return and the amount of tax so determined, if any, shall be paid to Central Mutual Insurance Company, which, in turn, shall be responsible for payment of the total tax liability calculated in the consolidated return. In the event the subsidiary produces a tax loss, which is utilized by Central Mutual in the consolidated return to reduce its tax liability, Central Mutual shall pay to the subsidiary the tax cash benefit so utilized in the consolidated tax return.

G. Federal or Foreign Federal Income Tax Loss Contingencies

The Company has no tax loss contingencies for which it is reasonably possible that the total liability will significantly increase within twelve months of the reporting date.

**11. Debt**

All America Insurance Company has no debt obligations.

**12. Retirement Plans, Deferred Compensation, Postemployment Benefits and Compensated Absences and Other Postretirement Benefit Plans**

A. Defined Benefit Plan – NONE

**17. Sale, Transfer and Servicing of Financial Assets and Extinguishments of Liabilities**

B. Transfer and Servicing of Financial Assets – NONE

Notes to Financial Statement

20. Fair Value Measurements

A. (1) Assets Measured at Fair Value on a Recurring Basis as of March 31, 2016:

ALL AMERICA						
			<u>LEVEL 1</u>	<u>LEVEL 2</u>	<u>LEVEL 3</u>	<u>TOTAL</u>
a. Assets at fair value						
	Preferred stocks					-
	Common stocks				231,177	231,177
	Total at Fair Value		-	-	231,177	231,177
b. Liabilities at fair value						
	Derivative liabilities					-
	Total at Fair Value		-	-	-	-

(2) Assets Measured at Fair Value on a Recurring Basis using Significant Unobservable Inputs (LEVEL 3) as of March 31, 2016:

										Total Gain/Loss included
						Purchases, Issuances, Sales		Transfers out of Level 3		
			Balance at 01/01/2016	Realized Gain/Loss	Unrealized Gain/Loss		Transfers into Level 3		Balance as of 03/31/2015	in Net Income
Equity			215,435		15,742				231,177	
Derivative assets										
Derivative liabilities										
Total			215,435	-	15,742	-	-	-	231,177	-

B. (1) Assets Measured at Fair Value on a Nonrecurring Basis - NONE

21. Other Items

G. Offsetting and Netting of Assets and Liabilities – N/A

25. Change to Incurred Losses and Loss Adjustment Expenses

Reserves for incurred losses and loss adjustment expenses attributable to insured events of prior years has decreased by \$6.7 million from \$68.8 million in 2014 to \$62.1 million (\$43.1 million in total net losses and expenses unpaid and \$19.0 million in total net losses and expenses paid) in 2015. To provide further detail, losses & defense and medical cost containment expenses decreased by \$6.0 million from \$61.3 million in 2014 to \$55.3 million (\$37.7 million in total net losses and defense & medical cost containment expenses unpaid and \$17.6 million in total net losses & defense and medical cost containment expenses paid) in 2015. Adjusting and other expenses decreased by \$0.6 million from \$7.5 million in 2014 to \$6.9 million (\$5.5 million in total net adjusting and other expenses unpaid and \$1.4 million in total net adjusting and other expenses paid) in 2015. Included in this change, All America Insurance Company experienced \$0.0 million of unfavorable (favorable) prior year loss development on retrospectively rated policies. Thus, there was no impact to surplus as a result.

36. Financial Guaranty Insurance

All America does not write Financial Guaranty insurance.

GENERAL INTERROGATORIES

PART 1 - COMMON INTERROGATORIES  
GENERAL

- 1.1 Did the reporting entity experience any material transactions requiring the filing of Disclosure of Material Transactions with the State of Domicile, as required by the Model Act?

Yes[ ] No[X]
- 1.2 If yes, has the report been filed with the domiciliary state?

Yes[ ] No[ ] N/A[X]
- 2.1 Has any change been made during the year of this statement in the charter, by-laws, articles of incorporation, or deed of settlement of the reporting entity?

Yes[ ] No[X]
- 2.2 If yes, date of change:
- 3.1 Is the reporting entity a member of an Insurance Holding Company System consisting of two or more affiliated persons, one or more of which is an insurer?

Yes[ ] No[X]
- If yes, complete Schedule Y, Parts 1 and 1A.
- 3.2 Have there been any substantial changes in the organizational chart since the prior quarter end?

Yes[ ] No[X]
- 3.3 If the response to 3.2 is yes, provide a brief description of those changes:
- 4.1 Has the reporting entity been a party to a merger or consolidation during the period covered by this statement?

Yes[ ] No[X]
- 4.2 If yes, provide the name of entity, NAIC Company Code, and state of domicile (use two letter state abbreviation) for any entity that has ceased to exist as a result of the merger or consolidation.

1	2	3
Name of Entity	NAIC Company Code	State of Domicile

5. If the reporting entity is subject to a management agreement, including third-party administrator(s), managing general agent(s), attorney-in-fact, or similar agreement, have there been any significant changes regarding the terms of the agreement or principals involved?

If yes, attach an explanation.

Yes[ ] No[ ] N/A[X]
- 6.1 State as of what date the latest financial examination of the reporting entity was made or is being made.

12/31/2011
- 6.2 State the as of date that the latest financial examination report became available from either the state of domicile or the reporting entity. This date should be the date of the examined balance sheet and not the date the report was completed or released.

12/31/2011
- 6.3 State as of what date the latest financial examination report became available to other states or the public from either the state of domicile or the reporting entity. This is the release date or completion date of the examination report and not the date of the examination (balance sheet date).

02/28/2013
- 6.4 By what department or departments?

Ohio Department of Insurance
- 6.5 Have all financial statement adjustments within the latest financial examination report been accounted for in a subsequent financial statement filed with Departments?

Yes[X] No[ ] N/A[ ]
- 6.6 Have all of the recommendations within the latest financial examination report been complied with?

Yes[X] No[ ] N/A[ ]
- 7.1 Has this reporting entity had any Certificates of Authority, licenses or registrations (including corporate registration, if applicable) suspended or revoked by any governmental entity during the reporting period?

Yes[ ] No[X]
- 7.2 If yes, give full information
- 8.1 Is the company a subsidiary of a bank holding company regulated by the Federal Reserve Board?

Yes[ ] No[X]
- 8.2 If response to 8.1 is yes, please identify the name of the bank holding company.
- 8.3 Is the company affiliated with one or more banks, thrifts or securities firms?

Yes[ ] No[X]
- 8.4 If response to 8.3 is yes, please provide below the names and location (city and state of the main office) of any affiliates regulated by a federal regulatory services agency [i.e. the Federal Reserve Board (FRB), the Office of the Comptroller of the Currency (OCC), the Federal Deposit Insurance Corporation (FDIC) and the Securities Exchange Commission (SEC)] and identify the affiliate's primary federal regulator.]

1	2	3	4	5	6
Affiliate Name	Location (City, State)	FRB	OCC	FDIC	SEC
		Yes[ ] No[X]	Yes[ ] No[X]	Yes[ ] No[X]	Yes[ ] No[X]

- 9.1 Are the senior officers (principal executive officer, principal financial officer, principal accounting officer or controller, or persons performing similar functions) of the reporting entity subject to a code of ethics, which includes the following standards?

Yes[X] No[ ]
- (a) Honest and ethical conduct, including the ethical handling of actual or apparent conflicts of interest between personal and professional relationships;

(b) Full, fair, accurate, timely and understandable disclosure in the periodic reports required to be filed by the reporting entity;

(c) Compliance with applicable governmental laws, rules and regulations;

(d) The prompt internal reporting of violations to an appropriate person or persons identified in the code; and

(e) Accountability for adherence to the code.
- 9.11 If the response to 9.1 is No, please explain:
- 9.2 Has the code of ethics for senior managers been amended?

Yes[ ] No[X]
- 9.21 If the response to 9.2 is Yes, provide information related to amendment(s).
- 9.3 Have any provisions of the code of ethics been waived for any of the specified officers?

Yes[ ] No[X]
- 9.31 If the response to 9.3 is Yes, provide the nature of any waiver(s).

FINANCIAL

- 10.1 Does the reporting entity report any amounts due from parent, subsidiaries or affiliates on Page 2 of this statement?

Yes[X] No[ ]
- 10.2 If yes, indicate any amounts receivable from parent included in the Page 2 amount:

\$..... 659,334

INVESTMENT

- 11.1 Were any of the stocks, bonds, or other assets of the reporting entity loaned, placed under option agreement, or otherwise made available for use by another person? (Exclude securities under securities lending agreements.)

Yes[ ] No[X]
- 11.2 If yes, give full and complete information relating thereto:
12. Amount of real estate and mortgages held in other invested assets in Schedule BA:

\$..... 0
13. Amount of real estate and mortgages held in short-term investments:

\$..... 0

GENERAL INTERROGATORIES (Continued)

INVESTMENT

14.1 Does the reporting entity have any investments in parent, subsidiaries and affiliates?

14.2 If yes, please complete the following:

Yes[X] No[]

	1 Prior Year-End Book/Adjusted Carrying Value	2 Current Quarter Book/Adjusted Carrying Value
14.21 Bonds .....		
14.22 Preferred Stock .....		
14.23 Common Stock .....	213,456	229,198
14.24 Short-Term Investments .....		
14.25 Mortgages Loans on Real Estate .....		
14.26 All Other .....		
14.27 Total Investment in Parent, Subsidiaries and Affiliates (Subtotal Lines 14.21 to 14.26) .....	213,456	229,198
14.28 Total Investment in Parent included in Lines 14.21 to 14.26 above .....		

15.1 Has the reporting entity entered into any hedging transactions reported on Schedule DB?

15.2 If yes, has a comprehensive description of the hedging program been made available to the domiciliary state?  
If no, attach a description with this statement.

16. For the reporting entity's security lending program, state the amount of the following as of the current statement date:  
16.1 Total fair value of reinvested collateral assets reported on Schedule DL, Parts 1 and 2  
16.2 Total book adjusted/carrying value of reinvested collateral assets reported on Schedule DL, Parts 1 and 2  
16.3 Total payable for securities lending reported on the liability page

17. Excluding items in Schedule E - Part 3 - Special Deposits, real estate, mortgage loans and investments held physically in the reporting entity's  
offices, vaults or safety deposit boxes, were all stocks, bonds and other securities, owned throughout the current year held pursuant to a  
custodial agreement with a qualified bank or trust company in accordance with Section 1, III - General Examination Considerations, F.  
Outsourcing of Critical Functions, Custodial or Safekeeping Agreements of the NAIC Financial Condition Examiners Handbook?

17.1 For all agreements that comply with the requirements of the NAIC Financial Condition Examiners Handbook, complete the following:

Yes[] No[X]  
Yes[] No[] N/A[X]

\$ ..... 0  
\$ ..... 0  
\$ ..... 0

Yes[X] No[]

1 Name of Custodian(s)	2 Custodian Address
JPMORGAN CHASE BANK .....	14201 Dallas Pkwy, Mail Code TX1-J182, Dallas, TX 75254 .....

17.2 For all agreements that do not comply with the requirements of the NAIC Financial Condition Examiners Handbook, provide the name,  
location and a complete explanation:

1 Name(s)	2 Location(s)	3 Complete Explanation(s)
.....	.....	.....

17.3 Have there been any changes, including name changes, in the custodian(s) identified in 17.1 during the current quarter?

17.4 If yes, give full and complete information relating thereto:

Yes[] No[X]

1 Old Custodian	2 New Custodian	3 Date of Change	4 Reason
.....	.....	.....	.....

17.5 Identify all investment advisors, brokers/dealers or individuals acting on behalf of broker/dealers that have access to the investment accounts,  
handle securities and have authority to make investments on behalf of the reporting entity:

1 Central Registration Depository	2 Name(s)	3 Address
.....	.....	.....

18.1 Have all the filing requirements of the Purposes and Procedures Manual of the NAIC Investment Analysis Office been followed?

18.2 If no, list exceptions:

Yes[X] No[]

GENERAL INTERROGATORIES

PART 2 - PROPERTY & CASUALTY INTERROGATORIES

1. If the reporting entity is a member of a pooling arrangement, did the agreement or the reporting entity's participation change?  
If yes, attach an explanation.

Yes[ ] No[ ] N/A[X]
2. Has the reporting entity reinsured any risk with any other reporting entity and agreed to release such entity from liability, in whole or in part, from any loss that may occur on the risk, or portion thereof, reinsured?  
If yes, attach an explanation.

Yes[ ] No[X]
- 3.1 Have any of the reporting entity's primary reinsurance contracts been canceled?

Yes[ ] No[X]
- 3.2 If yes, give full and complete information thereto
- 4.1 Are any of the liabilities for unpaid losses and loss adjustment expenses other than certain workers' compensation tabular reserves (see annual statement instructions pertaining to disclosure of discounting for definition of "tabular reserves,") discounted at a rate of interest greater than zero?

Yes[ ] No[X]
- 4.2 If yes, complete the following schedule:

1  Line of Business	2  Maximum Interest	3  Discount Rate	TOTAL DISCOUNT				DISCOUNT TAKEN DURING PERIOD			
			4  Unpaid Losses	5  Unpaid LAE	6  IBNR	7  TOTAL	8  Unpaid Losses	9  Unpaid LAE	10  IBNR	11  TOTAL
04.2999 Total .....			.....	.....	.....	.....	.....	.....	.....	.....

5. Operating Percentages:

5.1 A&H loss percent

5.2 A&H cost containment percent

5.3 A&H expense percent excluding cost containment expenses

.....0.000%

.....0.000%

.....0.000%
- 6.1 Do you act as a custodian for health savings accounts?

Yes[ ] No[X]
- 6.2 If yes, please provide the amount of custodial funds held as of the reporting date.

\$.....0
- 6.3 Do you act as an administrator for health savings accounts?

Yes[ ] No[X]
- 6.4 If yes, please provide the balance of the funds administered as of the reporting date.

\$.....0

**SCHEDULE F - CEDED REINSURANCE**  
**Showing all new reinsurers - Current Year to Date**

1 NAIC Company Code	2  ID Number	3  Name of Reinsurer	4  Domiciliary Jurisdiction	5  Type of Reinsurer	6 Certified Reinsurer Rating (1 through 6)	7 Effective Date of Certified Reinsurer Rating
<b>U.S. insurers</b>						
23388 .....	43-0613000 .....	SHELTER MUT INS CO .....	MO .....	Authorized .....	.....	.....
<b>All other insurers</b>						
00000 .....	AA-1120164 .....	LLOYD'S SYNDICATE NUMBER 2088 .....	GBR .....	Authorized .....	.....	.....

**SCHEDULE T - EXHIBIT OF PREMIUMS WRITTEN**

**Current Year to Date - Allocated by States and Territories**

		1	Direct Premiums Written		Direct Losses Paid (Deducting Salvage)		Direct Losses Unpaid	
			2	3	4	5	6	7
States, etc.		Active Status	Current Year To Date	Prior Year To Date	Current Year To Date	Prior Year To Date	Current Year To Date	Prior Year To Date
1.	Alabama (AL)	N						
2.	Alaska (AK)	N						
3.	Arizona (AZ)	L	602,019	401,316	143,128	180,164	1,231,182	1,461,252
4.	Arkansas (AR)	N						
5.	California (CA)	L						
6.	Colorado (CO)	N					2	1
7.	Connecticut (CT)	L	992,331	803,806	777,482	325,368	3,499,437	3,875,258
8.	Delaware (DE)	N						
9.	District of Columbia (DC)	N						
10.	Florida (FL)	N					12,403	13,434
11.	Georgia (GA)	L	1,641,243	1,370,406	368,413	362,918	3,793,493	3,630,122
12.	Hawaii (HI)	N						
13.	Idaho (ID)	N						
14.	Illinois (IL)	L	350,694	289,823	8,518	134,278	3,375,457	4,586,352
15.	Indiana (IN)	L	273,078	348,393	93,220	51,833	2,156,923	1,454,877
16.	Iowa (IA)	L						
17.	Kansas (KS)	N						
18.	Kentucky (KY)	L	63,535	16,903			25,702	6,111
19.	Louisiana (LA)	N						
20.	Maine (ME)	N						
21.	Maryland (MD)	L	21,538				3,239	
22.	Massachusetts (MA)	L	819,815	749,032	141,666	148,346	9,047,020	9,633,725
23.	Michigan (MI)	L	969,499	613,907	25,171	32,438	1,531,366	1,767,078
24.	Minnesota (MN)	N						
25.	Mississippi (MS)	N						
26.	Missouri (MO)	N						
27.	Montana (MT)	N						
28.	Nebraska (NE)	N						
29.	Nevada (NV)	L						
30.	New Hampshire (NH)	N						
31.	New Jersey (NJ)	L			97,203	39,510	3,880,656	4,562,873
32.	New Mexico (NM)	N						
33.	New York (NY)	L	1,391,759	1,416,732	924,489	291,755	8,813,496	7,608,322
34.	North Carolina (NC)	L	861,491	808,593	455,145	455,516	4,849,243	3,020,969
35.	North Dakota (ND)	N						
36.	Ohio (OH)	L	1,049,686	1,253,984	1,022,083	993,070	2,839,552	3,700,322
37.	Oklahoma (OK)	L	271,292	74,774	66,989	218,313	1,261,672	888,372
38.	Oregon (OR)	N						
39.	Pennsylvania (PA)	N						
40.	Rhode Island (RI)	N						
41.	South Carolina (SC)	L	435,620	366,163	278,140	40,264	1,506,226	2,157,953
42.	South Dakota (SD)	N						
43.	Tennessee (TN)	L	348,731	483,849	58,378	214,057	1,221,466	1,956,679
44.	Texas (TX)	L	87,985	50,808	28,174	219,145	2,068,357	2,090,169
45.	Utah (UT)	N						
46.	Vermont (VT)	N						
47.	Virginia (VA)	L	592,080	646,077	128,176	162,018	1,681,152	1,834,146
48.	Washington (WA)	N						
49.	West Virginia (WV)	N						
50.	Wisconsin (WI)	L						
51.	Wyoming (WY)	N						
52.	American Samoa (AS)	N						
53.	Guam (GU)	N						
54.	Puerto Rico (PR)	N						
55.	U.S. Virgin Islands (VI)	N						
56.	Northern Mariana Islands (MP)	N						
57.	Canada (CAN)	N						
58.	Aggregate other alien (OT)	X X X						
59.	Totals	(a) 22	10,772,396	9,694,566	4,616,375	3,868,993	52,798,044	54,248,015
DETAILS OF WRITE-INS								
58001.....	X X X							
58002.....	X X X							
58003.....	X X X							
58998Summary of remaining write-ins for Line 58 from overflow page	X X X							
58999TOTALS (Lines 58001 through 58003 plus 58998) (Line 58 above)	X X X							

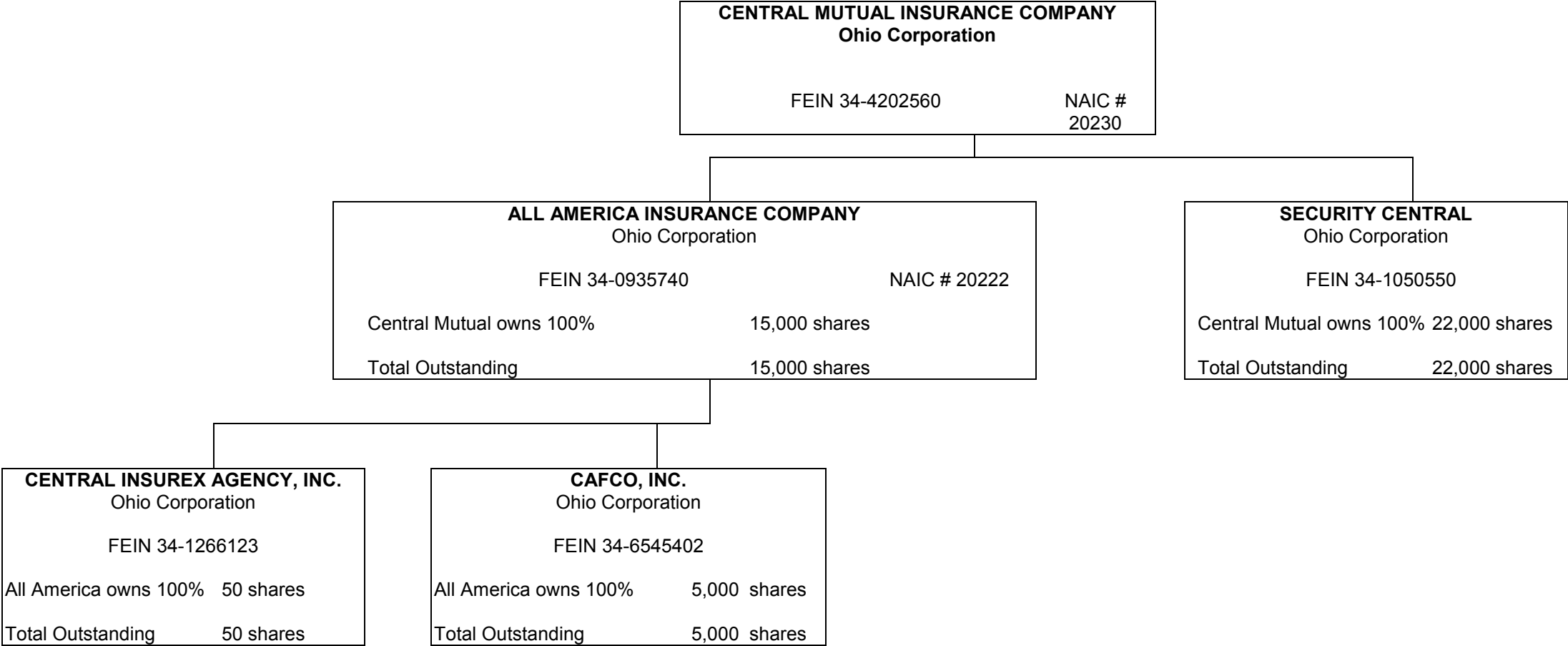
(L) Licensed or Chartered - Licensed Insurance Carrier or Domiciled RRG; (R) Registered - Non-domiciled RRGs; (Q) Qualified - Qualified or Accredited Reinsurer; (E) Eligible - Reporting Entities eligible or approved to write Surplus Lines in the state; (N) None of the above - Not allowed to write business in the state.

(a) Insert the number of L responses except for Canada and Other Alien.



**SCHEDULE Y - INFORMATION CONCERNING ACTIVITIES OF INSURER**  
**MEMBERS OF A HOLDING COMPANY GROUP**  
**PART 1 - ORGANIZATIONAL CHART**

Q11



**SCHEDULE Y**

**PART 1A - DETAIL OF INSURANCE HOLDING COMPANY SYSTEM**

1	2	3	4	5	6	7	8	9	10	11	12	13	14	15
Group Code	Group Name	NAIC Comp- any Code	ID Number	FEDERAL RSSD	CIK	Name of Securities Exchange if Publicly Traded (U.S. or International)	Names of Parent, Subsidiaries Or Affiliates	Domic- iliary Loca- tion	Relation- ship to Report- ing Entity	Directly Controlled by (Name of Entity / Person)	Type of Control (Ownership, Board, Management, Attorney-in-Fact, Influence, Other)	If Control is Ownership Provide Percentage	Ultimate Controlling Entity(ies) / Person(s)	*
36 .....	CENTRAL INSURANCE COMPANIES .....	20230	34-4202560 .	.....	.....	.....	CENTRAL MUTUAL INSURANCE COMPANY .....	OH .	.. UDP .	.....	Board of Directors .....	.....	Central Mutual Insurance Company .....	0000001
36 .....	CENTRAL INSURANCE COMPANIES .....	20222	34-0935740 .	.....	.....	.....	ALL AMERICA INSURANCE COMPANY .....	OH .	.. DS ..	Central Mutual Insurance Company .....	Board of Directors .....	.....	Central Mutual Insurance Company .....	0000001
36 .....	CENTRAL INSURANCE COMPANIES .....	00000	34-1050550 .	.....	.....	.....	SECURITY CENTRAL CORPORATION .	OH .	.. NIA ..	Central Mutual Insurance Company .....	Board of Directors .....	.....	Central Mutual Insurance Company .....	.....
36 .....	CENTRAL INSURANCE COMPANIES .....	00000	34-1266123 .	.....	.....	.....	CENTRAL INSUREX AGENCY, INC. ....	OH .	.. IA ...	All America Insurance Company .....	Board of Directors .....	.....	Central Mutual Insurance Company .....	.....
36 .....	CENTRAL INSURANCE COMPANIES .....	00000	34-6545402 .	.....	.....	.....	CAFCO, INC. ....	OH .	.. NIA ..	All America Insurance Company .....	Board of Directors .....	.....	Central Mutual Insurance Company .....	.....

Asterisk	Explanation
0000001	Central Mutual and All America participate in an intercompany pooling agreement whereby Central Mutual receives 84% of all premiums, losses, and expenses and All America receives 16%. .....

STATEMENT AS OF **March 31, 2016** OF THE **ALL AMERICA INSURANCE COMPANY**

PART 1 - LOSS EXPERIENCE

Line of Business		Current Year to Date			4 Prior Year to Date Direct Loss Percentage
		1 Direct Premiums Earned	2 Direct Losses Incurred	3 Direct Loss Percentage	
1.	Fire .....	4,705	320	6.801	40.655
2.	Allied lines .....	11,232	55,724	496.118	9.413
3.	Farmowners multiple peril .....				
4.	Homeowners multiple peril .....		(245)		
5.	Commercial multiple peril .....	6,073,041	2,909,048	47.901	30.244
6.	Mortgage guaranty .....				
8.	Ocean marine .....				
9.	Inland marine .....	2,914	(1,164)	(39.945)	30.273
10.	Financial guaranty .....				
11.1	Medical professional liability - occurrence .....				
11.2	Medical professional liability - claims made .....				
12.	Earthquake .....	703			
13.	Group accident and health .....				
14.	Credit accident and health .....				
15.	Other accident and health .....				
16.	Workers' compensation .....	959,554	(2,551,660)	(265.922)	138.131
17.1	Other liability - occurrence .....	7,901	59,649	754.955	(270.025)
17.2	Other liability - claims made .....				
17.3	Excess Workers' Compensation .....				
18.1	Products liability - occurrence .....	487,910	(8,009)	(1.642)	(39.518)
18.2	Products liability - claims made .....				
19.1	19.2 Private passenger auto liability .....		(3,366)		
19.3	19.4 Commercial auto liability .....	2,103,409	1,000,480	47.565	116.534
21.	Auto physical damage .....	902,014	669,814	74.258	40.194
22.	Aircraft (all perils) .....				
23.	Fidelity .....	226			
24.	Surety .....				
26.	Burglary and theft .....				
27.	Boiler and machinery .....	1,333			
28.	Credit .....				
29.	International .....				
30.	Warranty .....				
31.	Reinsurance-Nonproportional Assumed Property .....	X X X	X X X	X X X	X X X
32.	Reinsurance-Nonproportional Assumed Liability .....	X X X	X X X	X X X	X X X
33.	Reinsurance-Nonproportional Assumed Financial Lines .....	X X X	X X X	X X X	X X X
34.	Aggregate write-ins for other lines of business .....				
35.	TOTALS .....	10,554,942	2,130,591	20.186	53.779
DETAILS OF WRITE-INS					
3401.	.....				
3402.	.....				
3403.	.....				
3498.	Summary of remaining write-ins for Line 34 from overflow page .....				
3499.	TOTALS (Lines 3401 through 3403 plus 3498) (Line 34 above) .....				

PART 2 - DIRECT PREMIUMS WRITTEN

Line of Business		1 Current Quarter	2 Current Year to Date	3 Prior Year Year to Date
1.	Fire .....	5,026	5,026	2,822
2.	Allied lines .....	10,807	10,807	7,916
3.	Farmowners multiple peril .....			
4.	Homeowners multiple peril .....			
5.	Commercial multiple peril .....	6,031,097	6,031,097	5,646,638
6.	Mortgage guaranty .....			
8.	Ocean marine .....			
9.	Inland marine .....	3,729	3,729	16,309
10.	Financial guaranty .....			
11.1	Medical professional liability - occurrence .....			
11.2	Medical professional liability - claims made .....			
12.	Earthquake .....	111	111	111
13.	Group accident and health .....			
14.	Credit accident and health .....			
15.	Other accident and health .....			
16.	Workers' compensation .....	1,146,509	1,146,509	972,270
17.1	Other liability - occurrence .....	8,249	8,249	5,687
17.2	Other liability - claims made .....			
17.3	Excess Workers' Compensation .....			
18.1	Products liability - occurrence .....	364,595	364,595	459,534
18.2	Products liability - claims made .....			
19.1	19.2 Private passenger auto liability .....			
19.3	19.4 Commercial auto liability .....	2,279,187	2,279,187	1,837,846
21.	Auto physical damage .....	921,641	921,641	746,216
22.	Aircraft (all perils) .....			
23.	Fidelity .....			
24.	Surety .....			
26.	Burglary and theft .....			
27.	Boiler and machinery .....	1,445	1,445	(783)
28.	Credit .....			
29.	International .....			
30.	Warranty .....			
31.	Reinsurance-Nonproportional Assumed Property .....	X X X	X X X	X X X
32.	Reinsurance-Nonproportional Assumed Liability .....	X X X	X X X	X X X
33.	Reinsurance-Nonproportional Assumed Financial Lines .....	X X X	X X X	X X X
34.	Aggregate write-ins for other lines of business .....			
35.	TOTALS .....	10,772,396	10,772,396	9,694,566
DETAILS OF WRITE-INS				
3401.	.....			
3402.	.....			
3403.	.....			
3498.	Summary of remaining write-ins for Line 34 from overflow page .....			
3499.	TOTALS (Lines 3401 through 3403 plus 3498) (Line 34 above) .....			

**PART 3 (000 omitted)**  
**LOSS AND LOSS ADJUSTMENT EXPENSE RESERVES SCHEDULE**

		1	2	3	4	5	6	7	8	9	10	11	12	13
Years in Which Losses Occurred		Prior Year-End Known Case Loss and LAE Reserves	Prior Year-End IBNR Loss and LAE Reserves	Total Prior Year-End Loss and LAE Reserves (Cols. 1 + 2)	2016 Loss and LAE Payments on Claims Reported as of Prior Year-End	2016 Loss and LAE Payments on Claims Unreported as of Prior Year-End	Total 2016 Loss and LAE Payments (Cols. 4 + 5)	Q.S. Date Known Case Loss and LAE Reserves on Claims Reported and Open as of Prior Year-End	Q.S. Date Known Case Loss and LAE Reserves on Claims Reported or Reopened Subsequent to Prior Year-End	Q.S. Date IBNR Loss and LAE Reserves	Total Q.S. Loss and LAE Reserves (Cols. 7 + 8 + 9)	Prior Year-End Known Case Loss and LAE Reserves Developed (Savings)/ Deficiency (Cols. 4 + 7 minus Col. 1)	Prior Year-End IBNR Loss and LAE Reserves Developed (Savings)/ Deficiency (Cols. 5 + 8 + 9 minus Col. 2)	Prior Year-End Total Loss and LAE Reserves Developed (Savings)/ Deficiency (Cols. 11 + 12)
1.	2013 + Prior .....	17,464	14,435	31,899	1,063	(79)	984	22,667	7,076	26	29,769	6,267	(7,413)	(1,146)
2.	2014 .....	7,336	3,943	11,279	1,447	86	1,532	7,130	2,729	(36)	9,823	1,241	(1,165)	76
3.	Subtotals 2014 + Prior .....	24,799	18,379	43,178	2,510	6	2,516	29,797	9,805	(10)	39,592	7,508	(8,577)	(1,069)
4.	2015 .....	14,313	11,320	25,633	4,053	1,785	5,838	15,151	4,485	(336)	19,300	4,891	(5,385)	(494)
5.	Subtotals 2015 + Prior .....	39,112	29,699	68,811	6,563	1,792	8,354	44,948	14,290	(345)	58,893	12,399	(13,963)	(1,564)
6.	2016 .....	X X X	X X X	X X X	X X X	5,765	5,765	X X X	6,696	4,905	11,602	X X X	X X X	X X X
7.	Totals .....	39,112	29,699	68,811	6,563	7,556	14,119	44,948	20,986	4,560	70,494	12,399	(13,963)	(1,564)
8.	Prior Year-End Surplus As Regards Policyholders .....	145,965										Col. 11, Line 7 As % of Col. 1 Line 7	Col. 12, Line 7 As % of Col. 2 Line 7	Col. 13, Line 7 As % of Col. 3 Line 7
												1..... 31.701	2..... (47.014)	3..... (2.273)
														Col. 13, Line 7 Line 8
														4..... (1.071)

# SUPPLEMENTAL EXHIBITS AND SCHEDULES INTERROGATORIES

The following supplemental reports are required to be filed as part of your statement filing. However, in the event that your company does not transact the type of business for which the special report must be filed, your response of NO to the specific interrogatory will be accepted in lieu of filing a "NONE" report and a bar code will be printed below. If the supplement is required of your company but is not being filed for whatever reason enter SEE EXPLANATION and provide an explanation following the interrogatory questions.

	RESPONSES
1. Will the Trusteed Surplus Statement be filed with the state of domicile and the NAIC with this statement?	No
2. Will Supplement A to Schedule T (Medical Professional Liability Supplement) be filed with this statement?	No
3. Will the Medicare Part D Coverage Supplement be filed with the state of domicile and the NAIC with this statement?	No
4. Will the Director and Officer Insurance Coverage Supplement be filed with the state of domicile and the NAIC with this statement?	No

Explanations:

Bar Codes:

Trusteed Surplus Statement



20222201649000001

2016

Document Code: 490

Supplement A to Schedule T



20222201645500001

2016

Document Code: 455

Medicare Part D Coverage Supplement



20222201636500001

2016

Document Code: 365

Director and Officer Supplement



20222201650500001

2016

Document Code: 505

**OVERFLOW PAGE FOR WRITE-INS**

STATEMENT AS OF **March 31, 2016** OF THE **ALL AMERICA INSURANCE COMPANY**

**SCHEDULE A - VERIFICATION**

Real Estate		1	2
		Year To Date	Prior Year Ended December 31
1.	Book/adjusted carrying value, December 31 of prior year .....		
2.	Cost of acquired:		
2.1	Actual cost at time of acquisition .....		
2.2	Additional investment made after acquisition .....		
3.	Current year change in encumbrances .....		
4.	Total gain (loss) on disposals .....		
5.	Deduct amounts received on disposals .....		
6.	Total foreign exchange change in book/adjusted carrying value .....		
7.	Deduct current year's other-than-temporary impairment recognized .....		
8.	Deduct current year's depreciation .....		
9.	Book/adjusted carrying value at the end of current period (Lines 1 + 2 + 3 + 4 - 5 + 6 - 7 - 8 ) .....		
10.	Deduct total nonadmitted amounts .....		
11.	Statement value at end of current period (Line 9 minus Line 10) .....		

**SCHEDULE B - VERIFICATION**

Mortgage Loans

Mortgage Loans		1	2
		Year To Date	Prior Year Ended December 31
1.	Book value/recorded investment excluding accrued interest, December 31 of prior year .....		
2.	Cost of acquired:		
2.1	Actual cost at time of acquisition .....		
2.2	Additional investment made after acquisition .....		
3.	Capitalized deferred interest and other .....		
4.	Accrual of discount .....		
5.	Unrealized valuation increase (decrease) .....		
6.	Total gain (loss) on disposals .....		
7.	Deduct amounts received on disposals .....		
8.	Deduct amortization of premium and mortgage interest points .....		
9.	Total foreign exchange change in book value/recorded investment .....		
10.	Deduct current year's other than temporary impairment recognized .....		
11.	Book value/recorded investment excluding accrued interest at end of current period (Lines 1 + 2 + 3 + 4 + 5 + 6 - 7 - 8 + 9 - 10) .....		
12.	Total valuation allowance .....		
13.	Subtotal (Line 11 plus Line 12) .....		
14.	Deduct total nonadmitted amounts .....		
15.	Statement value at end of current period (Line 13 minus Line 14) .....		

**SCHEDULE BA - VERIFICATION**

Other Long-Term Invested Assets

Other Long-Term Invested Assets		1	2
		Year To Date	Prior Year Ended December 31
1.	Book/adjusted carrying value, December 31 of prior year .....		
2.	Cost of acquired:		
2.1	Actual cost at time of acquisition .....		
2.2	Additional investment made after acquisition .....		
3.	Capitalized deferred interest and other .....		
4.	Accrual of discount .....		
5.	Unrealized valuation increase (decrease) .....		
6.	Total gain (loss) on disposals .....		
7.	Deduct amounts received on disposals .....		
8.	Deduct amortization of premium and depreciation .....		
9.	Total foreign exchange change in book/adjusted carrying value .....		
10.	Deduct current year's other than temporary impairment recognized .....		
11.	Book/adjusted carrying value at end of current period (Lines 1 + 2 + 3 + 4 + 5 + 6 - 7 - 8 + 9 - 10) .....		
12.	Deduct total nonadmitted amounts .....		
13.	Statement value at end of current period (Line 11 minus Line 12) .....		

**SCHEDULE D - VERIFICATION**

Bonds and Stocks

Bonds and Stocks		1	2
		Year To Date	Prior Year Ended December 31
1.	Book/adjusted carrying value of bonds and stocks, December 31 of prior year .....	226,192,846	213,327,388
2.	Cost of bonds and stocks acquired .....	6,937,386	53,566,347
3.	Accrual of discount .....	8,344	33,189
4.	Unrealized valuation increase (decrease) .....	15,742	(74,349)
5.	Total gain (loss) on disposals .....	(529,339)	32,463
6.	Deduct consideration for bonds and stocks disposed of .....	6,368,456	39,811,679
7.	Deduct amortization of premium .....	224,369	880,513
8.	Total foreign exchange change in book/adjusted carrying value .....		
9.	Deduct current year's other than temporary impairment recognized .....		
10.	Book/adjusted carrying value at end of current period (Lines 1 + 2 + 3 + 4 + 5 - 6 - 7 + 8 - 9) .....	226,032,154	226,192,846
11.	Deduct total nonadmitted amounts .....	229,198	213,456
12.	Statement value at end of current period (Line 10 minus Line 11) .....	225,802,956	225,979,390

QSI02

**SCHEDULE D - PART 1B**  
**Showing the Acquisitions, Dispositions and Non-Trading Activity**  
**During the Current Quarter for all Bonds and Preferred Stock by NAIC Designation**

NAIC Designation	1 Book/Adjusted Carrying Value Beginning of Current Quarter	2 Acquisitions During Current Quarter	3 Dispositions During Current Quarter	4 Non-Trading Activity During Current Quarter	5 Book/Adjusted Carrying Value End of First Quarter	6 Book/Adjusted Carrying Value End of Second Quarter	7 Book/Adjusted Carrying Value End of Third Quarter	8 Book/Adjusted Carrying Value December 31 Prior Year
<b>BONDS</b>								
1. NAIC 1 (a) .....	227,079,197	19,456,464	14,105,754	(213,372)	232,216,535			227,079,197
2. NAIC 2 (a) .....	8,328,728		1,652,795	(2,652)	6,673,281			8,328,728
3. NAIC 3 (a) .....								
4. NAIC 4 (a) .....								
5. NAIC 5 (a) .....								
6. NAIC 6 (a) .....								
7. Total Bonds .....	235,407,925	19,456,464	15,758,549	(216,024)	238,889,816			235,407,925
<b>PREFERRED STOCK</b>								
8. NAIC 1 .....								
9. NAIC 2 .....								
10. NAIC 3 .....								
11. NAIC 4 .....								
12. NAIC 5 .....								
13. NAIC 6 .....								
14. Total Preferred Stock .....								
15. Total Bonds & Preferred Stock .....	235,407,925	19,456,464	15,758,549	(216,024)	238,889,816			235,407,925

(a) Book/Adjusted Carrying Value column for the end of the current reporting period includes the following amount of non-rated short-term and cash equivalent bonds by NAIC designation: NAIC 1 \$.....0; NAIC 2 \$.....0; NAIC 3 \$.....0; NAIC 4 \$.....0; NAIC 5 \$.....0; NAIC 6 \$.....0



**SCHEDULE DA - PART 1**

**Short - Term Investments**

	1 Book/Adjusted Carrying Value	2  Par Value	3  Actual Cost	4  Interest Collected Year To Date	5  Paid for Accrued Interest Year To Date
9199999. Totals .....	13,088,837	X X X	13,088,838	6,329	

**SCHEDULE DA - Verification**

**Short-Term Investments**

		1  Year To Date	2  Prior Year Ended December 31
1.	Book/adjusted carrying value, December 31 of prior year .....	9,430,513	8,388,217
2.	Cost of short-term investments acquired .....	12,519,078	52,748,198
3.	Accrual of discount .....		
4.	Unrealized valuation increase (decrease) .....		
5.	Total gain (loss) on disposals .....		
6.	Deduct consideration received on disposals .....	8,860,754	51,705,902
7.	Deduct amortization of premium .....		
8.	Total foreign exchange change in book/adjusted carrying value .....		
9.	Deduct current year's other than temporary impairment recognized ....		
10.	Book/adjusted carrying value at end of current period (Lines 1 + 2 + 3 + 4 + 5 - 6 - 7 + 8 - 9) .....	13,088,837	9,430,513
11.	Deduct total nonadmitted amounts .....		
12.	Statement value at end of current period (Line 10 minus Line 11) .....	13,088,837	9,430,513

**SI04   Schedule DB - Part A Verification   ..... NONE**

**SI04   Schedule DB - Part B Verification   ..... NONE**

**SI05   Schedule DB Part C Section 1   ..... NONE**

**SI06   Schedule DB Part C Section 2   ..... NONE**

**SI07   Schedule DB - Verification   ..... NONE**

**SI08   Schedule E - Verification (Cash Equivalents)   ..... NONE**

**E01   Schedule A Part 2   ..... NONE**

**E01   Schedule A Part 3   ..... NONE**

**E02   Schedule B Part 2   ..... NONE**

**E02   Schedule B Part 3   ..... NONE**

**E03   Schedule BA Part 2   ..... NONE**

**E03   Schedule BA Part 3   ..... NONE**

**SCHEDULE D - PART 3**

**Show All Long-Term Bonds and Stock Acquired During the Current Quarter**

1	2	3	4	5	6	7	8	9	10
CUSIP Identification	Description	Foreign	Date Acquired	Name of Vendor	Number of Shares of Stock	Actual Cost	Par Value	Paid for Accrued Interest and Dividends	NAIC Designation or Market Indicator (a)
<b>Bonds - U.S. Governments</b>									
912828VS6 ..	U.S. TREASURY NOTES .....		.. 01/27/2016 ..	Stephens, Inc. ....	.. X X X .....	419,125 .....	400,000 .....	4,511 .....	1 .....
912828WJ5 ..	U.S. TREASURY NOTES .....		.. 03/01/2016 ..	Stephens, Inc. ....	.. X X X .....	1,034,961 .....	1,000,000 .....	4,265 .....	1 .....
0599999	Subtotal - Bonds - U.S. Governments .....				.. X X X .....	1,454,086 .....	1,400,000 .....	8,776 .....	X X X .....
<b>Bonds - U.S. Political Subdivisions of States, Territories and Possessions</b>									
054213XF5 ..	AVON OH REF .....		.. 01/29/2016 ..	Huntington Investments .....	.. X X X .....	844,165 .....	785,000 .....		1FE .....
054213XG3 ..	AVON OH REF .....		.. 01/29/2016 ..	Huntington Investments .....	.. X X X .....	533,235 .....	500,000 .....		1FE .....
2499999	Subtotal - Bonds - U.S. Political Subdivisions of States, Territories and Possessions .....				.. X X X .....	1,377,400 .....	1,285,000 .....		X X X .....
<b>Bonds - U.S. Special Revenue, Special Assessment</b>									
153879QT1 ..	CENTRAL LINCOLN OR PEOPLES UTIL .....		.. 03/18/2016 ..	Piper, Jaffray & Hopwood .....	.. X X X .....	531,190 .....	500,000 .....		1FE .....
186406HK3 ..	CLEVELAND OH ST UNIV REF SER A .....		.. 01/13/2016 ..	PNC Capital Markets .....	.. X X X .....	694,355 .....	645,000 .....		1FE .....
46923PAP6 ..	JACKSONVILLE AR WSTWTR REV REF TXB .....		.. 03/04/2016 ..	Stephens, Inc. ....	.. X X X .....	500,000 .....	500,000 .....		1FE .....
4854292M5 ..	KS ST DEV FIN AUTH REV UNIV PROJS .....		.. 01/28/2016 ..	Janney Montgomery .....	.. X X X .....	808,419 .....	735,000 .....	327 .....	1FE .....
953701C56 ..	WEST LAFAYETTE IN SWR REV .....		.. 01/14/2016 ..	City Securities .....	.. X X X .....	540,440 .....	500,000 .....		1FE .....
3199999	Subtotal - Bonds - U.S. Special Revenue, Special Assessment .....				.. X X X .....	3,074,404 .....	2,880,000 .....	327 .....	X X X .....
<b>Bonds - Industrial and Miscellaneous (Unaffiliated)</b>									
00206RDB5 ..	A T & T, INC. ....		.. 03/21/2016 ..	EXCHANGE .....	.. X X X .....	532,000 .....	500,000 .....		1FE .....
69353REV6 ..	PNC BANK NAT'L ASSOC BND CORP .....		.. 03/01/2016 ..	PNC Capital Markets .....	.. X X X .....	499,495 .....	500,000 .....		1FE .....
3899999	Subtotal - Bonds - Industrial and Miscellaneous (Unaffiliated) .....				.. X X X .....	1,031,495 .....	1,000,000 .....		X X X .....
8399997	Subtotal - Bonds - Part 3 .....				.. X X X .....	6,937,385 .....	6,565,000 .....	9,103 .....	X X X .....
8399998	Summary Item from Part 5 for Bonds (N/A to Quarterly) .....				.. X X X .....	X X X .....	X X X .....	X X X .....	X X X .....
8399999	Subtotal - Bonds .....				.. X X X .....	6,937,385 .....	6,565,000 .....	9,103 .....	X X X .....
8999998	Summary Item from Part 5 for Preferred Stocks (N/A to Quarterly) .....				.. X X X .....	X X X .....	X X X .....	X X X .....	X X X .....
9799998	Summary Item from Part 5 for Common Stocks (N/A to Quarterly) .....				.. X X X .....	X X X .....	X X X .....	X X X .....	X X X .....
9899999	Subtotal - Preferred and Common Stocks .....				.. X X X .....		X X X .....		X X X .....
9999999	Total - Bonds, Preferred and Common Stocks .....				.. X X X .....	6,937,385 .....	X X X .....	9,103 .....	X X X .....

(a) For all common stock bearing the NAIC market indicator "U" provide: the number of such issues .....0.

**SCHEDULE D - PART 4**  
**Show All Long-Term Bonds and Stocks Sold, Redeemed or Otherwise Disposed of**  
**During the Current Quarter**

1	2	3 F o r e i g n	4	5	6	7	8	9	10	Change in Book/Adjusted Carrying Value					16	17	18	19	20	21	22
										11	12	13	14	15							
CUSIP Identification	Description		Disposal Date	Name of Purchaser	Number of Shares of Stock	Consideration	Par Value	Actual Cost	Prior Year Book/ Adjusted Carrying Value	Unrealized Valuation Increase/ (Decrease)	Current Year's (Amortization)/ Accretion	Current Year's Other Than Temporary Impairment Recognized	Total Change in B./A.C.V. (11 + 12 - 13)	Total Foreign Exchange Change in B./A.C.V.	Book/ Adjusted Carrying Value at Disposal Date	Foreign Exchange Gain (Loss) on Disposal	Realized Gain (Loss) on Disposal	Total Gain (Loss) on Disposal	Bond Interest/ Stock Dividends Received During Year	Stated Contractual Maturity Date	NAIC Designation or Market Indicator (a)
<b>Bonds - U.S. Governments</b>																					
3133EEQF0	FEDERAL FARM CREDIT BANK		03/03/2016	CALLED	X X X	500,000	500,000	500,000	500,000						500,000				7,231	02/23/2024	1FE
0599999	Subtotal - Bonds - U.S. Governments				X X X	500,000	500,000	500,000	500,000						500,000				7,231	X X X	X X X
<b>Bonds - U.S. Political Subdivisions of States, Territories and Possessions</b>																					
208418RG0	CONROE TX ISD SBC RFDG		02/15/2016	CALLED @ 100.0000000	X X X	500,000	500,000	508,360	500,561		(561)		(561)		500,000				12,500	02/15/2018	1FE
213039CV0	COOK & DUPAGE CNTYS IL HS DIST 210		01/01/2016	CALLED @ 100.0000000	X X X	680,000	680,000	737,807	680,000						680,000				17,000	01/01/2019	1FE
733505GL9	PORT ARTHUR TX INDPT SD SCH BLDG		02/15/2016	CALLED @ 100.0000000	X X X	500,000	500,000	507,961	500,534		(534)		(534)		500,000				12,500	02/15/2021	1FE
2499999	Subtotal - Bonds - U.S. Political Subdivisions of States, Territories and Possessions				X X X	1,680,000	1,680,000	1,754,128	1,681,095		(1,095)		(1,095)		1,680,000				42,000	X X X	X X X
<b>Bonds - U.S. Special Revenue, Special Assessment</b>																					
39168AAQ6	GREATER CLARK CNTY IN SBC		01/15/2016	MATURITY	X X X	175,000	175,000	190,750	175,000						175,000				4,375	01/15/2016	1FE
516393JN6	LANSING MI BLDG AUTH		01/20/2016	CALLED	X X X	625,000	625,000	663,656	625,000						625,000				4,254	06/01/2018	1FE
606092BG8	MO JT ELEC UTIL COMM POWR PROJ		01/01/2016	CALLED @ 100.0000000	X X X	750,000	750,000	809,198	750,000						750,000				18,750	01/01/2019	1FE
606092EY6	MO JT MUN ELEC UTIL COMMN PWR PROJ		01/01/2016	MATURITY	X X X	500,000	500,000	500,000	500,000						500,000				11,733	01/01/2016	1FE
64469DWJ6	NH ST HSG FIN AUTH REV TXBL REF A		03/01/2016	CALLED	X X X	15,000	15,000	15,000	15,000						15,000				311	01/01/2024	1FE
3199999	Subtotal - Bonds - U.S. Special Revenue, Special Assessment				X X X	2,065,000	2,065,000	2,178,604	2,065,000						2,065,000				39,423	X X X	X X X
<b>Bonds - Industrial and Miscellaneous (Unaffiliated)</b>																					
067383AB5	CR BARD, INC.		01/15/2016	MATURITY	X X X	500,000	500,000	499,875	499,999		1		1		500,000				7,188	01/15/2016	1FE
25459HBF1	DIRECTV HOLDINGS LLC SR NT		03/21/2016	EXCHANGE	X X X	532,500	500,000	525,745	517,454		(570)		(570)		516,884		15,616	15,616	9,500	03/15/2022	2FE
29358QAA7	ENSCO, PLC		02/17/2016	Raymond James Morgan Keegan	X X X	348,456	635,000	622,459	627,721		158		158		627,879		(279,423)	(279,423)	13,016	03/15/2021	2FE
35671DAU9	FREEPORT-McMORAN COPPER & GOLD		02/08/2016	Raymond James Morgan Keegan	X X X	242,500	500,000	511,750	508,156		(124)		(124)		508,032		(265,532)	(265,532)	7,889	03/01/2022	2FE
790849AH6	ST. JUDE MEDICAL, INC.		01/15/2016	MATURITY	X X X	500,000	500,000	499,535	499,996		4		4		500,000				6,250	01/15/2016	1FE
3899999	Subtotal - Bonds - Industrial and Miscellaneous (Unaffiliated)				X X X	2,123,456	2,635,000	2,659,364	2,653,326		(531)		(531)		2,652,795		(529,339)	(529,339)	43,843	X X X	X X X
8399997	Subtotal - Bonds - Part 4				X X X	6,368,456	6,880,000	7,092,096	6,899,421		(1,626)		(1,626)		6,897,795		(529,339)	(529,339)	132,497	X X X	X X X
8399998	Summary Item from Part 5 for Bonds (N/A to Quarterly)				X X X	X X X	X X X	X X X	X X X		X X X		X X X		X X X		X X X	X X X	X X X	X X X	X X X
8399999	Subtotal - Bonds				X X X	6,368,456	6,880,000	7,092,096	6,899,421		(1,626)		(1,626)		6,897,795		(529,339)	(529,339)	132,497	X X X	X X X
8999998	Summary Item from Part 5 for Preferred Stocks (N/A to Quarterly)				X X X	X X X	X X X	X X X	X X X		X X X		X X X		X X X		X X X	X X X	X X X	X X X	X X X
9799998	Summary Item from Part 5 for Common Stocks (N/A to Quarterly)				X X X	X X X	X X X	X X X	X X X		X X X		X X X		X X X		X X X	X X X	X X X	X X X	X X X
9899999	Subtotal - Preferred and Common Stocks				X X X		X X X													X X X	X X X
9999999	Total - Bonds, Preferred and Common Stocks				X X X	6,368,456	X X X	7,092,096	6,899,421		(1,626)		(1,626)		6,897,795		(529,339)	(529,339)	132,497	X X X	X X X

(a) For all common stock bearing the NAIC market indicator "U" provide: the number of such issues .....0.

**E06   Schedule DB Part A Section 1 ..... NONE**

**E07   Schedule DB Part B Section 1 ..... NONE**

**E08   Schedule DB Part D Section 1 ..... NONE**

**E09   Schedule DB Part D Section 2 - Collateral Pledged By Reporting Entity ..... NONE**

**E09   Schedule DB Part D Section 2 - Collateral Pledged To Reporting Entity ..... NONE**

**E10   Schedule DL - Part 1 - Securities Lending Collateral Assets ..... NONE**

**E11   Schedule DL - Part 2 - Securities Lending Collateral Assets ..... NONE**

**SCHEDULE E - PART 1 - CASH**

**Month End Depository Balances**

1          Depository	2       Code	3       Rate of Interest	4    Amount of Interest Received During Current Quarter	5    Amount of Interest Accrued at Current Statement Date	Book Balance at End of Each Month During Current Quarter			9       *
					6	7	8	
					First Month	Second Month	Third Month	
0199998 Deposits in .....1 depositories that do not exceed the allowable limit in any one depository (see Instructions) - open depositories ..	X X X	... X X X ..	..... 172	.....	..... 235,347	..... 241,548	..... 199,101	X X X
0199999 Totals - Open Depositories .....	X X X	... X X X ..	..... 172	.....	..... 235,347	..... 241,548	..... 199,101	X X X
0299998 Deposits in .....0 depositories that do not exceed the allowable limit in any one depository (see Instructions) - suspended depositories .....	X X X	... X X X ..	.....	.....	.....	.....	.....	X X X
0299999 Totals - Suspended Depositories .....	X X X	... X X X ..	.....	.....	.....	.....	.....	X X X
0399999 Total Cash On Deposit .....	X X X	... X X X ..	..... 172	.....	..... 235,347	..... 241,548	..... 199,101	X X X
0499999 Cash in Company's Office .....	X X X	... X X X ..	... X X X ..	... X X X ..	.....	.....	.....	X X X
0599999 Total Cash .....	X X X	... X X X ..	..... 172	.....	..... 235,347	..... 241,548	..... 199,101	X X X

**SCHEDULE E - PART 2 - CASH EQUIVALENTS**

Show Investments Owned End of Current Quarter

1	2	3	4	5	6	7	8
Description	Code	Date Acquired	Rate of Interest	Maturity Date	Book/Adjusted Carrying Value	Amount of Interest Due & Accrued	Amount Received During Year
<div>NONE</div>							
8699999 Total - Cash Equivalents .....					.....	.....	.....



**INDEX TO PROPERTY & CASUALTY  
QUARTERLY STATEMENT**

Accident and Health Insurance; Q3; Q13
Accounting Changes and Corrections of Errors; Q6, Note 2
Accounting Practices and Policies; Q6, Note 1
Admitted Assets; Q2; QSI01
Affiliated Transactions; Q2; Q3; Q7; Q7.1
Asbestos Losses and Loss Adjustment Expenses; Q6, Note 33
Bonds; Q2; Q5; Q7.1; Q7.2; QSI01; QSI02; QE04; QE05; QSupp2
Business Combinations and Goodwill; Q6, Note 3
Capital Gains (Losses); Q3; Q4; Q5
Capital Stock; Q3; Q4; Q6, Note 13
Capital Notes; Q3; Q5; Q6, Note 11
Caps; QE06; QSI04
Cash; Q2; Q5; QE12; QSupp2
Cash Equivalents; Q2; Q5; QE13
Collars; QE06; QSI04
Commissions; Q3; Q5
Common Stock; Q2; Q7.1; Q7.2; QSI01; QE04; QE05; QSupp2
Counterparty Exposure; Q6, Note 8; QE06; QE08
Contingencies; Q6, Note 14
Debt; Q6, Note 11
Deferred Compensation; Q6, Note 12
Derivative Instruments; Q6, Note 8; QSI04; QSI05; QSI06; QSI07; QE06; QE07; QE08
Director and Officer; QSupp7
Discontinued Operations; Q6, Note 4
Discounting of Liabilities; Q6, Note 32; Q8
Electronic Data Processing Equipment; Q2
Environmental Losses and Loss Adjustment Expenses; Q6, Note 33
Exchange or Counterparty; QE06; QE08
Expenses; Q3; Q4; Q5; Q8; QE01; QSupp3
Extinguishment of Liabilities; Q6, Note 17
Extraordinary Items; Q6, Note 21
Fair Value; Q7, Note 20
Federal ID Number; Q9
Federal Reserve Board; Q7
Finance and Service Charge; Q4
Floors; QE06; QSI04
Foreign Exchange; Q2; Q3; Q4; QSI01; QSI02; QSI03; QE04; QE05
Forwards; QE06; QSI04
Futures Contracts; QE07; QSI04
Guaranty Fund; Q2
Health Care Receivables; Q6, Note 28
Hedging Transactions; Q7.1; QE06; QE07
High Deductible Policies; Q6, Note 31
Holding Company; Q7; Q11; Q12
Income Generation Transactions; QE06;QE07
Income Taxes; Q2; Q3; Q4; Q5; Q6, Note 9
Intercompany Pooling; Q6, Note 26
Investment Income; Q2; Q4; Q5; Q6, Note 7; QSupp2
Investments; Q2; Q4; Q6, Note 5; Q7.1; Q7.2; QSI01; QSI03; QE03; QE04; QE05; QE08; QE13; QSupp2
Joint Venture; Q6, Note 6
Leases; Q6, Note 15
Licensing; Q3; Q7; Q10
Limited Liability Company (LLC); Q6, Note 6
Limited Partnership; Q6, Note 6
Lines of Business; Q8; Q13
Long-Term Invested Assets; QSI01; QE03
Loss Development; Q6
Losses; Q3; Q4; Q5; Q6, Note 25; Q8; Q10; Q13; Q14; QSupp1; QSupp3
Loss Adjustment Expenses; Q3; Q6, Note 26; Q8; Q14; QSupp3
Managing General Agents; Q6, Note 19; Q7
Medical Malpractice Insurance; Q13; Q15; QSupp5
Medicare Part D Coverage; QSupp6
Mortgage Loans; Q2; Q5; Q7.1; QSI01; QE02; QSupp2
Multiple Peril Crop Insurance; Q6, Note 35
Nonadmitted Assets; Q2; Q4; QSI01; QSI03
Non-Tabular Discount; Q6, Note 32
Off-Balance Sheet Risk; Q6, Note 16

**INDEX TO PROPERTY & CASUALTY  
QUARTERLY STATEMENT**

Options; Q7.1; QE06; QSI04

Organizational Chart; Q7; Q11

Other Derivative Transactions; QE06; QE07

Parent, Subsidiaries and Affiliates; Q2; Q3; Q6, Note 10; Q7.1

Participating Policies; Q6, Note 29

Pharmaceutical Rebates; Q6, Note 28

Policyholder Dividends; Q3; Q4; Q5

Postemployment Benefits; Q6, Note 12

Postretirement Benefits; Q6, Note 12

Preferred Stock; Q2; Q7.1; Q7.2; QSI01; QSI02; QE04; QSupp2

Premium Deficiency Reserves; Q6, Note 30

Premium Notes; Q2; Q5

Premiums; Q3; Q5; Qsupp3

    Accrued Retrospective; Q2

    Advance; Q3

    Direct; Q10; Q13

    Earned; Q4; Q10; Q13; QSupp5

    Earned but Unbilled; Q2

    Unearned; Q3

    Written; Q4; Q10; Q13; QSupp5

Quasi Reorganizations; Q6, Note 13

Real Estate; Q2; Q5; Q7.1; QSI01; QE01; QSupp2

Redetermination, Contract Subject to; Q6, Note 24

Reinsurance; Q6, Note 23

    Assumed; Q13

    Ceded; Q3; Q9; QSupp3

    Commutation; Q6, Note 23

    Funds Held; Q2; Q3

    Losses; Q3; Q4; Q8; QSupp3

    Payable; Q3; QSupp3

    Premiums; Q3; QSupp3

    Receivable; Q2; QSupp3

    Unsecured; Q6, Note 23

    Uncollectible; Q6, Note 23

Reserves

    Incurred but Not Reported (IBNR); Q8; Q14

    Unpaid Loss Adjustment Expense (LAE); Q14

Retirement Plans; Q6, Note 12

Retrospectively Rated Contracts; Q6, Note 24

Salvage and Subrogation; Q10

Securities Lending; Q2; Q3; QE9; QE11

Servicing of Financial Assets; Q6, Note 17

Short-Term Investments; Q2; Q5; Q7.1; QSI03; QSupp2

Special Deposits; QSupp2

Stockholder Dividends; Q3; Q4; Q5

Structured Settlements; Q6, Note 27

Subscriber Savings Accounts; Q6, Note 34

Subsequent Events; Q6, Note 22

Surplus; Q3; Q4; Q5; Q6, Note 13; Q14; Q15; QSupp1; QSupp2; QSupp3

Surplus Notes; Q3; Q4; Q5

Swaps; QE07; QSI04

Synthetic Assets; QSI04; QSI05

Tabular Discount; Q6, Note 32

Third Party Administrator; Q6, Note 19; Q7

Treasury Stock; Q3; Q4; Q5

Underwriting Expenses; Q4

Uninsured Accident and Health; Q3; Q6, Note 18

Valuation Allowance; QSI01

Wash Sales; Q6, Note 17