



ANNUAL STATEMENT

For the Year Ended December 31, 2015
of the Condition and Affairs of the

PROGRESSIVE NORTHWESTERN INSURANCE COMPANY

NAIC Group Code.....155, 155
(Current Period) (Prior Period)

NAIC Company Code..... 42919

Employer's ID Number..... 91-1187829

Organized under the Laws of OH

State of Domicile or Port of Entry OH

Country of Domicile US

Incorporated/Organized..... September 24, 1982

Commenced Business..... September 26, 1983

Statutory Home Office

6300 WILSON MILLS ROAD, W33..... CLEVELAND OH US 44143-2182
(Street and Number) (City or Town, State, Country and Zip Code)

Main Administrative Office

6300 WILSON MILLS ROAD, W33..... CLEVELAND OH US..... 44143-2182 440-461-5000
(Street and Number) (City or Town, State, Country and Zip Code) (Area Code) (Telephone Number)

Mail Address

P.O. BOX 89490..... CLEVELAND OH US 44101-6490
(Street and Number or P. O. Box) (City or Town, State, Country and Zip Code)

Primary Location of Books and Records

6300 WILSON MILLS ROAD, W33..... CLEVELAND OH US 44143-2182 440-395-4460
(Street and Number) (City or Town, State, Country and Zip Code) (Area Code) (Telephone Number)

Internet Web Site Address

PROGRESSIVE.COM

Statutory Statement Contact

MARY BETH ANDREANO
(Name)

440-395-4460
(Area Code) (Telephone Number) (Extension)

FINANCIAL_REPORTING@PROGRESSIVE.COM
(E-Mail Address)

440-603-5500
(Fax Number)

POLICYHOLDER SERVICES AND CLAIMS REPORTING -- 1-800-PROGRESSIVE (1-800-776-4737)

OFFICERS

Name	Title	Name	Title
MARK DONALD NIEHAUS	PRESIDENT	PETER JAMES ALBERT	SECRETARY
THOMAS ALFRED KING	TREASURER		

OTHER

PETER JAMES ALBERT	(VICE PRESIDENT)	MARY BETH ANDREANO	(VICE PRESIDENT)
KAREN BARONE BAILO	(VICE PRESIDENT)	KATHLEEN MARY CERNY	(ASST. SECRETARY)
CHRISTINA LYNN CREWS #	(ASST. SECRETARY)	JAMES LEE KUSMER	(ASST. TREASURER)

DIRECTORS OR TRUSTEES

THOMAS HUDSON HOLLYER	KATHRYN MARGARET LEMIEUX	MARK DONALD NIEHAUS	DAVID LLOYD PRATT
GEOFFREY THOMAS SOUSER #			

State of..... OHIO
County of..... CUYAHOGA

The officers of this reporting entity being duly sworn, each depose and say that they are the described officers of said reporting entity, and that on the reporting period stated above, all of the herein described assets were the absolute property of the said reporting entity, free and clear from any liens or claims thereon, except as herein stated, and that this statement, together with related exhibits, schedules and explanations therein contained, annexed or referred to, is a full and true statement of all the assets and liabilities and of the condition and affairs of the said reporting entity as of the reporting period stated above, and of its income and deductions therefrom for the period ended, and have been completed in accordance with the NAIC *Annual Statement Instructions and Accounting Practices and Procedures* manual except to the extent that: (1) state law may differ; or, (2) that state rules or regulations require differences in reporting not related to accounting practices and procedures, according to the best of their information, knowledge and belief, respectively. Furthermore, the scope of this attestation by the described officers also includes the related corresponding electronic filing with the NAIC, when required, that is an exact copy (except for formatting differences due to electronic filing) of the enclosed statement. The electronic filing may be requested by various regulators in lieu of or in addition to the enclosed statement.

(Signature)	(Signature)	(Signature)
MARK DONALD NIEHAUS	PETER JAMES ALBERT	THOMAS ALFRED KING
1. (Printed Name)	2. (Printed Name)	3. (Printed Name)
PRESIDENT	SECRETARY	TREASURER
(Title)	(Title)	(Title)

Subscribed and sworn to before me	a. Is this an original filing?	Yes [X] No []
This 16TH day of FEBRUARY, 2016	b. If no	1. State the amendment number
		2. Date filed
		3. Number of pages attached

ASSETS

	Current Year			Prior Year
	1	2	3	4
	Assets	Nonadmitted Assets	Net Admitted Assets (Cols. 1 - 2)	Net Admitted Assets
1. Bonds (Schedule D).....	1,020,372,283		1,020,372,283	1,008,717,805
2. Stocks (Schedule D):				
2.1 Preferred stocks.....			.0	
2.2 Common stocks.....	177,804,008		177,804,008	186,012,968
3. Mortgage loans on real estate (Schedule B):				
3.1 First liens.....			.0	
3.2 Other than first liens.....			.0	
4. Real estate (Schedule A):				
4.1 Properties occupied by the company (less \$.....0 encumbrances).....			.0	
4.2 Properties held for the production of income (less \$.....0 encumbrances).....			.0	
4.3 Properties held for sale (less \$.....0 encumbrances).....			.0	
5. Cash (\$.....20,329, Schedule E-Part 1), cash equivalents (\$.....89,091,413, Schedule E-Part 2) and short-term investments (\$.....5,110,348, Schedule DA).....	94,222,090		94,222,090	25,714,950
6. Contract loans (including \$.....0 premium notes).....			.0	
7. Derivatives (Schedule DB).....			.0	
8. Other invested assets (Schedule BA).....			.0	
9. Receivables for securities.....			.0	
10. Securities lending reinvested collateral assets (Schedule DL).....			.0	
11. Aggregate write-ins for invested assets.....	0	0	.0	0
12. Subtotals, cash and invested assets (Lines 1 to 11).....	1,292,398,381	0	1,292,398,381	1,220,445,723
13. Title plants less \$.....0 charged off (for Title insurers only).....			.0	
14. Investment income due and accrued.....	4,827,363		4,827,363	4,998,936
15. Premiums and considerations:				
15.1 Uncollected premiums and agents' balances in the course of collection.....	(7,349,816)	2,215,816	(9,565,632)	3,361,738
15.2 Deferred premiums, agents' balances and installments booked but deferred and not yet due (including \$.....0 earned but unbilled premiums).....	57,408,642		57,408,642	62,460,642
15.3 Accrued retrospective premiums (\$.....0) and contracts subject to redetermination (\$.....0).....			.0	
16. Reinsurance:				
16.1 Amounts recoverable from reinsurers.....	1,824,971		1,824,971	3,018,535
16.2 Funds held by or deposited with reinsured companies.....			.0	
16.3 Other amounts receivable under reinsurance contracts.....			.0	
17. Amounts receivable relating to uninsured plans.....			.0	
18.1 Current federal and foreign income tax recoverable and interest thereon.....			.0	
18.2 Net deferred tax asset.....	4,570,550		4,570,550	
19. Guaranty funds receivable or on deposit.....			.0	
20. Electronic data processing equipment and software.....			.0	
21. Furniture and equipment, including health care delivery assets (\$.....0).....			.0	
22. Net adjustment in assets and liabilities due to foreign exchange rates.....			.0	
23. Receivables from parent, subsidiaries and affiliates.....	20,250,625		20,250,625	18,906,682
24. Health care (\$.....0) and other amounts receivable.....			.0	
25. Aggregate write-ins for other than invested assets.....	463,520	167,664	295,856	340,725
26. Total assets excluding Separate Accounts, Segregated Accounts and Protected Cell Accounts (Lines 12 to 25).....	1,374,394,236	2,383,480	1,372,010,756	1,313,532,981
27. From Separate Accounts, Segregated Accounts and Protected Cell Accounts.....			.0	
28. TOTALS (Lines 26 and 27).....	1,374,394,236	2,383,480	1,372,010,756	1,313,532,981

DETAILS OF WRITE-INS

1101.0	
1102.0	
1103.0	
1198. Summary of remaining write-ins for Line 11 from overflow page.....	0	0	.0	0
1199. Totals (Lines 1101 thru 1103 plus 1198) (Line 11 above).....	0	0	.0	0
2501. STATE TAX CREDITS.....	282,940		282,940	340,725
2502. NEW YORK STATE ASSESSMENT RECOVERABLE.....	12,916		12,916	
2503. PREPAID EXPENSES.....	161,007	161,007	.0	
2598. Summary of remaining write-ins for Line 25 from overflow page.....	6,657	6,657	.0	0
2599. Totals (Lines 2501 thru 2503 plus 2598) (Line 25 above).....	463,520	167,664	295,856	340,725

PROGRESSIVE NORTHWESTERN INSURANCE COMPANY
LIABILITIES, SURPLUS AND OTHER FUNDS

	1 Current Year	2 Prior Year
1. Losses (Part 2A, Line 35, Column 8).....	419,910,275	400,722,262
2. Reinsurance payable on paid losses and loss adjustment expenses (Schedule F, Part 1, Column 6).....	2,163,295	6,562,778
3. Loss adjustment expenses (Part 2A, Line 35, Column 9).....	88,382,307	82,233,083
4. Commissions payable, contingent commissions and other similar charges.....	1,850,058	1,506,818
5. Other expenses (excluding taxes, licenses and fees).....	54,722,966	46,902,328
6. Taxes, licenses and fees (excluding federal and foreign income taxes).....	7,619,597	8,700,462
7.1 Current federal and foreign income taxes (including \$.....864,668 on realized capital gains (losses)).....	9,088,133	12,057,395
7.2 Net deferred tax liability.....		566,707
8. Borrowed money \$.....0 and interest thereon \$.....0.....		
9. Unearned premiums (Part 1A, Line 38, Column 5) (after deducting unearned premiums for ceded reinsurance of \$.....137,005,773 and including warranty reserves of \$.....0 and accrued accident and health experience rating refunds including \$.....0 for medical loss ratio rebate per the Public Health Service Act).....	370,324,513	342,137,812
10. Advance premium.....	2,846,183	3,205,883
11. Dividends declared and unpaid:		
11.1 Stockholders.....		
11.2 Policyholders.....		
12. Ceded reinsurance premiums payable (net of ceding commissions).....	21,055	19,954
13. Funds held by company under reinsurance treaties (Schedule F, Part 3, Column 19).....		
14. Amounts withheld or retained by company for account of others.....		
15. Remittances and items not allocated.....		
16. Provision for reinsurance (including \$.....0 certified) (Schedule F, Part 8).....		
17. Net adjustments in assets and liabilities due to foreign exchange rates.....		
18. Drafts outstanding.....	16,627,792	19,065,003
19. Payable to parent, subsidiaries and affiliates.....		
20. Derivatives.....		
21. Payable for securities.....		
22. Payable for securities lending.....		
23. Liability for amounts held under uninsured plans.....		
24. Capital notes \$.....0 and interest thereon \$.....0.....		
25. Aggregate write-ins for liabilities.....	2,274,554	2,259,573
26. Total liabilities excluding protected cell liabilities (Lines 1 through 25).....	975,830,728	925,940,058
27. Protected cell liabilities.....		
28. Total liabilities (Lines 26 and 27).....	975,830,728	925,940,058
29. Aggregate write-ins for special surplus funds.....	0	0
30. Common capital stock.....	3,000,025	3,000,025
31. Preferred capital stock.....		
32. Aggregate write-ins for other than special surplus funds.....	0	0
33. Surplus notes.....		
34. Gross paid in and contributed surplus.....	146,299,975	146,299,975
35. Unassigned funds (surplus).....	246,880,028	238,292,923
36. Less treasury stock, at cost:		
36.10.000 shares common (value included in Line 30 \$.....0).....		
36.20.000 shares preferred (value included in Line 31 \$.....0).....		
37. Surplus as regards policyholders (Lines 29 to 35, less 36) (Page 4, Line 39).....	396,180,028	387,592,923
38. TOTALS (Page 2, Line 28, Col. 3).....	1,372,010,756	1,313,532,981

DETAILS OF WRITE-INS		
2501. STATE PLAN LIABILITY.....	2,126,125	2,064,303
2502. ESCHEATABLE PROPERTY.....	106,743	103,146
2503. OTHER LIABILITIES.....	41,686	83,576
2598. Summary of remaining write-ins for Line 25 from overflow page.....	0	8,548
2599. Totals (Lines 2501 thru 2503 plus 2598) (Line 25 above).....	2,274,554	2,259,573
2901.		
2902.		
2903.		
2998. Summary of remaining write-ins for Line 29 from overflow page.....	0	0
2999. Totals (Lines 2901 thru 2903 plus 2998) (Line 29 above).....	0	0
3201.		
3202.		
3203.		
3298. Summary of remaining write-ins for Line 32 from overflow page.....	0	0
3299. Totals (Lines 3201 thru 3203 plus 3298) (Line 32 above).....	0	0

PROGRESSIVE NORTHWESTERN INSURANCE COMPANY
STATEMENT OF INCOME

		1	2
UNDERWRITING INCOME		Current Year	Prior Year
1.	Premiums earned (Part 1, Line 35, Column 4).....	1,208,611,469	1,191,365,224
DEDUCTIONS			
2.	Losses incurred (Part 2, Line 35, Column 7).....	740,523,188	734,552,238
3.	Loss adjustment expenses incurred (Part 3, Line 25, Column 1).....	125,392,032	120,911,256
4.	Other underwriting expenses incurred (Part 3, Line 25, Column 2).....	254,086,939	247,025,605
5.	Aggregate write-ins for underwriting deductions.....	0	0
6.	Total underwriting deductions (Lines 2 through 5).....	1,120,002,159	1,102,489,099
7.	Net income of protected cells.....		
8.	Net underwriting gain (loss) (Line 1 minus Line 6 plus Line 7).....	88,609,310	88,876,125
INVESTMENT INCOME			
9.	Net investment income earned (Exhibit of Net Investment Income, Line 17).....	26,956,627	25,425,341
10.	Net realized capital gains (losses) less capital gains tax of \$.....2,216,505 (Exhibit of Capital Gains (Losses)).....	4,072,654	10,708,532
11.	Net investment gain (loss) (Lines 9 + 10).....	31,029,281	36,133,873
OTHER INCOME			
12.	Net gain (loss) from agents' or premium balances charged off (amount recovered \$.....308,606 amount charged off \$.....4,326,916).....	(4,018,310)	(4,135,216)
13.	Finance and service charges not included in premiums.....	8,857,266	9,534,212
14.	Aggregate write-ins for miscellaneous income.....	1,149,501	2,092,763
15.	Total other income (Lines 12 through 14).....	5,988,457	7,491,759
16.	Net income before dividends to policyholders, after capital gains tax and before all other federal and foreign income taxes (Lines 8 + 11 + 15).....	125,627,048	132,501,757
17.	Dividends to policyholders.....		
18.	Net income, after dividends to policyholders, after capital gains tax and before all other federal and foreign income taxes (Line 16 minus Line 17).....	125,627,048	132,501,757
19.	Federal and foreign income taxes incurred.....	41,136,969	39,619,240
20.	Net income (Line 18 minus Line 19) (to Line 22).....	84,490,079	92,882,517
CAPITAL AND SURPLUS ACCOUNT			
21.	Surplus as regards policyholders, December 31 prior year (Page 4, Line 39, Column 2).....	387,592,923	371,568,997
22.	Net income (from Line 20).....	84,490,079	92,882,517
23.	Net transfers (to) from Protected Cell accounts.....		
24.	Change in net unrealized capital gains or (losses) less capital gains tax of \$.....(5,205,435).....	(9,667,237)	5,548,899
25.	Change in net unrealized foreign exchange capital gain (loss).....		
26.	Change in net deferred income tax.....	(68,178)	(2,010,206)
27.	Change in nonadmitted assets (Exhibit of Nonadmitted Assets, Line 28, Column 3).....	332,441	(197,284)
28.	Change in provision for reinsurance (Page 3, Line 16, Column 2 minus Column 1).....		
29.	Change in surplus notes.....		
30.	Surplus (contributed to) withdrawn from protected cells.....		
31.	Cumulative effect of changes in accounting principles.....		
32.	Capital changes:		
32.1	Paid in.....		
32.2	Transferred from surplus (Stock Dividend).....		
32.3	Transferred to surplus.....		
33.	Surplus adjustments:		
33.1	Paid in.....		
33.2	Transferred to capital (Stock Dividend).....		
33.3.	Transferred from capital.....		
34.	Net remittances from or (to) Home Office.....		
35.	Dividends to stockholders.....	(66,500,000)	(80,200,000)
36.	Change in treasury stock (Page 3, Lines 36.1 and 36.2, Column 2 minus Column 1).....		
37.	Aggregate write-ins for gains and losses in surplus.....	0	0
38.	Change in surplus as regards policyholders for the year (Lines 22 through 37).....	8,587,105	16,023,926
39.	Surplus as regards policyholders, December 31 current year (Line 21 plus Line 38) (Page 3, Line 37).....	396,180,028	387,592,923
DETAILS OF WRITE-INS			
0501.		
0502.		
0503.		
0598.	Summary of remaining write-ins for Line 5 from overflow page.....	0	0
0599.	Totals (Lines 0501 thru 0503 plus 0598) (Line 5 above).....	0	0
1401.	MISCELLANEOUS INCOME.....	1,110,329	2,013,381
1402.	SERVICE BUSINESS REVENUE.....	25,472	70,567
1403.	INTEREST INCOME ON INTERCOMPANY BALANCES.....	13,700	8,815
1498.	Summary of remaining write-ins for Line 14 from overflow page.....	0	0
1499.	Totals (Lines 1401 thru 1403 plus 1498) (Line 14 above).....	1,149,501	2,092,763
3701.		
3702.		
3703.		
3798.	Summary of remaining write-ins for Line 37 from overflow page.....	0	0
3799.	Totals (Lines 3701 thru 3703 plus 3798) (Line 37 above).....	0	0

CASH FLOW

	1 Current Year	2 Prior Year
CASH FROM OPERATIONS		
1. Premiums collected net of reinsurance.....	1,254,737,312	1,194,142,281
2. Net investment income.....	32,087,753	31,042,859
3. Miscellaneous income.....	5,881,250	7,463,234
4. Total (Lines 1 through 3).....	1,292,706,315	1,232,648,374
5. Benefit and loss related payments.....	724,541,094	730,649,484
6. Net transfers to Separate Accounts, Segregated Accounts and Protected Cell Accounts.....		
7. Commissions, expenses paid and aggregate write-ins for deductions.....	366,244,558	357,184,197
8. Dividends paid to policyholders.....		
9. Federal and foreign income taxes paid (recovered) net of \$.....1,393,656 tax on capital gains (losses).....	46,322,736	41,131,459
10. Total (Lines 5 through 9).....	1,137,108,388	1,128,965,140
11. Net cash from operations (Line 4 minus Line 10).....	155,597,927	103,683,234
CASH FROM INVESTMENTS		
12. Proceeds from investments sold, matured or repaid:		
12.1 Bonds.....	606,446,151	538,535,825
12.2 Stocks.....	8,832,865	39,882,672
12.3 Mortgage loans.....		
12.4 Real estate.....		
12.5 Other invested assets.....		
12.6 Net gains or (losses) on cash, cash equivalents and short-term investments.....		
12.7 Miscellaneous proceeds.....		
12.8 Total investment proceeds (Lines 12.1 to 12.7).....	615,279,016	578,418,497
13. Cost of investments acquired (long-term only):		
13.1 Bonds.....	619,349,334	589,794,708
13.2 Stocks.....	12,920,445	6,195,870
13.3 Mortgage loans.....		
13.4 Real estate.....		
13.5 Other invested assets.....		
13.6 Miscellaneous applications.....		
13.7 Total investments acquired (Lines 13.1 to 13.6).....	632,269,779	595,990,578
14. Net increase (decrease) in contract loans and premium notes.....		
15. Net cash from investments (Line 12.8 minus Lines 13.7 minus Line 14).....	(16,990,763)	(17,572,081)
CASH FROM FINANCING AND MISCELLANEOUS SOURCES		
16. Cash provided (applied):		
16.1 Surplus notes, capital notes.....		
16.2 Capital and paid in surplus, less treasury stock.....		
16.3 Borrowed funds.....		
16.4 Net deposits on deposit-type contracts and other insurance liabilities.....		
16.5 Dividends to stockholders.....	66,500,000	80,200,000
16.6 Other cash provided (applied).....	(3,600,024)	3,932,528
17. Net cash from financing and miscellaneous sources (Lines 16.1 to 16.4 minus Line 16.5 plus Line 16.6).....	(70,100,024)	(76,267,472)
RECONCILIATION OF CASH, CASH EQUIVALENTS AND SHORT-TERM INVESTMENTS		
18. Net change in cash, cash equivalents and short-term investments (Line 11 plus Line 15 plus Line 17).....	68,507,140	9,843,681
19. Cash, cash equivalents and short-term investments:		
19.1 Beginning of year.....	25,714,950	15,871,269
19.2 End of year (Line 18 plus Line 19.1).....	94,222,090	25,714,950

Note: Supplemental disclosures of cash flow information for non-cash transactions:

20.0001		
---------	--	--

PROGRESSIVE NORTHWESTERN INSURANCE COMPANY
UNDERWRITING AND INVESTMENT EXHIBIT

PART 1 - PREMIUMS EARNED

Line of Business		1 Net Premiums Written per Column 6, Part 1B	2 Unearned Premiums December 31 Prior Year- per Col. 3, Last Year's Part 1	3 Unearned Premiums December 31 Current Year- per Col. 5, Part 1A	4 Premiums Earned During Year (Cols. 1 + 2 - 3)
1.	Fire.....			0
2.	Allied lines.....			0
3.	Farmowners multiple peril.....			0
4.	Homeowners multiple peril.....	5,034,352	2,300,861	2,628,827	4,706,386
5.	Commercial multiple peril.....			0
6.	Mortgage guaranty.....			0
8.	Ocean marine.....			0
9.	Inland marine.....	21,784,614	9,330,990	10,299,698	20,815,906
10.	Financial guaranty.....			0
11.1	Medical professional liability - occurrence.....			0
11.2	Medical professional liability - claims-made.....	3,600	286	296	3,590
12.	Earthquake.....			0
13.	Group accident and health.....			0
14.	Credit accident and health (group and individual).....			0
15.	Other accident and health.....			0
16.	Workers' compensation.....			0
17.1	Other liability - occurrence.....	8,076,868	3,751,390	3,828,169	8,000,088
17.2	Other liability - claims-made.....	(19,214)	8,720	5,450	(15,945)
17.3	Excess workers' compensation.....			0
18.1	Products liability - occurrence.....			0
18.2	Products liability - claims-made.....			0
19.1, 19.2	Private passenger auto liability.....	691,790,569	177,054,024	185,502,158	683,342,436
19.3, 19.4	Commercial auto liability.....	85,480,529	33,954,479	42,591,539	76,843,469
21.	Auto physical damage.....	424,645,306	115,736,517	125,467,739	414,914,084
22.	Aircraft (all perils).....			0
23.	Fidelity.....			0
24.	Surety.....	1,546	545	635	1,456
26.	Burglary and theft.....			0
27.	Boiler and machinery.....			0
28.	Credit.....			0
29.	International.....			0
30.	Warranty.....			0
31.	Reinsurance - nonproportional assumed property.....			0
32.	Reinsurance - nonproportional assumed liability.....			0
33.	Reinsurance - nonproportional assumed financial lines.....			0
34.	Aggregate write-ins for other lines of business.....	0	0	0	0
35.	TOTALS.....	1,236,798,170	342,137,812	370,324,513	1,208,611,469

DETAILS OF WRITE-INS

3401.0
3402.0
3403.0
3498.	Summary of remaining write-ins for Line 34 from overflow page.....	0	0	0	0
3499.	Totals (Lines 3401 thru 3403 plus 3498) (Line 34 above).....	0	0	0	0

PROGRESSIVE NORTHWESTERN INSURANCE COMPANY
UNDERWRITING AND INVESTMENT EXHIBIT

PART 1A - RECAPITULATION OF ALL PREMIUMS

Line of Business		1	2	3	4	5
		Amount Unearned (Running One Year or Less from Date of Policy) (a)	Amount Unearned (Running More Than One Year from Date of Policy) (a)	Earned But Unbilled Premium	Reserve for Rate Credits and Retrospective Adjustments Based on Experience	Total Reserve for Unearned Premiums Cols. 1 + 2 + 3 + 4
1.	Fire.....					0
2.	Allied lines.....					0
3.	Farmowners multiple peril.....					0
4.	Homeowners multiple peril.....	2,628,827				2,628,827
5.	Commercial multiple peril.....					0
6.	Mortgage guaranty.....					0
8.	Ocean marine.....					0
9.	Inland marine.....	10,299,698				10,299,698
10.	Financial guaranty.....					0
11.1	Medical professional liability - occurrence.....					0
11.2	Medical professional liability - claims-made.....	296				296
12.	Earthquake.....					0
13.	Group accident and health.....					0
14.	Credit accident and health (group and individual).....					0
15.	Other accident and health.....					0
16.	Workers' compensation.....					0
17.1	Other liability - occurrence.....	3,828,169				3,828,169
17.2	Other liability - claims-made.....	2,466	2,984			5,450
17.3	Excess workers' compensation.....					0
18.1	Products liability - occurrence.....					0
18.2	Products liability - claims-made.....					0
19.1, 19.2	Private passenger auto liability.....	185,502,158				185,502,158
19.3, 19.4	Commercial auto liability.....	42,591,539				42,591,539
21.	Auto physical damage.....	125,467,739				125,467,739
22.	Aircraft (all perils).....					0
23.	Fidelity.....					0
24.	Surety.....	635				635
26.	Burglary and theft.....					0
27.	Boiler and machinery.....					0
28.	Credit.....					0
29.	International.....					0
30.	Warranty.....					0
31.	Reinsurance - nonproportional assumed property.....					0
32.	Reinsurance - nonproportional assumed liability.....					0
33.	Reinsurance - nonproportional assumed financial lines.....					0
34.	Aggregate write-ins for other lines of business.....	0	0	0	0	0
35.	TOTALS.....	370,321,529	2,984	0	0	370,324,513
36.	Accrued retrospective premiums based on experience.....					
37.	Earned but unbilled premiums.....					0
38.	Balance (sum of Lines 35 through 37).....					370,324,513

DETAILS OF WRITE-INS

3401.					0
3402.					0
3403.					0
3498.	Summary of remaining write-ins for Line 34 from overflow page.....	0	0	0	0	0
3499.	Totals (Lines 3401 thru 3403 plus 3498) (Line 34 above).....	0	0	0	0	0

(a) State here basis of computation used in each case: Pro Rata

PROGRESSIVE NORTHWESTERN INSURANCE COMPANY
UNDERWRITING AND INVESTMENT EXHIBIT

PART 1B - PREMIUMS WRITTEN

Line of Business	1 Direct Business (a)	Reinsurance Assumed		Reinsurance Ceded		6 Net Premiums Written (Cols. 1 + 2 + 3 - 4 - 5)
		2 From Affiliates	3 From Non-Affiliates	4 To Affiliates	5 To Non-Affiliates	
1. Fire.....					0
2. Allied lines.....					0
3. Farmowners multiple peril.....					0
4. Homeowners multiple peril.....	5,034,352			5,034,352
5. Commercial multiple peril.....					0
6. Mortgage guaranty.....					0
8. Ocean marine.....					0
9. Inland marine.....13,676,67721,784,614	13,676,677	21,784,614
10. Financial guaranty.....					0
11.1 Medical professional liability - occurrence.....					0
11.2 Medical professional liability - claims-made.....	3,600			3,600
12. Earthquake.....					0
13. Group accident and health.....					0
14. Credit accident and health (group and individual).....					0
15. Other accident and health.....					0
16. Workers' compensation.....					0
17.1 Other liability - occurrence.....7,108,5728,076,867	6,972,841135,7308,076,868
17.2 Other liability - claims-made.....	(19,214)			(19,214)
17.3 Excess workers' compensation.....					0
18.1 Products liability - occurrence.....					0
18.2 Products liability - claims-made.....					0
19.1, 19.2 Private passenger auto liability.....241,768,204691,790,569	241,768,204	691,790,569
19.3, 19.4 Commercial auto liability.....19,581,80385,480,530	19,559,93321,87185,480,529
21. Auto physical damage.....182,786,902424,645,306	182,786,902	424,645,306
22. Aircraft (all perils).....					0
23. Fidelity.....					0
24. Surety.....	1,546			1,546
26. Burglary and theft.....					0
27. Boiler and machinery.....					0
28. Credit.....					0
29. International.....					0
30. Warranty.....					0
31. Reinsurance - nonproportional assumed property.....XXX				0
32. Reinsurance - nonproportional assumed liability.....XXX				0
33. Reinsurance - nonproportional assumed financial lines.....XXX				0
34. Aggregate write-ins for other lines of business.....000000
35. TOTALS.....464,922,1581,236,798,1700464,764,557157,6011,236,798,170

DETAILS OF WRITE-INS

3401.0
3402.0
3403.0
3498. Summary of remaining write-ins for Line 34 from overflow page.....000000
3499. Totals (Lines 3401 thru 3403 plus 3498) (Line 34 above).....000000

(a) Does the company's direct premiums written include premiums recorded on an installment basis? Yes [] No [X]
If yes: 1. The amount of such installment premiums \$.....0.
2. Amount at which such installment premiums would have been reported had they been recorded on an annualized basis \$.....0.

UNDERWRITING AND INVESTMENT EXHIBIT

PART 2 - LOSSES PAID AND INCURRED

		Losses Paid Less Salvage				5	6	7	8
		1	2	3	4				
Line of Business		Direct Business	Reinsurance Assumed	Reinsurance Recovered	Net Payments (Cols. 1 + 2 - 3)	Net Losses Unpaid Current Year (Part 2A, Col. 8)	Net Losses Unpaid Prior Year	Losses Incurred Current Year (Cols. 4 + 5 - 6)	Percentage of Losses Incurred (Col. 7, Part 2) to Premiums Earned (Col. 4, Part 1)
1.	Fire.....				0			0	0.0
2.	Allied lines.....				0			0	0.0
3.	Farmowners multiple peril.....				0			0	0.0
4.	Homeowners multiple peril.....		1,840,671		1,840,671	446,701	354,211	1,933,160	41.1
5.	Commercial multiple peril.....				0			0	0.0
6.	Mortgage guaranty.....				0			0	0.0
8.	Ocean marine.....				0			0	0.0
9.	Inland marine.....	5,719,240	8,379,684	5,719,240	8,379,684	999,883	966,748	8,412,820	40.4
	Financial guaranty.....				0			0	0.0
11.1	Medical professional liability - occurrence.....				0			0	0.0
11.2	Medical professional liability - claims-made.....				0	180	184	(5)	(0.1)
12.	Earthquake.....				0			0	0.0
13.	Group accident and health.....				0			0	0.0
14.	Credit accident and health (group and individual).....				0			0	0.0
15.	Other accident and health.....				0			0	0.0
16.	Workers' compensation.....		5,291		5,291	230,754	236,045	(0)	0.0
17.1	Other liability - occurrence.....	882,512	2,335,791	882,512	2,335,791	4,916,791	5,003,021	2,249,561	28.1
17.2	Other liability - claims-made.....		451,537		451,537	144,997	410,539	185,995	(1,166.5)
17.3	Excess workers' compensation.....				0			0	0.0
18.1	Products liability - occurrence.....				0			0	0.0
18.2	Products liability - claims-made.....				0			0	0.0
19.1, 19.2	Private passenger auto liability.....	146,950,304	406,904,499	146,950,304	406,904,499	352,402,734	336,852,702	422,454,531	61.8
19.3, 19.4	Commercial auto liability.....	14,589,783	35,527,698	14,589,783	35,527,698	57,780,022	54,396,935	38,910,784	50.6
21.	Auto physical damage.....	109,496,396	265,886,239	109,496,396	265,886,239	2,162,677	1,681,740	266,367,176	64.2
22.	Aircraft (all perils).....				0			0	0.0
23.	Fidelity.....		(24,796)		(24,796)	2,343	5,372	(27,825)	0.0
24.	Surety.....				0	369	747	(378)	(26.0)
26.	Burglary and theft.....				0			0	0.0
27.	Boiler and machinery.....				0			0	0.0
28.	Credit.....				0			0	0.0
29.	International.....				0			0	0.0
30.	Warranty.....				0			0	0.0
31.	Reinsurance - nonproportional assumed property.....	XXX			0			0	0.0
32.	Reinsurance - nonproportional assumed liability.....	XXX	28,561		28,561	822,823	814,020	37,364	0.0
33.	Reinsurance - nonproportional assumed financial lines.....	XXX			0			0	0.0
34.	Aggregate write-ins for other lines of business.....	0	0	0	0	0	0	0	0.0
35.	TOTALS.....	277,638,235	721,335,174	277,638,235	721,335,174	419,910,274	400,722,265	740,523,183	61.3
DETAILS OF WRITE-INS									
3401.				0			0	0.0
3402.				0			0	0.0
3403.				0			0	0.0
3498.	Summary of remaining write-ins for Line 34 from overflow page.....	0	0	0	0	0	0	0	XXX
3499.	Totals (Lines 3401 thru 3403 plus 3498) (Line 34 above).....	0	0	0	0	0	0	0	0.0

UNDERWRITING AND INVESTMENT EXHIBIT

PART 2A - UNPAID LOSSES AND LOSS ADJUSTMENT EXPENSES

		Reported Losses				Incurred But Not Reported			8	9
		1	2	3	4	5	6	7		
Line of Business		Direct	Reinsurance Assumed	Deduct Reinsurance Recoverable	Net Losses Excluding Incurred but not Reported (Cols. 1 + 2 - 3)	Direct	Reinsurance Assumed	Reinsurance Ceded	Net Losses Unpaid (Cols. 4 + 5 + 6 - 7)	Net Unpaid Loss Adjustment Expenses
1.	Fire.....				.0				.0	
2.	Allied lines.....				.0				.0	
3.	Farmowners multiple peril.....				.0				.0	
4.	Homeowners multiple peril.....		282,181		282,181		164,520		446,701	104,012
5.	Commercial multiple peril.....				.0				.0	
6.	Mortgage guaranty.....				.0				.0	
8.	Ocean marine.....				.0				.0	
9.	Inland marine.....	398,365	515,120	398,365	515,120	184,831	484,763	184,831	999,883	201,331
10.	Financial guaranty.....				.0				.0	
11.1	Medical professional liability - occurrence.....				.0				.0	
11.2	Medical professional liability - claims-made.....				.0		180		180	158
12.	Earthquake.....				.0				.0	
13.	Group accident and health.....				.0				(a).0	
14.	Credit accident and health (group and individual).....				.0				.0	
15.	Other accident and health.....				.0				(a).0	
16.	Workers' compensation.....		230,754		230,754				230,754	11,812
17.1	Other liability - occurrence.....	1,394,858	3,238,132	1,394,858	3,238,132	871,721	1,678,659	871,721	4,916,791	771,825
17.2	Other liability - claims-made.....		55,468		55,468		89,529		144,997	26,571
17.3	Excess workers' compensation.....				.0				.0	
18.1	Products liability - occurrence.....				.0				.0	
18.2	Products liability - claims-made.....				.0				.0	
19.1, 19.2	Private passenger auto liability.....	96,212,508	274,625,597	96,212,508	274,625,597	21,626,207	77,777,137	21,626,207	352,402,734	73,956,159
19.3, 19.4	Commercial auto liability.....	15,673,702	48,421,952	15,673,702	48,421,952	3,272,959	9,358,070	3,272,959	57,780,022	9,872,631
21.	Auto physical damage.....	6,040,210	14,021,798	6,040,210	14,021,798	(3,984,446)	(11,859,120)	(3,984,445)	2,162,677	3,431,756
22.	Aircraft (all perils).....				.0				.0	
23.	Fidelity.....		150		150		2,193		2,343	5,247
24.	Surety.....				.0		369		369	805
26.	Burglary and theft.....				.0				.0	
27.	Boiler and machinery.....				.0				.0	
28.	Credit.....				.0				.0	
29.	International.....				.0				.0	
30.	Warranty.....				.0				.0	
31.	Reinsurance - nonproportional assumed property.....	.XXX.			.0	.XXX			.0	
32.	Reinsurance - nonproportional assumed liability.....	.XXX.	184,316		184,316	.XXX.	638,507		822,823	
33.	Reinsurance - nonproportional assumed financial lines.....	.XXX.			.0	.XXX.			.0	
34.	Aggregate write-ins for other lines of business.....	0	0	0	.0	.0	.0	.0	.0	.0
35.	TOTALS.....	119,719,643	341,575,468	119,719,643	341,575,468	21,971,272	78,334,807	21,971,273	419,910,274	88,382,307
DETAILS OF WRITE-INS										
3401.0				.0	
3402.0				.0	
3403.0				.0	
3498.	Summary of remaining write-ins for Line 34 from overflow page.....	0	0	0	.0	.0	.0	.0	.0	.0
3499.	Totals (Lines 3401 thru 3403 plus 3498) (Line 34 above).....	0	0	0	.0	.0	.0	.0	.0	.0
(a)	Including \$.0 for present value of life indemnity claims.									

PROGRESSIVE NORTHWESTERN INSURANCE COMPANY
UNDERWRITING AND INVESTMENT EXHIBIT

PART 3 - EXPENSES

	1	2	3	4
	Loss Adjustment Expenses	Other Underwriting Expenses	Investment Expenses	Total
1. Claim adjustment services:				
1.1 Direct.....	4,371,632			4,371,632
1.2 Reinsurance assumed.....	20,117,773			20,117,773
1.3 Reinsurance ceded.....	4,371,632			4,371,632
1.4 Net claim adjustment services (1.1 + 1.2 - 1.3).....	20,117,773	0	0	20,117,773
2. Commission and brokerage:				
2.1 Direct, excluding contingent.....		46,766,650		46,766,650
2.2 Reinsurance assumed, excluding contingent.....		114,598,644		114,598,644
2.3 Reinsurance ceded, excluding contingent.....		46,766,650		46,766,650
2.4 Contingent - direct.....		367,714		367,714
2.5 Contingent - reinsurance assumed.....		2,006,035		2,006,035
2.6 Contingent - reinsurance ceded.....		367,714		367,714
2.7 Policy and membership fees.....				0
2.8 Net commission and brokerage (2.1 + 2.2 - 2.3 + 2.4 + 2.5 - 2.6 + 2.7).....	0	116,604,679	0	116,604,679
3. Allowances to manager and agents.....		656,357		656,357
4. Advertising.....	15,273	12,841,750		12,857,023
5. Boards, bureaus and associations.....	334,633	587,722		922,356
6. Surveys and underwriting reports.....		7,954,146		7,954,146
7. Audit of assureds' records.....				0
8. Salary and related items:				
8.1 Salaries.....	70,751,117	52,732,237	853,353	124,336,706
8.2 Payroll taxes.....	4,951,704	3,635,236	26,354	8,613,294
9. Employee relations and welfare.....	12,241,745	8,406,860	34,094	20,682,699
10. Insurance.....	219,322	170,473		389,795
11. Directors' fees.....				0
12. Travel and travel items.....	3,192,309	1,303,448	4,714	4,500,471
13. Rent and rent items.....	4,457,274	4,878,652	19,223	9,355,148
14. Equipment.....	358,841	1,255,786		1,614,627
15. Cost or depreciation of EDP equipment and software.....	4,236,477	7,349,263	12,397	11,598,137
16. Printing and stationery.....	422,924	996,765	1,978	1,421,666
17. Postage, telephone and telegraph, exchange and express.....	3,231,486	7,294,946	5,178	10,531,610
18. Legal and auditing.....	666,221	955,263	103,074	1,724,559
19. Totals (Lines 3 to 18).....	105,079,326	111,018,904	1,060,364	217,158,595
20. Taxes, licenses and fees:				
20.1 State and local insurance taxes deducting guaranty association credits of \$.....8,356.....		20,277,348		20,277,348
20.2 Insurance department licenses and fees.....	135,424	1,157,462		1,292,887
20.3 Gross guaranty association assessments.....		22,740		22,740
20.4 All other (excluding federal and foreign income and real estate).....	24,619	3,918,037		3,942,656
20.5 Total taxes, licenses and fees (20.1 + 20.2 + 20.3 + 20.4).....	160,043	25,375,588	0	25,535,631
21. Real estate expenses.....				0
22. Real estate taxes.....				0
23. Reimbursements by uninsured plans.....				0
24. Aggregate write-ins for miscellaneous expenses.....	34,890	1,087,768	184,092	1,306,750
25. Total expenses incurred.....	125,392,032	254,086,939	1,244,456	(a).....380,723,427
26. Less unpaid expenses - current year.....	88,382,307	64,169,273	23,349	152,574,929
27. Add unpaid expenses - prior year.....	82,233,083	57,084,084	25,525	139,342,692
28. Amounts receivable relating to uninsured plans, prior year.....				0
29. Amounts receivable relating to uninsured plans, current year.....				0
30. TOTAL EXPENSES PAID (Lines 25 - 26 + 27 - 28 + 29).....	119,242,808	247,001,750	1,246,632	367,491,190

DETAILS OF WRITE-INS

2401. MISCELLANEOUS EXPENSES.....	34,890	1,087,768	184,092	1,306,750
2402.				0
2403.				0
2498. Summary of remaining write-ins for Line 24 from overflow page.....	0	0	0	0
2499. Totals (Lines 2401 thru 2403 plus 2498) (Line 24 above).....	34,890	1,087,768	184,092	1,306,750

(a) Includes management fees of \$.....218,465,344 to affiliates and \$.....0 to non-affiliates.

EXHIBIT OF NET INVESTMENT INCOME

		1	2
		Collected During Year	Earned During Year
1.	U.S. government bonds.....	(a).....2,150,2612,224,061
1.1	Bonds exempt from U.S. tax.....	(a).....1,833,4901,910,073
1.2	Other bonds (unaffiliated).....	(a).....20,260,98719,914,836
1.3	Bonds of affiliates.....	(a).....
2.1	Preferred stocks (unaffiliated).....	(b).....
2.11	Preferred stocks of affiliates.....	(b).....
2.2	Common stocks (unaffiliated).....4,117,3964,132,931
2.21	Common stocks of affiliates.....
3.	Mortgage loans.....	(c).....
4.	Real estate.....	(d).....
5.	Contract loans.....
6.	Cash, cash equivalents and short-term investments.....	(e).....10,52219,183
7.	Derivative instruments.....	(f).....
8.	Other invested assets.....
9.	Aggregate write-ins for investment income.....00
10.	Total gross investment income.....28,372,65628,201,084
11.	Investment expenses.....	(g).....1,244,456
12.	Investment taxes, licenses and fees, excluding federal income taxes.....	(g).....
13.	Interest expense.....	(h).....
14.	Depreciation on real estate and other invested assets.....	(i).....0
15.	Aggregate write-ins for deductions from investment income.....0
16.	Total deductions (Lines 11 through 15).....1,244,456
17.	Net investment income (Line 10 minus Line 16).....26,956,628

DETAILS OF WRITE-INS

0901.
0902.
0903.
0998.	Summary of remaining write-ins for Line 9 from overflow page.....00
0999.	Totals (Lines 0901 thru 0903 plus 0998) (Line 9 above).....00
1501.
1502.
1503.
1598.	Summary of remaining write-ins for Line 15 from overflow page.....0
1599.	Totals (Lines 1501 thru 1503 plus 1598) (Line 15 above).....0
(a)	Includes \$.....2,400,798 accrual of discount less \$.....7,362,527 amortization of premium and less \$.....884,139 paid for accrued interest on purchases.		
(b)	Includes \$.....0 accrual of discount less \$.....0 amortization of premium and less \$.....0 paid for accrued dividends on purchases.		
(c)	Includes \$.....0 accrual of discount less \$.....0 amortization of premium and less \$.....0 paid for accrued interest on purchases.		
(d)	Includes \$.....0 for company's occupancy of its own buildings; and excludes \$.....0 interest on encumbrances.		
(e)	Includes \$.....17,057 accrual of discount less \$.....3,282 amortization of premium and less \$.....3,210 paid for accrued interest on purchases.		
(f)	Includes \$.....0 accrual of discount less \$.....0 amortization of premium.		
(g)	Includes \$.....0 investment expenses and \$.....0 investment taxes, licenses and fees, excluding federal income taxes, attributable to Segregated and Separate Accounts.		
(h)	Includes \$.....0 interest on surplus notes and \$.....0 interest on capital notes.		
(i)	Includes \$.....0 depreciation on real estate and \$.....0 depreciation on other invested assets.		

EXHIBIT OF CAPITAL GAINS (LOSSES)

	1	2	3	4	5
	Realized Gain (Loss) on Sales or Maturity	Other Realized Adjustments	Total Realized Capital Gain (Loss) (Columns 1 + 2)	Change in Unrealized Capital Gain (Loss)	Change in Unrealized Foreign Exchange Capital Gain (Loss)
1.	U.S. government bonds.....1,124,8501,124,850
1.1	Bonds exempt from U.S. tax.....487,733487,733
1.2	Other bonds (unaffiliated).....2,166,7122,166,712(66,272)
1.3	Bonds of affiliates.....0
2.1	Preferred stocks (unaffiliated).....0
2.11	Preferred stocks of affiliates.....0
2.2	Common stocks (unaffiliated).....2,720,240(210,376)2,509,864(14,806,401)
2.21	Common stocks of affiliates.....0
3.	Mortgage loans.....0
4.	Real estate.....0
5.	Contract loans.....0
6.	Cash, cash equivalents and short-term investments.....0
7.	Derivative instruments.....0
8.	Other invested assets.....0
9.	Aggregate write-ins for capital gains (losses).....00000
10.	Total capital gains (losses).....6,499,535(210,376)6,289,159(14,872,673)0

DETAILS OF WRITE-INS

0901.0
0902.0
0903.0
0998.	Summary of remaining write-ins for Line 9 from overflow page....00000
0999.	Totals (Lines 0901 thru 0903 plus 0998) (Line 9 above).....00000

PROGRESSIVE NORTHWESTERN INSURANCE COMPANY
EXHIBIT OF NONADMITTED ASSETS

	1 Current Year Total Nonadmitted Assets	2 Prior Year Total Nonadmitted Assets	3 Change in Total Nonadmitted Assets (Col. 2 - Col. 1)
1. Bonds (Schedule D).....		0
2. Stocks (Schedule D):			
2.1 Preferred stocks.....		0
2.2 Common stocks.....		0
3. Mortgage loans on real estate (Schedule B):			
3.1 First liens.....		0
3.2 Other than first liens.....		0
4. Real estate (Schedule A):			
4.1 Properties occupied by the company.....		0
4.2 Properties held for the production of income.....		0
4.3 Properties held for sale.....		0
5. Cash (Schedule E-Part 1), cash equivalents (Schedule E-Part 2) and short-term investments (Schedule DA).....		0
6. Contract loans.....		0
7. Derivatives (Schedule DB).....		0
8. Other invested assets (Schedule BA).....		0
9. Receivables for securities.....		0
10. Securities lending reinvested collateral assets (Schedule DL).....		0
11. Aggregate write-ins for invested assets.....000
12. Subtotals, cash and invested assets (Lines 1 to 11).....000
13. Title plants (for Title insurers only).....		0
14. Investment income due and accrued.....		0
15. Premiums and considerations:			
15.1 Uncollected premiums and agents' balances in the course of collection.....2,215,8162,426,980211,164
15.2 Deferred premiums, agents' balances and installments booked but deferred and not yet due.....		0
15.3 Accrued retrospective premiums and contracts subject to redetermination.....		0
16. Reinsurance:			
16.1 Amounts recoverable from reinsurers.....		0
16.2 Funds held by or deposited with reinsured companies.....		0
16.3 Other amounts receivable under reinsurance contracts.....		0
17. Amounts receivable relating to uninsured plans.....		0
18.1 Current federal and foreign income tax recoverable and interest thereon.....		0
18.2 Net deferred tax asset.....		0
19. Guaranty funds receivable or on deposit.....		0
20. Electronic data processing equipment and software.....		0
21. Furniture and equipment, including health care delivery assets.....		0
22. Net adjustment in assets and liabilities due to foreign exchange rates.....		0
23. Receivables from parent, subsidiaries and affiliates.....		0
24. Health care and other amounts receivable.....		0
25. Aggregate write-ins for other than invested assets.....167,664288,941121,277
26. Total assets excluding Separate Accounts, Segregated Accounts and Protected Cell Accounts (Lines 12 through 25).....2,383,4802,715,921332,441
27. From Separate Accounts, Segregated Accounts and Protected Cell Accounts.....		0
28. TOTALS (Lines 26 and 27).....2,383,4802,715,921332,441

DETAILS OF WRITE-INS

1101.0
1102.0
1103.0
1198. Summary of remaining write-ins for Line 11 from overflow page.....000
1199. Totals (Lines 1101 thru 1103 plus 1198) (Line 11 above).....000
2501. PREPAID EXPENSES.....161,007282,020121,013
2502. MISCELLANEOUS OTHER ASSETS.....6,6576,921264
2503.0
2598. Summary of remaining write-ins for Line 25 from overflow page.....000
2599. Totals (Lines 2501 thru 2503 plus 2598) (Line 25 above).....167,664288,941121,277

PROGRESSIVE NORTHWESTERN INSURANCE COMPANY

NOTES TO FINANCIAL STATEMENTS

1. Summary of Significant Accounting Policies

A. Accounting Practices

The accompanying statutory-basis financial statements of Progressive Northwestern Insurance Company (the “Company”) were prepared on the basis of accounting practices prescribed or permitted by the Ohio Department of Insurance (“DOI”).

The Ohio DOI requires insurance companies domiciled in the state of Ohio to prepare their statutory-basis financial statements in accordance with the National Association of Insurance Commissioners’ (“NAIC”) *Accounting Practices and Procedures Manual*, subject to any deviations prescribed or permitted by the Ohio DOI. No deviations from NAIC statutory accounting practices (“NAIC SAP”) were used in preparing these statutory-basis financial statements as illustrated in the table below:

Description	State of Domicile	2015	2014
Net income			
(1) Net income, state basis	OH	\$ 84,490,079	\$ 92,882,517
(2) Effect of state prescribed practices			
(3) Effect of state permitted practices			
(4) Net income, NAIC SAP basis (1-2-3=4)	OH	\$ 84,490,079	\$ 92,882,517
Surplus			
(5) Policyholders' surplus, state basis	OH	\$ 396,180,028	\$ 387,592,923
(6) Effect of state prescribed practices			
(7) Effect of state permitted practices			
(8) Policyholders' surplus, NAIC SAP basis (5-6-7=8)	OH	\$ 396,180,028	\$ 387,592,923

B. Use of Estimates

The Company is required to make estimates and assumptions when preparing its financial statements and accompanying notes in conformity with NAIC SAP. Actual results may differ from those estimates. Material estimates that are susceptible to significant changes in the near term include the loss and loss adjustment expense (“LAE”) reserves and the Company’s adjustment to realized losses for other-than- temporary impairment (“OTTI”), (see page 12, column 2, Exhibit of Capital Gains (Losses) and Note 1C).

C. Accounting Policies

Insurance premiums written are being earned into income on a pro-rata basis over the period of risk based on a daily earnings convention. Unearned premiums are established to cover the unexpired portion of premiums written. The Company offers a variety of payment plans to meet individual customer needs. Generally, insurance premiums are collected in advance of providing risk coverage, minimizing the Company’s exposure to credit risk.

Acquisition costs, such as agents’ commissions, premium taxes, and other policy initiation costs, are charged to operations as incurred. Advertising costs are expensed as incurred.

Certain assets designated as “nonadmitted assets”, in accordance with Statement of Statutory Accounting Principles (“SSAP”) No. 4, Assets and Nonadmitted Assets, are reported on page 13, Exhibit of Nonadmitted Assets. The change in nonadmitted assets is charged directly against surplus as regards policyholders on page 4, Statement of Income, capital and surplus section.

In addition, the Company uses the following accounting policies:

Investments

- Cash and cash equivalents include bank accounts and certificates of deposit as well as short-term investments with original maturities of three months or less that are reported at amortized cost which approximates market value.
- Short-term investments include securities acquired within one year of maturity except for those with original maturities of three months or less (see cash and cash equivalents above) and are reported at amortized cost which approximates market value.
- Investment grade bond valuations are based on NAIC designations or NAIC Credit Rating Provider (“CRP”) designations from the Acceptable Rating Organization (“ARO”) list and are reported at amortized cost using the scientific method which closely approximates the effective interest method. Non-investment grade bond valuations are also based on NAIC designations or NAIC CRP-ARO designations and are reported at the lower of amortized cost or fair market value. Loan-backed and structured securities follow the guidance prescribed by SSAP No. 43R, Loan-backed and Structured Securities (“SSAP No. 43R”), for the determination of the bond valuation and reporting designation. The difference between the original cost and redemption value of these securities is recognized over the lives of the respective issues and included in net investment gain.
- Common stocks, other than investments in stocks of subsidiaries and affiliates, are reported at fair market values based on active market closing quotations from a regulated exchange. Changes in the fair market values of these securities are reflected directly as unrealized gains or losses in statutory surplus, net of deferred income taxes.
- Non-redeemable preferred stocks are reported at fair market values. Changes in the fair market values of these securities are reflected directly as unrealized gains or losses in statutory surplus, net of deferred income taxes. Investment grade redeemable preferred stocks are reported at amortized cost, while non-investment grade redeemable preferred stocks are reported at the lower of amortized cost or fair market value. The difference between the original cost and redemption value of the redeemable preferred securities is recognized using the scientific method, which closely approximates the effective interest method, over the lives of the respective issues and included in net investment gain.
- The fair market values reported are derived from independent and observable market input evaluations provided by reputable pricing services, independent broker/dealer bid lists, independent broker/dealer quotations, independent broker/dealer pricing services, or active market closing quotations from a regulated exchange. In very rare cases, if none of the aforementioned primary sources are available, matrix pricing using the reporting entity’s own market based assumptions may be utilized. The approved methods for computation of fair market value are prescribed in Part Five of the Securities Valuation Office Purposes and Procedures Manual.
- The Company has no investments in mortgage loans.
- Loan-backed and structured securities are accounted for as prescribed by SSAP No. 43R. These securities are generally stated at amortized cost as determined by the estimated value of future cash flows. Prepayment assumptions for loan-backed and structured debt securities are obtained from available market data, broker/dealers, and/or internal estimates, and are consistent with current interest rate and economic trends.
- The Company has no investments in joint ventures, partnerships, or limited liability companies.
- The Company has no investments in derivatives.

PROGRESSIVE NORTHWESTERN INSURANCE COMPANY

NOTES TO FINANCIAL STATEMENTS

- The Company may enter into repurchase agreements in which it borrows cash by providing certain underlying securities as collateral for the arrangement. The cash borrowed is invested in cash equivalents and an offsetting liability is established. The cash equivalent investment maturities and the term of the borrowing arrangement on the collateralized securities match, eliminating duration risk exposure to the Company. The Company did not have any open repurchase agreements at December 31, 2015 and December 31, 2014.
- Realized gains and losses on sales of securities are computed based on the first-in, first-out method.
- The Company's management routinely monitors individual securities in its investment portfolio for pricing changes that might indicate potential impairments and performs detailed reviews of securities with unrealized losses based on predetermined guidelines to determine whether a decline in the value of a security is other-than-temporary. A review for OTTI requires making certain judgments regarding the materiality of the decline, its effect on the financial statements, the probability, extent, and timing of a valuation recovery, and the Company's ability and intent to hold the security. The scope of this review is broad and requires a forward-looking assessment of the fundamental characteristics of a security, as well as the market-related prospects of the issuer and its industry.

Management assesses valuation declines to determine the extent to which such changes are attributable to (i) fundamental factors specific to the issuer, such as financial conditions, business prospects or other factors, or (ii) market-related factors such as interest rates or equity market declines (i.e., negative returns at either a sector index level or the broader market level), or (iii) credit-related losses where the present value of cash flows expected to be collected are lower than the amortized cost basis of the security (includes only those securities covered under SSAP No. 43R). This evaluation reflects management's assessment of current conditions, as well as predictions of uncertain future events that may have a material effect on the financial statements related to security valuation.

When persuasive evidence exists that causes management to conclude that a decline in fair value is other-than-temporary, the book value of such security is written down and recognized as a realized loss. All other unrealized gains or losses are reflected in statutory surplus.

Loss, Loss Adjustment Expense, and Premium Deficiency Reserves

- Loss reserves represent the estimated liability on claims reported to the Company, plus reserves for losses incurred but not yet reported ("IBNR"). These estimates are reported net of amounts recoverable from salvage and subrogation. LAE reserves represent the estimated expenses required to settle reported claims and IBNR losses. Such loss and LAE reserves could be susceptible to significant change in the near term. The Company conducts extensive reviews each month on portions of its business to help ensure that the Company is meeting its objective of always having reserves that are adequate with minimal variation. Results would differ if different assumptions were made (see Notes 25 and 33).
- The Company does anticipate investment income when evaluating the need for premium deficiency reserves. See Note 30.

Capitalization of Assets

- Prepaid assets above a \$100,000 threshold are capitalized. Under certain circumstances, the Company may decide to establish a prepaid expense for amounts less than the threshold. Prepaid assets are nonadmitted. There have been no changes to the written policy or predefined capitalization threshold from the prior year.

Pharmaceutical Rebate Receivables

- The Company does not write medical insurance or prescription drug coverage.

D. Going Concern

Management continuously monitors the Company's financial results and compliance with regulatory requirements and found no reason to expect the Company to not continue as a going concern.

2. Accounting Changes and Corrections of Errors

Not applicable

3. Business Combinations and Goodwill

Not applicable

4. Discontinued Operations

Not applicable

5. Investments

A. Mortgage Loans, Including Mezzanine Real Estate Loans

Not applicable

B. Troubled Debt Restructuring for Creditors

Not applicable

C. Reverse Mortgages

Not applicable

D. Loan-Backed Securities

1. The sources used to determine prepayment assumptions are derived from updated cash flows from widely utilized reputable industry sources. The Company's portfolio managers review the available cash flow data and prepayment assumptions and make adjustments based on current performance indicators on the underlying assets (e.g., delinquency rates, foreclosure rates, and default rates), credit support (via current levels of subordination), and historical credit ratings.
2. Intent to Sell or Inability to Hold Securities with a Recognized Other-Than-Temporary Impairment

Not applicable
3. The Company did not recognize any other-than-temporary impairment for loan-backed and structured debt securities during the current year.

PROGRESSIVE NORTHWESTERN INSURANCE COMPANY

NOTES TO FINANCIAL STATEMENTS

4. As of December 31, 2015, the Company had \$4,357,483 of gross unrealized losses in the Company's loan-backed and structured debt securities. The Company currently does not intend to sell the loan-backed and structured debt securities and determined that it is more likely than not that the Company will not be required to sell these securities for the period of time necessary to recover their cost basis. If the Company's strategy was to change and these securities were determined to be other-than-temporarily impaired, the Company would recognize a write-down in accordance with the Company's stated policy.

As of December 31, 2015, the composition of fair value and gross unrealized losses on loan-backed and structured debt securities by the length of time that individual securities have been in a continuous unrealized loss position is as follows:

Description	Amount
a. Aggregate amount of unrealized losses	
1. Less than twelve months	\$ 2,872,235
2. Twelve months or longer	1,485,248
Total	\$ 4,357,483
b. Aggregate fair value of securities with unrealized losses	
1. Less than twelve months	\$ 296,374,415
2. Twelve months or longer	67,446,904
Total	\$ 363,821,319

5. Under SSAP No. 43R, the Company analyzes its structured debt securities to determine if the Company intends to sell, or if it is more likely than not that the Company will be required to sell, the security prior to recovery and, if so, the Company writes down the security to its current fair market value with the entire amount of the write-down recorded as a realized loss. To the extent that it is more likely than not that the Company will hold the debt security until recovery (which could be maturity), the Company determines if any of the decline in value is due to a credit loss (i.e., where the present value of cash flows expected to be collected is lower than the amortized cost basis of the security) and, if so, the Company recognizes that portion of the impairment as a realized loss.

E. Repurchase Agreements and/or Securities Lending Transactions

Not applicable (see Note 1.C Investments)

F. Real Estate

Not applicable

G. Low Income Housing Tax Credits

Not applicable

PROGRESSIVE NORTHWESTERN INSURANCE COMPANY

NOTES TO FINANCIAL STATEMENTS

H. Restricted Assets

1. Restricted assets (including pledged) summarized by restricted asset category are as follows:

	Gross Restricted								Percentage		
	Current Year					6	7		8	9	10
	1	2	3	4	5						
Restricted Asset Category	Total General Account (G/A)	G/A Supporting Protected Cell Account Activity (a)	Total Protected Cell Account Restricted Assets	Protected Cell Account Assets Supporting G/A Activity (b)	Total (1plus 3)	Total From Prior Year	Increase/ (Decrease) (5 minus 6)	Total Current Year Admitted Restricted	Gross Restricted to Total Assets	Admitted Restricted to Total Admitted Assets	
a. Subject to contractual obligation for which liability is not shown	\$ --	\$ --	\$ --	\$ --	\$ --	\$ --	\$ --	\$ --	0%	0%	
b. Collateral held under security lending agreements	--	--	--	--	--	--	--	--	0%	0%	
c. Subject to repurchase agreements	--	--	--	--	--	--	--	--	0%	0%	
d. Subject to reverse repurchase agreements	--	--	--	--	--	--	--	--	0%	0%	
e. Subject to dollar repurchase agreements	--	--	--	--	--	--	--	--	0%	0%	
f. Subject to dollar reverse repurchase agreements	--	--	--	--	--	--	--	--	0%	0%	
g. Placed under option contracts	--	--	--	--	--	--	--	--	0%	0%	
h. Letter stock or securities restricted as to sale – excluding FHLB capital stock	--	--	--	--	--	--	--	--	0%	0%	
i. FHLB capital	--	--	--	--	--	--	--	--	0%	0%	
j. On deposit with states	4,127,196	--	--	--	4,127,196	4,069,654	57,542	4,127,196	0.30%	0.30%	
k. On deposit with other regulatory bodies	--	--	--	--	--	--	--	--	0%	0%	
l. Pledged as collateral to FHLB (including assets backing funding agreements)	--	--	--	--	--	--	--	--	0%	0%	
m. Pledged as collateral not captured in other categories	--	--	--	--	--	--	--	--	0%	0%	
n. Other restricted assets	--	--	--	--	--	--	--	--	0%	0%	
o. Total Restricted Assets	\$ 4,127,196	\$ --	\$ --	\$ --	\$ 4,127,196	\$ 4,069,654	\$ 57,542	\$ 4,127,196	0.30%	0.30%	

(a) Subset of column 1

(b) Subset of column 3

2. Detail of Assets Pledged as Collateral Not Captured in Other Categories (from above table)

Not applicable

3. Detail of Other Restricted Assets

Not applicable

I. Working Capital Finance Investments

Not applicable

J. Offsetting and Netting of Assets and Liabilities

Not applicable

K. Structured Notes

Not applicable

6. Joint Ventures, Partnerships and Limited Liability Companies

Not applicable

7. Investment Income

A. Accrued Investment Income

The Company nonadmits investment income due and accrued if the amounts are greater than 90 days past due.

B. Amounts Nonadmitted

Not applicable

8. Derivative Instruments

Not applicable

PROGRESSIVE NORTHWESTERN INSURANCE COMPANY

NOTES TO FINANCIAL STATEMENTS

9. Income Taxes

A. Components of the net deferred tax asset (liability) ("DTA"/"(DTL)")

1. The components of the net DTA/(DTL) at December 31 are as follows:

Description	December 31, 2015			December 31, 2014			Change		
	(1)	(2)	(3)	(4)	(5)	(6)	(7)	(8)	(9)
	Ordinary Income	Capital Gain (Loss)	(Col 1+2) Total	Ordinary Income	Capital Gain (Loss)	(Col 4+5) Total	(Col 1-4) Ordinary Income	(Col 2-5) Capital Gain (Loss)	(Col 7+8) Total
(a) Gross deferred tax assets	\$ 43,072,412	\$ 3,283,679	\$ 46,356,091	\$ 41,130,502	\$ 2,957,399	\$ 44,087,901	\$ 1,941,910	\$ 326,280	\$ 2,268,190
(b) Statutory valuation allowance adjustment	--	--	--	--	--	--	--	--	--
(c) Adjusted gross deferred tax assets (1a-1b)	\$ 43,072,412	\$ 3,283,679	\$ 46,356,091	\$ 41,130,502	\$ 2,957,399	\$ 44,087,901	\$ 1,941,910	\$ 326,280	\$ 2,268,190
(d) Deferred tax assets nonadmitted	--	--	--	--	--	--	--	--	--
(e) Subtotal (net deferred tax asset) (1c-1d)	\$ 43,072,412	\$ 3,283,679	\$ 46,356,091	\$ 41,130,502	\$ 2,957,399	\$ 44,087,901	\$ 1,941,910	\$ 326,280	\$ 2,268,190
(f) Deferred tax liabilities	7,175,936	34,609,605	41,785,541	5,512,017	39,142,591	44,654,608	1,663,919	(4,532,986)	(2,869,067)
(g) Net admitted deferred tax assets (net deferred tax liability) (1e-1f)	\$ 35,896,476	\$ (31,325,926)	\$ 4,570,550	\$ 35,618,485	\$ (36,185,192)	\$ (566,707)	\$ 277,991	\$ 4,859,266	\$ 5,137,257

2. The admission calculation components of the DTA in accordance with SSAP No. 101, Income Taxes, are as follows:

Description	December 31, 2015			December 31, 2014			Change		
	(1)	(2)	(3)	(4)	(5)	(6)	(7)	(8)	(9)
	Ordinary Income	Capital Gain (Loss)	(Col 1+2) Total	Ordinary Income	Capital Gain (Loss)	(Col 4+5) Total	(Col 1-4) Ordinary Income	(Col 2-5) Capital Gain (Loss)	(Col 7+8) Total
(a) Federal income taxes paid in prior years recoverable through loss carrybacks	\$ 40,182,192	\$ --	\$ 40,182,192	\$ 37,962,912	\$ --	\$ 37,962,912	\$ 2,219,280	\$ --	\$ 2,219,280
(b) Adjusted gross deferred tax assets expected to be realized (excluding the amount of deferred tax assets from 2(a) above) after application of the threshold limitation. (The lesser of 2(b)1 and 2(b)2 below)	1,586,019	--	1,586,019	1,742,499	--	1,742,499	(156,480)	--	(156,480)
1. Adjusted gross deferred tax assets expected to be realized following the balance sheet date	1,586,019	--	1,586,019	1,742,499	--	1,742,499	(156,480)	--	(156,480)
2. Adjusted gross deferred tax assets allowed per limitation threshold			58,741,422			58,138,938			602,484
(c) Adjusted gross deferred tax assets(excluding the amount of deferred tax assets from 2(a) and 2(b) above) offset by gross deferred tax liabilities	1,304,201	3,283,679	4,587,880	1,425,091	2,957,399	4,382,490	(120,890)	326,280	205,390
(d) Deferred tax assets admitted as result of application of SSAP No. 101.									
Total (2(a)+2(b)+2(c))	\$ 43,072,412	\$ 3,283,679	\$ 46,356,091	\$ 41,130,502	\$ 2,957,399	\$ 44,087,901	\$ 1,941,910	\$ 326,280	\$ 2,268,190

3. Recovery period and threshold limitation information is as follows:

Description	2015	2014
(a) Ratio percentage used to determine recovery period and threshold limitation amount	898%	865%
(b) Amount of adjusted capital and surplus used to determine recovery period and threshold limitation in 2(b)2 above	\$ 391,609,478	\$ 387,592,923

PROGRESSIVE NORTHWESTERN INSURANCE COMPANY

NOTES TO FINANCIAL STATEMENTS

4. The impact of tax planning strategies is as follows:

Description	December 31, 2015		December 31, 2014		Change	
	(1)	(2)	(3)	(4)	(5)	(6)
	Ordinary	Capital	Ordinary	Capital	(Col 1-3)	(Col 2-4)
	Income	Gain (Loss)	Income	Gain (Loss)	Ordinary	Capital
Income						
(a) Determination of adjusted gross deferred tax assets and net admitted deferred tax assets, by tax character as a percentage						
1. Adjusted gross DTAs	\$ 43,072,412	\$ 3,283,679	\$ 41,130,502	\$ 2,957,399	\$ 1,941,910	\$ 326,280
2. %of adjusted gross DTAs attributable to the impact of tax planning strategies	0%	0%	0%	0%	0%	0%
3. Net admitted adjusted gross DTAs	\$ 43,072,412	\$ 3,283,679	\$ 41,130,502	\$ 2,957,399	\$ 1,941,910	\$ 326,280
4. %of net admitted adjusted gross DTAs admitted due to tax planning strategies	0%	0%	0%	0%	0%	0%
(b) Does the Company's tax planning strategies include the use of reinsurance? Yes ___ No <u>X</u>						

B. Regarding deferred tax liabilities that are not recognized:

Not applicable

C. Current and deferred income taxes consist of the following major components:

1. Current Income Tax:

Description	(1) December 31, 2015	(2) December 31, 2014	(3) (Col 1-2) Change
(a) Federal	\$ 41,136,969	\$ 39,619,240	\$ 1,517,729
(b) Foreign	--	--	--
(c) Subtotal	\$ 41,136,969	\$ 39,619,240	\$ 1,517,729
(d) Federal income tax on net capital gains	2,216,505	5,378,599	(3,162,094)
(e) Utilization of capital loss carry-forwards	--	--	--
(f) Other	--	--	--
(g) Federal and foreign income taxes incurred	\$ 43,353,474	\$ 44,997,839	\$ (1,644,365)

2. Deferred Tax Assets:

Description	(1) December 31, 2015	(2) December 31, 2014	(3) (Col 1-2) Change
(a) Ordinary			
(1) Discounting of unpaid losses	\$ 4,367,814	\$ 4,776,716	\$ (408,902)
(2) Unearned premium reserve	26,183,574	24,197,495	1,986,079
(3) Policyholder reserves	--	--	--
(4) Investments	--	--	--
(5) Deferred acquisition costs	--	--	--
(6) Policyholder dividend accrual	--	--	--
(7) Fixed assets	1,157,831	1,049,426	108,405
(8) Compensation and benefits accrual	9,819,093	9,469,294	349,799
(9) Pension accrual	--	--	--
(10) Receivables - nonadmitted	775,535	849,443	(73,908)
(11) Net operating loss carry-forward	--	--	--
(12) Tax credit carry-forward	--	--	--
(13) Other - nonadmitted assets	58,682	101,129	(42,447)
(14) Other - bad debt reserve	386,040	423,563	(37,523)
(15) Other (including items <5% of total ordinary tax assets)	323,843	263,436	60,407
(99) Subtotal	\$ 43,072,412	\$ 41,130,502	\$ 1,941,910
(b) Statutory valuation allowance adjustment	--	--	--
(c) Nonadmitted	--	--	--
(d) Admitted ordinary deferred tax assets (2a99-2b-2c)	\$ 43,072,412	\$ 41,130,502	\$ 1,941,910
(e) Capital			
(1) Investments	3,283,679	2,957,399	326,280
(2) Net capital loss carry-forward	--	--	--
(3) Real estate	--	--	--
(4) Other (including items <5% of total capital tax assets)	--	--	--
(99) Subtotal	\$ 3,283,679	\$ 2,957,399	\$ 326,280
(f) Statutory valuation allowance adjustment	--	--	--
(g) Nonadmitted	--	--	--
(h) Admitted capital deferred tax assets (2e99-2f-2g)	\$ 3,283,679	\$ 2,957,399	\$ 326,280
(i) Admitted deferred tax assets (2d+2h)	\$ 46,356,091	\$ 44,087,901	\$ 2,268,190

PROGRESSIVE NORTHWESTERN INSURANCE COMPANY

NOTES TO FINANCIAL STATEMENTS

3. Deferred Tax Liabilities:

Description	(1) December 31, 2015	(2) December 31, 2014	(3) (Col 1-2) Change
(a) Ordinary			
(1) Investments	\$ 38,076	\$ 35,875	\$ 2,201
(2) Fixed assets	5,304,218	3,672,275	1,631,943
(3) Deferred and uncollected premium	--	--	--
(4) Policyholder reserves	--	--	--
(5) Other liabilities - prepaid expenses	1,384,236	1,308,031	76,205
(6) Other liabilities - salvage and subrogation	275,334	303,223	(27,889)
(7) Other (including items <5% of total ordinary tax liabilities)	174,072	192,613	(18,541)
(99) Subtotal	\$ 7,175,936	\$ 5,512,017	\$ 1,663,919
(b) Capital			
(1) Investments	34,609,605	39,142,591	(4,532,986)
(2) Real estate	--	--	--
(3) Other (including items <5% of total capital tax assets)	--	--	--
(99) Subtotal	\$ 34,609,605	\$ 39,142,591	\$ (4,532,986)
(c) Deferred tax liabilities (3a99+3b99)	\$ 41,785,541	\$ 44,654,608	\$ (2,869,067)

4. Net Deferred Tax Asset (Liability) (2i – 3c):

Description	(1) December 31, 2015	(2) December 31, 2014	(3) (Col 1-2) Change
Net deferred tax asset (liability) (2i-3c)	\$ 4,570,550	\$ (566,707)	\$ 5,137,257

The change in net deferred income tax is comprised of the following (this analysis excludes nonadmitted assets; the change in nonadmitted assets is reported separately from the change in net deferred income tax in the Statement of Income, Surplus section):

Description	December 31, 2015	December 31, 2014	Change
Total deferred tax assets	\$ 46,356,091	\$ 44,087,901	\$ 2,268,190
Total deferred tax liabilities	41,785,541	44,654,608	(2,869,067)
Net deferred tax asset (liability)	\$ 4,570,550	\$ (566,707)	\$ 5,137,257
Tax effect of unrealized gains (losses)			5,205,435
Change in net deferred income tax			\$ (68,178)

D. Reconciliation of Federal Income Tax Rate to Actual Effective Rate

The provision for Federal income taxes is different than that which would be obtained by applying the statutory Federal income tax rate to pre-tax income. The significant book to tax adjustments causing this difference are as follows:

Description	Tax Effect Amount	Effective Tax Rate
Provision computed at statutory rate	\$ 44,745,244	35%
Exempt interest income	(568,231)	0%
Dividends received deduction	(858,546)	-1%
Impact of nonadmitted assets	116,354	0%
Other	(13,169)	0%
Total	\$ 43,421,652	34%
Federal and foreign income taxes incurred	\$ 43,353,474	
Change in net deferred income tax	68,178	
Total statutory income taxes	\$ 43,421,652	

E. Operating Loss and Tax Credit Carryforwards

1. The Company has no operating loss or tax credit carryforwards available.
2. The amount of Federal income taxes incurred and available for recoupment by the Company in the event of future net losses is equal to approximately:

Period	Amount
Current tax year:	\$ 41,415,819
First preceding tax year:	\$ 44,189,111

The amounts that can be recouped may be subject to the alternative minimum tax rules, and therefore may be limited.

PROGRESSIVE NORTHWESTERN INSURANCE COMPANY

NOTES TO FINANCIAL STATEMENTS

3.	Protective Tax Deposits
	Not applicable
F.	Consolidated Federal Income Tax Return
1.	The Company's Federal income tax return is consolidated with The Progressive Corporation ("TPC"), a publicly traded holding company incorporated in Ohio, and all of its wholly-owned United States subsidiaries (the "Group") as detailed in Schedule Y, Part 1.
2.	The method of allocation between the companies is subject to written agreement and is jointly approved by an officer of TPC and the Company. The allocation is based upon separate tax return calculations with current credit for net losses or other items utilized in the consolidated tax return. Intercompany tax balances are settled quarterly.
G.	Federal or Foreign Income Tax Loss Contingencies
	The Company does not have any tax loss contingencies for which it is reasonably possible that the total liability will significantly increase within twelve months of the reporting date.
10.	Information Concerning Parent, Subsidiaries, Affiliates and Other Related Parties
A.	Nature of Relationships
	The Company is wholly owned by Drive Insurance Holdings, Inc. ("DIH"), a holding company incorporated in Delaware. The structure of the holding company organization is shown on Schedule Y, Part 1.
B.	Detail of Transactions Greater than ½% of Admitted Assets
	All significant 2015 transactions by the Company or any affiliated insurer with any affiliate are summarized in Schedule Y, Part 2.
	See Note 13.4
C.	Change in Terms of Intercompany Arrangements
	Not applicable
D.	Amounts Due to or from Related Parties
	The Company reported a \$20,250,625 and \$18,906,682 receivable from parent, subsidiaries, and affiliates at December 31, 2015 and 2014, respectively. These balances are due to the timing of security purchases and cash collections and disbursements under the Group's centralized cash management system and the reinsurance and management agreements in which the Company participates. The Company also reported a \$9,088,133 and \$12,057,395 current Federal income tax payable at December 31, 2015 and 2014, respectively. These balances are due to TPC for the Company's Federal income tax liability. The intercompany balances are settled by the end of the following quarter depending on the timing of investment transactions. These transactions are dependent upon market timing, investment needs and overall portfolio strategy as to the timing of such settlement transactions.
E.	Guarantees or Contingencies for Related Parties
	Not applicable
F.	Management, Service Contracts, Cost Sharing Arrangements
	The Company does not have employees or facilities. Management, operations and claims services are provided under a management agreement with Progressive Casualty Insurance Company ("Casualty"), an insurance affiliate domiciled in Ohio. Under the terms of the agreement, the Company is provided underwriting and loss adjustment services for business produced in exchange for a management fee based on the Company's use of services.
	The Company participates in an investment services agreement with Progressive Capital Management Corp., a non-insurance affiliate. Under the terms of the agreement, the Company is provided investment and capital management services in exchange for an investment management fee based on its use of services.
	All intercompany agreements are approved by the participating insurance companies' states of domicile when established. Upon redomestication, intercompany agreements are not required to be approved by the new state of domicile.
G.	Nature of Relationships that Could Affect Operations
	All outstanding shares of the Company are owned by DIH.
H.	Amount Deducted for Investment in Upstream Company
	Not applicable
I.	Detail of Investments in Affiliates Greater than 10% of Admitted Assets
	Not applicable
J.	Write-Downs for Impairments of Investments in Affiliates
	Not applicable
K.	Investment in Foreign Insurance Subsidiary
	Not applicable
L.	Investment in Downstream Non-Insurance Holding Company
	Not applicable
M.	Subsidiary, Controlled and Affiliated Entities (except insurance subsidiary, controlled and affiliated entities) Value
	Not applicable
N.	Insurance Subsidiary, Controlled and Affiliated Entities Valuation That Departs From NAIC Statutory Accounting Practices and Procedures
	Not applicable

PROGRESSIVE NORTHWESTERN INSURANCE COMPANY

NOTES TO FINANCIAL STATEMENTS

11. Debt
- Not applicable
12. Retirement Plans, Deferred Compensation, Postemployment Benefits and Compensated Absences and Other Postretirement Benefit Plans
- The Company has no direct payroll (see Note 10.F).
13. Capital and Surplus, Dividend Restrictions and Quasi-Reorganizations

1. Outstanding Shares
- The Company has 40,000 shares of \$175 par value common stock authorized and 17,143 shares issued and outstanding. The Company has no preferred stock authorized, issued, or outstanding.
2. Dividend Rate of Preferred Stock
- Not applicable
- 3,4,5,6. Dividends
- The maximum amount of dividends the Company can pay to DIH in 2016 without prior regulatory approval is limited by insurance laws in Ohio. Based on the dividend laws currently in effect, the Company may pay dividends of \$84,490,079 in 2016 without prior approval from the Ohio DOI, provided the dividend payment is not made within 12 months of the previous payment.
- Within the limitations described above, there are no additional restrictions placed on the portion of Company profits that may be paid as ordinary dividends to stockholders.

The Company paid dividends to DIH as follows:

Date Paid	Amount Paid	Dividend Type
December 31, 2015	\$ 3,000,000	Ordinary
December 21, 2015	\$ 63,500,000	Ordinary
December 19, 2014	\$ 65,900,000	Ordinary
December 19, 2014	\$ 14,300,000	Extraordinary

The extraordinary cash dividend was approved by the Ohio DOI.

7. Mutual Surplus Advances
- Not applicable
8. Company Stock Held for Special Purposes
- Not applicable
9. Changes in Special Surplus Funds
- Not applicable
10. Changes in Unassigned Funds (Surplus)

As of December 31, 2015, the portion of unassigned funds (surplus) represented or reduced by each item below is as follows:

Description	Cumulative Increase (Decrease) in Surplus
Unrealized gain (loss)	\$ 86,401,229
Nonadmitted assets	(2,383,480)
Provision for reinsurance	--
Total	\$ 84,017,749
The unrealized gain is gross of the applicable deferred tax liability of	\$ 30,240,430

11. Surplus Notes
- Not applicable
- 12,13. Quasi Reorganizations
- Not applicable
14. Liabilities, Contingencies and Assessments
- A. Contingent Commitments
- Not applicable
- B. Assessments
- The Company is subject to state guaranty fund and other assessments by the states in which it writes business. State guaranty fund assessments are accrued at the time of any known insolvencies. Other assessments are accrued either at the time of assessment or at the time the premiums are written. These accruals are based on information received from the states in which the Company writes business and may change due to many factors including the Company's share of the ultimate cost of current insolvencies.
- As of December 31, 2015 and 2014, the Company's estimated liability for state guaranty fund and other assessments was \$282,645 and \$332,846, respectively. The Company did not recognize any premium tax benefit associated with its various assessments.
- As of December 31, 2015 and 2014, the Company's estimated liability for various surcharges was \$4,830 and \$6,103, respectively.
- C. Gain Contingencies
- Not applicable

PROGRESSIVE NORTHWESTERN INSURANCE COMPANY

NOTES TO FINANCIAL STATEMENTS

D.	Claims Related Extra Contractual Obligations and Bad Faith Losses Stemming from Lawsuits
	Not applicable
E.	Product Warranties
	Not applicable
F.	Joint and Several Liabilities
	Not applicable
G.	All Other Contingencies
	<p>The Company routinely assesses the collectibility of premiums and agents' balances receivable and records a bad debt reserve for amounts exceeding the nonadmitted balance that the Company believes are uncollectible.</p> <p>The Company is named as defendant in various lawsuits arising out of its insurance operations. All legal actions relating to claims made under insurance policies are considered by the Company in establishing its loss and LAE reserves. The Company also has, on a net basis, potential exposure relating to lawsuits due to its participation in a 100% pooling reinsurance agreement for which it is allocated litigation expenses (see Note 26).</p> <p>The following is a discussion of potentially significant pending cases at December 31, 2015. The Company does not consider a loss from these cases to be probable and is unable to estimate a range of loss, if any, at this time.</p> <p>As of December 31, 2015, there was one putative class action lawsuit challenging the Company's use of certain automated database vendors or software to assist in the adjustment of bodily injury claims. Plaintiffs allege that these databases or software systematically undervalue the claims.</p> <p>As of December 31, 2015, there were two cases consolidated into multi-district proceedings alleging that the Company improperly steers automobile repair work to certain auto body repair shops and challenging the labor rates the Company pays to auto body repair shops.</p>
15.	Leases
	Not applicable
16.	Information about Financial Instruments with Off-Balance Sheet Risk and with Concentrations of Credit Risk
	Not applicable
17.	Sale, Transfer, and Servicing of Financial Assets and Extinguishments of Liabilities
A.	Transfers of Receivables Reported as Sales
	Not applicable
B.	Transfers and Servicing of Financial Assets
	Not applicable
C.	Wash Sales
	The Company had no wash sales of securities with a NAIC rating of 3 or below during the year.
18.	Gain or Loss from Uninsured Plans and the Uninsured Portion of Partially Insured Plans
	Not applicable
19.	Direct Premiums Written / Produced by Managing General Agents / Third Party Administrators
	Not applicable
20.	Fair Value Measurements
A.	Inputs Used for Assets and Liabilities Measured at Fair Value in the Company's Financial Statements
1.	Fair Value Measurements by Levels 1, 2 and 3
	<p>The Company categorizes its financial instruments, based on the degree of subjectivity inherent in the method by which they are valued, into a fair value hierarchy of three levels, as follows:</p> <p>Level 1 - Inputs are unadjusted, quoted prices in active markets for identical instruments at the measurement date (e.g., active exchange-traded equity securities).</p> <p>Level 2 - Inputs (other than quoted prices included within Level 1) that are observable for the instrument either directly or indirectly. This includes: (i) quoted prices for similar instruments in active markets, (ii) quoted prices for identical or similar instruments in markets that are not active, (iii) inputs other than quoted prices that are observable for the instruments, and (iv) inputs that are derived principally from or corroborated by observable market data by correlation or other means.</p> <p>Level 3 - Inputs that are unobservable. Unobservable inputs reflect the Company's subjective evaluation about the assumptions market participants would use in pricing the financial instrument.</p> <p>See Note 1, Investment Policies section for further information regarding methods used to determine fair market value. The Company's management evaluated whether the market was distressed or inactive in determining the fair value of the Company's securities and reviewed certain market level inputs to evaluate whether sufficient activity, volume, and new issuances existed to create an active market. Based on this evaluation, management concluded that there was sufficient activity in determining the fair market value of the Company's securities.</p> <p>The valuations classified as either Level 1 or Level 2 in the table below are priced exclusively by external sources, including: pricing vendors, dealers/market makers, and exchange-quoted prices. The Company did not have any transfers between Level 1 and Level 2. At the end of each reporting period, the Company evaluates whether or not any event has occurred or circumstances have changed that would cause an instrument to be transferred into or out of Level 3.</p>

PROGRESSIVE NORTHWESTERN INSURANCE COMPANY

NOTES TO FINANCIAL STATEMENTS

Fair Value Measurements at December 31, 2015:

Asset Description	Level 1	Level 2	Level 3	Total
a. Assets on balance sheet at fair value				
Bonds industrial & miscellaneous	\$ --	\$ 28,786,576	\$ --	\$ 28,786,576
Common stock industrial & miscellaneous	177,804,008	--	--	177,804,008
Preferred stock industrial & miscellaneous		--	--	--
Total assets at fair value	\$ 177,804,008	\$ 28,786,576	\$ --	\$ 206,590,584
b. Liabilities on balance sheet at fair value				
Derivative liabilities	\$ --	\$ --	\$ --	\$ --
Total liabilities at fair value	\$ --	\$ --	\$ --	\$ --

2. Roll forward of Level 3 Items

Not applicable

3. Policy on Transfers Into and Out of Level 3

At the end of each reporting period, the Company evaluates whether or not any event has occurred or circumstances have changed that would cause an instrument to be transferred into or out of Level 3.

4. Inputs and Techniques Used for Level 2 and Level 3 Fair Values

See Note 20.A.1 above.

5. Derivative Fair Values

Not applicable

B. Other Fair Value Disclosures

Not applicable

C. Fair Values for all Financial Instruments by Levels 1, 2, and 3

The table below represents the fair value of all financial instruments at December 31, 2015, however, not all financial instruments are reported at fair value in the Company's financial statements.

Type of Financial Instrument	Aggregate Fair Value	Admitted Assets	Level 1	Level 2	Level 3	Not Practicable (Carrying Value)
Bonds	\$ 1,019,052,658	\$ 1,020,372,283	\$ 145,684,082	\$ 873,368,576	\$ --	\$ --
Cash equivalents	89,091,412	89,091,413	89,091,412	--	--	--
Common stock	177,804,008	177,804,008	177,804,008	--	--	--
Preferred stock	--	--	--	--	--	--
Short-term investments	5,110,220	5,110,348	5,110,220	--	--	--
Total	\$ 1,291,058,298	\$ 1,292,378,052	\$ 417,689,722	\$ 873,368,576	\$ --	\$ --

D. Financial Instruments for Which it is Not Practicable to Estimate Fair Values

Not applicable

21. Other Items

A. Unusual or Infrequent Items

Not applicable

B. Troubled Debt Restructuring for Debtors

Not applicable

C. Other Disclosures

Not applicable

D. Business Interruption Insurance Recoveries

Not applicable

E. State Transferable and Non-transferable Tax Credits

1. The carrying value of transferable and non-transferable state tax credits, gross of any related tax liabilities, and total unused transferable and non-transferable state tax credits by state and in total at December 31, 2015 are as follows:

Description of state transferable ("T") and non-transferable ("NT") tax credits	State	Carrying Value	Unused Amount
Digital Media Production Tax Credit (T)	CT	\$ 265,500	\$ 300,000
Digital Media Production Tax Credit (T)	CT	17,440	61,715
Total		\$ 282,940	\$ 361,715

PROGRESSIVE NORTHWESTERN INSURANCE COMPANY

NOTES TO FINANCIAL STATEMENTS

2. The Company estimated the utilization of the remaining transferable and non-transferable state tax credits by projecting future premium, taking into account policy growth and rate changes, projecting the future tax liability based on projected premium, tax rates, and tax credits, and comparing the projected future tax liability to the availability of remaining transferable and non-transferable state tax credits.
3. The Company recognized an impairment loss of \$0 related to write-downs as a result of impairment analysis of the carrying amount for transferable and non-transferable state tax credits.
4. State tax credits admitted and nonadmitted are as follows:

Type	Total Admitted	Total Nonadmitted
Transferable	\$ 282,940	\$ --
Non-transferable	\$ --	\$ --

F. Subprime Mortgage Related Risk Exposure

1. Exposure to Subprime Mortgage Related Risk

The following subprime disclosure and the review and procedures described within are completed at a consolidated level for all the Progressive companies. To the extent the Company had any direct subprime exposure, those securities would be listed in Note 21.F.3.

Management's review of the investment portfolio for securities with direct subprime exposure, such as Alt-A residential mortgage loan-backed bonds and home equity loan-backed bonds is performed in conjunction with the OTTI analysis and procedures (see Note 1.C). Additionally, securities that were determined to have an indirect subprime exposure were also reviewed as part of the OTTI process.

The Company's management continues to perform a detailed review of its investment portfolio, paying particular attention to the credit profile of the issuers to identify the extent to which any asset values may have been impacted by direct or indirect exposure to the subprime mortgage loan disruption, as well as broader credit and financial market events.

In 2015, the Company recorded no OTTI write-downs on any securities as a result of direct subprime exposure.

2. Direct Investment in Subprime Mortgage Loans
- Not applicable
3. Direct Investment in Securities with Underlying Subprime Exposure

At December 31, 2015, the Company had the following securities with underlying subprime exposure:

Investment Type	Actual Cost	Book Adjusted Carrying Value	Fair Market Value	OTTI Recognized
(a) Residential mortgage-backed securities	\$ 108,484,445	\$ 108,480,139	\$ 107,131,850	\$ --
(b) Commercial mortgage-backed securities	--	--	--	--
(c) Collateralized debt obligations	--	--	--	--
(d) Structured securities	--	--	--	--
(e) Equity investment in SCAs	--	--	--	--
(f) Other assets	--	--	--	--
(g) Total	\$ 108,484,445	\$ 108,480,139	\$ 107,131,850	\$ --

4. Mortgage or Financial Guaranty Subprime Exposure
- Not applicable

G. Insurance-Linked Securities

Not applicable

22. Events Subsequent

The Company was not impacted by any subsequent events. Subsequent events have been considered through February 15, 2016 for the statutory statement that was available for issuance by March 1, 2016.

The Company does not write health insurance and therefore has no premiums subject to assessment under section 9010 of the Affordable Care Act for either the current or prior years.

23. Reinsurance

A. Unsecured Reinsurance Recoverable

At December 31, 2015, the Company had the following unsecured reinsurance recoverable balance which exceeded 3% of policyholders' surplus:

Reinsurer	NAIC Code	Federal ID#	Amount
Progressive Casualty Insurance Company	24260	34-6513736	\$ 303,678,000
Total			\$ 303,678,000

B. Reinsurance Recoverable in Dispute

Not applicable

PROGRESSIVE NORTHWESTERN INSURANCE COMPANY

NOTES TO FINANCIAL STATEMENTS

C. Reinsurance Assumed and Ceded

1. The table below summarizes ceded and assumed unearned premiums and the related commission equity at December 31, 2015.

	Assumed		Ceded		Net	
	Unearned Premiums	Commission Equity	Unearned Premiums	Commission Equity	Unearned Premiums	Commission Equity
(a) Affiliates	\$ 370,325,000	\$ --	\$ 136,932,000	\$ --	\$ 233,393,000	\$ --
(b) All Other	--	--	74,000	19,000	(74,000)	(19,000)
(c) Totals	\$ 370,325,000	\$ --	\$ 137,006,000	\$ 19,000	\$ 233,319,000	\$ (19,000)
(d) Direct Uneamed Premium Reserve is \$137,006,000						

2. The Company has no return commission or profit sharing arrangements.

D. Uncollectible Reinsurance

Not applicable

E. Commutation of Ceded Reinsurance

Not applicable

F. Retroactive Reinsurance

Not applicable

G. Reinsurance Accounted for as a Deposit

Not applicable

H. Disclosures for the Transfer of Property and Casualty Run-off Agreements

Not applicable

I. Certified Reinsurer Downgraded or Status Subject to Revocation

Not applicable

J. Reinsurance Agreements Qualifying for Reinsurer Aggregation

Not applicable

24. Retrospectively Rated Contracts and Contracts Subject to Redetermination

Not applicable

25. Changes in Incurred Losses and Loss Adjustment Expenses

Incurred losses and LAE attributable to insured events of prior accident years decreased by \$16,657,037 in 2015, which is 3.4% of the total prior year net unpaid losses and LAE of \$482,955,345. The favorable development is primarily due to private passenger auto liability originally anticipated severity for accident year 2014 decreasing 1.7% and less late reported losses than anticipated for auto physical damage. LAE reserves developed favorably primarily due to favorable adjusting and other expense reserve development.

26. Intercompany Pooling Arrangements

The Company participates in a pooling reinsurance agreement with the property-casualty affiliates listed below (the “Agency Pool”) under which 100% of the underwriting business of each member company, net of external reinsurance, is ceded to Casualty, the Agency Pool manager and an Agency Pool participant. The combined premiums, losses, and expenses are then retroceded to each Agency Pool member based on pre-determined pooling percentages.

Progressive Hawaii Insurance Corp. (“Hawaii”), an insurance affiliate domiciled in Ohio and National Continental Insurance Company (“National Continental”), an insurance affiliate domiciled in New York, terminated their future participation in the Agency Pool effective November 5, 2005 and January 1, 1996, respectively. Hawaii and National Continental have zero percent retrocession participation in the Agency Pool for all policies written prior to the dates listed above.

The pooling percentages for each Agency Pool participant as of December 31, 2015 and 2014 were as follows:

Company	NAIC Code	2015 Pool %	2014 Pool %
Progressive Casualty Insurance Company (Lead)	24260	49.0%	49.0%
Progressive Northern Insurance Company	38628	12.0	12.0
Progressive Northwestern Insurance Company	42919	12.0	12.0
Progressive Specialty Insurance Company	32786	7.0	7.0
Progressive Preferred Insurance Company	37834	6.0	6.0
Progressive Michigan Insurance Company	10187	4.0	4.0
Progressive Classic Insurance Company	42994	3.0	3.0
Progressive American Insurance Company	24252	2.0	2.0
Progressive Gulf Insurance Company	42412	2.0	2.0
Progressive Bayside Insurance Company	17350	1.0	1.0
Progressive Mountain Insurance Company	35190	1.0	1.0
Progressive Southeastern Insurance Company	38784	1.0	1.0
Progressive Hawaii Insurance Corp.	10067	--	--
National Continental Insurance Company	10243	--	--
		100.0%	100.0%

PROGRESSIVE NORTHWESTERN INSURANCE COMPANY

NOTES TO FINANCIAL STATEMENTS

All business written by each Agency Pool participant is subject to pooling. Business ceded by Agency Pool members to non-affiliated reinsurers prior to pooling, is primarily due to state-provided reinsurance programs. The Company does not participate in any intercompany sharing of the provision for reinsurance and the write-off of uncollectible reinsurance.

At December 31, 2015, amounts recoverable from and payable to the Company and all affiliates participating in the Agency Pool are as follows:

Company	Amounts Recoverable	Amounts Payable
Progressive Casualty Insurance Company (Lead)	\$ 77,732,488	\$ 20,104,474
Progressive Northern Insurance Company	5,046,185	12,201,162
Progressive Northwestern Insurance Company	1,823,572	22,306,683
Progressive Specialty Insurance Company	6,170,010	1,261,920
Progressive Preferred Insurance Company	783,215	10,833,498
Progressive Michigan Insurance Company	233,457	4,069,799
Progressive Classic Insurance Company	1,301,987	6,586,063
Progressive American Insurance Company	3,764,534	8,056,774
Progressive Gulf Insurance Company	965,727	3,554,201
Progressive Bayside Insurance Company	10,093	1,466,113
Progressive Mountain Insurance Company	--	5,530,741
Progressive Southeastern Insurance Company	--	1,864,673
Progressive Hawaii Insurance Corp.	--	862
National Continental Insurance Company	5,695	--
Total	\$ 97,836,963	\$ 97,836,963

27. Structured Settlements

Not applicable

28. Health Care Receivables

Not applicable

29. Participating Accident and Health Policies

Not applicable

30. Premium Deficiency Reserves

1.

Liability carried for premium deficiency reserves

\$0
2.

Date of most recent evaluation of this liability

December 31, 2015
3.

Was anticipated investment income utilized in the calculation?

Yes [X] No []

31. High Deductibles

Not applicable

32. Discounting of Liabilities for Unpaid Losses and Unpaid Loss Adjustment Expenses

Not applicable

33. Asbestos and Environmental Reserves

Because the Company is primarily an insurer of motor vehicles, it has limited exposure for asbestos and environmental claims. In accordance with disclosure requirements, the amounts reported for direct, assumed, and net below reflect the Company's pooled share (see Note 26) of the Agency Pool's exposure to asbestos and environmental claims. The Agency Pool's exposure arises from Casualty's participation in various reinsurance pools from 1968 to 1975, which underwrote general liability insurance, Casualty's aggregate stop loss reinsurance agreement with Progressive Max Insurance Company, an insurance affiliate domiciled in Ohio, for various reinsurance pools from 1965 to 1975, Progressive American Insurance Company's, an insurance affiliate and Agency Pool member domiciled in Ohio, limited number of general liability policies issued from 1972 to 1975, and Casualty's aggregate stop loss reinsurance agreement with National Continental Insurance Company, an insurance affiliate domiciled in New York, for general liability business written on or before November 25, 1985.

A. Asbestos reserves direct, assumed, and net of reinsurance are as follows:

	December 31,				
	2011	2012	2013	2014	2015
Direct					
Beginning reserves	\$ 24,600	\$ 24,600	\$ 24,600	\$ 24,600	\$ 1,320
Losses and DCC incurred	--	--	--	(23,280)	--
Calendar year payments for losses and DCC	--	--	--	--	--
Ending reserves	\$ 24,600	\$ 24,600	\$ 24,600	\$ 1,320	\$ 1,320
Assumed Reinsurance					
Beginning reserves	\$ 572,794	\$ 388,948	\$ 393,773	\$ 261,436	\$ 460,861
Losses and DCC incurred	(93,407)	17,617	(78,576)	238,827	2,610
Calendar year payments for losses and DCC	90,439	12,792	53,761	39,402	23,200
Ending reserves	\$ 388,948	\$ 393,773	\$ 261,436	\$ 460,861	\$ 440,271
Net of Ceded Reinsurance					
Beginning reserves	\$ 597,394	\$ 413,548	\$ 418,373	\$ 286,036	\$ 462,181
Losses and DCC incurred	(93,407)	17,617	(78,576)	215,547	2,610
Calendar year payments for losses and DCC	90,439	12,792	53,761	39,402	23,200
Ending reserves	\$ 413,548	\$ 418,373	\$ 286,036	\$ 462,181	\$ 441,591

PROGRESSIVE NORTHWESTERN INSURANCE COMPANY

NOTES TO FINANCIAL STATEMENTS

B. Ending Reserves for Asbestos Claims for Bulk and IBNR Included in A above (Losses and LAE):

Direct	\$ --
Assumed	108,638
Net	\$ 108,638

C. Ending Reserves for Asbestos Claims for LAE Included in A above (Case, Bulk, and IBNR):

Direct	\$ 1,200
Assumed	49,402
Net	\$ 50,602

D. Environmental reserves direct, assumed, and net of reinsurance are as follows:

	December 31,				
	2011	2012	2013	2014	2015
Direct					
Beginning reserves	\$ 6,132	\$ 6,132	\$ 6,132	\$ 6,132	\$ --
Losses and DCC incurred	--	--	--	(6,132)	--
Calendar year payments for losses and DCC	--	--	--	--	--
Ending reserves	\$ 6,132	\$ 6,132	\$ 6,132	\$ --	\$ --
Assumed Reinsurance					
Beginning reserves	\$ 354,382	\$ 423,309	\$ 612,564	\$ 969,724	\$ 1,181,173
Losses and DCC incurred	68,368	188,520	363,963	851,414	12,206
Calendar year payments for losses and DCC	(559)	(735)	6,803	639,965	71,401
Ending reserves	\$ 423,309	\$ 612,564	\$ 969,724	\$ 1,181,173	\$ 1,121,978
Net of Ceded Reinsurance					
Beginning reserves	\$ 360,514	\$ 429,441	\$ 618,696	\$ 975,856	\$ 1,181,173
Losses and DCC incurred	68,368	188,520	363,963	845,282	12,206
Calendar year payments for losses and DCC	(559)	(735)	6,803	639,965	71,401
Ending reserves	\$ 429,441	\$ 618,696	\$ 975,856	\$ 1,181,173	\$ 1,121,978

E. Ending Reserves for Environmental Claims for Bulk and IBNR Included in D above (Losses and LAE):

Direct	\$ --
Assumed	291,147
Net	\$ 291,147

F. Ending Reserves for Environmental Claims for LAE Included in D above (Case, Bulk, and IBNR):

Direct	\$ --
Assumed	169,687
Net	\$ 169,687

34. Subscriber Savings Accounts

Not applicable

35. Multiple Peril Crop Insurance

Not applicable

36. Financial Guaranty Insurance

Not applicable

GENERAL INTERROGATORIES

PART 1 - COMMON INTERROGATORIES

GENERAL

1.1

Is the reporting entity a member of an Insurance Holding Company System consisting of two or more affiliated persons, one or more of which is an insurer?
If yes, complete Schedule Y, Parts 1, 1A and 2.

Yes [X] No []

1.2

If yes, did the reporting entity register and file with its domiciliary State Insurance Commissioner, Director or Superintendent or with such regulatory official of the state of domicile of the principal insurer in the Holding Company System, a registration statement providing disclosure substantially similar to the standards adopted by the National Association of Insurance Commissioners (NAIC) in its Model Insurance Holding Company System Regulatory Act and model regulations pertaining thereto, or is the reporting entity subject to standards and disclosure requirements substantially similar to those required by such Act and regulations?

Yes [X] No [] N/A []

1.3

State regulating? OHIO

2.1

Has any change been made during the year of this statement in the charter, by-laws, articles of incorporation, or deed of settlement of the reporting entity?

Yes [] No [X]

2.2

If yes, date of change:

3.1

State as of what date the latest financial examination of the reporting entity was made or is being made.

12/31/2012

3.2

State the as of date that the latest financial examination report became available from either the state of domicile or the reporting entity.
This date should be the date of the examined balance sheet and not the date the report was completed or released.

12/31/2012

3.3

State as of what date the latest financial examination report became available to other states or the public from either the state of domicile or the reporting entity. This is the release date or completion date of the examination report and not the date of the examination (balance sheet date).

08/06/2013

3.4

By what department or departments?
OHIO

3.5

Have all financial statement adjustments within the latest financial examination report been accounted for in a subsequent financial statement filed with departments?

Yes [] No [] N/A [X]

3.6

Have all of the recommendations within the latest financial examination report been complied with?

Yes [X] No [] N/A []

4.1

During the period covered by this statement, did any agent, broker, sales representative, non-affiliated sales/service organization or any combination thereof under common control (other than salaried employees of the reporting entity) receive credit or commissions for or control a substantial part (more than 20 percent of any major line of business measured on direct premiums) of:

4.11

sales of new business?

Yes [] No [X]

4.12

renewals?

Yes [] No [X]

4.2

During the period covered by this statement, did any sales/service organization owned in whole or in part by the reporting entity or an affiliate, receive credit or commissions for or control a substantial part (more than 20 percent of any major line of business measured on direct premiums) of:

4.21

sales of new business?

Yes [] No [X]

4.22

renewals?

Yes [] No [X]

5.1

Has the reporting entity been a party to a merger or consolidation during the period covered by this statement?

Yes [] No [X]

5.2

If yes, provide name of entity, NAIC Company Code, and state of domicile (use two letter state abbreviation) for any entity that has ceased to exist as a result of the merger or consolidation.

1	2	3
Name of Entity	NAIC Company Code	State of Domicile

6.1

Has the reporting entity had any Certificates of Authority, licenses or registrations (including corporate registration, if applicable) suspended or revoked by any governmental entity during the reporting period?

Yes [] No [X]

6.2

If yes, give full information:

7.1

Does any foreign (non-United States) person or entity directly or indirectly control 10% or more of the reporting entity?

Yes [] No [X]

7.2

If yes,

7.21

State the percentage of foreign control

7.22

State the nationality(ies) of the foreign person(s) or entity(ies); or if the entity is a mutual or reciprocal, the nationality of its manager or attorney-in-fact and identify the type of entity(ies) (e.g., individual, corporation, government, manager or attorney-in-fact).

1	2
Nationality	Type of Entity

8.1

Is the company a subsidiary of a bank holding company regulated with the Federal Reserve Board?

Yes [] No [X]

8.2

If response to 8.1 is yes, please identify the name of the bank holding company.

8.3

Is the company affiliated with one or more banks, thrifts or securities firms?

Yes [] No [X]

8.4

If the response to 8.3 is yes, please provide below the names and locations (city and state of the main office) of any affiliates regulated by a federal financial regulatory services agency [i.e. the Federal Reserve Board (FRB), the Office of the Comptroller of the Currency (OCC), the Federal Deposit Insurance Corporation (FDIC) and the Securities Exchange Commission (SEC)] and identify the affiliate's primary federal regulator.

1	2	3	4	5	6
Affiliate Name	Location (City, State)	FRB	OCC	FDIC	SEC

9.

What is the name and address of the independent certified public accountant or accounting firm retained to conduct the annual audit?
PRICEWATERHOUSECOOPERS, LLP 200 PUBLIC SQUARE, 18TH FLOOR CLEVELAND, OH 44114-2301

10.1

Has the insurer been granted any exemptions to the prohibited non-audit services provided by the certified independent public accountant requirements as allowed in Section 7H of the Annual Financial Reporting Model Regulation (Model Audit Rule), or substantially similar state law or regulation?

Yes [] No [X]

10.2

If the response to 10.1 is yes, provide information related to this exemption:

10.3

Has the insurer been granted any exemptions related to other requirements of the Annual Financial Reporting Model Regulation as allowed for in Section 18A of the Model Regulation, or substantially similar state law or regulation?

Yes [] No [X]

10.4

If the response to 10.3 is yes, provide information related to this exemption:

10.5

Has the reporting entity established an Audit Committee in compliance with the domiciliary state insurance laws?

Yes [X] No [] N/A []

10.6

If the response to 10.5 is no or n/a, please explain:

PROGRESSIVE NORTHWESTERN INSURANCE COMPANY
GENERAL INTERROGATORIES

PART 1 - COMMON INTERROGATORIES

11.

What is the name, address and affiliation (officer/employee of the reporting entity or actuary/consultant associated with an actuarial consulting firm) of the individual providing the statement of actuarial opinion/certification?
GARY S. TRAIKOFF, FCAS, MAAA CORPORATE ACTUARY 6300 WILSON MILLS ROAD MAYFIELD VILLAGE, OH 44143-2182
- 12.1

Does the reporting entity own any securities of a real estate holding company or otherwise hold real estate indirectly?

Yes ☒ No ☐

12.11

Name of real estate holding company

VORNADO REALTY TRUST, ROUSE PROPERTIES INC, URBAN EDGE PROPERTIES

12.12

Number of parcels involved

0

12.13

Total book/adjusted carrying value

\$

1,387,817
- 12.2

If yes, provide explanation
WE HOLD A COMMON STOCK INTEREST IN SEVERAL REAL ESTATE HOLDING COMPANIES. THE NUMBER OF PARCELS IS UNKNOWN.
13.

FOR UNITED STATES BRANCES OF ALIEN REPORTING ENTITIES ONLY:
- 13.1

What changes have been made during the year in the United States manager or the United States trustees of the reporting entity?
N/A
- 13.2

Does this statement contain all business transacted for the reporting entity through its United States Branch on risks wherever located?

Yes ☐ No ☐

13.3

Have there been any changes made to any of the trust indentures during the year?

Yes ☐ No ☐

13.4

If answer to (13.3) is yes, has the domiciliary or entry state approved the changes?

Yes ☐ No ☐ N/A ☐

14.1

Are the senior officers (principal executive officer, principal financial officer, principal accounting officer or controller, or persons performing similar functions) of the reporting entity subject to a code of ethics, which includes the following standards?

Yes ☒ No ☐

(a)

Honest and ethical conduct, including the ethical handling of actual or apparent conflicts of interest between personal and professional relationships;

(b)

Full, fair, accurate, timely and understandable disclosure in the periodic reports required to be filed by the reporting entity;

(c)

Compliance with applicable governmental laws, rules and regulations;

(d)

The prompt internal reporting of violations to an appropriate person or persons identified in the code; and

(e)

Accountability for adherence to the code.

14.11

If the response to 14.1 is no, please explain:

14.2

Has the code of ethics for senior managers been amended?

Yes ☐ No ☒

14.21

If the response to 14.2 is yes, provide information related to amendment(s).

14.3

Have any provisions of the code of ethics been waived for any of the specified officers?

Yes ☐ No ☒

14.31

If the response to 14.3 is yes, provide the nature of any waiver(s).

15.1

Is the reporting entity the beneficiary of a Letter of Credit that is unrelated to reinsurance where the issuing or confirming bank is not on the SVO Bank List?

Yes ☐ No ☒

15.2

If the response to 15.1 is yes, indicate the American Bankers Association (ABA) Routing Number and the name of the issuing or confirming bank of the Letter of Credit and describe the circumstances in which the Letter of Credit is triggered.

1	2	3	4
American Bankers Association (ABA) Routing Number	Issuing or Confirming Bank Name	Circumstances That Can Trigger the Letter of Credit	Amount

BOARD OF DIRECTORS

16.

Is the purchase or sale of all investments of the reporting entity passed upon either by the Board of Directors or a subordinator committee thereof?

Yes ☒ No ☐

17.

Does the reporting entity keep a complete permanent record of the proceedings of its Board of Directors an all subordinator committees thereof?

Yes ☒ No ☐

18.

Has the reporting entity an established procedure for disclosure to its Board of Directors or trustees of any material interest or affiliation on the part of any of its officers, directors, trustees or responsible employees that is in conflict or is likely to conflict with the official duties of such person?

Yes ☒ No ☐

FINANCIAL

19.

Has this statement been prepared using a basis of accounting other than Statutory Accounting Principles (e.g., Generally Accepted Accounting Principles)?

Yes ☐ No ☒

20.1

Total amount loaned during the year (inclusive of Separate Accounts, exclusive of policy loans):

20.11

To directors or other officers

\$

0

20.12

To stockholders not officers

\$

0

20.13

Trustees, supreme or grand (Fraternal only)

\$

0

20.2

Total amount of loans outstanding at the end of year (inclusive of Separate Accounts, exclusive of policy loans):

20.21

To directors or other officers

\$

0

20.22

To stockholders not officers

\$

0

20.23

Trustees, supreme or grand (Fraternal only)

\$

0

21.1

Were any assets reported in this statement subject to a contractual obligation to transfer to another party without the liability for such obligation being reporting in the statement?

Yes ☐ No ☒

21.2

If yes, state the amount thereof at December 31 of the current year:

21.21

Rented from others

\$

0

21.22

Borrowed from others

\$

0

21.23

Leased from others

\$

0

21.24

Other

\$

0

22.1

Does this statement include payments for assessments as described in the *Annual Statement Instructions* other than guaranty fund or guaranty association assessments?

Yes ☐ No ☒

22.2

If answer is yes:

22.21

Amount paid as losses or risk adjustment

\$

0

22.22

Amount paid as expenses

\$

0

22.23

Other amounts paid

\$

0

23.1

Does the reporting entity report any amounts due from parent, subsidiaries or affiliates on Page 2 of this statement?

Yes ☒ No ☐

23.2

If yes, indicate any amounts receivable from parent included in the Page 2 amount:

\$

0

INVESTMENT

15.1

GENERAL INTERROGATORIES

PART 1 - COMMON INTERROGATORIES

24.01

Were all of the stocks, bonds and other securities owned December 31 of current year, over which the reporting entity has exclusive control, in the actual possession of the reporting entity on said date (other than securities lending programs addressed in 24.03)?

Yes ☒ No ☐

24.02

If no, give full and complete information, relating thereto:

24.03

For security lending programs, provide a description of the program including value for collateral and amount of loaned securities, and whether collateral is carried on or off balance sheet (an alternative is to reference Note 17 where this information is also provided).
N/A

24.04

Does the company's security lending program meet the requirements for a conforming program as outlined in the *Risk-Based Capital Instructions*?

Yes ☐ No ☐ N/A ☒

24.05

If answer to 24.04 is yes, report amount of collateral for conforming programs.

\$0

24.06

If answer to 24.04 is no, report amount of collateral for other programs

\$0

24.07

Does your securities lending program require 102% (domestic securities) and 105% (foreign securities) from the counterparty at the outset of the contract?

Yes ☐ No ☐ N/A ☒

24.08

Does the reporting entity non-admit when the collateral received from the counterparty falls below 100%?

Yes ☐ No ☐ N/A ☒

24.09.

Does the reporting entity or the reporting entity's securities lending agent utilize the Master Securities Lending Agreement (MSLA) to conduct securities lending?

Yes ☐ No ☐ N/A ☒

24.10

For the reporting entity's security lending program, state the amount of the following as of December 31 of the current year:

24.101

Total fair value of reinvested collateral assets reported on Schedule DL, Parts 1 and 2:

\$0

24.102

Total book adjusted/carrying value of reinvested collateral assets reported on Schedule DL, Parts 1 and 2:

\$0

24.103

Total payable for securities lending reported on the liability page:

\$0

25.1

Were any of the stocks, bonds or other assets of the reporting entity owned at December 31 of the current year not exclusively under the control of the reporting entity or has the reporting entity sold or transferred any assets subject to a put option contract that is current in force? (Exclude securities subject to Interrogatory 21.1 and 24.03.)

Yes ☒ No ☐

25.2

If yes, state the amount thereof at December of the current year:

25.21

Subject to repurchase agreements

\$0

25.22

Subject to reverse repurchase agreements

\$0

25.23

Subject to dollar repurchase agreements

\$0

25.24

Subject to reverse dollar repurchase agreements

\$0

25.25

Placed under option agreements

\$0

25.26

Letter stock or securities restricted as sale – excluding FHLB Capital Stock

\$0

25.27

FHLB Capital Stock

\$0

25.28

On deposit with states

\$4,127,196

25.29

On deposit with other regulatory bodies

\$0

25.30

Pledged as collateral – excluding collateral pledged to an FHLB

\$0

25.31

Pledged as collateral to FHLB – including assets backing funding agreements

\$0

25.32

Other

\$0

25.3

For category (25.26) provide the following:

1 Nature of Restriction	2 Description	3 Amount
		\$

26.1

Does the reporting entity have any hedging transactions reported on Schedule DB?

Yes ☐ No ☒

26.2

If yes, has a comprehensive description of the hedging program been made available to the domiciliary state?
If no, attach a description with this statement.

Yes ☐ No ☐ N/A ☒

27.1

Were any preferred stocks or bonds owned as of December 31 of the current year mandatorily convertible into equity, or, at the option of the issuer, convertible into equity?

Yes ☐ No ☒

27.2

If yes, state the amount thereof at December of the current year:

\$0

28.

Excluding items in Schedule E-Part 3-Special Deposits, real estate, mortgage loans and investments held physically in the reporting entity's offices, vaults or safety deposit boxes, were all stocks, bonds and other securities, owned throughout the current year held pursuant to a custodial agreement with a qualified bank or trust company in accordance with Section 1, III - General Examination Considerations, F. Outsourcing of Critical Functions, Custodial or Safekeeping Agreements of the NAIC *Financial Condition Examiners Handbook*?

Yes ☒ No ☐

28.01

For all agreements that comply with the requirements of the NAIC *Financial Condition Examiners Handbook*, complete the following:

1 Name of Custodian(s)	2 Custodian Address
CITIBANK, N.A.	338 GREENWICH STREET, NEW YORK, NY 10013
STATE STREET	801 PENNSYLVANIA AVE, KANSAS CITY, MO 64105

28.02

For all agreements that do not comply with the requirements of the NAIC *Financial Condition Examiners Handbook*, provide the name, location and a complete explanation

1 Name(s)	2 Location(s)	3 Complete Explanation(s)
NONE		

28.03

Have there been any changes, including name changes, in the custodian(s) identified in 28.01 during the current year?

Yes ☐ No ☒

28.04

If yes, give full and complete information relating thereto:

1 Old Custodian	2 New Custodian	3 Date of Change	4 Reason
NONE			

28.05

Identify all investment advisors, broker/dealers or individuals acting on behalf of broker/dealers that have access to the investment accounts, handle securities and have authority to make investments on behalf of the reporting entity:

1 Central Registration Depository	2 Name(s)	3 Address
30107	STATE STREET GLOBAL MARKETS, LLC	225 FRANKLIN ST, BOSTON, MA 02110

29.1

Does the reporting entity have any diversified mutual funds reported in Schedule D-Part 2 (diversified according to the Securities and Exchange Commission (SEC) in the Investment Company Act of 1940 [Section 5 (b) (1)])?

Yes ☐ No ☒

GENERAL INTERROGATORIES

PART 1 - COMMON INTERROGATORIES

29.2 If yes, complete the following schedule:

1 CUSIP	2 Name of Mutual Fund	3 Book/Adjusted Carrying Value
29.2999 TOTAL		

29.3 For each mutual fund listed in the table above, complete the following schedule:

1 Name of Mutual Fund (from above table)	2 Name of Significant Holding of the Mutual Fund	3 Amount of Mutual Fund's Book/Adjusted Carrying Value Attributable to the Holdings	4 Date of Valuation

30. Provide the following information for all short-term and long-term bonds and all preferred stocks. Do not substitute amortized value or statement value for fair value.

		1 Statement (Admitted) Value	2 Fair Value	3 Excess of Statement over Fair Value (-), or Fair Value over Statement (+)
30.1	Bonds	1,114,574,043	1,113,254,290	(1,319,753)
30.2	Preferred Stocks	0	0	0
30.3	Totals	1,114,574,043	1,113,254,290	(1,319,753)

30.4 Describe the sources or methods utilized in determining fair values:
THE FAIR MARKET VALUES REPORTED ARE DERIVED FROM INDEPENDENT AND OBSERVABLE MARKET INPUT EVALUATIONS PROVIDED BY WIDELY UTILIZED REPUTABLE PRICING SERVICES, INDEPENDENT BROKER/DEALER BID LISTS, INDEPENDENT BROKER/DEALER QUOTATIONS, INDEPENDENT BROKER/DEALER PRICING SERVICES, OR ACTIVE MARKET CLOSING QUOTATIONS FROM A REGULATED EXCHANGE. IN VERY RARE CASES, IF NONE OF THE AFOREMENTIONED PRIMARY SOURCES ARE AVAILABLE, MATRIX PRICING USING THE REPORTING ENTITY'S OWN MARKET BASED ASSUMPTIONS MAY BE UTILIZED. THE APPROVED METHODS FOR COMPUTATION OF FAIR MARKET VALUE ARE PRESCRIBED IN PART FIVE OF THE SECURITIES VALUATION OFFICE PURPOSES AND PROCEDURES MANUAL.

31.1

Was the rate used to calculate fair value determined by a broker or custodian for any of the securities in Schedule D?

Yes [☐] No [☒]

31.2

If the answer to 31.1 is yes, does the reporting entity have a copy of the broker's or custodian's pricing policy (hard copy or electronic copy) for all brokers or custodians used as a pricing source?

Yes [☐] No [☐]

31.3

If the answer to 31.2 is no, describe the reporting entity's process for determining a reliance pricing source for purposes of disclosure of fair value for Schedule D:

32.1

Have all the filing requirements of the *Purposes and Procedures Manual of the NAIC Investment Analysis Office* been followed?

Yes [☒] No [☐]

32.2

If no, list exceptions:

OTHER

33.1

Amount of payments to trade associations, service organizations and statistical or rating bureaus, if any?

\$48,796

33.2

List the name of the organization and the amount paid if any such payment represented 25% or more of the total payments to trade associations, service organizations and statistical or rating bureaus during the period covered by this statement.

1 Name	2 Amount Paid
INDEPENDENT STATISTICAL SVCS	\$48,796

34.1

Amount of payments for legal expenses, if any?

\$0

34.2

List the name of the firm and the amount paid if any such payment represented 25% or more of the total payments for legal expenses during the period covered by this statement.

1 Name	2 Amount Paid
NONE	\$

35.1

Amount of payments for expenditures in connection with matters before legislative bodies, officers or departments of government, if any?

\$0

35.2

List the name of the firm and the amount paid if any such payment represented 25% or more of the total payment expenditures in connection with matters before legislative bodies, officers or departments of government during the period covered by this statement.

1 Name	2 Amount Paid
NONE	\$

GENERAL INTERROGATORIES

PART 2 – PROPERTY & CASUALTY INTERROGATORIES

1.1	Does the reporting entity have any direct Medicare Supplement Insurance in force?		Yes [<input type="checkbox"/>]	No [<input checked="" type="checkbox"/> X]
1.2	If yes, indicate premium earned on U.S. business only.	\$		0
1.3	What portion of Item (1.2) is not reported on the Medicare Supplement Insurance Experience Exhibit?	\$		0
1.31	Reason for excluding:			
1.4	Indicate amount of earned premium attributable to Canadian and/or Other Alien not included in Item (1.2) above.	\$		0
1.5	Indicate total incurred claims on all Medicare Supplement insurance.	\$		0
1.6	Individual policies:			
	Most current three years:			
1.61	Total premium earned	\$		0
1.62	Total incurred claims	\$		0
1.63	Number of covered lives			0
	All years prior to most current three years:			
1.64	Total premium earned	\$		0
1.65	Total incurred claims	\$		0
1.66	Number of covered lives			0
1.7	Group policies:			
	Most current three years:			
1.71	Total premium earned	\$		0
1.72	Total incurred claims	\$		0
1.73	Number of covered lives			0
	All years prior to most current three years:			
1.74	Total premium earned	\$		0
1.75	Total incurred claims	\$		0
1.76	Number of covered lives			0
2.	Health Test:			
		1	2	
		Current Year	Prior Year	
2.1	Premium Numerator	\$		0
2.2	Premium Denominator	\$		1,208,611,469
2.3	Premium Ratio (2.1/2.2)			
2.4	Reserve Numerator	\$		0
2.5	Reserve Denominator	\$		880,780,390
2.6	Reserve Ratio (2.4/2.5)			
3.1	Does the reporting entity issue both participating and non-participating policies?			Yes [<input type="checkbox"/>] No [<input checked="" type="checkbox"/> X]
3.2	If yes, state the amount of calendar year premiums written on:			
3.21	Participating policies	\$		0
3.22	Non-participating policies	\$		0
4.	FOR MUTUAL REPORTING ENTITIES AND RECIPROCAL EXCHANGES ONLY:			
4.1	Does the reporting entity issue assessable policies?			Yes [<input type="checkbox"/>] No [<input type="checkbox"/>]
4.2	Does the reporting entity issue non-assessable policies?			Yes [<input type="checkbox"/>] No [<input type="checkbox"/>]
4.3	If assessable policies are issued, what is the extent of the contingent liability of the policyholders?			%
4.4	Total amount of assessments paid or ordered to be paid during the year on deposit notes or contingent premiums.	\$		0
5.	FOR RECIPROCAL EXCHANGES ONLY:			
5.1	Does the exchange appoint local agents?			Yes [<input type="checkbox"/>] No [<input type="checkbox"/>]
5.2	If yes, is the commission paid:			
5.21	Out of Attorney's-in-fact compensation			Yes [<input type="checkbox"/>] No [<input type="checkbox"/>] N/A [<input type="checkbox"/>]
5.22	As a direct expense of the exchange			Yes [<input type="checkbox"/>] No [<input type="checkbox"/>] N/A [<input type="checkbox"/>]
5.3	What expenses of the exchange are not paid out of the compensation of the Attorney-in-fact?			
5.4	Has any Attorney-in-fact compensation, contingent on fulfillments of certain conditions, been deferred?			Yes [<input type="checkbox"/>] No [<input type="checkbox"/>]
5.5	If yes, give full information:			
6.1	What provision has this reporting entity made to protect itself from an excessive loss in the event of a catastrophe under a workers' compensation contract issued without limit of loss?			
	THE COMPANY DOES NOT WRITE WORKERS' COMPENSATION INSURANCE.			
6.2	Describe the method used to estimate this reporting entity's probable maximum insurance loss, and identify the type of insured exposures comprising that probable maximum loss, the locations of concentrations of those exposures and the external resources (such as consulting firms or computer software models), if any, used in the estimation process:			
	THE COMPANY'S PROBABLE MAXIMUM LOSS (PML) IS ESTIMATED BY ANALYZING HISTORICAL MAJOR OCCURRENCES AND ESTIMATING FREQUENCY OF LOSS AND SEVERITY BASED ON THE POTENTIAL FORCE OF AN OCCURRENCE AND THE TOTAL NUMBER OF AUTOS AND BOATS EXPOSED. THE ESTIMATE OF THE PML WAS MADE EXCLUSIVELY BY PROGRESSIVE EMPLOYEES. THE COMPANY'S NET COMPREHENSIVE EXPOSURE IN THE CATASTROPHE PRONE STATES OF FLORIDA, LOUISIANA, TEXAS, MISSISSIPPI, ALABAMA, NEW YORK, NEW JERSEY AND CALIFORNIA IS LIMITED SINCE THE COMPANY IS A MEMBER OF A 100% POOLING REINSURANCE ARRANGEMENT WITH 11 OF ITS PROPERTY AND CASUALTY AFFILIATES. THE PRIMARY PROPERTY COVERAGE SOLD BY THE COMPANY IS COMPREHENSIVE FOR AUTOMOBILE AND INLAND MARINE FOR BOATS. THE ESTIMATE OF THE PML IS 6% OF THE SURPLUS.			
6.3	What provision has this reporting entity made (such as catastrophic reinsurance program) to protect itself from an excessive loss arising from the types and concentrations of insured exposures comprising its probable maximum property insurance loss?			
	THE COMPANY'S ESTIMATED PML IS 6% OF THE SURPLUS. THE COMPANY CARRIES NO EXTERNAL CATASTROPHE REINSURANCE TO COVER ITS LIMITED CATASTROPHE EXPOSURE. THE COMPANY PARTICIPATES IN A POOLING ARRANGEMENT, WHICH SPREADS THE UNDERWRITING RISK INCLUDING THE CATASTROPHE EXPOSURE AMONG ALL PARTIES TO THE POOLING AGREEMENT.			
6.4	Does the reporting entity carry catastrophe reinsurance protection for at least one reinstatement, in an amount sufficient to cover its estimated probable maximum loss attributable to a single loss event or occurrence?			Yes [<input type="checkbox"/>] No [<input checked="" type="checkbox"/> X]

PROGRESSIVE NORTHWESTERN INSURANCE COMPANY
GENERAL INTERROGATORIES

PART 2 – PROPERTY & CASUALTY INTERROGATORIES

12.62	Collateral and other funds		\$	0		
13.1	Largest net aggregate amount insured in any one risk (excluding workers' compensation):		\$	1,200,000		
13.2	Does any reinsurance contract considered in the calculation of this amount include an aggregate limit of recovery without also including a reinstatement provision?			Yes []	No [X]	
13.3	State the number of reinsurance contracts (excluding individual facultative risk certificates, but including facultative programs, automatic facilities or facultative obligatory contracts) considered in the calculation of the amount.			1		
14.1	Is the company a cedant in a multiple cedant reinsurance contract?			Yes []	No [X]	
14.2	If yes, please describe the method of allocating and recording reinsurance among the cedants:					
14.3	If the answer to 14.1 is yes, are the methods described in item 14.2 entirely contained in the respective multiple cedant reinsurance contracts?			Yes []	No []	
14.4	If the answer to 14.3 is no, are all the methods described in 14.2 entirely contained in written agreements?			Yes []	No []	
14.5	If the answer to 14.4 is no, please explain:					
15.1	Has the reporting entity guaranteed any financed premium accounts?			Yes []	No [X]	
15.2	If yes, give full information					
16.1	Does the reporting entity write any warranty business?			Yes []	No [X]	
	If yes, disclose the following information for each of the following types of warranty coverage:					
		1	2	3	4	5
		Direct Losses Incurred	Direct Losses Unpaid	Direct Written Premium	Direct Premium Unearned	Direct Premium Earned
16.11	Home	\$ 0	\$ 0	\$ 0	\$ 0	0
16.12	Products	\$ 0	\$ 0	\$ 0	\$ 0	0
16.13	Automobile	\$ 0	\$ 0	\$ 0	\$ 0	0
16.14	Other*	\$ 0	\$ 0	\$ 0	\$ 0	0
	* Disclose type of coverage:					
17.1	Does the reporting entity include amounts recoverable on unauthorized reinsurance in Schedule F – Part 3 that it excludes from Schedule F – Part 5.			Yes []	No [X]	
	Included but not reported losses on contracts in force prior to July 1, 1984, and not subsequently renewed are exempt from inclusion in Schedule F – Part 5. Provide the following information for this exemption:					
17.11	Gross amount of unauthorized reinsurance in Schedule F – Part 3 excluded from Schedule F – Part 5		\$	0		
17.12	Unfunded portion of Interrogatory 17.11		\$	0		
17.13	Paid losses and loss adjustment expenses portion of Interrogatory 17.11		\$	0		
17.14	Case reserves portion of Interrogatory 17.11		\$	0		
17.15	Incurred but not reported portion of Interrogatory 17.11		\$	0		
17.16	Unearned premium portion of Interrogatory 17.11		\$	0		
17.17	Contingent commission portion of Interrogatory 17.11		\$	0		
	Provide the following information for all other amounts included in Schedule F – Part 3 and excluded from Schedule F – Part 5, not included above.					
17.18	Gross amount of unauthorized reinsurance in Schedule F – Part 3 excluded from Schedule F – Part 5		\$	0		
17.19	Unfunded portion of Interrogatory 17.18		\$	0		
17.20	Paid losses and loss adjustment expenses portion of Interrogatory 17.18		\$	0		
17.21	Case reserves portion of Interrogatory 17.18		\$	0		
17.22	Incurred but not reported portion of Interrogatory 17.18		\$	0		
17.23	Unearned premium portion of Interrogatory 17.18		\$	0		
17.24	Contingent commission portion of Interrogatory 17.18		\$	0		
18.1	Do you act as a custodian for health savings accounts?			Yes []	No [X]	
18.2	If yes, please provide the amount of custodial funds held as of the reporting date.		\$	0		
18.3	Do you act as an administrator for health savings accounts?			Yes []	No [X]	
18.4	If yes, please provide the balance of the funds administered as of the reporting date.		\$	0		

FIVE-YEAR HISTORICAL DATA

Show amounts in whole dollars only, no cents; show percentages to one decimal place, i.e. 17.6.

	1 2015	2 2014	3 2013	4 2012	5 2011
Gross Premiums Written (Page 8, Part 1B, Cols. 1, 2 & 3)					
1. Liability lines (Lines 11.1, 11.2, 16, 17.1, 17.2, 17.3, 18.1, 18.2, 19.1, 19.2 & 19.3, 19.4).....	1,053,790,931	1,049,327,863	1,015,535,433	981,428,152	933,396,799
2. Property lines (Lines 1, 2, 9, 12, 21 & 26).....	642,893,499	629,590,169	599,410,113	575,694,248	545,688,576
3. Property and liability combined lines (Lines 3, 4, 5, 8, 22 & 27).....	5,034,352	4,504,230	3,640,548	3,369,545	3,216,831
4. All other lines (Lines 6, 10, 13, 14, 15, 23, 24, 28, 29, 30 & 34).....	1,546	1,412	496	1,012	2,110
5. Nonproportional reinsurance lines (Lines 31, 32 & 33).....					
6. Total (Line 35).....	1,701,720,328	1,683,423,675	1,618,586,590	1,560,492,957	1,482,304,317
Net Premiums Written (Page 8, Part 1B, Col. 6)					
7. Liability lines (Lines 11.1, 11.2, 16, 17.1, 17.2, 17.3, 18.1, 18.2, 19.1, 19.2 & 19.3, 19.4).....	785,332,352	762,704,597	729,531,087	696,693,128	650,764,726
8. Property lines (Lines 1, 2, 9, 12, 21 & 26).....	446,429,920	430,749,653	407,503,971	389,227,687	362,609,221
9. Property and liability combined lines (Lines 3, 4, 5, 8, 22 & 27).....	5,034,352	4,504,230	3,640,548	3,369,545	3,216,831
10. All other lines (Lines 6, 10, 13, 14, 15, 23, 24, 28, 29, 30 & 34).....	1,546	1,412	496	1,012	2,110
11. Nonproportional reinsurance lines (Lines 31, 32 & 33).....					
12. Total (Line 35).....	1,236,798,170	1,197,959,893	1,140,676,102	1,089,291,372	1,016,592,889
Statement of Income (Page 4)					
13. Net underwriting gain (loss) (Line 8).....	88,609,310	88,876,125	64,848,922	35,073,884	57,966,104
14. Net investment gain (loss) (Line 11).....	31,029,281	36,133,873	28,620,472	41,959,570	31,690,987
15. Total other income (Line 15).....	5,988,457	7,491,759	6,656,754	7,054,048	6,996,149
16. Dividends to policyholders (Line 17).....					
17. Federal and foreign income taxes incurred (Line 19).....	41,136,969	39,619,240	34,172,626	27,105,269	31,167,447
18. Net income (Line 20).....	84,490,079	92,882,517	65,953,522	56,982,233	65,485,793
Balance Sheet Lines (Pages 2 and 3)					
19. Total admitted assets excluding protected cell business (Page 2, Line 26, Col. 3).....	1,372,010,756	1,313,532,981	1,267,549,552	1,207,215,853	1,127,035,186
20. Premiums and considerations (Page 2, Col. 3):					
20.1 In course of collection (Line 15.1).....	(9,565,632)	3,361,738	(719,471)	(62,425)	1,443,823
20.2 Deferred and not yet due (Line 15.2).....	57,408,642	62,460,642	62,812,852	62,315,381	60,646,295
20.3 Accrued retrospective premiums (Line 15.3).....					
21. Total liabilities excluding protected cell business (Page 3, Line 26).....	975,830,728	925,940,058	895,980,555	859,885,629	798,559,924
22. Losses (Page 3, Line 1).....	419,910,275	400,722,262	396,117,151	372,252,858	342,647,501
23. Loss adjustment expenses (Page 3, Line 3).....	88,382,307	82,233,083	77,520,872	74,321,507	72,269,683
24. Unearned premiums (Page 3, Line 9).....	370,324,513	342,137,812	335,543,144	324,200,664	303,716,375
25. Capital paid up (Page 3, Lines 30 & 31).....	3,000,025	3,000,025	3,000,025	3,000,025	3,000,025
26. Surplus as regards policyholders (Page 3, Line 37).....	396,180,028	387,592,923	371,568,997	347,330,224	328,475,262
Cash Flow (Page 5)					
27. Net cash from operations (Line 11).....	155,597,927	103,683,234	119,763,521	106,823,192	93,656,450
Risk-Based Capital Analysis					
28. Total adjusted capital.....	396,180,028	387,592,923	371,568,997	347,330,224	328,475,262
29. Authorized control level risk-based capital.....	43,608,977	44,802,081	43,924,381	38,827,349	36,140,499
Percentage Distribution of Cash, Cash Equivalents and Invested Assets (Page 2, Col. 3) (Item divided by Page 2, Line 12, Col. 3) x 100.0					
30. Bonds (Line 1).....	79.0	82.7	81.7	79.2	84.1
31. Stocks (Lines 2.1 & 2.2).....	13.8	15.2	16.9	13.5	11.7
32. Mortgage loans on real estate (Lines 3.1 & 3.2).....					
33. Real estate (Lines 4.1, 4.2 & 4.3).....					
34. Cash, cash equivalents and short-term investments (Line 5).....	7.3	2.1	1.4	7.2	4.2
35. Contract loans (Line 6).....					
36. Derivatives (Line 7).....					
37. Other invested assets (Line 8).....					
38. Receivable for securities (Line 9).....					0.0
39. Securities lending reinvested collateral assets (Line 10).....					
40. Aggregate write-ins for invested assets (Line 11).....					
41. Cash, cash equivalents and invested assets (Line 12).....	100.0	100.0	100.0	100.0	100.0
Investments in Parent, Subsidiaries and Affiliates					
42. Affiliated bonds (Sch. D, Summary, Line 12, Col. 1).....					
43. Affiliated preferred stocks (Sch. D, Summary, Line 18, Col. 1).....					
44. Affiliated common stocks (Sch. D, Summary, Line 24, Col. 1).....					
45. Affiliated short-term investments (subtotals included in Schedule DA, Verification, Column 5, Line 10).....					
46. Affiliated mortgage loans on real estate.....					
47. All other affiliated.....					
48. Total of above lines 42 to 47.....	0	0	0	0	0
49. Total investment in parent included in Lines 42 to 47 above.....					
50. Percentage of investments in parent, subsidiaries and affiliates to surplus as regards policyholders (Line 48 above divided by Page 3, Col. 1, Line 37 x 100.0).....	0.0				

PROGRESSIVE NORTHWESTERN INSURANCE COMPANY
FIVE-YEAR HISTORICAL DATA

(Continued)

	1	2	3	4	5
	2015	2014	2013	2012	2011
Capital and Surplus Accounts (Page 4)					
51. Net unrealized capital gains (losses) (Line 24).....	(9,667,237)	5,548,899	30,339,785	2,327,329	(64,731)
52. Dividends to stockholders (Line 35).....	(66,500,000)	(80,200,000)	(73,600,000)	(43,000,000)	(58,000,000)
53. Change in surplus as regards policyholders for the year (Line 38).....	8,587,105	16,023,926	24,238,773	18,854,962	9,208,144
Gross Losses Paid (Page 9, Part 2, Cols. 1 & 2)					
54. Liability lines (Lines 11.1, 11.2, 16, 17.1, 17.2, 17.3, 18.1, 18.2, 19.1, 19.2 & 19.3, 19.4).....	607,647,414	635,224,708	592,238,003	580,341,537	547,424,067
55. Property lines (Lines 1, 2, 9, 12, 21 & 26).....	389,481,560	390,666,520	373,658,356	364,858,270	342,038,212
56. Property and liability combined lines (Lines 3, 4, 5, 8, 22 & 27).....	1,840,671	1,991,904	1,601,923	2,538,027	1,956,736
57. All other lines (Lines 6, 10, 13, 14, 15, 23, 24, 28, 29, 30 & 34).....	(24,796)	(7,574)	154,786	248,120	177,777
58. Nonproportional reinsurance lines (Lines 31, 32 & 33).....	28,561	48,669	76,210	41,806	100,903
59. Total (Line 35).....	998,973,409	1,027,924,227	967,729,278	948,027,760	891,697,695
Net Losses Paid (Page 9, Part 2, Col. 4)					
60. Liability lines (Lines 11.1, 11.2, 16, 17.1, 17.2, 17.3, 18.1, 18.2, 19.1, 19.2 & 19.3, 19.4).....	445,224,815	457,177,037	426,075,607	409,492,597	378,189,047
61. Property lines (Lines 1, 2, 9, 12, 21 & 26).....	274,265,924	270,737,092	256,577,143	250,479,459	229,800,143
62. Property and liability combined lines (Lines 3, 4, 5, 8, 22 & 27).....	1,840,671	1,991,904	1,601,923	2,538,027	1,956,736
63. All other lines (Lines 6, 10, 13, 14, 15, 23, 24, 28, 29, 30 & 34).....	(24,796)	(7,574)	154,786	248,120	177,777
64. Nonproportional reinsurance lines (Lines 31, 32 & 33).....	28,561	48,669	76,210	41,806	100,903
65. Total (Line 35).....	721,335,174	729,947,128	684,485,669	662,800,009	610,224,606
Operating Percentages (Page 4) (Item divided by Page 4, Line 1) x 100.0					
66. Premiums earned (Line 1).....	100.0	100.0	100.0	100.0	100.0
67. Losses incurred (Line 2).....	61.3	61.7	62.7	64.8	61.6
68. Loss expenses incurred (Line 3).....	10.4	10.1	10.2	10.3	10.4
69. Other underwriting expenses incurred (Line 4).....	21.0	20.7	21.3	21.6	22.3
70. Net underwriting gain (loss) (Line 8).....	7.3	7.5	5.7	3.3	5.8
Other Percentages					
71. Other underwriting expenses to net premiums written (Page 4, Lines 4 + 5 - 15 divided by Page 8, Part 1B, Col. 6, Line 35 x 100.0).....	20.1	20.0	20.5	20.5	21.3
72. Losses and loss expenses incurred to premiums earned (Page 4, Lines 2 + 3 divided by Page 4, Line 1 x 100.0).....	71.6	71.8	72.9	75.1	72.0
73. Net premiums written to policyholders' surplus (Page 8, Part 1B, Col. 6, Line 35, divided by Page 3, Line 37, Col. 1 x 100.0).....	312.2	309.1	307.0	313.6	309.5
One Year Loss Development (000 omitted)					
74. Development in estimated losses and loss expenses incurred prior to current year (Schedule P, Part 2-Summary, Line 12, Col. 11).....	(15,861)	(2,317)	5,223	3,811	(6,998)
75. Percent of development of losses and loss expenses incurred to policyholders' surplus of prior year end (Line 74 above divided by Page 4, Line 21, Col. 1 x 100).....	(4.1)	(0.6)	1.5	1.2	(2.2)
Two Year Loss Development (000 omitted)					
76. Development in estimated losses and loss expenses incurred 2 years before the current year and prior year (Schedule P, Part 2-Summary, Line 12, Col. 12).....	(5,493)	3,683	7,103	(10,712)	(22,910)
77. Percent of development of losses and loss expenses incurred to reported policyholders' surplus of second prior year end (Line 76 above divided by Page 4, Line 21, Col. 2 x 100.0).....	(1.5)	1.1	2.2	(3.4)	(7.0)

If a party to a merger, have the two most recent years of this exhibit been restated due to a merger in compliance with the disclosure requirements of
SSAP No. 3, Accounting Changes and Correction of Errors?

Yes[] No[]

If no, please explain:

SCHEDULE P - ANALYSIS OF LOSSES AND LOSS EXPENSES

SCHEDULE P - PART 1 - SUMMARY

(\$000 Omitted)

Years in Which Premiums Were Earned and Losses Were Incurred	Premiums Earned			Loss and Loss Expense Payments								12 Number of Claims Reported- Direct and Assumed
	1 Direct and Assumed	2 Ceded	3 Net (Cols. 1 - 2)	Loss Payments		Defense and Cost Containment Payments		Adjusting and Other Payments		10 Salvage and Subrogation Received	11 Total Net Paid (Cols. 4 - 5 + 6 - 7 + 8 - 9)	
				4 Direct and Assumed	5 Ceded	6 Direct and Assumed	7 Ceded	8 Direct and Assumed	9 Ceded			
1. Prior.....XXX.....XXX.....XXX.....1,9571,63120639108118601XXX.....
2. 2006.....1,144,62918,5011,126,128641,55317,66219,468680120,74967654,213762,750XXX.....
3. 2007.....1,040,19615,3391,024,857607,4869,08716,368147108,05811856,497722,558XXX.....
4. 2008.....991,24712,485978,762602,6048,40416,127472103,80618052,146713,480XXX.....
5. 2009.....992,96613,210979,756583,26210,66016,25772090,46516349,147678,442XXX.....
6. 2010.....986,84714,865971,982600,14712,44816,90157489,6582652,674693,658XXX.....
7. 2011.....1,016,52713,6071,002,920629,3276,78414,9829988,692058,235726,116XXX.....
8. 2012.....1,079,90911,1021,068,807679,3106,10714,1163091,17965,317778,468XXX.....
9. 2013.....1,140,52211,1881,129,334666,0494,45111,1461092,18365,048764,918XXX.....
10. 2014.....1,203,07011,7041,191,365633,2123,2226,328389,57865,813725,894XXX.....
11. 2015.....1,220,68012,0691,208,611506,3682,2161,757177,55943,299583,467XXX.....
12. Totals.....XXX.....XXX.....XXX.....	..6,151,27482,671133,6532,775952,0341,163562,5077,150,352XXX.....

	Losses Unpaid				Defense and Cost Containment Unpaid				Adjusting and Other Unpaid		23 Salvage and Subrogation Anticipated	24 Total Net Losses and Expenses Unpaid	25 Number of Claims Outstanding- Direct and Assumed
	Case Basis		Bulk + IBNR		Case Basis		Bulk + IBNR		21	22			
	13 Direct and Assumed	14 Ceded	15 Direct and Assumed	16 Ceded	17 Direct and Assumed	18 Ceded	19 Direct and Assumed	20 Ceded					
1. Prior.....22,96520,9801,06226211203753,802XXX.....
2. 2006.....6,2125,9431850106443XXX.....
3. 2007.....5,9695,744379361570132433XXX.....
4. 2008.....7,1726,4131,4421,418114116121651,065XXX.....
5. 2009.....6,2665,0211,2951,275222110723911,728XXX.....
6. 2010.....6,4683,7831,5861,567431310931713,452XXX.....
7. 2011.....9,4334,3481,1241,1048681211853516,509XXX.....
8. 2012.....21,2536,8056,1071,5392,30821,311171,6022,56224,217XXX.....
9. 2013.....42,3267,4737,2971,4016,14441,61563,3922,44451,890XXX.....
10. 2014.....79,4311,48822,3386,34310,51462,78948,4185,057115,649XXX.....
11. 2015.....207,5195,44157,4176,72114,39535,4291026,52226,865299,106XXX.....
12. Totals...415,01473,439100,06421,72935,3642211,3208341,803036,930508,293XXX.....

	Total Losses and Loss Expenses Incurred			Loss and Loss Expense Percentage (Incurred/Premiums Earned)			Nontabular Discount		34 Inter-Company Pooling Participation Percentage	Net Balance Sheet Reserves after Discount	
	26 Direct and Assumed	27 Ceded	28 Net	29 Direct and Assumed	30 Ceded	31 Net	32 Loss	33 Loss Expense		35 Losses Unpaid	36 Loss Expenses Unpaid
1. Prior..XXX.....XXX.....XXX.....XXX.....XXX.....XXX.....XXX.....3,047756
2. 2006.788,15524,961763,19368.9134.967.812.00287156
3. 2007.738,44815,457722,99171.0100.870.512.00244189
4. 2008.731,44416,899714,54573.8135.473.012.00782282
5. 2009.698,01717,847680,17070.3135.169.412.001,265463
6. 2010.715,51918,409697,11072.5123.871.712.002,705747
7. 2011.744,98112,355732,62573.390.873.012.005,1051,404
8. 2012.817,18414,499802,68575.7130.675.112.0019,0165,201
9. 2013.830,15213,344816,80772.8119.372.312.0040,75011,140
10. 2014.852,60811,066841,54270.994.570.612.0093,93821,711
11. 2015.896,96514,393882,57373.5119.373.012.00252,77346,333
12. TotalsXXX.....XXX.....XXX.....XXX.....XXX.....XXX.....00XXX.....419,91088,382

Note: Parts 2 and 4 are gross of all discounting, including tabular discounting. Part 1 is gross of only nontabular discounting, which is reported in Columns 32 and 33 of Part 1. The tabular discount, if any, is reported in the Notes to Financial Statements, which will reconcile Part 1 with Parts 2 and 4.

SCHEDULE P - PART 2 - SUMMARY

Years in Which Losses Were Incurred	Incurred Net Losses and Defense and Cost Containment Expenses Reported at Year End (\$000 omitted)										DEVELOPMENT	
	1	2	3	4	5	6	7	8	9	10	11	12
	2006	2007	2008	2009	2010	2011	2012	2013	2014	2015	One Year	Two Year
1. Prior.....195,192200,145196,775191,551191,011190,811191,367192,290194,049194,142931,852
2. 2006.....642,602644,781649,853646,814642,643642,457642,173642,222642,247643,015768793
3. 2007.....XXX621,046621,722622,918620,002614,860614,882615,235614,962614,920(42)(315)
4. 2008.....XXXXXX615,066614,834615,851612,501609,628610,797610,717610,75538(42)
5. 2009.....XXXXXXXXX601,418592,436593,997591,361588,977589,645589,629(16)652
6. 2010.....XXXXXXXXXXXX607,819608,138609,638610,529606,559607,160602(3,369)
7. 2011.....XXXXXXXXXXXXXXX638,493646,019648,310648,290643,398(4,892)(4,912)
8. 2012.....XXXXXXXXXXXXXXXXXX706,921708,852709,205709,9036991,051
9. 2013.....XXXXXXXXXXXXXXXXXXXXX722,436721,658721,233(425)(1,202)
10. 2014.....XXXXXXXXXXXXXXXXXXXXXXXX756,231743,546(12,685)XXX
11. 2015.....XXXXXXXXXXXXXXXXXXXXXXXXXXX778,492XXXXXX
12. Totals.....										(15,861)(5,493)

SCHEDULE P - PART 3 - SUMMARY

Years in Which Losses Were Incurred	Cumulative Paid Net Losses and Defense and Cost Containment Expenses Reported at Year End (\$000 omitted)										11	12
	1	2	3	4	5	6	7	8	9	10	Number of Claims Closed With Loss Payment	Number of Claims Closed Without Loss Payment
	2006	2007	2008	2009	2010	2011	2012	2013	2014	2015		
1. Prior.....000100,267153,712173,836182,558185,829188,071189,055190,222190,715XXXXXX
2. 2006.....436,816550,819599,189624,933634,914639,054640,634641,376641,767642,678XXXXXX
3. 2007.....XXX423,256533,852578,235599,591608,587612,007613,731614,317614,619XXXXXX
4. 2008.....XXXXXX413,968530,433571,310592,591602,951607,404609,043609,855XXXXXX
5. 2009.....XXXXXXXXX395,412506,146549,181571,237581,989586,510588,140XXXXXX
6. 2010.....XXXXXXXXXXXX400,094516,690564,818589,014600,046604,025XXXXXX
7. 2011.....XXXXXXXXXXXXXXX428,520553,414603,676628,257637,425XXXXXX
8. 2012.....XXXXXXXXXXXXXXXXXX467,244608,646662,427687,288XXXXXX
9. 2013.....XXXXXXXXXXXXXXXXXXXXX467,410619,442672,735XXXXXX
10. 2014.....XXXXXXXXXXXXXXXXXXXXXXXX497,787636,315XXXXXX
11. 2015.....XXXXXXXXXXXXXXXXXXXXXXXXXXX505,908XXXXXX

SCHEDULE P - PART 4 - SUMMARY

Years in Which Losses Were Incurred	Bulk and IBNR Reserves on Net Losses and Defense and Cost Containment Expenses Reported at Year End (\$000 omitted)									
	1	2	3	4	5	6	7	8	9	10
	2006	2007	2008	2009	2010	2011	2012	2013	2014	2015
1. Prior.....27,01211,3684,7841,3751,3019639287431,1791,182
2. 2006.....50,36415,7127,8603,7571479167161918
3. 2007.....XXX50,24114,8077,3484,169132742253118
4. 2008.....XXXXXX54,21215,2498,1933,9831242514228
5. 2009.....XXXXXXXXX49,87815,7008,6534,8691964923
6. 2010.....XXXXXXXXXXXX45,83215,6727,1475,1548421
7. 2011.....XXXXXXXXXXXXXXX46,62315,3596,8845,49322
8. 2012.....XXXXXXXXXXXXXXXXXX57,14116,5467,0155,862
9. 2013.....XXXXXXXXXXXXXXXXXXXXX61,37718,2687,505
10. 2014.....XXXXXXXXXXXXXXXXXXXXXXXX57,91318,780
11. 2015.....XXXXXXXXXXXXXXXXXXXXXXXXXXX56,114

PROGRESSIVE NORTHWESTERN INSURANCE COMPANY
SCHEDULE T - EXHIBIT OF PREMIUMS WRITTEN

Allocated by States and Territories

States, Etc.	1 Active Status	Gross Premiums, Including Policy and Membership Fees Less Return Premiums and Premiums on Policies Not Taken		4 Dividends Paid or Credited to Policyholders on Direct Business	5 Direct Losses Paid (Deducting Salvage)	6 Direct Losses Incurred	7 Direct Losses Unpaid	8 Finance and Service Charges not Included in Premiums	9 Direct Premiums Written for Federal Purchasing Groups (Incl. in Col. 2)
		2 Direct Premiums Written	3 Direct Premiums Earned						
1. Alabama.....AL	...N....								
2. Alaska.....AK	...L....	3,742,867	3,810,625		1,374,290	1,223,651	799,718	50,132	
3. Arizona.....AZ	...L....	1,500,850	1,734,737		1,103,885	938,239	451,239	25,620	
4. Arkansas.....AR	...L....	66,996,682	66,337,433		38,268,096	39,968,098	14,448,712	1,694,242	
5. California.....CA	...L....								
6. Colorado.....CO	...L....								
7. Connecticut.....CT	...L....	22,538,765	31,548,621		16,783,047	13,212,980	18,187,127	438,478	
8. Delaware.....DE	...L....				(1,262)	(1,262)			
9. District of Columbia.....DC	...L....								
10. Florida.....FL	...N....								
11. Georgia.....GA	...L....				(1,865)	(3,815)			
12. Hawaii.....HI	...L....	337,097	350,579		193,097	160,776	64,541	3,199	
13. Idaho.....ID	...L....	43,046,513	42,437,332		27,699,716	27,618,494	13,512,256	1,014,152	
14. Illinois.....IL	...N....								
15. Indiana.....IN	...L....	2,787,133	2,906,965		1,907,078	1,557,873	633,708	54,375	
16. Iowa.....IA	...L....								
17. Kansas.....KS	...L....	99,513,023	98,846,273		62,022,173	61,144,758	21,022,604	1,940,959	
18. Kentucky.....KY	...L....								
19. Louisiana.....LA	...L....								
20. Maine.....ME	...L....	55,784,645	55,775,605		32,762,222	31,268,969	19,392,528	1,050,628	
21. Maryland.....MD	...L....								
22. Massachusetts.....MA	...N....								
23. Michigan.....MI	...Q....								
24. Minnesota.....MN	...L....				29,181	672			
25. Mississippi.....MS	...L....								
26. Missouri.....MO	...L....	21,521,090	21,642,745		10,594,241	10,066,008	5,698,020	304,450	
27. Montana.....MT	...L....	45,319,448	45,099,856		27,529,144	29,544,475	13,788,783	653,387	
28. Nebraska.....NE	...L....								
29. Nevada.....NV	...L....	696,430	733,386		424,977	408,192	190,472	11,961	
30. New Hampshire.....NH	...N....								
31. New Jersey.....NJ	...L....								
32. New Mexico.....NM	...L....				134,501	134,506	104,714		
33. New York.....NY	...L....	34,733,706	34,511,062		16,676,253	16,213,016	10,923,015	660,637	
34. North Carolina.....NC	...L....								
35. North Dakota.....ND	...L....	45,412,157	45,422,991		24,496,909	24,511,768	10,774,830	696,231	
36. Ohio.....OH	...L....								
37. Oklahoma.....OK	...L....								
38. Oregon.....OR	...L....				(1,023)	(1,023)			
39. Pennsylvania.....PA	...N....								
40. Rhode Island.....RI	...L....	430,071	531,200		374,025	240,314	205,218	10,776	
41. South Carolina.....SC	...L....								
42. South Dakota.....SD	...L....								
43. Tennessee.....TN	...L....				(2,350)	(2,350)			
44. Texas.....TX	...L....								
45. Utah.....UT	...L....				(967)	(967)			
46. Vermont.....VT	...N....								
47. Virginia.....VA	...L....	3,614,015	3,779,454		1,697,549	1,706,455	1,626,432	64,506	
48. Washington.....WA	...L....	16,947,667	17,668,084		13,575,318	11,537,504	9,867,001	183,534	
49. West Virginia.....WV	...L....								
50. Wisconsin.....WI	...L....								
51. Wyoming.....WY	...N....								
52. American Samoa.....AS	...N....								
53. Guam.....GU	...N....								
54. Puerto Rico.....PR	...N....								
55. US Virgin Islands.....VI	...N....								
56. Northern Mariana Islands...MP	...N....								
57. Canada.....CAN	...N....								
58. Aggregate Other Alien.....OT	XXX	0	0	0	0	0	0	0	0
59. Totals.....	(a) ...42	464,922,159	473,136,948	0	277,638,235	271,447,331	141,690,918	8,857,267	0

DETAILS OF WRITE-INS

58001.	XXX							
58002.	XXX							
58003.	XXX							
58998. Summary of remaining write-ins for Line 58 from overflow page	XXX	0	0	0	0	0	0	0
58999. Totals (Lines 58001 thru 58003+ Line 58998) (Line 58 above)	XXX	0	0	0	0	0	0	0

(a) Insert the number of "L" responses except for Canada and Other Alien.

(L) - Licensed or Chartered - Licensed Insurance Carrier or Domiciled RRG; (R) - Registered - Non-domiciled RRGs; (Q) - Qualified - Qualified or Accredited Reinsurer;

(E) - Eligible - Reporting Entities eligible or approved to write Surplus Lines in the state; (N) - None of the above - Not allowed to write business in the state.

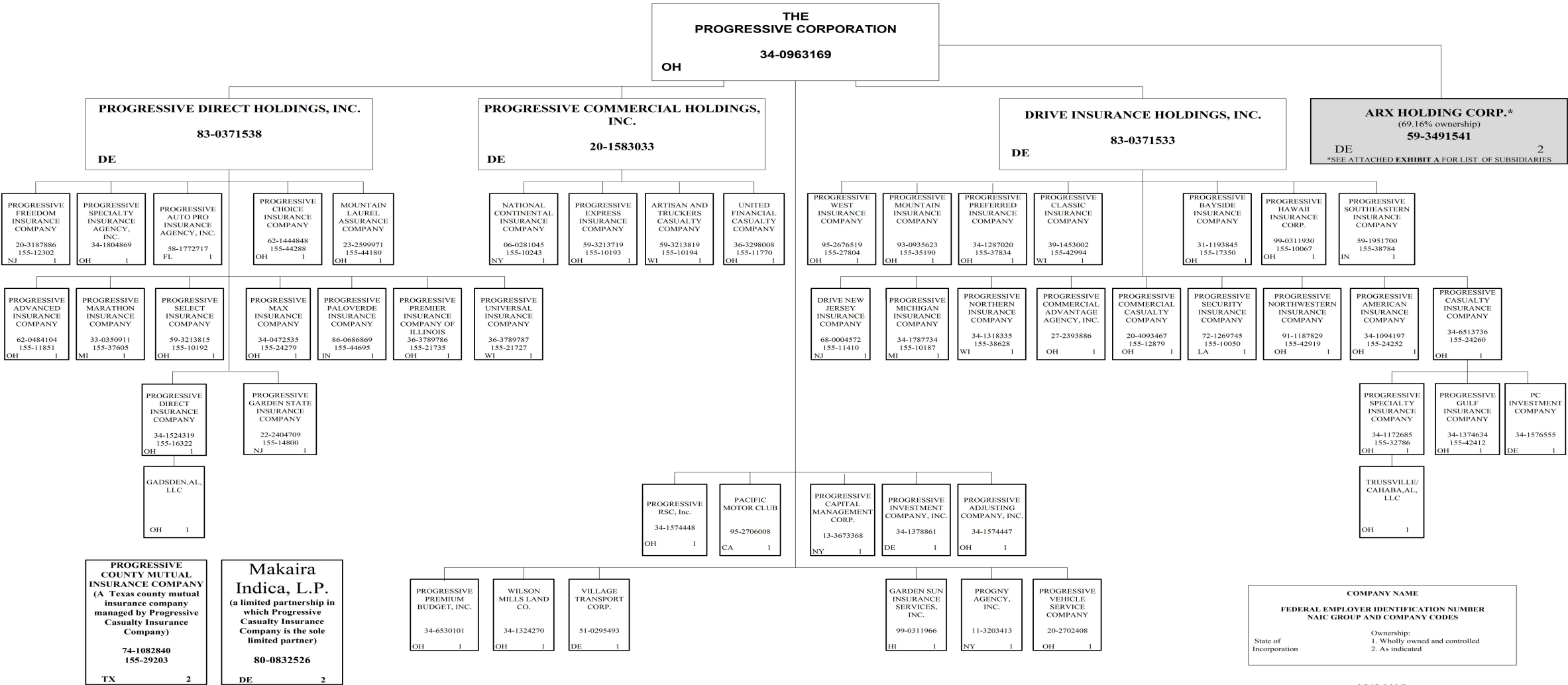
Explanation of Basis of Allocation of Premiums by States, etc.

Allocation on the basis of the location where the vehicle is principally garaged and used.

SCHEDULE Y – INFORMATION CONCERNING ACTIVITIES OF INSURER MEMBERS OF A HOLDING COMPANY GROUP

PART 1 – ORGANIZATIONAL CHART

96



SCHEDULE Y – INFORMATION CONCERNING ACTIVITIES OF INSURER MEMBERS OF A HOLDING COMPANY GROUP
PART 1 – ORGANIZATIONAL CHART

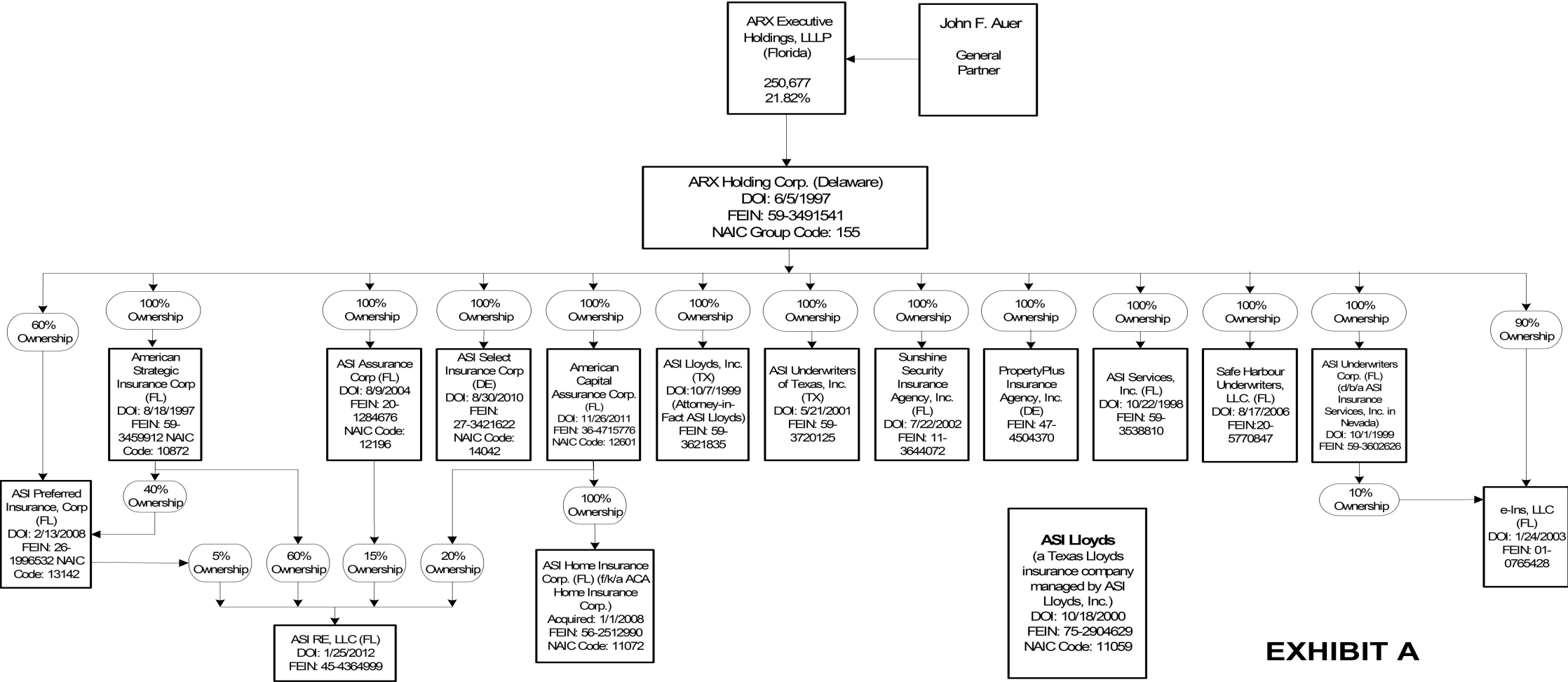


EXHIBIT A

2015 ALPHABETICAL INDEX -- PROPERTY & CASUALTY ANNUAL STATEMENT BLANK

Assets	2	Schedule P-Part 2G-Special Liability (Ocean Marine, Aircraft (All Perils), Boiler & Machinery)	58
Cash Flow	5	Schedule P-Part 2H-Section 1-Other Liability-Occurrence	58
Exhibit of Capital Gains (Losses)	12	Schedule P-Part 2H-Section 2-Other Liability-Claims-Made	58
Exhibit of Net Investment Income	12	Schedule P-Part 2I-Spec. Prop. (Fire, Allied Lines, Inland Marine, Earthquake, Burglary, Theft)	59
Exhibit of Nonadmitted Assets	13	Schedule P-Part 2J-Auto Physical Damage	59
Exhibit of Premiums and Losses (State Page)	19	Schedule P-Part 2K-Fidelity, Surety	59
Five-Year Historical Data	17	Schedule P-Part 2L-Other (Including Credit, Accident and Health)	59
General Interrogatories	15	Schedule P-Part 2M-International	59
Jurat Page	1	Schedule P-Part 2N-Reinsurance – Nonproportional Assumed Property	60
Liabilities, Surplus and Other Funds	3	Schedule P-Part 2O-Reinsurance – Nonproportional Assumed Liability	60
Notes To Financial Statements	14	Schedule P-Part 2P-Reinsurance – Nonproportional Assumed Financial Lines	60
Overflow Page For Write-ins	100	Schedule P-Part 2R-Section 1-Products Liability-Occurrence	61
Schedule A-Part 1	E01	Schedule P-Part 2R-Section 2-Products Liability-Claims-Made	61
Schedule A-Part 2	E02	Schedule P-Part 2S-Financial Guaranty/Mortgage Guaranty	61
Schedule A-Part 3	E03	Schedule P-Part 2T-Warranty	61
Schedule A-Verification Between Years	SI02	Schedule P-Part 3A-Homeowners/Farmowners	62
Schedule B-Part 1	E04	Schedule P-Part 3B-Private Passenger Auto Liability/Medical	62
Schedule B-Part 2	E05	Schedule P-Part 3C-Commercial Auto/Truck Liability/Medical	62
Schedule B-Part 3	E06	Schedule P-Part 3D-Workers' Compensation (Excluding Excess Workers Compensation)	62
Schedule B-Verification Between Years	SI02	Schedule P-Part 3E-Commercial Multiple Peril	62
Schedule BA-Part 1	E07	Schedule P-Part 3F-Section 1 –Medical Professional Liability-Occurrence	63
Schedule BA-Part 2	E08	Schedule P-Part 3F-Section 2-Medical Professional Liability-Claims-Made	63
Schedule BA-Part 3	E09	Schedule P-Part 3G-Special Liability (Ocean Marine, Aircraft (All Perils), Boiler & Machinery)	63
Schedule BA-Verification Between Years	SI03	Schedule P-Part 3H-Section 1-Other Liability-Occurrence	63
Schedule D-Part 1	E10	Schedule P-Part 3H-Section 2-Other Liability-Claims-Made	63
Schedule D-Part 1A-Section 1	SI05	Schedule P-Part 3I-Spec. Prop. (Fire, Allied Lines, Inland Marine, Earthquake, Burglary, Theft)	64
Schedule D-Part 1A-Section 2	SI08	Schedule P-Part 3J-Auto Physical Damage	64
Schedule D-Part 2-Section 1	E11	Schedule P-Part 3K-Fidelity/Surety	64
Schedule D-Part 2-Section 2	E12	Schedule P-Part 3L-Other (Including Credit, Accident and Health)	64
Schedule D-Part 3	E13	Schedule P-Part 3M-International	64
Schedule D-Part 4	E14	Schedule P-Part 3N-Reinsurance – Nonproportional Assumed Property	65
Schedule D-Part 5	E15	Schedule P-Part 3O-Reinsurance – Nonproportional Assumed Liability	65
Schedule D-Part 6-Section 1	E16	Schedule P-Part 3P-Reinsurance – Nonproportional Assumed Financial Lines	65
Schedule D-Part 6-Section 2	E16	Schedule P-Part 3R-Section 1-Products Liability-Occurrence	66
Schedule D-Summary By Country	SI04	Schedule P-Part 3R-Section 2-Products Liability-Claims-Made	66
Schedule D-Verification Between Years	SI03	Schedule P-Part 3S-Financial Guaranty/Mortgage Guaranty	66
Schedule DA-Part 1	E17	Schedule P-Part 3T-Warranty	66
Schedule DA-Verification Between Years	SI10	Schedule P-Part 4A-Homeowners/Farmowners	67
Schedule DB-Part A-Section 1	E18	Schedule P-Part 4B-Private Passenger Auto Liability/Medical	67
Schedule DB-Part A-Section 2	E19	Schedule P-Part 4C-Commercial Auto/Truck Liability/Medical	67
Schedule DB-Part A-Verification Between Years	SI11	Schedule P-Part 4D-Workers' Compensation (Excluding Excess Workers Compensation)	67
Schedule DB-Part B-Section 1	E20	Schedule P-Part 4E-Commercial Multiple Peril	67
Schedule DB-Part B-Section 2	E21	Schedule P-Part 4F-Section 1-Medical Professional Liability-Occurrence	68
Schedule DB-Part B-Verification Between Years	SI11	Schedule P-Part 4F-Section 2-Medical Professional Liability-Claims-Made	68
Schedule DB-Part C-Section 1	SI12	Schedule P-Part 4G-Special Liability (Ocean Marine, Aircraft (All Perils), Boiler & Machinery)	68
Schedule DB-Part C-Section 2	SI13	Schedule P-Part 4H-Section 1-Other Liability-Occurrence	68
Schedule DB-Part D-Section 1	E22	Schedule P-Part 4H-Section 2-Other Liability-Claims-Made	68
Schedule DB-Part D-Section 2	E23	Schedule P-Part 4I-Spec. Prop. (Fire, Allied Lines, Inland Marine, Earthquake, Burglary & Theft)	69
Schedule DB-Verification	SI14	Schedule P-Part 4J-Auto Physical Damage	69
Schedule DL-Part 1	E24	Schedule P-Part 4K-Fidelity/Surety	69
Schedule DL-Part 2	E25	Schedule P-Part 4L-Other (Including Credit, Accident and Health)	69
Schedule E-Part 1-Cash	E26	Schedule P-Part 4M-International	69
Schedule E-Part 2-Cash Equivalents	E27	Schedule P-Part 4N-Reinsurance – Nonproportional Assumed Property	70
Schedule E-Part 3-Special Deposits	E28	Schedule P-Part 4O-Reinsurance – Nonproportional Assumed Liability	70
Schedule E-Verification Between Years	SI15	Schedule P-Part 4P-Reinsurance – Nonproportional Assumed Financial Lines	70
Schedule F-Part 1	20	Schedule P-Part 4R-Section 1-Products Liability-Occurrence	71
Schedule F-Part 2	21	Schedule P-Part 4R-Section 2-Products Liability-Claims-Made	71
Schedule F-Part 3	22	Schedule P-Part 4S-Financial Guaranty/Mortgage Guaranty	71
Schedule F-Part 4	23	Schedule P-Part 4T-Warranty	71
Schedule F-Part 5	24	Schedule P-Part 5A-Homeowners/Farmowners	72
Schedule F-Part 6-Section 1	25	Schedule P-Part 5B-Private Passenger Auto Liability/Medical	73
Schedule F-Part 6-Section 2	26	Schedule P-Part 5C-Commercial Auto/Truck Liability/Medical	74
Schedule F-Part 7	27	Schedule P-Part 5D-Workers' Compensation (Excluding Excess Workers Compensation)	75
Schedule F-Part 8	28	Schedule P-Part 5E-Commercial Multiple Peril	76
Schedule F-Part 9	29	Schedule P-Part 5F-Medical Professional Liability-Claims-Made	78
Schedule H-Accident and Health Exhibit-Part 1	30	Schedule P-Part 5F-Medical Professional Liability-Occurrence	77
Schedule H-Part 2, Part 3 and Part 4	31	Schedule P-Part 5H-Other Liability-Claims-Made	80
Schedule H-Part 5-Health Claims	32	Schedule P-Part 5H-Other Liability-Occurrence	79
Schedule P-Part 1-Summary	33	Schedule P-Part 5R-Products Liability-Claims-Made	82
Schedule P-Part 1A-Homeowners/Farmowners	35	Schedule P-Part 5R-Products Liability-Occurrence	81
Schedule P-Part 1B-Private Passenger Auto Liability/Medical	36	Schedule P-Part 5T-Warranty	83
Schedule P-Part 1C-Commercial Auto/Truck Liability/Medical	37	Schedule P-Part 6C-Commercial Auto/Truck Liability/Medical	84
Schedule P-Part 1D-Workers' Compensation (Excluding Excess Workers Compensation)	38	Schedule P-Part 6D-Workers' Compensation (Excluding Excess Workers Compensation)	84
Schedule P-Part 1E-Commercial Multiple Peril	39	Schedule P-Part 6E-Commercial Multiple Peril	85
Schedule P-Part 1F-Section 1-Medical Professional Liability-Occurrence	40	Schedule P-Part 6H-Other Liability-Claims-Made	86
Schedule P-Part 1F-Section 2-Medical Professional Liability-Claims-Made	41	Schedule P-Part 6H-Other Liability-Occurrence	85
Schedule P-Part 1G-Special Liability (Ocean, Marine, Aircraft (All Perils), Boiler & Machinery)	42	Schedule P-Part 6M-International	86
Schedule P-Part 1H-Section 1-Other Liability-Occurrence	43	Schedule P-Part 6N-Reinsurance – Nonproportional Assumed Property	87
Schedule P-Part 1H-Section 2-Other Liability-Claims-Made	44	Schedule P-Part 6O-Reinsurance – Nonproportional Assumed Liability	87
Schedule P-Part 1I-Spec. Prop. (Fire, Allied Lines, Inland Marine, Earthquake, Burglary & Theft)	45	Schedule P-Part 6R-Products Liability-Claims-Made	88
Schedule P-Part 1J-Auto Physical Damage	46	Schedule P-Part 6R-Products Liability-Occurrence	88
Schedule P-Part 1K-Fidelity/Surety	47	Schedule P-Part 7A-Primary Loss Sensitive Contracts	89
Schedule P-Part 1L-Other (Including Credit, Accident and Health)	48	Schedule P-Part 7B-Reinsurance Loss Sensitive Contracts	91
Schedule P-Part 1M-International	49	Schedule P Interrogatories	93
Schedule P-Part 1N-Reinsurance – Nonproportional Assumed Property	50	Schedule T-Exhibit of Premiums Written	94
Schedule P-Part 1O-Reinsurance – Nonproportional Assumed Liability	51	Schedule T-Part 2-Interstate Compact	95
Schedule P-Part 1P-Reinsurance – Nonproportional Assumed Financial Lines	52	Schedule Y-Information Concerning Activities of Insurer Members of a Holding Company Group	96
Schedule P-Part 1R-Section 1-Products Liability-Occurrence	53	Schedule Y-Detail of Insurance Holding Company System	97
Schedule P-Part 1R-Section 2-Products Liability-Claims-Made	54	Schedule Y-Part 2-Summary of Insurer's Transactions With Any Affiliates	98
Schedule P-Part 1S-Financial Guaranty/Mortgage Guaranty	55	Statement of Income	4
Schedule P-Part 1T-Warranty	56	Summary Investment Schedule	SI01
Schedule P-Part 2, Part 3 and Part 4 - Summary	34	Supplemental Exhibits and Schedules Interrogatories	99
Schedule P-Part 2A-Homeowners/Farmowners	57	Underwriting and Investment Exhibit Part 1	6
Schedule P-Part 2B-Private Passenger Auto Liability/Medical	57	Underwriting and Investment Exhibit Part 1A	7
Schedule P-Part 2C-Commercial Auto/Truck Liability/Medical	57	Underwriting and Investment Exhibit Part 1B	8
Schedule P-Part 2D-Workers' Compensation (Excluding Excess Workers Compensation)	57	Underwriting and Investment Exhibit Part 2	9
Schedule P-Part 2E-Commercial Multiple Peril	57	Underwriting and Investment Exhibit Part 2A	10
Schedule P-Part 2F-Section 1-Medical Professional Liability-Occurrence	58	Underwriting and Investment Exhibit Part 3	11
Schedule P-Part 2F-Section 2-Medical Professional Liability-Claims-Made	58		