



ANNUAL STATEMENT  
For the Year Ended December 31, 2015  
OF THE CONDITION AND AFFAIRS OF THE  
CINCINNATI CASUALTY COMPANY

NAIC Group Code	0244	0244	NAIC Company Code	28665	Employer's ID Number	31-0826946
	(Current Period)	(Prior Period)				
Organized under the Laws of	Ohio			State of Domicile or Port of Entry	Ohio	
Country of Domicile	United States					
Incorporated/Organized	12/27/1972			Commenced Business	03/31/1973	
Statutory Home Office	6200 SOUTH GILMORE ROAD			FAIRFIELD, OH, US 45014-5141		
	(Street and Number)			(City or Town, State, Country and Zip Code)		
Main Administrative Office	6200 SOUTH GILMORE ROAD			FAIRFIELD, OH, US 45014-5141	513-870-2000	
	(Street and Number)			(City or Town, State, Country and Zip Code)	(Area Code)	(Telephone Number)
Mail Address	P.O. BOX 145496			CINCINNATI, OH, US 45250-5496		
	(Street and Number or P.O. Box)			(City or Town, State, Country and Zip Code)		
Primary Location of Books and Records	6200 SOUTH GILMORE ROAD			FAIRFIELD, OH, US 45014-5141	513-870-2000-4938	
	(Street and Number)			(City or Town, State, Country and Zip Code)	(Area Code)	(Telephone Number)
Internet Web Site Address	www.cinfin.com					
Statutory Statement Contact	Christy Scherpenberg			513-870-2000		
	(Name)			(Area Code) (Telephone Number) (Extension)		
	christina_scherpenberg@cinfin.com			513-603-5500		
	(E-Mail Address)			(Fax Number)		

OFFICERS

Name	Title	Name	Title
STEVEN JUSTUS JOHNSTON	CHIEF EXECUTIVE OFFICER, PRESIDENT	MICHAEL JAMES SEWELL	CHIEF FINANCIAL OFFICER, SENIOR VICE PRESIDENT
THERESA ANN HOFFER	VICE PRESIDENT, TREASURER		

OTHER OFFICERS

TERESA CURRIN CRACAS	SENIOR VICE PRESIDENT	DONALD JOSEPH DOYLE JR	SENIOR VICE PRESIDENT
MARTIN FRANCIS HOLLENBECK	SENIOR VICE PRESIDENT	JOHN SCOTT KELLINGTON	SENIOR VICE PRESIDENT
	SENIOR VICE PRESIDENT, CORPORATE SECRETARY		
LISA ANNE LOVE	SENIOR VICE PRESIDENT	ERIC NEIL MATHEWS	SENIOR VICE PRESIDENT
MARTIN JOSEPH MULLEN	SENIOR VICE PRESIDENT	JACOB FERDINAND SCHERER	EXECUTIVE VICE PRESIDENT
STEPHEN MICHAEL SPRAY	SENIOR VICE PRESIDENT	KENNETH WILLIAM STECHER	CHAIRMAN OF THE BOARD
CHARLES PHILIP STONEBURNER II			
WILLIAM HAROLD VAN DEN HEUVEL	SENIOR VICE PRESIDENT	TIMOTHY LEE TIMMEL	SENIOR VICE PRESIDENT
	SENIOR VICE PRESIDENT		

DIRECTORS OR TRUSTEES

WILLIAM FORREST BAHL	GREGORY THOMAS BIER	TERESA CURRIN CRACAS	DONALD JOSEPH DOYLE JR
MARTIN FRANCIS HOLLENBECK	STEVEN JUSTUS JOHNSTON	JOHN SCOTT KELLINGTON	LISA ANNE LOVE
WILLIAM RODNEY MCMULLEN	MARTIN JOSEPH MULLEN	DAVID PAUL OSBORN	JACOB FERDINAND SCHERER
JOHN JEFFERSON SCHIFF JR	THOMAS REID SCHIFF	MICHAEL JAMES SEWELL	STEPHEN MICHAEL SPRAY
		CHARLES PHILIP STONEBURNER II	
KENNETH WILLIAM STECHER	JOHN FREDRICK STEELE JR		TIMOTHY LEE TIMMEL
WILLIAM HAROLD VAN DEN HEUVEL #	LARRY RUSSEL WEBB		

State of .....OHIO.....  
County of .....BUTLER.....

ss

The officers of this reporting entity, being duly sworn, each depose and say that they are the described officers of said reporting entity, and that on the reporting period stated above, all of the herein described assets were the absolute property of the said reporting entity, free and clear from any liens or claims thereon, except as herein stated, and that this statement, together with related exhibits, schedules and explanations therein contained, annexed or referred to, is a full and true statement of all the assets and liabilities and of the condition and affairs of the said reporting entity as of the reporting period stated above, and of its income and deductions therefrom for the period ended, and have been completed in accordance with the NAIC Annual Statement Instructions and Accounting Practices and Procedures manual except to the extent that: (1) state law may differ; or, (2) that state rules or regulations require differences in reporting not related to accounting practices and procedures, according to the best of their information, knowledge and belief, respectively. Furthermore, the scope of this attestation by the described officers also includes the related corresponding electronic filing with the NAIC, when required, that is an exact copy (except for formatting differences due to electronic filing) of the enclosed statement. The electronic filing may be requested by various regulators in lieu of or in addition to the enclosed statement.

STEVEN J. JOHNSTON CHIEF EXECUTIVE OFFICER, PRESIDENT	MICHAEL J. SEWELL CHIEF FINANCIAL OFFICER, SENIOR VICE PRESIDENT	THERESA A. HOFFER SENIOR VICE PRESIDENT, TREASURER
Subscribed and sworn to before me this 19TH day of FEBRUARY, 2016		
a. Is this an original filing? Yes [ X ] No [ ]		
b. If no:		
1. State the amendment number		
2. Date filed		
3. Number of pages attached		

ASSETS

	Current Year			Prior Year
	1	2	3	4
	Assets	Nonadmitted Assets	Net Admitted Assets (Cols. 1 - 2)	Net Admitted Assets
1. Bonds (Schedule D).....	258,271,454		258,271,454	248,257,311
2. Stocks (Schedule D):				
2.1 Preferred stocks .....	.0		.0	.0
2.2 Common stocks .....	.81,578,622		.81,578,622	.90,539,502
3. Mortgage loans on real estate (Schedule B):				
3.1 First liens .....			.0	.0
3.2 Other than first liens .....			.0	.0
4. Real estate (Schedule A):				
4.1 Properties occupied by the company (less \$ ..... encumbrances).....			.0	.0
4.2 Properties held for the production of income (less \$ ..... encumbrances) .....			.0	.0
4.3 Properties held for sale (less \$ ..... encumbrances) .....			.0	.0
5. Cash (\$ .....8,899,856 , Schedule E-Part 1), cash equivalents (\$ .....0 , Schedule E-Part 2) and short-term investments (\$ .....0 , Schedule DA).....	.8,899,856		.8,899,856	.5,485,557
6. Contract loans (including \$ ..... premium notes).....			.0	.0
7. Derivatives (Schedule DB).....	.0		.0	.0
8. Other invested assets (Schedule BA) .....	.0		.0	.0
9. Receivables for securities .....			.0	.0
10. Securities lending reinvested collateral assets (Schedule DL).....			.0	.0
11. Aggregate write-ins for invested assets .....	.0	.0	.0	.0
12. Subtotals, cash and invested assets (Lines 1 to 11) .....	.348,749,932	.0	.348,749,932	.344,282,370
13. Title plants less \$ ..... charged off (for Title insurers only).....			.0	.0
14. Investment income due and accrued .....	.3,097,438		.3,097,438	.3,022,512
15. Premiums and considerations:				
15.1 Uncollected premiums and agents' balances in the course of collection .....			.0	.0
15.2 Deferred premiums, agents' balances and installments booked but deferred and not yet due (including \$ ..... earned but unbilled premiums).....			.0	.0
15.3 Accrued retrospective premiums (\$ ..... ) and contracts subject to redetermination (\$ ..... ) .....			.0	.0
16. Reinsurance:				
16.1 Amounts recoverable from reinsurers .....	.14,162,848		.14,162,848	.14,990,882
16.2 Funds held by or deposited with reinsured companies .....			.0	.0
16.3 Other amounts receivable under reinsurance contracts .....	.3,005,478		.3,005,478	.2,489,705
17. Amounts receivable relating to uninsured plans .....			.0	.0
18.1 Current federal and foreign income tax recoverable and interest thereon .....			.0	.0
18.2 Net deferred tax asset.....			.0	.0
19. Guaranty funds receivable or on deposit .....			.0	.0
20. Electronic data processing equipment and software.....			.0	.0
21. Furniture and equipment, including health care delivery assets (\$ ..... ) .....			.0	.0
22. Net adjustment in assets and liabilities due to foreign exchange rates .....			.0	.0
23. Receivables from parent, subsidiaries and affiliates .....	.8,655,270		.8,655,270	.6,983,309
24. Health care (\$ ..... ) and other amounts receivable.....			.0	.0
25. Aggregate write-ins for other-than-invested assets .....	.0	.0	.0	.0
26. Total assets excluding Separate Accounts, Segregated Accounts and Protected Cell Accounts (Lines 12 to 25).....	.377,670,966	.0	.377,670,966	.371,768,778
27. From Separate Accounts, Segregated Accounts and Protected Cell Accounts.....			.0	.0
28. Total (Lines 26 and 27)	.377,670,966	.0	.377,670,966	.371,768,778
DETAILS OF WRITE-INS				
1101. ....			.0	.0
1102. ....				
1103. ....				
1198. Summary of remaining write-ins for Line 11 from overflow page .....	.0	.0	.0	.0
1199. Totals (Lines 1101 through 1103 plus 1198) (Line 11 above) .....	.0	.0	.0	.0
2501. ....			.0	.0
2502. ....			.0	.0
2503. ....				
2598. Summary of remaining write-ins for Line 25 from overflow page .....	.0	.0	.0	.0
2599. Totals (Lines 2501 through 2503 plus 2598) (Line 25 above) .....	.0	.0	.0	.0

LIABILITIES, SURPLUS AND OTHER FUNDS

	1 Current Year	2 Prior Year
1. Losses (Part 2A, Line 35, Column 8) .....	0	0
2. Reinsurance payable on paid losses and loss adjustment expenses (Schedule F, Part 1, Column 6) .....	145,138	0
3. Loss adjustment expenses (Part 2A, Line 35, Column 9) .....	0	0
4. Commissions payable, contingent commissions and other similar charges .....		0
5. Other expenses (excluding taxes, licenses and fees) .....	3,683	1,987
6. Taxes, licenses and fees (excluding federal and foreign income taxes) .....		0
7.1 Current federal and foreign income taxes (including \$ 92,574 on realized capital gains (losses)) .....	349,403	219,439
7.2 Net deferred tax liability .....	12,474,686	15,651,468
8. Borrowed money \$ and interest thereon \$ .....		0
9. Unearned premiums (Part 1A, Line 38, Column 5) (after deducting unearned premiums for ceded reinsurance of \$ 142,296,521 and including warranty reserves of \$ and accrued accident and health experience rating refunds including \$ for medical loss ratio rebate per the Public Health Service Act) .....	0	0
10. Advance premium .....		0
11. Dividends declared and unpaid:		
11.1 Stockholders .....		0
11.2 Policyholders .....		0
12. Ceded reinsurance premiums payable (net of ceding commissions) .....	25,208,102	24,125,804
13. Funds held by company under reinsurance treaties (Schedule F, Part 3, Column 19) .....		0
14. Amounts withheld or retained by company for account of others .....	1,115,659	1,548,637
15. Remittances and items not allocated .....		0
16. Provision for reinsurance (including \$ certified) (Schedule F, Part 8) .....	0	0
17. Net adjustments in assets and liabilities due to foreign exchange rates .....	0	0
18. Drafts outstanding .....	0	0
19. Payable to parent, subsidiaries and affiliates .....		0
20. Derivatives .....	0	0
21. Payable for securities .....	1,870,912	0
22. Payable for securities lending .....	0	0
23. Liability for amounts held under uninsured plans .....		0
24. Capital notes \$ and interest thereon \$ .....		0
25. Aggregate write-ins for liabilities .....	131	850
26. Total liabilities excluding protected cell liabilities (Lines 1 through 25) .....	41,167,715	41,548,185
27. Protected cell liabilities .....		0
28. Total liabilities (Lines 26 and 27) .....	41,167,715	41,548,185
29. Aggregate write-ins for special surplus funds .....	0	0
30. Common capital stock .....	3,750,000	3,750,000
31. Preferred capital stock .....		0
32. Aggregate write-ins for other-than-special surplus funds .....	0	0
33. Surplus notes .....	0	0
34. Gross paid in and contributed surplus .....	18,000,000	18,000,000
35. Unassigned funds (surplus) .....	314,753,250	308,470,593
36. Less treasury stock, at cost:		
36.1 shares common (value included in Line 30 \$ ) .....		0
36.2 shares preferred (value included in Line 31 \$ ) .....		0
37. Surplus as regards policyholders (Lines 29 to 35, less 36) (Page 4, Line 39) .....	336,503,250	330,220,593
38. Totals (Page 2, Line 28, Col. 3) .....	377,670,966	371,768,778
DETAILS OF WRITE-INS		
2501. Accounts Payable--Other .....	131	850
2502. ....		0
2503. ....		0
2598. Summary of remaining write-ins for Line 25 from overflow page .....	0	0
2599. Totals (Lines 2501 through 2503 plus 2598) (Line 25 above) .....	131	850
2901. ....		
2902. ....		
2903. ....		
2998. Summary of remaining write-ins for Line 29 from overflow page .....	0	0
2999. Totals (Lines 2901 through 2903 plus 2998) (Line 29 above) .....	0	0
3201. ....		
3202. ....		
3203. ....		
3298. Summary of remaining write-ins for Line 32 from overflow page .....	0	0
3299. Totals (Lines 3201 through 3203 plus 3298) (Line 32 above) .....	0	0

STATEMENT OF INCOME

	1 Current Year	2 Prior Year
UNDERWRITING INCOME		
1. Premiums earned (Part 1, Line 35, Column 4) .....	0	0
DEDUCTIONS:		
2. Losses incurred (Part 2, Line 35, Column 7) .....	0	0
3. Loss adjustment expenses incurred (Part 3, Line 25, Column 1) .....	0	0
4. Other underwriting expenses incurred (Part 3, Line 25, Column 2) .....	0	0
5. Aggregate write-ins for underwriting deductions .....	0	0
6. Total underwriting deductions (Lines 2 through 5) .....	0	0
7. Net income of protected cells .....		0
8. Net underwriting gain (loss) (Line 1 minus Line 6 plus Line 7) .....	0	0
INVESTMENT INCOME		
9. Net investment income earned (Exhibit of Net Investment Income, Line 17) .....	13,040,146	12,697,926
10. Net realized capital gains (losses) less capital gains tax of \$ .....884,776 (Exhibit of Capital Gains (Losses)).....	1,643,155	1,729,670
11. Net investment gain (loss) (Lines 9 + 10) .....	14,683,301	14,427,596
OTHER INCOME		
12. Net gain (loss) from agents' or premium balances charged off (amount recovered \$ ..... amount charged off \$ ..... ) .....		0
13. Finance and service charges not included in premiums .....		0
14. Aggregate write-ins for miscellaneous income .....	0	0
15. Total other income (Lines 12 through 14) .....	0	0
16. Net income before dividends to policyholders, after capital gains tax and before all other federal and foreign income taxes (Lines 8 + 11 + 15) .....	14,683,301	14,427,596
17. Dividends to policyholders .....		0
18. Net income, after dividends to policyholders, after capital gains tax and before all other federal and foreign income taxes (Line 16 minus Line 17) .....	14,683,301	14,427,596
19. Federal and foreign income taxes incurred .....	2,454,628	2,420,523
20. Net income (Line 18 minus Line 19) (to Line 22) .....	12,228,673	12,007,072
CAPITAL AND SURPLUS ACCOUNT		
21. Surplus as regards policyholders, December 31 prior year (Page 4, Line 39, Column 2) .....	330,220,593	316,526,228
22. Net income (from Line 20) .....	12,228,673	12,007,072
23. Net transfers (to) from Protected Cell accounts .....		0
24. Change in net unrealized capital gains or (losses) less capital gains tax of \$ ..... (3,192,979) .....	(5,929,819)	1,673,855
25. Change in net unrealized foreign exchange capital gain (loss) .....		0
26. Change in net deferred income tax .....	(16,197)	13,437
27. Change in nonadmitted assets (Exhibit of Nonadmitted Assets, Line 28, Col. 3) .....	0	0
28. Change in provision for reinsurance (Page 3, Line 16, Column 2 minus Column 1) .....	0	0
29. Change in surplus notes .....		0
30. Surplus (contributed to) withdrawn from protected cells .....		0
31. Cumulative effect of changes in accounting principles .....		0
32. Capital changes:		
32.1 Paid in .....		0
32.2 Transferred from surplus (Stock Dividend) .....		0
32.3 Transferred to surplus .....		0
33. Surplus adjustments:		
33.1 Paid in .....		0
33.2 Transferred to capital (Stock Dividend) .....		0
33.3 Transferred from capital .....		0
34. Net remittances from or (to) Home Office .....		0
35. Dividends to stockholders .....		0
36. Change in treasury stock (Page 3, Lines 36.1 and 36.2, Column 2 minus Column 1) .....	0	0
37. Aggregate write-ins for gains and losses in surplus .....	0	0
38. Change in surplus as regards policyholders for the year (Lines 22 through 37) .....	6,282,657	13,694,365
39. Surplus as regards policyholders, December 31 current year (Line 21 plus Line 38) (Page 3, Line 37) .....	336,503,250	330,220,593
DETAILS OF WRITE-INS		
0501. ....		
0502. ....		
0503. ....		
0598. Summary of remaining write-ins for Line 5 from overflow page .....	0	0
0599. Totals (Lines 0501 through 0503 plus 0598) (Line 5 above) .....	0	0
1401. ....		0
1402. ....		0
1403. ....		0
1498. Summary of remaining write-ins for Line 14 from overflow page .....	0	0
1499. Totals (Lines 1401 through 1403 plus 1498) (Line 14 above) .....	0	0
3701. ....		
3702. ....		
3703. ....		
3798. Summary of remaining write-ins for Line 37 from overflow page .....	0	0
3799. Totals (Lines 3701 through 3703 plus 3798) (Line 37 above) .....	0	0

CASH FLOW

	1 Current Year	2 Prior Year
<b>Cash from Operations</b>		
1. Premiums collected net of reinsurance .....	1,082,298	(4,106,256)
2. Net investment income .....	13,838,495	13,342,921
3. Miscellaneous income .....	0	0
4. Total (Lines 1 through 3) .....	14,920,793	9,236,665
5. Benefit and loss related payments .....	(457,400)	834,835
6. Net transfers to Separate Accounts, Segregated Accounts and Protected Cell Accounts .....	0	0
7. Commissions, expenses paid and aggregate write-ins for deductions .....	0	0
8. Dividends paid to policyholders .....	0	0
9. Federal and foreign income taxes paid (recovered) net of \$ 896,311 tax on capital gains (losses) .....	3,209,439	3,155,820
10. Total (Lines 5 through 9) .....	2,752,039	3,990,655
11. Net cash from operations (Line 4 minus Line 10) .....	12,168,754	5,246,010
<b>Cash from Investments</b>		
12. Proceeds from investments sold, matured or repaid:		
12.1 Bonds .....	38,089,780	23,763,320
12.2 Stocks .....	6,372,978	6,075,683
12.3 Mortgage loans .....	0	0
12.4 Real estate .....	0	0
12.5 Other invested assets .....	0	0
12.6 Net gains or (losses) on cash, cash equivalents and short-term investments .....	0	0
12.7 Miscellaneous proceeds .....	1,870,912	2,562
12.8 Total investment proceeds (Lines 12.1 to 12.7) .....	46,333,670	29,841,566
13. Cost of investments acquired (long-term only):		
13.1 Bonds .....	48,874,159	35,074,827
13.2 Stocks .....	4,108,308	2,057,229
13.3 Mortgage loans .....	0	0
13.4 Real estate .....	0	0
13.5 Other invested assets .....	0	0
13.6 Miscellaneous applications .....	0	0
13.7 Total investments acquired (Lines 13.1 to 13.6) .....	52,982,467	37,132,055
14. Net increase (decrease) in contract loans and premium notes .....	0	0
15. Net cash from investments (Line 12.8 minus Line 13.7 minus Line 14) .....	(6,648,797)	(7,290,490)
<b>Cash from Financing and Miscellaneous Sources</b>		
16. Cash provided (applied):		
16.1 Surplus notes, capital notes .....	0	0
16.2 Capital and paid in surplus, less treasury stock .....	0	0
16.3 Borrowed funds .....	0	0
16.4 Net deposits on deposit-type contracts and other insurance liabilities .....	0	0
16.5 Dividends to stockholders .....	0	0
16.6 Other cash provided (applied) .....	(2,105,658)	5,361,408
17. Net cash from financing and miscellaneous sources (Lines 16.1 to 16.4 minus Line 16.5 plus Line 16.6) .....	(2,105,658)	5,361,408
<b>RECONCILIATION OF CASH, CASH EQUIVALENTS AND SHORT-TERM INVESTMENTS</b>		
18. Net change in cash, cash equivalents and short-term investments (Line 11, plus Lines 15 and 17) .....	3,414,299	3,316,928
19. Cash, cash equivalents and short-term investments:		
19.1 Beginning of year .....	5,485,557	2,168,628
19.2 End of year (Line 18 plus Line 19.1) .....	8,899,856	5,485,557

Part 1  
**NONE**

Part 1A  
**NONE**

UNDERWRITING AND INVESTMENT EXHIBIT

PART 1B - PREMIUMS WRITTEN

Line of Business		1 Direct Business (a)	Reinsurance Assumed		Reinsurance Ceded		6 Net Premiums Written Cols. 1 + 2 + 3 - 4 - 5
			2 From Affiliates	3 From Non-Affiliates	4 To Affiliates	5 To Non-Affiliates	
1.	Fire .....	3,266,651			3,266,651		0
2.	Allied lines .....	2,947,519			2,947,519		0
3.	Farmowners multiple peril .....						0
4.	Homeowners multiple peril .....						0
5.	Commercial multiple peril .....	90,702,636			90,702,636		0
6.	Mortgage guaranty .....						0
8.	Ocean marine .....						0
9.	Inland marine .....	1,481,849			1,481,849		0
10.	Financial guaranty .....						0
11.1	Medical professional liability-occurrence .....	1,725,119			1,725,119		0
11.2	Medical professional liability-claims-made .....	11,544			11,544		0
12.	Earthquake .....	94,856			94,856		0
13.	Group accident and health .....						0
14.	Credit accident and health (group and individual) .....						0
15.	Other accident and health .....						0
16.	Workers' compensation .....	143,413,851		2,814	143,416,665		0
17.1	Other liability-occurrence .....	26,722,531			26,722,531		0
17.2	Other liability-claims-made .....	1,085,818			1,085,818		0
17.3	Excess workers' compensation .....						0
18.1	Products liability-occurrence .....	8,109,696			8,109,696		0
18.2	Products liability-claims-made .....						0
19.1,19.2	Private passenger auto liability .....	15,682			15,682		0
19.3,19.4	Commercial auto liability .....	24,399,097			24,399,097		0
21.	Auto physical damage .....	8,513,777			8,513,777		0
22.	Aircraft (all perils) .....						0
23.	Fidelity .....						0
24.	Surety .....	68,210			68,210		0
26.	Burglary and theft .....	113,187			113,187		0
27.	Boiler and machinery .....	412,661			412,661		0
28.	Credit .....						0
29.	International .....						0
30.	Warranty .....						0
31.	Reinsurance-nonproportional assumed property .....	XXX					0
32.	Reinsurance-nonproportional assumed liability .....	XXX					0
33.	Reinsurance-nonproportional assumed financial lines .....	XXX					0
34.	Aggregate write-ins for other lines of business .....	0	0	0	0	0	0
35.	TOTALS	313,084,684	0	2,814	313,087,498	0	0
DETAILS OF WRITE-INS							
3401.	.....						
3402.	.....						
3403.	.....						
3498.	Sum. of remaining write-ins for Line 34 from overflow page .....	0	0	0	0	0	0
3499.	Totals (Lines 3401 through 3403 plus 3498) (Line 34 above)	0	0	0	0	0	0

(a) Does the company's direct premiums written include premiums recorded on an installment basis?    Yes    [    ]    No    [ X ]

If yes: 1. The amount of such installment premiums \$ .....

2. Amount at which such installment premiums would have been reported had they been recorded on an annualized basis \$ .....

ANNUAL STATEMENT FOR THE YEAR 2015 OF THE CINCINNATI CASUALTY COMPANY

UNDERWRITING AND INVESTMENT EXHIBIT

PART 2 - LOSSES PAID AND INCURRED

Line of Business		Losses Paid Less Salvage				5  Net Losses Unpaid Current Year (Part 2A, Col. 8)	6  Net Losses Unpaid Prior Year	7  Losses Incurred Current Year (Cols. 4 + 5 - 6)	8  Percentage of Losses Incurred (Col. 7, Part 2) to Premiums Earned (Col. 4, Part 1)
		1  Direct Business	2  Reinsurance Assumed	3  Reinsurance Recovered	4  Net Payments (Cols. 1 + 2 - 3)				
1.	Fire .....	1,492,217		1,492,217	.0	0	0	0	.00
2.	Allied lines .....	1,190,155		1,190,155	.0	0	0	0	.00
3.	Farmowners multiple peril .....				.0	0	0	0	.00
4.	Homeowners multiple peril .....	(117)		(117)	.0	0	0	0	.00
5.	Commercial multiple peril .....	39,647,971		39,647,971	.0	0	0	0	.00
6.	Mortgage guaranty .....				.0	0	0	0	.00
8.	Ocean marine .....				.0	0	0	0	.00
9.	Inland marine .....	178,864		178,864	.0	0	0	0	.00
10.	Financial guaranty .....				.0	0	0	0	.00
11.1	Medical professional liability-occurrence .....	318,405		318,405	.0	0	0	0	.00
11.2	Medical professional liability-claims-made .....				.0	0	0	0	.00
12.	Earthquake .....				.0	0	0	0	.00
13.	Group accident and health .....				.0	0	0	0	.00
14.	Credit accident and health (group and individual) .....				.0	0	0	0	.00
15.	Other accident and health .....				.0	0	0	0	.00
16.	Workers' compensation .....	75,108,500	513,946	75,622,446	.0	0	0	0	.00
17.1	Other liability-occurrence .....	6,053,098		6,053,098	.0	0	0	0	.00
17.2	Other liability-claims-made .....	44,703		44,703	.0	0	0	0	.00
17.3	Excess workers' compensation .....				.0	0	0	0	.00
18.1	Products liability-occurrence .....	1,460,966		1,460,966	.0	0	0	0	.00
18.2	Products liability-claims-made .....				.0	0	0	0	.00
19.1,19.2	Private passenger auto liability .....	273,584		273,584	.0	0	0	0	.00
19.3,19.4	Commercial auto liability .....	11,551,700		11,551,700	.0	0	0	0	.00
21.	Auto physical damage .....	5,578,741		5,578,741	.0	0	0	0	.00
22.	Aircraft (all perils) .....				.0	0	0	0	.00
23.	Fidelity .....				.0	0	0	0	.00
24.	Surety .....				.0	0	0	0	.00
26.	Burglary and theft .....	45,262		45,262	.0	0	0	0	.00
27.	Boiler and machinery .....	66,037		66,037	.0	0	0	0	.00
28.	Credit .....				.0	0	0	0	.00
29.	International .....				.0	0	0	0	.00
30.	Warranty .....				.0	0	0	0	.00
31.	Reinsurance-nonproportional assumed property .....	XXX			.0	0	0	0	.00
32.	Reinsurance-nonproportional assumed liability .....	XXX			.0	0	0	0	.00
33.	Reinsurance-nonproportional assumed financial lines .....	XXX			.0	0	0	0	.00
34.	Aggregate write-ins for other lines of business .....	0	0	0	0	0	0	0	0.0
35.	TOTALS .....	143,010,085	513,946	143,524,031	0	0	0	0	0.0
DETAILS OF WRITE-INS									
3401.	.....								
3402.	.....								
3403.	.....								
3498.	Sum. of remaining write-ins for Line 34 from overflow page .....	0	0	0	0	0	0	0	.00
3499.	Totals (Lines 3401 through 3403 + 3498) (Line 34 above) .....	0	0	0	0	0	0	0	0.0



ANNUAL STATEMENT FOR THE YEAR 2015 OF THE CINCINNATI CASUALTY COMPANY

UNDERWRITING AND INVESTMENT EXHIBIT  
PART 2A - UNPAID LOSSES AND LOSS ADJUSTMENT EXPENSES

		Reported Losses				Incurred But Not Reported			8	9
		1	2	3	4	5	6	7		
Line of Business		Direct	Reinsurance Assumed	Deduct Reinsurance Recoverable	Net Losses Excl. Incurred But Not Reported (Cols. 1 + 2 - 3)	Direct	Reinsurance Assumed	Reinsurance Ceded	Net Losses Unpaid (Cols. 4 + 5 + 6 - 7)	Net Unpaid Loss Adjustment Expenses
1.	Fire .....	527,793		527,793	.0				.0	
2.	Allied lines .....	213,583		213,583	.0				.0	
3.	Farmowners multiple peril .....				.0				.0	
4.	Homeowners multiple peril .....	55,869		55,869	.0				.0	
5.	Commercial multiple peril .....	48,643,048		48,643,048	.0	1,012,000		1,012,000	.0	
6.	Mortgage guaranty .....				.0				.0	
8.	Ocean marine .....				.0				.0	
9.	Inland marine .....	10,649		10,649	.0				.0	
10.	Financial guaranty .....				.0				.0	
11.1	Medical professional liability-occurrence .....	1,364,868		1,364,868	.0	433,000		433,000	.0	
11.2	Medical professional liability-claims-made .....	23,638		23,638	.0				.0	
12.	Earthquake .....				.0				.0	
13.	Group accident and health .....				.0				(a)	.0
14.	Credit accident and health (group and individual) .....				.0				.0	
15.	Other accident and health .....				.0				(a)	.0
16.	Workers' compensation .....	161,197,044	5,216,738	166,413,782	.0	244,777,000	4,312,022	249,089,022	.0	
17.1	Other liability-occurrence .....	10,060,133		10,060,133	.0	14,145,000		14,145,000	.0	
17.2	Other liability-claims-made .....	195,825		195,825	.0				.0	
17.3	Excess workers' compensation .....				.0				.0	
18.1	Products liability-occurrence .....	4,243,560		4,243,560	.0	6,528,000		6,528,000	.0	
18.2	Products liability-claims-made .....				.0				.0	
19.1,19.2	Private passenger auto liability .....	1,294,738		1,294,738	.0				.0	
19.3,19.4	Commercial auto liability .....	15,795,595		15,795,595	.0	3,525,000		3,525,000	.0	
21.	Auto physical damage .....	544,120		544,120	.0	(1,000)		(1,000)	.0	
22.	Aircraft (all perils) .....				.0				.0	
23.	Fidelity .....				.0				.0	
24.	Surety .....				.0				.0	
26.	Burglary and theft .....	2,738		2,738	.0				.0	
27.	Boiler and machinery .....				.0				.0	
28.	Credit .....				.0				.0	
29.	International .....				.0				.0	
30.	Warranty .....				.0				.0	
31.	Reinsurance-nonproportional assumed property .....	XXX			.0	XXX			.0	
32.	Reinsurance-nonproportional assumed liability .....	XXX			.0	XXX			.0	
33.	Reinsurance-nonproportional assumed financial lines .....	XXX			.0	XXX			.0	
34.	Aggregate write-ins for other lines of business .....	.0	.0	.0	.0	.0	.0	.0	.0	.0
35.	TOTALS .....	244,173,201	5,216,738	249,389,939	0	270,419,000	4,312,022	274,731,022	0	0
DETAILS OF WRITE-INS										
3401.	.....									
3402.	.....									
3403.	.....									
3498.	Sum. of remaining write-ins for Line 34 from overflow page .....	.0	.0	.0	.0	.0	.0	.0	.0	.0
3499.	Totals (Lines 3401 through 3403 + 3498) (Line 34 above) .....	0	0	0	0	0	0	0	0	0

(a) Including \$ .....for present value of life indemnity claims.

UNDERWRITING AND INVESTMENT EXHIBIT

PART 3 - EXPENSES

	1	2	3	4
	Loss Adjustment Expenses	Other Underwriting Expenses	Investment Expenses	Total
1. Claim adjustment services:				
1.1 Direct .....	16,452,488			16,452,488
1.2 Reinsurance assumed .....				0
1.3 Reinsurance ceded .....	16,452,488			16,452,488
1.4 Net claim adjustment services (1.1 + 1.2 - 1.3) .....	0	0	0	0
2. Commission and brokerage:				
2.1 Direct, excluding contingent .....		32,599,529		32,599,529
2.2 Reinsurance assumed, excluding contingent .....		17,885		17,885
2.3 Reinsurance ceded, excluding contingent .....		32,617,414		32,617,414
2.4 Contingent-direct .....		9,200,000		9,200,000
2.5 Contingent-reinsurance assumed .....				0
2.6 Contingent-reinsurance ceded .....		9,200,000		9,200,000
2.7 Policy and membership fees .....				0
2.8 Net commission and brokerage (2.1 + 2.2 - 2.3 + 2.4 + 2.5 - 2.6 + 2.7) .....	0	0	0	0
3. Allowances to manager and agents .....				0
4. Advertising .....				0
5. Boards, bureaus and associations .....			890	890
6. Surveys and underwriting reports .....				0
7. Audit of assureds' records .....			(27)	(27)
8. Salary and related items:				
8.1 Salaries .....			98,975	98,975
8.2 Payroll taxes .....			4,684	4,684
9. Employee relations and welfare .....			7,829	7,829
10. Insurance .....				0
11. Directors' fees .....				0
12. Travel and travel items .....			654	654
13. Rent and rent items .....				0
14. Equipment .....			252	252
15. Cost or depreciation of EDP equipment and software .....			46,186	46,186
16. Printing and stationery .....				0
17. Postage, telephone and telegraph, exchange and express .....			73	73
18. Legal and auditing .....			19,682	19,682
19. Totals (Lines 3 to 18) .....	0	0	179,198	179,198
20. Taxes, licenses and fees:				
20.1 State and local insurance taxes deducting guaranty association credits of \$ .....				0
20.2 Insurance department licenses and fees .....				0
20.3 Gross guaranty association assessments .....				0
20.4 All other (excluding federal and foreign income and real estate) .....				0
20.5 Total taxes, licenses and fees (20.1 + 20.2 + 20.3 + 20.4) .....	0	0	0	0
21. Real estate expenses .....				0
22. Real estate taxes .....				0
23. Reimbursements by uninsured plans .....				0
24. Aggregate write-ins for miscellaneous expenses .....	0	0	0	0
25. Total expenses incurred .....	0	0	179,198	(a) 179,198
26. Less unpaid expenses-current year .....	0		3,683	3,683
27. Add unpaid expenses-prior year .....	0	0	1,987	1,987
28. Amounts receivable relating to uninsured plans, prior year .....	0	0	0	0
29. Amounts receivable relating to uninsured plans, current year .....				0
30. TOTAL EXPENSES PAID (Lines 25 - 26 + 27 - 28 + 29)	0	0	177,502	177,502
DETAILS OF WRITE-INS				
2401. ....				0
2402. ....				0
2403. ....				
2498. Summary of remaining write-ins for Line 24 from overflow page .....	0	0	0	0
2499. Totals (Lines 2401 through 2403 plus 2498) (Line 24 above)	0	0	0	0

(a) Includes management fees of \$ ..... to affiliates and \$ .....to non-affiliates.

EXHIBIT OF NET INVESTMENT INCOME

		1	2
		Collected During Year	Earned During Year
1.	U.S. Government bonds .....	(a).....38,854	.....38,825
1.1	Bonds exempt from U.S. tax .....	(a).....5,197,857	.....5,240,835
1.2	Other bonds (unaffiliated) .....	(a).....5,231,169	.....5,317,983
1.3	Bonds of affiliates .....	(a).....0	.....
2.1	Preferred stocks (unaffiliated) .....	(b).....0	.....
2.11	Preferred stocks of affiliates .....	(b).....0	.....
2.2	Common stocks (unaffiliated) .....	.....2,632,090	.....2,621,702
2.21	Common stocks of affiliates .....	.....0	.....
3.	Mortgage loans .....	(c).....	.....
4.	Real estate .....	(d).....	.....
5.	Contract loans .....	.....	.....
6.	Cash, cash equivalents and short-term investments .....	(e).....	.....
7.	Derivative instruments .....	(f).....	.....
8.	Other invested assets .....	.....	.....
9.	Aggregate write-ins for investment income .....	.....0	.....0
10.	Total gross investment income .....	13,099,970	13,219,344
11.	Investment expenses .....		(g).....179,198
12.	Investment taxes, licenses and fees, excluding federal income taxes .....		(g).....
13.	Interest expense .....		(h).....
14.	Depreciation on real estate and other invested assets .....		(i).....
15.	Aggregate write-ins for deductions from investment income .....		.....0
16.	Total deductions (Lines 11 through 15) .....		.....179,198
17.	Net investment income (Line 10 minus Line 16) .....		13,040,146
DETAILS OF WRITE-INS			
0901.	.....	.....	.....
0902.	.....	.....	.....
0903.	.....	.....	.....
0998.	Summary of remaining write-ins for Line 9 from overflow page .....	.....0	.....0
0999.	Totals (Lines 0901 through 0903 plus 0998) (Line 9 above) .....	0	0
1501.	.....		.....
1502.	.....		.....
1503.	.....		.....
1598.	Summary of remaining write-ins for Line 15 from overflow page .....		.....0
1599.	Totals (Lines 1501 through 1503 plus 1598) (Line 15 above) .....		0

(a) Includes \$ .....91,783 accrual of discount less \$ .....963,361 amortization of premium and less \$ .....10,767 paid for accrued interest on purchases.  
(b) Includes \$ ..... accrual of discount less \$ ..... amortization of premium and less \$ .....0 paid for accrued dividends on purchases.  
(c) Includes \$ .....0 accrual of discount less \$ .....0 amortization of premium and less \$ ..... paid for accrued interest on purchases.  
(d) Includes \$ ..... for company's occupancy of its own buildings; and excludes \$ ..... interest on encumbrances.  
(e) Includes \$ ..... accrual of discount less \$ ..... amortization of premium and less \$ ..... paid for accrued interest on purchases.  
(f) Includes \$ ..... accrual of discount less \$ ..... amortization of premium.  
(g) Includes \$ ..... investment expenses and \$ ..... investment taxes, licenses and fees, excluding federal income taxes, attributable to segregated and Separate Accounts.  
(h) Includes \$ ..... interest on surplus notes and \$ ..... interest on capital notes.  
(i) Includes \$ ..... depreciation on real estate and \$ ..... depreciation on other invested assets.

EXHIBIT OF CAPITAL GAINS (LOSSES)

		1	2	3	4	5
		Realized Gain (Loss) On Sales or Maturity	Other Realized Adjustments	Total Realized Capital Gain (Loss) (Columns 1 + 2)	Change in Unrealized Capital Gain (Loss)	Change in Unrealized Foreign Exchange Capital Gain (Loss)
1.	U.S. Government bonds .....			.....0		
1.1	Bonds exempt from U.S. tax .....	.....25,402		.....25,402		
1.2	Other bonds (unaffiliated) .....	.....68,375		.....68,375	.....7,566	
1.3	Bonds of affiliates .....	.....0	.....0	.....0	.....0	.....0
2.1	Preferred stocks (unaffiliated) .....	.....0	.....0	.....0	.....0	.....0
2.11	Preferred stocks of affiliates .....	.....0	.....0	.....0	.....0	.....0
2.2	Common stocks (unaffiliated) .....	.....2,433,653	.....0	.....2,433,653	.....(9,130,364)	.....0
2.21	Common stocks of affiliates .....	.....0	.....0	.....0	.....0	.....0
3.	Mortgage loans .....	.....0	.....0	.....0	.....0	.....0
4.	Real estate .....	.....0	.....0	.....0		.....0
5.	Contract loans .....			.....0		
6.	Cash, cash equivalents and short-term investments .....			.....0	.....0	.....0
7.	Derivative instruments .....			.....0		
8.	Other invested assets .....	.....0	.....0	.....0	.....0	.....0
9.	Aggregate write-ins for capital gains (losses) .....	.....500	.....0	.....500	.....0	.....0
10.	Total capital gains (losses) .....	2,527,930	0	2,527,930	(9,122,798)	0
DETAILS OF WRITE-INS						
0901.	Capital gains from investments previously charged off .....	.....500		.....500		
0902.	.....					
0903.	.....					
0998.	Summary of remaining write-ins for Line 9 from overflow page .....	.....0	.....0	.....0	.....0	.....0
0999.	Totals (Lines 0901 through 0903 plus 0998) (Line 9 above) .....	500	0	500	0	0

EXHIBIT OF NONADMITTED ASSETS

	1	2	3
	Current Year Total Nonadmitted Assets	Prior Year Total Nonadmitted Assets	Change in Total Nonadmitted Assets (Col. 2 - Col. 1)
1. Bonds (Schedule D).....	0	0	0
2. Stocks (Schedule D):			
2.1 Preferred stocks .....	0	0	0
2.2 Common stocks .....	0	0	0
3. Mortgage loans on real estate (Schedule B):			
3.1 First liens .....	0	0	0
3.2 Other than first liens .....	0	0	0
4. Real estate (Schedule A):			
4.1 Properties occupied by the company .....	0	0	0
4.2 Properties held for the production of income.....	0	0	0
4.3 Properties held for sale .....	0	0	0
5. Cash (Schedule E-Part 1), cash equivalents (Schedule E-Part 2) and short-term investments (Schedule DA).....	0	0	0
6. Contract loans .....	0	0	0
7. Derivatives (Schedule DB).....	0	0	0
8. Other invested assets (Schedule BA) .....	0	0	0
9. Receivables for securities .....	0	0	0
10. Securities lending reinvested collateral assets (Schedule DL).....	0	0	0
11. Aggregate write-ins for invested assets .....	0	0	0
12. Subtotals, cash and invested assets (Lines 1 to 11) .....	0	0	0
13. Title plants (for Title insurers only).....	0	0	0
14. Investment income due and accrued .....	0	0	0
15. Premiums and considerations:			
15.1 Uncollected premiums and agents' balances in the course of collection.....	0	0	0
15.2 Deferred premiums, agents' balances and installments booked but not yet due.....	0	0	0
15.3 Accrued retrospective premiums and contracts subject to reexamination.....	0	0	0
16. Reinsurance:			
16.1 Amounts recoverable from reinsurers .....	0	0	0
16.2 Funds held by or deposited with reinsured companies .....	0	0	0
16.3 Other amounts receivable under reinsurance contracts .....	0	0	0
17. Amounts receivable relating to uninsured plans .....	0	0	0
18.1 Current federal and foreign income tax recoverable and interest thereon .....	0	0	0
18.2 Net deferred tax asset.....	0	0	0
19. Guaranty funds receivable or on deposit .....	0	0	0
20. Electronic data processing equipment and software.....	0	0	0
21. Furniture and equipment, including health care delivery assets .....	0	0	0
22. Net adjustment in assets and liabilities due to foreign exchange rates .....	0	0	0
23. Receivables from parent, subsidiaries and affiliates .....	0	0	0
24. Health care and other amounts receivable.....	0	0	0
25. Aggregate write-ins for other-than-invested assets .....	0	0	0
26. Total assets excluding Separate Accounts, Segregated Accounts and Protected Cell Accounts (Lines 12 to 25).....	0	0	0
27. From Separate Accounts, Segregated Accounts and Protected Cell Accounts.....	0	0	0
28. Total (Lines 26 and 27)	0	0	0
DETAILS OF WRITE-INS			
1101. ....			
1102. ....			
1103. ....			
1198. Summary of remaining write-ins for Line 11 from overflow page .....	0	0	0
1199. Totals (Lines 1101 through 1103 plus 1198) (Line 11 above)	0	0	0
2501. ....			
2502. ....			
2503. ....			
2598. Summary of remaining write-ins for Line 25 from overflow page .....	0	0	0
2599. Totals (Lines 2501 through 2503 plus 2598) (Line 25 above)	0	0	0

**ANNUAL STATEMENT FOR THE YEAR 2015 FOR THE CINCINNATI CASUALTY COMPANY**  
**NOTES TO THE FINANCIAL STATEMENTS**

1. Summary of Significant Accounting Policies

A. Accounting Practices

The financial statements of the Cincinnati Casualty Company are presented on the basis of accounting practices prescribed or permitted by the Ohio Department of Insurance. The Ohio Department of Insurance recognizes only statutory accounting practices prescribed or permitted by the state of Ohio for determining and reporting the financial condition and results of operations of an insurance company, for determining its solvency under the Ohio Insurance Law. The National Association of Insurance Commissioners' (NAIC) *Accounting Practices and Procedures* manual, version effective January 1, 2001 and updates through current year have been adopted as a component of prescribed or permitted practices by the state of Ohio.

	<u>STATE OF DOMICILE</u>	<u>2015</u>	<u>2014</u>
<b><u>NET INCOME</u></b>			
(1) Company state basis (Page 4, Line 20, Columns 1 & 2)	Ohio	\$12,228,673	\$12,007,072
(2) State Prescribed Practices that increase/(decrease) NAIC SAP	Ohio	0	0
(3) State Permitted Practices that increase/(decrease) NAIC SAP	Ohio	0	0
(4) NAIC SAP (1-2-3=4)	Ohio	\$12,228,673	\$12,007,072
<b><u>SURPLUS</u></b>			
(5) Company state basis (Page 3, Line 37, Columns 1 & 2)	Ohio	\$336,503,250	\$330,220,593
(6) State Prescribed Practices that increase/(decrease) NAIC SAP	Ohio	0	0
(7) State Permitted Practices that increase/(decrease) NAIC SAP	Ohio	0	0
(8) NAIC SAP (5-6-7=8)	Ohio	\$336,503,250	\$330,220,593

B. Use of Estimates in the Preparation of the Financial Statements

The preparation of financial statements in conformity with Statutory Accounting Principles requires management to make estimates and assumptions that affect the reported amounts of assets and liabilities. It also requires disclosure of contingent assets and liabilities at the date of the financial statements and the reported amounts of revenue and expenses during the period. Actual results could differ from those estimates.

C. Accounting Policy

Premiums are earned over the terms of the related insurance policies and reinsurance contracts. Unearned premium reserves are established to cover the unexpired portion of premiums written. These reserves are computed by pro rata methods for direct business and are based on reports received from ceding companies for reinsurance. Expenses incurred in connection with acquiring new insurance business, including such acquisition costs as sales commissions, are charged to operations as incurred. Expenses incurred are reduced for ceding allowances received or receivable.

In addition, the company uses the following accounting policies:

- (1) Short-term investments are stated at amortized cost.
- (2) Bonds not backed by other loans are stated at amortized cost using the effective yield method.
- (3) Common stocks are stated at market.
- (4) Preferred stocks are stated at book value. Also, Per SSAP 32, lower quality preferred stocks (P3 to P6) are being stated at the lower of book or fair value.
- (5) Mortgage Loans on Real Estate - Not applicable
- (6) Loan-backed Securities - Not applicable
- (7) Investments in stocks of uncombined subsidiaries and affiliates – Not applicable
- (8) Joint Ventures - Not applicable
- (9) Derivatives – Not applicable
- (10) In the event that a first-order approximation (excluding anticipated investment income) of estimated future costs related to unearned premium as of a particular evaluation date exceeds the unearned premium as of that date, we would incorporate consideration of the related investment income we would expect to earn. However, to date we have not had to proceed to this step in order to demonstrate that no premium deficiency exists.
- (11) Unpaid losses and loss adjustment expenses include an amount determined from individual case estimates and loss reports and an amount, based on past experience, for losses incurred but not reported. Such liabilities are necessarily based on assumptions and estimates and while management believes the amount is adequate, the ultimate liability may be in excess of or less than the amount provided. The methods for making such estimates and for establishing the resulting liability is continually reviewed and any adjustments are reflected in the period determined.
- (12) The company has not modified its capital policy from a prior period.
- (13) Pharmaceutical Rebate Receivables - Not applicable

2. Accounting Changes and Correction of Errors - The Company had no material changes in accounting principles and/or correction of errors.

3. Business Combinations and Goodwill

- A. Statutory Purchase Method – Not applicable
- B. Statutory Merger – Not applicable
- C. Impairment Loss – Not applicable

4. Discontinued Operations – Not applicable

5. Investments

- A. Mortgage Loans - Not applicable
- B. Debt Restructuring - Not applicable
- C. Reverse Mortgages - Not applicable
- D. Loan-Backed Securities - Not applicable
- E. Repurchase Agreements and/or Securities Lending Transactions - Not applicable
- F. Real Estate - Not applicable
- G. Low-income Housing Tax Credit (LIHTC) – Not applicable

ANNUAL STATEMENT FOR THE YEAR 2015 FOR THE CINCINNATI CASUALTY COMPANY

NOTES TO THE FINANCIAL STATEMENTS

- H. Restricted Assets
1. Restricted Assets (Including Pledged)

	Gross Restricted								Percentage	
	Current Year									
	1	2	3	4	5	6	7	8	9	10
Restricted Asset Category	Total General Account (G/A)	G/A Supporting S/A Activity (a)	Total Separate Account (S/A) Restricted Assets	S/A Assets Supporting G/A Activity (b)	Total (1 plus 3)	Total from Prior Year	Increase/ (Decrease) (5 minus 6)	Total Current Year Admitted Restricted	Gross Restricted to Total Assets	Admitted Restricted to Total Admitted Assets
a. Subject to contractual obligation for which liability is not shown	\$ -	\$ -	\$ -	\$ -	\$ -	\$ -	\$ -	\$ -	0.000%	0.000%
b. Collateral held under security lending agreements	-	-	-	-	-	-	-	-	0.000%	0.000%
c. Subject to repurchase agreements	-	-	-	-	-	-	-	-	0.000%	0.000%
d. Subject to reverse repurchase agreements	-	-	-	-	-	-	-	-	0.000%	0.000%
e. Subject to dollar repurchase agreements	-	-	-	-	-	-	-	-	0.000%	0.000%
f. Subject to dollar reverse repurchase agreements	-	-	-	-	-	-	-	-	0.000%	0.000%
g. Placed under option contracts	-	-	-	-	-	-	-	-	0.000%	0.000%
h. Letter stock or securities restricted as to sale	-	-	-	-	-	-	-	-	0.000%	0.000%
i. On deposit with states	8,226,510	-	-	-	8,226,510	8,582,053	(355,543)	8,226,510	2.178%	2.178%
j. On deposit with other regulatory bodies	-	-	-	-	-	-	-	-	0.000%	0.000%
k. Pledged as collateral not captured in other categories	-	-	-	-	-	-	-	-	0.000%	0.000%
l. Other restricted assets	-	-	-	-	-	-	-	-	0.000%	0.000%
m. Total Restricted Assets	\$ 8,226,510	\$ -	\$ -	\$ -	\$ 8,226,510	\$ 8,582,053	\$ (355,543)	\$ 8,226,510	2.178%	2.178%
(a) Subset of column 1										
(b) Subset of column 3										

2. Detail of Assets Pledged as Collateral Not Captured in Other Categories – Not applicable

3. Detail of Other Restricted Assets – Not applicable

- I. Working Capital Finance Investments – Not applicable
- J. Offsetting and Netting of Assets and Liabilities – Not applicable
- K. Structured Notes – Not applicable

6. Joint Ventures, Partnerships and Limited Liability Companies

- A. The Company has no investments in Joint Ventures, Partnerships or Limited Liability Companies that exceed 10% of its admitted assets.
- B. The Company did not recognize any impairment write down for its investments in Joint Ventures, Partnerships and Limited Liability Companies during the statement periods.

7. Investment Income

- A. There was no due and accrued income excluded from investment income in 2015.
- B. Not applicable

8. Derivative Instruments

- A. Not applicable
- B. Not applicable
- C. Not applicable
- D. Not applicable
- E. Not applicable
- F. Not applicable

ANNUAL STATEMENT FOR THE YEAR 2015 FOR THE CINCINNATI CASUALTY COMPANY

NOTES TO THE FINANCIAL STATEMENTS

9 - Income Taxes

A. Components of Deferred Tax Assets (DTAs) and Deferred Tax Liabilities (DTLs):

1.

	2015		
	Ordinary	Capital	Total
(a) Gross deferred tax assets	\$ -	\$ 121,858	\$ 121,858
(b) Statutory valuation allowance	-	-	-
(c) Adjusted gross deferred tax assets (1a - 1b)	-	121,858	121,858
(d) Deferred Tax Assets Nonadmitted	-	-	-
(e) Subtotal Net Admitted Deferred Tax Asset (1c- 1d)	-	121,858	121,858
(f) Deferred Tax Liabilities	10,804	12,585,740	12,596,544
(g) Net admitted deferred tax asset/(liability) (1e - 1f)	\$ (10,804)	\$ (12,463,882)	\$ (12,474,686)

	2014		
	Ordinary	Capital	Total
(a) Gross deferred tax assets	\$ -	\$ 139,528	\$ 139,528
(b) Statutory valuation allowance	-	-	-
(c) Adjusted gross deferred tax assets (1a - 1b)	-	139,528	139,528
(d) Deferred Tax Assets Nonadmitted	-	-	-
(e) Subtotal Net Admitted Deferred Tax Asset (1c- 1d)	-	139,528	139,528
(f) Deferred Tax Liabilities	12,277	15,778,719	15,790,996
(g) Net admitted deferred tax asset/(liability) (1e - 1f)	\$ (12,277)	\$ (15,639,191)	\$ (15,651,468)

	Change		
	Ordinary	Capital	Total
(a) Gross deferred tax assets	\$ -	\$ (17,670)	\$ (17,670)
(b) Statutory valuation allowance	-	-	-
(c) Adjusted gross deferred tax assets (1a - 1b)	-	(17,670)	(17,670)
(d) Deferred Tax Assets Nonadmitted	-	-	-
(e) Subtotal Net Admitted Deferred Tax Asset (1c- 1d)	-	(17,670)	(17,670)
(f) Deferred Tax Liabilities	(1,473)	(3,192,979)	(3,194,452)
(g) Net admitted deferred tax asset/(liability) (1e - 1f)	\$ 1,473	\$ 3,175,309	\$ 3,176,782

2.

	2015		
	Ordinary	Capital	Total
<b>SSAP 101, paragraphs 11.a., 11.b., and 11.c.:</b>			
(a) Federal Income Taxes Paid in Prior Years Recoverable Through Loss Carrybacks	\$ -	\$ -	\$ -
(b) Adjusted Gross Deferred Tax Assets Expected to be Realized (Excluding The Amount of Deferred Tax Assets From 2(a) above) After Application of the Threshold Limitation. (The lesser of 2(b)1 and 2(b)2 Below)	-	-	-
1. Adjusted Gross Deferred Tax Assets Expected to be Realized Following the Balance Sheet Date	-	-	-
2. Adjusted Gross Deferred Tax Assets Allowed per Limitation Threshold	50,475,488	50,475,488	50,475,488
(c) Adjusted Gross Deferred Tax Assets (Excluding the amount of Deferred Tax Assets from 2(a) and 2(b) above) Offset by Gross Deferred Tax Liabilities	-	121,858	121,858
(d) Deferred Tax Assets Admitted as the Result of Application of SSAP No.101 Total (2(a)+2(b)+2(c))	-	121,858	121,858

	2014		
	Ordinary	Capital	Total
<b>SSAP 101, paragraphs 11.a., 11.b., and 11.c.:</b>			
(a) Federal Income Taxes Paid in Prior Years Recoverable Through Loss Carrybacks	\$ -	\$ -	\$ -
(b) Adjusted Gross Deferred Tax Assets Expected to be Realized (Excluding The Amount of Deferred Tax Assets From 2(a) above) After Application of the Threshold Limitation. (The lesser of 2(b)1 and 2(b)2 Below)	-	-	-
1. Adjusted Gross Deferred Tax Assets Expected to be Realized Following the Balance Sheet Date	-	-	-
2. Adjusted Gross Deferred Tax Assets Allowed per Limitation Threshold	49,533,089	49,533,089	49,533,089
(c) Adjusted Gross Deferred Tax Assets (Excluding the amount of Deferred Tax Assets from 2(a) and 2(b) above) Offset by Gross Deferred Tax Liabilities	-	139,528	139,528
(d) Deferred Tax Assets Admitted as the Result of Application of SSAP No.101 Total (2(a)+2(b)+2(c))	-	139,528	139,528

	Change		
	Ordinary	Capital	Total
<b>SSAP 101, paragraphs 11.a., 11.b., and 11.c.:</b>			
(a) Federal Income Taxes Paid in Prior Years Recoverable Through Loss Carrybacks	\$ -	\$ -	\$ -
(b) Adjusted Gross Deferred Tax Assets Expected to be Realized (Excluding The Amount of Deferred Tax Assets From 2(a) above) After Application of the Threshold Limitation. (The lesser of 2(b)1 and 2(b)2 Below)	-	-	-
1. Adjusted Gross Deferred Tax Assets Expected to be Realized Following the Balance Sheet Date	-	-	-
2. Adjusted Gross Deferred Tax Assets Allowed per Limitation Threshold	942,399	942,399	942,399
(c) Adjusted Gross Deferred Tax Assets (Excluding the amount of Deferred Tax Assets from 2(a) and 2(b) above) Offset by Gross Deferred Tax Liabilities	-	(17,670)	(17,670)
(d) Deferred Tax Assets Admitted as the Result of Application of SSAP No.101 Total (2(a)+2(b)+2(c))	-	(17,670)	(17,670)

3.

	2015 Percentage	2014 Percentage
(a) Ratio Percentage Used to Determine Recovery Period and Threshold Limitation Amount	3322%	2861%
(b) Amount of Adjusted Capital and Surplus Used to Determine Recovery Period and Threshold Limitation in 2(b) 2 above	336,503,250	330,220,593

ANNUAL STATEMENT FOR THE YEAR 2015 FOR THE CINCINNATI CASUALTY COMPANY

NOTES TO THE FINANCIAL STATEMENTS

4.

	2015		
	Ordinary	Capital	Total
<b>Impact of Tax Planning Strategies</b>			
(a) Determination of adjusted gross deferred tax assets and net admitted deferred tax assets, by tax character as a percentage.			
1. Adjusted Gross DTAs amount from Note 9A1(c)	-	121,858	121,858
2. Percentage of Adjusted gross DTAs by tax character attributable to the impact of tax planning strategies	0.00%	0.00%	0.00%
3. Net Admitted Adjusted Gross DTAs amount from Note 9A1(e)	-	121,858	121,858
4. Percentage of net admitted adjusted gross DTAs by tax character admitted because of the impact of tax planning strategies	0.00%	0.00%	0.00%
(b) The Company's tax-planning strategies did not include the use of reinsurance-related tax planning strategies.			

	2014		
	Ordinary	Capital	Total
<b>Impact of Tax Planning Strategies</b>			
(a) Determination of adjusted gross deferred tax assets and net admitted deferred tax assets, by tax character as a percentage.			
1. Adjusted Gross DTAs amount from Note 9A1(c)	-	139,528	139,528
2. Percentage of Adjusted gross DTAs by tax character attributable to the impact of tax planning strategies	0.00%	0.00%	0.00%
3. Net Admitted Adjusted Gross DTAs amount from Note 9A1(e)	-	139,528	139,528
4. Percentage of net admitted adjusted gross DTAs by tax character admitted because of the impact of tax planning strategies	0.00%	0.00%	0.00%
(b) The Company's tax-planning strategies did not include the use of reinsurance-related tax planning strategies.			

	Change		
	Ordinary	Capital	Total
<b>Impact of Tax Planning Strategies</b>			
(a) Determination of adjusted gross deferred tax assets and net admitted deferred tax assets, by tax character as a percentage.			
1. Adjusted Gross DTAs amount from Note 9A1(c)	-	(17,670)	(17,670)
2. Percentage of Adjusted gross DTAs by tax character attributable to the impact of tax planning strategies	0.00%	0.00%	0.00%
3. Net Admitted Adjusted Gross DTAs amount from Note 9A1(e)	-	(17,670)	(17,670)
4. Percentage of net admitted adjusted gross DTAs by tax character admitted because of the impact of tax planning strategies	0.00%	0.00%	0.00%
(b) The Company's tax-planning strategies did not include the use of reinsurance-related tax planning strategies.			

B. Unrecognized DTLs

Not applicable

C. Current Tax and Change in Deferred Tax

1. Current income tax:

	2015	2014	Change
(a) Federal	\$ 2,454,628	\$ 2,420,524	\$ 34,104
(b) Foreign	-	-	-
(c) Subtotal	2,454,628	2,420,524	34,104
(d) Federal Income Tax on capital gains/(losses)	884,776	930,916	(46,140)
(e) Utilization of capital loss carryforwards	-	-	-
(f) Other	-	-	-
Federal income taxes incurred	\$ 3,339,404	\$ 3,351,440	\$ (12,036)

2. Deferred tax assets

	December 31, 2015	December 31, 2014	Change
(a) Ordinary			
(1) Other	-	-	-
(99) Subtotal	-	-	-
(b) Statutory valuation allowance adj	-	-	-
(c) Nonadmitted	-	-	-
(d) Admitted ordinary deferred tax assets (2a99-2b-2c)	-	-	-
(e) Capital			
(1) Investments	121,858	139,528	(17,670)
(2) Unrealized losses on investments	-	-	-
(99) Subtotal	121,858	139,528	(17,670)
(f) Statutory valuation allowance adj	-	-	-
(g) Nonadmitted	-	-	-
(h) Admitted capital deferred tax assets (2e99-2f-2g)	121,858	139,528	(17,670)
(i) Admitted deferred tax assets (2d + 2h)	121,858	139,528	(17,670)

3. Deferred tax liabilities

	December 31, 2015	December 31, 2014	Change
(a) Ordinary			
(1) Other, net	10,804	12,277	(1,473)
(99) Subtotal	10,804	12,277	(1,473)
(b) Capital			
(1) Unrealized gains on investments	12,585,740	15,778,719	(3,192,979)
(2) Other	-	-	-
(99) Subtotal	12,585,740	15,778,719	(3,192,979)
(c) Deferred tax liabilities (3a99 + 3b99)	12,596,544	15,790,996	(3,194,452)

4. Net deferred tax assets/liabilities (2i-3c)	(12,474,686)	(15,651,468)	3,176,782
--	--------------	--------------	-----------



ANNUAL STATEMENT FOR THE YEAR 2015 FOR THE CINCINNATI CASUALTY COMPANY

NOTES TO THE FINANCIAL STATEMENTS

The change in net deferred income taxes is comprised of the following (this analysis is exclusive of nonadmitted assets as the Change in Nonadmitted Assets is reported separately from the Change in Net Deferred Income Taxes in the surplus section of the Annual Statement):				
	December 31, 2015	December 31, 2014	Change	
Total deferred tax assets	\$ 121,858	\$ 139,528	\$	(17,670)
Total deferred tax liabilities	12,596,544	15,790,996		(3,194,452)
Net deferred tax asset/(liability)	\$ (12,474,686)	\$ (15,651,468)	\$	3,176,782
Tax effect of unrealized (gains)/losses				(3,192,979)
Change in net deferred income tax (charge)/benefit			\$	(16,197)

	December 31, 2014	December 31, 2013	Change	
Total deferred tax assets	\$ 139,528	\$ 125,663	\$	13,865
Total deferred tax liabilities	15,790,996	14,889,263		901,733
Net deferred tax asset/(liability)	\$ (15,651,468)	\$ (14,763,600)	\$	(887,868)
Tax effect of unrealized (gains)/losses				901,306
Change in net deferred income tax (charge)/benefit			\$	13,438

D. Reconciliation of Federal income Tax Rate to Actual Effective Rate

The provision for federal income taxes incurred is different from that which would be obtained by applying the statutory federal income tax rate to income before income taxes. The significant items causing this difference are as follows:			
	As of December 31, 2015		
Description	Amount	Tax Effect	Ef ective Tax Rate
Income before taxes	\$ 15,568,077	\$ 5,448,827	35.00%
Tax Exempt Interest	(4,439,663)	(1,553,882)	-9.98%
Dividends received deduction	(1,547,174)	(541,511)	-3.48%
Other items permanent in nature	8	3	0.00%
DRD on Accrued	6,183	2,164	0.01%
Total	\$ 9,587,431	\$ 3,355,601	21.55%
Federal income taxes incurred expense/(benefit)	\$ 7,013,223	\$ 2,454,628	15.77%
Tax on capital gains/(losses)	2,527,931	884,776	5.68%
Change in net deferred income tax charge/(benefit)	46,277	16,197	0.10%
Total statutory income taxes	\$ 9,587,431	\$ 3,355,601	21.55%

	As of December 31, 2014		
Description	Amount	Tax Effect	Ef ective Tax Rate
Income before taxes	\$ 15,358,511	\$ 5,375,479	35.00%
Tax Exempt Interest	(4,313,000)	(1,509,550)	-9.83%
Dividends received deduction	(1,506,577)	(527,302)	-3.43%
Other	6	2	0.00%
DRD on Accrued	(1,791)	(627)	0.00%
Total	\$ 9,537,149	\$ 3,338,002	21.74%
Federal income taxes incurred expense/(benefit)	\$ 6,915,783	\$ 2,420,524	15.76%
Tax on capital gains/(losses)	2,659,760	930,916	6.06%
Change in net deferred income tax charge/(benefit)	(38,394)	(13,438)	-0.08%
Total statutory income taxes	\$ 9,537,149	\$ 3,338,002	21.74%

E. Operating Loss and Tax Credit Carryforwards

(1) At December 31, 2015, the Company had net operating loss and tax credit carryforwards of:	\$	-
(2) At December 31, 2015, the Company had capital loss carryforwards of:	\$	-

(3) The following is income tax expense for the current and prior years that is available for recoupment in the event of future net losses:				
Year	Ordinary	Capital	Total	
2015	\$ 2,454,628	\$ 884,776	\$	3,339,404
2014	2,420,523	930,916		3,351,439
2013	-	2,016		2,016
Total	\$ 4,875,151	\$ 1,817,708	\$	6,692,859

(4) Deposits admitted under Internal Revenue Code Section 6603:	\$	-
---	----	---

F. Consolidated Federal Income Tax Return

(1) The Company's federal income tax return is consolidated with the following entities:

Cincinnati Financial Corporation (Parent)  
The Cincinnati Insurance Company  
The Cincinnati Indemnity Company  
The Cincinnati Life Insurance Company  
The Cincinnati Specialty Underwriters Insurance Company  
CFC Investment Company  
CSU Producer Resources, Inc.

(2) The method of allocation between the Company is subject to a written agreement, approved by the Board of Directors, whereby allocation is made primarily on a separate return basis, with the company receiving a current benefit for losses generated to the extent federal taxes are reduced for the consolidated tax group. Furthermore, tax allocations are computed without regard to any amount attributable to any minimum tax arising under Code Section 55 or minimum tax credit arising under Code Section 53.

G. Federal or Foreign Federal Income Tax Loss Contingencies

For the years ended December 31, 2015 and 2014, the Company did not have tax contingencies under the principles of SSAP No. 5, *Liabilities, Contingencies and Impairment of Assets*. This is subject to change but it is not expected to significantly increase in the 12 month period following the balance sheet date. The Company is primarily subject to examination by U.S. federal and various U.S. state and local tax authorities. The statute of limitations for federal tax purposes has closed for tax years 2011 and earlier. The statute of limitations for state income tax purposes has closed for tax years 2011 and earlier. As of December 31, 2015, there are no U.S. federal or state returns under examination.

**ANNUAL STATEMENT FOR THE YEAR 2015 FOR THE CINCINNATI CASUALTY COMPANY**  
**NOTES TO THE FINANCIAL STATEMENTS**

10. Information Concerning Parent, Subsidiaries, Affiliates and Other Related Parties
  - A. Not applicable
  - B. Not applicable
  - C. Not applicable
  - D. At December 31, 2015, the Company reported \$8,655,270 due from the Parent Company, The Cincinnati Insurance Company. The terms of the settlement require that these amounts be settled within 30 days.
  - E. Not applicable
  - F. The Company has the following management agreements with related parties:
    - (1) Inter-company Benefits and Expense Allocation Agreement.
    - (2) Inter-company Cost Sharing and Expense Allocation Agreement.
    - (3) Inter-company Tax Sharing Agreement.
    - (4) Inter-company Reinsurance Agreement.
  - G. All outstanding shares of The Company are owned by the Parent Company, The Cincinnati Insurance Company, an insurance company domiciled in the State of Ohio.
  - H. Not applicable
  - I. Not applicable
  - J. Not applicable
  - K. Not applicable
  - L. Not applicable
  - M. Not applicable
  - N. Not applicable
11. Debt
  - A. Capital Notes – Not applicable
  - B. FHLB (Federal Home Loan Bank) Agreements – Not applicable
12. Retirement Plans, Deferred Compensation, Postemployment Benefits and Compensated Absences and Other Postretirement Benefit Plans
  - A. Defined Benefit Plan – Not applicable
  - B. Not applicable
  - C. Not applicable
  - D. Not applicable
  - E. Defined Contribution Plans – Not applicable
  - F. Multiemployer Plans – Not applicable
  - G. Consolidated/Holding Company Plans
    - (1) Defined Benefit Pension Plan – The Company participates in a qualified, noncontributory defined benefit pension plan sponsored by Cincinnati Financial Corporation, the ultimate parent. The Company has no legal obligations for benefits under these plans.
    - (2) Defined Contribution Plans - The Company participates in a qualified, defined contribution plan sponsored by Cincinnati Financial Corporation, the ultimate parent. The Company has no legal obligations for benefits under these plans. Cincinnati Financial Corporation allocates amounts to the Company based on an inter-company management fee. The Company's share of net expense for the contribution plan was \$2,467 and \$2,891 for 2015 and 2014 respectively.
  - H. Postemployment Benefits and Compensated Absences – Not applicable
  - I. Impact of Medicare Modernization Act on Postretirement Benefits – Not applicable
13. Capital and Surplus, Dividend Restrictions and Quasi-Reorganizations
  - (1) The Company has 2,000 shares authorized, 1,875 shares issued and 1,875 shares outstanding. All shares are Class A shares.
  - (2) The Company has no preferred stock outstanding.
  - (3) Without prior approval from the Ohio Insurance Commissioner, dividends to shareholders are limited by the laws of Ohio which state that dividends are restricted to the greater of 10% of surplus or net income. In 2016 we would be restricted to \$33,650,325. In 2015 10% of surplus was \$33,650,325 and net income was \$12,228,673. In 2015 we were restricted to \$33,022,059. In 2014 10% of surplus was \$33,022,059 and net income was \$12,007,072.
  - (4) Dividends Paid – Not applicable
  - (5) Within the limitations of (3) above, there are no restrictions placed on the portion of Company profits that may be paid as ordinary dividends to stockholders.
  - (6) There were no restrictions placed on the Company's surplus, including for whom the surplus is being held.
  - (7) Not applicable
  - (8) Not applicable
  - (9) Not applicable
  - (10) The portion of unassigned funds (surplus) represented or reduced by cumulative unrealized gains & losses are (\$5,929,819) net of tax.
  - (11) The Company has no surplus debentures or similar obligations.
  - (12) Not applicable
  - (13) Not applicable
14. Liabilities, Contingencies and Assessments
  - A. The Company is not aware of any material commitments not disclosed on our balance sheet as of year-end.
  - B. The Company is not aware of any material assessments as of year-end.
  - C. The Company does not have any gain contingencies.
  - D. The Company does not have any bad faith losses stemming from lawsuits.
  - E. The Company does not have product warranties.
  - F. Joint and Several Liabilities – Not applicable
  - G. Various lawsuits against the Company have arisen in the course of the Company's business. Contingent liabilities arising from litigation, income taxes and other matters are not considered material in relation to the financial position of the Company. The Company has no assets it considers impaired.
15. Leases – The Company does not have material lease obligations at this time.
16. Information About Financial Instruments with Off-Balance Sheet Risk and Financial Instruments with Concentrations of Credit Risk – Not applicable
17. Sale, Transfer and Servicing of Financial Assets and Extinguishments of Liabilities
  - A. Transfers of Receivables Reported as Sales - Not applicable
  - B. Transfer and Servicing of Financial Assets - Not applicable
  - C. Wash Sales - Not applicable
18. Gain or Loss to the Reporting Entity from Uninsured Plans and the Uninsured Portion of Partially Insured Plans – Not applicable
19. The Company does not have any direct premiums written through managing general agents or third party administrators equal or greater than 5% of surplus.

ANNUAL STATEMENT FOR THE YEAR 2015 FOR THE CINCINNATI CASUALTY COMPANY

NOTES TO THE FINANCIAL STATEMENTS

20. Fair Value Measurement

- A. Not applicable
- B. Not applicable
- C.

<u>Type of Financial Instrument</u>	<u>Aggregate Fair Value</u>	<u>Admitted Assets</u>	<u>(Level 1)</u>	<u>(Level 2)</u>	<u>(Level 3)</u>	<u>Not Practicable (Carrying Value)</u>
Bonds	267,656,096	258,271,454	1,782,045	263,874,051	2,000,000	
Common Stock	81,578,622	81,578,622	81,578,622			
Perpetual Preferred Stock						
Mortgage Loans						

- D. Not applicable
- 21. Other Items
  - A. Unusual or Infrequent Items – Not applicable
  - B. Trouble Debt Restructuring - Not applicable
  - C. Assets in the amount of \$8,226,510 and \$8,582,053 at December 31, 2015 and 2014, respectively, were on deposit with government authorities or trustees as required by law.
  - D. Business Interruption Insurance Recoveries - Not applicable
  - E. State Transferable and Non-Transferable Tax Credits - Not applicable
  - F. Subprime-Mortgage-Related Risk Exposure - The Cincinnati Casualty Company has no investments in subprime or related areas. This includes direct investments in subprime mortgage loans, RMBS, CMBS, CDO's, hedge funds, credit default swaps or SIVs. Additionally, we have no equity investments in subsidiary, controlled or affiliated entities with subprime exposure nor do we underwrite any form of mortgage guarantee insurance.
  - G. Not applicable
- 22. Subsequent Events – Not applicable
- 23. Reinsurance
  - A. Unsecured Reinsurance Recoverables – Not applicable
  - B. Reinsurance Recoverable in Dispute – Not applicable
  - C. Reinsurance Assumed and Ceded

(1)

	Assumed Reinsurance		Ceded Reinsurance		Assumed Less Ceded	
	Premium	Commission	Premium	Commission	Premium	Commission
	Reserve	Equity	Reserve	Equity	Reserve	Equity
a. Affiliates	\$ 0	\$ 0	\$ 142,296,521	\$14,549,969	(\$142,296,521)	(\$14,549,969)
b. All Other	\$ 0	\$ 0	\$ 0	\$ 0	\$ 0	\$ 0
c. Total	\$ 0	\$ 0	\$142,296,521	\$14,549,969	(\$142,296,521)	(\$14,549,969)
d. Direct Unearned Premium Reserve			\$142,296,521			

(2)

REINSURANCE				
	Direct	Assumed	Ceded	Net
a. Contingent Comm	\$ 9,200,000	\$ 0	\$ 9,200,000	\$ 0
b. Sliding Scale Adj.				
c. Other Profit Comm Arrangements				
d. Total	\$ 9,200,000	\$ 0	\$ 9,200,000	\$ 0

(3) Not applicable

- D. Uncollectible Reinsurance – Not applicable
- E. Commutation of Ceded Reinsurance – Not applicable
- F. Retroactive Reinsurance – Not applicable
- G. Reinsurance Accounted for as a Deposit – Not applicable
- H. Disclosures for the Transfer of Property and Casualty Run-off Agreements – Not applicable
- I. Certified Reinsurer Rating Downgraded or Status Subject to Revocation – Not applicable
- J. Reinsurance Agreements Qualifying for Reinsurer Aggregation – Not applicable
- 24. Retrospectively Rated Contracts and Contracts Subject to Redetermination– Not applicable
- 25. Change in Incurred Losses and Loss Adjustment Expenses – Not applicable
- 26. Intercompany Pooling Arrangements – Not applicable
- 27. Structured Settlements – Not applicable
- 28. Health Care Receivables – Not applicable
- 29. Participating Policies – Not applicable
- 30. Premium Deficiency Reserves

1. Liability carried for premium deficiency reserves	\$0
2. Date of most recent evaluation of this liability	01/21/2016
3. Was anticipated investment income utilized in the calculation	No
- 31. High Deductibles – Not applicable
- 32. The Company does not discount unpaid losses or loss adjustment expenses except for income tax purposes.

ANNUAL STATEMENT FOR THE YEAR 2015 FOR THE CINCINNATI CASUALTY COMPANY

NOTES TO THE FINANCIAL STATEMENTS

33. Asbestos and Environmental Reserves

Does the company have on the books, or has it ever written an insured for which you have identified a potential for the existence of, a liability due to asbestos losses? Yes ( ) No (X)

ASBESTOS LOSSES	2011	2012	2013	2014	2015
	Direct	Direct	Direct	Direct	Direct
Beginning Reserves	\$0	\$0	\$0	\$0	\$0
Incurred Loss & LAE	\$0	\$0	\$0	\$0	\$0
Calendar year payments for Loss and LAE	\$0	\$0	\$0	\$0	\$0
Ending Reserves	\$0	\$0	\$0	\$0	\$0
	Assumed	Assumed	Assumed	Assumed	Assumed
Beginning Reserves	\$0	\$0	\$0	\$0	\$0
Incurred Loss & LAE	\$0	\$0	\$0	\$0	\$0
Calendar year payments for Loss and LAE	\$0	\$0	\$0	\$0	\$0
Ending Reserves	\$0	\$0	\$0	\$0	\$0
	Net	Net	Net	Net	Net
Beginning Reserves	\$0	\$0	\$0	\$0	\$0
Incurred Loss & LAE	\$0	\$0	\$0	\$0	\$0
Calendar year payments for Loss and LAE	\$0	\$0	\$0	\$0	\$0
Ending Reserves	\$0	\$0	\$0	\$0	\$0
IBNR Reserves	\$0	\$0	\$0	\$0	\$0
Direct	\$0	\$0	\$0	\$0	\$0
Assumed	\$0	\$0	\$0	\$0	\$0
Net	\$0	\$0	\$0	\$0	\$0
LAE Reserves					
Direct	\$0	\$0	\$0	\$0	\$0
Assumed	\$0	\$0	\$0	\$0	\$0
Net	\$0	\$0	\$0	\$0	\$0

Does the company have on the books, or has it ever written an insured for which you have identified a potential for the existence of, a liability due to environmental losses? Yes (X) No ( )

The Company's exposure arose from the sale of commercial liability products. The Company tries to estimate the full impact of the environmental exposures by establishing full case basis reserves on all known losses and computing IBNR based on generally accepted actuarial methodologies.

ENVIRONMENTAL LOSSES	2011	2012	2013	2014	2015
	Direct	Direct	Direct	Direct	Direct
Beginning Reserves	\$0	\$0	\$12,500	\$15,000	\$80,067
Incurred Loss & LAE	\$0	\$15,925	\$2,500	\$106,688	(\$9,315)
Calendar year payments for Loss and LAE	\$0	\$3,425	\$0	\$41,620	\$70,752
Ending Reserves	\$0	\$12,500	\$15,000	\$80,067	\$0
	Assumed	Assumed	Assumed	Assumed	Assumed
Beginning Reserves	\$0	\$0	\$0	\$0	\$0
Incurred Loss & LAE	\$0	\$0	\$0	\$0	\$0
Calendar year payments for Loss and LAE	\$0	\$0	\$0	\$0	\$0
Ending Reserves	\$0	\$0	\$0	\$0	\$0
	Net	Net	Net	Net	Net
Beginning Reserves	\$0	\$0	\$0	\$0	\$0
Incurred Loss & LAE	\$0	\$0	\$0	\$0	\$0
Calendar year payments for Loss and LAE	\$0	\$0	\$0	\$0	\$0
Ending Reserves	\$0	\$0	\$0	\$0	\$0
IBNR Reserves	\$0	\$0	\$0	\$0	\$0
Direct	\$0	\$0	\$0	\$0	\$0
Assumed	\$0	\$0	\$0	\$0	\$0
Net	\$0	\$0	\$0	\$0	\$0
LAE Reserves	\$0	\$0	\$0	\$0	\$0
Direct	\$0	\$0	\$0	\$0	\$0
Assumed	\$0	\$0	\$0	\$0	\$0
Net	\$0	\$0	\$0	\$0	\$0

34. Subscriber Savings Accounts – Not applicable

35. Multiple Peril Crop Insurance – Not applicable

36. Financial Guaranty Insurance – Not applicable

37. Other

Prior year data included in Schedule P is calculated as follows:

Part 1-Payments made in the current year and current reserves for AY's 2005 & prior.

Parts 2&3-The prior line on last year’s statement is combined with the year 2005 total. Paid amounts prior to 2006 are then subtracted from this sum to arrive at the prior figure.

Part 4-The sum of the prior year line and the 2005 line from the prior year's Schedule P compose the prior figures for this section.

Part 5 Section 1&3-The prior line is combined with year 2004 from the prior schedule P. Counts for accident year 2005 in the preceding year are then subtracted from this sum to arrive at the prior figure, removing the cumulative effect.

Part 5 Section 2 - The prior line is combined with the 2005 AY of the prior year's Schedule P to arrive at the new prior number.

GENERAL INTERROGATORIES

PART 1 - COMMON INTERROGATORIES

GENERAL

- 1.1

Is the reporting entity a member of an Insurance Holding Company System consisting of two or more affiliated persons, one or more of which is an insurer?

Yes ☒ No ☐
- If yes, complete Schedule Y, Parts 1, 1A and 2.
- 1.2

If yes, did the reporting entity register and file with its domiciliary State Insurance Commissioner, Director or Superintendent or with such regulatory official of the state of domicile of the principal insurer in the Holding Company System, a registration statement providing disclosure substantially similar to the standards adopted by the National Association of Insurance Commissioners (NAIC) in its Model Insurance Holding Company System Regulatory Act and model regulations pertaining thereto, or is the reporting entity subject to standards and disclosure requirements substantially similar to those required by such Act and regulations?

Yes ☒ No ☐ N/A ☐
- 1.3

State Regulating?

Ohio.....
- 2.1

Has any change been made during the year of this statement in the charter, by-laws, articles of incorporation, or deed of settlement of the reporting entity?

Yes ☐ No ☒
- 2.2

If yes, date of change:

.....
- 3.1

State as of what date the latest financial examination of the reporting entity was made or is being made.

.....12/31/2014
- 3.2

State the as of date that the latest financial examination report became available from either the state of domicile or the reporting entity. This date should be the date of the examined balance sheet and not the date the report was completed or released.

.....12/31/2014
- 3.3

State as of what date the latest financial examination report became available to other states or the public from either the state of domicile or the reporting entity. This is the release date or completion date of the examination report and not the date of the examination (balance sheet date).

.....10/05/2015
- 3.4

By what department or departments? Ohio.....
- 3.5

Have all financial statement adjustments within the latest financial examination report been accounted for in a subsequent financial statement filed with Departments?

Yes ☒ No ☐ N/A ☐
- 3.6

Have all of the recommendations within the latest financial examination report been complied with?

Yes ☒ No ☐ N/A ☐
- 4.1

During the period covered by this statement, did any agent, broker, sales representative, non-affiliated sales/service organization or any combination thereof under common control (other than salaried employees of the reporting entity) receive credit or commissions for or control a substantial part (more than 20 percent of any major line of business measured on direct premiums) of:

4.11 sales of new business? Yes ☐ No ☒

4.12 renewals? Yes ☐ No ☒
- 4.2

During the period covered by this statement, did any sales/service organization owned in whole or in part by the reporting entity or an affiliate, receive credit or commissions for or control a substantial part (more than 20 percent of any major line of business measured on direct premiums) of:

4.21 sales of new business? Yes ☐ No ☒

4.22 renewals? Yes ☐ No ☒
- 5.1

Has the reporting entity been a party to a merger or consolidation during the period covered by this statement?

Yes ☐ No ☒
- 5.2

If yes, provide the name of the entity, NAIC company code, and state of domicile (use two letter state abbreviation) for any entity that has ceased to exist as a result of the merger or consolidation.

1 Name of Entity	2 NAIC Company Code	3 State of Domicile
.....	.....	.....
.....	.....	.....
.....	.....	.....
.....	.....	.....
.....	.....	.....

- 6.1

Has the reporting entity had any Certificates of Authority, licenses or registrations (including corporate registration, if applicable) suspended or revoked by any governmental entity during the reporting period?

Yes ☐ No ☒
- 6.2

If yes, give full information .....
- 7.1

Does any foreign (non-United States) person or entity directly or indirectly control 10% or more of the reporting entity?

Yes ☐ No ☒
- 7.2

If yes,
- 7.21

State the percentage of foreign control .....
- 7.22

State the nationality(s) of the foreign person(s) or entity(s); or if the entity is a mutual or reciprocal, the nationality of its manager or attorney-in-fact and identify the type of entity(s) (e.g., individual, corporation, government, manager or attorney-in-fact).

1 Nationality	2 Type of Entity
.....	.....
.....	.....
.....	.....
.....	.....
.....	.....

GENERAL INTERROGATORIES

8.1 Is the company a subsidiary of a bank holding company regulated by the Federal Reserve Board? Yes [ ] No [ X ]

8.2 If response to 8.1 is yes, please identify the name of the bank holding company.

8.3 Is the company affiliated with one or more banks, thrifts or securities firms? Yes [ ] No [ X ]

8.4 If response to 8.3 is yes, please provide the names and locations (city and state of the main office) of any affiliates regulated by a federal financial regulatory services agency [i.e. the Federal Reserve Board (FRB), the Office of the Comptroller of the Currency (OCC), the Federal Deposit Insurance Corporation (FDIC) and the Securities Exchange Commission (SEC)] and identify the affiliate's primary federal regulator.

1	2	3	4	5	6
Affiliate Name	Location (City, State)	FRB	OCC	FDIC	SEC

9. What is the name and address of the independent certified public accountant or accounting firm retained to conduct the annual audit?  
Deloitte & Touche; Suite 1900; 250 E. 5th St; PO Box 5340; Cincinnati, OH 45201-5340.....

10.1 Has the insurer been granted any exemptions to the prohibited non-audit services provided by the certified independent public accountant requirements as allowed in Section 7H of the Annual Financial Reporting Model Regulation (Model Audit Rule), or substantially similar state law or regulation? Yes [ ] No [ X ]

10.2 If the response to 10.1 is yes, provide information related to this exemption:

10.3 Has the insurer been granted any exemptions related to the other requirements of the Annual Financial Reporting Model Regulation as allowed for in Section 18A of the Model Regulation, or substantially similar state law or regulation? Yes [ ] No [ X ]

10.4 If the response to 10.3 is yes, provide information related to this exemption:

10.5 Has the reporting entity established an Audit Committee in compliance with the domiciliary state insurance laws? Yes [ X ] No [ ] N/A [ ]

10.6 If the response to 10.5 is no or n/a, please explain

11. What is the name, address and affiliation (officer/employee of the reporting entity or actuary/consultant associated with an actuarial consulting firm) of the individual providing the statement of actuarial opinion/certification?  
Rita Zona; Deloitte Consulting LLP; 111 S. Wacker Dr; Chicago, IL 60606.....

12.1 Does the reporting entity own any securities of a real estate holding company or otherwise hold real estate indirectly? Yes [ ] No [ X ]

12.11 Name of real estate holding company .....

12.12 Number of parcels involved .....

12.13 Total book/adjusted carrying value \$.....

12.2 If yes, provide explanation

13. FOR UNITED STATES BRANCHES OF ALIEN REPORTING ENTITIES ONLY:

13.1 What changes have been made during the year in the United States manager or the United States trustees of the reporting entity?

13.2 Does this statement contain all business transacted for the reporting entity through its United States Branch on risks wherever located? Yes [ ] No [ ]

13.3 Have there been any changes made to any of the trust indentures during the year? Yes [ ] No [ ]

13.4 If answer to (13.3) is yes, has the domiciliary or entry state approved the changes? Yes [ ] No [ ] N/A [ ]

14.1 Are the senior officers (principal executive officer, principal financial officer, principal accounting officer or controller, or persons performing similar functions) of the reporting entity subject to a code of ethics, which includes the following standards?  
a. Honest and ethical conduct, including the ethical handling of actual or apparent conflicts of interest between personal and professional relationships;  
b. Full, fair, accurate, timely and understandable disclosure in the periodic reports required to be filed by the reporting entity;  
c. Compliance with applicable governmental laws, rules and regulations;  
d. The prompt internal reporting of violations to an appropriate person or persons identified in the code; and  
e. Accountability for adherence to the code.

14.11 If the response to 14.1 is no, please explain:

14.2 Has the code of ethics for senior managers been amended? Yes [ ] No [ X ]

14.21 If the response to 14.2 is yes, provide information related to amendment(s)

14.3 Have any provisions of the code of ethics been waived for any of the specified officers? Yes [ ] No [ X ]

14.31 If the response to 14.3 is yes, provide the nature of any waiver(s).

GENERAL INTERROGATORIES

- 15.1 Is the reporting entity the beneficiary of a Letter of Credit that is unrelated to reinsurance where the issuing or confirming bank is not on the SVO Bank List?
- Yes [ ] No [ X ]
- 15.2 If the response to 15.1 is yes, indicate the American Bankers Association (ABA) Routing Number and the name of the issuing or confirming bank of the Letter of Credit and describe the circumstances in which the Letter of Credit is triggered.

1	2	3	4
American Bankers Association (ABA) Routing Number	Issuing or Confirming Bank Name	Circumstances That Can Trigger the Letter of Credit	Amount
.....	.....	.....	.....
.....	.....	.....	.....
.....	.....	.....	.....

BOARD OF DIRECTORS

16. Is the purchase or sale of all investments of the reporting entity passed upon either by the board of directors or a subordinate committee thereof?
- Yes [ X ] No [ ]
17. Does the reporting entity keep a complete permanent record of the proceedings of its board of directors and all subordinate committees thereof?
- Yes [ X ] No [ ]
18. Has the reporting entity an established procedure for disclosure to its board of directors or trustees of any material interest or affiliation on the part of any of its officers, directors, trustees or responsible employees that is in conflict or is likely to conflict with the official duties of such person?
- Yes [ X ] No [ ]

FINANCIAL

19. Has this statement been prepared using a basis of accounting other than Statutory Accounting Principles (e.g., Generally Accepted Accounting Principles)?
- Yes [ ] No [ X ]
- 20.1 Total amount loaned during the year (inclusive of Separate Accounts, exclusive of policy loans):
- 20.11 To directors or other officers \$.....
- 20.12 To stockholders not officers \$.....
- 20.13 Trustees, supreme or grand (Fraternal only) \$.....
- 20.2 Total amount of loans outstanding at the end of year (inclusive of Separate Accounts, exclusive of policy loans):
- 20.21 To directors or other officers \$.....
- 20.22 To stockholders not officers \$.....
- 20.23 Trustees, supreme or grand (Fraternal only) \$.....
- 21.1 Were any assets reported in this statement subject to a contractual obligation to transfer to another party without the liability for such obligation being reported in the statement?
- Yes [ ] No [ X ]
- 21.2 If yes, state the amount thereof at December 31 of the current year:
- 21.21 Rented from others \$.....
- 21.22 Borrowed from others \$.....
- 21.23 Leased from others \$.....
- 21.24 Other \$.....
- 22.1 Does this statement include payments for assessments as described in the *Annual Statement Instructions* other than guaranty fund or guaranty association assessments?
- Yes [ ] No [ X ]
- 22.2 If answer is yes:
- 22.21 Amount paid as losses or risk adjustment \$.....
- 22.22 Amount paid as expenses \$.....
- 22.23 Other amounts paid \$.....
- 23.1 Does the reporting entity report any amounts due from parent, subsidiaries or affiliates on Page 2 of this statement?
- Yes [ X ] No [ ]
- 23.2 If yes, indicate any amounts receivable from parent included in the Page 2 amount:
- \$.....8,655,270

INVESTMENT

- 24.01 Were all the stocks, bonds and other securities owned December 31 of current year, over which the reporting entity has exclusive control, in the actual possession of the reporting entity on said date? (other than securities lending programs addressed in 24.03)
- Yes [ X ] No [ ]
- 24.02 If no, give full and complete information, relating thereto
- 24.03 For security lending programs, provide a description of the program including value for collateral and amount of loaned securities, and whether collateral is carried on or off-balance sheet. (an alternative is to reference Note 17 where this information is also provided)
- 24.04 Does the company's security lending program meet the requirements for a conforming program as outlined in the Risk-Based Capital Instructions?
- Yes [ ] No [ ] NA [ X ]
- 24.05 If answer to 24.04 is yes, report amount of collateral for conforming programs.
- \$.....
- 24.06 If answer to 24.04 is no, report amount of collateral for other programs.
- \$.....
- 24.07 Does your securities lending program require 102% (domestic securities) and 105% (foreign securities) from the counterparty at the outset of the contract?
- Yes [ ] No [ ] NA [ X ]
- 24.08 Does the reporting entity non-admit when the collateral received from the counterparty falls below 100%?
- Yes [ ] No [ ] NA [ X ]
- 24.09 Does the reporting entity or the reporting entity's securities lending agent utilize the Master Securities Lending Agreement (MSLA) to conduct securities lending?
- Yes [ ] No [ ] NA [ X ]
- 24.10 For the reporting entity's security lending program, state the amount of the following as of December 31 of the current year:
- 24.101 Total fair value of reinvested collateral assets reported on Schedule DL, Parts 1 and 2 \$.....
- 24.102 Total book adjusted/carrying value of reinvested collateral assets reported on Schedule DL, Parts 1 and 2 \$.....
- 24.103 Total payable for securities lending reported on the liability page \$.....

GENERAL INTERROGATORIES

25.1 Were any of the stocks, bonds or other assets of the reporting entity owned at December 31 of the current year not exclusively under the control of the reporting entity or has the reporting entity sold or transferred any assets subject to a put option contract that is currently in force? (Exclude securities subject to Interrogatory 21.1 and 24.03). Yes [ X ] No [ ]

25.2 If yes, state the amount thereof at December 31 of the current year:

25.21 Subject to repurchase agreements

25.22 Subject to reverse repurchase agreements

25.23 Subject to dollar repurchase agreements

25.24 Subject to reverse dollar repurchase agreements

25.25 Placed under option agreements

25.26 Letter stock or securities restricted as to sale – excluding FHLB Capital Stock

25.27 FHLB Capital Stock

25.28 On deposit with states

25.29 On deposit with other regulatory bodies

25.30 Pledged as collateral – excluding collateral pledged to an FHLB

25.31 Pledged as collateral to FHLB – including assets backing funding agreements

25.32 Other

\$

\$

\$

\$

\$

\$

\$

\$

\$

\$

\$

\$

8,226,510

25.3 For category (25.26) provide the following:

1 Nature of Restriction	2 Description	3 Amount

26.1 Does the reporting entity have any hedging transactions reported on Schedule DB? Yes [ ] No [ X ]

26.2 If yes, has a comprehensive description of the hedging program been made available to the domiciliary state? If no, attach a description with this statement. Yes [ ] No [ ] N/A [ X ]

27.1 Were any preferred stocks or bonds owned as of December 31 of the current year mandatorily convertible into equity, or, at the option of the issuer, convertible into equity? Yes [ ] No [ X ]

27.2 If yes, state the amount thereof at December 31 of the current year. \$

28. Excluding items in Schedule E – Part 3 – Special Deposits, real estate, mortgage loans and investments held physically in the reporting entity’s offices, vaults or safety deposit boxes, were all stocks, bonds and other securities, owned throughout the current year held pursuant to a custodial agreement with a qualified bank or trust company in accordance with Section 1, III – General Examination Considerations, F. Outsourcing of Critical Functions, Custodial or Safekeeping agreements of the NAIC *Financial Condition Examiners Handbook*? Yes [ X ] No [ ]

28.01 For agreements that comply with the requirements of the NAIC *Financial Condition Examiners Handbook*, complete the following:

1 Name of Custodian(s)	2 Custodian’s Address
Fifth Third Bank	Fifth Third Center; Cincinnati, Ohio 45263

28.02 For all agreements that do not comply with the requirements of the NAIC *Financial Condition Examiners Handbook*, provide the name, location and a complete explanation:

1 Name(s)	2 Location(s)	3 Complete Explanation(s)

28.03 Have there been any changes, including name changes, in the custodian(s) identified in 28.01 during the current year? Yes [ ] No [ X ]

28.04 If yes, give full and complete information relating thereto:

1 Old Custodian	2 New Custodian	3 Date of Change	4 Reason



GENERAL INTERROGATORIES

28.05 Identify all investment advisors, brokers/dealers or individuals acting on behalf of broker/dealers that have access to the investment accounts, handle securities and have authority to make investments on behalf of the reporting entity:

1 Central Registration Depository Number(s)	2 Name	3 Address
.....	.....	.....
.....	.....	.....
.....	.....	.....

29.1 Does the reporting entity have any diversified mutual funds reported in Schedule D - Part 2 (diversified according to the Securities and Exchange Commission (SEC) in the Investment Company Act of 1940 [Section 5 (b) (1)])?

Yes [   ] No [ X ]

29.2 If yes, complete the following schedule:

1 CUSIP #	2 Name of Mutual Fund	3 Book/Adjusted Carrying Value
.....	.....	.....
.....	.....	.....
.....	.....	.....
29.2999 TOTAL		0

29.3 For each mutual fund listed in the table above, complete the following schedule:

1 Name of Mutual Fund (from above table)	2 Name of Significant Holding of the Mutual Fund	3 Amount of Mutual Fund's Book/Adjusted Carrying Value Attributable to the Holding	4 Date of Valuation
.....	.....	.....	.....
.....	.....	.....	.....
.....	.....	.....	.....

30. Provide the following information for all short-term and long-term bonds and all preferred stocks. Do not substitute amortized value or statement value for fair value.

	1 Statement (Admitted) Value	2 Fair Value	3 Excess of Statement over Fair Value (-), or Fair Value over Statement (+)
30.1 Bonds.....	258,271,454	267,656,096	9,384,642
30.2 Preferred Stocks.....	0		0
30.3 Totals	258,271,454	267,656,096	9,384,642

30.4 Describe the sources or methods utilized in determining the fair values:

31.1 Was the rate used to calculate fair value determined by a broker or custodian for any of the securities in Schedule D?

Yes [   ] No [ X ]

31.2 If the answer to 31.1 is yes, does the reporting entity have a copy of the broker's or custodian's pricing policy (hard copy or electronic copy) for all brokers or custodians used as a pricing source?

Yes [   ] No [   ]

31.3 If the answer to 31.2 is no, describe the reporting entity's process for determining a reliable pricing source for purposes of disclosure of fair value for Schedule D:

32.1 Have all the filing requirements of the *Purposes and Procedures Manual of the NAIC Investment Analysis Office* been followed?

Yes [ X ] No [   ]

32.2 If no, list exceptions:

GENERAL INTERROGATORIES

OTHER

- 33.1 Amount of payments to trade associations, service organizations and statistical or rating bureaus, if any? \$ .....2,205,850
- 33.2 List the name of the organization and the amount paid if any such payment represented 25% or more of the total payments to trade associations, service organizations and statistical or rating bureaus during the period covered by this statement.

1 Name	2 Amount Paid
.....	\$.....
.....	\$.....
.....	\$.....

- 34.1 Amount of payments for legal expenses, if any? \$ .....4,328
- 34.2 List the name of the firm and the amount paid if any such payment represented 25% or more of the total payments for legal expenses during the period covered by this statement.

1 Name	2 Amount Paid
CAMPBELL HIGHTOWER & ADAMS.....	\$.....2,885

- 35.1 Amount of payments for expenditures in connection with matters before legislative bodies, officers or departments of government, if any? \$ .....
- 35.2 List the name of the firm and the amount paid if any such payment represented 25% or more of the total payment expenditures in connection with matters before legislative bodies, officers or departments of government during the period covered by this statement.

1 Name	2 Amount Paid
.....	\$.....
.....	\$.....
.....	\$.....

GENERAL INTERROGATORIES  
PART 2 - PROPERTY & CASUALTY INTERROGATORIES

1.1

Does the reporting entity have any direct Medicare Supplement Insurance in force? .....

Yes [ ] No [ X ]

1.2

If yes, indicate premium earned on U. S. business only. ....

\$.....0

1.3

What portion of Item (1.2) is not reported on the Medicare Supplement Insurance Experience Exhibit? .....

\$.....

1.31

Reason for excluding

.....

1.4

Indicate amount of earned premium attributable to Canadian and/or Other Alien not included in Item (1.2) above. ....

\$.....

1.5

Indicate total incurred claims on all Medicare Supplement insurance. ....

\$.....0

1.6

Individual policies:

Most current three years:

1.61

Total premium earned .....

\$.....0

1.62

Total incurred claims .....

\$.....0

1.63

Number of covered lives .....

.....0

All years prior to most current three years:

1.64

Total premium earned .....

\$.....0

1.65

Total incurred claims .....

\$.....0

1.66

Number of covered lives .....

.....0

1.7

Group policies:

Most current three years:

1.71

Total premium earned .....

\$.....0

1.72

Total incurred claims .....

\$.....0

1.73

Number of covered lives .....

.....0

All years prior to most current three years:

1.74

Total premium earned .....

\$.....0

1.75

Total incurred claims .....

\$.....0

1.76

Number of covered lives .....

.....0

2.

Health Test:

1

Current Year

2

Prior Year

2.1

Premium Numerator

\$ .....

0

\$ .....

0

2.2

Premium Denominator

\$ .....

0

\$ .....

0

2.3

Premium Ratio (2.1/2.2)

.....0.000

.....0.000

2.4

Reserve Numerator

\$ .....

0

\$ .....

0

2.5

Reserve Denominator

\$ .....

145,138

\$ .....

0

2.6

Reserve Ratio (2.4/2.5)

.....0.000

.....0.000

3.1

Does the reporting entity issue both participating and non-participating policies? .....

Yes [ X ] No [ ]

3.2

If yes, state the amount of calendar year premiums written on:

3.21

Participating policies.....

\$.....42,428

3.22

Non-participating policies.....

\$.....313,042,256

4.

For Mutual reporting entities and Reciprocal Exchanges only:

4.1

Does the reporting entity issue assessable policies?.....

Yes [ ] No [ ]

4.2

Does the reporting entity issue non-assessable policies?.....

Yes [ ] No [ ]

4.3

If assessable policies are issued, what is the extent of the contingent liability of the policyholders?.....

%

4.4

Total amount of assessments paid or ordered to be paid during the year on deposit notes or contingent premiums. ....

\$.....

5.

For Reciprocal Exchanges Only:

5.1

Does the exchange appoint local agents?.....

Yes [ ] No [ ]

5.2

If yes, is the commission paid:

5.21

Out of Attorney's-in-fact compensation.....

Yes [ ] No [ ] N/A [ ]

5.22

As a direct expense of the exchange.....

Yes [ ] No [ ] N/A [ ]

5.3

What expenses of the Exchange are not paid out of the compensation of the Attorney-in-fact?

.....

5.4

Has any Attorney-in-fact compensation, contingent on fulfillment of certain conditions, been deferred?.....

Yes [ ] No [ ]

5.5

If yes, give full information

.....

16

GENERAL INTERROGATORIES  
PART 2 - PROPERTY & CASUALTY INTERROGATORIES

6.1

What provision has this reporting entity made to protect itself from an excessive loss in the event of a catastrophe under a workers' compensation contract issued without limit of loss: .....

Protection is provided through several excess reinsurance contracts for workers' compensation coverage.....

6.2

Describe the method used to estimate this reporting entity's probable maximum insurance loss, and identify the type of insured exposures comprising that probable maximum loss, the locations of concentrations of those exposures and the external resources (such as consulting firms or computer software models), if any, used in the estimation process: .....

The company has engaged with JLT Towers Re, who uses the catastrophe risk models from Risk Management Solutions and Applied Insurance Research to model potential maximum loss exposure.....

6.3

What provision has this reporting entity made (such as a catastrophic reinsurance program) to protect itself from an excessive loss arising from the types and concentrations of insured exposures comprising its probable maximum property insurance loss?.....

The company has a catastrophe reinsurance program insuring losses to \$500 million in excess of \$100 million, plus co-participation by layer.....

6.4

Does the reporting entity carry catastrophe reinsurance protection for at least one reinstatement, in an amount sufficient to cover its estimated probable maximum loss attributable to a single loss event or occurrence?.....

Yes [ X ] No [ ]

6.5

If no, describe any arrangements or mechanisms employed by the reporting entity to supplement its catastrophe reinsurance program or to hedge its exposure to uninsured catastrophic loss

.....

7.1

Has the reporting entity reinsured any risk with any other entity under a quota share reinsurance contract that includes a provision that would limit the reinsurer's losses below the stated quota share percentage (e.g., a deductible, a loss ratio corridor, a loss cap, an aggregate limit or any similar provisions)?.....

Yes [ ] No [ X ]

7.2

If yes, indicate the number of reinsurance contracts containing such provisions.....

.....

7.3

If yes, does the amount of reinsurance credit taken reflect the reduction in quota share coverage caused by any applicable limiting provision(s)?.....

Yes [ ] No [ ]

8.1

Has this reporting entity reinsured any risk with any other entity and agreed to release such entity from liability, in whole or in part, from any loss that may occur on this risk, or portion thereof, reinsured?.....

Yes [ ] No [ X ]

8.2

If yes, give full information

.....

9.1

Has the reporting entity ceded any risk under any reinsurance contract (or under multiple contracts with the same reinsurer or its affiliates) for which during the period covered by the statement: (i) it recorded a positive or negative underwriting result greater than 5% of prior year-end surplus as regards policyholders or it reported calendar year written premium ceded or year-end loss and loss expense reserves ceded greater than 5% of prior year-end surplus as regards policyholders; (ii) it accounted for that contract as reinsurance and not as a deposit; and (iii) the contract(s) contain one or more of the following features or other features that would have similar results:

(a) A contract term longer than two years and the contract is noncancellable by the reporting entity during the contract term;

(b) A limited or conditional cancellation provision under which cancellation triggers an obligation by the reporting entity, or an affiliate of the reporting entity, to enter into a new reinsurance contract with the reinsurer, or an affiliate of the reinsurer;

(c) Aggregate stop loss reinsurance coverage;

(d) A unilateral right by either party (or both parties) to commute the reinsurance contract, whether conditional or not, except for such provisions which are only triggered by a decline in the credit status of the other party;

(e) A provision permitting reporting of losses, or payment of losses, less frequently than on a quarterly basis (unless there is no activity during the period); or

(f) Payment schedule, accumulating retentions from multiple years or any features inherently designed to delay timing of the reimbursement to the ceding entity.....

Yes [ ] No [ X ]

9.2

Has the reporting entity during the period covered by the statement ceded any risk under any reinsurance contract (or under multiple contracts with the same reinsurer or its affiliates), for which, during the period covered by the statement, it recorded a positive or negative underwriting result greater than 5% of prior year-end surplus as regards policyholders or it reported calendar year written premium ceded or year-end loss and loss expense reserves ceded greater than 5% of prior year-end surplus as regards policyholders; excluding cessions to approved pooling arrangements or to captive insurance companies that are directly or indirectly controlling, controlled by, or under common control with (i) one or more unaffiliated policyholders of the reporting entity, or (ii) an association of which one or more unaffiliated policyholders of the reporting entity is a member where:

(a) The written premium ceded to the reinsurer by the reporting entity or its affiliates represents fifty percent (50%) or more of the entire direct and assumed premium written by the reinsurer based on its most recently available financial statement; or

(b) Twenty-five percent (25%) or more of the written premium ceded to the reinsurer has been retroceded back to the reporting entity or its affiliates in a separate reinsurance contract.

Yes [ ] No [ X ]

9.3

If yes to 9.1 or 9.2, please provide the following information in the Reinsurance Summary Supplemental Filing for General Interrogatory 9:

(a) The aggregate financial statement impact gross of all such ceded reinsurance contracts on the balance sheet and statement of income;

(b) A summary of the reinsurance contract terms and indicate whether it applies to the contracts meeting the criteria in 9.1 or 9.2; and

(c) A brief discussion of management's principle objectives in entering into the reinsurance contract including the economic purpose to be achieved.

9.4

Except for transactions meeting the requirements of paragraph 31 of SSAP No. 62R, Property and Casualty Reinsurance, has the reporting entity ceded any risk under any reinsurance contract (or multiple contracts with the same reinsurer or its affiliates) during the period covered by the financial statement, and either:

(a) Accounted for that contract as reinsurance (either prospective or retroactive) under statutory accounting principles ("SAP") and as a deposit under generally accepted accounting principles ("GAAP"); or

(b) Accounted for that contract as reinsurance under GAAP and as a deposit under SAP?

Yes [ ] No [ X ]

9.5

If yes to 9.4, explain in the Reinsurance Summary Supplemental Filing for General Interrogatory 9 (Section D) why the contract(s) is treated differently for GAAP and SAP.

.....

9.6

The reporting entity is exempt from the Reinsurance Attestation Supplement under one or more of the following criteria:

(a) The entity does not utilize reinsurance; or,

(b) The entity only engages in a 100% quota share contract with an affiliate and the affiliated or lead company has filed an attestation supplement; or

(c) The entity has no external cessions and only participates in an intercompany pool and the affiliated or lead company has filed an attestation supplement.

Yes [ ] No [ X ]

Yes [ X ] No [ ]

Yes [ ] No [ X ]

10.

If the reporting entity has assumed risks from another entity, there should be charged on account of such reinsurances a reserve equal to that which the original entity would have been required to charge had it retained the risks. Has this been done?

Yes [X] No [ ] N/A [ ]

GENERAL INTERROGATORIES  
PART 2 - PROPERTY & CASUALTY INTERROGATORIES

11.1

Has the reporting entity guaranteed policies issued by any other entity and now in force:

Yes [ ] No [X]

11.2

If yes, give full information

12.1

If the reporting entity recorded accrued retrospective premiums on insurance contracts on Line 15.3 of the asset schedule, Page 2, state the amount of corresponding liabilities recorded for:

12.11

Unpaid losses

\$

12.12

Unpaid underwriting expenses (including loss adjustment expenses)

\$

12.2

Of the amount on Line 15.3, Page 2, state the amount that is secured by letters of credit, collateral and other funds?

\$

12.3

If the reporting entity underwrites commercial insurance risks, such as workers' compensation, are premium notes or promissory notes accepted from its insureds covering unpaid premiums and/or unpaid losses?

Yes [ ] No [X] N/A [ ]

12.4

If yes, provide the range of interest rates charged under such notes during the period covered by this statement:

12.41

From

%

12.42

To

%

12.5

Are letters of credit or collateral and other funds received from insureds being utilized by the reporting entity to secure premium notes or promissory notes taken by a reporting entity, or to secure any of the reporting entity's reported direct unpaid loss reserves, including unpaid losses under loss deductible features of commercial policies?

Yes [ ] No [X]

12.6

If yes, state the amount thereof at December 31 of current year:

12.61

Letters of Credit

\$

12.62

Collateral and other funds

\$

13.1

Largest net aggregate amount insured in any one risk (excluding workers' compensation):

\$

13.2

Does any reinsurance contract considered in the calculation of this amount include an aggregate limit of recovery without also including a reinstatement provision?

Yes [ ] No [X]

13.3

State the number of reinsurance contracts (excluding individual facultative risk certificates, but including facultative programs, automatic facilities or facultative obligatory contracts) considered in the calculation of the amount.

14.1

Is the company a cedant in a multiple cedant reinsurance contract?

Yes [ ] No [X]

14.2

If yes, please describe the method of allocating and recording reinsurance among the cedants:

14.3

If the answer to 14.1 is yes, are the methods described in item 14.2 entirely contained in the respective multiple cedant reinsurance contracts?

Yes [ ] No [ ]

14.4

If the answer to 14.3 is no, are all the methods described in 14.2 entirely contained in written agreements?

Yes [ ] No [ ]

14.5

If the answer to 14.4 is no, please explain:

15.1

Has the reporting entity guaranteed any financed premium accounts?

Yes [ ] No [X]

15.2

If yes, give full information

16.1

Does the reporting entity write any warranty business?

Yes [ ] No [X]

If yes, disclose the following information for each of the following types of warranty coverage:

	1	2	3	4	5
	Direct Losses Incurred	Direct Losses Unpaid	Direct Written Premium	Direct Premium Unearned	Direct Premium Earned
16.11 Home	\$	\$	\$	\$	\$
16.12 Products	\$	\$	\$	\$	\$
16.13 Automobile	\$	\$	\$	\$	\$
16.14 Other*	\$	\$	\$	\$	\$

\* Disclose type of coverage:

GENERAL INTERROGATORIES  
PART 2 - PROPERTY & CASUALTY INTERROGATORIES

17.1 Does the reporting entity include amounts recoverable on unauthorized reinsurance in Schedule F – Part 3 that it excludes from Schedule F – Part 5. .... Yes [ ] No [ X ]

Incurred but not reported losses on contracts in force prior to July 1, 1984, and not subsequently renewed are exempt from inclusion in Schedule F – Part 5. Provide the following information for this exemption:

17.11	Gross amount of unauthorized reinsurance in Schedule F – Part 3 excluded from Schedule F – Part 5.....	\$.....
17.12	Unfunded portion of Interrogatory 17.11.....	\$.....
17.13	Paid losses and loss adjustment expenses portion of Interrogatory 17.11	\$.....
17.14	Case reserves portion of Interrogatory 17.11.....	\$.....
17.15	Incurred but not reported portion of Interrogatory 17.11.....	\$.....
17.16	Unearned premium portion of Interrogatory 17.11.....	\$.....
17.17	Contingent commission portion of Interrogatory 17.11.....	\$.....

Provide the following information for all other amounts included in Schedule F – Part 3 and excluded from Schedule F – Part 5, not included above.

17.18	Gross amount of unauthorized reinsurance in Schedule F – Part 3 excluded from Schedule F – Part 5.....	\$.....
17.19	Unfunded portion of Interrogatory 17.18.....	\$.....
17.20	Paid losses and loss adjustment expenses portion of Interrogatory 17.18	\$.....
17.21	Case reserves portion of Interrogatory 17.18.....	\$.....
17.22	Incurred but not reported portion of Interrogatory 17.18.....	\$.....
17.23	Unearned premium portion of Interrogatory 17.18.....	\$.....
17.24	Contingent commission portion of Interrogatory 17.18.....	\$.....

18.1 Do you act as a custodian for health savings accounts? ..... Yes [ ] No [ X ]  
18.2 If yes, please provide the amount of custodial funds held as of the reporting date. .... \$.....  
18.3 Do you act as an administrator for health savings accounts? ..... Yes [ ] No [ X ]  
18.4 If yes, please provide the balance of the funds administered as of the reporting date. .... \$.....

ANNUAL STATEMENT FOR THE YEAR 2015 OF THE CINCINNATI CASUALTY COMPANY

FIVE-YEAR HISTORICAL DATA

Show amounts in whole dollars only, no cents; show percentages to one decimal place, i.e., 17.6.

	1 2015	2 2014	3 2013	4 2012	5 2011
<b>Gross Premiums Written</b> (Page 8, Part 1B, Cols. 1, 2 & 3)					
1. Liability lines (Lines 11.1, 11.2, 16, 17.1, 17.2, 17.3, 18.1, 18.2, 19.1, 19.2 & 19.3, 19.4)	205,486,152	209,785,548	222,971,118	206,100,406	169,222,613
2. Property lines (Lines 1, 2, 9, 12, 21 & 26)	16,417,839	14,695,967	14,266,862	13,598,806	5,408,445
3. Property and liability combined lines (Lines 3, 4, 5, 8, 22 & 27)	91,115,297	77,121,572	71,209,323	61,756,479	25,844,606
4. All other lines (Lines 6, 10, 13, 14, 15, 23, 24, 28, 29, 30 & 34)	68,210	89,154	63,299	218,878	268,925
5. Nonproportional reinsurance lines (Lines 31, 32 & 33)	0	0	0	0	0
6. Total (Line 35)	313,087,498	301,692,241	308,510,603	281,674,569	200,744,589
<b>Net Premiums Written</b> (Page 8, Part 1B, Col. 6)					
7. Liability lines (Lines 11.1, 11.2, 16, 17.1, 17.2, 17.3, 18.1, 18.2, 19.1, 19.2 & 19.3, 19.4)	0	0	0	0	0
8. Property lines (Lines 1, 2, 9, 12, 21 & 26)	0	0	0	0	0
9. Property and liability combined lines (Lines 3, 4, 5, 8, 22 & 27)	0	0	0	0	0
10. All other lines (Lines 6, 10, 13, 14, 15, 23, 24, 28, 29, 30 & 34)	0	0	0	0	0
11. Nonproportional reinsurance lines (Lines 31, 32 & 33)	0	0	0	0	0
12. Total (Line 35)	0	0	0	0	0
<b>Statement of Income</b> (Page 4)					
13. Net underwriting gain (loss) (Line 8)	0	0	0	0	0
14. Net investment gain (loss) (Line 11)	14,683,301	14,427,596	12,278,067	11,876,664	17,546,619
15. Total other income (Line 15)	0	0	0	0	0
16. Dividends to policyholders (Line 17)	0	0	0	0	0
17. Federal and foreign income taxes incurred (Line 19)	2,454,628	2,420,523	2,344,864	2,116,639	2,354,052
18. Net income (Line 20)	12,228,673	12,007,072	9,933,203	9,760,026	15,192,566
<b>Balance Sheet Lines</b> (Pages 2 and 3)					
19. Total admitted assets excluding protected cell business (Page 2, Line 26, Col. 3)	377,670,966	371,768,778	361,054,298	329,294,196	313,321,029
20. Premiums and considerations (Page 2, Col. 3)					
20.1 In course of collection (Line 15.1)	0	0	0	0	0
20.2 Deferred and not yet due (Line 15.2)	0	0	0	0	0
20.3 Accrued retrospective premiums (Line 15.3)	0	0	0	0	0
21. Total liabilities excluding protected cell business (Page 3, Line 26)	41,167,715	41,548,185	44,528,070	36,647,530	33,341,803
22. Losses (Page 3, Line 1)	0	0	0	0	0
23. Loss adjustment expenses (Page 3, Line 3)	0	0	0	0	0
24. Unearned premiums (Page 3, Line 9)	0	0	0	0	0
25. Capital paid up (Page 3, Lines 30 & 31)	3,750,000	3,750,000	3,750,000	3,750,000	3,750,000
26. Surplus as regards policyholders (Page 3, Line 37)	336,503,250	330,220,593	316,526,228	292,646,666	279,979,226
<b>Cash Flow</b> (Page 5)					
27. Net cash from operations (Line 11)	12,168,754	5,246,010	9,123,382	11,472,102	17,306,082
<b>Risk-Based Capital Analysis</b>					
28. Total adjusted capital	336,503,250	330,220,593	316,526,228	292,646,666	279,979,226
29. Authorized control level risk-based capital	10,130,965	11,543,725	11,186,000	8,523,309	7,491,699
<b>Percentage Distribution of Cash, Cash Equivalents and Invested Assets</b>					
(Page 2, Col. 3)(Item divided by Page 2, Line 12, Col. 3) x 100.0					
30. Bonds (Line 1)	74.1	72.1	72.2	74.1	77.5
31. Stocks (Lines 2.1 & 2.2)	23.4	26.3	27.1	22.7	22.0
32. Mortgage loans on real estate (Lines 3.1 and 3.2)	0.0	0.0	0.0	0.0	0.0
33. Real estate (Lines 4.1, 4.2 & 4.3)	0.0	0.0	0.0	0.0	0.0
34. Cash, cash equivalents and short-term investments (Line 5)	2.6	1.6	0.7	3.2	0.5
35. Contract loans (Line 6)	0.0	0.0	0.0	0.0	0.0
36. Derivatives (Line 7)	0.0	0.0	0.0	0.0	0.0
37. Other invested assets (Line 8)	0.0	0.0	0.0	0.0	0.0
38. Receivables for securities (Line 9)	0.0	0.0	0.0	0.0	0.0
39. Securities lending reinvested collateral assets (Line 10)	0.0	0.0	0.0	0.0	0.0
40. Aggregate write-ins for invested assets (Line 11)	0.0	0.0	0.0	0.0	0.0
41. Cash, cash equivalents and invested assets (Line 12)	100.0	100.0	100.0	100.0	100.0
<b>Investments in Parent, Subsidiaries and Affiliates</b>					
42. Affiliated bonds, (Sch. D, Summary, Line 12, Col. 1)	0	0	0	0	0
43. Affiliated preferred stocks (Sch. D, Summary, Line 18, Col. 1)	0	0	0	0	0
44. Affiliated common stocks (Sch. D, Summary, Line 24, Col. 1)	0	0	0	0	0
45. Affiliated short-term investments (subtotals included in Schedule DA Verification, Col. 5, Line 10)	0	0	0	0	0
46. Affiliated mortgage loans on real estate	0	0	0	0	0
47. All other affiliated	0	0	0	0	0
48. Total of above Lines 42 to 47	0	0	0	0	0
49. Total Investment in parent included in Lines 42 to 47 above		0	0	0	0
50. Percentage of investments in parent, subsidiaries and affiliates to surplus as regards policyholders (Line 48 above divided by Page 3, Col. 1, Line 37 x 100.0)	0.0	0.0	0.0	0.0	0.0

FIVE-YEAR HISTORICAL DATA

	1	2	3	4	5
	2015	2014	2013	2012	2011
Capital and Surplus Accounts (Page 4)					
51. Net unrealized capital gains (losses) (Line 24) .....	(5,929,819)	1,673,855	13,974,589	3,162,079	(4,217,338)
52. Dividends to stockholders (Line 35) .....	0	0	0	0	0
53. Change in surplus as regards policyholders for the year (Line 38) .....	6,282,657	13,694,365	23,879,562	12,667,439	11,436,245
Gross Losses Paid (Page 9, Part 2, Cols. 1 & 2)					
54. Liability lines (Lines 11.1, 11.2, 16, 17.1, 17.2, 17.3, 18.1, 18.2, 19.1, 19.2 & 19.3, 19.4) .....	95,324,902	93,670,516	104,296,097	102,578,612	103,081,818
55. Property lines (Lines 1, 2, 9, 12, 21 & 26) .....	8,485,239	6,860,685	8,608,640	6,753,705	1,885,957
56. Property and liability combined lines (Lines 3, 4, 5, 8, 22 & 27) .....	39,713,891	40,306,695	31,057,112	31,376,501	5,305,815
57. All other lines (Lines 6, 10, 13, 14, 15, 23, 24, 28, 29, 30 & 34) .....	0	0	10,000	(10,000)	0
58. Nonproportional reinsurance lines (Lines 31, 32 & 33) .....	0	0	0	0	0
59. Total (Line 35) .....	143,524,031	140,837,896	143,971,849	140,698,818	110,273,590
Net Losses Paid (Page 9, Part 2, Col. 4)					
60. Liability lines (Lines 11.1, 11.2, 16, 17.1, 17.2, 17.3, 18.1, 18.2, 19.1, 19.2 & 19.3, 19.4) .....	0	0	0	0	0
61. Property lines (Lines 1, 2, 9, 12, 21 & 26) .....	0	0	0	0	0
62. Property and liability combined lines (Lines 3, 4, 5, 8, 22 & 27) .....	0	0	0	0	0
63. All other lines (Lines 6, 10, 13, 14, 15, 23, 24, 28, 29, 30 & 34) .....	0	0	0	0	0
64. Nonproportional reinsurance lines (Lines 31, 32 & 33) .....	0	0	0	0	0
65. Total (Line 35) .....	0	0	0	0	0
Operating Percentages (Page 4) (Item divided by Page 4, Line 1) x 100.0					
66. Premiums earned (Line 1) .....	100.0	100.0	100.0	100.0	100.0
67. Losses incurred (Line 2) .....	0.0	0.0	0.0	0.0	0.0
68. Loss expenses incurred (Line 3) .....	0.0	0.0	0.0	0.0	0.0
69. Other underwriting expenses incurred (Line 4) .....	0.0	0.0	0.0	0.0	0.0
70. Net underwriting gain (loss) (Line 8) .....	0.0	0.0	0.0	0.0	0.0
Other Percentages					
71. Other underwriting expenses to net premiums written (Page 4, Lines 4 + 5 - 15 divided by Page 8, Part 1B, Col. 6, Line 35 x 100.0) .....	0.0	0.0	0.0	0.0	0.0
72. Losses and loss expenses incurred to premiums earned (Page 4, Lines 2 + 3 divided by Page 4, Line 1 x 100.0) .....	0.0	0.0	0.0	0.0	0.0
73. Net premiums written to policyholders' surplus (Page 8, Part 1B, Col. 6, Line 35 divided by Page 3, Line 37, Col. 1 x 100.0) .....	0.0	0.0	0.0	0.0	0.0
One Year Loss Development (000 omitted)					
74. Development in estimated losses and loss expenses incurred prior to current year (Schedule P, Part 2-Summary, Line 12, Col. 11) .....	0	0	0	0	0
75. Percent of development of losses and loss expenses incurred to policyholders' surplus of prior year end (Line 74 above divided by Page 4, Line 21, Col. 1 x 100.0) .....	0.0	0.0	0.0	0.0	0.0
Two Year Loss Development (000 omitted)					
76. Development in estimated losses and loss expenses incurred 2 years before the current year and prior year (Schedule P, Part 2 - Summary, Line 12, Col. 12) .....	0	0	0	0	0
77. Percent of development of losses and loss expenses incurred to reported policyholders' surplus of second prior year end (Line 76 above divided by Page 4, Line 21, Col. 2 x 100.0) .....	0.0	0.0	0.0	0.0	0.0

NOTE: If a party to a merger, have the two most recent years of this exhibit been restated due to a merger in compliance with the disclosure requirements of SSAP No. 3, *Accounting Changes and Correction of Errors*? Yes [   ] No [   ]

If no, please explain

.....



SCHEDULE P - ANALYSIS OF LOSSES AND LOSS EXPENSES  
SCHEDULE P - PART 1 - SUMMARY

(\$000 Omitted)

Years in Which Premiums Were Earned and Losses Were Incurred	Premiums Earned			Loss and Loss Expense Payments								12
	1	2	3	Loss Payments		Defense and Cost Containment Payments		Adjusting and Other Payments		10	11	Number of Claims Reported Direct and Assumed
				4	5	6	7	8	9			
Direct and Assumed	Ceded	Net (Cols. 1 - 2)	Direct and Assumed	Ceded	Direct and Assumed	Ceded	Direct and Assumed	Ceded	Salvage and Subrogation Received	Total Net Paid (Cols. 4 - 5 + 6 - 7 + 8 - 9)		
1. Prior	XXX	XXX	XXX	5,053	5,053	306	306	466	466	0	0	XXX
2. 2006	187,639	187,639	0	117,977	117,977	8,390	8,390	9,018	9,018	0	0	XXX
3. 2007	185,549	185,549	0	115,101	115,101	8,496	8,496	9,947	9,947	0	0	XXX
4. 2008	183,995	183,995	0	113,395	113,395	9,443	9,443	10,254	10,254	0	0	XXX
5. 2009	158,219	158,219	0	92,360	92,360	7,790	7,790	8,373	8,373	0	0	XXX
6. 2010	156,890	156,890	0	98,594	98,594	7,627	7,627	9,947	9,947	0	0	XXX
7. 2011	174,970	174,970	0	99,909	99,909	7,159	7,159	12,783	12,783	0	0	XXX
8. 2012	261,587	261,587	0	124,831	124,831	8,020	8,020	14,928	14,928	0	0	XXX
9. 2013	299,461	299,461	0	113,423	113,423	7,591	7,591	13,475	13,475	0	0	XXX
10. 2014	307,591	307,591	0	108,428	108,428	5,296	5,296	13,507	13,507	0	0	XXX
11. 2015	305,080	305,080	0	51,245	51,245	1,641	1,641	7,545	7,545	0	0	XXX
12. Totals	XXX	XXX	XXX	1,040,314	1,040,314	71,758	71,758	110,242	110,242	0	0	XXX

	Losses Unpaid				Defense and Cost Containment Unpaid				Adjusting and Other Unpaid		23  Salvage and Subrogation Anticipated	24  Total Net Losses and Expenses Unpaid	25  Number of Claims Outstanding Direct and Assumed
	Case Basis		Bulk + IBNR		Case Basis		Bulk + IBNR		21	22			
	13	14	15	16	17	18	19	20					
	Direct and Assumed	Ceded	Direct and Assumed	Ceded	Direct and Assumed	Ceded	Direct and Assumed	Ceded	Direct and Assumed	Ceded			
1. ....	40,394	40,394	68,298	68,298	0	0	3,441	3,441	849	849	0	0	XXX
2. ....	5,489	5,489	10,024	10,024	0	0	570	570	94	94	0	0	XXX
3. ....	3,119	3,119	14,041	14,041	0	0	729	729	100	100	0	0	XXX
4. ....	5,545	5,545	14,710	14,710	0	0	956	956	119	119	0	0	XXX
5. ....	9,660	9,660	9,606	9,606	0	0	811	811	154	154	0	0	XXX
6. ....	9,848	9,848	12,219	12,219	0	0	1,098	1,098	228	228	0	0	XXX
7. ....	7,470	7,470	13,411	13,411	0	0	1,560	1,560	368	368	0	0	XXX
8. ....	20,299	20,299	16,087	16,087	0	0	5,152	5,152	831	831	0	0	XXX
9. ....	26,230	26,230	20,858	20,858	0	0	9,370	9,370	1,699	1,699	0	0	XXX
10. ....	54,304	54,304	33,820	33,820	0	0	13,802	13,802	4,678	4,678	0	0	XXX
11. ....	67,033	67,033	61,657	61,657	0	0	19,357	19,357	9,930	9,930	0	0	XXX
12. ....	249,390	249,390	274,731	274,731	0	0	56,846	56,846	19,050	19,050	0	0	XXX

	Total Losses and Loss Expenses Incurred			Loss and Loss Expense Percentage (Incurred/Premiums Earned)			Nontabular Discount		34 Inter-Company Pooling Participation Percentage	Net Balance Sheet Reserves After Discount	
	26	27	28	29	30	31	32	33		35	36
	Direct and Assumed	Ceded	Net	Direct and Assumed	Ceded	Net	Loss	Loss Expense		Losses Unpaid	Loss Expenses Unpaid
1. ....	XXX	XXX	XXX	XXX	XXX	XXX	0	0	XXX	0	0
2. ....	151,562	151,562	0	80.8	80.8	0.0	0	0		0	0
3. ....	151,534	151,534	0	81.7	81.7	0.0	0	0		0	0
4. ....	154,422	154,422	0	83.9	83.9	0.0	0	0		0	0
5. ....	128,753	128,753	0	81.4	81.4	0.0	0	0		0	0
6. ....	139,561	139,561	0	89.0	89.0	0.0	0	0		0	0
7. ....	142,659	142,659	0	81.5	81.5	0.0	0	0		0	0
8. ....	190,148	190,148	0	72.7	72.7	0.0	0	0		0	0
9. ....	192,645	192,645	0	64.3	64.3	0.0	0	0		0	0
10. ....	233,834	233,834	0	76.0	76.0	0.0	0	0		0	0
11. ....	218,408	218,408	0	71.6	71.6	0.0	0	0		0	0
12. ....	XXX	XXX	XXX	XXX	XXX	XXX	0	0	XXX	0	0

Note: Parts 2 and 4 are gross of all discounting, including tabular discounting. Part 1 is gross of only nontabular discounting, which is reported in Columns 32 and 33 of Part 1. The tabular discount, if any, is reported in the Notes to Financial Statements, which will reconcile Part 1 with Parts 2 and 4.

SCHEDULE P - PART 2 - SUMMARY

Years in Which Losses Were Incurred	INCURRED NET LOSSES AND DEFENSE AND COST CONTAINMENT EXPENSES REPORTED AT YEAR END (\$000 OMITTED)										DEVELOPMENT	
	1	2	3	4	5	6	7	8	9	10	11	12
	2006	2007	2008	2009	2010	2011	2012	2013	2014	2015	One Year	Two Year
1. Prior	.0	.0	.0	.0	.0	.0	.0	.0	.0	.0	.0	.0
2. 2006	.0	.0	.0	.0	.0	.0	.0	.0	.0	.0	.0	.0
3. 2007	XXX	.0	.0	.0	.0	.0	.0	.0	.0	.0	.0	.0
4. 2008	XXX	XXX	.0	.0	.0	.0	.0	.0	.0	.0	.0	.0
5. 2009	XXX	XXX	XXX	.0	.0	.0	.0	.0	.0	.0	.0	.0
6. 2010	XXX	XXX	XXX	XXX	.0	.0	.0	.0	.0	.0	.0	.0
7. 2011	XXX	XXX	XXX	XXX	XXX	.0	.0	.0	.0	.0	.0	.0
8. 2012	XXX	XXX	XXX	XXX	XXX	XXX	.0	.0	.0	.0	.0	.0
9. 2013	XXX	XXX	XXX	XXX	XXX	XXX	XXX	.0	.0	.0	.0	.0
10. 2014	XXX	XXX	XXX	XXX	XXX	XXX	XXX	XXX	.0	.0	.0	XXX
11. 2015	XXX	XXX	XXX	XXX	XXX	XXX	XXX	XXX	XXX	.0	XXX	XXX
12. Totals											0	0

SCHEDULE P - PART 3 - SUMMARY

Years in Which Losses Were Incurred	CUMULATIVE PAID NET LOSSES AND DEFENSE AND COST CONTAINMENT EXPENSES REPORTED AT YEAR END (\$000 OMITTED)										11	12
	1	2	3	4	5	6	7	8	9	10	Number of Claims Closed With Loss Payment	Number of Claims Closed Without Loss Payment
	2006	2007	2008	2009	2010	2011	2012	2013	2014	2015		
1. Prior	.000	.0	.0	.0	.0	.0	.0	.0	.0	.0	XXX	XXX
2. 2006	.0	.0	.0	.0	.0	.0	.0	.0	.0	.0	XXX	XXX
3. 2007	XXX	.0	.0	.0	.0	.0	.0	.0	.0	.0	XXX	XXX
4. 2008	XXX	XXX	.0	.0	.0	.0	.0	.0	.0	.0	XXX	XXX
5. 2009	XXX	XXX	XXX	.0	.0	.0	.0	.0	.0	.0	XXX	XXX
6. 2010	XXX	XXX	XXX	XXX	.0	.0	.0	.0	.0	.0	XXX	XXX
7. 2011	XXX	XXX	XXX	XXX	XXX	.0	.0	.0	.0	.0	XXX	XXX
8. 2012	XXX	XXX	XXX	XXX	XXX	XXX	.0	.0	.0	.0	XXX	XXX
9. 2013	XXX	XXX	XXX	XXX	XXX	XXX	XXX	.0	.0	.0	XXX	XXX
10. 2014	XXX	XXX	XXX	XXX	XXX	XXX	XXX	XXX	.0	.0	XXX	XXX
11. 2015	XXX	XXX	XXX	XXX	XXX	XXX	XXX	XXX	XXX	.0	XXX	XXX

SCHEDULE P - PART 4 - SUMMARY

Years in Which Losses Were Incurred	BULK AND IBNR RESERVES ON NET LOSSES AND DEFENSE AND COST CONTAINMENT EXPENSES REPORTED AT YEAR END (\$000 OMITTED)									
	1 2006	2 2007	3 2008	4 2009	5 2010	6 2011	7 2012	8 2013	9 2014	10 2015
1. Prior	.0	.0	.0	.0	.0	.0	.0	.0	.0	.0
2. 2006	.0	.0	.0	.0	.0	.0	.0	.0	.0	.0
3. 2007	XXX	.0	.0	.0	.0	.0	.0	.0	.0	.0
4. 2008	XXX	XXX	.0	.0	.0	.0	.0	.0	.0	.0
5. 2009	XXX	XXX	XXX	.0	.0	.0	.0	.0	.0	.0
6. 2010	XXX	XXX	XXX	XXX	.0	.0	.0	.0	.0	.0
7. 2011	XXX	XXX	XXX	XXX	XXX	.0	.0	.0	.0	.0
8. 2012	XXX	XXX	XXX	XXX	XXX	XXX	.0	.0	.0	.0
9. 2013	XXX	XXX	XXX	XXX	XXX	XXX	XXX	.0	.0	.0
10. 2014	XXX	XXX	XXX	XXX	XXX	XXX	XXX	XXX	.0	.0
11. 2015	XXX	XXX	XXX	XXX	XXX	XXX	XXX	XXX	XXX	0

ANNUAL STATEMENT FOR THE YEAR 2015 OF THE CINCINNATI CASUALTY COMPANY

SCHEDULE T - EXHIBIT OF PREMIUMS WRITTEN

Allocated By States And Territories										
States, etc.		1	Gross Premiums, Including Policy and Membership Fees Less Return Premiums and Premiums on Policies Not Taken		4	5	6	7	8	9
			2	3						
		Active Status	Direct Premiums Written	Direct Premiums Earned	Dividends Paid or Credited to Policyholders on Direct Business	Direct Losses Paid (Deducting Salvage)	Direct Losses Incurred	Direct Losses Unpaid	Finance and Service Charges Not Included in Premiums	Direct Premium Written for Federal Purchasing Groups (Included in Col. 2)
1. Alabama	AL	L	7,542,854	7,231,364	0	1,845,278	2,504,936	5,048,747	1,337	
2. Alaska	AK	L	0	0	0	0	0	0	0	
3. Arizona	AZ	L	3,906,682	3,216,409	0	1,460,943	2,655,906	2,599,497	501	
4. Arkansas	AR	L	5,720,883	4,919,821	0	1,060,934	1,801,213	3,748,995	1,036	
5. California	CA	L	432,895	482,242	0	19,069	136,587	210,813	0	
6. Colorado	CO	L	2,415,351	2,247,431	0	883,315	(91,792)	4,103,457	471	
7. Connecticut	CT	L	1,031,119	806,288	0	112,906	343,510	550,783	39	
8. Delaware	DE	L	2,211,364	2,116,997	0	1,064,127	247,574	2,415,439	356	
9. Dist. Columbia	DC	L	283,014	254,999	0	93	40,627	189,516	0	
10. Florida	FL	L	549,650	754,556	0	483,948	454,594	2,848,484	25	
11. Georgia	GA	L	17,441,167	16,803,498	0	11,338,459	11,155,157	23,240,920	1,982	
12. Hawaii	HI	L	1,032	1,084	0	0	(256)	1,255	0	
13. Idaho	ID	L	2,500,541	2,136,996	0	177,572	738,468	1,248,157	317	
14. Illinois	IL	L	33,810,812	35,993,063	0	22,707,275	16,816,780	105,117,560	2,182	
15. Indiana	IN	L	24,050,232	23,771,346	0	10,431,853	17,601,880	50,615,888	1,486	
16. Iowa	IA	L	5,896,006	6,133,275	0	3,348,093	3,449,536	18,515,250	482	
17. Kansas	KS	L	4,716,795	4,583,262	0	2,448,773	1,687,557	5,396,371	964	
18. Kentucky	KY	L	5,294,740	5,141,847	0	5,154,775	6,500,962	14,633,855	1,248	
19. Louisiana	LA	L	104,815	107,491	0	64,551	68,769	84,975	0	
20. Maine	ME	L	20,654	15,505	0	1,208	17,481	17,207	0	
21. Maryland	MD	L	6,550,200	6,400,464	0	3,172,679	3,295,290	12,032,654	501	
22. Massachusetts	MA	L	0	0	0	0	(19)	199	0	
23. Michigan	MI	L	18,308,859	18,718,612	0	6,998,939	4,488,327	36,170,495	2,393	
24. Minnesota	MN	L	8,501,759	7,813,917	0	2,688,715	3,529,716	10,257,771	574	
25. Mississippi	MS	L	254,286	242,032	0	16,183	44,403	253,396	0	
26. Missouri	MO	L	11,998,135	11,536,509	0	4,720,390	1,067,091	21,892,140	1,265	
27. Montana	MT	L	1,045,586	885,723	0	250,236	150,649	268,041	272	
28. Nebraska	NE	L	6,145,197	5,858,937	0	2,550,619	4,657,488	8,417,718	196	
29. Nevada	NV	L	23,215	24,403	0	716	1,390	15,568	0	
30. New Hampshire	NH	L	1,486,159	1,529,610	0	921,889	1,231,186	2,711,454	67	
31. New Jersey	NJ	L	595,772	489,206	0	11,580	219,016	272,387	0	
32. New Mexico	NM	L	1,377,171	1,256,553	0	271,181	464,809	773,141	67	
33. New York	NY	L	4,745,004	4,665,585	0	1,286,400	1,703,513	6,060,160	936	
34. No. Carolina	NC	L	16,894,921	16,558,487	0	5,431,961	4,596,866	27,104,977	1,841	
35. No. Dakota	ND	L	834,194	680,136	0	76,199	193,240	231,439	135	
36. Ohio	OH	L	27,727,344	25,798,522	0	8,715,523	8,208,819	11,840,054	9,020	
37. Oklahoma	OK	L	427,371	473,339	0	138,119	57,995	578,499	0	
38. Oregon	OR	L	4,627,710	3,591,545	0	942,455	1,590,847	1,696,342	292	
39. Pennsylvania	PA	L	28,465,447	28,552,282	0	12,406,793	13,717,687	46,225,367	3,765	
40. Rhode Island	RI	L	9,028	41,702	0	132,653	374,994	349,584	0	
41. So. Carolina	SC	L	2,838,783	2,873,609	0	1,462,162	2,701,973	8,625,678	343	
42. So. Dakota	SD	L	964,030	1,076,981	0	1,164,379	(41,431)	3,506,030	63	
43. Tennessee	TN	L	8,471,079	8,037,732	0	2,580,091	2,955,322	15,966,061	1,528	
44. Texas	TX	L	11,836,478	11,542,251	19,788	11,322,901	9,787,797	11,218,381	453	
45. Utah	UT	L	3,558,939	2,874,476	0	576,742	770,261	2,239,578	465	
46. Vermont	VT	L	2,709,238	2,604,256	0	1,250,516	885,600	6,126,069	146	
47. Virginia	VA	L	11,664,649	10,722,379	0	4,805,413	6,010,155	19,460,992	923	
48. Washington	WA	L	1,133,719	796,884	0	358,145	332,670	256,483	45	
49. West Virginia	WV	L	2,228,775	2,228,023	0	1,028,315	584,160	1,912,917	384	
50. Wisconsin	WI	L	9,560,808	10,279,863	0	5,066,788	3,550,280	17,337,122	1,020	
51. Wyoming	WY	L	170,222	205,486	0	58,233	57,516	204,335	177	
52. American Samoa	AS	N	0	0	0	0	0	0	0	
53. Guam	GU	N	0	0	0	0	0	0	0	
54. Puerto Rico	PR	N	0	0	0	0	0	0	0	
55. U.S. Virgin Islands	VI	N	0	0	0	0	0	0	0	
56. Northern Mariana Islands	MP	N	0	0	0	0	0	0	0	
57. Canada	CAN	N	0	0	0	0	0	0	0	
58. Aggregate other alien	OT	XXX	0	0	0	0	0	0	0	0
59. Totals	(a) 51		313,084,684	305,076,978	19,788	143,010,085	143,317,100	514,592,201	39,297	0
DETAILS OF WRITE-INS										
58001.		XXX								
58002.		XXX								
58003.		XXX								
58998. Sum. of remaining write-ins for Line 58 from overflow page		XXX	0	0	0	0	0	0	0	0
58999. Totals (Lines 58001 through 58003 + 58998) (Line 58 above)		XXX	0	0	0	0	0	0	0	

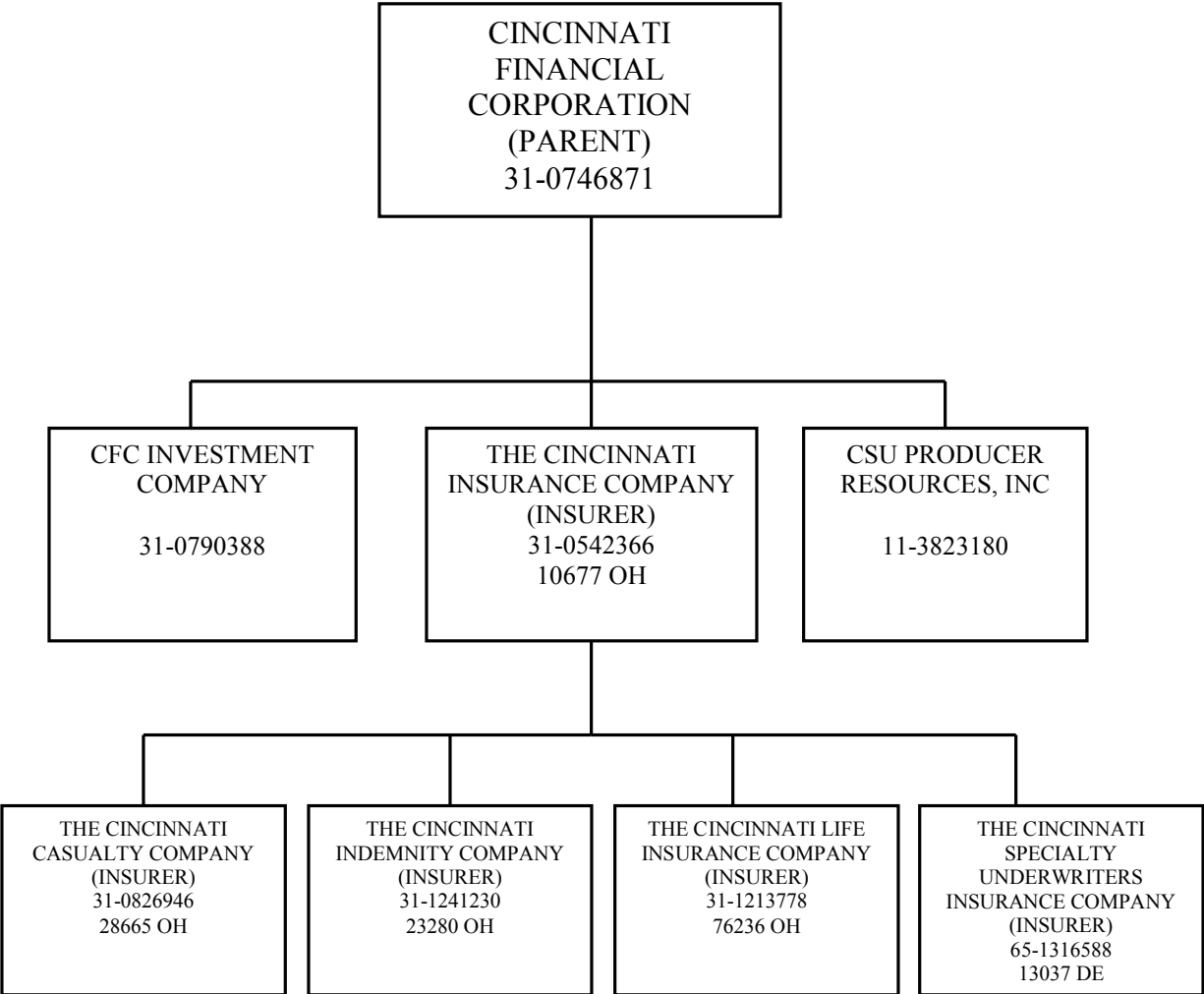
(L) Licensed or Chartered - Licensed Insurance Carrier or Domiciled RRG; (R) Registered - Non-domiciled RRGs; (Q) Qualified - Qualified or Accredited Reinsurer; (E) Eligible - Reporting Entities eligible or approved to write Surplus Lines in the state; (N) None of the above - Not allowed to write business in the state.

Explanation of basis of allocation of premiums by states, etc.

Premiums recieved on all classes are booked to the state in which the risk is located.

(a) Insert the number of L responses except for Canada and Other Alien

SCHEDULE Y – INFORMATION CONCERNING ACTIVITES OF  
INSURER MEMBERS OF A HOLDING COMPANY GROUP PART 1  
– ORGANIZATIONAL CHART



# ALPHABETICAL INDEX

ANNUAL STATEMENT BLANK

Assets	2
Cash Flow	5
Exhibit of Capital Gains (Losses)	12
Exhibit of Net Investment Income	12
Exhibit of Nonadmitted Assets	13
Exhibit of Premiums and Losses (State Page)	19
Five-Year Historical Data	17
General Interrogatories	15
Jurat Page	1
Liabilities, Surplus and Other Funds	3
Notes To Financial Statements	14
Overflow Page For Write-Ins	100
Schedule A – Part 1	E01
Schedule A – Part 2	E02
Schedule A – Part 3	E03
Schedule A – Verification Between Years	SI02
Schedule B – Part 1	E04
Schedule B – Part 2	E05
Schedule B – Part 3	E06
Schedule B – Verification Between Years	SI02
Schedule BA – Part 1	E07
Schedule BA – Part 2	E08
Schedule BA – Part 3	E09
Schedule BA – Verification Between Years	SI03
Schedule D – Part 1	E10
Schedule D – Part 1A – Section 1	SI05
Schedule D – Part 1A – Section 2	SI08
Schedule D – Part 2 – Section 1	E11
Schedule D – Part 2 – Section 2	E12
Schedule D – Part 3	E13
Schedule D – Part 4	E14
Schedule D – Part 5	E15
Schedule D – Part 6 – Section 1	E16
Schedule D – Part 6 – Section 2	E16
Schedule D – Summary By Country	SI04
Schedule D – Verification Between Years	SI03
Schedule DA – Part 1	E17

# ALPHABETICAL INDEX

---

## ANNUAL STATEMENT BLANK (Continued)

Schedule DA – Verification Between Years	SI10
Schedule DB – Part A – Section 1	E18
Schedule DB – Part A – Section 2	E19
Schedule DB – Part A – Verification Between Years	SI11
Schedule DB – Part B – Section 1	E20
Schedule DB – Part B – Section 2	E21
Schedule DB – Part B – Verification Between Years	SI11
Schedule DB – Part C – Section 1	SI12
Schedule DB – Part C – Section 2	SI13
Schedule DB – Part D – Section 1	E22
Schedule DB – Part D – Section 2	E23
Schedule DB – Verification	SI14
Schedule DL – Part 1	E24
Schedule DL – Part 2	E25
Schedule E – Part 1 – Cash	E26
Schedule E – Part 2 – Cash Equivalents	E27
Schedule E – Part 3 – Special Deposits	E28
Schedule E – Verification Between Years	SI15
Schedule F – Part 1	20
Schedule F – Part 2	21
Schedule F – Part 3	22
Schedule F – Part 4	23
Schedule F – Part 5	24
Schedule F – Part 6 – Section 1	25
Schedule F – Part 6 – Section 2	26
Schedule F – Part 7	27
Schedule F – Part 8	28
Schedule F – Part 9	29
Schedule H – Accident and Health Exhibit – Part 1	30
Schedule H – Part 2, Part 3, and Part 4	31
Schedule H – Part 5 – Health Claims	32
Schedule P – Part 1 – Summary	33
Schedule P – Part 1A – Homeowners/Farmowners	35
Schedule P – Part 1B – Private Passenger Auto Liability/Medical	36
Schedule P – Part 1C – Commercial Auto/Truck Liability/Medical	37
Schedule P – Part 1D – Workers’ Compensation (Excluding Excess Workers’ Compensation)	38

# ALPHABETICAL INDEX

---

## ANNUAL STATEMENT BLANK (Continued)

Schedule P – Part 1E – Commercial Multiple Peril	39
Schedule P – Part 1F – Section 1 – Medical Professional Liability – Occurrence	40
Schedule P – Part 1F – Section 2 – Medical Professional Liability – Claims-Made	41
Schedule P – Part 1G – Special Liability (Ocean, Marine, Aircraft (All Perils), Boiler and Machinery)	42
Schedule P – Part 1H – Section 1 – Other Liability–Occurrence	43
Schedule P – Part 1H – Section 2 – Other Liability – Claims-Made	44
Schedule P – Part 1I – Special Property (Fire, Allied Lines, Inland Marine, Earthquake, Burglary & Theft)	45
Schedule P – Part 1J – Auto Physical Damage	46
Schedule P – Part 1K – Fidelity/Surety	47
Schedule P – Part 1L – Other (Including Credit, Accident and Health)	48
Schedule P – Part 1M – International	49
Schedule P – Part 1N – Reinsurance – Nonproportional Assumed Property	50
Schedule P – Part 1O – Reinsurance – Nonproportional Assumed Liability	51
Schedule P – Part 1P – Reinsurance – Nonproportional Assumed Financial Lines	52
Schedule P – Part 1R – Section 1 – Products Liability – Occurrence	53
Schedule P – Part 1R – Section 2 – Products Liability – Claims – Made	54
Schedule P – Part 1S – Financial Guaranty/Mortgage Guaranty	55
Schedule P – Part 1T – Warranty	56
Schedule P – Part 2, Part 3 and Part 4 – Summary	34
Schedule P – Part 2A – Homeowners/Farmowners	57
Schedule P – Part 2B – Private Passenger Auto Liability/Medical	57
Schedule P – Part 2C – Commercial Auto/Truck Liability/Medical	57
Schedule P – Part 2D – Workers’ Compensation (Excluding Excess Workers’ Compensation)	57
Schedule P – Part 2E – Commercial Multiple Peril	57
Schedule P – Part 2F – Section 1 – Medical Professional Liability – Occurrence	58
Schedule P – Part 2F – Section 2 – Medical Professional Liability – Claims – Made	58
Schedule P – Part 2G – Special Liability (Ocean Marine, Aircraft (All Perils), Boiler and Machinery)	58
Schedule P – Part 2H – Section 1 – Other Liability – Occurrence	58
Schedule P – Part 2H – Section 2 – Other Liability – Claims – Made	58
Schedule P – Part 2I – Special Property (Fire, Allied Lines, Inland Marine, Earthquake, Burglary, and Theft)	59
Schedule P – Part 2J – Auto Physical Damage	59
Schedule P – Part 2K – Fidelity, Surety	59
Schedule P – Part 2L – Other (Including Credit, Accident and Health)	59
Schedule P – Part 2M – International	59
Schedule P – Part 2N – Reinsurance – Nonproportional Assumed Property	60
Schedule P – Part 2O – Reinsurance – Nonproportional Assumed Liability	60
Schedule P – Part 2P – Reinsurance – Nonproportional Assumed Financial Lines	60
Schedule P – Part 2R – Section 1 – Products Liability – Occurrence	61
Schedule P – Part 2R – Section 2 – Products Liability – Claims-Made	61
Schedule P – Part 2S – Financial Guaranty/Mortgage Guaranty	61
Schedule P – Part 2T – Warranty	61
Schedule P – Part 3A – Homeowners/Farmowners	62

# ALPHABETICAL INDEX

## ANNUAL STATEMENT BLANK (Continued)

Schedule P – Part 3B – Private Passenger Auto Liability/Medical	62
Schedule P – Part 3C – Commercial Auto/Truck Liability/Medical	62
Schedule P – Part 3D – Workers’ Compensation (Excluding Excess Workers’ Compensation)	62
Schedule P – Part 3E – Commercial Multiple Peril	62
Schedule P – Part 3F – Section 1 – Medical Professional Liability – Occurrence	63
Schedule P – Part 3F – Section 2 – Medical Professional Liability – Claims-Made	63
Schedule P – Part 3G – Special Liability (Ocean Marine, Aircraft (All Perils), Boiler and Machinery)	63
Schedule P – Part 3H – Section 1 – Other Liability – Occurrence	63
Schedule P – Part 3H – Section 2 – Other Liability – Claims-Made	63
Schedule P – Part 3I – Special Property (Fire, Allied Lines, Inland Marine, Earthquake, Burglary, and Theft)	64
Schedule P – Part 3J – Auto Physical Damage	64
Schedule P – Part 3K – Fidelity/Surety	64
Schedule P – Part 3L – Other (Including Credit, Accident and Health)	64
Schedule P – Part 3M – International	64
Schedule P – Part 3N – Reinsurance – Nonproportional Assumed Property	65
Schedule P – Part 3O – Reinsurance – Nonproportional Assumed Liability	65
Schedule P – Part 3P – Reinsurance – Nonproportional Assumed Financial Lines	65
Schedule P – Part 3R – Section 1 – Products Liability – Occurrence	66
Schedule P – Part 3R – Section 2 – Products Liability – Claims-Made	66
Schedule P – Part 3S – Financial Guaranty/Mortgage Guaranty	66
Schedule P – Part 3T – Warranty	66
Schedule P – Part 4A – Homeowners/Farmowners	67
Schedule P – Part 4B – Private Passenger Auto Liability/Medical	67
Schedule P – Part 4C – Commercial Auto/Truck Liability/Medical	67
Schedule P – Part 4D – Workers’ Compensation (Excluding Excess Workers’ Compensation)	67
Schedule P – Part 4E – Commercial Multiple Peril	67
Schedule P – Part 4F – Section 1 – Medical Professional Liability – Occurrence	68
Schedule P – Part 4F – Section 2 – Medical Professional Liability – Claims-Made	68
Schedule P – Part 4G – Special Liability (Ocean Marine, Aircraft (All Perils), Boiler and Machinery)	68
Schedule P – Part 4H – Section 1 – Other Liability – Occurrence	68
Schedule P – Part 4H – Section 2 – Other Liability – Claims-Made	68
Schedule P – Part 4I – Special Property (Fire, Allied Lines, Inland Marine, Earthquake, Burglary and Theft)	69
Schedule P – Part 4J – Auto Physical Damage	69
Schedule P – Part 4K – Fidelity/Surety	69
Schedule P – Part 4L – Other (Including Credit, Accident and Health)	69
Schedule P – Part 4M – International	69
Schedule P – Part 4N – Reinsurance – Nonproportional Assumed Property	70
Schedule P – Part 4O – Reinsurance – Nonproportional Assumed Liability	70
Schedule P – Part 4P – Reinsurance – Nonproportional Assumed Financial Lines	70
Schedule P – Part 4R – Section 1 – Products Liability – Occurrence	71
Schedule P – Part 4R – Section 2 – Products Liability – Claims-Made	71



# ALPHABETICAL INDEX

## ANNUAL STATEMENT BLANK (Continued)

Schedule P – Part 4S – Financial Guaranty/Mortgage Guaranty	71
Schedule P – Part 4T – Warranty	71
Schedule P – Part 5A – Homeowners/Farmowners	72
Schedule P – Part 5B – Private Passenger Auto Liability/Medical	73
Schedule P – Part 5C – Commercial Auto/Truck Liability/Medical	74
Schedule P – Part 5D – Workers’ Compensation (Excluding Excess Workers’ Compensation)	75
Schedule P – Part 5E – Commercial Multiple Peril	76
Schedule P – Part 5F – Medical Professional Liability – Claims-Made	78
Schedule P – Part 5F – Medical Professional Liability – Occurrence	77
Schedule P – Part 5H – Other Liability – Claims-Made	80
Schedule P – Part 5H – Other Liability – Occurrence	79
Schedule P – Part 5R – Products Liability – Claims-Made	82
Schedule P – Part 5R – Products Liability – Occurrence	81
Schedule P – Part 5T – Warranty	83
Schedule P – Part 6C – Commercial Auto/Truck Liability/Medical	84
Schedule P – Part 6D – Workers’ Compensation (Excluding Excess Workers’ Compensation)	84
Schedule P – Part 6E – Commercial Multiple Peril	85
Schedule P – Part 6H – Other Liability – Claims-Made	86
Schedule P – Part 6H – Other Liability – Occurrence	85
Schedule P – Part 6M – International	86
Schedule P – Part 6N – Reinsurance – Nonproportional Assumed Property	87
Schedule P – Part 6O – Reinsurance – Nonproportional Assumed Liability	87
Schedule P – Part 6R – Products Liability – Claims-Made	88
Schedule P – Part 6R – Products Liability – Occurrence	88
Schedule P – Part 7A – Primary Loss Sensitive Contracts	89
Schedule P – Part 7B – Reinsurance Loss Sensitive Contracts	91
Schedule P Interrogatories	93
Schedule T – Exhibit of Premiums Written	94
Schedule T – Part 2 – Interstate Compact	95
Schedule Y – Information Concerning Activities of Insurer Members of a Holding Company Group	96
Schedule Y – Part 1A – Detail of Insurance Holding Company System	97
Schedule Y – Part 2 – Summary of Insurer’s Transactions With Any Affiliates	98
Statement of Income	4
Summary Investment Schedule	SI01
Supplemental Exhibits and Schedules Interrogatories	99
Underwriting and Investment Exhibit Part 1	6
Underwriting and Investment Exhibit Part 1A	7
Underwriting and Investment Exhibit Part 1B	8
Underwriting and Investment Exhibit Part 2	9
Underwriting and Investment Exhibit Part 2A	10
Underwriting and Investment Exhibit Part 3	11

