



PROPERTY AND CASUALTY COMPANIES—ASSOCIATION EDITION

ANNUAL STATEMENT
For the Year Ended December 31, 2015
OF THE CONDITION AND AFFAIRS OF THE
Plans' Liability Insurance Company

NAIC Group Code	00023	00023	NAIC Company Code	26794	Employer's ID Number	36-3503382
	(Current Period)	(Prior Period)				
Organized under the Laws of	Ohio			State of Domicile or Port of Entry		Ohio
Country of Domicile	United States					
Incorporated/Organized	05/15/1986			Commenced Business		06/17/1986
Statutory Home Office	6740 North High Street			Worthington, OH, US 43085		
	(Street and Number)			(City or Town, State, Country and Zip Code)		
Main Administrative Office	2 Mid America Plaza, Suite 200			Oakbrook Terrace, IL, US 60181		630-472-7700
	(Street and Number)			(City or Town, State, Country and Zip Code)		(Area Code) (Telephone Number)
Mail Address	2 Mid America Plaza, Suite 200			Oakbrook Terrace, IL, US 60181		
	(Street and Number or P.O. Box)			(City or Town, State, Country and Zip Code)		
Primary Location of Books and Records	2 Mid America Plaza, Suite 200			Oakbrook Terrace, IL, US 60181		630-472-7700
	(Street and Number)			(City or Town, State, Country and Zip Code)		(Area Code) (Telephone Number)
Internet Web Site Address	N/A					
Statutory Statement Contact	Elias Georgopoulos			630-472-7749		
	(Name)			(Area Code) (Telephone Number) (Extension)		
	Lgeorgo@bcsf.com			630-472-7837		
	(E-Mail Address)			(Fax Number)		

OFFICERS

Name	Title	Name	Title
Howard Francis Beacham III	President & Chief Executive Officer	Terry Michael Hackett	General Counsel & Secretary
Susan Ann Pickar	Chief Financial Officer & Treasurer	Scott Phillip Serota	Chairman of the Board

OTHER OFFICERS

Sharon Jane Dold	Vice President, Marketing	David John Jacobs	Chief Actuary
------------------	---------------------------	-------------------	---------------

DIRECTORS OR TRUSTEES

Howard Francis Beacham III	Terry Dee Kellogg	Steven Scott Martin	Scott Phillip Serota
Paul Mark White			

State ofIllinois.....

SS

County ofDuPage.....

The officers of this reporting entity, being duly sworn, each depose and say that they are the described officers of said reporting entity, and that on the reporting period stated above, all of the herein described assets were the absolute property of the said reporting entity, free and clear from any liens or claims thereon, except as herein stated, and that this statement, together with related exhibits, schedules and explanations therein contained, annexed or referred to, is a full and true statement of all the assets and liabilities and of the condition and affairs of the said reporting entity as of the reporting period stated above, and of its income and deductions therefrom for the period ended, and have been completed in accordance with the NAIC Annual Statement Instructions and Accounting Practices and Procedures manual except to the extent that: (1) state law may differ; or, (2) that state rules or regulations require differences in reporting not related to accounting practices and procedures, according to the best of their information, knowledge and belief, respectively. Furthermore, the scope of this attestation by the described officers also includes the related corresponding electronic filing with the NAIC, when required, that is an exact copy (except for formatting differences due to electronic filing) of the enclosed statement. The electronic filing may be requested by various regulators in lieu of or in addition to the enclosed statement.

Howard Francis Beacham III	Terry Michael Hackett	Susan Ann Pickar
President & Chief Executive Officer	General Counsel & Secretary	Chief Financial Officer & Treasurer

Subscribed and sworn to before me
this 10th day of February, 2016

- a. Is this an original filing? Yes [X] No []
b. If no:
1. State the amendment number _____
2. Date filed _____
3. Number of pages attached _____

Jennifer Mark, Notary Public
03/24/2018



ASSETS

	Current Year			Prior Year
	1	2	3	4
	Assets	Nonadmitted Assets	Net Admitted Assets (Cols. 1 - 2)	Net Admitted Assets
1. Bonds (Schedule D).....	66,229,721		66,229,721	68,275,723
2. Stocks (Schedule D):				
2.1 Preferred stocks	0		0	0
2.2 Common stocks	5,657,197	361,616	5,295,581	5,475,679
3. Mortgage loans on real estate (Schedule B):				
3.1 First liens			0	0
3.2 Other than first liens			0	0
4. Real estate (Schedule A):				
4.1 Properties occupied by the company (less \$ encumbrances).....			0	0
4.2 Properties held for the production of income (less \$ encumbrances)			0	0
4.3 Properties held for sale (less \$ encumbrances)			0	0
5. Cash (\$1,249,019 , Schedule E-Part 1), cash equivalents (\$0 , Schedule E-Part 2) and short-term investments (\$796,234 , Schedule DA).....	2,045,254		2,045,254	1,691,257
6. Contract loans (including \$ premium notes).....			0	0
7. Derivatives (Schedule DB).....	0		0	0
8. Other invested assets (Schedule BA)	3,794,393		3,794,393	3,973,896
9. Receivables for securities			0	0
10. Securities lending reinvested collateral assets (Schedule DL).....			0	0
11. Aggregate write-ins for invested assets	0	0	0	0
12. Subtotals, cash and invested assets (Lines 1 to 11)	77,726,565	361,616	77,364,949	79,416,555
13. Title plants less \$ charged off (for Title insurers only).....			0	0
14. Investment income due and accrued	508,754		508,754	529,336
15. Premiums and considerations:				
15.1 Uncollected premiums and agents' balances in the course of collection	55,359		55,359	144,311
15.2 Deferred premiums, agents' balances and installments booked but deferred and not yet due (including \$ earned but unbilled premiums).....			0	0
15.3 Accrued retrospective premiums (\$) and contracts subject to redetermination (\$)			0	0
16. Reinsurance:				
16.1 Amounts recoverable from reinsurers			0	0
16.2 Funds held by or deposited with reinsured companies			0	0
16.3 Other amounts receivable under reinsurance contracts			0	0
17. Amounts receivable relating to uninsured plans			0	0
18.1 Current federal and foreign income tax recoverable and interest thereon			0	0
18.2 Net deferred tax asset.....			0	0
19. Guaranty funds receivable or on deposit			0	0
20. Electronic data processing equipment and software.....			0	0
21. Furniture and equipment, including health care delivery assets (\$)			0	0
22. Net adjustment in assets and liabilities due to foreign exchange rates			0	0
23. Receivables from parent, subsidiaries and affiliates			0	0
24. Health care (\$) and other amounts receivable.....			0	0
25. Aggregate write-ins for other-than-invested assets	0	0	0	0
26. Total assets excluding Separate Accounts, Segregated Accounts and Protected Cell Accounts (Lines 12 to 25).....	78,290,678	361,616	77,929,062	80,090,202
27. From Separate Accounts, Segregated Accounts and Protected Cell Accounts.....			0	0
28. Total (Lines 26 and 27)	78,290,678	361,616	77,929,062	80,090,202
DETAILS OF WRITE-INS				
1101.			0	0
1102.			0	0
1103.			0	0
1198. Summary of remaining write-ins for Line 11 from overflow page	0	0	0	0
1199. Totals (Lines 1101 through 1103 plus 1198) (Line 11 above)	0	0	0	0
2501.			0	0
2502.			0	0
2503.				
2598. Summary of remaining write-ins for Line 25 from overflow page	0	0	0	0
2599. Totals (Lines 2501 through 2503 plus 2598) (Line 25 above)	0	0	0	0

LIABILITIES, SURPLUS AND OTHER FUNDS

	1 Current Year	2 Prior Year
1. Losses (Part 2A, Line 35, Column 8)	32,354,600	31,265,234
2. Reinsurance payable on paid losses and loss adjustment expenses (Schedule F, Part 1, Column 6)	1,036,539	249,197
3. Loss adjustment expenses (Part 2A, Line 35, Column 9)	3,289,442	2,680,587
4. Commissions payable, contingent commissions and other similar charges		0
5. Other expenses (excluding taxes, licenses and fees)	135,089	156,127
6. Taxes, licenses and fees (excluding federal and foreign income taxes)	111,458	97,762
7.1 Current federal and foreign income taxes (including \$ on realized capital gains (losses))		0
7.2 Net deferred tax liability		0
8. Borrowed money \$3,770,500 and interest thereon \$1,286	3,771,786	3,771,317
9. Unearned premiums (Part 1A, Line 38, Column 5) (after deducting unearned premiums for ceded reinsurance of \$ and including warranty reserves of \$ and accrued accident and health experience rating refunds including \$ for medical loss ratio rebate per the Public Health Service Act)	656,827	627,828
10. Advance premium		0
11. Dividends declared and unpaid:		
11.1 Stockholders		0
11.2 Policyholders		0
12. Ceded reinsurance premiums payable (net of ceding commissions)		0
13. Funds held by company under reinsurance treaties (Schedule F, Part 3, Column 19)		0
14. Amounts withheld or retained by company for account of others		0
15. Remittances and items not allocated	6,490	28,008
16. Provision for reinsurance (including \$ certified) (Schedule F, Part 8)	0	0
17. Net adjustments in assets and liabilities due to foreign exchange rates		0
18. Drafts outstanding		0
19. Payable to parent, subsidiaries and affiliates	434,980	304,211
20. Derivatives	0	0
21. Payable for securities		0
22. Payable for securities lending		0
23. Liability for amounts held under uninsured plans		0
24. Capital notes \$ and interest thereon \$		0
25. Aggregate write-ins for liabilities	2,557,955	3,319,248
26. Total liabilities excluding protected cell liabilities (Lines 1 through 25)	44,355,166	42,499,519
27. Protected cell liabilities		0
28. Total liabilities (Lines 26 and 27)	44,355,166	42,499,519
29. Aggregate write-ins for special surplus funds	0	0
30. Common capital stock	2,942,436	2,942,436
31. Preferred capital stock		0
32. Aggregate write-ins for other-than-special surplus funds	0	0
33. Surplus notes		0
34. Gross paid in and contributed surplus	23,180,772	23,180,772
35. Unassigned funds (surplus)	7,450,688	11,467,475
36. Less treasury stock, at cost:		
36.1 shares common (value included in Line 30 \$)		0
36.2 shares preferred (value included in Line 31 \$)		0
37. Surplus as regards policyholders (Lines 29 to 35, less 36) (Page 4, Line 39)	33,573,896	37,590,683
38. Totals (Page 2, Line 28, Col. 3)	77,929,062	80,090,202
DETAILS OF WRITE-INS		
2501. Continuity Credit Assumed Liability.....	1,401,410	2,229,248
2502. Assumed Reinsurance Liability.....	1,000,000	1,000,000
2503. Premium Deficiency Reserve.....	156,545	90,000
2598. Summary of remaining write-ins for Line 25 from overflow page	0	0
2599. Totals (Lines 2501 through 2503 plus 2598) (Line 25 above)	2,557,955	3,319,248
2901.		0
2902.		0
2903.		0
2998. Summary of remaining write-ins for Line 29 from overflow page	0	0
2999. Totals (Lines 2901 through 2903 plus 2998) (Line 29 above)	0	0
3201.		0
3202.		0
3203.		0
3298. Summary of remaining write-ins for Line 32 from overflow page	0	0
3299. Totals (Lines 3201 through 3203 plus 3298) (Line 32 above)	0	0

STATEMENT OF INCOME

	1 Current Year	2 Prior Year
UNDERWRITING INCOME		
1. Premiums earned (Part 1, Line 35, Column 4)	3,942,946	2,670,480
DEDUCTIONS:		
2. Losses incurred (Part 2, Line 35, Column 7)	4,537,079	3,487,077
3. Loss adjustment expenses incurred (Part 3, Line 25, Column 1)	2,827,134	1,579,825
4. Other underwriting expenses incurred (Part 3, Line 25, Column 2)	3,209,570	2,899,971
5. Aggregate write-ins for underwriting deductions	66,545	(102,000)
6. Total underwriting deductions (Lines 2 through 5)	10,640,328	7,864,873
7. Net income of protected cells		0
8. Net underwriting gain (loss) (Line 1 minus Line 6 plus Line 7)	(6,697,382)	(5,194,393)
INVESTMENT INCOME		
9. Net investment income earned (Exhibit of Net Investment Income, Line 17)	2,465,991	2,513,292
10. Net realized capital gains (losses) less capital gains tax of \$31,366 (Exhibit of Capital Gains (Losses)).....	151,141	130,702
11. Net investment gain (loss) (Lines 9 + 10)	2,617,132	2,643,994
OTHER INCOME		
12. Net gain (loss) from agents' or premium balances charged off (amount recovered \$ amount charged off \$)		0
13. Finance and service charges not included in premiums.....		0
14. Aggregate write-ins for miscellaneous income	386,821	(75,573)
15. Total other income (Lines 12 through 14)	386,821	(75,573)
16. Net income before dividends to policyholders, after capital gains tax and before all other federal and foreign income taxes (Lines 8 + 11 + 15)	(3,693,429)	(2,625,972)
17. Dividends to policyholders		0
18. Net income, after dividends to policyholders, after capital gains tax and before all other federal and foreign income taxes (Line 16 minus Line 17)	(3,693,429)	(2,625,972)
19. Federal and foreign income taxes incurred	(31,366)	(63,713)
20. Net income (Line 18 minus Line 19) (to Line 22)	(3,662,063)	(2,562,259)
CAPITAL AND SURPLUS ACCOUNT		
21. Surplus as regards policyholders, December 31 prior year (Page 4, Line 39, Column 2)	37,590,683	39,897,886
22. Net income (from Line 20)	(3,662,063)	(2,562,259)
23. Net transfers (to) from Protected Cell accounts		0
24. Change in net unrealized capital gains or (losses) less capital gains tax of \$(120,606)	(234,118)	168,337
25. Change in net unrealized foreign exchange capital gain (loss)		0
26. Change in net deferred income tax	(120,606)	(5,447,514)
27. Change in nonadmitted assets (Exhibit of Nonadmitted Assets, Line 28, Col. 3)	0	5,534,233
28. Change in provision for reinsurance (Page 3, Line 16, Column 2 minus Column 1)	0	0
29. Change in surplus notes		0
30. Surplus (contributed to) withdrawn from protected cells		0
31. Cumulative effect of changes in accounting principles		0
32. Capital changes:		
32.1 Paid in		0
32.2 Transferred from surplus (Stock Dividend)		0
32.3 Transferred to surplus		0
33. Surplus adjustments:		
33.1 Paid in		0
33.2 Transferred to capital (Stock Dividend)		0
33.3 Transferred from capital		0
34. Net remittances from or (to) Home Office		0
35. Dividends to stockholders		0
36. Change in treasury stock (Page 3, Lines 36.1 and 36.2, Column 2 minus Column 1)	0	0
37. Aggregate write-ins for gains and losses in surplus	0	0
38. Change in surplus as regards policyholders for the year (Lines 22 through 37)	(4,016,787)	(2,307,203)
39. Surplus as regards policyholders, December 31 current year (Line 21 plus Line 38) (Page 3, Line 37)	33,573,896	37,590,683
DETAILS OF WRITE-INS		
0501. Premium Deficiency Reserve.....	66,545	(102,000)
0502.		0
0503.		0
0598. Summary of remaining write-ins for Line 5 from overflow page	0	0
0599. Totals (Lines 0501 through 0503 plus 0598) (Line 5 above)	66,545	(102,000)
1401. Continuity Credit Assumed.....	395,800	(134,928)
1402. Retroactive Reinsurance Gain Assumed.....	0	55,870
1403. Miscellaneous (Expense)/ Income.....	(8,979)	3,485
1498. Summary of remaining write-ins for Line 14 from overflow page	0	0
1499. Totals (Lines 1401 through 1403 plus 1498) (Line 14 above)	386,821	(75,573)
3701.		0
3702.		0
3703.		0
3798. Summary of remaining write-ins for Line 37 from overflow page	0	0
3799. Totals (Lines 3701 through 3703 plus 3798) (Line 37 above)	0	0

CASH FLOW

	1 Current Year	2 Prior Year
Cash from Operations		
1. Premiums collected net of reinsurance	4,060,897	2,504,320
2. Net investment income	2,669,838	2,667,010
3. Miscellaneous income	(441,017)	(548,753)
4. Total (Lines 1 through 3)	6,289,718	4,622,577
5. Benefit and loss related payments	3,115,171	977,831
6. Net transfers to Separate Accounts, Segregated Accounts and Protected Cell Accounts	0	0
7. Commissions, expenses paid and aggregate write-ins for deductions	5,052,051	5,222,167
8. Dividends paid to policyholders	0	0
9. Federal and foreign income taxes paid (recovered) net of \$ tax on capital gains (losses)	0	(692,947)
10. Total (Lines 5 through 9)	8,167,222	5,507,051
11. Net cash from operations (Line 4 minus Line 10)	(1,877,504)	(884,474)
Cash from Investments		
12. Proceeds from investments sold, matured or repaid:		
12.1 Bonds	14,185,917	11,267,514
12.2 Stocks	94,547	95,234
12.3 Mortgage loans	0	0
12.4 Real estate	0	0
12.5 Other invested assets	0	0
12.6 Net gains or (losses) on cash, cash equivalents and short-term investments	0	(10)
12.7 Miscellaneous proceeds	0	2
12.8 Total investment proceeds (Lines 12.1 to 12.7)	14,280,464	11,362,740
13. Cost of investments acquired (long-term only):		
13.1 Bonds	12,225,231	11,279,829
13.2 Stocks	0	127,949
13.3 Mortgage loans	0	0
13.4 Real estate	0	0
13.5 Other invested assets	0	2,000,000
13.6 Miscellaneous applications	1	1
13.7 Total investments acquired (Lines 13.1 to 13.6)	12,225,232	13,407,779
14. Net increase (decrease) in contract loans and premium notes	0	0
15. Net cash from investments (Line 12.8 minus Line 13.7 minus Line 14)	2,055,232	(2,045,039)
Cash from Financing and Miscellaneous Sources		
16. Cash provided (applied):		
16.1 Surplus notes, capital notes	0	0
16.2 Capital and paid in surplus, less treasury stock	0	0
16.3 Borrowed funds	469	(89,361)
16.4 Net deposits on deposit-type contracts and other insurance liabilities	0	0
16.5 Dividends to stockholders	0	0
16.6 Other cash provided (applied)	175,800	(857,312)
17. Net cash from financing and miscellaneous sources (Lines 16.1 to 16.4 minus Line 16.5 plus Line 16.6)	176,269	(946,673)
RECONCILIATION OF CASH, CASH EQUIVALENTS AND SHORT-TERM INVESTMENTS		
18. Net change in cash, cash equivalents and short-term investments (Line 11, plus Lines 15 and 17)	353,997	(3,876,186)
19. Cash, cash equivalents and short-term investments:		
19.1 Beginning of year	1,691,257	5,567,443
19.2 End of year (Line 18 plus Line 19.1)	2,045,254	1,691,257

UNDERWRITING AND INVESTMENT EXHIBIT

PART 1 - PREMIUMS EARNED

Line of Business		1 Net Premiums Written per Column 6, Part 1B	2 Unearned Premiums Dec. 31 Prior Year - per Col. 3, Last Year's Part 1	3 Unearned Premiums Dec. 31 Current Year - per Col. 5 Part 1A	4 Premiums Earned During Year (Cols. 1 + 2 - 3)
1.	Fire	0	0	0	0
2.	Allied lines	0	0	0	0
3.	Farmowners multiple peril	0	0	0	0
4.	Homeowners multiple peril	0	0	0	0
5.	Commercial multiple peril	0	0	0	0
6.	Mortgage guaranty	0	0	0	0
8.	Ocean marine	0	0	0	0
9.	Inland marine	0	0	0	0
10.	Financial guaranty	0	0	0	0
11.1	Medical professional liability-occurrence	0	0	0	0
11.2	Medical professional liability-claims-made	0	0	0	0
12.	Earthquake	0	0	0	0
13.	Group accident and health	0	0	0	0
14.	Credit accident and health (group and individual)	0	0	0	0
15.	Other accident and health	0	0	0	0
16.	Workers' compensation	0	0	0	0
17.1	Other liability-occurrence	0	0	0	0
17.2	Other liability-claims-made	3,954,937	623,102	651,981	3,926,058
17.3	Excess workers' compensation.....	0	0	0	0
18.1	Products liability-occurrence	0	0	0	0
18.2	Products liability-claims-made	0	0	0	0
19.1,19.2	Private passenger auto liability	0	0	0	0
19.3,19.4	Commercial auto liability	0	0	0	0
21.	Auto physical damage	0	0	0	0
22.	Aircraft (all perils)	0	0	0	0
23.	Fidelity	17,008	4,726	4,846	16,888
24.	Surety	0	0	0	0
26.	Burglary and theft	0	0	0	0
27.	Boiler and machinery	0	0	0	0
28.	Credit	0	0	0	0
29.	International	0	0	0	0
30.	Warranty	0	0	0	0
31.	Reinsurance-nonproportional assumed property	0	0	0	0
32.	Reinsurance-nonproportional assumed liability	0	0	0	0
33.	Reinsurance-nonproportional assumed financial lines	0	0	0	0
34.	Aggregate write-ins for other lines of business	0	0	0	0
35.	TOTALS	3,971,945	627,828	656,827	3,942,946
DETAILS OF WRITE-INS					
3401.	0	0	0	0
3402.	0	0	0	0
3403.	0	0	0	0
3498.	Sum. of remaining write-ins for Line 34 from overflow page	0	0	0	0
3499.	Totals (Lines 3401 through 3403 plus 3498) (Line 34 above)	0	0	0	0

UNDERWRITING AND INVESTMENT EXHIBIT

PART 1A - RECAPITULATION OF ALL PREMIUMS

Line of Business		1 Amount Unearned (Running One Year or Less from Date of Policy) (a)	2 Amount Unearned (Running More Than One Year from Date of Policy) (a)	3 Earned but Unbilled Premium	4 Reserve for Rate Credits and Retrospective Adjustments Based on Experience	5 Total Reserve for Unearned Premiums Cols. 1 + 2 + 3 + 4
1.	Fire0
2.	Allied lines0
3.	Farmowners multiple peril0
4.	Homeowners multiple peril0
5.	Commercial multiple peril0
6.	Mortgage guaranty0
8.	Ocean marine0
9.	Inland marine0
10.	Financial guaranty0
11.1	Medical professional liability-occurrence0
11.2	Medical professional liability-claims-made0
12.	Earthquake0
13.	Group accident and health0
14.	Credit accident and health (group and individual)0
15.	Other accident and health0
16.	Workers' compensation0
17.1	Other liability-occurrence0
17.2	Other liability-claims-made614,006	.37,975			.651,981
17.3	Excess workers' compensation0
18.1	Products liability-occurrence0
18.2	Products liability-claims-made0
19.1,19.2	Private passenger auto liability0
19.3,19.4	Commercial auto liability0
21.	Auto physical damage0
22.	Aircraft (all perils)0
23.	Fidelity4,846				.4,846
24.	Surety0
26.	Burglary and theft0
27.	Boiler and machinery0
28.	Credit0
29.	International0
30.	Warranty0
31.	Reinsurance-nonproportional assumed property0
32.	Reinsurance-nonproportional assumed liability0
33.	Reinsurance-nonproportional assumed financial lines0
34.	Aggregate write-ins for other lines of business	0	0	0	0	0
35.	TOTALS	618,852	37,975	0	0	656,827
36.	Accrued retrospective premiums based on experience					
37.	Earned but unbilled premiums					
38.	Balance (Sum of Lines 35 through 37)					656,827
DETAILS OF WRITE-INS						
3401.0
3402.0
3403.0
3498.	Sum. of remaining write-ins for Line 34 from overflow page0	.0	.0	.0	.0
3499.	Totals (Lines 3401 through 3403 plus 3498) (Line 34 above)	0	0	0	0	0

(a) State here basis of computation used in each case.

UNDERWRITING AND INVESTMENT EXHIBIT

PART 1B - PREMIUMS WRITTEN

Line of Business	1 Direct Business (a)	Reinsurance Assumed		Reinsurance Ceded		6 Net Premiums Written Cols. 1 + 2 + 3 - 4 - 5
		2 From Affiliates	3 From Non-Affiliates	4 To Affiliates	5 To Non-Affiliates	
1. Fire						0
2. Allied lines						0
3. Farmowners multiple peril						0
4. Homeowners multiple peril						0
5. Commercial multiple peril						0
6. Mortgage guaranty						0
8. Ocean marine						0
9. Inland marine						0
10. Financial guaranty						0
11.1 Medical professional liability-occurrence						0
11.2 Medical professional liability-claims-made						0
12. Earthquake						0
13. Group accident and health						0
14. Credit accident and health (group and individual)						0
15. Other accident and health						0
16. Workers' compensation						0
17.1 Other liability-occurrence						0
17.2 Other liability-claims-made.....		3,954,937				3,954,937
17.3 Excess workers' compensation.....						0
18.1 Products liability-occurrence						0
18.2 Products liability-claims- made						0
19.1,19.2 Private passenger auto liability						0
19.3,19.4 Commercial auto liability						0
21. Auto physical damage						0
22. Aircraft (all perils)						0
23. Fidelity		17,008				17,008
24. Surety						0
26. Burglary and theft						0
27. Boiler and machinery						0
28. Credit						0
29. International						0
30. Warranty						0
31. Reinsurance- nonproportional assumed property	XXX					0
32. Reinsurance- nonproportional assumed liability	XXX					0
33. Reinsurance- nonproportional assumed financial lines	XXX					0
34. Aggregate write-ins for other lines of business	0	0	0	0	0	0
35. TOTALS	0	3,971,945	0	0	0	3,971,945
DETAILS OF WRITE-INS						
3401.						0
3402.						0
3403.						0
3498. Sum. of remaining write- ins for Line 34 from overflow page	0	0	0	0	0	0
3499. Totals (Lines 3401 through 3403 plus 3498) (Line 34 above)	0	0	0	0	0	0

(a) Does the company's direct premiums written include premiums recorded on an installment basis? Yes [] No [X]

If yes: 1. The amount of such installment premiums \$

2. Amount at which such installment premiums would have been reported had they been recorded on an annualized basis \$

ANNUAL STATEMENT FOR THE YEAR 2015 OF THE Plans' Liability Insurance Company

UNDERWRITING AND INVESTMENT EXHIBIT

PART 2 - LOSSES PAID AND INCURRED

Line of Business		Losses Paid Less Salvage				5 Net Losses Unpaid Current Year (Part 2A, Col. 8)	6 Net Losses Unpaid Prior Year	7 Losses Incurred Current Year (Cols. 4 + 5 - 6)	8 Percentage of Losses Incurred (Col. 7, Part 2) to Premiums Earned (Col. 4, Part 1)
		1 Direct Business	2 Reinsurance Assumed	3 Reinsurance Recovered	4 Net Payments (Cols. 1 + 2 - 3)				
1.	Fire0	.0	0	.0	.0
2.	Allied lines0	.0	0	.0	.0
3.	Farmowners multiple peril0	.0	0	.0	.0
4.	Homeowners multiple peril0	.0	0	.0	.0
5.	Commercial multiple peril0	.0	0	.0	.0
6.	Mortgage guaranty0	.0	0	.0	.0
8.	Ocean marine0	.0	0	.0	.0
9.	Inland marine0	.0	0	.0	.0
10.	Financial guaranty0	.0	0	.0	.0
11.1	Medical professional liability-occurrence0	.0	0	.0	.0
11.2	Medical professional liability-claims-made0	.0	0	.0	.0
12.	Earthquake0	.0	0	.0	.0
13.	Group accident and health0	.0	0	.0	.0
14.	Credit accident and health (group and individual)0	.0	0	.0	.0
15.	Other accident and health0	.0	0	.0	.0
16.	Workers' compensation0	.0	0	.0	.0
17.1	Other liability-occurrence0	.0	0	.0	.0
17.2	Other liability-claims-made0	3,447,713		3,447,713	32,316,179	31,231,820	4,532,072	115.4
17.3	Excess workers' compensation0	.0	0	.0	.0
18.1	Products liability-occurrence0	.0	0	.0	.0
18.2	Products liability-claims-made0	.0	0	.0	.0
19.1,19.2	Private passenger auto liability0	.0	0	.0	.0
19.3,19.4	Commercial auto liability0	.0	0	.0	.0
21.	Auto physical damage0	.0	0	.0	.0
22.	Aircraft (all perils)0	.0	0	.0	.0
23.	Fidelity0	38,421	33,414	5,007	29.6
24.	Surety0	.0	0	.0	.0
26.	Burglary and theft0	.0	0	.0	.0
27.	Boiler and machinery0	.0	0	.0	.0
28.	Credit0	.0	0	.0	.0
29.	International0	.0	0	.0	.0
30.	Warranty0	.0	0	.0	.0
31.	Reinsurance-nonproportional assumed property	XXX			.0	.0	0	.0	.0
32.	Reinsurance-nonproportional assumed liability	XXX			.0	.0	0	.0	.0
33.	Reinsurance-nonproportional assumed financial lines	XXX			.0	.0	0	.0	.0
34.	Aggregate write-ins for other lines of business	0	0	0	0	0	0	0	0.0
35.	TOTALS	0	3,447,713	0	3,447,713	32,354,600	31,265,234	4,537,079	115.1
DETAILS OF WRITE-INS									
3401.0	.0	0	.0	.0
3402.0	.0	0	.0	.0
3403.0	.0	0	.0	.0
3498.	Sum. of remaining write-ins for Line 34 from overflow page0	.0	.0	.0	.0	0	.0	.0
3499.	Totals (Lines 3401 through 3403 + 3498) (Line 34 above)	0	0	0	0	0	0	0	0.0

ANNUAL STATEMENT FOR THE YEAR 2015 OF THE Plans' Liability Insurance Company

UNDERWRITING AND INVESTMENT EXHIBIT
PART 2A - UNPAID LOSSES AND LOSS ADJUSTMENT EXPENSES

		Reported Losses				Incurred But Not Reported			8	9
		1	2	3	4	5	6	7		
Line of Business		Direct	Reinsurance Assumed	Deduct Reinsurance Recoverable	Net Losses Excl. Incurred But Not Reported (Cols. 1 + 2 - 3)	Direct	Reinsurance Assumed	Reinsurance Ceded	Net Losses Unpaid (Cols. 4 + 5 + 6 - 7)	Net Unpaid Loss Adjustment Expenses
1.	Fire0				.0	
2.	Allied lines0				.0	
3.	Farmowners multiple peril0				.0	
4.	Homeowners multiple peril0				.0	
5.	Commercial multiple peril0				.0	
6.	Mortgage guaranty0				.0	
8.	Ocean marine0				.0	
9.	Inland marine0				.0	
10.	Financial guaranty0				.0	
11.1	Medical professional liability-occurrence0				.0	
11.2	Medical professional liability-claims-made0				.0	
12.	Earthquake0				.0	
13.	Group accident and health0				(a) .0	
14.	Credit accident and health (group and individual)0				.0	
15.	Other accident and health0				(a) .0	
16.	Workers' compensation0				.0	
17.1	Other liability-occurrence0				.0	
17.2	Other liability-claims-made0	23,242,970	.0	23,242,970	.0	9,073,209	.0	32,316,179	3,284,692
17.3	Excess workers' compensation0				.0	
18.1	Products liability-occurrence0				.0	
18.2	Products liability-claims-made0				.0	
19.1,19.2	Private passenger auto liability0				.0	
19.3,19.4	Commercial auto liability0				.0	
21.	Auto physical damage0				.0	
22.	Aircraft (all perils)0				.0	
23.	Fidelity0	.0	.0	.0	.0	38,421	.0	38,421	4,750
24.	Surety0				.0	
26.	Burglary and theft0				.0	
27.	Boiler and machinery0				.0	
28.	Credit0				.0	
29.	International0				.0	
30.	Warranty0				.0	
31.	Reinsurance-nonproportional assumed property	XXX			.0	XXX			.0	
32.	Reinsurance-nonproportional assumed liability	XXX			.0	XXX			.0	
33.	Reinsurance-nonproportional assumed financial lines	XXX			.0	XXX			.0	
34.	Aggregate write-ins for other lines of business0	.0	.0	.0	.0	.0	.0	.0	.0
35.	TOTALS	0	23,242,970	0	23,242,970	0	9,111,630	0	32,354,600	3,289,442
DETAILS OF WRITE-INS										
3401.0				.0	
3402.0				.0	
3403.0				.0	
3498.	Sum. of remaining write-ins for Line 34 from overflow page0	.0	.0	.0	.0	.0	.0	.0	.0
3499.	Totals (Lines 3401 through 3403 + 3498) (Line 34 above)	0	0	0	0	0	0	0	0	0

(a) Including \$for present value of life indemnity claims.

UNDERWRITING AND INVESTMENT EXHIBIT

PART 3 - EXPENSES

	1	2	3	4
	Loss Adjustment Expenses	Other Underwriting Expenses	Investment Expenses	Total
1. Claim adjustment services:				
1.1 Direct	0			0
1.2 Reinsurance assumed	2,741,598			2,741,598
1.3 Reinsurance ceded	0			0
1.4 Net claim adjustment services (1.1 + 1.2 - 1.3)	2,741,598	0	0	2,741,598
2. Commission and brokerage:				
2.1 Direct, excluding contingent		0		0
2.2 Reinsurance assumed, excluding contingent		1,825,751		1,825,751
2.3 Reinsurance ceded, excluding contingent		0		0
2.4 Contingent-direct		0		0
2.5 Contingent-reinsurance assumed		0		0
2.6 Contingent-reinsurance ceded		0		0
2.7 Policy and membership fees		0		0
2.8 Net commission and brokerage (2.1 + 2.2 - 2.3 + 2.4 + 2.5 - 2.6 + 2.7)	0	1,825,751	0	1,825,751
3. Allowances to manager and agents	0	0	0	0
4. Advertising	681	67,179	1,394	69,253
5. Boards, bureaus and associations	0	0	0	0
6. Surveys and underwriting reports	0	0	0	0
7. Audit of assureds' records	0	0	0	0
8. Salary and related items:				
8.1 Salaries	43,215	542,381	88,493	674,089
8.2 Payroll taxes	2,562	28,045	4,665	35,272
9. Employee relations and welfare	24,160	304,099	52,169	380,428
10. Insurance	230	2,331	474	3,036
11. Directors' fees	1	10	1	11
12. Travel and travel items	2,759	79,405	5,937	88,100
13. Rent and rent items	5,386	67,319	10,728	83,434
14. Equipment	276	3,523	591	4,391
15. Cost or depreciation of EDP equipment and software	2,778	39,428	5,141	47,347
16. Printing and stationery	812	31,050	1,747	33,609
17. Postage, telephone and telegraph, exchange and express	337	8,065	676	9,078
18. Legal and auditing	2,221	137,064	174,067	313,351
19. Totals (Lines 3 to 18)	85,419	1,309,899	346,082	1,741,400
20. Taxes, licenses and fees:				
20.1 State and local insurance taxes deducting guaranty association credits of \$	0	9,150	0	9,150
20.2 Insurance department licenses and fees	0	90,764	0	90,764
20.3 Gross guaranty association assessments	0	1,250	0	1,250
20.4 All other (excluding federal and foreign income and real estate)	(1)	(28,886)	(4)	(28,891)
20.5 Total taxes, licenses and fees (20.1 + 20.2 + 20.3 + 20.4)	(1)	72,278	(4)	72,273
21. Real estate expenses	0	0	0	0
22. Real estate taxes	0	0	0	0
23. Reimbursements by uninsured plans	0	0	0	0
24. Aggregate write-ins for miscellaneous expenses	118	1,642	223	1,983
25. Total expenses incurred	2,827,134	3,209,570	346,301	(a) 6,383,005
26. Less unpaid expenses-current year	3,289,442	217,227	29,320	3,535,988
27. Add unpaid expenses-prior year	2,680,587	229,683	24,205	2,934,475
28. Amounts receivable relating to uninsured plans, prior year	0	0	0	0
29. Amounts receivable relating to uninsured plans, current year				0
30. TOTAL EXPENSES PAID (Lines 25 - 26 + 27 - 28 + 29)	2,218,280	3,222,026	341,186	5,781,492
DETAILS OF WRITE-INS				
2401. Donations.....	118	1,642	223	1,983
2402.	0			0
2403.				0
2498. Summary of remaining write-ins for Line 24 from overflow page	0	0	0	0
2499. Totals (Lines 2401 through 2403 plus 2498) (Line 24 above)	118	1,642	223	1,983

(a) Includes management fees of \$ 1,332,443 to affiliates and \$ to non-affiliates.

EXHIBIT OF NET INVESTMENT INCOME

		1	2
		Collected During Year	Earned During Year
1.	U.S. Government bonds	(a).....227,668227,806
1.1	Bonds exempt from U.S. tax	(a).....86,70983,286
1.2	Other bonds (unaffiliated)	(a).....2,232,0322,213,945
1.3	Bonds of affiliates	(a).....0
2.1	Preferred stocks (unaffiliated)	(b).....0
2.11	Preferred stocks of affiliates	(b).....0
2.2	Common stocks (unaffiliated)117,973117,973
2.21	Common stocks of affiliates0
3.	Mortgage loans	(c).....
4.	Real estate	(d).....
5.	Contract loans
6.	Cash, cash equivalents and short-term investments	(e).....6361
7.	Derivative instruments	(f).....
8.	Other invested assets168,483168,918
9.	Aggregate write-ins for investment income00
10.	Total gross investment income	2,832,871	2,812,289
11.	Investment expenses		(g).....346,298
12.	Investment taxes, licenses and fees, excluding federal income taxes		(g).....
13.	Interest expense		(h).....
14.	Depreciation on real estate and other invested assets		(i).....
15.	Aggregate write-ins for deductions from investment income0
16.	Total deductions (Lines 11 through 15)346,298
17.	Net investment income (Line 10 minus Line 16)		2,465,991
DETAILS OF WRITE-INS			
0901.
0902.
0903.
0998.	Summary of remaining write-ins for Line 9 from overflow page00
0999.	Totals (Lines 0901 through 0903 plus 0998) (Line 9 above)	0	0
1501.		
1502.		
1503.		
1598.	Summary of remaining write-ins for Line 15 from overflow page0
1599.	Totals (Lines 1501 through 1503 plus 1598) (Line 15 above)		0

(a) Includes \$100,407 accrual of discount less \$278,557 amortization of premium and less \$21,900 paid for accrued interest on purchases.
(b) Includes \$ accrual of discount less \$ amortization of premium and less \$0 paid for accrued dividends on purchases.
(c) Includes \$0 accrual of discount less \$0 amortization of premium and less \$ paid for accrued interest on purchases.
(d) Includes \$ for company's occupancy of its own buildings; and excludes \$ interest on encumbrances.
(e) Includes \$ accrual of discount less \$ amortization of premium and less \$ paid for accrued interest on purchases.
(f) Includes \$ accrual of discount less \$ amortization of premium.
(g) Includes \$ investment expenses and \$ investment taxes, licenses and fees, excluding federal income taxes, attributable to segregated and Separate Accounts.
(h) Includes \$ interest on surplus notes and \$ interest on capital notes.
(i) Includes \$ depreciation on real estate and \$ depreciation on other invested assets.

EXHIBIT OF CAPITAL GAINS (LOSSES)

		1	2	3	4	5
		Realized Gain (Loss) On Sales or Maturity	Other Realized Adjustments	Total Realized Capital Gain (Loss) (Columns 1 + 2)	Change in Unrealized Capital Gain (Loss)	Change in Unrealized Foreign Exchange Capital Gain (Loss)
1.	U.S. Government bonds	13,961		13,961		
1.1	Bonds exempt from U.S. tax	(606)		(606)		
1.2	Other bonds (unaffiliated)	74,604		74,604	4,877	
1.3	Bonds of affiliates	0	0	0	0	0
2.1	Preferred stocks (unaffiliated)	0	0	0	0	0
2.11	Preferred stocks of affiliates	0	0	0	0	0
2.2	Common stocks (unaffiliated)	94,547	0	94,547	(180,098)	0
2.21	Common stocks of affiliates	0	0	0	0	0
3.	Mortgage loans	0	0	0	0	0
4.	Real estate	0	0	0		0
5.	Contract loans			0		
6.	Cash, cash equivalents and short-term investments			0	0	0
7.	Derivative instruments			0		
8.	Other invested assets	0	0	0	(179,503)	0
9.	Aggregate write-ins for capital gains (losses)	0	0	0	0	0
10.	Total capital gains (losses)	182,506	0	182,506	(354,724)	0
DETAILS OF WRITE-INS						
0901.			0		
0902.			0		
0903.			0		
0998.	Summary of remaining write-ins for Line 9 from overflow page	0	0	0	0	0
0999.	Totals (Lines 0901 through 0903 plus 0998) (Line 9 above)	0	0	0	0	0

EXHIBIT OF NONADMITTED ASSETS

	1	2	3
	Current Year Total Nonadmitted Assets	Prior Year Total Nonadmitted Assets	Change in Total Nonadmitted Assets (Col. 2 - Col. 1)
1. Bonds (Schedule D).....	0	0	0
2. Stocks (Schedule D):			
2.1 Preferred stocks	0	0	0
2.2 Common stocks	361,616	361,616	0
3. Mortgage loans on real estate (Schedule B):			
3.1 First liens	0	0	0
3.2 Other than first liens	0	0	0
4. Real estate (Schedule A):			
4.1 Properties occupied by the company	0	0	0
4.2 Properties held for the production of income.....	0	0	0
4.3 Properties held for sale	0	0	0
5. Cash (Schedule E-Part 1), cash equivalents (Schedule E-Part 2) and short-term investments (Schedule DA).....	0	0	0
6. Contract loans	0	0	0
7. Derivatives (Schedule DB).....	0	0	0
8. Other invested assets (Schedule BA)	0	0	0
9. Receivables for securities	0	0	0
10. Securities lending reinvested collateral assets (Schedule DL).....	0	0	0
11. Aggregate write-ins for invested assets	0	0	0
12. Subtotals, cash and invested assets (Lines 1 to 11)	361,616	361,616	0
13. Title plants (for Title insurers only).....	0	0	0
14. Investment income due and accrued	0	0	0
15. Premiums and considerations:			
15.1 Uncollected premiums and agents' balances in the course of collection.....	0	0	0
15.2 Deferred premiums, agents' balances and installments booked but deferred and not yet due.....	0	0	0
15.3 Accrued retrospective premiums and contracts subject to redetermination	0	0	0
16. Reinsurance:			
16.1 Amounts recoverable from reinsurers	0	0	0
16.2 Funds held by or deposited with reinsured companies	0	0	0
16.3 Other amounts receivable under reinsurance contracts	0	0	0
17. Amounts receivable relating to uninsured plans	0	0	0
18.1 Current federal and foreign income tax recoverable and interest thereon	0	0	0
18.2 Net deferred tax asset.....	0	0	0
19. Guaranty funds receivable or on deposit	0	0	0
20. Electronic data processing equipment and software.....	0	0	0
21. Furniture and equipment, including health care delivery assets	0	0	0
22. Net adjustment in assets and liabilities due to foreign exchange rates	0	0	0
23. Receivables from parent, subsidiaries and affiliates	0	0	0
24. Health care and other amounts receivable.....	0	0	0
25. Aggregate write-ins for other-than-invested assets	0	0	0
26. Total assets excluding Separate Accounts, Segregated Accounts and Protected Cell Accounts (Lines 12 to 25).....	361,616	361,616	0
27. From Separate Accounts, Segregated Accounts and Protected Cell Accounts.....	0	0	0
28. Total (Lines 26 and 27)	361,616	361,616	0
DETAILS OF WRITE-INS			
1101.		0	0
1102.		0	0
1103.		0	0
1198. Summary of remaining write-ins for Line 11 from overflow page	0	0	0
1199. Totals (Lines 1101 through 1103 plus 1198) (Line 11 above)	0	0	0
2501.		0	0
2502.			
2503.			
2598. Summary of remaining write-ins for Line 25 from overflow page	0	0	0
2599. Totals (Lines 2501 through 2503 plus 2598) (Line 25 above)	0	0	0

NOTES TO FINANCIAL STATEMENTS

1. Summary of Significant Accounting Policies

A. Accounting Practices and Going Concern

The accompanying financial statements of the Company have been prepared on the basis of accounting procedures prescribed or permitted by the Ohio Insurance Department. The state of Ohio requires insurance companies domiciled in the state of Ohio to prepare their statutory financial statements in accordance with the National Association of Insurance Commissioners' (NAIC) Accounting Practices and Procedures Manual subject to any deviations prescribed or permitted by the Ohio Insurance Department.

	State of Domicile		2015	2014
Net Income				
(1) Plans' Liability Insurance Company State Basis (page 4 line 20, columns 1 & 2)	Ohio	\$	(3,662,063)	\$ (2,562,259)
(2) State Prescribed practices that increase/(decrease) NAIC SAP: e.g., Depreciation of fixed assets			-	-
(3) State Permitted practices that increase/(decrease) NAIC SAP: e.g., Depreciation, home office property			-	-
(4) NAIC SAP (1-2-3=4)		\$	<u>(3,662,063)</u>	<u>(2,562,259)</u>
Surplus				
(5) Plans' Liability Insurance Company State Basis (page 3 line 37, columns 1 & 2)	Ohio	\$	33,573,896	\$ 37,590,683
(6) State Prescribed practices that increase/(decrease) NAIC SAP: Investments			(361,616)	(361,616)
(7) State Permitted practices that increase/(decrease) NAIC SAP: e.g., Depreciation, home office property			-	-
(8) NAIC SAP (5-6-7=8)		\$	<u>33,935,512</u>	<u>37,952,299</u>

B. Use of Estimates in the Preparation of the Financial Statements

The preparation of financial statements requires management to make estimates and assumptions that affect the reported amounts of assets, liabilities, revenues, and expenses. Such estimates and assumptions could change in the future as more information becomes known, which could impact the amounts reported and disclosed herein.

C. Accounting Policy

Premiums are earned over the terms of the related policies and reinsurance contracts. Unearned premium is assumed from BCS Insurance Company (BCSIC) and is established to cover the unexpired portion of premiums written. Such reserves are computed by the pro rata method. Expenses incurred in connection with acquiring new insurance business (acquisition costs) are charged to operations as incurred. Net investment income earned consists primarily of interest. Net realized capital gains (losses) are recognized on a specific identification basis when securities are sold, redeemed or otherwise disposed.

In addition, the Company uses the following accounting policies:

- Short-term investments are stated at cost, which approximates market.
- Long-term bonds are generally stated at their amortized value. Non-investment grade securities with NAIC designations of 3 through 6 are stated at the lower of amortized value or fair value. If a security is deemed to be other than temporarily impaired, it is written down to its fair value through a charge to earnings.
- Common Stocks are stated at fair value.
- Preferred Stocks - Not applicable
- Mortgage Loans - Not applicable
- Prepayment assumptions for loan-backed securities are obtained from broker dealer survey values or Bloomberg System. These assumptions are consistent with current interest rates and the economic environment. The retrospective scientific method is used to value all loan backed and structured securities.
- Subsidiaries, Controlled and Affiliated Companies - Not applicable
- Joint ventures, Partnerships and Limited Liability Companies are stated at fair value.
- Derivatives - Not applicable
- Anticipated investment income is a factor for premium deficiency reserves.
- Unpaid losses and loss adjustment expenses include an amount determined from individual case estimates and loss reports and an amount, based on past experience, for losses incurred but not reported. Such liabilities are necessarily based on assumptions and estimates and while management believes the amount is reasonable, the ultimate liability may be in excess of or less than the amount provided. The methods for making such estimates and for establishing the resulting liabilities are continually reviewed and any adjustments are reflected in the period determined.
- Capitalization Policy - Not applicable
- Pharmaceutical Rebate Receivables – Not applicable

NOTES TO FINANCIAL STATEMENTS

D. Going Concern

Not Applicable

2. Accounting Changes and Corrections of Errors

None

3. Business Combinations and Goodwill

A. Statutory Purchase Method

None

B. Statutory Merger

None

C. Impairment Loss

None

4. Discontinued Operations

Not Applicable

5. Investments

A. Mortgage Loans, including Mezzanine Real Estate Loans

None

B. Debt Restructuring

None

C. Reverse Mortgages

None

D. Loan-Backed Securities

1. Anticipated prepayments for loan-backed and structured securities are used to determine the effective yield of an issue at purchase. Changes in the estimated cash flows of the issue are incorporated when determining the statement value at the end of each quarter and year-end. Prepayments for loan-backed and structured securities were obtained from the broker dealer survey or Bloomberg Systems. These assumptions are consistent with the current interest rate and economic environment. The retrospective scientific method is used to value most loan-backed and structured securities. For structured securities deemed to be high-risk, meaning the Company might not recover substantially all of its recorded investment due to unanticipated prepayment events, changes in investment yields due to changes in estimated future cash flows are accounted for on a prospective basis.

2. The Company has the following recognized other-than-temporary impairments on loan-backed securities:

None

3. Securities, by CUSIP, with a recognized other-than-temporary impairment, currently held by the reporting entity, as the present value of cash flows expected to be collected is less than the amortized cost basis of the securities:

None

4. All impaired securities (fair value is less than cost or amortized cost) for which an other-than-temporary impairment has not been recognized in earnings as a realized loss (including securities with a recognized other-than-temporary impairment for non-interest related declines when a non-recognized interest related impairment remains):

a. The aggregate amount of unrealized losses:

1. Less than 12 months	\$130,879
2. 12 Months or Longer	\$61,880

b. The aggregate related fair value of securities with unrealized losses:

1. Less than 12 months	\$9,768,313
2. 12 Months or Longer	\$1,522,808

NOTES TO FINANCIAL STATEMENTS

5. The Company periodically reviews its bonds on a case by case basis to determine whether any decline in fair value below amortized cost is other than temporary. Factors considered when determining whether a decline is other than temporary include the length of time a security has been in an unrealized loss position, reasons for the decline in value, expectations for the amount and timing of a recovery in fair value, and whether or not the Company has the intent and ability to sell the security. When the Company intends to sell an impaired security or has the intent and ability to hold an impaired security before recovery of its amortized cost basis, an other than temporary impairment is recognized in the statutory statement of operations as the difference between the amortized cost basis of the security and fair value. For structured securities, a credit loss also exists when an estimate of the present value of cash flows expected to be collected on the security is less than its amortized cost basis. For other bonds, a credit loss exists when the fair value of the security is less than the amortized cost and based on analysis the decrease in value is thought to be other than temporary. Credit losses are recognized in the statutory statements of operations.

Generally, securities with fair values that are less than 80% of cost, other securities the Company determines are underperforming, or potential problem securities are subject to regular impairment review. To facilitate the review, securities with significant declines in value, or where objective criteria evidencing credit deterioration have been met, are included on a watch list. Among the criteria for securities to be included on a watch list are: credit deterioration, which has led to a significant decline in value of the security; a significant covenant related to the security has been breached; and an issuer has filed or indicated a possibility of filing for bankruptcy, has missed or announced it intends to miss a scheduled interest or principal payment, or has experienced a specific material adverse change that may impair its creditworthiness.

When performing these reviews, the Company considers the relevant facts and circumstances relating to each investment and exercises considerable judgment in determining whether a security is other than temporarily impaired. Assessment factors include judgments about an obligor's current and projected financial position, an issuer's current and projected ability to service and repay its debt obligations, the existence of, and realizable value of, any collateral backing the obligations, the macroeconomic outlook, and the microeconomic outlook for specific industries and issuers. Assessing the duration of asset backed securities can also involve assumptions regarding underlying collateral, such as prepayment rates, default and recovery rates, and third party servicing capabilities.

Among the factors considered is whether the decline in fair value results from a change in the quality of the security itself, or from a downward movement in the market as a whole, the likelihood of recovering the carrying value based on the current and short term prospects of the issuer, and the Company's ability and intent to sell the security before such a recovery may occur. Unrealized losses that are considered to be primarily the result of market conditions, such as increasing interest rates, unusual market volatility or industry related events, and where the Company also believes there exists a reasonable expectation for recovery and, furthermore, has the intent and ability to hold the investment until maturity or the market recovery, are usually determined to be temporary. To the extent factors contributing to recognized other than temporary impairment losses affected other investments, such investments were reviewed for other than temporary impairment and losses were recorded when appropriate.

In addition to the review procedures described above, investments in structured securities where market prices are depressed are subject to a review of their future estimated cash flows, including expected and stress case scenarios, to identify potential shortfalls with regard to full recovery of amortized cost. Even in the case of severely depressed market values on structured securities, the Company places significant importance on the results of its cash flow testing and its intent to sell these securities prior to full recovery of amortized cost until their fair values recover when reaching other than temporary impairment conclusions. If amortized cost of the security is less than the present value of estimated cash flows, an other than temporary impairment is recognized in the statutory statements of operations.

If the Company does not expect to recover the amortized cost of nonstructured securities, an impairment loss is recognized as the difference between amortized cost and fair value under SSAP No. 26, Bonds, Excluding Loan Backed and Structured Securities. If the Company intends to sell an impaired loan backed or structured security or has the intent and ability to sell such a security before a period of time sufficient for recovery of the amortized cost basis, an other than temporary impairment has occurred and an impairment loss is recognized as the difference between amortized cost and fair value of the loan backed or structured security. If the Company does not expect to recover the amortized cost basis of loan backed or structured securities even if the entity has no intent to sell and the entity has the intent and ability to hold, an impairment loss is recognized as the difference between the amortized cost basis and the present value of cash flows expected to be collected. Impairment losses are recognized in the statutory statements of operations.

There are inherent uncertainties in assessing the fair values assigned to the Company's investments and in determining whether a decline in fair value is other than temporary. The Company's review of fair value involves several criteria including economic conditions, credit loss experience, other issuer specific developments, and future cash flows. These assessments are based on the best available information at the time. Factors such as market liquidity, the widening of bid/ask spreads, and a change in the cash flow assumptions can contribute to fair value volatility and uncertainty with regard to other than temporary impairment. If actual experience differs negatively from the assumptions and other considerations, realized losses may be recognized in the statutory statements of operations in future periods.

As of December 31, 2015, the Company does not intend to sell securities with unrealized losses not considered other than temporary prior to full recovery of amortized cost. However, if the specific facts and circumstances surrounding a security or the outlook for its industry sector change, the Company may sell the security and realize a loss in the period in which the decision to sell was made.

E. Repurchase Agreements and/or Securities Lending Transactions

None

F. Real Estate

None

NOTES TO FINANCIAL STATEMENTS

G. Investments in Low-Income Housing Tax Credits (LIHTC)

None

H. Restricted Assets

1. Restricted Assets (Including Pledged)

Restricted Asset Category	Gross Restricted							8	Percentage	
	Current Year					6	7		9	10
	1	2	3	4	5					
	Total General Account (G/A)	G/A Supporting Protected Cell Account Activity (a)	Total Protected Cell Account Restricted Assets	Protected Cell Account Assets Supporting G/A Activity (b)	Total (1plus 3)	Total From Prior Year	Increase / (Decrease) (5 minus 6)	Total Current Year Admitted Restricted	Gross Restricted to Total Assets	Admitted Restricted to Total Admitted Assets
a. Subject to contractual obligation for which liability is not shown	\$ -	\$ -	\$ -	\$ -	\$ -	\$ -	\$ -	\$ -	-	-
b. Collateral held under security lending arrangements	-	-	-	-	-	-	-	-	-	-
c. Subject to repurchase agreements	-	-	-	-	-	-	-	-	-	-
d. Subject to reverse repurchase agreements	-	-	-	-	-	-	-	-	-	-
e. Subject to dollar repurchase agreements	-	-	-	-	-	-	-	-	-	-
f. Subject to dollar reverse repurchase agreements	-	-	-	-	-	-	-	-	-	-
g. Placed under option contracts	-	-	-	-	-	-	-	-	-	-
h. Letter stock or securities restricted as to sale - excluding FHLB capital stock	-	-	-	-	-	-	-	-	-	-
i. FHLB capital stock	217,600	-	-	-	217,600	217,600	-	217,600	0.3%	0.3%
j. On deposit with states	4,695,415	-	-	-	4,695,415	4,710,433	(15,018)	4,695,415	6.0%	6.0%
k. On deposit with other regulatory bodies	-	-	-	-	-	-	-	-	-	-
l. Pledged as collateral to FHLB (including assets backing funding agreements)	3,929,613	-	-	-	3,929,613	3,823,665	105,948	3,929,613	5.0%	5.0%
m. Pledged as collateral not captured in other categories	-	-	-	-	-	-	-	-	-	-
n. Other restricted assets	-	-	-	-	-	-	-	-	-	-
o. Total restricted assets	\$ 8,842,628	\$ -	\$ -	\$ -	\$ 8,842,628	\$ 8,751,698	\$ 90,930	\$ 8,842,628	11.3%	11.3%

(a) Subset of column 1
(b) Subset of column 2

2. Detail of Other Assets Pledged as Collateral Not Captured in Other Categories

None

3. Detail of Other Restricted Assets

None

I. Working Capital Finance Investments

1. Aggregate Working Capital Finance Investments (WCFI) Book/Adjusted Carrying Value by NAIC designation:

None

2. Aggregate Maturity Distribution the Underlying Working Capital Finance Programs:

None

3. Events of Default of Working Capital Finance Investments During the Reporting Period

None

J. Offsetting and Netting of Assets and Liabilities

None

K. Structured Notes

None

6. Joint Ventures, Partnerships and Limited Liability Companies

A. Detail for Those Greater than 10% of Admitted Assets

Not Applicable

NOTES TO FINANCIAL STATEMENTS

B. Write-downs for Impairments

Not Applicable

7. Investment Income

A. Due and Accrued Investment Income was excluded from surplus on the following bases:

The Company non-admits investment income due and accrued if amounts are over 90 days past due.

B. Amounts Non-admitted

The total amount excluded was \$0.

8. Derivative Instruments

Not Applicable

9. Income Taxes

A. The components of the net deferred tax asset/(liability) are as follows:

1. The change between years by tax character (ordinary and capital) for the year 2015 and 2014:

	12/31/2015		
	(1)	(2)	(3)
	Ordinary	Capital	(Col 1+2) Total
(a) Gross Deferred Tax Assets	\$ 7,966,902	\$ 124,585	\$ 8,091,487
(b) Statutory Valuation Allowance Adjustments	7,738,119	-	7,738,119
(c) Adjusted Gross Deferred Tax Assets (1a-1b)	228,783	124,585	353,368
(d) Deferred Tax Assets Nonadmitted	-	-	-
(e) Subtotal Net Admitted Deferred Tax Asset (1c-1d)	228,783	124,585	353,368
(f) Deferred Tax Liabilities	12,317	341,051	353,368
(g) Net Admitted Deferred Tax Asset/(Net Deferred Tax Liability) (1e-1f)	\$ 216,466	\$ (216,466)	\$ -

	12/31/2014		
	(4)	(5)	(6)
	Ordinary	Capital	(Col 4+5) Total
(a) Gross Deferred Tax Assets	\$ 6,649,660	\$ 111,889	\$ 6,761,549
(b) Statutory Valuation Allowance Adjustments	6,358,633	-	6,358,633
(c) Adjusted Gross Deferred Tax Assets (1a-1b)	291,027	111,889	402,916
(d) Deferred Tax Assets Nonadmitted	-	-	-
(e) Subtotal Net Admitted Deferred Tax Asset (1c-1d)	291,027	111,889	402,916
(f) Deferred Tax Liabilities	2,290	400,626	402,916
(g) Net Admitted Deferred Tax Asset/(Net Deferred Tax Liability) (1e-1f)	\$ 288,737	\$ (288,737)	\$ -

	Change		
	(7)	(8)	(9)
	(Col 1-4) Ordinary	(Col 2-5) Capital	(Col 7+8) Total
(a) Gross Deferred Tax Assets	\$ 1,317,242	\$ 12,696	\$ 1,329,938
(b) Statutory Valuation Allowance Adjustments	1,379,486	-	1,379,486
(c) Adjusted Gross Deferred Tax Assets (1a-1b)	(62,244)	12,696	(49,548)
(d) Deferred Tax Assets Nonadmitted	-	-	-
(e) Subtotal Net Admitted Deferred Tax Asset (1c-1d)	(62,244)	12,696	(49,548)
(f) Deferred Tax Liabilities	10,027	(59,575)	(49,548)
(g) Net Admitted Deferred Tax Asset/(Net Deferred Tax Liability) (1e-1f)	\$ (72,271)	\$ 72,271	\$ -

NOTES TO FINANCIAL STATEMENTS

2. The amount of admitted adjusted gross deferred tax assets admitted under each component of SSAP 101:

12/31/2015			
(1)	(2)	(3)	
Ordinary	Capital	(Col 1+2)	Total
Admission Calculation Components SSAP No. 101			
(a) Federal Income Taxes Paid In Prior Years Recoverable Through Loss Carrybacks	\$ -	\$ -	\$ -
(b) Adjusted Gross Deferred Tax Assets Expected to be Realized (Excluding the Amount of Deferred Tax Assets From 2(a) above) After Application of the Threshold Limitation (The Lesser of 2(b)1 and 2(b)2 below)	-	-	-
1. Adjusted Gross Deferred Tax Assets Expected to be Realized Following the Balance Sheet Date	-	-	-
2. Adjusted Gross Deferred Tax Assets Allowed per Limitation Threshold	XXX	XXX	5,036,084
(c) Adjusted Gross Deferred Tax Assets (Excluding the Amount of Deferred Tax Assets from 2(a) and 2(b) above) Offset by Gross Deferred Tax Liabilities	228,783	124,585	353,368
(d) Deferred Tax Assets Admitted as the Result of Application of SSAP No. 101 Total (2(a) + 2(b) + 2(c))	\$228,783	\$ 124,585	\$ 353,368
12/31/2014			
(4)	(5)	(6)	
Ordinary	Capital	(Col 4+5)	Total
(a) Federal Income Taxes Paid In Prior Years Recoverable Through Loss Carrybacks	\$ -	\$ -	\$ -
(b) Adjusted Gross Deferred Tax Assets Expected to be Realized (Excluding the Amount of Deferred Tax Assets From 2(a) above) After Application of the Threshold Limitation (The Lesser of 2(b)1 and 2(b)2 below)	-	-	-
1. Adjusted Gross Deferred Tax Assets Expected to be Realized Following the Balance Sheet Date	-	-	-
2. Adjusted Gross Deferred Tax Assets Allowed per Limitation Threshold	XXX	XXX	5,638,602
(c) Adjusted Gross Deferred Tax Assets (Excluding the Amount of Deferred Tax Assets from 2(a) and 2(b) above) Offset by Gross Deferred Tax Liabilities	291,027	111,889	402,916
(d) Deferred Tax Assets Admitted as the Result of Application of SSAP No. 101 Total (2(a) + 2(b) + 2(c))	\$291,027	\$ 111,889	\$ 402,916
Change			
(7)	(8)	(9)	
(Col 1-4)	(Col 2-5)	(Col 7+8)	Total
Ordinary	Capital		Total
(a) Federal Income Taxes Paid In Prior Years Recoverable Through Loss Carrybacks	\$ -	\$ -	\$ -
(b) Adjusted Gross Deferred Tax Assets Expected to be Realized (Excluding the Amount of Deferred Tax Assets From 2(a) above) After Application of the Threshold Limitation (The Lesser of 2(b)1 and 2(b)2 below)	-	-	-
1. Adjusted Gross Deferred Tax Assets Expected to be Realized Following the Balance Sheet Date	-	-	-
2. Adjusted Gross Deferred Tax Assets Allowed per Limitation Threshold	XXX	XXX	(602,518)
(c) Adjusted Gross Deferred Tax Assets (Excluding the Amount of Deferred Tax Assets from 2(a) and 2(b) above) Offset by Gross Deferred Tax Liabilities	(62,244)	12,696	(49,548)
(d) Deferred Tax Assets Admitted as the Result of Application of SSAP No. 101 Total (2(a) + 2(b) + 2(c))	\$ (62,244)	\$ 12,696	\$ (49,548)

3. The ratio used to determine applicable period used in 9A(2)b1 for determining the amount of adjusted gross DTAs:

	2015	2014
(a) Ratio Percentage Used to Determine Recovery Period and Threshold Limitation Amount	446%	580%
(b) Amount of Adjusted Capital and Surplus Used to Determine Recovery Period and Threshold Limitation in 2(b)2 Above	\$ 33,573,896	\$ 37,590,683

NOTES TO FINANCIAL STATEMENTS

4. Disclose the impact of tax-planning strategies:

12/31/2015		
	(1) Ordinary Percent	(2) Capital Percent
(a) Determination Of Adjusted Gross Deferred Tax Assets and Net Admitted Deferred Tax Assets, By Tax Character as a Percentage.		
1. Adjusted Gross DTAs Amount from Note 9A1(c)	228,783	124,585
2. Percentage of Adjusted Gross DTAs By Tax Character Attributable to the Impact of Tax Planning Strategies	0%	0%
3. Net Admitted Adjusted Gross DTAs Amount from Note 9A1(e)	228,783	124,585
4. Percentage of Net Admitted Percentage of Adjusted Gross DTAs by Tax Character Admitted because of the Impact of Tax Planning Strategies	0%	0%

12/31/2014		
	(4) Ordinary Percent	(5) Capital Percent
(a) Determination Of Adjusted Gross Deferred Tax Assets and Net Admitted Deferred Tax Assets, By Tax Character as a Percentage.		
1. Adjusted Gross DTAs Amount from Note 9A1(c)	291,027	111,889
2. Percentage of Adjusted Gross DTAs By Tax Character Attributable to the Impact of Tax Planning Strategies	0%	0%
3. Net Admitted Adjusted Gross DTAs Amount from Note 9A1(e)	291,027	111,889
4. Percentage of Net Admitted Percentage of Adjusted Gross DTAs by Tax Character Admitted because of the Impact of Tax Planning Strategies	0%	0%

Change		
	(7) (Col 1-4) Ordinary Percent	(8) (Col 2-5) Capital Percent
(a) Determination Of Adjusted Gross Deferred Tax Assets and Net Admitted Deferred Tax Assets, By Tax Character as a Percentage.		
1. Adjusted Gross DTAs Amount from Note 9A1(c)	(62,244)	12,696
2. Percentage of Adjusted Gross DTAs By Tax Character Attributable to the Impact of Tax Planning Strategies	0%	0%
3. Net Admitted Adjusted Gross DTAs Amount from Note 9A1(e)	(62,244)	12,696
4. Percentage of Net Admitted Percentage of Adjusted Gross DTAs by Tax Character Admitted because of the Impact of Tax Planning Strategies	0%	0%

(b) Does the Company's tax-planning strategies include the use of reinsurance? Yes___ No_X_

B. Unrecognized Deferred Tax Liabilities

Not Applicable

NOTES TO FINANCIAL STATEMENTS

C. Current income taxes incurred consist of the following major components:

	(1) 12/31/2015	(2) 12/31/2014	(3) (Col 1-2) Change
1. Current Income Tax			
(a) Federal	\$ (31,366)	\$ (63,713)	\$ 32,347
(b) Foreign	-	-	-
(c) Subtotal	(31,366)	(63,713)	32,347
(d) Federal income tax on net capital gains	31,366	77,541	(46,175)
(e) Utilization of capital loss carry-forwards	-	-	-
(f) Other	-	-	-
(g) Federal and foreign income taxes incurred	\$ -	\$ 13,828	\$ (13,828)
2. Deferred Tax Assets:			
(a) Ordinary			
(1) Discounting of unpaid losses	\$ 826,951	\$ 885,503	\$ (58,552)
(2) Unearned premium reserve	44,664	42,692	1,972
(3) Policyholder reserves	-	-	-
(4) Investments	-	-	-
(5) Deferred acquisition costs	-	-	-
(6) Policyholder dividends accrual	-	-	-
(7) Fixed assets	-	-	-
(8) Compensation and benefits accrual	-	-	-
(9) Pension accrual	-	-	-
(10) Receivables - nonadmitted	122,949	122,949	-
(11) Net operating loss carry-forward	6,417,751	4,785,157	1,632,594
(12) Tax credit carry-forward	-	-	-
(13) Other (including items <5% of total ordinary tax assets)	554,587	813,359	(258,772)
(99) Subtotal	7,966,902	6,649,660	1,317,242
(b) Statutory valuation allowance adjustment	7,738,119	6,358,633	1,379,486
(c) Nonadmitted	-	-	-
(d) Admitted ordinary deferred tax assets (2a99 - 2b - 2c)	228,783	291,027	(62,244)
(e) Capital:			
(1) Investments	124,585	111,889	12,696
(2) Net capital loss carry-forward	-	-	-
(3) Real estate	-	-	-
(4) Other (including items <5% of total capital tax assets)	-	-	-
(99) Subtotal	124,585	111,889	12,696
(f) Statutory valuation allowance adjustment	-	-	-
(g) Nonadmitted	-	-	-
(h) Admitted capital deferred tax assets (2e99 -2f -2g)	124,585	111,889	12,696
(i) Admitted deferred tax assets (2d + 2h)	353,368	402,916	(49,548)
3. Deferred Tax Liabilities:			
(a) Ordinary			
(1) Investments	12,317	2,290	10,027
(2) Fixed assets	-	-	-
(3) Deferred and uncollected premium	-	-	-
(4) Policyholder reserves	-	-	-
(5) Other (including items <5% of total ordinary tax liabilities)	-	-	-
(99) Subtotal	12,317	2,290	10,027
(b) Capital			
(1) Investments	341,051	400,626	(59,575)
(2) Real estate	-	-	-
(3) Other (including items <5% of total ordinary tax liabilities)	-	-	-
(99) Subtotal	341,051	400,626	(59,575)
(c) Deferred tax liabilities (3a99 + 3b99)	353,368	402,916	(49,548)
4. Net deferred tax assets/liabilities (2i - 3c)	\$ -	\$ -	\$ -

NOTES TO FINANCIAL STATEMENTS

Deferred Tax Assets - Ordinary
09C2(a)(13)

	(1) 12/31/2015	(2) 12/31/2014	(3) (Col 1-2) Change
Other items <5% of total ordinary tax assets			
(14) Premium deficiency reserve	\$ 53,225	\$ 30,600	\$ 22,625
(15) Charitable contributions	68	-	68
(16) AMT	24,815	24,815	-
(17) Subtotal other items <5% of total ordinary tax assets	78,108	55,415	22,693
Other items >=5% of total ordinary tax assets			
(18) Continuity Credit	476,479	757,944	(281,465)
(98) Subtotal other items >=5% of total ordinary tax assets	476,479	757,944	(281,465)
(99) Total Other	\$ 554,587	\$ 813,359	\$ (258,772)

D. Among the more significant book to tax adjustments were the following:

	December 31, 2015	Effective Tax Rate
Provision computed at statutory rate	\$ (1,245,101)	34%
Nondeductible expense for meals, entertainment, spouse travel, nonemployee gifts, and penalties	1,029	0%
Tax exempt interest	(24,070)	1%
Provision to actual adjustment	(806)	0%
Valuation allowance	1,379,486	-38%
Other adjustment	10,068	0%
Total income tax reported	\$ 120,606	-3%
Federal and foreign income taxes incurred	\$ (31,366)	1%
Realized capital gains (losses) tax	31,366	-1%
Change in net deferred income taxes	120,606	-3%
Total income tax	\$ 120,606	-3%

E. Operating Loss and Tax Credit Carryforwards and Protective Tax Deposits

- As of December 31, 2015, the Company has net operating loss carry-forwards which expire as follows: 2033-2035, \$18,875,740. As of December 31, 2014, the Company has a net operating loss carryforward which expires as follows: 2033-2034, \$14,127,953.
- As of December 31, 2015 and December 31, 2014, income tax expense available for recoupment in the event of future net losses was \$0 and \$0, respectively.
- The reporting entity has a total of \$0 protective deposits which are on deposit with the Internal Revenue Service under Section 6603 of the Internal Revenue Service Code.

F. Consolidated Federal Income Tax Return

The Company's federal income tax return is not consolidated.

G. Federal or Foreign Federal Income Tax Loss Contingencies

The Company does not have any tax loss contingencies for which it is reasonably possible that the total liability will significantly increase within twelve months of the reporting date.

10. Information Concerning Parent, Subsidiaries, Affiliates, and Other Related Parties

A. B. & C. Nature of Relationships

Outstanding stock of Plans' Liability Insurance Company (PLIC) is distributed among forty nine corporate shareholders, with no shareholder owning greater than 6.64%. PLIC reinsures directors' and officers' professional liability insurance and fidelity insurance on a claims-made basis for certain Blue Cross Blue Shield Plans (Plans) and their affiliates written through BCSIC. The Plans purchasing liability insurance through BCSIC are required to purchase a proportionate share of PLIC's common stock. PLIC is under common management with BCSIC and BCSIC's parent, BCS Financial Corporation (BCSF).

The Company did not pay cash dividends in 2014 or 2015.

D. Amounts Due to or from Related Parties

At December 31, 2015, the Company reported \$434,980 payable to BCSF.

NOTES TO FINANCIAL STATEMENTS

E. Guarantees or Contingencies for Related Parties

None

F. Management or Service Contracts and Cost Sharing Arrangements

The Company has a management agreement with BCSIC whereby BCSIC provides all insurance management, administrative and advisory services as well as investment management and general office administrative services.

G. Nature of Control Relationship

Not Applicable

H. Amount Deducted for Investment in Upstream Company

Not Applicable

I. Investments in SCA Entities Disclosures

Not Applicable

J. Investments in Impaired SCA Entities Disclosures

Not Applicable

K. Foreign Insurance Subsidiary

Not Applicable

L. Downstream Noninsurance Holding Company

Not Applicable

11. Debt

A. Debt & Holding Company Obligations

Not Applicable

B. Federal Home Loan Bank (FHLB) Agreements

1. The Company is a member of Federal Home Loan Bank (FHLB) of Cincinnati. Through its membership, the Company has conducted business activity (borrowings) with the FHLB. It is part of the Company's strategy to utilize these funds for general operations. The Company has determined the actual/estimated maximum borrowing capacity as \$3,861,803. The Company calculated this amount in accordance with its investment in FHLB capital stock and pledged collateral.

2. FHLB Capital Stock

a. Aggregate Totals

	1 Total 2+3	2 General Account	3 Separate Account
1. Current Year			
(a) Membership Stock - Class A	-	-	-
(b) Membership Stock - Class B	96,108	96,108	-
(c) Activity Stock	121,492	121,492	-
(d) Excess Stock	-	-	-
(e) Aggregate Total (a+b+c)	217,600	217,600	-
(f) Actual or estimated Borrowing Capacity as Determined by the Insurer	3,861,803	XXX	XXX
2. Prior Year-end			
(a) Membership Stock - Class A	-	-	-
(b) Membership Stock - Class B	123,497	123,497	-
(c) Activity Stock	94,103	94,103	-
(d) Excess Stock	-	-	-
(e) Aggregate Total (a+b+c)	217,600	217,600	-
(f) Actual or estimated Borrowing Capacity as Determined by the Insurer	3,771,432	XXX	XXX

11B(2)a1(f) should be equal to or greater than 11B(4)a1(d)

11B(2)a2(f) should be equal to or greater than 11B(4)a2(d)

NOTES TO FINANCIAL STATEMENTS

b. Membership Stock (Class A and B) Eligible for Redemption

	1	2	Eligible for Redemption			
Membership Stock	Current Year Total (2+3+4+5+6)	Not Eligible for Redemption	3 Less than 6 Months	4 6 Months to Less than 1 Year	5 1 to Less than 3 Years	6 3 to 5 Years
1. Class A	-	-	-	-	-	-
2. Class B	96,108	96,108	-	-	-	-

11B(2)b1 Current Year Total (Column 1) should equal 11B(2)a1(a) Total (Column 1)
11B(2)b2 Current Year Total (Column 1) should equal 11B(2)a1(b) Total (Column 1)

3. Collateral Pledged to FHLB

a. Amount Pledged as of Reporting Date

	1 Fair Value	2 Carrying Value	3 Aggregate Total Borrowing
1. Current Year Total General and Separate Accounts Total Collateral Pledged (Lines 2+3)	4,044,412	3,929,613	3,770,500
2. Current Year General Account Total Collateral Pledged	4,044,412	3,929,613	3,770,500
3. Current Year Protected Cell Accounts Total Collateral Pledged	-	-	-
4. Prior Year-end Total General and Separate Accounts Total Collateral Pledged	3,959,033	3,823,665	3,770,500

11B(3)a1 (Columns 1, 2 and 3) should be equal to or less than 11B(3)b1 (Columns 1, 2 and 3 respectively)
11B(3)a2 (Columns 1, 2 and 3) should be equal to or less than 11B(3)b2 (Columns 1, 2 and 3 respectively)
11B(3)a3 (Columns 1, 2 and 3) should be equal to or less than 11B(3)b3 (Columns 1, 2 and 3 respectively)
11B(3)a4 (Columns 1, 2 and 3) should be equal to or less than 11B(3)b4 (Columns 1, 2 and 3 respectively)

b. Maximum Amount Pledged During Reporting Period

	1 Fair Value	2 Carrying Value	3 Amount Borrowed at Time of Maximum Collateral
1. Current Year Total General and Separate Accounts Maximum Collateral Pledged (Lines 2+3)	4,380,149	4,167,160	3,770,500
2. Current Year General Account Maximum Collateral Pledged	4,380,149	4,167,160	3,770,500
3. Current Year Separate Accounts Maximum Collateral Pledged	-	-	-
4. Prior year-end Total General and Separate Accounts Maximum Collateral Pledged	4,522,275	4,473,069	3,860,000

4. Borrowing from FHLB

a. Amounts as of the Reporting Date

	1 Total 2+3	2 General Account	3 Separate Account	4 Funding Agreements Reserves Established
1. Current Year				
(a) Debt	-	-	-	XXX
(b) Funding	-	-	-	-
(c) Other	3,770,500	3,770,500	-	-
(d) Aggregate Total (a+b+c)	3,770,500	3,770,500	-	XXX
2. Prior Year-end				
(a) Debt	-	-	-	XXX
(b) Funding	-	-	-	-
(c) Other	3,770,500	3,770,500	-	-
(d) Aggregate Total (a+b+c)	3,770,500	3,770,500	-	XXX

NOTES TO FINANCIAL STATEMENTS

b. Maximum Amount during Reporting Period (Current Year)

	1 Total 2+3	2 General Account	3 Separate Account
1. Debt	-	-	-
2. Funding	-	-	-
3. Other	3,770,500	3,770,500	-
4. Aggregate Total (Lines 1+2+3)	3,770,500	3,770,500	-

11B(4)b4 (Columns 1, 2 and 3) should be equal to or greater than 11B(4)a1(d) (Columns 1, 2 and 3 respectively)

c. FHLB – Prepayments Obligations

None

12. Retirement Plans, Deferred Compensation, Postemployment Benefits and Compensated Absences and Other Postretirement Benefit Plans

A. Defined Benefit Plan

None

B. Investment Policies & Strategies

None

C. Fair Value of Each Class of Plan Assets

None

D. Basis Used to Determine the Overall Expected Long-Term Rate-of-Return-on-Assets

None

E. Defined Contribution Plans

None

F. Multiemployer Plans

None

G. Consolidated/Holding Company Plans

BCSF sponsors a defined benefit pension plan, a postretirement healthcare benefit plan and a 401(k) Plan covering substantially all of its employees as well as a deferred compensation plan for select employees. The expenses of these plans are charged in accordance with the management service agreement. The Company incurred expenses of \$336,787 in 2015, relating to these plans. The Company has no legal obligation for benefits under these plans.

H. Postemployment Benefits and Compensated Absences

None

I. Impact of Medicare Modernization Act on Postretirement Benefits

Not Applicable

13. Capital and Surplus, Shareholders' Dividend Restrictions, and Quasi-Reorganizations

1. Outstanding Shares

The Company has 1,000 shares of \$6,000 par value common stock authorized and 490.4 shares issued and outstanding. The Company has no preferred stock authorized, issued or outstanding.

2. Dividend Rate of Preferred Stock

Not Applicable

3. , 4, & 5. Dividend Restrictions

All dividends require notification to the Director of the Ohio Department of Insurance. The amount of dividends that can be paid by insurance companies domiciled in Ohio without prior approval of the Director of the Ohio Department of Insurance is subject to restriction and cannot exceed the greater of ten percent of the prior year end surplus or the prior year's net income. The amount of dividends that could be paid during 2015 without prior approval was \$3,759,068. The Company did not pay dividends to its stockholders during 2015.

NOTES TO FINANCIAL STATEMENTS

6. Surplus Restriction

None

7. Mutual Surplus Advances

None

8. Company Stock Held for Special Purposes

None

9. Changes in Special Surplus Funds

None

10. Changes in Unassigned Funds

The portion of unassigned funds represented or increased by net unrealized gains is \$484,735 at December 31, 2015.

11. Surplus Notes

None

12. & 13. Quasi Reorganizations

None

14. Liabilities, Contingencies and Assessments

A. Contingent Commitments

None

B. Assessments

None

C. Gain Contingencies

None

D. Claims Related to Extra Contractual Obligation and Bad Faith Losses Stemming from Lawsuits

The Company paid the following amounts in the reporting period to settle claims related to extra contractual obligations or bad faith claims stemming from lawsuits.

	Direct
Claims related to ECO and bad faith losses paid during the reporting period	\$ -

Number of claims where amounts were paid to settle claims related extra contractual obligations or bad faith claims resulting from lawsuits during the reporting period.

(a)	(b)	(c)	(d)	(e)
0-25 Claims	26-50 Claims	51-100 Claims	101-500 Claims	More than 500 Claims
X				

Indicate whether claim count information is disclosed per claim or per claimant.

(f) Per Claim [x] (g) Per Claimant []

E. Product Warranties

None

F. Joint and Several Liabilities

None

G. All Other Contingencies

None

NOTES TO FINANCIAL STATEMENTS

15. Leases

None

16. Information About Financial Instruments with Off-Balance Sheet Risk and Financial Instruments with Concentrations of Credit Risk

None

17. Sale, Transfer and Servicing of Financial Assets and Extinguishment of Liabilities

A. Transfer of Receivables Reported as Sales

Not Applicable

B. Transfer and Servicing of Financial Assets

Not Applicable

C. Wash Sales

1. The Company has not sold and reacquired any security within a 30 day period of its original sale.
2. The details by NAIC designation 3 or below of securities sold during the year ended December 31, 2015 are reacquired within 30 days of the sale date are:

None

18. Gain or Loss to the Reporting Entity from Uninsured Plans and the Uninsured Portion of Partially Insured Plans

A. Administrative Services Only (ASO) Plans

Not Applicable

B. Administrative Services Contract (ASC) Plans

Not Applicable

C. Medicare or Similarly Structured Cost Based Reimbursement Contracts

Not Applicable

19. Direct Premium Written/Produced by Managing General Agents/Third Party Administrators

None

20. Fair Value Measurements

A. Input used for assets measured and reported at Fair Value

1. Items measured and reported at Fair Value by levels 1, 2, and 3

Statutory accounting principles define the fair value of a financial instrument as the amount at which that asset could be bought or sold in a current transaction between willing parties that is other than in a forced or liquidation sale. The fair value of a liability is the amount at which that liability could be incurred or settled in a current transaction between willing parties. Certain financial instruments and all nonfinancial instruments are excluded from statutory disclosure requirements. Therefore, the aggregate fair value amounts presented below do not represent the underlying fair value of the Company.

Fair values are based on quoted market prices when available. When market prices are not available, fair value is generally estimated using discounted cash flow analyses, incorporation of current market inputs for similar financial instruments with comparable terms and credit quality (matrix pricing). In instances where there is little or no market activity for the same or similar instruments, the Company estimates fair value using methods, models, and assumptions that management believes market participants would use to determine a current transaction price. These valuation techniques involve some level of management estimation and judgment, which becomes significant with increasingly complex instruments or pricing models. Where appropriate, adjustments are included to reflect the risk inherent in a particular methodology model or input used.

The Company's financial assets and liabilities carried at fair value have been classified, for disclosure purposes, based on a hierarchy as defined by SSAP No. 100, Fair Value Measurements. The hierarchy gives the highest ranking to fair values determined using unadjusted quoted prices in active markets for identical assets and liabilities (Level 1) and the lowest ranking to fair values determined using methodologies and models with unobservable inputs (Level 3). An asset's or liability's classification is based on the lowest level input that is significant to its measurement. For example, a Level 3 fair value measurement may include inputs that are both observable (Levels 1 and 2) and unobservable (Level 3).

The levels of the fair value hierarchy are as follows:

Level 1 – Management's valuations are unadjusted quoted prices for identical, unrestricted assets and liabilities in active markets accessible at the measurement date. Since valuations are based on quoted prices that are readily available in an active market, valuation of these assets does not involve any meaningful degree of judgment. An active market is defined as a market where transactions for the financial instrument occur with

NOTES TO FINANCIAL STATEMENTS

sufficient frequency and volume to provide pricing information on an ongoing basis. Level 1 financial assets and liabilities generally include common stocks and U.S. government debt securities, where management’s valuations are based on quoted market prices.

Level 2 – Management’s valuations are based on quoted prices where such markets are not deemed to be sufficiently “active.” In such circumstances, additional valuations metrics will be used, which involve direct or indirect observable market inputs. Level 2 financial assets and liabilities generally include debt securities other than debt issued by the U.S. government. Inputs include quoted prices for similar assets or liabilities in active markets, quoted prices from those willing to trade in markets that are not active, or other inputs that are observable or can be corroborated by market data for the term of the instrument. Such inputs include market interest rates and volatilities, spreads, and yield curves.

Level 3 – Management’s valuations are based on inputs that are unobservable (supported by little or no market activity) and significant to the fair value measurement. Valuations under Level 3 generally involve a significant degree of judgment on the part of management.

Assets Measured at Fair Value

Certain financial assets are measured and recorded at fair value, including bonds designated as NAIC 3 – 6 at December 31, 2015, which are carried at the lower of cost or fair value. The following table summarizes assets measured at fair value:

Description of each class of assets	(Level 1)	(Level 2)	(Level 3)	(Total)
Assets at fair value				
U.S. Treasury	\$ -	\$ -	\$ -	\$ -
Government agencies	-	-	-	-
States and political subdivisions	-	-	-	-
Corporate securities	-	-	-	-
Structured securities				
U.S. government agency	-	-	-	-
States and political subdivisions	-	-	-	-
Residential-prime	-	43,843	-	43,843
Residential-Alt-A	-	-	-	-
Residential subprime	-	70,100	-	70,100
Commercial	-	-	-	-
Asset-backed	-	-	-	-
Corporate securities	-	174,000	-	174,000
Total structured securities	-	287,943	-	287,943
Total bonds	-	287,943	-	287,943
Common stock				
Vanguard	3,651,210	-	-	3,651,210
Artisan	1,788,387	-	-	1,788,387
Federal Home Loan Bank	-	217,600	-	217,600
Total common stock	5,439,597	217,600	-	5,657,197
Other invested assets				
Babson	-	-	1,933,523	1,933,523
Eaton Vance	-	-	1,860,870	1,860,870
Total other invested assets	-	-	3,794,393	3,794,393
Total bonds, stocks, and other invested assets	\$ 5,439,597	\$ 505,543	\$ 3,794,393	\$ 9,739,533

The Company does not have any investment commitments at December 31, 2015.

NOTES TO FINANCIAL STATEMENTS

2. Fair Value Measurements in (Level 3) of the Fair Value Hierarchy

Description	Beginning Balance at 1/1/2015	Transfers into Level 3	Transfers out of Level 3	Total gains and (losses) included in Net Income	Total gains and (losses) included in Surplus	Purchases	Issuances	Sales	Settle- ments	Ending Balance at 12/31/2015
U.S. Treasury	\$ -	\$ -	\$ -	\$ -	\$ -	\$ -	\$ -	\$ -	\$ -	\$ -
Government agencies	-	-	-	-	-	-	-	-	-	-
States political subdivision	-	-	-	-	-	-	-	-	-	-
Corporate securities	-	-	-	-	-	-	-	-	-	-
Structured securities										
U.S. government agency	-	-	-	-	-	-	-	-	-	-
States and political subdivisions	-	-	-	-	-	-	-	-	-	-
Residential - prime	-	-	-	-	-	-	-	-	-	-
Residential - Alt-A	-	-	-	-	-	-	-	-	-	-
Residential - subprime	-	-	-	-	-	-	-	-	-	-
Commercial	-	-	-	-	-	-	-	-	-	-
Asset-backed	-	-	-	-	-	-	-	-	-	-
Corporate securities	-	-	-	-	-	-	-	-	-	-
Total structured	-	-	-	-	-	-	-	-	-	-
Total bonds	-	-	-	-	-	-	-	-	-	-
Common stock										
Vanguard	-	-	-	-	-	-	-	-	-	-
Artisan	-	-	-	-	-	-	-	-	-	-
Federal Home Loan Bank	-	-	-	-	-	-	-	-	-	-
Total common stock	-	-	-	-	-	-	-	-	-	-
Other invested assets										
Babson	2,021,722	-	-	-	(88,199)	-	-	-	-	1,933,523
Eaton Vance	1,952,174	-	-	-	(91,304)	-	-	-	-	1,860,870
Total other invested assets	3,973,896	-	-	-	(179,503)	-	-	-	-	3,794,393
Total assets	\$ 3,973,896	\$ -	\$ -	\$ -	\$ (179,503)	\$ -	\$ -	\$ -	\$ -	\$ 3,794,393

3. Policy on Transfers into and out of Level 3

At the end of each reporting period, the Company evaluates whether or not any event has occurred or circumstances have changed that would cause an instrument to be transferred into or out of Level 3. During the current year, no transfers into or out of Level 3 were required.

4. Inputs and techniques used for level 2 and level 3 Fair Values

Bonds carried at fair value categorized as Level 2 were valued using a market approach. These valuations were determined to be Level 2 valuations as quoted markets prices for similar instruments in an active market were utilized. This was accomplished by the use of matrix pricing. Matrix pricing takes quoted prices of bonds with similar features and applies analytic methods to determine the fair value of bonds held. Features that are inputs into the analysis include duration, credit quality, tax status and call and sinking fund features.

Investments categorized as Level 3 had key unobservable inputs. Also, the investments are less liquid, and there is limited trading activity. The use of independent non-binding broker quotations to value investments generally indicates there is a lack of liquidity or the general lack of transparency in the process to develop the valuation estimates generally causing these investments to be classified in Level 3.

5. Derivative Fair Values

Not applicable.

B. Other Fair Value Disclosures

Not applicable

NOTES TO FINANCIAL STATEMENTS

C. Fair Value for all financial instruments by levels 1, 2, and 3

Type of Financial Instrument	Aggregate Fair Value	Admitted Assets	Level 1	Level 2	Level 3	Not Practicable (Carrying Value)
U.S. Treasury	\$ 8,854,055	\$ 8,694,532	\$ -	\$ 8,694,532	\$ -	\$ -
Government agencies	651,540	603,214	-	603,214	-	-
States and political subdivisions	7,912,546	7,165,146	-	7,165,146	-	-
Corporate securities	20,579,944	20,287,290	-	20,287,290	-	-
Structured securities						
U.S. government agency	15,191,905	14,845,344	-	14,845,344	-	-
States and political subdivisions	405,704	395,317	-	395,317	-	-
Residential - prime	1,151,483	1,124,203	-	1,124,203	-	-
Residential - Alt - A	147,233	136,308	-	136,308	-	-
Residential - subprime	925,325	813,668	-	813,668	-	-
Commercial	9,023,696	8,940,059	-	8,940,059	-	-
Asset-backed	2,719,056	2,696,068	-	2,696,068	-	-
Corporate securities	591,106	528,572	-	528,572	-	-
Total structured securities	30,155,508	29,479,539	-	29,479,539	-	-
Total bonds	68,153,593	66,229,721	-	66,229,721	-	-
Common stock						
Vanguard	3,651,210	3,289,594	3,289,594	-	-	-
Artisan	1,788,387	1,788,387	1,788,387	-	-	-
Federal Home Loan Bank	217,600	217,600	-	217,600	-	-
Total common stock	5,657,197	5,295,581	5,077,981	217,600	-	-
Other invested assets						
Babson	1,933,523	1,933,523	-	-	1,933,523	-
Eaton Vance	1,860,870	1,860,870	-	-	1,860,870	-
Total other invested assets	3,794,393	3,794,393	-	-	3,794,393	-
Cash and short-term investments	2,045,254	2,045,254	1,841,254	204,000	-	-
Total assets	<u>\$ 79,650,437</u>	<u>\$ 77,364,949</u>	<u>\$6,919,235</u>	<u>\$66,651,321</u>	<u>\$3,794,393</u>	<u>\$ -</u>

D. Financial instruments for which not practicable to Estimate Fair Value

Not applicable

21. Other Items

A. Extraordinary Items

None

B. Troubled Debt Restructuring for Debtors

None

C. Other Disclosures

In 2012 PLIC and BCSIC, the direct insurer, implemented a continuity credit program for the professional liability policyholders. The continuity credit program is a mechanism to reward the policyholders for their continued participation in the program. BCSIC issued a rider to the 2012 professional liability policies, which granted a continuity credit of 40% of 2012 premium on primary coverage and 20% of 2012 premium on excess coverage. In 2013, upon the 2012 participating policy renewals a new rider was issued, granting an additional continuity credit. The amount of the continuity credit that could be paid to the policyholder in 2013 is equal to the total continuity credit balance earned in 2013. The remaining amount is carried forward into future years, and is forfeited if the policyholder decides not to renew. Pursuant to a reinsurance treaty between PLIC and BCSIC, PLIC is reinsuring BCSIC for the continuity credit. Per the reinsurance treaty, PLIC reimburses BCSIC only when BCSIC actually pays the continuity credit to the policyholder. In 2015, PLIC did not grant an additional continuity credit. As of December 31, 2015, PLIC has a continuity credit liability of \$1,401,410, which is reflected in aggregate write-ins for liabilities on page 3 of this Statement.

D. Business Interruption Insurance Recoveries

None

E. State Transferable and Non-transferrable Tax Credits

None

F. Subprime-Mortgage-Related Risk Exposure

1. The Company has identified securities with the following characteristics as having subprime mortgage risk:
- a. First lien mortgages where borrowers have a FICO scores less than 650

b. First lien mortgages with loan-to-value ratios greater than 95%

c. Second lien mortgages where borrowers have FICO scores less than 675

d. Borrowers with less than conventional documentation of their income and/or net assets and FICO scores less than 650

NOTES TO FINANCIAL STATEMENTS

2. Direct exposure through investment in subprime mortgage loans

None

3. The following summarizes the Company's investments in securities with underlying subprime exposure at December 31, 2015:

Investment Type	Actual Cost	Book Adjusted Carrying Value (excluding interest)	Fair Value	Other-than-Temporary Impairment Losses Recognized
a. Residential mortgage backed securities	\$ 857,523	\$ 813,669	\$ 925,326	\$ 303,440
b. Commercial mortgage backed securities	-	-	-	-
c. Collateralized debt obligations	-	-	-	-
d. Structured securities	-	-	-	-
e. Equity investments in SCAs	-	-	-	-
f. Other assets	-	-	-	-
g. Total	\$ 857,523	\$ 813,669	\$ 925,326	\$ 303,440

4. Underwriting exposure to subprime mortgage risk through Mortgage Guaranty or Financial Guaranty insurance coverage

None

22. Events Subsequent

Type I – Recognized Subsequent Events:

Subsequent events have been considered through February 10, 2016 for the statutory statement issued on March 1, 2016.

The Company does not have any subsequent events to report.

Type II – Non-recognized Subsequent Events:

Subsequent events have been considered through February 10, 2016 for the statutory statement issued on March 1, 2016.

Not Applicable

23. Reinsurance

A. Unsecured Reinsurance Recoverable

None

B. Reinsurance Recoverable in Dispute

None

C. Reinsurance Assumed and Ceded

1. The following table summarizes ceded and assumed unearned premiums and the related commission equity at December 31, 2015:

	Assumed Reinsurance		Ceded Reinsurance		Net	
	Premium Reserve	Commission Equity	Premium Reserve	Commission Equity	Premium Reserve	Commission Equity
a. Affiliates	\$ 656,827	\$ 82,957	\$ -	\$ -	\$ 656,827	\$ 82,957
b. All Other	-	-	-	-	-	-
c. Totals	\$ 656,827	\$ 82,957	\$ -	\$ -	\$ 656,827	\$ 82,957
d. Direct Unearned Premium Reserve			\$ -			

Line (c) of Ceded Reinsurance Premium Reserve Column must equal Page 3, Line 9, first inside amount.

2. The additional or return commission, predicted on loss experience or on any other form of profit sharing arrangements in this annual statement as a result of existing contractual arrangements is accrued as follows:

None

3. Types of risk attributed to each of the Company's protected cells:

None

NOTES TO FINANCIAL STATEMENTS

4. Reinsurance Agreement Between PLIC and BCSIC:

Pursuant to a reinsurance treaty between PLIC and BCSIC, PLIC agrees to reimburse BCSIC, the direct insurer, for any payments to third-party reinsurers of BCSIC greater than premiums actually collected to satisfy any guaranteed premiums required to be ceded to any reinsurer of BCSIC. In addition, PLIC agrees to accept liability for any uncollected reinsurance recoveries that BCSIC has unsuccessfully attempted to recover from third-party reinsurers on the business within the reinsurance agreement. PLIC further agrees to reimburse BCSIC for any adjustable premiums, loss corridors, and any other net retained risk. The intent of the reinsurance contract between BCSIC and PLIC is to have BCSIC bear no underwriting or other risk.

D. Uncollectible Reinsurance

None

E. Commutation of Ceded Reinsurance

None

F. Retroactive Reinsurance

None

G. Reinsurance Accounted for as a Deposit

Not Applicable

H. Disclosure for the Transfer of Property and Casualty Run-off Agreements

Not Applicable

I. Certified Reinsurer Rating Downgraded or Status Subject to Revocation

Not Applicable

24. Retrospectively Rated Contracts and Contracts Subject to Redetermination

A. Methods Used to Estimate

None

B. Method Used to Record

None

C. Amount and Percent of Net Retrospective Premiums

None

D. Medical Loss Ratio Rebates Required Pursuant to the Public Health Service Act

None

E. Calculation of Non-admitted Accrued Retrospective Premiums

None

F. Risk-Sharing Provisions of the Affordable Care Act

1. Did the reporting entity write accident and health insurance premium that is subject to the Affordable Care Act risk-sharing provisions (YES/NO)?

NO

2. Impact of Risk-Sharing Provisions of the Affordable Care Act on Admitted Assets, Liabilities and Revenue for the Current Year

Not Applicable

3. Roll forward of prior year ACA risk-sharing provisions for the following asset (gross of any nonadmission) and liability balances, along with the reasons for adjustments to prior year balance.

Not Applicable

25. Changes in Incurred Losses and Loss Adjustment Expenses

The estimated cost on the loss and loss adjustment expenses attributable to insured events of prior years' increased by \$2,135,000 during 2015. The increase is due to unfavorable development on the Other Liability-Claims Made line of business. An increase of this nature occurs as the result of claim settlements during the current year and as information is received regarding individual claims, causing changes from the original estimates of the cost of these claims.

26. Intercompany Pooling Arrangements

Not Applicable

NOTES TO FINANCIAL STATEMENTS

27. Structured Settlements

A. Reserves Released Due to Purchase of Annuities

Not Applicable

B. Annuity Insurers with Balances Due Greater than 1% of Policyholders' Surplus

Not Applicable

28. Health Care Receivables

A. Pharmaceutical Rebate Receivables

None

B. Risk Sharing Receivables

None

29. Participating Policies

Not Applicable

30. Premium Deficiency Reserves

The Company evaluated the need to record a premium deficiency reserve as of the end of the current year and determined a reserve of \$156,545 was necessary. This evaluation was completed on January 22, 2016. The Company does anticipate investment income when evaluating the need for a premium deficiency reserve.

	(1)	
1. Liability carried for premium deficiency reserves	\$	156,545
2. Date of the most recent evaluation of this liability	1/22/2016	
3. Was anticipated investment income utilized in the calculation?	Yes__X__	No_____

31. High Deductibles

Not Applicable

32. Discounting of Liabilities for Unpaid Losses and Loss Adjustment Expenses

A. Tabular Basis

Not Applicable

B. Non-Tabular Basis

Not Applicable

C. Changes in Discount Assumptions

Not Applicable

33. Asbestos/ Environmental Reserves

Not Applicable

34. Subscriber Savings Accounts

Not Applicable

35. Multiple Peril Crop Insurance

Not Applicable

36. Financial Guaranty Insurance

Not Applicable

GENERAL INTERROGATORIES

PART 1 - COMMON INTERROGATORIES

GENERAL

- 1.1

Is the reporting entity a member of an Insurance Holding Company System consisting of two or more affiliated persons, one or more of which is an insurer?

Yes ☒ No ☐
- If yes, complete Schedule Y, Parts 1, 1A and 2.
- 1.2

If yes, did the reporting entity register and file with its domiciliary State Insurance Commissioner, Director or Superintendent or with such regulatory official of the state of domicile of the principal insurer in the Holding Company System, a registration statement providing disclosure substantially similar to the standards adopted by the National Association of Insurance Commissioners (NAIC) in its Model Insurance Holding Company System Regulatory Act and model regulations pertaining thereto, or is the reporting entity subject to standards and disclosure requirements substantially similar to those required by such Act and regulations?

Yes ☒ No ☐ N/A ☐
- 1.3

State Regulating?

Ohio.....
- 2.1

Has any change been made during the year of this statement in the charter, by-laws, articles of incorporation, or deed of settlement of the reporting entity?

Yes ☐ No ☒
- 2.2

If yes, date of change:

.....
- 3.1

State as of what date the latest financial examination of the reporting entity was made or is being made.

.....12/31/2013
- 3.2

State the as of date that the latest financial examination report became available from either the state of domicile or the reporting entity. This date should be the date of the examined balance sheet and not the date the report was completed or released.

.....12/31/2013
- 3.3

State as of what date the latest financial examination report became available to other states or the public from either the state of domicile or the reporting entity. This is the release date or completion date of the examination report and not the date of the examination (balance sheet date).

.....10/31/2014
- 3.4

By what department or departments? Ohio.....
- 3.5

Have all financial statement adjustments within the latest financial examination report been accounted for in a subsequent financial statement filed with Departments?

Yes ☐ No ☐ N/A ☒
- 3.6

Have all of the recommendations within the latest financial examination report been complied with?

Yes ☒ No ☐ N/A ☐
- 4.1

During the period covered by this statement, did any agent, broker, sales representative, non-affiliated sales/service organization or any combination thereof under common control (other than salaried employees of the reporting entity) receive credit or commissions for or control a substantial part (more than 20 percent of any major line of business measured on direct premiums) of:

4.11 sales of new business? Yes ☐ No ☒

4.12 renewals? Yes ☐ No ☒
- 4.2

During the period covered by this statement, did any sales/service organization owned in whole or in part by the reporting entity or an affiliate, receive credit or commissions for or control a substantial part (more than 20 percent of any major line of business measured on direct premiums) of:

4.21 sales of new business? Yes ☐ No ☒

4.22 renewals? Yes ☐ No ☒
- 5.1

Has the reporting entity been a party to a merger or consolidation during the period covered by this statement?

Yes ☐ No ☒
- 5.2

If yes, provide the name of the entity, NAIC company code, and state of domicile (use two letter state abbreviation) for any entity that has ceased to exist as a result of the merger or consolidation.

1 Name of Entity	2 NAIC Company Code	3 State of Domicile
.....
.....
.....
.....
.....

- 6.1

Has the reporting entity had any Certificates of Authority, licenses or registrations (including corporate registration, if applicable) suspended or revoked by any governmental entity during the reporting period?

Yes ☐ No ☒
- 6.2

If yes, give full information
- 7.1

Does any foreign (non-United States) person or entity directly or indirectly control 10% or more of the reporting entity?

Yes ☐ No ☒
- 7.2

If yes,
- 7.21

State the percentage of foreign control
- 7.22

State the nationality(s) of the foreign person(s) or entity(s); or if the entity is a mutual or reciprocal, the nationality of its manager or attorney-in-fact and identify the type of entity(s) (e.g., individual, corporation, government, manager or attorney-in-fact).

1 Nationality	2 Type of Entity
.....
.....
.....
.....
.....

GENERAL INTERROGATORIES

8.1 Is the company a subsidiary of a bank holding company regulated by the Federal Reserve Board? Yes [] No [X]

8.2 If response to 8.1 is yes, please identify the name of the bank holding company.

8.3 Is the company affiliated with one or more banks, thrifts or securities firms? Yes [] No [X]

8.4 If response to 8.3 is yes, please provide the names and locations (city and state of the main office) of any affiliates regulated by a federal financial regulatory services agency [i.e. the Federal Reserve Board (FRB), the Office of the Comptroller of the Currency (OCC), the Federal Deposit Insurance Corporation (FDIC) and the Securities Exchange Commission (SEC)] and identify the affiliate's primary federal regulator.

1	2	3	4	5	6
Affiliate Name	Location (City, State)	FRB	OCC	FDIC	SEC

9. What is the name and address of the independent certified public accountant or accounting firm retained to conduct the annual audit?
KPMG LLP, 200 E. Randolph Drive, 56th Floor, Chicago, IL 60601.....

10.1 Has the insurer been granted any exemptions to the prohibited non-audit services provided by the certified independent public accountant requirements as allowed in Section 7H of the Annual Financial Reporting Model Regulation (Model Audit Rule), or substantially similar state law or regulation? Yes [] No [X]

10.2 If the response to 10.1 is yes, provide information related to this exemption:

10.3 Has the insurer been granted any exemptions related to the other requirements of the Annual Financial Reporting Model Regulation as allowed for in Section 18A of the Model Regulation, or substantially similar state law or regulation? Yes [] No [X]

10.4 If the response to 10.3 is yes, provide information related to this exemption:

10.5 Has the reporting entity established an Audit Committee in compliance with the domiciliary state insurance laws? Yes [X] No [] N/A []

10.6 If the response to 10.5 is no or n/a, please explain

11. What is the name, address and affiliation (officer/employee of the reporting entity or actuary/consultant associated with an actuarial consulting firm) of the individual providing the statement of actuarial opinion/certification?
Charles C. Emma, EVP Advisors Inc., 115 Campbell Street, Suite 100C, Geneva, IL 60134.....

12.1 Does the reporting entity own any securities of a real estate holding company or otherwise hold real estate indirectly? Yes [] No [X]

12.11 Name of real estate holding company

12.12 Number of parcels involved0

12.13 Total book/adjusted carrying value \$0

12.2 If yes, provide explanation

13. FOR UNITED STATES BRANCHES OF ALIEN REPORTING ENTITIES ONLY:

13.1 What changes have been made during the year in the United States manager or the United States trustees of the reporting entity?

13.2 Does this statement contain all business transacted for the reporting entity through its United States Branch on risks wherever located? Yes [] No []

13.3 Have there been any changes made to any of the trust indentures during the year? Yes [] No []

13.4 If answer to (13.3) is yes, has the domiciliary or entry state approved the changes? Yes [] No [] N/A []

14.1 Are the senior officers (principal executive officer, principal financial officer, principal accounting officer or controller, or persons performing similar functions) of the reporting entity subject to a code of ethics, which includes the following standards? Yes [X] No []

a. Honest and ethical conduct, including the ethical handling of actual or apparent conflicts of interest between personal and professional relationships;

b. Full, fair, accurate, timely and understandable disclosure in the periodic reports required to be filed by the reporting entity;

c. Compliance with applicable governmental laws, rules and regulations;

d. The prompt internal reporting of violations to an appropriate person or persons identified in the code; and

e. Accountability for adherence to the code.

14.11 If the response to 14.1 is no, please explain:

14.2 Has the code of ethics for senior managers been amended? Yes [] No [X]

14.21 If the response to 14.2 is yes, provide information related to amendment(s)

14.3 Have any provisions of the code of ethics been waived for any of the specified officers? Yes [] No [X]

14.31 If the response to 14.3 is yes, provide the nature of any waiver(s).

GENERAL INTERROGATORIES

- 15.1 Is the reporting entity the beneficiary of a Letter of Credit that is unrelated to reinsurance where the issuing or confirming bank is not on the SVO Bank List?
- Yes [] No [X]
- 15.2 If the response to 15.1 is yes, indicate the American Bankers Association (ABA) Routing Number and the name of the issuing or confirming bank of the Letter of Credit and describe the circumstances in which the Letter of Credit is triggered.

1	2	3	4
American Bankers Association (ABA) Routing Number	Issuing or Confirming Bank Name	Circumstances That Can Trigger the Letter of Credit	Amount
.....
.....
.....

BOARD OF DIRECTORS

16. Is the purchase or sale of all investments of the reporting entity passed upon either by the board of directors or a subordinate committee thereof?
- Yes [X] No []
17. Does the reporting entity keep a complete permanent record of the proceedings of its board of directors and all subordinate committees thereof?
- Yes [X] No []
18. Has the reporting entity an established procedure for disclosure to its board of directors or trustees of any material interest or affiliation on the part of any of its officers, directors, trustees or responsible employees that is in conflict or is likely to conflict with the official duties of such person?
- Yes [X] No []

FINANCIAL

19. Has this statement been prepared using a basis of accounting other than Statutory Accounting Principles (e.g., Generally Accepted Accounting Principles)?
- Yes [] No [X]
- 20.1 Total amount loaned during the year (inclusive of Separate Accounts, exclusive of policy loans):
- 20.11 To directors or other officers \$.....0
- 20.12 To stockholders not officers \$.....0
- 20.13 Trustees, supreme or grand (Fraternal only) \$.....0
- 20.2 Total amount of loans outstanding at the end of year (inclusive of Separate Accounts, exclusive of policy loans):
- 20.21 To directors or other officers \$.....0
- 20.22 To stockholders not officers \$.....0
- 20.23 Trustees, supreme or grand (Fraternal only) \$.....0
- 21.1 Were any assets reported in this statement subject to a contractual obligation to transfer to another party without the liability for such obligation being reported in the statement?
- Yes [] No [X]
- 21.2 If yes, state the amount thereof at December 31 of the current year:
- 21.21 Rented from others \$.....0
- 21.22 Borrowed from others \$.....0
- 21.23 Leased from others \$.....0
- 21.24 Other \$.....0
- 22.1 Does this statement include payments for assessments as described in the Annual Statement Instructions other than guaranty fund or guaranty association assessments?
- Yes [] No [X]
- 22.2 If answer is yes:
- 22.21 Amount paid as losses or risk adjustment \$.....0
- 22.22 Amount paid as expenses \$.....0
- 22.23 Other amounts paid \$.....0
- 23.1 Does the reporting entity report any amounts due from parent, subsidiaries or affiliates on Page 2 of this statement?
- Yes [] No [X]
- 23.2 If yes, indicate any amounts receivable from parent included in the Page 2 amount:
- \$.....0

INVESTMENT

- 24.01 Were all the stocks, bonds and other securities owned December 31 of current year, over which the reporting entity has exclusive control, in the actual possession of the reporting entity on said date? (other than securities lending programs addressed in 24.03)
- Yes [] No [X]
- 24.02 If no, give full and complete information, relating thereto
- The Company has securities on deposit with Federal Home Loan Bank to secure a line of credit.....
- 24.03 For security lending programs, provide a description of the program including value for collateral and amount of loaned securities, and whether collateral is carried on or off-balance sheet. (an alternative is to reference Note 17 where this information is also provided)
- 24.04 Does the company's security lending program meet the requirements for a conforming program as outlined in the Risk-Based Capital Instructions?
- Yes [] No [] NA [X]
- 24.05 If answer to 24.04 is yes, report amount of collateral for conforming programs.
- \$.....0
- 24.06 If answer to 24.04 is no, report amount of collateral for other programs.
- \$.....0
- 24.07 Does your securities lending program require 102% (domestic securities) and 105% (foreign securities) from the counterparty at the outset of the contract?
- Yes [] No [] NA [X]
- 24.08 Does the reporting entity non-admit when the collateral received from the counterparty falls below 100%?
- Yes [] No [] NA [X]
- 24.09 Does the reporting entity or the reporting entity's securities lending agent utilize the Master Securities Lending Agreement (MSLA) to conduct securities lending?
- Yes [] No [] NA [X]
- 24.10 For the reporting entity's security lending program, state the amount of the following as of December 31 of the current year:
- 24.101 Total fair value of reinvested collateral assets reported on Schedule DL, Parts 1 and 2 \$.....0
- 24.102 Total book adjusted/carrying value of reinvested collateral assets reported on Schedule DL, Parts 1 and 2 \$.....0
- 24.103 Total payable for securities lending reported on the liability page \$.....0

GENERAL INTERROGATORIES

25.1 Were any of the stocks, bonds or other assets of the reporting entity owned at December 31 of the current year not exclusively under the control of the reporting entity or has the reporting entity sold or transferred any assets subject to a put option contract that is currently in force? (Exclude securities subject to Interrogatory 21.1 and 24.03). Yes [X] No []

25.2 If yes, state the amount thereof at December 31 of the current year:

25.21 Subject to repurchase agreements	\$	0
25.22 Subject to reverse repurchase agreements	\$	0
25.23 Subject to dollar repurchase agreements	\$	0
25.24 Subject to reverse dollar repurchase agreements	\$	0
25.25 Placed under option agreements	\$	0
25.26 Letter stock or securities restricted as to sale – excluding FHLB Capital Stock	\$	0
25.27 FHLB Capital Stock	\$	217,600
25.28 On deposit with states	\$	4,695,415
25.29 On deposit with other regulatory bodies	\$	0
25.30 Pledged as collateral – excluding collateral pledged to an FHLB	\$	0
25.31 Pledged as collateral to FHLB – including assets backing funding agreements	\$	3,929,613
25.32 Other	\$	0

25.3 For category (25.26) provide the following:

1 Nature of Restriction	2 Description	3 Amount
FHLB Capital Stock.....	FHLB Capital Stock requirement.....	217,600
.....
.....
.....
.....

26.1 Does the reporting entity have any hedging transactions reported on Schedule DB? Yes [] No [X]

26.2 If yes, has a comprehensive description of the hedging program been made available to the domiciliary state? Yes [] No [] N/A [X]
If no, attach a description with this statement.

27.1 Were any preferred stocks or bonds owned as of December 31 of the current year mandatorily convertible into equity, or, at the option of the issuer, convertible into equity? Yes [] No [X]

27.2 If yes, state the amount thereof at December 31 of the current year. \$ 0

28. Excluding items in Schedule E – Part 3 – Special Deposits, real estate, mortgage loans and investments held physically in the reporting entity's offices, vaults or safety deposit boxes, were all stocks, bonds and other securities, owned throughout the current year held pursuant to a custodial agreement with a qualified bank or trust company in accordance with Section 1, III – General Examination Considerations, F. Outsourcing of Critical Functions, Custodial or Safekeeping agreements of the NAIC *Financial Condition Examiners Handbook*? Yes [X] No []

28.01 For agreements that comply with the requirements of the NAIC *Financial Condition Examiners Handbook*, complete the following:

1 Name of Custodian(s)	2 Custodian's Address
State Street Bank & Trust Company Boston.....	1 Lincoln Street, Boston, MA 02111.....

28.02 For all agreements that do not comply with the requirements of the NAIC *Financial Condition Examiners Handbook*, provide the name, location and a complete explanation:

1 Name(s)	2 Location(s)	3 Complete Explanation(s)
.....

28.03 Have there been any changes, including name changes, in the custodian(s) identified in 28.01 during the current year? Yes [] No [X]

28.04 If yes, give full and complete information relating thereto:

1 Old Custodian	2 New Custodian	3 Date of Change	4 Reason
.....
.....
.....

GENERAL INTERROGATORIES

28.05 Identify all investment advisors, brokers/dealers or individuals acting on behalf of broker/dealers that have access to the investment accounts, handle securities and have authority to make investments on behalf of the reporting entity:

1 Central Registration Depository Number(s)	2 Name	3 Address
109875.....	Asset Allocation & Management Company, LLC.....	30 North LaSalle, Suite 3500, Chicago, IL 60602.....
106595.....	Wellington Management Company, LLP.....	280 Congress Street, Boston, MA 02210.....

29.1 Does the reporting entity have any diversified mutual funds reported in Schedule D - Part 2 (diversified according to the Securities and Exchange Commission (SEC) in the Investment Company Act of 1940 [Section 5 (b) (1)])? Yes [] No [X]

29.2 If yes, complete the following schedule:

1 CUSIP #	2 Name of Mutual Fund	3 Book/Adjusted Carrying Value
.....
.....
.....
29.2999 TOTAL		0

29.3 For each mutual fund listed in the table above, complete the following schedule:

1 Name of Mutual Fund (from above table)	2 Name of Significant Holding of the Mutual Fund	3 Amount of Mutual Fund's Book/Adjusted Carrying Value Attributable to the Holding	4 Date of Valuation
.....
.....
.....

30. Provide the following information for all short-term and long-term bonds and all preferred stocks. Do not substitute amortized value or statement value for fair value.

	1 Statement (Admitted) Value	2 Fair Value	3 Excess of Statement over Fair Value (-), or Fair Value over Statement (+)
30.1 Bonds.....67,025,95768,949,8301,923,873
30.2 Preferred Stocks.....000
30.3 Totals	67,025,957	68,949,830	1,923,873

30.4 Describe the sources or methods utilized in determining the fair values:

See Attachment.....

31.1 Was the rate used to calculate fair value determined by a broker or custodian for any of the securities in Schedule D? Yes [X] No []

31.2 If the answer to 31.1 is yes, does the reporting entity have a copy of the broker's or custodian's pricing policy (hard copy or electronic copy) for all brokers or custodians used as a pricing source? Yes [X] No []

31.3 If the answer to 31.2 is no, describe the reporting entity's process for determining a reliable pricing source for purposes of disclosure of fair value for Schedule D:

32.1 Have all the filing requirements of the *Purposes and Procedures Manual of the NAIC Investment Analysis Office* been followed? Yes [X] No []

32.2 If no, list exceptions:

GENERAL INTERROGATORIES

OTHER

- 33.1 Amount of payments to trade associations, service organizations and statistical or rating bureaus, if any? \$0
- 33.2 List the name of the organization and the amount paid if any such payment represented 25% or more of the total payments to trade associations, service organizations and statistical or rating bureaus during the period covered by this statement.

1 Name	2 Amount Paid
.....	\$.....
.....	\$.....
.....	\$.....

- 34.1 Amount of payments for legal expenses, if any? \$1,605
- 34.2 List the name of the firm and the amount paid if any such payment represented 25% or more of the total payments for legal expenses during the period covered by this statement.

1 Name	2 Amount Paid
Merchant & Gould.....	\$.....1,605

- 35.1 Amount of payments for expenditures in connection with matters before legislative bodies, officers or departments of government, if any? \$0
- 35.2 List the name of the firm and the amount paid if any such payment represented 25% or more of the total payment expenditures in connection with matters before legislative bodies, officers or departments of government during the period covered by this statement.

1 Name	2 Amount Paid
.....	\$.....
.....	\$.....
.....	\$.....

GENINTPT1 - Attachment

30.4 The Company's custodial bank provides the Company with the fair market value of securities. A description of its methods follows: Interactive Data Services, JP Morgan Pricing Direct, Barclays Capital are all sources for U.S. Treasuries, Corporates, Governments, and Collateralized Mortgage Obligations; Interactive Data Services and Bloomberg are the primary sources for Municipals; manual pricing is provided by Bloomberg.

GENERAL INTERROGATORIES
PART 2 - PROPERTY & CASUALTY INTERROGATORIES

1.1

Does the reporting entity have any direct Medicare Supplement Insurance in force?

Yes [] No [X]

1.2

If yes, indicate premium earned on U. S. business only.

\$0

1.3

What portion of Item (1.2) is not reported on the Medicare Supplement Insurance Experience Exhibit?

\$0

1.31 Reason for excluding

1.4

Indicate amount of earned premium attributable to Canadian and/or Other Alien not included in Item (1.2) above.

\$

1.5

Indicate total incurred claims on all Medicare Supplement insurance.

\$0

1.6

Individual policies:

Most current three years:

1.61 Total premium earned

\$0

1.62 Total incurred claims

\$0

1.63 Number of covered lives

0

All years prior to most current three years:

1.64 Total premium earned

\$0

1.65 Total incurred claims

\$0

1.66 Number of covered lives

0

1.7

Group policies:

Most current three years:

1.71 Total premium earned

\$0

1.72 Total incurred claims

\$0

1.73 Number of covered lives

0

All years prior to most current three years:

1.74 Total premium earned

\$0

1.75 Total incurred claims

\$0

1.76 Number of covered lives

0

2.

Health Test:

		1		2
		Current Year		Prior Year
2.1	Premium Numerator	\$0	\$	0
2.2	Premium Denominator	3,942,946	\$	2,670,480
2.3	Premium Ratio (2.1/2.2)	0.000		0.000
2.4	Reserve Numerator	\$0	\$	0
2.5	Reserve Denominator	37,337,408	\$	34,822,846
2.6	Reserve Ratio (2.4/2.5)	0.000		0.000

3.1

Does the reporting entity issue both participating and non-participating policies?

Yes [] No [X]

3.2

If yes, state the amount of calendar year premiums written on:

3.21 Participating policies

\$0

3.22 Non-participating policies

\$0

4.

For Mutual reporting entities and Reciprocal Exchanges only:

4.1

Does the reporting entity issue assessable policies?

Yes [] No []

4.2

Does the reporting entity issue non-assessable policies?

Yes [] No []

4.3

If assessable policies are issued, what is the extent of the contingent liability of the policyholders?

0.0 %

4.4

Total amount of assessments paid or ordered to be paid during the year on deposit notes or contingent premiums.

\$0

5.

For Reciprocal Exchanges Only:

5.1

Does the exchange appoint local agents?

Yes [] No []

5.2

If yes, is the commission paid:

5.21 Out of Attorney's-in-fact compensation

Yes [] No [] N/A [X]

5.22 As a direct expense of the exchange

Yes [] No [] N/A [X]

5.3

What expenses of the Exchange are not paid out of the compensation of the Attorney-in-fact?

5.4

Has any Attorney-in-fact compensation, contingent on fulfillment of certain conditions, been deferred?

Yes [] No [X]

5.5

If yes, give full information

16

GENERAL INTERROGATORIES
PART 2 - PROPERTY & CASUALTY INTERROGATORIES

6.1

What provision has this reporting entity made to protect itself from an excessive loss in the event of a catastrophe under a workers' compensation contract issued without limit of loss:
No workers' compensation contracts were written.....

6.2

Describe the method used to estimate this reporting entity's probable maximum insurance loss, and identify the type of insured exposures comprising that probable maximum loss, the locations of concentrations of those exposures and the external resources (such as consulting firms or computer software models), if any, used in the estimation process:
N/A.....

6.3

What provision has this reporting entity made (such as a catastrophic reinsurance program) to protect itself from an excessive loss arising from the types and concentrations of insured exposures comprising its probable maximum property insurance loss?.....
N/A.....

6.4

Does the reporting entity carry catastrophe reinsurance protection for at least one reinstatement, in an amount sufficient to cover its estimated probable maximum loss attributable to a single loss event or occurrence?.....

Yes [] No [X]

6.5

If no, describe any arrangements or mechanisms employed by the reporting entity to supplement its catastrophe reinsurance program or to hedge its exposure to unreinsured catastrophic loss
The Company assumes premium from an affiliate that carries reinsurance up to \$40 million with multiple reinstatements.....

7.1

Has the reporting entity reinsured any risk with any other entity under a quota share reinsurance contract that includes a provision that would limit the reinsurer's losses below the stated quota share percentage (e.g., a deductible, a loss ratio corridor, a loss cap, an aggregate limit or any similar provisions)?.....

Yes [] No [X]

7.2

If yes, indicate the number of reinsurance contracts containing such provisions.....

0

7.3

If yes, does the amount of reinsurance credit taken reflect the reduction in quota share coverage caused by any applicable limiting provision(s)?.....

Yes [] No []

8.1

Has this reporting entity reinsured any risk with any other entity and agreed to release such entity from liability, in whole or in part, from any loss that may occur on this risk, or portion thereof, reinsured?.....

Yes [] No [X]

8.2

If yes, give full information

9.1

Has the reporting entity ceded any risk under any reinsurance contract (or under multiple contracts with the same reinsurer or its affiliates) for which during the period covered by the statement: (i) it recorded a positive or negative underwriting result greater than 5% of prior year-end surplus as regards policyholders or it reported calendar year written premium ceded or year-end loss and loss expense reserves ceded greater than 5% of prior year-end surplus as regards policyholders; (ii) it accounted for that contract as reinsurance and not as a deposit; and (iii) the contract(s) contain one or more of the following features or other features that would have similar results:

(a) A contract term longer than two years and the contract is noncancellable by the reporting entity during the contract term;
(b) A limited or conditional cancellation provision under which cancellation triggers an obligation by the reporting entity, or an affiliate of the reporting entity, to enter into a new reinsurance contract with the reinsurer, or an affiliate of the reinsurer;
(c) Aggregate stop loss reinsurance coverage;
(d) A unilateral right by either party (or both parties) to commute the reinsurance contract, whether conditional or not, except for such provisions which are only triggered by a decline in the credit status of the other party;
(e) A provision permitting reporting of losses, or payment of losses, less frequently than on a quarterly basis (unless there is no activity during the period); or
(f) Payment schedule, accumulating retentions from multiple years or any features inherently designed to delay timing of the reimbursement to the ceding entity.....

Yes [] No [X]

9.2

Has the reporting entity during the period covered by the statement ceded any risk under any reinsurance contract (or under multiple contracts with the same reinsurer or its affiliates), for which, during the period covered by the statement, it recorded a positive or negative underwriting result greater than 5% of prior year-end surplus as regards policyholders or it reported calendar year written premium ceded or year-end loss and loss expense reserves ceded greater than 5% of prior year-end surplus as regards policyholders; excluding cessions to approved pooling arrangements or to captive insurance companies that are directly or indirectly controlling, controlled by, or under common control with (i) one or more unaffiliated policyholders of the reporting entity, or (ii) an association of which one or more unaffiliated policyholders of the reporting entity is a member where:

(a) The written premium ceded to the reinsurer by the reporting entity or its affiliates represents fifty percent (50%) or more of the entire direct and assumed premium written by the reinsurer based on its most recently available financial statement; or
(b) Twenty-five percent (25%) or more of the written premium ceded to the reinsurer has been retroceded back to the reporting entity or its affiliates in a separate reinsurance contract.

Yes [] No [X]

9.3

If yes to 9.1 or 9.2, please provide the following information in the Reinsurance Summary Supplemental Filing for General Interrogatory 9:

(a) The aggregate financial statement impact gross of all such ceded reinsurance contracts on the balance sheet and statement of income;
(b) A summary of the reinsurance contract terms and indicate whether it applies to the contracts meeting the criteria in 9.1 or 9.2; and
(c) A brief discussion of management's principle objectives in entering into the reinsurance contract including the economic purpose to be achieved.

9.4

Except for transactions meeting the requirements of paragraph 31 of SSAP No. 62R, Property and Casualty Reinsurance, has the reporting entity ceded any risk under any reinsurance contract (or multiple contracts with the same reinsurer or its affiliates) during the period covered by the financial statement, and either:

(a) Accounted for that contract as reinsurance (either prospective or retroactive) under statutory accounting principles ("SAP") and as a deposit under generally accepted accounting principles ("GAAP"); or
(b) Accounted for that contract as reinsurance under GAAP and as a deposit under SAP?

Yes [] No [X]

9.5

If yes to 9.4, explain in the Reinsurance Summary Supplemental Filing for General Interrogatory 9 (Section D) why the contract(s) is treated differently for GAAP and SAP.

9.6

The reporting entity is exempt from the Reinsurance Attestation Supplement under one or more of the following criteria:

(a) The entity does not utilize reinsurance; or,
(b) The entity only engages in a 100% quota share contract with an affiliate and the affiliated or lead company has filed an attestation supplement; or
(c) The entity has no external cessions and only participates in an intercompany pool and the affiliated or lead company has filed an attestation supplement.

Yes [X] No []
Yes [X] No []
Yes [] No [X]

10.

If the reporting entity has assumed risks from another entity, there should be charged on account of such reinsurances a reserve equal to that which the original entity would have been required to charge had it retained the risks. Has this been done?

Yes [X] No [] N/A []

GENERAL INTERROGATORIES
PART 2 - PROPERTY & CASUALTY INTERROGATORIES

11.1

Has the reporting entity guaranteed policies issued by any other entity and now in force:

Yes [] No [X]

11.2

If yes, give full information

12.1

If the reporting entity recorded accrued retrospective premiums on insurance contracts on Line 15.3 of the asset schedule, Page 2, state the amount of corresponding liabilities recorded for:

12.11

Unpaid losses

\$ 0

12.12

Unpaid underwriting expenses (including loss adjustment expenses)

\$ 0

12.2

Of the amount on Line 15.3, Page 2, state the amount that is secured by letters of credit, collateral and other funds?

\$ 0

12.3

If the reporting entity underwrites commercial insurance risks, such as workers' compensation, are premium notes or promissory notes accepted from its insureds covering unpaid premiums and/or unpaid losses?

Yes [] No [] N/A [X]

12.4

If yes, provide the range of interest rates charged under such notes during the period covered by this statement:

12.41

From

0.0 %

12.42

To

0.0 %

12.5

Are letters of credit or collateral and other funds received from insureds being utilized by the reporting entity to secure premium notes or promissory notes taken by a reporting entity, or to secure any of the reporting entity's reported direct unpaid loss reserves, including unpaid losses under loss deductible features of commercial policies?

Yes [] No [X]

12.6

If yes, state the amount thereof at December 31 of current year:

12.61

Letters of Credit

\$ 0

12.62

Collateral and other funds

\$ 0

13.1

Largest net aggregate amount insured in any one risk (excluding workers' compensation):

\$ 3,100,000

13.2

Does any reinsurance contract considered in the calculation of this amount include an aggregate limit of recovery without also including a reinstatement provision?

Yes [] No [X]

13.3

State the number of reinsurance contracts (excluding individual facultative risk certificates, but including facultative programs, automatic facilities or facultative obligatory contracts) considered in the calculation of the amount.

1

14.1

Is the company a cedant in a multiple cedant reinsurance contract?

Yes [] No [X]

14.2

If yes, please describe the method of allocating and recording reinsurance among the cedants:

14.3

If the answer to 14.1 is yes, are the methods described in item 14.2 entirely contained in the respective multiple cedant reinsurance contracts?

Yes [] No []

14.4

If the answer to 14.3 is no, are all the methods described in 14.2 entirely contained in written agreements?

Yes [] No []

14.5

If the answer to 14.4 is no, please explain:

15.1

Has the reporting entity guaranteed any financed premium accounts?

Yes [] No [X]

15.2

If yes, give full information

16.1

Does the reporting entity write any warranty business?

Yes [] No [X]

If yes, disclose the following information for each of the following types of warranty coverage:

	1	2	3	4	5
	Direct Losses Incurred	Direct Losses Unpaid	Direct Written Premium	Direct Premium Unearned	Direct Premium Earned
16.11 Home	\$ 0	\$ 0	\$ 0	\$ 0	\$ 0
16.12 Products	\$ 0	\$ 0	\$ 0	\$ 0	\$ 0
16.13 Automobile	\$ 0	\$ 0	\$ 0	\$ 0	\$ 0
16.14 Other*	\$ 0	\$ 0	\$ 0	\$ 0	\$ 0

* Disclose type of coverage:

GENERAL INTERROGATORIES
PART 2 - PROPERTY & CASUALTY INTERROGATORIES

17.1 Does the reporting entity include amounts recoverable on unauthorized reinsurance in Schedule F – Part 3 that it excludes from Schedule F – Part 5. Yes [] No [X]

Incurred but not reported losses on contracts in force prior to July 1, 1984, and not subsequently renewed are exempt from inclusion in Schedule F – Part 5. Provide the following information for this exemption:

17.11	Gross amount of unauthorized reinsurance in Schedule F – Part 3 excluded from Schedule F – Part 5	\$.....0
17.12	Unfunded portion of Interrogatory 17.11	\$.....0
17.13	Paid losses and loss adjustment expenses portion of Interrogatory 17.11	\$.....0
17.14	Case reserves portion of Interrogatory 17.11	\$.....0
17.15	Incurred but not reported portion of Interrogatory 17.11	\$.....0
17.16	Unearned premium portion of Interrogatory 17.11	\$.....0
17.17	Contingent commission portion of Interrogatory 17.11	\$.....0

Provide the following information for all other amounts included in Schedule F – Part 3 and excluded from Schedule F – Part 5, not included above.

17.18	Gross amount of unauthorized reinsurance in Schedule F – Part 3 excluded from Schedule F – Part 5	\$.....0
17.19	Unfunded portion of Interrogatory 17.18	\$.....0
17.20	Paid losses and loss adjustment expenses portion of Interrogatory 17.18	\$.....0
17.21	Case reserves portion of Interrogatory 17.18	\$.....0
17.22	Incurred but not reported portion of Interrogatory 17.18	\$.....0
17.23	Unearned premium portion of Interrogatory 17.18	\$.....0
17.24	Contingent commission portion of Interrogatory 17.18	\$.....0

18.1 Do you act as a custodian for health savings accounts? Yes [] No [X]
18.2 If yes, please provide the amount of custodial funds held as of the reporting date. \$.....0
18.3 Do you act as an administrator for health savings accounts? Yes [] No [X]
18.4 If yes, please provide the balance of the funds administered as of the reporting date. \$.....0

ANNUAL STATEMENT FOR THE YEAR 2015 OF THE Plans' Liability Insurance Company

FIVE-YEAR HISTORICAL DATA

Show amounts in whole dollars only, no cents; show percentages to one decimal place, i.e., 17.6.

	1 2015	2 2014	3 2013	4 2012	5 2011
Gross Premiums Written (Page 8, Part 1B, Cols. 1, 2 & 3)					
1. Liability lines (Lines 11.1, 11.2, 16, 17.1, 17.2, 17.3, 18.1, 18.2, 19.1, 19.2 & 19.3, 19.4)	3,954,937	2,478,774	2,528,537	2,126,316	2,839,683
2. Property lines (Lines 1, 2, 9, 12, 21 & 26)	0	0	0	0	0
3. Property and liability combined lines (Lines 3, 4, 5, 8, 22 & 27)	0	0	0	0	0
4. All other lines (Lines 6, 10, 13, 14, 15, 23, 24, 28, 29, 30 & 34)	17,008	16,718	16,367	29,416	80,208
5. Nonproportional reinsurance lines (Lines 31, 32 & 33)	0	0	0	0	0
6. Total (Line 35)	3,971,945	2,495,492	2,544,904	2,155,732	2,919,891
Net Premiums Written (Page 8, Part 1B, Col. 6)					
7. Liability lines (Lines 11.1, 11.2, 16, 17.1, 17.2, 17.3, 18.1, 18.2, 19.1, 19.2 & 19.3, 19.4)	3,954,937	2,478,774	2,528,537	2,126,316	2,839,683
8. Property lines (Lines 1, 2, 9, 12, 21 & 26)	0	0	0	0	0
9. Property and liability combined lines (Lines 3, 4, 5, 8, 22 & 27)	0	0	0	0	0
10. All other lines (Lines 6, 10, 13, 14, 15, 23, 24, 28, 29, 30 & 34)	17,008	16,718	16,367	29,416	80,208
11. Nonproportional reinsurance lines (Lines 31, 32 & 33)	0	0	0	0	0
12. Total (Line 35)	3,971,945	2,495,492	2,544,904	2,155,732	2,919,891
Statement of Income (Page 4)					
13. Net underwriting gain (loss) (Line 8)	(6,697,382)	(5,194,393)	(13,715,186)	(4,012,030)	(3,040,630)
14. Net investment gain (loss) (Line 11)	2,617,132	2,643,994	3,085,729	3,451,090	3,735,791
15. Total other income (Line 15)	386,821	(75,573)	(748,722)	(3,746,274)	78,184
16. Dividends to policyholders (Line 17)	0	0	0	0	0
17. Federal and foreign income taxes incurred (Line 19)	(31,366)	(63,713)	(116,959)	(752,519)	(55,912)
18. Net income (Line 20)	(3,662,063)	(2,562,259)	(11,261,220)	(3,554,695)	829,257
Balance Sheet Lines (Pages 2 and 3)					
19. Total admitted assets excluding protected cell business (Page 2, Line 26, Col. 3)	77,929,062	80,090,202	82,331,631	85,606,236	84,320,037
20. Premiums and considerations (Page 2, Col. 3)					
20.1 In course of collection (Line 15.1)	55,359	144,311	153,139	103,799	168,374
20.2 Deferred and not yet due (Line 15.2)	0	0	0	0	0
20.3 Accrued retrospective premiums (Line 15.3)	0	0	0	0	0
21. Total liabilities excluding protected cell business (Page 3, Line 26)	44,355,166	42,499,519	42,433,745	34,322,716	30,590,502
22. Losses (Page 3, Line 1)	32,354,600	31,265,234	28,526,066	18,772,211	19,184,869
23. Loss adjustment expenses (Page 3, Line 3)	3,289,442	2,680,587	3,571,568	4,298,613	5,085,210
24. Unearned premiums (Page 3, Line 9)	656,827	627,828	802,816	571,685	460,618
25. Capital paid up (Page 3, Lines 30 & 31)	2,942,436	2,942,436	2,942,436	2,942,436	2,942,436
26. Surplus as regards policyholders (Page 3, Line 37)	33,573,896	37,590,683	39,897,886	51,283,520	53,729,535
Cash Flow (Page 5)					
27. Net cash from operations (Line 11)	(1,877,504)	(884,474)	(1,300,909)	(4,052,011)	(2,049,952)
Risk-Based Capital Analysis					
28. Total adjusted capital	33,573,896	37,590,683	39,897,886	51,283,520	53,729,535
29. Authorized control level risk-based capital	7,527,621	6,478,250	5,281,067	3,883,775	3,824,058
Percentage Distribution of Cash, Cash Equivalents and Invested Assets (Page 2, Col. 3)(Item divided by Page 2, Line 12, Col. 3) x 100.0					
30. Bonds (Line 1)	85.6	86.0	84.2	88.3	97.1
31. Stocks (Lines 2.1 & 2.2)	6.8	6.9	6.3	7.5	0.2
32. Mortgage loans on real estate (Lines 3.1 and 3.2)	0.0	0.0	0.0	0.0	0.0
33. Real estate (Lines 4.1, 4.2 & 4.3)	0.0	0.0	0.0	0.0	0.0
34. Cash, cash equivalents and short-term investments (Line 5)	2.6	2.1	6.9	4.1	2.6
35. Contract loans (Line 6)	0.0	0.0	0.0	0.0	0.0
36. Derivatives (Line 7)	0.0	0.0	0.0	0.0	0.0
37. Other invested assets (Line 8)	4.9	5.0	2.6	0.0	0.0
38. Receivables for securities (Line 9)	0.0	0.0	0.0	0.0	0.0
39. Securities lending reinvested collateral assets (Line 10)	0.0	0.0	0.0	0.0	0.0
40. Aggregate write-ins for invested assets (Line 11)	0.0	0.0	0.0	0.0	0.0
41. Cash, cash equivalents and invested assets (Line 12)	100.0	100.0	100.0	100.0	100.0
Investments in Parent, Subsidiaries and Affiliates					
42. Affiliated bonds, (Sch. D, Summary, Line 12, Col. 1)	0	0	0	0	0
43. Affiliated preferred stocks (Sch. D, Summary, Line 18, Col. 1)	0	0	0	0	0
44. Affiliated common stocks (Sch. D, Summary, Line 24, Col. 1)	0	0	0	0	0
45. Affiliated short-term investments (subtotals included in Schedule DA Verification, Col. 5, Line 10)	0	0	6,660	6,643	6,643
46. Affiliated mortgage loans on real estate	0	0	0	0	0
47. All other affiliated	0	0	0	0	0
48. Total of above Lines 42 to 47	0	0	6,660	6,643	6,643
49. Total Investment in parent included in Lines 42 to 47 above		0	0	0	0
50. Percentage of investments in parent, subsidiaries and affiliates to surplus as regards policyholders (Line 48 above divided by Page 3, Col. 1, Line 37 x 100.0)	0.0	0.0	0.0	0.0	0.0

FIVE-YEAR HISTORICAL DATA

(Continued)					
	1 2015	2 2014	3 2013	4 2012	5 2011
Capital and Surplus Accounts (Page 4)					
51. Net unrealized capital gains (losses) (Line 24)	(234,118)	168,337	735,962	279,986	20,016
52. Dividends to stockholders (Line 35)	0	0	0	0	0
53. Change in surplus as regards policyholders for the year (Line 38)	(4,016,787)	(2,307,203)	(11,385,634)	(2,446,015)	769,291
Gross Losses Paid (Page 9, Part 2, Cols. 1 & 2)					
54. Liability lines (Lines 11.1, 11.2, 16, 17.1, 17.2, 17.3, 18.1, 18.2, 19.1, 19.2 & 19.3, 19.4)	3,447,713	747,909	1,505,652	1,999,493	3,661,341
55. Property lines (Lines 1, 2, 9, 12, 21 & 26)	0	0	0	0	0
56. Property and liability combined lines (Lines 3, 4, 5, 8, 22 & 27)	0	0	0	0	0
57. All other lines (Lines 6, 10, 13, 14, 15, 23, 24, 28, 29, 30 & 34)	0	0	0	0	0
58. Nonproportional reinsurance lines (Lines 31, 32 & 33)	0	0	0	0	0
59. Total (Line 35)	3,447,713	747,909	1,505,652	1,999,493	3,661,341
Net Losses Paid (Page 9, Part 2, Col. 4)					
60. Liability lines (Lines 11.1, 11.2, 16, 17.1, 17.2, 17.3, 18.1, 18.2, 19.1, 19.2 & 19.3, 19.4)	3,447,713	747,909	1,505,652	1,999,493	3,661,341
61. Property lines (Lines 1, 2, 9, 12, 21 & 26)	0	0	0	0	0
62. Property and liability combined lines (Lines 3, 4, 5, 8, 22 & 27)	0	0	0	0	0
63. All other lines (Lines 6, 10, 13, 14, 15, 23, 24, 28, 29, 30 & 34)	0	0	0	0	0
64. Nonproportional reinsurance lines (Lines 31, 32 & 33)	0	0	0	0	0
65. Total (Line 35)	3,447,713	747,909	1,505,652	1,999,493	3,661,341
Operating Percentages (Page 4) (Item divided by Page 4, Line 1) x 100.0					
66. Premiums earned (Line 1)	100.0	100.0	100.0	100.0	100.0
67. Losses incurred (Line 2)	115.1	130.6	486.6	77.6	44.2
68. Loss expenses incurred (Line 3)	71.7	59.2	69.4	40.5	34.9
69. Other underwriting expenses incurred (Line 4)	81.4	108.6	128.5	178.2	122.0
70. Net underwriting gain (loss) (Line 8)	(169.9)	(194.5)	(592.8)	(196.2)	(101.2)
Other Percentages					
71. Other underwriting expenses to net premiums written (Page 4, Lines 4 + 5 - 15 divided by Page 8, Part 1B, Col. 6, Line 35 x 100.0)	72.7	115.1	153.8	342.8	122.9
72. Losses and loss expenses incurred to premiums earned (Page 4, Lines 2 + 3 divided by Page 4, Line 1 x 100.0)	186.8	189.7	556.0	118.1	79.2
73. Net premiums written to policyholders' surplus (Page 8, Part 1B, Col. 6, Line 35 divided by Page 3, Line 37, Col. 1 x 100.0)	11.8	6.6	6.4	4.2	5.4
One Year Loss Development (000 omitted)					
74. Development in estimated losses and loss expenses incurred prior to current year (Schedule P, Part 2-Summary, Line 12, Col. 11)	2,135	1,948	8,078	(3,283)	(1,029)
75. Percent of development of losses and loss expenses incurred to policyholders' surplus of prior year end (Line 74 above divided by Page 4, Line 21, Col. 1 x 100.0)	5.7	4.9	15.8	(6.1)	(1.9)
Two Year Loss Development (000 omitted)					
76. Development in estimated losses and loss expenses incurred 2 years before the current year and prior year (Schedule P, Part 2 - Summary, Line 12, Col. 12)	1,095	9,981	(3,840)	(4,161)	(3,307)
77. Percent of development of losses and loss expenses incurred to reported policyholders' surplus of second prior year end (Line 76 above divided by Page 4, Line 21, Col. 2 x 100.0)	2.7	19.5	(7.1)	(7.9)	(6.5)

NOTE: If a party to a merger, have the two most recent years of this exhibit been restated due to a merger in compliance with the disclosure requirements of SSAP No. 3, *Accounting Changes and Correction of Errors*? Yes [] No []

If no, please explain

.....

SCHEDULE P - ANALYSIS OF LOSSES AND LOSS EXPENSES
SCHEDULE P - PART 1 - SUMMARY

(\$000 Omitted)

Years in Which Premiums Were Earned and Losses Were Incurred	Premiums Earned			Loss and Loss Expense Payments								12
	1	2	3	Loss Payments		Defense and Cost Containment Payments		Adjusting and Other Payments		10	11	Number of Claims Reported Direct and Assumed
				4	5	6	7	8	9			
Direct and Assumed	Ceded	Net (Cols. 1 - 2)	Direct and Assumed	Ceded	Direct and Assumed	Ceded	Direct and Assumed	Ceded	Salvage and Subrogation Received	Total Net Paid (Cols. 4 - 5 + 6 - 7 + 8 - 9)		
1. Prior	XXX	XXX	XXX	607	0	55	0	0	0	0	662	XXX
2. 2006	16,011	0	16,011	5,812	0	1,464	0	780	0	0	8,056	XXX
3. 2007	11,192	0	11,192	1,400	0	925	0	852	0	0	3,177	XXX
4. 2008	5,523	0	5,523	1,274	0	621	0	539	0	0	2,434	XXX
5. 2009	4,959	0	4,959	900	0	199	0	664	0	0	1,763	XXX
6. 2010	4,905	0	4,905	971	0	241	0	964	0	0	2,176	XXX
7. 2011	3,004	0	3,004	0	0	52	0	830	0	0	882	XXX
8. 2012	2,045	0	2,045	1,405	0	1,826	0	891	0	0	4,122	XXX
9. 2013	2,314	0	2,314	0	0	49	0	892	0	0	941	XXX
10. 2014	2,670	0	2,670	2,143	0	144	0	681	0	0	2,968	XXX
11. 2015	3,943	0	3,943	0	0	95	0	231	0	0	326	XXX
12. Totals	XXX	XXX	XXX	14,512	0	5,671	0	7,324	0	0	27,507	XXX

	Losses Unpaid				Defense and Cost Containment Unpaid				Adjusting and Other Unpaid		23 Salvage and Subrogation Anticipated	24 Total Net Losses and Expenses Unpaid	25 Number of Claims Outstanding Direct and Assumed
	Case Basis		Bulk + IBNR		Case Basis		Bulk + IBNR		21	22			
	13	14	15	16	17	18	19	20					
	Direct and Assumed	Ceded	Direct and Assumed	Ceded	Direct and Assumed	Ceded	Direct and Assumed	Ceded	Direct and Assumed	Ceded			
1.	1,498	0	0	0	374	0	0	0	0	0	0	1,872	xxx
2.	135	0	0	0	11	0	0	0	0	0	0	146	xxx
3.	724	0	500	0	79	0	0	0	0	0	0	1,303	xxx
4.	1,310	0	1,347	0	103	0	0	0	0	0	0	2,760	xxx
5.	336	0	1,100	0	0	0	0	0	0	0	0	1,436	xxx
6.	524	0	1,064	0	0	0	103	0	0	0	0	1,691	xxx
7.	824	0	956	0	0	0	50	0	188	0	0	2,018	xxx
8.	10,099	0	1,409	0	806	0	123	0	282	0	0	12,719	xxx
9.	2,420	0	1,217	0	16	0	60	0	204	0	0	3,917	xxx
10.	2,269	0	563	0	35	0	91	0	270	0	0	3,228	xxx
11.	3,104	0	956	0	85	0	153	0	256	0	0	4,554	xxx
12.	23,243	0	9,112	0	1,509	0	580	0	1,200	0	0	35,644	xxx

	Total Losses and Loss Expenses Incurred			Loss and Loss Expense Percentage (Incurred/Premiums Earned)			Nontabular Discount		34 Inter- Company Pooling Participation Percentage	Net Balance Sheet Reserves After Discount	
	26	27	28	29	30	31	32	33		35	36
	Direct and Assumed	Ceded	Net	Direct and Assumed	Ceded	Net	Loss	Loss Expense		Losses Unpaid	Loss Expenses Unpaid
1.	XXX	XXX	XXX	XXX	XXX	XXX	0	0	XXX	1,498	374
2.	8,202	0	8,202	51.2	0.0	51.2	0	0		135	11
3.	4,480	0	4,480	40.0	0.0	40.0	0	0		1,224	79
4.	5,194	0	5,194	94.0	0.0	94.0	0	0		2,657	103
5.	3,199	0	3,199	64.5	0.0	64.5	0	0		1,436	0
6.	3,867	0	3,867	78.8	0.0	78.8	0	0		1,588	103
7.	2,900	0	2,900	96.5	0.0	96.5	0	0		1,780	238
8.	16,841	0	16,841	823.5	0.0	823.5	0	0		11,508	1,211
9.	4,858	0	4,858	209.9	0.0	209.9	0	0		3,637	280
10.	6,196	0	6,196	232.1	0.0	232.1	0	0		2,832	396
11.	4,880	0	4,880	123.8	0.0	123.8	0	0		4,060	494
12.	XXX	XXX	XXX	XXX	XXX	XXX	0	0	XXX	32,355	3,289

Note: Parts 2 and 4 are gross of all discounting, including tabular discounting. Part 1 is gross of only nontabular discounting, which is reported in Columns 32 and 33 of Part 1. The tabular discount, if any, is reported in the Notes to Financial Statements, which will reconcile Part 1 with Parts 2 and 4.

SCHEDULE P - PART 2 - SUMMARY

Years in Which Losses Were Incurred	INCURRED NET LOSSES AND DEFENSE AND COST CONTAINMENT EXPENSES REPORTED AT YEAR END (\$000 OMITTED)										DEVELOPMENT	
	1	2	3	4	5	6	7	8	9	10	11	12
	2006	2007	2008	2009	2010	2011	2012	2013	2014	2015	One Year	Two Year
1. Prior	25,711	27,245	25,033	26,563	26,733	22,562	21,545	20,660	21,183	20,633	(550)	(27)
2. 2006	8,084	9,955	8,498	8,782	8,340	9,842	7,745	7,487	7,487	7,422	(65)	(65)
3. 2007	XXX	4,987	4,766	3,476	2,681	2,853	2,853	3,415	3,608	3,628	20	213
4. 2008	XXX	XXX	3,609	4,361	3,687	4,575	4,695	4,728	4,670	4,655	(15)	(73)
5. 2009	XXX	XXX	XXX	2,983	2,798	3,026	2,914	2,876	2,876	2,535	(341)	(341)
6. 2010	XXX	XXX	XXX	XXX	2,841	3,193	3,167	2,891	2,817	2,903	86	12
7. 2011	XXX	XXX	XXX	XXX	XXX	2,513	2,362	2,667	2,644	1,882	(762)	(785)
8. 2012	XXX	XXX	XXX	XXX	XXX	XXX	4,800	13,435	14,777	15,668	891	2,233
9. 2013	XXX	XXX	XXX	XXX	XXX	XXX	XXX	3,834	3,879	3,762	(117)	(72)
10. 2014	XXX	XXX	XXX	XXX	XXX	XXX	XXX	XXX	2,257	5,245	2,988	XXX
11. 2015	XXX	XXX	XXX	XXX	XXX	XXX	XXX	XXX	XXX	4,393	XXX	XXX
12. Totals											2,135	1,095

SCHEDULE P - PART 3 - SUMMARY

Years in Which Losses Were Incurred	CUMULATIVE PAID NET LOSSES AND DEFENSE AND COST CONTAINMENT EXPENSES REPORTED AT YEAR END (\$000 OMITTED)										11	12
	1	2	3	4	5	6	7	8	9	10	Number of Claims Closed With Loss Payment	Number of Claims Closed Without Loss Payment
	2006	2007	2008	2009	2010	2011	2012	2013	2014	2015		
1. Prior	000	5,500	7,330	13,493	14,679	15,515	16,182	17,142	18,099	18,761	XXX	XXX
2. 2006	11	142	647	3,389	3,633	7,236	7,260	7,262	7,269	7,276	XXX	XXX
3. 2007	XXX	103	488	1,587	1,946	1,994	2,002	2,055	2,238	2,325	XXX	XXX
4. 2008	XXX	XXX	7	149	329	462	1,281	1,849	1,883	1,895	XXX	XXX
5. 2009	XXX	XXX	XXX	0	148	167	1,096	1,098	1,099	1,099	XXX	XXX
6. 2010	XXX	XXX	XXX	XXX	0	115	241	1,212	1,212	1,212	XXX	XXX
7. 2011	XXX	XXX	XXX	XXX	XXX	4	33	52	52	52	XXX	XXX
8. 2012	XXX	XXX	XXX	XXX	XXX	XXX	115	425	1,586	3,231	XXX	XXX
9. 2013	XXX	XXX	XXX	XXX	XXX	XXX	XXX	0	13	49	XXX	XXX
10. 2014	XXX	XXX	XXX	XXX	XXX	XXX	XXX	XXX	0	2,287	XXX	XXX
11. 2015	XXX	XXX	XXX	XXX	XXX	XXX	XXX	XXX	XXX	95	XXX	XXX

SCHEDULE P - PART 4 - SUMMARY

Years in Which Losses Were Incurred	BULK AND IBNR RESERVES ON NET LOSSES AND DEFENSE AND COST CONTAINMENT EXPENSES REPORTED AT YEAR END (\$000 OMITTED)									
	1 2006	2 2007	3 2008	4 2009	5 2010	6 2011	7 2012	8 2013	9 2014	10 2015
1. Prior	3,635	2,111	410	0	0	0	0	0	0	0
2. 2006	2,853	960	628	442	45	0	0	0	0	0
3. 2007	XXX	2,416	879	505	45	0	0	0	280	500
4. 2008	XXX	XXX	938	196	590	1,300	1,400	1,525	1,572	1,347
5. 2009	XXX	XXX	XXX	1,794	1,045	1,400	950	1,071	1,167	1,100
6. 2010	XXX	XXX	XXX	XXX	1,883	1,039	1,147	947	1,025	1,167
7. 2011	XXX	XXX	XXX	XXX	XXX	1,627	1,240	1,589	1,703	1,006
8. 2012	XXX	XXX	XXX	XXX	XXX	XXX	897	1,161	1,547	1,532
9. 2013	XXX	XXX	XXX	XXX	XXX	XXX	XXX	854	622	1,277
10. 2014	XXX	XXX	XXX	XXX	XXX	XXX	XXX	XXX	401	654
11. 2015	XXX	XXX	XXX	XXX	XXX	XXX	XXX	XXX	XXX	1,109

SCHEDULE T - EXHIBIT OF PREMIUMS WRITTEN

Allocated By States And Territories									
States, etc.	1	Gross Premiums, Including Policy and Membership Fees Less Return Premiums and Premiums on Policies Not Taken		4	5	6	7	8	9
		2	3						
	Active Status	Direct Premiums Written	Direct Premiums Earned	Dividends Paid or Credited to Policyholders on Direct Business	Direct Losses Paid (Deducting Salvage)	Direct Losses Incurred	Direct Losses Unpaid	Finance and Service Charges Not Included in Premiums	Direct Premium Written for Federal Purchasing Groups (Included in Col. 2)
1. Alabama	AL L	.0	.0	.0	.0	.0	.0	.0	
2. Alaska	AK L	.0	.0	.0	.0	.0	.0	.0	
3. Arizona	AZ L	.0	.0	.0	.0	.0	.0	.0	
4. Arkansas	AR L	.0	.0	.0	.0	.0	.0	.0	
5. California	CA N	.0	.0	.0	.0	.0	.0	.0	
6. Colorado	CO L	.0	.0	.0	.0	.0	.0	.0	
7. Connecticut	CT L	.0	.0	.0	.0	.0	.0	.0	
8. Delaware	DE L	.0	.0	.0	.0	.0	.0	.0	
9. Dist. Columbia	DC L	.0	.0	.0	.0	.0	.0	.0	
10. Florida	FL L	.0	.0	.0	.0	.0	.0	.0	
11. Georgia	GA L	.0	.0	.0	.0	.0	.0	.0	
12. Hawaii	HI N	.0	.0	.0	.0	.0	.0	.0	
13. Idaho	ID L	.0	.0	.0	.0	.0	.0	.0	
14. Illinois	IL L	.0	.0	.0	.0	.0	.0	.0	
15. Indiana	IN L	.0	.0	.0	.0	.0	.0	.0	
16. Iowa	IA L	.0	.0	.0	.0	.0	.0	.0	
17. Kansas	KS L	.0	.0	.0	.0	.0	.0	.0	
18. Kentucky	KY L	.0	.0	.0	.0	.0	.0	.0	
19. Louisiana	LA L	.0	.0	.0	.0	.0	.0	.0	
20. Maine	ME L	.0	.0	.0	.0	.0	.0	.0	
21. Maryland	MD L	.0	.0	.0	.0	.0	.0	.0	
22. Massachusetts	MA L	.0	.0	.0	.0	.0	.0	.0	
23. Michigan	MI L	.0	.0	.0	.0	.0	.0	.0	
24. Minnesota	MN L	.0	.0	.0	.0	.0	.0	.0	
25. Mississippi	MS L	.0	.0	.0	.0	.0	.0	.0	
26. Missouri	MO L	.0	.0	.0	.0	.0	.0	.0	
27. Montana	MT L	.0	.0	.0	.0	.0	.0	.0	
28. Nebraska	NE L	.0	.0	.0	.0	.0	.0	.0	
29. Nevada	NV L	.0	.0	.0	.0	.0	.0	.0	
30. New Hampshire	NH L	.0	.0	.0	.0	.0	.0	.0	
31. New Jersey	NJ L	.0	.0	.0	.0	.0	.0	.0	
32. New Mexico	NM L	.0	.0	.0	.0	.0	.0	.0	
33. New York	NY L	.0	.0	.0	.0	.0	.0	.0	
34. No. Carolina	NC L	.0	.0	.0	.0	.0	.0	.0	
35. No. Dakota	ND L	.0	.0	.0	.0	.0	.0	.0	
36. Ohio	OH L	.0	.0	.0	.0	.0	.0	.0	
37. Oklahoma	OK L	.0	.0	.0	.0	.0	.0	.0	
38. Oregon	OR L	.0	.0	.0	.0	.0	.0	.0	
39. Pennsylvania	PA L	.0	.0	.0	.0	.0	.0	.0	
40. Rhode Island	RI L	.0	.0	.0	.0	.0	.0	.0	
41. So. Carolina	SC L	.0	.0	.0	.0	.0	.0	.0	
42. So. Dakota	SD L	.0	.0	.0	.0	.0	.0	.0	
43. Tennessee	TN L	.0	.0	.0	.0	.0	.0	.0	
44. Texas	TX L	.0	.0	.0	.0	.0	.0	.0	
45. Utah	UT L	.0	.0	.0	.0	.0	.0	.0	
46. Vermont	VT L	.0	.0	.0	.0	.0	.0	.0	
47. Virginia	VA L	.0	.0	.0	.0	.0	.0	.0	
48. Washington	WA L	.0	.0	.0	.0	.0	.0	.0	
49. West Virginia	WV L	.0	.0	.0	.0	.0	.0	.0	
50. Wisconsin	WI L	.0	.0	.0	.0	.0	.0	.0	
51. Wyoming	WY L	.0	.0	.0	.0	.0	.0	.0	
52. American Samoa	AS N	.0	.0	.0	.0	.0	.0	.0	
53. Guam	GU N	.0	.0	.0	.0	.0	.0	.0	
54. Puerto Rico	PR N	.0	.0	.0	.0	.0	.0	.0	
55. U.S. Virgin Islands	VI N	.0	.0	.0	.0	.0	.0	.0	
56. Northern Mariana Islands	MP N	.0	.0	.0	.0	.0	.0	.0	
57. Canada	CAN N	.0	.0	.0	.0	.0	.0	.0	
58. Aggregate other alien	OT XXX	.0	.0	.0	.0	.0	.0	.0	.0
59. Totals	(a) 49	0	0	0	0	0	0	0	0
DETAILS OF WRITE-INS									
58001.	XXX								
58002.	XXX								
58003.	XXX								
58998. Sum. of remaining write-ins for Line 58 from overflow page	XXX	.0	.0	.0	.0	.0	.0	.0	.0
58999. Totals (Lines 58001 through 58003 + 58998) (Line 58 above)	XXX	0	0	0	0	0	0	0	0

(L) Licensed or Chartered - Licensed Insurance Carrier or Domiciled RRG; (R) Registered - Non-domiciled RRGs; (Q) Qualified - Qualified or Accredited Reinsurer; (E) Eligible - Reporting Entities eligible or approved to write Surplus Lines in the state; (N) None of the above - Not allowed to write business in the state.

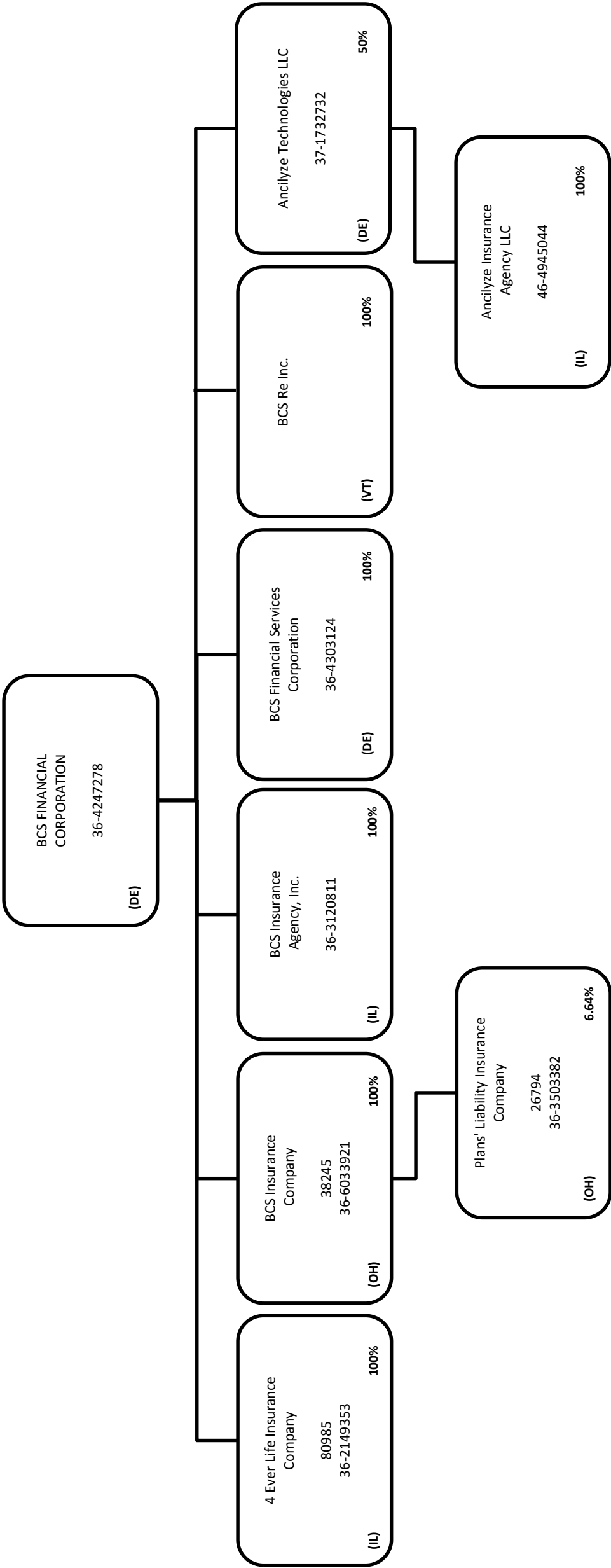
Explanation of basis of allocation of premiums by states, etc.

N/A

(a) Insert the number of L responses except for Canada and Other Alien

SCHEDULE Y – INFORMATION CONCERNING ACTIVITIES OF INSURER MEMBERS OF A HOLDING COMPANY GROUP

PART 1 – ORGANIZATIONAL CHART



ALPHABETICAL INDEX

ANNUAL STATEMENT BLANK

Assets	2
Cash Flow	5
Exhibit of Capital Gains (Losses)	12
Exhibit of Net Investment Income	12
Exhibit of Nonadmitted Assets	13
Exhibit of Premiums and Losses (State Page)	19
Five-Year Historical Data	17
General Interrogatories	15
Jurat Page	1
Liabilities, Surplus and Other Funds	3
Notes To Financial Statements	14
Overflow Page For Write-Ins	100
Schedule A – Part 1	E01
Schedule A – Part 2	E02
Schedule A – Part 3	E03
Schedule A – Verification Between Years	SI02
Schedule B – Part 1	E04
Schedule B – Part 2	E05
Schedule B – Part 3	E06
Schedule B – Verification Between Years	SI02
Schedule BA – Part 1	E07
Schedule BA – Part 2	E08
Schedule BA – Part 3	E09
Schedule BA – Verification Between Years	SI03
Schedule D – Part 1	E10
Schedule D – Part 1A – Section 1	SI05
Schedule D – Part 1A – Section 2	SI08
Schedule D – Part 2 – Section 1	E11
Schedule D – Part 2 – Section 2	E12
Schedule D – Part 3	E13
Schedule D – Part 4	E14
Schedule D – Part 5	E15
Schedule D – Part 6 – Section 1	E16
Schedule D – Part 6 – Section 2	E16
Schedule D – Summary By Country	SI04
Schedule D – Verification Between Years	SI03
Schedule DA – Part 1	E17

ALPHABETICAL INDEX

ANNUAL STATEMENT BLANK (Continued)

Schedule DA – Verification Between Years	SI10
Schedule DB – Part A – Section 1	E18
Schedule DB – Part A – Section 2	E19
Schedule DB – Part A – Verification Between Years	SI11
Schedule DB – Part B – Section 1	E20
Schedule DB – Part B – Section 2	E21
Schedule DB – Part B – Verification Between Years	SI11
Schedule DB – Part C – Section 1	SI12
Schedule DB – Part C – Section 2	SI13
Schedule DB – Part D – Section 1	E22
Schedule DB – Part D – Section 2	E23
Schedule DB – Verification	SI14
Schedule DL – Part 1	E24
Schedule DL – Part 2	E25
Schedule E – Part 1 – Cash	E26
Schedule E – Part 2 – Cash Equivalents	E27
Schedule E – Part 3 – Special Deposits	E28
Schedule E – Verification Between Years	SI15
Schedule F – Part 1	20
Schedule F – Part 2	21
Schedule F – Part 3	22
Schedule F – Part 4	23
Schedule F – Part 5	24
Schedule F – Part 6 – Section 1	25
Schedule F – Part 6 – Section 2	26
Schedule F – Part 7	27
Schedule F – Part 8	28
Schedule F – Part 9	29
Schedule H – Accident and Health Exhibit – Part 1	30
Schedule H – Part 2, Part 3, and Part 4	31
Schedule H – Part 5 – Health Claims	32
Schedule P – Part 1 – Summary	33
Schedule P – Part 1A – Homeowners/Farmowners	35
Schedule P – Part 1B – Private Passenger Auto Liability/Medical	36
Schedule P – Part 1C – Commercial Auto/Truck Liability/Medical	37
Schedule P – Part 1D – Workers’ Compensation (Excluding Excess Workers’ Compensation)	38

ALPHABETICAL INDEX

ANNUAL STATEMENT BLANK (Continued)

Schedule P – Part 1E – Commercial Multiple Peril	39
Schedule P – Part 1F – Section 1 – Medical Professional Liability – Occurrence	40
Schedule P – Part 1F – Section 2 – Medical Professional Liability – Claims-Made	41
Schedule P – Part 1G – Special Liability (Ocean, Marine, Aircraft (All Perils), Boiler and Machinery)	42
Schedule P – Part 1H – Section 1 – Other Liability–Occurrence	43
Schedule P – Part 1H – Section 2 – Other Liability – Claims-Made	44
Schedule P – Part 1I – Special Property (Fire, Allied Lines, Inland Marine, Earthquake, Burglary & Theft)	45
Schedule P – Part 1J – Auto Physical Damage	46
Schedule P – Part 1K – Fidelity/Surety	47
Schedule P – Part 1L – Other (Including Credit, Accident and Health)	48
Schedule P – Part 1M – International	49
Schedule P – Part 1N – Reinsurance – Nonproportional Assumed Property	50
Schedule P – Part 1O – Reinsurance – Nonproportional Assumed Liability	51
Schedule P – Part 1P – Reinsurance – Nonproportional Assumed Financial Lines	52
Schedule P – Part 1R – Section 1 – Products Liability – Occurrence	53
Schedule P – Part 1R – Section 2 – Products Liability – Claims – Made	54
Schedule P – Part 1S – Financial Guaranty/Mortgage Guaranty	55
Schedule P – Part 1T – Warranty	56
Schedule P – Part 2, Part 3 and Part 4 – Summary	34
Schedule P – Part 2A – Homeowners/Farmowners	57
Schedule P – Part 2B – Private Passenger Auto Liability/Medical	57
Schedule P – Part 2C – Commercial Auto/Truck Liability/Medical	57
Schedule P – Part 2D – Workers’ Compensation (Excluding Excess Workers’ Compensation)	57
Schedule P – Part 2E – Commercial Multiple Peril	57
Schedule P – Part 2F – Section 1 – Medical Professional Liability – Occurrence	58
Schedule P – Part 2F – Section 2 – Medical Professional Liability – Claims – Made	58
Schedule P – Part 2G – Special Liability (Ocean Marine, Aircraft (All Perils), Boiler and Machinery)	58
Schedule P – Part 2H – Section 1 – Other Liability – Occurrence	58
Schedule P – Part 2H – Section 2 – Other Liability – Claims – Made	58
Schedule P – Part 2I – Special Property (Fire, Allied Lines, Inland Marine, Earthquake, Burglary, and Theft)	59
Schedule P – Part 2J – Auto Physical Damage	59
Schedule P – Part 2K – Fidelity, Surety	59
Schedule P – Part 2L – Other (Including Credit, Accident and Health)	59
Schedule P – Part 2M – International	59
Schedule P – Part 2N – Reinsurance – Nonproportional Assumed Property	60
Schedule P – Part 2O – Reinsurance – Nonproportional Assumed Liability	60
Schedule P – Part 2P – Reinsurance – Nonproportional Assumed Financial Lines	60
Schedule P – Part 2R – Section 1 – Products Liability – Occurrence	61
Schedule P – Part 2R – Section 2 – Products Liability – Claims-Made	61
Schedule P – Part 2S – Financial Guaranty/Mortgage Guaranty	61
Schedule P – Part 2T – Warranty	61
Schedule P – Part 3A – Homeowners/Farmowners	62

ALPHABETICAL INDEX

ANNUAL STATEMENT BLANK (Continued)

Schedule P – Part 3B – Private Passenger Auto Liability/Medical	62
Schedule P – Part 3C – Commercial Auto/Truck Liability/Medical	62
Schedule P – Part 3D – Workers’ Compensation (Excluding Excess Workers’ Compensation)	62
Schedule P – Part 3E – Commercial Multiple Peril	62
Schedule P – Part 3F – Section 1 – Medical Professional Liability – Occurrence	63
Schedule P – Part 3F – Section 2 – Medical Professional Liability – Claims-Made	63
Schedule P – Part 3G – Special Liability (Ocean Marine, Aircraft (All Perils), Boiler and Machinery)	63
Schedule P – Part 3H – Section 1 – Other Liability – Occurrence	63
Schedule P – Part 3H – Section 2 – Other Liability – Claims-Made	63
Schedule P – Part 3I – Special Property (Fire, Allied Lines, Inland Marine, Earthquake, Burglary, and Theft)	64
Schedule P – Part 3J – Auto Physical Damage	64
Schedule P – Part 3K – Fidelity/Surety	64
Schedule P – Part 3L – Other (Including Credit, Accident and Health)	64
Schedule P – Part 3M – International	64
Schedule P – Part 3N – Reinsurance – Nonproportional Assumed Property	65
Schedule P – Part 3O – Reinsurance – Nonproportional Assumed Liability	65
Schedule P – Part 3P – Reinsurance – Nonproportional Assumed Financial Lines	65
Schedule P – Part 3R – Section 1 – Products Liability – Occurrence	66
Schedule P – Part 3R – Section 2 – Products Liability – Claims-Made	66
Schedule P – Part 3S – Financial Guaranty/Mortgage Guaranty	66
Schedule P – Part 3T – Warranty	66
Schedule P – Part 4A – Homeowners/Farmowners	67
Schedule P – Part 4B – Private Passenger Auto Liability/Medical	67
Schedule P – Part 4C – Commercial Auto/Truck Liability/Medical	67
Schedule P – Part 4D – Workers’ Compensation (Excluding Excess Workers’ Compensation)	67
Schedule P – Part 4E – Commercial Multiple Peril	67
Schedule P – Part 4F – Section 1 – Medical Professional Liability – Occurrence	68
Schedule P – Part 4F – Section 2 – Medical Professional Liability – Claims-Made	68
Schedule P – Part 4G – Special Liability (Ocean Marine, Aircraft (All Perils), Boiler and Machinery)	68
Schedule P – Part 4H – Section 1 – Other Liability – Occurrence	68
Schedule P – Part 4H – Section 2 – Other Liability – Claims-Made	68
Schedule P – Part 4I – Special Property (Fire, Allied Lines, Inland Marine, Earthquake, Burglary and Theft)	69
Schedule P – Part 4J – Auto Physical Damage	69
Schedule P – Part 4K – Fidelity/Surety	69
Schedule P – Part 4L – Other (Including Credit, Accident and Health)	69
Schedule P – Part 4M – International	69
Schedule P – Part 4N – Reinsurance – Nonproportional Assumed Property	70
Schedule P – Part 4O – Reinsurance – Nonproportional Assumed Liability	70
Schedule P – Part 4P – Reinsurance – Nonproportional Assumed Financial Lines	70
Schedule P – Part 4R – Section 1 – Products Liability – Occurrence	71
Schedule P – Part 4R – Section 2 – Products Liability – Claims-Made	71

ALPHABETICAL INDEX

ANNUAL STATEMENT BLANK (Continued)

Schedule P – Part 4S – Financial Guaranty/Mortgage Guaranty	71
Schedule P – Part 4T – Warranty	71
Schedule P – Part 5A – Homeowners/Farmowners	72
Schedule P – Part 5B – Private Passenger Auto Liability/Medical	73
Schedule P – Part 5C – Commercial Auto/Truck Liability/Medical	74
Schedule P – Part 5D – Workers’ Compensation (Excluding Excess Workers’ Compensation)	75
Schedule P – Part 5E – Commercial Multiple Peril	76
Schedule P – Part 5F – Medical Professional Liability – Claims-Made	78
Schedule P – Part 5F – Medical Professional Liability – Occurrence	77
Schedule P – Part 5H – Other Liability – Claims-Made	80
Schedule P – Part 5H – Other Liability – Occurrence	79
Schedule P – Part 5R – Products Liability – Claims-Made	82
Schedule P – Part 5R – Products Liability – Occurrence	81
Schedule P – Part 5T – Warranty	83
Schedule P – Part 6C – Commercial Auto/Truck Liability/Medical	84
Schedule P – Part 6D – Workers’ Compensation (Excluding Excess Workers’ Compensation)	84
Schedule P – Part 6E – Commercial Multiple Peril	85
Schedule P – Part 6H – Other Liability – Claims-Made	86
Schedule P – Part 6H – Other Liability – Occurrence	85
Schedule P – Part 6M – International	86
Schedule P – Part 6N – Reinsurance – Nonproportional Assumed Property	87
Schedule P – Part 6O – Reinsurance – Nonproportional Assumed Liability	87
Schedule P – Part 6R – Products Liability – Claims-Made	88
Schedule P – Part 6R – Products Liability – Occurrence	88
Schedule P – Part 7A – Primary Loss Sensitive Contracts	89
Schedule P – Part 7B – Reinsurance Loss Sensitive Contracts	91
Schedule P Interrogatories	93
Schedule T – Exhibit of Premiums Written	94
Schedule T – Part 2 – Interstate Compact	95
Schedule Y – Information Concerning Activities of Insurer Members of a Holding Company Group	96
Schedule Y – Part 1A – Detail of Insurance Holding Company System	97
Schedule Y – Part 2 – Summary of Insurer’s Transactions With Any Affiliates	98
Statement of Income	4
Summary Investment Schedule	SI01
Supplemental Exhibits and Schedules Interrogatories	99
Underwriting and Investment Exhibit Part 1	6
Underwriting and Investment Exhibit Part 1A	7
Underwriting and Investment Exhibit Part 1B	8
Underwriting and Investment Exhibit Part 2	9
Underwriting and Investment Exhibit Part 2A	10
Underwriting and Investment Exhibit Part 3	11

