

ANNUAL STATEMENT

OF THE

of _____
in the state of _____

TO THE

Insurance Department

OF THE

FOR THE YEAR ENDED

December 31, 2015

PROPERTY AND CASUALTY

2015



ANNUAL STATEMENT

For the Year Ended December 31, 2015
OF THE CONDITION AND AFFAIRS OF THE

Dealers Assurance Company

NAIC Group Code	0000	0000	NAIC Company Code	16705	Employer's ID Number	34-6513705
	(Current Period)	(Prior Period)				
Organized under the Laws of	Ohio	State of Domicile or Port of Entry				Ohio
Country of Domicile	US					
Incorporated/Organized	August 2, 1935	Commenced Business				August 2, 1935
Statutory Home Office	240 North Fifth St, Suite 350	Columbus, OH, US 43215				
	(Street and Number)	(City or Town, State, Country and Zip Code)				
Main Administrative Office	15920 Addison Rd	(Street and Number)				
	Addison, TX, US 75001	800-282-8913 ext 11773				
	(City or Town, State, Country and Zip Code)	(Area Code) (Telephone Number)				
Mail Address	240 North Fifth St, Suite 350	Columbus, OH, US 43215				
	(Street and Number or P.O. Box)	(City or Town, State, Country and Zip Code)				
Primary Location of Books and Records	240 North Fifth St, Suite 350	Columbus, OH, US 43215				800-282-8913 ext 11773
	(Street and Number)	(City or Town, State, Country and Zip Code) (Area Code) (Telephone Number)				
Internet Web Site Address	www.dealersassurance.com					
Statutory Statement Contact	Linda M Toy	800-282-8913 ext 11773				
	(Name)	(Area Code) (Telephone Number) (Extension)				
	ltoy@dealersassurance.com	614-459-2665				
	(E-Mail Address)	(Fax Number)				

OFFICERS

	Name	Title
1.	Kristen Anne Gruber	President
2.	David Steven Levine	Secretary
3.	Linda Marie Toy #	Treasurer
4.	David Paul May	Assistant Secretary

VICE-PRESIDENTS

Name	Title	Name	Title
Edmond Melgar Eckert	Senior Vice President	David Steven Levine	Vice President
Linda Marie Toy	Vice President		

DIRECTORS OR TRUSTEES

James Bradford Smith	Kristen Anne Gruber	Edmond Melgar Eckert	Robert Reynard Bowsher
Kelly Aubrey Westlake	Michael Thomas Rogers		

State of Ohio
County of Franklin ss

The officers of this reporting entity being duly sworn, each depose and say that they are the described officers of said reporting entity, and that on the reporting period stated above, all of the herein described assets were the absolute property of the said reporting entity, free and clear from any liens or claims thereon, except as herein stated, and that this statement, together with related exhibits, schedules and explanations therein contained, annexed or referred to, is a full and true statement of all the assets and liabilities and of the condition and affairs of the said reporting entity as of the reporting period stated above, and of its income and deductions therefrom for the period ended, and have been completed in accordance with the NAIC Annual Statement Instructions and Accounting Practices and Procedures manual except to the extent that: (1) state law may differ; or, (2) that state rules or regulations require differences in reporting not related to accounting practices and procedures, according to the best of their information, knowledge and belief, respectively. Furthermore, the scope of this attestation by the described officers also includes the related corresponding electronic filing with the NAIC, when required, that is an exact copy (except for formatting differences due to electronic filing) of the enclosed statement. The electronic filing may be requested by various regulators in lieu of or in addition to the enclosed statement.

(Signature)	(Signature)	(Signature)
Kristen Anne Gruber	David Steven Levine	Linda Marie Toy
(Printed Name)	(Printed Name)	(Printed Name)
1.	2.	3.
President	Secretary	Treasurer
(Title)	(Title)	(Title)

Subscribed and sworn to (or affirmed) before me this on this
22nd day of February, 2016, by

KEITH H BURKHOLDER
Notary Public
In and for the State of Ohio
My Commission Expires
August 17, 2020



a. Is this an original filing? [X] Yes [] No
b. If not:
1. State the amendment number
2. Date filed
3. Number of pages attached

ASSETS

	Current Year			Prior Year
	1	2	3	4
	Assets	Nonadmitted Assets	Net Admitted Assets (Cols. 1 - 2)	Net Admitted Assets
1. Bonds (Schedule D)	67,908,503		67,908,503	67,047,524
2. Stocks (Schedule D):				
2.1 Preferred stocks	3,139,347		3,139,347	
2.2 Common stocks	9,979,187		9,979,187	7,670,477
3. Mortgage loans on real estate (Schedule B):				
3.1 First liens	818,915		818,915	848,978
3.2 Other than first liens				
4. Real estate (Schedule A):				
4.1 Properties occupied by the company (less \$ 0 encumbrances)				
4.2 Properties held for the production of income (less \$ 0 encumbrances)				
4.3 Properties held for sale (less \$ 0 encumbrances)				
5. Cash (\$ 3,361,516, Schedule E - Part 1), cash equivalents (\$ 0, Schedule E - Part 2), and short-term investments (\$ 8,045,124, Schedule DA)	11,406,640		11,406,640	6,627,000
6. Contract loans (including \$ 0 premium notes)				
7. Derivatives (Schedule DB)				
8. Other invested assets (Schedule BA)				
9. Receivables for securities				
10. Securities lending reinvested collateral assets (Schedule DL)				
11. Aggregate write-ins for invested assets				
12. Subtotals, cash and invested assets (Lines 1 to 11)	93,252,592		93,252,592	82,193,979
13. Title plants less \$ 0 charged off (for Title insurers only)				
14. Investment income due and accrued	448,438		448,438	444,426
15. Premiums and considerations:				
15.1 Uncollected premiums and agents' balances in the course of collection	3,063,825		3,063,825	2,576,966
15.2 Deferred premiums, agents' balances and installments booked but deferred and not yet due (including \$ 0 earned but unbilled premiums)				
15.3 Accrued retrospective premiums (\$ 0) and contracts subject to redetermination (\$ 0)				
16. Reinsurance:				
16.1 Amounts recoverable from reinsurers				
16.2 Funds held by or deposited with reinsured companies				
16.3 Other amounts receivable under reinsurance contracts	63,309		63,309	243,607
17. Amounts receivable relating to uninsured plans				
18.1 Current federal and foreign income tax recoverable and interest thereon				
18.2 Net deferred tax asset	263,137		263,137	
19. Guaranty funds receivable or on deposit				
20. Electronic data processing equipment and software				
21. Furniture and equipment, including health care delivery assets (\$ 0)				
22. Net adjustment in assets and liabilities due to foreign exchange rates				
23. Receivables from parent, subsidiaries and affiliates				
24. Health care (\$ 0) and other amounts receivable				
25. Aggregate write-ins for other-than-invested assets	1,092,460		1,092,460	890,486
26. Total assets excluding Separate Accounts, Segregated Accounts and Protected Cell Accounts (Lines 12 to 25)	98,183,761		98,183,761	86,349,464
27. From Separate Accounts, Segregated Accounts and Protected Cell Accounts				
28. Total (Lines 26 and 27)	98,183,761		98,183,761	86,349,464

DETAILS OF WRITE-IN LINES				
1101.				
1102.				
1103.				
1198. Summary of remaining write-ins for Line 11 from overflow page				
1199. Totals (Lines 1101 through 1103 plus 1198) (Line 11 above)				
2501. Accounts Receivable	1,090,094		1,090,094	888,143
2502. Interest Receivable	2,366		2,366	2,343
2503.				
2598. Summary of remaining write-ins for Line 25 from overflow page				
2599. Totals (Lines 2501 through 2503 plus 2598) (Line 25 above)	1,092,460		1,092,460	890,486

LIABILITIES, SURPLUS AND OTHER FUNDS

	1	2
	Current Year	Prior Year
1. Losses (Part 2A, Line 35, Column 8)	38,325	25,206
2. Reinsurance payable on paid losses and loss adjustment expenses (Schedule F, Part 1, Column 6)		
3. Loss adjustment expenses (Part 2A, Line 35, Column 9)		1,512
4. Commissions payable, contingent commissions and other similar charges	380,322	301,597
5. Other expenses (excluding taxes, licenses and fees)	815,982	568,345
6. Taxes, licenses and fees (excluding federal and foreign income taxes)	794,730	671,881
7.1 Current federal and foreign income taxes (including \$ 0 on realized capital gains (losses))	609,177	759,217
7.2 Net deferred tax liability		41,702
8. Borrowed money \$ 0 and interest thereon \$ 14,668	14,668	14,196
9. Unearned premiums (Part 1A, Line 38, Column 5) (after deducting unearned premiums for ceded reinsurance of \$ 201,435,828 and including warranty reserves of \$ 17,490,736 and accrued accident and health experience rating refunds including \$ 0 for medical loss ratio rebate per the Public Health Service Act)	19,410,241	15,216,443
10. Advance premium		
11. Dividends declared and unpaid:		
11.1 Stockholders		
11.2 Policyholders		
12. Ceded reinsurance premiums payable (net of ceding commissions)	941,744	1,499,200
13. Funds held by company under reinsurance treaties (Schedule F, Part 3, Column 19)	10,887,209	8,528,410
14. Amounts withheld or retained by company for account of others	7,955,468	4,096,557
15. Remittances and items not allocated		
16. Provision for reinsurance (including \$ 0 certified) (Schedule F, Part 8)		
17. Net adjustments in assets and liabilities due to foreign exchange rates		
18. Drafts outstanding		
19. Payable to parent, subsidiaries and affiliates	163,159	233,574
20. Derivatives		
21. Payable for securities		
22. Payable for securities lending		
23. Liability for amounts held under uninsured plans		
24. Capital notes \$ 0 and interest thereon \$ 0		
25. Aggregate write-ins for liabilities		
26. Total liabilities excluding protected cell liabilities (Lines 1 through 25)	42,011,025	31,957,840
27. Protected cell liabilities		
28. Total liabilities (Lines 26 and 27)	42,011,025	31,957,840
29. Aggregate write-ins for special surplus funds		
30. Common capital stock	4,200,990	4,200,990
31. Preferred capital stock		
32. Aggregate write-ins for other-than-special surplus funds		
33. Surplus notes	3,000,000	3,000,000
34. Gross paid in and contributed surplus	9,732,810	9,732,810
35. Unassigned funds (surplus)	39,238,936	37,457,824
36. Less treasury stock, at cost:		
36.1 0 shares common (value included in Line 30 \$ 0)		
36.2 0 shares preferred (value included in Line 31 \$ 0)		
37. Surplus as regards policyholders (Lines 29 to 35, less 36) (Page 4, Line 39)	56,172,736	54,391,624
38. Totals (Page 2, Line 28, Col. 3)	98,183,761	86,349,464

DETAILS OF WRITE-IN LINES		
2501.		
2502.		
2503.		
2598. Summary of remaining write-ins for Line 25 from overflow page		
2599. Totals (Lines 2501 through 2503 plus 2598) (Line 25 above)		
2901.		
2902.		
2903.		
2998. Summary of remaining write-ins for Line 29 from overflow page		
2999. Totals (Lines 2901 through 2903 plus 2998) (Line 29 above)		
3201.		
3202.		
3203.		
3298. Summary of remaining write-ins for Line 32 from overflow page		
3299. Totals (Lines 3201 through 3203 plus 3298) (Line 32 above)		

STATEMENT OF INCOME

	1	2
	Current Year	Prior Year
UNDERWRITING INCOME		
1. Premiums earned (Part 1, Line 35, Column 4)	10,279,026	12,800,122
DEDUCTIONS:		
2. Losses incurred (Part 2, Line 35, Column 7)	1,351,224	439,767
3. Loss adjustment expenses incurred (Part 3, Line 25, Column 1)	292,011	284,920
4. Other underwriting expenses incurred (Part 3, Line 25, Column 2)	3,793,108	4,698,015
5. Aggregate write-ins for underwriting deductions		
6. Total underwriting deductions (Lines 2 through 5)	5,436,343	5,422,702
7. Net income of protected cells		
8. Net underwriting gain (loss) (Line 1 minus Line 6 plus Line 7)	4,842,683	7,377,420
INVESTMENT INCOME		
9. Net investment income earned (Exhibit of Net Investment Income, Line 17)	1,018,940	842,146
10. Net realized capital gains (losses) less capital gains tax of \$ 202,878 (Exhibit of Capital Gains (Losses))	393,829	620,525
11. Net investment gain (loss) (Lines 9 + 10)	1,412,769	1,462,671
OTHER INCOME		
12. Net gain or (loss) from agents' or premium balances charged off (amount recovered \$ 0 amount charged off \$ 0)		
13. Finance and service charges not included in premiums		
14. Aggregate write-ins for miscellaneous income	88,998	123,871
15. Total other income (Lines 12 through 14)	88,998	123,871
16. Net income before dividends to policyholders, after capital gains tax and before all other federal and foreign income taxes (Lines 8 + 11 + 15)	6,344,450	8,963,962
17. Dividends to policyholders		
18. Net income, after dividends to policyholders, after capital gains tax and before all other federal and foreign income taxes (Line 16 minus Line 17)	6,344,450	8,963,962
19. Federal and foreign income taxes incurred	2,263,838	2,901,713
20. Net income (Line 18 minus Line 19) (to Line 22)	4,080,612	6,062,249
CAPITAL AND SURPLUS ACCOUNT		
21. Surplus as regards policyholders, December 31 prior year (Page 4, Line 39, Column 2)	54,391,624	50,778,076
22. Net income (from Line 20)	4,080,612	6,062,249
23. Net transfers (to) from Protected Cell accounts		
24. Change in net unrealized capital gains or (losses) less capital gains tax of \$ (205,494)	(398,845)	197,510
25. Change in net unrealized foreign exchange capital gain (loss)		
26. Change in net deferred income tax	99,345	(148,530)
27. Change in nonadmitted assets (Exhibit of Nonadmitted Assets, Line 28, Col. 3)		2,319
28. Change in provision for reinsurance (Page 3, Line 16, Column 2 minus Column 1)		
29. Change in surplus notes		
30. Surplus (contributed to) withdrawn from protected cells		
31. Cumulative effect of changes in accounting principles		
32. Capital changes:		
32.1 Paid in		
32.2 Transferred from surplus (Stock Dividend)		
32.3 Transferred to surplus		
33. Surplus adjustments:		
33.1 Paid in		
33.2 Transferred to capital (Stock Dividend)		
33.3 Transferred from capital		
34. Net remittances from or (to) Home Office		
35. Dividends to stockholders	(2,000,000)	(2,500,000)
36. Change in treasury stock (Page 3, Lines 36.1 and 36.2, Column 2 minus Column 1)		
37. Aggregate write-ins for gains and losses in surplus		
38. Change in surplus as regards policyholders for the year (Lines 22 through 37)	1,781,112	3,613,548
39. Surplus as regards policyholders, December 31 current year (Lines 21 plus Line 38) (Page 3, Line 37)	56,172,736	54,391,624

DETAILS OF WRITE-IN LINES		
0501.		
0502.		
0503.		
0598. Summary of remaining write-ins for Line 05 from overflow page		
0599. Totals (Lines 0501 through 0503 plus 0598) (Line 05 above)		
1401. Misc. Income	88,998	122,481
1402. Roadside Commission		1,390
1403.		
1498. Summary of remaining write-ins for Line 14 from overflow page		
1499. Totals (Lines 1401 through 1403 plus 1498) (Line 14 above)	88,998	123,871
3701.		
3702.		
3703.		
3798. Summary of remaining write-ins for Line 37 from overflow page		
3799. Totals (Lines 3701 through 3703 plus 3798) (Line 37 above)		

CASH FLOW

	1	2
Cash from Operations	Current Year	Prior Year
1. Premiums collected net of reinsurance	13,608,810	11,836,120
2. Net investment income	1,566,344	1,516,774
3. Miscellaneous income	88,998	123,871
4. Total (Lines 1 through 3)	15,264,152	13,476,765
5. Benefit and loss related payments	1,338,105	454,340
6. Net transfers to Separate Accounts, Segregated Accounts and Protected Cell Accounts		
7. Commissions, expenses paid and aggregate write-ins for deductions	3,676,846	5,277,400
8. Dividends paid to policyholders		
9. Federal and foreign income taxes paid (recovered) net of \$ 202,878 tax on capital gains (losses)	2,616,756	2,926,906
10. Total (Lines 5 through 9)	7,631,707	8,658,646
11. Net cash from operations (Line 4 minus Line 10)	7,632,445	4,818,119
Cash from Investments		
12. Proceeds from investments sold, matured or repaid:		
12.1 Bonds	24,802,258	11,961,565
12.2 Stocks	16,092,392	6,592,658
12.3 Mortgage loans	30,063	11,022
12.4 Real estate		
12.5 Other invested assets		
12.6 Net gains or (losses) on cash, cash equivalents and short-term investments		
12.7 Miscellaneous proceeds		69
12.8 Total investment proceeds (Lines 12.1 to 12.7)	40,924,713	18,565,314
13. Cost of investments acquired (long-term only):		
13.1 Bonds	26,270,112	17,493,361
13.2 Stocks	21,453,193	8,196,422
13.3 Mortgage loans		860,000
13.4 Real estate		
13.5 Other invested assets		
13.6 Miscellaneous applications		197,510
13.7 Total investments acquired (Lines 13.1 to 13.6)	47,723,305	26,747,293
14. Net increase (decrease) in contract loans and premium notes		
15. Net cash from investments (Line 12.8 minus Line 13.7 minus Line 14)	(6,798,592)	(8,181,979)
Cash from Financing and Miscellaneous Sources		
16. Cash provided (applied):		
16.1 Surplus notes, capital notes		
16.2 Capital and paid in surplus, less treasury stock		
16.3 Borrowed funds	472	14,196
16.4 Net deposits on deposit-type contracts and other insurance liabilities		
16.5 Dividends to stockholders	2,000,000	2,500,000
16.6 Other cash provided (applied)	5,945,315	2,013,447
17. Net cash from financing and miscellaneous sources (Lines 16.1 to 16.4 minus Line 16.5 plus Line 16.6)	3,945,787	(472,357)
RECONCILIATION OF CASH, CASH EQUIVALENTS AND SHORT-TERM INVESTMENTS		
18. Net change in cash, cash equivalents and short-term investments (Line 11, plus Lines 15 and 17)	4,779,640	(3,836,217)
19. Cash, cash equivalents and short-term investments:		
19.1 Beginning of year	6,627,000	10,463,217
19.2 End of year (Line 18 plus Line 19.1)	11,406,640	6,627,000

Note: Supplemental disclosures of cash flow information for non-cash transactions:

20.0001		
20.0002		
20.0003		

UNDERWRITING AND INVESTMENT EXHIBIT

PART 1 – PREMIUMS EARNED

	1	2	3	4
Line of Business	Net Premiums Written per Column 6, Part 1B	Unearned Premiums Dec. 31 Prior Year- per Col. 3, Last Year's Part 1	Unearned Premiums Dec. 31 Current Year- per Col. 5 Part 1A	Premiums Earned During Year (Cols. 1 + 2 - 3)
1. Fire				
2. Allied lines				
3. Farmowners multiple peril				
4. Homeowners multiple peril				
5. Commercial multiple peril				
6. Mortgage guaranty				
8. Ocean marine				
9. Inland marine				
10. Financial guaranty				
11.1 Medical professional liability—occurrence				
11.2 Medical professional liability—claims-made				
12. Earthquake				
13. Group accident and health				
14. Credit accident and health (group and individual)				
15. Other accident and health				
16. Workers' compensation				
17.1 Other liability—occurrence	1,116,905	581,615	1,809,121	(110,601)
17.2 Other liability—claims-made				
17.3 Excess workers' compensation				
18.1 Products liability—occurrence				
18.2 Products liability—claims-made				
19.1,19.2 Private passenger auto liability				
19.3,19.4 Commercial auto liability				
21. Auto physical damage				
22. Aircraft (all perils)				
23. Fidelity				
24. Surety				
26. Burglary and theft				
27. Boiler and machinery				
28. Credit	93,717	755,176	110,384	738,509
29. International				
30. Warranty	13,262,202	13,879,652	17,490,736	9,651,118
31. Reinsurance-nonproportional assumed property				
32. Reinsurance-nonproportional assumed liability				
33. Reinsurance-nonproportional assumed financial lines				
34. Aggregate write-ins for other lines of business				
35. TOTALS	14,472,824	15,216,443	19,410,241	10,279,026

DETAILS OF WRITE-IN LINES				
3401.				
3402.				
3403.				
3498. Sum of remaining write-ins for Line 34 from overflow page				
3499. Totals (Lines 3401 through 3403 plus 3498) (Line 34 above)				

UNDERWRITING AND INVESTMENT EXHIBIT
PART 1A – RECAPITULATION OF ALL PREMIUMS

Line of Business	1 Amount Unearned (Running One Year or Less from Date of Policy) (a)	2 Amount Unearned (Running More Than One Year from Date of Policy) (a)	3 Earned but Unbilled Premium	4 Reserve for Rate Credits and Retrospective Adjustments Based on Experience	5 Total Reserve for Unearned Premiums Cols. 1 + 2 + 3 + 4
1. Fire					
2. Allied lines					
3. Farmowners multiple peril					
4. Homeowners multiple peril					
5. Commercial multiple peril					
6. Mortgage guaranty					
8. Ocean marine					
9. Inland marine					
10. Financial guaranty					
11.1 Medical professional liability—occurrence					
11.2 Medical professional liability—claims-made					
12. Earthquake					
13. Group accident and health					
14. Credit accident and health (group and individual)					
15. Other accident and health					
16. Workers' compensation					
17.1 Other liability—occurrence		1,809,121			1,809,121
17.2 Other liability—claims-made					
17.3 Excess workers' compensation					
18.1 Products liability—occurrence					
18.2 Products liability—claims-made					
19.1,19.2 Private passenger auto liability					
19.3,19.4 Commercial auto liability					
21. Auto physical damage					
22. Aircraft (all perils)					
23. Fidelity					
24. Surety					
26. Burglary and theft					
27. Boiler and machinery					
28. Credit		110,384			110,384
29. International					
30. Warranty		17,490,736			17,490,736
31. Reinsurance-nonproportional assumed property					
32. Reinsurance-nonproportional assumed liability					
33. Reinsurance-nonproportional assumed financial lines					
34. Aggregate write-ins for other lines of business					
35. TOTALS		19,410,241			19,410,241
36. Accrued retrospective premiums based on experience					
37. Earned but unbilled premiums					
38. Balance (Sum of Lines 35 through 37)					19,410,241

DETAILS OF WRITE-IN LINES					
3401.					
3402.					
3403.					
3498. Sum of remaining write-ins for Line 34 from overflow page					
3499. Totals (Lines 3401 through 3403 plus 3498) (Line 34 above)					

(a) State here basis of computation used in each case

UNDERWRITING AND INVESTMENT EXHIBIT
PART 2 – LOSSES PAID AND INCURRED

Line of Business	Losses Paid Less Salvage				5 Net Losses Unpaid Current Year (Part 2A, Col. 8)	6 Net Losses Unpaid Prior Year	7 Losses Incurred Current Year (Cols. 4 + 5 - 6)	8 Percentage of Losses Incurred (Col. 7, Part 2) to Premiums Earned (Col. 4, Part 1)
	1 Direct Business	2 Reinsurance Assumed	3 Reinsurance Recovered	4 Net Payments (Cols. 1 + 2 - 3)				
1. Fire								
2. Allied lines								
3. Farmowners multiple peril								
4. Homeowners multiple peril								
5. Commercial multiple peril								
6. Mortgage guaranty								
8. Ocean marine								
9. Inland marine								
10. Financial guaranty								
11.1 Medical professional liability—occurrence								
11.2 Medical professional liability—claims-made								
12. Earthquake								
13. Group accident and health								
14. Credit accident and health (group and individual)								
15. Other accident and health								
16. Workers' compensation								
17.1 Other liability—occurrence	778,102		718,162	59,940	5,110		65,050	(58.815)
17.2 Other liability—claims-made								
17.3 Excess workers' compensation								
18.1 Products liability—occurrence								
18.2 Products liability—claims-made								
19.1,19.2 Private passenger auto liability								
19.3,19.4 Commercial auto liability								
21. Auto physical damage								
22. Aircraft (all perils)								
23. Fidelity								
24. Surety								
26. Burglary and theft								
27. Boiler and machinery								
28. Credit	5,006		5,006			2,966	(2,966)	(0.402)
29. International								
30. Warranty	67,641,908	95,713	66,459,456	1,278,165	33,215	22,240	1,289,140	13.357
31. Reinsurance-nonproportional assumed property	X X X							
32. Reinsurance-nonproportional assumed liability	X X X							
33. Reinsurance-nonproportional assumed financial lines	X X X							
34. Aggregate write-ins for other lines of business								
35. TOTALS	68,425,016	95,713	67,182,624	1,338,105	38,325	25,206	1,351,224	13.145

DETAILS OF WRITE-IN LINES								
3401.								
3402.								
3403.								
3498. Sum of remaining write-ins for Line 34 from overflow page								
3499. Totals (Lines 3401 through 3403 plus 3498) (Line 34 above)								

UNDERWRITING AND INVESTMENT EXHIBIT
PART 2A – UNPAID LOSSES AND LOSS ADJUSTMENT EXPENSES

	Reported Losses				Incurred But Not Reported			8	9
	1	2	3	4	5	6	7		
Line of Business	Direct	Reinsurance Assumed	Deduct Reinsurance Recoverable	Net Losses Excl. Incurred But Not Reported (Cols. 1 + 2 - 3)	Direct	Reinsurance Assumed	Reinsurance Ceded	Net Losses Unpaid (Cols. 4 + 5 + 6 - 7)	Net Unpaid Loss Adjustment Expenses
1. Fire									
2. Allied lines									
3. Farmowners multiple peril									
4. Homeowners multiple peril									
5. Commercial multiple peril									
6. Mortgage guaranty									
8. Ocean marine									
9. Inland marine									
10. Financial guaranty									
11.1 Medical professional liability—occurrence									
11.2 Medical professional liability—claims-made									
12. Earthquake									
13. Group accident and health								(a)	
14. Credit accident and health (group and individual)									
15. Other accident and health								(a)	
16. Workers' compensation									
17.1 Other liability—occurrence					142,671		137,561	5,110	
17.2 Other liability—claims-made									
17.3 Excess workers' compensation									
18.1 Products liability—occurrence									
18.2 Products liability—claims-made									
19.1,19.2 Private passenger auto liability									
19.3,19.4 Commercial auto liability									
21. Auto physical damage									
22. Aircraft (all perils)									
23. Fidelity									
24. Surety									
26. Burglary and theft									
27. Boiler and machinery									
28. Credit									
29. International									
30. Warranty					4,089,199		4,055,984	33,215	
31. Reinsurance-nonproportional assumed property	X X X				X X X				
32. Reinsurance-nonproportional assumed liability	X X X				X X X				
33. Reinsurance-nonproportional assumed financial lines	X X X				X X X				
34. Aggregate write-ins for other lines of business									
35. TOTALS					4,231,870		4,193,545	38,325	

DETAILS OF WRITE-IN LINES									
3401.									
3402.									
3403.									
3498. Sum of remaining write-ins for Line 34 from overflow page									
3499. Totals (Lines 3401 through 3403 plus 3498) (Line 34 above)									

(a) Including \$ 0 for present value of life indemnity claims.

UNDERWRITING AND INVESTMENT EXHIBIT

PART 3 - EXPENSES

	1	2	3	4
	Loss Adjustment Expenses	Other Underwriting Expenses	Investment Expenses	Total
1. Claim adjustment services:				
1.1 Direct	(1,512)			(1,512)
1.2 Reinsurance assumed				
1.3 Reinsurance ceded				
1.4 Net claim adjustment services (1.1 + 1.2 - 1.3)	(1,512)			(1,512)
2. Commission and brokerage:				
2.1 Direct, excluding contingent		463,734		463,734
2.2 Reinsurance assumed, excluding contingent				
2.3 Reinsurance ceded, excluding contingent		1,653,824		1,653,824
2.4 Contingent—direct		687,082		687,082
2.5 Contingent—reinsurance assumed				
2.6 Contingent—reinsurance ceded				
2.7 Policy and membership fees				
2.8 Net commission and brokerage (2.1 + 2.2 - 2.3 + 2.4 + 2.5 - 2.6 + 2.7)		(503,008)		(503,008)
3. Allowances to manager and agents				
4. Advertising	4,296	50,483		54,779
5. Boards, bureaus and associations	6,691	77,153		83,844
6. Surveys and underwriting reports		521		521
7. Audit of assureds' records				
8. Salary and related items:				
8.1 Salaries	153,966	1,990,617		2,144,583
8.2 Payroll taxes	13,630	118,020		131,650
9. Employee relations and welfare	19,657	163,150		182,807
10. Insurance	4,216	48,616		52,832
11. Directors' fees		65,000		65,000
12. Travel and travel items		168,775		168,775
13. Rent and rent items	11,120	128,225		139,345
14. Equipment	5,134	66,547		71,681
15. Cost or depreciation of EDP equipment and software				
16. Printing and stationery	1,654	19,076		20,730
17. Postage, telephone and telegraph, exchange and express	4,048	46,675		50,723
18. Legal and auditing	46,792	794,509		841,301
19. Totals (Lines 3 to 18)	271,204	3,737,367		4,008,571
20. Taxes, licenses and fees:				
20.1 State and local insurance taxes deducting guaranty association credits of \$ 0		4,036		4,036
20.2 Insurance department licenses and fees		254,834		254,834
20.3 Gross guaranty association assessments				
20.4 All other (excluding federal and foreign income and real estate)				
20.5 Total taxes, licenses and fees (20.1 + 20.2 + 20.3 + 20.4)		258,870		258,870
21. Real estate expenses				
22. Real estate taxes				
23. Reimbursements by uninsured plans				
24. Aggregate write-ins for miscellaneous expenses	22,319	299,879	213,315	535,513
25. Total expenses incurred	292,011	3,793,108	213,315	(a) 4,298,434
26. Less unpaid expenses—current year		1,901,706	89,328	1,991,034
27. Add unpaid expenses—prior year	1,512	1,491,921	49,902	1,543,335
28. Amounts receivable relating to uninsured plans, prior year				
29. Amounts receivable relating to uninsured plans, current year				
30. TOTAL EXPENSES PAID (Lines 25 - 26 + 27 - 28 + 29)	293,523	3,383,323	173,889	3,850,735

DETAILS OF WRITE-IN LINES				
2401. Miscellaneous Outside Services	21,934	281,766	197,386	501,086
2402. Miscellaneous Expenses	385	18,113	15,929	34,427
2403.				
2498. Sum of remaining write-ins for Line 24 from overflow page				
2499. Totals (Lines 2401 through 2403 plus 2498) (Line 24 above)	22,319	299,879	213,315	535,513

(a) Includes management fees of \$ 172,671 to affiliates and \$ 0 to non-affiliates.

EXHIBIT OF NET INVESTMENT INCOME

	1 Collected During Year	2 Earned During Year
1. U.S. Government bonds	(a) 46,246	59,165
1.1 Bonds exempt from U.S. tax	(a)	
1.2 Other bonds (unaffiliated)	(a) 1,112,650	1,099,971
1.3 Bonds of affiliates	(a)	
2.1 Preferred stocks (unaffiliated)	(b) 20,196	30,985
2.11 Preferred stocks of affiliates	(b)	
2.2 Common stocks (unaffiliated)	185,140	187,451
2.21 Common stocks of affiliates		
3. Mortgage loans	(c) 42,476	42,476
4. Real estate	(d)	
5. Contract loans		
6. Cash, cash equivalents and short-term investments	(e) 10,198	871
7. Derivative instruments	(f)	
8. Other invested assets		
9. Aggregate write-ins for investment income		
10. Total gross investment income	1,416,906	1,420,919
11. Investment expenses		(g) 213,315
12. Investment taxes, licenses and fees, excluding federal income taxes		(g)
13. Interest expense		(h) 188,664
14. Depreciation on real estate and other invested assets		(i)
15. Aggregate write-ins for deductions from investment income		
16. Total deductions (Lines 11 through 15)		401,979
17. Net investment income (Line 10 minus Line 16)		1,018,940

DETAILS OF WRITE-IN LINES		
0901.		
0902.		
0903.		
0998. Summary of remaining write-ins for Line 09 from overflow page		
0999. Totals (Lines 0901 through 0903 plus 0998) (Line 09 above)		
1501.		
1502.		
1503.		
1598. Summary of remaining write-ins for Line 15 from overflow page		
1599. Totals (Lines 1501 through 1503 plus 1598) (Line 15 above)		

- (a) Includes \$ 11,690 accrual of discount less \$ 523,679 amortization of premium and less \$ 134,317 paid for accrued interest on purchases.
- (b) Includes \$ 0 accrual of discount less \$ 0 amortization of premium and less \$ 0 paid for accrued dividends on purchases.
- (c) Includes \$ 0 accrual of discount less \$ 0 amortization of premium and less \$ 0 paid for accrued interest on purchases.
- (d) Includes \$ 0 for company's occupancy of its own buildings; and excludes \$ 0 interest on encumbrances.
- (e) Includes \$ 0 accrual of discount less \$ 1,825 amortization of premium and less \$ 992 paid for accrued interest on purchases.
- (f) Includes \$ 0 accrual of discount less \$ 0 amortization of premium.
- (g) Includes \$ 0 investment expenses and \$ 0 investment taxes, licenses and fees, excluding federal income taxes, attributable to segregated and Separate Accounts.
- (h) Includes \$ 0 interest on surplus notes and \$ 0 interest on capital notes.
- (i) Includes \$ 0 depreciation on real estate and \$ 0 depreciation on other invested assets.

EXHIBIT OF CAPITAL GAINS (LOSSES)

	1 Realized Gain (Loss) on Sales or Maturity	2 Other Realized Adjustments	3 Total Realized Capital Gain (Loss) (Columns 1 + 2)	4 Change in Unrealized Capital Gain (Loss)	5 Change in Unrealized Foreign Exchange Capital Gain (Loss)
1. U.S. Government bonds	6,286		6,286		
1.1 Bonds exempt from U.S. tax					
1.2 Other bonds (unaffiliated)	(100,818)		(100,818)	(360)	
1.3 Bonds of affiliates					
2.1 Preferred stocks (unaffiliated)				(10,889)	
2.11 Preferred stocks of affiliates					
2.2 Common stocks (unaffiliated)	691,239		691,239	(593,090)	
2.21 Common stocks of affiliates					
3. Mortgage loans					
4. Real estate					
5. Contract loans					
6. Cash, cash equivalents and short-term investments					
7. Derivative instruments					
8. Other invested assets					
9. Aggregate write-ins for capital gains (losses)					
10. Total capital gains (losses)	596,707		596,707	(604,339)	

DETAILS OF WRITE-IN LINES					
0901.					
0902.					
0903.					
0998. Summary of remaining write-ins for Line 09 from overflow page					
0999. Totals (Lines 0901 through 0903 plus 0998) (Line 09 above)					

NONE Exhibit of Nonadmitted Assets

NOTES TO FINANCIAL STATEMENTS

1. Summary of Significant Accounting Policies

a. Accounting Practices

The accompanying financial statements of Dealers Assurance Company have been prepared in accordance with accounting practices prescribed or permitted by the National Association of Insurance Commissioners and the State of Ohio. The company adopted codification as of 01/01/01.

	State of Domicile	12/31/15	12/31/14
Net Income			
(1) Dealers Assurance Company	Ohio	4,080,612	\$ 6,062,249
(2) State Prescribed Practices that increase/(decrease) NAIC SAP	Ohio	-	-
(3) State Permitted Practices that Increase/(decrease) NAIC SAP	Ohio	-	-
(4) NAIC SAP	Ohio	4,080,612	\$ 6,062,249
Surplus	-	-	-
(5) Dealers Assurance Company state basis	Ohio	56,172,736	\$ 54,391,624
(6) State Prescribed Practices that increase/(decrease) NAIC SAP	Ohio	-	-
(7) State Permitted Practices that increase/(decrease) NAIC SAP	Ohio	-	-
(8) NAIC SAP	Ohio	56,172,736	\$ 54,391,624

b. Use of Estimates in the Preparation of the Financial Statements

The preparation of financial statements in conformity with Statutory Accounting Principles requires management to make estimates and assumptions that affect the reported amounts of assets and liabilities. It also requires disclosure of contingent assets and liabilities at the date of the financial statements and the reported amounts of revenue and expenses during the period. Actual results could differ from those estimates.

c. Accounting Policy

- Short-term investments are stated at cost.
- Bonds are stated at amortized cost using the scientific method.
- Common stocks are marked to market.
- Preferred stocks are stated in accordance with the guidelines stated in SSAP No.32.
- The Company has two first lien mortgage loans on real estate which are stated at their unpaid principal balances.
- Loan-backed securities are stated at either amortized cost or the lower of amortized cost or fair value. They are amortized using the prospective method.
- The Company has no investments in subsidiaries or the parent company.
- Investments are not made in joint ventures, partnerships and limited liability companies.
- The Company does not use derivatives.
- The Company does not have a premium deficiency reserve.
- Unpaid losses and loss adjustment expenses include an amount determined from individual case estimates and loss reports and amount, based on past experience, for losses incurred but not reported. Such liabilities are necessarily based on assumptions and estimates and while management believes the amount is adequate, the ultimate liability may be in excess of or less than the amount provided. The methods for making such estimates and for establishing the resulting liabilities are continually reviewed and any adjustments are reflected in the period determined.
- The Company has not modified its capitalization policy from the prior period.
- The Company has not reported receivables for pharmaceutical rebates.

2. Accounting Changes and Corrections of Errors

The Company did not make any corrections to prior year annual statements in the 2015 statement.

3. Business Combinations and Goodwill

The Company has not merged with any other entity during 2015.

4. Discontinued Operations

Dealers Assurance Company has no discontinued operations to report.

5. Investments

A. Mortgage Loans, including Mezzanine Real Estate Loans

- The minimum and maximum lending rates for mortgage loans during 2015 were:
Commercial Loans 5.50% Residential Loans 4.00%
- The maximum percentage of any one loan to the value of security at the time of the loan, exclusive of insured or guaranteed or purchase money mortgages was 76.92%.
- Taxes, assessments and any amounts advanced and not included in the mortgage loan total:

Current Year	Prior Year
-0-	-0-

- Age Analysis of Mortgage Loans:

NOTES TO FINANCIAL STATEMENTS

Farm	Residential		Commercial		Mezzanine	Total
	Insured	All Other	Insured	All Other		

a Current Year

1.	Recorded Investment (All)											
(a)	Current	\$	-	\$	-	280,454	\$	-	538,461	\$	-	818,915
(b)	30-59 Days Past Due		-		-	-		-	-		-	-
(c)	60-89 Days Past Due		-		-	-		-	-		-	-
(d)	60-179 Days Past Due		-		-	-		-	-		-	-
(e)	180+ Past Days Past Due		-		-	-		-	-		-	-
2.	Accruing Interest 90-179 Days Past Due											
(a)	Recorded Investment		-		-	-		-	-		-	-
(b)	Interest Accrued		-		-	-		-	-		-	-
3.	Accruing Interest 180+ Days Past Due											
(a)	Recorded Investment				-	-		-	-		-	-
(b)	Interest Accrued				-	-		-	-		-	-
4.	Interest Reduced											
(a)	Recorded Investment				-	-		-	-		-	-
(b)	Number of Loans				-	-		-	-		-	-
(c)	Percent Reduced				-	-		-	-		-	-
Prior Year												
1.	Recorded Investment											
(a)	Current				-	-		-	-		-	-
(b)	30-59 Days Past Due				-	-		-	-		-	-
(c)	60-89 Days Past Due				-	-		-	-		-	-
(d)	90-179 Days Past Due				-	-		-	-		-	-
(e)	180+ Days Past Due				-	-		-	-		-	-
2.	Accruing Interest 90-179 Days Past Due											
(a)	Recorded Investment				-	-		-	-		-	-
(b)	Interest Accrued				-	-		-	-		-	-
3.	Accruing Interest 180+ Days Past Due											
(a)	Recorded Investment				-	-		-	-		-	-
(b)	Interest Accrued				-	-		-	-		-	-
4.	Interest Reduced											
(a)	Recorded Investment				-	-		-	-		-	-
(b)	Number of Loans				-	-		-	-		-	-
(c)	Percent Reduced				-	-		-	-		-	-

- (5) Investment in Impaired Loans with or without allowance for Credit Losses
No investment in impaired loans to report

(6) Investment in impaired loans-Average recorded investment, Interest recognized, Recorded investment on nonaccrual status and and amount of interest income recognized using cash-basis method of accounting
No investment impaired loans to report

(7) Allowance for Credit Losses
No allowance for credit loans to report

(8) No mortgage loans were derecognized as a result of foreclosure.

(9) The Company recognizes interest income on its impaired loans upon receipt.
No interest income on impaired loans to report.
- B. Debt Restructuring
No recorded investment in restructured loans to report.
- C. Reverse Mortgages
The Company has no investment in reverse mortgages.
- D. Loan-Backed Securities
1. Bloomberg is used as a source for the prepayment factors.
2. – 4. Not applicable, no permanently impaired bonds.
5. No impairments exists other than interest rate related declines classified as temporary.
- E. Repurchase Agreements
The Company did not purchase any repurchase agreements in 2015.
- F. Real Estate
The Company does not own investments in Real Estate.
- G. Investments in Low-Income Housing Tax Credits
The Company has no investments to report that result in low-income housing tax credits.

NOTES TO FINANCIAL STATEMENTS

H. Restricted Assets

Restricted Asset Category	Gross Restricted							8	Percentage	
	Current Year					6	7		9	10
	1	2	3	4	5					
	Total General Account (G/A)	G/A Supporting Protected Cell Account Activity (a)	Total Protected Cell Account Restricted Assets	Protected Cell Account Assets Supporting G/A Activity (b)	Total (1 plus 3)	Total From Prior Year	Increase (5 minus 6)		Total Current Year Admitted Restricted	Gross Restrictedd to Total Assets
a Subject to contractual obligation for which liability is not shown	-	-	-	-	-	-	-			
b Collateral held under security lending agreements	-	-	-	-	-	-	-			
c Subject to repurchase agreements	-	-	-	-	-	-	-			
d Subject to reverse repurchase agreements	-	-	-	-	-	-	-			
e Subject to Dollar repurchase agreements	-	-	-	-	-	-	-			
f Subject to dollar reverse repurchase agreements	-	-	-	-	-	-	-			
g Placed under option contracts	-	-	-	-	-	-	-			
h Letter stock or securities restricted as to sale	-	-	-	-	-	-	-			
i FHLB capital stock	-	-	-	-	-	-	-			
j On deposit with states	4,295,535	-	-	-	4,295,535	3,717,091	578,444	4,295,535	4.37%	4.37%
k On deposit with other regulatory bodies	-	-	-	-	-	-	-			
l Pledged as collateral to FHLB (including assets backing funding agreements)	-	-	-	-	-	-	-			
m Pledged as collateral not captured in other categories	-	-	-	-	-	-	-			
n Other restricted assets	-	-	-	-	-	-	-			
o Total Restricted Assets	-	-	-	-	-	-	-			

- (a) Subset of Column 1

(b) Subset of Column 3
- I Working Capital Finance Investments

The Company has no working capital finance investments

J Offsetting and Netting of assets and liabilities

The Company has no offsetting or netting of assets and liabilities.

K The company has no structured notes

6. Joint Ventures, Partnerships and Limited Liability Companies

The Company does not have any investments in joint ventures, partnerships or limited liability companies.
7. Investment Income

All investment income due and accrued that is over 90 days past due would be excluded from surplus. The Company does not have any excluded investment income.
8. Derivative Instruments

Dealers Assurance Company does not own derivative instruments.
- 14.2

NOTES TO FINANCIAL STATEMENTS

9. Income Taxes

A. The components of the net deferred tax assets/(liability) at December 31, 2015 are as follows:

1.

		12/31/2015			12/31/2014			Change		
		(1)	(2)	(3)	(4)	(5)	(6)	(7)	(8)	(9)
		Ordinary	Capital	(Col 1 + 2) Total	Ordinary	Capital	(Col 4 + 5) Total	(Col 1 – 4) Ordinary	(Col 2 – 5) Capital	(Col 7 + 8) Total
a	Gross Deferred Tax Assets	1,321,555		1,321,555	1,036,081	-	1,036,091	285,474		285,474
b	Statutory Valuation allowance adjustment									
c	Adjusted Gross Deferred Tax Asset (1a -1d)	1,321,555		1,321,555	1,036,091	-	1,036,091	285,474		285,474
d	Deferred Tax Assets Nonadmitted	857,740		857,740	672,567	-	672,567	185,173		185,173
e	Subtotal Net Admitted Deferred Tax Assets (1c-1f)	463,815		463,815	363,514	-	363,514	100,301		100,301
f	Deferred Tax Liabilities	3,975	196,703	200,678	3,019	402,197	405,216	956	(205,494)	(204,538)
g	Net Admitted Deferred Tax Asset (Net Deferred Tax Liability)	459,840	196,703	263,137	360,495	(402,197)	(41,702)	99,345	(205,494)	304,839

2.

12/31/2015			12/31/2014			Change		
(1)	(2)	(3)	(4)	(5)	(6)	(7)	(8)	(9)
Ordinary	Capital	(Col 1 + 2) Total	Ordinary	Capital	(Col 4 + 5) Total	(Col 1 – 4) Ordinary	(Col 2 – 5) Capital	(Col 7 + 8) Total

Admission Calculation Components SSAP No. 101

a	Federal Income Taxes Paid in Prior Years Recoverable Through Loss Carrybacks	-	-	-	-	-	-	-	-	-
b	Adjusted Gross Deferred Tax Asset Expected To Be Realized (Excluding the Amount of Deferred Tax Assets From 2(a) above). After Application of the Threshold Limitation. (The Lesser of 2(b)1 and 2(b)2 Below)	459,840	(196,703)	263,137	360,495	(402,197)	(41,702)	99,345	205,494	304,839
	1 Adjusted Gross Deferred Tax Assets Expected to be Realized Following the Balance Sheet Date	459,840	(196,703)	263,137	360,495	(402,197)	(41,702)	99,345	205,494	304,839
	2. Adjusted Gross Deferred Tax Assets (Excluding the Amount of Deferred Tax Allowed per Limitation Threshold)	xxxxxxx	xxxxx	8,386,440	xxxxxx	xxxxxxx	8,164,999	xxxxxx	xxxxxxxxx	221,441
c	Adjusted Gross Deferred Tax Assets (Excluding the Amount of Deferred Tax Assets from 2(a) and 2 (b) above) Offset by Gross Deferred Tax Liabilities	-	-	-	-	-	-	-	-	-
d	Deferred Tax Assets Admitted as the result of application of SSAP 101. Total)2(a) + 2(b) + 2 (c))	459,840	(196,703)	263,137	360,495	(402,197)	(41,702)	99,345	205,494	304,839

3

		2015	2014
(a)	Ratio Percentage Used to Determine Recovery Period and Threshold Limitation Amount	539%	558%
(b)	Amount of Adjusted Capital and Surplus Used to Determine Recovery Period and Threshold Limitation in 1(b) above	56,172,736	54,391,624

NOTES TO FINANCIAL STATEMENTS

4.

12/31/2015			12/31/2014			Change		
(1)	(2)	(3)	(4)	(5)	(6)	(7)	(8)	(9)
Ordinary	Capital	(Col 1 + 2) Total	Ordinary	Capital	(Col 4 + 5) Total	(Col 1 – 4) Ordinary	(Col 2 – 5) Capital	(Col 7 + 8) Total

Impact of Tax Planning Strategies

a	Adjusted Gross DTA's (% of Total Adjusted Gross DTA's)	100%	0%	100%	100%	0%	100%	0%	0%	0%
b	Net Admitted Adjusted Gross DTA's (% of Total Net Admitted Adjusted Gross DTA's)	175%	-75%	100%	-864%	964%	100%	1039%	-1039%	0%

c Does the Company's tax-planning strategies include the use of Reinsurance? Yes ☒ No ☐

B Deferred tax liabilities are not recognized at December 31, 2015 and 2014 are as follows:

N/A-All Deferred Tax Liabilities have been recognized

C Current income taxes incurred consist of the following major components

		(1)	(2)	(3)
		12/31/2015	12/31/2014	(Col 1 + 2) Change
1.	Current Income Tax			
(a)	Federal	2,263,838	2,901,713	(637,875)
(b)	Foreign	-	-	-
(c)	Subtotal	2,263,838	2,901,713	(637,875)
(d)	Federal Income tax on net capital gains	202,878	45,219	157,659
(e)	Utilization of capital loss carry-forwards	-	(45,219)	45,219
(f)	Other	-	-	-
(g)	Federal and foreign income taxes incurred	2,466,716	2,901,713	(434,997)
2.	Deferred Tax Assets			
(a)	Ordinary			
(1)	Discounting of Unpaid Losses	1,955	1,363	592
(2)	Unearned Premium Reserve	1,319,600	1,034,718	284,882
(3)	Policyholder Reserves	-	-	-
(4)	Investments	-	-	-
(5)	Deferred Acquisition Costs	-	-	-
(6)	Policyholder Dividends Accrual	-	-	-
(7)	Fixed Assets	-	-	-
(8)	Compensation and Benefits Accrual	-	-	-
(9)	Pension Accrual	-	-	-
(10)	Receivables-Nonadmitted	-	-	-
(11)	Net Operating Loss Carry-forward	-	-	-
(12)	Tax Credit Carry-forward	-	-	-
(13)	Other (including items <5% of total Capital Assets)	-	-	-
(99)	Subtotal	1,321,555	1,036,081	285,474
(b)	Statutory Valuation Allowance Adjustment	-	-	-
(c)	Nonadmitted	857,740	672,567	185,173
(d)	Admitted Ordinary Deferred tax Asset (2a99 – 2f – 2g)	463,815	363,514	100,301
(e)	Capital:			
(1)	Investments	-	-	-
(2)	Net Capital less Carry-forward	-	-	-
(3)	Real Estate	-	-	-
(4)	Other (including items <5% of total Capital Assets)	-	-	-
(99)	Subtotal	-	-	-
(f)	Statutory Valuation Allowance Adjustment	-	-	-
(g)	Nonadmitted	-	-	-
(h)	Admitted Capital Deferred Tax Assets (2a99 – 2f -2g)	-	-	-
(i)	Admitted Deferred Tax Asset (2d + 22h)	463,815	363,514	100,301

NOTES TO FINANCIAL STATEMENTS

	(1)	(2)	(3)
	12/31/2015	12/31/2014	(Col 1 + 2) Change
3 Deferred Tax Liabilities			
(a) Ordinary			
(1) Investments	-	-	-
(2) Fixed Assets	-	-	-
(3) Deferred and Uncollected premium	-	-	-
(4) Policyholder Reserves	-	-	-
(5) Other (including items <5% of ordinary Tax Liabilities)	3,975	3,019	956
(99) Subtotal	3,975	3,019	956
(b) Capital			
(1) Investments	196,703	402,197	(205,494)
(2) Real Estate	-	-	-
(3) Other (including items <5% of ordinary Tax Liabilities)	-	-	-
(99) Subtotal	196,703	402,197	(205,494)
(c) Deferred Tax Liabilities (3a99 + 3b99)	200,678	405,216	(204,538)
4. Net Deferred Tax Assets/Liabilities (2i – 3c)	263,137	(41,702)	304,839

D Among the more significant book to tax adjustments were the following:

	Amount	Tax Effect	%
Income before taxes	6,547,328	2,226,091	34%
Unearned Premium Adjustment	838,759	285,178	4%
Compensation and Benefits Accrual	-	-	0%
Loss Reserve Discounting	1,741	592	0%
Dividends Received Deduction	(129,969)	(44,189)	-1%
Capital Loss Carry-Forward	-	-	0%
Other, net	(2,811)	(956)	0%
Total	7,255,048	2,466,716	38%

- E At December 31, 2015, the Company has no net capital carry-loss forward available for recoupment against future capital gains
- F. The Company is included in a consolidated federal income tax return with its parent company, DAC Financial Holdings, Inc. The Company has a written agreement, approved by the Company's Board of Directors, which sets forth the manner in which the total combined federal income tax is allocated to each entity which is party to the consolidation. Pursuant to this agreement, the Company has the enforceable right to recoup federal income taxes paid in prior years in the event of future net losses, which it may incur, or recoup its net losses carried forward as an offset to future net income subject to federal income taxes.

10. Information Concerning Parent, Subsidiaries and Affiliates and Other Related Parties

- A. All outstanding shares of Dealers Assurance Company are owned by Dealers Alliance Corporation, an insurance holding company domiciled in the State of Ohio.
- B. The Company did not have any transactions greater than .5% of admitted assets.
- C. The Company had no change to Intercompany arrangements.
- D. Amounts Due to or from related parties
The Company reported \$163,159 and \$233,574 due to affiliates in the current and prior years, respectively.
- E. Dealers Assurance Company has no guarantees or undertakings for the benefit of an affiliate, which result in a material contingent exposure of the Company's assets or liabilities.
- F. Other than cost allocation transactions described in (B-D) above there are no material management or service contracts.
- G. The parent company, Dealers Alliance Corporation, is a non-insurance entity. The Company had no transactions other than cost allocation with its parent company.
- H-N Dealers Assurance Company holds no investments in its parent company or affiliates.

11. Debt

The Company does not have any outstanding debt.

12. Retirement Plans, Deferred Compensation, Postemployment Benefits and Compensated Absences and Other Post Retirement Benefit

- A-D Dealers Assurance Company has no defined benefit plans.
- E. Defined Contribution Plan
Insurance company employees are covered by a qualified defined contribution pension plan sponsored by the insurance company.

Contributions of up to 4 percent of each employee's compensation are made each year. The Company's contribution for the plan was \$26,500 and \$49,548 for 2014 and 2015, respectively.
- F-I Dealers Assurance Company does not have any postretirement or postemployment benefits to report in these categories.

NOTES TO FINANCIAL STATEMENTS

13. Capital and Surplus, Dividend Restrictions and Quasi-Reorganizations

- 1. The Company has 3,000 shares authorized, 2,330 shares issued and 2,330 shares outstanding.
- 2. The Company has no preferred stock outstanding.
- 3. There are no restrictions placed on the portion of company profits that may be paid as ordinary dividends to Stockholders other than the restrictions outlined in (5) below.
- 4. An ordinary dividend of \$2,000,000 was declared and paid to the company's parent, Dealers Alliance Corporation in 2015.
- 5. The maximum amount of dividends which can be paid by the State of Ohio insurance companies to shareholders without prior approval of the Insurance Commissioner is subject to restrictions relating to statutory surplus. Statutory surplus at December 31, 2015 was \$56,172,736.
- 6. There were no restrictions placed on the Company's surplus.
- 7. Company is a stock company.
- 8. No stocks are held for special purposes.
- 9. There are no special surplus funds.
- 10. The portion of unassigned funds (surplus) represented or reduced by cumulative unrealized losses are \$578,538.
- 11. The Company issued the following surplus note:

Date Issued	Interest Rate	Par Value (Face Amount of Note)	Carrying Value	Interest and/or Principal Paid Current Year	Total Interest and/or Principal Paid	Unapproved Interest and/or Principal	Date of Maturity
5/26/2004	Libor+4.25 w/12.50% cap until 5/24/09	3,000,000	3,000,000	\$137,686	\$2,114,232	\$0	05/24/34 with first optional call date

This debt obligation exposes DAC to variability in interest payments due to changes in interest rates. If interest rates increase, interest expense increases. Conversely, if interest rates decrease, interest expense decreases. Management has allowed the interest rate swap (@8.87%) with Key Bank to expire without renewing.

12-13. The Company has not undergone reorganization.

14. Contingencies

A – F. The Company does not have outstanding contingencies to report.

15. Leases

A. Lessee Operating Lease

- 1. Description of Leasing Arrangements
 - a. The Company leases office space and equipment under various non-cancelable operating lease agreements that expire through February 28, 2019. Rental expense for 2015 and 2014 was approximately \$154,481 and \$102,971, respectively.
- 2. Future Minimum Rental Payments
 - a. At January 1, 2016, the minimum aggregate rental commitments are as follows:

	Year Ending December 31	Operating Leases
1.	2016	\$ 85,243
2.	2017	\$ 86,216
3.	2018	\$ 40,900
4.	2019	\$ 10,004
5.	Total	\$ 222,363

- 3. Sale-leaseback transactions
 - a. The company has entered into a sale-leaseback transaction for certain leasehold improvements and office furniture and fixtures. The lease term is for 48 months with end of term options for the company to purchase the leased furniture and fixtures at their fair value or extend the lease for an additional 6 months. The minimum aggregate rental commitments are included in the table above.
- B. Leasing is not a significant part of the lessor's business activities.

16. Information about Financial Instruments with Off-Balance Sheet Risk and Financial Instruments with Concentrations of Credit Risk

The Company does not own these types of investments.

17. Sale, Transfer and Servicing of Financial Assets and Extinguishments of Liabilities

The Company does not have any sales or transfers to report.

18. Gain/Loss to the Reporting Entity from Uninsured Plans and the Uninsured Portion of Partially Insured Plans

The Company was not subject to any gain or loss from uninsured accident and health plans or the uninsured portion of Insured plans.

19. Direct Premium Written/Produced by Managing General Agents/Third Party Administrators

The Company does not have premiums to report produced by managing general agents or third party administrators

NOTES TO FINANCIAL STATEMENTS

20. Fair Value Adjustments

- A.
(1) Fair value at reporting date

Description	(Level 1)	(Level 2)	(Level 3)	Total
a. Assets at fair value				
Preferred Stock	\$1,959,844	-	-	\$1,959,844
Bonds	-	-	-	-
Common Stock (Ind & Misc)	\$9,979,187	-	-	\$9,979,187
Derivative assets	-	-	-	-
Separate account assets	-	-	-	-
Total assets at fair value	\$11,939,031	\$ -	\$ -	\$11,939,031
b. Liabilities at fair value	-	-	-	-
Total liabilities at fair value	-	-	-	-

- (2) There have been no significant transfers between level 1 and 2.
(3) Assets measured at Fair Value on a recurring basis with significant unobservable inputs (level 3).
 NONE
(4) The Company has no investments categorized as level 2 or 3.
(5) The Company has no derivative assets or liabilities.

21. Other Items

- A. The Company does not have unusual or infrequent items to report.
B. No restructuring of debt occurred.
C. Other Items - None
D – E. Other Disclosures and unusual items-None
F. Subprime Mortgage-Related Risk Exposure
 The company does not have any exposure to sub-prime mortgage related risk.
 The Company's investment strategy of providing safety and preservation of capital, sufficient liquidity to meet cash flow requirements and the attainment of a competitive after-tax investment return is supported by a well diversified portfolio consisting of many different types of investments.

22. Events Subsequent

At the time of filing, no events have occurred which may have a material effect on the financial condition of the Company

23. Reinsurance

- A. The Company has no unsecured reinsurance recoverable to report.
B. The Company has no reinsurance recoverable in dispute.
C. Reinsurance Assumed or Ceded

	Assumed Reinsurance		Ceded Reinsurance		Net	
	Premium Reserve	Commission Equity	Premium Reserve	Commission Equity	Premium Reserve	Commission Equity
a Affiliates						
b All other	860,012	-	(201,435,828)	-	(200,575,816)	-
c TOTAL	860,012	-	(201,435,828)	-	(200,575,816)	-
d Direct Unearned Premium reserve	-	-	-	-	219,986,056	-

2. The additional or return commissions, predicted on loss experience or on any other form of profit sharing arrangements in this annual statement as result of existing contractual arrangements are accrued as follows:

	(1) Direct	(2) Assumed	(3) Ceded	(4) Net
a. Contingent Commissions	329,017	-	-	329,017
b. Sliding Scale Adjustments				
c. Other Profit Commissions				
d. Total	329,017	-	-	329,017

3. The Company does not have risks assigned to protected cells.
- D. The Company has no uncollectible reinsurance.
E. Dealers Assurance Company (DAC) entered into commutations agreements with Rubros Reinsurance Company and D.E. Markley effective December 31, 2015. The reinsurance agreements were terminated and all liabilities were recaptured effective December 31, 2015. The Unearned premium reserves at that time were \$4,365 and the Reinsurers paid DAC recapture fees of \$6,000.
F. The Company did not write any retroactive reinsurance.
G. The Company does not have reinsurance accounted for as a deposit.
H. The Company did not enter into any run-off agreements.
I. The Company did not have any certified reinsurers downgraded.
J. The Company does not have any reinsurance agreements qualifying for reinsurance aggregation

24. Retrospectively Rated Contracts & Contracts Subject to Redetermination

The Company does not have retrospectively rated contracts or contracts subject to redetermination

25. Change in Incurred Losses and Loss Adjustment Expenses

Reserves as of December 31, 2014 were \$26,718. As of December 31, 2015, \$429,500 (net of reinsured prior year claims) were paid for incurred losses and loss adjustment expenses attributable to insured events of prior years which reflects unfavorable development of \$403,000.

NOTES TO FINANCIAL STATEMENTS

- 26. Intercompany Pooling Agreements**
The Company does not participate in intercompany pooling arrangements.
- 27. Structured Settlements**
Dealers Assurance Company has no structured settlements.
- 28. Health Care Receivables**
The Company does not have health care receivables.
- 29. Participating Policies**
The Company does not write participating policies.
- 30. Premium Deficiency Reserves**
On February 26, 2016 the company's outside actuaries reviewed the reserves at 12/31/15. Using anticipated Investment income it was determined that the company had an adequate reserve liability set up and did not need to carry an additional liability for premium deficiencies.
- 31. High Deductibles**
The Company does not have reserve credits for high deductibles.
- 32. Discounting of Liabilities for Unpaid Losses or Unpaid Loss Adjustment Expenses**
The Company does not discount unpaid losses or unpaid loss adjustment expenses.
- 33. Asbestos/Environment Reserves**
Dealers Assurance Company does not have exposure to asbestos/environment claims.
- 34. Subscriber Savings Account**
The Company does not have subscriber savings accounts.
- 35. Multiple Peril Crops Insurance**
The Company does not write multiple peril crop insurance.
- 36. Financial Guaranty Insurance**
The company does not write financial guaranty insurance.

GENERAL INTERROGATORIES

PART 1 – COMMON INTERROGATORIES

GENERAL

1.1

Is the reporting entity a member of an Insurance Holding Company System consisting of two or more affiliated persons, one or more of which is an insurer?

Yes ☒ No ☐

If yes, complete Schedule Y, Parts 1, 1A and 2.

1.2

If yes, did the reporting entity register and file with its domiciliary State Insurance Commissioner, Director or Superintendent or with such regulatory official of the state of domicile of the principal insurer in the Holding Company System, a registration statement providing disclosure substantially similar to the standards adopted by the National Association of Insurance Commissioners (NAIC) in its Model Insurance Holding Company System Regulatory Act and model regulations pertaining thereto, or is the reporting entity subject to standards and disclosure requirements substantially similar to those required by such Act and regulations?

Yes ☒ No ☐ N/A ☐

1.3

State Regulating?

Ohio

2.1

Has any change been made during the year of this statement in the charter, by-laws, articles of incorporation, or deed of settlement of the reporting entity?

Yes ☐ No ☒

2.2

If yes, date of change:

3.1

State as of what date the latest financial examination of the reporting entity was made or is being made.

12/31/2013

3.2

State the as of date that the latest financial examination report became available from either the state of domicile or the reporting entity. This date should be the date of the examined balance sheet and not the date the report was completed or released.

12/31/2013

3.3

State as of what date the latest financial examination report became available to other states or the public from either the state of domicile or the reporting entity. This is the release date or completion date of the examination report and not the date of the examination (balance sheet date).

10/03/2014

3.4

By what department or departments?
Ohio Department of Insurance

3.5

Have all financial statement adjustments within the latest financial examination report been accounted for in a subsequent financial statement filed with departments?

Yes ☐ No ☐ N/A ☒

3.6

Have all of the recommendations within the latest financial examination report been complied with?

Yes ☐ No ☐ N/A ☒

4.1

During the period covered by this statement, did any agent, broker, sales representative, non-affiliated sales/service organization or any combination thereof under common control (other than salaried employees of the reporting entity) receive credit or commissions for or control a substantial part (more than 20 percent of any major line of business measured on direct premiums) of:

4.11

sales of new business?

Yes ☐ No ☒

4.12

renewals?

Yes ☐ No ☒

4.2

During the period covered by this statement, did any sales/service organization owned in whole or in part by the reporting entity or an affiliate, receive credit or commissions for or control a substantial part (more than 20 percent of any major line of business measured on direct premiums) of:

4.21

sales of new business?

Yes ☒ No ☐

4.22

renewals?

Yes ☒ No ☐

5.1

Has the reporting entity been a party to a merger or consolidation during the period covered by this statement?

Yes ☐ No ☒

5.2

If yes, provide the name of the entity, NAIC Company Code, and state of domicile (use two letter state abbreviation) for any entity that has ceased to exist as a result of the merger or consolidation.

1	2	3
Name of Entity	NAIC Company Code	State of Domicile

GENERAL INTERROGATORIES

6.1 Has the reporting entity had any Certificates of Authority, licenses or registrations (including corporate registration, if applicable) suspended or revoked by any governmental entity during the reporting period? Yes [] No [X]

6.2 If yes, give full information:

.....

.....

.....

7.1 Does any foreign (non-United States) person or entity directly or indirectly control 10% or more of the reporting entity? Yes [] No [X]

7.2 If yes,

7.21 State the percentage of foreign control. _____ %

7.22 State the nationality(s) of the foreign person(s) or entity(s); or if the entity is a mutual or reciprocal, the nationality of its manager or attorney-in-fact and identify the type of entity(s) (e.g., individual, corporation, government, manager or attorney-in-fact).

1 Nationality	2 Type of Entity
.....
.....

8.1 Is the company a subsidiary of a bank holding company regulated by the Federal Reserve Board? Yes [] No [X]

8.2 If response to 8.1 is yes, please identify the name of the bank holding company.

.....

.....

.....

8.3 Is the company affiliated with one or more banks, thrifts or securities firms? Yes [] No [X]

8.4 If response to 8.3 is yes, please provide the names and locations (city and state of the main office) of any affiliates regulated by a federal financial regulatory services agency [i.e. the Federal Reserve Board (FRB), the Office of the Comptroller of the Currency (OCC), the Federal Deposit Insurance Corporation (FDIC) and the Securities Exchange Commission (SEC)] and identify the affiliate's primary federal regulator.

1 Affiliate Name	2 Location (City, State)	3 FRB	4 OCC	5 FDIC	6 SEC
.....
.....

9. What is the name and address of the independent certified public accountant or accounting firm retained to conduct the annual audit?
Munninghoff, Lange & Co., Covington, KY
.....
.....
.....

10.1 Has the insurer been granted any exemptions to the prohibited non-audit services provided by the certified independent public accountant requirements as allowed in Section 7H of the Annual Financial Reporting Model Regulation (Model Audit Rule), or substantially similar state law or regulation? Yes [] No [X]

10.2 If response to 10.1 is yes, provide information related to this exemption:

.....

.....

.....

10.3 Has the insurer been granted any exemptions related to the other requirements of the Annual Financial Reporting Model Regulation as allowed for in Section 18A of the Model Regulation, or substantially similar state law or regulation? Yes [] No [X]

10.4 If response to 10.3 is yes, provide information related to this exemption:

.....

.....

.....

GENERAL INTERROGATORIES

10.5 Has the reporting entity established an Audit Committee in compliance with the domiciliary state insurance laws? Yes [X] No [] N/A []

10.6 If the response to 10.5 is no or n/a, please explain.

11. What is the name, address and affiliation (officer/employee of the reporting entity or actuary/consultant associated with an actuarial consulting firm) of the individual providing the statement of actuarial opinion/certification?
Joseph Kirsits, FCAS, MAAA of GPW and Associates, Inc of Phoenix, AZ

12.1 Does the reporting entity own any securities of a real estate holding company or otherwise hold real estate indirectly? Yes [] No [X]

12.11 Name of real estate holding company

12.12 Number of parcels involved

12.13 Total book/adjusted carrying value \$

12.2 If yes, provide explanation:

13. FOR UNITED STATES BRANCHES OF ALIEN REPORTING ENTITIES ONLY:

13.1 What changes have been made during the year in the United States manager or the United States trustees of the reporting entity?

13.2 Does this statement contain all business transacted for the reporting entity through its United States Branch on risks wherever located? Yes [] No [X]

13.3 Have there been any changes made to any of the trust indentures during the year? Yes [] No [X]

13.4 If answer to (13.3) is yes, has the domiciliary or entry state approved the changes? Yes [] No [] N/A [X]

14.1 Are the senior officers (principal executive officer, principal financial officer, principal accounting officer or controller, or persons performing similar functions) of the reporting entity subject to a code of ethics, which includes the following standards?

a. Honest and ethical conduct, including the ethical handling of actual or apparent conflicts of interest between personal and professional relationships;

b. Full, fair, accurate, timely and understandable disclosure in the periodic reports required to be filed by the reporting entity;

c. Compliance with applicable governmental laws, rules, and regulations;

d. The prompt internal reporting of violations to an appropriate person or persons identified in the code; and

e. Accountability for adherence to the code.

Yes [X] No []

14.11 If the response to 14.1 is no, please explain:

14.2 Has the code of ethics for senior managers been amended? Yes [] No [X]

14.21 If the response to 14.2 is yes, provide information related to amendment(s).

GENERAL INTERROGATORIES

14.3 Have any provisions of the code of ethics been waived for any of the specified officers? Yes [] No [X]

14.31 If the response to 14.3 is yes, provide the nature of any waiver(s).

15.1 Is the reporting entity the beneficiary of a Letter of Credit that is unrelated to reinsurance where the issuing or confirming bank is not on the SVO Bank List? Yes [] No [X]

15.2 If the response to 15.1 is yes, indicate the American Bankers Association (ABA) Routing Number and the name of the issuing or confirming bank of the Letter of Credit and describe the circumstances in which the Letter of Credit is triggered.

1 American Bankers Association (ABA) Routing Number	2 Issuing or Confirming Bank Name	3 Circumstances That Can Trigger the Letter of Credit	4 Amount

BOARD OF DIRECTORS

16. Is the purchase or sale of all investments of the reporting entity passed upon either by the board of directors or a subordinate committee thereof? Yes [X] No []

17. Does the reporting entity keep a complete permanent record of the proceedings of its board of directors and all subordinate committees thereof? Yes [X] No []

18. Has the reporting entity an established procedure for disclosure to its board of directors or trustees of any material interest or affiliation on the part of any of its officers, directors, trustees or responsible employees that is in conflict or is likely to conflict with the official duties of such person? Yes [X] No []

FINANCIAL

19. Has this statement been prepared using a basis of accounting other than Statutory Accounting Principles (e.g., Generally Accepted Accounting Principles)? Yes [X] No []

20.1 Total amount loaned during the year (inclusive of Separate Accounts, exclusive of policy loans):

20.11 To directors or other officers\$

20.12 To stockholders not officers\$

20.13 Trustees, supreme or grand (Fraternal only)\$

20.2 Total amount of loans outstanding at the end of year (inclusive of Separate Accounts, exclusive of policy loans):

20.21 To directors or other officers\$

20.22 To stockholders not officers\$

20.23 Trustees, supreme or grand (Fraternal only)\$

21.1 Were any assets reported in this statement subject to a contractual obligation to transfer to another party without the liability for such obligation being reported in the statement? Yes [] No [X]

21.2 If yes, state the amount thereof at December 31 of the current year:

21.21 Rented from others\$

21.22 Borrowed from others\$

21.23 Leased from others\$

21.24 Other\$

22.1 Does this statement include payments for assessments as described in the Annual Statement Instructions other than guaranty fund or guaranty association assessments? Yes [] No [X]

GENERAL INTERROGATORIES

22.2 If answer is yes:

22.21 Amount paid as losses or risk adjustment

22.22 Amount paid as expenses

22.23 Other amounts paid

\$

\$

\$

23.1 Does the reporting entity report any amounts due from parent, subsidiaries or affiliates on Page 2 of this statement?

Yes [] No [X]

23.2 If yes, indicate any amounts receivable from parent included in the Page 2 amount:

\$

INVESTMENT

24.01 Were all the stocks, bonds and other securities owned December 31 of current year, over which the reporting entity has exclusive control, in the actual possession of the reporting entity on said date? (other than securities lending programs addressed in 24.03)

Yes [X] No []

24.02 If no, give full and complete information, relating thereto:

24.03 For security lending programs, provide a description of the program including value for collateral and amount of loaned securities, and whether collateral is carried on or off-balance sheet. (an alternative is to reference Note 17 where this information is also provided)

24.04 Does the company's security lending program meet the requirements for a conforming program as outlined in the Risk-Based Capital Instructions?

Yes [] No [] N/A [X]

24.05 If answer to 24.04 is yes, report amount of collateral for conforming programs.

\$

24.06 If answer to 24.04 is no, report amount of collateral for other programs.

\$

24.07 Does your securities lending program require 102% (domestic securities) and 105% (foreign securities) from the counterparty at the outset of the contract?

Yes [] No [] N/A [X]

24.08 Does the reporting entity non-admit when the collateral received from the counterparty falls below 100%?

Yes [] No [] N/A [X]

24.09 Does the reporting entity or the reporting entity's securities lending agent utilize the Master Securities Lending Agreement (MSLA) to conduct securities lending?

Yes [] No [] N/A [X]

24.10 For the reporting entity's security lending program, state the amount of the following as of December 31 of the current year:

24.101 Total fair value of reinvested collateral assets reported on Schedule DL, Parts 1 and 2

24.102 Total book adjusted/carrying value of reinvested collateral assets reported on Schedule DL, Parts 1 and 2

24.103 Total payable for securities lending reported on the liability page

\$

\$

\$

25.1 Were any of the stocks, bonds or other assets of the reporting entity owned at December 31 of the current year not exclusively under the control of the reporting entity or has the reporting entity sold or transferred any assets subject to a put option contract that is currently in force? (Exclude securities subject to Interrogatory 21.1 and 24.03).

Yes [X] No []

GENERAL INTERROGATORIES

25.2 If yes, state the amount thereof at December 31 of the current year:

25.21	Subject to repurchase agreements	\$	
25.22	Subject to reverse repurchase agreements	\$	
25.23	Subject to dollar repurchase agreements	\$	
25.24	Subject to reverse dollar repurchase agreements	\$	
25.25	Placed under option agreements	\$	
25.26	Letter stock or securities restricted as to sale - excluding FHLB Capital Stock	\$	
25.27	FHLB Capital Stock	\$	
25.28	On deposit with states	\$	4,295,535
25.29	On deposit with other regulatory bodies	\$	
25.30	Pledged as collateral - excluding collateral pledged to an FHLB	\$	
25.31	Pledged as collateral to FHLB - including assets backing funding agreements	\$	
25.32	Other	\$	

25.3 For category (25.26) provide the following:

1 Nature of Restriction	2 Description	3 Amount

26.1 Does the reporting entity have any hedging transactions reported on Schedule DB? Yes [] No [X]

26.2 If yes, has a comprehensive description of the hedging program been made available to the domiciliary state? Yes [] No [] N/A [X]
If no, attach a description with this statement.

27.1 Were any preferred stocks or bonds owned as of December 31 of the current year mandatorily convertible into equity, or, at the option of the issuer, convertible into equity? Yes [X] No []

27.2 If yes, state the amount thereof at December 31 of the current year. \$ 295,217

28. Excluding items in Schedule E - Part 3 - Special Deposits, real estate, mortgage loans and investments held physically in the reporting entity's offices, vaults or safety deposit boxes, were all stocks, bonds and other securities, owned throughout the current year held pursuant to a custodial agreement with a qualified bank or trust company in accordance with Section 1, III - General Examination Considerations, F. Outsourcing of Critical Functions, Custodial or Safekeeping Agreements of the NAIC Financial Condition Examiners Handbook? Yes [X] No []

28.01 For agreements that comply with the requirements of the NAIC Financial Condition Examiners Handbook, complete the following:

1 Name of Custodian(s)	2 Custodian's Address
Fifth Third Bank	Cincinnati, Ohio
US Bank	Winston Salem, NC
Wells Fargo Bank	Richmond, VA
First National Bankers Bank	Little Rock, AR
Citibank, NA	NY, NY
Century Bank	Sante Fe, NM
RBS Citizens, NA	Providence, RI
Xerox State & Local Solutions, Inc	Quincy, MA
Bank of New York Mellon	Atlanta, GA

28.02 For all agreements that do not comply with the requirements of the NAIC Financial Condition Examiners Handbook, provide the name, location and a complete explanation:

1 Name(s)	2 Location(s)	3 Complete Explanation(s)

GENERAL INTERROGATORIES

28.03 Have there been any changes, including name changes, in the custodian(s) identified in 28.01 during the current year? Yes [] No [X]

28.04 If yes, give full and complete information relating thereto:

1 Old Custodian	2 New Custodian	3 Date of Change	4 Reason

28.05 Identify all investment advisors, broker/dealers or individuals acting on behalf of broker/dealers that have access to the investment accounts, handle securities and have authority to make investments on behalf of the reporting entity:

1 Central Registration Depository Number(s)	2 Name	3 Address
104650	ClearArc Capital, Inc.	Cincinnati, Ohio
8275	Bank of New York Mellon Wealth Mgmt	Atlanta, GA

29.1 Does the reporting entity have any diversified mutual funds reported in Schedule D – Part 2 (diversified according to the Securities and Exchange Commission (SEC) in the Investment Company Act of 1940 [Section 5 (b) (1)])? Yes [X] No []

29.2 If yes, complete the following schedule:

1 CUSIP #	2 Name of Mutual Fund	3 Book/Adjusted Carrying Value
991061-05-2	CRA (BNY MELLON, N.A., MEMBER F	410,923
29.2999 TOTAL		410,923

29.3 For each mutual fund listed in the table above, complete the following schedule:

1 Name of Mutual Fund (from above table)	2 Name of Significant Holding of the Mutual Fund	3 Amount of Mutual Fund's Book/Adjusted Carrying Value Attributable to the Holding	4 Date of Valuation
CRA (BNY MELLON, N.A., ME	BNY MELLON	410,923	12/31/2015

30. Provide the following information for all short-term and long-term bonds and all preferred stocks. Do not substitute amortized value or statement value for fair value.

	1 Statement (Admitted) Value	2 Fair Value	3 Excess of Statement over Fair Value (-), or Fair Value over Statement (+)
30.1 Bonds	75,953,622	75,987,006	33,384
30.2 Preferred stocks	3,139,347	3,145,071	5,724
30.3 Totals	79,092,969	79,132,077	39,108

30.4 Describe the sources or methods utilized in determining the fair values:
NAIC valuations. For those that do not have NAIC valuations, custodial statements are utilized.

31.1 Was the rate used to calculate fair value determined by a broker or custodian for any of the securities in Schedule D? Yes [X] No []

31.2 If the answer to 31.1 is yes, does the reporting entity have a copy of the broker's or custodian's pricing policy (hard copy or electronic copy) for all brokers or custodians used as a pricing source? Yes [X] No []

GENERAL INTERROGATORIES

31.3 If the answer to 31.2 is no, describe the reporting entity's process for determining a reliable pricing source for purposes of disclosure of fair value for Schedule D:

.....

.....

.....

.....

.....

32.1 Have all the filing requirements of the Purposes and Procedures Manual of the NAIC Investment Analysis Office been followed? Yes [X] No []

32.2 If no, list exceptions:

.....

.....

.....

OTHER

33.1 Amount of payments to trade associations, service organizations and statistical or Rating Bureaus, if any? \$ 32,535

33.2 List the name of the organization and the amount paid if any such payment represented 25% or more of the total payments to trade associations, service organizations and statistical or rating bureaus during the period covered by this statement.

1 Name	2 Amount Paid
AM Best	\$ 19,500
Service Contract Industry Council	\$ 12,500
	\$

34.1 Amount of payments for legal expenses, if any? \$ 254,951

34.2 List the name of the firm and the amount paid if any such payment represented 25% or more of the total payments for legal expenses during the period covered by this statement.

1 Name	2 Amount Paid
Thompson Hine LLP	\$ 219,165
	\$
	\$

35.1 Amount of payments for expenditures in connection with matters before legislative bodies, officers or departments of government, if any? \$

35.2 List the name of the firm and the amount paid if any such payment represented 25% or more of the total payment expenditures in connection with matters before legislative bodies, officers or departments of government during the period covered by this statement.

1 Name	2 Amount Paid
	\$
	\$
	\$

GENERAL INTERROGATORIES

PART 2 – PROPERTY & CASUALTY INTERROGATORIES

1.1 Does the reporting entity have any direct Medicare Supplement Insurance in force?

Yes [] No [X]

1.2 If yes, indicate premium earned on U.S. business only.

\$

1.3 What portion of Item (1.2) is not reported on the Medicare Supplement Insurance Experience Exhibit?

\$

1.31 Reason for excluding

1.4 Indicate amount of earned premium attributable to Canadian and/or Other Alien not included in Item (1.2) above.

\$

1.5 Indicate total incurred claims on all Medicare Supplement insurance.

\$

1.6 Individual policies:

Most current three years:

1.61 Total premium earned

\$

1.62 Total incurred claims

\$

1.63 Number of covered lives

All years prior to most current three years:

1.64 Total premium earned

\$

1.65 Total incurred claims

\$

1.66 Number of covered lives

1.7 Group policies:

Most current three years:

1.71 Total premium earned

\$

1.72 Total incurred claims

\$

1.73 Number of covered lives

All years prior to most current three years:

1.74 Total premium earned

\$

1.75 Total incurred claims

\$

1.76 Number of covered lives

2. Health Test:

1

2

Current Year

Prior Year

2.1 Premium Numerator

\$

\$

2.2 Premium Denominator

\$

\$

2.3 Premium Ratio (2.1 / 2.2)

2.4 Reserve Numerator

\$

\$

2.5 Reserve Denominator

\$

\$

2.6 Reserve Ratio (2.4 / 2.5)

3.1 Does the reporting entity issue both participating and non-participating policies?

Yes [] No [X]

3.2 If yes, state the amount of calendar year premiums written on:

3.21 Participating policies

\$

3.22 Non-participating policies

\$

4. For Mutual reporting entities and Reciprocal Exchanges only:

4.1 Does the reporting entity issue assessable policies?

Yes [] No [X]

4.2 Does the reporting entity issue non-assessable policies?

Yes [] No [X]

4.3 If assessable policies are issued, what is the extent of the contingent liability of the policyholders?

%

4.4 Total amount of assessments paid or ordered to be paid during the year on deposit notes or contingent premiums.

\$

5. For Reciprocal Exchanges Only:

5.1 Does the exchange appoint local agents?

Yes [] No [X]

5.2 If yes, is the commission paid:

5.21 Out of Attorney's-in-fact compensation

Yes [] No [] N/A [X]

5.22 As a direct expense of the exchange

Yes [] No [] N/A [X]

5.3 What expenses of the Exchange are not paid out of the compensation of the Attorney-in-fact?

5.4 Has any Attorney-in-fact compensation, contingent on fulfillment of certain conditions, been deferred?

Yes [] No [X]

5.5 If yes, give full information

6.1 What provision has this reporting entity made to protect itself from an excessive loss in the event of a catastrophe under a workers' compensation contract issued without limit loss:

Not Applicable

16

GENERAL INTERROGATORIES

PART 2 – PROPERTY & CASUALTY INTERROGATORIES

6.2 Describe the method used to estimate this reporting entity's probable maximum insurance loss, and identify the type of insured exposures comprising that probable maximum loss, the locations of concentrations of those exposures and the external resources (such as consulting firms or computer software models), if any, used in the estimation process:

Not Applicable

6.3 What provision has this reporting entity made (such as a catastrophic reinsurance program) to protect itself from an excessive loss arising from the types and concentrations of insured exposures comprising its probable maximum property insurance loss?

Not Applicable

6.4 Does the reporting entity carry catastrophe reinsurance protection for at least one reinstatement, in an amount sufficient to cover its estimated probable maximum loss attributable to a single loss event or occurrence?

Yes [] No [X]

6.5 If no, describe any arrangements or mechanisms employed by the reporting entity to supplement its catastrophe reinsurance program or to hedge its exposure to unreinsured catastrophic loss

Not Applicable

7.1 Has the reporting entity reinsured any risk with any other entity under a quota share reinsurance contract that includes a provision that would limit the reinsurer's losses below the stated quota share percentage (e.g., a deductible, a loss ratio corridor, a loss cap, an aggregate limit or any similar provisions)?

Yes [] No [X]

7.2 If yes, indicate the number of reinsurance contracts containing such provisions.

7.3 If yes, does the amount of reinsurance credit taken reflect the reduction in quota share coverage caused by any applicable limiting provision(s)?

Yes [] No []

8.1 Has this reporting entity reinsured any risk with any other entity and agreed to release such entity from liability, in whole or in part, from any loss that may occur on this risk, or portion thereof, reinsured?

Yes [] No [X]

8.2 If yes, give full information

9.1 Has the reporting entity ceded any risk under any reinsurance contract (or under multiple contracts with the same reinsurer or its affiliates) for which during the period covered by the statement: (i) it recorded a positive or negative underwriting result greater than 5% of prior year-end surplus as regards policyholders or it reported calendar year written premium ceded or year-end loss and loss expense reserves ceded greater than 5% of prior year-end surplus as regards policyholders; (ii) it accounted for that contract as reinsurance and not as a deposit; and (iii) the contract(s) contain one or more of the following features or other features that would have similar results:
(a) A contract term longer than two years and the contract is noncancellable by the reporting entity during the contract term;
(b) A limited or conditional cancellation provision under which cancellation triggers an obligation by the reporting entity, or an affiliate of the reporting entity, to enter into a new reinsurance contract with the reinsurer, or an affiliate of the reinsurer;
(c) Aggregate stop loss reinsurance coverage;
(d) A unilateral right by either party (or both parties) to commute the reinsurance contract, whether conditional or not, except for such provisions which are only triggered by a decline in the credit status of the other party;
(e) A provision permitting reporting of losses, or payment of losses, less frequently than on a quarterly basis (unless there is no activity during the period); or
(f) Payment schedule, accumulating retentions from multiple years or any features inherently designed to delay timing of the reimbursement to the ceding entity.

Yes [] No [X]

9.2 Has the reporting entity during the period covered by the statement ceded any risk under any reinsurance contract (or under multiple contracts with the same reinsurer or its affiliates), for which, during the period covered by the statement, it recorded a positive or negative underwriting result greater than 5% of prior year-end surplus as regards policyholders or it reported calendar year written premium ceded or year-end loss and loss expense reserves ceded greater than 5% of prior year-end surplus as regards policyholders; excluding cessions to approved pooling arrangements or to captive insurance companies that are directly or indirectly controlling, controlled by, or under common control with (i) one or more unaffiliated policyholders of the reporting entity, or (ii) an association of which one or more unaffiliated policyholders of the reporting entity is a member where:
(a) The written premium ceded to the reinsurer by the reporting entity or its affiliates represents fifty percent (50%) or more of the entire direct and assumed premium written by the reinsurer based on its most recently available financial statement; or
(b) Twenty-five percent (25%) or more of the written premium ceded to the reinsurer has been retroceded back to the reporting entity or its affiliates in a separate reinsurance contract.

Yes [] No [X]

9.3 If yes to 9.1 or 9.2, please provide the following information in the Reinsurance Summary Supplemental Filing for General Interrogatory 9:
(a) The aggregate financial statement impact gross of all such ceded reinsurance contracts on the balance sheet and statement of income;
(b) A summary of the reinsurance contract terms and indicate whether it applies to the contracts meeting the criteria in 9.1 or 9.2; and
(c) A brief discussion of management's principle objectives in entering into the reinsurance contract including the economic purpose to be achieved.

9.4 Except for transactions meeting the requirements of paragraph 31 of SSAP No. 62R, Property and Casualty Reinsurance, has the reporting entity ceded any risk under any reinsurance contract (or multiple contracts with the same reinsurer or its affiliates) during the period covered by the financial statement, and either:
(a) Accounted for that contract as reinsurance (either prospective or retroactive) under statutory accounting principles ("SAP") and as a deposit under generally accepted accounting principles ("GAAP"); or
(b) Accounted for that contract as reinsurance under GAAP and as a deposit under SAP?

Yes [] No [X]

9.5 If yes to 9.4, explain in the Reinsurance Summary Supplemental Filing for General Interrogatory 9 (Section D) why the contract(s) is treated differently for GAAP and SAP.

9.6 The reporting entity is exempt from the Reinsurance Attestation Supplement under one or more of the following criteria:
(a) The entity does not utilize reinsurance; or,
(b) The entity only engages in a 100% quota share contract with an affiliate and the affiliated or lead company has filed an attestation supplement; or
(c) The entity has no external cessions and only participates in an intercompany pool and the affiliated or lead company has filed an attestation supplement.

Yes [] No [X]

Yes [] No [X]

Yes [] No [X]

GENERAL INTERROGATORIES

PART 2 – PROPERTY & CASUALTY INTERROGATORIES

10.

If the reporting entity has assumed risks from another entity, there should be charged on account of such reinsurances a reserve equal to that which the original entity would have been required to charge had it retained the risks. Has this been done?

Yes ☒ No ☐ N/A ☐

11.1

Has the reporting entity guaranteed policies issued by any other entity and now in force:

Yes ☐ No ☒

11.2

If yes, give full information

12.1

If the reporting entity recorded accrued retrospective premiums on insurance contracts on Line 15.3 of the asset schedule, Page 2, state the amount of corresponding liabilities recorded for:

12.11

Unpaid losses

\$

12.12

Unpaid underwriting expenses (including loss adjustment expenses)

\$

12.2

Of the amount on Line 15.3, Page 2, state the amount that is secured by letters of credit, collateral and other funds?

\$

12.3

If the reporting entity underwrites commercial insurance risks, such as workers' compensation, are premium notes or promissory notes accepted from its insureds covering unpaid premiums and/or unpaid losses?

Yes ☐ No ☐ N/A ☒

12.4

If yes, provide the range of interest rates charged under such notes during the period covered by this statement:

12.41

From

%

12.42

To

%

12.5

Are letters of credit or collateral and other funds received from insureds being utilized by the reporting entity to secure premium notes or promissory notes taken by a reporting entity or to secure any of the reporting entity's reported direct unpaid loss reserves, including unpaid losses under loss deductible features of commercial policies?

Yes ☐ No ☒

12.6

If yes, state the amount thereof at December 31 of current year:

12.61

Letters of Credit

\$

12.62

Collateral and other funds

\$

13.1

Largest net aggregate amount insured in any one risk (excluding workers' compensation):

\$

476,304

13.2

Does any reinsurance contract considered in the calculation of this amount include an aggregate limit of recovery without also including a reinstatement provision?

Yes ☐ No ☒

13.3

State the number of reinsurance contracts (excluding individual facultative risk certificates, but including facultative programs, automatic facilities or facultative obligatory contracts) considered in the calculation of the amount.

14.1

Is the company a cedant in a multiple cedant reinsurance contract?

Yes ☒ No ☐

14.2

If yes, please describe the method of allocating and recording reinsurance among the cedants:
The participation amounts are described in the reinsurance agreements and ceded accordingly.

14.3

If the answer to 14.1 is yes, are the methods described in item 14.2 entirely contained in the respective multiple cedant reinsurance contracts?

Yes ☒ No ☐

14.4

If the answer to 14.3 is no, are all the methods described in 14.2 entirely contained in written agreements?

Yes ☒ No ☐

14.5

If the answer to 14.4 is no, please explain:

15.1

Has the reporting entity guaranteed any financed premium accounts?

Yes ☐ No ☒

15.2

If yes, give full information

16.1

Does the reporting entity write any warranty business?

Yes ☒ No ☐

If yes, disclose the following information for each of the following types of warranty coverage:

		1	2	3	4	5
		Direct Losses	Direct Losses	Direct Written	Direct Premium	Direct Premium
		Incurred	Unpaid	Premium	Unearned	Earned
16.11	Home	\$ 2,293,987	\$ 231,890	\$ 2,875,358	\$ 1,386,927	\$ 2,861,836
16.12	Products	\$ 3,672,131	\$ 596,713	\$ 18,333,978	\$ 18,858,402	\$ 6,625,656
16.13	Automobile	\$ 62,302,745	\$ 3,260,566	\$ 132,085,102	\$ 192,490,236	\$ 128,621,132
16.14	Other*	\$	\$	\$	\$	\$

* Disclose type of coverage:

GENERAL INTERROGATORIES

PART 2 – PROPERTY & CASUALTY INTERROGATORIES

17.1

Does the reporting entity include amounts recoverable on unauthorized reinsurance in Schedule F – Part 3 that it excludes from Schedule F – Part 5.

Yes [☐] No [☒]

Incurring but not reported losses on contracts in force prior to July 1, 1984, and not subsequently renewed are exempt from inclusion in Schedule F – Part 5. Provide the following information for this exemption:

17.11

Gross amount of unauthorized reinsurance in Schedule F – Part 3 excluded from Schedule F – Part 5

\$

17.12

Unfunded portion of Interrogatory 17.11

\$

17.13

Paid losses and loss adjustment expenses portion of Interrogatory 17.11

\$

17.14

Case reserves portion of Interrogatory 17.11

\$

17.15

Incurring but not reported portion of Interrogatory 17.11

\$

17.16

Unearned premium portion of Interrogatory 17.11

\$

17.17

Contingent commission portion of Interrogatory 17.11

\$

Provide the following information for all other amounts included in Schedule F – Part 3 and excluded from Schedule F – Part 5, not included above.

17.18

Gross amount of unauthorized reinsurance in Schedule F – Part 3 excluded from Schedule F – Part 5

\$

17.19

Unfunded portion of Interrogatory 17.18

\$

17.20

Paid losses and loss adjustment expenses portion of Interrogatory 17.18

\$

17.21

Case reserves portion of Interrogatory 17.18

\$

17.22

Incurring but not reported portion of Interrogatory 17.18

\$

17.23

Unearned premium portion of Interrogatory 17.18

\$

17.24

Contingent commission portion of Interrogatory 17.18

\$

18.1

Do you act as a custodian for health savings accounts?

Yes [☐] No [☒]

18.2

If yes, please provide the amount of custodial funds held as of the reporting date.

\$

18.3

Do you act as an administrator for health savings accounts?

Yes [☐] No [☒]

18.4

If yes, please provide the balance of the funds administered as of the reporting date.

\$

FIVE – YEAR HISTORICAL DATA

Show amounts in whole dollars only, no cents; show percentages to one decimal place, i.e., 17.6.

	1	2	3	4	5
	2015	2014	2013	2012	2011
Gross Premiums Written (Page 8, Part 1B, Cols. 1, 2 & 3)					
1. Liability lines (Lines 11.1, 11.2, 16, 17.1, 17.2, 17.3, 18.1, 18.2, 19.1, 19.2 & 19.3, 19.4)	5,583,439	1,184,491	869,119	1,100,455	878,577
2. Property lines (Lines 1, 2, 9, 12, 21 & 26)					
3. Property and liability combined lines (Lines 3, 4, 5, 8, 22 & 27)					
4. All other lines (Lines 6, 10, 13, 14, 15, 23, 24, 28, 29, 30 & 34)	153,364,080	145,426,688	140,258,135	129,696,248	113,676,761
5. Nonproportional reinsurance lines (Lines 31, 32 & 33)					
6. Total (Line 35)	158,947,519	146,611,179	141,127,254	130,796,703	114,555,338
Net Premiums Written (Page 8, Part 1B, Col. 6)					
7. Liability lines (Lines 11.1, 11.2, 16, 17.1, 17.2, 17.3, 18.1, 18.2, 19.1, 19.2 & 19.3, 19.4)	1,116,905	491,841	873,157	776,344	604,020
8. Property lines (Lines 1, 2, 9, 12, 21 & 26)					
9. Property and liability combined lines (Lines 3, 4, 5, 8, 22 & 27)					
10. All other lines (Lines 6, 10, 13, 14, 15, 23, 24, 28, 29, 30 & 34)	13,355,919	11,527,195	13,280,261	10,846,490	9,566,580
11. Nonproportional reinsurance lines (Lines 31, 32 & 33)					
12. Total (Line 35)	14,472,824	12,019,036	14,153,418	11,622,834	10,170,600
Statement of Income (Page 4)					
13. Net underwriting gain (loss) (Line 8)	4,842,683	7,377,420	6,612,706	6,101,765	4,484,610
14. Net investment gain (loss) (Line 11)	1,412,769	1,462,671	1,182,719	1,661,463	1,971,741
15. Total other income (Line 15)	88,998	123,871	36,254	62,875	28,307
16. Dividends to policyholders (Line 17)					
17. Federal and foreign income taxes incurred (Line 19)	2,263,838	2,901,713	2,718,440	2,602,434	2,024,233
18. Net income (Line 20)	4,080,612	6,062,249	5,113,239	5,223,669	4,460,425
Balance Sheet Lines (Pages 2 and 3)					
19. Total admitted assets excluding protected cell business (Page 2, Line 26, Col. 3)	98,183,761	86,349,464	80,714,715	74,079,957	76,420,489
20. Premiums and considerations (Page 2, Col. 3)					
20.1 In course of collection (Line 15.1)	3,063,825	2,576,966	1,467,716	2,204,472	2,941,331
20.2 Deferred and not yet due (Line 15.2)					
20.3 Accrued retrospective premiums (Line 15.3)					
21. Total liabilities excluding protected cell business (Page 3, Line 26)	42,011,025	31,957,840	29,936,639	28,127,299	32,264,809
22. Losses (Page 3, Line 1)	38,325	25,206	39,779	31,417	429,981
23. Loss adjustment expenses (Page 3, Line 3)		1,512	1,209	1,981	1,691
24. Unearned premiums (Page 3, Line 9)	19,410,241	15,216,443	15,997,529	14,273,531	13,674,209
25. Capital paid up (Page 3, Lines 30 & 31)	4,200,990	4,200,990	4,200,990	4,200,990	4,200,990
26. Surplus as regards policyholders (Page 3, Line 37)	56,172,736	54,391,624	50,778,076	45,952,658	44,155,680
Cash Flow (Page 5)					
27. Net cash from operations (Line 11)	7,632,445	4,818,119	8,297,902	6,419,838	4,132,710
Risk-Based Capital Analysis					
28. Total adjusted capital	56,172,736	54,391,624	50,778,076	45,952,658	44,155,680
29. Authorized control level risk-based capital	10,377,582	9,753,370	9,354,406	8,046,631	6,450,667
Percentage Distribution of Cash, Cash Equivalents and Invested Assets (Page 2, Col. 3) (Item divided by Page 2, Line 12, Col. 3) x 100.0					
30. Bonds (Line 1)	72.8	81.6	79.9	80.5	80.4
31. Stocks (Lines 2.1 & 2.2)	14.1	9.3	6.7	5.7	4.8
32. Mortgage loans on real estate (Lines 3.1 and 3.2)	0.9	1.0			
33. Real estate (Lines 4.1, 4.2 & 4.3)					
34. Cash, cash equivalents and short-term investments (Line 5)	12.2	8.1	13.4	13.8	14.8
35. Contract loans (Line 6)					
36. Derivatives (Line 7)					
37. Other invested assets (Line 8)					
38. Receivables for securities (Line 9)					
39. Securities lending reinvested collateral assets (Line 10)					
40. Aggregate write-ins for invested assets (Line 11)					
41. Cash, cash equivalents and invested assets (Line 12)	100.0	100.0	100.0	100.0	100.0
Investments in Parent, Subsidiaries and Affiliates					
42. Affiliated bonds, (Sch. D, Summary, Line 12, Col. 1)					
43. Affiliated preferred stocks (Sch. D, Summary, Line 18, Col. 1)					
44. Affiliated common stocks (Sch. D, Summary, Line 24, Col. 1)					
45. Affiliated short-term investments (subtotals included in Schedule DA Verification, Col. 5, Line 10)					
46. Affiliated mortgage loans on real estate					
47. All other affiliated					
48. Total of above Lines 42 to 47					
49. Total investment in parent included in Lines 42 to 47 above					
50. Percentage of investments in parent, subsidiaries and affiliates to surplus as regards policyholders (Line 48 above divided by Page 3, Col. 1, Line 37 x 100.0)					

FIVE – YEAR HISTORICAL DATA
(Continued)

	1	2	3	4	5
	2015	2014	2013	2012	2011
Capital and Surplus Accounts (Page 4)					
51. Net unrealized capital gains (losses) (Line 24)	(398,845)	197,510	860,596	180,570	(288,241)
52. Dividends to stockholders (Line 35)	(2,000,000)	(2,500,000)	(2,500,000)	(3,500,000)	
53. Change in surplus as regards policyholders for the year (Line 38)	1,781,112	3,613,548	4,825,417	1,796,979	4,569,589
Gross Losses Paid (Page 9, Part 2, Cols. 1 & 2)					
54. Liability lines (Lines 11.1, 11.2, 16, 17.1, 17.2, 17.3, 18.1, 18.2, 19.1, 19.2 & 19.3, 19.4)	778,102	46,576	32,176	22,985	3,192
55. Property lines (Lines 1, 2, 9, 12, 21 & 26)					
56. Property and liability combined lines (Lines 3, 4, 5, 8, 22 & 27)					
57. All other lines (Lines 6, 10, 13, 14, 15, 23, 24, 28, 29, 30 & 34)	67,742,627	67,940,189	67,212,659	59,462,900	51,605,465
58. Nonproportional reinsurance lines (Lines 31, 32 & 33)					
59. Total (Line 35)	68,520,729	67,986,765	67,244,835	59,485,885	51,608,657
Net Losses Paid (Page 9, Part 2, Col. 4)					
60. Liability lines (Lines 11.1, 11.2, 16, 17.1, 17.2, 17.3, 18.1, 18.2, 19.1, 19.2 & 19.3, 19.4)	59,940		3,512		
61. Property lines (Lines 1, 2, 9, 12, 21 & 26)					
62. Property and liability combined lines (Lines 3, 4, 5, 8, 22 & 27)					
63. All other lines (Lines 6, 10, 13, 14, 15, 23, 24, 28, 29, 30 & 34)	1,278,165	454,340	619,271	916,904	445,540
64. Nonproportional reinsurance lines (Lines 31, 32 & 33)					
65. Total (Line 35)	1,338,105	454,340	622,783	916,904	445,540
Operating Percentages (Page 4) (Item divided by Page 4, Line 1) x 100.0					
66. Premiums earned (Line 1)	100.0	100.0	100.0	100.0	100.0
67. Losses incurred (Line 2)	13.1	3.4	5.1	4.7	9.4
68. Loss expenses incurred (Line 3)	2.8	2.2	3.1	3.7	4.1
69. Other underwriting expenses incurred (Line 4)	36.9	36.7	38.6	36.3	37.6
70. Net underwriting gain (loss) (Line 8)	47.1	57.6	53.2	55.4	48.9
Other Percentages					
71. Other underwriting expenses to net premiums written (Page 4, Lines 4 + 5 - 15 divided by Page 8, Part 1B, Col. 6, Line 35 x 100.0	25.6	38.1	33.7	33.8	33.7
72. Losses and loss expenses incurred to premiums earned (Page 4, Lines 2 + 3 divided by Page 4, Line 1 x 100.0)	16.0	5.7	8.2	8.4	13.5
73. Net premiums written to policyholders' surplus (Page 8, Part 1B, Col. 6, Line 35 divided by Page 3, Line 37, Col. 1 x 100.0)	25.8	22.1	27.9	25.3	23.0
One Year Loss Development (000 omitted)					
74. Development in estimated losses and loss expenses incurred prior to current year (Schedule P, Part 2-Summary, Line 12, Col. 11)	403	21	(30)	(467)	(2)
75. Percent of development of losses and loss expenses incurred to policyholders' surplus of prior year end (Line 74 above divided by Page 4, Line 21, Col. 1 x 100.0)	0.7	0.0	(0.1)	(1.1)	(0.0)
Two Year Loss Development (000 omitted)					
76. Development in estimated losses and loss expenses incurred 2 years before the current year and prior year (Schedule P, Part 2-Summary, Line 12, Col. 12)	22	(1)	(469)	(2)	1
77. Percent of development of losses and loss expenses incurred to reported policyholders' surplus of second prior year end (Line 76 above divided by Page 4, Line 21, Col. 2 x 100.0)	0.0	(0.0)	(1.1)	(0.0)	0.0

NOTE: If a party to a merger, have the two most recent years of this exhibit been restated due to a merger in compliance with the disclosure

Yes [] No []

requirements of SSAP No. 3, Accounting Changes and Correction of Errors?

If no, please explain:

.....
.....
.....
.....

SCHEDULE P – ANALYSIS OF LOSSES AND LOSS EXPENSES

SCHEDULE P – PART 1 – SUMMARY

(\$000 omitted)

Years in Which Premiums Were Earned and Losses Were Incurred	Premiums Earned			Loss and Loss Expense Payments								12
	1 Direct and Assumed	2 Ceded	3 Net (Cols. 1–2)	Loss Payments		Defense and Cost Containment Payments		Adjusting and Other Payments		10 Salvage and Subrogation Received	11 Total Net Paid (Cols. 4 - 5 + 6 - 7 + 8 - 9)	Number of Claims Reported Direct and Assumed
				4 Direct and Assumed	5 Ceded	6 Direct and Assumed	7 Ceded	8 Direct and Assumed	9 Ceded			
1. Prior	X X X	X X X	X X X	15	15							X X X
2. 2006	12,965	5,882	7,083	6,135	4,103			419			2,451	X X X
3. 2007	20,768	10,838	9,930	11,543	8,431			469			3,581	X X X
4. 2008	41,677	30,463	11,214	24,267	22,287			293			2,273	X X X
5. 2009	56,312	48,493	7,819	30,774	31,842			280			(788)	X X X
6. 2010	64,993	55,842	9,151	39,164	38,622			390			932	X X X
7. 2011	80,370	71,192	9,178	51,748	51,338			357			767	X X X
8. 2012	98,570	87,547	11,023	59,967	59,001			407			1,373	X X X
9. 2013	113,889	101,459	12,430	71,200	70,548			385			1,037	X X X
10. 2014	139,785	126,984	12,801	69,008	68,187			285			1,106	X X X
11. 2015	142,189	131,910	10,279	62,885	61,854			292		121	1,323	X X X
12. Totals	X X X	X X X	X X X	426,706	416,228			3,577		121	14,055	X X X

	Losses Unpaid				Defense and Cost Containment Unpaid				Adjusting and		23	24	25
	Case Basis		Bulk + IBNR		Case Basis		Bulk + IBNR		Other Unpaid				
	13	14	15	16	17	18	19	20	21	22			
	Direct and Assumed	Ceded	Direct and Assumed	Ceded	Direct and Assumed	Ceded	Direct and Assumed	Ceded	Direct and Assumed	Ceded			
1. Prior													X X X
2. 2006													X X X
3. 2007													X X X
4. 2008													X X X
5. 2009													X X X
6. 2010													X X X
7. 2011													X X X
8. 2012													X X X
9. 2013													X X X
10. 2014													X X X
11. 2015			4,232	4,194								38	X X X
12. Totals			4,232	4,194								38	X X X

	Total Losses and Loss Expenses Incurred			Loss and Loss Expense Percentage (Incurred/Premiums Earned)			Nontabular Discount		34 Inter- Company Pooling Participation Percentage	Net Balance Sheet Reserves After Discount	
	26 Direct and Assumed	27 Ceded	28 Net	29 Direct and Assumed	30 Ceded	31 Net	32 Loss	33 Loss Expense		35 Losses Unpaid	36 Loss Expenses Unpaid
1. Prior	X X X	X X X	X X X	X X X	X X X	X X X			X X X		
2. 2006	6,554	4,103	2,451	50.551	69.755	34.604					
3. 2007	12,012	8,431	3,581	57.839	77.791	36.062					
4. 2008	24,560	22,287	2,273	58.929	73.161	20.269					
5. 2009	31,054	31,842	(788)	55.146	65.663	(10.078)					
6. 2010	39,554	38,622	932	60.859	69.163	10.185					
7. 2011	52,105	51,338	767	64.831	72.112	8.357					
8. 2012	60,374	59,001	1,373	61.250	67.394	12.456					
9. 2013	71,585	70,548	1,037	62.855	69.534	8.343					
10. 2014	69,293	68,187	1,106	49.571	53.697	8.640					
11. 2015	67,409	66,048	1,361	47.408	50.071	13.241				38	
12. Totals	X X X	X X X	X X X	X X X	X X X	X X X			X X X	38	

Note: Parts 2 and 4 are gross of all discounting, including tabular discounting. Part 1 is gross of only nontabular discounting, which is reported in Columns 32 and 33 of Part 1. The tabular discount, if any, is reported in the Notes to Financial Statements, which will reconcile Part 1 with Parts 2 and 4.

SCHEDULE P – PART 2 – SUMMARY

Years in Which Losses Were Incurred	INCURRED NET LOSSES AND DEFENSE AND COST CONTAINMENT EXPENSES REPORTED AT YEAR END (\$000 OMITTED)										DEVELOPMENT	
	1	2	3	4	5	6	7	8	9	10	11	12
	2006	2007	2008	2009	2010	2011	2012	2013	2014	2015	One Year	Two Year
1. Prior												
2. 2006	2,022	2,032	2,032	2,032	2,032	2,032	2,032	2,032	2,032	2,032		
3. 2007	X X X	3,197	3,112	3,112	3,112	3,112	3,112	3,112	3,112	3,112		
4. 2008	X X X	X X X	1,982	1,980	1,980	1,980	1,980	1,980	1,980	1,980		
5. 2009	X X X	X X X	X X X	(1,039)	(1,038)	(1,038)	(1,040)	(1,069)	(1,068)	(1,068)		1
6. 2010	X X X	X X X	X X X	X X X	539	537	537	537	542	542		5
7. 2011	X X X	X X X	X X X	X X X	X X X	863	396	396	410	410		14
8. 2012	X X X	X X X	X X X	X X X	X X X	X X X	987	957	966	966		9
9. 2013	X X X	X X X	X X X	X X X	X X X	X X X	X X X	659	651	652	1	(7)
10. 2014	X X X	X X X	X X X	X X X	X X X	X X X	X X X	X X X	419	821	402	X X X
11. 2015	X X X	X X X	X X X	X X X	X X X	X X X	X X X	X X X	X X X	1,069	X X X	X X X
12. Totals											403	22

SCHEDULE P – PART 3 – SUMMARY

Years in Which Losses Were Incurred	CUMULATIVE PAID NET LOSSES AND DEFENSE AND COST CONTAINMENT EXPENSES REPORTED AT YEAR END (\$000 OMITTED)										11	12
	1	2	3	4	5	6	7	8	9	10	Number of Claims Closed With Loss Payment	Number of Claims Closed Without Loss Payment
	2006	2007	2008	2009	2010	2011	2012	2013	2014	2015		
1. Prior	000										X X X	X X X
2. 2006	1,960	2,032	2,032	2,032	2,032	2,032	2,032	2,032	2,032	2,032	X X X	X X X
3. 2007	X X X	3,102	3,112	3,112	3,112	3,112	3,112	3,112	3,112	3,112	X X X	X X X
4. 2008	X X X	X X X	1,954	1,980	1,980	1,980	1,980	1,980	1,980	1,980	X X X	X X X
5. 2009	X X X	X X X	X X X	(1,039)	(1,039)	(1,039)	(1,039)	(1,069)	(1,068)	(1,068)	X X X	X X X
6. 2010	X X X	X X X	X X X	X X X	522	537	537	537	542	542	X X X	X X X
7. 2011	X X X	X X X	X X X	X X X	X X X	433	396	396	410	410	X X X	X X X
8. 2012	X X X	X X X	X X X	X X X	X X X	X X X	955	957	966	966	X X X	X X X
9. 2013	X X X	X X X	X X X	X X X	X X X	X X X	X X X	619	651	652	X X X	X X X
10. 2014	X X X	X X X	X X X	X X X	X X X	X X X	X X X	X X X	394	821	X X X	X X X
11. 2015	X X X	X X X	X X X	X X X	X X X	X X X	X X X	X X X	X X X	1,031	X X X	X X X

SCHEDULE P – PART 4 – SUMMARY

Years in Which Losses Were Incurred	BULK AND IBNR RESERVES ON NET LOSSES AND DEFENSE AND COST CONTAINMENT EXPENSES REPORTED AT YEAR END (\$000 OMITTED)									
	1	2	3	4	5	6	7	8	9	10
	2006	2007	2008	2009	2010	2011	2012	2013	2014	2015
1. Prior										
2. 2006	14									
3. 2007	X X X	20								
4. 2008	X X X	X X X	4							
5. 2009	X X X	X X X	X X X	2						
6. 2010	X X X	X X X	X X X	X X X	3					
7. 2011	X X X	X X X	X X X	X X X	X X X	18				
8. 2012	X X X	X X X	X X X	X X X	X X X	X X X	24			
9. 2013	X X X	X X X	X X X	X X X	X X X	X X X	X X X	26		
10. 2014	X X X	X X X	X X X	X X X	X X X	X X X	X X X	X X X	23	
11. 2015	X X X	X X X	X X X	X X X	X X X	X X X	X X X	X X X	X X X	38

SCHEDULE T - EXHIBIT OF PREMIUMS WRITTEN
Allocated By States and Territories

States, Etc.		1 Active Status	Gross Premiums, Including Policy and Membership Fees Less Return Premiums and Premiums on Policies Not Taken		4 Dividends Paid or Credited to Policyholders on Direct Business	5 Direct Losses Paid (Deducting Salvage)	6 Direct Losses Incurred	7 Direct Losses Unpaid	8 Finance and Service Charges Not Included in Premiums	9 Direct Premium Written for Federal Purchasing Groups (Included in Col. 2)
			2 Direct Premiums Written	3 Direct Premiums Earned						
1. Alabama	AL	L	1,925,385	1,688,213		732,123	729,645	40,866		
2. Alaska	AK	L	2,316	1,276		299	341	42		
3. Arizona	AZ	L	810,698	741,466		500,384	501,738	29,471		
4. Arkansas	AR	L	2,369,721	2,449,800		1,278,924	1,271,027	62,792		
5. California	CA	L	18,254,536	21,669,217		3,208,853	3,196,183	60,753		
6. Colorado	CO	L	7,561,141	11,148,694		3,852,435	3,855,667	199,240		
7. Connecticut	CT	L	907,449	1,259,142		1,135,722	1,122,293	28,517		
8. Delaware	DE	L	1,022,666	985,708		510,969	509,952	25,314		
9. District of Columbia	DC	L								
10. Florida	FL	L	17,897,299	6,913,689		3,443,239	3,889,874	480,445		
11. Georgia	GA	L	9,885,776	8,342,445		5,955,697	5,997,937	287,164		
12. Hawaii	HI	L								
13. Idaho	ID	L	2,186	11,468		3,164	2,876	108		
14. Illinois	IL	L	931,508	1,030,996		549,380	548,631	30,461		
15. Indiana	IN	L	1,026,134	1,079,463		1,061,401	1,057,327	28,026		
16. Iowa	IA	L	251,419	270,120		189,072	187,773	8,318		
17. Kansas	KS	L	17,608	33,953		10,198	9,635	613		
18. Kentucky	KY	L	652,590	574,934		257,273	258,436	17,272		
19. Louisiana	LA	L	1,627,165	1,685,712		1,066,992	1,061,650	40,890		
20. Maine	ME	L	400,224	386,184		236,872	237,116	9,559		
21. Maryland	MD	L	1,853,304	1,665,826		1,113,250	1,115,165	46,183		
22. Massachusetts	MA	L	989,554	1,240,624		803,046	792,896	30,167		
23. Michigan	MI	L	4,688,826	5,913,993		6,729,047	6,677,916	145,597		
24. Minnesota	MN	L	937,200	884,211		583,938	583,400	25,574		
25. Mississippi	MS	L	2,045,215	2,137,558		946,425	939,343	48,862		
26. Missouri	MO	L	1,336,578	891,949		481,393	480,051	21,446		
27. Montana	MT	L	147,840	179,700		85,460	84,035	5,005		
28. Nebraska	NE	L	237,038	385,877		136,336	133,119	7,381		
29. Nevada	NV	L	292,571	319,335		201,382	199,668	7,215		
30. New Hampshire	NH	L	314,023	374,531		194,902	192,291	8,430		
31. New Jersey	NJ	L	1,496,376	1,709,820		1,068,294	1,060,430	30,193		
32. New Mexico	NM	L	2,029,342	2,414,159		179,458	173,457	17,854		
33. New York	NY	L	4,834,509	5,197,494		4,896,233	4,871,385	139,049		
34. North Carolina	NC	L	10,538,494	6,691,217		4,905,188	5,001,750	272,216		
35. North Dakota	ND	L	127,467	145,895		72,696	71,764	4,145		
36. Ohio	OH	L	6,029,017	3,920,779		1,811,403	1,849,761	122,239		
37. Oklahoma	OK	L	89,103	186,900		69,664	66,406	3,742		
38. Oregon	OR	L	33,493	89,828		17,841	15,182	1,010		
39. Pennsylvania	PA	L	4,386,258	4,347,495		1,971,964	1,958,971	73,660		
40. Rhode Island	RI	L	82,116	78,050		51,319	51,287	1,845		
41. South Carolina	SC	L	630,890	331,331		188,468	197,970	23,081		
42. South Dakota	SD	L	29,295	34,981		13,579	13,339	727		
43. Tennessee	TN	L	1,917,709	1,684,246		806,962	812,118	54,349		
44. Texas	TX	L	33,480,901	25,240,197		10,412,104	10,513,309	1,353,681		
45. Utah	UT	L	5,187	4,632		187	193	134		
46. Vermont	VT	L	233,382	291,946		180,199	177,959	8,610		
47. Virginia	VA	L	1,217,062	1,208,249		538,077	535,644	32,479		
48. Washington	WA	L	12,511,097	12,362,719		5,452,712	5,495,870	274,309		
49. West Virginia	WV	L	268,705	327,813		174,369	251,773	98,662		
50. Wisconsin	WI	L	591,454	518,548		304,316	305,923	21,160		
51. Wyoming	WY	L	69,442	100,503		41,807	40,682	3,008		
52. American Samoa	AS	N								
53. Guam	GU	N								
54. Puerto Rico	PR	N								
55. U.S. Virgin Islands	VI	N								
56. Northern Mariana Islands	MP	N								
57. Canada	CAN	N								
58. Aggregate Other Alien	OT	X X X								
59. Totals	(a) 51		158,989,269	141,152,886		68,425,016	69,101,158	4,231,864		

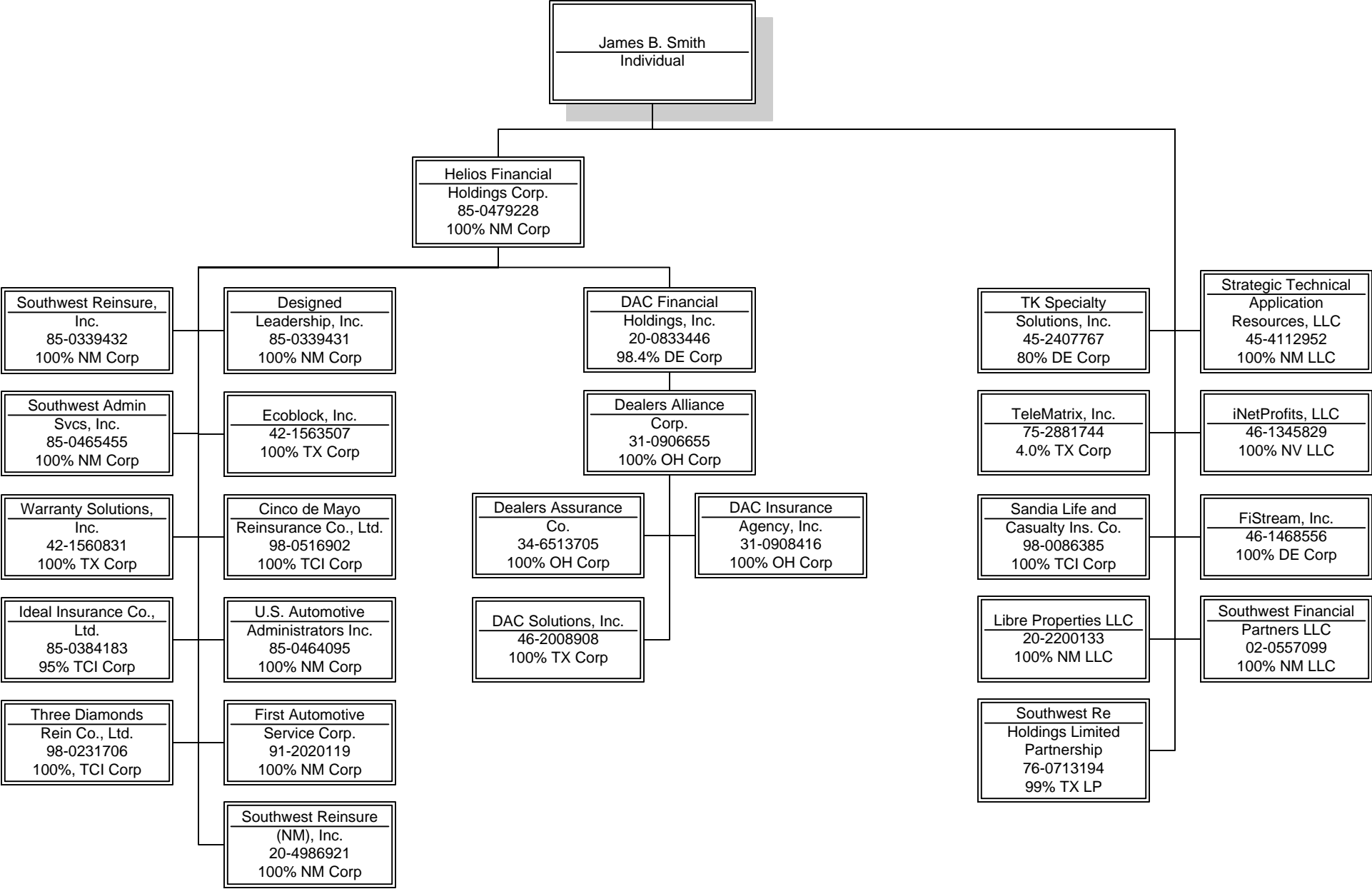
DETAILS OF WRITE-INS									
58001.		X X X							
58002.		X X X							
58003.		X X X							
58998. Summary of remaining write-ins for Line 58 from overflow page		X X X							
58999. Totals (Lines 58001 through 58003 plus 58998) (Line 58 above)		X X X							

(L) Licensed or Chartered - Licensed Insurance Carrier or Domiciled RRG; (R) Registered - Non-domiciled RRGs; (Q) Qualified - Qualified or Accredited Reinsurer; (E) Eligible - Reporting Entities eligible or approved to write Surplus Lines In the state; (N) None of the above - Not allowed to write business in the state.

Explanation of basis of allocation of premiums by states, etc.									
Not Applicable									

SCHEDULE Y - INFORMATION CONCERNING ACTIVITIES OF INSURER MEMBERS OF A HOLDING COMPANY GROUP

PART 1 - ORGANIZATIONAL CHART



OVERFLOW PAGE FOR WRITE-INS

ALPHABETICAL INDEX TO PROPERTY ANNUAL STATEMENT

Assets	2	Schedule E – Part 3 – Special Deposits	E28
Cash Flow	5	Schedule E – Verification Between Years	SI15
Exhibit of Capital Gains (Losses)	12	Schedule F – Part 1	20
Exhibit of Net Investment Income	12	Schedule F – Part 2	21
Exhibit of Nonadmitted Assets	13	Schedule F – Part 3	22
Exhibit of Premiums and Losses (State Page)	19	Schedule F – Part 4	23
Five-Year Historical Data	17	Schedule F – Part 5	24
General Interrogatories	15	Schedule F – Part 6 - Section 1	25
Jurat Page	1	Schedule F – Part 6 - Section 2	26
Liabilities, Surplus and Other Funds	3	Schedule F – Part 7	27
Notes To Financial Statements	14	Schedule F – Part 8	28
Overflow Page For Write-ins	100	Schedule F – Part 9	29
Schedule A – Part 1	E01	Schedule H – Accident and Health Exhibit – Part 1	30
Schedule A – Part 2	E02	Schedule H – Part 2, Part 3 and Part 4	31
Schedule A – Part 3	E03	Schedule H – Part 5 – Health Claims	32
Schedule A – Verification Between Years	SI02	Schedule P – Part 1 – Summary	33
Schedule B – Part 1	E04	Schedule P – Part 1A – Homeowners/Farmowners	35
Schedule B – Part 2	E05	Schedule P – Part 1B – Private Passenger Auto Liability/Medical	36
Schedule B – Part 3	E06	Schedule P – Part 1C – Commercial Auto/Truck Liability/Medical	37
Schedule B – Verification Between Years	SI02	Schedule P – Part 1D – Workers' Comp (Excluding Excess Workers' Comp)	38
Schedule BA – Part 1	E07	Schedule P – Part 1E – Commercial Multiple Peril	39
Schedule BA – Part 2	E08	Schedule P – Part 1F – Section 1 – Medical Professional Liability	
Schedule BA – Part 3	E09	– Occurrence	40
Schedule BA – Verification Between Years	SI03	Schedule P – Part 1F – Section 2 – Medical Professional Liability	
Schedule D – Part 1	E10	– Claims-Made	41
Schedule D – Part 1A – Section 1	SI05	Schedule P – Part 1G - Special Liability (Ocean, Marine, Aircraft (All	
Schedule D – Part 1A – Section 2	SI08	Perils), Boiler and Machinery)	42
Schedule D – Part 2 – Section 1	E11	Schedule P – Part 1H – Section 1 – Other Liability – Occurrence	43
Schedule D – Part 2 – Section 2	E12	Schedule P – Part 1H – Section 2 – Other Liability – Claims-Made	44
Schedule D – Part 3	E13	Schedule P – Part 1I – Special Property (Fire, Allied Lines, Inland Marine,	
Schedule D – Part 4	E14	Earthquake, Burglary & Theft)	45
Schedule D – Part 5	E15	Schedule P – Part 1J – Auto Physical Damage	46
Schedule D – Part 6 – Section 1	E16	Schedule P – Part 1K – Fidelity/Surety	47
Schedule D – Part 6 – Section 2	E16	Schedule P – Part 1L – Other (Including Credit, Accident and Health)	48
Schedule D – Summary By Country	SI04	Schedule P – Part 1M – International	49
Schedule D – Verification Between Years	SI03	Schedule P – Part 1N – Reinsurance - Nonproportional Assumed Property	50
Schedule DA – Part 1	E17	Schedule P – Part 1O – Reinsurance - Nonproportional Assumed Liability	51
Schedule DA – Verification Between Years	SI10	Schedule P – Part 1P – Reinsurance - Nonproportional Assumed Financial Lines	52
Schedule DB – Part A – Section 1	E18	Schedule P – Part 1R – Section 1 – Products Liability – Occurrence	53
Schedule DB – Part A – Section 2	E19	Schedule P – Part 1R – Section 2 – Products Liability – Claims – Made	54
Schedule DB – Part A – Verification Between Years	SI11	Schedule P – Part 1S – Financial Guaranty/Mortgage Guaranty	55
Schedule DB – Part B – Section 1	E20	Schedule P – Part 1T – Warranty	56
Schedule DB – Part B – Section 2	E21	Schedule P – Part 2, Part 3 and Part 4 - Summary	34
Schedule DB – Part B – Verification Between Years	SI11	Schedule P – Part 2A – Homeowners/Farmowners	57
Schedule DB – Part C – Section 1	SI12	Schedule P – Part 2B – Private Passenger Auto Liability/Medical	57
Schedule DB – Part C – Section 2	SI13	Schedule P – Part 2C – Commercial Auto/Truck Liability/Medical	57
Schedule DB - Part D - Section 1	E22	Schedule P – Part 2D – Workers' Comp (Excluding Excess Workers' Comp)	57
Schedule DB - Part D - Section 2	E23	Schedule P – Part 2E – Commercial Multiple Peril	57
Schedule DB - Verification	SI14	Schedule P – Part 2F – Section 1 – Medical Professional Liability	
Schedule DL - Part 1	E24	– Occurrence	58
Schedule DL - Part 2	E25	Schedule P - Part 2F - Medical Professional Liability - Claims - Made	58
Schedule E – Part 1 – Cash	E26	Schedule P – Part 2G – Special Liability (Ocean Marine, Aircraft (All Perils),	
Schedule E – Part 2 – Cash Equivalents	E27	Boiler and Machinery)	58

ALPHABETICAL INDEX TO PROPERTY ANNUAL STATEMENT

Schedule P – Part 2H – Section 1 – Other Liability – Occurrence	58	Schedule P – Part 4I – Special Property (Fire, Allied Lines, Inland Marine, Earthquake, Burglary and Theft)	69
Schedule P – Part 2H – Section 2 – Other Liability – Claims – Made	58	Schedule P – Part 4J – Auto Physical Damage	69
Schedule P – Part 2I – Special Property (Fire, Allied Lines, Inland Marine, Earthquake, Burglary, and Theft)	59	Schedule P – Part 4K – Fidelity/Surety	69
Schedule P – Part 2J – Auto Physical Damage	59	Schedule P – Part 4L – Other (Including Credit, Accident and Health)	69
Schedule P – Part 2K – Fidelity, Surety	59	Schedule P – Part 4M – International	69
Schedule P – Part 2L – Other (Including Credit, Accident and Health)	59	Schedule P – Part 4N – Reinsurance - Nonproportional Assumed Property	70
Schedule P – Part 2M – International	59	Schedule P – Part 4O – Reinsurance - Nonproportional Assumed Liability	70
Schedule P – Part 2N – Reinsurance - Nonproportional Assumed Property	60	Schedule P – Part 4P – Reinsurance - Nonproportional Assumed Financial Lines	70
Schedule P – Part 2O – Reinsurance - Nonproportional Assumed Liability	60	Schedule P – Part 4R – Section 1 – Products Liability – Occurrence	71
Schedule P – Part 2P – Reinsurance - Nonproportional Assumed Financial Lines	60	Schedule P – Part 4R – Section 2 – Products Liability – Claims-Made	71
Schedule P – Part 2R – Section 1 – Products Liability – Occurrence	61	Schedule P – Part 4S – Financial Guaranty/Mortgage Guaranty	71
Schedule P – Part 2R – Section 2 – Products Liability – Claims-Made	61	Schedule P – Part 4T – Warranty	71
Schedule P – Part 2S – Financial Guaranty/Mortgage Guaranty	61	Schedule P – Part 5A – Homeowners/Farmowners	72
Schedule P – Part 2T – Warranty	61	Schedule P – Part 5B – Private Passenger Auto Liability/Medical	73
Schedule P – Part 3A – Homeowners/Farmowners	62	Schedule P – Part 5C – Commercial Auto/Truck Liability/Medical	74
Schedule P – Part 3B – Private Passenger Auto Liability/Medical	62	Schedule P – Part 5D – Workers' Comp (Excluding Excess Workers' Comp)	75
Schedule P – Part 3C – Commercial Auto/Truck Liability/Medical	62	Schedule P – Part 5E – Commercial Multiple Peril	76
Schedule P – Part 3D – Workers' Comp (Excluding Excess Workers' Comp)	62	Schedule P – Part 5F – Medical Professional Liability – Claims-Made	78
Schedule P – Part 3E – Commercial Multiple Peril	62	Schedule P – Part 5F – Medical Professional Liability – Occurrence	77
Schedule P – Part 3F – Section 1 – Medical Professional Liability – Occurrence	63	Schedule P – Part 5H – Other Liability – Claims-Made	80
Schedule P – Part 3F – Section 2 – Medical Professional Liability – Claims-Made	63	Schedule P – Part 5H – Other Liability – Occurrence	79
Schedule P – Part 3G – Special Liability (Ocean Marine, Aircraft (All Perils), Boiler and Machinery)	63	Schedule P – Part 5R – Products Liability – Claims-Made	82
Schedule P – Part 3H – Section 1 – Other Liability – Occurrence	63	Schedule P – Part 5R – Products Liability – Occurrence	81
Schedule P – Part 3H – Section 2 – Other Liability – Claims-Made	63	Schedule P – Part 5T – Warranty	83
Schedule P – Part 3I – Special Property (Fire, Allied Lines, Inland Marine, Earthquake, Burglary, and Theft)	63	Schedule P – Part 6C – Commercial Auto/Truck Liability/Medical	84
Schedule P – Part 3J – Auto Physical Damage	63	Schedule P – Part 6D – Workers' Comp (Excluding Excess Workers' Comp)	84
Schedule P – Part 3K – Fidelity/Surety	63	Schedule P – Part 6E – Commercial Multiple Peril	85
Schedule P – Part 3L – Other (Including Credit, Accident and Health)	63	Schedule P – Part 6H – Other Liability – Claims-Made	86
Schedule P – Part 3M – International	64	Schedule P – Part 6H – Other Liability – Occurrence	85
Schedule P – Part 3N – Reinsurance - Nonproportional Assumed Property	64	Schedule P – Part 6M – International	86
Schedule P – Part 3O – Reinsurance - Nonproportional Assumed Liability	64	Schedule P – Part 6N – Reinsurance - Nonproportional Assumed Property	87
Schedule P – Part 3P – Reinsurance - Nonproportional Assumed Financial Lines	64	Schedule P – Part 6O – Reinsurance - Nonproportional Assumed Liability	87
Schedule P – Part 3R – Section 1 – Products Liability – Occurrence	65	Schedule P – Part 6R – Products Liability – Claims-Made	88
Schedule P – Part 3R – Section 2 – Products Liability – Claims-Made	65	Schedule P – Part 6R – Products Liability – Occurrence	88
Schedule P – Part 3S – Financial Guaranty/Mortgage Guaranty	65	Schedule P – Part 7A – Primary Loss Sensitive Contracts	89
Schedule P – Part 3T – Warranty	65	Schedule P – Part 7B – Reinsurance Loss Sensitive Contracts	91
Schedule P – Part 4A – Homeowners/Farmowners	66	Schedule P Interrogatories	93
Schedule P – Part 4B – Private Passenger Auto Liability/Medical	66	Schedule T – Exhibit of Premiums Written	94
Schedule P – Part 4C – Commercial Auto/Truck Liability/Medical	66	Schedule T – Part 2 – Interstate Compact	95
Schedule P – Part 4D – Workers' Comp (Excluding Excess Workers' Comp)	66	Schedule Y – Information Concerning Activities of Insurer Members of a Holding Company Group	96
Schedule P – Part 4E – Commercial Multiple Peril	67	Schedule Y - Part 1A - Detail of Insurance Holding Company System	97
Schedule P – Part 4F – Section 1 – Medical Professional Liability – Occurrence	67	Schedule Y – Part 2 – Summary of Insurer's Transactions With Any Affiliates	98
Schedule P – Part 4F – Section 2 – Medical Professional Liability – Claims-Made	67	Statement of Income	4
Schedule P – Part 4G – Special Liability (Ocean Marine, Aircraft (All Perils), Boiler and Machinery)	67	Summary Investment Schedule	SI01
Schedule P – Part 4H – Section 1 – Other Liability – Occurrence	67	Supplemental Exhibits and Schedules Interrogatories	99
Schedule P – Part 4H – Section 2 – Other Liability – Claims-Made	68	Underwriting and Investment Exhibit Part 1	6
		Underwriting and Investment Exhibit Part 1A	7
		Underwriting and Investment Exhibit Part 1B	8
		Underwriting and Investment Exhibit Part 2	9
		Underwriting and Investment Exhibit Part 2A	10
		Underwriting and Investment Exhibit Part 3	11