



ANNUAL STATEMENT

For the Year Ended December 31, 2015

of the Condition and Affairs of the

STATE AUTO INSURANCE COMPANY OF OHIO

NAIC Group Code.....0175, 0175	NAIC Company Code..... 11017	Employer's ID Number..... 31-1651026
(Current Period) (Prior Period)		
Organized under the Laws of Ohio	State of Domicile or Port of Entry Ohio	Country of Domicile US
Incorporated/Organized..... May 17, 1999	Commenced Business..... January 1, 2000	
Statutory Home Office	518 East Broad Street..... Columbus OH US 43215	
	(Street and Number) (City or Town, State, Country and Zip Code)	
Main Administrative Office	518 East Broad Street..... Columbus OH US 43215	614-464-5000
	(Street and Number) (City or Town, State, Country and Zip Code)	(Area Code) (Telephone Number)
Mail Address	518 East Broad Street..... Columbus OH US 43215	
	(Street and Number or P. O. Box) (City or Town, State, Country and Zip Code)	
Primary Location of Books and Records	518 East Broad Street..... Columbus OH US 43215	614-464-5000
	(Street and Number) (City or Town, State, Country and Zip Code)	(Area Code) (Telephone Number)
Internet Web Site Address	www.stateauto.com	
Statutory Statement Contact	Tina Marie Stillabower	317-931-7473
	(Name)	(Area Code) (Telephone Number) (Extension)
	corporateaccounting@stateauto.com	317-931-6558
	(E-Mail Address)	(Fax Number)

OFFICERS

Name	Title	Name	Title
1. Michael Edward LaRocco #	President	2. Melissa Ann Centers #	Secretary
3. Matthew Robert Pollak	Treasurer	4.	

OTHER

Douglas Edward Allen	Vice President	Jessica Elizabeth Clark	Senior Vice President
David William Dalton	Vice President	Steven Eugene English	Senior Vice President
Clyde Howard Fitch, Jr.	Senior Vice President	Kim Burton Garland #	Senior Vice President
Ricky Lee Holbein	Vice President	Scott Alan Jones	Vice President
Charles Edward McShane, Jr.	Vice President	Matthew Stanley Mrozek	Vice President
John Michael Petrucci	Senior Vice President	Cynthia Ann Powell	Senior Vice President
Timothy Gerard Reik	Vice President	Mary Jean Reynolds	Vice President
Lorraine Margaret Siegworth	Senior Vice President	Paul Martin Stachura #	Senior Vice President
Gregory Allan Tacchetti #	Senior Vice President	Angela Elliott Taylor	Vice President
Larry Emmett Willeford	Vice President		

DIRECTORS OR TRUSTEES

Robert Ellison Baker	David James D'Antoni	Michael Joseph Fiorile #	Michael Edward LaRocco #
Eileen Ann Mallesch	Thomas Edward Markert	David Russell Meuse	Robert Paul Restrepo, Jr.
Sharon Elaine Roberts	Alexander Bruen Trevor		

State of..... Ohio
County of..... Franklin

The officers of this reporting entity being duly sworn, each depose and say that they are the described officers of said reporting entity, and that on the reporting period stated above, all of the herein described assets were the absolute property of the said reporting entity, free and clear from any liens or claims thereon, except as herein stated, and that this statement, together with related exhibits, schedules and explanations therein contained, annexed or referred to, is a full and true statement of all the assets and liabilities and of the condition and affairs of the said reporting entity as of the reporting period stated above, and of its income and deductions therefrom for the period ended, and have been completed in accordance with the NAIC *Annual Statement Instructions and Accounting Practices and Procedures* manual except to the extent that: (1) state law may differ; or, (2) that state rules or regulations require differences in reporting not related to accounting practices and procedures, according to the best of their information, knowledge and belief, respectively. Furthermore, the scope of this attestation by the described officers also includes the related corresponding electronic filing with the NAIC, when required, that is an exact copy (except for formatting differences due to electronic filing) of the enclosed statement. The electronic filing may be requested by various regulators in lieu of or in addition to the enclosed statement.

Michael Edward LaRocco President	Melissa Ann Centers Secretary	Matthew Robert Pollak Treasurer
Subscribed and sworn to before me	a. Is this an original filing?	Yes [X] No []
This 23rd day of February, 2016	b. If no	1. State the amendment number
		2. Date filed
		3. Number of pages attached

ASSETS

	Current Year			Prior Year
	1	2	3	4
	Assets	Nonadmitted Assets	Net Admitted Assets (Cols. 1 - 2)	Net Admitted Assets
1. Bonds (Schedule D).....	16,150,958	0	16,150,958	14,391,338
2. Stocks (Schedule D):				
2.1 Preferred stocks.....	0	0	0	0
2.2 Common stocks.....	0	0	0	1,396,450
3. Mortgage loans on real estate (Schedule B):				
3.1 First liens.....	0	0	0	0
3.2 Other than first liens.....	0	0	0	0
4. Real estate (Schedule A):				
4.1 Properties occupied by the company (less \$.....0 encumbrances).....	0	0	0	0
4.2 Properties held for the production of income (less \$.....0 encumbrances).....	0	0	0	0
4.3 Properties held for sale (less \$.....0 encumbrances).....	0	0	0	0
5. Cash (\$.....252,947, Schedule E-Part 1), cash equivalents (\$.....0, Schedule E-Part 2) and short-term investments (\$.....0, Schedule DA).....	252,947	0	252,947	407,701
6. Contract loans (including \$.....0 premium notes).....	0	0	0	0
7. Derivatives (Schedule DB).....	0	0	0	0
8. Other invested assets (Schedule BA).....	0	0	0	0
9. Receivables for securities.....	0	0	0	0
10. Securities lending reinvested collateral assets (Schedule DL).....	0	0	0	0
11. Aggregate write-ins for invested assets.....	0	0	0	0
12. Subtotals, cash and invested assets (Lines 1 to 11).....	16,403,905	0	16,403,905	16,195,489
13. Title plants less \$.....0 charged off (for Title insurers only).....	0	0	0	0
14. Investment income due and accrued.....	123,160	0	123,160	88,756
15. Premiums and considerations:				
15.1 Uncollected premiums and agents' balances in the course of collection.....	0	0	0	0
15.2 Deferred premiums, agents' balances and installments booked but deferred and not yet due (including \$.....0 earned but unbilled premiums).....	0	0	0	0
15.3 Accrued retrospective premiums (\$.....0) and contracts subject to redetermination (\$.....0).....	0	0	0	0
16. Reinsurance:				
16.1 Amounts recoverable from reinsurers.....	7,442,620	0	7,442,620	8,522,092
16.2 Funds held by or deposited with reinsured companies.....	0	0	0	0
16.3 Other amounts receivable under reinsurance contracts.....	0	0	0	0
17. Amounts receivable relating to uninsured plans.....	0	0	0	0
18.1 Current federal and foreign income tax recoverable and interest thereon.....	0	0	0	0
18.2 Net deferred tax asset.....	484,913	209,092	275,821	439,437
19. Guaranty funds receivable or on deposit.....	0	0	0	0
20. Electronic data processing equipment and software.....	0	0	0	0
21. Furniture and equipment, including health care delivery assets (\$.....0).....	0	0	0	0
22. Net adjustment in assets and liabilities due to foreign exchange rates.....	0	0	0	0
23. Receivables from parent, subsidiaries and affiliates.....	7,917,443	0	7,917,443	7,012,102
24. Health care (\$.....0) and other amounts receivable.....	0	0	0	0
25. Aggregate write-ins for other than invested assets.....	0	0	0	0
26. Total assets excluding Separate Accounts, Segregated Accounts and Protected Cell Accounts (Lines 12 to 25).....	32,372,041	209,092	32,162,949	32,257,876
27. From Separate Accounts, Segregated Accounts and Protected Cell Accounts.....	0	0	0	0
28. TOTALS (Lines 26 and 27).....	32,372,041	209,092	32,162,949	32,257,876
DETAILS OF WRITE-INS				
1101.	0	0	0	0
1102.	0	0	0	0
1103.	0	0	0	0
1198. Summary of remaining write-ins for Line 11 from overflow page.....	0	0	0	0
1199. Totals (Lines 1101 thru 1103 plus 1198) (Line 11 above).....	0	0	0	0
2501.	0	0	0	0
2502.	0	0	0	0
2503.	0	0	0	0
2598. Summary of remaining write-ins for Line 25 from overflow page.....	0	0	0	0
2599. Totals (Lines 2501 thru 2503 plus 2598) (Line 25 above).....	0	0	0	0

STATE AUTO INSURANCE COMPANY OF OHIO
LIABILITIES, SURPLUS AND OTHER FUNDS

	1 Current Year	2 Prior Year
1. Losses (Part 2A, Line 35, Column 8).....	0	0
2. Reinsurance payable on paid losses and loss adjustment expenses (Schedule F, Part 1, Column 6).....	0	0
3. Loss adjustment expenses (Part 2A, Line 35, Column 9).....	0	0
4. Commissions payable, contingent commissions and other similar charges.....	0	0
5. Other expenses (excluding taxes, licenses and fees).....	0	0
6. Taxes, licenses and fees (excluding federal and foreign income taxes).....	0	0
7.1 Current federal and foreign income taxes (including \$.....0 on realized capital gains (losses)).....	20,747	207,315
7.2 Net deferred tax liability.....	0	0
8. Borrowed money \$.....0 and interest thereon \$.....0.....	0	0
9. Unearned premiums (Part 1A, Line 38, Column 5) (after deducting unearned premiums for ceded reinsurance of \$....28,207,899 and including warranty reserves of \$.....0 and accrued accident and health experience rating refunds including \$.....0 for medical loss ratio rebate per the Public Health Service Act).....	0	0
10. Advance premium.....	0	0
11. Dividends declared and unpaid:		
11.1 Stockholders.....	0	0
11.2 Policyholders.....	0	0
12. Ceded reinsurance premiums payable (net of ceding commissions).....	15,349,997	15,514,972
13. Funds held by company under reinsurance treaties (Schedule F, Part 3, Column 19).....	2,300	2,300
14. Amounts withheld or retained by company for account of others.....	0	0
15. Remittances and items not allocated.....	0	0
16. Provision for reinsurance (including \$.....0 certified) (Schedule F, Part 8).....	0	0
17. Net adjustments in assets and liabilities due to foreign exchange rates.....	0	0
18. Drafts outstanding.....	0	0
19. Payable to parent, subsidiaries and affiliates.....	8,394	9,307
20. Derivatives.....	0	0
21. Payable for securities.....	0	0
22. Payable for securities lending.....	0	0
23. Liability for amounts held under uninsured plans.....	0	0
24. Capital notes \$.....0 and interest thereon \$.....0.....	0	0
25. Aggregate write-ins for liabilities.....	8,406	17,625
26. Total liabilities excluding protected cell liabilities (Lines 1 through 25).....	15,389,844	15,751,519
27. Protected cell liabilities.....	0	0
28. Total liabilities (Lines 26 and 27).....	15,389,844	15,751,519
29. Aggregate write-ins for special surplus funds.....	0	0
30. Common capital stock.....	2,300,000	2,300,000
31. Preferred capital stock.....	0	0
32. Aggregate write-ins for other than special surplus funds.....	0	0
33. Surplus notes.....	0	0
34. Gross paid in and contributed surplus.....	3,823,680	3,823,680
35. Unassigned funds (surplus).....	10,649,425	10,382,677
36. Less treasury stock, at cost:		
36.10.000 shares common (value included in Line 30 \$.....0).....	0	0
36.20.000 shares preferred (value included in Line 31 \$.....0).....	0	0
37. Surplus as regards policyholders (Lines 29 to 35, less 36) (Page 4, Line 39).....	16,773,105	16,506,357
38. TOTALS (Page 2, Line 28, Col. 3).....	32,162,949	32,257,876

DETAILS OF WRITE-INS		
2501. Equities and deposits in pools and associations.....	8,406	17,625
2502.	0	0
2503.	0	0
2598. Summary of remaining write-ins for Line 25 from overflow page.....	0	0
2599. Totals (Lines 2501 thru 2503 plus 2598) (Line 25 above).....	8,406	17,625
2901.	0	0
2902.	0	0
2903.	0	0
2998. Summary of remaining write-ins for Line 29 from overflow page.....	0	0
2999. Totals (Lines 2901 thru 2903 plus 2998) (Line 29 above).....	0	0
3201.	0	0
3202.	0	0
3203.	0	0
3298. Summary of remaining write-ins for Line 32 from overflow page.....	0	0
3299. Totals (Lines 3201 thru 3203 plus 3298) (Line 32 above).....	0	0

STATE AUTO INSURANCE COMPANY OF OHIO
STATEMENT OF INCOME

UNDERWRITING INCOME			1	2
			Current Year	Prior Year
1.	Premiums earned (Part 1, Line 35, Column 4).....		0	0
DEDUCTIONS				
2.	Losses incurred (Part 2, Line 35, Column 7).....		0	0
3.	Loss adjustment expenses incurred (Part 3, Line 25, Column 1).....		0	0
4.	Other underwriting expenses incurred (Part 3, Line 25, Column 2).....		0	0
5.	Aggregate write-ins for underwriting deductions.....		0	0
6.	Total underwriting deductions (Lines 2 through 5).....		0	0
7.	Net income of protected cells.....		0	0
8.	Net underwriting gain (loss) (Line 1 minus Line 6 plus Line 7).....		0	0
INVESTMENT INCOME				
9.	Net investment income earned (Exhibit of Net Investment Income, Line 17).....		480,978	540,546
10.	Net realized capital gains (losses) less capital gains tax of \$.....7,136 (Exhibit of Capital Gains (Losses)).....		344,444	170,822
11.	Net investment gain (loss) (Lines 9 + 10).....		825,422	711,368
OTHER INCOME				
12.	Net gain (loss) from agents' or premium balances charged off (amount recovered \$.....0 amount charged off \$.....0).....		0	0
13.	Finance and service charges not included in premiums.....		0	0
14.	Aggregate write-ins for miscellaneous income.....		0	0
15.	Total other income (Lines 12 through 14).....		0	0
16.	Net income before dividends to policyholders, after capital gains tax and before all other federal and foreign income taxes (Lines 8 + 11 + 15).....		825,422	711,368
17.	Dividends to policyholders.....		0	0
18.	Net income, after dividends to policyholders, after capital gains tax and before all other federal and foreign income taxes (Line 16 minus Line 17).....		825,422	711,368
19.	Federal and foreign income taxes incurred.....		13,611	144,309
20.	Net income (Line 18 minus Line 19) (to Line 22).....		811,811	567,059
CAPITAL AND SURPLUS ACCOUNT				
21.	Surplus as regards policyholders, December 31 prior year (Page 4, Line 39, Column 2).....		16,506,357	15,938,927
22.	Net income (from Line 20).....		811,811	567,059
23.	Net transfers (to) from Protected Cell accounts.....		0	0
24.	Change in net unrealized capital gains or (losses) less capital gains tax of \$.....(133,507).....		(247,940)	(20,709)
25.	Change in net unrealized foreign exchange capital gain (loss).....		0	0
26.	Change in net deferred income tax.....		(223,205)	(27,216)
27.	Change in nonadmitted assets (Exhibit of Nonadmitted Assets, Line 28, Column 3).....		(73,918)	48,296
28.	Change in provision for reinsurance (Page 3, Line 16, Column 2 minus Column 1).....		0	0
29.	Change in surplus notes.....		0	0
30.	Surplus (contributed to) withdrawn from protected cells.....		0	0
31.	Cumulative effect of changes in accounting principles.....		0	0
32.	Capital changes:			
32.1	Paid in.....		0	0
32.2	Transferred from surplus (Stock Dividend).....		0	0
32.3	Transferred to surplus.....		0	0
33.	Surplus adjustments:			
33.1	Paid in.....		0	0
33.2	Transferred to capital (Stock Dividend).....		0	0
33.3.	Transferred from capital.....		0	0
34.	Net remittances from or (to) Home Office.....		0	0
35.	Dividends to stockholders.....		0	0
36.	Change in treasury stock (Page 3, Lines 36.1 and 36.2, Column 2 minus Column 1).....		0	0
37.	Aggregate write-ins for gains and losses in surplus.....		0	0
38.	Change in surplus as regards policyholders for the year (Lines 22 through 37).....		266,748	567,430
39.	Surplus as regards policyholders, December 31 current year (Line 21 plus Line 38) (Page 3, Line 37).....		16,773,105	16,506,357
DETAILS OF WRITE-INS				
0501.		0	0
0502.		0	0
0503.		0	0
0598.	Summary of remaining write-ins for Line 5 from overflow page.....		0	0
0599.	Totals (Lines 0501 thru 0503 plus 0598) (Line 5 above).....		0	0
1401.		0	0
1402.		0	0
1403.		0	0
1498.	Summary of remaining write-ins for Line 14 from overflow page.....		0	0
1499.	Totals (Lines 1401 thru 1403 plus 1498) (Line 14 above).....		0	0
3701.		0	0
3702.		0	0
3703.		0	0
3798.	Summary of remaining write-ins for Line 37 from overflow page.....		0	0
3799.	Totals (Lines 3701 thru 3703 plus 3798) (Line 37 above).....		0	0

STATE AUTO INSURANCE COMPANY OF OHIO
CASH FLOW

	1 Current Year	2 Prior Year
CASH FROM OPERATIONS		
1. Premiums collected net of reinsurance.....	(164,975)	(786,853)
2. Net investment income.....	580,093	600,503
3. Miscellaneous income.....	0	0
4. Total (Lines 1 through 3).....	415,118	(186,350)
5. Benefit and loss related payments.....	(1,079,472)	264,371
6. Net transfers to Separate Accounts, Segregated Accounts and Protected Cell Accounts.....	0	0
7. Commissions, expenses paid and aggregate write-ins for deductions.....	0	0
8. Dividends paid to policyholders.....	0	0
9. Federal and foreign income taxes paid (recovered) net of \$.....0 tax on capital gains (losses).....	207,315	34,433
10. Total (Lines 5 through 9).....	(872,157)	298,804
11. Net cash from operations (Line 4 minus Line 10).....	1,287,275	(485,154)
CASH FROM INVESTMENTS		
12. Proceeds from investments sold, matured or repaid:		
12.1 Bonds.....	4,566,334	4,382,552
12.2 Stocks.....	1,299,028	505,142
12.3 Mortgage loans.....	0	0
12.4 Real estate.....	0	0
12.5 Other invested assets.....	0	0
12.6 Net gains or (losses) on cash, cash equivalents and short-term investments.....	0	0
12.7 Miscellaneous proceeds.....	0	0
12.8 Total investment proceeds (Lines 12.1 to 12.7).....	5,865,362	4,887,694
13. Cost of investments acquired (long-term only):		
13.1 Bonds.....	6,392,778	5,652,735
13.2 Stocks.....	0	0
13.3 Mortgage loans.....	0	0
13.4 Real estate.....	0	0
13.5 Other invested assets.....	0	0
13.6 Miscellaneous applications.....	0	0
13.7 Total investments acquired (Lines 13.1 to 13.6).....	6,392,778	5,652,735
14. Net increase (decrease) in contract loans and premium notes.....	0	0
15. Net cash from investments (Line 12.8 minus Lines 13.7 minus Line 14).....	(527,416)	(765,041)
CASH FROM FINANCING AND MISCELLANEOUS SOURCES		
16. Cash provided (applied):		
16.1 Surplus notes, capital notes.....	0	0
16.2 Capital and paid in surplus, less treasury stock.....	0	0
16.3 Borrowed funds.....	0	0
16.4 Net deposits on deposit-type contracts and other insurance liabilities.....	0	0
16.5 Dividends to stockholders.....	0	0
16.6 Other cash provided (applied).....	(914,613)	1,051,304
17. Net cash from financing and miscellaneous sources (Lines 16.1 to 16.4 minus Line 16.5 plus Line 16.6).....	(914,613)	1,051,304
RECONCILIATION OF CASH, CASH EQUIVALENTS AND SHORT-TERM INVESTMENTS		
18. Net change in cash, cash equivalents and short-term investments (Line 11 plus Line 15 plus Line 17).....	(154,754)	(198,891)
19. Cash, cash equivalents and short-term investments:		
19.1 Beginning of year.....	407,701	606,592
19.2 End of year (Line 18 plus Line 19.1).....	252,947	407,701
Note: Supplemental disclosures of cash flow information for non-cash transactions:		
20.0001	0	0

Ex. of Premiums Earned
NONE

Underwriting and Investment Ex. - Pt. 1A - Recapitulation of All Premiums
NONE

STATE AUTO INSURANCE COMPANY OF OHIO
UNDERWRITING AND INVESTMENT EXHIBIT

PART 1B - PREMIUMS WRITTEN

Line of Business	1	Reinsurance Assumed		Reinsurance Ceded		6
	Direct Business (a)	2	3	4	5	Net Premiums Written (Cols. 1 + 2 + 3 - 4 - 5)
1. Fire.....	1,417,866	0	47,634	1,424,097	41,403	0
2. Allied lines.....	1,871,389	0	16,904	1,746,933	141,360	0
3. Farmowners multiple peril.....	0	0	0	(12,716)	12,716	0
4. Homeowners multiple peril.....	23,856,881	0	135,612	23,079,104	913,388	0
5. Commercial multiple peril.....	0	0	0	(36,466)	36,466	0
6. Mortgage guaranty.....	0	0	0	0	0	0
8. Ocean marine.....	117,033	0	0	114,519	2,514	0
9. Inland marine.....	850,457	0	0	834,723	15,734	0
10. Financial guaranty.....	0	0	0	0	0	0
11.1 Medical professional liability - occurrence.....	0	0	0	0	0	0
11.2 Medical professional liability - claims-made.....	0	0	0	0	0	0
12. Earthquake.....	247,572	0	0	201,224	46,348	0
13. Group accident and health.....	0	0	0	0	0	0
14. Credit accident and health (group and individual).....	0	0	0	0	0	0
15. Other accident and health.....	0	0	0	0	0	0
16. Workers' compensation.....	0	0	0	0	0	0
17.1 Other liability - occurrence.....	1,271,145	0	0	1,191,006	80,139	0
17.2 Other liability - claims-made.....	0	0	0	0	0	0
17.3 Excess workers' compensation.....	0	0	0	0	0	0
18.1 Products liability - occurrence.....	0	0	0	0	0	0
18.2 Products liability - claims-made.....	0	0	0	0	0	0
19.1, 19.2 Private passenger auto liability.....	18,942,229	0	0	18,933,141	9,088	0
19.3, 19.4 Commercial auto liability.....	0	0	0	0	0	0
21. Auto physical damage.....	15,412,351	0	0	15,412,351	0	0
22. Aircraft (all perils).....	0	0	0	0	0	0
23. Fidelity.....	0	0	0	0	0	0
24. Surety.....	0	0	0	0	0	0
26. Burglary and theft.....	0	0	54	54	0	0
27. Boiler and machinery.....	0	0	0	0	0	0
28. Credit.....	0	0	0	0	0	0
29. International.....	0	0	0	0	0	0
30. Warranty.....	0	0	0	0	0	0
31. Reinsurance - nonproportional assumed property.....	.XXX	0	0	0	0	0
32. Reinsurance - nonproportional assumed liability.....	.XXX	0	0	0	0	0
33. Reinsurance - nonproportional assumed financial lines.....	.XXX	0	0	0	0	0
34. Aggregate write-ins for other lines of business.....	0	0	0	0	0	0
35. TOTALS.....	63,986,923	0	200,203	62,887,969	1,299,157	0

DETAILS OF WRITE-INS						
3401.	0	0	0	0	0	0
3402.	0	0	0	0	0	0
3403.	0	0	0	0	0	0
3498. Summary of remaining write-ins for Line 34 from overflow page	0	0	0	0	0	0
3499. Totals (Lines 3401 thru 3403 plus 3498) (Line 34 above).....	0	0	0	0	0	0

(a) Does the company's direct premiums written include premiums recorded on an installment basis? Yes [] No [X]
If yes: 1. The amount of such installment premiums \$.0.
2. Amount at which such installment premiums would have been reported had they been recorded on an annualized basis \$.0.

UNDERWRITING AND INVESTMENT EXHIBIT

PART 2 - LOSSES PAID AND INCURRED

		Losses Paid Less Salvage				5	6	7	8
		1	2	3	4				
Line of Business		Direct Business	Reinsurance Assumed	Reinsurance Recovered	Net Payments (Cols. 1 + 2 - 3)	Net Losses Unpaid Current Year (Part 2A, Col. 8)	Net Losses Unpaid Prior Year	Losses Incurred Current Year (Cols. 4 + 5 - 6)	Percentage of Losses Incurred (Col. 7, Part 2) to Premiums Earned (Col. 4, Part 1)
1.	Fire.....	360,066	17,247	377,313	0	0	0	0	0.0
2.	Allied lines.....	512,942	6,180	519,122	0	0	0	0	0.0
3.	Farmowners multiple peril.....	0	0	0	0	0	0	0	0.0
4.	Homeowners multiple peril.....	8,512,866	59,183	8,572,049	0	0	0	0	0.0
5.	Commercial multiple peril.....	0	0	0	0	0	0	0	0.0
6.	Mortgage guaranty.....	0	0	0	0	0	0	0	0.0
8.	Ocean marine.....	12,672	0	12,672	0	0	0	0	0.0
9.	Inland marine.....	249,229	0	249,229	0	0	0	0	0.0
10.	Financial guaranty.....	0	0	0	0	0	0	0	0.0
11.1	Medical professional liability - occurrence.....	0	0	0	0	0	0	0	0.0
11.2	Medical professional liability - claims-made.....	0	0	0	0	0	0	0	0.0
12.	Earthquake.....	0	0	0	0	0	0	0	0.0
13.	Group accident and health.....	0	0	0	0	0	0	0	0.0
14.	Credit accident and health (group and individual).....	0	0	0	0	0	0	0	0.0
15.	Other accident and health.....	0	0	0	0	0	0	0	0.0
16.	Workers' compensation.....	0	0	0	0	0	0	0	0.0
17.1	Other liability - occurrence.....	14,910	0	14,910	0	0	0	0	0.0
17.2	Other liability - claims-made.....	0	0	0	0	0	0	0	0.0
17.3	Excess workers' compensation.....	0	0	0	0	0	0	0	0.0
18.1	Products liability - occurrence.....	0	0	0	0	0	0	0	0.0
18.2	Products liability - claims-made.....	0	0	0	0	0	0	0	0.0
19.1, 19.2	Private passenger auto liability.....	11,055,563	0	11,055,563	0	0	0	0	0.0
19.3, 19.4	Commercial auto liability.....	0	0	0	0	0	0	0	0.0
21.	Auto physical damage.....	9,104,112	0	9,104,112	0	0	0	0	0.0
22.	Aircraft (all perils).....	0	0	0	0	0	0	0	0.0
23.	Fidelity.....	0	0	0	0	0	0	0	0.0
24.	Surety.....	0	0	0	0	0	0	0	0.0
26.	Burglary and theft.....	0	0	0	0	0	0	0	0.0
27.	Boiler and machinery.....	0	0	0	0	0	0	0	0.0
28.	Credit.....	0	0	0	0	0	0	0	0.0
29.	International.....	0	0	0	0	0	0	0	0.0
30.	Warranty.....	0	0	0	0	0	0	0	0.0
31.	Reinsurance - nonproportional assumed property.....	.XXX	0	0	0	0	0	0	0.0
32.	Reinsurance - nonproportional assumed liability.....	.XXX	0	0	0	0	0	0	0.0
33.	Reinsurance - nonproportional assumed financial lines.....	.XXX	0	0	0	0	0	0	0.0
34.	Aggregate write-ins for other lines of business.....	0	0	0	0	0	0	0	0.0
35.	TOTALS.....	29,822,361	82,610	29,904,971	0	0	0	0	0.0
DETAILS OF WRITE-INS									
3401.	0	0	0	0	0	0	0	0.0
3402.	0	0	0	0	0	0	0	0.0
3403.	0	0	0	0	0	0	0	0.0
3498.	Summary of remaining write-ins for Line 34 from overflow page.....	0	0	0	0	0	0	0	.XXX
3499.	Totals (Lines 3401 thru 3403 plus 3498) (Line 34 above).....	0	0	0	0	0	0	0	0.0

UNDERWRITING AND INVESTMENT EXHIBIT

PART 2A - UNPAID LOSSES AND LOSS ADJUSTMENT EXPENSES

	Line of Business	Reported Losses				Incurred But Not Reported			8 Net Losses Unpaid (Cols. 4 + 5 + 6 - 7)	9 Net Unpaid Loss Adjustment Expenses
		1 Direct	2 Reinsurance Assumed	3 Deduct Reinsurance Recoverable	4 Net Losses Excluding Incurred but not Reported (Cols. 1 + 2 - 3)	5 Direct	6 Reinsurance Assumed	7 Reinsurance Ceded		
1.	Fire.....	150,589	0	150,589	0	26,961	0	26,961	0	0
2.	Allied lines.....	86,567	0	86,567	0	5,547	0	5,547	0	0
3.	Farmowners multiple peril.....	0	0	0	0	0	0	0	0	0
4.	Homeowners multiple peril.....	3,233,571	0	3,233,571	0	732,862	0	732,862	0	0
5.	Commercial multiple peril.....	0	0	0	0	0	0	0	0	0
6.	Mortgage guaranty.....	0	0	0	0	0	0	0	0	0
8.	Ocean marine.....	0	0	0	0	778	0	778	0	0
9.	Inland marine.....	40,976	0	40,976	0	8,918	0	8,918	0	0
10.	Financial guaranty.....	0	0	0	0	0	0	0	0	0
11.1	Medical professional liability - occurrence.....	0	0	0	0	0	0	0	0	0
11.2	Medical professional liability - claims-made.....	0	0	0	0	0	0	0	0	0
12.	Earthquake.....	0	0	0	0	0	0	0	0	0
13.	Group accident and health.....	0	0	0	0	0	0	0	(a) 0	0
14.	Credit accident and health (group and individual).....	0	0	0	0	0	0	0	0	0
15.	Other accident and health.....	0	0	0	0	0	0	0	(a) 0	0
16.	Workers' compensation.....	0	0	0	0	0	0	0	0	0
17.1	Other liability - occurrence.....	2,323,300	0	2,323,300	0	1,909,367	0	1,909,367	0	0
17.2	Other liability - claims-made.....	0	0	0	0	0	0	0	0	0
17.3	Excess workers' compensation.....	0	0	0	0	0	0	0	0	0
18.1	Products liability - occurrence.....	0	0	0	0	0	0	0	0	0
18.2	Products liability - claims-made.....	0	0	0	0	0	0	0	0	0
19.1, 19.2	Private passenger auto liability.....	10,036,726	0	10,036,726	0	3,911,008	0	3,911,008	0	0
19.3, 19.4	Commercial auto liability.....	0	0	0	0	0	0	0	0	0
21.	Auto physical damage.....	470,232	0	470,232	0	(361,942)	0	(361,942)	0	0
22.	Aircraft (all perils).....	0	0	0	0	0	0	0	0	0
23.	Fidelity.....	0	0	0	0	0	0	0	0	0
24.	Surety.....	0	0	0	0	0	0	0	0	0
26.	Burglary and theft.....	0	0	0	0	0	0	0	0	0
27.	Boiler and machinery.....	0	0	0	0	0	0	0	0	0
28.	Credit.....	0	0	0	0	0	0	0	0	0
29.	International.....	0	0	0	0	0	0	0	0	0
30.	Warranty.....	0	0	0	0	0	0	0	0	0
31.	Reinsurance - nonproportional assumed property.....	.XXX	0	0	0	.XXX	0	0	0	0
32.	Reinsurance - nonproportional assumed liability.....	.XXX	0	0	0	.XXX	0	0	0	0
33.	Reinsurance - nonproportional assumed financial lines.....	.XXX	0	0	0	.XXX	0	0	0	0
34.	Aggregate write-ins for other lines of business.....	0	0	0	0	0	0	0	0	0
35.	TOTALS.....	16,341,961	0	16,341,961	0	6,233,498	0	6,233,498	0	0

DETAILS OF WRITE-INS

3401.	0	0	0	0	0	0	0	0	0
3402.	0	0	0	0	0	0	0	0	0
3403.	0	0	0	0	0	0	0	0	0
3498.	Summary of remaining write-ins for Line 34 from overflow page.....	0	0	0	0	0	0	0	0	0
3499.	Totals (Lines 3401 thru 3403 plus 3498) (Line 34 above).....	0	0	0	0	0	0	0	0	0

(a) Including \$.00 for present value of life indemnity claims.

STATE AUTO INSURANCE COMPANY OF OHIO
UNDERWRITING AND INVESTMENT EXHIBIT

PART 3 - EXPENSES

	1	2	3	4
	Loss Adjustment Expenses	Other Underwriting Expenses	Investment Expenses	Total
1. Claim adjustment services:				
1.1 Direct.....	3,202,563	0	0	3,202,563
1.2 Reinsurance assumed.....	21,345	0	0	21,345
1.3 Reinsurance ceded.....	3,223,908	0	0	3,223,908
1.4 Net claim adjustment services (1.1 + 1.2 - 1.3).....	0	0	0	0
2. Commission and brokerage:				
2.1 Direct, excluding contingent.....	0	9,064,619	0	9,064,619
2.2 Reinsurance assumed, excluding contingent.....	0	84,605	0	84,605
2.3 Reinsurance ceded, excluding contingent.....	0	9,149,224	0	9,149,224
2.4 Contingent - direct.....	0	962,676	0	962,676
2.5 Contingent - reinsurance assumed.....	0	0	0	0
2.6 Contingent - reinsurance ceded.....	0	962,676	0	962,676
2.7 Policy and membership fees.....	0	0	0	0
2.8 Net commission and brokerage (2.1 + 2.2 - 2.3 + 2.4 + 2.5 - 2.6 + 2.7).....	0	0	0	0
3. Allowances to manager and agents.....	0	0	0	0
4. Advertising.....	0	0	0	0
5. Boards, bureaus and associations.....	0	0	0	0
6. Surveys and underwriting reports.....	0	0	0	0
7. Audit of assureds' records.....	0	0	0	0
8. Salary and related items:				
8.1 Salaries.....	0	0	759	759
8.2 Payroll taxes.....	0	0	52	52
9. Employee relations and welfare.....	0	0	2,880	2,880
10. Insurance.....	0	0	118	118
11. Directors' fees.....	0	0	0	0
12. Travel and travel items.....	0	0	264	264
13. Rent and rent items.....	0	0	75	75
14. Equipment.....	0	0	479	479
15. Cost or depreciation of EDP equipment and software.....	0	0	221	221
16. Printing and stationery.....	0	0	30	30
17. Postage, telephone and telegraph, exchange and express.....	0	0	169	169
18. Legal and auditing.....	0	0	36,386	36,386
19. Totals (Lines 3 to 18).....	0	0	41,433	41,433
20. Taxes, licenses and fees:				
20.1 State and local insurance taxes deducting guaranty association credits of \$.....0.....	0	0	0	0
20.2 Insurance department licenses and fees.....	0	0	0	0
20.3 Gross guaranty association assessments.....	0	0	0	0
20.4 All other (excluding federal and foreign income and real estate).....	0	0	0	0
20.5 Total taxes, licenses and fees (20.1 + 20.2 + 20.3 + 20.4).....	0	0	0	0
21. Real estate expenses.....	0	0	0	0
22. Real estate taxes.....	0	0	0	0
23. Reimbursements by uninsured plans.....	0	0	0	0
24. Aggregate write-ins for miscellaneous expenses.....	0	0	315	315
25. Total expenses incurred.....	0	0	41,748	(a).....41,748
26. Less unpaid expenses - current year.....	0	0	0	0
27. Add unpaid expenses - prior year.....	0	0	0	0
28. Amounts receivable relating to uninsured plans, prior year.....	0	0	0	0
29. Amounts receivable relating to uninsured plans, current year.....	0	0	0	0
30. TOTAL EXPENSES PAID (Lines 25 - 26 + 27 - 28 + 29).....	0	0	41,748	41,748

DETAILS OF WRITE-INS

2401. Miscellaneous.....	0	0	315	315
2402.	0	0	0	0
2403.	0	0	0	0
2498. Summary of remaining write-ins for Line 24 from overflow page.....	0	0	0	0
2499. Totals (Lines 2401 thru 2403 plus 2498) (Line 24 above).....	0	0	315	315

(a) Includes management fees of \$.....36,055 to affiliates and \$.....0 to non-affiliates.

STATE AUTO INSURANCE COMPANY OF OHIO
EXHIBIT OF NET INVESTMENT INCOME

	1 Collected During Year	2 Earned During Year
1. U.S. government bonds.....	(a).....93,393115,254
1.1 Bonds exempt from U.S. tax.....	(a).....142,329159,954
1.2 Other bonds (unaffiliated).....	(a).....231,841226,760
1.3 Bonds of affiliates.....	(a)......00
2.1 Preferred stocks (unaffiliated).....	(b)......00
2.11 Preferred stocks of affiliates.....	(b)......00
2.2 Common stocks (unaffiliated).....20,75920,759
2.21 Common stocks of affiliates.....00
3. Mortgage loans.....	(c)......00
4. Real estate.....	(d)......00
5. Contract loans.....00
6. Cash, cash equivalents and short-term investments.....	(e)......00
7. Derivative instruments.....	(f)......00
8. Other invested assets.....00
9. Aggregate write-ins for investment income.....00
10. Total gross investment income.....488,322522,727
11. Investment expenses.....		(g).....41,748
12. Investment taxes, licenses and fees, excluding federal income taxes.....		(g).....0
13. Interest expense.....		(h).....0
14. Depreciation on real estate and other invested assets.....		(i).....0
15. Aggregate write-ins for deductions from investment income.....	0
16. Total deductions (Lines 11 through 15).....	41,748
17. Net investment income (Line 10 minus Line 16).....	480,979

DETAILS OF WRITE-INS

0901.00
0902.00
0903.00
0998. Summary of remaining write-ins for Line 9 from overflow page.....00
0999. Totals (Lines 0901 thru 0903 plus 0998) (Line 9 above).....00
1501.0
1502.0
1503.0
1598. Summary of remaining write-ins for Line 15 from overflow page.....	0
1599. Totals (Lines 1501 thru 1503 plus 1598) (Line 15 above).....	0

- (a) Includes \$.....2,824 accrual of discount less \$.....137,204 amortization of premium and less \$.....29,959 paid for accrued interest on purchases.
- (b) Includes \$.....0 accrual of discount less \$.....0 amortization of premium and less \$.....0 paid for accrued dividends on purchases.
- (c) Includes \$.....0 accrual of discount less \$.....0 amortization of premium and less \$.....0 paid for accrued interest on purchases.
- (d) Includes \$.....0 for company's occupancy of its own buildings; and excludes \$.....0 interest on encumbrances.
- (e) Includes \$.....0 accrual of discount less \$.....0 amortization of premium and less \$.....0 paid for accrued interest on purchases.
- (f) Includes \$.....0 accrual of discount less \$.....0 amortization of premium.
- (g) Includes \$.....0 investment expenses and \$.....0 investment taxes, licenses and fees, excluding federal income taxes, attributable to Segregated and Separate Accounts.
- (h) Includes \$.....0 interest on surplus notes and \$.....0 interest on capital notes.
- (i) Includes \$.....0 depreciation on real estate and \$.....0 depreciation on other invested assets.

EXHIBIT OF CAPITAL GAINS (LOSSES)

	1 Realized Gain (Loss) on Sales or Maturity	2 Other Realized Adjustments	3 Total Realized Capital Gain (Loss) (Columns 1 + 2)	4 Change in Unrealized Capital Gain (Loss)	5 Change in Unrealized Foreign Exchange Capital Gain (Loss)
1. U.S. government bonds.....20,159020,1593,0780
1.1 Bonds exempt from U.S. tax.....3403400
1.2 Other bonds (unaffiliated).....44,284044,28400
1.3 Bonds of affiliates.....00000
2.1 Preferred stocks (unaffiliated).....00000
2.11 Preferred stocks of affiliates.....00000
2.2 Common stocks (unaffiliated).....287,1020287,102(384,525)0
2.21 Common stocks of affiliates.....00000
3. Mortgage loans.....00000
4. Real estate.....00000
5. Contract loans.....00000
6. Cash, cash equivalents and short-term investments.....00000
7. Derivative instruments.....00000
8. Other invested assets.....00000
9. Aggregate write-ins for capital gains (losses).....00000
10. Total capital gains (losses).....351,5800351,580(381,447)0

DETAILS OF WRITE-INS

0901.00000
0902.00000
0903.00000
0998. Summary of remaining write-ins for Line 9 from overflow page.....00000
0999. Totals (Lines 0901 thru 0903 plus 0998) (Line 9 above).....00000

STATE AUTO INSURANCE COMPANY OF OHIO
EXHIBIT OF NONADMITTED ASSETS

	1 Current Year Total Nonadmitted Assets	2 Prior Year Total Nonadmitted Assets	3 Change in Total Nonadmitted Assets (Col. 2 - Col. 1)
1. Bonds (Schedule D).....000
2. Stocks (Schedule D):			
2.1 Preferred stocks.....000
2.2 Common stocks.....000
3. Mortgage loans on real estate (Schedule B):			
3.1 First liens.....000
3.2 Other than first liens.....000
4. Real estate (Schedule A):			
4.1 Properties occupied by the company.....000
4.2 Properties held for the production of income.....000
4.3 Properties held for sale.....000
5. Cash (Schedule E-Part 1), cash equivalents (Schedule E-Part 2) and short-term investments (Schedule DA).....000
6. Contract loans.....000
7. Derivatives (Schedule DB).....000
8. Other invested assets (Schedule BA).....000
9. Receivables for securities.....000
10. Securities lending reinvested collateral assets (Schedule DL).....000
11. Aggregate write-ins for invested assets.....000
12. Subtotals, cash and invested assets (Lines 1 to 11).....000
13. Title plants (for Title insurers only).....000
14. Investment income due and accrued.....000
15. Premiums and considerations:			
15.1 Uncollected premiums and agents' balances in the course of collection.....000
15.2 Deferred premiums, agents' balances and installments booked but deferred and not yet due.....000
15.3 Accrued retrospective premiums and contracts subject to redetermination.....000
16. Reinsurance:			
16.1 Amounts recoverable from reinsurers.....000
16.2 Funds held by or deposited with reinsured companies.....000
16.3 Other amounts receivable under reinsurance contracts.....000
17. Amounts receivable relating to uninsured plans.....000
18.1 Current federal and foreign income tax recoverable and interest thereon.....000
18.2 Net deferred tax asset.....209,092135,174(73,918)
19. Guaranty funds receivable or on deposit.....000
20. Electronic data processing equipment and software.....000
21. Furniture and equipment, including health care delivery assets.....000
22. Net adjustment in assets and liabilities due to foreign exchange rates.....000
23. Receivables from parent, subsidiaries and affiliates.....000
24. Health care and other amounts receivable.....000
25. Aggregate write-ins for other than invested assets.....000
26. Total assets excluding Separate Accounts, Segregated Accounts and Protected Cell Accounts (Lines 12 through 25).....209,092135,174(73,918)
27. From Separate Accounts, Segregated Accounts and Protected Cell Accounts.....000
28. TOTALS (Lines 26 and 27).....209,092135,174(73,918)

DETAILS OF WRITE-INS

1101.000
1102.000
1103.000
1198. Summary of remaining write-ins for Line 11 from overflow page.....000
1199. Totals (Lines 1101 thru 1103 plus 1198) (Line 11 above).....000
2501.000
2502.000
2503.000
2598. Summary of remaining write-ins for Line 25 from overflow page.....000
2599. Totals (Lines 2501 thru 2503 plus 2598) (Line 25 above).....000

NOTES TO FINANCIAL STATEMENTS

1. Summary of Significant Accounting Policies:

A. Accounting Practices:

The accompanying financial statements of State Auto Insurance Company of Ohio (the "Company" or "SA Ohio") are presented on the basis of accounting practices prescribed or permitted by the Ohio Department of Insurance (the "Department"), which has adopted the National Association of Insurance Commissioners' (NAIC) *Accounting Practices and Procedures* manual (NAIC SAP).

A reconciliation of the Company's net income and capital and surplus between the practices prescribed and permitted by the state of Ohio and NAIC SAP is shown below:

Description	State of Domicile	Amount (\$)	
		2015	2014
Net income, OH basis	OH	811,811	567,059
State prescribed practice		-	-
State permitted practice		-	-
Net income, NAIC SAP basis	OH	811,811	567,059
Statutory surplus, OH basis	OH	16,773,105	16,506,357
State prescribed practice		-	-
State permitted practice		-	-
Statutory surplus, NAIC SAP basis	OH	16,773,105	16,506,357

The Company is a member of the State Auto Holding Company System ("State Auto Group") that is defined at Schedule Y – Information Concerning Activities of Insurer Members of a Holding Company Group. See Schedule Y Part 1 – Organizational Chart. The following member companies of the State Auto Group referred to throughout these notes are defined as follows: State Automobile Mutual Insurance Company ("State Auto Mutual"), State Auto Insurance Company of Wisconsin ("SA Wisconsin"), State Auto Financial Corporation ("State Auto Financial"), State Auto Property & Casualty Insurance Company ("State Auto P&C"), Stateco Financial Services, Inc. ("Stateco"), Milbank Insurance Company ("Milbank"), State Auto Insurance Company of Ohio ("SA Ohio"), Risk Evaluation & Design, LLC ("RED"), Meridian Security Insurance Company ("Meridian Security"), Patrons Mutual Insurance Company of Connecticut ("Patrons Mutual"), Rockhill Holding Company ("RHC"), Rockhill Insurance Company ("Rockhill"), Plaza Insurance Company ("Plaza"), American Compensation Insurance Company ("American Compensation"), and Bloomington Compensation Insurance Company ("Bloomington Compensation"). SA Software Shelf, Inc. ("SA Software") was dissolved on September 16, 2014. Meridian Citizens Mutual ("Meridian Citizens Mutual") was merged with State Auto Mutual on July 2, 2014. CDC Holding, Inc. ("CDC") and its subsidiaries, Network E&S Insurance Brokers, LLC and Partners General Insurance Agency, LLC was purchased by State Auto Mutual on June 1, 2014. Meridian Insurance Group, Inc. ("MIGI") was merged with and into State Auto Holdings, Inc. (State Auto Holdings) on May 31, 2014.

B. Use of Estimates in the Preparation of the Financial Statements:

The preparation of financial statements in conformity with Statutory Accounting Principles requires management to make estimates and assumptions that affect the reported amounts of assets and liabilities as of the date of the financial statements and of revenue and expense for the period then ended. It also requires estimates in the disclosure of contingent assets and liabilities at the date of the financial statements. Actual results could differ from these estimates.

C. Accounting Policy:

Premiums are earned over the terms of the related insurance policies and reinsurance contracts. Unearned premium reserves are established to cover the unexpired portion of premiums written. Such reserves are computed by pro rata methods for direct business and are based on reports received from ceding companies for reinsurance assumed.

Expenses incurred in connection with acquiring new insurance business, including acquisition costs such as sales commissions, are charged to operations as incurred.

In addition, the Company uses the following accounting policies:

- Short-term investments: Not applicable.
- Bonds not backed by other loans are stated at amortized cost using the scientific interest method.
- Common stocks are stated at fair value.
- Preferred stocks: Not applicable.
- Mortgage loans: Not applicable.
- Loan-backed securities are valued at amortized cost using the scientific interest method. The retrospective adjustment method is used to determine the fair value of all loan-backed securities.
- Investments in subsidiaries and affiliated companies: Not applicable.
- Investments in joint ventures, partnerships and limited liability companies: Not applicable.
- Derivatives: Not applicable.
- The Company anticipates investment income as a factor in the premium deficiency calculation, except accident and health business, in accordance with SSAP No. 53 - *Property-Casualty Contracts - Premiums*.
- Unpaid losses and loss adjustment expenses include an amount determined from individual case estimates and loss reports and an amount, based on past experience, for losses incurred but not reported. Such liabilities are necessarily based on assumptions and estimates, and, while management believes the amount is adequate, the ultimate liability may be in excess of or less than the amount provided. The methods for making such estimates and for establishing the resulting liability are continually reviewed, and any adjustments are reflected in the period determined.
- The Company has not modified its capitalization policy from the prior period.
- Pharmaceutical rebate receivables: Not applicable.

2. Accounting Changes and Corrections of Errors: Not applicable.

3. Business Combinations and Goodwill: Not applicable.

4. Discontinued Operations: Not applicable.

5. Investments:

A. Mortgage Loans: Not applicable.

B. Debt Restructuring: Not applicable.

C. Reverse Mortgages: Not applicable.

D. Loan-Backed Securities:

- Prepayment assumptions for mortgage-backed securities, asset-backed securities and collateralized mortgage obligations were generated using a purchased prepayment model. The prepayment model uses a number of factors to estimate prepayment activity including the time of year (seasonality), current levels of interest rates (refinancing incentive), economic activity (including housing turnover) and term and age of the underlying collateral (burnout, seasoning).
- The Company has not recognized any other than temporary impairments on its loan-backed securities.
- The Company has not recognized any other than temporary impairments on its loan-backed securities.

5. **Investments (continued):**

4. The Company has loan-backed securities in which the fair value is less than cost or amortized cost for which an other than temporary impairment has not been recognized.

	Amount (\$)
a. The aggregate amount of unrealized losses	
1. Less than 12 Months	(33,388)
2. 12 Months or Longer	-
b. The aggregate related fair value of securities with unrealized losses	
1. Less than 12 Months	1,443,074
2. 12 Months or Longer	-

5. The Company regularly reviews its investment portfolio for factors that may indicate that a decline in fair value of an investment is other than temporary. The Company considers various factors, such as the duration and extent the security has been below cost, underlying credit rating of the issuer, receipt of scheduled principal and interest cash flows, and the Company's ability and intent to hold the security until recovery.

E. Repurchase Agreements: Not applicable.

F. Real Estate: Not applicable.

G. Low Income Housing Tax Credits: Not applicable.

H. Restricted Assets:

1. Restricted assets (including pledged) summarized by restricted asset category:

	Amount (\$)								Percentage (%)	
	Gross Restricted									
	Current Year					6	7	8		
	1	2	3	4	5					
	Total General Account (G/A)	G/A Supporting S/A Restricted Assets (a)	Total Separate Account (S/A) Restricted Assets	S/A Assets Supporting G/A Activity (b)	Total (1 plus 3)	Total From Prior Year	Increase (Decrease) (5 minus 6)	Total Current Year Admitted Restricted	Gross Restricted to Total Assets	Admitted Restricted to Total Admitted Assets
a. Subject to contractual obligation for which liability is not shown	-	-	-	-	-	-	-	-	-	
b. Collateral held under security lending arrangements	-	-	-	-	-	-	-	-	-	
c. Subject to repurchase agreements	-	-	-	-	-	-	-	-	-	
d. Subject to reverse repurchase agreements	-	-	-	-	-	-	-	-	-	
e. Subject to dollar repurchase agreements	-	-	-	-	-	-	-	-	-	
f. Subject to dollar reverse repurchase agreements	-	-	-	-	-	-	-	-	-	
g. Placed under option contracts	-	-	-	-	-	-	-	-	-	
h. Letter stock or securities restricted as to sale – excluding FHLB capital stock	-	-	-	-	-	-	-	-	-	
i. FHLB capital stock										
j. On deposit with state	247,349	-	-	-	247,349	250,116	(2,767)	247,349	0.76	0.77
k. On deposit with other regulatory bodies	-	-	-	-	-	-	-	-	-	-
l. Pledged as collateral to FHLB (including assets backing funding agreements)										
m. Pledged as collateral not captured in other categories	-	-	-	-	-	-	-	-	-	-
n. Other restricted assets	-	-	-	-	-	-	-	-	-	-
o. Total restricted assets	247,349	-	-	-	247,349	250,116	(2,767)	247,349	0.76	0.77

2. Detail of assets pledged as collateral not captured in other categories (reported on line m above): Not applicable.

3. Detail of other restricted assets: Not applicable.

I. Working Capital Finance Investments: Not applicable.

J. Offsetting and Netting of Assets and Liabilities: Not applicable.

K. Structured Notes: Not applicable.

6. **Joint Ventures, Partnerships and Limited Liability Companies:** Not applicable.

7. **Investment Income:**

A. Accrued Investment Income:

The Company nonadmits investment income due and accrued if amounts are over 90 days past due.

B. Amounts Nonadmitted: Not applicable.

8. **Derivative Instruments:** Not applicable.

9. Income Taxes:

As a result of implementing a new computer system to calculate deferred tax balances with more specificity, certain groupings of deferred tax assets and deferred tax liabilities have been modified. These changes had no impact on historically admitted assets or net deferred tax assets/liabilities.

A. The components of the net deferred tax asset/(liability) at December 31, 2015 and 2014 are as follows:

1.	Amount (\$)								
	2015			2014			Change		
	Ordinary	Capital	Total	Ordinary	Capital	Total	Ordinary	Capital	Total
a. Gross deferred tax assets	485,184	29,688	514,872	709,379	25,689	735,068	(224,195)	3,999	(220,196)
b. Statutory valuation allowance adjustment	-	-	-	-	-	-	-	-	-
c. Adjusted gross deferred tax assets	485,184	29,688	514,872	709,379	25,689	735,068	(224,195)	3,999	(220,196)
d. Deferred tax assets nonadmitted	209,092	-	209,092	135,174	-	135,174	73,918	-	73,918
e. Subtotal net admitted deferred tax asset	276,092	29,688	305,780	574,205	25,689	599,894	(298,113)	3,999	(294,114)
f. Deferred tax liabilities	-	29,959	29,959	-	160,457	160,457	-	(130,498)	(130,498)
g. Net admitted deferred tax assets/(liability)	276,092	(271)	275,821	574,205	(134,768)	439,437	(298,113)	134,497	(163,616)

2.	Amount (\$)								
	2015			2014			Change		
	Ordinary	Capital	Total	Ordinary	Capital	Total	Ordinary	Capital	Total
Admission calculation components SSAP No. 101									
a. Recovered through loss carrybacks	-	-	-	-	-	-	-	-	-
b. The lesser of 2(b)1 and 2(b)2 below:	260,536	15,285	275,821	418,190	21,247	439,437	(157,654)	(5,962)	(163,616)
1. Adjusted gross DTA's expected to be realized within one or three years	260,536	15,285	275,821	418,190	21,247	439,437	(157,654)	(5,962)	(163,616)
2. Adjusted DTA's allowed per limitation threshold	NA	NA	2,456,839	NA	NA	2,441,143	NA	NA	15,696
c. Adjusted gross DTA's offset by gross DTLs	15,556	14,403	29,959	156,015	4,442	160,457	(140,459)	9,961	(130,498)
d. Total DTA's admitted	276,092	29,688	305,780	574,205	25,689	599,894	(298,113)	3,999	(294,114)

3.	2015	2014
a. Ratio percentage used to determine recovery period and threshold limitation	7960%	5742%
b. Amount of adjusted capital & surplus used to determine recovery period and threshold limitation in 2(b)2 above	16,378,927	16,274,289

4.	2015		2014		Change	
	Ordinary	Capital	Ordinary	Capital	Ordinary	Capital
a. Impact of tax planning strategies:						
1. Adjusted gross DTAs	485,184	29,688	709,379	25,689	(224,195)	3,999
2. Percentage of total adjusted gross DTAs by tax character attributable to planning	0.0%	0.0%	0.0%	0.0%	0.0%	0.0%
3. Net admitted adjusted gross DTAs	276,092	29,688	574,205	25,689	(298,113)	3,999
4. Percentage of net admitted gross DTAs attributable to planning	0.0%	0.0%	0.0%	0.0%	0.0%	0.0%

- b. Does the Company's tax-planning strategies include the use of reinsurance? Yes _____ No X
- B. Unrecognized Deferred Tax Liabilities: None.
- C. Current income taxes incurred consist of the following major components:

	Amount (\$)		
	2015	2014	Change
1. Current income tax:			
a. Federal	13,611	144,309	(130,698)
b. Foreign	-	-	-
c. Subtotal	13,611	144,309	(130,698)
d. Federal Income tax on net capital gains	7,136	56,683	(49,547)
e. Utilization of capital loss carry-forwards	-	-	-
f. Other	-	-	-
g. Federal and foreign income taxes incurred	20,747	200,992	(180,245)

2. Deferred tax assets:			
a. Ordinary			
1. Discounting of unpaid losses	-	-	-
2. Unearned premium reserve	-	-	-
3. Policyholder reserves	-	-	-
4. Investments	-	-	-
5. Deferred acquisition costs	-	-	-
6. Policyholder dividends accrual	-	-	-
7. Fixed Assets	-	-	-
8. Compensation & benefits accrual	-	-	-
9. Pension accrual	-	-	-
10. Receivables - nonadmitted	-	-	-
11. Net operating loss carry-forward	478,343	702,538	(224,195)
12. Tax credit carry-forward	6,841	6,841	-
13. Other	-	-	-
Subtotal	485,184	709,379	(224,195)

9. Income Taxes (continued):

b. Statutory valuation allowance adjustment	-	-	-
c. Nonadmitted	209,092	135,174	73,918
d. Admitted ordinary deferred tax assets	276,092	574,205	(298,113)
e. Capital:			
1. Investments	29,688	25,689	3,999
2. Net capital loss carry-forward	-	-	-
3. Real estate	-	-	-
4. Other	-	-	-
Subtotal	29,688	25,689	3,999
f. Statutory valuation allowance adjustment	-	-	-
g. Nonadmitted	-	-	-
h. Admitted capital deferred tax assets	29,688	25,689	3,999
i. Admitted deferred tax assets	305,780	599,894	(294,114)

3. Deferred tax liabilities:			
a. Ordinary			
1. Investments	-	-	-
2. Fixed assets	-	-	-
3. Deferred and uncollected premium	-	-	-
4. Policyholder reserves	-	-	-
5. Other	-	-	-
Subtotal	-	-	-
b. Capital:			
1. Investments	29,959	160,457	(130,498)
2. Real estate	-	-	-
3. Other	-	-	-
Subtotal	29,959	160,457	(130,498)
c. Deferred tax liabilities	29,959	160,457	(130,498)

4. Net deferred tax asset/(liabilities)	275,821	439,437	(163,616)
---	---------	---------	-----------

D. The significant book to tax adjustments were as follows:

	Amount (\$) Tax Effect @ 35%	Effective Tax Rate
Tax Reconciliation by Effective Rate:		
Income before tax	291,395	35.0%
Tax exempt interest and dividends received income deduction	(47,442)	-5.7%
Permanent difference on nonadmitted taxable assets	-	0.0%
Change in valuation allowance	-	0.0%
Other	(1)	0.0%
Total	243,952	29.3%
Tax Reconciliation by Statement of Income:		
Federal & foreign tax incurred	13,611	1.6%
Current taxes on realized gains	7,136	0.9%
Change in net deferred income taxes	223,205	26.8%
Total	243,952	29.3%

E. Operating Loss and Tax Credit Carry-forwards:

1. At December 31, 2015, the Company had \$1,366,694 of operating loss carry-forwards beginning in 2011 through 2015, which expire, if unused, beginning in 2031 through 2035. The Company had \$6,841 of alternative minimum tax credits that do not expire.
2. For 2015 and 2014, there is no income tax expense that is available for recoupment in the event of future net losses.
3. The Company did not have any protective tax deposits under Section 6603 of the Internal Revenue Code.

F. Consolidated Federal Income Tax Return:

1. The Company's federal income tax return is consolidated with the following entities:

State Auto Financial

State Auto P&C

Milbank

Stateco
2. The method of allocation among the companies is subject to a written agreement, approved by the Board of Directors, whereby allocation is made primarily on a separate return basis with current credit for any net operating losses or other items utilized in the consolidated tax return.

G. Federal or Foreign Federal Income Tax Loss Contingencies

The Company does not have any tax loss contingencies for which it is reasonably possible that the total liability will significantly increase within twelve months of the reporting date.

10. Information Concerning Parent, Subsidiaries, Affiliates and Other Related Parties:

A. Nature of the Relationships:

See Schedule Y - Information Concerning Activities of Insurer Members of a Holding Company Group, Part 1 Organizational Chart.

B. Detail of Transactions Greater than ½% of Admitted Assets:

The Company incurred federal income taxes of \$20,748 and \$200,992 through December 31, 2015 and 2014, respectively, through the tax sharing agreement. See Note 9 for additional disclosure.

C. Change in Terms of Intercompany Agreements:

The Pooling Arrangement was amended to increase State Auto Mutual's participation percentage to 34.5% from 34.0% due to its merger with Meridian Citizens Mutual, effective July 2, 2014.

10. Information Concerning Parent, Subsidiaries, Affiliates and Other Related Parties (continued):

D. Amounts Due to or from Related Parties:

The terms of settlement require that these amounts settle within 60 days after the end of each calendar quarter:

	Amount (\$)			
	December 31, 2015		December 31, 2014	
	Due To:	Due From:	Due To:	Due From:
State Auto Mutual	-	7,917,443	-	7,012,102
State Auto P&C	-	-	54	-
Stateco	8,394	-	9,254	-

E. Guarantee or Contingencies for Related Parties: Not applicable.

F. Management, Service Contracts, Cost Sharing Agreements:

Through contractual agreements with affiliated companies within the State Auto Group, State Auto P&C provides employees, while State Auto Mutual provides data processing and certain other data equipment and facilities as needed.

During 2015 and 2014, the following management and/or cost sharing agreements were effective:

- the “2015 Management and Operations Agreement” to which State Auto Mutual, State Auto P&C, Milbank, SA Ohio, Meridian Security, Patrons Mutual, State Auto Financial, Stateco, 518 Property Management and Leasing LLC, State Auto Holdings, Facilitators, Inc., CDC, Partners General Insurance Agency, LLC and Network E&S Insurance Brokers, LLC are parties, replacing the “2005 Management and Operations Agreement” to which State Auto Mutual, State Auto P&C, Milbank, SA Ohio, MIGI, Meridian Security, Patrons Mutual, State Auto Financial, Stateco, and 518 Property Management and Leasing LLC were parties;
- the “Midwest Management Agreement” to which State Auto Mutual, State Auto P&C, and SA Wisconsin are parties;
- the “RTW Consulting Services Agreement” to which State Auto Mutual, State Auto P&C, Meridian Security, and Milbank entered into an agreement with RTW, Inc., an affiliate for overall claims case management for the workers’ compensation program;
- the “RED Underwriting Management Agreement” to which State Auto Mutual, Rockhill, Plaza, American Compensation, Bloomington Compensation, State Auto P&C, Meridian Security, and Milbank entered into with RED to act as underwriting manager to underwrite insurance and reinsurance coverages for the alternative risk and program market;
- the “Rockhill Management & Operations Agreement” to which State Auto Mutual, State Auto P&C, Rockhill, Plaza, American Compensation, Bloomington Compensation, RHC, National Environmental Coverage Corporation, RTW, Inc., Rockhill Insurance Services, LLC., and Rockhill Underwriting Management, LLC. are parties;
- the “Rockhill-RUM Administrative Services Agreement” to which Rockhill and Rockhill Underwriting Management, LLC. are parties;
- the “Rockhill-RIS Surplus Lines Broker Agreement” to which Rockhill and Rockhill Insurance Services, LLC. are parties;
- the “Rockhill-NECC Administrative Services Agreement” to which Rockhill and National Environmental Coverage Corporation are parties;
- the “Rockhill Cost Sharing Agreement” to which Rockhill, RHC, and Rockhill Underwriting Management, LLC. are parties;
- the “RTW-ACI Intercompany Management Agreement” to which American Compensation and RTW, Inc. are parties;
- the “RTW-BCI Intercompany Management Agreement” to which Bloomington Compensation and RTW, Inc. are parties;
- the “RUM Administrative Services Agreement” to which State Auto Mutual and Rockhill Underwriting Management, LLC. are parties;
- the “Stateco Investment Management Agreement” to which Stateco, a wholly owned subsidiary of State Auto Financial, provides investment management services to the Company for a fee based on the average fair value of the investment portfolio of the Company;
- the “RUM-ACI Administrative Services Agreement” to which Rockhill Underwriting Management, LLC. and American Compensation are parties;
- the “RUM Underwriting Services Agreement” to which Rockhill Underwriting Management, LLC. and Plaza are parties;
- the “RTW Administrative Services Agreement” to which RTW, Inc. and Plaza are parties; and
- the “Rockhill-PGI Administrative Services Agreement” to which Rockhill and Partners General Insurance Agency, LLC are parties.

Each of the foregoing management and/or cost sharing agreements apportions or apportioned among the parties the actual costs of the services provided. With the exception of the “2015 Management & Operations Agreement”, the “RTW Consulting Services Agreement”, the “Rockhill Management & Operations Agreement”, the “Rockhill Cost Sharing Agreement”, the “RTW-ACI Intercompany Management Agreement”, and the “RTW-BCI Intercompany Management Agreement”, the above agreements provide for a management fee for services provided.

G. Nature of Relationships that Could Affect Operations:

The Company is a member of the State Auto Group that is defined in Schedule Y – Information Concerning Activities of Insurer Members of a Holding Company Group. See Schedule Y Part 1 – Organizational Chart. The Company is a wholly owned subsidiary of State Auto Financial, a publicly traded holding company, domiciled in the state of Ohio. State Auto Mutual, an Ohio domiciled property and casualty mutual insurance company, owns approximately 62.6% of the common shares outstanding of State Auto Financial at December 31, 2015.

H. Amount Deducted for Investment in Upstream Company: Not applicable

I. Detail of Investments in Affiliates Greater than 10% of Admitted Assets: Not applicable.

J. Write-down for Impairments of Investments in Subsidiary, Controlled or Affiliated Companies: Not applicable.

K. Investments in Foreign Insurance Subsidiary: Not applicable.

L. Investments in Downstream Noninsurance Holding Company: Not applicable.

M. Investments in Noninsurance Subsidiary, Controlled or Affiliated Companies: Not applicable.

N. Departure from Prescribed or Permitted Practices for Insurance Subsidiary, Controlled, or Affiliated Companies: Not applicable.

11. Debt: Not applicable.

12. Retirement Plans, Deferred Compensation, Postemployment Benefits and Compensated Absences and Other Postretirement Benefit Plans:

All employees of the State Auto Group are employees of State Auto P&C, which holds assets and liabilities related to the employee benefit plans of the State Auto Group, and is the plan sponsor of the employee benefit plans.

A. Defined Benefit Plan: Not applicable.

B. Investment policies and strategies: Not applicable.

C. Fair Value Measurement: Not applicable.

D. Basis Assumption: Not applicable.

E. Defined Contribution Plan: Not applicable.

F. Multiemployer Plans: Not applicable.

G. Consolidated/Holding Company Plans: Not applicable.

H. Postemployment Benefits and Compensated Absences: Not applicable.

I. Impact of Medicare Modernization Act on Postemployment Benefits (INT 04-17): Not applicable.

13. Capital and Surplus, Shareholders' Dividend Restrictions and Quasi-Reorganizations:

- A. Capital Stock Authorized, Issued and Outstanding as of the Balance Sheet Date:

The Company has 100,000 shares of \$40 par value common stock authorized and 57,500 shares issued and outstanding. The Company has no preferred stock authorized, issued or outstanding.
- B. Dividend Rate of Preferred Stock: Not applicable.
- C. Dividend Restrictions:

Dividends on common stock are paid as declared by the Board of Directors of the Company. Under the insurance regulations of Ohio, the maximum amount of dividends that the Company may pay out of earned surplus to shareholders within a twelve month period without prior approval of the Department is limited to the greater of 10% of the most recent year-end policyholders' surplus or net income for the twelve-month period ending the 31st day of December of the previous year-end. Accordingly, the maximum amount of dividends that the Company may pay to shareholders without prior approval of the Department in 2016 is \$1,677,311.
- D. Dates and Amounts of Dividends Paid: Not applicable.
- E. Portion of the Company's Profits that may be paid as Ordinary Dividends to Stockholders:

Within the limitations of (C) above, there are no restrictions placed on the portion of Company profits that may be paid as ordinary dividends to shareholders.
- F. Restrictions Placed on the Unassigned Funds, Including for Whom the Surplus is Being Held: Not applicable.
- G. Mutual Surplus Advances: Not applicable.
- H. Company Stock Held for Special Purposes: Not applicable.
- I. Changes in Special Surplus Funds: Not applicable.
- J. Changes in Unassigned Funds:

The portion of unassigned funds (surplus) represented by cumulative net unrealized gains is \$73,941. This excludes any applicable deferred taxes.
- K. Surplus Notes: Not applicable.
- L. Impact of Restatement Due to Quasi Reorganizations: Not applicable.
- M. Effective Date of Quasi Reorganizations: Not applicable.

14. Liabilities, Contingencies and Assessments:

- A. Contingent Commitments:

The Company has no commitments or contingent commitments to affiliates or other entities. The Company has made no guarantees on behalf of affiliates.
- B. Guaranty Fund and Other Assessments:

The Company is subject to guaranty fund and other assessments by the states in which it writes business. Guaranty fund assessments should be accrued at the time of insolvencies. On a direct basis, the Company currently has no liability for guaranty fund assessments. This represents management's best estimate based on information received from the states in which the Company writes business and may change due to many factors, including the Company's share of the ultimate cost of current insolvencies.
- C. Gain Contingencies: Not applicable.
- D. Claims-Related Extra Contractual Obligation and Bad-Faith Losses Stemming from Lawsuits: Not applicable.
- E. Product Warranties: Not applicable.
- F. Joint and Several Liabilities: Not applicable.
- G. All Other Contingencies:

The Company is involved in litigation and may become involved in potential litigation arising in the ordinary course of business. Additionally, the Company may be impacted by adverse regulatory actions and adverse court decisions where insurance coverages are expanded beyond the scope originally contemplated in the policies. In the opinion of management, the effects, if any, of such litigation and published court decisions are not expected to be material to the financial statements.

15. Leases: Not applicable.

16. Information about Financial Instruments with Off-Balance-Sheet Risk and Financial Instruments with Concentrations of Credit Risk: Not applicable.

17. Sale, Transfer and Servicing of Financial Instruments and Extinguishments of Liabilities:

- A. Transfers of Receivables Reported as Sales: Not applicable.
- B. Transfers and Servicing of Financial Assets:

1. Loaned Securities: None.

2. Servicing Assets and Servicing Liabilities:

a. Risks: None.

b. Contractually Specified Servicing Fees: None.

c. Assumptions Used to Estimate: None.

3. Servicing Assets and Servicing Liabilities Measured at Fair Value: Not applicable

4. Securitizations, Asset-backed Financing Agreements and Similar Transfers with Continued Involvement:

a. Income Statements Presented: None.

b. Statement of Financial Position Presented: None.

5. Assets Accounted for as Secured Borrowing: None.

6. Receivables with Recourse: None.

7. Securities Underlying Repurchase and Reverse Repurchase Agreements: None.
- C. Wash Sales: None.

18. Gain or Loss to the Reporting Entity from Uninsured Plans and the Uninsured Portion of Partially Insured Plans: Not applicable.

19. Direct Premium Written/Produced by Managing General Agents/Third Party Administrators: Not applicable.

20. Fair Value Measurement:

A. Inputs Used for Assets and Liabilities Measured and Reported at Fair Value:

The Company has categorized its assets and liabilities that are reported on the balance sheet at fair value into the three-level fair value hierarchy as reflected in the table below. The three-level fair value hierarchy is based on the degree of subjectivity inherent in the valuation method by which fair value was determined. The three levels are defined as follows.

Level 1 – Quoted Prices in Active Markets for Identical Assets and Liabilities: This category, for items measured at fair value on a recurring basis, includes exchange-traded common stocks. The estimated fair value of the equity securities within this category are based on unadjusted market prices provided by the Securities Valuation Office (“SVO”) and are thus classified as level 1.

Level 2 – Significant Other Observable Inputs: The Company has no assets or liabilities measured and reported at fair value in this category.

Level 3 – Significant Unobservable Inputs: The Company has no assets or liabilities measured and reported at fair value in this category.

1.

The Company has no assets or liabilities that are measured at fair value that can be categorized into the three-level fair value hierarchy.
2.

The Company has no assets or liabilities measured and reported at fair value in Level 3.
3.

Transfers between level categorizations may occur due to changes in the availability of market observable inputs. Transfers in and out of level categorizations are reported as having occurred at the beginning of the quarter in which the transfer occurred. There were no transfers between level categorizations as of December 31, 2015.
4.

The Company has no assets or liabilities measured and reported at fair value in Level 2 or Level 3.
5.

The Company has no derivative assets or liabilities.

B. Other Fair Value Disclosures: Not applicable.

C. Fair Values for All Financial Instruments by Levels 1, 2, and 3:

See Item A for a discussion on valuation techniques for assets and liabilities that are measured and reported at fair value.

The Company utilizes information provided by the SVO to estimate fair value measurements for the majority of its fixed maturities. If market data is not provided by the SVO, fair value is determined by using data provided by a nationally recognized pricing service.

December 31, 2015

Type of Financial Instrument	Amount (\$)					
	Aggregate Fair Value	Admitted Assets	(Level 1)	(Level 2)	(Level 3)	Not Practicable (Carrying Value)
Bonds	16,478,383	16,150,958	-	16,478,383	-	-

December 31, 2014

Type of Financial Instrument	Amount (\$)					
	Aggregate Fair Value	Admitted Assets	(Level 1)	(Level 2)	(Level 3)	Not Practicable (Carrying Value)
Bonds	14,987,420	14,391,338	-	14,987,420	-	-
Common stocks	1,396,450	1,396,450	1,396,450	-	-	-

D. Financial Instruments for which Not Practical to Estimate Fair Values: Not applicable.

21. Other Items:

- A. Unusual or Infrequent Items: Not applicable.
- B. Troubled Debt Restructuring: Not applicable.
- C. Other Disclosures:

The Company elected to use rounding in reporting amounts in this Annual Statement. The Company also set a tolerance for rounding errors at 10 for validation purposes.

Under the terms of the 2005 Management and Operations Agreement, State Auto Mutual receives all premiums and pays all losses and expenses associated with the insurance business produced by the pool participants, and then settles the intercompany balances generated by these transactions with the participating companies on a quarterly basis within 60 days following each quarter end. When settling the intercompany balances, State Auto Mutual provides the pool participants with full credit for the premiums written and net losses paid during the quarter and retains all receivable amounts from insureds and agents and reinsurance recoverables on paid losses from unaffiliated reinsurers. Any receivable amounts that are ultimately deemed to be uncollectible are charged-off by State Auto Mutual and allocated to the pool member on the basis of pool participation. As a result, each pool participant has an off-balance sheet credit risk based on the participant's pooling percentage related to the balances due to State Auto Mutual, which is collateralized by the unearned premium from the respective policies.

D. Business Interruption Insurance Recoveries: Not applicable.

E. State Transferable and Non-transferable Tax Credits: Not applicable.

F. Subprime Mortgage Related Risk Exposure:

1.

The Company has reviewed and considered possible exposure to subprime mortgage related risk through (1) direct investments in subprime mortgage loans; (2) direct investments in securities with underlying subprime exposure, such as residential mortgage backed securities, commercial mortgage backed securities, collateralized debt obligations, structured securities, hedge funds, credit default swaps, and special investment vehicles; (3) equity investments in subsidiary, controlled or affiliated entities with significant subprime related risk exposure; or (4) underwriting risk on policies issued for Mortgage Guaranty or Financial Guaranty insurance coverage and determined that the Company does not have direct exposure to subprime mortgage related risk.
2.

The Company does not have direct exposure through investments in subprime mortgage loans.
3.

The Company does not have direct exposure through other investments.
4.

The Company does not write Mortgage Guaranty or Financial Guaranty insurance coverage and, therefore, does not have underwriting exposure to subprime mortgage risk related to these.

G. Proceeds from Insurance-Linked Securities: Not applicable.

22. Events Subsequent:

Subsequent events have been considered through February 23, 2016 for the statutory statement issued on February 23, 2016.

23. Reinsurance:

A. Unsecured Reinsurance Recoverable:

The following table provides a listing of unsecured reinsurance recoverables that exceed 3% of the Company's policyholders' surplus:

NAIC Code	Federal ID#	Name of Reinsurer	Amount (\$)
25135	31-4316080	State Auto Mutual	62,819,088
		Total	62,819,088

23. **Reinsurance (continued):**

- B. Reinsurance Recoverable in Dispute: Not applicable.
- C. Reinsurance Assumed and Ceded:

1. The following table summarizes assumed and ceded unearned premiums and the related commission equity at December 31, 2015, stated in dollars:

	Amount (\$)					
	Assumed		Ceded		Assumed Less Ceded	
	Unearned Premiums	Commission Equity	Unearned Premiums	Commission Equity	Unearned Premiums	Commission Equity
Affiliates	-	-	28,204,782	-	(28,204,782)	-
All other	-	-	3,117	935	(3,117)	(935)
Totals	-	-	28,207,899	935	(28,207,899)	(935)
Direct Unearned Premium Reserve: 28,207,899						

2. The additional or return commission, predicated on loss experience or on any other form of profit sharing arrangements in this annual statement as a result of existing contractual arrangements is accrued as follows:
- | | Amount (\$) | | | |
|---|-------------|---------|-----------|-----|
| | Direct | Assumed | Ceded | Net |
| a. Contingent Commission | 1,026,000 | - | 1,026,000 | - |
| b. Sliding Scale Adjustments | - | - | - | - |
| c. Other Profit Commission Arrangements | - | - | - | - |
| Total | 1,026,000 | - | 1,026,000 | - |
3. Protected Cells: Not applicable.
- D. Uncollectible Reinsurance: Not applicable.
- E. Commutation of Ceded Reinsurance: Not applicable.
- F. Retroactive Reinsurance: Not applicable.
- G. Reinsurance Accounted for as a Deposit: Not applicable.
- H. Run-off Agreements: Not applicable.
- I. Certified Reinsurer Rating Downgraded or Status Subject to Revocation: Not applicable.

24. **Retrospectively Rated Contracts and Contracts Subject to Redetermination:** Not applicable.

25. **Changes in Incurred Losses and Loss Adjustment Expenses:**

The Company receives no losses or loss adjustment expenses from State Auto Mutual in accordance with the Pooling Arrangement.

26. **Intercompany Pooling Arrangements:**

The Company participates in a quota share reinsurance pooling arrangement with the following affiliated companies (the "Pooling Arrangement"):

Pool Participant (the "State Auto Pool")	NAIC Co. Code	Pooling Participation Percentages	
		2014	2015
State Auto Mutual – lead reinsurer	25135	34.5%	34.5%
State Auto P&C	25127	51.0%	51.0%
Milbank	41653	14.0%	14.0%
SA Wisconsin	31755	0.0%	0.0%
SA Ohio	11017	0.0%	0.0%
Meridian Security	23353	0.0%	0.0%
Patrons Mutual	14923	0.5%	0.5%
Rockhill	28053	0.0%	0.0%
Plaza	30945	0.0%	0.0%
American Compensation	45934	0.0%	0.0%
Bloomington Compensation	12311	0.0%	0.0%

Under the terms of the arrangement, the participants cede to State Auto Mutual all of their insurance business, net of assumed and ceded reinsurance, and assume from State Auto Mutual an amount equal to their respective participation percentages outlined in the Pooling Arrangement. All business written by each pool participant, except for State Auto Mutual's unaffiliated voluntary assumed reinsurance program with policies effective prior to January 1, 2009, is subject to the Pooling Arrangement. All premiums, losses, loss adjustment expenses and underwriting expenses are allocated among the participants on the basis of each company's respective participation percentage outlined in the Pooling Arrangement. The Pooling Arrangement provides indemnification against loss or liability relating to insurance risk and has been accounted for as reinsurance.

Per SSAP No. 62R – *Property and Casualty Reinsurance*, ceded reinsurance written premiums payable may be deducted from amounts due from the reinsurer when a legal right of offset exists. As the Pooling Arrangement provides for the right of offset, the Company has netted within the Statement of Assets and Liabilities the amount due to State Auto Mutual under ceded reinsurance written premiums payable with the amount due from State Auto Mutual on assumed reinsurance written premiums receivable for transactions under the Pooling Arrangement. The following tabular presentation reflects the ceded reinsurance written premiums payable and assumed reinsurance written premiums receivable at December 31, 2015, between each State Auto Pool participant and State Auto Mutual resulting in the net amount due to or due from State Auto Mutual:

	Amount (\$)		
	Assumed Reinsurance Written Premiums Receivable from State Auto Mutual	Ceded Reinsurance Written Premiums Payable to State Auto Mutual	Net Assumed Reinsurance Written Premiums Receivable/(Net Ceded Reinsurance Written Premiums Payable)
State Auto P&C	237,487,100	155,451,814	82,035,286
Milbank	65,192,537	20,821,370	44,371,167
SA Wisconsin	-	5,496,793	(5,496,793)
SA Ohio	-	15,526,587	(15,526,587)
Meridian Security	-	46,061,942	(46,061,942)
Patrons Mutual	2,328,305	17,322,584	(14,994,279)
Rockhill	-	52,585,948	(52,585,948)
Plaza	-	34,315,290	(34,315,290)
American Compensation	-	15,316,480	(15,316,480)
Bloomington Compensation	-	2,852,185	(2,852,185)

26. Intercompany Pooling Arrangements (continued):

The following tabular presentation reflects the reinsurance receivable and payable on loss and loss adjustment expense paid at December 31, 2015, between each State Auto Pool participant and State Auto Mutual:

	Amount (\$)	
	Assumed Reinsurance Loss and Loss Adjustment Expense Paid from State Auto Mutual	Ceded Reinsurance Loss and Loss Adjustment Expense Paid to State Auto Mutual
State Auto P&C	143,476,536	101,008,420
Milbank	39,385,716	15,386,259
SA Wisconsin	-	3,261,299
SA Ohio	-	7,442,532
Meridian Security	-	31,642,843
Patrons Mutual	1,406,633	10,068,863
Rockhill	-	13,691,925
Plaza	-	22,608,267
American Compensation	-	9,373,933
Bloomington Compensation	-	1,701,812

The following tabular presentation reflects all other intercompany amounts due from and due to State Auto Mutual from entities participating in the Pooling Arrangement at December 31, 2015:

	Amount (\$)	
	Intercompany Amounts Due from State Auto Mutual	Intercompany Amounts Due to State Auto Mutual
State Auto P&C	-	35,395,548
Milbank	-	19,187,630
SA Wisconsin	2,047,113	-
SA Ohio	7,917,443	-
Meridian Security	12,908,594	-
Patrons Mutual	4,012,532	-
Rockhill	34,753,281	-
Plaza	7,873,206	-
American Compensation	1,641,641	-
Bloomington Compensation	737,765	-

27. Structured Settlements: Not applicable.

28. Health Care Receivables: Not applicable.

29. Participating Policies: Not applicable.

30. Premium Deficiency Reserves:

1. Liability carried for premium deficiency reserves	-
2. Date of the most recent evaluation of this liability	12/31/2015
3. Was anticipated investment income utilized in the calculation?	Yes

31. High Deductibles: Not applicable.

32. Discounting of Liabilities for Unpaid Losses or Unpaid Loss Adjustment Expenses: Not applicable.

33. Asbestos/Environmental Reserves:

A. Does the Company have on the books, or has it ever written an insured for which you have identified a potential for the existence of, a liability due to asbestos losses? Yes.

The Company's exposure to asbestos losses arises from the sale of general liability insurance. The Company tries to estimate the full impact of the asbestos exposure by establishing full case basis reserves on all known losses and estimating incurred but not reported losses based on previous experience. As a result of the Company's participation in the Pooling Agreement (see Note 26), the Company cedes all insurance business to State Auto Mutual and assumes 0% from the pool participants. This results in the balance sheet and income statement reflecting no direct, assumed, or ceded reserves, incurred losses and loss adjustment expenses, or payments.

B. State the amount of the ending reserves for Bulk + IBNR included in A (Loss & LAE): None

C. State the amount of the ending reserves for loss adjustment expenses included in A (Case, Bulk + IBNR): None

D. Does the Company have on the books, or has it ever written an insured for which you have identified a potential for the existence of, a liability due to environmental losses? Yes. See Note 33A for explanation of direct, assumed, and ceded amounts.

E. State the amount of the ending reserves for Bulk + IBNR included in D (Loss & LAE): None

F. State the amount of the ending reserves for loss adjustment expenses included in D (Case, Bulk + IBNR): None

34. Subscriber Savings Accounts: Not applicable.

35. Multiple Peril Crop Insurance: Not applicable.

36. Financial Guaranty Insurance: Not applicable.

STATE AUTO INSURANCE COMPANY OF OHIO
GENERAL INTERROGATORIES

PART 1 - COMMON INTERROGATORIES

GENERAL

1.1

Is the reporting entity a member of an Insurance Holding Company System consisting of two or more affiliated persons, one or more of which is an insurer?
If yes, complete Schedule Y, Parts 1, 1A and 2.

Yes [X] No []

1.2

If yes, did the reporting entity register and file with its domiciliary State Insurance Commissioner, Director or Superintendent or with such regulatory official of the state of domicile of the principal insurer in the Holding Company System, a registration statement providing disclosure substantially similar to the standards adopted by the National Association of Insurance Commissioners (NAIC) in its Model Insurance Holding Company System Regulatory Act and model regulations pertaining thereto, or is the reporting entity subject to standards and disclosure requirements substantially similar to those required by such Act and regulations?

Yes [X] No [] N/A []

1.3

State regulating? Ohio

2.1

Has any change been made during the year of this statement in the charter, by-laws, articles of incorporation, or deed of settlement of the reporting entity?

Yes [] No [X]

2.2

If yes, date of change:

3.1

State as of what date the latest financial examination of the reporting entity was made or is being made.

12/31/2013

3.2

State the as of date that the latest financial examination report became available from either the state of domicile or the reporting entity.
This date should be the date of the examined balance sheet and not the date the report was completed or released.

12/31/2013

3.3

State as of what date the latest financial examination report became available to other states or the public from either the state of domicile or the reporting entity. This is the release date or completion date of the examination report and not the date of the examination (balance sheet date).

10/29/2014

3.4

By what department or departments?
Ohio Department of Insurance

3.5

Have all financial statement adjustments within the latest financial examination report been accounted for in a subsequent financial statement filed with departments?

Yes [] No [] N/A [X]

3.6

Have all of the recommendations within the latest financial examination report been complied with?

Yes [] No [] N/A [X]

4.1

During the period covered by this statement, did any agent, broker, sales representative, non-affiliated sales/service organization or any combination thereof under common control (other than salaried employees of the reporting entity) receive credit or commissions for or control a substantial part (more than 20 percent of any major line of business measured on direct premiums) of:

4.11

sales of new business?

Yes [] No [X]

4.12

renewals?

Yes [] No [X]

4.2

During the period covered by this statement, did any sales/service organization owned in whole or in part by the reporting entity or an affiliate, receive credit or commissions for or control a substantial part (more than 20 percent of any major line of business measured on direct premiums) of:

4.21

sales of new business?

Yes [] No [X]

4.22

renewals?

Yes [] No [X]

5.1

Has the reporting entity been a party to a merger or consolidation during the period covered by this statement?

Yes [] No [X]

5.2

If yes, provide name of entity, NAIC Company Code, and state of domicile (use two letter state abbreviation) for any entity that has ceased to exist as a result of the merger or consolidation.

1	2	3
Name of Entity	NAIC Company Code	State of Domicile
	0	

6.1

Has the reporting entity had any Certificates of Authority, licenses or registrations (including corporate registration, if applicable) suspended or revoked by any governmental entity during the reporting period?

Yes [] No [X]

6.2

If yes, give full information:

7.1

Does any foreign (non-United States) person or entity directly or indirectly control 10% or more of the reporting entity?

Yes [] No [X]

7.2

If yes,

7.21

State the percentage of foreign control

0.000%

7.22

State the nationality(ies) of the foreign person(s) or entity(ies); or if the entity is a mutual or reciprocal, the nationality of its manager or attorney-in-fact and identify the type of entity(ies) (e.g., individual, corporation, government, manager or attorney-in-fact).

1	2
Nationality	Type of Entity

8.1

Is the company a subsidiary of a bank holding company regulated with the Federal Reserve Board?

Yes [] No [X]

8.2

If response to 8.1 is yes, please identify the name of the bank holding company.

8.3

Is the company affiliated with one or more banks, thrifts or securities firms?

Yes [] No [X]

8.4

If the response to 8.3 is yes, please provide below the names and locations (city and state of the main office) of any affiliates regulated by a federal financial regulatory services agency [i.e. the Federal Reserve Board (FRB), the Office of the Comptroller of the Currency (OCC), the Federal Deposit Insurance Corporation (FDIC) and the Securities Exchange Commission (SEC)] and identify the affiliate's primary federal regulator.

1	2	3	4	5	6
Affiliate Name	Location (City, State)	FRB	OCC	FDIC	SEC

9.

What is the name and address of the independent certified public accountant or accounting firm retained to conduct the annual audit?
Ernst & Young LLP, 800 Yard Street, Grandview Heights, Ohio 43212

10.1

Has the insurer been granted any exemptions to the prohibited non-audit services provided by the certified independent public accountant requirements as allowed in Section 7H of the Annual Financial Reporting Model Regulation (Model Audit Rule), or substantially similar state law or regulation?

Yes [] No [X]

10.2

If the response to 10.1 is yes, provide information related to this exemption:

10.3

Has the insurer been granted any exemptions related to other requirements of the Annual Financial Reporting Model Regulation as allowed for in Section 18A of the Model Regulation, or substantially similar state law or regulation?

Yes [] No [X]

10.4

If the response to 10.3 is yes, provide information related to this exemption:

10.5

Has the reporting entity established an Audit Committee in compliance with the domiciliary state insurance laws?

Yes [X] No [] N/A []

10.6

If the response to 10.5 is no or n/a, please explain:

STATE AUTO INSURANCE COMPANY OF OHIO
GENERAL INTERROGATORIES

PART 1 - COMMON INTERROGATORIES

11.

What is the name, address and affiliation (officer/employee of the reporting entity or actuary/consultant associated with an actuarial consulting firm) of the individual providing the statement of actuarial opinion/certification?
Matthew S. Mrozek, FCAS, 518 East Broad Street, Columbus, Ohio 43215, officer of reporting entity
- 12.1

Does the reporting entity own any securities of a real estate holding company or otherwise hold real estate indirectly?

Yes [☐] No [☒]
- 12.11

Name of real estate holding company
- 12.12

Number of parcels involved

0
- 12.13

Total book/adjusted carrying value

\$ 0
- 12.2

If yes, provide explanation
13.

FOR UNITED STATES BRANCES OF ALIEN REPORTING ENTITIES ONLY:
- 13.1

What changes have been made during the year in the United States manager or the United States trustees of the reporting entity?
- 13.2

Does this statement contain all business transacted for the reporting entity through its United States Branch on risks wherever located?

Yes [☐] No [☐]
- 13.3

Have there been any changes made to any of the trust indentures during the year?

Yes [☐] No [☐]
- 13.4

If answer to (13.3) is yes, has the domiciliary or entry state approved the changes?

Yes [☐] No [☐] N/A [☐]
- 14.1

Are the senior officers (principal executive officer, principal financial officer, principal accounting officer or controller, or persons performing similar functions) of the reporting entity subject to a code of ethics, which includes the following standards?

Yes [☒] No [☐]
- (a)

Honest and ethical conduct, including the ethical handling of actual or apparent conflicts of interest between personal and professional relationships;
- (b)

Full, fair, accurate, timely and understandable disclosure in the periodic reports required to be filed by the reporting entity;
- (c)

Compliance with applicable governmental laws, rules and regulations;
- (d)

The prompt internal reporting of violations to an appropriate person or persons identified in the code; and
- (e)

Accountability for adherence to the code.
- 14.11

If the response to 14.1 is no, please explain:
- 14.2

Has the code of ethics for senior managers been amended?

Yes [☒] No [☐]
- 14.21

If the response to 14.2 is yes, provide information related to amendment(s).
The Nominating and Governance Committee of the Company's Board of Directors annually reviews the employee code of conduct, which is applicable to all senior managers. The 2015 annual review resulted in minor changes to the code. These changes were updating the communications with the public, adding an improper payments section and also adding a new provision that specifically addresses compliance with the Foreign Corrupt Practices Act.
- 14.3

Have any provisions of the code of ethics been waived for any of the specified officers?

Yes [☐] No [☒]
- 14.31

If the response to 14.3 is yes, provide the nature of any waiver(s).
- 15.1

Is the reporting entity the beneficiary of a Letter of Credit that is unrelated to reinsurance where the issuing or confirming bank is not on the SVO Bank List?

Yes [☐] No [☒]
- 15.2

If the response to 15.1 is yes, indicate the American Bankers Association (ABA) Routing Number and the name of the issuing or confirming bank of the Letter of Credit and describe the circumstances in which the Letter of Credit is triggered.

1 American Bankers Association (ABA) Routing Number	2 Issuing or Confirming Bank Name	3 Circumstances That Can Trigger the Letter of Credit	4 Amount
0			0

BOARD OF DIRECTORS

16.

Is the purchase or sale of all investments of the reporting entity passed upon either by the Board of Directors or a subordinator committee thereof?

Yes [☒] No [☐]
17.

Does the reporting entity keep a complete permanent record of the proceedings of its Board of Directors an all subordinator committees thereof?

Yes [☒] No [☐]
18.

Has the reporting entity an established procedure for disclosure to its Board of Directors or trustees of any material interest or affiliation on the part of any of its officers, directors, trustees or responsible employees that is in conflict or is likely to conflict with the official duties of such person?

Yes [☒] No [☐]

FINANCIAL

19.

Has this statement been prepared using a basis of accounting other than Statutory Accounting Principles (e.g., Generally Accepted Accounting Principles)?

Yes [☐] No [☒]
- 20.1

Total amount loaned during the year (inclusive of Separate Accounts, exclusive of policy loans):
- 20.11

To directors or other officers

\$ 0
- 20.12

To stockholders not officers

\$ 0
- 20.13

Trustees, supreme or grand (Fraternal only)

\$ 0
- 20.2

Total amount of loans outstanding at the end of year (inclusive of Separate Accounts, exclusive of policy loans):
- 20.21

To directors or other officers

\$ 0
- 20.22

To stockholders not officers

\$ 0
- 20.23

Trustees, supreme or grand (Fraternal only)

\$ 0
- 21.1

Were any assets reported in this statement subject to a contractual obligation to transfer to another party without the liability for such obligation being reporting in the statement?

Yes [☐] No [☒]
- 21.2

If yes, state the amount thereof at December 31 of the current year:
- 21.21

Rented from others

\$ 0
- 21.22

Borrowed from others

\$ 0
- 21.23

Leased from others

\$ 0
- 21.24

Other

\$ 0
- 22.1

Does this statement include payments for assessments as described in the *Annual Statement Instructions* other than guaranty fund or guaranty association assessments?

Yes [☐] No [☒]
- 22.2

If answer is yes:
- 22.21

Amount paid as losses or risk adjustment

\$ 0
- 22.22

Amount paid as expenses

\$ 0
- 22.23

Other amounts paid

\$ 0
- 23.1

Does the reporting entity report any amounts due from parent, subsidiaries or affiliates on Page 2 of this statement?

Yes [☒] No [☐]
- 23.2

If yes, indicate any amounts receivable from parent included in the Page 2 amount:

\$ 0

STATE AUTO INSURANCE COMPANY OF OHIO
GENERAL INTERROGATORIES

PART 1 - COMMON INTERROGATORIES

INVESTMENT

24.01

Were all of the stocks, bonds and other securities owned December 31 of current year, over which the reporting entity has exclusive control, in the actual possession of the reporting entity on said date (other than securities lending programs addressed in 24.03)?

Yes [X] No []

24.02

If no, give full and complete information, relating thereto:

24.03

For security lending programs, provide a description of the program including value for collateral and amount of loaned securities, and whether collateral is carried on or off balance sheet (an alternative is to reference Note 17 where this information is also provided).

24.04

Does the company's security lending program meet the requirements for a conforming program as outlined in the *Risk-Based Capital Instructions*?

Yes [] No [] N/A [X]

24.05

If answer to 24.04 is yes, report amount of collateral for conforming programs.

\$ 0

24.06

If answer to 24.04 is no, report amount of collateral for other programs

\$ 0

24.07

Does your securities lending program require 102% (domestic securities) and 105% (foreign securities) from the counterparty at the outset of the contract?

Yes [] No [] N/A [X]

24.08

Does the reporting entity non-admit when the collateral received from the counterparty falls below 100%?

Yes [] No [] N/A [X]

24.09.

Does the reporting entity or the reporting entity's securities lending agent utilize the Master Securities Lending Agreement (MSLA) to conduct securities lending?

Yes [] No [] N/A [X]

24.10

For the reporting entity's security lending program, state the amount of the following as of December 31 of the current year:

24.101

Total fair value of reinvested collateral assets reported on Schedule DL, Parts 1 and 2:

\$ 0

24.102

Total book adjusted/carrying value of reinvested collateral assets reported on Schedule DL, Parts 1 and 2:

\$ 0

24.103

Total payable for securities lending reported on the liability page:

\$ 0

25.1

Were any of the stocks, bonds or other assets of the reporting entity owned at December 31 of the current year not exclusively under the control of the reporting entity or has the reporting entity sold or transferred any assets subject to a put option contract that is current in force? (Exclude securities subject to Interrogatory 21.1 and 24.03.)

Yes [X] No []

25.2

If yes, state the amount thereof at December of the current year:

25.21

Subject to repurchase agreements

\$ 0

25.22

Subject to reverse repurchase agreements

\$ 0

25.23

Subject to dollar repurchase agreements

\$ 0

25.24

Subject to reverse dollar repurchase agreements

\$ 0

25.25

Placed under option agreements

\$ 0

25.26

Letter stock or securities restricted as sale – excluding FHLB Capital Stock

\$ 0

25.27

FHLB Capital Stock

\$ 0

25.28

On deposit with states

\$ 247,349

25.29

On deposit with other regulatory bodies

\$ 0

25.30

Pledged as collateral – excluding collateral pledged to an FHLB

\$ 0

25.31

Pledged as collateral to FHLB – including assets backing funding agreements

\$ 0

25.32

Other

\$ 0

25.3

For category (25.26) provide the following:

1 Nature of Restriction	2 Description	3 Amount
		\$ 0

26.1

Does the reporting entity have any hedging transactions reported on Schedule DB?

Yes [] No [X]

26.2

If yes, has a comprehensive description of the hedging program been made available to the domiciliary state?
If no, attach a description with this statement.

Yes [] No [] N/A [X]

27.1

Were any preferred stocks or bonds owned as of December 31 of the current year mandatorily convertible into equity, or, at the option of the issuer, convertible into equity?

Yes [] No [X]

27.2

If yes, state the amount thereof at December of the current year:

\$ 0

28.

Excluding items in Schedule E-Part 3-Special Deposits, real estate, mortgage loans and investments held physically in the reporting entity's offices, vaults or safety deposit boxes, were all stocks, bonds and other securities, owned throughout the current year held pursuant to a custodial agreement with a qualified bank or trust company in accordance with Section 1, III - General Examination Considerations, F. Outsourcing of Critical Functions, Custodial or Safekeeping Agreements of the NAIC *Financial Condition Examiners Handbook*?

Yes [X] No []

28.01

For all agreements that comply with the requirements of the NAIC *Financial Condition Examiners Handbook*, complete the following:

1 Name of Custodian(s)	2 Custodian Address
JP Morgan Chase Worldwide Securities	4 Chase Metrotech Center, 16th Floor, Brooklyn, NY 11245

28.02

For all agreements that do not comply with the requirements of the NAIC *Financial Condition Examiners Handbook*, provide the name, location and a complete explanation

1 Name(s)	2 Location(s)	3 Complete Explanation(s)

28.03

Have there been any changes, including name changes, in the custodian(s) identified in 28.01 during the current year?

Yes [] No [X]

28.04

If yes, give full and complete information relating thereto:

1 Old Custodian	2 New Custodian	3 Date of Change	4 Reason

28.05

Identify all investment advisors, broker/dealers or individuals acting on behalf of broker/dealers that have access to the investment accounts, handle securities and have authority to make investments on behalf of the reporting entity:

1 Central Registration Depository	2 Name(s)	3 Address

29.1

Does the reporting entity have any diversified mutual funds reported in Schedule D-Part 2 (diversified according to the Securities and Exchange Commission (SEC) in the Investment Company Act of 1940 [Section 5 (b) (1)])?

Yes [] No [X]

GENERAL INTERROGATORIES

PART 1 - COMMON INTERROGATORIES

29.2 If yes, complete the following schedule:

1 CUSIP	2 Name of Mutual Fund	3 Book/Adjusted Carrying Value
		0
29.2999 TOTAL		0

29.3 For each mutual fund listed in the table above, complete the following schedule:

1 Name of Mutual Fund (from above table)	2 Name of Significant Holding of the Mutual Fund	3 Amount of Mutual Fund's Book/Adjusted Carrying Value Attributable to the Holdings	4 Date of Valuation
		0	

30. Provide the following information for all short-term and long-term bonds and all preferred stocks. Do not substitute amortized value or statement value for fair value.

		1 Statement (Admitted) Value	2 Fair Value	3 Excess of Statement over Fair Value (-), or Fair Value over Statement (+)
30.1	Bonds	16,150,958	16,478,383	327,425
30.2	Preferred Stocks	0	0	0
30.3	Totals	16,150,958	16,478,383	327,425

30.4 Describe the sources or methods utilized in determining fair values:

Pricing services and broker / dealers

31.1 Was the rate used to calculate fair value determined by a broker or custodian for any of the securities in Schedule D? Yes [] No [X]

31.2 If the answer to 31.1 is yes, does the reporting entity have a copy of the broker's or custodian's pricing policy (hard copy or electronic copy) for all brokers or custodians used as a pricing source? Yes [] No []

31.3 If the answer to 31.2 is no, describe the reporting entity's process for determining a reliance pricing source for purposes of disclosure of fair value for Schedule D:

32.1 Have all the filing requirements of the *Purposes and Procedures Manual of the NAIC Investment Analysis Office* been followed? Yes [X] No []

32.2 If no, list exceptions:

OTHER

33.1 Amount of payments to trade associations, service organizations and statistical or rating bureaus, if any? \$ 0

33.2 List the name of the organization and the amount paid if any such payment represented 25% or more of the total payments to trade associations, service organizations and statistical or rating bureaus during the period covered by this statement.

1 Name	2 Amount Paid
	\$ 0

34.1 Amount of payments for legal expenses, if any? \$ 0

34.2 List the name of the firm and the amount paid if any such payment represented 25% or more of the total payments for legal expenses during the period covered by this statement.

1 Name	2 Amount Paid
	\$ 0

35.1 Amount of payments for expenditures in connection with matters before legislative bodies, officers or departments of government, if any? \$ 0

35.2 List the name of the firm and the amount paid if any such payment represented 25% or more of the total payment expenditures in connection with matters before legislative bodies, officers or departments of government during the period covered by this statement.

1 Name	2 Amount Paid
	\$ 0

STATE AUTO INSURANCE COMPANY OF OHIO

GENERAL INTERROGATORIES

PART 2 – PROPERTY & CASUALTY INTERROGATORIES

1.1	Does the reporting entity have any direct Medicare Supplement Insurance in force?			Yes []	No [X]
1.2	If yes, indicate premium earned on U.S. business only.	\$			0
1.3	What portion of Item (1.2) is not reported on the Medicare Supplement Insurance Experience Exhibit?	\$			0
1.31	Reason for excluding:				
1.4	Indicate amount of earned premium attributable to Canadian and/or Other Alien not included in Item (1.2) above.	\$			0
1.5	Indicate total incurred claims on all Medicare Supplement insurance.	\$			0
1.6	Individual policies:				
	Most current three years:				
1.61	Total premium earned	\$			0
1.62	Total incurred claims	\$			0
1.63	Number of covered lives				0
	All years prior to most current three years:				
1.64	Total premium earned	\$			0
1.65	Total incurred claims	\$			0
1.66	Number of covered lives				0
1.7	Group policies:				
	Most current three years:				
1.71	Total premium earned	\$			0
1.72	Total incurred claims	\$			0
1.73	Number of covered lives				0
	All years prior to most current three years:				
1.74	Total premium earned	\$			0
1.75	Total incurred claims	\$			0
1.76	Number of covered lives				0
2.	Health Test:				
		1	2		
		Current Year	Prior Year		
2.1	Premium Numerator	\$	0	\$	0
2.2	Premium Denominator	\$	0	\$	0
2.3	Premium Ratio (2.1/2.2)	0.000	0.000		
2.4	Reserve Numerator	\$	0	\$	0
2.5	Reserve Denominator	\$	0	\$	0
2.6	Reserve Ratio (2.4/2.5)	0.000	0.000		
3.1	Does the reporting entity issue both participating and non-participating policies?			Yes []	No [X]
3.2	If yes, state the amount of calendar year premiums written on:				
3.21	Participating policies	\$			0
3.22	Non-participating policies	\$			0
4.	FOR MUTUAL REPORTING ENTITIES AND RECIPROCAL EXCHANGES ONLY:				
4.1	Does the reporting entity issue assessable policies?			Yes []	No []
4.2	Does the reporting entity issue non-assessable policies?			Yes []	No []
4.3	If assessable policies are issued, what is the extent of the contingent liability of the policyholders?			0.000%	
4.4	Total amount of assessments paid or ordered to be paid during the year on deposit notes or contingent premiums.	\$			0
5.	FOR RECIPROCAL EXCHANGES ONLY:				
5.1	Does the exchange appoint local agents?			Yes []	No []
5.2	If yes, is the commission paid:				
5.21	Out of Attorney's-in-fact compensation			Yes []	No [] N/A []
5.22	As a direct expense of the exchange			Yes []	No [] N/A []
5.3	What expenses of the exchange are not paid out of the compensation of the Attorney-in-fact?				
5.4	Has any Attorney-in-fact compensation, contingent on fulfillments of certain conditions, been deferred?			Yes []	No []
5.5	If yes, give full information:				
6.1	What provision has this reporting entity made to protect itself from an excessive loss in the event of a catastrophe under a workers' compensation contract issued without limit of loss?				
	The Company does not currently write workers' compensation business.				
6.2	Describe the method used to estimate this reporting entity's probable maximum insurance loss, and identify the type of insured exposures comprising that probable maximum loss, the locations of concentrations of those exposures and the external resources (such as consulting firms or computer software models), if any, used in the estimation process:				
	Computer modeling is performed quarterly by the Companies' property reinsurance broker on a group basis using the combined property exposures of each State Auto Group company. Natural perils that could impact the Companies include a New Madrid or West Coast earthquake, an Atlantic or Gulf Coast hurricane, and severe thunderstorm systems, including tornado/hail damage. Catastrophe models used in the past include those developed by Applied Insurance Research (AIR) and Risk Management Solutions (RMS).				
6.3	What provision has this reporting entity made (such as catastrophic reinsurance program) to protect itself from an excessive loss arising from the types and concentrations of insured exposures comprising its probable maximum property insurance loss?				
	All of the State Auto Group companies are party to a traditional catastrophe reinsurance agreement providing \$285 million in coverage for covered losses above a \$55 million retention, with a 5% co-participation. Catastrophe limits are purchased based on a 1 in 100 return period on a hurricane basis.				
6.4	Does the reporting entity carry catastrophe reinsurance protection for at least one reinstatement, in an amount sufficient to cover its estimated probable maximum loss attributable to a single loss event or occurrence?			Yes [X]	No []
6.5	If no, describe any arrangements or mechanisms employed by the reporting entity to supplement its catastrophe reinsurance program or to hedge its exposure to uninsured catastrophic loss:				

STATE AUTO INSURANCE COMPANY OF OHIO
GENERAL INTERROGATORIES

PART 2 – PROPERTY & CASUALTY INTERROGATORIES

7.1	Has the reporting entity reinsured any risk with any other entity under a quota share reinsurance contract that includes a provision that would limit the reinsurer's losses below the stated quota share percentage (e.g., a deductible, a loss ratio corridor, a loss cap, an aggregate limit or any similar provisions)?	Yes [<input type="checkbox"/>]	No [<input checked="" type="checkbox"/> X]
7.2	If yes, indicate the number of reinsurance contracts containing such provisions.	<div>0</div>	
7.3	If yes, does the amount of reinsurance credit taken reflect the reduction in quota share coverage caused by any applicable limiting provision(s)?	Yes [<input type="checkbox"/>]	No [<input type="checkbox"/>]
8.1	Has this reporting entity reinsured any risk with any other entity and agreed to release such entity from liability, in whole or in part, from any loss that may occur on this risk, or portion thereof, reinsured?	Yes [<input type="checkbox"/>]	No [<input checked="" type="checkbox"/> X]
8.2	If yes, give full information		
9.1	Has the reporting entity ceded any risk under any reinsurance contract (or under multiple contracts with the same reinsurer or its affiliates) for which during the period covered by the statement: (i) it recorded a positive or negative underwriting result greater than 5% of prior year-end surplus as regards policyholders or it reported calendar year written premium ceded or year-end loss and loss expense reserves ceded greater than 5% of prior year-end surplus as regards policyholders; (ii) it accounted for that contract as reinsurance and not as a deposit; and (iii) the contract(s) contain one or more of the following features or other features that would have similar results: (a) A contract term longer than two years and the contract is noncancellable by the reporting entity during the contract term; (b) A limited or conditional cancellation provision under which cancellation triggers an obligation by the reporting entity, or an affiliate of the reporting entity, to enter into a new reinsurance contract with the reinsurer, or an affiliate of the reinsurer; (c) Aggregate stop loss reinsurance coverage; (d) A unilateral right by either party (or both parties) to commute the reinsurance contract, whether conditional or not, except for such provisions which are only triggered by a decline in the credit status of the other party; (e) A provision permitting reporting of losses, or payment of losses, less frequently than on a quarterly basis (unless there is no activity during the period); or (f) Payment schedule, accumulating retentions from multiple years or any features inherently designed to delay timing of the reimbursement to the ceding entity?	Yes [<input type="checkbox"/>]	No [<input checked="" type="checkbox"/> X]
9.2	Has the reporting entity during the period covered by the statement ceded any risk under any reinsurance contract (or under multiple contracts with the same reinsurer or its affiliates), for which, during the period covered by the statement, it recorded a positive or negative underwriting result greater than 5% of prior year-end surplus as regards policyholders or it reported calendar year written premium ceded or year-end loss and loss expense reserves ceded greater than 5% of prior year-end surplus as regards policyholders; excluding cessions to approved pooling arrangements or to captive insurance companies that are directly or indirectly controlling, controlled by, or under common control with (i) one or more unaffiliated policyholders of the reporting entity, or (ii) an association of which one or more unaffiliated policyholders of the reporting entity is a member where: (a) The written premium ceded to the reinsurer by the reporting entity or its affiliates represents fifty percent (50%) or more of the entire direct and assumed premium written by the reinsurer based on its most recently available financial statement; or (b) Twenty-five percent (25%) or more of the written premium ceded to the reinsurer has been retroceded back to the reporting entity or its affiliates in a separate reinsurance contract.	Yes [<input type="checkbox"/>]	No [<input checked="" type="checkbox"/> X]
9.3	If yes to 9.1 or 9.2, please provide the following information in the Reinsurance Summary Supplemental Filing for General Interrogatory 9: (a) The aggregate financial statement impact gross of all such ceded reinsurance contracts on the balance sheet and statement of income; (b) A summary of the reinsurance contract terms and indicate whether it applies to the contracts meeting the criteria in 9.1 or 9.2; and (c) A brief discussion of management's principle objectives in entering into the reinsurance contract including the economic purpose to be achieved.		
9.4	Except for transactions meeting the requirements of paragraph 31 of SSAP No. 62R, Property and Casualty Reinsurance, has the reporting entity ceded any risk under any reinsurance contract (or multiple contracts with the same reinsurer or its affiliates) during the period covered by the financial statement, and either: (a) Accounted for that contract as reinsurance (either prospective or retroactive) under statutory accounting principles ("SAP") and as a deposit under generally accepted accounting principles ("GAAP"); or (b) Accounted for that contract as reinsurance under GAAP and as a deposit under SAP?	Yes [<input type="checkbox"/>]	No [<input checked="" type="checkbox"/> X]
9.5	If yes to 9.4, explain in the Reinsurance Summary Supplemental Filing for General Interrogatory 9 (Section D) why the contract(s) is treated differently for GAAP and SAP.		
9.6	The reporting entity is exempt from the Reinsurance Attestation Supplement under one or more of the following criteria: (a) The entity does not utilize reinsurance; or, (b) The entity only engages in a 100% quota share contract with an affiliate and the affiliated or lead company has filed an attestation supplement; or (c) The entity has no external cessions and only participates in an intercompany pool and the affiliated or lead company has filed an attestation supplement.	Yes [<input type="checkbox"/>]	No [<input checked="" type="checkbox"/> X]
10.	If the reporting entity has assumed risks from another entity, there should be charged on account of such reinsurances a reserve equal to that which the original entity would have been required to charge had it retained the risks. Has this been done?	Yes [<input checked="" type="checkbox"/> X]	No [<input type="checkbox"/>] N/A [<input type="checkbox"/>]
11.1	Has the reporting entity guaranteed policies issued by any other entity and now in force?	Yes [<input type="checkbox"/>]	No [<input checked="" type="checkbox"/> X]
11.2	If yes, give full information		
12.1	If the reporting entity recorded accrued retrospective premiums on insurance contracts on Line 15.3 of the assets schedule, Page 2, state the amount of corresponding liabilities recorded for: 12.11 Unpaid losses 12.12 Unpaid underwriting expenses (including loss adjustment expenses)	\$	0
12.2	Of the amount on Line 15.3, Page 2, state the amount that is secured by letters of credit, collateral and other funds?	\$	0
12.3	If the reporting entity underwrites commercial insurance risks, such as workers' compensation, are premium notes or promissory notes accepted from its insureds covering unpaid premiums and/or unpaid losses?	Yes [<input type="checkbox"/>]	No [<input checked="" type="checkbox"/> X] N/A [<input type="checkbox"/>]
12.4	If yes, provide the range of interest rates charged under such notes during the period covered by this statement: 12.41 From 12.42 To	<div>0.000%</div> <div>0.000%</div>	
12.5	Are letters of credit or collateral and other funds received from insureds being utilized by the reporting entity to secure premium notes or promissory notes taken by a reporting entity, or to secure any of the reporting entity's reported direct unpaid loss reserves, including unpaid losses under loss deductible features of commercial policies?	Yes [<input type="checkbox"/>]	No [<input checked="" type="checkbox"/> X]
12.6	If yes, state the amount thereof at December 31 of current year: 12.61 Letters of Credit 12.62 Collateral and other funds	\$	0
13.1	Largest net aggregate amount insured in any one risk (excluding workers' compensation):	\$	0

STATE AUTO INSURANCE COMPANY OF OHIO
GENERAL INTERROGATORIES

PART 2 – PROPERTY & CASUALTY INTERROGATORIES

13.2

Does any reinsurance contract considered in the calculation of this amount include an aggregate limit of recovery without also including a reinstatement provision?

Yes [☐] No [☒ X]

13.3

State the number of reinsurance contracts (excluding individual facultative risk certificates, but including facultative programs, automatic facilities or facultative obligatory contracts) considered in the calculation of the amount.

3

14.1

Is the company a cedant in a multiple cedant reinsurance contract?

Yes [☒ X] No [☐]

14.2

If yes, please describe the method of allocating and recording reinsurance among the cedants:
The Company's reinsurance treaties are written to include multiple members of the State Auto Group. The total ceded premiums for each treaty are calculated based on that contract's definition of subject premium. Each cedant company's portion of the total ceded premiums is based on its contribution to that subject premium base.

14.3

If the answer to 14.1 is yes, are the methods described in item 14.2 entirely contained in the respective multiple cedant reinsurance contracts?

Yes [☐] No [☒ X]

14.4

If the answer to 14.3 is no, are all the methods described in 14.2 entirely contained in written agreements?

Yes [☐] No [☒ X]

14.5

If the answer to 14.4 is no, please explain:
As noted in #14.2 above, ceded premiums are allocated based on each cedant company's proportionate share of that contract's calculated subject premium base. Although not specified in each contract, Statutory Accounting Principles logically direct the Company to match each company's costs with that company's benefits under each contract.

15.1

Has the reporting entity guaranteed any financed premium accounts?

Yes [☐] No [☒ X]

15.2

If yes, give full information

16.1

Does the reporting entity write any warranty business?

Yes [☐] No [☒ X]

If yes, disclose the following information for each of the following types of warranty coverage:

	1	2	3	4	5
	Direct Losses Incurred	Direct Losses Unpaid	Direct Written Premium	Direct Premium Unearned	Direct Premium Earned
16.11 Home	\$ 0	\$ 0	\$ 0	\$ 0	0
16.12 Products	\$ 0	\$ 0	\$ 0	\$ 0	0
16.13 Automobile	\$ 0	\$ 0	\$ 0	\$ 0	0
16.14 Other*	\$ 0	\$ 0	\$ 0	\$ 0	0

* Disclose type of coverage:

17.1

Does the reporting entity include amounts recoverable on unauthorized reinsurance in Schedule F – Part 3 that it excludes from Schedule F – Part 5.

Yes [☐] No [☒ X]

Included but not reported losses on contracts in force prior to July 1, 1984, and not subsequently renewed are exempt from inclusion in Schedule F – Part 5. Provide the following information for this exemption:

17.11	Gross amount of unauthorized reinsurance in Schedule F – Part 3 excluded from Schedule F – Part 5	\$ 0
17.12	Unfunded portion of Interrogatory 17.11	\$ 0
17.13	Paid losses and loss adjustment expenses portion of Interrogatory 17.11	\$ 0
17.14	Case reserves portion of Interrogatory 17.11	\$ 0
17.15	Incurred but not reported portion of Interrogatory 17.11	\$ 0
17.16	Unearned premium portion of Interrogatory 17.11	\$ 0
17.17	Contingent commission portion of Interrogatory 17.11	\$ 0

Provide the following information for all other amounts included in Schedule F – Part 3 and excluded from Schedule F – Part 5, not included above.

17.18	Gross amount of unauthorized reinsurance in Schedule F – Part 3 excluded from Schedule F – Part 5	\$ 0
17.19	Unfunded portion of Interrogatory 17.18	\$ 0
17.20	Paid losses and loss adjustment expenses portion of Interrogatory 17.18	\$ 0
17.21	Case reserves portion of Interrogatory 17.18	\$ 0
17.22	Incurred but not reported portion of Interrogatory 17.18	\$ 0
17.23	Unearned premium portion of Interrogatory 17.18	\$ 0
17.24	Contingent commission portion of Interrogatory 17.18	\$ 0

18.1

Do you act as a custodian for health savings accounts?

Yes [☐] No [☒ X]

18.2

If yes, please provide the amount of custodial funds held as of the reporting date.

\$ 0

18.3

Do you act as an administrator for health savings accounts?

Yes [☐] No [☒ X]

18.4

If yes, please provide the balance of the funds administered as of the reporting date.

\$ 0

STATE AUTO INSURANCE COMPANY OF OHIO
FIVE-YEAR HISTORICAL DATA

Show amounts in whole dollars only, no cents; show percentages to one decimal place, i.e. 17.6.

	1 2015	2 2014	3 2013	4 2012	5 2011
Gross Premiums Written (Page 8, Part 1B, Cols. 1, 2 & 3)					
1. Liability lines (Lines 11.1, 11.2, 16, 17.1, 17.2, 17.3, 18.1, 18.2, 19.1, 19.2 & 19.3, 19.4).....	20,213,374	20,643,771	22,272,220	23,217,848	28,475,836
2. Property lines (Lines 1, 2, 9, 12, 21 & 26).....	19,864,226	19,645,849	20,166,674	21,982,467	25,519,996
3. Property and liability combined lines (Lines 3, 4, 5, 8, 22 & 27).....	24,109,526	24,853,451	26,653,905	26,659,664	27,508,846
4. All other lines (Lines 6, 10, 13, 14, 15, 23, 24, 28, 29, 30 & 34).....	0	0	0	0	28,771
5. Nonproportional reinsurance lines (Lines 31, 32 & 33).....	0	0	0	0	0
6. Total (Line 35).....	64,187,126	65,143,071	69,092,799	71,859,979	81,533,449
Net Premiums Written (Page 8, Part 1B, Col. 6)					
7. Liability lines (Lines 11.1, 11.2, 16, 17.1, 17.2, 17.3, 18.1, 18.2, 19.1, 19.2 & 19.3, 19.4).....	0	0	0	0	4,733,556
8. Property lines (Lines 1, 2, 9, 12, 21 & 26).....	0	0	0	0	2,696,257
9. Property and liability combined lines (Lines 3, 4, 5, 8, 22 & 27).....	0	0	0	0	2,814,212
10. All other lines (Lines 6, 10, 13, 14, 15, 23, 24, 28, 29, 30 & 34).....	0	0	0	0	28,771
11. Nonproportional reinsurance lines (Lines 31, 32 & 33).....	0	0	0	0	0
12. Total (Line 35).....	0	0	0	0	10,272,796
Statement of Income (Page 4)					
13. Net underwriting gain (loss) (Line 8).....	0	0	0	0	(906,506)
14. Net investment gain (loss) (Line 11).....	825,422	711,368	643,073	1,755,565	1,151,466
15. Total other income (Line 15).....	0	0	0	0	164,201
16. Dividends to policyholders (Line 17).....	0	0	0	0	4,047
17. Federal and foreign income taxes incurred (Line 19).....	13,611	144,309	8,024	153,276	(180,675)
18. Net income (Line 20).....	811,811	567,059	635,049	1,602,289	585,789
Balance Sheet Lines (Pages 2 and 3)					
19. Total admitted assets excluding protected cell business (Page 2, Line 26, Col. 3).....	32,162,949	32,257,876	32,329,873	32,428,321	46,617,977
20. Premiums and considerations (Page 2, Col. 3):					
20.1 In course of collection (Line 15.1).....	0	0	0	0	0
20.2 Deferred and not yet due (Line 15.2).....	0	0	0	0	0
20.3 Accrued retrospective premiums (Line 15.3).....	0	0	0	0	0
21. Total liabilities excluding protected cell business (Page 3, Line 26).....	15,389,844	15,751,519	16,390,946	17,827,559	32,971,989
22. Losses (Page 3, Line 1).....	0	0	0	0	0
23. Loss adjustment expenses (Page 3, Line 3).....	0	0	0	0	0
24. Unearned premiums (Page 3, Line 9).....	0	0	0	0	0
25. Capital paid up (Page 3, Lines 30 & 31).....	2,300,000	2,300,000	2,300,000	2,300,000	2,300,000
26. Surplus as regards policyholders (Page 3, Line 37).....	16,773,105	16,506,357	15,938,927	14,600,762	13,645,988
Cash Flow (Page 5)					
27. Net cash from operations (Line 11).....	1,287,275	(485,154)	2,147,491	1,793,849	(18,924,793)
Risk-Based Capital Analysis					
28. Total adjusted capital.....	16,773,105	16,506,357	15,938,927	14,600,762	13,645,988
29. Authorized control level risk-based capital.....	205,761	283,414	344,523	299,863	1,115,549
Percentage Distribution of Cash, Cash Equivalents and Invested Assets (Page 2, Col. 3) (Item divided by Page 2, Line 12, Col. 3) x 100.0					
30. Bonds (Line 1).....	98.5	88.9	85.0	88.0	73.6
31. Stocks (Lines 2.1 & 2.2).....	0.0	8.6	11.1	10.2	7.6
32. Mortgage loans on real estate (Lines 3.1 & 3.2).....	0.0	0.0	0.0	0.0	0.0
33. Real estate (Lines 4.1, 4.2 & 4.3).....	0.0	0.0	0.0	0.0	0.0
34. Cash, cash equivalents and short-term investments (Line 5).....	1.5	2.5	3.9	1.8	18.7
35. Contract loans (Line 6).....	0.0	0.0	0.0	0.0	0.0
36. Derivatives (Line 7).....	0.0	0.0	0.0	0.0	0.0
37. Other invested assets (Line 8).....	0.0	0.0	0.0	0.0	0.0
38. Receivable for securities (Line 9).....	0.0	0.0	0.0	0.0	0.0
39. Securities lending reinvested collateral assets (Line 10).....	0.0	0.0	0.0	0.0	0.0
40. Aggregate write-ins for invested assets (Line 11).....	0.0	0.0	0.0	0.0	0.0
41. Cash, cash equivalents and invested assets (Line 12).....	100.0	100.0	100.0	100.0	100.0
Investments in Parent, Subsidiaries and Affiliates					
42. Affiliated bonds (Sch. D, Summary, Line 12, Col. 1).....	0	0	0	0	0
43. Affiliated preferred stocks (Sch. D, Summary, Line 18, Col. 1).....	0	0	0	0	0
44. Affiliated common stocks (Sch. D, Summary, Line 24, Col. 1).....	0	0	0	0	0
45. Affiliated short-term investments (subtotals included in Schedule DA, Verification, Column 5, Line 10).....	0	0	0	0	0
46. Affiliated mortgage loans on real estate.....	0	0	0	0	0
47. All other affiliated.....	0	0	0	0	0
48. Total of above lines 42 to 47.....	0	0	0	0	0
49. Total investment in parent included in Lines 42 to 47 above.....	0	0	0	0	0
50. Percentage of investments in parent, subsidiaries and affiliates to surplus as regards policyholders (Line 48 above divided by Page 3, Col. 1, Line 37 x 100.0).....	0.0	0.0	0.0	0.0	0.0

STATE AUTO INSURANCE COMPANY OF OHIO
FIVE-YEAR HISTORICAL DATA
(Continued)

	1	2	3	4	5
	2015	2014	2013	2012	2011
Capital and Surplus Accounts (Page 4)					
51. Net unrealized capital gains (losses) (Line 24).....	(247,940)	(20,709)	203,752	(417,863)	17,892
52. Dividends to stockholders (Line 35).....	0	0	0	0	0
53. Change in surplus as regards policyholders for the year (Line 38).....	266,748	567,430	1,338,165	954,774	(229,199)
Gross Losses Paid (Page 9, Part 2, Cols. 1 & 2)					
54. Liability lines (Lines 11.1, 11.2, 16, 17.1, 17.2, 17.3, 18.1, 18.2, 19.1, 19.2 & 19.3, 19.4).....	11,070,473	13,337,745	13,477,383	14,765,733	28,605,769
55. Property lines (Lines 1, 2, 9, 12, 21 & 26).....	10,249,777	10,474,006	10,948,509	13,374,306	17,628,201
56. Property and liability combined lines (Lines 3, 4, 5, 8, 22 & 27).....	8,584,721	11,193,027	11,047,882	16,843,094	29,887,976
57. All other lines (Lines 6, 10, 13, 14, 15, 23, 24, 28, 29, 30 & 34).....	0	0	0	0	20,309
58. Nonproportional reinsurance lines (Lines 31, 32 & 33).....	0	0	0	0	12,157
59. Total (Line 35).....	29,904,971	35,004,778	35,473,774	44,983,134	76,154,411
Net Losses Paid (Page 9, Part 2, Col. 4)					
60. Liability lines (Lines 11.1, 11.2, 16, 17.1, 17.2, 17.3, 18.1, 18.2, 19.1, 19.2 & 19.3, 19.4)....	0	0	0	0	11,176,443
61. Property lines (Lines 1, 2, 9, 12, 21 & 26).....	0	0	0	0	3,283,134
62. Property and liability combined lines (Lines 3, 4, 5, 8, 22 & 27).....	0	0	0	0	6,791,721
63. All other lines (Lines 6, 10, 13, 14, 15, 23, 24, 28, 29, 30 & 34).....	0	0	0	0	20,309
64. Nonproportional reinsurance lines (Lines 31, 32 & 33).....	0	0	0	0	12,157
65. Total (Line 35).....	0	0	0	0	21,283,764
Operating Percentages (Page 4) (Item divided by Page 4, Line 1) x 100.0					
66. Premiums earned (Line 1).....	100.0	100.0	100.0	100.0	100.0
67. Losses incurred (Line 2).....	0.0	0.0	0.0	0.0	70.2
68. Loss expenses incurred (Line 3).....	0.0	0.0	0.0	0.0	12.2
69. Other underwriting expenses incurred (Line 4).....	0.0	0.0	0.0	0.0	22.7
70. Net underwriting gain (loss) (Line 8).....	0.0	0.0	0.0	0.0	(5.1)
Other Percentages					
71. Other underwriting expenses to net premiums written (Page 4, Lines 4 + 5 - 15 divided by Page 8, Part 1B, Col. 6, Line 35 x 100.0).....	0.0	0.0	0.0	0.0	37.8
72. Losses and loss expenses incurred to premiums earned (Page 4, Lines 2 + 3 divided by Page 4, Line 1 x 100.0).....	0.0	0.0	0.0	0.0	82.4
73. Net premiums written to policyholders' surplus (Page 8, Part 1B, Col. 6, Line 35, divided by Page 3, Line 37, Col. 1 x 100.0).....	0.0	0.0	0.0	0.0	75.3
One Year Loss Development (000 omitted)					
74. Development in estimated losses and loss expenses incurred prior to current year (Schedule P, Part 2-Summary, Line 12, Col. 11).....	0	0	0	0	0
75. Percent of development of losses and loss expenses incurred to policyholders' surplus of prior year end (Line 74 above divided by Page 4, Line 21, Col. 1 x 100).....	0.0	0.0	0.0	0.0	0.0
Two Year Loss Development (000 omitted)					
76. Development in estimated losses and loss expenses incurred 2 years before the current year and prior year (Schedule P, Part 2-Summary, Line 12, Col. 12).....	0	0	0	0	0
77. Percent of development of losses and loss expenses incurred to reported policyholders' surplus of second prior year end (Line 76 above divided by Page 4, Line 21, Col. 2 x 100.0).....	0.0	0.0	0.0	0.0	0.0

If a party to a merger, have the two most recent years of this exhibit been restated due to a merger in compliance with the disclosure requirements of
SSAP No. 3, Accounting Changes and Correction of Errors?

Yes [☐] No [☐]

If no, please explain:

SCHEDULE P - ANALYSIS OF LOSSES AND LOSS EXPENSES

SCHEDULE P - PART 1 - SUMMARY

(\$000 Omitted)

Years in Which Premiums Were Earned and Losses Were Incurred	Premiums Earned			Loss and Loss Expense Payments								12
	1 Direct and Assumed	2 Ceded	3 Net (Cols. 1 - 2)	Loss Payments		Defense and Cost Containment Payments		Adjusting and Other Payments		10 Salvage and Subrogation Received	11 Total Net Paid (Cols. 4 - 5 + 6 - 7 + 8 - 9)	Number of Claims Reported- Direct and Assumed
				4 Direct and Assumed	5 Ceded	6 Direct and Assumed	7 Ceded	8 Direct and Assumed	9 Ceded			
1. Prior.....XXX.....XXX.....XXX.....0.....0.....0.....0.....0.....0.....0.....0.....XXX.....
2. 2006.....0.....56.....(56).....0.....0.....0.....0.....0.....0.....0.....0.....XXX.....
3. 2007.....0.....73.....(73).....0.....0.....0.....0.....0.....0.....0.....0.....XXX.....
4. 2008.....0.....41.....(41).....0.....0.....0.....0.....0.....0.....0.....0.....XXX.....
5. 2009.....0.....0.....0.....0.....0.....0.....0.....0.....0.....0.....0.....XXX.....
6. 2010.....0.....0.....0.....0.....0.....0.....0.....0.....0.....0.....0.....XXX.....
7. 2011.....0.....0.....0.....0.....0.....0.....0.....0.....0.....0.....0.....XXX.....
8. 2012.....0.....0.....0.....0.....0.....0.....0.....0.....0.....0.....0.....XXX.....
9. 2013.....0.....0.....0.....0.....0.....0.....0.....0.....0.....0.....0.....XXX.....
10. 2014.....0.....0.....0.....0.....0.....0.....0.....0.....0.....0.....0.....XXX.....
11. 2015.....0.....0.....0.....0.....0.....0.....0.....0.....0.....0.....0.....XXX.....
12. Totals.....XXX.....XXX.....XXX.....0.....0.....0.....0.....0.....0.....0.....0.....XXX.....

	Losses Unpaid				Defense and Cost Containment Unpaid				Adjusting and Other Unpaid		23 Salvage and Subrogation Anticipated	24 Total Net Losses and Expenses Unpaid	25 Number of Claims Outstanding-Direct and Assumed
	Case Basis		Bulk + IBNR		Case Basis		Bulk + IBNR		21 Direct and Assumed	22 Ceded			
	13 Direct and Assumed	14 Ceded	15 Direct and Assumed	16 Ceded	17 Direct and Assumed	18 Ceded	19 Direct and Assumed	20 Ceded					
1. Prior....000000000000XXX....
2. 2006....000000000000XXX....
3. 2007....000000000000XXX....
4. 2008....000000000000XXX....
5. 2009....000000000000XXX....
6. 2010....000000000000XXX....
7. 2011....000000000000XXX....
8. 2012....000000000000XXX....
9. 2013....000000000000XXX....
10. 2014....000000000000XXX....
11. 2015....000000000000XXX....
12. Totals...000000000000XXX....

	Total Losses and Loss Expenses Incurred			Loss and Loss Expense Percentage (Incurred/Premiums Earned)			Nontabular Discount		34 Inter-Company Pooling Participation Percentage	Net Balance Sheet Reserves after Discount	
	26 Direct and Assumed	27 Ceded	28 Net	29 Direct and Assumed	30 Ceded	31 Net	32 Loss	33 Loss Expense		35 Losses Unpaid	36 Loss Expenses Unpaid
1. Prior...XXX.....XXX.....XXX.....XXX.....XXX.....XXX.....0.....0.....XXX.....0.....0.....
2. 2006.0.....0.....0.....0.0.....0.0.....0.0.....0.....0.....0.00.....0.....0.....
3. 2007.0.....0.....0.....0.0.....0.0.....0.0.....0.....0.....0.00.....0.....0.....
4. 2008.0.....0.....0.....0.0.....0.0.....0.0.....0.....0.....0.00.....0.....0.....
5. 2009.0.....0.....0.....0.0.....0.0.....0.0.....0.....0.....0.00.....0.....0.....
6. 2010.0.....0.....0.....0.0.....0.0.....0.0.....0.....0.....0.00.....0.....0.....
7. 2011.0.....0.....0.....0.0.....0.0.....0.0.....0.....0.....0.00.....0.....0.....
8. 2012.0.....0.....0.....0.0.....0.0.....0.0.....0.....0.....0.00.....0.....0.....
9. 2013.0.....0.....0.....0.0.....0.0.....0.0.....0.....0.....0.00.....0.....0.....
10. 2014.0.....0.....0.....0.0.....0.0.....0.0.....0.....0.....0.00.....0.....0.....
11. 2015.0.....0.....0.....0.0.....0.0.....0.0.....0.....0.....0.00.....0.....0.....
12. TotalsXXX.....XXX.....XXX.....XXX.....XXX.....XXX.....0.....0.....XXX.....0.....0.....

Note: Parts 2 and 4 are gross of all discounting, including tabular discounting. Part 1 is gross of only nontabular discounting, which is reported in Columns 32 and 33 of Part 1. The tabular discount, if any, is reported in the Notes to Financial Statements, which will reconcile Part 1 with Parts 2 and 4.

SCHEDULE P - PART 2 - SUMMARY

Years in Which Losses Were Incurred	Incurred Net Losses and Defense and Cost Containment Expenses Reported at Year End (\$000 omitted)										DEVELOPMENT	
	1	2	3	4	5	6	7	8	9	10	11	12
	2006	2007	2008	2009	2010	2011	2012	2013	2014	2015	One Year	Two Year
1. Prior.....(73)(73)(73)(73)(73)(73)(73)(73)(73)(73)00
2. 2006.....000000000000
3. 2007.....XXX.....00000000000
4. 2008.....XXX.....XXX.....0000000000
5. 2009.....XXX.....XXX.....XXX.....000000000
6. 2010.....XXX.....XXX.....XXX.....XXX.....00000000
7. 2011.....XXX.....XXX.....XXX.....XXX.....XXX.....0000000
8. 2012.....XXX.....XXX.....XXX.....XXX.....XXX.....XXX.....000000
9. 2013.....XXX.....XXX.....XXX.....XXX.....XXX.....XXX.....XXX.....00000
10. 2014.....XXX.....XXX.....XXX.....XXX.....XXX.....XXX.....XXX.....XXX.....000XXX.....
11. 2015.....XXX.....XXX.....XXX.....XXX.....XXX.....XXX.....XXX.....XXX.....XXX.....0XXX.....XXX.....
12. Totals.....										00

SCHEDULE P - PART 3 - SUMMARY

Years in Which Losses Were Incurred	Cumulative Paid Net Losses and Defense and Cost Containment Expenses Reported at Year End (\$000 omitted)										11	12
	1	2	3	4	5	6	7	8	9	10	Number of Claims Closed With Loss Payment	Number of Claims Closed Without Loss Payment
	2006	2007	2008	2009	2010	2011	2012	2013	2014	2015		
1. Prior.....000.....(73)(73)(73)(73)(73)(73)(73)(73)(73)XXX.....XXX.....
2. 2006.....0000000000XXX.....XXX.....
3. 2007.....XXX.....000000000XXX.....XXX.....
4. 2008.....XXX.....XXX.....00000000XXX.....XXX.....
5. 2009.....XXX.....XXX.....XXX.....0000000XXX.....XXX.....
6. 2010.....XXX.....XXX.....XXX.....XXX.....000000XXX.....XXX.....
7. 2011.....XXX.....XXX.....XXX.....XXX.....XXX.....00000XXX.....XXX.....
8. 2012.....XXX.....XXX.....XXX.....XXX.....XXX.....XXX.....0000XXX.....XXX.....
9. 2013.....XXX.....XXX.....XXX.....XXX.....XXX.....XXX.....XXX.....000XXX.....XXX.....
10. 2014.....XXX.....XXX.....XXX.....XXX.....XXX.....XXX.....XXX.....XXX.....00XXX.....XXX.....
11. 2015.....XXX.....XXX.....XXX.....XXX.....XXX.....XXX.....XXX.....XXX.....XXX.....0XXX.....XXX.....

SCHEDULE P - PART 4 - SUMMARY

Years in Which Losses Were Incurred	Bulk and IBNR Reserves on Net Losses and Defense and Cost Containment Expenses Reported at Year End (\$000 omitted)									
	1	2	3	4	5	6	7	8	9	10
	2006	2007	2008	2009	2010	2011	2012	2013	2014	2015
1. Prior.....0000000000
2. 2006.....0000000000
3. 2007.....XXX.....000000000
4. 2008.....XXX.....XXX.....0	NONE						
5. 2009.....XXX.....XXX.....XXX.....							
6. 2010.....XXX.....XXX.....XXX.....							
7. 2011.....XXX.....XXX.....XXX.....							
8. 2012.....XXX.....XXX.....XXX.....							
9. 2013.....XXX.....XXX.....XXX.....XXX.....XXX.....XXX.....XXX.....000
10. 2014.....XXX.....XXX.....XXX.....XXX.....XXX.....XXX.....XXX.....XXX.....00
11. 2015.....XXX.....XXX.....XXX.....XXX.....XXX.....XXX.....XXX.....XXX.....XXX.....0

STATE AUTO INSURANCE COMPANY OF OHIO
SCHEDULE T - EXHIBIT OF PREMIUMS WRITTEN

Allocated by States and Territories

		1	Gross Premiums, Including Policy and Membership Fees Less Return Premiums and Premiums on Policies Not Taken		4	5	6	7	8	9
		Active Status	2	3	Dividends Paid or Credited to Policyholders on Direct Business	Direct Losses Paid (Deducting Salvage)	Direct Losses Incurred	Direct Losses Unpaid	Finance and Service Charges not Included in Premiums	Direct Premiums Written for Federal Purchasing Groups (Incl. in Col. 2)
States, Etc.			Direct Premiums Written	Direct Premiums Earned						
1.	Alabama.....AL	...N....00000000
2.	Alaska.....AK	...N....00000000
3.	Arizona.....AZ	...N....00000000
4.	Arkansas.....AR	...N....00000000
5.	California.....CA	...N....00000000
6.	Colorado.....CO	...N....00000000
7.	Connecticut.....CT	...N....00000000
8.	Delaware.....DE	...N....00000000
9.	District of Columbia.....DC	...N....00000000
10.	Florida.....FL	...N....00000000
11.	Georgia.....GA	...N....00000000
12.	Hawaii.....HI	...N....00000000
13.	Idaho.....ID	...N....00000000
14.	Illinois.....IL	...N....00000000
15.	Indiana.....IN	...N....00000000
16.	Iowa.....IA	...N....00000000
17.	Kansas.....KS	...N....00000000
18.	Kentucky.....KY	...N....00000000
19.	Louisiana.....LA	...N....00000000
20.	Maine.....ME	...N....00000000
21.	Maryland.....MD	...N....00000000
22.	Massachusetts.....MA	...N....00000000
23.	Michigan.....MI	...N....00000000
24.	Minnesota.....MN	...N....00000000
25.	Mississippi.....MS	...N....00000000
26.	Missouri.....MO	...N....00000000
27.	Montana.....MT	...N....00000000
28.	Nebraska.....NE	...N....00000000
29.	Nevada.....NV	...N....00000000
30.	New Hampshire.....NH	...N....00000000
31.	New Jersey.....NJ	...N....00000000
32.	New Mexico.....NM	...N....00000000
33.	New York.....NY	...N....00000000
34.	North Carolina.....NC	...N....00000000
35.	North Dakota.....ND	...N....00000000
36.	Ohio.....OH	...L....63,986,92364,284,707029,822,36134,003,89022,575,460295,7610
37.	Oklahoma.....OK	...N....00000000
38.	Oregon.....OR	...N....00000000
39.	Pennsylvania.....PA	...N....00000000
40.	Rhode Island.....RI	...N....00000000
41.	South Carolina.....SC	...N....00000000
42.	South Dakota.....SD	...N....00000000
43.	Tennessee.....TN	...N....00000000
44.	Texas.....TX	...N....00000000
45.	Utah.....UT	...N....00000000
46.	Vermont.....VT	...N....00000000
47.	Virginia.....VA	...N....00000000
48.	Washington.....WA	...N....00000000
49.	West Virginia.....WV	...N....00000000
50.	Wisconsin.....WI	...N....00000000
51.	Wyoming.....WY	...N....00000000
52.	American Samoa.....AS	...N....00000000
53.	Guam.....GU	...N....00000000
54.	Puerto Rico.....PR	...N....00000000
55.	US Virgin Islands.....VI	...N....00000000
56.	Northern Mariana Islands...MP	...N....00000000
57.	Canada.....CAN	...N....00000000
58.	Aggregate Other Alien.....OT	XXX00000000
59.	Totals.....	(a)....163,986,92364,284,707029,822,36134,003,89022,575,460295,7610

DETAILS OF WRITE-INS

58001.	XXX00000000
58002.	XXX00000000
58003.	XXX00000000
58998. Summary of remaining write-ins for Line 58 from overflow page	XXX00000000
58999. Totals (Lines 58001 thru 58003+ Line 58998) (Line 58 above)	XXX00000000

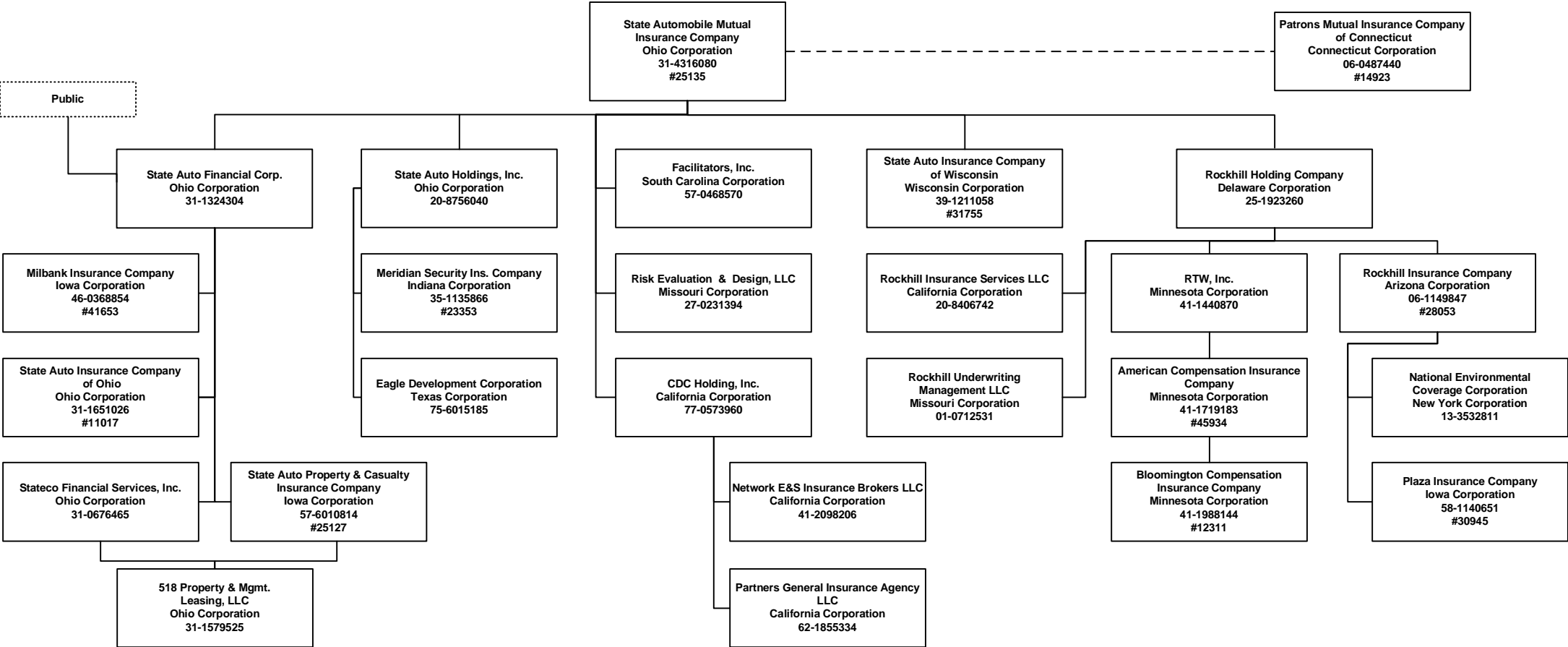
(a) Insert the number of "L" responses except for Canada and Other Alien.
(L) - Licensed or Chartered - Licensed Insurance Carrier or Domiciled RRG; (R) - Registered - Non-domiciled RRGs; (Q) - Qualified - Qualified or Accredited Reinsurer;
(E) - Eligible - Reporting Entities eligible or approved to write Surplus Lines in the state; (N) - None of the above - Not allowed to write business in the state.

Explanation of Basis of Allocation of Premiums by States, etc.

All Lines: the location of the insured risk controls the state code which is used for all statistical records.

SCHEDULE Y – INFORMATION CONCERNING ACTIVITIES OF INSURER MEMBERS OF A HOLDING GROUP
PART 1 – ORGANIZATIONAL CHART

ORGANIZATIONAL STRUCTURE OF STATE AUTO HOLDING COMPANY SYSTEM



2015 ALPHABETICAL INDEX -- PROPERTY & CASUALTY ANNUAL STATEMENT BLANK

Assets	2	Schedule P-Part 2G-Special Liability (Ocean Marine, Aircraft (All Perils), Boiler & Machinery)	58
Cash Flow	5	Schedule P-Part 2H-Section 1-Other Liability-Occurrence	58
Exhibit of Capital Gains (Losses)	12	Schedule P-Part 2H-Section 2-Other Liability-Claims-Made	58
Exhibit of Net Investment Income	12	Schedule P-Part 2I-Spec. Prop. (Fire, Allied Lines, Inland Marine, Earthquake, Burglary, Theft)	59
Exhibit of Nonadmitted Assets	13	Schedule P-Part 2J-Auto Physical Damage	59
Exhibit of Premiums and Losses (State Page)	19	Schedule P-Part 2K-Fidelity, Surety	59
Five-Year Historical Data	17	Schedule P-Part 2L-Other (Including Credit, Accident and Health)	59
General Interrogatories	15	Schedule P-Part 2M-International	59
Jurat Page	1	Schedule P-Part 2N-Reinsurance – Nonproportional Assumed Property	60
Liabilities, Surplus and Other Funds	3	Schedule P-Part 2O-Reinsurance – Nonproportional Assumed Liability	60
Notes To Financial Statements	14	Schedule P-Part 2P-Reinsurance – Nonproportional Assumed Financial Lines	60
Overflow Page For Write-ins	100	Schedule P-Part 2R-Section 1-Products Liability-Occurrence	61
Schedule A-Part 1	E01	Schedule P-Part 2R-Section 2-Products Liability-Claims-Made	61
Schedule A-Part 2	E02	Schedule P-Part 2S-Financial Guaranty/Mortgage Guaranty	61
Schedule A-Part 3	E03	Schedule P-Part 2T-Warranty	61
Schedule A-Verification Between Years	SI02	Schedule P-Part 3A-Homeowners/Farmowners	62
Schedule B-Part 1	E04	Schedule P-Part 3B-Private Passenger Auto Liability/Medical	62
Schedule B-Part 2	E05	Schedule P-Part 3C-Commercial Auto/Truck Liability/Medical	62
Schedule B-Part 3	E06	Schedule P-Part 3D-Workers' Compensation (Excluding Excess Workers Compensation)	62
Schedule B-Verification Between Years	SI02	Schedule P-Part 3E-Commercial Multiple Peril	62
Schedule BA-Part 1	E07	Schedule P-Part 3F-Section 1 –Medical Professional Liability-Occurrence	63
Schedule BA-Part 2	E08	Schedule P-Part 3F-Section 2-Medical Professional Liability-Claims-Made	63
Schedule BA-Part 3	E09	Schedule P-Part 3G-Special Liability (Ocean Marine, Aircraft (All Perils), Boiler & Machinery)	63
Schedule BA-Verification Between Years	SI03	Schedule P-Part 3H-Section 1-Other Liability-Occurrence	63
Schedule D-Part 1	E10	Schedule P-Part 3H-Section 2-Other Liability-Claims-Made	63
Schedule D-Part 1A-Section 1	SI05	Schedule P-Part 3I-Spec. Prop. (Fire, Allied Lines, Inland Marine, Earthquake, Burglary, Theft)	64
Schedule D-Part 1A-Section 2	SI08	Schedule P-Part 3J-Auto Physical Damage	64
Schedule D-Part 2-Section 1	E11	Schedule P-Part 3K-Fidelity/Surety	64
Schedule D-Part 2-Section 2	E12	Schedule P-Part 3L-Other (Including Credit, Accident and Health)	64
Schedule D-Part 3	E13	Schedule P-Part 3M-International	64
Schedule D-Part 4	E14	Schedule P-Part 3N-Reinsurance – Nonproportional Assumed Property	65
Schedule D-Part 5	E15	Schedule P-Part 3O-Reinsurance – Nonproportional Assumed Liability	65
Schedule D-Part 6-Section 1	E16	Schedule P-Part 3P-Reinsurance – Nonproportional Assumed Financial Lines	65
Schedule D-Part 6-Section 2	E16	Schedule P-Part 3R-Section 1-Products Liability-Occurrence	66
Schedule D-Summary By Country	SI04	Schedule P-Part 3R-Section 2-Products Liability-Claims-Made	66
Schedule D-Verification Between Years	SI03	Schedule P-Part 3S-Financial Guaranty/Mortgage Guaranty	66
Schedule DA-Part 1	E17	Schedule P-Part 3T-Warranty	66
Schedule DA-Verification Between Years	SI10	Schedule P-Part 4A-Homeowners/Farmowners	67
Schedule DB-Part A-Section 1	E18	Schedule P-Part 4B-Private Passenger Auto Liability/Medical	67
Schedule DB-Part A-Section 2	E19	Schedule P-Part 4C-Commercial Auto/Truck Liability/Medical	67
Schedule DB-Part A-Verification Between Years	SI11	Schedule P-Part 4D-Workers' Compensation (Excluding Excess Workers Compensation)	67
Schedule DB-Part B-Section 1	E20	Schedule P-Part 4E-Commercial Multiple Peril	67
Schedule DB-Part B-Section 2	E21	Schedule P-Part 4F-Section 1-Medical Professional Liability-Occurrence	68
Schedule DB-Part B-Verification Between Years	SI11	Schedule P-Part 4F-Section 2-Medical Professional Liability-Claims-Made	68
Schedule DB-Part C-Section 1	SI12	Schedule P-Part 4G-Special Liability (Ocean Marine, Aircraft (All Perils), Boiler & Machinery)	68
Schedule DB-Part C-Section 2	SI13	Schedule P-Part 4H-Section 1-Other Liability-Occurrence	68
Schedule DB-Part D-Section 1	E22	Schedule P-Part 4H-Section 2-Other Liability-Claims-Made	68
Schedule DB-Part D-Section 2	E23	Schedule P-Part 4I-Spec. Prop. (Fire, Allied Lines, Inland Marine, Earthquake, Burglary & Theft)	69
Schedule DB-Verification	SI14	Schedule P-Part 4J-Auto Physical Damage	69
Schedule DL-Part 1	E24	Schedule P-Part 4K-Fidelity/Surety	69
Schedule DL-Part 2	E25	Schedule P-Part 4L-Other (Including Credit, Accident and Health)	69
Schedule E-Part 1-Cash	E26	Schedule P-Part 4M-International	69
Schedule E-Part 2-Cash Equivalents	E27	Schedule P-Part 4N-Reinsurance – Nonproportional Assumed Property	70
Schedule E-Part 3-Special Deposits	E28	Schedule P-Part 4O-Reinsurance – Nonproportional Assumed Liability	70
Schedule E-Verification Between Years	SI15	Schedule P-Part 4P-Reinsurance – Nonproportional Assumed Financial Lines	70
Schedule F-Part 1	20	Schedule P-Part 4R-Section 1-Products Liability-Occurrence	71
Schedule F-Part 2	21	Schedule P-Part 4R-Section 2-Products Liability-Claims-Made	71
Schedule F-Part 3	22	Schedule P-Part 4S-Financial Guaranty/Mortgage Guaranty	71
Schedule F-Part 4	23	Schedule P-Part 4T-Warranty	71
Schedule F-Part 5	24	Schedule P-Part 5A-Homeowners/Farmowners	72
Schedule F-Part 6-Section 1	25	Schedule P-Part 5B-Private Passenger Auto Liability/Medical	73
Schedule F-Part 6-Section 2	26	Schedule P-Part 5C-Commercial Auto/Truck Liability/Medical	74
Schedule F-Part 7	27	Schedule P-Part 5D-Workers' Compensation (Excluding Excess Workers Compensation)	75
Schedule F-Part 8	28	Schedule P-Part 5E-Commercial Multiple Peril	76
Schedule F-Part 9	29	Schedule P-Part 5F-Medical Professional Liability-Claims-Made	78
Schedule H-Accident and Health Exhibit-Part 1	30	Schedule P-Part 5F-Medical Professional Liability-Occurrence	77
Schedule H-Part 2, Part 3 and Part 4	31	Schedule P-Part 5H-Other Liability-Claims-Made	80
Schedule H-Part 5-Health Claims	32	Schedule P-Part 5H-Other Liability-Occurrence	79
Schedule P-Part 1-Summary	33	Schedule P-Part 5R-Products Liability-Claims-Made	82
Schedule P-Part 1A-Homeowners/Farmowners	35	Schedule P-Part 5R-Products Liability-Occurrence	81
Schedule P-Part 1B-Private Passenger Auto Liability/Medical	36	Schedule P-Part 5T-Warranty	83
Schedule P-Part 1C-Commercial Auto/Truck Liability/Medical	37	Schedule P-Part 6C-Commercial Auto/Truck Liability/Medical	84
Schedule P-Part 1D-Workers' Compensation (Excluding Excess Workers Compensation)	38	Schedule P-Part 6D-Workers' Compensation (Excluding Excess Workers Compensation)	84
Schedule P-Part 1E-Commercial Multiple Peril	39	Schedule P-Part 6E-Commercial Multiple Peril	85
Schedule P-Part 1F-Section 1-Medical Professional Liability-Occurrence	40	Schedule P-Part 6H-Other Liability-Claims-Made	86
Schedule P-Part 1F-Section 2-Medical Professional Liability-Claims-Made	41	Schedule P-Part 6H-Other Liability-Occurrence	85
Schedule P-Part 1G-Special Liability (Ocean, Marine, Aircraft (All Perils), Boiler & Machinery)	42	Schedule P-Part 6M-International	86
Schedule P-Part 1H-Section 1-Other Liability-Occurrence	43	Schedule P-Part 6N-Reinsurance – Nonproportional Assumed Property	87
Schedule P-Part 1H-Section 2-Other Liability-Claims-Made	44	Schedule P-Part 6O-Reinsurance – Nonproportional Assumed Liability	87
Schedule P-Part 1I-Spec. Prop. (Fire, Allied Lines, Inland Marine, Earthquake, Burglary & Theft)	45	Schedule P-Part 6R-Products Liability-Claims-Made	88
Schedule P-Part 1J-Auto Physical Damage	46	Schedule P-Part 6R-Products Liability-Occurrence	88
Schedule P-Part 1K-Fidelity/Surety	47	Schedule P-Part 7A-Primary Loss Sensitive Contracts	89
Schedule P-Part 1L-Other (Including Credit, Accident and Health)	48	Schedule P-Part 7B-Reinsurance Loss Sensitive Contracts	91
Schedule P-Part 1M-International	49	Schedule P Interrogatories	93
Schedule P-Part 1N-Reinsurance – Nonproportional Assumed Property	50	Schedule T-Exhibit of Premiums Written	94
Schedule P-Part 1O-Reinsurance – Nonproportional Assumed Liability	51	Schedule T-Part 2-Interstate Compact	95
Schedule P-Part 1P-Reinsurance – Nonproportional Assumed Financial Lines	52	Schedule Y-Information Concerning Activities of Insurer Members of a Holding Company Group	96
Schedule P-Part 1R-Section 1-Products Liability-Occurrence	53	Schedule Y-Detail of Insurance Holding Company System	97
Schedule P-Part 1R-Section 2-Products Liability-Claims-Made	54	Schedule Y-Part 2-Summary of Insurer's Transactions With Any Affiliates	98
Schedule P-Part 1S-Financial Guaranty/Mortgage Guaranty	55	Statement of Income	4
Schedule P-Part 1T-Warranty	56	Summary Investment Schedule	SI01
Schedule P-Part 2, Part 3 and Part 4 - Summary	34	Supplemental Exhibits and Schedules Interrogatories	99
Schedule P-Part 2A-Homeowners/Farmowners	57	Underwriting and Investment Exhibit Part 1	6
Schedule P-Part 2B-Private Passenger Auto Liability/Medical	57	Underwriting and Investment Exhibit Part 1A	7
Schedule P-Part 2C-Commercial Auto/Truck Liability/Medical	57	Underwriting and Investment Exhibit Part 1B	8
Schedule P-Part 2D-Workers' Compensation (Excluding Excess Workers Compensation)	57	Underwriting and Investment Exhibit Part 2	9
Schedule P-Part 2E-Commercial Multiple Peril	57	Underwriting and Investment Exhibit Part 2A	10
Schedule P-Part 2F-Section 1-Medical Professional Liability-Occurrence	58	Underwriting and Investment Exhibit Part 3	11
Schedule P-Part 2F-Section 2-Medical Professional Liability-Claims-Made	58		