



# VETERINARY PET INSURANCE COMPANY ASSETS

	Current Statement Date			4 December 31 Prior Year Net Admitted Assets
	1 Assets	2 Nonadmitted Assets	3 Net Admitted Assets (Cols. 1 - 2)	
1. Bonds.....	166,662,343		166,662,343	167,908,991
2. Stocks:				
2.1 Preferred stocks.....			0	
2.2 Common stocks.....	37,585	1,865,918	(1,828,333)	(1,828,333)
3. Mortgage loans on real estate:				
3.1 First liens.....			0	
3.2 Other than first liens.....			0	
4. Real estate:				
4.1 Properties occupied by the company (less \$.....0 encumbrances).....			0	
4.2 Properties held for the production of income (less \$.....0 encumbrances).....			0	
4.3 Properties held for sale (less \$.....0 encumbrances).....			0	
5. Cash (\$.....(6,473,259)), cash equivalents (\$.....0) and short-term investments (\$.....3,937,240).....	(2,536,019)		(2,536,019)	1,490,782
6. Contract loans (including \$.....0 premium notes).....			0	
7. Derivatives.....			0	
8. Other invested assets.....			0	
9. Receivables for securities.....			0	
10. Securities lending reinvested collateral assets.....			0	
11. Aggregate write-ins for invested assets.....	0	0	0	0
12. Subtotals, cash and invested assets (Lines 1 to 11).....	164,163,909	1,865,918	162,297,991	167,571,440
13. Title plants less \$.....0 charged off (for Title insurers only).....			0	
14. Investment income due and accrued.....	1,530,241		1,530,241	1,549,297
15. Premiums and considerations:				
15.1 Uncollected premiums and agents' balances in the course of collection.....	5,548,322	1,294,701	4,253,621	3,405,827
15.2 Deferred premiums, agents' balances and installments booked but deferred and not yet due (including \$.....0 earned but unbilled premiums).....	94,436,904		94,436,904	88,557,889
15.3 Accrued retrospective premiums.....			0	
16. Reinsurance:				
16.1 Amounts recoverable from reinsurers.....			0	
16.2 Funds held by or deposited with reinsured companies.....			0	
16.3 Other amounts receivable under reinsurance contracts.....			0	
17. Amounts receivable relating to uninsured plans.....			0	
18.1 Current federal and foreign income tax recoverable and interest thereon.....			0	
18.2 Net deferred tax asset.....	10,930,223	1,717,162	9,213,061	9,449,878
19. Guaranty funds receivable or on deposit.....			0	
20. Electronic data processing equipment and software.....			0	
21. Furniture and equipment, including health care delivery assets (\$.....0).....			0	
22. Net adjustment in assets and liabilities due to foreign exchange rates.....			0	
23. Receivables from parent, subsidiaries and affiliates.....	12,299,517		12,299,517	9,776,877
24. Health care (\$.....0) and other amounts receivable.....			0	
25. Aggregate write-ins for other than invested assets.....	2,947,367	1,696,491	1,250,876	1,030,123
26. Total assets excluding Separate Accounts, Segregated Accounts and Protected Cell Accounts (Lines 12 through 25).....	291,856,483	6,574,272	285,282,211	281,341,331
27. From Separate Accounts, Segregated Accounts and Protected Cell Accounts.....			0	
28. Total (Lines 26 and 27).....	291,856,483	6,574,272	285,282,211	281,341,331

### DETAILS OF WRITE-INS

1101.....			0	
1102.....			0	
1103.....			0	
1198. Summary of remaining write-ins for Line 11 from overflow page.....	0	0	0	0
1199. Totals (Lines 1101 thru 1103 plus 1198) (Line 11 above).....	0	0	0	0
2501. DEPOSITS AND PREPAID EXPENSES.....	1,696,491	1,696,491	0	
2502. MISCELLANEOUS RECEIVABLE.....	1,250,876		1,250,876	1,030,123
2503.....			0	
2598. Summary of remaining write-ins for Line 25 from overflow page.....	0	0	0	0
2599. Totals (Lines 2501 thru 2503 plus 2598) (Line 25 above).....	2,947,367	1,696,491	1,250,876	1,030,123

## LIABILITIES, SURPLUS AND OTHER FUNDS

	1 Current Statement Date	2 December 31 Prior Year
1. Losses (current accident year \$... 22,211,249).....	28,325,112	23,849,271
2. Reinsurance payable on paid losses and loss adjustment expenses.....	11,785,552	10,152,585
3. Loss adjustment expenses.....	1,595,374	1,468,024
4. Commissions payable, contingent commissions and other similar charges.....	354,601	298,621
5. Other expenses (excluding taxes, licenses and fees).....	522,796	320,317
6. Taxes, licenses and fees (excluding federal and foreign income taxes).....		
7.1 Current federal and foreign income taxes (including \$.... 144,627 on realized capital gains (losses)).....	775,378	5,179,348
7.2 Net deferred tax liability.....		
8. Borrowed money \$.....0 and interest thereon \$.....0.....		
9. Unearned premiums (after deducting unearned premiums for ceded reinsurance of \$.....0 and including warranty reserves of \$.....0 and accrued accident and health experience rating refunds including \$.....0 for medical loss ratio rebate per the Public Health Service Act.....	137,890,247	129,923,945
10. Advance premium.....	727,183	720,625
11. Dividends declared and unpaid:		
11.1 Stockholders.....		
11.2 Policyholders.....		
12. Ceded reinsurance premiums payable (net of ceding commissions).....		
13. Funds held by company under reinsurance treaties.....		
14. Amounts withheld or retained by company for account of others.....	1,268,220	
15. Remittances and items not allocated.....		1,613,605
16. Provision for reinsurance (including \$.....0 certified).....		
17. Net adjustments in assets and liabilities due to foreign exchange rates.....		
18. Drafts outstanding.....		
19. Payable to parent, subsidiaries and affiliates.....	763,604	2,701,288
20. Derivatives.....		
21. Payable for securities.....		
22. Payable for securities lending.....		
23. Liability for amounts held under uninsured plans.....		
24. Capital notes \$.....0 and interest thereon \$.....0.....		
25. Aggregate write-ins for liabilities.....	1,341,287	1,165,044
26. Total liabilities excluding protected cell liabilities (Lines 1 through 25).....	185,349,354	177,392,673
27. Protected cell liabilities.....		
28. Total liabilities (Lines 26 and 27).....	185,349,354	177,392,673
29. Aggregate write-ins for special surplus funds.....	0	0
30. Common capital stock.....	1,240,711	1,240,711
31. Preferred capital stock.....		
32. Aggregate write-ins for other than special surplus funds.....	0	0
33. Surplus notes.....		
34. Gross paid in and contributed surplus.....	39,519,563	39,519,563
35. Unassigned funds (surplus).....	59,172,583	63,188,384
36. Less treasury stock, at cost:		
36.1 .....0.000 shares common (value included in Line 30 \$.....0).....		
36.2 .....0.000 shares preferred (value included in Line 31 \$.....0).....		
37. Surplus as regards policyholders (Lines 29 to 35, less 36).....	99,932,857	103,948,658
38. Totals (Page 2, Line 28, Col. 3).....	285,282,211	281,341,331

## DETAILS OF WRITE-INS

2501. ESCHEATMENT PAYABLE.....	890,065	653,712
2502. MISCELLANEOUS LIABILITIES.....	451,222	511,332
2503. ....		
2598. Summary of remaining write-ins for Line 25 from overflow page.....	0	0
2599. Totals (Lines 2501 thru 2503 plus 2598) (Line 25 above).....	1,341,287	1,165,044
2901. ....		
2902. ....		
2903. ....		
2998. Summary of remaining write-ins for Line 29 from overflow page.....	0	0
2999. Totals (Lines 2901 thru 2903 plus 2998) (Line 29 above).....	0	0
3201. ....		
3202. ....		
3203. ....		
3298. Summary of remaining write-ins for Line 32 from overflow page.....	0	0
3299. Totals (Lines 3201 thru 3203 plus 3298) (Line 32 above).....	0	0

# VETERINARY PET INSURANCE COMPANY STATEMENT OF INCOME

	1 Current Year to Date	2 Prior Year to Date	3 Prior Year Ended December 31
<b>UNDERWRITING INCOME</b>			
1. Premiums earned:			
1.1 Direct..... (written \$.....39,046,411).....	37,488,652	34,249,408	46,323,934
1.2 Assumed..... (written \$.....164,831,276).....	158,422,732	143,934,329	194,735,873
1.3 Ceded..... (written \$.....0).....			
1.4 Net..... (written \$.....203,877,687).....	195,911,384	178,183,737	241,059,807
DEDUCTIONS:			
2. Losses incurred (current accident year \$.....131,214,583):			
2.1 Direct.....	25,618,297	21,672,867	28,573,083
2.2 Assumed.....	109,281,631	92,951,987	123,092,759
2.3 Ceded.....			
2.4 Net.....	134,899,928	114,624,854	151,665,842
3. Loss adjustment expenses incurred.....	7,176,596	6,920,268	9,371,167
4. Other underwriting expenses incurred.....	65,190,092	58,296,774	81,084,937
5. Aggregate write-ins for underwriting deductions.....	0	0	0
6. Total underwriting deductions (Lines 2 through 5).....	207,266,616	179,841,896	242,121,946
7. Net income of protected cells.....			
8. Net underwriting gain (loss) (Line 1 minus Line 6 + Line 7).....	(11,355,232)	(1,658,159)	(1,062,139)
<b>INVESTMENT INCOME</b>			
9. Net investment income earned.....	4,250,455	1,797,677	5,447,052
10. Net realized capital gains (losses) less capital gains tax of \$.....144,627.....	188,296	(21,442)	47,864
11. Net investment gain (loss) (Lines 9 + 10).....	4,438,751	1,776,235	5,494,916
<b>OTHER INCOME</b>			
12. Net gain or (loss) from agents' or premium balances charged off (amount recovered \$.....0 amount charged off \$.....13,292).....	(13,292)	(126,084)	(149,329)
13. Finance and service charges not included in premiums.....	7,363,241	7,393,977	9,844,207
14. Aggregate write-ins for miscellaneous income.....	144,080	152,568	(16,429)
15. Total other income (Lines 12 through 14).....	7,494,029	7,420,461	9,678,449
16. Net income before dividends to policyholders, after capital gains tax and before all other federal and foreign income taxes (Lines 8 + 11 + 15).....	577,548	7,538,537	14,111,226
17. Dividends to policyholders.....			
18. Net income after dividends to policyholders, after capital gains tax and before all other federal and foreign income taxes (Line 16 minus Line 17).....	577,548	7,538,537	14,111,226
19. Federal and foreign income taxes incurred.....	626,337	2,398,033	4,668,881
20. Net income (Line 18 minus Line 19) (to Line 22).....	(48,789)	5,140,504	9,442,345
<b>CAPITAL AND SURPLUS ACCOUNT</b>			
21. Surplus as regards policyholders, December 31 prior year.....	103,948,658	90,996,069	90,996,069
22. Net income (from Line 20).....	(48,789)	5,140,504	9,442,345
23. Net transfers (to) from Protected Cell accounts.....			
24. Change in net unrealized capital gains or (losses) less capital gains tax of \$.....(159,428).....	(3,274,319)	(2,952,472)	(4,382,287)
25. Change in net unrealized foreign exchange capital gain (loss).....			
26. Change in net deferred income tax.....	715,483	(2,182,982)	(1,924,623)
27. Change in nonadmitted assets.....	(1,408,176)	10,991,930	9,817,154
28. Change in provision for reinsurance.....			
29. Change in surplus notes.....			
30. Surplus (contributed to) withdrawn from protected cells.....			
31. Cumulative effect of changes in accounting principles.....			
32. Capital changes:			
32.1 Paid in.....			
32.2 Transferred from surplus (Stock Dividend).....			
32.3 Transferred to surplus.....			
33. Surplus adjustments:			
33.1 Paid in.....			
33.2 Transferred to capital (Stock Dividend).....			
33.3 Transferred from capital.....			
34. Net remittances from or (to) Home Office.....			
35. Dividends to stockholders.....			
36. Change in treasury stock.....			
37. Aggregate write-ins for gains and losses in surplus.....	0	0	0
38. Change in surplus as regards policyholders (Lines 22 through 37).....	(4,015,801)	10,996,980	12,952,589
39. Surplus as regards policyholders, as of statement date (Lines 21 plus 38).....	99,932,857	101,993,049	103,948,658
<b>DETAILS OF WRITE-INS</b>			
0501. ....			
0502. ....			
0503. ....			
0598. Summary of remaining write-ins for Line 5 from overflow page.....	0	0	0
0599. Totals (Lines 0501 thru 0503 plus 0598) (Line 5 above).....	0	0	0
1401. MISCELLANEOUS.....	144,080	152,568	(16,429)
1402. ....			
1403. ....			
1498. Summary of remaining write-ins for Line 14 from overflow page.....	0	0	0
1499. Totals (Lines 1401 thru 1403 plus 1498) (Line 14 above).....	144,080	152,568	(16,429)
3701. ....			
3702. ....			
3703. ....			
3798. Summary of remaining write-ins for Line 37 from overflow page.....	0	0	0
3799. Totals (Lines 3701 thru 3703 plus 3798) (Line 37 above).....	0	0	0

# VETERINARY PET INSURANCE COMPANY

## CASH FLOW

	1 Current Year to Date	2 Prior Year To Date	3 Prior Year Ended December 31
<b>CASH FROM OPERATIONS</b>			
1. Premiums collected net of reinsurance.....	196,898,583	180,588,152	242,006,804
2. Net investment income.....	5,045,924	2,564,010	6,561,674
3. Miscellaneous income.....	7,494,029	7,420,460	9,678,449
4. Total (Lines 1 through 3).....	209,438,536	190,572,622	258,246,927
5. Benefit and loss related payments.....	128,791,121	109,797,619	147,221,676
6. Net transfers to Separate Accounts, Segregated Accounts and Protected Cell Accounts.....			
7. Commissions, expenses paid and aggregate write-ins for deductions.....	71,980,879	76,992,965	102,592,700
8. Dividends paid to policyholders.....			
9. Federal and foreign income taxes paid (recovered) net of \$.... (14,743) tax on capital gains (losses).....	5,174,933	5,230,271	4,709,555
10. Total (Lines 5 through 9).....	205,946,932	192,020,855	254,523,931
11. Net cash from operations (Line 4 minus Line 10).....	3,491,603	(1,448,233)	3,722,996
<b>CASH FROM INVESTMENTS</b>			
12. Proceeds from investments sold, matured or repaid:			
12.1 Bonds.....	17,369,113	12,090,591	16,457,882
12.2 Stocks.....			
12.3 Mortgage loans.....			
12.4 Real estate.....			
12.5 Other invested assets.....			
12.6 Net gains or (losses) on cash, cash equivalents and short-term investments.....			
12.7 Miscellaneous proceeds.....			
12.8 Total investment proceeds (Lines 12.1 to 12.7).....	17,369,113	12,090,591	16,457,882
13. Cost of investments acquired (long-term only):			
13.1 Bonds.....	17,021,464	28,270,692	32,769,837
13.2 Stocks.....	3,200,000	1,500,000	3,200,000
13.3 Mortgage loans.....			
13.4 Real estate.....			
13.5 Other invested assets.....			
13.6 Miscellaneous applications.....			
13.7 Total investments acquired (Lines 13.1 to 13.6).....	20,221,464	29,770,692	35,969,837
14. Net increase or (decrease) in contract loans and premium notes.....			
15. Net cash from investments (Line 12.8 minus Line 13.7 and Line 14).....	(2,852,351)	(17,680,101)	(19,511,955)
<b>CASH FROM FINANCING AND MISCELLANEOUS SOURCES</b>			
16. Cash provided (applied):			
16.1 Surplus notes, capital notes.....			
16.2 Capital and paid in surplus, less treasury stock.....			
16.3 Borrowed funds.....			
16.4 Net deposits on deposit-type contracts and other insurance liabilities.....			
16.5 Dividends to stockholders.....			
16.6 Other cash provided (applied).....	(4,666,053)	5,855,577	9,433,282
17. Net cash from financing and miscellaneous sources (Lines 16.1 through 16.4 minus Line 16.5 plus Line 16.6).....	(4,666,053)	5,855,577	9,433,282
<b>RECONCILIATION OF CASH, CASH EQUIVALENTS AND SHORT-TERM INVESTMENTS</b>			
18. Net change in cash, cash equivalents and short-term investments (Line 11 plus Line 15 plus Line 17).....	(4,026,801)	(13,272,757)	(6,355,677)
19. Cash, cash equivalents and short-term investments:			
19.1 Beginning of year.....	1,490,782	7,846,459	7,846,459
19.2 End of period (Line 18 plus Line 19.1).....	(2,536,019)	(5,426,298)	1,490,782

Note: Supplemental disclosures of cash flow information for non-cash transactions:

20.0001 .....			
---------------	--	--	--

**NOTES TO FINANCIAL STATEMENTS****Note 1 - Summary of Significant Accounting Policies**

## A. Accounting Practices

The accompanying statutory financial statements of Veterinary Pet Insurance Company (the Company) have been prepared in conformity with accounting practices prescribed or permitted by the National Association of Insurance Commissioners (NAIC) and the State of California.

The California Department of Insurance recognizes only statutory accounting practices (SAP) prescribed or permitted by the State of California for determining and reporting the financial condition and results of operations of an insurance company, as well as, determining its solvency under the California Insurance law. The National Association of Insurance Commissioners' (NAIC) *Accounting Practices and Procedures Manual* (NAIC SAP) has been adopted as a component of prescribed or permitted practices by the State of California.

A reconciliation of the Company's net income and capital and surplus between NAIC SAP and practices prescribed and permitted by the State of California is shown below:

	<u>State of</u> <u>Domicile</u>	<u>2015</u>	<u>2014</u>
<b><u>NET INCOME</u></b>			
(1) Veterinary Pet Insurance Company state basis (Page 4, Line 20, Columns 1 & 3)	CA	\$ (48,789)	\$ 9,442,345
(2) State Prescribed Practices that increase/(decrease) NAIC SAP	CA	-	-
(3) State Permitted Practices that increase/(decrease) NAIC SAP	CA	-	-
(4) NAIC SAP (1-2-3=4)	CA	\$ (48,789)	\$ 9,442,345
<b><u>SURPLUS</u></b>			
(5) Veterinary Pet Insurance Company state basis (Page 3, Line 37, Columns 1 & 2)	CA	\$ 99,932,857	\$ 103,948,658
(6) State Prescribed Practices that increase/(decrease) NAIC SAP	CA	-	-
(7) State Permitted Practices that increase/(decrease) NAIC SAP	CA	-	-
(8) NAIC SAP (5-6-7=8)	CA	\$ 99,932,857	\$ 103,948,658

## C. Accounting Policies

6. No change.

**Note 2 - Accounting Changes and Corrections of Errors**

No change.

**Note 3 - Business Combinations and Goodwill**

No change.

**Note 4 - Discontinued Operations**

No change.

**Note 5 - Investments**

## A. Mortgage Loans

No change.

## B. Troubled Debt Restructuring for Creditors

No change.

## C. Reverse Mortgages

No change.

## D. Loan-Backed Securities

1. Prepayment assumptions are generally obtained using a model provided by a third-party vendor.
2. Not applicable.
3. Not applicable.
4. All impaired securities (fair value is less than cost or amortized cost) for which an other-than-temporary impairment has not been recognized in earnings as a realized loss (including securities with a recognized other-than-temporary impairment for non-interest related declines when a non-recognized interest related impairment remains):

## a. The aggregate amount of unrealized losses:

1.	Less than 12 Months	\$ (58,195)
2.	12 Months or Longer	\$ (49,231)

## b. The aggregate related fair value of securities with unrealized losses:

1.	Less than 12 Months	\$ 10,359,023
2.	12 Months or Longer	\$ 3,605,164

## NOTES TO FINANCIAL STATEMENTS

5. The Company reviews all loan-backed and structured securities in which the fair value of the given security is less than the amortized cost to determine if a given security is other-than-temporarily impaired. The Company examines characteristics of the underlying collateral, such as delinquency and default rates, the quality of the underlying borrower, the type of collateral in the pool, the vintage year of the collateral, subordination levels within the structure of the collateral pool, and the quality of any credit guarantors, to determine the cash flows expected to be received for the security.

If the severity and duration of the security's unrealized loss indicates a risk of an other-than-temporary impairment, then the Company will evaluate if the amortized cost basis of the security will be recovered by comparing the present value of the cash flows expected to be received for the given security with the amortized cost basis of the security. If the present value of cash flows is greater than the amortized cost basis of a security then the security is deemed not to be other-than-temporarily impaired.

- E. Repurchase Agreements and Securities Lending Transactions

Not applicable.

- F. Real Estate

No change.

- G. Low-Income Housing Tax Credits

No change.

- H. Restricted Assets

No change.

- I. Working Capital Finance Investments

Not applicable.

- J. Offsetting and Netting of Assets and Liabilities

No assets or liabilities are offset and reported net in accordance with a valid right to offset per SSAP No. 64, Offsetting and Netting of Assets and Liabilities.

- K. Structured Notes

No change.

### **Note 6 - Joint Ventures, Partnerships and Limited Liability Companies**

No change.

### **Note 7 - Investment Income**

No change.

### **Note 8 - Derivative Instruments**

No change.

### **Note 9 - Income Taxes**

- F. Consolidated Federal Income Tax Return

1. Effective January 1, 2015, the consolidated federal income tax filing group of which the Company is a member expanded to include Nationwide Mutual Insurance Company's (NMIC's) eligible life insurance subsidiaries and non-insurance subsidiaries of the life insurance companies.

2. Effective January 1, 2015, the Company became a party to a revised tax sharing agreement which was approved by the Board of Directors. The revised tax sharing agreement reflects the NMIC's new consolidated federal return group which includes its eligible life and non-life subsidiaries. The method of allocation among the companies is based upon separate return calculations with current benefit for tax losses and credits utilized in the consolidated return.

### **Note 10 - Information Concerning Parent, Subsidiaries, Affiliates and Other Related Parties**

- B. Detail of Transactions Greater than ½ of Admitted Assets

On March 31, 2015, the Company made a capital contribution of \$2 million to VPI Services.

### **Note 11 - Debt**

- B. FHLB (Federal Home Loan Bank) Agreements

Not applicable.

### **Note 12 - Retirement Plans, Deferred Compensation, Postemployment Benefits and Compensated Absences and Other Postretirement Benefit Plans**

Not applicable.

### **Note 13 - Capital and Surplus, Dividend Restrictions and Quasi-Reorganizations**

No change.

### **Note 14 - Contingencies**

No change.

## NOTES TO FINANCIAL STATEMENTS

### **Note 15 – Leases**

No change.

### **Note 16 - Information About Financial Instruments With Off-Balance Sheet Risk And Financial Instruments With Concentrations of Credit Risk**

No change.

### **Note 17 - Sale, Transfer and Servicing of Financial Assets and Extinguishments of Liabilities**

A. Transfers of Receivables Reported as Sales

No change.

B. Transfers and Servicing of Financial Assets

Not applicable.

C. Wash Sales

Not applicable.

### **Note 18 - Gain or Loss to the Reporting Entity from Uninsured Plans and the Uninsured Portion of Partially Insured Plans**

No change.

### **Note 19 - Direct Premiums Written/Produced by Managing General Agents/Third Party Administrators**

No change.

### **Note 20 – Fair Value Measurements**

Fair value is defined as the price that would be received to sell an asset or paid to transfer a liability in an orderly transaction between market participants at the measurement date. Fair value measurements are based upon observable and unobservable inputs. Observable inputs reflect market data obtained from independent sources while unobservable inputs reflect the Company's view of market assumptions in the absence of observable market information. The Company utilizes valuation techniques that maximize the use of observable inputs and minimize the use of unobservable inputs. In determining fair value, the Company uses various methods including market, income and cost approaches.

The Company categorizes its financial assets and liabilities into a three-level hierarchy based on the priority of the inputs to the valuation technique. The fair value hierarchy gives the highest priority to quoted prices in active markets for identical assets or liabilities (Level 1) and the lowest priority to unobservable inputs (Level 3). If the inputs used to measure fair value fall within different levels of the hierarchy, the category level is based on the lowest priority level input that is significant to the fair value measurement of the instrument in its entirety.

The Company categorizes financial assets and liabilities as follows:

*Level 1.* Unadjusted quoted prices accessible in active markets for identical assets or liabilities at the measurement date and mutual funds where the value per share (unit) is determined and published daily and is the basis for current transactions.

*Level 2.* Unadjusted quoted prices for similar assets or liabilities in active markets or inputs (other than quoted prices) that are observable or that are derived principally from or corroborated by observable market data through correlation or other means. Primary inputs to this valuation technique may include comparative trades, bid/asks, interest rate movements, U.S. Treasury rates, U.S. LIBOR, prime rates, cash flows, maturity dates, call ability, estimated prepayments and/or underlying collateral values.

*Level 3.* Prices or valuation techniques that require inputs that are both unobservable and significant to the overall fair value measurement. Inputs reflect management's best estimate about the assumptions market participants would use at the measurement date in pricing the asset or liability. Consideration is given to the risk inherent in both the method of valuation and the valuation inputs. Primary inputs to this valuation technique include broker quotes and comparative trades.

The Company reviews its fair value hierarchy classifications for financial assets and liabilities quarterly. Changes in observability of significant valuation inputs identified during these reviews may trigger reclassifications. Reclassifications are reported as transfers at the beginning of the period in which the change occurs.

To determine the fair value of bonds and stocks for which market quotations are available, independent pricing services are most often utilized. For these bonds and stocks, the Company obtains the pricing services' methodologies, inputs and assumptions and classifies the investments accordingly in the fair value hierarchy.

A corporate pricing matrix or an internally developed pricing model is used in valuing certain bonds. The corporate pricing matrix is developed using private spreads for bonds with varying weighted average lives and credit quality ratings. The weighted average life and credit quality rating of a particular bond to be priced using the corporate pricing matrix are important inputs into the model and are used to determine a corresponding spread that is added to the appropriate U.S. Treasury yield to create an estimated market yield for that bond. The estimated market yield and other relevant factors are then used to estimate the fair value of the particular bond.

Non-binding broker quotes are also utilized to determine the fair value of certain bonds when quotes are not available from independent pricing services, corporate pricing matrix or internal pricing models. These bonds are classified accordingly in the fair value hierarchy as only one broker quote is ordinarily obtained, the investment is not traded on an exchange, the pricing is not available to other entities and/or the transaction volume in the same or similar investments has decreased. Inputs used in the development of prices are not provided to the Company by the brokers as the brokers often do not provide the necessary transparency into their quotes and methodologies. Broker quotes are subject to validation of price movements that require approval from the Company's management. Management uses its knowledge of the investment and current market conditions to determine if the price is indicative of the investment's fair value.

Fair value of derivative instruments is determined using various valuation techniques relying predominately on observable market inputs. These inputs include interest rate swap curves, credit spreads, interest rates, counterparty credit risk, equity volatility and equity index levels. In cases where observable inputs are not available, the Company will utilize non-binding broker quotes to determine fair value and these instruments are classified accordingly in the fair value hierarchy.

**NOTES TO FINANCIAL STATEMENTS**

The following table summarizes financial assets and liabilities measured at fair value as of September 30, 2015:

	Level 1	Level 2	Level 3	Total
<b>Assets at Fair Value</b>				
U.S. Government bonds	-	-	-	-
States, Territories and Possessions	-	-	-	-
Political subdivisions	-	-	-	-
Special revenues	-	-	-	-
Hybrid Securities	-	-	-	-
Credit tenant loans	-	-	-	-
Industrial & Misc.	-	2,500,920	-	2,500,920
<b>Total Bonds</b>	-	2,500,920	-	2,500,920
Sec Lending	-	-	-	-
Preferred Stocks	-	-	-	-
Common Stocks	-	-	-	-
Loans held for sale	-	-	-	-
Separate Account Assets	-	-	-	-
Derivative Assets	-	-	-	-
<b>Total Assets at Fair Value</b>	-	2,500,920	-	2,500,920
<b>Liabilities at Fair Value</b>				
Derivatives Liabilities	-	-	-	-
<b>Total Liabilities at Fair Value</b>	-	-	-	-

The following table summarizes aggregate carrying value and fair value, by level, for all financial assets and liabilities, excluding assets and liabilities reported at fair value, as of September 30, 2015:

	Aggregate Fair Value	Admitted Assets	(Level 1)	(Level 2)	(Level 3)	Not Practicable (Carrying Value)
<b>Assets</b>						
Bonds	\$ 167,555,963	\$ 164,161,423	\$ 34,766,039	\$ 132,789,924	\$ -	\$ -
Stocks	-	-	-	-	-	-
Mortgage loans	-	-	-	-	-	-
Short-term investments	3,937,240	3,937,240	3,937,240	-	-	-
Derivative assets	-	-	-	-	-	-
Policy loans	-	-	-	-	-	-
Securities lending collateral assets	-	-	-	-	-	-
<b>Total Assets</b>	<b>\$ 171,493,203</b>	<b>\$ 168,098,663</b>	<b>\$ 38,703,279</b>	<b>\$ 132,789,924</b>	<b>\$ -</b>	<b>\$ -</b>
<b>Liabilities</b>						
Derivative liabilities	\$ -	\$ -	\$ -	\$ -	\$ -	\$ -
<b>Total Liabilities</b>	<b>\$ -</b>	<b>\$ -</b>	<b>\$ -</b>	<b>\$ -</b>	<b>\$ -</b>	<b>\$ -</b>

**Note 21 - Other Items**

No change.

**Note 22 - Events Subsequent**

Subsequent events have been considered through November 3, 2015 for these statutory financial statements which are to be issued November 4, 2015. There were no events occurring subsequent to the end of the quarter that merited recognition or disclosure in these statements.

**Note 23 - Reinsurance**

No change.

**Note 24 - Retrospectively Rated Contracts and Contracts Subject to Redetermination**

No change.

**Note 25 - Changes in Incurred Losses and Loss Adjustment Expenses**

No change.

**Note 26 - Intercompany Pooling Arrangements**

No change.

**Note 27 - Structured Settlements**

No change.

**Note 28 - Health Care Receivables**

No change.

**Note 29 - Participating Policies**

No change.

**Note 30 - Premium Deficiency Reserves**

No change.

## **NOTES TO FINANCIAL STATEMENTS**

**Note 31 - High Deductibles**

No change.

**Note 32 - Discounting of Liabilities for Unpaid Losses or Unpaid Loss Adjustment Expenses**

No change.

**Note 33 - Asbestos/Environmental Reserves**

No change.

**Note 34 - Subscriber Savings Accounts**

No change.

**Note 35 - Multiple Peril Crop Insurance**

No change.

**Note 36 – Financial Guaranty Insurance**

B. Schedule of Insured Financial Obligations at the End of the Period

Not applicable.

**GENERAL INTERROGATORIES**

**PART 1 - COMMON INTERROGATORIES**

**GENERAL**

- 1.1 Did the reporting entity experience any material transactions requiring the filing of Disclosure of Material Transactions with the State of Domicile, as required by the Model Act? Yes [ ] No [ X ]
- 1.2 If yes, has the report been filed with the domiciliary state? Yes [ ] No [ ]
- 2.1 Has any change been made during the year of this statement in the charter, by-laws, articles of incorporation, or deed of settlement of the reporting entity? Yes [ ] No [ X ]
- 2.2 If yes, date of change: \_\_\_\_\_

- 3.1 Is the reporting entity a member of an Insurance Holding Company System consisting of two or more affiliated persons, one or more of which is an insurer? If yes, complete Schedule Y, Parts 1 and 1A. Yes [ X ] No [ ]
- 3.2 Have there been any substantial changes in the organizational chart since the prior quarter end? Yes [ X ] No [ ]
- 3.3 If the response to 3.2 is yes, provide a brief description of those changes.

Eagle Captive Reinsurance, LLC has been added.

- 4.1 Has the reporting entity been a party to a merger or consolidation during the period covered by this statement? Yes [ ] No [ X ]
- 4.2 If yes, provide name of entity, NAIC Company Code, and state of domicile (use two letter state abbreviation) for any entity that has ceased to exist as a result of the merger or consolidation.

1 Name of Entity	2 NAIC Company Code	3 State of Domicile
	0	

- 5. If the reporting entity is subject to a management agreement, including third-party administrator(s), managing general agent(s), attorney-in-fact, or similar agreement, have there been any significant changes regarding the terms of the agreement or principals involved? If yes, attach an explanation. Yes [ ] No [ X ] N/A [ ]

- 6.1 State as of what date the latest financial examination of the reporting entity was made or is being made. 12/31/2011
- 6.2 State the as of date that the latest financial examination report became available from either the state of domicile or the reporting entity. This date should be the date of the examined balance sheet and not the date the report was completed or released. 12/31/2011
- 6.3 State as of what date the latest financial examination report became available to other states or the public from either the state of domicile or the reporting entity. This is the release date or completion date of the examination report and not the date of the examination (balance sheet date). 09/26/2012

- 6.4 By what department or departments?

CA

- 6.5 Have all financial statement adjustments within the latest financial examination report been accounted for in a subsequent financial statement filed with the Department? Yes [ ] No [ ] N/A [ X ]
- 6.6 Have all of the recommendations within the latest financial examination report been complied with? Yes [ ] No [ ] N/A [ X ]
- 7.1 Has this reporting entity had any Certificates of Authority, licenses or registrations (including corporate registration, if applicable) suspended or revoked by any governmental entity during the reporting period? Yes [ ] No [ X ]
- 7.2 If yes, give full information:

- 8.1 Is the company a subsidiary of a bank holding company regulated with the Federal Reserve Board? Yes [ ] No [ X ]
- 8.2 If response to 8.1 is yes, please identify the name of the bank holding company.

- 8.3 Is the company affiliated with one or more banks, thrifts or securities firms? Yes [ X ] No [ ]

- 8.4 If the response to 8.3 is yes, please provide below the names and location (city and state of the main office) of any affiliates regulated by a federal regulatory services agency [i.e. the Federal Reserve Board (FRB), the Office of the Comptroller of the Currency (OCC), the Federal Deposit Insurance Corporation (FDIC) and the Securities Exchange Commission (SEC)] and identify the affiliate's primary federal regulator].

1 Affiliate Name	2 Location (City, State)	3 FRB	4 OCC	5 FDIC	6 SEC
Nationwide Bank	Columbus, OH	NO	YES	NO	NO
Nationwide Mutual Insurance Company	Columbus, OH	YES	NO	NO	NO
Nationwide Mutual Fire Insurance Company	Columbus, OH	YES	NO	NO	NO
Nationwide Corporation	Columbus, OH	YES	NO	NO	NO
Nationwide Financial Services, Inc.	Columbus, OH	YES	NO	NO	NO
Nationwide Investment Services Corp	Columbus, OH	NO	NO	NO	YES
Nationwide Investment Advisors, LLC	Columbus, OH	NO	NO	NO	YES
Nationwide Securities, LLC	Dublin, OH	NO	NO	NO	YES
Nationwide Fund Advisors	King of Prussia, PA	NO	NO	NO	YES
Nationwide Fund Distributors, LLC	King of Prussia, PA	NO	NO	NO	YES
Nationwide Asset Management, LLC	Columbus, OH	NO	NO	NO	YES

- 9.1 Are the senior officers (principal executive officer, principal financial officer, principal accounting officer or controller, or persons performing similar functions) of the reporting entity subject to a code of ethics, which includes the following standards? Yes [ X ] No [ ]
- (a) Honest and ethical conduct, including the ethical handling of actual or apparent conflicts of interest between personal and professional relationships;
  - (b) Full, fair, accurate, timely and understandable disclosure in the periodic reports required to be filed by the reporting entity;
  - (c) Compliance with applicable governmental laws, rules and regulations;
  - (d) The prompt internal reporting of violations to an appropriate person or persons identified in the code; and
  - (e) Accountability for adherence to the code.

9.11 If the response to 9.1 is No, please explain:

9.2 Has the code of ethics for senior managers been amended? Yes [ ] No [ X ]

9.21 If the response to 9.2 is Yes, provide information related to amendment(s).

9.3 Have any provisions of the code of ethics been waived for any of the specified officers? Yes [ ] No [ X ]

9.31 If the response to 9.3 is Yes, provide the nature of any waiver(s).

### FINANCIAL

10.1 Does the reporting entity report any amounts due from parent, subsidiaries or affiliates on Page 2 of this statement? Yes [ X ] No [ ]

10.2 If yes, indicate any amounts receivable from parent included in the Page 2 amount: \$ 0

### INVESTMENT

11.1 Were any of the stocks, bonds, or other assets of the reporting entity loaned, placed under option agreement, or otherwise made available for use by another person? (Exclude securities under securities lending agreements.) Yes [ ] No [ X ]

11.2 If yes, give full and complete information relating thereto:

12. Amount of real estate and mortgages held in other invested assets in Schedule BA: \$ 0

13. Amount of real estate and mortgages held in short-term investments: \$ 0

14.1 Does the reporting entity have any investments in parent, subsidiaries and affiliates? Yes [ X ] No [ ]

14.2 If yes, please complete the following:

- 14.21 Bonds
- 14.22 Preferred Stock
- 14.23 Common Stock
- 14.24 Short-Term Investments
- 14.25 Mortgage Loans on Real Estate
- 14.26 All Other
- 14.27 Total Investment in Parent, Subsidiaries and Affiliates (Subtotal Lines 14.21 to 14.26)
- 14.28 Total Investment in Parent included in Lines 14.21 to 14.26 above

	1 Prior Year-End Book/Adjusted Carrying Value	2 Current Quarter Book/Adjusted Carrying Value
\$	0	\$ 0
	0	0
	(184,177)	37,585
	0	0
	0	0
	0	0
\$	(184,177)	\$ 37,585
\$	0	\$ 0

15.1 Has the reporting entity entered into any hedging transactions reported on Schedule DB? Yes [ ] No [ X ]

15.2 If yes, has a comprehensive description of the hedging program been made available to the domiciliary state? Yes [ ] No [ ]  
If no, attach a description with this statement.

16. For the reporting entity's security lending program, state the amount of the following as of current statement date:

16.1 Total fair value of reinvested collateral assets reported on Schedule DL, Parts 1 and 2: \$ 0

16.2 Total book adjusted/carrying value of reinvested collateral assets reported on Schedule DL, Parts 1 and 2: \$ 0

16.3 Total payable for securities lending reported on the liability page: \$ 0

17. Excluding items in Schedule E-Part 3-Special Deposits, real estate, mortgage loans and investments held physically in the reporting entity's offices, vaults or safety deposit boxes, were all stocks, bonds and other securities, owned throughout the current year held pursuant to a custodial agreement with a qualified bank or trust company in accordance with Section 1, III - General Examination Considerations, F. Outsourcing of Critical Functions, Custodial or Safekeeping Agreements of the NAIC *Financial Condition Examiners Handbook*? Yes [ X ] No [ ]

17.1 For all agreements that comply with the requirements of the NAIC *Financial Condition Examiners Handbook*, complete the following:

1 Name of Custodian(s)	2 Custodian Address
The Bank of New York Mellon	1 Wall Street, New York, NY 10286

17.2 For all agreements that do not comply with the requirements of the NAIC *Financial Condition Examiners Handbook*, provide the name, location and a complete explanation

1 Name(s)	2 Location(s)	3 Complete Explanation(s)

17.3 Have there been any changes, including name changes, in the custodian(s) identified in 17.1 during the current quarter? Yes [ ] No [X]

17.4 If yes, give full and complete information relating thereto:

1 Old Custodian	2 New Custodian	3 Date of Change	4 Reason

17.5 Identify all investment advisors, broker/dealers or individuals acting on behalf of broker/dealers that have access to the investment accounts, handle securities and have authority to make investments on behalf of the reporting entity:

1 Central Registration Depository	2 Name(s)	3 Address
N/A	Members of the investment staff designated by the Chief Investment Officer as detailed in the Corporate Resolution	One Nationwide Plaza, Columbus, OH 43215

18.1 Have all the filing requirements of the *Purposes and Procedures Manual of the NAIC Securities Valuation Office* been followed? Yes [X] No [ ]

18.2 If no, list exceptions:

## GENERAL INTERROGATORIES (continued)

## PART 2 – PROPERTY &amp; CASUALTY INTERROGATORIES

1. If the reporting entity is a member of a pooling arrangement, did the agreement or the reporting entity's participation change? Yes [ ] No [ ] N/A [X]  
If yes, attach an explanation.
2. Has the reporting entity reinsured any risk with any other reporting entity and agreed to release such entity from liability, in whole or in part, from any loss that may occur on the risk, or portion thereof, reinsured? Yes [ ] No [X]  
If yes, attach an explanation.
- 3.1 Have any of the reporting entity's primary reinsurance contracts been canceled? Yes [ ] No [X]
- 3.2 If yes, give full and complete information thereto:
- 4.1 Are any of the liabilities for unpaid losses and loss adjustment expenses other than certain workers' compensation tabular reserves (see *Annual Statement Instructions* pertaining to disclosure of discounting for definition of "tabular reserves,") discounted at a rate of interest greater than zero? Yes [ ] No [X]
- 4.2 If yes, complete the following schedule:

1 Line of Business	2 Maximum Interest	3 Disc. Rate	Total Discount				Discount Taken During Period			
			4 Unpaid Losses	5 Unpaid LAE	6 IBNR	7 Total	8 Unpaid Losses	9 Unpaid LAE	10 IBNR	11 Total
	0.000	0.000	0	0	0	0	0	0	0	0
Total	XXX	XXX	0	0	0	0	0	0	0	0

- 5.1 Operating Percentages:
- 5.1 A&H loss percent 0.000%
- 5.2 A&H cost containment percent 0.000%
- 5.3 A&H expense percent excluding cost containment expenses 0.000%
- 6.1 Do you act as a custodian for health savings accounts? Yes [ ] No [X]
- 6.2 If yes, please provide the amount of custodial funds held as of the reporting date. \$ 0
- 6.3 Do you act as an administrator for health savings accounts? Yes [ ] No [X]
- 6.4 If yes, please provide the amount of funds administered as of the reporting date. \$ 0

**VETERINARY PET INSURANCE COMPANY**  
**SCHEDULE F - CEDED REINSURANCE**

Showing All New Reinsurers - Current Year to Date

1 NAIC Company Code	2 ID Number	3 Name of Reinsurer	4 Domiciliary Jurisdiction	5 Type of Reinsurer	6 Certified Reinsurer Rating (1 through 6)	7 Effective Date of Certified Reinsurer Rating
------------------------------	-------------------	------------------------	----------------------------------	---------------------------	---	---

**NONE**

**VETERINARY PET INSURANCE COMPANY**

**SCHEDULE T - EXHIBIT OF PREMIUMS WRITTEN**

Current Year to Date - Allocated by States and Territories

States, Etc.	1 Active Status	Direct Premiums Written		Direct Losses Paid (Deducting Salvage)		Direct Losses Unpaid	
		2 Current Year to Date	3 Prior Year to Date	4 Current Year to Date	5 Prior Year to Date	6 Current Year to Date	7 Prior Year to Date
1. Alabama.....AL	N						
2. Alaska.....AK	N						
3. Arizona.....AZ	N						
4. Arkansas.....AR	N						
5. California.....CA	L	39,046,411	36,316,680	24,630,023	21,291,330	5,398,765	4,466,816
6. Colorado.....CO	N						
7. Connecticut.....CT	N						
8. Delaware.....DE	N						
9. District of Columbia.....DC	N						
10. Florida.....FL	N						
11. Georgia.....GA	N						
12. Hawaii.....HI	N						
13. Idaho.....ID	N						
14. Illinois.....IL	N						
15. Indiana.....IN	N						
16. Iowa.....IA	N						
17. Kansas.....KS	N						
18. Kentucky.....KY	N						
19. Louisiana.....LA	N						
20. Maine.....ME	N						
21. Maryland.....MD	N						
22. Massachusetts.....MA	N						
23. Michigan.....MI	N						
24. Minnesota.....MN	N						
25. Mississippi.....MS	N						
26. Missouri.....MO	N						
27. Montana.....MT	N						
28. Nebraska.....NE	N						
29. Nevada.....NV	N						
30. New Hampshire.....NH	N						
31. New Jersey.....NJ	N						
32. New Mexico.....NM	N						
33. New York.....NY	N						
34. North Carolina.....NC	N						
35. North Dakota.....ND	N						
36. Ohio.....OH	L						
37. Oklahoma.....OK	N						
38. Oregon.....OR	N						
39. Pennsylvania.....PA	N						
40. Rhode Island.....RI	N						
41. South Carolina.....SC	N						
42. South Dakota.....SD	N						
43. Tennessee.....TN	N						
44. Texas.....TX	N						
45. Utah.....UT	N						
46. Vermont.....VT	N						
47. Virginia.....VA	N						
48. Washington.....WA	N						
49. West Virginia.....WV	N						
50. Wisconsin.....WI	N						
51. Wyoming.....WY	N						
52. American Samoa.....AS	N						
53. Guam.....GU	N						
54. Puerto Rico.....PR	N						
55. US Virgin Islands.....VI	N						
56. Northern Mariana Islands.....MP	N						
57. Canada.....CAN	N						
58. Aggregate Other Alien.....OT	XXX	0	0	0	0	0	0
59. Totals.....(a).....2		39,046,411	36,316,680	24,630,023	21,291,330	5,398,765	4,466,816

**DETAILS OF WRITE-INS**

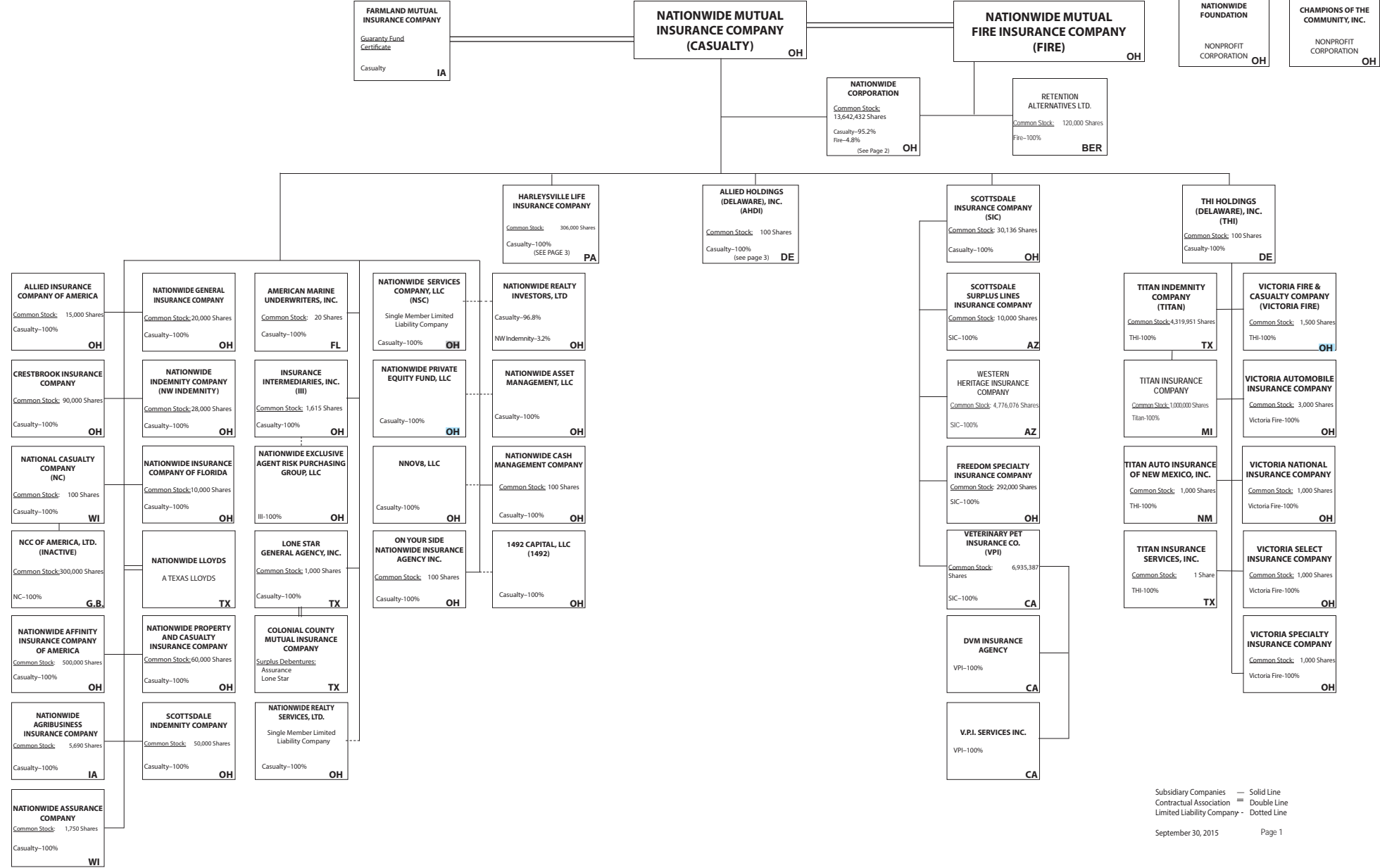
58001.....	XXX						
58002.....	XXX						
58003.....	XXX						
58998. Summary of remaining write-ins for Line 58 from overflow page.....	XXX	0	0	0	0	0	0
58999. Totals (Lines 58001 thru 58003+ Line 58998) (Line 58 above).....	XXX	0	0	0	0	0	0

(L) - Licensed or Chartered - Licensed Insurance Carrier or Domiciled RRG; (R) - Registered - Non-domiciled RRGs; (Q) - Qualified - Qualified or Accredited Reinsurer;

(E) - Eligible - Reporting Entities eligible or approved to write Surplus Lines in the state; (N) - None of the above - Not allowed to write business in the state.

(a) Insert the number of L responses except for Canada and Other Alien.

**NATIONWIDE®**

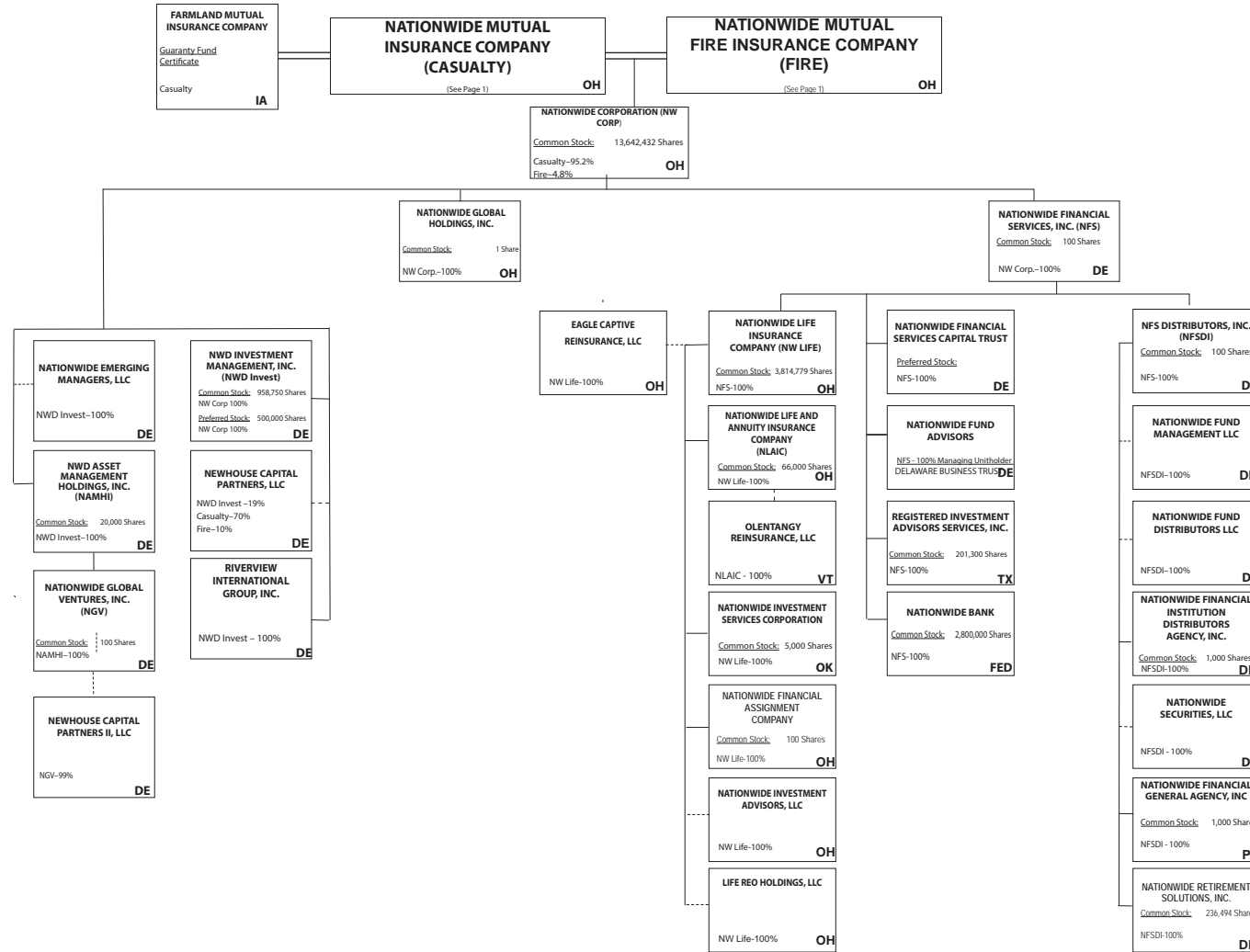


Subsidiary Companies — Solid Line  
 Contractual Association = Double Line  
 Limited Liability Company - Dotted Line  
 September 30, 2015 Page 1

(Casualty/Fire subsidiaries)

Q11

**NATIONWIDE®**

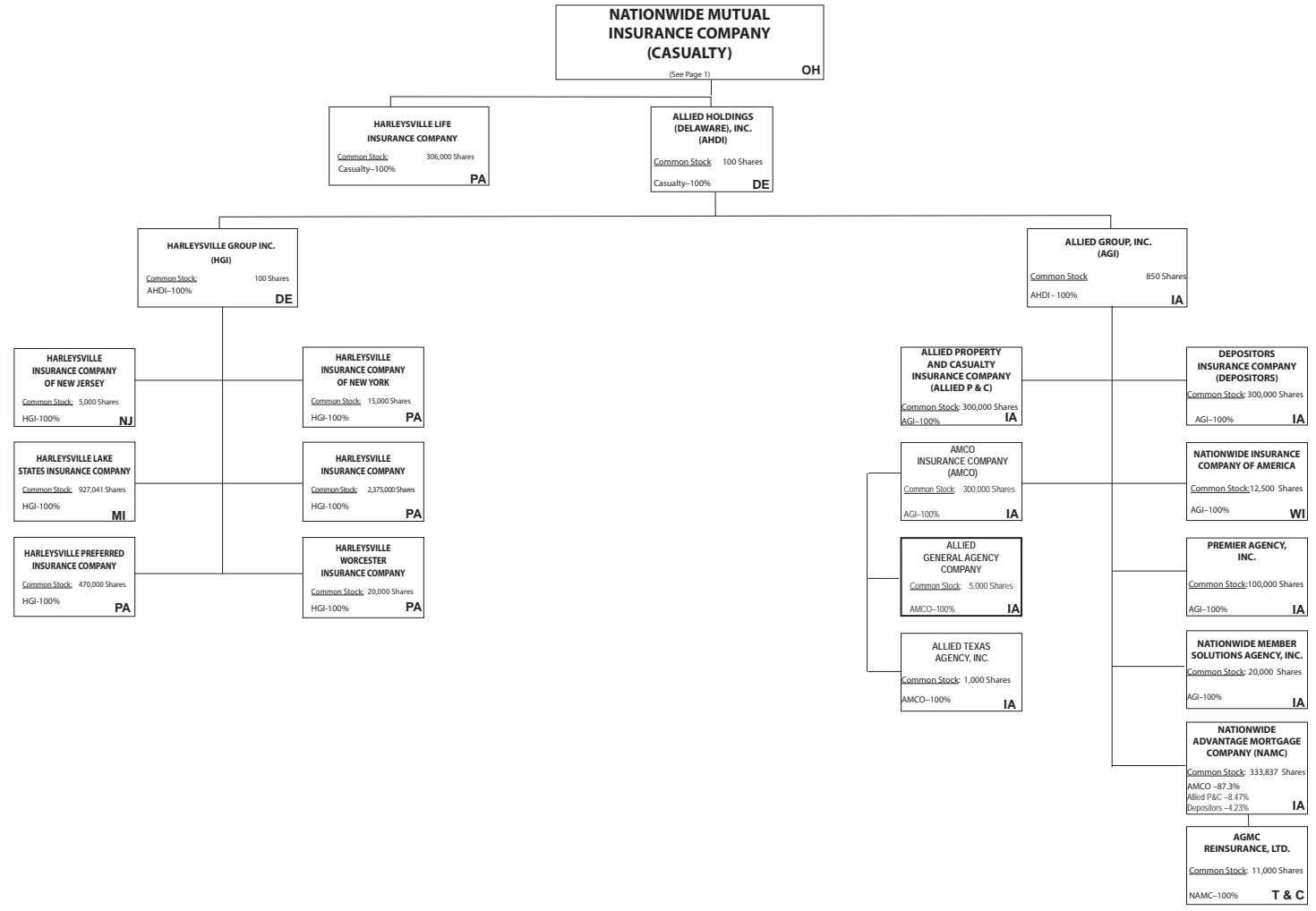


Subsidiary Companies — Solid Line  
 Contractual Association = Double Line  
 Limited Liability Company - - Dotted Line

(Nationwide Corp. subsidiaries)

Q11.1

**NATIONWIDE®**



Q11.2

(ALLIED/Harleysville subsidiaries)

Subsidiary Companies — Solid Line  
 Contractual Association = Double Line  
 Limited Liability Company - - Dotted Line

**NATIONWIDE INSURANCE COMPANIES**

NAIC Group Code	Group Name	NAIC Company Code	State of Domicile	Federal ID Number	Name of Company
0140	Nationwide	10127	OH	27-0114983	Allied Insurance Company of America
0140	Nationwide	42579	IA	42-1201931	Allied Property and Casualty Insurance Company
0140	Nationwide	19100	IA	42-6054959	AMCO Insurance Company
0140	Nationwide	29262	TX	74-1061659	Colonial County Mutual Insurance Company
0140	Nationwide	18961	OH	68-0066866	Crestbrook Insurance Company
0140	Nationwide	42587	IA	42-1207150	Depositors Insurance Company
0140	Nationwide	15821	OH	42-4523959	Eagle Captive Reinsurance, LLC
0140	Nationwide	13838	IA	42-0618271	Farmland Mutual Insurance Company
0140	Nationwide	22209	OH	75-6013587	Freedom Specialty Insurance Company
0140	Nationwide	23582	PA	41-0417250	Harleysville Insurance Company
0140	Nationwide	42900	NJ	23-2253669	Harleysville Insurance Company of New Jersey
0140	Nationwide	10674	PA	23-2864924	Harleysville Insurance Company of New York
0140	Nationwide	14516	MI	38-3198542	Harleysville Lake States Insurance Company
0140	Nationwide	64327	PA	23-1580983	Harleysville Life Insurance Company
0140	Nationwide	35696	PA	23-2384978	Harleysville Preferred Insurance Company
0140	Nationwide	26182	PA	04-1989660	Harleysville Worcester Insurance Company
0140	Nationwide	11991	WI	38-0865250	National Casualty Company
0140	Nationwide	26093	OH	48-0470690	Nationwide Affinity Insurance Company of America
0140	Nationwide	28223	IA	42-1015537	Nationwide Agribusiness Insurance Company
0140	Nationwide	10723	WI	95-0639970	Nationwide Assurance Company
0140	Nationwide	23760	OH	31-4425763	Nationwide General Insurance Company
0140	Nationwide	10070	OH	31-1399201	Nationwide Indemnity Company
0140	Nationwide	25453	WI	95-2130882	Nationwide Insurance Company of America
0140	Nationwide	10948	OH	31-1613686	Nationwide Insurance Company of Florida
0140	Nationwide	92657	OH	31-1000740	Nationwide Life and Annuity Insurance Company
0140	Nationwide	66869	OH	31-4156830	Nationwide Life Insurance Company
0140	Nationwide	42110	TX	75-1780981	Nationwide Lloyds
0140	Nationwide	23779	OH	31-4177110	Nationwide Mutual Fire Insurance Company
0140	Nationwide	23787	OH	31-4177100	Nationwide Mutual Insurance Company
0140	Nationwide	37877	OH	31-0970750	Nationwide Property & Casualty Insurance Company
0140	Nationwide	13999	VT	27-1712056	Olentangy Reinsurance, LLC
0140	Nationwide	15580	OH	31-1117969	Scottsdale Indemnity Company
0140	Nationwide	41297	OH	31-1024978	Scottsdale Insurance Company
0140	Nationwide	10672	AZ	86-0835870	Scottsdale Surplus Lines Insurance Company
0140	Nationwide	13242	TX	74-2286759	Titan Indemnity Company
0140	Nationwide	36269	MI	86-0619597	Titan Insurance Company
0140	Nationwide	42285	CA	95-3750113	Veterinary Pet Insurance Company
0140	Nationwide	10644	OH	34-1785903	Victoria Automobile Insurance Company
0140	Nationwide	42889	OH	34-1394913	Victoria Fire & Casualty Company
0140	Nationwide	10778	OH	34-1842604	Victoria National Insurance Company
0140	Nationwide	10105	OH	34-1777972	Victoria Select Insurance Company
0140	Nationwide	10777	OH	34-1842602	Victoria Specialty Insurance Company
0140	Nationwide	37150	AZ	86-0561941	Western Heritage Insurance Company
4664	PURE	12873	FL	20-8287105	Privilege Underwriters Reciprocal Exchange
4664	PURE	13204	FL	26-3109178	PURE Insurance Company

**VETERINARY PET INSURANCE COMPANY**

**SCHEDULE Y**

**PART 1A - DETAIL OF INSURANCE HOLDING COMPANY SYSTEM**

1	2	3	4	5	6	7	8	9	10	11	12	13	14	15
Group Code	Group Name	NAIC Company Code	ID Number	Federal RSSD	CIK	Name of Securities Exchange if Publicly Traded (U.S. or International)	Names of Parent, Subsidiaries or Affiliates	Domiciliary Location	Relationship to Reporting Entity	Directly Controlled by (Name of Entity/Person)	Type of Control (Ownership Board, Management Attorney-in-Fact, Influence, Other)	If Control is Ownership Provide Percentage	Ultimate Controlling Entity(ies)/Person(s)	*
<b>Members</b>														
0140.....	Nationwide.....		31-1486309..	4590018.....		0.....	10 W. Nationwide, LLC.....	OH.....	NIA.....	Nationwide Realty Investors, Ltd.....	ownership.....	...100.000	Nationwide Mutual Insurance Company.....	
0140.....	Nationwide.....		31-1486309..	4890843.....		0.....	75 Rivulon Boulevard, LLC.....	OH.....	NIA.....	Nationwide Realty Investors, Ltd.....	ownership.....	...100.000	Nationwide Mutual Insurance Company.....	
0140.....	Nationwide.....		31-1486309..	4594954.....		0.....	101 N Twentieth St, LLC.....	OH.....	NIA.....	Nationwide Realty Investors, Ltd.....	ownership.....	...100.000	Nationwide Mutual Insurance Company.....	
0140.....	Nationwide.....		31-1486309..	4810074.....		0.....	1000 Yard Street, LLC.....	OH.....	NIA.....	Nationwide Realty Investors, Ltd.....	ownership.....	...100.000	Nationwide Mutual Insurance Company.....	
0140.....	Nationwide.....		31-1486309..	4869474.....		0.....	1015 Long Street, LLC.....	OH.....	NIA.....	Nationwide Realty Investors, Ltd.....	ownership.....	...100.000	Nationwide Mutual Insurance Company.....	
0140.....	Nationwide.....		31-1486309..	4810047.....		0.....	1050 Yard Street, LLC.....	OH.....	NIA.....	Nationwide Realty Investors, Ltd.....	ownership.....	...100.000	Nationwide Mutual Insurance Company.....	
0140.....	Nationwide.....		20-4939866..	4810038.....		0.....	1125 Rail Street, LLC.....	OH.....	NIA.....	NRI Equity Land Investments, LLC.....	ownership.....	...100.000	Nationwide Mutual Insurance Company.....	
0140.....	Nationwide.....		31-1733036..	4594963.....		0.....	120 Acre Partners, LLC.....	DE.....	NIA.....	Nationwide Realty Investors, Ltd.....	ownership.....	...95.000	Nationwide Mutual Insurance Company.....	1.....
0140.....	Nationwide.....		26-2451988..	4288132.....		0.....	1492 Capital, LLC.....	OH.....	NIA.....	Nationwide Mutual Insurance Company.....	ownership.....	...100.000	Nationwide Mutual Insurance Company.....	
0140.....	Nationwide.....		31-1486309..	4810083.....		0.....	155 Rivulon Boulevard, LLC.....	OH.....	NIA.....	Nationwide Realty Investors, Ltd.....	ownership.....	...100.000	Nationwide Mutual Insurance Company.....	
0140.....	Nationwide.....		20-1347603..	4594806.....		0.....	180 E. Broad Partners, LLC.....	OH.....	NIA.....	Nationwide Realty Investors, Ltd.....	ownership.....	...33.330	Nationwide Mutual Insurance Company.....	1.....
0140.....	Nationwide.....		31-1486309..	4810092.....		0.....	275 Rivulon Boulevard, LLC.....	OH.....	NIA.....	Nationwide Realty Investors, Ltd.....	ownership.....	...100.000	Nationwide Mutual Insurance Company.....	
0140.....	Nationwide.....		31-1580283..	4590835.....		0.....	400 West Nationwide Boulevard, LLC.....	OH.....	NIA.....	NWD Investments, LLC.....	ownership.....	...100.000	Nationwide Mutual Insurance Company.....	
0140.....	Nationwide.....		31-1580283..	4591140.....		0.....	425 West Nationwide Boulevard, LLC.....	OH.....	NIA.....	NWD Investments, LLC.....	ownership.....	...100.000	Nationwide Mutual Insurance Company.....	
0140.....	Nationwide.....		31-1486309..	4595009.....		0.....	44 Chestnut, LLC.....	OH.....	NIA.....	Nationwide Realty Investors, Ltd.....	ownership.....	...100.000	Nationwide Mutual Insurance Company.....	
0140.....	Nationwide.....		20-4939866..	4590497.....		0.....	775 Yard Street Restaurant, LLC.....	OH.....	NIA.....	NRI Equity Land Investments, LLC.....	ownership.....	...100.000	Nationwide Mutual Insurance Company.....	
0140.....	Nationwide.....		20-4939866..	4590750.....		0.....	775 Yard Street, LLC.....	OH.....	NIA.....	NRI Equity Land Investments, LLC.....	ownership.....	...100.000	Nationwide Mutual Insurance Company.....	
0140.....	Nationwide.....		20-4939866..	4810104.....		0.....	780 Yard Street, LLC.....	OH.....	NIA.....	NRI Equity Land Investments, LLC.....	ownership.....	...100.000	Nationwide Mutual Insurance Company.....	
0140.....	Nationwide.....		20-4939866..	4671583.....		0.....	795 Rail Street, LLC.....	OH.....	NIA.....	NRI Equity Land Investments, LLC.....	ownership.....	...100.000	Nationwide Mutual Insurance Company.....	
0140.....	Nationwide.....		20-4939866..	4590602.....		0.....	800 Bobcat Avenue, LLC.....	OH.....	NIA.....	NRI Equity Land Investments, LLC.....	ownership.....	...100.000	Nationwide Mutual Insurance Company.....	
0140.....	Nationwide.....		20-4939866..	4671499.....		0.....	800 Goodale Boulevard, LLC.....	OH.....	NIA.....	NRI Equity Land Investments, LLC.....	ownership.....	...100.000	Nationwide Mutual Insurance Company.....	
0140.....	Nationwide.....		20-4939866..	4671789.....		0.....	800 Yard Street, LLC.....	OH.....	NIA.....	NRI Equity Land Investments, LLC.....	ownership.....	...100.000	Nationwide Mutual Insurance Company.....	
0140.....	Nationwide.....		20-4939866..	4590778.....		0.....	805 Bobcat Avenue, LLC.....	OH.....	NIA.....	NRI Equity Land Investments, LLC.....	ownership.....	...100.000	Nationwide Mutual Insurance Company.....	
0140.....	Nationwide.....		20-4939866..	4890834.....		0.....	808 Yard Street, LLC.....	OH.....	NIA.....	NRI Equity Land Investments, LLC.....	ownership.....	...100.000	Nationwide Mutual Insurance Company.....	
0140.....	Nationwide.....		20-4939866..	4869465.....		0.....	820 Goodale Boulevard, LLC.....	OH.....	NIA.....	NRI Equity Land Investments, LLC.....	ownership.....	...100.000	Nationwide Mutual Insurance Company.....	
0140.....	Nationwide.....		20-4939866..	4890759.....		0.....	840 Third Avenue, LLC.....	OH.....	NIA.....	NRI Equity Land Investments, LLC.....	ownership.....	...100.000	Nationwide Mutual Insurance Company.....	
0140.....	Nationwide.....		20-4939866..			0.....	860 Third Avenue, LLC.....	OH.....	NIA.....	NRI Equity Land Investments, LLC.....	ownership.....	...100.000	Nationwide Mutual Insurance Company.....	
0140.....	Nationwide.....		20-4939866..			0.....	880 Third Avenue, LLC.....	OH.....	NIA.....	NRI Equity Land Investments, LLC.....	ownership.....	...100.000	Nationwide Mutual Insurance Company.....	
0140.....	Nationwide.....		20-4939866..	4590611.....		0.....	845 Yard Street, LLC.....	OH.....	NIA.....	NRI Equity Land Investments, LLC.....	ownership.....	...100.000	Nationwide Mutual Insurance Company.....	
0140.....	Nationwide.....		20-4939866..	4590787.....		0.....	850 Goodale Blvd., LLC.....	OH.....	NIA.....	NRI Equity Land Investments, LLC.....	ownership.....	...100.000	Nationwide Mutual Insurance Company.....	
0140.....	Nationwide.....		20-4939866..	4590714.....		0.....	895 W. Third Avenue, LLC.....	OH.....	NIA.....	NRI Equity Land Investments, LLC.....	ownership.....	...100.000	Nationwide Mutual Insurance Company.....	
0140.....	Nationwide.....		20-4939866..	4810029.....		0.....	975 Rail Street, LLC.....	OH.....	NIA.....	NRI Equity Land Investments, LLC.....	ownership.....	...100.000	Nationwide Mutual Insurance Company.....	
0140.....	Nationwide.....		31-1680808..	4594833.....		0.....	AD Investments, LLC.....	OH.....	NIA.....	Nationwide Realty Investors, Ltd.....	ownership.....	...60.000	Nationwide Mutual Insurance Company.....	1.....
0140.....	Nationwide.....		31-1580283..	4590992.....		0.....	ADTV, LLC.....	OH.....	NIA.....	NWD Investments, LLC.....	ownership.....	...100.000	Nationwide Mutual Insurance Company.....	
0140.....	Nationwide.....		52-2227314..	42877247.....		0.....	AGMC Reinsurance, Ltd.....	TCA.....	IA.....	Nationwide Advantage Mortgage Company.....	ownership.....	...100.000	Nationwide Mutual Insurance Company.....	
0140.....	Nationwide.....		42-1011300..	4287229.....		0.....	ALLIED General Agency Company.....	IA.....	IA.....	AMCO Insurance Company.....	ownership.....	...100.000	Nationwide Mutual Insurance Company.....	

Q12

**VETERINARY PET INSURANCE COMPANY**

**SCHEDULE Y**

**PART 1A - DETAIL OF INSURANCE HOLDING COMPANY SYSTEM**

1	2	3	4	5	6	7	8	9	10	11	12	13	14	15
Group Code	Group Name	NAIC Company Code	ID Number	Federal RSSD	CIK	Name of Securities Exchange if Publicly Traded (U.S. or International)	Names of Parent, Subsidiaries or Affiliates	Domiciliary Location	Relationship to Reporting Entity	Directly Controlled by (Name of Entity/Person)	Type of Control (Ownership Board, Management Attorney-in-Fact, Influence, Other)	If Control is Ownership Provide Percentage	Ultimate Controlling Entity(ies)/Person(s)	*
0140.....	Nationwide.....		42-0958655..	1677548.....		0.....	ALLIED Group, Inc.....	IA.....	IA.....	Allied Holdings (Delaware), Inc.....	ownership.....	...100.000	Nationwide Mutual Insurance Company.....	
0140.....	Nationwide.....		46-4628790..	4613462.....		0.....	Allied Holdings (Delaware), Inc.....	DE.....	IA.....	Nationwide Mutual Insurance Company.....	ownership.....	...100.000	Nationwide Mutual Insurance Company.....	
0140.....	Nationwide.....	10127..	27-0114983..	4288169.....		0.....	ALLIED Insurance Company of America.....	OH.....	IA.....	Nationwide Mutual Insurance Company.....	ownership.....	...100.000	Nationwide Mutual Insurance Company.....	
0140.....	Nationwide.....	42579..	42-1201931..	4287144.....		0.....	ALLIED Property and Casualty Insurance Company	IA.....	IA.....	ALLIED Group, Inc.....	ownership.....	...100.000	Nationwide Mutual Insurance Company.....	
0140.....	Nationwide.....		42-1527863..	4287238.....		0.....	ALLIED Texas Agency, Inc.....	TX.....	IA.....	AMCO Insurance Company.....	ownership.....	...100.000	Nationwide Mutual Insurance Company.....	
0140.....	Nationwide.....	19100..	42-6054959..	4287153.....		0.....	AMCO Insurance Company.....	IA.....	IA.....	ALLIED Group, Inc.....	ownership.....	...100.000	Nationwide Mutual Insurance Company.....	
0140.....	Nationwide.....		59-1031596..	4288011.....		0.....	American Marine Underwriters, Inc.....	FL.....	IA.....	Nationwide Mutual Insurance Company.....	ownership.....	...100.000	Nationwide Mutual Insurance Company.....	
0140.....	Nationwide.....		31-1486309..	4595036.....		0.....	Anderson Meadows, LLC.....	OH.....	NIA.....	Nationwide Realty Investors, Ltd.....	ownership.....	...100.000	Nationwide Mutual Insurance Company.....	
0140.....	Nationwide.....		31-1580283..	4591177.....		0.....	Arena District CA I, LLC.....	OH.....	NIA.....	NWD Investments, LLC.....	ownership.....	...100.000	Nationwide Mutual Insurance Company.....	
0.....			90-0280710..	n/a.....		0.....	Arena District Owners Association.....	OH.....	OTH.....	Other non-Nationwide.....	n/a.....		Other non-Nationwide.....	2.....
0140.....	Nationwide.....		20-3624379..	4595371.....		0.....	BCCS Investment Fund LLC.....	DE.....	NIA.....	Nationwide Mutual Insurance Company.....	ownership.....	...100.000	Nationwide Mutual Insurance Company.....	
0140.....	Nationwide.....		26-4083207..	4869447.....		0.....	Berkshire Crossing Development, LLC.....	DE.....	NIA.....	NorthStar Commercial Development, LLC.....	ownership.....	...100.000	Nationwide Mutual Insurance Company.....	
0140.....	Nationwide.....		31-1184438..	4594842.....		0.....	Boulevard Inn Limited Liability Company.....	OH.....	NIA.....	Nationwide Realty Investors, Ltd.....	ownership.....	...94.800	Nationwide Mutual Insurance Company.....	1.....
0140.....	Nationwide.....		31-1555487..	4593658.....		0.....	Broad Street Retail, LLC.....	DE.....	NIA.....	Nationwide Realty Investors, Ltd.....	ownership.....	...60.000	Nationwide Mutual Insurance Company.....	1.....
0140.....	Nationwide.....		20-3624379..	4595531.....		0.....	Brooke School Investment Fund, LLC.....	DE.....	OTH.....	Nationwide Mutual Insurance Company.....	ownership.....	...100.000	Nationwide Mutual Insurance Company.....	2.....
0140.....	Nationwide.....		26-0899413..	3730540.....		0.....	CHP New Markets Investment Fund, LLC.....	OH.....	OTH.....	Nationwide Mutual Insurance Company.....	Limited partner /no control	...50.000	other non-Nationwide.....	1.....
0140.....	Nationwide.....		20-1618232..	4595241.....		0.....	CNRI-Cannonsport Condominium, LLC.....	OH.....	NIA.....	CNRI-Cannonsport, LLC.....	ownership.....	...100.000	Nationwide Mutual Insurance Company.....	
0140.....	Nationwide.....		20-1618232..	4595045.....		0.....	CNRI- Cannonsport, LLC.....	OH.....	NIA.....	Nationwide Realty Investors, Ltd.....	ownership.....	...100.000	Nationwide Mutual Insurance Company.....	
0.....			n/a.....	n/a.....		0.....	Co-Investment Fund, LLC.....	DE.....	OTH.....	Other non-Nationwide.....	n/a.....		Other non-Nationwide.....	2.....
0140.....	Nationwide.....		31-1579973..	n/a.....		0.....	COLHOC Limited Partnership.....	OH.....	NIA.....	NRI Arena, LLC.....	ownership.....	...30.757	Other non-Nationwide.....	2.....
0140.....	Nationwide.....	29262..	74-1061659..	4288057.....		0.....	Colonial County Mutual Insurance Company.....	TX.....	OTH.....	Other non-Nationwide.....	contract.....		Other non-Nationwide.....	2.....
0140.....	Nationwide.....		45-4901238..	n/a.....		0.....	Columbus Arena Management, LLC.....	OH.....	OTH.....	Other non-Nationwide.....	0.....		Other non-Nationwide.....	2.....
0140.....	Nationwide.....		04-3750770..	4595951.....		0.....	Continental/North Shore I, L.P.....	OH.....	NIA.....	Continental/NRI North Shore Investments, LLC..	ownership.....	...100.000	Nationwide Mutual Insurance Company.....	
0140.....	Nationwide.....		20-0366090..	3327212.....		0.....	Continental/North Shore II, L.P.....	OH.....	NIA.....	Continental/NRI North Shore Investments, LLC..	ownership.....	...100.000	Nationwide Mutual Insurance Company.....	
0140.....	Nationwide.....		20-0142724..	4588177.....		0.....	Continental/NRI North Shore Investments, LLC.....	OH.....	NIA.....	Nationwide Realty Investors, Ltd.....	ownership.....	...50.500	Nationwide Mutual Insurance Company.....	1.....
0140.....	Nationwide.....		26-4177534..	4595670.....		0.....	Cotton Mill Partners, LLC.....	VA.....	NIA.....	Nationwide Mutual Insurance Company.....	ownership.....	...50.000	Nationwide Mutual Insurance Company.....	1.....
0140.....	Nationwide.....		26-4177534..	4595670.....		0.....	Cotton Mill Partners, LLC.....	VA.....	NIA.....	Nationwide Property and Casualty Insurance Company	ownership.....	...50.000	Nationwide Mutual Insurance Company.....	1.....
0140.....	Nationwide.....	18961..	68-0066866..	4288178.....		0.....	Crestbrook Insurance Company.....	OH.....	IA.....	Nationwide Mutual Insurance Company.....	ownership.....	...100.000	Nationwide Mutual Insurance Company.....	
0140.....	Nationwide.....		31-1486309..	4590255.....		0.....	Crewville, Ltd.....	OH.....	NIA.....	Nationwide Realty Investors, Ltd.....	ownership.....	...100.000	Nationwide Mutual Insurance Company.....	
0140.....	Nationwide.....	42587..	42-1207150..	4287162.....		0.....	Depositors Insurance Company.....	IA.....	IA.....	ALLIED Group, Inc.....	ownership.....	...100.000	Nationwide Mutual Insurance Company.....	
0.....			46-4104813..	n/a.....		0.....	Discover Affordable Housing Investment Fund I LLC	OH.....	OTH.....	Other non-Nationwide.....	n/a.....		Other non-Nationwide.....	2.....
0140.....	Nationwide.....		33-0096671..	4287694.....		0.....	DVM Insurance Agency.....	CA.....	NIA.....	Veterinary Pet Insurance Company.....	ownership.....	...100.000	Nationwide Mutual Insurance Company.....	
0140.....	Nationwide.....		47-4523959..	4890825.....		0.....	Eagle Captive Reinsurance, LLC.....	OH.....	IA.....	Nationwide Life Insurance Company.....	ownership.....	...100.000	Nationwide Mutual Insurance Company.....	

Q12.1

**VETERINARY PET INSURANCE COMPANY**

**SCHEDULE Y**

**PART 1A - DETAIL OF INSURANCE HOLDING COMPANY SYSTEM**

1	2	3	4	5	6	7	8	9	10	11	12	13	14	15
Group Code	Group Name	NAIC Company Code	ID Number	Federal RSSD	CIK	Name of Securities Exchange if Publicly Traded (U.S. or International)	Names of Parent, Subsidiaries or Affiliates	Domiciliary Location	Relationship to Reporting Entity	Directly Controlled by (Name of Entity/Person)	Type of Control (Ownership Board, Management Attorney-in-Fact, Influence, Other)	If Control is Ownership Provide Percentage	Ultimate Controlling Entity(ies)/Person(s)	*
0140	Nationwide		20-1945276	4590590		0	East of Madison, LLC	DE	NIA	120 Acre Partners, Ltd.	ownership	24.910	Nationwide Mutual Insurance Company	1
0140	Nationwide		20-1945276	4590590		0	East of Madison, LLC	DE	NIA	ND La Quinta Partners, LLC	ownership	76.090	Nationwide Mutual Insurance Company	1
0140	Nationwide		20-5268940	4595689		0	ELH Investment Fund LLC	DE	OTH	Nationwide Mutual Insurance Company	ownership	100.000	Nationwide Mutual Insurance Company	2
0140	Nationwide	13838	42-0618271	4569372		0	Farmland Mutual Insurance Company	IA	OTH	Other non-Nationwide	debt		Other non-Nationwide	2
0140	Nationwide	22209	75-6013587	4287676		0	Freedom Specialty Insurance Company (fka Atlantic Insurance Company)	OH	IA	Scottsdale Insurance Company	ownership	100.000	Nationwide Mutual Insurance Company	
0			46-4736379	n/a		0	GPN-1 Property Owners Association, Inc.	OH	OTH	Other non-Nationwide	n/a		other non-Nationwide	2
0140	Nationwide		20-4939866	4590808		0	Grandview Yard Hotel Holdings, LLC	OH	NIA	NRI Equity Land Investments, LLC	ownership	100.000	Nationwide Mutual Insurance Company	
0140	Nationwide		20-4939866	4590826		0	Grandview Yard Hotel, LLC	OH	NIA	Grandview Yard Hotel Holdings, LLC	ownership	100.000	Nationwide Mutual Insurance Company	
0140	Nationwide		51-0241172	3582909		0	Harleysville Group Inc.	DE	NIA	Allied Holdings (Delaware), Inc.	ownership	100.000	Nationwide Mutual Insurance Company	
0140	Nationwide	23582	41-0417250	4442260		0	Harleysville Insurance Company	PA	IA	Harleysville Group, Inc.	ownership	100.000	Nationwide Mutual Insurance Company	
0140	Nationwide	42900	16-1075588	4442158		0	Harleysville Insurance Company of New Jersey	NJ	IA	Harleysville Group, Inc.	ownership	100.000	Nationwide Mutual Insurance Company	
0140	Nationwide	10674	23-2864924	4442242		0	Harleysville Insurance Company of New York	PA	IA	Harleysville Group, Inc.	ownership	100.000	Nationwide Mutual Insurance Company	
0140	Nationwide	14516	38-3198542	4442251		0	Harleysville Lake States Insurance Company	MI	IA	Harleysville Group, Inc.	ownership	100.000	Nationwide Mutual Insurance Company	
0140	Nationwide	64327	23-1580983	4440659		0	Harleysville Life Insurance Company	PA	IA	Nationwide Mutual Insurance Company	ownership	100.000	Nationwide Mutual Insurance Company	
0140	Nationwide		23-2612951	4442149		0	Harleysville Pennland Insurance Company	PA	IA	Nationwide Mutual Insurance Company	ownership	100.000	Nationwide Mutual Insurance Company	
0140	Nationwide	35696	23-2384978	4442288		0	Harleysville Preferred Insurance Company	PA	IA	Harleysville Group, Inc.	ownership	100.000	Nationwide Mutual Insurance Company	
0140	Nationwide	26182	04-1989660	4442372		0	Harleysville Worcester Insurance Company	PA	IA	Harleysville Group, Inc.	ownership	100.000	Nationwide Mutual Insurance Company	
0140	Nationwide		32-0051216	4596903		0	Hideaway Properties Corp	CA	OTH	Nationwide Realty Investors, Ltd.	ownership	50.000	Nationwide Mutual Insurance Company	1
0140	Nationwide		31-0871532	4288020		0	Insurance Intermediaries, Inc.	OH	IA	Nationwide Mutual Insurance Company	ownership	100.000	Nationwide Mutual Insurance Company	
0140	Nationwide		31-1486309	4097802		0	Jerome Village Company, LLC	OH	NIA	Nationwide Realty Investors, Ltd.	ownership	100.000	Nationwide Mutual Insurance Company	
0			46-2974590	n/a		0	Jerome Village Master Property Owners Association	OH	OTH	Other non-Nationwide	n/a		Other non-Nationwide	2
0			46-2956640	n/a		0	Jerome Village Residential Property Owners Association, Inc.	OH	OTH	Other non-Nationwide	n/a		Other non-Nationwide	2
0140	Nationwide		31-1486309	4590312		0	JV Developers, LLC	OH	OTH	Nationwide Realty Investors, Ltd.	ownership	100.000	Nationwide Mutual Insurance Company	2
0140	Nationwide		20-2137188	4595698		0	Leaguers Investment Fund, LLC	DE	OTH	Nationwide Mutual Insurance Company	ownership	100.000	Nationwide Mutual Insurance Company	2
0140	Nationwide		56-3789187	4286969		0	Life REO Holdings, LLC	OH	NIA	Nationwide Life Insurance Company	ownership	100.000	Nationwide Mutual Insurance Company	
0140	Nationwide		74-1395229	4288039		0	Lone Star General Agency, Inc.	TX	IA	Nationwide Mutual Insurance Company	ownership	100.000	Nationwide Mutual Insurance Company	
0140	Nationwide		20-3624379	4595700		0	Match School Investment Fund, LLC	DE	OTH	Nationwide Mutual Insurance Company	ownership	100.000	Nationwide Mutual Insurance Company	2
0140	Nationwide	11991	38-0865250	4288187		0	National Casualty Company	WI	IA	Nationwide Mutual Insurance Company	ownership	100.000	Nationwide Mutual Insurance Company	
0140	Nationwide		AC000920	4614900		0	National Casualty Company of America, Ltd.	GBR	IA	National Casualty Company	ownership	100.000	Nationwide Mutual Insurance Company	
0140	Nationwide		42-1154244	2889795		0	Nationwide Advantage Mortgage Company	IA	NIA	AMCO Insurance Company	ownership	87.300	Nationwide Mutual Insurance Company	1
0140	Nationwide		42-1154244	2889795		0	Nationwide Advantage Mortgage Company	IA	NIA	ALLIED Property & Casualty Insurance Company	ownership	8.470	Nationwide Mutual Insurance Company	1
0140	Nationwide		42-1154244	2889795		0	Nationwide Advantage Mortgage Company	IA	NIA	Depositors Insurance Company	ownership	4.230	Nationwide Mutual Insurance Company	1
0140	Nationwide	26093	48-0470690	4288196		0	Nationwide Affinity Insurance Company of America	OH	IA	Nationwide Mutual Insurance Company	ownership	100.000	Nationwide Mutual Insurance Company	

Q12.2

**VETERINARY PET INSURANCE COMPANY**

**SCHEDULE Y**

**PART 1A - DETAIL OF INSURANCE HOLDING COMPANY SYSTEM**

1	2	3	4	5	6	7	8	9	10	11	12	13	14	15
Group Code	Group Name	NAIC Company Code	ID Number	Federal RSSD	CIK	Name of Securities Exchange if Publicly Traded (U.S. or International)	Names of Parent, Subsidiaries or Affiliates	Domiciliary Location	Relationship to Reporting Entity	Directly Controlled by (Name of Entity/Person)	Type of Control (Ownership Board, Management Attorney-in-Fact, Influence, Other)	If Control is Ownership Provide Percentage	Ultimate Controlling Entity(ies)/Person(s)	*
0140	Nationwide	28223	42-1015537	4288208		0	Nationwide Agribusiness Insurance Company	IA	IA	Nationwide Mutual Insurance Company	ownership	100.000	Nationwide Mutual Insurance Company	
0140	Nationwide		20-5976272	4595910		0	Nationwide Alternative Investments, LLC	OH	NIA	Nationwide Mutual Insurance Company	ownership	100.000	Nationwide Mutual Insurance Company	
0140	Nationwide		31-1578869	4288075		0	Nationwide Arena, LLC	OH	NIA	NRI Arena, LLC	ownership	90.000	Nationwide Mutual Insurance Company	1
0140	Nationwide		20-8670712	4288114		0	Nationwide Asset Management, LLC	OH	NIA	Nationwide Mutual Insurance Company	ownership	100.000	Nationwide Mutual Insurance Company	
0140	Nationwide	10723	95-0639970	4288217		0	Nationwide Assurance Company	WI	IA	Nationwide Mutual Insurance Company	ownership	100.000	Nationwide Mutual Insurance Company	
0140	Nationwide		31-1592130	2729677		0	Nationwide Bank	OH	OTH	Nationwide Financial Services, Inc	ownership	100.000	Nationwide Mutual Insurance Company	2
0140	Nationwide		31-1036287	4288123		0	Nationwide Cash Management Company	OH	NIA	Nationwide Mutual Insurance Company	ownership	100.000	Nationwide Mutual Insurance Company	
0140	Nationwide		31-4416546	3828081		0	Nationwide Corporation	OH	NIA	Nationwide Mutual Insurance Company	ownership	95.200	Nationwide Mutual Insurance Company	1
0140	Nationwide		31-4416546	3828081		0	Nationwide Corporation	OH	NIA	Nationwide Mutual Fire Insurance Company	ownership	4.800	Nationwide Mutual Insurance Company	1
0140	Nationwide		04-3679407	4286839		0	Nationwide Emerging Managers, LLC	DE	NIA	NWD Investment Management, Inc	ownership	100.000	Nationwide Mutual Insurance Company	
0140	Nationwide		05-0630007	4288048		0	Nationwide Exclusive Agent Risk Purchasing Group, LLC	OH	NIA	Insurance Intermediaries, Inc	ownership	100.000	Nationwide Mutual Insurance Company	
0140	Nationwide		31-1667326	4286932		0	Nationwide Financial Assignment Company	OH	NIA	Nationwide Life Insurance Company	ownership	100.000	Nationwide Mutual Insurance Company	
0140	Nationwide		23-2412039	4287087		0	Nationwide Financial General Agency, Inc	PA	NIA	NFS Distributors, Inc	ownership	100.000	Nationwide Mutual Insurance Company	
0140	Nationwide		31-1316276	4287069		0	Nationwide Financial Institution Distributors Agency, Inc	DE	NIA	NFS Distributors, Inc	ownership	100.000	Nationwide Mutual Insurance Company	
0140	Nationwide		31-6554353	4286978		0	Nationwide Financial Services Capital Trust	DE	NIA	Nationwide Financial Services, Inc	ownership	100.000	Nationwide Mutual Insurance Company	
0140	Nationwide		31-1486870	3828063		0	Nationwide Financial Services, Inc	DE	NIA	Nationwide Corporation	ownership	100.000	Nationwide Mutual Insurance Company	
0140	Nationwide		31-6022301	n/a		0	Nationwide Foundation	OH	OTH	Other non-Nationwide	n/a		Other non-Nationwide	2
0140	Nationwide		52-6969857	4286996		0	Nationwide Fund Advisors	DE	NIA	Nationwide Financial Services, Inc	ownership	100.000	Nationwide Mutual Insurance Company	
0140	Nationwide		31-1748721	42877050		0	Nationwide Fund Distributors LLC	DE	NIA	NFS Distributors, Inc	ownership	100.000	Nationwide Mutual Insurance Company	
0140	Nationwide		31-0900518	4287041		0	Nationwide Fund Management LLC	DE	NIA	NFS Distributors, Inc	ownership	100.000	Nationwide Mutual Insurance Company	
0140	Nationwide	23760	31-4425763	4287957		0	Nationwide General Insurance Company	OH	IA	Nationwide Mutual Insurance Company	ownership	100.000	Nationwide Mutual Insurance Company	
0140	Nationwide		31-1570938	4286398		0	Nationwide Global Holdings, Inc	OH	NIA	Nationwide Corporation	ownership	100.000	Nationwide Mutual Insurance Company	
0140	Nationwide		04-3732385	4286857		0	Nationwide Global Ventures, Inc	DE	NIA	Nationwide Asset Management Holdings, Inc	ownership	100.000	Nationwide Mutual Insurance Company	
0140	Nationwide	10070	31-1399201	2839398		0	Nationwide Indemnity Company	OH	IA	Nationwide Mutual Insurance Company	ownership	100.000	Nationwide Mutual Insurance Company	
0140	Nationwide	25453	95-2130882	4287180		0	Nationwide Insurance Company of America	WI	IA	ALLIED Group, Inc	ownership	100.000	Nationwide Mutual Insurance Company	
0140	Nationwide	10948	31-1613686	4287966		0	Nationwide Insurance Company of Florida	OH	IA	Nationwide Mutual Insurance Company	ownership	100.000	Nationwide Mutual Insurance Company	
0140	Nationwide		41-2206199	4286950		0	Nationwide Investment Advisors, LLC	OH	NIA	Nationwide Life Insurance Company	ownership	100.000	Nationwide Mutual Insurance Company	
0140	Nationwide		73-0988442	4286923		0	Nationwide Investment Services Corporation	OK	NIA	Nationwide Life Insurance Company	ownership	100.000	Nationwide Mutual Insurance Company	
0140	Nationwide	92657	31-1000740	2995098		0	Nationwide Life and Annuity Insurance Company	OH	IA	Nationwide Life Insurance Company	ownership	100.000	Nationwide Mutual Insurance Company	
0140	Nationwide	66869	31-4156830	2819288		0	Nationwide Life Insurance Company	OH	IA	Nationwide Financial Services, Inc	ownership	100.000	Nationwide Mutual Insurance Company	
0140	Nationwide		13-4212969	4596127		0	Nationwide Life Tax Credit Partners 2002-A, LLC	OH	NIA	Nationwide Life Insurance Company	other	0.010	Nationwide Mutual Insurance Company	2
0140	Nationwide		01-0749754	4595960		0	Nationwide Life Tax Credit Partners 2002-B, LLC	OH	NIA	Nationwide Life Insurance Company	other	0.010	Nationwide Mutual Insurance Company	2

Q12.3

**VETERINARY PET INSURANCE COMPANY**

**SCHEDULE Y**

**PART 1A - DETAIL OF INSURANCE HOLDING COMPANY SYSTEM**

1	2	3	4	5	6	7	8	9	10	11	12	13	14	15
Group Code	Group Name	NAIC Company Code	ID Number	Federal RSSD	CIK	Name of Securities Exchange if Publicly Traded (U.S. or International)	Names of Parent, Subsidiaries or Affiliates	Domiciliary Location	Relationship to Reporting Entity	Directly Controlled by (Name of Entity/Person)	Type of Control (Ownership Board, Management Attorney-in-Fact, Influence, Other)	If Control is Ownership Provide Percentage	Ultimate Controlling Entity(ies)/Person(s)	*
0140.....	Nationwide.....		03-0498148..	3262573.....		0.....	Nationwide Life Tax Credit Partners 2002-C, LLC...	OH.....	NIA.....	Nationwide Life Insurance Company.....	other.....	.....0.010	Nationwide Mutual Insurance Company.....	2.....
0140.....	Nationwide.....		54-2113175..	4596127.....		0.....	Nationwide Life Tax Credit Partners 2003-A, LLC...	OH.....	NIA.....	Nationwide Life Insurance Company.....	other.....	.....0.010	Nationwide Mutual Insurance Company.....	2.....
0140.....	Nationwide.....		58-2672725..	4596163.....		0.....	Nationwide Life Tax Credit Partners 2003-B, LLC...	OH.....	NIA.....	Nationwide Life Insurance Company.....	other.....	.....0.010	Nationwide Mutual Insurance Company.....	2.....
0140.....	Nationwide.....		20-0357951..	3811001.....		0.....	Nationwide Life Tax Credit Partners 2003-C, LLC...	OH.....	NIA.....	Nationwide Life Insurance Company.....	other.....	.....0.010	Nationwide Mutual Insurance Company.....	2.....
0140.....	Nationwide.....		20-0382144..	4596707.....		0.....	Nationwide Life Tax Credit Partners 2004-A, LLC...	OH.....	NIA.....	Nationwide Life Insurance Company.....	other.....	.....0.010	Nationwide Mutual Insurance Company.....	2.....
0140.....	Nationwide.....		20-0745944..	4596211.....		0.....	Nationwide Life Tax Credit Partners 2004-B, LLC...	OH.....	NIA.....	Nationwide Life Insurance Company.....	other.....	.....0.010	Nationwide Mutual Insurance Company.....	2.....
0140.....	Nationwide.....		20-0745965..	4596239.....		0.....	Nationwide Life Tax Credit Partners 2004-C, LLC...	OH.....	NIA.....	Nationwide Life Insurance Company.....	other.....	.....0.010	Nationwide Mutual Insurance Company.....	2.....
0140.....	Nationwide.....		20-1128408..	4596332.....		0.....	Nationwide Life Tax Credit Partners 2004-D, LLC...	OH.....	NIA.....	Nationwide Life Insurance Company.....	other.....	.....0.010	Nationwide Mutual Insurance Company.....	2.....
0140.....	Nationwide.....		20-1128472..	4596350.....		0.....	Nationwide Life Tax Credit Partners 2004-E, LLC...	OH.....	NIA.....	Nationwide Life Insurance Company.....	other.....	.....0.010	Nationwide Mutual Insurance Company.....	2.....
0140.....	Nationwide.....		20-1918935..	3318117.....		0.....	Nationwide Life Tax Credit Partners 2004-F, LLC...	OH.....	NIA.....	Nationwide Life Insurance Company.....	other.....	.....0.010	Nationwide Mutual Insurance Company.....	2.....
0140.....	Nationwide.....		20-2303694..	4596369.....		0.....	Nationwide Life Tax Credit Partners 2005-A, LLC...	OH.....	NIA.....	Nationwide Life Insurance Company.....	other.....	.....0.010	Nationwide Mutual Insurance Company.....	2.....
0140.....	Nationwide.....		20-2303602..	4596378.....		0.....	Nationwide Life Tax Credit Partners 2005-B, LLC...	OH.....	NIA.....	Nationwide Life Insurance Company.....	other.....	.....0.010	Nationwide Mutual Insurance Company.....	2.....
0140.....	Nationwide.....		20-2450960..	4596387.....		0.....	Nationwide Life Tax Credit Partners 2005-C, LLC...	OH.....	NIA.....	Nationwide Life Insurance Company.....	other.....	.....0.010	Nationwide Mutual Insurance Company.....	2.....
0140.....	Nationwide.....		20-2451052..	4596396.....		0.....	Nationwide Life Tax Credit Partners 2005-D, LLC...	OH.....	NIA.....	Nationwide Life Insurance Company.....	other.....	.....0.010	Nationwide Mutual Insurance Company.....	2.....
0140.....	Nationwide.....		20-2774223..	4596408.....		0.....	Nationwide Life Tax Credit Partners 2005-E, LLC...	OH.....	NIA.....	Nationwide Life Insurance Company.....	other.....	.....0.010	Nationwide Mutual Insurance Company.....	2.....
0140.....	Nationwide.....		21-1288836..	4596426.....		0.....	Nationwide Life Tax Credit Partners 2007-A, LLC...	OH.....	NIA.....	Nationwide Life Insurance Company.....	other.....	.....0.010	Nationwide Mutual Insurance Company.....	2.....
0140.....	Nationwide.....		26-3427373..	4596435.....		0.....	Nationwide Life Tax Credit Partners 2009-A, LLC...	OH.....	NIA.....	Nationwide Life Insurance Company.....	other.....	.....0.010	Nationwide Mutual Insurance Company.....	2.....
0140.....	Nationwide.....		26-3427435..	4596444.....		0.....	Nationwide Life Tax Credit Partners 2009-B, LLC...	OH.....	NIA.....	Nationwide Life Insurance Company.....	other.....	.....0.010	Nationwide Mutual Insurance Company.....	2.....
0140.....	Nationwide.....		26-3427479..	4596499.....		0.....	Nationwide Life Tax Credit Partners 2009-C, LLC...	OH.....	NIA.....	Nationwide Life Insurance Company.....	other.....	.....0.010	Nationwide Mutual Insurance Company.....	2.....
0140.....	Nationwide.....		26-3427525..	4596510.....		0.....	Nationwide Life Tax Credit Partners 2009-D, LLC...	OH.....	NIA.....	Nationwide Life Insurance Company.....	other.....	.....0.010	Nationwide Mutual Insurance Company.....	2.....
0140.....	Nationwide.....		26-4737055..	4596529.....		0.....	Nationwide Life Tax Credit Partners 2009-E, LLC...	OH.....	NIA.....	Nationwide Life Insurance Company.....	ownership.....	...100.000	Nationwide Mutual Insurance Company.....	.....
0140.....	Nationwide.....		26-4737157..	4596547.....		0.....	Nationwide Life Tax Credit Partners 2009-F, LLC...	OH.....	NIA.....	Nationwide Life Insurance Company.....	ownership.....	...100.000	Nationwide Mutual Insurance Company.....	.....
0140.....	Nationwide.....		27-1362364..	4596622.....		0.....	Nationwide Life Tax Credit Partners 2009-I, LLC...	OH.....	NIA.....	Nationwide Life Insurance Company.....	other.....	.....0.010	Nationwide Mutual Insurance Company.....	2.....
0140.....	Nationwide.....		45-0469525..	3779811.....		0.....	Nationwide Life Tax Credit Partners No. 1, LLC....	OH.....	NIA.....	Nationwide Life Insurance Company.....	other.....	.....0.010	Nationwide Mutual Insurance Company.....	2.....
0140.....	Nationwide.....	42110..	75-1780981..	4287984.....		0.....	Nationwide Lloyds.....	TX.....	IA.....	n/a.....	contract.....	.....	Nationwide Mutual Insurance Company.....	.....
0140.....	Nationwide.....		42-1373380..	4287210.....		0.....	Nationwide Member Solutions Agency Inc.....	IA.....	NIA.....	ALLIED Group, Inc.....	ownership.....	...100.000	Nationwide Mutual Insurance Company.....	.....
0140.....	Nationwide.....		n/a.....	4597094.....		0.....	Nationwide Mutual Capital I, LLC.....	DE.....	NIA.....	Nationwide Mutual Capital, LLC.....	ownership.....	...100.000	Nationwide Mutual Insurance Company.....	.....
0140.....	Nationwide.....		75-3191025..	4595269.....		0.....	Nationwide Mutual Capital, LLC.....	OH.....	NIA.....	Nationwide Mutual Insurance Company.....	ownership.....	...100.000	Nationwide Mutual Insurance Company.....	.....
0140.....	Nationwide.....	23779..	82-0549218..	3828090.....		0.....	Nationwide Mutual Fire Insurance Company.....	OH.....	OTH.....	Other non-Nationwide.....	n/a.....	.....	Other non-Nationwide.....	2.....
0140.....	Nationwide.....	23787..	31-4177100..	3828072.....		0.....	Nationwide Mutual Insurance Company.....	OH.....	UIP.....	Other non-Nationwide.....	n/a.....	.....	Other non-Nationwide.....	.....
0140.....	Nationwide.....		34-2012765..	4288084.....		0.....	Nationwide Private Equity Fund, LLC.....	OH.....	NIA.....	Nationwide Mutual Insurance Company.....	ownership.....	...100.000	Nationwide Mutual Insurance Company.....	.....
0140.....	Nationwide.....	37877..	31-0970750..	4287993.....		0.....	Nationwide Property and Casualty Insurance Company	OH.....	IA.....	Nationwide Mutual Insurance Company.....	ownership.....	...100.000	Nationwide Mutual Insurance Company.....	.....
0140.....	Nationwide.....		31-1486309..	4288105.....		0.....	Nationwide Realty Investors, Ltd.....	OH.....	NIA.....	Nationwide Mutual Insurance Company.....	ownership.....	...96.800	Nationwide Mutual Insurance Company.....	1.....
0140.....	Nationwide.....		31-1486309..	4288105.....		0.....	Nationwide Realty Investors, Ltd.....	OH.....	NIA.....	Nationwide Indemnity Company.....	ownership.....	...3.200	Nationwide Mutual Insurance Company.....	1.....
0140.....	Nationwide.....		31-1486309..	4590264.....		0.....	Nationwide Realty Management, LLC.....	OH.....	NIA.....	Nationwide Realty Investors, Ltd.....	ownership.....	...100.000	Nationwide Mutual Insurance Company.....	.....
0140.....	Nationwide.....		n/a.....	4288066.....		0.....	Nationwide Realty Services, Ltd.....	OH.....	NIA.....	Nationwide Mutual Insurance Company.....	ownership.....	...100.000	Nationwide Mutual Insurance Company.....	.....

Q12.4

**VETERINARY PET INSURANCE COMPANY**

**SCHEDULE Y**

**PART 1A - DETAIL OF INSURANCE HOLDING COMPANY SYSTEM**

1	2	3	4	5	6	7	8	9	10	11	12	13	14	15
Group Code	Group Name	NAIC Company Code	ID Number	Federal RSSD	CIK	Name of Securities Exchange if Publicly Traded (U.S. or International)	Names of Parent, Subsidiaries or Affiliates	Domiciliary Location	Relationship to Reporting Entity	Directly Controlled by (Name of Entity/Person)	Type of Control (Ownership Board, Management Attorney-in-Fact, Influence, Other)	If Control is Ownership Provide Percentage	Ultimate Controlling Entity(ies)/Person(s)	*
0140	Nationwide		73-0948330	4287096		0	Nationwide Retirement Solutions, Inc.	DE	NIA	NFS Distributors, Inc.	ownership	100.000	Nationwide Mutual Insurance Company	
0140	Nationwide		36-2434406	4287078		0	Nationwide Securities, LLC	OH	NIA	NFS Distributors, Inc.	ownership	100.000	Nationwide Mutual Insurance Company	
0140	Nationwide		31-4177100	4288093		0	Nationwide Services Company, LLC	OH	NIA	Nationwide Mutual Insurance Company	ownership	100.000	Nationwide Mutual Insurance Company	
0140	Nationwide		27-0743545	4564041		0	Nationwide Tax Credit Partners 2009-G, LLC	OH	NIA	Nationwide Mutual Insurance Company	other	0.010	Nationwide Mutual Insurance Company	2
0140	Nationwide		27-0768791	4596891		0	Nationwide Tax Credit Partners 2009-H, LLC	OH	NIA	Nationwide Mutual Insurance Company	ownership	100.000	Nationwide Mutual Insurance Company	
0140	Nationwide		46-1952215	4596566		0	Nationwide Tax Credit Partners 2013-A, LLC	OH	NIA	Nationwide Life Insurance Company	ownership	0.010	Nationwide Mutual Insurance Company	1
0140	Nationwide		46-1971926	4596592		0	Nationwide Tax Credit Partners 2013-B, LLC	OH	NIA	Nationwide Life Insurance Company	ownership	0.010	Nationwide Mutual Insurance Company	1
0140	Nationwide		11-3651828	4588168		0	ND La Quinta Partners, LLC	DE	NIA	Nationwide Realty Investors, Ltd.	ownership	95.000	Nationwide Mutual Insurance Company	1
0140	Nationwide		0	4286866		0	Newhouse Capital Partners II, LLC	DE	NIA	Nationwide Global Ventures, Inc.	ownership	80.000	Nationwide Mutual Insurance Company	1
0140	Nationwide		0	4286866		0	Newhouse Capital Partners II, LLC	DE	NIA	Nationwide Global Ventures, Inc.	ownership	99.000	Nationwide Mutual Insurance Company	1
0140	Nationwide		0	4286679		0	Newhouse Capital Partners, LLC	DE	NIA	NWD Investment Management, Inc.	ownership	19.000	Nationwide Mutual Insurance Company	1
0140	Nationwide		0	4286679		0	Newhouse Capital Partners, LLC	DE	NIA	Nationwide Mutual Insurance Company	ownership	70.000	Nationwide Mutual Insurance Company	1
0140	Nationwide		0	4286679		0	Newhouse Capital Partners, LLC	DE	NIA	Nationwide Mutual Fire Insurance Company	ownership	10.000	Nationwide Mutual Insurance Company	1
0140	Nationwide		38-3660659	4287032		0	NFS Distributors, Inc.	DE	NIA	Nationwide Financial Services, Inc.	ownership	100.000	Nationwide Mutual Insurance Company	
0140	Nationwide		14-1892640	4596677		0	NHT XII Tax Credit Fund, LLC	DC	NIA	Nationwide Life Insurance Company	ownership	49.990	Nationwide Mutual Insurance Company	1
0140	Nationwide		14-1892640	4596677		0	NHT XII Tax Credit Fund, LLC	DC	NIA	Nationwide Assurance Company	ownership	25.000	Nationwide Mutual Insurance Company	1
0140	Nationwide		14-1892640	4596677		0	NHT XII Tax Credit Fund, LLC	DC	NIA	Nationwide Mutual Insurance Company	ownership	25.000	Nationwide Mutual Insurance Company	1
0140	Nationwide		46-3762545	4750442		0	NNOV8, LLC	OH	NIA	Nationwide Mutual Insurance Company	ownership	100.000	Nationwide Mutual Insurance Company	
0			26-0351004	n/a		0	North Bank Condominium Home Owners Association	OH	OTH	Other non-Nationwide	n/a		Other non-Nationwide	2
0140	Nationwide		20-4939866	4590817		0	North of Third, LLC	OH	NIA	NRI Equity Land Investments, LLC	ownership	100.000	Nationwide Mutual Insurance Company	
0140	Nationwide		26-4083207	4590385		0	Northstar Commercial Development, LLC	OH	NIA	Nationwide Realty Investors, Ltd.	ownership	50.000	Nationwide Mutual Insurance Company	1
0			61-1753500	n/a		0	Northstar Master Property Owners Association, Inc.	OH	OTH	Other non-Nationwide	n/a		Other non-Nationwide	2
0140	Nationwide		26-4083354	4594909		0	Northstar Residential Development, LLC	OH	NIA	Nationwide Realty Investors, Ltd.	ownership	50.000	Nationwide Mutual Insurance Company	1
0140	Nationwide		31-1486309	4594936		0	NRI 220 Schrock, LLC	OH	NIA	Nationwide Realty Investors, Ltd.	ownership	100.000	Nationwide Mutual Insurance Company	
0140	Nationwide		31-1486309	4594794		0	NRI Arena, LLC	OH	NIA	Nationwide Realty Investors, Ltd.	ownership	100.000	Nationwide Mutual Insurance Company	
0140	Nationwide		31-1486309	4594815		0	NRI Brooksedg, LLC	OH	NIA	Nationwide Realty Investors, Ltd.	ownership	100.000	Nationwide Mutual Insurance Company	
0140	Nationwide		31-1486309	4595027		0	NRI Builders, LLC	OH	NIA	Nationwide Realty Investors, Ltd.	ownership	100.000	Nationwide Mutual Insurance Company	
0140	Nationwide		31-1486309	4590246		0	NRI Communities/Harris Blvd., LLC	OH	NIA	Nationwide Realty Investors, Ltd.	ownership	100.000	Nationwide Mutual Insurance Company	
0140	Nationwide		31-1486309	4590282		0	NRI Cramer Creek, LLC	OH	NIA	Nationwide Realty Investors, Ltd.	ownership	100.000	Nationwide Mutual Insurance Company	
0140	Nationwide		20-4939866	4590460		0	NRI Equity Land Investments, LLC	OH	NIA	Nationwide Realty Investors, Ltd.	ownership	80.000	Nationwide Mutual Insurance Company	1
0140	Nationwide		26-0212217	4590394		0	NRI Equity Tampa, LLC	OH	OTH	Nationwide Realty Investors, Ltd.	ownership	100.000	Nationwide Mutual Insurance Company	2
0140	Nationwide		31-1486309	4590376		0	NRI Maxtown, LLC	OH	OTH	Nationwide Realty Investors, Ltd.	ownership	100.000	Nationwide Mutual Insurance Company	2
0140	Nationwide		30-4939866	4590406		0	NRI Office Ventures, Ltd.	OH	NIA	Nationwide Realty Investors, Ltd.	ownership	100.000	Nationwide Mutual Insurance Company	
0140	Nationwide		31-1486309	4590349		0	NRI-Rivulon, LLC	OH	NIA	Nationwide Realty Investors, Ltd.	ownership	100.000	Nationwide Mutual Insurance Company	
0140	Nationwide		31-1486309	4596912		0	NRI Telecom, LLC	OH	NIA	NWD Investments, LLC	ownership	100.000	Nationwide Mutual Insurance Company	

Q12.5

**VETERINARY PET INSURANCE COMPANY**

**SCHEDULE Y**

**PART 1A - DETAIL OF INSURANCE HOLDING COMPANY SYSTEM**

1	2	3	4	5	6	7	8	9	10	11	12	13	14	15
Group Code	Group Name	NAIC Company Code	ID Number	Federal RSSD	CIK	Name of Securities Exchange if Publicly Traded (U.S. or International)	Names of Parent, Subsidiaries or Affiliates	Domiciliary Location	Relationship to Reporting Entity	Directly Controlled by (Name of Entity/Person)	Type of Control (Ownership Board, Management Attorney-in-Fact, Influence, Other)	If Control is Ownership Provide Percentage	Ultimate Controlling Entity(ies)/Person(s)	*
0140	Nationwide		26-4083354	4869456		0	NS Developers, LLC	OH	NIA	Northstar Residential Development, LLC	ownership	100.000	Nationwide Mutual Insurance Company	
0140	Nationwide		45-3123274	4595438		0	NTCIF-2011 Georgia State Investor, LLC	OH	NIA	Nationwide Property and Casualty Company	ownership	100.000	Nationwide Mutual Insurance Company	
0140	Nationwide		90-0729552	4596695		0	NTCIF-2011, LLC	OH	NIA	Nationwide Life Insurance Company	ownership	50.000	Nationwide Mutual Insurance Company	1
0140	Nationwide		90-0729552	4596695		0	NTCIF-2011, LLC	OH	NIA	Nationwide Mutual Fire Insurance Company	ownership	50.000	Nationwide Mutual Insurance Company	1
0140	Nationwide		27-4700627	4596716		0	NTCP 2011-A, LLC	OH	NIA	Nationwide Life Insurance Company	other	0.010	Nationwide Mutual Insurance Company	1
0140	Nationwide		46-0741029	4464703		0	NTCP 2012-A, LLC	OH	NIA	Nationwide Life Insurance Company	other	0.010	Nationwide Mutual Insurance Company	1
0140	Nationwide		46-3309896	4586164		0	NTCP 2013-C, LLC	OH	NIA	Nationwide Life Insurance Company	other	0.010	Nationwide Mutual Insurance Company	1
0140	Nationwide		46-4111078	4596743		0	NTCP 2014-A, LLC	OH	NIA	Nationwide Life Insurance Company	other	0.010	Nationwide Mutual Insurance Company	1
0140	Nationwide		47-1404116	4802734		0	NTCP 2014-B, LLC	OH	NIA	Nationwide Life Insurance Company	ownership	100.000	Nationwide Mutual Insurance Company	
0140	Nationwide		47-1413242	4809948		0	NTCP 2014-C, LLC	OH	NIA	Nationwide Life Insurance Company	ownership	100.000	Nationwide Mutual Insurance Company	
0140	Nationwide		47-3909345	4869483		0	NTCP 2015-A, LLC	OH	NIA	Nationwide Life Insurance Company	ownership	100.000	Nationwide Mutual Insurance Company	
0140	Nationwide		47-4148470	4890807		0	NTCP 2015-B, LLC	OH	NIA	Nationwide Life Insurance Company	ownership	100.000	Nationwide Mutual Insurance Company	
0140	Nationwide		26-1903919	4591421		0	NW REI, LLC	DE	NIA	Nationwide Mutual Insurance Company	ownership	100.000	Nationwide Mutual Insurance Company	
0140	Nationwide		46-3654078	4593621		0	NW-Amesbury, LLC	OH	NIA	NE-REI, LLC	ownership	100.000	Nationwide Mutual Insurance Company	
0140	Nationwide		46-2943666	4594860		0	NW-Bandera, LLC	OH	NIA	NW REI, LLC	ownership	100.000	Nationwide Mutual Insurance Company	
0140	Nationwide		45-5159092	4595063		0	NW-Bayshore, LLC	OH	NIA	NW REI, LLC	ownership	100.000	Nationwide Mutual Insurance Company	
0140	Nationwide		46-2451156	4594879		0	NW-Bee Cave, LLC	OH	NIA	NW REI, LLC	ownership	100.000	Nationwide Mutual Insurance Company	
0140	Nationwide		47-4999493			0	NW-Belleview, LLC	OH	NIA	Nationwide Mutual Insurance Company	ownership	100.000	Nationwide Mutual Insurance Company	
0140	Nationwide		46-3707480	4593612		0	NW-Brooklyn, LLC	OH	NIA	NW REI, LLC	ownership	100.000	Nationwide Mutual Insurance Company	
0140	Nationwide		46-3968244	4591757		0	NW-Camelback, LLC	OH	NIA	NW REI, LLC	ownership	100.000	Nationwide Mutual Insurance Company	
0140	Nationwide		45-2724980	4591690		0	NW-Cameron, LLC	OH	NIA	NW REI, LLC	ownership	100.000	Nationwide Mutual Insurance Company	
0140	Nationwide		46-3674167	4590090		0	NW-Cedar Springs, LLC	OH	NIA	NW REI, LLC	ownership	100.000	Nationwide Mutual Insurance Company	
0140	Nationwide		46-3994437	4591663		0	NW-Central Station, LLC	OH	NIA	NE-REI, LLC	ownership	100.000	Nationwide Mutual Insurance Company	
0140	Nationwide		26-0901660	4505456		0	NW-CNC Coppel, LLC	DE	NIA	Nationwide Mutual Insurance Company	ownership	100.000	Nationwide Mutual Insurance Company	
0140	Nationwide		32-0359208	4595157		0	NW-Corvallis, LLC	OH	NIA	NW REI, LLC	ownership	100.000	Nationwide Mutual Insurance Company	
0140	Nationwide		31-1580283	4591038		0	NWD 205 Vine, LLC	OH	NIA	NWD Investments, LLC	ownership	100.000	Nationwide Mutual Insurance Company	
0140	Nationwide		31-1580283	4591261		0	NWD 225 Nationwide, LLC	OH	NIA	NWD Investments, LLC	ownership	100.000	Nationwide Mutual Insurance Company	
0140	Nationwide		31-1580283	4591056		0	NWD 230 West, LLC	OH	NIA	NWD Investments, LLC	ownership	100.000	Nationwide Mutual Insurance Company	
0140	Nationwide		31-1580283	4590545		0	NWD 240 Nationwide, LLC	OH	NIA	NWD Investments, LLC	ownership	100.000	Nationwide Mutual Insurance Company	
0140	Nationwide		31-1580283	4590273		0	NWD 250 Brodbelt, LLC	OH	NIA	NWD Investments, LLC	ownership	100.000	Nationwide Mutual Insurance Company	
0140	Nationwide		31-1580283	4590554		0	NWD 265 Neil, LLC	OH	NIA	NWD Investments, LLC	ownership	100.000	Nationwide Mutual Insurance Company	
0140	Nationwide		31-1580283	4590518		0	NWD 275 Marconi, LLC	OH	NIA	NWD Investments, LLC	ownership	100.000	Nationwide Mutual Insurance Company	
0140	Nationwide		31-1580283	4590563		0	NWD 295 McConnell, LLC	OH	NIA	NWD Investments, LLC	ownership	100.000	Nationwide Mutual Insurance Company	
0140	Nationwide		31-1580283	4590509		0	NWD 300 Neil, LLC	OH	NIA	NWD Investments, LLC	ownership	100.000	Nationwide Mutual Insurance Company	
0140	Nationwide		31-1580283	4590572		0	NWD 300 Spring, LLC	OH	NIA	NWD Investments, LLC	ownership	100.000	Nationwide Mutual Insurance Company	
0140	Nationwide		31-1580283	4590527		0	NWD 355 McConnell, LLC	OH	NIA	NWD Investments, LLC	ownership	100.000	Nationwide Mutual Insurance Company	
0140	Nationwide		31-1580283	4590581		0	NWD 425 Nationwide, LLC	OH	NIA	NWD Investments, LLC	ownership	100.000	Nationwide Mutual Insurance Company	

Q12.6

**VETERINARY PET INSURANCE COMPANY**

**SCHEDULE Y**

**PART 1A - DETAIL OF INSURANCE HOLDING COMPANY SYSTEM**

1	2	3	4	5	6	7	8	9	10	11	12	13	14	15
Group Code	Group Name	NAIC Company Code	ID Number	Federal RSSD	CIK	Name of Securities Exchange if Publicly Traded (U.S. or International)	Names of Parent, Subsidiaries or Affiliates	Domiciliary Location	Relationship to Reporting Entity	Directly Controlled by (Name of Entity/Person)	Type of Control (Ownership Board, Management Attorney-in-Fact, Influence, Other)	If Control is Ownership Provide Percentage	Ultimate Controlling Entity(ies)/Person(s)	*
0140.....	Nationwide.....		31-1580283..	4590536.....		0.....	NWD 500 Nationwide, LLC.....	OH.....	NIA.....	NWD Investments, LLC.....	ownership.....	...100.000	Nationwide Mutual Insurance Company.....	
0140.....	Nationwide.....		31-1580283..	4591298.....		0.....	NWD Arena Crossing, LLC.....	OH.....	NIA.....	NWD Investments, LLC.....	ownership.....	...100.000	Nationwide Mutual Insurance Company.....	
0140.....	Nationwide.....		31-1580283..	4591083.....		0.....	NWD Arena District I, LLC.....	OH.....	NIA.....	NWD Investments, LLC.....	ownership.....	...100.000	Nationwide Mutual Insurance Company.....	
0140.....	Nationwide.....		31-1580283..	4591300.....		0.....	NWD Arena District II, LLC.....	OH.....	NIA.....	NWD Investments, LLC.....	ownership.....	...100.000	Nationwide Mutual Insurance Company.....	
0140.....	Nationwide.....		31-1580283..	4591113.....		0.....	NWD Arena District MM, LLC.....	OH.....	NIA.....	NWD Investments, LLC.....	ownership.....	...100.000	Nationwide Mutual Insurance Company.....	
0140.....	Nationwide.....		31-1580283..	4591319.....		0.....	NWD Arena District PW, LLC.....	OH.....	NIA.....	NWD Investments, LLC.....	ownership.....	...100.000	Nationwide Mutual Insurance Company.....	
0140.....	Nationwide.....		31-1580283..	4591131.....		0.....	NWD Arena District V, LLC.....	OH.....	NIA.....	NWD Investments, LLC.....	ownership.....	...100.000	Nationwide Mutual Insurance Company.....	
0140.....	Nationwide.....		04-3679396..	4286848.....		0.....	NWD Asset Management Holdings, Inc.....	DE.....	NIA.....	NWD Investment Management, Inc.....	ownership.....	...100.000	Nationwide Mutual Insurance Company.....	
0140.....	Nationwide.....		31-1580283..	4591328.....		0.....	NWD Athletic Club, LLC.....	OH.....	NIA.....	NWD Investments, LLC.....	ownership.....	...100.000	Nationwide Mutual Insurance Company.....	
0140.....	Nationwide.....		30-0876022..	4810010.....		0.....	NWD Franklinton, LLC.....	DE.....	NIA.....	NWD Investments, LLC.....	ownership.....	...100.000	Nationwide Mutual Insurance Company.....	
0140.....	Nationwide.....		31-1636299..	4286594.....		0.....	NWD Investment Management, Inc.....	DE.....	NIA.....	Nationwide Corporation.....	ownership.....	...100.000	Nationwide Mutual Insurance Company.....	
0140.....	Nationwide.....		31-1580283..	4587965.....		0.....	NWD Investments, LLC.....	OH.....	NIA.....	Nationwide Realty Investors, Ltd.....	ownership.....	...80.000	Nationwide Mutual Insurance Company.....	1.....
0140.....	Nationwide.....		47-4036460..	4869492.....		0.....	NW-Deerfield, LLC.....	OH.....	NIA.....	Nationwide Mutual Insurance Company.....	ownership.....	...74.030	Nationwide Mutual Insurance Company.....	1.....
0140.....	Nationwide.....		47-4036460..	4869492.....		0.....	NW-Deerfield, LLC.....	OH.....	NIA.....	Nationwide Life and Annuity Insurance Company	ownership.....	...24.970	Nationwide Mutual Insurance Company.....	1.....
0140.....	Nationwide.....		90-0732898..	4591430.....		0.....	NW-Dulles, LLC.....	OH.....	NIA.....	NW REI, LLC.....	ownership.....	...100.000	Nationwide Mutual Insurance Company.....	
0140.....	Nationwide.....		46-3267884..	4595465.....		0.....	NW-Franklin Mills, LLC.....	OH.....	NIA.....	Life Reo Holdings, LLC.....	ownership.....	...100.000	Nationwide Mutual Insurance Company.....	
0140.....	Nationwide.....		46-2997049..	4591775.....		0.....	NW-Howell Mill, LLC.....	OH.....	NIA.....	NW REI, LLC.....	ownership.....	...100.000	Nationwide Mutual Insurance Company.....	
0140.....	Nationwide.....		46-4330384..	4750443.....		0.....	NW-Hudnall, LLC.....	OH.....	NIA.....	NW REI, LLC.....	ownership.....	...100.000	Nationwide Mutual Insurance Company.....	
0140.....	Nationwide.....		47-2482818..	4810122.....		0.....	NW-Jasper WAG, LLC.....	OH.....	NIA.....	NW REI, LLC.....	ownership.....	...100.000	Nationwide Mutual Insurance Company.....	
0140.....	Nationwide.....		47-1497429..	4809957.....		0.....	NW-Jefferson, LLC.....	OH.....	NIA.....	NW REI, LLC.....	ownership.....	...100.000	Nationwide Mutual Insurance Company.....	
0140.....	Nationwide.....		45-5408178..	4591458.....		0.....	NW-Kentwood Towne Center, LLC.....	OH.....	NIA.....	NW REI, LLC.....	ownership.....	...100.000	Nationwide Mutual Insurance Company.....	
0140.....	Nationwide.....		46-4857522..	4671798.....		0.....	NW-Lawrence, LLC.....	OH.....	NIA.....	NW REI, LLC.....	ownership.....	...100.000	Nationwide Mutual Insurance Company.....	
0140.....	Nationwide.....		45-5314607..	4593461.....		0.....	NW-Lovers Lane, LLC.....	OH.....	NIA.....	NW REI, LLC.....	ownership.....	...100.000	Nationwide Mutual Insurance Company.....	
0140.....	Nationwide.....		46-2457568..	4591467.....		0.....	NW-Montrose, LLC.....	OH.....	NIA.....	NW REI, LLC.....	ownership.....	...100.000	Nationwide Mutual Insurance Company.....	
0140.....	Nationwide.....		45-4630497..	4593470.....		0.....	NW-Mueller II, LLC.....	OH.....	NIA.....	NW REI, LLC.....	ownership.....	...100.000	Nationwide Mutual Insurance Company.....	
0140.....	Nationwide.....		27-4749848..	4591476.....		0.....	NW-Northridge, LLC.....	OH.....	NIA.....	NW REI, LLC.....	ownership.....	...100.000	Nationwide Mutual Insurance Company.....	
0140.....	Nationwide.....		46-1089165..	4593555.....		0.....	NW-Oakley Station, LLC.....	OH.....	NIA.....	NW REI, LLC.....	ownership.....	...100.000	Nationwide Mutual Insurance Company.....	
0140.....	Nationwide.....		47-4706924..			0.....	NW-Olathe, LLC.....	OH.....	NIA.....	NW REI, LLC.....	ownership.....	...100.000	Nationwide Mutual Insurance Company.....	
0140.....	Nationwide.....		46-3888719..	4593603.....		0.....	NW-Park 288, LLC.....	OH.....	NIA.....	NW REI, LLC.....	ownership.....	...100.000	Nationwide Mutual Insurance Company.....	
0140.....	Nationwide.....		45-5388656..	4591485.....		0.....	NW-Park Memorial, LLC.....	OH.....	NIA.....	NW REI, LLC.....	ownership.....	...100.000	Nationwide Mutual Insurance Company.....	
0140.....	Nationwide.....		47-1740812..	4809966.....		0.....	NW-Peachtree, LLC.....	OH.....	NIA.....	NW REI, LLC.....	ownership.....	...100.000	Nationwide Mutual Insurance Company.....	
0140.....	Nationwide.....		46-2469044..	4591494.....		0.....	NW-Portales, LLC.....	OH.....	NIA.....	NW REI, LLC.....	ownership.....	...100.000	Nationwide Mutual Insurance Company.....	
0140.....	Nationwide.....		47-2449044..	4810113.....		0.....	NW-Promenade at Madison, LLC.....	OH.....	NIA.....	NW REI, LLC.....	ownership.....	...100.000	Nationwide Mutual Insurance Company.....	
0140.....	Nationwide.....		45-5159117..	4593573.....		0.....	NW-South Park, LLC.....	OH.....	NIA.....	NW REI, LLC.....	ownership.....	...100.000	Nationwide Mutual Insurance Company.....	
0140.....	Nationwide.....		27-4749587..	4593582.....		0.....	NW-Taylor Farmer Jack, LLC.....	OH.....	NIA.....	NW REI, LLC.....	ownership.....	...100.000	Nationwide Mutual Insurance Company.....	

Q12.7

**VETERINARY PET INSURANCE COMPANY**

**SCHEDULE Y**

**PART 1A - DETAIL OF INSURANCE HOLDING COMPANY SYSTEM**

1	2	3	4	5	6	7	8	9	10	11	12	13	14	15
Group Code	Group Name	NAIC Company Code	ID Number	Federal RSSD	CIK	Name of Securities Exchange if Publicly Traded (U.S. or International)	Names of Parent, Subsidiaries or Affiliates	Domiciliary Location	Relationship to Reporting Entity	Directly Controlled by (Name of Entity/Person)	Type of Control (Ownership Board, Management Attorney-in-Fact, Influence, Other)	If Control is Ownership Provide Percentage	Ultimate Controlling Entity(ies)/Person(s)	*
0140	Nationwide		46-1100378	4591524		0	NW-Triangle, LLC	OH	NIA	NW REI, LLC	ownership	100.000	Nationwide Mutual Insurance Company	
0140	Nationwide		46-5764783	4809939		0	NW-Tyson, LLC	OH	NIA	NW REI, LLC	ownership	100.000	Nationwide Mutual Insurance Company	
0140	Nationwide		46-1077615	4593591		0	NW-West Ave., LLC	OH	NIA	NW REI, LLC	ownership	100.000	Nationwide Mutual Insurance Company	
0140	Nationwide		46-4992444	4671800		0	NW-Windcross, LLC	OH	NIA	NW REI, LLC	ownership	100.000	Nationwide Mutual Insurance Company	
0140	Nationwide		31-0947092	4590479		0	OCH Company, LLC	OH	NIA	Nationwide Realty Investors, Ltd	ownership	100.000	Nationwide Mutual Insurance Company	
0140	Nationwide		31-0947092	4590442		0	Ohio Center Hotel Company, Ltd	OH	NIA	Nationwide Realty Investors, Ltd	ownership	56.250	Nationwide Mutual Insurance Company	1
0140	Nationwide		26-0263012	n/a		0	Old Track Street Owners Association	OH	OTH	Other non-Nationwide	n/a		Other non-Nationwide	2
0140	Nationwide	13999	27-1712056	4286914		0	Olentangy Reinsurance, LLC	VT	IA	Nationwide Life and Annuity Insurance Company	ownership	100.000	Nationwide Mutual Insurance Company	
0140	Nationwide		47-1923444	4809975		0	On Your Side Nationwide Insurance Agency, Inc	OH	OTH	Nationwide Mutual Insurance Company	ownership	100.000	Nationwide Mutual Insurance Company	2
0140	Nationwide		n/a	4596462		0	OYS Fund LLC	DE	OTH	Nationwide Mutual Insurance Company	ownership	100.000	Nationwide Mutual Insurance Company	2
0140	Nationwide		n/a	4596480		0	Park 288 Industrial, LLC	TX	NIA	Nationwide Mutual Insurance Company	Investor member / no control	95.000	other non-Nationwide	
0140	Nationwide		31-1486309	4590358		0	Perimeter A, Ltd	OH	NIA	Nationwide Realty Investors, Ltd	ownership	100.000	Nationwide Mutual Insurance Company	
0140	Nationwide		31-1677602	4590488		0	Pizzuti Properties, LLC	OH	NIA	Nationwide Realty Investors, Ltd	ownership	65.000	Nationwide Mutual Insurance Company	1
0140	Nationwide		31-1486309	4590291		0	Polaris A, Ltd	OH	NIA	Nationwide Realty Investors, Ltd	ownership	100.000	Nationwide Mutual Insurance Company	
0140	Nationwide		39-1907217	4287201		0	Premier Agency, Inc	IA	NIA	ALLIED Group, Inc	ownership	100.000	Nationwide Mutual Insurance Company	
4664	Pure	12873	20-8287105	4288253		0	Privilege Underwriters Reciprocal Exchange	FL	IA	Other non-Nationwide	n/a		Other non-Nationwide	2
4664	Pure		n/a	4288150		0	Privilege Underwriters, Inc	DE	IA	Other non-Nationwide	n/a		Other non-Nationwide	2
4664	Pure	13204	26-3109178	4288226		0	Pure Insurance Company	FL	IA	Other non-Nationwide	n/a		Other non-Nationwide	2
4664	Pure		n/a	4288235		0	Pure Risk Management, LLC	FL	IA	Other non-Nationwide	n/a		Other non-Nationwide	2
0140	Nationwide		75-2938844	4287005		0	Registered Investment Advisors Services, Inc	TX	NIA	Nationwide Financial Services, Inc	ownership	100.000	Nationwide Mutual Insurance Company	
0140	Nationwide		82-0549218	4288244		0	Retention Alternatives Ltd	BMU	IA	Nationwide Mutual Fire Insurance Company	ownership	100.000	Nationwide Mutual Insurance Company	
0140	Nationwide		n/a	4595278		0	Riverview Diversified Opportunities, LLC	DE	OTH	Nationwide Mutual Insurance Company	ownership		Nationwide Mutual Insurance Company	1
0140	Nationwide		n/a	4595278		0	Riverview Diversified Opportunities, LLC	DE	OTH	Nationwide Mutual Fire Insurance Company	ownership		Nationwide Mutual Insurance Company	1
0140	Nationwide		n/a	4595278		0	Riverview Diversified Opportunities, LLC	DE	OTH	Nationwide Life Insurance Company	ownership		Nationwide Mutual Insurance Company	1
0140	Nationwide		22-3655264	4286530		0	Riverview International Group, Inc	DE	NIA	NWD Investment Management, Inc	ownership	100.000	Nationwide Mutual Insurance Company	
0140	Nationwide		n/a	4595287		0	Riverview Multi Series Fund, LL - Class Event	DE	OTH	Nationwide Mutual Insurance Company	ownership	100.000	Nationwide Mutual Insurance Company	2
0140	Nationwide		n/a	4595335		0	Riverview Multi Series Fund, LL - Class N	DE	OTH	Nationwide Mutual Insurance Company	ownership	100.000	Nationwide Mutual Insurance Company	2
0140	Nationwide		n/a	4564032		0	Riverview Polyphony Fund, LLC	DE	OTH	Nationwide Mutual Insurance Company	ownership	100.000	Nationwide Mutual Insurance Company	2
0140	Nationwide	15580	31-1117969	4288002		0	Scottsdale Indemnity Company	OH	IA	Nationwide Mutual Insurance Company	ownership	100.000	Nationwide Mutual Insurance Company	
0140	Nationwide	41297	31-1024978	3091988		0	Scottsdale Insurance Company	OH	UDP	Nationwide Mutual Insurance Company	ownership	100.000	Nationwide Mutual Insurance Company	
0140	Nationwide	10672	86-0835870	4287649		0	Scottsdale Surplus Lines Insurance Company	AZ	IA	Scottsdale Insurance Company	ownership	100.000	Nationwide Mutual Insurance Company	
0140	Nationwide		31-1486309	4590303		0	Streets of Toringdon, LLC	OH	NIA	Nationwide Realty Investors, Ltd	ownership	100.000	Nationwide Mutual Insurance Company	
0140	Nationwide		91-2158214	n/a		0	The Hideaway Club	CA	OTH	Other non-Nationwide	n/a		Other non-Nationwide	2
0140	Nationwide		86-1094799	n/a		0	The Hideaway Owners Association	CA	OTH	Other non-Nationwide	n/a		Other non-Nationwide	2

Q12.8

**SCHEDULE Y**

**PART 1A - DETAIL OF INSURANCE HOLDING COMPANY SYSTEM**

1	2	3	4	5	6	7	8	9	10	11	12	13	14	15
Group Code	Group Name	NAIC Company Code	ID Number	Federal RSSD	CIK	Name of Securities Exchange if Publicly Traded (U.S. or International)	Names of Parent, Subsidiaries or Affiliates	Domiciliary Location	Relationship to Reporting Entity	Directly Controlled by (Name of Entity/Person)	Type of Control (Ownership Board, Management Attorney-in-Fact, Influence, Other)	If Control is Ownership Provide Percentage	Ultimate Controlling Entity(ies)/Person(s)	*
0140.....	Nationwide.....		20-3541511..	n/a.....		0.....	The Madison Club.....	CA.....	OTH.....	Other non-Nationwide.....	n/a.....		Other non-Nationwide.....	2.....
0140.....	Nationwide.....		20-3541507..	n/a.....		0.....	The Madison Club Owners Association.....	CA.....	OTH.....	Other non-Nationwide.....	n/a.....		Other non-Nationwide.....	2.....
0140.....	Nationwide.....		52-2031677..	4287751..		0.....	THI Holdings (Delaware), Inc.....	DE.....	NIA.....	Nationwide Mutual Insurance Company.....	ownership.....	100.000	Nationwide Mutual Insurance Company.....	
0140.....	Nationwide.....		74-2825853..	4287863..		0.....	Titan Auto Insurance of New Mexico, Inc.....	NM.....	IA.....	THI Holdings (Delaware), Inc.....	ownership.....	100.000	Nationwide Mutual Insurance Company.....	
0140.....	Nationwide.....	13242..	74-2286759..	4287797..		0.....	Titan Indemnity Company.....	TX.....	IA.....	THI Holdings (Delaware), Inc.....	ownership.....	100.000	Nationwide Mutual Insurance Company.....	
0140.....	Nationwide.....	36269..	86-0619597..	4287845..		0.....	Titan Insurance Company.....	MI.....	IA.....	Titan Indemnity Company.....	ownership.....	100.000	Nationwide Mutual Insurance Company.....	
0140.....	Nationwide.....		75-1284530..	4287890..		0.....	Titan Insurance Services, Inc.....	TX.....	NIA.....	THI Holdings (Delaware), Inc.....	ownership.....	100.000	Nationwide Mutual Insurance Company.....	
0140.....	Nationwide.....		33-0160222..	4653196..		0.....	V.P.I. Services, Inc.....	CA.....	NIA.....	Veterinary Pet Insurance Company.....	ownership.....	100.000	Nationwide Mutual Insurance Company.....	
0140.....	Nationwide.....	42285..	95-3750113..	4287685..		0.....	Veterinary Pet Insurance Company.....	CA.....	RE.....	Scottsdale Insurance Company.....	ownership.....	100.000	Nationwide Mutual Insurance Company.....	
0140.....	Nationwide.....	10644..	34-1785903..	4287911..		0.....	Victoria Automobile Insurance Company.....	OH.....	IA.....	Victoria Fire & Casualty Insurance Company.....	ownership.....	100.000	Nationwide Mutual Insurance Company.....	
0140.....	Nationwide.....	42889..	34-1394913..	4287827..		0.....	Victoria Fire & Casualty Company.....	OH.....	IA.....	THI Holdings (Delaware), Inc.....	ownership.....	100.000	Nationwide Mutual Insurance Company.....	
0140.....	Nationwide.....	10778..	34-1842604..	4287920..		0.....	Victoria National Insurance Company.....	OH.....	IA.....	Victoria Fire & Casualty Insurance Company.....	ownership.....	100.000	Nationwide Mutual Insurance Company.....	
0140.....	Nationwide.....	10105..	34-1777972..	4287939..		0.....	Victoria Select Insurance Company.....	OH.....	IA.....	Victoria Fire & Casualty Insurance Company.....	ownership.....	100.000	Nationwide Mutual Insurance Company.....	
0140.....	Nationwide.....	10777..	34-1842602..	4287948..		0.....	Victoria Specialty Insurance Company.....	OH.....	IA.....	Victoria Fire & Casualty Insurance Company.....	ownership.....	100.000	Nationwide Mutual Insurance Company.....	
0140.....	Nationwide.....	37150..	86-0561941..	4287667..		0.....	Western Heritage Insurance Company.....	AZ.....	IA.....	Scottsdale Insurance Company.....	ownership.....	100.000	Nationwide Mutual Insurance Company.....	
0140.....	Nationwide.....		n/a.....	4613341..		0.....	Westport Capital Partners II.....	CT.....	OTH.....	Nationwide Mutual Insurance Company Nationwide Defined Benefit Master Trust	Investor member / no control	71.000	other non-Nationwide.....	2.....
0140.....	Nationwide.....		31-1486309..	4590321..		0.....	Wilson Road Developers, LLC.....	OH.....	NIA.....	Nationwide Realty Investors, Ltd.....	ownership.....	100.000	Nationwide Mutual Insurance Company.....	
0140.....	Nationwide.....		n/a.....	4613323..		0.....	Zais Zephyr A-4, LLC.....	DE.....	OTH.....	Nationwide Life Insurance Company.....	limited member / no control	60.000	other non-Nationwide.....	2.....

Q12.9

Asterisk	Explanation
1	For the purposes of this schedule, Nationwide presumed control of these entities because they are owned by at least 10% and are not wholly-owned by a Nationwide entity.
2	Other ownership indicates a non-ownership circumstance by a Nationwide entity.

# VETERINARY PET INSURANCE COMPANY

## PART 1 - LOSS EXPERIENCE

Lines of Business	Current Year to Date			4 Prior Year to Date Direct Loss Percentage
	1 Direct Premiums Earned	2 Direct Losses Incurred	3 Direct Loss Percentage	
1. Fire.....			0.0	
2. Allied lines.....			0.0	
3. Farmowners multiple peril.....			0.0	
4. Homeowners multiple peril.....			0.0	
5. Commercial multiple peril.....			0.0	
6. Mortgage guaranty.....			0.0	
8. Ocean marine.....			0.0	
9. Inland marine.....	37,488,652	25,618,297	68.3	63.3
10. Financial guaranty.....			0.0	
11.1. Medical professional liability - occurrence.....			0.0	
11.2. Medical professional liability - claims-made.....			0.0	
12. Earthquake.....			0.0	
13. Group accident and health.....			0.0	
14. Credit accident and health.....			0.0	
15. Other accident and health.....			0.0	
16. Workers' compensation.....			0.0	
17.1 Other liability-occurrence.....			0.0	
17.2 Other liability-claims made.....			0.0	
17.3 Excess workers' compensation.....			0.0	
18.1 Products liability-occurrence.....			0.0	
18.2 Products liability-claims made.....			0.0	
19.1, 19.2 Private passenger auto liability.....			0.0	
19.3, 19.4 Commercial auto liability.....			0.0	
21. Auto physical damage.....			0.0	
22. Aircraft (all perils).....			0.0	
23. Fidelity.....			0.0	
24. Surety.....			0.0	
26. Burglary and theft.....			0.0	
27. Boiler and machinery.....			0.0	
28. Credit.....			0.0	
29. International.....			0.0	
30. Warranty.....			0.0	
31. Reinsurance-nonproportional assumed property.....	XXX	XXX	XXX	XXX
32. Reinsurance-nonproportional assumed liability.....	XXX	XXX	XXX	XXX
33. Reinsurance-nonproportional assumed financial lines.....	XXX	XXX	XXX	XXX
34. Aggregate write-ins for other lines of business.....	0	0	0.0	
35. Totals.....	37,488,652	25,618,297	68.3	63.3

### DETAILS OF WRITE-INS

3401. ....			0.0	
3402. ....			0.0	
3403. ....			0.0	
3498. Sum. of remaining write-ins for Line 34 from overflow page.....	0	0	0.0	XXX
3499. Totals (Lines 3401 thru 3403 plus 3498) (Line 34).....	0	0	0.0	

## PART 2 - DIRECT PREMIUMS WRITTEN

Lines of Business	1	2	3
	Current Quarter	Current Year to Date	Prior Year Year to Date
1. Fire.....			
2. Allied lines.....			
3. Farmowners multiple peril.....			
4. Homeowners multiple peril.....			
5. Commercial multiple peril.....			
6. Mortgage guaranty.....			
8. Ocean marine.....			
9. Inland marine.....	13,020,482	39,046,411	36,316,680
10. Financial guaranty.....			
11.1. Medical professional liability - occurrence.....			
11.2. Medical professional liability - claims made.....			
12. Earthquake.....			
13. Group accident and health.....			
14. Credit accident and health.....			
15. Other accident and health.....			
16. Workers' compensation.....			
17.1 Other liability-occurrence.....			
17.2 Other liability-claims made.....			
17.3 Excess workers' compensation.....			
18.1 Products liability-occurrence.....			
18.2 Products liability-claims made.....			
19.1 19.2 Private passenger auto liability.....			
19.3 19.4 Commercial auto liability.....			
21. Auto physical damage.....			
22. Aircraft (all perils).....			
23. Fidelity.....			
24. Surety.....			
26. Burglary and theft.....			
27. Boiler and machinery.....			
28. Credit.....			
29. International.....			
30. Warranty.....			
31. Reinsurance-nonproportional assumed property.....	XXX	XXX	XXX
32. Reinsurance-nonproportional assumed liability.....	XXX	XXX	XXX
33. Reinsurance-nonproportional assumed financial lines.....	XXX	XXX	XXX
34. Aggregate write-ins for other lines of business.....	0	0	0
35. Totals.....	13,020,482	39,046,411	36,316,680

### DETAILS OF WRITE-INS

3401. ....			
3402. ....			
3403. ....			
3498. Sum. of remaining write-ins for Line 34 from overflow page.....	0	0	0
3499. Totals (Lines 3401 thru 3403 plus 3498) (Line 34).....	0	0	0

**PART 3 (000 omitted)**

**LOSS AND LOSS ADJUSTMENT EXPENSE RESERVES SCHEDULE**

	1	2	3	4	5	6	7	8	9	10	11	12	13
Years in Which Losses Occurred	Prior Year-End Known Case Loss and LAE Reserves	Prior Year-End IBNR Loss and LAE Reserves	Total Prior Year-End Loss and LAE Reserves (Cols. 1 + 2)	2015 Loss and LAE Payments on Claims Reported as of Prior Year-End	2015 Loss and LAE Payments on Claims Unreported as of Prior Year-End	Total 2015 Loss and LAE Payments (Cols. 4 + 5)	Q.S. Date Known Case Loss and LAE Reserves on Claims Reported and Open as of Prior Year-End	Q.S. Date Known Case Loss and LAE Reserves on Claims Reported or Reopened Subsequent to Prior Year-End	Q.S. Date IBNR Loss and LAE Reserves	Total Q.S. Loss and LAE Reserves (Cols. 7 + 8 + 9)	Prior Year-End Known Case Loss and LAE Reserves Developed (Savings)/Deficiency (Cols. 4 + 7 minus Col. 1)	Prior Year-End IBNR Loss and LAE Reserves Developed (Savings)/Deficiency (Cols. 5 + 8 + 9 minus Col. 2)	Prior Year-End Total Loss and LAE Reserve Developed (Savings)/Deficiency (Cols. 11 + 12)
1. 2012 + Prior.....		1,856	1,856		844	844			1,495	1,495	0	483	483
2. 2013.....		2,090	2,090		1,018	1,018			1,354	1,354	0	282	282
3. Subtotals 2013 + Prior.....	0	3,946	3,946	0	1,862	1,862	0	0	2,849	2,849	0	765	765
4. 2014.....		21,371	21,371		19,559	19,559			3,610	3,610	0	1,798	1,798
5. Subtotals 2014 + Prior.....	0	25,317	25,317	0	21,421	21,421	0	0	6,459	6,459	0	2,563	2,563
6. 2015.....	XXX	XXX	XXX	XXX	116,052	116,052	XXX		23,462	23,462	XXX	XXX	XXX
7. Totals.....	0	25,317	25,317	0	137,473	137,473	0	0	29,921	29,921	0	2,563	2,563
8. Prior Year-End's Surplus As Regards Policyholders	103,949												
											Col. 11, Line 7 As % of Col. 1, Line 7	Col. 12, Line 7 As % of Col. 2, Line 7	Col. 13, Line 7 As % of Col. 3, Line 7
											1. ....0.0 %	2. ....10.1 %	3. ....10.1 %
													Col. 13, Line 7 Line 8
													4. ....2.5 %

Q14

# SUPPLEMENTAL EXHIBITS AND SCHEDULES INTERROGATORIES

The following supplemental reports are required to be filed as part of your statement filing. However, in the event that your company does not transact the type of business for which the special report must be filed, your response of NO to the specific interrogatory will be accepted in lieu of filing a "NONE" report and a bar code will be printed below. If the supplement is required of your company but is not being filed for whatever reason, enter SEE EXPLANATION and provide an explanation following the interrogatory questions.

	<b>Response</b>
1. Will the Trusteed Surplus Statement be filed with the state of domicile and the NAIC with this statement?	NO _____
2. Will Supplement A to Schedule T (Medical Professional Liability Supplement) be filed with this statement?	NO _____
3. Will the Medicare Part D Coverage Supplement be filed with the state of domicile and the NAIC with this statement?	NO _____
4. Will the Director and Officer Supplement be filed with the state of domicile and the NAIC with this statement?	NO _____

**Explanation:**

- 1.
- 2.
- 3.
- 4.

**Bar Code:**



**NONE**

**VETERINARY PET INSURANCE COMPANY  
SCHEDULE A - VERIFICATION**

Real Estate

	1 Year to Date	2 Prior Year Ended December 31
1. Book/adjusted carrying value, December 31 of prior year.....	0	
2. Cost of acquired:		
2.1 Actual cost at time of acquisition.....		
2.2 Additional investment made after acquisition.....		
3. Current year change in encumbrances.....		
4. Total gain (loss) on disposals.....		
5. Deduct amounts received on disposals.....		
6. Total foreign exchange change in book/adjusted carrying value.....		
7. Deduct current year's other than temporary impairment recognized.....		
8. Deduct current year's depreciation.....		
9. Book/adjusted carrying value at end of current period (Lines 1+2+3+4-5+6-7-8).....	0	0
10. Deduct total nonadmitted amounts.....		
11. Statement value at end of current period (Line 9 minus Line 10).....	0	0

NONE

**SCHEDULE B - VERIFICATION**

Mortgage Loans

	1 Year to Date	2 Prior Year Ended December 31
1. Book value/recorded investment excluding accrued interest, December 31 of prior year.....	0	
2. Cost of acquired:		
2.1 Actual cost at time of acquisition.....		
2.2 Additional investment made after acquisition.....		
3. Capitalized deferred interest and other.....		
4. Accrual of discount.....		
5. Unrealized valuation increase (decrease).....		
6. Total gain (loss) on disposals.....		
7. Deduct amounts received on disposals.....		
8. Deduct amortization of premium and mortgage interest points and commitment fees.....		
9. Total foreign exchange change in book value/recorded investment excluding accrued interest.....		
10. Deduct current year's other than temporary impairment recognized.....		
11. Book value/recorded investment excluding accrued interest at end of current period (Lines 1+2+3+4+5+6-7-8+9-10).....	0	0
12. Total valuation allowance.....		
13. Subtotal (Line 11 plus Line 12).....	0	0
14. Deduct total nonadmitted amounts.....		
15. Statement value at end of current period (Line 13 minus Line 14).....	0	0

NONE

**SCHEDULE BA - VERIFICATION**

Other Long-Term Invested Assets

	1 Year to Date	2 Prior Year Ended December 31
1. Book/adjusted carrying value, December 31 of prior year.....	0	
2. Cost of acquired:		
2.1 Actual cost at time of acquisition.....		
2.2 Additional investment made after acquisition.....		
3. Capitalized deferred interest and other.....		
4. Accrual of discount.....		
5. Unrealized valuation increase (decrease).....		
6. Total gain (loss) on disposals.....		
7. Deduct amounts received on disposals.....		
8. Deduct amortization of premium and depreciation.....		
9. Total foreign exchange change in book/adjusted carrying value.....		
10. Deduct current year's other than temporary impairment recognized.....		
11. Book/adjusted carrying value at end of current period (Lines 1+2+3+4+5+6-7-8+9-10).....	0	0
12. Deduct total nonadmitted amounts.....		
13. Statement value at end of current period (Line 11 minus Line 12).....	0	0

NONE

**SCHEDULE D - VERIFICATION**

Bonds and Stocks

	1 Year to Date	2 Prior Year Ended December 31
1. Book/adjusted carrying value of bonds and stocks, December 31 of prior year.....	167,724,814	153,693,604
2. Cost of bonds and stocks acquired.....	20,221,464	35,969,837
3. Accrual of discount.....	98,852	91,891
4. Unrealized valuation increase (decrease).....	(3,433,746)	(4,370,393)
5. Total gain (loss) on disposals.....	332,923	33,121
6. Deduct consideration for bonds and stocks disposed of.....	17,369,112	16,457,883
7. Deduct amortization of premium.....	875,267	1,235,363
8. Total foreign exchange change in book/adjusted carrying value.....		
9. Deduct current year's other than temporary impairment recognized.....		
10. Book/adjusted carrying value at end of current period (Lines 1+2+3+4+5-6-7+8-9).....	166,699,928	167,724,814
11. Deduct total nonadmitted amounts.....	1,865,918	1,644,156
12. Statement value at end of current period (Line 10 minus Line 11).....	164,834,010	166,080,658

## SCHEDULE D - PART 1B

Showing the Acquisitions, Dispositions and Non-Trading Activity  
During the Current Quarter for all Bonds and Preferred Stock by NAIC Designation

	1	2	3	4	5	6	7	8
NAIC Designation	Book/Adjusted Carrying Value Beginning of Current Quarter	Acquisitions During Current Quarter	Dispositions During Current Quarter	Non-Trading Activity During Current Quarter	Book/Adjusted Carrying Value End of First Quarter	Book/Adjusted Carrying Value End of Second Quarter	Book/Adjusted Carrying Value End of Third Quarter	Book/Adjusted Carrying Value December 31 Prior Year
<b>BONDS</b>								
1. NAIC 1 (a).....	105,596,157	8,514,227	7,186,080	890,410	108,500,539	105,596,157	107,814,714	108,921,154
2. NAIC 2 (a).....	62,501,443	229,456	1,337,055	(1,109,896)	63,758,446	62,501,443	60,283,948	64,554,132
3. NAIC 3 (a).....	2,799,611			(298,691)	2,743,641	2,799,611	2,500,920	1,910,242
4. NAIC 4 (a).....								
5. NAIC 5 (a).....								
6. NAIC 6 (a).....								
7. Total Bonds.....	170,897,211	8,743,683	8,523,135	(518,177)	175,002,626	170,897,211	170,599,582	175,385,528
<b>PREFERRED STOCK</b>								
8. NAIC 1.....								
9. NAIC 2.....								
10. NAIC 3.....								
11. NAIC 4.....								
12. NAIC 5.....								
13. NAIC 6.....								
14. Total Preferred Stock.....	0	0	0	0	0	0	0	0
15. Total Bonds and Preferred Stock.....	170,897,211	8,743,683	8,523,135	(518,177)	175,002,626	170,897,211	170,599,582	175,385,528

QSI02

(a) Book/Adjusted Carrying Value column for the end of the current reporting period includes the following amount of non-rated short-term and cash equivalent bonds by NAIC designation:  
NAIC 1 \$.....0; NAIC 2 \$.....0; NAIC 3 \$.....0; NAIC 4 \$.....0; NAIC 5 \$.....0; NAIC 6 \$.....0.

**VETERINARY PET INSURANCE COMPANY**  
**SCHEDULE DA - PART 1**

Short-Term Investments

	1 Book/Adjusted Carrying Value	2 Par Value	3 Actual Cost	4 Interest Collected Year To Date	5 Paid for Accrued Interest Year To Date
9199999.....	.....3,937,240	.....XXX.....	.....3,937,240	.....164	.....

**SCHEDULE DA - VERIFICATION**

Short-Term Investments

	1 Year to Date	2 Prior Year Ended December 31
1. Book/adjusted carrying value, December 31 of prior year.....	.....7,476,537	.....1,739,938
2. Cost of short-term investments acquired.....	.....19,100,703	.....54,713,600
3. Accrual of discount.....	.....	.....
4. Unrealized valuation increase (decrease).....	.....	.....
5. Total gain (loss) on disposals.....	.....	.....
6. Deduct consideration received on disposals.....	.....22,640,000	.....48,977,001
7. Deduct amortization of premium.....	.....	.....
8. Total foreign exchange change in book/adjusted carrying value.....	.....	.....
9. Deduct current year's other than temporary impairment recognized.....	.....	.....
10. Book/adjusted carrying value at end of current period (Lines 1+2+3+4+5-6-7+8-9).....	.....3,937,240	.....7,476,537
11. Deduct total nonadmitted amounts.....	.....	.....
12. Statement value at end of current period (Line 10 minus Line 11).....	.....3,937,240	.....7,476,537

**Sch. DB-Pt A-Verification  
NONE**

**Sch. DB-Pt B-Verification  
NONE**

**Sch. DB-Pt C-Sn 1  
NONE**

**Sch. DB-Pt C-Sn 2  
NONE**

**Sch. DB-Verification  
NONE**

**Sch. E-Verification  
NONE**

**Sch. A-Pt 2  
NONE**

**Sch. A-Pt 3  
NONE**

**Sch. B-Pt 2  
NONE**

**Sch. B-Pt 3  
NONE**

**Sch. BA-Pt 2  
NONE**

**Sch. BA-Pt 3  
NONE**

### SCHEDULE D - PART 3

Show all Long-Term Bonds and Stock Acquired During the Current Quarter

1	2	3	4	5	6	7	8	9	10
Identification	Description	Foreign	Date Acquired	Name of Vendor	Number of Shares of Stock	Actual Cost	Par Value	Paid for Accrued Interest and Dividends	NAIC Designation or Market Indicator (a)
<b>Bonds - U.S. Political Subdivisions of States, Territories and Possessions</b>									
549188 UV 0	Lubbock TX GO Preref Ref 5.000% 02/15/.....		.....07/17/2015	Tax Free Exchange.....		.....315,234	.....310,000	.....6,544	1FE.....
549188 VC 1	Lubbock TX GO Unref Ref 5.000% 02/15/1.....		.....07/17/2015	Tax Free Exchange.....		.....698,796	.....690,000	.....14,567	1FE.....
2499999	Total Bonds - U.S. Political Subdivisions of States, Territories and Possessions.....					.....1,014,030	.....1,000,000	.....21,111	XXX
<b>Bonds - Industrial and Miscellaneous</b>									
761713 BL 9	Reynolds American Inc Sr Nt 6.875% 05/.....		.....07/15/2015	Tax Free Exchange.....		.....229,456	.....200,000	.....2,826	2FE.....
3899999	Total Bonds - Industrial and Miscellaneous.....					.....229,456	.....200,000	.....2,826	XXX
8399997	Total Bonds - Part 3.....					.....1,243,486	.....1,200,000	.....23,937	XXX
8399999	Total Bonds.....					.....1,243,486	.....1,200,000	.....23,937	XXX
<b>Common Stocks - Parent, Subsidiaries and Affiliates</b>									
99C001 09 8	VPI Services Inc.....		.....09/30/2015	Capital Contribution.....		.....1,200,000	XXX		K.....
9199999	Total Common Stocks - Parent, Subsidiaries and Affiliates.....					.....1,200,000	XXX	.....0	XXX
9799997	Total Common Stocks - Part 3.....					.....1,200,000	XXX	.....0	XXX
9799999	Total Common Stocks.....					.....1,200,000	XXX	.....0	XXX
9899999	Total Preferred and Common Stocks.....					.....1,200,000	XXX	.....0	XXX
9999999	Total Bonds, Preferred and Common Stocks.....					.....2,443,486	XXX	.....23,937	XXX

(a) For all common stock bearing the NAIC market indicator "U" provide: the number of such issues:.....0.

QE04

**SCHEDULE D - PART 4**

Show All Long-Term Bonds and Stock Sold, Redeemed or Otherwise Disposed of During the Current Quarter

1	2	3	4	5	6	7	8	9	10	Change in Book/Adjusted Carrying Value					16	17	18	19	20	21	22
										11	12	13	14	15							
CUSIP Identification	Description	For eign	Disposal Date	Name of Purchaser	Number of Shares of Stock	Consideration	Par Value	Actual Cost	Prior Year Book/Adjusted Carrying Value	Unrealized Valuation Increase/(Decrease)	Current Year's (Amortization)/Accretion	Current Year's Other Than Temporary Impairment Recognized	Total Change in B./A.C.V. (11+12-13)	Total Foreign Exchange Change in B./A.C.V.	Book/Adjusted Carrying Value at Disposal Date	Foreign Exchange Gain (Loss) on Disposal	Realized Gain (Loss) on Disposal	Total Gain (Loss) on Disposal	Bond Interest/Stock Dividends Received During Year	Stated Contractual Maturity Date	NAIC Designation or Market Indicator (a)
<b>Bonds - U.S. Government</b>																					
36200H	6R 0 GNMA Pool #602180 5.000% 02/15/18		09/01/2015	Paydown		2,013	2,013	2,065	2,029		(16)		(16)		2,013			.0	.67	02/15/2018	1
36200M	PW 7 GNMA Pool #604437 5.000% 07/15/18		09/01/2015	Paydown		5,410	5,410	5,579	5,469		(59)		(59)		5,410			.0	.180	07/15/2018	1
36201T	N7 8 GNMA Pool #592714 5.000% 04/15/18		09/01/2015	Paydown		1,676	1,676	1,716	1,689		(13)		(13)		1,676			.0	.56	04/15/2018	1
36202S	XE 3 GNMA Pool #608277 4.500% 09/15/18		09/01/2015	Paydown		3,302	3,302	3,326	3,308		(6)		(6)		3,302			.0	.99	09/15/2018	1
36202U	3X 9 GNMA Pool #610214 4.500% 05/15/18		09/01/2015	Paydown		3,791	3,791	3,809	3,793		(2)		(2)		3,791			.0	.113	05/15/2018	1
36213F	D3 4 GNMA Pool #552822 5.500% 10/15/32		09/01/2015	Paydown		1,646	1,646	1,718	1,711		(65)		(65)		1,646			.0	.63	10/15/2032	1
36295W	LC 9 GNMA Pool #682623 5.500% 06/15/38		09/01/2015	Paydown		5,038	5,038	5,053	5,052		(14)		(14)		5,038			.0	.185	06/15/2038	1
0599999 Total Bonds - U.S. Government						22,876	22,876	23,266	23,051	0	(175)	0	(175)	0	22,876	0	0	0	.763	XXX	XXX
<b>Bonds - U.S. Political Subdivisions of States, Territories and Possessions</b>																					
549187	3Y 6 Lubbock TX GO Ref 5.000% 02/15/19		07/17/2015	Tax Free Exchange		1,014,031	1,000,000	1,075,900	1,018,642		(4,612)		(4,612)		1,014,031			.0	.46,111	02/15/2019	1FE
2499999 Total Bonds - U.S. Political Subdivisions of States, Territories and Possessions						1,014,031	1,000,000	1,075,900	1,018,642	0	(4,612)	0	(4,612)	0	1,014,031	0	0	0	.46,111	XXX	XXX
<b>Bonds - U.S. Special Revenue and Special Assessment</b>																					
31283K	4D 7 FHLMC Gold PC Pool #G11720 4.500% 08/1		09/01/2015	Paydown		6,280	6,280	6,512	6,430		(149)		(149)		6,280			.0	.188	08/15/2020	1
3128GX	4R 4 FHLMC Pool #E93532 5.500% 01/15/18		09/01/2015	Paydown		2,141	2,141	2,210	2,165		(24)		(24)		2,141			.0	.78	01/15/2018	1
3128LX	S7 6 FHLMC Giant Pool #G02342 5.000% 10/15/		09/01/2015	Paydown		3,191	3,191	3,186	3,186		5		5		3,191			.0	.107	10/15/2036	1
3128MB	RK 5 FHLMC Giant Pool #G12990 4.500% 07/15/		09/01/2015	Paydown		15,562	15,562	16,238	15,947		(385)		(385)		15,562			.0	.467	07/15/2019	1
3132GR	ZW 4 FGLMC Pool #Q06757 3.500% 03/15/42		09/01/2015	Paydown		50,263	50,263	51,920	51,848		(1,585)		(1,585)		50,263			.0	.1,187	03/15/2042	1
3132GT	JE 8 FHLMC Pool #Q08061 3.500% 05/15/42		09/01/2015	Paydown		92,715	92,715	95,706	95,619		(2,904)		(2,904)		92,715			.0	.2,160	05/15/2042	1
31371K	3A 7 FNMA Pool #254693 5.500% 04/25/33		09/01/2015	Paydown		2,279	2,279	2,276	2,276		3		3		2,279			.0	.83	04/25/2033	1
31371M	GA 9 FNMA Pool #255893 5.500% 09/25/25		09/01/2015	Paydown		2,680	2,680	2,661	2,663		.17		.17		2,680			.0	.92	09/25/2025	1
31385B	HR 9 FNMA Pool #539440 5.500% 04/25/29		09/01/2015	Paydown		.992	.992	.981	.983		.10		.10		.992			.0	.37	04/25/2029	1
31385J	NS 3 FNMA Pool #545901 5.000% 09/25/17		09/01/2015	Paydown		1,990	1,990	2,043	2,004		(14)		(14)		1,990			.0	.66	09/25/2017	1
3138A8	JE 7 FNMA Pool #AH6560 4.000% 02/25/41		09/01/2015	Paydown		69,360	69,360	69,864	69,842		(482)		(482)		69,360			.0	.1,798	02/25/2041	1
3138E0	DM 8 FNMA Pool #AJ7307 3.500% 01/25/42		09/01/2015	Paydown		13,920	13,920	14,277	14,265		(344)		(344)		13,920			.0	.324	01/25/2042	1
3138M4	D8 2 FNMA Pool #AP1026 3.000% 07/25/42		09/01/2015	Paydown		75,743	75,743	78,772	78,634		(2,892)		(2,892)		75,743			.0	.1,456	07/25/2042	1
3138M8	AH 6 FNMA Pool #AP4507 3.000% 09/25/42		09/01/2015	Paydown		43,569	43,569	44,791	44,736		(1,167)		(1,167)		43,569			.0	.887	09/25/2042	1
31397N	2X 2 FNMA REMIC Ser 2009-44 CI AC 4.000% 12		09/01/2015	Paydown		4,887	4,887	5,031	4,920		(33)		(33)		4,887			.0	.128	12/25/2023	1
31397N	VS 1 FNMA REMIC Ser 2005-38 CI DA 4.000% 10		09/01/2015	Paydown		10,814	10,814	11,193	10,940		(126)		(126)		10,814			.0	.287	10/25/2019	1
31398E	AB 0 FHLMC REMIC Ser 3544 CI KA 4.500% 09/1		09/01/2015	Paydown		9,482	9,482	9,751	9,528		(47)		(47)		9,482			.0	.285	09/15/2023	1
31400D	A7 7 FNMA Pool #684130 5.500% 01/25/18		09/01/2015	Paydown		3,932	3,932	3,941	3,927		5		5		3,932			.0	.143	01/25/2018	1
31402U	QW 5 FNMA Pool #738569 8.000% 12/25/25		09/01/2015	Paydown		.993	.993	1,057	1,045		(53)		(53)		.993			.0	.53	12/25/2025	1
31404C	QG 8 FNMA Pool #764655 8.000% 09/25/28		09/01/2015	Paydown		1,832	1,832	1,948	1,930		(98)		(98)		1,832			.0	.98	09/25/2028	1
31410U	3F 7 FNMA Pool #898198 6.000% 11/25/36		09/01/2015	Paydown		4,825	4,825	4,866	4,864		(40)		(40)		4,825			.0	.195	11/25/2036	1
31413S	HB 3 FNMA Pool #953926 5.500% 12/25/37		09/01/2015	Paydown		4,588	4,588	4,639	4,636		(48)		(48)		4,588			.0	.166	12/25/2037	1
31414J	AA 1 FNMA Pool #967201 5.500% 12/25/37		09/01/2015	Paydown		2,762	2,762	2,790	2,788		(26)		(26)		2,762			.0	.102	12/25/2037	1
31417Y	BR 7 FNMA Pool #MA0047 4.500% 04/25/19		09/01/2015	Paydown		9,336	9,336	9,704	9,553		(217)		(217)		9,336			.0	.283	04/25/2019	1

QE05

## SCHEDULE D - PART 4

Show All Long-Term Bonds and Stock Sold, Redeemed or Otherwise Disposed of During the Current Quarter

1	2	3	4	5	6	7	8	9	10	Change in Book/Adjusted Carrying Value					16	17	18	19	20	21	22
										11	12	13	14	15							
CUSIP Identification	Description	For eig n	Disposal Date	Name of Purchaser	Number of Shares of Stock	Consideration	Par Value	Actual Cost	Prior Year Book/Adjusted Carrying Value	Unrealized Valuation Increase/ (Decrease)	Current Year's (Amortization)/ Accretion	Current Year's Other Than Temporary Impairment Recognized	Total Change in B./A.C.V. (11+12-13)	Total Foreign Exchange Change in B./A.C.V.	Book/Adjusted Carrying Value at Disposal Date	Foreign Exchange Gain (Loss) on Disposal	Realized Gain (Loss) on Disposal	Total Gain (Loss) on Disposal	Bond Interest/Stock Dividends Received During Year	Stated Contractual Maturity Date	NAIC Desig- nation or Market Indicator (a)
31419B BF 1	FNMA Pool #AE0937 3.500% 02/25/41		09/01/2015	Paydown		68,050	68,050	68,688	68,660		(610)		(610)		68,050			0	1,561	02/25/2041	1
31419B CT 0	FNMA Pool #AE0981 3.500% 03/25/41		09/01/2015	Paydown		20,963	20,963	21,614	21,589		(627)		(627)		20,963			0	485	03/25/2041	1
3199999. Total Bonds - U.S. Special Revenue and Special Assessment						523,149	523,149	536,659	534,978	0	(11,831)	0	(11,831)	0	523,149	0	0	0	12,716	XXX	XXX
<b>Bonds - Industrial and Miscellaneous</b>																					
009363 AJ 1	Airgas Inc Nt 3.250% 10/01/15		09/14/2015	Call 100.0000		1,000,000	1,000,000	998,490	999,759		241		241		1,000,000			0	30,965	10/01/2015	2FE
02377U AB 0	American Airlines Inc LBASS PTC Ser 2013		07/15/2015	Redemption 100.0000		96,020	96,020	96,020	96,020				0		96,020			0	4,753	01/15/2023	2FE
126650 BP 4	CVS Health Corp ABS PTC Nt 6.036% 12/1		09/10/2015	Redemption 100.0000		11,579	11,579	13,603	13,366		(1,787)		(1,787)		11,579			0	466	12/10/2028	2FE
46625Y P6 4	JP Morgan Chase Comm Mtg Secs CMBS Ser 2		09/01/2015	Paydown		19,774	19,774	21,715	20,211		(436)		(436)		19,774			0	780	04/15/2043	1FM
544152 AB 7	Lorillard Tobacco Co Co Gtd Nt 6.875%		07/15/2015	Tax Free Exchange		229,456	200,000	244,502	232,450		(2,994)		(2,994)		229,456			0	9,701	05/01/2020	2FE
59022H MU 3	Merrill Lynch Mortgage Tr CMBS Ser 2005-		07/01/2015	Paydown		94,971	94,971	94,852	94,819		152		152		94,971			0	2,956	11/12/2037	1FM
61756U AE 1	Morgan Stanley Cap I CMBS Ser 2007-IQ16		09/01/2015	Paydown		63,890	63,890	72,635	68,634		(4,744)		(4,744)		63,890			0	2,584	12/12/2049	1FM
6325C0 BY 6	National Australia Bank Sr Nt 4.375% 1	R	08/25/2015	Jeffries & Co Inc		1,094,350	1,000,000	995,520	997,107		284		284		997,391		96,959	96,959	31,354	12/10/2020	1FE
3899999. Total Bonds - Industrial and Miscellaneous						2,610,040	2,486,234	2,537,337	2,522,366	0	(9,284)	0	(9,284)	0	2,513,081	0	96,959	96,959	83,559	XXX	XXX
8399997. Total Bonds - Part 4						4,170,096	4,032,259	4,173,162	4,099,037	0	(25,902)	0	(25,902)	0	4,073,137	0	96,959	96,959	143,149	XXX	XXX
8399999. Total Bonds						4,170,096	4,032,259	4,173,162	4,099,037	0	(25,902)	0	(25,902)	0	4,073,137	0	96,959	96,959	143,149	XXX	XXX
9999999. Total Bonds, Preferred and Common Stocks						4,170,096	XXX	4,173,162	4,099,037	0	(25,902)	0	(25,902)	0	4,073,137	0	96,959	96,959	143,149	XXX	XXX

QE05.1

(a) For all common stock bearing the NAIC market indicator "U" provide: the number of such issues:.....0.

**Sch. DB-Pt A-Sn 1  
NONE**

**Sch. DB-Pt B-Sn 1  
NONE**

**Sch. DB-Pt D-Sn 1  
NONE**

**Sch. DB-Pt D-Sn 2  
NONE**

**Sch. DL-Pt. 1  
NONE**

**Sch. DL-Pt. 2  
NONE**

**VETERINARY PET INSURANCE COMPANY**  
**SCHEDULE E - PART 1 - CASH**

Month End Depository Balances

1 Depository	2 Code	3 Rate of Interest	4 Amount of Interest Received During Current Quarter	5 Amount of Interest Accrued at Current Statement Date	Book Balance at End of Each Month During Current Quarter			9 *
					6 First Month	7 Second Month	8 Third Month	
<b>Open Depositories</b>								
The Bank of New York Mellon..... New York, NY.....					.....293,602	.....2,613,954	.....2,161,574	XXX
Bank of America..... Los Angeles, CA.....					.....(8,713,939)	.....(8,726,396)	.....(8,634,833)	XXX
0199999. Total Open Depositories.....	XXX	XXX	.....0	.....0	.....(8,420,337)	.....(6,112,442)	.....(6,473,259)	XXX
0399999. Total Cash on Deposit.....	XXX	XXX	.....0	.....0	.....(8,420,337)	.....(6,112,442)	.....(6,473,259)	XXX
0599999. Total Cash.....	XXX	XXX	.....0	.....0	.....(8,420,337)	.....(6,112,442)	.....(6,473,259)	XXX

## SCHEDULE E - PART 2 - CASH EQUIVALENTS

Show Investments Owned End of Current Quarter

1 Description	2 Code	3 Date Acquired	4 Rate of Interest	5 Maturity Date	6 Book/Adjusted Carrying Value	7 Amount of Interest Due & Accrued	8 Amount Received During Year
------------------	-----------	--------------------	-----------------------	--------------------	-----------------------------------	---------------------------------------	----------------------------------

**NONE**