



**QUARTERLY STATEMENT**

AS OF SEPTEMBER 30, 2015

OF THE CONDITION AND AFFAIRS OF THE

**American Select Insurance Company**

NAIC Group Code 0228, 0228 NAIC Company Code 19992 Employer's ID Number 31-6016426  
(Current Period) (Prior Period)

Organized under the Laws of Ohio, State of Domicile or Port of Entry Ohio

Country of Domicile US

Incorporated/Organized August 21, 1959 Commenced Business October 1, 1959

Statutory Home Office One Park Circle, Westfield Center, Ohio, US 44251-5001  
(Street and Number, City or Town, State, Country and Zip Code)

Main Administrative Office One Park Circle, Westfield Center, Ohio, US 44251-5001 330-887-0101  
(Street and Number, City or Town, State, Country and Zip Code) (Area Code) (Telephone Number)

Mail Address P. O. Box 5001, Westfield Center, Ohio, US 44251-5001  
(Street and Number or P. O. Box, City or Town, State, Country and Zip Code)

Primary Location of Books and Records One Park Circle, Westfield Center, Ohio, US 44251-5001  
(Street and Number, City or Town, State, Country and Zip Code)  
330-887-0101  
(Area Code) (Telephone Number)

Internet Website Address www.westfieldgrp.com

Statutory Statement Contact Bambi Ann Beshire 330-887-0101  
(Name) (Area Code) (Telephone Number) (Extension)  
FinancialReporting@westfieldgrp.com 330-887-0840  
(E-Mail Address) (Fax Number)

**OFFICERS**

Edward James Largent (Westfield Group Leader, President & CEO)  
 Joseph Christian Kohmann (Group Finance Leader & Treasurer)  
 Frank Anthony Carrino (Group Legal Leader & Secretary)

**OTHER OFFICERS**

James Robert Clay (Chairman)  
 Dennis Paul Baus (National Surety Leader)  
 Bambi Ann Beshire (Group Finance & Accounting Leader)  
 Robert William Bowers# (National Claims Leader)  
 Robyn Renee Hahn# (Group Marketing & Communications Leader)  
 Stephen Edward Lehecka (Group Actuarial Leader)  
 James Robert Merz# (Group Actuarial & Analytics Leader)  
 Kristine Lynn Neate# (National Underwriting Office Leader)  
 Martha Haskins Oakes (National Middle Market Leader)  
 Christopher Michael Paterakis (Group HR Leader)  
 David Campbell Peterson (National PL & SBA Leader)  
 Michael Joseph Prandi# (Insurance Operations Leader)  
 Elizabeth Margaret Riczko# (Group Underwriting & Product Leader)  
 Stuart Wayne Rosenberg (Group Administration Leader)  
 Peter Robert Schwanke (Group Risk Management Leader)  
 Stephen John Tien (Group IT Leader)  
 Craig David Welsh (Group Distribution Leader)  
 George Krieg Wiswesser (Group Investment Leader)

**DIRECTORS OR TRUSTEES**

Michael John Bernaski  
 Cheryl Lila Carlisle  
 James Robert Clay  
 Fariborz Ghadar  
 Gary Dean Hallman  
 Susan Jane Insley  
 Edward James Largent  
 Deborah Denine Pryce  
 John Lewis Watson  
 Thomas Eldon Workman

State of Ohio }  
 County of Medina } SS

The officers of this reporting entity being duly sworn, each depose and say that they are the described officers of said reporting entity, and that on the reporting period stated above, all of the herein described assets were the absolute property of the said reporting entity, free and clear from any liens or claims thereon, except as herein stated, and that this statement, together with related exhibits, schedules and explanations therein contained, annexed or referred to, is a full and true statement of all the assets and liabilities and of the condition and affairs of the said reporting entity as of the reporting period stated above, and of its income and deductions there from for the period ended, and have been completed in accordance with the NAIC Annual Statement Instructions and Accounting Practices and Procedures manual except to the extent that: (1) state law may differ; or, (2) that state rules or regulations require differences in reporting not related to accounting practices and procedures, according to the best of their information, knowledge and belief, respectively. Furthermore, the scope of this attestation by the described officers also includes the related corresponding electronic filing with the NAIC, when required, that is an exact copy (except for formatting differences due to electronic filing) of the enclosed statement. The electronic filing may be requested by various regulators in lieu of or in addition to the enclosed statement.

\_\_\_\_\_  
 Edward James Largent  
 Westfield Group Leader, President & CEO

\_\_\_\_\_  
 Joseph Christian Kohmann  
 Group Finance Leader & Treasurer

\_\_\_\_\_  
 Frank Anthony Carrino  
 Group Legal Leader & Secretary

Subscribed and sworn to before me this  
 15th day of October, 2015

- a. Is this an original filing? Yes (X) No ( )  
 b. If no: 1. State the amendment number \_\_\_\_\_  
 2. Date filed \_\_\_\_\_  
 3. Number of pages attached \_\_\_\_\_

## ASSETS

	Current Statement Date			4
	1 Assets	2 Nonadmitted Assets	3 Net Admitted Assets (Col. 1 minus Col. 2)	December 31 Prior Year Net Admitted Assets
1. Bonds	134,045,414		134,045,414	127,621,854
2. Stocks:				
2.1 Preferred stocks				
2.2 Common stocks	55,616,653		55,616,653	67,106,873
3. Mortgage loans on real estate:				
3.1 First liens				
3.2 Other than first liens				
4. Real estate:				
4.1 Properties occupied by the company (less \$ ..... encumbrances)				
4.2 Properties held for the production of income (less \$ ..... encumbrances)				
4.3 Properties held for sale (less \$ ..... encumbrances)				
5. Cash (\$ .....), cash equivalents (\$ .....) and short-term investments (\$ ..... 2,099,950 )	2,099,950		2,099,950	1,202,142
6. Contract loans (including \$ ..... premium notes)				
7. Derivatives				
8. Other invested assets	1,039,200		1,039,200	1,200,720
9. Receivables for securities	35,938		35,938	
10. Securities lending reinvested collateral assets				
11. Aggregate write-ins for invested assets				
12. Subtotals, cash and invested assets (Line 1 through Line 11)	192,837,155		192,837,155	197,131,589
13. Title plants less \$ ..... charged off (for Title insurers only)				
14. Investment income due and accrued	1,799,985		1,799,985	1,862,198
15. Premiums and considerations:				
15.1 Uncollected premiums and agents' balances in the course of collection	5,067,262	606,363	4,460,899	4,427,184
15.2 Deferred premiums, agents' balances and installments booked but deferred and not yet due (including \$ ..... 58,175 earned but unbilled premiums)	28,935,840	5,817	28,930,023	26,762,050
15.3 Accrued retrospective premiums				
16. Reinsurance:				
16.1 Amounts recoverable from reinsurers				
16.2 Funds held by or deposited with reinsured companies				
16.3 Other amounts receivable under reinsurance contracts				
17. Amounts receivable relating to uninsured plans				
18.1 Current federal and foreign income tax recoverable and interest thereon	145,694		145,694	
18.2 Net deferred tax asset	1,196,411		1,196,411	
19. Guaranty funds receivable or on deposit				
20. Electronic data processing equipment and software				
21. Furniture and equipment, including health care delivery assets (\$ .....)				
22. Net adjustment in assets and liabilities due to foreign exchange rates				
23. Receivables from parent, subsidiaries and affiliates	771,981		771,981	344,179
24. Health care (\$ ..... ) and other amounts receivable				
25. Aggregate write-ins for other-than-invested assets				
26. Total assets excluding Separate Accounts, Segregated Accounts and Protected Cell Accounts (Line 12 to Line 25)	230,754,328	612,180	230,142,148	230,527,200
27. From Separate Accounts, Segregated Accounts and Protected Cell Accounts				
28. Totals (Line 26 and Line 27)	230,754,328	612,180	230,142,148	230,527,200
<b>DETAILS OF WRITE-INS</b>				
1101. ....				
1102. ....				
1103. ....				
1198. Summary of remaining write-ins for Line 11 from overflow page				
1199. Totals (Line 1101 through Line 1103 plus Line 1198) (Line 11 above)				
2501. ....				
2502. ....				
2503. ....				
2598. Summary of remaining write-ins for Line 25 from overflow page				
2599. Totals (Line 2501 through Line 2503 plus Line 2598) (Line 25 above)				

**LIABILITIES, SURPLUS AND OTHER FUNDS**

	1 Current Statement Date	2 December 31, Prior Year
1. Losses (current accident year \$ 17,679,302 )	56,875,580	55,446,122
2. Reinsurance payable on paid losses and loss adjustment expenses		
3. Loss adjustment expenses	19,640,410	18,824,073
4. Commissions payable, contingent commissions and other similar charges	5,815,975	6,096,931
5. Other expenses (excluding taxes, licenses and fees)	2,320,509	2,447,768
6. Taxes, licenses and fees (excluding federal and foreign income taxes)	1,141,363	1,301,356
7.1 Current federal and foreign income taxes (including \$ on realized capital gains (losses))		946,016
7.2 Net deferred tax liability		3,047,524
8. Borrowed money \$ and interest thereon \$		
9. Unearned premiums (after deducting unearned premiums for ceded reinsurance of \$ 101,003,194 and including warranty reserves of \$ and accrued accident and health experience rating refunds including \$ for medical loss ratio rebate per the Public Health Service Act)	44,885,580	42,096,803
10. Advance premium		
11. Dividends declared and unpaid:		
11.1 Stockholders		
11.2 Policyholders		
12. Ceded reinsurance premiums payable (net of ceding commissions)	(2,281)	182,923
13. Funds held by company under reinsurance treaties		
14. Amounts withheld or retained by company for account of others	(6,706)	
15. Remittances and items not allocated		
16. Provision for reinsurance (including \$ certified)		
17. Net adjustments in assets and liabilities due to foreign exchange rates		
18. Drafts outstanding		
19. Payable to parent, subsidiaries and affiliates		
20. Derivatives		
21. Payable for securities		
22. Payable for securities lending		
23. Liability for amounts held under uninsured plans		
24. Capital notes \$ and interest thereon \$		
25. Aggregate write-ins for liabilities		
26. Total liabilities excluding protected cell liabilities (Line 1 through Line 25)	130,670,430	130,389,516
27. Protected cell liabilities		
28. Total liabilities (Line 26 and Line 27)	130,670,430	130,389,516
29. Aggregate write-ins for special surplus funds	14,346,145	24,398,526
30. Common capital stock	3,000,000	3,000,000
31. Preferred capital stock		
32. Aggregate write-ins for other than special surplus funds		
33. Surplus notes		
34. Gross paid in and contributed surplus	11,046,134	11,046,134
35. Unassigned funds (surplus)	71,079,439	61,693,024
36. Less treasury stock, at cost:		
36.1 shares common (value included in Line 30 \$ )		
36.2 shares preferred (value included in Line 31 \$ )		
37. Surplus as regards policyholders (Line 29 through Line 35, less Line 36)	99,471,718	100,137,684
38. Totals (Page 2, Line 28, Column 3)	230,142,148	230,527,200
<b>DETAILS OF WRITE-INS</b>		
2501		
2502		
2503		
2598. Summary of remaining write-ins for Line 25 from overflow page		
2599. Totals (Line 2501 through Line 2503 plus Line 2598) (Line 25 above)		
2901. General voluntary reserve	14,346,145	24,398,526
2902		
2903		
2998. Summary of remaining write-ins for Line 29 from overflow page		
2999. Totals (Line 2901 through Line 2903 plus Line 2998) (Line 29 above)	14,346,145	24,398,526
3201		
3202		
3203		
3298. Summary of remaining write-ins for Line 32 from overflow page		
3299. Totals (Line 3201 through Line 3203 plus Line 3298) (Line 32 above)		

## STATEMENT OF INCOME

	1 Current Year to Date	2 Prior Year to Date	3 Prior Year Ended December 31
<b>UNDERWRITING INCOME</b>			
1. Premiums earned:			
1.1 Direct (written \$ 154,999,238 )	125,736,342	82,272,499	117,733,504
1.2 Assumed (written \$ 68,255,659 )	65,432,644	63,056,296	84,786,442
1.3 Ceded (written \$ 155,250,148 )	125,953,014	82,376,858	117,870,347
1.4 Net (written \$ 68,004,749 )	65,215,972	62,951,937	84,649,599
DEDUCTIONS:			
2. Losses incurred (current accident year \$ 33,050,216 ):			
2.1 Direct	68,692,606	50,965,522	69,390,046
2.2 Assumed	31,649,773	34,861,175	43,849,026
2.3 Ceded	68,842,603	51,025,547	69,472,799
2.4 Net	31,499,776	34,801,150	43,766,273
3. Loss adjustment expenses incurred	8,445,144	7,825,258	9,977,699
4. Other underwriting expenses incurred	22,507,515	21,630,293	29,121,669
5. Aggregate write-ins for underwriting deductions			
6. Total underwriting deductions (Line 2 through Line 5)	62,452,435	64,256,701	82,865,641
7. Net income of protected cells			
8. Net underwriting gain (loss) (Line 1 minus Line 6 plus Line 7)	2,763,537	(1,304,764)	1,783,958
<b>INVESTMENT INCOME</b>			
9. Net investment income earned	4,852,966	4,805,746	6,465,052
10. Net realized capital gains (losses) less capital gains tax of \$ 175,119	325,221	650,044	1,661,114
11. Net investment gain (loss) (Line 9 plus Line 10)	5,178,187	5,455,790	8,126,166
<b>OTHER INCOME</b>			
12. Net gain or (loss) from agents' or premium balances charged off (amount recovered \$ 282,064 amount charged off \$ 349,368 )	(67,304)	(60,337)	(81,144)
13. Finance and service charges not included in premiums	456,216	350,604	472,312
14. Aggregate write-ins for miscellaneous income	1,083	2,123	2,123
15. Total other income (Line 12 through Line 14)	389,995	292,390	393,291
16. Net income before dividends to policyholders, after capital gains tax and before all other federal and foreign income taxes (Line 8 plus Line 11 plus Line 15)	8,331,719	4,443,416	10,303,415
17. Dividends to policyholders	43,572	155,545	338,969
18. Net income, after dividends to policyholders, after capital gains tax and before all other federal and foreign income taxes (Line 16 minus Line 17)	8,288,147	4,287,871	9,964,446
19. Federal and foreign income taxes incurred	3,013,353	1,038,179	2,502,573
20. Net income (Line 18 minus Line 19) (to Line 22)	5,274,794	3,249,692	7,461,873
<b>CAPITAL AND SURPLUS ACCOUNT</b>			
21. Surplus as regards policyholders, December 31 prior year	100,137,684	91,864,770	91,864,770
22. Net income (from Line 20)	5,274,794	3,249,692	7,461,873
23. Net transfers (to) from Protected Cell accounts			
24. Change in net unrealized capital gains or (losses) less capital gains tax of \$ (3,518,333)	(6,534,048)	(504,981)	470,346
25. Change in net unrealized foreign exchange capital gain (loss)			
26. Change in net deferred income tax	725,602	255,827	294,068
27. Change in nonadmitted assets	(132,314)	(2,073)	46,627
28. Change in provision for reinsurance			
29. Change in surplus notes			
30. Surplus (contributed to) withdrawn from protected cells			
31. Cumulative effect of changes in accounting principles			
32. Capital changes:			
32.1 Paid in			
32.2 Transferred from surplus (Stock Dividend)			
32.3 Transferred to surplus			
33. Surplus adjustments:			
33.1 Paid in			
33.2 Transferred to capital (Stock Dividend)			
33.3 Transferred from capital			
34. Net remittances from or (to) Home Office			
35. Dividends to stockholders			
36. Change in treasury stock			
37. Aggregate write-ins for gains and losses in surplus			
38. Change in surplus as regards policyholders (Line 22 through Line 37)	(665,966)	2,998,465	8,272,914
39. Surplus as regards policyholders, as of statement date (Line 21 plus Line 38)	99,471,718	94,863,235	100,137,684
<b>DETAILS OF WRITE-INS</b>			
0501.			
0502.			
0503.			
0598. Summary of remaining write-ins for Line 5 from overflow page			
0599. TOTALS (Line 0501 through Line 0503 plus Line 0598) (Line 5 above)			
1401. Net other interest income	1,083	2,123	2,123
1402.			
1403.			
1498. Summary of remaining write-ins for Line 14 from overflow page			
1499. TOTALS (Line 1401 through Line 1403 plus Line 1498) (Line 14 above)	1,083	2,123	2,123
3701.			
3702.			
3703.			
3798. Summary of remaining write-ins for Line 37 from overflow page			
3799. TOTALS (Line 3701 through Line 3703 plus Line 3798) (Line 37 above)			

**CASH FLOW**

	1	2	3
	Current Year To Date	Prior Year To Date	Prior Year Ended December 31
<b>Cash from Operations</b>			
1. Premiums collected net of reinsurance	65,485,544	63,875,374	86,000,572
2. Net investment income	6,597,292	6,287,677	8,538,265
3. Miscellaneous income	389,994	292,390	393,291
4. Total (Line 1 through Line 3)	72,472,830	70,455,441	94,932,128
5. Benefit and loss related payments	30,070,318	33,851,590	44,885,524
6. Net transfers to Separate Accounts, Segregated Accounts and Protected Cell Accounts			
7. Commissions, expenses paid and aggregate write-ins for deductions	30,741,076	30,094,742	38,971,008
8. Dividends paid to policyholders	43,572	155,545	338,969
9. Federal and foreign income taxes paid (recovered) net of \$ 175,119 tax on capital gains (losses)	4,280,181	1,370,991	2,505,628
10. Total (Line 5 through Line 9)	65,135,147	65,472,868	86,701,129
11. Net cash from operations (Line 4 minus Line 10)	7,337,683	4,982,573	8,230,999
<b>Cash from Investments</b>			
12. Proceeds from investments sold, matured or repaid:			
12.1 Bonds	2,673,270	4,182,496	5,792,339
12.2 Stocks	6,940,761	4,705,169	6,305,833
12.3 Mortgage loans			
12.4 Real estate			
12.5 Other invested assets		995,915	2,087,648
12.6 Net gains or (losses) on cash, cash equivalents and short-term investments			
12.7 Miscellaneous proceeds			
12.8 Total investment proceeds (Line 12.1 through Line 12.7)	9,614,031	9,883,580	14,185,820
13. Cost of investments acquired (long-term only):			
13.1 Bonds	10,489,128	10,266,753	12,749,707
13.2 Stocks	5,094,332	4,751,322	9,230,605
13.3 Mortgage loans			
13.4 Real estate			
13.5 Other invested assets		1,247,638	1,247,638
13.6 Miscellaneous applications	35,938	17,188	
13.7 Total investments acquired (Line 13.1 through Line 13.6)	15,619,398	16,282,901	23,227,950
14. Net increase or (decrease) in contract loans and premium notes			
15. Net cash from investments (Line 12.8 minus Line 13.7 minus Line 14)	(6,005,367)	(6,399,321)	(9,042,130)
<b>Cash from Financing and Miscellaneous Sources</b>			
16. Cash provided (applied):			
16.1 Surplus notes, capital notes			
16.2 Capital and paid in surplus, less treasury stock			
16.3 Borrowed funds			
16.4 Net deposits on deposit-type contracts and other insurance liabilities			
16.5 Dividends to stockholders			
16.6 Other cash provided (applied)	(434,508)	954,650	1,046,450
17. Net cash from financing and miscellaneous sources (Line 16.1 through Line 16.4 minus Line 16.5 plus Line 16.6)	(434,508)	954,650	1,046,450
<b>RECONCILIATION OF CASH, CASH EQUIVALENTS AND SHORT-TERM INVESTMENTS</b>			
18. Net change in cash, cash equivalents and short-term investments (Line 11 plus Line 15 plus Line 17)	897,808	(462,098)	235,319
19. Cash, cash equivalents and short-term investments:			
19.1 Beginning of year	1,202,142	966,823	966,823
19.2 End of period (Line 18 plus Line 19.1)	2,099,950	504,725	1,202,142

Note: Supplemental disclosures of cash flow information for non-cash transactions:

20.0001			
20.0002			
20.0003			
20.0004			
20.0005			
20.0006			
20.0007			
20.0008			
20.0009			
20.0010			

## NOTES TO FINANCIAL STATEMENTS

### General Notes

#### 1. Summary of Significant Accounting Policies-

##### A. Accounting Practices

The financial statements of American Select Insurance Company (the Company) are presented on the basis of accounting practices prescribed or permitted by the Ohio Department of Insurance.

The Ohio Department of Insurance recognizes only statutory accounting practices (SAP) prescribed or permitted by the State of Ohio for determining and reporting the financial condition and results of operations of an insurance company, for determining its solvency under the Ohio Insurance law. The National Association of Insurance Commissioners' (NAIC) *Accounting Practices and Procedures Manual* (NAIC SAP) has been adopted as a component of prescribed or permitted practices by the State of Ohio.

The Company has not implemented any prescribed or permitted accounting practices by the State of Ohio that differ from those found in NAIC SAP.

A reconciliation of the Company's net income and capital and surplus between NAIC SAP and practices prescribed and permitted by the State of Ohio is shown below:

	State of Domicile	9/30/2015	12/31/2014
<b>NET INCOME</b>			
(1) American Select Insurance Company state basis (Page 4, Line 20, Columns 1 & 3)	Ohio	\$ 5,274,794	\$ 7,461,873
(2) State Prescribed Practices that increase / (decrease) NAIC SAP	Ohio	0	0
(3) State Permitted Practices that increase / (decrease) NAIC SAP	Ohio	0	0
(4) NAIC SAP (1-2-3=4)	Ohio	<u>\$ 5,274,794</u>	<u>\$ 7,461,873</u>
<b>SURPLUS</b>			
(5) American Select Insurance Company state basis (Page 3, Line 37, Columns 1 & 2)	Ohio	\$ 99,471,718	\$ 100,137,684
(6) State Prescribed Practices that increase / (decrease) NAIC SAP	Ohio	0	0
(7) State Permitted Practices that increase / (decrease) NAIC SAP	Ohio	0	0
(8) NAIC SAP (5-6-7=8)	Ohio	<u>\$ 99,471,718</u>	<u>\$ 100,137,684</u>

##### B. Use of Estimates in the Preparation of the Financial Statements- No significant change

##### C. Accounting Policy

Premiums are earned over the terms of the related insurance policies and reinsurance contracts. Unearned premium reserves are established to cover the unexpired portion of premiums written. Such reserves are computed by pro rata methods for direct business and are based on reports received from ceding companies for reinsurance.

Expenses incurred in connection with acquiring new insurance business, including such acquisition costs as sales commissions, are charged to operations as incurred. Expenses incurred are reduced for ceding allowances received or receivable. In addition, the Company uses the following accounting policies:

(1-5) No significant change

(6) Loan-backed securities are stated at either amortized cost or the lower of amortized cost or fair market value. The retrospective adjustment method is used to value all securities. If a security has been written down due to an other-than-temporary impairment, the prospective adjustment method is used subsequent to the loss recognition in accordance with SSAP No. 43R.

(7-13) No significant change

#### 2. Accounting Changes and Corrections of Errors- No significant change

#### 3. Business Combinations and Goodwill- Not applicable

#### 4. Discontinued Operations- No significant change

#### 5. Investments-

##### A. through C. - No significant change

##### D. Loan-Backed Securities

(1) Prepayment assumptions for single class and multi class mortgage-backed / asset-backed securities were obtained from broker dealer survey values or internal estimates. The Company used Interactive Data Corp. in determining the market value of its loan-backed securities.

(2-3) No other-than-temporary impairments have been recognized on loan-backed securities.

(4) Impaired loan-backed securities for which an other-than-temporary impairment has not been recognized as of September 30, 2015 are summarized below:

Less than 12 Months		12 Months or Longer		Total	
Fair Value	Unrealized Losses	Fair Value	Unrealized Losses	Fair Value	Unrealized Losses
\$ 1,499,065	\$ (9,493)	\$ 0	\$ 0	\$ 1,499,065	\$ (9,493)

(5) In concluding that the impairments are not other-than-temporary, the Company has considered the following general categories of information:

- Length of time and extent to which the fair value has been less than cost
- Issuer credit quality
- Industry sector considerations
- General interest rate environment
- Probability of collecting future cash flows

##### E. Repurchase Agreements and/or Securities Lending Transactions

The Company does not have any investments in repurchase agreements or securities lending.

##### F. through H. - No significant change

##### I. Working Capital Finance Investments

The Company does not hold any working capital finance investments.

##### J. Offsetting and Netting of Assets and Liabilities

The Company does not hold any investments involving offsetting and netting of assets and liabilities.

##### K. Structured Notes

The Company does not hold any structured notes.

#### 6. Joint Ventures, Partnerships and Limited Liability Companies- No significant change

#### 7. Investment Income- No significant change

#### 8. Derivative Instruments- No significant change

## NOTES TO FINANCIAL STATEMENTS

## 9. Income Taxes-

A The components of the net deferred tax assets/ (liability) for the current reporting period are as follows:

1

9/30/2015			
(1)	(2)	(3)	
Ordinary	Capital	(Col 1 + 2)	Total
(a) Gross deferred tax assets	\$ 4,938,761	\$ 1,848,376	\$ 6,787,137
(b) Statutory valuation allowance adjustment	0	0	0
(c) Adjusted gross deferred tax assets (1a-1b)	4,938,761	1,848,376	6,787,137
(d) Deferred tax assets nonadmitted	0	0	0
(e) Subtotal net admitted deferred tax asset (1c-1d)	4,938,761	1,848,376	6,787,137
(f) Deferred tax liabilities	194,788	5,395,938	5,590,726
(g) Net admitted deferred tax asset/ (Net admitted deferred tax liability) (1e-1f)	\$ 4,743,973	\$ (3,547,562)	\$ 1,196,411

12/31/2014			
(4)	(5)	(6)	
Ordinary	Capital	(Col 4 + 5)	Total
(a) Gross deferred tax assets	\$ 4,799,722	\$ 1,180,842	\$ 5,980,564
(b) Statutory valuation allowance adjustment	0	0	0
(c) Adjusted gross deferred tax assets (1a-1b)	4,799,722	1,180,842	5,980,564
(d) Deferred tax assets nonadmitted	0	0	0
(e) Subtotal net admitted deferred tax asset (1c-1d)	4,799,722	1,180,842	5,980,564
(f) Deferred tax liabilities	198,022	8,830,066	9,028,088
(g) Net admitted deferred tax asset/ (Net admitted deferred tax liability) (1e-1f)	\$ 4,601,700	\$ (7,649,224)	\$ (3,047,524)

Change			
(7)	(8)	(9)	
(Col 1 - 4)	(Col 2 - 5)	(Col 7 + 8)	Total
Ordinary	Capital	Total	
(a) Gross deferred tax assets	\$ 139,039	\$ 667,534	\$ 806,573
(b) Statutory valuation allowance adjustment	0	0	0
(c) Adjusted gross deferred tax assets (1a-1b)	139,039	667,534	806,573
(d) Deferred tax assets nonadmitted	0	0	0
(e) Subtotal net admitted deferred tax asset (1c-1d)	139,039	667,534	806,573
(f) Deferred tax liabilities	(3,234)	(3,434,128)	(3,437,362)
(g) Net admitted deferred tax asset/ (Net admitted deferred tax liability) (1e-1f)	\$ 142,273	\$ 4,101,662	\$ 4,243,935

## 2 Admission calculation components SSAP No. 101:

9/30/2015			
(1)	(2)	(3)	
Ordinary	Capital	(Col 1 + 2)	Total
(a) Federal Income taxes paid in prior years recoverable through loss carrybacks	\$ 4,012,713	\$ 896,311	\$ 4,909,024
(b) Adjusted gross DTA expected to be realized (excluding the amount of DTA from 2 (a) above) after application of the threshold limitation (lesser of 2 (b) 1 and 2 (b) 2 below)	373,752	0	373,752
1 Adjusted gross DTA expected to be realized following BS date	373,752	0	373,752
2 Adjusted gross DTA allowed per limitation threshold	XXX	XXX	15,430,344
(c) Adjusted gross DTA (excluding the amount of DTA from 2 (a) and 2 (b) above) offset by gross DTL	552,296	952,065	1,504,361
(d) Deferred tax assets admitted as the result of application of SSAP No. 101. Total (2 (a) + 2 (b) + 2 (c))	\$ 4,938,761	\$ 1,848,376	\$ 6,787,137

12/31/2014			
(4)	(5)	(6)	
Ordinary	Capital	(Col 4 + 5)	Total
(a) Federal Income taxes paid in prior years recoverable through loss carrybacks	\$ 3,913,564	\$ 515,869	\$ 4,429,433
(b) Adjusted gross DTA expected to be realized (excluding the amount of DTA from 2 (a) above) after application of the threshold limitation (lesser of 2 (b) 1 and 2 (b) 2 below)	349,288	0	349,288
1 Adjusted gross DTA expected to be realized following BS date	349,288	0	349,288
2 Adjusted gross DTA allowed per limitation threshold	XXX	XXX	14,229,485
(c) Adjusted gross DTA (excluding the amount of DTA from 2 (a) and 2 (b) above) offset by gross DTL	536,870	664,973	1,201,843
(d) Deferred tax assets admitted as the result of application of SSAP No. 101. Total (2 (a) + 2 (b) + 2 (c))	\$ 4,799,722	\$ 1,180,842	\$ 5,980,564

Change			
(7)	(8)	(9)	
(Col 1 - 4)	(Col 2 - 5)	(Col 7 + 8)	Total
Ordinary	Capital	Total	
(a) Federal Income taxes paid in prior years recoverable through loss carrybacks	\$ 99,149	\$ 380,442	\$ 479,591
(b) Adjusted gross DTA expected to be realized (excluding the amount of DTA from 2 (a) above) after application of the threshold limitation (lesser of 2 (b) 1 and 2 (b) 2 below)	24,464	0	24,464
1 Adjusted gross DTA expected to be realized following BS date	24,464	0	24,464
2 Adjusted gross DTA allowed per limitation threshold	XXX	XXX	1,200,859
(c) Adjusted gross DTA (excluding the amount of DTA from 2 (a) and 2 (b) above) offset by gross DTL	15,426	287,092	302,518
(d) Deferred tax assets admitted as the result of application of SSAP No. 101. Total (2 (a) + 2 (b) + 2 (c))	\$ 139,039	\$ 667,534	\$ 806,573

3

	2015	2014
(a) Ratio percentage used to determine recovery period and threshold limitation amount	872.7%	889.2%
(b) Amount of adjusted capital and surplus used to determine recovery period and threshold limitation in 2 (b) 2 above	\$ 102,868,963	\$ 94,863,235

## NOTES TO FINANCIAL STATEMENTS

## 4 Impact of tax planning strategies

(a) Determination of adjusted gross deferred tax assets and net admitted deferred tax assets, by tax character as a percentage

9/30/2015			
(1) Ordinary Percent	(2) Capital Percent	(3) (Col 1 + 2) Total Percent	
1	Adjusted gross DTAs amounts from note 9A1 (c)	\$ 4,938,761	\$ 1,848,376 \$ 6,787,137
2	Percentage of adjusted gross DTAs attributable to the impact of tax planning strategies	7.2%	0.0% 7.2%
3	Net admitted adjusted gross DTAs amount from note 9A1 (e)	\$ 4,938,761	\$ 1,848,376 \$ 6,787,137
4	Percentage of net admitted adjusted gross DTAs admitted because of the impact of tax planning strategies	7.2%	0.0% 7.2%

12/31/2014			
(4) Ordinary Percent	(5) Capital Percent	(6) (Col 4 + 5) Total Percent	
1	Adjusted gross DTAs amounts from note 9A1 (c)	\$ 4,799,722	\$ 1,180,842 \$ 5,980,564
2	Percentage of adjusted gross DTAs attributable to the impact of tax planning strategies	7.1%	0.0% 7.1%
3	Net admitted adjusted gross DTAs amount from note 9A1 (e)	\$ 4,799,722	\$ 1,180,842 \$ 5,980,564
4	Percentage of net admitted adjusted gross DTAs admitted because of the impact of tax planning strategies	7.1%	0.0% 7.1%

Change			
(7) (Col 1 - 4) Ordinary Percent	(8) (Col 2 - 5) Capital Percent	(9) (Col 7 + 8) Total Percent	
1	Adjusted gross DTAs amounts from note 9A1 (c)	\$ 139,039	\$ 667,534 \$ 806,573
2	Percentage of adjusted gross DTAs attributable to the impact of tax planning strategies	0.1%	0.0% 0.1%
3	Net admitted adjusted gross DTAs amount from note 9A1 (e)	\$ 139,039	\$ 667,534 \$ 806,573
4	Percentage of net admitted adjusted gross DTAs admitted because of the impact of tax planning strategies	0.1%	0.0% 0.1%

(b) Does the Company's tax planning strategies include the use of reinsurance? Yes \_\_\_\_\_ No  X

## B Deferred tax liabilities that are not recognized:

There are no temporary differences for which deferred tax liabilities are not recognized.

## C

## 1 Current income taxes incurred consist of the following major components:

(1) 9/30/2015	(2) 12/31/2014	(Col 1 - 2) Change
(a) Federal	\$ 3,272,490	\$ 3,551,528 \$ (279,038)
(b) Foreign	0	0 0
(c) Subtotal	3,272,490	3,551,528 (279,038)
(d) Federal income tax on net capital gain	(175,119)	(894,446) 719,327
(e) Utilization of capital loss carryforward	0	0 0
(f) Other	(84,018)	(154,509) 70,491
(g) Federal and foreign income taxes incurred	\$ 3,013,353	\$ 2,502,573 \$ 510,780

## 2 The tax effects of temporary differences that give rise to significant portions of the deferred tax assets and deferred tax liabilities are as follows:

(1) 9/30/2015	(2) 12/31/2014	(Col 1 - 2) Change
Deferred tax assets:		
(a) Ordinary deferred tax assets:		
1	Loss reserve discounting	\$ 653,774 \$ 762,589 \$ (108,815)
2	Unearned premium reserve	2,863,038 2,784,155 78,883
3	Investments	0 0 0
4	Guarantee fund accrual	0 0 0
5	Salvage and subrogation	508,447 464,305 44,142
6	Fixed assets	80,553 80,553 0
7	Deferred compensation	0 6,810 (6,810)
8	Pension accrual	822,978 691,312 131,666
9	Other assets (including item <5% of total)	9,971 9,998 (27)
(99)	Subtotal	4,938,761 4,799,722 139,039
(b)	Statutory valuation allowance adjustment	0 0 0
(c)	Nonadmitted ordinary deferred tax assets	0 0 0
(d)	Admitted ordinary deferred tax assets (2a99-2b-2c)	4,938,761 4,799,722 139,039
(e) Capital deferred tax assets:		
1	Investments	1,670,512 1,059,397 611,115
2	Net capital loss carryforward	0 0 0
3	Fixed assets	0 0 0
4	Other assets (including item <5% of total)	177,864 121,445 56,419
(99)	Subtotal	1,848,376 1,180,842 667,534
(f)	Statutory valuation allowance adjustment	0 0 0
(g)	Nonadmitted capital deferred tax assets	0 0 0
(h)	Admitted capital deferred tax assets (2e99 - 2f - 2g)	1,848,376 1,180,842 667,534
(i)	Admitted deferred tax assets (2d + 2h)	\$ 6,787,137 \$ 5,980,564 \$ 806,573

## 3 Deferred tax liabilities:

## (a) Ordinary deferred tax liabilities

1	Investments	\$ 36,179	\$ 57,063	\$ (20,884)
2	Fixed assets	1,678	1,678	0
3	Deferred and uncollected premiums	0	0	0
4	Deferred compensation	0	0	0
5	Other liabilities (including item <5% of total)	156,931	139,281	17,650
(99)	Subtotal	194,788	198,022	(3,234)

## NOTES TO FINANCIAL STATEMENTS

(b) Capital deferred tax liabilities			
1 Unrealized gain / (losses)	4,961,011	8,479,344	(3,518,333)
2 Investments	434,927	350,722	84,205
3 Real estate	0	0	0
4 Other liabilities (including item <5% of total)	0	0	0
(99) Subtotal	<u>5,395,938</u>	<u>8,830,066</u>	<u>(3,434,128)</u>

(c) Deferred tax liabilities (3a99 + 3b99) \$ 5,590,726 \$ 9,028,088 \$ (3,437,362)

4 Net admitted deferred tax asset / (liability) (2i - 3c) \$ 1,196,411 \$ (3,047,524) \$ 4,243,935

5 The change in deferred income taxes reported in surplus before consideration of nonadmitted assets is comprised of the following components:

	9/30/2015	12/31/2014	Change
Net deferred tax asset (liability)	\$ 1,196,411	\$ (3,047,524)	\$ 4,243,935
Tax-effect of unrealized gains and losses	(4,961,011)	(8,479,344)	3,518,333
Net tax effect without unrealized gains and losses	<u>\$ 6,157,422</u>	<u>\$ 5,431,820</u>	<u>\$ 725,602</u>
Change in deferred income tax			<u>\$ 725,602</u>

D The Company's income tax incurred and change in deferred income tax differs from the amount obtained by applying the federal statutory rate of 35% to income before income taxes as follows:

	9/30/2015	12/31/2014
1 Income taxes incurred, gross of capital gains tax (benefit)	\$ 3,188,472	\$ 3,397,019
2 Change in deferred income tax (without tax on unrealized gains and losses)	(725,602)	(294,068)
3 Total income tax reported	<u>\$ 2,462,870</u>	<u>\$ 3,102,951</u>
4 Statutory income before taxes, gross of capital gains tax (benefit)	8,463,266	10,858,892
5 Expected income tax expense (benefit) at 35% statutory rate	2,962,143	3,800,612
6 Increase (decrease) in actual tax reported resulting from:		
a. Dividend received deduction	\$ (292,822)	\$ (337,850)
b. Nondeductible expenses for meals, penalties, and lobbying	18,973	29,710
c. Tax exempt income	(280,956)	(377,932)
d. Prior period adjustment	25,843	(42,710)
e. Deferred tax benefit (expense) on nonadmitted assets	(56,419)	23,683
f. Deferred tax benefit (expense) on retirement liability	0	0
g. Appreciation on donated property	0	0
h. IRC 832 (b) (5) adjustment	86,067	107,367
i. Other	41	(99,929)
7 Total federal income tax reported	<u>\$ 2,462,870</u>	<u>\$ 3,102,951</u>

E Operating loss carryforward

- As of the end of the current period, there are no operating loss or tax credit carryforwards available for tax purposes.
- The amount of federal income taxes incurred that are available for recoupment in the event of future net losses are:

	Ordinary	Capital	Total
2015	\$ 3,097,371	\$ 175,119	\$ 3,272,490
2014	\$ 2,657,081	\$ 894,446	\$ 3,551,527
2013	\$ 0	\$ 1,560,565	\$ 1,560,565

3 The Company did not have any protective tax deposits under Section 6603 of the Internal Revenue Code.

F Consolidated Federal Income Tax Return

1 The Company's federal income tax return is consolidated with its affiliates. Ohio Farmers Insurance Company is the parent company of the consolidated return. The following subsidiaries will be included in the consolidated federal income tax return:

Westfield Insurance Company	Westfield Services, Inc.
Westfield National Insurance Company	Westfield Bancorp, Inc.
American Select Insurance Company	Westfield Bank, FSB
Old Guard Insurance Company	Westfield Credit Corp.
Westfield Management Company	

2 Each company in the consolidation has agreed to share any tax or recovery of tax based on their individual taxable income or loss. Each company's current taxable income or loss will be adjusted by any prior taxable income or loss which can be carried forward to the current year.

10. Information Concerning Parent, Subsidiaries, Affiliates and Other Related Parties-

- The Company is owned and operated by its parent company, Ohio Farmers Insurance Company.
- The Company has no exceptional transactions with affiliates to report.
- The Company has made no changes in methods of establishing terms.
- Affiliated Balances due to the Company at 9/30/2015 and 12/31/2014 respectively were:

	9/30/2015	12/31/2014
Ohio Farmers Insurance Company	\$ 771,981	\$ 344,179
Affiliated Receivable	<u>\$ 771,981</u>	<u>\$ 344,179</u>

Every ninety (90) days the affiliated balances are reviewed and settled in either cash or the transfer of securities.

E. through L. - No significant change

11. Debt-

- Holding Company Obligations- Not applicable
- Federal Home Loan Bank Agreements (FHLB)- Not applicable

## NOTES TO FINANCIAL STATEMENTS

### 12. Retirement Plans, Deferred Compensation, Postemployment Benefits and Compensated Absences and Other Postretirement Benefit Plans-

#### A. Defined Benefit Pension Plan and Postretirement (Other) Benefit Plans

The Company's parent, Ohio Farmers Insurance Company (OFIC), sponsors a non-contributory defined benefit pension plan covering U. S. employees. As of September 30, 2015, there was accrued, in accordance with actuarially determined amounts with an offset to the pension cost accrual for the incremental asset amortization, amounts representing the present value of future benefit obligations. The following data is an update of certain information related to the Net Periodic Benefit Cost. There was no significant change in other data associated with this footnote:

Components of net periodic benefit cost

	Pension Benefits		Postretirement Benefits	
	09/30/2015	09/30/2014	09/30/2015	09/30/2014
a. Service cost	\$ 10,031,741	\$ 7,562,354	\$ 693,608	\$ 606,291
b. Interest cost	13,203,960	12,317,417	1,301,586	1,346,269
c. Expected return on plan assets	(20,928,222)	(18,893,775)	(1,802,407)	(1,761,736)
d. Transition asset or obligation	0	0	0	0
e. Gains and losses	6,189,232	1,867,118	216,217	0
f. Prior service cost or credit	632,263	2,109,721	141,678	288,392
g. Gain or loss recognized due to a settlement or curtailment	0	0	0	0
h. Total net periodic benefit cost	\$ 9,128,974	\$ 4,962,835	\$ 550,682	\$ 479,216

On January 1, 2013, OFIC adopted SSAP No. 92, *Accounting for Postretirement Benefits Other Than Pensions - A Replacement of SSAP No. 14 and SSAP No. 102, Accounting for Pensions - A Replacement of SSAP No. 89*. The standards require insurers to recognize the overfunded or underfunded status of a defined benefit postretirement plan as an asset or liability and include non-vested employees in determining the plan obligations. In addition, a sponsor's fiscal year end will be used as the measurement date for estimating the fair value of postretirement benefit assets and liabilities. The guidance contains a transition provision that gives insurers the option to recognize the initial impact to surplus over a period not to exceed 10 years. OFIC has elected the transition option. The Company expects the remaining transition liability of \$2.0 million to be recognized in 2015.

OFIC contributed \$12.1 million to its pension plan in March 2015. OFIC does not expect to make any additional contributions during the remainder of fiscal year 2015.

The Other Postretirement Benefits expense reflects the receipt of the government subsidy during the period that OFIC's plan benefits are expected to be considered actuarially equivalent to those provided by Medicare Part D.

- B. Plan Asset Information- Not applicable
- C. Fair Value Measurements of Plan Assets- Not applicable
- D. Long-Term Rates of Return- Not applicable
- E. Defined Contribution Plan- No significant change
- F. Multiemployer Plans- Not applicable
- G. Consolidated/Holding Company Plans- Not applicable
- H. Post-employment Benefits and Compensated Absences- Not applicable
- I. Impact of Medicare Modernization Act on Postretirement Benefits (INT 04-17)- No significant change
13. Capital and Surplus, Dividend Restrictions and Quasi-Reorganizations- No significant change
14. Contingencies-
- A. Contingent Commitments- Not applicable
- B. Assessments- No significant change
- C. Gain Contingencies- Not applicable
- D. Claims Related Extra Contractual Obligation and Bad Faith Losses Stemming from Lawsuits- No significant change
- E. Product Warranties- Not applicable
- F. Joint and Several Liabilities- Not applicable
- G. All Other Contingencies  
Various lawsuits against the Company have arisen in the course of the Company's business. Contingent liabilities arising from litigation, income taxes, and other matters are not considered material in relation to the financial position of the Company. There are no contingent liabilities arising from litigation.
- There has been no significant change in the collectability of the Company's accounts receivable for Agents Balances or Uncollected Premiums.
15. Leases- No significant change
16. Information about Financial Instruments with Off-Balance-Sheet Risk and Financial Instruments with Concentrations of Credit Risk- No significant change
17. Sale, Transfer and Servicing of Financial Assets and Extinguishments of Liabilities-
- A. Transfer of Receivables Reported as Sales  
The Company has not sold or transferred any receivables to any other parties.
- B. Transfer and Servicing of Financial Assets- Not applicable
- C. Wash Sales  
The Company did not have any wash sales involving transactions for securities with a NAIC designation of 3 or below.
18. Gain or Loss to the Reporting Entity from Uninsured A&H Plans and the Uninsured Portion of Partially Insured Plans- Not applicable
19. Direct Premium Written / Produced by Managing General Agents / Third Party Administrators- Not applicable
20. Fair Value Measurements-
- A. For assets that are measured and reported at fair value in the statement of financial position after initial recognition, the valuation techniques and the inputs used to develop those measurements are as follows:

Level 1 - Values are unadjusted quoted prices for identical assets and liabilities in active markets accessible at the measurement date.

Level 2 - Inputs include quoted prices for similar assets or liabilities in active markets, quoted prices from those willing to trade in markets that are not active, or other inputs that are observable or can be corroborated by market data for the term of the instrument. Such inputs include market interest rates and volatilities, spreads and yield curves.

## NOTES TO FINANCIAL STATEMENTS

Level 3 - Certain inputs are unobservable (supported by little or no market activity) and significant to the fair value measurement. Unobservable inputs reflect the Company's best estimate of what hypothetical market participants would use to determine a transaction price for the asset or liability at the reporting date.

The Company has no liabilities that are measured at fair value in the statement of financial position.

## (1) Fair Value Measurements at September 30, 2015

Description	(Level 1)	(Level 2)	(Level 3)	Total
<b>Assets at Fair Value:</b>				
Common Stock				
Industrial and Miscellaneous	\$ 55,616,653	\$ 0	\$ 0	\$ 55,616,653
Total Common Stocks	\$ 55,616,653	\$ 0	\$ 0	\$ 55,616,653
Other Invested Assets				
Joint Venture, Ptr or LLC, char. of Com Stks - Unaffiliated	\$ 1,039,200	\$ 0	\$ 0	\$ 1,039,200
Total Other Invested Assets	\$ 1,039,200	\$ 0	\$ 0	\$ 1,039,200
Total Assets at Fair Value	\$ 56,655,853	\$ 0	\$ 0	\$ 56,655,853

(2) At September 30, 2015, the Company held no investments in assets or liabilities measured and reported at fair value that were classified as Level 3.

(3) The Company's policy for determining when transfers between levels is required is based upon change in the inputs used to determine fair value measurement. If an input changes, the Company evaluates the new input (s) and makes the determination whether or not a transfer between levels is appropriate. If an asset or liability is transferred between levels, it is the Company's policy to record the transfer as of the beginning of the quarter in which the transfer occurs. The Company held no assets or liabilities categorized as Level 1, 2 or 3 during the reporting period that were transferred into or out of the level categorization held at January 1, 2015.

(4) As of September 30, 2015, the Company held no investments in assets or liabilities measured and reported at fair value that were classified as Level 2 or Level 3. Historically, fair values in the Level 2 category are provided by independent pricing services. Where independent pricing services provide fair values, the Company has obtained an understanding of the methods, models and inputs used in pricing and has controls in place to validate that amounts provided represent current fair values. Estimated fair values of investments categorized as Level 3 generally include inputs for which no readily observable inputs are available and require management judgment.

(5) As of September 30, 2015, the Company had no holdings classified as either a derivative asset or liability.

B. Combining Fair Value Information- Not required

C. The method (s) and significant assumptions used to estimate the fair value of financial instruments are as follows:

*Investment Securities* - Fair values for bonds are based on the values prescribed by an independent pricing service or from brokers. For bonds that are not actively traded, estimated fair values are based on values of bonds of comparable yield and credit quality. The fair values for common stocks are based on quoted market prices, where available, which are provided to the Company by an independent pricing service.

*Short-term investments, Receivables for securities, Uncollected premiums and agents' balances in the course of collection, and Deferred premiums, agents' balances and installments booked but deferred and not yet due* - The carrying amounts reported as admitted assets or liabilities for these financial instruments approximate their fair values due to the short-term nature of these financial instruments.

*Other Invested Assets* - The estimated fair value of publicly traded limited partnerships is based on the values prescribed by an independent pricing service.

Type of Financial Instrument	Aggregate Fair Value	Admitted Assets or Liabilities	(Level 1)	(Level 2)	(Level 3)	Not Practicable (Carrying Value)
<b>a. Financial Assets:</b>						
Bonds	\$ 146,682,151	\$ 134,045,414	\$ 18,605,388	\$ 128,076,763	\$ 0	\$ 0
Common stocks	55,616,653	55,616,653	55,616,653	0	0	0
Short-term investments	2,099,950	2,099,950	0	2,099,950	0	0
Other invested assets	1,039,200	1,039,200	1,039,200	0	0	0
Receivables for securities	35,938	35,938	0	35,938	0	0
Uncollected premiums and agents' balances in the course of collection	4,460,899	4,460,899	0	4,460,899	0	0
Deferred premiums, agents' balances and installments booked but deferred and not yet due	28,930,023	28,930,023	0	28,930,023	0	0

b. Financial Liabilities: Not applicable

D. Fair Value Estimating- Not applicable

## 21. Other Items-

A. through B. - Not applicable

C. through F. - No significant change

## 22. Events Subsequent-

Subsequent events have been considered through October 15, 2015 for the statutory statements issued as of September 30, 2015. No events or transactions have occurred that would give rise to a Type I or Type II subsequent event.

## P &amp; C Specific Notes

23. Reinsurance- No significant change

24. Retrospectively Rated Contracts and Contracts Subject to Redetermination- Not applicable

## 25. Changes in Incurred Losses and Loss Adjustment Expenses-

Reserves as of December 31, 2014 were \$74.3 million. In calendar year 2015, \$18.5 million has been paid for incurred claims and claim adjustment expenses attributable to insured events of prior years. Reserves remaining for prior years are now \$54.0 million. Therefore, there has been a \$1.8 million favorable prior-year development from December 31, 2014 to September 30, 2015. The favorable development is principally from decreases in the estimates of loss and loss adjustment expenses for the following lines of business: Workers Compensation, Personal Auto Liability, Personal Auto Physical Damage and Fidelity/Surety. This is offset, in part, by increases in the estimates of loss and loss adjustment expenses for Commercial Auto Liability. This change is generally the result of ongoing analysis of recent loss development trends. Original estimates are increased or decreased, as additional information becomes known regarding individual claims. The estimates are not affected by prior year loss development on retrospectively rated policies, as the Company does not write this type of policy.

**NOTES TO FINANCIAL STATEMENTS**

26. Intercompany Pooling Arrangements-  
A through F - No significant change

G. Affiliated Balances due to the Company at 9/30/2015 and 12/31/2014 respectively were:

	<u>9/30/2015</u>	<u>12/31/2014</u>
Ohio Farmers Insurance Company*	<u>\$ 771,981</u>	<u>\$ 344,179</u>
Affiliated Receivable	<u>\$ 771,981</u>	<u>\$ 344,179</u>

\*Ohio Farmers Insurance Company is included in the intercompany pooling arrangement.

27. Structured Settlements- No significant change
28. Health Care Receivables- Not applicable
29. Participating Policies- Not applicable
30. Premium Deficiency Reserves- No significant change
31. High Deductibles- Not applicable
32. Discounting of Liabilities for Unpaid Losses or Unpaid Loss Adjustment Expenses- No significant change
33. Asbestos/Environmental Reserves- No significant change
34. Subscriber Savings Accounts- Not applicable
35. Multiple Peril Crop Insurance- Not applicable
36. Financial Guaranty Insurance- Not applicable

**GENERAL INTERROGATORIES**  
**PART 1 - COMMON INTERROGATORIES**

GENERAL

- 1.1 Did the reporting entity experience any material transactions requiring the filing of Disclosure of Material Transactions with the State of Domicile, as required by the Model Act? Yes ( ) No (X)
- 1.2 If yes, has the report been filed with the domiciliary state? Yes ( ) No ( )
- 2.1 Has any change been made during the year of this statement in the charter, by-laws, articles of incorporation, or deed of settlement of the reporting entity? Yes ( ) No (X)
- 2.2 If yes, date of change: .....
- 3.1 Is the reporting entity a member of an Insurance Holding Company System consisting of two or more affiliated persons, one or more of which is an insurer? Yes (X) No ( )  
 If yes, complete Schedule Y, Parts 1 and 1A.
- 3.2 Have there been any substantial changes in the organizational chart since the prior quarter end? Yes ( ) No (X)
- 3.3 If the response to 3.2 is yes, provide a brief description of those changes.  
 .....
- 4.1 Has the reporting entity been a party to a merger or consolidation during the period covered by this statement? Yes ( ) No (X)
- 4.2 If the response to 4.1 is yes, provide the name of entity, NAIC Company Code, and state of domicile (use two letter state abbreviation) for any entity that has ceased to exist as a result of the merger or consolidation.

1 Name of Entity	2 NAIC Company Code	3 State of Domicile
---------------------	------------------------	------------------------

- 5. If the reporting entity is subject to a management agreement, including third-party administrator(s), managing general agent(s), attorney-in-fact, or similar agreement, have there been any significant changes regarding the terms of the agreement or principals involved? Yes ( ) No ( ) N/A (X)
- 6.1 State as of what date the latest financial examination of the reporting entity was made or is being made. 12/31/2012
- 6.2 State the as of date that the latest financial examination report became available from either the state of domicile or the reporting entity. This date should be the date of the examined balance sheet and not the date the report was completed or released. 12/31/2012
- 6.3 State as of what date the latest financial examination report became available to other states or the public from either the state of domicile or the reporting entity. This is the release date or completion date of the examination report and not the date of the examination (balance sheet date). 01/02/2014
- 6.4 By what department or departments?  
 Ohio
- 6.5 Have all financial statement adjustments within the latest financial examination report been accounted for in a subsequent financial statement filed with Departments? Yes ( ) No ( ) N/A (X)
- 6.6 Have all of the recommendations within the latest financial examination report been complied with? Yes ( ) No ( ) N/A (X)
- 7.1 Has this reporting entity had any Certificates of Authority, licenses or registrations (including corporate registration, if applicable) suspended or revoked by any governmental entity during the reporting period? Yes ( ) No (X)
- 7.2 If yes, give full information  
 .....
- 8.1 Is the company a subsidiary of a bank holding company regulated by the Federal Reserve Board? Yes (X) No ( )
- 8.2 If response to 8.1 is yes, please identify the name of the bank holding company.  
 Ohio Farmers Insurance Company
- 8.3 Is the company affiliated with one or more banks, thrifts or securities firms? Yes (X) No ( )
- 8.4 If response to 8.3 is yes, please provide below the names and location (city and state of the main office) of any affiliates regulated by a federal regulatory services agency [i.e. the Federal Reserve Board (FRB), the Office of the Comptroller of the Currency (OCC), the Federal Deposit Insurance Corporation (FDIC) and the Securities Exchange Commission (SEC)] and identify the affiliate's primary federal regulator.

1 Affiliate Name	2 Location (City, State)	3 FRB	4 OCC	5 FDIC	6 SEC
Ohio Farmers Insurance Company	Westfield Center, Ohio	Y	N	N	N
Westfield Insurance Company	Westfield Center, Ohio	Y	N	N	N
Westfield Bancorp, Inc.	Westfield Center, Ohio	Y	N	N	N
Westfield Bank, FSB	Westfield Center, Ohio	N	Y	N	N

- 9.1 Are the senior officers (principal executive officer, principal financial officer, principal accounting officer or controller, or persons performing similar functions) of the reporting entity subject to a code of ethics, which includes the following standards? Yes (X) No ( )
  - (a) Honest and ethical conduct, including the ethical handling of actual or apparent conflicts of interest between personal and professional relationships;
  - (b) Full, fair, accurate, timely and understandable disclosure in the periodic reports required to be filed by the reporting entity;
  - (c) Compliance with applicable governmental laws, rules and regulations;
  - (d) The prompt internal reporting of violations to an appropriate person or persons identified in the code; and
  - (e) Accountability for adherence to the code.
- 9.11 If the response to 9.1 is No, please explain:  
 .....
- 9.2 Has the code of ethics for senior managers been amended? Yes ( ) No (X)
- 9.21 If the response to 9.2 is Yes, provide information related to amendment(s).  
 .....
- 9.3 Have any provisions of the code of ethics been waived for any of the specified officers? Yes ( ) No (X)
- 9.31 If the response to 9.3 is Yes, provide the nature of any waiver(s).  
 .....

**GENERAL INTERROGATORIES**  
**PART 1 - COMMON INTERROGATORIES**

**FINANCIAL**

- 10.1 Does the reporting entity report any amounts due from parent, subsidiaries or affiliates on Page 2 of this statement? Yes (X) No ( )
- 10.2 If yes, indicate the amounts receivable from parent included in the Page 2 amount: \$ ..... 771,981

**INVESTMENT**

- 11.1 Were any of the stocks, bonds, or other assets of the reporting entity loaned, placed under option agreement, or otherwise made available for use by another person? Yes ( ) No (X)  
(Exclude securities under securities lending agreements.)
- 11.2 If yes, give full and complete information relating thereto:  
.....

12. Amount of real estate and mortgages held in other invested assets in Schedule BA: \$ .....
13. Amount of real estate and mortgages held in short-term investments: \$ .....

- 14.1 Does the reporting entity have any investments in parent, subsidiaries and affiliates? Yes ( ) No (X)
- 14.2 If yes, please complete the following:

	<sup>1</sup> Prior Year-End Book/ Adjusted Carrying Value	<sup>2</sup> Current Quarter Book/ Adjusted Carrying Value
14.21 Bonds .....	\$ .....	\$ .....
14.22 Preferred Stock .....	\$ .....	\$ .....
14.23 Common Stock .....	\$ .....	\$ .....
14.24 Short-Term Investments .....	\$ .....	\$ .....
14.25 Mortgage Loans or Real Estate .....	\$ .....	\$ .....
14.26 All Other .....	\$ .....	\$ .....
14.27 Total Investment in Parent, Subsidiaries and Affiliates (Subtotal Line 14.21 to Line 14.26) .....	\$ .....	\$ .....
14.28 Total Investment in Parent included in Line 14.21 to Line 14.26 above .....	\$ .....	\$ .....

- 15.1 Has the reporting entity entered into any hedging transactions reported on Schedule DB? Yes ( ) No (X)
- 15.2 If yes, has a comprehensive description of the hedging program been made available to the domiciliary state? Yes ( ) No ( )  
If no, attach a description with this statement.

16. For the reporting entity's security lending program, state the amount of the following as of current statement date:
- 16.1 Total fair value of reinvested collateral assets reported on Schedule DL, Parts 1 and 2 \$ .....
- 16.2 Total book adusted /carrying value of reinvested collateral assets reported on Schedule DL, Parts 1 and 2 \$ .....
- 16.3 Total payable for securities lending reported on the liability page \$ .....

17. Excluding items in Schedule E - Part 3 - Special Deposits, real estate, mortgage loans and investments held physically in the reporting entity's offices, vaults or safety deposit boxes, were all stocks, bonds and other securities, owned throughout the current year held pursuant to a custodial agreement with a qualified bank or trust company in accordance with Section 1, III - General Examination Considerations, F. Outsourcing of Critical Functions, Custodial or Safekeeping Agreements of the NAIC Financial Condition Examiners Handbook? Yes (X) No ( )

- 17.1 For all agreements that comply with the requirements of the NAIC Financial Condition Examiners Handbook, complete the following:

<sup>1</sup> Name of Custodian (s)	<sup>2</sup> Custodian Address
---------------------------------------	-----------------------------------

BNY Mellon ..... One Wall Street, New York, NY 10286 .....

- 17.2 For all agreements that do not comply with the requirements of the NAIC Financial Condition Examiners Handbook, provide the name, location and a complete explanation:

<sup>1</sup> Name(s)	<sup>2</sup> Location(s)	<sup>3</sup> Complete Explanation(s)
-------------------------	-----------------------------	---

- 17.3 Have there been any changes, including name changes, in the custodian(s) identified in 17.1 during the current quarter? Yes ( ) No (X)

- 17.4 If yes, give full and complete information relating thereto:

<sup>1</sup> Old Custodian	<sup>2</sup> New Custodian	<sup>3</sup> Date of Change	<sup>4</sup> Reason
-------------------------------	-------------------------------	--------------------------------	------------------------

- 17.5 Identify all investment advisors, broker/dealers or individuals acting on behalf of broker/dealers that have access to the investment accounts, handle securities and have authority to make investments on behalf of the reporting entity:

<sup>1</sup> Central Registration Depository	<sup>2</sup> Name(s)	<sup>3</sup> Address
--	-------------------------	-------------------------

- 18.1 Have all the filing requirements of the Purposes and Procedures Manual of the NAIC Securities Valuation Office been followed? Yes (X) No ( )

- 18.2 If no, list exceptions:  
.....

**GENERAL INTERROGATORIES**

**PART 2 - PROPERTY AND CASUALTY INTERROGATORIES**

1. If the reporting entity is a member of a pooling arrangement, did the agreement of the reporting entity's participation change? If yes, attach an explanation. Yes ( ) No (X) N/A ( )

2. Has the reporting entity reinsured any risk with any other reporting entity and agreed to release such entity from liability, in whole or in part, from any loss that may occur on the risk, or portion thereof, reinsured? If yes, attach an explanation. Yes ( ) No (X)

3.1 Have any of the reporting entity's primary reinsurance contracts been canceled? Yes ( ) No (X)

3.2 If yes, give full and complete information thereto  
 .....

4.1 Are any of the liabilities for unpaid losses and loss adjustment expenses other than certain workers' compensation tabular reserves (see Annual Statement Instructions pertaining to disclosure of discounting for definition of "tabular reserves") discounted at a rate of interest greater than zero? Yes ( ) No (X)

4.2 If yes, complete the following schedule:

1 Line of Business	2 Maximum Interest	3 Discount Rate	TOTAL DISCOUNT				DISCOUNT TAKEN DURING PERIOD			
			4 Unpaid Losses	5 Unpaid LAE	6 IBNR	7 TOTAL	8 Unpaid Losses	9 Unpaid LAE	10 IBNR	11 TOTAL

5. Operating Percentages:

5.1 A&H loss percent ..... %

5.2 A&H cost containment percent ..... %

5.3 A&H expense percent excluding cost containment expenses ..... %

6.1 Do you act as a custodian for health savings accounts? Yes ( ) No (X)

6.2 If yes, please provide the amount of custodial funds held as of the reporting date. \$ .....

6.3 Do you act as an administrator for health savings accounts? Yes ( ) No (X)

6.4 If yes, please provide the balance of the funds administered as of the reporting date. \$ .....

**SCHEDULE F - CEDED REINSURANCE**

Showing All New Reinsurers - Current Year to Date

1 NAIC Company Code	2 ID Number	3 Name of Reinsurer	4 Domiciliary Jurisdiction	5 Type of Reinsurer	6 Certified Reinsurance Rating (1 through 6)	7 Effective Date of Certified Reinsurer Rating
------------------------------	-------------------	------------------------	----------------------------------	---------------------------	--	---

0199999 - Affiliates

0299999 - U. S. Insurers

0399999 - Pools and Associations

All Other Insurers

00000 ..... AA-1120075 ..... Lloyd's Syndicate Number 4020 ..... GBR ..... Authorized .....

0499999 - All Other Insurers

**SCHEDULE T - EXHIBIT OF PREMIUMS WRITTEN**

Current Year to Date - Allocated by States and Territories

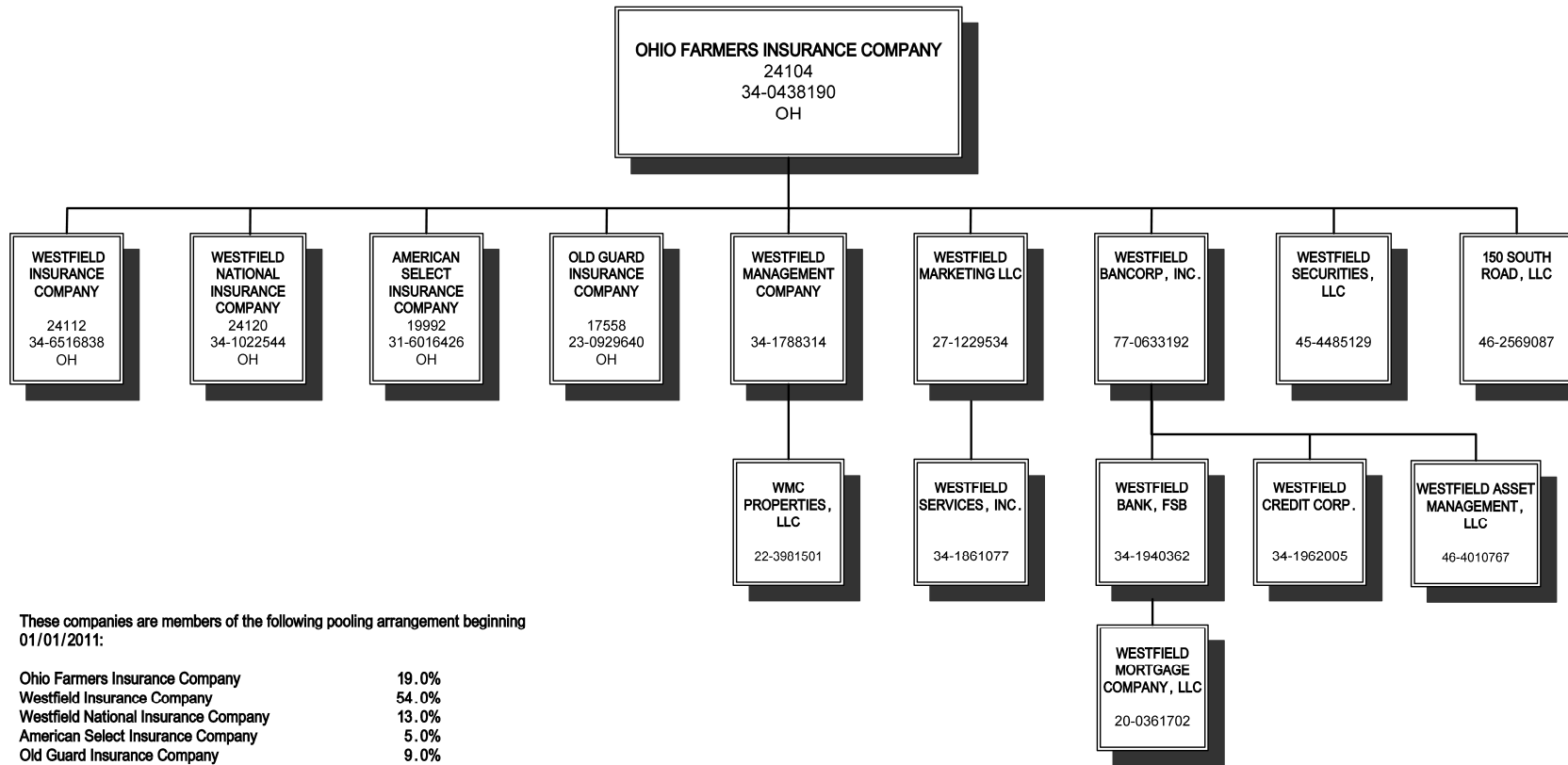
States, etc.	1		Direct Premiums Written		Direct Losses Paid (Deducting Salvage)		Direct Losses Unpaid	
	Active Status		2 Current Year To Date	3 Prior Year To Date	4 Current Year To Date	5 Prior Year To Date	6 Current Year To Date	7 Prior Year To Date
1. Alabama	AL	L	11,128	282,721	33,495	57,743	194,707	187,711
2. Alaska	AK	N						
3. Arizona	AZ	L	682,992	117,276	43,780	17,501	208,513	37,129
4. Arkansas	AR	L						
5. California	CA	N						
6. Colorado	CO	L	2,967,770	1,764,815	466,419	111,346	1,255,261	614,881
7. Connecticut	CT	N						
8. Delaware	DE	L	430,113	775,180	81,007	130,298	445,400	676,260
9. District of Columbia	DC	L						
10. Florida	FL	N						
11. Georgia	GA	L	3,432,431	2,350,523	706,436	245,738	1,594,677	1,190,149
12. Hawaii	HI	N						
13. Idaho	ID	L						
14. Illinois	IL	L	12,797,464	10,401,040	6,283,278	4,084,794	9,780,852	6,323,428
15. Indiana	IN	L	19,041,051	14,210,316	7,666,145	5,831,423	6,237,951	4,644,397
16. Iowa	IA	L	1,454,248	2,013,265	600,048	479,578	1,495,776	1,760,404
17. Kansas	KS	L	213,833	37,464	341		30,798	7,463
18. Kentucky	KY	L	361,478	398,724	86,512	92,309	217,057	158,049
19. Louisiana	LA	N						
20. Maine	ME	N						
21. Maryland	MD	L	292,094	167,303	153,772	103,498	202,910	223,599
22. Massachusetts	MA	N						
23. Michigan	MI	L	7,141,028	1,635,991	721,011	407,556	2,401,317	2,179,452
24. Minnesota	MN	L	2,867,212	3,361,327	627,725	941,394	2,350,254	2,633,568
25. Mississippi	MS	L	2,589	2,198			1,987	582
26. Missouri	MO	L	546,724	25,425	34,160		99,973	245
27. Montana	MT	L	122,440		6,265		43,476	
28. Nebraska	NE	L	42,312	169,005	32,865	8,401	67,495	85,888
29. Nevada	NV	L	5,712				2,249	
30. New Hampshire	NH	N						
31. New Jersey	NJ	N						
32. New Mexico	NM	L	624,713	289,135	48,546	3,412	184,189	60,294
33. New York	NY	N						
34. North Carolina	NC	L	950,363	694,284	159,906	50,442	307,311	279,734
35. North Dakota	ND	L	101,124	94,712		7,805	22,840	18,388
36. Ohio	OH	L	61,867,404	45,241,159	23,999,156	14,391,989	20,961,168	14,359,191
37. Oklahoma	OK	L	12,896	18,934			4,250	3,799
38. Oregon	OR	N						
39. Pennsylvania	PA	L	20,310,222	15,233,205	7,852,276	7,407,834	8,812,045	8,182,450
40. Rhode Island	RI	N						
41. South Carolina	SC	L	1,032,539	571,245	83,573	30,039	535,353	306,413
42. South Dakota	SD	N						
43. Tennessee	TN	L	9,934,795	6,397,247	3,625,799	950,067	3,089,353	1,660,215
44. Texas	TX	L	93,764	63,020	1,450	(112)	45,060	18,463
45. Utah	UT	L	16,254	9,168			2,092	738
46. Vermont	VT	N						
47. Virginia	VA	L	189,044	321,758	73,811	13,364	180,036	174,653
48. Washington	WA	L	50					
49. West Virginia	WV	L	7,126,524	4,855,790	2,450,551	884,407	1,805,058	910,319
50. Wisconsin	WI	L	326,926	301,136	195,110	78,318	286,661	152,455
51. Wyoming	WY	L						
52. American Samoa	AS	N						
53. Guam	GU	N						
54. Puerto Rico	PR	N						
55. U. S. Virgin Islands	VI	N						
56. Northern Mariana Islands	MP	N						
57. Canada	CAN	N						
58. Aggregate Other Alien	OT	X X X						
59. Totals	(a) 36		154,999,237	111,803,366	56,033,437	36,329,144	62,866,069	46,850,317
<b>DETAILS OF WRITE-INS</b>								
58001		X X X						
58002		X X X						
58003		X X X						
58998. Summary of remaining write-ins for Line 58 from overflow page		X X X						
58999. TOTALS (Line 58001 through Line 58003 plus Line 58998) (Line 58 above)		X X X						

(L) Licensed or Chartered - Licensed Insurance Carrier or Domiciled RRG; (R) Registered - Non-domiciled RRGs; (Q) Qualified - Qualified or Accredited Reinsurer; (E) Eligible - Reporting Entities eligible or approved to write Surplus Lines in the state; (N) None of the above - Not allowed to write business in the state.

(a) Insert the number of "L" responses except for Canada and Other Alien.

**SCHEDULE Y - INFORMATION CONCERNING ACTIVITIES  
OF INSURER MEMBERS OF A HOLDING COMPANY GROUP**

**PART 1 - ORGANIZATIONAL CHART**



**SCHEDULE Y**

**PART 1A - DETAIL OF INSURANCE HOLDING COMPANY SYSTEM**

1	2	3	4	5	6	7	8	9	10	11	12	13	14	15
Group Code	Group Name	NAIC Company Code	ID Number	Federal RSSD	CIK	Name of Securities Exchange if Publicly Traded (U.S. or International)	Names of Parent, Subsidiaries or Affiliates	Domiciliary Location	Relationship to Reporting Entity	Directly Controlled by (Name of Entity/Person)	Type of Control (Ownership, Board, Management, Attorney-in-Fact, Influence, Other)	If Control is Ownership Provide Percentage	Ultimate Controlling Entity(ies) / Person(s)	*
0228	OFIC & Affiliates	24104	34-0438190				Ohio Farmers Insurance Company	OH	UDP	NA	NA		NA	1
0228	OFIC & Affiliates	24112	34-6516838				Westfield Insurance Company	OH	IA	Ohio Farmers Insurance Company	Ownership	100.000	Ohio Farmers Insurance Company	
0228	OFIC & Affiliates	24120	34-1022544				Westfield National Insurance Company	OH	IA	Ohio Farmers Insurance Company	Ownership	100.000	Ohio Farmers Insurance Company	
0228	OFIC & Affiliates	19992	31-6016426				American Select Insurance Company	OH	RE	Ohio Farmers Insurance Company	Ownership	100.000	Ohio Farmers Insurance Company	
0228	OFIC & Affiliates	17558	23-0929640				Old Guard Insurance Company	OH	IA	Ohio Farmers Insurance Company	Ownership	100.000	Ohio Farmers Insurance Company	
		00000	34-1788314				Westfield Management Company	OH	NIA	Ohio Farmers Insurance Company	Ownership	85.000	Ohio Farmers Insurance Company	
		00000	22-3981501				WMC Properties, LLC	OH	NIA	Westfield Management Company	Ownership	100.000	Ohio Farmers Insurance Company	
		00000	27-1229534				Westfield Marketing LLC	OH	NIA	Ohio Farmers Insurance Company	Ownership	100.000	Ohio Farmers Insurance Company	
		00000	34-1861077				Westfield Services, Inc.	OH	NIA	Westfield Marketing LLC	Ownership	100.000	Ohio Farmers Insurance Company	
		00000	77-0633192				Westfield Bancorp, Inc.	OH	NIA	Ohio Farmers Insurance Company	Ownership	100.000	Ohio Farmers Insurance Company	
		00000	34-1962005				Westfield Credit Corp.	OH	NIA	Westfield Bancorp, Inc.	Ownership	100.000	Ohio Farmers Insurance Company	
		00000	46-4010767				Westfield Asset Management, LLC	OH	NIA	Westfield Bancorp, Inc.	Ownership	100.000	Ohio Farmers Insurance Company	
		00000	34-1940362				Westfield Bank, FSB	OH	NIA	Westfield Bancorp, Inc.	Ownership	100.000	Ohio Farmers Insurance Company	
		00000	20-0361702				Westfield Mortgage Company, LLC	OH	NIA	Westfield Bank, FSB	Ownership	100.000	Ohio Farmers Insurance Company	
		00000	45-4485129				Westfield Securities, LLC	OH	NIA	Ohio Farmers Insurance Company	Ownership	100.000	Ohio Farmers Insurance Company	
		00000	46-2569087				150 South Road, LLC	OH	NIA	Ohio Farmers Insurance Company	Ownership	100.000	Ohio Farmers Insurance Company	

Asterisk

Explanation

1 ..... No Entity(ies) or Person(s) has control of Ohio Farmers Insurance Company

**PART 1 - LOSS EXPERIENCE**

Line of Business	Current Year to Date			4
	1 Direct Premiums Earned	2 Direct Losses Incurred	3 Direct Loss Percentage	Prior Year to Date Direct Loss Percentage
1. Fire	102,265	6,377	6.2	68.2
2. Allied lines	107,795	36,531	33.9	(1.5)
3. Farmowners multiple peril				
4. Homeowners multiple peril	31,413,979	17,430,880	55.5	68.2
5. Commercial multiple peril	6,194,321	2,465,239	39.8	80.5
6. Mortgage guaranty				
8. Ocean marine				
9. Inland marine	2,584,586	771,231	29.8	27.3
10. Financial guaranty				
11.1 Medical professional liability-occurrence				
11.2 Medical professional liability-claims made				
12. Earthquake	458,459	1		
13. Group accident and health				
14. Credit accident and health				
15. Other accident and health				
16. Workers' compensation	19,792,833	6,032,138	30.5	51.8
17.1 Other liability-occurrence	3,928,723	2,810,323	71.5	15.2
17.2 Other liability-claims made	39,264			
17.3 Excess Workers' Compensation				
18.1 Products liability-occurrence	71,682	11,369	15.9	40.0
18.2 Products liability-claims made				
19.1, 19.2 Private passenger auto liability	29,657,803	20,734,214	69.9	68.3
19.3, 19.4 Commercial auto liability	3,091,113	1,333,940	43.2	32.2
21. Auto physical damage	27,965,723	16,999,058	60.8	71.4
22. Aircraft (all perils)				
23. Fidelity	20,154	(324)	(1.6)	(8.0)
24. Surety				
26. Burglary and theft	1,412	(17)	(1.2)	5.5
27. Boiler and machinery	306,230	61,646	20.1	(13.1)
28. Credit				
29. International				
30. Warranty				
31. Reinsurance-Nonproportional Assumed Property	X X X	X X X	X X X	X X X
32. Reinsurance-Nonproportional Assumed Liability	X X X	X X X	X X X	X X X
33. Reinsurance-Nonproportional Assumed Financial Lines	X X X	X X X	X X X	X X X
34. Aggregate write-ins for other lines of business				
35. TOTALS	125,736,342	68,692,606	54.6	61.9
<b>DETAILS OF WRITE-INS</b>				
3401.				
3402.				
3403.				
3498. Summary of remaining write-ins for Line 34 from overflow page				
3499. Totals (Line 3401 through Line 3403 plus Line 3498) (Line 34)				

**PART 2 - DIRECT PREMIUMS WRITTEN**

Line of Business	1 Current Quarter	2 Current Year to Date	3 Prior Year to Date
1. Fire	(1,710)	156,068	13,179
2. Allied lines	(9,821)	180,174	10,701
3. Farmowners multiple peril			
4. Homeowners multiple peril	16,135,360	40,941,660	25,833,487
5. Commercial multiple peril	1,656,783	6,448,002	4,951,376
6. Mortgage guaranty			
8. Ocean marine			
9. Inland marine	1,064,801	3,140,818	2,390,566
10. Financial guaranty			
11.1 Medical professional liability-occurrence			
11.2 Medical professional liability-claims made			
12. Earthquake	201,838	553,601	390,077
13. Group accident and health			
14. Credit accident and health			
15. Other accident and health			
16. Workers' compensation	7,872,922	21,019,813	21,733,966
17.1 Other liability-occurrence	1,478,443	4,723,185	3,260,842
17.2 Other liability-claims made	11,979	48,252	36,434
17.3 Excess Workers' Compensation			
18.1 Products liability-occurrence	32,150	83,891	68,893
18.2 Products liability-claims made			
19.1, 19.2 Private passenger auto liability	14,689,059	37,594,012	26,081,526
19.3, 19.4 Commercial auto liability	1,020,081	3,669,327	3,031,209
21. Auto physical damage	13,951,078	36,088,452	23,737,984
22. Aircraft (all perils)			
23. Fidelity	6,737	19,739	24,274
24. Surety			
26. Burglary and theft	537	1,185	2,197
27. Boiler and machinery	104,665	331,059	236,655
28. Credit			
29. International			
30. Warranty			
31. Reinsurance-Nonproportional Assumed Property	X X X	X X X	X X X
32. Reinsurance-Nonproportional Assumed Liability	X X X	X X X	X X X
33. Reinsurance-Nonproportional Assumed Financial Lines	X X X	X X X	X X X
34. Aggregate write-ins for other lines of business			
35. TOTALS	58,214,902	154,999,238	111,803,366
<b>DETAILS OF WRITE-INS</b>			
3401.			
3402.			
3403.			
3498. Summary of remaining write-ins for Line 34 from overflow page			
3499. Totals (Line 3401 through Line 3403 plus Line 3498) (Line 34)			

**PART 3 (000 Omitted)**

**LOSS AND LOSS ADJUSTMENT EXPENSE RESERVES SCHEDULE**

	1	2	3	4	5	6	7	8	9	10	11	12	13
Years in Which Losses Occurred	Prior Year-End Known Case Loss and LAE Reserves	Prior Year-End IBNR Loss and LAE Reserves	Total Prior Year-End Loss and LAE Reserves (Column 1 plus Column 2)	2015 Loss and LAE Payments on Claims Reported as of Prior Year-End	2015 Loss and LAE Payments on Claims Unreported as of Prior Year-End	Total 2015 Loss and LAE Payments (Column 4 plus Column 5)	Q. S. Date Known Case Loss and LAE Reserves on Claims Reported and Open as of Prior Year End	Q. S. Date Known Case Loss and LAE Reserves on Claims Reported or Reopened Subsequent to Prior Year End	Q. S. Date IBNR Loss and LAE Reserves	Total Q. S. Loss and LAE Reserves (Column 7 plus Column 8 plus Column 9)	Prior Year-End Known Case Loss and LAE Reserves Developed (Savings) / Deficiency (Column 4 plus Column 7 minus Column 1)	Prior-Year-End IBNR Loss and LAE Reserves Developed (Savings) / Deficiency (Column 5 plus Column 8 plus Column 9 minus Column 2)	Prior Year-End Total Loss and LAE Reserve Developed (Savings) / Deficiency (Column 11 plus Column 12)
1. 2012 + Prior	16,170	14,394	30,564	5,616	612	6,228	10,359	1,167	11,537	23,063	(195)	(1,078)	(1,273)
2. 2013	8,823	6,916	15,739	2,995	603	3,598	6,340	640	5,200	12,180	512	(473)	39
3. Subtotals 2013 + prior	24,993	21,310	46,303	8,611	1,215	9,826	16,699	1,807	16,737	35,243	317	(1,551)	(1,234)
4. 2014	14,432	13,535	27,967	6,047	2,647	8,694	8,343	2,456	7,989	18,788	(42)	(443)	(485)
5. Subtotals 2014 + prior	39,425	34,845	74,270	14,658	3,862	18,520	25,042	4,263	24,726	54,031	275	(1,994)	(1,719)
6. 2015	X X X	X X X	X X X	X X X	19,180	19,180	X X X	10,742	11,743	22,485	X X X	X X X	X X X
7. Totals	39,425	34,845	74,270	14,658	23,042	37,700	25,042	15,005	36,469	76,516	275	(1,994)	(1,719)
8. Prior Year-End Surplus As Regards Policy-holders	100,138												
											1. 0.7 %	2. (5.7) %	3. (2.3) %
													Column 13, Line 7
													Line 8
													4. (1.7) %

## SUPPLEMENTAL EXHIBITS AND SCHEDULES INTERROGATORIES

The following supplemental reports are required to be filed as part of your statement filing. However, in the event that your company does not transact the type of business for which the special report must be filed, your response of NO to the specific interrogatory will be accepted in lieu of filing a "NONE" report and a bar code will be printed below. If the supplement is required of your company but is not being filed for whatever reason enter SEE EXPLANATION and provide an explanation following the interrogatory questions.

Response

1. Will the Trusteed Surplus Statement be filed with the state of domicile and the NAIC with this statement?

NO

EXPLANATION:

BARCODE:

Document Identifier 490:



2. Will Supplement A to Schedule T (Medical Professional Liability Supplement) be filed with this statement?

NO

EXPLANATION:

BARCODE:

Document Identifier 455:



3. Will the Medicare Part D Coverage Supplement be filed with the state of domicile and the NAIC with this statement?

NO

EXPLANATION:

BARCODE:

Document Identifier 365:



4. Will the Director and Officer Insurance Coverage Supplement be filed with the state of domicile and the NAIC with this statement?

YES

EXPLANATION:

BARCODE:

Document Identifier 505:

**SCHEDULE A - VERIFICATION**

Real Estate

	1 Year To Date	2 Prior Year Ended December 31
1. Book/adjusted carrying value, December		
2. Cost of acquired:		
2.1. Actual cost at time of acquisition		
2.2. Additional investment made after ac		
3. Current year change in encumbrances		
4. Total gain (loss) on disposals		
5. Deduct amounts received on disposals		
6. Total foreign exchange change in book/ac		
7. Deduct current year's other-than-temporal		
8. Deduct current year's depreciation		
9. Book/adjusted carrying value at end of current period (Line 1 plus Line 2 plus Line 3 plus Line 4 minus Line 5 plus Line 6 minus Line 7 minus Line 8)		
10. Deduct total nonadmitted amounts		
11. Statement value at end of current period (Line 9 minus Line 10)		

NONE

**SCHEDULE B - VERIFICATION**

Mortgage Loans

	1 Year To Date	2 Prior Year Ended December 31
1. Book value/recorded investment excluding		
2. Cost of acquired:		
2.1. Actual cost at time of acquisition		
2.2. Additional investment made after a		
3. Capitalized deferred interest and other		
4. Accrual of discount		
5. Unrealized valuation increase (decrease)		
6. Total gain (loss) on disposals		
7. Deduct amounts received on disposals		
8. Deduct amortization of premium and mort		
9. Total foreign exchange change in book value/recorded investment excluding accrued interest		
10. Deduct current year's other-than-temporary impairment recognized		
11. Book value/recorded investment excluding accrued interest at end of current period (Line 1 plus Line 2 plus Line 3 plus Line 4 plus Line 5 plus Line 6 minus Line 7 minus Line 8 plus Line 9 minus Line 10)		
12. Total Valuation Allowance		
13. Subtotal (Line 11 plus Line 12)		
14. Deduct total nonadmitted amounts		
15. Statement value at end of current period (Line 13 minus Line 14)		

NONE

**SCHEDULE BA - VERIFICATION**

Other Long-Term Invested Assets

	1 Year To Date	2 Prior Year Ended December 31
1. Book/adjusted carrying value, December 31 of prior year	1,200,720	1,935,840
2. Cost of acquired:		
2.1. Actual cost at time of acquisition		534,559
2.2. Additional investment made after acquisition		713,079
3. Capitalized deferred interest and other		
4. Accrual of discount		
5. Unrealized valuation increase (decrease)	(161,520)	(704,472)
6. Total gain (loss) on disposals		809,362
7. Deduct amounts received on disposals		2,087,648
8. Deduct amortization of premium and depreciation		
9. Total foreign exchange change in book/adjusted carrying value		
10. Deduct current year's other-than-temporary impairment recognized		
11. Book/adjusted carrying value at end of current period (Line 1 plus Line 2 plus Line 3 plus Line 4 plus Line 5 plus Line 6 minus Line 7 minus Line 8 plus Line 9 minus Line 10)	1,039,200	1,200,720
12. Deduct total nonadmitted amounts		
13. Statement value at end of current period (Line 11 minus Line 12)	1,039,200	1,200,720

**SCHEDULE D - VERIFICATION**

Bonds and Stocks

	1 Year To Date	2 Prior Year Ended December 31
1. Book/adjusted carrying value of bonds and stocks, December 31 of prior year	194,728,727	183,760,065
2. Cost of bonds and stocks acquired	15,583,460	21,980,312
3. Accrual of discount	1,882	1,869
4. Unrealized valuation increase (decrease)	(9,890,861)	1,428,081
5. Total gain (loss) on disposals	2,324,909	2,622,267
6. Deduct consideration for bonds and stocks disposed of	9,614,031	12,098,172
7. Deduct amortization of premium	1,647,451	2,089,626
8. Total foreign exchange change in book/adjusted carrying value		
9. Deduct current year's other-than-temporary impairment recognized	1,824,568	876,069
10. Book/adjusted carrying value at end of current period (Line 1 plus Line 2 plus Line 3 plus Line 4 plus Line 5 minus Line 6 minus Line 7 plus Line 8 minus Line 9)	189,662,067	194,728,727
11. Deduct total nonadmitted amounts		
12. Statement value at end of current period (Line 10 minus Line 11)	189,662,067	194,728,727

**SCHEDULE D - PART 1B**

Showing the Acquisitions, Dispositions and Non-Trading Activity  
During the Current Quarter for all Bonds and Preferred Stock by NAIC Designation

NAIC Designation	1 Book/Adjusted Carrying Value Beginning of Current Quarter	2 Acquisitions During Current Quarter	3 Dispositions During Current Quarter	4 Non-Trading Activity During Current Quarter	5 Book/Adjusted Carrying Value End of First Quarter	6 Book/Adjusted Carrying Value End of Second Quarter	7 Book/Adjusted Carrying Value End of Third Quarter	8 Book/Adjusted Carrying Value December 31 Prior Year
<b>BONDS</b>								
1. NAIC 1 (a) .....	128,602,149	7,170,226	1,607,325	(566,409)	127,071,941	128,602,149	133,598,641	126,759,675
2. NAIC 2 (a) .....	2,549,464			(2,741)	1,019,050	2,549,464	2,546,723	2,064,321
3. NAIC 3 (a) .....								
4. NAIC 4 (a) .....								
5. NAIC 5 (a) .....								
6. NAIC 6 (a) .....								
7. Total Bonds .....	131,151,613	7,170,226	1,607,325	(569,150)	128,090,991	131,151,613	136,145,364	128,823,996
<b>PREFERRED STOCK</b>								
8. NAIC 1 .....								
9. NAIC 2 .....								
10. NAIC 3 .....								
11. NAIC 4 .....								
12. NAIC 5 .....								
13. NAIC 6 .....								
14. Total Preferred Stock .....								
15. Total Bonds and Preferred Stock .....	131,151,613	7,170,226	1,607,325	(569,150)	128,090,991	131,151,613	136,145,364	128,823,996

(a) Book/Adjusted Carrying Value column for the end of the current reporting period includes the following amount of non-rated short-term and cash equivalent bonds by NAIC designation:  
NAIC 1 \$ 2,099,950 ; NAIC 2 \$ ; NAIC 3 \$ ; NAIC 4 \$ ; NAIC 5 \$ ; NAIC 6 \$

**SCHEDULE DA - PART 1**

## Short-Term Investments

	1	2	3	4	5
	Book/Adjusted Carrying Value	Par Value	Actual Cost	Interest Collected Year To Date	Paid for Accrued Interest Year To Date
9199999 .....	2,099,950	X X X	2,099,950	190	.....

**SCHEDULE DA - VERIFICATION**

## Short-Term Investments

	1	2
	Year To Date	Prior Year Ended December 31
1. Book / adjusted carrying value, December 31 of prior year .....	1,202,142	966,823
2. Cost of short-term investments acquired .....	5,065,057	6,665,889
3. Accrual of discount .....		
4. Unrealized valuation increase (decrease) .....		
5. Total gain (loss) on disposals .....		
6. Deduct consideration received on disposals .....	4,167,249	6,430,570
7. Deduct amortization of premium .....		
8. Total foreign exchange change in book/adjusted carrying value .....		
9. Deduct current year's other-than-temporary impairment recognized .....		
10. Book/adjusted carrying value at end of current period (Line 1 + Line 2 + Line 3 + Line 4 + Line 5 - Line 6 - Line 7 + Line 8 - Line 9) .....	2,099,950	1,202,142
11. Deduct total nonadmitted amounts .....		
12. Statement value at end of current period (Line 10 minus Line 11) .....	2,099,950	1,202,142

**Page SI04**

Schedule DB, Part A, Verification

**NONE**

Schedule DB, Part B, Verification

**NONE**

**Page SI05**

Schedule DB, Pt. C, Section 1, Replicated (Synthetic Assets) Open

**NONE**

**Page SI06**

Sch DB, Pt C, Sn 2, Replication (Syn Assets) Transactions Open

**NONE**

**Page SI07**

Schedule DB, Verification

**NONE**

**Page SI08**

Schedule E, Verification (Cash Equivalents)

**NONE**

**Page E01**

Sch. A, Pt. 2, Real Estate Acquired

**NONE**

Sch. A, Pt. 3, Real Estate Disposed

**NONE**

**Page E02**

Schedule B, Part 2, Mortgage Loans Acquired

**NONE**

Schedule B, Part 3, Mortgage Loans Disposed

**NONE**

**Page E03**

Sch. BA, Pt. 2, Other Long-Term Invested Assets Acquired

**NONE**

Sch. BA, Pt. 3, Other Long-Term Invested Assets Disposed

**NONE**

STATEMENT AS OF SEPTEMBER 30, 2015 OF THE American Select Insurance Company

**SCHEDULE D - PART 3**

Show All Long-Term Bonds and Stock Acquired by the Company During the Current Quarter

1	2	3	4	5	6	7	8	9	10
CUSIP Identification	Description	Foreign	Date Acquired	Name of Vendor	Number of Shares of Stock	Actual Cost	Par Value	Paid for Accrued Interest and Dividends	NAIC Designation or Market Indicator (a)
Bonds - U. S. Political Subdivisions of States, Territories and Possessions									
05914F-EE-6	BALTIMORE CNTY MD TAX GO 5.450% 11/01/27		07/09/2015	BMO Capital		1,120,740	1,000,000.00	11,051	1FE
796269-VA-3	SAN ANTONIO TX TAX SCH 4.006% 08/15/28		07/07/2015	KeyBanc Capital Mkts		1,057,930	1,000,000.00	16,135	1FE
2499999	Subtotal - Bonds - U. S. Political Subdivisions of States, Territories and Possessions					2,178,670	2,000,000.00	27,186	
Bonds - U. S. Special Revenue and Special Assessment and all Non-Guaranteed Obligations of Agencies and Authorities of Governments and Their Political Subdivisions									
207758-KK-8	CONNECTICUT ST TAX REV 4.376% 11/01/21		07/17/2015	Southwest Securities Inc		513,851	470,000.00	4,628	1FE
3128MJ-WC-0	FHLMC 30 YR GOLD PC GRP 4.000% 05/01/45		07/16/2015	KeyBanc Capital Mkts		1,318,545	1,243,361.00	2,763	1
64971M-4N-9	NEW YORK NY TRANSTL TAX 5.808% 08/01/30		08/20/2015	KeyBanc Capital Mkts		1,140,150	1,000,000.00	3,872	1FE
3199999	Subtotal - Bonds - U. S. Special Revenue and Special Assessment and all Non-Guaranteed Obligations of Agencies and Authorities of Governments and Their Political Subdivisions					2,972,546	2,713,361.00	11,263	
8399997	Subtotal - Bonds - Part 3					5,151,216	4,713,361.00	38,449	
8399999	Subtotal - Bonds					5,151,216	4,713,361.00	38,449	
Common Stocks - Industrial and Miscellaneous (Unaffiliated)									
163851-10-8	CHEMOURS CO		07/01/2015	Spin Off	2,400.000	25,387			L
G1151C-10-1	ACCENTURE PLC IRELAND PLC SHS	F	09/14/2015	Strategas Research Partners	5,000.000	483,348			L
9099999	Subtotal - Common Stocks - Industrial and Miscellaneous (Unaffiliated)					508,735			
9799997	Subtotal - Common Stocks - Part 3					508,735			
9799999	Subtotal - Common Stocks					508,735			
9899999	Subtotal - Preferred and Common Stocks					508,735			
9999999	TOTALS					5,659,951		38,449	

E04

(a) For all common stock bearing the NAIC market indicator "U" provide: the number of such issues

STATEMENT AS OF SEPTEMBER 30, 2015 OF THE American Select Insurance Company

**SCHEDULE D - PART 4**

Show All Long-Term Bonds and Stock Sold, Redeemed or Otherwise Disposed of by the Company During the Current Quarter

1	2	3	4	5	6	7	8	9	10	Change in Book/Adjusted Carrying Value					16	17	18	19	20	21	22	
										11	12	13	14	15								
CUSIP Identification	Description	Foreign	Disposal Date	Name of Purchaser	Number of Shares of Stock	Consideration	Par Value	Actual Cost	Prior Year Book/Adjusted Carrying Value	Unrealized Valuation Increase/(Decrease)	Current Year's (Amortization)/Accretion	Current Year's Other-Than-Temporary Impairment Recognized	Total Change in B./A.C.V. (11+12-13)	Total Foreign Exchange Change in B./A.C.V.	Book/Adjusted Carrying Value at Disposal Date	Foreign Exchange Gain (Loss) on Disposal	Realized Gain (Loss) on Disposal	Total Gain (Loss) on Disposal	Bond Interest/Stock Dividends Received During Year	Stated Contractual Maturity Date	NAIC Designation or Market Indicator (a)	
Bonds - U. S. Governments																						
36202E-5K-1	GNMA GTD PASS THRU POOL 004450 6.500%		09/01/2015	Paydown		27,396	27,396.00	29,092	29,021	(1,624)			(1,624)		27,396				1,189	05/20/2039	1	
36202E-J2-6	GNMA GTD PASS THRU POOL 003881 7.000%		09/01/2015	Paydown		1,786	1,786.00	1,844	1,841	(56)			(56)		1,786				83	07/20/2036	1	
36202E-PP-8	GNMA GTD PASS THRU POOL 004030 7.000%		09/01/2015	Paydown		3,117	3,117.00	3,231	3,228	(111)			(111)		3,117				145	09/20/2037	1	
36295H-R9-3	GNMA GTD PASS THRU POOL 671112 6.500%		09/01/2015	Paydown		5,471	5,471.00	5,652	5,643	(172)			(172)		5,471				229	08/15/2037	1	
36296U-NG-1	GNMA GTD PASS THRU POOL 701591 6.500%		09/01/2015	Paydown		2,136	2,136.00	2,250	2,249	(112)			(112)		2,136				93	01/15/2039	1	
0599999 - Subtotal - Bonds - U. S. Governments						39,906	39,906.00	42,069	41,982	(2,075)			(2,075)		39,906				1,739			
Bonds - U. S. Special Revenue and Special Assessment and All Non-Guaranteed Obligations of Agencies and Authorities of Governments and Their Political Subdivisions																						
3128M4-AX-1	FHLMC 30 YR GOLD PC GRP POOL 6.000%		09/01/2015	Paydown		7,108	7,108.00	7,572	7,555	(447)			(447)		7,108				284	12/01/2036	1	
3128MJ-V2-3	FHLMC 30 YR GOLD PC GRP POOL 3.500%		09/01/2015	Paydown		9,168	9,168.00	9,625	9,625	(457)			(457)		9,168				109	03/01/2045	1	
3128MJ-VV-9	FHLMC 30 YR GOLD PC GRP POOL 3.500%		09/01/2015	Paydown		24,890	24,890.00	26,080	26,080	(1,190)			(1,190)		24,890				366	02/01/2045	1	
3128MJ-WC-0	FHLMC 30 YR GOLD PC GRP POOL 4.000%		09/01/2015	Paydown		20,296	20,296.00	21,523	21,523	(1,227)			(1,227)		20,296				114	05/01/2045	1	
3128P7-5H-2	FHLMC 30 YR GOLD PC GRP POOL 3.500%		09/01/2015	Paydown		52,918	52,918.00	54,638	54,590	(1,672)			(1,672)		52,918				1,265	01/01/2034	1	
3132GT-SA-6	FHLMC 30 YR GOLD PC GRP POOL 4.000%		09/01/2015	Paydown		37,058	37,058.00	39,398	39,371	(2,313)			(2,313)		37,058				1,008	05/01/2042	1	
3132GU-KK-9	FHLMC 30 YR GOLD PC GRP POOL 3.500%		09/01/2015	Paydown		68,165	68,165.00	69,975	69,950	(1,785)			(1,785)		68,165				1,586	06/01/2042	1	
3132M6-NV-8	FHLMC 30 YR GOLD PC GRP POOL 4.000%		09/01/2015	Paydown		102,658	102,658.00	108,160	108,083	(5,424)			(5,424)		102,658				2,604	05/01/2044	1	
3138EE-RL-5	FNMA PASS THRU POOL AK9490 4.000%		09/01/2015	Paydown		22,998	22,998.00	24,263	24,256	(1,259)			(1,259)		22,998				621	04/01/2042	1	
31392M-HL-9	FHLMC REMIC SER 2465 PG PAC 6.500%		09/01/2015	Paydown		17,176	17,176.00	17,605	17,605	(390)			(390)		17,176				745	06/15/2032	1	
31408G-ZH-3	FNMA PASS THRU POOL 851344 6.500%		09/01/2015	Paydown		11,228	11,228.00	11,500	11,490	(262)			(262)		11,228				486	02/01/2036	1	
31410B-GT-5	FNMA PASS THRU POOL 884110 7.000%		09/01/2015	Paydown		725	725.00	757	757	106			106		725				34	05/01/2036	1	
31410G-KU-6	FNMA PASS THRU POOL 888707 7.500%		09/01/2015	Paydown		14,831	14,831.00	15,591	15,558	(727)			(727)		14,831				735	10/01/2037	1	
31412F-H4-8	FNMA PASS THRU POOL 923751 7.000%		09/01/2015	Paydown		16,983	16,983.00	17,449	17,424	(441)			(441)		16,983				697	04/01/2037	1	
31412M-A9-9	FNMA PASS THRU POOL 928932 6.500%		09/01/2015	Paydown		48,490	48,490.00	49,960	49,926	(1,435)			(1,435)		48,490				2,100	11/01/2037	1	
31418A-VV-7	FNMA PASS THRU POOL MA1527 3.000%		09/01/2015	Paydown		26,123	26,123.00	26,298	26,294	(171)			(171)		26,123				518	08/01/2033	1	
3199999 - Subtotal - Bonds - U. S. Special Revenue and Special Assessment and All Non-Guaranteed Obligations of Agencies and Authorities of Governments and Their Political Subdivisions						480,815	480,815.00	500,394	442,682	(19,094)			(19,094)		480,815				13,272			
8399997 - Subtotal - Bonds - Part 4						520,721	520,721.00	542,463	484,664	(21,169)			(21,169)		520,721				15,011			
8399999 - Subtotal - Bonds						520,721	520,721.00	542,463	484,664	(21,169)			(21,169)		520,721				15,011			
Common Stocks - Industrial and Miscellaneous (Unaffiliated)																						
263534-10-9	DU PONT E I DE NEMOURS & CO		07/01/2015	Spin Off		25,387		25,387	42,871	(17,485)			(17,485)		25,387							L
000375-20-4	ABB LTD ADR	R	09/14/2015	Morgan Stanley Dean Witter	27,000.000	497,065		610,200	571,050	39,150			39,150		610,200		(113,134)	(113,134)	20,707			L
9099999 - Subtotal - Common Stocks - Industrial and Miscellaneous (Unaffiliated)						522,452		635,587	613,921	21,665			21,665		635,587		(113,134)	(113,134)	20,707			
9799997 - Subtotal - Common Stocks - Part 4						522,452		635,587	613,921	21,665			21,665		635,587		(113,134)	(113,134)	20,707			
9799999 - Subtotal - Common Stocks						522,452		635,587	613,921	21,665			21,665		635,587		(113,134)	(113,134)	20,707			
9899999 - Subtotal - Preferred and Common Stocks						522,452		635,587	613,921	21,665			21,665		635,587		(113,134)	(113,134)	20,707			
9999999 - TOTALS						1,043,173		1,178,050	1,098,585	21,665	(21,169)		496		1,156,308		(113,134)	(113,134)	35,718			

FO3

(a) For all common stock bearing the NAIC market indicator 'U' provide: the number of such issues

**Page E06**

Schedule DB, Part A, Section 1

**NONE**

Description of Hedged Risk (s)

**NONE**

Financial or Economic Impact of the Hedge

**NONE**

**Page E07**

Schedule DB, Part B, Section 1

**NONE**

Schedule DB, Part B, Section 1, Broker Name

**NONE**

Schedule DB, Part B, Description of Hedged Risk (s)

**NONE**

Schedule DB, Part B, Financial or Economic Impact of the Hedge

**NONE**

**Page E08**

Schedule DB, Part D, Section 1

**NONE**

**Page E09**

Schedule DB, Part D, Section 2, By Reporting Entity

**NONE**

Schedule DB, Part D, Section 2, To Reporting Entity

**NONE**

**Page E10**

Schedule DL, Part 1

**NONE**

**Page E11**

Schedule DL, Part 2

**NONE**

**Page E12**

Schedule E, Part 1, Cash

**NONE**

**Page E13**

Schedule E, Part 2, Cash Equivalents

**NONE**



SUPPLEMENT FOR THE QUARTER ENDING SEPTEMBER 30, 2015 OF THE American Select Insurance Company

# DIRECTOR AND OFFICER INSURANCE COVERAGE SUPPLEMENT

Year To Date For The Period Ended September 30

NAIC Group Code: 0228

NAIC Company Code: 19992

If the reporting entity writes any director and officer (D&O) business, please provide the following:

1. Monoline Policies

1 Direct Written Premium	2 Direct Earned Premium	3 Direct Losses Incurred
\$ .....	\$ .....	\$ .....

2. Commercial Multiple Peril (CMP) Packaged Policies

2.1 Does the reporting entity provide D&O liability coverage as part of a CMP packaged policy? Yes (X) No ( )

2.2 Can the direct premium earned for D&O liability coverage provided as part of a CMP packaged policy be quantified or estimated? Yes (X) No ( )

2.3 If the answer to question 2.2 is yes, provide the quantified or estimated direct premium earned amount for D&O liability coverage in CMP packaged policies.

2.31 Amount quantified: \$ ..... 442

2.32 Amount estimated using reasonable assumptions: \$ .....

2.4 If the answer to 2.1 is yes, provide direct losses incurred (losses paid plus change in case reserves) for the D&O liability coverage provided in CMP packaged policies. \$ .....