

DIRECTORS OR TRUSTEES (continued)

ASSETS

	Current Statement Date			4 December 31 Prior Year Net Admitted Assets
	1 Assets	2 Nonadmitted Assets	3 Net Admitted Assets (Cols. 1 - 2)	
1. Bonds	26,532,855		26,532,855	1,526,763
2. Stocks:				
2.1 Preferred stocks				
2.2 Common stocks	44,592,578		44,592,578	64,621,616
3. Mortgage loans on real estate:				
3.1 First liens				
3.2 Other than first liens				
4. Real estate:				
4.1 Properties occupied by the company (less \$.....0 encumbrances)				
4.2 Properties held for the production of income (less \$.....0 encumbrances)				
4.3 Properties held for sale (less \$.....0 encumbrances)				
5. Cash (\$.....8,748), cash equivalents (\$.....0) and short-term investments (\$.....277,474)	286,222		286,222	185,329
6. Contract loans (including \$.....0 premium notes)				
7. Derivatives				
8. Other invested assets	3,250,481		3,250,481	(753)
9. Receivables for securities				
10. Securities lending reinvested collateral assets				
11. Aggregate write-ins for invested assets				
12. Subtotals, cash and invested assets (Lines 1 to 11)	74,662,136		74,662,136	66,332,956
13. Title plants less \$.....0 charged off (for Title insurers only)				
14. Investment income due and accrued	175,766		175,766	9,684
15. Premiums and considerations:				
15.1 Uncollected premiums and agents' balances in the course of collection	6,223,304		6,223,304	
15.2 Deferred premiums, agents' balances and installments booked but deferred and not yet due (including \$.....0 earned but unbilled premiums)				
15.3 Accrued retrospective premiums				
16. Reinsurance:				
16.1 Amounts recoverable from reinsurers	540,000		540,000	
16.2 Funds held by or deposited with reinsured companies				
16.3 Other amounts receivable under reinsurance contracts				
17. Amounts receivable relating to uninsured plans	1,943,189		1,943,189	
18.1 Current federal and foreign income tax recoverable and interest thereon				
18.2 Net deferred tax asset				
19. Guaranty funds receivable or on deposit				
20. Electronic data processing equipment and software				
21. Furniture and equipment, including health care delivery assets (\$.....0)				
22. Net adjustments in assets and liabilities due to foreign exchange rates				
23. Receivables from parent, subsidiaries and affiliates				
24. Health care (\$.....5,509,584) and other amounts receivable	5,729,856	287,088	5,442,768	
25. Aggregate write-ins for other than invested assets				
26. TOTAL assets excluding Separate Accounts, Segregated Accounts and Protected Cell Accounts (Lines 12 to 25)	89,274,252	287,088	88,987,164	66,342,640
27. From Separate Accounts, Segregated Accounts and Protected Cell Accounts				
28. TOTAL (Lines 26 and 27)	89,274,252	287,088	88,987,164	66,342,640
DETAILS OF WRITE-INS				
1101.				
1102.				
1103.				
1198. Summary of remaining write-ins for Line 11 from overflow page				
1199. TOTALS (Lines 1101 through 1103 plus 1198) (Line 11 above)				
2501.				
2502.				
2503.				
2598. Summary of remaining write-ins for Line 25 from overflow page				
2599. TOTALS (Lines 2501 through 2503 plus 2598) (Line 25 above)				

LIABILITIES, CAPITAL AND SURPLUS

	Current Period			Prior Year
	1 Covered	2 Uncovered	3 Total	4 Total
1. Claims unpaid (less \$.....0 reinsurance ceded)	10,950,500		10,950,500	
2. Accrued medical incentive pool and bonus amounts	977,287		977,287	
3. Unpaid claims adjustment expenses				
4. Aggregate health policy reserves, including the liability of \$.....0 for medical loss ratio rebate per the Public Health Service Act				
5. Aggregate life policy reserves				
6. Property/casualty unearned premium reserve				
7. Aggregate health claim reserves				
8. Premiums received in advance	1,714,578		1,714,578	
9. General expenses due or accrued	1,911,900		1,911,900	
10.1 Current federal and foreign income tax payable and interest thereon (including \$.....0 on realized gains (losses))	8,746		8,746	
10.2 Net deferred tax liability				
11. Ceded reinsurance premiums payable				
12. Amounts withheld or retained for the account of others				
13. Remittances and items not allocated				
14. Borrowed money (including \$.....0 current) and interest thereon \$.....0 (including \$.....0 current)				
15. Amounts due to parent, subsidiaries and affiliates	2,560,235		2,560,235	
16. Derivatives				
17. Payable for securities				
18. Payable for securities lending				
19. Funds held under reinsurance treaties with (\$.....0 authorized reinsurers, \$.....0 unauthorized reinsurers and \$.....0 certified reinsurers)				
20. Reinsurance in unauthorized and certified (\$.....0) companies				
21. Net adjustments in assets and liabilities due to foreign exchange rates				
22. Liability for amounts held under uninsured plans	678,387		678,387	
23. Aggregate write-ins for other liabilities (including \$.....0 current)				
24. Total liabilities (Lines 1 to 23)	18,801,634		18,801,634	
25. Aggregate write-ins for special surplus funds	X X X	X X X		
26. Common capital stock	X X X	X X X		
27. Preferred capital stock	X X X	X X X		
28. Gross paid in and contributed surplus	X X X	X X X	68,069,349	68,069,349
29. Surplus notes	X X X	X X X		
30. Aggregate write-ins for other than special surplus funds	X X X	X X X		
31. Unassigned funds (surplus)	X X X	X X X	2,116,181	(1,726,709)
32. Less treasury stock, at cost:				
32.10 shares common (value included in Line 26 \$.....0)	X X X	X X X		
32.20 shares preferred (value included in Line 27 \$.....0)	X X X	X X X		
33. Total capital and surplus (Lines 25 to 31 minus Line 32)	X X X	X X X	70,185,529	66,342,640
34. Total Liabilities, capital and surplus (Lines 24 and 33)	X X X	X X X	88,987,164	66,342,640
DETAILS OF WRITE-INS				
2301. 0				
2302.				
2303.				
2398. Summary of remaining write-ins for Line 23 from overflow page				
2399. TOTALS (Lines 2301 through 2303 plus 2398) (Line 23 above)				
2501.	X X X	X X X		
2502.	X X X	X X X		
2503.	X X X	X X X		
2598. Summary of remaining write-ins for Line 25 from overflow page	X X X	X X X		
2599. TOTALS (Lines 2501 through 2503 plus 2598) (Line 25 above)	X X X	X X X		
3001.	X X X	X X X		
3002.	X X X	X X X		
3003.	X X X	X X X		
3098. Summary of remaining write-ins for Line 30 from overflow page	X X X	X X X		
3099. TOTALS (Lines 3001 through 3003 plus 3098) (Line 30 above)	X X X	X X X		

STATEMENT OF REVENUE AND EXPENSES

	Current Year To Date		Prior Year To Date	Prior Year Ended December 31
	1 Uncovered	2 Total	3 Total	4 Total
1. Member Months	X X X	181,135		
2. Net premium income (including \$.....0 non-health premium income)	X X X	172,783,479		
3. Change in unearned premium reserves and reserves for rate credits	X X X			
4. Fee-for-service (net of \$.....0 medical expenses)	X X X			
5. Risk revenue	X X X			
6. Aggregate write-ins for other health care related revenues	X X X			
7. Aggregate write-ins for other non-health revenues	X X X			
8. Total revenues (Lines 2 to 7)	X X X	172,783,479		
Hospital and Medical:				
9. Hospital/medical benefits		117,616,953		
10. Other professional services				
11. Outside referrals		5,270,867		
12. Emergency room and out-of-area		2,855,382		
13. Prescription drugs		28,910,627		
14. Aggregate write-ins for other hospital and medical				
15. Incentive pool, withhold adjustments and bonus amounts		2,982,965		
16. Subtotal (Lines 9 to 15)		157,636,794		
Less:				
17. Net reinsurance recoveries		540,000		
18. Total hospital and medical (Lines 16 minus 17)		157,096,794		
19. Non-health claims (net)				
20. Claims adjustment expenses, including \$.....3,410,218 cost containment expenses		3,410,218		
21. General administrative expenses		13,810,793	1,379	753
22. Increase in reserves for life and accident and health contracts (including \$.....0 increase in reserves for life only)				
23. Total underwriting deductions (Lines 18 through 22)		174,317,806	1,379	753
24. Net underwriting gain or (loss) (Lines 8 minus 23)	X X X	(1,534,327)	(1,379)	(753)
25. Net investment income earned		475,205	14,111	21,135
26. Net realized capital gains (losses) less capital gains tax of \$.....5,144,143		(400,569)	433	545
27. Net investment gains or (losses) (Lines 25 plus 26)		74,636	14,543	21,681
28. Net gain or (loss) from agents' or premium balances charged off [(amount recovered \$.....0) (amount charged off \$.....0)]				
29. Aggregate write-ins for other income or expenses				
30. Net income or (loss) after capital gains tax and before all other federal income taxes (Lines 24 plus 27 plus 28 plus 29)	X X X	(1,459,691)	13,164	20,928
31. Federal and foreign income taxes incurred	X X X	13,352	4,563	(96)
32. Net income (loss) (Lines 30 minus 31)	X X X	(1,473,043)	8,601	21,024
DETAILS OF WRITE-INS				
0601.	X X X			
0602.	X X X			
0603.	X X X			
0698. Summary of remaining write-ins for Line 6 from overflow page	X X X			
0699. TOTALS (Lines 0601 through 0603 plus 0698) (Line 6 above)	X X X			
0701.	X X X			
0702.	X X X			
0703.	X X X			
0798. Summary of remaining write-ins for Line 7 from overflow page	X X X			
0799. TOTALS (Lines 0701 through 0703 plus 0798) (Line 7 above)	X X X			
1401. Reinsurance Claims				
1402.				
1403.				
1498. Summary of remaining write-ins for Line 14 from overflow page				
1499. TOTALS (Lines 1401 through 1403 plus 1498) (Line 14 above)				
2901.				
2902.				
2903.				
2998. Summary of remaining write-ins for Line 29 from overflow page				
2999. TOTALS (Lines 2901 through 2903 plus 2998) (Line 29 above)				

STATEMENT OF REVENUE AND EXPENSES (Continued)

	1	2	3
	Current Year To Date	Prior Year To Date	Prior Year Ended December 31
CAPITAL & SURPLUS ACCOUNT			
33. Capital and surplus prior reporting year	66,342,640		
34. Net income or (loss) from Line 32	(1,473,043)	8,601	21,024
35. Change in valuation basis of aggregate policy and claim reserves			
36. Change in net unrealized capital gains (losses) less capital gains tax of \$.....0	5,603,021		(1,747,733)
37. Change in net unrealized foreign exchange capital gain or (loss)			
38. Change in net deferred income tax			
39. Change in nonadmitted assets	(287,088)		
40. Change in unauthorized and certified reinsurance			
41. Change in treasury stock			
42. Change in surplus notes			
43. Cumulative effect of changes in accounting principles			
44. Capital Changes:			
44.1 Paid in			
44.2 Transferred from surplus (Stock Dividend)			
44.3 Transferred to surplus			
45. Surplus adjustments:			
45.1 Paid in		1,700,000	68,069,349
45.2 Transferred to capital (Stock Dividend)			
45.3 Transferred from capital			
46. Dividends to stockholders			
47. Aggregate write-ins for gains or (losses) in surplus			
48. Net change in capital and surplus (Lines 34 to 47)	3,842,889	1,708,601	66,342,640
49. Capital and surplus end of reporting period (Line 33 plus 48)	70,185,529	1,708,601	66,342,640
DETAILS OF WRITE-INS			
4701. 0			
4702. 0			
4703.			
4798. Summary of remaining write-ins for Line 47 from overflow page			
4799. TOTALS (Lines 4701 through 4703 plus 4798) (Line 47 above)			

CASH FLOW

		1 Current Year To Date	2 Prior Year To Date	3 Prior Year Ended December 31
Cash from Operations				
1.	Premiums collected net of reinsurance	168,274,753		
2.	Net investment income	234,365	933	4,624
3.	Miscellaneous income			
4.	TOTAL (Lines 1 to 3)	168,509,118	933	4,624
5.	Benefit and loss related payments	151,438,863		
6.	Net transfers to Separate Accounts, Segregated Accounts and Protected Cell Accounts			
7.	Commissions, expenses paid and aggregate write-ins for deductions	16,573,913	1,379	753
8.	Dividends paid to policyholders			
9.	Federal and foreign income taxes paid (recovered) net of \$.....0 tax on capital gains (losses)	4,606	(76)	
10.	TOTAL (Lines 5 through 9)	168,017,382	1,303	753
11.	Net cash from operations (Line 4 minus Line 10)	491,736	(370)	3,871
Cash from Investments				
12.	Proceeds from investments sold, matured or repaid:			
12.1	Bonds	2,134,973	373,200	473,200
12.2	Stocks	3,239,511		
12.3	Mortgage loans			
12.4	Real estate			
12.5	Other invested assets			
12.6	Net gains or (losses) on cash, cash equivalents and short-term investments			
12.7	Miscellaneous proceeds	2,030,539	690	
12.8	TOTAL investment proceeds (Lines 12.1 to 12.7)	7,405,023	373,890	473,200
13.	Cost of investments acquired (long-term only):			
13.1	Bonds	3,353,622	1,942,495	1,992,495
13.2	Stocks	3,292,367		66,369,349
13.3	Mortgage loans			
13.4	Real estate			
13.5	Other invested assets	3,251,234		(753)
13.6	Miscellaneous applications	458,878	76	0
13.7	TOTAL investments acquired (Lines 13.1 to 13.6)	10,356,101	1,942,571	68,361,091
14.	Net increase (or decrease) in contract loans and premium notes			
15.	Net cash from investments (Line 12.8 minus Line 13.7 and Line 14)	(2,951,078)	(1,568,681)	(67,887,891)
Cash from Financing and Miscellaneous Sources				
16.	Cash provided (applied):			
16.1	Surplus notes, capital notes			
16.2	Capital and paid in surplus, less treasury stock		1,700,000	68,069,349
16.3	Borrowed funds			
16.4	Net deposits on deposit-type contracts and other insurance liabilities			
16.5	Dividends to stockholders			
16.6	Other cash provided (applied)	2,560,235	690	
17.	Net cash from financing and miscellaneous sources (Line 16.1 through 16.4 minus Line 16.5 plus Line 16.6)	2,560,235	1,700,690	68,069,349
RECONCILIATION OF CASH, CASH EQUIVALENTS AND SHORT-TERM INVESTMENTS				
18.	Net change in cash, cash equivalents and short-term investments (Line 11, plus Lines 15 and 17)	100,893	131,638	185,329
19.	Cash, cash equivalents and short-term investments:			
19.1	Beginning of year	185,329		
19.2	End of period (Line 18 plus Line 19.1)	286,222	131,638	185,329

Note: Supplemental Disclosures of Cash Flow Information for Non-Cash Transactions:

20.0001	In April 2015, AultCare Health Insuring Corporation received a capital contribution from AultCare Insurance Company			1,526,763
---------	---	--	--	-----------

EXHIBIT OF PREMIUMS, ENROLLMENT AND UTILIZATION

	1 Total	Comprehensive (Hospital & Medical)		4 Medicare Supplement	5 Vision Only	6 Dental Only	7 Federal Employees Health Benefit Plan	8 Title XVIII Medicare	9 Title XIX Medicaid	10 Other
		2 Individual	3 Group							
Total Members at end of:										
1. Prior Year										
2. First Quarter	20,077							20,077		
3. Second Quarter	20,146							20,146		
4. Third Quarter	20,198							20,198		
5. Current Year										
6. Current Year Member Months	181,135							181,135		
Total Member Ambulatory Encounters for Period:										
7. Physician	72,967							72,967		
8. Non-Physician	337,224							337,224		
9. Total	410,191							410,191		
10. Hospital Patient Days Incurred	15,444							15,444		
11. Number of Inpatient Admissions	3,997							3,997		
12. Health Premiums Written (a)	172,962,571							172,962,571		
13. Life Premiums Direct										
14. Property/Casualty Premiums Written										
15. Health Premiums Earned	172,962,571							172,962,571		
16. Property/Casualty Premiums Earned										
17. Amount Paid for Provision of Health Care Services	146,146,294							146,146,294		
18. Amount Incurred for Provision of Health Care Services	157,636,794							157,636,794		

(a) For health premiums written: amount of Medicare Title XVIII exempt from state taxes or fees \$.....0.

CLAIMS UNPAID AND INCENTIVE POOL, WITHHOLD AND BONUS (Reported and Unreported)

Aging Analysis of Unpaid Claims

1 Account	2 1 - 30 Days	3 31 - 60 Days	4 61 - 90 Days	5 91 - 120 days	6 Over 120 Days	7 Total
0199999 Individually Listed Claims Unpaid						
0299999 Aggregate Accounts Not Individually Listed - Uncovered						
0399999 Aggregate Accounts Not Individually Listed - Covered						
0499999 Subtotals						
0599999 Unreported claims and other claim reserves						10,950,500
0699999 Total Amounts Withheld						
0799999 Total Claims Unpaid						10,950,500
0899999 Accrued Medical Incentive Pool And Bonus Amounts						977,287

UNDERWRITING AND INVESTMENT EXHIBIT

ANALYSIS OF CLAIMS UNPAID-PRIOR YEAR-NET OF REINSURANCE

	Claims Paid Year to Date		Liability End of Current Quarter		5	6
	1	2	3	4	Claims Incurred in Prior Years (Columns 1+3)	Estimated Claim Reserve and Claim Liability Dec 31 of Prior Year
	On Claims Incurred Prior to January 1 of Current Year	On Claims Incurred During the Year	On Claims Unpaid Dec 31 of Prior Year	On Claims Incurred During the Year		
1. Comprehensive (hospital & medical)						
2. Medicare Supplement						
3. Dental only						
4. Vision only						
5. Federal Employees Health Benefits Plan						
6. Title XVIII - Medicare		143,163,329		10,950,500		
7. Title XIX - Medicaid						
8. Other health						
9. Health subtotal (Lines 1 to 8)		143,163,329		10,950,500		
10. Healthcare receivables (a)						
11. Other non-health						
12. Medical incentive pools and bonus amounts		2,005,678		977,287		
13. Totals (Lines 9 - 10 + 11 + 12)		145,169,007		11,927,787		

(a) Excludes \$.....0 loans or advances to providers not yet expensed.

Notes to Financial Statement

SECTION A

1. Summary of Significant Accounting Policies

- A. The accompanying financial statements of AultCare Health Insurance Company are presented on the basis of accounting practices prescribed or permitted by the Ohio Department of Insurance.

The Ohio Department of Insurance recognizes only statutory accounting prescribed or permitted by the State of Ohio for determining and reporting the financial condition and results of operations of an insurance company, for determining its solvency under the Ohio Insurance Law. The National Association of Insurance Commissioners' (NAIC) Accounting Practices and Procedures manual, (NAIC SAP) has been adopted as a component of prescribed or permitted practices by the state of Ohio.

- B. The preparation of financial statement in conformity with Statutory Accounting Principles requires management to make estimates and assumptions that affect the reported amounts of assets and liabilities. It also requires disclosure of contingent assets and liabilities at the date of the financial statements and the reported amounts of revenue and expenses during the period. Actual results could differ from those estimates.

C. Accounting Policy

- (1) Short-term investments are stated at amortized cost.
- (2) Bonds were stated at amortized cost using the straight-line method.
- (3) Common stock is stated at market value.
- (4) The Company had no preferred stock.
- (5) The Company had no mortgage loans.
- (6) The Company had no loan backed securities.
- (7) The Company has investments in subsidiaries and affiliates with a book adjusted carrying value totaling \$38,562,867.
- (8) The Company had no investments in joint ventures, partnerships, or limited liability companies.
- (9) The Company had no derivatives.
- (10) The Company does not utilize anticipated investment income as a factor in the premium deficiency calculation.
- (11) The Company estimated the liabilities for losses based on independent actuary calculations received quarterly.
- (12) The Company has not modified its capitalization policy from the prior period.
- (13) The Company has pharmacy rebates totaling \$742,353.

2. Accounting Changes and Corrections of Errors

- A. The Company had no change in accounting principles and/or correction of errors in 2015.

3. Business Combinations and Goodwill

- A. The Company had no business combinations accounted for under the statutory purchase method.
- B. The Company was not part of any merger.
- C. The Company had no assumption of reinsurance.
- D. An impairment loss was not recognized.

4. Discontinued Operations

- A. The Company did not discontinue any operations.

5. Investments

- A. The Company had no mortgage Loan Investments.
- B. The Company had no recorded investments in Restructured Loans.
- C. The Company had no recorded investments in Reverse Mortgages.
- D. The Company had no recorded investments in Loan-Backed Securities.
- E. The Company had no recorded investments in Repurchase Agreements.
- F. The Company has no recorded investments in Real Estate.
- G. The Company has no investments in Low-Income Housing Tax Credits.
- H. The Company has no investments in Restricted Assets.

6. Joint Ventures, Partnerships and Limited Liability Companies

- A. The Company had no investments in joint ventures, partnerships or limited liability companies.
- B. The Company had no impaired investments in joint ventures, partnerships or limited liability companies.

7. Investment Income

- A. The Company did not exclude any investment income due and accrued.

Notes to Financial Statement

8. Derivative Instruments
 - A. The Company had no derivative instruments.
9. Income Taxes
 - A. The Company had no net deferred tax asset/ (liability) at September 30, 2015
 - B. Not Applicable
 - C. The Company had no Current Income Taxes
 - D. The Company had no book to tax adjustments
 - E. Operating Loss and Tax Credit Carry forwards and Protective Tax Deposits
 - (1) At Sep 30, 2015, the Company had no net operating loss carry forwards available to offset against future taxable income.
 - (2) The Company had no income taxes in current or prior years
 - F. Not Applicable.
 - G. Federal or Foreign Income Tax Loss Contingencies
 - (1) The Company does not have any tax loss contingencies for which it is reasonably possible that the total liability will significantly increase within twelve months of the reporting date.
10. Information Concerning Parent, Subsidiaries and Affiliates
 - A, B, C, The following transactions are all as of Sep 30, 2015; The Company has paid \$49,104,067 in capitated claims to Aultman Hospital for their Medicare enrollees. The Company has a management services agreement with AultCare Corporation, an affiliate that allows various administrative, marketing, and claims processing services to be completed on behalf of the Company. The Company paid \$345,627 to Aultman Health Foundation for management services that were provided and paid \$3,299,828 of expenses to AultCare Corporation for management services. The Company has an operating lease for office space and paid \$234,589 to Aultman Health Foundation for rent. In April 2015, AultCare Insurance Company made a capital distribution to AultCare Health Insuring Corporation of \$31,479,461.
 - D. At Sep 30, 2015, the Company reported \$0 due from the parent company, AultCare Holding Company. The Company has an amount due from AultCare Insurance Company, an affiliate, of \$2,560,234.64. The Company also has capitation arrangement with Aultman Hospital for anticipation of future services. As of Sep 30, 2015, the Company has paid \$5,400,000 Aultman Health Foundation for these future services.
 - E. The Company did not make any guarantees or undertakings, written or otherwise, for the benefit of an affiliate or related party which resulted in a material contingent exposure of the Company's assets to any liabilities.
 - F. The Company had no administrative, marketing, and claims processing services.
 - G. All outstanding shares of the Company were owned by the parent company, AultCare Holding Company, a not-for-profit foundation domiciled in the State of Ohio.
 - H. The Company has no investments in upstream intermediate entities.
 - I. The Company owns 100% of the shares of AultCare Insurance Company.
 - J. The Company did not realize any impairment write down for its investments in Subsidiary, Controlled or Affiliated Companies during the statement period.
 - K. The Company does not have an investment in a foreign insurance subsidiary.
 - L. The Company did not hold an investment in a downstream non insurance holding company.
11. Debt
 - A. The Company did not have any debt including capital notes.
12. Retirement Plans, Deferred Compensation, Postemployment Benefits and Compensated Absences and Other Postretirement Benefit Plans
 - A. The Company had no defined benefit plans.
 - B. Contributions of 3% of each employee's compensation are made each year. The Company's contribution for the defined contribution plan was \$187,223 for 2015.
 - C – F The Company had no multiemployer plans, consolidated company plans, post-employment plans, compensated absences, or postretirement benefit plans.
13. Capital and Surplus, Shareholders' Dividend Restrictions and Quasi-Reorganizations
 - (1) The Company has no common stock outstanding
 - (2) The Company had no preferred stock outstanding.
 - (3) Without prior approval of its domiciliary commissioner, dividends to shareholders are limited by the laws of the Company's state of incorporation, Ohio, to an amount that is based on restrictions relating to statutory surplus and net income.
 - (4) The Company paid no dividends in 2015.
 - (5) There were no restrictions placed on the Company's profits that may be paid as ordinary dividends to stock holders.
 - (6) There were no restrictions placed on the Company's surplus.

Notes to Financial Statement

- (7) The Total Amount of advances to surplus not repaid is \$0.
- (8) The Amounts of stock held by the Company, including stock of affiliated companies, for special purposes was:
For conversion of preferred stock: 0 shares.
A. For employee stock options: 0 shares.
B. For stock purchase warrants: 0 shares.
- (9) The Company did not have changes in the balances of any special surplus funds.
- (10) The Company did not have any surplus funds represented that were reduced
- (11) The Company had no outstanding surplus debentures of similar obligations.
- (12) The Company had no restatements due to prior quasi-reorganizations.
- (13) The Company was not involved in quasi-reorganization.
14. Contingencies
- A. The Company is not aware of any material contingent commitments.
- B. The Company was not aware of any assessments that could have a material financial effect.
- C. The Company had no Gain Contingencies.
- D. Contingent liabilities arising from litigation, income taxes and other matters were not considered material in relation to the financial position of the Company.
15. Leases
- A. Lessee Operating Lease
- (1) The Company leases office space in buildings from Aultman Health Foundation through operating lease agreements that will expire Dec 31, 2015. In 2015, the company paid \$234,589 to Aultman Health Foundation for rent expense. Certain rental commitments have renewal options extending through the year 2019. Some of these renewals are subject to adjustments in future periods.
- (2) At January 1, 2015, the minimum aggregate rental commitments are as follows:

	Year Ending December 31	Operating Leases
1.	2015	\$ 78,196

- B. Leasing is not a significant part of the lessor's business activities in terms of revenue, net income, or assets.

16. Information About Financial Instruments With Off-Balance Sheet Risk and Financial Instruments With Concentrations of Credit Risk

- A. The Company had no financial instruments with off-balance sheet risk.

17. Sale, Transfer and Servicing of Financial Assets and Extinguishments of Liabilities

- A. The Company had no transfers of receivables reported as sales.
- B. The Company had no transfers of financial assets.
- C. The Company had no wash sales.

18. Gain or Loss to the Reporting Entity from Uninsured Plans and the Uninsured Portion of Partially Insured Plans (N/A – Title)

- A. The Company had no Uninsured A&H Plans or Uninsured Portion of Partially Insured Plans.

19. Direct Premium Written/Produced by Managing General Agents/Third Party Administrators (N/A – Title)

- A. The Company had no direct premium written or produced by managing general agents or third party administrators.

20. Fair Value Measurement

- A. The Company has assets that are measured at fair value on a recurring basis.
- (1)

Fair Value Measurements at Reporting Date				
(1) Description	(2) (Level 1)	(3) (Level 2)	(4) (Level 3)	(5) Total
a. Assets at fair value				
Common Stock	\$ 44,592,578	\$ -	\$ -	\$ -
Total assets at fair value	\$ 44,592,578	\$ -	\$ -	\$ -

- (2) The Company had no assets with fair value measurements using significant unobservable inputs.

- (3) The Company uses the valuation technique that is based on the quoted prices in the active markets.

Notes to Financial Statement

21. Other Items
- A. The Company did not experience an extraordinary event or transaction that resulted in a gain or loss.
 - B. The Company had no troubled debt to restructure.
 - C. There are no other disclosures.
 - D. At Sep 30, 2015 the Company had admitted assets of \$2,453,304 in accounts receivable and amounts due from agents. . The Company routinely assesses the collectability of these receivables. Based upon Company experience, less than 1% of the balance may become uncollectible and the potential loss is not material to the Company's financial condition.
 - E. The Company did not have any Business Interruption Insurance Recoveries.
 - F. The Company did not have any State Transferable Tax Credits.
 - G. The Company had no Subprime Mortgage Related Risk Exposure.
 - H. The Company had no offsetting and netting of assets and liabilities.
22. Events Subsequent
- A. As of Nov 15, 2015, there have been no Type I events subsequent to Sep 30, 2015, which would have a material effect on the financial condition of the Company or on the financial statement issued Nov 15, 2015.
 - B. No Change.
23. Reinsurance
- A. Ceded Reinsurance Report
- Section 1 – General Interrogatories
- (1) Are any of the reinsurers, listed in Schedule S as non-affiliated, owned in excess of 10% or controlled, either directly or indirectly, by the Company or by any representative, officer, trustee, or director of the company?
Yes () No (X)
- Cont. Note 23 A, Section 1
- (2) Have any policies issued by the company been reinsured with a company chartered in a country other than the United States (excluding U.S. branches of such companies) that is owned in excess of 10% or controlled directly or indirectly by an insured, a beneficiary, a creditor or any other person not primarily engaged in the insurance business?
Yes () No (X)
- Section 2 – Ceded Reinsurance Report – Part A
- (1) Does the Company have any reinsurance agreements in effect under which the reinsurer may unilaterally cancel any reinsurance for reasons other than for nonpayment of premium or other similar credits?
Yes () No (X)
 - (2) Does the company have any reinsurance agreements in effect such that the amount of losses paid or accrued through the statement date may result in a payment to the reinsurer of amounts which, in aggregate and allowing for offset of mutual credits from other reinsurance agreements with the same reinsurers exceed the total direct premium collected under the reinsured policies?
Yes () No (X)
- Section 3 – Ceded Reinsurance Report – part B
- (1) What is the estimated amount of the aggregate reduction in surplus, (for agreements other than those under which the reinsurer may unilaterally cancel other than for nonpayment of premium or other similar credits that are reflected in Section 2 above) of termination of all reinsurance agreements, by either party, as of the date of this statement? Where necessary, the company may consider the current or anticipated experience of the business reinsured in making this estimate. \$0
 - (2) Have any new agreements been executed or existing agreements amended, since January 1 of the year this statement, to included policies or contracts that were in force or which had existing reserves established by the company as of the effective date of the agreement?
Yes () No (X)
- B. The Company did not write off any uncollectible reinsurance during the year.
 - C. The Company did not have any commutation of ceded reinsurance during the year.
24. Retrospectively Rated Contracts & Contracts Subject to Redetermination (N/A –Title)
- A. The Company has no retrospectively rated contracts subject to redetermination.
25. Change in Incurred Claims and Claims Adjustment Expenses

Notes to Financial Statement

- A. The Company did not make any changes in the provision for incurred loss and loss adjustment expenses attributable to insured events of prior years.
26. Intercompany Pooling Arrangements
A. The Company had no intercompany pooling arrangements.
27. Structured Settlements
A. The Company had no structured settlements.
28. Health Care Receivables
A.

Quarter	Estimated Pharmacy Rebates as Reported on Financial Statements	Pharmacy Rebates as Billed or Otherwise Confirmed	Actual Rebates Received within 90 Days of Billing	Actual Rebates Received within 91 to 180 Days of Billing	Actual Rebates Received More Than 180 Days After Billing
9/30/2015	742,353				
6/30/2015	601,584				
3/31/2015	109,584				

- B. The Company does not estimate risk sharing receivables.
29. Participating Policies
A. The Company does not have participating policies or policyholder dividends.
30. Premium Deficiency Reserves
A. The Company does not have Premium Deficiency Reserves.
31. Anticipated Salvage and Subrogation
A. The Company did not have anticipated salvage and subrogation included as a reduction of loss reserves.

GENERAL INTERROGATORIES

PART 1 - COMMON INTERROGATORIES GENERAL

- 1.1 Did the reporting entity experience any material transactions requiring the filing of Disclosure of Material Transactions with the State of Domicile, as required by the Model Act? Yes[] No[X]
- 1.2 If yes, has the report been filed with the domiciliary state? Yes[] No[] N/A[X]

- 2.1 Has any change been made during the year of this statement in the charter, by-laws, articles of incorporation, or deed of settlement of the reporting entity? Yes[] No[X]
- 2.2 If yes, date of change:

- 3.1 Is the reporting entity a member of an Insurance Holding Company System consisting of two or more affiliated persons, one or more of which is an insurer? Yes[X] No[]
If yes, complete Schedule Y, Parts 1 and 1A.
- 3.2 Have there been any substantial changes in the organizational chart since the prior quarter end? Yes[] No[X]
- 3.3 If the response to 3.2 is yes, provide a brief description of those changes:

- 4.1 Has the reporting entity been a party to a merger or consolidation during the period covered by this statement? Yes[] No[X]
- 4.2 If yes, provide the name of entity, NAIC Company Code, and state of domicile (use two letter state abbreviation) for any entity that has ceased to exist as a result of the merger or consolidation.

1 Name of Entity	2 NAIC Company Code	3 State of Domicile
.....		

- 5. If the reporting entity is subject to a management agreement, including third-party administrator(s), managing general agent(s), attorney-in-fact, or similar agreement, have there been any significant changes regarding the terms of the agreement or principals involved? Yes[] No[X] N/A[]
If yes, attach an explanation.

- 6.1 State as of what date the latest financial examination of the reporting entity was made or is being made.
- 6.2 State the as of date that the latest financial examination report became available from either the state of domicile or the reporting entity. This date should be the date of the examined balance sheet and not the date the report was completed or released.
- 6.3 State as of what date the latest financial examination report became available to other states or the public from either the state of domicile or the reporting entity. This is the release date or completion date of the examination report and not the date of the examination (balance sheet date).
- 6.4 By what department or departments?
- 6.5 Have all financial statement adjustments within the latest financial examination report been accounted for in a subsequent financial statement filed with Departments? Yes[] No[] N/A[X]
- 6.6 Have all of the recommendations within the latest financial examination report been complied with? Yes[] No[] N/A[X]

- 7.1 Has this reporting entity had any Certificates of Authority, licenses or registrations (including corporate registration, if applicable) suspended or revoked by any governmental entity during the reporting period? Yes[] No[X]
- 7.2 If yes, give full information

- 8.1 Is the company a subsidiary of a bank holding company regulated by the Federal Reserve Board? Yes[] No[X]
- 8.2 If response to 8.1 is yes, please identify the name of the bank holding company.
- 8.3 Is the company affiliated with one or more banks, thrifts or securities firms? Yes[] No[X]
- 8.4 If response to 8.3 is yes, please provide below the names and location (city and state of the main office) of any affiliates regulated by a federal regulatory services agency [i.e. the Federal Reserve Board (FRB), the Office of the Comptroller of the Currency (OCC), the Federal Deposit Insurance Corporation (FDIC) and the Securities Exchange Commission (SEC)] and identify the affiliate's primary federal regulator.].

1 Affiliate Name	2 Location (City, State)	3 FRB	4 OCC	5 FDIC	6 SEC
.....	Yes[] No[X]	Yes[] No[X]	Yes[] No[X]	Yes[] No[X]

- 9.1 Are the senior officers (principal executive officer, principal financial officer, principal accounting officer or controller, or persons performing similar functions) of the reporting entity subject to a code of ethics, which includes the following standards? Yes[X] No[]
 - (a) Honest and ethical conduct, including the ethical handling of actual or apparent conflicts of interest between personal and professional relationships;
 - (b) Full, fair, accurate, timely and understandable disclosure in the periodic reports required to be filed by the reporting entity;
 - (c) Compliance with applicable governmental laws, rules and regulations;
 - (d) The prompt internal reporting of violations to an appropriate person or persons identified in the code; and
 - (e) Accountability for adherence to the code.
- 9.11 If the response to 9.1 is No, please explain:
- 9.2 Has the code of ethics for senior managers been amended? Yes[] No[X]
- 9.21 If the response to 9.2 is Yes, provide information related to amendment(s).
- 9.3 Have any provisions of the code of ethics been waived for any of the specified officers? Yes[] No[X]
- 9.31 If the response to 9.3 is Yes, provide the nature of any waiver(s).

FINANCIAL

- 10.1 Does the reporting entity report any amounts due from parent, subsidiaries or affiliates on Page 2 of this statement? Yes[] No[X]
- 10.2 If yes, indicate any amounts receivable from parent included in the Page 2 amount: \$..... 0

INVESTMENT

- 11.1 Were any of the stocks, bonds, or other assets of the reporting entity loaned, placed under option agreement, or otherwise made available for use by another person? (Exclude securities under securities lending agreements.) Yes[] No[X]
- 11.2 If yes, give full and complete information relating thereto:

- 12. Amount of real estate and mortgages held in other invested assets in Schedule BA: \$..... 0
- 13. Amount of real estate and mortgages held in short-term investments: \$..... 0

- 14.1 Does the reporting entity have any investments in parent, subsidiaries and affiliates? Yes[X] No[]

GENERAL INTERROGATORIES (Continued)

INVESTMENT

14.2 If yes, please complete the following:

	1 Prior Year-End Book/Adjusted Carrying Value	2 Current Quarter Book/Adjusted Carrying Value
14.21 Bonds		
14.22 Preferred Stock		
14.23 Common Stock	64,621,616	37,872,620
14.24 Short-Term Investments		
14.25 Mortgages Loans on Real Estate		
14.26 All Other	(753)	3,250,481
14.27 Total Investment in Parent, Subsidiaries and Affiliates (Subtotal Lines 14.21 to 14.26)	64,620,863	41,123,101
14.28 Total Investment in Parent included in Lines 14.21 to 14.26 above		

15.1 Has the reporting entity entered into any hedging transactions reported on Schedule DB?

Yes No
Yes No N/A

15.2 If yes, has a comprehensive description of the hedging program been made available to the domiciliary state?
If no, attach a description with this statement.

16. For the reporting entity's security lending program, state the amount of the following as of the current statement date:

16.1 Total fair value of reinvested collateral assets reported on Schedule DL, Parts 1 and 2

\$ 0

16.2 Total book adjusted/carrying value of reinvested collateral assets reported on Schedule DL, Parts 1 and 2

\$ 0

16.3 Total payable for securities lending reported on the liability page

\$ 0

17. Excluding items in Schedule E - Part 3 - Special Deposits, real estate, mortgage loans and investments held physically in the reporting entity's offices, vaults or safety deposit boxes, were all stocks, bonds and other securities, owned throughout the current year held pursuant to a custodial agreement with a qualified bank or trust company in accordance with Section 1, III - General Examination Considerations, F. Outsourcing of Critical Functions, Custodial or Safekeeping Agreements of the NAIC Financial Condition Examiners Handbook?

Yes No

17.1 For all agreements that comply with the requirements of the NAIC Financial Condition Examiners Handbook, complete the following:

1 Name of Custodian(s)	2 Custodian Address
FirstMerit Trust Company	4481 Munson St. NW #200, Canton, OH 44718
The Vanguard Group	P.O. Box 2600 Valley Forge PA 19482

17.2 For all agreements that do not comply with the requirements of the NAIC Financial Condition Examiners Handbook, provide the name, location and a complete explanation:

1 Name(s)	2 Location(s)	3 Complete Explanation(s)

17.3 Have there been any changes, including name changes, in the custodian(s) identified in 17.1 during the current quarter?

Yes No

17.4 If yes, give full and complete information relating thereto:

1 Old Custodian	2 New Custodian	3 Date of Change	4 Reason

17.5 Identify all investment advisors, brokers/dealers or individuals acting on behalf of broker/dealers that have access to the investment accounts, handle securities and have authority to make investments on behalf of the reporting entity:

1 Central Registration Depository	2 Name(s)	3 Address

18.1 Have all the filing requirements of the Purposes and Procedures Manual of the NAIC Securities Valuation Office been followed?

Yes No

18.2 If no, list exceptions:

GENERAL INTERROGATORIES

PART 2 - HEALTH

1. Operating Percentages:	
1.1 A&H loss percent	86.470%
1.2 A&H cost containment percent	1.970%
1.3 A&H expense percent excluding cost containment expenses	7.980%
2.1 Do you act as a custodian for health savings accounts?	Yes[] No[X]
2.2 If yes, please provide the amount of custodial funds held as of the reporting date.	\$..... 0
2.3 Do you act as an administrator for health savings accounts?	Yes[] No[X]
2.4 If yes, please provide the balance of the funds administered as of the reporting date.	\$..... 0

SCHEDULE S - CEDED REINSURANCE
Showing All New Reinsurance Treaties - Current Year to Date

1 NAIC Company Code	2 ID Number	3 Effective Date	4 Name of Reinsurer	5 Domiciliary Jurisdiction	6 Type of Reinsurance Ceded	7 Type of Reinsurer	8 Certified Reinsurer Rating (1 through 6)	9 Effective Date of Certified Reinsurer Rating

SCHEDULE T - PREMIUMS AND OTHER CONSIDERATIONS

Current Year to Date - Allocated by States and Territories

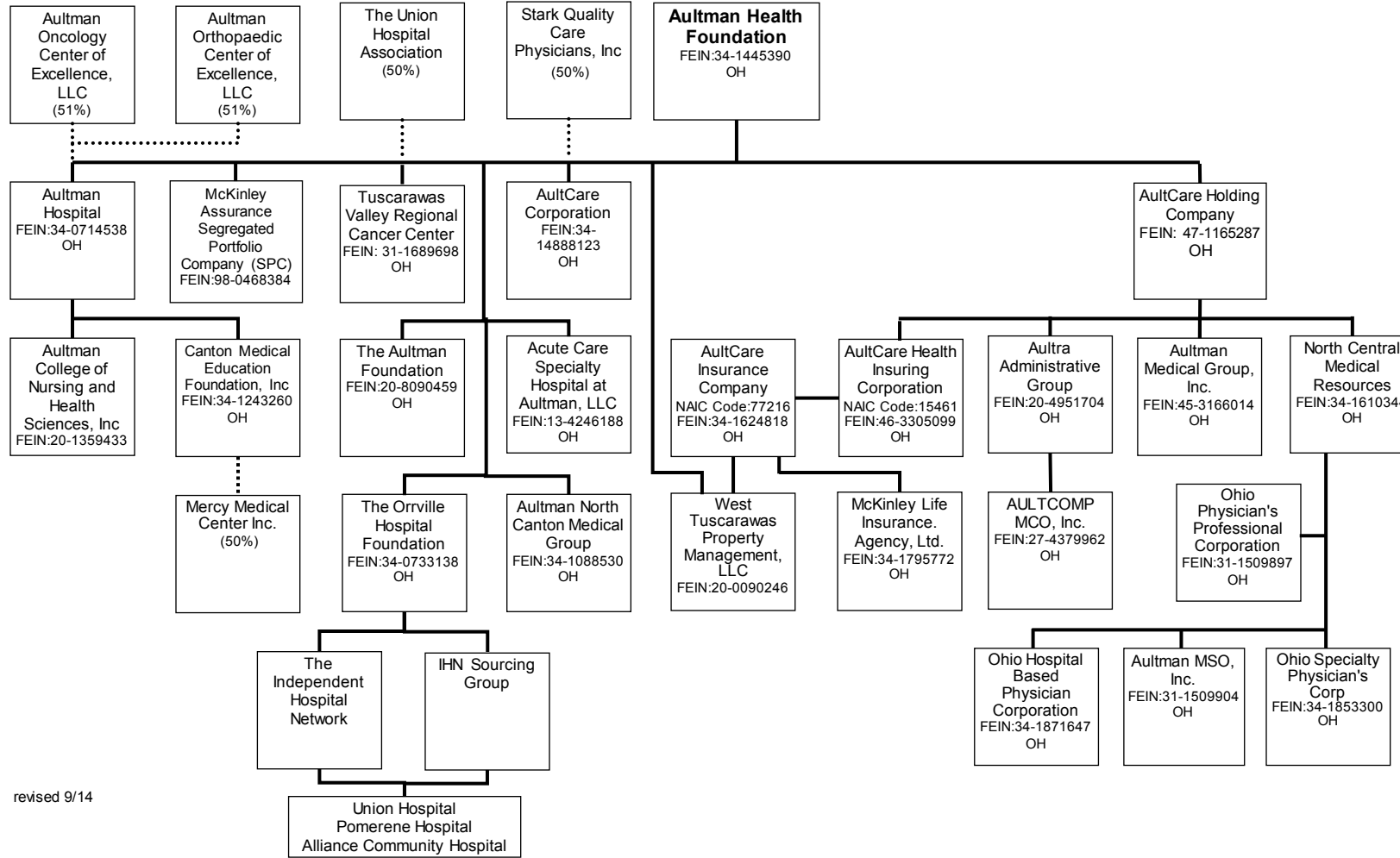
State, Etc.	1 Active Status	Direct Business Only							
		2 Accident and Health Premiums	3 Medicare Title XVIII	4 Medicaid Title XIX	5 Federal Employees Health Benefits Program Premiums	6 Life and Annuity Premiums and Other Considerations	7 Property/Casualty Premiums	8 Total Columns 2 Through 7	9 Deposit-Type Contracts
1. Alabama (AL)	N								
2. Alaska (AK)	N								
3. Arizona (AZ)	N								
4. Arkansas (AR)	N								
5. California (CA)	N								
6. Colorado (CO)	N								
7. Connecticut (CT)	N								
8. Delaware (DE)	N								
9. District of Columbia (DC)	N								
10. Florida (FL)	N								
11. Georgia (GA)	N								
12. Hawaii (HI)	N								
13. Idaho (ID)	N								
14. Illinois (IL)	N								
15. Indiana (IN)	N								
16. Iowa (IA)	N								
17. Kansas (KS)	N								
18. Kentucky (KY)	N								
19. Louisiana (LA)	N								
20. Maine (ME)	N								
21. Maryland (MD)	N								
22. Massachusetts (MA)	N								
23. Michigan (MI)	N								
24. Minnesota (MN)	N								
25. Mississippi (MS)	N								
26. Missouri (MO)	N								
27. Montana (MT)	N								
28. Nebraska (NE)	N								
29. Nevada (NV)	N								
30. New Hampshire (NH)	N								
31. New Jersey (NJ)	N								
32. New Mexico (NM)	N								
33. New York (NY)	N								
34. North Carolina (NC)	N								
35. North Dakota (ND)	N								
36. Ohio (OH)	L		172,962,571					172,962,571	
37. Oklahoma (OK)	N								
38. Oregon (OR)	N								
39. Pennsylvania (PA)	N								
40. Rhode Island (RI)	N								
41. South Carolina (SC)	N								
42. South Dakota (SD)	N								
43. Tennessee (TN)	N								
44. Texas (TX)	N								
45. Utah (UT)	N								
46. Vermont (VT)	N								
47. Virginia (VA)	N								
48. Washington (WA)	N								
49. West Virginia (WV)	N								
50. Wisconsin (WI)	N								
51. Wyoming (WY)	N								
52. American Samoa (AS)	N								
53. Guam (GU)	N								
54. Puerto Rico (PR)	N								
55. U.S. Virgin Islands (VI)	N								
56. Northern Mariana Islands (MP)	N								
57. Canada (CAN)	N								
58. Aggregate other alien (OT)	X X X								
59. Subtotal	X X X		172,962,571					172,962,571	
60. Reporting entity contributions for Employee Benefit Plans	X X X								
61. Total (Direct Business)	(a) 1		172,962,571					172,962,571	
DETAILS OF WRITE-INS									
58001.	X X X								
58002.	X X X								
58003.	X X X								
58998. Summary of remaining write-ins for Line 58 from overflow page	X X X								
58999. TOTALS (Lines 58001 through 58003 plus 58998) (Line 58 above)	X X X								

(L) Licensed or Chartered - Licensed Insurance Carrier or Domiciled RRG; (R) Registered - Non-domiciled RRGs; (Q) Qualified - Qualified or Accredited Reinsurer; (E) Eligible - Reporting Entities eligible or approved to write Surplus Lines in the state; (N) None of the above - Not allowed to write business in the state.

(a) Insert the number of L responses except for Canada and Other Alien.

SCHEDULE Y - INFORMATION CONCERNING ACTIVITIES OF INSURER
MEMBERS OF A HOLDING COMPANY GROUP
PART 1 - ORGANIZATIONAL CHART

Aultman Organization Structure by Legal Entity



Q15

SCHEDULE Y

PART 1A - DETAIL OF INSURANCE HOLDING COMPANY SYSTEM

1	2	3	4	5	6	7	8	9	10	11	12	13	14	15	
Group Code	Group Name	NAIC Company Code	ID Number	FEDERAL RSSD	CIK	Name of Securities Exchange if Publicly Traded (U.S. or International)	Names of Parent, Subsidiaries Or Affiliates	Domiciliary Location	Relationship to Reporting Entity	Directly Controlled by (Name of Entity / Person)	Type of Control (Ownership, Board, Management, Attorney-in-Fact, Influence, Other)	If Control is Ownership Provide Percentage	Ultimate Controlling Entity(ies) / Person(s)	*	
4805		00000	34-1445390				Aultman Health Foundation	US	UDP	Aultman Health Foundation	Board of Directors		Aultman Health Foundation		
		00000	34-0714538				Aultman Hospital	US	NIA	Aultman Health Foundation	Ownership	100.0	Aultman Health Foundation	0000004	
		77216	34-1624818				AultCare Insurance Company	US	RE	AultCare Health Insuring Corp	Ownership	100.0	Aultman Health Foundation		
		00000	34-1488123				AultCare Corporation	US	IA	Aultman Health Foundation & Stark County Care Physicians, Inc	Other		Aultman Health Foundation	0000001	
			00000	20-0090246				West Tuscarawas Property Management, LLC	US	DS	AultCare Insurance Company	Ownership	94.0	Aultman Health Foundation	
			00000	34-1795772				McKinley Life Insurance Agency, Ltd.	US	DS	AultCare Insurance Company	Ownership	100.0	Aultman Health Foundation	
			00000	20-4951704				Aultra Administrative Group	US	IA	AultCare Holding Company	Management		Aultman Health Foundation	
			00000	27-4379962				AultComp MCO, Inc.	US	NIA	Aultra Administrative Group	Ownership	100.0	Aultman Health Foundation	
			00000	34-1853300				Ohio Specialty Physician's Corporation	US	NIA	North Central Medical Resources	Ownership	100.0	Aultman Health Foundation	
			00000	98-0468384				McKinley Assurance Segregated Portfolio Company (SPC)	US	NIA	Aultman Health Foundation	Ownership	100.0	Aultman Health Foundation	
			00000	20-1359433				Aultman College of Nursing and Health Sciences	US	NIA	Aultman Hospital	Ownership	100.0	Aultman Hospital	
			00000	31-1509904				Aultman MSO, Inc.	US	NIA	North Central Medical Resources	Ownership	100.0	Aultman Health Foundation	
			00000	20-8090459				The Aultman Foundation	US	NIA	Aultman Health Foundation	Ownership	100.0	Aultman Health Foundation	
			00000	31-1509897				Ohio Physicians Professional Corporation	US	NIA	North Central Medical Resources	Ownership	100.0	Aultman Health Foundation	
			00000	34-1610344				North Central Medical Resources	US	NIA	AultCare Holding Company	Ownership	100.0	Aultman Health Foundation	
			00000	34-1871647				Ohio Hospital Based Physician Corporation	US	NIA	North Central Medical Resources	Ownership	100.0	Aultman Health Foundation	
			00000	31-1689698				Tuscarawas Valley Regional Cancer Center	US	NIA	Other	Ownership, Board of Directors	50.0	Aultman Health Foundation	0000002
			00000	13-4246188				Acute Care Specialty Hospital at Aultman, LLC	US	NIA	Aultman Health Foundation	Ownership	100.0	Aultman Health Foundation	
		00000	34-1243260				Canton Medical Education Foundation	US	NIA	Other	Ownership, Board of Directors	50.0	Aultman Hospital	0000003	
4805		15461	46-3305099				AultCare Health Insuring Corporation	US	NIA	Aultman Health Foundation	Ownership	100.0	Aultman Health Foundation		
		00000	34-1088530				Aultman North Canton Medical	US	NIA	Aultman Health Foundation	Ownership, Board of Directors	100.0	Aultman Health Foundation		
		00000	34-0733138				The Orville Hospital Foundation	US	NIA	Aultman Health Foundation	Ownership	100.0	Aultman Health Foundation		
		00000	45-3166014				Aultman Medical Group, Inc	US	UDP	AultCare Holding Company	Ownership	100.0	Aultman Health Foundation		
		00000	47-1165287				AultCare Holding Company	US	UDP	Aultman Health Foundation	Ownership	100.0	Aultman Health Foundation		

016

Asterisk	Explanation
0000001	AultCare Corporation's governance is controlled by Aultman Health Foundation 50% and Stark Quality Care Physicians, Inc 50%, 100% of equity owned by Aultman Health Foundation
0000002	Tuscarawas Valley Regional Cancer Center is controlled by Aultman Health Foundation 50% and a non-insurance affiliate entity Union Hospital 50%
0000003	Canton Medical Education Foundation is controlled by Aultman Hospital 50% and a non-insurance affiliate entity Mercy Medical Center 50%

SUPPLEMENTAL EXHIBITS AND SCHEDULES INTERROGATORIES

The following supplemental reports are required to be filed as part of your statement filing. However, in the event that your company does not transact the type of business for which the special report must be filed, your response of NO to the specific interrogatory will be accepted in lieu of filing a "NONE" report and a bar code will be printed below. If the supplement is required of your company but is not being filed for whatever reason enter SEE EXPLANATION and provide an explanation following the interrogatory questions.

RESPONSE

1. Will the Medicare Part D Coverage Supplement be filed with the state of domicile and the NAIC with this statement?

No

Explanations:

Bar Codes:

Medicare Part D Coverage Supplement



15461201536500003

2015

Document Code: 365

STATEMENT AS OF **September 30, 2015** OF THE **AultCare Health Insuring Corporation**
SCHEDULE A - VERIFICATION

Real Estate

	1	2
	Year To Date	Prior Year Ended December 31
1. Book/adjusted carrying value, December 31 of prior year		
2. Cost of acquired		
2.1 Actual cost at time of acquisition		
2.2 Additional investment made after acquisition		
3. Current year change in encumbrances		
4. Total gain (loss) on disposals		
5. Deduct amounts received on disposals		
6. Total foreign exchange change in book/adjusted carrying value		
7. Deduct current year's other than temporary impairment recognized		
8. Deduct current year's depreciation		
9. Book/adjusted carrying value at the end of current period (Lines 1 + 2 + 3 + 4 - 5 + 6 - 7 - 8)		
10. Deduct total nonadmitted amounts		
11. Statement value at end of current period (Line 9 minus Line 10)		

NONE

SCHEDULE B - VERIFICATION

Mortgage Loans

	1	2
	Year To Date	Prior Year Ended December 31
1. Book value/recorded investment excluding accrued interest, December 31 of prior year		
2. Cost of acquired:		
2.1 Actual cost at time of acquisition		
2.2 Additional investment made after acquisition		
3. Capitalized deferred interest and other		
4. Accrual of discount		
5. Unrealized valuation increase (decrease)		
6. Total gain (loss) on disposals		
7. Deduct amounts received on disposals		
8. Deduct amortization of premium and mortgage interest points		
9. Total foreign exchange change in book value/recorded investment		
10. Deduct current year's other than temporary impairment recognized		
11. Book value/recorded investment excluding accrued interest at end of current period (Lines 1 + 2 + 3 + 4 + 5 + 6 - 7 - 8 + 9 - 10)		
12. Total valuation allowance		
13. Subtotal (Line 11 plus Line 12)		
14. Deduct total nonadmitted amounts		
15. Statement value at end of current period (Line 13 minus Line 14)		

NONE

SCHEDULE BA - VERIFICATION

Other Long-Term Invested Assets

	1	2
	Year To Date	Prior Year Ended December 31
1. Book/adjusted carrying value, December 31 of prior year	(753)	
2. Cost of acquired:		
2.1 Actual cost at time of acquisition		
2.2 Additional investment made after acquisition	3,251,234	(753)
3. Capitalized deferred interest and other		
4. Accrual of discount		
5. Unrealized valuation increase (decrease)		
6. Total gain (loss) on disposals		
7. Deduct amounts received on disposals		
8. Deduct amortization of premium and depreciation		
9. Total foreign exchange change in book/adjusted carrying value		
10. Deduct current year's other than temporary impairment recognized		
11. Book/adjusted carrying value at end of current period (Lines 1 + 2 + 3 + 4 + 5 + 6 - 7 - 8 + 9 - 10)	3,250,481	(753)
12. Deduct total nonadmitted amounts		
13. Statement value at end of current period (Line 11 minus Line 12)	3,250,481	(753)

SCHEDULE D - VERIFICATION

Bonds and Stocks

	1	2
	Year To Date	Prior Year Ended December 31
1. Book/adjusted carrying value of bonds and stocks, December 31 of prior year	66,148,379	
2. Cost of bonds and stocks acquired	6,645,989	68,361,843
3. Accrual of discount	266,314	7,368
4. Unrealized valuation increase (decrease)	3,572,482	(1,747,733)
5. Total gain (loss) on disposals	58,309	641
6. Deduct consideration for bonds and stocks disposed of	5,374,485	473,200
7. Deduct amortization of premium	191,557	540
8. Total foreign exchange change in book/adjusted carrying value		
9. Deduct current year's other than temporary impairment recognized		
10. Book/adjusted carrying value at end of current period (Lines 1 + 2 + 3 + 4 + 5 - 6 - 7 + 8 - 9)	71,125,432	66,148,379
11. Deduct total nonadmitted amounts		
12. Statement value at end of current period (Line 10 minus Line 11)	71,125,432	66,148,379

SCHEDULE D - PART 1B

Showing the Acquisitions, Dispositions and Non-Trading Activity During the Current Quarter for all Bonds and Preferred Stock by NAIC Designation

	1	2	3	4	5	6	7	8
NAIC Designation	Book/Adjusted Carrying Value Beginning of Current Quarter	Acquisitions During Current Quarter	Dispositions During Current Quarter	Non-Trading Activity During Current Quarter	Book/Adjusted Carrying Value End of First Quarter	Book/Adjusted Carrying Value End of Second Quarter	Book/Adjusted Carrying Value End of Third Quarter	Book/Adjusted Carrying Value December 31 Prior Year
BONDS								
1. NAIC 1 (a)	24,235,354	4,714,645	3,790,166	40,258	1,426,725	24,235,354	25,200,091	1,526,763
2. NAIC 2 (a)	1,302,431	117,833		(6,985)		1,302,431	1,413,279	
3. NAIC 3 (a)								
4. NAIC 4 (a)								
5. NAIC 5 (a)								
6. NAIC 6 (a)								
7. Total Bonds	25,537,786	4,832,478	3,790,166	33,272	1,426,725	25,537,786	26,613,370	1,526,763
PREFERRED STOCK								
8. NAIC 1								
9. NAIC 2								
10. NAIC 3								
11. NAIC 4								
12. NAIC 5								
13. NAIC 6								
14. Total Preferred Stock								
15. Total Bonds & Preferred Stock	25,537,786	4,832,478	3,790,166	33,272	1,426,725	25,537,786	26,613,370	1,526,763

(a) Book/Adjusted Carrying Value column for the end of the current reporting period includes the following amount of non-rated short-term and cash equivalent bonds by NAIC designation: NAIC 1 \$.....0; NAIC 2 \$.....0; NAIC 3 \$.....0; NAIC 4 \$.....0; NAIC 5 \$.....0; NAIC 6 \$.....0

QS102

SCHEDULE DA - PART 1**Short - Term Investments**

	1 Book/Adjusted Carrying Value	2 Par Value	3 Actual Cost	4 Interest Collected Year To Date	5 Paid for Accrued Interest Year To Date
9199999. Totals	277,474	X X X	277,099	650	1,652

SCHEDULE DA - Verification**Short-Term Investments**

	1 Year To Date	2 Prior Year Ended December 31
1. Book/adjusted carrying value, December 31 of prior year		
2. Cost of short-term investments acquired	449,342	
3. Accrual of discount	576	
4. Unrealized valuation increase (decrease)		
5. Total gain (loss) on disposals	3	
6. Deduct consideration received on disposals	167,539	
7. Deduct amortization of premium	4,908	
8. Total foreign exchange change in book/adjusted carrying value		
9. Deduct current year's other than temporary impairment recognized		
10. Book/adjusted carrying value at end of current period (Lines 1 + 2 + 3 + 4 + 5 - 6 - 7 + 8 - 9)	277,474	
11. Deduct total nonadmitted amounts		
12. Statement value at end of current period (Line 10 minus Line 11)	277,474	

SI04 Schedule DB - Part A Verification NONE

SI04 Schedule DB - Part B Verification NONE

SI05 Schedule DB Part C Section 1 NONE

SI06 Schedule DB Part C Section 2 NONE

SI07 Schedule DB - Verification NONE

SI08 Schedule E - Verification (Cash Equivalentents) NONE

E01 Schedule A Part 2 NONE

E01 Schedule A Part 3 NONE

E02 Schedule B Part 2 NONE

E02 Schedule B Part 3 NONE

SCHEDULE BA - PART 2

Showing Other Long-Term Invested Assets ACQUIRED AND ADDITIONS MADE During the Current Quarter

1 CUSIP Identification	2 Name or Description	Location		5 Name of Vendor or General Partner	6 NAIC Designation	7 Date Originally Acquired	8 Type and Strategy	9 Actual Cost at Time of Acquisition	10 Additional Investment Made After Acquisition	11 Amount of Encumbrances	12 Commitment for Additional Investment	13 Percentage of Ownership
		3 City	4 State									
Non-collateral Loans - Affiliated												
	AultCare Insurance Company	Canton	OH	AultCare Health Insuring Corporation		01/01/2014			3,250,481			
2899999 Subtotal - Non-collateral Loans - Affiliated									3,250,481			X X X
4499999 Total - Unaffiliated												X X X
4599999 Total - Affiliated									3,250,481			X X X
4699999 TOTALS									3,250,481			X X X

SCHEDULE BA - PART 3

Showing Other Long-Term Invested Assets DISPOSED, Transferred or Repaid During the Current Quarter

1 CUSIP Identification	2 Name or Description	Location		5 Name of Purchaser or Nature of Disposal	6 Date Originally Acquired	7 Disposal Date	8 Book/Adjusted Carrying Value Less Encumbrances, Prior Year	Change in Book/Adjusted Carrying Value						15 Book/Adjusted Carrying Value Less Encumbrances on Disposal	16 Consideration	17 Foreign Exchange Gain (Loss) on Disposal	18 Realized Gain (Loss) on Disposal	19 Total Gain (Loss) on Disposal	20 Investment Income
		3 City	4 State					9 Unrealized Valuation Increase (Decrease)	10 Current Year's (Depreciation) or (Amortization)/ Accretion	11 Current Year's Other Than Temporary Impairment Recognized	12 Capitalized Deferred Interest and Other	13 Total Change in B./A.C.V. (9 + 10 - 11 + 12)	14 Total Foreign Exchange Change in B./A.C.V.						
NONE																			
4699999 TOTALS																			

QE03

SCHEDULE D - PART 3

Show All Long-Term Bonds and Stock Acquired During the Current Quarter

1 CUSIP Identification	2 Description	3 Foreign	4 Date Acquired	5 Name of Vendor	6 Number of Shares of Stock	7 Actual Cost	8 Par Value	9 Paid for Accrued Interest and Dividends	10 NAIC Designation or Market Indicator (a)
Bonds - U.S. Governments									
912828G38	U.S. TREASURY NOTE		07/08/2015	Firstmerit Trust	X X X	252,075	250,000	825	1
912828SV3	U.S. TREASURY NOTE		07/08/2015	Firstmerit Trust	X X X	248,125	250,000	642	1
912828UN8	U.S. TREASURY NOTE		07/08/2015	Firstmerit Trust	X X X	250,575	250,000	1,975	1
912828VF4	U.S. TREASURY NOTE		09/21/2015	Firstmerit Trust	X X X	250,000	250,000	1,061	1
0599999 Subtotal - Bonds - U.S. Governments					X X X	1,000,775	1,000,000	4,504	X X X
Bonds - Industrial and Miscellaneous (Unaffiliated)									
14042E6V7	CAPITAL ONE NA CD		09/16/2015	Firstmerit Trust	X X X	135,000	135,000		1
02006LTX1	ALLY BANK UT CD		09/17/2015	Firstmerit Trust	X X X	135,000	135,000		1
539830AY5	LOCKHEED MARTIN CORP		07/16/2015	Firstmerit Trust	X X X	51,141	50,000	563	1
717081DB6	PFIZER INC		08/11/2015	Firstmerit Trust	X X X	57,038	50,000	1,257	1
10112RAR5	BOSTON PROP LP		08/07/2015	Firstmerit Trust	X X X	56,922	50,000	641	2
17275RAT9	CISCO SYSTEMS INC.		09/25/2015	Firstmerit Trust	X X X	50,194	50,000	34	1
126650CJ7	CVS HEALTH CORP		09/09/2015	Firstmerit Trust	X X X	60,911	60,000	229	2
244199BE4	DEERE & CO.		09/30/2015	Firstmerit Trust	X X X	48,956	50,000	404	1
3899999 Subtotal - Bonds - Industrial and Miscellaneous (Unaffiliated)					X X X	595,161	580,000	3,128	X X X
8399997 Subtotal - Bonds - Part 3					X X X	1,595,936	1,580,000	7,631	X X X
8399998 Summary Item from Part 5 for Bonds (N/A to Quarterly)					X X X	X X X	X X X	X X X	X X X
8399999 Subtotal - Bonds					X X X	1,595,936	1,580,000	7,631	X X X
8999998 Summary Item from Part 5 for Preferred Stocks (N/A to Quarterly)					X X X	X X X	X X X	X X X	X X X
Common Stocks - Mutual Funds									
31428Q101	FEDERATED TOTAL RETURN BOND		08/25/2015	Firstmerit Trust		3,236,542	X X X		1
9299999 Subtotal - Common Stocks - Mutual Funds					X X X	3,236,542	X X X		X X X
9799997 Subtotal - Common Stocks - Part 3					X X X	3,236,542	X X X		X X X
9799998 Summary Item from Part 5 for Common Stocks (N/A to Quarterly)					X X X	X X X	X X X	X X X	X X X
9799999 Subtotal - Common Stocks					X X X	3,236,542	X X X		X X X
9899999 Subtotal - Preferred and Common Stocks					X X X	3,236,542	X X X		X X X
9999999 Total - Bonds, Preferred and Common Stocks					X X X	4,832,478	X X X	7,631	X X X

(a) For all common stock bearing the NAIC market indicator "U" provide: the number of such issues0.

QE04

SCHEDULE D - PART 4

Show All Long-Term Bonds and Stocks Sold, Redeemed or Otherwise Disposed of During the Current Quarter

1 CUSIP Identification	2 Description	3 F o r e i g n Date	4 Disposal Date	5 Name of Purchaser	6 Number of Shares of Stock	7 Consideration	8 Par Value	9 Actual Cost	10 Prior Year Book/ Adjusted Carrying Value	Change in Book/Adjusted Carrying Value					16 Book/ Adjusted Carrying Value at Disposal Date	17 Foreign Exchange Gain (Loss) on Disposal	18 Realized Gain (Loss) on Disposal	19 Total Gain (Loss) on Disposal	20 Bond Interest/ Stock Dividends Received During Year	21 Stated Contractual Maturity Date	22 NAIC Designation or Market Indicator (a)	
										11 Unrealized Valuation Increase/ (Decrease)	12 Current Year's (Amortization)/ Accretion	13 Current Year's Other Than Temporary Impairment Recognized	14 Total Change in B./A.C.V. (11 + 12 - 13)	15 Total Foreign Exchange Change in B./A.C.V.								
Bonds - U.S. Governments																						
3133EDTQ5	FFCB		08/27/2015	FIRST MERIT	X X X	50,000	50,000	50,000	50,000						50,000				398	08/27/2018	1	
3133EDTL6	FFCB		08/26/2015	FIRST MERIT	X X X	50,000	50,000	50,000	50,000						50,000				485	08/26/2019	1	
3134G56P5	FHLMC MTN		09/24/2015	FIRST MERIT	X X X	50,000	50,000	50,000	50,000						50,000				188	06/24/2016	1	
0599999 Subtotal - Bonds - U.S. Governments					X X X	150,000	150,000	150,000	150,000						150,000				1,070	X X X	X X X	
Bonds - Industrial and Miscellaneous (Unaffiliated)																						
20451PDP8	COMPASS BANK CD		09/11/2015	FIRST MERIT	X X X	112,000	112,000	112,000	225,000		(113,000)		(113,000)		112,000						09/11/2015	1
373334JY8	GEORGIA POWER CO.		08/10/2015	FIRST MERIT	X X X	70,000	70,000	70,060	140,196		(70,195)		(70,195)		70,001		(1)	(1)	263	08/10/2015	1	
001055AE2	AFLAC INC		08/17/2015	FIRST MERIT	X X X	47,000	47,000	47,466	47,754		(746)		(746)		47,007		(7)	(7)	811	08/15/2015	1	
24422ERV3	JOHN DEERE CAP		09/04/2015	FIRST MERIT	X X X	75,000	75,000	75,122	150,315		(75,314)		(75,314)		75,001		(1)	(1)	263	09/04/2015	1	
037411AS4	APACHE CORP		09/01/2015	FIRST MERIT	X X X	80,074	75,000	79,936	163,399		(90,714)		(90,714)		72,685		2,315	2,315	2,648	01/15/2017	1	
039483AY8	ARCHER DANIELS		09/04/2015	FIRST MERIT	X X X	16,581	15,000	16,564	56,314		(57,894)		(57,894)		(1,581)		16,581	16,581	656	03/15/2018	1	
3899999 Subtotal - Bonds - Industrial and Miscellaneous (Unaffiliated)					X X X	400,655	394,000	401,146	782,978		(407,865)		(407,865)		375,113		18,887	18,887	4,640	X X X	X X X	
8399997 Subtotal - Bonds - Part 4					X X X	550,655	544,000	551,146	932,978		(407,865)		(407,865)		525,113		18,887	18,887	5,710	X X X	X X X	
8399998 Summary Item from Part 5 for Bonds (N/A to Quarterly)					X X X	X X X	X X X	X X X	X X X	X X X	X X X	X X X	X X X	X X X	X X X	X X X	X X X	X X X	X X X	X X X	X X X	X X X
8399999 Subtotal - Bonds					X X X	550,655	544,000	551,146	932,978		(407,865)		(407,865)		525,113		18,887	18,887	5,710	X X X	X X X	
8999998 Summary Item from Part 5 for Preferred Stocks (N/A to Quarterly)					X X X	X X X	X X X	X X X	X X X	X X X	X X X	X X X	X X X	X X X	X X X	X X X	X X X	X X X	X X X	X X X	X X X	X X X
Common Stocks - Mutual Funds																						
921937603	Vanguard Total Bond Mkt Index Fund		08/21/2015	FIRST MERIT		3,239,511	X X X	3,267,355				15,488		15,488		(15,488)	(15,488)			X X X	1	
9299999 Subtotal - Common Stocks - Mutual Funds					X X X	3,239,511	X X X	3,267,355				15,488		15,488		15,488		(15,488)	(15,488)		X X X	X X X
9799997 Subtotal - Common Stocks - Part 4					X X X	3,239,511	X X X	3,267,355				15,488		15,488		15,488		(15,488)	(15,488)		X X X	X X X
9799998 Summary Item from Part 5 for Common Stocks (N/A to Quarterly)					X X X	X X X	X X X	X X X	X X X	X X X	X X X	X X X	X X X	X X X	X X X	X X X	X X X	X X X	X X X	X X X	X X X	X X X
9799999 Subtotal - Common Stocks					X X X	3,239,511	X X X	3,267,355				15,488		15,488		15,488		(15,488)	(15,488)		X X X	X X X
9899999 Subtotal - Preferred and Common Stocks					X X X	3,239,511	X X X	3,267,355				15,488		15,488		15,488		(15,488)	(15,488)		X X X	X X X
9999999 Total - Bonds, Preferred and Common Stocks					X X X	3,790,166	X X X	3,818,501	932,978		(392,377)		(392,377)		540,601		3,399	3,399	5,710	X X X	X X X	

(a) For all common stock bearing the NAIC market indicator "U" provide: the number of such issues0.

QE05

E06 Schedule DB Part A Section 1 NONE

E07 Schedule DB Part B Section 1 NONE

E08 Schedule DB Part D Section 1 NONE

E09 Schedule DB Part D Section 2 - Collateral Pledged By Reporting Entity NONE

E09 Schedule DB Part D Section 2 - Collateral Pledged To Reporting Entity NONE

E10 Schedule DL - Part 1 - Securities Lending Collateral Assets NONE

E11 Schedule DL - Part 2 - Securities Lending Collateral Assets NONE

SCHEDULE E - PART 1 - CASH**Month End Depository Balances**

1 Depository		2 Code	3 Rate of Interest	4 Amount of Interest Received During Current Quarter	5 Amount of Interest Accrued at Current Statement Date	Book Balance at End of Each Month During Current Quarter			9 *
						6 First Month	7 Second Month	8 Third Month	
open depositories									
FirstMerit Bank - Trust	Canton, Ohio		0.100	81		186,105	333,722	163,507	X X X
Huntington National Bank	Canton, Ohio					19,691,187	497,234	(336,780)	X X X
FirstMerit Bank - Brokered CD's	Canton, Ohio		0.100	21		48,399	167,034	10,873	X X X
FirstMerit Bank - Mutual Funds Cash	Canton, Ohio					1,466	4,435	9,387	X X X
FirstMerit Bank-Richmond Capital	Canton, Ohio		0.100	29		101,444	121,752	161,760	X X X
0199998 Deposits in0 depositories that do not exceed the allowable limit in any one depository (see Instructions) - open depositories		X X X	X X X						X X X
0199999 Totals - Open Depositories		X X X	X X X	131		20,028,601	1,124,177	8,748	X X X
0299998 Deposits in0 depositories that do not exceed the allowable limit in any one depository (see Instructions) - suspended depositories		X X X	X X X						X X X
0299999 Totals - Suspended Depositories		X X X	X X X						X X X
0399999 Total Cash On Deposit		X X X	X X X	131		20,028,601	1,124,177	8,748	X X X
0499999 Cash in Company's Office		X X X	X X X	X X X	X X X				X X X
0599999 Total Cash		X X X	X X X	131		20,028,601	1,124,177	8,748	X X X

SCHEDULE E - PART 2 - CASH EQUIVALENTS

Show Investments Owned End of Current Quarter

1 Description	2 Code	3 Date Acquired	4 Rate of Interest	5 Maturity Date	6 Book/Adjusted Carrying Value	7 Amount of Interest Due & Accrued	8 Amount Received During Year
NONE							
8699999 Total - Cash Equivalents							

INDEX TO HEALTH QUARTERLY STATEMENT

Accounting Changes and Corrections of Errors; Q10, Note 2; Q11
Accounting Practices and Policies; Q5; Q10, Note 1
Admitted Assets; Q2
Bonds; Q2; Q6; Q11.1; Q11.2; QE04; QE05
Bonuses; Q3; Q4; Q8; Q9
Borrowed Funds; Q3; Q6
Business Combinations and Goodwill; Q10, Note 3
Capital Gains (Losses)
 Realized; Q4
 Unrealized; Q4; Q5
Capital Stock; Q3; Q10, Note 13
Capital Notes; Q6; Q10, Note 11
Caps; QE06; QSI04
Cash; Q2; Q6; QE12
Cash Equivalents; Q2; Q6; QE13
Claims; Q3; Q4; Q8; Q9
Collars; QE06; QSI04
Commissions; Q6
Common Stock; Q2; Q3; Q6; Q11.1; Q11.2
Cost Containment Expenses; Q4
Contingencies; Q10, Note 14
Counterparty Exposure; Q10, Note 8; QE06; QE08
Debt; Q10, Note 11
Deferred Compensation; Q10, Note 12
Derivative Instruments; Q10, Note 8; QSI04; QSI05; QSI06; QSI07; QE06; QE07; QE08
Discontinued Operations; Q10, Note 4
Electronic Data Processing Equipment; Q2
Encumbrances; Q2; QSI01; QE01
Emergency Room; Q4
Expenses; Q3; Q4; Q6
Extinguishment of Liabilities; Q10, Note 17
Extraordinary Item; Q10, Note 21
Fair Value; Q7, Note 20
Fee for Service; Q4
Foreign Exchange; Q2; Q3; Q5; QSI01; QSI03; QE01; QE02; QE03; QE05
Forwards; QE06; QSI04
Furniture, Equipment and Supplies; Q2
Guaranty Fund; Q2
Health Care Receivables; Q2; Q9; Q10, Note 28
Holding Company; Q16
Hospital/Medical Benefits; Q4
Incentive Pools; Q3; Q4; Q8; Q9
Income; Q4; Q5; Q6
Income Taxes; Q2; Q3; Q4; Q5; Q10, Note 9
Incurred Claims and Claim Adjustment Expenses; Q10, Note 25
Intercompany Pooling; Q10, Note 26
Investment Income; Q10, Note 7
 Accrued; Q2
 Earned; Q2; QSI03
 Received; Q6
Investments; Q10, Note 5; Q11.1; Q11.2; QE08
Joint Venture; Q10, Note 6
Leases; Q10, Note 15
Limited Liability Company (LLC); Q10, Note 6
Limited Partnership; Q10, Note 6
Long-Term Invested Assets; Q2; QE03
Managing General Agents; Q10, Note 19
Medicare Part D Coverage; QSupp1
Member Months; Q4; Q7
Mortgage Loans; Q2; Q6; Q11.1; QSI01; QE02
Nonadmitted Assets; Q2; Q5; QSI01; QSI03
Off-Balance Sheet Risk; Q10, Note 16
Options; QE06; QSI04
Organizational Chart; Q11; Q14
Out-of-Area; Q4
Outside Referrals; Q4
Parent, Subsidiaries and Affiliates; Q2; Q3; Q10, Note 10; Q11.1
Participating Policies; Q10, Note 29
Pharmaceutical Rebates; Q10, Note 28
Policyholder Dividends; Q5; Q6
Postemployment Benefits; Q10, Note 12
Postretirement Benefits; Q10, Note 12
Preferred Stock; Q2; Q3; Q6; Q11.1; Q11.2

INDEX TO HEALTH QUARTERLY STATEMENT

Premium Deficiency Reserves; Q10, Note 30
Premiums and Considerations
 Advance; Q3
 Collected; Q6
 Deferred; Q2
 Direct; Q7; Q13
 Earned; Q7
 Retrospective; Q2
 Uncollected; Q2
 Unearned; Q4
 Written; Q4; Q7
Prescription Drugs; Q4
Quasi Reorganizations; Q10, Note 13
Real Estate; Q2; Q6; QE01; QSI01
Redetermination, Contracts Subject to; Q10, Note 24
Reinsurance; Q9; Q10, Note 23
 Ceded; Q3; Q12
 Funds Held; Q2
 Payable; Q3
 Premiums; Q3
 Receivable; Q2; Q4
 Unauthorized; Q3; Q5
Reserves
 Accident and Health; Q3; Q4
 Claim; Q3; Q5; Q8
 Life; Q3
Retirement Plans; Q10, Note 12
Retrospectively Rated Policies; Q10, Note 24
Risk Revenue; Q4
Salvage and Subrogation; Q10, Note 31
Securities Lending; Q2; Q3; QE09; QE11
Servicing of Financial Assets; Q10, Note 17
Short-Term Investments; Q2; Q6; Q11.1; QSI03
Stockholder Dividends; Q5; Q6
Subsequent Events; Q10, Note 22
Surplus; Q3; Q5; Q6
Surplus Notes; Q3; Q5; Q6
Swaps; QE07; QSI04
Synthetic Assets; QSI04; QSI05
Third Party Administrator; Q10, Note 19
Treasury Stock; Q3; Q5
Uninsured Accident and Health; Q2; Q3; Q10, Note 18
Valuation Allowance; QSI01
Wash Sales; Q10, Note 17
Withholds; Q4; Q8