



HEALTH QUARTERLY STATEMENT
AS OF JUNE 30, 2015
OF THE CONDITION AND AFFAIRS OF THE
AMERIGROUP Ohio, Inc. dba AMERIGROUP Community Care

NAIC Group Code 0671 0671 NAIC Company Code 10767 Employer's ID Number 13-4212818
(Current) (Prior)

Organized under the Laws of Ohio, State of Domicile or Port of Entry Ohio

Country of Domicile United States of America

Licensed as business type: Health Maintenance Organization

Is HMO Federally Qualified? Yes [] No [X]

Incorporated/Organized 03/08/2002 Commenced Business 09/01/2005

Statutory Home Office 4361 Irwin Simpson Road, C/O Community Ins. Co. Mason, OH, US 45040
(Street and Number) (City or Town, State, Country and Zip Code)

Main Administrative Office 4425 Corporation Lane
(Street and Number)
Virginia Beach, VA, US 23462 757-490-6900
(City or Town, State, Country and Zip Code) (Area Code) (Telephone Number)

Mail Address N17 W24340 Riverwood Drive Waukesha, WI, US 53188
(Street and Number or P.O. Box) (City or Town, State, Country and Zip Code)

Primary Location of Books and Records N17 W24340 Riverwood Drive
(Street and Number)
Waukesha, WI, US 53188 262-523-2439
(City or Town, State, Country and Zip Code) (Area Code) (Telephone Number)

Internet Website Address www.amerigroup.com

Statutory Statement Contact Brenda J. Buss 262-523-2439
(Name) (Area Code) (Telephone Number)
Brenda.Buss@anthem.com 262-523-4945
(E-mail Address) (FAX Number)

OFFICERS

President/Chairperson Tunde Sotayo Sotunde # Treasurer Robert David Kretschmer
Secretary Kathleen Susan Kiefer Vice President/Assistant Secretary Jack Louis Young

OTHER

Eric (Rick) Kenneth Noble Assistant Treasurer Mark Anthony Blessinger Jr. # Valuation Actuary

DIRECTORS OR TRUSTEES

Carter Allen Beck Tunde Sotayo Sotunde Wayne Scott DeVeydt
Catherine Irene Kelaghan

State of Virginia SS:
County of Virginia Beach

The officers of this reporting entity being duly sworn, each depose and say that they are the described officers of said reporting entity, and that on the reporting period stated above, all of the herein described assets were the absolute property of the said reporting entity, free and clear from any liens or claims thereon, except as herein stated, and that this statement, together with related exhibits, schedules and explanations therein contained, annexed or referred to, is a full and true statement of all the assets and liabilities and of the condition and affairs of the said reporting entity as of the reporting period stated above, and of its income and deductions therefrom for the period ended, and have been completed in accordance with the NAIC Annual Statement Instructions and Accounting Practices and Procedures manual except to the extent that: (1) state law may differ; or, (2) that state rules or regulations require differences in reporting not related to accounting practices and procedures, according to the best of their information, knowledge and belief, respectively. Furthermore, the scope of this attestation by the described officers also includes the related corresponding electronic filing with the NAIC, when required, that is an exact copy (except for formatting differences due to electronic filing) of the enclosed statement. The electronic filing may be requested by various regulators in lieu of or in addition to the enclosed statement.

Tunde Sotayo Sotunde
President/Chairperson

Kathleen Susan Kiefer
Secretary

Robert David Kretschmer
Treasurer

Subscribed and sworn to before me this 31st day of July 2015
Donna McIntosh

- a. Is this an original filing? Yes [X] No []
b. If no,
1. State the amendment number.....
2. Date filed.....
3. Number of pages attached.....



ASSETS

	Current Statement Date			4 December 31 Prior Year Net Admitted Assets
	1 Assets	2 Nonadmitted Assets	3 Net Admitted Assets (Cols. 1 - 2)	
1. Bonds	3,769,553		3,769,553	24,849,637
2. Stocks:				
2.1 Preferred stocks			0	0
2.2 Common stocks			0	0
3. Mortgage loans on real estate:				
3.1 First liens			0	0
3.2 Other than first liens.....			0	0
4. Real estate:				
4.1 Properties occupied by the company (less \$ encumbrances)			0	0
4.2 Properties held for the production of income (less \$ encumbrances)			0	0
4.3 Properties held for sale (less \$ encumbrances)			0	0
5. Cash (\$5,305,554), cash equivalents (\$) and short-term investments (\$4,331,244)	9,636,798		9,636,798	(11,293,957)
6. Contract loans (including \$ premium notes)			0	0
7. Derivatives			0	0
8. Other invested assets			0	0
9. Receivables for securities			0	0
10. Securities lending reinvested collateral assets	0		0	682,833
11. Aggregate write-ins for invested assets	0	0	0	0
12. Subtotals, cash and invested assets (Lines 1 to 11)	13,406,351	0	13,406,351	14,238,513
13. Title plants less \$ charged off (for Title insurers only)			0	0
14. Investment income due and accrued	45,882		45,882	246,161
15. Premiums and considerations:				
15.1 Uncollected premiums and agents' balances in the course of collection	90,465		90,465	90,465
15.2 Deferred premiums, agents' balances and installments booked but deferred and not yet due (including \$ earned but unbilled premiums)			0	0
15.3 Accrued retrospective premiums			0	0
16. Reinsurance:				
16.1 Amounts recoverable from reinsurers			0	0
16.2 Funds held by or deposited with reinsured companies			0	0
16.3 Other amounts receivable under reinsurance contracts			0	0
17. Amounts receivable relating to uninsured plans			0	0
18.1 Current federal and foreign income tax recoverable and interest thereon	80,643		80,643	201,693
18.2 Net deferred tax asset	60,689	1,008	59,681	3,742
19. Guaranty funds receivable or on deposit			0	0
20. Electronic data processing equipment and software			0	0
21. Furniture and equipment, including health care delivery assets (\$)			0	0
22. Net adjustment in assets and liabilities due to foreign exchange rates			0	0
23. Receivables from parent, subsidiaries and affiliates	673,769		673,769	27,468
24. Health care (\$) and other amounts receivable	11	11	0	0
25. Aggregate write-ins for other than invested assets	8,895	0	8,895	0
26. Total assets excluding Separate Accounts, Segregated Accounts and Protected Cell Accounts (Lines 12 to 25)	14,366,705	1,019	14,365,686	14,808,042
27. From Separate Accounts, Segregated Accounts and Protected Cell Accounts			0	0
28. Total (Lines 26 and 27)	14,366,705	1,019	14,365,686	14,808,042
DETAILS OF WRITE-INS				
1101.				
1102.				
1103.				
1198. Summary of remaining write-ins for Line 11 from overflow page	0	0	0	0
1199. Totals (Lines 1101 through 1103 plus 1198)(Line 11 above)	0	0	0	0
2501. State income tax recoverable	8,895		8,895	0
2502.				
2503.				
2598. Summary of remaining write-ins for Line 25 from overflow page	0	0	0	0
2599. Totals (Lines 2501 through 2503 plus 2598)(Line 25 above)	8,895	0	8,895	0

LIABILITIES, CAPITAL AND SURPLUS

	Current Period			Prior Year
	1 Covered	2 Uncovered	3 Total	4 Total
1. Claims unpaid (less \$ reinsurance ceded)			0	0
2. Accrued medical incentive pool and bonus amounts			0	0
3. Unpaid claims adjustment expenses			0	0
4. Aggregate health policy reserves, including the liability of \$0 for medical loss ratio rebate per the Public Health Service Act			0	0
5. Aggregate life policy reserves			0	0
6. Property/casualty unearned premium reserve			0	0
7. Aggregate health claim reserves			0	0
8. Premiums received in advance			0	0
9. General expenses due or accrued	7,770		7,770	21,094
10.1 Current federal and foreign income tax payable and interest thereon (including \$ on realized gains (losses))			0	0
10.2 Net deferred tax liability			0	0
11. Ceded reinsurance premiums payable			0	0
12. Amounts withheld or retained for the account of others.....			0	0
13. Remittances and items not allocated	3,664,249		3,664,249	3,664,248
14. Borrowed money (including \$ current) and interest thereon \$ (including \$ current)			0	0
15. Amounts due to parent, subsidiaries and affiliates	78,977		78,977	48,598
16. Derivatives			0	0
17. Payable for securities			0	284,595
18. Payable for securities lending			0	682,833
19. Funds held under reinsurance treaties (with \$ authorized reinsurers, \$ unauthorized reinsurers and \$ certified reinsurers).....			0	0
20. Reinsurance in unauthorized and certified (\$) companies			0	0
21. Net adjustments in assets and liabilities due to foreign exchange rates			0	0
22. Liability for amounts held under uninsured plans			0	0
23. Aggregate write-ins for other liabilities (including \$ current)	16,385	0	16,385	16,384
24. Total liabilities (Lines 1 to 23)	3,767,381	0	3,767,381	4,717,752
25. Aggregate write-ins for special surplus funds	XXX	XXX	0	0
26. Common capital stock	XXX	XXX	10	10
27. Preferred capital stock	XXX	XXX		
28. Gross paid in and contributed surplus	XXX	XXX	10,396,904	10,396,904
29. Surplus notes	XXX	XXX		
30. Aggregate write-ins for other than special surplus funds	XXX	XXX	0	0
31. Unassigned funds (surplus)	XXX	XXX	201,391	(306,624)
32. Less treasury stock, at cost:				
32.1 shares common (value included in Line 26 \$)	XXX	XXX		
32.2 shares preferred (value included in Line 27 \$)	XXX	XXX		
33. Total capital and surplus (Lines 25 to 31 minus Line 32)	XXX	XXX	10,598,305	10,090,290
34. Total liabilities, capital and surplus (Lines 24 and 33)	XXX	XXX	14,365,686	14,808,042
DETAILS OF WRITE-INS				
2301. Unclaimed Property	15,818		15,818	16,384
2302. Miscellaneous liabilities	567		567	
2303.				
2398. Summary of remaining write-ins for Line 23 from overflow page	0	0	0	0
2399. Totals (Lines 2301 through 2303 plus 2398)(Line 23 above)	16,385	0	16,385	16,384
2501.	XXX	XXX		
2502.	XXX	XXX		
2503.	XXX	XXX		
2598. Summary of remaining write-ins for Line 25 from overflow page	XXX	XXX	0	0
2599. Totals (Lines 2501 through 2503 plus 2598)(Line 25 above)	XXX	XXX	0	0
3001.	XXX	XXX		
3002.	XXX	XXX		
3003.	XXX	XXX		
3098. Summary of remaining write-ins for Line 30 from overflow page	XXX	XXX	0	0
3099. Totals (Lines 3001 through 3003 plus 3098)(Line 30 above)	XXX	XXX	0	0

STATEMENT OF REVENUE AND EXPENSES

	Current Year To Date		Prior Year To Date	Prior Year Ended December 31
	1 Uncovered	2 Total	3 Total	4 Total
1. Member Months	XXX	0	0	
2. Net premium income (including \$ non-health premium income).....	XXX		293,313	293,313
3. Change in unearned premium reserves and reserve for rate credits.....	XXX			45,000
4. Fee-for-service (net of \$ medical expenses).....	XXX			
5. Risk revenue	XXX			
6. Aggregate write-ins for other health care related revenues	XXX	0	0	0
7. Aggregate write-ins for other non-health revenues	XXX	0	0	0
8. Total revenues (Lines 2 to 7)	XXX	0	293,313	338,313
Hospital and Medical:				
9. Hospital/medical benefits		(179,387)	99,452	413,140
10. Other professional services			(2)	(2)
11. Outside referrals				
12. Emergency room and out-of-area				
13. Prescription drugs		(41,782)	(144,390)	(193,408)
14. Aggregate write-ins for other hospital and medical	0	0	0	0
15. Incentive pool, withhold adjustments and bonus amounts				
16. Subtotal (Lines 9 to 15)	0	(221,169)	(44,939)	219,730
Less:				
17. Net reinsurance recoveries			1,102,696	(68,974)
18. Total hospital and medical (Lines 16 minus 17)	0	(221,169)	(1,147,636)	288,704
19. Non-health claims (net)				
20. Claims adjustment expenses, including \$ cost containment expenses		20,081	13,081	(108,558)
21. General administrative expenses		143,797	20,426	272,632
22. Increase in reserves for life and accident and health contracts (including \$ increase in reserves for life only)				0
23. Total underwriting deductions (Lines 18 through 22).....	0	(57,291)	(1,114,129)	452,778
24. Net underwriting gain or (loss) (Lines 8 minus 23)	XXX	57,291	1,407,442	(114,465)
25. Net investment income earned		231,248	206,301	430,846
26. Net realized capital gains (losses) less capital gains tax of \$85,238		154,473	12,255	12,619
27. Net investment gains (losses) (Lines 25 plus 26)	0	385,721	218,556	443,465
28. Net gain or (loss) from agents' or premium balances charged off [(amount recovered \$) (amount charged off \$)].....				
29. Aggregate write-ins for other income or expenses	0	0	0	0
30. Net income or (loss) after capital gains tax and before all other federal income taxes (Lines 24 plus 27 plus 28 plus 29)	XXX	443,012	1,625,998	329,000
31. Federal and foreign income taxes incurred	XXX	135,930	655,022	139,333
32. Net income (loss) (Lines 30 minus 31)	XXX	307,082	970,975	189,667
DETAILS OF WRITE-INS				
0601.	XXX			
0602.	XXX			
0603.	XXX			
0698. Summary of remaining write-ins for Line 6 from overflow page	XXX	0	0	0
0699. Totals (Lines 0601 through 0603 plus 0698)(Line 6 above)	XXX	0	0	0
0701.	XXX			
0702.	XXX			
0703.	XXX			
0798. Summary of remaining write-ins for Line 7 from overflow page	XXX	0	0	0
0799. Totals (Lines 0701 through 0703 plus 0798)(Line 7 above)	XXX	0	0	0
1401.				
1402.				
1403.				
1498. Summary of remaining write-ins for Line 14 from overflow page	0	0	0	0
1499. Totals (Lines 1401 through 1403 plus 1498)(Line 14 above)	0	0	0	0
2901.				
2902.				
2903.				
2998. Summary of remaining write-ins for Line 29 from overflow page	0	0	0	0
2999. Totals (Lines 2901 through 2903 plus 2998)(Line 29 above)	0	0	0	0

STATEMENT OF REVENUE AND EXPENSES (Continued)

	1 Current Year to Date	2 Prior Year to Date	3 Prior Year Ended December 31
CAPITAL AND SURPLUS ACCOUNT			
33. Capital and surplus prior reporting year.....	10,090,290	33,839,805	33,839,805
34. Net income or (loss) from Line 32	307,082	970,975	189,667
35. Change in valuation basis of aggregate policy and claim reserves			
36. Change in net unrealized capital gains (losses) less capital gains tax of \$			
37. Change in net unrealized foreign exchange capital gain or (loss)			
38. Change in net deferred income tax	56,378	(331,400)	(672,340)
39. Change in nonadmitted assets	144,555	1,198,097	1,733,159
40. Change in unauthorized and certified reinsurance	0	0	0
41. Change in treasury stock	0	0	0
42. Change in surplus notes	0	0	0
43. Cumulative effect of changes in accounting principles.....			
44. Capital Changes:			
44.1 Paid in	0	0	0
44.2 Transferred from surplus (Stock Dividend).....	0	0	0
44.3 Transferred to surplus.....			
45. Surplus adjustments:			
45.1 Paid in	0	(183,156)	(183,156)
45.2 Transferred to capital (Stock Dividend)			
45.3 Transferred from capital		183,156	183,156
46. Dividends to stockholders		(25,000,000)	(25,000,000)
47. Aggregate write-ins for gains or (losses) in surplus	0	0	0
48. Net change in capital & surplus (Lines 34 to 47)	508,015	(23,162,327)	(23,749,514)
49. Capital and surplus end of reporting period (Line 33 plus 48)	10,598,305	10,677,478	10,090,290
DETAILS OF WRITE-INS			
4701.			
4702.			
4703.			
4798. Summary of remaining write-ins for Line 47 from overflow page	0	0	0
4799. Totals (Lines 4701 through 4703 plus 4798)(Line 47 above)	0	0	0

CASH FLOW

	1 Current Year To Date	2 Prior Year To Date	3 Prior Year Ended December 31
Cash from Operations			
1. Premiums collected net of reinsurance	0	241,808	241,809
2. Net investment income	600,964	331,821	749,562
3. Miscellaneous income	0	0	0
4. Total (Lines 1 to 3)	600,964	573,630	991,371
5. Benefit and loss related payments	(221,169)	2,709,979	3,176,616
6. Net transfers to Separate Accounts, Segregated Accounts and Protected Cell Accounts			
7. Commissions, expenses paid and aggregate write-ins for deductions	177,202	1,006,031	1,140,323
8. Dividends paid to policyholders			
9. Federal and foreign income taxes paid (recovered) net of \$85,238 tax on capital gains (losses)	100,119	180,104	175,469
10. Total (Lines 5 through 9)	56,152	3,896,113	4,492,408
11. Net cash from operations (Line 4 minus Line 10)	544,812	(3,322,484)	(3,501,037)
Cash from Investments			
12. Proceeds from investments sold, matured or repaid:			
12.1 Bonds	23,351,513	5,349,549	9,189,058
12.2 Stocks	0	0	0
12.3 Mortgage loans	0	0	0
12.4 Real estate	0	0	0
12.5 Other invested assets	0	0	0
12.6 Net gains or (losses) on cash, cash equivalents and short-term investments	0	0	0
12.7 Miscellaneous proceeds	682,833	95,096	284,595
12.8 Total investment proceeds (Lines 12.1 to 12.7)	24,034,346	5,444,645	9,473,653
13. Cost of investments acquired (long-term only):			
13.1 Bonds	2,201,153	8,545,327	11,961,922
13.2 Stocks	0	0	0
13.3 Mortgage loans	0	0	0
13.4 Real estate	0	0	0
13.5 Other invested assets	0	0	0
13.6 Miscellaneous applications	284,595	1,424,198	682,833
13.7 Total investments acquired (Lines 13.1 to 13.6)	2,485,748	9,969,525	12,644,755
14. Net increase (or decrease) in contract loans and premium notes	0	0	0
15. Net cash from investments (Line 12.8 minus Line 13.7 and Line 14)	21,548,598	(4,524,880)	(3,171,102)
Cash from Financing and Miscellaneous Sources			
16. Cash provided (applied):			
16.1 Surplus notes, capital notes	0	0	0
16.2 Capital and paid in surplus, less treasury stock	0	0	0
16.3 Borrowed funds	0	0	0
16.4 Net deposits on deposit-type contracts and other insurance liabilities	0	0	0
16.5 Dividends to stockholders	(16,384)	25,000,000	25,000,000
16.6 Other cash provided (applied)	(1,179,039)	5,608,037	5,429,408
17. Net cash from financing and miscellaneous sources (Line 16.1 through Line 16.4 minus Line 16.5 plus Line 16.6)	(1,162,655)	(19,391,962)	(19,570,592)
RECONCILIATION OF CASH, CASH EQUIVALENTS AND SHORT-TERM INVESTMENTS			
18. Net change in cash, cash equivalents and short-term investments (Line 11, plus Lines 15 and 17)	20,930,755	(27,239,326)	(26,242,731)
19. Cash, cash equivalents and short-term investments:			
19.1 Beginning of year	(11,293,957)	14,948,774	14,948,774
19.2 End of period (Line 18 plus Line 19.1)	9,636,798	(12,290,552)	(11,293,957)

Note: Supplemental disclosures of cash flow information for non-cash transactions:

--	--	--	--

EXHIBIT OF PREMIUMS, ENROLLMENT AND UTILIZATION

	1 Total	Comprehensive (Hospital & Medical)		4 Medicare Supplement	5 Vision Only	6 Dental Only	7 Federal Employees Health Benefit Plan	8 Title XVIII Medicare	9 Title XIX Medicaid	10 Other
		2 Individual	3 Group							
Total Members at end of:										
1. Prior Year	0	0	0	0	0	0	0	0	0	0
2. First Quarter	0	0	0	0	0	0	0	0	0	0
3. Second Quarter	0									
4. Third Quarter	0									
5. Current Year	0									
6. Current Year Member Months	0									
Total Member Ambulatory Encounters for Period:										
7 Physician	0									
8. Non-Physician	0									
9. Total	0	0	0	0	0	0	0	0	0	0
10. Hospital Patient Days Incurred	0									
11. Number of Inpatient Admissions	0									
12. Health Premiums Written (a)	0									
13. Life Premiums Direct	0									
14. Property/Casualty Premiums Written	0									
15. Health Premiums Earned	0									
16. Property/Casualty Premiums Earned	0									
17. Amount Paid for Provision of Health Care Services.....	(221,169)								(221,169)	
18. Amount Incurred for Provision of Health Care Services	(221,169)								(221,169)	

(a) For health premiums written: amount of Medicare Title XVIII exempt from state taxes or fees \$

CLAIMS UNPAID AND INCENTIVE POOL, WITHHOLD AND BONUS (Reported and Unreported)

oo

UNDERWRITING AND INVESTMENT EXHIBIT

ANALYSIS OF CLAIMS UNPAID - PRIOR YEAR - NET OF REINSURANCE

Line of Business	Claims Paid Year to Date		Liability End of Current Quarter		5 Claims Incurred in Prior Years (Columns 1 + 3)	6 Estimated Claim Reserve and Claim Liability December 31 of Prior Year
	1 On Claims Incurred Prior to January 1 of Current Year	2 On Claims Incurred During the Year	3 On Claims Unpaid Dec. 31 of Prior Year	4 On Claims Incurred During the Year		
1. Comprehensive (hospital and medical)					0	0
2. Medicare Supplement					0	0
3. Dental Only					0	0
4. Vision Only					0	0
5. Federal Employees Health Benefits Plan					0	0
6. Title XVIII - Medicare					0	0
7. Title XIX - Medicaid	(221, 158)				(221, 158)	0
8. Other health					0	0
9. Health subtotal (Lines 1 to 8)	(221, 158)	0	0	0	(221, 158)	0
10. Healthcare receivables (a)	11				11	0
11. Other non-health					0	0
12. Medical incentive pools and bonus amounts					0	0
13. Totals (Lines 9-10+11+12)	(221, 169)	0	0	0	(221, 169)	0

(a) Excludes \$ loans or advances to providers not yet expensed.

NOTES TO FINANCIAL STATEMENTS

For the purposes of the quarterly interim financial information, it is presumed that the users of the interim financial information have read or have access to the Annual Statement as of December 31, 2014. This presentation addresses only significant events occurring since the last Annual Statement.

1. Summary of Significant Accounting Policies**A. Accounting Practices**

The accompanying financial statements of AMERIGROUP Ohio, Inc. (the “Company”) have been prepared in conformity with the National Association of Insurance Commissioners’ (“NAIC”) *Annual Statement Instructions* and in accordance with accounting practices prescribed by the NAIC *Accounting Practices and Procedures Manual* (“NAIC SAP”), subject to any deviations prescribed or permitted by the Ohio Department of Insurance (“ODI”).

A reconciliation of the Company’s net income and capital and surplus between NAIC SAP and practices prescribed and permitted by the ODI is shown below:

	<u>State of Domicile</u>	<u>June 30, 2015</u>	<u>December 31, 2014</u>
<u>Net Income</u>			
(1) AMERIGROUP Ohio, Inc. state basis (Page 4, Line 32, Columns 2 & 4)	Ohio	\$ 307,082	\$ 189,667
(2) State Prescribed Practices that increase/(decrease) NAIC SAP:		-	-
(3) State Permitted Practices that increase/(decrease) NAIC SAP:		-	-
(4) NAIC SAP (1-2-3=4)	Ohio	<u>\$ 307,082</u>	<u>\$ 189,667</u>
<u>Surplus</u>			
(5) AMERIGROUP Ohio, Inc. state basis (Page 3, Line 33, Columns 3 & 4)	Ohio	\$ 10,598,305	\$ 10,090,290
(6) State Prescribed Practices that increase/(decrease) NAIC SAP:		-	-
(7) State Permitted Practices that increase/(decrease) NAIC SAP:		-	-
(8) NAIC SAP (5-6-7=8)	Ohio	<u>\$ 10,598,305</u>	<u>\$ 10,090,290</u>

B. Use of Estimates in the Preparation of the Financial Statements

No significant change.

C. Accounting Policies

(1) – (5) No significant change.

(6) Loan-backed securities are stated at amortized cost. Pre-payment assumptions for loan-backed securities and structured securities were obtained from broker-dealer survey values or internal estimates. These assumptions are consistent with the current interest rate and economic environment. The retrospective adjustment method is used to value all loan-backed securities. Non-investment grade loan-backed securities are stated at the lower of amortized cost or fair value.

(7) – (13) No significant change.

2. Accounting Changes and Corrections of Errors

Not applicable.

NOTES TO FINANCIAL STATEMENTS

3. Business Combinations and Goodwill

Not applicable.

4. Discontinued Operations

1 – 4. The Company's contract with the Ohio Department of Job and Family Services terminated effective June 30, 2013. The Company is expected to perform certain operations to close out the contract.

5. Not applicable.

5. Investments

A. – C.

Not applicable.

D. Loan-Backed Securities

1. Prepayment assumptions for single-class and multi-class mortgage-backed and asset-backed securities were obtained from broker-dealer survey values or internal estimates. The Company used various third-party pricing sources in determining the market value of its loan-backed securities.
2. The Company did not recognize other-than-temporary impairments on its loan-backed securities during the six months ended June 30, 2015.
3. The Company did not hold other-than-temporarily impaired loan-backed securities at June 30, 2015.
4. The Company had no impaired securities for which an other-than-temporary impairment had not been recognized in earnings as a realized loss at June 30, 2015.
5. The Company had no impaired loan-backed securities at June 30, 2015.

E. Repurchase Agreements and/or Securities Lending Transactions

1. Not applicable.
2. No significant change.
3. At June 30, 2015, the Company did not participate in securities lending programs.
4. Not applicable.
5. No significant change.
6. Not applicable.
7. Not applicable.

F. – G.

Not applicable.

H. Restricted Assets

No significant change.

I. Working Capital Finance Investments

Not applicable.

J. Offsetting and Netting of Assets and Liabilities

The Company did not have any offsetting or netting of assets and liabilities at June 30, 2015.

K. Structured Notes

NOTES TO FINANCIAL STATEMENTS

Not applicable.

6. Joint Ventures, Partnerships and Limited Liability Companies

Not applicable.

7. Investment Income

No significant change.

8. Derivative Instruments

Not applicable.

9. Income Taxes

No significant change.

10. Information Concerning Parent, Subsidiaries, Affiliates, and Other Related Parties

A. – C.

No significant change.

D. Amounts Due to or from Related Parties

At June 30, 2015, the Company reported \$673,769 due from affiliates and \$78,977 due to affiliates. The balance represents intercompany transactions that will be settled in accordance with the settlement terms of the intercompany agreement.

E. - L.

No significant change.

11. Debt

Not applicable.

12. Retirement Plans, Deferred Compensation, Postemployment Benefits and Compensated Absences and Other Postretirement Benefit Plans

A. Defined Benefit Plan

Not applicable.

B. Not applicable.

C. Not applicable.

D. Not applicable.

E. Defined Contribution Plan

Not applicable.

F. Multiemployer Plan

The Company does not participate in a multiemployer plan.

G. Consolidated/Holding Company Plans

NOTES TO FINANCIAL STATEMENTS

No significant change.

13. Capital and Surplus, Shareholders' Dividend Restrictions and Quasi-Reorganizations

No significant change.

14. Liabilities, Contingencies and Assessments

Not applicable.

15. Leases

No significant change.

16. Information About Financial Instruments with Off-Balance Sheet Risk and Financial Instruments with Concentrations of Credit Risk

No significant change.

17. Sale, Transfer and Servicing of Financial Assets and Extinguishments of Liabilities

A. Transfers of Receivables Reported as Sales

Not applicable.

B. Transfer and Servicing of Financial Assets

(1) No significant change.

(2) – (7) Not applicable.

C. Wash Sales

1. In the course of the Company's asset management, securities may be sold and reacquired within 30 days of the sale date to enhance the yield on the investments.
2. At June 30, 2015, there were no wash sales involving securities with an NAIC designation of 3 or below or unrated.

18. Gain or Loss to the Reporting Entity from Uninsured Plans and the Uninsured Portion of Partially Insured Plans

A. Administrative Services Only Plans

Not applicable.

B. Administrative Services Contract Plans

Not applicable.

C. Medicare or Other Similarly Structured Cost-Based Reimbursement Contract

Not applicable.

19. Direct Premium Written/Produced by Managing General Agents/Third Party Administrators

Not applicable.

20. Fair Value Measurements

NOTES TO FINANCIAL STATEMENTS

A. There are no assets or liabilities measured at fair value as of June 30, 2015.

B. Fair Value Measurements Under Other Accounting Pronouncements

Not applicable.

C. Financial Instruments

Type of Financial Instrument	Aggregate Fair Value	Admitted Assets	(Level 1)	(Level 2)	(Level 3)	Not Practicable (Carrying Value)
Bonds	\$ 3,792,634	\$ 3,769,553	\$ -	\$ 3,792,634	\$ -	\$ -
Short-term investments	4,331,244	4,331,244	4,331,244	-	-	-

D. Not Practicable to Estimate Fair Value

There are no financial instruments that were not practicable to estimate fair value.

21. Other Items

No significant change.

21. Events Subsequent

On July 24, 2015, the Company’s ultimate parent company, Anthem, Inc. (“Anthem”), and Cigna Corporation (“Cigna”) entered into an Agreement and Plan of Merger dated as of July 23, 2015, by and among Anthem, Cigna and Anthem Merger Sub Corp., a Delaware corporation and a direct wholly-owned subsidiary of Anthem, pursuant to which Anthem will acquire all outstanding shares of Cigna. The acquisition is expected to close in the second half of 2016 and is subject to certain state regulatory approvals, standard closing conditions, customary approvals required under the Hart-Scott-Rodino Antitrust Improvements Act and the approval of both the Anthem, Inc. shareholders and Cigna’s stockholders.

There were no other events occurring subsequent to June 30, 2015 requiring disclosure. Subsequent events have been considered through August 11, 2015 for the statutory statement issued on August 11, 2015.

23. Reinsurance

Not applicable.

24. Retrospectively Rated Contracts & Contracts Subject to Redetermination

A. - D.

Not applicable.

E. Risk-Sharing Provisions of the Affordable Care Act (“ACA”)

- (1) Did the reporting entity write accident and health insurance premium that is subject to the Affordable Care Act risk sharing provisions (YES/NO)?

No
- (2) Impact of Risk-Sharing Provisions of the Affordable Care Act on Admitted Assets, Liabilities and Revenue for the Current Year

Not applicable.
- (3) Roll-forward of prior year ACA risk-sharing provisions for the following asset (gross of any nonadmission) and liability balances, along with the reasons for adjustments to prior year balance.

Not applicable.

25. Change in Incurred Claims and Claim Adjustment Expenses

NOTES TO FINANCIAL STATEMENTS

Not applicable.

26. Intercompany Pooling Arrangements

Not applicable.

27. Structured Settlements

Not applicable.

28. Health Care Receivables

No significant change.

29. Participating Policies

Not applicable.

30. Premium Deficiency Reserves

Not applicable.

31. Anticipated Subrogation and Other Recoveries

No significant change.

GENERAL INTERROGATORIES

PART 1 - COMMON INTERROGATORIES

GENERAL

1.1

Did the reporting entity experience any material transactions requiring the filing of Disclosure of Material Transactions with the State of Domicile, as required by the Model Act?

Yes [] No [X]

1.2

If yes, has the report been filed with the domiciliary state?

Yes [] No []

2.1

Has any change been made during the year of this statement in the charter, by-laws, articles of incorporation, or deed of settlement of the reporting entity?

Yes [] No [X]

2.2

If yes, date of change:

3.1

Is the reporting entity a member of an Insurance Holding Company System consisting of two or more affiliated persons, one or more of which is an insurer?
If yes, complete Schedule Y, Parts 1 and 1A.

Yes [X] No []

3.2

Have there been any substantial changes in the organizational chart since the prior quarter end?

Yes [] No [X]

3.3

If the response to 3.2 is yes, provide a brief description of those changes.

4.1

Has the reporting entity been a party to a merger or consolidation during the period covered by this statement?

Yes [] No [X]

4.2

If yes, provide the name of the entity, NAIC Company Code, and state of domicile (use two letter state abbreviation) for any entity that has ceased to exist as a result of the merger or consolidation.

1 Name of Entity	2 NAIC Company Code	3 State of Domicile

5.

If the reporting entity is subject to a management agreement, including third-party administrator(s), managing general agent(s), attorney-in-fact, or similar agreement, have there been any significant changes regarding the terms of the agreement or principals involved?
If yes, attach an explanation.

Yes [] No [X] N/A []

6.1

State as of what date the latest financial examination of the reporting entity was made or is being made.

12/31/2013

6.2

State the as of date that the latest financial examination report became available from either the state of domicile or the reporting entity. This date should be the date of the examined balance sheet and not the date the report was completed or released.

12/31/2013

6.3

State as of what date the latest financial examination report became available to other states or the public from either the state of domicile or the reporting entity. This is the release date or completion date of the examination report and not the date of the examination (balance sheet date).

05/15/2015

6.4

By what department or departments?
Ohio Department of Insurance

6.5

Have all financial statement adjustments within the latest financial examination report been accounted for in a subsequent financial statement filed with Departments?

Yes [] No [] N/A [X]

6.6

Have all of the recommendations within the latest financial examination report been complied with?

Yes [] No [] N/A [X]

7.1

Has this reporting entity had any Certificates of Authority, licenses or registrations (including corporate registration, if applicable) suspended or revoked by any governmental entity during the reporting period?

Yes [] No [X]

7.2

If yes, give full information:

8.1

Is the company a subsidiary of a bank holding company regulated by the Federal Reserve Board?

Yes [] No [X]

8.2

If response to 8.1 is yes, please identify the name of the bank holding company.

8.3

Is the company affiliated with one or more banks, thrifts or securities firms?

Yes [] No [X]

8.4

If response to 8.3 is yes, please provide below the names and location (city and state of the main office) of any affiliates regulated by a federal regulatory services agency [i.e. the Federal Reserve Board (FRB), the Office of the Comptroller of the Currency (OCC), the Federal Deposit Insurance Corporation (FDIC) and the Securities Exchange Commission (SEC)] and identify the affiliate's primary federal regulator.

1 Affiliate Name	2 Location (City, State)	3 FRB	4 OCC	5 FDIC	6 SEC

GENERAL INTERROGATORIES

- 9.1

Are the senior officers (principal executive officer, principal financial officer, principal accounting officer or controller, or persons performing similar functions) of the reporting entity subject to a code of ethics, which includes the following standards? (a) Honest and ethical conduct, including the ethical handling of actual or apparent conflicts of interest between personal and professional relationships; (b) Full, fair, accurate, timely and understandable disclosure in the periodic reports required to be filed by the reporting entity; (c) Compliance with applicable governmental laws, rules and regulations; (d) The prompt internal reporting of violations to an appropriate person or persons identified in the code; and (e) Accountability for adherence to the code.

Yes [X] No []
- 9.11

If the response to 9.1 is No, please explain:
- 9.2

Has the code of ethics for senior managers been amended?

Yes [X] No []
- 9.21

If the response to 9.2 is Yes, provide information related to amendment(s).
Minor revisions were made in February 2015. Specifically, the language was modified for the following policy changes contained within the code: Community Service, Business Entertainment, Vendor Relationships, Prohibition on Discrimination in Marketing and Enrollment and Business Relationships with Pharmaceutical Manufacturers. Additionally the Chief Executive Officer's letter was updated, a letter from the Chief Compliance Officer was added and certain informational sections were removed
- 9.3

Have any provisions of the code of ethics been waived for any of the specified officers?

Yes [] No [X]
- 9.31

If the response to 9.3 is Yes, provide the nature of any waiver(s).

FINANCIAL

- 10.1

Does the reporting entity report any amounts due from parent, subsidiaries or affiliates on Page 2 of this statement?

Yes [X] No []
- 10.2

If yes, indicate any amounts receivable from parent included in the Page 2 amount:

\$3,375

INVESTMENT

- 11.1

Were any of the stocks, bonds, or other assets of the reporting entity loaned, placed under option agreement, or otherwise made available for use by another person? (Exclude securities under securities lending agreements.)

Yes [] No [X]
- 11.2

If yes, give full and complete information relating thereto:
12.

Amount of real estate and mortgages held in other invested assets in Schedule BA:

\$
13.

Amount of real estate and mortgages held in short-term investments:

\$
- 14.1

Does the reporting entity have any investments in parent, subsidiaries and affiliates?

Yes [] No [X]
- 14.2

If yes, please complete the following:
- | | 1 | 2 |
|---|---|--|
| | Prior Year-End Book/Adjusted Carrying Value | Current Quarter Book/Adjusted Carrying Value |
| 14.21 Bonds | \$0 | \$ |
| 14.22 Preferred Stock | \$0 | \$ |
| 14.23 Common Stock | \$0 | \$ |
| 14.24 Short-Term Investments | \$0 | \$ |
| 14.25 Mortgage Loans on Real Estate | \$0 | \$ |
| 14.26 All Other | \$0 | \$ |
| 14.27 Total Investment in Parent, Subsidiaries and Affiliates (Subtotal Lines 14.21 to 14.26) | \$0 | \$0 |
| 14.28 Total Investment in Parent included in Lines 14.21 to 14.26 above | \$ | \$ |
- 15.1

Has the reporting entity entered into any hedging transactions reported on Schedule DB?

Yes [] No [X]
- 15.2

If yes, has a comprehensive description of the hedging program been made available to the domiciliary state? If no, attach a description with this statement.

Yes [] No []

STATEMENT AS OF JUNE 30, 2015 OF THE Amerigroup Ohio, Inc.

GENERAL INTERROGATORIES

16. For the reporting entity's security lending program, state the amount of the following as of the current statement date:
- 16.1

Total fair value of reinvested collateral assets reported on Schedule DL, Parts 1 and 2.

\$

0
- 16.2

Total book adjusted/carrying value of reinvested collateral assets reported on Schedule DL, Parts 1 and 2

\$

0
- 16.3

Total payable for securities lending reported on the liability page.

\$

0

17. Excluding items in Schedule E - Part 3 - Special Deposits, real estate, mortgage loans and investments held physically in the reporting entity's offices, vaults or safety deposit boxes, were all stocks, bonds and other securities, owned throughout the current year held pursuant to a custodial agreement with a qualified bank or trust company in accordance with Section 1, III - General Examination Considerations, F. Outsourcing of Critical Functions, Custodial or Safekeeping Agreements of the NAIC Financial Condition Examiners Handbook? Yes ☒ No ☐

- 17.1 For all agreements that comply with the requirements of the NAIC Financial Condition Examiners Handbook, complete the following:

1 Name of Custodian(s)	2 Custodian Address
Bank of New York Mellon Corporation	One BNY Mellon Center Room 151-1035 Pittsburgh, PA 15258

- 17.2 For all agreements that do not comply with the requirements of the NAIC Financial Condition Examiners Handbook, provide the name, location and a complete explanation:

1 Name(s)	2 Location(s)	3 Complete Explanation(s)

- 17.3 Have there been any changes, including name changes, in the custodian(s) identified in 17.1 during the current quarter? Yes ☐ No ☒

- 17.4 If yes, give full information relating thereto:

1 Old Custodian	2 New Custodian	3 Date of Change	4 Reason

- 17.5 Identify all investment advisors, brokers/dealers or individuals acting on behalf of broker/dealers that have access to the investment accounts, handle securities and have authority to make investments on behalf of the reporting entity:

1 Central Registration Depository	2 Name(s)	3 Address
113878	McDonnell Investment Management, LLC	Oak Brook, IL
105006	Deutsche Asset Management	New York, NY

- 18.1 Have all the filing requirements of the Purposes and Procedures Manual of the NAIC Securities Valuation Office been followed? Yes ☒ No ☐

- 18.2 If no, list exceptions:

GENERAL INTERROGATORIES

PART 2 - HEALTH

1.

Operating Percentages:

1.1 A&H loss percent

1.2 A&H cost containment percent

1.3 A&H expense percent excluding cost containment expenses

%

%

%
- 2.1

Do you act as a custodian for health savings accounts?

Yes [] No [X]
- 2.2

If yes, please provide the amount of custodial funds held as of the reporting date

\$
- 2.3

Do you act as an administrator for health savings accounts?

Yes [] No [X]
- 2.4

If yes, please provide the balance of the funds administered as of the reporting date

\$

STATEMENT AS OF JUNE 30, 2015 OF THE Amerigroup Ohio, Inc.

SCHEDULE S - CEDED REINSURANCE

Showing All New Reinsurance Treaties - Current Year to Date

[illegible]

SCHEDULE T - PREMIUMS AND OTHER CONSIDERATIONS

Current Year to Date - Allocated by States and Territories

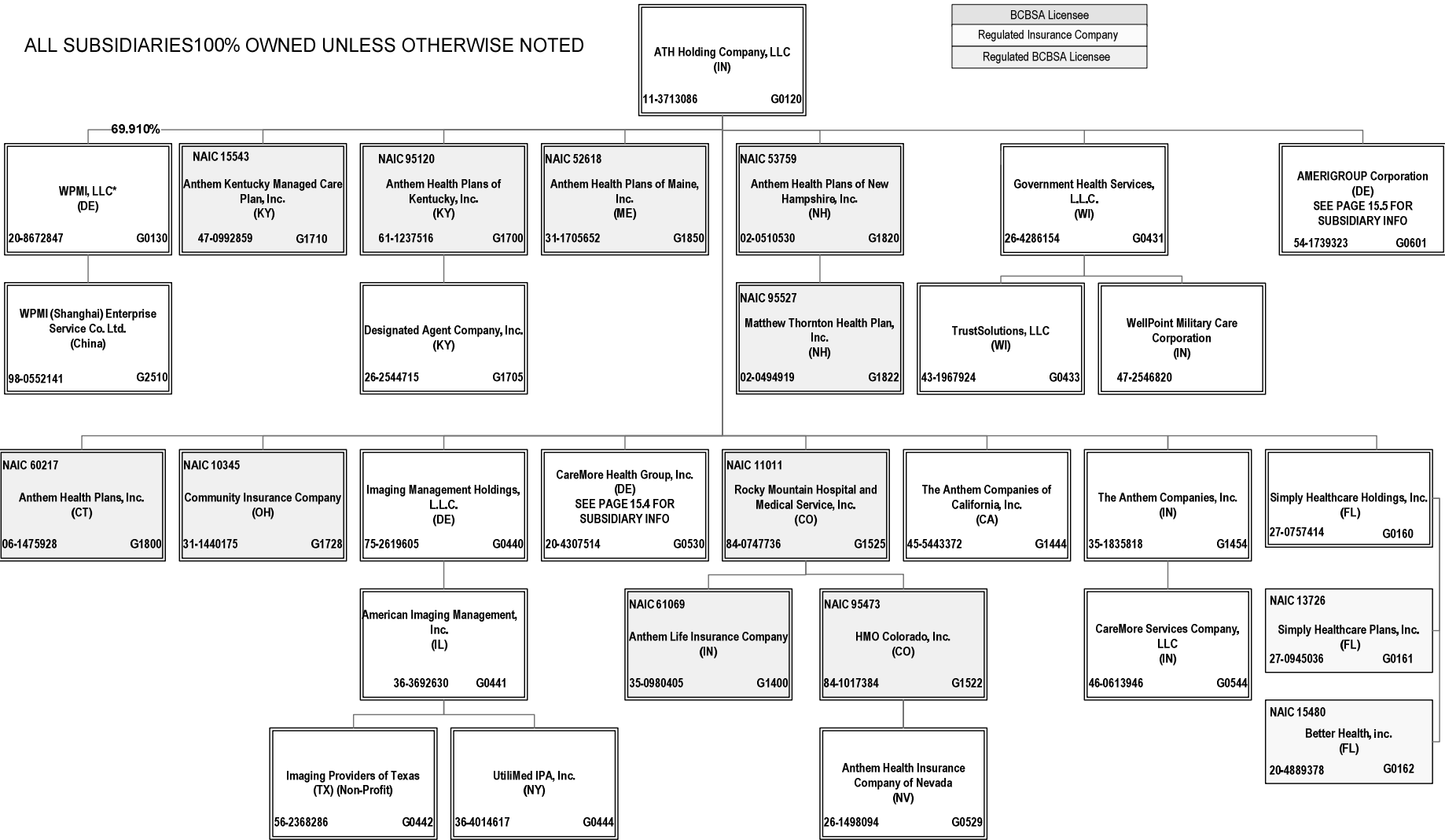
		1	Direct Business Only							
States, etc.		Active Status	Accident and Health Premiums	Medicare Title XVIII	Medicaid Title XIX	Federal Employees Health Benefits Program Premiums	Life and Annuity Premiums & Other Considerations	Property/Casualty Premiums	Total Columns 2 Through 7	Deposit-Type Contracts
1.	Alabama	AL	N						0	
2.	Alaska	AK	N						0	
3.	Arizona	AZ	N						0	
4.	Arkansas	AR	N						0	
5.	California	CA	N						0	
6.	Colorado	CO	N						0	
7.	Connecticut	CT	N						0	
8.	Delaware	DE	N						0	
9.	District of Columbia	DC	N						0	
10.	Florida	FL	N						0	
11.	Georgia	GA	N						0	
12.	Hawaii	HI	N						0	
13.	Idaho	ID	N						0	
14.	Illinois	IL	N						0	
15.	Indiana	IN	N						0	
16.	Iowa	IA	N						0	
17.	Kansas	KS	N						0	
18.	Kentucky	KY	N						0	
19.	Louisiana	LA	N						0	
20.	Maine	ME	N						0	
21.	Maryland	MD	N						0	
22.	Massachusetts	MA	N						0	
23.	Michigan	MI	N						0	
24.	Minnesota	MN	N						0	
25.	Mississippi	MS	N						0	
26.	Missouri	MO	N						0	
27.	Montana	MT	N						0	
28.	Nebraska	NE	N						0	
29.	Nevada	NV	N						0	
30.	New Hampshire	NH	N						0	
31.	New Jersey	NJ	N						0	
32.	New Mexico	NM	N						0	
33.	New York	NY	N						0	
34.	North Carolina	NC	N						0	
35.	North Dakota	ND	N						0	
36.	Ohio	OH	L						0	
37.	Oklahoma	OK	N						0	
38.	Oregon	OR	N						0	
39.	Pennsylvania	PA	N						0	
40.	Rhode Island	RI	N						0	
41.	South Carolina	SC	N						0	
42.	South Dakota	SD	N						0	
43.	Tennessee	TN	N						0	
44.	Texas	TX	N						0	
45.	Utah	UT	N						0	
46.	Vermont	VT	N						0	
47.	Virginia	VA	N						0	
48.	Washington	WA	N						0	
49.	West Virginia	WV	N						0	
50.	Wisconsin	WI	N						0	
51.	Wyoming	WY	N						0	
52.	American Samoa	AS	N						0	
53.	Guam	GU	N						0	
54.	Puerto Rico	PR	N						0	
55.	U.S. Virgin Islands	VI	N						0	
56.	Northern Mariana Islands	MP	N						0	
57.	Canada	CAN	N						0	
58.	Aggregate Other Aliens	OT	XXX	0	0	0	0	0	0	0
59.	Subtotal	XXX	0	0	0	0	0	0	0	0
60.	Reporting Entity Contributions for Employee Benefit Plans	XXX							0	
61.	Totals (Direct Business)	(a) 1	0	0	0	0	0	0	0	0
DETAILS OF WRITE-INS										
58001.	XXX								
58002.	XXX								
58003.	XXX								
58998.	Summary of remaining write-ins for Line 58 from overflow page	XXX	0	0	0	0	0	0	0	0
58999.	Totals (Lines 58001 through 58003 plus 58998)(Line 58 above)	XXX	0	0	0	0	0	0	0	0

(L) Licensed or Chartered - Licensed Insurance Carrier or Domiciled RRG; (R) Registered - Non-domiciled RRGs; (Q) Qualified - Qualified or Accredited Reinsurer; (E) Eligible - Reporting Entities eligible or approved to write Surplus Lines in the state; (N) None of the above - Not allowed to write business in the state.
(a) Insert the number of L responses except for Canada and Other Alien.

SCHEDULE Y – INFORMATION CONCERNING ACTIVITIES OF INSURER MEMBERS OF A HOLDING COMPANY GROUP
PART 1 – ORGANIZATIONAL CHART

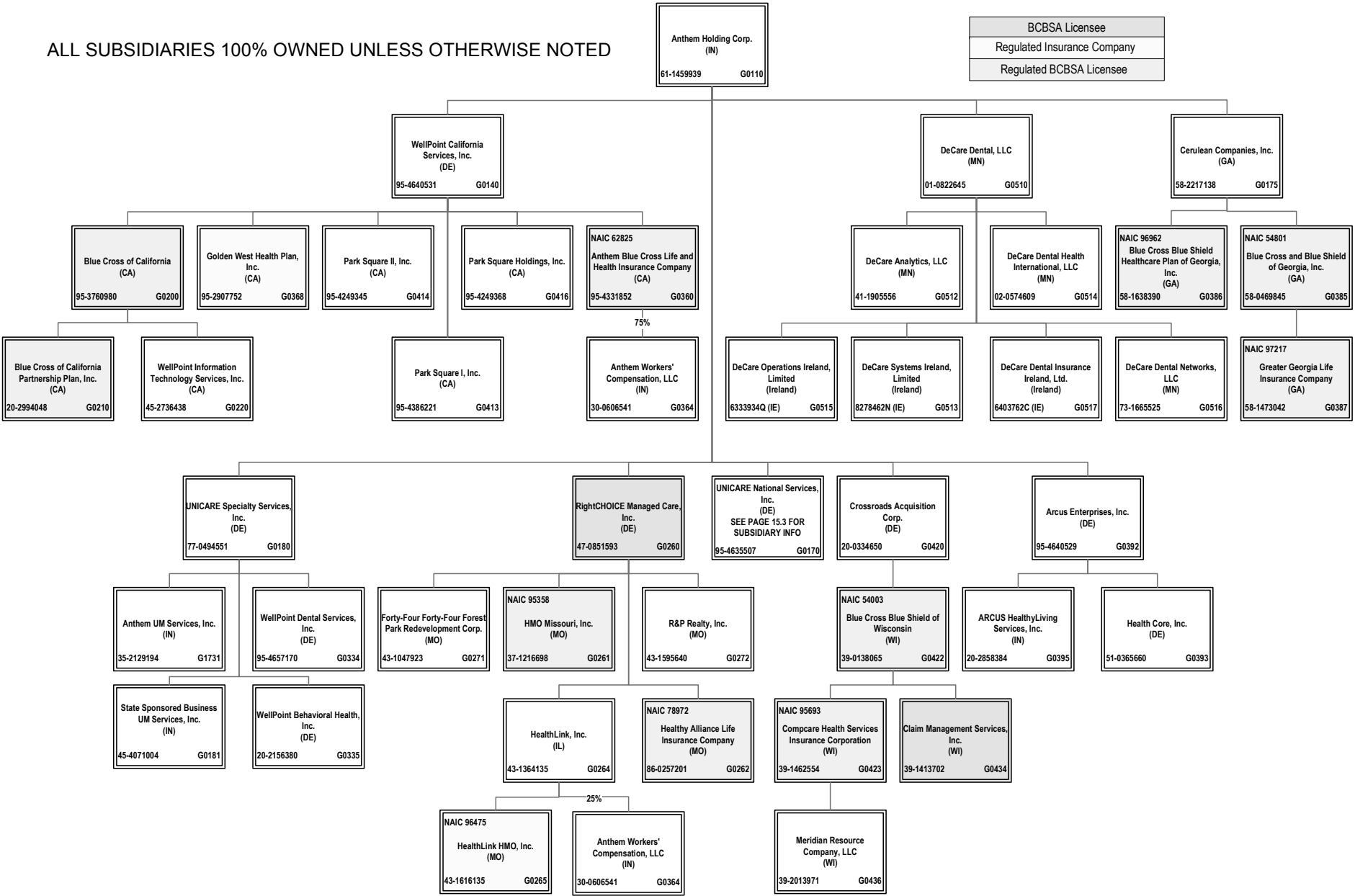


SCHEDULE Y – INFORMATION CONCERNING ACTIVITIES OF INSURER MEMBERS OF A HOLDING COMPANY GROUP
PART 1 – ORGANIZATIONAL CHART



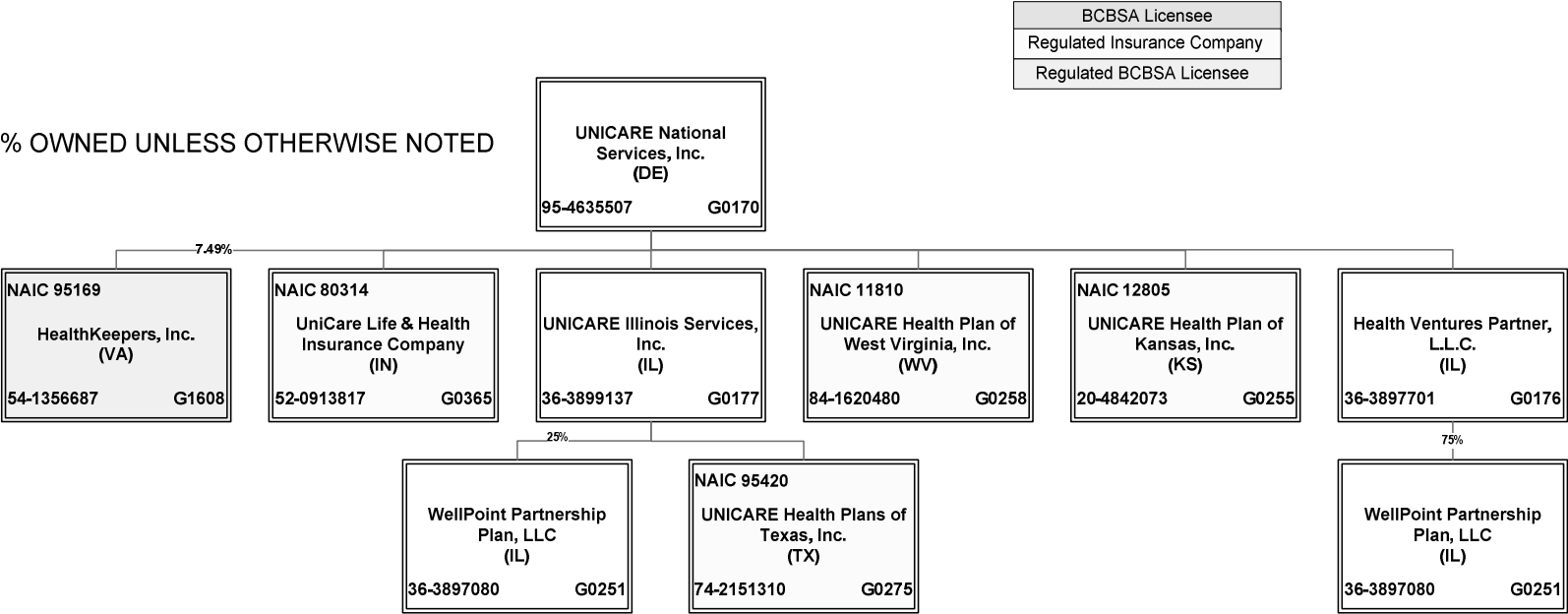
*30.09% of WPMI, LLC is owned by unaffiliated investors

SCHEDULE Y – INFORMATION CONCERNING ACTIVITIES OF INSURER MEMBERS OF A HOLDING COMPANY GROUP
PART 1 – ORGANIZATIONAL CHART



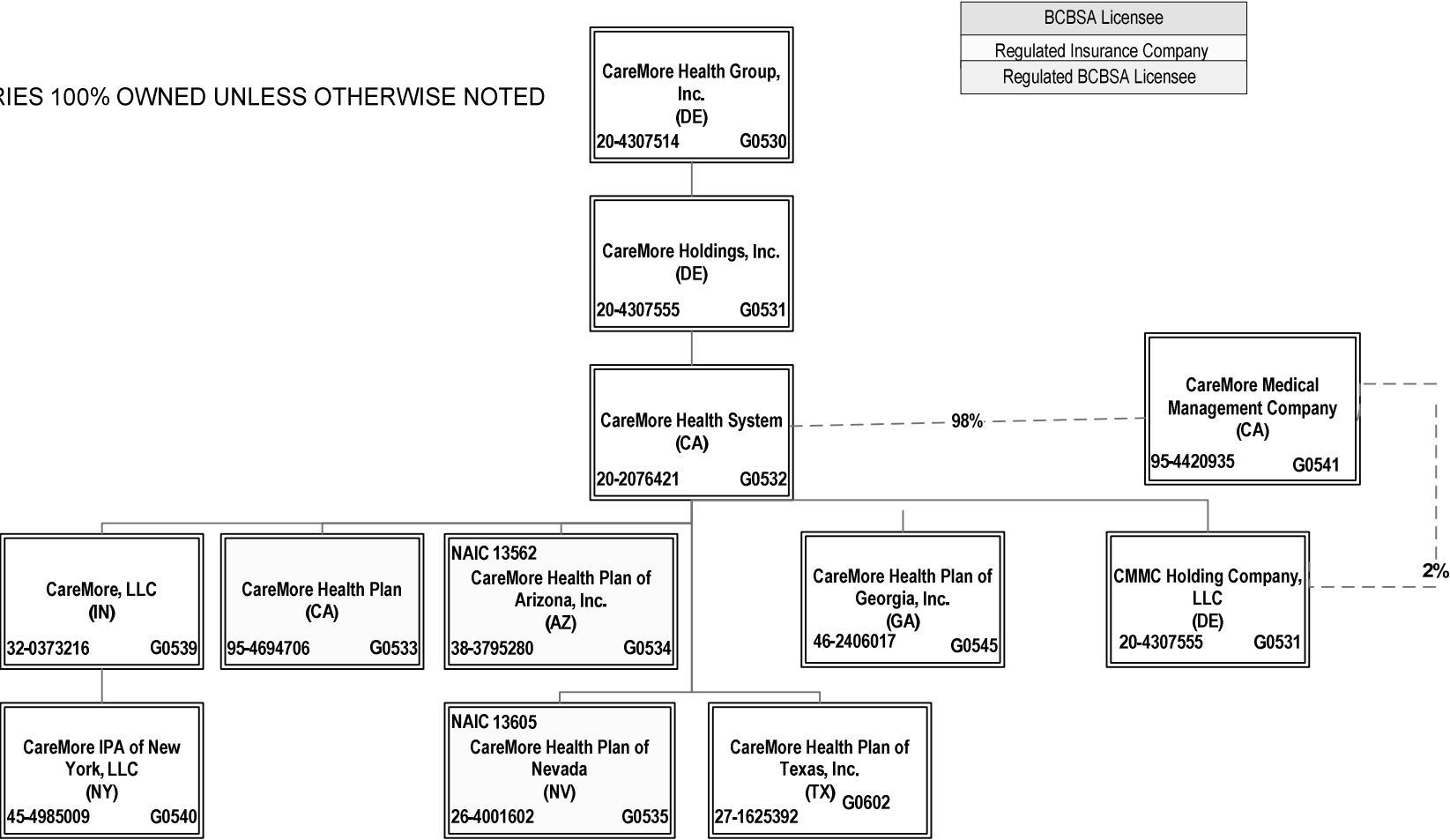
SCHEDULE Y – INFORMATION CONCERNING ACTIVITIES OF INSURER MEMBERS OF A HOLDING COMPANY GROUP
PART 1 – ORGANIZATIONAL CHART

ALL SUBSIDIARIES 100% OWNED UNLESS OTHERWISE NOTED



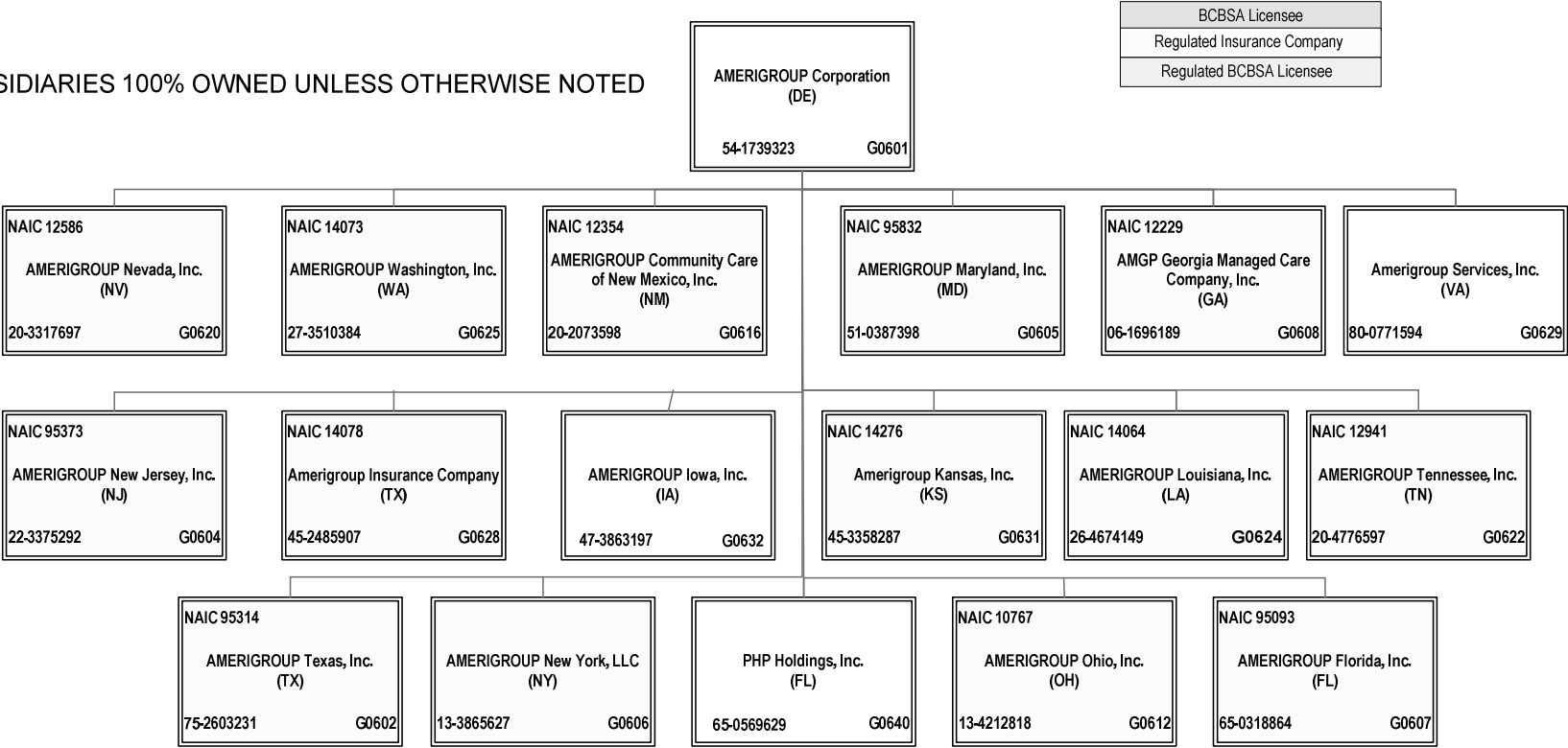
SCHEDULE Y – INFORMATION CONCERNING ACTIVITIES OF INSURER MEMBERS OF A HOLDING COMPANY GROUP
PART 1 – ORGANIZATIONAL CHART

ALL SUBSIDIARIES 100% OWNED UNLESS OTHERWISE NOTED



SCHEDULE Y – INFORMATION CONCERNING ACTIVITIES OF INSURER MEMBERS OF A HOLDING COMPANY GROUP
PART 1 – ORGANIZATIONAL CHART

ALL SUBSIDIARIES 100% OWNED UNLESS OTHERWISE NOTED



BCBSA Licensee
Regulated Insurance Company
Regulated BCBSA Licensee

SCHEDULE Y
PART 1A - DETAIL OF INSURANCE HOLDING COMPANY SYSTEM

1	2	3	4	5	6	7	8	9	10	11	12	13	14	15
Group Code	Group Name	NAIC Company Code	ID Number	Federal RSSD	CIK	Name of Securities Exchange if Publicly Traded (U.S. or International)	Names of Parent, Subsidiaries Or Affiliates	Domiciliary Location	Relationship to Reporting Entity	Directly Controlled by (Name of Entity/Person)	Type of Control (Ownership, Board, Management, Attorney-in-Fact, Influence, Other)	If Control is Ownership Provide Percentage	Ultimate Controlling Entity(ies)/Person(s)	*
0671	Anthem, Inc.		36-3692630				American Imaging Management, Inc.	IL	NIA	Imaging Management Holdings, L.L.C.	Ownership	100.000	Anthem, Inc.	
0671	Anthem, Inc.	12354	20-2073598				AMERIGROUP Community Care of New Mexico, Inc.	NM	IA	AMERIGROUP Corporation	Ownership	100.000	Anthem, Inc.	
0671	Anthem, Inc.	95093	54-1739323				AMERIGROUP Corporation	DE	UDP	ATH Holding Company, LLC	Ownership	100.000	Anthem, Inc.	
0671	Anthem, Inc.	14078	65-0318864				AMERIGROUP Florida, Inc.	FL	IA	PHP Holdings, Inc.	Ownership	100.000	Anthem, Inc.	
0671	Anthem, Inc.		45-2485907				Amerigroup Insurance Company	TX	IA	AMERIGROUP Corporation	Ownership	100.000	Anthem, Inc.	
0671	Anthem, Inc.		47-3863197				AMERIGROUP Iowa, Inc.	IA	NIA	AMERIGROUP Corporation	Ownership	100.000	Anthem, Inc.	
0671	Anthem, Inc.	14276	45-3358287				Amerigroup Kansas, Inc.	KS	IA	AMERIGROUP Corporation	Ownership	100.000	Anthem, Inc.	
0671	Anthem, Inc.	14064	26-4674149				AMERIGROUP Louisiana, Inc.	LA	IA	AMERIGROUP Corporation	Ownership	100.000	Anthem, Inc.	
0671	Anthem, Inc.	95832	51-0387398				AMERIGROUP Maryland, Inc.	MD	IA	AMERIGROUP Corporation	Ownership	100.000	Anthem, Inc.	
0671	Anthem, Inc.	12586	20-3317697				AMERIGROUP Nevada, Inc.	NV	IA	AMERIGROUP Corporation	Ownership	100.000	Anthem, Inc.	
0671	Anthem, Inc.	95373	22-3375292				AMERIGROUP New Jersey, Inc.	NJ	IA	AMERIGROUP Corporation	Ownership	100.000	Anthem, Inc.	
0671	Anthem, Inc.		13-3865627				AMERIGROUP New York, LLC	NY	IA	AMERIGROUP Corporation	Ownership	100.000	Anthem, Inc.	0100
0671	Anthem, Inc.	10767	13-4212818				AMERIGROUP Ohio, Inc.	OH	RE	AMERIGROUP Corporation	Ownership	100.000	Anthem, Inc.	
0671	Anthem, Inc.		80-0771594				Amerigroup Services, Inc.	VA	NIA	AMERIGROUP Corporation	Ownership	100.000	Anthem, Inc.	
0671	Anthem, Inc.	12941	20-4776597				AMERIGROUP Tennessee, Inc.	TN	IA	AMERIGROUP Corporation	Ownership	100.000	Anthem, Inc.	
0671	Anthem, Inc.	95314	75-2603231				AMERIGROUP Texas, Inc.	TX	IA	AMERIGROUP Corporation	Ownership	100.000	Anthem, Inc.	
0671	Anthem, Inc.	14073	27-3510384				AMERIGROUP Washington, Inc.	WA	IA	AMERIGROUP Corporation	Ownership	100.000	Anthem, Inc.	
0671	Anthem, Inc.	12229	06-1696189				AMGP Georgia Managed Care Company, Inc.	GA	IA	AMERIGROUP Corporation	Ownership	100.000	Anthem, Inc.	
0671	Anthem, Inc.	62825	95-4331852				Anthem Blue Cross Life and Health Insurance Company	CA	IA	WellPoint California Services, Inc.	Ownership	100.000	Anthem, Inc.	
0671	Anthem, Inc.		35-1898945				Anthem Financial, Inc.	DE	NIA	Associated Group, Inc.	Ownership	100.000	Anthem, Inc.	
0671	Anthem, Inc.		26-1498094				Anthem Health Insurance Company of Nevada	NV	NIA	HMO Colorado, Inc.	Ownership	100.000	Anthem, Inc.	
0671	Anthem, Inc.	95120	61-1237516				Anthem Health Plans of Kentucky, Inc.	KY	IA	ATH Holding Company, LLC	Ownership	100.000	Anthem, Inc.	
0671	Anthem, Inc.	52618	31-1705652				Anthem Health Plans of Maine, Inc.	ME	IA	ATH Holding Company, LLC	Ownership	100.000	Anthem, Inc.	
0671	Anthem, Inc.	53759	02-0510530				Anthem Health Plans of New Hampshire, Inc.	NH	IA	ATH Holding Company, LLC	Ownership	100.000	Anthem, Inc.	
0671	Anthem, Inc.	71835	54-0357120	40003317			Anthem Health Plans of Virginia, Inc.	VA	IA	Anthem Southeast, Inc.	Ownership	100.000	Anthem, Inc.	
0671	Anthem, Inc.	60217	06-1475928				Anthem Health Plans, Inc.	CT	IA	ATH Holding Company, LLC	Ownership	100.000	Anthem, Inc.	
0671	Anthem, Inc.		61-1459939				Anthem Holding Corp.	IN	NIA	Anthem, Inc.	Ownership	100.000	Anthem, Inc.	
0671	Anthem, Inc.		35-2145715		6324	New York Stock Exchange (NYSE)	Anthem, Inc.	IN	UIP				Anthem, Inc.	
0671	Anthem, Inc.	28207	35-0781558				Anthem Insurance Companies, Inc.	IN	IA	Anthem, Inc.	Ownership	100.000	Anthem, Inc.	
0671	Anthem, Inc.	15543	47-0992859				Anthem Kentucky Managed Care Plan, Inc.	KY	IA	ATH Holding Company, LLC	Ownership	100.000	Anthem, Inc.	
0671	Anthem, Inc.	13573	20-5876774				Anthem Life & Disability Insurance Company	NY	IA	WellPoint Acquisition, LLC	Ownership	100.000	Anthem, Inc.	
0671	Anthem, Inc.	61069	35-0980405				Anthem Life Insurance Company	IN	IA	Rocky Mountain Hospital and Medical Service, Inc.	Ownership	100.000	Anthem, Inc.	
0671	Anthem, Inc.		32-0031791				Anthem Southeast, Inc.	IN	NIA	Anthem, Inc.	Ownership	100.000	Anthem, Inc.	
0671	Anthem, Inc.		35-2129194				Anthem UM Services, Inc.	IN	NIA	UNICARE Specialty Services, Inc.	Ownership	100.000	Anthem, Inc.	
0671	Anthem, Inc.		30-0606541				Anthem Workers' Compensation, LLC	IN	NIA	Anthem Blue Cross Life and Health Insurance Company	Ownership	75.000	Anthem, Inc.	
0671	Anthem, Inc.		30-0606541				Anthem Workers' Compensation, LLC	IN	NIA	HealthLink, Inc.	Ownership	25.000	Anthem, Inc.	
0671	Anthem, Inc.		95-4640529				Arcus Enterprises, Inc.	DE	NIA	Anthem Holding Corp.	Ownership	100.000	Anthem, Inc.	
0671	Anthem, Inc.		20-2858384				ARCUS HealthLiving Services, Inc.	IN	NIA	Arcus Enterprises, Inc.	Ownership	100.000	Anthem, Inc.	
0671	Anthem, Inc.		35-1292384				Associated Group, Inc.	IN	NIA	Anthem Insurance Companies, Inc.	Ownership	100.000	Anthem, Inc.	
0671	Anthem, Inc.		11-3713086				ATH Holding Company, LLC	IN	UIP	Anthem, Inc.	Ownership	100.000	Anthem, Inc.	
0671	Anthem, Inc.	15480	20-4889378				Better Health, Inc.	FL	IA	Simply Healthcare Holdings, Inc.	Ownership	100.000	Anthem, Inc.	
0671	Anthem, Inc.	54801	58-0469845				Blue Cross and Blue Shield of Georgia, Inc.	GA	IA	Cerulean Companies, Inc.	Ownership	100.000	Anthem, Inc.	

SCHEDULE Y
PART 1A - DETAIL OF INSURANCE HOLDING COMPANY SYSTEM

1	2	3	4	5	6	7	8	9	10	11	12	13	14	15
Group Code	Group Name	NAIC Company Code	ID Number	Federal RSSD	CIK	Name of Securities Exchange if Publicly Traded (U.S. or International)	Names of Parent, Subsidiaries Or Affiliates	Domiciliary Location	Relationship to Reporting Entity	Directly Controlled by (Name of Entity/Person)	Type of Control (Ownership, Board, Management, Attorney-in-Fact, Influence, Other)	If Control is Ownership Provide Percentage	Ultimate Controlling Entity(ies)/Person(s)	*
0671	Anthem, Inc.	96962	58-1638390				Blue Cross Blue Shield Healthcare Plan of Georgia, Inc.	GA	IA	Cerulean Companies, Inc.	Ownership	100.000	Anthem, Inc.	
0671	Anthem, Inc.	54003	39-0138065				Blue Cross Blue Shield of Wisconsin	WI	IA	Crossroads Acquisition Corp.	Ownership	100.000	Anthem, Inc.	
0671	Anthem, Inc.		95-3760980				Blue Cross of California	CA	IA	WellPoint California Services, Inc.	Ownership	100.000	Anthem, Inc.	0101
0671	Anthem, Inc.		20-2994048				Blue Cross of California Partnership Plan, Inc.	CA	IA	Blue Cross of California	Ownership	100.000	Anthem, Inc.	0102
0671	Anthem, Inc.		20-4307514				CareMore Health Group, Inc.	DE	NIA	ATH Holding Company, LLC	Ownership	100.000	Anthem, Inc.	
0671	Anthem, Inc.		95-4694706				CareMore Health Plan	CA	IA	CareMore Health System	Ownership	100.000	Anthem, Inc.	0103
0671	Anthem, Inc.	13562	38-3795280				CareMore Health Plan of Arizona, Inc.	AZ	IA	CareMore Health System	Ownership	100.000	Anthem, Inc.	
0671	Anthem, Inc.		46-2406017				CareMore Health Plan of Georgia, Inc.	GA	NIA	CareMore Health System	Ownership	100.000	Anthem, Inc.	
0671	Anthem, Inc.	13605	26-4001602				CareMore Health Plan of Nevada	NV	IA	CareMore Health System	Ownership	100.000	Anthem, Inc.	
0671	Anthem, Inc.		27-1625392				CareMore Health Plan of Texas, Inc.	TX	NIA	CareMore Health System	Ownership	100.000	Anthem, Inc.	
0671	Anthem, Inc.		20-4307555				CareMore Holdings, Inc.	DE	NIA	CareMore Health Group, Inc.	Ownership	100.000	Anthem, Inc.	
0671	Anthem, Inc.		45-4985009				CareMore IPA of New York, LLC	NY	NIA	CareMore, LLC	Ownership	100.000	Anthem, Inc.	
0671	Anthem, Inc.		32-0373216				CareMore, LLC	IN	NIA	CareMore Health System	Ownership	100.000	Anthem, Inc.	
0671	Anthem, Inc.		20-2076421				CareMore Health System	CA	NIA	CareMore Holdings, Inc.	Ownership	100.000	Anthem, Inc.	
0671	Anthem, Inc.		95-4420935				CareMore Medical Management Company	CA	NIA	CareMore Health System	Ownership	98.000	Anthem, Inc.	
0671	Anthem, Inc.		95-4420935				CareMore Medical Management Company	CA	NIA	CMHC Holding Company, LLC	Ownership	2.000	Anthem, Inc.	
0671	Anthem, Inc.		46-0613946				CareMore Services Company, LLC	IN	NIA	The Anthem Companies, Inc.	Ownership	100.000	Anthem, Inc.	
0671	Anthem, Inc.		58-2217138				Cerulean Companies, Inc.	GA	NIA	Anthem Holding Corp.	Ownership	100.000	Anthem, Inc.	
0671	Anthem, Inc.		39-1413702				Claim Management Services, Inc.	WI	NIA	Blue Cross Blue Shield of Wisconsin	Ownership	100.000	Anthem, Inc.	
0671	Anthem, Inc.		20-4307555				CMHC Holding Company, LLC	DE	NIA	CareMore Health System	Ownership	100.000	Anthem, Inc.	
0671	Anthem, Inc.	10345	31-1440175				Community Insurance Company	OH	IA	ATH Holding Company, LLC	Ownership	100.000	Anthem, Inc.	
0671	Anthem, Inc.						Compcare Health Services Insurance Corporation	WI	IA	Blue Cross Blue Shield of Wisconsin	Ownership	100.000	Anthem, Inc.	
0671	Anthem, Inc.	95693	39-1462554				Crossroads Acquisition Corp.	DE	NIA	Anthem Holding Corp.	Ownership	100.000	Anthem, Inc.	
0671	Anthem, Inc.		20-0334650				DeCare Analytics, LLC	MN	NIA	DeCare Dental, LLC	Ownership	100.000	Anthem, Inc.	
0671	Anthem, Inc.		41-1905556				DeCare Dental Health International, LLC	MN	NIA	DeCare Dental, LLC	Ownership	100.000	Anthem, Inc.	
0671	Anthem, Inc.		02-0574609				DeCare Dental Insurance Ireland, Ltd.	JRL	NIA	DeCare Dental, LLC	Ownership	100.000	Anthem, Inc.	
0671	Anthem, Inc.		73-1665525				DeCare Dental Networks, LLC	MN	NIA	DeCare Dental, LLC	Ownership	100.000	Anthem, Inc.	
0671	Anthem, Inc.		01-0822645				DeCare Dental, LLC	MN	NIA	Anthem Holding Corp.	Ownership	100.000	Anthem, Inc.	
0671	Anthem, Inc.						DeCare Operations Ireland, Limited	JRL	NIA	DeCare Dental, LLC	Ownership	100.000	Anthem, Inc.	
0671	Anthem, Inc.						DeCare Systems Ireland, Limited	JRL	NIA	DeCare Dental, LLC	Ownership	100.000	Anthem, Inc.	
0671	Anthem, Inc.		26-2544715				Designated Agent Company, Inc.	KY	NIA	Anthem Health Plans of Kentucky, Inc.	Ownership	100.000	Anthem, Inc.	
0671	Anthem, Inc.		13-3934328				EHC Benefits Agency, Inc.	NY	NIA	WellPoint Holding Corp	Ownership	100.000	Anthem, Inc.	
0671	Anthem, Inc.	55093	23-7391136				Empire HealthChoice Assurance, Inc.	NY	IA	WellPoint Holding Corp	Ownership	100.000	Anthem, Inc.	
0671	Anthem, Inc.	95433	13-3874803				Empire HealthChoice HMO, Inc.	NY	IA	Empire HealthChoice Assurance, Inc.	Ownership	100.000	Anthem, Inc.	
0671	Anthem, Inc.						Forty-Four Forty-Four Forest Park Redevelopment Corp.	MO	NIA	RightCHOICE Managed Care, Inc.	Ownership	100.000	Anthem, Inc.	
0671	Anthem, Inc.		43-1047923				Golden West Health Plan, Inc.	CA	IA	WellPoint California Services, Inc.	Ownership	100.000	Anthem, Inc.	0104
0671	Anthem, Inc.		95-2907752				Government Health Services, LLC	WI	NIA	ATH Holding Company, LLC	Ownership	100.000	Anthem, Inc.	
0671	Anthem, Inc.		26-4286154							Blue Cross and Blue Shield of Georgia, Inc.	Ownership	100.000	Anthem, Inc.	
0671	Anthem, Inc.	97217	58-1473042				Greater Georgia Life Insurance Company	GA	IA		Ownership	100.000	Anthem, Inc.	
0671	Anthem, Inc.		51-0365660				Health Core, Inc.	DE	NIA	Arcus Enterprises, Inc.	Ownership	100.000	Anthem, Inc.	
0671	Anthem, Inc.		54-1237939				Health Management Corporation	VA	NIA	Southeast Services, Inc.	Ownership	100.000	Anthem, Inc.	
0671	Anthem, Inc.		36-3897701				Health Ventures Partner, L.L.C.	IL	NIA	UNICARE National Services, Inc.	Ownership	100.000	Anthem, Inc.	
0671	Anthem, Inc.	95169	54-1356687				HealthKeepers, Inc.	VA	IA	Anthem Southeast, Inc.	Ownership	92.510	Anthem, Inc.	
0671	Anthem, Inc.	95169	54-1356687				HealthKeepers, Inc.	VA	IA	UNICARE National Services, Inc.	Ownership	7.490	Anthem, Inc.	
0671	Anthem, Inc.	96475	43-1616135				HealthLink HMO, Inc.	MO	IA	HealthLink, Inc.	Ownership	100.000	Anthem, Inc.	
0671	Anthem, Inc.		43-1364135				HealthLink, Inc.	IL	NIA	RightCHOICE Managed Care, Inc.	Ownership	100.000	Anthem, Inc.	
0671	Anthem, Inc.	78972	86-0257201				Healthy Alliance Life Insurance Company	MO	IA	RightCHOICE Managed Care, Inc.	Ownership	100.000	Anthem, Inc.	

SCHEDULE Y
PART 1A - DETAIL OF INSURANCE HOLDING COMPANY SYSTEM

1	2	3	4	5	6	7	8	9	10	11	12	13	14	15
Group Code	Group Name	NAIC Company Code	ID Number	Federal RSSD	CIK	Name of Securities Exchange if Publicly Traded (U.S. or International)	Names of Parent, Subsidiaries Or Affiliates	Domi-ciliary Location	Relation-ship to Reporting Entity	Directly Controlled by (Name of Entity/Person)	Type of Control (Ownership, Board, Management, Attorney-in-Fact, Influence, Other)	If Control is Owner-ship Provide Perce-ntage	Ultimate Controlling Entity(ies)/Person(s)	*
...0671 ...	Anthem, Inc.95473 ..	84-1017384	HMO Colorado, Inc.CO.IA	Rocky Mountain Hospital and Medical Service, Inc.	Ownership.....	..100.000 ...	Anthem, Inc.
...0671 ...	Anthem, Inc.95358 ..	37-1216698	HMO Missouri, Inc.MO.IA	RightCHOICE Managed Care, Inc.	Ownership.....	..100.000 ...	Anthem, Inc.
...0671 ...	Anthem, Inc.	75-2619605	Imaging Management Holdings, L.L.C.DE.NIA	ATH Holding Company, LLC	Ownership.....	..100.000 ...	Anthem, Inc.
...0671 ...	Anthem, Inc.	56-2368286	Imaging Providers of Texas (non-profit)TX.NIA	American Imaging Management, Inc.	Ownership.....	..100.000 ...	Anthem, Inc.
...0671 ...	Anthem, Inc.95527 ..	02-0494919	Matthew Thornton Health Plan, Inc.NH.IA	Anthem Health Plans of New Hampshire, Inc.	Ownership.....	..100.000 ...	Anthem, Inc.
...0671 ...	Anthem, Inc.	39-2013971	Meridian Resource Company, LLCWI.NIA	Compcare Health Services Insurance Corporation	Ownership.....	..100.000 ...	Anthem, Inc.
...0671 ...	Anthem, Inc.	35-1840597	National Government Services, Inc.IN.NIA	Anthem Insurance Companies, Inc.	Ownership.....	..100.000 ...	Anthem, Inc.
...0671 ...	Anthem, Inc.	46-1595582	National Telehealth Network, LLCDE.NIA	Sellcore, Inc.	Ownership.....	..50.000	Anthem, Inc.0105 ...
...0671 ...	Anthem, Inc.	95-4249368	Park Square Holdings, Inc.CA.NIA	WellPoint California Services, Inc.	Ownership.....	..100.000 ...	Anthem, Inc.
...0671 ...	Anthem, Inc.	95-4386221	Park Square I, Inc.CA.NIA	WellPoint California Services, Inc.	Ownership.....	..100.000 ...	Anthem, Inc.
...0671 ...	Anthem, Inc.	95-4249345	Park Square II, Inc.CA.NIA	WellPoint California Services, Inc.	Ownership.....	..100.000 ...	Anthem, Inc.
...0671 ...	Anthem, Inc.	65-0569629	PHP Holdings, Inc.FL.NIA	AMERIGROUP Corporation	Ownership.....	..100.000 ...	Anthem, Inc.
...0671 ...	Anthem, Inc.	43-1595640	R & P Realty, Inc.MO.NIA	RightCHOICE Managed Care, Inc.	Ownership.....	..100.000 ...	Anthem, Inc.
...0671 ...	Anthem, Inc.	56-2396739	Resolution Health, Inc.DE.NIA	Anthem Southeast, Inc.	Ownership.....	..100.000 ...	Anthem, Inc.
...0671 ...	Anthem, Inc.	47-0851593	RightCHOICE Managed Care, Inc.DE.NIA	Anthem Holding Corp.	Ownership.....	..100.000 ...	Anthem, Inc.
...0671 ...	Anthem, Inc.11011 ..	84-0747736	Rocky Mountain Hospital and Medical Service, Inc.CO.IA	ATH Holding Company, LLC	Ownership.....	..100.000 ...	Anthem, Inc.
...0671 ...	Anthem, Inc.	20-0473316	SellCore, Inc.DE.NIA	Anthem, Inc.	Ownership.....	..100.000 ...	Anthem, Inc.
...0671 ...	Anthem, Inc.	27-0757414	Simply Healthcare Holdings, Inc.FL.NIA	ATH Holding Company, LLC	Ownership.....	..100.000 ...	Anthem, Inc.
...0671 ...	Anthem, Inc.13726 ..	27-0945036	Simply Healthcare Plans, Inc.FL.IA	Simply Healthcare Holdings, Inc.	Ownership.....	..100.000 ...	Anthem, Inc.
...0671 ...	Anthem, Inc.	55-0712302	Southeast Services, Inc.VA.NIA	Anthem Southeast, Inc.	Ownership.....	..100.000 ...	Anthem, Inc.
...0671 ...	Anthem, Inc.	45-4071004	State Sponsored Business UM Services, Inc.IN.NIA	UNICARE Specialty Services, Inc.	Ownership.....	..100.000 ...	Anthem, Inc.
...0671 ...	Anthem, Inc.	35-1835818	The Anthem Companies, Inc.IN.NIA	ATH Holding Company, LLC	Ownership.....	..100.000 ...	Anthem, Inc.
...0671 ...	Anthem, Inc.	45-5443372	The Anthem Companies of California, Inc.CA.NIA	ATH Holding Company, LLC	Ownership.....	..100.000 ...	Anthem, Inc.
...0671 ...	Anthem, Inc.	43-1967924	TrustSolutions, LLCWI.NIA	Government Health Services, LLC	Ownership.....	..100.000 ...	Anthem, Inc.
...0671 ...	Anthem, Inc.12805 ..	20-4842073	UNICARE Health Plan of Kansas, Inc.KS.IA	UNICARE National Services, Inc.	Ownership.....	..100.000 ...	Anthem, Inc.
...0671 ...	Anthem, Inc.11810 ..	84-1620480	UNICARE Health Plan of West Virginia, Inc.WV.IA	UNICARE National Services, Inc.	Ownership.....	..100.000 ...	Anthem, Inc.
...0671 ...	Anthem, Inc.95420 ..	74-2151310	UNICARE Health Plans of Texas, Inc.TX.IA	UNICARE Illinois Services, Inc.	Ownership.....	..100.000 ...	Anthem, Inc.
...0671 ...	Anthem, Inc.	36-3899137	UNICARE Illinois Services, Inc.IL.NIA	UNICARE National Services, Inc.	Ownership.....	..100.000 ...	Anthem, Inc.
...0671 ...	Anthem, Inc.80314 ..	52-0913817	UNICARE Life & Health Insurance CompanyIN.IA	UNICARE National Services, Inc.	Ownership.....	..100.000 ...	Anthem, Inc.
...0671 ...	Anthem, Inc.	95-4635507	UNICARE National Services, Inc.DE.NIA	Anthem Holding Corp.	Ownership.....	..100.000 ...	Anthem, Inc.
...0671 ...	Anthem, Inc.	77-0494551	UNICARE Specialty Services, Inc.DE.NIA	Anthem Holding Corp.	Ownership.....	..100.000 ...	Anthem, Inc.
...0671 ...	Anthem, Inc.	36-4014617	UtiliMED IPA, Inc.NY.NIA	American Imaging Management, Inc.	Ownership.....	..100.000 ...	Anthem, Inc.
...0671 ...	Anthem, Inc.	20-4405193	WellPoint Acquisition, LLCIN.NIA	Anthem, Inc.	Ownership.....	..100.000 ...	Anthem, Inc.
...0671 ...	Anthem, Inc.	20-2156380	WellPoint Behavioral Health, Inc.DE.NIA	UNICARE Specialty Services, Inc.	Ownership.....	..100.000 ...	Anthem, Inc.
...0671 ...	Anthem, Inc.	95-4640531	WellPoint California Services, Inc.DE.NIA	Anthem Holding Corp.	Ownership.....	..100.000 ...	Anthem, Inc.
...0671 ...	Anthem, Inc.	95-4657170	WellPoint Dental Services, Inc.DE.NIA	UNICARE Specialty Services, Inc.	Ownership.....	..100.000 ...	Anthem, Inc.
...0671 ...	Anthem, Inc.	20-3620996	WellPoint Holding CorpDE.NIA	Anthem, Inc.	Ownership.....	..100.000 ...	Anthem, Inc.
...0671 ...	Anthem, Inc.	45-2736438	WellPoint Information Technology Services, Inc.CA.NIA	Blue Cross of California	Ownership.....	..100.000 ...	Anthem, Inc.
...0671 ...	Anthem, Inc.	36-4595641	WellPoint Insurance Services, Inc.HI.NIA	Anthem, Inc.	Ownership.....	..100.000 ...	Anthem, Inc.
...0671 ...	Anthem, Inc.	47-2546820	WellPoint Military Care CorporationIN.NIA	Government Health Services, LLC	Ownership.....	..100.000 ...	Anthem, Inc.
...0671 ...	Anthem, Inc.	36-3897080	WellPoint Partnership Plan, LLCIL.NIA	Health Ventures Partner, L.L.C.	Ownership.....	..75.000	Anthem, Inc.
...0671 ...	Anthem, Inc.	36-3897080	WellPoint Partnership Plan, LLCIL.NIA	UNICARE Illinois Services, Inc.	Ownership.....	..25.000	Anthem, Inc.
...0671 ...	Anthem, Inc.	98-0552141	WPMI (Shanghai) Enterprise Service Co. Ltd.CHN.NIA	WPMI, LLC	Ownership.....	..100.000 ...	Anthem, Inc.

SCHEDULE Y
PART 1A - DETAIL OF INSURANCE HOLDING COMPANY SYSTEM

1	2	3	4	5	6	7	8	9	10	11	12	13	14	15
Group Code	Group Name	NAIC Company Code	ID Number	Federal RSSD	CIK	Name of Securities Exchange if Publicly Traded (U.S. or International)	Names of Parent, Subsidiaries Or Affiliates	Domi-ciliary Loca-tion	Relation-ship to Reporting Entity	Directly Controlled by (Name of Entity/Person)	Type of Control (Ownership, Board, Management, Attorney-in-Fact, Influence, Other)	If Control is Owner-ship Provide Percen-tage	Ultimate Controlling Entity(ies)/Person(s)	*
...0671	Anthem, Inc.	20-8672847	WPMI, LLCDE.....NIA.....	ATH Holding Company, LLC	Ownership.....	..63.880	Anthem, Inc.0106

Asterisk	Explanation
0100	Insurer is deemed to be an insurance affiliate in column 10, but does not have an NAIC Company Code in column 3 because it is regulated by the New York State Department of Health.
0101	Insurer is deemed to be an insurance affiliate in column 10, but does not have an NAIC Company Code in column 3 because it is regulated by the California Department of Managed Health Care.
0102	Insurer is deemed to be an insurance affiliate in column 10, but does not have an NAIC Company Code in column 3 because it is regulated by the California Department of Managed Health Care.
0103	Insurer is deemed to be an insurance affiliate in column 10, but does not have an NAIC Company Code in column 3 because it is regulated by the California Department of Managed Health Care.
0104	Insurer is deemed to be an insurance affiliate in column 10, but does not have an NAIC Company Code in column 3 because it is regulated by the California Department of Managed Health Care.
0105	50% owned by unaffiliated investors
0106	30.09% owned by unaffiliated investors

SUPPLEMENTAL EXHIBITS AND SCHEDULES INTERROGATORIES

The following supplemental reports are required to be filed as part of your statement filing. However, in the event that your company does not transact the type of business for which the special report must be filed, your response of NO to the specific interrogatory will be accepted in lieu of filing a "NONE" report and a bar code will be printed below. If the supplement is required of your company but is not being filed for whatever reason enter SEE EXPLANATION and provide an explanation following the interrogatory questions.

Response

1. Will the Medicare Part D Coverage Supplement be filed with the state of domicile and the NAIC with this statement?

NO

Explanation:

1.

Bar Code:

1. Medicare Part D Coverage Supplement [Document Identifier 365]



OVERFLOW PAGE FOR WRITE-INS

NONE

SCHEDULE A - VERIFICATION

Real Estate

	1	2
	Year to Date	Prior Year Ended December 31
1. Book/adjusted carrying value, December 31 of prior year		
2. Cost of acquired:		
2.1 Actual cost at time of acquisition		
2.2 Additional investment made after acquisition		
3. Current year change in encumbrances		
4. Total gain (loss) on disposals		
5. Deduct amounts received on disposals		
6. Total foreign exchange change in book/adjusted carrying value		
7. Deduct current year's other than temporary impairment recognized		
8. Deduct current year's depreciation		
9. Book/adjusted carrying value at the end of current period (Lines 1+2+3+4-5+6-7-8)		
10. Deduct total nonadmitted amounts		
11. Statement value at end of current period (Line 9 minus Line 10)		

SCHEDULE B - VERIFICATION

Mortgage Loans

	1	2
	Year to Date	Prior Year Ended December 31
1. Book value/recorded investment excluding accrued interest, December 31 of prior year		
2. Cost of acquired:		
2.1 Actual cost at time of acquisition		
2.2 Additional investment made after acquisition		
3. Capitalized deferred interest and other		
4. Accrual of discount		
5. Unrealized valuation increase (decrease)		
6. Total gain (loss) on disposals		
7. Deduct amounts received on disposals		
8. Deduct amortization of premium and mortgage interest point and commitment fees		
9. Total foreign exchange change in book value/recorded investment excluding accrued interest		
10. Deduct current year's other than temporary impairment recognized		
11. Book value/recorded investment excluding accrued interest at end of current period (Lines 1+2+3+4+5+6-7-8+9-10)		
12. Total valuation allowance		
13. Subtotal (Line 11 plus Line 12)		
14. Deduct total nonadmitted amounts		
15. Statement value at end of current period (Line 13 minus Line 14)		

SCHEDULE BA - VERIFICATION

Other Long-Term Invested Assets

	1	2
	Year to Date	Prior Year Ended December 31
1. Book/adjusted carrying value, December 31 of prior year		
2. Cost of acquired:		
2.1 Actual cost at time of acquisition		
2.2 Additional investment made after acquisition		
3. Capitalized deferred interest and other		
4. Accrual of discount		
5. Unrealized valuation increase (decrease)		
6. Total gain (loss) on disposals		
7. Deduct amounts received on disposals		
8. Deduct amortization of premium and depreciation		
9. Total foreign exchange change in book/adjusted carrying value		
10. Deduct current year's other than temporary impairment recognized		
11. Book/adjusted carrying value at end of current period (Lines 1+2+3+4+5+6-7-8+9-10)		
12. Deduct total nonadmitted amounts		
13. Statement value at end of current period (Line 11 minus Line 12)		

SCHEDULE D - VERIFICATION

Bonds and Stocks

	1	2
	Year to Date	Prior Year Ended December 31
1. Book/adjusted carrying value of bonds and stocks, December 31 of prior year	24,849,637	22,411,412
2. Cost of bonds and stocks acquired	2,201,153	11,961,922
3. Accrual of discount	1,345	2,845
4. Unrealized valuation increase (decrease)		
5. Total gain (loss) on disposals	239,713	20,785
6. Deduct consideration for bonds and stocks disposed of	23,351,513	9,189,058
7. Deduct amortization of premium	170,782	358,269
8. Total foreign exchange change in book/adjusted carrying value		
9. Deduct current year's other than temporary impairment recognized		
10. Book/adjusted carrying value at end of current period (Lines 1+2+3+4+5-6-7+8-9)	3,769,553	24,849,637
11. Deduct total nonadmitted amounts		
12. Statement value at end of current period (Line 10 minus Line 11)	3,769,553	24,849,637

STATEMENT AS OF JUNE 30, 2015 OF THE Amerigroup Ohio, Inc.

SCHEDULE D - PART 1B

Showing the Acquisitions, Dispositions and Non-Trading Activity
During the Current Quarter for all Bonds and Preferred Stock by NAIC Designation

NAIC Designation	1 Book/Adjusted Carrying Value Beginning of Current Quarter	2 Acquisitions During Current Quarter	3 Dispositions During Current Quarter	4 Non-Trading Activity During Current Quarter	5 Book/Adjusted Carrying Value End of First Quarter	6 Book/Adjusted Carrying Value End of Second Quarter	7 Book/Adjusted Carrying Value End of Third Quarter	8 Book/Adjusted Carrying Value December 31 Prior Year
BONDS								
1. NAIC 1 (a)	26,274,412	11,050,512	29,144,271	(79,856)	26,274,412	8,100,797		26,367,667
2. NAIC 2 (a)	2,572,392	379,314	2,948,795	(2,911)	2,572,392	0		2,443,172
3. NAIC 3 (a)	0				0	0		
4. NAIC 4 (a)	0				0	0		
5. NAIC 5 (a)	0				0	0		
6. NAIC 6 (a)	0				0	0		
7. Total Bonds	28,846,804	11,429,826	32,093,066	(82,767)	28,846,804	8,100,797	0	28,810,839
PREFERRED STOCK								
8. NAIC 1	0				0	0		0
9. NAIC 2	0				0	0		0
10. NAIC 3	0				0	0		0
11. NAIC 4	0				0	0		0
12. NAIC 5	0				0	0		0
13. NAIC 6	0				0	0		0
14. Total Preferred Stock	0	0	0	0	0	0	0	0
15. Total Bonds and Preferred Stock	28,846,804	11,429,826	32,093,066	(82,767)	28,846,804	8,100,797	0	28,810,839

(a) Book/Adjusted Carrying Value column for the end of the current reporting period includes the following amount of non-rated short-term and cash equivalent bonds by NAIC designation: NAIC 1 \$; NAIC 2 \$; NAIC 3 \$;
NAIC 4 \$; NAIC 5 \$; NAIC 6 \$

SCHEDULE DA - PART 1

Short-Term Investments

	1	2	3	4	5
	Book/Adjusted Carrying Value	Par Value	Actual Cost	Interest Collected Year-to-Date	Paid for Accrued Interest Year-to-Date
9199999 Totals	4,331,244	xxx	4,331,244	207	0

SCHEDULE DA - VERIFICATION

Short-Term Investments

	1	2
	Year To Date	Prior Year Ended December 31
1. Book/adjusted carrying value, December 31 of prior year	3,961,202	3,993,628
2. Cost of short-term investments acquired	12,635,292	8,195,968
3. Accrual of discount		
4. Unrealized valuation increase (decrease)		
5. Total gain (loss) on disposals		
6. Deduct consideration received on disposals	12,265,250	8,228,394
7. Deduct amortization of premium		
8. Total foreign exchange change in book/adjusted carrying value		
9. Deduct current year's other than temporary impairment recognized		
10. Book/adjusted carrying value at end of current period (Lines 1+2+3+4+5-6-7+8-9)	4,331,244	3,961,202
11. Deduct total nonadmitted amounts		
12. Statement value at end of current period (Line 10 minus Line 11)	4,331,244	3,961,202

Schedule DB - Part A - Verification - Options, Caps, Floors, Collars, Swaps and Forwards
N O N E

Schedule DB - Part B - Verification - Futures Contracts
N O N E

Schedule DB - Part C - Section 1 - Replication (Synthetic Asset) Transactions (RSATs) Open
N O N E

Schedule DB-Part C-Section 2-Reconciliation of Replication (Synthetic Asset) Transactions Open
N O N E

Schedule DB - Verification - Book/Adjusted Carrying Value, Fair Value and Potential Exposure of
Derivatives
N O N E

Schedule E - Verification - Cash Equivalents
N O N E

Schedule A - Part 2 - Real Estate Acquired and Additions Made
N O N E

Schedule A - Part 3 - Real Estate Disposed
N O N E

Schedule B - Part 2 - Mortgage Loans Acquired and Additions Made
N O N E

Schedule B - Part 3 - Mortgage Loans Disposed, Transferred or Repaid
N O N E

Schedule BA - Part 2 - Other Long-Term Invested Assets Acquired and Additions Made
N O N E

Schedule BA - Part 3 - Other Long-Term Invested Assets Disposed, Transferred or Repaid
N O N E

STATEMENT AS OF JUNE 30, 2015 OF THE Amerigroup Ohio, Inc.

SCHEDULE D - PART 3

Show All Long-Term Bonds and Stock Acquired During the Current Quarter

1	2	3	4	5	6	7	8	9	10
CUSIP Identification	Description	Foreign	Date Acquired	Name of Vendor	Number of Shares of Stock	Actual Cost	Par Value	Paid for Accrued Interest and Dividends	NAIC Designation or Market Indicator (a)
36179R-BW-8	GNMA 11 POOL MA2753 3.000% 04/20/45		.05/14/2015	Morgan Stanley		254,427	249,438	395	1
0599999. Subtotal - Bonds - U.S. Governments						254,427	249,438	395	XXX
66285W-NB-8	NORTH TEX TWY AUTH REV 5.000% 01/01/24		.04/09/2015	Chase		71,441	60,000	0	1FE
3199999. Subtotal - Bonds - U.S. Special Revenues						71,441	60,000	0	XXX
00206R-CL-4	AT&T INC 2.450% 06/30/20		.04/23/2015	J P Morgan		39,980	40,000	0	2FE
00287Y-AN-9	ABBVIE INC 1.800% 05/14/18		.05/05/2015	Bank of America		104,893	105,000	0	2FE
031162-BW-9	AMGEN INC 2.125% 05/01/20		.04/28/2015	CS First Boston		89,933	90,000	0	1FE
037833-BB-5	APPLE COMPUTER INC 0.900% 05/12/17		.05/06/2015	Goldman Sachs & Co		89,938	90,000	0	1FE
053332-AS-1	AUTOZONE INC 2.500% 04/15/21		.04/20/2015	US Bancorp		39,985	40,000	0	2FE
172967-JN-2	CITIGROUP INC 1.700% 04/27/18		.04/22/2015	Citigroup Global Markets		69,778	70,000	0	1FE
25466A-AG-6	DISCOVER BANK SERIES BKTN 3.100% 06/04/20		.06/01/2015	J P Morgan		159,963	160,000	0	1FE
378272-AJ-7	GLENCORE FUNDING LLC SERIES 144A 2.125% 04/16/18		.04/08/2015	Bank of America		34,976	35,000	0	2FE
413875-AQ-8	HARRIS CORP 2.700% 04/27/20		.04/22/2015	Morgan Stanley		30,000	30,000	0	2FE
78355H-JZ-3	RYDER SYSTEM INC SERIES MTN 2.500% 05/11/20		.05/04/2015	Mitsubishi Securities Inc		44,876	45,000	0	1FE
80282K-AD-8	SANTANDER HOLDINGS USA 2.650% 04/17/20		.04/14/2015	Bony/Barclays Capital Inc		129,481	130,000	0	2FE
3899999. Subtotal - Bonds - Industrial and Miscellaneous (Unaffiliated)						833,803	835,000	0	XXX
8399997. Total - Bonds - Part 3						1,159,671	1,144,438	395	XXX
8399998. Total - Bonds - Part 5						XXX	XXX	XXX	XXX
8399999. Total - Bonds						1,159,671	1,144,438	395	XXX
8999997. Total - Preferred Stocks - Part 3						0	XXX	0	XXX
8999998. Total - Preferred Stocks - Part 5						XXX	XXX	XXX	XXX
8999999. Total - Preferred Stocks						0	XXX	0	XXX
9799997. Total - Common Stocks - Part 3						0	XXX	0	XXX
9799998. Total - Common Stocks - Part 5						XXX	XXX	XXX	XXX
9799999. Total - Common Stocks						0	XXX	0	XXX
9899999. Total - Preferred and Common Stocks						0	XXX	0	XXX
9999999 - Totals						1,159,671	XXX	395	XXX

(a) For all common stock bearing the NAIC market indicator "U" provide: the number of such issues

STATEMENT AS OF JUNE 30, 2015 OF THE Amerigroup Ohio, Inc.

SCHEDULE D - PART 4

Show All Long-Term Bonds and Stock Sold, Redeemed or Otherwise Disposed of During the Current Quarter

1	2	3	4	5	6	7	8	9	10	Change In Book/Adjusted Carrying Value					16	17	18	19	20	21	22
										11	12	13	14	15							
CUSIP Ident-ification	Description	For-eign	Disposal Date	Name of Purchaser	Number of Shares of Stock	Consid-eration	Par Value	Actual Cost	Prior Year Book/ Adjusted Carrying Value	Unrealized Valuation Increase/ (Decrease)	Current Year's (Amor-tization)/ Accretion	Current Year's Other Than Temporary Impairment Recogn-ized	Total Change in Book/ Adjusted Carrying Value (11 + 12 - 13)	Total Foreign Exchange Change in Book /Adjusted Carrying Value	Book/ Adjusted Carrying Value at Disposal Date	Foreign Exchange Gain (Loss) on Disposal	Realized Gain (Loss) on Disposal	Total Gain (Loss) on Disposal	Bond Interest/ Stock Dividends Received During Year	Stated Con-tractual Maturity Date	NAIC Desig-nation or Market In-dicator (a)
36179R-BW-8	GNMA II POOL MA2753 3.000% 04/20/45		06/23/2015	Citigroup Global Markets		250,642	248,699	253,673	.0	.0	(15)	.0	(15)	.0	253,658	.0	(3,016)	(3,016)	1,098	04/20/2045	1
36179R-BW-8	GNMA II POOL MA2753 3.000% 04/20/45		06/01/2015	Paydown		739	739	754	.0	.0	(15)	.0	(15)	.0	739	.0	.0	.0	2	04/20/2045	1
0599999. Subtotal - Bonds - U.S. Governments						251,381	249,438	254,427	0	0	(30)	0	(30)	0	254,397	0	(3,016)	(3,016)	1,100	XXX	XXX
20772G-7D-4	CONNECTICUT ST 5.000% 12/01/19		06/23/2015	Hutchisin, Schockey		433,500	380,000	428,081	408,558	.0	(2,621)	.0	(2,621)	.0	405,937	.0	27,563	27,563	10,819	12/01/2019	1FE
373384-OP-8	GEORGIA ST 5.000% 08/01/20		06/23/2015	Stifel Nicolaus & Co		211,889	195,000	220,286	203,664	.0	(1,577)	.0	(1,577)	.0	202,087	.0	9,802	9,802	8,802	08/01/2020	1FE
57582P-RU-6	MASSACHUSETTS ST 5.000% 07/01/16		06/23/2015	Davidson D.A.+Company		161,891	155,000	179,716	160,603	.0	(1,793)	.0	(1,793)	.0	158,810	.0	3,081	3,081	7,642	07/01/2016	1FE
604129-VS-2	MINNESOTA ST 5.000% 08/01/18		06/23/2015	Baird & Co		279,240	250,000	304,765	276,075	.0	(3,431)	.0	(3,431)	.0	272,644	.0	6,596	6,596	11,285	08/01/2018	1FE
604129-VS-1	MINNESOTA ST 5.000% 06/01/20		06/23/2015	BMO Capital Markets		135,404	130,000	135,678	133,354	.0	(1,135)	.0	(1,135)	.0	132,220	.0	3,185	3,185	3,701	06/01/2020	1FE
604129-X7-6	MINNESOTA ST 5.000% 06/01/20		06/23/2015	Baird & Co		25,948	25,000	25,893	25,529	.0	(179)	.0	(179)	.0	25,350	.0	597	597	712	06/01/2020	1FE
646039-QW-0	NEW JERSEY ST 5.000% 08/01/16		06/23/2015	Chase		166,824	160,000	179,976	164,812	.0	(1,454)	.0	(1,454)	.0	163,358	.0	3,466	3,466	7,222	08/01/2016	1FE
677520-T9-9	OHIO ST HWY CAP IMPT 5.000% 08/01/17		06/23/2015	Pershing		166,779	154,000	177,413	162,008	.0	(1,462)	.0	(1,462)	.0	160,545	.0	6,234	6,234	6,951	08/01/2017	1FE
93974C-JG-6	WASHINGTON ST 5.000% 01/01/17		06/23/2015	Oppenheimer & Co.		159,414	150,000	167,834	155,190	.0	(1,232)	.0	(1,232)	.0	153,958	.0	5,456	5,456	7,396	01/01/2017	1FE
1799999. Subtotal - Bonds - U.S. States, Territories and Possessions						1,740,889	1,599,000	1,819,642	1,689,793	0	(14,884)	0	(14,884)	0	1,674,909	0	65,980	65,980	64,530	XXX	XXX
167560-LM-1	CHICAGO IL MET WTR RECLAMATION 5.000% 12/01/18		06/23/2015	Stifel Nicolaus & Co		281,263	265,000	298,327	274,212	.0	(2,285)	.0	(2,285)	.0	271,927	.0	9,336	9,336	7,545	12/01/2018	1FE
199491-3C-3	COLUMBUS OHIO 5.000% 07/01/19		06/23/2015	Hutchisin, Schockey		455,952	400,000	500,812	462,610	.0	(6,576)	.0	(6,576)	.0	456,033	.0	(81)	(81)	19,722	07/01/2019	1FE
235219-GQ-9	DALLAS TEXAS 5.000% 02/15/17		06/23/2015	Millinium Advisors		21,176	20,000	22,159	21,311	.0	(296)	.0	(296)	.0	21,015	.0	160	160	864	02/15/2017	1FE
34153P-Q3-5	FLORIDA ST BRD ED SERIES C 5.000% 06/01/21		06/23/2015	Paine Webber		205,396	175,000	206,696	201,346	.0	(1,855)	.0	(1,855)	.0	199,491	.0	5,905	5,905	4,983	06/01/2021	1FE
442331-TN-4	HOUSTON TEX 5.000% 03/01/17		06/23/2015	Oppenheimer & Co.		80,103	75,000	85,804	78,944	.0	(867)	.0	(867)	.0	78,077	.0	2,026	2,026	3,073	03/01/2017	1FE
592112-BM-7	METROPOLITAN GOVT NASHVILLE 5.000% 08/01/21		06/23/2015	Pershing		162,446	155,000	168,701	158,316	.0	(999)	.0	(999)	.0	157,317	.0	5,129	5,129	6,997	08/01/2021	1FE
592112-JP-2	METROPOLITAN GOVT NASHVILLE 5.000% 07/01/19		06/23/2015	BONY + VINNING SPARKS IB		570,345	500,000	618,395	573,519	.0	(7,691)	.0	(7,691)	.0	565,828	.0	4,517	4,517	24,653	07/01/2019	1FE
940157-TH-3	WASHINGTON SUBN SAN DIST MD 5.000% 06/01/19		06/23/2015	Citigroup Global Markets		570,280	500,000	630,445	579,621	.0	(8,545)	.0	(8,545)	.0	571,076	.0	(796)	(796)	14,236	06/01/2019	1FE
2499999. Subtotal - Bonds - U.S. Political Subdivisions of States, Territories and Possessions						2,346,961	2,090,000	2,531,339	2,349,879	0	(29,114)	0	(29,114)	0	2,320,764	0	26,196	26,196	82,073	XXX	XXX
02765U-GC-2	AMERICAN MUN PWR-OHIO INC SERIES A 5.000% 02/15/29		06/23/2015	Citigroup Global Markets		280,640	250,000	284,595	284,595	.0	(1,484)	.0	(1,484)	.0	283,111	.0	(2,471)	(2,471)	5,625	02/15/2029	1FE
047870-MY-3	ATLANTA GEORGIA WATER REVENUE 5.000% 11/01/30		06/23/2015	Morgan Stanley		52,497	45,000	52,514	.0	.0	(184)	.0	(184)	.0	52,330	.0	167	167	650	11/01/2030	1FE
101029-PY-6	BOSTON MA WTR & SWIR COMMISSION 5.000% 11/01/17		06/23/2015	Duncan Williams Inc.		158,485	145,000	168,125	153,429	.0	(1,399)	.0	(1,399)	.0	152,030	.0	6,455	6,455	4,733	11/01/2017	1FE
29270C-WX-9	ENERGY NORTHWEST WASH ELEC REV 5.000% 07/01/23		06/23/2015	Southwest Securities		293,013	250,000	305,905	289,976	.0	(2,786)	.0	(2,786)	.0	287,190	.0	5,823	5,823	12,326	07/01/2023	1FE
312807-W6-9	FHLMC POOL G05769 5.000% 12/01/39		06/23/2015	Goldman Sachs & Co		94,939	85,531	94,525	.0	.0	(95)	.0	(95)	.0	94,430	.0	509	509	1,699	12/01/2039	1
312807-W6-9	FHLMC POOL G05769 5.000% 12/01/39		06/01/2015	Paydown		4,052	4,052	4,478	.0	.0	(426)	.0	(426)	.0	4,052	.0	.0	.0	56	12/01/2039	1
3138EK-WE-1	FNMA POOL AL3344 4.500% 10/01/42		06/23/2015	Goldman Sachs & Co		122,198	111,469	119,446	119,284	.0	(19)	.0	(19)	.0	119,265	.0	2,933	2,933	2,829	10/01/2042	1
3138EK-WE-1	FNMA POOL AL3344 4.500% 10/01/42		06/01/2015	Paydown		4,250	4,250	4,555	4,548	.0	(298)	.0	(298)	.0	4,250	.0	.0	.0	79	10/01/2042	1
3138EL-BR-3	FNMA POOL AL3647 4.000% 12/01/42		06/23/2015	Citigroup Global Markets		149,657	141,061	150,538	150,522	.0	(49)	.0	(49)	.0	150,474	.0	(817)	(817)	3,182	12/01/2042	1
3138EL-BR-3	FNMA POOL AL3647 4.000% 12/01/42		06/01/2015	Paydown		11,055	11,798	11,797	.0	.0	(742)	.0	(742)	.0	11,055	.0	.0	.0	180	12/01/2042	1
3138ID-RW-3	FNMA POOL AS4100 4.500% 12/01/44		06/23/2015	Goldman Sachs & Co		212,204	195,243	213,730	.0	.0	(55)	.0	(55)	.0	213,674	.0	(1,470)	(1,470)	2,758	12/01/2044	1
3138ID-RW-3	FNMA POOL AS4100 4.500% 12/01/44		06/01/2015	Paydown		784	784	859	.0	.0	(74)	.0	(74)	.0	784	.0	.0	.0	6	12/01/2044	1
3138Y3-MT-5	FNMA POOL AX2169 4.000% 11/01/44		06/23/2015	Goldman Sachs & Co		209,509	196,032	208,866	208,807	.0	(140)	.0	(140)	.0	208,666	.0	843	843	4,422	11/01/2044	1
3138Y3-MT-5	FNMA POOL AX2169 4.000% 11/01/44		06/01/2015	Paydown		2,796	2,796	2,979	2,978	.0	(182)	.0	(182)	.0	2,796	.0	.0	.0	42	11/01/2044	1
31403D-DX-4	FNMA POOL 745418 5.500% 04/01/36		06/23/2015	Citigroup Global Markets		105,056	93,384	101,613	101,415	.0	12	.0	12	.0	101,427	.0	3,629	3,629	2,896	04/01/2036	1
31403D-DX-4	FNMA POOL 745418 5.500% 04/01/36		06/01/2015	Paydown		7,408	8,061	8,045	.0	.0	(637)	.0	(637)	.0	7,408	.0	.0	.0	167	04/01/2036	1
31416B-TA-6	FNMA POOL 995245 5.000% 01/01/39		06/23/2015	Citigroup Global Markets		164,962	149,753	163,792	163,490	.0	56	.0	56	.0	163,546	.0	1,417	1,417	4,222	01/01/2039	1
31416B-TA-6	FNMA POOL 995245 5.000% 01/01/39		06/01/2015	Paydown		13,415	13,415	14,673	14,646	.0	(1,231)	.0	(1,231)	.0	13,415	.0	.0	.0	275	01/01/2039	1
31416Y-XY-9	FNMA POOL AB3394 4.500% 08/01/41		06/23/2015	Goldman Sachs & Co		187,921	173,542	188,592	188,432	.0	(20)	.0	(20)	.0	188,412						

STATEMENT AS OF JUNE 30, 2015 OF THE Amerigroup Ohio, Inc.

SCHEDULE D - PART 4

Show All Long-Term Bonds and Stock Sold, Redeemed or Otherwise Disposed of During the Current Quarter

1	2	3	4	5	6	7	8	9	10	Change In Book/Adjusted Carrying Value					16	17	18	19	20	21	22
										11	12	13	14	15							
CUSIP Ident-ification	Description	For-foreign	Disposal Date	Name of Purchaser	Number of Shares of Stock	Consid-eration	Par Value	Actual Cost	Prior Year Book/ Adjusted Carrying Value	Unrealized Valuation Increase/ (Decrease)	Current Year's (Amor-tization)/ Accretion	Current Year's Other Than Temporary Impairment Recog-nized	Total Change in Book/ Adjusted Carrying Value (11 + 12 - 13)	Total Foreign Exchange Change in Book /Adjusted Carrying Value	Book/ Adjusted Carrying Value at Disposal Date	Foreign Exchange Gain (Loss) on Disposal	Realized Gain (Loss) on Disposal	Total Gain (Loss) on Disposal	Bond Interest/ Stock Dividends Received During Year	Stated Con-tractual Maturity Date	NAIC Desig-nation or Market In-dicator (a)
31417G-CE-4	FNMA POOL AB9068 3.500% 04/01/43		06/01/2015	Paydown		7,137	7,137	7,582	7,569	.0	(432)	.0	(432)	.0	7,137	.0	.0	.0	.92	04/01/2043	1
31418A-6G-8	FNMA POOL MA1770 4.500% 02/01/44		06/23/2015	Goldman Sachs & Co		184,354	170,304	182,784	182,579	.0	(4)	.0	(4)	.0	182,575	.0	1,779	1,779	4,321	02/01/2044	1
31418A-6G-8	FNMA POOL MA1770 4.500% 02/01/44		06/01/2015	Paydown		4,855	5,205	5,211	5,205	.0	(350)	.0	(350)	.0	4,855	.0	.0	.0	.86	02/01/2044	1
31419D-4K-4	FNMA POOL AE3525 4.000% 03/01/41		06/23/2015	Goldman Sachs & Co		103,291	97,502	104,845	104,611	.0	(39)	.0	(39)	.0	104,572	.0	(1,280)	(1,280)	2,199	03/01/2041	1
31419D-4K-4	FNMA POOL AE3525 4.000% 03/01/41		06/01/2015	Paydown		11,302	11,302	12,153	12,126	.0	(824)	.0	(824)	.0	11,302	.0	.0	.0	.187	03/01/2041	1
442435-4Q-3	HOUSTON TEX UTIL SYS REV SER C 5.000% 05/15/28		06/23/2015	Wachovia Securities First Tennessee Capital		75,057	65,000	73,932	73,398	.0	(374)	.0	(374)	.0	73,025	.0	2,033	2,033	1,995	05/15/2028	1FE
442435-YM-9	HOUSTON TEX UTIL SYS REV 5.000% 11/15/18 MASSACHUSETTS BAY TRANSN AUTH 5.250% 07/01/21		06/23/2015			628,410	560,000	674,313	616,588	.0	(6,837)	.0	(6,837)	.0	609,751	.0	18,659	18,659	17,189	11/15/2018	1FE
575579-FE-2	METROPOLITAN WASHINGTON D C AR SERIES A 5.000% 10/01/28		06/23/2015	Pershing		686,861	575,000	730,101	686,441	.0	(7,834)	.0	(7,834)	.0	678,607	.0	8,253	8,253	29,768	07/01/2021	1FE
592646-6S-7	METRO WTR DIST SOUTHRN CALIF 5.250% 07/01/24		06/23/2015	FUNB FUNDS II		39,071	35,000	40,102	39,891	.0	(209)	.0	(209)	.0	39,682	.0	(611)	(611)	1,288	10/01/2028	1FE
59266T-AL-5	MISSOURI JT MUN ELEC UTIL COMM SERIES A 5.000% 12/01/29		06/23/2015	Morgan Stanley		185,296	160,000	177,123	168,499	.0	(848)	.0	(848)	.0	167,651	.0	17,645	17,645	8,283	07/01/2024	1FE
606092-JC-9	NEW JERSEY ST TURNPIKE AUTH SERIES A 5.000% 01/01/30		06/23/2015	Morgan Stanley		137,588	120,000	138,334	.0	.0	(311)	.0	(311)	.0	138,022	.0	(434)	(434)	1,200	12/01/2029	1FE
646139-4Z-5	NEW YORK NY CITY TRANSITIONAL 5.000% 08/01/20		06/23/2015	Millinium Advisors		235,496	210,000	237,955	236,542	.0	(1,160)	.0	(1,160)	.0	235,381	.0	.115	.115	11,492	01/01/2030	1FE
64971Q-OH-9	NEW YORK ST ENVIRONMENTAL FACS 5.000% 12/15/22		06/23/2015	Oppenheimer & Co. Fidelity Capital Markets		162,288	155,000	163,614	158,571	.0	(1,076)	.0	(1,076)	.0	157,495	.0	4,793	4,793	6,997	08/01/2020	1
64985Y-DV-9	Citigroup Global Markets		06/23/2015			164,531	155,000	165,457	157,998	.0	(724)	.0	(724)	.0	157,274	.0	7,257	7,257	4,112	12/15/2022	1FE
650009-G3-1	NEW YORK ST THRUWAY AUTH 5.000% 01/01/30		06/23/2015			226,344	200,000	232,190	232,081	.0	(1,335)	.0	(1,335)	.0	230,746	.0	(4,402)	(4,402)	5,250	01/01/2030	1FE
66285W-NB-8	NORTH TEX TIWY AUTH REV 5.000% 01/01/24		06/23/2015	Morgan Stanley		68,425	60,000	71,441	.0	(209)	.0	.0	(209)	.0	71,232	.0	(2,808)	(2,808)	525	01/01/2024	1FE
679111-US-1	OKLAHOMA ST TURNPIKE AUTH 5.000% 01/01/18		06/23/2015	Paine Webber		464,971	425,000	517,272	472,845	.0	(7,640)	.0	(7,640)	.0	465,205	.0	(234)	(234)	20,955	01/01/2018	1FE
684517-OB-4	ORANGE CNTY FL SCH BRD COPS SERIES A 5.000% 08/01/29		06/23/2015	FUNB FUNDS II		300,627	265,000	291,269	289,865	.0	(1,056)	.0	(1,056)	.0	288,808	.0	11,818	11,818	11,962	08/01/2029	1FE
708840-HJ-0	PENNSYLVANIA INTERGOVTAL COOP 5.000% 06/15/17		06/23/2015	B C Zeigler		161,781	150,000	163,940	154,714	.0	(900)	.0	(900)	.0	153,814	.0	7,967	7,967	3,979	06/15/2017	1FE
709224-EV-7	PENNSYLVANIA ST TURNPIKE COMM 5.000% 12/01/31		06/23/2015	Citigroup Global Markets		401,760	360,000	409,190	408,784	.0	(2,029)	.0	(2,029)	.0	406,755	.0	(4,995)	(4,995)	10,500	12/01/2031	1FE
71883P-JU-2	PHOENIX ARIZ CIVIC IMPT CORP 5.000% 07/01/29		06/23/2015	Morgan Stanley		52,139	45,000	51,542	51,152	.0	(270)	.0	(270)	.0	50,881	.0	1,258	1,258	2,219	07/01/2029	1FE
71883R-JT-1	PHOENIX ARIZ CIVIC IMPT CORP 5.000% 07/01/24		06/23/2015	Morgan Stanley		136,248	120,000	129,467	124,702	.0	(468)	.0	(468)	.0	124,234	.0	12,014	12,014	5,917	07/01/2024	1FE
79730A-HN-1	SAN DIEGO CALIF PUB FACS FING 5.500% 05/15/23		06/23/2015	Morgan Stanley		144,728	125,000	135,889	130,376	.0	(548)	.0	(548)	.0	129,828	.0	14,900	14,900	4,220	05/15/2023	1FE
882806-BF-8	TEXAS ST TECH UNIV REVENUE 5.000% 08/15/17		06/23/2015	Oppenheimer & Co. BONY + VINNING SPARKS IB		515,366	475,000	573,088	522,489	.0	(8,700)	.0	(8,700)	.0	513,789	.0	1,577	1,577	20,517	08/15/2017	1FE
88283L-EP-7	TEXAS ST TRANS COMM 5.000% 04/01/24		04/09/2015			167,476	155,000	166,040	158,509	.0	(428)	.0	(428)	.0	158,080	.0	9,396	9,396	4,155	04/01/2024	1FE
928172-SJ-5	VIRGINIA ST PUB BLDG AUTH PUB 5.000% 08/01/18		06/23/2015	Hutchisin, Schockey		546,375	490,000	596,644	547,302	.0	(7,599)	.0	(7,599)	.0	539,703	.0	6,671	6,671	22,118	08/01/2018	1FE
977092-UH-6	WISCONSIN ST CLEAN WTR REV 5.000% 06/01/18		06/23/2015	Janney Montgomery Scott		166,464	150,000	176,852	162,770	.0	(1,754)	.0	(1,754)	.0	161,016	.0	5,448	5,448	4,271	06/01/2018	1FE
3199999	Subtotal - Bonds - U.S. Special Revenues					8,226,644	7,394,568	8,507,303	7,586,601	0	(64,106)	0	(64,106)	0	8,098,369	0	128,274	128,274	259,668	XXX	XXX
00206R-AV-4	AT&T INC 2.500% 08/15/15		06/22/2015	HSBC Securities Bony/Barclays Capital Inc		83,157	83,000	86,359	83,629	.0	(488)	.0	(488)	.0	83,141	.0	.16	.16	1,787	08/15/2015	2FE
00206R-CL-4	AT&T INC 2.450% 06/30/20		06/22/2015			39,226	40,000	39,980	.0	.0	.0	.0	.0	.0	39,980	.0	(754)	(754)	139	06/30/2020	2FE
00287Y-AN-9	ABBVIE INC 1.800% 05/14/18		06/22/2015	Morgan Stanley		104,652	105,000	104,893	.0	.0	.0	.0	.0	.0	104,897	.0	(244)	(244)	215	05/14/2018	2FE
023135-AH-9	AMAZON.COM INC 1.200% 11/29/17		06/22/2015	Pershing		69,788	70,000	69,659	69,799	.0	.33	.0	.33	.0	69,832	.0	(44)	(44)	481	11/29/2017	1FE
025816-AX-7	AMERICAN EXPRESS COMPANY 6.150% 08/28/17		06/22/2015	First Union Capital Markets		142,450	130,000	144,528	.0	.0	(1,417)	.0	(1,417)	.0	143,110	.0	(660)	(660)	2,598	08/28/2017	1FE
026874-CZ-8	AMERICAN INTERNATIONAL GROUP 2.300% 07/16/19		06/22/2015	Bony/Barclays Capital Inc		64,997	65,000	64,869	64,880	.0	12	.0	12	.0	64,892	.0	104	104	1,408	07/16/2019	2FE

STATEMENT AS OF JUNE 30, 2015 OF THE Amerigroup Ohio, Inc.

SCHEDULE D - PART 4

Show All Long-Term Bonds and Stock Sold, Redeemed or Otherwise Disposed of During the Current Quarter

1	2	3	4	5	6	7	8	9	10	Change In Book/Adjusted Carrying Value					16	17	18	19	20	21	22
										11	12	13	14	15							
CUSIP Ident-ification	Description	For-eign	Disposal Date	Name of Purchaser	Number of Shares of Stock	Consid-eration	Par Value	Actual Cost	Prior Year Book/ Adjusted Carrying Value	Unrealized Valuation Increase/(Decrease)	Current Year's (Amor-tization)/ Accretion	Current Year's Other Than Temporary Impairment Recog-nized	Total Change in Book/ Adjusted Carrying Value (11 + 12 - 13)	Total Foreign Exchange Change in Book /Adjusted Carrying Value	Book/ Adjusted Carrying Value at Disposal Date	Foreign Exchange Gain (Loss) on Disposal	Realized Gain (Loss) on Disposal	Total Gain (Loss) on Disposal	Bond Interest/ Stock Dividends Received During Year	Stated Con-tractual Maturity Date	NAIC Design-ation or Market In-dicator (a)
..031162-BR-0	AMGEN INC 1.250% 05/22/17		04/28/2015	Jeffries & Co		100,010	100,000	99,891	99,913	0	12	0	12	0	99,925	0	85	85	552	05/22/2017	2FE
..031162-BW-9	AMGEN INC 2.125% 05/01/20		06/22/2015	Bony/Barclays Capital Inc		88,277	90,000	89,933	0	0	2	0	2	0	89,934	0	(1,658)	(1,658)	287	05/01/2020	1FE
..032095-AD-3	AMPHENOL CORP 1.550% 09/15/17		06/22/2015	First Union Capital Markets		84,856	85,000	84,913	84,922	0	14	0	14	0	84,936	0	(80)	(80)	1,036	09/15/2017	2FE
..037833-AJ-9	APPLE COMPUTER INC 1.000% 05/03/18		06/22/2015	HSBC Securities		118,567	120,000	119,557	119,702	0	43	0	43	0	119,744	0	(1,177)	(1,177)	773	05/03/2018	1FE
..037833-BB-5	APPLE COMPUTER INC 0.900% 05/12/17		06/22/2015	Goldman Sachs & Co		90,005	90,000	89,938	0	0	4	0	4	0	89,942	0	63	63	95	05/12/2017	1FE
..053332-AS-1	AUTOZONE INC 2.500% 04/15/21		06/22/2015	Pershing		39,035	40,000	39,985	0	0	0	0	0	0	39,985	0	(950)	(950)	156	04/15/2021	2FE
..05531F-AN-3	BB&T CORPORATION 2.050% 06/19/18		06/22/2015	Pershing		50,478	50,000	49,927	49,949	0	7	0	7	0	49,956	0	522	522	530	06/19/2018	1FE
..06051G-EX-3	BANK OF AMERICA CORP 2.600% 01/15/19		06/22/2015	UBS Securities Inc		232,105	230,000	233,579	233,136	(361)	0	0	(361)	0	232,775	0	(671)	(671)	5,648	01/15/2019	1FE
..075887-BD-0	BECTON DICKINSON AND CO 1.800% 12/15/17		06/22/2015	Morgan Stanley		70,055	70,000	70,000	70,000	0	0	0	0	0	70,000	0	55	55	665	12/15/2017	2FE
..13342B-AN-5	CAMERON INTERNATIONAL CORP 1.400% 06/15/17		06/22/2015	Pershing		69,316	70,000	69,966	69,972	0	6	0	6	0	69,977	0	(661)	(661)	517	06/15/2017	2FE
..14042E-3Z-1	CAPITAL ONE NA SERIES BKNT 1.500% 09/05/17		06/22/2015	Southwest Securities		178,976	180,000	179,806	179,826	0	31	0	31	0	179,857	0	(881)	(881)	2,175	09/05/2017	1FE
..14912L-GD-8	CATERPILLAR FINANCE SE SERIES MTN 1.250% 08/18/17		06/22/2015	Goldman Sachs & Co		25,032	25,000	24,988	24,989	0	2	0	2	0	24,991	0	41	41	265	08/18/2017	1FE
..151020-AN-4	CELGENE CORP 2.250% 05/15/19		06/22/2015	Morgan Stanley CALYON SECURITIES (USA)		65,108	65,000	64,838	64,857	0	15	0	15	0	64,873	0	235	235	894	05/15/2019	2FE
..166764-AA-8	CHEVRONTXACO CORP 1.104% 12/05/17		06/22/2015	l		29,861	30,000	30,000	30,000	0	0	0	0	0	30,000	0	(139)	(139)	184	12/05/2017	1FE
..166764-AE-0	CHEVRONTXACO CORP 1.718% 06/24/18		06/22/2015	Pershing Citigroup Global Markets		80,363	80,000	80,000	80,000	0	0	0	0	0	80,000	0	363	363	691	06/24/2018	1FE
..172967-HY-0	CITIGROUP INC 1.550% 08/14/17		06/22/2015	First Union Capital Markets		100,075	100,000	99,860	99,877	0	22	0	22	0	99,900	0	175	175	1,339	08/14/2017	1FE
..172967-JN-2	CITIGROUP INC 1.700% 04/27/18		06/22/2015	Bony/Barclays Capital Inc		69,474	70,000	69,778	0	0	12	0	12	0	69,790	0	(315)	(315)	192	04/27/2018	1FE
..191216-BE-9	COCA-COLA COMPANY 3.200% 11/01/23		06/22/2015	MarketAxess Corporation		202,294	200,000	200,000	200,000	0	0	0	0	0	200,000	0	2,294	2,294	4,160	11/01/2023	1FE
..22160K-AE-5	HEALTH CARE REIT 1.125% 12/15/17		06/22/2015	Pershing		199,772	200,000	199,960	199,976	0	4	0	4	0	199,980	0	(208)	(208)	1,188	12/15/2017	1FE
..25466A-AG-6	DISCOVER BANK SERIES BKTN 3.100% 06/04/20		06/22/2015	Bony/Barclays Capital Inc		159,467	160,000	159,963	0	0	0	0	0	0	159,964	0	(496)	(496)	289	06/04/2020	1FE
..25468P-CV-6	WALT DISNEY COMPANY 1.100% 12/01/17		06/22/2015	Corporate Action		29,933	30,000	29,787	29,874	0	21	0	21	0	29,895	0	39	39	187	12/01/2017	1FE
..263534-CD-9	E I DU PONT DE NEMOURS 1.950% 01/15/16		04/24/2015	Morgan Stanley		101,151	100,000	103,082	100,863	0	(269)	0	(269)	0	100,594	0	557	557	1,533	01/15/2016	1FE
..26441C-AK-1	DUKE ENERGY CORP 2.100% 06/15/18		06/22/2015	Southwest Securities		151,490	150,000	149,837	149,885	0	16	0	16	0	149,901	0	1,589	1,589	1,663	06/15/2018	2FE
..29273R-AH-2	ENERGY TRANSFER PARTNERS 6.700% 07/01/18		06/22/2015	Bony/Barclays Capital Inc		111,797	100,000	113,291	0	0	(1,639)	0	(1,639)	0	111,652	0	145	145	3,238	07/01/2018	2FE
..30161M-AP-8	EXELON GENERATION CO LLC 2.950% 01/15/20		06/22/2015	CALYON SECURITIES (USA)		40,114	40,000	39,992	0	0	1	0	1	0	39,993	0	121	121	531	01/15/2020	2FE
..30219G-AJ-7	EXPRESS SCRIPTS HOLDING 1.250% 06/02/17		06/22/2015	First Union Capital Markets		119,509	120,000	119,954	119,963	0	7	0	7	0	119,970	0	(461)	(461)	846	06/02/2017	2FE
..364760-AK-4	GAP INC 5.950% 04/12/21		06/22/2015	Bank of America		202,374	180,000	211,838	205,770	0	(1,882)	0	(1,882)	0	203,888	0	(1,514)	(1,514)	7,527	04/12/2021	2FE
..36962G-GW-9	GENERAL ELECTRIC CAP CORP 1.625% 04/02/18		06/22/2015	Mitsubishi Securities		50,142	50,000	49,855	49,904	0	14	0	14	0	49,918	0	224	224	594	04/02/2018	1FE
..378272-AJ-7	GLENCORE FUNDING LLC SERIES 144A 2.125% 04/16/18		06/22/2015	Maturity		34,740	35,000	34,976	0	0	2	0	2	0	34,977	0	(238)	(238)	143	04/16/2018	2FE
..38141G-GT-5	GOLDMAN SACHS GROUP INC 3.300% 05/03/15		05/03/2015	Chase		235,000	235,000	234,833	234,980	0	20	0	20	0	235,000	0	0	0	3,878	05/03/2015	1FE
..413875-AQ-8	HARRIS CORP 2.700% 04/27/20		06/22/2015	Morgan Stanley		29,828	30,000	0	0	0	0	0	0	0	30,000	0	(172)	(172)	131	04/27/2020	2FE
..42809H-AE-7	HESS CORP 1.300% 06/15/17		06/22/2015	Southwest Securities		44,681	45,000	44,956	44,964	0	9	0	9	0	44,964	0	(283)	(283)	309	06/15/2017	2FE
..458140-AL-4	INTEL CORP 1.350% 12/15/17		06/22/2015	Morgan Stanley		74,924	75,000	74,921	74,952	0	8	0	8	0	74,960	0	(37)	(37)	534	12/15/2017	1FE
..46623H-JA-9	JP MORGAN CHASE & CO 3.150% 07/05/16		06/22/2015	Bony/Barclays Capital Inc		204,180	200,000	211,618	205,719	0	(1,818)	0	(1,818)	0	203,901	0	279	279	6,125	07/05/2016	1FE
..46642E-AV-8	JPMBB COMMERCIAL MORTGAGE SECU SERIES 2014- C21 CLASS A2 2.892% 08/15/47		06/23/2015	Pershing		174,987	170,000	175,100	174,641	0	(507)	0	(507)	0	174,134	0	853	853	2,786	08/15/2047	1FM
..482480-AB-6	KLA-TENCOR CORPORATION 2.375% 11/01/17		06/22/2015	Maturity		90,840	90,000	89,946	89,949	0	8	0	8	0	89,957	0	683	683	1,360	11/01/2017	2FE
..48783G-BG-2	KELLOGG CO 1.125% 05/15/15		05/15/2015	Morgan Stanley		100,000	100,000	99,971	99,996	0	4	0	4	0	100,000	0	0	0	563	05/15/2015	2FE
..59217G-AZ-2	MET LIFE GLOB FUNDING I SERIES SERIES 144A 1.875% 06/22/18		06/22/2015	US Bancorp		100,514	100,000	99,863	99,903	0	13	0	13	0	99,916	0	598	598	953	06/22/2018	1FE
..615369-AD-7	MOODY'S CORPORATION 2.750% 07/15/19		06/22/2015	Jeffries & Co		40,399	40,000	39,935	39,940	0	12	0	12	0	39,952	0	447	447	1,036	07/15/2019	2FE
..61746B-DQ-6	MORGAN STANLEY SERIES F 3.875% 04/29/24		06/22/2015			504,835	500,000	495,620	495,865	0	179	0	179	0	496,044	0	8,791	8,791	12,701	04/29/2024	1FE

STATEMENT AS OF JUNE 30, 2015 OF THE Amerigroup Ohio, Inc.

SCHEDULE D - PART 4

Show All Long-Term Bonds and Stock Sold, Redeemed or Otherwise Disposed of During the Current Quarter

1	2	3	4	5	6	7	8	9	10	Change In Book/Adjusted Carrying Value					16	17	18	19	20	21	22	
										11	12	13	14	15								
CUSIP Ident- ification	Description	For- eign	Disposal Date	Name of Purchaser	Number of Shares of Stock	Consid- eration	Par Value	Actual Cost	Prior Year Book/ Adjusted Carrying Value	Unrealized Valuation Increase/ (Decrease)	Current Year's (Amor- tization)/ Accretion	Current Year's Other Than Temporary Impairment Recog- nized	Total Change in Book/ Adjusted Carrying Value (11 + 12 - 13)	Total Foreign Exchange Change in Book /Adjusted Carrying Value	Book/ Adjusted Carrying Value at Disposal Date	Foreign Exchange Gain (Loss) on Disposal	Realized Gain (Loss) on Disposal	Total Gain (Loss) on Disposal	Bond Interest/ Stock Dividends Received During Year	Stated Con- tractual Maturity Date	NAIC Desig- nation or Market In- dicator (a)	
8999998. Total - Preferred Stocks - Part 5						XXX	XXX	XXX	XXX	XXX	XXX	XXX	XXX	XXX	XXX	XXX	XXX	XXX	XXX	XXX	XXX	
8999999. Total - Preferred Stocks						0	XXX	0	0	0	0	0	0	0	0	0	0	0	0	0	XXX	XXX
9799997. Total - Common Stocks - Part 4						0	XXX	0	0	0	0	0	0	0	0	0	0	0	0	0	XXX	XXX
9799998. Total - Common Stocks - Part 5						XXX	XXX	XXX	XXX	XXX	XXX	XXX	XXX	XXX	XXX	XXX	XXX	XXX	XXX	XXX	XXX	XXX
9799999. Total - Common Stocks						0	XXX	0	0	0	0	0	0	0	0	0	0	0	0	0	XXX	XXX
9899999. Total - Preferred and Common Stocks						0	XXX	0	0	0	0	0	0	0	0	0	0	0	0	0	XXX	XXX
9999999 - Totals						21,082,669	XXX	21,649,323	18,769,879	0	(117,782)	0	(117,782)	0	20,853,006	0	229,657	229,657	526,081	XXX	XXX	

(a) For all common stock bearing the NAIC market indicator "U" provide: the number of such issues.....

Schedule DB - Part A - Section 1 - Options, Caps, Floors, Collars, Swaps and Forwards Open
N O N E

Schedule DB - Part B - Section 1 - Futures Contracts Open
N O N E

Schedule DB - Part B - Section 1B - Brokers with whom cash deposits have been made
N O N E

Schedule DB - Part D - Section 1 - Counterparty Exposure for Derivative Instruments Open
N O N E

Schedule DB - Part D-Section 2 - Collateral for Derivative Instruments Open - Pledged By
N O N E

Schedule DB - Part D-Section 2 - Collateral for Derivative Instruments Open - Pledged To
N O N E

SCHEDULE DL - PART 1
SECURITIES LENDING COLLATERAL ASSETS

Reinvested Collateral Assets Owned Current Statement Date						
1	2	3	4	5	6	7
CUSIP Identification	Description	Code	NAIC Designation/ Market Indicator	Fair Value	Book/Adjusted Carrying Value	Maturity Date
0599999. Total - U.S. Government Bonds				0	0	XXX
1099999. Total - All Other Government Bonds				0	0	XXX
1799999. Total - U.S. States, Territories and Possessions Bonds				0	0	XXX
2499999. Total - U.S. Political Subdivisions Bonds				0	0	XXX
3199999. Total - U.S. Special Revenues Bonds				0	0	XXX
3899999. Total - Industrial and Miscellaneous (Unaffiliated) Bonds				0	0	XXX
4899999. Total - Hybrid Securities				0	0	XXX
5599999. Total - Parent, Subsidiaries and Affiliates Bonds				0	0	XXX
6199999. Total - Issuer Obligations				0	0	XXX
6299999. Total - Residential Mortgage-Backed Securities				0	0	XXX
6399999. Total - Commercial Mortgage-Backed Securities				0	0	XXX
6499999. Total - Other Loan-Backed and Structured Securities				0	0	XXX
6599999. Total Bonds				0	0	XXX
7099999. Total - Preferred Stocks				0	0	XXX
7599999. Total - Common Stocks				0	0	XXX
7699999. Total - Preferred and Common Stocks				0	0	XXX
9999999 - Totals				0	0	XXX

General Interrogatories:

1. Total activity for the year to date Fair Value \$(682,833) Book/Adjusted Carrying Value \$(682,833)
2. Average balance for the year to date Fair Value \$446,710 Book/Adjusted Carrying Value \$446,710
3. Reinvested securities lending collateral assets book/adjusted carrying value included in this schedule by NAIC designation:
NAIC 1 \$ NAIC 2 \$ NAIC 3 \$ NAIC 4 \$ NAIC 5 \$ NAIC 6 \$

SCHEDULE DL - PART 2
SECURITIES LENDING COLLATERAL ASSETS

1 CUSIP Identification	2 Description	3 Code	4 NAIC Designation/ Market Indicator	5 Fair Value	6 Book/Adjusted Carrying Value	7 Maturity Date
NONE						
9999999 - Totals						XXX

General Interrogatories:

2. Average balance for the year to date

Fair Value \$ Book/Adjusted Carrying Value \$

SCHEDULE E - PART 1 - CASH

Month End Depository Balances

1	2	3	4	5	Book Balance at End of Each Month During Current Quarter			9
					6	7	8	
					First Month	Second Month	Third Month	
Depository	Code	Rate of Interest	Amount of Interest Received During Current Quarter	Amount of Interest Accrued at Current Statement Date				*
Bank of America Concord, CA					(16,041,467)	(15,972,803)	4,470,780	XXX
Wells Fargo San Francisco, CA					85,534	81,823	81,823	XXX
JP Morgan Chase Bank San Antonio, TX					665		74	XXX
Keybank National Association Cleveland, OH					752,877	752,877	752,877	XXX
0199998. Deposits in ... depositories that do not exceed the allowable limit in any one depository (See instructions) - Open Depositories	XXX	XXX						XXX
0199999. Totals - Open Depositories	XXX	XXX	0	0	(15,202,391)	(15,138,103)	5,305,554	XXX
0299998. Deposits in ... depositories that do not exceed the allowable limit in any one depository (See instructions) - Suspended Depositories	XXX	XXX						XXX
0299999. Totals - Suspended Depositories	XXX	XXX	0	0	0	0	0	XXX
0399999. Total Cash on Deposit	XXX	XXX	0	0	(15,202,391)	(15,138,103)	5,305,554	XXX
0499999. Cash in Company's Office	XXX	XXX	XXX	XXX				XXX
0599999. Total - Cash	XXX	XXX	0	0	(15,202,391)	(15,138,103)	5,305,554	XXX

STATEMENT AS OF JUNE 30, 2015 OF THE Amerigroup Ohio, Inc.

SCHEDULE E - PART 2 - CASH EQUIVALENTS

Show Investments Owned End of Current Quarter

1	2	3	4	5	6	7	8
Description	Code	Date Acquired	Rate of Interest	Maturity Date	Book/Adjusted Carrying Value	Amount of Interest Due and Accrued	Amount Received During Year
NONE							
8699999 - Total Cash Equivalents							