



PROPERTY AND CASUALTY COMPANIES - ASSOCIATION EDITION

QUARTERLY STATEMENT

AS OF JUNE 30, 2015

OF THE CONDITION AND AFFAIRS OF THE

Nationwide Indemnity Company

NAIC Group Code 0140 (Current) 0140 (Prior) NAIC Company Code 10070 Employer's ID Number 31-1399201

Organized under the Laws of Ohio, State of Domicile or Port of Entry Ohio

Country of Domicile United States of America

Incorporated/Organized 02/16/1994 Commenced Business 04/15/1994

Statutory Home Office One West Nationwide Blvd. (Street and Number) Columbus, OH, US 43215-2220 (City or Town, State, Country and Zip Code)

Main Administrative Office One West Nationwide Blvd. (Street and Number) Columbus, OH, US 43215-2220 (City or Town, State, Country and Zip Code) 614-249-7111 (Area Code) (Telephone Number)

Mail Address One West Nationwide Blvd., 1-04-701 (Street and Number or P.O. Box) Columbus, OH, US 43215-2220 (City or Town, State, Country and Zip Code)

Primary Location of Books and Records One West Nationwide Blvd., 1-04-701 (Street and Number) Columbus, OH, US 43215-2220 (City or Town, State, Country and Zip Code) 614-249-1545 (Area Code) (Telephone Number)

Internet Website Address www.nationwide.com

Statutory Statement Contact Cheryl M. Dennis (Name) 614-249-1545 (Area Code) (Telephone Number) FinRpt@nationwide.com (E-mail Address) 866-315-1430 (FAX Number)

OFFICERS

President & COO David Alan Bano VP & Asst Treasurer Timothy John Dwyer

VP & Secretary Robert William Horner III

OTHER

Pamela Ann Biesecker Sr VP-Head of Taxation Harry Hansen Hallowell Sr VP - CIO Mark Raymond Thresher Exec VP - CFO

DIRECTORS OR TRUSTEES

David Alan Bano James David Benson Kevin Thomas Hilyard

Michael Patrick Leach Duane Lee Meyer Mark Raymond Thresher

State of Ohio SS:

County of Franklin

The officers of this reporting entity being duly sworn, each depose and say that they are the described officers of said reporting entity, and that on the reporting period stated above, all of the herein described assets were the absolute property of the said reporting entity, free and clear from any liens or claims thereon, except as herein stated, and that this statement, together with related exhibits, schedules and explanations therein contained, annexed or referred to, is a full and true statement of all the assets and liabilities and of the condition and affairs of the said reporting entity as of the reporting period stated above, and of its income and deductions therefrom for the period ended, and have been completed in accordance with the NAIC Annual Statement Instructions and Accounting Practices and Procedures manual except to the extent that: (1) state law may differ; or, (2) that state rules or regulations require differences in reporting not related to accounting practices and procedures, according to the best of their information, knowledge and belief, respectively. Furthermore, the scope of this attestation by the described officers also includes the related corresponding electronic filing with the NAIC, when required, that is an exact copy (except for formatting differences due to electronic filing) of the enclosed statement. The electronic filing may be requested by various regulators in lieu of or in addition to the enclosed statement.

David Alan Bano President & COO Robert William Horner III VP & Secretary Timothy John Dwyer VP & Asst Treasurer

Subscribed and sworn to before me this day of Yes [X] No []

1. State the amendment number.....

2. Date filed

3. Number of pages attached.....

STATEMENT AS OF JUNE 30, 2015 OF THE NATIONWIDE INDEMNITY COMPANY

ASSETS

	Current Statement Date			4 December 31 Prior Year Net Admitted Assets
	1 Assets	2 Nonadmitted Assets	3 Net Admitted Assets (Cols. 1 - 2)	
1. Bonds	2,896,090,645		2,896,090,645	2,899,629,564
2. Stocks:				
2.1 Preferred stocks				
2.2 Common stocks	2,823,618		2,823,618	2,609,166
3. Mortgage loans on real estate:				
3.1 First liens	49,180,121		49,180,121	77,979,552
3.2 Other than first liens.....				
4. Real estate:				
4.1 Properties occupied by the company (less \$ encumbrances)				
4.2 Properties held for the production of income (less \$ encumbrances)				
4.3 Properties held for sale (less \$ encumbrances)				
5. Cash (\$(1,328,527)), cash equivalents (\$) and short-term investments (\$12,670,360)	11,341,833		11,341,833	10,707,624
6. Contract loans (including \$ premium notes)				
7. Derivatives				
8. Other invested assets	60,686,184	623	60,685,561	60,547,873
9. Receivables for securities				
10. Securities lending reinvested collateral assets	9,286,515		9,286,515	11,884,360
11. Aggregate write-ins for invested assets				
12. Subtotals, cash and invested assets (Lines 1 to 11)	3,029,408,916	623	3,029,408,293	3,063,358,139
13. Title plants less \$ charged off (for Title insurers only)				
14. Investment income due and accrued	34,736,214		34,736,214	34,480,471
15. Premiums and considerations:				
15.1 Uncollected premiums and agents' balances in the course of collection	2,333,647	2,333,647		
15.2 Deferred premiums, agents' balances and installments booked but deferred and not yet due (including \$ earned but unbilled premiums)				
15.3 Accrued retrospective premiums				
16. Reinsurance:				
16.1 Amounts recoverable from reinsurers				
16.2 Funds held by or deposited with reinsured companies	9,276,211		9,276,211	8,154,315
16.3 Other amounts receivable under reinsurance contracts				
17. Amounts receivable relating to uninsured plans				
18.1 Current federal and foreign income tax recoverable and interest thereon				4,904,261
18.2 Net deferred tax asset	43,609,254	6,404,503	37,204,751	41,187,465
19. Guaranty funds receivable or on deposit				
20. Electronic data processing equipment and software				
21. Furniture and equipment, including health care delivery assets (\$)				
22. Net adjustment in assets and liabilities due to foreign exchange rates	2,206,766		2,206,766	2,206,766
23. Receivables from parent, subsidiaries and affiliates				158,279
24. Health care (\$) and other amounts receivable				
25. Aggregate write-ins for other than invested assets	23,315,289	8,865,212	14,450,077	10,895,060
26. Total assets excluding Separate Accounts, Segregated Accounts and Protected Cell Accounts (Lines 12 to 25)	3,144,886,297	17,603,985	3,127,282,312	3,165,344,756
27. From Separate Accounts, Segregated Accounts and Protected Cell Accounts				
28. Total (Lines 26 and 27)	3,144,886,297	17,603,985	3,127,282,312	3,165,344,756
DETAILS OF WRITE-INS				
1101.				
1102.				
1103.				
1198. Summary of remaining write-ins for Line 11 from overflow page				
1199. Totals (Lines 1101 through 1103 plus 1198)(Line 11 above)				
2501. Third party administrative receivables	20,769,047	6,909,863	13,859,184	7,436,240
2502. Deposits and prepaid assets	1,951,865	1,951,865		
2503. Miscellaneous assets	590,893		590,893	3,458,820
2598. Summary of remaining write-ins for Line 25 from overflow page	3,484	3,484		
2599. Totals (Lines 2501 through 2503 plus 2598)(Line 25 above)	23,315,289	8,865,212	14,450,077	10,895,060

STATEMENT AS OF JUNE 30, 2015 OF THE NATIONWIDE INDEMNITY COMPANY

LIABILITIES, SURPLUS AND OTHER FUNDS

	1 Current Statement Date	2 December 31, Prior Year
1. Losses (current accident year \$)	1,112,536,934	1,159,419,592
2. Reinsurance payable on paid losses and loss adjustment expenses		
3. Loss adjustment expenses	849,419,511	897,692,516
4. Commissions payable, contingent commissions and other similar charges		
5. Other expenses (excluding taxes, licenses and fees)		
6. Taxes, licenses and fees (excluding federal and foreign income taxes)		
7.1 Current federal and foreign income taxes (including \$ 689,483 on realized capital gains (losses))	9,042,040	
7.2 Net deferred tax liability		
8. Borrowed money \$ and interest thereon \$		
9. Unearned premiums (after deducting unearned premiums for ceded reinsurance of \$ and including warranty reserves of \$ and accrued accident and health experience rating refunds including \$ for medical loss ratio rebate per the Public Health Service Act)	26,502	32,899
10. Advance premium		
11. Dividends declared and unpaid:		
11.1 Stockholders		
11.2 Policyholders		
12. Ceded reinsurance premiums payable (net of ceding commissions)		
13. Funds held by company under reinsurance treaties		
14. Amounts withheld or retained by company for account of others	1,494,028	1,302,467
15. Remittances and items not allocated	672,794	
16. Provision for reinsurance (including \$ certified)		
17. Net adjustments in assets and liabilities due to foreign exchange rates		
18. Drafts outstanding		
19. Payable to parent, subsidiaries and affiliates	2,376,204	105
20. Derivatives		
21. Payable for securities	26,040,551	11,383,802
22. Payable for securities lending	14,125,000	21,382,500
23. Liability for amounts held under uninsured plans		
24. Capital notes \$ and interest thereon \$		
25. Aggregate write-ins for liabilities	23,300,256	29,238,571
26. Total liabilities excluding protected cell liabilities (Lines 1 through 25)	2,039,033,820	2,120,452,452
27. Protected cell liabilities		
28. Total liabilities (Lines 26 and 27)	2,039,033,820	2,120,452,452
29. Aggregate write-ins for special surplus funds	8,883,000	10,574,000
30. Common capital stock	3,080,000	3,080,000
31. Preferred capital stock		
32. Aggregate write-ins for other than special surplus funds		
33. Surplus notes		
34. Gross paid in and contributed surplus	1,226,449,000	1,226,449,000
35. Unassigned funds (surplus)	(150,163,508)	(195,210,696)
36. Less treasury stock, at cost:		
36.1 shares common (value included in Line 30 \$)		
36.2 shares preferred (value included in Line 31 \$)		
37. Surplus as regards policyholders (Lines 29 to 35, less 36)	1,088,248,492	1,044,892,304
38. Totals (Page 2, Line 28, Col. 3)	3,127,282,312	3,165,344,756
DETAILS OF WRITE-INS		
2501. Assumed reinsurance balances payable	23,296,781	29,231,512
2502. Miscellaneous liabilities	3,475	7,059
2503.		
2598. Summary of remaining write-ins for Line 25 from overflow page		
2599. Totals (Lines 2501 through 2503 plus 2598)(Line 25 above)	23,300,256	29,238,571
2901. EU Solvency 1 Directive	8,883,000	10,574,000
2902.		
2903.		
2998. Summary of remaining write-ins for Line 29 from overflow page		
2999. Totals (Lines 2901 through 2903 plus 2998)(Line 29 above)	8,883,000	10,574,000
3201.		
3202.		
3203.		
3298. Summary of remaining write-ins for Line 32 from overflow page		
3299. Totals (Lines 3201 through 3203 plus 3298)(Line 32 above)		

STATEMENT OF INCOME

	1	2	3
	Current Year to Date	Prior Year to Date	Prior Year Ended December 31
UNDERWRITING INCOME			
1. Premiums earned:			
1.1 Direct (written \$)			
1.2 Assumed (written \$ 56,146)	62,543	50,821	(340,790)
1.3 Ceded (written \$)			
1.4 Net (written \$ 56,146)	62,543	50,821	(340,790)
DEDUCTIONS:			
2. Losses incurred (current accident year \$):			
2.1 Direct			
2.2 Assumed	(2,835,908)	23,283,238	23,970,789
2.3 Ceded			
2.4 Net	(2,835,908)	23,283,238	23,970,789
3. Loss adjustment expenses incurred	2,835,908	(23,576,472)	108,140,692
4. Other underwriting expenses incurred	2,828,655	2,746,866	5,194,250
5. Aggregate write-ins for underwriting deductions			
6. Total underwriting deductions (Lines 2 through 5)	2,828,655	2,453,632	137,305,731
7. Net income of protected cells			
8. Net underwriting gain or (loss) (Line 1 minus Line 6 + Line 7)	(2,766,112)	(2,402,811)	(137,646,521)
INVESTMENT INCOME			
9. Net investment income earned	60,495,835	61,716,969	122,296,854
10. Net realized capital gains (losses) less capital gains tax of \$ 689,483	4,777,079	871,177	13,598,783
11. Net investment gain (loss) (Lines 9 + 10)	65,272,914	62,588,146	135,895,637
OTHER INCOME			
12. Net gain or (loss) from agents' or premium balances charged off (amount recovered \$ amount charged off \$)			
13. Finance and service charges not included in premiums			
14. Aggregate write-ins for miscellaneous income	(286,261)	(14,834)	(11,866)
15. Total other income (Lines 12 through 14)	(286,261)	(14,834)	(11,866)
16. Net income before dividends to policyholders, after capital gains tax and before all other federal and foreign income taxes (Lines 8 + 11 + 15)	62,220,541	60,170,501	(1,762,750)
17. Dividends to policyholders			
18. Net income, after dividends to policyholders, after capital gains tax and before all other federal and foreign income taxes (Line 16 minus Line 17)	62,220,541	60,170,501	(1,762,750)
19. Federal and foreign income taxes incurred	8,360,176	16,483,923	(5,752,768)
20. Net income (Line 18 minus Line 19)(to Line 22)	53,860,365	43,686,578	3,990,018
CAPITAL AND SURPLUS ACCOUNT			
21. Surplus as regards policyholders, December 31 prior year	1,044,892,304	1,069,363,331	1,069,363,331
22. Net income (from Line 20)	53,860,365	43,686,578	3,990,018
23. Net transfers (to) from Protected Cell accounts			
24. Change in net unrealized capital gains (losses) less capital gains tax of \$ (3,487,641)	(6,477,046)	10,045,230	3,961,494
25. Change in net unrealized foreign exchange capital gain (loss)	535,776	21,984	696,442
26. Change in net deferred income tax	(6,899,917)	1,726,521	8,426,871
27. Change in nonadmitted assets	2,337,010	6,080,853	8,454,148
28. Change in provision for reinsurance			
29. Change in surplus notes			
30. Surplus (contributed to) withdrawn from protected cells			
31. Cumulative effect of changes in accounting principles			
32. Capital changes:			
32.1 Paid in			
32.2 Transferred from surplus (Stock Dividend)			
32.3 Transferred to surplus			
33. Surplus adjustments:			
33.1 Paid in			(50,000,000)
33.2 Transferred to capital (Stock Dividend)			
33.3 Transferred from capital			
34. Net remittances from or (to) Home Office			
35. Dividends to stockholders			
36. Change in treasury stock			
37. Aggregate write-ins for gains and losses in surplus			
38. Change in surplus as regards policyholders (Lines 22 through 37)	43,356,188	61,561,166	(24,471,027)
39. Surplus as regards policyholders, as of statement date (Lines 21 plus 38)	1,088,248,492	1,130,924,497	1,044,892,304
DETAILS OF WRITE-INS			
0501.			
0502.			
0503.			
0598. Summary of remaining write-ins for Line 5 from overflow page			
0599. Totals (Lines 0501 through 0503 plus 0598)(Line 5 above)			
1401. Miscellaneous expenses	(286,261)	(14,834)	(11,866)
1402.			
1403.			
1498. Summary of remaining write-ins for Line 14 from overflow page			
1499. Totals (Lines 1401 through 1403 plus 1498)(Line 14 above)	(286,261)	(14,834)	(11,866)
3701.			
3702.			
3703.			
3798. Summary of remaining write-ins for Line 37 from overflow page			
3799. Totals (Lines 3701 through 3703 plus 3798)(Line 37 above)			

STATEMENT AS OF JUNE 30, 2015 OF THE NATIONWIDE INDEMNITY COMPANY

CASH FLOW

	1 Current Year To Date	2 Prior Year To Date	3 Prior Year Ended December 31
Cash from Operations			
1. Premiums collected net of reinsurance	(332,263)	1,708,956	1,131,446
2. Net investment income	62,305,140	63,720,694	128,464,062
3. Miscellaneous income	(1,408,157)	755,576	(705,679)
4. Total (Lines 1 to 3)	60,564,720	66,185,226	128,889,829
5. Benefit and loss related payments	44,046,751	51,731,817	95,302,654
6. Net transfers to Separate Accounts, Segregated Accounts and Protected Cell Accounts			
7. Commissions, expenses paid and aggregate write-ins for deductions	53,937,568	51,000,681	104,616,193
8. Dividends paid to policyholders			
9. Federal and foreign income taxes paid (recovered) net of \$1,035,026 tax on capital gains (losses)	(4,896,642)	(21,418,802)	(20,500,867)
10. Total (Lines 5 through 9)	93,087,677	81,313,696	179,417,980
11. Net cash from operations (Line 4 minus Line 10)	(32,522,957)	(15,128,470)	(50,528,151)
Cash from Investments			
12. Proceeds from investments sold, matured or repaid:			
12.1 Bonds	149,107,496	48,023,203	238,137,922
12.2 Stocks			
12.3 Mortgage loans	28,808,815	5,993,235	18,079,587
12.4 Real estate			
12.5 Other invested assets	7,182,110		285,511
12.6 Net gains or (losses) on cash, cash equivalents and short-term investments			
12.7 Miscellaneous proceeds	14,730,842	86,689	11,473,240
12.8 Total investment proceeds (Lines 12.1 to 12.7)	199,829,263	54,103,127	267,976,260
13. Cost of investments acquired (long-term only):			
13.1 Bonds	152,710,331	9,340,016	135,528,325
13.2 Stocks			
13.3 Mortgage loans			
13.4 Real estate			
13.5 Other invested assets	42,228	2,150,496	4,811,220
13.6 Miscellaneous applications			
13.7 Total investments acquired (Lines 13.1 to 13.6)	152,752,559	11,490,512	140,339,545
14. Net increase (or decrease) in contract loans and premium notes			
15. Net cash from investments (Line 12.8 minus Line 13.7 and Line 14)	47,076,704	42,612,615	127,636,715
Cash from Financing and Miscellaneous Sources			
16. Cash provided (applied):			
16.1 Surplus notes, capital notes			
16.2 Capital and paid in surplus, less treasury stock			(50,000,000)
16.3 Borrowed funds			
16.4 Net deposits on deposit-type contracts and other insurance liabilities			
16.5 Dividends to stockholders			
16.6 Other cash provided (applied)	(13,919,538)	(860,074)	(12,623,967)
17. Net cash from financing and miscellaneous sources (Line 16.1 through Line 16.4 minus Line 16.5 plus Line 16.6)	(13,919,538)	(860,074)	(62,623,967)
RECONCILIATION OF CASH, CASH EQUIVALENTS AND SHORT-TERM INVESTMENTS			
18. Net change in cash, cash equivalents and short-term investments (Line 11, plus Lines 15 and 17) ..	634,209	26,624,071	14,484,597
19. Cash, cash equivalents and short-term investments:			
19.1 Beginning of year	10,707,624	(3,776,973)	(3,776,973)
19.2 End of period (Line 18 plus Line 19.1)	11,341,833	22,847,098	10,707,624

Note: Supplemental disclosures of cash flow information for non-cash transactions:

--	--	--	--

NOTES TO FINANCIAL STATEMENTS

Note 1 - Summary of Significant Accounting Policies

A. Accounting Practices

The accompanying statutory financial statements of Nationwide Indemnity Company (the Company) have been prepared in conformity with accounting practices prescribed or permitted by the National Association of Insurance Commissioners (NAIC) and the State of Ohio.

The Ohio Department of Insurance recognizes only statutory accounting practices (SAP) prescribed or permitted by the State of Ohio for determining and reporting the financial condition and results of operations of an insurance company, as well as, determining its solvency under the Ohio Insurance law. The National Association of Insurance Commissioners' (NAIC) *Accounting Practices and Procedures Manual* (NAIC SAP) has been adopted as a component of prescribed or permitted practices by the State of Ohio.

A reconciliation of the Company's net income and capital and surplus between NAIC SAP and practices prescribed and permitted by the State of Ohio is shown below:

	State of Domicile	2015	2014
<u>NET INCOME</u>			
(1) Nationwide Indemnity Company state basis (Page 4, Line 20, Columns 1 & 3)	OH	\$ 53,860,365	\$ 3,990,018
(2) State Prescribed Practices that increase/(decrease) NAIC SAP	OH	-	-
(3) State Permitted Practices that increase/(decrease) NAIC SAP	OH	-	-
(4) NAIC SAP (1-2-3=4)	OH	\$ 53,860,365	\$ 3,990,018
<u>SURPLUS</u>			
(5) Nationwide Indemnity Company state basis (Page 3, Line 37, Columns 1 & 2)	OH	\$1,088,248,492	\$ 1,044,892,304
(6) State Prescribed Practices that increase/(decrease) NAIC SAP	OH	-	-
(7) State Permitted Practices that increase/(decrease) NAIC SAP	OH	-	-
(8) NAIC SAP (5-6-7=8)	OH	\$1,088,248,492	\$ 1,044,892,304

C. Accounting Policies

6. No change.

Note 2 - Accounting Changes and Corrections of Errors

No change.

Note 3 - Business Combinations and Goodwill

No change.

Note 4 - Discontinued Operations

No change.

Note 5 - Investments

A. Mortgage Loans

No change.

B. Troubled Debt Restructuring for Creditors

No change.

C. Reverse Mortgages

No change.

D. Loan-Backed Securities

- Prepayment assumptions are generally obtained using a model provided by a third-party vendor.
- Not applicable.
- Not applicable.
- All impaired securities (fair value is less than cost or amortized cost) for which an other-than-temporary impairment has not been recognized in earnings as a realized loss (including securities with a recognized other-than-temporary impairment for non-interest related declines when a non-recognized interest related impairment remains):

a. The aggregate amount of unrealized losses:

1.	Less than 12 Months	\$ (123,305)
2.	12 Months or Longer	\$ (2,922,935)

b. The aggregate related fair value of securities with unrealized losses:

1.	Less than 12 Months	\$ 15,846,059
2.	12 Months or Longer	\$ 59,945,902

NOTES TO FINANCIAL STATEMENTS

5. The Company reviews all loan-backed and structured securities in which the fair value of the given security is less than the amortized cost to determine if a given security is other-than-temporarily impaired. The Company examines characteristics of the underlying collateral, such as delinquency and default rates, the quality of the underlying borrower, the type of collateral in the pool, the vintage year of the collateral, subordination levels within the structure of the collateral pool, and the quality of any credit guarantors, to determine the cash flows expected to be received for the security.

If the severity and duration of the security's unrealized loss indicates a risk of an other-than-temporary impairment, then the Company will evaluate if the amortized cost basis of the security will be recovered by comparing the present value of the cash flows expected to be received for the given security with the amortized cost basis of the security. If the present value of cash flows is greater than the amortized cost basis of a security then the security is deemed not to be other-than-temporarily impaired.

E. Repurchase Agreements and Securities Lending Transactions

3. Collateral Received

- b. The fair value as of the date of each statement of financial position presented of that collateral and of the portion of that collateral that it has sold or repledged is \$9,532,660.

F. Real Estate

No change.

G. Low-Income Housing Tax Credits

No change.

H. Restricted Assets

No change.

I. Working Capital Finance Investments

Not applicable.

J. Offsetting and Netting of Assets and Liabilities

No assets or liabilities are offset and reported net in accordance with a valid right to offset per SSAP No. 64, Offsetting and Netting of Assets and Liabilities.

K. Structured Notes

No change.

Note 6 - Joint Ventures, Partnerships and Limited Liability Companies

No change.

Note 7 - Investment Income

No change.

Note 8 - Derivative Instruments

No change.

Note 9 - Income Taxes

F. Consolidated Federal Income Tax Return

1. Effective January 1, 2015, the consolidated federal income tax filing group of which the Company is a member expanded to include Nationwide Mutual Insurance Company's (NMIC's) eligible life insurance subsidiaries and non-insurance subsidiaries of the life insurance companies.

2. Effective January 1, 2015, the Company became a party to a revised tax sharing agreement which was approved by the Board of Directors. The revised tax sharing agreement reflects the NMIC's new consolidated federal return group which includes its eligible life and non-life subsidiaries. The method of allocation among the companies is based upon separate return calculations with current benefit for tax losses and credits utilized in the consolidated return.

Note 10 - Information Concerning Parent, Subsidiaries, Affiliates and Other Related Parties

No change.

Note 11 - Debt

B. FHLB (Federal Home Loan Bank) Agreements

Not applicable.

Note 12 - Retirement Plans, Deferred Compensation, Postemployment Benefits and Compensated Absences and Other Postretirement Benefit Plans

Not applicable.

Note 13 - Capital and Surplus, Dividend Restrictions and Quasi-Reorganizations

No change.

Note 14 - Contingencies

No change.

NOTES TO FINANCIAL STATEMENTS

Note 15 – Leases

No change.

Note 16 - Information About Financial Instruments With Off-Balance Sheet Risk And Financial Instruments With Concentrations of Credit Risk

No change.

Note 17 - Sale, Transfer and Servicing of Financial Assets and Extinguishments of Liabilities

A. Transfers of Receivables Reported as Sales

No change.

B. Transfers and Servicing of Financial Assets

Not applicable.

C. Wash Sales

Not applicable.

Note 18 - Gain or Loss to the Reporting Entity from Uninsured Plans and the Uninsured Portion of Partially Insured Plans

No change.

Note 19 - Direct Premiums Written/Produced by Managing General Agents/Third Party Administrators

No change.

Note 20 – Fair Value Measurements

Fair value is defined as the price that would be received to sell an asset or paid to transfer a liability in an orderly transaction between market participants at the measurement date. Fair value measurements are based upon observable and unobservable inputs. Observable inputs reflect market data obtained from independent sources while unobservable inputs reflect the Company's view of market assumptions in the absence of observable market information. The Company utilizes valuation techniques that maximize the use of observable inputs and minimize the use of unobservable inputs. In determining fair value, the Company uses various methods including market, income and cost approaches.

The Company categorizes its financial assets and liabilities into a three-level hierarchy based on the priority of the inputs to the valuation technique. The fair value hierarchy gives the highest priority to quoted prices in active markets for identical assets or liabilities (Level 1) and the lowest priority to unobservable inputs (Level 3). If the inputs used to measure fair value fall within different levels of the hierarchy, the category level is based on the lowest priority level input that is significant to the fair value measurement of the instrument in its entirety.

The Company categorizes financial assets and liabilities as follows:

Level 1. Unadjusted quoted prices accessible in active markets for identical assets or liabilities at the measurement date and mutual funds where the value per share (unit) is determined and published daily and is the basis for current transactions.

Level 2. Unadjusted quoted prices for similar assets or liabilities in active markets or inputs (other than quoted prices) that are observable or that are derived principally from or corroborated by observable market data through correlation or other means. Primary inputs to this valuation technique may include comparative trades, bid/asks, interest rate movements, U.S. Treasury rates, U.S. LIBOR, prime rates, cash flows, maturity dates, call ability, estimated prepayments and/or underlying collateral values.

Level 3. Prices or valuation techniques that require inputs that are both unobservable and significant to the overall fair value measurement. Inputs reflect management's best estimate about the assumptions market participants would use at the measurement date in pricing the asset or liability. Consideration is given to the risk inherent in both the method of valuation and the valuation inputs. Primary inputs to this valuation technique include broker quotes and comparative trades.

The Company reviews its fair value hierarchy classifications for financial assets and liabilities quarterly. Changes in observability of significant valuation inputs identified during these reviews may trigger reclassifications. Reclassifications are reported as transfers at the beginning of the period in which the change occurs.

To determine the fair value of bonds and stocks for which market quotations are available, independent pricing services are most often utilized. For these bonds and stocks, the Company obtains the pricing services' methodologies, inputs and assumptions and classifies the investments accordingly in the fair value hierarchy.

A corporate pricing matrix or an internally developed pricing model is used in valuing certain bonds. The corporate pricing matrix is developed using private spreads for bonds with varying weighted average lives and credit quality ratings. The weighted average life and credit quality rating of a particular bond to be priced using the corporate pricing matrix are important inputs into the model and are used to determine a corresponding spread that is added to the appropriate U.S. Treasury yield to create an estimated market yield for that bond. The estimated market yield and other relevant factors are then used to estimate the fair value of the particular bond.

Non-binding broker quotes are also utilized to determine the fair value of certain bonds when quotes are not available from independent pricing services, corporate pricing matrix or internal pricing models. These bonds are classified accordingly in the fair value hierarchy as only one broker quote is ordinarily obtained, the investment is not traded on an exchange, the pricing is not available to other entities and/or the transaction volume in the same or similar investments has decreased. Inputs used in the development of prices are not provided to the Company by the brokers as the brokers often do not provide the necessary transparency into their quotes and methodologies. Broker quotes are subject to validation of price movements that require approval from the Company's management. Management uses its knowledge of the investment and current market conditions to determine if the price is indicative of the investment's fair value.

Fair value of derivative instruments is determined using various valuation techniques relying predominately on observable market inputs. These inputs include interest rate swap curves, credit spreads, interest rates, counterparty credit risk, equity volatility and equity index levels. In cases where observable inputs are not available, the Company will utilize non-binding broker quotes to determine fair value and these instruments are classified accordingly in the fair value hierarchy.

NOTES TO FINANCIAL STATEMENTS

The following table summarizes financial assets and liabilities measured at fair value as of June 30, 2015:

	Level 1	Level 2	Level 3	Total
Assets at Fair Value				
U.S. Government bonds	-	-	-	-
States, Territories and Possessions	-	-	-	-
Political subdivisions	-	-	-	-
Special revenues	-	-	-	-
Hybrid Securities	-	-	-	-
Credit tenant loans	-	-	-	-
Industrial & Misc.	-	19,682,577	2,450,000	22,132,577
Total Bonds	-	19,682,577	2,450,000	22,132,577
Sec Lending	-	5,179,273	-	5,179,273
Preferred Stocks	-	-	-	-
Common Stocks	-	-	2,823,618	2,823,618
Loans held for sale	-	-	-	-
Separate Account Assets	-	-	-	-
Derivative Assets	-	-	-	-
Total Assets at Fair Value	-	24,861,850	5,273,618	30,135,468
Liabilities at Fair Value				
Derivatives Liabilities	-	-	-	-
Total Liabilities at Fair Value	-	-	-	-

The following table presents the rollforward of Level 3 financial assets and liabilities held at fair value during the three months ended June 30, 2015:

	Beginning Balance at 3/31/2015	Transfers Into Level 3	Transfers Out of Level 3	Total Gains and (losses) included in Net Income	Total Gains and (losses) included in Surplus	Purchases	Issuances	Sales	Settlements	Ending Balance at 6/30/2015
Assets at Fair Value										
U.S. Government bonds	-	-	-	-	-	-	-	-	-	-
States, Territories and Possessions	-	-	-	-	-	-	-	-	-	-
Political subdivisions	-	-	-	-	-	-	-	-	-	-
Special revenues	-	-	-	-	-	-	-	-	-	-
Hybrid Securities	-	-	-	-	-	-	-	-	-	-
Credit tenant loans	-	-	-	-	-	-	-	-	-	-
Industrial & Misc.	2,500,000	-	-	-	(50,000)	-	-	-	-	2,450,000
Total Bonds	2,500,000	-	-	-	(50,000)	-	-	-	-	2,450,000
Sec Lending	-	-	-	-	-	-	-	-	-	-
Preferred Stocks	-	-	-	-	-	-	-	-	-	-
Common Stocks	2,537,682	-	-	-	285,936	-	-	-	-	2,823,618
Loans held for sale	-	-	-	-	-	-	-	-	-	-
Separate Account Assets	-	-	-	-	-	-	-	-	-	-
Derivative Assets	-	-	-	-	-	-	-	-	-	-
Total Assets at Fair Value	5,037,682	-	-	-	235,936	-	-	-	-	5,273,618
Liabilities										
Derivatives Liabilities	-	-	-	-	-	-	-	-	-	-
Total Liabilities	-	-	-	-	-	-	-	-	-	-

The following table summarizes aggregate carrying value and fair value, by level, for all financial assets and liabilities, excluding assets and liabilities reported at fair value, as of June 30, 2015:

	Aggregate Fair Value	Admitted Assets	(Level 1)	(Level 2)	(Level 3)	Not Practicable (Carrying Value)
Assets						
Bonds	\$ 3,062,299,558	\$ 2,873,958,068	\$ 838,092,781	\$ 2,208,029,862	\$ 16,176,915	\$ -
Stocks	-	-	-	-	-	-
Mortgage loans	52,971,581	49,180,121	-	-	52,971,581	-
Short-term investments	12,670,360	12,670,360	-	12,670,360	-	-
Derivative assets	-	-	-	-	-	-
Policy loans	-	-	-	-	-	-
Securities lending collateral assets ¹	4,353,387	4,107,242	2,716,925	1,636,462	-	-
Total Assets	\$ 3,132,294,886	\$ 2,939,915,791	\$ 840,809,706	\$ 2,222,336,684	\$ 69,148,496	\$ -
Liabilities						
Derivative liabilities	\$ -	\$ -	\$ -	\$ -	\$ -	\$ -
Total Liabilities	\$ -	\$ -	\$ -	\$ -	\$ -	\$ -
1 - Includes non admitted assets						

Note 21 - Other Items

No change.

Note 22 - Events Subsequent

Subsequent events have been considered through August 6, 2015 for these statutory financial statements which are to be issued August 7, 2015. There were no events occurring subsequent to the end of the quarter that merited recognition or disclosure in these statements.

Note 23 – Reinsurance

No change.

NOTES TO FINANCIAL STATEMENTS

Note 24 - Retrospectively Rated Contracts and Contracts Subject to Redetermination

F. Risk-Sharing Provisions of the Affordable Care Act (ACA)

1. The Company has zero balances for the risk corridors program due to not writing this type of business.
2. Risk-sharing provisions of the ACA on admitted assets, liabilities and revenue for the current year:

a. Permanent ACA Risk Adjustment Program		AMOUNT
Assets		
1. Premium adjustments receivable due to ACA Risk Adjustment	\$	-
Liabilities		
2. Risk adjustment user fees payable for ACA Risk Adjustment	\$	-
3. Premium adjustments payable due to ACA Risk Adjustment	\$	-
Operations (Revenue & Expense)		
4. Reported as revenue in premium for accident and health contracts (written/collected) due to ACA Risk Adjustment	\$	-
5. Reported in expenses as ACA risk adjustment user fees (incurred/paid)	\$	-
b. Transitional ACA Reinsurance Program		
Assets		
1. Amounts recoverable for claims paid due to ACA Reinsurance	\$	-
2. Amounts recoverable for claims unpaid due to ACA Reinsurance	\$	-
3. Amounts receivable relating to uninsured plans for contributions for ACA Reinsurance	\$	-
Liabilities		
4. Claims unpaid - ceded due to ACA Reinsurance	\$	-
5. Liabilities for contributions payable due to ACA Reinsurance - not reported as ceded premium	\$	-
6. Ceded reinsurance premiums payable due to ACA	\$	-
7. Liability for amounts held under uninsured plans contributions for ACA Reinsurance	\$	-
Operations (Revenue & Expense)		
8. Ceded reinsurance premiums due to ACA Reinsurance	\$	-
9. Reinsurance recoveries (income statement) due to ACA Reinsurance payments or expected payments	\$	-
10. ACA Reinsurance contributions - not reported as ceded premium	\$	-
c. Temporary ACA Risk Corridors Program		
Assets		
1. Accrued retrospective premium due to ACA Risk Corridors Liabilities	\$	-
2. Reserve for rate credits or policy experience rating refunds due to ACA Risk Corridors	\$	-
Operations (Revenue & Expense)		
3. Effect of ACA Risk Corridors on net premium income (paid/received)	\$	-
4. Effect of ACA Risk Corridors on change in reserves for rate credits	\$	-

NOTES TO FINANCIAL STATEMENTS

3. Roll-forward of prior year ACA risk-sharing provisions for the following asset (gross any nonadmission) and liability balances, along with the reason for adjustment to prior year balance:

	Accrued During the Prior Year on Business Written Before December 31 of the Prior Year		Received or Paid as of the Current Year on Business Written Before December 31 of the Prior Year		Differences		Adjustments			Unsettled Balances as of the Reporting Date	
	1	2	3	4	Prior Year	Prior Year	To Prior Year	To Prior Year	9	Cumulative	Cumulative
					Accrued Less	Accrued Less					
					Payments	Payments					
	Receivable	(Payable)	Receivable	(Payable)	5	6	7	8	Ref	10	11
a. Permanent ACA Risk Adjustment Program											
1. Premium adjustments receivable					-	-			A	-	-
2. Premium adjustments (payable)					-	-			B	-	-
3. Subtotal ACA Permanent Risk Adjustment Program					-	-				-	-
b. Transitional ACA Reinsurance Program					-	-				-	-
1. Amounts recoverable for claims paid					-	-			C	-	-
2. Amounts recoverable for claims unpaid					-	-			D	-	-
3. Amounts receivable relating to uninsured plans					-	-			E	-	-
4. Claims unpaid - ceded					-	-			F	-	-
5. Liabilities for contributions payable due to ACA Reinsurance - not reported as ceded premium					-	-			G	-	-
6. Ceded reinsurance premiums payable					-	-			I	-	-
7. Liability for amounts held under uninsured plans					-	-			J	-	-
8. Subtotal ACA Transitional Reinsurance Program					-	-				-	-
c. Temporary ACA Risk Corridors Program					-	-				-	-
1. Accrued retrospective premium					-	-			K	-	-
2. Reserve for rate credits or policy experience rating refunds					-	-			L	-	-
3. Subtotal ACA Risk Corridors Program					-	-			M	-	-
d. Total for ACA Risk Sharing Provisions					-	-				-	-

Explanations of Adjustments

A	
B	
C	
D	
E	
F	
G	
H	
I	

Note 25 - Changes in Incurred Losses and Loss Adjustment Expenses

No change.

Note 26 - Intercompany Pooling Arrangements

Not applicable.

Note 27 - Structured Settlements

No change.

Note 28 - Health Care Receivables

No change.

NOTES TO FINANCIAL STATEMENTS

Note 29 - Participating Policies

No change.

Note 30 - Premium Deficiency Reserves

No change.

Note 31 - High Deductibles

No change.

Note 32 - Discounting of Liabilities for Unpaid Losses or Unpaid Loss Adjustment Expenses

No change.

Note 33 - Asbestos/Environmental Reserves

No change.

Note 34 - Subscriber Savings Accounts

No change.

Note 35 - Multiple Peril Crop Insurance

No change.

Note 36 – Financial Guaranty Insurance

B. Schedule of Insured Financial Obligations at the End of the Period

Not applicable.

STATEMENT AS OF JUNE 30, 2015 OF THE NATIONWIDE INDEMNITY COMPANY

GENERAL INTERROGATORIES

PART 1 - COMMON INTERROGATORIES

GENERAL

- 1.1

Did the reporting entity experience any material transactions requiring the filing of Disclosure of Material Transactions with the State of Domicile, as required by the Model Act?

Yes ☐ No ☒
- 1.2

If yes, has the report been filed with the domiciliary state?

Yes ☐ No ☐
- 2.1

Has any change been made during the year of this statement in the charter, by-laws, articles of incorporation, or deed of settlement of the reporting entity?

Yes ☐ No ☒
- 2.2

If yes, date of change:
- 3.1

Is the reporting entity a member of an Insurance Holding Company System consisting of two or more affiliated persons, one or more of which is an insurer?
If yes, complete Schedule Y, Parts 1 and 1A.

Yes ☒ No ☐
- 3.2

Have there been any substantial changes in the organizational chart since the prior quarter end?

Yes ☒ No ☐
- 3.3

If the response to 3.2 is yes, provide a brief description of those changes.
Four companies (Nationwide Retirement Solutions, Inc. of Arizona, Nationwide Retirement Solutions, Inc. of Ohio, Nationwide Retirement Solutions, Inc. of Texas and Nationwide Retirement Solutions Insurance Agency, Inc.) were merged into their parent entity Nationwide Retirement Solutions, Inc.
- 4.1

Has the reporting entity been a party to a merger or consolidation during the period covered by this statement?

Yes ☐ No ☒
- 4.2

If yes, provide the name of the entity, NAIC Company Code, and state of domicile (use two letter state abbreviation) for any entity that has ceased to exist as a result of the merger or consolidation.

<div>1</div> <div>Name of Entity</div>	<div>2</div> <div>NAIC Company Code</div>	<div>3</div> <div>State of Domicile</div>

5.

If the reporting entity is subject to a management agreement, including third-party administrator(s), managing general agent(s), attorney-in-fact, or similar agreement, have there been any significant changes regarding the terms of the agreement or principals involved?
If yes, attach an explanation.

Yes ☐ No ☒ N/A ☐
- 6.1

State as of what date the latest financial examination of the reporting entity was made or is being made.

12/31/2011
- 6.2

State the as of date that the latest financial examination report became available from either the state of domicile or the reporting entity. This date should be the date of the examined balance sheet and not the date the report was completed or released.

12/31/2011
- 6.3

State as of what date the latest financial examination report became available to other states or the public from either the state of domicile or the reporting entity. This is the release date or completion date of the examination report and not the date of the examination (balance sheet date).

03/25/2013
- 6.4

By what department or departments?
OH
- 6.5

Have all financial statement adjustments within the latest financial examination report been accounted for in a subsequent financial statement filed with Departments?

Yes ☐ No ☐ N/A ☒
- 6.6

Have all of the recommendations within the latest financial examination report been complied with?

Yes ☐ No ☐ N/A ☒
- 7.1

Has this reporting entity had any Certificates of Authority, licenses or registrations (including corporate registration, if applicable) suspended or revoked by any governmental entity during the reporting period?

Yes ☐ No ☒
- 7.2

If yes, give full information:
- 8.1

Is the company a subsidiary of a bank holding company regulated by the Federal Reserve Board?

Yes ☐ No ☒
- 8.2

If response to 8.1 is yes, please identify the name of the bank holding company.
- 8.3

Is the company affiliated with one or more banks, thrifts or securities firms?

Yes ☒ No ☐
- 8.4

If response to 8.3 is yes, please provide below the names and location (city and state of the main office) of any affiliates regulated by a federal regulatory services agency [i.e. the Federal Reserve Board (FRB), the Office of the Comptroller of the Currency (OCC), the Federal Deposit Insurance Corporation (FDIC) and the Securities Exchange Commission (SEC)] and identify the affiliate's primary federal regulator.

<div>1</div> <div>Affiliate Name</div>	<div>2</div> <div>Location (City, State)</div>	<div>3</div> <div>FRB</div>	<div>4</div> <div>OCC</div>	<div>5</div> <div>FDIC</div>	<div>6</div> <div>SEC</div>
Nationwide Bank	Columbus, OH	NO	YES	NO	NO
Nationwide Mutual Insurance Company	Columbus, OH	YES	NO	NO	NO
Nationwide Mutual Fire Insurance Company	Columbus, OH	YES	NO	NO	NO
Nationwide Corporation	Columbus, OH	YES	NO	NO	NO
Nationwide Financial Services, Inc.	Columbus, OH	YES	NO	NO	NO
Nationwide Investment Services Corp.	Columbus, OH	NO	NO	NO	YES
Nationwide Investment Advisors, LLC	Columbus, OH	NO	NO	NO	YES
Nationwide Securities, LLC	Dublin, OH	NO	NO	NO	YES
Nationwide Fund Advisors	King of Prussia, PA	NO	NO	NO	YES
Nationwide Fund Distributors, LLC	King of Prussia, PA	NO	NO	NO	YES
Nationwide Asset Management, LLC	Columbus, OH	NO	NO	NO	YES

STATEMENT AS OF JUNE 30, 2015 OF THE NATIONWIDE INDEMNITY COMPANY

GENERAL INTERROGATORIES

- 9.1

Are the senior officers (principal executive officer, principal financial officer, principal accounting officer or controller, or persons performing similar functions) of the reporting entity subject to a code of ethics, which includes the following standards?
(a) Honest and ethical conduct, including the ethical handling of actual or apparent conflicts of interest between personal and professional relationships;
(b) Full, fair, accurate, timely and understandable disclosure in the periodic reports required to be filed by the reporting entity;
(c) Compliance with applicable governmental laws, rules and regulations;
(d) The prompt internal reporting of violations to an appropriate person or persons identified in the code; and
(e) Accountability for adherence to the code.

Yes [X] No []
- 9.11

If the response to 9.1 is No, please explain:
- 9.2

Has the code of ethics for senior managers been amended?

Yes [] No [X]
- 9.21

If the response to 9.2 is Yes, provide information related to amendment(s).
- 9.3

Have any provisions of the code of ethics been waived for any of the specified officers?

Yes [] No [X]
- 9.31

If the response to 9.3 is Yes, provide the nature of any waiver(s).

FINANCIAL

- 10.1

Does the reporting entity report any amounts due from parent, subsidiaries or affiliates on Page 2 of this statement?

Yes [] No [X]
- 10.2

If yes, indicate any amounts receivable from parent included in the Page 2 amount:

\$

INVESTMENT

- 11.1

Were any of the stocks, bonds, or other assets of the reporting entity loaned, placed under option agreement, or otherwise made available for use by another person? (Exclude securities under securities lending agreements.)

Yes [] No [X]
- 11.2

If yes, give full and complete information relating thereto:
12.

Amount of real estate and mortgages held in other invested assets in Schedule BA:

\$60,455,815
13.

Amount of real estate and mortgages held in short-term investments:

\$
- 14.1

Does the reporting entity have any investments in parent, subsidiaries and affiliates?

Yes [X] No []
- 14.2

If yes, please complete the following:
- | | 1 | 2 |
|---|---|--|
| | Prior Year-End
Book/Adjusted
Carrying Value | Current Quarter
Book/Adjusted
Carrying Value |
| 14.21 Bonds | \$ | \$ |
| 14.22 Preferred Stock | \$ | \$ |
| 14.23 Common Stock | \$ | \$ |
| 14.24 Short-Term Investments | \$ | \$ |
| 14.25 Mortgage Loans on Real Estate | \$ | \$ |
| 14.26 All Other | \$20,644,403 | \$20,551,574 |
| 14.27 Total Investment in Parent, Subsidiaries and Affiliates (Subtotal Lines 14.21 to 14.26) | \$20,644,403 | \$20,551,574 |
| 14.28 Total Investment in Parent included in Lines 14.21 to 14.26 above | \$ | \$ |
- 15.1

Has the reporting entity entered into any hedging transactions reported on Schedule DB?

Yes [] No [X]
- 15.2

If yes, has a comprehensive description of the hedging program been made available to the domiciliary state?
If no, attach a description with this statement.

Yes [] No []

STATEMENT AS OF JUNE 30, 2015 OF THE NATIONWIDE INDEMNITY COMPANY

GENERAL INTERROGATORIES

16. For the reporting entity's security lending program, state the amount of the following as of the current statement date:
- 16.1

Total fair value of reinvested collateral assets reported on Schedule DL, Parts 1 and 2.

\$

9,532,660
- 16.2

Total book adjusted/carrying value of reinvested collateral assets reported on Schedule DL, Parts 1 and 2

\$

9,286,515
- 16.3

Total payable for securities lending reported on the liability page.

\$

14,125,000

17. Excluding items in Schedule E - Part 3 - Special Deposits, real estate, mortgage loans and investments held physically in the reporting entity's offices, vaults or safety deposit boxes, were all stocks, bonds and other securities, owned throughout the current year held pursuant to a custodial agreement with a qualified bank or trust company in accordance with Section 1, III - General Examination Considerations, F. Outsourcing of Critical Functions, Custodial or Safekeeping Agreements of the NAIC Financial Condition Examiners Handbook? Yes ☒ No ☐

- 17.1 For all agreements that comply with the requirements of the NAIC Financial Condition Examiners Handbook, complete the following:

1 Name of Custodian(s)	2 Custodian Address
The Bank of New York Mellon	1 Wall Street, New York, NY 10286

- 17.2 For all agreements that do not comply with the requirements of the NAIC Financial Condition Examiners Handbook, provide the name, location and a complete explanation:

1 Name(s)	2 Location(s)	3 Complete Explanation(s)

- 17.3 Have there been any changes, including name changes, in the custodian(s) identified in 17.1 during the current quarter? Yes ☐ No ☒

- 17.4 If yes, give full information relating thereto:

1 Old Custodian	2 New Custodian	3 Date of Change	4 Reason

- 17.5 Identify all investment advisors, brokers/dealers or individuals acting on behalf of broker/dealers that have access to the investment accounts, handle securities and have authority to make investments on behalf of the reporting entity:

1 Central Registration Depository	2 Name(s)	3 Address
N/A	Members of the investment staff designated by the Chief Investment Officer as detailed in the Corporate Resolution.	One West Nationwide Blvd., Columbus, OH 43215

- 18.1 Have all the filing requirements of the Purposes and Procedures Manual of the NAIC Securities Valuation Office been followed? Yes ☒ No ☐

- 18.2 If no, list exceptions:

GENERAL INTERROGATORIES

PART 2 - PROPERTY & CASUALTY INTERROGATORIES

1.

If the reporting entity is a member of a pooling arrangement, did the agreement or the reporting entity's participation change?
If yes, attach an explanation.

Yes [] No [] N/A [X]
2.

Has the reporting entity reinsured any risk with any other reporting entity and agreed to release such entity from liability, in whole or in part, from any loss that may occur on the risk, or portion thereof, reinsured?
If yes, attach an explanation.

Yes [] No [X]
- 3.1

Have any of the reporting entity's primary reinsurance contracts been canceled?

Yes [] No [X]
- 3.2

If yes, give full and complete information thereto.
- 4.1

Are any of the liabilities for unpaid losses and loss adjustment expenses other than certain workers' compensation tabular reserves (see Annual Statement Instructions pertaining to disclosure of discounting for definition of " tabular reserves") discounted at a rate of interest greater than zero?

Yes [] No [X]
- 4.2

If yes, complete the following schedule:

			TOTAL DISCOUNT				DISCOUNT TAKEN DURING PERIOD			
1	2	3	4	5	6	7	8	9	10	11
Line of Business	Maximum Interest	Discount Rate	Unpaid Losses	Unpaid LAE	IBNR	TOTAL	Unpaid Losses	Unpaid LAE	IBNR	TOTAL
TOTAL										

5.

Operating Percentages:

5.1 A&H loss percent %

5.2 A&H cost containment percent %

5.3 A&H expense percent excluding cost containment expenses %
- 6.1

Do you act as a custodian for health savings accounts?

Yes [] No [X]
- 6.2

If yes, please provide the amount of custodial funds held as of the reporting date\$.....
- 6.3

Do you act as an administrator for health savings accounts?

Yes [] No [X]
- 6.4

If yes, please provide the balance of the funds administered as of the reporting date\$.....

SCHEDULE F - CEDED REINSURANCE

Showing All New Reinsurers - Current Year to Date

1	2	3	4	5	6	7
NAIC Company Code	ID Number	Name of Reinsurer	Domiciliary Jurisdiction	Type of Reinsurer	Certified Reinsurer Rating (1 through 6)	Effective Date of Certified Reinsurer Rating
NONE						

STATEMENT AS OF JUNE 30, 2015 OF THE NATIONWIDE INDEMNITY COMPANY

SCHEDULE T - EXHIBIT OF PREMIUMS WRITTEN

Current Year to Date - Allocated by States and Territories							
States, etc.	1 Active Status	Direct Premiums Written		Direct Losses Paid (Deducting Salvage)		Direct Losses Unpaid	
		2 Current Year To Date	3 Prior Year To Date	4 Current Year To Date	5 Prior Year To Date	6 Current Year To Date	7 Prior Year To Date
1. Alabama.....AL	N						
2. Alaska.....AK	N						
3. Arizona.....AZ	N						
4. Arkansas.....AR	N						
5. California.....CA	N						
6. Colorado.....CO	N						
7. Connecticut.....CT	N						
8. Delaware.....DE	N						
9. District of Columbia.....DC	N						
10. Florida.....FL	N						
11. Georgia.....GA	N						
12. Hawaii.....HI	N						
13. Idaho.....ID	N						
14. Illinois.....IL	Q						
15. Indiana.....IN	N						
16. Iowa.....IA	Q						
17. Kansas.....KS	N						
18. Kentucky.....KY	N						
19. Louisiana.....LA	N						
20. Maine.....ME	N						
21. Maryland.....MD	N						
22. Massachusetts.....MA	N						
23. Michigan.....MI	N						
24. Minnesota.....MN	N						
25. Mississippi.....MS	N						
26. Missouri.....MO	N						
27. Montana.....MT	N						
28. Nebraska.....NE	N						
29. Nevada.....NV	N						
30. New Hampshire.....NH	N						
31. New Jersey.....NJ	N						
32. New Mexico.....NM	N						
33. New York.....NY	Q						
34. North Carolina.....NC	N						
35. North Dakota.....ND	N						
36. Ohio.....OH	L						
37. Oklahoma.....OK	N						
38. Oregon.....OR	N						
39. Pennsylvania.....PA	N						
40. Rhode Island.....RI	N						
41. South Carolina.....SC	N						
42. South Dakota.....SD	N						
43. Tennessee.....TN	N						
44. Texas.....TX	N						
45. Utah.....UT	N						
46. Vermont.....VT	N						
47. Virginia.....VA	N						
48. Washington.....WA	N						
49. West Virginia.....WV	N						
50. Wisconsin.....WI	Q						
51. Wyoming.....WY	N						
52. American Samoa.....AS	N						
53. Guam.....GU	N						
54. Puerto Rico.....PR	N						
55. U.S. Virgin Islands.....VI	N						
56. Northern Mariana Islands.....MP	N						
57. Canada.....CAN	N						
58. Aggregate Other Alien OT	XXX						
59. Totals	(a) 1						
DETAILS OF WRITE-INS							
58001.....	XXX						
58002.....	XXX						
58003.....	XXX						
58998. Summary of remaining write-ins for Line 58 from overflow page.....	XXX						
58999. Totals (Lines 58001 through 58003 plus 58998)(Line 58 above)	XXX						

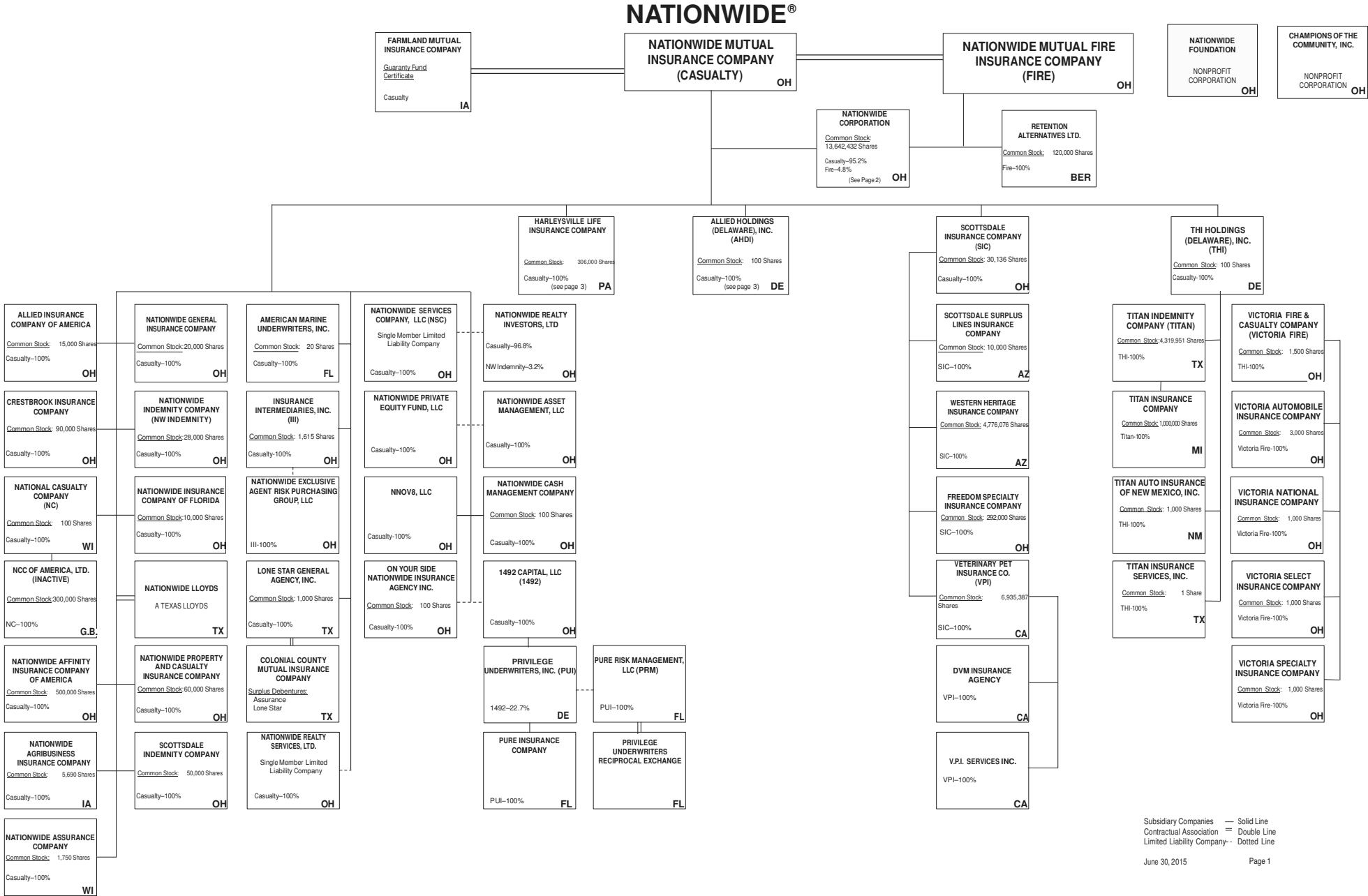
(L) Licensed or Chartered - Licensed Insurance Carrier or Domiciled RRG; (R) Registered - Non-domiciled RRGs; (Q) Qualified - Qualified or Accredited Reinsurer; (E) Eligible - Reporting Entities eligible or approved to write Surplus Lines in the state; (N) None of the above - Not allowed to write business in the state.

(a) Insert the number of L responses except for Canada and Other Alien.

STATEMENT AS OF JUNE 30, 2015 OF THE NATIONWIDE INDEMNITY COMPANY

SCHEDULE Y - INFORMATION CONCERNING ACTIVITIES OF INSURER MEMBERS OF A HOLDING COMPANY GROUP

PART 1 - ORGANIZATIONAL CHART

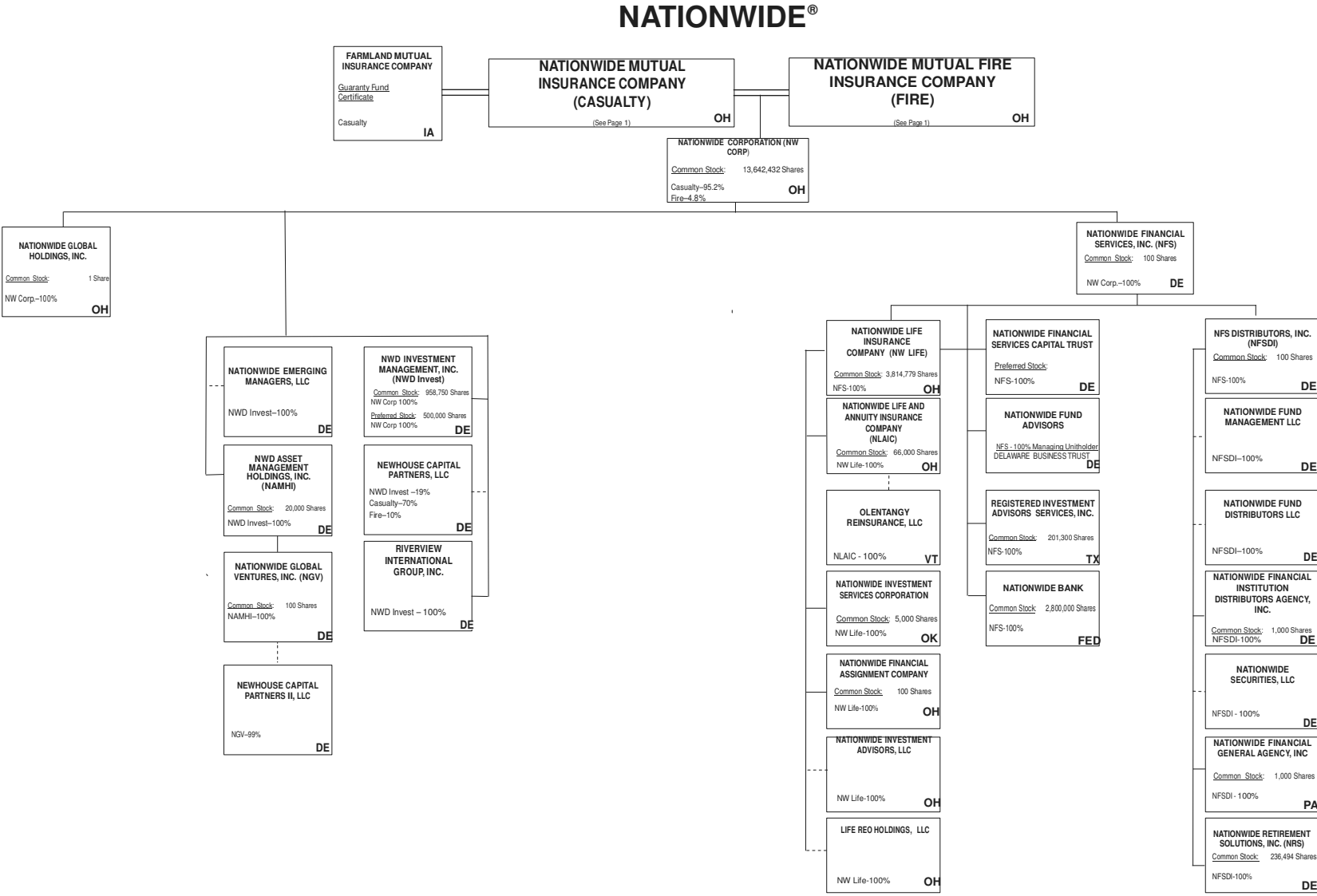


Subsidiary Companies — Solid Line
Contractual Association = Double Line
Limited Liability Company - - Dotted Line

STATEMENT AS OF JUNE 30, 2015 OF THE NATIONWIDE INDEMNITY COMPANY

SCHEDULE Y - INFORMATION CONCERNING ACTIVITIES OF INSURER MEMBERS OF A HOLDING COMPANY GROUP

PART 1 - ORGANIZATIONAL CHART

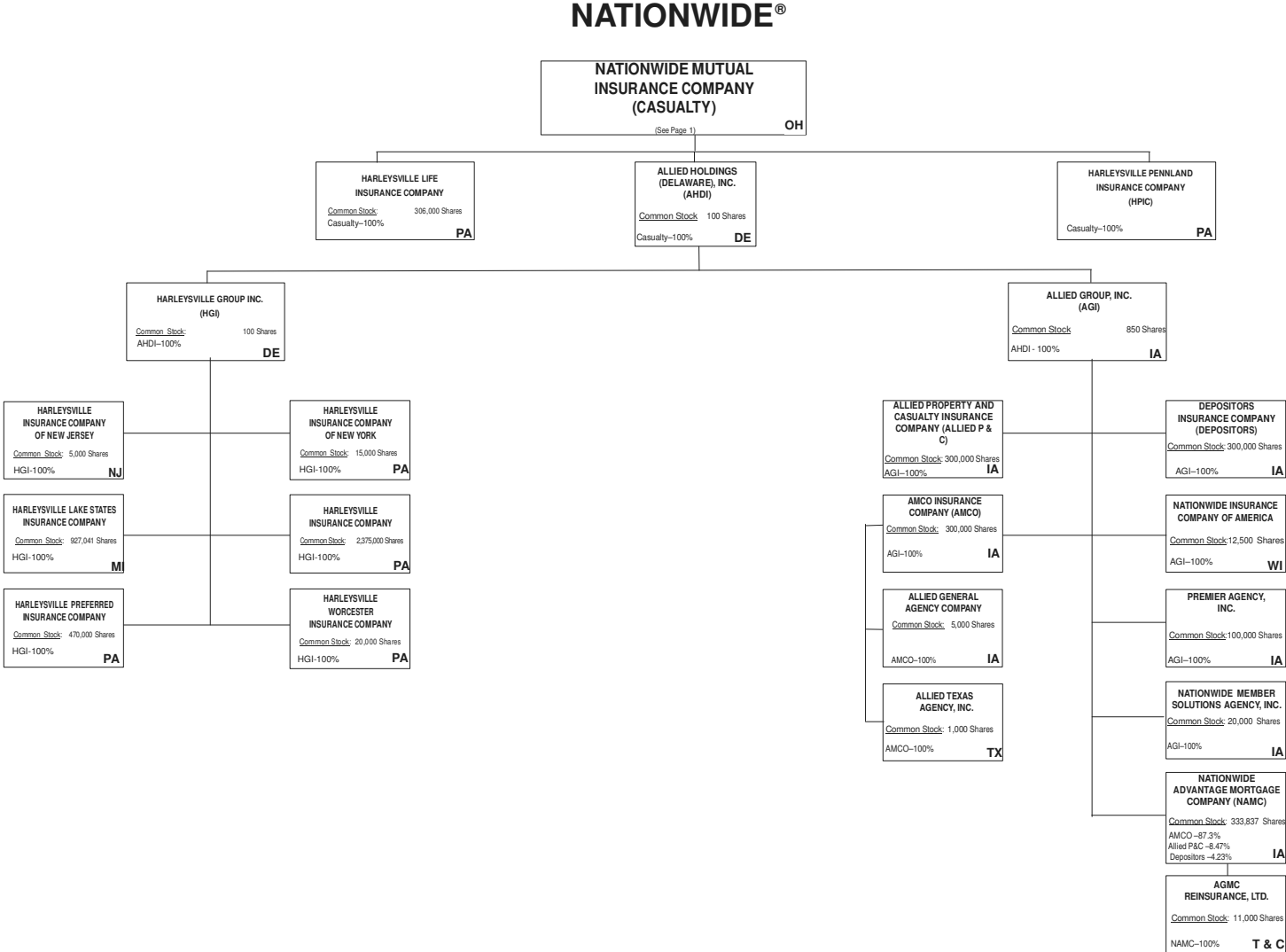


Subsidiary Companies — Solid Line
Contractual Association == Double Line
Limited Liability Company - - Dotted Line

STATEMENT AS OF JUNE 30, 2015 OF THE NATIONWIDE INDEMNITY COMPANY

SCHEDULE Y - INFORMATION CONCERNING ACTIVITIES OF INSURER MEMBERS OF A HOLDING COMPANY GROUP

PART 1 - ORGANIZATIONAL CHART



Subsidiary Companies	—	Solid Line
Contractual Association	=	Double Line
Limited Liability Company	..	Dotted Line

June 30, 2015

Page 3

(ALLIED/Harleysville subsidiaries)

STATEMENT AS OF JUNE 30, 2015 OF THE NATIONWIDE INDEMNITY COMPANY

NATIONWIDE INSURANCE COMPANIES

NAIC Group Code	Group Name	NAIC Company Code	State of Domicile	Federal ID Number	Name of Company
0140	Nationwide	10127	OH	27-0114983	Allied Insurance Company of America
0140	Nationwide	42579	IA	42-1201931	Allied Property and Casualty Insurance Company
0140	Nationwide	19100	IA	42-6054959	AMCO Insurance Company
0140	Nationwide	29262	TX	74-1061659	Colonial County Mutual Insurance Company
0140	Nationwide	18961	OH	68-0066866	Crestbrook Insurance Company
0140	Nationwide	42587	IA	42-1207150	Depositors Insurance Company
0140	Nationwide	13838	IA	42-0618271	Farmland Mutual Insurance Company
0140	Nationwide	22209	OH	75-6013587	Freedom Specialty Insurance Company
0140	Nationwide	23582	PA	41-0417250	Harleysville Insurance Company
0140	Nationwide	42900	NJ	23-2253669	Harleysville Insurance Company of New Jersey
0140	Nationwide	10674	PA	23-2864924	Harleysville Insurance Company of New York
0140	Nationwide	14516	MI	38-3198542	Harleysville Lake States Insurance Company
0140	Nationwide	64327	PA	23-1580983	Harleysville Life Insurance Company
0140	Nationwide	35696	PA	23-2384978	Harleysville Preferred Insurance Company
0140	Nationwide	26182	PA	04-1989660	Harleysville Worcester Insurance Company
0140	Nationwide	11991	WI	38-0865250	National Casualty Company
0140	Nationwide	26093	OH	48-0470690	Nationwide Affinity Insurance Company of America
0140	Nationwide	28223	IA	42-1015537	Nationwide Agribusiness Insurance Company
0140	Nationwide	10723	WI	95-0639970	Nationwide Assurance Company
0140	Nationwide	23760	OH	31-4425763	Nationwide General Insurance Company
0140	Nationwide	10070	OH	31-1399201	Nationwide Indemnity Company
0140	Nationwide	25453	WI	95-2130882	Nationwide Insurance Company of America
0140	Nationwide	10948	OH	31-1613686	Nationwide Insurance Company of Florida
0140	Nationwide	92657	OH	31-1000740	Nationwide Life and Annuity Insurance Company
0140	Nationwide	66869	OH	31-4156830	Nationwide Life Insurance Company
0140	Nationwide	42110	TX	75-1780981	Nationwide Lloyds
0140	Nationwide	23779	OH	31-4177110	Nationwide Mutual Fire Insurance Company
0140	Nationwide	23787	OH	31-4177100	Nationwide Mutual Insurance Company
0140	Nationwide	37877	OH	31-0970750	Nationwide Property & Casualty Insurance Company
0140	Nationwide	13999	VT	27-1712056	Olentangy Reinsurance, LLC
0140	Nationwide	15580	OH	31-1117969	Scottsdale Indemnity Company
0140	Nationwide	41297	OH	31-1024978	Scottsdale Insurance Company
0140	Nationwide	10672	AZ	86-0835870	Scottsdale Surplus Lines Insurance Company
0140	Nationwide	13242	TX	74-2286759	Titan Indemnity Company
0140	Nationwide	36269	MI	86-0619597	Titan Insurance Company
0140	Nationwide	42285	CA	95-3750113	Veterinary Pet Insurance Company
0140	Nationwide	10644	OH	34-1785903	Victoria Automobile Insurance Company
0140	Nationwide	42889	OH	34-1394913	Victoria Fire & Casualty Company
0140	Nationwide	10778	OH	34-1842604	Victoria National Insurance Company
0140	Nationwide	10105	OH	34-1777972	Victoria Select Insurance Company
0140	Nationwide	10777	OH	34-1842602	Victoria Specialty Insurance Company
0140	Nationwide	37150	AZ	86-0561941	Western Heritage Insurance Company
4664	PURE	12873	FL	20-8287105	Privilege Underwriters Reciprocal Exchange
4664	PURE	13204	FL	26-3109178	PURE Insurance Company

STATEMENT AS OF JUNE 30, 2015 OF THE NATIONWIDE INDEMNITY COMPANY

SCHEDULE Y
PART 1A - DETAIL OF INSURANCE HOLDING COMPANY SYSTEM

1	2	3	4	5	6	7	8	9	10	11	12	13	14	15
Group Code	Group Name	NAIC Company Code	ID Number	Federal RSSD	CIK	Name of Securities Exchange if Publicly Traded (U.S. or International)	Names of Parent, Subsidiaries Or Affiliates	Domiciliary Location	Relationship to Reporting Entity	Directly Controlled by (Name of Entity/Person)	Type of Control (Ownership, Board, Management, Attorney-in-Fact, Influence, Other)	If Control is Ownership Provide Percentage	Ultimate Controlling Entity(ies)/Person(s)	*
0140	Nationwide		31-1486309	4590018			10 W. Nationwide, LLC	OH	NIA	Nationwide Realty Investors, Ltd.	Ownership	100.000	Nationwide Mutual Insurance Company	
0140	Nationwide		31-1486309	4810074			1000 Yard Street, LLC	OH	NIA	Nationwide Realty Investors, Ltd.	Ownership	100.000	Nationwide Mutual Insurance Company	
0140	Nationwide		31-1486309	4594954			101 N Twentieth St, LLC	OH	NIA	Nationwide Realty Investors, Ltd.	Ownership	100.000	Nationwide Mutual Insurance Company	
0140	Nationwide		31-1486309	4869474			1015 Long Street, LLC	OH	NIA	Nationwide Realty Investors, Ltd.	Ownership	100.000	Nationwide Mutual Insurance Company	
0140	Nationwide		31-1486309	4810047			1050 Yard Street, LLC	OH	NIA	Nationwide Realty Investors, Ltd.	Ownership	100.000	Nationwide Mutual Insurance Company	
0140	Nationwide		20-4939866	4810038			1125 Rail Street, LLC	OH	NIA	NRI Equity Land Investments, LLC	Ownership	100.000	Nationwide Mutual Insurance Company	
0140	Nationwide		31-1733036	4594963			120 Acre Partners, LLC	DE	NIA	Nationwide Realty Investors, Ltd.	Ownership	95.000	Nationwide Mutual Insurance Company	1
0140	Nationwide		26-2451988	4288132			1492 Capital, LLC	OH	NIA	Nationwide Mutual Insurance Company	Ownership	100.000	Nationwide Mutual Insurance Company	
0140	Nationwide		31-1486309	4810083			155 Rivulon Boulevard, LLC	OH	NIA	Nationwide Realty Investors, Ltd.	Ownership	100.000	Nationwide Mutual Insurance Company	
0140	Nationwide		20-1347603	4594806			180 E. Broad Partners, LLC	OH	NIA	Nationwide Realty Investors, Ltd.	Ownership	33.330	Nationwide Mutual Insurance Company	1
0140	Nationwide		31-1486309	4810092			275 Rivulon Boulevard, LLC	OH	NIA	Nationwide Realty Investors, Ltd.	Ownership	100.000	Nationwide Mutual Insurance Company	
0140	Nationwide		31-1580283	4590835			400 West Nationwide Boulevard, LLC	OH	NIA	NWD Investments, LLC	Ownership	100.000	Nationwide Mutual Insurance Company	
0140	Nationwide		31-1580283	4591140			425 West Nationwide Boulevard, LLC	OH	NIA	NWD Investments, LLC	Ownership	100.000	Nationwide Mutual Insurance Company	
0140	Nationwide		31-1486309	4595009			44 Chestnut, LLC	OH	NIA	Nationwide Realty Investors, Ltd.	Ownership	100.000	Nationwide Mutual Insurance Company	
0140	Nationwide		20-4939866	4590497			775 Yard Street Restaurant, LLC	OH	NIA	NRI Equity Land Investments, LLC	Ownership	100.000	Nationwide Mutual Insurance Company	
0140	Nationwide		20-4939866	4590750			775 Yard Street, LLC	OH	NIA	NRI Equity Land Investments, LLC	Ownership	100.000	Nationwide Mutual Insurance Company	
0140	Nationwide		20-4939866	4810104			780 Yard Street, LLC	OH	NIA	NRI Equity Land Investments, LLC	Ownership	100.000	Nationwide Mutual Insurance Company	
0140	Nationwide		20-4939866	4671583			795 Rail Street, LLC	OH	NIA	NRI Equity Land Investments, LLC	Ownership	100.000	Nationwide Mutual Insurance Company	
0140	Nationwide		20-4939866	4590602			800 Bobcat Avenue, LLC	OH	NIA	NRI Equity Land Investments, LLC	Ownership	100.000	Nationwide Mutual Insurance Company	
0140	Nationwide		20-4939866	4671499			800 Goodale Boulevard, LLC	OH	NIA	NRI Equity Land Investments, LLC	Ownership	100.000	Nationwide Mutual Insurance Company	
0140	Nationwide		20-4939866	4671789			800 Yard Street, LLC	OH	NIA	NRI Equity Land Investments, LLC	Ownership	100.000	Nationwide Mutual Insurance Company	
0140	Nationwide		20-4939866	4590778			805 Bobcat Avenue, LLC	OH	NIA	NRI Equity Land Investments, LLC	Ownership	100.000	Nationwide Mutual Insurance Company	
0140	Nationwide		20-4939866	4869465			820 Goodale Boulevard, LLC	OH	NIA	NRI Equity Land Investments, LLC	Ownership	100.000	Nationwide Mutual Insurance Company	
0140	Nationwide		20-4939866				840 Third Avenue, LLC	OH	NIA	NRI Equity Land Investments, LLC	Ownership	100.000	Nationwide Mutual Insurance Company	
0140	Nationwide		20-4939866	4590611			845 Yard Street, LLC	OH	NIA	NRI Equity Land Investments, LLC	Ownership	100.000	Nationwide Mutual Insurance Company	
0140	Nationwide		20-4939866	4590787			850 Goodale Blvd., LLC	OH	NIA	NRI Equity Land Investments, LLC	Ownership	100.000	Nationwide Mutual Insurance Company	
0140	Nationwide		20-4939866	4590714			895 W. Third Avenue, LLC	OH	NIA	NRI Equity Land Investments, LLC	Ownership	100.000	Nationwide Mutual Insurance Company	
0140	Nationwide		20-4939866	4810029			975 Rail Street, LLC	OH	NIA	NRI Equity Land Investments, LLC	Ownership	100.000	Nationwide Mutual Insurance Company	
0140	Nationwide		31-1680808	4594833			AD Investments, LLC	OH	NIA	Nationwide Realty Investors, Ltd.	Ownership	60.000	Nationwide Mutual Insurance Company	1
0140	Nationwide		31-1580283	4590992			ADTV, LLC	OH	NIA	NWD Investments, LLC	Ownership	100.000	Nationwide Mutual Insurance Company	
0140	Nationwide		52-2227314	4287247			AGMC Reinsurance, Ltd.	TCA	IA	Nationwide Advantage Mortgage Company	Ownership	100.000	Nationwide Mutual Insurance Company	
0140	Nationwide		42-1011300	4287229			ALLIED General Agency Company	IA	IA	AMCO Insurance Company	Ownership	100.000	Nationwide Mutual Insurance Company	
0140	Nationwide		42-0958655	1677548			ALLIED Group, Inc.	IA	IA	Allied Holdings (Delaware), Inc.	Ownership	100.000	Nationwide Mutual Insurance Company	
0140	Nationwide		46-4628790	4613462			Allied Holdings (Delaware), Inc.	DE	IA	Nationwide Mutual Insurance Company	Ownership	100.000	Nationwide Mutual Insurance Company	
0140	Nationwide	10127	27-0114983	4288169			ALLIED Insurance Company of America	OH	IA	Nationwide Mutual Insurance Company	Ownership	100.000	Nationwide Mutual Insurance Company	
							ALLIED Property and Casualty Insurance Company							
0140	Nationwide	42579	42-1201931	4287144			Company	IA	IA	ALLIED Group, Inc.	Ownership	100.000	Nationwide Mutual Insurance Company	
0140	Nationwide		42-1527863	4287238			ALLIED Texas Agency, Inc.	TX	IA	AMCO Insurance Company	Ownership	100.000	Nationwide Mutual Insurance Company	
0140	Nationwide	19100	42-6054959	4287153			AMCO Insurance Company	IA	IA	ALLIED Group, Inc.	Ownership	100.000	Nationwide Mutual Insurance Company	
0140	Nationwide		59-1031596	4288011			American Marine Underwriters, Inc.	FL	IA	Nationwide Mutual Insurance Company	Ownership	100.000	Nationwide Mutual Insurance Company	
0140	Nationwide		31-1486309	4595036			Anderson Meadows, LLC	OH	NIA	Nationwide Realty Investors, Ltd.	Ownership	100.000	Nationwide Mutual Insurance Company	
0140	Nationwide		31-1580283	4591177			Arena District CA I, LLC	OH	NIA	NWD Investments, LLC	Ownership	100.000	Nationwide Mutual Insurance Company	
			90-0280710				Arena District Owners Association	OH	OTH	Other non-Nationwide	n/a		Other non-Nationwide	2
0140	Nationwide		20-3624379	4595371			BCCS Investment Fund LLC	DE	NIA	Nationwide Mutual Insurance Company	Ownership	100.000	Nationwide Mutual Insurance Company	
0140	Nationwide		26-4083207	4869447			Berkshire Crossing Development, LLC	DE	NIA	NorthStar Commercial Development, LLC	Ownership	100.000	Nationwide Mutual Insurance Company	
0140	Nationwide		31-1184438	4594842			Boulevard Inn Limited Liability Company	OH	NIA	Nationwide Realty Investors, Ltd.	Ownership	94.800	Nationwide Mutual Insurance Company	1
0140	Nationwide		31-1555487	4593658			Broad Street Retail, LLC	DE	NIA	Nationwide Realty Investors, Ltd.	Ownership	60.000	Nationwide Mutual Insurance Company	1
0140	Nationwide		20-3624379	4595531			Brooke School Investment Fund, LLC	DE	OTH	Nationwide Mutual Insurance Company	Ownership	100.000	Nationwide Mutual Insurance Company	2
0140	Nationwide		26-0899413	3730540			CHP New Markets Investment Fund, LLC	OH	OTH	Nationwide Mutual Insurance Company	Limited partner /no control	50.000	Other non-Nationwide	1
0140	Nationwide		20-1618232	4595241			CNRI-Cannonsport Condominium, LLC	OH	NIA	CNRI-Cannonsport, LLC	Ownership	100.000	Nationwide Mutual Insurance Company	
0140	Nationwide		20-1618232	4595045			CNRI- Cannonsport, LLC	OH	NIA	Nationwide Realty Investors, Ltd.	Ownership	100.000	Nationwide Mutual Insurance Company	

STATEMENT AS OF JUNE 30, 2015 OF THE NATIONWIDE INDEMNITY COMPANY

SCHEDULE Y
PART 1A - DETAIL OF INSURANCE HOLDING COMPANY SYSTEM

1	2	3	4	5	6	7	8	9	10	11	12	13	14	15
Group Code	Group Name	NAIC Company Code	ID Number	Federal RSSD	CIK	Name of Securities Exchange if Publicly Traded (U.S. or International)	Names of Parent, Subsidiaries Or Affiliates	Domiciliary Location	Relationship to Reporting Entity	Directly Controlled by (Name of Entity/Person)	Type of Control (Ownership, Board, Management, Attorney-in-Fact, Influence, Other)	If Control is Ownership Provide Percentage	Ultimate Controlling Entity(ies)/Person(s)	*
.....	Co-Investment Fund, LLCDE.....	..OTH.....	Other non-Nationwide	n/a	Other non-Nationwide2
.....0140	Nationwide	31-1579973	COLHOC Limited PartnershipOH.....	..NIA.....	NRI Arena, LLC	Ownership.....	30.760	Other non-Nationwide
.....0140	Nationwide	29262	74-1061659	4288057	Colonial County Mutual Insurance CompanyTX.....	..OTH.....	Other non-Nationwide	contract	Other non-Nationwide2
.....0140	Nationwide	45-4901238	Columbus Arena Management, LLCOH.....	..OTH.....	Other non-Nationwide	Other non-Nationwide2
.....0140	Nationwide	04-3750770	4595951	Continental/North Shore I, L.P.OH.....	..NIA.....	Continental/NRI North Shore Investments, LLC	Ownership.....	100.000	Nationwide Mutual Insurance Company
.....0140	Nationwide	20-0366090	3327212	Continental/North Shore II, L.P.OH.....	..NIA.....	Continental/NRI North Shore Investments, LLC	Ownership.....	100.000	Nationwide Mutual Insurance Company
.....0140	Nationwide	20-0142724	4588177	Continental/NRI North Shore Investments, LLCOH.....	..NIA.....	Nationwide Realty Investors, Ltd.	Ownership.....	50.500	Nationwide Mutual Insurance Company1
.....0140	Nationwide	26-4177534	4595670	Cotton Mill Partners, LLCVA.....	..NIA.....	Nationwide Mutual Insurance Company	Ownership.....	50.000	Nationwide Mutual Insurance Company1
.....0140	Nationwide	26-4177534	4595670	Cotton Mill Partners, LLCVA.....	..NIA.....	Nationwide Property and Casualty Insurance Company	Ownership.....	50.000	Nationwide Mutual Insurance Company1
.....0140	Nationwide	18961	68-0066866	4288178	Crestbrook Insurance CompanyOH.....	..IA.....	Nationwide Mutual Insurance Company	Ownership.....	100.000	Nationwide Mutual Insurance Company
.....0140	Nationwide	31-1486309	4590255	Crewville, Ltd.OH.....	..NIA.....	Nationwide Realty Investors, Ltd.	Ownership.....	100.000	Nationwide Mutual Insurance Company
.....0140	Nationwide	42587	42-1207150	4287162	Depositors Insurance CompanyIA.....	..IA.....	ALLIED Group, Inc.	Ownership.....	100.000	Nationwide Mutual Insurance Company
.....0140	Nationwide	46-4104813	Discover Affordable Housing Investment Fund I LLCOH.....	..OTH.....	Other non-Nationwide	n/a	Other non-Nationwide2
.....0140	Nationwide	33-0096671	4287694	DVM Insurance AgencyCA.....	..NIA.....	Veterinary Pet Insurance Company	Ownership.....	100.000	Nationwide Mutual Insurance Company
.....0140	Nationwide	20-1945276	4590590	East of Madison, LLCDE.....	..NIA.....	120 Acre Partners, Ltd.	Ownership.....	24.910	Nationwide Mutual Insurance Company1
.....0140	Nationwide	20-1945276	4590590	East of Madison, LLCDE.....	..NIA.....	ND La Quinta Partners, LLC	Ownership.....	76.090	Nationwide Mutual Insurance Company1
.....0140	Nationwide	20-5268940	4595689	ELH Investments LLCDE.....	..OTH.....	Nationwide Mutual Insurance Company	Ownership.....	100.000	Nationwide Mutual Insurance Company2
.....0140	Nationwide	13838	42-0618271	4569372	Farmland Mutual Insurance CompanyIA.....	..OTH.....	Other non-Nationwide	debt	Other non-Nationwide2
.....0140	Nationwide	22209	75-6013587	4287676	Freedom Specialty Insurance Company (fka Atlantic Insurance Company)OH.....	..IA.....	Scottsdale Insurance Company	Ownership.....	100.000	Nationwide Mutual Insurance Company
.....0140	Nationwide	46-4736379	GPN-1 Property Owners Association, Inc.OH.....	..OTH.....	Other non-Nationwide	n/a	Other non-Nationwide2
.....0140	Nationwide	20-4939866	4590808	Grandview Yard Hotel Holdings, LLCOH.....	..NIA.....	NRI Equity Land Investments, LLC	Ownership.....	100.000	Nationwide Mutual Insurance Company
.....0140	Nationwide	20-4939866	4590826	Grandview Yard Hotel, LLCOH.....	..NIA.....	Grandview Yard Hotel Holdings, LLC	Ownership.....	100.000	Nationwide Mutual Insurance Company
.....0140	Nationwide	51-0241172	3582909	Harleysville Group Inc.DE.....	..NIA.....	Allied Holdings (Delaware), Inc.	Ownership.....	100.000	Nationwide Mutual Insurance Company
.....0140	Nationwide	23582	41-0417250	4442260	Harleysville Insurance CompanyPA.....	..IA.....	Harleysville Group, Inc.	Ownership.....	100.000	Nationwide Mutual Insurance Company
.....0140	Nationwide	42900	16-1075588	4442158	Harleysville Insurance Company of New JerseyNJ.....	..IA.....	Harleysville Group, Inc.	Ownership.....	100.000	Nationwide Mutual Insurance Company
.....0140	Nationwide	10674	23-2864924	4442242	Harleysville Insurance Company of New YorkPA.....	..IA.....	Harleysville Group, Inc.	Ownership.....	100.000	Nationwide Mutual Insurance Company
.....0140	Nationwide	14516	38-3198542	4442251	Harleysville Lake States Insurance CompanyMI.....	..IA.....	Harleysville Group, Inc.	Ownership.....	100.000	Nationwide Mutual Insurance Company
.....0140	Nationwide	64327	23-1580983	4440659	Harleysville Life Insurance CompanyPA.....	..IA.....	Nationwide Mutual Insurance Company	Ownership.....	100.000	Nationwide Mutual Insurance Company
.....0140	Nationwide	23-2612951	4442149	Harleysville Pennland Insurance CompanyPA.....	..IA.....	Nationwide Mutual Insurance Company	Ownership.....	100.000	Nationwide Mutual Insurance Company
.....0140	Nationwide	35696	23-2384978	4442288	Harleysville Preferred Insurance CompanyPA.....	..IA.....	Harleysville Group, Inc.	Ownership.....	100.000	Nationwide Mutual Insurance Company
.....0140	Nationwide	26182	04-1989660	4442372	Harleysville Worcester Insurance CompanyPA.....	..IA.....	Harleysville Group, Inc.	Ownership.....	100.000	Nationwide Mutual Insurance Company
.....0140	Nationwide	32-0051216	4596903	Hideaway Properties Corp.CA.....	..OTH.....	Nationwide Realty Investors, Ltd.	Ownership.....	50.000	Nationwide Mutual Insurance Company1
.....0140	Nationwide	31-0871532	4288020	Insurance Intermediaries, Inc.OH.....	..IA.....	Nationwide Mutual Insurance Company	Ownership.....	100.000	Nationwide Mutual Insurance Company
.....0140	Nationwide	31-1486309	4097802	Jerome Village Company, LLCOH.....	..NIA.....	Nationwide Realty Investors, Ltd.	Ownership.....	100.000	Nationwide Mutual Insurance Company
.....0140	Nationwide	46-2974590	Jerome Village Master Property Owners AssociationOH.....	..OTH.....	Other non-Nationwide	n/a	Other non-Nationwide2
.....0140	Nationwide	46-2956640	Jerome Village Residential Property Owners Association, Inc.OH.....	..OTH.....	Other non-Nationwide	n/a	Other non-Nationwide2
.....0140	Nationwide	31-1486309	4590312	JV Developers, LLCOH.....	..OTH.....	Nationwide Realty Investors, Ltd.	Ownership.....	100.000	Nationwide Mutual Insurance Company2
.....0140	Nationwide	20-2137188	4595698	Leaguers Investment Fund, LLCDE.....	..OTH.....	Nationwide Mutual Insurance Company	Ownership.....	100.000	Nationwide Mutual Insurance Company2
.....0140	Nationwide	56-3789187	4286969	Life REO Holdings, LLCOH.....	..NIA.....	Nationwide Life Insurance Company	Ownership.....	100.000	Nationwide Mutual Insurance Company
.....0140	Nationwide	74-1395229	4288039	Lone Star General Agency, Inc.TX.....	..IA.....	Nationwide Mutual Insurance Company	Ownership.....	100.000	Nationwide Mutual Insurance Company

STATEMENT AS OF JUNE 30, 2015 OF THE NATIONWIDE INDEMNITY COMPANY

SCHEDULE Y
PART 1A - DETAIL OF INSURANCE HOLDING COMPANY SYSTEM

1	2	3	4	5	6	7	8	9	10	11	12	13	14	15
Group Code	Group Name	NAIC Company Code	ID Number	Federal RSSD	CIK	Name of Securities Exchange if Publicly Traded (U.S. or International)	Names of Parent, Subsidiaries Or Affiliates	Domi-ciliary Location	Relation-ship to Reporting Entity	Directly Controlled by (Name of Entity/Person)	Type of Control (Ownership, Board, Management, Attorney-in-Fact, Influence, Other)	If Control is Owner-ship Provide Per-centage	Ultimate Controlling Entity(ies)/Person(s)	*
...0140 ...	Nationwide		20-3624379	4595700			Match School Investment Fund, LLC	..DEOTH ..	Nationwide Mutual Insurance Company	Ownership.....	100.000	Nationwide Mutual Insurance Company2
...0140 ...	Nationwide	..11991	38-0865250	4288187			National Casualty Company	..WIIA ..	Nationwide Mutual Insurance Company	Ownership.....	100.000	Nationwide Mutual Insurance Company
...0140 ...	Nationwide			4614900			National Casualty Company of America, Ltd.							
...0140 ...	Nationwide		42-1154244	2889795			Nationwide Advantage Mortgage Company	..GBRIA ..	Nationwide Mutual Insurance Company	Ownership.....	100.000	Nationwide Mutual Insurance Company
...0140 ...	Nationwide							..IANIA ..	AMCO Insurance Company	Ownership.....	87.300	Nationwide Mutual Insurance Company1
...0140 ...	Nationwide		42-1154244	2889795			Nationwide Advantage Mortgage Company	..IANIA ..	ALLIED Property & Casualty Insurance Company	Ownership.....	8.470	Nationwide Mutual Insurance Company1
...0140 ...	Nationwide		42-1154244	2889795			Nationwide Advantage Mortgage Company	..IANIA ..	Depositors Insurance Company	Ownership.....	4.230	Nationwide Mutual Insurance Company1
...0140 ...	Nationwide	..26093	48-0470690	4288196			America	..OHIA ..	Nationwide Mutual Insurance Company	Ownership.....	100.000	Nationwide Mutual Insurance Company
...0140 ...	Nationwide	..28223	42-1015537	4288208			Nationwide Agribusiness Insurance Company	..IAIA ..	Nationwide Mutual Insurance Company	Ownership.....	100.000	Nationwide Mutual Insurance Company
...0140 ...	Nationwide		20-5976272	4595910			Nationwide Alternative Investments, LLC	..OHNIA ..	Nationwide Mutual Insurance Company	Ownership.....	100.000	Nationwide Mutual Insurance Company
...0140 ...	Nationwide		31-1578869	4288075			Nationwide Arena, LLC	..OHNIA ..	NRI Arena, LLC	Ownership.....	90.000	Nationwide Mutual Insurance Company1
...0140 ...	Nationwide		20-8670712	4288114			Nationwide Asset Management, LLC	..OHNIA ..	Nationwide Mutual Insurance Company	Ownership.....	100.000	Nationwide Mutual Insurance Company
...0140 ...	Nationwide	..10723	95-0639970	4288217			Nationwide Assurance Company	..WIIA ..	Nationwide Mutual Insurance Company	Ownership.....	100.000	Nationwide Mutual Insurance Company
...0140 ...	Nationwide		31-1592130	2729677			Nationwide Bank		..OTH ..	Nationwide Financial Services, Inc.	Ownership.....	100.000	Nationwide Mutual Insurance Company2
...0140 ...	Nationwide		31-1036287	4288123			Nationwide Cash Management Company	..OHNIA ..	Nationwide Mutual Insurance Company	Ownership.....	100.000	Nationwide Mutual Insurance Company
...0140 ...	Nationwide		31-4416546	3828081			Nationwide Corporation	..OHNIA ..	Nationwide Mutual Insurance Company	Ownership.....	95.200	Nationwide Mutual Insurance Company1
...0140 ...	Nationwide		31-4416546	3828081			Nationwide Corporation	..OHNIA ..	Nationwide Mutual Fire Insurance Company	Ownership.....	4.800	Nationwide Mutual Insurance Company1
...0140 ...	Nationwide		04-3679407	4286839			Nationwide Emerging Managers, LLC	..DENIA ..	NWD Investment Management, Inc.	Ownership.....	100.000	Nationwide Mutual Insurance Company
...0140 ...	Nationwide		05-0630007	4288048			Nationwide Exclusive Agent Risk Purchasing Group, LLC	..OHNIA ..	Insurance Intermediaries, Inc.	Ownership.....	100.000	Nationwide Mutual Insurance Company
...0140 ...	Nationwide		31-1667326	4286932			Nationwide Financial Assignment Company	..OHNIA ..	Nationwide Life Insurance Company	Ownership.....	100.000	Nationwide Mutual Insurance Company
...0140 ...	Nationwide		23-2412039	4287087			Nationwide Financial General Agency, Inc.	..PANIA ..	NFS Distributors, Inc.	Ownership.....	100.000	Nationwide Mutual Insurance Company
...0140 ...	Nationwide		31-1316276	4287069			Nationwide Financial Institution Distributors Agency, Inc.	..DENIA ..	NFS Distributors, Inc.	Ownership.....	100.000	Nationwide Mutual Insurance Company
...0140 ...	Nationwide		31-6554353	4286978			Nationwide Financial Services Capital Trust	..DENIA ..	Nationwide Financial Services, Inc.	Ownership.....	100.000	Nationwide Mutual Insurance Company
...0140 ...	Nationwide		31-1486870	3828063			Nationwide Financial Services, Inc.	..DENIA ..	Nationwide Corporation	Ownership.....	100.000	Nationwide Mutual Insurance Company
...0140 ...	Nationwide		31-6022301				Nationwide Foundation	..OHOTH ..	Other non-Nationwide	n/a		Other non-Nationwide2
...0140 ...	Nationwide		52-6969857	4286996			Nationwide Fund Advisors	..DENIA ..	Nationwide Financial Services, Inc.	Ownership.....	100.000	Nationwide Mutual Insurance Company
...0140 ...	Nationwide		31-1748721	4287050			Nationwide Fund Distributors LLC	..DENIA ..	NFS Distributors, Inc.	Ownership.....	100.000	Nationwide Mutual Insurance Company
...0140 ...	Nationwide		31-0900518	4287041			Nationwide Fund Management LLC	..DENIA ..	NFS Distributors, Inc.	Ownership.....	100.000	Nationwide Mutual Insurance Company
...0140 ...	Nationwide	..23760	31-4425763	4287957			Nationwide General Insurance Company	..OHIA ..	Nationwide Mutual Insurance Company	Ownership.....	100.000	Nationwide Mutual Insurance Company
...0140 ...	Nationwide		31-1570938	4286398			Nationwide Global Holdings, Inc.	..OHNIA ..	Nationwide Corporation	Ownership.....	100.000	Nationwide Mutual Insurance Company
...0140 ...	Nationwide		04-3732385	4286857			Nationwide Global Ventures, Inc.	..DENIA ..	Nationwide Asset Management Holdings, Inc.	Ownership.....	100.000	Nationwide Mutual Insurance Company
...0140 ...	Nationwide	..10070	31-1399201	2839398			Nationwide Indemnity Company	..OHRE ..	Nationwide Mutual Insurance Company	Ownership.....	100.000	Nationwide Mutual Insurance Company
...0140 ...	Nationwide	..25453	95-2130882	4287180			Nationwide Insurance Company of America	..WIIA ..	ALLIED Group, Inc.	Ownership.....	100.000	Nationwide Mutual Insurance Company
...0140 ...	Nationwide	..10948	31-1613686	4287966			Nationwide Insurance Company of Florida	..OHIA ..	Nationwide Mutual Insurance Company	Ownership.....	100.000	Nationwide Mutual Insurance Company
...0140 ...	Nationwide		41-2206199	4286950			Nationwide Investment Advisors, LLC	..OHNIA ..	Nationwide Life Insurance Company	Ownership.....	100.000	Nationwide Mutual Insurance Company
...0140 ...	Nationwide		73-0988442	4286923			Nationwide Investment Services Corporation	..OKNIA ..	Nationwide Life Insurance Company	Ownership.....	100.000	Nationwide Mutual Insurance Company
...0140 ...	Nationwide	..92657	31-1000740	2995098			Nationwide Life and Annuity Insurance Company	..OHIA ..	Nationwide Life Insurance Company	Ownership.....	100.000	Nationwide Mutual Insurance Company
...0140 ...	Nationwide	..66869	31-4156830	2819288			Nationwide Life Insurance Company	..OHIA ..	Nationwide Financial Services, Inc.	Ownership.....	100.000	Nationwide Mutual Insurance Company
...0140 ...	Nationwide		13-4212969	4596127			Nationwide Life Tax Credit Partners 2002-A, LLC	..OHNIA ..	Nationwide Life Insurance Company	Other.....	0.010	Nationwide Mutual Insurance Company2
...0140 ...	Nationwide		01-0749754	4595960			Nationwide Life Tax Credit Partners 2002-B, LLC	..OHNIA ..	Nationwide Life Insurance Company	Other.....	0.010	Nationwide Mutual Insurance Company2

STATEMENT AS OF JUNE 30, 2015 OF THE NATIONWIDE INDEMNITY COMPANY

SCHEDULE Y
PART 1A - DETAIL OF INSURANCE HOLDING COMPANY SYSTEM

1	2	3	4	5	6	7	8	9	10	11	12	13	14	15
Group Code	Group Name	NAIC Company Code	ID Number	Federal RSSD	CIK	Name of Securities Exchange if Publicly Traded (U.S. or International)	Names of Parent, Subsidiaries Or Affiliates	Domi-ciliary Location	Relation-ship to Reporting Entity	Directly Controlled by (Name of Entity/Person)	Type of Control (Ownership, Board, Management, Attorney-in-Fact, Influence, Other)	If Control is Owner-ship Provide Perce-ntage	Ultimate Controlling Entity(ies)/Person(s)	*
...0140 ...	Nationwide		03-0498148	3262573			Nationwide Life Tax Credit Partners 2002-C, LLC	..OH..	...NIA.....	Nationwide Life Insurance Company	Other.....	...0.010	Nationwide Mutual Insurance Company2
...0140 ...	Nationwide		54-2113175	4596127			Nationwide Life Tax Credit Partners 2003-A, LLC	..OH..	...NIA.....	Nationwide Life Insurance Company	Other.....	...0.010	Nationwide Mutual Insurance Company2
...0140 ...	Nationwide		58-2672725	4596163			Nationwide Life Tax Credit Partners 2003-B, LLC	..OH..	...NIA.....	Nationwide Life Insurance Company	Other.....	...0.010	Nationwide Mutual Insurance Company2
...0140 ...	Nationwide		20-0357951	3811001			Nationwide Life Tax Credit Partners 2003-C, LLC	..OH..	...NIA.....	Nationwide Life Insurance Company	Other.....	...0.010	Nationwide Mutual Insurance Company2
...0140 ...	Nationwide		20-0382144	4596707			Nationwide Life Tax Credit Partners 2004-A, LLC	..OH..	...NIA.....	Nationwide Life Insurance Company	Other.....	...0.010	Nationwide Mutual Insurance Company2
...0140 ...	Nationwide		20-0745944	4596211			Nationwide Life Tax Credit Partners 2004-B, LLC	..OH..	...NIA.....	Nationwide Life Insurance Company	Other.....	...0.010	Nationwide Mutual Insurance Company2
...0140 ...	Nationwide		20-0745965	4596239			Nationwide Life Tax Credit Partners 2004-C, LLC	..OH..	...NIA.....	Nationwide Life Insurance Company	Other.....	...0.010	Nationwide Mutual Insurance Company2
...0140 ...	Nationwide		20-1128408	4596332			Nationwide Life Tax Credit Partners 2004-D, LLC	..OH..	...NIA.....	Nationwide Life Insurance Company	Other.....	...0.010	Nationwide Mutual Insurance Company2
...0140 ...	Nationwide		20-1128472	4596350			Nationwide Life Tax Credit Partners 2004-E, LLC	..OH..	...NIA.....	Nationwide Life Insurance Company	Other.....	...0.010	Nationwide Mutual Insurance Company2
...0140 ...	Nationwide		20-1918935	3318117			Nationwide Life Tax Credit Partners 2004-F, LLC	..OH..	...NIA.....	Nationwide Life Insurance Company	Other.....	...0.010	Nationwide Mutual Insurance Company2
...0140 ...	Nationwide		20-2303694	4596369			Nationwide Life Tax Credit Partners 2005-A, LLC	..OH..	...NIA.....	Nationwide Life Insurance Company	Other.....	...0.010	Nationwide Mutual Insurance Company2
...0140 ...	Nationwide		20-2303602	4596378			Nationwide Life Tax Credit Partners 2005-B, LLC	..OH..	...NIA.....	Nationwide Life Insurance Company	Other.....	...0.010	Nationwide Mutual Insurance Company2
...0140 ...	Nationwide		20-2450960	4596387			Nationwide Life Tax Credit Partners 2005-C, LLC	..OH..	...NIA.....	Nationwide Life Insurance Company	Other.....	...0.010	Nationwide Mutual Insurance Company2
...0140 ...	Nationwide		20-2451052	4596396			Nationwide Life Tax Credit Partners 2005-D, LLC	..OH..	...NIA.....	Nationwide Life Insurance Company	Other.....	...0.010	Nationwide Mutual Insurance Company2
...0140 ...	Nationwide		20-2774223	4596408			Nationwide Life Tax Credit Partners 2005-E, LLC	..OH..	...NIA.....	Nationwide Life Insurance Company	Other.....	...0.010	Nationwide Mutual Insurance Company2
...0140 ...	Nationwide		21-1288836	4596426			Nationwide Life Tax Credit Partners 2007-A, LLC	..OH..	...NIA.....	Nationwide Life Insurance Company	Other.....	...0.010	Nationwide Mutual Insurance Company2
...0140 ...	Nationwide		26-3427373	4596435			Nationwide Life Tax Credit Partners 2009-A, LLC	..OH..	...NIA.....	Nationwide Life Insurance Company	Other.....	...0.010	Nationwide Mutual Insurance Company2
...0140 ...	Nationwide		26-3427435	4596444			Nationwide Life Tax Credit Partners 2009-B, LLC	..OH..	...NIA.....	Nationwide Life Insurance Company	Other.....	...0.010	Nationwide Mutual Insurance Company2
...0140 ...	Nationwide		26-3427479	4596499			Nationwide Life Tax Credit Partners 2009-C, LLC	..OH..	...NIA.....	Nationwide Life Insurance Company	Other.....	...0.010	Nationwide Mutual Insurance Company2
...0140 ...	Nationwide		26-3427525	4596510			Nationwide Life Tax Credit Partners 2009-D, LLC	..OH..	...NIA.....	Nationwide Life Insurance Company	Other.....	...0.010	Nationwide Mutual Insurance Company2
...0140 ...	Nationwide		26-4737055	4596529			Nationwide Life Tax Credit Partners 2009-E, LLC	..OH..	...NIA.....	Nationwide Life Insurance Company	Ownership.....	...100.000	Nationwide Mutual Insurance Company
...0140 ...	Nationwide		26-4737157	4596547			Nationwide Life Tax Credit Partners 2009-F, LLC	..OH..	...NIA.....	Nationwide Life Insurance Company	Ownership.....	...100.000	Nationwide Mutual Insurance Company
...0140 ...	Nationwide		27-1362364	4596622			Nationwide Life Tax Credit Partners 2009-I, LLC	..OH..	...NIA.....	Nationwide Life Insurance Company	Other.....	...0.010	Nationwide Mutual Insurance Company2
...0140 ...	Nationwide		45-0469525	3779811			Nationwide Life Tax Credit Partners No. 1, LLC	..OH..	...NIA.....	Nationwide Life Insurance Company	Other.....	...0.010	Nationwide Mutual Insurance Company2
...0140 ...	Nationwide42110	75-1780981	4287984			Nationwide Lloyds	..TX..	...IA.....	n/a	contract.....		Nationwide Mutual Insurance Company
...0140 ...	Nationwide		42-1373380	4287210			Nationwide Member Solutions Agency Inc.	..IA..	...NIA.....	ALLIED Group, Inc.	Ownership.....	...100.000	Nationwide Mutual Insurance Company
...0140 ...	Nationwide		4597094				Nationwide Mutual Capital I, LLC	..DE..	...NIA.....	Nationwide Mutal Capital, LLC	Ownership.....	...100.000	Nationwide Mutual Insurance Company

STATEMENT AS OF JUNE 30, 2015 OF THE NATIONWIDE INDEMNITY COMPANY

SCHEDULE Y

PART 1A - DETAIL OF INSURANCE HOLDING COMPANY SYSTEM

1	2	3	4	5	6	7	8	9	10	11	12	13	14	15
Group Code	Group Name	NAIC Company Code	ID Number	Federal RSSD	CIK	Name of Securities Exchange if Publicly Traded (U.S. or International)	Names of Parent, Subsidiaries Or Affiliates	Domi-ciliary Location	Relation-ship to Reporting Entity	Directly Controlled by (Name of Entity/Person)	Type of Control (Ownership, Board, Management, Attorney-in-Fact, Influence, Other)	If Control is Owner-ship Provide Percen-tage	Ultimate Controlling Entity(ies)/Person(s)	*
...0140 ...	Nationwide		75-3191025	4595269			Nationwide Mutual Capital, LLCOH..	..NIA	Nationwide Mutual Insurance Company	Ownership.....	..100.000	Nationwide Mutual Insurance Company
...0140 ...	Nationwide23779	82-0549218	3828090			Nationwide Mutual Fire Insurance CompanyOH..	..OTH.....	Other non-Nationwide	n/a	Other non-Nationwide2
...0140 ...	Nationwide23787	31-4177100	3828072			Nationwide Mutual Insurance CompanyOH..	..UDP	Other non-Nationwide	n/a	Other non-Nationwide
...0140 ...	Nationwide		34-2012765	4288084			Nationwide Private Equity Fund, LLCOH..	..NIA	Nationwide Mutual Insurance Company	Ownership.....	..100.000	Nationwide Mutual Insurance Company
...0140 ...	Nationwide						Nationwide Property and Casualty Insurance CompanyOH..	..IA	Nationwide Mutual Insurance Company	Ownership.....	..100.000	Nationwide Mutual Insurance Company
...0140 ...	Nationwide37877	31-0970750	4287993			Nationwide Realty Investors, Ltd.OH..	..NIA	Nationwide Mutual Insurance Company	Ownership.....	..96.800	Nationwide Mutual Insurance Company1
...0140 ...	Nationwide		31-1486309	4288105			Nationwide Realty Investors, Ltd.OH..	..NIA	Nationwide Indemnity Company	Ownership.....	..3.200	Nationwide Mutual Insurance Company1
...0140 ...	Nationwide		31-1486309	4590264			Nationwide Realty Management, LLCOH..	..NIA	Nationwide Realty Investors, Ltd.	Ownership.....	..100.000	Nationwide Mutual Insurance Company
...0140 ...	Nationwide			4288066			Nationwide Realty Services, Ltd.OH..	..NIA	Nationwide Mutual Insurance Company	Ownership.....	..100.000	Nationwide Mutual Insurance Company
...0140 ...	Nationwide		73-0948330	4287096			Nationwide Retirement Solutions, Inc.DE..	..NIA	NFS Distributors, Inc.	Ownership.....	..100.000	Nationwide Mutual Insurance Company
...0140 ...	Nationwide		36-2434406	4287078			Nationwide Securities, LLCOH..	..NIA	NFS Distributors, Inc.	Ownership.....	..100.000	Nationwide Mutual Insurance Company
...0140 ...	Nationwide		31-4177100	4288093			Nationwide Services Company, LLCOH..	..NIA	Nationwide Mutual Insurance Company	Ownership.....	..100.000	Nationwide Mutual Insurance Company
...0140 ...	Nationwide		27-0743545	4564041			Nationwide Tax Credit Partners 2009-G, LLCOH..	..NIA	Nationwide Mutual Insurance Company	Other.....	..0.010	Nationwide Mutual Insurance Company2
...0140 ...	Nationwide		27-0768791	4596891			Nationwide Tax Credit Partners 2009-H, LLCOH..	..NIA	Nationwide Mutual Insurance Company	Ownership.....	..100.000	Nationwide Mutual Insurance Company
...0140 ...	Nationwide		46-1952215	4596566			Nationwide Tax Credit Partners 2013-A, LLCOH..	..NIA	Nationwide Mutual Insurance Company	Ownership.....	..100.000	Nationwide Mutual Insurance Company
...0140 ...	Nationwide						Nationwide Tax Credit Partners 2013-B, LLCOH..	..NIA	Nationwide Life Insurance Company	Ownership.....	..0.010	Nationwide Mutual Insurance Company1
...0140 ...	Nationwide		46-1971926	4596592				..OH..	..NIA	Nationwide Life Insurance Company	Ownership.....	..0.010	Nationwide Mutual Insurance Company1
...0140 ...	Nationwide		11-3651828	4588168			ND La Quinta Partners, LLCDE..	..NIA	Nationwide Realty Investors, Ltd.	Ownership.....	..95.000	Nationwide Mutual Insurance Company1
...0140 ...	Nationwide			4286866			Newhouse Capital Partners II, LLCDE..	..NIA	Nationwide Global Ventures, Inc.	Ownership.....	..80.000	Nationwide Mutual Insurance Company1
...0140 ...	Nationwide			4286866			Newhouse Capital Partners II, LLCDE..	..NIA	Nationwide Global Ventures, Inc.	Ownership.....	..99.000	Nationwide Mutual Insurance Company1
...0140 ...	Nationwide			4286679			Newhouse Capital Partners, LLCDE..	..NIA	NWD Investment Management, Inc.	Ownership.....	..19.000	Nationwide Mutual Insurance Company1
...0140 ...	Nationwide			4286679			Newhouse Capital Partners, LLCDE..	..NIA	Nationwide Mutual Insurance Company	Ownership.....	..70.000	Nationwide Mutual Insurance Company1
...0140 ...	Nationwide			4286679			Newhouse Capital Partners, LLCDE..	..NIA	Nationwide Mutual Fire Insurance Company	Ownership.....	..10.000	Nationwide Mutual Insurance Company1
...0140 ...	Nationwide		38-3660659	4287032			NFS Distributors, Inc.DE..	..NIA	Nationwide Financial Services, Inc.	Ownership.....	..100.000	Nationwide Mutual Insurance Company
...0140 ...	Nationwide		14-1892640	4596677			NHT XII Tax Credit Fund, LLCDC..	..NIA	Nationwide Life Insurance Company	Ownership.....	..49.990	Nationwide Mutual Insurance Company1
...0140 ...	Nationwide		14-1892640	4596677			NHT XII Tax Credit Fund, LLCDC..	..NIA	Nationwide Assurance Company	Ownership.....	..25.000	Nationwide Mutual Insurance Company1
...0140 ...	Nationwide		14-1892640	4596677			NHT XII Tax Credit Fund, LLCDC..	..NIA	Nationwide Mutual Insurance Company	Ownership.....	..25.000	Nationwide Mutual Insurance Company1
...0140 ...	Nationwide		46-3762545	4750442			NNOV8, LLCOH..	..NIA	Nationwide Mutual Insurance Company	Ownership.....	..100.000	Nationwide Mutual Insurance Company
...0140 ...	Nationwide		26-0351004				North Bank Condominium Home Owners AssociationOH..	..OTH.....	Other non-Nationwide	n/a	Other non-Nationwide2
...0140 ...	Nationwide		20-4939866	4590817			North of Third, LLCOH..	..NIA	NRI Equity Land Investments, LLC	Ownership.....	..100.000	Nationwide Mutual Insurance Company
...0140 ...	Nationwide		26-4083207	4590385			Northstar Commercial Development, LLCOH..	..NIA	Nationwide Realty Investors, Ltd.	Ownership.....	..50.000	Nationwide Mutual Insurance Company1
...0140 ...	Nationwide						Northstar Master Property Owners Association, Inc.OH..	..OTH.....	Other non-Nationwide	n/a	Other non-Nationwide2
...0140 ...	Nationwide		26-4083354	4594909			Northstar Residential Development, LLCOH..	..NIA	Nationwide Realty Investors, Ltd.	Ownership.....	..50.000	Nationwide Mutual Insurance Company1
...0140 ...	Nationwide		31-1486309	4594936			NRI 220 Schrock, LLCOH..	..NIA	Nationwide Realty Investors, Ltd.	Ownership.....	..100.000	Nationwide Mutual Insurance Company
...0140 ...	Nationwide		31-1486309	4594794			NRI Arena, LLCOH..	..NIA	Nationwide Realty Investors, Ltd.	Ownership.....	..100.000	Nationwide Mutual Insurance Company
...0140 ...	Nationwide		31-1486309	4594815			NRI Brooksedg, LLCOH..	..NIA	Nationwide Realty Investors, Ltd.	Ownership.....	..100.000	Nationwide Mutual Insurance Company
...0140 ...	Nationwide		31-1486309	4595027			NRI Builders, LLCOH..	..NIA	Nationwide Realty Investors, Ltd.	Ownership.....	..100.000	Nationwide Mutual Insurance Company
...0140 ...	Nationwide		31-1486309	4590246			NRI Communities/Harris Blvd., LLCOH..	..NIA	Nationwide Realty Investors, Ltd.	Ownership.....	..100.000	Nationwide Mutual Insurance Company
...0140 ...	Nationwide		31-1486309	4590282			NRI Cramer Creek, LLCOH..	..NIA	Nationwide Realty Investors, Ltd.	Ownership.....	..100.000	Nationwide Mutual Insurance Company
...0140 ...	Nationwide		20-4939866	4590460			NRI Equity Land Investments, LLCOH..	..NIA	Nationwide Realty Investors, Ltd.	Ownership.....	..80.000	Nationwide Mutual Insurance Company1
...0140 ...	Nationwide		26-0212217	4590394			NRI Equity Tampa, LLCOH..	..OTH.....	Nationwide Realty Investors, Ltd.	Ownership.....	..100.000	Nationwide Mutual Insurance Company2
...0140 ...	Nationwide		31-1486309	4590376			NRI Maxtown, LLCOH..	..OTH.....	Nationwide Realty Investors, Ltd.	Ownership.....	..100.000	Nationwide Mutual Insurance Company2
...0140 ...	Nationwide		30-4939866	4590406			NRI Office Ventures, LtdOH..	..NIA	Nationwide Realty Investors, Ltd.	Ownership.....	..100.000	Nationwide Mutual Insurance Company
...0140 ...	Nationwide		31-1486309	4590349			NRI-Rivulon, LLCOH..	..NIA	Nationwide Realty Investors, Ltd.	Ownership.....	..100.000	Nationwide Mutual Insurance Company

STATEMENT AS OF JUNE 30, 2015 OF THE NATIONWIDE INDEMNITY COMPANY

SCHEDULE Y
PART 1A - DETAIL OF INSURANCE HOLDING COMPANY SYSTEM

1	2	3	4	5	6	7	8	9	10	11	12	13	14	15
Group Code	Group Name	NAIC Company Code	ID Number	Federal RSSD	CIK	Name of Securities Exchange if Publicly Traded (U.S. or International)	Names of Parent, Subsidiaries Or Affiliates	Domiciliary Location	Relationship to Reporting Entity	Directly Controlled by (Name of Entity/Person)	Type of Control (Ownership, Board, Management, Attorney-in-Fact, Influence, Other)	If Control is Ownership Provide Percentage	Ultimate Controlling Entity(ies)/Person(s)	*
0140	Nationwide		31-1486309	4596912			NRI Telecom, LLC	OH	NIA	NWD Investments, LLC	Ownership	100.000	Nationwide Mutual Insurance Company	
0140	Nationwide		26-4083354	4869456			NS Developers, LLC	OH	NIA	Northstar Residential Development, LLC Nationwide Property and Casualty Company	Ownership	100.000	Nationwide Mutual Insurance Company	
0140	Nationwide		45-3123274	4595438			NTCIF-2011 Georgia State Investor, LLC	OH	NIA		Ownership	100.000	Nationwide Mutual Insurance Company	
0140	Nationwide		90-0729552	4596695			NTCIF-2011, LLC	OH	NIA	Nationwide Life Insurance Company Nationwide Mutual Fire Insurance Company	Ownership	50.000	Nationwide Mutual Insurance Company	1
0140	Nationwide		90-0729552	4596695			NTCIF-2011, LLC	OH	NIA		Ownership	50.000	Nationwide Mutual Insurance Company	1
0140	Nationwide		27-4700627	4596716			NTCP 2011-A, LLC	OH	NIA	Nationwide Life Insurance Company	Other	0.010	Nationwide Mutual Insurance Company	1
0140	Nationwide		46-0741029	4464703			NTCP 2012-A, LLC	OH	NIA	Nationwide Life Insurance Company	Other	0.010	Nationwide Mutual Insurance Company	1
0140	Nationwide		46-3309896	4586164			NTCP 2013-C, LLC	OH	NIA	Nationwide Life Insurance Company	Other	0.010	Nationwide Mutual Insurance Company	1
0140	Nationwide		46-4111078	4596743			NTCP 2014-A, LLC	OH	NIA	Nationwide Life Insurance Company	Other	0.010	Nationwide Mutual Insurance Company	1
0140	Nationwide		47-1404116	4802734			NTCP 2014-B, LLC	OH	NIA	Nationwide Life Insurance Company	Ownership	100.000	Nationwide Mutual Insurance Company	
0140	Nationwide		47-1413242	4809948			NTCP 2014-C, LLC	OH	NIA	Nationwide Life Insurance Company	Ownership	100.000	Nationwide Mutual Insurance Company	
0140	Nationwide		47-3909345	4869483			NTCP 2015-A, LLC	OH	NIA	Nationwide Life Insurance Company	Ownership	100.000	Nationwide Mutual Insurance Company	
0140	Nationwide		47-4148470				NTCP 2015-B, LLC	OH	NIA	Nationwide Life Insurance Company	Ownership	100.000	Nationwide Mutual Insurance Company	
0140	Nationwide		26-1903919	4591421			NW REI, LLC	DE	NIA	Nationwide Mutual Insurance Company	Ownership	100.000	Nationwide Mutual Insurance Company	
0140	Nationwide		46-3654078	4593621			NW-Amesbury, LLC	OH	NIA	NE-REI, LLC	Ownership	100.000	Nationwide Mutual Insurance Company	
0140	Nationwide		46-2943666	4594860			NW-Bandera, LLC	OH	NIA	NW REI, LLC	Ownership	100.000	Nationwide Mutual Insurance Company	
0140	Nationwide		45-5159092	4595063			NW-Bayshore, LLC	OH	NIA	NW REI, LLC	Ownership	100.000	Nationwide Mutual Insurance Company	
0140	Nationwide		46-2451156	4594879			NW-Bee Cave, LLC	OH	NIA	NW REI, LLC	Ownership	100.000	Nationwide Mutual Insurance Company	
0140	Nationwide		46-3707480	4593612			NW-Brooklyn, LLC	OH	NIA	NW REI, LLC	Ownership	100.000	Nationwide Mutual Insurance Company	
0140	Nationwide		46-3968244	4591757			NW-Camelback, LLC	OH	NIA	NW REI, LLC	Ownership	100.000	Nationwide Mutual Insurance Company	
0140	Nationwide		45-2724980	4591690			NW-Cameron, LLC	OH	NIA	NW REI, LLC	Ownership	100.000	Nationwide Mutual Insurance Company	
0140	Nationwide		46-3674167	4590090			NW-Cedar Springs, LLC	OH	NIA	NW REI, LLC	Ownership	100.000	Nationwide Mutual Insurance Company	
0140	Nationwide		46-3994437	4591663			NW-Central Station, LLC	OH	NIA	NE-REI, LLC	Ownership	100.000	Nationwide Mutual Insurance Company	
0140	Nationwide		26-0901660	4505456			NW-CNC Coppell, LLC	DE	NIA	Nationwide Mutual Insurance Company	Ownership	100.000	Nationwide Mutual Insurance Company	
0140	Nationwide		32-0359208	4595157			NW-Corvallis, LLC	OH	NIA	NW REI, LLC	Ownership	100.000	Nationwide Mutual Insurance Company	
0140	Nationwide		31-1580283	4591038			NWD 205 Vine, LLC	OH	NIA	NWD Investments, LLC	Ownership	100.000	Nationwide Mutual Insurance Company	
0140	Nationwide		31-1580283	4591261			NWD 225 Nationwide, LLC	OH	NIA	NWD Investments, LLC	Ownership	100.000	Nationwide Mutual Insurance Company	
0140	Nationwide		31-1580283	4591056			NWD 230 West, LLC	OH	NIA	NWD Investments, LLC	Ownership	100.000	Nationwide Mutual Insurance Company	
0140	Nationwide		31-1580283	4590545			NWD 240 Nationwide, LLC	OH	NIA	NWD Investments, LLC	Ownership	100.000	Nationwide Mutual Insurance Company	
0140	Nationwide		31-1580283	4590273			NWD 250 Brodbelt, LLC	OH	NIA	NWD Investments, LLC	Ownership	100.000	Nationwide Mutual Insurance Company	
0140	Nationwide		31-1580283	4590554			NWD 265 Neil, LLC	OH	NIA	NWD Investments, LLC	Ownership	100.000	Nationwide Mutual Insurance Company	
0140	Nationwide		31-1580283	4590518			NWD 275 Marconi, LLC	OH	NIA	NWD Investments, LLC	Ownership	100.000	Nationwide Mutual Insurance Company	
0140	Nationwide		31-1580283	4590563			NWD 295 McConnell, LLC	OH	NIA	NWD Investments, LLC	Ownership	100.000	Nationwide Mutual Insurance Company	
0140	Nationwide		31-1580283	4590509			NWD 300 Neil, LLC	OH	NIA	NWD Investments, LLC	Ownership	100.000	Nationwide Mutual Insurance Company	
0140	Nationwide		31-1580283	4590572			NWD 300 Spring, LLC	OH	NIA	NWD Investments, LLC	Ownership	100.000	Nationwide Mutual Insurance Company	
0140	Nationwide		31-1580283	4590527			NWD 355 McConnell, LLC	OH	NIA	NWD Investments, LLC	Ownership	100.000	Nationwide Mutual Insurance Company	
0140	Nationwide		31-1580283	4590581			NWD 425 Nationwide, LLC	OH	NIA	NWD Investments, LLC	Ownership	100.000	Nationwide Mutual Insurance Company	
0140	Nationwide		31-1580283	4590536			NWD 500 Nationwide, LLC	OH	NIA	NWD Investments, LLC	Ownership	100.000	Nationwide Mutual Insurance Company	
0140	Nationwide		31-1580283	4591298			NWD Arena Crossing, LLC	OH	NIA	NWD Investments, LLC	Ownership	100.000	Nationwide Mutual Insurance Company	
0140	Nationwide		31-1580283	4591083			NWD Arena District I, LLC	OH	NIA	NWD Investments, LLC	Ownership	100.000	Nationwide Mutual Insurance Company	
0140	Nationwide		31-1580283	4591300			NWD Arena District II, LLC	OH	NIA	NWD Investments, LLC	Ownership	100.000	Nationwide Mutual Insurance Company	
0140	Nationwide		31-1580283	4591113			NWD Arena District MM, LLC	OH	NIA	NWD Investments, LLC	Ownership	100.000	Nationwide Mutual Insurance Company	
0140	Nationwide		31-1580283	4591319			NWD Arena District PW, LLC	OH	NIA	NWD Investments, LLC	Ownership	100.000	Nationwide Mutual Insurance Company	
0140	Nationwide		31-1580283	4591131			NWD Arena District V, LLC	OH	NIA	NWD Investments, LLC	Ownership	100.000	Nationwide Mutual Insurance Company	
0140	Nationwide		04-3679396	4286848			NWD Asset Management Holdings, Inc.	DE	NIA	NWD Investment Management, Inc.	Ownership	100.000	Nationwide Mutual Insurance Company	
0140	Nationwide		31-1580283	4591328			NWD Athletic Club, LLC	OH	NIA	NWD Investments, LLC	Ownership	100.000	Nationwide Mutual Insurance Company	
0140	Nationwide		30-0876022	4810010			NWD Franklinton, LLC	DE	NIA	NWD Investments, LLC	Ownership	100.000	Nationwide Mutual Insurance Company	
0140	Nationwide		31-1636299	4286594			NWD Investment Management, Inc.	DE	NIA	Nationwide Corporation	Ownership	100.000	Nationwide Mutual Insurance Company	
0140	Nationwide		31-1580283	4587965			NWD Investments, LLC	OH	NIA	Nationwide Realty Investors, Ltd.	Ownership	80.000	Nationwide Mutual Insurance Company	1

STATEMENT AS OF JUNE 30, 2015 OF THE NATIONWIDE INDEMNITY COMPANY

SCHEDULE Y
PART 1A - DETAIL OF INSURANCE HOLDING COMPANY SYSTEM

1	2	3	4	5	6	7	8	9	10	11	12	13	14	15
Group Code	Group Name	NAIC Company Code	ID Number	Federal RSSD	CIK	Name of Securities Exchange if Publicly Traded (U.S. or International)	Names of Parent, Subsidiaries Or Affiliates	Domiciliary Location	Relationship to Reporting Entity	Directly Controlled by (Name of Entity/Person)	Type of Control (Ownership, Board, Management, Attorney-in-Fact, Influence, Other)	If Control is Ownership Provide Percentage	Ultimate Controlling Entity(ies)/Person(s)	*
...0140 ...	Nationwide		47-4036460	4869492			NW-Deerfield, LLC	..OH..	..NIA..	NW REI, LLC	Ownership.....	..70.000	Nationwide Mutual Insurance Company1
...0140 ...	Nationwide		47-4036460	4869492			NW-Deerfield, LLC	..OH..	..NIA..	Nationwide Life and Annuity Insurance Company	Ownership.....	..30.000	Nationwide Mutual Insurance Company1
...0140 ...	Nationwide		90-0732898	4591430			NW-Dulles, LLC	..OH..	..NIA..	NW REI, LLC	Ownership.....	..100.000	Nationwide Mutual Insurance Company2
...0140 ...	Nationwide		46-3267884	4595465			NW-Franklin Mills, LLC	..OH..	..NIA..	Life Reo Holdings, LLC	Ownership.....	..100.000	Nationwide Mutual Insurance Company2
...0140 ...	Nationwide		46-2997049	4591775			NW-Howell Mill, LLC	..OH..	..NIA..	NW REI, LLC	Ownership.....	..100.000	Nationwide Mutual Insurance Company2
...0140 ...	Nationwide		46-4330384	4750443			NW-Hudnall, LLC	..OH..	..NIA..	NW REI, LLC	Ownership.....	..100.000	Nationwide Mutual Insurance Company2
...0140 ...	Nationwide		47-2482818	4810122			NW-Jasper WAG, LLC	..OH..	..NIA..	NW REI, LLC	Ownership.....	..100.000	Nationwide Mutual Insurance Company2
...0140 ...	Nationwide		47-1497429	4809957			NW-Jefferson, LLC	..OH..	..NIA..	NW REI, LLC	Ownership.....	..100.000	Nationwide Mutual Insurance Company2
...0140 ...	Nationwide		45-5408178	4591458			NW-Kentwood Towne Center, LLC	..OH..	..NIA..	NW REI, LLC	Ownership.....	..100.000	Nationwide Mutual Insurance Company2
...0140 ...	Nationwide		46-4857522	4671798			NW-Lawrence, LLC	..OH..	..NIA..	NW REI, LLC	Ownership.....	..100.000	Nationwide Mutual Insurance Company2
...0140 ...	Nationwide		45-5314607	4593461			NW-Lovers Lane, LLC	..OH..	..NIA..	NW REI, LLC	Ownership.....	..100.000	Nationwide Mutual Insurance Company2
...0140 ...	Nationwide		46-2457568	4591467			NW-Montrose, LLC	..OH..	..NIA..	NW REI, LLC	Ownership.....	..100.000	Nationwide Mutual Insurance Company2
...0140 ...	Nationwide		45-4630497	4593470			NW-Mueller II, LLC	..OH..	..NIA..	NW REI, LLC	Ownership.....	..100.000	Nationwide Mutual Insurance Company2
...0140 ...	Nationwide		27-4749848	4591476			NW-Northridge, LLC	..OH..	..NIA..	NW REI, LLC	Ownership.....	..100.000	Nationwide Mutual Insurance Company2
...0140 ...	Nationwide		46-1089165	4593555			NW-Oakley Station, LLC	..OH..	..NIA..	NW REI, LLC	Ownership.....	..100.000	Nationwide Mutual Insurance Company2
...0140 ...	Nationwide		46-3888719	4593603			NW-Park 288, LLC	..OH..	..NIA..	NW REI, LLC	Ownership.....	..100.000	Nationwide Mutual Insurance Company2
...0140 ...	Nationwide		45-5388656	4591485			NW-Park Memorial, LLC	..OH..	..NIA..	NW REI, LLC	Ownership.....	..100.000	Nationwide Mutual Insurance Company2
...0140 ...	Nationwide		47-1740812	4809966			NW-Peachtree, LLC	..OH..	..NIA..	NW REI, LLC	Ownership.....	..100.000	Nationwide Mutual Insurance Company2
...0140 ...	Nationwide		46-2469044	4591494			NW-Portales, LLC	..OH..	..NIA..	NW REI, LLC	Ownership.....	..100.000	Nationwide Mutual Insurance Company2
...0140 ...	Nationwide		47-2449044	4810113			NW-Promenade at Madison, LLC	..OH..	..NIA..	NW REI, LLC	Ownership.....	..100.000	Nationwide Mutual Insurance Company2
...0140 ...	Nationwide		45-5159117	4593573			NW-South Park, LLC	..OH..	..NIA..	NW REI, LLC	Ownership.....	..100.000	Nationwide Mutual Insurance Company2
...0140 ...	Nationwide		27-4749587	4593582			NW-Taylor Farmer Jack, LLC	..OH..	..NIA..	NW REI, LLC	Ownership.....	..100.000	Nationwide Mutual Insurance Company2
...0140 ...	Nationwide		46-1100378	4591524			NW-Triangle, LLC	..OH..	..NIA..	NW REI, LLC	Ownership.....	..100.000	Nationwide Mutual Insurance Company2
...0140 ...	Nationwide		46-5764783	4809939			NW-Tyson's, LLC	..OH..	..NIA..	NW REI, LLC	Ownership.....	..100.000	Nationwide Mutual Insurance Company2
...0140 ...	Nationwide		46-1077615	4593591			NW-West Ave., LLC	..OH..	..NIA..	NW REI, LLC	Ownership.....	..100.000	Nationwide Mutual Insurance Company2
...0140 ...	Nationwide		46-4992444	4671800			NW-Windcross, LLC	..OH..	..NIA..	NW REI, LLC	Ownership.....	..100.000	Nationwide Mutual Insurance Company2
...0140 ...	Nationwide		31-0947092	4590479			OCH Company, LLC	..OH..	..NIA..	Nationwide Realty Investors, Ltd.	Ownership.....	..100.000	Nationwide Mutual Insurance Company2
...0140 ...	Nationwide		31-0947092	4590442			Ohio Center Hotel Company, Ltd.	..OH..	..NIA..	Nationwide Realty Investors, Ltd.	Ownership.....	..56.250	Nationwide Mutual Insurance Company1
...0140 ...	Nationwide		26-0263012				Old Track Street Owners Association	..OH..	..OTH..	Other non-Nationwide	n/a		Other non-Nationwide2
...0140 ...	Nationwide13999	27-1712056	4286914			Olentangy Reinsurance, LLC	..VT..	..IA..	Nationwide Life and Annuity Insurance Company	Ownership.....	..100.000	Nationwide Mutual Insurance Company2
...0140 ...	Nationwide		47-1923444	4809975			On Your Side Nationwide Insurance Agency, Inc.	..OH..	..OTH..	Nationwide Mutual Insurance Company	Ownership.....	..100.000	Nationwide Mutual Insurance Company2
...0140 ...	Nationwide			4596462			OYS Fund, LLC	..DE..	..OTH..	Nationwide Mutual Insurance Company	Ownership.....	..100.000	Nationwide Mutual Insurance Company2
...0140 ...	Nationwide			4596480			Park 288 Industrial, LLC	..TX..	..NIA..	Nationwide Mutual Insurance Company	Investor member / no control	..95.000	other non-Nationwide2
...0140 ...	Nationwide		31-1486309	4590358			Perimeter A, Ltd.	..OH..	..NIA..	Nationwide Realty Investors, Ltd.	Ownership.....	..100.000	Nationwide Mutual Insurance Company2
...0140 ...	Nationwide		31-1677602	4590488			Pizzuti Properties, LLC	..OH..	..NIA..	Nationwide Realty Investors, Ltd.	Ownership.....	..65.000	Nationwide Mutual Insurance Company1
...0140 ...	Nationwide		31-1486309	4590291			Polaris A, Ltd.	..OH..	..NIA..	Nationwide Realty Investors, Ltd.	Ownership.....	..100.000	Nationwide Mutual Insurance Company2
...0140 ...	Nationwide		39-1907217	4287201			Premier Agency, Inc.	..IA..	..NIA..	ALLIED Group, Inc.	Ownership.....	..100.000	Nationwide Mutual Insurance Company2
...4664 ...	Pure12873	20-8287105	4288253			Privilege Underwriters Reciprocal Exchange	..FL..	..IA..	Other non-Nationwide	n/a		Other non-Nationwide2
...4664 ...	Pure			4288150			Privilege Underwriters, Inc.	..DE..	..IA..	Other non-Nationwide	n/a		Other non-Nationwide2
...4664 ...	Pure13204	26-3109178	4288226			Pure Insurance Company	..FL..	..IA..	Other non-Nationwide	n/a		Other non-Nationwide2
...4664 ...	Pure			4288235			Pure Risk Management, LLC	..FL..	..IA..	Other non-Nationwide	n/a		Other non-Nationwide2
...0140 ...	Nationwide		75-2938844	4287005			Registered Investment Advisors Services, Inc.	..TX..	..NIA..	Nationwide Financial Services, Inc.	Ownership.....	..100.000	Nationwide Mutual Insurance Company2
...0140 ...	Nationwide		82-0549218	4288244			Retention Alternatives Ltd.	..BMU..	..IA..	Nationwide Mutual Fire Insurance Company	Ownership.....	..100.000	Nationwide Mutual Insurance Company2
...0140 ...	Nationwide			4595278			Riverview Diversified Opportunities, LLC	..DE..	..OTH..	Nationwide Mutual Insurance Company	Ownership.....		Nationwide Mutual Insurance Company1

STATEMENT AS OF JUNE 30, 2015 OF THE NATIONWIDE INDEMNITY COMPANY

SCHEDULE Y
PART 1A - DETAIL OF INSURANCE HOLDING COMPANY SYSTEM

1	2	3	4	5	6	7	8	9	10	11	12	13	14	15
Group Code	Group Name	NAIC Company Code	ID Number	Federal RSSD	CIK	Name of Securities Exchange if Publicly Traded (U.S. or International)	Names of Parent, Subsidiaries Or Affiliates	Domi-ciliary Location	Relation-ship to Reporting Entity	Directly Controlled by (Name of Entity/Person)	Type of Control (Ownership, Board, Management, Attorney-in-Fact, Influence, Other)	If Control is Owner-ship Provide Percen-tage	Ultimate Controlling Entity(ies)/Person(s)	*
...0140 ...	Nationwide	4595278	Riverview Diversified Opportunities, LLCDE.....	...OTH.....	Nationwide Mutual Fire Insurance Company	Ownership.....	Nationwide Mutual Insurance Company1
...0140 ...	Nationwide	4595278	Riverview Diversified Opportunities, LLCDE.....	...OTH.....	Nationwide Life Insurance Company	Ownership.....	Nationwide Mutual Insurance Company1
...0140 ...	Nationwide	22-3655264	4286530	Riverview International Group, Inc.DE.....	...NIA.....	NWD Investment Management, Inc.	Ownership.....	100.000	Nationwide Mutual Insurance Company
...0140 ...	Nationwide	4595287	Riverview Multi Series Fund, LL - Class EventDE.....	...OTH.....	Nationwide Mutual Insurance Company	Ownership.....	100.000	Nationwide Mutual Insurance Company2
...0140 ...	Nationwide	4595335	Riverview Multi Series Fund, LL - Class NDE.....	...OTH.....	Nationwide Mutual Insurance Company	Ownership.....	100.000	Nationwide Mutual Insurance Company2
...0140 ...	Nationwide	4564032	Riverview Polyphony Fund, LLCDE.....	...OTH.....	Nationwide Mutual Insurance Company	Ownership.....	100.000	Nationwide Mutual Insurance Company2
...0140 ...	Nationwide	15580	31-1117969	4288002	Scottsdale Indemnity CompanyOH.....	...IA.....	Nationwide Mutual Insurance Company	Ownership.....	100.000	Nationwide Mutual Insurance Company
...0140 ...	Nationwide	41297	31-1024978	3091988	Scottsdale Insurance CompanyOH.....	...IA.....	Nationwide Mutual Insurance Company	Ownership.....	100.000	Nationwide Mutual Insurance Company
...0140 ...	Nationwide	Scottsdale Surplus Lines Insurance Company
...0140 ...	Nationwide	10672	86-0835870	4287649AZ.....	...IA.....	Scottsdale Insurance Company	Ownership.....	100.000	Nationwide Mutual Insurance Company
...0140 ...	Nationwide	31-1486309	4590303	Streets of Toringdon, LLCOH.....	...NIA.....	Nationwide Realty Investors, Ltd.	Ownership.....	100.000	Nationwide Mutual Insurance Company
...0140 ...	Nationwide	91-2158214	The Hideaway ClubCA.....	...OTH.....	Other non-Nationwide	n/a	Other non-Nationwide2
...0140 ...	Nationwide	86-1094799	The Hideaway Owners AssociationCA.....	...OTH.....	Other non-Nationwide	n/a	Other non-Nationwide2
...0140 ...	Nationwide	20-3541511	The Madison ClubCA.....	...OTH.....	Other non-Nationwide	n/a	Other non-Nationwide2
...0140 ...	Nationwide	20-3541507	The Madison Club Owners AssociationCA.....	...OTH.....	Other non-Nationwide	n/a	Other non-Nationwide2
...0140 ...	Nationwide	52-2031677	4287751	THI Holdings (Delaware), Inc.DE.....	...NIA.....	Nationwide Mutual Insurance Company	Ownership.....	100.000	Nationwide Mutual Insurance Company
...0140 ...	Nationwide	74-2825853	4287863	Titan Auto Insurance of New Mexico, Inc.NM.....	...IA.....	THI Holdings (Delaware), Inc.	Ownership.....	100.000	Nationwide Mutual Insurance Company
...0140 ...	Nationwide	13242	74-2286759	4287797	Titan Indemnity CompanyTX.....	...IA.....	THI Holdings (Delaware), Inc.	Ownership.....	100.000	Nationwide Mutual Insurance Company
...0140 ...	Nationwide	36269	86-0619597	4287845	Titan Insurance CompanyMI.....	...IA.....	Titan Indemnity Company	Ownership.....	100.000	Nationwide Mutual Insurance Company
...0140 ...	Nationwide	75-1284530	4287890	Titan Insurance Services, Inc.TX.....	...NIA.....	THI Holdings (Delaware), Inc.	Ownership.....	100.000	Nationwide Mutual Insurance Company
...0140 ...	Nationwide	33-0160222	4653196	V.P.I. Services, Inc.CA.....	...NIA.....	Veterinary Pet Insurance Company	Ownership.....	100.000	Nationwide Mutual Insurance Company
...0140 ...	Nationwide	42285	95-3750113	4287685	Veterinary Pet Insurance CompanyCA.....	...IA.....	Scottsdale Insurance Company	Ownership.....	100.000	Nationwide Mutual Insurance Company
...0140 ...	Nationwide	10644	34-1785903	4287911	Victoria Automobile Insurance CompanyOH.....	...IA.....	Victoria Fire & Casualty Insurance Company	Ownership.....	100.000	Nationwide Mutual Insurance Company
...0140 ...	Nationwide	42889	34-1394913	4287827	Victoria Fire & Casualty CompanyOH.....	...IA.....	THI Holdings (Delaware), Inc.	Ownership.....	100.000	Nationwide Mutual Insurance Company
...0140 ...	Nationwide	10778	34-1842604	4287920	Victoria National Insurance CompanyOH.....	...IA.....	Victoria Fire & Casualty Insurance Company	Ownership.....	100.000	Nationwide Mutual Insurance Company
...0140 ...	Nationwide	10105	34-1777972	4287939	Victoria Select Insurance CompanyOH.....	...IA.....	Victoria Fire & Casualty Insurance Company	Ownership.....	100.000	Nationwide Mutual Insurance Company
...0140 ...	Nationwide	10777	34-1842602	4287948	Victoria Specialty Insurance CompanyOH.....	...IA.....	Victoria Fire & Casualty Insurance Company	Ownership.....	100.000	Nationwide Mutual Insurance Company
...0140 ...	Nationwide	37150	86-0561941	4287667	Western Heritage Insurance CompanyAZ.....	...IA.....	Scottsdale Insurance Company	Ownership.....	100.000	Nationwide Mutual Insurance Company
...0140 ...	Nationwide	4613341	Westport Capital Partners IICT.....	...OTH.....	Nationwide Mutual Insurance Company	Investor member / no control	71.000	other non-Nationwide2
...0140 ...	Nationwide	31-1486309	4590321	Wilson Road Developers, LLCOH.....	...NIA.....	Nationwide Realty Investors, Ltd.	Ownership.....	100.000	Nationwide Mutual Insurance Company
...0140 ...	Nationwide	4613323	Zais Zephyr A-4, LLCDE.....	...OTH.....	Nationwide Life Insurance Company	limited member / no control	60.000	other non-Nationwide2

Asterisk	Explanation
1	For the purposes of this schedule, Nationwide presumed control of these entities because they are owned by at least 10% and are not wholly-owned by a Nationwide entity.
2	Other ownership indicates a non-ownership circumstance by a Nationwide entity.

Part 1 - Loss Experience

NONE

Part 2 - Direct Premiums Written

NONE

STATEMENT AS OF JUNE 30, 2015 OF THE NATIONWIDE INDEMNITY COMPANY

PART 3 (000 omitted)

LOSS AND LOSS ADJUSTMENT EXPENSE RESERVES SCHEDULE

	1	2	3	4	5	6	7	8	9	10	11	12	13	
Years in Which Losses Occurred	Prior Year-End Known Case Loss and LAE Reserves	Prior Year-End IBNR Loss and LAE Reserves	Total Prior Year-End Loss and LAE Reserves (Cols. 1+2)	2015 Loss and LAE Payments on Claims Reported as of Prior Year-End	2015 Loss and LAE Payments on Claims Unreported as of Prior Year-End	Total 2015 Loss and LAE Payments (Cols. 4+5)	Q.S. Date Known Case Loss and LAE Reserves on Claims Reported and Open as of Prior Year End	Q.S. Date Known Case Loss and LAE Reserves on Claims Reported or Reopened Subsequent to Prior Year End	Q.S. Date IBNR Loss and LAE Reserves	Total Q.S. Loss and LAE Reserves (Cols.7+8+9)	Prior Year-End Known Case Loss and LAE Reserves Developed (Savings)/ Deficiency (Cols.4+7 minus Col. 1)	Prior Year-End IBNR Loss and LAE Reserves Developed (Savings)/ Deficiency (Cols. 5+8+9 minus Col. 2)	Prior Year-End Total Loss and LAE Reserve Developed (Savings)/ Deficiency (Cols. 11+12)	
1. 2012 + Prior	489,368	1,567,744	2,057,112	95,082	44	95,126	484,933	12,092	1,464,931	1,961,956	90,647	(90,677)	(30)	
2. 2013														
3. Subtotals 2013 + Prior	489,368	1,567,744	2,057,112	95,082	44	95,126	484,933	12,092	1,464,931	1,961,956	90,647	(90,677)	(30)	
4. 2014														
5. Subtotals 2014 + Prior	489,368	1,567,744	2,057,112	95,082	44	95,126	484,933	12,092	1,464,931	1,961,956	90,647	(90,677)	(30)	
6. 2015	XXX	XXX	XXX	XXX	29	29	XXX				XXX	XXX	XXX	
7. Totals	489,368	1,567,744	2,057,112	95,082	73	95,155	484,933	12,092	1,464,931	1,961,956	90,647	(90,677)	(30)	
8. Prior Year-End Surplus As Regards Policyholders	1,044,892											Col. 11, Line 7 As % of Col. 1 Line 7	Col. 12, Line 7 As % of Col. 2 Line 7	Col. 13, Line 7 As % of Col. 3 Line 7
												1. 18.5	2. (5.8)	3. 0.0
												Col. 13, Line 7 As a % of Col. 1 Line 8		
												4. 0.0		

STATEMENT AS OF JUNE 30, 2015 OF THE NATIONWIDE INDEMNITY COMPANY

SUPPLEMENTAL EXHIBITS AND SCHEDULES INTERROGATORIES

The following supplemental reports are required to be filed as part of your statement filing. However, in the event that your company does not transact the type of business for which the special report must be filed, your response of NO to the specific interrogatory will be accepted in lieu of filing a "NONE" report and a bar code will be printed below. If the supplement is required of your company but is not being filed for whatever reason enter SEE EXPLANATION and provide an explanation following the interrogatory questions.

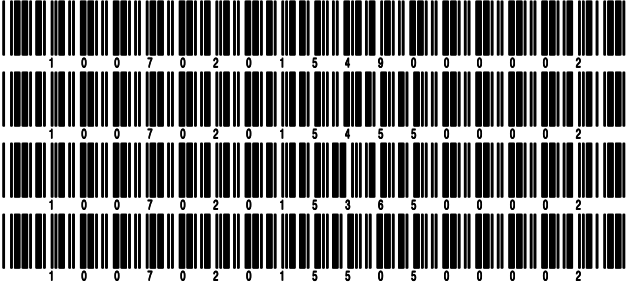
	Response
1. Will the Trusteed Surplus Statement be filed with the state of domicile and the NAIC with this statement?	NO
2. Will Supplement A to Schedule T (Medical Professional Liability Supplement) be filed with this statement?	NO
3. Will the Medicare Part D Coverage Supplement be filed with the state of domicile and the NAIC with this statement?	NO
4. Will the Director and Officer Insurance Coverage Supplement be filed with the state of domicile and the NAIC with this statement?	NO

Explanations:

1.
2.
3.
4.

Bar Codes:

1. Trusteed Surplus Statement [Document Identifier 490]
2. Supplement A to Schedule T [Document Identifier 455]
3. Medicare Part D Coverage Supplement [Document Identifier 365]
4. Director and Officer Supplement [Document Identifier 505]



STATEMENT AS OF JUNE 30, 2015 OF THE NATIONWIDE INDEMNITY COMPANY

OVERFLOW PAGE FOR WRITE-INS

Additional Write-ins for Assets Line 25

		Current Statement Date			4 December 31 Prior Year Net Admitted Assets
		1 Assets	2 Nonadmitted Assets	3 Net Admitted Assets (Cols. 1 - 2)	
2504.	Other assets nonadmitted	3,484	3,484		
2597.	Summary of remaining write-ins for Line 25 from overflow page	3,484	3,484		

SCHEDULE A - VERIFICATION

Real Estate

	1	2
	Year to Date	Prior Year Ended December 31
1. Book/adjusted carrying value, December 31 of prior year		
2. Cost of acquired:		
2.1 Actual cost at time of acquisition		
2.2 Additional investment made after acquisition		
3. Current year change in encumbrances		
4. Total gain (loss) on disposals		
5. Deduct amounts received on disposals		
6. Total foreign exchange change in book/adjusted carrying value		
7. Deduct current year's other than temporary impairment recognized		
8. Deduct current year's depreciation		
9. Book/adjusted carrying value at the end of current period (Lines 1+2+3+4-5+6-7-8)		
10. Deduct total nonadmitted amounts		
11. Statement value at end of current period (Line 9 minus Line 10)		

SCHEDULE B - VERIFICATION

Mortgage Loans

	1	2
	Year to Date	Prior Year Ended December 31
1. Book value/recorded investment excluding accrued interest, December 31 of prior year	78,013,813	95,444,490
2. Cost of acquired:		
2.1 Actual cost at time of acquisition		
2.2 Additional investment made after acquisition		
3. Capitalized deferred interest and other		
4. Accrual of discount		
5. Unrealized valuation increase (decrease)		
6. Total gain (loss) on disposals		648,911
7. Deduct amounts received on disposals	28,808,815	18,079,587
8. Deduct amortization of premium and mortgage interest points and commitment fees		
9. Total foreign exchange change in book value/recorded investment excluding accrued interest		
10. Deduct current year's other than temporary impairment recognized		
11. Book value/recorded investment excluding accrued interest at end of current period (Lines 1+2+3+4+5+6-7-8+9-10)	49,204,998	78,013,813
12. Total valuation allowance	(24,877)	(34,261)
13. Subtotal (Line 11 plus Line 12)	49,180,121	77,979,552
14. Deduct total nonadmitted amounts		
15. Statement value at end of current period (Line 13 minus Line 14)	49,180,121	77,979,552

SCHEDULE BA - VERIFICATION

Other Long-Term Invested Assets

	1	2
	Year to Date	Prior Year Ended December 31
1. Book/adjusted carrying value, December 31 of prior year	60,548,496	59,291,375
2. Cost of acquired:		
2.1 Actual cost at time of acquisition		
2.2 Additional investment made after acquisition	42,228	205,885
3. Capitalized deferred interest and other		
4. Accrual of discount		
5. Unrealized valuation increase (decrease)	155,211	2,007,845
6. Total gain (loss) on disposals	1,028,662	
7. Deduct amounts received on disposals	1,028,763	285,511
8. Deduct amortization of premium and depreciation	59,651	671,098
9. Total foreign exchange change in book/adjusted carrying value		
10. Deduct current year's other than temporary impairment recognized		
11. Book/adjusted carrying value at end of current period (Lines 1+2+3+4+5+6-7-8+9-10)	60,686,183	60,548,496
12. Deduct total nonadmitted amounts	623	623
13. Statement value at end of current period (Line 11 minus Line 12)	60,685,560	60,547,873

SCHEDULE D - VERIFICATION

Bonds and Stocks

	1	2
	Year to Date	Prior Year Ended December 31
1. Book/adjusted carrying value of bonds and stocks, December 31 of prior year	2,902,238,723	2,991,834,132
2. Cost of bonds and stocks acquired	152,710,331	135,528,327
3. Accrual of discount	3,461,899	5,869,675
4. Unrealized valuation increase (decrease)	(10,314,376)	3,125,201
5. Total gain (loss) on disposals	5,392,471	14,444,413
6. Deduct consideration for bonds and stocks disposed of	149,107,495	238,137,918
7. Deduct amortization of premium	5,467,297	10,425,107
8. Total foreign exchange change in book/adjusted carrying value		
9. Deduct current year's other than temporary impairment recognized		
10. Book/adjusted carrying value at end of current period (Lines 1+2+3+4+5-6-7+8-9)	2,898,914,256	2,902,238,723
11. Deduct total nonadmitted amounts		
12. Statement value at end of current period (Line 10 minus Line 11)	2,898,914,256	2,902,238,723

STATEMENT AS OF JUNE 30, 2015 OF THE NATIONWIDE INDEMNITY COMPANY

SCHEDULE D - PART 1B

Showing the Acquisitions, Dispositions and Non-Trading Activity
During the Current Quarter for all Bonds and Preferred Stock by NAIC Designation

NAIC Designation	1 Book/Adjusted Carrying Value Beginning of Current Quarter	2 Acquisitions During Current Quarter	3 Dispositions During Current Quarter	4 Non-Trading Activity During Current Quarter	5 Book/Adjusted Carrying Value End of First Quarter	6 Book/Adjusted Carrying Value End of Second Quarter	7 Book/Adjusted Carrying Value End of Third Quarter	8 Book/Adjusted Carrying Value December 31 Prior Year
BONDS								
1. NAIC 1 (a)	2,388,965,482	56,612,480	34,384,842	(5,095,882)	2,388,965,482	2,406,097,238		2,444,272,830
2. NAIC 2 (a)	412,435,894	32,758,943	28,739,917	11,400,347	412,435,894	427,855,267		394,412,032
3. NAIC 3 (a)	38,900,899		10,617,413	967,638	38,900,899	29,251,124		26,772,365
4. NAIC 4 (a)	30,957,314	104,380	351,473	(302,496)	30,957,314	30,407,725		31,585,881
5. NAIC 5 (a)								
6. NAIC 6 (a)	2,534,141		4,729	(50,123)	2,534,141	2,479,289		2,586,453
7. Total Bonds	2,873,793,730	89,475,803	74,098,374	6,919,484	2,873,793,730	2,896,090,643		2,899,629,561
PREFERRED STOCK								
8. NAIC 1								
9. NAIC 2								
10. NAIC 3								
11. NAIC 4								
12. NAIC 5								
13. NAIC 6								
14. Total Preferred Stock								
15. Total Bonds and Preferred Stock	2,873,793,730	89,475,803	74,098,374	6,919,484	2,873,793,730	2,896,090,643		2,899,629,561

(a) Book/Adjusted Carrying Value column for the end of the current reporting period includes the following amount of non-rated short-term and cash equivalent bonds by NAIC designation: NAIC 1 \$; NAIC 2 \$; NAIC 3 \$;
NAIC 4 \$; NAIC 5 \$; NAIC 6 \$

SCHEDULE DA - PART 1

Short-Term Investments

	1	2	3	4	5
	Book/Adjusted Carrying Value	Par Value	Actual Cost	Interest Collected Year-to-Date	Paid for Accrued Interest Year-to-Date
9199999 Totals	12,670,360	xxx	12,670,360	258	

SCHEDULE DA - VERIFICATION

Short-Term Investments

	1	2
	Year To Date	Prior Year Ended December 31
1. Book/adjusted carrying value, December 31 of prior year	14,524,612	1,074,640
2. Cost of short-term investments acquired	221,937,917	449,821,281
3. Accrual of discount		
4. Unrealized valuation increase (decrease)		
5. Total gain (loss) on disposals		
6. Deduct consideration received on disposals	223,792,169	436,371,309
7. Deduct amortization of premium		
8. Total foreign exchange change in book/adjusted carrying value		
9. Deduct current year's other than temporary impairment recognized		
10. Book/adjusted carrying value at end of current period (Lines 1+2+3+4+5-6-7+8-9)	12,670,360	14,524,612
11. Deduct total nonadmitted amounts		
12. Statement value at end of current period (Line 10 minus Line 11)	12,670,360	14,524,612

Schedule DB - Part A - Verification - Options, Caps, Floors, Collars, Swaps and Forwards

NONE

Schedule DB - Part B - Verification - Futures Contracts

NONE

Schedule DB - Part C - Section 1 - Replication (Synthetic Asset) Transactions (RSATs) Open

NONE

Schedule DB-Part C-Section 2-Reconciliation of Replication (Synthetic Asset) Transactions Open

NONE

Schedule DB - Verification - Book/Adjusted Carrying Value, Fair Value and Potential Exposure of
Derivatives

NONE

Schedule E - Verification - Cash Equivalents

NONE

Schedule A - Part 2 - Real Estate Acquired and Additions Made

NONE

Schedule A - Part 3 - Real Estate Disposed

NONE

SCHEDULE B - PART 2

[illegible]

Showing All Mortgage Loans DISPOSED, Transferred or Repaid During the Current Quarter

1	Location		4	5	6	7	Change in Book Value/Recorded Investment						14	15	16	17	18
	2	3					8	9	10	11	12	13					
Loan Number	City	State	Loan Type	Date Acquired	Disposal Date							Book Value/ Recorded Investment Excluding Accrued Interest on Disposal	Consid- eration	Foreign Exchange Gain (Loss) on Disposal	Realized Gain (Loss) on Disposal	Total Gain (Loss) on Disposal	
00-1100768	FRISCO	TX		06/02/2005	04/29/2015	1,498,225						1,485,745	1,485,745				
00-1100810	ST CLAIR SHORES	MI		05/05/2005	04/30/2015	1,937,983						1,927,262	1,927,262				
00-1100828	MULTIPLE	TN		07/08/2005	05/07/2015	1,717,220						1,686,942	1,686,942				
00-1100889	REDWOOD CITY	CA		06/21/2005	05/13/2015	4,175,366						4,137,894	4,137,894				
0199999. Mortgages closed by repayment						9,328,794						9,237,843	9,237,842				
00-1000541	COLUMBUS	OH		04/30/2001		2,955,183						92,101	92,101				
00-1000588	CINCINNATI	OH		06/01/2001		295,960						48,018	48,018				
00-1000696	FT. LAUDERDALE	FL		05/08/2002		3,583,723						44,708	44,708				
00-1000701	VILLANOVA	PA		12/17/2001		2,632,542						72,853	72,853				
00-1000714	CLOSTER	NJ		11/08/2001		1,326,797						36,786	36,786				
00-1000774	FLINT	MI		12/20/2001		2,618,173						110,368	110,368				
00-1000789	COOPER CITY	FL		11/30/2001		555,990						23,847	23,847				
00-1000875	SCOTTSDALE	AZ		09/18/2002		1,987,753						46,916	46,916				
00-1000932	HARRISON TOWNSHIP	MI		05/29/2002		3,709,180						42,121	42,121				
00-1000949	STOW	OH		05/30/2002		1,214,872						30,919	30,919				
00-1001164	CHESTERFIELD	VA		11/20/2002		3,374,914						27,515	27,515				
00-1001203	NILES	IL		12/30/2002		2,369,863						18,793	18,793				
00-1001237	DALLAS	TX		11/20/2002		1,802,519						52,135	52,135				
00-1100774	SOLANA BEACH	CA		03/24/2005		1,745,951						50,292	50,292				
00-1100844	ORLAND PARK	IL		07/22/2005		656,863						11,791	11,791				
00-1100865	ANN ARBOR	MI		07/20/2005		4,604,043						48,258	48,258				
00-1100904	DENVER	CO		08/29/2005		1,534,319						16,121	16,121				
00-1100925	PLANO	TX		09/15/2005		6,775,898						27,860	27,860				
00-1100927	ANN ARBOR	MI		08/09/2005		1,162,569						8,155	8,155				

STATEMENT AS OF JUNE 30, 2015 OF THE NATIONWIDE INDEMNITY COMPANY

SCHEDULE B - PART 3

Showing All Mortgage Loans DISPOSED, Transferred or Repaid During the Current Quarter

1	Location		4	5	6	7	Change in Book Value/Recorded Investment						14	15	16	17	18
	2	3					8	9	10	11	12	13					
Loan Number	City	State	Loan Type	Date Acquired	Disposal Date	Book Value/ Recorded Investment Excluding Accrued Interest Prior Year	Unrealized Valuation Increase (Decrease)	Current Year's (Amortization) /Accretion	Current Year's Other Than Temporary Impairment Recognized	Capitalized Deferred Interest and Other	Total Change in Book Value (8+9-10+11)	Total Foreign Exchange Change in Book Value	Book Value/ Recorded Investment Excluding Accrued Interest on Disposal	Consid- eration	Foreign Exchange Gain (Loss) on Disposal	Realized Gain (Loss) on Disposal	Total Gain (Loss) on Disposal
00-1100947	SYKESVILLE	MD		08/31/2005		1,540,857							15,998	15,998			
00-1100952	KANSAS CITY	KS		08/18/2005		2,296,543							24,274	24,274			
28-0001469	WASHINGTON TOWNSHIP	OH		07/07/1999		2,343,742							108,089	108,089			
0299999. Mortgages with partial repayments						51,088,255							957,918	957,918			
0599999 - Totals						60,417,050							10,195,761	10,195,760			

SCHEDULE BA - PART 2

[illegible]

SCHEDULE BA - PART 3

[illegible]

STATEMENT AS OF JUNE 30, 2015 OF THE NATIONWIDE INDEMNITY COMPANY

SCHEDULE D - PART 3

Show All Long-Term Bonds and Stock Acquired During the Current Quarter

1	2	3	4	5	6	7	8	9	10
CUSIP Identification	Description	Foreign	Date Acquired	Name of Vendor	Number of Shares of Stock	Actual Cost	Par Value	Paid for Accrued Interest and Dividends	NAIC Designation or Market Indicator (a)
13066Y-SZ-3	California St Wtr Res Pwr Rev Preref Ser		.05/06/2015	Tax Free Exchange		7,251,700	7,145,000	4,962	1FE
13066Y-TF-6	California St Wtr Res Pwr Rev Unref Ser		.05/06/2015	Tax Free Exchange		2,925,763	2,855,000	1,983	1FE
452024-HY-1	Illinois Mun Elec Agy Supp Rev Ref Ser A		.04/01/2015	Citigroup		6,966,240	6,000,000		1FE
57563R-LY-3	Massachusetts Educ Fin Rev Student Loan		.05/29/2015	Morgan Stanley & Co Inc		6,593,520	6,000,000		1FE
57563R-MA-4	Massachusetts Educ Fin Rev Student Loan		.05/29/2015	Morgan Stanley & Co Inc		3,656,969	3,700,000		1FE
57563R-MB-2	Massachusetts Educ Fin Rev Student Loan		.05/29/2015	Morgan Stanley & Co Inc		2,473,200	2,500,000		1FE
57563R-MC-0	Massachusetts Educ Fin Rev Student Loan		.05/29/2015	Morgan Stanley & Co Inc		2,987,100	3,000,000		1FE
57563R-MD-8	Massachusetts Educ Fin Rev Student Loan		.05/29/2015	Morgan Stanley & Co Inc		5,349,462	5,410,000		1FE
717893-ZL-8	Philadelphia PA Wtr & Wst Rev Ref Ser B		.04/01/2015	Merrill Lynch		7,872,530	6,790,000		1FE
812728-UK-7	Seattle WA Wtr Sys Rev Preref Ref 5.00		.06/17/2015	Tax Free Exchange		3,548,773	3,505,000	66,206	1FE
812728-UW-1	Seattle WA Wtr Sys Rev Unref Ref 5.00		.06/17/2015	Tax Free Exchange		4,534,125	4,475,000	84,528	1FE
87638Q-LD-9	Tarrant Cnty TX Rev Preref Culture Ed Fa		.05/01/2015	Tax Free Exchange		1,428,911	1,455,000	16,126	1Z
87638Q-LG-2	Tarrant Cnty TX Rev Unref Culture Ed Fac		.05/01/2015	Tax Free Exchange		1,024,187	1,045,000	11,582	1FE
3199999. Subtotal - Bonds - U.S. Special Revenues						56,612,480	53,880,000	185,387	XXX
12670N-AB-9	CHGS Term Ln Nt 4 5.750% 02/20/20		.05/15/2015	Tax Free Exchange		104,380	105,224	34	4FE
423074-AV-5	Heinz /H J/ Co Sr Nt 5.200% 07/15/45		.06/23/2015	Barclays Capital		4,980,300	5,000,000		2FE
90131H-AP-0	21st Century Fox America Sr Nt 5.650%		.04/06/2015	Tax Free Exchange		6,988,445	7,000,000	56,029	2FE
90131H-BF-1	21st Century Fox America Sr Nt 6.200%		.04/06/2015	Tax Free Exchange		20,790,198	20,000,000	382,333	2FE
3899999. Subtotal - Bonds - Industrial and Miscellaneous (Unaffiliated)						32,863,323	32,105,224	438,396	XXX
8399997. Total - Bonds - Part 3						89,475,803	85,985,224	623,783	XXX
8399998. Total - Bonds - Part 5						XXX	XXX	XXX	XXX
8399999. Total - Bonds						89,475,803	85,985,224	623,783	XXX
8999997. Total - Preferred Stocks - Part 3							XXX		XXX
8999998. Total - Preferred Stocks - Part 5						XXX	XXX	XXX	XXX
8999999. Total - Preferred Stocks							XXX		XXX
9799997. Total - Common Stocks - Part 3							XXX		XXX
9799998. Total - Common Stocks - Part 5						XXX	XXX	XXX	XXX
9799999. Total - Common Stocks							XXX		XXX
9899999. Total - Preferred and Common Stocks							XXX		XXX
9999999 - Totals						89,475,803	XXX	623,783	XXX

(a) For all common stock bearing the NAIC market indicator "U" provide: the number of such issues

STATEMENT AS OF JUNE 30, 2015 OF THE NATIONWIDE INDEMNITY COMPANY

SCHEDULE D - PART 4

Show All Long-Term Bonds and Stock Sold, Redeemed or Otherwise Disposed of During the Current Quarter

1	2	3	4	5	6	7	8	9	10	Change In Book/Adjusted Carrying Value					16	17	18	19	20	21	22
										11	12	13	14	15							
CUSIP Ident-ification	Description	For-eign	Disposal Date	Name of Purchaser	Number of Shares of Stock	Consid-eration	Par Value	Actual Cost	Prior Year Book/ Adjusted Carrying Value	Unrealized Valuation Increase/(Decrease)	Current Year's (Amor-tization)/ Accretion	Current Year's Other Than Temporary Impairment Recogn-ized	Total Change in Book/ Adjusted Carrying Value (11 + 12 - 13)	Total Foreign Exchange Change in Book /Adjusted Carrying Value	Book/ Adjusted Carrying Value at Disposal Date	Foreign Exchange Gain (Loss) on Disposal	Realized Gain (Loss) on Disposal	Total Gain (Loss) on Disposal	Bond Interest/ Stock Dividends Received DuringYear	Stated Con-tractual Maturity Date	NAIC Desig-nation or Market In-dicator (a)
..455780-AG-1	Indonesia (Republic of) AID Sr Nt 8.90		06/01/2015	Redemption 100.0000		50,000	50,000	54,500	52,049		(2,049)		(2,049)		50,000				2,225	06/01/2021	1
..491798-AA-2	Kenya (Republic of) AID Sr Nt 10.000% 1		04/15/2015	Redemption 100.0000		48,529	48,529	53,018	49,950		(1,421)		(1,421)		48,529				2,426	10/15/2018	1
..62938L-AA-8	NRRC-B Facilities Corp CTL GSA Backed		04/15/2015			240,000	240,000	240,000	240,000						240,000				8,220	04/15/2022	1
..911760-EJ-1	Vendee Mtg Tr RMBS REMIC Ser 1994-2 3ZB		06/01/2015	Paydown		60,896	60,896	59,560	60,166		731		731		60,896				1,728	06/15/2024	1
..911760-HH-2	Vendee Mtg Tr RMBS REMIC Ser 1996-2 1Z		06/01/2015	Paydown		110,059	110,059	109,512	109,599		460		460		110,059				3,037	06/15/2026	1
0599999	Subtotal - Bonds - U.S. Governments					509,484	509,484	516,590	511,764		(2,279)		(2,279)		509,484				17,636	XXX	XXX
..011832-S3-7	Alaska St Hsg Fin Corp Rev LBASS AMT 1st		06/01/2015	Call 100.0000		70,000	70,000	70,000	70,000						70,000				1,376	12/01/2024	1FE
..13066Y-MQ-9	California St Wtr Res Pwr Rev Pwr Supply		05/06/2015	Tax Free Exchange		10,177,464	10,000,000	10,518,400	10,196,477		(19,014)		(19,014)		10,177,464				256,944	05/01/2021	1FE
..254773-AG-9	District Columbia Hsg Fin Rev LBASS AMT		06/01/2015	Redemption 100.0000		45,000	45,000	45,000	45,000						45,000				1,035	06/01/2020	1FE
..312903-HR-1	FHLMC REMIC Ser 113-C 8.500% 05/15/21		06/15/2015	Paydown		2,510	2,510	2,615	2,561		(52)		(52)		2,510				90	05/15/2021	1
..312905-YJ-5	FHLMC REMIC Ser 1077-E 9.000% 05/15/21		06/01/2015	Paydown		3,753	3,753	3,909	3,753		(106)		(106)		3,753				141	05/15/2021	1
..312906-E5-5	FHLMC REMIC Ser 1116-XA 8.400% 08/15/2		06/01/2015	Paydown		1,029	1,029	1,058	1,046		(17)		(17)		1,029				36	08/15/2021	1
..312909-MY-7	FHLMC REMIC Ser 1251-Z 8.000% 04/15/22		06/01/2015	Paydown		14,780	14,780	15,454	15,145		(366)		(366)		14,780				488	04/15/2022	1
..312915-UF-6	FHLMC REMIC Ser 1504-Z 7.000% 05/15/23		06/01/2015	Paydown		12,851	12,851	13,219	13,042		(191)		(191)		12,851				368	05/15/2023	1
..313373-X8-6	FHLMC REMIC Ser 1683-Z 6.500% 02/15/24		06/01/2015	Paydown		151,189	151,189	152,119	151,375		(186)		(186)		151,189				3,705	02/15/2024	1
..31337A-CQ-3	FHLMC REMIC Ser 1967-BA 7.000% 06/17/2		06/01/2015	Paydown		19,191	19,191	19,638	19,379		(189)		(189)		19,191				556	06/17/2027	1
..31340Y-BH-1	FHLMC REMIC Ser 6-C 9.050% 06/15/19		06/15/2015	Paydown		868	868	910	880		(12)		(12)		868				34	06/15/2019	1
..31340Y-DB-2	FHLMC REMIC Ser 12-A 9.250% 11/15/19		06/15/2015	Paydown		583	583	612	590		(8)		(8)		583				23	11/15/2019	1
..31340Y-KF-5	FHLMC REMIC Ser 31-E 7.550% 05/15/20		06/15/2015	Paydown		4,393	4,393	4,533	4,125		268		268		4,393				166	05/15/2020	1
..31340Y-KX-6	FHLMC REMIC Ser 33-D 8.000% 04/15/20		06/15/2015	Paydown		3,503	3,503	3,628	3,540		(36)		(36)		3,503				117	04/15/2020	1
..31340Y-QS-1	FHLMC REMIC Ser 46-B 7.800% 09/15/20		06/15/2015	Paydown		3,159	3,159	3,250	3,185		(26)		(26)		3,159				104	09/15/2020	1
..31358E-XG-2	FNMA REMIC Ser 1990-83A 9.250% 07/25/2		06/01/2015	Paydown		3,712	3,712	3,956	3,883		(171)		(171)		3,712				129	07/25/2020	1
..31358G-X4-4	FNMA REMIC Ser 1991-56G 8.600% 06/25/2		06/01/2015	Paydown		1,218	1,218	1,276	1,254		(36)		(36)		1,218				45	06/25/2021	1
..31359E-YL-9	FNMA REMIC Ser 1993-199PF 6.500% 10/25		06/01/2015	Paydown		21,086	21,086	21,429	21,060		26		26		21,086				585	10/25/2023	1
..31359F-DE-5	FNMA REMIC Ser 1993-202M 6.500% 11/25/		06/01/2015	Paydown		117,224	117,224	119,177	116,845		379		379		117,224				3,107	11/25/2023	1
..31359K-2K-2	FNMA REMIC Ser 1996-M7 CI Z 6.640% 05/		06/01/2015	Paydown		243	243	245	244		(1)		(1)		243				7	05/17/2036	1
..31359K-ZR-1	FNMA REMIC Ser 1996-45 CI K 7.000% 09/		06/01/2015	Paydown		5,185	5,185	5,289	5,245		(60)		(60)		5,185				147	09/25/2021	1
..31359P-DJ-2	FNMA ACES Ser 1997-M2 CI Z 7.125% 01/1		06/01/2015	Paydown		3,652	3,652	3,923	3,871		(219)		(219)		3,652				108	01/17/2037	1
..313602-GQ-1	FNMA REMIC Ser 1988-25B 9.250% 10/25/1		06/01/2015	Paydown		639	639	678	652		(12)		(12)		639				25	10/25/2018	1
..313603-2H-4	FNMA REMIC Ser 1990-35E 9.500% 04/25/2		06/01/2015	Paydown		212	212	225	221		(9)		(9)		212				8	04/25/2020	1
..313603-SJ-7	FNMA REMIC Ser 1990-41D 9.500% 04/25/2		06/01/2015	Paydown		3,325	3,325	3,528	3,451		(126)		(126)		3,325				131	04/25/2020	1
..31377R-BH-2	FNMA DUS Pool #384440 6.600% 10/25/26		06/01/2015	Paydown		14,506	14,506	16,065	15,349		(843)		(843)		14,506				399	10/25/2026	1
..31381H-TQ-9	FNMA DUS Pool #461459 5.450% 11/25/23		06/01/2015	Paydown		51,896	51,896	53,412	52,555		(659)		(659)		51,896				1,179	11/25/2023	1
..31392E-FL-9	FNMA REMIC Ser 2002-55 CI GC 5.500% 09		06/01/2015	Paydown		22,328	22,328	23,060	22,414		(87)		(87)		22,328				515	09/25/2017	1
..31392E-SX-9	FNMA REMIC Ser 2002-59 CI B 5.500% 09/		06/01/2015	Paydown		11,120	11,120	11,562	11,232		(112)		(112)		11,120				257	09/25/2017	1
..31392U-RH-9	FHLMC REMIC Ser 2501 AN 5.500% 09/15/1		06/01/2015	Paydown		49,897	49,897	51,737	50,181		(284)		(284)		49,897				1,132	09/15/2017	1
..31392V-2F-8	FHLMC REMIC Ser 2494 J 5.500% 09/15/17		06/01/2015	Paydown		134,223	134,223	141,127	134,963		(740)		(740)		134,223				3,155	09/15/2017	1
..31392V-SN-3	FHLMC REMIC Ser 2496 BK 5.500% 09/15/1		06/01/2015	Paydown		57,148	57,148	59,456	57,513		(364)		(364)		57,148				1,312	09/15/2017	1
..31393A-2V-8	FNMA REMIC Ser 2003-38 CI MP 5.500% 05		06/01/2015	Paydown		111,178	111,178	113,679	111,585		(407)		(407)		111,178				2,526	05/25/2023	1
..31394J-KW-6	FHLMC REMIC Ser 2673 CI QL 5.500% 09/1		06/01/2015	Paydown		101,273	101,273	102,918	101,587		(314)		(314)		101,273				2,337	09/15/2023	1
..31394L-HM-7	FHLMC REMIC Ser 2691 CI VU 5.500% 08/1		06/01/2015	Paydown		919,172	919,172	934,396	917,795		1,377		1,377		919,172				20,897	08/15/2023	1
..60415N-G2-2	Minnesota St Hsg Fin Agy Rev LBASS AMT S		06/01/2015	Call 100.0000		45,000	45,000	45,000	45,000						45,000				1,792	07/01/2021	1FE
..649085-AA-5	New Valley Generation II Ser 2001 5.57		05/01/2015	Redemption 100.0000		246,123	246,123	256,792	249,848		(3,726)		(3,726)		246,123				6,857	05/01/2020	1FE
..658207-KG-9	North Carolina Hsg Fin Agy Rev LBASS AMT		06/01/2015	Call 100.0000		2,060,000	2,060,000	2,060,000	2,060,000						2,060,000				101,498	07/01/2028	1FE
..67755C-QN-2	Ohio St Bldg Auth Rev LBASS St Facs Adul		04/01/2015	Call 100.0000		5,000,000	5,000,000	5,314,150	5,009,678		(9,678)		(9,678)		5,000,000				125,000	04/01/2021	1FE
..812728-NB-5	Seattle WA Wtr Sys Rev Ref 5.000% 02/0		06/17/2015	Tax Free Exchange		8,082,898	7,980,000	8,529,188	8,110,834		(27,936)		(27,936)		8,082,898				350,233	02/01/2023	1FE
..87638Q-BC-2	Tarrant Cnty TX Rev Cultural Ed Facs Fin		05/01/2015	Tax Free Exchange		2,453,098	2,500,000	2,436,575	2,452,161		938		938		2,453,098				93,333	08/15/2028	1FE
3199999	Subtotal - Bonds - U.S. Special Revenues					30,026,629	29,793,169	31,163,188	30,089,624		(62,999)		(62,999)		30,026,629				981,897	XXX	XXX
..01082#-AA-3	Alameda Cnty CA CTL Ser 2002-A 7.500%		06/15/2015	Redemption 100.0000		38,563	38,563	40,877	39,622		(1,059)		(1,059)		38,563				1,206	06/15/2021	1
..01877K-AB-9	Alliance Pipeline LP Sr Nt 6.996% 12/3		06/30/2015	Redemption 100.0000		185,714	185,714	199,575	191,774		(6,060)		(6,060)		185,714				6,496	12/31/2019	2FE

STATEMENT AS OF JUNE 30, 2015 OF THE NATIONWIDE INDEMNITY COMPANY

SCHEDULE D - PART 4

Show All Long-Term Bonds and Stock Sold, Redeemed or Otherwise Disposed of During the Current Quarter

1	2	3	4	5	6	7	8	9	10	Change In Book/Adjusted Carrying Value					16	17	18	19	20	21	22
										11	12	13	14	15							
CUSIP Ident- ification	Description	For- eign	Disposal Date	Name of Purchaser	Number of Shares of Stock	Consid- eration	Par Value	Actual Cost	Prior Year Book/ Adjusted Carrying Value	Unrealized Valuation Increase/ (Decrease)	Current Year's (Amor- tization)/ Accretion	Current Year's Other Than Temporary Impairment Recogn- ized	Total Change in Book/ Adjusted Carrying Value (11 + 12 - 13)	Total Foreign Exchange Change in Book /Adjusted Carrying Value	Book/ Adjusted Carrying Value at Disposal Date	Foreign Exchange Gain (Loss) on Disposal	Realized Gain (Loss) on Disposal	Total Gain (Loss) on Disposal	Bond Interest/ Stock Dividends Received During Year	Stated Con- tractual Maturity Date	NAIC Design- ation or Market In- dicator (a)
..02150W-AB-9	Countrywide Alternative Ln Tr RMBS Ser 2		06/01/2015	Paydown Redemption 100.0000		..20,289	..132,886	123,973	123,973						123,973		..(103,684)	..(103,684)	1,332	..03/25/2047	1FIM
..030955-AB-4	Ameritech Capital Funding Corp Nt 9.10		06/01/2015			..75,800	75,800	89,126	77,896		..(2,096)		..(2,096)		75,800				3,449	..06/01/2016	2FE
..03215P-CD-9	Amresco Resdlt Sec Mtg Loan RMBS Ser 199		06/01/2015	Paydown Redemption 100.0000		..15,550	15,550	15,764	15,483		..68		..68		15,550				328	..06/25/2027	1FIM
..03334@-AA-7	AnchoragePermit Ctr Bldg Ls Tr CTL 6.3		06/15/2015	Redemption 100.0000		..23,049	23,049	23,049	23,049						23,049				609	..02/15/2025	1
..05501T-AC-3	TGGT Holdings (Azure) LLC 1st Lien Term		06/30/2015	Redemption 100.0000		..157,636	157,636	155,272	141,873	..13,852	1,911		15,763		157,636				6,980	..11/18/2018	4FE
..05549@-AA-3	BJs Wholesale Club Inc CTL (HG Bowie Rea		06/15/2015	Redemption 100.0000		..30,159	30,159	30,450	30,302		..(142)		..(142)		30,159				874	..05/15/2022	2
..079867-AQ-0	BellSouth Telecom Inc Deb 6.300% 12/15		06/15/2015	Redemption 100.0000		..102,042	102,042	103,693	102,231		..(190)		..(190)		102,042				3,220	..12/15/2015	2FE
..08183*-AA-0	Benenson Parsippany LLC CTL 7.050% 04/		06/10/2015	Redemption 100.0000		..94,400	94,400	94,400	94,400						94,400				2,775	..04/10/2016	1
..117017-AA-1	Brunswick & Glynn Co Dev Auth CTL Rev Le		04/15/2015	Redemption 100.0000		..134,755	134,755	134,755	134,755						134,755				4,871	..10/15/2022	1
..12644*-AC-1	CTL Cap Tr CTL Ser 2002-3 Anchorage 7.		06/15/2015	Redemption 100.0000		..50,462	50,462	50,462	50,462						50,462				1,534	..12/15/2026	1
..12644@-BR-5	CTL Cap Tr CTLSer 2002-21Aurora Heathcar		06/15/2015			..55,304	55,304	55,304	55,304						55,304				1,534	..10/15/2022	1
..12667G-AX-1	Countrywide Alternative Ln Tr RMBS Ser 2		06/25/2015	Paydown		..273,158	273,158	257,842	257,842		..10,295		10,295		268,137		5,020	5,020		..05/25/2035	1FIM
..12667G-XN-8	Countrywide Alternative Ln Tr RMBS Ser 2		06/01/2015	Paydown		..538,558	538,558	504,119	504,119		..34,439		34,439		538,558				12,645	..08/25/2035	1FIM
..12668@-AC-8	CIABS Inc RMBS Ser 2006-H CI 2A1B 0.33		06/15/2015	Paydown		..81,373	81,373	28,171	28,171		..53,202		53,202		81,373				150	..11/15/2036	1FIM
..126694-NS-3	CIHL Inc RMBS Ser 2005-27 CI 1A3 5.500		06/01/2015	Paydown		..92,887	92,887	90,405	87,308	4,219	1,360		5,579		2,286				2,286	..12/25/2035	1FIM
..12669F-D2-6	CIHL Inc RMBS Ser 2004-10 CI A10 5.000		06/01/2015	Paydown		..34,289	34,289	32,103	33,878		..411		411		34,289				725	..07/25/2034	1FIM
..12669G-R3-7	Countrywide Home Loans RMBS Ser 2005-15		06/01/2015	Paydown Redemption 100.0000		..29,014	32,527	32,014	30,838	1,381	1		1,382		32,219		..(3,205)	..(3,205)	793	..08/25/2035	1FIM
..12670N-AB-9	CIWGS Term Ln Nt 4 5.750% 02/20/20		06/30/2015			..62,500	62,500	61,955	50,153	19	519		538		62,500				1,526	..02/20/2020	4FE
..12670N-AB-9	CIWGS Term Ln Nt 1 5.750% 02/20/20		05/15/2015	Tax Free Exchange Redemption 100.0000		..104,380	105,224	104,172	104,303	22	55		77		104,380				3,092	..02/20/2020	4FE
..130789-T#-7	California Wtr Svc Co 1st Mtg Bd Ser JJJ		05/01/2015			..181,800	181,800	183,694	182,628		..(828)		..(828)		181,800				4,945	..05/01/2018	1
..144527-AB-4	Carrington Mtg Loan Tr RMBS Ser 2007-FRE		06/25/2015	Paydown		..422,708	422,708	422,581	422,581		..128		128		422,708				681	..02/25/2037	2FIM
..17306U-CE-6	Citifinancial Mtg Sec Inc RMBS Ser 2004-		06/01/2015	Paydown		..12,921	12,921	12,904	12,904		..17		17		12,921				194	..04/25/2034	1FIM
..17307G-YH-5	Citigroup Mtg Ln Tr RMBS Ser 2005-5 CI 2		06/01/2015	Paydown		..116,622	116,622	107,774	107,774		8,849		8,849		116,622				2,628	..08/25/2035	1FIM
..23321M-AL-9	CIJ Mtg Accept Tr I RMBS CMO Ser 89-1-F		06/01/2015	Paydown		..454	454	500	476		..(22)		..(22)		454				20	..08/01/2019	6*
..251563-CB-6	Deutsche Mtg Sec Inc RMBS Ser 2004-1 CI		06/01/2015	Paydown		..84,074	84,074	84,051	85,028		..(953)		..(953)		84,074				2,018	..12/25/2033	1FIM
..251563-DM-1	Deutsche Mtg Sec Inc RMBS Ser 2004-2 CI		06/01/2015	Paydown		..5,510	5,510	5,508	5,594		..(84)		..(84)		5,510				119	..01/25/2034	1FIM
..36157R-3X-1	GE Cap Mtg Serv Inc RMBS Ser 1999-HE2 CI		05/01/2015	Paydown		..6,919	6,919	6,919	6,919						6,919				193	..07/25/2029	2FIM
..36157R-DB-5	GE Cap Mtg Serv Inc RMBS Ser 1999-HE1 CI		06/01/2015	Paydown		..823	823	823	823						823				22	..04/25/2029	1FIM
..36242@-7Q-0	GS Mortgage Securities Corp RMBS Ser 200		06/01/2015	Paydown		..56,021	56,021	53,237	54,611		1,410		1,410		56,021				1,209	..06/25/2035	1FIM
..40075@-BG-6	Guaranteed Mtg Corp III CMBS CMO Ser L-5		06/20/2015	Paydown		..4,274	4,274	4,592	4,183		..91		91		4,274				184	..07/20/2019	6*
..43739E-AP-2	Homebanc Mortgage Tr RMBS Ser 2005-1 CI		06/25/2015	Paydown		..145,593	145,593	134,598	134,598		10,995		10,995		145,593				278	..03/25/2035	1FIM
..45254N-JG-3	IMPAC CMB Tr RMBS Ser 2004-5 CI 1A1 0.		06/25/2015	Paydown		..36,880	36,880	36,948	36,933		..(53)		..(53)		36,880				128	..10/25/2034	1FIM
..45254N-KX-4	IMPAC CMB Tr RMBS Ser 2004-9 CI 1A1 0.		06/25/2015	Paydown Redemption 100.0000		..13,603	13,603	13,637	13,500		..103		103		13,603				67	..01/25/2035	2FIM
..50026*-AA-3	Kohls Corp CTL Shelby MI 7.600% 12/15/		06/15/2015	Redemption 100.0000		..27,103	27,103	28,634	27,805		..(702)		..(702)		27,103				855	..12/15/2022	2
..52467@-AA-3	Legg Mason Mtg Cap Corp CTL 7.400% 12/		06/15/2015	Redemption 100.0000		..16,449	16,449	17,337	16,791		..(342)		..(342)		16,449				504	..12/15/2021	1
..52467@-AH-8	Legg Mason Mtg Cap Corp CTL 7.750% 01/		06/15/2015			..24,460	24,460	25,653	22,064		2,396		2,396		24,460				817	..01/15/2021	4
..55265W-CA-9	Master Seasoned Securities Tr RMBS Ser 2		06/01/2015	Paydown		..6,669	6,669	6,890	6,870		..(200)		..(200)		6,669				175	..08/25/2032	3FIM
..589929-RK-6	Merrill Lynch Mtg Investors RMBS Ser 199		06/01/2015	Paydown		..2,002	2,002	1,922	1,990		..5		5		1,995		8	8	60	..07/25/2027	1FIM
..59549R-AC-8	Mid State Tr X ABS Ser 10 CI M1 6.280%		06/15/2015	Paydown		..77,676	77,676	65,316	65,316		12,360		12,360		77,676				2,089	..02/15/2036	1AM
..63860H-AC-3	Nationstar Home Equity Loan Tr RMBS Ser		06/25/2015	Paydown		..510,563	510,563	460,943	473,752		..36,811		36,811		510,563				699	..03/25/2037	1FIM
..652482-BJ-8	News America Inc Co Gtd Nt 6.200% 12/1		04/06/2015	Tax Free Exchange		..20,790,198	20,000,000	20,880,700	20,795,803		..(5,606)		..(5,606)		20,790,198				382,333	..12/15/2034	2FE
..652482-BX-7	News America Inc Co Gtd Nt 5.650% 08/1		04/06/2015	Tax Free Exchange Redemption 100.0000		..6,988,445	7,000,000	6,979,875	6,987,967		..478		478		6,988,445				253,779	..08/15/2020	2FE
..65324@-AA-9	Newtown CTL Ser 2002 6.082% 05/15/23		06/15/2015			..69,879	69,879	69,877	69,878		1		1		69,879				1,772	..05/15/2023	1

STATEMENT AS OF JUNE 30, 2015 OF THE NATIONWIDE INDEMNITY COMPANY

SCHEDULE D - PART 4

Show All Long-Term Bonds and Stock Sold, Redeemed or Otherwise Disposed of During the Current Quarter

1	2	3	4	5	6	7	8	9	10	Change In Book/Adjusted Carrying Value					16	17	18	19	20	21	22	
CUSIP Ident- ification	Description	For- eign	Disposal Date	Name of Purchaser	Number of Shares of Stock	Consid- eration	Par Value	Actual Cost	Prior Year Book/ Adjusted Carrying Value	Unrealized Valuation Increase/ (Decrease)	Current Year's (Amor- tization)/ Accretion	Current Year's Other Than Temporary Impairment Recog- nized	14 Total Change in Book/ Adjusted Carrying Value (11 + 12 - 13)	15 Total Foreign Exchange Change in Book /Adjusted Carrying Value	Book/ Adjusted Carrying Value at Disposal Date	Foreign Exchange Gain (Loss) on Disposal	Realized Gain (Loss) on Disposal	Total Gain (Loss) on Disposal	Bond Interest/ Stock Dividends Received During Year	Stated Con- tractual Maturity Date	NAIC Desig- nation or Market In- dicator (a)	
..67020B-AA-8	NRRC-D Facilities Corp CTL GSA Rev Bd Ls		06/07/2015	Redemption 100.0000		..51,293	..51,293	..51,293	..51,293						..51,293				..1,390	..11/07/2023	1.....	
..68216D-AC-2	Omnicracs 1st Lien TL Nt 1 4.750% 11/2		06/30/2015	Redemption 100.0000		..2,496	..2,496	..2,484	..2,440	..45	..11		..56		..2,496				..60	..11/25/2020	4FE.....	
..73664#-AA-8	Portland Natural Gas Trans Sys Sr Sec Nt		06/30/2015	Redemption 100.0000		..37,964	..37,964	..37,964	..37,964						..37,964				..1,120	..12/31/2018	2.....	
..760985-M9-9	Residential Asset Mtg Prod Inc RMBS Ser		06/01/2015	Paydown		..21,187	..21,187	..21,187	..21,139		..48		..48		..21,187				..430	..01/25/2034	1FM.....	
..76111B-HD-3	Residential Accredit Loans Inc RMBS Ser		06/01/2015	Paydown		..116,953	..128,749	..106,267	..106,267						..106,267		..10,686	..10,686	..3,178	..09/25/2035	1FM.....	
..78402C-AA-1	SC Commercial Mtg Pass Through CTL Ser 2		06/01/2015	Redemption 100.0000		..10,273	..10,273	..10,742	..10,519		..(247)		..(247)		..10,273				..295	..11/01/2026	2.....	
..78442G-G6-5	SLM Student Loan Tr ABS Ser 2003-4 CI A5		06/15/2015	Paydown		..206,803	..206,803	..208,499	..207,732		..(928)		..(928)		..206,803				..1,051	..03/15/2033	1FE.....	
..78577B-HD-6	SACO I Tr RMBS Ser 2005-6 CI A 0.767%		06/25/2015	Paydown		..77,560	..77,560	..74,902	..74,902		..2,657		..2,657		..77,560				..237	..09/25/2035	1FM.....	
..79548K-ZJ-0	Salomon Bros Mtg Sec VII Inc RMBS Ser 19		06/01/2015	Paydown		..1,180	..1,180	..1,190	..1,175						..1,175		..5	..5	..37	..06/25/2028	1FM.....	
..81441P-CE-9	Security Natl Mtg Loan Tr RMBS Ser 2005-		06/01/2015	Paydown		..20,674	..20,674	..20,608	..20,608		..65		..65		..20,674				..369	..02/25/2035	1FM.....	
..86363G-AJ-3	Structured Asset Sec Corp RMBS Ser 2007-		06/01/2015	Paydown		..117,521	..127,377	..114,951	..114,951						..114,951		..2,570	..2,570	..2,628	..04/25/2047	1FM.....	
..91737#-AA-3	United States Govt SS Ls FinTr CTL GSA G		06/15/2015	Redemption 100.0000		..137,793	..137,793	..137,340	..137,646		..147		..147		..137,793				..2,702	..11/15/2018	1.....	
..92851#-AA-3	Vivendi SPC Tr CTL 6.630% 04/15/22		06/15/2015	Redemption 100.0000		..21,751	..21,751	..21,751	..21,751						..21,751				..601	..04/15/2022	2.....	
..93934B-AE-8	Washington Mutual MSC Mtg PT RMBS Ser 20		06/01/2015	Paydown		..22,527	..20,479	..15,743	..15,743						..15,743		..6,784	..6,784	..180	..04/25/2037	1FM.....	
..94978#-AT-4	Wells Fargo Bank Northwest NA CTL Ser 20		06/01/2015	Redemption 100.0000		..18,130	..18,130	..18,130	..18,130						..18,130				..503	..08/01/2027	2.....	
..96928#-AC-7	William Blair CTL CTL PTC Ser 2004-1 7		06/25/2015			..9,109	..9,109	..10,444	..9,612		..(503)		..(503)		..9,109				..317	..01/25/2023	2.....	
..01448Y-AB-9	ALESCO Pfd Fdg Ltd ABS Ser 7A CI A1B 0	R.....	06/23/2015	Paydown		..50,703	..50,703	..41,069	..41,739		..8,964		..8,964		..50,703				..169	..07/23/2035	1FE.....	
..74042T-AC-5	Preferred Term Sec Ltd XXVII ABS Nt CI A	R.....	06/22/2015	Paydown		..44,929	..44,929	..40,283	..40,283		..4,647		..4,647		..44,929				..149	..12/22/2037	1AM.....	
..86210M-AB-2	Stora Enso Oyj Sr Nt 6.404% 04/15/16	R.....	05/26/2015	Call 105.2340		..10,610,744	..10,083,000	..10,463,520	..10,145,062		..465,682		..465,682		..10,610,744				..396,397	..04/15/2016	3FE.....	
..G1981#-AA-0	Cayman Turtle Farm Ltd Gtd Sr Nt 4.850	F.....	06/01/2015	Redemption 100.0000		..99,327	..99,327	..99,327	..99,327						..99,327				..2,409	..03/01/2019	1.....	
8399999. Subtotal - Bonds - Industrial and Miscellaneous (Unaffiliated)						43,480,445	42,312,945	43,330,048	42,892,807	19,538	638,111		657,649		43,562,261		(81,816)	(81,816)	1,127,192	XXX	XXX	
8399997. Total - Bonds - Part 4						74,016,558	72,615,598	75,009,826	73,494,195	19,538	572,833		592,371		74,098,374		(81,816)	(81,816)	2,126,725	XXX	XXX	
8399998. Total - Bonds - Part 5						XXX	XXX	XXX	XXX	XXX	XXX	XXX	XXX	XXX	XXX	XXX	XXX	XXX	XXX	XXX	XXX	XXX
8399999. Total - Bonds						74,016,558	72,615,598	75,009,826	73,494,195	19,538	572,833		592,371		74,098,374		(81,816)	(81,816)	2,126,725	XXX	XXX	
8999997. Total - Preferred Stocks - Part 4							XXX													XXX	XXX	
8999998. Total - Preferred Stocks - Part 5						XXX	XXX	XXX	XXX	XXX	XXX	XXX	XXX	XXX	XXX	XXX	XXX	XXX	XXX	XXX	XXX	XXX
8999999. Total - Preferred Stocks							XXX													XXX	XXX	
9799997. Total - Common Stocks - Part 4							XXX													XXX	XXX	
9799998. Total - Common Stocks - Part 5						XXX	XXX	XXX	XXX	XXX	XXX	XXX	XXX	XXX	XXX	XXX	XXX	XXX	XXX	XXX	XXX	XXX
9799999. Total - Common Stocks							XXX													XXX	XXX	
9899999. Total - Preferred and Common Stocks							XXX													XXX	XXX	
9999999 - Totals						74,016,558	XXX	75,009,826	73,494,195	19,538	572,833		592,371		74,098,374		(81,816)	(81,816)	2,126,725	XXX	XXX	

(a) For all common stock bearing the NAIC market indicator "U" provide: the number of such issues.....

Schedule DB - Part A - Section 1 - Options, Caps, Floors, Collars, Swaps and Forwards Open
N O N E

Schedule DB - Part B - Section 1 - Futures Contracts Open
N O N E

Schedule DB - Part B - Section 1B - Brokers with whom cash deposits have been made
N O N E

Schedule DB - Part D - Section 1 - Counterparty Exposure for Derivative Instruments Open
N O N E

Schedule DB - Part D-Section 2 - Collateral for Derivative Instruments Open - Pledged By
N O N E

Schedule DB - Part D-Section 2 - Collateral for Derivative Instruments Open - Pledged To
N O N E

SCHEDULE DL - PART 1
SECURITIES LENDING COLLATERAL ASSETS

Reinvested Collateral Assets Owned Current Statement Date						
1 CUSIP Identification	2 Description	3 Code	4 NAIC Designation/ Market Indicator	5 Fair Value	6 Book/Adjusted Carrying Value	7 Maturity Date
0599999. Total - U.S. Government Bonds						XXX
1099999. Total - All Other Government Bonds						XXX
1799999. Total - U.S. States, Territories and Possessions Bonds						XXX
2499999. Total - U.S. Political Subdivisions Bonds						XXX
3199999. Total - U.S. Special Revenues Bonds						XXX
04012M-AP-4	Argent Securities Inc RMBS Ser 2006-M1 C		1FHL	229,488	229,48807/25/2036
14454A-AE-9	Carrington Mtg Loan Tr RMBS Ser 2006-FRE		1FHL	1,636,462	1,390,31710/25/2036
362351-AA-6	GSAA Home Equity Tr RMBS Ser 2006-20 CI		1FHL	840,101	840,10112/25/2046
617487-AB-9	Morgan Stanley Mtg Tr RMBS Ser 2006-16AX		1FHL	563,497	563,49711/25/2036
81378E-AA-1	Securitized AB Receivables LLC RMBS Ser		1FHL	3,546,187	3,546,18705/25/2037
3399999. Subtotal - Bonds - Industrial and Miscellaneous (Unaffiliated) - Residential Mortgage-Backed Securities				6,815,735	6,569,590	XXX
3899999. Total - Industrial and Miscellaneous (Unaffiliated) Bonds				6,815,735	6,569,590	XXX
4899999. Total - Hybrid Securities						XXX
5599999. Total - Parent, Subsidiaries and Affiliates Bonds						XXX
6199999. Total - Issuer Obligations						XXX
6299999. Total - Residential Mortgage-Backed Securities				6,815,735	6,569,590	XXX
6399999. Total - Commercial Mortgage-Backed Securities						XXX
6499999. Total - Other Loan-Backed and Structured Securities						XXX
6599999. Total Bonds				6,815,735	6,569,590	XXX
7099999. Total - Preferred Stocks						XXX
7599999. Total - Common Stocks						XXX
7699999. Total - Preferred and Common Stocks						XXX
000000-00-0	Overnight Repos			2,716,925	2,716,925	.07/01/2015
9199999. Total - Cash Equivalents (Schedule E Part 2 type)				2,716,925	2,716,925	XXX
9999999 - Totals				9,532,660	9,286,515	XXX

General Interrogatories:

1. Total activity for the year to date Fair Value \$(6,993,238) Book/Adjusted Carrying Value \$(6,996,917)
2. Average balance for the year to date Fair Value \$12,037,370 Book/Adjusted Carrying Value \$11,793,734
3. Reinvested securities lending collateral assets book/adjusted carrying value included in this schedule by NAIC designation:
NAIC 1 \$6,569,590 NAIC 2 \$ NAIC 3 \$ NAIC 4 \$ NAIC 5 \$ NAIC 6 \$

SCHEDULE DL - PART 2
SECURITIES LENDING COLLATERAL ASSETS

1 CUSIP Identification	2 Description	3 Code	4 NAIC Designation/ Market Indicator	5 Fair Value	6 Book/Adjusted Carrying Value	7 Maturity Date
NONE						
9999999 - Totals						XXX

General Interrogatories:

Fair Value \$ Book/Adjusted Carrying Value \$
 Fair Value \$ Book/Adjusted Carrying Value \$

SCHEDULE E - PART 1 - CASH

[illegible]

STATEMENT AS OF JUNE 30, 2015 OF THE NATIONWIDE INDEMNITY COMPANY

SCHEDULE E - PART 2 - CASH EQUIVALENTS

Show Investments Owned End of Current Quarter

1	2	3	4	5	6	7	8
Description	Code	Date Acquired	Rate of Interest	Maturity Date	Book/Adjusted Carrying Value	Amount of Interest Due and Accrued	Amount Received During Year
NONE							
8699999 - Total Cash Equivalents							