



PROPERTY AND CASUALTY COMPANIES - ASSOCIATION EDITION

# QUARTERLY STATEMENT

AS OF MARCH 31, 2015

OF THE CONDITION AND AFFAIRS OF THE

## Cincinnati Equitable Insurance Company

NAIC Group Code 0838 0838 NAIC Company Code 16721 Employer's ID Number 31-0239840  
(Current) (Prior)

Organized under the Laws of Ohio, State of Domicile or Port of Entry Ohio

Country of Domicile United States of America

Incorporated/Organized 01/24/1827 Commenced Business 04/17/1826

Statutory Home Office 525 Vine Street, Suite 1925, Cincinnati, OH, US 45202  
(Street and Number) (City or Town, State, Country and Zip Code)

Main Administrative Office 525 Vine Street, Suite 1925  
(Street and Number)  
Cincinnati, OH, US 45202, 513-621-1826  
(City or Town, State, Country and Zip Code) (Area Code) (Telephone Number)

Mail Address 525 Vine Street, Suite 1925, Cincinnati, OH, US 45202  
(Street and Number or P.O. Box) (City or Town, State, Country and Zip Code)

Primary Location of Books and Records 525 Vine Street, Suite 1925  
(Street and Number)  
Cincinnati, OH, US 45202, 513-621-1826  
(City or Town, State, Country and Zip Code) (Area Code) (Telephone Number)

Internet Website Address www.cineqlife.com

Statutory Statement Contact Gregory A Baker, 513-621-1826  
(Name) (Area Code) (Telephone Number)  
gbaker@cineqlife.com, 513-621-4531  
(E-mail Address) (FAX Number)

### OFFICERS

Chairman of the Board Peter A Alpaugh President/CFO/Treasurer Gregory A Baker  
Secretary Linda S Bales

### OTHER

### DIRECTORS OR TRUSTEES

Peter A Alpaugh Andrea A Kessel Gregory A Baker  
James W Ketring Drew F Knowles

State of Ohio SS:  
County of Hamilton

The officers of this reporting entity being duly sworn, each depose and say that they are the described officers of said reporting entity, and that on the reporting period stated above, all of the herein described assets were the absolute property of the said reporting entity, free and clear from any liens or claims thereon, except as herein stated, and that this statement, together with related exhibits, schedules and explanations therein contained, annexed or referred to, is a full and true statement of all the assets and liabilities and of the condition and affairs of the said reporting entity as of the reporting period stated above, and of its income and deductions therefrom for the period ended, and have been completed in accordance with the NAIC Annual Statement Instructions and Accounting Practices and Procedures manual except to the extent that: (1) state law may differ; or, (2) that state rules or regulations require differences in reporting not related to accounting practices and procedures, according to the best of their information, knowledge and belief, respectively. Furthermore, the scope of this attestation by the described officers also includes the related corresponding electronic filing with the NAIC, when required, that is an exact copy (except for formatting differences due to electronic filing) of the enclosed statement. The electronic filing may be requested by various regulators in lieu of or in addition to the enclosed statement.

Peter A. Alpaugh  
Chairman of the Board

Linda S. Bales  
Secretary

Gregory A. Baker  
Treasurer

Subscribed and sworn to before me this 7th day of May 2015

- a. Is this an original filing? ..... Yes [ X ] No [ ]  
b. If no,  
1. State the amendment number.....  
2. Date filed .....  
3. Number of pages attached.....

Richard H. Hansman, Jr.

11/8/2019

## STATEMENT AS OF MARCH 31, 2015 OF THE Cincinnati Equitable Insurance Company

**ASSETS**

	Current Statement Date			4 December 31 Prior Year Net Admitted Assets
	1 Assets	2 Nonadmitted Assets	3 Net Admitted Assets (Cols. 1 - 2)	
1. Bonds .....	3,049,619		3,049,619	3,395,279
2. Stocks:				
2.1 Preferred stocks .....	324,400		324,400	301,720
2.2 Common stocks .....	4,949		4,949	4,853
3. Mortgage loans on real estate:				
3.1 First liens .....			0	0
3.2 Other than first liens.....			0	0
4. Real estate:				
4.1 Properties occupied by the company (less \$ encumbrances) .....			0	0
4.2 Properties held for the production of income (less \$ ..... encumbrances) .....			0	0
4.3 Properties held for sale (less \$ encumbrances) .....			0	0
5. Cash (\$ .....13,232 ), cash equivalents (\$ ..... ) and short-term investments (\$ .....497,460 ) .....	510,692		510,692	104,917
6. Contract loans (including \$ ..... premium notes) .....			0	0
7. Derivatives .....			0	0
8. Other invested assets .....			0	0
9. Receivables for securities .....			0	0
10. Securities lending reinvested collateral assets .....			0	0
11. Aggregate write-ins for invested assets .....	0	0	0	0
12. Subtotals, cash and invested assets (Lines 1 to 11) .....	3,889,660	0	3,889,660	3,806,769
13. Title plants less \$ ..... charged off (for Title insurers only) .....			0	0
14. Investment income due and accrued .....	38,320		38,320	51,366
15. Premiums and considerations:				
15.1 Uncollected premiums and agents' balances in the course of collection .....			0	0
15.2 Deferred premiums, agents' balances and installments booked but deferred and not yet due (including \$ ..... earned but unbilled premiums) .....			0	0
15.3 Accrued retrospective premiums .....			0	0
16. Reinsurance:				
16.1 Amounts recoverable from reinsurers .....			0	0
16.2 Funds held by or deposited with reinsured companies .....			0	0
16.3 Other amounts receivable under reinsurance contracts .....			0	0
17. Amounts receivable relating to uninsured plans .....			0	0
18.1 Current federal and foreign income tax recoverable and interest thereon .....			0	0
18.2 Net deferred tax asset .....	216,000	164,000	52,000	52,000
19. Guaranty funds receivable or on deposit .....			0	0
20. Electronic data processing equipment and software .....	5,883		5,883	5,883
21. Furniture and equipment, including health care delivery assets (\$ ..... ) .....	12,109	12,109	0	0
22. Net adjustment in assets and liabilities due to foreign exchange rates .....			0	0
23. Receivables from parent, subsidiaries and affiliates .....	862		862	0
24. Health care (\$ ..... ) and other amounts receivable .....			0	0
25. Aggregate write-ins for other than invested assets .....	0	0	0	0
26. Total assets excluding Separate Accounts, Segregated Accounts and Protected Cell Accounts (Lines 12 to 25) .....	4,162,834	176,109	3,986,725	3,916,018
27. From Separate Accounts, Segregated Accounts and Protected Cell Accounts .....			0	0
28. Total (Lines 26 and 27)	4,162,834	176,109	3,986,725	3,916,018
<b>DETAILS OF WRITE-INS</b>				
1101. ....			0	0
1102. ....				
1103. ....				
1198. Summary of remaining write-ins for Line 11 from overflow page .....	0	0	0	0
1199. Totals (Lines 1101 through 1103 plus 1198)(Line 11 above) .....	0	0	0	0
2501. ....			0	0
2502. ....				
2503. ....				
2598. Summary of remaining write-ins for Line 25 from overflow page .....	0	0	0	0
2599. Totals (Lines 2501 through 2503 plus 2598)(Line 25 above) .....	0	0	0	0

## STATEMENT AS OF MARCH 31, 2015 OF THE Cincinnati Equitable Insurance Company

**LIABILITIES, SURPLUS AND OTHER FUNDS**

	1 Current Statement Date	2 December 31, Prior Year
1. Losses (current accident year \$ ..... )	30,000	30,000
2. Reinsurance payable on paid losses and loss adjustment expenses		0
3. Loss adjustment expenses	7,509	7,509
4. Commissions payable, contingent commissions and other similar charges		
5. Other expenses (excluding taxes, licenses and fees)	48,989	43,425
6. Taxes, licenses and fees (excluding federal and foreign income taxes)	250	250
7.1 Current federal and foreign income taxes (including \$ ..... on realized capital gains (losses))	6,625	625
7.2 Net deferred tax liability		
8. Borrowed money \$ ..... and interest thereon \$ .....		
9. Unearned premiums (after deducting unearned premiums for ceded reinsurance of \$ ..... and including warranty reserves of \$ ..... and accrued accident and health experience rating refunds including \$ ..... for medical loss ratio rebate per the Public Health Service Act)		
10. Advance premium		
11. Dividends declared and unpaid:		
11.1 Stockholders		
11.2 Policyholders		
12. Ceded reinsurance premiums payable (net of ceding commissions)	428	428
13. Funds held by company under reinsurance treaties		0
14. Amounts withheld or retained by company for account of others	340	340
15. Remittances and items not allocated		
16. Provision for reinsurance (including \$ ..... certified)		0
17. Net adjustments in assets and liabilities due to foreign exchange rates		
18. Drafts outstanding		
19. Payable to parent, subsidiaries and affiliates		3,377
20. Derivatives	0	
21. Payable for securities		
22. Payable for securities lending		
23. Liability for amounts held under uninsured plans		
24. Capital notes \$ ..... and interest thereon \$ .....		
25. Aggregate write-ins for liabilities	0	0
26. Total liabilities excluding protected cell liabilities (Lines 1 through 25)	94,141	85,954
27. Protected cell liabilities		
28. Total liabilities (Lines 26 and 27)	94,141	85,954
29. Aggregate write-ins for special surplus funds	0	0
30. Common capital stock	1,000,000	1,000,000
31. Preferred capital stock		
32. Aggregate write-ins for other than special surplus funds	0	0
33. Surplus notes		
34. Gross paid in and contributed surplus	2,699,915	2,699,915
35. Unassigned funds (surplus)	192,669	130,149
36. Less treasury stock, at cost:		
36.1 ..... shares common (value included in Line 30 \$ ..... )		
36.2 ..... shares preferred (value included in Line 31 \$ ..... )		
37. Surplus as regards policyholders (Lines 29 to 35, less 36)	3,892,584	3,830,064
38. Totals (Page 2, Line 28, Col. 3)	3,986,725	3,916,018
<b>DETAILS OF WRITE-INS</b>		
2501. ....		
2502. ....		
2503. ....		
2598. Summary of remaining write-ins for Line 25 from overflow page	0	0
2599. Totals (Lines 2501 through 2503 plus 2598)(Line 25 above)	0	0
2901. ....		
2902. ....		
2903. ....		
2998. Summary of remaining write-ins for Line 29 from overflow page	0	0
2999. Totals (Lines 2901 through 2903 plus 2998)(Line 29 above)	0	0
3201. ....		
3202. ....		
3203. ....		
3298. Summary of remaining write-ins for Line 32 from overflow page	0	0
3299. Totals (Lines 3201 through 3203 plus 3298)(Line 32 above)	0	0

## STATEMENT AS OF MARCH 31, 2015 OF THE Cincinnati Equitable Insurance Company

**STATEMENT OF INCOME**

	1 Current Year to Date	2 Prior Year to Date	3 Prior Year Ended December 31
<b>UNDERWRITING INCOME</b>			
1. Premiums earned:			
1.1 Direct (written \$ ..... )			
1.2 Assumed (written \$ ..... )			
1.3 Ceded (written \$ ..... )			
1.4 Net (written \$ ..... 0 )	0	0	0
<b>DEDUCTIONS:</b>			
2. Losses incurred (current accident year \$ ..... ):			
2.1 Direct .....		8,130	20,000
2.2 Assumed .....			
2.3 Ceded .....			
2.4 Net .....	0	8,130	20,000
3. Loss adjustment expenses incurred .....	719	8,300	7,284
4. Other underwriting expenses incurred .....	23,284	20,951	92,080
5. Aggregate write-ins for underwriting deductions .....	0	0	0
6. Total underwriting deductions (Lines 2 through 5) .....	24,003	37,381	119,364
7. Net income of protected cells .....			
8. Net underwriting gain or (loss) (Line 1 minus Line 6 + Line 7) .....	(24,003)	(37,381)	(119,364)
<b>INVESTMENT INCOME</b>			
9. Net investment income earned .....	30,384	47,839	177,349
10. Net realized capital gains (losses) less capital gains tax of \$ .....	42,925	3,605	13,703
11. Net investment gain (loss) (Lines 9 + 10) .....	73,309	51,444	191,052
<b>OTHER INCOME</b>			
12. Net gain or (loss) from agents' or premium balances charged off (amount recovered \$ ..... amount charged off \$ ..... ) .....			
13. Finance and service charges not included in premiums .....			
14. Aggregate write-ins for miscellaneous income .....	0	0	0
15. Total other income (Lines 12 through 14) .....	0	0	0
16. Net income before dividends to policyholders, after capital gains tax and before all other federal and foreign income taxes (Lines 8 + 11 + 15) .....	49,306	14,063	71,688
17. Dividends to policyholders .....			
18. Net income, after dividends to policyholders, after capital gains tax and before all other federal and foreign income taxes (Line 16 minus Line 17) .....	49,306	14,063	71,688
19. Federal and foreign income taxes incurred .....	6,000	650	275
20. Net income (Line 18 minus Line 19)(to Line 22) .....	43,306	13,413	71,413
<b>CAPITAL AND SURPLUS ACCOUNT</b>			
21. Surplus as regards policyholders, December 31 prior year .....	3,830,064	4,194,492	4,194,492
22. Net income (from Line 20) .....	43,306	13,413	71,413
23. Net transfers (to) from Protected Cell accounts .....			
24. Change in net unrealized capital gains (losses) less capital gains tax of \$ .....	18,316	28,113	8,568
25. Change in net unrealized foreign exchange capital gain (loss) .....			
26. Change in net deferred income tax .....			87,000
27. Change in nonadmitted assets .....	898	898	(31,409)
28. Change in provision for reinsurance .....			0
29. Change in surplus notes .....			
30. Surplus (contributed to) withdrawn from protected cells .....			
31. Cumulative effect of changes in accounting principles .....			
32. Capital changes:			
32.1 Paid in .....			
32.2 Transferred from surplus (Stock Dividend) .....			
32.3 Transferred to surplus .....			
33. Surplus adjustments:			
33.1 Paid in .....	0	0	(500,000)
33.2 Transferred to capital (Stock Dividend) .....			
33.3 Transferred from capital .....			500,000
34. Net remittances from or (to) Home Office .....			(500,000)
35. Dividends to stockholders .....			
36. Change in treasury stock .....			0
37. Aggregate write-ins for gains and losses in surplus .....	0	0	0
38. Change in surplus as regards policyholders (Lines 22 through 37) .....	62,520	42,424	(364,428)
39. Surplus as regards policyholders, as of statement date (Lines 21 plus 38) .....	3,892,584	4,236,916	3,830,064
<b>DETAILS OF WRITE-INS</b>			
0501. ....			
0502. ....			
0503. ....			
0598. Summary of remaining write-ins for Line 5 from overflow page .....	0	0	0
0599. Totals (Lines 0501 through 0503 plus 0598)(Line 5 above) .....	0	0	0
1401. ....			
1402. ....			
1403. ....			
1498. Summary of remaining write-ins for Line 14 from overflow page .....	0	0	0
1499. Totals (Lines 1401 through 1403 plus 1498)(Line 14 above) .....	0	0	0
3701. ....			
3702. ....			
3703. ....			
3798. Summary of remaining write-ins for Line 37 from overflow page .....	0	0	0
3799. Totals (Lines 3701 through 3703 plus 3798)(Line 37 above) .....	0	0	0

## STATEMENT AS OF MARCH 31, 2015 OF THE Cincinnati Equitable Insurance Company

**CASH FLOW**

	1 Current Year To Date	2 Prior Year To Date	3 Prior Year Ended December 31
<b>Cash from Operations</b>			
1. Premiums collected net of reinsurance .....	0	0	0
2. Net investment income .....	44,998	72,820	199,233
3. Miscellaneous income .....	0	0	0
4. Total (Lines 1 to 3) .....	44,998	72,820	199,233
5. Benefit and loss related payments .....	0	(1,870)	0
6. Net transfers to Separate Accounts, Segregated Accounts and Protected Cell Accounts .....	0	0	0
7. Commissions, expenses paid and aggregate write-ins for deductions .....	18,440	50,885	125,946
8. Dividends paid to policyholders .....	0	0	0
9. Federal and foreign income taxes paid (recovered) net of \$ ..... tax on capital gains (losses) .....	0	650	650
10. Total (Lines 5 through 9) .....	18,440	49,665	126,596
11. Net cash from operations (Line 4 minus Line 10) .....	26,558	23,155	72,637
<b>Cash from Investments</b>			
12. Proceeds from investments sold, matured or repaid:			
12.1 Bonds .....	499,450	125,497	1,183,404
12.2 Stocks .....	0	126,372	344,748
12.3 Mortgage loans .....	0	0	0
12.4 Real estate .....	0	0	0
12.5 Other invested assets .....	0	0	0
12.6 Net gains or (losses) on cash, cash equivalents and short-term investments .....	0	0	0
12.7 Miscellaneous proceeds .....	0	0	0
12.8 Total investment proceeds (Lines 12.1 to 12.7) .....	499,450	251,869	1,528,152
13. Cost of investments acquired (long-term only):			
13.1 Bonds .....	116,893	128,000	790,942
13.2 Stocks .....	0	153,172	308,000
13.3 Mortgage loans .....	0	0	0
13.4 Real estate .....	0	0	0
13.5 Other invested assets .....	0	0	0
13.6 Miscellaneous applications .....	0	18,606	0
13.7 Total investments acquired (Lines 13.1 to 13.6) .....	116,893	299,778	1,098,942
14. Net increase (or decrease) in contract loans and premium notes .....	0	0	0
15. Net cash from investments (Line 12.8 minus Line 13.7 and Line 14) .....	382,557	(47,909)	429,210
<b>Cash from Financing and Miscellaneous Sources</b>			
16. Cash provided (applied):			
16.1 Surplus notes, capital notes .....	0	0	0
16.2 Capital and paid in surplus, less treasury stock .....	0	0	0
16.3 Borrowed funds .....	0	0	0
16.4 Net deposits on deposit-type contracts and other insurance liabilities .....	0	0	0
16.5 Dividends to stockholders .....	0	0	500,000
16.6 Other cash provided (applied) .....	(3,341)	15,036	2,287
17. Net cash from financing and miscellaneous sources (Line 16.1 through Line 16.4 minus Line 16.5 plus Line 16.6) .....	(3,341)	15,036	(497,713)
<b>RECONCILIATION OF CASH, CASH EQUIVALENTS AND SHORT-TERM INVESTMENTS</b>			
18. Net change in cash, cash equivalents and short-term investments (Line 11, plus Lines 15 and 17) .....	405,774	(9,718)	4,134
19. Cash, cash equivalents and short-term investments:			
19.1 Beginning of year .....	104,917	100,784	100,784
19.2 End of period (Line 18 plus Line 19.1) .....	510,692	91,066	104,917

Note: Supplemental disclosures of cash flow information for non-cash transactions:

**STATEMENT AS OF March 31, 2015 OF THE Cincinnati Equitable Insurance Company**  
**NOTES TO FINANCIAL STATEMENTS**

1. Summary of Significant Accounting Policies

A. Accounting Practices

The financial statements of Cincinnati Equitable Insurance Company are presented on the basis of accounting practices prescribed or permitted by the Ohio Insurance Department.

The Ohio Insurance Department recognizes only statutory accounting practices prescribed or permitted by the State of Ohio for determining and reporting the financial condition and results of operations of an insurance company, for determining its solvency under the Ohio Insurance Law. The National Association of Insurance Commissioners' (NAIC) Accounting Practices and Procedures manual, version effective January 1, 2001, (NAIC SAP) has been adopted as a component of prescribed or permitted practices by the State of Ohio. The State of Ohio has not adopted any prescribed or permitted practices that differ from NAIC SAP.

2. No significant change

3. No significant change

4. No significant change

5. Investments

D. Loan-Backed Securities

The Company has no Loan-Backed Securities.

6. No significant change

7. No significant change

8. No significant change

9. No significant change

10. No significant change

11. No significant change

12. No significant change

13. No significant change

14. No significant change

15. No significant change

16. No significant change

17. Sale, Transfer and Servicing of Financial Assets and Extinguishments of Liabilities

A. The Company has not transferred receivable balances.

B. The Company has no transaction in accordance with SSAP No.18.

C. The Company has made no wash sale transactions.

18. No significant change

19. No significant change

20. Fair Value Measure

A.

(1) Fair Value Measurements at Reporting Date

(1) Description	(2) (Level 1)	(3) (Level 2)	(4) (Level 3)	(5) Total
a). Assets at fair value				
Perpetual Preferred stock				
Industrial and Misc	\$ 324,400	-	-	\$ 324,400
Parent, Subsidiaries and Affiliates	-	-	-	-
Total Perpetual Preferred Stocks	324,400	-	-	324,400
Bonds				
U.S. Governments	-	-	-	-
Industrial and Misc	-	3,260,855	-	3,260,855
Hybrid Securities	-	-	-	-
Parent, Subsidiaries and Affiliates	-	-	-	-
Total Bonds	-	3,260,855	-	3,260,855
Common Stock				
Industrial and Misc	4,949	-	-	4,949
Parent, Subsidiaries and Affiliates	-	-	-	-
Total Common Stocks	4,949	-	-	4,949
Separate account assets	-	-	-	-
Total assets at fair value	329,349	3,260,855	-	3,590,204
b). Liabilities at fair value				
Other liabilities				
Total liabilities at fair value	-	-	-	-

STATEMENT AS OF March 31, 2015 OF THE Cincinnati Equitable Insurance Company  
**NOTES TO FINANCIAL STATEMENTS**

---

- 21. No significant change
- 22. No significant change
- 23. No significant change
- 24. No significant change

25. Change in Incurred Losses and Loss Adjustment Expenses

There have been no significant changes in the Loss and Loss Adjustment Expense reserves for losses incurred in prior accident years.

- 26. No significant change
- 27. No significant change
- 28. No significant change
- 29. No significant change
- 30. No significant change
- 31. No significant change
- 32. No significant change
- 33. No significant change
- 34. No significant change

# GENERAL INTERROGATORIES

## PART 1 - COMMON INTERROGATORIES

### GENERAL

- 1.1 Did the reporting entity experience any material transactions requiring the filing of Disclosure of Material Transactions with the State of Domicile, as required by the Model Act? ..... Yes [ ] No [ X ]
- 1.2 If yes, has the report been filed with the domiciliary state? ..... Yes [ ] No [ ]
- 2.1 Has any change been made during the year of this statement in the charter, by-laws, articles of incorporation, or deed of settlement of the reporting entity? ..... Yes [ ] No [ X ]
- 2.2 If yes, date of change: .....
- 3.1 Is the reporting entity a member of an Insurance Holding Company System consisting of two or more affiliated persons, one or more of which is an insurer? ..... Yes [ X ] No [ ]  
If yes, complete Schedule Y, Parts 1 and 1A.
- 3.2 Have there been any substantial changes in the organizational chart since the prior quarter end? ..... Yes [ ] No [ X ]
- 3.3 If the response to 3.2 is yes, provide a brief description of those changes.
- 4.1 Has the reporting entity been a party to a merger or consolidation during the period covered by this statement? ..... Yes [ ] No [ X ]
- 4.2 If yes, provide the name of the entity, NAIC Company Code, and state of domicile (use two letter state abbreviation) for any entity that has ceased to exist as a result of the merger or consolidation.

1 Name of Entity	2 NAIC Company Code	3 State of Domicile

5. If the reporting entity is subject to a management agreement, including third-party administrator(s), managing general agent(s), attorney-in-fact, or similar agreement, have there been any significant changes regarding the terms of the agreement or principals involved? ..... Yes [ ] No [ X ] N/A [ ]  
If yes, attach an explanation.
- 6.1 State as of what date the latest financial examination of the reporting entity was made or is being made. .... 12/31/2013
- 6.2 State the as of date that the latest financial examination report became available from either the state of domicile or the reporting entity. This date should be the date of the examined balance sheet and not the date the report was completed or released. .... 12/31/2013
- 6.3 State as of what date the latest financial examination report became available to other states or the public from either the state of domicile or the reporting entity. This is the release date or completion date of the examination report and not the date of the examination (balance sheet date). .... 11/16/2014
- 6.4 By what department or departments?  
Ohio
- 6.5 Have all financial statement adjustments within the latest financial examination report been accounted for in a subsequent financial statement filed with Departments? ..... Yes [ ] No [ ] N/A [ X ]
- 6.6 Have all of the recommendations within the latest financial examination report been complied with? ..... Yes [ X ] No [ ] N/A [ ]
- 7.1 Has this reporting entity had any Certificates of Authority, licenses or registrations (including corporate registration, if applicable) suspended or revoked by any governmental entity during the reporting period? ..... Yes [ ] No [ X ]
- 7.2 If yes, give full information:
- 8.1 Is the company a subsidiary of a bank holding company regulated by the Federal Reserve Board? ..... Yes [ ] No [ X ]
- 8.2 If response to 8.1 is yes, please identify the name of the bank holding company.
- 8.3 Is the company affiliated with one or more banks, thrifts or securities firms? ..... Yes [ ] No [ X ]
- 8.4 If response to 8.3 is yes, please provide below the names and location (city and state of the main office) of any affiliates regulated by a federal regulatory services agency [i.e. the Federal Reserve Board (FRB), the Office of the Comptroller of the Currency (OCC), the Federal Deposit Insurance Corporation (FDIC) and the Securities Exchange Commission (SEC)] and identify the affiliate's primary federal regulator.

1 Affiliate Name	2 Location (City, State)	3 FRB	4 OCC	5 FDIC	6 SEC

## GENERAL INTERROGATORIES

- 9.1 Are the senior officers (principal executive officer, principal financial officer, principal accounting officer or controller, or persons performing similar functions) of the reporting entity subject to a code of ethics, which includes the following standards? ..... Yes [  ] No [  ]  
 (a) Honest and ethical conduct, including the ethical handling of actual or apparent conflicts of interest between personal and professional relationships;  
 (b) Full, fair, accurate, timely and understandable disclosure in the periodic reports required to be filed by the reporting entity;  
 (c) Compliance with applicable governmental laws, rules and regulations;  
 (d) The prompt internal reporting of violations to an appropriate person or persons identified in the code; and  
 (e) Accountability for adherence to the code.
- 9.11 If the response to 9.1 is No, please explain:
- 9.2 Has the code of ethics for senior managers been amended? ..... Yes [  ] No [  ]
- 9.21 If the response to 9.2 is Yes, provide information related to amendment(s).
- 9.3 Have any provisions of the code of ethics been waived for any of the specified officers? ..... Yes [  ] No [  ]
- 9.31 If the response to 9.3 is Yes, provide the nature of any waiver(s).

### FINANCIAL

- 10.1 Does the reporting entity report any amounts due from parent, subsidiaries or affiliates on Page 2 of this statement? ..... Yes [  ] No [  ]
- 10.2 If yes, indicate any amounts receivable from parent included in the Page 2 amount: ..... \$ ..... 862

### INVESTMENT

- 11.1 Were any of the stocks, bonds, or other assets of the reporting entity loaned, placed under option agreement, or otherwise made available for use by another person? (Exclude securities under securities lending agreements.) ..... Yes [  ] No [  ]
- 11.2 If yes, give full and complete information relating thereto:
12. Amount of real estate and mortgages held in other invested assets in Schedule BA: ..... \$ .....
13. Amount of real estate and mortgages held in short-term investments: ..... \$ .....
- 14.1 Does the reporting entity have any investments in parent, subsidiaries and affiliates? ..... Yes [  ] No [  ]
- 14.2 If yes, please complete the following:
- |   | 1<br>Prior Year-End<br>Book/Adjusted<br>Carrying Value | 2<br>Current Quarter<br>Book/Adjusted<br>Carrying Value |
|---|--|---|
| 14.21 Bonds .....   | \$ ..... 0   | \$ .....  |
| 14.22 Preferred Stock .....   | \$ ..... 0   | \$ .....  |
| 14.23 Common Stock .....  | \$ ..... 0   | \$ .....  |
| 14.24 Short-Term Investments .....  | \$ ..... 0   | \$ .....  |
| 14.25 Mortgage Loans on Real Estate .....   | \$ ..... 0   | \$ .....  |
| 14.26 All Other .....   | \$ ..... 0   | \$ .....  |
| 14.27 Total Investment in Parent, Subsidiaries and Affiliates (Subtotal Lines 14.21 to 14.26) ..... | \$ ..... 0   | \$ ..... 0  |
| 14.28 Total Investment in Parent included in Lines 14.21 to 14.26 above .....                       | \$ .....   | \$ .....  |
- 15.1 Has the reporting entity entered into any hedging transactions reported on Schedule DB? ..... Yes [  ] No [  ]
- 15.2 If yes, has a comprehensive description of the hedging program been made available to the domiciliary state? ..... Yes [  ] No [  ]  
 If no, attach a description with this statement.

STATEMENT AS OF MARCH 31, 2015 OF THE Cincinnati Equitable Insurance Company  
**GENERAL INTERROGATORIES**

16. For the reporting entity's security lending program, state the amount of the following as of the current statement date:
- |  |          |   |
|--|----------|---|
| 16.1 Total fair value of reinvested collateral assets reported on Schedule DL, Parts 1 and 2 .....                   | \$ ..... | 0 |
| 16.2 Total book adjusted/carrying value of reinvested collateral assets reported on Schedule DL, Parts 1 and 2 ..... | \$ ..... | 0 |
| 16.3 Total payable for securities lending reported on the liability page .....                                       | \$ ..... | 0 |

17. Excluding items in Schedule E - Part 3 - Special Deposits, real estate, mortgage loans and investments held physically in the reporting entity's offices, vaults or safety deposit boxes, were all stocks, bonds and other securities, owned throughout the current year held pursuant to a custodial agreement with a qualified bank or trust company in accordance with Section 1, III - General Examination Considerations, F. Outsourcing of Critical Functions, Custodial or Safekeeping Agreements of the NAIC Financial Condition Examiners Handbook? ..... Yes [  ] No [  ]
- 17.1 For all agreements that comply with the requirements of the NAIC Financial Condition Examiners Handbook, complete the following:

1 Name of Custodian(s)	2 Custodian Address
Fifth Third Bank .....	38 Fountain Square Plaza Cincinnati, OH 45263 .....

- 17.2 For all agreements that do not comply with the requirements of the NAIC Financial Condition Examiners Handbook, provide the name, location and a complete explanation:

1 Name(s)	2 Location(s)	3 Complete Explanation(s)

- 17.3 Have there been any changes, including name changes, in the custodian(s) identified in 17.1 during the current quarter? ..... Yes [  ] No [  ]

- 17.4 If yes, give full information relating thereto:

1 Old Custodian	2 New Custodian	3 Date of Change	4 Reason

- 17.5 Identify all investment advisors, brokers/dealers or individuals acting on behalf of broker/dealers that have access to the investment accounts, handle securities and have authority to make investments on behalf of the reporting entity:

1 Central Registration Depository	2 Name(s)	3 Address
	Cincinnati Asset Management .....	8845 Governor's Hill Drive Cincinnati, OH 45249 .....

- 18.1 Have all the filing requirements of the Purposes and Procedures Manual of the NAIC Securities Valuation Office been followed? ..... Yes [  ] No [  ]

- 18.2 If no, list exceptions:

# GENERAL INTERROGATORIES

## PART 2 - PROPERTY & CASUALTY INTERROGATORIES

1. If the reporting entity is a member of a pooling arrangement, did the agreement or the reporting entity's participation change? ..... Yes [ ] No [ ] N/A [ X ]  
If yes, attach an explanation.

2. Has the reporting entity reinsured any risk with any other reporting entity and agreed to release such entity from liability, in whole or in part, from any loss that may occur on the risk, or portion thereof, reinsured? ..... Yes [ ] No [ X ]  
If yes, attach an explanation.

3.1 Have any of the reporting entity's primary reinsurance contracts been canceled? ..... Yes [ ] No [ X ]

3.2 If yes, give full and complete information thereto.

4.1 Are any of the liabilities for unpaid losses and loss adjustment expenses other than certain workers' compensation tabular reserves (see Annual Statement Instructions pertaining to disclosure of discounting for definition of "tabular reserves") discounted at a rate of interest greater than zero? ..... Yes [ ] No [ X ]

4.2 If yes, complete the following schedule:

			TOTAL DISCOUNT				DISCOUNT TAKEN DURING PERIOD			
1	2	3	4	5	6	7	8	9	10	11
Line of Business	Maximum Interest	Discount Rate	Unpaid Losses	Unpaid LAE	IBNR	TOTAL	Unpaid Losses	Unpaid LAE	IBNR	TOTAL
TOTAL			0	0	0	0	0	0	0	0

5. Operating Percentages:

5.1 A&H loss percent ..... %

5.2 A&H cost containment percent ..... %

5.3 A&H expense percent excluding cost containment expenses ..... %

6.1 Do you act as a custodian for health savings accounts? ..... Yes [ ] No [ X ]

6.2 If yes, please provide the amount of custodial funds held as of the reporting date ..... \$.....

6.3 Do you act as an administrator for health savings accounts? ..... Yes [ ] No [ X ]

6.4 If yes, please provide the balance of the funds administered as of the reporting date ..... \$.....

**SCHEDULE F - CEDED REINSURANCE**

Showing All New Reinsurers - Current Year to Date

1 NAIC Company Code	2 ID Number	3 Name of Reinsurer	4 Domiciliary Jurisdiction	5 Type of Reinsurer	6 Certified Reinsurer Rating (1 through 6)	7 Effective Date of Certified Reinsurer Rating
<b>NONE</b>						

STATEMENT AS OF MARCH 31, 2015 OF THE Cincinnati Equitable Insurance Company

**SCHEDULE T - EXHIBIT OF PREMIUMS WRITTEN**

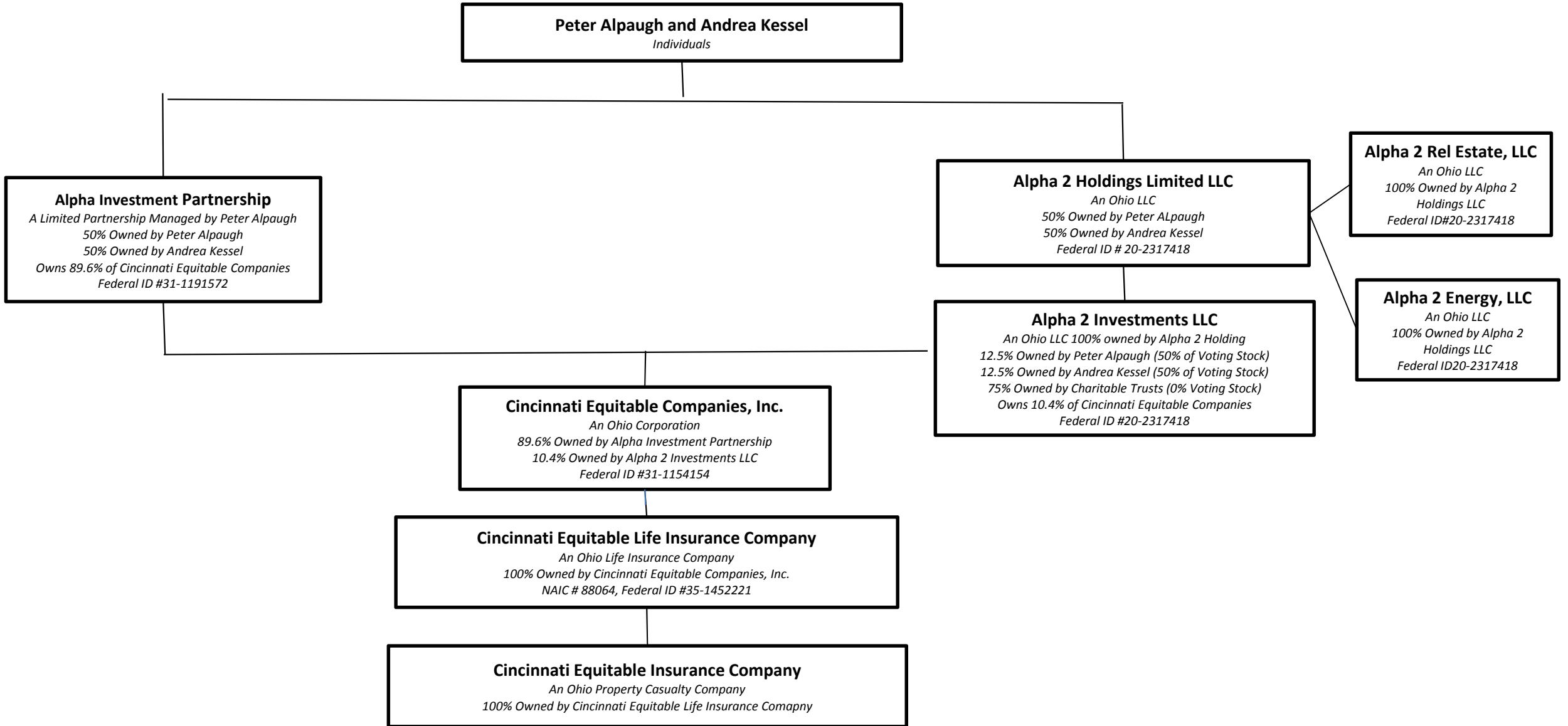
Current Year to Date - Allocated by States and Territories

States, etc.	1 Active Status	Direct Premiums Written		Direct Losses Paid (Deducting Salvage)		Direct Losses Unpaid	
		2 Current Year To Date	3 Prior Year To Date	4 Current Year To Date	5 Prior Year To Date	6 Current Year To Date	7 Prior Year To Date
1. Alabama .....AL	N						
2. Alaska .....AK	N						
3. Arizona .....AZ	N						
4. Arkansas .....AR	N						
5. California .....CA	N						
6. Colorado .....CO	N						
7. Connecticut .....CT	N						
8. Delaware .....DE	N						
9. District of Columbia .....DC	N						
10. Florida .....FL	N						
11. Georgia .....GA	N						
12. Hawaii .....HI	N						
13. Idaho .....ID	N						
14. Illinois .....IL	L						
15. Indiana .....IN	L						
16. Iowa .....IA	N						
17. Kansas .....KS	N						
18. Kentucky .....KY	L						
19. Louisiana .....LA	N						
20. Maine .....ME	N						
21. Maryland .....MD	N						
22. Massachusetts .....MA	N						
23. Michigan .....MI	N						
24. Minnesota .....MN	N						
25. Mississippi .....MS	N						
26. Missouri .....MO	N						
27. Montana .....MT	N						
28. Nebraska .....NE	N						
29. Nevada .....NV	N						
30. New Hampshire .....NH	N						
31. New Jersey .....NJ	N						
32. New Mexico .....NM	N						
33. New York .....NY	N						
34. North Carolina .....NC	N						
35. North Dakota .....ND	N						
36. Ohio .....OH	L						
37. Oklahoma .....OK	N						
38. Oregon .....OR	N						
39. Pennsylvania .....PA	L					30,000	20,000
40. Rhode Island .....RI	N						
41. South Carolina .....SC	N						
42. South Dakota .....SD	N						
43. Tennessee .....TN	N						
44. Texas .....TX	N						
45. Utah .....UT	N						
46. Vermont .....VT	N						
47. Virginia .....VA	N						
48. Washington .....WA	N						
49. West Virginia .....WV	N						
50. Wisconsin .....WI	N						
51. Wyoming .....WY	N						
52. American Samoa .....AS	N						
53. Guam .....GU	N						
54. Puerto Rico .....PR	N						
55. U.S. Virgin Islands .....VI	N						
56. Northern Mariana Islands .....MP	N						
57. Canada .....CAN	N						
58. Aggregate Other Alien OT	XXX	0	0	0	0	0	0
59. Totals	(a) 5	0	0	0	0	30,000	20,000
DETAILS OF WRITE-INS							
58001.	XXX						
58002.	XXX						
58003.	XXX						
58998. Summary of remaining write-ins for Line 58 from overflow page	XXX	0	0	0	0	0	0
58999. Totals (Lines 58001 through 58003 plus 58998)(Line 58 above)	XXX	0	0	0	0	0	0

(L) Licensed or Chartered - Licensed Insurance Carrier or Domiciled RRG; (R) Registered - Non-domiciled RRGs; (Q) Qualified - Qualified or Accredited Reinsurer; (E) Eligible - Reporting Entities eligible or approved to write Surplus Lines in the state; (N) None of the above - Not allowed to write business in the state.

(a) Insert the number of L responses except for Canada and Other Alien.

STATEMENT AS OF MARCH 31, 2015 OF THE Cincinnati Equitable Insurance Company



STATEMENT AS OF MARCH 31, 2015 OF THE Cincinnati Equitable Insurance Company

**SCHEDULE Y**

**PART 1A - DETAIL OF INSURANCE HOLDING COMPANY SYSTEM**

1	2	3	4	5	6	7	8	9	10	11	12	13	14	15
Group Code	Group Name	NAIC Company Code	ID Number	Federal RSSD	CIK	Name of Securities Exchange if Publicly Traded (U.S. or International)	Names of Parent, Subsidiaries Or Affiliates	Domiciliary Location	Relationship to Reporting Entity	Directly Controlled by (Name of Entity/Person)	Type of Control (Ownership, Board, Management, Attorney-in-Fact, Influence, Other)	If Control is Ownership Provide Percentage	Ultimate Controlling Entity(ies)/Person(s)	*
			31-1191572				Alpha Investment Partnership	OH	UIP	Peter Alpaugh/ Andrea Kessel	Ownership	100.000	Peter Alpaugh/ Andrea Kessel	
			20-2317418				Alpha 2 Holdings	OH	UIP	Peter Alpaugh/ Andrea Kessel	Ownership	100.000	Peter Alpaugh/ Andrea Kessel	
			20-2317418				Alpha 2 Real Estate	OH	NIA	Peter Alpaugh/ Andrea Kessel	Ownership	100.000	Peter Alpaugh/ Andrea Kessel	
			20-2317418				Alpha 2 Energy	OH	NIA	Peter Alpaugh/ Andrea Kessel	Ownership	100.000	Peter Alpaugh/ Andrea Kessel	
			20-2317418				Alpha 2 Investments	OH	UIP	Peter Alpaugh/ Andrea Kessel	Ownership	100.000	Peter Alpaugh/ Andrea Kessel	
.0838	Cincinnati Equitable Companies	.00020	31-1154154				Cincinnati Equitable Companies, Inc	OH	UDP	Peter Alpaugh/ Andrea Kessel	Ownership	100.000	Peter Alpaugh/ Andrea Kessel	
.0838	Cincinnati Equitable Companies	.88064	35-1452221				Cincinnati Equitable Life Ins. Co.	OH	UDP	Cincinnati Equitable Companies, Inc	Ownership	100.000	Peter Alpaugh/ Andrea Kessel	
.0838	Cincinnati Equitable Companies	.16721	31-0239840				Cincinnati Equitable Insurance Co.	OH	IA	Cincinnati Equitable Life Insurance	Ownership	100.000	Peter Alpaugh/ Andrea Kessel	

NONE

Asterisk	Explanation

Part 1 - Loss Experience

**NONE**

Part 2 - Direct Premiums Written

**NONE**

STATEMENT AS OF MARCH 31, 2015 OF THE Cincinnati Equitable Insurance Company

**PART 3 (000 omitted)**

LOSS AND LOSS ADJUSTMENT EXPENSE RESERVES SCHEDULE

	1	2	3	4	5	6	7	8	9	10	11	12	13
Years in Which Losses Occurred	Prior Year-End Known Case Loss and LAE Reserves	Prior Year-End IBNR Loss and LAE Reserves	Total Prior Year-End Loss and LAE Reserves (Cols. 1+2)	2015 Loss and LAE Payments on Claims Reported as of Prior Year-End	2015 Loss and LAE Payments on Claims Unreported as of Prior Year-End	Total 2015 Loss and LAE Payments (Cols. 4+5)	Q.S. Date Known Case Loss and LAE Reserves on Claims Reported and Open as of Prior Year End	Q.S. Date Known Case Loss and LAE Reserves on Claims Reported or Reopened Subsequent to Prior Year End	Q.S. Date IBNR Loss and LAE Reserves	Total Q.S. Loss and LAE Reserves (Cols.7+8+9)	Prior Year-End Known Case Loss and LAE Reserves Developed (Savings)/ Deficiency (Cols.4+7 minus Col. 1)	Prior Year-End IBNR Loss and LAE Reserves Developed (Savings)/ Deficiency (Cols. 5+8+9 minus Col. 2)	Prior Year-End Total Loss and LAE Reserve Developed (Savings)/ Deficiency (Cols. 11+12)
1. 2012 + Prior .....	30	7	37	1		1	30		7	37	1	0	1
2. 2013 .....			0			0				0	0	0	0
3. Subtotals 2013 + Prior .....	30	7	37	1	0	1	30	0	7	37	1	0	1
4. 2014 .....			0			0				0	0	0	0
5. Subtotals 2014 + Prior .....	30	7	37	1	0	1	30	0	7	37	1	0	1
6. 2015 .....	XXX	XXX	XXX	XXX		0	XXX			0	XXX	XXX	XXX
7. Totals .....	30	7	37	1	0	1	30	0	7	37	1	0	1
8. Prior Year-End Surplus As Regards Policyholders	3,830										Col. 11, Line 7 As % of Col. 1 Line 7	Col. 12, Line 7 As % of Col. 2 Line 7	Col. 13, Line 7 As % of Col. 3 Line 7
											1. 3.3	2. 0.0	3. 2.7
													Col. 13, Line 7 As a % of Col. 1 Line 8
													4. 0.0

# SUPPLEMENTAL EXHIBITS AND SCHEDULES INTERROGATORIES

The following supplemental reports are required to be filed as part of your statement filing. However, in the event that your company does not transact the type of business for which the special report must be filed, your response of NO to the specific interrogatory will be accepted in lieu of filing a "NONE" report and a bar code will be printed below. If the supplement is required of your company but is not being filed for whatever reason enter SEE EXPLANATION and provide an explanation following the interrogatory questions.

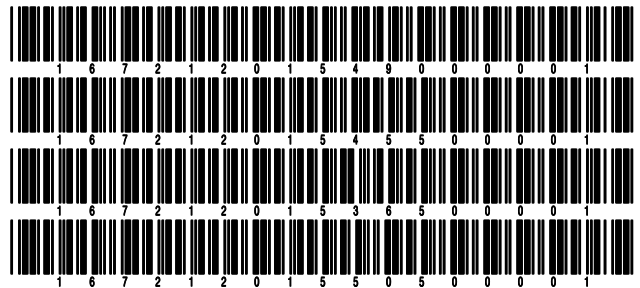
	Response
1. Will the Trusteed Surplus Statement be filed with the state of domicile and the NAIC with this statement? .....	NO
2. Will Supplement A to Schedule T (Medical Professional Liability Supplement) be filed with this statement? .....	NO
3. Will the Medicare Part D Coverage Supplement be filed with the state of domicile and the NAIC with this statement? .....	NO
4. Will the Director and Officer Insurance Coverage Supplement be filed with the state of domicile and the NAIC with this statement? .....	NO

Explanations:

1. N/A
2. N/A
3. N/A
4. N/A

Bar Codes:

1. Trusteed Surplus Statement [Document Identifier 490]
2. Supplement A to Schedule T [Document Identifier 455]
3. Medicare Part D Coverage Supplement [Document Identifier 365]
4. Director and Officer Supplement [Document Identifier 505]



**OVERFLOW PAGE FOR WRITE-INS**

STATEMENT AS OF MARCH 31, 2015 OF THE Cincinnati Equitable Insurance Company

**SCHEDULE A - VERIFICATION**

Real Estate

	1 Year to Date	2 Prior Year Ended December 31
1. Book/adjusted carrying value, December 31 of prior year .....		
2. Cost of acquired:		
2.1 Actual cost at time of acquisition .....		
2.2 Additional investment made after acquisition .....		
3. Current year change in encumbrances .....		
4. Total gain (loss) on disposals .....		
5. Deduct amounts received on disposals .....		
6. Total foreign exchange change in book/adjusted carrying value .....		
7. Deduct current year's other than temporary impairment recognized .....		
8. Deduct current year's depreciation .....		
9. Book/adjusted carrying value at the end of current period (Lines 1+2+3+4-5+6-7-8) .....		
10. Deduct total nonadmitted amounts .....		
11. Statement value at end of current period (Line 9 minus Line 10) .....		

**NONE**

**SCHEDULE B - VERIFICATION**

Mortgage Loans

	1 Year to Date	2 Prior Year Ended December 31
1. Book value/recorded investment excluding accrued interest, December 31 of prior year .....		
2. Cost of acquired:		
2.1 Actual cost at time of acquisition .....		
2.2 Additional investment made after acquisition .....		
3. Capitalized deferred interest and other .....		
4. Accrual of discount .....		
5. Unrealized valuation increase (decrease) .....		
6. Total gain (loss) on disposals .....		
7. Deduct amounts received on disposals .....		
8. Deduct amortization of premium and mortgage interest and commitment fees .....		
9. Total foreign exchange change in book value/recorded investment excluding accrued interest .....		
10. Deduct current year's other than temporary impairment recognized .....		
11. Book value/recorded investment excluding accrued interest at end of current period (Lines 1+2+3+4+5+6-7-8+9-10) .....		
12. Total valuation allowance .....		
13. Subtotal (Line 11 plus Line 12) .....		
14. Deduct total nonadmitted amounts .....		
15. Statement value at end of current period (Line 13 minus Line 14) .....		

**NONE**

**SCHEDULE BA - VERIFICATION**

Other Long-Term Invested Assets

	1 Year to Date	2 Prior Year Ended December 31
1. Book/adjusted carrying value, December 31 of prior year .....		
2. Cost of acquired:		
2.1 Actual cost at time of acquisition .....		
2.2 Additional investment made after acquisition .....		
3. Capitalized deferred interest and other .....		
4. Accrual of discount .....		
5. Unrealized valuation increase (decrease) .....		
6. Total gain (loss) on disposals .....		
7. Deduct amounts received on disposals .....		
8. Deduct amortization of premium and depreciation .....		
9. Total foreign exchange change in book/adjusted carrying value .....		
10. Deduct current year's other than temporary impairment recognized .....		
11. Book/adjusted carrying value at end of current period (Lines 1+2+3+4+5+6-7-8+9-10) .....		
12. Deduct total nonadmitted amounts .....		
13. Statement value at end of current period (Line 11 minus Line 12) .....		

**NONE**

**SCHEDULE D - VERIFICATION**

Bonds and Stocks

	1 Year to Date	2 Prior Year Ended December 31
1. Book/adjusted carrying value of bonds and stocks, December 31 of prior year .....	3,701,852	4,119,477
2. Cost of bonds and stocks acquired .....	116,893	1,098,942
3. Accrual of discount .....	347	953
4. Unrealized valuation increase (decrease) .....	18,316	8,527
5. Total gain (loss) on disposals .....	42,925	13,703
6. Deduct consideration for bonds and stocks disposed of .....	499,450	1,528,152
7. Deduct amortization of premium .....	1,915	11,597
8. Total foreign exchange change in book/adjusted carrying value .....		0
9. Deduct current year's other than temporary impairment recognized .....		0
10. Book/adjusted carrying value at end of current period (Lines 1+2+3+4+5-6-7+8-9) .....	3,378,968	3,701,852
11. Deduct total nonadmitted amounts .....		0
12. Statement value at end of current period (Line 10 minus Line 11) .....	3,378,968	3,701,852

STATEMENT AS OF MARCH 31, 2015 OF THE Cincinnati Equitable Insurance Company

**SCHEDULE D - PART 1B**

Showing the Acquisitions, Dispositions and Non-Trading Activity  
During the Current Quarter for all Bonds and Preferred Stock by NAIC Designation

NAIC Designation	1 Book/Adjusted Carrying Value Beginning of Current Quarter	2 Acquisitions During Current Quarter	3 Dispositions During Current Quarter	4 Non-Trading Activity During Current Quarter	5 Book/Adjusted Carrying Value End of First Quarter	6 Book/Adjusted Carrying Value End of Second Quarter	7 Book/Adjusted Carrying Value End of Third Quarter	8 Book/Adjusted Carrying Value December 31 Prior Year
<b>BONDS</b>								
1. NAIC 1 (a) .....	1,863,608	49,982	(53,223)	(740)	1,966,074			1,863,608
2. NAIC 2 (a) .....	720,343	22,405	842	(338)	741,568			720,343
3. NAIC 3 (a) .....	407,543	0	32,041	952	376,454			407,543
4. NAIC 4 (a) .....	458,313	44,506	42,485	(6,629)	453,704			458,313
5. NAIC 5 (a) .....	8,550	0	0	733	9,283			8,550
6. NAIC 6 (a) .....	0				0			
7. Total Bonds	3,458,357	116,893	22,144	(6,023)	3,547,082	0	0	3,458,357
<b>PREFERRED STOCK</b>								
8. NAIC 1 .....	0				0			
9. NAIC 2 .....	235,300	0	0	13,500	248,800			235,300
10. NAIC 3 .....	66,420	0	0	9,180	75,600			66,420
11. NAIC 4 .....	0				0			
12. NAIC 5 .....	0				0			
13. NAIC 6 .....	0				0			
14. Total Preferred Stock	301,720	0	0	22,680	324,400	0	0	301,720
15. Total Bonds and Preferred Stock	3,760,077	116,893	22,144	16,657	3,871,482	0	0	3,760,077

(a) Book/Adjusted Carrying Value column for the end of the current reporting period includes the following amount of non-rated short-term and cash equivalent bonds by NAIC designation: NAIC 1 \$ ..... ; NAIC 2 \$ ..... ; NAIC 3 \$ ..... ; NAIC 4 \$ ..... ; NAIC 5 \$ ..... ; NAIC 6 \$ .....

S102

**SCHEDULE DA - PART 1**

## Short-Term Investments

	1	2	3	4	5
	Book/Adjusted Carrying Value	Par Value	Actual Cost	Interest Collected Year-to-Date	Paid for Accrued Interest Year-to-Date
9199999 Totals	497,460	xxx	497,460	2	

**SCHEDULE DA - VERIFICATION**

## Short-Term Investments

	1	2
	Year To Date	Prior Year Ended December 31
1. Book/adjusted carrying value, December 31 of prior year .....	63,075	96,313
2. Cost of short-term investments acquired .....	434,385	63,075
3. Accrual of discount .....		0
4. Unrealized valuation increase (decrease) .....		0
5. Total gain (loss) on disposals .....		0
6. Deduct consideration received on disposals .....		96,313
7. Deduct amortization of premium .....		0
8. Total foreign exchange change in book/adjusted carrying value .....		0
9. Deduct current year's other than temporary impairment recognized .....		0
10. Book/adjusted carrying value at end of current period (Lines 1+2+3+4+5-6-7+8-9) .....	497,460	63,075
11. Deduct total nonadmitted amounts .....		0
12. Statement value at end of current period (Line 10 minus Line 11)	497,460	63,075

Schedule DB - Part A - Verification - Options, Caps, Floors, Collars, Swaps and Forwards

**N O N E**

Schedule DB - Part B - Verification - Futures Contracts

**N O N E**

Schedule DB - Part C - Section 1 - Replication (Synthetic Asset) Transactions (RSATs) Open

**N O N E**

Schedule DB-Part C-Section 2-Reconciliation of Replication (Synthetic Asset) Transactions Open

**N O N E**

Schedule DB - Verification - Book/Adjusted Carrying Value, Fair Value and Potential Exposure of  
Derivatives

**N O N E**

Schedule E - Verification - Cash Equivalents

**N O N E**

Schedule A - Part 2 - Real Estate Acquired and Additions Made

**N O N E**

Schedule A - Part 3 - Real Estate Disposed

**N O N E**

Schedule B - Part 2 - Mortgage Loans Acquired and Additions Made

**N O N E**

Schedule B - Part 3 - Mortgage Loans Disposed, Transferred or Repaid

**N O N E**

Schedule BA - Part 2 - Other Long-Term Invested Assets Acquired and Additions Made

**N O N E**

Schedule BA - Part 3 - Other Long-Term Invested Assets Disposed, Transferred or Repaid

**N O N E**

STATEMENT AS OF MARCH 31, 2015 OF THE Cincinnati Equitable Insurance Company

**SCHEDULE D - PART 3**

Show All Long-Term Bonds and Stock Acquired During the Current Quarter

1 CUSIP Identification	2 Description	3 Foreign	4 Date Acquired	5 Name of Vendor	6 Number of Shares of Stock	7 Actual Cost	8 Par Value	9 Paid for Accrued Interest and Dividends	10 NAIC Desig- nation or Market Indicator (a)
002824-BB-5	ABBOTT LABORATORIES		.03/05/2015	Crew		20,000	20,000	.0	1FE
131347-CF-1	CALPINE CORP		.03/10/2015	Crew		15,075	15,000	.553	4FE
125450-AB-4	CHC HELICOPTER		.02/02/2015	Schwab		2,356	2,700	.76	4FE
16524R-AE-3	CHESAPEAKE (ACCESS) MIDSTREAM PARTNERS		.01/20/2015	Crew		3,203	3,000	.4	2FE
18911M-AD-3	CLOUD PEAK ENERGY RES		.02/18/2015	Broker		4,070	4,000	.64	4FE
212015-AH-4	CONTINENTAL RESOURCES		.03/04/2015	Crew		4,975	5,000	.121	2FE
69353R-EK-0	PNC BANK NA		.02/18/2015	Crew		29,982	30,000	.0	1FE
85207U-AJ-4	SPRINT CORP		.03/10/2015	Crew		23,005	23,000	.16	4FE
88037E-AJ-0	TENNECO INC		.03/19/2015	Crew		3,131	3,000	.49	2FE
912920-AC-9	US WEST COMMUNICATIONS		.01/26/2015	Crew		11,096	11,000	.281	2FE
United States						116,893	116,700	1,166	XXX
3899999. Subtotal - Bonds - Industrial and Miscellaneous (Unaffiliated)						116,893	116,700	1,166	XXX
8399997. Total - Bonds - Part 3						116,893	116,700	1,166	XXX
8399998. Total - Bonds - Part 5						XXX	XXX	XXX	XXX
8399999. Total - Bonds						116,893	116,700	1,166	XXX
8999997. Total - Preferred Stocks - Part 3						0	XXX	0	XXX
8999998. Total - Preferred Stocks - Part 5						XXX	XXX	XXX	XXX
8999999. Total - Preferred Stocks						0	XXX	0	XXX
9799997. Total - Common Stocks - Part 3						0	XXX	0	XXX
9799998. Total - Common Stocks - Part 5						XXX	XXX	XXX	XXX
9799999. Total - Common Stocks						0	XXX	0	XXX
9899999. Total - Preferred and Common Stocks						0	XXX	0	XXX
9999999 - Totals						116,893	XXX	1,166	XXX

(a) For all common stock bearing the NAIC market indicator "U" provide: the number of such issues .....

STATEMENT AS OF MARCH 31, 2015 OF THE Cincinnati Equitable Insurance Company

**SCHEDULE D - PART 4**

Show All Long-Term Bonds and Stock Sold, Redeemed or Otherwise Disposed of During the Current Quarter

1	2	3	4	5	6	7	8	9	10	Change In Book/Adjusted Carrying Value					16	17	18	19	20	21	22			
										11	12	13	14	15										
CUSIP Identification	Description	Foreign	Disposal Date	Name of Purchaser	Number of Shares of Stock	Consideration	Par Value	Actual Cost	Prior Year Book/Adjusted Carrying Value	Unrealized Valuation Increase/(Decrease)	Current Year's (Amortization)/Accretion	Current Year's Other Than Temporary Impairment Recognized	Total Change in Book/Adjusted Carrying Value (11 + 12 - 13)	Total Foreign Exchange Change in Book /Adjusted Carrying Value	Book/Adjusted Carrying Value at Disposal Date	Foreign Exchange Gain (Loss) on Disposal	Realized Gain (Loss) on Disposal	Total Gain (Loss) on Disposal	Bond Interest/Stock Dividends Received During Year	Stated Contractual Maturity Date	NAIC Designation or Market Indicator (a)			
17275R-AH-5	CISCO SYSTEMS INC		03/02/2015	Crew		16,709	15,000	15,550	15,336	0	(10)	0	(10)	0	15,325	0	1,384	1,384	428	01/15/2020	1FE			
29078E-AA-3	EMBARQ CORP		01/26/2015	Crew		11,525	10,000	10,540	10,517	0	(1)	0	(1)	0	10,516	0	1,009	1,009	129	06/01/2036	3FE			
459200-GJ-4	TBM CORP		03/11/2015	Call		376,456	335,000	350,073	340,139	0	(345)	0	(345)	0	339,794	0	36,662	36,662	0	09/14/2017	1FE			
552953-CC-3	MGM RESORTS INTL		03/23/2015	Crew		22,578	22,000	21,890	21,890	0	2	0	2	0	21,893	0	685	685	444	03/15/2023	4FE			
693476-BJ-1	PNC FUNDING CORP		02/18/2015	KEEFE		28,363	25,000	26,160	25,714	0	(18)	0	(18)	0	25,696	0	2,667	2,667	694	02/08/2020	1FE			
780153-AJ-6	ROYAL CARIBBEAN CRUISE LTD		02/27/2015	Crew		22,575	21,000	21,551	21,516	0	(8)	0	(8)	0	21,508	0	1,068	1,068	334	11/15/2022	3FE			
852061-AS-9	SPRINT NEXTEL CORP		02/20/2015	Schwab		20,055	21,000	20,554	19,478	1,120	6	0	1,126	0	20,604	0	(549)	(549)	350	11/15/2022	4FE			
909319-AA-3	UNITED AIR 2013-1 A PTT		02/17/2015	Redemption		346	346	352	347	0	0	0	0	0	346	0	0	0	7	08/15/2025	1FE			
023650-AG-9	AMERICA WEST AIR		01/05/2015	Redemption		232	232	242	232	0	0	0	0	0	232	0	0	0	9	01/02/2022	2FE			
21079V-AA-1	CONTINENTAL AIRLINES INC		01/13/2015	Redemption		610	610	598	610	0	0	0	0	0	610	0	0	0	14	01/12/2021	2FE			
<b>United States</b>						499,450	450,189	467,510	455,778	1,120	(374)	0	746	0	456,524	0	42,925	42,925	2,408	XXX	XXX			
3899999. Subtotal - Bonds - Industrial and Miscellaneous (Unaffiliated)						499,450	450,189	467,510	455,778	1,120	(374)	0	746	0	456,524	0	42,925	42,925	2,408	XXX	XXX			
8399997. Total - Bonds - Part 4						499,450	450,189	467,510	455,778	1,120	(374)	0	746	0	456,524	0	42,925	42,925	2,408	XXX	XXX			
8399998. Total - Bonds - Part 5						XXX	XXX	XXX	XXX	XXX	XXX	XXX	XXX	XXX	XXX	XXX	XXX	XXX	XXX	XXX	XXX	XXX		
8399999. Total - Bonds						499,450	450,189	467,510	455,778	1,120	(374)	0	746	0	456,524	0	42,925	42,925	2,408	XXX	XXX			
8999997. Total - Preferred Stocks - Part 4						0	XXX	0	0	0	0	0	0	0	0	0	0	0	0	0	0	XXX	XXX	
8999998. Total - Preferred Stocks - Part 5						XXX	XXX	XXX	XXX	XXX	XXX	XXX	XXX	XXX	XXX	XXX	XXX	XXX	XXX	XXX	XXX	XXX	XXX	
8999999. Total - Preferred Stocks						0	XXX	0	0	0	0	0	0	0	0	0	0	0	0	0	0	XXX	XXX	
9799997. Total - Common Stocks - Part 4						0	XXX	0	0	0	0	0	0	0	0	0	0	0	0	0	0	XXX	XXX	
9799998. Total - Common Stocks - Part 5						XXX	XXX	XXX	XXX	XXX	XXX	XXX	XXX	XXX	XXX	XXX	XXX	XXX	XXX	XXX	XXX	XXX	XXX	
9799999. Total - Common Stocks						0	XXX	0	0	0	0	0	0	0	0	0	0	0	0	0	0	XXX	XXX	
9899999. Total - Preferred and Common Stocks						0	XXX	0	0	0	0	0	0	0	0	0	0	0	0	0	0	0	XXX	XXX
9999999 - Totals						499,450	XXX	467,510	455,778	1,120	(374)	0	746	0	456,524	0	42,925	42,925	2,408	XXX	XXX			

(a) For all common stock bearing the NAIC market indicator "U" provide: the number of such issues.....

Schedule DB - Part A - Section 1 - Options, Caps, Floors, Collars, Swaps and Forwards Open

**N O N E**

Schedule DB - Part B - Section 1 - Futures Contracts Open

**N O N E**

Schedule DB - Part B - Section 1B - Brokers with whom cash deposits have been made

**N O N E**

Schedule DB - Part D - Section 1 - Counterparty Exposure for Derivative Instruments Open

**N O N E**

Schedule DB - Part D-Section 2 - Collateral for Derivative Instruments Open - Pledged By

**N O N E**

Schedule DB - Part D-Section 2 - Collateral for Derivative Instruments Open - Pledged To

**N O N E**

Schedule DL - Part 1 - Reinvested Collateral Assets Owned

**N O N E**

Schedule DL - Part 2 - Reinvested Collateral Assets Owned

**N O N E**



Schedule E - Part 2 - Cash Equivalents - Investments Owned End of Current Quarter

**N O N E**