



ANNUAL STATEMENT

For the Year Ended December 31, 2014  
of the Condition and Affairs of the

PROGRESSIVE AMERICAN INSURANCE COMPANY

NAIC Group Code.....155, 155  
(Current Period) (Prior Period)

Organized under the Laws of OH  
Incorporated/Organized..... August 25, 1971

Statutory Home Office

Main Administrative Office

Mail Address

Primary Location of Books and Records

Internet Web Site Address

Statutory Statement Contact

NAIC Company Code..... 24252

State of Domicile or Port of Entry OH

6300 WILSON MILLS ROAD, W33..... CLEVELAND ..... OH ..... US ..... 44143-2182  
(Street and Number) (City or Town, State, Country and Zip Code)

6300 WILSON MILLS ROAD, W33..... CLEVELAND ..... OH ..... US..... 44143-2182 440-461-5000  
(Street and Number) (City or Town, State, Country and Zip Code) (Area Code) (Telephone Number)

P.O. BOX 89490..... CLEVELAND ..... OH ..... US ..... 44101-6490  
(Street and Number or P. O. Box) (City or Town, State, Country and Zip Code)

6300 WILSON MILLS ROAD, W33..... CLEVELAND ..... OH ..... US ..... 44143-2182 440-395-4460  
(Street and Number) (City or Town, State, Country and Zip Code) (Area Code) (Telephone Number)

PROGRESSIVE.COM

MARY BETH ANDREANO  
(Name)  
FINANCIAL\_REPORTING@PROGRESSIVE.COM  
(E-Mail Address)

Employer's ID Number..... 34-1094197

Country of Domicile US

Commenced Business..... April 2, 1979

440-395-4460  
(Area Code) (Telephone Number) (Extension)

440-603-5500  
(Fax Number)

POLICYHOLDER SERVICES AND CLAIMS REPORTING -- 1-800-PROGRESSIVE (1-800-776-4737)

OFFICERS

Name	Title	Name	Title
DAVID JAMES SKOVE	PRESIDENT	DANE ALLEN SHRALLOW	SECRETARY
THOMAS ALFRED KING	TREASURER		

OTHER

MARY BETH ANDREANO	(VICE PRESIDENT)	KAREN BARONE BAILO	(VICE PRESIDENT)
KATHLEEN MARY CERNY	(ASST. SECRETARY)	SARAH ELIZABETH FRYE	(VICE PRESIDENT)
JAMES LEE KUSMER	(ASST. TREASURER)		

DIRECTORS OR TRUSTEES

KAREN BARONE BAILO	RICHARD RUSSELL CRAWLEY	KATHRYN MARGARET LEMIEUX	DAVID LLOYD PRATT
DAVID JAMES SKOVE			

State of..... OHIO  
County of..... CUYAHOGA

The officers of this reporting entity being duly sworn, each depose and say that they are the described officers of said reporting entity, and that on the reporting period stated above, all of the herein described assets were the absolute property of the said reporting entity, free and clear from any liens or claims thereon, except as herein stated, and that this statement, together with related exhibits, schedules and explanations therein contained, annexed or referred to, is a full and true statement of all the assets and liabilities and of the condition and affairs of the said reporting entity as of the reporting period stated above, and of its income and deductions therefrom for the period ended, and have been completed in accordance with the NAIC *Annual Statement Instructions and Accounting Practices and Procedures* manual except to the extent that: (1) state law may differ; or, (2) that state rules or regulations require differences in reporting not related to accounting practices and procedures, according to the best of their information, knowledge and belief, respectively. Furthermore, the scope of this attestation by the described officers also includes the related corresponding electronic filing with the NAIC, when required, that is an exact copy (except for formatting differences due to electronic filing) of the enclosed statement. The electronic filing may be requested by various regulators in lieu of or in addition to the enclosed statement.

(Signature) DAVID JAMES SKOVE	(Signature) KATHLEEN MARY CERNY	(Signature) THOMAS ALFRED KING
1. (Printed Name) PRESIDENT	2. (Printed Name) ASSISTANT SECRETARY	3. (Printed Name) TREASURER
(Title)	(Title)	(Title)

Subscribed and sworn to before me

This 17TH day of FEBRUARY, 2015

a. Is this an original filing?

Yes [ X ] No [ ]

b. If no

1. State the amendment number

2. Date filed

3. Number of pages attached

ASSETS

	Current Year			Prior Year
	1	2	3	4
	Assets	Nonadmitted Assets	Net Admitted Assets (Cols. 1 - 2)	Net Admitted Assets
1. Bonds (Schedule D).....	146,493,855		146,493,855	175,475,935
2. Stocks (Schedule D):				
2.1 Preferred stocks.....			0	
2.2 Common stocks.....			0	
3. Mortgage loans on real estate (Schedule B):				
3.1 First liens.....			0	
3.2 Other than first liens.....			0	
4. Real estate (Schedule A):				
4.1 Properties occupied by the company (less \$.....0 encumbrances).....			0	
4.2 Properties held for the production of income (less \$.....0 encumbrances).....			0	
4.3 Properties held for sale (less \$.....0 encumbrances).....			0	
5. Cash (\$.....0, Schedule E-Part 1), cash equivalents (\$....44,099,983, Schedule E-Part 2) and short-term investments (\$.....2,861,229, Schedule DA).....	46,961,212		46,961,212	
6. Contract loans (including \$.....0 premium notes).....			0	
7. Derivatives (Schedule DB).....			0	
8. Other invested assets (Schedule BA).....			0	
9. Receivables for securities.....			0	
10. Securities lending reinvested collateral assets (Schedule DL).....			0	
11. Aggregate write-ins for invested assets.....	0	0	0	0
12. Subtotals, cash and invested assets (Lines 1 to 11).....	193,455,067	0	193,455,067	175,475,935
13. Title plants less \$.....0 charged off (for Title insurers only).....			0	
14. Investment income due and accrued.....	1,112,669		1,112,669	902,375
15. Premiums and considerations:				
15.1 Uncollected premiums and agents' balances in the course of collection.....	29,083,949	4,325,821	24,758,128	22,097,616
15.2 Deferred premiums, agents' balances and installments booked but deferred and not yet due (including \$.....0 earned but unbilled premiums).....	135,264,398		135,264,398	130,963,564
15.3 Accrued retrospective premiums.....			0	
16. Reinsurance:				
16.1 Amounts recoverable from reinsurers.....	3,479,478		3,479,478	7,802,455
16.2 Funds held by or deposited with reinsured companies.....			0	
16.3 Other amounts receivable under reinsurance contracts.....			0	
17. Amounts receivable relating to uninsured plans.....			0	
18.1 Current federal and foreign income tax recoverable and interest thereon.....			0	
18.2 Net deferred tax asset.....	8,131,297		8,131,297	8,206,036
19. Guaranty funds receivable or on deposit.....			0	
20. Electronic data processing equipment and software.....			0	
21. Furniture and equipment, including health care delivery assets (\$.....0).....			0	
22. Net adjustment in assets and liabilities due to foreign exchange rates.....			0	
23. Receivables from parent, subsidiaries and affiliates.....	46,065,873		46,065,873	40,858,375
24. Health care (\$.....0) and other amounts receivable.....			0	
25. Aggregate write-ins for other than invested assets.....	4,040,350	70,164	3,970,186	3,746,013
26. Total assets excluding Separate Accounts, Segregated Accounts and Protected Cell Accounts (Lines 12 to 25).....	420,633,081	4,395,985	416,237,096	390,052,369
27. From Separate Accounts, Segregated Accounts and Protected Cell Accounts.....			0	
28. TOTALS (Lines 26 and 27).....	420,633,081	4,395,985	416,237,096	390,052,369

DETAILS OF WRITE-INS

1101. ....			0	
1102. ....			0	
1103. ....			0	
1198. Summary of remaining write-ins for Line 11 from overflow page.....	0	0	0	0
1199. Totals (Lines 1101 thru 1103 plus 1198) (Line 11 above).....	0	0	0	0
2501. FLORIDA HURRICANE CATASTROPHE FUND ASSETS.....	3,836,225		3,836,225	3,616,202
2502. STATE TAX CREDITS.....	99,111		99,111	107,146
2503. STATE UNEARNED SURCHARGE RECOVERABLE.....	34,850		34,850	22,665
2598. Summary of remaining write-ins for Line 25 from overflow page.....	70,164	70,164	0	0
2599. Totals (Lines 2501 thru 2503 plus 2598) (Line 25 above).....	4,040,350	70,164	3,970,186	3,746,013

PROGRESSIVE AMERICAN INSURANCE COMPANY  
LIABILITIES, SURPLUS AND OTHER FUNDS

	1 Current Year	2 Prior Year
1. Losses (Part 2A, Line 35, Column 8).....	66,787,043	66,019,525
2. Reinsurance payable on paid losses and loss adjustment expenses (Schedule F, Part 1, Column 6).....	1,093,796	946,724
3. Loss adjustment expenses (Part 2A, Line 35, Column 9).....	13,705,514	12,920,145
4. Commissions payable, contingent commissions and other similar charges.....	251,136	254,629
5. Other expenses (excluding taxes, licenses and fees).....	7,815,789	6,892,917
6. Taxes, licenses and fees (excluding federal and foreign income taxes).....	1,450,077	1,361,868
7.1 Current federal and foreign income taxes (including \$.....119,833 on realized capital gains (losses)).....	2,061,408	1,044,177
7.2 Net deferred tax liability.....		
8. Borrowed money \$.....0 and interest thereon \$.....0.....		
9. Unearned premiums (Part 1A, Line 38, Column 5) (after deducting unearned premiums for ceded reinsurance of \$.....309,933,540 and including warranty reserves of \$.....0 and accrued accident and health experience rating refunds including \$.....0 for medical loss ratio rebate per the Public Health Service Act).....	57,022,969	55,923,857
10. Advance premium.....	10,079,936	10,922,806
11. Dividends declared and unpaid:		
11.1 Stockholders.....		
11.2 Policyholders.....		
12. Ceded reinsurance premiums payable (net of ceding commissions).....	8,237,343	11,789,294
13. Funds held by company under reinsurance treaties (Schedule F, Part 3, Column 19).....		
14. Amounts withheld or retained by company for account of others.....		
15. Remittances and items not allocated.....		
16. Provision for reinsurance (including \$.....0 certified) (Schedule F, Part 8).....		
17. Net adjustments in assets and liabilities due to foreign exchange rates.....		
18. Drafts outstanding.....	63,970,869	55,620,020
19. Payable to parent, subsidiaries and affiliates.....		
20. Derivatives.....		
21. Payable for securities.....		
22. Payable for securities lending.....		
23. Liability for amounts held under uninsured plans.....		
24. Capital notes \$.....0 and interest thereon \$.....0.....		
25. Aggregate write-ins for liabilities.....	8,407,382	7,905,967
26. Total liabilities excluding protected cell liabilities (Lines 1 through 25).....	240,883,262	231,601,929
27. Protected cell liabilities.....		
28. Total liabilities (Lines 26 and 27).....	240,883,262	231,601,929
29. Aggregate write-ins for special surplus funds.....	0	0
30. Common capital stock.....	2,500,000	2,500,000
31. Preferred capital stock.....		
32. Aggregate write-ins for other than special surplus funds.....	0	0
33. Surplus notes.....		
34. Gross paid in and contributed surplus.....	65,054,816	60,254,816
35. Unassigned funds (surplus).....	107,799,018	95,695,624
36. Less treasury stock, at cost:		
36.1 .....0.000 shares common (value included in Line 30 \$.....0).....		
36.2 .....0.000 shares preferred (value included in Line 31 \$.....0).....		
37. Surplus as regards policyholders (Lines 29 to 35, less 36) (Page 4, Line 39).....	175,353,834	158,450,440
38. TOTALS (Page 2, Line 28, Col. 3).....	416,237,096	390,052,369

DETAILS OF WRITE-INS		
2501. FLORIDA HURRICANE CATASTROPHE FUND.....	7,684,936	6,973,379
2502. STATE PLAN LIABILITY.....	490,425	587,254
2503. ESCHEATABLE PROPERTY.....	133,520	10,416
2598. Summary of remaining write-ins for Line 25 from overflow page.....	98,501	334,918
2599. Totals (Lines 2501 thru 2503 plus 2598) (Line 25 above).....	8,407,382	7,905,967
2901. ....		
2902. ....		
2903. ....		
2998. Summary of remaining write-ins for Line 29 from overflow page.....	0	0
2999. Totals (Lines 2901 thru 2903 plus 2998) (Line 29 above).....	0	0
3201. ....		
3202. ....		
3203. ....		
3298. Summary of remaining write-ins for Line 32 from overflow page.....	0	0
3299. Totals (Lines 3201 thru 3203 plus 3298) (Line 32 above).....	0	0

PROGRESSIVE AMERICAN INSURANCE COMPANY  
STATEMENT OF INCOME

UNDERWRITING INCOME			1	2
			Current Year	Prior Year
1.	Premiums earned (Part 1, Line 35, Column 4).....		198,560,871	188,222,270
DEDUCTIONS				
2.	Losses incurred (Part 2, Line 35, Column 7).....		122,425,373	118,058,327
3.	Loss adjustment expenses incurred (Part 3, Line 25, Column 1).....		20,151,876	19,204,231
4.	Other underwriting expenses incurred (Part 3, Line 25, Column 2).....		41,170,934	40,150,569
5.	Aggregate write-ins for underwriting deductions.....		0	990
6.	Total underwriting deductions (Lines 2 through 5).....		183,748,183	177,414,117
7.	Net income of protected cells.....			
8.	Net underwriting gain (loss) (Line 1 minus Line 6 plus Line 7).....		14,812,688	10,808,153
INVESTMENT INCOME				
9.	Net investment income earned (Exhibit of Net Investment Income, Line 17).....		1,974,070	1,744,076
10.	Net realized capital gains (losses) less capital gains tax of \$.....(77,679) (Exhibit of Capital Gains (Losses)).....		(137,322)	(38,184)
11.	Net investment gain (loss) (Lines 9 + 10).....		1,836,748	1,705,892
OTHER INCOME				
12.	Net gain (loss) from agents' or premium balances charged off (amount recovered \$.....529,417 amount charged off \$.....9,297,189).....		(8,767,772)	(9,058,680)
13.	Finance and service charges not included in premiums.....		10,156,317	9,027,788
14.	Aggregate write-ins for miscellaneous income.....		361,602	213,784
15.	Total other income (Lines 12 through 14).....		1,750,147	182,892
16.	Net income before dividends to policyholders, after capital gains tax and before all other federal and foreign income taxes (Lines 8 + 11 + 15).....		18,399,583	12,696,937
17.	Dividends to policyholders.....			
18.	Net income, after dividends to policyholders, after capital gains tax and before all other federal and foreign income taxes (Line 16 minus Line 17).....		18,399,583	12,696,937
19.	Federal and foreign income taxes incurred.....		6,228,606	4,417,455
20.	Net income (Line 18 minus Line 19) (to Line 22).....		12,170,977	8,279,482
CAPITAL AND SURPLUS ACCOUNT				
21.	Surplus as regards policyholders, December 31 prior year (Page 4, Line 39, Column 2).....		158,450,440	140,860,075
22.	Net income (from Line 20).....		12,170,977	8,279,482
23.	Net transfers (to) from Protected Cell accounts.....			
24.	Change in net unrealized capital gains or (losses) less capital gains tax of \$.....0.....			
25.	Change in net unrealized foreign exchange capital gain (loss).....			
26.	Change in net deferred income tax.....		(74,739)	(4,273)
27.	Change in nonadmitted assets (Exhibit of Nonadmitted Assets, Line 28, Column 3).....		7,156	315,156
28.	Change in provision for reinsurance (Page 3, Line 16, Column 2 minus Column 1).....			
29.	Change in surplus notes.....			
30.	Surplus (contributed to) withdrawn from protected cells.....			
31.	Cumulative effect of changes in accounting principles.....			
32.	Capital changes:			
32.1	Paid in.....			
32.2	Transferred from surplus (Stock Dividend).....			
32.3	Transferred to surplus.....			
33.	Surplus adjustments:			
33.1	Paid in.....		4,800,000	9,000,000
33.2	Transferred to capital (Stock Dividend).....			
33.3.	Transferred from capital.....			
34.	Net remittances from or (to) Home Office.....			
35.	Dividends to stockholders.....			
36.	Change in treasury stock (Page 3, Lines 36.1 and 36.2, Column 2 minus Column 1).....			
37.	Aggregate write-ins for gains and losses in surplus.....		0	0
38.	Change in surplus as regards policyholders for the year (Lines 22 through 37).....		16,903,394	17,590,365
39.	Surplus as regards policyholders, December 31 current year (Line 21 plus Line 38) (Page 3, Line 37).....		175,353,834	158,450,440
DETAILS OF WRITE-INS				
0501.	LOSS ON COMMUTATION.....			990
0502.	.....			
0503.	.....			
0598.	Summary of remaining write-ins for Line 5 from overflow page.....		0	0
0599.	Totals (Lines 0501 thru 0503 plus 0598) (Line 5 above).....		0	990
1401.	MISCELLANEOUS INCOME.....		335,564	174,509
1402.	INTEREST INCOME ON INTERCOMPANY BALANCES.....		14,277	28,727
1403.	SERVICE BUSINESS REVENUE.....		11,761	10,548
1498.	Summary of remaining write-ins for Line 14 from overflow page.....		0	0
1499.	Totals (Lines 1401 thru 1403 plus 1498) (Line 14 above).....		361,602	213,784
3701.	.....			
3702.	.....			
3703.	.....			
3798.	Summary of remaining write-ins for Line 37 from overflow page.....		0	0
3799.	Totals (Lines 3701 thru 3703 plus 3798) (Line 37 above).....		0	0

CASH FLOW

	1 Current Year	2 Prior Year
CASH FROM OPERATIONS		
1. Premiums collected net of reinsurance.....	187,944,508	187,201,513
2. Net investment income.....	2,867,840	2,369,047
3. Miscellaneous income.....	2,113,496	184,900
4. Total (Lines 1 through 3).....	192,925,844	189,755,460
5. Benefit and loss related payments.....	117,187,806	115,116,939
6. Net transfers to Separate Accounts, Segregated Accounts and Protected Cell Accounts.....		
7. Commissions, expenses paid and aggregate write-ins for deductions.....	59,530,699	57,764,400
8. Dividends paid to policyholders.....		
9. Federal and foreign income taxes paid (recovered) net of \$.....(278,509) tax on capital gains (losses).....	5,133,696	4,481,428
10. Total (Lines 5 through 9).....	181,852,201	177,362,767
11. Net cash from operations (Line 4 minus Line 10).....	11,073,643	12,392,693
CASH FROM INVESTMENTS		
12. Proceeds from investments sold, matured or repaid:		
12.1 Bonds.....	179,910,336	73,068,413
12.2 Stocks.....		
12.3 Mortgage loans.....		
12.4 Real estate.....		
12.5 Other invested assets.....		
12.6 Net gains or (losses) on cash, cash equivalents and short-term investments.....		
12.7 Miscellaneous proceeds.....		
12.8 Total investment proceeds (Lines 12.1 to 12.7).....	179,910,336	73,068,413
13. Cost of investments acquired (long-term only):		
13.1 Bonds.....	152,246,476	104,667,034
13.2 Stocks.....		
13.3 Mortgage loans.....		
13.4 Real estate.....		
13.5 Other invested assets.....		
13.6 Miscellaneous applications.....		
13.7 Total investments acquired (Lines 13.1 to 13.6).....	152,246,476	104,667,034
14. Net increase (decrease) in contract loans and premium notes.....		
15. Net cash from investments (Line 12.8 minus Lines 13.7 minus Line 14).....	27,663,860	(31,598,621)
CASH FROM FINANCING AND MISCELLANEOUS SOURCES		
16. Cash provided (applied):		
16.1 Surplus notes, capital notes.....		
16.2 Capital and paid in surplus, less treasury stock.....	4,800,000	9,000,000
16.3 Borrowed funds.....		
16.4 Net deposits on deposit-type contracts and other insurance liabilities.....		
16.5 Dividends to stockholders.....		
16.6 Other cash provided (applied).....	3,423,709	3,964,688
17. Net cash from financing and miscellaneous sources (Lines 16.1 to 16.4 minus Line 16.5 plus Line 16.6).....	8,223,709	12,964,688
RECONCILIATION OF CASH, CASH EQUIVALENTS AND SHORT-TERM INVESTMENTS		
18. Net change in cash, cash equivalents and short-term investments (Line 11 plus Line 15 plus Line 17).....	46,961,212	(6,241,240)
19. Cash, cash equivalents and short-term investments:		
19.1 Beginning of year.....	(0)	6,241,240
19.2 End of year (Line 18 plus Line 19.1).....	46,961,212	(0)

Note: Supplemental disclosures of cash flow information for non-cash transactions:

20.0001 .....		
---------------	--	--

PROGRESSIVE AMERICAN INSURANCE COMPANY  
UNDERWRITING AND INVESTMENT EXHIBIT

PART 1 - PREMIUMS EARNED

Line of Business		1  Net Premiums Written per Column 6, Part 1B	2  Unearned Premiums December 31 Prior Year- per Col. 3, Last Year's Part 1	3  Unearned Premiums December 31 Current Year- per Col. 5, Part 1A	4  Premiums Earned During Year (Cols. 1 + 2 - 3)
1.	Fire.....				.....0
2.	Allied lines.....				.....0
3.	Farmowners multiple peril.....				.....0
4.	Homeowners multiple peril.....	.....750,705	.....317,137	.....383,477	.....684,365
5.	Commercial multiple peril.....				.....0
6.	Mortgage guaranty.....				.....0
8.	Ocean marine.....				.....0
9.	Inland marine.....	.....3,367,317	.....1,504,187	.....1,555,165	.....3,316,339
10.	Financial guaranty.....				.....0
11.1	Medical professional liability - occurrence.....				.....0
11.2	Medical professional liability - claims-made.....	.....600	.....58	.....48	.....610
12.	Earthquake.....				.....0
13.	Group accident and health.....				.....0
14.	Credit accident and health (group and individual).....				.....0
15.	Other accident and health.....				.....0
16.	Workers' compensation.....				.....0
17.1	Other liability - occurrence.....	.....1,345,260	.....623,696	.....625,232	.....1,343,725
17.2	Other liability - claims-made.....	.....5,763	.....2,171	.....1,453	.....6,480
17.3	Excess workers' compensation.....				.....0
18.1	Products liability - occurrence.....				.....0
18.2	Products liability - claims-made.....				.....0
19.1, 19.2	Private passenger auto liability.....	.....113,766,353	.....29,371,178	.....29,509,004	.....113,628,527
19.3, 19.4	Commercial auto liability.....	.....11,999,457	.....5,319,842	.....5,659,080	.....11,660,220
21.	Auto physical damage.....	.....68,424,292	.....18,785,509	.....19,289,419	.....67,920,382
22.	Aircraft (all perils).....				.....0
23.	Fidelity.....		.....5		.....5
24.	Surety.....	.....235	.....75	.....91	.....219
26.	Burglary and theft.....				.....0
27.	Boiler and machinery.....				.....0
28.	Credit.....				.....0
29.	International.....				.....0
30.	Warranty.....				.....0
31.	Reinsurance - nonproportional assumed property.....				.....0
32.	Reinsurance - nonproportional assumed liability.....				.....0
33.	Reinsurance - nonproportional assumed financial lines.....				.....0
34.	Aggregate write-ins for other lines of business.....	.....0	.....0	.....0	.....0
35.	TOTALS.....	.....199,659,983	.....55,923,857	.....57,022,969	.....198,560,872

DETAILS OF WRITE-INS

3401.	.....				.....0
3402.	.....				.....0
3403.	.....				.....0
3498.	Summary of remaining write-ins for Line 34 from overflow page.....	.....0	.....0	.....0	.....0
3499.	Totals (Lines 3401 thru 3403 plus 3498) (Line 34 above).....	.....0	.....0	.....0	.....0

PROGRESSIVE AMERICAN INSURANCE COMPANY  
UNDERWRITING AND INVESTMENT EXHIBIT  
PART 1A - RECAPITULATION OF ALL PREMIUMS

Line of Business		1	2	3	4	5
		Amount Unearned (Running One Year or Less from Date of Policy) (a)	Amount Unearned (Running More Than One Year from Date of Policy) (a)	Earned But Unbilled Premium	Reserve for Rate Credits and Retrospective Adjustments Based on Experience	Total Reserve for Unearned Premiums Cols. 1 + 2 + 3 + 4
1.	Fire.....					0
2.	Allied lines.....					0
3.	Farmowners multiple peril.....					0
4.	Homeowners multiple peril.....	383,477				383,477
5.	Commercial multiple peril.....					0
6.	Mortgage guaranty.....					0
8.	Ocean marine.....					0
9.	Inland marine.....	1,555,165				1,555,165
10.	Financial guaranty.....					0
11.1	Medical professional liability - occurrence.....					0
11.2	Medical professional liability - claims-made.....	48				48
12.	Earthquake.....					0
13.	Group accident and health.....					0
14.	Credit accident and health (group and individual).....					0
15.	Other accident and health.....					0
16.	Workers' compensation.....					0
17.1	Other liability - occurrence.....	625,232				625,232
17.2	Other liability - claims-made.....	397	1,056			1,453
17.3	Excess workers' compensation.....					0
18.1	Products liability - occurrence.....					0
18.2	Products liability - claims-made.....					0
19.1, 19.2	Private passenger auto liability.....	29,509,004				29,509,004
19.3, 19.4	Commercial auto liability.....	5,659,080				5,659,080
21.	Auto physical damage.....	19,289,419				19,289,419
22.	Aircraft (all perils).....					0
23.	Fidelity.....					0
24.	Surety.....	91				91
26.	Burglary and theft.....					0
27.	Boiler and machinery.....					0
28.	Credit.....					0
29.	International.....					0
30.	Warranty.....					0
31.	Reinsurance - nonproportional assumed property.....					0
32.	Reinsurance - nonproportional assumed liability.....					0
33.	Reinsurance - nonproportional assumed financial lines.....					0
34.	Aggregate write-ins for other lines of business.....	0	0	0	0	0
35.	TOTALS.....	57,021,913	1,056	0	0	57,022,969
36.	Accrued retrospective premiums based on experience.....					
37.	Earned but unbilled premiums.....					0
38.	Balance (sum of Lines 35 through 37).....					57,022,969

DETAILS OF WRITE-INS					
3401.	.....				0
3402.	.....				0
3403.	.....				0
3498.	Summary of remaining write-ins for Line 34 from overflow page.....	0	0	0	0
3499.	Totals (Lines 3401 thru 3403 plus 3498) (Line 34 above).....	0	0	0	0

(a) State here basis of computation used in each case: Pro Rata

PROGRESSIVE AMERICAN INSURANCE COMPANY  
UNDERWRITING AND INVESTMENT EXHIBIT

PART 1B - PREMIUMS WRITTEN

Line of Business	1  Direct Business (a)	Reinsurance Assumed		Reinsurance Ceded		6  Net Premiums Written (Cols. 1 + 2 + 3 - 4 - 5)
		2  From Affiliates	3  From Non-Affiliates	4  To Affiliates	5  To Non-Affiliates	
1. Fire.....						.....0
2. Allied lines.....						.....0
3. Farmowners multiple peril.....						.....0
4. Homeowners multiple peril.....		.....750,705				.....750,705
5. Commercial multiple peril.....						.....0
6. Mortgage guaranty.....						.....0
8. Ocean marine.....						.....0
9. Inland marine.....	.....29,632,506	.....3,367,317		.....29,632,506		.....3,367,317
10. Financial guaranty.....						.....0
11.1 Medical professional liability - occurrence.....						.....0
11.2 Medical professional liability - claims-made.....		.....600				.....600
12. Earthquake.....						.....0
13. Group accident and health.....						.....0
14. Credit accident and health (group and individual).....						.....0
15. Other accident and health.....						.....0
16. Workers' compensation.....						.....0
17.1 Other liability - occurrence.....	.....12,970,992	.....1,345,260		.....11,076,625	.....1,894,367	.....1,345,260
17.2 Other liability - claims-made.....		.....5,763				.....5,763
17.3 Excess workers' compensation.....						.....0
18.1 Products liability - occurrence.....						.....0
18.2 Products liability - claims-made.....						.....0
19.1, 19.2 Private passenger auto liability.....	.....858,511,260	.....113,766,352		.....857,782,338	.....728,921	.....113,766,353
19.3, 19.4 Commercial auto liability.....	.....1,505,839	.....11,999,457		.....1,505,839		.....11,999,457
21. Auto physical damage.....	.....293,209,080	.....68,424,292		.....293,209,080		.....68,424,292
22. Aircraft (all perils).....						.....0
23. Fidelity.....						.....0
24. Surety.....		.....235				.....235
26. Burglary and theft.....						.....0
27. Boiler and machinery.....						.....0
28. Credit.....						.....0
29. International.....						.....0
30. Warranty.....						.....0
31. Reinsurance - nonproportional assumed property.....	.....XXX					.....0
32. Reinsurance - nonproportional assumed liability.....	.....XXX					.....0
33. Reinsurance - nonproportional assumed financial lines.....	.....XXX					.....0
34. Aggregate write-ins for other lines of business.....	.....0	.....0	.....0	.....0	.....0	.....0
35. TOTALS.....	.....1,195,829,677	.....199,659,982	.....0	.....1,193,206,388	.....2,623,288	.....199,659,983

DETAILS OF WRITE-INS

3401. ....						.....0
3402. ....						.....0
3403. ....						.....0
3498. Summary of remaining write-ins for Line 34 from overflow page	.....0	.....0	.....0	.....0	.....0	.....0
3499. Totals (Lines 3401 thru 3403 plus 3498) (Line 34 above).....	.....0	.....0	.....0	.....0	.....0	.....0

(a) Does the company's direct premiums written include premiums recorded on an installment basis? Yes [ ] No [ X ]  
If yes: 1. The amount of such installment premiums \$.....0.  
2. Amount at which such installment premiums would have been reported had they been recorded on an annualized basis \$.....0.



UNDERWRITING AND INVESTMENT EXHIBIT

PART 2 - LOSSES PAID AND INCURRED

		Losses Paid Less Salvage				5	6	7	8
		1	2	3	4				
Line of Business		Direct Business	Reinsurance Assumed	Reinsurance Recovered	Net Payments (Cols. 1 + 2 - 3)	Net Losses Unpaid Current Year (Part 2A, Col. 8)	Net Losses Unpaid Prior Year	Losses Incurred Current Year (Cols. 4 + 5 - 6)	Percentage of Losses Incurred (Col. 7, Part 2) to Premiums Earned (Col. 4, Part 1)
1.	Fire.....				0			0	0.0
2.	Allied lines.....				0			0	0.0
3.	Farmowners multiple peril.....				0			0	0.0
4.	Homeowners multiple peril.....		331,984		331,984	59,035	58,645	332,374	48.6
5.	Commercial multiple peril.....				0			0	0.0
6.	Mortgage guaranty.....				0			0	0.0
8.	Ocean marine.....				0			0	0.0
9.	Inland marine.....	9,294,248	1,355,477	9,294,248	1,355,477	161,123	171,630	1,344,970	40.6
10.	Financial guaranty.....				0			0	0.0
11.1	Medical professional liability - occurrence.....				0			0	0.0
11.2	Medical professional liability - claims-made.....				0	31	30	1	0.1
12.	Earthquake.....				0			0	0.0
13.	Group accident and health.....				0			0	0.0
14.	Credit accident and health (group and individual).....				0			0	0.0
15.	Other accident and health.....				0			0	0.0
16.	Workers' compensation.....		1,477		1,477	39,341	13,957	26,860	0.0
17.1	Other liability - occurrence.....	2,005,772	409,648	2,005,772	409,648	833,836	712,573	530,911	39.5
17.2	Other liability - claims-made.....	26,946	145,387	26,946	145,387	68,423	175,213	38,597	595.6
17.3	Excess workers' compensation.....				0			0	0.0
18.1	Products liability - occurrence.....				0			0	0.0
18.2	Products liability - claims-made.....				0			0	0.0
19.1, 19.2	Private passenger auto liability.....	510,357,964	69,354,489	510,357,963	69,354,490	56,142,117	54,385,093	71,111,514	62.6
19.3, 19.4	Commercial auto liability.....	866,892	6,285,171	866,892	6,285,171	9,066,156	9,413,560	5,937,767	50.9
21.	Auto physical damage.....	183,750,833	43,767,372	183,750,833	43,767,372	280,290	937,322	43,110,340	63.5
22.	Aircraft (all perils).....				0			0	0.0
23.	Fidelity.....		(1,262)		(1,262)	895	4,414	(4,781)	(102,164.1)
24.	Surety.....				0	125	231	(106)	(48.5)
26.	Burglary and theft.....				0			0	0.0
27.	Boiler and machinery.....				0			0	0.0
28.	Credit.....				0			0	0.0
29.	International.....				0			0	0.0
30.	Warranty.....				0			0	0.0
31.	Reinsurance - nonproportional assumed property.....	XXX			0			0	0.0
32.	Reinsurance - nonproportional assumed liability.....	XXX	8,112		8,112	135,670	146,860	(3,079)	0.0
33.	Reinsurance - nonproportional assumed financial lines.....	XXX			0			0	0.0
34.	Aggregate write-ins for other lines of business.....	0	0	0	0	0	0	0	0.0
35.	TOTALS.....	706,302,655	121,657,855	706,302,654	121,657,856	66,787,042	66,019,528	122,425,369	61.7
DETAILS OF WRITE-INS									
3401.	.....				0			0	0.0
3402.	.....				0			0	0.0
3403.	.....				0			0	0.0
3498.	Summary of remaining write-ins for Line 34 from overflow page.....	0	0	0	0	0	0	0	XXX
3499.	Totals (Lines 3401 thru 3403 plus 3498) (Line 34 above).....	0	0	0	0	0	0	0	0.0

**UNDERWRITING AND INVESTMENT EXHIBIT**

**PART 2A - UNPAID LOSSES AND LOSS ADJUSTMENT EXPENSES**

		Reported Losses				Incurred But Not Reported			8	9
		1	2	3	4	5	6	7		
Line of Business		Direct	Reinsurance Assumed	Deduct Reinsurance Recoverable	Net Losses Excluding Incurred but not Reported (Cols. 1 + 2 - 3)	Direct	Reinsurance Assumed	Reinsurance Ceded	Net Losses Unpaid (Cols. 4 + 5 + 6 - 7)	Net Unpaid Loss Adjustment Expenses
1.	Fire.....				0				0	
2.	Allied lines.....				0				0	
3.	Farmowners multiple peril.....				0				0	
4.	Homeowners multiple peril.....		33,965		33,965		25,070		59,035	12,368
5.	Commercial multiple peril.....				0				0	
6.	Mortgage guaranty.....				0				0	
8.	Ocean marine.....				0				0	
9.	Inland marine.....	374,372	73,912	374,372	73,912	818,009	87,212	818,010	161,123	30,322
10.	Financial guaranty.....				0				0	
11.1	Medical professional liability - occurrence.....				0				0	
11.2	Medical professional liability - claims-made.....				0		31		31	26
12.	Earthquake.....				0				0	
13.	Group accident and health.....				0				(a)	0
14.	Credit accident and health (group and individual).....				0				0	
15.	Other accident and health.....				0				(a)	0
16.	Workers' compensation.....		39,341		39,341				39,341	1,865
17.1	Other liability - occurrence.....	4,544,141	551,920	4,544,141	551,920	4,328,397	281,916	4,328,398	833,836	152,137
17.2	Other liability - claims-made.....	74,474	47,739	74,474	47,739	265,530	20,685	265,530	68,423	11,458
17.3	Excess workers' compensation.....				0				0	
18.1	Products liability - occurrence.....				0				0	
18.2	Products liability - claims-made.....				0				0	
19.1, 19.2	Private passenger auto liability.....	265,411,977	43,192,132	265,411,977	43,192,132	123,045,601	12,949,985	123,045,601	56,142,117	11,437,287
19.3, 19.4	Commercial auto liability.....	425,161	7,515,124	425,161	7,515,124	189,847	1,551,032	189,847	9,066,156	1,587,613
21.	Auto physical damage.....	10,398,784	2,057,615	10,398,784	2,057,615	(12,456,737)	(1,777,325)	(12,456,737)	280,290	469,935
22.	Aircraft (all perils).....				0				0	
23.	Fidelity.....		100		100		795		895	2,190
24.	Surety.....				0		125		125	313
26.	Burglary and theft.....				0				0	
27.	Boiler and machinery.....				0				0	
28.	Credit.....				0				0	
29.	International.....				0				0	
30.	Warranty.....				0				0	
31.	Reinsurance - nonproportional assumed property.....	XXX			0	XXX			0	
32.	Reinsurance - nonproportional assumed liability.....	XXX	31,377		31,377	XXX	104,293		135,670	
33.	Reinsurance - nonproportional assumed financial lines.....	XXX			0	XXX			0	
34.	Aggregate write-ins for other lines of business.....	0	0	0	0	0	0	0	0	0
35.	TOTALS.....	281,228,909	53,543,225	281,228,909	53,543,225	116,190,647	13,243,818	116,190,649	66,787,042	13,705,514
DETAILS OF WRITE-INS										
3401.	.....				0				0	
3402.	.....				0				0	
3403.	.....				0				0	
3498.	Summary of remaining write-ins for Line 34 from overflow page.....	0	0	0	0	0	0	0	0	0
3499.	Totals (Lines 3401 thru 3403 plus 3498) (Line 34 above).....	0	0	0	0	0	0	0	0	0

(a) Including \$.....0 for present value of life indemnity claims.

PROGRESSIVE AMERICAN INSURANCE COMPANY  
UNDERWRITING AND INVESTMENT EXHIBIT

PART 3 - EXPENSES

	1	2	3	4
	Loss Adjustment Expenses	Other Underwriting Expenses	Investment Expenses	Total
1. Claim adjustment services:				
1.1 Direct.....	20,033,238			20,033,238
1.2 Reinsurance assumed.....	2,992,316			2,992,316
1.3 Reinsurance ceded.....	20,033,238			20,033,238
1.4 Net claim adjustment services (1.1 + 1.2 - 1.3).....	2,992,316	0	0	2,992,316
2. Commission and brokerage:				
2.1 Direct, excluding contingent.....		123,674,892		123,674,892
2.2 Reinsurance assumed, excluding contingent.....		18,602,358		18,602,358
2.3 Reinsurance ceded, excluding contingent.....		123,674,892		123,674,892
2.4 Contingent - direct.....		3,330,732		3,330,732
2.5 Contingent - reinsurance assumed.....		264,749		264,749
2.6 Contingent - reinsurance ceded.....		3,330,732		3,330,732
2.7 Policy and membership fees.....				0
2.8 Net commission and brokerage (2.1 + 2.2 - 2.3 + 2.4 + 2.5 - 2.6 + 2.7).....	0	18,867,107	0	18,867,107
3. Allowances to manager and agents.....		109,546		109,546
4. Advertising.....		1,662,423		1,662,423
5. Boards, bureaus and associations.....	55,196	105,311		160,507
6. Surveys and underwriting reports.....		1,287,429		1,287,429
7. Audit of assureds' records.....				0
8. Salary and related items:				
8.1 Salaries.....	11,352,990	8,715,322	101,883	20,170,196
8.2 Payroll taxes.....	800,556	615,436	3,832	1,419,825
9. Employee relations and welfare.....	2,032,215	1,472,814	6,013	3,511,042
10. Insurance.....	29,832	31,603		61,436
11. Directors' fees.....				0
12. Travel and travel items.....	591,666	207,255	630	799,551
13. Rent and rent items.....	801,711	719,209	2,694	1,523,614
14. Equipment.....	48,493	232,480		280,973
15. Cost or depreciation of EDP equipment and software.....	698,009	1,318,427	833	2,017,269
16. Printing and stationery.....	71,939	159,049	260	231,248
17. Postage, telephone and telegraph, exchange and express.....	561,893	1,205,964	739	1,768,595
18. Legal and auditing.....	86,365	183,012	15,428	284,805
19. Totals (Lines 3 to 18).....	17,130,867	18,025,281	132,312	35,288,459
20. Taxes, licenses and fees:				
20.1 State and local insurance taxes deducting guaranty association credits of \$.....206.....		3,302,451		3,302,451
20.2 Insurance department licenses and fees.....	17,470	206,401		223,871
20.3 Gross guaranty association assessments.....		11,090		11,090
20.4 All other (excluding federal and foreign income and real estate).....	4,560	610,768		615,328
20.5 Total taxes, licenses and fees (20.1 + 20.2 + 20.3 + 20.4).....	22,030	4,130,710	0	4,152,740
21. Real estate expenses.....				0
22. Real estate taxes.....				0
23. Reimbursements by uninsured plans.....				0
24. Aggregate write-ins for miscellaneous expenses.....	6,663	147,837	18,569	173,070
25. Total expenses incurred.....	20,151,876	41,170,935	150,881	(a).....61,473,692
26. Less unpaid expenses - current year.....	13,705,514	9,514,014	2,988	23,222,516
27. Add unpaid expenses - prior year.....	12,920,145	8,507,272	2,142	21,429,560
28. Amounts receivable relating to uninsured plans, prior year.....				0
29. Amounts receivable relating to uninsured plans, current year.....				0
30. TOTAL EXPENSES PAID (Lines 25 - 26 + 27 - 28 + 29).....	19,366,508	40,164,193	150,035	59,680,736

DETAILS OF WRITE-INS

2401. MISCELLANEOUS EXPENSES.....	6,663	147,837	18,569	173,070
2402. ....				0
2403. ....				0
2498. Summary of remaining write-ins for Line 24 from overflow page.....	0	0	0	0
2499. Totals (Lines 2401 thru 2403 plus 2498) (Line 24 above).....	6,663	147,837	18,569	173,070

(a) Includes management fees of \$.....35,461,529 to affiliates and \$.....0 to non-affiliates.

EXHIBIT OF NET INVESTMENT INCOME

	1 Collected During Year	2 Earned During Year
1. U.S. government bonds.....	(a).....1,620,996	.....1,491,137
1.1 Bonds exempt from U.S. tax.....	(a).....357,123	.....630,911
1.2 Other bonds (unaffiliated).....	(a).....	.....
1.3 Bonds of affiliates.....	(a).....	.....
2.1 Preferred stocks (unaffiliated).....	(b).....	.....
2.11 Preferred stocks of affiliates.....	(b).....	.....
2.2 Common stocks (unaffiliated).....	.....	.....
2.21 Common stocks of affiliates.....	.....	.....
3. Mortgage loans.....	(c).....	.....
4. Real estate.....	(d).....	.....
5. Contract loans.....	.....	.....
6. Cash, cash equivalents and short-term investments.....	(e).....(63,461)	.....2,904
7. Derivative instruments.....	(f).....	.....
8. Other invested assets.....	.....	.....
9. Aggregate write-ins for investment income.....	.....0	.....0
10. Total gross investment income.....	.....1,914,658	.....2,124,952
11. Investment expenses.....	.....	(g).....150,881
12. Investment taxes, licenses and fees, excluding federal income taxes.....	.....	(g).....
13. Interest expense.....	.....	(h).....
14. Depreciation on real estate and other invested assets.....	.....	(i).....0
15. Aggregate write-ins for deductions from investment income.....	.....	.....0
16. Total deductions (Lines 11 through 15).....	.....	.....150,881
17. Net investment income (Line 10 minus Line 16).....	.....	.....1,974,071

DETAILS OF WRITE-INS

0901. ....	.....	.....
0902. ....	.....	.....
0903. ....	.....	.....
0998. Summary of remaining write-ins for Line 9 from overflow page.....	.....0	.....0
0999. Totals (Lines 0901 thru 0903 plus 0998) (Line 9 above).....	.....0	.....0
1501. ....	.....	.....
1502. ....	.....	.....
1503. ....	.....	.....
1598. Summary of remaining write-ins for Line 15 from overflow page.....	.....	.....0
1599. Totals (Lines 1501 thru 1503 plus 1598) (Line 15 above).....	.....	.....0

- (a) Includes \$.....70,393 accrual of discount less \$.....1,173,611 amortization of premium and less \$.....182,702 paid for accrued interest on purchases.
- (b) Includes \$.....0 accrual of discount less \$.....0 amortization of premium and less \$.....0 paid for accrued dividends on purchases.
- (c) Includes \$.....0 accrual of discount less \$.....0 amortization of premium and less \$.....0 paid for accrued interest on purchases.
- (d) Includes \$.....0 for company's occupancy of its own buildings; and excludes \$.....0 interest on encumbrances.
- (e) Includes \$.....1,857 accrual of discount less \$.....54,279 amortization of premium and less \$.....11,061 paid for accrued interest on purchases.
- (f) Includes \$.....0 accrual of discount less \$.....0 amortization of premium.
- (g) Includes \$.....0 investment expenses and \$.....0 investment taxes, licenses and fees, excluding federal income taxes, attributable to Segregated and Separate Accounts.
- (h) Includes \$.....0 interest on surplus notes and \$.....0 interest on capital notes.
- (i) Includes \$.....0 depreciation on real estate and \$.....0 depreciation on other invested assets.

EXHIBIT OF CAPITAL GAINS (LOSSES)

	1 Realized Gain (Loss) on Sales or Maturity	2 Other Realized Adjustments	3 Total Realized Capital Gain (Loss) (Columns 1 + 2)	4 Change in Unrealized Capital Gain (Loss)	5 Change in Unrealized Foreign Exchange Capital Gain (Loss)
1. U.S. government bonds.....	.....(216,045)	.....	.....(216,045)	.....	.....
1.1 Bonds exempt from U.S. tax.....	.....	.....	.....0	.....	.....
1.2 Other bonds (unaffiliated).....	.....1,044	.....	.....1,044	.....	.....
1.3 Bonds of affiliates.....	.....	.....	.....0	.....	.....
2.1 Preferred stocks (unaffiliated).....	.....	.....	.....0	.....	.....
2.11 Preferred stocks of affiliates.....	.....	.....	.....0	.....	.....
2.2 Common stocks (unaffiliated).....	.....	.....	.....0	.....	.....
2.21 Common stocks of affiliates.....	.....	.....	.....0	.....	.....
3. Mortgage loans.....	.....	.....	.....0	.....	.....
4. Real estate.....	.....	.....	.....0	.....	.....
5. Contract loans.....	.....	.....	.....0	.....	.....
6. Cash, cash equivalents and short-term investments.....	.....	.....	.....0	.....	.....
7. Derivative instruments.....	.....	.....	.....0	.....	.....
8. Other invested assets.....	.....	.....	.....0	.....	.....
9. Aggregate write-ins for capital gains (losses).....	.....0	.....0	.....0	.....0	.....0
10. Total capital gains (losses).....	.....(215,001)	.....0	.....(215,001)	.....0	.....0

DETAILS OF WRITE-INS

0901. ....	.....	.....	.....0	.....	.....
0902. ....	.....	.....	.....0	.....	.....
0903. ....	.....	.....	.....0	.....	.....
0998. Summary of remaining write-ins for Line 9 from overflow page....	.....0	.....0	.....0	.....0	.....0
0999. Totals (Lines 0901 thru 0903 plus 0998) (Line 9 above).....	.....0	.....0	.....0	.....0	.....0

PROGRESSIVE AMERICAN INSURANCE COMPANY  
EXHIBIT OF NONADMITTED ASSETS

	1 Current Year Total Nonadmitted Assets	2 Prior Year Total Nonadmitted Assets	3 Change in Total Nonadmitted Assets (Col. 2 - Col. 1)
1. Bonds (Schedule D).....			.....0
2. Stocks (Schedule D):			
2.1 Preferred stocks.....			.....0
2.2 Common stocks.....			.....0
3. Mortgage loans on real estate (Schedule B):			
3.1 First liens.....			.....0
3.2 Other than first liens.....			.....0
4. Real estate (Schedule A):			
4.1 Properties occupied by the company.....			.....0
4.2 Properties held for the production of income.....			.....0
4.3 Properties held for sale.....			.....0
5. Cash (Schedule E-Part 1), cash equivalents (Schedule E-Part 2) and short-term investments (Schedule DA).....			.....0
6. Contract loans.....			.....0
7. Derivatives (Schedule DB).....			.....0
8. Other invested assets (Schedule BA).....			.....0
9. Receivables for securities.....			.....0
10. Securities lending reinvested collateral assets (Schedule DL).....			.....0
11. Aggregate write-ins for invested assets.....	.....0	.....0	.....0
12. Subtotals, cash and invested assets (Lines 1 to 11).....	.....0	.....0	.....0
13. Title plants (for Title insurers only).....			.....0
14. Investment income due and accrued.....			.....0
15. Premiums and considerations:			
15.1 Uncollected premiums and agents' balances in the course of collection.....	.....4,325,821	.....4,329,862	.....4,041
15.2 Deferred premiums, agents' balances and installments booked but deferred and not yet due.....			.....0
15.3 Accrued retrospective premiums.....			.....0
16. Reinsurance:			
16.1 Amounts recoverable from reinsurers.....			.....0
16.2 Funds held by or deposited with reinsured companies.....			.....0
16.3 Other amounts receivable under reinsurance contracts.....			.....0
17. Amounts receivable relating to uninsured plans.....			.....0
18.1 Current federal and foreign income tax recoverable and interest thereon.....			.....0
18.2 Net deferred tax asset.....			.....0
19. Guaranty funds receivable or on deposit.....			.....0
20. Electronic data processing equipment and software.....			.....0
21. Furniture and equipment, including health care delivery assets.....			.....0
22. Net adjustment in assets and liabilities due to foreign exchange rates.....			.....0
23. Receivables from parent, subsidiaries and affiliates.....			.....0
24. Health care and other amounts receivable.....			.....0
25. Aggregate write-ins for other than invested assets.....	.....70,164	.....73,279	.....3,115
26. Total assets excluding Separate Accounts, Segregated Accounts and Protected Cell Accounts (Lines 12 through 25).....	.....4,395,985	.....4,403,141	.....7,156
27. From Separate Accounts, Segregated Accounts and Protected Cell Accounts.....			.....0
28. TOTALS (Lines 26 and 27).....	.....4,395,985	.....4,403,141	.....7,156

DETAILS OF WRITE-INS

1101. ....			.....0
1102. ....			.....0
1103. ....			.....0
1198. Summary of remaining write-ins for Line 11 from overflow page.....	.....0	.....0	.....0
1199. Totals (Lines 1101 thru 1103 plus 1198) (Line 11 above).....	.....0	.....0	.....0
2501. MISCELLANEOUS OTHER ASSETS.....	.....52,752	.....51,629	.....(1,123)
2502. PREPAID EXPENSES.....	.....17,412	.....21,650	.....4,238
2503. ....			.....0
2598. Summary of remaining write-ins for Line 25 from overflow page.....	.....0	.....0	.....0
2599. Totals (Lines 2501 thru 2503 plus 2598) (Line 25 above).....	.....70,164	.....73,279	.....3,115

**PROGRESSIVE AMERICAN INSURANCE COMPANY**  
**NOTES TO FINANCIAL STATEMENTS**

---

<u>Note</u>	<u>Description</u>	<u>Page #</u>
1	Summary of Significant Accounting Policies	14.1
2	Accounting Changes and Corrections of Errors	14.2
3	Business Combinations and Goodwill	14.2
4	Discontinued Operations	14.2
5	Investments	14.2
6	Joint Ventures, Partnerships and Limited Liability Companies	14.3
7	Investment Income	14.3
8	Derivative Instruments	14.3
9	Income Taxes	14.3
10	Information Concerning Parent, Subsidiaries, Affiliates and Other Related Parties	14.6
11	Debt	14.7
12	Retirement Plans, Deferred Compensation, Postemployment Benefits and Compensated Absences and Other Postretirement Benefit Plans	14.7
13	Capital and Surplus, Dividend Restrictions and Quasi-Reorganizations	14.7
14	Liabilities, Contingencies and Assessments	14.8
15	Leases	14.8
16	Information about Financial Instruments with Off-Balance Sheet Risk and with Concentrations of Credit Risk	14.8
17	Sale, Transfer, and Servicing of Financial Assets and Extinguishments of Liabilities	14.8
18	Gain or Loss from Uninsured Plans and the Uninsured Portion of Partially Insured Plans	14.9
19	Direct Premiums Written / Produced by Managing General Agents / Third Party Administrators	14.9
20	Fair Value Measurements	14.9
21	Other Items	14.9
22	Events Subsequent	14.10
23	Reinsurance	14.10
24	Retrospectively Rated Contracts and Contracts Subject to Redetermination	14.11
25	Changes in Incurred Losses and Loss Adjustment Expenses	14.11
26	Intercompany Pooling Arrangements	14.11
27	Structured Settlements	14.12
28	Health Care Receivables	14.12
29	Participating Accident and Health Policies	14.12
30	Premium Deficiency Reserves	14.12
31	High Deductibles	14.12
32	Discounting of Liabilities for Unpaid Losses and Unpaid Loss Adjustment Expenses	14.12
33	Asbestos and Environmental Reserves	14.12
34	Subscriber Savings Accounts	14.13
35	Multiple Peril Crop Insurance	14.14
36	Financial Guaranty Insurance	14.14

PROGRESSIVE AMERICAN INSURANCE COMPANY

NOTES TO FINANCIAL STATEMENTS

1. Summary of Significant Accounting Policies

A. Accounting Practices

The accompanying statutory-basis financial statements of Progressive American Insurance Company (the “Company”) were prepared on the basis of accounting practices prescribed or permitted by the Ohio Department of Insurance (“DOI”).

The Ohio DOI requires insurance companies domiciled in the state of Ohio to prepare their statutory-basis financial statements in accordance with the National Association of Insurance Commissioners’ (“NAIC”) *Accounting Practices and Procedures Manual* subject to any deviations prescribed or permitted by the Ohio DOI. No deviations from NAIC statutory accounting practices (“NAIC SAP”) were used in preparing these statutory-basis financial statements as illustrated in the table below:

Description	State of Domicile	2014	2013
Net income			
(1) Net income, state basis	OH	\$ 12,170,977	\$ 8,279,482
(2) Effect of state prescribed practices			
(3) Effect of state permitted practices			
(4) Net income, NAIC SAP basis (1-2-3=4)	OH	\$ 12,170,977	\$ 8,279,482
Surplus			
(5) Policyholders' surplus, state basis	OH	\$ 175,353,834	\$ 158,450,440
(6) Effect of state prescribed practices			
(7) Effect of state permitted practices			
(8) Policyholders' surplus, NAIC SAP basis (5-6-7=8)	OH	\$ 175,353,834	\$ 158,450,440

B. Use of Estimates

The Company is required to make estimates and assumptions when preparing its financial statements and accompanying notes in conformity with NAIC SAP. Actual results may differ from those estimates. Material estimates that are susceptible to significant changes in the near term include the loss and loss adjustment expense (“LAE”) reserves.

C. Accounting Policies

Insurance premiums written are being earned into income on a pro-rata basis over the period of risk, based on a daily earnings convention. Unearned premiums are established to cover the unexpired portion of premiums written. The Company offers a variety of payment plans to meet individual customer needs. Generally, insurance premiums are collected in advance of providing risk coverage, minimizing the Company’s exposure to credit risk.

Acquisition costs, such as agents’ commissions, premium taxes, and other policy initiation costs, are charged to operations as incurred. Advertising costs are expensed as incurred.

Certain assets designated as “nonadmitted assets”, in accordance with Statement of Statutory Accounting Principles (“SSAP”) No. 4, Assets and Nonadmitted Assets, are reported on page 13, Exhibit of Nonadmitted Assets. The change in nonadmitted assets is charged directly against surplus as regards policyholders on page 4, Statement of Income, capital and surplus section.

In addition, the Company uses the following accounting policies:

Investments

- Cash and cash equivalents include bank accounts and certificates of deposit as well as short-term investments with original maturities of three months or less that are reported at amortized cost, which approximates market value.
- Short-term investments include securities acquired within one year of maturity except for those with original maturities of three months or less (see cash and cash equivalents above) and are reported at amortized cost, which approximates market value.
- Investment grade bond valuations are based on NAIC designations or NAIC Credit Rating Provider (“CRP”) designations from the Acceptable Rating Organization (“ARO”) list and are reported at amortized cost using the scientific method which closely approximates the effective interest method. Non-investment grade bond valuations are also based on NAIC designations or NAIC CRP-ARO designations and are reported at the lower of amortized cost or fair market value. Loan-backed and structured securities follow the guidance prescribed by SSAP No. 43R, Loan-backed and Structured Securities (“SSAP No. 43R”), for the determination of the bond valuation and reporting designation. The difference between the original cost and redemption value of these securities is recognized over the lives of the respective issues and included in net investment gain.
- Common stocks, other than investments in stocks of subsidiaries and affiliates, are reported at fair market values based on active market closing quotations from a regulated exchange. Changes in the fair market values of these securities are reflected directly as unrealized gains or losses in statutory surplus, net of deferred income taxes.
- Non-redeemable preferred stocks are reported at fair market values. Changes in the fair market values of these securities are reflected directly as unrealized gains or losses in statutory surplus, net of deferred income taxes. Investment grade redeemable preferred stocks are reported at amortized cost, while non-investment grade redeemable preferred stocks are reported at the lower of amortized cost or fair market value. The difference between the original cost and redemption value of the redeemable preferred securities is recognized using the scientific method, which closely approximates the effective interest method, over the lives of the respective issues and included in net investment gain.
- The fair market values reported are derived from independent and observable market input evaluations provided by reputable pricing services, independent broker/dealer bid lists, independent broker/dealer quotations, independent broker/dealer pricing services, or active market closing quotations from a regulated exchange. In very rare cases, if none of the aforementioned primary sources are available, matrix pricing using the reporting entity’s own market based assumptions may be utilized. The approved methods for computation of fair market value are prescribed in Part Five of the Securities Valuation Office Purposes and Procedures Manual.
- The Company has no investments in mortgage loans.
- Loan-backed and structured securities are accounted for as prescribed by SSAP No. 43R. These securities are generally stated at amortized cost as determined by the estimated value of future cash flows. Prepayment assumptions for loan-backed and structured debt securities are obtained from available market data, broker/dealers, and/or internal estimates, and are consistent with current interest rate and economic trends.
- The Company has no investments in joint ventures, partnerships, or limited liability companies.
- The Company has no investments in derivatives.

PROGRESSIVE AMERICAN INSURANCE COMPANY

NOTES TO FINANCIAL STATEMENTS

- The Company may enter into repurchase agreements in which it borrows cash by providing certain underlying securities as collateral for the arrangement. The cash borrowed is invested in cash equivalents and an offsetting liability is established. The cash equivalent investment maturities and the term of the borrowing arrangement on the collateralized securities match, eliminating duration risk exposure to the Company. The Company did not have any open repurchase agreements at December 31, 2014 and December 31, 2013.
- Realized gains and losses on sales of securities are computed based on the first-in, first-out method.
- The Company's management routinely monitors individual securities in its investment portfolio for pricing changes that might indicate potential impairments and performs detailed reviews of securities with unrealized losses based on predetermined guidelines to determine whether a decline in the value of a security is other-than-temporary. A review for other-than-temporary impairment ("OTTI") requires making certain judgments regarding the materiality of the decline, its effect on the financial statements, the probability, extent, and timing of a valuation recovery, and the Company's ability and intent to hold the security. The scope of this review is broad and requires a forward-looking assessment of the fundamental characteristics of a security, as well as the market-related prospects of the issuer and its industry.

Management assesses valuation declines to determine the extent to which such changes are attributable to (i) fundamental factors specific to the issuer, such as financial conditions, business prospects or other factors, or (ii) market-related factors such as interest rates or equity market declines (i.e., negative returns at either a sector index level or the broader market level), or (iii) credit-related losses where the present value of cash flows expected to be collected are lower than the amortized cost basis of the security (includes only those securities covered under SSAP No. 43R). This evaluation reflects management's assessment of current conditions, as well as predictions of uncertain future events that may have a material effect on the financial statements related to security valuation.

When persuasive evidence exists that causes management to conclude that a decline in fair value is other-than-temporary, the book value of such security is written down and recognized as a realized loss. All other unrealized gains or losses are reflected in statutory surplus.

Loss, Loss Adjustment Expense, and Premium Deficiency Reserves

- Loss reserves represent the estimated liability on claims reported to the Company, plus reserves for losses incurred but not yet reported ("IBNR"). These estimates are reported net of amounts recoverable from salvage and subrogation. LAE reserves represent the estimated expenses required to settle reported claims and IBNR losses. Such loss and LAE reserves could be susceptible to significant change in the near term. The Company conducts extensive reviews each month on portions of its business to help ensure that the Company is meeting its objective of always having reserves that are adequate, with minimal variation. Results would differ if different assumptions were made (see Notes 25 and 33).
- The Company does anticipate investment income when evaluating the need for premium deficiency reserves. See Note 30.

Capitalization of Assets

- Prepaid assets above a \$100,000 threshold are capitalized. Under certain circumstances, the Company may decide to establish a prepaid expense for amounts less than the threshold. Prepaid assets are nonadmitted. There have been no changes to the written policy or predefined capitalization threshold from the prior year.

Pharmaceutical Rebate Receivables

- The Company does not write medical insurance or prescription drug coverage.

2. Accounting Changes and Corrections of Errors

Not applicable

3. Business Combinations and Goodwill

Not applicable

4. Discontinued Operations

Not applicable

5. Investments

A. Mortgage Loans, Including Mezzanine Real Estate Loans

Not applicable

B. Troubled Debt Restructuring for Creditors

Not applicable

C. Reverse Mortgages

Not applicable

D. Loan-Backed Securities

The Company does not own any loan-backed or structured debt securities.

E. Repurchase Agreements and/or Securities Lending Transactions

Not applicable (see Note 1.C Investments)

F. Real Estate

Not applicable



PROGRESSIVE AMERICAN INSURANCE COMPANY

NOTES TO FINANCIAL STATEMENTS

G. Low Income Housing Tax Credits

Not applicable

H. Restricted Assets

1. Restricted assets (including pledged) summarized by restricted asset category are as follows:

Restricted Asset Category	Gross Restricted							8	Percentage	
	Current Year					6	7		9	10
	1	2	3	4	5					
	Total General Account (G/A)	G/A Supporting Protected Cell Account Activity (a)	Total Protected Cell Account Restricted Assets	Protected Cell Account Assets Supporting G/A Activity (b)	Total (1 plus 3)					
On deposit with state	\$ 6,234,912	\$ --	\$ --	\$ --	\$ 6,234,912	\$ 6,085,459	\$ 149,453	\$ 6,234,912	1.48%	1.50%
Total restricted assets	\$ 6,234,912	\$ --	\$ --	\$ --	\$ 6,234,912	\$ 6,085,459	\$ 149,453	\$ 6,234,912	1.48%	1.50%

(a) Subset of column 1

(b) Subset of column 3

2. Detail of Assets Pledged as Collateral Not Captured in Other Categories (from above table)

Not applicable

3. Detail of Other Restricted Assets

Not applicable

I. Working Capital Finance Investments

Not applicable

J. Offsetting and Netting of Assets and Liabilities

Not applicable

K. Structured Notes

Not applicable

6. Joint Ventures, Partnerships and Limited Liability Companies

Not applicable

7. Investment Income

A. Accrued Investment Income

The Company nonadmits investment income due and accrued if the amounts are greater than 90 days past due.

B. Amounts Nonadmitted

Not applicable

8. Derivative Instruments

Not applicable

9. Income Taxes

A. Components of the net deferred tax asset (liability) ("DTA"/"(DTL)")

1. The components of the net DTA/(DTL) at December 31 are as follows:

Description	December 31, 2014			December 31, 2013			Change		
	(1)	(2)	(3)	(4)	(5)	(6)	(7)	(8)	(9)
	Ordinary Income	Capital Gain (Loss)	(Col 1+2) Total	Ordinary Income	Capital Gain (Loss)	(Col 4+5) Total	(Col 1-4) Ordinary Income	(Col 2-5) Capital Gain (Loss)	(Col 7+8) Total
(a) Gross deferred tax assets	\$ 9,092,496	\$ 27	\$ 9,092,523	\$ 9,272,071	\$ 29	\$ 9,272,100	\$ (179,575)	\$ (2)	\$ (179,577)
(b) Statutory valuation allowance adjustment	--	--	--	--	--	--	--	--	--
(c) Adjusted gross deferred tax assets (1a-1b)	\$ 9,092,496	\$ 27	\$ 9,092,523	\$ 9,272,071	\$ 29	\$ 9,272,100	\$ (179,575)	\$ (2)	\$ (179,577)
(d) Deferred tax assets nonadmitted	--	--	--	--	--	--	--	--	--
(e) Subtotal (net deferred tax asset) (1c-1d)	\$ 9,092,496	\$ 27	\$ 9,092,523	\$ 9,272,071	\$ 29	\$ 9,272,100	\$ (179,575)	\$ (2)	\$ (179,577)
(f) Deferred tax liabilities	912,690	48,536	961,226	1,013,106	52,958	1,066,064	(100,416)	(4,422)	(104,838)
(g) Net admitted deferred tax assets (net deferred tax liability) 1e-1f)	\$ 8,179,806	\$ (48,509)	\$ 8,131,297	\$ 8,258,965	\$ (52,929)	\$ 8,206,036	\$ (79,159)	\$ 4,420	\$ (74,739)

PROGRESSIVE AMERICAN INSURANCE COMPANY

NOTES TO FINANCIAL STATEMENTS

2. The admission calculation components of the DTA in accordance with SSAP No. 101, Income Taxes, are as follows:

Description	December 31, 2014			December 31, 2013			Change		
	(1) Ordinary Income	(2) Capital Gain (Loss)	(3) (Col 1+2) Total	(4) Ordinary Income	(5) Capital Gain (Loss)	(6) (Col 4+5) Total	(7) (Col 1-4) Ordinary Income	(8) (Col 2-5) Capital Gain (Loss)	(9) (Col 7+8) Total
(a) Federal income taxes paid in prior years recoverable through loss carrybacks	\$ 8,564,565	\$ --	\$ 8,564,565	\$ 8,603,568	\$ --	\$ 8,603,568	\$ (39,003)	\$ --	\$ (39,003)
(b) Adjusted gross deferred tax assets expected to be realized (excluding the amount of deferred tax assets from 2(a) above) after application of the threshold limitation. (The lesser of 2(b)1 and 2(b)2 below)	290,416	--	290,416	379,766	--	379,766	(89,350)	--	(89,350)
1. Adjusted gross deferred tax assets expected to be realized following the balance sheet date	290,416	--	290,416	379,766	--	379,766	(89,350)	--	(89,350)
2. Adjusted gross deferred tax assets allowed per limitation threshold			25,083,381			22,536,661			2,546,720
(c) Adjusted gross deferred tax assets(excluding the amount of deferred tax assets from 2(a) and 2(b) above) offset by gross deferred tax liabilities	237,515	27	237,542	288,737	29	288,766	(51,222)	(2)	(51,224)
(d) Deferred tax assets admitted as result of application of SSAP No. 101.									
Total (2(a)+2(b)+2(c))	\$ 9,092,496	\$ 27	\$ 9,092,523	\$ 9,272,071	\$ 29	\$ 9,272,100	\$ (179,575)	\$ (2)	\$ (179,577)

3. Recovery period and threshold limitation information is as follows:

Description	2014	2013
(a) Ratio percentage used to determine recovery period and threshold limitation amount	2331%	2160%
(b) Amount of adjusted capital and surplus used to determine recovery period and threshold limitation in 2(b)2 above	\$ 167,222,537	\$ 150,244,404

4. The impact of tax planning strategies is as follows:

Description	December 31, 2014		December 31, 2013		Change	
	(1) Ordinary Income	(2) Capital Gain (Loss)	(3) Ordinary Income	(4) Capital Gain (Loss)	(5) (Col 1-3) Ordinary Income	(6) (Col 2-4) Capital Gain (Loss)
(a) Determination of adjusted gross deferred tax assets and net admitted deferred tax assets, by tax character as a percentage						
1. Adjusted gross DTAs	\$ 9,092,496	\$ 27	\$ 9,272,071	\$ 29	\$ (179,575)	\$ (2)
2. % of adjusted gross DTAs attributable to the impact of tax planning strategies	0%	0%	0%	0%	0%	0%
3. Net admitted adjusted gross DTAs	\$ 9,092,496	\$ 27	\$ 9,272,071	\$ 29	\$ (179,575)	\$ (2)
4. % of net admitted adjusted gross DTAs admitted due to tax planning strategies	0%	0%	0%	0%	0%	0%
(b) Does the Company's tax planning strategies include the use of reinsurance? Yes ___ No <u>X</u>						

B. Regarding deferred tax liabilities that are not recognized:

Not applicable

C. Current and deferred income taxes consist of the following major components:

1. Current Income Tax:

Description	(1) December 31, 2014	(2) December 31, 2013	(3) (Col 1-2) Change
(a) Federal	\$ 6,228,606	\$ 4,417,455	\$ 1,811,151
(b) Foreign	--	--	--
(c) Subtotal	\$ 6,228,606	\$ 4,417,455	\$ 1,811,151
(d) Federal income tax on net capital gains	(77,679)	(7,643)	(70,036)
(e) Utilization of capital loss carry-forwards	--	--	--
(f) Other	--	--	--
(g) Federal and foreign income taxes incurred	\$ 6,150,927	\$ 4,409,812	\$ 1,741,115

2. Deferred Tax Assets:

Description	(1) December 31, 2014	(2) December 31, 2013	(3) (Col 1-2) Change
(a) Ordinary			
(1) Discounting of unpaid losses	\$ 796,119	\$ 961,133	\$ (165,014)
(2) Unearned premium reserve	4,032,916	3,957,005	75,911
(3) Policyholder reserves	--	--	--
(4) Investments	--	--	--
(5) Deferred acquisition costs	--	--	--
(6) Policyholder dividends accrual	--	--	--
(7) Fixed assets	174,905	219,780	(44,875)
(8) Compensation and benefits accrual	1,578,216	1,735,658	(157,442)
(9) Pension accrual	--	--	--
(10) Receivables - nonadmitted	1,514,037	1,515,452	(1,415)
(11) Net operating loss carry-forward	--	--	--
(12) Tax credit carry-forward	--	--	--
(13) Other - non admitted assets	24,557	25,648	(1,091)
(14) Other - bad debt reserve	927,840	800,668	127,172
(15) Other (including items <5% of total ordinary tax assets)	43,906	56,727	(12,821)
(99) Subtotal	\$ 9,092,496	\$ 9,272,071	\$ (179,575)
(b) Statutory valuation allowance adjustment	--	--	--
(c) Nonadmitted	--	--	--
(d) Admitted ordinary deferred tax assets (2a99-2b-2c)	\$ 9,092,496	\$ 9,272,071	\$ (179,575)
(e) Capital			
(1) Investments	27	29	(2)
(2) Net capital loss carry-forward	--	--	--
(3) Real estate	--	--	--
(4) Other (including items <5% of total capital tax assets)	--	--	--
(99) Subtotal	\$ 27	\$ 29	\$ (2)
(f) Statutory valuation allowance adjustment	--	--	--
(g) Nonadmitted	--	--	--
(h) Admitted capital deferred tax assets (2e99-2f-2g)	\$ 27	\$ 29	\$ (2)
(i) Admitted deferred tax assets (2d+2h)	\$ 9,092,523	\$ 9,272,100	\$ (179,577)

3. Deferred Tax Liabilities:

Description	(1) December 31, 2014	(2) December 31, 2013	(3) (Col 1-2) Change
(a) Ordinary			
(1) Investments	\$ --	\$ --	\$ --
(2) Fixed Assets	612,046	640,784	(28,738)
(3) Deferred and uncollected premium	--	--	--
(4) Policyholder reserves	--	--	--
(5) Other liabilities- prepaid expenses	218,005	279,671	(61,666)
(6) Other liabilities - salvage and subrogation	50,537	61,362	(10,825)
(7) Other (including items <5% of total ordinary tax liabilities)	32,102	31,289	813
(99) Subtotal	912,690	1,013,106	(100,416)
(b) Capital			
(1) Investments	48,536	52,958	(4,422)
(2) Real estate	--	--	--
(3) Other (including items <5% of total capital tax liabilities)	--	--	--
(99) Subtotal	48,536	52,958	(4,422)
(c) Deferred tax liabilities (3a99+3b99)	\$ 961,226	\$ 1,066,064	\$ (104,838)

4. Net Deferred Tax Asset (Liability) (2i – 3c):

Description	(1) December 31, 2014	(2) December 31, 2013	(3) (Col 1-2) Change
Net deferred tax asset (liability) (2i-3c)	\$ 8,131,297	\$ 8,206,036	\$ (74,739)

The change in net deferred income tax is comprised of the following (this analysis excludes nonadmitted assets; the change in nonadmitted assets is reported separately from the change in net deferred income tax in the Statement of Income, Surplus section):

Description	December 31, 2014	December 31, 2013	Change
Total deferred tax assets	\$ 9,092,523	\$ 9,272,100	\$ (179,577)
Total deferred tax liabilities	961,226	1,066,064	(104,838)
Net deferred tax asset (liability)	\$ 8,131,297	\$ 8,206,036	\$ (74,739)
Tax effect of unrealized gains (losses)			--
Change in net deferred income tax			\$ (74,739)

PROGRESSIVE AMERICAN INSURANCE COMPANY

NOTES TO FINANCIAL STATEMENTS

D. Reconciliation of Federal Income Tax Rate to Actual Effective Rate

The provision for Federal income taxes is different than that which would be obtained by applying the statutory Federal income tax rate to pre-tax income. The significant book to tax adjustments causing this difference are as follows:

Description	Tax Effect Amount	Effective Tax Rate
Provision computed at statutory rate	\$ 6,412,666	35%
Exempt interest income	(188,001)	-1%
Impact of nonadmitted assets	2,505	0%
Other	(1,504)	0%
Total	\$ 6,225,666	34%
Federal and foreign income taxes incurred	\$ 6,150,927	
Change in net deferred income tax	74,739	
Total statutory income taxes	\$ 6,225,666	

E. Operating Loss and Tax Credit Carryforwards

1. The Company has no operating loss or tax credit carryforwards available.
2. The amount of Federal income taxes incurred and available for recoupment by the Company in the event of future net losses is equal to approximately:

Period	Amount
Current tax year:	\$ 5,892,756
First preceding tax year:	\$ 4,331,276

The amounts that can be recouped may be subject to the alternative minimum tax rules, and therefore may be limited.

3. Protective Tax Deposits
- Not applicable

F. Consolidated Federal Income Tax Return

1. The Company's Federal income tax return is consolidated with The Progressive Corporation ("TPC"), a publicly traded holding company incorporated in Ohio, and all of its wholly-owned United States subsidiaries (the "Group") as detailed in Schedule Y, Part 1.
2. The method of allocation between the companies is subject to written agreement and is jointly approved by an officer of TPC and the Company. The allocation is based upon separate tax return calculations with current credit for net losses or other items utilized in the consolidated tax return. Intercompany tax balances are settled quarterly.

G. Federal or Foreign Income Tax Loss Contingencies

The Company does not have any tax loss contingencies for which it is reasonably possible that the total liability will significantly increase within twelve months of the reporting date.

10. Information Concerning Parent, Subsidiaries, Affiliates and Other Related Parties

A. Nature of Relationships

The Company is wholly owned by Drive Insurance Holdings, Inc. ("DIH"), a holding company incorporated in Delaware. The structure of the holding company organization is shown on Schedule Y, Part 1.

B. Detail of Transactions Greater than 1/2% of Admitted Assets

The Company received capital contributions of \$4,800,000 and \$9,000,000 from DIH in 2014 and 2013, respectively.

All significant 2014 transactions by the Company or any affiliated insurer with any affiliate are summarized in Schedule Y, Part 2.

C. Change in Terms of Intercompany Arrangements

Not applicable

D. Amounts Due to or from Related Parties

The Company reported a \$46,065,873 and \$40,858,375 receivable from parent, subsidiaries, and affiliates at December 31, 2014 and 2013, respectively. These balances are due to the timing of security purchases and cash collections and disbursements under the Group's centralized cash management system and the reinsurance and management agreements in which the Company participates. The Company also reported a \$2,061,408 and \$1,044,177 current Federal income tax payable at December 31, 2014 and 2013, respectively. These balances are due to TPC for the Company's Federal income tax liability. The intercompany balances are settled by the end of the following quarter depending on the timing of investment transactions. These transactions are dependent upon market timing, investment needs and overall portfolio strategy as to the timing of such settlement transactions.

E. Guarantees or Contingencies for Related Parties

Not applicable

F. Management, Service Contracts, Cost Sharing Arrangements

Management, operations and claims services are provided under a joint management services agreement with Progressive Casualty Insurance Company ("Casualty"), an insurance affiliate domiciled in Ohio. Under the terms of the agreement, Casualty provides the Company with underwriting and loss adjustment services for specific business produced, and the Company may, from time to time, provide Casualty with similar services for other specific business produced. In exchange for these services, the companies charge management fees based on each company's use of the other's services.

The Company participates in an investment services agreement with Progressive Capital Management Corp., a non-insurance affiliate. Under the terms of the agreement, the Company is provided investment and capital management services in exchange for an investment management fee based on its use of services.

PROGRESSIVE AMERICAN INSURANCE COMPANY

NOTES TO FINANCIAL STATEMENTS

All intercompany agreements are approved by the participating insurance companies' states of domicile when established. Upon redomestication, intercompany agreements are not required to be approved by the new state of domicile.

G. Nature of Relationships that Could Affect Operations

All outstanding shares of the Company are owned by DIH.

H. Amount Deducted for Investment in Upstream Company

Not applicable

I. Detail of Investments in Affiliates Greater than 10% of Admitted Assets

Not applicable

J. Write-Downs for Impairment of Investments in Affiliates

Not applicable

K. Investment in Foreign Insurance Subsidiary

Not applicable

L. Investment in Downstream Non-Insurance Holding Company

Not applicable

11. Debt

Not applicable

12. Retirement Plans, Deferred Compensation, Postemployment Benefits and Compensated Absences and Other Postretirement Benefit Plans

The Company has no direct payroll (see Note 10.F).

13. Capital and Surplus, Dividend Restrictions and Quasi-Reorganizations

1. Outstanding Shares

The Company has 50,000 shares of \$100 par value common stock authorized and 25,000 shares issued and outstanding. The Company has no preferred stock authorized, issued, or outstanding.

2. Dividend Rate of Preferred Stock

Not applicable

3,4,5,6. Dividends

The maximum amount of dividends the Company can pay to DIH in 2015 without prior regulatory approval is limited by insurance laws in Ohio. Based on the dividend laws currently in effect, the Company may pay dividends of \$17,535,383 in 2015 without prior approval from the Ohio DOI, provided the dividend payment is not made within 12 months of the previous payment.

Within the limitations described above, there are no additional restrictions placed on the portion of Company profits that may be paid as ordinary dividends to stockholders.

7. Mutual Surplus Advances

Not applicable

8. Company Stock Held for Special Purposes

Not applicable

9. Changes in Special Surplus Funds

Not applicable

10. Changes in Unassigned Funds (Surplus)

As of December 31, 2014, the portion of unassigned funds (surplus) represented or reduced by each item below is as follows:

Description	Cumulative Increase (Decrease) in Surplus
Unrealized gain (loss)	\$ --
Nonadmitted assets	(4,395,985)
Provision for reinsurance	--
Total	<u>\$ (4,395,985)</u>

11. Surplus Notes

Not applicable

12,13. Quasi Reorganizations

Not applicable

14.

Liabilities, Contingencies and Assessments

A.

Contingent Commitments

Not applicable

B.

Assessments

The Company is subject to state guaranty fund and other assessments by the states in which it writes business. State guaranty fund assessments are accrued at the time of any known insolvencies. Other assessments are accrued either at the time of assessment or at the time the premiums are written. These accruals are based on information received from the states in which the Company writes business and may change due to many factors including the Company’s share of the ultimate cost of current insolvencies.

As of December 31, 2014 and 2013, the Company’s estimated liability for state guaranty fund and other assessments was \$17,890 and \$21,231, respectively. The Company did not recognize any premium tax benefit associated with its various assessments.

As of December 31, 2014 and 2013, the Company’s estimated liability for various surcharges was \$3,867,794 and \$3,369,761, respectively.

C.

Gain Contingencies

Not applicable

D.

Claims Related Extra Contractual Obligations and Bad Faith Losses Stemming from Lawsuits

The Company paid the following amounts in 2014 to settle claims related extra contractual obligations (“ECO”) or bad faith claims stemming from lawsuits:

Description	Direct
Claims related ECO and bad faith losses paid in 2014	\$ 85,000

The table below indicates the number of claims where amounts were paid to settle claims related ECO or bad faith claims resulting from lawsuits during 2014.

(a)	(b)	(c)	(d)	(e)
0-25 Claims	26-50 Claims	51-100 Claims	101-500 Claims	More than 500 Claims
x				

(f) Per Claim [ ] (g) Per Claimant [x]

E.

Product Warranties

Not applicable

F.

Joint and Several Liabilities

Not applicable

G.

All Other Contingencies

The Company routinely assesses the collectability of premiums and agents’ balances receivable and records a bad debt reserve for amounts exceeding the nonadmitted balance that the Company believes are uncollectible.

The Company is named as defendant in various lawsuits arising out of its insurance operations. All legal actions relating to claims made under insurance policies are considered by the Company in establishing its loss and LAE reserves. The Company also has, on a net basis, potential exposure relating to lawsuits due to its participation in a 100% pooling reinsurance agreement for which it is allocated litigation expenses (see Note 26).

The following is a discussion of potentially significant pending cases at December 31, 2014. The Company does not consider a loss from these cases to be probable and is unable to estimate a range of loss, if any, at this time.

As of December 31, 2014, there were two putative class action lawsuits challenging the Company’s practice in Florida of adjusting personal injury protection and first-party medical payments.

As of December 31, 2014, there were two cases consolidated into multi-district proceedings alleging that the Company improperly steers automobile repair work to certain auto body repair shops and challenging the labor rates the Company pays to auto body repair shops.

As of December 31, 2014, there was a putative class action lawsuit alleging that the Company improperly collects premiums for personal injury protection wage loss coverage from insured’s who are retired.

15.

Leases

Not applicable

16.

Information about Financial Instruments with Off-Balance Sheet Risk and with Concentrations of Credit Risk

Not applicable

17.

Sale, Transfer, and Servicing of Financial Assets and Extinguishments of Liabilities

A.

Transfers of Receivables Reported as Sales

Not applicable

B.

Transfers and Servicing of Financial Assets

Not applicable

C.

Wash Sales

The Company had no wash sales of securities with a NAIC rating of 3 or below during the year.

PROGRESSIVE AMERICAN INSURANCE COMPANY

NOTES TO FINANCIAL STATEMENTS

18. Gain or Loss from Uninsured Plans and the Uninsured Portion of Partially Insured Plans

Not applicable

19. Direct Premiums Written / Produced by Managing General Agents / Third Party Administrators

Not applicable

20. Fair Value Measurements

A. Inputs Used for Assets and Liabilities Measured at Fair Value in the Company's Financial Statements

1. Fair Value Measurements by Levels 1, 2 and 3

The Company categorizes its financial instruments, based on the degree of subjectivity inherent in the method by which they are valued, into a fair value hierarchy of three levels, as follows:

Level 1 - Inputs are unadjusted, quoted prices in active markets for identical instruments at the measurement date (e.g., active exchange-traded equity securities).

Level 2 - Inputs (other than quoted prices included within Level 1) that are observable for the instrument either directly or indirectly. This includes: (i) quoted prices for similar instruments in active markets, (ii) quoted prices for identical or similar instruments in markets that are not active, (iii) inputs other than quoted prices that are observable for the instruments, and (iv) inputs that are derived principally from or corroborated by observable market data by correlation or other means.

Level 3 - Inputs that are unobservable. Unobservable inputs reflect the Company's subjective evaluation about the assumptions market participants would use in pricing the financial instrument.

See Note 1, Investment Policies section for further information regarding methods used to determine fair market value.

The Company's management evaluated whether the market was distressed or inactive in determining the fair value of the Company's securities and reviewed certain market level inputs to evaluate whether sufficient activity, volume, and new issuances existed to create an active market. Based on this evaluation, management concluded that there was sufficient activity in determining the fair market value of the Company's securities.

As of December 31, 2014, the Company did not measure and report any securities at fair value on the balance sheet. All bonds were carried at amortized cost.

2. Roll forward of Level 3 Items

Not applicable

3. Policy on Transfers Into and Out of Level 3

At the end of each reporting period, the Company evaluates whether or not any event has occurred or circumstances have changed that would cause an instrument to be transferred into or out of Level 3.

4. Inputs and Techniques Used for Level 2 and Level 3 Fair Values

See Note 20.A.1 above.

5. Derivative Fair Values

Not applicable

B. Other Fair Value Disclosures

Not applicable

C. Fair Values for all Financial Instruments by Levels 1, 2, and 3

The table below represents the fair value of all financial instruments at December 31, 2014, however, not all financial instruments are reported at fair value in the Company's financial statements.

Type of Financial Instrument	Aggregate Fair Value	Admitted Assets	Level 1	Level 2	Level 3	Not Practicable (Carrying Value)
Bonds	\$ 147,767,374	\$ 146,493,855	\$ 102,034,247	\$ 45,733,127	\$ --	\$ --
Cash-equivalents	44,099,983	44,099,983	44,099,983	--	--	--
Short-term investments	2,860,634	2,861,229	--	2,860,634	--	--
Total	\$ 194,727,991	\$ 193,455,067	\$ 146,134,230	\$ 48,593,761	\$ --	\$ --

D. Financial Instruments for Which it is Not Practicable to Estimate Fair Values

Not applicable

21. Other Items

A. Extraordinary Items

Not applicable

B. Troubled Debt Restructuring for Debtors

Not applicable

C. Other Disclosures

Not applicable



PROGRESSIVE AMERICAN INSURANCE COMPANY

NOTES TO FINANCIAL STATEMENTS

D. Business Interruption Insurance Recoveries

Not applicable

E. State Transferable and Non-transferable Tax Credits

1. The carrying value of transferable and non-transferable state tax credits, gross of any related tax liabilities, and total unused transferable and non-transferable state tax credits by state and in total at December 31, 2014 are as follows:

Description of state transferable ("T") and non-transferable ("NT") tax credits	State	Carrying Value	Unused Amount
Low Income Housing Tax Credit (NT)	GA	\$ 99,111	\$ 185,000
Low Income Housing Tax Credit (NT)	GA	--	6,478
Total		\$ 99,111	\$ 191,478

2. The Company estimated the utilization of the remaining transferable and non-transferable state tax credits by projecting future premium, taking into account policy growth and rate changes, projecting the future tax liability based on projected premium, tax rates, and tax credits, and comparing the projected future tax liability to the availability of remaining transferable and non-transferable state tax credits.
3. The Company recognized an impairment loss of \$0 related to write-downs as a result of impairment analysis of the carrying amount for transferable and non-transferable state tax credits.
4. State tax credits admitted and nonadmitted are as follows:

Type	Total Admitted	Total Nonadmitted
Transferable	\$ --	\$ --
Non-transferable	\$ 99,111	\$ --

F. Subprime Mortgage Related Risk Exposure

1. Exposure to Subprime Mortgage Related Risk

The following subprime disclosure and the review and procedures described within are completed at a consolidated level for all the Progressive companies. To the extent the Company had any direct subprime exposure, those securities would be listed in Note 21.F.3.

Management's review of the investment portfolio for securities with direct subprime exposure, such as Alt-A residential mortgage loan-backed bonds and home equity loan-backed bonds is performed in conjunction with the OTTI analysis and procedures (see Note 1.C). Additionally, securities that were determined to have an indirect subprime exposure were also reviewed as part of the OTTI process.

The Company's management continues to perform a detailed review of its investment portfolio, paying particular attention to the credit profile of the issuers to identify the extent to which any asset values may have been impacted by direct or indirect exposure to the subprime mortgage loan disruption, as well as broader credit and financial market events.

In 2014, the Company recorded no OTTI write-downs on any securities as a result of direct subprime exposure.

2. Direct Investment in Subprime Mortgage Loans
- Not applicable
3. Direct Investment in Securities with Underlying Subprime Exposure
- Not applicable
4. Mortgage or Financial Guaranty Subprime Exposure
- Not applicable

G. Agents' Balances Certification, Florida Statute 625.012 (5):

At December 31, 2014 and 2013, the Company reported net admitted premiums and agents' balances in course of collection of \$24,758,128 and \$22,097,616, respectively. Of this amount there were no premiums due from a controlled or controlling person as defined in Florida statute 625.012 (5).

22. Events Subsequent

The Company was not impacted by any subsequent events. Subsequent events have been considered through February 13, 2015 for the statutory statement that was available for issuance by March 1, 2015.

23. Reinsurance

A. Unsecured Reinsurance Recoverable (all amounts in 000's)

At December 31, 2014, the Company had the following unsecured reinsurance recoverable balance which exceeded 3% of policyholders' surplus:

Reinsurer	NAIC Code	Federal ID#	Amount
Progressive Casualty Insurance Company	24260	34-6513736	\$ 795,747
Total			\$ 795,747



PROGRESSIVE AMERICAN INSURANCE COMPANY

NOTES TO FINANCIAL STATEMENTS

- B. Reinsurance Recoverable in Dispute
- Not applicable
- C. Reinsurance Assumed and Ceded (all amounts in 000's)
1. The table below summarizes ceded and assumed unearned premiums and the related commission equity at December 31, 2014.

	Assumed		Ceded		Net	
	Unearned Premiums	Commission Equity	Unearned Premiums	Commission Equity	Unearned Premiums	Commission Equity
(a) Affiliates	\$ 57,023	\$ --	\$ 308,832	\$ --	\$ (251,809)	\$ --
(b) All Other	--	--	1,101	303	(1,101)	(303)
(c) Totals	\$ 57,023	\$ --	\$ 309,933	\$ 303	\$ (252,910)	\$ (303)
(d) Direct Unearned Premium Reserve is \$309,934						

2. The Company has no return commission or profit sharing arrangements.
- D. Uncollectible Reinsurance
- Not applicable
- E. Commutation of Ceded Reinsurance
- Not applicable
- F. Retroactive Reinsurance
- Not applicable
- G. Reinsurance Accounted for as a Deposit
- Not applicable
- H. Disclosures for the Transfer of Property and Casualty Run-off Agreements
- Not applicable
- I. Certified Reinsurer Downgraded or Status Subject to Revocation
- Not applicable

24. Retrospectively Rated Contracts and Contracts Subject to Redetermination
- Not applicable

25. Changes in Incurred Losses and Loss Adjustment Expenses

Incurred losses and LAE attributable to insured events of prior accident years decreased by \$23,736 in 2014, which is less than 1% of the total prior year net unpaid losses and LAE of \$78,939,670. The favorable development is primarily due to passenger auto liability originally anticipated severity for accident years 2011 and prior decreasing by less than 1%, partially offset by originally anticipated severity for accident years 2012 and 2013 increasing by less than 1%. The LAE reserves developed unfavorably primarily due to unfavorable adjusting and other expense reserve development.

26. Intercompany Pooling Arrangements

The Company participates in a pooling reinsurance agreement with the property-casualty affiliates listed below (the "Agency Pool") under which 100% of the underwriting business of each member company, net of external reinsurance, is ceded to Casualty, the Agency Pool manager and an Agency Pool participant. The combined premiums, losses, and expenses are then retroceded to each Agency Pool member based on pre-determined pooling percentages.

Progressive Hawaii Insurance Corp. ("Hawaii"), an insurance affiliate domiciled in Ohio and National Continental Insurance Company ("National Continental"), an insurance affiliate domiciled in New York, terminated their future participation in the Agency Pool effective November 5, 2005 and January 1, 1996, respectively. Hawaii and National Continental have zero percent retrocession participation in the Agency Pool for all policies written prior to the dates listed above.

The pooling percentages for each Agency Pool participant as of December 31, 2014 and 2013 were as follows:

Company	NAIC Code	2014 Pool %	2013 Pool %
Progressive Casualty Insurance Company (Lead)	24260	49.0%	49.0%
Progressive Northern Insurance Company	38628	12.0	12.0
Progressive Northwestern Insurance Company	42919	12.0	12.0
Progressive Specialty Insurance Company	32786	7.0	7.0
Progressive Preferred Insurance Company	37834	6.0	6.0
Progressive Michigan Insurance Company	10187	4.0	4.0
Progressive Classic Insurance Company	42994	3.0	3.0
Progressive American Insurance Company	24252	2.0	2.0
Progressive Gulf Insurance Company	42412	2.0	2.0
Progressive Bayside Insurance Company	17350	1.0	1.0
Progressive Mountain Insurance Company	35190	1.0	1.0
Progressive Southeastern Insurance Company	38784	1.0	1.0
Progressive Hawaii Insurance Corp.	10067	--	--
National Continental Insurance Company	10243	--	--
		100.0%	100.0%

PROGRESSIVE AMERICAN INSURANCE COMPANY

NOTES TO FINANCIAL STATEMENTS

All business written by each Agency Pool participant is subject to pooling. Business ceded by Agency Pool members to non-affiliated reinsurers prior to pooling, is primarily due to state-provided reinsurance programs. The Company does not participate in any intercompany sharing of the provision for reinsurance and the write-off of uncollectible reinsurance.

At December 31, 2014, amounts recoverable from and payable to the Company and all affiliates participating in the Agency Pool are as follows:

Company	Amounts Recoverable	Amounts Payable
Progressive Casualty Insurance Company (Lead)	\$ 63,226,910	\$ 34,861,435
Progressive Northern Insurance Company	7,343,826	11,452,028
Progressive Northwestern Insurance Company	3,018,535	14,354,272
Progressive Specialty Insurance Company	7,111,274	3,828,289
Progressive Preferred Insurance Company	1,547,354	7,367,063
Progressive Michigan Insurance Company	3,553,607	6,140,282
Progressive Classic Insurance Company	2,686,264	3,685,327
Progressive American Insurance Company	3,416,942	8,935,790
Progressive Gulf Insurance Company	--	3,395,759
Progressive Bayside Insurance Company	--	1,447,169
Progressive Mountain Insurance Company	3,933,577	1,656,930
Progressive Southeastern Insurance Company	2,241,542	962,107
Progressive Hawaii Insurance Corp.	--	1,894
National Continental Insurance Company	8,514	--
Total	\$ 98,088,345	\$ 98,088,345

27. Structured Settlements

Not applicable

28. Health Care Receivables

Not applicable

29. Participating Accident and Health Policies

Not applicable

30. Premium Deficiency Reserves

1.

Liability carried for premium deficiency reserves

\$0
2.

Date of most recent evaluation of this liability

December 31, 2014
3.

Was anticipated investment income utilized in the calculation?

Yes [X] No [ ]

31. High Deductibles

Not applicable

32. Discounting of Liabilities for Unpaid Losses and Unpaid Loss Adjustment Expenses

Not applicable

33. Asbestos and Environmental Reserves

Because the Company is primarily an insurer of motor vehicles, it has limited exposure for asbestos and environmental claims. In accordance with disclosure requirements, the amounts reported for direct, assumed, and net below reflect the Company's pooled share (see Note 26) of the Agency Pool's exposure to asbestos and environmental claims. The Agency Pool's exposure arises from the Company's limited number of general liability policies issued from 1972 to 1975, Casualty's participation in various reinsurance pools from 1968 to 1975, which underwrote general liability insurance, Casualty's aggregate stop loss reinsurance agreement with Progressive Max Insurance Company, an insurance affiliate domiciled in Ohio, for various reinsurance pools from 1965 to 1975, and Casualty's aggregate stop loss reinsurance agreement with National Continental Insurance Company, an insurance affiliate domiciled in New York, for general liability business written on or before November 25, 1985.

The Company records case and DCC reserves based on financial information maintained by the Company. IBNR is established based on previous experience.

PROGRESSIVE AMERICAN INSURANCE COMPANY

NOTES TO FINANCIAL STATEMENTS

A. Asbestos reserves direct, assumed, and net of reinsurance are as follows:

	December 31,				
	2010	2011	2012	2013	2014
Direct					
Beginning reserves	\$ 4,100	\$ 4,100	\$ 4,100	\$ 4,100	\$ 4,100
Losses and DCC incurred	--	--	--	--	(3,880)
Calendar year payments for losses and DCC	--	--	--	--	--
Ending reserves	\$ 4,100	\$ 4,100	\$ 4,100	\$ 4,100	\$ 220
Assumed Reinsurance					
Beginning reserves	\$ 92,085	\$ 95,465	\$ 64,824	\$ 65,629	\$ 43,574
Losses and DCC incurred	8,263	(15,568)	2,937	(13,095)	39,805
Calendar year payments for losses and DCC	4,883	15,073	2,132	8,960	6,567
Ending reserves	\$ 95,465	\$ 64,824	\$ 65,629	\$ 43,574	\$ 76,812
Net of Ceded Reinsurance					
Beginning reserves	\$ 96,185	\$ 99,565	\$ 68,924	\$ 69,729	\$ 47,674
Losses and DCC incurred	8,263	(15,568)	2,937	(13,095)	35,925
Calendar year payments for losses and DCC	4,883	15,073	2,132	8,960	6,567
Ending reserves	\$ 99,565	\$ 68,924	\$ 69,729	\$ 47,674	\$ 77,032

B. Ending Reserves for Asbestos Claims for Bulk and IBNR Included in A above (Losses and LAE):

Direct	\$ --
Assumed	19,843
Net	\$ 19,843

C. Ending Reserves for Asbestos Claims for LAE Included in A above (Case, Bulk, and IBNR):

Direct	\$ 200
Assumed	8,554
Net	\$ 8,754

D. Environmental reserves direct, assumed, and net of reinsurance are as follows:

	December 31,				
	2010	2011	2012	2013	2014
Direct					
Beginning reserves	\$ 1,022	\$ 1,022	\$ 1,022	\$ 1,022	\$ 1,022
Losses and DCC incurred	--	--	--	--	(1,022)
Calendar year payments for losses and DCC	--	--	--	--	--
Ending reserves	\$ 1,022	\$ 1,022	\$ 1,022	\$ 1,022	\$ --
Assumed Reinsurance					
Beginning reserves	\$ 67,048	\$ 59,065	\$ 70,552	\$ 102,094	\$ 161,621
Losses and DCC incurred	(6,771)	11,394	31,420	60,661	141,902
Calendar year payments for losses and DCC	1,212	(93)	(122)	1,134	106,661
Ending reserves	\$ 59,065	\$ 70,552	\$ 102,094	\$ 161,621	\$ 196,862
Net of Ceded Reinsurance					
Beginning reserves	\$ 68,070	\$ 60,087	\$ 71,574	\$ 103,116	\$ 162,643
Losses and DCC incurred	(6,771)	11,394	31,420	60,661	140,880
Calendar year payments for losses and DCC	1,212	(93)	(122)	1,134	106,661
Ending reserves	\$ 60,087	\$ 71,574	\$ 103,116	\$ 162,643	\$ 196,862

E. Ending Reserves for Environmental Claims for Bulk and IBNR Included in D above (Losses and LAE):

Direct	\$ --
Assumed	45,952
Net	\$ 45,952

F. Ending Reserves for Environmental Claims for LAE Included in D above (Case, Bulk, and IBNR):

Direct	\$ --
Assumed	39,684
Net	\$ 39,684

34. Subscriber Savings Accounts

Not applicable

35.

Multiple Peril Crop Insurance

Not applicable
36.

Financial Guaranty Insurance

Not applicable

GENERAL INTERROGATORIES

PART 1 - COMMON INTERROGATORIES - GENERAL

1.1

Is the reporting entity a member of an Insurance Holding Company System consisting of two or more affiliated persons, one or more of which is an insurer?  
If yes, complete Schedule Y, Parts 1, 1A and 2.

Yes [ X ]    No [   ]

1.2

If yes, did the reporting entity register and file with its domiciliary State Insurance Commissioner, Director or Superintendent or with such regulatory official of the state of domicile of the principal insurer in the Holding Company System, a registration statement providing disclosure substantially similar to the standards adopted by the National Association of Insurance Commissioners (NAIC) in its Model Insurance Holding Company System Regulatory Act and model regulations pertaining thereto, or is the reporting entity subject to standards and disclosure requirements substantially similar to those required by such Act and regulations?

Yes [ X ]    No [   ]    N/A [   ]

1.3

State regulating? OHIO

2.1

Has any change been made during the year of this statement in the charter, by-laws, articles of incorporation, or deed of settlement of the reporting entity?

Yes [   ]    No [ X ]

2.2

If yes, date of change:

3.1

State as of what date the latest financial examination of the reporting entity was made or is being made.

12/31/2012

3.2

State the as of date that the latest financial examination report became available from either the state of domicile or the reporting entity. This date should be the date of the examined balance sheet and not the date the report was completed or released.

12/31/2012

3.3

State as of what date the latest financial examination report became available to other states or the public from either the state of domicile or the reporting entity. This is the release date or completion date of the examination report and not the date of the examination (balance sheet date).

08/06/2013

3.4

By what department or departments?  
OHIO

3.5

Have all financial statement adjustments within the latest financial examination report been accounted for in a subsequent financial statement filed with departments?

Yes [   ]    No [   ]    N/A [ X ]

3.6

Have all of the recommendations within the latest financial examination report been complied with?

Yes [ X ]    No [   ]    N/A [   ]

4.1

During the period covered by this statement, did any agent, broker, sales representative, non-affiliated sales/service organization or any combination thereof under common control (other than salaried employees of the reporting entity) receive credit or commissions for or control a substantial part (more than 20 percent of any major line of business measured on direct premiums) of:

4.11

sales of new business?

Yes [   ]    No [ X ]

4.12

renewals?

Yes [   ]    No [ X ]

4.2

During the period covered by this statement, did any sales/service organization owned in whole or in part by the reporting entity or an affiliate, receive credit or commissions for or control a substantial part (more than 20 percent of any major line of business measured on direct premiums) of:

4.21

sales of new business?

Yes [   ]    No [ X ]

4.22

renewals?

Yes [   ]    No [ X ]

5.1

Has the reporting entity been a party to a merger or consolidation during the period covered by this statement?

Yes [   ]    No [ X ]

5.2

If yes, provide the name of the entity, NAIC company code, and state of domicile (use two letter state abbreviation) for any entity that has ceased to exist as a result of the merger or consolidation.

1	2	3
Name of Entity	NAIC Co. Code	State of Domicile

6.1

Has the reporting entity had any Certificates of Authority, licenses or registrations (including corporate registration, if applicable) suspended or revoked by any governmental entity during the reporting period?

Yes [   ]    No [ X ]

6.2

If yes, give full information:

7.1

Does any foreign (non-United States) person or entity directly or indirectly control 10% or more of the reporting entity?

Yes [   ]    No [ X ]

7.2

If yes,

7.21

State the percentage of foreign control

.....%

7.22

State the nationality(ies) of the foreign person(s) or entity(ies); or if the entity is a mutual or reciprocal, the nationality of its manager or attorney-in-fact and identify the type of entity(ies) (e.g., individual, corporation, government, manager or attorney-in-fact)

1	2
Nationality	Type of Entity

8.1

Is the company a subsidiary of a bank holding company regulated by the Federal Reserve Board?

Yes [   ]    No [ X ]

8.2

If response to 8.1 is yes, please identify the name of the bank holding company.

8.3

Is the company affiliated with one or more banks, thrifts or securities firms?

Yes [   ]    No [ X ]

8.4

If response to 8.3 is yes, please provide the names and locations (city and state of the main office) of any affiliates regulated by a federal financial regulatory services agency [i.e. the Federal Reserve Board (FRB), the Office of the Comptroller of the Currency (OCC), the Federal Deposit Insurance Corporation (FDIC) and the Securities Exchange Commission (SEC)] and identify the affiliate's primary federal regulator.

1	2	3	4	5	6
Affiliate Name	Location (City, State)	FRB	OCC	FDIC	SEC

9.

What is the name and address of the independent certified public accountant or accounting firm retained to conduct the annual audit?  
PRICEWATERHOUSECOOPERS, LLP 200 PUBLIC SQUARE, 18TH FLOOR CLEVELAND, OH 44114-2301

10.1

Has the insurer been granted any exemptions to the prohibited non-audit services provided by the certified independent public accountant requirements as allowed in Section 7H of the Annual Financial Reporting Model Regulation (Model Audit Rule), or substantially similar state law or regulation?

Yes [   ]    No [ X ]

10.2

If the response to 10.1 is yes, provide information related to this exemption:

10.3

Has the insurer been granted any exemptions related to the other requirements of the Annual Financial Reporting Model Regulation as allowed for in Section 17A of the Model Regulation, or substantially similar state law or regulation?

Yes [   ]    No [ X ]

10.4

If the response to 10.3 is yes, provide information related to this exemption:



PROGRESSIVE AMERICAN INSURANCE COMPANY

PART 1 - COMMON INTERROGATORIES - FINANCIAL

22.1

Does this statement include payments for assessments as described in the Annual Statement Instructions other than guaranty fund or guaranty association assessments?

Yes [ ☐ ]    No [ ☒ ]

22.2

If answer is yes:

22.21

Amount paid as losses or risk adjustment

.....

22.22

Amount paid as expenses

.....

22.23

Other amounts paid

.....

23.1

Does the reporting entity report any amounts due from parent, subsidiaries or affiliates on Page 2 of this statement?

Yes [ ☒ ]    No [ ☐ ]

23.2

If yes, indicate any amounts receivable from parent included in the Page 2 amount.

\$.....0

PART 1 - COMMON INTERROGATORIES - INVESTMENT

24.01

Were all the stocks, bonds and other securities owned December 31 of current year, over which the reporting entity has exclusive control, in the actual possession of the reporting entity on said date (other than securities lending programs addressed in 24.03)?

Yes [ ☒ ]    No [ ☐ ]

24.02

If no, give full and complete information relating thereto.

.....

24.03

For security lending programs, provide a description of the program including value for collateral and amount of loaned securities, and whether collateral is carried on or off-balance sheet (an alternative is to reference Note 17 where this information is also provided).

N/A

24.04

Does the company's security lending program meet the requirements for a conforming program as outlined in the Risk-Based Capital Instructions?

Yes [ ☐ ]    No [ ☐ ]    N/A [ ☒ ]

24.05

If answer to 24.04 is yes, report amount of collateral for conforming programs.

.....

24.06

If answer to 24.04 is no, report amount of collateral for other programs.

.....

24.07

Does your securities lending program require 102% (domestic securities) and 105% (foreign securities) from the counterparty at the outset of the contract?

Yes [ ☐ ]    No [ ☐ ]    N/A [ ☒ ]

24.08

Does the reporting entity non-admit when the collateral received from the counterparty falls below 100%?

Yes [ ☐ ]    No [ ☐ ]    N/A [ ☒ ]

24.09

Does the reporting entity or the reporting entity's securities lending agent utilize the Master Securities Lending Agreement (MSLA) to conduct securities lending?

Yes [ ☐ ]    No [ ☐ ]    N/A [ ☒ ]

24.10

For the reporting entity's security lending program, state the amount of the following as of December 31 of the current year:

24.101

Total fair value of reinvested collateral assets reported on Schedule DL, Parts 1 and 2.

.....

24.102

Total book adjusted/carrying value of reinvested collateral assets reported on Schedule DL, Parts 1 and 2.

.....

24.103

Total payable for securities lending reported on the liability page.

.....

25.1

Were any of the stocks, bonds or other assets of the reporting entity owned at December 31 of the current year not exclusively under the control of the reporting entity or has the reporting entity sold or transferred any assets subject to a put option contract that is currently in force? (Exclude securities subject to Interrogatory 21.1 and 24.03)

Yes [ ☒ ]    No [ ☐ ]

25.2

If yes, state the amount thereof at December 31 of the current year:

25.21

Subject to repurchase agreements

\$.....0

25.22

Subject to reverse repurchase agreements

\$.....0

25.23

Subject to dollar repurchase agreements

\$.....0

25.24

Subject to reverse dollar repurchase agreements

\$.....0

25.25

Placed under option agreements

\$.....0

25.26

Letter stock or securities restricted as to sale - excluding FHLB Capital Stock

\$.....0

25.27

FHLB Capital Stock

\$.....0

25.28

On deposit with states

\$.....6,234,912

25.29

On deposit with other regulatory bodies

\$.....0

25.30

Pledged as collateral - excluding collateral pledged to an FHLB

\$.....0

25.31

Pledged as collateral to FHLB - including assets backing funding agreements

\$.....0

25.32

Other

\$.....0

25.3

For category (25.26) provide the following:

1	2	3
Nature of Restriction	Description	Amount

26.1

Does the reporting entity have any hedging transactions reported on Schedule DB?

Yes [ ☐ ]    No [ ☒ ]

26.2

If yes, has a comprehensive description of the hedging program been made available to the domiciliary state?

Yes [ ☐ ]    No [ ☐ ]    N/A [ ☒ ]

If no, attach a description with this statement.

.....

27.1

Were any preferred stocks or bonds owned as of December 31 of the current year mandatorily convertible into equity, or, at the option of the issuer, convertible into equity?

Yes [ ☐ ]    No [ ☒ ]

27.2

If yes, state the amount thereof at December 31 of the current year:

.....

28.

Excluding items in Schedule E-Part 3-Special Deposits, real estate, mortgage loans and investments held physically in the reporting entity's offices, vaults or safety deposit boxes, were all stocks, bonds and other securities, owned throughout the current year held pursuant to a custodial agreement with a qualified bank or trust company in accordance with Section 1, III - General Examination Considerations, F. Outsourcing of Critical Functions Custodial or Safekeeping Agreements of the NAIC Financial Condition Examiners Handbook?

Yes [ ☒ ]    No [ ☐ ]

28.01

For agreements that comply with the requirements of the NAIC Financial Condition Examiners Handbook, complete the following:

1	2
Name of Custodian(s)	Custodian's Address
CITIBANK, N.A.	338 GREENWICH STREET, NEW YORK, NY 10013

28.02

For all agreements that do not comply with the requirements of the NAIC Financial Condition Examiners Handbook, provide the name, location and a complete explanation:

1	2	3
Name(s)	Location(s)	Complete Explanation(s)
NONE		

28.03

Have there been any changes, including name changes, in the custodian(s) identified in 28.01 during the current year?

Yes [ ☐ ]    No [ ☒ ]

28.04

If yes, give full and complete information relating thereto:

1	2	3	4
Old Custodian	New Custodian	Date of Change	Reason
NONE			

28.05

Identify all investment advisors, brokers/dealers or individuals acting on behalf of broker/dealers that have access to the investment accounts, handle securities and have authority to make investments on behalf of the reporting entity:

1	2	3
Central Registration Depository Number(s)	Name	Address
NONE		

29.1

Does the reporting entity have any diversified mutual funds reported in Schedule D-Part 2 (diversified according to the Securities and Exchange Commission (SEC) in the Investment Company Act of 1940 [Section 5 (b) (1)])?

Yes [ ☐ ]    No [ ☒ ]

PROGRESSIVE AMERICAN INSURANCE COMPANY

PART 1 - COMMON INTERROGATORIES - INVESTMENT

29.2 If yes, complete the following schedule:

1	2	3
CUSIP #	Name of Mutual Fund	Book/Adjusted Carrying Value
29.2999. TOTAL		0

29.3 For each mutual fund listed in the table above, complete the following schedule:

1	2	3	4
Name of Mutual Fund (from the above table)	Name of Significant Holding of the Mutual Fund	Amount of Mutual Fund's Book/Adjusted Carrying Value Attributable to Holding	Date of Valuation

30. Provide the following information for all short-term and long-term bonds and all preferred stocks. Do not substitute amortized value or statement value for fair value.

	1	2	3
	Statement (Admitted) Value	Fair Value	Excess of Statement over Fair Value (-), or Fair Value over Statement (+)
30.1 Bonds.....	.....193,455,068	.....194,727,991	.....1,272,923
30.2 Preferred stocks.....	.....	.....	.....0
30.3 Totals.....	.....193,455,068	.....194,727,991	.....1,272,923

30.4 Describe the sources or methods utilized in determining the fair values:  
THE FAIR MARKET VALUES REPORTED ARE DERIVED FROM INDEPENDENT AND OBSERVABLE MARKET INPUT EVALUATIONS PROVIDED BY WIDELY UTILIZED REPUTABLE PRICING SERVICES, INDEPENDENT BROKER/DEALER BID LISTS, INDEPENDENT BROKER/DEALER QUOTATIONS, INDEPENDENT BROKER/DEALER PRICING SERVICES, OR ACTIVE MARKET CLOSING QUOTATIONS FROM A REGULATED EXCHANGE. IN VERY RARE CASES, IF NONE OF THE AFOREMENTIONED PRIMARY SOURCES ARE AVAILABLE, MATRIX PRICING USING THE REPORTING ENTITY'S OWN MARKET BASED ASSUMPTIONS MAY BE UTILIZED. THE APPROVED METHODS FOR COMPUTATION OF FAIR MARKET VALUE ARE PRESCRIBED IN PART FIVE OF THE SECURITIES VALUATION OFFICE PURPOSES AND PROCEDURES MANUAL.

31.1 Was the rate used to calculate fair value determined by a broker or custodian for any of the securities in Schedule D?

Yes [ ☐ ]No [ ☒ ]

31.2 If the answer to 31.1 is yes, does the reporting entity have a copy of the broker's or custodian's pricing policy (hard copy or electronic copy) for all brokers or custodians used as a pricing source?

Yes [ ☐ ]No [ ☐ ]

31.3 If the answer to 31.2 is no, describe the reporting entity's process for determining a reliable pricing source for purposes of disclosure of fair value for Schedule D.

32.1 Have all the filing requirements of the Purposes and Procedures Manual of the NAIC Securities Valuation Office been followed?

Yes [ ☒ ]No [ ☐ ]

32.2 If no, list exceptions:

PART 1 - COMMON INTERROGATORIES - OTHER

33.1 Amount of payments to trade associations, service organizations and statistical or rating bureaus, if any?

\$.....20,634

33.2 List the name of the organization and the amount paid if any such payment represented 25% or more of the total payments to trade associations, service organizations and statistical or rating bureaus during the period covered by this statement.

1	2
Name	Amount Paid
INDEPENDENT STATISTICAL SVCS	20,634

34.1 Amount of payments for legal expenses, if any?

\$.....0

34.2 List the name of the firm and the amount paid if any such payment represented 25% or more of the total payments for legal expenses during the period covered by this statement.

1	2
Name	Amount Paid
	0

35.1 Amount of payments for expenditures in connection with matters before legislative bodies, officers or departments of government, if any?

\$.....0

35.2 List the name of the firm and the amount paid if any such payment represented 25% or more of the total payment expenditures in connection with matters before legislative bodies, officers or departments of government during the period covered by this statement.

1	2
Name	Amount Paid
	0



GENERAL INTERROGATORIES

PART 2 - PROPERTY AND CASUALTY INTERROGATORIES

1.1

Does the reporting entity have any direct Medicare Supplement Insurance in force?

Yes [ ]

No [ X ]

1.2

If yes, indicate premium earned on U.S. business only.

\$.....0

1.3

What portion of item (1.2) is not reported on the Medicare Supplement Insurance Experience Exhibit?

.....

1.31

Reason for excluding:

.....

1.4

Indicate amount of earned premium attributable to Canadian and/or Other Alien not included in Item (1.2) above.

.....

1.5

Indicate total incurred claims on all Medicare Supplement insurance.

\$.....0

1.6

Individual policies:

Most current three years:

1.61

Total premium earned

.....

1.62

Total incurred claims

.....

1.63

Number of covered lives

.....

All years prior to most current three years:

1.64

Total premium earned

.....

1.65

Total incurred claims

.....

1.66

Number of covered lives

.....

1.7

Group policies:

Most current three years:

1.71

Total premium earned

.....

1.72

Total incurred claims

.....

1.73

Number of covered lives

.....

All years prior to most current three years:

1.74

Total premium earned

.....

1.75

Total incurred claims

.....

1.76

Number of covered lives

.....

2.

Health test:

2.1

Premium Numerator.....

.....

2.2

Premium Denominator.....

\$.....198,560,871

2.3

Premium Ratio (2.1/2.2).....

.....0.0

2.4

Reserve Numerator.....

.....

2.5

Reserve Denominator.....

\$.....138,609,322

2.6

Reserve Ratio (2.4/2.5).....

.....0.0

3.1

Does the reporting entity issue both participating and non-participating policies?

Yes [ ]

No [ X ]

3.2

If yes, state the amount of calendar year premiums written on:

3.21

Participating policies

.....

3.22

Non-participating policies

.....

4.

FOR MUTUAL REPORTING ENTITIES AND RECIPROCAL EXCHANGES ONLY:

4.1

Does the reporting entity issue assessable policies?

Yes [ ]

No [ ]

4.2

Does the reporting entity issue non-assessable policies?

Yes [ ]

No [ ]

4.3

If assessable policies are issued, what is the extent of the contingent liability of the policyholders?

.....%

4.4

Total amount of assessments paid or ordered to be paid during the year on deposit notes or contingent premiums.

.....

5.

FOR RECIPROCAL EXCHANGES ONLY:

5.1

Does the exchange appoint local agents?

Yes [ ]

No [ ]

5.2

If yes, is the commission paid:

5.21

Out of Attorney's-in-fact compensation

Yes [ ]

No [ ]

N/A [ ]

5.22

As a direct expense of the exchange

Yes [ ]

No [ ]

N/A [ ]

5.3

What expenses of the exchange are not paid out of the compensation of the Attorney-in-fact?

.....

5.4

Has any Attorney-in-fact compensation, contingent on fulfillment of certain conditions, been deferred?

Yes [ ]

No [ ]

5.5

If yes, give full information:

.....

6.1

What provision has this reporting entity made to protect itself from an excessive loss in the event of a catastrophe under a workers' compensation contract issued without limit of loss?

THE COMPANY DOES NOT WRITE WORKERS' COMPENSATION INSURANCE.

6.2

Describe the method used to estimate this reporting entity's probable maximum insurance loss, and identify the type of insured exposures comprising that probable maximum loss, the locations of concentrations of those exposures and the external resources (such as consulting firms or computer software models), if any, used in the estimation process:

THE COMPANY'S PROBABLE MAXIMUM LOSS (PML) IS ESTIMATED BY ANALYZING HISTORICAL MAJOR OCCURRENCES AND ESTIMATING FREQUENCY OF LOSS AND SEVERITY BASED ON THE POTENTIAL FORCE OF AN OCCURRENCE AND THE TOTAL NUMBER OF AUTOS AND BOATS EXPOSED. THE ESTIMATE OF THE PML WAS MADE EXCLUSIVELY BY PROGRESSIVE EMPLOYEES. THE COMPANY'S NET COMPREHENSIVE EXPOSURE IN THE CATASTROPHE PRONE STATES OF FLORIDA, LOUISIANA, TEXAS, MISSISSIPPI, ALABAMA, NEW YORK, AND CALIFORNIA IS LIMITED SINCE THE COMPANY IS A MEMBER OF A 100% POOLING REINSURANCE ARRANGEMENT WITH 11 OF ITS PROPERTY AND CASUALTY AFFILIATES. THE PRIMARY PROPERTY COVERAGE SOLD BY THE COMPANY IS COMPREHENSIVE FOR AUTOMOBILE AND INLAND MARINE FOR BOATS. THE ESTIMATE OF THE PML IS 7% OF THE SURPLUS.

6.3

What provision has this reporting entity made (such as a catastrophic reinsurance program) to protect itself from an excessive loss arising from the types and concentrations of insured exposures comprising its probable maximum property insurance loss?

THE COMPANY'S ESTIMATED PML IS 7% OF THE SURPLUS. THE COMPANY CARRIES NO EXTERNAL CATASTROPHE REINSURANCE TO COVER ITS LIMITED CATASTROPHE EXPOSURE. THE COMPANY PARTICIPATES IN A POOLING ARRANGEMENT, WHICH SPREADS THE UNDERWRITING RISK INCLUDING THE CATASTROPHE EXPOSURE AMONG ALL PARTIES TO THE POOLING AGREEMENT.

6.4

Does the reporting entity carry catastrophe reinsurance protection for at least one reinstatement, in an amount sufficient to cover its estimated probable maximum loss attributable to a single loss event or occurrence?

Yes [ ]

No [ X ]

6.5

If no, describe any arrangements or mechanisms employed by the reporting entity to supplement its catastrophe reinsurance program or to hedge its exposure to uninsured catastrophic loss:

NONE

GENERAL INTERROGATORIES

PART 2 - PROPERTY AND CASUALTY INTERROGATORIES

7.1

Has the reporting entity reinsured any risk with any other entity under a quota share reinsurance contract that includes a provision that would limit the reinsurer's losses below the stated quota share percentage (e.g., a deductible, a loss ratio corridor, a loss cap, an aggregate limit or any similar provisions)?

Yes [ ]

No [X]

7.2

If yes, indicate the number of reinsurance contracts containing such provisions.

7.3

If yes, does the amount of reinsurance credit taken reflect the reduction in quota share coverage caused by any applicable limiting provision(s)?

Yes [ ]

No [ ]

8.1

Has this reporting entity reinsured any risk with any other entity and agreed to release such entity from liability, in whole or in part, from any loss that may occur on this risk, or portion thereof, reinsured?

Yes [ ]

No [X]

8.2

If yes, give full information:

9.1

Has the reporting entity ceded any risk under any reinsurance contract (or under multiple contracts with the same reinsurer or its affiliates) for which during the period covered by the statement: (i) it recorded a positive or negative underwriting result greater than 5% of prior year-end surplus as regards policyholders or it reported calendar year written premium ceded or year-end loss and loss expense reserves ceded greater than 5% of prior year-end surplus as regards policyholders; (ii) it accounted for that contract as reinsurance and not as a deposit; and (iii) the contract(s) contain one or more of the following features or other features that would have similar results:  
(a) A contract term longer than two years and the contract is noncancellable by the reporting entity during the contract term;  
(b) A limited or conditional cancellation provision under which cancellation triggers an obligation by the reporting entity, or an affiliate of the reporting entity, to enter into a new reinsurance contract with the reinsurer, or an affiliate of the reinsurer;  
(c) Aggregate stop loss reinsurance coverage;  
(d) A unilateral right by either party (or both parties) to commute the reinsurance contract, whether conditional or not, except for such provisions which are only triggered by a decline in the credit status of the other party;  
(e) A provision permitting reporting of losses, or payment of losses, less frequently than on a quarterly basis (unless there is no activity during the period); or  
(f) Payment schedule, accumulating retentions from multiple years or any features inherently designed to delay timing of the reimbursement to the ceding entity?

Yes [ ]

No [X]

9.2

Has the reporting entity during the period covered by the statement ceded any risk under any reinsurance contract (or under multiple contracts with the same reinsurer or its affiliates), for which, during the period covered by the statement, it recorded a positive or negative underwriting result greater than 5% of prior year-end surplus as regards policyholders or it reported calendar year written premium ceded or year-end loss and loss expense reserves ceded greater than 5% of prior year-end surplus as regards policyholders; excluding cessions to approved pooling arrangements or to captive insurance companies that are directly or indirectly controlling, controlled by, or under control with (i) one or more unaffiliated policyholders of the reporting entity, or (ii) an association of which one or more unaffiliated policyholders of the reporting entity is a member where:  
(a) The written premium ceded to the reinsurer by the reporting entity or its affiliates represents fifty percent (50%) or more of the entire direct and assumed premium written by the reinsurer based on its most recently available financial statement; or  
(b) Twenty-five percent (25%) or more of the written premium ceded to the reinsurer has been retroceded back to the reporting entity or its affiliates in a separate reinsurance contract?

Yes [ ]

No [X]

9.3

If yes to 9.1 or 9.2, please provide the following information in the Reinsurance Summary Supplemental Filing for General Interrogatory 9:  
(a) The aggregate financial statement impact gross of all such ceded reinsurance contracts on the balance sheet and statement of income;  
(b) A summary of the reinsurance contract terms and indicate whether it applies to the contracts meeting the criteria in 9.1 or 9.2; and  
(c) A brief discussion of management's principle objectives in entering into the reinsurance contract including the economic purpose to be achieved.

9.4

Except for transactions meeting the requirements of paragraph 31 of SSAP No. 62R, Property and Casualty Reinsurance, has the reporting entity ceded any risk under any reinsurance contract (or multiple contracts with the same reinsurer or its affiliates) during the period covered by the financial statement, and either:  
(a) Accounted for that contract as reinsurance (either prospective or retroactive) under statutory accounting principles ("SAP") and as a deposit under generally accepted accounting principles ("GAAP"); or  
(b) Accounted for that contract as reinsurance under GAAP and as a deposit under SAP?

Yes [ ]

No [X]

9.5

If yes to 9.4, explain in the Reinsurance Summary Supplemental Filing for General Interrogatory 9 (Section D) why the contract(s) is treated differently for GAAP and SAP.

9.6

The reporting entity is exempt from the Reinsurance Attestation Supplement under one or more of the following criteria:  
(a) The entity does not utilize reinsurance; or  
(b) The entity only engages in a 100% quota share contract with an affiliate and the affiliated or lead company has filed an attestation supplement; or  
(c) The entity has no external cessions and only participates in an intercompany pool and the affiliated or lead company has filed an attestation supplement.

Yes [ ]

No [X]

Yes [ ]

No [X]

Yes [ ]

No [X]

10.

If the reporting entity has assumed risks from another entity, there should be charged on account of such reinsurance a reserve equal to that which the original entity would have been required to charge had it retained the risks. Has this been done?

Yes [X]

No [ ]

N/A [ ]

11.1

Has this reporting entity guaranteed policies issued by any other reporting entity and now in force?

Yes [ ]

No [X]

11.2

If yes, give full information:

12.1

If the reporting entity recorded accrued retrospective premiums on insurance contracts on Line 15.3 of the assets schedule, Page 2, state the amount of corresponding liabilities recorded for:  
12.11 Unpaid losses  
12.12 Unpaid underwriting expenses (including loss adjustment expenses)

\$.....0

\$.....0

\$.....0

12.2

Of the amount on Line 15.3, Page 2, state the amount that is secured by letters of credit, collateral and other funds:

\$.....0

12.3

If the reporting entity underwrites commercial insurance risks, such as workers' compensation, are premium notes or promissory notes accepted from its insureds covering unpaid premiums and/or unpaid losses?

Yes [ ]

No [X]

N/A [ ]

12.4

If yes, provide the range of interest rates charged under such notes during the period covered by this statement:  
12.41 From  
12.42 To

.....%

.....%

12.5

Are letters of credit or collateral and other funds received from insureds being utilized by the reporting entity to secure premium notes or promissory notes taken by a reporting entity, or to secure any of the reporting entity's reported direct unpaid loss reserves, including unpaid losses under loss deductible features of commercial policies?

Yes [ ]

No [X]

12.6

If yes, state the amount thereof at December 31 of current year:  
12.61 Letters of credit  
12.62 Collateral and other funds

GENERAL INTERROGATORIES

PART 2 - PROPERTY AND CASUALTY INTERROGATORIES

13.1

Largest net aggregate amount insured in any one risk (excluding workers' compensation):

\$.....200,000

13.2

Does any reinsurance contract considered in the calculation of this amount include an aggregate limit of recovery without also including a reinstatement provision?

Yes [ ☐ ]      No [ ☒ ]

13.3

State the number of reinsurance contracts (excluding individual facultative risk certificates, but including facultative programs, automatic facilities or facultative obligatory contracts) considered in the calculation of the amount.

.....1

14.1

Is the company a cedant in a multiple cedant reinsurance contract?

Yes [ ☐ ]      No [ ☒ ]

14.2

If yes, please describe the method of allocating and recording reinsurance among the cedants:

14.3

If the answer to 14.1 is yes, are the methods described in item 14.2 entirely contained in the respective multiple cedant reinsurance contracts?

Yes [ ☐ ]      No [ ☐ ]

14.4

If the answer to 14.3 is no, are all the methods described in 14.2 entirely contained in written agreements?

Yes [ ☐ ]      No [ ☐ ]

14.5

If the answer to 14.4 is no, please explain:

15.1

Has the reporting entity guaranteed any financed premium accounts?

Yes [ ☐ ]      No [ ☒ ]

15.2

If yes, give full information:

16.1

Does the reporting entity write any warranty business?

Yes [ ☐ ]      No [ ☒ ]

If yes, disclose the following information for each of the following types of warranty coverage:

	1 Direct Losses Incurred	2 Direct Losses Unpaid	3 Direct Written Premium	4 Direct Premium Unearned	5 Direct Premium Earned
16.11 Home.....	.....	.....	.....	.....	.....
16.12 Products.....	.....	.....	.....	.....	.....
16.13 Automobile.....	.....	.....	.....	.....	.....
16.14 Other*.....	.....	.....	.....	.....	.....

\* Disclose type of coverage: .....

17.1

Does the reporting entity include amounts recoverable on unauthorized reinsurance in Schedule F-Part 3 that it excludes from Schedule F-Part 5?

Yes [ ☐ ]      No [ ☒ ]

Incurred but not reported losses on contracts in force prior to July 1, 1984, and not subsequently renewed are exempt from inclusion in Schedule F-Part 5.  
Provide the following information for this exemption:

17.11

Gross amount of unauthorized reinsurance in Schedule F-Part 3 excluded from Schedule F-Part 5

.....

17.12

Unfunded portion of Interrogatory 17.11

.....

17.13

Paid losses and loss adjustment expenses portion of Interrogatory 17.11

.....

17.14

Case reserves portion of Interrogatory 17.11

.....

17.15

Incurred but not reported portion of Interrogatory 17.11

.....

17.16

Unearned premium portion of Interrogatory 17.11

.....

17.17

Contingent commission portion of Interrogatory 17.11

.....

Provide the following information for all other amounts included in Schedule F-Part 3 and excluded from Schedule F-Part 5, not included above:

17.18

Gross amount of unauthorized reinsurance in Schedule F-Part 3 excluded from Schedule F-Part 5

.....

17.19

Unfunded portion of Interrogatory 17.18

.....

17.20

Paid losses and loss adjustment expenses portion of Interrogatory 17.18

.....

17.21

Case reserves portion of Interrogatory 17.18

.....

17.22

Incurred but not reported portion of Interrogatory 17.18

.....

17.23

Unearned premium portion of Interrogatory 17.18

.....

17.24

Contingent commission portion of Interrogatory 17.18

.....

18.1

Do you act as a custodian for health savings account?

Yes [ ☐ ]      No [ ☒ ]

18.2

If yes, please provide the amount of custodial funds held as of the reporting date.

.....

18.3

Do you act as an administrator for health savings accounts?

Yes [ ☐ ]      No [ ☒ ]

18.4

If yes, please provide the balance of the funds administered as of the reporting date.

.....

FIVE-YEAR HISTORICAL DATA

Show amounts in whole dollars only, no cents; show percentages to one decimal place, i.e. 17.6.

	1 2014	2 2013	3 2012	4 2011	5 2010
<b>Gross Premiums Written (Page 8, Part 1B, Cols. 1, 2 &amp; 3)</b>					
1. Liability lines (Lines 11.1, 11.2, 16, 17.1, 17.2, 17.3, 18.1, 18.2, 19.1, 19.2 & 19.3, 19.4).....	1,000,105,524	921,226,480	827,021,943	684,641,117	649,007,937
2. Property lines (Lines 1, 2, 9, 12, 21 & 26).....	394,633,195	341,767,093	305,727,946	269,074,236	265,237,469
3. Property and liability combined lines (Lines 3, 4, 5, 8, 22 & 27).....	750,705	606,758	561,591	536,139	537,185
4. All other lines (Lines 6, 10, 13, 14, 15, 23, 24, 28, 29, 30 & 34).....	235	83	169	352	145
5. Nonproportional reinsurance lines (Lines 31, 32 & 33).....					
6. Total (Line 35).....	1,395,489,659	1,263,600,415	1,133,311,649	954,251,843	914,782,736
<b>Net Premiums Written (Page 8, Part 1B, Col. 6)</b>					
7. Liability lines (Lines 11.1, 11.2, 16, 17.1, 17.2, 17.3, 18.1, 18.2, 19.1, 19.2 & 19.3, 19.4).....	127,117,434	121,588,515	116,115,521	108,460,788	102,894,468
8. Property lines (Lines 1, 2, 9, 12, 21 & 26).....	71,791,609	67,917,328	64,871,281	60,434,870	60,046,950
9. Property and liability combined lines (Lines 3, 4, 5, 8, 22 & 27).....	750,705	606,758	561,591	536,139	537,185
10. All other lines (Lines 6, 10, 13, 14, 15, 23, 24, 28, 29, 30 & 34).....	235	83	169	352	145
11. Nonproportional reinsurance lines (Lines 31, 32 & 33).....					
12. Total (Line 35).....	199,659,983	190,112,685	181,548,562	169,432,148	163,478,748
<b>Statement of Income (Page 4)</b>					
13. Net underwriting gain (loss) (Line 8).....	14,812,688	10,808,153	5,845,648	9,661,017	11,089,651
14. Net investment gain (loss) (Line 11).....	1,836,748	1,705,892	3,896,452	6,447,937	4,775,756
15. Total other income (Line 15).....	1,750,147	182,892	1,644,314	705,031	(766,039)
16. Dividends to policyholders (Line 17).....					
17. Federal and foreign income taxes incurred (Line 19).....	6,228,606	4,417,455	3,789,150	4,573,949	4,788,024
18. Net income (Line 20).....	12,170,977	8,279,482	7,597,264	12,240,036	10,311,344
<b>Balance Sheet Lines (Pages 2 and 3)</b>					
19. Total admitted assets excluding protected cell business (Page 2, Line 26, Col. 3).....	416,237,096	390,052,369	353,393,004	313,073,592	296,802,310
20. Premiums and considerations (Page 2, Col. 3):					
20.1 In course of collection (Line 15.1).....	24,758,128	22,097,616	20,813,436	19,306,207	11,658,211
20.2 Deferred and not yet due (Line 15.2).....	135,264,398	130,963,564	124,212,204	109,174,098	97,959,472
20.3 Accrued retrospective premiums (Line 15.3).....					
21. Total liabilities excluding protected cell business (Page 3, Line 26).....	240,883,262	231,601,929	212,532,929	191,960,982	179,473,148
22. Losses (Page 3, Line 1).....	66,787,043	66,019,525	62,042,143	57,107,917	55,844,102
23. Loss adjustment expenses (Page 3, Line 3).....	13,705,514	12,920,145	12,386,918	12,044,948	12,182,935
24. Unearned premiums (Page 3, Line 9).....	57,022,969	55,923,857	54,033,444	50,619,396	48,340,571
25. Capital paid up (Page 3, Lines 30 & 31).....	2,500,000	2,500,000	2,500,000	2,500,000	2,500,000
26. Surplus as regards policyholders (Page 3, Line 37).....	175,353,834	158,450,440	140,860,075	121,112,610	117,329,162
<b>Cash Flow (Page 5)</b>					
27. Net cash from operations (Line 11).....	11,073,643	12,392,693	(4,572,009)	1,821,063	19,636,251
<b>Risk-Based Capital Analysis</b>					
28. Total adjusted capital.....	175,353,834	158,450,440	140,860,075	121,112,610	117,329,162
29. Authorized control level risk-based capital.....	7,175,274	6,954,167	6,209,246	5,866,387	5,680,521
<b>Percentage Distribution of Cash, Cash Equivalents and Invested Assets</b> (Page 2, Col. 3) (Item divided by Page 2, Line 12, Col. 3) x 100.0					
30. Bonds (Line 1).....	75.7	100.0	95.9	98.9	99.4
31. Stocks (Lines 2.1 & 2.2).....					
32. Mortgage loans on real estate (Lines 3.1 & 3.2).....					
33. Real estate (Lines 4.1, 4.2 & 4.3).....					
34. Cash, cash equivalents and short-term investments (Line 5).....	24.3		4.1	0.8	0.6
35. Contract loans (Line 6).....					
36. Derivatives (Line 7).....					
37. Other invested assets (Line 8).....					
38. Receivable for securities (Line 9).....				0.2	
39. Securities lending reinvested collateral assets (Line 10).....					
40. Aggregate write-ins for invested assets (Line 11).....					
41. Cash, cash equivalents and invested assets (Line 12).....	100.0	100.0	100.0	100.0	100.0
<b>Investments in Parent, Subsidiaries and Affiliates</b>					
42. Affiliated bonds (Sch. D, Summary, Line 12, Col. 1).....					
43. Affiliated preferred stocks (Sch. D, Summary, Line 18, Col. 1).....					
44. Affiliated common stocks (Sch. D, Summary, Line 24, Col. 1).....					
45. Affiliated short-term investments (subtotals included in Schedule DA, Verification, Column 5, Line 10).....					
46. Affiliated mortgage loans on real estate.....					
47. All other affiliated.....					
48. Total of above lines 42 to 47.....	0	0	0	0	0
49. Total investment in parent included in Lines 42 to 47 above.....					
50. Percentage of investments in parent, subsidiaries and affiliates to surplus as regards policyholders (Line 48 above divided by Page 3, Col. 1, Line 37 x 100.0).....	0.0				

PROGRESSIVE AMERICAN INSURANCE COMPANY  
FIVE-YEAR HISTORICAL DATA  
(Continued)

	1	2	3	4	5
	2014	2013	2012	2011	2010
<b>Capital and Surplus Accounts (Page 4)</b>					
51. Net unrealized capital gains (losses) (Line 24).....					
52. Dividends to stockholders (Line 35).....				(9,000,000)	(17,300,000)
53. Change in surplus as regards policyholders for the year (Line 38).....	16,903,394	17,590,365	19,747,465	3,783,448	(6,235,985)
<b>Gross Losses Paid (Page 9, Part 2, Cols. 1 &amp; 2)</b>					
54. Liability lines (Lines 11.1, 11.2, 16, 17.1, 17.2, 17.3, 18.1, 18.2, 19.1, 19.2 & 19.3, 19.4).....	589,453,747	501,009,837	451,612,592	390,319,052	426,808,535
55. Property lines (Lines 1, 2, 9, 12, 21 & 26).....	238,167,930	200,947,337	181,362,363	154,563,931	154,803,127
56. Property and liability combined lines (Lines 3, 4, 5, 8, 22 & 27).....	331,984	266,987	423,004	326,123	272,136
57. All other lines (Lines 6, 10, 13, 14, 15, 23, 24, 28, 29, 30 & 34).....	(1,262)	25,798	41,353	29,630	10,472
58. Nonproportional reinsurance lines (Lines 31, 32 & 33).....	8,112	12,702	6,968	16,817	10,631
59. Total (Line 35).....	827,960,510	702,262,661	633,446,280	545,255,552	581,904,902
<b>Net Losses Paid (Page 9, Part 2, Col. 4)</b>					
60. Liability lines (Lines 11.1, 11.2, 16, 17.1, 17.2, 17.3, 18.1, 18.2, 19.1, 19.2 & 19.3, 19.4).....	76,196,174	71,012,601	68,248,766	63,031,508	61,107,358
61. Property lines (Lines 1, 2, 9, 12, 21 & 26).....	45,122,849	42,762,857	41,746,577	38,300,024	34,673,183
62. Property and liability combined lines (Lines 3, 4, 5, 8, 22 & 27).....	331,984	266,987	423,004	326,123	272,136
63. All other lines (Lines 6, 10, 13, 14, 15, 23, 24, 28, 29, 30 & 34).....	(1,262)	25,798	41,353	29,630	10,472
64. Nonproportional reinsurance lines (Lines 31, 32 & 33).....	8,112	12,702	6,968	16,817	10,631
65. Total (Line 35).....	121,657,856	114,080,945	110,466,668	101,704,101	96,073,781
<b>Operating Percentages</b> (Page 4) (Item divided by Page 4, Line 1) x 100.0					
66. Premiums earned (Line 1).....	100.0	100.0	100.0	100.0	100.0
67. Losses incurred (Line 2).....	61.7	62.7	64.8	61.6	59.5
68. Loss expenses incurred (Line 3).....	10.1	10.2	10.3	10.4	10.8
69. Other underwriting expenses incurred (Line 4).....	20.7	21.3	21.6	22.3	22.8
70. Net underwriting gain (loss) (Line 8).....	7.5	5.7	3.3	5.8	6.8
<b>Other Percentages</b>					
71. Other underwriting expenses to net premiums written (Page 4, Lines 4 + 5 - 15 divided by Page 8, Part 1B, Col. 6, Line 35 x 100.0).....	19.7	21.0	20.3	21.6	23.1
72. Losses and loss expenses incurred to premiums earned (Page 4, Lines 2 + 3 divided by Page 4, Line 1 x 100.0).....	71.8	72.9	75.1	72.0	70.3
73. Net premiums written to policyholders' surplus (Page 8, Part 1B, Col. 6, Line 35, divided by Page 3, Line 37, Col. 1 x 100.0).....	113.9	120.0	128.9	139.9	139.3
<b>One Year Loss Development (000 omitted)</b>					
74. Development in estimated losses and loss expenses incurred prior to current year (Schedule P, Part 2-Summary, Line 12, Col. 11).....	(386)	870	635	(1,166)	(2,599)
75. Percent of development of losses and loss expenses incurred to policyholders' surplus of prior year end (Line 74 above divided by Page 4, Line 21, Col. 1 x 100).....	(0.2)	0.6	0.5	(1.0)	(2.1)
<b>Two Year Loss Development (000 omitted)</b>					
76. Development in estimated losses and loss expenses incurred 2 years before the current year and prior year (Schedule P, Part 2-Summary, Line 12, Col. 12).....	614	1,184	(1,785)	(3,818)	(2,318)
77. Percent of development of losses and loss expenses incurred to reported policyholders' surplus of second prior year end (Line 76 above divided by Page 4, Line 21, Col. 2 x 100.0).....	0.4	1.0	(1.5)	(3.1)	(1.9)

If a party to a merger, have the two most recent years of this exhibit been restated due to a merger in compliance with the disclosure requirements of  
SSAP No. 3, Accounting Changes and Correction of Errors?

Yes[ ] No[ ]

If no, please explain:

**SCHEDULE P - ANALYSIS OF LOSSES AND LOSS EXPENSES**

**SCHEDULE P - PART 1 - SUMMARY**

(\$000 Omitted)

Years in Which Premiums Were Earned and Losses Were Incurred	Premiums Earned			Loss and Loss Expense Payments								12 Number of Claims Reported- Direct and Assumed
	1	2	3	Loss Payments		Defense and Cost Containment Payments		Adjusting and Other Payments		10	11	
	Direct and Assumed	Ceded	Net (Cols. 1 - 2)	4 Direct and Assumed	5 Ceded	6 Direct and Assumed	7 Ceded	8 Direct and Assumed	9 Ceded	Salvage and Subrogation Received	Total Net Paid (Cols. 4 - 5 + 6 - 7 + 8 - 9)	
1. Prior.....	.....XXX.....	.....XXX.....	.....XXX.....	.....318	.....154	.....10	.....1	.....20	.....	.....21	.....193	.....XXX.....
2. 2005.....	.....201,852	.....3,468	.....198,384	.....113,370	.....2,739	.....3,727	.....98	.....21,751	.....166	.....9,073	.....135,844	.....XXX.....
3. 2006.....	.....190,772	.....3,084	.....187,688	.....106,712	.....2,852	.....3,214	.....113	.....20,117	.....113	.....9,031	.....126,966	.....XXX.....
4. 2007.....	.....173,366	.....2,556	.....170,810	.....101,140	.....1,436	.....2,707	.....24	.....17,998	.....20	.....9,406	.....120,364	.....XXX.....
5. 2008.....	.....165,208	.....2,081	.....163,127	.....100,197	.....1,274	.....2,659	.....74	.....17,280	.....30	.....8,677	.....118,757	.....XXX.....
6. 2009.....	.....165,494	.....2,202	.....163,293	.....96,829	.....1,608	.....2,644	.....113	.....15,035	.....27	.....8,162	.....112,760	.....XXX.....
7. 2010.....	.....164,475	.....2,477	.....161,997	.....99,133	.....1,721	.....2,687	.....92	.....14,867	.....4	.....8,741	.....114,870	.....XXX.....
8. 2011.....	.....169,421	.....2,268	.....167,153	.....103,524	.....1,047	.....2,248	.....15	.....14,663	.....0	.....9,625	.....119,373	.....XXX.....
9. 2012.....	.....179,985	.....1,850	.....178,134	.....109,504	.....848	.....1,754	.....5	.....14,908	.....	.....10,713	.....125,313	.....XXX.....
10. 2013.....	.....190,087	.....1,865	.....188,222	.....102,830	.....580	.....991	.....1	.....14,636	.....	.....10,431	.....117,876	.....XXX.....
11. 2014.....	.....200,512	.....1,951	.....198,561	.....83,053	.....344	.....256	.....0	.....12,385	.....	.....7,308	.....95,350	.....XXX.....
12. Totals.....	.....XXX.....	.....XXX.....	.....XXX.....	.....1,016,609	.....14,603	.....22,897	.....537	.....163,660	.....360	.....91,188	.....1,187,666	.....XXX.....

	Losses Unpaid				Defense and Cost Containment Unpaid				Adjusting and Other Unpaid		23	24	25
	Case Basis		Bulk + IBNR		Case Basis		Bulk + IBNR		21	22	Salvage and Subrogation Anticipated	Total Net Losses and Expenses Unpaid	Number of Claims Outstanding- Direct and Assumed
	13 Direct and Assumed	14 Ceded	15 Direct and Assumed	16 Ceded	17 Direct and Assumed	18 Ceded	19 Direct and Assumed	20 Ceded	Direct and Assumed	Ceded			
1. Prior.....	.....2,931	.....2,593	.....174	.....	.....54	.....6	.....20	.....	.....41	.....	.....	.....621	.....XXX.....
2. 2005.....	.....1,164	.....1,117	.....3	.....	.....9	.....	.....	.....	.....18	.....	.....	.....76	.....XXX.....
3. 2006.....	.....1,038	.....974	.....30	.....27	.....13	.....0	.....	.....	.....20	.....	.....	.....100	.....XXX.....
4. 2007.....	.....1,122	.....1,036	.....122	.....118	.....17	.....0	.....4	.....3	.....25	.....	.....	.....132	.....XXX.....
5. 2008.....	.....1,471	.....1,234	.....116	.....111	.....35	.....0	.....10	.....8	.....36	.....	.....	.....315	.....XXX.....
6. 2009.....	.....1,237	.....794	.....145	.....139	.....72	.....1	.....14	.....11	.....51	.....	.....	.....573	.....XXX.....
7. 2010.....	.....2,015	.....1,086	.....62	.....51	.....144	.....1	.....22	.....19	.....84	.....	.....	.....1,170	.....XXX.....
8. 2011.....	.....2,871	.....790	.....949	.....226	.....343	.....1	.....208	.....15	.....244	.....	.....408	.....3,583	.....XXX.....
9. 2012.....	.....6,854	.....1,183	.....979	.....59	.....956	.....1	.....255	.....7	.....536	.....	.....425	.....8,333	.....XXX.....
10. 2013.....	.....13,708	.....1,298	.....2,708	.....100	.....1,584	.....2	.....439	.....2	.....1,302	.....	.....852	.....18,338	.....XXX.....
11. 2014.....	.....31,512	.....272	.....10,012	.....1,225	.....2,184	.....1	.....868	.....2	.....4,177	.....	.....4,516	.....47,251	.....XXX.....
12. Totals...	.....65,920	.....12,377	.....15,301	.....2,057	.....5,410	.....12	.....1,840	.....68	.....6,535	.....0	.....6,201	.....80,493	.....XXX.....

	Total Losses and Loss Expenses Incurred			Loss and Loss Expense Percentage (Incurred/Premiums Earned)			Nontabular Discount		34	Net Balance Sheet Reserves after Discount	
	26 Direct and Assumed	27 Ceded	28 Net	29 Direct and Assumed	30 Ceded	31 Net	32 Loss	33 Loss Expense	Inter-Company Pooling Participation Percentage	35 Losses Unpaid	36 Loss Expenses Unpaid
1. Prior..	.....XXX.....	.....XXX.....	.....XXX.....	.....XXX.....	.....XXX.....	.....XXX.....	.....	.....	.....XXX.....	.....512	.....109
2. 2005.	.....140,042	.....4,121	.....135,921	.....69.4	.....118.8	.....68.5	.....	.....	.....2.00	.....49	.....27
3. 2006.	.....131,144	.....4,079	.....127,066	.....68.7	.....132.3	.....67.7	.....	.....	.....2.00	.....67	.....33
4. 2007.	.....123,135	.....2,638	.....120,497	.....71.0	.....103.2	.....70.5	.....	.....	.....2.00	.....90	.....42
5. 2008.	.....121,804	.....2,732	.....119,072	.....73.7	.....131.3	.....73.0	.....	.....	.....2.00	.....242	.....73
6. 2009.	.....116,027	.....2,694	.....113,333	.....70.1	.....122.3	.....69.4	.....	.....	.....2.00	.....449	.....125
7. 2010.	.....119,013	.....2,973	.....116,040	.....72.4	.....120.0	.....71.6	.....	.....	.....2.00	.....939	.....231
8. 2011.	.....125,050	.....2,094	.....122,956	.....73.8	.....92.3	.....73.6	.....	.....	.....2.00	.....2,804	.....780
9. 2012.	.....135,747	.....2,101	.....133,645	.....75.4	.....113.6	.....75.0	.....	.....	.....2.00	.....6,592	.....1,741
10. 2013.	.....138,198	.....1,983	.....136,214	.....72.7	.....106.4	.....72.4	.....	.....	.....2.00	.....15,018	.....3,320
11. 2014.	.....144,446	.....1,845	.....142,601	.....72.0	.....94.6	.....71.8	.....	.....	.....2.00	.....40,026	.....7,226
12. Totals	.....XXX.....	.....XXX.....	.....XXX.....	.....XXX.....	.....XXX.....	.....XXX.....	.....0	.....0	.....XXX.....	.....66,787	.....13,706

Note: Parts 2 and 4 are gross of all discounting, including tabular discounting. Part 1 is gross of only nontabular discounting, which is reported in Columns 32 and 33 of Part 1. The tabular discount, if any, is reported in the Notes to Financial Statements, which will reconcile Part 1 with Parts 2 and 4.

**SCHEDULE P - PART 2 - SUMMARY**

Years in Which Losses Were Incurred	Incurred Net Losses and Defense and Cost Containment Expenses Reported at Year End (\$000 omitted)										DEVELOPMENT	
	1	2	3	4	5	6	7	8	9	10	11	12
	2005	2006	2007	2008	2009	2010	2011	2012	2013	2014	One Year	Two Year
1. Prior.....	.....30,556	.....29,258	.....29,420	.....28,820	.....28,696	.....28,781	.....28,681	.....28,738	.....28,777	.....29,136	.....358	.....398
2. 2005.....	.....115,717	.....114,386	.....115,049	.....115,087	.....114,341	.....114,166	.....114,233	.....114,269	.....114,383	.....114,318	.....(65)	.....49
3. 2006.....	.....XXX	.....107,100	.....107,464	.....108,309	.....107,802	.....107,107	.....107,076	.....107,029	.....107,037	.....107,041	.....4	.....12
4. 2007.....	.....XXX	.....XXX	.....103,508	.....103,620	.....103,820	.....103,334	.....102,477	.....102,480	.....102,539	.....102,494	.....(46)	.....13
5. 2008.....	.....XXX	.....XXX	.....XXX	.....102,511	.....102,472	.....102,642	.....102,083	.....101,605	.....101,799	.....101,786	.....(13)	.....181
6. 2009.....	.....XXX	.....XXX	.....XXX	.....XXX	.....100,236	.....98,739	.....99,000	.....98,560	.....98,163	.....98,274	.....111	.....(286)
7. 2010.....	.....XXX	.....XXX	.....XXX	.....XXX	.....XXX	.....101,303	.....101,356	.....101,606	.....101,755	.....101,093	.....(662)	.....(513)
8. 2011.....	.....XXX	.....XXX	.....XXX	.....XXX	.....XXX	.....XXX	.....106,416	.....107,670	.....108,052	.....108,048	.....(3)	.....379
9. 2012.....	.....XXX	.....XXX	.....XXX	.....XXX	.....XXX	.....XXX	.....XXX	.....117,820	.....118,142	.....118,201	.....59	.....381
10. 2013.....	.....XXX	.....XXX	.....XXX	.....XXX	.....XXX	.....XXX	.....XXX	.....XXX	.....120,406	.....120,276	.....(130)	.....XXX
11. 2014.....	.....XXX	.....XXX	.....XXX	.....XXX	.....XXX	.....XXX	.....XXX	.....XXX	.....XXX	.....126,039	.....XXX	.....XXX
12. Totals.....											.....(386)	.....614

**SCHEDULE P - PART 3 - SUMMARY**

Years in Which Losses Were Incurred	Cumulative Paid Net Losses and Defense and Cost Containment Expenses Reported at Year End (\$000 omitted)										11	12
	1	2	3	4	5	6	7	8	9	10	Number of Claims Closed With Loss Payment	Number of Claims Closed Without Loss Payment
	2005	2006	2007	2008	2009	2010	2011	2012	2013	2014		
1. Prior.....	.....000	.....14,541	.....22,180	.....25,911	.....27,151	.....27,835	.....28,139	.....28,322	.....28,382	.....28,556	.....XXX	.....XXX
2. 2005.....	.....76,745	.....96,571	.....105,643	.....110,819	.....112,933	.....113,703	.....113,944	.....114,135	.....114,239	.....114,260	.....XXX	.....XXX
3. 2006.....	.....XXX	.....72,803	.....91,803	.....99,865	.....104,155	.....105,819	.....106,509	.....106,772	.....106,896	.....106,961	.....XXX	.....XXX
4. 2007.....	.....XXX	.....XXX	.....70,543	.....88,975	.....96,373	.....99,932	.....101,431	.....102,001	.....102,288	.....102,386	.....XXX	.....XXX
5. 2008.....	.....XXX	.....XXX	.....XXX	.....68,995	.....88,406	.....95,218	.....98,765	.....100,492	.....101,234	.....101,507	.....XXX	.....XXX
6. 2009.....	.....XXX	.....XXX	.....XXX	.....XXX	.....65,902	.....84,358	.....91,530	.....95,206	.....96,998	.....97,752	.....XXX	.....XXX
7. 2010.....	.....XXX	.....XXX	.....XXX	.....XXX	.....XXX	.....66,682	.....86,115	.....94,136	.....98,169	.....100,008	.....XXX	.....XXX
8. 2011.....	.....XXX	.....XXX	.....XXX	.....XXX	.....XXX	.....XXX	.....71,420	.....92,236	.....100,613	.....104,709	.....XXX	.....XXX
9. 2012.....	.....XXX	.....XXX	.....XXX	.....XXX	.....XXX	.....XXX	.....XXX	.....77,874	.....101,441	.....110,405	.....XXX	.....XXX
10. 2013.....	.....XXX	.....XXX	.....XXX	.....XXX	.....XXX	.....XXX	.....XXX	.....XXX	.....77,902	.....103,240	.....XXX	.....XXX
11. 2014.....	.....XXX	.....XXX	.....XXX	.....XXX	.....XXX	.....XXX	.....XXX	.....XXX	.....XXX	.....82,965	.....XXX	.....XXX

**SCHEDULE P - PART 4 - SUMMARY**

Years in Which Losses Were Incurred	Bulk and IBNR Reserves on Net Losses and Defense and Cost Containment Expenses Reported at Year End (\$000 omitted)									
	1	2	3	4	5	6	7	8	9	10
	2005	2006	2007	2008	2009	2010	2011	2012	2013	2014
1. Prior.....	.....4,774	.....1,680	.....630	.....194	.....211	.....201	.....148	.....149	.....122	.....194
2. 2005.....	.....9,082	.....2,822	.....1,264	.....603	.....18	.....16	.....13	.....6	.....2	.....3
3. 2006.....	.....XXX	.....8,394	.....2,619	.....1,310	.....626	.....24	.....15	.....11	.....3	.....3
4. 2007.....	.....XXX	.....XXX	.....8,373	.....2,468	.....1,225	.....695	.....22	.....12	.....37	.....5
5. 2008.....	.....XXX	.....XXX	.....XXX	.....9,035	.....2,542	.....1,365	.....664	.....21	.....42	.....7
6. 2009.....	.....XXX	.....XXX	.....XXX	.....XXX	.....8,313	.....2,617	.....1,442	.....811	.....33	.....8
7. 2010.....	.....XXX	.....XXX	.....XXX	.....XXX	.....XXX	.....7,639	.....2,612	.....1,191	.....859	.....14
8. 2011.....	.....XXX	.....XXX	.....XXX	.....XXX	.....XXX	.....XXX	.....7,770	.....2,560	.....1,147	.....916
9. 2012.....	.....XXX	.....XXX	.....XXX	.....XXX	.....XXX	.....XXX	.....XXX	.....9,523	.....2,758	.....1,169
10. 2013.....	.....XXX	.....XXX	.....XXX	.....XXX	.....XXX	.....XXX	.....XXX	.....XXX	.....10,230	.....3,045
11. 2014.....	.....XXX	.....XXX	.....XXX	.....XXX	.....XXX	.....XXX	.....XXX	.....XXX	.....XXX	.....9,652

PROGRESSIVE AMERICAN INSURANCE COMPANY  
SCHEDULE T - EXHIBIT OF PREMIUMS WRITTEN

Allocated by States and Territories

		1  Active Status	Gross Premiums, Including Policy and Membership Fees Less Return Premiums and Premiums on Policies Not Taken		4  Dividends Paid or Credited to Policyholders on Direct Business	5  Direct Losses Paid (Deducting Salvage)	6  Direct Losses Incurred	7  Direct Losses Unpaid	8  Finance and Service Charges not Included in Premiums	9  Direct Premiums Written for Federal Purchasing Groups (Incl. in Col. 2)
			2  Direct Premiums Written	3  Direct Premiums Earned						
States, Etc.										
1.	Alabama.....AL	...N....								
2.	Alaska.....AK	...N....								
3.	Arizona.....AZ	...N....								
4.	Arkansas.....AR	...E....								
5.	California.....CA	...N....								
6.	Colorado.....CO	...L....								
7.	Connecticut.....CT	...N....								
8.	Delaware.....DE	...N....								
9.	District of Columbia.....DC	...N....								
10.	Florida.....FL	...L....	1,162,710,157	1,140,761,912		685,706,181	729,740,941	386,703,056	9,581,636	
11.	Georgia.....GA	...L....	13,844,868	14,465,767		8,580,992	7,898,338	4,093,876	290,034	
12.	Hawaii.....HI	...L....								
13.	Idaho.....ID	...N....								
14.	Illinois.....IL	...L....								
15.	Indiana.....IN	...L....					1			
16.	Iowa.....IA	...N....								
17.	Kansas.....KS	...N....								
18.	Kentucky.....KY	...L....								
19.	Louisiana.....LA	...N....					(6,786)			
20.	Maine.....ME	...E....								
21.	Maryland.....MD	...L....	10,211,214	10,871,805		7,042,929	5,205,402	4,204,799	120,429	
22.	Massachusetts.....MA	...E....								
23.	Michigan.....MI	...L....								
24.	Minnesota.....MN	...N....								
25.	Mississippi.....MS	...L....								
26.	Missouri.....MO	...E....								
27.	Montana.....MT	...E....								
28.	Nebraska.....NE	...N....								
29.	Nevada.....NV	...N....								
30.	New Hampshire.....NH	...N....								
31.	New Jersey.....NJ	...N....								
32.	New Mexico.....NM	...E....								
33.	New York.....NY	...Q....					(140,001)	1,001		
34.	North Carolina.....NC	...L....	5,606,468	6,013,748		3,233,480	2,698,246	1,538,248	99,626	
35.	North Dakota.....ND	...E....								
36.	Ohio.....OH	...L....								
37.	Oklahoma.....OK	...L....								
38.	Oregon.....OR	...N....								
39.	Pennsylvania.....PA	...N....								
40.	Rhode Island.....RI	...N....								
41.	South Carolina.....SC	...N....								
42.	South Dakota.....SD	...N....								
43.	Tennessee.....TN	...N....								
44.	Texas.....TX	...N....								
45.	Utah.....UT	...E....								
46.	Vermont.....VT	...N....								
47.	Virginia.....VA	...L....	3,071,328	3,362,869		1,468,051	638,037	554,986	59,406	
48.	Washington.....WA	...L....	385,642	398,161		271,022	278,220	323,593	5,187	
49.	West Virginia.....WV	...N....								
50.	Wisconsin.....WI	...E....								
51.	Wyoming.....WY	...N....								
52.	American Samoa.....AS	...N....								
53.	Guam.....GU	...N....								
54.	Puerto Rico.....PR	...N....								
55.	US Virgin Islands.....VI	...N....								
56.	Northern Mariana Islands...MP	...N....								
57.	Canada.....CAN	...N....								
58.	Aggregate Other Alien.....OT	XXX	0	0	0	0	0	0	0	0
59.	Totals.....	(a) ...15	1,195,829,677	1,175,874,262	0	706,302,655	746,312,398	397,419,559	10,156,318	0

DETAILS OF WRITE-INS

58001. ....	XXX								
58002. ....	XXX								
58003. ....	XXX								
58998. Summary of remaining write-ins for Line 58 from overflow page	XXX	0	0	0	0	0	0	0	0
58999. Totals (Lines 58001 thru 58003+ Line 58998) (Line 58 above)	XXX	0	0	0	0	0	0	0	0

(a) Insert the number of "L" responses except for Canada and Other Alien.

(L) - Licensed or Chartered - Licensed Insurance Carrier or Domiciled RRG; (R) - Registered - Non-domiciled RRGs; (Q) - Qualified - Qualified or Accredited Reinsurer;

(E) - Eligible - Reporting Entities eligible or approved to write Surplus Lines in the state; (N) - None of the above - Not allowed to write business in the state.

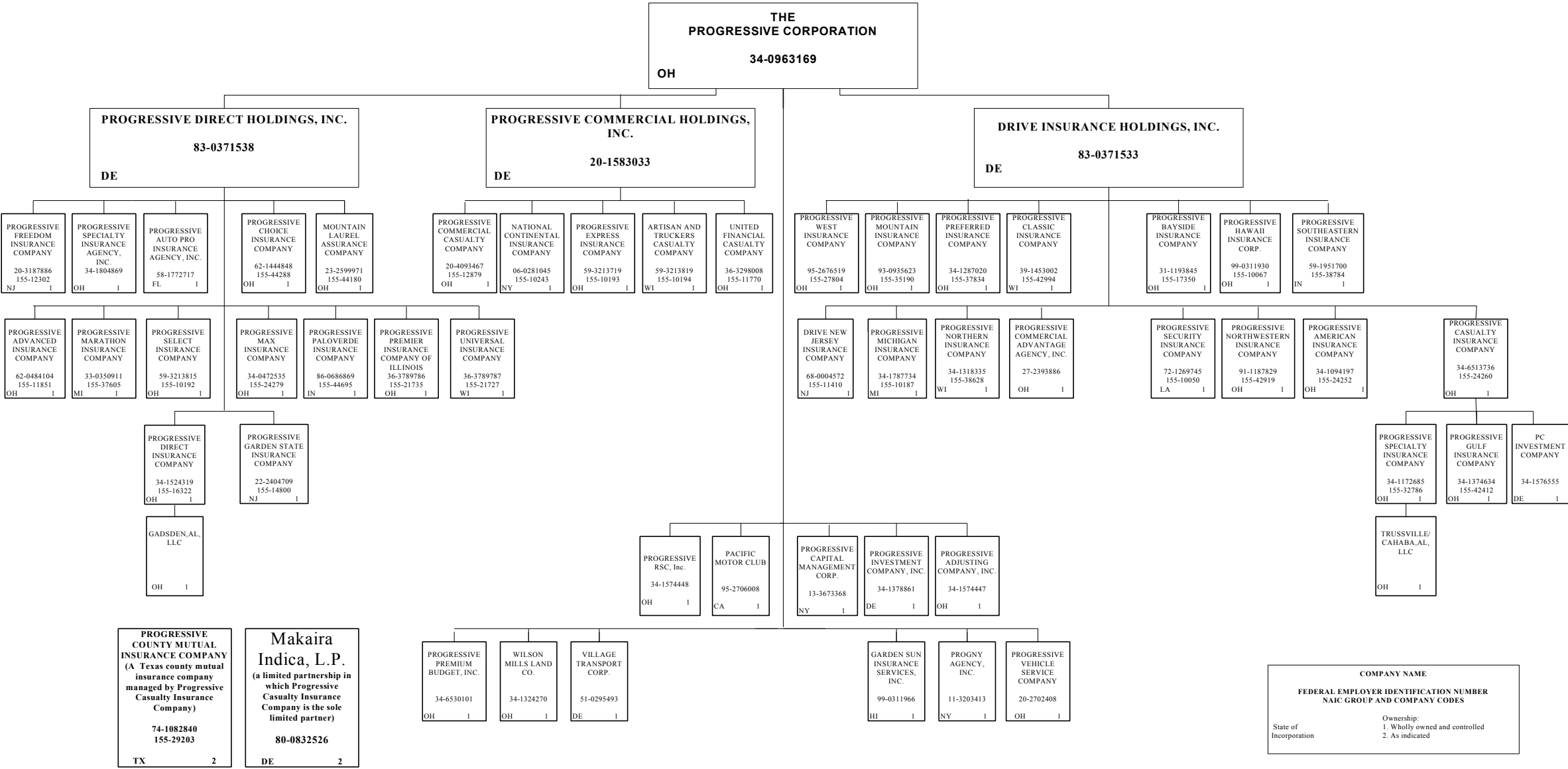
Explanation of Basis of Allocation of Premiums by States, etc.

Allocation on the basis of the location where the vehicle is principally garaged and used.



SCHEDULE Y – INFORMATION CONCERNING ACTIVITIES OF INSURER MEMBERS OF A HOLDING COMPANY GROUP

PART 1 – ORGANIZATIONAL CHART



2014 ALPHABETICAL INDEX -- PROPERTY & CASUALTY ANNUAL STATEMENT BLANK

Assets	2	Schedule P-Part 2G-Special Liability (Ocean Marine, Aircraft (All Perils), Boiler & Machinery)	58
Cash Flow	5	Schedule P-Part 2H-Section 1-Other Liability-Occurrence	58
Exhibit of Capital Gains (Losses)	12	Schedule P-Part 2H-Section 2-Other Liability-Claims-Made	58
Exhibit of Net Investment Income	12	Schedule P-Part 2I-Spec. Prop. (Fire, Allied Lines, Inland Marine, Earthquake, Burglary, Theft)	59
Exhibit of Nonadmitted Assets	13	Schedule P-Part 2J-Auto Physical Damage	59
Exhibit of Premiums and Losses (State Page)	19	Schedule P-Part 2K-Fidelity, Surety	59
Five-Year Historical Data	17	Schedule P-Part 2L-Other (Including Credit, Accident and Health)	59
General Interrogatories	15	Schedule P-Part 2M-International	59
Jurat Page	1	Schedule P-Part 2N-Reinsurance - Nonproportional Assumed Property	60
Liabilities, Surplus and Other Funds	3	Schedule P-Part 2O-Reinsurance - Nonproportional Assumed Liability	60
Notes To Financial Statements	14	Schedule P-Part 2P-Reinsurance - Nonproportional Assumed Financial Lines	60
Overflow Page For Write-ins	100	Schedule P-Part 2R-Section 1-Products Liability-Occurrence	61
Schedule A-Part 1	E01	Schedule P-Part 2R-Section 2-Products Liability-Claims-Made	61
Schedule A-Part 2	E02	Schedule P-Part 2S-Financial Guaranty/Mortgage Guaranty	61
Schedule A-Part 3	E03	Schedule P-Part 2T-Warranty	61
Schedule A-Verification Between Years	SI02	Schedule P-Part 3A-Homeowners/Farmowners	62
Schedule B-Part 1	E04	Schedule P-Part 3B-Private Passenger Auto Liability/Medical	62
Schedule B-Part 2	E05	Schedule P-Part 3C-Commercial Auto/Truck Liability/Medical	62
Schedule B-Part 3	E06	Schedule P-Part 3D-Workers' Compensation (Excluding Excess Workers Compensation)	62
Schedule B-Verification Between Years	SI02	Schedule P-Part 3E-Commercial Multiple Peril	62
Schedule BA-Part 1	E07	Schedule P-Part 3F-Section 1 -Medical Professional Liability-Occurrence	63
Schedule BA-Part 2	E08	Schedule P-Part 3F-Section 2-Medical Professional Liability-Claims-Made	63
Schedule BA-Part 3	E09	Schedule P-Part 3G-Special Liability (Ocean Marine, Aircraft (All Perils), Boiler & Machinery)	63
Schedule BA-Verification Between Years	SI03	Schedule P-Part 3H-Section 1-Other Liability-Occurrence	63
Schedule D-Part 1	E10	Schedule P-Part 3H-Section 2-Other Liability-Claims-Made	63
Schedule D-Part 1A-Section 1	SI05	Schedule P-Part 3I-Spec. Prop. (Fire, Allied Lines, Inland Marine, Earthquake, Burglary, Theft)	64
Schedule D-Part 1A-Section 2	SI08	Schedule P-Part 3J-Auto Physical Damage	64
Schedule D-Part 2-Section 1	E11	Schedule P-Part 3K-Fidelity/Surety	64
Schedule D-Part 2-Section 2	E12	Schedule P-Part 3L-Other (Including Credit, Accident and Health)	64
Schedule D-Part 3	E13	Schedule P-Part 3M-International	64
Schedule D-Part 4	E14	Schedule P-Part 3N-Reinsurance - Nonproportional Assumed Property	65
Schedule D-Part 5	E15	Schedule P-Part 3O-Reinsurance - Nonproportional Assumed Liability	65
Schedule D-Part 6-Section 1	E16	Schedule P-Part 3P-Reinsurance - Nonproportional Assumed Financial Lines	65
Schedule D-Part 6-Section 2	E16	Schedule P-Part 3R-Section 1-Products Liability-Occurrence	66
Schedule D-Summary By Country	SI04	Schedule P-Part 3R-Section 2-Products Liability-Claims-Made	66
Schedule D-Verification Between Years	SI03	Schedule P-Part 3S-Financial Guaranty/Mortgage Guaranty	66
Schedule DA-Part 1	E17	Schedule P-Part 3T-Warranty	66
Schedule DA-Verification Between Years	SI10	Schedule P-Part 4A-Homeowners/Farmowners	67
Schedule DB-Part A-Section 1	E18	Schedule P-Part 4B-Private Passenger Auto Liability/Medical	67
Schedule DB-Part A-Section 2	E19	Schedule P-Part 4C-Commercial Auto/Truck Liability/Medical	67
Schedule DB-Part A-Verification Between Years	SI11	Schedule P-Part 4D-Workers' Compensation (Excluding Excess Workers Compensation)	67
Schedule DB-Part B-Section 1	E20	Schedule P-Part 4E-Commercial Multiple Peril	67
Schedule DB-Part B-Section 2	E21	Schedule P-Part 4F-Section 1-Medical Professional Liability-Occurrence	68
Schedule DB-Part B-Verification Between Years	SI11	Schedule P-Part 4F-Section 2-Medical Professional Liability-Claims-Made	68
Schedule DB-Part C-Section 1	SI12	Schedule P-Part 4G-Special Liability (Ocean Marine, Aircraft (All Perils), Boiler & Machinery)	68
Schedule DB-Part C-Section 2	SI13	Schedule P-Part 4H-Section 1-Other Liability-Occurrence	68
Schedule DB-Part D-Section 1	E22	Schedule P-Part 4H-Section 2-Other Liability-Claims-Made	68
Schedule DB-Part D-Section 2	E23	Schedule P-Part 4I-Spec. Prop. (Fire, Allied Lines, Inland Marine, Earthquake, Burglary & Theft)	69
Schedule DB-Verification	SI14	Schedule P-Part 4J-Auto Physical Damage	69
Schedule DL-Part 1	E24	Schedule P-Part 4K-Fidelity/Surety	69
Schedule DL-Part 2	E25	Schedule P-Part 4L-Other (Including Credit, Accident and Health)	69
Schedule E-Part 1-Cash	E26	Schedule P-Part 4M-International	69
Schedule E-Part 2-Cash Equivalents	E27	Schedule P-Part 4N-Reinsurance - Nonproportional Assumed Property	70
Schedule E-Part 3-Special Deposits	E28	Schedule P-Part 4O-Reinsurance - Nonproportional Assumed Liability	70
Schedule E-Verification Between Years	SI15	Schedule P-Part 4P-Reinsurance - Nonproportional Assumed Financial Lines	70
Schedule F-Part 1	20	Schedule P-Part 4R-Section 1-Products Liability-Occurrence	71
Schedule F-Part 2	21	Schedule P-Part 4R-Section 2-Products Liability-Claims-Made	71
Schedule F-Part 3	22	Schedule P-Part 4S-Financial Guaranty/Mortgage Guaranty	71
Schedule F-Part 4	23	Schedule P-Part 4T-Warranty	71
Schedule F-Part 5	24	Schedule P-Part 5A-Homeowners/Farmowners	72
Schedule F-Part 6-Section 1	25	Schedule P-Part 5B-Private Passenger Auto Liability/Medical	73
Schedule F-Part 6-Section 2	26	Schedule P-Part 5C-Commercial Auto/Truck Liability/Medical	74
Schedule F-Part 7	27	Schedule P-Part 5D-Workers' Compensation (Excluding Excess Workers Compensation)	75
Schedule F-Part 8	28	Schedule P-Part 5E-Commercial Multiple Peril	76
Schedule F-Part 9	29	Schedule P-Part 5F-Medical Professional Liability-Claims-Made	78
Schedule H-Accident and Health Exhibit-Part 1	30	Schedule P-Part 5F-Medical Professional Liability-Occurrence	77
Schedule H-Part 2, Part 3 and Part 4	31	Schedule P-Part 5H-Other Liability-Claims-Made	80
Schedule H-Part 5-Health Claims	32	Schedule P-Part 5H-Other Liability-Occurrence	79
Schedule P-Part 1-Summary	33	Schedule P-Part 5R-Products Liability-Claims-Made	82
Schedule P-Part 1A-Homeowners/Farmowners	35	Schedule P-Part 5R-Products Liability-Occurrence	81
Schedule P-Part 1B-Private Passenger Auto Liability/Medical	36	Schedule P-Part 5T-Warranty	83
Schedule P-Part 1C-Commercial Auto/Truck Liability/Medical	37	Schedule P-Part 6C-Commercial Auto/Truck Liability/Medical	84
Schedule P-Part 1D-Workers' Compensation (Excluding Excess Workers Compensation)	38	Schedule P-Part 6D-Workers' Compensation (Excluding Excess Workers Compensation)	84
Schedule P-Part 1E-Commercial Multiple Peril	39	Schedule P-Part 6E-Commercial Multiple Peril	85
Schedule P-Part 1F-Section 1-Medical Professional Liability-Occurrence	40	Schedule P-Part 6H-Other Liability-Claims-Made	86
Schedule P-Part 1F-Section 2-Medical Professional Liability-Claims-Made	41	Schedule P-Part 6H-Other Liability-Occurrence	85
Schedule P-Part 1G-Special Liability (Ocean, Marine, Aircraft (All Perils), Boiler & Machinery)	42	Schedule P-Part 6M-International	86
Schedule P-Part 1H-Section 1-Other Liability-Occurrence	43	Schedule P-Part 6N-Reinsurance - Nonproportional Assumed Property	87
Schedule P-Part 1H-Section 2-Other Liability-Claims-Made	44	Schedule P-Part 6O-Reinsurance - Nonproportional Assumed Liability	87
Schedule P-Part 1I-Spec. Prop. (Fire, Allied Lines, Inland Marine, Earthquake, Burglary & Theft)	45	Schedule P-Part 6R-Products Liability-Claims-Made	88
Schedule P-Part 1J-Auto Physical Damage	46	Schedule P-Part 6R-Products Liability-Occurrence	88
Schedule P-Part 1K-Fidelity/Surety	47	Schedule P-Part 7A-Primary Loss Sensitive Contracts	89
Schedule P-Part 1L-Other (Including Credit, Accident and Health)	48	Schedule P-Part 7B-Reinsurance Loss Sensitive Contracts	91
Schedule P-Part 1M-International	49	Schedule P Interrogatories	93
Schedule P-Part 1N-Reinsurance - Nonproportional Assumed Property	50	Schedule T-Exhibit of Premiums Written	94
Schedule P-Part 1O-Reinsurance - Nonproportional Assumed Liability	51	Schedule T-Part 2-Interstate Compact	95
Schedule P-Part 1P-Reinsurance - Nonproportional Assumed Financial Lines	52	Schedule Y-Information Concerning Activities of Insurer Members of a Holding Company Group	96
Schedule P-Part 1R-Section 1-Products Liability-Occurrence	53	Schedule Y-Detail of Insurance Holding Company System	97
Schedule P-Part 1R-Section 2-Products Liability-Claims-Made	54	Schedule Y-Part 2-Summary of Insurer's Transactions With Any Affiliates	98
Schedule P-Part 1S-Financial Guaranty/Mortgage Guaranty	55	Statement of Income	4
Schedule P-Part 1T-Warranty	56	Summary Investment Schedule	SI01
Schedule P-Part 2, Part 3 and Part 4 - Summary	34	Supplemental Exhibits and Schedules Interrogatories	99
Schedule P-Part 2A-Homeowners/Farmowners	57	Underwriting and Investment Exhibit Part 1	6
Schedule P-Part 2B-Private Passenger Auto Liability/Medical	57	Underwriting and Investment Exhibit Part 1A	7
Schedule P-Part 2C-Commercial Auto/Truck Liability/Medical	57	Underwriting and Investment Exhibit Part 1B	8
Schedule P-Part 2D-Workers' Compensation (Excluding Excess Workers Compensation)	57	Underwriting and Investment Exhibit Part 2	9
Schedule P-Part 2E-Commercial Multiple Peril	57	Underwriting and Investment Exhibit Part 2A	10
Schedule P-Part 2F-Section 1-Medical Professional Liability-Occurrence	58	Underwriting and Investment Exhibit Part 3	11
Schedule P-Part 2F-Section 2-Medical Professional Liability-Claims-Made	58		