



ANNUAL STATEMENT  
FOR THE YEAR ENDED DECEMBER 31 , 2014  
OF THE CONDITION AND AFFAIRS OF THE

Ohio Farmers Insurance Company

NAIC Group Code 0228 , 0228 NAIC Company Code 24104 Employer's ID Number 34-0438190  
(Current Period) (Prior Period)

Organized under the Laws of Ohio , State of Domicile or Port of Entry Ohio

Country of Domicile US

Incorporated/Organized February 8, 1848 Commenced Business July 8, 1848

Statutory Home Office One Park Circle, Westfield Center, Ohio, US 44251-5001  
(Street and Number, City or Town, State, Country and Zip Code)

Main Administrative Office One Park Circle, Westfield Center, Ohio, US 44251-5001 330-887-0101  
(Street and Number, City or Town, State, Country and Zip Code) (Area Code) (Telephone Number)

Mail Address P. O. Box 5001, Westfield Center, Ohio, US 44251-5001  
(Street and Number or P. O. Box, City or Town, State, Country and Zip Code)

Primary Location of Books and Records One Park Circle, Westfield Center, Ohio, US 44251-5001  
(Street and Number, City or Town, State, Country and Zip Code)  
330-887-0101  
(Area Code) (Telephone Number)

Internet Website Address www.westfieldgrp.com

Statutory Statement Contact Bambi Ann Beshire 330-887-0101  
(Name) (Area Code) (Telephone Number) (Extension)  
FinancialReporting@westfieldgrp.com 330-887-0840  
(E-Mail Address) (Fax Number)

OFFICERS

Edward James Largent (Westfield Insurance Leader & President)  
Joseph Christian Kohmann (Group Finance Leader & Treasurer)  
Frank Anthony Carrino (Group Legal Leader & Secretary)

OTHER

James Robert Clay (Chairman & CEO)  
Dennis Paul Baus (National Surety Leader)  
Bambi Ann Beshire (Group Finance & Accounting Leader)  
Stephen Edward Lehecka (Group Actuarial Leader)  
Martha Haskins Oakes (National Middle Market Leader)  
Christopher Michael Paterakis (Group HR Leader)  
David Campbell Peterson (National PL & SBA Leader)  
Michael Joseph Prandi (National Claims Leader)  
Elizabeth Margaret Riczko# (Group Underwriting Leader)  
Stuart Wayne Rosenberg (Group Administration Leader)  
Peter Robert Schwanke (Group Risk Management Leader)  
Stephen John Tien (Group IT Leader)  
Craig David Welsh (Group Distribution Leader)  
George Krieg Wiswesser (Group Investment Leader)

DIRECTORS OR TRUSTEES

Michael John Bernaski  
Cheryl Lila Carlisle  
James Robert Clay  
Fariborz Ghadar  
Gary Dean Hallman  
Susan Jane Insley  
Edward James Largent  
Deborah Denine Pryce  
John Lewis Watson  
Thomas Eldon Workman

State of Ohio }  
County of Medina } SS

The officers of this reporting entity being duly sworn, each depose and say that they are the described officers of said reporting entity, and that on the reporting period stated above, all of the herein described assets were the absolute property of the said reporting entity, free and clear from any liens or claims thereon, except as herein stated, and that this statement, together with related exhibits, schedules and explanations therein contained, annexed or referred to, is a full and true statement of all the assets and liabilities and of the condition and affairs of the said reporting entity as of the reporting period stated above, and of its income and deductions therefrom for the period ended, and have been completed in accordance with the NAIC Annual Statement Instructions and Accounting Practices and Procedures manual except to the extent that: (1) state law may differ; or, (2) that state rules or regulations require differences in reporting not related to accounting practices and procedures, according to the best of their information, knowledge and belief, respectively. Furthermore, the scope of this attestation by the described officers also includes the related corresponding electronic filing with the NAIC, when required, that is an exact copy (except for formatting differences due to electronic filing) of the enclosed statement. The electronic filing may be requested by various regulators in lieu of or in addition to the enclosed statement.

<u>Edward James Largent</u> Westfield Insurance Leader & President	<u>Joseph Christian Kohmann</u> Group Finance Leader & Treasurer	<u>Frank Anthony Carrino</u> Group Legal Leader & Secretary
Subscribed and sworn to before me this 16th day of February, 2015		a. Is this an original filing? Yes (X) No ( )
		b. If no: 1. State the amendment number <u>0</u>
		2. Date filed _____
		3. Number of pages attached <u>0</u>

ASSETS

	Current Year			Prior Year
	1  Assets	2  Nonadmitted Assets	3 Net Admitted Assets (Col 1 - Col 2)	4  Net Admitted Assets
1. Bonds (Schedule D) .....	401,334,253	0	401,334,253	394,893,255
2. Stocks (Schedule D):				
2.1 Preferred stocks .....	0	0	0	0
2.2 Common stocks .....	1,829,191,672	0	1,829,191,672	1,700,931,192
3. Mortgage loans on real estate (Schedule B):				
3.1 First liens .....	0	0	0	0
3.2 Other than first liens .....	0	0	0	0
4. Real estate (Schedule A):				
4.1 Properties occupied by the company (less \$ ..... 0 encumbrances) .....	54,392,408	0	54,392,408	58,780,106
4.2 Properties held for the production of income (less \$ ..... 0 encumbrances) .....	1,209,460	0	1,209,460	1,237,673
4.3 Properties held for sale (less \$ ..... 0 encumbrances) .....	3,544,740	0	3,544,740	0
5. Cash (\$ ..... 47,801,378 , Schedule E - Part 1) , cash equivalents (\$ ..... 0 , Schedule E - Part 2) and short-term investments (\$ ..... 168,224 , Schedule DA) .....	47,969,602	0	47,969,602	26,553,767
6. Contract loans (including \$ ..... 0 premium notes) .....	0	0	0	0
7. Derivatives (Schedule DB) .....	0	0	0	0
8. Other invested assets (Schedule BA) .....	82,442,455	27,500	82,414,955	74,206,121
9. Receivables for securities .....	3,750	0	3,750	0
10. Securities lending reinvested collateral assets (Schedule DL) .....	0	0	0	0
11. Aggregate write-ins for invested assets .....	(1,603,872)	0	(1,603,872)	(1,934,334)
12. Subtotals, cash and invested assets (Line 1 through Line 11) .....	2,418,484,468	27,500	2,418,456,968	2,254,667,780
13. Title plants less \$ ..... 0 charged off (for Title insurers only) .....	0	0	0	0
14. Investment income due and accrued .....	5,654,356	0	5,654,356	5,774,668
15. Premiums and considerations:				
15.1 Uncollected premiums and agents' balances in the course of collection .....	18,624,687	1,801,386	16,823,301	15,494,857
15.2 Deferred premiums, agents' balances and installments booked but deferred and not yet due (including \$ ..... 221,065 earned but unbilled premiums) .....	101,717,895	22,106	101,695,789	99,957,167
15.3 Accrued retrospective premiums .....	0	0	0	0
16. Reinsurance:				
16.1 Amounts recoverable from reinsurers .....	994,738	0	994,738	640,782
16.2 Funds held by or deposited with reinsured companies .....	945,689	683,221	262,468	341,712
16.3 Other amounts receivable under reinsurance contracts .....	0	0	0	0
17. Amounts receivable relating to uninsured plans .....	0	0	0	0
18.1 Current federal and foreign income tax recoverable and interest thereon .....	0	0	0	0
18.2 Net deferred tax asset .....	46,009,529	0	46,009,529	21,477,878
19. Guaranty funds receivable or on deposit .....	0	0	0	0
20. Electronic data processing equipment and software .....	2,375,603	193,419	2,182,184	2,157,733
21. Furniture and equipment, including health care delivery assets (\$ ..... 0 ) .....	6,348,584	6,348,584	0	0
22. Net adjustment in assets and liabilities due to foreign exchange rates .....	0	0	0	0
23. Receivables from parent, subsidiaries and affiliates .....	2,978,847	0	2,978,847	3,797,064
24. Health care (\$ ..... 0 ) and other amounts receivable .....	2,387,976	2,387,976	0	0
25. Aggregate write-ins for other-than-invested assets .....	9,225,885	9,178,690	47,195	267,265
26. Total assets excluding Separate Accounts, Segregated Accounts and Protected Cell Accounts (Line 12 to Line 25) .....	2,615,748,257	20,642,882	2,595,105,375	2,404,576,906
27. From Separate Accounts, Segregated Accounts and Protected Cell Accounts .....	0	0	0	0
28. Total (Line 26 and Line 27) .....	2,615,748,257	20,642,882	2,595,105,375	2,404,576,906
DETAILS OF WRITE-INS				
1101. Amortization on intercompany transactions .....	872,336	0	872,336	1,065,729
1102. Deferred gain on intercompany transactions .....	(2,476,208)	0	(2,476,208)	(3,000,063)
1103. ....	0	0	0	0
1198. Summary of remaining write-ins for Line 11 from overflow page .....	0	0	0	0
1199. Totals (Line 1101 through Line 1103 plus Line 1198) (Line 11 above) .....	(1,603,872)	0	(1,603,872)	(1,934,334)
2501. Prepaid pension cost .....	50,663,005	50,663,005	0	0
2502. Other prepaid assets .....	8,601,496	8,601,496	0	0
2503. Post retirement benefit asset .....	3,061,751	3,061,751	0	0
2598. Summary of remaining write-ins for Line 25 from overflow page .....	(53,100,367)	(53,147,562)	47,195	267,265
2599. Totals (Line 2501 through Line 2503 plus Line 2598) (Line 25 above) .....	9,225,885	9,178,690	47,195	267,265

ANNUAL STATEMENT FOR THE YEAR 2014 OF THE Ohio Farmers Insurance Company

LIABILITIES, SURPLUS AND OTHER FUNDS

	1 Current Year	2 Prior Year
1. Losses (Part 2A, Line 35, Column 8) .....	210,695,265	214,948,416
2. Reinsurance payable on paid losses and loss adjustment expenses (Schedule F, Part 1, Columnn 6) .....	17,471,873	8,418,983
3. Loss adjustment expenses (Part 2A, Line 35, Column 9) .....	71,531,479	68,685,751
4. Commissions payable, contingent commissions and other similar charges .....	23,168,339	23,602,376
5. Other expenses (excluding taxes, licenses and fees) .....	12,156,811	13,672,611
6. Taxes, licenses and fees (excluding federal and foreign income taxes) .....	5,795,954	5,663,652
7.1 Current federal and foreign income taxes (including \$ ..... 0 on realized capital gains (losses) ) .....	1,767,794	3,361,775
7.2 Net deferred tax liability .....	0	0
8. Borrowed money \$ ..... 0 and interest thereon \$ ..... 0 .....	0	0
9. Unearned premiums (Part 1A, Line 38, Column 5) (after deducting unearned premiums for ceded reinsurance of \$ ..... 683,538,603 and including warranty reserves of \$ ..... 0 and accrued accident and health experience rating refunds including \$ ..... 0 for medical loss ratio rebate per the Public Health Service Act) .....	159,967,851	152,355,066
10. Advance premium .....	6,337,943	5,172,394
11. Dividends declared and unpaid:		
11.1 Stockholders .....	0	0
11.2 Policyholders .....	0	0
12. Ceded reinsurance premiums payable (net of ceding commissions) .....	695,108	284,311
13. Funds held by company under reinsurance treaties (Schedule F, Part 3, Column 19) .....	0	0
14. Amounts withheld or retained by company for account of others .....	4,329,472	4,169,385
15. Remittances and items not allocated .....	(697,129)	(594,292)
16. Provision for reinsurance (including \$ ..... 0 certified) (Schedule F, Part 8) .....	0	0
17. Net adjustments in assets and liabilities due to foreign exchange rates .....	0	0
18. Drafts outstanding .....	49,341,564	40,982,163
19. Payable to parent, subsidiaries and affiliates .....	17,746,621	22,186,118
20. Derivatives .....	0	0
21. Payable for securities .....	0	0
22. Payable for securities lending .....	0	0
23. Liability for amounts held under uninsured plans .....	0	0
24. Capital notes \$ ..... 0 and interest thereon \$ ..... 0 .....	0	0
25. Aggregate write-ins for liabilities .....	112,346,896	32,978,001
26. Total liabilities excluding protected cell liabilities (Line 1 through Line 25) .....	692,655,841	595,886,710
27. Protected cell liabilities .....	0	0
28. Total liabilities (Line 26 and Line 27) .....	692,655,841	595,886,710
29. Aggregate write-ins for special surplus funds .....	423,565,288	411,261,910
30. Common capital stock .....	0	0
31. Preferred capital stock .....	0	0
32. Aggregate write-ins for other than special surplus funds .....	0	0
33. Surplus notes .....	0	0
34. Gross paid in and contributed surplus .....	0	0
35. Unassigned funds (surplus) .....	1,478,884,246	1,397,428,286
36. Less treasury stock, at cost:		
36.1 ..... 0 shares common (value included in Line 30 \$ ..... 0 ) .....	0	0
36.2 ..... 0 shares preferred (value included in Line 31 \$ ..... 0 ) .....	0	0
37. Surplus as regards policyholders (Line 29 to Line 35, less Line 36) (Page 4, Line 39) .....	1,902,449,534	1,808,690,196
38. Totals (Page 2, Line 28, Column 3) .....	2,595,105,375	2,404,576,906
DETAILS OF WRITE-INS		
2501. Liability for retirement plans .....	111,212,377	31,960,740
2502. Reserve for outstanding checks and drafts charged off .....	1,134,519	1,017,261
2503. ....	0	0
2598. Summary of remaining write-ins for Line 25 from overflow page .....	0	0
2599. Totals (Line 2501 through Line 2503 plus Line 2598) (Line 25 above) .....	112,346,896	32,978,001
2901. General voluntary reserve .....	423,565,288	411,261,910
2902. ....	0	0
2903. ....	0	0
2998. Summary of remaining write-ins for Line 29 from overflow page .....	0	0
2999. Totals (Line 2901 through Line 2903 plus Line 2998) (Line 29 above) .....	423,565,288	411,261,910
3201. ....	0	0
3202. ....	0	0
3203. ....	0	0
3298. Summary of remaining write-ins for Line 32 from overflow page .....	0	0
3299. Totals (Line 3201 through Line 3203 plus Line 3298) (Line 32 above) .....	0	0

ANNUAL STATEMENT FOR THE YEAR 2014 OF THE Ohio Farmers Insurance Company

STATEMENT OF INCOME

UNDERWRITING INCOME	1	2
	Current Year	Prior Year
1. Premiums earned (Part 1, Line 35, Column 4) .....	321,668,474	311,169,633
DEDUCTIONS		
2. Losses incurred (Part 2, Line 35, Column 7) .....	166,311,839	148,340,576
3. Loss adjustment expenses incurred (Part 3, Line 25, Column 1) .....	37,915,256	37,754,409
4. Other underwriting expenses incurred (Part 3, Line 25, Column 2) .....	110,662,344	110,756,146
5. Aggregate write-ins for underwriting deductions .....	0	0
6. Total underwriting deductions (Line 2 through Line 5) .....	314,889,439	296,851,131
7. Net income of protected cells .....	0	0
8. Net underwriting gain (loss) (Line 1 minus Line 6 plus Line 7) .....	6,779,035	14,318,502
INVESTMENT INCOME		
9. Net investment income earned (Exhibit of Net Investment Income, Line 17) .....	35,350,051	15,019,835
10. Net realized capital gains (losses) less capital gains tax of \$ ..... 1,237,252 (Exhibit of Capital Gains (Losses)) .....	877,701	998,297
11. Net investment gain (loss) (Line 9 plus Line 10) .....	36,227,752	16,018,132
OTHER INCOME		
12. Net gain (loss) from agents' or premium balances charged off (amount recovered \$ ..... 1,220,366 , amount charged off \$ ..... 1,528,713 ) .....	(308,347)	(408,260)
13. Finance and service charges not included in premiums .....	459,472	457,465
14. Aggregate write-ins for miscellaneous income .....	(28,668)	103,390
15. Total other income (Line 12 through Line 14) .....	122,457	152,595
16. Net income before dividends to policyholders, after capital gains tax and before all other federal and foreign income taxes (Line 8 plus Line 11 plus Line 15) .....	43,129,244	30,489,229
17. Dividends to policyholders .....	0	0
18. Net income, after dividends to policyholders, after capital gains tax and before all other federal and foreign income taxes (Line 16 minus Line 17) .....	43,129,244	30,489,229
19. Federal and foreign income taxes incurred .....	3,846,425	9,394,576
20. Net income (Line 18 minus Line 19) (to Line 22) .....	39,282,819	21,094,653
CAPITAL AND SURPLUS ACCOUNT		
21. Surplus as regards policyholders, December 31 prior year (Page 4, Line 39, Column 2) .....	1,808,690,196	1,525,563,428
22. Net income (from Line 20) .....	39,282,819	21,094,653
23. Net transfers (to) from Protected Cell accounts .....	0	0
24. Change in net unrealized capital gains or (losses) less capital gains tax of \$ ..... 3,174,697 .....	110,745,448	242,025,883
25. Change in net unrealized foreign exchange capital gain (loss) .....	0	0
26. Change in net deferred income tax .....	(1,395,322)	(15,221,662)
27. Change in nonadmitted assets (Exhibit of Nonadmitted Assets, Line 28, Column 3) .....	(827,649)	60,554,642
28. Change in provision for reinsurance (Page 3, Line 16, Column 2 minus Column 1) .....	0	0
29. Change in surplus notes .....	0	0
30. Surplus (contributed to) withdrawn from protected cells .....	0	0
31. Cumulative effect of changes in accounting principles .....	0	0
32. Capital changes:		
32.1 Paid in .....	0	0
32.2 Transferred from surplus (Stock Dividend) .....	0	0
32.3 Transferred to surplus .....	0	0
33. Surplus adjustments:		
33.1 Paid in .....	0	0
33.2 Transferred to capital (Stock Dividend) .....	0	0
33.3 Transferred from capital .....	0	0
34. Net remittances from or (to) Home Office .....	0	0
35. Dividends to stockholders .....	0	0
36. Change in treasury stock (Page 3, Line 36.1 and Line 36.2, Column 2 minus Column 1) .....	0	0
37. Aggregate write-ins for gains and losses in surplus .....	(54,045,958)	(25,326,748)
38. Change in surplus as regards policyholders for the year (Line 22 through Line 37) .....	93,759,338	283,126,768
39. Surplus as regards policyholders, December 31 current year (Line 21 plus Line 38) (Page 3, Line 37) .....	1,902,449,534	1,808,690,196
DETAILS OF WRITE-INS		
0501. ....	0	0
0502. ....	0	0
0503. ....	0	0
0598. Summary of remaining write-ins for Line 5 from overflow page .....	0	0
0599. Totals (Line 0501 through Line 0503 plus Line 0598) (Line 5 above) .....	0	0
1401. Net gain on sale of nonadmitted assets .....	18,107	54,774
1402. Contractual expense on sold properties .....	(5,622)	(5,413)
1403. Net other interest (expense) income and unidentified cash .....	(41,153)	4,029
1498. Summary of remaining write-ins for Line 14 from overflow page .....	0	50,000
1499. Totals (Line 1401 through Line 1403 plus Line 1498) (Line 14 above) .....	(28,668)	103,390
3701. Change in retirement plan liabilities, net tax of \$29,101,670 and \$13,637,480 for 2014 and 2013, respectively .....	(54,045,958)	(25,326,748)
3702. ....	0	0
3703. ....	0	0
3798. Summary of remaining write-ins for Line 37 from overflow page .....	0	0
3799. Totals (Line 3701 through Line 3703 plus Line 3798) (Line 37 above) .....	(54,045,958)	(25,326,748)

CASH FLOW

	1	2
	Current Year	Prior Year
Cash from Operations		
1. Premiums collected net of reinsurance	327,967,723	308,066,171
2. Net investment income	45,570,835	23,431,423
3. Miscellaneous income	54,360	67,260
4. Total (Line 1 through Line 3)	373,592,918	331,564,854
5. Benefit and loss related payments	161,866,057	163,442,276
6. Net transfers to Separate Accounts, Segregated Accounts and Protected Cell Accounts	0	0
7. Commissions, expenses paid and aggregate write-ins for deductions	148,089,832	139,828,591
8. Dividends paid to policyholders	0	0
9. Federal and foreign income taxes paid (recovered) net of \$ 1,237,252 tax on capital gains (losses)	6,677,658	5,144,599
10. Total (Line 5 through Line 9)	316,633,547	308,415,466
11. Net cash from operations (Line 4 minus Line 10)	56,959,371	23,149,388
Cash from Investments		
12. Proceeds from investments sold, matured or repaid:		
12.1 Bonds	31,809,987	39,118,406
12.2 Stocks	7,826,860	37,947,442
12.3 Mortgage loans	0	0
12.4 Real estate	570,355	431,146
12.5 Other invested assets	9,431,472	16,670,568
12.6 Net gains or (losses) on cash, cash equivalents and short-term investments	0	0
12.7 Miscellaneous proceeds	0	0
12.8 Total investment proceeds (Line 12.1 through Line 12.7)	49,638,674	94,167,562
13. Cost of investments acquired (long-term only):		
13.1 Bonds	44,600,625	98,403,720
13.2 Stocks	22,501,273	11,301,626
13.3 Mortgage loans	0	0
13.4 Real estate	2,690,638	3,619,864
13.5 Other invested assets	15,448,874	19,981,793
13.6 Miscellaneous applications	3,750	1,223,360
13.7 Total investments acquired (Line 13.1 through Line 13.6)	85,245,160	134,530,363
14. Net increase (decrease) in contract loans and premium notes	0	0
15. Net cash from investments (Line 12.8 minus Line 13.7 minus Line 14)	(35,606,486)	(40,362,801)
Cash from Financing and Miscellaneous Sources		
16. Cash provided (applied):		
16.1 Surplus notes, capital notes	0	0
16.2 Capital and paid in surplus, less treasury stock	0	0
16.3 Borrowed funds	0	0
16.4 Net deposits on deposit-type contracts and other insurance liabilities	0	0
16.5 Dividends to stockholders	0	0
16.6 Other cash provided (applied)	62,949	9,276,319
17. Net cash from financing and miscellaneous sources (Line 16.1 through Line 16.4 minus Line 16.5 plus Line 16.6)	62,949	9,276,319
RECONCILIATION OF CASH, CASH EQUIVALENTS AND SHORT-TERM INVESTMENTS		
18. Net change in cash, cash equivalents and short-term investments (Line 11 plus Line 15 plus Line 17)	21,415,834	(7,937,095)
19. Cash, cash equivalents and short-term investments:		
19.1 Beginning of year	26,553,767	34,490,862
19.2 End of year (Line 18 plus Line 19.1)	47,969,602	26,553,767

Note: Supplemental disclosures of cash flow information for non-cash transactions:

20.0001	0	0
20.0002	0	0
20.0003	0	0
20.0004	0	0
20.0005	0	0
20.0006	0	0
20.0007	0	0
20.0008	0	0
20.0009	0	0
20.0010	0	0

UNDERWRITING AND INVESTMENT EXHIBIT

PART 1 - PREMIUMS EARNED

Line of Business	1  Net Premiums Written per Column 6, Part 1B	2  Unearned Premiums December 31 Prior Year- per Column 3, Last Year's Part 1	3  Unearned Premiums December 31 Current Year- per Column 5 Part 1A	4  Premiums Earned During Year (Columns 1 plus 2 minus 3)
1. Fire .....	2,908,896	1,445,050	1,483,207	2,870,739
2. Allied lines .....	2,563,422	1,288,823	1,360,137	2,492,108
3. Farmowners multiple peril .....	11,028,318	5,076,139	5,386,864	10,717,593
4. Homeowners multiple peril .....	42,062,673	21,778,930	22,797,845	41,043,758
5. Commercial multiple peril .....	70,124,586	32,398,443	33,581,429	68,941,600
6. Mortgage guaranty .....	0	0	0	0
8. Ocean marine .....	0	0	0	0
9. Inland marine .....	13,033,693	5,977,133	6,115,976	12,894,850
10. Financial guaranty .....	0	0	0	0
11.1 Medical professional liability - occurrence .....	0	0	0	0
11.2 Medical professional liability - claims-made .....	0	0	0	0
12. Earthquake .....	723,506	396,431	420,280	699,657
13. Group accident and health .....	0	0	0	0
14. Credit accident and health (group and individual) .....	0	0	0	0
15. Other accident and health .....	0	0	0	0
16. Workers' compensation .....	23,317,791	10,417,200	10,326,840	23,408,151
17.1 Other liability - occurrence .....	23,100,831	11,313,339	11,885,800	22,528,370
17.2 Other liability - claims-made .....	306,455	141,965	138,976	309,444
17.3 Excess workers' compensation .....	0	0	0	0
18.1 Products liability - occurrence .....	552,111	275,770	277,699	550,182
18.2 Products liability - claims-made .....	0	0	0	0
19.1, 19.2 Private passenger auto liability .....	33,886,613	16,742,856	17,437,754	33,191,715
19.3, 19.4 Commercial auto liability .....	42,224,663	17,896,805	19,666,606	40,454,862
21. Auto physical damage .....	45,149,745	20,413,615	21,998,215	43,565,145
22. Aircraft (all perils) .....	0	0	0	0
23. Fidelity .....	528,649	329,415	318,408	539,656
24. Surety .....	8,951,411	4,861,628	5,112,100	8,700,939
26. Burglary and theft .....	50,401	23,276	22,946	50,731
27. Boiler and machinery .....	0	0	0	0
28. Credit .....	0	0	0	0
29. International .....	0	0	0	0
30. Warranty .....	0	0	0	0
31. Reinsurance - Nonproportional Assumed Property .....	8,767,497	1,578,248	1,636,772	8,708,973
32. Reinsurance - Nonproportional Assumed Liability .....	0	0	0	0
33. Reinsurance - Nonproportional Assumed Financial Lines .....	0	0	0	0
34. Aggregate write-ins for other lines of business .....	0	0	0	0
35. TOTALS .....	329,281,261	152,355,066	159,967,854	321,668,473
DETAILS OF WRITE-INS				
3401. ....	0	0	0	0
3402. ....	0	0	0	0
3403. ....	0	0	0	0
3498. Summary of remaining write-ins for Line 34 from overflow page .....	0	0	0	0
3499. Totals (Line 3401 through Line 3403 plus Line 3498) (Line 34 above) .....	0	0	0	0

UNDERWRITING AND INVESTMENT EXHIBIT

PART 1A-RECAPITULATION OF ALL PREMIUMS

Line of Business		1	2	3	4	5
		Amount Unearned (Running One Year or Less from Date of Policy) (a)	Amount Unearned (Running More Than One Year from Date of Policy) (a)	Earned but Unbilled Premium	Reserve for Rate Credits and Retrospective Adjustments Based on Experience	Total Reserve for Unearned Premiums Columns 1 + 2 + 3 + 4
1.	Fire	1,483,207	0	0	0	1,483,207
2.	Allied lines	1,360,137	0	0	0	1,360,137
3.	Farmowners multiple peril	5,386,864	0	0	0	5,386,864
4.	Homeowners multiple peril	22,797,845	0	0	0	22,797,845
5.	Commercial multiple peril	33,581,408	21	0	0	33,581,429
6.	Mortgage guaranty	0	0	0	0	0
8.	Ocean marine	0	0	0	0	0
9.	Inland marine	6,115,976	0	0	0	6,115,976
10.	Financial guaranty	0	0	0	0	0
11.1	Medical professional liability - occurrence	0	0	0	0	0
11.2	Medical professional liability - claims-made	0	0	0	0	0
12.	Earthquake	420,280	0	0	0	420,280
13.	Group accident and health	0	0	0	0	0
14.	Credit accident and health (group and individual)	0	0	0	0	0
15.	Other accident and health	0	0	0	0	0
16.	Workers' compensation	10,326,840	0	0	0	10,326,840
17.1	Other liability - occurrence	11,885,741	59	0	0	11,885,800
17.2	Other liability - claims-made	138,904	72	0	0	138,976
17.3	Excess workers' compensation	0	0	0	0	0
18.1	Products liability - occurrence	276,965	734	0	0	277,699
18.2	Products liability - claims-made	0	0	0	0	0
19.1, 19.2	Private passenger auto liability	17,437,754	0	0	0	17,437,754
19.3, 19.4	Commercial auto liability	19,666,606	0	0	0	19,666,606
21.	Auto physical damage	21,998,215	0	0	0	21,998,215
22.	Aircraft (all perils)	0	0	0	0	0
23.	Fidelity	199,849	118,559	0	0	318,408
24.	Surety	1,578,646	3,533,454	0	0	5,112,100
26.	Burglary and theft	22,818	128	0	0	22,946
27.	Boiler and machinery	0	0	0	0	0
28.	Credit	0	0	0	0	0
29.	International	0	0	0	0	0
30.	Warranty	0	0	0	0	0
31.	Reinsurance - Nonproportional Assumed Property	1,636,772	0	0	0	1,636,772
32.	Reinsurance - Nonproportional Assumed Liability	0	0	0	0	0
33.	Reinsurance - Nonproportional Assumed Financial Lines	0	0	0	0	0
34.	Aggregate write-ins for other lines of business	0	0	0	0	0
35.	TOTALS	156,314,827	3,653,027	0	0	159,967,854
36.	Accrued retrospective premiums based on experience					0
37.	Earned but unbilled premiums					0
38.	Balance (Sum of Line 35 through Line 37)					159,967,854
DETAILS OF WRITE-INS						
3401.		0	0	0	0	0
3402.		0	0	0	0	0
3403.		0	0	0	0	0
3498.	Summary of remaining write-ins for Line 34 from overflow page	0	0	0	0	0
3499.	Totals (Line 3401 through Line 3403 plus Line 3498) (Line 34 above)	0	0	0	0	0

(a) State here basis of computation used in each case.  
Daily Pro-Rata

UNDERWRITING AND INVESTMENT EXHIBIT

PART 1B-PREMIUMS WRITTEN

Line of Business	1 Direct Business (a)	Reinsurance Assumed		Reinsurance Ceded		6 Net Premiums Written Columns 1 + 2 + 3 - 4 - 5
		2 From Affiliates	3 From Non-Affiliates	4 To Affiliates	5 To Non-Affiliates	
1. Fire .....	0	15,309,920	62	12,401,086	0	2,908,896
2. Allied lines .....	0	13,491,695	0	10,928,273	0	2,563,422
3. Farmowners multiple peril .....	0	58,043,775	0	47,015,457	0	11,028,318
4. Homeowners multiple peril .....	0	221,382,491	0	179,319,818	0	42,062,673
5. Commercial multiple peril .....	0	369,049,738	27,029	298,952,181	0	70,124,586
6. Mortgage guaranty .....	0	0	0	0	0	0
8. Ocean marine .....	0	0	0	0	0	0
9. Inland marine .....	0	68,598,388	0	55,564,695	0	13,033,693
10. Financial guaranty .....	0	0	0	0	0	0
11.1 Medical professional liability - occurrence .....	0	0	0	0	0	0
11.2 Medical professional liability - claims-made .....	0	0	0	0	0	0
12. Earthquake .....	0	3,807,928	0	3,084,422	0	723,506
13. Group accident and health .....	0	0	0	0	0	0
14. Credit accident and health (group and individual) .....	0	0	0	0	0	0
15. Other accident and health .....	0	0	0	0	0	0
16. Workers' compensation .....	0	122,716,697	4,804,246	99,407,424	4,795,728	23,317,791
17.1 Other liability - occurrence .....	6,934	121,407,504	168,878	98,482,485	0	23,100,831
17.2 Other liability - claims-made .....	0	1,612,921	0	1,306,466	0	306,455
17.3 Excess workers' compensation .....	0	0	0	0	0	0
18.1 Products liability - occurrence .....	0	2,905,849	0	2,353,738	0	552,111
18.2 Products liability - claims-made .....	0	0	0	0	0	0
19.1, 19.2 Private passenger auto liability .....	0	178,350,594	0	144,463,981	0	33,886,613
19.3, 19.4 Commercial auto liability .....	0	222,235,067	0	180,010,404	0	42,224,663
21. Auto physical damage .....	0	237,630,240	0	192,480,495	0	45,149,745
22. Aircraft (all perils) .....	0	0	0	0	0	0
23. Fidelity .....	40,323	2,742,039	0	2,253,713	0	528,649
24. Surety .....	22,854,540	26,805,173	1,250	38,161,276	2,548,276	8,951,411
26. Burglary and theft .....	0	265,268	0	214,867	0	50,401
27. Boiler and machinery .....	0	0	0	0	0	0
28. Credit .....	0	0	0	0	0	0
29. International .....	0	0	0	0	0	0
30. Warranty .....	0	0	0	0	0	0
31. Reinsurance - Nonproportional Assumed Property .....	X X X	0	46,144,721	37,377,224	0	8,767,497
32. Reinsurance - Nonproportional Assumed Liability .....	X X X	0	0	0	0	0
33. Reinsurance - Nonproportional Assumed Financial Lines .....	X X X	0	0	0	0	0
34. Aggregate write-ins for other lines of business .....	0	0	0	0	0	0
35. TOTALS .....	22,901,797	1,666,355,287	51,146,186	1,403,778,005	7,344,004	329,281,261
DETAILS OF WRITE-INS						
3401. ....	0	0	0	0	0	0
3402. ....	0	0	0	0	0	0
3403. ....	0	0	0	0	0	0
3498. Summary of remaining write-ins for Line 34 from overflow page .....	0	0	0	0	0	0
3499. Totals (Line 3401 through Line 3403 plus Line 3498) (Line 34 above) .....	0	0	0	0	0	0

(a) Does the company's direct premiums written include premiums recorded on an installment basis? Yes ( ) No (X)  
If yes: 1. The amount of such installment premiums \$ 0  
2. Amount at which such installment premiums would have been reported had they been recorded on an annualized basis \$ 0



UNDERWRITING AND INVESTMENT EXHIBIT

PART 2 - LOSSES PAID AND INCURRED

Line of Business	Losses Paid Less Salvage				5	6	7	8
	1 Direct Business	2 Reinsurance Assumed	3 Reinsurance Recovered	4 Net Payments (Columns 1 plus 2 minus 3)	Net Losses Unpaid Current Year (Part 2A, Column 8)	Net Losses Unpaid Prior Year	Losses Incurred Current Year (Columns 4 plus 5 minus 6)	Percentage of Losses Incurred (Column 7, Part 2) to Premiums Earned (Column 4, Part 1)
1. Fire	0	9,928,348	8,041,962	1,886,386	284,720	503,955	1,667,151	58.1
2. Allied lines	0	7,811,107	6,326,997	1,484,110	380,653	233,577	1,631,186	65.5
3. Farmowners multiple peril	(334)	24,549,718	19,885,001	4,664,383	1,124,011	985,073	4,803,321	44.8
4. Homeowners multiple peril	(3,353)	131,355,755	106,395,445	24,956,957	7,480,267	7,192,143	25,245,081	61.5
5. Commercial multiple peril	564,733	182,171,428	148,016,291	34,719,870	47,132,478	48,200,476	33,651,872	48.8
6. Mortgage guaranty	0	0	0	0	0	0	0	0.0
8. Ocean marine	0	0	0	0	0	0	0	0.0
9. Inland marine	0	24,529,594	19,868,971	4,660,623	1,324,696	930,782	5,054,537	39.2
10. Financial guaranty	0	0	0	0	0	0	0	0.0
11.1 Medical professional liability - occurrence	0	0	0	0	0	0	0	0.0
11.2 Medical professional liability - claims-made	0	0	0	0	0	0	0	0.0
12. Earthquake	0	0	0	0	1	295	(294)	0.0
13. Group accident and health	0	0	0	0	0	0	0	0.0
14. Credit accident and health (group and individual)	0	0	0	0	0	0	0	0.0
15. Other accident and health	0	0	0	0	0	0	0	0.0
16. Workers' compensation	955,465	78,538,273	64,932,469	14,561,269	40,934,041	44,585,693	10,909,617	46.6
17.1 Other liability - occurrence	260,503	29,396,572	24,022,231	5,634,844	30,378,905	29,978,139	6,035,610	26.8
17.2 Other liability - claims-made	1,235	(2,500)	(1,025)	(240)	121,478	129,677	(8,439)	(2.7)
17.3 Excess workers' compensation	0	0	0	0	0	0	0	0.0
18.1 Products liability - occurrence	0	2,261,505	1,831,819	429,686	4,167,300	5,744,578	(1,147,592)	(208.6)
18.2 Products liability - claims-made	0	0	0	0	0	0	0	0.0
19.1, 19.2 Private passenger auto liability	71,676	109,271,429	88,568,570	20,774,535	23,179,820	23,856,408	20,097,947	60.6
19.3, 19.4 Commercial auto liability	5,423	132,474,498	107,310,484	25,169,437	44,608,085	39,507,424	30,270,098	74.8
21. Auto physical damage	(1,464)	137,303,997	111,215,052	26,087,481	3,544,655	2,720,749	26,911,387	61.8
22. Aircraft (all perils)	0	0	0	0	97	82	15	0.0
23. Fidelity	(7,609)	474,521	378,199	88,713	82,361	314,317	(143,243)	(26.5)
24. Surety	2,235,052	4,048,919	5,090,016	1,193,955	1,016,501	1,352,263	858,193	9.9
26. Burglary and theft	0	44,003	35,643	8,360	1,671	1,775	8,256	16.3
27. Boiler and machinery	0	0	0	0	0	0	0	0.0
28. Credit	0	0	0	0	0	0	0	0.0
29. International	0	0	0	0	0	0	0	0.0
30. Warranty	0	0	0	0	0	0	0	0.0
31. Reinsurance - Nonproportional Assumed Property	X X X	22,340,113	18,095,492	4,244,621	4,933,525	8,711,007	467,139	5.4
32. Reinsurance - Nonproportional Assumed Liability	X X X	0	0	0	0	0	0	0.0
33. Reinsurance - Nonproportional Assumed Financial Lines	X X X	0	0	0	0	0	0	0.0
34. Aggregate write-ins for other lines of business	0	0	0	0	0	0	0	0.0
35. TOTALS	4,081,327	896,497,280	730,013,617	170,564,990	210,695,265	214,948,413	166,311,842	51.7
DETAILS OF WRITE-INS								
3401.	0	0	0	0	0	0	0	0.0
3402.	0	0	0	0	0	0	0	0.0
3403.	0	0	0	0	0	0	0	0.0
3498. Summary of remaining write-ins for Line 34 from overflow page	0	0	0	0	0	0	0	0.0
3499. Totals (Line 3401 through Line 3403 plus Line 3498) (Line 34 above)	0	0	0	0	0	0	0	0.0

UNDERWRITING AND INVESTMENT EXHIBIT

PART 2A - UNPAID LOSSES AND LOSS ADJUSTMENT EXPENSES

Line of Business	Reported Losses				Incurred But Not Reported			8	9
	1	2	3	4	5	6	7		
	Direct	Reinsurance Assumed	Deduct Reinsurance Recoverable	Net Losses Excluding Incurred But Not Reported (Columns 1 plus 2 minus 3)	Direct	Reinsurance Assumed	Reinsurance Ceded	Net Losses Unpaid (Columns 4 plus 5 plus 6 minus 7)	Net Unpaid Loss Adjustment Expenses
1. Fire	0	1,017,572	824,233	193,339	0	480,955	389,574	284,720	57,997
2. Allied lines	0	789,874	639,798	150,076	0	1,213,560	982,983	380,653	48,283
3. Farmowners multiple peril	2	4,744,394	3,842,960	901,436	0	1,171,449	948,874	1,124,011	194,126
4. Homeowners multiple peril	1	31,277,477	25,334,757	5,942,721	3	8,092,345	6,554,802	7,480,267	1,020,494
5. Commercial multiple peril	671,035	153,492,913	124,872,798	29,291,150	734	93,900,990	76,060,396	47,132,478	30,462,274
6. Mortgage guaranty	0	0	0	0	0	0	0	0	0
8. Ocean marine	0	0	0	0	0	0	0	0	0
9. Inland marine	0	5,329,923	4,317,238	1,012,685	0	1,642,165	1,330,154	1,324,696	215,620
10. Financial guaranty	0	0	0	0	0	0	0	0	0
11.1 Medical professional liability - occurrence	0	0	0	0	0	0	0	0	0
11.2 Medical professional liability - claims-made	0	0	0	0	0	0	0	0	0
12. Earthquake	0	0	0	0	0	3	2	1	23
13. Group accident and health	0	0	0	0	0	0	0	(a)	0
14. Credit accident and health (group and individual)	0	0	0	0	0	0	0	0	0
15. Other accident and health	0	0	0	0	0	0	0	(a)	0
16. Workers' compensation	16,715,373	121,516,206	114,891,688	23,339,891	1,870	97,978,510	80,386,230	40,934,041	7,557,413
17.1 Other liability - occurrence	111,546	42,580,205	34,593,618	8,098,133	294,624	116,972,595	94,986,447	30,378,905	9,056,424
17.2 Other liability - claims-made	224,772	232,496	370,387	86,881	0	182,088	147,491	121,478	7,363
17.3 Excess workers' compensation	0	0	0	0	0	0	0	0	0
18.1 Products liability - occurrence	3,091	4,798,436	3,889,237	912,290	1,321,884	15,809,747	13,876,621	4,167,300	2,138,096
18.2 Products liability - claims-made	0	0	0	0	0	0	0	0	0
19.1, 19.2 Private passenger auto liability	70,330	97,061,511	78,682,381	18,449,460	1,963	24,894,671	20,166,274	23,179,820	5,925,692
19.3, 19.4 Commercial auto liability	176,393	145,397,299	117,939,387	27,634,305	1,967	89,333,719	72,361,906	44,608,085	12,067,143
21. Auto physical damage	0	9,607,201	7,781,833	1,825,368	0	9,048,879	7,329,592	3,544,655	553,988
22. Aircraft (all perils)	0	509	412	97	0	0	0	97	0
23. Fidelity	10,000	226,143	191,276	44,867	5,828	191,509	159,843	82,361	56,793
24. Surety	2,343,708	(517,748)	1,503,728	322,232	1,900,044	2,019,002	3,224,777	1,016,501	2,169,566
26. Burglary and theft	0	6,129	4,965	1,164	0	2,666	2,159	1,671	185
27. Boiler and machinery	0	0	0	0	0	0	0	0	0
28. Credit	0	0	0	0	0	0	0	0	0
29. International	0	0	0	0	0	0	0	0	0
30. Warranty	0	0	0	0	0	0	0	0	0
31. Reinsurance - Nonproportional Assumed Property	X X X	2,908,778	2,356,110	552,668	X X X	23,057,142	18,676,285	4,933,525	0
32. Reinsurance - Nonproportional Assumed Liability	X X X	0	0	0	X X X	0	0	0	0
33. Reinsurance - Nonproportional Assumed Financial Lines	X X X	0	0	0	X X X	0	0	0	0
34. Aggregate write-ins for other lines of business	0	0	0	0	0	0	0	0	0
35. TOTALS	20,326,251	620,469,318	522,036,806	118,758,763	3,528,917	485,991,995	397,584,410	210,695,265	71,531,480
DETAILS OF WRITE-INS									
3401.	0	0	0	0	0	0	0	0	0
3402.	0	0	0	0	0	0	0	0	0
3403.	0	0	0	0	0	0	0	0	0
3498. Summary of remaining write-ins for Line 34 from overflow page	0	0	0	0	0	0	0	0	0
3499. Totals (Line 3401 through Line 3403 plus Line 3498) (Line 34 above)	0	0	0	0	0	0	0	0	0

(a) Including \$ 0 for present value of life indemnity claims.

UNDERWRITING AND INVESTMENT EXHIBIT

PART 3 - EXPENSES

	1	2	3	4
	Loss Adjustment Expenses	Other Underwriting Expenses	Investment Expenses	Total
1. Claim adjustment services:				
1.1 Direct	1,690,836	0	0	1,690,836
1.2 Reinsurance assumed	74,271,542	0	0	74,271,542
1.3 Reinsurance ceded	61,529,526	0	0	61,529,526
1.4 Net claim adjustment services (Line 1.1 plus Line 1.2 minus Line 1.3)	14,432,852	0	0	14,432,852
2. Commission and brokerage:				
2.1 Direct excluding contingent	0	5,743,035	0	5,743,035
2.2 Reinsurance assumed excluding contingent	0	260,237,592	0	260,237,592
2.3 Reinsurance ceded excluding contingent	0	215,591,932	0	215,591,932
2.4 Contingent - direct	0	551,604	0	551,604
2.5 Contingent - reinsurance assumed	0	52,026,558	0	52,026,558
2.6 Contingent - reinsurance ceded	0	42,588,311	0	42,588,311
2.7 Policy and membership fees	0	0	0	0
2.8 Net commission and brokerage (Line 2.1 plus Line 2.2 minus Line 2.3 plus Line 2.4 plus Line 2.5 minus Line 2.6 plus Line 2.7)	0	60,378,546	0	60,378,546
3. Allowances to manager and agents	0	390,360	0	390,360
4. Advertising	0	402,691	0	402,691
5. Boards, bureaus and associations	269,847	1,446,400	0	1,716,247
6. Surveys and underwriting reports	0	1,388,151	0	1,388,151
7. Audit of assureds' records	0	156,346	0	156,346
8. Salary and related items:				
8.1 Salaries	9,909,911	17,460,866	404,911	27,775,688
8.2 Payroll taxes	748,851	1,291,897	24,904	2,065,652
9. Employee relations and welfare	2,543,992	4,468,015	112,376	7,124,383
10. Insurance	323	541,848	(17)	542,154
11. Directors' fees	0	0	0	0
12. Travel and travel items	809,249	1,035,050	8,345	1,852,644
13. Rent and rent items	923,790	1,817,303	24,098	2,765,191
14. Equipment	160,188	499,049	3,163	662,400
15. Cost or depreciation of EDP equipment and software	491,481	888,619	3,796	1,383,896
16. Printing and stationery	102,946	286,257	4,185	393,388
17. Postage, telephone and telegraph, exchange and express	330,295	854,615	38,322	1,223,232
18. Legal and auditing	104,509	859,358	45,014	1,008,881
19. Totals (Line 3 through Line 18)	16,395,382	33,786,825	669,097	50,851,304
20. Taxes, licenses and fees:				
20.1 State and local insurance taxes deducting guaranty association credits of \$ 6,781	0	6,914,048	0	6,914,048
20.2 Insurance department licenses and fees	0	286,848	0	286,848
20.3 Gross guaranty association assessments	0	(153,342)	0	(153,342)
20.4 All other (excluding federal and foreign income and real estate)	0	248,482	0	248,482
20.5 Total taxes, licenses and fees (Line 20.1 plus Line 20.2 plus Line 20.3 plus Line 20.4)	0	7,296,036	0	7,296,036
21. Real estate expenses	0	0	19,039,409	19,039,409
22. Real estate taxes	0	0	894,238	894,238
23. Reimbursements by uninsured plans	0	0	0	0
24. Aggregate write-ins for miscellaneous expenses	7,087,020	9,200,941	365,580	16,653,541
25. Total expenses incurred	37,915,254	110,662,348	20,968,324	(a) 169,545,926
26. Less unpaid expenses - current year	71,531,479	36,491,525	4,629,581	112,652,585
27. Add unpaid expenses - prior year	68,685,751	38,849,485	4,089,155	111,624,391
28. Amounts receivable relating to uninsured plans, prior year	0	0	0	0
29. Amounts receivable relating to uninsured plans, current year	0	0	0	0
30. TOTAL EXPENSES PAID (Line 25 minus Line 26 plus Line 27 minus Line 28 plus Line 29)	35,069,526	113,020,308	20,427,898	168,517,732
DETAILS OF WRITE-INS				
2401. Electronic data processing service	1,744,235	5,380,104	111,891	7,236,230
2402. Unallocated LAE reserve change and other ULAE	4,111,285	0	0	4,111,285
2403. Management fee	725,870	2,526,803	218,419	3,471,092
2498. Summary of remaining write-ins for Line 24 from overflow page	505,630	1,294,034	35,270	1,834,934
2499. Totals (Line 2401 through Line 2403 plus Line 2498) (Line 24 above)	7,087,020	9,200,941	365,580	16,653,541

(a) Includes management fees of \$ 3,788,203 to affiliates and \$ 0 to non-affiliates.

EXHIBIT OF NET INVESTMENT INCOME

	1	2
	Collected During Year	Earned During Year
1. U. S. Government bonds	(a) 3,341,423	3,318,880
1.1 Bonds exempt from U. S. tax	(a) 1,847,706	1,843,753
1.2 Other bonds (unaffiliated)	(a) 8,818,946	8,782,845
1.3 Bonds of affiliates	(a) 0	0
2.1 Preferred stocks (unaffiliated)	(b) 0	0
2.11 Preferred stocks of affiliates	(b) 0	0
2.2 Common stocks (unaffiliated)	4,768,504	4,813,570
2.21 Common stocks of affiliates	20,000,000	20,000,000
3. Mortgage loans	(c) 0	0
4. Real estate	(d) 18,360,347	18,360,347
5. Contract loans	0	0
6. Cash, cash equivalents and short-term investments	(e) 118	118
7. Derivative instruments	(f) 0	0
8. Other invested assets	1,924,383	1,821,601
9. Aggregate write-ins for investment income	330,462	330,462
10. Total gross investment income	59,391,889	59,271,576
11. Investment expenses		(g) 20,968,323
12. Investment taxes, licenses and fees, excluding federal income taxes		(g) 0
13. Interest expense		(h) 0
14. Depreciation on real estate and other invested assets		(i) 2,953,202
15. Aggregate write-ins for deductions from investment income		0
16. Total deductions (Line 11 through Line 15)		23,921,525
17. Net investment income (Line 10 minus Line 16)		35,350,051
DETAILS OF WRITE-INS		
0901. Amortization on intercompany transactions	330,462	330,462
0902.	0	0
0903.	0	0
0998. Summary of remaining write-ins for Line 9 from overflow page	0	0
0999. Totals (Line 0901 through Line 0903 plus Line 0998) (Line 9 above)	330,462	330,462
1501.		0
1502.		0
1503.		0
1598. Summary of remaining write-ins for Line 15 from overflow page		0
1599. Totals (Line 1501 through Line 1503 plus Line 1598) (Line 15 above)		0
(a) Includes \$ 41,287 accrual of discount less \$ 6,978,593 amortization of premium and less \$ 218,068 paid for accrued interest on purchases.	(f) Includes \$ 0 accrual of discount less \$ 0 amortization of premium.	
(b) Includes \$ 0 accrual of discount less \$ 0 amortization of premium and less \$ 0 paid for accrued dividends on purchases.	(g) Includes \$ 0 investment expenses and \$ 0 investment taxes, licenses and fees, excluding federal income taxes, attributable to segregated and Separate Accounts.	
(c) Includes \$ 0 accrual of discount less \$ 0 amortization of premium and less \$ 0 paid for accrued interest on purchases.	(h) Includes \$ 0 interest on surplus notes and \$ 0 interest on capital notes.	
(d) Includes \$ 10,630,854 for company's occupancy of its own buildings; and excludes \$ 0 interest on encumbrances.	(i) Includes \$ 2,953,202 depreciation on real estate and \$ 0 depreciation on other invested assets.	
(e) Includes \$ 0 accrual of discount less \$ 0 amortization of premium and less \$ 0 paid for accrued interest on purchases.		

EXHIBIT OF CAPITAL GAINS (LOSSES)

	1	2	3	4	5
	Realized Gain (Loss) On Sales or Maturity	Other Realized Adjustments	Total Realized Capital Gain (Loss) (Col. 1 + Col. 2)	Change in Unrealized Capital Gain (Loss)	Change in Unrealized Foreign Exchange Capital Gain (Loss)
1. U. S. Government bonds	0	0	0	0	0
1.1 Bonds exempt from U. S. tax	12,567	0	12,567	0	0
1.2 Other bonds (unaffiliated)	1,475,099	(900,000)	575,099	0	0
1.3 Bonds of affiliates	0	0	0	0	0
2.1 Preferred stocks (unaffiliated)	0	0	0	0	0
2.11 Preferred stocks of affiliates	0	0	0	0	0
2.2 Common stocks (unaffiliated)	1,536,836	0	1,536,836	8,495,385	0
2.21 Common stocks of affiliates	0	0	0	103,553,848	0
3. Mortgage loans	0	0	0	0	0
4. Real estate	24,347	(62,600)	(38,253)	0	0
5. Contract loans	0	0	0	0	0
6. Cash, cash equivalents and short-term investments	0	0	0	0	0
7. Derivative instruments	0	0	0	0	0
8. Other invested assets	28,704	0	28,704	1,870,912	0
9. Aggregate write-ins for capital gains (losses)	0	0	0	0	0
10. Total capital gains (losses)	3,077,553	(962,600)	2,114,953	113,920,145	0
DETAILS OF WRITE-INS					
0901.	0	0	0	0	0
0902.	0	0	0	0	0
0903.	0	0	0	0	0
0998. Summary of remaining write-ins for Line 9 from overflow page	0	0	0	0	0
0999. Totals (Line 0901 through Line 0903 plus Line 0998) (Line 9 above)	0	0	0	0	0

EXHIBIT OF NONADMITTED ASSETS

	1	2	3
	Current Year Total Nonadmitted Assets	Prior Year Total Nonadmitted Assets	Change in Total Nonadmitted Assets (Col. 2 - Col. 1)
1. Bonds (Schedule D) .....	0	0	0
2. Stocks (Schedule D): .....			
2.1 Preferred stocks .....	0	0	0
2.2 Common stocks .....	0	0	0
3. Mortgage loans on real estate (Schedule B): .....			
3.1 First liens .....	0	0	0
3.2 Other than first liens .....	0	0	0
4. Real estate (Schedule A): .....			
4.1 Properties occupied by the company .....	0	0	0
4.2 Properties held for the production of income .....	0	0	0
4.3 Properties held for sale .....	0	0	0
5. Cash (Schedule E-Part 1) , cash equivalents (Schedule E-Part 2) and short-term investments (Schedule DA) .....	0	0	0
6. Contract loans .....	0	0	0
7. Derivatives (Schedule DB) .....	0	0	0
8. Other invested assets (Schedule BA) .....	27,500	319,316	291,816
9. Receivables for securities .....	0	0	0
10. Securities lending reinvested collateral assets (Schedule DL) .....	0	0	0
11. Aggregate write-ins for invested assets .....	0	0	0
12. Subtotals, cash and invested assets (Line 1 to Line 11) .....	27,500	319,316	291,816
13. Title plants (for Title insurers only) .....	0	0	0
14. Investment income due and accrued .....	0	0	0
15. Premiums and considerations: .....			
15.1 Uncollected premiums and agents' balances in the course of collection .....	1,801,386	1,978,570	177,184
15.2 Deferred premiums, agents' balances and installments booked but deferred and not yet due .....	22,106	22,106	0
15.3 Accrued retrospective premiums .....	0	0	0
16. Reinsurance: .....			
16.1 Amounts recoverable from reinsurers .....	0	0	0
16.2 Funds held by or deposited with reinsured companies .....	683,221	535,881	(147,340)
16.3 Other amounts receivable under reinsurance contracts .....	0	0	0
17. Amounts receivable relating to uninsured plans .....	0	0	0
18.1 Current federal and foreign income tax recoverable and interest thereon .....	0	0	0
18.2 Net deferred tax asset .....	0	0	0
19. Guaranty funds receivable or on deposit .....	0	0	0
20. Electronic data processing equipment and software .....	193,419	285,304	91,885
21. Furniture and equipment, including health care delivery assets .....	6,348,584	7,329,450	980,866
22. Net adjustment in assets and liabilities due to foreign exchange rates .....	0	0	0
23. Receivables from parent, subsidiaries and affiliates .....	0	0	0
24. Health care and other amounts receivable .....	2,387,976	1,782,137	(605,839)
25. Aggregate write-ins for other-than-invested assets .....	9,178,690	7,562,469	(1,616,221)
26. Total assets excluding Separate Accounts, Segregated Accounts and Protected Cell Accounts (Line 12 to Line 25) .....	20,642,882	19,815,233	(827,649)
27. From Separate Accounts, Segregated Accounts and Protected Cell Accounts .....	0	0	0
28. Total (Line 26 and Line 27) .....	20,642,882	19,815,233	(827,649)
DETAILS OF WRITE-INS			
1101. ....	0	0	0
1102. ....	0	0	0
1103. ....	0	0	0
1198. Summary of remaining write-ins for Line 11 from overflow page .....	0	0	0
1199. Totals (Line 1101 through Line 1103 plus Line 1198) (Line 11 above) .....	0	0	0
2501. Prepaid pension cost .....	50,663,005	45,880,118	(4,782,887)
2502. Other prepaid assets .....	8,601,496	7,016,766	(1,584,730)
2503. Post retirement benefit asset .....	3,061,751	3,948,647	886,896
2598. Summary of remaining write-ins for Line 25 from overflow page .....	(53,147,562)	(49,283,062)	3,864,500
2599. Totals (Line 2501 through Line 2503 plus Line 2598) (Line 25 above) .....	9,178,690	7,562,469	(1,616,221)

NOTES TO FINANCIAL STATEMENTS

General Notes

1. Summary of Significant Accounting Policies-

A. Accounting Practices

The financial statements of Ohio Farmers Insurance Company (the Company) are presented on the basis of accounting practices prescribed or permitted by the Ohio Department of Insurance.

The Ohio Department of Insurance recognizes only statutory accounting practices (SAP) prescribed or permitted by the State of Ohio for determining and reporting the financial condition and results of operations of an insurance company, for determining its solvency under the Ohio Insurance law. The National Association of Insurance Commissioners' (NAIC) *Accounting Practices and Procedures Manual* (NAIC SAP) has been adopted as a component of prescribed or permitted practices by the State of Ohio.

The Company has not implemented any prescribed or permitted accounting practices by the State of Ohio that differ from those found in NAIC SAP.

A reconciliation of the Company's net income and capital and surplus between NAIC SAP and practices prescribed and permitted by the State of Ohio is shown below:

	State of Domicile	12/31/2014	12/31/2013
<b>NET INCOME</b>			
(1) Ohio Farmers Insurance Company state basis (Page 4, Line 20, Columns 1 & 2)	Ohio	\$ 39,282,819	\$ 21,094,653
(2) State Prescribed Practices that increase / (decrease) NAIC SAP	Ohio	0	0
(3) State Permitted Practices that increase / (decrease) NAIC SAP	Ohio	0	0
(4) NAIC SAP (1-2-3=4)	Ohio	<u>\$ 39,282,819</u>	<u>\$ 21,094,653</u>
<b>SURPLUS</b>			
(5) Ohio Farmers Insurance Company state basis (Page 3, Line 37, Columns 1 & 2)	Ohio	\$ 1,902,449,534	\$ 1,808,690,196
(6) State Prescribed Practices that increase / (decrease) NAIC SAP	Ohio	0	0
(7) State Permitted Practices that increase / (decrease) NAIC SAP	Ohio	0	0
(8) NAIC SAP (5-6-7=8)	Ohio	<u>\$ 1,902,449,534</u>	<u>\$ 1,808,690,196</u>

B. Use of Estimates in the Preparation of the Financial Statements

The preparation of financial statements in conformity with SAP requires management to make estimates and assumptions that affect the reported amounts of assets and liabilities. It also requires disclosure of contingent assets and liabilities at the date of the financial statements and the reported amounts of revenue and expenses during the period. Actual results could differ from those estimates.

C. Accounting Policy

Premiums are earned over the terms of the related insurance policies and reinsurance contracts. Unearned premium reserves are established to cover the unexpired portion of premiums written. Such reserves are computed by pro rata methods for direct business and are based on reports received from ceding companies for reinsurance.

Expenses incurred in connection with acquiring new insurance business, including such acquisition costs as sales commissions, are charged to operations as incurred. Expenses incurred are reduced for ceding allowances received or receivable. In addition, the Company uses the following accounting policies:

- (1) Short-term investments are reported in the same manner as similar long-term investments per Statements of Statutory Accounting Principles (SSAP) No. 2.
- (2) Bonds not backed by other loans are stated at amortized cost using the scientific interest method per SSAP No. 26.
- (3) Common stocks are stated at market per SSAP No. 30, except for investments in stocks of uncombined subsidiaries in which the Company has an interest of 20% or more, which are carried on the equity basis per SSAP No. 97.
- (4) Redeemable preferred stocks, which have underlying characteristics of debt, are stated at amortized cost. Perpetual preferred stocks are stated at cost. Preferred stocks with NAIC designations 3 - 6 are stated at the lower of cost, amortized cost, or fair value in accordance with SSAP No. 32.
- (5) The Company does not hold any mortgage loans.
- (6) Loan-backed securities are stated at either amortized cost or the lower of amortized cost or fair market value. The retrospective adjustment method is used to value all securities. If a security has been written down due to an other-than-temporary impairment, the prospective adjustment method is used subsequent to the loss recognition in accordance with SSAP No. 43R.
- (7) The Company owns 100.0% of the common stock of the Westfield Insurance Company, Westfield National Insurance Company, American Select Insurance Company, and Old Guard Insurance Company. These common stocks are all carried at statutory equity of each reporting entity as described in the "Valuation of Subsidiary Controlled and Affiliated (SCA) Investments" section of the Purposes and Procedures Manual of the NAIC Investment Analysis Office and SSAP No. 97. It owns 100.0% of Westfield Bancorp, Inc., Westfield Marketing LLC, Westfield Securities, LLC, and 150 South Road, LLC, which are each measured on a GAAP equity basis as described in the Purposes and Procedures Manual and SSAP No. 97. Westfield Securities, LLC is a nonadmitted asset, as it is un-audited. It owns 85.0% of the common stock of Westfield Management Company, which is recorded based on the underlying equity of the entity adjusted to a statutory accounting basis and adjusted for remaining goodwill, if any, as described in the Purposes and Procedures Manual.
- (8) The Company has minor ownership interests in partnerships. Those with underlying characteristics of common stock are carried at market value per SSAP No. 30. In addition, the Company has interests in two trusts which are reported as other invested assets with carry values determined in accordance with the SSAP applicable to the underlying assets. Partnership investments in private limited partnerships are recorded at cost and adjusted for the Company's proportional share of the entity's audited GAAP earnings and other equity adjustments less any distributions received per SSAP No. 48.
- (9) The Company does not invest in derivative instruments.
- (10) The Company anticipates investment income as a factor in the premium deficiency calculation, in accordance with SSAP No. 53, Property-Casualty Contracts - Premiums.
- (11) Unpaid losses and loss adjustment expenses include an amount determined from individual case estimates and loss reports and an amount, based on past experience, for losses incurred but not reported. Such liabilities are necessarily based on assumptions and estimates and, while management believes the amount is adequate, the ultimate liability may be in excess of or less than the amount provided. The methods for making such estimates and for establishing the resulting liability are continually reviewed and any adjustments are reflected in the period determined. The Company has limited exposure to asbestos and environmental claims and management believes the reserve for such claims is adequate.
- (12) The Company has not modified its capitalization policy from the prior period.
- (13) Pharmaceutical rebate receivables are applicable to health insurance entities. The Company does not offer health insurance policies.

2. Accounting Changes and Corrections of Errors-

On January 1, 2013, the Company adopted SSAP No. 92, *Accounting for Postretirement Benefits Other Than Pensions* - A Replacement of SSAP No. 14 and SSAP No. 102, *Accounting for Pensions* - A Replacement of SSAP No. 89. The standards require insurers to recognize the overfunded or underfunded status of a postretirement plan as an asset or liability and include non-vested employees in determining the plan obligations. In addition, a sponsor's fiscal year end will be used as the measurement date for estimating the fair value of postretirement benefit assets and liabilities. The guidance contains a transition provision that gives insurers the option to recognize the initial impact to surplus over a period not to exceed ten (10) years. The Company has elected the transition option. These amounts are reported in "Aggregate write-ins for gains and losses in surplus" per SSAP No. 102 and SSAP No. 92 instead of "Cumulative effect of changes in accounting principles". The 2013 postretirement plan activity is detailed below. See Note 12 for further information.

	Gross	Tax Impact	Net
Excess of additional minimum liability over unrecognized PSC	\$ 42,825,277	\$ (14,988,847)	\$ 27,836,430
Nonadmitted prepaid assets at 12/13/2012	(56,743,962)	19,860,387	(36,883,575)
Plan amendment	(6,435,695)	2,252,493	(4,183,202)
Minimum transition liability recognized at 1/1/2013	(51,506,220)	18,027,177	(33,479,043)
Net actuarial gains at 12/31/2013	32,896,372	(11,513,730)	21,382,642
Net surplus decrease reported on page 4, line 37	\$ (38,964,228)	\$ 13,637,480	\$ (25,326,748)

3. Business Combinations and Goodwill- Not applicable

4. Discontinued Operations-

No events or transactions occurred during the year that would give rise to discontinued operations.

NOTES TO FINANCIAL STATEMENTS

5. Investments-
- A. Mortgage Loans, including Mezzanine Real Estate Loans  
The Company does not invest in mortgage loans. No mezzanine real estate loans are held.
- B. Debt Restructuring  
The Company is not a creditor for any loans that have been restructured.
- C. Reverse Mortgages  
The Company does not invest in reverse mortgages.
- D. Loan-Backed Securities
- (1) Prepayment assumptions for single class and multi class mortgage-backed/asset-backed securities were obtained from broker dealer survey values or internal estimates. The Company used Interactive Data Corp. in determining the market value of its loan-backed securities.
- (2-3) No other-than-temporary impairments have been recognized on loan-backed securities.
- (4) The Company held no loan-backed securities or structured securities in an unrealized loss position at December 31, 2014.
- (5) In concluding that the impairments are not other-than-temporary, the Company has considered the following general categories of information:
- Length of time and extent to which the fair value has been less than cost
  - Issuer credit quality
  - Industry sector considerations
  - General interest rate environment
  - Probability of collecting future cash flows
- E. Repurchase Agreements and/or Securities Lending Transactions  
The Company does not have any investments in repurchase agreements or securities lending.

- F. Real Estate
- (1) a. The Company impairs the value of each real estate asset classified as "held for sale" both at the time of purchase and as dictated by market conditions while held for sale. The decision to impair each asset is based on historical resale experience and current market conditions. Each real estate asset classified as "held for sale" and held at year end is re-evaluated for impairment based on current market conditions.
- b. The Company determines a fair value based on market appraisals, adjusted for average selling costs, and market conditions. The Company recorded the following impairment total during 2014.

Parcel	Description			Fair Value	Impairment
686	DWELLING & LAND	SEVILLE	OH	\$ 106,973	\$ 9,302
690	DWELLING & LAND	WESTBURY	NY	376,769	32,763
694	DWELLING & LAND	PINGREE GROVE	IL	236,167	20,536
Total					\$ 62,601

- c. The aggregate impairment loss is reported under the Statement of Income, line 10, "Net realized capital gains (losses) less capital gains tax".
- (2) a. The Company routinely purchases real estate as part of a qualifying employee relocation program with the intent to resell the asset on the open market within one (1) year. The Company recorded the following relocation related real estate sale transactions during 2014.

Parcel	Description			Disposal Date	Realized Profit (Loss) on Sale
686	DWELLING & LAND	SEVILLE	OH	04/23/2014	\$ (8,618)
690	DWELLING & LAND	WESTBURY	NY	12/22/2014	(22,636)
Total					\$ (31,254)

- b. The aggregate gain/ (loss) is reported under the Statement of Income, line 10, "Net realized capital gains (losses) less capital gains tax".
- (3) Changes to Plan of Sale- Not applicable
- (4) Retail Land Sales Operations- Not applicable
- (5) Real Estate Investments with Participating Mortgage Loan Features- Not applicable

- G. Investments in low-income housing tax credits (LIHTC)  
The Company does not invest in any low income housing which qualifies for tax credits.

- H. Restricted Assets
- (1) Restricted Assets (Including Pledged)

Restricted Asset Category	Gross Restricted							8	Percentage	
	Current Year					6	7		9	10
	1	2	3	4	5					
	Total General Account (G/A)	G/A Supporting Protected Cell Account Activity (a)	Total Protected Cell Account Restricted Assets	Protected Cell Account Assets Supporting G/A Activity (b)	Total (1 plus 3)	Total From Prior Year	Increase / (Decrease) (5 minus 6)	Total Current Year Admitted Restricted	Gross Restricted to Total Assets	Admitted Restricted to Total Admitted Assets
a. Subject to contractual obligation for which liability is not shown	\$ 0	\$ 0	\$ 0	\$ 0	\$ 0	\$ 0	\$ 0	\$ 0	0.00%	0.00%
b. Collateral held under security lending agreements	0	0	0	0	0	0	0	0	0.00%	0.00%
c. Subject to repurchase agreements	0	0	0	0	0	0	0	0	0.00%	0.00%
d. Subject to reverse repurchase agreements	0	0	0	0	0	0	0	0	0.00%	0.00%
e. Subject to dollar repurchase agreements	0	0	0	0	0	0	0	0	0.00%	0.00%
f. Subject to dollar reverse repurchase agreements	0	0	0	0	0	0	0	0	0.00%	0.00%
g. Placed under option contracts	0	0	0	0	0	0	0	0	0.00%	0.00%
h. Letter stock or securities restricted as to sale -										
i. FHLB capital stock	0	0	0	0	0	0	0	0	0.00%	0.00%
j. On deposit with states	6,045,334	0	0	0	6,045,334	6,206,159	(160,825)	6,045,334	0.23%	0.23%
k. On deposit with other regulatory bodies	0	0	0	0	0	0	0	0	0.00%	0.00%
l. Pledged as collateral to FHLB (including assets backing funding agreements)	0	0	0	0	0	0	0	0	0.00%	0.00%
m. Pledged as collateral not captured in other categories	7,837,258	0	0	0	7,837,258	19,322,463	(11,485,205)	7,837,258	0.30%	0.30%
n. Other restricted assets	0	0	0	0	0	0	0	0	0.00%	0.00%
o. Total Restricted Assets	\$ 13,882,592	\$ 0	\$ 0	\$ 0	\$ 13,882,592	\$ 25,528,622	\$ (11,646,030)	\$ 13,882,592	0.53%	0.53%

(a) Subset of column 1  
(b) Subset of column 3

ANNUAL STATEMENT FOR THE YEAR 2014 OF THE Ohio Farmers Insurance Company

NOTES TO FINANCIAL STATEMENTS

(2) Detail of Assets Pledged as Collateral Not Captured in Other Categories (Contracts that Share Similar Characteristics, Such as Reinsurance and Derivatives, Are Reported in the Aggregate)

Description of Assets	Gross Restricted							8	Percentage	
	Current Year					6	7		9	10
	1	2	3	4	5					
	Total General Account (G/A)	G/A Supporting Protected Cell Account Activity (a)	Total Protected Cell Account Restricted Assets	Protected Cell Account Assets Supporting G/A Activity (b)	Total (1 plus 3)	Total From Prior Year	Increase / (Decrease) (5 minus 6)	Total Current Year Admitted Restricted	Gross Restricted to Total Assets	Admitted Restricted to Total Admitted Assets
United States Treas Bd 7.250% 08/15/2022 912810EM6	\$ 0	0	\$ 0	0	\$ 0	\$ 5,767,888	\$ (5,767,888)	\$ 0	0.00%	0.00%
United States Treas Bd 6.750% 08/15/2026 912810EX2	7,837,258	0	0	0	7,837,258	13,554,575	(5,717,317)	7,837,258	0.30%	0.30%
Total	\$ 7,837,258	0	\$ 0	\$ 0	\$ 7,837,258	\$ 19,322,463	\$ (11,485,205)	\$ 7,837,258	0.30%	0.30%

(a) Subset of column 1  
(b) Subset of column 3

(3) Detail of Other Restricted Assets (Contracts that Share Similar Characteristics, Such as Reinsurance and Derivatives, Are Reported in the Aggregate) - Not applicable

- I. Working Capital Finance Investments-  
The Company does not hold any working capital finance investments .
- J. Offsetting and Netting of Assets and Liabilities  
The Company does not hold any investments involving offsetting and netting of assets and liabilities .
- K. Structured Notes  
The Company does not hold any structured notes .

6. Joint Ventures, Partnerships and Limited Liability Companies-  
A. The Company has no investments in Joint Ventures, Partnerships or Limited Liability Companies that exceed 10% of its admitted assets.
- B. The Company did not recognize any impairment write down for its investments in Joint Ventures, Partnerships and Limited Liability Companies during the statement period.
7. Investment Income-  
The Company did not exclude any due and accrued income from surplus .
8. Derivative Instruments-  
The Company does not hold derivative instruments .
9. Income Taxes-  
A The components of the net deferred tax assets/ (liability) for the current reporting period are as follows:

1

- (a) Gross deferred tax assets  
(b) Statutory valuation allowance adjustment  
(c) Adjusted gross deferred tax assets (1a-1b)  
(d) Deferred tax assets nonadmitted  
(e) Subtotal net admitted deferred tax asset (1c-1d)  
(f) Deferred tax liabilities  
(g) Net admitted deferred tax asset/ (Net admitted deferred tax liability) (1e-1f)

12/31/2014		
(1)	(2)	(3)
Ordinary	Capital	(Col 1 + 2) Total
\$ 89,307,899	\$ 8,595,933	\$ 97,903,832
0	0	0
89,307,899	8,595,933	97,903,832
0	0	0
89,307,899	8,595,933	97,903,832
20,459,490	31,434,813	51,894,303
\$ 68,848,409	\$ (22,838,880)	\$ 46,009,529

- (a) Gross deferred tax assets  
(b) Statutory valuation allowance adjustment  
(c) Adjusted gross deferred tax assets (1a-1b)  
(d) Deferred tax assets nonadmitted  
(e) Subtotal net admitted deferred tax asset (1c-1d)  
(f) Deferred tax liabilities  
(g) Net admitted deferred tax asset/ (Net admitted deferred tax liability) (1e-1f)

12/31/2013		
(4)	(5)	(6)
Ordinary	Capital	(Col 4 + 5) Total
\$ 62,175,994	\$ 8,305,074	\$ 70,481,068
0	0	0
62,175,994	8,305,074	70,481,068
0	0	0
62,175,994	8,305,074	70,481,068
21,849,091	27,154,099	49,003,190
\$ 40,326,903	\$ (18,849,025)	\$ 21,477,878

- (a) Gross deferred tax assets  
(b) Statutory valuation allowance adjustment  
(c) Adjusted gross deferred tax assets (1a-1b)  
(d) Deferred tax assets nonadmitted  
(e) Subtotal net admitted deferred tax asset (1c-1d)  
(f) Deferred tax liabilities  
(g) Net admitted deferred tax asset/ (Net admitted deferred tax liability) (1e-1f)

Change		
(7)	(8)	(9)
(Col 1 - 4) Ordinary	(Col 2 - 5) Capital	(Col 7 + 8) Total
\$ 27,131,905	\$ 290,859	\$ 27,422,764
0	0	0
27,131,905	290,859	27,422,764
0	0	0
27,131,905	290,859	27,422,764
(1,389,601)	4,280,714	2,891,113
\$ 28,521,506	\$ (3,989,855)	\$ 24,531,651



ANNUAL STATEMENT FOR THE YEAR 2014 OF THE Ohio Farmers Insurance Company

NOTES TO FINANCIAL STATEMENTS

2 Admission calculation components SSAP No. 101:

- (a) Federal Income taxes paid in prior years recoverable through loss carrybacks
- (b) Adjusted gross DTA expected to be realized (excluding the amount of DTA from 2 (a) above) after application of the threshold limitation (lesser of 2 (b) 1 and 2 (b) 2 below)
- 1 Adjusted gross DTA expected to be realized following BS date
- 2 Adjusted gross DTA allowed per limitation threshold
- (c) Adjusted gross DTA (excluding the amount of DTA from 2 (a) and 2 (b) above) offset by gross DTL
- (d) Deferred tax assets admitted as the result of application of SSAP No. 101. Total (2 (a) +2 (b) +2 (c) )

12/31/2014		
(1)	(2)	(3)
Ordinary	Capital	(Col 1 + 2) Total
\$ 14,752,954	\$ 4,620,024	\$ 19,372,978
12,396,562	0	12,396,562
12,396,562	0	12,396,562
XXX	XXX	276,288,752
62,158,383	3,975,909	66,134,292
\$ 89,307,899	\$ 8,595,933	\$ 97,903,832

- (a) Federal Income taxes paid in prior years recoverable through loss carrybacks
- (b) Adjusted gross DTA expected to be realized (excluding the amount of DTA from 2 (a) above) after application of the threshold limitation (lesser of 2 (b) 1 and 2 (b) 2 below)
- 1 Adjusted gross DTA expected to be realized following BS date
- 2 Adjusted gross DTA allowed per limitation threshold
- (c) Adjusted gross DTA (excluding the amount of DTA from 2 (a) and 2 (b) above) offset by gross DTL
- (d) Deferred tax assets admitted as the result of application of SSAP No. 101. Total (2 (a) +2 (b) +2 (c) )

12/31/2013		
(4)	(5)	(6)
Ordinary	Capital	(Col 4 + 5) Total
\$ 15,660,336	\$ 3,799,233	\$ 19,459,569
22,411,719	4,399,903	26,811,622
28,279,786	4,399,903	32,679,689
XXX	XXX	26,811,623
24,103,939	105,938	24,209,877
\$ 62,175,994	\$ 8,305,074	\$ 70,481,068

- (a) Federal Income taxes paid in prior years recoverable through loss carrybacks
- (b) Adjusted gross DTA expected to be realized (excluding the amount of DTA from 2 (a) above) after application of the threshold limitation (lesser of 2 (b) 1 and 2 (b) 2 below)
- 1 Adjusted gross DTA expected to be realized following BS date
- 2 Adjusted gross DTA allowed per limitation threshold
- (c) Adjusted gross DTA (excluding the amount of DTA from 2 (a) and 2 (b) above) offset by gross DTL
- (d) Deferred tax assets admitted as the result of application of SSAP No. 101. Total (2 (a) +2 (b) +2 (c) )

Change		
(7)	(8)	(9)
(Col 1 - 4) Ordinary	(Col 2 - 5) Capital	(Col 7 + 8) Total
\$ (907,382)	\$ 820,791	\$ (86,591)
(10,015,157)	(4,399,903)	(14,415,060)
(15,883,224)	(4,399,903)	(20,283,127)
XXX	XXX	249,477,129
38,054,444	3,869,971	41,924,415
\$ 27,131,905	\$ 290,859	\$ 27,422,764

3

- (a) Ratio percentage used to determine recovery period and threshold limitation amount
- (b) Amount of adjusted capital and surplus used to determine recovery period and threshold limitation in 2 (b) 2 above

2014	2013
851.9%	831.9%
\$ 1,841,925,014	\$ 1,654,158,576

4 Impact of tax planning strategies

- (a) Determination of adjusted gross deferred tax assets and net admitted deferred tax assets, by tax character as a percentage

- 1 Adjusted gross DTAs amounts from note 9A1 (c)
- 2 Percentage of adjusted gross DTAs attributable to the impact of tax planning strategies
- 3 Net admitted adjusted gross DTAs amount from note 9A1 (e)
- 4 Percentage of net admitted adjusted gross DTAs admitted because of the impact of tax planning strategies

12/31/2014		
(1)	(2)	(3)
Ordinary Percent	Capital Percent	(Col 1 + 2) Total Percent
\$ 89,307,899	\$ 8,595,933	\$ 97,903,832
46.7%	0.0%	46.7%
\$ 89,307,899	\$ 8,595,933	\$ 97,903,832
46.7%	0.0%	46.7%

- 1 Adjusted gross DTAs amounts from note 9A1 (c)
- 2 Percentage of adjusted gross DTAs attributable to the impact of tax planning strategies
- 3 Net admitted adjusted gross DTAs amount from note 9A1 (e)
- 4 Percentage of net admitted adjusted gross DTAs admitted because of the impact of tax planning strategies

12/31/2013		
(4)	(5)	(6)
Ordinary Percent	Capital Percent	(Col 4 + 5) Total Percent
\$ 62,175,994	\$ 8,305,074	\$ 70,481,068
3.6%	0.0%	3.6%
\$ 62,175,994	\$ 8,305,074	\$ 70,481,068
3.6%	0.0%	3.6%

- 1 Adjusted gross DTAs amounts from note 9A1 (c)
- 2 Percentage of adjusted gross DTAs attributable to the impact of tax planning strategies
- 3 Net admitted adjusted gross DTAs amount from note 9A1 (e)
- 4 Percentage of net admitted adjusted gross DTAs admitted because of the impact of tax planning strategies

Change		
(7)	(8)	(9)
(Col 1 - 4) Ordinary Percent	(Col 2 - 5) Capital Percent	(Col 7 + 8) Total Percent
\$ 27,131,905	\$ 290,859	\$ 27,422,764
43.1%	0.0%	43.1%
\$ 27,131,905	\$ 290,859	\$ 27,422,764
43.1%	0.0%	43.1%

- (b) Does the Company's tax planning strategies include the use of reinsurance? Yes \_\_\_\_\_ No \_\_\_X\_\_\_

NOTES TO FINANCIAL STATEMENTS

B Deferred tax liabilities that are not recognized:  
There are no temporary differences for which deferred tax liabilities are not recognized.

C 1 Current income taxes incurred consist of the following major components:

	(1) 12/31/2014	(2) 12/31/2013	(Col 1 - 2) Change
(a) Federal	\$ 5,694,501	\$ 12,906,253	\$ (7,211,752)
(b) Foreign	0	0	0
(c) Subtotal	5,694,501	12,906,253	(7,211,752)
(d) Federal income tax on net capital gain	(1,237,252)	(1,999,724)	762,472
(e) Utilization of capital loss carryforward	0	0	0
(f) Other	(610,824)	(1,511,953)	901,129
(g) Federal and foreign income taxes incurred	\$ 3,846,425	\$ 9,394,576	\$ (5,548,151)

2 The tax effects of temporary differences that give rise to significant portions of the deferred tax assets and deferred tax liabilities are as follows:

	(1) 12/31/2014	(2) 12/31/2013	(Col 1 - 2) Change
Deferred tax assets:			
(a) Ordinary deferred tax assets:			
1 Loss reserve discounting	\$ 11,939,522	\$ 12,495,116	\$ (555,594)
2 Uneamed premium reserve	11,974,201	11,114,952	859,249
3 Investments	0	0	0
4 Guarantee fund accrual	2,473,865	2,513,874	(40,009)
5 Salvage and subrogation	4,310,602	4,015,399	295,203
6 Fixed assets	102,163	2,719,736	(2,617,573)
7 Deferred compensation	340,496	363,563	(23,067)
8 Unrecognized retirement costs	57,727,997	28,626,327	29,101,670
9 Other assets (including item <5% of total)	439,053	327,027	112,026
(99) Subtotal	89,307,899	62,175,994	27,131,905
(b) Statutory valuation allowance adjustment	0	0	0
(c) Nonadmitted ordinary deferred tax assets	0	0	0
(d) Admitted ordinary deferred tax assets (2a99-2b-2c)	89,307,899	62,175,994	27,131,905
(e) Capital deferred tax assets:			
1 Investments	8,134,708	7,753,855	380,853
2 Net capital loss carryforward	0	0	0
3 Fixed assets	0	0	0
4 Other assets (including item <5% of total)	461,225	551,219	(89,994)
(99) Subtotal	8,595,933	8,305,074	290,859
(f) Statutory valuation allowance adjustment	0	0	0
(g) Nonadmitted ordinary deferred tax assets	0	0	0
(h) Admitted capital deferred tax assets (2e99 - 2f - 2g)	8,595,933	8,305,074	290,859
(i) Admitted deferred tax assets (2d + 2h)	\$ 97,903,832	\$ 70,481,068	\$ 27,422,764
3 Deferred tax liabilities:			
(a) Ordinary deferred tax liabilities			
1 Investments	\$ 129,907	\$ 114,134	\$ 15,773
2 Fixed assets	2,187,676	5,182,521	(2,994,845)
3 Deferred and uncollected premiums	0	0	0
4 Deferred compensation	0	0	0
5 Other liabilities (including item <5% of total)	18,141,907	16,552,436	1,589,471
(99) Subtotal	20,459,490	21,849,091	(1,389,601)
(b) Capital deferred tax liabilities			
1 Unrealized gain / (losses)	25,888,845	22,714,149	3,174,696
2 Investments	5,545,968	4,439,950	1,106,018
3 Real estate	0	0	0
4 Other liabilities (including item <5% of total)	0	0	0
(99) Subtotal	31,434,813	27,154,099	4,280,714
(c) Deferred tax liabilities (3a99 + 3b99)	\$ 51,894,303	\$ 49,003,190	\$ 2,891,113
4 Net admitted deferred tax asset/ (liability) (2i - 3c)	\$ 46,009,529	\$ 21,477,878	\$ 24,531,651

5 The change in deferred income taxes reported in surplus before consideration of nonadmitted assets is comprised of the following components:

	12/31/2014	12/31/2013	Change
Net deferred tax asset (liability)	\$ 46,009,529	\$ 21,477,878	\$ 24,531,651
Tax-effect of unrealized retirement costs	57,727,996	28,626,327	29,101,669
Tax-effect of unrealized gains and losses	(25,888,845)	(22,714,149)	(3,174,696)
Net tax effect without unrealized gains and losses	\$ 14,170,378	\$ 15,565,700	\$ (1,395,322)
Change in deferred income tax			\$ (1,395,322)

D The Company's income tax incurred and change in deferred income tax differs from the amount obtained by applying the federal statutory rate of 35% to income before income taxes as follows:

	12/31/2014	12/31/2013
1 Income taxes incurred , gross of capital gains tax (benefit)	\$ 5,083,676	\$ 11,394,300
2 Change in deferred income tax (without tax on unrealized gains and losses)	1,395,322	15,221,662
3 Total income tax reported	\$ 6,478,998	\$ 26,615,962
4 Statutory income before taxes, gross of capital gains tax (benefit)	44,366,496	32,488,953
5 Expected income tax expense (benefit) at 35% statutory rate	15,528,274	11,371,134
6 Increase (decrease) in actual tax reported resulting from:		
a. Dividend received deduction	\$ (7,936,449)	\$ (904,931)
b. Nondeductible expenses for meals, penalties, and lobbying	112,897	102,046
c. Tax exempt income	(758,322)	(704,601)
d. Prior period adjustment	(126,897)	(568,650)
e. Deferred tax benefit (expense) on nonadmitted assets	89,994	17,801,157
f. Deferred tax benefit (expense) on retirement liability	0	0
g. Appreciation on donated property	(618,659)	(1,292,403)
h. IRC 832 (b) (5) adjustment	254,216	241,430
i. Other	(66,056)	570,780
7 Total federal income tax reported	\$ 6,478,998	\$ 26,615,962

ANNUAL STATEMENT FOR THE YEAR 2014 OF THE Ohio Farmers Insurance Company

NOTES TO FINANCIAL STATEMENTS

E Operating loss carryforward

- 1 As of the end of the current period , there are no operating loss or tax credit carryforwards available for tax purposes .
- 2 The amount of federal income taxes incurred that are available for recoupment in the event of future net losses are:

	Ordinary	Capital	Total
2014	\$ 4,457,249	\$ 1,237,252	\$ 5,694,501
2013	\$ 10,295,704	\$ 1,999,724	\$ 12,295,428
2012	\$ 0	\$ 1,799,509	\$ 1,799,509

- 3 The Company did not have any protective tax deposits under Section 6603 of the Internal Revenue Code .

F Consolidated Federal Income Tax Return

- 1 The Company's federal income tax return is consolidated with its affiliates . Ohio Farmers Insurance Company is the parent company of the consolidated return . The following subsidiaries will be included in the consolidated federal income tax return:

Westfield Insurance Company	Westfield Services, Inc.
Westfield National Insurance Company	Westfield Bancorp, Inc.
American Select Insurance Company	Westfield Bank, FSB
Old Guard Insurance Company	Westfield Credit Corp.
Westfield Management Company	

- 2 Each company in the consolidation has agreed to share any tax or recovery of tax based on their individual taxable income or loss . Each company's current taxable income or loss will be adjusted by any prior taxable income or loss which can be carried forward to the current year.

10. Information Concerning Parent , Subsidiaries , Affiliates and Other Related Parties-

- A. The Company is not directly or indirectly owned or controlled by any other company , corporation , groups of companies , partnerships nor individuals .
- B. On September 8 , 2014 , the Company received a common stock dividend distribution from its subsidiary , Westfield Insurance Company , in the amount of \$20,000,000 .

On September 9 , 2014 , the Company made a capital contribution to Westfield Bancorp , Inc. in the amount of \$12,750,000 .

Westfield Bancorp , Inc. , a direct non-insurance subsidiary of the Company , purchased through its affiliate , Westfield Bank , FSB , 100% of the outstanding stock of Valley Savings Bank for \$1,932 per share . The transaction was completed and effective on September 12 , 2014 .

The Company made additional capital contributions to 150 South Road , LLC as follows:

September 9 , 2014	5,000,000 units at \$1 per unit
February 25 , 2014	585,000 units at \$1 per unit
August 6 , 2013	250,000 units at \$1 per unit

The Company formed a single member limited liability company , 150 South Road , LLC , which was capitalized on May 10 , 2013 with 10,000 units having a value of \$1 per unit .

On December 4 , 2013 , the Company received a return of capital from its affiliate , Westfield Marketing LLC in the amount of \$1,000,000 .

- C. The Company has made no changes in methods of establishing terms .
- D. Affiliated Balances due to and from Ohio Farmers Insurance Company (OFIC) at 12/31/2014 and 12/31/2013 respectively were:

	12/31/2014	12/31/2013
Westfield Insurance Company	\$ 0	\$ 1,682,296
Westfield National Insurance Company	458,953	0
Westfield Services, Inc. *	163,557	87,295
150 South Road , LLC*	2,165	0
OFIC VEBA Trust*	2,138,861	1,842,926
OFIC Pension and /or VEBA Trust*	215,311	184,547
Affiliated Receivable	\$ 2,978,847	\$ 3,797,064
Westfield Insurance Company	\$ 6,046,751	\$ 0
Westfield National Insurance Company	0	3,638,716
American Select Insurance Company	344,179	1,390,627
Old Guard Insurance Company	627,079	5,672,362
Westfield Management Company*	10,728,612	11,484,413
Affiliated Payable	\$ 17,746,621	\$ 22,186,118

\*Westfield Services, Inc. , 150 South Road , LLC , OFIC VEBA Trust , OFIC Pension and/or VEBA Trust , and Westfield Management Company are not part of the intercompany pooling arrangement .

Every ninety (90) days the affiliated balances are reviewed and settled in either cash or the transfer of securities .

- E. Guarantees or Undertakings , Written or Otherwise  
The Company has given commitments to affiliated companies . The details of these commitments are described in Note 14 A-1 .
- F. The Company does not have any management or non-GAAP cost sharing arrangements with any affiliated insurers . The Company does have an agreement with its non-insurance affiliate , Westfield Management Company , to provide executive management services to the Company and its subsidiaries in accordance with SSAP No.70 .
- G. The Company is not directly or indirectly owned or controlled by any other company , corporation , groups of companies , partnerships , nor individuals .
- H. The Company holds no shares of an upstream parent .
- I. The Company owns 100 .0% of Westfield Insurance Company , an Insurance SCA , whose carrying value is based on the underlying equity per SSAP No. 97 . Dividend restrictions are provided by the Insurance Regulations of the Ohio Revised Code . There are no differences between the underlying statutory equity and the carrying value . The Company's investment in Westfield Insurance Company accounts for 40 .2% of the Company's admitted assets .

Summary of Financial Information for Westfield Insurance Company

Assets	\$ 2,536,054,216
Liabilities	\$ 1,493,012,840
Surplus	\$ 1,043,041,376
Net Income	\$ 93,254,566

ANNUAL STATEMENT FOR THE YEAR 2014 OF THE Ohio Farmers Insurance Company

NOTES TO FINANCIAL STATEMENTS

The Company owns 100.0% of Westfield National Insurance Company , an Insurance SCA , whose carrying value is based on the underlying equity per SSAP No . 97 . Dividend restrictions are provided by the Insurance Regulations of the Ohio Revised Code . There are no differences between the underlying statutory equity and the carrying value . The Company's investment in Westfield National Insurance Company accounts for 10.1% of the Company's admitted assets .

Summary of Financial Information for Westfield National Insurance Company

Assets	\$	598,653,135
Liabilities	\$	335,594,420
Surplus	\$	263,058,715
Net Income	\$	16,599,925

- J. The Company did not recognize any impairment write-down for its investments in Subsidiary , Controlled or Affiliated Companies during the statement period.
- K. The Company has no investment in a foreign insurance subsidiary .
- L. The Company does not hold an investment in a downstream non-insurance holding company .
11. Debt-
- A. Holding Company Obligations- Not applicable
- B. Federal Home Loan Bank Agreements (FHLB)- Not applicable

NOTES TO FINANCIAL STATEMENTS

12. Retirement Plans , Deferred Compensation , Postemployment Benefits and Compensated Absences and Other Postretirement Benefit Plans-

A. Defined Benefit Pension Plan and Postretirement ( Other ) Benefit Plans

The Company sponsors a non-contributory defined benefit pension plan covering U . S . employees . As of December 31 , 2014 , there was accrued , in accordance with actuarially determined amounts with an offset to the pension cost accrual for the incremental asset amortization , amounts representing the present value of future benefit obligations .

A summary of assets , obligations and assumptions of the Pension and Other Postretirement Benefit Plans is as follows at December 31 , 2014 and 2013:

(1) Change in benefit obligation

a. Pension Benefits

	Overfunded		Underfunded	
	2014	2013	2014	2013
1. Benefit obligation at beginniq of year	\$ 0	\$ 0	\$ 312,568,278	\$ 339,696,450
2. Service cost	0	0	10,083,138	12,162,220
3. Interest cost	0	0	16,423,223	14,525,725
4. Contribution by plan participants	0	0	0	0
5. Actuarial (gain) loss	0	0	75,075,327	(42,406,194)
6. Foreign currency exchange rate changes	0	0	0	0
7. Benefits paid	0	0	(11,969,695)	(11,409,923)
8. Plan amendments	0	0	0	0
9. Business combinations, divestitures, curtailments, settlements and special termination benefits	0	0	0	0
10. Benefit obligation at end of year	\$ 0	\$ 0	\$ 402,180,271	\$ 312,568,278

b. Postretirement Benefits

	Overfunded		Underfunded	
	2014	2013	2014	2013
1. Benefit obligation at beginniq of year	\$ 0	\$ 0	\$ 34,906,398	\$ 40,559,391
2. Service cost	0	0	802,929	969,885
3. Interest cost	0	0	1,799,740	1,711,354
4. Contribution by plan participants	0	0	1,486,208	1,305,027
5. Actuarial (gain) loss	0	0	5,956,033	(6,494,891)
6. Foreign currency exchange rate changes	0	0	0	0
7. Benefits paid	0	0	(3,476,987)	(3,144,368)
8. Plan amendments	0	0	0	0
9. Business combinations, divestitures, curtailments, settlements and special termination benefits	0	0	0	0
10. Benefit obligation at end of year	\$ 0	\$ 0	\$ 41,474,321	\$ 34,906,398

c. Nonqualified Benefits

	Overfunded		Underfunded	
	2014	2013	2014	2013
1. Benefit obligation at beginniq of year	\$ 0	\$ 0	\$ 60,722,989	\$ 59,077,576
2. Service cost	0	0	2,013,834	558,750
3. Interest cost	0	0	3,088,909	2,608,560
4. Contribution by plan participants	0	0	0	0
5. Actuarial (gain) loss	0	0	12,742,809	(3,616,979)
6. Foreign currency exchange rate changes	0	0	0	0
7. Benefits paid	0	0	(4,370,207)	(4,340,613)
8. Plan amendments	0	0	0	6,435,695
9. Business combinations, divestitures, curtailments, settlements and special termination benefits	0	0	0	0
10. Benefit obligation at end of year	\$ 0	\$ 0	\$ 74,198,334	\$ 60,722,989

(2) Change in plan assets

	Pension Benefits		Postretirement Benefits		Nonqualified Benefits	
	2014	2013	2014	2013	2014	2013
a. Fair value of plan assets at beginning of year	\$ 298,150,100	\$ 262,328,515	\$ 30,496,366	\$ 28,414,149	\$ 0	\$ 0
b. Actual return on plan assets	29,716,247	37,031,508	2,814,491	4,029,419	0	0
c. Foreign currency exchange rate changes	0	0	0	0	0	0
d. Employer contribution	11,400,000	10,200,000	132,128	215,692	4,370,207	4,340,613
e. Plan participants' contributions	0	0	1,486,208	1,305,027	0	0
f. Benefits paid	(11,969,695)	(11,409,923)	(3,819,379)	(3,467,921)	(4,370,207)	(4,340,613)
g. Business combinations, divestitures, and settlements	0	0	0	0	0	0
h. Fair value of plan assets at end of year	\$ 327,296,652	\$ 298,150,100	\$ 31,109,814	\$ 30,496,366	\$ 0	\$ 0

(3) Funded status

	Pension Benefits		Postretirement Benefits		Nonqualified Benefits	
	2014	2013	2014	2013	2014	2013
Overfunded:						
a. Assets (nonadmitted)						
1. Prepaid benefit costs	\$ 50,663,005	\$ 45,880,118	\$ 3,061,752	\$ 3,948,649	\$ 0	\$ 0
2. Overfunded plan assets	(50,663,005)	(45,880,118)	(3,061,752)	(3,948,649)	0	0
3. Total assets (nonadmitted)	\$ 0	\$ 0	\$ 0	\$ 0	\$ 0	\$ 0
Underfunded:						
b. Liabilities recognized						
1. Accrued benefits costs	\$ 0	\$ 0	\$ 0	\$ 0	\$ 46,253,100	\$ 44,394,951
2. Liability for benefits	74,883,619	14,418,178	8,383,523	1,214,524	27,945,234	16,328,038
3. Total liabilities recognized	\$ 74,883,619	\$ 14,418,178	\$ 8,383,523	\$ 1,214,524	\$ 74,198,334	\$ 60,722,989
c. Unrecognized liabilities	\$ 0	\$ 0	\$ 1,980,984	\$ 3,195,508	\$ 0	\$ 0

(4) Components of net periodic benefit cost

	Pension Benefits		Postretirement Benefits		Nonqualified Benefits	
	2014	2013	2014	2013	2014	2013
a. Service cost	\$ 10,083,138	\$ 12,162,220	\$ 802,929	\$ 969,885	\$ 2,013,834	\$ 558,750
b. Interest cost	16,423,223	14,525,725	1,799,740	1,711,354	3,088,909	2,608,560
c. Expected return on plan assets	(25,191,700)	(22,141,165)	(2,348,063)	(2,185,792)	0	0
d. Transition asset or obligation	0	0	0	0	0	0
e. Gains and losses	2,489,491	7,886,953	0	660,671	513,603	917,231
f. Prior service cost or credit	2,812,961	2,999,657	384,349	417,827	612,010	612,010
g. Gain or loss recognized due to a settlement or curtailment	0	0	0	0	0	0
h. Total net periodic benefit cost	\$ 6,617,113	\$ 15,433,390	\$ 638,955	\$ 1,573,945	\$ 6,228,356	\$ 4,696,551

(5) Amounts in unassigned (funds) surplus recognized as components of net periodic benefit cost

	Pension Benefits		Postretirement Benefits		Nonqualified Benefits	
	2014	2013	2014	2013	2014	2013
a. Items not yet recognized as a component of net periodic cost - prior year	\$ (60,298,296)	\$ (124,215,901)	\$ (8,358,681)	\$ (4,788,561)	\$ (16,328,038)	\$ (15,038,563)
b. Net transition asset or obligation recognized	0	0	0	0	0	0
c. Net prior service cost or credit arising during the year	0	(4,265,542)	0	(12,987,136)	0	(6,435,695)
d. Net prior service cost or credit recognized	2,812,961	2,999,657	384,349	417,827	612,010	612,010
e. Net gain or loss arising during the year	(70,550,780)	57,296,537	(5,451,927)	8,338,518	(12,742,809)	3,616,979
f. Net gain or loss recognized	2,489,491	7,886,953	0	660,671	513,603	917,231
g. Items not yet recognized as a component of net periodic cost - current year	\$ (125,546,624)	\$ (60,298,296)	\$ (13,426,259)	\$ (8,358,681)	\$ (27,945,234)	\$ (16,328,038)

ANNUAL STATEMENT FOR THE YEAR 2014 OF THE Ohio Farmers Insurance Company

NOTES TO FINANCIAL STATEMENTS

(6) Amounts in unassigned funds (surplus) expected to be recognized in the next fiscal year as components of net periodic benefit cost

	Pension Benefits	Postretirement Benefits	Nonqualified Benefits
	2015	2015	2015
a. Net transition asset or obligation	\$ 0	\$ 0	\$ 0
b. Net prior service cost or credit	843,017	188,658	612,010
c. Net recognized gains and losses	\$ 7,732,702	\$ 300,386	\$ 1,327,374

(7) Amounts in unassigned funds (surplus) that have not yet been recognized as components of net periodic benefit cost

	Pension Benefits		Postretirement Benefits		Nonqualified Benefits	
	2014	2013	2014	2013	2014	2013
a. Net transition asset or obligation	\$ 0	\$ 0	\$ 0	\$ 0	\$ 0	\$ 0
b. Net prior service cost or credit	2,894,432	5,707,393	5,577,630	5,961,979	5,799,260	6,411,270
c. Net recognized gains and losses	122,652,192	54,590,903	7,848,629	2,396,702	22,145,974	9,916,768
d. Total amounts in unassigned funds (surplus)	\$ 125,546,624	\$ 60,298,296	\$ 13,426,259	\$ 8,358,681	\$ 27,945,234	\$ 16,328,038

(8) Weighted-average assumptions used to determine net periodic benefit cost as of Dec. 31:

	Pension Benefits		Postretirement Benefits		Nonqualified Benefits	
	2014	2013	2014	2013	2014	2013
a. Weighted-average discount rate	5.13%	4.23%	5.06%	4.14%	4.93%	3.89%
b. Expected long-term rate of return on plan assets	8.375%	8.375%	8.00%	8.00%	NA	NA
c. Rate of compensation increase	3.00%	3.00%	NA	NA	3.00%	3.00%

Weighted-average assumptions used to determine projected benefit obligations as of Dec. 31:

d. Weighted average discount rate	4.25%	5.13%	4.22%	5.06%	4.17%	4.93%
e. Rate of compensation increase	3.50%**	3.00%*	NA	NA	3.50%**	3.00%*

\* Rate of compensation increase assumed to be 3.0% for 2013-2015; and 3.5% for 2016+.

\*\* Rate of compensation increase assumed to be 3.5% for 2015; and 3.0% for 2016+.

For measurement purposes, a 7.00% annual rate of increase in the per capita cost of covered health care benefits was assumed for 2014 (7.25% for 2013). The rate is assumed to decrease to 6.75% for 2015, then decrease gradually to 5.00% for 2022, and remain at that level thereafter.

The measurement date (annual valuation) used to determine other postretirement benefit measurements for postretirement benefit plans that make up at least the majority of plan assets and benefit obligation is December 31 (based on January 1 participant data). The fair market value of assets is measured and updated as of December 31.

(9) The amount of the accumulated benefit obligation for the defined benefit Pension Plan was \$356,695,802 for 2014 and \$276,072,455 for 2013. The amount of the accumulated benefit obligation for the Nonqualified Plan was \$69,786,836 for 2014 and \$57,511,771 for 2013.

(10) In addition to pension benefits, the Company and its subsidiaries provide certain health care and life insurance benefits for retired employees and their eligible dependents via the Ohio Farmers Insurance Company Group Health Benefit Plan and Ohio Farmers Insurance Company Group Life Insurance Plan (Postretirement Benefit Plans). Employees who meet the requirements for retirement and other eligibility prerequisites are eligible for these benefits. The Company's future obligation for annual medical and dental costs is generally limited to between \$1,500 and \$6,500 per covered individual based on age and years of service. New employees hired on January 1, 2002 or after are not eligible for the postretirement benefits under the OFIC Group Health Benefit Plan.

The OFIC Group Life Plan provides a flat \$15,000 postretirement life insurance benefit for all current and future retirees. The cost of postretirement benefits is accrued during the years after retirement eligibility occurs.

The Company also sponsors a nonqualified Supplemental Executive Retirement Plan (SERP) and Supplemental Executive Retirement Compensation Plan (SERC). The SERP and SERC, which are unfunded, provide benefits to eligible senior leadership positions based on average earnings, years of service, and age at retirement.

(11) Due to the caps in the Company's postretirement health care plan, assumed health care cost trend rates have a limited effect on the amounts reported for the health care plans. A one-percentage-point change in assumed health care cost trend rates, including the effects of Medicare Part D subsidies, would have the following effects:

	1 Percentage Point Increase	1 Percentage Point Decrease
a. Effect on total of service cost and interest cost components	\$ (39,467)	\$ 28,642
b. Effect on postretirement benefit obligation	\$ (239,455)	\$ 211,644

(12) The following estimated future payments, which reflect expected future service, as appropriate, are expected to be paid in the years indicated:

Year (s)	Pension	Postretirement	Nonqualified	Total
a. 2015	\$ 13,402,527	\$ 2,218,080	\$ 4,464,275	\$ 20,084,882
b. 2016	14,231,024	2,200,018	4,428,128	20,859,170
c. 2017	15,100,657	2,193,311	4,386,824	21,680,792
d. 2018	15,968,318	2,173,570	4,354,491	22,496,379
e. 2019	16,875,845	2,156,783	4,329,251	23,361,879
f. 2020 through 2024	\$ 98,681,203	\$ 10,580,815	\$ 21,232,490	\$ 130,494,508

(13) The Company may not have any regulatory pension plan contribution requirements for 2015; however, the Company currently intends to make a voluntary contribution of approximately \$11,900,000 to the defined benefit pension plan with reference to the Company's contribution funding guidelines.

The Company contribution funding guidelines were developed during 2006 and address the contribution and funding limitations as adjusted by the Pension Protection Act Of 2006. The guidelines provide that the Company will generally contribute an amount equal to the value of benefits earned each year regardless of whether or not a minimum contribution is required with an option to not fund in years where a minimum contribution is not projected during the subsequent five (5) years. Minimum required contributions will always be funded. Contributions are at the final discretion of the Ohio Farmers Insurance Company Board of Directors.

Additionally, the Company's postretirement health care plan is contributory, with participants' contributions adjusted annually; the life insurance plan is non-contributory.

(14) Securities, Insurance Contracts, and other Employer Transactions - Not applicable.

(15) Prior service cost is amortized on a straight-line basis over participants' average future service, not on a weighted-average basis.

(16) Substantive commitment used as basis for accounting for the benefit obligation - Not applicable.

(17) Cost of providing special or contractual termination benefits recognized during the period - Not applicable.

(18) Explanation of significant change in the benefit obligation or plan assets not otherwise apparent - Not applicable.

(19) The amount and timing of plan assets expected to be returned in the next twelve months: None

NOTES TO FINANCIAL STATEMENTS

(20) The following provides the status of the Company's pension and postretirement plans as of December 31, 2012 and at the transition date, January 1, 2013:

	Pension Benefits		Postretirement Benefits		Nonqualified Benefits	
	12/31/2012	1/1/2013	12/31/2012	1/1/2013	12/31/2012	1/1/2013
Accumulated Benefit Obligation	\$ (295,144,322)	\$ (297,581,648)	\$ 0	\$ 0	\$ (59,077,576)	\$ (59,077,576)
Projected Benefit Obligation	(335,430,908)	(335,430,908)	(27,572,255)	(27,572,255)	(59,077,576)	(59,077,576)
Plus: Non-vested liability	0	(4,265,542)	0	(12,987,136)	0	0
Total Projected Benefit Obligation	(335,430,908)	(339,696,450)	(27,572,255)	(40,559,391)	(59,077,576)	(59,077,576)
Plan assets at fair value	262,328,515	262,328,515	28,414,149	28,414,149	0	0
Funded status	(73,102,393)	(77,367,935)	841,894	(12,145,242)	(59,077,576)	(59,077,576)
Additional minimum liability	(32,815,807)	0	0	0	(15,038,563)	0
Prior service cost (credit)	4,441,508	0	(6,607,330)	0	587,585	0
Unrecognized losses (gains)	119,774,393	0	11,395,891	0	14,450,978	0
Total unrecognized items	\$ 124,215,901	\$ 0	\$ 4,788,561	\$ 0	\$ 15,038,563	\$ 0
Unrecognized remaining transition liability	0	(42,114,802)	0	(10,930,718)	0	0
Overfunded plan assets (liability for benefits)	51,113,508	(35,253,133)	5,630,455	(1,214,524)	(44,039,013)	(59,077,576)
		\$ (77,367,935)		\$ (12,145,242)		\$ (59,077,576)

(21) On January 1, 2013, the Company adopted SSAP No. 92, Accounting for Postretirement Benefits Other Than Pensions - A Replacement of SSAP No. 14 and SSAP No. 102, Accounting for Pensions - A Replacement of SSAP No. 89. The standards require insurers to recognize the overfunded or underfunded status of a defined benefit postretirement plan as an asset or liability and include non-vested employees in determining the plan obligations. In addition, a sponsor's fiscal year end will be used as the measurement date for estimating the fair value of postretirement benefit assets and liabilities. The guidance contains a transition provision that gives insurers the option to recognize the initial impact to surplus over a period not to exceed 10 years. The Company elected the transition option and estimated a surplus decrease of \$36.9 million, net of tax, and initially estimated it to be recognized over the next 5 years. This election was made at the date of transition and the following transition liability was reflected as a reduction in surplus during the 1st, 2nd and 3rd quarters of 2013:

Minimum Transition Liability - greater of:	Pension	Postretirement	Nonqualified	Total
-10% of calculated surplus impact	\$ 7,736,794	\$ 1,214,524	\$ 5,907,758	
- Annual amortization of unrecognized items	10,886,610	1,078,498	1,529,241	
- Difference between ABO and accrued benefits	35,253,133	N/A	15,038,563	
Minimum Transition Liability at 1/1/2013	\$ 35,253,133	\$ 1,214,524	\$ 15,038,563	\$ 51,506,220
Additional min. liability recognized in surplus at 12/31/2012				(47,854,370)
Surplus decrease at 1/1/2013				\$ 3,651,850
Tax impact				(1,278,148)
Net surplus decrease at 1/1/2013				\$ 2,373,702

The remaining aggregate transition liability, which reduces surplus in future periods, is shown below:

Recognized Surplus Impact at Transition & Unrecognized remaining transition liability	Total Gross	Tax Impact	Net	Post Service Cost	Post Service Cost - Non vested	Unrealized Losses
Total transition liability, 1/1/2013	\$ 161,295,703	\$ (56,453,496)	\$ 104,842,207	\$ (1,578,237)	\$ 17,252,678	\$ 145,621,262
Nonadmitted prepaid benefit cost at 12/31/2012	(56,743,963)	19,860,387	(36,883,576)			
Amount recognized in surplus, 1/1/2013	(51,506,220)	18,027,177	(33,479,043)			
Unrecognized transition liability at 1/1/2013	\$ 53,045,520	\$ (18,565,932)	\$ 34,479,588			
Net surplus decrease at 1/1/2013		\$ 2,373,702				
Unrecognized remaining transition liability at 1/1/2013		34,479,588				
Total surplus impact, net of tax, of adoption SSAP No. 92 & 102		\$ 36,853,290				

In accordance with SSAP No. 92 and 102, management revised its estimate of the recognition of the transition liability. Based on the actuarial information, the Company estimates that the unrecorded transition liability at 12/31/2014 will be fully recognized in 2015. Below is a recap of the transition liability activity:

	Pension	Postretirement	Nonqualified	Total
Transition liability at 1/1/2013	\$ 128,481,443	\$ 17,775,697	\$ 15,038,563	\$ 161,295,703
Transition liability recognized at adoption	(86,366,641)	(6,844,979)	(15,038,563)	(108,250,183)
Unrecorded transition liability at 1/1/2013	42,114,802	10,930,718	0	53,045,520
Required offset due to actuarial gains	(42,114,802)	(7,735,210)	0	(49,850,012)
Unrecorded transition liability at 12/31/2013	0	3,195,508	0	3,195,508
Transition liability recognized during 2014	0	(1,214,524)	0	(1,214,524)
Unrecorded transition liability at 12/31/2014	\$ 0	\$ 1,980,984	\$ 0	\$ 1,980,984

B. Plan asset information:

The defined benefit pension plan asset allocation as of the measurement date, December 31, and the target allocation, and the target asset allocations, presented as a percentage of total plan assets were as follows:

	2014	2013	Target Allocation
a. Debt Securities	38.0%	37.0%	35.0% - 45.0%
b. Equity Securities	61.0%	62.0%	55.0% - 65.0%
c. Real Estate	0.0%	0.0%	0.0%
d. Other	1.0%	1.0%	0.0%
e. Total	100.0%	100.0%	

The Company's policy of investment is based on a standard plan and formula. The investment plan and formula states that all assets of the pension trust except dividends and interest received from portfolio securities will be a part of the investment fund (formula). This income will be used to pay benefits, but may be allocated to the investment fund after an amount approximately equal to three months' benefits have accumulated. The investment fund will normally consist of debt instruments, including those of governments, government agencies and publicly owned corporations and properly diversified number of common and/or preferred stocks of publicly owned corporations. The investment fund will be divided between these two normal portions. The debt instruments comprise the Bond Fund and shall be considered normal when it is 40% of the investment fund and is generally maintained in a range of 35.0% to 45.0% of the fund. The equities comprise the Stock Fund and shall be considered normal when it is 60% of the investment fund and is generally maintained in a range of 55.0% to 65.0% of the fund. The measurement date for these funds is December 31, annually.

The investments fund portfolio will have the following overall characteristics:

- (1) Complies with provisions of the Ohio Farmers Pension Trust Investment Plan and Formula
- (2) Above average financial quality
- (3) Broadly diversified
- (4) Liquidity requirements minimal
- (5) Fully invested (minimal cash reserves)
- (6) Growing investment income
- (7) Long term time horizon

Additionally the following constraints are placed on individual investments within the portfolio. In the case of equity investments, no equity shall be held unless:

- (1) Dividends are paid (except in the case of mutual funds), and
- (2) Foreign common stock may not exceed 15% of the common stock portfolio.

ANNUAL STATEMENT FOR THE YEAR 2014 OF THE Ohio Farmers Insurance Company

NOTES TO FINANCIAL STATEMENTS

In the case of debt instruments , no debt shall be held unless:

- (1) Straight bonds will have a duration range of 7-10 years and be of BBB-/AAA quality ,
- (2) Foreign bonds may not exceed 15% of the bond fund , and
- (3) Convertible bonds may not exceed 20% of the bond fund and be of BBB- or higher quality , unless company is held in other portfolios .

The funds shall be managed by five trustees , elected by the Board of Directors , utilizing investment advice provided under an agreement with the Company . The trustees annually review the investment plan and formula .

C. (1) Fair Value Measurements of Plan Assets at December 31 , 2014

Description for each class of Pension Plan assets	(Level 1)	(Level 2)	(Level 3)	Total
Common stocks:				
Consumer discretionary	\$ 15,310,405	\$ 0	\$ 0	\$ 15,310,405
Consumer staples	29,534,165	0	0	29,534,165
Energy	15,083,637	0	0	15,083,637
Financials	19,286,036	0	0	19,286,036
Health care	26,541,975	0	0	26,541,975
Industrials	24,452,239	0	0	24,452,239
Information technology	20,820,664	0	0	20,820,664
Materials	7,216,100	0	0	7,216,100
Money managers	10,429,939	0	0	10,429,939
Real Estate Investment Trust	1,120,080	0	0	1,120,080
Telecommunication services	4,889,380	0	0	4,889,380
Utilities	1,546,965	0	0	1,546,965
Preferred stocks:				
Energy	551,400	0	0	551,400
Mutual funds	22,270,125	0	0	22,270,125
Money market fund	0	1,011,841	0	1,011,841
Fixed income securities:				
U. S. Government and agency obligations	23,604,679	23,667,647	0	47,272,326
Other Government obligations	0	3,099,500	0	3,099,500
Corporate bonds	0	45,036,480	0	45,036,480
Mortgage-backed securities	0	21,677,145	0	21,677,145
Convertible bonds	0	494,725	0	494,725
Other types of investments:				
Conditional participation certificates of deposit *	0	6,445,545	0	6,445,545
Total Pension Plan Assets	\$ 222,657,789	\$ 101,432,883	\$ 0	\$ 324,090,672

Description for each class of Postretirement Plan assets	(Level 1)	(Level 2)	(Level 3)	Total
Mutual funds	\$ 5,501,100	\$ 0	\$ 0	\$ 5,501,100
OFIC Group Health Benefit 401 (h) :				
Mutual Funds	25,824,024	0	0	25,824,024
Total Postretirement Plan Assets	\$ 31,325,124	\$ 0	\$ 0	\$ 31,325,124

\* This category includes various conditional participation certificates (CPCDs) for which total return is dependent upon performance of either an index, equity or commodity basket . These securities are FDIC insured and principal protected .

Fair Value Measurements of Plan Assets at December 31 , 2013

Description for each class of Pension Plan assets	(Level 1)	(Level 2)	(Level 3)	Total
Common stocks:				
Consumer discretionary	\$ 11,713,531	\$ 0	\$ 0	\$ 11,713,531
Consumer staples	22,621,694	0	0	22,621,694
Energy	18,076,386	0	0	18,076,386
Financials	12,138,170	0	0	12,138,170
Health care	25,458,437	0	0	25,458,437
Industrials	24,343,649	0	0	24,343,649
Information technology	20,988,555	0	0	20,988,555
Materials	6,592,620	0	0	6,592,620
Money managers	11,405,054	0	0	11,405,054
Real Estate Investment Trust	308,040	0	0	308,040
Telecommunication services	5,876,340	0	0	5,876,340
Utilities	1,294,965	0	0	1,294,965
Preferred stocks:				
Energy	556,200	0	0	556,200
Mutual funds	24,360,976	0	0	24,360,976
Money market fund	0	195,675	0	195,675
Fixed income securities:				
U. S. Government and agency obligations	17,870,761	22,133,603	0	40,004,364
Other Government obligations	0	2,310,740	0	2,310,740
Corporate bonds	0	39,606,057	0	39,606,057
Mortgage-backed securities	0	19,854,949	0	19,854,949
Convertible bonds	0	498,665	0	498,665
Other types of investments:				
Conditional participation certificates of deposit *	0	6,861,965	0	6,861,965
Total Pension Plan Assets	\$ 203,605,378	\$ 91,461,654	\$ 0	\$ 295,067,032

Description for each class of Postretirement Plan assets	(Level 1)	(Level 2)	(Level 3)	Total
Mutual funds	\$ 5,262,821	\$ 0	\$ 0	\$ 5,262,821
OFIC Group Health Benefit 401 (h) :				
Mutual Funds	25,432,085	0	0	25,432,085
Total Postretirement Plan Assets	\$ 30,694,906	\$ 0	\$ 0	\$ 30,694,906

\* This category includes various conditional participation certificates (CPCDs) for which total return is dependent upon performance of either an index, equity or commodity basket . These securities are FDIC insured and principal protected .



ANNUAL STATEMENT FOR THE YEAR 2014 OF THE Ohio Farmers Insurance Company

NOTES TO FINANCIAL STATEMENTS

(2) Fair Value Measurements in Level 3 of the Fair Value Hierarchy

Description for each class of plan assets	Beginning Balance at 01/01/2014	Transfers into Level 3	Transfers out of Level 3	Return on Assets Still Held	Return on Assets Sold	Purchases	Issuances	Sales	Settlements	Ending Balance at 12/31/2014
Conditional participation certificates of deposit	\$ 0	\$ 0	\$ 0	\$ 0	\$ 0	\$ 0	\$ 0	\$ 0	\$ 0	\$ 0
Total Level 3 Plan Assets	\$ 0	\$ 0	\$ 0	\$ 0	\$ 0	\$ 0	\$ 0	\$ 0	\$ 0	\$ 0

Description for each class of plan assets	Beginning Balance at 01/01/2013	Transfers into Level 3	Transfers out of Level 3	Return on Assets Still Held	Return on Assets Sold	Purchases	Issuances	Sales	Settlements	Ending Balance at 12/31/2013
Conditional participation certificates of deposit	\$ 909,000	\$ 0	\$ (909,000)	\$ 0	\$ 0	\$ 0	\$ 0	\$ 0	\$ 0	\$ 0
Total Level 3 Plan Assets	\$ 909,000	\$ 0	\$ (909,000)	\$ 0	\$ 0	\$ 0	\$ 0	\$ 0	\$ 0	\$ 0

- (3) The Company determines the fair value of its defined benefit pension plan and postretirement plan assets with a three-level hierarchy for fair value measurements that distinguishes between market participant assumptions based on market data obtained from sources independent of the reporting entity (observable inputs) and the reporting entity's own assumptions about market participant assumptions developed based on the best information available in the circumstances (unobservable inputs) . The hierarchy level assigned to each security is based on management's assessment of the transparency and reliability of the inputs used in the valuation of such instruments at the measurement date .

The Company's policy for determining when a transfer between levels is required is based upon change in the inputs used to determine fair value measurement . If an input changes, the Company evaluates the new input (s) and makes the determination whether or not a transfer between levels is appropriate . If an asset or liability is transferred between levels, it is the Company's policy to record the transfer as of the beginning of the reporting period in which the transfer occurs .

In 2013, a CPCD with a fair value of \$909,000 was transferred from Level 3 of the fair value hierarchy to Level 2 . The transfer was related to the change in availability of readily observable market data from the Company's independent vendor . There were no other transfers into or out of Level 1, 2 or 3 during 2014 or 2013 .

- D. The long-term rates of return were determined using a combination of actual results and published market data . The rates are within the high and low ends of an expected return range . The low end of the range was calculated by multiplying the percentage of portfolio composition of each asset category by published historical return data for the category . The high end of the range was calculated by combining the published market data with actual historical returns for the pension plan weighting the percentages , 80% published and 20% historical .

The investment approach for Postretirement Benefit Plans follows the same conservative investment strategies as for the Pension Plan . In light of the shorter duration, however, more emphasis is placed on investments that provide a stable return to fund more current needs .

E. Defined Contribution Plan

The Company's employees are covered by a qualified defined contribution pension plan (under IRC Section 401 (k) ) sponsored by the Ohio Farmers Insurance Company . The plan began operation on January 1, 2000 , in accordance with "Safe Harbor" Treasury regulations .

Contributions of three percent (3%) of each employee's eligible compensation are made during the year . The Company's non-elective contribution for the plan was \$813,412 and \$815,959 for 2014 and 2013 , respectively .

At December 31, 2014, the total fair market value of the defined contribution plan assets was \$223,985,197 , including unrealized gains and losses and participant loans .

- F. Multiemployer Plans - Not applicable
- G. Consolidated /Holding Company Plans - Not applicable
- H. Post-employment Benefits and Compensated Absences - Not applicable
- I. Impact of Medicare Modernization Act on Postretirement Benefits (INT 04-17)

- (1) Pre-adoption note regarding existence of Act - Not applicable
- (2) Effects of the Subsidy in Measuring the Net Postretirement Benefit Cost - Not applicable

The Medicare Prescription Drug , Improvement and Modernization Act of 2003 (the Act) was signed into law in December of 2003 . The Act includes the following two new features to Medicare Part D that could affect the measurement of the accumulated postretirement benefit obligation (APBO) and net periodic postretirement cost for the Plan:

- a. A federal subsidy (based on 28% of an individual beneficiary's annual prescription drug costs between \$250 and \$5,000) to sponsors of retiree healthcare benefit plans that provide a prescription drug benefit that is at least actuarially equivalent to Medicare Part D; and
- b. The opportunity for a retiree to obtain a prescription drug benefit under Medicare .

- (3) Gross benefits payments and the amount of the subsidy for the period:

	2014	2013
Medical	\$ 1,374,025	\$ 1,117,073
Dental	0	25,155
Prescription	1,741,332	1,671,882
Dental premiums	302,333	282,210
Life insurance premiums	187,307	180,098
Administration fees	204,770	191,503
ACA transitional reinsurance contribution	9,612	0
Gross benefits paid	\$ 3,819,379	\$ 3,467,921

Future gross benefits payments are estimated to be at approximately the same level.

Subsidy received during calendar year (for plan year 2012)	\$ 342,392	\$ 0
--	------------	------

Expected subsidy receivable (for plan years 2014/2013 and 2013/2012 , respectively)	\$ 684,784	\$ 647,107
---	------------	------------

13. Capital and Surplus, Dividend Restrictions and Quasi-Reorganizations-
- (1-10) There are no outstanding shares upon which dividends can be paid . Dividend restrictions are not applicable . The Company does not have any cumulative unrealized gains or losses in unassigned funds .
- (11) Surplus Notes- Not applicable
- (12-13) Quasi-Reorganizations- Not applicable
14. Liabilities, Contingencies and Assessments-
- A. Contingent Commitments
- (1) On January 15, 2013, both the Company and Westfield Insurance Company gave Westfield Bank and Westfield Bancorp , Inc. a shared commitment effective January 1, 2013 through December 31, 2017 to provide additional capital up to \$6,000,000 . Neither the Company nor Westfield Insurance Company made any contributions during 2014 or 2013 . The Company foresees no circumstances which will prevent its ability to honor the commitment .
- (2) The Company was not a guarantor of any obligations as of December 31, 2014 .
- (3) The Company has no guarantee obligations as of December 31, 2014 .

NOTES TO FINANCIAL STATEMENTS

- B. Assessments
- (1) On January 17, 2014 the Company received notification of the insolvency of CAGC Insurance Co; on August 15, 2014 the Company received notification of the insolvency of Freestone Insurance Co; and on August 21, 2014 the Company received notification of the insolvency of Red Rock Insurance Company. It is expected that these insolvencies will result in retrospective premium-based guaranty fund assessments against the Company of \$12,562 that have been charged to operations in the current period.
- The Company has accrued \$ 953,615 for guaranty fund and other assessments. This represents management's best estimates on the information received from the states in which the Company writes business and may change due to many factors including the Company's share in the ultimate cost of current insolvencies.
- |        |  |    |       |
|--------|--|----|-------|
| (2) a. | Assets recognized from paid and accrued premium tax offsets and policy surcharges prior year-end   | \$ | 6,068 |
| b.     | Decreases current year: Premium tax offsets expired  | \$ | 544   |
| c.     | Increases current year: Premium tax offsets added  | \$ | 1,257 |
| d.     | Assets recognized from paid and accrued premium tax offsets and policy surcharges current year-end | \$ | 6,781 |
- C. Gain Contingencies- Not applicable
- D. Claims Related Extra Contractual Obligation and Bad Faith Losses Stemming from Lawsuits- Not applicable
- E. Product Warranties- Not applicable
- F. Joint and Several Liabilities- Not applicable
- G. All Other Contingencies
- Various lawsuits against the Company have arisen in the course of the Company's business. Contingent liabilities arising from litigation, income taxes, and other matters are not considered material in relation to the financial position of the Company. There are no contingent liabilities arising from litigation.
- At December 31, 2014 and 2013, the Company had admitted assets of \$118,519,090 and \$115,452,024, respectively, in accounts receivable for Agents' Balances or Uncollected Premiums. The Company routinely assesses the collectability of these receivables. Based upon company experience, less than 1% of the balance may become uncollectible and the potential loss is not material to the Company's financial condition.

15. Leases-
- A. Lessee Operating Lease
- (1) Current period expenses:
- a. The Company leases property, automobiles, office equipment and software under various noncancelable operating lease agreements that expire through December 2019. Rental expense for 2014 and 2013 was \$30,284,563 and \$28,699,075, respectively.
- b. The Company does not have any contingent rental payments.
- c. Certain rental commitments have renewal options extending through the year 2019. Some of these renewals are subject to adjustments in future periods.
- d. The Company's lease agreements do not impose restrictions concerning dividends, additional debt and further leasing.
- e. The Company did not terminate any leases early in 2014. There were no leases for which the Company (lessee) no longer used the leased property benefits in 2014.
- (2) Future lease obligations for the next five years:
- a. At January 1, 2015, the minimum aggregate rental commitments are as follows:
- |                         |                  |
|-------------------------|------------------|
| Year Ending December 31 | Operating Leases |
| 1. 2015                 | \$ 23,056,846    |
| 2. 2016                 | 9,687,779        |
| 3. 2017                 | 4,532,499        |
| 4. 2018                 | 1,624,662        |
| 5. 2019                 | 382,547          |
| 6. Total                | \$ 39,284,332    |
- b. The Company is not involved in any sublease agreements.
- (3) The Company is not involved in any material sales - leaseback transactions.
- B. Leasing is not a significant part of the Company's business.

16. Information about Financial Instruments with Off-Balance-Sheet Risk and Financial Instruments with Concentrations of Credit Risk- The Company does not invest in financial instruments with off-balance-sheet risk.

17. Sale, Transfer and Servicing of Financial Assets and Extinguishments of Liabilities-
- A. Transfers of Receivables Reported as Sales
- The Company has not sold or transferred any receivables to any other parties.
- B. Transfer and Servicing of Financial Assets- Not applicable
- C. Wash Sales
- The Company did not have any wash sales involving transactions for securities with a NAIC designation of 3 or below.

18. Gain or Loss to the Reporting Entity from Uninsured A&H Plans and the Uninsured Portion of Partially Insured Plans- Not applicable

19. Direct Premium Written / Produced by Managing General Agents / Third Party Administrators- Not applicable

20. Fair Value Measurements-
- A. For assets that are measured and reported at fair value in the statement of financial position after initial recognition, the valuation techniques and the inputs used to develop those measurements are as follows:
- Level 1 - Values are unadjusted quoted prices for identical assets and liabilities in active markets accessible at the measurement date.
- Level 2 - Inputs include quoted prices for similar assets or liabilities in active markets, quoted prices from those willing to trade in markets that are not active, or other inputs that are observable or can be corroborated by market data for the term of the instrument. Such inputs include market interest rates and volatilities, spreads and yield curves.
- Level 3 - Certain inputs are unobservable (supported by little or no market activity) and significant to the fair value measurement. Unobservable inputs reflect the Company's best estimate of what hypothetical market participants would use to determine a transaction price for the asset or liability at the reporting date.
- The Company has no liabilities that are measured at fair value in the statement of financial position.

NOTES TO FINANCIAL STATEMENTS

(1) Fair Value Measurements at December 31, 2014

Description	(Level 1)	(Level 2)	(Level 3)	Total
Assets at Fair Value:				
Common Stock				
Industrial and Miscellaneous	\$ 161,944,931	\$ 0	\$ 0	\$ 161,944,931
Total Common Stocks	\$ 161,944,931	\$ 0	\$ 0	\$ 161,944,931
Other Invested Assets				
Joint Venture, Ptr or LLC, char. of Com Stks - Unaffiliated	\$ 2,889,600	\$ 0	\$ 0	\$ 2,889,600
Other Assets - Affiliated	18,950,972	0	0	18,950,972
Total Other Invested Assets	\$ 21,840,572	\$ 0	\$ 0	\$ 21,840,572
Total Assets at Fair Value	\$ 183,785,503	\$ 0	\$ 0	\$ 183,785,503

(2) At December 31, 2014, the Company held no investments in assets or liabilities measured and reported at fair value that were classified as Level 3.

(3) The Company's policy for determining when transfers between levels is required is based upon change in the inputs used to determine fair value measurement. If an input changes, the Company evaluates the new input (s) and makes the determination whether or not a transfer between levels is appropriate. If an asset or liability is transferred between levels, it is the Company's policy to record the transfer as of the beginning of the quarter in which the transfer occurs. The Company held no assets or liabilities categorized as Level 1, 2 or 3 during the reporting period that were transferred into or out of the level categorization held at January 1, 2014.

(4) As of December 31, 2014, the Company held no investments in assets or liabilities measured and reported at fair value that were classified as Level 2 or Level 3. Historically, fair values in the Level 2 category are provided by independent pricing services. Where independent pricing services provide fair values, the Company has obtained an understanding of the methods, models and inputs used in pricing and has controls in place to validate that amounts provided represent current fair values. Estimated fair values of investments categorized as Level 3 generally include inputs for which no readily observable inputs are available and require management judgment.

(5) As of December 31, 2014, the Company had no holdings classified as either a derivative asset or liability.

B. Combining Fair Value Information- Not required

C. The method (s) and significant assumptions used to estimate the fair value of financial instruments are as follows:

*Investment Securities* - Fair values for bonds, including the aggregate write-ins for invested assets are based on the values prescribed by an independent pricing service or from brokers. For bonds that are not actively traded, estimated fair values are based on values of bonds of comparable yield and credit quality. The fair values for common stocks are based on quoted market prices, where available, which are provided to the Company by an independent pricing service.

*Short-term investments, Receivables for securities, Uncollected premiums and agents' balances in the course of collection, Deferred premiums, agents' balances and installments booked but deferred and not yet due, Amounts recoverable from reinsurers, and Funds held by or deposited with reinsured companies* - The carrying amounts reported as admitted assets or liabilities for these financial instruments approximate their fair values due to the short-term nature of these financial instruments.

*Other Invested Assets* - The estimated fair value of publicly traded limited partnerships and trusts is based on the values prescribed by an independent pricing service.

Type of Financial Instrument	Aggregate Fair Value	Admitted Assets or Liabilities	(Level 1)	(Level 2)	(Level 3)	Not Practicable (Carrying Value)
a. Financial Assets:						
Bonds	\$ 433,391,716	\$ 401,334,253	\$ 72,035,715	\$ 361,356,001	\$ 0	\$ 0
Common stocks	161,944,931	161,944,931	161,944,931	0	0	0
Short-term investments	168,224	168,224	0	168,224	0	0
Other invested assets	77,563,006	73,244,055	77,563,006	0	0	0
Receivables for securities	3,750	3,750	0	3,750	0	0
Aggregate write-ins for invested assets*	(1,603,872)	(1,603,872)	0	(1,603,872)	0	0
Uncollected premiums and agents' balances in the course of collection	16,823,301	16,823,301	0	16,823,301	0	0
Deferred premiums, agents' balances and installments booked but deferred and not yet due	101,695,789	101,695,789	0	101,695,789	0	0
Amounts recoverable from reinsurers	994,738	994,738	0	994,738	0	0
Funds held by or deposited with reinsured companies	262,468	262,468	0	262,468	0	0

b. Financial Liabilities: Not applicable

\* Represents amortization and deferred gain on intercompany transactions related to bonds.

D. Fair Value Estimating- Not applicable

21. Other Items-

A. Extraordinary Items- Not applicable

B. Troubled Debt Restructuring: Debtors- Not applicable

C. Other Disclosures and Unusual Items- Not applicable

D. Business Interruption Insurance Recoveries  
The Company had no business interruption insurance recoveries in 2014.

E. State Transferable and Non-transferable Tax Credits  
The Company does not have state transferable or non-transferable tax credits.

F. Subprime-Mortgage-Related Risk Exposure

(1) The subprime lending sector is the sector of the mortgage lending industry which lends to borrowers who do not qualify for prime market interest rates because of poor or insufficient credit history. The term also applies to paper taken on property that cannot be sold on the primary market, including loans on certain types of investment properties and certain types of self-employed individuals.

For purposes of this disclosure, subprime exposure is defined as the potential for financial loss through direct investment, or underwriting risk associated with the risk from the subprime lending sector. This includes any direct risk through investments in debt securities, asset backed or structured securities, hedge funds, subsidiaries and affiliates, and insurance product issuance. The Company views the following features as common characteristics of subprime mortgage loans:

- An interest rate above prime to borrowers who do not qualify for prime rate
- Borrowers with low credit ratings (FICO scores)
- Interest-only or negative amortizing loans
- Unconventionally high initial loan-to-value ratios
- Low initial payments based on a fixed introductory rate that expires after a short initial period, then adjusts to a variable rate plus a margin for the remaining term of the loan
- Borrowers with less than conventional documentation of their home and/or assets
- Very high or no limits on how much the payment amount or the interest rate may increase at reset periods, potentially causing a substantial increase in the monthly payment amount
- Include substantial prepayment penalties

The Company's strategy to manage or mitigate subprime exposure is to avoid making direct investments in, or insuring any of the sources of risk identified above. Westfield Bancorp, Inc.'s strategy to manage or mitigate subprime exposure is to adhere to stringent underwriting standards and to require Board review for any exceptions before loan approval.

ANNUAL STATEMENT FOR THE YEAR 2014 OF THE Ohio Farmers Insurance Company

NOTES TO FINANCIAL STATEMENTS

- (2) The Company has no direct exposure through investments in subprime mortgage loans. The Company's wholly owned affiliate, Westfield Bancorp, Inc., has insignificant subprime related risk exposure.
- (3) The Company has no direct exposure through other investments.
- (4) The Company has no underwriting exposure to subprime mortgage related risk.
22. Events Subsequent-  
Subsequent events have been considered through February 15, 2015 for the statutory statements issued as of December 31, 2014. No events or transactions have occurred that would give rise to a Type I or Type II subsequent event.

P & C Specific Notes

23. Reinsurance-
- A. Unsecured Reinsurance Recoverables  
The Company has an intercompany recoverable with affiliated companies that have an unsecured aggregate recoverable for paid and unpaid losses, including IBNR, loss adjustment expenses, and unearned premium that exceeds 3% of the Company's policyholder surplus with the following reinsurers:

American Select Insurance Company	FEIN 31-6016426	\$ 116,385,480
Old Guard Insurance Company	FEIN 23-0929640	209,448,708
Westfield Insurance Company	FEIN 34-6516838	1,256,779,782
Westfield National Insurance Company	FEIN 34-1022544	302,556,511

- B. Reinsurance Recoverable in Dispute  
The Company has no material recoverable to disclose.

- C. Reinsurance Assumed and Ceded  
(1)

	Assumed Reinsurance		Ceded Reinsurance		Net	
	Premium Reserve	Commission Equity	Premium Reserve	Commission Equity	Premium Reserve	Commission Equity
a. Affiliates	\$ 820,687,174	\$ 122,054,108	\$ 681,968,209	\$ 104,359,076	\$ 138,718,965	\$ 17,695,033
b. All Other	10,192,835	2,473,998	1,570,394	166,142	8,622,441	2,307,855
c. TOTAL	\$ 830,880,009	\$ 124,528,106	\$ 683,538,603	\$ 104,525,218	\$ 147,341,406	\$ 20,002,888

- d. Direct Unearned Premium Reserve \$ 12,626,445

- (2) The additional or return commission, predicated on loss experience or on any other form of profit sharing arrangements in this annual statement as a result of existing contractual arrangements is accrued as follows:

	Direct	Assumed	Ceded	Net
a. Contingent Commission	\$ 39,784,940	\$ 5,379,209	\$ 0	\$ 45,164,149
b. Sliding Scale Adjustments	0	0	0	0
c. Other Profit Commission Arrangements	0	0	0	0
d. TOTAL	\$ 39,784,940	\$ 5,379,209	\$ 0	\$ 45,164,149

The above figures do not include the intercompany pooling of Agents' Contingent Commission in the Assumed and Ceded columns.

- (3) Protected Cells - Not applicable

- D. Uncollectible Reinsurance- Not applicable
- E. Commutation of Ceded Reinsurance- Not applicable
- F. Retroactive Reinsurance- Not applicable
- G. Reinsurance Accounted for as a Deposit- Not applicable
- H. Disclosures for the Transfer of Property and Casualty Run-off Agreements- Not applicable
- I. Certified Reinsurer Rating Downgraded or Status Subject to Revocation- Not applicable

24. Retrospectively Rated Contracts and Contracts Subject to Redetermination- Not applicable

25. Changes in Incurred Losses and Loss Adjustment Expenses-  
Reserves as of December 31, 2013 were \$283.6 million. In calendar year 2014, \$92.0 million has been paid for incurred losses and loss adjustment expenses attributable to insured events of prior years. Reserves remaining for prior years are now \$176.0 million. Therefore, there has been a \$15.6 million favorable prior-year development from December 31, 2013 to December 31, 2014. The favorable development is principally from decreases in the estimates of loss and loss adjustment expenses for the following lines of business: other liability - occurrence and workers compensation. This change is generally the result of ongoing analysis of recent loss development trends. Original estimates are increased or decreased, as additional information becomes known regarding individual claims. The estimates are not affected by prior year loss development on retrospectively rated policies as the Company does not write this type of policy.

26. Intercompany Pooling Arrangements-  
A. The lead company, Ohio Farmers Insurance Company, and its property-casualty companies participate in a single 100% reinsurance pooling arrangement. The following companies are participants:

Company	NAIC Number	Percent
Ohio Farmers Insurance Company	24104	19.0%
Westfield Insurance Company	24112	54.0%
Westfield National Insurance Company	24120	13.0%
American Select Insurance Company	19992	5.0%
Old Guard Insurance Company	17558	9.0%

- B. Each participating company shares in all lines and types of business.
- C. Any cession to non-affiliated reinsurers is prior to the cession of pooling business from the affiliated pool member to the lead company.
- D. All pool members have contractual right of direct recovery from the non-affiliated reinsurer per the terms of such reinsurance agreements.
- E. No discrepancies exist between pooled business entries on the assumed and ceded reinsurance schedule of the lead company and corresponding entries on the assumed and ceded reinsurance schedules of other pool participants.
- F. The Provision for Reinsurance is recorded in accordance with the percentages set forth in the intercompany pooling arrangement.

ANNUAL STATEMENT FOR THE YEAR 2014 OF THE Ohio Farmers Insurance Company

NOTES TO FINANCIAL STATEMENTS

G. Affiliated Balances due to and from the Company at 12/31/2014 and 12/31/2013 respectively were:

	<u>12/31/2014</u>	<u>12/31/2013</u>
Westfield Insurance Company*	\$ 0	\$ 1,682,296
Westfield National Insurance Company*	458,953	0
Westfield Services, Inc.	163,557	87,295
150 South Road, LLC	2,165	0
OFIC VEBA Trust	2,138,861	1,842,926
OFIC Pension and /or VEBA Trust	<u>215,311</u>	<u>184,547</u>
Affiliated Receivable	\$ 2,978,847	\$ 3,797,064
Westfield Insurance Company*	\$ 6,046,751	\$ 0
Westfield National Insurance Company*	0	3,638,716
American Select Insurance Company*	344,179	1,390,627
Old Guard Insurance Company*	627,079	5,672,362
Westfield Management Company	<u>10,728,612</u>	<u>11,484,413</u>
Affiliated Payable	\$ 17,746,621	\$ 22,186,118

\*Westfield Insurance Company, Westfield National Insurance Company, American Select Insurance Company, and Old Guard Insurance Company are included in the intercompany pooling arrangement.

27. Structured Settlements-
- A. The amount of reserves no longer carried by the Company due to purchased annuities with the claimant as payee and the extent to which the reporting entity is contingently liable for such amounts as of December 31, 2014 is presented below:

<u>Loss Reserves Eliminated by Annuities</u>	<u>Unrecorded Loss Contingencies</u>
\$1,331,161	\$1,331,161

- B. The Company has purchased annuities of which the claimant is payee but for which the Company is contingently liable. However, the total value of all annuities due from any single life insurer does not equal or exceed 1% of the Company's policyholder surplus.

28. Health Care Receivables- Not applicable

29. Participating Policies- Not applicable

30. Premium Deficiency Reserves-
- |   |            |
|---|------------|
| 1. Liability carried for premium deficiency reserves:             | \$ 0       |
| 2. Date of the most recent evaluation of this liability:          | 12/31/2014 |
| 3. Was anticipated investment income utilized in the calculation? | Yes        |

31. High Deductibles- Not applicable

32. Discounting of Liabilities for Unpaid Losses or Unpaid Loss Adjustment Expenses-
- The Company does not discount the liabilities for unpaid losses or unpaid loss adjustment expenses for Workers' Compensation or any other line of business.

ANNUAL STATEMENT FOR THE YEAR 2014 OF THE Ohio Farmers Insurance Company

NOTES TO FINANCIAL STATEMENTS

33. Asbestos/Environmental Reserves-  
The Company's exposure to asbestos and environmental claims arises from general liability and commercial multiple peril lines of business. The Company tries to estimate the full impact of the asbestos and environmental exposure by establishing full case basis reserves on all known claims and computing incurred but not reported losses based on market share tempered by previous experience. In addition, reserves are held for future allocated loss adjustment expenses including coverage dispute costs.

In 2014, the Company elected to move \$1,140,000 from asbestos IBNR reserves to environmental IBNR reserves. The Company still believes that the total reserves held for asbestos and environmental claims make a reasonable provision for unpaid claims.

A. Does the company have on the books, or has it ever written an insured for which you have identified a potential for the existence of a liability due to asbestos losses?  
Yes ( X )    No (   )

The Company's asbestos related losses (including coverage dispute costs) for each of the five most recent years were as follows after intercompany pooling:

(1) Direct Basis:					
	2010	2011	2012	2013	2014
a. Beginning reserves:	\$ 9,093,447	\$ 8,857,778	\$ 8,649,571	\$ 8,415,924	\$ 8,119,030
b. Incurred losses and loss adjustment expense:	0	0	0	0	(1,140,000)
c. Calendar year payments for losses and loss adjustment expenses:	235,669	208,207	233,647	296,894	520,123
d. Ending reserves:	\$ 8,857,778	\$ 8,649,571	\$ 8,415,924	\$ 8,119,030	\$ 6,458,907
(2) Assumed Reinsurance:					
a. Beginning reserves:	\$ 0	\$ 0	\$ 0	\$ 0	\$ 0
b. Incurred losses and loss adjustment expense:	0	0	0	0	0
c. Calendar year payments for losses and loss adjustment expenses:	0	0	0	0	0
d. Ending reserves:	\$ 0	\$ 0	\$ 0	\$ 0	\$ 0
(3) Net of Ceded Reinsurance:					
a. Beginning reserves:	\$ 9,093,445	\$ 8,857,776	\$ 8,649,568	\$ 8,415,921	\$ 8,119,027
b. Incurred losses and loss adjustment expense:	0	0	0	0	(1,140,000)
c. Calendar year payments for losses and loss adjustment expenses:	235,669	208,208	233,647	296,894	520,123
d. Ending reserves:	\$ 8,857,776	\$ 8,649,568	\$ 8,415,921	\$ 8,119,027	\$ 6,458,904

B. State the amount of the ending reserves for Bulk + IBNR included in A (Loss & LAE) :

(1) Direct Basis:	\$ 5,340,634
(2) Assumed Reinsurance Basis:	\$ 0
(3) Net of Ceded Reinsurance Basis:	\$ 5,340,634

C. State the amount of the ending reserves for loss adjustment expenses included in A (Case, Bulk + IBNR) :

(1) Direct Basis:	\$ 1,824,473
(2) Assumed Reinsurance Basis:	\$ 0
(3) Net of Ceded Reinsurance Basis:	\$ 1,824,473

D. Does the company have on the books, or has it ever written an insured for which you have identified a potential for the existence of a liability due to environmental losses?  
Yes ( X )    No (   )

The Company's environmental related losses (including coverage dispute costs) for each of the five most recent years were as follows after intercompany pooling:

(1) Direct Basis:					
	2010	2011	2012	2013	2014
a. Beginning reserves:	\$ 1,865,950	\$ 1,820,978	\$ 1,618,156	\$ 1,464,823	\$ 1,241,889
b. Incurred losses and loss adjustment expense:	0	0	0	0	1,140,000
c. Calendar year payments for losses and loss adjustment expenses:	44,972	202,822	153,333	222,934	280,759
d. Ending reserves:	\$ 1,820,978	\$ 1,618,156	\$ 1,464,823	\$ 1,241,889	\$ 2,101,130
(2) Assumed Reinsurance:					
a. Beginning reserves:	\$ 0	\$ 0	\$ 0	\$ 0	\$ 0
b. Incurred losses and loss adjustment expense:	0	0	0	0	0
c. Calendar year payments for losses and loss adjustment expenses:	0	0	0	0	0
d. Ending reserves:	\$ 0	\$ 0	\$ 0	\$ 0	\$ 0
(3) Net of Ceded Reinsurance:					
a. Beginning reserves:	\$ 1,865,950	\$ 1,820,978	\$ 1,618,156	\$ 1,464,823	\$ 1,241,889
b. Incurred losses and loss adjustment expense:	0	0	0	0	1,140,000
c. Calendar year payments for losses and loss adjustment expenses:	44,972	202,822	153,333	222,934	280,759
d. Ending reserves:	\$ 1,820,978	\$ 1,618,156	\$ 1,464,823	\$ 1,241,889	\$ 2,101,130

E. State the amount of the ending reserves for Bulk + IBNR included in D (Loss & LAE) :

(1) Direct Basis:	\$ 1,604,019
(2) Assumed Reinsurance Basis:	\$ 0
(3) Net of Ceded Reinsurance Basis:	\$ 1,604,019

F. State the amount of the ending reserves for loss adjustment expenses included in D (Case, Bulk + IBNR) :

(1) Direct Basis:	\$ 1,120,164
(2) Assumed Reinsurance Basis:	\$ 0
(3) Net of Ceded Reinsurance Basis:	\$ 1,120,164

34. Subscriber Savings Accounts- Not applicable

35. Multiple Peril Crop Insurance- Not applicable

36. Financial Guaranty Insurance- Not applicable

ANNUAL STATEMENT FOR THE YEAR 2014 OF THE Ohio Farmers Insurance Company

GENERAL INTERROGATORIES

PART 1 - COMMON INTERROGATORIES

GENERAL

- 1.1

Is the reporting entity a member of an Insurance Holding Company System consisting of two or more affiliated persons, one or more of which is an insurer?

Yes (X) No ( )
- If yes, complete Schedule Y, Parts 1, 1A and 2.
- 1.2

If yes, did the reporting entity register and file with its domiciliary State Insurance Commissioner, Director or Superintendent, or with such regulatory official of the state of domicile of the principal insurer in the Holding Company System, a registration statement providing disclosure substantially similar to the standards adopted by the National Association of Insurance Commissioners (NAIC) in its Model Insurance Holding Company System Regulatory Act and model regulations pertaining thereto, or is the reporting entity subject to standards and disclosure requirements substantially similar to those required by such Act and regulations?

Yes (X) No ( ) N/A ( )
- 1.3

State Regulating?

Ohio
- 2.1

Has any change been made during the year of this statement in the charter, by-laws, articles of incorporation, or deed of settlement of the reporting entity?

Yes ( ) No (X)
- 2.2

If yes, date of change:

.....
- 3.1

State as of what date the latest financial examination of the reporting entity was made or is being made.

12/31/2012
- 3.2

State the as of date of the latest financial examination report became available from either the state of domicile or the reporting entity. This date should be the date of the examined balance sheet and not the date the report was completed or released.

12/31/2012
- 3.3

State as of what date the latest financial examination report became available to other states or the public from either the state of domicile or the reporting entity. This is the release date or completion date of the examination report and not the date of the examination (balance sheet date).

01/02/2014
- 3.4

By what department or departments?

Ohio
- 3.5

Have all financial statement adjustments within the latest financial examination report been accounted for in a subsequent financial statement filed with Departments?

Yes ( ) No ( ) N/A (X)
- 3.6

Have all of the recommendations within the latest financial examination report been complied with?

Yes ( ) No ( ) N/A (X)
- 4.1

During the period covered by this statement, did any agent, broker, sales representative, non-affiliated sales/service organization or any combination thereof under common control (other than salaried employees of the reporting entity) receive credit or commissions for or control a substantial part (more than 20 percent of any major line of business measured on direct premiums) of:

4.11

sales of new business?

Yes ( ) No (X)

4.12

renewals?

Yes ( ) No (X)
- 4.2

During the period covered by this statement, did any sales/service organization owned in whole or in part by the reporting entity or an affiliate, receive credit or commissions for or control a substantial part (more than 20 percent of any major line of business measured on direct premiums) of:

4.21

sales of new business?

Yes ( ) No (X)

4.22

renewals?

Yes ( ) No (X)
- 5.1

Has the reporting entity been a party to a merger or consolidation during the period covered by this statement?

Yes ( ) No (X)
- 5.2

If yes, provide the name of entity, the NAIC company code, and state of domicile (use two-letter state abbreviation) for any entity that has ceased to exist as a result of the merger or consolidation.

1 Name of Entity	2 NAIC Company Code	3 State of Domicile
---------------------	------------------------	------------------------

- 6.1

Has the reporting entity had any Certificates of Authority, licenses or registrations (including corporate registration, if applicable) suspended or revoked by any governmental entity during the reporting period?

Yes ( ) No (X)
- 6.2

If yes, give full information:

.....
- 7.1

Does any foreign (non-United States) person or entity directly or indirectly control 10% or more of the reporting entity?

Yes ( ) No (X)
- 7.2

If yes,

7.21

State the percentage of foreign control

..... 0.0 %

7.22

State the nationality(s) of the foreign person(s) or entity(s); or if the entity is a mutual or reciprocal, the nationality of its manager or attorney-in-fact and identify the type of entity(s) (e.g., individual, corporation, government, manager or attorney-in-fact).

1 Nationality	2 Type of Entity
------------------	---------------------

- 8.1

Is the company a subsidiary of a bank holding company regulated by the Federal Reserve Board?

Yes ( ) No (X)
- 8.2

If response to 8.1 is yes, please identify the name of the bank holding company.

.....
- 8.3

Is the company affiliated with one or more banks, thrifts or securities firms?

Yes (X) No ( )
- 8.4

If response to 8.3 is yes, please provide the names and locations (city and state of the main office) of any affiliates regulated by a federal financial regulatory services agency [i.e. the Federal Reserve Board (FRB), the Office of the Comptroller of the Currency (OCC), the Federal Deposit Insurance Corporation (FDIC) and the Securities Exchange Commission (SEC)] and identify the affiliate's primary federal regulator.

1 Affiliate Name	2 Location (City, State)	3 FRB	4 OCC	5 FDIC	6 SEC
---------------------	-----------------------------	----------	----------	-----------	----------

Westfield Insurance Company .....	Westfield Center, Ohio .....	Yes .....	No .....	No .....	No .....
Westfield Bancorp., Inc. ....	Westfield Center, Ohio .....	Yes .....	No .....	No .....	No .....
Westfield Bank, FSB .....	Westfield Center, Ohio .....	No .....	Yes .....	No .....	No .....

9.

What is the name and address of the independent certified public accountant or accounting firm retained to conduct the annual audit?

KPMG LLP, 191 West Nationwide Blvd., Suite 500, Columbus, OH 43215

GENERAL INTERROGATORIES

PART 1 - COMMON INTERROGATORIES

- 10.1Has the insurer been granted any exemptions to the prohibited non-audit services provided by the certified independent public accountant requirements as allowed in Section 7H of the Annual Financial Reporting Model Regulation (Model Audit Rule) , or substantially similar state law or regulation?Yes ( ) No (X)
- 10.2If the response to 10.1 is yes, provide information related to this exemption:
- 10.3Has the insurer been granted any exemptions related to the other requirements of the Annual Financial Reporting Model Regulation as allowed for in Section 17A of the Model Regulation , or substantially similar state law or regulation?Yes ( ) No (X)
- 10.4If the response to 10.3 is yes, provide information related to this exemption:
- 10.5Has the reporting entity established an Audit Committee in compliance with domiciliary state insurance laws?Yes (X) No ( ) N/A ( )
- 10.6If the response to 10.5 is no or n/a, please explain:
- 11.What is the name, address and affiliation (officer/employee of the reporting entity or actuary/consultant associated with an actuarial consulting firm) of the individual providing the statement of actuarial opinion/certification?  
Scott Weinstein, FCAS, KPMG LLP, 303 Peachtree St, Suite 2000, Atlanta, GA 30308-3210
- 12.1Does the reporting entity own any securities of a real estate holding company or otherwise hold real estate indirectly?Yes (X) No ( )
- 12.11Name of real estate holding company  
150 South Road, LLC and various real estate holdings owned by and through Westfield Bancorp, Inc.
- 12.12Number of parcels involved

10
- 12.13Total book/adjusted carrying value

\$ 5,283,779
- 12.2If yes, provide explanation  
150 South Road, LLC, a real estate holding company, owns three business properties. Westfield Bancorp, Inc. owns two business properties and five others classified as Other Real Estate Owned
- 13.FOR UNITED STATES BRANCHES OF ALIEN REPORTING ENTITIES ONLY:
- 13.1What changes have been made during the year in the United States manager or the United States trustees of the reporting entity?
- 13.2Does this statement contain all business transacted for the reporting entity through its United States Branch on risks wherever located?Yes ( ) No ( )
- 13.3Have there been any changes made to any of the trust indentures during the year?Yes ( ) No ( )
- 13.4If answer to (13.3) is yes, has the domiciliary or entry state approved the changes?Yes ( ) No ( ) N/A (X)
- 14.1Are the senior officers (principal executive officer, principal financial officer, principal accounting officer or controller, or persons performing similar functions) of the reporting entity subject to a code of ethics, which includes the following standards?  
(a) Honest and ethical conduct, including the ethical handling of actual or apparent conflicts of interest between personal and professional relationships;  
(b) Full, fair, accurate, timely and understandable disclosure in the periodic reports required to be filed by the reporting entity;  
(c) Compliance with applicable governmental laws, rules and regulations;  
(d) The prompt internal reporting of violations to an appropriate person or persons identified in the code; and  
(e) Accountability for adherence to the code.  
Yes (X) No ( )
- 14.11If the response to 14.1 is no, please explain:
- 14.2Has the code of ethics for senior managers been amended?Yes ( ) No (X)
- 14.21If the response to 14.2 is yes, provide information related to amendment(s).
- 14.3Have any provisions of the code of ethics been waived for any of the specified officers?Yes ( ) No (X)
- 14.31If the response to 14.3 is yes, provide the nature of any waiver(s).
- 15.1Is the reporting entity the beneficiary of a Letter of Credit that is unrelated to reinsurance where the issuing or confirming bank is not on the SVO Bank List?Yes ( ) No (X)
- 15.2If the response to 15.1 is yes, indicate the American Bankers Association (ABA) Routing Number and the name of issuing or confirming bank of the Letter of Credit and describe the circumstances in which the Letter of Credit is triggered.

1 American Bankers Association (ABA) Routing Number	2  Issuing or Confirming Bank Name	3  Circumstances That Can Trigger the Letter of Credit	4  Amount
--	--	--	-----------------

BOARD OF DIRECTORS

- 16.Is the purchase or sale of all investments of the reporting entity passed upon either by the board of directors or a subordinate committee thereof?Yes (X) No ( )
- 17.Does the reporting entity keep a complete permanent record of the proceedings of its board of directors and all subordinate committees thereof?Yes (X) No ( )
- 18.Has the reporting entity an established procedure for disclosure to its board of directors or trustees of any material interest or affiliation on the part of any of its officers, directors, trustees, or responsible employees that is in conflict or is likely to conflict with the official duties of such person?Yes (X) No ( )

FINANCIAL

- 19.Has this statement been prepared using a basis of accounting other than Statutory Accounting Principles (e.g., Generally Accepted Accounting Principles)?Yes ( ) No (X)
- 20.1Total amount loaned during the year (inclusive of Separate Accounts, exclusive of policy loans):

20.11To directors or other officers\$ 0  
20.12To stockholders not officers\$ 0  
20.13Trustees, supreme or grand (Fraternal only)\$ 0
- 20.2Total amount of loans outstanding at end of year (inclusive of Separate Accounts, exclusive of policy loans):

20.21To directors or other officers\$ 0  
20.22To stockholders not officers\$ 0  
20.23Trustees, supreme or grand (Fraternal only)\$ 0
- 21.1Were any assets reported in this statement subject to a contractual obligation to transfer to another party without the liability for such obligation being reported in the statement?Yes ( ) No (X)
- 21.2If yes, state the amount thereof at December 31 of the current year:

21.21Rented from others\$ 0  
21.22Borrowed from others\$ 0  
21.23Leased from others\$ 0  
21.24Other\$ 0



GENERAL INTERROGATORIES

PART 1 - COMMON INTERROGATORIES

- 22.1

Does this statement include payments for assessments as described in the Annual Statement Instructions other than guaranty fund or guaranty association assessments?

Yes ( ) No (X)
- 22.2

If answer is yes:

22.21

Amount paid as losses or risk adjustment

\$ .....

0

22.22

Amount paid as expenses

\$ .....

0

22.23

Other amounts paid

\$ .....

0
- 23.1

Does the reporting entity report any amounts due from parent, subsidiaries or affiliates on Page 2 of this statement?

Yes (X) No ( )
- 23.2

If yes, indicate any amounts receivable from parent included in the Page 2 amount:

\$ .....

0

INVESTMENT

- 24.01

Were all the stocks, bonds and other securities owned December 31 of current year, over which the reporting entity has exclusive control, in the actual possession of the reporting entity on said date? (other than securities lending programs addressed in 24.03)

Yes (X) No ( )
- 24.02

If no, give full and complete information relating thereto:
- 24.03

For the security lending programs, provide a description of the program including value for collateral and amount of loaned securities, and whether collateral is carried on or off-balance sheet. (an alternative is to reference Note 17 where this information is also provided)  
The Company has no securities lending agreements as of December 31, 2014.
- 24.04

Does the Company's security lending program meet the requirements for a conforming program as outlined in Risk-Based Capital Instructions?

Yes ( ) No ( ) N/A (X)
- 24.05

If answer to 24.04 is YES, report amount of collateral for conforming programs.

\$ .....

0
- 24.06

If answer to 24.04 is NO, report amount of collateral for other programs.

\$ .....

0
- 24.07

Does your securities lending program require 102% (domestic securities) and 105% (foreign securities) from the counterparty at the outset of the contract?

Yes ( ) No ( ) N/A (X)
- 24.08

Does the reporting entity non-admit when the collateral received from the counterparty falls below 100%?

Yes ( ) No ( ) N/A (X)
- 24.09

Does the reporting entity or the reporting entity's securities lending agent utilize the Master Securities Lending Agreement (MSLA) to conduct securities lending?

Yes ( ) No ( ) N/A (X)
- 24.10

For the reporting entity's security lending program, state the amount of the following as of December 31 of the current year:

24.101

Total fair value of reinvented collateral assets reported on Schedule DL, Parts 1 and 2

\$ .....

0

24.102

Total book adjusted/carrying value of reinvested collateral assets reported on Schedule DL, Parts 1 and 2

\$ .....

0

24.103

Total payable for securities lending reported on the liability page

\$ .....

0
- 25.1

Were any of the stocks, bonds or other assets of the reporting entity owned at December 31 of the current year not exclusively under the control of the reporting entity or has the reporting entity sold or transferred any assets subject to a put option contract that is currently in force? (Exclude securities subject to Interrogatory 21.1 and 24.03)

Yes (X) No ( )
- 25.2

If yes, state the amount thereof at December 31 of the current year:

25.21

Subject to repurchase agreements

\$ .....

0

25.22

Subject to reverse repurchase agreements

\$ .....

0

25.23

Subject to dollar repurchase agreements

\$ .....

0

25.24

Subject to reverse dollar repurchase agreements

\$ .....

0

25.25

Placed under option agreements

\$ .....

0

25.26

Letter stock or securities restricted as to sale - excluding FHLB Capital Stock

\$ .....

0

25.27

FHLB Capital Stock

\$ .....

0

25.28

On deposit with states

\$ .....

6,045,334

25.29

On deposit with other regulatory bodies

\$ .....

0

25.30

Pledged as collateral - excluding collateral pledged to an FHLB

\$ .....

7,837,258

25.31

Pledged as collateral to FHLB - including assets backing funding agreements

\$ .....

0

25.32

Other

\$ .....

0
- 25.3

For category (25.26) provide the following:

1	2	3
Nature of Restriction	Description	Amount

- 26.1

Does the reporting entity have any hedging transactions reported on Schedule DB?

Yes ( ) No (X)
- 26.2

If yes, has a comprehensive description of the hedging program been made available to the domiciliary state?  
If no, attach a description with this statement.

Yes ( ) No ( ) N/A (X)
- 27.1

Were any preferred stocks or bonds owned as of December 31 of the current year mandatorily convertible into equity, or, at the option of the issuer, convertible into equity?

Yes ( ) No (X)
- 27.2

If yes, state the amount thereof at December 31 of the current year.

\$ .....

0
28.

Excluding items in Schedule E - Part 3 - Special Deposits, real estate, mortgage loans and investments held physically in the reporting entity's offices, vaults or safety deposit boxes, were all stocks, bonds, and other securities, owned throughout the current year held pursuant to a custodial agreement with a qualified bank or trust company in accordance with Section 1, III - General Examination Considerations, F. Outsourcing of Critical Functions, Custodial or Safekeeping Agreements of the NAIC Financial Condition Examiners Handbook?

Yes (X) No ( )
- 28.01

For agreements that comply with the requirements of the NAIC Financial Condition Examiners Handbook, complete the following:

1	2
Name of Custodian(s)	Custodian's Address

JPMorgan Chase ..... 1 Chase Manhattan Plaza - 19th Floor, New York, NY 10005 .....

BNY Mellon ..... One Wall Street, New York, NY 10286 .....

Fifth Third Bank ..... 20 NW 3rd Street, 11th Floor, Evansville, IN 47708 .....

GENERAL INTERROGATORIES

PART 1 - COMMON INTERROGATORIES

28.02 For all agreements that do not comply with the requirements of the NAIC Financial Condition Examiners Handbook, provide the name, location and a complete explanation:

1 Name(s)	2 Location(s)	3 Complete Explanation(s)
--------------	------------------	------------------------------

28.03 Have there been any changes, including name changes, in the custodian(s) identified in 28.01 during the current year? Yes (X) No ( )

28.04 If yes, give full and complete information relating thereto:

1 Old Custodian	2 New Custodian	3 Date of Change	4 Reason
--------------------	--------------------	---------------------	-------------

JPMorgan Chase ..... BNY Mellon ..... 05/30/2014 ..... General business purposes .....  
JPMorgan Chase ..... Fifth Third Bank ..... 05/30/2014 ..... General business purposes .....

28.05 Identify all investment advisors, broker/dealers or individuals acting on behalf of broker/dealers that have access to the investment accounts, handle securities and have authority to make investments on behalf of the reporting entity:

1 Central Registration Depository Number(s)	2 Name	3 Address
--	-----------	--------------

29.1 Does the reporting entity have any diversified mutual funds reported in Schedule D, Part 2 (diversified according to the Securities and Exchange Commission (SEC) in the Investment Company Act of 1940 [Section 5 (b) (1)])? Yes ( ) No (X)

29.2 If yes, complete the following schedule:

1 CUSIP Number	2 Name of Mutual Fund	3 Book/Adjusted Carrying Value
-------------------	--------------------------	-----------------------------------

29.3 For each mutual fund listed in the table above, complete the following schedule:

1 Name of Mutual Fund (from question 29.2)	2 Name of Significant Holding of the Mutual Fund	3 Amount of Mutual Fund's Book/Adjusted Carrying Value Attributable to the Holding	4 Date of Valuation
--	--	---	------------------------

30. Provide the following information for all short-term and long-term bonds and all preferred stocks. Do not substitute amortized value or statement value for fair value.

	1 Statement (Admitted) Value	2 Fair Value	3 Excess of Statement over Fair Value (-), or Fair Value over Statement (+)
30.1 Bonds .....	\$ ..... 401,502,477	\$ ..... 433,559,940	\$ ..... 32,057,463
30.2 Preferred stocks .....	\$ ..... 0	\$ ..... 0	\$ ..... 0
30.3 Totals .....	\$ ..... 401,502,477	\$ ..... 433,559,940	\$ ..... 32,057,463

30.4 Describe the sources or methods utilized in determining the fair values:  
Interactive Data Corp (IDC) , Bloomberg Financial Services .....

31.1 Was the rate used to calculate fair value determined by a broker or custodian for any of the securities in Schedule D? Yes ( ) No (X)

31.2 If the answer to 31.1 is yes, does the reporting entity have a copy of the broker's or custodian's pricing policy (hard copy or electronic copy) for all brokers or custodians used as a pricing source? Yes ( ) No ( )

31.3 If the answer to 31.2 is no, describe the reporting entity's process for determining a reliable pricing source for purposes of disclosure of fair value for Schedule D:  
.....  
.....

32.1 Have all the filing requirements of the Purposes and Procedures Manual of the NAIC Securities Valuation Office been followed? Yes (X) No ( )

32.2 If no, list exceptions:  
.....  
.....

OTHER

33.1 Amount of payments to trade associations, service organizations and statistical or rating bureaus, if any? \$ ..... 1,619,621

33.2 List the name of the organization and the amount paid if any such payment represented 25% or more of the total payments to trade associations, service organizations and statistical or rating bureaus during the period covered by this statement.

1 Name	2 Amount Paid
INSURANCE SERVICES OFFICES INC .....	\$ ..... 820,959
.....	\$ ..... 0
.....	\$ ..... 0
.....	\$ ..... 0

GENERAL INTERROGATORIES  
PART 1 - COMMON INTERROGATORIES

- 34.1 Amount of payments for legal expenses, if any?

\$ ..... 561,455
- 34.2 List the name of the firm and the amount paid if any such payment represented 25% or more of the total payments for legal expenses during the period covered by this statement.

1 Name	2 Amount Paid
FOX ROTHSCHILD LLP .....	\$ ..... 412,467
.....	\$ ..... 0
.....	\$ ..... 0
.....	\$ ..... 0

- 35.1 Amount of payments for expenditures in connection with matters before legislative bodies, officers or departments of government, if any?

\$ ..... 52,082
- 35.2 List the name of the firm and the amount paid if any such payment represented 25% or more of the total payment expenditures in connection with matters before legislative bodies, officers or departments of government during the period covered by this statement.

1 Name	2 Amount Paid
.....	\$ ..... 0
.....	\$ ..... 0
.....	\$ ..... 0
.....	\$ ..... 0

GENERAL INTERROGATORIES

PART 2 - PROPERTY AND CASUALTY INTERROGATORIES

1.1

Does the reporting entity have any direct Medicare Supplement Insurance in force?

Yes ( ) No (X)

1.2

If yes, indicate premium earned on U.S. business only.

\$ ..... 0

1.3

What portion of Item (1.2) is not reported on the Medicare Supplement Insurance Experience Exhibit?

\$ ..... 0

1.31

Reason for excluding:

1.4

Indicate amount of earned premium attributable to Canadian and/or Other Alien not included in Line (1.2) above.

\$ ..... 0

1.5

Indicate total incurred claims on all Medicare Supplement insurance.

\$ ..... 0

1.6

Individual policies:

Most current three years:

1.61

Total premium earned

\$ ..... 0

1.62

Total incurred claims

\$ ..... 0

1.63

Number of covered lives

..... 0

All years prior to most current three years:

1.64

Total premium earned

\$ ..... 0

1.65

Total incurred claims

\$ ..... 0

1.66

Number of covered lives

..... 0

1.7

Group policies:

Most current three years:

1.71

Total premium earned

\$ ..... 0

1.72

Total incurred claims

\$ ..... 0

1.73

Number of covered lives

..... 0

All years prior to most current three years:

1.74

Total premium earned

\$ ..... 0

1.75

Total incurred claims

\$ ..... 0

1.76

Number of covered lives

..... 0

2. Health Test:

2.1

Premium Numerator

\$ ..... 0

2.2

Premium Denominator

\$ ..... 321,668,473

2.3

Premium Ratio (Line 2.1/Line 2.2)

..... 0.000

2.4

Reserve Numerator

\$ ..... 0

2.5

Reserve Denominator

\$ ..... 459,666,468

2.6

Reserve Ratio (Line 2.4/Line 2.5)

..... 0.000

1

Current Year

2

Prior Year

3.1

Does the reporting entity issue both participating and non-participating policies?

Yes ( ) No (X)

3.2

If yes, state the amount of calendar year premiums written on:

3.21

Participating policies

\$ ..... 0

3.22

Non-participating policies

\$ ..... 0

4.

For Mutual reporting entities and Reciprocal Exchange only:

4.1

Does the reporting entity issue assessable policies?

Yes ( ) No ( )

4.2

Does the reporting entity issue non-assessable policies?

Yes ( ) No ( )

4.3

If assessable policies are issued, what is the extent of the contingent liability of the policyholders?

..... 0.0 %

4.4

Total amount of assessments paid or ordered to be paid during the year on deposit notes or contingent premiums.

\$ ..... 0

5.

For Reciprocal Exchanges only:

5.1

Does the exchange appoint local agents?

Yes ( ) No ( )

5.2

If yes, is the commission paid:

5.21

Out of Attorney's-in-fact compensation

Yes ( ) No ( ) N/A (X)

5.22

As a direct expense of the exchange

Yes ( ) No ( ) N/A (X)

5.3

What expenses of the Exchange are not paid out of the compensation of the Attorney-in-fact?

5.4

Has any Attorney-in-fact compensation, contingent on fulfillment of certain conditions, been deferred?

Yes ( ) No ( )

5.5

If yes, give full information.

6.1

What provision has this reporting entity made to protect itself from an excessive loss in the event of a catastrophe under a workers' compensation contract issued without limit of loss?

Reinsurance protection was provided by two agreements: the Multiple Line Excess of Loss with two layers (\$4.5M x \$3M) and (\$7.5M x \$7.5M); and the Casualty Clash and Contingency Excess with two layers (\$15M x \$15M) and (\$30M x \$30M) totaling \$57M above a \$3M retention per occurrence.

6.2

Describe the method used to estimate this reporting entity's probable maximum insurance loss, and identify the type of insured exposures comprising that probable maximum loss, the locations of concentrations of those exposures and the external resources (such as consulting firms or computer software models), if any, used in the estimation process:

The modeled all perils probable maximum loss at the 250 year return time is \$285M and includes hurricane, earthquake and severe convective storm. The locations of concentrations are southeastern PA, DE, GA and FL for hurricane; OH for severe convective storm; and IN, KY and OH for earthquake.

6.3

What provision has this reporting entity made (such as a catastrophic reinsurance program) to protect itself from an excessive loss arising from the types and concentrations of insured exposures comprising its probable maximum property insurance loss?

The property catastrophe reinsurance program consisted of four layers with varying retentions and one automatic reinstatement for additional premium. The total amount of coverage for a single loss occurrence was \$350,525,000 excess of Westfield's \$35M net retention per loss occurrence.

16

GENERAL INTERROGATORIES

PART 2 - PROPERTY AND CASUALTY INTERROGATORIES

6.4

Does the reporting entity carry catastrophe reinsurance protection for at least one reinstatement, in an amount sufficient to cover its estimated probable maximum loss attributable to a single loss event or occurrence?

Yes (X) No ( )

6.5

If no., describe any arrangements or mechanisms employed by the reporting entity to supplement its catastrophe reinsurance program or to hedge its exposure to uninsured catastrophic loss.

7.1

Has the reporting entity reinsured any risk with any other entity under a quota share reinsurance contract that includes a provision that would limit the reinsurer's losses below the stated quota share percentage (e.g., a deductible, a loss ratio corridor, a loss cap, an aggregate limit or any similar provisions)?

Yes (X) No ( )

7.2

If yes, indicate the number of reinsurance contracts containing such provisions.

1

7.3

If yes, does the amount of reinsurance credit taken reflect the reduction in quota share coverage caused by any applicable limiting provision(s)?

Yes (X) No ( )

8.1

Has this reporting entity reinsured any risk with any other entity and agreed to release such entity from liability, in whole or in part, from any loss that may occur on this risk, or portion thereof, reinsured?

Yes ( ) No (X)

8.2

If yes, give full information.

9.1

Has the reporting entity ceded any risk under any reinsurance contract (or under multiple contracts with the same reinsurer or its affiliates) for which during the period covered by the statement: (i) it recorded a positive or negative underwriting result greater than 5% of prior year-end surplus as regards policyholders or it reported calendar year written premium ceded or year-end loss and loss expense reserves ceded greater than 5% of prior year-end surplus as regards policyholders; (ii) it accounted for that contract as reinsurance and not as a deposit; and (iii) the contract(s) contain one or more of the following features or other features that would have similar results:  
(a) A contract term longer than two years and the contract is noncancellable by the reporting entity during the contract term;  
(b) A limited or conditional cancellation provision under which cancellation triggers an obligation by the reporting entity, or an affiliate of the reporting entity, to enter into a new reinsurance contract with the reinsurer, or an affiliate of the reinsurer;  
(c) Aggregate stop loss reinsurance coverage;  
(d) A unilateral right by either party (or both parties) to commute the reinsurance contract, whether conditional or not, except for such provisions which are only triggered by a decline in the credit status of the other party;  
(e) A provision permitting reporting of losses, or payment of losses, less frequently than on a quarterly basis (unless there is no activity during the period); or  
(f) Payment schedule, accumulating retentions from multiple years or any features inherently designed to delay timing of the reimbursement to the ceding entity.

Yes ( ) No (X)

9.2

Has the reporting entity during the period covered by the statement ceded any risk under any reinsurance contract (or under multiple contracts with the same reinsurer or its affiliates), for which, during the period covered by the statement, it recorded a positive or negative underwriting result greater than 5% of the prior year-end surplus as regards policyholders or it reported calendar year written premium ceded or year-end loss and loss expense reserves ceded greater than 5% of prior year-end surplus as regards policyholders; excluding cessions to approved pooling arrangements or to captive insurance companies that are directly or indirectly controlling, controlled by, or under common control with (i) one or more unaffiliated policyholders of the reporting entity, or (ii) an association of which one or more unaffiliated policyholders of the reporting entity is a member where:  
(a) The written premium ceded to the reinsurer by the reporting entity or its affiliates represents fifty percent (50%) or more of the entire direct and assumed premium written by the reinsurer based on its most recently available financial statement; or  
(b) Twenty-five percent (25%) or more of the written premium ceded to the reinsurer has been retroceded back to the reporting entity or its affiliates in a separate reinsurance contract.

Yes ( ) No (X)

9.3

If yes to 9.1 or 9.2., please provide the following information in the Reinsurance Summary Supplemental Filing for General Interrogatory 9:  
(a) The aggregate financial statement impact gross of all such ceded reinsurance contracts on the balance sheet and statement of income;  
(b) A summary of the reinsurance contract terms and indicate whether it applies to the contracts meeting the criteria in 9.1 or 9.2; and  
(c) A brief discussion of management's principle objectives in entering into the reinsurance contract including the economic purpose to be achieved.

9.4

Except for transactions meeting the requirements of paragraph 31 of SSAP No. 62R, Property and Casualty Reinsurance, has the reporting entity ceded any risk under any reinsurance contract (or multiple contracts with the same reinsurer or its affiliates) during the period covered by the financial statement, and either:  
(a) Accounted for that contract as reinsurance (either prospective or retroactive) under statutory accounting principles ("SAP") and as a deposit under generally accepted accounting principles ("GAAP"); or  
(b) Accounted for that contract as reinsurance under GAAP and as a deposit under SAP?

Yes ( ) No (X)

9.5

If yes to 9.4., explain in the Reinsurance Summary Supplemental Filing for General Interrogatory 9 (Section D) why the contract(s) is treated differently for GAAP and SAP.

9.6

The reporting entity is exempt from the Reinsurance Attestation Supplement under one or more of the following criteria:  
(a) The entity does not utilize reinsurance; or,  
(b) The entity only engages in a 100% quota share contract with an affiliate and the affiliated or lead company has filed an attestation supplement; or  
(c) The entity has no external cessions and only participates in an intercompany pool and the affiliated or lead company has filed an attestation supplement.

Yes ( ) No (X)  
Yes ( ) No (X)  
Yes ( ) No (X)

10.

If the reporting entity has assumed risks from another entity, there should be charged on account of such reinsurances a reserve equal to that which the original entity would have been required to charge had it retained the risks. Has this been done?

Yes (X) No ( ) N/A ( )

11.1

Has this reporting entity guaranteed policies issued by any other entity and now in force?

Yes ( ) No (X)

11.2

If yes, give full information.

12.1

If the reporting entity recorded accrued retrospective premiums on insurance contracts on Line 15.3 of the asset schedule, Page 2, state the amount of corresponding liabilities recorded for:  

12.11

Unpaid losses

\$ 0

12.12

Unpaid underwriting expenses (including loss adjustment expenses)

\$ 0

12.2

Of the amount on Line 15.3, Page 2, state the amount that is secured by letters of credit, collateral and other funds:

\$ 0

12.3

If the reporting entity underwrites commercial insurance risks, such as workers' compensation, are premium notes or promissory notes accepted from its insureds covering unpaid premiums and/or unpaid losses?

Yes ( ) No (X) N/A ( )

GENERAL INTERROGATORIES

PART 2 - PROPERTY AND CASUALTY INTERROGATORIES

12.4 If yes, provide the range of interest rates charged under such notes during the period covered by this statement:

12.41 From

12.42 To

0.000 %

0.000 %

12.5 Are letters of credit or collateral and other funds received from insureds being utilized by the reporting entity to secure premium notes or promissory notes taken by the reporting entity, or to secure any of the reporting entity's reported direct unpaid loss reserves, including unpaid losses under loss deductible features of commercial policies?

Yes ( ) No (X)

12.6 If yes, state the amount thereof at December 31 of the current year:

12.61 Letters of credit

12.62 Collateral and other funds

\$ 0

\$ 0

13.1 Largest net aggregate amount insured in any one risk (excluding workers' compensation):

\$ 3,000,000

13.2 Does any reinsurance contract considered in the calculation of this amount include an aggregate limit of recovery without also including a reinstatement provision?

Yes (X) No ( )

13.3 State the number of reinsurance contracts (excluding individual facultative risk certificates, but including facultative programs, automatic facilities or facultative obligatory contracts) considered in the calculation of the amount.

6

14.1 Is the company a cedant in a multiple cedant reinsurance contract?

Yes (X) No ( )

14.2 If yes, please describe the method of allocating and recording reinsurance among the cedants:

All of the insurance companies that make up Westfield Group are listed in each of our reinsurance contracts if they write the type of insurance covered by the reinsurance contract

14.3 If the answer to 14. 1 is yes, are the methods described in item 14.2 entirely contained in the respective multiple cedant reinsurance contracts?

Yes ( ) No (X)

14.4 If the answer to 14.3 is no, are the methods described in 14.2 entirely contained in written agreements?

Yes (X) No ( )

14.5 If the answer to 14.4 is no, please explain:

15.1 Has the reporting entity guaranteed any financed premium accounts?

Yes ( ) No (X)

15.2 If yes, give full information.

16.1 Does the reporting entity write any warranty business?

Yes ( ) No (X)

If yes, disclose the following information for each of the following types of warranty coverage:

	1 Direct Losses Incurred	2 Direct Losses Unpaid	3 Direct Written Premium	4 Direct Premium Unearned	5 Direct Premium Earned
16.11 Home	\$ 0	\$ 0	\$ 0	\$ 0	\$ 0
16.12 Products	\$ 0	\$ 0	\$ 0	\$ 0	\$ 0
16.13 Automobile	\$ 0	\$ 0	\$ 0	\$ 0	\$ 0
16.14 Other*	\$ 0	\$ 0	\$ 0	\$ 0	\$ 0

\* Disclose type of coverage:

17.1 Does the reporting entity include amounts recoverable on unauthorized reinsurance in Schedule F - Part 3 that it excludes from Schedule F - Part 5?

Yes ( ) No (X)

Incurred but not reported losses on contracts in force prior to July 1, 1984, and not subsequently renewed are exempt from inclusion in Schedule F - Part 5.  
Provide the following information for this exemption:

17.11	Gross amount of unauthorized reinsurance in Schedule F - Part 3 excluded from Schedule F - Part 5	\$ 0
17.12	Unfunded portion of Interrogatory 17.11	\$ 0
17.13	Paid losses and loss adjustment expenses portion of Interrogatory 17.11	\$ 0
17.14	Case reserves portion of Interrogatory 17.11	\$ 0
17.15	Incurred but not reported portion of Interrogatory 17.11	\$ 0
17.16	Unearned premium portion of Interrogatory 17.11	\$ 0
17.17	Contingent commission portion of Interrogatory 17.11	\$ 0

Provide the following information for all other amounts included in Schedule F - Part 3 and excluded from Schedule F - Part 5, not included above.

17.18	Gross amount of unauthorized reinsurance in Schedule F - Part 3 excluded from Schedule F - Part 5	\$ 0
17.19	Unfunded portion of Interrogatory 17.18	\$ 0
17.20	Paid losses and loss adjustment expenses portion of Interrogatory 17.18	\$ 0
17.21	Case reserves portion of Interrogatory 17.18	\$ 0
17.22	Incurred but not reported portion of Interrogatory 17.18	\$ 0
17.23	Unearned premium portion of Interrogatory 17.18	\$ 0
17.24	Contingent commission portion of Interrogatory 17.18	\$ 0

18.1 Do you act as a custodian for health savings accounts?

Yes ( ) No (X)

18.2 If yes, please provide the amount of custodial funds held as of the reporting date.

\$ 0

18.3 Do you act as an administrator for health savings accounts?

Yes ( ) No (X)

18.4 If yes, please provide the balance of the funds administered as of the reporting date.

\$ 0

FIVE-YEAR HISTORICAL DATA

Show amounts in whole dollars only , no cents; show percentages to one decimal place , i . e . 17.6 .

	1 2014	2 2013	3 2012	4 2011	5 2010
Gross Premiums Written (Page 8, Part 1B, Columns 1, 2 and 3)					
1. Liability lines (Lines 11.1, 11.2, 16, 17.1, 17.2, 17.3, 18.1, 18.2, 19.1, 19.2 and 19.3, 19.4)	654,208,690	626,957,645	599,605,225	605,636,486	561,687,473
2. Property lines (Lines 1, 2, 9, 12, 21 and 26)	339,103,501	318,843,697	300,387,652	303,014,958	281,199,341
3. Property and liability combined lines (Lines 3, 4, 5, 8, 22 and 27)	648,503,033	617,495,383	586,730,295	578,980,125	518,886,663
4. All other lines (Lines 6, 10, 13, 14, 15, 23, 24, 28, 29, 30 and 34)	52,443,325	51,006,767	53,111,849	60,631,715	60,219,081
5. Nonproportional reinsurance lines (Lines 31, 32 and 33)	46,144,721	68,185,804	74,381,116	64,101,325	59,730,234
6. Total (Line 35)	1,740,403,270	1,682,489,296	1,614,216,137	1,612,364,609	1,481,722,792
Net Premiums Written (Page 8, Part 1B, Column 6)					
7. Liability lines (Lines 11.1, 11.2, 16, 17.1, 17.2, 17.3, 18.1, 18.2, 19.1, 19.2 and 19.3, 19.4)	123,388,464	118,325,498	113,228,100	136,618,767	50,390,423
8. Property lines (Lines 1, 2, 9, 12, 21 and 26)	64,429,663	60,580,303	57,073,654	68,560,306	25,307,940
9. Property and liability combined lines (Lines 3, 4, 5, 8, 22 and 27)	123,215,577	117,324,123	111,478,755	131,632,786	46,699,798
10. All other lines (Lines 6, 10, 13, 14, 15, 23, 24, 28, 29, 30 and 34)	9,480,060	9,139,026	9,413,670	13,489,852	5,218,498
11. Nonproportional reinsurance lines (Line 31, 32 and 33)	8,767,497	12,955,303	14,132,412	12,698,867	5,375,721
12. Total (Line 35)	329,281,261	318,324,253	305,326,591	363,000,578	132,992,380
Statement of Income (Page 4)					
13. Net underwriting gain (loss) (Line 8)	6,779,035	14,318,502	933,939	(58,018,682)	461,675
14. Net investment gain (loss) (Line 11)	36,227,752	16,018,132	39,787,565	(7,249,926)	69,857,619
15. Total other income (Line 15)	122,457	152,595	286,969	(458,474)	4,731,567
16. Dividends to policyholders (Line 17)	0	0	0	0	0
17. Federal and foreign income taxes incurred (Line 19)	3,846,425	9,394,576	4,096,609	(3,328,578)	6,527,202
18. Net income (Line 20)	39,282,819	21,094,653	36,911,864	(62,398,504)	68,523,659
Balance Sheet Lines (Pages 2 and 3)					
19. Total admitted assets excluding protected cell business (Page 2, Line 26, Column 3)	2,595,105,375	2,404,576,906	2,131,875,807	1,915,579,522	1,661,104,519
20. Premiums and considerations (Page 2, Column 3)					
20.1 In course of collection (Line 15.1)	16,823,301	15,494,857	14,944,364	14,668,902	6,519,845
20.2 Deferred and not yet due (Line 15.2)	101,695,789	99,957,167	92,243,360	88,200,509	39,672,700
20.3 Accrued retrospective premiums (Line 15.3)	0	0	0	0	0
21. Total liabilities excluding protected cell business (Page 3, Line 26)	692,655,841	595,886,710	606,312,379	553,869,272	278,205,565
22. Losses (Page 3, Line 1)	210,695,265	214,948,416	215,498,196	225,503,691	97,940,267
23. Loss adjustment expenses (Page 3, Line 3)	71,531,479	68,685,751	65,711,302	62,421,121	26,902,534
24. Unearned premiums (Page 3, Line 9)	159,967,851	152,355,066	145,200,448	140,707,188	64,123,775
25. Capital paid up (Page 3, Line 30 and Line 31)	0	0	0	0	0
26. Surplus as regards policyholders (Page 3, Line 37)	1,902,449,534	1,808,690,196	1,525,563,428	1,361,710,250	1,382,898,954
Cash Flow (Page 5)					
27. Net cash from operations (Line 11)	56,959,371	23,149,388	58,636,075	165,483,296	82,142,631
Risk-Based Capital Analysis					
28. Total adjusted capital	1,902,449,534	1,808,690,196	1,525,563,428	1,361,710,250	1,382,898,954
29. Authorized control level risk-based capital	217,917,695	214,838,149	204,555,447	188,828,582	171,167,782
Percentage Distribution of Cash, Cash Equivalents and Invested Assets (Page 2, Column 3) (Item divided by Page 2, Line 12, Column 3) x 100.0					
30. Bonds (Line 1)	16.6	17.5	17.3	17.7	14.5
31. Stocks (Line 2.1 and Line 2.2)	75.6	75.4	74.6	73.7	77.5
32. Mortgage loans on real estate (Line 3.1 and Line 3.2)	0.0	0.0	0.0	0.0	0.0
33. Real estate (Lines 4.1, 4.2 and 4.3)	2.4	2.7	3.0	3.4	3.8
34. Cash, cash equivalents and short-term investments (Line 5)	2.0	1.2	1.7	1.6	0.9
35. Contact loans (Line 6)	0.0	0.0	0.0	0.0	0.0
36. Derivatives (Line 7)	0.0	0.0	0.0	0.0	0.0
37. Other invested assets (Line 8)	3.4	3.3	3.5	3.7	3.4
38. Receivables for securities (Line 9)	0.0	0.0	0.0	0.0	0.0
39. Securities lending reinvested collateral assets (Line 10)	0.0	0.0	0.0	0.0	0.0
40. Aggregate write-ins for invested assets (Line 11)	(0.1)	(0.1)	(0.1)	(0.2)	(0.1)
41. Cash, cash equivalents and invested assets (Line 12)	100.0	100.0	100.0	100.0	100.0
Investments in Parent, Subsidiaries and Affiliates					
42. Affiliated bonds (Schedule D, Summary, Line 12, Column 1)	0	0	0	0	0
43. Affiliated preferred stocks (Schedule D, Summary, Line 18, Column 1)	0	0	0	0	0
44. Affiliated common stocks (Schedule D, Summary, Line 24, Column 1)	1,667,246,742	1,550,942,894	1,330,175,365	1,176,568,888	1,160,018,624
45. Affiliated short-term investments (Schedule DA Verification, Column 5, Line 10)	0	0	0	0	0
46. Affiliated mortgage loans on real estate	0	0	0	0	0
47. All other affiliated	0	0	0	0	0
48. Total of above Line 42 through Line 47	1,667,246,742	1,550,942,894	1,330,175,365	1,176,568,888	1,160,018,624
49. Total investment in parent included in Line 42 through Line 47 above	0	0	0	0	0
50. Percentage of investments in parent, subsidiaries and affiliates to surplus as regards policyholders (Line 48 above divided by Page 3, Column 1, Line 37 x 100.0)	87.6	85.7	87.2	86.4	83.9

FIVE-YEAR HISTORICAL DATA  
(Continued)

	1 2014	2 2013	3 2012	4 2011	5 2010
Capital and Surplus Accounts (Page 4)					
51. Net unrealized capital gains (losses) (Line 24)	110,745,448	242,025,883	141,402,654	54,852,214	71,196,229
52. Dividends to stockholders (Line 35)	0	0	0	0	0
53. Change in surplus as regards policyholders for the year (Line 38)	93,759,338	283,126,768	163,853,178	(21,188,704)	142,744,853
Gross Losses Paid (Page 9, Part 2, Columns 1 and 2)					
54. Liability lines (Lines 11.1, 11.2, 16, 17.1, 17.2, 17.3, 18.1, 18.2, 19.1, 19.2 and 19.3, 19.4)	353,234,079	323,288,268	312,365,503	300,684,351	295,945,362
55. Property lines (Lines 1, 2, 9, 12, 21 and 26)	179,615,585	155,708,680	160,431,357	165,823,351	153,209,743
56. Property and liability combined lines (Lines 3, 4, 5, 8, 22 and 27)	338,637,947	295,668,815	336,764,788	385,144,663	294,003,659
57. All other lines (Lines 6, 10, 13, 14, 15, 23, 24, 28, 29, 30 and 34)	6,750,883	10,229,608	63,906,453	8,838,593	11,492,111
58. Nonproportional reinsurance lines (Lines 31, 32, and 33)	22,340,113	1,141,998	59,500,649	59,637,592	2,631,754
59. Total (Line 35)	900,578,607	786,037,369	932,968,750	920,128,550	757,282,629
Net Losses Paid (Page 9, Part 2, Column 4)					
60. Liability lines (Lines 11.1, 11.2, 16, 17.1, 17.2, 17.3, 18.1, 18.2, 19.1, 19.2 and 19.3, 19.4)	66,569,531	60,982,256	58,937,616	(13,441,576)	26,466,027
61. Property lines (Lines 1, 2, 9, 12, 21 and 26)	34,126,960	29,584,650	30,481,957	29,325,959	13,788,877
62. Property and liability combined lines (Lines 3, 4, 5, 8, 22 and 27)	64,341,210	56,177,075	63,985,311	40,887,769	26,460,329
63. All other lines (Lines 6, 10, 13, 14, 15, 23, 24, 28, 29, 30 and 34)	1,282,668	1,929,397	5,561,885	728,468	771,532
64. Nonproportional reinsurance lines (Lines 31, 32, and 33)	4,244,621	216,980	11,305,123	8,143,356	236,858
65. Total (Line 35)	170,564,990	148,890,358	170,271,892	65,643,976	67,723,623
Operating Percentages (Page 4) (Item divided by Page 4, Line 1) x 100.0					
66. Premiums earned (Line 1)	100.0	100.0	100.0	100.0	100.0
67. Losses incurred (Line 2)	51.7	47.7	53.3	67.5	56.4
68. Loss expenses incurred (Line 3)	11.8	12.1	11.6	11.8	10.1
69. Other underwriting expenses incurred (Line 4)	34.4	35.6	34.8	41.0	33.1
70. Net underwriting gain (loss) (Line 8)	2.1	4.6	0.3	(20.3)	0.3
Other Percentages					
71. Other underwriting expenses to net premiums written (Page 4, Line 4 plus Line 5 minus Line 15 divided by Page 8, Part 1B, Column 6, Line 35 x 100.0)	33.6	34.7	34.2	32.5	29.5
72. Losses and loss expenses incurred to premiums earned (Page 4, Line 2 plus Line 3 divided by Page 4, Line 1 x 100.0)	63.5	59.8	64.9	79.3	66.5
73. Net premiums written to policyholders' surplus (Page 8, Part 1B, Column 6, Line 35 divided by Page 3, Line 37, Column 1 x 100.0)	17.3	17.6	20.0	26.7	9.6
One Year Loss Development (000 omitted)					
74. Development in estimated losses and loss expenses incurred prior to current year (Schedule P, Part 2 - Summary, Line 12, Column 11)	(16,483)	(18,396)	(17,671)	(20,376)	(8,575)
75. Percent of development of losses and loss expenses incurred to policyholders' surplus of prior year end (Line 74 above divided by Page 4, Line 21, Column 1 x 100.0)	(0.9)	(1.2)	(1.3)	(1.5)	(0.7)
Two Year Loss Development (000 omitted)					
76. Development in estimated losses and loss expenses incurred 2 years before the current year and prior year (Schedule P, Part 2 - Summary, Line 12, Column 12)	(26,085)	(28,184)	(31,935)	(29,429)	(10,617)
77. Percent of development of losses and loss expenses incurred to reported policyholders' surplus of second prior year end (Line 76 above divided by Page 4, Line 21, Column 2 x 100.0)	(1.7)	(2.1)	(2.3)	(2.4)	(1.0)

Note: If a party to a merger, have the two most recent years of this exhibit been restated due to a merger in compliance with the disclosure requirements of SSAP No. 3, Accounting Changes and Correction of Errors?  
If no, please explain:

Yes ( ) No ( )



SCHEDULE P - ANALYSIS OF LOSSES AND LOSS EXPENSES

SCHEDULE P - PART 1 - SUMMARY

(\$000 Omitted)

Years in Which Premiums Were Earned and Losses Were Incurred	Premiums Earned			Loss and Loss Expense Payments								12  Number of Claims Reported - Direct and Assumed
	1	2	3	Loss Payments		Defense and Cost Containment Payments		Adjusting and Other Payments		10	11	
	Direct and Assumed	Ceded	Net (Columns 1 - 2)	4 Direct and Assumed	5 Ceded	6 Direct and Assumed	7 Ceded	8 Direct and Assumed	9 Ceded	Salvage and Subrogation Received	Total Net Paid (Columns 4 - 5 + 6 - 7 + 8 - 9)	
1. Prior .....	X X X	X X X	X X X	2,202	291	703	19	163	0	96	2,759	X X X
2. 2005 .....	286,337	11,978	274,359	128,983	3,540	9,156	159	14,769	2	6,075	149,207	X X X
3. 2006 .....	304,819	20,674	284,144	146,829	14,492	9,531	371	16,362	7	5,461	157,853	X X X
4. 2007 .....	323,806	24,748	299,058	147,750	6,557	10,197	205	16,550	0	5,543	167,735	X X X
5. 2008 .....	354,749	41,718	313,031	212,533	31,802	11,345	404	16,484	1	6,624	208,155	X X X
6. 2009 .....	287,732	13,400	274,332	135,840	2,441	10,591	69	15,721	4	5,790	159,638	X X X
7. 2010 .....	293,295	13,067	280,228	152,965	2,232	10,394	136	16,588	(1)	6,271	177,581	X X X
8. 2011 .....	301,876	15,459	286,417	204,444	20,218	9,694	663	18,671	(3)	6,971	211,932	X X X
9. 2012 .....	317,501	16,668	300,833	150,039	8,094	5,416	263	18,807	1	5,861	165,905	X X X
10. 2013 .....	328,763	17,594	311,170	120,186	4,329	2,986	120	18,709	3	5,043	137,430	X X X
11. 2014 .....	340,227	18,559	321,668	99,126	2,558	889	78	16,255	(3)	3,137	113,637	X X X
12. Totals .....	X X X	X X X	X X X	1,500,898	96,552	80,902	2,485	169,080	11	56,872	1,651,832	X X X

	Losses Unpaid				Defense and Cost Containment Unpaid				Adjusting and Other Unpaid		23	24	25
	Case Basis		Bulk + IBNR		Case Basis		Bulk + IBNR		21	22	Salvage and Subrogation Anticipated	Total Net Losses and Expenses Unpaid	Number of Claims Outstanding - Direct & Assumed
	13 Direct and Assumed	14 Ceded	15 Direct and Assumed	16 Ceded	17 Direct and Assumed	18 Ceded	19 Direct and Assumed	20 Ceded	Direct and Assumed	Ceded			
1. ....	11,008	4,216	8,350	0	262	0	3,416	0	1,169	0	0	19,988	X X X
2. ....	676	101	1,030	72	79	0	243	0	149	0	0	2,003	X X X
3. ....	1,629	259	1,058	57	94	0	354	0	224	0	0	3,043	X X X
4. ....	1,529	215	1,640	40	187	0	541	0	269	0	0	3,910	X X X
5. ....	2,258	284	1,916	49	296	0	910	0	390	0	0	5,438	X X X
6. ....	4,630	777	1,909	126	529	0	1,230	10	689	0	0	8,074	X X X
7. ....	6,291	70	2,750	239	1,070	0	1,952	19	1,202	0	0	12,938	X X X
8. ....	12,710	2,532	5,723	464	1,799	0	3,809	38	1,776	0	0	22,782	X X X
9. ....	17,277	471	11,661	890	3,301	0	4,850	76	2,313	0	0	37,966	X X X
10. ....	29,217	2,846	19,234	1,655	4,834	0	6,961	134	4,197	0	0	59,809	X X X
11. ....	45,471	2,165	42,532	2,274	7,646	0	8,876	237	6,426	0	0	106,275	X X X
12. ....	132,696	13,937	97,804	5,867	20,097	0	33,143	513	18,804	0	0	282,227	X X X

	Total Losses and Loss Expenses Incurred			Loss and Loss Expense Percentage (Incurred/Premiums Earned)			Nontabular Discount		34	Net Balance Sheet Reserves After Discount	
	26 Direct and Assumed	27 Ceded	28 Net	29 Direct and Assumed	30 Ceded	31 Net	32 Loss	33 Loss Expense	Inter - Company Pooling Participation Percentage	35 Losses Unpaid	36 Loss Expenses Unpaid
1. ....	X X X	X X X	X X X	X X X	X X X	X X X	0	0	X X X	15,142	4,847
2. ....	155,084	3,874	151,210	54.2	32.3	55.1	0	0	19.0	1,533	471
3. ....	176,082	15,186	160,896	57.8	73.5	56.6	0	0	19.0	2,371	672
4. ....	178,663	7,018	171,646	55.2	28.4	57.4	0	0	19.0	2,914	997
5. ....	246,132	32,539	213,593	69.4	78.0	68.2	0	0	19.0	3,841	1,596
6. ....	171,138	3,427	167,712	59.5	25.6	61.1	0	0	19.0	5,636	2,438
7. ....	193,213	2,694	190,519	65.9	20.6	68.0	0	0	19.0	8,732	4,206
8. ....	258,626	23,912	234,715	85.7	154.7	81.9	0	0	19.0	15,437	7,346
9. ....	213,666	9,794	203,872	67.3	58.8	67.8	0	0	19.0	27,578	10,389
10. ....	206,325	9,087	197,238	62.8	51.6	63.4	0	0	19.0	43,949	15,859
11. ....	227,221	7,309	219,912	66.8	39.4	68.4	0	0	19.0	83,563	22,712
12. ....	X X X	X X X	X X X	X X X	X X X	X X X	0	0	X X X	210,695	71,531

Note: Parts 2 and 4 are gross of all discounting, including tabular discounting. Part 1 is gross of only nontabular discounting, which is reported in Columns 32 and 33 of Part 1. The tabular discount, if any, is reported in the Notes to Financial Statements which will reconcile Part 1 with Parts 2 and 4.

SCHEDULE P - PART 2 - SUMMARY

Years in Which Losses Were Incurred	INCURRED NET LOSSES AND DEFENSE AND COST CONTAINMENT EXPENSES REPORTED AT YEAR END (\$000 OMITTED)										DEVELOPMENT	
	1 2005	2 2006	3 2007	4 2008	5 2009	6 2010	7 2011	8 2012	9 2013	10 2014	11 One Year	12 Two Year
1. Prior .....	..... 113,242	..... 117,775	..... 118,249	..... 117,362	..... 116,515	..... 115,403	..... 116,177	..... 115,539	..... 114,837	..... 115,693	..... 856	..... 154
2. 2005 .....	..... 146,033	..... 140,918	..... 140,948	..... 140,256	..... 138,710	..... 137,305	..... 136,777	..... 136,558	..... 136,371	..... 136,294	..... (76)	..... (263)
3. 2006 .....	X X X	..... 156,665	..... 152,472	..... 149,606	..... 146,633	..... 145,104	..... 144,321	..... 144,680	..... 144,252	..... 144,316	..... 64	..... (363)
4. 2007 .....	X X X	X X X	..... 178,175	..... 163,659	..... 160,125	..... 157,162	..... 155,901	..... 154,756	..... 154,268	..... 154,827	..... 559	..... 71
5. 2008 .....	X X X	X X X	X X X	..... 210,647	..... 208,835	..... 204,143	..... 200,046	..... 198,438	..... 197,394	..... 196,719	..... (674)	..... (1,718)
6. 2009 .....	X X X	X X X	X X X	X X X	..... 169,777	..... 163,376	..... 157,944	..... 154,352	..... 152,516	..... 151,306	..... (1,210)	..... (3,046)
7. 2010 .....	X X X	X X X	X X X	X X X	X X X	..... 188,812	..... 179,762	..... 175,047	..... 174,044	..... 172,727	..... (1,317)	..... (2,320)
8. 2011 .....	X X X	X X X	X X X	X X X	X X X	X X X	..... 228,412	..... 222,300	..... 217,475	..... 214,264	..... (3,210)	..... (8,035)
9. 2012 .....	X X X	X X X	X X X	X X X	X X X	X X X	X X X	..... 193,315	..... 185,432	..... 182,752	..... (2,679)	..... (10,563)
10. 2013 .....	X X X	X X X	X X X	X X X	X X X	X X X	X X X	X X X	..... 183,130	..... 174,335	..... (8,795)	X X X
11. 2014 .....	X X X	X X X	X X X	X X X	X X X	X X X	X X X	X X X	X X X	..... 197,228	X X X	X X X
12. Totals											..... (16,483)	..... (26,085)

SCHEDULE P - PART 3 - SUMMARY

Years in Which Losses Were Incurred	CUMULATIVE PAID NET LOSSES AND DEFENSE AND COST CONTAINMENT EXPENSES REPORTED AT YEAR END (\$000 OMITTED)										11	12
	1 2005	2 2006	3 2007	4 2008	5 2009	6 2010	7 2011	8 2012	9 2013	10 2014	Number of Claims Closed With Loss Payment	Number of Claims Closed Without Loss Payment
1. Prior .....	0 0 0	..... 35,980	..... 61,159	..... 75,006	..... 81,977	..... 85,416	..... 89,784	..... 92,382	..... 94,277	..... 96,873	X X X	X X X
2. 2005 .....	..... 70,683	..... 99,701	..... 114,186	..... 124,045	..... 129,415	..... 131,676	..... 133,054	..... 133,555	..... 134,111	..... 134,440	X X X	X X X
3. 2006 .....	X X X	..... 76,953	..... 107,165	..... 122,276	..... 131,470	..... 135,508	..... 137,671	..... 139,698	..... 140,711	..... 141,497	X X X	X X X
4. 2007 .....	X X X	X X X	..... 82,266	..... 114,855	..... 130,384	..... 140,625	..... 145,394	..... 148,165	..... 150,011	..... 151,185	X X X	X X X
5. 2008 .....	X X X	X X X	X X X	..... 103,222	..... 157,345	..... 172,007	..... 180,879	..... 186,822	..... 189,867	..... 191,672	X X X	X X X
6. 2009 .....	X X X	X X X	X X X	X X X	..... 80,324	..... 111,095	..... 125,635	..... 135,472	..... 140,939	..... 143,921	X X X	X X X
7. 2010 .....	X X X	X X X	X X X	X X X	X X X	..... 87,437	..... 124,406	..... 141,497	..... 153,921	..... 160,991	X X X	X X X
8. 2011 .....	X X X	X X X	X X X	X X X	X X X	X X X	..... 112,268	..... 161,905	..... 179,413	..... 193,258	X X X	X X X
9. 2012 .....	X X X	X X X	X X X	X X X	X X X	X X X	X X X	..... 91,680	..... 127,449	..... 147,099	X X X	X X X
10. 2013 .....	X X X	X X X	X X X	X X X	X X X	X X X	X X X	X X X	..... 82,785	..... 118,724	X X X	X X X
11. 2014 .....	X X X	X X X	X X X	X X X	X X X	X X X	X X X	X X X	X X X	..... 97,379	X X X	X X X

SCHEDULE P - PART 4 - SUMMARY

Years in Which Losses Were Incurred	BULK AND IBNR RESERVES ON NET LOSSES AND DEFENSE AND COST CONTAINMENT EXPENSES REPORTED AT YEAR END (\$000 OMITTED)									
	1 2005	2 2006	3 2007	4 2008	5 2009	6 2010	7 2011	8 2012	9 2013	10 2014
1. Prior .....	..... 42,759	..... 34,484	..... 27,240	..... 24,314	..... 21,495	..... 19,146	..... 16,097	..... 13,955	..... 12,502	..... 11,766
2. 2005 .....	..... 29,372	..... 13,182	..... 7,445	..... 5,600	..... 4,372	..... 2,886	..... 2,207	..... 1,739	..... 1,331	..... 1,200
3. 2006 .....	X X X	..... 32,855	..... 15,410	..... 9,662	..... 6,562	..... 4,101	..... 2,441	..... 2,382	..... 1,739	..... 1,355
4. 2007 .....	X X X	X X X	..... 42,115	..... 17,954	..... 12,403	..... 7,731	..... 4,802	..... 3,269	..... 2,354	..... 2,141
5. 2008 .....	X X X	X X X	X X X	..... 40,411	..... 21,167	..... 12,329	..... 7,258	..... 4,603	..... 3,020	..... 2,777
6. 2009 .....	X X X	X X X	X X X	X X X	..... 44,201	..... 22,510	..... 13,702	..... 8,045	..... 4,972	..... 3,003
7. 2010 .....	X X X	X X X	X X X	X X X	X X X	..... 48,632	..... 21,916	..... 12,966	..... 7,999	..... 4,444
8. 2011 .....	X X X	X X X	X X X	X X X	X X X	X X X	..... 54,852	..... 22,296	..... 15,061	..... 9,030
9. 2012 .....	X X X	X X X	X X X	X X X	X X X	X X X	X X X	..... 51,279	..... 23,691	..... 15,546
10. 2013 .....	X X X	X X X	X X X	X X X	X X X	X X X	X X X	X X X	..... 50,551	..... 24,406
11. 2014 .....	X X X	X X X	X X X	X X X	X X X	X X X	X X X	X X X	X X X	..... 48,898

SCHEDULE T - EXHIBIT OF PREMIUMS WRITTEN

Allocated By States And Territories

			1	Gross Premiums, Including Policy and Membership Fees Less Return Premiums and Premiums on Policies Not Taken		4	5	6	7	8	9
			Active Status	2	3	Dividends Paid or Credited to Policyholders on Direct Business	Direct Losses Paid (Deducting Salvage)	Direct Losses Incurred	Direct Losses Unpaid	Finance and Service Charges Not Included in Premiums	Direct Premium Written for Federal Purchasing Groups (Included in Column 2)
States, Etc.				Direct Premiums Written	Direct Premiums Earned						
1. Alabama	AL	L	7,659	17,604	0	0	426	1,765	2	0	
2. Alaska	AK	N	0	0	0	0	0	0	0	0	
3. Arizona	AZ	L	37,056	22,360	0	0	827	11,263	37	0	
4. Arkansas	AR	L	7,762	11,075	0	0	(388)	690	0	0	
5. California	CA	N	0	0	0	0	0	70,000	0	0	
6. Colorado	CO	L	21,717	13,989	0	(2,458)	1,818	4,869	20	0	
7. Connecticut	CT	N	0	0	0	0	0	0	0	0	
8. Delaware	DE	L	102,423	18,804	0	0	4,844	6,993	114	0	
9. Dist. Columbia	DC	L	45,501	32,007	0	0	1,286	4,117	13	0	
10. Florida	FL	L	219,006	216,208	0	(41,992)	(77,891)	122,762	167	0	
11. Georgia	GA	L	74,517	101,202	0	(5,223)	(24,436)	47,485	79	0	
12. Hawaii	HI	N	0	0	0	0	0	0	0	0	
13. Idaho	ID	N	0	0	0	0	0	0	0	0	
14. Illinois	IL	L	1,700,384	1,594,189	0	376,609	7,562,582	11,344,364	2,788	0	
15. Indiana	IN	L	967,101	1,143,483	0	2,429,000	2,387,892	241,913	3,189	0	
16. Iowa	IA	L	109,166	116,975	0	0	(9,977)	35,392	196	0	
17. Kansas	KS	L	0	0	0	0	0	0	0	0	
18. Kentucky	KY	L	1,067,300	1,313,699	0	112,328	6,412	1,601,046	398,253	0	
19. Louisiana	LA	L	2,276	2,313	0	0	(207)	205	0	0	
20. Maine	ME	N	0	0	0	0	0	0	0	0	
21. Maryland	MD	L	98,764	61,851	0	0	4,160	4,510	53	0	
22. Massachusetts	MA	L	3,971	44,960	0	0	300	534	0	0	
23. Michigan	MI	L	785,068	646,160	0	(114,904)	(215,391)	3,278,606	3,417	0	
24. Minnesota	MN	L	1,341,393	1,311,847	0	140,342	203,369	1,500,799	2,292	0	
25. Mississippi	MS	L	20,796	20,014	0	0	1,751	1,910	2	0	
26. Missouri	MO	L	41,888	59,746	0	0	(791)	3,521	10	0	
27. Montana	MT	L	194,096	167,260	0	0	6,140	17,497	0	0	
28. Nebraska	NE	L	13,443	4,920	0	0	738	764	0	0	
29. Nevada	NV	L	13,778	11,602	0	0	312	831	4	0	
30. New Hampshire	NH	N	0	0	0	0	0	0	0	0	
31. New Jersey	NJ	L	4,320	77,414	0	0	(8,485)	1,394	0	0	
32. New Mexico	NM	L	1,503	1,838	0	0	45	303	5	0	
33. New York	NY	L	81,520	110,571	0	58,066	8,472	689,388	2	0	
34. North Carolina	NC	L	50,337	71,946	0	(360,686)	(428,950)	106,660	(2)	0	
35. North Dakota	ND	L	1,307,028	1,213,312	0	(35,472)	(25,560)	98,921	0	0	
36. Ohio	OH	L	11,366,807	12,008,724	0	1,076,433	602,060	2,657,557	42,715	0	
37. Oklahoma	OK	L	(2,881)	2,500	0	0	(772)	465	0	0	
38. Oregon	OR	N	0	0	0	0	0	0	0	0	
39. Pennsylvania	PA	L	133,163	164,823	0	73,101	(6,518)	245,430	499	0	
40. Rhode Island	RI	L	0	0	0	0	0	1	0	0	
41. South Carolina	SC	L	109,868	175,477	0	0	(4,409)	9,852	75	0	
42. South Dakota	SD	L	534,626	571,499	0	81,717	51,906	49,149	(28)	0	
43. Tennessee	TN	L	187,134	113,025	0	357,269	216,493	936,558	564	0	
44. Texas	TX	L	172,102	157,990	0	0	(2,989)	481,023	5	0	
45. Utah	UT	L	0	0	0	0	4	11	0	0	
46. Vermont	VT	L	0	0	0	0	2	10	0	0	
47. Virginia	VA	L	155,765	115,346	0	0	4,988	7,693	105	0	
48. Washington	WA	L	8,321	8,631	0	0	(3,062)	592	0	0	
49. West Virginia	WV	L	1,445,694	1,630,114	0	(62,796)	(90,092)	187,222	4,589	0	
50. Wisconsin	WI	L	387,282	222,363	0	(6)	24,519	74,355	274	0	
51. Wyoming	WY	L	84,143	66,065	0	0	5,370	6,747	31	0	
52. American Samoa	AS	N	0	0	0	0	0	0	0	0	
53. Guam	GU	N	0	0	0	0	0	0	0	0	
54. Puerto Rico	PR	N	0	0	0	0	0	0	0	0	
55. U.S. Virgin Islands	VI	N	0	0	0	0	0	0	0	0	
56. Northern Mariana Islands	MP	N	0	0	0	0	0	0	0	0	
57. Canada	CAN	N	0	0	0	0	0	0	0	0	
58. Aggregate other alien	OT	X X X	0	0	0	0	0	0	0	0	
59. Totals	(a)	43	22,901,797	23,643,906	0	4,081,328	10,196,798	23,855,167	459,470	0	
DETAILS OF WRITE-INS											
58001.	X X X	0	0	0	0	0	0	0	0	0	
58002.	X X X	0	0	0	0	0	0	0	0	0	
58003.	X X X	0	0	0	0	0	0	0	0	0	
58998. Summary of remaining write-ins for Line 58 from overflow page	X X X	0	0	0	0	0	0	0	0	0	
58999. Totals (Line 58001 through 58003+58998) (Line 58 above)	X X X	0	0	0	0	0	0	0	0	0	

(L) Licensed or Chartered - Licensed Insurance Carrier or Domiciled RRG; (R) Registered - Non-domiciled RRGs; (Q) Qualified - Qualified or Accredited Reinsurer;  
(E) Eligible - Reporting Entities eligible or approved to write Surplus Lines in the state; (N) None of the above - Not allowed to write business in the state.

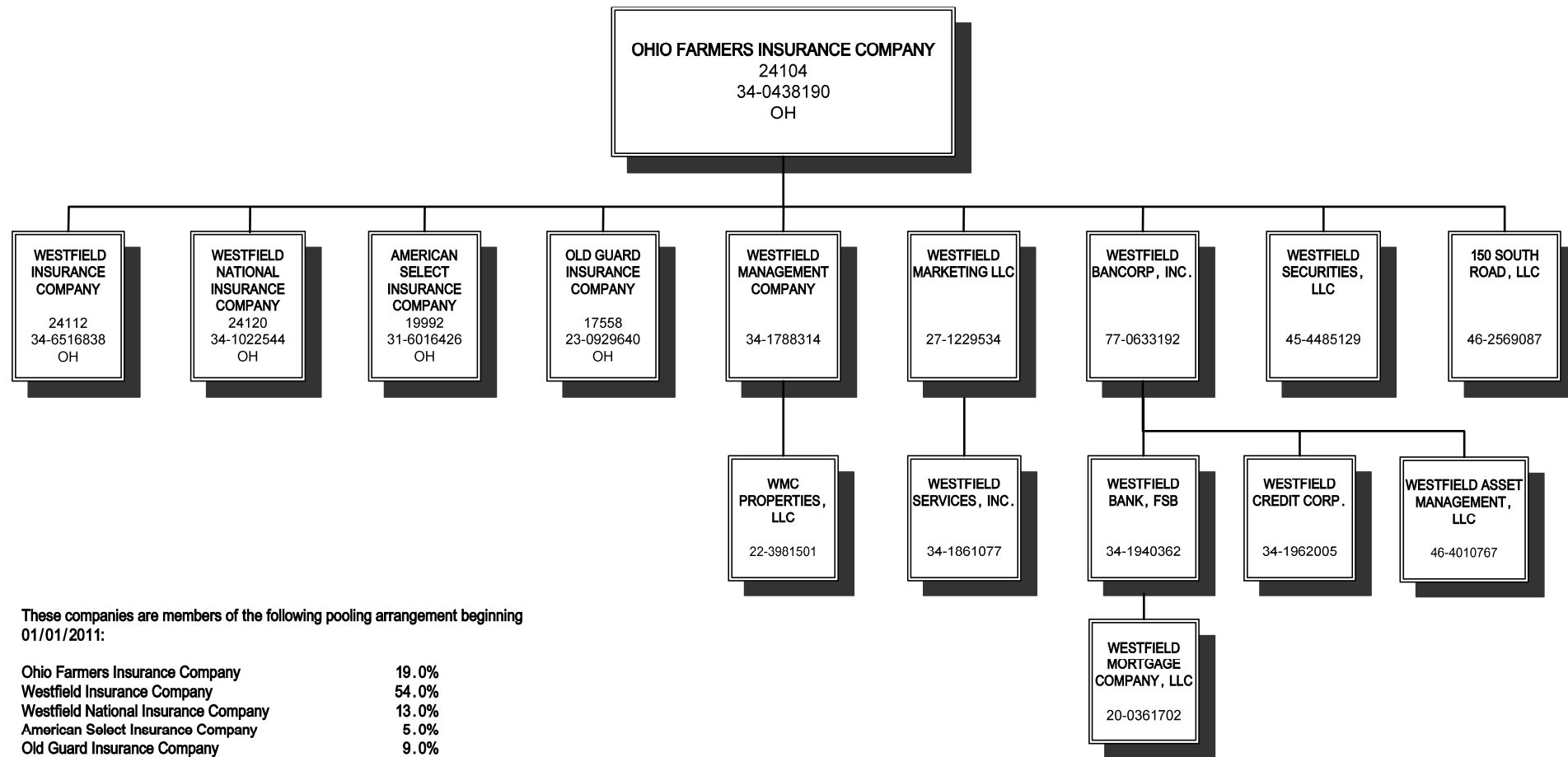
Explanation of basis of allocation of premiums by states, etc.

Inland Marine and Other Accident and Health - Residence of Insured

All Other Lines - Location of Risk

(a) Insert the number of "L" responses except for Canada and Other Alien.

ANNUAL STATEMENT FOR THE YEAR 2014 OF THE Ohio Farmers Insurance Company  
SCHEDULE Y - INFORMATION CONCERNING ACTIVITIES OF INSURER MEMBERS OF A HOLDING COMPANY GROUP  
PART 1 - ORGANIZATIONAL CHART



Property and Casualty  
Annual Statement Blank Alphabetical Index

Assets .....	2	Schedule H - Accident and Health Exhibit - Part 1 .....	30
Cash Flow .....	5	Schedule H - Parts 2, 3, and 4 .....	31
Exhibit of Capital Gains (Losses) .....	12	Schedule H - Part 5 - Health Claims .....	32
Exhibit of Net Investment Income .....	12	Schedule P - Part 1 - Summary .....	33
Exhibit of Nonadmitted Assets .....	13	Schedule P - Part 1A - Homeowners/Farmowners .....	35
Exhibit of Premiums and Losses (State Page) .....	19	Schedule P - Part 1B - Private Passenger Auto Liability/Medical .....	36
Five-Year Historical Data .....	17	Schedule P - Part 1C - Commercial Auto/Truck Liability/Medical .....	37
General Interrogatories .....	15	Schedule P - Part 1D - Workers' Compensation .....	38
Jurat Page .....	1	Schedule P - Part 1E - Commercial Multiple Peril .....	39
Liabilities, Surplus and Other Funds .....	3	Schedule P - Part 1F - Section 1 - Medical Professional Liability - Occurrence .....	40
Notes To Financial Statements .....	14	Schedule P - Part 1F - Section 2 - Medical Professional Liability - Claims-Made .....	41
Overflow Page For Write-ins .....	100	Schedule P - Part 1G - Special Liability (Ocean, Marine, Aircraft (All Perils) , Boiler and Machinery) .....	42
Schedule A - Part 1 .....	E01	Schedule P - Part 1H - Section 1 - Other Liability - Occurrence .....	43
Schedule A - Part 2 .....	E02	Schedule P - Part 1H - Section 2 - Other Liability - Claims-Made .....	44
Schedule A - Part 3 .....	E03	Schedule P - Part 1I - Special Property (Fire, Allied Lines, Inland Marine, Earthquake, Burglary and Theft) .....	45
Schedule A - Verification Between Years .....	SI02	Schedule P - Part 1J - Auto Physical Damage .....	46
Schedule B - Part 1 .....	E04	Schedule P - Part 1K - Fidelity/Surety .....	47
Schedule B - Part 2 .....	E05	Schedule P - Part 1L - Other (Including Credit, Accident and Health) .....	48
Schedule B - Part 3 .....	E06	Schedule P - Part 1M - International .....	49
Schedule B - Verification Between Years .....	SI02	Schedule P - Part 1N - Reinsurance - Nonproportional Assumed Property .....	50
Schedule BA - Part 1 .....	E07	Schedule P - Part 1O - Reinsurance - Nonproportional Assumed Liability .....	51
Schedule BA - Part 2 .....	E08	Schedule P - Part 1P - Reinsurance - Nonproportional Assumed Financial Lines .....	52
Schedule BA - Part 3 .....	E09	Schedule P - Part 1R - Section 1 - Products Liability - Occurrence .....	53
Schedule BA - Verification Between Years .....	SI03	Schedule P - Part 1R - Section 2 - Products Liability - Claims-Made .....	54
Schedule D - Part 1 .....	E10	Schedule P - Part 1S - Financial Guaranty/Mortgage Guaranty .....	55
Schedule D - Part 1A - Section 1 .....	SI05	Schedule P - Part 1T - Warranty .....	56
Schedule D - Part 1A - Section 2 .....	SI08	Schedule P - Parts 2, 3, and 4 - Summary .....	34
Schedule D - Part 2 - Section 1 .....	E11	Schedule P - Part 2A - Homeowners/Farmowners .....	57
Schedule D - Part 2 - Section 2 .....	E12	Schedule P - Part 2B - Private Passenger Auto Liability/Medical .....	57
Schedule D - Part 3 .....	E13	Schedule P - Part 2C - Commercial Auto/Truck Liability/Medical .....	57
Schedule D - Part 4 .....	E14	Schedule P - Part 2D - Workers' Compensation .....	57
Schedule D - Part 5 .....	E15	Schedule P - Part 2E - Commercial Multiple Peril .....	57
Schedule D - Part 6 - Section 1 .....	E16	Schedule P - Part 2F - Section 1 - Medical Professional Liability - Occurrence .....	58
Schedule D - Part 6 - Section 2 .....	E16	Schedule P - Part 2F - Section 2 - Medical Professional Liability - Claims-Made .....	58
Schedule D - Summary By Country .....	SI04	Schedule P - Part 2G - Special Liability (Ocean Marine, Aircraft (All Perils) , Boiler and Machinery) .....	58
Schedule D - Verification Between Years .....	SI03	Schedule P - Part 2H - Section 1 - Other Liability - Occurrence .....	58
Schedule DA - Part 1 .....	E17	Schedule P - Part 2H - Section 2 - Other Liability - Claims-Made .....	58
Schedule DA - Verification Between Years .....	SI10	Schedule P - Part 2I - Special Property (Fire, Allied Lines, Inland Marine, Earthquake, Burglary and Theft) .....	59
Schedule DB - Part A - Section 1 .....	E18	Schedule P - Part 2J - Auto Physical Damage .....	59
Schedule DB - Part A - Section 2 .....	E19	Schedule P - Part 2K - Fidelity/Surety .....	59
Schedule DB - Part A - Verification Between Years .....	SI11	Schedule P - Part 2L - Other (Including Credit, Accident and Health) .....	59
Schedule DB - Part B - Section 1 .....	E20	Schedule P - Part 2M - International .....	59
Schedule DB - Part B - Section 2 .....	E21	Schedule P - Part 2N - Reinsurance - Nonproportional Assumed Property .....	60
Schedule DB - Part B - Verification Between Years .....	SI11	Schedule P - Part 2O - Reinsurance - Nonproportional Assumed Liability .....	60
Schedule DB - Part C - Section 1 .....	SI12	Schedule P - Part 2P - Reinsurance - Nonproportional Assumed Financial Lines .....	60
Schedule DB - Part C - Section 2 .....	SI13	Schedule P - Part 2R - Section 1 - Products Liability - Occurrence .....	61
Schedule DB - Part D - Section 1 .....	E22	Schedule P - Part 2R - Section 2 - Products Liability - Claims-Made .....	61
Schedule DB - Part D - Section 2 .....	E23	Schedule P - Part 2S - Financial Guaranty/Mortgage Guaranty .....	61
Schedule DB - Verification .....	SI14	Schedule P - Part 2T - Warranty .....	61
Schedule DL - Part 1 .....	E24	Schedule P - Part 3A - Homeowners/Farmowners .....	62
Schedule DL - Part 2 .....	E25	Schedule P - Part 3B - Private Passenger Auto Liability/Medical .....	62
Schedule E - Part 1 - Cash .....	E26	Schedule P - Part 3C - Commercial Auto/Truck Liability/Medical .....	62
Schedule E - Part 2 - Cash Equivalents .....	E27	Schedule P - Part 3D - Workers' Compensation .....	62
Schedule E - Part 3 - Special Deposits .....	E28	Schedule P - Part 3E - Commercial Multiple Peril .....	62
Schedule E - Verification Between Years .....	SI15	Schedule P - Part 3F - Section 1 - Medical Professional Liability - Occurrence .....	63
Schedule F - Part 1 .....	20	Schedule P - Part 3F - Section 2 - Medical Professional Liability - Claims-Made .....	63
Schedule F - Part 2 .....	21	Schedule P - Part 3G - Special Liability (Ocean Marine, Aircraft (All Perils) , Boiler and Machinery) .....	63
Schedule F - Part 3 .....	22	Schedule P - Part 3H - Section 1 - Other Liability - Occurrence .....	63
Schedule F - Part 4 .....	23	Schedule P - Part 3H - Section 2 - Other Liability - Claims-Made .....	63
Schedule F - Part 5 .....	24	Schedule P - Part 3I - Special Property (Fire, Allied Lines, Inland Marine, Earthquake, Burglary and Theft) .....	64
Schedule F - Part 6 - Section 1 .....	25	Schedule P - Part 3J - Auto Physical Damage .....	64
Schedule F - Part 6 - Section 2 .....	26		
Schedule F - Part 7 .....	27		
Schedule F - Part 8 .....	28		
Schedule F - Part 9 .....	29		

Property and Casualty  
Annual Statement Blank Alphabetical Index (cont.)

Schedule P - Part 3K - Fidelity/Surety . . . . .	64	Summary Investment Schedule . . . . .	SI01
Schedule P - Part 3L - Other (Including Credit, Accident and Health) . . . . .	64	Supplemental Exhibits and Schedules Interrogatories . . . . .	99
Schedule P - Part 3M - International . . . . .	64	Underwriting and Investment Exhibit Part 1 . . . . .	6
Schedule P - Part 3N - Reinsurance - Nonproportional Assumed Property . . . . .	65	Underwriting and Investment Exhibit Part 1A . . . . .	7
Schedule P - Part 3O - Reinsurance - Nonproportional Assumed Liability . . . . .	65	Underwriting and Investment Exhibit Part 1B . . . . .	8
Schedule P - Part 3P - Reinsurance - Nonproportional Assumed Financial Lines . . . . .	65	Underwriting and Investment Exhibit Part 2 . . . . .	9
Schedule P - Part 3R - Section 1 - Products Liability - Occurrence . . . . .	66	Underwriting and Investment Exhibit Part 2A . . . . .	10
Schedule P - Part 3R - Section 2 - Products Liability - Claims-Made . . . . .	66	Underwriting and Investment Exhibit Part 3 . . . . .	11
Schedule P - Part 3S - Financial Guaranty/Mortgage Guaranty . . . . .	66		
Schedule P - Part 3T - Warranty . . . . .	66		
Schedule P - Part 4A - Homeowners/Farmowners . . . . .	67		
Schedule P - Part 4B - Private Passenger Auto Liability/Medical . . . . .	67		
Schedule P - Part 4C - Commercial Auto/Truck Liability/Medical . . . . .	67		
Schedule P - Part 4D - Workers' Compensation . . . . .	67		
Schedule P - Part 4E - Commercial Multiple Peril . . . . .	67		
Schedule P - Part 4F - Section 1 - Medical Professional Liability - Occurrence . . . . .	68		
Schedule P - Part 4F - Section 2 - Medical Professional Liability - Claims-Made . . . . .	68		
Schedule P - Part 4G - Special Liability (Ocean Marine, Aircraft (All Perils), Boiler and Machinery) . . . . .	68		
Schedule P - Part 4H - Section 1 - Other Liability - Occurrence . . . . .	68		
Schedule P - Part 4H - Section 2 - Other Liability - Claims-Made . . . . .	68		
Schedule P - Part 4I - Special Property (Fire, Allied Lines, Inland Marine, Earthquake, Burglary and Theft) . . . . .	69		
Schedule P - Part 4J - Auto Physical Damage . . . . .	69		
Schedule P - Part 4K - Fidelity/Surety . . . . .	69		
Schedule P - Part 4L - Other (Including Credit, Accident and Health) . . . . .	69		
Schedule P - Part 4M - International . . . . .	69		
Schedule P - Part 4N - Reinsurance - Nonproportional Assumed Property . . . . .	70		
Schedule P - Part 4O - Reinsurance - Nonproportional Assumed Liability . . . . .	70		
Schedule P - Part 4P - Reinsurance - Nonproportional Assumed Financial Lines . . . . .	70		
Schedule P - Part 4R - Section 1 - Products Liability - Occurrence . . . . .	71		
Schedule P - Part 4R - Section 2 - Products Liability - Claims-Made . . . . .	71		
Schedule P - Part 4S - Financial Guaranty/Mortgage Guaranty . . . . .	71		
Schedule P - Part 4T - Warranty . . . . .	71		
Schedule P - Part 5A - Homeowners/Farmowners . . . . .	72		
Schedule P - Part 5B - Private Passenger Auto Liability/Medical . . . . .	73		
Schedule P - Part 5C - Commercial Auto/Truck Liability/Medical . . . . .	74		
Schedule P - Part 5D - Workers' Compensation . . . . .	75		
Schedule P - Part 5E - Commercial Multiple Peril . . . . .	76		
Schedule P - Part 5F - Medical Professional Liability - Claims-Made . . . . .	78		
Schedule P - Part 5F - Medical Professional Liability - Occurrence . . . . .	77		
Schedule P - Part 5H - Other Liability - Claims-Made . . . . .	80		
Schedule P - Part 5H - Other Liability - Occurrence . . . . .	79		
Schedule P - Part 5R - Products Liability - Claims-Made . . . . .	82		
Schedule P - Part 5R - Products Liability - Occurrence . . . . .	81		
Schedule P - Part 5T - Warranty . . . . .	83		
Schedule P - Part 6C - Commercial Auto/Truck Liability/Medical . . . . .	84		
Schedule P - Part 6D - Workers' Compensation . . . . .	84		
Schedule P - Part 6E - Commercial Multiple Peril . . . . .	85		
Schedule P - Part 6H - Other Liability - Claims-Made . . . . .	86		
Schedule P - Part 6H - Other Liability - Occurrence . . . . .	85		
Schedule P - Part 6M - International . . . . .	86		
Schedule P - Part 6N - Reinsurance - Nonproportional Assumed Property . . . . .	87		
Schedule P - Part 6O - Reinsurance - Nonproportional Assumed Liability . . . . .	87		
Schedule P - Part 6R - Products Liability - Claims-Made . . . . .	88		
Schedule P - Part 6R - Products Liability - Occurrence . . . . .	88		
Schedule P - Part 7A - Primary Loss Sensitive Contracts . . . . .	89		
Schedule P - Part 7B - Reinsurance Loss Sensitive Contracts . . . . .	91		
Schedule P Interrogatories . . . . .	93		
Schedule T - Exhibit of Premiums Written . . . . .	94		
Schedule T - Part 2 - Interstate Compact . . . . .	95		
Schedule Y - Information Concerning Activities of Insurer Members of a Holding Company Group . . . . .	96		
Schedule Y - Past 1A - Detail of Insurance Holding Company System . . . . .	97		
Schedule Y - Part 2 - Summary of Insurer's Transactions With Any Affiliates . . . . .	98		
Statement of Income . . . . .	4		