



QUARTERLY STATEMENT

AS OF SEPTEMBER 30, 2014
OF THE CONDITION AND AFFAIRS OF THE

TRUSTGARD INSURANCE COMPANY

NAIC Group Code 00267 , 00267 NAIC Company Code 40118 Employer's ID Number 41-1405571
(Current Period) (Prior Period)

Organized under the Laws of Ohio , State of Domicile or Port of Entry Ohio

Country of Domicile United States

Incorporated/Organized 07/01/1981 Commenced Business 11/10/1981

Statutory Home Office 671 South High Street , Columbus, OH, US 43206-1014
(Street and Number) (City or Town, State, Country and Zip Code)

Main Administrative Office 671 South High Street Columbus, OH, US 43206-1014 614-445-2900
(Street and Number) (City or Town, State, Country and Zip Code) (Area Code) (Telephone Number)

Mail Address 671 South High Street, P.O. Box 1218 , Columbus, OH, US 43216-1218
(Street and Number or P.O. Box) (City or Town, State, Country and Zip Code)

Primary Location of Books and Records 671 South High Street Columbus, OH, US 43206-1014 614-445-2900
(Street and Number) (City or Town, State, Country and Zip Code) (Area Code) (Telephone Number)

Internet Web Site Address www.grangeinsurance.com

Statutory Statement Contact David Sidney Ackermann 614-445-2900
(Name) (Area Code) (Telephone Number) (Extension)

ackermann@d@grangeinsurance.com 614-449-3757
(E-Mail Address) (Fax Number)

OFFICERS

Name	Title	Name	Title
<u>THOMAS HOWARD WELCH</u>	<u>PRESIDENT & CEO</u>	<u>LAVAWN DEE COLEMAN</u>	<u>EVP & SECRETARY</u>
<u>JOHN PAUL MCCAFFREY</u>	<u>EVP & CFO</u>		

OTHER OFFICERS

<u>JOHN CHRISTOPHER MONTGOMERY</u>	<u>VP - INVESTMENTS</u>		
------------------------------------	-------------------------	--	--

DIRECTORS OR TRUSTEES

<u>MARK LEWIS BOXER</u>	<u>DOUGLAS PAUL BUTH</u>	<u>GLENN EUGENE CORLETT</u>	<u>ROBERT ENLOW HOYT</u>
<u>JOHN PAUL MCCAFFREY</u>	<u>MARY MARNETTE PERRY</u>	<u>MELVIN GEORGE PYE JR</u>	<u>THOMAS SIMRALL STEWART</u>
<u>THOMAS HOWARD WELCH</u>	<u>DAVID CHARLES WETMORE</u>	<u>CHRISTIANNA (NMN) WOOD</u>	

State of Ohio

County of Franklin

The officers of this reporting entity being duly sworn, each depose and say that they are the described officers of said reporting entity, and that on the reporting period stated above, all of the herein described assets were the absolute property of the said reporting entity, free and clear from any liens or claims thereon, except as herein stated, and that this statement, together with related exhibits, schedules and explanations therein contained, annexed or referred to, is a full and true statement of all the assets and liabilities and of the condition and affairs of the said reporting entity as of the reporting period stated above, and of its income and deductions therefrom for the period ended, and have been completed in accordance with the NAIC Annual Statement Instructions and Accounting Practices and Procedures manual except to the extent that: (1) state law may differ; or, (2) that state rules or regulations require differences in reporting not related to accounting practices and procedures, according to the best of their information, knowledge and belief, respectively. Furthermore, the scope of this attestation by the described officers also includes the related corresponding electronic filing with the NAIC, when required, that is an exact copy (except for formatting differences due to electronic filing) of the enclosed statement. The electronic filing may be requested by various regulators in lieu of or in addition to the enclosed statement.

THOMAS HOWARD WELCH
PRESIDENT & CEO

LAVAWN DEE COLEMAN
EVP & SECRETARY

JOHN PAUL MCCAFFREY
EVP & CFO

a. Is this an original filing? Yes [X] No []

Subscribed and sworn to before me this
11th day of November, 2014

- b. If no:
1. State the amendment number _____
 2. Date filed _____
 3. Number of pages attached _____

Teresa J. Burchwell, Notary Public
April 28, 2017

STATEMENT AS OF SEPTEMBER 30, 2014 OF THE TRUSTGARD INSURANCE COMPANY

ASSETS

	Current Statement Date			4 December 31 Prior Year Net Admitted Assets
	1 Assets	2 Nonadmitted Assets	3 Net Admitted Assets (Cols. 1 - 2)	
1. Bonds	85,058,175		85,058,175	82,546,499
2. Stocks:				
2.1 Preferred stocks			0	0
2.2 Common stocks			0	0
3. Mortgage loans on real estate:				
3.1 First liens			0	0
3.2 Other than first liens			0	0
4. Real estate:				
4.1 Properties occupied by the company (less \$ encumbrances)			0	0
4.2 Properties held for the production of income (less \$ encumbrances)			0	0
4.3 Properties held for sale (less \$ encumbrances)			0	0
5. Cash (\$ 1,289,219), cash equivalents (\$ 0) and short-term investments (\$ 0)	1,289,219		1,289,219	817,575
6. Contract loans (including \$ premium notes)			0	0
7. Derivatives			0	0
8. Other invested assets	0		0	0
9. Receivables for securities			0	0
10. Securities lending reinvested collateral assets	2,223,371		2,223,371	1,636,873
11. Aggregate write-ins for invested assets	0	0	0	0
12. Subtotals, cash and invested assets (Lines 1 to 11)	88,570,765	0	88,570,765	85,000,947
13. Title plants less \$ charged off (for Title insurers only)			0	0
14. Investment income due and accrued	1,013,285		1,013,285	869,559
15. Premiums and considerations:				
15.1 Uncollected premiums and agents' balances in the course of collection	8,682,226	50,623	8,631,603	7,576,807
15.2 Deferred premiums, agents' balances and installments booked but deferred and not yet due (including \$ 17,661 earned but unbilled premiums)	18,538	877	17,661	12,629
15.3 Accrued retrospective premiums			0	0
16. Reinsurance:				
16.1 Amounts recoverable from reinsurers			0	0
16.2 Funds held by or deposited with reinsured companies			0	0
16.3 Other amounts receivable under reinsurance contracts			0	0
17. Amounts receivable relating to uninsured plans			0	0
18.1 Current federal and foreign income tax recoverable and interest thereon			0	0
18.2 Net deferred tax asset	1,581,021	1,689	1,579,332	1,451,076
19. Guaranty funds receivable or on deposit			0	0
20. Electronic data processing equipment and software			0	0
21. Furniture and equipment, including health care delivery assets (\$)			0	0
22. Net adjustment in assets and liabilities due to foreign exchange rates			0	0
23. Receivables from parent, subsidiaries and affiliates	2,469,997		2,469,997	1,293,403
24. Health care (\$) and other amounts receivable			0	0
25. Aggregate write-ins for other-than-invested assets	23,069	0	23,069	18,727
26. Total assets excluding Separate Accounts, Segregated Accounts and Protected Cell Accounts (Lines 12 to 25)	102,358,901	53,189	102,305,712	96,223,148
27. From Separate Accounts, Segregated Accounts and Protected Cell Accounts			0	0
28. Total (Lines 26 and 27)	102,358,901	53,189	102,305,712	96,223,148
DETAILS OF WRITE-INS				
1101.			0	0
1102.			0	0
1103.			0	0
1198. Summary of remaining write-ins for Line 11 from overflow page	0	0	0	0
1199. Totals (Lines 1101 through 1103 plus 1198) (Line 11 above)	0	0	0	0
2501. Equities in Pools	23,069		23,069	18,727
2502.			0	0
2503.			0	0
2598. Summary of remaining write-ins for Line 25 from overflow page	0	0	0	0
2599. Totals (Lines 2501 through 2503 plus 2598) (Line 25 above)	23,069	0	23,069	18,727

STATEMENT AS OF SEPTEMBER 30, 2014 OF THE TRUSTGARD INSURANCE COMPANY

LIABILITIES, SURPLUS AND OTHER FUNDS

	1 Current Statement Date	2 December 31, Prior Year
1. Losses (current accident year \$ 6,122,857)	15,419,847	14,703,824
2. Reinsurance payable on paid losses and loss adjustment expenses		0
3. Loss adjustment expenses	4,415,854	4,393,818
4. Commissions payable, contingent commissions and other similar charges	462,666	713,766
5. Other expenses (excluding taxes, licenses and fees)	1,207,347	1,346,271
6. Taxes, licenses and fees (excluding federal and foreign income taxes)	371,981	487,761
7.1 Current federal and foreign income taxes (including \$ (12,321) on realized capital gains (losses))	1,592,442	2,177,684
7.2 Net deferred tax liability		0
8. Borrowed money \$ and interest thereon \$		0
9. Unearned premiums (after deducting unearned premiums for ceded reinsurance of \$ 68,311,386 and including warranty reserves of and accrued accident and health experience rating refunds including \$ for medical loss ratio rebate per the Public Health Service Act)	17,338,931	15,696,006
10. Advance premium	1,585,943	869,976
11. Dividends declared and unpaid:		
11.1 Stockholders		0
11.2 Policyholders	48,641	34,827
12. Ceded reinsurance premiums payable (net of ceding commissions)		0
13. Funds held by company under reinsurance treaties		0
14. Amounts withheld or retained by company for account of others		0
15. Remittances and items not allocated		0
16. Provision for reinsurance (including \$ certified)		0
17. Net adjustments in assets and liabilities due to foreign exchange rates		0
18. Drafts outstanding		0
19. Payable to parent, subsidiaries and affiliates		0
20. Derivatives		0
21. Payable for securities		0
22. Payable for securities lending	2,223,371	1,636,873
23. Liability for amounts held under uninsured plans		0
24. Capital notes \$ and interest thereon \$		0
25. Aggregate write-ins for liabilities	0	0
26. Total liabilities excluding protected cell liabilities (Lines 1 through 25)	44,667,023	42,060,807
27. Protected cell liabilities		0
28. Total liabilities (Lines 26 and 27)	44,667,023	42,060,807
29. Aggregate write-ins for special surplus funds	0	0
30. Common capital stock	2,500,000	2,500,000
31. Preferred capital stock		0
32. Aggregate write-ins for other than special surplus funds	0	0
33. Surplus notes		0
34. Gross paid in and contributed surplus	4,657,724	4,657,724
35. Unassigned funds (surplus)	50,480,965	47,004,617
36. Less treasury stock, at cost:		
36.1 shares common (value included in Line 30 \$)		0
36.2 shares preferred (value included in Line 31 \$)		0
37. Surplus as regards policyholders (Lines 29 to 35, less 36)	57,638,689	54,162,341
38. Totals (Page 2, Line 28, Col. 3)	102,305,712	96,223,148
DETAILS OF WRITE-INS		
2501.		0
2502.		0
2503.		0
2598. Summary of remaining write-ins for Line 25 from overflow page	0	0
2599. Totals (Lines 2501 through 2503 plus 2598) (Line 25 above)	0	0
2901.		0
2902.		0
2903.		0
2998. Summary of remaining write-ins for Line 29 from overflow page	0	0
2999. Totals (Lines 2901 through 2903 plus 2998) (Line 29 above)	0	0
3201.		0
3202.		0
3203.		0
3298. Summary of remaining write-ins for Line 32 from overflow page	0	0
3299. Totals (Lines 3201 through 3203 plus 3298) (Line 32 above)	0	0

STATEMENT OF INCOME

	1 Current Year to Date	2 Prior Year to Date	3 Prior Year Ended December 31
UNDERWRITING INCOME			
1. Premiums earned:			
1.1 Direct (written \$ 135,756,026)	128,160,811	117,676,997	159,005,171
1.2 Assumed (written \$ 32,440,333)	30,786,796	28,823,690	38,795,355
1.3 Ceded (written \$ 135,879,754)	128,273,926	117,769,632	159,106,079
1.4 Net (written \$ 32,316,605)	30,673,681	28,731,055	38,694,447
DEDUCTIONS:			
2. Losses incurred (current accident year \$ 17,144,385):			
2.1 Direct	77,692,445	61,573,511	87,102,263
2.2 Assumed	17,743,956	15,372,943	21,385,941
2.3 Ceded	77,752,603	61,627,107	87,158,000
2.4 Net	17,683,798	15,319,347	21,330,203
3. Loss adjustment expenses incurred	3,466,777	3,349,937	4,575,054
4. Other underwriting expenses incurred	9,742,101	9,752,809	12,794,328
5. Aggregate write-ins for underwriting deductions	0	0	0
6. Total underwriting deductions (Lines 2 through 5)	30,892,676	28,422,093	38,699,586
7. Net income of protected cells	0	0	0
8. Net underwriting gain (loss) (Line 1 minus Line 6 + Line 7)	(218,995)	308,962	(5,139)
INVESTMENT INCOME			
9. Net investment income earned	2,189,425	1,951,623	2,697,255
10. Net realized capital gains (losses) less capital gains tax of \$ (12,321)	(22,881)	96,897	123,415
11. Net investment gain (loss) (Lines 9 + 10)	2,166,544	2,048,520	2,820,670
OTHER INCOME			
12. Net gain or (loss) from agents' or premium balances charged off (amount recovered \$ 2,815 amount charged off \$ 171,797)	(168,982)	(136,327)	(194,722)
13. Finance and service charges not included in premiums	3,108,354	2,781,767	3,732,544
14. Aggregate write-ins for miscellaneous income	158,745	189,347	231,722
15. Total other income (Lines 12 through 14)	3,098,117	2,834,787	3,769,544
16. Net income before dividends to policyholders, after capital gains tax and before all other federal and foreign income taxes (Lines 8 + 11 + 15)	5,045,666	5,192,269	6,585,075
17. Dividends to policyholders	85,312	77,860	113,380
18. Net income, after dividends to policyholders, after capital gains tax and before all other federal and foreign income taxes (Line 16 minus Line 17)	4,960,354	5,114,409	6,471,695
19. Federal and foreign income taxes incurred	1,604,763	1,652,952	2,111,230
20. Net income (Line 18 minus Line 19)(to Line 22)	3,355,591	3,461,457	4,360,465
CAPITAL AND SURPLUS ACCOUNT			
21. Surplus as regards policyholders, December 31 prior year	54,162,341	49,648,447	49,648,447
22. Net income (from Line 20)	3,355,591	3,461,457	4,360,465
23. Net transfers (to) from Protected Cell accounts	0	0	0
24. Change in net unrealized capital gains or (losses) less capital gains tax of \$	0	0	0
25. Change in net unrealized foreign exchange capital gain (loss)	0	0	0
26. Change in net deferred income tax	98,184	111,915	181,105
27. Change in nonadmitted assets	22,573	(6,275)	(27,677)
28. Change in provision for reinsurance	0	0	0
29. Change in surplus notes	0	0	0
30. Surplus (contributed to) withdrawn from protected cells	0	0	0
31. Cumulative effect of changes in accounting principles	0	0	0
32. Capital changes:			
32.1 Paid in	0	0	0
32.2 Transferred from surplus (Stock Dividend)	0	0	0
32.3 Transferred to surplus	0	0	0
33. Surplus adjustments:			
33.1 Paid in	0	0	0
33.2 Transferred to capital (Stock Dividend)	0	0	0
33.3 Transferred from capital	0	0	0
34. Net remittances from or (to) Home Office	0	0	0
35. Dividends to stockholders	0	0	0
36. Change in treasury stock	0	0	0
37. Aggregate write-ins for gains and losses in surplus	0	0	0
38. Change in surplus as regards policyholders (Lines 22 through 37)	3,476,348	3,567,097	4,513,893
39. Surplus as regards policyholders, as of statement date (Lines 21 plus 38)	57,638,689	53,215,544	54,162,341
DETAILS OF WRITE-INS			
0501.	0	0	0
0502.	0	0	0
0503.	0	0	0
0598. Summary of remaining write-ins for Line 5 from overflow page	0	0	0
0599. TOTALS (Lines 0501 through 0503 plus 0598) (Line 5 above)	0	0	0
1401. Miscellaneous Income	158,745	189,347	231,722
1402.	0	0	0
1403.	0	0	0
1498. Summary of remaining write-ins for Line 14 from overflow page	0	0	0
1499. TOTALS (Lines 1401 through 1403 plus 1498) (Line 14 above)	158,745	189,347	231,722
3701.	0	0	0
3702.	0	0	0
3703.	0	0	0
3798. Summary of remaining write-ins for Line 37 from overflow page	0	0	0
3799. TOTALS (Lines 3701 through 3703 plus 3798) (Line 37 above)	0	0	0

STATEMENT AS OF SEPTEMBER 30, 2014 OF THE TRUSTGARD INSURANCE COMPANY

CASH FLOW

	1 Current Year To Date	2 Prior Year To Date	3 Prior Year Ended December 31
Cash from Operations			
1. Premiums collected net of reinsurance.....	31,963,245	30,583,058	39,998,762
2. Net investment income	2,416,930	2,179,334	3,113,703
3. Miscellaneous income	3,098,117	2,834,787	3,769,544
4. Total (Lines 1 to 3)	37,478,292	35,597,179	46,882,009
5. Benefit and loss related payments	16,967,776	15,136,332	20,282,567
6. Net transfers to Separate Accounts, Segregated Accounts and Protected Cell Accounts.....	0	0	0
7. Commissions, expenses paid and aggregate write-ins for deductions	13,692,646	12,825,230	16,610,456
8. Dividends paid to policyholders	71,498	77,724	110,040
9. Federal and foreign income taxes paid (recovered) net of \$ (12,321) tax on capital gains (losses).....	2,177,684	1,776,387	1,776,387
10. Total (Lines 5 through 9)	32,909,604	29,815,672	38,779,450
11. Net cash from operations (Line 4 minus Line 10)	4,568,688	5,781,507	8,102,559
Cash from Investments			
12. Proceeds from investments sold, matured or repaid:			
12.1 Bonds	9,777,399	10,348,600	12,086,244
12.2 Stocks	0	0	0
12.3 Mortgage loans	0	0	0
12.4 Real estate	0	0	0
12.5 Other invested assets	0	0	0
12.6 Net gains or (losses) on cash, cash equivalents and short-term investments	0	0	0
12.7 Miscellaneous proceeds	0	0	0
12.8 Total investment proceeds (Lines 12.1 to 12.7)	9,777,399	10,348,600	12,086,244
13. Cost of investments acquired (long-term only):			
13.1 Bonds	12,693,508	15,159,236	20,519,412
13.2 Stocks	0	0	0
13.3 Mortgage loans	0	0	0
13.4 Real estate	0	0	0
13.5 Other invested assets	0	0	0
13.6 Miscellaneous applications	0	16,182	0
13.7 Total investments acquired (Lines 13.1 to 13.6)	12,693,508	15,175,418	20,519,412
14. Net increase (or decrease) in contract loans and premium notes	0	0	0
15. Net cash from investments (Line 12.8 minus Line 13.7 and Line 14)	(2,916,109)	(4,826,818)	(8,433,168)
Cash from Financing and Miscellaneous Sources			
16. Cash provided (applied):			
16.1 Surplus notes, capital notes	0	0	0
16.2 Capital and paid in surplus, less treasury stock.....	0	0	0
16.3 Borrowed funds	0	0	0
16.4 Net deposits on deposit-type contracts and other insurance liabilities	0	0	0
16.5 Dividends to stockholders	0	0	0
16.6 Other cash provided (applied).....	(1,180,935)	(552,955)	330,609
17. Net cash from financing and miscellaneous sources (Line 16.1 through Line 16.4 minus Line 16.5 plus Line 16.6).....	(1,180,935)	(552,955)	330,609
RECONCILIATION OF CASH, CASH EQUIVALENTS AND SHORT-TERM INVESTMENTS			
18. Net change in cash, cash equivalents and short-term investments (Line 11, plus Lines 15 and 17)	471,644	401,734	0
19. Cash, cash equivalents and short-term investments:			
19.1 Beginning of year.....	817,575	817,576	817,576
19.2 End of period (Line 18 plus Line 19.1)	1,289,219	1,219,309	817,575

**STATEMENT AS OF SEPTEMBER 30, 2014 OF THE
TRUSTGARD INSURANCE COMPANY**

NOTES TO FINANCIAL STATEMENTS

1. SUMMARY OF SIGNIFICANT ACCOUNT POLICIES

- A. The Company prepares its statutory financial statements in conformity with accounting practices prescribed or permitted by the State of Ohio. The State of Ohio requires that insurance companies domiciled in the State prepare their statutory basis financial statements in accordance with the NAIC Accounting Practices and Procedures manual subject to any deviations prescribed or permitted by the State of Ohio insurance commissioner. The Company does not employ accounting practices that depart from the NAIC Accounting Practices and Procedures Manual.

2. ACCOUNTING CHANGES AND CORRECTIONS OF ERRORS

NONE

3. BUSINESS COMBINATIONS AND GOODWILL

NONE

4. DISCONTINUED OPERATIONS

NO CHANGE

5. INVESTMENTS

D. LOAN-BACKED SECURITIES

1. Prepayment assumptions for single class and multi-class mortgage-backed/asset-backed securities were obtained from Hub Data and Bloomberg. These assumptions are consistent with the current interest rate and economic environment.
2. NONE
3. NONE
4. Impaired securities (fair value is less than cost or amortized cost) for which an other-than-temporary impairment has not been recognized in earnings as a realized loss (including securities with a recognized other-than-temporary impairment for non-interest related declines when a non-recognized interest related impairment remains):

a.

Aggregate Amount of Unrealized Losses:

1	Less than 12 Months	(12,307)
2	Greater than 12 Months	(83,648)

b.

The Aggregate Related Fair Value of Securities with Unrealized Losses:

1	Less than 12 Months	1,574,671
2	Greater than 12 Months	1,750,059

5. According to SSAP 43R, loan-backed and structured securities with an unrealized loss position were reviewed for impairment. The best estimate of future cash flows using the appropriate discount rate was calculated for each affected security, with other-than-temporary impairments realized to the extent that present value was less than amortized cost. Securities with a present value greater than amortized cost were not other-than-temporarily impaired.

E. REPURCHASE AGREEMENTS AND SECURITIES LENDING TRANSACTIONS

3. COLLATERAL RECEIVED

The fair value of that collateral and of the portion of that collateral that it has sold or repledged.

	Fair Value
Open	2,223,248
30 Days or Less	0
31 to 60 Days	0
61 to 90 Days	0
Greater than 90 Days	0
Sub-Total	2,223,248
Securities Received	0
Total Collateral Received	2,223,248

I. WORKING CAPITAL FINANCE INVESTMENTS

The Company has no working capital finance investments.

6. JOINT VENTURES, PARTNERSHIPS AND LIMITED LIABILITY COMPANIES

NO CHANGE

7. INVESTMENT INCOME

NO CHANGE

8. DERIVATIVE INSTRUMENTS

NONE

**STATEMENT AS OF SEPTEMBER 30, 2014 OF THE
TRUSTGARD INSURANCE COMPANY**

NOTES TO FINANCIAL STATEMENTS

9. FEDERAL INCOME TAXES

A. The components of the net deferred tax assets at September 30, 2014 and December 31, 2013 are as follows:

	<u>September 30, 2014</u>	<u>December 31, 2013</u>
Gross Deferred Tax Assets	\$ 1,739,374	\$ 1,578,412
Gross Deferred Tax Liabilities	158,353	95,575
Net Deferred Tax Asset (Liability)	1,581,021	1,482,837
Non-admitted Deferred Tax Assets	<u>1,689</u>	<u>31,761</u>
Admitted Deferred Tax Asset	<u>1,579,332</u>	<u>1,451,076</u>
(Increase) Decrease in Deferred Tax Assets Non-admitted	\$ 30,072	\$ 10,094

B. The Company has no deferred tax liabilities that are not recognized

C. Current income taxes incurred consist of the following major components:

	<u>September 30, 2014</u>	<u>December 31, 2013</u>
Current Income Tax Expense	\$ 1,604,763	\$ 2,073,847
Tax on Capital Gains/(Losses)	(12,321)	66,454
Prior Year Under Accrual (Over Accrual)	<u>0</u>	<u>37,383</u>
Federal Income Taxes Incurred	<u>\$ 1,592,442</u>	<u>\$ 2,177,684</u>

10. INFORMATION CONCERNING PARENT, SUBSIDIARIES AND AFFILIATES
NO CHANGE

11. DEBT
B. FHLB
NONE

12. RETIREMENT PLANS, DEFERRED COMPENSATION, AND POSTRETIREMENT BENEFIT PLANS
No Pension, Postretirement or Postemployment and Compensated Absence Benefit Plans

13. CAPITAL AND SURPLUS, DIVIDEND RESTRICTIONS AND QUSAI-REORGANIZATIONS
NO CHANGE

14. CONTINGENCIES
NO CHANGE

15. LEASES
NO CHANGE

16. INFORMATION ABOUT FINANCIAL INSTRUMENTS WITH OFF-BALANCE SHEET RISK AND FINANCIAL INSTRUMENTS WITH
CONCENTRATION OF CREDIT RISK.
NONE

17. SALE, TRANSFER AND SERVICING OF FINANCIAL ASSETS AND EXTINGUISHMENTS OF LIABILITIES

B. Transfer and Servicing of Financial Assets

2. For all servicing assets and servicing liabilities:

b) None

4. For securitizations, asset-backed financing arrangements and similar transfers accounted for as sales when the transferor has continuing involvement (as defined in the Accounting Practices and Procedures Manual) with the transferred financial assets:

a) None

b) None

C. Wash Sales

None

18. GAINS OR LOSS TO THE REPORTING ENTITY FROM UNINSURED A&H PLANS AND THE UNINSURED PORTION OF PARTIALLY INSURED
PLANS.

NONE

19. DIRECT PREMIUM WRITTEN / PRODUCED BY MANAGING GENERAL AGENTS / THIRD PARTY ADMINISTRATORS
NONE

**STATEMENT AS OF SEPTEMBER 30, 2014 OF THE
TRUSTGARD INSURANCE COMPANY**

NOTES TO FINANCIAL STATEMENTS

20. FAIR VALUE MEASUREMENTS

- A.
1. NONE
 2. NONE
 3. The Company's policy is to recognize transfers in and out as of the end of the reporting period.
 4. As of September 30, 2014, the reported fair value of the entity's investments categorized within Level 2 and Level 3 of the fair value hierarchy are as follows:

According to statutory accounting rules, fixed income securities with a rating of NAIC 1 or 2 are reported at amortized cost. Securities with a rating of NAIC 3 thru 6, or non-investment grade ratings, are measured and reported at the lower of amortized cost or fair value on the statement of financial position. As of September 30, 2014, the Company did not have any bonds rated NAIC 3 thru 6, and therefore did not report any securities at fair value.

- B. Not Required
C.

Type of Financial Instrument	Aggregate Fair Value	Admitted Assets	Level 1	Level 2	Level 3	Not Practicable (CV)
Bonds	89,407,771	85,058,175	10,240,189	79,167,582	0	0
Common Stock	0	0	0	0	0	0
Perpetual Preferred	0	0	0	0	0	0
Mortgage Loans	0	0	0	0	0	0
Money Market	0	0	0	0	0	0
Total	89,407,771	85,058,175	10,240,189	79,167,582	0	0

- D. NONE

21. OTHER ITEMS

- G. Offsetting and Netting of Assets and Liabilities
NONE
- I. Risk Sharing Provisions of the Affordable Care Act (ACA)
NONE

22. EVENTS SUBSEQUENT
NO CHANGE

23. REINSURANCE
NO CHANGE

24. RETROSPECTIVELY RATED CONTRACTS & CONTRACTS SUBJECT TO REDETERMINATION
NONE

25. CHANGES IN INCURRED LOSSES AND LOSS ADJUSTMENT EXPENSES

Reserves for incurred losses and loss adjustment expenses attributable to insured events of prior years has increased (decreased) by \$0.015 million from \$31.485 million in 2013 to \$31.500 million in 2014 as a result of re-estimation of unpaid losses and loss adjustment expenses principally on private passenger auto liability and homeowners lines of insurance. This increase (decrease) is generally the result of ongoing analysis of recent loss development trends. Original estimates are increased or decreased as additional information becomes known regarding individual claims. Included in this increase (decrease), the Company experienced \$0 million of unfavorable (favorable) prior year loss development on retrospectively rated policies. However, since the business to which it relates is subject to premium adjustments, there was no significant impact on surplus.

LOSSES AND LAE	September 30, 2014	December 31, 2013
BALANCE JANUARY 1	31,484,689	28,082,004
LESS REINSURANCE RECOVERABLES	12,387,047	10,337,273
NET BALANCE JANUARY 1	19,097,642	17,744,731
INCURRED RELATED TO:		
CURRENT YEAR	21,135,370	26,686,214
PRIOR YEAR	15,205	(780,957)
TOTAL INCURRED	21,150,576	25,905,257
PAID RELATED TO:		
CURRENT YEAR	13,259,082	16,601,975
PRIOR YEAR	7,153,435	7,950,371
TOTAL PAID	20,412,517	24,552,346
NET BALANCE AT DECEMBER 31	19,835,701	19,097,642
PLUS REINSURANCE RECOVERABLES	12,629,771	12,387,047
BALANCE AT DECEMBER 31	32,465,472	31,484,689

26. INTERCOMPANY POOLING AGREEMENTS
NO CHANGE

STATEMENT AS OF SEPTEMBER 30, 2014 OF THE
TRUSTGARD INSURANCE COMPANY

NOTES TO FINANCIAL STATEMENTS

27. STRUCTURED SETTLEMENTS
NO CHANGE.

28. HEALTH CARE RECEIVABLES
NONE

29. PARTICIPATING POLICIES
NONE

30. PREMIUM DEFICIENCY RESERVES
NO CHANGE

31. HIGH DEDUCTIBLES
NONE

32. DISCOUNTING OF LIABILITIES FOR UNPAID LOSSES OR UNPAID LOSS ADJUSTMENT EXPENSES
NONE

33. ASBESTOS/ENVIRONMENTAL RESERVES
NONE

34. SUBSCRIBER SAVINGS ACCOUNTS
NOT APPLICABLE

35. MULTIPLE PERIL CROP INSURANCE
NONE

36. FINANCIAL GUARANTY INSURANCE
No Financial Guaranty Insurance

37. CATASTROPHIC PLANNING
NO CHANGE

GENERAL INTERROGATORIES

PART 1 - COMMON INTERROGATORIES GENERAL

- 1.1 Did the reporting entity experience any material transactions requiring the filing of Disclosure of Material Transactions with the State of Domicile, as required by the Model Act? Yes [] No [X]
- 1.2 If yes, has the report been filed with the domiciliary state? Yes [] No []
- 2.1 Has any change been made during the year of this statement in the charter, by-laws, articles of incorporation, or deed of settlement of the reporting entity? Yes [] No [X]
- 2.2 If yes, date of change:01/01/3000
- 3.1 Is the reporting entity a member of an Insurance Holding Company System consisting of two or more affiliated persons, one or more of which is an insurer? Yes [X] No []
If yes, complete Schedule Y, Parts 1 and 1A.
- 3.2 Have there been any substantial changes in the organizational chart since the prior quarter end? Yes [] No [X]
- 3.3 If the response to 3.2 is yes, provide a brief description of those changes.
.....
- 4.1 Has the reporting entity been a party to a merger or consolidation during the period covered by this statement? Yes [] No [X]
- 4.2 If yes, provide the name of entity, NAIC Company Code, and state of domicile (use two letter state abbreviation) for any entity that has ceased to exist as a result of the merger or consolidation.

1 Name of Entity	2 NAIC Company Code	3 State of Domicile

5. If the reporting entity is subject to a management agreement, including third-party administrator(s), managing general agent(s), attorney-in-fact, or similar agreement, have there been any significant changes regarding the terms of the agreement or principals involved? Yes [] No [X] NA []
If yes, attach an explanation.
- 6.1 State as of what date the latest financial examination of the reporting entity was made or is being made.12/31/2009
- 6.2 State the as of date that the latest financial examination report became available from either the state of domicile or the reporting entity. This date should be the date of the examined balance sheet and not the date the report was completed or released.12/31/2009
- 6.3 State as of what date the latest financial examination report became available to other states or the public from either the state of domicile or the reporting entity. This is the release date or completion date of the examination report and not the date of the examination (balance sheet date).10/25/2010
- 6.4 By what department or departments?
Ohio.....
- 6.5 Have all financial statement adjustments within the latest financial examination report been accounted for in a subsequent financial statement filed with Departments? Yes [] No [] NA [X]
- 6.6 Have all of the recommendations within the latest financial examination report been complied with? Yes [X] No [] NA []
- 7.1 Has this reporting entity had any Certificates of Authority, licenses or registrations (including corporate registration, if applicable) suspended or revoked by any governmental entity during the reporting period? Yes [] No [X]
- 7.2 If yes, give full information:
.....
- 8.1 Is the company a subsidiary of a bank holding company regulated by the Federal Reserve Board?..... Yes [] No [X]
- 8.2 If response to 8.1 is yes, please identify the name of the bank holding company.
.....
- 8.3 Is the company affiliated with one or more banks, thrifts or securities firms?..... Yes [] No [X]
- 8.4 If response to 8.3 is yes, please provide below the names and location (city and state of the main office) of any affiliates regulated by a federal regulatory services agency [i.e. the Federal Reserve Board (FRB), the Office of the Comptroller of the Currency (OCC), the Federal Deposit Insurance Corporation (FDIC) and the Securities Exchange Commission (SEC)] and identify the affiliate's primary federal regulator.]

1 Affiliate Name	2 Location (City, State)	3 FRB	4 OCC	5 FDIC	6 SEC

GENERAL INTERROGATORIES

9.1 Are the senior officers (principal executive officer, principal financial officer, principal accounting officer or controller, or persons performing similar functions) of the reporting entity subject to a code of ethics, which includes the following standards? Yes [X] No []

(a) Honest and ethical conduct, including the ethical handling of actual or apparent conflicts of interest between personal and professional relationships;

(b) Full, fair, accurate, timely and understandable disclosure in the periodic reports required to be filed by the reporting entity;

(c) Compliance with applicable governmental laws, rules and regulations;

(d) The prompt internal reporting of violations to an appropriate person or persons identified in the code; and

(e) Accountability for adherence to the code.

9.11 If the response to 9.1 is No, please explain:

9.2 Has the code of ethics for senior managers been amended? Yes [] No [X]

9.21 If the response to 9.2 is Yes, provide information related to amendment(s).

9.3 Have any provisions of the code of ethics been waived for any of the specified officers? Yes [] No [X]

9.31 If the response to 9.3 is Yes, provide the nature of any waiver(s).

FINANCIAL

10.1 Does the reporting entity report any amounts due from parent, subsidiaries or affiliates on Page 2 of this statement?..... Yes [X] No []

10.2 If yes, indicate any amounts receivable from parent included in the Page 2 amount:..... \$ 2,469,997

INVESTMENT

11.1 Were any of the stocks, bonds, or other assets of the reporting entity loaned, placed under option agreement, or otherwise made available for use by another person? (Exclude securities under securities lending agreements.) Yes [] No [X]

11.2 If yes, give full and complete information relating thereto:

12. Amount of real estate and mortgages held in other invested assets in Schedule BA: \$ 0

13. Amount of real estate and mortgages held in short-term investments: \$ 0

14.1 Does the reporting entity have any investments in parent, subsidiaries and affiliates? Yes [X] No []

14.2 If yes, please complete the following:

	1	2
	Prior Year-End Book/Adjusted Carrying Value	Current Quarter Book/Adjusted Carrying Value
14.21 Bonds	\$	\$
14.22 Preferred Stock	\$	\$
14.23 Common Stock	\$ 2,000	\$ 2,000
14.24 Short-Term Investments	\$	\$
14.25 Mortgage Loans on Real Estate	\$	\$
14.26 All Other	\$	\$
14.27 Total Investment in Parent, Subsidiaries and Affiliates (Subtotal Lines 14.21 to 14.26).....	\$ 2,000	\$ 2,000
14.28 Total Investment in Parent included in Lines 14.21 to 14.26 above	\$	\$

15.1 Has the reporting entity entered into any hedging transactions reported on Schedule DB? Yes [] No [X]

15.2 If yes, has a comprehensive description of the hedging program been made available to the domiciliary state? Yes [] No []

If no, attach a description with this statement.

GENERAL INTERROGATORIES

- 16 For the reporting entity's security lending program, state the amount of the following as of the current statement date:
- | | |
|--|--------------------|
| 16.1 Total fair value of reinvested collateral assets reported on Schedule DL, Parts 1 and 2 | \$ 2,223,406 |
| 16.2 Total book adjusted/carrying value of reinvested collateral assets reported on Schedule DL, Parts 1 and 2 | \$ 2,223,371 |
| 16.3 Total payable for securities lending reported on the liability page | \$ 2,223,371 |

17. Excluding items in Schedule E – Part 3 – Special Deposits, real estate, mortgage loans and investments held physically in the reporting entity's offices, vaults or safety deposit boxes, were all stocks, bonds and other securities, owned throughout the current year held pursuant to a custodial agreement with a qualified bank or trust company in accordance with Section 1, III – General Examination Considerations, F. Outsourcing of Critical Functions, Custodial or Safekeeping Agreements of the NAIC *Financial Condition Examiners Handbook*? Yes No

17.1 For all agreements that comply with the requirements of the NAIC *Financial Condition Examiners Handbook*, complete the following:

1 Name of Custodian(s)	2 Custodian Address
JP Morgan Chase Bank, N.A.....	1111 Polaris Parkway, Columbus, OH 43240.....

17.2 For all agreements that do not comply with the requirements of the NAIC *Financial Condition Examiners Handbook*, provide the name, location and a complete explanation:

1 Name(s)	2 Location(s)	3 Complete Explanation(s)

17.3 Have there been any changes, including name changes, in the custodian(s) identified in 17.1 during the current quarter? Yes No

17.4 If yes, give full and complete information relating thereto:

1 Old Custodian	2 New Custodian	3 Date of Change	4 Reason

17.5 Identify all investment advisors, broker/dealers or individuals acting on behalf of broker/dealers that have access to the investment accounts, handle securities and have authority to make investments on behalf of the reporting entity:

1 Central Registration Depository	2 Name(s)	3 Address

18.1 Have all the filing requirements of the *Purposes and Procedures Manual* of the NAIC Securities Valuation Office been followed? Yes No

18.2 If no, list exceptions:

.....

GENERAL INTERROGATORIES

PART 2 - PROPERTY & CASUALTY INTERROGATORIES

1. If the reporting entity is a member of a pooling arrangement, did the agreement or the reporting entity's participation change? Yes [] No [X] NA []
 If yes, attach an explanation.

2. Has the reporting entity reinsured any risk with any other reporting entity and agreed to release such entity from liability, in whole or in part, from any loss that may occur on the risk, or portion thereof, reinsured? Yes [] No [X]
 If yes, attach an explanation.

3.1 Have any of the reporting entity's primary reinsurance contracts been canceled? Yes [] No [X]

3.2 If yes, give full and complete information thereto.

4.1 Are any of the liabilities for unpaid losses and loss adjustment expenses other than certain workers' compensation tabular reserves (see *Annual Statement Instructions* pertaining to disclosure of discounting for definition of "tabular reserves,") discounted at a rate of interest greater than zero? Yes [] No [X]

4.2 If yes, complete the following schedule:

1 Line of Business	2 Maximum Interest	3 Discount Rate	TOTAL DISCOUNT				DISCOUNT TAKEN DURING PERIOD			
			4 Unpaid Losses	5 Unpaid LAE	6 IBNR	7 TOTAL	8 Unpaid Losses	9 Unpaid LAE	10 IBNR	11 TOTAL
TOTAL			0	0	0	0	0	0	0	0

5. Operating Percentages:

5.1 A&H loss percent %
 5.2 A&H cost containment percent %
 5.3 A&H expense percent excluding cost containment expenses %

6.1 Do you act as a custodian for health savings accounts? Yes [] No [X]

6.2 If yes, please provide the amount of custodial funds held as of the reporting date \$ _____

6.3 Do you act as an administrator for health savings accounts? Yes [] No [X]

6.4 If yes, please provide the balance of the funds administered as of the reporting date \$ _____

STATEMENT AS OF SEPTEMBER 30, 2014 OF THE TRUSTGARD INSURANCE COMPANY

SCHEDULE T - EXHIBIT OF PREMIUMS WRITTEN

Current Year to Date - Allocated by States and Territories

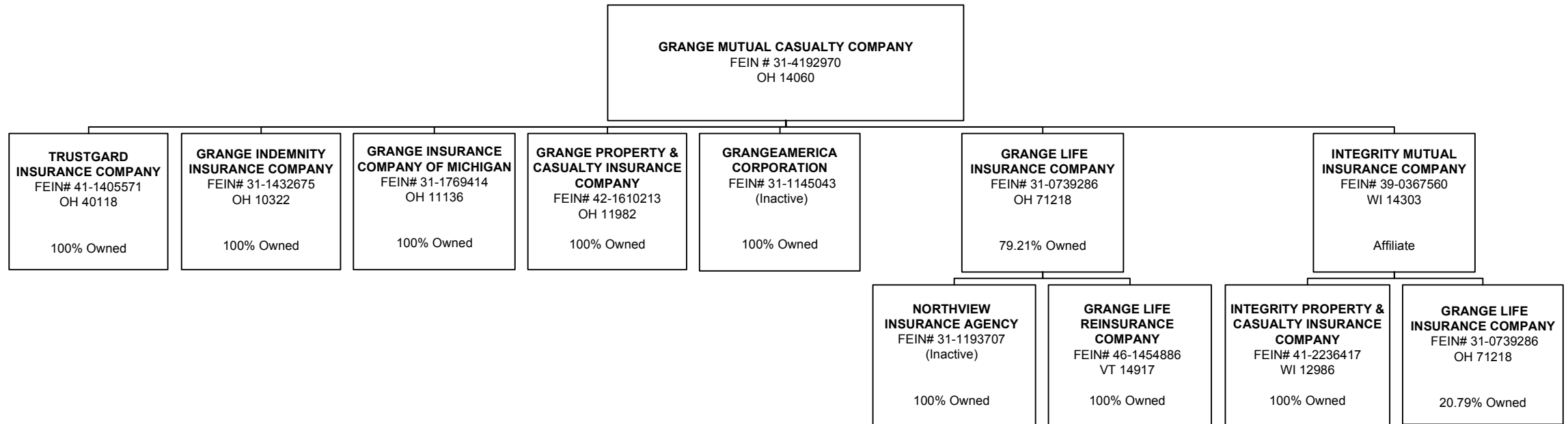
	1	Direct Premiums Written		Direct Losses Paid (Deducting Salvage)		Direct Losses Unpaid		
		2	3	4	5	6	7	
States, etc.	Active Status	Current Year To Date	Prior Year To Date	Current Year To Date	Prior Year To Date	Current Year To Date	Prior Year To Date	
1. Alabama	AL	N	0	0	0	0	0	
2. Alaska	AK	N	0	0	0	0	0	
3. Arizona	AZ	N	0	0	0	0	0	
4. Arkansas	AR	N	0	0	0	0	0	
5. California	CA	N	0	0	0	0	0	
6. Colorado	CO	L	0	0	0	0	0	
7. Connecticut	CT	N	0	0	0	0	0	
8. Delaware	DE	N	0	0	0	0	0	
9. Dist. Columbia	DC	N	0	0	0	0	0	
10. Florida	FL	N	0	0	0	0	0	
11. Georgia	GA	L	10,165,963	10,110,721	4,217,697	4,278,401	1,688,439	1,728,438
12. Hawaii	HI	N	0	0	0	0	0	0
13. Idaho	ID	N	0	0	0	0	0	0
14. Illinois	IL	L	15,629,515	17,062,712	14,150,298	11,475,712	8,431,739	7,831,754
15. Indiana	IN	L	26,392,142	22,627,635	15,240,054	12,869,674	6,353,769	5,055,375
16. Iowa	IA	L	0	0	0	0	0	0
17. Kansas	KS	L	0	0	0	0	0	0
18. Kentucky	KY	L	9,921,977	10,163,418	3,378,238	5,388,864	3,135,500	3,533,316
19. Louisiana	LA	N	0	0	0	0	0	0
20. Maine	ME	N	0	0	0	0	0	0
21. Maryland	MD	N	0	0	0	0	0	0
22. Massachusetts	MA	N	0	0	0	0	0	0
23. Michigan	MI	N	0	0	0	0	0	0
24. Minnesota	MN	L	0	0	0	0	0	0
25. Mississippi	MS	N	0	0	0	0	0	0
26. Missouri	MO	L	0	0	(770)	(877)	0	0
27. Montana	MT	N	0	0	0	0	0	0
28. Nebraska	NE	L	0	0	0	0	0	0
29. Nevada	NV	N	0	0	0	0	0	0
30. New Hampshire	NH	N	0	0	0	0	0	0
31. New Jersey	NJ	N	0	0	0	0	0	0
32. New Mexico	NM	N	0	0	0	0	0	0
33. New York	NY	N	0	0	0	0	0	0
34. No. Carolina	NC	N	0	0	0	0	0	0
35. No. Dakota	ND	L	0	0	0	0	0	0
36. Ohio	OH	L	16,109,264	12,288,566	8,452,052	6,202,502	5,324,383	4,228,232
37. Oklahoma	OK	N	0	0	0	0	0	0
38. Oregon	OR	L	0	0	0	0	0	0
39. Pennsylvania	PA	L	17,003,266	16,415,486	10,797,726	8,484,612	8,039,665	7,053,519
40. Rhode Island	RI	N	0	0	0	0	0	0
41. So. Carolina	SC	L	7,575,421	6,411,176	3,916,108	3,213,043	4,108,072	2,261,325
42. So. Dakota	SD	L	0	0	0	0	0	0
43. Tennessee	TN	L	20,807,440	20,588,052	8,637,338	8,946,710	6,695,151	6,962,588
44. Texas	TX	L	0	0	0	0	0	0
45. Utah	UT	N	0	0	0	0	0	0
46. Vermont	VT	N	0	0	0	0	0	0
47. Virginia	VA	L	12,151,037	8,436,279	5,596,660	4,529,100	4,625,731	3,667,656
48. Washington	WA	L	0	0	0	0	0	0
49. West Virginia	WV	N	0	0	0	0	0	0
50. Wisconsin	WI	L	0	0	0	0	0	0
51. Wyoming	WY	N	0	0	0	0	0	0
52. American Samoa	AS	N	0	0	0	0	0	0
53. Guam	GU	N	0	0	0	0	0	0
54. Puerto Rico	PR	N	0	0	0	0	0	0
55. U.S. Virgin Islands	VI	N	0	0	0	0	0	0
56. Northern Mariana Islands	MP	N	0	0	0	0	0	0
57. Canada	CAN	N	0	0	0	0	0	0
58. Aggregate Other Alien	OT	XXX	0	0	0	0	0	0
59. Totals	(a) 21		135,756,026	124,104,045	74,385,400	65,387,741	48,402,450	42,322,203
DETAILS OF WRITE-INS								
58001.	XXX							
58002.	XXX							
58003.	XXX							
58998. Summary of remaining write-ins for Line 58 from overflow page.	XXX		0	0	0	0	0	0
58999. TOTALS (Lines 58001 through 58003 plus 58998) (Line 58 above)	XXX		0	0	0	0	0	0

(L) Licensed or Chartered - Licensed Insurance Carrier or Domiciled RRG; (R) Registered - Non-domiciled RRGs; (Q) Qualified - Qualified or Accredited Reinsurer; (E) Eligible - Reporting Entities eligible or approved to write Surplus Lines in the state; (N) None of the above - Not allowed to write business in the state.

(a) Insert the number of L responses except for Canada and Other Alien.

SCHEDULE Y – INFORMATION CONCERNING ACTIVITIES OF INSURER MEMBERS OF A HOLDING COMPANY GROUP

PART 1 – ORGANIZATIONAL CHART



STATEMENT AS OF SEPTEMBER 30, 2014 OF THE TRUSTGARD INSURANCE COMPANY

SCHEDULE Y
PART 1A – DETAIL OF INSURANCE HOLDING COMPANY SYSTEM

1	2	3	4	5	6	7	8	9	10	11	12	13	14	15
Group Code	Group Name	NAIC Company Code	Federal ID Number	Federal RSSD	CIK	Name of Securities Exchange if Publicly Traded (U.S. or International)	Name of Parent Subsidiaries or Affiliates	Domiciliary Location	Relationship to Reporting Entity	Directly Controlled by (Name of Entity/Person)	Type of Control (Ownership, Board, Management, Attorney-in-Fact, Influence, Other)	If Control is Ownership Provide Percentage	Ultimate Controlling Entity(ies)/ Person(s)	*
00267	GRANGE MUTUAL CASUALTY GROUP	14060	31-4192970				GRANGE MUTUAL CASUALTY COMPANY	.OH	UDP	GRANGE MUTUAL CASUALTY COMPANY	BOARD	.0	GRANGE MUTUAL CASUALTY COMPANY	.0
00267	GRANGE MUTUAL CASUALTY GROUP	71218	31-0739286				GRANGE LIFE INSURANCE COMPANY	.OH	IA	GRANGE MUTUAL CASUALTY COMPANY	OWNERSHIP	.79	GRANGE MUTUAL CASUALTY COMPANY	.0
00267	GRANGE MUTUAL CASUALTY GROUP	71218	31-0739286				GRANGE LIFE INSURANCE COMPANY	.OH	IA	INTEGRITY MUTUAL INSURANCE COMPANY	OWNERSHIP	.20	GRANGE MUTUAL CASUALTY COMPANY	.0
00267	GRANGE MUTUAL CASUALTY GROUP	40118	41-1405571				TRUSTGARD INSURANCE COMPANY	.OH	RE	GRANGE MUTUAL CASUALTY COMPANY	OWNERSHIP	100	GRANGE MUTUAL CASUALTY COMPANY	.0
00267	GRANGE MUTUAL CASUALTY GROUP	10322	31-1432675				GRANGE INDEMNITY INSURANCE COMPANY	.OH	IA	GRANGE MUTUAL CASUALTY COMPANY	OWNERSHIP	100	GRANGE MUTUAL CASUALTY COMPANY	.0
00267	GRANGE MUTUAL CASUALTY GROUP	11136	31-1769414				GRANGE INSURANCE COMPANY OF MICHIGAN	.OH	IA	GRANGE MUTUAL CASUALTY COMPANY	OWNERSHIP	100	GRANGE MUTUAL CASUALTY COMPANY	.0
00267	GRANGE MUTUAL CASUALTY GROUP	14303	39-0367560				INTEGRITY MUTUAL INSURANCE COMPANY	.WI	IA	GRANGE MUTUAL CASUALTY COMPANY	BOARD	.0	GRANGE MUTUAL CASUALTY COMPANY	.0
00267	GRANGE MUTUAL CASUALTY GROUP	11982	42-1610213				GRANGE PROPERTY & CASUALTY INSURANCE COMPANY	.OH	IA	GRANGE MUTUAL CASUALTY COMPANY	OWNERSHIP	100	GRANGE MUTUAL CASUALTY COMPANY	.0
00267	GRANGE MUTUAL CASUALTY GROUP	12986	41-2236417				INTEGRITY PROPERTY & CASUALTY INSURANCE COMPANY	.WI	IA	INTEGRITY MUTUAL INSURANCE COMPANY	OWNERSHIP	100	GRANGE MUTUAL CASUALTY COMPANY	.0
00267	GRANGE MUTUAL CASUALTY GROUP	14917	46-1454886				GRANGE LIFE REINSURANCE COMPANY	.VT	IA	GRANGE LIFE INSURANCE COMPANY	OWNERSHIP	100	GRANGE MUTUAL CASUALTY COMPANY	.0
		00000	31-1145043				GRANGEAMERICA	.OH	NIA	GRANGE MUTUAL CASUALTY COMPANY	OWNERSHIP	100	GRANGE MUTUAL CASUALTY COMPANY	.0
		00000	31-1193707				NORTHVIEW INSURANCE AGENCY	.OH	NIA	GRANGE LIFE INSURANCE COMPANY	OWNERSHIP	100	GRANGE MUTUAL CASUALTY COMPANY	.0
												.0		.0

12

Asterisk	Explanation

PART 1 - LOSS EXPERIENCE

Line of Business	Current Year to Date			4 Prior Year to Date Direct Loss Percentage
	1 Direct Premiums Earned	2 Direct Losses Incurred	3 Direct Loss Percentage	
1. Fire	2,644,339	1,388,378	52.5	45.2
2. Allied lines	1,744,057	820,015	47.0	21.8
3. Farmowners multiple peril			0.0	0.0
4. Homeowners multiple peril	38,539,207	24,278,930	63.0	54.5
5. Commercial multiple peril			0.0	0.0
6. Mortgage guaranty			0.0	0.0
8. Ocean marine			0.0	0.0
9. Inland marine	699,541	313,244	44.8	30.6
10. Financial guaranty			0.0	0.0
11.1 Medical professional liability -occurrence			0.0	0.0
11.2 Medical professional liability -claims made			0.0	0.0
12. Earthquake	416,967		0.0	0.0
13. Group accident and health			0.0	0.0
14. Credit accident and health			0.0	0.0
15. Other accident and health			0.0	0.0
16. Workers' compensation	1,306,575	277,474	21.2	65.5
17.1 Other liability occurrence	802,695	617,679	77.0	22.8
17.2 Other liability-claims made			0.0	0.0
17.3 Excess Workers' Compensation			0.0	0.0
18.1 Products liability-occurrence			0.0	0.0
18.2 Products liability-claims made			0.0	0.0
19.1,19.2 Private passenger auto liability	43,522,040	26,248,258	60.3	49.8
19.3,19.4 Commercial auto liability	7,267,948	4,366,778	60.1	51.5
21. Auto physical damage	31,217,444	19,381,689	62.1	56.7
22. Aircraft (all perils)			0.0	0.0
23. Fidelity			0.0	0.0
24. Surety			0.0	0.0
26. Burglary and theft			0.0	0.0
27. Boiler and machinery			0.0	0.0
28. Credit			0.0	0.0
29. International			0.0	0.0
30. Warranty			0.0	0.0
31. Reinsurance - Nonproportional Assumed Property	XXX	XXX	XXX	XXX
32. Reinsurance - Nonproportional Assumed Liability	XXX	XXX	XXX	XXX
33. Reinsurance - Nonproportional Assumed Financial Lines	XXX	XXX	XXX	XXX
34. Aggregate write-ins for other lines of business	0	0	0.0	0.0
35. TOTALS	128,160,811	77,692,445	60.6	52.3
DETAILS OF WRITE-INS				
3401.			0.0	0.0
3402.			0.0	0.0
3403.			0.0	0.0
3498. Sum. of remaining write-ins for Line 34 from overflow page	0	0	0.0	0.0
3499. Totals (Lines 3401 through 3403 plus 3498) (Line 34)	0	0	0.0	0.0

PART 2 - DIRECT PREMIUMS WRITTEN

Line of Business	1	2	3
	Current Quarter	Current Year to Date	Prior Year Year to Date
1. Fire	1,015,992	2,841,550	2,478,538
2. Allied lines	663,601	1,840,379	1,641,178
3. Farmowners multiple peril	0	0	0
4. Homeowners multiple peril	14,523,384	40,543,810	37,752,005
5. Commercial multiple peril	0	0	0
6. Mortgage guaranty	0	0	0
8. Ocean marine	0	0	0
9. Inland marine	237,278	704,706	728,118
10. Financial guaranty	0	0	0
11.1 Medical professional liability-occurrence	0	0	0
11.2 Medical professional liability-claims made	0	0	0
12. Earthquake	140,043	404,485	420,666
13. Group accident and health	0	0	0
14. Credit accident and health	0	0	0
15. Other accident and health	0	0	0
16. Workers' compensation	528,062	1,245,729	2,351,015
17.1 Other liability occurrence	267,440	785,396	836,654
17.2 Other liability-claims made	0	0	0
17.3 Excess Workers' Compensation	0	0	0
18.1 Products liability-occurrence	0	0	0
18.2 Products liability-claims made	0	0	0
19.1,19.2 Private passenger auto liability	15,157,215	45,040,660	42,337,582
19.3,19.4 Commercial auto liability	2,792,665	9,252,974	6,152,593
21. Auto physical damage	11,213,200	33,096,337	29,405,696
22. Aircraft (all perils)	0	0	0
23. Fidelity	0	0	0
24. Surety	0	0	0
26. Burglary and theft	0	0	0
27. Boiler and machinery	0	0	0
28. Credit	0	0	0
29. International	0	0	0
30. Warranty	0	0	0
31. Reinsurance - Nonproportional Assumed Property	XXX	XXX	XXX
32. Reinsurance - Nonproportional Assumed Liability	XXX	XXX	XXX
33. Reinsurance - Nonproportional Assumed Financial Lines	XXX	XXX	XXX
34. Aggregate write-ins for other lines of business	0	0	0
35. TOTALS	46,538,880	135,756,026	124,104,045
DETAILS OF WRITE-INS			
3401.	0	0	0
3402.	0	0	0
3403.	0	0	0
3498. Sum. of remaining write-ins for Line 34 from overflow page	0	0	0
3499. Totals (Lines 3401 through 3403 plus 3498) (Line 34)	0	0	0

STATEMENT AS OF SEPTEMBER 30, 2014 OF THE TRUSTGARD INSURANCE COMPANY

PART 3 (000 omitted)

LOSS AND LOSS ADJUSTMENT EXPENSE RESERVES SCHEDULE

	1	2	3	4	5	6	7	8	9	10	11	12	13
Years in Which Losses Occurred	Prior Year-End Known Case Loss and LAE Reserves	Prior Year-End IBNR Loss and LAE Reserves	Total Prior Year-End Loss and LAE Reserves (Cols. 1 + 2)	2014 Loss and LAE Payments on Claims Reported as of Prior Year-End	2014 Loss and LAE Payments on Claims Unreported as of Prior Year-End	Total 2014 Loss and LAE Payments (Cols. 4 + 5)	Q.S. Date Known Case Loss and LAE Reserves on Claims Reported and Open as of Prior Year End	Q.S. Date Known Case Loss and LAE Reserves on Claims Reported or Reopened Subsequent to Prior Year End	Q.S. Date IBNR Loss and LAE Reserves	Total Q.S. Loss and LAE Reserves (Cols.7 + 8 + 9)	Prior Year-End Known Case Loss and LAE Reserves Developed (Savings)/ Deficiency (Cols. 4 + 7 minus Col. 1)	Prior Year-End IBNR Loss and LAE Reserves Developed (Savings)/ Deficiency (Cols. 5 + 8 + 9 minus Col. 2)	Prior Year-End Total Loss and LAE Reserve Developed (Savings)/ Deficiency (Cols. 11 + 12)
1. 2011 + Prior	3,084	1,681	4,765	1,841	114	1,955	1,981	201	785	2,967	738	(581)	157
2. 2012	2,217	2,032	4,248	1,229	107	1,335	1,513	73	1,356	2,943	525	(496)	30
3. Subtotals 2012 + prior	5,301	3,713	9,013	3,070	220	3,290	3,494	274	2,141	5,910	1,263	(1,077)	187
4. 2013	4,990	5,094	10,084	3,153	710	3,863	2,995	210	2,845	6,050	1,158	(1,330)	(172)
5. Subtotals 2013 + prior	10,291	8,807	19,098	6,223	930	7,153	6,489	484	4,986	11,959	2,422	(2,407)	15
6. 2014	XXX	XXX	XXX	XXX	13,259	13,259	XXX	3,751	4,125	7,876	XXX	XXX	XXX
7. Totals	10,291	8,807	19,098	6,223	14,189	20,413	6,489	4,236	9,111	19,836	2,422	(2,407)	15
8. Prior Year-End Surplus As Regards Policy-holders	54,162												
											Col. 11, Line 7 As % of Col. 1, Line 7	Col. 12, Line 7 As % of Col. 2, Line 7	Col. 13, Line 7 As % of Col. 3, Line 7
											1. 23.5	2. (27.3)	3. 0.1
													Col. 13, Line 7 Line 8
													4. 0.0

SUPPLEMENTAL EXHIBITS AND SCHEDULES INTERROGATORIES

The following supplemental reports are required to be filed as part of your statement filing. However, in the event that your company does not transact the type of business for which the special report must be filed, your response of **NO** to the specific interrogatory will be accepted in lieu of filing a "NONE" report and a bar code will be printed below. If the supplement is required of your company but is not being filed for whatever reason enter **SEE EXPLANATION** and provide an explanation following the interrogatory questions.

	<u>Response</u>
1. Will the Trusteed Surplus Statement be filed with the state of domicile and the NAIC with this statement?NO.....
2. Will Supplement A to Schedule T (Medical Professional Liability Supplement) be filed with this statement?NO.....
3. Will the Medicare Part D Coverage Supplement be filed with the state of domicile and the NAIC with this statement?NO.....
4. Will the Director and Officer Insurance Coverage Supplement be filed with the state of domicile and the NAIC with this statement?NO.....

Explanation:

- 1.
- 2.
- 3.
- 4.

Bar Code:

1.	 4 0 1 1 8 2 0 1 4 4 9 0 0 0 0 0 3
2.	 4 0 1 1 8 2 0 1 4 4 5 5 0 0 0 0 3
3.	 4 0 1 1 8 2 0 1 4 3 6 5 0 0 0 0 3
4.	 4 0 1 1 8 2 0 1 4 5 0 5 0 0 0 0 3

OVERFLOW PAGE FOR WRITE-INS

SCHEDULE A – VERIFICATION

Real Estate

	1 Year To Date	2 Prior Year Ended December 31
1. Book/adjusted carrying value, December 31 of prior year	0	0
2. Cost of acquired:		
2.1 Actual cost at time of acquisition	0	0
2.2 Additional investment made after acquisition	0	0
3. Current year change in encumbrances	0	0
4. Total gain (loss) on disposals	0	0
5. Deduct amounts received on disposals	0	0
6. Total foreign exchange change in book/adjusted carrying value	0	0
7. Deduct current year's other-than-temporary impairment recognized	0	0
8. Deduct current year's depreciation	0	0
9. Book/adjusted carrying value at the end of current period (Lines 1+2+3+4-5+6-7-8)	0	0
10. Deduct total nonadmitted amounts	0	0
11. Statement value at end of current period (Line 9 minus Line 10)	0	0

NONE

SCHEDULE B – VERIFICATION

Mortgage Loans

	1 Year To Date	2 Prior Year Ended December 31
1. Book value/recorded investment excluding accrued interest, December 31 of prior year	0	0
2. Cost of acquired:		
2.1 Actual cost at time of acquisition	0	0
2.2 Additional investment made after acquisition	0	0
3. Capitalized deferred interest and other	0	0
4. Accrual of discount	0	0
5. Unrealized valuation increase (decrease)	0	0
6. Total gain (loss) on disposals	0	0
7. Deduct amounts received on disposals	0	0
8. Deduct amortization of premium and mortgage interest points and commitment fees	0	0
9. Total foreign exchange change in book value/recorded investment excluding accrued interest	0	0
10. Deduct current year's other-than-temporary impairment recognized	0	0
11. Book value/recorded investment excluding accrued interest at end of current period (Lines 1+2+3+4+5+6-7-8+9-10)	0	0
12. Total valuation allowance	0	0
13. Subtotal (Line 11 plus Line 12)	0	0
14. Deduct total nonadmitted amounts	0	0
15. Statement value at end of current period (Line 13 minus Line 14)	0	0

NONE

SCHEDULE BA – VERIFICATION

Other Long-Term Invested Assets

	1 Year To Date	2 Prior Year Ended December 31
1. Book/adjusted carrying value, December 31 of prior year	0	0
2. Cost of acquired:		
2.1 Actual cost at time of acquisition	0	0
2.2 Additional investment made after acquisition	0	0
3. Capitalized deferred interest and other	0	0
4. Accrual of discount	0	0
5. Unrealized valuation increase (decrease)	0	0
6. Total gain (loss) on disposals	0	0
7. Deduct amounts received on disposals	0	0
8. Deduct amortization of premium and depreciation	0	0
9. Total foreign exchange change in book/adjusted carrying value	0	0
10. Deduct current year's other-than-temporary impairment recognized	0	0
11. Book/adjusted carrying value at end of current period (Lines 1+2+3+4+5+6-7+8+9-10)	0	0
12. Deduct total nonadmitted amounts	0	0
13. Statement value at end of current period (Line 11 minus Line 12)	0	0

NONE

SCHEDULE D – VERIFICATION

Bonds and Stocks

	1 Year To Date	2 Prior Year Ended December 31
1. Book/adjusted carrying value of bonds and stocks, December 31 of prior year	82,548,499	74,428,504
2. Cost of bonds and stocks acquired	12,693,508	20,519,412
3. Accrual of discount	177,819	93,680
4. Unrealized valuation increase (decrease)	0	0
5. Total gain (loss) on disposals	(35,202)	189,869
6. Deduct consideration for bonds and stocks disposed of	9,777,399	12,086,244
7. Deduct amortization of premium	549,050	596,722
8. Total foreign exchange change in book/adjusted carrying value	0	0
9. Deduct current year's other-than-temporary impairment recognized	0	0
10. Book/adjusted carrying value at end of current period (Lines 1+2+3+4+5-6-7+8-9)	85,058,175	82,548,499
11. Deduct total nonadmitted amounts	0	2,000
12. Statement value at end of current period (Line 10 minus Line 11)	85,058,175	82,546,499

STATEMENT AS OF SEPTEMBER 30, 2014 OF THE TRUSTGARD INSURANCE COMPANY

SCHEDULE D - PART 1B

Showing the Acquisitions, Dispositions and Non-Trading Activity
During the Current Quarter for all Bonds and Preferred Stock by NAIC Designation

NAIC Designation	1 Book/Adjusted Carrying Value Beginning of Current Quarter	2 Acquisitions During Current Quarter	3 Dispositions During Current Quarter	4 Non-Trading Activity During Current Quarter	5 Book/Adjusted Carrying Value End of First Quarter	6 Book/Adjusted Carrying Value End of Second Quarter	7 Book/Adjusted Carrying Value End of Third Quarter	8 Book/Adjusted Carrying Value December 31 Prior Year
BONDS								
1. NAIC 1 (a).....	69,358,176	4,990,190	2,584,472	(226,815)	69,570,850	69,358,176	71,537,079	67,793,105
2. NAIC 2 (a).....	13,734,666	605,166	1,000,000	181,264	14,565,563	13,734,666	13,521,096	14,753,394
3. NAIC 3 (a).....	0				0	0	0	0
4. NAIC 4 (a).....	0				0	0	0	0
5. NAIC 5 (a).....	0				0	0	0	0
6. NAIC 6 (a).....	0				0	0	0	0
7. Total Bonds	83,092,842	5,595,356	3,584,472	(45,551)	84,136,413	83,092,842	85,058,175	82,546,499
PREFERRED STOCK								
8. NAIC 1.....	0				0	0	0	0
9. NAIC 2.....	0				0	0	0	0
10. NAIC 3.....	0				0	0	0	0
11. NAIC 4.....	0				0	0	0	0
12. NAIC 5.....	0				0	0	0	0
13. NAIC 6.....	0				0	0	0	0
14. Total Preferred Stock.....	0	0	0	0	0	0	0	0
15. Total Bonds & Preferred Stock	83,092,842	5,595,356	3,584,472	(45,551)	84,136,413	83,092,842	85,058,175	82,546,499

(a) Book/Adjusted Carrying Value column for the end of the current reporting period includes the following amount of non-rated short-term and cash equivalent bonds by NAIC designation: NAIC 1 \$; NAIC 2 \$;
NAIC 3 \$; NAIC 4 \$; NAIC 5 \$; NAIC 6 \$

S102

SCHEDULE DA - PART 1

Short-Term Investments

	1	2	3	4	5
	Book/Adjusted Carrying Value	Par Value	Actual Cost	Interest Collected Year To Date	Paid for Accrued Interest Year To Date
9199999	0	XXX	0	0	0

SCHEDULE DA - VERIFICATION

Short-Term Investments

	1	2
	Year To Date	Prior Year Ended December 31
1. Book/adjusted carrying value, December 31 of prior year.....	0	817,576
2. Cost of short-term investments acquired		7,013,632
3. Accrual of discount		0
4. Unrealized valuation increase (decrease).....		0
5. Total gain (loss) on disposals		0
6. Deduct consideration received on disposals		7,831,208
7. Deduct amortization of premium.....		0
8. Total foreign exchange change in book/adjusted carrying value.....		0
9. Deduct current year's other-than-temporary impairment recognized.....		0
10. Book/adjusted carrying value at end of current period (Lines 1+2+3+4+5-6-7+8-9).....	0	0
11. Deduct total nonadmitted amounts.....		0
12. Statement value at end of current period (Line 10 minus Line 11)	0	0

Schedule DB - Part A - Verification

NONE

Schedule DB - Part B - Verification

NONE

Schedule DB - Part C - Section 1

NONE

Schedule DB - Part C - Section 2

NONE

Schedule DB - Verification

NONE

Schedule E - Verification

NONE

Schedule A - Part 2

NONE

Schedule A - Part 3

NONE

Schedule B - Part 2

NONE

Schedule B - Part 3

NONE

Schedule BA - Part 2

NONE

Schedule BA - Part 3

NONE

STATEMENT AS OF SEPTEMBER 30, 2014 OF THE TRUSTGARD INSURANCE COMPANY

SCHEDULE D - PART 3

Show All Long-Term Bonds and Stock Acquired During the Current Quarter

1	2	3	4	5	6	7	8	9	10
CUSIP Identification	Description	Foreign	Date Acquired	Name of Vendor	Number of Shares of Stock	Actual Cost	Par Value	Paid for Accrued Interest and Dividends	NAIC Designation or Market Indicator (a)
Bonds - U.S. Governments									
313380-JF-5	FHLB Call 2.400% 09/06/22		08/12/2014	Stifel Nicolaus & Co.		487,950	500,000	5,233	1
313381-E3-5	Federal Home Loan Bank Call 1.750% 11/		07/24/2014	Keybank Capital Markets		946,280	1,000,000	2,868	1
313381-QQ-1	Federal Home Loan Bank Call 2.000% 01/		07/14/2014	FTN Financial		946,900	1,000,000	9,556	1
3136G0-VL-2	FNMA Call 3.000% 08/23/32		09/02/2014	Stifel Nicolaus & Co.		473,751	475,000	396	1
0599999 - Bonds - U.S. Governments						2,854,881	2,975,000	18,053	XXX
Bonds - U.S. States, Territories and Possessions									
70914P-TE-2	Pennsylvania State NC 5.000% 07/01/22		09/23/2014	Baird, Robert W. & Company		239,760	200,000	2,361	1FE
1799999 - Bonds - U.S. States, Territories and Possessions						239,760	200,000	2,361	XXX
Bonds - U.S. Special Revenue									
120525-DS-6	Buncombe Cnty, NC Call 5.000% 06/01/30		07/30/2014	Stephens Inc.		589,655	500,000	4,375	1FE
3136AA-CD-5	FNR 2012-131DZ 2.500% 05/25/41		09/01/2014	Interest Capitalization		709	709	1	1
87638Q-HS-1	Tarrant County, TX Call 5.000% 10/01/2		07/16/2014	Stephens Inc.		573,320	500,000	7,639	1FE
3199999 - Bonds - U.S. Special Revenue and Special Assessment and all Non-Guaranteed Obligations of Agencies and Authorities of Governments and Their Political Subdivisions						1,163,684	1,000,709	12,014	XXX
Bonds - Industrial and Miscellaneous (Unaffiliated)									
126256-AC-8	CNOOC Finance NC 3.000% 05/09/23	F	07/21/2014	National Financial Services		474,895	500,000	3,125	1FE
22303Q-AN-0	Coviden Intl Finance Call 3.200% 06/1	F	09/22/2014	National Financial Services		605,166	600,000	5,333	2FE
494386-AB-1	Kimberly Clark De Mexico 144A 3.800% 0	F	07/17/2014	Davidson, D.A., Co., Inc		256,970	250,000	2,744	1FE
3899999 - Bonds - Industrial and Miscellaneous (Unaffiliated)						1,337,031	1,350,000	11,203	XXX
8399997 - Subtotals - Bonds - Part 3						5,595,356	5,525,709	43,631	XXX
8399999 - Subtotals - Bonds						5,595,356	5,525,709	43,631	XXX
9999999 Totals						5,595,356	XXX	43,631	XXX

(a) For all common stock bearing the NAIC market indicator "U" provide: the number of such issues

STATEMENT AS OF SEPTEMBER 30, 2014 OF THE TRUSTGARD INSURANCE COMPANY

SCHEDULE D - PART 4

Show All Long-Term Bonds and Stock Sold, Redeemed or Otherwise Disposed of During the Current Quarter

1	2	3	4	5	6	7	8	9	10	Change in Book/Adjusted Carrying Value					16	17	18	19	20	21	22
										11	12	13	14	15							
CUSIP Identification	Description	Foreign	Disposal Date	Name of Purchaser	Number of Shares of Stock	Consideration	Par Value	Actual Cost	Prior Year Book/Adjusted Carrying Value	Unrealized Valuation Increase/(Decrease)	Current Year's (Amortization)/Accretion	Current Year's Other Than Temporary Impairment Recognized	Total Change in B./A.C.V. (11+12-13)	Total Foreign Exchange Change in B./A.C.V.	Book/Adjusted Carrying Value at Disposal Date	Foreign Exchange Gain (Loss) on Disposal	Realized Gain (Loss) on Disposal	Total Gain (Loss) on Disposal	Bond Interest/Stock Dividends Received During Year	Stated Contractual Maturity Date	NAIC Designation or Market Indicator (a)
Bonds - U.S. Governments																					
36202F-UC-8...	GNMA G2 5072 3.500%		06/20/26	Paydown		30,556	30,556	32,332	32,304		(1,748)		(1,748)		30,556			0	716	06/20/2026	1
383730-PY-1...	GNR 2003-41 BX 4.500%		05/20/33	Paydown		10,810	10,810	10,841	10,807		3		3		10,810			0	325	05/20/2033	1
38376Y-FF-3...	GNR 2010-46 CH 4.000%		03/20/39	Paydown		31,414	31,414	33,264		(1,850)		(1,850)		31,414			0	731	03/20/2039	1	
38378C-RT-6...	GNR 2012-13 EG 2.000%		10/20/40	Paydown		14,279	14,279	14,442	14,415		(136)		(136)		14,279			0	190	10/20/2040	1
38378D-VT-9...	GNR 2012-36 MA 3.000%		06/20/39	Paydown		11,372	11,372	12,104	12,030		(659)		(659)		11,372			0	228	06/20/2039	1
38378V-XZ-3...	GNR 2013-119 TV 3.000%		08/20/43	Paydown		4,008	4,008	4,088	4,083		(75)		(75)		4,008			0	80	08/20/2043	1
912828-CT-5...	United States Treasury Note - GA 4.250%		08/15/2014	Maturity		100,000	100,000	101,469	100,111		(111)		(111)		100,000			0	4,250	08/15/2014	1
0599999 - Bonds - U.S. Governments						202,438	202,438	208,539	173,750	0	(4,577)	0	(4,577)	0	202,438	0	0	0	6,520	XXX	XXX
Bonds - U.S. Special Revenue and Special Assessment and all Non-Guaranteed Obligations of Agencies and Authorities of Governments and Their Political Subdivisions																					
312962-0G-1...	FG B10455 5.000%		10/01/18	Paydown		43,897	43,897	47,079	46,187		(2,291)		(2,291)		43,897			0	1,517	10/01/2018	1
313382-KX-0...	Federal Home Loan Bank Call 1.050% 03/		09/28/2014	Call	100.0000	500,000	500,000	500,000	506,892		(6,892)		(6,892)		500,000			0	5,250	03/28/2025	1
313382-N6-6...	Federal Home Loan Bank Call 1.000% 04/		07/18/2014	Call	100.0000	500,000	500,000	500,000	503,226		(3,226)		(3,226)		500,000			0	3,750	04/18/2028	1
3136A7-ZV-7...	FNR 2012-83 BA 3.500%		03/25/41	Paydown		7,392	7,392	7,581	7,572		(180)		(180)		7,392			0	172	03/25/2041	1
31371J-S8-8...	FNMA Pool 253543 7.000%		11/01/20	Paydown		1,250	1,250	1,238	1,241		9		9		1,250			0	64	11/01/2020	1
3137A3-JW-0...	FHR 3753 AS 3.500%		11/15/25	Paydown		406	406	419	417		(10)		(10)		406			0	9	11/15/2025	1
3137A3-PN-3...	FHR 3762 GM 3.500%		08/15/28	Paydown		11,007	11,007	11,351	11,254		(247)		(247)		11,007			0	254	08/15/2028	1
3137A5-WW-0...	FHR 3786 WA 4.000%		12/15/28	Paydown		27,111	27,111	27,866	27,723		(612)		(612)		27,111			0	715	12/15/2028	1
3137AG-CA-6...	FHR 3947 BC 2.500%		10/15/26	Paydown		8,595	8,595	8,890	8,829		(233)		(233)		8,595			0	144	10/15/2026	1
3137AN-JP-1...	FHR 4013 WY 3.145%		11/15/40	Paydown		6,954	6,954	7,150	7,102		(149)		(149)		6,954			0	150	11/15/2040	1
3137AS-FL-3...	FHR 4076 QD 2.500%		11/15/41	Paydown		31,818	31,818	30,277		1,541		1,541		31,818			0	146	11/15/2041	1	
3138M8-CJ-0...	FN AP4572 3.000%		09/01/27	Paydown		15,229	15,229	16,257	16,187		(959)		(959)		15,229			0	306	09/01/2027	1
31392E-SX-9...	FNR 2002-59 B 5.500%		09/25/17	Paydown		2,430	2,430	2,473	2,443		(13)		(13)		2,430			0	89	09/25/2017	1
31393A-GG-6...	FNR 2003-28 GA 4.000%		10/25/32	Paydown		2,890	2,890	2,873	2,880		10		10		2,890			0	78	10/25/2032	1
31395B-D7-5...	FNR 2006-22 CE 4.500%		08/25/23	Paydown		11,227	11,227	11,528	11,361		(134)		(134)		11,227			0	335	08/25/2023	1
31395J-5E-2...	FHR 2881 AG 4.500%		08/15/34	Paydown		3,295	3,295	3,287	3,288		7		7		3,295			0	100	08/15/2034	1
31395W-4L-8...	FHR 3003 LD 5.000%		12/15/34	Paydown		13,933	13,933	14,630	14,318		(385)		(385)		13,933			0	463	12/15/2034	1
31398L-NU-8...	FHR 3606 A 4.000%		07/15/23	Paydown		18,106	18,106	19,003	18,572		(466)		(466)		18,106			0	477	07/15/2023	1
31398N-3X-0...	FNR 2010-130 CA 4.500%		05/25/38	Paydown		22,880	22,880	24,968		(2,088)		(2,088)		22,880			0	429	05/25/2038	1	
31398S-SG-9...	FNR 2010-136 BA 3.500%		12/25/30	Paydown		5,409	5,409	5,599	5,538		(129)		(129)		5,409			0	126	12/25/2030	1
31402C-4H-2...	FNMA Pool 725424 5.500%		04/01/34	Paydown		4,331	4,331	4,285	4,286		45		45		4,331			0	158	04/01/2034	1
31403B-4M-2...	FNMA Pool 744328 5.000%		09/01/33	Paydown		363	363	349	350		14		14		363			0	12	09/01/2033	1
31403D-GZ-6...	FNMA Pool 745516 5.500%		05/01/36	Paydown		1,819	1,819	1,816	1,816		2		2		1,819			0	67	05/01/2036	1

E05

STATEMENT AS OF SEPTEMBER 30, 2014 OF THE TRUSTGARD INSURANCE COMPANY

SCHEDULE D - PART 4

Show All Long-Term Bonds and Stock Sold, Redeemed or Otherwise Disposed of During the Current Quarter

1	2	3	4	5	6	7	8	9	10	Change in Book/Adjusted Carrying Value					16	17	18	19	20	21	22
										11	12	13	14	15							
CUSIP Identification	Description	Foreign	Disposal Date	Name of Purchaser	Number of Shares of Stock	Consideration	Par Value	Actual Cost	Prior Year Book/Adjusted Carrying Value	Unrealized Valuation Increase/ (Decrease)	Current Year's (Amortization)/ Accretion	Current Year's Other Than Temporary Impairment Recognized	Total Change in B./A.C.V. (11+12-13)	Total Foreign Exchange Change in B./A.C.V.	Book/ Adjusted Carrying Value at Disposal Date	Foreign Exchange Gain (Loss) on Disposal	Realized Gain (Loss) on Disposal	Total Gain (Loss) on Disposal	Bond Interest/Stock Dividends Received During Year	Stated Contractual Maturity Date	NAIC Designation or Market Indicator (a)
31418A-KN-7	FN MA1200 3.000% 10/01/32		09/01/2014	Paydown		12,285	12,285	13,072	13,035		(751)		(751)		12,285			0	244	10/01/2032	1
31419F-EB-8	FN AE4629 4.000% 10/01/40		09/01/2014	Paydown		12,890	12,890	13,518	13,502		(612)		(612)		12,890			0	342	10/01/2040	1
3199999 - Bonds - U.S. Special Revenue and Special Assessment and all Non-Guaranteed Obligations of Agencies and Authorities of Governments and Their Political Subdivisions						1,265,516	1,265,516	1,275,508	1,228,018	0	(17,748)	0	(17,748)	0	1,265,516	0	0	0	15,396	XXX	XXX
Bonds - Industrial and Miscellaneous (Unaffiliated)																					
49306C-AH-4	Key Bank, NA NC 5.800% 07/01/14		07/01/2014	Maturity		1,000,000	1,000,000	1,065,090	1,004,197		(4,197)		(4,197)		1,000,000			0	58,000	07/01/2014	2FE
78387G-AL-7	SBC Communications Inc. NC 5.625% 06/1		07/15/2014	Call	109.4757	547,379	500,000	519,500	505,133		42,246		42,246		547,379			0	16,406	06/15/2016	1FE
929280-AB-4	WEA Financial 144A-Call 4.625% 05/10/2		07/23/2014	Call	113.8280	569,140	500,000	480,825	484,306		84,834		84,834		569,140			0	16,253	05/10/2021	1FE
3899999 - Bonds - Industrial and Miscellaneous (Unaffiliated)						2,116,519	2,000,000	2,065,415	1,993,636	0	122,883	0	122,883	0	2,116,519	0	0	0	90,659	XXX	XXX
8399997 - Subtotals - Bonds - Part 4						3,584,472	3,467,954	3,549,462	3,395,404	0	100,558	0	100,558	0	3,584,472	0	0	0	112,574	XXX	XXX
8399999 - Subtotals - Bonds						3,584,472	3,467,954	3,549,462	3,395,404	0	100,558	0	100,558	0	3,584,472	0	0	0	112,574	XXX	XXX
9999999 Totals						3,584,472	XXX	3,549,462	3,395,404	0	100,558	0	100,558	0	3,584,472	0	0	0	112,574	XXX	XXX

(a) For all common stock bearing the NAIC market indicator "U" provide: the number of such issues

E05.1

Schedule DB - Part A - Section 1

NONE

Schedule DB - Part B - Section 1

NONE

Schedule DB - Part D - Section 1

NONE

Schedule DB - Part D - Section 2

NONE

STATEMENT AS OF SEPTEMBER 30, 2014 OF THE TRUSTGARD INSURANCE COMPANY

SCHEDULE E - PART 2 - CASH EQUIVALENTS

Show Investments Owned End of Current Quarter

1 Description	2 Code	3 Date Acquired	4 Rate of Interest	5 Maturity Date	6 Book/Adjusted Carrying Value	7 Amount of Interest Due & Accrued	8 Amount Received During Year
NONE							
8699999 Total Cash Equivalents					0	0	0