



PROPERTY AND CASUALTY COMPANIES - ASSOCIATION EDITION

QUARTERLY STATEMENT

AS OF SEPTEMBER 30, 2014

OF THE CONDITION AND AFFAIRS OF THE

Nationwide Property & Casualty Insurance Company

NAIC Group Code 0140 (Current) 0140 (Prior) NAIC Company Code 37877 Employer's ID Number 31-0970750

Organized under the Laws of Ohio, State of Domicile or Port of Entry Ohio

Country of Domicile United States of America

Incorporated/Organized 11/09/1979 Commenced Business 07/01/1981

Statutory Home Office One West Nationwide Blvd., Columbus, OH, US 43215-2220

Main Administrative Office One West Nationwide Blvd., Columbus, OH, US 43215-2220

Mail Address One West Nationwide Blvd., 1-04-701 Columbus, OH, US 43215-2220

Primary Location of Books and Records One West Nationwide Blvd., 1-04-701 Columbus, OH, US 43215-2220

Internet Website Address www.nationwide.com

Statutory Statement Contact Monda S. Caudill, FinRpt@nationwide.com, 614-249-1545

OFFICERS

President Mark Angelo Pizzi VP & Treasurer Lynda Marie Butler #
VP & Secretary Robert William Horner III

OTHER

David Gerard Arango Div Pres-Pres-P & C Spec Prod David Alan Bano Sr VP - Chief Claims Off Mark Allen Berven Exe VP-Chf Strat&Prod Mgmt Off
Pamela Ann Biesecker Sr VP-Head of Taxation Thomas Edward Clark Sr VP-Field Operations IC Gary Anthony Douglas Sr VP-NW National Partners
Harry Hansen Hallowell Sr VP Jennifer Marie Hanley Sr VP Michael Allen Lex Sr VP-Cmmrcial Lines Prod Mgmt
Amy Taylor Shore Sr VP-Field Operations EC

DIRECTORS OR TRUSTEES

Anne Louise Arvia Wesley Kim Austen Mark Allen Berven
Mark Angelo Pizzi Mark Raymond Thresher

State of Ohio SS:
County of Franklin

The officers of this reporting entity being duly sworn, each depose and say that they are the described officers of said reporting entity, and that on the reporting period stated above, all of the herein described assets were the absolute property of the said reporting entity, free and clear from any liens or claims thereon, except as herein stated, and that this statement, together with related exhibits, schedules and explanations therein contained, annexed or referred to, is a full and true statement of all the assets and liabilities and of the condition and affairs of the said reporting entity as of the reporting period stated above, and of its income and deductions therefrom for the period ended, and have been completed in accordance with the NAIC Annual Statement Instructions and Accounting Practices and Procedures manual except to the extent that: (1) state law may differ; or, (2) that state rules or regulations require differences in reporting not related to accounting practices and procedures, according to the best of their information, knowledge and belief, respectively. Furthermore, the scope of this attestation by the described officers also includes the related corresponding electronic filing with the NAIC, when required, that is an exact copy (except for formatting differences due to electronic filing) of the enclosed statement. The electronic filing may be requested by various regulators in lieu of or in addition to the enclosed statement.

Mark Angelo Pizzi
President

Robert William Horner III
VP & Secretary

Lynda Marie Butler
VP & Treasurer

Subscribed and sworn to before me this
day of October, 2014

- a. Is this an original filing? Yes [X] No []
b. If no,
1. State the amendment number.....
2. Date filed
3. Number of pages attached.....

STATEMENT AS OF SEPTEMBER 30, 2014 OF THE NATIONWIDE PROPERTY AND CASUALTY INSURANCE
COMPANY

ASSETS

	Current Statement Date			4 December 31 Prior Year Net Admitted Assets
	1 Assets	2 Nonadmitted Assets	3 Net Admitted Assets (Cols. 1 - 2)	
1. Bonds	35,265,826		35,265,826	37,879,845
2. Stocks:				
2.1 Preferred stocks				
2.2 Common stocks				
3. Mortgage loans on real estate:				
3.1 First liens				
3.2 Other than first liens				
4. Real estate:				
4.1 Properties occupied by the company (less \$ encumbrances)				
4.2 Properties held for the production of income (less \$ encumbrances)				
4.3 Properties held for sale (less \$ encumbrances)				
5. Cash (\$90,938), cash equivalents (\$) and short-term investments (\$8,272,487)	8,363,426		8,363,426	4,140,220
6. Contract loans (including \$ premium notes)				
7. Derivatives				
8. Other invested assets	12,359,590		12,359,590	10,918,672
9. Receivables for securities				
10. Securities lending reinvested collateral assets				
11. Aggregate write-ins for invested assets				
12. Subtotals, cash and invested assets (Lines 1 to 11)	55,988,842		55,988,842	52,938,737
13. Title plants less \$ charged off (for Title insurers only)				
14. Investment income due and accrued	204,706		204,706	287,571
15. Premiums and considerations:				
15.1 Uncollected premiums and agents' balances in the course of collection	47,999,828		47,999,828	49,113,217
15.2 Deferred premiums, agents' balances and installments booked but deferred and not yet due (including \$ earned but unbilled premiums)	371,454,081	266,984	371,187,097	329,861,229
15.3 Accrued retrospective premiums				
16. Reinsurance:				
16.1 Amounts recoverable from reinsurers	79,067,594		79,067,594	67,251,457
16.2 Funds held by or deposited with reinsured companies	891		891	1,043
16.3 Other amounts receivable under reinsurance contracts	32,992,033		32,992,033	30,892,756
17. Amounts receivable relating to uninsured plans				
18.1 Current federal and foreign income tax recoverable and interest thereon				
18.2 Net deferred tax asset	508,151	104,978	403,173	467,669
19. Guaranty funds receivable or on deposit				
20. Electronic data processing equipment and software				
21. Furniture and equipment, including health care delivery assets (\$)				
22. Net adjustment in assets and liabilities due to foreign exchange rates				
23. Receivables from parent, subsidiaries and affiliates	24,826,485	23,841	24,802,644	40,942,402
24. Health care (\$) and other amounts receivable				
25. Aggregate write-ins for other than invested assets	32		32	3,256,007
26. Total assets excluding Separate Accounts, Segregated Accounts and Protected Cell Accounts (Lines 12 to 25)	613,042,643	395,803	612,646,840	575,012,088
27. From Separate Accounts, Segregated Accounts and Protected Cell Accounts				
28. Total (Lines 26 and 27)	613,042,643	395,803	612,646,840	575,012,088
DETAILS OF WRITE-INS				
1101.				
1102.				
1103.				
1198. Summary of remaining write-ins for Line 11 from overflow page				
1199. Totals (Lines 1101 through 1103 plus 1198)(Line 11 above)				
2501. Miscellaneous assets	32		32	3,256,007
2502.				
2503.				
2598. Summary of remaining write-ins for Line 25 from overflow page				
2599. Totals (Lines 2501 through 2503 plus 2598)(Line 25 above)	32		32	3,256,007

STATEMENT AS OF SEPTEMBER 30, 2014 OF THE NATIONWIDE PROPERTY AND CASUALTY INSURANCE COMPANY

LIABILITIES, SURPLUS AND OTHER FUNDS

	1 Current Statement Date	2 December 31, Prior Year
1. Losses (current accident year \$)		
2. Reinsurance payable on paid losses and loss adjustment expenses		
3. Loss adjustment expenses		
4. Commissions payable, contingent commissions and other similar charges		
5. Other expenses (excluding taxes, licenses and fees)		
6. Taxes, licenses and fees (excluding federal and foreign income taxes)		
7.1 Current federal and foreign income taxes (including \$ (191,815) on realized capital gains (losses))	250,812	1,072,187
7.2 Net deferred tax liability		
8. Borrowed money \$ and interest thereon \$		
9. Unearned premiums (after deducting unearned premiums for ceded reinsurance of \$679,075,925 and including warranty reserves of \$ and accrued accident and health experience rating refunds including \$ for medical loss ratio rebate per the Public Health Service Act)		
10. Advance premium		
11. Dividends declared and unpaid:		
11.1 Stockholders		
11.2 Policyholders		
12. Ceded reinsurance premiums payable (net of ceding commissions)	544,367,403	508,276,254
13. Funds held by company under reinsurance treaties	891	1,043
14. Amounts withheld or retained by company for account of others		
15. Remittances and items not allocated	7,233	
16. Provision for reinsurance (including \$ certified)		
17. Net adjustments in assets and liabilities due to foreign exchange rates		
18. Drafts outstanding		
19. Payable to parent, subsidiaries and affiliates	11,631,821	10,057,916
20. Derivatives		
21. Payable for securities		
22. Payable for securities lending		
23. Liability for amounts held under uninsured plans		
24. Capital notes \$ and interest thereon \$		
25. Aggregate write-ins for liabilities		
26. Total liabilities excluding protected cell liabilities (Lines 1 through 25)	556,258,160	519,407,400
27. Protected cell liabilities		
28. Total liabilities (Lines 26 and 27)	556,258,160	519,407,400
29. Aggregate write-ins for special surplus funds		
30. Common capital stock	3,000,000	3,000,000
31. Preferred capital stock		
32. Aggregate write-ins for other than special surplus funds		
33. Surplus notes		
34. Gross paid in and contributed surplus	24,000,000	24,000,000
35. Unassigned funds (surplus)	29,388,680	28,604,688
36. Less treasury stock, at cost:		
36.1 shares common (value included in Line 30 \$)		
36.2 shares preferred (value included in Line 31 \$)		
37. Surplus as regards policyholders (Lines 29 to 35, less 36)	56,388,680	55,604,688
38. Totals (Page 2, Line 28, Col. 3)	612,646,840	575,012,088
DETAILS OF WRITE-INS		
2501.		
2502.		
2503.		
2598. Summary of remaining write-ins for Line 25 from overflow page		
2599. Totals (Lines 2501 through 2503 plus 2598)(Line 25 above)		
2901.		
2902.		
2903.		
2998. Summary of remaining write-ins for Line 29 from overflow page		
2999. Totals (Lines 2901 through 2903 plus 2998)(Line 29 above)		
3201.		
3202.		
3203.		
3298. Summary of remaining write-ins for Line 32 from overflow page		
3299. Totals (Lines 3201 through 3203 plus 3298)(Line 32 above)		

STATEMENT AS OF SEPTEMBER 30, 2014 OF THE NATIONWIDE PROPERTY AND CASUALTY INSURANCE COMPANY

STATEMENT OF INCOME

	1 Current Year to Date	2 Prior Year to Date	3 Prior Year Ended December 31
UNDERWRITING INCOME			
1. Premiums earned:			
1.1 Direct (written \$1,240,284,353)	1,220,637,651	1,139,977,790	1,537,521,184
1.2 Assumed (written \$1,932)	1,405	1,395	1,796
1.3 Ceded (written \$1,240,286,285)	1,220,639,056	1,139,979,185	1,537,522,980
1.4 Net (written \$)			
DEDUCTIONS:			
2. Losses incurred (current accident year \$):			
2.1 Direct	789,273,062	707,204,470	900,450,037
2.2 Assumed	1,037	809	1,607
2.3 Ceded	789,274,099	707,205,279	900,451,644
2.4 Net			
3. Loss adjustment expenses incurred			
4. Other underwriting expenses incurred			
5. Aggregate write-ins for underwriting deductions			
6. Total underwriting deductions (Lines 2 through 5)			
7. Net income of protected cells			
8. Net underwriting gain or (loss) (Line 1 minus Line 6 + Line 7)			
INVESTMENT INCOME			
9. Net investment income earned	527,411	452,789	270,049
10. Net realized capital gains (losses) less capital gains tax of \$(191,815)	563,544	1,016,591	1,016,381
11. Net investment gain (loss) (Lines 9 + 10)	1,090,955	1,469,380	1,286,430
OTHER INCOME			
12. Net gain or (loss) from agents' or premium balances charged off (amount recovered \$ amount charged off \$)			
13. Finance and service charges not included in premiums			
14. Aggregate write-ins for miscellaneous income			1,224
15. Total other income (Lines 12 through 14)			1,224
16. Net income before dividends to policyholders, after capital gains tax and before all other federal and foreign income taxes (Lines 8 + 11 + 15)	1,090,955	1,469,380	1,287,654
17. Dividends to policyholders			
18. Net income, after dividends to policyholders, after capital gains tax and before all other federal and foreign income taxes (Line 16 minus Line 17)	1,090,955	1,469,380	1,287,654
19. Federal and foreign income taxes incurred	460,376	779,113	616,674
20. Net income (Line 18 minus Line 19)(to Line 22)	630,579	690,267	670,980
CAPITAL AND SURPLUS ACCOUNT			
21. Surplus as regards policyholders, December 31 prior year	55,604,688	54,531,215	54,531,215
22. Net income (from Line 20)	630,579	690,267	670,980
23. Net transfers (to) from Protected Cell accounts			
24. Change in net unrealized capital gains (losses) less capital gains tax of \$25,467	47,296	71,810	69,412
25. Change in net unrealized foreign exchange capital gain (loss)			
26. Change in net deferred income tax	(74,936)	727,947	642,901
27. Change in nonadmitted assets	159,897	(386,172)	(309,820)
28. Change in provision for reinsurance			
29. Change in surplus notes			
30. Surplus (contributed to) withdrawn from protected cells			
31. Cumulative effect of changes in accounting principles			
32. Capital changes:			
32.1 Paid in			
32.2 Transferred from surplus (Stock Dividend)			
32.3 Transferred to surplus			
33. Surplus adjustments:			
33.1 Paid in			
33.2 Transferred to capital (Stock Dividend)			
33.3 Transferred from capital			
34. Net remittances from or (to) Home Office			
35. Dividends to stockholders			
36. Change in treasury stock			
37. Aggregate write-ins for gains and losses in surplus	21,156		
38. Change in surplus as regards policyholders (Lines 22 through 37)	783,992	1,103,852	1,073,473
39. Surplus as regards policyholders, as of statement date (Lines 21 plus 38)	56,388,680	55,635,067	55,604,688
DETAILS OF WRITE-INS			
0501.			
0502.			
0503.			
0598. Summary of remaining write-ins for Line 5 from overflow page			
0599. Totals (Lines 0501 through 0503 plus 0598)(Line 5 above)			
1401. Miscellaneous income			1,224
1402.			
1403.			
1498. Summary of remaining write-ins for Line 14 from overflow page			
1499. Totals (Lines 1401 through 1403 plus 1498)(Line 14 above)			1,224
3701. Change in surplus - miscellaneous	21,156		
3702.			
3703.			
3798. Summary of remaining write-ins for Line 37 from overflow page			
3799. Totals (Lines 3701 through 3703 plus 3798)(Line 37 above)	21,156		

STATEMENT AS OF SEPTEMBER 30, 2014 OF THE NATIONWIDE PROPERTY AND CASUALTY INSURANCE
COMPANY

CASH FLOW

	1 Current Year To Date	2 Prior Year To Date	3 Prior Year Ended December 31
Cash from Operations			
1. Premiums collected net of reinsurance	(4,121,330)	11,869,686	28,078,671
2. Net investment income	2,273,697	1,009,012	3,026,172
3. Miscellaneous income	(2,099,125)	9,839,799	10,095,753
4. Total (Lines 1 to 3)	(3,946,758)	22,718,497	41,200,596
5. Benefit and loss related payments	11,816,137	(8,371,313)	(11,035,704)
6. Net transfers to Separate Accounts, Segregated Accounts and Protected Cell Accounts			
7. Commissions, expenses paid and aggregate write-ins for deductions			
8. Dividends paid to policyholders			
9. Federal and foreign income taxes paid (recovered) net of \$ 539,114 tax on capital gains (losses)	1,089,936	234,074	264,334
10. Total (Lines 5 through 9)	12,906,073	(8,137,239)	(10,771,370)
11. Net cash from operations (Line 4 minus Line 10)	(16,852,831)	30,855,736	51,971,966
Cash from Investments			
12. Proceeds from investments sold, matured or repaid:			
12.1 Bonds	3,971,146	2,742,562	2,979,279
12.2 Stocks			
12.3 Mortgage loans			
12.4 Real estate			
12.5 Other invested assets	448,058	5,472,158	5,472,158
12.6 Net gains or (losses) on cash, cash equivalents and short-term investments			
12.7 Miscellaneous proceeds			
12.8 Total investment proceeds (Lines 12.1 to 12.7)	4,419,204	8,214,720	8,451,437
13. Cost of investments acquired (long-term only):			
13.1 Bonds	1,544,991		1,147,650
13.2 Stocks			
13.3 Mortgage loans			
13.4 Real estate			
13.5 Other invested assets	2,774,894	5,861,103	5,861,748
13.6 Miscellaneous applications			
13.7 Total investments acquired (Lines 13.1 to 13.6)	4,319,885	5,861,103	7,009,398
14. Net increase (or decrease) in contract loans and premium notes			
15. Net cash from investments (Line 12.8 minus Line 13.7 and Line 14)	99,319	2,353,617	1,442,039
Cash from Financing and Miscellaneous Sources			
16. Cash provided (applied):			
16.1 Surplus notes, capital notes			
16.2 Capital and paid in surplus, less treasury stock			
16.3 Borrowed funds			
16.4 Net deposits on deposit-type contracts and other insurance liabilities			
16.5 Dividends to stockholders			
16.6 Other cash provided (applied)	20,976,718	(34,922,372)	(52,573,021)
17. Net cash from financing and miscellaneous sources (Line 16.1 through Line 16.4 minus Line 16.5 plus Line 16.6)	20,976,718	(34,922,372)	(52,573,021)
RECONCILIATION OF CASH, CASH EQUIVALENTS AND SHORT-TERM INVESTMENTS			
18. Net change in cash, cash equivalents and short-term investments (Line 11, plus Lines 15 and 17)	4,223,206	(1,713,019)	.840,984
19. Cash, cash equivalents and short-term investments:			
19.1 Beginning of year	4,140,220	3,299,236	3,299,236
19.2 End of period (Line 18 plus Line 19.1)	8,363,426	1,586,217	4,140,220

Note: Supplemental disclosures of cash flow information for non-cash transactions:

--	--	--	--

NOTES TO FINANCIAL STATEMENTS

Note 1 - Summary of Significant Accounting Policies

A. Accounting Practices

The accompanying statutory financial statements of Nationwide Property & Casualty Insurance Company (the Company) have been prepared in conformity with accounting practices prescribed or permitted by the National Association of Insurance Commissioners (NAIC) and the State of Ohio.

The Ohio Insurance Department recognizes only statutory accounting practices (SAP) prescribed or permitted by the State of Ohio for determining and reporting the financial condition and results of operations of an insurance company, as well as, determining its solvency under the Ohio Insurance law. The National Association of Insurance Commissioners' (NAIC) *Accounting Practices and Procedures Manual* (NAIC SAP) has been adopted as a component of prescribed or permitted practices by the State of Ohio.

A reconciliation of the Company's net income and capital and surplus between NAIC SAP and practices prescribed and permitted by the State of Ohio is shown below:

	<u>State of Domicile</u>	<u>2014</u>	<u>2013</u>
<u>NET INCOME</u>			
(1) Nationwide Property & Casualty Insurance Company state basis (Page 4, Line 20, Columns 1 & 3)	OH	\$ 630,579	\$ 670,980
(2) State Prescribed Practices that increase/(decrease) NAIC SAP	OH	-	-
(3) State Permitted Practices that increase/(decrease) NAIC SAP	OH	-	-
(4) NAIC SAP (1-2-3=4)	OH	\$ 630,579	\$ 670,980
<u>SURPLUS</u>			
(5) Nationwide Property & Casualty Insurance Company state basis (Page 3, Line 37, Columns 1 & 2)	OH	\$ 56,388,680	\$ 55,604,688
(6) State Prescribed Practices that increase/(decrease) NAIC SAP	OH	-	-
(7) State Permitted Practices that increase/(decrease) NAIC SAP	OH	-	-
(8) NAIC SAP (5-6-7=8)	OH	\$ 56,388,680	\$ 55,604,688

Note 2 - Accounting Changes and Corrections of Errors

No change.

Note 3 - Business Combinations and Goodwill

No change.

Note 4 - Discontinued Operations

No change.

Note 5 - Investments

A. Mortgage Loans

No change.

B. Troubled Debt Restructuring for Creditors

No change.

C. Reverse Mortgages

No change.

D. Loan-Backed Securities

1. Prepayment assumptions are generally obtained using a model provided by a third-party vendor.
2. Not applicable.
3. Not applicable.
4. All impaired securities (fair value is less than cost or amortized cost) for which an other-than-temporary impairment has not been recognized in earnings as a realized loss (including securities with a recognized other-than-temporary impairment for non-interest related declines when a non-recognized interest related impairment remains):

a.	The aggregate amount of unrealized losses:		
	1.	Less than 12 Months	\$ -
	2.	12 Months or Longer	\$ (353,212)
			<u> </u>
b.	The aggregate related fair value of securities with unrealized losses:		
	1.	Less than 12 Months	\$ -
	2.	12 Months or Longer	\$ 15,142,729
			<u> </u>

5. The Company reviews all loan-backed and structured securities in which the fair value of the given security is less than the amortized cost to determine if a given security is other-than-temporarily impaired. The Company examines characteristics of the underlying collateral, such as delinquency and default rates, the quality of the underlying borrower, the type of collateral in the pool, the vintage year of the collateral, subordination levels within the structure of the collateral pool, and the quality of any credit guarantors, to determine the cash flows expected to be received for the security.

If the severity and duration of the security's unrealized loss indicates a risk of an other-than-temporary impairment, then the Company will evaluate if the amortized cost basis of the security will be recovered by comparing the present value of the cash flows expected to be received for the given security with the amortized cost basis of the security. If the present value of cash flows is greater than the amortized cost basis of a security then the security is deemed not to be other-than-temporarily impaired.

NOTES TO FINANCIAL STATEMENTS

E. Repurchase Agreements and Securities Lending Transactions

Not applicable.

F. Real Estate

No change.

G. Low-Income Housing Tax Credits

No change.

H. Restricted Assets

No change.

I. Working Capital Finance Investments

Not applicable.

Note 6 - Joint Ventures, Partnerships and Limited Liability Companies

No change.

Note 7 - Investment Income

No change.

Note 8 - Derivative Instruments

No change.

Note 9 - Income Taxes

No change.

Note 10 - Information Concerning Parent, Subsidiaries, Affiliates and Other Related Parties

C. Change in Terms of Intercompany Arrangements

Effective January 1, 2013, there are changes to the Nationwide Pool. See Note 26.

Note 11 - Debt

B. FHLB (Federal Home Loan Bank) Agreements

Not applicable.

Note 12 - Retirement Plans, Deferred Compensation, Postemployment Benefits and Compensated Absences and Other Postretirement Benefit Plans

Not applicable.

Note 13 - Capital and Surplus, Dividend Restrictions and Quasi-Reorganizations

No change.

Note 14 - Contingencies

No change.

Note 15 - Leases

No change.

Note 16 - Information About Financial Instruments With Off-Balance Sheet Risk And Financial Instruments With Concentrations of Credit Risk

No change.

Note 17 - Sale, Transfer and Servicing of Financial Assets and Extinguishments of Liabilities

A. Transfers of Receivables Reported as Sales

No change.

B. Transfers and Servicing of Financial Assets

Not applicable.

C. Wash Sales

Not applicable.

Note 18 - Gain or Loss to the Reporting Entity from Uninsured Plans and the Uninsured Portion of Partially Insured Plans

No change.

Note 19 - Direct Premiums Written/Produced by Managing General Agents/Third Party Administrators

No change.

NOTES TO FINANCIAL STATEMENTS

Note 20 – Fair Value Measurements

Fair value is defined as the price that would be received to sell an asset or paid to transfer a liability in an orderly transaction between market participants at the measurement date. Fair value measurements are based upon observable and unobservable inputs. Observable inputs reflect market data obtained from independent sources while unobservable inputs reflect the Company's view of market assumptions in the absence of observable market information. The Company utilizes valuation techniques that maximize the use of observable inputs and minimize the use of unobservable inputs. In determining fair value, the Company uses various methods including market, income and cost approaches.

The Company categorizes its financial assets and liabilities into a three-level hierarchy based on the priority of the inputs to the valuation technique. The fair value hierarchy gives the highest priority to quoted prices in active markets for identical assets or liabilities (Level 1) and the lowest priority to unobservable inputs (Level 3). If the inputs used to measure fair value fall within different levels of the hierarchy, the category level is based on the lowest priority level input that is significant to the fair value measurement of the instrument in its entirety.

The Company categorizes financial assets and liabilities as follows:

Level 1. Unadjusted quoted prices accessible in active markets for identical assets or liabilities at the measurement date and mutual funds where the value per share (unit) is determined and published daily and is the basis for current transactions.

Level 2. Unadjusted quoted prices for similar assets or liabilities in active markets or inputs (other than quoted prices) that are observable or that are derived principally from or corroborated by observable market data through correlation or other means. Primary inputs to this valuation technique may include comparative trades, bid/asks, interest rate movements, U.S. Treasury rates, U.S. LIBOR, prime rates, cash flows, maturity dates, call ability, estimated prepayments and/or underlying collateral values.

Level 3. Prices or valuation techniques that require inputs that are both unobservable and significant to the overall fair value measurement. Inputs reflect management's best estimate about the assumptions market participants would use at the measurement date in pricing the asset or liability. Consideration is given to the risk inherent in both the method of valuation and the valuation inputs. Primary inputs to this valuation technique include broker quotes and comparative trades.

The Company reviews its fair value hierarchy classifications for financial assets and liabilities quarterly. Changes in observability of significant valuation inputs identified during these reviews may trigger reclassifications. Reclassifications are reported as transfers at the beginning of the period in which the change occurs.

To determine the fair value of bonds and stocks for which market quotations are available, independent pricing services are most often utilized. For these bonds and stocks, the Company obtains the pricing services' methodologies, inputs and assumptions and classifies the investments accordingly in the fair value hierarchy.

A corporate pricing matrix or an internally developed pricing model is used in valuing certain bonds. The corporate pricing matrix is developed using private spreads for bonds with varying weighted average lives and credit quality ratings. The weighted average life and credit quality rating of a particular bond to be priced using the corporate pricing matrix are important inputs into the model and are used to determine a corresponding spread that is added to the appropriate U.S. Treasury yield to create an estimated market yield for that bond. The estimated market yield and other relevant factors are then used to estimate the fair value of the particular bond.

Non-binding broker quotes are also utilized to determine the fair value of certain bonds when quotes are not available from independent pricing services, corporate pricing matrix or internal pricing models. These bonds are classified accordingly in the fair value hierarchy as only one broker quote is ordinarily obtained, the investment is not traded on an exchange, the pricing is not available to other entities and/or the transaction volume in the same or similar investments has decreased. Inputs used in the development of prices are not provided to the Company by the brokers as the brokers often do not provide the necessary transparency into their quotes and methodologies. Broker quotes are subject to validation of price movements that require approval from the Company's management. Management uses its knowledge of the investment and current market conditions to determine if the price is indicative of the investment's fair value.

Fair value of derivative instruments is determined using various valuation techniques relying predominately on observable market inputs. These inputs include interest rate swap curves, credit spreads, interest rates, counterparty credit risk, equity volatility and equity index levels. In cases where observable inputs are not available, the Company will utilize non-binding broker quotes to determine fair value and these instruments are classified accordingly in the fair value hierarchy.

No financial assets or liabilities were carried at fair value as of September 30, 2014.

The following table summarizes aggregate carrying value and fair value, by level, for all financial assets and liabilities, excluding assets and liabilities reported at fair value, as of September 30, 2014:

	Aggregate Fair Value	Admitted Assets	(Level 1)	(Level 2)	(Level 3)	Not Practicable (Carrying Value)
Assets						
Bonds	\$ 35,311,585	\$35,265,826	\$32,063,140	\$ 3,248,445	\$ -	\$ -
Stocks	-	-	-	-	-	-
Mortgage loans	-	-	-	-	-	-
Short-term investments	8,272,487	8,272,487	-	8,272,487	-	-
Derivative assets	-	-	-	-	-	-
Policy loans	-	-	-	-	-	-
Securities lending collateral assets	-	-	-	-	-	-
Total Assets	\$ 43,584,072	\$43,538,313	\$32,063,140	\$11,520,932	\$ -	\$ -
Liabilities						
Derivative liabilities	\$ -	\$ -	\$ -	\$ -	\$ -	\$ -
Total Liabilities	\$ -	\$ -	\$ -	\$ -	\$ -	\$ -

NOTES TO FINANCIAL STATEMENTS

Note 21 - Other Items

C. Other Disclosures

On April 4, 2013, Nationwide Mutual Insurance Company (Mutual) and certain of its affiliates entered into a second agreement with Caelus Re 2013 Limited, a Cayman Islands Special Purpose Reinsurance Vehicle, for the purpose of securing additional collateralized, multi-year property catastrophe loss protection through the capital markets. The catastrophe bonds issued as part of this agreement, referred to as Caelus Re 2013 Limited Series 2013-2, also provide reinsurance coverage to Mutual for catastrophic events, including hurricanes and earthquakes. The catastrophe bonds are indemnity, trigger-based bonds where Mutual recovers losses in excess of a specified level of catastrophic claims, which is reset annually. Mutual's attachment point on the Caelus Re 2013-2 Limited bond is \$1.5 billion. The agreement is effective June 1, 2013 and expires on March 31, 2017.

On March 7, 2013, Mutual and certain of its affiliates entered into an agreement with Caelus Re 2013 Limited, a Cayman Islands Special Purpose Reinsurance Vehicle, for the purpose of securing collateralized, multi-year property catastrophe loss protection through the capital markets. Catastrophe bonds issued as part of this agreement provide reinsurance coverage to Mutual for events including hurricanes and earthquakes. The catastrophe bonds are indemnity, trigger based bonds where Mutual recovers losses in excess of a specified level of catastrophic claims, which is reset annually. Mutual's attachment point on the Caelus Re 2013 Limited bond is \$1.9 billion. The Caelus Re 2013 Limited agreement is effective June 1, 2013 and expires on February 29, 2016.

G. Offsetting and Netting of Assets and Liabilities

No assets or liabilities are offset and reported net in accordance with a valid right to offset per SSAP No. 64, Offsetting and Netting of Assets and Liabilities.

Note 22 - Events Subsequent

Subsequent events have been considered through November 4, 2014 for these statutory financial statements which are to be issued November 5, 2014. There were no events occurring subsequent to the end of the quarter that merited recognition or disclosure in these statements.

Note 23 - Reinsurance

No change.

Note 24 - Retrospectively Rated Contracts and Contracts Subject to Redetermination

No change.

Note 25 - Changes in Incurred Losses and Loss Adjustment Expenses

The Company is a participant in a 100% pooling reinsurance agreement with Mutual, and as such has zero net incurred losses and loss adjustment expenses.

Note 26 - Intercompany Pooling Arrangements

Mutual is the lead company in the Nationwide Pool. Each member contributes 100% of its underwriting results to the Nationwide Pool through the reinsurance pooling agreement.

Effective January 1, 2013, Mutual's pooling percentage changed to 83% from 83.7%. In addition, Nationwide Mutual Fire Insurance Company's pooling percentage changed to 12% from 11.3%.

The companies in the Nationwide Pool assuming a proportionate share of the pool as of January 1, 2013, are:

	<u>NAIC#</u>	<u>Pool</u>
Nationwide Mutual Insurance Company	23787	83%
Nationwide Mutual Fire Insurance Company	23779	12%
Scottsdale Insurance Company	41297	4%
Farmland Mutual Insurance Company	13838	1%

Also, effective January 1, 2013, the following companies became zero percent participants in the Nationwide Pool: Harleysville Preferred Insurance Company (NAIC #35696), Harleysville Insurance Company of New Jersey (NAIC #42900), Harleysville Worcester Insurance Company (NAIC #26182), Harleysville Insurance Company of New York (NAIC #10674), Harleysville Pennland Insurance Company (NAIC #40983), Harleysville Lake States Insurance Company (NAIC #14516), and Harleysville Insurance Company (NAIC #23582).

Note 27 - Structured Settlements

No change.

Note 28 - Health Care Receivables

No change.

Note 29 - Participating Policies

No change.

Note 30 - Premium Deficiency Reserves

No change.

Note 31 - High Deductibles

No change.

Note 32 - Discounting of Liabilities for Unpaid Losses or Unpaid Loss Adjustment Expenses

No change.

NOTES TO FINANCIAL STATEMENTS

Note 33 - Asbestos/Environmental Reserves

No change.

Note 34 - Subscriber Savings Accounts

No change.

Note 35 - Multiple Peril Crop Insurance

No change.

Note 36 - Financial Guaranty Insurance

B. Schedule of Insured Financial Obligations at the End of the Period

Not applicable.

GENERAL INTERROGATORIES

PART 1 - COMMON INTERROGATORIES

GENERAL

- 1.1 Did the reporting entity experience any material transactions requiring the filing of Disclosure of Material Transactions with the State of Domicile, as required by the Model Act? Yes [] No [X]
- 1.2 If yes, has the report been filed with the domiciliary state? Yes [] No []
- 2.1 Has any change been made during the year of this statement in the charter, by-laws, articles of incorporation, or deed of settlement of the reporting entity? Yes [] No [X]
- 2.2 If yes, date of change:
- 3.1 Is the reporting entity a member of an Insurance Holding Company System consisting of two or more affiliated persons, one or more of which is an insurer? Yes [X] No []
If yes, complete Schedule Y, Parts 1 and 1A.
- 3.2 Have there been any substantial changes in the organizational chart since the prior quarter end? Yes [] No [X]
- 3.3 If the response to 3.2 is yes, provide a brief description of those changes.
- 4.1 Has the reporting entity been a party to a merger or consolidation during the period covered by this statement? Yes [] No [X]
- 4.2 If yes, provide the name of the entity, NAIC Company Code, and state of domicile (use two letter state abbreviation) for any entity that has ceased to exist as a result of the merger or consolidation.

1 Name of Entity	2 NAIC Company Code	3 State of Domicile

5. If the reporting entity is subject to a management agreement, including third-party administrator(s), managing general agent(s), attorney-in-fact, or similar agreement, have there been any significant changes regarding the terms of the agreement or principals involved? Yes [] No [X] N/A []
If yes, attach an explanation.
- 6.1 State as of what date the latest financial examination of the reporting entity was made or is being made. 12/31/2011
- 6.2 State the as of date that the latest financial examination report became available from either the state of domicile or the reporting entity. This date should be the date of the examined balance sheet and not the date the report was completed or released. 12/31/2011
- 6.3 State as of what date the latest financial examination report became available to other states or the public from either the state of domicile or the reporting entity. This is the release date or completion date of the examination report and not the date of the examination (balance sheet date). 03/25/2013
- 6.4 By what department or departments?
OH
- 6.5 Have all financial statement adjustments within the latest financial examination report been accounted for in a subsequent financial statement filed with Departments? Yes [] No [] N/A [X]
- 6.6 Have all of the recommendations within the latest financial examination report been complied with? Yes [] No [] N/A [X]
- 7.1 Has this reporting entity had any Certificates of Authority, licenses or registrations (including corporate registration, if applicable) suspended or revoked by any governmental entity during the reporting period? Yes [] No [X]
- 7.2 If yes, give full information:
- 8.1 Is the company a subsidiary of a bank holding company regulated by the Federal Reserve Board? Yes [] No [X]
- 8.2 If response to 8.1 is yes, please identify the name of the bank holding company.
- 8.3 Is the company affiliated with one or more banks, thrifts or securities firms? Yes [X] No []
- 8.4 If response to 8.3 is yes, please provide below the names and location (city and state of the main office) of any affiliates regulated by a federal regulatory services agency [i.e. the Federal Reserve Board (FRB), the Office of the Comptroller of the Currency (OCC), the Federal Deposit Insurance Corporation (FDIC) and the Securities Exchange Commission (SEC)] and identify the affiliate's primary federal regulator.

1 Affiliate Name	2 Location (City, State)	3 FRB	4 OCC	5 FDIC	6 SEC
Nationwide Bank	Columbus, OH	NO	YES	NO	NO
Nationwide Mutual Insurance Company	Columbus, OH	YES	NO	NO	NO
Nationwide Mutual Fire Insurance Company	Columbus, OH	YES	NO	NO	NO
Nationwide Corporation	Columbus, OH	YES	NO	NO	NO
Nationwide Financial Services, Inc.	Columbus, OH	YES	NO	NO	NO
Nationwide Investment Services Corp	Columbus, OH	NO	NO	NO	YES
Nationwide Investment Advisors, LLC	Columbus, OH	NO	NO	NO	YES
Nationwide Securities, LLC	Dublin, OH	NO	NO	NO	YES
Nationwide Fund Advisors	King of Prussia, PA	NO	NO	NO	YES
Nationwide Fund Distributors, LLC	King of Prussia, PA	NO	NO	NO	YES
Nationwide Asset Management, LLC	Columbus, OH	NO	NO	NO	YES

STATEMENT AS OF SEPTEMBER 30, 2014 OF THE NATIONWIDE PROPERTY AND CASUALTY INSURANCE COMPANY

GENERAL INTERROGATORIES

- 9.1 Are the senior officers (principal executive officer, principal financial officer, principal accounting officer or controller, or persons performing similar functions) of the reporting entity subject to a code of ethics, which includes the following standards? Yes [X] No []
 (a) Honest and ethical conduct, including the ethical handling of actual or apparent conflicts of interest between personal and professional relationships;
 (b) Full, fair, accurate, timely and understandable disclosure in the periodic reports required to be filed by the reporting entity;
 (c) Compliance with applicable governmental laws, rules and regulations;
 (d) The prompt internal reporting of violations to an appropriate person or persons identified in the code; and
 (e) Accountability for adherence to the code.
- 9.11 If the response to 9.1 is No, please explain:
- 9.2 Has the code of ethics for senior managers been amended? Yes [] No [X]
- 9.21 If the response to 9.2 is Yes, provide information related to amendment(s).
- 9.3 Have any provisions of the code of ethics been waived for any of the specified officers? Yes [] No [X]
- 9.31 If the response to 9.3 is Yes, provide the nature of any waiver(s).

FINANCIAL

- 10.1 Does the reporting entity report any amounts due from parent, subsidiaries or affiliates on Page 2 of this statement? Yes [X] No []
- 10.2 If yes, indicate any amounts receivable from parent included in the Page 2 amount: \$ 4,574,692

INVESTMENT

- 11.1 Were any of the stocks, bonds, or other assets of the reporting entity loaned, placed under option agreement, or otherwise made available for use by another person? (Exclude securities under securities lending agreements.) Yes [] No [X]
- 11.2 If yes, give full and complete information relating thereto:
12. Amount of real estate and mortgages held in other invested assets in Schedule BA: \$ 625,173
13. Amount of real estate and mortgages held in short-term investments: \$
- 14.1 Does the reporting entity have any investments in parent, subsidiaries and affiliates? Yes [] No [X]
- 14.2 If yes, please complete the following:
- | | 1
Prior Year-End
Book/Adjusted
Carrying Value | 2
Current Quarter
Book/Adjusted
Carrying Value |
|---|--|---|
| 14.21 Bonds | \$ | \$ |
| 14.22 Preferred Stock | \$ | \$ |
| 14.23 Common Stock | \$ | \$ |
| 14.24 Short-Term Investments | \$ | \$ |
| 14.25 Mortgage Loans on Real Estate | \$ | \$ |
| 14.26 All Other | \$ | \$ |
| 14.27 Total Investment in Parent, Subsidiaries and Affiliates (Subtotal Lines 14.21 to 14.26) | \$ | \$ |
| 14.28 Total Investment in Parent included in Lines 14.21 to 14.26 above | \$ | \$ |
- 15.1 Has the reporting entity entered into any hedging transactions reported on Schedule DB? Yes [] No [X]
- 15.2 If yes, has a comprehensive description of the hedging program been made available to the domiciliary state? Yes [] No []
 If no, attach a description with this statement.

STATEMENT AS OF SEPTEMBER 30, 2014 OF THE NATIONWIDE PROPERTY AND CASUALTY INSURANCE COMPANY

GENERAL INTERROGATORIES

16. For the reporting entity's security lending program, state the amount of the following as of the current statement date:
- 16.1 Total fair value of reinvested collateral assets reported on Schedule DL, Parts 1 and 2\$
 - 16.2 Total book adjusted/carrying value of reinvested collateral assets reported on Schedule DL, Parts 1 and 2\$
 - 16.3 Total payable for securities lending reported on the liability page\$

17. Excluding items in Schedule E - Part 3 - Special Deposits, real estate, mortgage loans and investments held physically in the reporting entity's offices, vaults or safety deposit boxes, were all stocks, bonds and other securities, owned throughout the current year held pursuant to a custodial agreement with a qualified bank or trust company in accordance with Section 1, III - General Examination Considerations, F. Outsourcing of Critical Functions, Custodial or Safekeeping Agreements of the NAIC Financial Condition Examiners Handbook? Yes [X] No []
- 17.1 For all agreements that comply with the requirements of the NAIC Financial Condition Examiners Handbook, complete the following:

1 Name of Custodian(s)	2 Custodian Address
The Bank of New York Mellon	1 Wall Street, New York, NY 10286

- 17.2 For all agreements that do not comply with the requirements of the NAIC Financial Condition Examiners Handbook, provide the name, location and a complete explanation:

1 Name(s)	2 Location(s)	3 Complete Explanation(s)

- 17.3 Have there been any changes, including name changes, in the custodian(s) identified in 17.1 during the current quarter? Yes [] No [X]

- 17.4 If yes, give full information relating thereto:

1 Old Custodian	2 New Custodian	3 Date of Change	4 Reason

- 17.5 Identify all investment advisors, brokers/dealers or individuals acting on behalf of broker/dealers that have access to the investment accounts, handle securities and have authority to make investments on behalf of the reporting entity:

1 Central Registration Depository	2 Name(s)	3 Address
N/A	Members of the investment staff designated by the Chief Investment Officer as detailed in the Corporate Resolution.	One Nationwide Blvd, Columbus, OH 43215-2220

- 18.1 Have all the filing requirements of the Purposes and Procedures Manual of the NAIC Securities Valuation Office been followed? Yes [X] No []

- 18.2 If no, list exceptions:

GENERAL INTERROGATORIES

PART 2 - PROPERTY & CASUALTY INTERROGATORIES

1. If the reporting entity is a member of a pooling arrangement, did the agreement or the reporting entity's participation change? Yes [] No [X] N/A []
If yes, attach an explanation.

2. Has the reporting entity reinsured any risk with any other reporting entity and agreed to release such entity from liability, in whole or in part, from any loss that may occur on the risk, or portion thereof, reinsured? Yes [] No [X]
If yes, attach an explanation.

3.1 Have any of the reporting entity's primary reinsurance contracts been canceled? Yes [] No [X]

3.2 If yes, give full and complete information thereto.

4.1 Are any of the liabilities for unpaid losses and loss adjustment expenses other than certain workers' compensation tabular reserves (see Annual Statement Instructions pertaining to disclosure of discounting for definition of "tabular reserves") discounted at a rate of interest greater than zero? Yes [] No [X]

4.2 If yes, complete the following schedule:

			TOTAL DISCOUNT				DISCOUNT TAKEN DURING PERIOD			
1	2	3	4	5	6	7	8	9	10	11
Line of Business	Maximum Interest	Discount Rate	Unpaid Losses	Unpaid LAE	IBNR	TOTAL	Unpaid Losses	Unpaid LAE	IBNR	TOTAL
TOTAL										

5. Operating Percentages:

5.1 A&H loss percent 0.000 %

5.2 A&H cost containment percent 0.000 %

5.3 A&H expense percent excluding cost containment expenses 0.000 %

6.1 Do you act as a custodian for health savings accounts? Yes [] No [X]

6.2 If yes, please provide the amount of custodial funds held as of the reporting date \$

6.3 Do you act as an administrator for health savings accounts? Yes [] No [X]

6.4 If yes, please provide the balance of the funds administered as of the reporting date \$

SCHEDULE F - CEDED REINSURANCE

Showing All New Reinsurers - Current Year to Date

1 NAIC Company Code	2 ID Number	3 Name of Reinsurer	4 Domiciliary Jurisdiction	5 Type of Reinsurer	6 Certified Reinsurer Rating (1 through 6)	7 Effective Date of Certified Reinsurer Rating
NONE						

STATEMENT AS OF SEPTEMBER 30, 2014 OF THE NATIONWIDE PROPERTY AND CASUALTY INSURANCE COMPANY

SCHEDULE T - EXHIBIT OF PREMIUMS WRITTEN

Current Year to Date - Allocated by States and Territories

	1 Active Status	Direct Premiums Written		Direct Losses Paid (Deducting Salvage)		Direct Losses Unpaid	
		2 Current Year To Date	3 Prior Year To Date	4 Current Year To Date	5 Prior Year To Date	6 Current Year To Date	7 Prior Year To Date
1. Alabama AL	L	49,867,924	43,475,543	29,657,926	22,800,281	12,733,028	11,394,978
2. Alaska AK	L			(121)	246	16,845	(131)
3. Arizona AZ	L			(733)	(78,080)	(1,402)	(1,466)
4. Arkansas AR	L	22,063,173	17,099,344	11,180,567	8,338,672	6,428,512	4,832,189
5. California CA	L			(249)	(691)	(33,066)	(2,250)
6. Colorado CO	L			32,005	21,845	167,069	178,308
7. Connecticut CT	L	32,226,494	32,642,569	19,746,472	21,903,239	18,991,591	17,560,944
8. Delaware DE	L	19,280,328	12,042,985	10,297,448	5,929,554	6,628,543	5,159,382
9. District of Columbia DC	L	477,760	471,328	128,885	114,883	731,119	535,745
10. Florida FL	L	120		326,005	1,116,375	3,981,210	4,759,971
11. Georgia GA	L	65,784,289	73,007,407	48,151,256	57,605,053	21,917,318	25,063,347
12. Hawaii HI	N						
13. Idaho ID	L					118	297
14. Illinois IL	L	4,048,645	3,774,654	4,012,245	1,849,013	4,043,572	3,757,396
15. Indiana IN	L	2,483,797	2,624,011	1,731,378	1,951,768	1,451,358	1,235,253
16. Iowa IA	L					13,408	13,509
17. Kansas KS	L					141	194
18. Kentucky KY	L	40,059,670	33,898,682	26,357,776	22,065,633	19,012,269	15,882,397
19. Louisiana LA	N					(1)	1
20. Maine ME	L	202,965	252,873	466,847	324,708	163,182	93,780
21. Maryland MD	L	39,026,554	39,139,737	28,869,202	23,836,934	19,527,890	21,317,082
22. Massachusetts MA	L					136,972	1,246
23. Michigan MI	L	9,357,484	9,246,448	8,094,287	5,394,375	72,585,980	72,096,696
24. Minnesota MN	L					(3,933)	715
25. Mississippi MS	L	77,009,215	80,461,524	45,231,231	92,402,874	36,898,186	42,016,050
26. Missouri MO	L			19,249	9,099	179,321	193,793
27. Montana MT	L			(1,292)	(259)	208	(150)
28. Nebraska NE	L					22	(45)
29. Nevada NV	L					(482)	(204)
30. New Hampshire NH	L	3,295,456	3,689,687	1,825,440	1,747,130	1,783,853	1,946,944
31. New Jersey NJ	N						
32. New Mexico NM	L					474	212
33. New York NY	L	43,641,473	45,021,810	18,580,224	24,060,780	38,014,392	37,603,621
34. North Carolina NC	L	131,306,147	150,488,420	72,144,353	85,701,958	57,931,965	61,954,294
35. North Dakota ND	L					(9)	(10)
36. Ohio OH	L	112,660,822	117,211,158	67,779,424	62,584,457	27,840,611	26,651,503
37. Oklahoma OK	L	798,325	692,970	780,351	466,713	526,913	401,968
38. Oregon OR	L			(58)	(1,517)	(2,051)	(2,473)
39. Pennsylvania PA	L	196,400,180	136,619,391	115,177,690	64,307,877	92,687,574	61,530,585
40. Rhode Island RI	L	10,935,067	10,662,957	7,658,229	6,857,347	4,660,599	5,599,552
41. South Carolina SC	L	36,694,765	38,148,288	24,280,405	14,577,989	18,030,556	10,978,739
42. South Dakota SD	L					(19)	(24)
43. Tennessee TN	L	53,630,568	60,931,814	31,813,877	37,004,010	18,389,319	19,202,015
44. Texas TX	L	83,751,145	89,957,878	35,068,968	35,251,559	21,795,740	19,755,869
45. Utah UT	L					5,325	5,885
46. Vermont VT	L	3,816,697	3,836,860	4,585,547	2,489,953	3,172,109	2,598,399
47. Virginia VA	L	172,683,641	149,430,469	97,794,604	71,537,162	71,368,093	55,021,809
48. Washington WA	L			(5,457)	(10,217)	24,261	20,221
49. West Virginia WV	L	28,781,649	29,111,966	18,212,623	16,351,977	7,622,440	7,991,819
50. Wisconsin WI	L					67	189
51. Wyoming WY	N						
52. American Samoa AS	N						
53. Guam GU	N						
54. Puerto Rico PR	N						
55. U.S. Virgin Islands VI	N						
56. Northern Mariana Islands MP	N						
57. Canada CAN	N						
58. Aggregate Other Alien OT	XXX						
59. Totals	(a) 47	1,240,284,353	1,183,940,773	729,996,604	688,512,700	589,421,190	537,350,144
DETAILS OF WRITE-INS							
58001.	XXX						
58002.	XXX						
58003.	XXX						
58998. Summary of remaining write-ins for Line 58 from overflow page	XXX						
58999. Totals (Lines 58001 through 58003 plus 58998)(Line 58 above)	XXX						

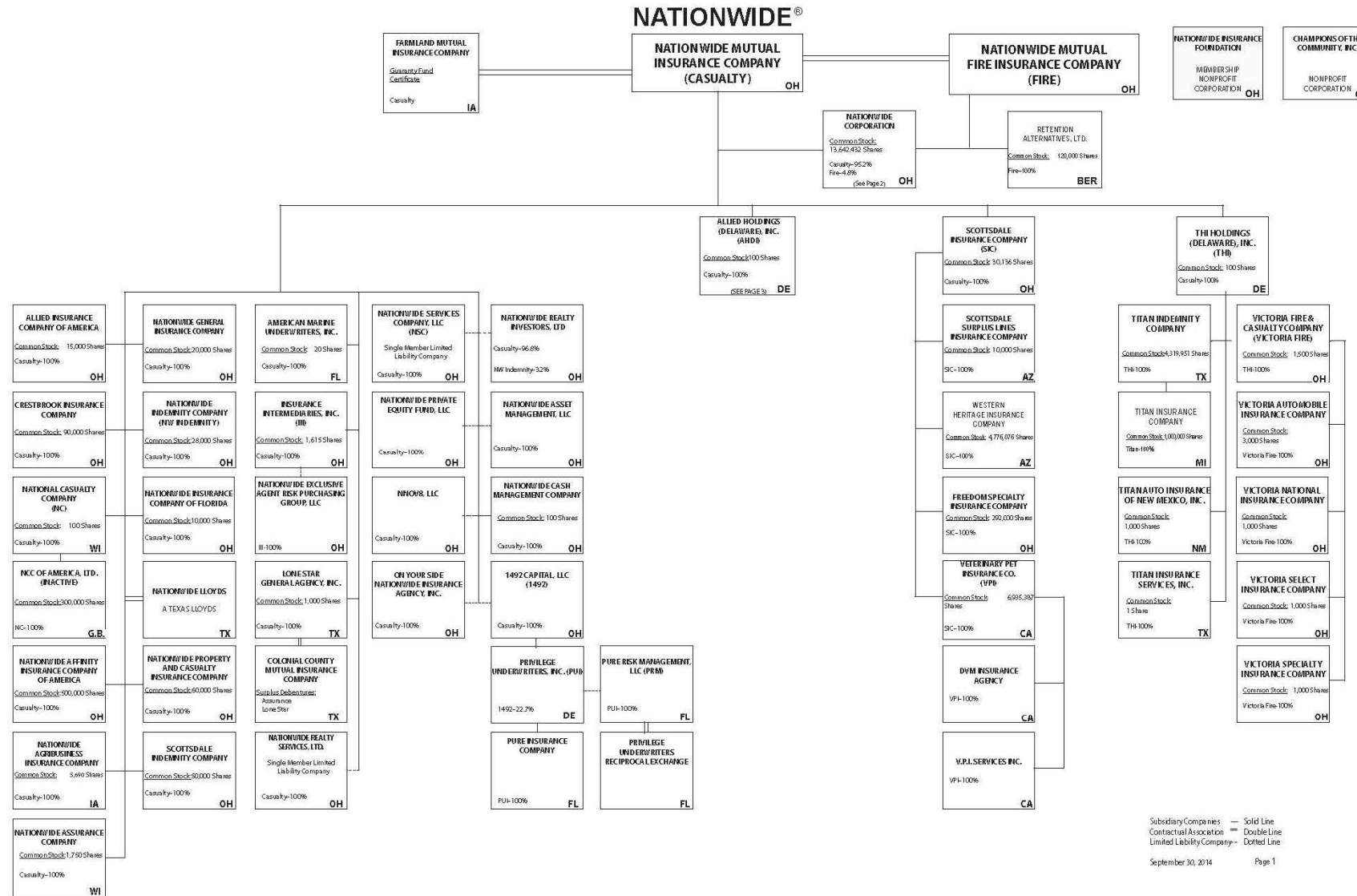
(L) Licensed or Chartered - Licensed Insurance Carrier or Domiciled RRG; (R) Registered - Non-domiciled RRGs; (Q) Qualified - Qualified or Accredited Reinsurer; (E) Eligible - Reporting Entities eligible or approved to write Surplus Lines in the state; (N) None of the above - Not allowed to write business in the state.

(a) Insert the number of L responses except for Canada and Other Alien.

STATEMENT AS OF SEPTEMBER 30, 2014 OF THE NATIONWIDE PROPERTY AND CASUALTY INSURANCE COMPANY

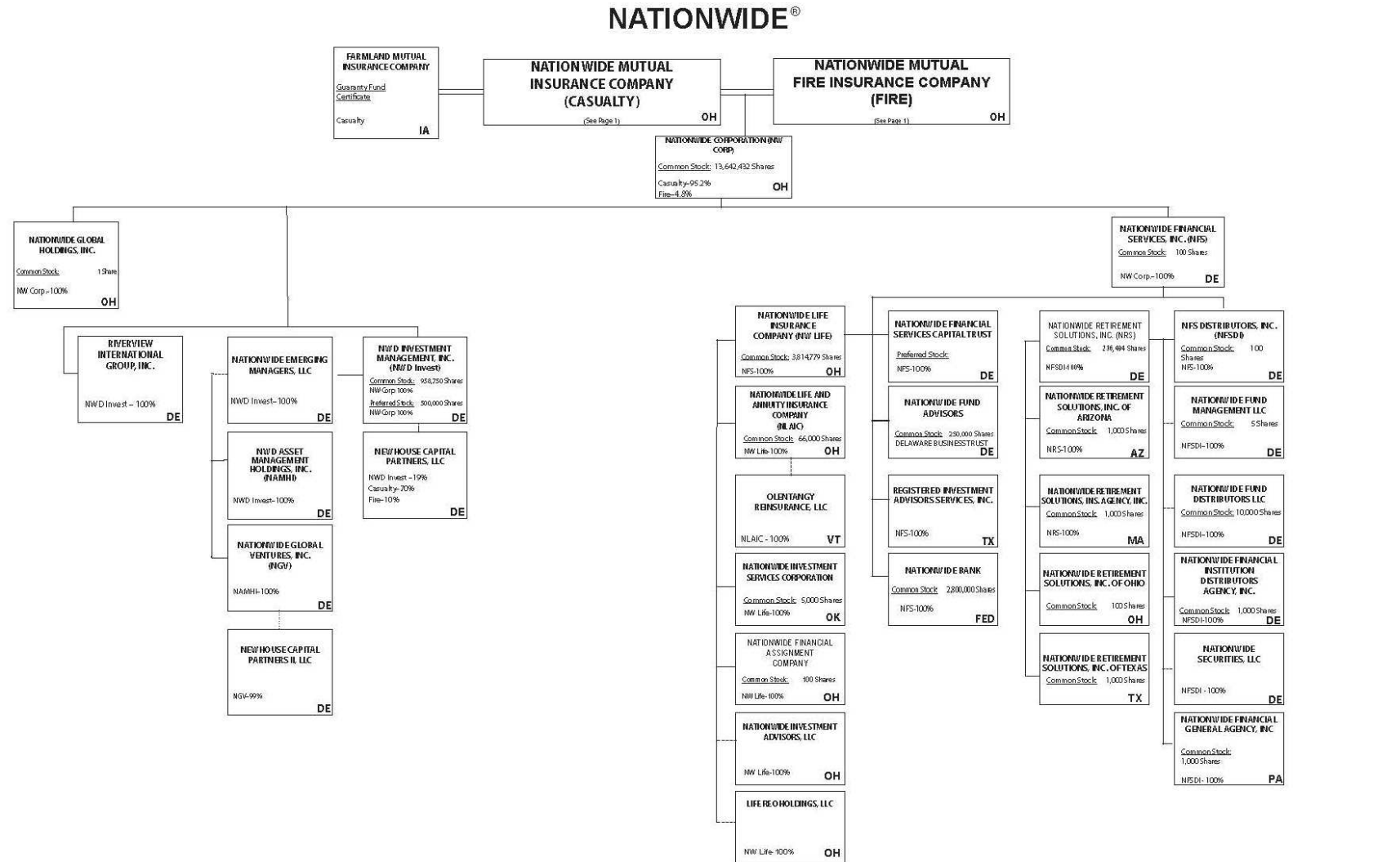
SCHEDULE Y - INFORMATION CONCERNING ACTIVITIES OF INSURER MEMBERS OF A HOLDING COMPANY GROUP

PART 1 - ORGANIZATIONAL CHART



(Casualty/Fire subsidiaries)

STATEMENT AS OF SEPTEMBER 30, 2014 OF THE NATIONWIDE PROPERTY AND CASUALTY INSURANCE COMPANY
SCHEDULE Y - INFORMATION CONCERNING ACTIVITIES OF INSURER MEMBERS OF A HOLDING COMPANY GROUP
PART 1 - ORGANIZATIONAL CHART

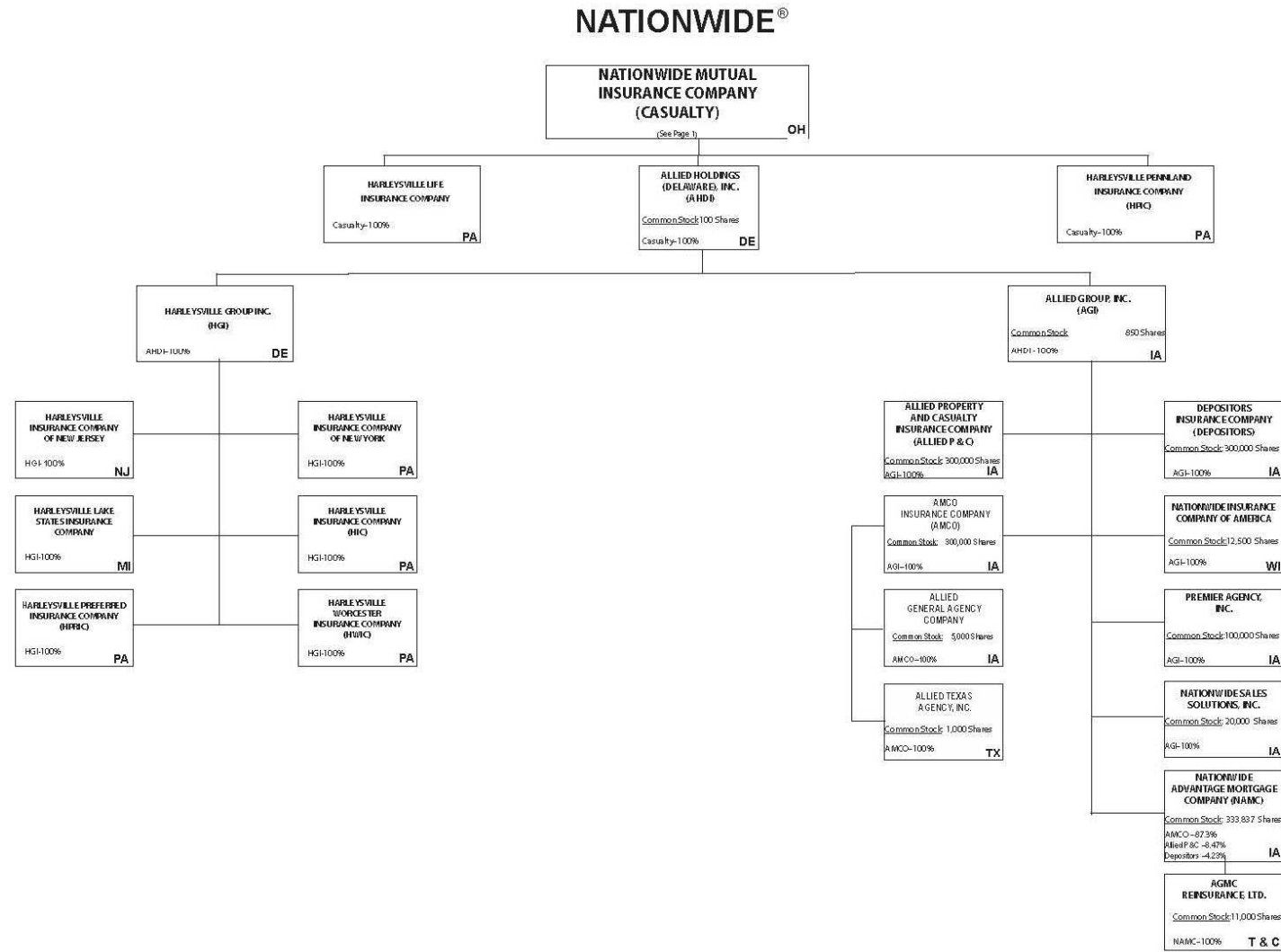


11.1

Subsidiary Companies — Solid Line
 Contractual Association = Double Line
 Limited Liability Company - - Dotted Line
 September 30, 2014 Page 2

(Nationwide Corp. subsidiaries)

STATEMENT AS OF SEPTEMBER 30, 2014 OF THE NATIONWIDE PROPERTY AND CASUALTY INSURANCE COMPANY
SCHEDULE Y - INFORMATION CONCERNING ACTIVITIES OF INSURER MEMBERS OF A HOLDING COMPANY GROUP
PART 1 - ORGANIZATIONAL CHART



11.2

Subsidiary Companies — Solid Line
 Contractual Association = Double Line
 Limited Liability Company --- Dotted Line
 September 30, 2014 Page 3

(ALLIED/Harleysville subsidiaries)

STATEMENT AS OF SEPTEMBER 30, 2014 OF THE NATIONWIDE PROPERTY AND CASUALTY INSURANCE COMPANY

NATIONWIDE INSURANCE COMPANIES

NAIC Group Code	Group Name	NAIC Company Code	State of Domicile	Federal ID Number	Name of Company
0140	Nationwide	10127	OH	27-0114983	Allied Insurance Company of America
0140	Nationwide	42579	IA	42-1201931	Allied Property and Casualty Insurance Company
0140	Nationwide	19100	IA	42-6054959	AMCO Insurance Company
0140	Nationwide	29262	TX	74-1061659	Colonial County Mutual Insurance Company
0140	Nationwide	18961	OH	68-0066866	Crestbrook Insurance Company
0140	Nationwide	42587	IA	42-1207150	Depositors Insurance Company
0140	Nationwide	13838	IA	42-0618271	Farmland Mutual Insurance Company
0140	Nationwide	22209	OH	75-6013587	Freedom Specialty Insurance Company
0140	Nationwide	23582	PA	41-0417250	Harleysville Insurance Company
0140	Nationwide	42900	NJ	23-2253669	Harleysville Insurance Company of New Jersey
0140	Nationwide	10674	PA	23-2864924	Harleysville Insurance Company of New York
0140	Nationwide	14516	MI	38-3198542	Harleysville Lake States Insurance Company
0140	Nationwide	64327	PA	23-1580983	Harleysville Life Insurance Company
0140	Nationwide	40983	PA	23-2612951	* Harleysville Pennland Insurance Company
0140	Nationwide	35696	PA	23-2384978	Harleysville Preferred Insurance Company
0140	Nationwide	26182	PA	04-1989660	Harleysville Worcester Insurance Company
0140	Nationwide	11991	WI	38-0865250	National Casualty Company
0140	Nationwide	26093	OH	48-0470690	Nationwide Affinity Insurance Company of America
0140	Nationwide	28223	IA	42-1015537	Nationwide Agribusiness Insurance Company
0140	Nationwide	10723	WI	95-0639970	Nationwide Assurance Company
0140	Nationwide	23760	OH	31-4425763	Nationwide General Insurance Company
0140	Nationwide	10070	OH	31-1399201	Nationwide Indemnity Company
0140	Nationwide	25453	WI	95-2130882	Nationwide Insurance Company of America
0140	Nationwide	10948	OH	31-1613686	Nationwide Insurance Company of Florida
0140	Nationwide	92657	OH	31-1000740	Nationwide Life and Annuity Insurance Company
0140	Nationwide	66869	OH	31-4156830	Nationwide Life Insurance Company
0140	Nationwide	42110	TX	75-1780981	Nationwide Lloyds
0140	Nationwide	23779	OH	31-4177110	Nationwide Mutual Fire Insurance Company
0140	Nationwide	23787	OH	31-4177100	Nationwide Mutual Insurance Company
0140	Nationwide	37877	OH	31-0970750	Nationwide Property & Casualty Insurance Company
0140	Nationwide	13999	VT	27-1712056	Olentangy Reinsurance, LLC
0140	Nationwide	15580	OH	31-1117969	Scottsdale Indemnity Company
0140	Nationwide	41297	OH	31-1024978	Scottsdale Insurance Company
0140	Nationwide	10672	AZ	86-0835870	Scottsdale Surplus Lines Insurance Company
0140	Nationwide	13242	TX	74-2286759	Titan Indemnity Company
0140	Nationwide	36269	MI	86-0619597	Titan Insurance Company
0140	Nationwide	42285	CA	95-3750113	Veterinary Pet Insurance Company
0140	Nationwide	10644	OH	34-1785903	Victoria Automobile Insurance Company
0140	Nationwide	42889	OH	34-1394913	Victoria Fire & Casualty Company
0140	Nationwide	10778	OH	34-1842604	Victoria National Insurance Company
0140	Nationwide	10105	OH	34-1777972	Victoria Select Insurance Company
0140	Nationwide	10777	OH	34-1842602	Victoria Specialty Insurance Company
0140	Nationwide	37150	AZ	86-0561941	Western Heritage Insurance Company
4664	PURE	12873	FL	20-8287105	Privilege Underwriters Reciprocal Exchange
4664	PURE	13204	FL	26-3109178	PURE Insurance Company

* Harleysville Pennland surrendered its Certificate of Authority effective 11/2/2013

STATEMENT AS OF SEPTEMBER 30, 2014 OF THE NATIONWIDE PROPERTY AND CASUALTY INSURANCE COMPANY

SCHEDULE Y

PART 1A - DETAIL OF INSURANCE HOLDING COMPANY SYSTEM

1	2	3	4	5	6	7	8	9	10	11	12	13	14	15
Group Code	Group Name	NAIC Company Code	Federal ID Number	Federal RSSD	CIK	Name of Securities Exchange if Publicly Traded (U.S. or International)	Names of Parent, Subsidiaries Or Affiliates	Domiciliary Location	Relationship to Reporting Entity	Directly Controlled by (Name of Entity/Person)	Type of Control (Ownership, Board, Management, Attorney-in-Fact, Influence, Other)	If Control is Ownership Provide Percentage	Ultimate Controlling Entity(ies)/Person(s)	*
0140	Nationwide		31-1486309	4590018			10 W. Nationwide, LLC	OH	NIA	Nationwide Realty Investors, Ltd.	Ownership	100.000	Nationwide Mutual Insurance Company	
0140	Nationwide		31-1486309	4594954			101 N. Twentieth St, LLC	OH	NIA	Nationwide Realty Investors, Ltd.	Ownership	100.000	Nationwide Mutual Insurance Company	
0140	Nationwide		31-1733036	4594963			120 Acre Partners, LLC	DE	NIA	Nationwide Realty Investors, Ltd.	Ownership	95.000	Nationwide Mutual Insurance Company	1
0140	Nationwide		26-2451988	4288132			1492 Capital, LLC	OH	NIA	Nationwide Mutual Insurance Company	Ownership	100.000	Nationwide Mutual Insurance Company	
0140	Nationwide		20-1347603	4594806			180 E. Broad Partners, LLC	OH	NIA	Nationwide Realty Investors, Ltd.	Ownership	33.330	Nationwide Mutual Insurance Company	1
0140	Nationwide		31-1580283	4590835			400 West Nationwide Boulevard, LLC	OH	NIA	NWD Investments, LLC	Ownership	100.000	Nationwide Mutual Insurance Company	
0140	Nationwide		31-1580283	4591140			425 West Nationwide Boulevard, LLC	OH	NIA	NWD Investments, LLC	Ownership	100.000	Nationwide Mutual Insurance Company	
0140	Nationwide		31-1486309	4595009			44 Chestnut, LLC	OH	NIA	Nationwide Realty Investors, Ltd.	Ownership	100.000	Nationwide Mutual Insurance Company	
0140	Nationwide		20-4939866	4590497			775 Yard Street Restaurant, LLC	OH	NIA	NRI Equity Land Investments, LLC	Ownership	100.000	Nationwide Mutual Insurance Company	
0140	Nationwide		20-4939866	4590750			775 Yard Street, LLC	OH	NIA	NRI Equity Land Investments, LLC	Ownership	100.000	Nationwide Mutual Insurance Company	
0140	Nationwide		20-4939866	4671583			795 Rail Street, LLC	OH	NIA	NRI Equity Land Investments, LLC	Ownership	100.000	Nationwide Mutual Insurance Company	
0140	Nationwide		20-4939866	4590602			800 Bobcat Avenue, LLC	OH	NIA	NRI Equity Land Investments, LLC	Ownership	100.000	Nationwide Mutual Insurance Company	
0140	Nationwide		20-4939866	4671499			800 Goodale Boulevard, LLC	OH	NIA	NRI Equity Land Investments, LLC	Ownership	100.000	Nationwide Mutual Insurance Company	
0140	Nationwide		20-4939866	4671789			800 Yard Street, LLC	OH	NIA	NRI Equity Land Investments, LLC	Ownership	100.000	Nationwide Mutual Insurance Company	
0140	Nationwide		20-4939866	4590778			805 Bobcat Avenue, LLC	OH	NIA	NRI Equity Land Investments, LLC	Ownership	100.000	Nationwide Mutual Insurance Company	
0140	Nationwide		20-4939866	4590611			845 Yard Street, LLC	OH	NIA	NRI Equity Land Investments, LLC	Ownership	100.000	Nationwide Mutual Insurance Company	
0140	Nationwide		20-4939866	4590787			850 Goodale Blvd., LLC	OH	NIA	NRI Equity Land Investments, LLC	Ownership	100.000	Nationwide Mutual Insurance Company	
0140	Nationwide		20-4939866	4590714			895 W. Third Ave., LLC	OH	NIA	NRI Equity Land Investments, LLC	Ownership	100.000	Nationwide Mutual Insurance Company	
0140	Nationwide		20-4939866	4590714			925 Burrell Avenue Acquisitions, LLC	OH	NIA	NRI Equity Land Investments, LLC	Ownership	100.000	Nationwide Mutual Insurance Company	
0140	Nationwide		31-1680808	4594833			AD Investments, LLC	OH	NIA	Nationwide Realty Investors, Ltd.	Ownership	60.000	Nationwide Mutual Insurance Company	1
0140	Nationwide		31-1580283	4590992			ADTV, LLC	OH	NIA	NWD Investments, LLC	Ownership	100.000	Nationwide Mutual Insurance Company	
0140	Nationwide		52-2227314	42877247			AGMC Reinsurance, Ltd.	TCA	IA	Nationwide Advantage Mortgage Company	Ownership	100.000	Nationwide Mutual Insurance Company	
0140	Nationwide		42-1011300	4287229			ALLIED General Agency Company	IA	IA	AMCO Insurance Company	Ownership	100.000	Nationwide Mutual Insurance Company	
0140	Nationwide		42-0958655	1677548			ALLIED Group, Inc.	IA	IA	Allied Holdings (Delaware), Inc.	Ownership	100.000	Nationwide Mutual Insurance Company	
0140	Nationwide		46-4628790	4613462			Allied Holdings (Delaware), Inc.	DE	IA	Nationwide Mutual Insurance Company	Ownership	100.000	Nationwide Mutual Insurance Company	
0140	Nationwide	10127	27-0114983	4288169			ALLIED Insurance Company of America	OH	IA	Nationwide Mutual Insurance Company	Ownership	100.000	Nationwide Mutual Insurance Company	
							ALLIED Property and Casualty Insurance Company	IA	IA	ALLIED Group, Inc.	Ownership	100.000	Nationwide Mutual Insurance Company	
0140	Nationwide	45279	42-1201931	4287144			ALLIED Texas Agency, Inc.	TX	IA	AMCO Insurance Company	Ownership	100.000	Nationwide Mutual Insurance Company	
0140	Nationwide	19100	42-1527863	4287238			AMCO Insurance Company	IA	IA	ALLIED Group, Inc.	Ownership	100.000	Nationwide Mutual Insurance Company	
0140	Nationwide		42-6054959	4287153			American Marine Underwriters, Inc.	FL	IA	Nationwide Mutual Insurance Company	Ownership	100.000	Nationwide Mutual Insurance Company	
0140	Nationwide		59-1031596	4288011			Anderson Meadows, LLC	OH	NIA	Nationwide Realty Investors, Ltd.	Ownership	100.000	Nationwide Mutual Insurance Company	
0140	Nationwide		31-1486309	4595036			Arena District CA I, LLC	OH	NIA	NWD Investments, LLC	Ownership	100.000	Nationwide Mutual Insurance Company	
0140	Nationwide		31-1580283	4591177			Arena District Owners Association	OH	OTH	Other non-Nationwide	n/a	0.000	Other non-Nationwide	2
0140	Nationwide		90-0280710				Arena Theatres, LLC	OH	NIA	NWD Investments, LLC	Ownership	100.000	Nationwide Mutual Insurance Company	
0140	Nationwide		31-1580283	4591010			Artessa at Quarry Village, LLC	TX	OTH	Other non-Nationwide	n/a	0.000	Other non-Nationwide	2
0140	Nationwide			4595371			BOCS Investment Fund LLC	DE	OTH	Nationwide Mutual Insurance Company	Ownership	100.000	Nationwide Mutual Insurance Company	
0140	Nationwide		31-1184438	4594842			Boulevard Inn Limited Liability Company	OH	NIA	Nationwide Realty Investors, Ltd.	Ownership	94.800	Nationwide Mutual Insurance Company	1
0140	Nationwide		31-1555487	4593658			Broad Street Retail, LLC	DE	NIA	Nationwide Realty Investors, Ltd.	Ownership	60.000	Nationwide Mutual Insurance Company	1
0140	Nationwide			4595531			Brooke School Investment Fund, LLC	DE	OTH	Nationwide Mutual Insurance Company	Ownership	100.000	Nationwide Mutual Insurance Company	
0140	Nationwide			3730540			CHP New Markets Investment Fund, LLC	OH	OTH	Nationwide Mutual Insurance Company	Limited partner /no control	50.000	other non-Nationwide	1
0140	Nationwide		20-1618232	4595241			CNRI-Cannonsport Condominium, LLC	OH	NIA	CNRI-Cannonsport, LLC	Ownership	100.000	Nationwide Mutual Insurance Company	
0140	Nationwide		20-1618232	4595045			CNRI-Cannonsport, LLC	OH	NIA	Nationwide Realty Investors, Ltd.	Ownership	100.000	Nationwide Mutual Insurance Company	
0140	Nationwide						Co-Investment Fund, LLC	DE	OTH	Other non-Nationwide	n/a	0.000	Other non-Nationwide	2
0140	Nationwide		31-1579973				COLHOC Limited Partnership	OH	NIA	NRI Limited Partnership	Ownership	30.760	Other non-Nationwide	1
0140	Nationwide	29262	74-1061659	4288057			Colonial County Mutual Insurance Company	TX	OTH	Other non-Nationwide	contract	0.000	Other non-Nationwide	
0140	Nationwide		45-4901238				Columbus Arena Management, LLC	OH	OTH	Other non-Nationwide		0.000	Other non-Nationwide	
0140	Nationwide		04-3750770	4595951			Continental/North Shore I, L.P.	OH	NIA	Continental/NRI North Shore Investments, LLC	Ownership	100.000	Nationwide Mutual Insurance Company	
0140	Nationwide		20-0366090	3327212			Continental/North Shore II, L.P.	OH	NIA	Continental/NRI North Shore Investments, LLC	Ownership	100.000	Nationwide Mutual Insurance Company	

STATEMENT AS OF SEPTEMBER 30, 2014 OF THE NATIONWIDE PROPERTY AND CASUALTY INSURANCE COMPANY

SCHEDULE Y
PART 1A - DETAIL OF INSURANCE HOLDING COMPANY SYSTEM

1	2	3	4	5	6	7	8	9	10	11	12	13	14	15
Group Code	Group Name	NAIC Company Code	Federal ID Number	Federal RSSD	CIK	Name of Securities Exchange if Publicly Traded (U.S. or International)	Names of Parent, Subsidiaries Or Affiliates	Domiciliary Location	Relationship to Reporting Entity	Directly Controlled by (Name of Entity/Person)	Type of Control (Ownership, Board, Management, Attorney-in-Fact, Influence, Other)	If Control is Ownership Provide Percentage	Ultimate Controlling Entity(ies)/Person(s)	*
...0140	Nationwide		20-0142724	4588177			Continental/NRI North Shore Investments, LLC	..OH	..NIA	Nationwide Realty Investors, Ltd.	Ownership	..50.500	Nationwide Mutual Insurance Company1
0140	Nationwide			4595670			Cotton Mill Partners, LLC	..VA	..OTH	Nationwide Mutual Insurance Company	Limited partner /no control	..2.000	other non-Nationwide1
0140	Nationwide	18961	68-0066866	4288178			Crestbrook Insurance Company	..OH	..IA	Nationwide Mutual Insurance Company	Ownership	..100.000	Nationwide Mutual Insurance Company
0140	Nationwide		31-1486309	4590255			Crewville, Ltd.	..OH	..NIA	Nationwide Realty Investors, Ltd.	Ownership	..100.000	Nationwide Mutual Insurance Company
0140	Nationwide	42587	42-1207150	4287162			Depositors Insurance Company	..IA	..IA	ALLIED Group, Inc.	Ownership	..100.000	Nationwide Mutual Insurance Company
0140	Nationwide		33-0096671	4287694			DVM Insurance Agency	..CA	..NIA	Veterinary Pet Insurance Company	Ownership	..100.000	Nationwide Mutual Insurance Company
0140	Nationwide		20-1945276	4590590			East of Madison, LLC	..DE	..NIA	120 Acre Partners, Ltd.	Ownership	..24.910	Nationwide Mutual Insurance Company1
0140	Nationwide		20-1945276	4590590			East of Madison, LLC	..DE	..NIA	ND La Quinta Partners, LLC	Ownership	..76.090	Nationwide Mutual Insurance Company1
0140	Nationwide			4595689			ELH Investment LLC	..DE	..OTH	Nationwide Mutual Insurance Company	Other	..0.000	Nationwide Mutual Insurance Company2
0140	Nationwide	13838	42-0618271	4569372			Farmland Mutual Insurance Company	..IA	..OTH	Other non-Nationwide	debt	..0.000	Other non-Nationwide2
0140	Nationwide	22209	75-6013587	4287676			Freedom Specialty Insurance Company (fka Atlantic Insurance Company)	..OH	..IA	Scottsdale Insurance Company	Ownership	..100.000	Nationwide Mutual Insurance Company
0140	Nationwide		46-4736379				GPN-1 Property Owners Association, Inc.	..OH	..OTH	other non-Nationwide	n/a	..0.000	other non-Nationwide2
0140	Nationwide		20-4939866	4590808			Grandview Yard Hotel Holdings, LLC	..OH	..NIA	NRI Equity Land Investments, LLC	Ownership	..100.000	Nationwide Mutual Insurance Company
0140	Nationwide		20-4939866	4590826			Grandview Yard Hotel, LLC	..OH	..NIA	Grandview Yard Hotel Holdings, LLC	Ownership	..100.000	Nationwide Mutual Insurance Company
0140	Nationwide		51-0241172	3582909			Harleysville Group, Inc.	..DE	..NIA	Allied Holdings (Delaware), Inc.	Ownership	..100.000	Nationwide Mutual Insurance Company
0140	Nationwide	23582	41-0417250	4442260			Harleysville Insurance Company	..PA	..IA	Harleysville Group, Inc.	Ownership	..100.000	Nationwide Mutual Insurance Company
0140	Nationwide	33235	16-1075588	4442158			Harleysville Insurance Company of New Jersey	..NJ	..IA	Harleysville Group, Inc.	Ownership	..100.000	Nationwide Mutual Insurance Company
0140	Nationwide	10674	23-2864924	4442242			Harleysville Insurance Company of New York	..PA	..IA	Harleysville Group, Inc.	Ownership	..100.000	Nationwide Mutual Insurance Company
0140	Nationwide	14516	38-3198542	4442251			Harleysville Lake States Insurance Company	..MI	..IA	Harleysville Group, Inc.	Ownership	..100.000	Nationwide Mutual Insurance Company
0140	Nationwide	64327	23-1580983	4440659			Harleysville Life Insurance Company	..PA	..IA	Nationwide Mutual Insurance Company	Ownership	..100.000	Nationwide Mutual Insurance Company
0140	Nationwide	40983	23-2612951	4442149			Harleysville Pennland Insurance Company	..PA	..IA	Nationwide Mutual Insurance Company	Ownership	..100.000	Nationwide Mutual Insurance Company
0140	Nationwide	35896	23-2384978	4442288			Harleysville Preferred Insurance Company	..PA	..IA	Harleysville Group, Inc.	Ownership	..100.000	Nationwide Mutual Insurance Company
0140	Nationwide	26182	04-1989660	4442372			Harleysville Worcester Insurance Company	..PA	..IA	Harleysville Group, Inc.	Ownership	..100.000	Nationwide Mutual Insurance Company
0140	Nationwide		32-0051216	4596903			Hideaway Properties Corp.	..CA	..OTH	Nationwide Realty Investors, Ltd.	Ownership	..50.000	Nationwide Mutual Insurance Company1
0140	Nationwide		31-0871532	4288020			Insurance Intermediaries, Inc.	..OH	..IA	Nationwide Mutual Insurance Company	Ownership	..100.000	Nationwide Mutual Insurance Company
0140	Nationwide		31-1486309	4097802			Jerome Village Company, LLC	..OH	..NIA	Nationwide Realty Investors, Ltd.	Ownership	..100.000	Nationwide Mutual Insurance Company
0140	Nationwide						Jerome Village Master Property Owners Association	..OH	..OTH	Other non-Nationwide	Ownership	..0.000	Other non-Nationwide2
0140	Nationwide		31-1486309	4590312			JV Developers, LLC	..OH	..OTH	Nationwide Realty Investors, Ltd.	Ownership	..100.000	Nationwide Mutual Insurance Company2
0140	Nationwide		46-2956640				Jerome Village Residential Property Owners Association, Inc.	..OH	..NIA	Other non-Nationwide	Ownership	..0.000	Other non-Nationwide
0140	Nationwide			4595698			Leaguers Investment Fund LLC	..DE	..OTH	Nationwide Mutual Insurance Company	Other	..0.000	Nationwide Mutual Insurance Company2
0140	Nationwide		56-3789187	4286969			Life REO Holdings, LLC	..OH	..NIA	Nationwide Life Insurance Company	Ownership	..100.000	Nationwide Mutual Insurance Company
0140	Nationwide		74-1395229	4288039			Lone Star General Agency, Inc.	..TX	..IA	Nationwide Mutual Insurance Company	Ownership	..100.000	Nationwide Mutual Insurance Company
0140	Nationwide			4595700			Match School Investment Fund, LLC	..DE	..OTH	Nationwide Mutual Insurance Company	Ownership	..100.000	Nationwide Mutual Insurance Company2
0140	Nationwide	11991	38-0865250	4288187			National Casualty Company	..WI	..IA	Nationwide Mutual Insurance Company	Ownership	..100.000	Nationwide Mutual Insurance Company
0140	Nationwide			4614900			National Casualty Company of America, Ltd.	..GBR	..IA	Nationwide Mutual Insurance Company	Ownership	..100.000	Nationwide Mutual Insurance Company
0140	Nationwide		42-1154244	2889795			Nationwide Advantage Mortgage Company	..IA	..NIA	AMCO Insurance Company	Ownership	..87.300	Nationwide Mutual Insurance Company
0140	Nationwide		42-1154244	2889795			Nationwide Advantage Mortgage Company	..IA	..NIA	ALLIED Property & Casualty Insurance Company	Ownership	..8.470	Nationwide Mutual Insurance Company
0140	Nationwide		42-1154244	2889795			Nationwide Advantage Mortgage Company	..IA	..NIA	Depositors Insurance Company	Ownership	..4.230	Nationwide Mutual Insurance Company
0140	Nationwide	26093	48-0470690	4288196			Nationwide Affinity Insurance Company of America	..OH	..IA	Nationwide Mutual Insurance Company	Ownership	..100.000	Nationwide Mutual Insurance Company
0140	Nationwide	28223	42-1015537	4288208			Nationwide Agribusiness Insurance Company	..IA	..IA	Nationwide Mutual Insurance Company	Ownership	..100.000	Nationwide Mutual Insurance Company
0140	Nationwide		20-5976272	4595910			Nationwide Alternative Investments, LLC	..OH	..NIA	Nationwide Mutual Insurance Company	Ownership	..100.000	Nationwide Mutual Insurance Company

STATEMENT AS OF SEPTEMBER 30, 2014 OF THE NATIONWIDE PROPERTY AND CASUALTY INSURANCE COMPANY

SCHEDULE Y

PART 1A - DETAIL OF INSURANCE HOLDING COMPANY SYSTEM

1	2	3	4	5	6	7	8	9	10	11	12	13	14	15
Group Code	Group Name	NAIC Company Code	Federal ID Number	Federal RSSD	CIK	Name of Securities Exchange if Publicly Traded (U.S. or International)	Names of Parent, Subsidiaries Or Affiliates	Domiciliary Location	Relationship to Reporting Entity	Directly Controlled by (Name of Entity/Person)	Type of Control (Ownership, Board, Management, Attorney-in-Fact, Influence, Other)	If Control is Ownership Provide Percentage	Ultimate Controlling Entity(ies)/Person(s)	*
0140	Nationwide		31-1578869	4288075			Nationwide Arena, LLC	OH	NIA	NRI Arena, Ltd.	Ownership	90.000	Nationwide Mutual Insurance Company	1
0140	Nationwide		20-8670712	4288114			Nationwide Asset Management, LLC	OH	NIA	Nationwide Mutual Insurance Company	Ownership	100.000	Nationwide Mutual Insurance Company	
0140	Nationwide	10723	95-0639970	4288217			Nationwide Assurance Company	WI	IA	Nationwide Mutual Insurance Company	Ownership	100.000	Nationwide Mutual Insurance Company	
0140	Nationwide		31-1592130	2729677			Nationwide Bank	OH	OTH	Nationwide Financial Services, Inc.	Ownership	100.000	Nationwide Mutual Insurance Company	
0140	Nationwide		31-1036287	4288123			Nationwide Cash Management Company	OH	NIA	Nationwide Mutual Insurance Company	Ownership	100.000	Nationwide Mutual Insurance Company	
0140	Nationwide		31-4416546	3828081			Nationwide Corporation	OH	NIA	Nationwide Mutual Insurance Company Nationwide Mutual Fire Insurance Company	Ownership	95.200	Nationwide Mutual Insurance Company	
0140	Nationwide		31-4416546	3828081			Nationwide Corporation	OH	NIA		Ownership	4.800	Nationwide Mutual Insurance Company	
0140	Nationwide		04-3679407	4286839			Nationwide Emerging Managers, LLC	DE	NIA	NWD Investment Management, Inc.	Ownership	100.000	Nationwide Mutual Insurance Company	
0140	Nationwide		05-0630007	4288048			Nationwide Exclusive Agent Risk Purchasing Group, LLC	OH	NIA	Insurance Intermediaries, Inc.	Ownership	100.000	Nationwide Mutual Insurance Company	
0140	Nationwide		31-1667326	4286932			Nationwide Financial Assignment Company	OH	NIA	Nationwide Life Insurance Company	Ownership	100.000	Nationwide Mutual Insurance Company	
0140	Nationwide		23-2412039	4287087			Nationwide Financial General Agency, Inc.	PA	NIA	NFS Distributors, Inc.	Ownership	100.000	Nationwide Mutual Insurance Company	
0140	Nationwide		31-1316276	4287069			Nationwide Financial Institution Distributors Agency, Inc.	DE	NIA	NFS Distributors, Inc.	Ownership	100.000	Nationwide Mutual Insurance Company	
0140	Nationwide		31-6554353	4286978			Nationwide Financial Services Capital Trust	DE	NIA	Nationwide Financial Services, Inc.	Ownership	100.000	Nationwide Mutual Insurance Company	
0140	Nationwide		31-1486870	3828063			Nationwide Financial Services, Inc.	DE	NIA	Nationwide Corporation	Ownership	100.000	Nationwide Mutual Insurance Company	
0140	Nationwide		52-6969857	4286996			Nationwide Fund Advisors	DE	NIA	Nationwide Financial Services, Inc.	Ownership	100.000	Nationwide Mutual Insurance Company	
0140	Nationwide		31-1748721	42877050			Nationwide Fund Distributors LLC	DE	NIA	NFS Distributors, Inc.	Ownership	100.000	Nationwide Mutual Insurance Company	
0140	Nationwide		31-0900518	4287041			Nationwide Fund Management LLC	DE	IA	NFS Distributors, Inc.	Ownership	100.000	Nationwide Mutual Insurance Company	
0140	Nationwide	23760	31-4425763	4287957			Nationwide General Insurance Company	OH	NIA	Nationwide Mutual Insurance Company	Ownership	100.000	Nationwide Mutual Insurance Company	
0140	Nationwide		31-1570938	4286398			Nationwide Global Holdings, Inc.	OH	NIA	Nationwide Corporation	Ownership	100.000	Nationwide Mutual Insurance Company	
0140	Nationwide		04-3732385	4286857			Nationwide Global Ventures, Inc.	DE	NIA	Nationwide Asset Management Holdings, Inc.	Ownership	100.000	Nationwide Mutual Insurance Company	
0140	Nationwide	10070	31-1399201	2839398			Nationwide Indemnity Company	OH	IA	Nationwide Mutual Insurance Company	Ownership	100.000	Nationwide Mutual Insurance Company	
0140	Nationwide	25453	95-2130882	4287180			Nationwide Insurance Company of America	WI	IA	ALLIED Group, Inc.	Ownership	100.000	Nationwide Mutual Insurance Company	
0140	Nationwide	10948	31-1613686	4287966			Nationwide Insurance Company of Florida	OH	IA	Nationwide Mutual Insurance Company	Ownership	100.000	Nationwide Mutual Insurance Company	
0140	Nationwide		31-6022301				Nationwide Insurance Foundation	OH	OTH	Other non-Nationwide	n/a	0.000	Other non-Nationwide	2
0140	Nationwide		41-2206199	4286950			Nationwide Investment Advisors, LLC	OH	NIA	Nationwide Life Insurance Company	Ownership	100.000	Nationwide Mutual Insurance Company	
0140	Nationwide		73-0988442	4286923			Nationwide Investment Services Corporation	OK	NIA	Nationwide Life Insurance Company	Ownership	100.000	Nationwide Mutual Insurance Company	
0140	Nationwide	92657	31-1000740	2995098			Nationwide Life and Annuity Insurance Company	OH	IA	Nationwide Life Insurance Company	Ownership	100.000	Nationwide Mutual Insurance Company	
0140	Nationwide	66869	31-4156830	2819288			Nationwide Life Insurance Company	OH	IA	Nationwide Financial Services, Inc.	Ownership	100.000	Nationwide Mutual Insurance Company	
0140	Nationwide		13-4212969	4596127			Nationwide Life Tax Credit Partners 2002-A, LLC	OH	NIA	Nationwide Life Insurance Company	Other	0.000	Nationwide Mutual Insurance Company	2
0140	Nationwide		01-0749754	4595960			Nationwide Life Tax Credit Partners 2002-B, LLC	OH	NIA	Nationwide Life Insurance Company	Other	0.000	Nationwide Mutual Insurance Company	2
0140	Nationwide		03-0498148	3262573			Nationwide Life Tax Credit Partners 2002-C, LLC	OH	NIA	Nationwide Life Insurance Company	Other	0.000	Nationwide Mutual Insurance Company	2
0140	Nationwide		54-2113175	4596127			Nationwide Life Tax Credit Partners 2003-A, LLC	OH	NIA	Nationwide Life Insurance Company	Other	0.000	Nationwide Mutual Insurance Company	2
0140	Nationwide		58-2672725	4596163			Nationwide Life Tax Credit Partners 2003-B, LLC	OH	NIA	Nationwide Life Insurance Company	Other	0.000	Nationwide Mutual Insurance Company	2
0140	Nationwide		20-0357951	3811001			Nationwide Life Tax Credit Partners 2003-C, LLC	OH	NIA	Nationwide Life Insurance Company	Other	0.000	Nationwide Mutual Insurance Company	2
0140	Nationwide		20-0382144	4596707			Nationwide Life Tax Credit Partners 2004-A, LLC	OH	NIA	Nationwide Life Insurance Company	Other	0.000	Nationwide Mutual Insurance Company	2
0140	Nationwide		20-0745944	4596211			Nationwide Life Tax Credit Partners 2004-B, LLC	OH	NIA	Nationwide Life Insurance Company	Other	0.000	Nationwide Mutual Insurance Company	2

122

STATEMENT AS OF SEPTEMBER 30, 2014 OF THE NATIONWIDE PROPERTY AND CASUALTY INSURANCE COMPANY

SCHEDULE Y

PART 1A - DETAIL OF INSURANCE HOLDING COMPANY SYSTEM

1	2	3	4	5	6	7	8	9	10	11	12	13	14	15
Group Code	Group Name	NAIC Company Code	Federal ID Number	Federal RSSD	CIK	Name of Securities Exchange if Publicly Traded (U.S. or International)	Names of Parent, Subsidiaries Or Affiliates	Domiciliary Location	Relationship to Reporting Entity	Directly Controlled by (Name of Entity/Person)	Type of Control (Ownership, Board, Management, Attorney-in-Fact, Influence, Other)	If Control is Ownership Provide Percentage	Ultimate Controlling Entity(ies)/Person(s)	*
...0140	Nationwide		20-0745965	4596239			Nationwide Life Tax Credit Partners 2004-C, LLC	..OH	..NIA	Nationwide Life Insurance Company	Other	..0.000	Nationwide Mutual Insurance Company	...2
...0140	Nationwide		20-1128408	4596332			Nationwide Life Tax Credit Partners 2004-D, LLC	..OH	..NIA	Nationwide Life Insurance Company	Other	..0.000	Nationwide Mutual Insurance Company	...2
...0140	Nationwide		20-1128472	4596350			Nationwide Life Tax Credit Partners 2004-E, LLC	..OH	..NIA	Nationwide Life Insurance Company	Other	..0.000	Nationwide Mutual Insurance Company	...2
...0140	Nationwide		20-1918935	3318117			Nationwide Life Tax Credit Partners 2004-F, LLC	..OH	..NIA	Nationwide Life Insurance Company	Other	..0.000	Nationwide Mutual Insurance Company	...2
...0140	Nationwide		20-2303694	4596369			Nationwide Life Tax Credit Partners 2005-A, LLC	..OH	..NIA	Nationwide Life Insurance Company	Other	..0.000	Nationwide Mutual Insurance Company	...2
...0140	Nationwide		20-2303602	4596378			Nationwide Life Tax Credit Partners 2005-B, LLC	..OH	..NIA	Nationwide Life Insurance Company	Other	..0.000	Nationwide Mutual Insurance Company	...2
...0140	Nationwide		20-2450960	4596387			Nationwide Life Tax Credit Partners 2005-C, LLC	..OH	..NIA	Nationwide Life Insurance Company	Other	..0.000	Nationwide Mutual Insurance Company	...2
...0140	Nationwide		20-2451052	4596396			Nationwide Life Tax Credit Partners 2005-D, LLC	..OH	..NIA	Nationwide Life Insurance Company	Other	..0.000	Nationwide Mutual Insurance Company	...2
...0140	Nationwide		20-2774223	4596408			Nationwide Life Tax Credit Partners 2005-E, LLC	..OH	..NIA	Nationwide Life Insurance Company	Other	..0.000	Nationwide Mutual Insurance Company	...2
...0140	Nationwide		21-1288836	4596426			Nationwide Life Tax Credit Partners 2007-A, LLC	..OH	..NIA	Nationwide Life Insurance Company	Other	..0.000	Nationwide Mutual Insurance Company	...2
...0140	Nationwide		26-3427373	4596435			Nationwide Life Tax Credit Partners 2009-A, LLC	..OH	..NIA	Nationwide Life Insurance Company	Other	..0.000	Nationwide Mutual Insurance Company	...2
...0140	Nationwide		26-3427435	4596444			Nationwide Life Tax Credit Partners 2009-B, LLC	..OH	..NIA	Nationwide Life Insurance Company	Other	..0.000	Nationwide Mutual Insurance Company	...2
...0140	Nationwide		26-3427479	4596499			Nationwide Life Tax Credit Partners 2009-C, LLC	..OH	..NIA	Nationwide Life Insurance Company	Other	..0.000	Nationwide Mutual Insurance Company	...2
...0140	Nationwide		26-3427525	4596510			Nationwide Life Tax Credit Partners 2009-D, LLC	..OH	..NIA	Nationwide Life Insurance Company	Other	..0.000	Nationwide Mutual Insurance Company	...2
...0140	Nationwide		26-4737055	4596529			Nationwide Life Tax Credit Partners 2009-E, LLC	..OH	..NIA	Nationwide Life Insurance Company	Other	..0.000	Nationwide Mutual Insurance Company	...2
...0140	Nationwide		26-4737157	4596547			Nationwide Life Tax Credit Partners 2009-F, LLC	..OH	..NIA	Nationwide Life Insurance Company	Other	..0.000	Nationwide Mutual Insurance Company	...2
...0140	Nationwide		46-1952215	4596556			Nationwide Life Tax Credit Partners 2013-A, LLC	..OH	..NIA	Nationwide Life Insurance Company	Other	..0.000	Nationwide Mutual Insurance Company	...2
...0140	Nationwide		46-1971926	4596592			Nationwide Life Tax Credit Partners 2013-B, LLC	..OH	..NIA	Nationwide Life Insurance Company	Other	..0.000	Nationwide Mutual Insurance Company	...2
...0140	Nationwide		27-1362364	4596622			Nationwide Life Tax Credit Partners 2009-I, LLC	..OH	..NIA	Nationwide Life Insurance Company	Other	..0.000	Nationwide Mutual Insurance Company	...2
...0140	Nationwide			3779811			Nationwide Life Tax Credit Partners No. 1, LLC	..OH	..NIA	Nationwide Life Insurance Company	Other	..0.000	Nationwide Mutual Insurance Company	...2
...0140	Nationwide	42110	75-1780981	4287984			Nationwide Lloyds	..TX	..IA	n/a	contract	..0.000	Nationwide Mutual Insurance Company	...2
...0140	Nationwide			4597094			Nationwide Mutual Capital I, LLC	..DE	..NIA	Nationwide Mutual Capital, LLC	Ownership	..100.000	Nationwide Mutual Insurance Company	...2
...0140	Nationwide		75-3191025	4595269			Nationwide Mutual Capital, LLC	..OH	..NIA	Nationwide Mutual Insurance Company	Ownership	..100.000	Nationwide Mutual Insurance Company	...2
...0140	Nationwide	23779	82-0549218	3828090			Nationwide Mutual Fire Insurance Company	..OH	..OTH	Other non-Nationwide	n/a	..0.000	Other non-Nationwide	...2
...0140	Nationwide	23787	31-4177100	3828072			Nationwide Mutual Insurance Company	..OH	..UDP	Other non-Nationwide	n/a	..0.000	Other non-Nationwide	...2
...0140	Nationwide		34-2012765	4288084			Nationwide Private Equity Fund, LLC	..OH	..NIA	Nationwide Mutual Insurance Company	Ownership	..100.000	Nationwide Mutual Insurance Company	...2
...0140	Nationwide	37877	31-0970750	4287993			Nationwide Property and Casualty Insurance Company	..OH	..RE	Nationwide Mutual Insurance Company	Ownership	..100.000	Nationwide Mutual Insurance Company	...2
...0140	Nationwide		31-1486309	4288105			Nationwide Realty Investors, Ltd.	..OH	..NIA	Nationwide Mutual Insurance Company	Ownership	..96.800	Nationwide Mutual Insurance Company	...2
...0140	Nationwide		31-1486309	4288105			Nationwide Realty Investors, Ltd.	..OH	..NIA	Nationwide Indemnity Company	Ownership	..3.200	Nationwide Mutual Insurance Company	...2
...0140	Nationwide		31-1486309	4590264			Nationwide Realty Management, LLC	..OH	..NIA	Nationwide Realty Investors, Ltd.	Ownership	..100.000	Nationwide Mutual Insurance Company	...2

STATEMENT AS OF SEPTEMBER 30, 2014 OF THE NATIONWIDE PROPERTY AND CASUALTY INSURANCE COMPANY

SCHEDULE Y

PART 1A - DETAIL OF INSURANCE HOLDING COMPANY SYSTEM

1	2	3	4	5	6	7	8	9	10	11	12	13	14	15
Group Code	Group Name	NAIC Company Code	Federal ID Number	Federal RSSD	CIK	Name of Securities Exchange if Publicly Traded (U.S. or International)	Names of Parent, Subsidiaries Or Affiliates	Domiciliary Location	Relationship to Reporting Entity	Directly Controlled by (Name of Entity/Person)	Type of Control (Ownership, Board, Management, Attorney-in-Fact, Influence, Other)	If Control is Ownership Provide Percentage	Ultimate Controlling Entity(ies)/Person(s)	*
..0140	Nationwide			4288066			Nationwide Realty Services, Ltd.	..OH	..NIA	Nationwide Mutual Insurance Company	Ownership	..100.000	Nationwide Mutual Insurance Company	
..0140	Nationwide		06-0987812	4287117			Nationwide Retirement Solutions Insurance Agency, Inc.	..MA	..IA	Nationwide Retirement Solutions, Inc.	Ownership	..100.000	Nationwide Mutual Insurance Company	
..0140	Nationwide		73-0948330	4287096			Nationwide Retirement Solutions, Inc.	..DE	..NIA	NFS Distributors, Inc.	Ownership	..100.000	Nationwide Mutual Insurance Company	
..0140	Nationwide		86-0924069	4287108			Nationwide Retirement Solutions, Inc. of Arizona	..AZ	..NIA	Nationwide Retirement Solutions, Inc.	Ownership	..100.000	Nationwide Mutual Insurance Company	
..0140	Nationwide		31-1331479	4287126			Nationwide Retirement Solutions, Inc. of Ohio	..OH	..NIA	Nationwide Retirement Solutions, Inc.	Ownership	..100.000	Nationwide Mutual Insurance Company	
..0140	Nationwide		74-2200854	4287135			Nationwide Retirement Solutions, Inc. of Texas	..TX	..NIA	Nationwide Retirement Solutions, Inc.	Ownership	..100.000	Nationwide Mutual Insurance Company	
..0140	Nationwide		42-1373380	4287210			Nationwide Sales Solutions, Inc.	..IA	..NIA	ALLIED Group, Inc.	Ownership	..100.000	Nationwide Mutual Insurance Company	
..0140	Nationwide		36-2434406	4287078			Nationwide Securities, LLC	..OH	..NIA	NFS Distributors, Inc.	Ownership	..100.000	Nationwide Mutual Insurance Company	
..0140	Nationwide		31-4177100	4288093			Nationwide Services Company, LLC	..OH	..NIA	Nationwide Mutual Insurance Company	Ownership	..100.000	Nationwide Mutual Insurance Company	
..0140	Nationwide		27-0743545	4564041			Nationwide Tax Credit Partners 2009-G, LLC	..OH	..NIA	Nationwide Mutual Insurance Company	Other	..0.000	Nationwide Mutual Insurance Company	..2
..0140	Nationwide		27-0768791	4596891			Nationwide Tax Credit Partners 2009-H, LLC	..OH	..NIA	Nationwide Mutual Insurance Company	Other	..0.000	Nationwide Mutual Insurance Company	..2
..0140	Nationwide		27-1362364	4596622			Nationwide Tax Credit Partners 2009-I, LLC	..OH	..NIA	Nationwide Mutual Insurance Company	Other	..0.000	Nationwide Mutual Insurance Company	..2
..0140	Nationwide		46-1952215	4596566			Nationwide Tax Credit Partners 2013-A, LLC	..OH	..NIA	Nationwide Life Insurance Company	Ownership	..100.000	Nationwide Mutual Insurance Company	..2
..0140	Nationwide		47-1404116				NTCP 2014-B, LLC	..OH	..NIA	Nationwide Life Insurance Company	Ownership	..100.000	Nationwide Mutual Insurance Company	
..0140	Nationwide		47-1413242				NTCP 2014-C, LLC	..OH	..NIA	Nationwide Life Insurance Company	Other	..0.000	Nationwide Mutual Insurance Company	..2
..0140	Nationwide		11-3651828	4588168			ND La Quinta Partners, LLC	..DE	..NIA	Nationwide Realty Investors, Ltd.	Ownership	..95.000	Nationwide Mutual Insurance Company	..1
..0140	Nationwide			4286866			Newhouse Capital Partners II, LLC	..DE	..NIA	Nationwide Global Ventures, Inc.	Ownership	..80.000	Nationwide Mutual Insurance Company	..1
..0140	Nationwide			4286866			Newhouse Capital Partners II, LLC	..DE	..NIA	Nationwide Global Ventures, Inc.	Ownership	..99.000	Nationwide Mutual Insurance Company	..1
..0140	Nationwide			4286679			Newhouse Capital Partners, LLC	..DE	..NIA	NWD Investment Management, Inc.	Ownership	..19.000	Nationwide Mutual Insurance Company	..1
..0140	Nationwide			4286679			Newhouse Capital Partners, LLC	..DE	..NIA	Nationwide Mutual Insurance Company	Ownership	..70.000	Nationwide Mutual Insurance Company	..1
..0140	Nationwide			4286679			Newhouse Capital Partners, LLC	..DE	..NIA	Nationwide Mutual Fire Insurance Company	Ownership	..10.000	Nationwide Mutual Insurance Company	..1
..0140	Nationwide		31-1630871	4287032			NFS Distributors, Inc.	..DE	..NIA	Nationwide Financial Services, Inc.	Ownership	..100.000	Nationwide Mutual Insurance Company	..1
..0140	Nationwide		14-1892640	4596677			NHT XII Tax Credit Fund, LLC	..DC	..NIA	Nationwide Life Insurance Company	Ownership	..49.990	Nationwide Mutual Insurance Company	..1
..0140	Nationwide		14-1892640	4596677			NHT XII Tax Credit Fund, LLC	..DC	..NIA	Nationwide Assurance Company	Ownership	..25.000	Nationwide Mutual Insurance Company	..1
..0140	Nationwide		14-1892640	4596677			NHT XII Tax Credit Fund, LLC	..DC	..NIA	Nationwide Mutual Insurance Company	Ownership	..25.000	Nationwide Mutual Insurance Company	..1
..0140	Nationwide		46-3762545				INNOV8, LLC	..OH	..NIA	Nationwide Mutual Insurance Company	Ownership	..100.000	Nationwide Mutual Insurance Company	
..0140	Nationwide		26-0351004				North Bank Condominium Home Owners Association	..OH	..OTH	Other non-Nationwide	n/a	..0.000	Other non-Nationwide	..2
..0140	Nationwide		20-4939866	4590817			North of Third, LLC	..OH	..NIA	NRI Equity Land Investments, LLC	Ownership	..100.000	Nationwide Mutual Insurance Company	
..0140	Nationwide		26-4083207	4590385			Northstar Commercial Development, LLC	..OH	..NIA	Nationwide Realty Investors, Ltd.	Ownership	..50.000	Nationwide Mutual Insurance Company	..1
..0140	Nationwide		26-4083354	4594909			Northstar Residential Development, LLC	..OH	..NIA	Nationwide Realty Investors, Ltd.	Ownership	..50.000	Nationwide Mutual Insurance Company	..1
..0140	Nationwide		31-1486309	4593630			NRI 12325 Copper Way, LLC	..OH	..NIA	Nationwide Realty Investors, Ltd.	Ownership	..100.000	Nationwide Mutual Insurance Company	
..0140	Nationwide		31-1486309	4594936			NRI 220 Schrock, LLC	..OH	..NIA	Nationwide Realty Investors, Ltd.	Ownership	..100.000	Nationwide Mutual Insurance Company	
..0140	Nationwide		31-1486309	4594794			NRI Arena, LLC	..OH	..NIA	Nationwide Realty Investors, Ltd.	Ownership	..100.000	Nationwide Mutual Insurance Company	
..0140	Nationwide		31-1486309	4594815			NRI Brookside, LLC	..OH	..NIA	Nationwide Realty Investors, Ltd.	Ownership	..100.000	Nationwide Mutual Insurance Company	
..0140	Nationwide		31-1486309	4595027			NRI Builders, LLC	..OH	..NIA	Nationwide Realty Investors, Ltd.	Ownership	..100.000	Nationwide Mutual Insurance Company	
..0140	Nationwide		31-1486309	4594851			NRI Communities/Charlotte, LLC	..OH	..NIA	Nationwide Realty Investors, Ltd.	Ownership	..100.000	Nationwide Mutual Insurance Company	
..0140	Nationwide		31-1486309	4590246			NRI Communities/Harris Blvd, LLC	..OH	..NIA	Nationwide Realty Investors, Ltd.	Ownership	..100.000	Nationwide Mutual Insurance Company	
..0140	Nationwide		31-1486309	4590282			NRI Cramer Creek, LLC	..OH	..NIA	Nationwide Realty Investors, Ltd.	Ownership	..100.000	Nationwide Mutual Insurance Company	
..0140	Nationwide		20-4939866	4590460			NRI Equity Land Investments, LLC	..OH	..NIA	Nationwide Realty Investors, Ltd.	Ownership	..80.000	Nationwide Mutual Insurance Company	..1
..0140	Nationwide		26-0212217	4590394			NRI Equity Tampa, LLC	..OH	..OTH	Nationwide Realty Investors, Ltd.	Ownership	..100.000	Nationwide Mutual Insurance Company	
..0140	Nationwide		31-1486309	4590376			NRI Maxtown, LLC	..OH	..OTH	Nationwide Realty Investors, Ltd.	Ownership	..100.000	Nationwide Mutual Insurance Company	

STATEMENT AS OF SEPTEMBER 30, 2014 OF THE NATIONWIDE PROPERTY AND CASUALTY INSURANCE COMPANY

SCHEDULE Y

PART 1A - DETAIL OF INSURANCE HOLDING COMPANY SYSTEM

1	2	3	4	5	6	7	8	9	10	11	12	13	14	15
Group Code	Group Name	NAIC Company Code	Federal ID Number	Federal RSSD	CIK	Name of Securities Exchange if Publicly Traded (U.S. or International)	Names of Parent, Subsidiaries Or Affiliates	Domiciliary Location	Relationship to Reporting Entity	Directly Controlled by (Name of Entity/Person)	Type of Control (Ownership, Board, Management, Attorney-in-Fact, Influence, Other)	If Control is Ownership Provide Percentage	Ultimate Controlling Entity(ies)/Person(s)	*
0140	Nationwide		30-4939866	4590406			NRI Office Ventures, Ltd	OH	NIA	Nationwide Realty Investors, Ltd.	Ownership	100.000	Nationwide Mutual Insurance Company	
0140	Nationwide		31-1486309	4590349			NRI-Rivulon, LLC	OH	NIA	Nationwide Realty Investors, Ltd.	Ownership	100.000	Nationwide Mutual Insurance Company	
0140	Nationwide		31-1486309	4596912			NRI Telecom, LLC	OH	NIA	NWD Investments, LLC Nationwide Property and Casualty Company	Ownership	100.000	Nationwide Mutual Insurance Company	
0140	Nationwide		45-3123274	4595438			NTCIF-2011 Georgia State Investor, LLC	OH	NIA		Ownership	100.000	Nationwide Mutual Insurance Company	
0140	Nationwide		90-0729552	4596695			NTCIF-2011, LLC	OH	NIA	Nationwide Life Insurance Company Nationwide Mutual Fire Insurance Company	Ownership	50.000	Nationwide Mutual Insurance Company	
0140	Nationwide		90-0729552	4596695			NTCIF-2011, LLC	OH	NIA		Ownership	50.000	Nationwide Mutual Insurance Company	
0140	Nationwide		27-4700627	4596716			NTCP 2011-A, LLC	OH	NIA	Nationwide Life Insurance Company	Ownership	100.000	Nationwide Mutual Insurance Company	
0140	Nationwide		46-0747898	4596752			NTCP 2011-B, LLC	OH	NIA	Nationwide Life Insurance Company	Ownership	100.000	Nationwide Mutual Insurance Company	
0140	Nationwide		46-0741029	4464703			NTCP 2012-A, LLC	OH	NIA	Nationwide Life Insurance Company	Ownership	100.000	Nationwide Mutual Insurance Company	
0140	Nationwide		46-3309896	4586164			NTCP 2013-C, LLC	OH	NIA	Nationwide Life Insurance Company	Ownership	100.000	Nationwide Mutual Insurance Company	
0140	Nationwide		46-4111078	4596743			NTCP 2014-A, LLC	OH	NIA	Nationwide Life Insurance Company	Ownership	100.000	Nationwide Mutual Insurance Company	
0140	Nationwide		47-1404116				NTCP 2014-B, LLC	OH	NIA	Nationwide Life Insurance Company	Ownership	100.000	Nationwide Mutual Insurance Company	
0140	Nationwide		47-1413242				NTCP 2014-C, LLC	OH	NIA	Nationwide Life Insurance Company	Other	0.000	Nationwide Mutual Insurance Company	
0140	Nationwide		46-3654078	4593621			NW-Amesbury, LLC	OH	NIA	NW REI, LLC	Ownership	100.000	Nationwide Mutual Insurance Company	
0140	Nationwide		46-2943666	4594860			NW-Bandera, LLC	OH	NIA	NW REI, LLC	Ownership	100.000	Nationwide Mutual Insurance Company	
0140	Nationwide		45-5159092	4595063			NW-Bayshore, LLC	OH	NIA	NW REI, LLC	Ownership	100.000	Nationwide Mutual Insurance Company	
0140	Nationwide		46-2451156	4594879			NW-Bee Cave, LLC	OH	NIA	NW REI, LLC	Ownership	100.000	Nationwide Mutual Insurance Company	
0140	Nationwide		46-3707480	4593612			NW-Brooklyn, LLC	OH	NIA	NW REI, LLC	Ownership	100.000	Nationwide Mutual Insurance Company	
0140	Nationwide		46-3968244	4591757			NW-Camelback, LLC	OH	NIA	NW REI, LLC	Ownership	100.000	Nationwide Mutual Insurance Company	
0140	Nationwide		45-2724980	4591690			NW-Cameron, LLC	OH	NIA	NW REI, LLC	Ownership	100.000	Nationwide Mutual Insurance Company	
0140	Nationwide		46-3674167	4590090			NW-Cedar Springs, LLC	OH	NIA	NW REI, LLC	Ownership	100.000	Nationwide Mutual Insurance Company	
0140	Nationwide		46-3994437	4591663			NW-Central Station, LLC	OH	NIA	NW REI, LLC	Ownership	100.000	Nationwide Mutual Insurance Company	
0140	Nationwide		26-0901660	4505456			NW-CNC Coppel, LLC	DE	NIA	Nationwide Mutual Insurance Company	Ownership	100.000	Nationwide Mutual Insurance Company	
0140	Nationwide		32-0359208	4595157			NW-Corvallis, LLC	OH	NIA	NW REI, LLC	Ownership	100.000	Nationwide Mutual Insurance Company	
0140	Nationwide		31-1580283	4591038			NWD 205 Vine, LLC	OH	NIA	NWD Investments, LLC	Ownership	100.000	Nationwide Mutual Insurance Company	
0140	Nationwide		31-1580283	4591261			NWD 225 Nationwide, LLC	OH	NIA	NWD Investments, LLC	Ownership	100.000	Nationwide Mutual Insurance Company	
0140	Nationwide		31-1580283	4591056			NWD 230 West, LLC	OH	NIA	NWD Investments, LLC	Ownership	100.000	Nationwide Mutual Insurance Company	
0140	Nationwide		31-1580283	4590545			NWD 240 Nationwide, LLC	OH	NIA	NWD Investments, LLC	Ownership	100.000	Nationwide Mutual Insurance Company	
0140	Nationwide		31-1580283	4590273			NWD 250 Brodbelt, LLC	OH	NIA	NWD Investments, LLC	Ownership	100.000	Nationwide Mutual Insurance Company	
0140	Nationwide		31-1580283	4590554			NWD 265 Neil, LLC	OH	NIA	NWD Investments, LLC	Ownership	100.000	Nationwide Mutual Insurance Company	
0140	Nationwide		31-1580283	4590518			NWD 275 Marconi, LLC	OH	NIA	NWD Investments, LLC	Ownership	100.000	Nationwide Mutual Insurance Company	
0140	Nationwide		31-1580283	4590563			NWD 295 McConnell, LLC	OH	NIA	NWD Investments, LLC	Ownership	100.000	Nationwide Mutual Insurance Company	
0140	Nationwide		31-1580283	4590509			NWD 300 Neil, LLC	OH	NIA	NWD Investments, LLC	Ownership	100.000	Nationwide Mutual Insurance Company	
0140	Nationwide		31-1580283	4590572			NWD 300 Spring, LLC	OH	NIA	NWD Investments, LLC	Ownership	100.000	Nationwide Mutual Insurance Company	
0140	Nationwide		31-1580283	4590527			NWD 355 McConnell, LLC	OH	NIA	NWD Investments, LLC	Ownership	100.000	Nationwide Mutual Insurance Company	
0140	Nationwide		31-1580283	4590581			NWD 425 Nationwide, LLC	OH	NIA	NWD Investments, LLC	Ownership	100.000	Nationwide Mutual Insurance Company	
0140	Nationwide		31-1580283	4590536			NWD 500 Nationwide, LLC	OH	NIA	NWD Investments, LLC	Ownership	100.000	Nationwide Mutual Insurance Company	
0140	Nationwide		31-1580283	4591298			NWD Arena Crossing, LLC	OH	NIA	NWD Investments, LLC	Ownership	100.000	Nationwide Mutual Insurance Company	
0140	Nationwide		31-1580283	4591083			NWD Arena District I, LLC	OH	NIA	NWD Investments, LLC	Ownership	100.000	Nationwide Mutual Insurance Company	
0140	Nationwide		31-1580283	4591300			NWD Arena District II, LLC	OH	NIA	NWD Investments, LLC	Ownership	100.000	Nationwide Mutual Insurance Company	
0140	Nationwide		31-1580283	4591113			NWD Arena District IM, LLC	OH	NIA	NWD Investments, LLC	Ownership	100.000	Nationwide Mutual Insurance Company	
0140	Nationwide		31-1580283	4591319			NWD Arena District PW, LLC	OH	NIA	NWD Investments, LLC	Ownership	100.000	Nationwide Mutual Insurance Company	
0140	Nationwide		31-1580283	4591131			NWD Arena District V, LLC	OH	NIA	NWD Investments, LLC	Ownership	100.000	Nationwide Mutual Insurance Company	
0140	Nationwide		04-3679396	4286848			NWD Asset Management Holdings, Inc.	DE	NIA	NWD Investment Management, Inc.	Ownership	100.000	Nationwide Mutual Insurance Company	
0140	Nationwide		31-1580283	4591328			NWD Athletic Club, LLC	OH	NIA	NWD Investments, LLC	Ownership	100.000	Nationwide Mutual Insurance Company	
0140	Nationwide		31-1580283				NWD Franklinton, LLC	DE	NIA	NWD Investments, LLC	Ownership	100.000	Nationwide Mutual Insurance Company	
0140	Nationwide		31-1636299	4286594			NWD Investment Management, Inc.	DE	NIA	Nationwide Corporation	Ownership	100.000	Nationwide Mutual Insurance Company	
0140	Nationwide		31-1580283	4587965			NWD Investments, LLC	OH	NIA	Nationwide Realty Investors, Ltd.	Ownership	80.000	Nationwide Mutual Insurance Company	
0140	Nationwide		90-0732898	4591430			NW-Duiles, LLC	OH	NIA	NW REI, LLC	Ownership	100.000	Nationwide Mutual Insurance Company	

STATEMENT AS OF SEPTEMBER 30, 2014 OF THE NATIONWIDE PROPERTY AND CASUALTY INSURANCE COMPANY

SCHEDULE Y

PART 1A - DETAIL OF INSURANCE HOLDING COMPANY SYSTEM

1	2	3	4	5	6	7	8	9	10	11	12	13	14	15
Group Code	Group Name	NAIC Company Code	Federal ID Number	Federal RSSD	CIK	Name of Securities Exchange if Publicly Traded (U.S. or International)	Names of Parent, Subsidiaries Or Affiliates	Domiciliary Location	Relationship to Reporting Entity	Directly Controlled by (Name of Entity/Person)	Type of Control (Ownership, Board, Management, Attorney-in-Fact, Influence, Other)	If Control is Ownership Provide Percentage	Ultimate Controlling Entity(ies)/Person(s)	*
0140	Nationwide		46-3267884	4595465			NW-Franklin Mills, LLC	OH	NIA	Life Reo Holdings, LLC	Ownership	100.000	Nationwide Mutual Insurance Company	
0140	Nationwide		46-2997049	4591775			NW-Howell Mill, LLC	OH	NIA	NW REI, LLC	Ownership	100.000	Nationwide Mutual Insurance Company	
0140	Nationwide		46-4330384				NW-Hudhall, LLC	OH	NIA	NW REI, LLC	Ownership	100.000	Nationwide Mutual Insurance Company	
0140	Nationwide		47-1497429				NW-Jefferson, LLC	OH	NIA	NW REI, LLC	Ownership	100.000	Nationwide Mutual Insurance Company	
0140	Nationwide		45-5408178	4591458			NW-Kentwood Towne Center, LLC	OH	NIA	NW REI, LLC	Ownership	100.000	Nationwide Mutual Insurance Company	
0140	Nationwide		46-4857522				NW-Lawrence, LLC	OH	NIA	NW REI, LLC	Ownership	100.000	Nationwide Mutual Insurance Company	
0140	Nationwide		45-5314607	4593461			NW-Lovers Lane, LLC	OH	NIA	NW REI, LLC	Ownership	100.000	Nationwide Mutual Insurance Company	
0140	Nationwide		46-2457568	4591467			NW-Montrose, LLC	OH	NIA	NW REI, LLC	Ownership	100.000	Nationwide Mutual Insurance Company	
0140	Nationwide		45-4630497	4593470			NW-Mueller II, LLC	OH	NIA	NW REI, LLC	Ownership	100.000	Nationwide Mutual Insurance Company	
0140	Nationwide		27-4749848	4591476			NW-Northridge, LLC	OH	NIA	NW REI, LLC	Ownership	100.000	Nationwide Mutual Insurance Company	
0140	Nationwide		46-1089165	4593555			NW-Oakley Station, LLC	OH	NIA	NW REI, LLC	Ownership	100.000	Nationwide Mutual Insurance Company	
0140	Nationwide		46-3888719	4593603			NW-Park 288, LLC	OH	NIA	NW REI, LLC	Ownership	100.000	Nationwide Mutual Insurance Company	
0140	Nationwide		45-5388656	4591485			NW-Park Memorial, LLC	OH	NIA	NW REI, LLC	Ownership	100.000	Nationwide Mutual Insurance Company	
0140	Nationwide		47-1740812				NW-Peachtree, LLC	OH	NIA	NW REI, LLC	Ownership	100.000	Nationwide Mutual Insurance Company	
0140	Nationwide		46-2469044	4591494			NW-Portales, LLC	OH	NIA	NW REI, LLC	Ownership	100.000	Nationwide Mutual Insurance Company	
0140	Nationwide		26-1903919	4591421			NW REI, LLC	DE	NIA	Nationwide Mutual Insurance Company	Ownership	100.000	Nationwide Mutual Insurance Company	
0140	Nationwide		45-5159117	4593573			NW-South Park, LLC	OH	NIA	NW REI, LLC	Ownership	100.000	Nationwide Mutual Insurance Company	
0140	Nationwide		27-4749587	4593582			NW-Taylor Farmer Jack, LLC	OH	NIA	NW REI, LLC	Ownership	100.000	Nationwide Mutual Insurance Company	
0140	Nationwide		46-1100378	4591524			NW-Triangle, LLC	OH	NIA	NW REI, LLC	Ownership	100.000	Nationwide Mutual Insurance Company	
0140	Nationwide		46-5764783				NW-Tyson, LLC	OH	NIA	NW REI, LLC	Ownership	100.000	Nationwide Mutual Insurance Company	
0140	Nationwide		46-1077615	4593591			NW-West Ave., LLC	OH	NIA	NW REI, LLC	Ownership	100.000	Nationwide Mutual Insurance Company	
0140	Nationwide		46-4992444				NW-Windcross, LLC	OH	NIA	NW REI, LLC	Ownership	100.000	Nationwide Mutual Insurance Company	
0140	Nationwide		31-0947092	4590479			OCH Company, LLC	OH	NIA	Nationwide Realty Investors, Ltd.	Ownership	100.000	Nationwide Mutual Insurance Company	
0140	Nationwide		31-0947092	4590442			Ohio Center Hotel Company, Ltd.	OH	NIA	Nationwide Realty Investors, Ltd.	Ownership	56.250	Nationwide Mutual Insurance Company	1
0140	Nationwide		26-0263012				Old Track Street Owners Association	OH	OTH	Other non-Nationwide	n/a	0.000	Other non-Nationwide	2
0140	Nationwide	13999	27-1712056	4286914			Olentangy Reinsurance, LLC	VT	IA	Nationwide Life and Annuity Insurance Company	Ownership	100.000	Nationwide Mutual Insurance Company	
0140	Nationwide		47-1923444				On Your Side Nationwide Insurance Agency, Inc.	OH	OTH	Nationwide Mutual Insurance Company	Ownership	100.000	Nationwide Mutual Insurance Company	
0140	Nationwide			4596462			OYS Fund, LLC	DE	OTH	Nationwide Mutual Insurance Company	Ownership	100.000	Nationwide Mutual Insurance Company	
0140	Nationwide			4596480			Park 288 Industrial, LLC	TX	NIA	Nationwide Mutual Insurance Company	Investor member / no control	95.000	Other non-Nationwide	
0140	Nationwide		31-1486309	4590358			Perimeter A, Ltd	OH	NIA	Nationwide Realty Investors, Ltd.	Ownership	100.000	Nationwide Mutual Insurance Company	
0140	Nationwide		31-1677602	4590488			Pizzuti Properties, LLC	OH	NIA	Nationwide Realty Investors, Ltd.	Ownership	65.000	Nationwide Mutual Insurance Company	
0140	Nationwide		31-1486309	4590291			Polaris A, Ltd.	OH	NIA	Nationwide Realty Investors, Ltd.	Ownership	100.000	Nationwide Mutual Insurance Company	
0140	Nationwide		39-1907217	4287201			Premier Agency, Inc.	IA	NIA	ALLIED Group, Inc.	Ownership	100.000	Nationwide Mutual Insurance Company	
4664	Pure	12873	20-8287105	4288253			Privilege Underwriters Reciprocal Exchange	FL	IA	Other non-Nationwide	n/a	0.000	Other non-Nationwide	2
0140	Pure			4288150			Privilege Underwriters, Inc.	DE	IA	Other non-Nationwide	n/a	0.000	Other non-Nationwide	2
4664	Pure	13204	26-3109178	4288226			Pure Insurance Company	FL	IA	Other non-Nationwide	n/a	0.000	Other non-Nationwide	2
4664	Pure			4288235			Pure Risk Management, LLC	FL	IA	Other non-Nationwide	n/a	0.000	Other non-Nationwide	2
4664	Nationwide		75-2938844	4287005			Registered Investment Advisors Services, Inc.	TX	NIA	Nationwide Financial Services, Inc.	Ownership	100.000	Nationwide Mutual Insurance Company	
0140	Nationwide		82-0549218	4288244			Retention Alternatives, Ltd.	BMU	IA	Nationwide Mutual Fire Insurance Company	Ownership	100.000	Nationwide Mutual Insurance Company	1
0140	Nationwide			4595278			Riverview Diversified Opportunities Fund, LLC	DE	OTH	Nationwide Mutual Insurance Company	Ownership	0.000	Nationwide Mutual Insurance Company	1
0140	Nationwide			4595278			Riverview Diversified Opportunities Fund, LLC	DE	OTH	Nationwide Mutual Fire Insurance Company	Ownership	0.000	Nationwide Mutual Insurance Company	1
0140	Nationwide			4595278			Riverview Diversified Opportunities Fund, LLC	DE	OTH	Nationwide Life Insurance Company	Ownership	0.000	Nationwide Mutual Insurance Company	1
0140	Nationwide		22-3655264	4286530			Riverview International Group, Inc.	DE	NIA	NWD Investment Management, Inc.	Ownership	100.000	Nationwide Mutual Insurance Company	

STATEMENT AS OF SEPTEMBER 30, 2014 OF THE NATIONWIDE PROPERTY AND CASUALTY INSURANCE COMPANY

SCHEDULE Y

PART 1A - DETAIL OF INSURANCE HOLDING COMPANY SYSTEM

1	2	3	4	5	6	7	8	9	10	11	12	13	14	15
Group Code	Group Name	NAIC Company Code	Federal ID Number	Federal RSSD	CIK	Name of Securities Exchange if Publicly Traded (U.S. or International)	Names of Parent, Subsidiaries Or Affiliates	Domiciliary Location	Relationship to Reporting Entity	Directly Controlled by (Name of Entity/Person)	Type of Control (Ownership, Board, Management, Attorney-in-Fact, Influence, Other)	If Control is Ownership Provide Percentage	Ultimate Controlling Entity(ies)/Person(s)	*
.....0140	Nationwide	4595287	Riverview Multi Series Fund, LL - Class Event	..DEOTH	Nationwide Mutual Insurance Company	Ownership	..100.000	Nationwide Mutual Insurance Company
.....0140	Nationwide	4595335	Riverview Multi Series Fund, LL - Class N	..DEOTH	Nationwide Mutual Insurance Company	Ownership	..100.000	Nationwide Mutual Insurance Company
.....0140	Nationwide	4564032	Riverview Polyphony Fund, LLC	..DEOTH	Nationwide Mutual Insurance Company	Ownership	..100.000	Nationwide Mutual Insurance Company
.....0140	Nationwide	..15580	31-1117969	4288002	Scottsdale Indemnity Company	..OHIA	Nationwide Mutual Insurance Company	Ownership	..100.000	Nationwide Mutual Insurance Company
.....0140	Nationwide	..41297	31-1024978	3091988	Scottsdale Insurance Company	..OHIA	Nationwide Mutual Insurance Company	Ownership	..100.000	Nationwide Mutual Insurance Company
.....0140	Nationwide	Scottsdale Surplus Lines Insurance Company
.....0140	Nationwide	..10672	86-0835870	4287649	Scottsdale Insurance Company	..AZIA	Scottsdale Insurance Company	Ownership	..100.000	Nationwide Mutual Insurance Company
.....0140	Nationwide	31-1486309	4590303	Streets of Toringdon, LLC	..OHNIA	Nationwide Realty Investors, Ltd.	Ownership	..100.000	Nationwide Mutual Insurance Company
.....0140	Nationwide	91-2158214	The Hideaway Club	..CAOTH	Other non-Nationwide	n/a	..0.000	Other non-Nationwide2
.....0140	Nationwide	86-1094799	The Hideaway Owners Association	..CAOTH	Other non-Nationwide	n/a	..0.000	Other non-Nationwide2
.....0140	Nationwide	20-3541511	The Madison Club	..CAOTH	Other non-Nationwide	n/a	..0.000	Other non-Nationwide2
.....0140	Nationwide	20-3541507	The Madison Club Owners Association	..CAOTH	Other non-Nationwide	n/a	..0.000	Other non-Nationwide2
.....0140	Nationwide	31-1610040	2989882	The Waterfront Partners, LLC	..OHNIA	Nationwide Realty Investors, Ltd.	Ownership	..50.000	Nationwide Mutual Insurance Company1
.....0140	Nationwide	52-2031677	4287751	THI Holdings (Delaware), Inc.	..DENIA	Nationwide Mutual Insurance Company	Ownership	..100.000	Nationwide Mutual Insurance Company
.....0140	Nationwide	74-2825853	4287863	Titan Auto Insurance of New Mexico, Inc.	..NMIA	THI Holdings (Delaware), Inc.	Ownership	..100.000	Nationwide Mutual Insurance Company
.....0140	Nationwide	..13242	74-2286759	4287797	Titan Indemnity Company	..TXIA	THI Holdings (Delaware), Inc.	Ownership	..100.000	Nationwide Mutual Insurance Company
.....0140	Nationwide	..36269	86-0619597	4287845	Titan Insurance Company	..MIIA	Titan Indemnity Company	Ownership	..100.000	Nationwide Mutual Insurance Company
.....0140	Nationwide	75-1284530	4287890	Titan Insurance Services, Inc.	..TXNIA	THI Holdings (Delaware), Inc.	Ownership	..100.000	Nationwide Mutual Insurance Company
.....0140	Nationwide	33-0160222	4653196	V.P.I. Services, Inc.	..CANIA	Veterinary Pet Insurance Company	Ownership	..100.000	Nationwide Mutual Insurance Company
.....0140	Nationwide	..42285	95-3750113	4287685	Veterinary Pet Insurance Company	..CAIA	Scottsdale Insurance Company	Ownership	..100.000	Nationwide Mutual Insurance Company
.....0140	Nationwide	..10644	34-1785903	4287911	Victoria Automobile Insurance Company	..OHIA	Victoria Fire & Casualty Insurance Company	Ownership	..100.000	Nationwide Mutual Insurance Company
.....0140	Nationwide	..42889	34-1394913	4287827	Victoria Fire & Casualty Company	..OHIA	THI Holdings (Delaware), Inc.	Ownership	..100.000	Nationwide Mutual Insurance Company
.....0140	Nationwide	34-1842604	4287920	Victoria National Insurance Company	..OHIA	Victoria Fire & Casualty Insurance Company	Ownership	..100.000	Nationwide Mutual Insurance Company
.....0140	Nationwide	34-1777972	4287939	Victoria Select Insurance Company	..OHIA	Victoria Fire & Casualty Insurance Company	Ownership	..100.000	Nationwide Mutual Insurance Company
.....0140	Nationwide	..10777	34-1842602	4287948	Victoria Specialty Insurance Company	..OHIA	Victoria Fire & Casualty Insurance Company	Ownership	..100.000	Nationwide Mutual Insurance Company
.....0140	Nationwide	..37150	86-0561941	4287667	Western Heritage Insurance Company	..AZIA	Scottsdale Insurance Company	Ownership	..100.000	Nationwide Mutual Insurance Company
.....0140	Nationwide	4613341	Westport Capital Partners II	..CTOTH	Nationwide Mutual Insurance Company	Investor member / no control	..71.000	other non-Nationwide2
.....0140	Nationwide	31-1486309	4590321	Wilson Road Developers, LLC	..OHNIA	Nationwide Realty Investors, Ltd.	Ownership	..100.000	Nationwide Mutual Insurance Company
.....0140	Nationwide	4613323	Zais Zephyr A-4, LLC	..DEOTH	Nationwide Life Insurance Company	Limited member / no control	..60.000	other non-Nationwide2

Asterisk	Explanation
1	For the purposes of this schedule, Nationwide presumed control of these entities because they are owned by at least 10% and are not wholly-owned by a Nationwide entity.
2	Other ownership indicates a non-ownership circumstance by a Nationwide entity.

STATEMENT AS OF SEPTEMBER 30, 2014 OF THE NATIONWIDE PROPERTY AND CASUALTY INSURANCE COMPANY

PART 1 - LOSS EXPERIENCE

Line of Business	Current Year to Date			4 Prior Year to Date Direct Loss Percentage
	1 Direct Premiums Earned	2 Direct Losses Incurred	3 Direct Loss Percentage	
1. Fire	1,959,348	1,317,020	67.2	105.8
2. Allied Lines	2,409,432	905,712	37.6	168.9
3. Farmowners multiple peril				
4. Homeowners multiple peril	553,480,115	352,434,666	63.7	52.5
5. Commercial multiple peril	109,609,559	66,472,582	60.6	63.0
6. Mortgage guaranty				
8. Ocean marine				
9. Inland marine	16,481,618	7,852,472	47.6	49.8
10. Financial guaranty				
11.1 Medical professional liability - occurrence		(240)		
11.2 Medical professional liability - claims-made				
12. Earthquake	5,197,625	110,019	2.1	0.3
13. Group accident and health				
14. Credit accident and health				
15. Other accident and health				
16. Workers' compensation	18,937,021	12,162,356	64.2	67.1
17.1 Other liability - occurrence	8,942,359	3,492,399	39.1	34.7
17.2 Other liability - claims-made		(8)		
17.3 Excess workers' compensation				
18.1 Products liability - occurrence	1,190,214	147,312	12.4	(16.8)
18.2 Products liability - claims-made		(67)		
19.1,19.2 Private passenger auto liability	266,974,814	183,847,972	68.9	89.2
19.3,19.4 Commercial auto liability	25,956,460	26,371,515	101.6	59.7
21. Auto physical damage	205,929,164	133,069,093	64.6	62.0
22. Aircraft (all perils)				
23. Fidelity		18		
24. Surety				
26. Burglary and theft	131,911	68	0.1	0.2
27. Boiler and machinery	3,438,011	1,090,173	31.7	27.0
28. Credit				
29. International				
30. Warranty				
31. Reinsurance - Nonproportional Assumed Property	XXX	XXX	XXX	XXX
32. Reinsurance - Nonproportional Assumed Liability	XXX	XXX	XXX	XXX
33. Reinsurance - Nonproportional Assumed Financial Lines	XXX	XXX	XXX	XXX
34. Aggregate write-ins for other lines of business				
35. Totals	1,220,637,651	789,273,062	64.7	62.0
DETAILS OF WRITE-INS				
3401.				
3402.				
3403.				
3498. Summary of remaining write-ins for Line 34 from overflow page				
3499. Totals (Lines 3401 through 3403 plus 3498)(Line 34 above)				

PART 2 - DIRECT PREMIUMS WRITTEN

Line of Business	1	2	3
	Current Quarter	Current Year to Date	Prior Year Year to Date
1. Fire	831,712	2,160,687	2,111,956
2. Allied Lines	950,266	2,779,287	2,344,647
3. Farmowners multiple peril			
4. Homeowners multiple peril	197,296,633	539,888,725	576,312,314
5. Commercial multiple peril	34,105,981	111,766,296	103,992,507
6. Mortgage guaranty			
8. Ocean marine			
9. Inland marine	6,006,781	18,758,405	19,175,227
10. Financial guaranty			
11.1 Medical professional liability - occurrence			
11.2 Medical professional liability - claims-made			
12. Earthquake	1,602,298	4,869,850	5,364,126
13. Group accident and health			
14. Credit accident and health			
15. Other accident and health			
16. Workers' compensation	6,547,970	20,042,408	17,535,037
17.1 Other liability - occurrence	3,476,109	10,687,897	9,656,746
17.2 Other liability - claims-made			
17.3 Excess workers' compensation			
18.1 Products liability - occurrence	383,347	1,384,396	1,055,370
18.2 Products liability - claims-made			
19.1,19.2 Private passenger auto liability	98,420,952	280,320,406	234,667,233
19.3,19.4 Commercial auto liability	8,532,211	28,021,692	25,162,462
21. Auto physical damage	75,592,900	215,843,282	183,180,096
22. Aircraft (all perils)			
23. Fidelity			
24. Surety			
26. Burglary and theft	130,201	246,993	8,543
27. Boiler and machinery	1,089,372	3,514,029	3,374,509
28. Credit			
29. International			
30. Warranty			
31. Reinsurance - Nonproportional Assumed Property	XXX	XXX	XXX
32. Reinsurance - Nonproportional Assumed Liability	XXX	XXX	XXX
33. Reinsurance - Nonproportional Assumed Financial Lines	XXX	XXX	XXX
34. Aggregate write-ins for other lines of business			
35. Totals	434,966,733	1,240,284,353	1,183,940,773
DETAILS OF WRITE-INS			
3401.			
3402.			
3403.			
3498. Summary of remaining write-ins for Line 34 from overflow page			
3499. Totals (Lines 3401 through 3403 plus 3498)(Line 34 above)			

STATEMENT AS OF SEPTEMBER 30, 2014 OF THE NATIONWIDE PROPERTY AND CASUALTY INSURANCE COMPANY

PART 3 (000 omitted)

LOSS AND LOSS ADJUSTMENT EXPENSE RESERVES SCHEDULE

	1	2	3	4	5	6	7	8	9	10	11	12	13
Years in Which Losses Occurred	Prior Year-End Known Case Loss and LAE Reserves	Prior Year-End IBNR Loss and LAE Reserves	Total Prior Year-End Loss and LAE Reserves (Cols. 1+2)	2014 Loss and LAE Payments on Claims Reported as of Prior Year-End	2014 Loss and LAE Payments on Claims Unreported as of Prior Year-End	Total 2014 Loss and LAE Payments (Cols. 4+5)	Q.S. Date Known Case Loss and LAE Reserves on Claims Reported and Open as of Prior Year End	Q.S. Date Known Case Loss and LAE Reserves on Claims Reported or Reopened Subsequent to Prior Year End	Q.S. Date IBNR Loss and LAE Reserves	Total Q.S. Loss and LAE Reserves (Cols.7+8+9)	Prior Year-End Known Case Loss and LAE Reserves Developed (Savings)/ Deficiency (Cols.4+7 minus Col. 1)	Prior Year-End IBNR Loss and LAE Reserves Developed (Savings)/ Deficiency (Cols. 5+8+9 minus Col. 2)	Prior Year-End Total Loss and LAE Reserve Developed (Savings)/ Deficiency (Cols. 11+12)
1. 2011 + Prior													
2. 2012													
3. Subtotals 2012 + Prior													
4. 2013													
5. Subtotals 2013 + Prior													
6. 2014	XXX	XXX	XXX	XXX			XXX				XXX	XXX	XXX
7. Totals													
8. Prior Year-End Surplus As Regards Policyholders											Col. 11, Line 7 As % of Col. 1 Line 7	Col. 12, Line 7 As % of Col. 2 Line 7	Col. 13, Line 7 As % of Col. 3 Line 7
											1.	2.	3.
													Col. 13, Line 7 As a % of Col. 1 Line 8
													4.

NONE

SUPPLEMENTAL EXHIBITS AND SCHEDULES INTERROGATORIES

The following supplemental reports are required to be filed as part of your statement filing. However, in the event that your company does not transact the type of business for which the special report must be filed, your response of NO to the specific interrogatory will be accepted in lieu of filing a "NONE" report and a bar code will be printed below. If the supplement is required of your company but is not being filed for whatever reason enter SEE EXPLANATION and provide an explanation following the interrogatory questions.

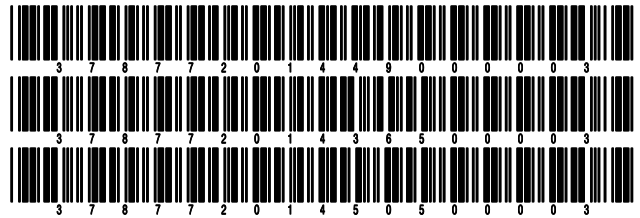
	Response
1. Will the Trusteed Surplus Statement be filed with the state of domicile and the NAIC with this statement?	NO
2. Will Supplement A to Schedule T (Medical Professional Liability Supplement) be filed with this statement?	YES
3. Will the Medicare Part D Coverage Supplement be filed with the state of domicile and the NAIC with this statement?	NO
4. Will the Director and Officer Insurance Coverage Supplement be filed with the state of domicile and the NAIC with this statement?	NO

Explanations:

- 1.
- 3.
- 4.

Bar Codes:

1. Trusteed Surplus Statement [Document Identifier 490]
3. Medicare Part D Coverage Supplement [Document Identifier 365]
4. Director and Officer Supplement [Document Identifier 505]



OVERFLOW PAGE FOR WRITE-INS

NONE

STATEMENT AS OF SEPTEMBER 30, 2014 OF THE NATIONWIDE PROPERTY AND CASUALTY INSURANCE COMPANY

SCHEDULE A - VERIFICATION

Real Estate

	1 Year to Date	2 Prior Year Ended December 31
1. Book/adjusted carrying value, December 31 of prior year		
2. Cost of acquired:		
2.1 Actual cost at time of acquisition		
2.2 Additional investment made after acquisition		
3. Current year change in encumbrances		
4. Total gain (loss) on disposals		
5. Deduct amounts received on disposals		
6. Total foreign exchange change in book/adjusted carrying value		
7. Deduct current year's other than temporary impairment recognized		
8. Deduct current year's depreciation		
9. Book/adjusted carrying value at the end of current period (Lines 1+2+3+4-5+6-7-8)		
10. Deduct total nonadmitted amounts		
11. Statement value at end of current period (Line 9 minus Line 10)		

NONE

SCHEDULE B - VERIFICATION

Mortgage Loans

	1 Year to Date	2 Prior Year Ended December 31
1. Book value/recorded investment excluding accrued interest, December 31 of prior year		
2. Cost of acquired:		
2.1 Actual cost at time of acquisition		
2.2 Additional investment made after acquisition		
3. Capitalized deferred interest and other		
4. Accrual of discount		
5. Unrealized valuation increase (decrease)		
6. Total gain (loss) on disposals		
7. Deduct amounts received on disposals		
8. Deduct amortization of premium and mortgage interest points and commitment fees		
9. Total foreign exchange change in book value/recorded investment excluding accrued interest		
10. Deduct current year's other than temporary impairment recognized		
11. Book value/recorded investment excluding accrued interest at end of current period (Lines 1+2+3+4+5+6-7-8+9-10)		
12. Total valuation allowance		
13. Subtotal (Line 11 plus Line 12)		
14. Deduct total nonadmitted amounts		
15. Statement value at end of current period (Line 13 minus Line 14)		

NONE

SCHEDULE BA - VERIFICATION

Other Long-Term Invested Assets

	1 Year to Date	2 Prior Year Ended December 31
1. Book/adjusted carrying value, December 31 of prior year	11,063,818	11,300,666
2. Cost of acquired:		
2.1 Actual cost at time of acquisition	600,083	5,861,748
2.2 Additional investment made after acquisition	2,174,811	
3. Capitalized deferred interest and other		
4. Accrual of discount		
5. Unrealized valuation increase (decrease)	(146,316)	
6. Total gain (loss) on disposals		1,523,812
7. Deduct amounts received on disposals	448,058	5,472,158
8. Deduct amortization of premium and depreciation	884,749	2,150,250
9. Total foreign exchange change in book/adjusted carrying value		
10. Deduct current year's other than temporary impairment recognized		
11. Book/adjusted carrying value at end of current period (Lines 1+2+3+4+5+6-7-8+9-10)	12,359,589	11,063,818
12. Deduct total nonadmitted amounts		145,146
13. Statement value at end of current period (Line 11 minus Line 12)	12,359,589	10,918,672

SCHEDULE D - VERIFICATION

Bonds and Stocks

	1 Year to Date	2 Prior Year Ended December 31
1. Book/adjusted carrying value of bonds and stocks, December 31 of prior year	37,879,845	40,221,541
2. Cost of bonds and stocks acquired	1,544,991	1,147,650
3. Accrual of discount	922	1,183
4. Unrealized valuation increase (decrease)	219,079	106,787
5. Total gain (loss) on disposals		
6. Deduct consideration for bonds and stocks disposed of	3,971,146	2,979,279
7. Deduct amortization of premium	407,866	618,037
8. Total foreign exchange change in book/adjusted carrying value		
9. Deduct current year's other than temporary impairment recognized		
10. Book/adjusted carrying value at end of current period (Lines 1+2+3+4+5-6-7+8-9)	35,265,825	37,879,845
11. Deduct total nonadmitted amounts		
12. Statement value at end of current period (Line 10 minus Line 11)	35,265,825	37,879,845

STATEMENT AS OF SEPTEMBER 30, 2014 OF THE NATIONWIDE PROPERTY AND CASUALTY INSURANCE COMPANY

SCHEDULE D - PART 1B

Showing the Acquisitions, Dispositions and Non-Trading Activity
During the Current Quarter for all Bonds and Preferred Stock by NAIC Designation

NAIC Designation	1 Book/Adjusted Carrying Value Beginning of Current Quarter	2 Acquisitions During Current Quarter	3 Dispositions During Current Quarter	4 Non-Trading Activity During Current Quarter	5 Book/Adjusted Carrying Value End of First Quarter	6 Book/Adjusted Carrying Value End of Second Quarter	7 Book/Adjusted Carrying Value End of Third Quarter	8 Book/Adjusted Carrying Value December 31 Prior Year
BONDS								
1. NAIC 1 (a)	35,836,474		482,085	(88,563)	36,524,439	35,836,474	35,265,826	37,879,845
2. NAIC 2 (a)								
3. NAIC 3 (a)								
4. NAIC 4 (a)								
5. NAIC 5 (a)								
6. NAIC 6 (a)								
7. Total Bonds	35,836,474		482,085	(88,563)	36,524,439	35,836,474	35,265,826	37,879,845
PREFERRED STOCK								
8. NAIC 1								
9. NAIC 2								
10. NAIC 3								
11. NAIC 4								
12. NAIC 5								
13. NAIC 6								
14. Total Preferred Stock								
15. Total Bonds and Preferred Stock	35,836,474		482,085	(88,563)	36,524,439	35,836,474	35,265,826	37,879,845

(a) Book/Adjusted Carrying Value column for the end of the current reporting period includes the following amount of non-rated short-term and cash equivalent bonds by NAIC designation: NAIC 1 \$; NAIC 2 \$; NAIC 3 \$; NAIC 4 \$; NAIC 5 \$; NAIC 6 \$

S102

STATEMENT AS OF SEPTEMBER 30, 2014 OF THE NATIONWIDE PROPERTY AND CASUALTY INSURANCE COMPANY

SCHEDULE DA - PART 1

Short-Term Investments

	1 Book/Adjusted Carrying Value	2 Par Value	3 Actual Cost	4 Interest Collected Year-to-Date	5 Paid for Accrued Interest Year-to-Date
9199999 Totals	8,272,487	xxx	8,272,487	106	

SCHEDULE DA - VERIFICATION

Short-Term Investments

	1 Year To Date	2 Prior Year Ended December 31
1. Book/adjusted carrying value, December 31 of prior year	3,901,672	3,495,517
2. Cost of short-term investments acquired	476,116,587	636,263,334
3. Accrual of discount		
4. Unrealized valuation increase (decrease)		
5. Total gain (loss) on disposals		
6. Deduct consideration received on disposals	471,745,772	635,857,179
7. Deduct amortization of premium		
8. Total foreign exchange change in book/adjusted carrying value		
9. Deduct current year's other than temporary impairment recognized		
10. Book/adjusted carrying value at end of current period (Lines 1+2+3+4+5-6-7+8-9)	8,272,487	3,901,672
11. Deduct total nonadmitted amounts		
12. Statement value at end of current period (Line 10 minus Line 11)	8,272,487	3,901,672

Schedule DB - Part A - Verification - Options, Caps, Floors, Collars, Swaps and Forwards

N O N E

Schedule DB - Part B - Verification - Futures Contracts

N O N E

Schedule DB - Part C - Section 1 - Replication (Synthetic Asset) Transactions (RSATs) Open

N O N E

Schedule DB-Part C-Section 2-Reconciliation of Replication (Synthetic Asset) Transactions Open

N O N E

Schedule DB - Verification - Book/Adjusted Carrying Value, Fair Value and Potential Exposure of
Derivatives

N O N E

Schedule E - Verification - Cash Equivalents

N O N E

Schedule A - Part 2 - Real Estate Acquired and Additions Made

N O N E

Schedule A - Part 3 - Real Estate Disposed

N O N E

Schedule B - Part 2 - Mortgage Loans Acquired

N O N E

Schedule B - Part 3 - Mortgage Loans Disposed, Transferred or Repaid

N O N E

STATEMENT AS OF SEPTEMBER 30, 2014 OF THE NATIONWIDE PROPERTY AND CASUALTY INSURANCE COMPANY

SCHEDULE BA - PART 2

Showing Other Long-Term Invested Assets ACQUIRED AND ADDITIONS MADE During the Current Quarter

1 CUSIP Identification	2 Name or Description	3 Location		5 Name of Vendor or General Partner	6 NAIC Designation	7 Date Originally Acquired	8 Type and Strategy	9 Actual Cost at Time of Acquisition	10 Additional Investment Made After Acquisition	11 Amount of Encumbrances	12 Commitment for Additional Investment	13 Percentage of Ownership
		City	State									
	Stonehenge Investor III LLC The Shoreway Building LLC	Winston-Salem Cleveland	NC OH	Pennrose ORA Shoreway LLC		08/11/2014 02/19/2014		494,955	1,269		307,790 1,927,297	9.300 1.000
1799999	Joint Venture Interests - Real Estate - Unaffiliated											
	WNC Institutional Tax Credit Fund III 2012 LLC	Irvine	CA	WNC Advisors LLC		07/31/2012		494,955	1,269		2,235,087	XXX
3399999	Non-Guaranteed Federal Low Income Housing Tax Credit - Unaffiliated											
	Mayfair Mill LLC	Rock Hill	SC	Mayfair State Investors, LLC		10/24/2007			(2,063,480)		313,697	1.000
3799999	Non-Guaranteed State Low Income Housing Tax Credit - Unaffiliated											
4499999	Total - Unaffiliated											
4599999	Total - Affiliated											
4699999	Totals											
								494,955	(2,061,908)		2,903,120	XXX

SCHEDULE BA - PART 3

Showing Other Long-Term Invested Assets DISPOSED, Transferred or Repaid During the Current Quarter

1 CUSIP Identification	2 Name or Description	3 Location		5 Name of Purchaser or Nature of Disposal	6 Date Originally Acquired	7 Disposal Date	8 Book/ Adjusted Carrying Value Less Encum- brances, Prior Year	9 Change in Book/Adjusted Carrying Value						15 Book/ Adjusted Carrying Value Less Encum- brances on Disposal	16 Consid- eration	17 Foreign Exchange Gain (Loss) on Disposal	18 Realized Gain (Loss) on Disposal	19 Total Gain (Loss) on Disposal	20 Invest- ment Income
		City	State					9 Unrealized Valuation Increase (De- crease)	10 Current Year's (Depre- ciation) or (Amorti- zation)/ Accretion	11 Current Year's Other Than Temporary Impair- ment Recogn- ized	12 Capital- ized Deferred Interest and Other	13 Total Change in Book/ Adjusted Carrying Value (9+10- 11+12)	14 Total Foreign Exchange Change in Book/ Adjusted Carrying Value						
NONE																			
4699999	Totals																		

Schedule D - Part 3 - Long-Term Bonds and Stocks Acquired

N O N E

STATEMENT AS OF SEPTEMBER 30, 2014 OF THE NATIONWIDE PROPERTY AND CASUALTY INSURANCE COMPANY

SCHEDULE D - PART 4

Show All Long-Term Bonds and Stock Sold, Redeemed or Otherwise Disposed of During the Current Quarter

1	2	3	4	5	6	7	8	9	10	Change In Book/Adjusted Carrying Value					16	17	18	19	20	21	22		
										11	12	13	14	15									
CUSIP Identification	Description	Foreign	Disposal Date	Name of Purchaser	Number of Shares of Stock	Consideration	Par Value	Actual Cost	Prior Year Book/Adjusted Carrying Value	Unrealized Valuation Increase/(Decrease)	Current Year's (Amortization)/Accretion	Other Than Temporary Impairment Recognized	Total Change in Book/Adjusted Carrying Value (11 + 12 - 13)	Total Foreign Exchange Change in Book /Adjusted Carrying Value	Book/Adjusted Carrying Value at Disposal Date	Foreign Exchange Gain (Loss) on Disposal	Realized Gain (Loss) on Disposal	Total Gain (Loss) on Disposal	Bond Interest/Stock Dividends Received During Year	Stated Contractual Maturity Date	NAIC Designation or Market Indicator (a)		
312913-ZE-9	FHLMC REMIC Ser 1437-HD 7.000% 12/15/2		09/01/2014	Paydown		2,654	2,654	2,723	2,693		(38)		(38)		2,654				123	12/15/2022	1		
31326U-KL-7	FGLMC Pool #008999 3.500% 06/15/42		09/01/2014	Paydown		479,257	479,257	501,834	501,343		(22,087)		(22,087)		479,257				11,096	06/15/2042	1		
31340Y-BH-1	FHLMC REMIC Ser 6-C 9.050% 06/15/19		09/15/2014	Paydown		80	80	84	81		(2)		(2)		80				5	06/15/2019	1		
313602-DV-3	FNMA REMIC Ser 1988-15A 9.000% 06/25/1		09/01/2014	Paydown		95	95	96	95						95				6	06/25/2018	1		
3199999. Subtotal - Bonds - U.S. Special Revenues						482,086	482,086	504,737	504,212				(22,127)		482,086					11,230	XXX	XXX	
8399997. Total - Bonds - Part 4						482,086	482,086	504,737	504,212				(22,127)		482,086					11,230	XXX	XXX	
8399998. Total - Bonds - Part 5						XXX	XXX	XXX	XXX	XXX	XXX	XXX	XXX	XXX	XXX	XXX	XXX	XXX	XXX	XXX	XXX	XXX	XXX
8399999. Total - Bonds						482,086	482,086	504,737	504,212				(22,127)		482,086					11,230	XXX	XXX	
8999997. Total - Preferred Stocks - Part 4							XXX														XXX	XXX	
8999998. Total - Preferred Stocks - Part 5						XXX	XXX	XXX	XXX	XXX	XXX	XXX	XXX	XXX	XXX	XXX	XXX	XXX	XXX	XXX	XXX	XXX	XXX
8999999. Total - Preferred Stocks							XXX														XXX	XXX	
9799997. Total - Common Stocks - Part 4							XXX														XXX	XXX	
9799998. Total - Common Stocks - Part 5						XXX	XXX	XXX	XXX	XXX	XXX	XXX	XXX	XXX	XXX	XXX	XXX	XXX	XXX	XXX	XXX	XXX	XXX
9799999. Total - Common Stocks							XXX														XXX	XXX	
9899999. Total - Preferred and Common Stocks							XXX														XXX	XXX	
9999999 - Totals						482,086	XXX		504,737	504,212				(22,127)		482,086					11,230	XXX	XXX

(a) For all common stock bearing the NAIC market indicator "U" provide: the number of such issues.....

Schedule DB - Part A - Section 1 - Options, Caps, Floors, Collars, Swaps and Forwards Open

N O N E

Schedule DB - Part B - Section 1 - Futures Contracts Open

N O N E

Schedule DB - Part B - Section 1B - Brokers with whom cash deposits have been made

N O N E

Schedule DB - Part D - Section 1 - Counterparty Exposure for Derivative Instruments Open

N O N E

Schedule DB - Part D-Section 2 - Collateral for Derivative Instruments Open - Pledged By

N O N E

Schedule DB - Part D-Section 2 - Collateral for Derivative Instruments Open - Pledged To

N O N E

Schedule DL - Part 1 - Reinvested Collateral Assets Owned

N O N E

Schedule DL - Part 2 - Reinvested Collateral Assets Owned

N O N E

SCHEDULE E - PART 2 - CASH EQUIVALENTS

Show Investments Owned End of Current Quarter

1 Description	2 Code	3 Date Acquired	4 Rate of Interest	5 Maturity Date	6 Book/Adjusted Carrying Value	7 Amount of Interest Due and Accrued	8 Amount Received During Year
NONE							
8699999 - Total Cash Equivalents							



SUPPLEMENT FOR THE QUARTER ENDING SEPTEMBER 30, 2014 OF THE NATIONWIDE PROPERTY AND CASUALTY INSURANCE COMPANY

Designate the type of health care providers reported on this page:
Physicians, including surgeons and osteopaths

**SUPPLEMENT A TO SCHEDULE T
EXHIBIT OF MEDICAL PROFESSIONAL LIABILITY PREMIUMS WRITTEN
ALLOCATED BY STATES AND TERRITORIES**

States, etc.	1 Direct Premiums Written	2 Direct Premiums Earned	Direct Losses Paid		5 Direct Losses Incurred	Direct Losses Unpaid		8 Direct Losses Incurred But Not Reported
			3 Amount	4 No. of Claims		6 Amount Reported	7 No. of Claims	
1. Alabama AL								
2. Alaska AK								
3. Arizona AZ								
4. Arkansas AR								
5. California CA								
6. Colorado CO								
7. Connecticut CT								
8. Delaware DE								
9. District of Columbia DC								
10. Florida FL								
11. Georgia GA								
12. Hawaii HI								
13. Idaho ID								
14. Illinois IL								
15. Indiana IN								
16. Iowa IA								
17. Kansas KS								
18. Kentucky KY								
19. Louisiana LA								
20. Maine ME								
21. Maryland MD								
22. Massachusetts MA								
23. Michigan MI								
24. Minnesota MN								
25. Mississippi MS								
26. Missouri MO								
27. Montana MT								
28. Nebraska NE								
29. Nevada NV								
30. New Hampshire NH								
31. New Jersey NJ								
32. New Mexico NM								
33. New York NY								
34. North Carolina NC								
35. North Dakota ND								
36. Ohio OH								
37. Oklahoma OK								
38. Oregon OR								
39. Pennsylvania PA								
40. Rhode Island RI								
41. South Carolina SC								
42. South Dakota SD								
43. Tennessee TN								
44. Texas TX								
45. Utah UT								
46. Vermont VT								
47. Virginia VA								
48. Washington WA								
49. West Virginia WV								
50. Wisconsin WI								
51. Wyoming WY								
52. American Samoa AS								
53. Guam GU								
54. Puerto Rico PR								
55. U.S. Virgin Islands VI								
56. Northern Mariana Islands MP								
57. Canada CAN								
58. Aggregate Other Aliens OT								
59. Totals								
DETAILS OF WRITE-INS								
58001.								
58002.								
58003.								
58998. Summary of remaining write-ins for Line 58 from overflow page								
58999. Totals (Lines 58001 through 58003 plus 58998)(Line 58 above)								

NONE



SUPPLEMENT FOR THE QUARTER ENDING SEPTEMBER 30, 2014 OF THE NATIONWIDE PROPERTY AND CASUALTY INSURANCE COMPANY

Designate the type of health care providers reported on this page:
Hospitals

**SUPPLEMENT A TO SCHEDULE T
EXHIBIT OF MEDICAL PROFESSIONAL LIABILITY PREMIUMS WRITTEN
ALLOCATED BY STATES AND TERRITORIES**

States, etc.	1 Direct Premiums Written	2 Direct Premiums Earned	Direct Losses Paid		5 Direct Losses Incurred	Direct Losses Unpaid		8 Direct Losses Incurred But Not Reported
			3 Amount	4 No. of Claims		6 Amount Reported	7 No. of Claims	
1. Alabama AL								
2. Alaska AK								
3. Arizona AZ								
4. Arkansas AR								
5. California CA								
6. Colorado CO								
7. Connecticut CT								
8. Delaware DE								
9. District of Columbia DC								
10. Florida FL								
11. Georgia GA								
12. Hawaii HI								
13. Idaho ID								
14. Illinois IL								
15. Indiana IN								
16. Iowa IA								
17. Kansas KS								
18. Kentucky KY								
19. Louisiana LA								
20. Maine ME								
21. Maryland MD								
22. Massachusetts MA								
23. Michigan MI								
24. Minnesota MN								
25. Mississippi MS								
26. Missouri MO								
27. Montana MT								
28. Nebraska NE								
29. Nevada NV								
30. New Hampshire NH								
31. New Jersey NJ								
32. New Mexico NM								
33. New York NY								
34. North Carolina NC								
35. North Dakota ND								
36. Ohio OH								
37. Oklahoma OK								
38. Oregon OR								
39. Pennsylvania PA								
40. Rhode Island RI								
41. South Carolina SC								
42. South Dakota SD								
43. Tennessee TN								
44. Texas TX								
45. Utah UT								
46. Vermont VT								
47. Virginia VA								
48. Washington WA								
49. West Virginia WV								
50. Wisconsin WI								
51. Wyoming WY								
52. American Samoa AS								
53. Guam GU								
54. Puerto Rico PR								
55. U.S. Virgin Islands VI								
56. Northern Mariana Islands MP								
57. Canada CAN								
58. Aggregate Other Aliens OT								
59. Totals								
DETAILS OF WRITE-INS								
58001.								
58002.								
58003.								
58998. Summary of remaining write-ins for Line 58 from overflow page								
58999. Totals (Lines 58001 through 58003 plus 58998)(Line 58 above)								

NONE



SUPPLEMENT FOR THE QUARTER ENDING SEPTEMBER 30, 2014 OF THE NATIONWIDE PROPERTY AND CASUALTY INSURANCE COMPANY

Designate the type of health care providers reported on this page:
 Other health care professionals, including dentists, chiropractors, and podiatrists

**SUPPLEMENT A TO SCHEDULE T
 EXHIBIT OF MEDICAL PROFESSIONAL LIABILITY PREMIUMS WRITTEN
 ALLOCATED BY STATES AND TERRITORIES**

States, etc.	1 Direct Premiums Written	2 Direct Premiums Earned	Direct Losses Paid		5 Direct Losses Incurred	Direct Losses Unpaid		8 Direct Losses Incurred But Not Reported
			3 Amount	4 No. of Claims		6 Amount Reported	7 No. of Claims	
1. AlabamaAL								
2. AlaskaAK								
3. ArizonaAZ								
4. ArkansasAR								
5. CaliforniaCA								
6. ColoradoCO								
7. ConnecticutCT								
8. DelawareDE								
9. District of ColumbiaDC								
10. FloridaFL								
11. GeorgiaGA								
12. HawaiiHI								
13. IdahoID								
14. IllinoisIL								
15. IndianaIN								
16. IowaIA								
17. KansasKS								
18. KentuckyKY								
19. LouisianaLA								
20. MaineME								
21. MarylandMD								
22. MassachusettsMA								
23. MichiganMI								
24. MinnesotaMN								
25. MississippiMS								
26. MissouriMO								
27. MontanaMT								
28. NebraskaNE								
29. NevadaNV								
30. New HampshireNH								
31. New JerseyNJ								
32. New MexicoNM								
33. New YorkNY								
34. North CarolinaNC								
35. North DakotaND								
36. OhioOH								
37. OklahomaOK								
38. OregonOR								
39. PennsylvaniaPA								
40. Rhode IslandRI								
41. South CarolinaSC								
42. South DakotaSD								
43. TennesseeTN								
44. TexasTX								
45. UtahUT								
46. VermontVT								
47. VirginiaVA								
48. WashingtonWA								
49. West VirginiaWV								
50. WisconsinWI								
51. WyomingWY								
52. American SamoaAS								
53. GuamGU								
54. Puerto RicoPR								
55. U.S. Virgin IslandsVI								
56. Northern Mariana IslandsMP								
57. CanadaCAN								
58. Aggregate Other AliensOT								
59. Totals								
DETAILS OF WRITE-INS								
58001.								
58002.								
58003.								
58998. Summary of remaining write-ins for Line 58 from overflow page								
58999. Totals (Lines 58001 through 58003 plus 58998)(Line 58 above)								

NONE



SUPPLEMENT FOR THE QUARTER ENDING SEPTEMBER 30, 2014 OF THE NATIONWIDE PROPERTY AND CASUALTY INSURANCE COMPANY

Designate the type of health care providers reported on this page:
Other health care facilities

**SUPPLEMENT A TO SCHEDULE T
EXHIBIT OF MEDICAL PROFESSIONAL LIABILITY PREMIUMS WRITTEN
ALLOCATED BY STATES AND TERRITORIES**

States, etc.	1 Direct Premiums Written	2 Direct Premiums Earned	Direct Losses Paid		5 Direct Losses Incurred	Direct Losses Unpaid		8 Direct Losses Incurred But Not Reported
			3 Amount	4 No. of Claims		6 Amount Reported	7 No. of Claims	
1. Alabama AL								
2. Alaska AK								
3. Arizona AZ								
4. Arkansas AR								
5. California CA								
6. Colorado CO								
7. Connecticut CT								
8. Delaware DE								
9. District of Columbia DC								
10. Florida FL					(170)			4
11. Georgia GA								
12. Hawaii HI								
13. Idaho ID								
14. Illinois IL					(5)			12
15. Indiana IN								
16. Iowa IA								
17. Kansas KS								
18. Kentucky KY								
19. Louisiana LA								
20. Maine ME								
21. Maryland MD								
22. Massachusetts MA								
23. Michigan MI								
24. Minnesota MN								
25. Mississippi MS								
26. Missouri MO								
27. Montana MT								
28. Nebraska NE								
29. Nevada NV								
30. New Hampshire NH								
31. New Jersey NJ								
32. New Mexico NM								
33. New York NY								
34. North Carolina NC								
35. North Dakota ND								
36. Ohio OH					(1)			
37. Oklahoma OK								
38. Oregon OR								
39. Pennsylvania PA					(64)			70
40. Rhode Island RI								
41. South Carolina SC								
42. South Dakota SD								
43. Tennessee TN								
44. Texas TX								
45. Utah UT								
46. Vermont VT								
47. Virginia VA					1			3
48. Washington WA								
49. West Virginia WV								
50. Wisconsin WI								
51. Wyoming WY								
52. American Samoa AS								
53. Guam GU								
54. Puerto Rico PR								
55. U.S. Virgin Islands VI								
56. Northern Mariana Islands MP								
57. Canada CAN								
58. Aggregate Other Aliens OT								
59. Totals					(239)			89
DETAILS OF WRITE-INS								
58001.								
58002.								
58003.								
58998. Summary of remaining write-ins for Line 58 from overflow page								
58999. Totals (Lines 58001 through 58003 plus 58998)(Line 58 above)								