

ASSETS

	Current Statement Date			4 December 31 Prior Year Net Admitted Assets
	1 Assets	2 Nonadmitted Assets	3 Net Admitted Assets (Cols. 1 - 2)	
1. Bonds.....	37,369,843		37,369,843	37,241,083
2. Stocks:				
2.1 Preferred stocks.....			0	
2.2 Common stocks.....	18,557,263		18,557,263	17,867,506
3. Mortgage loans on real estate:				
3.1 First liens.....			0	
3.2 Other than first liens.....			0	
4. Real estate:				
4.1 Properties occupied by the company (less \$.....0 encumbrances).....			0	
4.2 Properties held for the production of income (less \$.....0 encumbrances).....			0	
4.3 Properties held for sale (less \$.....0 encumbrances).....			0	
5. Cash (\$....3,345,538), cash equivalents (\$.....0) and short-term investments (\$....2,746,752).....	6,092,290		6,092,290	7,297,046
6. Contract loans (including \$.....0 premium notes).....			0	
7. Derivatives.....			0	
8. Other invested assets.....			0	
9. Receivables for securities.....			0	
10. Securities lending reinvested collateral assets.....			0	
11. Aggregate write-ins for invested assets.....	0	0	0	0
12. Subtotals, cash and invested assets (Lines 1 to 11).....	62,019,396	0	62,019,396	62,405,635
13. Title plants less \$.....0 charged off (for Title insurers only).....			0	
14. Investment income due and accrued.....	331,419		331,419	285,762
15. Premiums and considerations:				
15.1 Uncollected premiums and agents' balances in the course of collection.....	2,510,851	407,491	2,103,360	1,333,828
15.2 Deferred premiums, agents' balances and installments booked but deferred and not yet due (including \$....86,533 earned but unbilled premiums).....	86,533		86,533	86,533
15.3 Accrued retrospective premiums.....			0	
16. Reinsurance:				
16.1 Amounts recoverable from reinsurers.....	5,022,643		5,022,643	2,187,793
16.2 Funds held by or deposited with reinsured companies.....			0	
16.3 Other amounts receivable under reinsurance contracts.....			0	
17. Amounts receivable relating to uninsured plans.....			0	
18.1 Current federal and foreign income tax recoverable and interest thereon.....			0	
18.2 Net deferred tax asset.....			0	
19. Guaranty funds receivable or on deposit.....			0	
20. Electronic data processing equipment and software.....			0	
21. Furniture and equipment, including health care delivery assets (\$.....0).....			0	
22. Net adjustment in assets and liabilities due to foreign exchange rates.....			0	
23. Receivables from parent, subsidiaries and affiliates.....	1,429,146		1,429,146	2,758,440
24. Health care (\$.....0) and other amounts receivable.....			0	
25. Aggregate write-ins for other than invested assets.....	0	0	0	417,731
26. Total assets excluding Separate Accounts, Segregated Accounts and Protected Cell Accounts (Lines 12 through 25).....	71,399,988	407,491	70,992,497	69,475,722
27. From Separate Accounts, Segregated Accounts and Protected Cell Accounts.....			0	
28. Total (Lines 26 and 27).....	71,399,988	407,491	70,992,497	69,475,722

DETAILS OF WRITE-INS

1101.....			0	
1102.....			0	
1103.....			0	
1198. Summary of remaining write-ins for Line 11 from overflow page.....	0	0	0	0
1199. Totals (Lines 1101 thru 1103 plus 1198) (Line 11 above).....	0	0	0	0
2501. Miscellaneous Assets.....			0	417,731
2502.....			0	
2503.....			0	
2598. Summary of remaining write-ins for Line 25 from overflow page.....	0	0	0	0
2599. Totals (Lines 2501 thru 2503 plus 2598) (Line 25 above).....	0	0	0	417,731

COLONY SPECIALTY INSURANCE COMPANY LIABILITIES, SURPLUS AND OTHER FUNDS

	1 Current Statement Date	2 December 31 Prior Year
1. Losses (current accident year \$.....0).....		
2. Reinsurance payable on paid losses and loss adjustment expenses.....		
3. Loss adjustment expenses.....		
4. Commissions payable, contingent commissions and other similar charges.....	25,325	26,278
5. Other expenses (excluding taxes, licenses and fees).....		
6. Taxes, licenses and fees (excluding federal and foreign income taxes).....	207,023	(94,810)
7.1 Current federal and foreign income taxes (including \$.....(75,113) on realized capital gains (losses)).....	234,636	258,853
7.2 Net deferred tax liability.....	1,713,527	1,427,429
8. Borrowed money \$.....0 and interest thereon \$.....0.....		
9. Unearned premiums (after deducting unearned premiums for ceded reinsurance of \$.....13,761,388 and including warranty reserves of \$.....0 and accrued accident and health experience rating refunds including \$.....0 for medical loss ratio rebate per the Public Health Service Act.....		
10. Advance premium.....		
11. Dividends declared and unpaid:		
11.1 Stockholders.....		
11.2 Policyholders.....		
12. Ceded reinsurance premiums payable (net of ceding commissions).....	4,213,361	1,641,807
13. Funds held by company under reinsurance treaties.....	35,408,854	37,817,802
14. Amounts withheld or retained by company for account of others.....		
15. Remittances and items not allocated.....	4,242	
16. Provision for reinsurance (including \$.....0 certified).....	582,930	582,930
17. Net adjustments in assets and liabilities due to foreign exchange rates.....		
18. Drafts outstanding.....		
19. Payable to parent, subsidiaries and affiliates.....	617,557	558,212
20. Derivatives.....		
21. Payable for securities.....		
22. Payable for securities lending.....		
23. Liability for amounts held under uninsured plans.....		
24. Capital notes \$.....0 and interest thereon \$.....0.....		
25. Aggregate write-ins for liabilities.....	0	0
26. Total liabilities excluding protected cell liabilities (Lines 1 through 25).....	43,007,455	42,218,500
27. Protected cell liabilities.....		
28. Total liabilities (Lines 26 and 27).....	43,007,455	42,218,500
29. Aggregate write-ins for special surplus funds.....	0	0
30. Common capital stock.....	3,500,000	3,500,000
31. Preferred capital stock.....		
32. Aggregate write-ins for other than special surplus funds.....	0	0
33. Surplus notes.....		
34. Gross paid in and contributed surplus.....	8,002,700	8,002,700
35. Unassigned funds (surplus).....	16,482,341	15,754,522
36. Less treasury stock, at cost:		
36.10.000 shares common (value included in Line 30 \$.....0).....		
36.20.000 shares preferred (value included in Line 31 \$.....0).....		
37. Surplus as regards policyholders (Lines 29 to 35, less 36).....	27,985,041	27,257,222
38. Totals (Page 2, Line 28, Col. 3).....	70,992,497	69,475,722

DETAILS OF WRITE-INS

2501.		
2502.		
2503.		
2598. Summary of remaining write-ins for Line 25 from overflow page.....	0	0
2599. Totals (Lines 2501 thru 2503 plus 2598) (Line 25 above).....	0	0
2901.		
2902.		
2903.		
2998. Summary of remaining write-ins for Line 29 from overflow page.....	0	0
2999. Totals (Lines 2901 thru 2903 plus 2998) (Line 29 above).....	0	0
3201.		
3202.		
3203.		
3298. Summary of remaining write-ins for Line 32 from overflow page.....	0	0
3299. Totals (Lines 3201 thru 3203 plus 3298) (Line 32 above).....	0	0

COLONY SPECIALTY INSURANCE COMPANY STATEMENT OF INCOME

	1 Current Year to Date	2 Prior Year to Date	3 Prior Year Ended December 31
UNDERWRITING INCOME			
1. Premiums earned:			
1.1 Direct..... (written \$.....22,606,843).....	19,387,632	17,459,530	23,711,360
1.2 Assumed..... (written \$.....0).....			
1.3 Ceded..... (written \$.....22,606,843).....	19,387,632	17,459,530	23,711,360
1.4 Net..... (written \$.....0).....	0	0	0
DEDUCTIONS:			
2. Losses incurred (current accident year \$.....0):			
2.1 Direct.....	13,181,182	12,078,990	15,488,712
2.2 Assumed.....			
2.3 Ceded.....	13,181,182	12,078,990	15,488,712
2.4 Net.....	0	0	0
3. Loss adjustment expenses incurred.....			
4. Other underwriting expenses incurred.....			
5. Aggregate write-ins for underwriting deductions.....	0	0	0
6. Total underwriting deductions (Lines 2 through 5).....	0	0	0
7. Net income of protected cells.....			
8. Net underwriting gain (loss) (Line 1 minus Line 6 + Line 7).....	0	0	0
INVESTMENT INCOME			
9. Net investment income earned.....	903,765	1,283,573	1,309,048
10. Net realized capital gains (losses) less capital gains tax of \$.....(60,802).....	80,532	110,740	(148,427)
11. Net investment gain (loss) (Lines 9 + 10).....	984,296	1,394,313	1,160,621
OTHER INCOME			
12. Net gain or (loss) from agents' or premium balances charged off (amount recovered \$.....0 amount charged off \$.....2,278).....	(2,278)	(1,215)	(1,105)
13. Finance and service charges not included in premiums.....			
14. Aggregate write-ins for miscellaneous income.....	(231,073)	(177,216)	(247,169)
15. Total other income (Lines 12 through 14).....	(233,351)	(178,431)	(248,274)
16. Net income before dividends to policyholders, after capital gains tax and before all other federal and foreign income taxes (Lines 8 + 11 + 15).....	750,945	1,215,882	912,347
17. Dividends to policyholders.....			
18. Net income after dividends to policyholders, after capital gains tax and before all other federal and foreign income taxes (Line 16 minus Line 17).....	750,945	1,215,882	912,347
19. Federal and foreign income taxes incurred.....	216,984	309,571	283,908
20. Net income (Line 18 minus Line 19) (to Line 22).....	533,961	906,311	628,439
CAPITAL AND SURPLUS ACCOUNT			
21. Surplus as regards policyholders, December 31 prior year.....	27,257,222	25,224,848	25,224,848
22. Net income (from Line 20).....	533,961	906,311	628,439
23. Net transfers (to) from Protected Cell accounts.....			
24. Change in net unrealized capital gains or (losses) less capital gains tax of \$.....242,328.....	450,037	1,011,232	1,472,925
25. Change in net unrealized foreign exchange capital gain (loss).....			
26. Change in net deferred income tax.....	(43,771)	(240,030)	105,577
27. Change in nonadmitted assets.....	(212,408)	(50,255)	(37,154)
28. Change in provision for reinsurance.....	(0)	0	(137,413)
29. Change in surplus notes.....			
30. Surplus (contributed to) withdrawn from protected cells.....			
31. Cumulative effect of changes in accounting principles.....			
32. Capital changes:			
32.1 Paid in.....			
32.2 Transferred from surplus (Stock Dividend).....			
32.3 Transferred to surplus.....			
33. Surplus adjustments:			
33.1 Paid in.....			
33.2 Transferred to capital (Stock Dividend).....			
33.3 Transferred from capital.....			
34. Net remittances from or (to) Home Office.....			
35. Dividends to stockholders.....			
36. Change in treasury stock.....			
37. Aggregate write-ins for gains and losses in surplus.....	0	0	0
38. Change in surplus as regards policyholders (Lines 22 through 37).....	727,818	1,627,258	2,032,374
39. Surplus as regards policyholders, as of statement date (Lines 21 plus 38).....	27,985,041	26,852,106	27,257,222
DETAILS OF WRITE-INS			
0501.			
0502.			
0503.			
0598. Summary of remaining write-ins for Line 5 from overflow page.....	0	0	0
0599. Totals (Lines 0501 thru 0503 plus 0598) (Line 5 above).....	0	0	0
1401. Intercompany interest expense.....	(231,073)	(177,216)	(247,169)
1402.			
1403.			
1498. Summary of remaining write-ins for Line 14 from overflow page.....	0	0	0
1499. Totals (Lines 1401 thru 1403 plus 1498) (Line 14 above).....	(231,073)	(177,216)	(247,169)
3701.			
3702.			
3703.			
3798. Summary of remaining write-ins for Line 37 from overflow page.....	0	0	0
3799. Totals (Lines 3701 thru 3703 plus 3798) (Line 37 above).....	0	0	0

COLONY SPECIALTY INSURANCE COMPANY CASH FLOW

	1 Current Year to Date	2 Prior Year To Date	3 Prior Year Ended December 31
CASH FROM OPERATIONS			
1. Premiums collected net of reinsurance.....	1,589,613	(431,575)	1,266,147
2. Net investment income.....	810,757	1,357,746	1,790,022
3. Miscellaneous income.....	(233,351)	(178,431)	(248,274)
4. Total (Lines 1 through 3).....	2,167,018	747,740	2,807,895
5. Benefit and loss related payments.....	2,834,849	1,578,656	1,038,354
6. Net transfers to Separate Accounts, Segregated Accounts and Protected Cell Accounts.....			
7. Commissions, expenses paid and aggregate write-ins for deductions.....	(300,880)	(165,586)	31,573
8. Dividends paid to policyholders.....			
9. Federal and foreign income taxes paid (recovered) net of \$..... 14,310 tax on capital gains (losses).....	180,399	354,878	336,508
10. Total (Lines 5 through 9).....	2,714,368	1,767,947	1,406,436
11. Net cash from operations (Line 4 minus Line 10).....	(547,350)	(1,020,207)	1,401,459
CASH FROM INVESTMENTS			
12. Proceeds from investments sold, matured or repaid:			
12.1 Bonds.....	5,782,406	23,101,969	24,291,996
12.2 Stocks.....		519,921	2,891,100
12.3 Mortgage loans.....			
12.4 Real estate.....			
12.5 Other invested assets.....			
12.6 Net gains or (losses) on cash, cash equivalents and short-term investments.....			108
12.7 Miscellaneous proceeds.....			
12.8 Total investment proceeds (Lines 12.1 to 12.7).....	5,782,406	23,621,890	27,183,204
13. Cost of investments acquired (long-term only):			
13.1 Bonds.....	6,095,262	15,899,356	16,383,527
13.2 Stocks.....		3,539,607	3,728,723
13.3 Mortgage loans.....			
13.4 Real estate.....			
13.5 Other invested assets.....			
13.6 Miscellaneous applications.....		0	0
13.7 Total investments acquired (Lines 13.1 to 13.6).....	6,095,262	19,438,964	20,112,250
14. Net increase or (decrease) in contract loans and premium notes.....			
15. Net cash from investments (Line 12.8 minus Line 13.7 and Line 14).....	(312,856)	4,182,926	7,070,954
CASH FROM FINANCING AND MISCELLANEOUS SOURCES			
16. Cash provided (applied):			
16.1 Surplus notes, capital notes.....			
16.2 Capital and paid in surplus, less treasury stock.....			
16.3 Borrowed funds.....			
16.4 Net deposits on deposit-type contracts and other insurance liabilities.....			
16.5 Dividends to stockholders.....			
16.6 Other cash provided (applied).....	(344,550)	(7,156,084)	(9,095,148)
17. Net cash from financing and miscellaneous sources (Lines 16.1 through 16.4 minus Line 16.5 plus Line 16.6).....	(344,550)	(7,156,084)	(9,095,148)
RECONCILIATION OF CASH, CASH EQUIVALENTS AND SHORT-TERM INVESTMENTS			
18. Net change in cash, cash equivalents and short-term investments (Line 11 plus Line 15 plus Line 17).....	(1,204,756)	(3,993,365)	(622,735)
19. Cash, cash equivalents and short-term investments:			
19.1 Beginning of year.....	7,297,046	7,919,780	7,919,780
19.2 End of period (Line 18 plus Line 19.1).....	6,092,290	3,926,416	7,297,046

Note: Supplemental disclosures of cash flow information for non-cash transactions:

20.0001			
---------------	--	--	--

NOTES TO FINANCIAL STATEMENTS

Note 1 - Summary of Significant Accounting Policies

A. Accounting Practices

The accompanying financial statements of Colony Specialty Insurance Company are presented on the basis of accounting practices prescribed or permitted by the Department of Insurance in the State of Ohio.

The Ohio Department of Insurance recognizes only statutory accounting practices prescribed or permitted by the State of Ohio for determining and reporting the financial condition and results of operations of an insurance company, for determining its solvency under the Ohio Insurance Law. The National Association of Insurance Commissioners' (NAIC) *Accounting Practices and Procedures Manual* (NAIC SAP) has been adopted as a component of prescribed or permitted practices by the state of Ohio. The accompanying financial statements contain no differences as a result of practices prescribed or permitted by Ohio that differ from NAIC SAP.

Note 2 - Accounting Changes and Corrections of Errors

The Company filed an amended 2013 annual statement to reflect changes from the 2013 statutory audit financials as follows: a) decrease in investment income of \$253,784, b) increase to current FIT expense of \$189,382 and c) decrease to Deferred FIT liability of \$300,366 for a total net decrease in capital and surplus of \$142,800 and decrease to net income of \$443,166. Accordingly, Q1 and Q2 2014 statutory statements were refiled to reflect these changes in the December 31, 2013 prior year numbers.

Note 3 - Business Combinations and Goodwill

No significant change.

Note 4 - Discontinued Operations

No significant change.

Note 5 - Investments

D. Loan-Backed Securities

- (1) Prepayment assumptions for loan-backed securities are obtained by the Company's third-party accounting provider from industry standard external data providers.
- (2) The Company did not have any securities with a recognized other-than-temporary impairment loss in the three or nine months ended September 30, 2014.
- (3) The Company did not hold any loan-backed securities at September 30, 2014 with a recognized other-than-temporary impairment.
- (4) The Company did not have any loan-backed securities in an unrealized loss position at September 30, 2014.

E. The Company has had no repurchase agreements or security lending transactions.

I. The Company has no working capital finance investments.

Note 6 - Joint Ventures, Partnerships and Limited Liability Companies

No significant change.

Note 7 - Investment Income

No significant change.

Note 8 - Derivative Instruments

No significant change.

Note 9 - Income Taxes

No significant change.

Note 10 - Information Concerning Parent, Subsidiaries, Affiliates and Other Related Parties

No significant change.

Note 11 - Debt

No significant change.

Note 12 - Retirement Plans, Deferred Compensation, Postemployment Benefits and Compensated Absences and Other Postretirement Benefit Plans

A. The Company does not sponsor a defined benefit plan.

NOTES TO FINANCIAL STATEMENTS**Note 13 - Capital and Surplus, Dividend Restrictions and Quasi-Reorganizations**

No significant change.

Note 14 - Contingencies

No significant change.

Note 15 - Leases

No significant change.

Note 16 - Information About Financial Instruments With Off-Balance Sheet Risk

No significant change.

Note 17 - Sale, Transfer and Servicing of Financial Assets and Extinguishments of Liabilities

- C. The Company had no wash sales as defined in paragraph 9 of SSAP No. 91R, Accounting Transfers and Servicing of Financial Assets and Extinguishments of Liabilities, involving securities with a NAIC designation of 3 or below, or unrated during the three or nine month period ended September 30, 2014.

Note 18 - Gain or Loss to the Reporting Entity from Uninsured Plans and the Uninsured Portion of Partially Insured Plans

No significant change.

Note 19 - Direct Premium Written/Produced by Managing General Agents/Third Party Administrators

No significant change.

Note 20 - Fair Value

A.

(1) Fair Value Measurements at Reporting Date

Assets at Fair Value	Level 1	Level 2	Level 3	Total
BONDS		569,401		569,401
COMMON STOCKS	18,557,263			18,557,263
Total	18,557,263	569,401		19,126,664

(2) The Company has no Level 3 items.

(3) The Company had no transfers between levels.

(4) For Level 2 investments, fair value prices are obtained from third party pricing services, where available. For securities where the Company is unable to obtain fair values from a pricing source, fair values are obtained from a broker or investment advisor. These prices are determined using observable market information such as dealer quotes, market spreads, cash flows, yield curves, live trading levels, trade execution data, market consensus prepayment speeds, credit information and the security's terms and conditions, among other things.

(5) The Company has no derivatives.

B. The Company has no other fair value disclosures.

C. The following table provides information as of September 30, 2014 about the aggregate fair value for all financial instruments and the level within the fair value hierarchy in which the fair value measurements in their entirety fall:

Type of Financial Instrument	Aggregate Fair Value	Admitted Assets	(Level 1)	(Level 2)	(Level 3)	Not Practicable (Carrying Value)
BONDS	38,071,225	37,369,843	15,814,954	22,256,271		
COMMON STOCKS	18,557,263	18,557,263	18,557,263			
SHORT TERM	2,746,752	2,746,752	2,746,752			
CASH	3,345,538	3,345,538	3,345,538			
Total	62,720,778	62,019,396	40,464,507	22,256,271		

D. The Company has no financial instruments for which it was not practical to estimate fair values.

Note 21 - Other Items

No significant change.

Note 22 - Events Subsequent

No significant change.

NOTES TO FINANCIAL STATEMENTS

Note 23 - Reinsurance

No significant change.

Note 24 - Retrospectively Rated Contracts & Contracts Subject to Redetermination

No significant change.

Note 25 - Change in Incurred Losses and Loss Adjustment Expenses

Net Reserves at December 31, 2013 were \$0 due to a 100% quota share agreement with Colony Insurance Company. All future loss activity will be subject to the quota share and will have no net effect to Colony Specialty Insurance Company's results. Therefore, Net Reserves at September 30, 2014 are \$0.

Note 26 - Intercompany Pooling Arrangements

No significant change.

Note 27 - Structured Settlements

No significant change.

Note 28 - Health Care Receivables

No significant change.

Note 29 - Participating Policies

No significant change.

Note 30 - Premium Deficiency Reserves

No significant change.

Note 31 - High Deductibles

No significant change.

Note 32 - Discounting of Liabilities for Unpaid Losses or Unpaid Loss Adjustment Expenses

No significant change.

Note 33 - Asbestos/Environmental Reserves

No significant change.

Note 34 - Subscriber Savings Accounts

No significant change.

Note 35 - Multiple Peril Crop Insurance

No significant change.

Note 36 - Financial Guaranty Insurance

The Company does not write financial guarantee insurance.

COLONY SPECIALTY INSURANCE COMPANY GENERAL INTERROGATORIES

PART 1 - COMMON INTERROGATORIES - GENERAL

- 1.1 Did the reporting entity experience any material transactions requiring the filing of Disclosure of Material Transactions with the State of Domicile, as required by the Model Act? Yes [] No [X]
- 1.2 If yes, has the report been filed with the domiciliary state? Yes [] No []
- 2.1 Has any change been made during the year of this statement in the charter, by-laws, articles of incorporation, or deed of settlement of the reporting entity? Yes [] No [X]
- 2.2 If yes, date of change:
- 3.1 Is the reporting entity a member of an Insurance Holding Company System consisting of two or more affiliated persons, one or more of which is an insurer? Yes [X] No []
If yes, complete Schedule Y, Parts 1 and 1A.
- 3.2 Have there been any substantial changes in the organizational chart since the prior quarter end? Yes [] No [X]
- 3.3 If the response to 3.2 is yes, provide a brief description of those changes.

- 4.1 Has the reporting entity been a party to a merger or consolidation during the period covered by this statement? Yes [] No [X]
- 4.2 If yes, provide name of entity, NAIC Company Code, and state of domicile (use two letter state abbreviation) for any entity that has ceased to exist as a result of the merger or consolidation.

1 Name of Entity	2 NAIC Company Code	3 State of Domicile

5. If the reporting entity is subject to a management agreement, including third-party administrator(s), managing general agent(s), attorney-in-fact, or similar agreement, have there been any significant changes regarding the terms of the agreement or principals involved? Yes [] No [] N/A [X]
If yes, attach an explanation.

- 6.1 State as of what date the latest financial examination of the reporting entity was made or is being made.
- 6.2 State the as of date that the latest financial examination report became available from either the state of domicile or the reporting entity. This date should be the date of the examined balance sheet and not the date the report was completed or released.
- 6.3 State as of what date the latest financial examination report became available to other states or the public from either the state of domicile or the reporting entity. This is the release date or completion date of the examination report and not the date of the examination (balance sheet date).

- 6.4 By what department or departments?
Ohio
- _____

- 6.5 Have all financial statement adjustments within the latest financial examination report been accounted for in a subsequent financial statement filed with Departments? Yes [] No [] N/A [X]
- 6.6 Have all of the recommendations within the latest financial examination report been complied with? Yes [] No [] N/A [X]

- 7.1 Has this reporting entity had any Certificates of Authority, licenses or registrations (including corporate registration, if applicable) suspended or revoked by any governmental entity during the reporting period? Yes [] No [X]
- 7.2 If yes, give full information:

- 8.1 Is the company a subsidiary of a bank holding company regulated by the Federal Reserve Board? Yes [] No [X]
- 8.2 If response to 8.1 is yes, please identify the name of the bank holding company.

- 8.3 Is the company affiliated with one or more banks, thrifts or securities firms? Yes [] No [X]
- 8.4 If the response to 8.3 is yes, please provide below the names and location (city and state of the main office) of any affiliates regulated by a federal regulatory services agency [i.e. the Federal Reserve Board (FRB), the Office of the Comptroller of the Currency (OCC), the Federal Deposit Insurance Corporation (FDIC) and the Securities Exchange Commission (SEC)] and identify the affiliate's primary federal regulator].

1 Affiliate Name	2 Location (City, State)	3 FRB	4 OCC	5 FDIC	6 SEC

- 9.1 Are the senior officers (principal executive officer, principal financial officer, principal accounting officer or controller, or persons performing similar functions) of the reporting entity subject to a code of ethics, which includes the following standards? Yes [X] No []
- (a) Honest and ethical conduct, including the ethical handling of actual or apparent conflicts of interest between personal and professional relationships;
- (b) Full, fair, accurate, timely and understandable disclosure in the periodic reports required to be filed by the reporting entity;
- (c) Compliance with applicable governmental laws, rules and regulations;
- (d) The prompt internal reporting of violations to an appropriate person or persons identified in the code; and
- (e) Accountability for adherence to the code.

- 9.11 If the response to 9.1 is No, please explain:
- _____
- _____

- 9.2 Has the code of ethics for senior managers been amended? Yes [] No [X]
- 9.21 If the response to 9.2 is Yes, provide information related to amendment(s).

- 9.3 Have any provisions of the code of ethics been waived for any of the specified officers? Yes [] No [X]

COLONY SPECIALTY INSURANCE COMPANY GENERAL INTERROGATORIES

PART 1 - COMMON INTERROGATORIES - GENERAL

9.31 If the response to 9.3 is Yes, provide the nature of any waiver(s).

PART 1 - FINANCIAL

10.1 Does the reporting entity report any amounts due from parent, subsidiaries or affiliates on Page 2 of this statement? Yes No

10.2 If yes, indicate any amounts receivable from parent included in the Page 2 amount: \$.....0

PART 1 - INVESTMENT

11.1 Were any of the stocks, bonds, or other assets of the reporting entity loaned, placed under option agreement, or otherwise made available for use by another person? (Exclude securities under securities lending agreements.) Yes No

11.2 If yes, give full and complete information relating thereto:

12. Amount of real estate and mortgages held in other invested assets in Schedule BA: \$.....0

13. Amount of real estate and mortgages held in short-term investments: \$.....0

14.1 Does the reporting entity have any investments in parent, subsidiaries and affiliates? Yes No

14.2 If yes, please complete the following:

	1 Prior Year-End Book/Adjusted Carrying Value	2 Current Quarter Book/Adjusted Carrying Value
14.21 Bonds.....	\$0	\$0
14.22 Preferred Stock.....	\$0	\$0
14.23 Common Stock.....	\$0	\$0
14.24 Short-Term Investments.....	\$0	\$0
14.25 Mortgage Loans on Real Estate.....	\$0	\$0
14.26 All Other.....	\$0	\$0
14.27 Total Investment in Parent, Subsidiaries and Affiliates (Subtotal Lines 14.21 to 14.26).....	\$0	\$0
14.28 Total Investment in Parent included in Lines 14.21 to 14.26 above.....	\$0	\$0

15.1 Has the reporting entity entered into any hedging transactions reported on Schedule DB? Yes No

15.2 If yes, has a comprehensive description of the hedging program been made available to the domiciliary state? Yes No
If no, attach a description with this statement.

16. For the reporting entity's security lending program, state the amount of the following as of current statement date:

- 16.1 Total fair value of reinvested collateral assets reported on Schedule DL, Parts 1 and 2: \$.....0
- 16.2 Total book adjusted/carrying value of reinvested collateral assets reported on Schedule DL, Parts 1 and 2: \$.....0
- 16.3 Total payable for securities lending reported on the liability page: \$.....0

17. Excluding items in Schedule E-Part 3-Special Deposits, real estate, mortgage loans and investments held physically in the reporting entity's offices, vaults or safety deposit boxes, were all stocks, bonds and other securities, owned throughout the current year held pursuant to a custodial agreement with a qualified bank or trust company in accordance with Section 1, III - General Examination Considerations, F. Outsourcing of Critical Functions, Custodial or Safekeeping Agreements of the NAIC Financial Condition Examiners Handbook? Yes No

17.1 For all agreements that comply with the requirements of the NAIC Financial Condition Examiners Handbook, complete the following:

1 Name of Custodian(s)	2 Custodian Address
US Bank Institutional Trust & Custody	2204 Lakeshore Drive, Ste 302, Birmingham, AL 35209

17.2 For all agreements that do not comply with the requirements of the NAIC Financial Condition Examiners Handbook, provide the name, location and a complete explanation.

1 Name(s)	2 Location(s)	3 Complete Explanation(s)

17.3 Have there been any changes, including name changes, in the custodian(s) identified in 17.1 during the current quarter? Yes No

17.4 If yes, give full and complete information relating thereto:

1 Old Custodian	2 New Custodian	3 Date of Change	4 Reason

17.5 Identify all investment advisors, broker/dealers or individuals acting on behalf of broker/dealers that have access to the investment accounts, handle securities and have authority to make investments on behalf of the reporting entity:

1 Central Registration Depository	2 Name(s)	3 Address
107105	Blackrock Financial Management	46 E. 52nd St, New York, NY 10022
106584	Fayez Sarofim & Company	PO Box 297426, Houston, TX 77297

PART 1 - INVESTMENT

18.1 Have all the filing requirements of the Purposes and Procedures Manual of the NAIC Securities Valuation Office been followed?

Yes [X] No []

18.2 If no, list exceptions:

**COLONY SPECIALTY INSURANCE COMPANY
GENERAL INTERROGATORIES (continued)**

PART 2

PROPERTY & CASUALTY INTERROGATORIES

1. If the reporting entity is a member of a pooling arrangement, did the agreement or the reporting entity's participation change? Yes [] No [] N/A [X]
If yes, attach an explanation.

2. Has the reporting entity reinsured any risk with any other reporting entity and agreed to release such entity from liability, in whole or in part, from any loss that may occur on the risk, or portion thereof, reinsured? Yes [] No [X]
If yes, attach an explanation.

3.1 Have any of the reporting entity's primary reinsurance contracts been canceled? Yes [] No [X]
3.2 If yes, give full and complete information thereto:

4.1 Are any of the liabilities for unpaid losses and loss adjustment expenses other than certain workers' compensation tabular reserves (see Annual Statement Instructions pertaining to disclosure of discounting for definition of "tabular reserves,") discounted at a rate of interest greater than zero? Yes [] No [X]
4.2 If yes, complete the following schedule:

1 Line of Business	2 Maximum Interest	3 Disc. Rate	Total Discount				Discount Taken During Period			
			4 Unpaid Losses	5 Unpaid LAE	6 IBNR	7 Total	8 Unpaid Losses	9 Unpaid LAE	10 IBNR	11 Total
XXX..XXX.....00000000
Total.....XXX..XXX.....00000000

5. Operating Percentages:

5.1 A&H loss percent 0.0 %

5.2 A&H cost containment percent 0.0 %

5.3 A&H expense percent excluding cost containment expenses 0.0 %

6.1 Do you act as a custodian for health savings accounts? Yes [] No [X]

6.2 If yes, please provide the amount of custodial funds held as of the reporting date. 0

6.3 Do you act as an administrator for health savings accounts? Yes [] No [X]

6.4 If yes, please provide the amount of funds administered as of the reporting date. 0

COLONY SPECIALTY INSURANCE COMPANY

SCHEDULE F - CEDED REINSURANCE

Showing All New Reinsurers - Current Year to Date

1 NAIC Company Code	2 ID Number	3 Name of Reinsurer	4 Domiciliary Jurisdiction	5 Type of Reinsurer	6 Certified Reinsurer Rating (1 through 6)	7 Effective Date of Certified Reinsurer Rating
Affiliates						
19801.....	94-1390273.....	ARGONAUT INS CO.....	IL.....	Authorized.....
All Other Insurers						
00000.....	AA-3194101.....	EVEREST REINS BERMUDA LTD.....	BMU.....	Unauthorized....
00000.....	AA-1126609.....	LLOYD'S SYNDICATE NUMBER 609.....	GBR.....	Authorized.....
00000.....	AA-1127414.....	LLOYD'S SYNDICATE NUMBER 1414.....	GBR.....	Authorized.....
00000.....	AA-1120158.....	LLOYD'S SYNDICATE NUMBER 2014.....	GBR.....	Authorized.....

COLONY SPECIALTY INSURANCE COMPANY

SCHEDULE T - EXHIBIT OF PREMIUMS WRITTEN

Current Year to Date - Allocated by States and Territories

States, Etc.	1 Active Status	Direct Premiums Written		Direct Losses Paid (Deducting Salvage)		Direct Losses Unpaid	
		2 Current Year to Date	3 Prior Year to Date	4 Current Year to Date	5 Prior Year to Date	6 Current Year to Date	7 Prior Year to Date
1. Alabama.....AL.....L.....		345,829	414,422	4,703,374	166,650	908,431	2,655,540
2. Alaska.....AK.....L.....							
3. Arizona.....AZ.....L.....		29,572				1,787	
4. Arkansas.....AR.....L.....		61,704	22,713			58,577	234,842
5. California.....CA.....L.....		646,246		40,660		19,218	
6. Colorado.....CO.....L.....		268,876	384,942	120,000	264,452	621,830	1,246,472
7. Connecticut.....CT.....L.....		13,743				575	
8. Delaware.....DE.....L.....							
9. District of Columbia.....DC.....L.....		67,342	76,477		310	49,523	17,811
10. Florida.....FL.....L.....		859,284	830,572	534,010	124,689	2,133,225	3,718,843
11. Georgia.....GA.....L.....		505,925	373,694	161,075	310,000	86,874	4
12. Hawaii.....HI.....L.....							
13. Idaho.....ID.....L.....		27,280	90,820	81,375	10,084	3,284	
14. Illinois.....IL.....L.....		467,116	106,988	143,478	2,127	14,596	154,903
15. Indiana.....IN.....L.....		259,665	189,637	818,000	(840)	898,104	607,901
16. Iowa.....IA.....L.....							
17. Kansas.....KS.....L.....		(44,339)				7,721	
18. Kentucky.....KY.....L.....			22,770			1,170	
19. Louisiana.....LA.....L.....		77,519				2,764	
20. Maine.....ME.....L.....		22,785				580	
21. Maryland.....MD.....L.....		1,014,390	1,073,660	402,594	589,507	1,846,283	2,851,855
22. Massachusetts.....MA.....L.....		87,564				4,549	
23. Michigan.....MI.....L.....		153,564				6,781	
24. Minnesota.....MN.....L.....		500		112,514		250	
25. Mississippi.....MS.....L.....		83,591	28,854	25,758	35,000	183,661	180,648
26. Missouri.....MO.....L.....		34,654				9,599	
27. Montana.....MT.....L.....		245,977	58,150		45,980	257,862	90,324
28. Nebraska.....NE.....L.....						662	
29. Nevada.....NV.....L.....		39,112	462,484	657,477	931,637	490,641	1,382,449
30. New Hampshire.....NH.....L.....		38,020				954	
31. New Jersey.....NJ.....L.....		812,373		105,871		94,233	
32. New Mexico.....NM.....L.....		49,358				2,317	
33. New York.....NY.....L.....		812,827		148,500		10,751	
34. North Carolina.....NC.....L.....		438,200	434,815	468,907	93,337	234,966	356,258
35. North Dakota.....ND.....L.....		37,243				2,226	
36. Ohio.....OH.....L.....		503,516	546,378	205,661	475,230	2,196,213	2,168,865
37. Oklahoma.....OK.....L.....		181,870		19,690		(2,075)	
38. Oregon.....OR.....L.....		403,229	394,494	137,673	277,965	442,816	126,453
39. Pennsylvania.....PA.....L.....		8,658,497	8,981,367	791,405	3,017,668	15,596,639	15,375,267
40. Rhode Island.....RI.....L.....							
41. South Carolina.....SC.....L.....		78,464	21,797		4,650	92,002	268,735
42. South Dakota.....SD.....L.....		11,644	20,574	10,255	(6,300)	283,980	451,619
43. Tennessee.....TN.....L.....		267,625	281,573	1,039,502	(8,775)	1,370,564	2,940,964
44. Texas.....TX.....L.....		1,504,963	217,443	295,130		80,284	
45. Utah.....UT.....L.....		51,999	20,348		32,500	878,173	596,645
46. Vermont.....VT.....L.....							
47. Virginia.....VA.....E.....		3,161,693	3,206,064	3,614,236	3,992,245	9,586,231	3,720,887
48. Washington.....WA.....L.....			50,625	61,713	90,291	40,131	
49. West Virginia.....WV.....L.....		212,238	25,399	47,073		13,540	
50. Wisconsin.....WI.....L.....		44,371				2,427	
51. Wyoming.....WY.....L.....		70,815				2,368	
52. American Samoa.....AS.....N.....							
53. Guam.....GU.....N.....							
54. Puerto Rico.....PR.....N.....							
55. US Virgin Islands.....VI.....N.....							
56. Northern Mariana Islands.....MP.....N.....							
57. Canada.....CAN.....N.....							
58. Aggregate Other Alien.....OT.....XXX.....		0	0	0	0	0	0
59. Totals.....(a).....50.....		22,606,843	18,337,059	14,745,931	10,448,406	38,537,286	39,147,283

DETAILS OF WRITE-INS

58001.....	XXX.....						
58002.....	XXX.....						
58003.....	XXX.....						
58998. Summary of remaining write-ins for Line 58 from overflow page....	XXX.....	0	0	0	0	0	0
58999. Totals (Lines 58001 thru 58003+ Line 58998) (Line 58 above).....	XXX.....	0	0	0	0	0	0

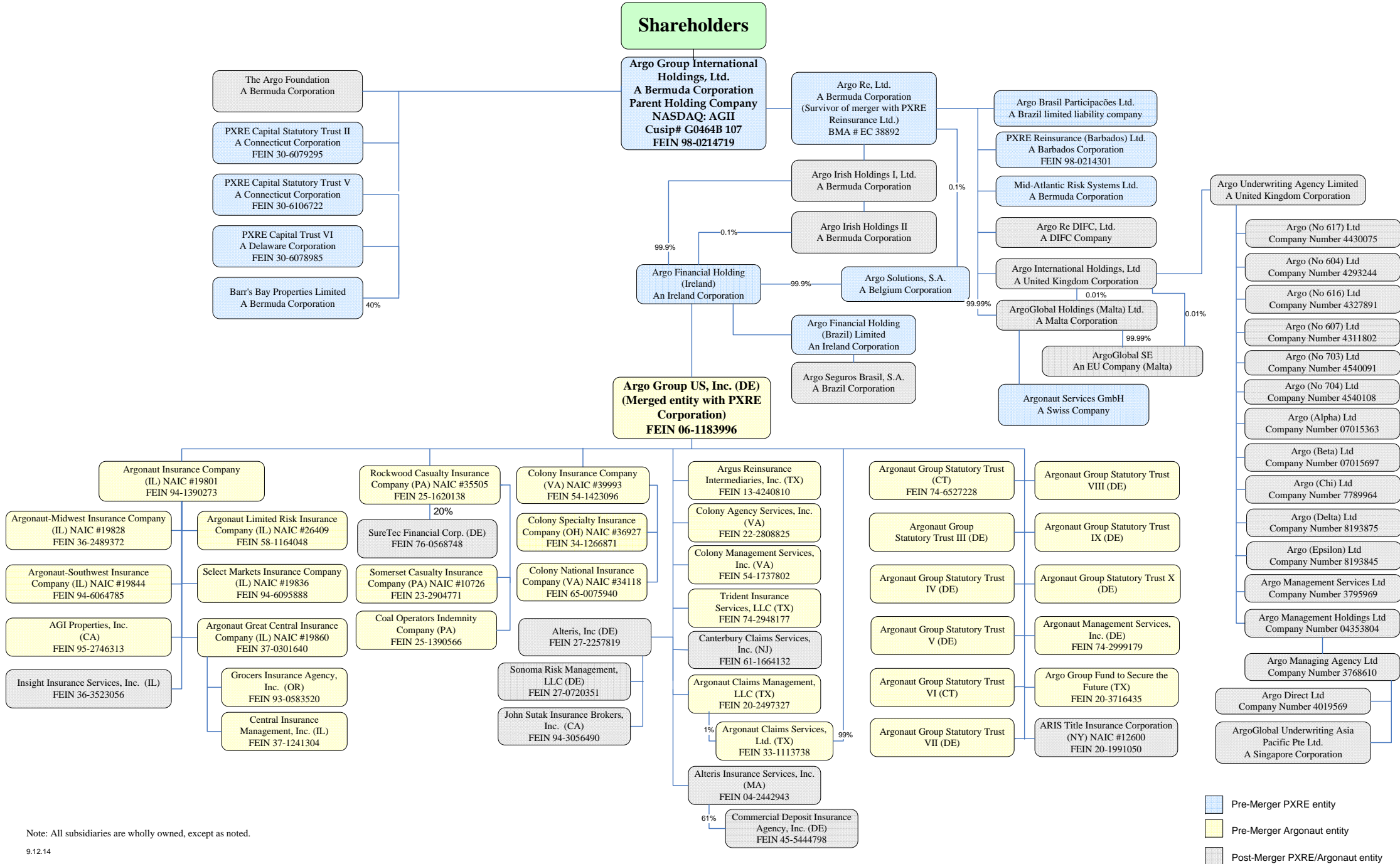
(L) - Licensed or Chartered - Licensed Insurance Carrier or Domiciled RRG; (R) - Registered - Non-domiciled RRGs; (Q) - Qualified - Qualified or Accredited Reinsurer;

(E) - Eligible - Reporting Entities eligible or approved to write Surplus Lines in the state; (N) - None of the above - Not allowed to write business in the state.

(a) Insert the number of L responses except for Canada and Other Alien.

SCHEDULE Y – INFORMATION CONCERNING ACTIVITIES OF INSURER MEMBERS OF A HOLDING COMPANY GROUP

PART 1 – ORGANIZATIONAL CHART



Note: All subsidiaries are wholly owned, except as noted.

SCHEDULE Y

PART 1A - DETAIL OF INSURANCE HOLDING COMPANY SYSTEM

1	2	3	4	5	6	7	8	9	10	11	12	13	14	15
Group Code	Group Name	NAIC Company Code	Federal ID Number	Federal RSSD	CIK	Name of Securities Exchange if Publicly Traded (U.S. or International)	Names of Parent, Subsidiaries or Affiliates	Domiciliary Location	Relationship to Reporting Entity	Directly Controlled by (Name of Entity/Person)	Type of Control (Ownership Board, Management Attorney-in-Fact, Influence, Other)	If Control is Ownership Provide Percentage	Ultimate Controlling Entity(ies)/Person(s)	*
Members														
		00000	98-0214719		0001091748	NasdaqGS	Argo Group International Holdings, Ltd.	BMU	UIP	Shareholders	Ownership	1.000		
		00000					Barr's Bay Properties Limited.	BMU	NIA	Argo Group International Holdings, Ltd.	Ownership	0.400	Argo Group International Holdings, Ltd.	
		00000					The Argo Foundation	BMU	NIA	Argo Group International Holdings, Ltd.	Ownership	1.000	Argo Group International Holdings, Ltd.	
		00000	30-6079295				PXRE Capital Statutory Trust II	CT	NIA	Argo Group International Holdings, Ltd.	Ownership	1.000	Argo Group International Holdings, Ltd.	
		00000	30-6106722				PXRE Capital Statutory Trust V	CT	NIA	Argo Group International Holdings, Ltd.	Ownership	1.000	Argo Group International Holdings, Ltd.	
		00000	30-6078985				PXRE Capital Statutory Trust VI	DE	NIA	Argo Group International Holdings, Ltd.	Ownership	1.000	Argo Group International Holdings, Ltd.	
		00000			0001436607		Argo Re Ltd.	BMU	UIP	Argo Group International Holdings, Ltd.	Ownership	1.000	Argo Group International Holdings, Ltd.	
		00000					Argo Brasil Participações Ltd.	BRA	NIA	Argo Re Ltd.	Ownership	1.000	Argo Group International Holdings, Ltd.	
		00000	98-0214301				PXRE Reinsurance (Barbados), Ltd.	BRB	IA	Argo Re Ltd.	Ownership	1.000	Argo Group International Holdings, Ltd.	
		00000					Mid-Atlantic Risk Systems, Ltd.	BMU	NIA	Argo Re Ltd.	Ownership	1.000	Argo Group International Holdings, Ltd.	
		00000					Argo Re DIFC, Ltd.	ARE	IA	Argo Re Ltd.	Ownership	1.000	Argo Group International Holdings, Ltd.	
		00000					Argo Irish Holdings I Ltd.	BMU	UIP	Argo Re Ltd.	Ownership	1.000	Argo Group International Holdings, Ltd.	
		00000					Argo Irish Holdings II	BMU	UIP	Argo Irish Holdings I Ltd.	Ownership	1.000	Argo Group International Holdings, Ltd.	
		00000					Argo International Holdings Ltd.	GBR	NIA	Argo Re Ltd.	Ownership	1.000	Argo Group International Holdings, Ltd.	
		00000					ArgoGlobal Holdings (Malta) Ltd.	MLT	NIA	Argo Re Ltd.	Ownership	1.000	Argo Group International Holdings, Ltd.	
		00000					ArgoGlobal Holdings (Malta) Ltd.	MLT	NIA	Argo International Holdings Ltd.	Ownership	0.000	Argo Group International Holdings, Ltd.	
		00000					Argonaut Services GmbH	CHE	NIA	ArgoGlobal Holdings (Malta) Ltd.	Ownership	1.000	Argo Group International Holdings, Ltd.	
		00000					ArgoGlobal SE	MLT	IA	ArgoGlobal Holdings (Malta) Ltd.	Ownership	1.000	Argo Group International Holdings, Ltd.	
		00000					ArgoGlobal SE	MLT	IA	Argo International Holdings Ltd.	Ownership	0.000	Argo Group International Holdings, Ltd.	
		00000					Argo Underwriting Agency Ltd.	GBR	NIA	Argo International Holdings Ltd.	Ownership	1.000	Argo Group International Holdings, Ltd.	
		00000					Argo (No 617), Ltd.	GBR	NIA	Argo Underwriting Agency Ltd.	Ownership	1.000	Argo Group International Holdings, Ltd.	
		00000					Argo (No 604), Ltd.	GBR	NIA	Argo Underwriting Agency Ltd.	Ownership	1.000	Argo Group International Holdings, Ltd.	
		00000					Argo (No 616), Ltd.	GBR	NIA	Argo Underwriting Agency Ltd.	Ownership	1.000	Argo Group International Holdings, Ltd.	
		00000					Argo (No 607), Ltd.	GBR	NIA	Argo Underwriting Agency Ltd.	Ownership	1.000	Argo Group International Holdings, Ltd.	
		00000					Argo (No 703), Ltd.	GBR	NIA	Argo Underwriting Agency Ltd.	Ownership	1.000	Argo Group International Holdings, Ltd.	
		00000					Argo (No 704), Ltd.	GBR	NIA	Argo Underwriting Agency Ltd.	Ownership	1.000	Argo Group International Holdings, Ltd.	
		00000					Argo (Alpha) Ltd.	GBR	NIA	Argo Underwriting Agency Ltd.	Ownership	1.000	Argo Group International Holdings, Ltd.	
		00000					Argo (Beta) Ltd.	GBR	NIA	Argo Underwriting Agency Ltd.	Ownership	1.000	Argo Group International Holdings, Ltd.	
		00000					Argo (Chi) Ltd.	GBR	NIA	Argo Underwriting Agency Ltd.	Ownership	1.000	Argo Group International Holdings, Ltd.	
		00000					Argo (Delta) Ltd.	GBR	NIA	Argo Underwriting Agency Ltd.	Ownership	1.000	Argo Group International Holdings, Ltd.	
		00000					Argo (Epsilon) Ltd.	GBR	NIA	Argo Underwriting Agency Ltd.	Ownership	1.000	Argo Group International Holdings, Ltd.	
		00000					Argo Management Services Ltd.	GBR	NIA	Argo Underwriting Agency Ltd.	Ownership	1.000	Argo Group International Holdings, Ltd.	
		00000					Argo Management Holdings Ltd.	GBR	NIA	Argo Underwriting Agency Ltd.	Ownership	1.000	Argo Group International Holdings, Ltd.	
		00000					Argo Managing Agency Ltd.	GBR	IA	Argo Management Holdings Ltd.	Ownership	1.000	Argo Group International Holdings, Ltd.	
		00000					Argo Direct Ltd.	GBR	IA	Argo Managing Agency Ltd.	Ownership	1.000	Argo Group International Holdings, Ltd.	
		00000					ArgoGlobal Underwriting Asia Pacific Pte Ltd.	SGP	IA	Argo Managing Agency Ltd.	Ownership	1.000	Argo Group International Holdings, Ltd.	

Q12

SCHEDULE Y

PART 1A - DETAIL OF INSURANCE HOLDING COMPANY SYSTEM

1	2	3	4	5	6	7	8	9	10	11	12	13	14	15
Group Code	Group Name	NAIC Company Code	Federal ID Number	Federal RSSD	CIK	Name of Securities Exchange if Publicly Traded (U.S. or International)	Names of Parent, Subsidiaries or Affiliates	Domiciliary Location	Relationship to Reporting Entity	Directly Controlled by (Name of Entity/Person)	Type of Control (Ownership Board, Management Attorney-in-Fact, Influence, Other)	If Control is Ownership Provide Percentage	Ultimate Controlling Entity(ies)/Person(s)	*
		00000					Argo Solutions, S.A.....	BEL.....	NIA.....	Argo Re Ltd.....	Ownership.....	0.001	Argo Group International Holdings, Ltd.....	
		00000					Argo Financial Holding (Ireland).....	IRL.....	UIP.....	Argo Irish Holdings I Ltd.....	Ownership.....	0.999	Argo Group International Holdings, Ltd.....	
		00000					Argo Financial Holding (Ireland).....	IRL.....	UIP.....	Argo Irish Holdings II.....	Ownership.....	0.001	Argo Group International Holdings, Ltd.....	
		00000					Argo Financial Holding (Brazil) Limited.....	IRL.....	NIA.....	Argo Financial Holding (Ireland).....	Ownership.....	1.000	Argo Group International Holdings, Ltd.....	
		00000					Argo Seguros Brasil, S.A.....	BRA.....	IA.....	Argo Financial Holding (Brazil) Limited.....	Ownership.....	1.000	Argo Group International Holdings, Ltd.....	
		00000					Argo Solutions, S.A.....	BEL.....	IA.....	Argo Financial Holding (Ireland).....	Ownership.....	0.999	Argo Group International Holdings, Ltd.....	
		00000	06-1183996				Argo Group US, Inc.....	DE.....	UIP.....	Argo Financial Holding (Ireland).....	Ownership.....	1.000	Argo Group International Holdings, Ltd.....	
		00000	74-6527228		0001470439		Argonaut Group Statutory Trust.....	CT.....	NIA.....	Argo Group US, Inc.....	Ownership.....	1.000	Argo Group International Holdings, Ltd.....	
		00000					Argonaut Group Statutory Trust III.....	DE.....	NIA.....	Argo Group US, Inc.....	Ownership.....	1.000	Argo Group International Holdings, Ltd.....	
		00000					Argonaut Group Statutory Trust IV.....	DE.....	NIA.....	Argo Group US, Inc.....	Ownership.....	1.000	Argo Group International Holdings, Ltd.....	
		00000					Argonaut Group Statutory Trust V.....	DE.....	NIA.....	Argo Group US, Inc.....	Ownership.....	1.000	Argo Group International Holdings, Ltd.....	
		00000					Argonaut Group Statutory Trust VI.....	CT.....	NIA.....	Argo Group US, Inc.....	Ownership.....	1.000	Argo Group International Holdings, Ltd.....	
		00000					Argonaut Group Statutory Trust VII.....	DE.....	NIA.....	Argo Group US, Inc.....	Ownership.....	1.000	Argo Group International Holdings, Ltd.....	
		00000					Argonaut Group Statutory Trust VIII.....	DE.....	NIA.....	Argo Group US, Inc.....	Ownership.....	1.000	Argo Group International Holdings, Ltd.....	
		00000					Argonaut Group Statutory Trust IX.....	DE.....	NIA.....	Argo Group US, Inc.....	Ownership.....	1.000	Argo Group International Holdings, Ltd.....	
		00000					Argonaut Group Statutory Trust X.....	DE.....	NIA.....	Argo Group US, Inc.....	Ownership.....	1.000	Argo Group International Holdings, Ltd.....	
		00000	74-2999179				Argonaut Management Services, Inc.....	DE.....	NIA.....	Argo Group US, Inc.....	Ownership.....	1.000	Argo Group International Holdings, Ltd.....	
		00000	20-3716435				Argo Group Fund to Secure the Future.....	TX.....	NIA.....	Argo Group US, Inc.....	Ownership.....	1.000	Argo Group International Holdings, Ltd.....	
		12600	20-1991050				ARIS Title Insurance Corporation.....	NY.....	IA.....	Argo Group US, Inc.....	Ownership.....	1.000	Argo Group International Holdings, Ltd.....	
		00000	13-4240810				Argus Reinsurance Intermediaries, Inc.....	TX.....	IA.....	Argo Group US, Inc.....	Ownership.....	1.000	Argo Group International Holdings, Ltd.....	
		00000	22-2808825				Colony Agency Services, Inc.....	VA.....	IA.....	Argo Group US, Inc.....	Ownership.....	1.000	Argo Group International Holdings, Ltd.....	
		00000	54-1737802				Colony Management Services, Inc.....	VA.....	NIA.....	Argo Group US, Inc.....	Ownership.....	1.000	Argo Group International Holdings, Ltd.....	
		00000	74-2948177				Trident Insurance Services, LLC.....	TX.....	IA.....	Argo Group US, Inc.....	Ownership.....	1.000	Argo Group International Holdings, Ltd.....	
		00000	61-1664132				Canterbury Claims Services, Inc.....	NJ.....	IA.....	Argo Group US, Inc.....	Ownership.....	1.000	Argo Group International Holdings, Ltd.....	
		00000	20-2497327				Argonaut Claims Management, LLC.....	TX.....	IA.....	Argo Group US, Inc.....	Ownership.....	1.000	Argo Group International Holdings, Ltd.....	
		00000	33-1113738				Argonaut Claims Services, Ltd.....	TX.....	IA.....	Argonaut Claims Management, LLC.....	Ownership.....	0.010	Argo Group International Holdings, Ltd.....	
		00000	33-1113738				Argonaut Claims Services, Ltd.....	TX.....	IA.....	Argo Group US, Inc.....	Ownership.....	0.990	Argo Group International Holdings, Ltd.....	
0457	Argo Group, U.S.....	39993	54-1423096				Colony Insurance Company.....	VA.....	UDP.....	Argo Group US, Inc.....	Ownership.....	1.000	Argo Group International Holdings, Ltd.....	
0457	Argo Group, U.S.....	34118	65-0075940				Colony National Insurance Company.....	VA.....	IA.....	Colony Insurance Company.....	Ownership.....	1.000	Argo Group International Holdings, Ltd.....	
0457	Argo Group, U.S.....	36927	34-1266871				Colony Specialty Insurance Company.....	OH.....		Colony Insurance Company.....	Ownership.....	1.000	Argo Group International Holdings, Ltd.....	
		00000	04-2442943				Alteris Insurance Services, Inc.....	MA.....	IA.....	Argo Group US, Inc.....	Ownership.....	1.000	Argo Group International Holdings, Ltd.....	
		00000	45-5444798				Commercial Deposit Insurance Agency, Inc.....	DE.....	IA.....	Alteris Insurance Services, Inc.....	Ownership.....	0.610	Argo Group International Holdings, Ltd.....	
		00000	27-2257819				Alteris, Inc.....	DE.....	IA.....	Argo Group US, Inc.....	Ownership.....	1.000	Argo Group International Holdings, Ltd.....	
		00000	27-0720351				Sonoma Risk Management, LLC.....	DE.....	IA.....	Alteris, Inc.....	Ownership.....	1.000	Argo Group International Holdings, Ltd.....	
		00000	94-3056490				John Sutak Insurance Brokers, Inc.....	CA.....	IA.....	Alteris, Inc.....	Ownership.....	1.000	Argo Group International Holdings, Ltd.....	
0457	Argo Group, U.S.....	19801	94-1390273				Argonaut Insurance Company.....	IL.....	IA.....	Argo Group US, Inc.....	Ownership.....	1.000	Argo Group International Holdings, Ltd.....	

Q12.1

SCHEDULE Y

PART 1A - DETAIL OF INSURANCE HOLDING COMPANY SYSTEM

1	2	3	4	5	6	7	8	9	10	11	12	13	14	15
Group Code	Group Name	NAIC Company Code	Federal ID Number	Federal RSSD	CIK	Name of Securities Exchange if Publicly Traded (U.S. or International)	Names of Parent, Subsidiaries or Affiliates	Domiciliary Location	Relationship to Reporting Entity	Directly Controlled by (Name of Entity/Person)	Type of Control (Ownership Board, Management Attorney-in-Fact, Influence, Other)	If Control is Ownership Provide Percentage	Ultimate Controlling Entity(ies)/Person(s)	*
		00000.....	95-2746313				AGI Properties, Inc.....	CA.....	NIA.....	Argonaut Insurance Company.....	Ownership.....1.000	Argo Group International Holdings, Ltd.....	
		00000.....	36-3523056				Insight Insurance Services, Inc.....	IL.....	IA.....	Argonaut Insurance Company.....	Ownership.....1.000	Argo Group International Holdings, Ltd.....	
0457.....	Argo Group, U.S.....	19828.....	36-2489372				Argonaut-Midwest Insurance Company.....	IL.....	IA.....	Argonaut Insurance Company.....	Ownership.....1.000	Argo Group International Holdings, Ltd.....	
0457.....	Argo Group, U.S.....	19844.....	94-6064785				Argonaut-Southwest Insurance Company.....	IL.....	IA.....	Argonaut Insurance Company.....	Ownership.....1.000	Argo Group International Holdings, Ltd.....	
0457.....	Argo Group, U.S.....	19836.....	94-6095888				Select Markets Insurance Company.....	IL.....	IA.....	Argonaut Insurance Company.....	Ownership.....1.000	Argo Group International Holdings, Ltd.....	
0457.....	Argo Group, U.S.....	26409.....	58-1164048				Argonaut Limited Risk Insurance Company.....	IL.....	IA.....	Argonaut Insurance Company.....	Ownership.....1.000	Argo Group International Holdings, Ltd.....	
0457.....	Argo Group, U.S.....	19860.....	37-0301640				Argonaut Great Central Insurance Company.....	IL.....	IA.....	Argonaut Insurance Company.....	Ownership.....1.000	Argo Group International Holdings, Ltd.....	
		00000.....	93-0583520				Grocers Insurance Agency, Inc.....	OR.....	IA.....	Argonaut Great Central Insurance Company.....	Ownership.....1.000	Argo Group International Holdings, Ltd.....	
		00000.....	37-1241304				Central Insurance Management, Inc.....	IL.....	IA.....	Argonaut Great Central Insurance Company.....	Ownership.....1.000	Argo Group International Holdings, Ltd.....	
0457.....	Argo Group, U.S.....	35505.....	25-1620138				Rockwood Casualty Insurance Company.....	PA.....	IA.....	Argo Group US, Inc.....	Ownership.....1.000	Argo Group International Holdings, Ltd.....	
0457.....	Argo Group, U.S.....	10726.....	23-2904771				Somerset Casualty Insurance Company.....	PA.....	IA.....	Rockwood Casualty Insurance Company.....	Ownership.....1.000	Argo Group International Holdings, Ltd.....	
		00000.....	25-1390566				Coal Operators Indemnity Company.....	PA.....	IA.....	Rockwood Casualty Insurance Company.....	Ownership.....1.000	Argo Group International Holdings, Ltd.....	
		00000.....	76-0568748				SureTec Financial Corporation.....	DE.....	IA.....	Rockwood Casualty Insurance Company.....	Ownership.....0.200	Argo Group International Holdings, Ltd.....	

Q12.2

Asterisk	Explanation

NONE

COLONY SPECIALTY INSURANCE COMPANY PART 1 - LOSS EXPERIENCE

Lines of Business	Current Year to Date			4 Prior Year to Date Direct Loss Percentage
	1 Direct Premiums Earned	2 Direct Losses Incurred	3 Direct Loss Percentage	
1. Fire.....	13,324	6,549	49.2	(300.8)
2. Allied lines.....	302,926	1,795,814	592.8	(39.6)
3. Farmowners multiple peril.....			0.0	
4. Homeowners multiple peril.....			0.0	
5. Commercial multiple peril.....	370,690	173,630	46.8	27.8
6. Mortgage guaranty.....			0.0	
8. Ocean marine.....			0.0	
9. Inland marine.....	3,262,166	1,995,643	61.2	45.0
10. Financial guaranty.....			0.0	
11.1. Medical professional liability - occurrence.....	2,393	904	37.8	
11.2. Medical professional liability - claims-made.....	36,166	1,643	4.5	65.1
12. Earthquake.....	5,148		0.0	
13. Group accident and health.....			0.0	
14. Credit accident and health.....			0.0	
15. Other accident and health.....			0.0	
16. Workers' compensation.....	8,759,112	5,458,318	62.3	61.9
17.1. Other liability-occurrence.....	1,354,912	(425,616)	(31.4)	178.6
17.2. Other liability-claims made.....	4,581,869	3,723,632	81.3	70.3
17.3. Excess workers' compensation.....			0.0	
18.1. Products liability-occurrence.....	314,049	(116,221)	(37.0)	.23
18.2. Products liability-claims made.....	15,300	96,675	631.9	281.1
19.1, 19.2. Private passenger auto liability.....			0.0	
19.3, 19.4. Commercial auto liability.....	269,146	443,083	164.6	28.0
21. Auto physical damage.....	100,139	27,127	27.1	38.0
22. Aircraft (all perils).....			0.0	
23. Fidelity.....			0.0	
24. Surety.....			0.0	
26. Burglary and theft.....	292		0.0	
27. Boiler and machinery.....			0.0	
28. Credit.....			0.0	
29. International.....			0.0	
30. Warranty.....			0.0	
31. Reinsurance-nonproportional assumed property.....	XXX	XXX	XXX	XXX
32. Reinsurance-nonproportional assumed liability.....	XXX	XXX	XXX	XXX
33. Reinsurance-nonproportional assumed financial lines.....	XXX	XXX	XXX	XXX
34. Aggregate write-ins for other lines of business.....	0	0	0.0	
35. Totals.....	19,387,632	13,181,182	68.0	69.2
DETAILS OF WRITE-INS				
3401.....			0.0	
3402.....			0.0	
3403.....			0.0	
3498. Sum. of remaining write-ins for Line 34 from overflow page.....	0	0	0.0	XXX
3499. Totals (Lines 3401 thru 3403 plus 3498) (Line 34).....	0	0	0.0	

PART 2 - DIRECT PREMIUMS WRITTEN

Lines of Business	1	2	3
	Current Quarter	Current Year to Date	Prior Year Year to Date
1. Fire.....	11,339	24,745	12,107
2. Allied lines.....	181,864	450,974	173,888
3. Farmowners multiple peril.....			
4. Homeowners multiple peril.....			
5. Commercial multiple peril.....	142,616	332,225	605,424
6. Mortgage guaranty.....			
8. Ocean marine.....			
9. Inland marine.....	2,367,259	6,391,424	1,364,641
10. Financial guaranty.....			
11.1. Medical professional liability - occurrence.....			
11.2. Medical professional liability - claims made.....	(433)	29,129	30,726
12. Earthquake.....	19,874	19,874	469
13. Group accident and health.....			
14. Credit accident and health.....			
15. Other accident and health.....			
16. Workers' compensation.....	2,731,142	8,668,369	8,946,119
17.1. Other liability-occurrence.....	732,241	1,532,528	1,236,665
17.2. Other liability-claims made.....	1,641,764	4,604,966	5,069,514
17.3. Excess workers' compensation.....			
18.1. Products liability-occurrence.....	110,662	320,337	345,151
18.2. Products liability-claims made.....		6,000	6,000
19.1 19.2. Private passenger auto liability.....			
19.3 19.4. Commercial auto liability.....	15,745	148,496	401,178
21. Auto physical damage.....	7,603	77,483	145,178
22. Aircraft (all perils).....			
23. Fidelity.....			
24. Surety.....			
26. Burglary and theft.....		292	
27. Boiler and machinery.....			
28. Credit.....			
29. International.....			
30. Warranty.....			
31. Reinsurance-nonproportional assumed property.....	XXX	XXX	XXX
32. Reinsurance-nonproportional assumed liability.....	XXX	XXX	XXX
33. Reinsurance-nonproportional assumed financial lines.....	XXX	XXX	XXX
34. Aggregate write-ins for other lines of business.....	0	0	0
35. Totals.....	7,961,677	22,606,843	18,337,059
DETAILS OF WRITE-INS			
3401.....			
3402.....			
3403.....			
3498. Sum. of remaining write-ins for Line 34 from overflow page.....	0	0	0
3499. Totals (Lines 3401 thru 3403 plus 3498) (Line 34).....	0	0	0

PART 3 (000 omitted)

LOSS AND LOSS ADJUSTMENT EXPENSE RESERVES SCHEDULE

	1	2	3	4	5	6	7	8	9	10	11	12	13
Years in Which Losses Occurred	Prior Year-End Known Case Loss and LAE Reserves	Prior Year-End IBNR Loss and LAE Reserves	Total Prior Year-End Loss and LAE Reserves (Cols. 1 + 2)	2014 Loss and LAE Payments on Claims Reported as of Prior Year-End	2014 Loss and LAE Payments on Claims Unreported as of Prior Year-End	Total 2014 Loss and LAE Payments (Cols. 4 + 5)	Q.S. Date Known Case Loss and LAE Reserves on Claims Reported and Open as of Prior Year-End	Q.S. Date Known Case Loss and LAE Reserves on Claims Reported or Reopened Subsequent to Prior Year-End	Q.S. Date IBNR Loss and LAE Reserves	Total Q.S. Loss and LAE Reserves (Cols. 7 + 8 + 9)	Prior Year-End Known Case Loss and LAE Reserves Developed (Savings)/Deficiency (Cols. 4 + 7 minus Col. 1)	Prior Year-End IBNR Loss and LAE Reserves Developed (Savings)/Deficiency (Cols. 5 + 8 + 9 minus Col. 2)	Prior Year-End Total Loss and LAE Reserve Developed (Savings)/Deficiency (Cols. 11 + 12)
1. 2011 + Prior.....			.0			.0				.0	.0	.0	.0
2. 2012.....			.0			.0				.0	.0	.0	.0
3. Subtotals 2012 + Prior.....	0	0	.0	0	0	.0	0	0	0	.0	0	0	0
4. 2013.....			.0			.0				.0	.0	.0	.0
5. Subtotals 2013 + Prior.....	0	0	.0	0	0	.0	0	0	0	.0	0	0	0
6. 2014.....	.XXX	.XXX	.XXX	.XXX		.0	.XXX			.0	.XXX	.XXX	.XXX
7. Totals.....	0	0	.0	0	0	.0	0	0	0	.0	0	0	0
8. Prior Year-End's Surplus As Regards Policyholders.....	27,257												
											Col. 11, Line 7 As % of Col. 1, Line 7	Col. 12, Line 7 As % of Col. 2, Line 7	Col. 13, Line 7 As % of Col. 3, Line 7
											1.0.0 %	2.0.0 %	3.0.0 %
													Col. 13, Line 7 Line 8
													4.0.0 %

Q14

SUPPLEMENTAL EXHIBITS AND SCHEDULES INTERROGATORIES

The following supplemental reports are required to be filed as part of your statement filing. However, in the event that your company does not transact the type of business for which the special report must be filed, your response of NO to the specific interrogatory will be accepted in lieu of filing a "NONE" report and a bar code will be printed below. If the supplement is required of your company but is not being filed for whatever reason, enter SEE EXPLANATION and provide an explanation following the interrogatory questions.

	Response
1. Will the Trusteed Surplus Statement be filed with the state of domicile and the NAIC with this statement?	NO
2. Will Supplement A to Schedule T (Medical Professional Liability Supplement) be filed with this statement?	YES
3. Will the Medicare Part D Coverage Supplement be filed with the state of domicile and the NAIC with this statement?	NO
4. Will the Director and Officer Supplement be filed with the state of domicile and the NAIC with this statement?	NO

Explanation:

- 1.
- 2.
- 3.
- 4.

Bar Code:



NONE

**COLONY SPECIALTY INSURANCE COMPANY
SCHEDULE A - VERIFICATION**

Real Estate

	1 Year to Date	2 Prior Year Ended December 31
1. Book/adjusted carrying value, December 31 of prior year.....	0	
2. Cost of acquired:		
2.1 Actual cost at time of acquisition.....		
2.2 Additional investment made after acquisition.....		
3. Current year change in encumbrances.....		
4. Total gain (loss) on disposals.....		
5. Deduct amounts received on disposals.....		
6. Total foreign exchange change in book/adjusted carrying value.....		
7. Deduct current year's other than temporary impairment recognized.....		
8. Deduct current year's depreciation.....		
9. Book/adjusted carrying value at end of current period (Lines 1+2+3+4-5+6-7-8).....	0	0
10. Deduct total nonadmitted amounts.....		
11. Statement value at end of current period (Line 9 minus Line 10).....	0	0

SCHEDULE B - VERIFICATION

Mortgage Loans

	1 Year to Date	2 Prior Year Ended December 31
1. Book value/recorded investment excluding accrued interest, December 31 of prior year.....	0	
2. Cost of acquired:		
2.1 Actual cost at time of acquisition.....		
2.2 Additional investment made after acquisition.....		
3. Capitalized deferred interest and other.....		
4. Accrual of discount.....		
5. Unrealized valuation increase (decrease).....		
6. Total gain (loss) on disposals.....		
7. Deduct amounts received on disposals.....		
8. Deduct amortization of premium and mortgage interest points and commitment fees.....		
9. Total foreign exchange change in book value/recorded investment excluding accrued interest.....		
10. Deduct current year's other than temporary impairment recognized.....		
11. Book value/recorded investment excluding accrued interest at end of current period (Lines 1+2+3+4+5+6-7-8+9-10).....	0	0
12. Total valuation allowance.....		
13. Subtotal (Line 11 plus Line 12).....	0	0
14. Deduct total nonadmitted amounts.....		
15. Statement value at end of current period (Line 13 minus Line 14).....	0	0

SCHEDULE BA - VERIFICATION

Other Long-Term Invested Assets

	1 Year to Date	2 Prior Year Ended December 31
1. Book/adjusted carrying value, December 31 of prior year.....	0	
2. Cost of acquired:		
2.1 Actual cost at time of acquisition.....		
2.2 Additional investment made after acquisition.....		
3. Capitalized deferred interest and other.....		
4. Accrual of discount.....		
5. Unrealized valuation increase (decrease).....		
6. Total gain (loss) on disposals.....		
7. Deduct amounts received on disposals.....		
8. Deduct amortization of premium and depreciation.....		
9. Total foreign exchange change in book/adjusted carrying value.....		
10. Deduct current year's other than temporary impairment recognized.....		
11. Book/adjusted carrying value at end of current period (Lines 1+2+3+4+5+6-7-8+9-10).....	0	0
12. Deduct total nonadmitted amounts.....		
13. Statement value at end of current period (Line 11 minus Line 12).....	0	0

SCHEDULE D - VERIFICATION

Bonds and Stocks

	1 Year to Date	2 Prior Year Ended December 31
1. Book/adjusted carrying value of bonds and stocks, December 31 of prior year.....	55,108,576	60,242,711
2. Cost of bonds and stocks acquired.....	6,095,262	20,112,249
3. Accrual of discount.....	26,644	40,716
4. Unrealized valuation increase (decrease).....	692,365	2,266,040
5. Total gain (loss) on disposals.....	26,675	283,419
6. Deduct consideration for bonds and stocks disposed of.....	5,782,404	27,183,096
7. Deduct amortization of premium.....	233,078	301,183
8. Total foreign exchange change in book/adjusted carrying value.....		
9. Deduct current year's other than temporary impairment recognized.....	6,946	352,280
10. Book/adjusted carrying value at end of current period (Lines 1+2+3+4+5-6-7+8-9).....	55,927,094	55,108,576
11. Deduct total nonadmitted amounts.....		
12. Statement value at end of current period (Line 10 minus Line 11).....	55,927,094	55,108,576

SCHEDULE D - PART 1B

Showing the Acquisitions, Dispositions and Non-Trading Activity

During the Current Quarter for all Bonds and Preferred Stock by NAIC Designation

NAIC Designation	1 Book/Adjusted Carrying Value Beginning of Current Quarter	2 Acquisitions During Current Quarter	3 Dispositions During Current Quarter	4 Non-Trading Activity During Current Quarter	5 Book/Adjusted Carrying Value End of First Quarter	6 Book/Adjusted Carrying Value End of Second Quarter	7 Book/Adjusted Carrying Value End of Third Quarter	8 Book/Adjusted Carrying Value December 31 Prior Year
BONDS								
1. NAIC 1 (a).....	35,523,438	2,276,237	2,047,295	(65,328)	35,327,340	35,523,438	35,687,052	37,433,382
2. NAIC 2 (a).....	3,752,718			(291)	3,885,192	3,752,718	3,752,427	3,885,749
3. NAIC 3 (a).....	212,891			(2,176)	319,032	212,891	210,715	629,491
4. NAIC 4 (a).....								
5. NAIC 5 (a).....	468,403			(2,002)		468,403	466,401	
6. NAIC 6 (a).....								
7. Total Bonds.....	39,957,450	2,276,237	2,047,295	(69,797)	39,531,564	39,957,450	40,116,595	41,948,622
PREFERRED STOCK								
8. NAIC 1.....								
9. NAIC 2.....								
10. NAIC 3.....								
11. NAIC 4.....								
12. NAIC 5.....								
13. NAIC 6.....								
14. Total Preferred Stock.....	0	0	0	0	0	0	0	0
15. Total Bonds and Preferred Stock.....	39,957,450	2,276,237	2,047,295	(69,797)	39,531,564	39,957,450	40,116,595	41,948,622

QS102

(a) Book/Adjusted Carrying Value column for the end of the current reporting period includes the following amount of non-rated short-term and cash equivalent bonds by NAIC designation:

NAIC 1 \$.....2,746,752; NAIC 2 \$.....0; NAIC 3 \$.....0; NAIC 4 \$.....0; NAIC 5 \$.....0; NAIC 6 \$.....0.

SCHEDULE DA - PART 1

Short-Term Investments

	1 Book/Adjusted Carrying Value	2 Par Value	3 Actual Cost	4 Interest Collected Year To Date	5 Paid for Accrued Interest Year To Date
9199999.....2,746,752XXX.....2,746,752142

SCHEDULE DA - VERIFICATION

Short-Term Investments

	1 Year to Date	2 Prior Year Ended December 31
1. Book/adjusted carrying value, December 31 of prior year.....4,707,5396,695,342
2. Cost of short-term investments acquired.....6,825,80829,584,583
3. Accrual of discount.....209
4. Unrealized valuation increase (decrease).....
5. Total gain (loss) on disposals.....16
6. Deduct consideration received on disposals.....8,786,59531,572,611
7. Deduct amortization of premium.....
8. Total foreign exchange change in book/adjusted carrying value.....
9. Deduct current year's other than temporary impairment recognized.....
10. Book/adjusted carrying value at end of current period (Lines 1+2+3+4+5-6-7+8-9).....2,746,7524,707,539
11. Deduct total nonadmitted amounts.....
12. Statement value at end of current period (Line 10 minus Line 11).....2,746,7524,707,539

**Sch. DB-Pt A-Verification
NONE**

**Sch. DB-Pt B-Verification
NONE**

**Sch. DB-Pt C-Sn 1
NONE**

**Sch. DB-Pt C-Sn 2
NONE**

**Sch. DB-Verification
NONE**

COLONY SPECIALTY INSURANCE COMPANY
SCHEDULE E- VERIFICATION

Cash Equivalents

	1 Year to Date	2 Prior Year Ended December 31
1. Book/adjusted carrying value, December 31 of prior year.....	0	
2. Cost of cash equivalents acquired.....		7,069,172
3. Accrual of discount.....		193
4. Unrealized valuation increase (decrease).....		
5. Total gain (loss) on disposals.....		.92
6. Deduct consideration received on disposals.....		7,069,457
7. Deduct amortization of premium.....		
8. Total foreign exchange change in book/ adjusted carrying value.....		
9. Deduct current year's other than temporary impairment recognized.....		
10. Book/adjusted carrying value at end of current period (Lines 1+2+3+4+5-6-7+8-9).....	0	0
11. Deduct total nonadmitted amounts.....		
12. Statement value at end of current period (Line 10 minus Line 11).....	0	0

Sch. A-Pt 2
NONE

Sch. A-Pt 3
NONE

Sch. B-Pt 2
NONE

Sch. B-Pt 3
NONE

Sch. BA-Pt 2
NONE

Sch. BA-Pt 3
NONE

SCHEDULE D - PART 3

Show all Long-Term Bonds and Stock Acquired During the Current Quarter

1 CUSIP Identification	2 Description	3 Foreign	4 Date Acquired	5 Name of Vendor	6 Number of Shares of Stock	7 Actual Cost	8 Par Value	9 Paid for Accrued Interest and Dividends	10 NAIC Designation or Market Indicator (a)
Bonds - U.S. Special Revenue and Special Assessment									
54811G XD 7	LOWER COLORADO RIVER AUTHORITY MUNI BND.....		...08/25/2014	Tax Free Exchange.....	291,515250,0003,472	1FE.....
3199999	Total Bonds - U.S. Special Revenue and Special Assessment.....				291,515250,0003,472XXX.....
8399997	Total Bonds - Part 3.....				291,515250,0003,472XXX.....
8399999	Total Bonds.....				291,515250,0003,472XXX.....
Common Stocks - Industrial and Miscellaneous									
293792 10 7	ENTERPRISE PRODUCTS PARTNERS L.....		...08/22/2014	Stock Split.....11,050,000	XXX.....		L.....
9099999	Total Common Stocks - Industrial and Miscellaneous.....				0XXX.....0XXX.....
9799997	Total Common Stocks - Part 3.....				0XXX.....0XXX.....
9799999	Total Common Stocks.....				0XXX.....0XXX.....
9899999	Total Preferred and Common Stocks.....				0XXX.....0XXX.....
9999999	Total Bonds, Preferred and Common Stocks.....				291,515XXX.....3,472XXX.....

(a) For all common stock bearing the NAIC market indicator "U" provide: the number of such issues:.....0.

QE04

SCHEDULE D - PART 4

Show All Long-Term Bonds and Stock Sold, Redeemed or Otherwise Disposed of During the Current Quarter

1	2	3	4	5	6	7	8	9	10	Change in Book/Adjusted Carrying Value					16	17	18	19	20	21	22
										11	12	13	14	15							
CUSIP Identification	Description	For i g n	Disposal Date	Name of Purchaser	Number of Shares of Stock	Consideration	Par Value	Actual Cost	Prior Year Book/ Adjusted Carrying Value	Unrealized Valuation Increase/ (Decrease)	Current Year's (Amortization)/ Accretion	Current Year's Other Than Temporary Impairment Recognized	Total Change in B./A.C.V. (11+12-13)	Total Foreign Exchange Change in B./A.C.V.	Book/ Adjusted Carrying Value At Disposal Date	Foreign Exchange Gain (Loss) on Disposal	Realized Gain (Loss) on Disposal	Total Gain (Loss) on Disposal	Bond Interest/ Stock Dividends Received During Year	Stated Contractual Maturity Date	NAIC Designation or Market Indicator (a)
Bonds - U.S. Government																					
912828 LC 2	UNITED STATES TREASURY GOVT BND 2.625%		07/31/2014	Maturity.....		320,000	320,000	325,251	320,663		(663)		(663)		320,000			0	8,400	07/31/2014	1.....
0599999. Total Bonds - U.S. Government.....						320,000	320,000	325,251	320,663	0	(663)	0	(663)	0	320,000	0	0	0	8,400	XXX...	XXX...
Bonds - U.S. States, Territories and Possessions																					
604129 JV 9	MINNESOTA ST MUNI BND GO 5.000% 08/01/14.		08/01/2014	Maturity.....		750,000	750,000	816,645	757,093		(7,093)		(7,093)		750,000			0	37,500	08/01/2014	1FE....
1799999. Total Bonds - U.S. States, Territories and Possessions.....						750,000	750,000	816,645	757,093	0	(7,093)	0	(7,093)	0	750,000	0	0	0	37,500	XXX...	XXX...
Bonds - U.S. Special Revenue and Special Assessment																					
3128M4 2P 7	FHLMC POOL # G03182 5.000% 05/01/36.....		09/01/2014	Paydown.....		12,897	12,897	12,156	12,182		716		716		12,897			0	432	05/01/2036	1.....
3128M7 LM 6	FHLMC POOL # G05432 6.000% 04/01/39.....		09/01/2014	Paydown.....		19,452	19,452	20,367	20,352		(901)		(901)		19,452			0	804	04/01/2039	1.....
312931 K6 4	FHLMC POOL # A84817 6.000% 03/01/39.....		09/01/2014	Paydown.....		10,677	10,677	11,178	11,168		(491)		(491)		10,677			0	479	03/01/2039	1.....
3132GE S3 5	FHLMC POOL # Q01438 4.500% 06/01/41.....		09/01/2014	Paydown.....		11,070	11,070	11,480	11,470		(399)		(399)		11,070			0	337	06/01/2041	1.....
31407C AE 7	FNMA POOL # 826305 5.000% 07/01/35.....		09/01/2014	Paydown.....		36,165	36,165	33,842	33,924		2,241		2,241		36,165			0	1,225	07/01/2035	1.....
31410P QW 6	FNMA POOL # 893369 5.000% 07/01/33.....		09/01/2014	Paydown.....		11,386	11,386	10,893	10,915		471		471		11,386			0	379	07/01/2033	1.....
54811A 5V 1	LOWER COLORADO RIVER AUTHORITY LOWER COL		08/25/2014	Tax Free Exchange.....		291,515	250,000	291,850	288,761		(2,677)		(2,677)		286,084		5,431	5,431	9,722	05/15/2025	1FE....
3199999. Total Bonds - U.S. Special Revenue and Special Assessment.....						393,162	351,647	391,766	388,772	0	(1,040)	0	(1,040)	0	387,731	0	5,431	5,431	13,378	XXX...	XXX...
Bonds - Industrial and Miscellaneous																					
17314Q AY 3	CMLTI_09-11 RMBS_09-11 6A1 144A 1.505%.....		09/25/2014	Paydown.....		8,718	8,718	7,672	8,198		520		520		8,718			0	82	10/25/2035	1FM....
22532V AA 0	CAALT_12-1 ABS CAALT_12-1A 144A 2.200%.....		09/15/2014	Paydown.....		446,151	446,151	446,099	446,124		27		27		446,151			0	6,530	09/16/2019	1FE....
46629Y AD 1	JPMCC_07-CB18 PAC SENIOR CMBS 07-CB18 A1		09/01/2014	Paydown.....		6,267	6,267	6,951	6,864		(598)		(598)		6,267			0	226	06/12/2047	1FM....
61753J AB 5	MSC_07-IQ13 PAC SENIOR CMBS 07-IQ13 A1A		09/01/2014	Paydown.....		675	675	748	739		(64)		(64)		675			0	24	03/15/2044	1FM....
3899999. Total Bonds - Industrial and Miscellaneous.....						461,811	461,811	461,470	461,925	0	(115)	0	(115)	0	461,811	0	0	0	6,862	XXX...	XXX...
8399997. Total Bonds - Part 4.....						1,924,973	1,883,458	1,995,132	1,928,453	0	(8,911)	0	(8,911)	0	1,919,542	0	5,431	5,431	66,140	XXX...	XXX...
8399999. Total Bonds.....						1,924,973	1,883,458	1,995,132	1,928,453	0	(8,911)	0	(8,911)	0	1,919,542	0	5,431	5,431	66,140	XXX...	XXX...
9999999. Total Bonds, Preferred and Common Stocks.....						1,924,973	1,883,458	1,995,132	1,928,453	0	(8,911)	0	(8,911)	0	1,919,542	0	5,431	5,431	66,140	XXX...	XXX...

QE05

(a) For all common stock bearing the NAIC market indicator "U" provide: the number of such issues:.....0.

**Sch. DB-Pt A-Sn 1
NONE**

**Sch. DB-Pt A-Sn 1-Footer A
NONE**

**Sch. DB-Pt A-Sn 1-Footer B
NONE**

**Sch. DB-Pt B-Sn 1
NONE**

**Sch. DB-Pt B-Sn 1-Footer A
NONE**

**Sch. DB-Pt B-Sn 1-Footer B
NONE**

**Sch. DB-Pt B-Sn 1B-Broker List
NONE**

**Sch. DB-Pt D-Sn 1
NONE**

**Sch. DB-Pt D-Sn 2
NONE**

**Sch. DL-Pt. 1
NONE**

**Sch. DL-Pt. 2
NONE**

COLONY SPECIALTY INSURANCE COMPANY

SCHEDULE E - PART 1 - CASH

Month End Depository Balances

1 Depository	2 Code	3 Rate of Interest	4 Amount of Interest Received During Current Quarter	5 Amount of Interest Accrued at Current Statement Date	Book Balance at End of Each Month During Current Quarter			9 *
					6 First Month	7 Second Month	8 Third Month	
Open Depositories								
Wells Fargo Bank, NA..... San Antonio, Texas.....				3,351,5503,343,6923,345,538	XXX..
0199999. Total Open Depositories.....	...XXX.....	...XXX.....003,351,5503,343,6923,345,538	XXX..
0399999. Total Cash on Deposit.....	...XXX.....	...XXX.....003,351,5503,343,6923,345,538	XXX..
0599999. Total Cash.....	...XXX.....	...XXX.....003,351,5503,343,6923,345,538	XXX..

SCHEDULE E - PART 2 - CASH EQUIVALENTS

Show Investments Owned End of Current Quarter

1 Description	2 Code	3 Date Acquired	4 Rate of Interest	5 Maturity Date	6 Book/Adjusted Carrying Value	7 Amount of Interest Due & Accrued	8 Amount Received During Year
------------------	-----------	-----------------------	--------------------------	-----------------------	--------------------------------------	--	-------------------------------------

NONE

**Supplement A to Sch. T
NONE**

**Supplement A to Sch. T
NONE**

**Supplement A to Sch. T
NONE**



SUPPLEMENT "A" TO SCHEDULE T

**EXHIBIT OF MEDICAL PROFESSIONAL LIABILITY PREMIUMS WRITTEN
ALLOCATED BY STATES AND TERRITORIES**

Designate the type of health care providers reported on this page.

Other Health Care Facilities

States, Etc.	1 Direct Premiums Written	2 Direct Premiums Earned	Direct Losses Paid		5 Direct Losses Incurred	Direct Losses Unpaid		8 Direct Losses Incurred But Not Reported
			3 Amount	4 Number of Claims		6 Amount Reported	7 Number of Claims	
1. Alabama.....AL								
2. Alaska.....AK								
3. Arizona.....AZ								
4. Arkansas.....AR								
5. California.....CA								
6. Colorado.....CO								
7. Connecticut.....CT								
8. Delaware.....DE								
9. District of Columbia.....DC								
10. Florida.....FL								
11. Georgia.....GA								
12. Hawaii.....HI								
13. Idaho.....ID								
14. Illinois.....IL								
15. Indiana.....IN								
16. Iowa.....IA								
17. Kansas.....KS								
18. Kentucky.....KY								
19. Louisiana.....LA								
20. Maine.....ME								
21. Maryland.....MD								
22. Massachusetts.....MA								
23. Michigan.....MI								
24. Minnesota.....MN								
25. Mississippi.....MS								
26. Missouri.....MO								
27. Montana.....MT								
28. Nebraska.....NE								
29. Nevada.....NV								
30. New Hampshire.....NH								
31. New Jersey.....NJ								
32. New Mexico.....NM								
33. New York.....NY								
34. North Carolina.....NC								
35. North Dakota.....ND								
36. Ohio.....OH								
37. Oklahoma.....OK								
38. Oregon.....OR								
39. Pennsylvania.....PA								
40. Rhode Island.....RI								
41. South Carolina.....SC								
42. South Dakota.....SD								
43. Tennessee.....TN								
44. Texas.....TX								
45. Utah.....UT								
46. Vermont.....VT								
47. Virginia.....VA	29,129	38,559			2,547			42,371
48. Washington.....WA								
49. West Virginia.....WV								
50. Wisconsin.....WI								
51. Wyoming.....WY								
52. American Samoa.....AS								
53. Guam.....GU								
54. Puerto Rico.....PR								
55. US Virgin Islands.....VI								
56. Northern Mariana Islands.....MP								
57. Canada.....CAN								
58. Aggregate Other Alien.....OT	0	0	0	0	0	0	0	0
59. Totals.....	29,129	38,559	0	0	2,547	0	0	42,371

DETAILS OF WRITE-INS

58001.....								
58002.....								
58003.....								
58998. Summary of remaining write-ins for Line 58 from overflow page.....	0	0	0	0	0	0	0	0
58999. Totals (Lines 58001 thru 58003+ 58998) (Line 58 above).....	0	0	0	0	0	0	0	0

NONE