



QUARTERLY STATEMENT

AS OF SEPTEMBER 30, 2014
OF THE CONDITION AND AFFAIRS OF THE

SONNENBERG MUTUAL INSURANCE COMPANY

NAIC Group Code 0207 , 0207 NAIC Company Code 10271 Employer's ID Number 34-0541185
(Current Period) (Prior Period)

Organized under the Laws of Ohio , State of Domicile or Port of Entry Ohio
Country of Domicile United States

Incorporated/Organized 01/01/1905 Commenced Business 01/01/1859

Statutory Home Office 1685 Cleveland Road , Wooster, OH, US 44691
(Street and Number) (City or Town, State, Country and Zip Code)

Main Administrative Office 1685 Cleveland Road Wooster, OH, US 44691-0036 330-262-9060
(Street and Number) (City or Town, State, Country and Zip Code) (Area Code) (Telephone Number)

Mail Address 1685 Cleveland Road , Wooster, OH, US 44691-0036
(Street and Number or P.O. Box) (City or Town, State, Country and Zip Code)

Primary Location of Books and Records 1685 Cleveland Road Wooster, OH, US 44691-0036 330-262-9060
(Street and Number) (City or Town, State, Country and Zip Code) (Area Code) (Telephone Number)

Internet Web Site Address www.wrg-ins.com

Statutory Statement Contact Brooke M. McVay, CPA 330-262-9060-2446
(Name) (Area Code) (Telephone Number) (Extension)
brooke_mcvay@wrg-ins.com 330-264-7822
(E-Mail Address) (Fax Number)

OFFICERS

| Name | Title | Name | Title |
|---------------------|--|-------------------------|--|
| <u>KEVIN W. DAY</u> | <u>PRESIDENT AND SECRETARY - CHIEF EXECUTIVE OFFICER</u> | <u>MICHAEL A. SHUTT</u> | <u>VICE PRESIDENT AND TREASURER -CHIEF FINANCIAL OFFICER</u> |

OTHER OFFICERS

| | | | |
|-------------------------|---|----------------------|---|
| <u>GREGORY A. BRUNN</u> | <u>VICE PRESIDENT -CHIEF MARKETING & UNDERWRITING OFFICER</u> | <u>GARY W. GWINN</u> | <u>VICE PRESIDENT -CHIEF CLAIMS OFFICER</u> |
| <u>GREGORY J. OWEN</u> | <u>VICE PRESIDENT -CHIEF INFORMATION OFFICER</u> | | |

DIRECTORS OR TRUSTEES

| | | | |
|---------------------------|----------------------------|-------------------------------|---------------------------|
| <u>KEVIN W. DAY</u> | <u>JEFFREY P. HASTINGS</u> | <u>RONALD E. HOLTMAN</u> | <u>JOHN P. MURPHY</u> |
| <u>C. MICHAEL REARDON</u> | <u>EDDIE L. STEINER</u> | <u>FLOYD A. TROUTEN III #</u> | <u>KENNETH L. VAGNINI</u> |

State ofOhio.....

County ofWayne.....ss

The officers of this reporting entity being duly sworn, each depose and say that they are the described officers of said reporting entity, and that on the reporting period stated above, all of the herein described assets were the absolute property of the said reporting entity, free and clear from any liens or claims thereon, except as herein stated, and that this statement, together with related exhibits, schedules and explanations therein contained, annexed or referred to, is a full and true statement of all the assets and liabilities and of the condition and affairs of the said reporting entity as of the reporting period stated above, and of its income and deductions therefrom for the period ended, and have been completed in accordance with the NAIC Annual Statement Instructions and Accounting Practices and Procedures manual except to the extent that: (1) state law may differ; or, (2) that state rules or regulations require differences in reporting not related to accounting practices and procedures, according to the best of their information, knowledge and belief, respectively. Furthermore, the scope of this attestation by the described officers also includes the related corresponding electronic filing with the NAIC, when required, that is an exact copy (except for formatting differences due to electronic filing) of the enclosed statement. The electronic filing may be requested by various regulators in lieu of or in addition to the enclosed statement.

KEVIN W. DAY
PRESIDENT AND SECRETARY -CHIEF
EXECUTIVE OFFICER

MICHAEL A. SHUTT
VICE PRESIDENT AND TREASURER -CHIEF
FINANCIAL OFFICER

a. Is this an original filing? Yes [X] No []

Subscribed and sworn to before me this
13th day of November, 2014

b. If no:
1. State the amendment number _____
2. Date filed _____
3. Number of pages attached _____

Lauresa Durham, Notary Public
July 30, 2016

STATEMENT AS OF SEPTEMBER 30, 2014 OF THE SONNENBERG MUTUAL INSURANCE COMPANY

ASSETS

| | Current Statement Date | | | 4 December 31 Prior Year Net Admitted Assets |
|---|------------------------|-------------------------|---|---|
| | 1 Assets | 2 Nonadmitted Assets | 3 Net Admitted Assets (Cols. 1 - 2) | |
| 1. Bonds | 13,622,184 | 0 | 13,622,184 | 12,732,287 |
| 2. Stocks: | | | | |
| 2.1 Preferred stocks | 48,582 | 0 | 48,582 | 49,266 |
| 2.2 Common stocks | 7,014,881 | 3,326 | 7,011,555 | 6,364,144 |
| 3. Mortgage loans on real estate: | | | | |
| 3.1 First liens | 0 | 0 | 0 | 0 |
| 3.2 Other than first liens | 0 | 0 | 0 | 0 |
| 4. Real estate: | | | | |
| 4.1 Properties occupied by the company (less \$ encumbrances) | 0 | 0 | 0 | 0 |
| 4.2 Properties held for the production of income (less \$ encumbrances) | 0 | 0 | 0 | 0 |
| 4.3 Properties held for sale (less \$ encumbrances) | 0 | 0 | 0 | 0 |
| 5. Cash (\$756,853), cash equivalents (\$0) and short-term investments (\$835,034) | 1,591,888 | 0 | 1,591,888 | 1,269,654 |
| 6. Contract loans (including \$ premium notes) | 0 | 0 | 0 | 0 |
| 7. Derivatives | 0 | 0 | 0 | 0 |
| 8. Other invested assets | 0 | 0 | 0 | 435,046 |
| 9. Receivables for securities | 0 | 0 | 0 | 0 |
| 10. Securities lending reinvested collateral assets | 0 | 0 | 0 | 0 |
| 11. Aggregate write-ins for invested assets | 0 | 0 | 0 | 0 |
| 12. Subtotals, cash and invested assets (Lines 1 to 11) | 22,277,534 | 3,326 | 22,274,208 | 20,850,397 |
| 13. Title plants less \$ charged off (for Title insurers only) | 0 | 0 | 0 | 0 |
| 14. Investment income due and accrued | 156,159 | 0 | 156,159 | 114,690 |
| 15. Premiums and considerations: | | | | |
| 15.1 Uncollected premiums and agents' balances in the course of collection | 306,548 | 879 | 305,669 | 306,236 |
| 15.2 Deferred premiums, agents' balances and installments booked but deferred and not yet due (including \$ earned but unbilled premiums) | 0 | 0 | 0 | 0 |
| 15.3 Accrued retrospective premiums | 0 | 0 | 0 | 0 |
| 16. Reinsurance: | | | | |
| 16.1 Amounts recoverable from reinsurers | (1,075) | 0 | (1,075) | 3,816 |
| 16.2 Funds held by or deposited with reinsured companies | 0 | 0 | 0 | 0 |
| 16.3 Other amounts receivable under reinsurance contracts | 0 | 0 | 0 | 0 |
| 17. Amounts receivable relating to uninsured plans | 0 | 0 | 0 | 0 |
| 18.1 Current federal and foreign income tax recoverable and interest thereon | 8,588 | 0 | 8,588 | 77,781 |
| 18.2 Net deferred tax asset | 0 | 0 | 0 | 0 |
| 19. Guaranty funds receivable or on deposit | 0 | 0 | 0 | 0 |
| 20. Electronic data processing equipment and software | 0 | 0 | 0 | 0 |
| 21. Furniture and equipment, including health care delivery assets (\$) | 0 | 0 | 0 | 0 |
| 22. Net adjustment in assets and liabilities due to foreign exchange rates | 0 | 0 | 0 | 0 |
| 23. Receivables from parent, subsidiaries and affiliates | 0 | 0 | 0 | 548,510 |
| 24. Health care (\$) and other amounts receivable | 0 | 0 | 0 | 0 |
| 25. Aggregate write-ins for other-than-invested assets | 9,319 | 9,319 | 0 | 0 |
| 26. Total assets excluding Separate Accounts, Segregated Accounts and Protected Cell Accounts (Lines 12 to 25) | 22,757,074 | 13,524 | 22,743,549 | 21,901,430 |
| 27. From Separate Accounts, Segregated Accounts and Protected Cell Accounts | 0 | 0 | 0 | 0 |
| 28. Total (Lines 26 and 27) | 22,757,074 | 13,524 | 22,743,549 | 21,901,430 |
| DETAILS OF WRITE-INS | | | | |
| 1101. | | | 0 | 0 |
| 1102. | | | 0 | 0 |
| 1103. | | | 0 | 0 |
| 1198. Summary of remaining write-ins for Line 11 from overflow page | 0 | 0 | 0 | 0 |
| 1199. Totals (Lines 1101 through 1103 plus 1198) (Line 11 above) | 0 | 0 | 0 | 0 |
| 2501. Prepaid Expense | 9,319 | 9,319 | 0 | 0 |
| 2502. | | | 0 | 0 |
| 2503. | | | 0 | 0 |
| 2598. Summary of remaining write-ins for Line 25 from overflow page | 0 | 0 | 0 | 0 |
| 2599. Totals (Lines 2501 through 2503 plus 2598) (Line 25 above) | 9,319 | 9,319 | 0 | 0 |

LIABILITIES, SURPLUS AND OTHER FUNDS

| | 1 Current Statement Date | 2 December 31, Prior Year |
|---|--------------------------------|---------------------------------|
| 1. Losses (current accident year \$ 1,392,128) | 2,841,313 | 2,927,913 |
| 2. Reinsurance payable on paid losses and loss adjustment expenses | 0 | 0 |
| 3. Loss adjustment expenses | 583,902 | 583,903 |
| 4. Commissions payable, contingent commissions and other similar charges | 292,714 | 395,628 |
| 5. Other expenses (excluding taxes, licenses and fees) | 385,429 | 389,577 |
| 6. Taxes, licenses and fees (excluding federal and foreign income taxes) | 95,576 | 115,432 |
| 7.1 Current federal and foreign income taxes (including \$ on realized capital gains (losses)) | 0 | 0 |
| 7.2 Net deferred tax liability | 228,614 | 72,397 |
| 8. Borrowed money \$ and interest thereon \$ | 0 | 0 |
| 9. Unearned premiums (after deducting unearned premiums for ceded reinsurance of \$ 0 and including warranty reserves of \$ and accrued accident and health experience rating refunds including \$ for medical loss ratio rebate per the Public Health Service Act) | 4,637,065 | 4,373,822 |
| 10. Advance premium | 97,491 | 69,163 |
| 11. Dividends declared and unpaid: | | |
| 11.1 Stockholders | 0 | 0 |
| 11.2 Policyholders | 0 | 0 |
| 12. Ceded reinsurance premiums payable (net of ceding commissions) | (49,517) | 48,100 |
| 13. Funds held by company under reinsurance treaties | 0 | 0 |
| 14. Amounts withheld or retained by company for account of others | 299,965 | 408,234 |
| 15. Remittances and items not allocated | 0 | 0 |
| 16. Provision for reinsurance (including \$ certified) | 0 | 0 |
| 17. Net adjustments in assets and liabilities due to foreign exchange rates | 0 | 0 |
| 18. Drafts outstanding | 0 | 0 |
| 19. Payable to parent, subsidiaries and affiliates | 0 | 0 |
| 20. Derivatives | 0 | 0 |
| 21. Payable for securities | 0 | 0 |
| 22. Payable for securities lending | 0 | 0 |
| 23. Liability for amounts held under uninsured plans | 0 | 0 |
| 24. Capital notes \$ and interest thereon \$ | 0 | 0 |
| 25. Aggregate write-ins for liabilities | 0 | 0 |
| 26. Total liabilities excluding protected cell liabilities (Lines 1 through 25) | 9,412,553 | 9,384,169 |
| 27. Protected cell liabilities | 0 | 0 |
| 28. Total liabilities (Lines 26 and 27) | 9,412,553 | 9,384,169 |
| 29. Aggregate write-ins for special surplus funds | 0 | 0 |
| 30. Common capital stock | 0 | 0 |
| 31. Preferred capital stock | 0 | 0 |
| 32. Aggregate write-ins for other than special surplus funds | 0 | 0 |
| 33. Surplus notes | 0 | 0 |
| 34. Gross paid in and contributed surplus | 0 | 0 |
| 35. Unassigned funds (surplus) | 13,330,996 | 12,517,261 |
| 36. Less treasury stock, at cost: | | |
| 36.1 shares common (value included in Line 30 \$) | 0 | 0 |
| 36.2 shares preferred (value included in Line 31 \$) | 0 | 0 |
| 37. Surplus as regards policyholders (Lines 29 to 35, less 36) | 13,330,996 | 12,517,261 |
| 38. Totals (Page 2, Line 28, Col. 3) | 22,743,549 | 21,901,430 |
| DETAILS OF WRITE-INS | | |
| 2501. | | |
| 2502. | | |
| 2503. | | |
| 2598. Summary of remaining write-ins for Line 25 from overflow page | 0 | 0 |
| 2599. Totals (Lines 2501 through 2503 plus 2598) (Line 25 above) | 0 | 0 |
| 2901. | | |
| 2902. | | |
| 2903. | | |
| 2998. Summary of remaining write-ins for Line 29 from overflow page | 0 | 0 |
| 2999. Totals (Lines 2901 through 2903 plus 2998) (Line 29 above) | 0 | 0 |
| 3201. | | |
| 3202. | | |
| 3203. | | |
| 3298. Summary of remaining write-ins for Line 32 from overflow page | 0 | 0 |
| 3299. Totals (Lines 3201 through 3203 plus 3298) (Line 32 above) | 0 | 0 |

STATEMENT OF INCOME

| | 1 Current Year to Date | 2 Prior Year to Date | 3 Prior Year Ended December 31 |
|---|------------------------------|----------------------------|--------------------------------------|
| UNDERWRITING INCOME | | | |
| 1. Premiums earned: | | | |
| 1.1 Direct (written \$ 3,270,106) | 2,219,421 | 1,839,146 | 2,506,768 |
| 1.2 Assumed (written \$ 7,360,703) | 7,097,462 | 6,752,471 | 9,049,997 |
| 1.3 Ceded (written \$ 3,270,106) | 2,219,421 | 1,839,146 | 2,506,768 |
| 1.4 Net (written \$ 7,360,703) | 7,097,462 | 6,752,471 | 9,049,997 |
| DEDUCTIONS: | | | |
| 2. Losses incurred (current accident year \$):: | | | |
| 2.1 Direct | 931,985 | 341,808 | 479,295 |
| 2.2 Assumed | 3,676,918 | 3,445,351 | 4,895,690 |
| 2.3 Ceded | 931,985 | 341,808 | 479,295 |
| 2.4 Net | 3,676,918 | 3,445,351 | 4,895,690 |
| 3. Loss adjustment expenses incurred | 698,311 | 647,016 | 918,499 |
| 4. Other underwriting expenses incurred | 2,333,247 | 2,309,977 | 3,092,045 |
| 5. Aggregate write-ins for underwriting deductions | 0 | 0 | 0 |
| 6. Total underwriting deductions (Lines 2 through 5) | 6,708,476 | 6,402,344 | 8,906,234 |
| 7. Net income of protected cells | 0 | 0 | 0 |
| 8. Net underwriting gain (loss) (Line 1 minus Line 6 + Line 7) | 388,985 | 350,127 | 143,763 |
| INVESTMENT INCOME | | | |
| 9. Net investment income earned | 377,445 | 412,354 | 539,235 |
| 10. Net realized capital gains (losses) less capital gains tax of \$ 14,403 | 27,959 | 99,123 | 117,656 |
| 11. Net investment gain (loss) (Lines 9 + 10) | 405,404 | 511,477 | 656,891 |
| OTHER INCOME | | | |
| 12. Net gain or (loss) from agents' or premium balances charged off (amount recovered \$ amount charged off \$ 8,441) | (8,441) | (6,872) | (8,945) |
| 13. Finance and service charges not included in premiums | 112,033 | 110,257 | 148,287 |
| 14. Aggregate write-ins for miscellaneous income | 113 | 108 | 83 |
| 15. Total other income (Lines 12 through 14) | 103,706 | 103,493 | 139,425 |
| 16. Net income before dividends to policyholders, after capital gains tax and before all other federal and foreign income taxes (Lines 8 + 11 + 15) | 898,095 | 965,097 | 940,079 |
| 17. Dividends to policyholders | 0 | 0 | 0 |
| 18. Net income, after dividends to policyholders, after capital gains tax and before all other federal and foreign income taxes (Line 16 minus Line 17) | 898,095 | 965,097 | 940,079 |
| 19. Federal and foreign income taxes incurred | 119,790 | (51,063) | 11,608 |
| 20. Net income (Line 18 minus Line 19)(to Line 22) | 778,305 | 1,016,160 | 928,471 |
| CAPITAL AND SURPLUS ACCOUNT | | | |
| 21. Surplus as regards policyholders, December 31 prior year | 12,517,261 | 11,252,409 | 11,252,409 |
| 22. Net income (from Line 20) | 778,305 | 1,016,160 | 928,471 |
| 23. Net transfers (to) from Protected Cell accounts | 0 | 0 | 0 |
| 24. Change in net unrealized capital gains or (losses) less capital gains tax of \$ 68,509 | 132,989 | 239,488 | 423,821 |
| 25. Change in net unrealized foreign exchange capital gain (loss) | 0 | 0 | 0 |
| 26. Change in net deferred income tax | (87,707) | (297,463) | (179,523) |
| 27. Change in nonadmitted assets | (9,852) | 49,703 | 50,166 |
| 28. Change in provision for reinsurance | 0 | 0 | 26,640 |
| 29. Change in surplus notes | 0 | 0 | 0 |
| 30. Surplus (contributed to) withdrawn from protected cells | 0 | 0 | 0 |
| 31. Cumulative effect of changes in accounting principles | 0 | 0 | 0 |
| 32. Capital changes: | | | |
| 32.1 Paid in | 0 | 0 | 0 |
| 32.2 Transferred from surplus (Stock Dividend) | 0 | 0 | 0 |
| 32.3 Transferred to surplus | 0 | 0 | 0 |
| 33. Surplus adjustments: | | | |
| 33.1 Paid in | 0 | 0 | 0 |
| 33.2 Transferred to capital (Stock Dividend) | 0 | 0 | 0 |
| 33.3 Transferred from capital | 0 | 0 | 0 |
| 34. Net remittances from or (to) Home Office | 0 | 0 | 0 |
| 35. Dividends to stockholders | 0 | 0 | 0 |
| 36. Change in treasury stock | 0 | 0 | 0 |
| 37. Aggregate write-ins for gains and losses in surplus | 0 | 9,940 | 15,277 |
| 38. Change in surplus as regards policyholders (Lines 22 through 37) | 813,735 | 1,017,828 | 1,264,852 |
| 39. Surplus as regards policyholders, as of statement date (Lines 21 plus 38) | 13,330,996 | 12,270,237 | 12,517,261 |
| DETAILS OF WRITE-INS | | | |
| 0501. | | 0 | 0 |
| 0502. | | 0 | 0 |
| 0503. | | 0 | 0 |
| 0598. Summary of remaining write-ins for Line 5 from overflow page | 0 | 0 | 0 |
| 0599. TOTALS (Lines 0501 through 0503 plus 0598) (Line 5 above) | 0 | 0 | 0 |
| 1401. Other Income (Expense) | 113 | 108 | 83 |
| 1402. | | | |
| 1403. | | | |
| 1498. Summary of remaining write-ins for Line 14 from overflow page | 0 | 0 | 0 |
| 1499. TOTALS (Lines 1401 through 1403 plus 1498) (Line 14 above) | 113 | 108 | 83 |
| 3701. Change in Surplus Due to Prior Period Adjustment (See Footnote 2) | 0 | 0 | 5,140 |
| 3702. Change in Surplus Due to Adoption of SSAP No. 102 less deferred tax of \$4,103 | 0 | 7,962 | 7,962 |
| 3703. Change in Option Liability | 0 | 1,978 | 2,175 |
| 3798. Summary of remaining write-ins for Line 37 from overflow page | 0 | 0 | 0 |
| 3799. TOTALS (Lines 3701 through 3703 plus 3798) (Line 37 above) | 0 | 9,940 | 15,277 |

CASH FLOW

| | 1 Current Year To Date | 2 Prior Year To Date | 3 Prior Year Ended December 31 |
|--|------------------------------|----------------------------|--------------------------------------|
| Cash from Operations | | | |
| 1. Premiums collected net of reinsurance..... | 7,291,415 | 7,002,812 | 9,273,249 |
| 2. Net investment income | 369,723 | 405,533 | 569,306 |
| 3. Miscellaneous income | 103,706 | 103,493 | 139,425 |
| 4. Total (Lines 1 to 3) | 7,764,844 | 7,511,838 | 9,981,980 |
| 5. Benefit and loss related payments | 3,758,627 | 3,203,426 | 4,506,312 |
| 6. Net transfers to Separate Accounts, Segregated Accounts and Protected Cell Accounts..... | 0 | 0 | 0 |
| 7. Commissions, expenses paid and aggregate write-ins for deductions | 3,158,477 | 2,838,565 | 3,675,455 |
| 8. Dividends paid to policyholders | 0 | 0 | 0 |
| 9. Federal and foreign income taxes paid (recovered) net of \$ tax on capital gains (losses)..... | 65,000 | 150,000 | 149,999 |
| 10. Total (Lines 5 through 9) | 6,982,105 | 6,191,991 | 8,331,766 |
| 11. Net cash from operations (Line 4 minus Line 10) | 782,740 | 1,319,847 | 1,650,214 |
| Cash from Investments | | | |
| 12. Proceeds from investments sold, matured or repaid: | | | |
| 12.1 Bonds | 625,936 | 1,225,085 | 1,760,846 |
| 12.2 Stocks | 172,098 | 3,004,352 | 3,718,290 |
| 12.3 Mortgage loans | 0 | 0 | 0 |
| 12.4 Real estate | 0 | 0 | 0 |
| 12.5 Other invested assets | 632,363 | 23,425 | 43,380 |
| 12.6 Net gains or (losses) on cash, cash equivalents and short-term investments | 0 | 0 | 0 |
| 12.7 Miscellaneous proceeds | 2 | 28,560 | 28,560 |
| 12.8 Total investment proceeds (Lines 12.1 to 12.7) | 1,430,399 | 4,281,422 | 5,551,076 |
| 13. Cost of investments acquired (long-term only): | | | |
| 13.1 Bonds | 1,534,219 | 1,587,109 | 2,416,157 |
| 13.2 Stocks | 531,211 | 2,388,902 | 3,378,007 |
| 13.3 Mortgage loans | 0 | 0 | 0 |
| 13.4 Real estate | 0 | 0 | 0 |
| 13.5 Other invested assets | 256,397 | 0 | 0 |
| 13.6 Miscellaneous applications | 0 | 22,998 | 22,560 |
| 13.7 Total investments acquired (Lines 13.1 to 13.6) | 2,321,827 | 3,999,009 | 5,816,724 |
| 14. Net increase (or decrease) in contract loans and premium notes | 0 | 0 | 0 |
| 15. Net cash from investments (Line 12.8 minus Line 13.7 and Line 14) | (891,428) | 282,413 | (265,648) |
| Cash from Financing and Miscellaneous Sources | | | |
| 16. Cash provided (applied): | | | |
| 16.1 Surplus notes, capital notes | 0 | 0 | 0 |
| 16.2 Capital and paid in surplus, less treasury stock..... | 0 | 0 | 0 |
| 16.3 Borrowed funds | 0 | 0 | 0 |
| 16.4 Net deposits on deposit-type contracts and other insurance liabilities | 0 | 0 | 0 |
| 16.5 Dividends to stockholders | 0 | 0 | 0 |
| 16.6 Other cash provided (applied)..... | 430,922 | (716,523) | (853,811) |
| 17. Net cash from financing and miscellaneous sources (Line 16.1 through Line 16.4 minus Line 16.5 plus Line 16.6)..... | 430,922 | (716,523) | (853,811) |
| RECONCILIATION OF CASH, CASH EQUIVALENTS AND SHORT-TERM INVESTMENTS | | | |
| 18. Net change in cash, cash equivalents and short-term investments (Line 11, plus Lines 15 and 17) | 322,234 | 885,737 | 530,755 |
| 19. Cash, cash equivalents and short-term investments: | | | |
| 19.1 Beginning of year..... | 1,269,654 | 738,899 | 738,899 |
| 19.2 End of period (Line 18 plus Line 19.1) | 1,591,888 | 1,624,636 | 1,269,654 |

NOTES TO FINANCIAL STATEMENTS

1. Summary of Significant Accounting Policies

A. Accounting Practices

The financial statements of Sonnenberg Mutual Insurance Company (SMIC) are presented on the basis of accounting principles prescribed or permitted by the Ohio Department of Insurance.

The Ohio Department of Insurance recognizes only statutory accounting practices prescribed or permitted by the State of Ohio for determining and reporting the financial condition and results of operations of an insurance company for determining its solvency under Ohio Insurance Law. The National Association of Insurance Commissioners' (NAIC) *Accounting Practices and Procedures Manual* (NAIC SAP) has been adopted as a component of prescribed or permitted practices by the State of Ohio.

The financial statements of the company are presented solely on the basis of accounting principles prescribed by the Ohio Department of Insurance. No permitted principles were utilized. As such, there are no increases or decreases to net income and surplus on a statutory accounting basis.

| | State of Domicile | 2014 | 2013 |
|---|----------------------|---------------|---------------|
| <u>NET INCOME</u> | | | |
| (1) Company state basis (Page 4, Line 20, Columns 1 & 3) | Ohio | \$ 778,305 | \$ 928,471 |
| (2) State Prescribed Practices that increase/(decrease) NAIC SAP: | | — | — |
| (3) State Permitted Practices that increase/(decrease) NAIC SAP: | | — | — |
| (4) NAIC SAP (1-2-3=4) | | \$ 778,305 | \$ 928,471 |
| <u>SURPLUS</u> | | | |
| (5) Company state basis (Page 3, Line 37, Columns 1 & 2) | Ohio | \$ 13,330,996 | \$ 12,517,261 |
| (6) State Prescribed Practices that increase/(decrease) NAIC SAP: | | — | — |
| (7) State Permitted Practices that increase/(decrease) NAIC SAP: | | — | — |
| (8) NAIC SAP (5-6-7=8) | | \$ 13,330,996 | \$ 12,517,261 |

B. Use of Estimates in the Preparation of the Financial Statements

No significant changes.

C. Accounting Policy

No significant changes.

2. Accounting Changes and Corrections of Errors

Accounting changes adopted to conform to the provisions of the NAIC Accounting Practices and Procedures Manual are reported as changes in accounting principles. The cumulative effect of the changes in accounting principles is reported as an adjustment to unassigned funds (surplus) in the period of the change in accounting principle. The cumulative effect is the difference between the amount of capital and surplus at the beginning of the year and the amount of capital and surplus that would have been reported at that date if the new accounting principles had been applied retroactively for all periods.

Effective January 1, 2013 the Company adopted the provisions of SSAP No. 102, *Accounting for Pensions, A Replacement of SSAP No. 89*. As a result, the Company recorded an adjustment to unassigned funds (surplus) net of deferred tax (\$4,103) of \$7,962.

In accordance with SSAP No. 3 *Accounting Changes and Errors*, the Company recorded a prior period adjustment to true—up the cost bases of mutual funds for prior year distributions originally reported as return of capital that the fund later reclassified as dividends. The net impact to surplus was an increase of \$5,140.

3. Business Combinations and Goodwill

A. Statutory Purchase Method

Not applicable.

B. Statutory Merger

Not applicable.

C. Impairment Loans

Not applicable.

4. Discontinued Operations

Not applicable.

NOTES TO FINANCIAL STATEMENTS

5. Investments

- A. Mortgage Loans, including Mezzanine Real Estate Loans
Not applicable.
- B. Debt Restructuring
Not applicable.
- C. Reverse Mortgages
Not applicable.
- D. Loan-Backed Securities
Not applicable.
- E. Repurchase Agreements and/or Securities Lending Transactions
Not applicable.
- F. Real Estate
Not applicable.
- G. Low-income Housing Tax Credits (LIHTC)
Not applicable.
- H. Restricted Assets
Not applicable.
- I. Working Capital Finance Investments
Not applicable.

6. Joint Ventures, Partnerships and Limited Liability Companies

No significant changes.

7. Investment Income

No significant changes.

8. Derivative Instruments

No significant changes.

9. Income Taxes

- A. The components of the net deferred tax asset/(liability) at September 30, 2014 and December 31, 2013 are as follows:

1.

| | 09/30/2014 | | |
|---|-------------------|---------------------|---------------------|
| | (1) | (2) | (3) |
| | Ordinary | Capital | (Col 1+2) Total |
| (a) Gross Deferred Tax Assets | \$ 750,057 | \$ 78,098 | \$ 828,155 |
| (b) Statutory Valuation Allowance Adjustments | — | — | — |
| (c) Adjusted Gross Deferred Tax Assets (1a – 1b) | 750,057 | 78,098 | 828,155 |
| (d) Deferred Tax Assets Nonadmitted | — | — | — |
| (e) Subtotal Net Deferred Tax Asset (1c – 1d) | 750,057 | 78,098 | 828,155 |
| (f) Deferred Tax Liabilities | (65,136) | (991,633) | (1,056,769) |
| (g) Net Admitted Deferred Tax Asset/(Net Deferred Tax Liability) (1e – 1f) | <u>\$ 684,921</u> | <u>\$ (913,535)</u> | <u>\$ (228,614)</u> |

NOTES TO FINANCIAL STATEMENTS

| | 12/31/2013 | | |
|---|-------------------|---------------------|--------------------|
| | (4) | (5) | (6) |
| | Ordinary | Capital | (Col 4+5) Total |
| (a) Gross Deferred Tax Assets | \$ 810,534 | \$ 113,360 | \$ 923,896 |
| (b) Statutory Valuation Allowance Adjustments | — | — | — |
| (c) Adjusted Gross Deferred Tax Assets (1a – 1b) | 810,534 | 113,360 | 923,896 |
| (d) Deferred Tax Assets Nonadmitted | — | — | — |
| (e) Subtotal Net Deferred Tax Asset (1c – 1d) | 810,534 | 113,360 | 923,896 |
| (f) Deferred Tax Liabilities | (73,170) | (923,123) | (996,293) |
| (g) Net Admitted Deferred Tax Asset/(Net Deferred Tax Liability) (1e – 1f) | <u>\$ 737,364</u> | <u>\$ (809,763)</u> | <u>\$ (72,397)</u> |

| | Change | | |
|---|-----------------------|----------------------|---------------------|
| | (7) | (8) | (9) |
| | (Col 1—4) Ordinary | (Col 2—5) Capital | (Co 7+8) Total |
| (a) Gross Deferred Tax Assets | \$ (60,477) | \$ (35,263) | \$ (95,740) |
| (b) Statutory Valuation Allowance Adjustments | — | — | — |
| (c) Adjusted Gross Deferred Tax Assets (1a – 1b) | (60,477) | (35,263) | (95,740) |
| (d) Deferred Tax Assets Nonadmitted | — | — | — |
| (e) Subtotal Net Deferred Tax Asset (1c – 1d) | (60,477) | (35,263) | (95,740) |
| (f) Deferred Tax Liabilities | 8,033 | (68,509) | (60,476) |
| (g) Net Admitted Deferred Tax Asset/(Net Deferred Tax Liability) (1e – 1f) | <u>\$ (52,244)</u> | <u>\$ (103,772)</u> | <u>\$ (156,216)</u> |

2. Admission Calculation Components SSAP No. 101

| | 09/30/2014 | | |
|--|-------------------|------------------|--------------------|
| | (1) | (2) | (3) |
| | Ordinary | Capital | (Col 1+2) Total |
| (a) Federal Income Taxes Paid In Prior Years Recoverable Through Loss Carrybacks. | \$ — | \$ — | \$ — |
| (b) Adjusted Gross Deferred Tax Assets Expected To Be Realized (Excluding The Amount Of Deferred Tax Assets From 2(a) above) After Application of the Threshold Limitation (The Lesser of 2(b)1 and 2(b)2 Below) | 434,335 | — | 434,335 |
| 1. Adjusted Gross Deferred Tax Assets Expected to be Realized Following the Balance Sheet Date. | 434,335 | — | 434,335 |
| 2. Adjusted Gross Deferred Tax Assets Allowed per Limitation Threshold. | XXX | XXX | 1,999,649 |
| (c) Adjusted Gross Deferred Tax Assets (Excluding The Amount Of Deferred Tax Assets From 2(a) and 2(b) above) Offset by Gross Deferred Tax Liabilities. | 315,722 | 78,098 | 393,820 |
| (d) Deferred Tax Assets Admitted as the result of application of SSAP No. 101. (2(a) + 2(b) + 2(c)) | <u>\$ 750,057</u> | <u>\$ 78,098</u> | <u>\$ 828,155</u> |

NOTES TO FINANCIAL STATEMENTS

| | 12/31/2013 | | |
|--|-----------------------|----------------------|--------------------|
| | (4) | (5) | (6) |
| | Ordinary | Capital | (Col 4+5) Total |
| (a) Federal Income Taxes Paid In Prior Years Recoverable Through Loss Carrybacks. | \$ — | \$ — | \$ — |
| (b) Adjusted Gross Deferred Tax Assets Expected To Be Realized (Excluding The Amount Of Deferred Tax Assets From 2(a) above) After Application of the Threshold Limitation (The Lesser of 2(b)1 and 2(b)2 Below) | 434,335 | — | 434,335 |
| 1. Adjusted Gross Deferred Tax Assets Expected to be Realized Following the Balance Sheet Date. | 434,335 | — | 434,335 |
| 2. Adjusted Gross Deferred Tax Assets Allowed per Limitation Threshold. | XXX | XXX | 1,868,311 |
| (c) Adjusted Gross Deferred Tax Assets (Excluding The Amount Of Deferred Tax Assets From 2(a) and 2(b) above) Offset by Gross Deferred Tax Liabilities. | <u>376,201</u> | <u>113,360</u> | <u>489,561</u> |
| (d) Deferred Tax Assets Admitted as the result of application of SSAP No. 101. (2(a) + 2(b) + 2(c)) | <u>\$ 810,536</u> | <u>\$ 113,360</u> | <u>\$ 923,896</u> |
| | Change | | |
| | (7) | (8) | (9) |
| | (Col 1—4) Ordinary | (Col 2—5) Capital | (Col 7+8) Total |
| (a) Federal Income Taxes Paid In Prior Years Recoverable Through Loss Carrybacks. | \$ — | \$ — | \$ — |
| (b) Adjusted Gross Deferred Tax Assets Expected To Be Realized (Excluding The Amount Of Deferred Tax Assets From 2(a) above) After Application of the Threshold Limitation (The Lesser of 2(b)1 and 2(b)2 Below) | — | — | — |
| 1. Adjusted Gross Deferred Tax Assets Expected to be Realized Following the Balance Sheet Date. | — | — | — |
| 2. Adjusted Gross Deferred Tax Assets Allowed per Limitation Threshold. | XXX | XXX | 131,338 |
| (c) Adjusted Gross Deferred Tax Assets (Excluding The Amount Of Deferred Tax Assets From 2(a) and 2(b) above) Offset by Gross Deferred Tax Liabilities. | <u>(60,477)</u> | <u>(35,263)</u> | <u>(95,740)</u> |
| (d) Deferred Tax Assets Admitted as the result of application of SSAP No. 101. (2(a) + 2(b) + 2(c)) | <u>\$ (60,477)</u> | <u>\$ (35,263)</u> | <u>\$ (95,740)</u> |
| 3. | | | |
| | 2014 | 2013 | |
| (a) Ratio Percentage Used To Determine Recovery Period And Threshold Limitation Amount. | 15% | 15% | |
| (b) Amount Of Adjusted Capital And Surplus Used To Determine Recovery Period And Threshold Limitation In 2(b) 2 Above. | \$ 13,330,996 | \$ 12,517,261 | |

NOTES TO FINANCIAL STATEMENTS

4. Impact of Tax—Planning Strategies

| | | <u>09/30/2014</u> | |
|-----|---|-------------------|----------------|
| | | (1) | (2) |
| | | <u>Ordinary</u> | <u>Capital</u> |
| (a) | Determination Of Adjusted Gross Deferred Tax Assets And Net Admitted Deferred Tax Assets, By Tax Character As A Percentage. | | |
| 1. | Adjusted Gross DTAs Amount From Note 9A1(c) | \$ 750,057 | \$ 78,098 |
| 2. | Percentage of Adjusted Gross DTAs By Tax Character Attributable To The Impact Of Tax Planning Strategies | 0% | 0% |
| 3. | Net Admitted Adjusted Gross DTAs Amount from Note 9A1(e) | \$ 750,057 | \$ 78,098 |
| 4. | Percentage of Net Admitted Adjusted Gross DTAs By Tax Character Admitted Because Of The Impact Of Tax Planning Strategies | 0% | 0% |
| | | <u>12/31/2013</u> | |
| | | (3) | (4) |
| | | <u>Ordinary</u> | <u>Capital</u> |
| (a) | Determination Of Adjusted Gross Deferred Tax Assets And Net Admitted Deferred Tax Assets, By Tax Character As A Percentage. | | |
| 1. | Adjusted Gross DTAs Amount From Note 9A1(c) | \$ 810,534 | \$ 113,360 |
| 2. | Percentage of Adjusted Gross DTAs By Tax Character Attributable To The Impact Of Tax Planning Strategies | 0% | 0% |
| 3. | Net Admitted Adjusted Gross DTAs Amount from Note 9A1(e) | \$ 810,534 | \$ 113,360 |
| 4. | Percentage of Net Admitted Adjusted Gross DTAs By Tax Character Admitted Because Of The Impact Of Tax Planning Strategies | 0% | 0% |
| | | <u>Change</u> | |
| | | (5) | (6) |
| | | (Col 1-3) | (Col 2-4) |
| | | <u>Ordinary</u> | <u>Capital</u> |
| (a) | Determination Of Adjusted Gross Deferred Tax Assets And Net Admitted Deferred Tax Assets, By Tax Character As A Percentage. | | |
| 1. | Adjusted Gross DTAs Amount From Note 9A1(c) | \$ (60,477) | \$ (35,263) |
| 2. | Percentage of Adjusted Gross DTAs By Tax Character Attributable To The Impact Of Tax Planning Strategies | 0% | 0% |
| 3. | Net Admitted Adjusted Gross DTAs Amount from Note 9A1(c) | \$ (60,477) | \$ (35,263) |
| 4. | Percentage of Net Admitted Adjusted Gross DTAs By Tax Character Admitted Because Of The Impact Of Tax Planning Strategies | 0% | 0% |
| (b) | Does the Company's tax—planning strategies include the use of reinsurance? Yes _____ No <u>X</u> | | |

B. The Company has no temporary differences for which deferred tax liabilities are not recognized.

C. Current income taxes incurred consist of the following major components:

| | | (1) | (2) | (3) |
|-----|--|-------------------|-------------------|------------------|
| | | <u>09/30/2014</u> | <u>12/31/2013</u> | <u>(Col 1—2)</u> |
| | | <u>Change</u> | | |
| 1. | Current Income Tax | | | |
| (a) | Federal | \$ 135,078 | \$ 11,608 | \$ 123,470 |
| (b) | Foreign | \$ — | \$ — | \$ — |
| (c) | Subtotal | \$ 135,078 | \$ 11,608 | \$ 123,470 |
| (d) | Federal income tax on net capital gains | \$ 14,403 | \$ 60,610 | \$ (46,207) |
| (e) | Utilization of operating loss carry—forwards | \$ — | \$ — | \$ — |
| (f) | Other (incl. prior year over/under accrual) | \$ — | \$ — | \$ — |
| (g) | Federal and foreign income taxes incurred | <u>\$ 149,481</u> | <u>\$ 72,218</u> | <u>\$ 77,263</u> |

NOTES TO FINANCIAL STATEMENTS

2. Deferred Tax Assets

(a) Ordinary

| | | | |
|--|------------|------------|-------------|
| (1) Discounting of unpaid losses | \$ 56,177 | \$ 56,177 | \$ — |
| (2) Unearned premium reserve | \$ 315,320 | \$ 297,420 | \$ 17,900 |
| (3) Policyholder reserves | \$ — | \$ — | \$ — |
| (4) Investments | \$ — | \$ — | \$ — |
| (5) Deferred acquisition costs | \$ — | \$ — | \$ — |
| (6) Policyholder dividends accrual | \$ — | \$ — | \$ — |
| (7) Fixed assets and prepaid expense— nonadmitted | \$ 3,168 | \$ — | \$ 3,168 |
| (8) Compensation and benefits accrual | \$ 79,941 | \$ 105,492 | \$ (25,551) |
| (9) Pension accrual | \$ 25,706 | \$ 25,690 | \$ 16 |
| (10) Receivables – nonadmitted | \$ 299 | \$ 106 | \$ 193 |
| (11) Net operating loss carry—forward | \$ 0 | \$ 86,574 | \$ (86,574) |
| (12) Tax credit carry—forward | \$ 120,739 | \$ 108,169 | \$ 12,570 |
| (13) Other (including items <5% of total ordinary tax assets): | | | |
| (14) Salvage and subrogation anticipated | \$ 87,678 | \$ 87,678 | \$ — |
| (15) Software capitalized | \$ 53,830 | \$ 36,339 | \$ 17,491 |
| (16) Other | \$ 7,199 | \$ 6,889 | \$ 310 |
| (99) Subtotal | \$ 750,057 | \$ 810,534 | \$ (60,477) |
| (b) Statutory valuation allowance adjustment | \$ — | \$ — | \$ — |
| (c) Nonadmitted | \$ — | \$ — | \$ — |
| (d) Admitted ordinary deferred tax assets (2a99 – 2b – 2c) | \$ 750,057 | \$ 810,534 | \$ (60,477) |

| (1) | (2) | (3) |
|------------|------------|---------------------|
| 09/30/2014 | 12/31/2013 | (Col 1—2) Change |

(e) Capital:

| | | | |
|--|------------|------------|-------------|
| (1) Investments | \$ — | \$ — | \$ — |
| (2) Net capital loss carry—forward | \$ — | \$ — | \$ — |
| (3) Real estate | \$ — | \$ — | \$ — |
| (4) Other (including items <5% of total capital tax assets): | | | |
| (5) Unrealized capital losses for impaired securities | \$ 78,098 | \$ 113,361 | \$ (35,263) |
| (99) Subtotal | \$ 78,098 | \$ 113,361 | \$ (35,263) |
| (f) Statutory valuation allowance adjustment | \$ — | \$ — | \$ — |
| (g) Nonadmitted | \$ — | \$ — | \$ — |
| (h) Admitted capital deferred tax assets (2e99 – 2f – 2g) | \$ 78,098 | \$ 113,361 | \$ (35,263) |
| (i) Admitted deferred tax assets (2d + 2h) | \$ 828,155 | \$ 923,895 | \$ (95,740) |

3. Deferred Tax Liabilities:

(a) Ordinary

| | | | |
|---|----------------|--------------|--------------|
| (1) Investments | \$ (38,823) | \$ (57,011) | \$ 18,188 |
| (2) Fixed assets | \$ — | \$ — | \$ — |
| (3) Deferred and uncollected premium | \$ — | \$ — | \$ — |
| (4) Policyholder reserves | \$ — | \$ — | \$ — |
| (5) Other (including items <5% of total ordinary tax liabilities) | \$ (26,313) | \$ (16,159) | \$ (10,154) |
| (99) Subtotal | \$ (65,136) | \$ (73,170) | \$ 8,034 |
| (b) Capital: | | | |
| (1) Investments | \$ — | \$ — | \$ — |
| (2) Real estate | \$ — | \$ — | \$ — |
| (3) Other (including items <5% of total capital tax liabilities): | | | |
| (4) Unrealized capital gains | \$ (991,633) | \$ (923,123) | \$ (68,510) |
| (99) Subtotal | \$ (991,633) | \$ (923,123) | \$ (68,510) |
| (c) Deferred tax liabilities (3a99 + 3b99) | \$ (1,056,769) | \$ (996,293) | \$ (60,476) |
| 4. Net deferred tax assets/liabilities (2i – 3c) | \$ (228,614) | \$ (72,398) | \$ (156,216) |

NOTES TO FINANCIAL STATEMENTS

- D. The provision for federal income taxes incurred is different from that which would be obtained by applying the statutory federal income tax rate to income before income taxes. Among the more significant book to tax adjustments were the following:

| | <u>09/30/2014</u> | <u>Effective Tax Rate</u> |
|--|-------------------|-------------------------------|
| Provision computed at statutory rate | \$ 310,249 | 34.0% |
| Tax exempt interest | (38,792) | (4.3%) |
| Dividends received deduction | (22,436) | (2.5%) |
| Change in deferred tax on nonadmitted assets | (3,467) | (0.4%) |
| Other | (8,365) | (0.8%) |
| Total | <u>\$ 237,188</u> | <u>26.0%</u> |
| Federal and foreign income taxes incurred | \$ 135,078 | 14.8% |
| Tax on capital gains (losses) | 14,403 | 1.6% |
| Change in net deferred income taxes | 87,707 | 9.6% |
| Total statutory income taxes | <u>\$ 236,990</u> | <u>26.0%</u> |

- E. Carry—forwards, recoverable taxes, and IRC §6603 deposits:

(1) As of September 30, 2014, the Company had no net operating loss and net capital loss carry—forwards available for tax purposes.

As of September 30, 2014, the Company had alternative minimum tax (AMT) credit carry—forwards in the amount of \$120,739 which do not have an expiration date.

(2) As of September 30, 2014, the Company had no federal income taxes incurred available for recoupment in the event of future net losses.

(3) The Company has no deposits reported as admitted assets under IRC §6603 as of September 30, 2014.

- F. The Company files an individual federal income tax return.

10. Information Concerning Parent, Subsidiaries, Affiliates and Other Related Parties

- A. Not applicable.
- B. Not applicable.
- C. Not applicable.
- D. At September 30, 2014, there was no intercompany receivable due from and/or due to its Subsidiaries and Affiliates. The intercompany balances due from and/or due to its Subsidiaries and Affiliates are reimbursed quarterly on an as made basis.
- E. Not applicable.
- F. No significant changes.
- G. No significant changes.
- H. Not applicable.
- I. Not applicable.
- J. Not applicable.
- K. Not applicable.
- L. No significant changes.

11. Debt

Not applicable.

NOTES TO FINANCIAL STATEMENTS

12. Retirement Plans, Deferred Compensation, Postemployment Benefits and Compensated Absences and Other Postretirement Benefit Plans

A. Defined Benefit Plans

The Company has a non—qualified, unfunded, directors' retirement plan and a retiree healthcare plan both of which are closed to new participants. The related liabilities and expenses are not material to the Company's financial position.

The Company also has a non—qualified voluntary deferred compensation plan for senior executive officers. The plan allows for deferral of payouts from the Annual Cash Bonus Plan and Performance Share Plan for Key Executives. As of September 30, 2014 and December 31, 2013, amounts held for these deferrals were \$.3 million and \$.4 million, respectively.

B. Investment Policies and Strategies

Not applicable.

C. Fair Value of Plan Assets

Not applicable.

D. Basis of Rates of Returns on Assets

Not applicable.

E. Defined Contribution Plans

No significant changes.

F. Multiemployer Plans

Not applicable.

G. Consolidated/Holding Company Plans

Not applicable.

H. Postemployment Benefits and Compensated Absences

Not applicable.

I. Impact of Medicare Modernization Act on Postretirement Benefits (INT 04—17)

Not applicable.

13. Capital and Surplus, Dividend Restrictions and Quasi—Reorganizations

(1) Not applicable.

(2) Not applicable.

(3) Not applicable.

(4) Not applicable.

(5) Not applicable.

(6) Not applicable.

(7) Not applicable.

(8) Not applicable.

(9) Not applicable.

(10) The portion of unassigned funds (surplus) represented or reduced by cumulative unrealized gains and losses before tax is \$2.9 million.

(11) Not applicable.

(12) Not applicable.

(13) Not applicable.

NOTES TO FINANCIAL STATEMENTS

14. Contingencies

- A. Contingent Commitments
Not applicable.
- B. Assessments
No significant changes.
- C. Gain Contingencies
Not applicable.
- D. Claims Related Extra Contractual Obligation and Bad Faith Losses Stemming from Lawsuits
No significant changes.
- E. Product Warranties
Not applicable.
- F. All Other Contingencies
Not applicable.

15. Leases

No significant changes.

16. Information about Financial Instruments With Off—Balance—Sheet Risk and Financial Instruments With Concentrations of Credit Risk

Not applicable.

17. Sale, Transfer, and Servicing of Financial Assets and Extinguishment of Liabilities

- A. Transfers of Receivables Reported as Sales
Not applicable.
- B. Transfer and Servicing of Financial Assets
Not applicable.
- C. Wash Sales
Not applicable.

18. Gain or Loss to the Reporting Entity from Uninsured A&H Plans and the Uninsured Portion of Partially Insured Plans

- A. ASO Plans
Not applicable.
- B. ASC Plans
Not applicable.
- C. Medicare or Other Similarly Structured Cost Based Reimbursement Contract
Not applicable.

19. Direct Premium Written/Produced by Managing General Agents/Third Party Administrators

Not applicable.

NOTES TO FINANCIAL STATEMENTS

20. Fair Value Measurements

- A. The Company's financial assets and liabilities carried at fair value have been classified, for disclosure purposes, based on a hierarchy defined by FASB ASC 820 (SFAS No. 157), *Fair Value Measurements*. The hierarchy gives the highest ranking to fair values determined using unadjusted quoted prices in active markets for identical assets and liabilities (Level 1) and the lowest ranking to fair values determined using methodologies and models with unobservable inputs (Level 3). An asset's or a liability's classification is based on the lowest level input that is significant to its measurement. For example, a Level 3 fair value measurement may include inputs that are both observable (Levels 1 and 2) and unobservable (Level 3). The levels of the fair value hierarchy are as follows:

Level 1:

Values are unadjusted quoted prices for identical assets and liabilities in active markets accessible at the measurement date.

Level 2:

Inputs include quoted prices for similar assets or liabilities in active markets, quoted prices from those willing to trade in markets that are not active, or other inputs that are observable or can be corroborated by market data for the term of the instrument. Such inputs include market interest rates and volatilities, spreads and yield curves.

Level 3:

Certain inputs are unobservable (supported by little or no market activity) and significant to the fair value measurement. Unobservable inputs reflect the Company's best estimate of what hypothetical market participants would use to determine a transaction price for the asset or liability at the reporting date.

(1) Fair Value Measurements at September 30, 2014:

| Description for each class of asset or liability | (Level 1) | (Level 2) | (Level 3) | Total |
|---|--------------|-----------|-----------|--------------|
| a. Assets at fair value: | | | | |
| Perpetual Preferred Stock: | | | | |
| Industrial and Misc | \$ 48,582 | \$ — | \$ — | \$ 48,582 |
| Total Perpetual Preferred Stocks | 48,582 | — | — | 48,582 |
| Common Stock: | | | | |
| Mutual Funds | 2,882,561 | | | 2,882,561 |
| Industrial and Misc | 4,056,481 | | 72,513 | 4,128,994 |
| Parent, Subsidiaries, and Affiliates | — | — | — | — |
| Total Common Stocks | 6,939,042 | — | 72,513 | 7,011,555 |
| Other Invested Assets | — | — | — | — |
| Total assets at fair value | \$ 6,987,624 | \$ — | \$ 72,513 | \$ 7,060,137 |
| b. Liabilities at fair value: | | | | |
| Not applicable. | | | | |

Fair Value Measurements at December 31, 2013:

| Description for each class of asset or liability | (Level 1) | (Level 2) | (Level 3) | Total |
|---|--------------|-----------|------------|--------------|
| a. Assets at fair value: | | | | |
| Perpetual Preferred Stock: | | | | |
| Industrial and Misc | \$ 49,266 | \$ — | \$ — | \$ 49,266 |
| Total Perpetual Preferred Stocks | 49,266 | — | — | 49,266 |
| Common Stock: | | | | |
| Mutual Funds | 2,494,535 | | | 2,494,535 |
| Industrial and Misc | 3,796,995 | 72,614 | — | 3,869,609 |
| Parent, Subsidiaries, and Affiliates | — | — | — | — |
| Total Common Stocks | 6,291,530 | 72,614 | — | 6,364,144 |
| Other Invested Assets | — | — | 435,046 | 435,046 |
| Total assets at fair value | \$ 6,340,796 | \$ 72,614 | \$ 435,046 | \$ 6,848,456 |
| b. Liabilities at fair value: | | | | |
| Not applicable. | | | | |

NOTES TO FINANCIAL STATEMENTS

(2) Fair Value Measurements in (Level 3) of the Fair Value Hierarchy:

| | Beginning Balance at 01/01/2014 | Transfers In/(out) Level 3 | Total Gain/(Loss) Included in Net Income | Total Gain/(Loss) Included in Surplus | (Sales) | Ending Balance at 09/30/2014 |
|--------------------------|---------------------------------------|----------------------------------|---|--|---------------------|------------------------------------|
| a. Assets: | | | | | | |
| Common Stock: | | | | | | |
| Industrial and Misc | \$ — | \$ 72,513 | \$ — | \$ — | \$ — | \$ 72,513 |
| Other Invested Assets | 435,046 | — | 26,038 | (85,118) | (375,966) | — |
| Total Assets | <u>\$ 435,046</u> | <u>\$ 72,513</u> | <u>\$ 26,038</u> | <u>\$ (85,118)</u> | <u>\$ (375,966)</u> | <u>\$ 72,513</u> |
| b. Liabilities: | | | | | | |
| Not applicable. | | | | | | |

(3) The Company's policy is to recognize transfers in and out as of the end of the reporting period.

(4) As of September 30, 2014, the reported fair value of the entity's investments categorized within Level 3 of the fair value hierarchy is as follows:

Common Stocks – The Company holds an investment in NAMIC common stock.

B. Not applicable.

C. Fair Value of All Financial Instruments:

| Type of Financial Instrument | Aggregate Fair Value | Admitted Assets | (Level 1) | (Level 2) | (Level 3) | Not Practicable (Carrying Value) |
|------------------------------|-------------------------|--------------------|--------------|---------------|-----------|---|
| Bonds | \$ 14,230,064 | \$ 13,622,184 | \$ 1,521,275 | \$ 12,708,789 | \$ — | \$ — |
| Perpetual Preferred Stock | 48,582 | 48,582 | 48,582 | — | — | — |
| Common Stock | 7,011,555 | 7,011,555 | 6,939,042 | — | 72,513 | — |
| Other Invested Assets | — | — | — | — | — | — |

D. The Company has no assets for which it was not practicable to estimate fair value.

21. Other Items

A. Extraordinary Items

Not applicable.

B. Troubled Debt Restructuring: Debtors

Not applicable.

C. Other Disclosures and Unusual Items

Not applicable.

D. Business Interruption Insurance Recoveries

Not applicable.

E. State Transferable and Non—transferable Tax Credits

Not applicable.

F. Subprime Mortgage Related Risk Exposure

Not applicable.

22. Events Subsequent

Type I – Recognized Subsequent Events:

Subsequent events have been considered through November 14, 2014 for the statutory statement issued on November 14, 2014 for the quarter ending September 30, 2014. No Type I events were identified that would have a material effect on the financial condition of the Company.

Type II – Nonrecognized Subsequent Events:

Subsequent events have been considered through November 14, 2014 for the statutory statement issued on November 14, 2014 for the quarter ending September 30, 2014. No Type II events were identified that would have a material effect on the financial condition of the Company.

NOTES TO FINANCIAL STATEMENTS

23. Reinsurance

- A. Unsecured Reinsurance Recoverables
Not applicable.
- B. Reinsurance Recoverable in Dispute
Not applicable.
- C. Reinsurance Assumed and Ceded
No significant changes.
- D. Uncollectible Reinsurance
No significant changes.
- E. Commutation of Ceded Reinsurance
Not applicable.
- F. Retroactive Reinsurance
Not applicable.
- G. Reinsurance Accounted for as a Deposit
Not applicable.
- H. Disclosures for the Transfer of Property and Casualty Run—off Agreements
Not applicable.
- I. Certified Reinsurer Rating Downgraded or Status Subject to Revocation
Not applicable.

24. Retrospectively Rated Contracts and Contracts Subject to Redetermination

Not applicable.

25. Changes in Incurred Losses and Loss Adjustment Expense

Reserves as of December 31, 2013 were \$3.5 million. In calendar year 2014, \$1.4 million has been paid for incurred losses and loss adjustment expenses attributable to insured events of prior years. Reserves remaining for prior years are now \$1.9 million. Therefore, there has been a \$0.2 million favorable prior year development from December 31, 2013 to September 30, 2014. The favorable development is generally the result of ongoing analysis of recent loss development trends, and from decreases in the estimates of loss and loss adjustment expenses for the following lines of business: commercial auto liability, auto physical damage, homeowners/farmowners, commercial multi-peril, other liability and special property. These decreases were offset, in part, by increases in workers compensation, and private passenger auto liability. Original estimates are increased or decreased as additional information becomes known regarding individual claims. The estimates are not affected by prior year loss development on retrospectively rated policies, as the Company does not write this type of policy.

26. Intercompany Pooling Agreements

- A. No significant changes.
- B. No significant changes.
- C. No significant changes.
- D. No significant changes.
- E. No significant changes.
- F. No significant changes.
- G. There were no balances due to/ due from the Company's affiliated entities participating in the intercompany pool as of September 30, 2014.

27. Structured Settlements

Not applicable.

NOTES TO FINANCIAL STATEMENTS

28. Health Care Receivables

Not applicable.

29. Participating Policies

Not applicable.

30. Premium Deficiency Reserves

No significant changes.

31. High Deductibles

Not applicable.

32. Discounting of Liabilities for Unpaid Losses or Unpaid Loss Adjustment Expenses

No significant changes.

33. Asbestos/Environmental Reserves

- A. Does the Company have on the books, or has it ever written an insured for which you have identified a potential for the existence of a liability due to asbestos losses? Yes () No (x)
- B. Not applicable.
- C. Not applicable.
- D. Does the Company have on the books, or has it ever written an insured for which you have identified a potential for the existence of a liability due to environmental losses? Yes (x) No ()

| | <u>2010</u> | <u>2011</u> | <u>2012</u> | <u>2013</u> | <u>2014</u> |
|--|-------------|-------------|-------------|-------------|--------------|
| (1) Direct – | | | | | |
| a. Beginning reserves: | \$ — | \$ 1 | \$ 1 | \$ 4 | \$ 8 |
| b. Incurred losses and loss adjustment expense: | 7 | 2 | 4 | 9 | 3 |
| c. Calendar year payments for losses and loss adjustment expenses: | <u>6</u> | <u>2</u> | <u>1</u> | <u>5</u> | <u>(6)</u> |
| d. Ending reserves: | <u>\$ 1</u> | <u>\$ 1</u> | <u>\$ 4</u> | <u>\$ 8</u> | <u>\$ 17</u> |
| (2) Assumed Reinsurance – | | | | | |
| a. Beginning reserves: | \$ — | \$ — | \$ — | \$ — | \$ — |
| b. Incurred losses and loss adjustment expense: | — | — | — | — | — |
| c. Calendar year payments for losses and loss adjustment expenses: | <u>—</u> | <u>—</u> | <u>—</u> | <u>—</u> | <u>—</u> |
| d. Ending reserves: | <u>\$ —</u> | <u>\$ —</u> | <u>\$ —</u> | <u>\$ —</u> | <u>\$ —</u> |
| (3) Net of Ceded Reinsurance – | | | | | |
| a. Beginning reserves: | \$ — | \$ 1 | \$ 1 | \$ 4 | \$ 8 |
| b. Incurred losses and loss adjustment expense: | 7 | 2 | 4 | 5 | (8) |
| c. Calendar year payments for loss and loss adjustment expenses: | <u>6</u> | <u>2</u> | <u>1</u> | <u>1</u> | <u>(2)</u> |
| d. Ending reserves: | <u>\$ 1</u> | <u>\$ 1</u> | <u>\$ 4</u> | <u>\$ 8</u> | <u>\$ 2</u> |

NOTES TO FINANCIAL STATEMENTS

The Company's exposure to environmental losses arises from the sale of general liability insurance. The company estimates the full impact of the environmental exposure by establishing full case basis reserves on all known losses and computing incurred but not reported losses based on previous experience. The company's estimate of the environmental related losses for each of the five most recent years after intercompany pooling are displayed above.

E. State the amount of ending reserves for Bulk + IBNR included in D (Loss & LAE):

| | | |
|-------------------------------------|----|---|
| (1) Direct Basis: | \$ | — |
| (2) Assumed Reinsurance Basis: | \$ | — |
| (3) Net of Ceded Reinsurance Basis: | \$ | — |

F. State the amount of ending reserves for loss adjustment expenses included in D (Case, Bulk + IBNR):

| | | |
|--------------------------------|----|---|
| (1) Direct Basis: | \$ | — |
| (2) Assumed Reinsurance Basis: | \$ | — |
| (3) Ceded Reinsurance Basis: | \$ | — |

34. Subscriber Savings Accounts

Not applicable.

35. Multiple Peril Crop Insurance

Not applicable.

36. Financial Guaranty Insurance

Not applicable.

GENERAL INTERROGATORIES

PART 1 - COMMON INTERROGATORIES GENERAL

- 1.1 Did the reporting entity experience any material transactions requiring the filing of Disclosure of Material Transactions with the State of Domicile, as required by the Model Act? Yes No
- 1.2 If yes, has the report been filed with the domiciliary state? Yes No
- 2.1 Has any change been made during the year of this statement in the charter, by-laws, articles of incorporation, or deed of settlement of the reporting entity? Yes No
- 2.2 If yes, date of change:
- 3.1 Is the reporting entity a member of an Insurance Holding Company System consisting of two or more affiliated persons, one or more of which is an insurer? Yes No
If yes, complete Schedule Y, Parts 1 and 1A.
- 3.2 Have there been any substantial changes in the organizational chart since the prior quarter end? Yes No
- 3.3 If the response to 3.2 is yes, provide a brief description of those changes.
.....
- 4.1 Has the reporting entity been a party to a merger or consolidation during the period covered by this statement? Yes No
- 4.2 If yes, provide the name of entity, NAIC Company Code, and state of domicile (use two letter state abbreviation) for any entity that has ceased to exist as a result of the merger or consolidation.

| 1 Name of Entity | 2 NAIC Company Code | 3 State of Domicile |
|---------------------|------------------------|------------------------|
| | | |

5. If the reporting entity is subject to a management agreement, including third-party administrator(s), managing general agent(s), attorney-in-fact, or similar agreement, have there been any significant changes regarding the terms of the agreement or principals involved? Yes No NA
If yes, attach an explanation.
- 6.1 State as of what date the latest financial examination of the reporting entity was made or is being made.12/31/2011
- 6.2 State the as of date that the latest financial examination report became available from either the state of domicile or the reporting entity. This date should be the date of the examined balance sheet and not the date the report was completed or released.12/31/2011
- 6.3 State as of what date the latest financial examination report became available to other states or the public from either the state of domicile or the reporting entity. This is the release date or completion date of the examination report and not the date of the examination (balance sheet date).11/26/2012
- 6.4 By what department or departments?
Ohio.....
- 6.5 Have all financial statement adjustments within the latest financial examination report been accounted for in a subsequent financial statement filed with Departments? Yes No NA
- 6.6 Have all of the recommendations within the latest financial examination report been complied with? Yes No NA
- 7.1 Has this reporting entity had any Certificates of Authority, licenses or registrations (including corporate registration, if applicable) suspended or revoked by any governmental entity during the reporting period? Yes No
- 7.2 If yes, give full information:
.....
- 8.1 Is the company a subsidiary of a bank holding company regulated by the Federal Reserve Board?..... Yes No
- 8.2 If response to 8.1 is yes, please identify the name of the bank holding company.
.....
- 8.3 Is the company affiliated with one or more banks, thrifts or securities firms?..... Yes No
- 8.4 If response to 8.3 is yes, please provide below the names and location (city and state of the main office) of any affiliates regulated by a federal regulatory services agency [i.e. the Federal Reserve Board (FRB), the Office of the Comptroller of the Currency (OCC), the Federal Deposit Insurance Corporation (FDIC) and the Securities Exchange Commission (SEC)] and identify the affiliate's primary federal regulator.]

| 1 Affiliate Name | 2 Location (City, State) | 3 FRB | 4 OCC | 5 FDIC | 6 SEC |
|---------------------|--------------------------------|----------|----------|-----------|----------|
| | | | | | |

GENERAL INTERROGATORIES

- 9.1 Are the senior officers (principal executive officer, principal financial officer, principal accounting officer or controller, or persons performing similar functions) of the reporting entity subject to a code of ethics, which includes the following standards? Yes No
- (a) Honest and ethical conduct, including the ethical handling of actual or apparent conflicts of interest between personal and professional relationships;
- (b) Full, fair, accurate, timely and understandable disclosure in the periodic reports required to be filed by the reporting entity;
- (c) Compliance with applicable governmental laws, rules and regulations;
- (d) The prompt internal reporting of violations to an appropriate person or persons identified in the code; and
- (e) Accountability for adherence to the code.

9.11 If the response to 9.1 is No, please explain:
.....

- 9.2 Has the code of ethics for senior managers been amended? Yes No

9.21 If the response to 9.2 is Yes, provide information related to amendment(s).
.....

- 9.3 Have any provisions of the code of ethics been waived for any of the specified officers? Yes No

9.31 If the response to 9.3 is Yes, provide the nature of any waiver(s).
.....

FINANCIAL

- 10.1 Does the reporting entity report any amounts due from parent, subsidiaries or affiliates on Page 2 of this statement? Yes No

10.2 If yes, indicate any amounts receivable from parent included in the Page 2 amount: \$

INVESTMENT

- 11.1 Were any of the stocks, bonds, or other assets of the reporting entity loaned, placed under option agreement, or otherwise made available for use by another person? (Exclude securities under securities lending agreements.) Yes No

11.2 If yes, give full and complete information relating thereto:
.....

12. Amount of real estate and mortgages held in other invested assets in Schedule BA: \$0

13. Amount of real estate and mortgages held in short-term investments: \$0

- 14.1 Does the reporting entity have any investments in parent, subsidiaries and affiliates? Yes No

14.2 If yes, please complete the following:

| | 1 Prior Year-End Book/Adjusted Carrying Value | 2 Current Quarter Book/Adjusted Carrying Value |
|---|--|---|
| 14.21 Bonds | \$ | \$ |
| 14.22 Preferred Stock | \$ | \$ |
| 14.23 Common Stock | \$3,361 | \$3,326 |
| 14.24 Short-Term Investments | \$ | \$ |
| 14.25 Mortgage Loans on Real Estate | \$ | \$ |
| 14.26 All Other | \$ | \$ |
| 14.27 Total Investment in Parent, Subsidiaries and Affiliates (Subtotal Lines 14.21 to 14.26)..... | \$3,361 | \$3,326 |
| 14.28 Total Investment in Parent included in Lines 14.21 to 14.26 above | \$ | \$ |

- 15.1 Has the reporting entity entered into any hedging transactions reported on Schedule DB? Yes No

- 15.2 If yes, has a comprehensive description of the hedging program been made available to the domiciliary state? Yes No

If no, attach a description with this statement.

GENERAL INTERROGATORIES

- 16 For the reporting entity's security lending program, state the amount of the following as of the current statement date:
- | | |
|--|-----------|
| 16.1 Total fair value of reinvested collateral assets reported on Schedule DL, Parts 1 and 2 | \$0 |
| 16.2 Total book adjusted/carrying value of reinvested collateral assets reported on Schedule DL, Parts 1 and 2 | \$0 |
| 16.3 Total payable for securities lending reported on the liability page | \$0 |

17. Excluding items in Schedule E – Part 3 – Special Deposits, real estate, mortgage loans and investments held physically in the reporting entity's offices, vaults or safety deposit boxes, were all stocks, bonds and other securities, owned throughout the current year held pursuant to a custodial agreement with a qualified bank or trust company in accordance with Section 1, III – General Examination Considerations, F. Outsourcing of Critical Functions, Custodial or Safekeeping Agreements of the NAIC *Financial Condition Examiners Handbook*? Yes No

17.1 For all agreements that comply with the requirements of the NAIC *Financial Condition Examiners Handbook*, complete the following:

| 1 Name of Custodian(s) | 2 Custodian Address |
|---------------------------|------------------------|
| FirstMerit..... | Akron, Ohio..... |
| Northern Trust..... | Chicago, Illinois..... |

17.2 For all agreements that do not comply with the requirements of the NAIC *Financial Condition Examiners Handbook*, provide the name, location and a complete explanation:

| 1 Name(s) | 2 Location(s) | 3 Complete Explanation(s) |
|--------------|------------------|------------------------------|
| | | |

17.3 Have there been any changes, including name changes, in the custodian(s) identified in 17.1 during the current quarter? Yes No

17.4 If yes, give full and complete information relating thereto:

| 1 Old Custodian | 2 New Custodian | 3 Date of Change | 4 Reason |
|--------------------|--------------------|---------------------|-------------|
| | | | |

17.5 Identify all investment advisors, broker/dealers or individuals acting on behalf of broker/dealers that have access to the investment accounts, handle securities and have authority to make investments on behalf of the reporting entity:

| 1 Central Registration Depository | 2 Name(s) | 3 Address |
|--------------------------------------|--------------|--------------|
| None..... | | |

18.1 Have all the filing requirements of the *Purposes and Procedures Manual* of the NAIC Securities Valuation Office been followed? Yes No

18.2 If no, list exceptions:

.....

STATEMENT AS OF SEPTEMBER 30, 2014 OF THE SONNENBERG MUTUAL INSURANCE COMPANY

SCHEDULE T - EXHIBIT OF PREMIUMS WRITTEN

Current Year to Date - Allocated by States and Territories

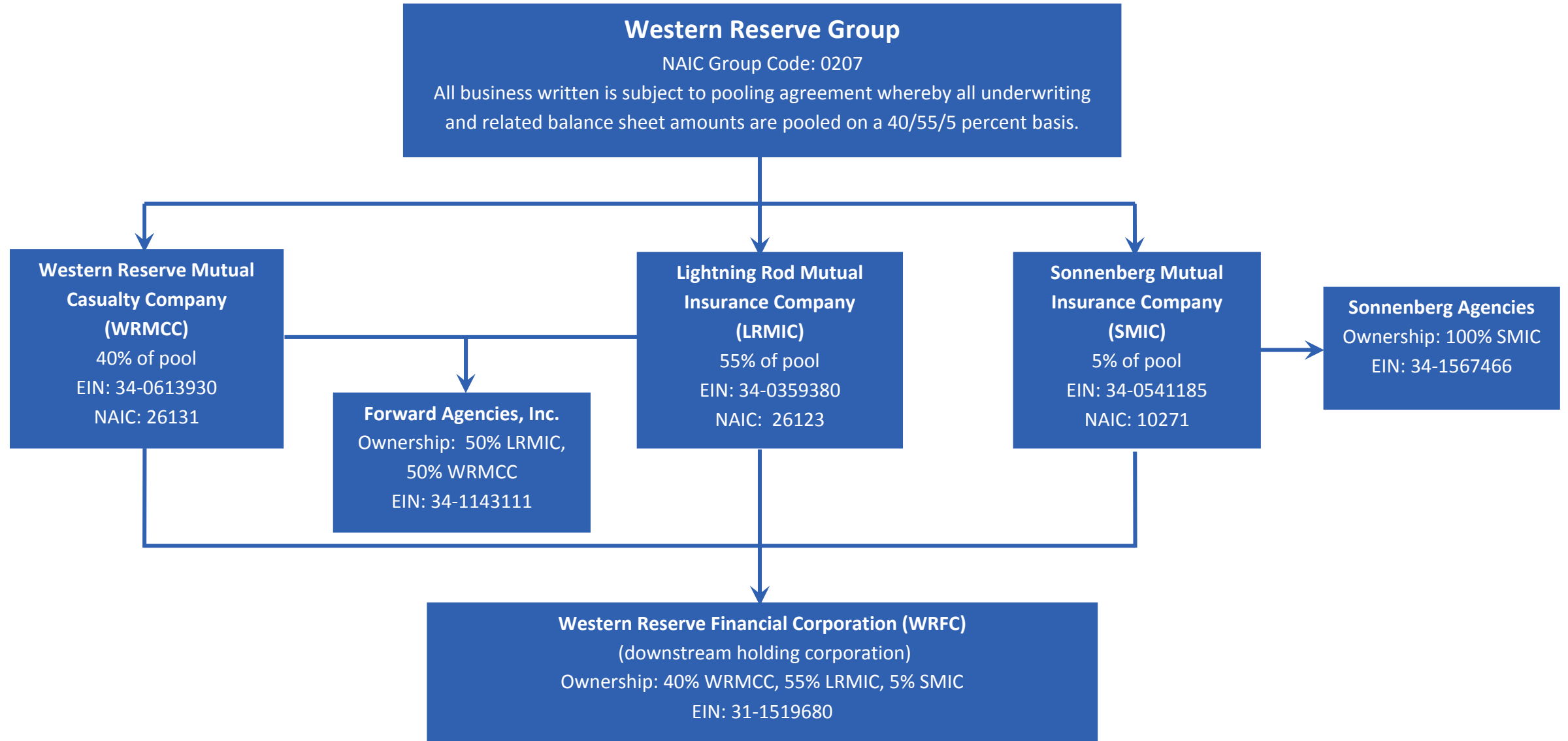
| States, etc. | 1 Active Status | Direct Premiums Written | | Direct Losses Paid (Deducting Salvage) | | Direct Losses Unpaid | | |
|---|--------------------|---------------------------|-------------------------|--|-------------------------|---------------------------|-------------------------|---------|
| | | 2 Current Year To Date | 3 Prior Year To Date | 4 Current Year To Date | 5 Prior Year To Date | 6 Current Year To Date | 7 Prior Year To Date | |
| 1. Alabama | AL | N | 0 | 0 | 0 | 0 | 0 | |
| 2. Alaska | AK | N | 0 | 0 | 0 | 0 | 0 | |
| 3. Arizona | AZ | N | 0 | 0 | 0 | 0 | 0 | |
| 4. Arkansas | AR | N | 0 | 0 | 0 | 0 | 0 | |
| 5. California | CA | N | 0 | 0 | 0 | 0 | 0 | |
| 6. Colorado | CO | N | 0 | 0 | 0 | 0 | 0 | |
| 7. Connecticut | CT | N | 0 | 0 | 0 | 0 | 0 | |
| 8. Delaware | DE | N | 0 | 0 | 0 | 0 | 0 | |
| 9. Dist. Columbia | DC | N | 0 | 0 | 0 | 0 | 0 | |
| 10. Florida | FL | N | 0 | 0 | 0 | 0 | 0 | |
| 11. Georgia | GA | N | 0 | 0 | 0 | 0 | 0 | |
| 12. Hawaii | HI | N | 0 | 0 | 0 | 0 | 0 | |
| 13. Idaho | ID | N | 0 | 0 | 0 | 0 | 0 | |
| 14. Illinois | IL | N | 0 | 0 | 0 | 0 | 0 | |
| 15. Indiana | IN | L | 841,780 | 505,507 | 144,202 | 180,430 | 29,538 | 64,981 |
| 16. Iowa | IA | N | 0 | 0 | 0 | 0 | 0 | 0 |
| 17. Kansas | KS | N | 0 | 0 | 0 | 0 | 0 | 0 |
| 18. Kentucky | KY | N | 0 | 0 | 0 | 0 | 0 | 0 |
| 19. Louisiana | LA | N | 0 | 0 | 0 | 0 | 0 | 0 |
| 20. Maine | ME | N | 0 | 0 | 0 | 0 | 0 | 0 |
| 21. Maryland | MD | N | 0 | 0 | 0 | 0 | 0 | 0 |
| 22. Massachusetts | MA | N | 0 | 0 | 0 | 0 | 0 | 0 |
| 23. Michigan | MI | N | 0 | 0 | 0 | 0 | 0 | 0 |
| 24. Minnesota | MN | N | 0 | 0 | 0 | 0 | 0 | 0 |
| 25. Mississippi | MS | N | 0 | 0 | 0 | 0 | 0 | 0 |
| 26. Missouri | MO | N | 0 | 0 | 0 | 0 | 0 | 0 |
| 27. Montana | MT | N | 0 | 0 | 0 | 0 | 0 | 0 |
| 28. Nebraska | NE | N | 0 | 0 | 0 | 0 | 0 | 0 |
| 29. Nevada | NV | N | 0 | 0 | 0 | 0 | 0 | 0 |
| 30. New Hampshire | NH | N | 0 | 0 | 0 | 0 | 0 | 0 |
| 31. New Jersey | NJ | N | 0 | 0 | 0 | 0 | 0 | 0 |
| 32. New Mexico | NM | N | 0 | 0 | 0 | 0 | 0 | 0 |
| 33. New York | NY | N | 0 | 0 | 0 | 0 | 0 | 0 |
| 34. No. Carolina | NC | N | 0 | 0 | 0 | 0 | 0 | 0 |
| 35. No. Dakota | ND | N | 0 | 0 | 0 | 0 | 0 | 0 |
| 36. Ohio | OH | L | 2,428,326 | 1,542,966 | 638,266 | 597,760 | 315,705 | 147,480 |
| 37. Oklahoma | OK | N | 0 | 0 | 0 | 0 | 0 | 0 |
| 38. Oregon | OR | N | 0 | 0 | 0 | 0 | 0 | 0 |
| 39. Pennsylvania | PA | N | 0 | 0 | 0 | 0 | 0 | 0 |
| 40. Rhode Island | RI | N | 0 | 0 | 0 | 0 | 0 | 0 |
| 41. So. Carolina | SC | N | 0 | 0 | 0 | 0 | 0 | 0 |
| 42. So. Dakota | SD | N | 0 | 0 | 0 | 0 | 0 | 0 |
| 43. Tennessee | TN | N | 0 | 0 | 0 | 0 | 0 | 0 |
| 44. Texas | TX | N | 0 | 0 | 0 | 0 | 0 | 0 |
| 45. Utah | UT | N | 0 | 0 | 0 | 0 | 0 | 0 |
| 46. Vermont | VT | N | 0 | 0 | 0 | 0 | 0 | 0 |
| 47. Virginia | VA | N | 0 | 0 | 0 | 0 | 0 | 0 |
| 48. Washington | WA | N | 0 | 0 | 0 | 0 | 0 | 0 |
| 49. West Virginia | WV | N | 0 | 0 | 0 | 0 | 0 | 0 |
| 50. Wisconsin | WI | N | 0 | 0 | 0 | 0 | 0 | 0 |
| 51. Wyoming | WY | N | 0 | 0 | 0 | 0 | 0 | 0 |
| 52. American Samoa | AS | N | 0 | 0 | 0 | 0 | 0 | 0 |
| 53. Guam | GU | N | 0 | 0 | 0 | 0 | 0 | 0 |
| 54. Puerto Rico | PR | N | 0 | 0 | 0 | 0 | 0 | 0 |
| 55. U.S. Virgin Islands | VI | N | 0 | 0 | 0 | 0 | 0 | 0 |
| 56. Northern Mariana Islands | MP | N | 0 | 0 | 0 | 0 | 0 | 0 |
| 57. Canada | CAN | N | 0 | 0 | 0 | 0 | 0 | 0 |
| 58. Aggregate Other Alien | OT | XXX | 0 | 0 | 0 | 0 | 0 | 0 |
| 59. Totals | (a) 2 | | 3,270,106 | 2,048,473 | 782,468 | 778,190 | 345,243 | 212,461 |
| DETAILS OF WRITE-INS | | | | | | | | |
| 58001. | XXX | | | | | | | |
| 58002. | XXX | | | | | | | |
| 58003. | XXX | | | | | | | |
| 58998. Summary of remaining write-ins for Line 58 from overflow page. | XXX | | 0 | 0 | 0 | 0 | 0 | 0 |
| 58999. TOTALS (Lines 58001 through 58003 plus 58998) (Line 58 above) | XXX | | 0 | 0 | 0 | 0 | 0 | 0 |

(L) Licensed or Chartered - Licensed Insurance Carrier or Domiciled RRG; (R) Registered - Non-domiciled RRGs; (Q) Qualified - Qualified or Accredited Reinsurer; (E) Eligible - Reporting Entities eligible or approved to write Surplus Lines in the state; (N) None of the above - Not allowed to write business in the state.

(a) Insert the number of L responses except for Canada and Other Alien.

SCHEDULE Y – INFORMATION CONCERNING ACTIVITIES OF INSURER MEMBERS OF A HOLDING COMPANY GROUP

PART 1 – ORGANIZATIONAL CHART



PART 1 - LOSS EXPERIENCE

| Line of Business | Current Year to Date | | | 4 Prior Year to Date Direct Loss Percentage |
|--|--------------------------------|--------------------------------|--------------------------------|--|
| | 1 Direct Premiums Earned | 2 Direct Losses Incurred | 3 Direct Loss Percentage | |
| 1. Fire | 25,722 | | 0.0 | 0.0 |
| 2. Allied lines | 11,565 | (467) | (4.0) | 21.8 |
| 3. Farmowners multiple peril | 275,988 | 201,224 | 72.9 | 6.0 |
| 4. Homeowners multiple peril | 1,765,085 | 691,068 | 39.2 | 25.8 |
| 5. Commercial multiple peril | 0 | | 0.0 | 0.0 |
| 6. Mortgage guaranty | | | 0.0 | 0.0 |
| 8. Ocean marine | | | 0.0 | 0.0 |
| 9. Inland marine | | | 0.0 | 0.0 |
| 10. Financial guaranty | | | 0.0 | 0.0 |
| 11.1 Medical professional liability -occurrence | | | 0.0 | 0.0 |
| 11.2 Medical professional liability -claims made | | | 0.0 | 0.0 |
| 12. Earthquake | | | 0.0 | 0.0 |
| 13. Group accident and health | | | 0.0 | 0.0 |
| 14. Credit accident and health | | | 0.0 | 0.0 |
| 15. Other accident and health | | | 0.0 | 0.0 |
| 16. Workers' compensation | | | 0.0 | 0.0 |
| 17.1 Other liability occurrence | 957 | | 0.0 | 0.0 |
| 17.2 Other liability-claims made | | | 0.0 | 0.0 |
| 17.3 Excess Workers' Compensation | | | 0.0 | 0.0 |
| 18.1 Products liability-occurrence | | | 0.0 | 0.0 |
| 18.2 Products liability-claims made | | | 0.0 | 0.0 |
| 19.1,19.2 Private passenger auto liability | 80,975 | 17,417 | 21.5 | (6,969.4) |
| 19.3,19.4 Commercial auto liability | 0 | | 0.0 | 0.0 |
| 21. Auto physical damage | 58,883 | 22,743 | 38.6 | 0.0 |
| 22. Aircraft (all perils) | | | 0.0 | 0.0 |
| 23. Fidelity | | | 0.0 | 0.0 |
| 24. Surety | | | 0.0 | 0.0 |
| 26. Burglary and theft | | | 0.0 | 0.0 |
| 27. Boiler and machinery | 246 | | 0.0 | 0.0 |
| 28. Credit | | | 0.0 | 0.0 |
| 29. International | | | 0.0 | 0.0 |
| 30. Warranty | | | 0.0 | 0.0 |
| 31. Reinsurance - Nonproportional Assumed Property | XXX | XXX | XXX | XXX |
| 32. Reinsurance - Nonproportional Assumed Liability | XXX | XXX | XXX | XXX |
| 33. Reinsurance - Nonproportional Assumed Financial Lines | XXX | XXX | XXX | XXX |
| 34. Aggregate write-ins for other lines of business | 0 | 0 | 0.0 | 0.0 |
| 35. TOTALS | 2,219,421 | 931,985 | 42.0 | 18.6 |
| DETAILS OF WRITE-INS | | | | |
| 3401. | | | 0.0 | 0.0 |
| 3402. | | | 0.0 | 0.0 |
| 3403. | | | 0.0 | 0.0 |
| 3498. Sum. of remaining write-ins for Line 34 from overflow page | 0 | 0 | 0.0 | 0.0 |
| 3499. Totals (Lines 3401 through 3403 plus 3498) (Line 34) | 0 | 0 | 0.0 | 0.0 |

PART 2 - DIRECT PREMIUMS WRITTEN

| Line of Business | 1 | 2 | 3 |
|--|--------------------|-------------------------|----------------------------|
| | Current Quarter | Current Year to Date | Prior Year Year to Date |
| 1. Fire | 11,308 | 26,878 | 27,120 |
| 2. Allied lines | 4,409 | 11,429 | 11,482 |
| 3. Farmowners multiple peril | 80,686 | 267,712 | 271,834 |
| 4. Homeowners multiple peril | 694,482 | 1,879,904 | 1,736,966 |
| 5. Commercial multiple peril | 0 | | 0 |
| 6. Mortgage guaranty | 0 | | 0 |
| 8. Ocean marine | 0 | | 0 |
| 9. Inland marine | 0 | | 0 |
| 10. Financial guaranty | 0 | | 0 |
| 11.1 Medical professional liability-occurrence | 0 | | 0 |
| 11.2 Medical professional liability-claims made | 0 | | 0 |
| 12. Earthquake | 0 | | 0 |
| 13. Group accident and health | 0 | | 0 |
| 14. Credit accident and health | 0 | | 0 |
| 15. Other accident and health | 0 | | 0 |
| 16. Workers' compensation | 0 | | 0 |
| 17.1 Other liability occurrence | 467 | 1,021 | 1,071 |
| 17.2 Other liability-claims made | 0 | | 0 |
| 17.3 Excess Workers' Compensation | 0 | | 0 |
| 18.1 Products liability-occurrence | 0 | | 0 |
| 18.2 Products liability-claims made | 0 | | 0 |
| 19.1,19.2 Private passenger auto liability | 624,868 | 624,868 | 0 |
| 19.3,19.4 Commercial auto liability | 0 | 0 | 0 |
| 21. Auto physical damage | 457,693 | 457,693 | 0 |
| 22. Aircraft (all perils) | 0 | | 0 |
| 23. Fidelity | 0 | | 0 |
| 24. Surety | 0 | | 0 |
| 26. Burglary and theft | 0 | | 0 |
| 27. Boiler and machinery | 601 | 601 | 0 |
| 28. Credit | 0 | | 0 |
| 29. International | 0 | | 0 |
| 30. Warranty | 0 | | 0 |
| 31. Reinsurance - Nonproportional Assumed Property | XXX | XXX | XXX |
| 32. Reinsurance - Nonproportional Assumed Liability | XXX | XXX | XXX |
| 33. Reinsurance - Nonproportional Assumed Financial Lines | XXX | XXX | XXX |
| 34. Aggregate write-ins for other lines of business | 0 | 0 | 0 |
| 35. TOTALS | 1,874,514 | 3,270,106 | 2,048,473 |
| DETAILS OF WRITE-INS | | | |
| 3401. | 0 | | 0 |
| 3402. | 0 | | 0 |
| 3403. | 0 | | 0 |
| 3498. Sum. of remaining write-ins for Line 34 from overflow page | 0 | 0 | 0 |
| 3499. Totals (Lines 3401 through 3403 plus 3498) (Line 34) | 0 | 0 | 0 |

STATEMENT AS OF SEPTEMBER 30, 2014 OF THE SONNENBERG MUTUAL INSURANCE COMPANY

PART 3 (000 omitted)

LOSS AND LOSS ADJUSTMENT EXPENSE RESERVES SCHEDULE

| | 1 | 2 | 3 | 4 | 5 | 6 | 7 | 8 | 9 | 10 | 11 | 12 | 13 |
|---|---|---|--|--|--|--|---|--|--------------------------------------|---|--|--|---|
| Years in Which Losses Occurred | Prior Year-End Known Case Loss and LAE Reserves | Prior Year-End IBNR Loss and LAE Reserves | Total Prior Year-End Loss and LAE Reserves (Cols. 1 + 2) | 2014 Loss and LAE Payments on Claims Reported as of Prior Year-End | 2014 Loss and LAE Payments on Claims Unreported as of Prior Year-End | Total 2014 Loss and LAE Payments (Cols. 4 + 5) | Q.S. Date Known Case Loss and LAE Reserves on Claims Reported and Open as of Prior Year End | Q.S. Date Known Case Loss and LAE Reserves on Claims Reported or Reopened Subsequent to Prior Year End | Q.S. Date IBNR Loss and LAE Reserves | Total Q.S. Loss and LAE Reserves (Cols.7 + 8 + 9) | Prior Year-End Known Case Loss and LAE Reserves Developed (Savings)/ Deficiency (Cols. 4 + 7 minus Col. 1) | Prior Year-End IBNR Loss and LAE Reserves Developed (Savings)/ Deficiency (Cols. 5 + 8 + 9 minus Col. 2) | Prior Year-End Total Loss and LAE Reserve Developed (Savings)/ Deficiency (Cols. 11 + 12) |
| 1. 2011 + Prior | .636 | .54 | .690 | .207 | .3 | .210 | .314 | .7 | .21 | .342 | (115) | (23) | (138) |
| 2. 2012 | .753 | .70 | .823 | .260 | .7 | .267 | .446 | .18 | .41 | .505 | (47) | (4) | (51) |
| 3. Subtotals 2012 + prior | 1,389 | .124 | 1,513 | .467 | .10 | .477 | .760 | .25 | .62 | .847 | (162) | (27) | (189) |
| 4. 2013 | 1,535 | .464 | 1,999 | .841 | .110 | .951 | .911 | .34 | .77 | 1,022 | .217 | (243) | (26) |
| 5. Subtotals 2013 + prior | 2,924 | .588 | 3,512 | 1,308 | .120 | 1,428 | 1,671 | .59 | .139 | 1,869 | .55 | (270) | (215) |
| 6. 2014 | XXX | XXX | XXX | XXX | 3,028 | 3,028 | XXX | 1,189 | .367 | 1,556 | XXX | XXX | XXX |
| 7. Totals | 2,924 | 588 | 3,512 | 1,308 | 3,148 | 4,456 | 1,671 | 1,248 | 506 | 3,425 | 55 | (270) | (215) |
| 8. Prior Year-End Surplus As Regards Policy-holders | 12,517 | | | | | | | | | | Col. 11, Line 7 As % of Col. 1, Line 7 | Col. 12, Line 7 As % of Col. 2, Line 7 | Col. 13, Line 7 As % of Col. 3, Line 7 |
| | | | | | | | | | | | 1. 1.9 | 2. (45.9) | 3. (6.1) |
| | | | | | | | | | | | | | Col. 13, Line 7 Line 8 |
| | | | | | | | | | | | | | 4. (1.7) |

SUPPLEMENTAL EXHIBITS AND SCHEDULES INTERROGATORIES

The following supplemental reports are required to be filed as part of your statement filing. However, in the event that your company does not transact the type of business for which the special report must be filed, your response of **NO** to the specific interrogatory will be accepted in lieu of filing a "NONE" report and a bar code will be printed below. If the supplement is required of your company but is not being filed for whatever reason enter **SEE EXPLANATION** and provide an explanation following the interrogatory questions.

| | <u>Response</u> |
|--|-----------------|
| 1. Will the Trusteed Surplus Statement be filed with the state of domicile and the NAIC with this statement? |NO..... |
| 2. Will Supplement A to Schedule T (Medical Professional Liability Supplement) be filed with this statement? |NO..... |
| 3. Will the Medicare Part D Coverage Supplement be filed with the state of domicile and the NAIC with this statement? |NO..... |
| 4. Will the Director and Officer Insurance Coverage Supplement be filed with the state of domicile and the NAIC with this statement? |NO..... |

Explanation:

- 1.
- 2.
- 3.
- 4.

Bar Code:

| | |
|----|--|
| 1. |  1 0 2 7 1 2 0 1 4 4 9 0 0 0 0 0 3 |
| 2. |  1 0 2 7 1 2 0 1 4 4 5 5 0 0 0 0 3 |
| 3. |  1 0 2 7 1 2 0 1 4 3 6 5 0 0 0 0 3 |
| 4. |  1 0 2 7 1 2 0 1 4 5 0 5 0 0 0 0 3 |

OVERFLOW PAGE FOR WRITE-INS

SCHEDULE A – VERIFICATION

Real Estate

| | 1 Year To Date | 2 Prior Year Ended December 31 |
|--|-------------------|--------------------------------------|
| 1. Book/adjusted carrying value, December 31 of prior year | 0 | 0 |
| 2. Cost of acquired: | | |
| 2.1 Actual cost at time of acquisition | 0 | 0 |
| 2.2 Additional investment made after acquisition | 0 | 0 |
| 3. Current year change in encumbrances | 0 | 0 |
| 4. Total gain (loss) on disposals | 0 | 0 |
| 5. Deduct amounts received on disposals | 0 | 0 |
| 6. Total foreign exchange change in book/adjusted carrying value | 0 | 0 |
| 7. Deduct current year's other-than-temporary impairment recognized | 0 | 0 |
| 8. Deduct current year's depreciation | 0 | 0 |
| 9. Book/adjusted carrying value at the end of current period (Lines 1+2+3+4-5+6-7-8) | 0 | 0 |
| 10. Deduct total nonadmitted amounts | 0 | 0 |
| 11. Statement value at end of current period (Line 9 minus Line 10) | 0 | 0 |

NONE

SCHEDULE B – VERIFICATION

Mortgage Loans

| | 1 Year To Date | 2 Prior Year Ended December 31 |
|---|-------------------|--------------------------------------|
| 1. Book value/recorded investment excluding accrued interest, December 31 of prior year | 0 | 0 |
| 2. Cost of acquired: | | |
| 2.1 Actual cost at time of acquisition | 0 | 0 |
| 2.2 Additional investment made after acquisition | 0 | 0 |
| 3. Capitalized deferred interest and other | 0 | 0 |
| 4. Accrual of discount | 0 | 0 |
| 5. Unrealized valuation increase (decrease) | 0 | 0 |
| 6. Total gain (loss) on disposals | 0 | 0 |
| 7. Deduct amounts received on disposals | 0 | 0 |
| 8. Deduct amortization of premium and mortgage interest points and commitment fees | 0 | 0 |
| 9. Total foreign exchange change in book value/recorded investment excluding accrued interest | 0 | 0 |
| 10. Deduct current year's other-than-temporary impairment recognized | 0 | 0 |
| 11. Book value/recorded investment excluding accrued interest at end of current period (Lines 1+2+3+4+5+6-7-8+9-10) | 0 | 0 |
| 12. Total valuation allowance | 0 | 0 |
| 13. Subtotal (Line 11 plus Line 12) | 0 | 0 |
| 14. Deduct total nonadmitted amounts | 0 | 0 |
| 15. Statement value at end of current period (Line 13 minus Line 14) | 0 | 0 |

NONE

SCHEDULE BA – VERIFICATION

Other Long-Term Invested Assets

| | 1 Year To Date | 2 Prior Year Ended December 31 |
|--|-------------------|--------------------------------------|
| 1. Book/adjusted carrying value, December 31 of prior year | 435,046 | 468,505 |
| 2. Cost of acquired: | | |
| 2.1 Actual cost at time of acquisition | 256,397 | 0 |
| 2.2 Additional investment made after acquisition | 0 | 0 |
| 3. Capitalized deferred interest and other | 0 | 0 |
| 4. Accrual of discount | 0 | 0 |
| 5. Unrealized valuation increase (decrease) | (85,118) | 2,287 |
| 6. Total gain (loss) on disposals | 26,038 | 7,634 |
| 7. Deduct amounts received on disposals | 632,363 | 43,380 |
| 8. Deduct amortization of premium and depreciation | 0 | 0 |
| 9. Total foreign exchange change in book/adjusted carrying value | 0 | 0 |
| 10. Deduct current year's other-than-temporary impairment recognized | 0 | 0 |
| 11. Book/adjusted carrying value at end of current period (Lines 1+2+3+4+5+6-7+8+9-10) | 0 | 435,046 |
| 12. Deduct total nonadmitted amounts | 0 | 0 |
| 13. Statement value at end of current period (Line 11 minus Line 12) | 0 | 435,046 |

SCHEDULE D – VERIFICATION

Bonds and Stocks

| | 1 Year To Date | 2 Prior Year Ended December 31 |
|---|-------------------|--------------------------------------|
| 1. Book/adjusted carrying value of bonds and stocks, December 31 of prior year | 19,149,059 | 18,053,127 |
| 2. Cost of bonds and stocks acquired | 2,065,429 | 5,794,164 |
| 3. Accrual of discount | 9,881 | 13,007 |
| 4. Unrealized valuation increase (decrease) | 286,618 | 636,566 |
| 5. Total gain (loss) on disposals | 16,324 | 193,192 |
| 6. Deduct consideration for bonds and stocks disposed of | 798,035 | 5,479,136 |
| 7. Deduct amortization of premium | 43,629 | 36,601 |
| 8. Total foreign exchange change in book/adjusted carrying value | 0 | 0 |
| 9. Deduct current year's other-than-temporary impairment recognized | 0 | 25,260 |
| 10. Book/adjusted carrying value at end of current period (Lines 1+2+3+4+5-6-7+8-9) | 20,685,647 | 19,149,059 |
| 11. Deduct total nonadmitted amounts | 3,326 | 3,361 |
| 12. Statement value at end of current period (Line 10 minus Line 11) | 20,682,321 | 19,145,698 |

STATEMENT AS OF SEPTEMBER 30, 2014 OF THE SONNENBERG MUTUAL INSURANCE COMPANY

SCHEDULE D - PART 1B

Showing the Acquisitions, Dispositions and Non-Trading Activity
During the Current Quarter for all Bonds and Preferred Stock by NAIC Designation

| NAIC Designation | 1 Book/Adjusted Carrying Value Beginning of Current Quarter | 2 Acquisitions During Current Quarter | 3 Dispositions During Current Quarter | 4 Non-Trading Activity During Current Quarter | 5 Book/Adjusted Carrying Value End of First Quarter | 6 Book/Adjusted Carrying Value End of Second Quarter | 7 Book/Adjusted Carrying Value End of Third Quarter | 8 Book/Adjusted Carrying Value December 31 Prior Year |
|-----------------------------------|---|--|--|---|---|--|---|---|
| BONDS | | | | | | | | |
| 1. NAIC 1 (a)..... | 14,007,980 | 927,194 | 978,200 | (322,126) | 13,348,561 | 14,007,980 | 13,634,848 | 12,765,025 |
| 2. NAIC 2 (a)..... | 300,740 | | | 100,567 | 441,262 | 300,740 | 401,307 | 441,974 |
| 3. NAIC 3 (a)..... | 208,006 | | | (631) | 208,637 | 208,006 | 207,375 | 209,255 |
| 4. NAIC 4 (a)..... | 0 | | | | 0 | 0 | 0 | 0 |
| 5. NAIC 5 (a)..... | 0 | | | | 0 | 0 | 0 | 0 |
| 6. NAIC 6 (a)..... | 0 | | | | 0 | 0 | 0 | 0 |
| 7. Total Bonds | 14,516,727 | 927,194 | 978,200 | (222,191) | 13,998,459 | 14,516,727 | 14,243,530 | 13,416,254 |
| PREFERRED STOCK | | | | | | | | |
| 8. NAIC 1..... | 0 | | | | 0 | 0 | 0 | 0 |
| 9. NAIC 2..... | 49,338 | | | (756) | 49,410 | 49,338 | 48,582 | 49,266 |
| 10. NAIC 3..... | 0 | | | | 0 | 0 | 0 | 0 |
| 11. NAIC 4..... | 0 | | | | 0 | 0 | 0 | 0 |
| 12. NAIC 5..... | 0 | | | | 0 | 0 | 0 | 0 |
| 13. NAIC 6..... | 0 | | | | 0 | 0 | 0 | 0 |
| 14. Total Preferred Stock..... | 49,338 | 0 | 0 | (756) | 49,410 | 49,338 | 48,582 | 49,266 |
| 15. Total Bonds & Preferred Stock | 14,566,065 | 927,194 | 978,200 | (222,947) | 14,047,869 | 14,566,065 | 14,292,112 | 13,465,520 |

(a) Book/Adjusted Carrying Value column for the end of the current reporting period includes the following amount of non-rated short-term and cash equivalent bonds by NAIC designation: NAIC 1 \$; NAIC 2 \$;
NAIC 3 \$; NAIC 4 \$; NAIC 5 \$; NAIC 6 \$

S102

SCHEDULE DA - PART 1

Short-Term Investments

| | 1 | 2 | 3 | 4 | 5 |
|---------|---------------------------------|-----------|-------------|------------------------------------|--|
| | Book/Adjusted Carrying Value | Par Value | Actual Cost | Interest Collected Year To Date | Paid for Accrued Interest Year To Date |
| 9199999 | 835,034 | XXX | 835,034 | 74 | |

SCHEDULE DA - VERIFICATION

Short-Term Investments

| | 1 | 2 |
|--|--------------|---------------------------------|
| | Year To Date | Prior Year Ended December 31 |
| 1. Book/adjusted carrying value, December 31 of prior year..... | 683,967 | 251,123 |
| 2. Cost of short-term investments acquired | 3,341,045 | 3,823,317 |
| 3. Accrual of discount | | 0 |
| 4. Unrealized valuation increase (decrease)..... | | 0 |
| 5. Total gain (loss) on disposals | | 0 |
| 6. Deduct consideration received on disposals | 3,189,978 | 3,390,474 |
| 7. Deduct amortization of premium..... | | 0 |
| 8. Total foreign exchange change in book/adjusted carrying value..... | | 0 |
| 9. Deduct current year's other-than-temporary impairment recognized..... | | 0 |
| 10. Book/adjusted carrying value at end of current period (Lines 1+2+3+4+5-6-7+8-9)..... | 835,034 | 683,967 |
| 11. Deduct total nonadmitted amounts..... | | 0 |
| 12. Statement value at end of current period (Line 10 minus Line 11) | 835,034 | 683,967 |

Schedule DB - Part A - Verification

NONE

Schedule DB - Part B - Verification

NONE

Schedule DB - Part C - Section 1

NONE

Schedule DB - Part C - Section 2

NONE

Schedule DB - Verification

NONE

Schedule E - Verification

NONE

Schedule A - Part 2

NONE

Schedule A - Part 3

NONE

Schedule B - Part 2

NONE

Schedule B - Part 3

NONE

Schedule BA - Part 2

NONE

Schedule BA - Part 3

NONE

STATEMENT AS OF SEPTEMBER 30, 2014 OF THE SONNENBERG MUTUAL INSURANCE COMPANY

SCHEDULE D - PART 3

Show All Long-Term Bonds and Stock Acquired During the Current Quarter

| 1 | 2 | 3 | 4 | 5 | 6 | 7 | 8 | 9 | 10 |
|---|--|---------|---------------|---------------------------|---------------------------|-------------|-----------|---|--|
| CUSIP Identification | Description | Foreign | Date Acquired | Name of Vendor | Number of Shares of Stock | Actual Cost | Par Value | Paid for Accrued Interest and Dividends | NAIC Designation or Market Indicator (a) |
| Bonds - U.S. States, Territories and Possessions | | | | | | | | | |
| 612103-UL-3 | Montana State | | 07/09/2014 | D A Davidson & Co. | | 171,096 | 150,000 | | 1FE |
| 1799999 | Bonds - U.S. States, Territories and Possessions | | | | | | | | |
| Bonds - U.S. Political Subdivisions of States, Territories and Possessions | | | | | | | | | |
| 181093-YK-5 | Clark Cnty WA | | 09/11/2014 | Merrill Lynch | | 100,000 | 100,000 | | 1FE |
| 2499999 | Bonds - U.S. Political Subdivisions of States, Territories and Possessions | | | | | | | | |
| Bonds - U.S. Special Revenue | | | | | | | | | |
| 18150T-FF-8 | Clark-Pleasant IN Sch Bldg Revenue | | 08/29/2014 | Fifth Third Securities, I | | 119,808 | 100,000 | | 1FE |
| 3199999 | Bonds - U.S. Special Revenue and Special Assessment and all Non-Guaranteed Obligations of Agencies and Authorities of Governments and Their Political Subdivisions | | | | | | | | |
| Bonds - Industrial and Miscellaneous (Unaffiliated) | | | | | | | | | |
| 235851-AM-4 | Danaher Corp | | 09/24/2014 | Raymond James & Associate | | 108,000 | 100,000 | 1,040 | 1FE |
| 3899999 | Bonds - Industrial and Miscellaneous (Unaffiliated) | | | | | | | | |
| 8399997 | Subtotals - Bonds - Part 3 | | | | | | | | |
| 8399999 | Subtotals - Bonds | | | | | | | | |
| Common Stocks - Mutual Funds | | | | | | | | | |
| 001620-86-6 | Alerian MLP ETF | | 08/07/2014 | Merrill Lynch | 2,700.000 | 49,995 | | | L |
| 277911-49-1 | Eaton Vance Floating Rate Fnd CL I | | 09/22/2014 | Merrill Lynch | 10,983.085 | 100,000 | | | U |
| 464287-46-5 | iShares MSCI EAFE Index ETF | R | 09/22/2014 | Merrill Lynch | 1,128.000 | 74,837 | | | L |
| 464287-65-5 | iShares Trust Russell 2000 Index | | 09/25/2014 | Merrill Lynch | 446.000 | 49,957 | | | L |
| 9299999 | Common Stocks - Mutual Funds | | | | | | | | |
| 9799997 | Subtotals - Common Stocks - Part 3 | | | | | | | | |
| 9799999 | Subtotals - Common Stocks | | | | | | | | |
| 9899999 | Subtotals- Preferred and Common Stocks | | | | | | | | |
| 9999999 Totals | | | | | | 773,693 | XXX | 1,040 | XXX |

(a) For all common stock bearing the NAIC market indicator "U" provide: the number of such issues1

E04

STATEMENT AS OF SEPTEMBER 30, 2014 OF THE SONNENBERG MUTUAL INSURANCE COMPANY

SCHEDULE D - PART 4

Show All Long-Term Bonds and Stock Sold, Redeemed or Otherwise Disposed of During the Current Quarter

| 1 | 2 | 3 | 4 | 5 | 6 | 7 | 8 | 9 | 10 | Change in Book/Adjusted Carrying Value | | | | | 16 | 17 | 18 | 19 | 20 | 21 | 22 |
|--|------------------------------------|-----------------------|-------------------|---------------------------|---------------|-----------|-------------|---|--|---|---|--------------------------------------|--|---|--|----------------------------------|-------------------------------|--|----------------------------------|--|----|
| | | | | | | | | | | 11 | 12 | 13 | 14 | 15 | | | | | | | |
| CUSIP Identification | Description | Foreign Disposal Date | Name of Purchaser | Number of Shares of Stock | Consideration | Par Value | Actual Cost | Prior Year Book/Adjusted Carrying Value | Unrealized Valuation Increase/(Decrease) | Current Year's (Amortization)/Accretion | Current Year's Other Than Temporary Impairment Recognized | Total Change in B./A.C.V. (11+12-13) | Total Foreign Exchange Change in B./A.C.V. | Book/Adjusted Carrying Value at Disposal Date | Foreign Exchange Gain (Loss) on Disposal | Realized Gain (Loss) on Disposal | Total Gain (Loss) on Disposal | Bond Interest/Stock Dividends Received During Year | Stated Contractual Maturity Date | NAIC Designation or Market Indicator (a) | |
| Bonds - U.S. Governments | | | | | | | | | | | | | | | | | | | | | |
| 831641-ES-0... | SBA SBIC 2010-10A 1 CMO | 09/10/2014 | PRINCIPAL RECEIPT | | 13,086 | 13,086 | 14,264 | 14,212 | | (1,126) | | (1,126) | | 13,086 | | | 0 | 538 | 03/10/2020 | 1FE | |
| 0599999 - Bonds - U.S. Governments | | | | | | | | | | | | | | | | | | | | | |
| Bonds - Industrial and Miscellaneous (Unaffiliated) | | | | | | | | | | | | | | | | | | | | | |
| 020002-AR-2 | Allstate Corp. | 08/15/2014 | MATURITY | | 100,000 | 100,000 | 100,821 | 100,091 | | (91) | | (91) | | 100,000 | | | 0 | 5,000 | 08/15/2014 | 1FE | |
| 3899999 - Bonds - Industrial and Miscellaneous (Unaffiliated) | | | | | | | | | | | | | | | | | | | | | |
| 8399997 - Subtotals - Bonds - Part 4 | | | | | | | | | | | | | | | | | | | | | |
| 8399999 - Subtotals - Bonds | | | | | | | | | | | | | | | | | | | | | |
| Common Stock - Mutual Funds | | | | | | | | | | | | | | | | | | | | | |
| 22544R-30-5 | Credit Suisse Commodity Fnd Inst'l | 07/16/2014 | Merrill Lynch | 6,351,790 | 47,257 | XXX | 48,796 | 45,923 | 2,872 | | | 2,872 | | 48,796 | | (1,538) | (1,538) | | XXX | U | |
| 52106N-88-9 | Lazard Emerging Mkts Eqty PFL CL | 08/08/2014 | CAPITAL GAIN | | 374 | XXX | | | | | | 0 | | | | 374 | 374 | | XXX | U | |
| 9299999 - Common Stocks - Mutual Funds | | | | | | | | | | | | | | | | | | | | | |
| 9799997 - Subtotals - Common Stocks - Part 4 | | | | | | | | | | | | | | | | | | | | | |
| 9799999 - Subtotals - Common Stocks | | | | | | | | | | | | | | | | | | | | | |
| 9899999 - Subtotals - Preferred and Common Stocks | | | | | | | | | | | | | | | | | | | | | |
| 9999999 Totals | | | | | | | | | | | | | | | | | | | | | |
| | | | | | 160,718 | XXX | 163,880 | 160,226 | 2,872 | (1,217) | 0 | 1,656 | 0 | 161,882 | 0 | (1,164) | (1,164) | 5,538 | XXX | XXX | |

(a) For all common stock bearing the NAIC market indicator "U" provide: the number of such issues2

E05

Schedule DB - Part A - Section 1

NONE

Schedule DB - Part B - Section 1

NONE

Schedule DB - Part D - Section 1

NONE

Schedule DB - Part D - Section 2

NONE

Schedule DL - Part 1

NONE

Schedule DL - Part 2

NONE

SCHEDULE E - PART 2 - CASH EQUIVALENTS

Show Investments Owned End of Current Quarter

| 1 Description | 2 Code | 3 Date Acquired | 4 Rate of Interest | 5 Maturity Date | 6 Book/Adjusted Carrying Value | 7 Amount of Interest Due & Accrued | 8 Amount Received During Year |
|--------------------------------|-----------|-----------------------|--------------------------|-----------------------|--------------------------------------|--|-------------------------------------|
| <p>NONE</p> | | | | | | | |
| 8699999 Total Cash Equivalents | | | | | 0 | 0 | 0 |