



# QUARTERLY STATEMENT

As of September 30, 2014  
of the Condition and Affairs of the

## PROGRESSIVE SELECT INSURANCE COMPANY

NAIC Group Code.....155, 155 (Current Period) (Prior Period)	NAIC Company Code..... 10192	Employer's ID Number..... 59-3213815
Organized under the Laws of OH	State of Domicile or Port of Entry OH	Country of Domicile US
Incorporated/Organized..... August 12, 1994	Commenced Business..... July 30, 2001	
Statutory Home Office	6300 WILSON MILLS ROAD, W33..... CLEVELAND ..... OH ..... US ..... 44143-2182 <i>(Street and Number) (City or Town, State, Country and Zip Code)</i>	
Main Administrative Office	6300 WILSON MILLS ROAD, W33..... CLEVELAND ..... OH ..... US ..... 44143-2182 440-461-5000 <i>(Street and Number) (City or Town, State, Country and Zip Code) (Area Code) (Telephone Number)</i>	
Mail Address	P.O. BOX 89490..... CLEVELAND ..... OH ..... US ..... 44101-6490 <i>(Street and Number or P. O. Box) (City or Town, State, Country and Zip Code)</i>	
Primary Location of Books and Records	6300 WILSON MILLS ROAD, W33..... CLEVELAND ..... OH ..... US ..... 44143-2182 440-395-4460 <i>(Street and Number) (City or Town, State, Country and Zip Code) (Area Code) (Telephone Number)</i>	
Internet Web Site Address	PROGRESSIVE.COM	
Statutory Statement Contact	MARY BETH ANDREANO <i>(Name)</i>	440-395-4460 <i>(Area Code) (Telephone Number) (Extension)</i>
	FINANCIAL_REPORTING@PROGRESSIVE.COM <i>(E-Mail Address)</i>	440-603-5500 <i>(Fax Number)</i>

### POLICYHOLDER SERVICES AND CLAIMS REPORTING -- 1-800-PROGRESSIVE (1-800-776-4737)

#### OFFICERS

<b>Name</b>	<b>Title</b>	<b>Name</b>	<b>Title</b>
SCOTT WESLEY ZIEGLER	PRESIDENT	MICHAEL ROBERT UTH	SECRETARY
DANIEL JOSEPH WITALEC	TREASURER		

#### OTHER

PATRICK KEVIN CALLAHAN	(VICE PRESIDENT)	SCOTT EDWARD COLEMAN	(ASST. TREASURER)
JAMES RUSSELL HAAS	(VICE PRESIDENT)	KAREN ANN KOSUDA	(ASST. SECRETARY)
MARIANN WOJTKUN MARSHALL	(VICE PRESIDENT)		

#### DIRECTORS OR TRUSTEES

STEVEN ANTHONY BROZ	JAMES RUSSELL HAAS	CAROLINE MAE KORAN	DANIEL JOSEPH WITALEC
SCOTT WESLEY ZIEGLER			

State of..... OHIO  
County of..... CUYAHOGA

The officers of this reporting entity being duly sworn, each depose and say that they are the described officers of said reporting entity, and that on the reporting period stated above, all of the herein described assets were the absolute property of the said reporting entity, free and clear from any liens or claims thereon, except as herein stated, and that this statement, together with related exhibits, schedules and explanations therein contained, annexed or referred to, is a full and true statement of all the assets and liabilities and of the condition and affairs of the said reporting entity as of the reporting period stated above, and of its income and deductions therefrom for the period ended, and have been completed in accordance with the NAIC *Annual Statement Instructions and Accounting Practices and Procedures* manual except to the extent that: (1) state law may differ; or, (2) that state rules or regulations require differences in reporting not related to accounting practices and procedures, according to the best of their information, knowledge and belief, respectively. Furthermore, the scope of this attestation by the described officers also includes the related corresponding electronic filing with the NAIC, when required, that is an exact copy (except for formatting differences due to electronic filing) of the enclosed statement. The electronic filing may be requested by various regulators in lieu of or in addition to the enclosed statement.

_____ (Signature) SCOTT WESLEY ZIEGLER _____ 1. (Printed Name) PRESIDENT _____ (Title)	_____ (Signature) KAREN ANN KOSUDA _____ 2. (Printed Name) ASSISTANT SECRETARY _____ (Title)	_____ (Signature) DANIEL JOSEPH WITALEC _____ 3. (Printed Name) TREASURER _____ (Title)
---	---	--

Subscribed and sworn to before me  
This 11TH day of NOVEMBER, 2014

a. Is this an original filing? Yes [ X ] No [ ]  
b. If no: 1. State the amendment number \_\_\_\_\_  
2. Date filed \_\_\_\_\_  
3. Number of pages attached \_\_\_\_\_

**ASSETS**

	Current Statement Date			4 December 31 Prior Year Net Admitted Assets
	1 Assets	2 Nonadmitted Assets	3 Net Admitted Assets (Cols. 1 - 2)	
1. Bonds.....	89,340,291		89,340,291	108,825,039
2. Stocks:				
2.1 Preferred stocks.....			0	
2.2 Common stocks.....			0	
3. Mortgage loans on real estate:				
3.1 First liens.....			0	
3.2 Other than first liens.....			0	
4. Real estate:				
4.1 Properties occupied by the company (less \$.....0 encumbrances).....			0	
4.2 Properties held for the production of income (less \$.....0 encumbrances).....			0	
4.3 Properties held for sale (less \$.....0 encumbrances).....			0	
5. Cash (\$.....0), cash equivalents (\$....699,974) and short-term investments (\$.....0).....	699,974		699,974	
6. Contract loans (including \$.....0 premium notes).....			0	
7. Derivatives.....			0	
8. Other invested assets.....			0	
9. Receivables for securities.....			0	
10. Securities lending reinvested collateral assets.....			0	
11. Aggregate write-ins for invested assets.....	0	0	0	0
12. Subtotals, cash and invested assets (Lines 1 to 11).....	90,040,265	0	90,040,265	108,825,039
13. Title plants less \$.....0 charged off (for Title insurers only).....			0	
14. Investment income due and accrued.....	664,607		664,607	696,723
15. Premiums and considerations:				
15.1 Uncollected premiums and agents' balances in the course of collection.....	33,848,408	7,303,611	26,544,797	23,036,241
15.2 Deferred premiums, agents' balances and installments booked but deferred and not yet due (including \$.....0 earned but unbilled premiums).....	177,710,503		177,710,503	152,272,686
15.3 Accrued retrospective premiums.....			0	
16. Reinsurance:				
16.1 Amounts recoverable from reinsurers.....	182,920,358		182,920,358	158,271,578
16.2 Funds held by or deposited with reinsured companies.....			0	
16.3 Other amounts receivable under reinsurance contracts.....			0	
17. Amounts receivable relating to uninsured plans.....			0	
18.1 Current federal and foreign income tax recoverable and interest thereon.....			0	
18.2 Net deferred tax asset.....	7,054,888	92,011	6,962,877	6,709,229
19. Guaranty funds receivable or on deposit.....			0	
20. Electronic data processing equipment and software.....			0	
21. Furniture and equipment, including health care delivery assets (\$.....0).....			0	
22. Net adjustment in assets and liabilities due to foreign exchange rates.....			0	
23. Receivables from parent, subsidiaries and affiliates.....	16,675,022		16,675,022	
24. Health care (\$.....0) and other amounts receivable.....			0	
25. Aggregate write-ins for other than invested assets.....	3,111,514	66,274	3,045,240	2,644,574
26. Total assets excluding Separate Accounts, Segregated Accounts and Protected Cell Accounts (Lines 12 through 25).....	512,025,565	7,461,896	504,563,669	452,456,070
27. From Separate Accounts, Segregated Accounts and Protected Cell Accounts.....			0	
28. Total (Lines 26 and 27).....	512,025,565	7,461,896	504,563,669	452,456,070

**DETAILS OF WRITE-INS**

1101.....			0	
1102.....			0	
1103.....			0	
1198. Summary of remaining write-ins for Line 11 from overflow page.....	0	0	0	0
1199. Totals (Lines 1101 thru 1103 plus 1198) (Line 11 above).....	0	0	0	0
2501. FLORIDA HURRICANE CATASTROPHE FUND ASSETS.....	3,045,240		3,045,240	2,617,409
2502. MISCELLANEOUS OTHER ASSETS.....	66,274	66,274	0	
2503. EQUITIES AND DEPOSITS IN POOLS & ASSOCIATIONS.....			0	27,165
2598. Summary of remaining write-ins for Line 25 from overflow page.....	0	0	0	0
2599. Totals (Lines 2501 thru 2503 plus 2598) (Line 25 above).....	3,111,514	66,274	3,045,240	2,644,574

## LIABILITIES, SURPLUS AND OTHER FUNDS

	1 Current Statement Date	2 December 31 Prior Year
1. Losses (current accident year \$.....18,963,174).....	33,639,621	31,374,211
2. Reinsurance payable on paid losses and loss adjustment expenses.....		
3. Loss adjustment expenses.....	7,904,800	7,031,111
4. Commissions payable, contingent commissions and other similar charges.....	65,365	68,126
5. Other expenses (excluding taxes, licenses and fees).....	142,499	151,854
6. Taxes, licenses and fees (excluding federal and foreign income taxes).....	4,487,512	4,887,784
7.1 Current federal and foreign income taxes (including \$.....(11,277) on realized capital gains (losses)).....	906,443	1,261,050
7.2 Net deferred tax liability.....		
8. Borrowed money \$.....0 and interest thereon \$.....0.....		
9. Unearned premiums (after deducting unearned premiums for ceded reinsurance of \$.....282,581,474 and including warranty reserves of \$.....0 and accrued accident and health experience rating refunds including \$.....0 for medical loss ratio rebate per the Public Health Service Act.....)	31,397,949	26,961,138
10. Advance premium.....	7,497,618	5,931,788
11. Dividends declared and unpaid:		
11.1 Stockholders.....		
11.2 Policyholders.....		
12. Ceded reinsurance premiums payable (net of ceding commissions).....	228,684,748	181,438,260
13. Funds held by company under reinsurance treaties.....		
14. Amounts withheld or retained by company for account of others.....		
15. Remittances and items not allocated.....		
16. Provision for reinsurance (including \$.....0 certified).....		
17. Net adjustments in assets and liabilities due to foreign exchange rates.....		
18. Drafts outstanding.....	47,006,290	38,288,817
19. Payable to parent, subsidiaries and affiliates.....		17,865,747
20. Derivatives.....		
21. Payable for securities.....	43	
22. Payable for securities lending.....		
23. Liability for amounts held under uninsured plans.....		
24. Capital notes \$.....0 and interest thereon \$.....0.....		
25. Aggregate write-ins for liabilities.....	6,221,972	5,378,770
26. Total liabilities excluding protected cell liabilities (Lines 1 through 25).....	367,954,860	320,638,656
27. Protected cell liabilities.....		
28. Total liabilities (Lines 26 and 27).....	367,954,860	320,638,656
29. Aggregate write-ins for special surplus funds.....	0	0
30. Common capital stock.....	1,500,000	1,500,000
31. Preferred capital stock.....		
32. Aggregate write-ins for other than special surplus funds.....	0	0
33. Surplus notes.....		
34. Gross paid in and contributed surplus.....	99,537,495	99,537,495
35. Unassigned funds (surplus).....	35,571,314	30,779,919
36. Less treasury stock, at cost:		
36.1 .....0.000 shares common (value included in Line 30 \$.....0).....		
36.2 .....0.000 shares preferred (value included in Line 31 \$.....0).....		
37. Surplus as regards policyholders (Lines 29 to 35, less 36).....	136,608,809	131,817,414
38. Totals (Page 2, Line 28, Col. 3).....	504,563,669	452,456,070

## DETAILS OF WRITE-INS

2501. FLORIDA HURRICANE CATASTROPHE FUND LIABILITIES.....	6,018,192	5,008,796
2502. STATE PLAN LIABILITY.....	189,187	
2503. ESCHEATABLE PROPERTY.....	14,593	3,054
2598. Summary of remaining write-ins for Line 25 from overflow page.....	0	366,920
2599. Totals (Lines 2501 thru 2503 plus 2598) (Line 25 above).....	6,221,972	5,378,770
2901. ....		
2902. ....		
2903. ....		
2998. Summary of remaining write-ins for Line 29 from overflow page.....	0	0
2999. Totals (Lines 2901 thru 2903 plus 2998) (Line 29 above).....	0	0
3201. ....		
3202. ....		
3203. ....		
3298. Summary of remaining write-ins for Line 32 from overflow page.....	0	0
3299. Totals (Lines 3201 thru 3203 plus 3298) (Line 32 above).....	0	0

**PROGRESSIVE SELECT INSURANCE COMPANY  
STATEMENT OF INCOME**

	1 Current Year to Date	2 Prior Year to Date	3 Prior Year Ended December 31
<b>UNDERWRITING INCOME</b>			
1. Premiums earned:			
1.1 Direct..... (written \$.....868,832,235).....	824,464,118	771,025,634	1,034,613,088
1.2 Assumed..... (written \$.....0).....			
1.3 Ceded..... (written \$.....781,949,012).....	742,017,707	693,923,070	931,151,782
1.4 Net..... (written \$.....86,883,223).....	82,446,411	77,102,564	103,461,306
DEDUCTIONS:			
2. Losses incurred (current accident year \$.....51,863,553):			
2.1 Direct.....	522,982,501	433,720,079	591,617,454
2.2 Assumed.....			
2.3 Ceded.....	470,684,265	390,348,088	532,455,731
2.4 Net.....	52,298,236	43,371,991	59,161,723
3. Loss adjustment expenses incurred.....	9,234,264	8,136,661	10,894,028
4. Other underwriting expenses incurred.....	14,921,151	13,647,860	18,185,703
5. Aggregate write-ins for underwriting deductions.....	0	0	0
6. Total underwriting deductions (Lines 2 through 5).....	76,453,651	65,156,512	88,241,454
7. Net income of protected cells.....			
8. Net underwriting gain (loss) (Line 1 minus Line 6 + Line 7).....	5,992,760	11,946,052	15,219,852
<b>INVESTMENT INCOME</b>			
9. Net investment income earned.....	1,233,873	1,408,191	1,853,535
10. Net realized capital gains (losses) less capital gains tax of \$.....(138,621).....	(147,978)	467,597	353,663
11. Net investment gain (loss) (Lines 9 + 10).....	1,085,895	1,875,788	2,207,198
<b>OTHER INCOME</b>			
12. Net gain or (loss) from agents' or premium balances charged off (amount recovered \$.....11,279,840 amount charged off \$.....12,466,607).....	(1,186,767)	(1,104,624)	(1,494,800)
13. Finance and service charges not included in premiums.....	7,772,300	6,710,638	9,106,773
14. Aggregate write-ins for miscellaneous income.....	(7,001,242)	(5,996,229)	(8,143,343)
15. Total other income (Lines 12 through 14).....	(415,709)	(390,215)	(531,370)
16. Net income before dividends to policyholders, after capital gains tax and before all other federal and foreign income taxes (Lines 8 + 11 + 15).....	6,662,946	13,431,625	16,895,680
17. Dividends to policyholders.....			
18. Net income after dividends to policyholders, after capital gains tax and before all other federal and foreign income taxes (Line 16 minus Line 17).....	6,662,946	13,431,625	16,895,680
19. Federal and foreign income taxes incurred.....	2,611,350	4,617,483	5,788,408
20. Net income (Line 18 minus Line 19) (to Line 22).....	4,051,596	8,814,142	11,107,272
<b>CAPITAL AND SURPLUS ACCOUNT</b>			
21. Surplus as regards policyholders, December 31 prior year.....	131,817,414	109,508,890	109,508,890
22. Net income (from Line 20).....	4,051,596	8,814,142	11,107,272
23. Net transfers (to) from Protected Cell accounts.....			
24. Change in net unrealized capital gains or (losses) less capital gains tax of \$.....0.....			
25. Change in net unrealized foreign exchange capital gain (loss).....			
26. Change in net deferred income tax.....	219,577	377,350	669,046
27. Change in nonadmitted assets.....	520,222	(309,953)	(967,794)
28. Change in provision for reinsurance.....			
29. Change in surplus notes.....			
30. Surplus (contributed to) withdrawn from protected cells.....			
31. Cumulative effect of changes in accounting principles.....			
32. Capital changes:			
32.1 Paid in.....			
32.2 Transferred from surplus (Stock Dividend).....			
32.3 Transferred to surplus.....			
33. Surplus adjustments:			
33.1 Paid in.....			11,500,000
33.2 Transferred to capital (Stock Dividend).....			
33.3 Transferred from capital.....			
34. Net remittances from or (to) Home Office.....			
35. Dividends to stockholders.....			
36. Change in treasury stock.....			
37. Aggregate write-ins for gains and losses in surplus.....	0	0	0
38. Change in surplus as regards policyholders (Lines 22 through 37).....	4,791,395	8,881,539	22,308,524
39. Surplus as regards policyholders, as of statement date (Lines 21 plus 38).....	136,608,809	118,390,429	131,817,414
<b>DETAILS OF WRITE-INS</b>			
0501. ....			
0502. ....			
0503. ....			
0598. Summary of remaining write-ins for Line 5 from overflow page.....	0	0	0
0599. Totals (Lines 0501 thru 0503 plus 0598) (Line 5 above).....	0	0	0
1401. INTEREST INCOME ON INTERCOMPANY BALANCES.....	17,779	34,223	44,620
1402. MISCELLANEOUS OTHER (EXPENSE) INCOME.....	(23,950)	9,122	8,133
1403. FINANCE & SERVICE CHARGE REVENUE CEDED.....	(6,995,071)	(6,039,574)	(8,196,096)
1498. Summary of remaining write-ins for Line 14 from overflow page.....	0	0	0
1499. Totals (Lines 1401 thru 1403 plus 1498) (Line 14 above).....	(7,001,242)	(5,996,229)	(8,143,343)
3701. ....			
3702. ....			
3703. ....			
3798. Summary of remaining write-ins for Line 37 from overflow page.....	0	0	0
3799. Totals (Lines 3701 thru 3703 plus 3798) (Line 37 above).....	0	0	0

## CASH FLOW

	1 Current Year to Date	2 Prior Year To Date	3 Prior Year Ended December 31
<b>CASH FROM OPERATIONS</b>			
1. Premiums collected net of reinsurance.....	107,147,719	88,636,047	99,443,586
2. Net investment income.....	1,909,098	1,809,751	2,551,991
3. Miscellaneous income.....	(380,647)	(367,727)	(478,045)
4. Total (Lines 1 through 3).....	108,676,170	90,078,071	101,517,532
5. Benefit and loss related payments.....	74,681,606	58,644,075	81,523,697
6. Net transfers to Separate Accounts, Segregated Accounts and Protected Cell Accounts.....			
7. Commissions, expenses paid and aggregate write-ins for deductions.....	23,694,114	22,166,516	28,414,954
8. Dividends paid to policyholders.....			
9. Federal and foreign income taxes paid (recovered) net of \$.....(37,219) tax on capital gains (losses).....	2,827,336	4,381,031	5,900,824
10. Total (Lines 5 through 9).....	101,203,056	85,191,622	115,839,475
11. Net cash from operations (Line 4 minus Line 10).....	7,473,114	4,886,449	(14,321,943)
<b>CASH FROM INVESTMENTS</b>			
12. Proceeds from investments sold, matured or repaid:			
12.1 Bonds.....	69,799,932	31,984,059	36,773,332
12.2 Stocks.....			
12.3 Mortgage loans.....			
12.4 Real estate.....			
12.5 Other invested assets.....			
12.6 Net gains or (losses) on cash, cash equivalents and short-term investments.....			
12.7 Miscellaneous proceeds.....	43		
12.8 Total investment proceeds (Lines 12.1 to 12.7).....	69,799,975	31,984,059	36,773,332
13. Cost of investments acquired (long-term only):			
13.1 Bonds.....	51,244,892	33,712,481	64,289,907
13.2 Stocks.....			
13.3 Mortgage loans.....			
13.4 Real estate.....			
13.5 Other invested assets.....			
13.6 Miscellaneous applications.....			
13.7 Total investments acquired (Lines 13.1 to 13.6).....	51,244,892	33,712,481	64,289,907
14. Net increase or (decrease) in contract loans and premium notes.....			
15. Net cash from investments (Line 12.8 minus Line 13.7 and Line 14).....	18,555,083	(1,728,422)	(27,516,575)
<b>CASH FROM FINANCING AND MISCELLANEOUS SOURCES</b>			
16. Cash provided (applied):			
16.1 Surplus notes, capital notes.....			
16.2 Capital and paid in surplus, less treasury stock.....			11,500,000
16.3 Borrowed funds.....			
16.4 Net deposits on deposit-type contracts and other insurance liabilities.....			
16.5 Dividends to stockholders.....			
16.6 Other cash provided (applied).....	(25,328,223)	(13,157,360)	20,339,185
17. Net cash from financing and miscellaneous sources (Lines 16.1 through 16.4 minus Line 16.5 plus Line 16.6).....	(25,328,223)	(13,157,360)	31,839,185
<b>RECONCILIATION OF CASH, CASH EQUIVALENTS AND SHORT-TERM INVESTMENTS</b>			
18. Net change in cash, cash equivalents and short-term investments (Line 11 plus Line 15 plus Line 17).....	699,974	(9,999,333)	(9,999,333)
19. Cash, cash equivalents and short-term investments:			
19.1 Beginning of year.....	0	9,999,333	9,999,333
19.2 End of period (Line 18 plus Line 19.1).....	699,974	0	0

Note: Supplemental disclosures of cash flow information for non-cash transactions:

20.0001			
---------	--	--	--

## NOTES TO FINANCIAL STATEMENTS

## 1. Summary of Significant Accounting Policies

## A. Accounting Practices

The accompanying statutory-basis financial statements of Progressive Select Insurance Company (the "Company") were prepared on the basis of accounting practices prescribed or permitted by the Ohio Department of Insurance ("DOI").

The Ohio DOI requires insurance companies domiciled in the state of Ohio to prepare their statutory-basis financial statements in accordance with the National Association of Insurance Commissioners' ("NAIC") *Accounting Practices and Procedures Manual* subject to any deviations prescribed or permitted by the Ohio DOI. No deviations from NAIC statutory accounting practices ("NAIC SAP") were used in preparing these statutory-basis financial statements as illustrated in the table below:

Description	State of Domicile	September 30, 2014	December 31, 2013
<b>Net income</b>			
(1) Net income, state basis	OH	\$ 4,051,596	\$ 11,107,272
(2) Effect of state prescribed practices		--	--
(3) Effect of state permitted practices		--	--
(4) Net income, NAIC SAP basis (1-2-3=4)	OH	\$ 4,051,596	\$ 11,107,272
<b>Surplus</b>			
(5) Policyholders' surplus, state basis	OH	\$ 136,608,809	\$ 131,817,414
(6) Effect of state prescribed practices		--	--
(7) Effect of state permitted practices		--	--
(8) Policyholders' surplus, NAIC SAP basis(5-6-7=8)	OH	\$ 136,608,809	\$ 131,817,414

## 2. Accounting Changes and Corrections of Errors

No significant change

## 3. Business Combinations and Goodwill

No significant change

## 4. Discontinued Operations

No significant change

## 5. Investments

## D. Loan-Backed Securities

- The sources used to determine prepayment assumptions are derived from updated cash flows from widely utilized reputable industry sources. The Company's portfolio managers review the available cash flow data and prepayment assumptions and make adjustments based on current performance indicators on the underlying assets (e.g., delinquency rates, foreclosure rates, and default rates), credit support (via current levels of subordination), and historical credit ratings.
- Intent to Sell or Inability to Hold Securities with a Recognized Other-Than-Temporary Impairment  
Not applicable
- The Company has not recognized any other-than-temporary impairment for loan-backed and structured debt securities during the current year.
- As of September 30, 2014, the Company does not own any loan-backed or structured debt securities in an unrealized loss position.
- Under SSAP No. 43R, the Company analyzes its structured debt securities to determine if the Company intends to sell, or if it is more likely than not that the Company will be required to sell, the security prior to recovery and, if so, the Company writes down the security to its current fair market value with the entire amount of the write-down recorded as a realized loss. To the extent that it is more likely than not that the Company will hold the debt security until recovery (which could be maturity), the Company determines if any of the decline in value is due to a credit loss (i.e., where the present value of cash flows expected to be collected is lower than the amortized cost basis of the security) and, if so, the Company recognizes that portion of the impairment as a realized loss.

## E. Repurchase Agreements and/or Securities Lending Transactions

Not applicable

## I. Working Capital Finance Investments

Not applicable

## 6. Joint Ventures, Partnerships and Limited Liability Companies

No significant change

## 7. Investment Income

No significant change

## 8. Derivative Instruments

No significant change

## 9. Income Taxes

No significant change

## 10. Information Concerning Parent, Subsidiaries, Affiliates and Other Related Parties

No significant change

## NOTES TO FINANCIAL STATEMENTS

11. Debt
- B. Federal Home Loan Bank Agreements
- Not applicable

12. Retirement Plans, Deferred Compensation, Postemployment Benefits and Compensated Absences and Other Postretirement Benefit Plans
- A. Defined Benefit Plan
- Not applicable

13. Capital and Surplus, Dividend Restrictions and Quasi-Reorganizations
- No significant change

14. Contingencies

- D. Claims Related Extra Contractual Obligations and Bad Faith Losses Stemming from Lawsuits

The Company paid the following amounts in the reporting period to settle claims related extra contractual obligations ("ECO") or bad faith claims stemming from lawsuits.

Description	Direct
Claims related ECO and bad faith losses paid	\$ 250,000

The table below indicates the number of claims where amounts were paid to settle claims related ECO or bad faith claims resulting from lawsuits during the reporting period.

(a) 0-25 Claims	(b) 26-50 Claims	(c) 51-100 Claims	(d) 101-500 Claims	(e) More than 500 Claims
X				

(f) Per Claim [ ] (g) Per Claimant [x]

- F. All Other Contingencies

The Company is named as defendant in various lawsuits arising out of its insurance operations. All legal actions relating to claims made under insurance policies are considered by the Company in establishing its loss and loss adjustment expense ("LAE") reserves. The Company also has potential exposure relating to lawsuits due to its participation in a management agreement for which it is allocated litigation expenses.

The following is a discussion of potentially significant pending cases at September 30, 2014. The Company does not consider a loss from these cases to be probable and is unable to estimate a range of loss, if any, at this time.

As of September 30, 2014, there were two putative class action lawsuits challenging the Company's practice in Florida of adjusting personal injury protection and first-party medical payments.

15. Leases

No significant change

16. Information about Financial Instruments with Off-Balance Sheet Risk and with Concentrations of Credit Risk

No significant change

17. Sale, Transfer, and Servicing of Financial Assets and Extinguishments of Liabilities

- B. Transfer and Servicing of Financial Assets

Not applicable

- C. Wash Sales

The Company had no wash sales of securities with a NAIC rating of 3 or below during the reporting period.

18. Gain or Loss from Uninsured Plans and the Uninsured Portion of Partially Insured Plans

No significant change

19. Direct Premiums Written / Produced by Managing General Agents / Third Party Administrators

No significant change

20. Fair Value Measurements

- A. Inputs Used for Assets and Liabilities Measured at Fair Value in the Company's Financial Statements

1. Fair Value Measurements by Levels 1, 2 and 3

The Company categorizes its financial instruments, based on the degree of subjectivity inherent in the method by which they are valued, into a fair value hierarchy of three levels, as follows:

Level 1 - Inputs are unadjusted, quoted prices in active markets for identical instruments at the measurement date (e.g., active exchange-traded equity securities).

Level 2 - Inputs (other than quoted prices included within Level 1) that are observable for the instrument either directly or indirectly. This includes: (i) quoted prices for similar instruments in active markets, (ii) quoted prices for identical or similar instruments in markets that are not active, (iii) inputs other than quoted prices that are observable for the instruments, and (iv) inputs that are derived principally from or corroborated by observable market data by correlation or other means.

Level 3 - Inputs that are unobservable. Unobservable inputs reflect the Company's subjective evaluation about the assumptions market participants would use in pricing the financial instrument.

## NOTES TO FINANCIAL STATEMENTS

The Company's management evaluated whether the market was distressed or inactive in determining the fair value of the Company's securities and reviewed certain market level inputs to evaluate whether sufficient activity, volume, and new issuances existed to create an active market. Based on this evaluation, management concluded that there was sufficient activity in determining the fair market value of the Company's securities.

As of September 30, 2014, the Company did not measure and report any securities at fair value on the balance sheet. All bonds were carried at amortized cost.

## 2. Roll forward of Level 3 Items

Not applicable

## 3. Policy on Transfers Into and Out of Level 3

At the end of each reporting period, the Company evaluates whether or not any event has occurred or circumstances have changed that would cause an instrument to be transferred into or out of Level 3.

## 4. Inputs and Techniques Used for Level 2 and Level 3 Fair Values

See Note 20A above.

## 5. Derivative Fair Values

Not applicable

## B. Other Fair Value Disclosures

Not applicable

## C. Fair Values for all Financial Instruments by Levels 1, 2, and 3

The table below represents the fair value of all financial instruments at September 30, 2014, however, not all financial instruments are reported at fair value in the Company's financial statements.

Type of Financial Instrument	Aggregate Fair Value	Admitted Assets	Level 1	Level 2	Level 3	Not Practicable (Carrying Value)
Bonds	\$ 90,074,155	\$ 89,340,291	\$ 18,850,248	\$ 71,223,907	\$ --	\$ --
Cash equivalents	699,974	699,974	699,974	--	--	--
Total	\$ 90,774,129	\$ 90,040,265	\$ 19,550,222	\$ 71,223,907	\$ --	\$ --

## D. Financial Instruments for Which it is Not Practicable to Estimate Fair Values

Not applicable

## 21. Other Items

## G. Offsetting and Netting of Assets and Liabilities

Not applicable

## I. Risk Sharing Provisions of the Affordable Care Act

Not applicable

## J. Agents' Balances Certification, Florida Statute 625.012 (5):

At September 30, 2014, the Company reported net admitted premiums and agents' balances in course of collection of \$26,544,797. Of this amount there were no premiums due from a controlled or controlling person as defined in Florida statute 625.012 (5).

## 22. Events Subsequent

Subsequent events have been considered through November 7, 2014 for the statutory statement that was available for issuance by November 15, 2014. There were no subsequent events to report.

## 23. Reinsurance

No significant change

## 24. Retrospectively Rated Contracts and Contracts Subject to Redetermination

No significant change

## 25. Changes in Incurred Losses and Loss Adjustment Expenses

Incurred losses and LAE attributable to insured events of prior accident years increased by \$444,000 in 2014, which is 1.2% of the total prior year net unpaid losses and LAE of \$38,405,322. Private passenger auto liability experienced unfavorable development due to originally anticipated severity for accident year 2013 increasing by 1.2%. LAE reserves developed unfavorably primarily in adjusting and other expenses partially offset by favorable defense and cost containment reserve development.

## 26. Intercompany Pooling Arrangements

No significant change

## 27. Structured Settlements

No significant change

## 28. Health Care Receivables

No significant change

## **NOTES TO FINANCIAL STATEMENTS**

---

- 29. Participating Accident and Health Policies  
No significant change
- 30. Premium Deficiency Reserves  
No significant change
- 31. High Deductibles  
No significant change
- 32. Discounting of Liabilities for Unpaid Losses and Unpaid Loss Adjustment Expenses  
No significant change
- 33. Asbestos and Environmental Reserves  
No significant change
- 34. Subscriber Savings Accounts  
No significant change
- 35. Multiple Peril Crop Insurance  
No significant change
- 36. Financial Guaranty Insurance
  - B. Schedule of Insured Financial Obligations at the End of the Period  
Not applicable

**PROGRESSIVE SELECT INSURANCE COMPANY**

**GENERAL INTERROGATORIES**

**PART 1 - COMMON INTERROGATORIES - GENERAL**

- 1.1 Did the reporting entity experience any material transactions requiring the filing of Disclosure of Material Transactions with the State of Domicile, as required by the Model Act? Yes [ ] No [X]
- 1.2 If yes, has the report been filed with the domiciliary state? Yes [ ] No [ ]
- 2.1 Has any change been made during the year of this statement in the charter, by-laws, articles of incorporation, or deed of settlement of the reporting entity? Yes [ ] No [X]
- 2.2 If yes, date of change: .....
- 3.1 Is the reporting entity a member of an Insurance Holding Company System consisting of two or more affiliated persons, one or more of which is an insurer? Yes [X] No [ ]  
If yes, complete Schedule Y, Parts 1 and 1A.
- 3.2 Have there been any substantial changes in the organizational chart since the prior quarter end? Yes [ ] No [X]
- 3.3 If the response to 3.2 is yes, provide a brief description of those changes.

\_\_\_\_\_

\_\_\_\_\_

- 4.1 Has the reporting entity been a party to a merger or consolidation during the period covered by this statement? Yes [ ] No [X]
- 4.2 If yes, provide name of entity, NAIC Company Code, and state of domicile (use two letter state abbreviation) for any entity that has ceased to exist as a result of the merger or consolidation.

1 Name of Entity	2 NAIC Company Code	3 State of Domicile

- 5. If the reporting entity is subject to a management agreement, including third-party administrator(s), managing general agent(s), attorney-in-fact, or similar agreement, have there been any significant changes regarding the terms of the agreement or principals involved? Yes [ ] No [X] N/A [ ]  
If yes, attach an explanation.

\_\_\_\_\_

\_\_\_\_\_

- 6.1 State as of what date the latest financial examination of the reporting entity was made or is being made. .....12/31/2012.....
- 6.2 State the as of date that the latest financial examination report became available from either the state of domicile or the reporting entity. This date should be the date of the examined balance sheet and not the date the report was completed or released. .....12/31/2012.....
- 6.3 State as of what date the latest financial examination report became available to other states or the public from either the state of domicile or the reporting entity. This is the release date or completion date of the examination report and not the date of the examination (balance sheet date). .....8/6/2013.....

- 6.4 By what department or departments?  
OHIO

- 6.5 Have all financial statement adjustments within the latest financial examination report been accounted for in a subsequent financial statement filed with Departments? Yes [ ] No [ ] N/A [X]
- 6.6 Have all of the recommendations within the latest financial examination report been complied with? Yes [X] No [ ] N/A [ ]

- 7.1 Has this reporting entity had any Certificates of Authority, licenses or registrations (including corporate registration, if applicable) suspended or revoked by any governmental entity during the reporting period? Yes [ ] No [X]
- 7.2 If yes, give full information:

\_\_\_\_\_

\_\_\_\_\_

- 8.1 Is the company a subsidiary of a bank holding company regulated by the Federal Reserve Board? Yes [ ] No [X]
- 8.2 If response to 8.1 is yes, please identify the name of the bank holding company.

\_\_\_\_\_

\_\_\_\_\_

- 8.3 Is the company affiliated with one or more banks, thrifts or securities firms? Yes [ ] No [X]
- 8.4 If the response to 8.3 is yes, please provide below the names and location (city and state of the main office) of any affiliates regulated by a federal regulatory services agency [i.e. the Federal Reserve Board (FRB), the Office of the Comptroller of the Currency (OCC), the Federal Deposit Insurance Corporation (FDIC) and the Securities Exchange Commission (SEC)] and identify the affiliate's primary federal regulator].

1 Affiliate Name	2 Location (City, State)	3 FRB	4 OCC	5 FDIC	6 SEC

- 9.1 Are the senior officers (principal executive officer, principal financial officer, principal accounting officer or controller, or persons performing similar functions) of the reporting entity subject to a code of ethics, which includes the following standards? Yes [X] No [ ]
  - (a) Honest and ethical conduct, including the ethical handling of actual or apparent conflicts of interest between personal and professional relationships;
  - (b) Full, fair, accurate, timely and understandable disclosure in the periodic reports required to be filed by the reporting entity;
  - (c) Compliance with applicable governmental laws, rules and regulations;
  - (d) The prompt internal reporting of violations to an appropriate person or persons identified in the code; and
  - (e) Accountability for adherence to the code.

- 9.11 If the response to 9.1 is No, please explain:

\_\_\_\_\_

\_\_\_\_\_

- 9.2 Has the code of ethics for senior managers been amended? Yes [ ] No [X]
- 9.21 If the response to 9.2 is Yes, provide information related to amendment(s).

\_\_\_\_\_

\_\_\_\_\_

- 9.3 Have any provisions of the code of ethics been waived for any of the specified officers? Yes [ ] No [X]

**GENERAL INTERROGATORIES**

**PART 1 - COMMON INTERROGATORIES - GENERAL**

9.31 If the response to 9.3 is Yes, provide the nature of any waiver(s).

---



---

**PART 1 - FINANCIAL**

10.1 Does the reporting entity report any amounts due from parent, subsidiaries or affiliates on Page 2 of this statement? Yes  No

10.2 If yes, indicate any amounts receivable from parent included in the Page 2 amount: \$.....0

**PART 1 - INVESTMENT**

11.1 Were any of the stocks, bonds, or other assets of the reporting entity loaned, placed under option agreement, or otherwise made available for use by another person? (Exclude securities under securities lending agreements.) Yes  No

11.2 If yes, give full and complete information relating thereto:

---



---

12. Amount of real estate and mortgages held in other invested assets in Schedule BA: \$.....0

13. Amount of real estate and mortgages held in short-term investments: \$.....0

14.1 Does the reporting entity have any investments in parent, subsidiaries and affiliates? Yes  No

14.2 If yes, please complete the following:

	1 Prior Year-End Book/Adjusted Carrying Value	2 Current Quarter Book/Adjusted Carrying Value
14.21 Bonds.....	\$ .....0	\$ .....0
14.22 Preferred Stock.....	\$ .....0	\$ .....0
14.23 Common Stock.....	\$ .....0	\$ .....0
14.24 Short-Term Investments.....	\$ .....0	\$ .....0
14.25 Mortgage Loans on Real Estate.....	\$ .....0	\$ .....0
14.26 All Other.....	\$ .....0	\$ .....0
14.27 Total Investment in Parent, Subsidiaries and Affiliates (Subtotal Lines 14.21 to 14.26).....	\$ .....0	\$ .....0
14.28 Total Investment in Parent included in Lines 14.21 to 14.26 above.....	\$ .....0	\$ .....0

15.1 Has the reporting entity entered into any hedging transactions reported on Schedule DB? Yes  No

15.2 If yes, has a comprehensive description of the hedging program been made available to the domiciliary state? Yes  No   
If no, attach a description with this statement.

---



---

16. For the reporting entity's security lending program, state the amount of the following as of current statement date:

- 16.1 Total fair value of reinvested collateral assets reported on Schedule DL, Parts 1 and 2: \$.....0
- 16.2 Total book adjusted/carrying value of reinvested collateral assets reported on Schedule DL, Parts 1 and 2: \$.....0
- 16.3 Total payable for securities lending reported on the liability page: \$.....0

17. Excluding items in Schedule E-Part 3-Special Deposits, real estate, mortgage loans and investments held physically in the reporting entity's offices, vaults or safety deposit boxes, were all stocks, bonds and other securities, owned throughout the current year held pursuant to a custodial agreement with a qualified bank or trust company in accordance with Section 1, III - General Examination Considerations, F. Outsourcing of Critical Functions, Custodial or Safekeeping Agreements of the NAIC Financial Condition Examiners Handbook? Yes  No

17.1 For all agreements that comply with the requirements of the NAIC Financial Condition Examiners Handbook, complete the following:

1 Name of Custodian(s)	2 Custodian Address
CITIBANK, N.A.	338 GREENWICH STREET NEW YORK, NY 10013

17.2 For all agreements that do not comply with the requirements of the NAIC Financial Condition Examiners Handbook, provide the name, location and a complete explanation.

1 Name(s)	2 Location(s)	3 Complete Explanation(s)
NONE		

17.3 Have there been any changes, including name changes, in the custodian(s) identified in 17.1 during the current quarter? Yes  No

17.4 If yes, give full and complete information relating thereto:

1 Old Custodian	2 New Custodian	3 Date of Change	4 Reason
NONE			

17.5 Identify all investment advisors, broker/dealers or individuals acting on behalf of broker/dealers that have access to the investment accounts, handle securities and have authority to make investments on behalf of the reporting entity:

1 Central Registration Depository	2 Name(s)	3 Address
NONE		

**PART 1 - INVESTMENT**

18.1 Have all the filing requirements of the Purposes and Procedures Manual of the NAIC Securities Valuation Office been followed?

Yes [X] No [ ]

18.2 If no, list exceptions:

---

**PROGRESSIVE SELECT INSURANCE COMPANY  
GENERAL INTERROGATORIES (continued)**

**PART 2**

**PROPERTY & CASUALTY INTERROGATORIES**

1. If the reporting entity is a member of a pooling arrangement, did the agreement or the reporting entity's participation change? Yes [ ] No [ ] N/A [X]  
If yes, attach an explanation.

---



---

2. Has the reporting entity reinsured any risk with any other reporting entity and agreed to release such entity from liability, in whole or in part, from any loss that may occur on the risk, or portion thereof, reinsured? Yes [ ] No [X]  
If yes, attach an explanation.

---



---

3.1 Have any of the reporting entity's primary reinsurance contracts been canceled? Yes [ ] No [X]  
3.2 If yes, give full and complete information thereto:

---



---

4.1 Are any of the liabilities for unpaid losses and loss adjustment expenses other than certain workers' compensation tabular reserves (see Annual Statement Instructions pertaining to disclosure of discounting for definition of "tabular reserves,") discounted at a rate of interest greater than zero? Yes [ ] No [X]  
4.2 If yes, complete the following schedule:

1 Line of Business	2 Maximum Interest	3 Disc. Rate	Total Discount				Discount Taken During Period			
			4 Unpaid Losses	5 Unpaid LAE	6 IBNR	7 Total	8 Unpaid Losses	9 Unpaid LAE	10 IBNR	11 Total
	.....XXX..	.....XXX.....	.....0	.....0	.....0	.....0	.....0	.....0	.....0	.....0
<b>Total</b> .....	.....XXX..	.....XXX.....	.....0	.....0	.....0	.....0	.....0	.....0	.....0	.....0

5. Operating Percentages:

5.1 A&H loss percent 0.0 %

5.2 A&H cost containment percent 0.0 %

5.3 A&H expense percent excluding cost containment expenses 0.0 %

6.1 Do you act as a custodian for health savings accounts? Yes [ ] No [X]

6.2 If yes, please provide the amount of custodial funds held as of the reporting date. 0

6.3 Do you act as an administrator for health savings accounts? Yes [ ] No [X]

6.4 If yes, please provide the amount of funds administered as of the reporting date. 0

**PROGRESSIVE SELECT INSURANCE COMPANY**  
**SCHEDULE F - CEDED REINSURANCE**

Showing All New Reinsurers - Current Year to Date

1 NAIC Company Code	2 ID Number	3 Name of Reinsurer	4 Domiciliary Jurisdiction	5 Type of Reinsurer	6 Certified Reinsurer Rating (1 through 6)	7 Effective Date of Certified Reinsurer Rating
------------------------------	-------------------	------------------------	----------------------------------	---------------------------	---	---

**NONE**

**PROGRESSIVE SELECT INSURANCE COMPANY**

**SCHEDULE T - EXHIBIT OF PREMIUMS WRITTEN**

Current Year to Date - Allocated by States and Territories

States, Etc.	1 Active Status	Direct Premiums Written		Direct Losses Paid (Deducting Salvage)		Direct Losses Unpaid	
		2 Current Year to Date	3 Prior Year to Date	4 Current Year to Date	5 Prior Year to Date	6 Current Year to Date	7 Prior Year to Date
1. Alabama.....AL	N						
2. Alaska.....AK	N						
3. Arizona.....AZ	N						
4. Arkansas.....AR	N						
5. California.....CA	L	147,910,479	142,483,602	73,623,203	54,373,686	44,771,219	29,591,932
6. Colorado.....CO	N						
7. Connecticut.....CT	N						
8. Delaware.....DE	N						
9. District of Columbia.....DC	N						
10. Florida.....FL	L	645,269,415	603,341,182	388,131,676	328,023,838	267,385,711	257,323,453
11. Georgia.....GA	N						
12. Hawaii.....HI	N						
13. Idaho.....ID	N						
14. Illinois.....IL	N						
15. Indiana.....IN	N						
16. Iowa.....IA	N						
17. Kansas.....KS	N						
18. Kentucky.....KY	N						
19. Louisiana.....LA	N						
20. Maine.....ME	N						
21. Maryland.....MD	L	75,652,341	59,756,364	38,573,434	27,705,154	24,240,172	18,475,016
22. Massachusetts.....MA	N						
23. Michigan.....MI	N						
24. Minnesota.....MN	N						
25. Mississippi.....MS	N						
26. Missouri.....MO	N						
27. Montana.....MT	N						
28. Nebraska.....NE	N						
29. Nevada.....NV	N						
30. New Hampshire.....NH	N						
31. New Jersey.....NJ	N						
32. New Mexico.....NM	N						
33. New York.....NY	N						
34. North Carolina.....NC	N						
35. North Dakota.....ND	N						
36. Ohio.....OH	L						
37. Oklahoma.....OK	N						
38. Oregon.....OR	N						
39. Pennsylvania.....PA	N						
40. Rhode Island.....RI	N						
41. South Carolina.....SC	N						
42. South Dakota.....SD	N						
43. Tennessee.....TN	N						
44. Texas.....TX	N						
45. Utah.....UT	N						
46. Vermont.....VT	N						
47. Virginia.....VA	N						
48. Washington.....WA	N						
49. West Virginia.....WV	N						
50. Wisconsin.....WI	N						
51. Wyoming.....WY	N						
52. American Samoa.....AS	N						
53. Guam.....GU	N						
54. Puerto Rico.....PR	N						
55. US Virgin Islands.....VI	N						
56. Northern Mariana Islands.....MP	N						
57. Canada.....CAN	N						
58. Aggregate Other Alien.....OT	XXX	0	0	0	0	0	0
59. Totals.....(a) 4		868,832,235	805,581,147	500,328,313	410,102,678	336,397,103	305,390,401

**DETAILS OF WRITE-INS**

58001.....	XXX						
58002.....	XXX						
58003.....	XXX						
58998. Summary of remaining write-ins for Line 58 from overflow page....	XXX	0	0	0	0	0	0
58999. Totals (Lines 58001 thru 58003+ Line 58998) (Line 58 above).....	XXX	0	0	0	0	0	0

(L) - Licensed or Chartered - Licensed Insurance Carrier or Domiciled RRG; (R) - Registered - Non-domiciled RRGs; (Q) - Qualified - Qualified or Accredited Reinsurer;

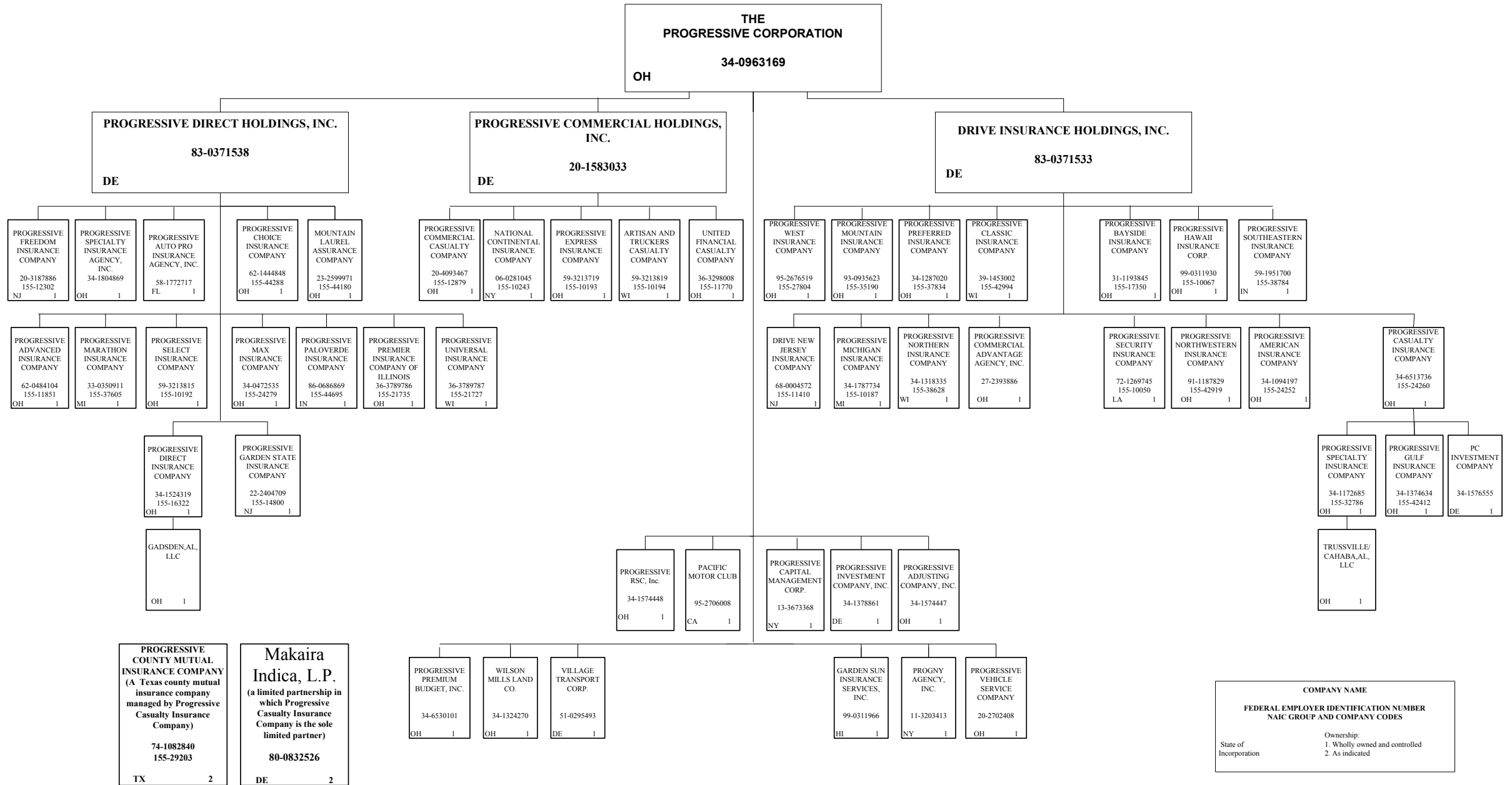
(E) - Eligible - Reporting Entities eligible or approved to write Surplus Lines in the state; (N) - None of the above - Not allowed to write business in the state.

(a) Insert the number of L responses except for Canada and Other Alien.

**SCHEDULE Y – INFORMATION CONCERNING ACTIVITIES OF INSURER MEMBERS OF A HOLDING COMPANY GROUP**

**PART 1 – ORGANIZATIONAL CHART**

Q11



**SCHEDULE Y**

**PART 1A - DETAIL OF INSURANCE HOLDING COMPANY SYSTEM**

1	2	3	4	5	6	7	8	9	10	11	12	13	14	15
Group Code	Group Name	NAIC Company Code	Federal ID Number	Federal RSSD	CIK	Name of Securities Exchange if Publicly Traded (U.S. or International)	Names of Parent, Subsidiaries or Affiliates	Domiciliary Location	Relationship to Reporting Entity	Directly Controlled by (Name of Entity/Person)	Type of Control (Ownership Board, Management Attorney-in-Fact, Influence, Other)	If Control is Ownership Provide Percentage	Ultimate Controlling Entity(ies)/Person(s)	*
<b>Members</b>														
0155.....	The Progressive Insurance Group...	00000.....	34-0963169		0000080661	New York Stock Exchange..	The Progressive Corporation.....	OH.....	UIP.....	Board, Management.....	Board.....		The Progressive Corporation.	1, 3.....
0155.....	The Progressive Insurance Group...	00000.....	83-0371533				Drive Insurance Holdings, Inc.....	DE.....	NIA.....	The Progressive Corporation.....	Ownership.....	100.000	The Progressive Corporation.	1, 3.....
0155.....	The Progressive Insurance Group...	11410.....	68-0004572				Drive New Jersey Insurance Company.....	NJ.....	IA.....	Drive Insurance Holdings, Inc.....	Ownership.....	100.000	The Progressive Corporation.	1, 3.....
0155.....	The Progressive Insurance Group...	24252.....	34-1094197				Progressive American Insurance Company.....	OH.....	IA.....	Drive Insurance Holdings, Inc.....	Ownership.....	100.000	The Progressive Corporation.	1, 3.....
0155.....	The Progressive Insurance Group...	17350.....	31-1193845				Progressive Bayside Insurance Company.....	OH.....	IA.....	Drive Insurance Holdings, Inc.....	Ownership.....	100.000	The Progressive Corporation.	1, 3.....
0155.....	The Progressive Insurance Group...	24260.....	34-6513736				Progressive Casualty Insurance Company.....	OH.....	IA.....	Drive Insurance Holdings, Inc.....	Ownership.....	100.000	The Progressive Corporation.	1, 3.....
0155.....	The Progressive Insurance Group...	00000.....	34-1576555				PC Investment Company.....	DE.....	NIA.....	Progressive Casualty Insurance Company.....	Ownership.....	100.000	The Progressive Corporation.	1, 3.....
0155.....	The Progressive Insurance Group...	29203.....	74-1082840				Progressive County Mutual Insurance Company.....	TX.....	IA.....	Progressive Casualty Insurance Company.....	Management.....		The Progressive Corporation.	2, 3.....
0155.....	The Progressive Insurance Group...	42412.....	34-1374634				Progressive Gulf Insurance Company.....	OH.....	IA.....	Progressive Casualty Insurance Company.....	Ownership.....	100.000	The Progressive Corporation.	1, 3.....
0155.....	The Progressive Insurance Group...	32786.....	34-1172685				Progressive Specialty Insurance Company.....	OH.....	IA.....	Progressive Casualty Insurance Company.....	Ownership.....	100.000	The Progressive Corporation.	1, 3.....
0155.....	The Progressive Insurance Group...	00000.....	20-5716113				Trussville/Cahaba, AL , LLC.....	OH.....	NIA.....	Progressive Specialty Insurance Company.....	Ownership.....	100.000	The Progressive Corporation.	1, 3.....
0155.....	The Progressive Insurance Group...	42994.....	39-1453002				Progressive Classic Insurance Company.....	WI.....	IA.....	Drive Insurance Holdings, Inc.....	Ownership.....	100.000	The Progressive Corporation.	1, 3.....
0155.....	The Progressive Insurance Group...	10067.....	99-0311930				Progressive Hawaii Insurance Corp.....	OH.....	IA.....	Drive Insurance Holdings, Inc.....	Ownership.....	100.000	The Progressive Corporation.	1, 3.....
0155.....	The Progressive Insurance Group...	10187.....	34-1787734				Progressive Michigan Insurance Company.....	MI.....	IA.....	Drive Insurance Holdings, Inc.....	Ownership.....	100.000	The Progressive Corporation.	1, 3.....
0155.....	The Progressive Insurance Group...	35190.....	93-0935623				Progressive Mountain Insurance Company.....	OH.....	IA.....	Drive Insurance Holdings, Inc.....	Ownership.....	100.000	The Progressive Corporation.	1, 3.....
0155.....	The Progressive Insurance Group...	38628.....	34-1318335				Progressive Northern insurance Company.....	WI.....	IA.....	Drive Insurance Holdings, Inc.....	Ownership.....	100.000	The Progressive Corporation.	1, 3.....
0155.....	The Progressive Insurance Group...	42919.....	91-1187829				Progressive Northwestern Insurance Company.....	OH.....	IA.....	Drive Insurance Holdings, Inc.....	Ownership.....	100.000	The Progressive Corporation.	1, 3.....
0155.....	The Progressive Insurance Group...	37834.....	34-1287020				Progressive Preferred Insurance Company.....	OH.....	IA.....	Drive Insurance Holdings, Inc.....	Ownership.....	100.000	The Progressive Corporation.	1, 3.....
0155.....	The Progressive Insurance Group...	10050.....	72-1269745				Progressive Security Insurance Company.....	LA.....	IA.....	Drive Insurance Holdings, Inc.....	Ownership.....	100.000	The Progressive Corporation.	1, 3.....
0155.....	The Progressive Insurance Group...	38784.....	59-1951700				Progressive Southeastern Insurance Company.....	IN.....	IA.....	Drive Insurance Holdings, Inc.....	Ownership.....	100.000	The Progressive Corporation.	1, 3.....
0155.....	The Progressive Insurance Group...	27804.....	95-2676519				Progressive West Insurance Company.....	OH.....	IA.....	Drive Insurance Holdings, Inc.....	Ownership.....	100.000	The Progressive Corporation.	1, 3.....
0155.....	The Progressive Insurance Group...	00000.....	27-2393886				Progressive Commercial Advantage Agency, Inc.....	OH.....	NIA.....	Drive Insurance Holdings, Inc.....	Ownership.....	100.000	The Progressive Corporation.	1, 3.....
0155.....	The Progressive Insurance Group...	00000.....	20-1583033				Progressive Commercial Holdings, Inc.....	DE.....	NIA.....	The Progressive Corporation.....	Ownership.....	100.000	The Progressive Corporation.	1, 3.....
0155.....	The Progressive Insurance Group...	10194.....	59-3213819				Artisan and Truckers Casualty Company.....	WI.....	IA.....	Progressive Commercial Holdings, Inc.....	Ownership.....	100.000	The Progressive Corporation.	1, 3.....
0155.....	The Progressive Insurance Group...	10243.....	06-0281045				National Continental Insurance Company.....	NY.....	IA.....	Progressive Commercial Holdings, Inc.....	Ownership.....	100.000	The Progressive Corporation.	1, 3.....
0155.....	The Progressive Insurance Group...	12879.....	20-4093467				Progressive Commercial Casualty Company.....	OH.....	IA.....	Progressive Commercial Holdings, Inc.....	Ownership.....	100.000	The Progressive Corporation.	1, 3.....
0155.....	The Progressive Insurance Group...	10193.....	59-3213719				Progressive Express Insurance Company.....	OH.....	IA.....	Progressive Commercial Holdings, Inc.....	Ownership.....	100.000	The Progressive Corporation.	1, 3.....
0155.....	The Progressive Insurance Group...	11770.....	36-3298008				United Financial Casualty Company.....	OH.....	IA.....	Progressive Commercial Holdings, Inc.....	Ownership.....	100.000	The Progressive Corporation.	1, 3.....
0155.....	The Progressive Insurance Group...	00000.....	83-0371538				Progressive Direct Holdings, Inc.....	DE.....	UDP.....	The Progressive Corporation.....	Ownership.....	100.000	The Progressive Corporation.	1, 3.....
0155.....	The Progressive Insurance Group...	44180.....	23-2599971				Mountain Laurel Assurance Company.....	OH.....	IA.....	Progressive Direct Holdings, Inc.....	Ownership.....	100.000	The Progressive Corporation.	1, 3.....
0155.....	The Progressive Insurance Group...	11851.....	62-0484104				Progressive Advanced Insurance Company.....	OH.....	IA.....	Progressive Direct Holdings, Inc.....	Ownership.....	100.000	The Progressive Corporation.	1, 3.....
0155.....	The Progressive Insurance Group...	00000.....	58-1772717				Progressive Auto Pro Insurance Agency, Inc.....	FL.....	NIA.....	Progressive Direct Holdings, Inc.....	Ownership.....	100.000	The Progressive Corporation.	1, 3.....
0155.....	The Progressive Insurance Group...	44288.....	62-1444848				Progressive Choice Insurance Company.....	OH.....	IA.....	Progressive Direct Holdings, Inc.....	Ownership.....	100.000	The Progressive Corporation.	1, 3.....
0155.....	The Progressive Insurance Group...	16322.....	34-1524319				Progressive Direct Insurance Company.....	OH.....	IA.....	Progressive Direct Holdings, Inc.....	Ownership.....	100.000	The Progressive Corporation.	1, 3.....
0155.....	The Progressive Insurance Group...	00000.....	20-5716047				Gadsden, AL, LLC.....	OH.....	NIA.....	Progressive Direct Insurance Company.....	Ownership.....	100.000	The Progressive Corporation.	1, 3.....
0155.....	The Progressive Insurance Group...	12302.....	20-3187886				Progressive Freedom Insurance Company.....	NJ.....	IA.....	Progressive Direct Holdings, Inc.....	Ownership.....	100.000	The Progressive Corporation.	1, 3.....

Q12

**SCHEDULE Y**

**PART 1A - DETAIL OF INSURANCE HOLDING COMPANY SYSTEM**

1	2	3	4	5	6	7	8	9	10	11	12	13	14	15
Group Code	Group Name	NAIC Company Code	Federal ID Number	Federal RSSD	CIK	Name of Securities Exchange if Publicly Traded (U.S. or International)	Names of Parent, Subsidiaries or Affiliates	Domiciliary Location	Relationship to Reporting Entity	Directly Controlled by (Name of Entity/Person)	Type of Control (Ownership Board, Management Attorney-in-Fact, Influence, Other)	If Control is Ownership Provide Percentage	Ultimate Controlling Entity(ies)/Person(s)	*
0155.....	The Progressive Insurance Group...	14800.....	22-2404709				Progressive Garden State Insurance Company.....	NJ.....	IA.....	Progressive Direct Holdings, Inc.....	Ownership.....	...100.000	The Progressive Corporation.	1, 3.....
0155.....	The Progressive Insurance Group...	37605.....	33-0350911				Progressive Marathon Insurance Company.....	MI.....	IA.....	Progressive Direct Holdings, Inc.....	Ownership.....	...100.000	The Progressive Corporation.	1, 3.....
0155.....	The Progressive Insurance Group...	24279.....	34-0472535				Progressive Max Insurance Company.....	OH.....	IA.....	Progressive Direct Holdings, Inc.....	Ownership.....	...100.000	The Progressive Corporation.	1, 3.....
0155.....	The Progressive Insurance Group...	44695.....	86-0686869				Progressive Paloverde Insurance Company.....	IN.....	IA.....	Progressive Direct Holdings, Inc.....	Ownership.....	...100.000	The Progressive Corporation.	1, 3.....
0155.....	The Progressive Insurance Group...	21735.....	36-3789786				Progressive Premier Insurance Company of Illinois.....	OH.....	IA.....	Progressive Direct Holdings, Inc.....	Ownership.....	...100.000	The Progressive Corporation.	1, 3.....
0155.....	The Progressive Insurance Group...	10192.....	59-3213815				Progressive Select Insurance Company.....	OH.....	RE.....	Progressive Direct Holdings, Inc.....	Ownership.....	...100.000	The Progressive Corporation.	1, 3.....
0155.....	The Progressive Insurance Group...	00000.....	34-1804869				Progressive Specialty Insurance Agency, Inc.....	OH.....	NIA.....	Progressive Direct Holdings, Inc.....	Ownership.....	...100.000	The Progressive Corporation.	1, 3.....
0155.....	The Progressive Insurance Group...	21727.....	36-3789787				Progressive Universal Insurance Company.....	WI.....	IA.....	Progressive Direct Holdings, Inc.....	Ownership.....	...100.000	The Progressive Corporation.	1, 3.....
0155.....	The Progressive Insurance Group...	00000.....	99-0311966				Garden Sun Insurance Services, ilc.....	HI.....	NIA.....	The Progressive Corporation.....	Ownership.....	...100.000	The Progressive Corporation.	1, 3.....
0155.....	The Progressive Insurance Group...	00000.....	95-2706008				Pacific Motor Club.....	CA.....	NIA.....	The Progressive Corporation.....	Ownership.....	...100.000	The Progressive Corporation.	1, 3.....
0155.....	The Progressive Insurance Group...	00000.....	11-3203413				PROGNY Agency, Inc.....	NY.....	NIA.....	The Progressive Corporation.....	Ownership.....	...100.000	The Progressive Corporation.	1, 3.....
0155.....	The Progressive Insurance Group...	00000.....	34-1574447				Progressive Adjusting Company, Inc.....	OH.....	NIA.....	The Progressive Corporation.....	Ownership.....	...100.000	The Progressive Corporation.	1, 3.....
0155.....	The Progressive Insurance Group...	00000.....	13-3673368				Progressive Capital Management Corp.....	NY.....	NIA.....	The Progressive Corporation.....	Ownership.....	...100.000	The Progressive Corporation.	1, 3.....
0155.....	The Progressive Insurance Group...	00000.....	34-1378861				Progressive Investment Company, Inc.....	DE.....	NIA.....	The Progressive Corporation.....	Ownership.....	...100.000	The Progressive Corporation.	1, 3.....
0155.....	The Progressive Insurance Group...	00000.....	34-6530101				Progressive Premium Budget, Inc.....	OH.....	NIA.....	The Progressive Corporation.....	Ownership.....	...100.000	The Progressive Corporation.	1, 3.....
0155.....	The Progressive Insurance Group...	00000.....	34-1574448				Progressive RSC, Inc.....	OH.....	NIA.....	The Progressive Corporation.....	Ownership.....	...100.000	The Progressive Corporation.	1, 3.....
0155.....	The Progressive Insurance Group...	00000.....	20-2702408				Progressive Vehicle Service Company.....	OH.....	NIA.....	The Progressive Corporation.....	Ownership.....	...100.000	The Progressive Corporation.	1, 3.....
0155.....	The Progressive Insurance Group...	00000.....	51-0295493				Village Transport Corp.....	DE.....	NIA.....	The Progressive Corporation.....	Ownership.....	...100.000	The Progressive Corporation.	1, 3.....
0155.....	The Progressive Insurance Group...	00000.....	34-1324270				Wilson Mills Land Co.....	OH.....	NIA.....	The Progressive Corporation.....	Ownership.....	...100.000	The Progressive Corporation.	1, 3.....
0155.....	The Progressive Insurance Group...	00000.....	80-0832526				Makaira Indica, LP.....	CA.....	NIA.....	Progressive Casualty Insurance Company.....	Other.....	.....	The Progressive Corporation.	1, 3, 4.....

Q12.1

**Asterisk**

**Explanation**

1	Schedule Y Part 1A is a common schedule for all companies in The Progressive Insurance Group, however column 10 requires specific relationship information relative to the reporting entity.
2	Progressive County Mutual Insurance Company is a Texas county mutual insurance company that is managed, but not owned by Progressive Casualty Insurance Company.
3	None of the companies in The Progressive Insurance Group are Federally chartered or insured institutions and therefore, do not have Federal RSSD numbers.
4	Makaira Indica, LP is a limited partnership in which Progressive Casualty Insurance Company is the sole limited partner.

## PROGRESSIVE SELECT INSURANCE COMPANY PART 1 - LOSS EXPERIENCE

Lines of Business	Current Year to Date			4 Prior Year to Date Direct Loss Percentage
	1 Direct Premiums Earned	2 Direct Losses Incurred	3 Direct Loss Percentage	
1. Fire.....			0.0	
2. Allied lines.....			0.0	
3. Farmowners multiple peril.....			0.0	
4. Homeowners multiple peril.....			0.0	
5. Commercial multiple peril.....			0.0	
6. Mortgage guaranty.....			0.0	
8. Ocean marine.....			0.0	
9. Inland marine.....	11,535,740	4,493,918	39.0	46.9
10. Financial guaranty.....			0.0	
11.1. Medical professional liability - occurrence.....			0.0	
11.2. Medical professional liability - claims-made.....			0.0	
12. Earthquake.....			0.0	
13. Group accident and health.....			0.0	
14. Credit accident and health.....			0.0	
15. Other accident and health.....			0.0	
16. Workers' compensation.....			0.0	
17.1 Other liability-occurrence.....	3,837,800	775,113	20.2	53.0
17.2 Other liability-claims made.....			0.0	
17.3 Excess workers' compensation.....			0.0	
18.1 Products liability-occurrence.....			0.0	
18.2 Products liability-claims made.....			0.0	
19.1, 19.2 Private passenger auto liability.....	589,196,179	361,380,025	61.3	52.0
19.3, 19.4 Commercial auto liability.....			0.0	
21. Auto physical damage.....	219,894,400	156,333,445	71.1	69.9
22. Aircraft (all perils).....			0.0	
23. Fidelity.....			0.0	
24. Surety.....			0.0	
26. Burglary and theft.....			0.0	
27. Boiler and machinery.....			0.0	
28. Credit.....			0.0	
29. International.....			0.0	
30. Warranty.....			0.0	
31. Reinsurance-nonproportional assumed property.....	XXX	XXX	XXX	XXX
32. Reinsurance-nonproportional assumed liability.....	XXX	XXX	XXX	XXX
33. Reinsurance-nonproportional assumed financial lines.....	XXX	XXX	XXX	XXX
34. Aggregate write-ins for other lines of business.....	0	0	0.0	
35. Totals.....	824,464,118	522,982,501	63.4	56.3
<b>DETAILS OF WRITE-INS</b>				
3401.....			0.0	
3402.....			0.0	
3403.....			0.0	
3498. Sum. of remaining write-ins for Line 34 from overflow page.....	0	0	0.0	XXX
3499. Totals (Lines 3401 thru 3403 plus 3498) (Line 34).....	0	0	0.0	

## PART 2 - DIRECT PREMIUMS WRITTEN

Lines of Business	1	2	3
	Current Quarter	Current Year to Date	Prior Year Year to Date
1. Fire.....			
2. Allied lines.....			
3. Farmowners multiple peril.....			
4. Homeowners multiple peril.....			
5. Commercial multiple peril.....			
6. Mortgage guaranty.....			
8. Ocean marine.....			
9. Inland marine.....	4,509,682	13,670,607	12,400,247
10. Financial guaranty.....			
11.1. Medical professional liability - occurrence.....			
11.2. Medical professional liability - claims made.....			
12. Earthquake.....			
13. Group accident and health.....			
14. Credit accident and health.....			
15. Other accident and health.....			
16. Workers' compensation.....			
17.1 Other liability-occurrence.....	1,497,292	4,507,542	4,187,349
17.2 Other liability-claims made.....			
17.3 Excess workers' compensation.....			
18.1 Products liability-occurrence.....			
18.2 Products liability-claims made.....			
19.1 19.2 Private passenger auto liability.....	216,523,325	613,056,496	591,174,657
19.3 19.4 Commercial auto liability.....			
21. Auto physical damage.....	85,019,183	237,597,589	197,818,894
22. Aircraft (all perils).....			
23. Fidelity.....			
24. Surety.....			
26. Burglary and theft.....			
27. Boiler and machinery.....			
28. Credit.....			
29. International.....			
30. Warranty.....			
31. Reinsurance-nonproportional assumed property.....	XXX	XXX	XXX
32. Reinsurance-nonproportional assumed liability.....	XXX	XXX	XXX
33. Reinsurance-nonproportional assumed financial lines.....	XXX	XXX	XXX
34. Aggregate write-ins for other lines of business.....	0	0	0
35. Totals.....	307,549,481	868,832,235	805,581,147
<b>DETAILS OF WRITE-INS</b>			
3401.....			
3402.....			
3403.....			
3498. Sum. of remaining write-ins for Line 34 from overflow page.....	0	0	0
3499. Totals (Lines 3401 thru 3403 plus 3498) (Line 34).....	0	0	0

**PART 3 (000 omitted)**

**LOSS AND LOSS ADJUSTMENT EXPENSE RESERVES SCHEDULE**

	1	2	3	4	5	6	7	8	9	10	11	12	13
Years in Which Losses Occurred	Prior Year-End Known Case Loss and LAE Reserves	Prior Year-End IBNR Loss and LAE Reserves	Total Prior Year-End Loss and LAE Reserves (Cols. 1 + 2)	2014 Loss and LAE Payments on Claims Reported as of Prior Year-End	2014 Loss and LAE Payments on Claims Unreported as of Prior Year-End	Total 2014 Loss and LAE Payments (Cols. 4 + 5)	Q.S. Date Known Case Loss and LAE Reserves on Claims Reported and Open as of Prior Year-End	Q.S. Date Known Case Loss and LAE Reserves on Claims Reported or Reopened Subsequent to Prior Year-End	Q.S. Date IBNR Loss and LAE Reserves	Total Q.S. Loss and LAE Reserves (Cols. 7 + 8 + 9)	Prior Year-End Known Case Loss and LAE Reserves Developed (Savings)/Deficiency (Cols. 4 + 7 minus Col. 1)	Prior Year-End IBNR Loss and LAE Reserves Developed (Savings)/Deficiency (Cols. 5 + 8 + 9 minus Col. 2)	Prior Year-End Total Loss and LAE Reserve Developed (Savings)/Deficiency (Cols. 11 + 12)
1. 2011 + Prior.....	4,061	2,517	6,578	2,057	560	2,617	1,653	493	1,445	3,591	(351)	(19)	(371)
2. 2012.....	4,410	2,233	6,643	2,399	488	2,887	1,997	512	1,305	3,815	(14)	74	59
3. Subtotals 2012 + Prior.....	8,472	4,750	13,221	4,456	1,048	5,504	3,650	1,005	2,751	7,406	(366)	54	(311)
4. 2013.....	17,667	7,517	25,184	11,572	3,102	14,674	5,926	2,303	3,036	11,265	(170)	925	755
5. Subtotals 2013 + Prior.....	26,139	12,266	38,405	16,028	4,150	20,178	9,576	3,309	5,787	18,671	(535)	979	444
6. 2014.....	XXX	XXX	XXX	XXX	38,214	38,214	XXX	17,092	5,782	22,874	XXX	XXX	XXX
7. Totals.....	26,139	12,266	38,405	16,028	42,365	58,392	9,576	20,400	11,569	41,545	(535)	979	444
8. Prior Year-End's Surplus As Regards Policyholders	131,817										Col. 11, Line 7 As % of Col. 1, Line 7	Col. 12, Line 7 As % of Col. 2, Line 7	Col. 13, Line 7 As % of Col. 3, Line 7
											1. ....(2.0)%	2. ....8.0 %	3. ....1.2 %
													Col. 13, Line 7 Line 8
													4. ....0.3 %

Q14

# SUPPLEMENTAL EXHIBITS AND SCHEDULES INTERROGATORIES

The following supplemental reports are required to be filed as part of your statement filing. However, in the event that your company does not transact the type of business for which the special report must be filed, your response of NO to the specific interrogatory will be accepted in lieu of filing a "NONE" report and a bar code will be printed below. If the supplement is required of your company but is not being filed for whatever reason, enter SEE EXPLANATION and provide an explanation following the interrogatory questions.

	<b>Response</b>
1. Will the Trusteed Surplus Statement be filed with the state of domicile and the NAIC with this statement?	NO
2. Will Supplement A to Schedule T (Medical Professional Liability Supplement) be filed with this statement?	NO
3. Will the Medicare Part D Coverage Supplement be filed with the state of domicile and the NAIC with this statement?	NO
4. Will the Director and Officer Supplement be filed with the state of domicile and the NAIC with this statement?	NO

**Explanation:**

- 1.
- 2.
- 3.
- 4.

**Bar Code:**



**PROGRESSIVE SELECT INSURANCE COMPANY**  
**Overflow Page for Write-Ins**

**Additional Write-ins for Liabilities:**

	1 Current Statement Date	2 December 31, Prior Year
2504. PREMIUM REFUND LIABILITY.....		366,920
2597. Summary of remaining write-ins for Line 25.....	0	366,920

**PROGRESSIVE SELECT INSURANCE COMPANY  
SCHEDULE A - VERIFICATION**

Real Estate

	1 Year to Date	2 Prior Year Ended December 31
1. Book/adjusted carrying value, December 31 of prior year.....	0	
2. Cost of acquired:		
2.1 Actual cost at time of acquisition.....		
2.2 Additional investment made after acquisition.....		
3. Current year change in encumbrances.....		
4. Total gain (loss) on disposals.....		
5. Deduct amounts received on disposals.....		
6. Total foreign exchange change in book/adjusted carrying value.....		
7. Deduct current year's other than temporary impairment recognized.....		
8. Deduct current year's depreciation.....		
9. Book/adjusted carrying value at end of current period (Lines 1+2+3+4-5+6-7-8).....	0	0
10. Deduct total nonadmitted amounts.....		
11. Statement value at end of current period (Line 9 minus Line 10).....	0	0

**SCHEDULE B - VERIFICATION**

Mortgage Loans

	1 Year to Date	2 Prior Year Ended December 31
1. Book value/recorded investment excluding accrued interest, December 31 of prior year.....	0	
2. Cost of acquired:		
2.1 Actual cost at time of acquisition.....		
2.2 Additional investment made after acquisition.....		
3. Capitalized deferred interest and other.....		
4. Accrual of discount.....		
5. Unrealized valuation increase (decrease).....		
6. Total gain (loss) on disposals.....		
7. Deduct amounts received on disposals.....		
8. Deduct amortization of premium and mortgage interest points and commitment fees.....		
9. Total foreign exchange change in book value/recorded investment excluding accrued interest.....		
10. Deduct current year's other than temporary impairment recognized.....		
11. Book value/recorded investment excluding accrued interest at end of current period (Lines 1+2+3+4+5+6-7-8+9-10).....	0	0
12. Total valuation allowance.....		
13. Subtotal (Line 11 plus Line 12).....	0	0
14. Deduct total nonadmitted amounts.....		
15. Statement value at end of current period (Line 13 minus Line 14).....	0	0

**SCHEDULE BA - VERIFICATION**

Other Long-Term Invested Assets

	1 Year to Date	2 Prior Year Ended December 31
1. Book/adjusted carrying value, December 31 of prior year.....	0	
2. Cost of acquired:		
2.1 Actual cost at time of acquisition.....		
2.2 Additional investment made after acquisition.....		
3. Capitalized deferred interest and other.....		
4. Accrual of discount.....		
5. Unrealized valuation increase (decrease).....		
6. Total gain (loss) on disposals.....		
7. Deduct amounts received on disposals.....		
8. Deduct amortization of premium and depreciation.....		
9. Total foreign exchange change in book/adjusted carrying value.....		
10. Deduct current year's other than temporary impairment recognized.....		
11. Book/adjusted carrying value at end of current period (Lines 1+2+3+4+5+6-7-8+9-10).....	0	0
12. Deduct total nonadmitted amounts.....		
13. Statement value at end of current period (Line 11 minus Line 12).....	0	0

**SCHEDULE D - VERIFICATION**

Bonds and Stocks

	1 Year to Date	2 Prior Year Ended December 31
1. Book/adjusted carrying value of bonds and stocks, December 31 of prior year.....	108,825,041	81,369,609
2. Cost of bonds and stocks acquired.....	51,244,891	64,289,907
3. Accrual of discount.....	8,600	38,993
4. Unrealized valuation increase (decrease).....		
5. Total gain (loss) on disposals.....	(286,599)	656,856
6. Deduct consideration for bonds and stocks disposed of.....	69,799,933	36,773,332
7. Deduct amortization of premium.....	651,709	756,992
8. Total foreign exchange change in book/adjusted carrying value.....		
9. Deduct current year's other than temporary impairment recognized.....		
10. Book/adjusted carrying value at end of current period (Lines 1+2+3+4+5-6-7+8-9).....	89,340,291	108,825,041
11. Deduct total nonadmitted amounts.....		
12. Statement value at end of current period (Line 10 minus Line 11).....	89,340,291	108,825,041

**SCHEDULE D - PART 1B**

Showing the Acquisitions, Dispositions and Non-Trading Activity

During the Current Quarter for all Bonds and Preferred Stock by NAIC Designation

NAIC Designation	1 Book/Adjusted Carrying Value Beginning of Current Quarter	2 Acquisitions During Current Quarter	3 Dispositions During Current Quarter	4 Non-Trading Activity During Current Quarter	5 Book/Adjusted Carrying Value End of First Quarter	6 Book/Adjusted Carrying Value End of Second Quarter	7 Book/Adjusted Carrying Value End of Third Quarter	8 Book/Adjusted Carrying Value December 31 Prior Year
<b>BONDS</b>								
1. NAIC 1 (a).....	117,012,868	699,967	33,088,449	(181,449)	83,839,019	117,012,868	84,442,937	103,184,383
2. NAIC 2 (a).....	5,611,847			(14,519)	5,626,250	5,611,847	5,597,328	5,640,660
3. NAIC 3 (a).....								
4. NAIC 4 (a).....								
5. NAIC 5 (a).....								
6. NAIC 6 (a).....								
7. Total Bonds.....	122,624,715	699,967	33,088,449	(195,968)	89,465,269	122,624,715	90,040,265	108,825,043
<b>PREFERRED STOCK</b>								
8. NAIC 1.....								
9. NAIC 2.....								
10. NAIC 3.....								
11. NAIC 4.....								
12. NAIC 5.....								
13. NAIC 6.....								
14. Total Preferred Stock.....	0	0	0	0	0	0	0	0
15. Total Bonds and Preferred Stock.....	122,624,715	699,967	33,088,449	(195,968)	89,465,269	122,624,715	90,040,265	108,825,043

QS102

(a) Book/Adjusted Carrying Value column for the end of the current reporting period includes the following amount of non-rated short-term and cash equivalent bonds by NAIC designation:

NAIC 1 \$.....0; NAIC 2 \$.....0; NAIC 3 \$.....0; NAIC 4 \$.....0; NAIC 5 \$.....0; NAIC 6 \$.....0.

**Sch. DA-Pt 1  
NONE**

**Sch. DA-Verification  
NONE**

**Sch. DB-Pt A-Verification  
NONE**

**Sch. DB-Pt B-Verification  
NONE**

**Sch. DB-Pt C-Sn 1  
NONE**

**Sch. DB-Pt C-Sn 2  
NONE**

**Sch. DB-Verification  
NONE**

**SCHEDULE E- VERIFICATION**

## Cash Equivalents

	1 Year to Date	2 Prior Year Ended December 31
1. Book/adjusted carrying value, December 31 of prior year.....	0	9,999,333
2. Cost of cash equivalents acquired.....	21,799,493	4,999,631
3. Accrual of discount.....	481	1,036
4. Unrealized valuation increase (decrease).....		
5. Total gain (loss) on disposals.....		
6. Deduct consideration received on disposals.....	21,100,000	15,000,000
7. Deduct amortization of premium.....		
8. Total foreign exchange change in book/ adjusted carrying value.....		
9. Deduct current year's other than temporary impairment recognized.....		
10. Book/adjusted carrying value at end of current period (Lines 1+2+3+4+5-6-7+8-9).....	699,974	0
11. Deduct total nonadmitted amounts.....		
12. Statement value at end of current period (Line 10 minus Line 11).....	699,974	0

**Sch. A-Pt 2**  
**NONE**

**Sch. A-Pt 3**  
**NONE**

**Sch. B-Pt 2**  
**NONE**

**Sch. B-Pt 3**  
**NONE**

**Sch. BA-Pt 2**  
**NONE**

**Sch. BA-Pt 3**  
**NONE**

**Sch. D-Pt 3**  
**NONE**

### SCHEDULE D - PART 4

Show All Long-Term Bonds and Stock Sold, Redeemed or Otherwise Disposed of During the Current Quarter

1 CUSIP Identification	2 Description	3 F o r e i g n Date	4 Disposal Date	5 Name of Purchaser	6 Number of Shares of Stock	7 Consideration	8 Par Value	9 Actual Cost	10 Prior Year Book/ Adjusted Carrying Value	Change in Book/Adjusted Carrying Value					16 Book/ Adjusted Carrying Value At Disposal Date	17 Foreign Exchange Gain (Loss) on Disposal	18 Realized Gain (Loss) on Disposal	19 Total Gain (Loss) on Disposal	20 Bond Interest/ Stock Dividends Received During Year	21 Stated Contractual Maturity Date	22 NAIC Design- ation or Market Indicator (a)
										11 Unrealized Valuation Increase/ (Decrease)	12 Current Year's (Amortization)/ Accretion	13 Current Year's Other Than Temporary Impairment Recognized	14 Total Change in B./A.C.V. (11+12-13)	15 Total Foreign Exchange Change in B./A.C.V.							
<b>Bonds - U.S. Government</b>																					
912828 B6 6	US TREASURY NOTE 2.750% 02/15/24.....	09/15/2014		Barclays Capital.....		1,016,875	1,000,000	1,011,523			(557)		(557)		1,010,966		5,909	5,909	16,141	02/15/2024	1.....
912828 WN 6	US TREASURY NOTE 2.000% 05/31/21.....	07/18/2014		Barclays Capital.....		4,966,992	5,000,000	4,950,391			798		798		4,951,189		15,804	15,804	13,934	05/31/2021	1.....
0599999	Total Bonds - U.S. Government.....					5,983,867	6,000,000	5,961,914	0	0	241	0	241	0	5,962,155	0	21,713	21,713	30,075	XXX...	XXX...
<b>Bonds - U.S. Special Revenue and Special Assessment</b>																					
34073N 2B 5	FLORIDA HSG FIN CORP 6.000% 01/01/48.....	07/01/2014		Call 100.0000.....		225,000	225,000	243,788	228,607		(3,607)		(3,607)		225,000			0	13,500	07/01/2015	1FE.....
60636X 7B 3	MISSOURI ST HSG SF 5.000% 11/01/27.....	09/01/2014		Call 100.0000.....		65,000	65,000	69,661	67,889		(2,889)		(2,889)		65,000			0	2,438	11/01/2019	1FE.....
60637B CK 4	MISSOURI ST HSG DEV COMMN 4.250% 11/01/30.....	09/01/2014		Call 100.0000.....		150,000	150,000	160,908	157,722		(7,722)		(7,722)		150,000			0	4,870	11/01/2021	1FE.....
658886 EP 7	NORTH DAKOTA ST HSG 5.750% 07/01/38.....	07/01/2014		Call 100.0000.....		235,000	235,000	247,831	240,540		(5,540)		(5,540)		235,000			0	13,513	07/01/2038	1FE.....
709193 LM 6	PENNSYLVANIA ST INDL DEV AUTH 4.000% 07/01/14.....	07/01/2014		Maturity.....		3,000,000	3,000,000	3,189,720	3,044,177		(44,177)		(44,177)		3,000,000			0	120,000	07/01/2014	1FE.....
736754 LK 6	PORTLAND OR WTR SYS REVENUE 3.000% 10/01/19.....	08/26/2014		Morgan Stanley.....		2,168,620	2,000,000	2,226,800	2,204,065		(22,771)		(22,771)		2,181,294		(12,674)	(12,674)	54,667	10/01/2019	1FE.....
76221R NZ 2	RHODE ISLAND ST HSG & MTGE FIN 4.000% 04/01/34.....	07/01/2014		Call 100.0000.....		215,000	215,000	222,235	219,456		(4,456)		(4,456)		215,000			0	6,450	04/01/2017	1FE.....
882750 NA 6	TEXAS ST HSG & CMNTY 4.250% 01/01/34.....	09/01/2014		Call 100.0000.....		95,000	95,000	102,571	100,199		(5,199)		(5,199)		95,000			0	4,392	06/01/2022	1FE.....
93978X CB 4	WASHINGTON ST HSG FIN COMMN 4.700% 10/01/28.....	09/01/2014		Call 100.0000.....		60,000	60,000	63,708	62,136		(2,136)		(2,136)		60,000			0	2,389	10/01/2019	1FE.....
3199999	Total Bonds - U.S. Special Revenue and Special Assessment.....					6,213,620	6,045,000	6,527,222	6,324,791	0	(98,497)	0	(98,497)	0	6,226,294	0	(12,674)	(12,674)	222,219	XXX...	XXX...
8399997	Total Bonds - Part 4.....					12,197,487	12,045,000	12,489,136	6,324,791	0	(98,256)	0	(98,256)	0	12,188,449	0	9,039	9,039	252,294	XXX...	XXX...
8399999	Total Bonds.....					12,197,487	12,045,000	12,489,136	6,324,791	0	(98,256)	0	(98,256)	0	12,188,449	0	9,039	9,039	252,294	XXX...	XXX...
9999999	Total Bonds, Preferred and Common Stocks.....					12,197,487	XXX	12,489,136	6,324,791	0	(98,256)	0	(98,256)	0	12,188,449	0	9,039	9,039	252,294	XXX...	XXX...

QE05

(a) For all common stock bearing the NAIC market indicator "U" provide: the number of such issues:.....0.

**Sch. DB-Pt A-Sn 1  
NONE**

**Sch. DB-Pt A-Sn 1-Footer A  
NONE**

**Sch. DB-Pt A-Sn 1-Footer B  
NONE**

**Sch. DB-Pt B-Sn 1  
NONE**

**Sch. DB-Pt B-Sn 1-Footer A  
NONE**

**Sch. DB-Pt B-Sn 1-Footer B  
NONE**

**Sch. DB-Pt B-Sn 1B-Broker List  
NONE**

**Sch. DB-Pt D-Sn 1  
NONE**

**Sch. DB-Pt D-Sn 2  
NONE**

**Sch. DL-Pt. 1  
NONE**

**Sch. DL-Pt. 2  
NONE**

**PROGRESSIVE SELECT INSURANCE COMPANY**

**SCHEDULE E - PART 1 - CASH**

Month End Depository Balances

1 Depository	2 Code	3 Rate of Interest	4 Amount of Interest Received During Current Quarter	5 Amount of Interest Accrued at Current Statement Date	Book Balance at End of Each Month During Current Quarter			9 *
					6 First Month	7 Second Month	8 Third Month	
<b>Open Depositories</b>								
CITIBANK..... NEW YORK, NY.....	.....	.....	.....	.....	.....	.....	.....	XXX..
0199999. Total Open Depositories.....	...XXX.....	...XXX.....	.....0	.....0	.....0	.....0	.....0	XXX..
0399999. Total Cash on Deposit.....	...XXX.....	...XXX.....	.....0	.....0	.....0	.....0	.....0	XXX..
0599999. Total Cash.....	...XXX.....	...XXX.....	.....0	.....0	.....0	.....0	.....0	XXX..

**SCHEDULE E - PART 2 - CASH EQUIVALENTS**

Show Investments Owned End of Current Quarter

1	2	3	4	5	6	7	8
Description	Code	Date Acquired	Rate of Interest	Maturity Date	Book/Adjusted Carrying Value	Amount of Interest Due & Accrued	Amount Received During Year
<b>Bonds - Industrial and Miscellaneous (Unaffiliated) - Issuer Obligations</b>							
TORONTO DOM HLDG.....		09/23/2014	0.040	11/04/2014	699,974		6
3299999. Industrial and Miscellaneous (Unaffiliated) - Issuer Obligations.....					699,974	.0	6
3899999. Total - Industrial and Miscellaneous (Unaffiliated).....					699,974	.0	6
<b>Total Bonds</b>							
7799999. Subtotals - Issuer Obligations.....					699,974	.0	6
8399999. Subtotals - Bonds.....					699,974	.0	6
8699999. Total - Cash Equivalents.....					699,974	.0	6

QE13