



PROPERTY AND CASUALTY COMPANIES - ASSOCIATION EDITION

QUARTERLY STATEMENT

AS OF SEPTEMBER 30, 2014

OF THE CONDITION AND AFFAIRS OF THE

Nationwide Indemnity Company

NAIC Group Code 0140 0140 NAIC Company Code 10070 Employer's ID Number 31-1399201
(Current) (Prior)

Organized under the Laws of Ohio, State of Domicile or Port of Entry Ohio

Country of Domicile United States of America

Incorporated/Organized 02/16/1994 Commenced Business 04/15/1994

Statutory Home Office One West Nationwide Blvd., Columbus, OH, US 43215-2220
(Street and Number) (City or Town, State, Country and Zip Code)

Main Administrative Office One West Nationwide Blvd.
(Street and Number)
Columbus, OH, US 43215-2220, 614-249-7111
(City or Town, State, Country and Zip Code) (Area Code) (Telephone Number)

Mail Address One West Nationwide Blvd., 1-04-701, Columbus, OH, US 43215-2220
(Street and Number or P.O. Box) (City or Town, State, Country and Zip Code)

Primary Location of Books and Records One West Nationwide Blvd., 1-04-701
(Street and Number)
Columbus, OH, US 43215-2220, 614-249-1545
(City or Town, State, Country and Zip Code) (Area Code) (Telephone Number)

Internet Website Address www.nationwide.com

Statutory Statement Contact Monda S. Caudill, 614-249-1545
(Name) (Area Code) (Telephone Number)
FinRpt@nationwide.com, 866-315-1430
(E-mail Address) (FAX Number)

OFFICERS

President & COO David Alan Bano VP & Asst Treasurer Timothy John Dwyer #
VP & Secretary Robert William Horner III

OTHER

Pamela Ann Biesecker Sr VP-Head of Taxation Harry Hansen Hallowell Sr VP - CIO Mark Raymond Thresher Exec VP - CFO

DIRECTORS OR TRUSTEES

David Alan Bano James David Benson Kevin Thomas Hilyard
Michael Patrick Leach Duane Lee Meyer Mark Raymond Thresher

State of Ohio SS:
County of Franklin

The officers of this reporting entity being duly sworn, each depose and say that they are the described officers of said reporting entity, and that on the reporting period stated above, all of the herein described assets were the absolute property of the said reporting entity, free and clear from any liens or claims thereon, except as herein stated, and that this statement, together with related exhibits, schedules and explanations therein contained, annexed or referred to, is a full and true statement of all the assets and liabilities and of the condition and affairs of the said reporting entity as of the reporting period stated above, and of its income and deductions therefrom for the period ended, and have been completed in accordance with the NAIC Annual Statement Instructions and Accounting Practices and Procedures manual except to the extent that: (1) state law may differ; or, (2) that state rules or regulations require differences in reporting not related to accounting practices and procedures, according to the best of their information, knowledge and belief, respectively. Furthermore, the scope of this attestation by the described officers also includes the related corresponding electronic filing with the NAIC, when required, that is an exact copy (except for formatting differences due to electronic filing) of the enclosed statement. The electronic filing may be requested by various regulators in lieu of or in addition to the enclosed statement.

David Alan Bano
President & COO

Robert William Horner III
VP & Secretary

Timothy John Dwyer
VP & Asst Treasurer

Subscribed and sworn to before me this _____ day of October, 2014

- a. Is this an original filing? Yes [X] No []
b. If no,
1. State the amendment number.....
2. Date filed
3. Number of pages attached.....

STATEMENT AS OF SEPTEMBER 30, 2014 OF THE NATIONWIDE INDEMNITY COMPANY

ASSETS

	Current Statement Date			4 December 31 Prior Year Net Admitted Assets
	1 Assets	2 Nonadmitted Assets	3 Net Admitted Assets (Cols. 1 - 2)	
1. Bonds	2,932,183,343		2,932,183,343	2,989,403,690
2. Stocks:				
2.1 Preferred stocks				
2.2 Common stocks	2,752,134		2,752,134	2,430,456
3. Mortgage loans on real estate:				
3.1 First liens	85,039,893		85,039,893	95,054,802
3.2 Other than first liens.....				
4. Real estate:				
4.1 Properties occupied by the company (less \$ encumbrances)				
4.2 Properties held for the production of income (less \$ encumbrances)				
4.3 Properties held for sale (less \$ encumbrances)				
5. Cash (\$ (1,906,412)), cash equivalents (\$) and short-term investments (\$ 40,390,055)	38,483,642		38,483,642	(3,776,973)
6. Contract loans (including \$ premium notes)				
7. Derivatives				
8. Other invested assets	60,795,320	623	60,794,697	59,152,708
9. Receivables for securities				
10. Securities lending reinvested collateral assets	9,903,326	4,557,731	5,345,595	5,386,564
11. Aggregate write-ins for invested assets				
12. Subtotals, cash and invested assets (Lines 1 to 11)	3,129,157,658	4,558,354	3,124,599,304	3,147,651,247
13. Title plants less \$ charged off (for Title insurers only)				
14. Investment income due and accrued	30,710,105		30,710,105	35,421,149
15. Premiums and considerations:				
15.1 Uncollected premiums and agents' balances in the course of collection	1,975,614	1,975,614		
15.2 Deferred premiums, agents' balances and installments booked but deferred and not yet due (including \$ earned but unbilled premiums)				
15.3 Accrued retrospective premiums				
16. Reinsurance:				
16.1 Amounts recoverable from reinsurers				
16.2 Funds held by or deposited with reinsured companies	6,293,160		6,293,160	7,460,502
16.3 Other amounts receivable under reinsurance contracts				
17. Amounts receivable relating to uninsured plans				
18.1 Current federal and foreign income tax recoverable and interest thereon	6,260,138		6,260,138	21,047,687
18.2 Net deferred tax asset	52,082,245	52,082,245		31,371,664
19. Guaranty funds receivable or on deposit				
20. Electronic data processing equipment and software				
21. Furniture and equipment, including health care delivery assets (\$)				
22. Net adjustment in assets and liabilities due to foreign exchange rates	1,876,109		1,876,109	1,876,109
23. Receivables from parent, subsidiaries and affiliates	1		1	100
24. Health care (\$) and other amounts receivable				
25. Aggregate write-ins for other than invested assets	21,412,300	9,748,666	11,663,634	7,070,635
26. Total assets excluding Separate Accounts, Segregated Accounts and Protected Cell Accounts (Lines 12 to 25)	3,249,767,330	68,364,879	3,181,402,451	3,251,899,093
27. From Separate Accounts, Segregated Accounts and Protected Cell Accounts				
28. Total (Lines 26 and 27)	3,249,767,330	68,364,879	3,181,402,451	3,251,899,093
DETAILS OF WRITE-INS				
1101.				
1102.				
1103.				
1198. Summary of remaining write-ins for Line 11 from overflow page				
1199. Totals (Lines 1101 through 1103 plus 1198)(Line 11 above)				
2501. Third party administrative receivables	19,153,674	7,746,917	11,406,757	6,889,225
2502. Deposits and prepaid assets	1,951,865	1,951,865		
2503. Miscellaneous assets	256,877		256,877	181,410
2598. Summary of remaining write-ins for Line 25 from overflow page	49,884	49,884		
2599. Totals (Lines 2501 through 2503 plus 2598)(Line 25 above)	21,412,300	9,748,666	11,663,634	7,070,635

STATEMENT AS OF SEPTEMBER 30, 2014 OF THE NATIONWIDE INDEMNITY COMPANY

LIABILITIES, SURPLUS AND OTHER FUNDS

	1 Current Statement Date	2 December 31, Prior Year
1. Losses (current accident year \$)	1,174,931,507	1,230,751,457
2. Reinsurance payable on paid losses and loss adjustment expenses		
3. Loss adjustment expenses	921,389,773	888,973,766
4. Commissions payable, contingent commissions and other similar charges		
5. Other expenses (excluding taxes, licenses and fees)		
6. Taxes, licenses and fees (excluding federal and foreign income taxes)		
7.1 Current federal and foreign income taxes (including \$ on realized capital gains (losses))		
7.2 Net deferred tax liability		
8. Borrowed money \$ and interest thereon \$		
9. Unearned premiums (after deducting unearned premiums for ceded reinsurance of \$ and including warranty reserves of \$ and accrued accident and health experience rating refunds including \$ for medical loss ratio rebate per the Public Health Service Act)	34,889	49,350
10. Advance premium		
11. Dividends declared and unpaid:		
11.1 Stockholders		
11.2 Policyholders		
12. Ceded reinsurance premiums payable (net of ceding commissions)		
13. Funds held by company under reinsurance treaties		
14. Amounts withheld or retained by company for account of others	1,345,440	2,275,485
15. Remittances and items not allocated	587,255	178,648
16. Provision for reinsurance (including \$ certified)		
17. Net adjustments in assets and liabilities due to foreign exchange rates		
18. Drafts outstanding		
19. Payable to parent, subsidiaries and affiliates	1,711,308	2,709,142
20. Derivatives		
21. Payable for securities		
22. Payable for securities lending	14,970,000	17,125,000
23. Liability for amounts held under uninsured plans		
24. Capital notes \$ and interest thereon \$		
25. Aggregate write-ins for liabilities	41,126,035	40,472,914
26. Total liabilities excluding protected cell liabilities (Lines 1 through 25)	2,156,096,207	2,182,535,762
27. Protected cell liabilities		
28. Total liabilities (Lines 26 and 27)	2,156,096,207	2,182,535,762
29. Aggregate write-ins for special surplus funds	10,574,000	9,984,000
30. Common capital stock	3,080,000	3,080,000
31. Preferred capital stock		
32. Aggregate write-ins for other than special surplus funds		
33. Surplus notes		
34. Gross paid in and contributed surplus	1,276,449,000	1,276,449,000
35. Unassigned funds (surplus)	(264,796,756)	(220,149,669)
36. Less treasury stock, at cost:		
36.1 shares common (value included in Line 30 \$)		
36.2 shares preferred (value included in Line 31 \$)		
37. Surplus as regards policyholders (Lines 29 to 35, less 36)	1,025,306,244	1,069,363,331
38. Totals (Page 2, Line 28, Col. 3)	3,181,402,451	3,251,899,093
DETAILS OF WRITE-INS		
2501. Assumed reinsurance balances payable	41,122,561	40,469,440
2502. Miscellaneous liabilities	3,474	3,474
2503.		
2598. Summary of remaining write-ins for Line 25 from overflow page		
2599. Totals (Lines 2501 through 2503 plus 2598)(Line 25 above)	41,126,035	40,472,914
2901. EU Solvency 1 Directive	10,574,000	9,984,000
2902.		
2903.		
2998. Summary of remaining write-ins for Line 29 from overflow page		
2999. Totals (Lines 2901 through 2903 plus 2998)(Line 29 above)	10,574,000	9,984,000
3201.		
3202.		
3203.		
3298. Summary of remaining write-ins for Line 32 from overflow page		
3299. Totals (Lines 3201 through 3203 plus 3298)(Line 32 above)		

STATEMENT AS OF SEPTEMBER 30, 2014 OF THE NATIONWIDE INDEMNITY COMPANY

STATEMENT OF INCOME

	1 Current Year to Date	2 Prior Year to Date	3 Prior Year Ended December 31
UNDERWRITING INCOME			
1. Premiums earned:			
1.1 Direct (written \$)			
1.2 Assumed (written \$(785,145))	(770,685)	(133,866)	221,615
1.3 Ceded (written \$)			
1.4 Net (written \$(785,145))	(770,685)	(133,866)	221,615
DEDUCTIONS:			
2. Losses incurred (current accident year \$):			
2.1 Direct			
2.2 Assumed	26,869,699	3,701,393	2,804,687
2.3 Ceded			
2.4 Net	26,869,699	3,701,393	2,804,687
3. Loss adjustment expenses incurred	105,142,643	148,700,557	149,614,283
4. Other underwriting expenses incurred	3,899,415	4,620,083	6,249,797
5. Aggregate write-ins for underwriting deductions			
6. Total underwriting deductions (Lines 2 through 5)	135,911,757	157,022,033	158,668,767
7. Net income of protected cells			
8. Net underwriting gain or (loss) (Line 1 minus Line 6 + Line 7)	(136,682,442)	(157,155,899)	(158,447,152)
INVESTMENT INCOME			
9. Net investment income earned	92,016,439	96,786,707	127,993,404
10. Net realized capital gains (losses) less capital gains tax of \$542,580	5,004,991	(137,569)	(2,517,726)
11. Net investment gain (loss) (Lines 9 + 10)	97,021,430	96,649,138	125,475,678
OTHER INCOME			
12. Net gain or (loss) from agents' or premium balances charged off (amount recovered \$ amount charged off \$)			
13. Finance and service charges not included in premiums			
14. Aggregate write-ins for miscellaneous income	(2,386)	(198,818)	(195,193)
15. Total other income (Lines 12 through 14)	(2,386)	(198,818)	(195,193)
16. Net income before dividends to policyholders, after capital gains tax and before all other federal and foreign income taxes (Lines 8 + 11 + 15)	(39,663,398)	(60,705,579)	(33,166,667)
17. Dividends to policyholders			
18. Net income, after dividends to policyholders, after capital gains tax and before all other federal and foreign income taxes (Line 16 minus Line 17)	(39,663,398)	(60,705,579)	(33,166,667)
19. Federal and foreign income taxes incurred	(6,842,929)	(30,564,773)	(24,622,341)
20. Net income (Line 18 minus Line 19)(to Line 22)	(32,820,469)	(30,140,806)	(8,544,326)
CAPITAL AND SURPLUS ACCOUNT			
21. Surplus as regards policyholders, December 31 prior year	1,069,363,331	1,120,629,973	1,120,629,973
22. Net income (from Line 20)	(32,820,469)	(30,140,806)	(8,544,326)
23. Net transfers (to) from Protected Cell accounts			
24. Change in net unrealized capital gains (losses) less capital gains tax of \$6,051,758	11,389,659	9,540,282	11,239,204
25. Change in net unrealized foreign exchange capital gain (loss)	115,275	518,576	1,251,215
26. Change in net deferred income tax	17,228,184	1,554,998	3,089,231
27. Change in nonadmitted assets	(39,969,736)	8,493,936	11,698,034
28. Change in provision for reinsurance			
29. Change in surplus notes			
30. Surplus (contributed to) withdrawn from protected cells			
31. Cumulative effect of changes in accounting principles			
32. Capital changes:			
32.1 Paid in			
32.2 Transferred from surplus (Stock Dividend)			
32.3 Transferred to surplus			
33. Surplus adjustments:			
33.1 Paid in			(70,000,000)
33.2 Transferred to capital (Stock Dividend)			
33.3 Transferred from capital			
34. Net remittances from or (to) Home Office			
35. Dividends to stockholders			
36. Change in treasury stock			
37. Aggregate write-ins for gains and losses in surplus			
38. Change in surplus as regards policyholders (Lines 22 through 37)	(44,057,087)	(10,033,014)	(51,266,642)
39. Surplus as regards policyholders, as of statement date (Lines 21 plus 38)	1,025,306,244	1,110,596,959	1,069,363,331
DETAILS OF WRITE-INS			
0501.			
0502.			
0503.			
0598. Summary of remaining write-ins for Line 5 from overflow page			
0599. Totals (Lines 0501 through 0503 plus 0598)(Line 5 above)			
1401. Miscellaneous expenses	(2,386)	(198,818)	(195,193)
1402.			
1403.			
1498. Summary of remaining write-ins for Line 14 from overflow page			
1499. Totals (Lines 1401 through 1403 plus 1498)(Line 14 above)	(2,386)	(198,818)	(195,193)
3701.			
3702.			
3703.			
3798. Summary of remaining write-ins for Line 37 from overflow page			
3799. Totals (Lines 3701 through 3703 plus 3798)(Line 37 above)			

STATEMENT AS OF SEPTEMBER 30, 2014 OF THE NATIONWIDE INDEMNITY COMPANY

CASH FLOW

	1 Current Year To Date	2 Prior Year To Date	3 Prior Year Ended December 31
Cash from Operations			
1. Premiums collected net of reinsurance	673,167	257,370	(1,499,699)
2. Net investment income	100,278,258	105,591,542	132,974,946
3. Miscellaneous income	1,164,955	426,329	2,265,728
4. Total (Lines 1 to 3)	102,116,380	106,275,241	133,740,975
5. Benefit and loss related payments	82,689,649	53,793,949	83,886,182
6. Net transfers to Separate Accounts, Segregated Accounts and Protected Cell Accounts			
7. Commissions, expenses paid and aggregate write-ins for deductions	76,626,052	69,769,510	104,335,132
8. Dividends paid to policyholders			
9. Federal and foreign income taxes paid (recovered) net of \$ 2,532,632 tax on capital gains (losses)	(21,087,898)	15,238,316	18,010,000
10. Total (Lines 5 through 9)	138,227,803	138,801,775	206,231,314
11. Net cash from operations (Line 4 minus Line 10)	(36,111,423)	(32,526,534)	(72,490,339)
Cash from Investments			
12. Proceeds from investments sold, matured or repaid:			
12.1 Bonds	108,058,612	140,499,696	196,508,181
12.2 Stocks		59,965	59,962
12.3 Mortgage loans	10,933,579	4,995,247	11,081,686
12.4 Real estate			
12.5 Other invested assets	2,176,655	570,082	5,523,558
12.6 Net gains or (losses) on cash, cash equivalents and short-term investments		575	575
12.7 Miscellaneous proceeds	89,618		
12.8 Total investment proceeds (Lines 12.1 to 12.7)	121,258,464	146,125,565	213,173,962
13. Cost of investments acquired (long-term only):			
13.1 Bonds	34,840,423	82,761,882	127,380,971
13.2 Stocks		8,234	8,234
13.3 Mortgage loans			
13.4 Real estate			
13.5 Other invested assets	394,538	7,752,170	158,610
13.6 Miscellaneous applications		66,929	68,749
13.7 Total investments acquired (Lines 13.1 to 13.6)	35,234,961	90,589,215	127,616,564
14. Net increase (or decrease) in contract loans and premium notes			
15. Net cash from investments (Line 12.8 minus Line 13.7 and Line 14)	86,023,503	55,536,350	85,557,398
Cash from Financing and Miscellaneous Sources			
16. Cash provided (applied):			
16.1 Surplus notes, capital notes			
16.2 Capital and paid in surplus, less treasury stock			(70,000,000)
16.3 Borrowed funds			
16.4 Net deposits on deposit-type contracts and other insurance liabilities			
16.5 Dividends to stockholders			
16.6 Other cash provided (applied)	(7,651,465)	(7,430,457)	(3,323,980)
17. Net cash from financing and miscellaneous sources (Line 16.1 through Line 16.4 minus Line 16.5 plus Line 16.6)	(7,651,465)	(7,430,457)	(73,323,980)
RECONCILIATION OF CASH, CASH EQUIVALENTS AND SHORT-TERM INVESTMENTS			
18. Net change in cash, cash equivalents and short-term investments (Line 11, plus Lines 15 and 17)	42,260,615	15,579,359	(60,256,921)
19. Cash, cash equivalents and short-term investments:			
19.1 Beginning of year	(3,776,973)	56,479,948	56,479,948
19.2 End of period (Line 18 plus Line 19.1)	38,483,642	72,059,307	(3,776,973)

Note: Supplemental disclosures of cash flow information for non-cash transactions:

--	--	--	--

NOTES TO FINANCIAL STATEMENTS

Note 1 - Summary of Significant Accounting Policies

A. Accounting Practices

The accompanying statutory financial statements of Nationwide Indemnity Company (the Company) have been prepared in conformity with accounting practices prescribed or permitted by the National Association of Insurance Commissioners (NAIC) and the State of Ohio.

The Ohio Insurance Department recognizes only statutory accounting practices (SAP) prescribed or permitted by the State of Ohio for determining and reporting the financial condition and results of operations of an insurance company, as well as, determining its solvency under the Ohio Insurance law. The National Association of Insurance Commissioners' (NAIC) *Accounting Practices and Procedures Manual* (NAIC SAP) has been adopted as a component of prescribed or permitted practices by the State of Ohio.

A reconciliation of the Company's net income and capital and surplus between NAIC SAP and practices prescribed and permitted by the State of Ohio is shown below:

	<u>State of Domicile</u>	<u>2014</u>	<u>2013</u>
NET INCOME			
(1) Nationwide Indemnity Company state basis (Page 4, Line 20, Columns 1 & 3)	OH	\$ (32,820,469)	\$ (8,544,326)
(2) State Prescribed Practices that increase/(decrease) NAIC SAP	OH	-	-
(3) State Permitted Practices that increase/(decrease) NAIC SAP	OH	-	-
(4) NAIC SAP (1-2-3=4)	OH	<u>\$ (32,820,469)</u>	<u>\$ (8,544,326)</u>
SURPLUS			
(5) Nationwide Indemnity Company state basis (Page 3, Line 37, Columns 1 & 2)	OH	\$ 1,025,306,244	\$ 1,069,363,331
(6) State Prescribed Practices that increase/(decrease) NAIC SAP	OH	-	-
(7) State Permitted Practices that increase/(decrease) NAIC SAP	OH	-	-
(8) NAIC SAP (5-6-7=8)	OH	<u>\$ 1,025,306,244</u>	<u>\$ 1,069,363,331</u>

C. Accounting Policies

7. Investments in subsidiary and affiliated companies are stated as follows:

The admitted investments in all subsidiary, controlled, and affiliated (SCA) entities are valued using an equity method approach. Under this approach, investments in insurance affiliated companies are stated at underlying audited statutory surplus adjusted for unamortized goodwill. Investments in non-insurance affiliated companies that have no significant ongoing operations other than to hold assets that are primarily for the direct or indirect benefit or use of the reporting entity or its affiliates are stated at audited GAAP equity adjusted to a statutory basis of accounting. Investments in non-insurance affiliated companies that have significant ongoing operations beyond holding assets that are primarily for the direct or indirect benefit or use of the reporting entity or its affiliates are stated at audited GAAP equity. Unaudited affiliated companies of the reporting entity or its affiliates are non-admitted under prescribed SAP accounting practices. Goodwill arising from the acquisition of affiliated companies is amortized over a period of ten years. Investments in affiliated companies are generally included in stocks. Goodwill was fully amortized as of September 30, 2014.

Note 2 - Accounting Changes and Corrections of Errors

No change.

Note 3 - Business Combinations and Goodwill

No change.

Note 4 - Discontinued Operations

No change.

Note 5 - Investments

A. Mortgage Loans

No change.

B. Troubled Debt Restructuring for Creditors

No change.

C. Reverse Mortgages

No change.

D. Loan-Backed Securities

1. Prepayment assumptions are generally obtained using a model provided by a third-party vendor.
2. Not applicable.
3. Not applicable.

NOTES TO FINANCIAL STATEMENTS

4. All impaired securities (fair value is less than cost or amortized cost) for which an other-than-temporary impairment has not been recognized in earnings as a realized loss (including securities with a recognized other-than-temporary impairment for non-interest related declines when a non-recognized interest related impairment remains):

a.	The aggregate amount of unrealized losses:		
	1.	Less than 12 Months	\$ (89,338)
	2.	12 Months or Longer	<u>\$ (3,618,275)</u>
b.	The aggregate related fair value of securities with unrealized losses:		
	1.	Less than 12 Months	\$ 18,691,528
	2.	12 Months or Longer	<u>\$ 75,158,079</u>

5. The Company reviews all loan-backed and structured securities in which the fair value of the given security is less than the amortized cost to determine if a given security is other-than-temporarily impaired. The Company examines characteristics of the underlying collateral, such as delinquency and default rates, the quality of the underlying borrower, the type of collateral in the pool, the vintage year of the collateral, subordination levels within the structure of the collateral pool, and the quality of any credit guarantors, to determine the cash flows expected to be received for the security.

If the severity and duration of the security's unrealized loss indicates a risk of an other-than-temporary impairment, then the Company will evaluate if the amortized cost basis of the security will be recovered by comparing the present value of the cash flows expected to be received for the given security with the amortized cost basis of the security. If the present value of cash flows is greater than the amortized cost basis of a security then the security is deemed not to be other-than-temporarily impaired.

E. Repurchase Agreements and Securities Lending Transactions

3. Collateral Received

- b. The fair value as of the date of each statement of financial position presented of that collateral and of the portion of that collateral that it has sold or repledged is \$10,111,985.

F. Real Estate

No change.

G. Low-Income Housing Tax Credits

No change.

H. Restricted Assets

No change.

I. Working Capital Finance Investments

Not applicable.

Note 6 - Joint Ventures, Partnerships and Limited Liability Companies

No change.

Note 7 - Investment Income

No change.

Note 8 - Derivative Instruments

No change.

Note 9 - Income Taxes

No change.

Note 10 - Information Concerning Parent, Subsidiaries, Affiliates and Other Related Parties

No change.

Note 11 - Debt

B. FHLB (Federal Home Loan Bank) Agreements

Not applicable.

Note 12 - Retirement Plans, Deferred Compensation, Postemployment Benefits and Compensated Absences and Other Postretirement Benefit Plans

Not applicable.

Note 13 - Capital and Surplus, Dividend Restrictions and Quasi-Reorganizations

No change.

Note 14 - Contingencies

No change.

Note 15 - Leases

No change.

NOTES TO FINANCIAL STATEMENTS

Note 16 - Information About Financial Instruments With Off-Balance Sheet Risk And Financial Instruments With Concentrations of Credit Risk

No change.

Note 17 - Sale, Transfer and Servicing of Financial Assets and Extinguishments of Liabilities

A. Transfers of Receivables Reported as Sales

No change.

B. Transfers and Servicing of Financial Assets

Not applicable.

C. Wash Sales

Not applicable.

Note 18 - Gain or Loss to the Reporting Entity from Uninsured Plans and the Uninsured Portion of Partially Insured Plans

No change.

Note 19 - Direct Premiums Written/Produced by Managing General Agents/Third Party Administrators

No change.

Note 20 - Fair Value Measurements

Fair value is defined as the price that would be received to sell an asset or paid to transfer a liability in an orderly transaction between market participants at the measurement date. Fair value measurements are based upon observable and unobservable inputs. Observable inputs reflect market data obtained from independent sources while unobservable inputs reflect the Company's view of market assumptions in the absence of observable market information. The Company utilizes valuation techniques that maximize the use of observable inputs and minimize the use of unobservable inputs. In determining fair value, the Company uses various methods including market, income and cost approaches.

The Company categorizes its financial assets and liabilities into a three-level hierarchy based on the priority of the inputs to the valuation technique. The fair value hierarchy gives the highest priority to quoted prices in active markets for identical assets or liabilities (Level 1) and the lowest priority to unobservable inputs (Level 3). If the inputs used to measure fair value fall within different levels of the hierarchy, the category level is based on the lowest priority level input that is significant to the fair value measurement of the instrument in its entirety.

The Company categorizes financial assets and liabilities as follows:

Level 1. Unadjusted quoted prices accessible in active markets for identical assets or liabilities at the measurement date and mutual funds where the value per share (unit) is determined and published daily and is the basis for current transactions.

Level 2. Unadjusted quoted prices for similar assets or liabilities in active markets or inputs (other than quoted prices) that are observable or that are derived principally from or corroborated by observable market data through correlation or other means. Primary inputs to this valuation technique may include comparative trades, bid/asks, interest rate movements, U.S. Treasury rates, U.S. LIBOR, prime rates, cash flows, maturity dates, call ability, estimated prepayments and/or underlying collateral values.

Level 3. Prices or valuation techniques that require inputs that are both unobservable and significant to the overall fair value measurement. Inputs reflect management's best estimate about the assumptions market participants would use at the measurement date in pricing the asset or liability. Consideration is given to the risk inherent in both the method of valuation and the valuation inputs. Primary inputs to this valuation technique include broker quotes and comparative trades.

The Company reviews its fair value hierarchy classifications for financial assets and liabilities quarterly. Changes in observability of significant valuation inputs identified during these reviews may trigger reclassifications. Reclassifications are reported as transfers at the beginning of the period in which the change occurs.

To determine the fair value of bonds and stocks for which market quotations are available, independent pricing services are most often utilized. For these bonds and stocks, the Company obtains the pricing services' methodologies, inputs and assumptions and classifies the investments accordingly in the fair value hierarchy.

A corporate pricing matrix or an internally developed pricing model is used in valuing certain bonds. The corporate pricing matrix is developed using private spreads for bonds with varying weighted average lives and credit quality ratings. The weighted average life and credit quality rating of a particular bond to be priced using the corporate pricing matrix are important inputs into the model and are used to determine a corresponding spread that is added to the appropriate U.S. Treasury yield to create an estimated market yield for that bond. The estimated market yield and other relevant factors are then used to estimate the fair value of the particular bond.

Non-binding broker quotes are also utilized to determine the fair value of certain bonds when quotes are not available from independent pricing services, corporate pricing matrix or internal pricing models. These bonds are classified accordingly in the fair value hierarchy as only one broker quote is ordinarily obtained, the investment is not traded on an exchange, the pricing is not available to other entities and/or the transaction volume in the same or similar investments has decreased. Inputs used in the development of prices are not provided to the Company by the brokers as the brokers often do not provide the necessary transparency into their quotes and methodologies. Broker quotes are subject to validation of price movements that require approval from the Company's management. Management uses its knowledge of the investment and current market conditions to determine if the price is indicative of the investment's fair value.

Fair value of derivative instruments is determined using various valuation techniques relying predominately on observable market inputs. These inputs include interest rate swap curves, credit spreads, interest rates, counterparty credit risk, equity volatility and equity index levels. In cases where observable inputs are not available, the Company will utilize non-binding broker quotes to determine fair value and these instruments are classified accordingly in the fair value hierarchy.

NOTES TO FINANCIAL STATEMENTS

The following table summarizes financial assets and liabilities measured at fair value as of September 30, 2014:

	Level 1	Level 2	Level 3	Total
Assets at Fair Value				
U.S. Government bonds	\$ -	\$ -	\$ -	\$ -
States, Territories and Possessions	-	-	-	-
Political subdivisions	-	-	-	-
Special revenues	-	-	-	-
Hybrid Securities	-	-	-	-
Credit tenant loans	-	-	-	-
Industrial & Misc.	-	16,678,862	2,250,000	18,928,862
Total Bonds	\$ -	\$ 16,678,862	\$ 2,250,000	\$ 18,928,862
Sec Lending	-	5,366,121	-	5,366,121
Preferred Stocks	-	-	-	-
Common Stocks	-	-	2,752,134	2,752,134
Loans held for sale	-	-	-	-
Separate Account Assets	-	-	-	-
Derivative Assets	-	-	-	-
Total Assets at Fair Value	\$ -	\$ 22,044,983	\$ 5,002,134	\$ 27,047,117
Liabilities at Fair Value				
Derivatives Liabilities	-	-	-	-
Total Liabilities at Fair Value	\$ -	\$ -	\$ -	\$ -

The following table presents the rollforward of Level 3 financial assets and liabilities held at fair value during the three months ended September 30, 2014:

	Beginning Balance at 6/30/2014	Transfers Into Level 3	Transfers Out of Level 3	Total Gains and (losses) included in Net Income	Total Gains and (losses) included in Surplus	Purchases	Issuances	Sales	Settlements	Ending Balance at 9/30/2014
Assets at Fair Value										
U.S. Government bonds	\$ -	\$ -	\$ -	\$ -	\$ -	\$ -	\$ -	\$ -	\$ -	\$ -
States, Territories and Possessions	-	-	-	-	-	-	-	-	-	-
Political subdivisions	-	-	-	-	-	-	-	-	-	-
Special revenues	-	-	-	-	-	-	-	-	-	-
Hybrid Securities	-	-	-	-	-	-	-	-	-	-
Credit tenant loans	-	-	-	-	-	-	-	-	-	-
Industrial & Misc.	2,150,000	-	-	-	100,000	-	-	-	-	2,250,000
Total Bonds	\$ 2,150,000	\$ -	\$ -	\$ -	\$ 100,000	\$ -	\$ -	\$ -	\$ -	\$ 2,250,000
Sec Lending	-	-	-	-	-	-	-	-	-	-
Preferred Stocks	-	-	-	-	-	-	-	-	-	-
Common Stocks	2,770,005	-	-	-	(17,871)	-	-	-	-	2,752,134
Loans held for sale	-	-	-	-	-	-	-	-	-	-
Separate Account Assets	-	-	-	-	-	-	-	-	-	-
Derivative Assets	-	-	-	-	-	-	-	-	-	-
Total Assets at Fair Value	\$ 4,920,005	\$ -	\$ -	\$ -	\$ 82,129	\$ -	\$ -	\$ -	\$ -	\$ 5,002,134
Liabilities										
Derivatives Liabilities	-	-	-	-	-	-	-	-	-	-
Total Liabilities	\$ -	\$ -	\$ -	\$ -	\$ -	\$ -	\$ -	\$ -	\$ -	\$ -

The following table presents the rollforward of Level 3 financial assets and liabilities held at fair value during the nine months ended September 30, 2014:

	Beginning Balance at 12/31/2013	Transfers Into Level 3	Transfers Out of Level 3	Total Gains and (losses) included in Net Income	Total Gains and (losses) included in Surplus	Purchases	Issuances	Sales	Settlements	Ending Balance at 9/30/2014
Assets at Fair Value										
U.S. Government bonds	\$ -	\$ -	\$ -	\$ -	\$ -	\$ -	\$ -	\$ -	\$ -	\$ -
States, Territories and Possessions	-	-	-	-	-	-	-	-	-	-
Political subdivisions	-	-	-	-	-	-	-	-	-	-
Special revenues	-	-	-	-	-	-	-	-	-	-
Hybrid Securities	-	-	-	-	-	-	-	-	-	-
Credit tenant loans	-	-	-	-	-	-	-	-	-	-
Industrial & Misc.	1,550,000	-	-	-	700,000	-	-	-	-	2,250,000
Total Bonds	\$ 1,550,000	\$ -	\$ -	\$ -	\$ 700,000	\$ -	\$ -	\$ -	\$ -	\$ 2,250,000
Sec Lending	-	-	-	-	-	-	-	-	-	-
Preferred Stocks	-	-	-	-	-	-	-	-	-	-
Common Stocks	2,430,456	-	-	-	321,678	-	-	-	-	2,752,134
Loans held for sale	-	-	-	-	-	-	-	-	-	-
Separate Account Assets	-	-	-	-	-	-	-	-	-	-
Derivative Assets	-	-	-	-	-	-	-	-	-	-
Total Assets at Fair Value	\$ 3,980,456	\$ -	\$ -	\$ -	\$ 1,021,678	\$ -	\$ -	\$ -	\$ -	\$ 5,002,134
Liabilities										
Derivatives Liabilities	-	-	-	-	-	-	-	-	-	-
Total Liabilities	\$ -	\$ -	\$ -	\$ -	\$ -	\$ -	\$ -	\$ -	\$ -	\$ -

NOTES TO FINANCIAL STATEMENTS

The following table summarizes aggregate carrying value and fair value, by level, for all financial assets and liabilities, excluding assets and liabilities reported at fair value, as of September 30, 2014:

	Aggregate Fair Value	Admitted Assets	(Level 1)	(Level 2)	(Level 3)	Not Practicable (Carrying Value)
Assets						
Bonds	\$3,153,194,829	\$ 2,913,254,480	\$1,003,025,334	\$2,129,293,352	\$ 20,876,143	\$ -
Stocks	-	-	-	-	-	-
Mortgage loans	90,026,511	85,039,893	-	-	90,026,511	-
Short-term investments	40,390,055	40,390,055	-	40,390,055	-	-
Derivative assets	-	-	-	-	-	-
Policy loans	-	-	-	-	-	-
Securities lending collateral assets ¹	4,745,863	4,537,205	-	4,745,863	-	-
Total Assets	\$3,288,357,258	\$ 3,043,221,633	\$1,003,025,334	\$2,174,429,270	\$110,902,654	\$ -
Liabilities						
Derivative liabilities	\$ -	\$ -	\$ -	\$ -	\$ -	\$ -
Total Liabilities	\$ -	\$ -	\$ -	\$ -	\$ -	\$ -
1 - Includes non admitted assets						

Note 21 - Other Items

G. Offsetting and Netting of Assets and Liabilities

No assets or liabilities are offset and reported net in accordance with a valid right to offset per SSAP No. 64, Offsetting and Netting of Assets and Liabilities.

Note 22 - Events Subsequent

Subsequent events have been considered through November 6, 2014 for these statutory financial statements which are to be issued November 7, 2014. There were no events occurring subsequent to the end of the quarter that merited recognition or disclosure in these statements.

Note 23 - Reinsurance

No change.

Note 24 - Retrospectively Rated Contracts and Contracts Subject to Redetermination

No change.

Note 25 - Changes in Incurred Losses and Loss Adjustment Expenses

The Company experienced reserve strengthening of \$132.0 million during the year.

Note 26 - Intercompany Pooling Arrangements

Not applicable.

Note 27 - Structured Settlements

No change.

Note 28 - Health Care Receivables

No change.

Note 29 - Participating Policies

No change.

Note 30 - Premium Deficiency Reserves

No change.

Note 31 - High Deductibles

No change.

Note 32 - Discounting of Liabilities for Unpaid Losses or Unpaid Loss Adjustment Expenses

No change.

Note 33 - Asbestos/Environmental Reserves

No change.

Note 34 - Subscriber Savings Accounts

No change.

Note 35 - Multiple Peril Crop Insurance

No change.

Note 36 - Financial Guaranty Insurance

B. Schedule of Insured Financial Obligations at the End of the Period

Not applicable.

GENERAL INTERROGATORIES

PART 1 - COMMON INTERROGATORIES

GENERAL

- 1.1 Did the reporting entity experience any material transactions requiring the filing of Disclosure of Material Transactions with the State of Domicile, as required by the Model Act? Yes [] No [X]
- 1.2 If yes, has the report been filed with the domiciliary state? Yes [] No []
- 2.1 Has any change been made during the year of this statement in the charter, by-laws, articles of incorporation, or deed of settlement of the reporting entity? Yes [] No [X]
- 2.2 If yes, date of change:
- 3.1 Is the reporting entity a member of an Insurance Holding Company System consisting of two or more affiliated persons, one or more of which is an insurer? Yes [X] No []
If yes, complete Schedule Y, Parts 1 and 1A.
- 3.2 Have there been any substantial changes in the organizational chart since the prior quarter end? Yes [] No [X]
- 3.3 If the response to 3.2 is yes, provide a brief description of those changes.
- 4.1 Has the reporting entity been a party to a merger or consolidation during the period covered by this statement? Yes [] No [X]
- 4.2 If yes, provide the name of the entity, NAIC Company Code, and state of domicile (use two letter state abbreviation) for any entity that has ceased to exist as a result of the merger or consolidation.

1 Name of Entity	2 NAIC Company Code	3 State of Domicile

5. If the reporting entity is subject to a management agreement, including third-party administrator(s), managing general agent(s), attorney-in-fact, or similar agreement, have there been any significant changes regarding the terms of the agreement or principals involved? Yes [] No [X] N/A []
If yes, attach an explanation.
- 6.1 State as of what date the latest financial examination of the reporting entity was made or is being made. 12/31/2011
- 6.2 State the as of date that the latest financial examination report became available from either the state of domicile or the reporting entity. This date should be the date of the examined balance sheet and not the date the report was completed or released. 12/31/2011
- 6.3 State as of what date the latest financial examination report became available to other states or the public from either the state of domicile or the reporting entity. This is the release date or completion date of the examination report and not the date of the examination (balance sheet date). 03/25/2013
- 6.4 By what department or departments?
OH
- 6.5 Have all financial statement adjustments within the latest financial examination report been accounted for in a subsequent financial statement filed with Departments? Yes [] No [] N/A [X]
- 6.6 Have all of the recommendations within the latest financial examination report been complied with? Yes [] No [] N/A [X]
- 7.1 Has this reporting entity had any Certificates of Authority, licenses or registrations (including corporate registration, if applicable) suspended or revoked by any governmental entity during the reporting period? Yes [] No [X]
- 7.2 If yes, give full information:
- 8.1 Is the company a subsidiary of a bank holding company regulated by the Federal Reserve Board? Yes [] No [X]
- 8.2 If response to 8.1 is yes, please identify the name of the bank holding company.
- 8.3 Is the company affiliated with one or more banks, thrifts or securities firms? Yes [X] No []
- 8.4 If response to 8.3 is yes, please provide below the names and location (city and state of the main office) of any affiliates regulated by a federal regulatory services agency [i.e. the Federal Reserve Board (FRB), the Office of the Comptroller of the Currency (OCC), the Federal Deposit Insurance Corporation (FDIC) and the Securities Exchange Commission (SEC)] and identify the affiliate's primary federal regulator.

1 Affiliate Name	2 Location (City, State)	3 FRB	4 OCC	5 FDIC	6 SEC
Nationwide Bank	Columbus, OH	NO	YES	NO	NO
Nationwide Mutual Insurance Company	Columbus, OH	YES	NO	NO	NO
Nationwide Mutual Fire Insurance Company	Columbus, OH	YES	NO	NO	NO
Nationwide Corporation	Columbus, OH	YES	NO	NO	NO
Nationwide Financial Services, Inc.	Columbus, OH	YES	NO	NO	NO
Nationwide Investment Services Corp.	Columbus, OH	NO	NO	NO	YES
Nationwide Investment Advisors, LLC	Columbus, OH	NO	NO	NO	YES
Nationwide Securities, LLC	Dublin, OH	NO	NO	NO	YES
Nationwide Fund Advisors	King of Prussia, PA	NO	NO	NO	YES
Nationwide Fund Distributors, LLC	King of Prussia, PA	NO	NO	NO	YES
Nationwide Asset Management, LLC	Columbus, OH	NO	NO	NO	YES

GENERAL INTERROGATORIES

- 9.1 Are the senior officers (principal executive officer, principal financial officer, principal accounting officer or controller, or persons performing similar functions) of the reporting entity subject to a code of ethics, which includes the following standards? Yes No
- (a) Honest and ethical conduct, including the ethical handling of actual or apparent conflicts of interest between personal and professional relationships;
- (b) Full, fair, accurate, timely and understandable disclosure in the periodic reports required to be filed by the reporting entity;
- (c) Compliance with applicable governmental laws, rules and regulations;
- (d) The prompt internal reporting of violations to an appropriate person or persons identified in the code; and
- (e) Accountability for adherence to the code.
- 9.11 If the response to 9.1 is No, please explain:
- 9.2 Has the code of ethics for senior managers been amended? Yes No
- 9.21 If the response to 9.2 is Yes, provide information related to amendment(s).
- 9.3 Have any provisions of the code of ethics been waived for any of the specified officers? Yes No
- 9.31 If the response to 9.3 is Yes, provide the nature of any waiver(s).

FINANCIAL

- 10.1 Does the reporting entity report any amounts due from parent, subsidiaries or affiliates on Page 2 of this statement? Yes No
- 10.2 If yes, indicate any amounts receivable from parent included in the Page 2 amount: \$

INVESTMENT

- 11.1 Were any of the stocks, bonds, or other assets of the reporting entity loaned, placed under option agreement, or otherwise made available for use by another person? (Exclude securities under securities lending agreements.) Yes No
- 11.2 If yes, give full and complete information relating thereto:
12. Amount of real estate and mortgages held in other invested assets in Schedule BA: \$ 60,048,415
13. Amount of real estate and mortgages held in short-term investments: \$
- 14.1 Does the reporting entity have any investments in parent, subsidiaries and affiliates? Yes No
- 14.2 If yes, please complete the following:
- | | 1 | 2 |
|---|---|--|
| | Prior Year-End
Book/Adjusted
Carrying Value | Current Quarter
Book/Adjusted
Carrying Value |
| 14.21 Bonds | \$ | \$ |
| 14.22 Preferred Stock | \$ | \$ |
| 14.23 Common Stock | \$ | \$ |
| 14.24 Short-Term Investments | \$ | \$ |
| 14.25 Mortgage Loans on Real Estate | \$ | \$ |
| 14.26 All Other | \$ 21,728,965 | \$ 21,433,448 |
| 14.27 Total Investment in Parent, Subsidiaries and Affiliates (Subtotal Lines 14.21 to 14.26) | \$ 21,728,965 | \$ 21,433,448 |
| 14.28 Total Investment in Parent included in Lines 14.21 to 14.26 above | \$ | \$ |
- 15.1 Has the reporting entity entered into any hedging transactions reported on Schedule DB? Yes No
- 15.2 If yes, has a comprehensive description of the hedging program been made available to the domiciliary state? Yes No
- If no, attach a description with this statement.

STATEMENT AS OF SEPTEMBER 30, 2014 OF THE NATIONWIDE INDEMNITY COMPANY
GENERAL INTERROGATORIES

16. For the reporting entity's security lending program, state the amount of the following as of the current statement date:
- | | |
|--|--------------------|
| 16.1 Total fair value of reinvested collateral assets reported on Schedule DL, Parts 1 and 2 | \$10,111,985 |
| 16.2 Total book adjusted/carrying value of reinvested collateral assets reported on Schedule DL, Parts 1 and 2 | \$9,903,326 |
| 16.3 Total payable for securities lending reported on the liability page | \$14,970,000 |

17. Excluding items in Schedule E - Part 3 - Special Deposits, real estate, mortgage loans and investments held physically in the reporting entity's offices, vaults or safety deposit boxes, were all stocks, bonds and other securities, owned throughout the current year held pursuant to a custodial agreement with a qualified bank or trust company in accordance with Section 1, III - General Examination Considerations, F. Outsourcing of Critical Functions, Custodial or Safekeeping Agreements of the NAIC Financial Condition Examiners Handbook? Yes [X] No []
- 17.1 For all agreements that comply with the requirements of the NAIC Financial Condition Examiners Handbook, complete the following:

1 Name of Custodian(s)	2 Custodian Address
The Bank of New York Mellon	1 Wall Street, New York, NY 10286

- 17.2 For all agreements that do not comply with the requirements of the NAIC Financial Condition Examiners Handbook, provide the name, location and a complete explanation:

1 Name(s)	2 Location(s)	3 Complete Explanation(s)

- 17.3 Have there been any changes, including name changes, in the custodian(s) identified in 17.1 during the current quarter? Yes [] No [X]

- 17.4 If yes, give full information relating thereto:

1 Old Custodian	2 New Custodian	3 Date of Change	4 Reason

- 17.5 Identify all investment advisors, brokers/dealers or individuals acting on behalf of broker/dealers that have access to the investment accounts, handle securities and have authority to make investments on behalf of the reporting entity:

1 Central Registration Depository	2 Name(s)	3 Address
N/A	Members of the investment staff designated by the Chief Investment Officer as detailed in the Corporate Resolution.	One West Nationwide Blvd., Columbus, OH 43215

- 18.1 Have all the filing requirements of the Purposes and Procedures Manual of the NAIC Securities Valuation Office been followed? Yes [X] No []

- 18.2 If no, list exceptions:

GENERAL INTERROGATORIES

PART 2 - PROPERTY & CASUALTY INTERROGATORIES

1. If the reporting entity is a member of a pooling arrangement, did the agreement or the reporting entity's participation change? Yes [] No [] N/A [X]
If yes, attach an explanation.

2. Has the reporting entity reinsured any risk with any other reporting entity and agreed to release such entity from liability, in whole or in part, from any loss that may occur on the risk, or portion thereof, reinsured? Yes [] No [X]
If yes, attach an explanation.

3.1 Have any of the reporting entity's primary reinsurance contracts been canceled? Yes [] No [X]

3.2 If yes, give full and complete information thereto.

4.1 Are any of the liabilities for unpaid losses and loss adjustment expenses other than certain workers' compensation tabular reserves (see Annual Statement Instructions pertaining to disclosure of discounting for definition of "tabular reserves") discounted at a rate of interest greater than zero? Yes [] No [X]

4.2 If yes, complete the following schedule:

			TOTAL DISCOUNT				DISCOUNT TAKEN DURING PERIOD			
1	2	3	4	5	6	7	8	9	10	11
Line of Business	Maximum Interest	Discount Rate	Unpaid Losses	Unpaid LAE	IBNR	TOTAL	Unpaid Losses	Unpaid LAE	IBNR	TOTAL
TOTAL										

5. Operating Percentages:

5.1 A&H loss percent %

5.2 A&H cost containment percent %

5.3 A&H expense percent excluding cost containment expenses %

6.1 Do you act as a custodian for health savings accounts? Yes [] No [X]

6.2 If yes, please provide the amount of custodial funds held as of the reporting date \$.....

6.3 Do you act as an administrator for health savings accounts? Yes [] No [X]

6.4 If yes, please provide the balance of the funds administered as of the reporting date \$.....

SCHEDULE F - CEDED REINSURANCE

Showing All New Reinsurers - Current Year to Date

1 NAIC Company Code	2 ID Number	3 Name of Reinsurer	4 Domiciliary Jurisdiction	5 Type of Reinsurer	6 Certified Reinsurer Rating (1 through 6)	7 Effective Date of Certified Reinsurer Rating
NONE						

STATEMENT AS OF SEPTEMBER 30, 2014 OF THE NATIONWIDE INDEMNITY COMPANY

SCHEDULE T - EXHIBIT OF PREMIUMS WRITTEN

Current Year to Date - Allocated by States and Territories

States, etc.	1 Active Status	Direct Premiums Written		Direct Losses Paid (Deducting Salvage)		Direct Losses Unpaid	
		2 Current Year To Date	3 Prior Year To Date	4 Current Year To Date	5 Prior Year To Date	6 Current Year To Date	7 Prior Year To Date
1. Alabama AL	N						
2. Alaska AK	N						
3. Arizona AZ	N						
4. Arkansas AR	N						
5. California CA	N						
6. Colorado CO	N						
7. Connecticut CT	N						
8. Delaware DE	N						
9. District of Columbia DC	N						
10. Florida FL	N						
11. Georgia GA	N						
12. Hawaii HI	N						
13. Idaho ID	N						
14. Illinois IL	Q						
15. Indiana IN	N						
16. Iowa IA	Q						
17. Kansas KS	N						
18. Kentucky KY	N						
19. Louisiana LA	N						
20. Maine ME	N						
21. Maryland MD	N						
22. Massachusetts MA	N						
23. Michigan MI	N						
24. Minnesota MN	N						
25. Mississippi MS	N						
26. Missouri MO	N						
27. Montana MT	N						
28. Nebraska NE	N						
29. Nevada NV	N						
30. New Hampshire NH	N						
31. New Jersey NJ	N						
32. New Mexico NM	N						
33. New York NY	Q						
34. North Carolina NC	N						
35. North Dakota ND	N						
36. Ohio OH	L						
37. Oklahoma OK	N						
38. Oregon OR	N						
39. Pennsylvania PA	N						
40. Rhode Island RI	N						
41. South Carolina SC	N						
42. South Dakota SD	N						
43. Tennessee TN	N						
44. Texas TX	N						
45. Utah UT	N						
46. Vermont VT	N						
47. Virginia VA	N						
48. Washington WA	N						
49. West Virginia WV	N						
50. Wisconsin WI	Q						
51. Wyoming WY	N						
52. American Samoa AS	N						
53. Guam GU	N						
54. Puerto Rico PR	N						
55. U.S. Virgin Islands VI	N						
56. Northern Mariana Islands MP	N						
57. Canada CAN	N						
58. Aggregate Other Alien OT	XXX						
59. Totals	(a) 1						
DETAILS OF WRITE-INS							
58001.	XXX						
58002.	XXX						
58003.	XXX						
58998. Summary of remaining write-ins for Line 58 from overflow page	XXX						
58999. Totals (Lines 58001 through 58003 plus 58998)(Line 58 above)	XXX						

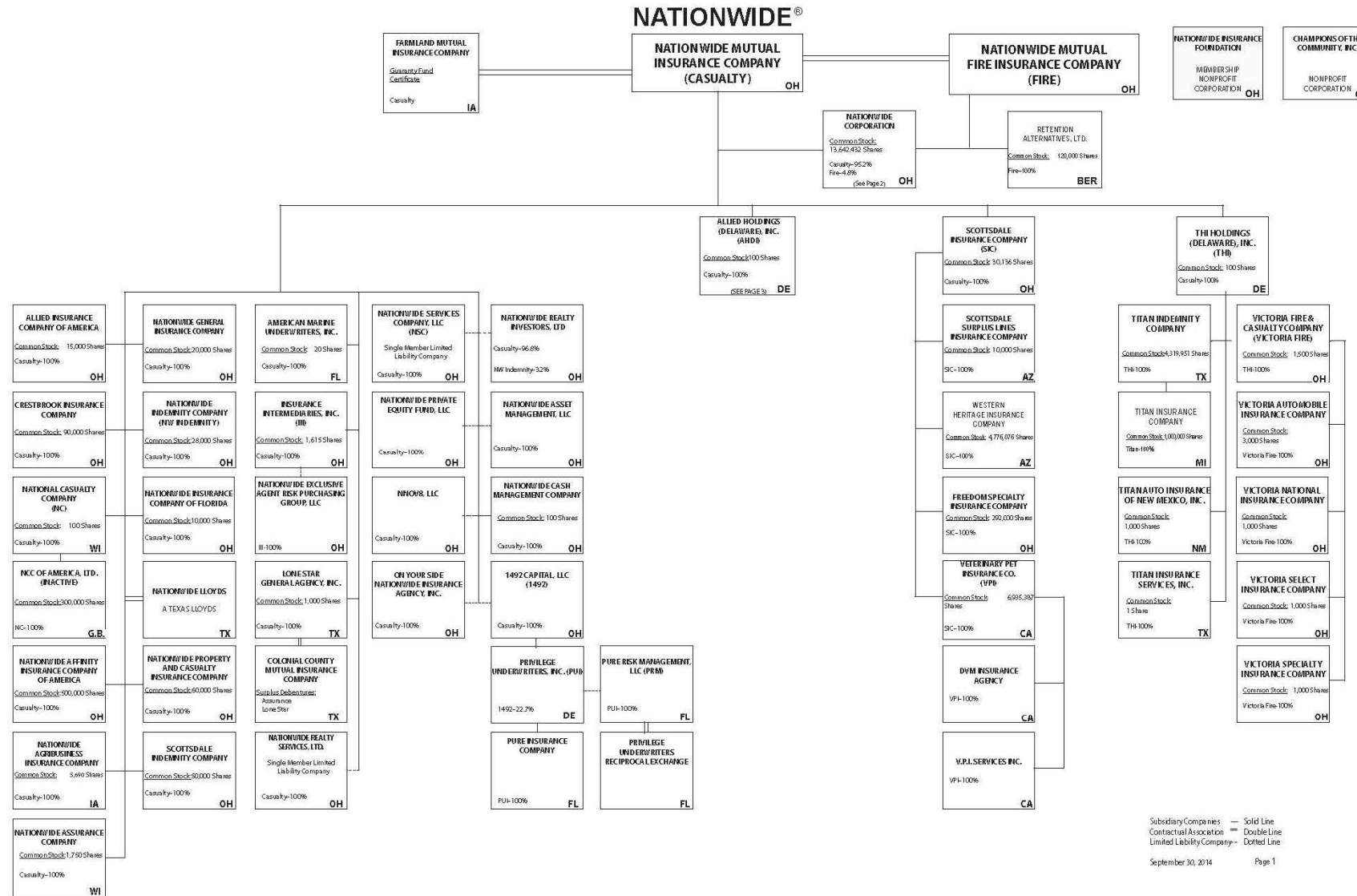
(L) Licensed or Chartered - Licensed Insurance Carrier or Domiciled RRG; (R) Registered - Non-domiciled RRGs; (Q) Qualified - Qualified or Accredited Reinsurer; (E) Eligible - Reporting Entities eligible or approved to write Surplus Lines in the state; (N) None of the above - Not allowed to write business in the state.

(a) Insert the number of L responses except for Canada and Other Alien.

STATEMENT AS OF SEPTEMBER 30, 2014 OF THE NATIONWIDE INDEMNITY COMPANY

SCHEDULE Y - INFORMATION CONCERNING ACTIVITIES OF INSURER MEMBERS OF A HOLDING COMPANY GROUP

PART 1 - ORGANIZATIONAL CHART



Subsidiary Companies — Solid Line
Contractual Association — Double Line
Limited Liability Company — Dotted Line

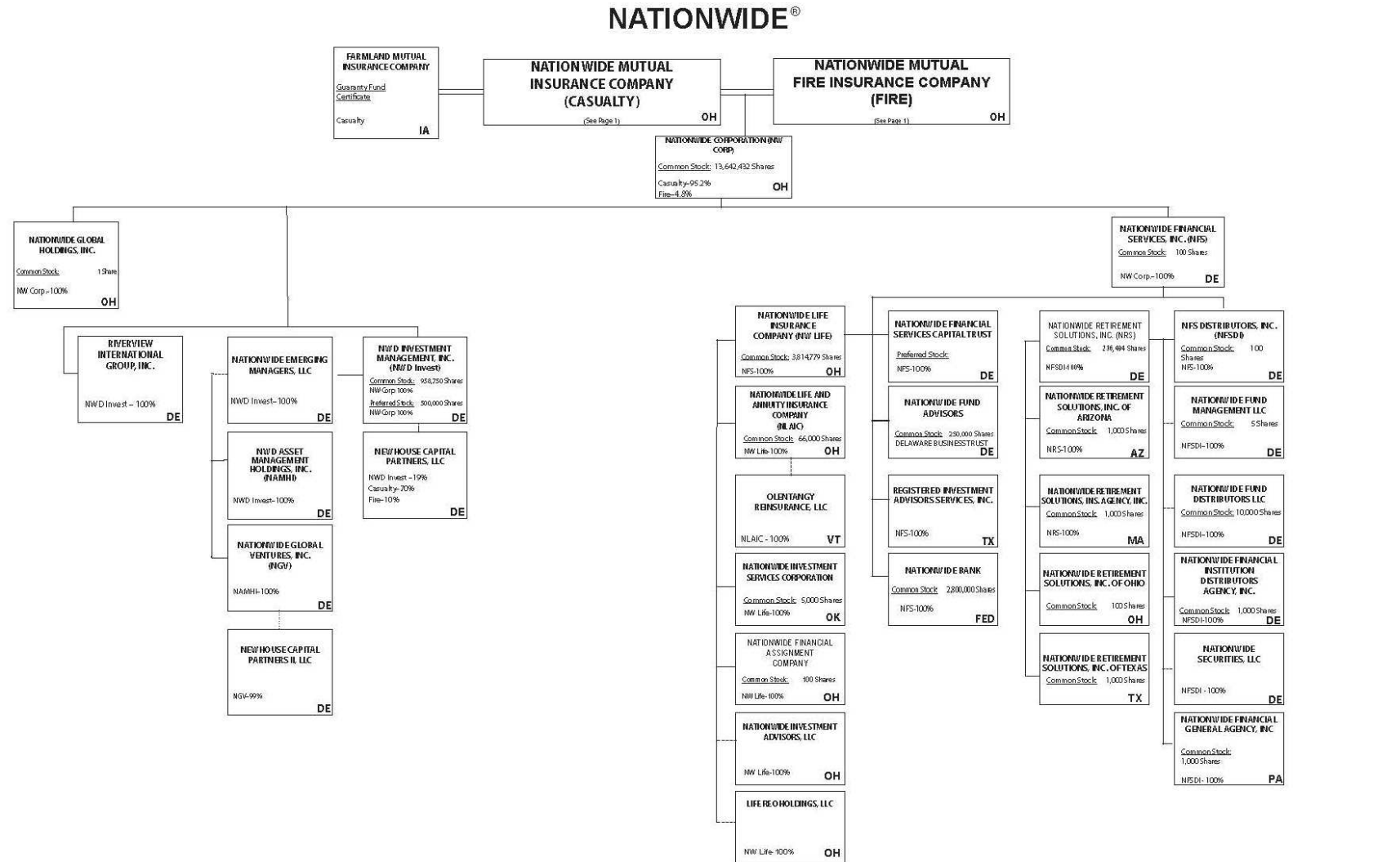
September 30, 2014 Page 1

(Casualty/Fire subsidiaries)

STATEMENT AS OF SEPTEMBER 30, 2014 OF THE NATIONWIDE INDEMNITY COMPANY

SCHEDULE Y - INFORMATION CONCERNING ACTIVITIES OF INSURER MEMBERS OF A HOLDING COMPANY GROUP

PART 1 - ORGANIZATIONAL CHART



11.1

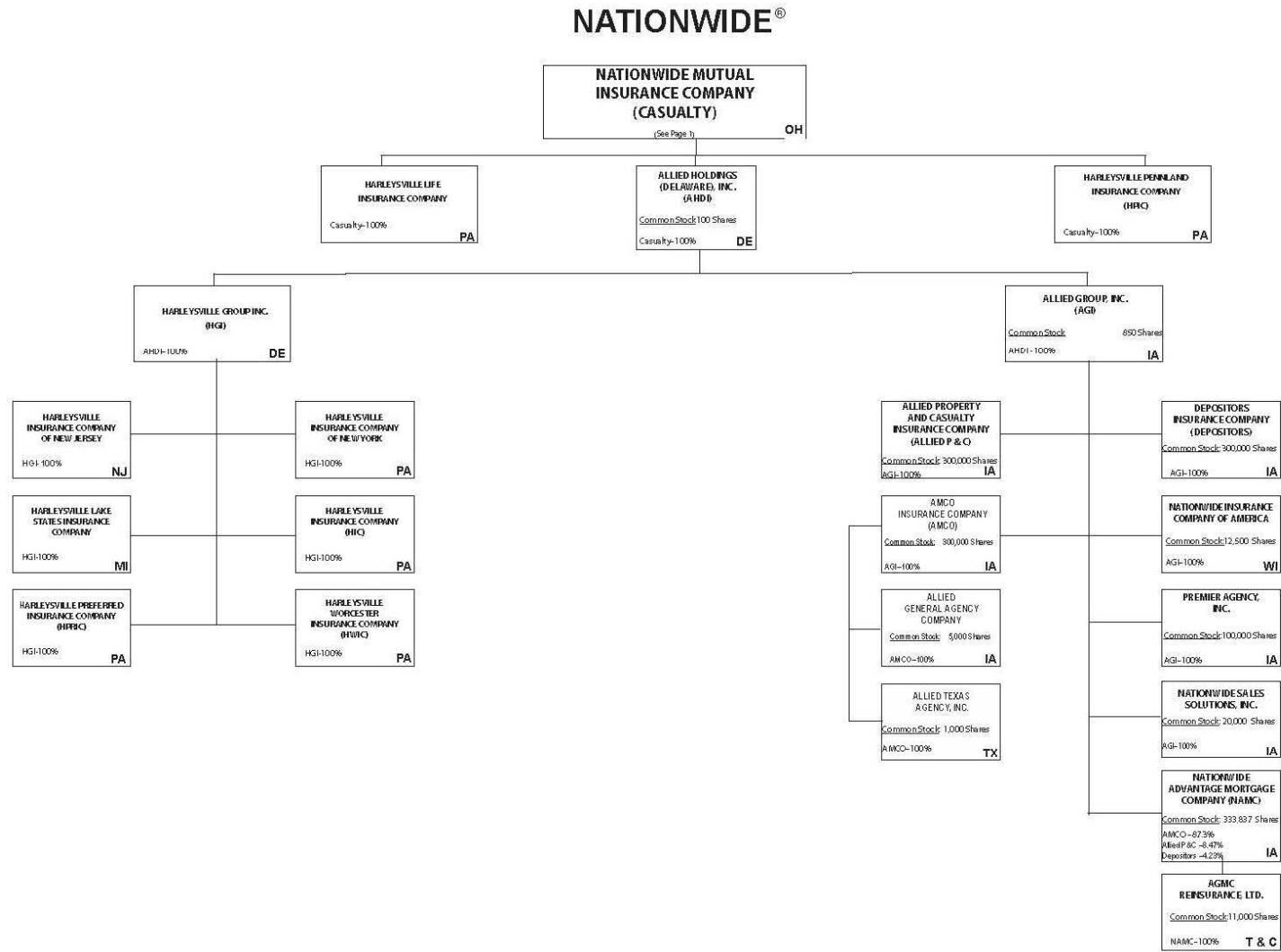
Subsidiary Companies — Solid Line
Contractual Association = Double Line
Limited Liability Company - - Dotted Line

(Nationwide Corp. subsidiaries)

STATEMENT AS OF SEPTEMBER 30, 2014 OF THE NATIONWIDE INDEMNITY COMPANY

SCHEDULE Y - INFORMATION CONCERNING ACTIVITIES OF INSURER MEMBERS OF A HOLDING COMPANY GROUP

PART 1 - ORGANIZATIONAL CHART



Subsidiary Companies — Solid Line
 Contractual Association — Double Line
 Limited Liability Company — Dotted Line

September 30, 2014. Page 3

(ALLIED/Harleysville subsidiaries)

11.2

STATEMENT AS OF SEPTEMBER 30, 2014 OF THE NATIONWIDE INDEMNITY COMPANY

NATIONWIDE INSURANCE COMPANIES

NAIC Group Code	Group Name	NAIC Company Code	State of Domicile	Federal ID Number	Name of Company
0140	Nationwide	10127	OH	27-0114983	Allied Insurance Company of America
0140	Nationwide	42579	IA	42-1201931	Allied Property and Casualty Insurance Company
0140	Nationwide	19100	IA	42-6054959	AMCO Insurance Company
0140	Nationwide	29262	TX	74-1061659	Colonial County Mutual Insurance Company
0140	Nationwide	18961	OH	68-0066866	Crestbrook Insurance Company
0140	Nationwide	42587	IA	42-1207150	Depositors Insurance Company
0140	Nationwide	13838	IA	42-0618271	Farmland Mutual Insurance Company
0140	Nationwide	22209	OH	75-6013587	Freedom Specialty Insurance Company
0140	Nationwide	23582	PA	41-0417250	Harleysville Insurance Company
0140	Nationwide	42900	NJ	23-2253669	Harleysville Insurance Company of New Jersey
0140	Nationwide	10674	PA	23-2864924	Harleysville Insurance Company of New York
0140	Nationwide	14516	MI	38-3198542	Harleysville Lake States Insurance Company
0140	Nationwide	64327	PA	23-1580983	Harleysville Life Insurance Company
0140	Nationwide	40983	PA	23-2612951	* Harleysville Pennland Insurance Company
0140	Nationwide	35696	PA	23-2384978	Harleysville Preferred Insurance Company
0140	Nationwide	26182	PA	04-1989660	Harleysville Worcester Insurance Company
0140	Nationwide	11991	WI	38-0865250	National Casualty Company
0140	Nationwide	26093	OH	48-0470690	Nationwide Affinity Insurance Company of America
0140	Nationwide	28223	IA	42-1015537	Nationwide Agribusiness Insurance Company
0140	Nationwide	10723	WI	95-0639970	Nationwide Assurance Company
0140	Nationwide	23760	OH	31-4425763	Nationwide General Insurance Company
0140	Nationwide	10070	OH	31-1399201	Nationwide Indemnity Company
0140	Nationwide	25453	WI	95-2130882	Nationwide Insurance Company of America
0140	Nationwide	10948	OH	31-1613686	Nationwide Insurance Company of Florida
0140	Nationwide	92657	OH	31-1000740	Nationwide Life and Annuity Insurance Company
0140	Nationwide	66869	OH	31-4156830	Nationwide Life Insurance Company
0140	Nationwide	42110	TX	75-1780981	Nationwide Lloyds
0140	Nationwide	23779	OH	31-4177110	Nationwide Mutual Fire Insurance Company
0140	Nationwide	23787	OH	31-4177100	Nationwide Mutual Insurance Company
0140	Nationwide	37877	OH	31-0970750	Nationwide Property & Casualty Insurance Company
0140	Nationwide	13999	VT	27-1712056	Olentangy Reinsurance, LLC
0140	Nationwide	15580	OH	31-1117969	Scottsdale Indemnity Company
0140	Nationwide	41297	OH	31-1024978	Scottsdale Insurance Company
0140	Nationwide	10672	AZ	86-0835870	Scottsdale Surplus Lines Insurance Company
0140	Nationwide	13242	TX	74-2286759	Titan Indemnity Company
0140	Nationwide	36269	MI	86-0619597	Titan Insurance Company
0140	Nationwide	42285	CA	95-3750113	Veterinary Pet Insurance Company
0140	Nationwide	10644	OH	34-1785903	Victoria Automobile Insurance Company
0140	Nationwide	42889	OH	34-1394913	Victoria Fire & Casualty Company
0140	Nationwide	10778	OH	34-1842604	Victoria National Insurance Company
0140	Nationwide	10105	OH	34-1777972	Victoria Select Insurance Company
0140	Nationwide	10777	OH	34-1842602	Victoria Specialty Insurance Company
0140	Nationwide	37150	AZ	86-0561941	Western Heritage Insurance Company
4664	PURE	12873	FL	20-8287105	Privilege Underwriters Reciprocal Exchange
4664	PURE	13204	FL	26-3109178	PURE Insurance Company

* Harleysville Pennland surrendered its Certificate of Authority effective 11/2/2013

STATEMENT AS OF SEPTEMBER 30, 2014 OF THE NATIONWIDE INDEMNITY COMPANY

SCHEDULE Y

PART 1A - DETAIL OF INSURANCE HOLDING COMPANY SYSTEM

1	2	3	4	5	6	7	8	9	10	11	12	13	14	15
Group Code	Group Name	NAIC Company Code	Federal ID Number	Federal RSSD	CIK	Name of Securities Exchange if Publicly Traded (U.S. or International)	Names of Parent, Subsidiaries Or Affiliates	Domiciliary Location	Relationship to Reporting Entity	Directly Controlled by (Name of Entity/Person)	Type of Control (Ownership, Board, Management, Attorney-in-Fact, Influence, Other)	If Control is Ownership Provide Percentage	Ultimate Controlling Entity(ies)/Person(s)	*
0140	Nationwide		31-1486309	4590018			10 W. Nationwide, LLC	OH	NIA	Nationwide Realty Investors, Ltd.	Ownership	100.000	Nationwide Mutual Insurance Company	
0140	Nationwide		31-1486309	4594954			101 N. Twentieth St, LLC	OH	NIA	Nationwide Realty Investors, Ltd.	Ownership	100.000	Nationwide Mutual Insurance Company	
0140	Nationwide		31-1733036	4594963			120 Acre Partners, LLC	DE	NIA	Nationwide Realty Investors, Ltd.	Ownership	95.000	Nationwide Mutual Insurance Company	1
0140	Nationwide		26-2451988	4288132			1492 Capital, LLC	OH	NIA	Nationwide Mutual Insurance Company	Ownership	100.000	Nationwide Mutual Insurance Company	
0140	Nationwide		20-1347603	4594806			180 E. Broad Partners, LLC	OH	NIA	Nationwide Realty Investors, Ltd.	Ownership	33.330	Nationwide Mutual Insurance Company	1
0140	Nationwide		31-1580283	4590835			400 West Nationwide Boulevard, LLC	OH	NIA	NWD Investments, LLC	Ownership	100.000	Nationwide Mutual Insurance Company	
0140	Nationwide		31-1580283	4591140			425 West Nationwide Boulevard, LLC	OH	NIA	NWD Investments, LLC	Ownership	100.000	Nationwide Mutual Insurance Company	
0140	Nationwide		31-1486309	4595009			44 Chestnut, LLC	OH	NIA	Nationwide Realty Investors, Ltd.	Ownership	100.000	Nationwide Mutual Insurance Company	
0140	Nationwide		20-4939866	4590497			775 Yard Street Restaurant, LLC	OH	NIA	NRI Equity Land Investments, LLC	Ownership	100.000	Nationwide Mutual Insurance Company	
0140	Nationwide		20-4939866	4590750			775 Yard Street, LLC	OH	NIA	NRI Equity Land Investments, LLC	Ownership	100.000	Nationwide Mutual Insurance Company	
0140	Nationwide		20-4939866	4671583			795 Rail Street, LLC	OH	NIA	NRI Equity Land Investments, LLC	Ownership	100.000	Nationwide Mutual Insurance Company	
0140	Nationwide		20-4939866	4590602			800 Bobcat Avenue, LLC	OH	NIA	NRI Equity Land Investments, LLC	Ownership	100.000	Nationwide Mutual Insurance Company	
0140	Nationwide		20-4939866	4671499			800 Goodale Boulevard, LLC	OH	NIA	NRI Equity Land Investments, LLC	Ownership	100.000	Nationwide Mutual Insurance Company	
0140	Nationwide		20-4939866	4671789			800 Yard Street, LLC	OH	NIA	NRI Equity Land Investments, LLC	Ownership	100.000	Nationwide Mutual Insurance Company	
0140	Nationwide		20-4939866	4590778			805 Bobcat Avenue, LLC	OH	NIA	NRI Equity Land Investments, LLC	Ownership	100.000	Nationwide Mutual Insurance Company	
0140	Nationwide		20-4939866	4590611			845 Yard Street, LLC	OH	NIA	NRI Equity Land Investments, LLC	Ownership	100.000	Nationwide Mutual Insurance Company	
0140	Nationwide		20-4939866	4590787			850 Goodale Blvd., LLC	OH	NIA	NRI Equity Land Investments, LLC	Ownership	100.000	Nationwide Mutual Insurance Company	
0140	Nationwide		20-4939866	4590714			895 W. Third Ave., LLC	OH	NIA	NRI Equity Land Investments, LLC	Ownership	100.000	Nationwide Mutual Insurance Company	
0140	Nationwide		20-4939866	4590714			925 Burrell Avenue Acquisitions, LLC	OH	NIA	NRI Equity Land Investments, LLC	Ownership	100.000	Nationwide Mutual Insurance Company	
0140	Nationwide		31-1680808	4594833			AD Investments, LLC	OH	NIA	Nationwide Realty Investors, Ltd.	Ownership	60.000	Nationwide Mutual Insurance Company	1
0140	Nationwide		31-1580283	4590992			ADTV, LLC	OH	NIA	NWD Investments, LLC	Ownership	100.000	Nationwide Mutual Insurance Company	
0140	Nationwide		52-2227314	42877247			AGMC Reinsurance, Ltd.	TCA	IA	Nationwide Advantage Mortgage Company	Ownership	100.000	Nationwide Mutual Insurance Company	
0140	Nationwide		42-1011300	4287229			ALLIED General Agency Company	IA	IA	AMCO Insurance Company	Ownership	100.000	Nationwide Mutual Insurance Company	
0140	Nationwide		42-0958655	1677548			ALLIED Group, Inc.	IA	IA	Allied Holdings (Delaware), Inc.	Ownership	100.000	Nationwide Mutual Insurance Company	
0140	Nationwide		46-4628790	4613462			Allied Holdings (Delaware), Inc.	DE	IA	Nationwide Mutual Insurance Company	Ownership	100.000	Nationwide Mutual Insurance Company	
0140	Nationwide	10127	27-0114983	4288169			ALLIED Insurance Company of America	OH	IA	Nationwide Mutual Insurance Company	Ownership	100.000	Nationwide Mutual Insurance Company	
0140	Nationwide	45279	42-1201931	4287144			ALLIED Property and Casualty Insurance Company	IA	IA	ALLIED Group, Inc.	Ownership	100.000	Nationwide Mutual Insurance Company	
0140	Nationwide		42-1527863	4287238			ALLIED Texas Agency, Inc.	TX	IA	AMCO Insurance Company	Ownership	100.000	Nationwide Mutual Insurance Company	
0140	Nationwide	19100	42-6054959	4287153			AMCO Insurance Company	IA	IA	ALLIED Group, Inc.	Ownership	100.000	Nationwide Mutual Insurance Company	
0140	Nationwide		59-1031596	4288011			American Marine Underwriters, Inc.	FL	IA	Nationwide Mutual Insurance Company	Ownership	100.000	Nationwide Mutual Insurance Company	
0140	Nationwide		31-1486309	4595036			Anderson Meadows, LLC	OH	NIA	Nationwide Realty Investors, Ltd.	Ownership	100.000	Nationwide Mutual Insurance Company	
0140	Nationwide		31-1580283	4591177			Arena District CA I, LLC	OH	NIA	NWD Investments, LLC	Ownership	100.000	Nationwide Mutual Insurance Company	
0140	Nationwide		90-0280710				Arena District Owners Association	OH	OTH	Other non-Nationwide	n/a	0.000	Other non-Nationwide	2
0140	Nationwide		31-1580283	4591010			Arena Theatres, LLC	OH	NIA	NWD Investments, LLC	Ownership	100.000	Nationwide Mutual Insurance Company	
0140	Nationwide						Artessa at Quarry Village, LLC	TX	OTH	Other non-Nationwide	n/a	0.000	Other non-Nationwide	2
0140	Nationwide			4595371			BOCS Investment Fund LLC	DE	OTH	Nationwide Mutual Insurance Company	Ownership	100.000	Nationwide Mutual Insurance Company	
0140	Nationwide		31-1184438	4594842			Boulevard Inn Limited Liability Company	OH	NIA	Nationwide Realty Investors, Ltd.	Ownership	94.800	Nationwide Mutual Insurance Company	1
0140	Nationwide		31-1555487	4593658			Broad Street Retail, LLC	DE	NIA	Nationwide Realty Investors, Ltd.	Ownership	60.000	Nationwide Mutual Insurance Company	1
0140	Nationwide			4595531			Brooke School Investment Fund, LLC	DE	OTH	Nationwide Mutual Insurance Company	Ownership	100.000	Nationwide Mutual Insurance Company	
0140	Nationwide			3730540			CHP New Markets Investment Fund, LLC	OH	OTH	Nationwide Mutual Insurance Company	Limited partner /no control	50.000	Other non-Nationwide	1
0140	Nationwide		20-1618232	4595241			CNRI-Cannonsport Condominium, LLC	OH	NIA	CNRI-Cannonsport, LLC	Ownership	100.000	Nationwide Mutual Insurance Company	
0140	Nationwide		20-1618232	4595045			CNRI-Cannonsport, LLC	OH	NIA	Nationwide Realty Investors, Ltd.	Ownership	100.000	Nationwide Mutual Insurance Company	
0140	Nationwide						Co-Investment Fund, LLC	DE	OTH	Other non-Nationwide	n/a	0.000	Other non-Nationwide	2
0140	Nationwide		31-1579973				COLHOC Limited Partnership	OH	NIA	NRI Limited Partnership	Ownership	30.760	Other non-Nationwide	1
0140	Nationwide	29262	74-1061659	4288057			Colonial County Mutual Insurance Company	TX	OTH	Other non-Nationwide	contract	0.000	Other non-Nationwide	
0140	Nationwide		45-4901238				Columbus Arena Management, LLC	OH	OTH	Other non-Nationwide		0.000	Other non-Nationwide	
0140	Nationwide		04-3750770	4595951			Continental/North Shore I, L.P.	OH	NIA	Continental/NRI North Shore Investments, LLC	Ownership	100.000	Nationwide Mutual Insurance Company	
0140	Nationwide		20-0366090	3327212			Continental/North Shore II, L.P.	OH	NIA	Continental/NRI North Shore Investments, LLC	Ownership	100.000	Nationwide Mutual Insurance Company	

STATEMENT AS OF SEPTEMBER 30, 2014 OF THE NATIONWIDE INDEMNITY COMPANY

SCHEDULE Y
PART 1A - DETAIL OF INSURANCE HOLDING COMPANY SYSTEM

1	2	3	4	5	6	7	8	9	10	11	12	13	14	15
Group Code	Group Name	NAIC Company Code	Federal ID Number	Federal RSSD	CIK	Name of Securities Exchange if Publicly Traded (U.S. or International)	Names of Parent, Subsidiaries Or Affiliates	Domiciliary Location	Relationship to Reporting Entity	Directly Controlled by (Name of Entity/Person)	Type of Control (Ownership, Board, Management, Attorney-in-Fact, Influence, Other)	If Control is Ownership Provide Percentage	Ultimate Controlling Entity(ies)/Person(s)	*
...0140	Nationwide		20-0142724	4588177			Continental/NRI North Shore Investments, LLC	..OH	..NIA	Nationwide Realty Investors, Ltd.	Ownership	..50.500	Nationwide Mutual Insurance Company1
0140	Nationwide			4595670			Cotton Mill Partners, LLC	..VA	..OTH	Nationwide Mutual Insurance Company	Limited partner /no control	..2.000	other non-Nationwide1
0140	Nationwide	18961	68-0066866	4288178			Crestbrook Insurance Company	..OH	..IA	Nationwide Mutual Insurance Company	Ownership	..100.000	Nationwide Mutual Insurance Company
0140	Nationwide		31-1486309	4590255			Crewville, Ltd.	..OH	..NIA	Nationwide Realty Investors, Ltd.	Ownership	..100.000	Nationwide Mutual Insurance Company
0140	Nationwide	42587	42-1207150	4287162			Depositors Insurance Company	..IA	..IA	ALLIED Group, Inc.	Ownership	..100.000	Nationwide Mutual Insurance Company
0140	Nationwide		33-0096671	4287694			DVM Insurance Agency	..CA	..NIA	Veterinary Pet Insurance Company	Ownership	..100.000	Nationwide Mutual Insurance Company
0140	Nationwide		20-1945276	4590590			East of Madison, LLC	..DE	..NIA	120 Acre Partners, Ltd.	Ownership	..24.910	Nationwide Mutual Insurance Company1
0140	Nationwide		20-1945276	4590590			East of Madison, LLC	..DE	..NIA	ND La Quinta Partners, LLC	Ownership	..76.090	Nationwide Mutual Insurance Company1
0140	Nationwide			4595689			ELH Investment LLC	..DE	..OTH	Nationwide Mutual Insurance Company	Other	..0.000	Nationwide Mutual Insurance Company2
0140	Nationwide	13838	42-0618271	4569372			Farmland Mutual Insurance Company	..IA	..OTH	Other non-Nationwide	debt	..0.000	Other non-Nationwide2
0140	Nationwide	22209	75-6013587	4287676			Freedom Specialty Insurance Company (fka Atlantic Insurance Company)	..OH	..IA	Scottsdale Insurance Company	Ownership	..100.000	Nationwide Mutual Insurance Company
0140	Nationwide		46-4736379				GPN-1 Property Owners Association, Inc.	..OH	..OTH	other non-Nationwide	n/a	..0.000	other non-Nationwide2
0140	Nationwide		20-4939866	4590808			Grandview Yard Hotel Holdings, LLC	..OH	..NIA	NRI Equity Land Investments, LLC	Ownership	..100.000	Nationwide Mutual Insurance Company
0140	Nationwide		20-4939866	4590826			Grandview Yard Hotel, LLC	..OH	..NIA	Grandview Yard Hotel Holdings, LLC	Ownership	..100.000	Nationwide Mutual Insurance Company
0140	Nationwide		51-0241172	3582909			Harleysville Group, Inc.	..DE	..NIA	Allied Holdings (Delaware), Inc.	Ownership	..100.000	Nationwide Mutual Insurance Company
0140	Nationwide	23582	41-0417250	4442260			Harleysville Insurance Company	..PA	..IA	Harleysville Group, Inc.	Ownership	..100.000	Nationwide Mutual Insurance Company
0140	Nationwide	33235	16-1075588	4442158			Harleysville Insurance Company of New Jersey	..NJ	..IA	Harleysville Group, Inc.	Ownership	..100.000	Nationwide Mutual Insurance Company
0140	Nationwide	10674	23-2864924	4442242			Harleysville Insurance Company of New York	..PA	..IA	Harleysville Group, Inc.	Ownership	..100.000	Nationwide Mutual Insurance Company
0140	Nationwide	14516	38-3198542	4442251			Harleysville Lake States Insurance Company	..MI	..IA	Harleysville Group, Inc.	Ownership	..100.000	Nationwide Mutual Insurance Company
0140	Nationwide	64327	23-1580983	4440659			Harleysville Life Insurance Company	..PA	..IA	Nationwide Mutual Insurance Company	Ownership	..100.000	Nationwide Mutual Insurance Company
0140	Nationwide	40983	23-2612951	4442149			Harleysville Pennland Insurance Company	..PA	..IA	Nationwide Mutual Insurance Company	Ownership	..100.000	Nationwide Mutual Insurance Company
0140	Nationwide	35896	23-2384978	4442288			Harleysville Preferred Insurance Company	..PA	..IA	Harleysville Group, Inc.	Ownership	..100.000	Nationwide Mutual Insurance Company
0140	Nationwide	26182	04-1989660	4442372			Harleysville Worcester Insurance Company	..PA	..IA	Harleysville Group, Inc.	Ownership	..100.000	Nationwide Mutual Insurance Company
0140	Nationwide		32-0051216	4596903			Hideaway Properties Corp.	..CA	..OTH	Nationwide Realty Investors, Ltd.	Ownership	..50.000	Nationwide Mutual Insurance Company1
0140	Nationwide		31-0871532	4288020			Insurance Intermediaries, Inc.	..OH	..IA	Nationwide Mutual Insurance Company	Ownership	..100.000	Nationwide Mutual Insurance Company
0140	Nationwide		31-1486309	4097802			Jerome Village Company, LLC	..OH	..NIA	Nationwide Realty Investors, Ltd.	Ownership	..100.000	Nationwide Mutual Insurance Company
0140	Nationwide						Jerome Village Master Property Owners Association	..OH	..OTH	Other non-Nationwide	Ownership	..0.000	Other non-Nationwide2
0140	Nationwide		31-1486309	4590312			JV Developers, LLC	..OH	..OTH	Nationwide Realty Investors, Ltd.	Ownership	..100.000	Nationwide Mutual Insurance Company2
0140	Nationwide		46-2956640				Jerome Village Residential Property Owners Association, Inc.	..OH	..NIA	Other non-Nationwide	Ownership	..0.000	Other non-Nationwide
0140	Nationwide			4595698			Leaguers Investment Fund LLC	..DE	..OTH	Nationwide Mutual Insurance Company	Other	..0.000	Nationwide Mutual Insurance Company2
0140	Nationwide		56-3789187	4286969			Life REO Holdings, LLC	..OH	..NIA	Nationwide Life Insurance Company	Ownership	..100.000	Nationwide Mutual Insurance Company
0140	Nationwide		74-1395229	4288039			Lone Star General Agency, Inc.	..TX	..IA	Nationwide Mutual Insurance Company	Ownership	..100.000	Nationwide Mutual Insurance Company
0140	Nationwide			4595700			Match School Investment Fund, LLC	..DE	..OTH	Nationwide Mutual Insurance Company	Ownership	..100.000	Nationwide Mutual Insurance Company2
0140	Nationwide	11991	38-0865250	4288187			National Casualty Company	..WI	..IA	Nationwide Mutual Insurance Company	Ownership	..100.000	Nationwide Mutual Insurance Company
0140	Nationwide			4614900			National Casualty Company of America, Ltd.	..GBR	..IA	Nationwide Mutual Insurance Company	Ownership	..100.000	Nationwide Mutual Insurance Company
0140	Nationwide		42-1154244	2889795			Nationwide Advantage Mortgage Company	..IA	..NIA	AMCO Insurance Company	Ownership	..87.300	Nationwide Mutual Insurance Company
0140	Nationwide		42-1154244	2889795			Nationwide Advantage Mortgage Company	..IA	..NIA	ALLIED Property & Casualty Insurance Company	Ownership	..8.470	Nationwide Mutual Insurance Company
0140	Nationwide		42-1154244	2889795			Nationwide Advantage Mortgage Company	..IA	..NIA	Depositors Insurance Company	Ownership	..4.230	Nationwide Mutual Insurance Company
0140	Nationwide	26093	48-0470690	4288196			Nationwide Affinity Insurance Company of America	..OH	..IA	Nationwide Mutual Insurance Company	Ownership	..100.000	Nationwide Mutual Insurance Company
0140	Nationwide	28223	42-1015537	4288208			Nationwide Agribusiness Insurance Company	..IA	..IA	Nationwide Mutual Insurance Company	Ownership	..100.000	Nationwide Mutual Insurance Company
0140	Nationwide		20-5976272	4595910			Nationwide Alternative Investments, LLC	..OH	..NIA	Nationwide Mutual Insurance Company	Ownership	..100.000	Nationwide Mutual Insurance Company

STATEMENT AS OF SEPTEMBER 30, 2014 OF THE NATIONWIDE INDEMNITY COMPANY

SCHEDULE Y

PART 1A - DETAIL OF INSURANCE HOLDING COMPANY SYSTEM

1	2	3	4	5	6	7	8	9	10	11	12	13	14	15
Group Code	Group Name	NAIC Company Code	Federal ID Number	Federal RSSD	CIK	Name of Securities Exchange if Publicly Traded (U.S. or International)	Names of Parent, Subsidiaries Or Affiliates	Domiciliary Location	Relationship to Reporting Entity	Directly Controlled by (Name of Entity/Person)	Type of Control (Ownership, Board, Management, Attorney-in-Fact, Influence, Other)	If Control is Ownership Provide Percentage	Ultimate Controlling Entity(ies)/Person(s)	*
0140	Nationwide		31-1578869	4288075			Nationwide Arena, LLC	OH	NIA	NRI Arena, Ltd.	Ownership	90.000	Nationwide Mutual Insurance Company	1
0140	Nationwide		20-8670712	4288114			Nationwide Asset Management, LLC	OH	NIA	Nationwide Mutual Insurance Company	Ownership	100.000	Nationwide Mutual Insurance Company	
0140	Nationwide	10723	95-0639970	4288217			Nationwide Assurance Company	WI	IA	Nationwide Mutual Insurance Company	Ownership	100.000	Nationwide Mutual Insurance Company	
0140	Nationwide		31-1592130	2729677			Nationwide Bank	OH	OTH	Nationwide Financial Services, Inc.	Ownership	100.000	Nationwide Mutual Insurance Company	
0140	Nationwide		31-1036287	4288123			Nationwide Cash Management Company	OH	NIA	Nationwide Mutual Insurance Company	Ownership	100.000	Nationwide Mutual Insurance Company	
0140	Nationwide		31-4416546	3828081			Nationwide Corporation	OH	NIA	Nationwide Mutual Insurance Company Nationwide Mutual Fire Insurance Company	Ownership	95.200	Nationwide Mutual Insurance Company	
0140	Nationwide		31-4416546	3828081			Nationwide Corporation	OH	NIA		Ownership	4.800	Nationwide Mutual Insurance Company	
0140	Nationwide		04-3679407	4286839			Nationwide Emerging Managers, LLC	DE	NIA	NWD Investment Management, Inc.	Ownership	100.000	Nationwide Mutual Insurance Company	
0140	Nationwide		05-0630007	4288048			Nationwide Exclusive Agent Risk Purchasing Group, LLC	OH	NIA	Insurance Intermediaries, Inc.	Ownership	100.000	Nationwide Mutual Insurance Company	
0140	Nationwide		31-1667326	4286932			Nationwide Financial Assignment Company	OH	NIA	Nationwide Life Insurance Company	Ownership	100.000	Nationwide Mutual Insurance Company	
0140	Nationwide		23-2412039	4287087			Nationwide Financial General Agency, Inc.	PA	NIA	NFS Distributors, Inc.	Ownership	100.000	Nationwide Mutual Insurance Company	
0140	Nationwide		31-1316276	4287069			Nationwide Financial Institution Distributors Agency, Inc.	DE	NIA	NFS Distributors, Inc.	Ownership	100.000	Nationwide Mutual Insurance Company	
0140	Nationwide		31-6554353	4286978			Nationwide Financial Services Capital Trust	DE	NIA	Nationwide Financial Services, Inc.	Ownership	100.000	Nationwide Mutual Insurance Company	
0140	Nationwide		31-1486870	3828063			Nationwide Financial Services, Inc.	DE	NIA	Nationwide Corporation	Ownership	100.000	Nationwide Mutual Insurance Company	
0140	Nationwide		52-6969857	4286996			Nationwide Fund Advisors	DE	NIA	Nationwide Financial Services, Inc.	Ownership	100.000	Nationwide Mutual Insurance Company	
0140	Nationwide		31-1748721	42877050			Nationwide Fund Distributors LLC	DE	NIA	NFS Distributors, Inc.	Ownership	100.000	Nationwide Mutual Insurance Company	
0140	Nationwide		31-0900518	4287041			Nationwide Fund Management LLC	DE	IA	NFS Distributors, Inc.	Ownership	100.000	Nationwide Mutual Insurance Company	
0140	Nationwide	23760	31-4425763	4287957			Nationwide General Insurance Company	OH	NIA	Nationwide Mutual Insurance Company	Ownership	100.000	Nationwide Mutual Insurance Company	
0140	Nationwide		31-1570938	4286398			Nationwide Global Holdings, Inc.	OH	NIA	Nationwide Corporation	Ownership	100.000	Nationwide Mutual Insurance Company	
0140	Nationwide		04-3732385	4286857			Nationwide Global Ventures, Inc.	DE	NIA	Nationwide Asset Management Holdings, Inc.	Ownership	100.000	Nationwide Mutual Insurance Company	
0140	Nationwide	10070	31-1399201	2839398			Nationwide Indemnity Company	OH	RE	Nationwide Mutual Insurance Company	Ownership	100.000	Nationwide Mutual Insurance Company	
0140	Nationwide	25453	95-2130882	4287180			Nationwide Insurance Company of America	WI	IA	ALLIED Group, Inc.	Ownership	100.000	Nationwide Mutual Insurance Company	
0140	Nationwide	10948	31-1613686	4287966			Nationwide Insurance Company of Florida	OH	IA	Nationwide Mutual Insurance Company	Ownership	100.000	Nationwide Mutual Insurance Company	
0140	Nationwide		31-6022301				Nationwide Insurance Foundation	OH	OTH	Other non-Nationwide	n/a	0.000	Other non-Nationwide	2
0140	Nationwide		41-2206199	4286950			Nationwide Investment Advisors, LLC	OH	NIA	Nationwide Life Insurance Company	Ownership	100.000	Nationwide Mutual Insurance Company	
0140	Nationwide		73-0988442	4286923			Nationwide Investment Services Corporation	OK	NIA	Nationwide Life Insurance Company	Ownership	100.000	Nationwide Mutual Insurance Company	
0140	Nationwide	92657	31-1000740	2995098			Nationwide Life and Annuity Insurance Company	OH	IA	Nationwide Life Insurance Company	Ownership	100.000	Nationwide Mutual Insurance Company	
0140	Nationwide	66869	31-4156830	2819288			Nationwide Life Insurance Company	OH	IA	Nationwide Financial Services, Inc.	Ownership	100.000	Nationwide Mutual Insurance Company	
0140	Nationwide		13-4212969	4596127			Nationwide Life Tax Credit Partners 2002-A, LLC	OH	NIA	Nationwide Life Insurance Company	Other	0.000	Nationwide Mutual Insurance Company	2
0140	Nationwide		01-0749754	4595960			Nationwide Life Tax Credit Partners 2002-B, LLC	OH	NIA	Nationwide Life Insurance Company	Other	0.000	Nationwide Mutual Insurance Company	2
0140	Nationwide		03-0498148	3262573			Nationwide Life Tax Credit Partners 2002-C, LLC	OH	NIA	Nationwide Life Insurance Company	Other	0.000	Nationwide Mutual Insurance Company	2
0140	Nationwide		54-2113175	4596127			Nationwide Life Tax Credit Partners 2003-A, LLC	OH	NIA	Nationwide Life Insurance Company	Other	0.000	Nationwide Mutual Insurance Company	2
0140	Nationwide		58-2672725	4596163			Nationwide Life Tax Credit Partners 2003-B, LLC	OH	NIA	Nationwide Life Insurance Company	Other	0.000	Nationwide Mutual Insurance Company	2
0140	Nationwide		20-0357951	3811001			Nationwide Life Tax Credit Partners 2003-C, LLC	OH	NIA	Nationwide Life Insurance Company	Other	0.000	Nationwide Mutual Insurance Company	2
0140	Nationwide		20-0382144	4596707			Nationwide Life Tax Credit Partners 2004-A, LLC	OH	NIA	Nationwide Life Insurance Company	Other	0.000	Nationwide Mutual Insurance Company	2
0140	Nationwide		20-0745944	4596211			Nationwide Life Tax Credit Partners 2004-B, LLC	OH	NIA	Nationwide Life Insurance Company	Other	0.000	Nationwide Mutual Insurance Company	2

122

STATEMENT AS OF SEPTEMBER 30, 2014 OF THE NATIONWIDE INDEMNITY COMPANY

SCHEDULE Y

PART 1A - DETAIL OF INSURANCE HOLDING COMPANY SYSTEM

1	2	3	4	5	6	7	8	9	10	11	12	13	14	15
Group Code	Group Name	NAIC Company Code	Federal ID Number	Federal RSSD	CIK	Name of Securities Exchange if Publicly Traded (U.S. or International)	Names of Parent, Subsidiaries Or Affiliates	Domiciliary Location	Relationship to Reporting Entity	Directly Controlled by (Name of Entity/Person)	Type of Control (Ownership, Board, Management, Attorney-in-Fact, Influence, Other)	If Control is Ownership Provide Percentage	Ultimate Controlling Entity(ies)/Person(s)	*
...0140	Nationwide		20-0745965	4596239			Nationwide Life Tax Credit Partners 2004-C, LLC	..OHNIA.....	Nationwide Life Insurance Company	Other.....	...0.000	Nationwide Mutual Insurance Company2
...0140	Nationwide		20-1128408	4596332			Nationwide Life Tax Credit Partners 2004-D, LLC	..OHNIA.....	Nationwide Life Insurance Company	Other.....	...0.000	Nationwide Mutual Insurance Company2
...0140	Nationwide		20-1128472	4596350			Nationwide Life Tax Credit Partners 2004-E, LLC	..OHNIA.....	Nationwide Life Insurance Company	Other.....	...0.000	Nationwide Mutual Insurance Company2
...0140	Nationwide		20-1918935	3318117			Nationwide Life Tax Credit Partners 2004-F, LLC	..OHNIA.....	Nationwide Life Insurance Company	Other.....	...0.000	Nationwide Mutual Insurance Company2
...0140	Nationwide		20-2303694	4596369			Nationwide Life Tax Credit Partners 2005-A, LLC	..OHNIA.....	Nationwide Life Insurance Company	Other.....	...0.000	Nationwide Mutual Insurance Company2
...0140	Nationwide		20-2303602	4596378			Nationwide Life Tax Credit Partners 2005-B, LLC	..OHNIA.....	Nationwide Life Insurance Company	Other.....	...0.000	Nationwide Mutual Insurance Company2
...0140	Nationwide		20-2450960	4596387			Nationwide Life Tax Credit Partners 2005-C, LLC	..OHNIA.....	Nationwide Life Insurance Company	Other.....	...0.000	Nationwide Mutual Insurance Company2
...0140	Nationwide		20-2451052	4596396			Nationwide Life Tax Credit Partners 2005-D, LLC	..OHNIA.....	Nationwide Life Insurance Company	Other.....	...0.000	Nationwide Mutual Insurance Company2
...0140	Nationwide		20-2774223	4596408			Nationwide Life Tax Credit Partners 2005-E, LLC	..OHNIA.....	Nationwide Life Insurance Company	Other.....	...0.000	Nationwide Mutual Insurance Company2
...0140	Nationwide		21-1288836	4596426			Nationwide Life Tax Credit Partners 2007-A, LLC	..OHNIA.....	Nationwide Life Insurance Company	Other.....	...0.000	Nationwide Mutual Insurance Company2
...0140	Nationwide		26-3427373	4596435			Nationwide Life Tax Credit Partners 2009-A, LLC	..OHNIA.....	Nationwide Life Insurance Company	Other.....	...0.000	Nationwide Mutual Insurance Company2
...0140	Nationwide		26-3427435	4596444			Nationwide Life Tax Credit Partners 2009-B, LLC	..OHNIA.....	Nationwide Life Insurance Company	Other.....	...0.000	Nationwide Mutual Insurance Company2
...0140	Nationwide		26-3427479	4596499			Nationwide Life Tax Credit Partners 2009-C, LLC	..OHNIA.....	Nationwide Life Insurance Company	Other.....	...0.000	Nationwide Mutual Insurance Company2
...0140	Nationwide		26-3427525	4596510			Nationwide Life Tax Credit Partners 2009-D, LLC	..OHNIA.....	Nationwide Life Insurance Company	Other.....	...0.000	Nationwide Mutual Insurance Company2
...0140	Nationwide		26-4737055	4596529			Nationwide Life Tax Credit Partners 2009-E, LLC	..OHNIA.....	Nationwide Life Insurance Company	Other.....	...0.000	Nationwide Mutual Insurance Company2
...0140	Nationwide		26-4737157	4596547			Nationwide Life Tax Credit Partners 2009-F, LLC	..OHNIA.....	Nationwide Life Insurance Company	Other.....	...0.000	Nationwide Mutual Insurance Company2
...0140	Nationwide		46-1952215	4596556			Nationwide Life Tax Credit Partners 2013-A, LLC	..OHNIA.....	Nationwide Life Insurance Company	Other.....	...0.000	Nationwide Mutual Insurance Company2
...0140	Nationwide		46-1971926	4596592			Nationwide Life Tax Credit Partners 2013-B, LLC	..OHNIA.....	Nationwide Life Insurance Company	Other.....	...0.000	Nationwide Mutual Insurance Company2
...0140	Nationwide		27-1362364	4596622			Nationwide Life Tax Credit Partners 2009-I, LLC	..OHNIA.....	Nationwide Life Insurance Company	Other.....	...0.000	Nationwide Mutual Insurance Company2
...0140	Nationwide			3779811			Nationwide Life Tax Credit Partners No. 1, LLC	..OHNIA.....	Nationwide Life Insurance Company	Other.....	...0.000	Nationwide Mutual Insurance Company2
...0140	Nationwide	42110	75-1780981	4287984			Nationwide Lloyds	..TXIA.....	n/a	contract	...0.000	Nationwide Mutual Insurance Company2
...0140	Nationwide			4597094			Nationwide Mutual Capital I, LLC	..DENIA.....	Nationwide Mutual Capital, LLC	Ownership.....	...100.000	Nationwide Mutual Insurance Company2
...0140	Nationwide		75-3191025	4595269			Nationwide Mutual Capital, LLC	..OHNIA.....	Nationwide Mutual Insurance Company	Ownership.....	...100.000	Nationwide Mutual Insurance Company2
...0140	Nationwide	23779	82-0549218	3828090			Nationwide Mutual Fire Insurance Company	..OHOTH.....	Other non-Nationwide	n/a	...0.000	Other non-Nationwide2
...0140	Nationwide	23787	31-4177100	3828072			Nationwide Mutual Insurance Company	..OHUDP.....	Other non-Nationwide	n/a	...0.000	Other non-Nationwide2
...0140	Nationwide		34-2012765	4288084			Nationwide Private Equity Fund, LLC	..OHNIA.....	Nationwide Mutual Insurance Company	Ownership.....	...100.000	Nationwide Mutual Insurance Company2
...0140	Nationwide	37877	31-0970750	4287993			Nationwide Property and Casualty Insurance Company	..OHIA.....	Nationwide Mutual Insurance Company	Ownership.....	...100.000	Nationwide Mutual Insurance Company2
...0140	Nationwide		31-1486309	4288105			Nationwide Realty Investors, Ltd.	..OHNIA.....	Nationwide Mutual Insurance Company	Ownership.....	...96.800	Nationwide Mutual Insurance Company2
...0140	Nationwide		31-1486309	4288105			Nationwide Realty Investors, Ltd.	..OHNIA.....	Nationwide Indemnity Company	Ownership.....	...3.200	Nationwide Mutual Insurance Company2
...0140	Nationwide		31-1486309	4590264			Nationwide Realty Management, LLC	..OHNIA.....	Nationwide Realty Investors, Ltd.	Ownership.....	...100.000	Nationwide Mutual Insurance Company2

STATEMENT AS OF SEPTEMBER 30, 2014 OF THE NATIONWIDE INDEMNITY COMPANY

SCHEDULE Y

PART 1A - DETAIL OF INSURANCE HOLDING COMPANY SYSTEM

1	2	3	4	5	6	7	8	9	10	11	12	13	14	15
Group Code	Group Name	NAIC Company Code	Federal ID Number	Federal RSSD	CIK	Name of Securities Exchange if Publicly Traded (U.S. or International)	Names of Parent, Subsidiaries Or Affiliates	Domiciliary Location	Relationship to Reporting Entity	Directly Controlled by (Name of Entity/Person)	Type of Control (Ownership, Board, Management, Attorney-in-Fact, Influence, Other)	If Control is Ownership Provide Percentage	Ultimate Controlling Entity(ies)/Person(s)	*
..0140	Nationwide			4288066			Nationwide Realty Services, Ltd.	..OH	..NIA	Nationwide Mutual Insurance Company	Ownership	..100.000	Nationwide Mutual Insurance Company	
..0140	Nationwide		06-0987812	4287117			Nationwide Retirement Solutions Insurance Agency, Inc.	..MA	..IA	Nationwide Retirement Solutions, Inc.	Ownership	..100.000	Nationwide Mutual Insurance Company	
..0140	Nationwide		73-0948330	4287096			Nationwide Retirement Solutions, Inc.	..DE	..NIA	NFS Distributors, Inc.	Ownership	..100.000	Nationwide Mutual Insurance Company	
..0140	Nationwide		86-0924069	4287108			Nationwide Retirement Solutions, Inc. of Arizona	..AZ	..NIA	Nationwide Retirement Solutions, Inc.	Ownership	..100.000	Nationwide Mutual Insurance Company	
..0140	Nationwide		31-1331479	4287126			Nationwide Retirement Solutions, Inc. of Ohio	..OH	..NIA	Nationwide Retirement Solutions, Inc.	Ownership	..100.000	Nationwide Mutual Insurance Company	
..0140	Nationwide		74-2200854	4287135			Nationwide Retirement Solutions, Inc. of Texas	..TX	..NIA	Nationwide Retirement Solutions, Inc.	Ownership	..100.000	Nationwide Mutual Insurance Company	
..0140	Nationwide		42-1373380	4287210			Nationwide Sales Solutions, Inc.	..IA	..NIA	ALLIED Group, Inc.	Ownership	..100.000	Nationwide Mutual Insurance Company	
..0140	Nationwide		36-2434406	4287078			Nationwide Securities, LLC	..OH	..NIA	NFS Distributors, Inc.	Ownership	..100.000	Nationwide Mutual Insurance Company	
..0140	Nationwide		31-4177100	4288093			Nationwide Services Company, LLC	..OH	..NIA	Nationwide Mutual Insurance Company	Ownership	..100.000	Nationwide Mutual Insurance Company	
..0140	Nationwide		27-0743545	4564041			Nationwide Tax Credit Partners 2009-G, LLC	..OH	..NIA	Nationwide Mutual Insurance Company	Other	..0.000	Nationwide Mutual Insurance Company	..2
..0140	Nationwide		27-0768791	4596891			Nationwide Tax Credit Partners 2009-H, LLC	..OH	..NIA	Nationwide Mutual Insurance Company	Other	..0.000	Nationwide Mutual Insurance Company	..2
..0140	Nationwide		27-1362364	4596622			Nationwide Tax Credit Partners 2009-I, LLC	..OH	..NIA	Nationwide Mutual Insurance Company	Other	..0.000	Nationwide Mutual Insurance Company	..2
..0140	Nationwide		46-1952215	4596566			Nationwide Tax Credit Partners 2013-A, LLC	..OH	..NIA	Nationwide Life Insurance Company	Ownership	..100.000	Nationwide Mutual Insurance Company	..2
..0140	Nationwide		47-1404116				NTCP 2014-B, LLC	..OH	..NIA	Nationwide Life Insurance Company	Ownership	..100.000	Nationwide Mutual Insurance Company	
..0140	Nationwide		47-1413242				NTCP 2014-C, LLC	..OH	..NIA	Nationwide Life Insurance Company	Other	..0.000	Nationwide Mutual Insurance Company	..2
..0140	Nationwide		11-3651828	4588168			ND La Quinta Partners, LLC	..DE	..NIA	Nationwide Realty Investors, Ltd.	Ownership	..95.000	Nationwide Mutual Insurance Company	..1
..0140	Nationwide			4286866			Newhouse Capital Partners II, LLC	..DE	..NIA	Nationwide Global Ventures, Inc.	Ownership	..80.000	Nationwide Mutual Insurance Company	..1
..0140	Nationwide			4286866			Newhouse Capital Partners II, LLC	..DE	..NIA	Nationwide Global Ventures, Inc.	Ownership	..99.000	Nationwide Mutual Insurance Company	..1
..0140	Nationwide			4286679			Newhouse Capital Partners, LLC	..DE	..NIA	NWD Investment Management, Inc.	Ownership	..19.000	Nationwide Mutual Insurance Company	..1
..0140	Nationwide			4286679			Newhouse Capital Partners, LLC	..DE	..NIA	Nationwide Mutual Insurance Company	Ownership	..70.000	Nationwide Mutual Insurance Company	..1
..0140	Nationwide			4286679			Newhouse Capital Partners, LLC	..DE	..NIA	Nationwide Mutual Fire Insurance Company	Ownership	..10.000	Nationwide Mutual Insurance Company	..1
..0140	Nationwide		31-1630871	4287032			NFS Distributors, Inc.	..DE	..NIA	Nationwide Financial Services, Inc.	Ownership	..100.000	Nationwide Mutual Insurance Company	..1
..0140	Nationwide		14-1892640	4596677			NHT XII Tax Credit Fund, LLC	..DC	..NIA	Nationwide Life Insurance Company	Ownership	..49.990	Nationwide Mutual Insurance Company	..1
..0140	Nationwide		14-1892640	4596677			NHT XII Tax Credit Fund, LLC	..DC	..NIA	Nationwide Assurance Company	Ownership	..25.000	Nationwide Mutual Insurance Company	..1
..0140	Nationwide		14-1892640	4596677			NHT XII Tax Credit Fund, LLC	..DC	..NIA	Nationwide Mutual Insurance Company	Ownership	..25.000	Nationwide Mutual Insurance Company	..1
..0140	Nationwide		46-3762545				INNOV8, LLC	..OH	..NIA	Nationwide Mutual Insurance Company	Ownership	..100.000	Nationwide Mutual Insurance Company	
..0140	Nationwide		26-0351004				North Bank Condominium Home Owners Association	..OH	..OTH	Other non-Nationwide	n/a	..0.000	Other non-Nationwide	..2
..0140	Nationwide		20-4939866	4590817			North of Third, LLC	..OH	..NIA	NRI Equity Land Investments, LLC	Ownership	..100.000	Nationwide Mutual Insurance Company	
..0140	Nationwide		26-4083207	4590385			Northstar Commercial Development, LLC	..OH	..NIA	Nationwide Realty Investors, Ltd.	Ownership	..50.000	Nationwide Mutual Insurance Company	..1
..0140	Nationwide		26-4083354	4594909			Northstar Residential Development, LLC	..OH	..NIA	Nationwide Realty Investors, Ltd.	Ownership	..50.000	Nationwide Mutual Insurance Company	..1
..0140	Nationwide		31-1486309	4593630			NRI 12325 Copper Way, LLC	..OH	..NIA	Nationwide Realty Investors, Ltd.	Ownership	..100.000	Nationwide Mutual Insurance Company	
..0140	Nationwide		31-1486309	4594936			NRI 220 Schrock, LLC	..OH	..NIA	Nationwide Realty Investors, Ltd.	Ownership	..100.000	Nationwide Mutual Insurance Company	
..0140	Nationwide		31-1486309	4594794			NRI Arena, LLC	..OH	..NIA	Nationwide Realty Investors, Ltd.	Ownership	..100.000	Nationwide Mutual Insurance Company	
..0140	Nationwide		31-1486309	4594815			NRI Brookside, LLC	..OH	..NIA	Nationwide Realty Investors, Ltd.	Ownership	..100.000	Nationwide Mutual Insurance Company	
..0140	Nationwide		31-1486309	4595027			NRI Builders, LLC	..OH	..NIA	Nationwide Realty Investors, Ltd.	Ownership	..100.000	Nationwide Mutual Insurance Company	
..0140	Nationwide		31-1486309	4594851			NRI Communities/Charlotte, LLC	..OH	..NIA	Nationwide Realty Investors, Ltd.	Ownership	..100.000	Nationwide Mutual Insurance Company	
..0140	Nationwide		31-1486309	4590246			NRI Communities/Harris Blvd., LLC	..OH	..NIA	Nationwide Realty Investors, Ltd.	Ownership	..100.000	Nationwide Mutual Insurance Company	
..0140	Nationwide		31-1486309	4590282			NRI Cramer Creek, LLC	..OH	..NIA	Nationwide Realty Investors, Ltd.	Ownership	..100.000	Nationwide Mutual Insurance Company	
..0140	Nationwide		20-4939866	4590460			NRI Equity Land Investments, LLC	..OH	..NIA	Nationwide Realty Investors, Ltd.	Ownership	..80.000	Nationwide Mutual Insurance Company	..1
..0140	Nationwide		26-0212217	4590394			NRI Equity Tampa, LLC	..OH	..OTH	Nationwide Realty Investors, Ltd.	Ownership	..100.000	Nationwide Mutual Insurance Company	
..0140	Nationwide		31-1486309	4590376			NRI Maxtown, LLC	..OH	..OTH	Nationwide Realty Investors, Ltd.	Ownership	..100.000	Nationwide Mutual Insurance Company	

STATEMENT AS OF SEPTEMBER 30, 2014 OF THE NATIONWIDE INDEMNITY COMPANY

SCHEDULE Y

PART 1A - DETAIL OF INSURANCE HOLDING COMPANY SYSTEM

1	2	3	4	5	6	7	8	9	10	11	12	13	14	15
Group Code	Group Name	NAIC Company Code	Federal ID Number	Federal RSSD	CIK	Name of Securities Exchange if Publicly Traded (U.S. or International)	Names of Parent, Subsidiaries Or Affiliates	Domiciliary Location	Relationship to Reporting Entity	Directly Controlled by (Name of Entity/Person)	Type of Control (Ownership, Board, Management, Attorney-in-Fact, Influence, Other)	If Control is Ownership Provide Percentage	Ultimate Controlling Entity(ies)/Person(s)	*
0140	Nationwide		30-4939866	4590406			NRI Office Ventures, Ltd	OH	NIA	Nationwide Realty Investors, Ltd.	Ownership	100.000	Nationwide Mutual Insurance Company	
0140	Nationwide		31-1486309	4590349			NRI-Rivulon, LLC	OH	NIA	Nationwide Realty Investors, Ltd.	Ownership	100.000	Nationwide Mutual Insurance Company	
0140	Nationwide		31-1486309	4596912			NRI Telecom, LLC	OH	NIA	NWD Investments, LLC Nationwide Property and Casualty Company	Ownership	100.000	Nationwide Mutual Insurance Company	
0140	Nationwide		45-3123274	4595438			NTCIF-2011 Georgia State Investor, LLC	OH	NIA		Ownership	100.000	Nationwide Mutual Insurance Company	
0140	Nationwide		90-0729552	4596695			NTCIF-2011, LLC	OH	NIA	Nationwide Life Insurance Company Nationwide Mutual Fire Insurance Company	Ownership	50.000	Nationwide Mutual Insurance Company	
0140	Nationwide		90-0729552	4596695			NTCIF-2011, LLC	OH	NIA		Ownership	50.000	Nationwide Mutual Insurance Company	
0140	Nationwide		27-4700627	4596716			NTCP 2011-A, LLC	OH	NIA	Nationwide Life Insurance Company	Ownership	100.000	Nationwide Mutual Insurance Company	
0140	Nationwide		46-0747898	4596752			NTCP 2011-B, LLC	OH	NIA	Nationwide Life Insurance Company	Ownership	100.000	Nationwide Mutual Insurance Company	
0140	Nationwide		46-0741029	4464703			NTCP 2012-A, LLC	OH	NIA	Nationwide Life Insurance Company	Ownership	100.000	Nationwide Mutual Insurance Company	
0140	Nationwide		46-3309896	4586164			NTCP 2013-C, LLC	OH	NIA	Nationwide Life Insurance Company	Ownership	100.000	Nationwide Mutual Insurance Company	
0140	Nationwide		46-4111078	4596743			NTCP 2014-A, LLC	OH	NIA	Nationwide Life Insurance Company	Ownership	100.000	Nationwide Mutual Insurance Company	
0140	Nationwide		47-1404116				NTCP 2014-B, LLC	OH	NIA	Nationwide Life Insurance Company	Ownership	100.000	Nationwide Mutual Insurance Company	
0140	Nationwide		47-1413242				NTCP 2014-C, LLC	OH	NIA	Nationwide Life Insurance Company	Other	0.000	Nationwide Mutual Insurance Company	
0140	Nationwide		46-3654078	4593621			NW-Amesbury, LLC	OH	NIA	NE-REI, LLC	Ownership	100.000	Nationwide Mutual Insurance Company	
0140	Nationwide		46-2943666	4594860			NW-Bandera, LLC	OH	NIA	NW REI, LLC	Ownership	100.000	Nationwide Mutual Insurance Company	
0140	Nationwide		45-5159092	4595063			NW-Bayshore, LLC	OH	NIA	NW REI, LLC	Ownership	100.000	Nationwide Mutual Insurance Company	
0140	Nationwide		46-2451156	4594879			NW-Bee Cave, LLC	OH	NIA	NW REI, LLC	Ownership	100.000	Nationwide Mutual Insurance Company	
0140	Nationwide		46-3707480	4593612			NW-Brooklyn, LLC	OH	NIA	NW REI, LLC	Ownership	100.000	Nationwide Mutual Insurance Company	
0140	Nationwide		46-3968244	4591757			NW-Camelback, LLC	OH	NIA	NW REI, LLC	Ownership	100.000	Nationwide Mutual Insurance Company	
0140	Nationwide		45-2724980	4591690			NW-Cameron, LLC	OH	NIA	NW REI, LLC	Ownership	100.000	Nationwide Mutual Insurance Company	
0140	Nationwide		46-3674167	4590090			NW-Cedar Springs, LLC	OH	NIA	NW REI, LLC	Ownership	100.000	Nationwide Mutual Insurance Company	
0140	Nationwide		46-3994437	4591663			NW-Central Station, LLC	OH	NIA	NE-REI, LLC	Ownership	100.000	Nationwide Mutual Insurance Company	
0140	Nationwide		26-0901660	4505456			NW-CNC Coppel, LLC	DE	NIA	Nationwide Mutual Insurance Company	Ownership	100.000	Nationwide Mutual Insurance Company	
0140	Nationwide		32-0359208	4595157			NW-Corvallis, LLC	OH	NIA	NW REI, LLC	Ownership	100.000	Nationwide Mutual Insurance Company	
0140	Nationwide		31-1580283	4591038			NWD 205 Vine, LLC	OH	NIA	NWD Investments, LLC	Ownership	100.000	Nationwide Mutual Insurance Company	
0140	Nationwide		31-1580283	4591261			NWD 225 Nationwide, LLC	OH	NIA	NWD Investments, LLC	Ownership	100.000	Nationwide Mutual Insurance Company	
0140	Nationwide		31-1580283	4591056			NWD 230 West, LLC	OH	NIA	NWD Investments, LLC	Ownership	100.000	Nationwide Mutual Insurance Company	
0140	Nationwide		31-1580283	4590545			NWD 240 Nationwide, LLC	OH	NIA	NWD Investments, LLC	Ownership	100.000	Nationwide Mutual Insurance Company	
0140	Nationwide		31-1580283	4590273			NWD 250 Brodbelt, LLC	OH	NIA	NWD Investments, LLC	Ownership	100.000	Nationwide Mutual Insurance Company	
0140	Nationwide		31-1580283	4590554			NWD 265 Neil, LLC	OH	NIA	NWD Investments, LLC	Ownership	100.000	Nationwide Mutual Insurance Company	
0140	Nationwide		31-1580283	4590518			NWD 275 Marconi, LLC	OH	NIA	NWD Investments, LLC	Ownership	100.000	Nationwide Mutual Insurance Company	
0140	Nationwide		31-1580283	4590563			NWD 295 McConnell, LLC	OH	NIA	NWD Investments, LLC	Ownership	100.000	Nationwide Mutual Insurance Company	
0140	Nationwide		31-1580283	4590509			NWD 300 Neil, LLC	OH	NIA	NWD Investments, LLC	Ownership	100.000	Nationwide Mutual Insurance Company	
0140	Nationwide		31-1580283	4590572			NWD 300 Spring, LLC	OH	NIA	NWD Investments, LLC	Ownership	100.000	Nationwide Mutual Insurance Company	
0140	Nationwide		31-1580283	4590527			NWD 355 McConnell, LLC	OH	NIA	NWD Investments, LLC	Ownership	100.000	Nationwide Mutual Insurance Company	
0140	Nationwide		31-1580283	4590581			NWD 425 Nationwide, LLC	OH	NIA	NWD Investments, LLC	Ownership	100.000	Nationwide Mutual Insurance Company	
0140	Nationwide		31-1580283	4590536			NWD 500 Nationwide, LLC	OH	NIA	NWD Investments, LLC	Ownership	100.000	Nationwide Mutual Insurance Company	
0140	Nationwide		31-1580283	4591298			NWD Arena Crossing, LLC	OH	NIA	NWD Investments, LLC	Ownership	100.000	Nationwide Mutual Insurance Company	
0140	Nationwide		31-1580283	4591083			NWD Arena District I, LLC	OH	NIA	NWD Investments, LLC	Ownership	100.000	Nationwide Mutual Insurance Company	
0140	Nationwide		31-1580283	4591300			NWD Arena District II, LLC	OH	NIA	NWD Investments, LLC	Ownership	100.000	Nationwide Mutual Insurance Company	
0140	Nationwide		31-1580283	4591113			NWD Arena District IM, LLC	OH	NIA	NWD Investments, LLC	Ownership	100.000	Nationwide Mutual Insurance Company	
0140	Nationwide		31-1580283	4591319			NWD Arena District PW, LLC	OH	NIA	NWD Investments, LLC	Ownership	100.000	Nationwide Mutual Insurance Company	
0140	Nationwide		31-1580283	4591131			NWD Arena District V, LLC	OH	NIA	NWD Investments, LLC	Ownership	100.000	Nationwide Mutual Insurance Company	
0140	Nationwide		04-3679396	4286848			NWD Asset Management Holdings, Inc.	DE	NIA	NWD Investment Management, Inc.	Ownership	100.000	Nationwide Mutual Insurance Company	
0140	Nationwide		31-1580283	4591328			NWD Athletic Club, LLC	OH	NIA	NWD Investments, LLC	Ownership	100.000	Nationwide Mutual Insurance Company	
0140	Nationwide		31-1580283				NWD Franklinton, LLC	DE	NIA	NWD Investments, LLC	Ownership	100.000	Nationwide Mutual Insurance Company	
0140	Nationwide		31-1636299	4286594			NWD Investment Management, Inc.	DE	NIA	Nationwide Corporation	Ownership	100.000	Nationwide Mutual Insurance Company	
0140	Nationwide		31-1580283	4587965			NWD Investments, LLC	OH	NIA	Nationwide Realty Investors, Ltd.	Ownership	80.000	Nationwide Mutual Insurance Company	
0140	Nationwide		90-0732898	4591430			NW-Duiles, LLC	OH	NIA	NW REI, LLC	Ownership	100.000	Nationwide Mutual Insurance Company	

STATEMENT AS OF SEPTEMBER 30, 2014 OF THE NATIONWIDE INDEMNITY COMPANY

SCHEDULE Y

PART 1A - DETAIL OF INSURANCE HOLDING COMPANY SYSTEM

1	2	3	4	5	6	7	8	9	10	11	12	13	14	15
Group Code	Group Name	NAIC Company Code	Federal ID Number	Federal RSSD	CIK	Name of Securities Exchange if Publicly Traded (U.S. or International)	Names of Parent, Subsidiaries Or Affiliates	Domiciliary Location	Relationship to Reporting Entity	Directly Controlled by (Name of Entity/Person)	Type of Control (Ownership, Board, Management, Attorney-in-Fact, Influence, Other)	If Control is Ownership Provide Percentage	Ultimate Controlling Entity(ies)/Person(s)	*
0140	Nationwide		46-3267884	4595465			NW-Franklin Mills, LLC	OH	NIA	Life Reo Holdings, LLC	Ownership	100.000	Nationwide Mutual Insurance Company	
0140	Nationwide		46-2997049	4591775			NW-Howell Mill, LLC	OH	NIA	NW REI, LLC	Ownership	100.000	Nationwide Mutual Insurance Company	
0140	Nationwide		46-4330384				NW-Hudhall, LLC	OH	NIA	NW REI, LLC	Ownership	100.000	Nationwide Mutual Insurance Company	
0140	Nationwide		47-1497429				NW-Jefferson, LLC	OH	NIA	NW REI, LLC	Ownership	100.000	Nationwide Mutual Insurance Company	
0140	Nationwide		45-5408178	4591458			NW-Kentwood Towne Center, LLC	OH	NIA	NW REI, LLC	Ownership	100.000	Nationwide Mutual Insurance Company	
0140	Nationwide		46-4857522				NW-Lawrence, LLC	OH	NIA	NW REI, LLC	Ownership	100.000	Nationwide Mutual Insurance Company	
0140	Nationwide		45-5314607	4593461			NW-Lovers Lane, LLC	OH	NIA	NW REI, LLC	Ownership	100.000	Nationwide Mutual Insurance Company	
0140	Nationwide		46-2457568	4591467			NW-Montrose, LLC	OH	NIA	NW REI, LLC	Ownership	100.000	Nationwide Mutual Insurance Company	
0140	Nationwide		45-4630497	4593470			NW-Mueller II, LLC	OH	NIA	NW REI, LLC	Ownership	100.000	Nationwide Mutual Insurance Company	
0140	Nationwide		27-4749848	4591476			NW-Northridge, LLC	OH	NIA	NW REI, LLC	Ownership	100.000	Nationwide Mutual Insurance Company	
0140	Nationwide		46-1089165	4593555			NW-Oakley Station, LLC	OH	NIA	NW REI, LLC	Ownership	100.000	Nationwide Mutual Insurance Company	
0140	Nationwide		46-3888719	4593603			NW-Park 288, LLC	OH	NIA	NW REI, LLC	Ownership	100.000	Nationwide Mutual Insurance Company	
0140	Nationwide		45-5388656	4591485			NW-Park Memorial, LLC	OH	NIA	NW REI, LLC	Ownership	100.000	Nationwide Mutual Insurance Company	
0140	Nationwide		47-1740812				NW-Peachtree, LLC	OH	NIA	NW REI, LLC	Ownership	100.000	Nationwide Mutual Insurance Company	
0140	Nationwide		46-2469044	4591494			NW-Portales, LLC	OH	NIA	NW REI, LLC	Ownership	100.000	Nationwide Mutual Insurance Company	
0140	Nationwide		26-1903919	4591421			NW REI, LLC	DE	NIA	Nationwide Mutual Insurance Company	Ownership	100.000	Nationwide Mutual Insurance Company	
0140	Nationwide		45-5159117	4593573			NW-South Park, LLC	OH	NIA	NW REI, LLC	Ownership	100.000	Nationwide Mutual Insurance Company	
0140	Nationwide		27-4749587	4593582			NW-Taylor Farmer Jack, LLC	OH	NIA	NW REI, LLC	Ownership	100.000	Nationwide Mutual Insurance Company	
0140	Nationwide		46-1100378	4591524			NW-Triangle, LLC	OH	NIA	NW REI, LLC	Ownership	100.000	Nationwide Mutual Insurance Company	
0140	Nationwide		46-5764783				NW-Tyson, LLC	OH	NIA	NW REI, LLC	Ownership	100.000	Nationwide Mutual Insurance Company	
0140	Nationwide		46-1077615	4593591			NW-West Ave., LLC	OH	NIA	NW REI, LLC	Ownership	100.000	Nationwide Mutual Insurance Company	
0140	Nationwide		46-4992444				NW-Windcross, LLC	OH	NIA	NW REI, LLC	Ownership	100.000	Nationwide Mutual Insurance Company	
0140	Nationwide		31-0947092	4590479			OOH Company, LLC	OH	NIA	Nationwide Realty Investors, Ltd.	Ownership	100.000	Nationwide Mutual Insurance Company	
0140	Nationwide		31-0947092	4590442			Ohio Center Hotel Company, Ltd.	OH	NIA	Nationwide Realty Investors, Ltd.	Ownership	56.250	Nationwide Mutual Insurance Company	1
0140	Nationwide		26-0263012				Old Track Street Owners Association	OH	OTH	Other non-Nationwide	n/a	0.000	Other non-Nationwide	2
0140	Nationwide	13999	27-1712056	4286914			Olentangy Reinsurance, LLC	VT	IA	Nationwide Life and Annuity Insurance Company	Ownership	100.000	Nationwide Mutual Insurance Company	
0140	Nationwide		47-1923444				On Your Side Nationwide Insurance Agency, Inc.	OH	OTH	Nationwide Mutual Insurance Company	Ownership	100.000	Nationwide Mutual Insurance Company	
0140	Nationwide			4596462			OYS Fund, LLC	DE	OTH	Nationwide Mutual Insurance Company	Ownership	100.000	Nationwide Mutual Insurance Company	
0140	Nationwide			4596480			Park 288 Industrial, LLC	TX	NIA	Nationwide Mutual Insurance Company	Investor member / no control	95.000	Other non-Nationwide	
0140	Nationwide		31-1486309	4590358			Perimeter A, Ltd	OH	NIA	Nationwide Realty Investors, Ltd.	Ownership	100.000	Nationwide Mutual Insurance Company	
0140	Nationwide		31-1677602	4590488			Pizzuti Properties, LLC	OH	NIA	Nationwide Realty Investors, Ltd.	Ownership	65.000	Nationwide Mutual Insurance Company	
0140	Nationwide		31-1486309	4590291			Polaris A, Ltd.	OH	NIA	Nationwide Realty Investors, Ltd.	Ownership	100.000	Nationwide Mutual Insurance Company	
0140	Nationwide		39-1907217	4287201			Premier Agency, Inc.	IA	NIA	ALLIED Group, Inc.	Ownership	100.000	Nationwide Mutual Insurance Company	
4664	Pure	12873	20-8287105	4288253			Privilege Underwriters Reciprocal Exchange	FL	IA	Other non-Nationwide	n/a	0.000	Other non-Nationwide	2
0140	Pure			4288150			Privilege Underwriters, Inc.	DE	IA	Other non-Nationwide	n/a	0.000	Other non-Nationwide	2
4664	Pure	13204	26-3109178	4288226			Pure Insurance Company	FL	IA	Other non-Nationwide	n/a	0.000	Other non-Nationwide	2
4664	Pure			4288235			Pure Risk Management, LLC	FL	IA	Other non-Nationwide	n/a	0.000	Other non-Nationwide	2
4664	Nationwide		75-2938844	4287005			Registered Investment Advisors Services, Inc.	TX	NIA	Nationwide Financial Services, Inc.	Ownership	100.000	Nationwide Mutual Insurance Company	
0140	Nationwide		82-0549218	4288244			Retention Alternatives, Ltd.	BMU	IA	Nationwide Mutual Fire Insurance Company	Ownership	100.000	Nationwide Mutual Insurance Company	1
0140	Nationwide			4595278			Riverview Diversified Opportunities Fund, LLC	DE	OTH	Nationwide Mutual Insurance Company	Ownership	0.000	Nationwide Mutual Insurance Company	1
0140	Nationwide			4595278			Riverview Diversified Opportunities Fund, LLC	DE	OTH	Nationwide Mutual Fire Insurance Company	Ownership	0.000	Nationwide Mutual Insurance Company	1
0140	Nationwide			4595278			Riverview Diversified Opportunities Fund, LLC	DE	OTH	Nationwide Life Insurance Company	Ownership	0.000	Nationwide Mutual Insurance Company	1
0140	Nationwide		22-3655264	4286530			Riverview International Group, Inc.	DE	NIA	NWD Investment Management, Inc.	Ownership	100.000	Nationwide Mutual Insurance Company	

STATEMENT AS OF SEPTEMBER 30, 2014 OF THE NATIONWIDE INDEMNITY COMPANY

SCHEDULE Y

PART 1A - DETAIL OF INSURANCE HOLDING COMPANY SYSTEM

1	2	3	4	5	6	7	8	9	10	11	12	13	14	15
Group Code	Group Name	NAIC Company Code	Federal ID Number	Federal RSSD	CIK	Name of Securities Exchange if Publicly Traded (U.S. or International)	Names of Parent, Subsidiaries Or Affiliates	Domiciliary Location	Relationship to Reporting Entity	Directly Controlled by (Name of Entity/Person)	Type of Control (Ownership, Board, Management, Attorney-in-Fact, Influence, Other)	If Control is Ownership Provide Percentage	Ultimate Controlling Entity(ies)/Person(s)	*
.....0140	Nationwide	4595287	Riverview Multi Series Fund, LL - Class Event	..DEOTH	Nationwide Mutual Insurance Company	Ownership	..100.000	Nationwide Mutual Insurance Company
.....0140	Nationwide	4595335	Riverview Multi Series Fund, LL - Class N	..DEOTH	Nationwide Mutual Insurance Company	Ownership	..100.000	Nationwide Mutual Insurance Company
.....0140	Nationwide	4564032	Riverview Polyphony Fund, LLC	..DEOTH	Nationwide Mutual Insurance Company	Ownership	..100.000	Nationwide Mutual Insurance Company
.....0140	Nationwide	..15580	31-1117969	4288002	Scottsdale Indemnity Company	..OHIA	Nationwide Mutual Insurance Company	Ownership	..100.000	Nationwide Mutual Insurance Company
.....0140	Nationwide	..41297	31-1024978	3091988	Scottsdale Insurance Company	..OHIA	Nationwide Mutual Insurance Company	Ownership	..100.000	Nationwide Mutual Insurance Company
.....0140	Nationwide	Scottsdale Surplus Lines Insurance Company
.....0140	Nationwide	..10672	86-0835870	4287649	Scottsdale Insurance Company	..AZIA	Scottsdale Insurance Company	Ownership	..100.000	Nationwide Mutual Insurance Company
.....0140	Nationwide	31-1486309	4590303	Streets of Toringdon, LLC	..OHNIA	Nationwide Realty Investors, Ltd.	Ownership	..100.000	Nationwide Mutual Insurance Company
.....0140	Nationwide	91-2158214	The Hideaway Club	..CAOTH	Other non-Nationwide	n/a	..0.000	Other non-Nationwide2
.....0140	Nationwide	86-1094799	The Hideaway Owners Association	..CAOTH	Other non-Nationwide	n/a	..0.000	Other non-Nationwide2
.....0140	Nationwide	20-3541511	The Madison Club	..CAOTH	Other non-Nationwide	n/a	..0.000	Other non-Nationwide2
.....0140	Nationwide	20-3541507	The Madison Club Owners Association	..CAOTH	Other non-Nationwide	n/a	..0.000	Other non-Nationwide2
.....0140	Nationwide	31-1610040	2989882	The Waterfront Partners, LLC	..OHNIA	Nationwide Realty Investors, Ltd.	Ownership	..50.000	Nationwide Mutual Insurance Company1
.....0140	Nationwide	52-2031677	4287751	THI Holdings (Delaware), Inc.	..DENIA	Nationwide Mutual Insurance Company	Ownership	..100.000	Nationwide Mutual Insurance Company
.....0140	Nationwide	74-2825853	4287863	Titan Auto Insurance of New Mexico, Inc.	..NMIA	THI Holdings (Delaware), Inc.	Ownership	..100.000	Nationwide Mutual Insurance Company
.....0140	Nationwide	..13242	74-2286759	4287797	Titan Indemnity Company	..TXIA	THI Holdings (Delaware), Inc.	Ownership	..100.000	Nationwide Mutual Insurance Company
.....0140	Nationwide	..36269	86-0619597	4287845	Titan Insurance Company	..MIIA	Titan Indemnity Company	Ownership	..100.000	Nationwide Mutual Insurance Company
.....0140	Nationwide	75-1284530	4287890	Titan Insurance Services, Inc.	..TXNIA	THI Holdings (Delaware), Inc.	Ownership	..100.000	Nationwide Mutual Insurance Company
.....0140	Nationwide	33-0160222	4653196	V.P.I. Services, Inc.	..CANIA	Veterinary Pet Insurance Company	Ownership	..100.000	Nationwide Mutual Insurance Company
.....0140	Nationwide	..42285	95-3750113	4287685	Veterinary Pet Insurance Company	..CAIA	Scottsdale Insurance Company	Ownership	..100.000	Nationwide Mutual Insurance Company
.....0140	Nationwide	..10644	34-1785903	4287911	Victoria Automobile Insurance Company	..OHIA	Victoria Fire & Casualty Insurance Company	Ownership	..100.000	Nationwide Mutual Insurance Company
.....0140	Nationwide	..42889	34-1394913	4287827	Victoria Fire & Casualty Company	..OHIA	THI Holdings (Delaware), Inc.	Ownership	..100.000	Nationwide Mutual Insurance Company
.....0140	Nationwide	34-1842604	4287920	Victoria National Insurance Company	..OHIA	Victoria Fire & Casualty Insurance Company	Ownership	..100.000	Nationwide Mutual Insurance Company
.....0140	Nationwide	34-1777972	4287939	Victoria Select Insurance Company	..OHIA	Victoria Fire & Casualty Insurance Company	Ownership	..100.000	Nationwide Mutual Insurance Company
.....0140	Nationwide	..10777	34-1842602	4287948	Victoria Specialty Insurance Company	..OHIA	Victoria Fire & Casualty Insurance Company	Ownership	..100.000	Nationwide Mutual Insurance Company
.....0140	Nationwide	..37150	86-0561941	4287667	Western Heritage Insurance Company	..AZIA	Scottsdale Insurance Company	Ownership	..100.000	Nationwide Mutual Insurance Company
.....0140	Nationwide	4613341	Westport Capital Partners II	..CTOTH	Nationwide Mutual Insurance Company	Investor member / no control	..71.000	other non-Nationwide2
.....0140	Nationwide	31-1486309	4590321	Wilson Road Developers, LLC	..OHNIA	Nationwide Realty Investors, Ltd.	Ownership	..100.000	Nationwide Mutual Insurance Company
.....0140	Nationwide	4613323	Zais Zephyr A-4, LLC	..DEOTH	Nationwide Life Insurance Company	Limited member / no control	..60.000	other non-Nationwide2

Asterisk	Explanation
1	For the purposes of this schedule, Nationwide presumed control of these entities because they are owned by at least 10% and are not wholly-owned by a Nationwide entity.
2	Other ownership indicates a non-ownership circumstance by a Nationwide entity.

Part 1 - Loss Experience

N O N E

Part 2 - Direct Premiums Written

N O N E

STATEMENT AS OF SEPTEMBER 30, 2014 OF THE NATIONWIDE INDEMNITY COMPANY

PART 3 (000 omitted)

LOSS AND LOSS ADJUSTMENT EXPENSE RESERVES SCHEDULE

	1	2	3	4	5	6	7	8	9	10	11	12	13
Years in Which Losses Occurred	Prior Year-End Known Case Loss and LAE Reserves	Prior Year-End IBNR Loss and LAE Reserves	Total Prior Year-End Loss and LAE Reserves (Cols. 1+2)	2014 Loss and LAE Payments on Claims Reported as of Prior Year-End	2014 Loss and LAE Payments on Claims Unreported as of Prior Year-End	Total 2014 Loss and LAE Payments (Cols. 4+5)	Q.S. Date Known Case Loss and LAE Reserves on Claims Reported and Open as of Prior Year End	Q.S. Date Known Case Loss and LAE Reserves on Claims Reported or Reopened Subsequent to Prior Year End	Q.S. Date IBNR Loss and LAE Reserves	Total Q.S. Loss and LAE Reserves (Cols.7+8+9)	Prior Year-End Known Case Loss and LAE Reserves Developed (Savings)/ Deficiency (Cols.4+7 minus Col. 1)	Prior Year-End IBNR Loss and LAE Reserves Developed (Savings)/ Deficiency (Cols. 5+8+9 minus Col. 2)	Prior Year-End Total Loss and LAE Reserve Developed (Savings)/ Deficiency (Cols. 11+12)
1. 2011 + Prior	494,178	1,625,547	2,119,725	155,344	72	155,416	477,881	11,916	1,606,524	2,096,321	139,047	(7,035)	132,012
2. 2012													
3. Subtotals 2012 + Prior	494,178	1,625,547	2,119,725	155,344	72	155,416	477,881	11,916	1,606,524	2,096,321	139,047	(7,035)	132,012
4. 2013													
5. Subtotals 2013 + Prior	494,178	1,625,547	2,119,725	155,344	72	155,416	477,881	11,916	1,606,524	2,096,321	139,047	(7,035)	132,012
6. 2014	XXX	XXX	XXX	XXX			XXX				XXX	XXX	XXX
7. Totals	494,178	1,625,547	2,119,725	155,344	72	155,416	477,881	11,916	1,606,524	2,096,321	139,047	(7,035)	132,012
8. Prior Year-End Surplus As Regards Policyholders	1,069,363										Col. 11, Line 7 As % of Col. 1 Line 7	Col. 12, Line 7 As % of Col. 2 Line 7	Col. 13, Line 7 As % of Col. 3 Line 7
											1. 28.1	2. (0.4)	3. 6.2
													Col. 13, Line 7 As a % of Col. 1 Line 8
													4. 12.3

SUPPLEMENTAL EXHIBITS AND SCHEDULES INTERROGATORIES

The following supplemental reports are required to be filed as part of your statement filing. However, in the event that your company does not transact the type of business for which the special report must be filed, your response of NO to the specific interrogatory will be accepted in lieu of filing a "NONE" report and a bar code will be printed below. If the supplement is required of your company but is not being filed for whatever reason enter SEE EXPLANATION and provide an explanation following the interrogatory questions.

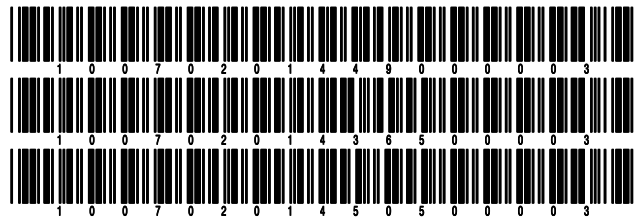
	Response
1. Will the Trusteed Surplus Statement be filed with the state of domicile and the NAIC with this statement?	NO
2. Will Supplement A to Schedule T (Medical Professional Liability Supplement) be filed with this statement?	YES
3. Will the Medicare Part D Coverage Supplement be filed with the state of domicile and the NAIC with this statement?	NO
4. Will the Director and Officer Insurance Coverage Supplement be filed with the state of domicile and the NAIC with this statement?	NO

Explanations:

- 1.
- 3.
- 4.

Bar Codes:

1. Trusteed Surplus Statement [Document Identifier 490]
3. Medicare Part D Coverage Supplement [Document Identifier 365]
4. Director and Officer Supplement [Document Identifier 505]



OVERFLOW PAGE FOR WRITE-INS

Additional Write-ins for Assets Line 25

	Current Statement Date			4 December 31 Prior Year Net Admitted Assets
	1 Assets	2 Nonadmitted Assets	3 Net Admitted Assets (Cols. 1 - 2)	
2504. Other assets nonadmitted	49,884	49,884		
2597. Summary of remaining write-ins for Line 25 from overflow page	49,884	49,884		

STATEMENT AS OF SEPTEMBER 30, 2014 OF THE NATIONWIDE INDEMNITY COMPANY

SCHEDULE A - VERIFICATION

Real Estate

	1 Year to Date	2 Prior Year Ended December 31
1. Book/adjusted carrying value, December 31 of prior year		
2. Cost of acquired:		
2.1 Actual cost at time of acquisition		
2.2 Additional investment made after acquisition		
3. Current year change in encumbrances		
4. Total gain (loss) on disposals		
5. Deduct amounts received on disposals		
6. Total foreign exchange change in book/adjusted carrying value		
7. Deduct current year's other than temporary impairment recognized		
8. Deduct current year's depreciation		
9. Book/adjusted carrying value at the end of current period (Lines 1+2+3+4-5+6-7-8)		
10. Deduct total nonadmitted amounts		
11. Statement value at end of current period (Line 9 minus Line 10)		

NONE

SCHEDULE B - VERIFICATION

Mortgage Loans

	1 Year to Date	2 Prior Year Ended December 31
1. Book value/recorded investment excluding accrued interest, December 31 of prior year	95,444,490	106,814,087
2. Cost of acquired:		
2.1 Actual cost at time of acquisition		
2.2 Additional investment made after acquisition		
3. Capitalized deferred interest and other		
4. Accrual of discount		
5. Unrealized valuation increase (decrease)		
6. Total gain (loss) on disposals	569,628	
7. Deduct amounts received on disposals	10,933,581	11,081,686
8. Deduct amortization of premium and mortgage interest points and commitment fees		
9. Total foreign exchange change in book value/recorded investment excluding accrued interest		
10. Deduct current year's other than temporary impairment recognized		287,911
11. Book value/recorded investment excluding accrued interest at end of current period (Lines 1+2+3+4+5+6-7-8+9-10)	85,080,537	95,444,490
12. Total valuation allowance	(40,643)	(389,687)
13. Subtotal (Line 11 plus Line 12)	85,039,894	95,054,803
14. Deduct total nonadmitted amounts		
15. Statement value at end of current period (Line 13 minus Line 14)	85,039,894	95,054,803

SCHEDULE BA - VERIFICATION

Other Long-Term Invested Assets

	1 Year to Date	2 Prior Year Ended December 31
1. Book/adjusted carrying value, December 31 of prior year	59,291,375	59,081,315
2. Cost of acquired:		
2.1 Actual cost at time of acquisition	205,885	
2.2 Additional investment made after acquisition		158,610
3. Capitalized deferred interest and other		
4. Accrual of discount		
5. Unrealized valuation increase (decrease)	1,608,088	3,415,605
6. Total gain (loss) on disposals		
7. Deduct amounts received on disposals	138,044	1,775,100
8. Deduct amortization of premium and depreciation	171,984	1,589,055
9. Total foreign exchange change in book/adjusted carrying value		
10. Deduct current year's other than temporary impairment recognized		
11. Book/adjusted carrying value at end of current period (Lines 1+2+3+4+5+6-7-8+9-10)	60,795,320	59,291,375
12. Deduct total nonadmitted amounts	623	138,667
13. Statement value at end of current period (Line 11 minus Line 12)	60,794,697	59,152,708

SCHEDULE D - VERIFICATION

Bonds and Stocks

	1 Year to Date	2 Prior Year Ended December 31
1. Book/adjusted carrying value of bonds and stocks, December 31 of prior year	2,991,834,132	3,049,202,417
2. Cost of bonds and stocks acquired	34,840,423	127,389,206
3. Accrual of discount	4,453,910	7,172,342
4. Unrealized valuation increase (decrease)	14,621,332	13,656,739
5. Total gain (loss) on disposals	5,076,978	1,833,358
6. Deduct consideration for bonds and stocks disposed of	108,058,612	196,568,142
7. Deduct amortization of premium	7,832,700	10,851,788
8. Total foreign exchange change in book/adjusted carrying value		
9. Deduct current year's other than temporary impairment recognized		
10. Book/adjusted carrying value at end of current period (Lines 1+2+3+4+5-6-7+8-9)	2,934,935,463	2,991,834,132
11. Deduct total nonadmitted amounts		
12. Statement value at end of current period (Line 10 minus Line 11)	2,934,935,463	2,991,834,132

STATEMENT AS OF SEPTEMBER 30, 2014 OF THE NATIONWIDE INDEMNITY COMPANY

SCHEDULE D - PART 1B

Showing the Acquisitions, Dispositions and Non-Trading Activity
During the Current Quarter for all Bonds and Preferred Stock by NAIC Designation

NAIC Designation	1 Book/Adjusted Carrying Value Beginning of Current Quarter	2 Acquisitions During Current Quarter	3 Dispositions During Current Quarter	4 Non-Trading Activity During Current Quarter	5 Book/Adjusted Carrying Value End of First Quarter	6 Book/Adjusted Carrying Value End of Second Quarter	7 Book/Adjusted Carrying Value End of Third Quarter	8 Book/Adjusted Carrying Value December 31 Prior Year
BONDS								
1. NAIC 1 (a)	2,535,365,890	14,981,763	53,408,113	(15,512,106)	2,512,694,823	2,535,365,890	2,481,427,434	2,519,729,646
2. NAIC 2 (a)	379,718,557	10,375,600	2,063,769	14,010,110	400,880,587	379,718,557	402,040,498	417,789,988
3. NAIC 3 (a)	13,867,880		26,448	446,496	13,771,490	13,867,880	14,287,928	13,544,614
4. NAIC 4 (a)	32,336,065	143,044	322,783	(18,894)	37,506,506	32,336,065	32,137,432	36,738,361
5. NAIC 5 (a)								
6. NAIC 6 (a)	2,193,398		3,221	99,878	2,047,166	2,193,398	2,290,055	1,601,085
7. Total Bonds	2,963,481,790	25,500,407	55,824,334	(974,516)	2,966,900,572	2,963,481,790	2,932,183,347	2,989,403,694
PREFERRED STOCK								
8. NAIC 1								
9. NAIC 2								
10. NAIC 3								
11. NAIC 4								
12. NAIC 5								
13. NAIC 6								
14. Total Preferred Stock								
15. Total Bonds and Preferred Stock	2,963,481,790	25,500,407	55,824,334	(974,516)	2,966,900,572	2,963,481,790	2,932,183,347	2,989,403,694

(a) Book/Adjusted Carrying Value column for the end of the current reporting period includes the following amount of non-rated short-term and cash equivalent bonds by NAIC designation: NAIC 1 \$; NAIC 2 \$; NAIC 3 \$; NAIC 4 \$; NAIC 5 \$; NAIC 6 \$

S102

SCHEDULE DA - PART 1

Short-Term Investments

	1	2	3	4	5
	Book/Adjusted Carrying Value	Par Value	Actual Cost	Interest Collected Year-to-Date	Paid for Accrued Interest Year-to-Date
9199999 Totals	40,390,055	xxx	40,390,055	8,753	

SCHEDULE DA - VERIFICATION

Short-Term Investments

	1	2
	Year To Date	Prior Year Ended December 31
1. Book/adjusted carrying value, December 31 of prior year	1,074,640	58,840,716
2. Cost of short-term investments acquired	265,484,440	409,709,916
3. Accrual of discount		
4. Unrealized valuation increase (decrease)		
5. Total gain (loss) on disposals		
6. Deduct consideration received on disposals	226,169,025	467,475,992
7. Deduct amortization of premium		
8. Total foreign exchange change in book/adjusted carrying value		
9. Deduct current year's other than temporary impairment recognized		
10. Book/adjusted carrying value at end of current period (Lines 1+2+3+4+5-6-7+8-9)	40,390,055	1,074,640
11. Deduct total nonadmitted amounts		
12. Statement value at end of current period (Line 10 minus Line 11)	40,390,055	1,074,640

Schedule DB - Part A - Verification - Options, Caps, Floors, Collars, Swaps and Forwards

N O N E

Schedule DB - Part B - Verification - Futures Contracts

N O N E

Schedule DB - Part C - Section 1 - Replication (Synthetic Asset) Transactions (RSATs) Open

N O N E

Schedule DB-Part C-Section 2-Reconciliation of Replication (Synthetic Asset) Transactions Open

N O N E

Schedule DB - Verification - Book/Adjusted Carrying Value, Fair Value and Potential Exposure of
Derivatives

N O N E

Schedule E - Verification - Cash Equivalents

N O N E

Schedule A - Part 2 - Real Estate Acquired and Additions Made

N O N E

Schedule A - Part 3 - Real Estate Disposed

N O N E

STATEMENT AS OF SEPTEMBER 30, 2014 OF THE NATIONWIDE INDEMNITY COMPANY

SCHEDULE B - PART 2

Showing All Mortgage Loans ACQUIRED AND ADDITIONS MADE During the Current Quarter

1 Loan Number	2 Location		4 Loan Type	5 Date Acquired	6 Rate of Interest	7 Actual Cost at Time of Acquisition	8 Additional Investment Made After Acquisition	9 Value of Land and Buildings
	3 City	3 State						
NONE								
3399999 - Totals								

SCHEDULE B - PART 3

Showing All Mortgage Loans DISPOSED, Transferred or Repaid During the Current Quarter

1 Loan Number	2 Location		4 Loan Type	5 Date Acquired	6 Disposal Date	7 Book Value/Recorded Investment Excluding Accrued Interest Prior Year	8 Change in Book Value/Recorded Investment					14 Book Value/Recorded Investment Excluding Accrued Interest on Disposal	15 Consid-eration	16 Foreign Exchange Gain (Loss) on Disposal	17 Realized Gain (Loss) on Disposal	18 Total Gain (Loss) on Disposal
	3 City	3 State					8 Unrealized Valuation Increase (Decrease)	9 Current Year's (Amortization) /Accretion	10 Current Year's Other Than Temporary Impairment Recognized	11 Capitalized Deferred Interest and Other	12 Total Change in Book Value (8+9-10+11)					
00-1000541	COLUMBUS	OH		04/30/2001		3,300,154						87,040	87,040			
00-1000570	WEST PALM BEACH	FL		06/20/2001		774,726						71,308	71,308			
00-1000588	CINCINNATI	OH		06/01/2001		480,493						45,545	45,545			
00-1000696	FT. LAUDERDALE	FL		05/08/2002		3,751,940						42,286	42,286			
00-1000701	VILLANOVA	PA		12/17/2001		2,905,912						68,957	68,957			
00-1000714	CLOSTER	NJ		11/08/2001		1,464,367						34,718	34,718			
00-1000774	FLINT	MI		12/20/2001		3,033,929						104,817	104,817			
00-1000789	COOPER CITY	FL		11/30/2001		645,743						22,630	22,630			
00-1000875	SCOTTSDALE	AZ		09/18/2002		2,162,694						44,166	44,166			
00-1000932	HARRISON TOWNSHIP	MI		05/29/2002		3,867,573						39,943	39,943			
00-1000949	STON	OH		05/30/2002		1,330,621						29,207	29,207			
00-1001164	CHESTERFIELD	VA		11/20/2002		3,479,655						26,368	26,368			
00-1001203	NILES	IL		12/30/2002		2,441,278						17,983	17,983			
00-1001237	DALLAS	TX		11/20/2002		1,998,842						49,498	49,498			
00-1100768	FRISCO	TX		06/02/2005		1,546,385						12,126	12,126			
00-1100774	SOLANA BEACH	CA		03/24/2005		1,954,636						48,362	48,362			
00-1100810	ST. CLAIR SHORES	MI		05/05/2005		1,979,369						10,419	10,419			
00-1100820	LEXINGTON	KY		05/12/2005		8,790,929						47,870	47,870			
00-1100828	VARIOUS CITIES	TN		07/08/2005		1,833,891						29,383	29,383			
00-1100844	ORLAND PARK	IL		07/22/2005		701,960						11,346	11,346			
00-1100865	ANN ARBOR	MI		07/20/2005		4,788,413						46,391	46,391			
00-1100889	REDWOOD CITY	CA		06/21/2005		4,283,862						27,303	27,303			
00-1100904	DENVER	CO		08/29/2005		1,595,975						15,512	15,512			
00-1100905	AUSTIN	TX		07/07/2005		3,792,327						17,454	17,454			
00-1100925	PLANO	TX		09/15/2005		6,882,440						26,805	26,805			

STATEMENT AS OF SEPTEMBER 30, 2014 OF THE NATIONWIDE INDEMNITY COMPANY

SCHEDULE B - PART 3

Showing All Mortgage Loans DISPOSED, Transferred or Repaid During the Current Quarter

1 Loan Number	Location		4 Loan Type	5 Date Acquired	6 Disposal Date	7 Book Value/ Recorded Investment Excluding Accrued Interest Prior Year	Change in Book Value/Recorded Investment					14 Book Value/ Recorded Investment Excluding Accrued Interest on Disposal	15 Consid- eration	16 Foreign Exchange Gain (Loss) on Disposal	17 Realized Gain (Loss) on Disposal	18 Total Gain (Loss) on Disposal
	2 City	3 State					8 Unrealized Valuation Increase (Decrease)	9 Current Year's (Amortization) /Accretion	10 Current Year's Other Than Temporary Impairment Recognized	11 Capitalized Deferred Interest and Other	12 Total Change in Book Value (8+9-10+11)					
00-1100927	ANN ARBOR	MI		08/09/2005		1,193,805						7,857	7,857			
00-1100947	ELDERSBURG	MD		08/31/2005		1,601,967						15,377	15,377			
00-1100952	KANSAS CITY	KS		08/18/2005		2,389,436						23,369	23,369			
03-4002230	CLEARWATER	FL		09/22/1999		1,748,031						19,870	19,870			
28-0001469	WASHINGTON TOWNSHIP	OH		07/07/1999		2,749,088						102,256	102,256			
0299999. Mortgages with partial repayments						79,469,841						1,146,165	1,146,165			
00-1001152	DALLAS	TX		12/20/2002	08/07/2014	1,918,907						1,883,951	2,008,389		124,438	124,438
00-1100940	ROYAL PALM BEACH	FL		08/31/2005	08/07/2014	1,340,602						1,340,602	1,785,791		445,190	445,190
0399999. Mortgages disposed						3,259,509						3,224,553	3,794,180		569,628	569,628
0599999 - Totals						82,729,350						4,370,718	4,940,345		569,628	569,628

STATEMENT AS OF SEPTEMBER 30, 2014 OF THE NATIONWIDE INDEMNITY COMPANY

SCHEDULE BA - PART 2

Showing Other Long-Term Invested Assets ACQUIRED AND ADDITIONS MADE During the Current Quarter

1 CUSIP Identification	2 Name or Description	3 Location		5 Name of Vendor or General Partner	6 NAIC Designation	7 Date Originally Acquired	8 Type and Strategy	9 Actual Cost at Time of Acquisition	10 Additional Investment Made After Acquisition	11 Amount of Encumbrances	12 Commitment for Additional Investment	13 Percentage of Ownership
		City	State									
	Ohio Equity Fund for Housing LP XII	Columbus	OH	Ohio Equity Fund, Inc.		10/25/2002			67,725		1,405,641	1.530
	Ohio Equity Fund for Housing LP XIII	Columbus	OH	Apollo Housing		04/08/2003			26,445		1,562,371	1.440
3499999. Non-Guaranteed Federal Low Income Housing Tax Credit - Affiliated									94,170		2,968,012	XXX
4499999. Total - Unaffiliated												XXX
4599999. Total - Affiliated									94,170		2,968,012	XXX
4699999 - Totals									94,170		2,968,012	XXX

SCHEDULE BA - PART 3

Showing Other Long-Term Invested Assets DISPOSED, Transferred or Repaid During the Current Quarter

1 CUSIP Identification	2 Name or Description	3 Location		5 Name of Purchaser or Nature of Disposal	6 Date Originally Acquired	7 Disposal Date	8 Book/ Adjusted Carrying Value Less Encum- brances, Prior Year	9 Change in Book/Adjusted Carrying Value						15 Book/ Adjusted Carrying Value Less Encum- brances on Disposal	16 Consid- eration	17 Foreign Exchange Gain (Loss) on Disposal	18 Realized Gain (Loss) on Disposal	19 Total Gain (Loss) on Disposal	20 Invest- ment Income
		City	State					9 Unrealized Valuation Increase (De- crease)	10 Current Year's (Depre- ciation) or (Amorti- zation)/ Accretion	11 Current Year's Other Than Temporary Impair- ment Recogn- ized	12 Capital- ized Deferred Interest and Other	13 Total Change in Book/ Adjusted Carrying Value (9+10- 11+12)	14 Total Foreign Exchange Change in Book/ Adjusted Carrying Value						
	US Government Building Open-End Feeder 1, LP	San Antonio	TX	Distribution	07/17/2008	07/23/2014	34,525,367	14,927				14,927	35,634,783					553,846	
1799999. Joint Venture Interests - Real Estate - Unaffiliated									34,525,367	14,927		14,927	35,634,783					553,846	
	Riverview Multi Series Fund LLC - Class N	Red Bank	NJ	Distribution	12/30/2008	07/31/2014	192,193	192,193				192,193		138,044				53,527	
2299999. Joint Venture Interests - Other - Affiliated									192,193	192,193		192,193		138,044				53,527	
4499999. Total - Unaffiliated									34,525,367	14,927		14,927	35,634,783					553,846	
4599999. Total - Affiliated									192,193	192,193		192,193		138,044			53,527		
4699999 - Totals									34,717,560	207,120		207,120	35,634,783	138,044			607,373		

E03

STATEMENT AS OF SEPTEMBER 30, 2014 OF THE NATIONWIDE INDEMNITY COMPANY

SCHEDULE D - PART 3

Show All Long-Term Bonds and Stock Acquired During the Current Quarter

1 CUSIP Identification	2 Description	3 Foreign	4 Date Acquired	5 Name of Vendor	6 Number of Shares of Stock	7 Actual Cost	8 Par Value	9 Paid for Accrued Interest and Dividends	10 NAIC Desig- nation or Market Indicator (a)
12670N-AB-9	CMGS Term Ln Nt 3 5.750% 02/20/20		.09/30/2014	Tax Free Exchange		143,044	144,345	.1	4FE
61763X-BF-2	Morgan Stanley BAML Tr CMBS Ser 2014-C18		.09/17/2014	Bank of America BIDS Dealer		9,993,750	10,000,000	30,200	1FE
902494-AY-9	Tyson Foods Inc Sr Nt 5.150% 08/15/44		.09/11/2014	Goldman Sachs & Company		10,375,600	10,000,000	54,361	2FE
92890H-AC-6	WEA Fin LLC/Westfield Sr Nt 3.750% 09/		.09/10/2014	Various		4,988,013	5,000,000		2FE
3899999. Subtotal - Bonds - Industrial and Miscellaneous (Unaffiliated)						25,500,407	25,144,345	84,562	XXX
8399997. Total - Bonds - Part 3						25,500,407	25,144,345	84,562	XXX
8399998. Total - Bonds - Part 5						XXX	XXX	XXX	XXX
8399999. Total - Bonds						25,500,407	25,144,345	84,562	XXX
8999997. Total - Preferred Stocks - Part 3							XXX		XXX
8999998. Total - Preferred Stocks - Part 5						XXX	XXX	XXX	XXX
8999999. Total - Preferred Stocks							XXX		XXX
9799997. Total - Common Stocks - Part 3							XXX		XXX
9799998. Total - Common Stocks - Part 5						XXX	XXX	XXX	XXX
9799999. Total - Common Stocks							XXX		XXX
9899999. Total - Preferred and Common Stocks							XXX		XXX
9999999 - Totals						25,500,407	XXX	84,562	XXX

(a) For all common stock bearing the NAIC market indicator "U" provide: the number of such issues

STATEMENT AS OF SEPTEMBER 30, 2014 OF THE NATIONWIDE INDEMNITY COMPANY

SCHEDULE D - PART 4

Show All Long-Term Bonds and Stock Sold, Redeemed or Otherwise Disposed of During the Current Quarter

1	2	3	4	5	6	7	8	9	10	Change In Book/Adjusted Carrying Value					16	17	18	19	20	21	22
										11	12	13	14	15							
CUSIP Identification	Description	Foreign	Disposal Date	Name of Purchaser	Number of Shares of Stock	Consideration	Par Value	Actual Cost	Prior Year Book/Adjusted Carrying Value	Unrealized Valuation Increase/(Decrease)	Current Year's (Amortization)/Accretion	Current Year's Other Than Temporary Impairment Recognized	Total Change in Book/Adjusted Carrying Value (11 + 12 - 13)	Total Foreign Exchange Change in Book /Adjusted Carrying Value	Book/Adjusted Carrying Value at Disposal Date	Foreign Exchange Gain (Loss) on Disposal	Realized Gain (Loss) on Disposal	Total Gain (Loss) on Disposal	Bond Interest/Stock Dividends Received During Year	Stated Contractual Maturity Date	NAIC Designation or Market Indicator (a)
34459R-AB-1	Morocco AID Gtd SF Bd 7.550% 07/15/26		07/15/2014	Redemption 100.0000		19,342	19,342	23,162	21,498		(2,156)		(2,156)		19,342				1,460	01/15/2026	1FE
911760-EJ-1	Vendee Mtg Tr RMBS REMIC Ser 1994-2 3ZB		09/01/2014	Paydown		62,732	62,732	61,355	61,944		788		788		62,732				2,740	06/15/2024	1
911760-HH-2	Vendee Mtg Tr RMBS REMIC Ser 1996-2 1Z		09/01/2014	Paydown		130,607	130,607	129,957	130,053		554		554		130,607				5,765	06/15/2026	1
91282B-DH-0	U S Treasury Inflation Index Nt 1.625%		09/25/2014	Barclays Capital		37,507,614	30,000,000	33,414,091	36,664,906	(3,144,265)	18,381		(3,125,884)		33,539,021		3,968,593	3,968,593	721,639	01/15/2015	1
0599999. Subtotal - Bonds - U.S. Governments						37,720,295	30,212,681	33,628,565	36,878,401	(3,144,265)	17,567		(3,126,698)		33,751,702		3,968,593	3,968,593	731,604	XXX	XXX
011832-S3-7	Alaska St Hsg Fin Corp Rev LBASS AMT 1st		09/01/2014	Call 100.0000		150,000	150,000	150,000	150,000					150,000				4,611	12/01/2024	1FE	
254773-AG-9	District Columbia Hsg Fin Rev LBASS Agcy		09/01/2014	Call 100.0000		30,000	30,000	30,000	30,000					30,000				1,035	06/01/2020	1FE	
312903-HR-1	FHLMC REMIC Ser 113-C 8.500% 05/15/21		09/15/2014	Paydown		3,234	3,234	3,369	3,309		(75)		(75)	3,234				184	05/15/2021	1	
312905-YJ-5	FHLMC REMIC Ser 1077-E 9.000% 05/15/21		09/01/2014	Paydown		5,062	5,062	5,273	5,216		(154)		(154)	5,062				302	05/15/2021	1	
312906-E5-5	FHLMC REMIC Ser 1116-XA 8.400% 08/15/22		09/01/2014	Paydown		1,021	1,021	1,050	1,041		(19)		(19)	1,021				57	08/15/2021	1	
312909-MY-7	FHLMC REMIC Ser 1251-Z 8.000% 04/15/22		09/01/2014	Paydown		23,682	23,682	24,763	24,342		(660)		(660)	23,682				1,254	04/15/2022	1	
312915-UF-6	FHLMC REMIC Ser 1504 Z 7.000% 05/15/23		09/01/2014	Paydown		11,313	11,313	11,637	11,492		(179)		(179)	11,313				537	05/15/2023	1	
313373-X8-6	FHLMC REMIC Ser 1683 Z 6.500% 02/15/24		09/01/2014	Paydown		75,674	75,674	76,140	75,780		(106)		(106)	75,674				3,270	02/15/2024	1	
31337A-CQ-3	FHLMC REMIC Ser 1967-BA 7.000% 06/17/22		09/01/2014	Paydown		14,040	14,040	14,368	14,184		(144)		(144)	14,040				666	06/17/2022	1	
31340Y-BH-1	FHLMC REMIC Ser 6-C 9.050% 06/15/19		09/15/2014	Paydown		916	916	960	931		(16)		(16)	916				56	06/15/2019	1	
31340Y-DB-2	FHLMC REMIC Ser 12-A 9.250% 11/15/19		09/15/2014	Paydown		644	644	677	655		(11)		(11)	644				40	11/15/2019	1	
31340Y-KF-5	FHLMC REMIC Ser 31-E 7.550% 05/15/20		09/15/2014	Paydown		5,681	5,681	5,862	5,712		(31)		(31)	5,681				295	05/15/2020	1	
31340Y-KX-6	FHLMC REMIC Ser 33-D 8.000% 04/15/20		09/15/2014	Paydown		3,804	3,804	3,939	3,851		(48)		(48)	3,804				204	04/15/2020	1	
31340Y-QS-1	FHLMC REMIC Ser 46-B 7.800% 09/15/20		09/15/2014	Paydown		8,821	8,821	9,076	8,911		(90)		(90)	8,821				479	09/15/2020	1	
31358E-XG-2	FNMA REMIC Ser 1990-83A 9.250% 07/25/22		09/01/2014	Paydown		1,904	1,904	2,029	1,998		(94)		(94)	1,904				117	07/25/2020	1	
31358G-X4-4	FNMA REMIC Ser 1991-56G 8.600% 06/25/22		09/01/2014	Paydown		1,637	1,637	1,714	1,689		(52)		(52)	1,637				97	06/25/2021	1	
31358E-YL-9	FNMA REMIC Ser 1993-199PF 6.500% 10/25		09/01/2014	Paydown		25,084	25,084	25,493	25,090		(6)		(6)	25,084				1,061	10/25/2023	1	
31359F-DE-5	FNMA REMIC Ser 1993-202M 6.500% 11/25/2		09/01/2014	Paydown		154,070	154,070	156,637	153,847		223		223	154,070				6,618	11/25/2023	1	
31359K-ZK-2	FNMA REMIC Ser 1996-M7 CI Z 6.400% 05/		09/01/2014	Paydown		229	229	231	231		(1)		(1)	229				10	05/17/2026	1	
31359K-ZR-1	FNMA REMIC Ser 1996-45 CI K 7.000% 09/		09/01/2014	Paydown		4,779	4,779	4,874	4,841		(62)		(62)	4,779				221	09/25/2017	1	
31359P-DJ-2	FNMA ACES Ser 1997-M2 CI Z 7.125% 01/1		09/01/2014	Paydown		3,452	3,452	3,708	3,669		(217)		(217)	3,452				164	01/17/2037	1	
313602-GQ-1	FNMA REMIC Ser 1988-25B 9.250% 10/25/1		09/01/2014	Paydown		906	906	961	930		(25)		(25)	906				55	10/25/2018	1	
313603-2H-4	FNMA REMIC Ser 1990-35E 9.500% 04/25/2		09/01/2014	Paydown		212	212	224	221		(10)		(10)	212				13	04/25/2020	1	
313603-5J-7	FNMA REMIC Ser 1990-41D 9.500% 04/25/2		09/01/2014	Paydown		3,981	3,981	4,225	4,148		(167)		(167)	3,981				261	04/25/2020	1	
31377R-BH-2	FNMA DUS Pool #384440 6.600% 10/25/26		09/01/2014	Paydown		13,704	13,704	15,178	14,566		(861)		(861)	13,704				603	10/25/2026	1	
31381H-TQ-9	FNMA DUS Pool #461459 5.450% 11/25/23		09/01/2014	Paydown		49,628	49,628	51,078	50,341		(713)		(713)	49,628				1,804	11/25/2023	1	
31392E-FL-9	FNMA REMIC Ser 2002-55 CI GC 5.500% 09		09/01/2014	Paydown		30,718	30,718	31,726	30,906		(188)		(188)	30,718				1,130	09/25/2017	1	
31392E-SX-9	FNMA REMIC Ser 2002-59 CI B 5.500% 09/		09/01/2014	Paydown		12,150	12,150	12,632	12,321		(171)		(171)	12,150				443	09/25/2017	1	
31392U-RH-9	FHLMC REMIC Ser 2501 AN 5.500% 09/15/1		09/01/2014	Paydown		68,122	68,122	70,634	68,681		(559)		(559)	68,122				2,492	09/15/2017	1	
31392V-2F-8	FHLMC REMIC Ser 2494 J 5.500% 09/15/17		09/01/2014	Paydown		163,343	163,343	171,746	164,563		(1,220)		(1,220)	163,343				5,893	09/15/2017	1	
31392V-SN-3	FHLMC REMIC Ser 2496 BK 5.500% 09/15/1		09/01/2014	Paydown		87,105	87,105	90,622	87,899		(794)		(794)	87,105				3,221	09/15/2017	1	
31393A-2V-8	FNMA REMIC Ser 2003-38 CI MP 5.500% 05		09/01/2014	Paydown		111,133	111,133	113,634	111,577		(444)		(444)	111,133				4,103	05/25/2023	1	
31394J-KW-6	FHLMC REMIC Ser 2673 CI QL 5.500% 09/1		09/01/2014	Paydown		123,613	123,613	125,622	124,030		(417)		(417)	123,613				4,557	09/15/2023	1	
31394L-HM-7	FHLMC REMIC Ser 2691 CI VU 5.500% 08/1		09/01/2014	Paydown		812,669	812,669	826,129	812,239		430		430	812,669				30,068	08/15/2023	1	
454806-BV-1	Indiana St Hsg & Cmnty Dev Rev LBASS Aut		07/01/2014	Call 100.0000		270,000	270,000	270,000	270,000					270,000				12,555	07/01/2021	1FE	
454806-BW-9	Indiana St Hsg & Cmnty Dev Rev LBASS Aut		07/01/2014	Call 100.0000		520,000	520,000	520,000	520,000					520,000				24,960	07/01/2027	1FE	
60415N-G2-2	Minnesota St Hsg Fin Agcy Rev LBASS AMT S		08/01/2014	Call 100.0000		55,000	55,000	55,000	55,000					55,000				2,756	07/01/2021	1FE	
3199999. Subtotal - Bonds - U.S. Special Revenues						2,847,331	2,847,331	2,891,211	2,854,211	(6,881)			(6,881)		2,847,331				116,192	XXX	XXX
01082#-AA-3	Alameda Cnty CA CTL Ser 2002-A 7.500%		09/15/2014	Redemption 100.0000		36,460	36,460	38,648	37,576		(1,116)		(1,116)	36,460				1,824	06/15/2021	1	
02150W-AB-9	Countrywide Alternative Ln Tr RMBS Ser 2		09/01/2014	Paydown		170,435	170,435	221,902	206,663	15,239			15,239	221,902		(51,467)	(51,467)	5,108	03/25/2047	1FM	
03215P-CD-9	Amresco Resdlt Sec Mtg Loan RMBS Ser 199		09/01/2014	Paydown		6,575	6,575	6,666	6,547		28		28	6,575				213	06/25/2027	1FM	
03334#-AA-7	AnchoragePermit Ctr Bldg Ls Tr CTL 6.3		09/15/2014	Redemption 100.0000		21,981	21,981	21,981	21,981					21,981				930	02/15/2025	1	
04626R-AA-4	Astoria Power Project ABS PTC Ser A 5.		09/01/2014	Redemption 100.0000		293,188	293,188	293,188	293,188					293,188				11,200	05/01/2016	2AM	
05501T-AC-3	TGGT Holdings (Azure) LLC 1st Lien Term		09/30/2014	Redemption 100.0000		50,000	50,000	49,250	49,262		738		738	50,000				2,600	11/18/2018	4FE	
05549#-AA-3	Bjs Wholesale Club Inc CTL (HG Bowie Rea		09/15/2014	Redemption 100.0000		28,632	28,632	28,908	28,781		(149)		(149)	28,632				1,327	05/15/2022	2	

E05

STATEMENT AS OF SEPTEMBER 30, 2014 OF THE NATIONWIDE INDEMNITY COMPANY

SCHEDULE D - PART 4

Show All Long-Term Bonds and Stock Sold, Redeemed or Otherwise Disposed of During the Current Quarter

1	2	3	4	5	6	7	8	9	10	Change In Book/Adjusted Carrying Value					16	17	18	19	20	21	22
										11	12	13	14	15							
CUSIP Identification	Description	For-ign	Disposal Date	Name of Purchaser	Number of Shares of Stock	Consid-eration	Par Value	Actual Cost	Prior Year Book/ Adjusted Carrying Value	Unrealized Valuation Increase/ (Decrease)	Current Year's (Amor-tization)/ Accretion	Current Year's Other Than Temporary Impairment Recogn-ized	Total Change in Book/ Adjusted Carrying Value (11 + 12 - 13)	Total Foreign Exchange Change in Book /Adjusted Carrying Value	Book/ Adjusted Carrying Value at Disposal Date	Foreign Exchange Gain (Loss) on Disposal	Realized Gain (Loss) on Disposal	Total Gain (Loss) on Disposal	Bond Interest/ Stock Dividends Received During Year	Stated Con-tractual Maturity Date	NAIC Design-ation or Market In-dicator (a)
..06183*-AA-0	Benenson Parsippany LLC CTL 7.050% 04/		09/10/2014	Redemption 100.0000		89,200	89,200	89,200	89,200						89,200				4,194	04/10/2016	1
..11448*-BU-0	Brookshire Grocery Co Ser A-1 7.010% 0		09/01/2014	Redemption 100.0000		72,540	72,540	72,540	72,540						72,540				3,392	09/01/2014	2
..11448*-BV-8	Brookshire Grocery Co Ser A-2 7.010% 0		09/01/2014	Redemption 100.0000		69,876	69,876	69,876	69,876						69,876				3,267	09/01/2014	2
..117017-AB-9	Brunswick & Glynn Co Dev Auth CTL Rev Le		08/15/2014	Redemption 100.0000		74,795	74,795	74,795	74,795						74,795				4,682	02/15/2023	1
..12189P-AH-5	Burlington Northern Santa Fe ABS ETC Ser		07/15/2014	Paydown		17,061	17,061	19,319	17,671		(610)		(610)		17,061				1,349	01/15/2020	1FE
..12644*-AC-1	CTL Cap Tr CTL Ser 2002-3 Anchorage 7.		09/15/2014	Redemption 100.0000		47,784	47,784	47,784	47,784						47,784				2,323	12/15/2026	1
..12644*-AX-3	CTL Cap Tr CTL Lowes 7.070% 08/15/21		08/15/2014	Redemption 100.0000		140,371	140,371	140,371	140,371						140,371				9,924	08/14/2021	1
..12644*-BR-5	CTL Cap Tr CTL Ser 2002-21Aurora Healthcar		09/15/2014	Redemption 100.0000		52,562	52,562	52,562	52,562						52,562				2,331	10/15/2022	2
..12667G-XN-8	Countrywide Alternative Ln Tr RMBS Ser 2		09/01/2014	Paydown		408,183	408,183	382,081	382,081		26,102		26,102		408,183				14,643	08/25/2035	2FM
..12668*-AC-8	CIABS Inc RMBS Ser 2006-H CI 2A1B 0.30		09/15/2014	Paydown		89,174	89,174	30,872	30,872		58,302		58,302		89,174				185	11/15/2036	2FM
..12669*-NS-3	CIHL Inc RMBS Ser 2005-27 CI 1A3 5.000		09/01/2014	Paydown		97,831	97,831	95,217	92,885	3,575	1,370		4,945		97,831				3,815	12/25/2035	1FM
..12669*-D2-6	CIHL Inc RMBS Ser 2004-10 CI A10 5.000		09/01/2014	Paydown		27,547	27,547	27,547	27,446		401		401		27,547				936	07/25/2034	1FM
..12669*-R3-7	Countrywide Home Loans RMBS Ser 2005-15		07/01/2014	Paydown		3,535	3,535	3,479	3,314	189			189		3,503		32	32	113	08/25/2035	2FM
..12669*-R3-7	Countrywide Home Loans RMBS Ser 2005-15		09/01/2014	Paydown		26,685	26,685	26,264	25,017	1,430			1,431		26,448		238	238	1,052	08/25/2035	3FM
..12670N-AB-9	CIWS Term Ln Nt 2 5.750% 02/20/20		09/30/2014	Redemption 100.0000		31,250	31,250	30,938	30,940		310		310		31,250				1,492	02/20/2020	4FE
..12670N-AB-9	CIWS Term Ln Nt 1 5.750% 02/20/20		09/30/2014	Tax Free Exchange		143,044	144,345	142,902	142,915		129		129		143,044				5,845	02/20/2020	4FE
..144527-AB-4	Carrington Mtg Loan Tr RMBS Ser 2007-FRE		09/25/2014	Paydown		302,358	302,358	302,266	248,198	54,004	157		54,161		302,358				(4,099)	02/25/2037	1FM
..151895*-A-0	CenterPoint Properties Tr CTL 7.530% 1		09/01/2014	Redemption 100.0000		32,741	32,741	32,741	32,741						32,741				1,644	10/01/2014	1
..17306U-CE-6	Citifinancial Mtg Sec Inc RMBS Ser 2004-		09/01/2014	Paydown		21,095	21,095	21,094	21,068		27		27		21,095				542	04/25/2034	1FM
..17307G-YH-5	Citigroup Mtg Ln Tr RMBS Ser 2005-5 CI 2		09/01/2014	Paydown		137,784	137,784	127,330	127,330		10,454		10,454		137,784				5,178	08/25/2035	1FM
..23321M-AL-9	DLJ Mtg Accept Tr I RMBS CMO Ser 89-1-F		09/01/2014	Paydown		381	381	419	393		(12)		(12)		381				(8)	08/01/2019	6*
..251563-CB-6	Deutsche Mtg Sec Inc RMBS Ser 2004-1 CI		09/01/2014	Paydown		46,683	46,683	46,669	46,592		90		90		46,683				1,481	12/25/2033	1FM
..251563-DM-1	Deutsche Mtg Sec Inc RMBS Ser 2004-2 CI		09/01/2014	Paydown		7,259	7,259	7,257	7,246		13		13		7,259				227	01/25/2034	1FM
..36157R-3X-1	GE Cap Mtg Serv Inc RMBS Ser 1999-HE2 CI		09/01/2014	Paydown		29,684	29,684	29,577	29,577	108			108		29,684				1,413	07/25/2029	2FM
..36157R-DB-5	GE Cap Mtg Serv Inc RMBS Ser 1999-HE1 CI		09/01/2014	Paydown		882	882	882	882						882				39	04/25/2029	1FM
..36242D-70-0	GS Mortgage Securities Corp RMBS Ser 200		09/01/2014	Paydown		77,759	77,759	73,895	74,788		2,971		2,971		77,759				2,672	06/25/2035	1FM
..400756-BG-6	Guaranteed Mtg Corp III CMB Ser L-5		09/20/2014	Paydown		2,840	2,840	3,051	2,920		(80)		(80)		2,840				(36)	07/20/2019	6*
..43739E-AP-2	Homebank Mortgage Tr RMBS Ser 2005-1 CI		09/25/2014	Paydown		127,909	127,909	118,249	118,249		9,660		9,660		127,909				347	03/25/2035	1FM
..45254N-JG-3	IMPAC CMB Tr RMBS Ser 2004-5 CI 1A1 0.		09/25/2014	Paydown		38,499	38,499	38,570	38,556		(57)		(57)		38,499				234	10/25/2034	1FM
..45254N-KX-4	IMPAC CMB Tr RMBS Ser 2004-9 CI 1A1 0.		09/25/2014	Paydown		31,307	31,307	31,385	27,405	3,961	(59)		3,902		31,307				196	01/25/2035	1FM
..50026*-AA-3	Kohls Corp CTL Shelby MI 7.600% 12/15/		09/15/2014	Redemption 100.0000		25,606	25,606	27,052	26,344		(738)		(738)		25,606				1,298	12/15/2022	2
..52108H-2U-7	LB-UBS Comm Mtg Tr CMB Ser 2005-C1 CI A		09/11/2014	Paydown		5,407,516	5,407,516	5,434,530	5,406,601		915		915		5,407,516				181,336	02/15/2030	1FM
..52467*-AA-3	Legg Mason Mtg Cap Corp CTL 7.400% 12/		09/15/2014	Redemption 100.0000		15,563	15,563	16,404	15,930		(367)		(367)		15,563				764	12/15/2021	1
..52467*-AH-8	Legg Mason Mtg Cap Corp CTL 7.750% 01/		09/15/2014	Redemption 100.0000		23,083	23,083	24,209	23,580		(497)		(497)		23,083				1,187	01/15/2021	4
..55265W-CA-9	Master Seasoned Securities Tr RMBS Ser 2		09/01/2014	Paydown		6,993	6,993	7,225	7,118		(125)		(125)		6,993				311	08/25/2032	1FM
..589929-RK-6	Merrill Lynch Mtg Investors RMBS Ser 199		09/01/2014	Paydown		2,800	2,800	2,687	2,782		1		1		2,782		17	17	131	07/25/2027	1FM
..59549R-AC-8	Mid State Tr X ABS Ser 10 CI M1 6.280%		09/15/2014	Paydown		80,342	80,342	67,558	67,558		12,784		12,784		80,342				3,366	02/15/2036	1AM
..59560*-AC-8	Mid America Pref Cap Tr ABS Cumulative G		08/27/2014	Redemption 100.0000		667,327	667,327	759,118	684,311		(16,984)		(16,984)		667,327				39,189	08/27/2016	2
..636516-AB-2	National Inst of Hlth Fishers CTL P I B		07/15/2014	Redemption 100.0000		34,718	34,718	34,718	34,718						34,718				2,430	01/15/2024	1
..636517-AA-2	National Inst of Hlth Fishers CTLPI II B		07/15/2014	Redemption 100.0000		179,313	179,313	179,313	179,313						179,313				12,677	07/15/2022	1
..63860H-AC-3	Nationstar Home Equity Loan Tr RMBS Ser		09/25/2014	Paydown		433,983	433,983	391,805	396,979		37,004		37,004		433,983				902	03/25/2037	1FM
..64508Q-AA-3	New Haven Fed Office Bldg Ls CTL GSA Gtd		07/15/2014	Redemption 100.0000		71,239	71,239	71,239	71,239						71,239				4,203	01/15/2020	1

E05.1

STATEMENT AS OF SEPTEMBER 30, 2014 OF THE NATIONWIDE INDEMNITY COMPANY

SCHEDULE D - PART 4

Show All Long-Term Bonds and Stock Sold, Redeemed or Otherwise Disposed of During the Current Quarter

1	2	3	4	5	6	7	8	9	10	Change In Book/Adjusted Carrying Value					16	17	18	19	20	21	22	
										11	12	13	14	15								
CUSIP Identification	Description	Foreign	Disposal Date	Name of Purchaser	Number of Shares of Stock	Consideration	Par Value	Actual Cost	Prior Year Book/Adjusted Carrying Value	Unrealized Valuation Increase/(Decrease)	Current Year's (Amortization)/Accretion	Current Year's Other Than Temporary Impairment Recognized	Total Change in Book/Adjusted Carrying Value (11 + 12 - 13)	Total Foreign Exchange Change in Book/Adjusted Carrying Value	Book/Adjusted Carrying Value at Disposal Date	Foreign Exchange Gain (Loss) on Disposal	Realized Gain (Loss) on Disposal	Total Gain (Loss) on Disposal	Bond Interest/Stock Dividends Received During Year	Stated Contractual Maturity Date	NAIC Designation or Market Indicator (a)	
..653240-AA-9	Newtown CTL Ser 2002 6.082% 05/15/23		09/15/2014	Redemption 100.0000		66,771	66,771	66,769	66,770				1		66,771				2,709	05/15/2023	1	
..67020B-AA-8	NRRD-D Facilities Corp CTL GSA Rev Bd Ls		09/07/2014	Redemption 100.0000		48,858	48,858	48,858	48,858						48,858				2,118	11/07/2023	1	
..68216D-AC-2	Omnitracs 1st Lien TL Nt 1 4.750% 11/2		09/30/2014	Redemption 100.0000		2,500	2,500	2,488			13		13		2,500				84	11/25/2020	4FE	
..72153*-AA-2	Pillsbury Winthrop LLP Sr Nt Ser A-1 4		07/18/2014	Redemption 100.0000		111,111	111,111	111,111	111,111						111,111				4,567	07/18/2015	2	
..73664#-AA-8	Portland Natural Gas Trans Sys Sr Sec Nt		09/30/2014	Redemption 100.0000		36,000	36,000	36,000	36,000						36,000				1,593	12/31/2018	2	
..742741-AA-9	Procter & Gamble ESOP Deb Ser A 9.360%		07/01/2014	Redemption 100.0000		115,255	115,255	156,893	132,121		(16,866)		(16,866)		115,255				10,788	01/01/2021	1FE	
..755920-AG-0	Receipts on Corp Sec Tr ABS Coll Tr Ser		08/01/2014	Redemption 100.0000		72,905	72,905	79,579	74,740		(1,836)		(1,836)		72,905				4,739	08/01/2017	4AM	
..760985-M9-9	Residential Asset Mtg Prod Inc RMBS Ser		09/01/2014	Paydown		15,578	15,578	15,578	15,545		33		33		15,578				464	01/25/2034	1FM	
..76111H-HD-3	Residential Accredit Loans Inc RMBS Ser		09/01/2014	Paydown		80,855	86,824	80,855	71,663						71,663		9,193	9,193	3,237	09/25/2035	1FM	
..771196-AS-1	Roche Hldgs Inc Co Gtd Nt 6.000% 03/01		08/29/2014	Call 116.4350		505,328	434,000	458,018	448,295		57,033		57,033		505,328				25,895	03/01/2019	1FE	
..78402C-AA-1	SC Commercial Mtg Pass Through CTL Ser 2		09/01/2014	Redemption 100.0000		9,745	9,745	10,190	10,001		(256)		(256)		9,745				448	11/01/2026	2	
..78442G-GG-5	SLM Student Loan Tr ABS Ser 2003-4 CI A5		09/15/2014	Paydown		211,206	211,206	212,937	212,208		(1,002)		(1,002)		211,206				1,579	03/15/2033	1FE	
..78577B-HD-6	SACO I Tr RMBS Ser 2005-6 CI A 0.735%		09/25/2014	Paydown		79,784	79,784	77,051	77,051		2,733		2,733		79,784				398	09/25/2035	1FM	
..79548K-ZJ-0	Salomon Bros Mtg Sec VII Inc RMBS Ser 19		09/01/2014	Paydown		1,111	1,111	1,121	1,107						1,106		5	5	48	06/25/2028	1FM	
..81441P-CE-9	Security Natl Mtg Loan Tr RMBS Ser 2005-		09/01/2014	Paydown		28,516	28,516	28,346	28,426		90		90		28,516				896	02/25/2035	1FM	
..85231C-AA-3	St Louis Fed Office Bldg Tr CTL GSA Gtd		07/15/2014	Redemption 100.0000		1,075,706	1,075,706	1,075,706	1,075,706						1,075,706				74,331	01/15/2019	1	
..86363G-AJ-3	Structured Asset Sec Corp RMBS Ser 2007-		09/01/2014	Paydown		193,913	203,386	183,545	183,545						183,545		10,368	10,368	6,463	04/25/2047	1FM	
..89655M-AA-0	Trinity Rail Leasing I LLC LBASS ETC 6		09/20/2014	Redemption 100.0000		119,928	119,928	119,928	119,928						119,928				5,466	04/20/2020	1FE	
..91737#-AA-3	United States Govt SS Ls FinTr CTL GSA G		09/15/2014	Redemption 100.0000		133,026	133,026	132,588	132,855		171		171		133,026				4,173	11/15/2018	1	
..92851@-AA-3	Vivendi SPC Tr CTL 6.630% 04/15/22		09/15/2014	Paydown		20,699	20,699	20,699	20,699						20,699				915	04/15/2022	2	
..939348-AE-8	Washington Mutual MSC Mtg PT RMBS Ser 20		09/01/2014	Paydown		64,110	72,473	55,710	55,710						55,710		8,401	8,401	1,098	04/25/2037	1FM	
..94978#-AT-4	Wells Fargo Bank Northwest NA CTL Ser 20		09/01/2014	Redemption 100.0000		17,250	17,250	17,250	17,250						17,250				765	08/01/2027	2	
..96928#-AC-7	William Blair CTL PTC Ser 2004-1 7		09/25/2014	Redemption 100.0000		128,688	128,688	147,550	137,042		(8,354)		(8,354)		128,688				5,819	01/25/2023	2	
..01448Y-AB-9	ALESCO Pfd Fdg Ltd ABS Ser 7A CI A1B 0	R	09/23/2014	Paydown		123,890	123,890	100,351	101,019		22,871		22,871		123,890				600	07/23/2035	1FE	
..74042T-AC-5	Preferred Term Sec Ltd XXVII ABS Nt CI A	R	09/22/2014	Paydown		39,572	39,572	35,480	35,480		4,092		4,092		39,572				191	12/22/2037	1AM	
..85804P-AA-1	Stedman Loan Fund Ltd CLOSer2008-1A CIC	R	07/15/2014	Direct		265,698	265,698										265,698	265,698		05/15/2015	6*	
..61981@-AA-0	Cayman Turtle Farm Ltd Gtd Sr Nt 4.850	F	09/01/2014	Redemption 100.0000		95,404	95,404	95,404	95,404						95,404				3,470	03/01/2019	1	
..02464#-AA-1	Civic Nexus Fin Pty Ltd Sr Nt 5.110% 0	F	09/15/2014	Maturity		6,000,000	6,000,000	6,000,000	6,000,000						6,000,000				229,950	09/15/2014	1	
8399999	Subtotal - Bonds - Industrial and Miscellaneous (Unaffiliated)					19,467,780	19,488,978	19,174,697	18,944,919	78,506	199,386		277,892		19,225,297		242,485	242,485	733,173	XXX	XXX	
8399997	Total - Bonds - Part 4					60,035,406	52,548,990	55,694,473	58,677,531	(3,065,759)	210,072		(2,855,687)		55,824,330		4,211,078	4,211,078	1,580,969	XXX	XXX	
8399998	Total - Bonds - Part 5					XXX	XXX	XXX	XXX	XXX	XXX	XXX	XXX	XXX	XXX	XXX	XXX	XXX	XXX	XXX	XXX	XXX
8399999	Total - Bonds					60,035,406	52,548,990	55,694,473	58,677,531	(3,065,759)	210,072		(2,855,687)		55,824,330		4,211,078	4,211,078	1,580,969	XXX	XXX	
8999997	Total - Preferred Stocks - Part 4					XXX	XXX												XXX	XXX	XXX	
8999998	Total - Preferred Stocks - Part 5					XXX	XXX	XXX	XXX	XXX	XXX	XXX	XXX	XXX	XXX	XXX	XXX	XXX	XXX	XXX	XXX	XXX
8999999	Total - Preferred Stocks						XXX													XXX	XXX	
9799997	Total - Common Stocks - Part 4						XXX													XXX	XXX	
9799998	Total - Common Stocks - Part 5					XXX	XXX	XXX	XXX	XXX	XXX	XXX	XXX	XXX	XXX	XXX	XXX	XXX	XXX	XXX	XXX	XXX
9799999	Total - Common Stocks						XXX													XXX	XXX	
9899999	Total - Preferred and Common Stocks						XXX													XXX	XXX	
9999999	Totals					60,035,406	XXX	55,694,473	58,677,531	(3,065,759)	210,072		(2,855,687)		55,824,330		4,211,078	4,211,078	1,580,969	XXX	XXX	

E05.2

Schedule DB - Part A - Section 1 - Options, Caps, Floors, Collars, Swaps and Forwards Open

N O N E

Schedule DB - Part B - Section 1 - Futures Contracts Open

N O N E

Schedule DB - Part B - Section 1B - Brokers with whom cash deposits have been made

N O N E

Schedule DB - Part D - Section 1 - Counterparty Exposure for Derivative Instruments Open

N O N E

Schedule DB - Part D-Section 2 - Collateral for Derivative Instruments Open - Pledged By

N O N E

Schedule DB - Part D-Section 2 - Collateral for Derivative Instruments Open - Pledged To

N O N E

STATEMENT AS OF SEPTEMBER 30, 2014 OF THE NATIONWIDE INDEMNITY COMPANY

SCHEDULE DL - PART 1
SECURITIES LENDING COLLATERAL ASSETS

Reinvested Collateral Assets Owned Current Statement Date

1 CUSIP Identification	2 Description	3 Code	4 NAIC Designation/ Market Indicator	5 Fair Value	6 Book/Adjusted Carrying Value	7 Maturity Date
0599999. Total	U.S. Government Bonds					XXX
1099999. Total	All Other Government Bonds					XXX
1799999. Total	U.S. States, Territories and Possessions Bonds					XXX
2499999. Total	U.S. Political Subdivisions Bonds					XXX
3199999. Total	U.S. Special Revenues Bonds					XXX
04012M-AP-4	Argent Securities Inc RMBS		1FM	227,629	227,629	07/25/2036
14454A-AE-9	Carrington Mtg Loan Tr RMBS		1FM	1,677,341	1,465,985	10/25/2036
29445J-AA-3	Equifirst Mtg Loan Tr RMBS		1FM	518,149	520,846	04/25/2037
362351-AA-6	GSAA Home Equity Tr RMBS		1FM	837,094	837,094	12/25/2046
617487-AB-9	Morgan Stanley Mtg Tr RMBS		1FM	546,914	546,914	11/25/2036
81378E-AA-1	Securitized AB Rec LLC RMBS		1FM	3,754,485	3,754,485	05/25/2037
3399999. Subtotal	Bonds - Industrial and Miscellaneous (Unaffiliated) - Residential Mortgage-Backed Securities			7,561,612	7,352,953	XXX
3899999. Total	Industrial and Miscellaneous (Unaffiliated) Bonds			7,561,612	7,352,953	XXX
4899999. Total	Hybrid Securities					XXX
5599999. Total	Parent, Subsidiaries and Affiliates Bonds					XXX
6199999. Total	Issuer Obligations					XXX
6299999. Total	Residential Mortgage-Backed Securities			7,561,612	7,352,953	XXX
6399999. Total	Commercial Mortgage-Backed Securities					XXX
6499999. Total	Other Loan-Backed and Structured Securities					XXX
6599999. Total	Bonds			7,561,612	7,352,953	XXX
7099999. Total	Preferred Stocks					XXX
7599999. Total	Common Stocks					XXX
7699999. Total	Preferred and Common Stocks					XXX
	Overnight repo			2,550,373	2,550,373	10/01/2014
8999999. Total	Short-Term Invested Assets (Schedule DA type)			2,550,373	2,550,373	XXX
9999999. Total	Totals			10,111,985	9,903,326	XXX

General Interrogatories:

- Total activity for the year to date Fair Value \$(966,999) Book/Adjusted Carrying Value \$(1,175,657)
- Average balance for the year to date Fair Value \$13,043,371 Book/Adjusted Carrying Value \$12,903,892
- Reinvested securities lending collateral assets book/adjusted carrying value included in this schedule by NAIC designation:
 NAIC 1 \$7,352,953 NAIC 2 \$ NAIC 3 \$ NAIC 4 \$ NAIC 5 \$ NAIC 6 \$

**SCHEDULE DL - PART 2
SECURITIES LENDING COLLATERAL ASSETS**

Reinvested Collateral Assets Owned Current Statement Date

1 CUSIP Identification	2 Description	3 Code	4 NAIC Designation/ Market Indicator	5 Fair Value	6 Book/Adjusted Carrying Value	7 Maturity Date
NONE						
9999999 - Totals						XXX

General Interrogatories:

- | | | |
|---|---------------------|---------------------------------------|
| 1. Total activity for the year to date | Fair Value \$ | Book/Adjusted Carrying Value \$ |
| 2. Average balance for the year to date | Fair Value \$ | Book/Adjusted Carrying Value \$ |

SCHEDULE E - PART 2 - CASH EQUIVALENTS

Show Investments Owned End of Current Quarter

1 Description	2 Code	3 Date Acquired	4 Rate of Interest	5 Maturity Date	6 Book/Adjusted Carrying Value	7 Amount of Interest Due and Accrued	8 Amount Received During Year
NONE							
8699999 - Total Cash Equivalents							



SUPPLEMENT FOR THE QUARTER ENDING SEPTEMBER 30, 2014 OF THE NATIONWIDE INDEMNITY COMPANY

Designate the type of health care providers reported on this page: Physicians, including surgeons and osteopaths

SUPPLEMENT A TO SCHEDULE T EXHIBIT OF MEDICAL PROFESSIONAL LIABILITY PREMIUMS WRITTEN ALLOCATED BY STATES AND TERRITORIES

Table with 9 columns: States, etc.; 1 Direct Premiums Written; 2 Direct Premiums Earned; 3 Direct Losses Paid Amount; 4 Direct Losses Paid No. of Claims; 5 Direct Losses Incurred; 6 Direct Losses Unpaid Amount Reported; 7 Direct Losses Unpaid No. of Claims; 8 Direct Losses Incurred But Not Reported. The table contains a large 'NONE' watermark across the center.



SUPPLEMENT FOR THE QUARTER ENDING SEPTEMBER 30, 2014 OF THE NATIONWIDE INDEMNITY COMPANY

Designate the type of health care providers reported on this page: Hospitals

SUPPLEMENT A TO SCHEDULE T EXHIBIT OF MEDICAL PROFESSIONAL LIABILITY PREMIUMS WRITTEN ALLOCATED BY STATES AND TERRITORIES

Table with 8 columns: States, etc.; Direct Premiums Written; Direct Premiums Earned; Direct Losses Paid (Amount, No. of Claims); Direct Losses Incurred; Direct Losses Unpaid (Amount Reported, No. of Claims); Direct Losses Incurred But Not Reported. The table contains a large 'NONE' watermark across the center.



SUPPLEMENT FOR THE QUARTER ENDING SEPTEMBER 30, 2014 OF THE NATIONWIDE INDEMNITY COMPANY

Designate the type of health care providers reported on this page: Other health care professionals, including dentists, chiropractors, and podiatrists

SUPPLEMENT A TO SCHEDULE T EXHIBIT OF MEDICAL PROFESSIONAL LIABILITY PREMIUMS WRITTEN ALLOCATED BY STATES AND TERRITORIES

Table with 9 columns: States, etc.; Direct Premiums Written; Direct Premiums Earned; Direct Losses Paid (Amount, No. of Claims); Direct Losses Incurred; Direct Losses Unpaid (Amount Reported, No. of Claims); Direct Losses Incurred But Not Reported. The table contains a large 'NONE' watermark across the center.



SUPPLEMENT FOR THE QUARTER ENDING SEPTEMBER 30, 2014 OF THE NATIONWIDE INDEMNITY COMPANY

Designate the type of health care providers reported on this page: Other health care facilities

SUPPLEMENT A TO SCHEDULE T EXHIBIT OF MEDICAL PROFESSIONAL LIABILITY PREMIUMS WRITTEN ALLOCATED BY STATES AND TERRITORIES

Table with 8 columns: States, etc.; Direct Premiums Written; Direct Premiums Earned; Direct Losses Paid (Amount, No. of Claims); Direct Losses Incurred; Direct Losses Unpaid (Amount Reported, No. of Claims); Direct Losses Incurred But Not Reported. The table contains a large 'NONE' watermark across the center.