



PROPERTY AND CASUALTY COMPANIES - ASSOCIATION EDITION

QUARTERLY STATEMENT

AS OF JUNE 30, 2014

OF THE CONDITION AND AFFAIRS OF THE

Scottsdale Insurance Company

NAIC Group Code	0140	0140	NAIC Company Code	41297	Employer's ID Number	31-1024978
	(Current)	(Prior)				
Organized under the Laws of	Ohio		, State of Domicile or Port of Entry		Ohio	
Country of Domicile	United States of America					
Incorporated/Organized	01/04/1982			Commenced Business 07/01/1982		
Statutory Home Office	One West Nationwide Blvd.			Columbus , OH, US 43215-2220		
	(Street and Number)			(City or Town, State, Country and Zip Code)		
Main Administrative Office	8877 N. Gainey Center Drive					
	(Street and Number)					
	Scottsdale , AZ, US 85258-2108			480-365-4000		
	(City or Town, State, Country and Zip Code)			(Area Code) (Telephone Number)		
Mail Address	One West Nationwide Blvd., 1-04-701			Columbus , OH, US 43215-2220		
	(Street and Number or P.O. Box)			(City or Town, State, Country and Zip Code)		
Primary Location of Books and Records	One West Nationwide Blvd., 1-04-701					
	(Street and Number)					
	Columbus , OH, US 43215-2220			614-249-1545		
	(City or Town, State, Country and Zip Code)			(Area Code) (Telephone Number)		
Internet Website Address	www.scottsdaleins.com					
Statutory Statement Contact	Monda S. Caudill			614-249-1545		
	(Name)			(Area Code) (Telephone Number)		
	FinRpt@nationwide.com			866-315-1430		
	(E-mail Address)			(FAX Number)		

OFFICERS

President & COO	Michael Dean Miller	VP & Treasurer	Michael Patrick Leach
VP & Secretary	Robert William Horner III		

OTHER

Pamela Ann Biesecker	Sr VP-Head of Taxation	Craig Edward Landi	Sr VP-Underwriting	Gary Lynn Tiepelman	Sr VP-Underwriting
Andrew Dawnly Walker	Sr VP-IT Fin & Hd of Sourcing				

DIRECTORS OR TRUSTEES

Kim Wesley Austen	#	Kenneth Ari Levine	Michael Dean Miller
David Neil Nelson	#	Gary Lynn Tiepelman	

State of	Ohio	SS:
County of	Franklin	

The officers of this reporting entity being duly sworn, each depose and say that they are the described officers of said reporting entity, and that on the reporting period stated above, all of the herein described assets were the absolute property of the said reporting entity, free and clear from any liens or claims thereon, except as herein stated, and that this statement, together with related exhibits, schedules and explanations therein contained, annexed or referred to, is a full and true statement of all the assets and liabilities and of the condition and affairs of the said reporting entity as of the reporting period stated above, and of its income and deductions therefrom for the period ended, and have been completed in accordance with the NAIC Annual Statement Instructions and Accounting Practices and Procedures manual except to the extent that: (1) state law may differ; or, (2) that state rules or regulations require differences in reporting not related to accounting practices and procedures, according to the best of their information, knowledge and belief, respectively. Furthermore, the scope of this attestation by the described officers also includes the related corresponding electronic filing with the NAIC, when required, that is an exact copy (except for formatting differences due to electronic filing) of the enclosed statement. The electronic filing may be requested by various regulators in lieu of or in addition to the enclosed statement.

Michael Dean Miller	Robert William Horner III	Michael Patrick Leach
President & COO	VP & Secretary	VP & Treasurer

Subscribed and sworn to before me this	a. Is this an original filing?	Yes [X] No []
day of	b. If no,	
July, 2014	1. State the amendment number.....	
	2. Date filed	
	3. Number of pages attached.....	

STATEMENT AS OF JUNE 30, 2014 OF THE SCOTTSDALE INSURANCE COMPANY

ASSETS

	Current Statement Date			4 December 31 Prior Year Net Admitted Assets
	1 Assets	2 Nonadmitted Assets	3 Net Admitted Assets (Cols. 1 - 2)	
1. Bonds	1,126,467,740		1,126,467,740	1,104,440,208
2. Stocks:				
2.1 Preferred stocks				
2.2 Common stocks	278,143,985		278,143,985	237,058,886
3. Mortgage loans on real estate:				
3.1 First liens	1,799,733		1,799,733	2,684,156
3.2 Other than first liens.....				
4. Real estate:				
4.1 Properties occupied by the company (less \$ encumbrances)				
4.2 Properties held for the production of income (less \$ encumbrances)				
4.3 Properties held for sale (less \$ encumbrances)				
5. Cash (\$(58,338,773)), cash equivalents (\$) and short-term investments (\$16,573,774)	(41,764,999)		(41,764,999)	(29,394,641)
6. Contract loans (including \$ premium notes)				
7. Derivatives				
8. Other invested assets				
9. Receivables for securities				
10. Securities lending reinvested collateral assets	209,440	129,286	80,154	1,360,730
11. Aggregate write-ins for invested assets				
12. Subtotals, cash and invested assets (Lines 1 to 11)	1,364,855,899	129,286	1,364,726,613	1,316,149,339
13. Title plants less \$ charged off (for Title insurers only)				
14. Investment income due and accrued	11,837,899		11,837,899	11,264,125
15. Premiums and considerations:				
15.1 Uncollected premiums and agents' balances in the course of collection	502,791,238	23,541,773	479,249,465	453,365,276
15.2 Deferred premiums, agents' balances and installments booked but deferred and not yet due (including \$ earned but unbilled premiums)	115,916,143	189,572	115,726,571	109,821,565
15.3 Accrued retrospective premiums				
16. Reinsurance:				
16.1 Amounts recoverable from reinsurers	130,878,962		130,878,962	128,582,377
16.2 Funds held by or deposited with reinsured companies	222,647		222,647	256,737
16.3 Other amounts receivable under reinsurance contracts	4,435,671		4,435,671	13,278,715
17. Amounts receivable relating to uninsured plans				
18.1 Current federal and foreign income tax recoverable and interest thereon	1,052,426		1,052,426	
18.2 Net deferred tax asset	49,255,595	103,226	49,152,369	46,927,393
19. Guaranty funds receivable or on deposit	262,635		262,635	492,175
20. Electronic data processing equipment and software				
21. Furniture and equipment, including health care delivery assets (\$)				
22. Net adjustment in assets and liabilities due to foreign exchange rates	479		479	
23. Receivables from parent, subsidiaries and affiliates	53,914,314	575	53,913,739	45,305,814
24. Health care (\$) and other amounts receivable				
25. Aggregate write-ins for other than invested assets	11,241,504	2,510,416	8,731,088	7,882,642
26. Total assets excluding Separate Accounts, Segregated Accounts and Protected Cell Accounts (Lines 12 to 25)	2,246,665,412	26,474,848	2,220,190,564	2,133,326,158
27. From Separate Accounts, Segregated Accounts and Protected Cell Accounts				
28. Total (Lines 26 and 27)	2,246,665,412	26,474,848	2,220,190,564	2,133,326,158
DETAILS OF WRITE-INS				
1101.				
1102.				
1103.				
1198. Summary of remaining write-ins for Line 11 from overflow page				
1199. Totals (Lines 1101 through 1103 plus 1198)(Line 11 above)				
2501. Deposits and prepaid assets	302,834	302,834		
2502. Funds held equity pools & associations	6,607,189		6,607,189	6,721,021
2503. Miscellaneous assets	356,637	330,187	26,450	3,158
2598. Summary of remaining write-ins for Line 25 from overflow page	3,974,844	1,877,395	2,097,449	1,158,463
2599. Totals (Lines 2501 through 2503 plus 2598)(Line 25 above)	11,241,504	2,510,416	8,731,088	7,882,642

STATEMENT AS OF JUNE 30, 2014 OF THE SCOTTSDALE INSURANCE COMPANY

LIABILITIES, SURPLUS AND OTHER FUNDS

	1 Current Statement Date	2 December 31, Prior Year
1. Losses (current accident year \$115,996,031)	401,990,649	379,084,069
2. Reinsurance payable on paid losses and loss adjustment expenses	100,137,945	98,515,467
3. Loss adjustment expenses	87,373,306	87,337,625
4. Commissions payable, contingent commissions and other similar charges	14,008,057	14,721,993
5. Other expenses (excluding taxes, licenses and fees)	3,145,933	4,965,165
6. Taxes, licenses and fees (excluding federal and foreign income taxes)	2,553,625	3,785,387
7.1 Current federal and foreign income taxes (including \$ on realized capital gains (losses))		9,372,931
7.2 Net deferred tax liability		
8. Borrowed money \$ and interest thereon \$		
9. Unearned premiums (after deducting unearned premiums for ceded reinsurance of \$1,281,397,476 and including warranty reserves of \$639,311 and accrued accident and health experience rating refunds including \$ for medical loss ratio rebate per the Public Health Service Act)	285,604,549	275,005,566
10. Advance premium	6,195,847	5,363,747
11. Dividends declared and unpaid:		
11.1 Stockholders		
11.2 Policyholders	387,692	360,325
12. Ceded reinsurance premiums payable (net of ceding commissions)	507,461,075	474,829,186
13. Funds held by company under reinsurance treaties	247,132	222,668
14. Amounts withheld or retained by company for account of others	8,081,535	14,490,706
15. Remittances and items not allocated	2,448,252	2,214,889
16. Provision for reinsurance (including \$ certified)	7,782,677	7,782,677
17. Net adjustments in assets and liabilities due to foreign exchange rates		157
18. Drafts outstanding		
19. Payable to parent, subsidiaries and affiliates	28,448,226	28,426,025
20. Derivatives		
21. Payable for securities		
22. Payable for securities lending	346,000	1,612,490
23. Liability for amounts held under uninsured plans		
24. Capital notes \$ and interest thereon \$		
25. Aggregate write-ins for liabilities	5,327,304	8,870,390
26. Total liabilities excluding protected cell liabilities (Lines 1 through 25)	1,461,539,804	1,416,961,463
27. Protected cell liabilities		
28. Total liabilities (Lines 26 and 27)	1,461,539,804	1,416,961,463
29. Aggregate write-ins for special surplus funds		
30. Common capital stock	6,027,200	6,027,200
31. Preferred capital stock		
32. Aggregate write-ins for other than special surplus funds		
33. Surplus notes		
34. Gross paid in and contributed surplus	173,973,300	143,973,300
35. Unassigned funds (surplus)	578,650,260	566,364,195
36. Less treasury stock, at cost:		
36.1 shares common (value included in Line 30 \$)		
36.2 shares preferred (value included in Line 31 \$)		
37. Surplus as regards policyholders (Lines 29 to 35, less 36)	758,650,760	716,364,695
38. Totals (Page 2, Line 28, Col. 3)	2,220,190,564	2,133,326,158
DETAILS OF WRITE-INS		
2501. Contingent suits	938,359	1,024,244
2502. Escrow liability	267,654	255,326
2503. Loss based assessment		465,364
2598. Summary of remaining write-ins for Line 25 from overflow page	4,121,291	7,125,456
2599. Totals (Lines 2501 through 2503 plus 2598)(Line 25 above)	5,327,304	8,870,390
2901.		
2902.		
2903.		
2998. Summary of remaining write-ins for Line 29 from overflow page		
2999. Totals (Lines 2901 through 2903 plus 2998)(Line 29 above)		
3201.		
3202.		
3203.		
3298. Summary of remaining write-ins for Line 32 from overflow page		
3299. Totals (Lines 3201 through 3203 plus 3298)(Line 32 above)		

STATEMENT OF INCOME

	1	2	3
	Current Year to Date	Prior Year to Date	Prior Year Ended December 31
UNDERWRITING INCOME			
1. Premiums earned:			
1.1 Direct (written \$763,801,874)	746,760,130	654,528,307	1,362,646,994
1.2 Assumed (written \$1,057,897,055)	995,519,668	913,000,524	1,890,280,991
1.3 Ceded (written \$1,463,279,002)	1,394,458,851	1,239,978,523	2,585,595,254
1.4 Net (written \$358,419,927)	347,820,947	327,550,308	667,332,731
DEDUCTIONS:			
2. Losses incurred (current accident year \$221,714,253):			
2.1 Direct	377,458,645	307,619,363	621,010,965
2.2 Assumed	640,778,876	558,075,303	1,110,061,112
2.3 Ceded	794,990,820	680,891,679	1,358,531,563
2.4 Net	223,246,701	184,802,987	372,540,514
3. Loss adjustment expenses incurred	33,798,922	34,049,895	69,117,014
4. Other underwriting expenses incurred	118,609,977	119,715,322	237,970,638
5. Aggregate write-ins for underwriting deductions			14,475
6. Total underwriting deductions (Lines 2 through 5)	375,655,600	338,568,204	679,642,641
7. Net income of protected cells			
8. Net underwriting gain or (loss) (Line 1 minus Line 6 + Line 7)	(27,834,653)	(11,017,896)	(12,309,910)
INVESTMENT INCOME			
9. Net investment income earned	20,966,254	17,234,635	35,903,328
10. Net realized capital gains (losses) less capital gains tax of \$(23,485)	43,410	(14,723)	(392,539)
11. Net investment gain (loss) (Lines 9 + 10)	21,009,664	17,219,912	35,510,789
OTHER INCOME			
12. Net gain or (loss) from agents' or premium balances charged off (amount recovered \$20,703 amount charged off \$1,457,973)	(1,437,270)	(1,470,826)	(2,948,112)
13. Finance and service charges not included in premiums	3,211,841	3,355,280	6,669,984
14. Aggregate write-ins for miscellaneous income	1,416,906	1,140,683	1,086,985
15. Total other income (Lines 12 through 14)	3,191,477	3,025,137	4,808,857
16. Net income before dividends to policyholders, after capital gains tax and before all other federal and foreign income taxes (Lines 8 + 11 + 15)	(3,633,512)	9,227,153	28,009,736
17. Dividends to policyholders	260,526	269,942	475,406
18. Net income, after dividends to policyholders, after capital gains tax and before all other federal and foreign income taxes (Line 16 minus Line 17)	(3,894,038)	8,957,211	27,534,330
19. Federal and foreign income taxes incurred	383,081	5,984,826	11,339,111
20. Net income (Line 18 minus Line 19)(to Line 22)	(4,277,119)	2,972,385	16,195,219
CAPITAL AND SURPLUS ACCOUNT			
21. Surplus as regards policyholders, December 31 prior year	716,364,695	670,198,712	670,198,712
22. Net income (from Line 20)	(4,277,119)	2,972,385	16,195,219
23. Net transfers (to) from Protected Cell accounts			
24. Change in net unrealized capital gains (losses) less capital gains tax of \$1,375,667	13,657,386	1,473,379	9,385,630
25. Change in net unrealized foreign exchange capital gain (loss)	(28,108)	(394,153)	(457,289)
26. Change in net deferred income tax	3,703,869	2,796,315	10,038,592
27. Change in nonadmitted assets	(769,963)	7,743,770	13,213,249
28. Change in provision for reinsurance			(2,209,418)
29. Change in surplus notes			
30. Surplus (contributed to) withdrawn from protected cells			
31. Cumulative effect of changes in accounting principles			
32. Capital changes:			
32.1 Paid in			
32.2 Transferred from surplus (Stock Dividend)			
32.3 Transferred to surplus			
33. Surplus adjustments:			
33.1 Paid in	30,000,000		
33.2 Transferred to capital (Stock Dividend)			
33.3 Transferred from capital			
34. Net remittances from or (to) Home Office			
35. Dividends to stockholders			
36. Change in treasury stock			
37. Aggregate write-ins for gains and losses in surplus			
38. Change in surplus as regards policyholders (Lines 22 through 37)	42,286,065	14,591,696	46,165,983
39. Surplus as regards policyholders, as of statement date (Lines 21 plus 38)	758,650,760	684,790,408	716,364,695
DETAILS OF WRITE-INS			
0501. Loss based assessment			14,475
0502.			
0503.			
0598. Summary of remaining write-ins for Line 5 from overflow page			
0599. Totals (Lines 0501 through 0503 plus 0598)(Line 5 above)			14,475
1401. Change in contingent suit liability	85,885	64,212	(503,887)
1402. Other income	1,331,021	1,076,471	1,590,872
1403.			
1498. Summary of remaining write-ins for Line 14 from overflow page			
1499. Totals (Lines 1401 through 1403 plus 1498)(Line 14 above)	1,416,906	1,140,683	1,086,985
3701.			
3702.			
3703.			
3798. Summary of remaining write-ins for Line 37 from overflow page			
3799. Totals (Lines 3701 through 3703 plus 3798)(Line 37 above)			

STATEMENT AS OF JUNE 30, 2014 OF THE SCOTTSDALE INSURANCE COMPANY

CASH FLOW

	1 Current Year To Date	2 Prior Year To Date	3 Prior Year Ended December 31
Cash from Operations			
1. Premiums collected net of reinsurance	360,325,545	335,190,633	715,480,790
2. Net investment income	21,300,848	16,978,882	37,228,240
3. Miscellaneous income	12,068,610	(216,145)	(7,212,981)
4. Total (Lines 1 to 3)	393,695,003	351,953,370	745,496,049
5. Benefit and loss related payments	201,114,593	108,426,164	299,833,856
6. Net transfers to Separate Accounts, Segregated Accounts and Protected Cell Accounts			
7. Commissions, expenses paid and aggregate write-ins for deductions	156,373,971	134,537,031	283,441,421
8. Dividends paid to policyholders	233,159	169,278	392,683
9. Federal and foreign income taxes paid (recovered) net of \$ (138,649) tax on capital gains (losses)	10,784,953	81,679	219,837
10. Total (Lines 5 through 9)	368,506,675	243,214,151	583,887,798
11. Net cash from operations (Line 4 minus Line 10)	25,188,328	108,739,219	161,608,252
Cash from Investments			
12. Proceeds from investments sold, matured or repaid:			
12.1 Bonds	61,790,556	45,859,652	103,750,911
12.2 Stocks		17,980	17,980
12.3 Mortgage loans	884,584	86,202	175,178
12.4 Real estate			
12.5 Other invested assets	1,264,624		314,931
12.6 Net gains or (losses) on cash, cash equivalents and short-term investments	219	2,144	1,620
12.7 Miscellaneous proceeds			
12.8 Total investment proceeds (Lines 12.1 to 12.7)	63,939,983	45,965,978	104,260,619
13. Cost of investments acquired (long-term only):			
13.1 Bonds	80,793,934	229,866,372	332,972,201
13.2 Stocks	30,000,000		
13.3 Mortgage loans			
13.4 Real estate			
13.5 Other invested assets		170,138	
13.6 Miscellaneous applications		150,126	171,668
13.7 Total investments acquired (Lines 13.1 to 13.6)	110,793,934	230,186,636	333,143,869
14. Net increase (or decrease) in contract loans and premium notes			
15. Net cash from investments (Line 12.8 minus Line 13.7 and Line 14)	(46,853,951)	(184,220,658)	(228,883,250)
Cash from Financing and Miscellaneous Sources			
16. Cash provided (applied):			
16.1 Surplus notes, capital notes			
16.2 Capital and paid in surplus, less treasury stock	30,000,000		
16.3 Borrowed funds			
16.4 Net deposits on deposit-type contracts and other insurance liabilities			
16.5 Dividends to stockholders			
16.6 Other cash provided (applied)	(20,704,735)	(11,541,605)	(20,245,465)
17. Net cash from financing and miscellaneous sources (Line 16.1 through Line 16.4 minus Line 16.5 plus Line 16.6)	9,295,265	(11,541,605)	(20,245,465)
RECONCILIATION OF CASH, CASH EQUIVALENTS AND SHORT-TERM INVESTMENTS			
18. Net change in cash, cash equivalents and short-term investments (Line 11, plus Lines 15 and 17) ..	(12,370,358)	(87,023,044)	(87,520,463)
19. Cash, cash equivalents and short-term investments:			
19.1 Beginning of year	(29,394,641)	58,125,822	58,125,822
19.2 End of period (Line 18 plus Line 19.1)	(41,764,999)	(28,897,222)	(29,394,641)

Note: Supplemental disclosures of cash flow information for non-cash transactions:

--	--	--	--

NOTES TO FINANCIAL STATEMENTS

Note 1 - Summary of Significant Accounting Policies

A. Accounting Practices

The accompanying statutory financial statements of Scottsdale Insurance Company (the Company) have been prepared in conformity with accounting practices prescribed or permitted by the National Association of Insurance Commissioners (NAIC) and the State of Ohio.

The Ohio Insurance Department recognizes only statutory accounting practices (SAP) prescribed or permitted by the State of Ohio for determining and reporting the financial condition and results of operations of an insurance company, as well as, determining its solvency under the Ohio Insurance law. The National Association of Insurance Commissioners' (NAIC) *Accounting Practices and Procedures Manual* (NAIC SAP) has been adopted as a component of prescribed or permitted practices by the State of Ohio.

A reconciliation of the Company's net income and capital and surplus between NAIC SAP and practices prescribed and permitted by the State of Ohio is shown below:

	State of Domicile	2014	2013
NET INCOME			
(1) Scottsdale Insurance Company state basis (Page 4, Line 20, Columns 1 & 3)	OH	\$ (4,277,119)	\$ 16,195,219
(2) State Prescribed Practices that increase/(decrease) NAIC SAP	OH	-	-
(3) State Permitted Practices that increase/(decrease) NAIC SAP	OH	-	-
(4) NAIC SAP (1-2-3=4)	OH	\$ (4,277,119)	\$ 16,195,219
SURPLUS			
(5) Scottsdale Insurance Company state basis (Page 3, Line 37, Columns 1 & 2)	OH	\$ 758,650,760	\$ 716,364,695
(6) State Prescribed Practices that increase/(decrease) NAIC SAP	OH	-	-
(7) State Permitted Practices that increase/(decrease) NAIC SAP	OH	-	-
(8) NAIC SAP (5-6-7=8)	OH	\$ 758,650,760	\$ 716,364,695

C. Accounting Policies

7. Investments in subsidiary and affiliated companies are stated as follows:

The admitted investments in all subsidiary, controlled, and affiliated (SCA) entities are valued using an equity method approach. Under this approach, investments in insurance affiliated companies are stated at underlying audited statutory surplus adjusted for unamortized goodwill. Investments in non-insurance affiliated companies that have no significant ongoing operations other than to hold assets that are primarily for the direct or indirect benefit or use of the reporting entity or its affiliates are stated at audited GAAP equity adjusted to a statutory basis of accounting. Investments in non-insurance affiliated companies that have significant ongoing operations beyond holding assets that are primarily for the direct or indirect benefit or use of the reporting entity or its affiliates are stated at audited GAAP equity. Unaudited affiliated companies of the reporting entity or its affiliates are non-admitted under prescribed SAP accounting practices. Goodwill arising from the acquisition of affiliated companies is amortized over a period of ten years. Investments in affiliated companies are generally included in stocks. Unamortized goodwill at June 30, 2014 was \$11.9 million, which was fully admitted based upon adjusted policyholder surplus.

Note 2 - Accounting Changes and Corrections of Errors

No change.

Note 3 - Business Combinations and Goodwill

No change.

Note 4 - Discontinued Operations

No change.

Note 5 - Investments

A. Mortgage Loans

No change.

B. Troubled Debt Restructuring for Creditors

No change.

C. Reverse Mortgages

No change.

D. Loan-Backed Securities

- Prepayment assumptions are generally obtained using a model provided by a third-party vendor.
- Not applicable.
- Not applicable.
- All impaired securities (fair value is less than cost or amortized cost) for which an other-than-temporary impairment has not been recognized in earnings as a realized loss (including securities with a recognized other-than-temporary impairment for non-interest related declines when a non-recognized interest related impairment remains):

a. The aggregate amount of unrealized losses:

1.	Less than 12 Months	\$ -
2.	12 Months or Longer	\$ (42,989)

b. The aggregate related fair value of securities with unrealized losses:

1.	Less than 12 Months	\$ -
2.	12 Months or Longer	\$ 10,658,682

NOTES TO FINANCIAL STATEMENTS

5. The Company reviews all loan-backed and structured securities in which the fair value of the given security is less than the amortized cost to determine if a given security is other-than-temporarily impaired. The Company examines characteristics of the underlying collateral, such as delinquency and default rates, the quality of the underlying borrower, the type of collateral in the pool, the vintage year of the collateral, subordination levels within the structure of the collateral pool, and the quality of any credit guarantors, to determine the cash flows expected to be received for the security.

If the severity and duration of the security's unrealized loss indicates a risk of an other-than-temporary impairment, then the Company will evaluate if the amortized cost basis of the security will be recovered by comparing the present value of the cash flows expected to be received for the given security with the amortized cost basis of the security. If the present value of cash flows is greater than the amortized cost basis of a security then the security is deemed not to be other-than-temporarily impaired.

E. Repurchase Agreements and Securities Lending Transactions

3. Collateral Received

- b. The fair value as of the date of each statement of financial position presented of that collateral and of the portion of that collateral that it has sold or replighted is \$209,440.

F. Real Estate

No change.

G. Low-Income Housing Tax Credits

No change.

H. Restricted Assets

No change.

I. Working Capital Finance Investments

Not applicable.

Note 6 - Joint Ventures, Partnerships and Limited Liability Companies

No change.

Note 7 - Investment Income

No change.

Note 8 - Derivative Instruments

No change.

Note 9 - Income Taxes

No change.

Note 10 - Information Concerning Parent, Subsidiaries, Affiliates and Other Related Parties

B. Detail of Transactions Greater than ½ % of Admitted Assets

On May 28, 2014, the Company received a capital contribution of \$30 million from Nationwide Mutual Insurance Company. The Company contributed the \$30 million to Scottsdale Surplus Lines Insurance Company.

C. Change in Terms of Intercompany Arrangements

Effective January 1, 2013, there are changes to the Nationwide Pool. See Note 26.

Note 11 - Debt

B. FHLB (Federal Home Loan Bank) Agreements

Not applicable.

Note 12 - Retirement Plans, Deferred Compensation, Postemployment Benefits and Compensated Absences and Other Postretirement Benefit Plans

Not applicable.

Note 13 - Capital and Surplus, Dividend Restrictions and Quasi-Reorganizations

No change.

Note 14 – Contingencies

A. Contingent Commitments

On February 12, 2014, the California Insurance Department rescinded the requirement of the Company to add additional capital or renegotiate the reinsurance agreement between itself and Veterinary Pet Insurance, or both, in order to maintain the capital and surplus of Veterinary Pet Services at or above the \$2.0 million required by the Department.

Note 15 – Leases

No change.

NOTES TO FINANCIAL STATEMENTS

Note 16 - Information About Financial Instruments With Off-Balance Sheet Risk And Financial Instruments With Concentrations of Credit Risk

No change.

Note 17 - Sale, Transfer and Servicing of Financial Assets and Extinguishments of Liabilities

A. Transfers of Receivables Reported as Sales

No change.

B. Transfers and Servicing of Financial Assets

Not applicable.

C. Wash Sales

Not applicable.

Note 18 - Gain or Loss to the Reporting Entity from Uninsured Plans and the Uninsured Portion of Partially Insured Plans

No change.

Note 19 - Direct Premiums Written/Produced by Managing General Agents/Third Party Administrators

No change.

Note 20 – Fair Value Measurements

Fair value is defined as the price that would be received to sell an asset or paid to transfer a liability in an orderly transaction between market participants at the measurement date. Fair value measurements are based upon observable and unobservable inputs. Observable inputs reflect market data obtained from independent sources while unobservable inputs reflect the Company's view of market assumptions in the absence of observable market information. The Company utilizes valuation techniques that maximize the use of observable inputs and minimize the use of unobservable inputs. In determining fair value, the Company uses various methods including market, income and cost approaches.

The Company categorizes its financial assets and liabilities into a three-level hierarchy based on the priority of the inputs to the valuation technique. The fair value hierarchy gives the highest priority to quoted prices in active markets for identical assets or liabilities (Level 1) and the lowest priority to unobservable inputs (Level 3). If the inputs used to measure fair value fall within different levels of the hierarchy, the category level is based on the lowest priority level input that is significant to the fair value measurement of the instrument in its entirety.

The Company categorizes financial assets and liabilities as follows:

Level 1. Unadjusted quoted prices accessible in active markets for identical assets or liabilities at the measurement date and mutual funds where the value per share (unit) is determined and published daily and is the basis for current transactions.

Level 2. Unadjusted quoted prices for similar assets or liabilities in active markets or inputs (other than quoted prices) that are observable or that are derived principally from or corroborated by observable market data through correlation or other means. Primary inputs to this valuation technique may include comparative trades, bid/asks, interest rate movements, U.S. Treasury rates, U.S. LIBOR, prime rates, cash flows, maturity dates, call ability, estimated prepayments and/or underlying collateral values.

Level 3. Prices or valuation techniques that require inputs that are both unobservable and significant to the overall fair value measurement. Inputs reflect management's best estimate about the assumptions market participants would use at the measurement date in pricing the asset or liability. Consideration is given to the risk inherent in both the method of valuation and the valuation inputs. Primary inputs to this valuation technique include broker quotes and comparative trades.

The Company reviews its fair value hierarchy classifications for financial assets and liabilities quarterly. Changes in observability of significant valuation inputs identified during these reviews may trigger reclassifications. Reclassifications are reported as transfers at the beginning of the period in which the change occurs.

To determine the fair value of bonds and stocks for which market quotations are available, independent pricing services are most often utilized. For these bonds and stocks, the Company obtains the pricing services' methodologies, inputs and assumptions and classifies the investments accordingly in the fair value hierarchy.

A corporate pricing matrix or an internally developed pricing model is used in valuing certain bonds. The corporate pricing matrix is developed using private spreads for bonds with varying weighted average lives and credit quality ratings. The weighted average life and credit quality rating of a particular bond to be priced using the corporate pricing matrix are important inputs into the model and are used to determine a corresponding spread that is added to the appropriate U.S. Treasury yield to create an estimated market yield for that bond. The estimated market yield and other relevant factors are then used to estimate the fair value of the particular bond.

Non-binding broker quotes are also utilized to determine the fair value of certain bonds when quotes are not available from independent pricing services, corporate pricing matrix or internal pricing models. These bonds are classified accordingly in the fair value hierarchy as only one broker quote is ordinarily obtained, the investment is not traded on an exchange, the pricing is not available to other entities and/or the transaction volume in the same or similar investments has decreased. Inputs used in the development of prices are not provided to the Company by the brokers as the brokers often do not provide the necessary transparency into their quotes and methodologies. Broker quotes are subject to validation of price movements that require approval from the Company's management. Management uses its knowledge of the investment and current market conditions to determine if the price is indicative of the investment's fair value.

Fair value of derivative instruments is determined using various valuation techniques relying predominately on observable market inputs. These inputs include interest rate swap curves, credit spreads, interest rates, counterparty credit risk, equity volatility and equity index levels. In cases where observable inputs are not available, the Company will utilize non-binding broker quotes to determine fair value and these instruments are classified accordingly in the fair value hierarchy.

NOTES TO FINANCIAL STATEMENTS

The following table summarizes financial assets and liabilities measured at fair value as of June 30, 2014:

	Level 1	Level 2	Level 3	Total
Assets at Fair Value				
U.S. Government bonds	\$ -	\$ -	\$ -	\$ -
States, Territories and Possessions	-	-	-	-
Political subdivisions	-	-	-	-
Special revenues	-	-	-	-
Hybrid Securities	-	-	-	-
Credit tenant loans	-	-	-	-
Industrial & Misc.	-	-	-	-
Total Bonds	\$ -	\$ -	\$ -	\$ -
Sec Lending	-	78,631	-	78,631
Preferred Stocks	-	-	-	-
Common Stocks	-	-	-	-
Loans held for sale	-	-	-	-
Separate Account Assets	-	-	-	-
Derivative Assets	-	-	-	-
Total Assets at Fair Value	\$ -	\$ 78,631	\$ -	\$ 78,631
Liabilities at Fair Value				
Derivatives Liabilities	-	-	-	-
Total Liabilities at Fair Value	\$ -	\$ -	\$ -	\$ -

The following table summarizes aggregate carrying value and fair value, by level, for all financial assets and liabilities, excluding assets and liabilities reported at fair value, as of June 30, 2014:

	Aggregate Fair Value	Admitted Assets	(Level 1)	(Level 2)	(Level 3)	Not Practicable (Carrying Value)
Assets						
Bonds	\$ 1,216,812,661	\$ 1,126,467,740	\$ 318,443,610	\$ 898,011,973	\$ 357,078	\$ -
Stocks	278,143,985	278,143,985	-	-	278,143,985	-
Mortgage loans	1,974,397	1,799,733	-	-	1,974,397	-
Short-term investments	16,573,775	16,573,775	-	16,573,775	-	-
Derivative assets	-	-	-	-	-	-
Policy loans	-	-	-	-	-	-
Securities lending collateral assets ¹	130,809	130,809	-	130,809	-	-
Total Assets	\$ 1,513,635,627	\$ 1,423,116,042	\$ 318,443,610	\$ 914,716,557	\$ 280,475,460	\$ -
Liabilities						
Derivative liabilities	\$ -	\$ -	\$ -	\$ -	\$ -	\$ -
Total Liabilities	\$ -	\$ -	\$ -	\$ -	\$ -	\$ -
1 - Includes non admitted assets						

Note 21 - Other Items

C. Other Disclosures

Effective June 1, 2014, the Company renewed its Property Catastrophe Program at 45% of \$200.0 million in excess of \$300.0 million.

G. Offsetting and Netting of Assets and Liabilities

No assets or liabilities are offset and reported net in accordance with a valid right to offset per SSAP No. 64, Offsetting and Netting of Assets and Liabilities.

NOTES TO FINANCIAL STATEMENTS

I. Risk Sharing Provisions of the Affordable Care Act

a. Permanent ACA Risk Adjustment Program		AMOUNT
Assets		
1. Premium adjustments receivable due to ACA Risk Adjustment	\$	-
Liabilities		
2. Risk adjustment user fees payable for ACA Risk Adjustment	\$	-
3. Premium adjustments payable due to ACA Risk Adjustment	\$	-
Operations (Revenue & Expense)		
4. Reported as revenue in premium for accident and health contracts (written/collected) due to ACA Risk Adjustment	\$	-
5. Reported in expenses as ACA risk adjustment user fees (incurred/paid)	\$	-
b. Transitional ACA Reinsurance Program		
Assets		
1. Amounts recoverable for claims paid due to ACA Reinsurance	\$	-
2. Amounts recoverable for claims unpaid due to ACA Reinsurance	\$	-
3. Amounts receivable relating to uninsured plans for contributions for ACA Reinsurance	\$	-
Liabilities		
4. Claims unpaid - ceded due to ACA Reinsurance	\$	-
5. Liabilities for contributions payable due to ACA Reinsurance - not reported as ceded premium	\$	-
6. Ceded reinsurance premiums payable due to ACA	\$	-
7. Liability for amounts held under uninsured plans contributions for ACA Reinsurance	\$	-
Operations (Revenue & Expense)		
8. Ceded reinsurance premiums due to ACA Reinsurance	\$	-
9. Reinsurance recoveries (income statement) due to ACA Reinsurance payments or expected payments	\$	-
10. ACA Reinsurance contributions - not reported as ceded premium	\$	-
c. Temporary ACA Risk Corridors Program		
Assets		
1. Accrued retrospective premium due to ACA Risk Corridors		
Liabilities		
2. Reserve for rate credits or policy experience rating refunds due to ACA Risk Corridors	\$	-
Operations (Revenue & Expense)		
3. Effect of ACA Risk Corridors on net premium income (paid/received)	\$	-
4. Effect of ACA Risk Corridors on change in reserves for rate credits	\$	-

Note 22 - Events Subsequent

Subsequent events have been considered through August 6, 2014 for these statutory financial statements which are to be issued August 7, 2014. There were no events occurring subsequent to the end of the quarter that merited recognition or disclosure in these statements.

Note 23 – Reinsurance

No change.

Note 24 - Retrospectively Rated Contracts and Contracts Subject to Redetermination

No change.

Note 25 - Changes in Incurred Losses and Loss Adjustment Expenses

No change.

Note 26 - Intercompany Pooling Arrangements

Nationwide Mutual Insurance Company (Mutual) is the lead company in the Nationwide Pool. Each member contributes 100% of its underwriting results to the Nationwide Pool through the reinsurance pooling agreement.

Effective January 1, 2013, Mutual's pooling percentage changed to 83% from 83.7%. In addition, Nationwide Mutual Fire Insurance Company's pooling percentage changed to 12% from 11.3%.

The companies in the Nationwide Pool assuming a proportionate share of the pool as of January 1, 2013, are:

	NAIC#	Pool
Nationwide Mutual Insurance Company	23787	83%
Nationwide Mutual Fire Insurance Company	23779	12%
Scottsdale Insurance Company	41297	4%
Farmland Mutual Insurance Company	13838	1%

Also, effective January 1, 2013, the following companies became zero percent participants in the Nationwide Pool: Harleysville Preferred Insurance Company (NAIC #35696), Harleysville Insurance Company of New Jersey (NAIC #42900), Harleysville Worcester Insurance Company (NAIC #26182), Harleysville Insurance Company of New York (NAIC #10674), Harleysville Pennland Insurance Company (NAIC #40983), Harleysville Lake States Insurance Company (NAIC #14516), and Harleysville Insurance Company (NAIC #23582).

Note 27 - Structured Settlements

No change.

NOTES TO FINANCIAL STATEMENTS

Note 28 - Health Care Receivables

No change.

Note 29 - Participating Policies

No change.

Note 30 - Premium Deficiency Reserves

No change.

Note 31 - High Deductibles

No change.

Note 32 - Discounting of Liabilities for Unpaid Losses or Unpaid Loss Adjustment Expenses

No change.

Note 33 - Asbestos/Environmental Reserves

No change.

Note 34 - Subscriber Savings Accounts

No change.

Note 35 - Multiple Peril Crop Insurance

No change.

Note 36 – Financial Guaranty Insurance

B. Schedule of Insured Financial Obligations at the End of the Period

Not applicable.

STATEMENT AS OF JUNE 30, 2014 OF THE SCOTTSDALE INSURANCE COMPANY

GENERAL INTERROGATORIES

PART 1 - COMMON INTERROGATORIES

GENERAL

- 1.1

Did the reporting entity experience any material transactions requiring the filing of Disclosure of Material Transactions with the State of Domicile, as required by the Model Act?

Yes ☐ No ☒
- 1.2

If yes, has the report been filed with the domiciliary state?

Yes ☐ No ☐
- 2.1

Has any change been made during the year of this statement in the charter, by-laws, articles of incorporation, or deed of settlement of the reporting entity?

Yes ☐ No ☒
- 2.2

If yes, date of change:
- 3.1

Is the reporting entity a member of an Insurance Holding Company System consisting of two or more affiliated persons, one or more of which is an insurer?
If yes, complete Schedule Y, Parts 1 and 1A.

Yes ☒ No ☐
- 3.2

Have there been any substantial changes in the organizational chart since the prior quarter end?

Yes ☐ No ☒
- 3.3

If the response to 3.2 is yes, provide a brief description of those changes.
- 4.1

Has the reporting entity been a party to a merger or consolidation during the period covered by this statement?

Yes ☐ No ☒
- 4.2

If yes, provide the name of the entity, NAIC Company Code, and state of domicile (use two letter state abbreviation) for any entity that has ceased to exist as a result of the merger or consolidation.

1 Name of Entity	2 NAIC Company Code	3 State of Domicile
5.

If the reporting entity is subject to a management agreement, including third-party administrator(s), managing general agent(s), attorney-in-fact, or similar agreement, have there been any significant changes regarding the terms of the agreement or principals involved?
If yes, attach an explanation.

Yes ☐ No ☒ N/A ☐
- 6.1

State as of what date the latest financial examination of the reporting entity was made or is being made.

12/31/2011
- 6.2

State the as of date that the latest financial examination report became available from either the state of domicile or the reporting entity. This date should be the date of the examined balance sheet and not the date the report was completed or released.

12/31/2011
- 6.3

State as of what date the latest financial examination report became available to other states or the public from either the state of domicile or the reporting entity. This is the release date or completion date of the examination report and not the date of the examination (balance sheet date).

03/13/2013
- 6.4

By what department or departments?
OH
- 6.5

Have all financial statement adjustments within the latest financial examination report been accounted for in a subsequent financial statement filed with Departments?

Yes ☐ No ☐ N/A ☒
- 6.6

Have all of the recommendations within the latest financial examination report been complied with?

Yes ☐ No ☐ N/A ☒
- 7.1

Has this reporting entity had any Certificates of Authority, licenses or registrations (including corporate registration, if applicable) suspended or revoked by any governmental entity during the reporting period?

Yes ☐ No ☒
- 7.2

If yes, give full information:
- 8.1

Is the company a subsidiary of a bank holding company regulated by the Federal Reserve Board?

Yes ☐ No ☒
- 8.2

If response to 8.1 is yes, please identify the name of the bank holding company.
- 8.3

Is the company affiliated with one or more banks, thrifts or securities firms?

Yes ☒ No ☐
- 8.4

If response to 8.3 is yes, please provide below the names and location (city and state of the main office) of any affiliates regulated by a federal regulatory services agency [i.e. the Federal Reserve Board (FRB), the Office of the Comptroller of the Currency (OCC), the Federal Deposit Insurance Corporation (FDIC) and the Securities Exchange Commission (SEC)] and identify the affiliate's primary federal regulator.

1 Affiliate Name	2 Location (City, State)	3 FRB	4 OCC	5 FDIC	6 SEC
Nationwide Bank	Columbus, OH	NO	YES	NO	NO
Nationwide Mutual Insurance Company	Columbus, OH	YES	NO	NO	NO
Nationwide Mutual Fire Insurance Company	Columbus, OH	YES	NO	NO	NO
Nationwide Corporation	Columbus, OH	YES	NO	NO	NO
Nationwide Financial Services, Inc.	Columbus, OH	YES	NO	NO	NO
Nationwide Investment Services Corp	Columbus, OH	NO	NO	NO	YES
Nationwide Investment Advisors, LLC	Columbus, OH	NO	NO	NO	YES
Nationwide Securities, LLC	Dublin, OH	NO	NO	NO	YES
Nationwide Fund Advisors	King of Prussia, PA	NO	NO	NO	YES
Nationwide Fund Distributors, LLC	King of Prussia, PA	NO	NO	NO	YES
Nationwide Asset Management, LLC	Columbus, OH	NO	NO	NO	YES

STATEMENT AS OF JUNE 30, 2014 OF THE SCOTTSDALE INSURANCE COMPANY

GENERAL INTERROGATORIES

- 9.1

Are the senior officers (principal executive officer, principal financial officer, principal accounting officer or controller, or persons performing similar functions) of the reporting entity subject to a code of ethics, which includes the following standards?
(a) Honest and ethical conduct, including the ethical handling of actual or apparent conflicts of interest between personal and professional relationships;
(b) Full, fair, accurate, timely and understandable disclosure in the periodic reports required to be filed by the reporting entity;
(c) Compliance with applicable governmental laws, rules and regulations;
(d) The prompt internal reporting of violations to an appropriate person or persons identified in the code; and
(e) Accountability for adherence to the code.

Yes [X] No []
- 9.11

If the response to 9.1 is No, please explain:
- 9.2

Has the code of ethics for senior managers been amended?

Yes [] No [X]
- 9.21

If the response to 9.2 is Yes, provide information related to amendment(s).
- 9.3

Have any provisions of the code of ethics been waived for any of the specified officers?

Yes [] No [X]
- 9.31

If the response to 9.3 is Yes, provide the nature of any waiver(s).

FINANCIAL

- 10.1

Does the reporting entity report any amounts due from parent, subsidiaries or affiliates on Page 2 of this statement?

Yes [X] No []
- 10.2

If yes, indicate any amounts receivable from parent included in the Page 2 amount:

\$.....53,764,569

INVESTMENT

- 11.1

Were any of the stocks, bonds, or other assets of the reporting entity loaned, placed under option agreement, or otherwise made available for use by another person? (Exclude securities under securities lending agreements.)

Yes [] No [X]
- 11.2

If yes, give full and complete information relating thereto:
12.

Amount of real estate and mortgages held in other invested assets in Schedule BA:

\$.....
13.

Amount of real estate and mortgages held in short-term investments:

\$.....
- 14.1

Does the reporting entity have any investments in parent, subsidiaries and affiliates?

Yes [X] No []
- 14.2

If yes, please complete the following:
- | | 1 | 2 |
|---|---|--|
| | Prior Year-End
Book/Adjusted
Carrying Value | Current Quarter
Book/Adjusted
Carrying Value |
| 14.21 Bonds | \$..... | \$..... |
| 14.22 Preferred Stock | \$..... | \$..... |
| 14.23 Common Stock | \$.....237,058,885 | \$.....278,143,985 |
| 14.24 Short-Term Investments | \$..... | \$..... |
| 14.25 Mortgage Loans on Real Estate | \$..... | \$..... |
| 14.26 All Other | \$..... | \$..... |
| 14.27 Total Investment in Parent, Subsidiaries and Affiliates (Subtotal Lines 14.21 to 14.26) | \$.....237,058,885 | \$.....278,143,985 |
| 14.28 Total Investment in Parent included in Lines 14.21 to 14.26 above | \$..... | \$..... |
- 15.1

Has the reporting entity entered into any hedging transactions reported on Schedule DB?

Yes [] No [X]
- 15.2

If yes, has a comprehensive description of the hedging program been made available to the domiciliary state?
If no, attach a description with this statement.

Yes [] No []

STATEMENT AS OF JUNE 30, 2014 OF THE SCOTTSDALE INSURANCE COMPANY

GENERAL INTERROGATORIES

16. For the reporting entity's security lending program, state the amount of the following as of the current statement date:
- 16.1 Total fair value of reinvested collateral assets reported on Schedule DL, Parts 1 and 2.

16.2 Total book adjusted/carrying value of reinvested collateral assets reported on Schedule DL, Parts 1 and 2.

16.3 Total payable for securities lending reported on the liability page.
- \$

209,440

\$

209,440

\$

346,000

17. Excluding items in Schedule E - Part 3 - Special Deposits, real estate, mortgage loans and investments held physically in the reporting entity's offices, vaults or safety deposit boxes, were all stocks, bonds and other securities, owned throughout the current year held pursuant to a custodial agreement with a qualified bank or trust company in accordance with Section 1, III - General Examination Considerations, F. Outsourcing of Critical Functions, Custodial or Safekeeping Agreements of the NAIC Financial Condition Examiners Handbook?
- Yes
- [X]
- No
- []

- 17.1 For all agreements that comply with the requirements of the NAIC Financial Condition Examiners Handbook, complete the following:

1 Name of Custodian(s)	2 Custodian Address
The Bank of New York Mellon	1 Wall Street, New York, NY 10286
The Royal Trust of Canada	155 Wellington St. W 2nd Floor Toronto, Ontario Canada M5V 3L3

- 17.2 For all agreements that do not comply with the requirements of the NAIC Financial Condition Examiners Handbook, provide the name, location and a complete explanation:

1 Name(s)	2 Location(s)	3 Complete Explanation(s)

- 17.3 Have there been any changes, including name changes, in the custodian(s) identified in 17.1 during the current quarter?
- Yes
- []
- No
- [X]

- 17.4 If yes, give full information relating thereto:

1 Old Custodian	2 New Custodian	3 Date of Change	4 Reason

- 17.5 Identify all investment advisors, brokers/dealers or individuals acting on behalf of broker/dealers that have access to the investment accounts, handle securities and have authority to make investments on behalf of the reporting entity:

1 Central Registration Depository	2 Name(s)	3 Address
N/A	Members of the investment staff designated by the Chief Investment Officer as detailed in the Corporate Resolution.	One Nationwide Blvd, Columbus, OH 43215-2220

- 18.1 Have all the filing requirements of the Purposes and Procedures Manual of the NAIC Securities Valuation Office been followed?
- Yes
- [X]
- No
- []

- 18.2 If no, list exceptions:

GENERAL INTERROGATORIES

PART 2 - PROPERTY & CASUALTY INTERROGATORIES

1.

If the reporting entity is a member of a pooling arrangement, did the agreement or the reporting entity's participation change?
If yes, attach an explanation.

Yes [] No [X] N/A []
2.

Has the reporting entity reinsured any risk with any other reporting entity and agreed to release such entity from liability, in whole or in part, from any loss that may occur on the risk, or portion thereof, reinsured?
If yes, attach an explanation.

Yes [] No [X]
- 3.1

Have any of the reporting entity's primary reinsurance contracts been canceled?

Yes [] No [X]
- 3.2

If yes, give full and complete information thereto.
- 4.1

Are any of the liabilities for unpaid losses and loss adjustment expenses other than certain workers' compensation tabular reserves (see Annual Statement Instructions pertaining to disclosure of discounting for definition of " tabular reserves") discounted at a rate of interest greater than zero?

Yes [] No [X]

4.2 If yes, complete the following schedule:

			TOTAL DISCOUNT				DISCOUNT TAKEN DURING PERIOD			
1	2	3	4	5	6	7	8	9	10	11
Line of Business	Maximum Interest	Discount Rate	Unpaid Losses	Unpaid LAE	IBNR	TOTAL	Unpaid Losses	Unpaid LAE	IBNR	TOTAL
TOTAL										

5.

Operating Percentages:

5.1 A&H loss percent70.450 %

5.2 A&H cost containment percent(0.020)%

5.3 A&H expense percent excluding cost containment expenses30.940 %
- 6.1

Do you act as a custodian for health savings accounts?

Yes [] No [X]
- 6.2

If yes, please provide the amount of custodial funds held as of the reporting date\$.....
- 6.3

Do you act as an administrator for health savings accounts?

Yes [] No [X]
- 6.4

If yes, please provide the balance of the funds administered as of the reporting date\$.....

SCHEDULE F - CEDED REINSURANCE

[illegible]

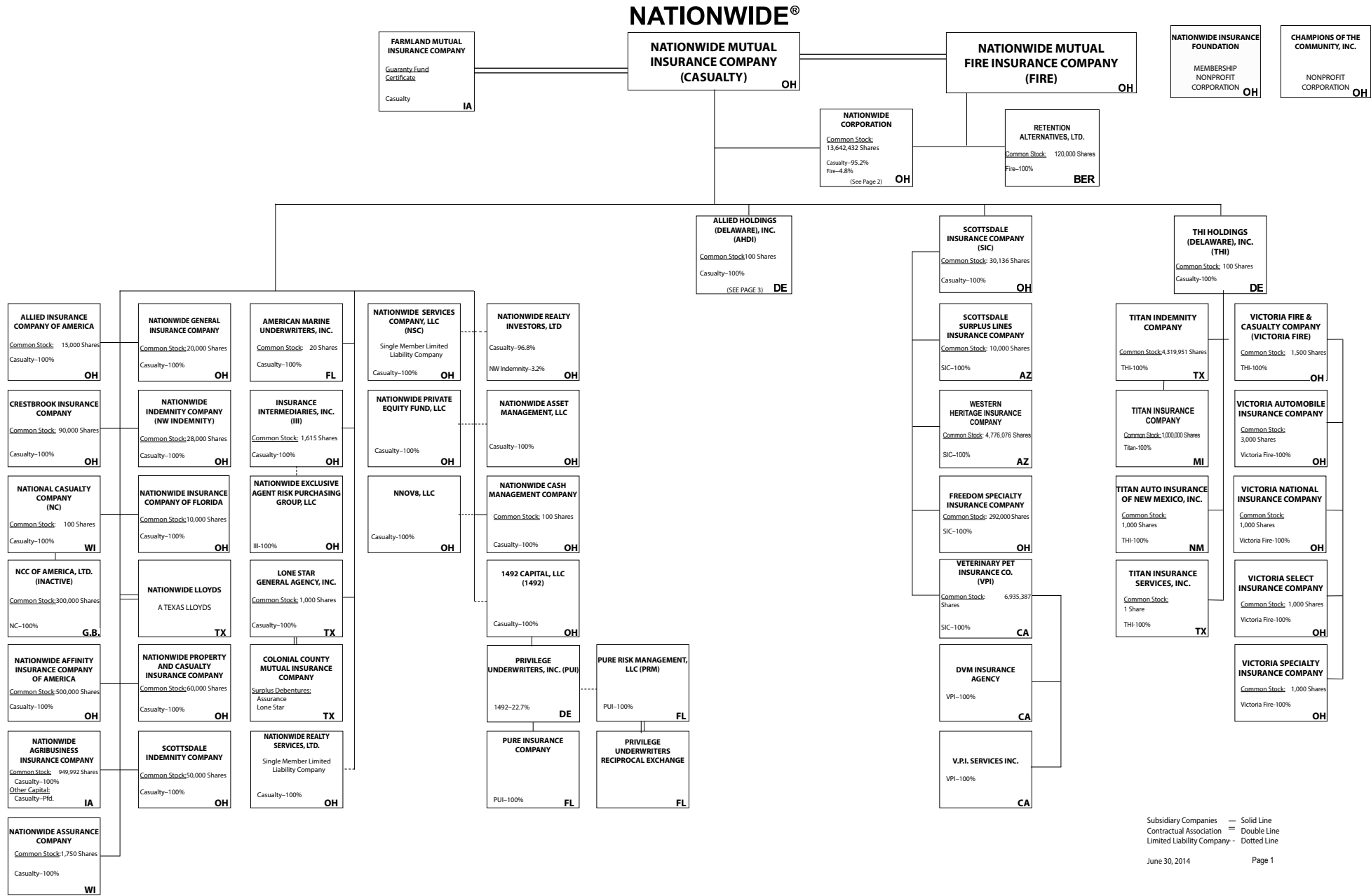
STATEMENT AS OF JUNE 30, 2014 OF THE SCOTTSDALE INSURANCE COMPANY

SCHEDULE T - EXHIBIT OF PREMIUMS WRITTEN

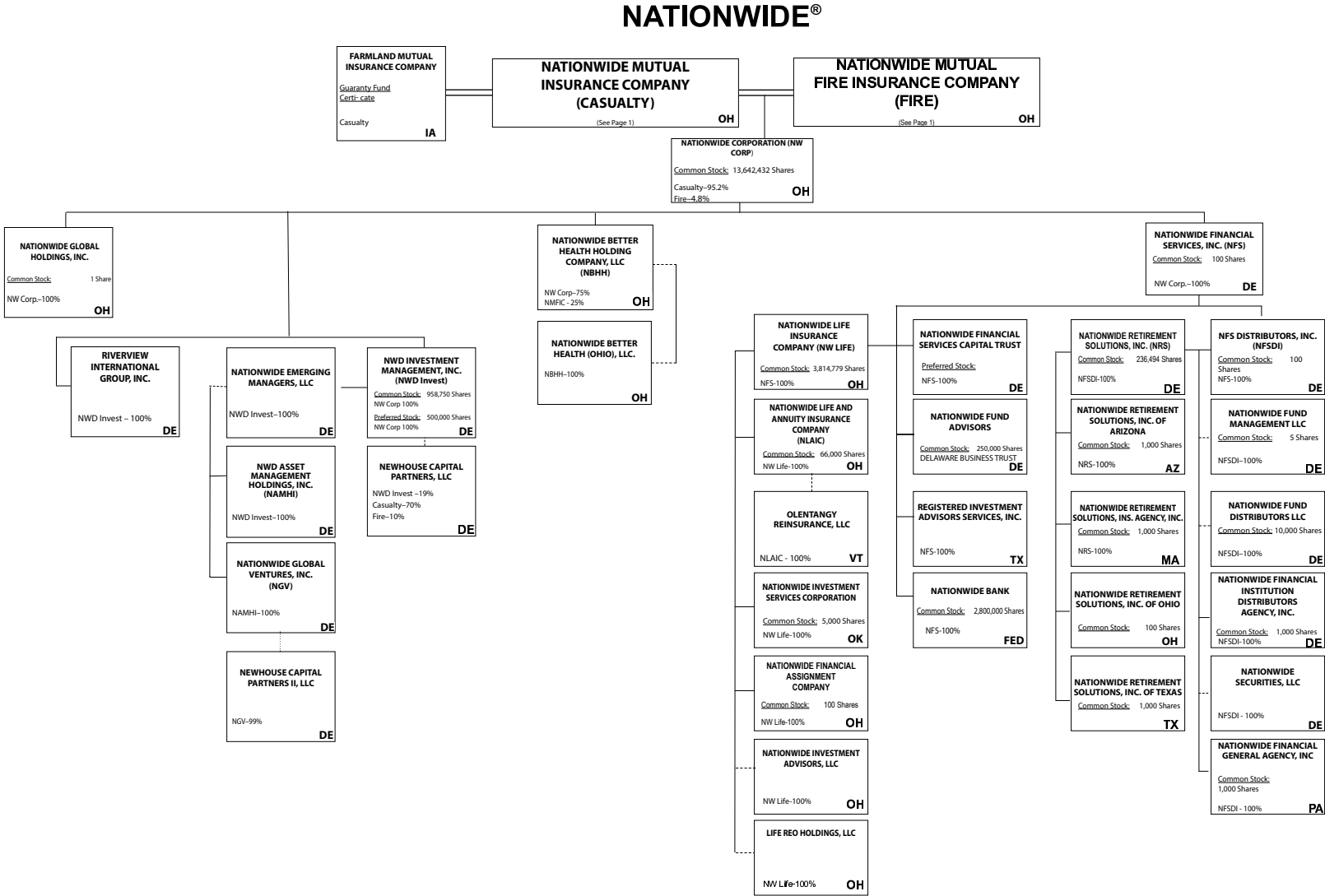
Current Year to Date - Allocated by States and Territories								
States, etc.	1 Active Status	Direct Premiums Written		Direct Losses Paid (Deducting Salvage)		Direct Losses Unpaid		
		2 Current Year To Date	3 Prior Year To Date	4 Current Year To Date	5 Prior Year To Date	6 Current Year To Date	7 Prior Year To Date	
1. Alabama	AL	E	13,406,411	13,034,906	6,914,986	4,353,974	14,328,231	12,547,912
2. Alaska	AK	E	1,714,273	1,377,427	90,787	498,399	2,426,592	2,626,029
3. Arizona	AZ	L	6,319,816	5,503,509	2,199,404	2,604,905	7,178,499	4,604,892
4. Arkansas	AR	E	3,738,751	3,619,672	3,149,878	1,464,618	7,164,475	4,850,393
5. California	CA	E	125,729,773	106,221,330	43,281,062	37,593,572	234,012,688	220,504,154
6. Colorado	CO	E	8,801,552	7,797,656	4,198,538	2,351,616	17,622,679	11,875,021
7. Connecticut	CT	E	4,984,859	4,729,815	1,669,521	2,738,894	10,179,992	11,473,838
8. Delaware	DE	L	344,725	471,146	271,834	206,662	1,488,726	1,085,478
9. District of Columbia	DC	E	6,287,990	1,965,020	83,444	1,288,876	9,635,426	1,895,000
10. Florida	FL	E	94,819,568	84,552,470	27,109,245	23,301,311	125,553,072	126,295,364
11. Georgia	GA	E	17,835,735	18,280,417	17,358,848	7,355,386	29,407,714	32,096,252
12. Hawaii	HI	E	5,564,209	5,660,415	1,154,881	607,223	8,075,825	10,015,393
13. Idaho	ID	E	1,854,569	1,710,990	135,455	1,504,654	2,216,455	2,809,414
14. Illinois	IL	E	17,846,899	17,903,075	3,914,962	7,698,157	47,497,812	53,296,880
15. Indiana	IN	E	11,696,021	9,285,051	3,973,126	1,258,741	15,469,639	13,595,778
16. Iowa	IA	E	4,860,407	3,988,713	2,514,822	1,105,361	10,166,960	8,509,116
17. Kansas	KS	E	4,981,571	4,174,571	1,530,864	1,571,765	6,073,873	5,330,792
18. Kentucky	KY	E	2,302,770	1,890,486	2,342,057	396,216	5,575,748	6,760,657
19. Louisiana	LA	E	48,326,764	46,221,818	19,122,960	14,522,176	58,100,957	60,919,369
20. Maine	ME	E	950,423	948,659	834,720	33,037	2,614,224	2,396,946
21. Maryland	MD	E	7,028,936	6,902,724	2,040,808	3,695,107	14,380,143	14,703,478
22. Massachusetts	MA	E	11,599,272	11,486,509	4,721,703	8,030,177	32,236,373	30,249,711
23. Michigan	MI	E	4,226,664	4,571,357	1,763,598	1,537,487	12,245,381	12,389,685
24. Minnesota	MN	E	5,930,734	5,166,791	886,299	715,951	10,768,973	10,989,023
25. Mississippi	MS	E	8,534,478	9,505,210	2,698,565	6,350,522	11,230,392	9,198,122
26. Missouri	MO	E	9,452,595	12,118,337	2,206,452	2,403,058	12,659,413	10,559,537
27. Montana	MT	E	3,252,947	2,267,616	1,485,524	285,100	5,760,536	3,268,221
28. Nebraska	NE	E	3,122,633	2,598,335	1,239,344	422,532	6,455,256	3,931,380
29. Nevada	NV	E	4,442,863	4,176,024	1,073,825	886,554	9,085,195	9,154,984
30. New Hampshire	NH	E	666,395	908,698	8,868	125,351	2,588,215	2,362,717
31. New Jersey	NJ	E	31,249,637	32,078,391	18,238,271	24,828,135	73,401,196	70,527,708
32. New Mexico	NM	E	3,392,928	2,851,402	1,929,552	1,435,322	5,577,700	5,540,152
33. New York	NY	E	108,667,086	101,601,053	33,754,143	38,304,491	266,073,407	220,180,689
34. North Carolina	NC	E	14,615,086	13,601,739	2,264,649	2,859,897	13,074,077	11,689,382
35. North Dakota	ND	E	1,242,829	1,129,948	149,346	513,748	1,009,981	1,037,050
36. Ohio	OH	L	3,011,874	2,357,645	1,530,069	1,375,029	5,017,900	5,950,703
37. Oklahoma	OK	E	9,408,162	8,533,992	3,325,184	4,813,823	11,714,235	10,272,192
38. Oregon	OR	E	5,870,126	4,705,586	2,914,400	1,475,028	10,431,201	11,887,999
39. Pennsylvania	PA	E	12,560,819	13,397,881	4,891,824	3,226,979	50,193,638	39,166,603
40. Rhode Island	RI	E	1,476,292	1,615,526	1,130,562	773,092	4,401,533	4,643,912
41. South Carolina	SC	E	14,191,846	13,183,075	4,067,892	6,410,758	16,950,895	15,771,882
42. South Dakota	SD	E	711,511	548,485	470,187	52,187	1,901,563	888,688
43. Tennessee	TN	E	7,053,614	8,118,340	5,149,952	5,293,577	18,541,104	17,836,711
44. Texas	TX	E	79,587,652	75,557,012	33,520,249	33,229,152	121,443,548	99,948,644
45. Utah	UT	E	2,583,712	2,793,135	885,125	2,556,527	5,070,560	5,412,372
46. Vermont	VT	E	473,345	611,553	165,010	164,921	1,629,455	1,474,090
47. Virginia	VA	E	10,125,354	9,859,418	3,500,948	976,564	19,043,771	17,054,425
48. Washington	WA	E	9,962,776	8,590,935	3,089,362	4,025,122	21,610,853	19,061,114
49. West Virginia	WV	E	2,344,354	2,584,693	379,764	444,545	4,284,168	3,756,010
50. Wisconsin	WI	E	3,443,380	2,859,127	1,622,263	1,004,037	6,962,212	6,908,905
51. Wyoming	WY	E	1,064,538	1,256,289	86,985	372,570	1,045,344	950,435
52. American Samoa	AS	N						
53. Guam	GU	N						
54. Puerto Rico	PR	E	140,350		(2,500)	55,000	30,885	6,858
55. U.S. Virgin Islands	VI	N						
56. Northern Mariana Islands	MP	N						
57. Canada	CAN	N						
58. Aggregate Other Alien OT	XXX						236,830	124,513
59. Totals	(a) 3		763,801,874	706,873,972	283,039,617	271,097,886	1,391,845,520	1,270,386,577
DETAILS OF WRITE-INS								
58001. BMU Bermuda	XXX						136,202	51,450
58002. ENG England	XXX						100,628	73,063
58003.	XXX							
58998. Summary of remaining write-ins for Line 58 from overflow page	XXX							
58999. Totals (Lines 58001 through 58003 plus 58998)(Line 58 above)	XXX						236,830	124,513

(L) Licensed or Chartered - Licensed Insurance Carrier or Domiciled RRG; (R) Registered - Non-domiciled RRGs; (Q) Qualified - Qualified or Accredited Reinsurer; (E) Eligible - Reporting Entities eligible or approved to write Surplus Lines in the state; (N) None of the above - Not allowed to write business in the state.

(a) Insert the number of L responses except for Canada and Other Alien.



(Casualty/Fire subsidiaries)



Subsidiary Companies — Solid Line
Contractual Association = Double Line
Limited Liability Company - - Dotted Line

(Nationwide Corp. subsidiaries)



(ALLIED/Harleysville subsidiaries)

STATEMENT AS OF JUNE 30, 2014 OF THE SCOTTSDALE INSURANCE COMPANY

NATIONWIDE INSURANCE COMPANIES

NAIC Group Code	Group Name	NAIC Company Code	State of Domicile	Federal ID Number	Name of Company
0140	Nationwide	10127	OH	27-0114983	Allied Insurance Company of America
0140	Nationwide	42579	IA	42-1201931	Allied Property and Casualty Insurance Company
0140	Nationwide	19100	IA	42-6054959	AMCO Insurance Company
0140	Nationwide	29262	TX	74-1061659	Colonial County Mutual Insurance Company
0140	Nationwide	18961	OH	68-0066866	Crestbrook Insurance Company
0140	Nationwide	42587	IA	42-1207150	Depositors Insurance Company
0140	Nationwide	13838	IA	42-0618271	Farmland Mutual Insurance Company
0140	Nationwide	22209	OH	75-6013587	Freedom Specialty Insurance Company
0140	Nationwide	23582	PA	41-0417250	Harleysville Insurance Company
0140	Nationwide	42900	NJ	23-2253669	Harleysville Insurance Company of New Jersey
0140	Nationwide	10674	PA	23-2864924	Harleysville Insurance Company of New York
0140	Nationwide	14516	MI	38-3198542	Harleysville Lake States Insurance Company
0140	Nationwide	64327	PA	23-1580983	Harleysville Life Insurance Company
0140	Nationwide	40983	PA	23-2612951	* Harleysville Pennland Insurance Company
0140	Nationwide	35696	PA	23-2384978	Harleysville Preferred Insurance Company
0140	Nationwide	26182	PA	04-1989660	Harleysville Worcester Insurance Company
0140	Nationwide	11991	WI	38-0865250	National Casualty Company
0140	Nationwide	26093	OH	48-0470690	Nationwide Affinity Insurance Company of America
0140	Nationwide	28223	IA	42-1015537	Nationwide Agribusiness Insurance Company
0140	Nationwide	10723	WI	95-0639970	Nationwide Assurance Company
0140	Nationwide	23760	OH	31-4425763	Nationwide General Insurance Company
0140	Nationwide	10070	OH	31-1399201	Nationwide Indemnity Company
0140	Nationwide	25453	WI	95-2130882	Nationwide Insurance Company of America
0140	Nationwide	10948	OH	31-1613686	Nationwide Insurance Company of Florida
0140	Nationwide	92657	OH	31-1000740	Nationwide Life and Annuity Insurance Company
0140	Nationwide	66869	OH	31-4156830	Nationwide Life Insurance Company
0140	Nationwide	42110	TX	75-1780981	Nationwide Lloyds
0140	Nationwide	23779	OH	31-4177110	Nationwide Mutual Fire Insurance Company
0140	Nationwide	23787	OH	31-4177100	Nationwide Mutual Insurance Company
0140	Nationwide	37877	OH	31-0970750	Nationwide Property & Casualty Insurance Company
0140	Nationwide	13999	VT	27-1712056	Olentangy Reinsurance, LLC
0140	Nationwide	15580	OH	31-1117969	Scottsdale Indemnity Company
0140	Nationwide	41297	OH	31-1024978	Scottsdale Insurance Company
0140	Nationwide	10672	AZ	86-0835870	Scottsdale Surplus Lines Insurance Company
0140	Nationwide	13242	TX	74-2286759	Titan Indemnity Company
0140	Nationwide	36269	MI	86-0619597	Titan Insurance Company
0140	Nationwide	42285	CA	95-3750113	Veterinary Pet Insurance Company
0140	Nationwide	10644	OH	34-1785903	Victoria Automobile Insurance Company
0140	Nationwide	42889	OH	34-1394913	Victoria Fire & Casualty Company
0140	Nationwide	10778	OH	34-1842604	Victoria National Insurance Company
0140	Nationwide	10105	OH	34-1777972	Victoria Select Insurance Company
0140	Nationwide	10777	OH	34-1842602	Victoria Specialty Insurance Company
0140	Nationwide	37150	AZ	86-0561941	Western Heritage Insurance Company
4664	PURE	12873	FL	20-8287105	Privilege Underwriters Reciprocal Exchange
4664	PURE	13204	FL	26-3109178	PURE Insurance Company

* Harleysville Pennland surrendered its Certificate of Authority effective 11/2/2013

STATEMENT AS OF JUNE 30, 2014 OF THE SCOTTSDALE INSURANCE COMPANY

SCHEDULE Y

PART 1A - DETAIL OF INSURANCE HOLDING COMPANY SYSTEM

1	2	3	4	5	6	7	8	9	10	11	12	13	14	15
Group Code	Group Name	NAIC Company Code	Federal ID Number	Federal RSSD	CIK	Name of Securities Exchange if Publicly Traded (U.S. or International)	Names of Parent, Subsidiaries Or Affiliates	Domi-ciliary Location	Relation-ship to Reporting Entity	Directly Controlled by (Name of Entity/Person)	Type of Control (Ownership, Board, Management, Attorney-in-Fact, Influence, Other)	If Control is Owner-ship Provide Percen-tage	Ultimate Controlling Entity(ies)/Person(s)	*
0140	Nationwide		31-1486309	4590018			10 W. Nationwide, LLC	OH	NIA	Nationwide Realty Investors, Ltd.	Ownership	100.000	Nationwide Mutual Insurance Company	
0140	Nationwide		31-1486309	4594954			101 N. Twentieth St, LLC	OH	NIA	Nationwide Realty Investors, Ltd.	Ownership	100.000	Nationwide Mutual Insurance Company	
0140	Nationwide		31-1733036	4594963			120 Acre Partners, LLC	DE	NIA	Nationwide Realty Investors, Ltd.	Ownership	95.000	Nationwide Mutual Insurance Company	1
0140	Nationwide		26-2451988	4288132			1492 Capital, LLC	OH	NIA	Nationwide Mutual Insurance Company	Ownership	100.000	Nationwide Mutual Insurance Company	
0140	Nationwide		20-1347603	4594806			180 E. Broad Partners, LLC	OH	NIA	Nationwide Realty Investors, Ltd.	Ownership	33.330	Nationwide Mutual Insurance Company	1
0140	Nationwide		31-1580283	4590835			400 West Nationwide Boulevard, LLC	OH	NIA	NWD Investments, LLC	Ownership	100.000	Nationwide Mutual Insurance Company	
0140	Nationwide		31-1580283	4591140			425 West Nationwide Boulevard, LLC	OH	NIA	NWD Investments, LLC	Ownership	100.000	Nationwide Mutual Insurance Company	
0140	Nationwide		31-1486309	4595009			44 Chestnut, LLC	OH	NIA	Nationwide Realty Investors, Ltd.	Ownership	100.000	Nationwide Mutual Insurance Company	
0140	Nationwide		20-4939866	4590497			775 Yard Street Restaurant, LLC	OH	NIA	NRI Equity Land Investments, LLC	Ownership	100.000	Nationwide Mutual Insurance Company	
0140	Nationwide		20-4939866	4590750			775 Yard Street, LLC	OH	NIA	NRI Equity Land Investments, LLC	Ownership	100.000	Nationwide Mutual Insurance Company	
0140	Nationwide		20-4939866	4590602			800 Bobcat Avenue, LLC	OH	NIA	NRI Equity Land Investments, LLC	Ownership	100.000	Nationwide Mutual Insurance Company	
0140	Nationwide		20-4939866	4671499			800 Goodale Boulevard, LLC	OH	NIA	NRI Equity Land Investments, LLC	Ownership	100.000	Nationwide Mutual Insurance Company	
0140	Nationwide		20-4939866	4671583			800 Rail Street, LLC	OH	NIA	NRI Equity Land Investments, LLC	Ownership	100.000	Nationwide Mutual Insurance Company	
0140	Nationwide		20-4939866	4671789			800 Yard Street, LLC	OH	NIA	NRI Equity Land Investments, LLC	Ownership	100.000	Nationwide Mutual Insurance Company	
0140	Nationwide		20-4939866	4590778			805 Bobcat Avenue, LLC	OH	NIA	NRI Equity Land Investments, LLC	Ownership	100.000	Nationwide Mutual Insurance Company	
0140	Nationwide		20-4939866	4590611			845 Yard Street, LLC	OH	NIA	NRI Equity Land Investments, LLC	Ownership	100.000	Nationwide Mutual Insurance Company	
0140	Nationwide		20-4939866	4590787			850 Goodale Blvd., LLC	OH	NIA	NRI Equity Land Investments, LLC	Ownership	100.000	Nationwide Mutual Insurance Company	
0140	Nationwide		20-4939866	4590714			895 W. Third Ave., LLC	OH	NIA	NRI Equity Land Investments, LLC	Ownership	100.000	Nationwide Mutual Insurance Company	
0140	Nationwide		20-4939866	4590714			925 Burrell Avenue Acquisitions, LLC	OH	NIA	NRI Equity Land Investments, LLC	Ownership	100.000	Nationwide Mutual Insurance Company	
0140	Nationwide		31-1680808	4594833			AD Investments, LLC	OH	NIA	Nationwide Realty Investors, Ltd.	Ownership	60.000	Nationwide Mutual Insurance Company	1
0140	Nationwide		31-1580283	4590992			ADTV, LLC	OH	NIA	NWD Investments, LLC	Ownership	100.000	Nationwide Mutual Insurance Company	
0140	Nationwide		52-2227314	42877247			AGMC Reinsurance, Ltd.	TCA	IA	Nationwide Advantage Mortgage Company	Ownership	100.000	Nationwide Mutual Insurance Company	
0140	Nationwide		42-1011300	4287229			ALLIED General Agency Company	IA	IA	AMCO Insurance Company	Ownership	100.000	Nationwide Mutual Insurance Company	
0140	Nationwide		42-0958655	1677548			Allied Group, Inc.	IA	IA	Allied Holdings (Delaware), Inc.	Ownership	100.000	Nationwide Mutual Insurance Company	
0140	Nationwide		46-4628790	4613462			Allied Holdings (Delaware), Inc.	DE	IA	Nationwide Mutual Insurance Company	Ownership	100.000	Nationwide Mutual Insurance Company	
0140	Nationwide	10127	27-0114983	4288169			ALLIED Insurance Company of America	OH	IA	Nationwide Mutual Insurance Company	Ownership	100.000	Nationwide Mutual Insurance Company	
							ALLIED Property and Casualty Insurance Company	IA	IA	ALLIED Group, Inc.	Ownership	100.000	Nationwide Mutual Insurance Company	
0140	Nationwide	45279	42-1201931	4287144			ALLIED Texas Agency, Inc.	TX	IA	AMCO Insurance Company	Ownership	100.000	Nationwide Mutual Insurance Company	
0140	Nationwide	19100	42-6054959	4287153			AMCO Insurance Company	IA	IA	ALLIED Group, Inc.	Ownership	100.000	Nationwide Mutual Insurance Company	
0140	Nationwide		59-1031596	4288011			American Marine Underwriters, Inc.	FL	IA	Nationwide Mutual Insurance Company	Ownership	100.000	Nationwide Mutual Insurance Company	
0140	Nationwide		31-1486309	4595036			Anderson Meadows, LLC	OH	NIA	Nationwide Realty Investors, Ltd.	Ownership	100.000	Nationwide Mutual Insurance Company	
0140	Nationwide		31-1580283	4591177			Arena District CA I, LLC	OH	NIA	NWD Investments, LLC	Ownership	100.000	Nationwide Mutual Insurance Company	
			90-0280710				Arena District Owners Association	OH	OTH	Other non-Nationwide	n/a	0.000	Other non-Nationwide	2
0140	Nationwide		31-1580283	4591010			Arena Theatres, LLC	OH	NIA	NWD Investments, LLC	Ownership	100.000	Nationwide Mutual Insurance Company	
							Artessa at Quarry Village, LLC	TX	OTH	Other non-Nationwide	n/a	0.000	Other non-Nationwide	2
0140	Nationwide			4595371			BOCS Investment Fund LLC	DE	OTH	Nationwide Mutual Insurance Company	Ownership	100.000	Nationwide Mutual Insurance Company	
0140	Nationwide		31-1184438	4594842			Boulevard Inn Limited Liability Company	OH	NIA	Nationwide Realty Investors, Ltd.	Ownership	94.800	Nationwide Mutual Insurance Company	1
0140	Nationwide		31-1555487	4593658			Broad Street Retail, LLC	DE	NIA	Nationwide Realty Investors, Ltd.	Ownership	60.000	Nationwide Mutual Insurance Company	1
0140	Nationwide			4595531			Brooke School Investment Fund, LLC	DE	OTH	Nationwide Mutual Insurance Company	Ownership	100.000	Nationwide Mutual Insurance Company	
0140	Nationwide			3730540			CHP New Markets Investment Fund, LLC	OH	OTH	Nationwide Mutual Insurance Company	Limited partner /no control	50.000	other non-Nationwide	1
0140	Nationwide		20-1618232	4595241			CNRI-Cannonsport Condominium, LLC	OH	NIA	CNRI-Cannonsport, LLC	Ownership	100.000	Nationwide Mutual Insurance Company	
0140	Nationwide		20-1618232	4595045			CNRI-Cannonsport, LLC	OH	NIA	Nationwide Realty Investors, Ltd.	Ownership	100.000	Nationwide Mutual Insurance Company	
							Co-Investment Fund, LLC	DE	OTH	Other non-Nationwide	n/a	0.000	Other non-Nationwide	
0140	Nationwide		31-1579973				COLHOC Limited Partnership	OH	NIA	NRI Limited Partnership	Ownership	30.760	Other non-Nationwide	1
0140	Nationwide	29262	74-1061659	4288057			Colonial County Mutual Insurance Company	TX	OTH	Other non-Nationwide	contract	0.000	Other non-Nationwide	
							Continental/NRI North Shore Investments, LLC	OH	NIA	Continental/NRI North Shore Investments, LLC	Ownership	100.000	Nationwide Mutual Insurance Company	
0140	Nationwide		04-3750770	4595951			Continental/NRI North Shore Investments, LLC	OH	NIA	Continental/NRI North Shore Investments, LLC	Ownership	100.000	Nationwide Mutual Insurance Company	

STATEMENT AS OF JUNE 30, 2014 OF THE SCOTTSDALE INSURANCE COMPANY

SCHEDULE Y

PART 1A - DETAIL OF INSURANCE HOLDING COMPANY SYSTEM

1	2	3	4	5	6	7	8	9	10	11	12	13	14	15
Group Code	Group Name	NAIC Company Code	Federal ID Number	Federal RSSD	CIK	Name of Securities Exchange if Publicly Traded (U.S. or International)	Names of Parent, Subsidiaries Or Affiliates	Domi-ciliary Location	Relation-ship to Reporting Entity	Directly Controlled by (Name of Entity/Person)	Type of Control (Ownership, Board, Management, Attorney-in-Fact, Influence, Other)	If Control is Owner-ship Provide Per-centage	Ultimate Controlling Entity(ies)/Person(s)	*
...0140 ...	Nationwide	20-0142724	4588177	Continental/NRI North Shore Investments, LLCOH..	...NIA.....	Nationwide Realty Investors, Ltd.	Ownership.....	..50.500	Nationwide Mutual Insurance Company1
...0140 ...	Nationwide	4595670	Cotton Mill Partners, LLCVA..	...OTH.....	Nationwide Mutual Insurance Company	Limited partner /no control2.000	other non-Nationwide1
...0140 ...	Nationwide	18961	68-0068866	4288178	Crestbrook Insurance CompanyOH..	...IA.....	Nationwide Mutual Insurance Company	Ownership.....	..100.000	Nationwide Mutual Insurance Company
...0140 ...	Nationwide	31-1486309	4590255	Crewville, Ltd.OH..	...NIA.....	Nationwide Realty Investors, Ltd.	Ownership.....	..100.000	Nationwide Mutual Insurance Company
...0140 ...	Nationwide	42587	42-1207150	4287162	Depositors Insurance CompanyIA..	...IA.....	ALLIED Group, Inc.	Ownership.....	..100.000	Nationwide Mutual Insurance Company
...0140 ...	Nationwide	33-0096671	4287694	DVM Insurance AgencyCA..	...NIA.....	Veterinary Pet Insurance Company	Ownership.....	..100.000	Nationwide Mutual Insurance Company
...0140 ...	Nationwide	20-1945276	4590590	East of Madison, LLCDE..	...NIA.....	120 Acre Partners, Ltd.	Ownership.....	..24.910	Nationwide Mutual Insurance Company1
...0140 ...	Nationwide	20-1945276	4590590	East of Madison, LLCDE..	...NIA.....	ND La Quinta Partners, LLC	Ownership.....	..76.090	Nationwide Mutual Insurance Company1
...0140 ...	Nationwide	4595689	ELH Investment LLCDE..	...OTH.....	Nationwide Mutual Insurance Company	Other.....	..0.000	Nationwide Mutual Insurance Company2
...0140 ...	Nationwide	13838	42-0618271	4569372	Farmland Mutual Insurance CompanyIA..	...OTH.....	Other non-Nationwide	debt0.000	Other non-Nationwide2
...0140 ...	Nationwide	22209	75-6013587	4287676	Freedom Specialty Insurance Company (fka Atlantic Insurance Company)OH..	...IA.....	Scottsdale Insurance Company	Ownership.....	..100.000	Nationwide Mutual Insurance Company
...0140 ...	Nationwide	46-4736379	GPN-1 Property Owners Association, Inc.OH..	other non-Nationwide	n/a0.000	other non-Nationwide2
...0140 ...	Nationwide	20-4939866	4590808	Grandview Yard Hotel Holdings, LLCOH..	...NIA.....	NRI Equity Land Investments, LLC	Ownership.....	..100.000	Nationwide Mutual Insurance Company
...0140 ...	Nationwide	20-4939866	4590826	Grandview Yard Hotel, LLCOH..	...NIA.....	Grandview Yard Hotel Holdings, LLC	Ownership.....	..100.000	Nationwide Mutual Insurance Company
...0140 ...	Nationwide	51-0241172	3582909	Harleysville Group, Inc.DE..	...NIA.....	Allied Holdings (Delaware), Inc.	Ownership.....	..100.000	Nationwide Mutual Insurance Company
...0140 ...	Nationwide	23582	41-0417250	4442260	Harleysville Insurance CompanyPA..	...IA.....	Harleysville Group, Inc.	Ownership.....	..100.000	Nationwide Mutual Insurance Company
...0140 ...	Nationwide	33235	16-1075588	4442158	Harleysville Insurance Company of New JerseyNJ..	...IA.....	Harleysville Group, Inc.	Ownership.....	..100.000	Nationwide Mutual Insurance Company
...0140 ...	Nationwide	10674	23-2864924	4442242	Harleysville Insurance Company of New YorkPA..	...IA.....	Harleysville Group, Inc.	Ownership.....	..100.000	Nationwide Mutual Insurance Company
...0140 ...	Nationwide	14516	38-3198542	4442251	Harleysville Lake States Insurance CompanyMI..	...IA.....	Harleysville Group, Inc.	Ownership.....	..100.000	Nationwide Mutual Insurance Company
...0140 ...	Nationwide	64327	23-1580983	4440659	Harleysville Life Insurance CompanyPA..	...IA.....	Nationwide Mutual Insurance Company	Ownership.....	..100.000	Nationwide Mutual Insurance Company
...0140 ...	Nationwide	40983	23-2612951	4442149	Harleysville Pennland Insurance CompanyPA..	...IA.....	Nationwide Mutual Insurance Company	Ownership.....	..100.000	Nationwide Mutual Insurance Company
...0140 ...	Nationwide	35896	23-2384978	4442288	Harleysville Preferred Insurance CompanyPA..	...IA.....	Harleysville Group, Inc.	Ownership.....	..100.000	Nationwide Mutual Insurance Company
...0140 ...	Nationwide	26182	04-1989660	4442372	Harleysville Worcester Insurance CompanyPA..	...IA.....	Harleysville Group, Inc.	Ownership.....	..100.000	Nationwide Mutual Insurance Company
...0140 ...	Nationwide	32-0051216	4596903	Hideaway Properties Corp.CA..	...OTH.....	Nationwide Realty Investors, Ltd.	Ownership.....	..50.000	Nationwide Mutual Insurance Company1
...0140 ...	Nationwide	31-0871532	4288020	Insurance Intermediaries, Inc.OH..	...IA.....	Nationwide Mutual Insurance Company	Ownership.....	..100.000	Nationwide Mutual Insurance Company
...0140 ...	Nationwide	31-1486309	4097802	Jerome Village Company, LLCOH..	...NIA.....	Nationwide Realty Investors, Ltd.	Ownership.....	..100.000	Nationwide Mutual Insurance Company
.....	Jerome Village Master Property Owners AssociationOH..	...OTH.....	Other non-Nationwide	Ownership.....	..0.000	Other non-Nationwide2
.....	46-2956640	Jerome Village Residential Property Owners Association, Inc.OH..	...OTH.....	Other non-Nationwide	Ownership.....	..0.000	Other non-Nationwide2
...0140 ...	Nationwide	31-1486309	4590312	JV Developers, LLCOH..	...NIA.....	Nationwide Realty Investors, Ltd.	Ownership.....	..100.000	Nationwide Mutual Insurance Company
...0140 ...	Nationwide	4595698	Leaguers Investment Fund LLCDE..	...OTH.....	Nationwide Mutual Insurance Company	Other.....	..0.000	Nationwide Mutual Insurance Company2
...0140 ...	Nationwide	56-3789187	4286969	Life REO Holdings, LLCOH..	...NIA.....	Nationwide Life Insurance Company	Ownership.....	..100.000	Nationwide Mutual Insurance Company
...0140 ...	Nationwide	74-1395229	4288039	Lone Star General Agency, Inc.TX..	...IA.....	Nationwide Mutual Insurance Company	Ownership.....	..100.000	Nationwide Mutual Insurance Company
...0140 ...	Nationwide	4595700	Match School Investment Fund, LLCDE..	...OTH.....	Nationwide Mutual Insurance Company	Ownership.....	..100.000	Nationwide Mutual Insurance Company
...0140 ...	Nationwide	11991	38-0865250	4288187	National Casualty CompanyWI..	...IA.....	Nationwide Mutual Insurance Company	Ownership.....	..100.000	Nationwide Mutual Insurance Company
.....	National Casualty Company of America, Ltd.
...0140 ...	Nationwide	42-1154244	2889795	Nationwide Advantage Mortgage CompanyGBR..	...IA.....	Nationwide Mutual Insurance Company	Ownership.....	..100.000	Nationwide Mutual Insurance Company
.....	Nationwide Advantage Mortgage CompanyIA..	...NIA.....	AMCO Insurance Company	Ownership.....	..87.300	Nationwide Mutual Insurance Company
...0140 ...	Nationwide	42-1154244	2889795	Nationwide Advantage Mortgage CompanyIA..	...NIA.....	ALLIED Property & Casualty Insurance Company	Ownership.....	..8.470	Nationwide Mutual Insurance Company
...0140 ...	Nationwide	42-1154244	2889795	Nationwide Affinity Insurance Company of AmericaIA..	...NIA.....	Depositors Insurance Company	Ownership.....	..4.230	Nationwide Mutual Insurance Company
...0140 ...	Nationwide	26093	48-0470690	4288196	Nationwide Agribusiness Insurance CompanyOH..	...IA.....	Nationwide Mutual Insurance Company	Ownership.....	..100.000	Nationwide Mutual Insurance Company
...0140 ...	Nationwide	28223	42-1015537	4288208	Nationwide Alternative Investments, LLCOH..	...NIA.....	Nationwide Mutual Insurance Company	Ownership.....	..100.000	Nationwide Mutual Insurance Company
...0140 ...	Nationwide	20-5976272	4595910	Nationwide Mutual Insurance Company	Ownership.....	..100.000	Nationwide Mutual Insurance Company

STATEMENT AS OF JUNE 30, 2014 OF THE SCOTTSDALE INSURANCE COMPANY

SCHEDULE Y

PART 1A - DETAIL OF INSURANCE HOLDING COMPANY SYSTEM

1	2	3	4	5	6	7	8	9	10	11	12	13	14	15
Group Code	Group Name	NAIC Company Code	Federal ID Number	Federal RSSD	CIK	Name of Securities Exchange if Publicly Traded (U.S. or International)	Names of Parent, Subsidiaries Or Affiliates	Domi-ciliary Location	Relation-ship to Reporting Entity	Directly Controlled by (Name of Entity/Person)	Type of Control (Ownership, Board, Management, Attorney-in-Fact, Influence, Other)	If Control is Owner-ship Provide Percen-tage	Ultimate Controlling Entity(ies)/Person(s)	*
...0140	Nationwide		31-1578869	4288075			Nationwide Arena, LLC	..OH	..NIA	NRI Arena, Ltd.	Ownership.....	..90.000	Nationwide Mutual Insurance Company
...0140	Nationwide		20-8670712	4288114			Nationwide Asset Management, LLC	..OH	..NIA	Nationwide Mutual Insurance Company	Ownership.....	..100.000	Nationwide Mutual Insurance Company
...0140	Nationwide	10723	95-0639970	4288217			Nationwide Assurance Company	..WI	..IA	Nationwide Mutual Insurance Company	Ownership.....	..100.000	Nationwide Mutual Insurance Company
...0140	Nationwide		31-1592130	2729677			Nationwide BankOTH	Nationwide Financial Services, Inc.	Ownership.....	..100.000	Nationwide Mutual Insurance Company
...0140	Nationwide		52-1776258	4286875			Nationwide Better Health (Ohio), LLC	..OH	..NIA	Nationwide Better Health Holding Company, LLC	Ownership.....	..100.000	Nationwide Mutual Insurance Company
...0140	Nationwide		11-3766032	4286428			Nationwide Better Health Holding Company, LLC	..OH	..NIA	Nationwide Corporation	Ownership.....	..75.000	Nationwide Mutual Insurance Company
...0140	Nationwide		11-3766032	4286428			Nationwide Better Health Holding Company, LLC	..OH	..NIA	Nationwide Mutual Fire Insurance Company	Ownership.....	..25.000	Nationwide Mutual Insurance Company
...0140	Nationwide		31-1036287	4288123			Nationwide Cash Management Company	..OH	..NIA	Nationwide Mutual Insurance Company	Ownership.....	..100.000	Nationwide Mutual Insurance Company
...0140	Nationwide		31-4416546	3828081			Nationwide Corporation	..OH	..NIA	Nationwide Mutual Insurance Company	Ownership.....	..95.200	Nationwide Mutual Insurance Company
...0140	Nationwide		31-4416546	3828081			Nationwide Corporation	..OH	..NIA	Nationwide Mutual Fire Insurance Company	Ownership.....	..4.800	Nationwide Mutual Insurance Company
...0140	Nationwide		04-3679407	4286839			Nationwide Emerging Managers, LLC	..DE	..NIA	NWD Investment Management, Inc.	Ownership.....	..100.000	Nationwide Mutual Insurance Company
...0140	Nationwide		05-0630007	4288048			Nationwide Exclusive Agent Risk Purchasing Group, LLC	..OH	..NIA	Insurance Intermediaries, Inc.	Ownership.....	..100.000	Nationwide Mutual Insurance Company
...0140	Nationwide		31-1667326	4286932			Nationwide Financial Assignment Company	..OH	..NIA	Nationwide Life Insurance Company	Ownership.....	..100.000	Nationwide Mutual Insurance Company
...0140	Nationwide		23-2412039	4287087			Nationwide Financial General Agency, Inc.	..PA	..NIA	NFS Distributors, Inc.	Ownership.....	..100.000	Nationwide Mutual Insurance Company
...0140	Nationwide		31-1316276	4287069			Nationwide Financial Institution Distributors Agency, Inc.	..DE	..NIA	NFS Distributors, Inc.	Ownership.....	..100.000	Nationwide Mutual Insurance Company
...0140	Nationwide		31-6554353	4286978			Nationwide Financial Services Capital Trust	..DE	..NIA	Nationwide Financial Services, Inc.	Ownership.....	..100.000	Nationwide Mutual Insurance Company
...0140	Nationwide		31-1486870	3828063			Nationwide Financial Services, Inc.	..DE	..NIA	Nationwide Corporation	Ownership.....	..100.000	Nationwide Mutual Insurance Company
...0140	Nationwide		52-6969857	4286996			Nationwide Fund Advisors	..DE	..NIA	Nationwide Financial Services, Inc.	Ownership.....	..100.000	Nationwide Mutual Insurance Company
...0140	Nationwide		31-1748721	4287050			Nationwide Fund Distributors LLC	..DE	..NIA	NFS Distributors, Inc.	Ownership.....	..100.000	Nationwide Mutual Insurance Company
...0140	Nationwide		31-0900518	4287041			Nationwide Fund Management LLC	..DE	..NIA	NFS Distributors, Inc.	Ownership.....	..100.000	Nationwide Mutual Insurance Company
...0140	Nationwide	23760	31-4425763	4287957			Nationwide General Insurance Company	..OH	..IA	Nationwide Mutual Insurance Company	Ownership.....	..100.000	Nationwide Mutual Insurance Company
...0140	Nationwide		31-1570938	4286398			Nationwide Global Holdings, Inc.	..OH	..NIA	Nationwide Corporation	Ownership.....	..100.000	Nationwide Mutual Insurance Company
...0140	Nationwide		04-3732385	4286857			Nationwide Global Ventures, Inc.	..DE	..NIA	Nationwide Asset Management Holdings, Inc.	Ownership.....	..100.000	Nationwide Mutual Insurance Company
...0140	Nationwide	10070	31-1399201	2839398			Nationwide Indemnity Company	..OH	..IA	Nationwide Mutual Insurance Company	Ownership.....	..100.000	Nationwide Mutual Insurance Company
...0140	Nationwide	25453	95-2130882	4287180			Nationwide Insurance Company of America	..WI	..IA	ALLIED Group, Inc.	Ownership.....	..100.000	Nationwide Mutual Insurance Company
...0140	Nationwide	10948	31-1613686	4287966			Nationwide Insurance Company of Florida	..OH	..IA	Nationwide Mutual Insurance Company	Ownership.....	..100.000	Nationwide Mutual Insurance Company
...0140	Nationwide		31-6022301				Nationwide Insurance Foundation	..OH	..OTH	Other non-Nationwide	n/a	..0.000	Other non-Nationwide2
...0140	Nationwide		41-2206199	4286950			Nationwide Investment Advisors, LLC	..OH	..NIA	Nationwide Life Insurance Company	Ownership.....	..100.000	Nationwide Mutual Insurance Company
...0140	Nationwide		73-0988442	4286923			Nationwide Investment Services Corporation	..OK	..NIA	Nationwide Life Insurance Company	Ownership.....	..100.000	Nationwide Mutual Insurance Company
...0140	Nationwide	92657	31-1000740	2995098			Nationwide Life and Annuity Insurance Company	..OH	..IA	Nationwide Life Insurance Company	Ownership.....	..100.000	Nationwide Mutual Insurance Company
...0140	Nationwide	66869	31-4156830	2819288			Nationwide Life Insurance Company	..OH	..IA	Nationwide Financial Services, Inc.	Ownership.....	..100.000	Nationwide Mutual Insurance Company
...0140	Nationwide		13-4212969	4596127			Nationwide Life Tax Credit Partners 2002-A, LLC	..OH	..NIA	Nationwide Life Insurance Company	Other.....	..0.000	Nationwide Mutual Insurance Company2
...0140	Nationwide		01-0749754	4595960			Nationwide Life Tax Credit Partners 2002-B, LLC	..OH	..NIA	Nationwide Life Insurance Company	Other.....	..0.000	Nationwide Mutual Insurance Company2
...0140	Nationwide		03-0498148	3262573			Nationwide Life Tax Credit Partners 2002-C, LLC	..OH	..NIA	Nationwide Life Insurance Company	Other.....	..0.000	Nationwide Mutual Insurance Company2
...0140	Nationwide		54-2113175	4596127			Nationwide Life Tax Credit Partners 2003-A, LLC	..OH	..NIA	Nationwide Life Insurance Company	Other.....	..0.000	Nationwide Mutual Insurance Company2
...0140	Nationwide		58-2672725	4596163			Nationwide Life Tax Credit Partners 2003-B, LLC	..OH	..NIA	Nationwide Life Insurance Company	Other.....	..0.000	Nationwide Mutual Insurance Company2

STATEMENT AS OF JUNE 30, 2014 OF THE SCOTTSDALE INSURANCE COMPANY

SCHEDULE Y

PART 1A - DETAIL OF INSURANCE HOLDING COMPANY SYSTEM

1	2	3	4	5	6	7	8	9	10	11	12	13	14	15
Group Code	Group Name	NAIC Company Code	Federal ID Number	Federal RSSD	CIK	Name of Securities Exchange if Publicly Traded (U.S. or International)	Names of Parent, Subsidiaries Or Affiliates	Domi-ciliary Location	Relation-ship to Reporting Entity	Directly Controlled by (Name of Entity/Person)	Type of Control (Ownership, Board, Management, Attorney-in-Fact, Influence, Other)	If Control is Owner-ship Provide Percentage	Ultimate Controlling Entity(ies)/Person(s)	*
...0140	Nationwide		20-0357951	3811001			Nationwide Life Tax Credit Partners 2003-C, LLC	..OH.	...NIA.....	Nationwide Life Insurance Company	Other.....	...0.000	Nationwide Mutual Insurance Company2
...0140	Nationwide		20-0382144	4596707			Nationwide Life Tax Credit Partners 2004-A, LLC	..OH.	...NIA.....	Nationwide Life Insurance Company	Other.....	...0.000	Nationwide Mutual Insurance Company2
...0140	Nationwide		20-0745944	4596211			Nationwide Life Tax Credit Partners 2004-B, LLC	..OH.	...NIA.....	Nationwide Life Insurance Company	Other.....	...0.000	Nationwide Mutual Insurance Company2
...0140	Nationwide		20-0745965	4596239			Nationwide Life Tax Credit Partners 2004-C, LLC	..OH.	...NIA.....	Nationwide Life Insurance Company	Other.....	...0.000	Nationwide Mutual Insurance Company2
...0140	Nationwide		20-1128408	4596332			Nationwide Life Tax Credit Partners 2004-D, LLC	..OH.	...NIA.....	Nationwide Life Insurance Company	Other.....	...0.000	Nationwide Mutual Insurance Company2
...0140	Nationwide		20-1128472	4596350			Nationwide Life Tax Credit Partners 2004-E, LLC	..OH.	...NIA.....	Nationwide Life Insurance Company	Other.....	...0.000	Nationwide Mutual Insurance Company2
...0140	Nationwide		20-1918935	3318117			Nationwide Life Tax Credit Partners 2004-F, LLC	..OH.	...NIA.....	Nationwide Life Insurance Company	Other.....	...0.000	Nationwide Mutual Insurance Company2
...0140	Nationwide		20-2303694	4596369			Nationwide Life Tax Credit Partners 2005-A, LLC	..OH.	...NIA.....	Nationwide Life Insurance Company	Other.....	...0.000	Nationwide Mutual Insurance Company2
...0140	Nationwide		20-2303602	4596378			Nationwide Life Tax Credit Partners 2005-B, LLC	..OH.	...NIA.....	Nationwide Life Insurance Company	Other.....	...0.000	Nationwide Mutual Insurance Company2
...0140	Nationwide		20-2450960	4596387			Nationwide Life Tax Credit Partners 2005-C, LLC	..OH.	...NIA.....	Nationwide Life Insurance Company	Other.....	...0.000	Nationwide Mutual Insurance Company2
...0140	Nationwide		20-2451052	4596396			Nationwide Life Tax Credit Partners 2005-D, LLC	..OH.	...NIA.....	Nationwide Life Insurance Company	Other.....	...0.000	Nationwide Mutual Insurance Company2
...0140	Nationwide		20-2774223	4596408			Nationwide Life Tax Credit Partners 2005-E, LLC	..OH.	...NIA.....	Nationwide Life Insurance Company	Other.....	...0.000	Nationwide Mutual Insurance Company2
...0140	Nationwide		21-1288836	4596426			Nationwide Life Tax Credit Partners 2007-A, LLC	..OH.	...NIA.....	Nationwide Life Insurance Company	Other.....	...0.000	Nationwide Mutual Insurance Company2
...0140	Nationwide		26-3427373	4596435			Nationwide Life Tax Credit Partners 2009-A, LLC	..OH.	...NIA.....	Nationwide Life Insurance Company	Other.....	...0.000	Nationwide Mutual Insurance Company2
...0140	Nationwide		26-3427435	4596444			Nationwide Life Tax Credit Partners 2009-B, LLC	..OH.	...NIA.....	Nationwide Life Insurance Company	Other.....	...0.000	Nationwide Mutual Insurance Company2
...0140	Nationwide		26-3427479	4596499			Nationwide Life Tax Credit Partners 2009-C, LLC	..OH.	...NIA.....	Nationwide Life Insurance Company	Other.....	...0.000	Nationwide Mutual Insurance Company2
...0140	Nationwide		26-3427525	4596510			Nationwide Life Tax Credit Partners 2009-D, LLC	..OH.	...NIA.....	Nationwide Life Insurance Company	Other.....	...0.000	Nationwide Mutual Insurance Company2
...0140	Nationwide		26-4737055	4596529			Nationwide Life Tax Credit Partners 2009-E, LLC	..OH.	...NIA.....	Nationwide Life Insurance Company	Other.....	...0.000	Nationwide Mutual Insurance Company2
...0140	Nationwide		26-4737157	4596547			Nationwide Life Tax Credit Partners 2009-F, LLC	..OH.	...NIA.....	Nationwide Life Insurance Company	Other.....	...0.000	Nationwide Mutual Insurance Company2
...0140	Nationwide		27-1362364	4596622			Nationwide Life Tax Credit Partners 2009-I, LLC	..OH.	...NIA.....	Nationwide Life Insurance Company	Other.....	...0.000	Nationwide Mutual Insurance Company2
...0140	Nationwide		46-1952215	4596556			Nationwide Life Tax Credit Partners 2013-A, LLC	..OH.	...NIA.....	Nationwide Life Insurance Company	Other.....	...0.000	Nationwide Mutual Insurance Company2
...0140	Nationwide		46-1971926	4596592			Nationwide Life Tax Credit Partners 2013-B, LLC	..OH.	...NIA.....	Nationwide Life Insurance Company	Other.....	...0.000	Nationwide Mutual Insurance Company2
...0140	Nationwide			3779811			Nationwide Life Tax Credit Partners No. 1, LLC	..OH.	...NIA.....	Nationwide Life Insurance Company	Other.....	...0.000	Nationwide Mutual Insurance Company2
...0140	Nationwide	..42110	75-1780981	4287984			Nationwide Lloyds	..TX.	...IA.....	n/a	contract	...0.000	Nationwide Mutual Insurance Company2
...0140	Nationwide			4597094			Nationwide Mutual Capital I, LLC	..DE.	...NIA.....	Nationwide Mutual Capital, LLC	Ownership.....	...100.000	Nationwide Mutual Insurance Company2
...0140	Nationwide		75-3191025	4595269			Nationwide Mutual Capital, LLC	..OH.	...NIA.....	Nationwide Mutual Insurance Company	Ownership.....	...100.000	Nationwide Mutual Insurance Company2
...0140	Nationwide	..23779	82-0549218	3828090			Nationwide Mutual Fire Insurance Company	..OH.	...OTH.....	Other non-Nationwide	n/a	...0.000	Other non-Nationwide2
...0140	Nationwide	..23787	31-4177100	3828072			Nationwide Mutual Insurance Company	..OH.	...UDP.....	Other non-Nationwide	n/a	...0.000	Other non-Nationwide2

STATEMENT AS OF JUNE 30, 2014 OF THE SCOTTSDALE INSURANCE COMPANY

SCHEDULE Y

PART 1A - DETAIL OF INSURANCE HOLDING COMPANY SYSTEM

1	2	3	4	5	6	7	8	9	10	11	12	13	14	15
Group Code	Group Name	NAIC Company Code	Federal ID Number	Federal RSSD	CIK	Name of Securities Exchange if Publicly Traded (U.S. or International)	Names of Parent, Subsidiaries Or Affiliates	Domi-ciliary Location	Relation-ship to Reporting Entity	Directly Controlled by (Name of Entity/Person)	Type of Control (Ownership, Board, Management, Attorney-in-Fact, Influence, Other)	If Control is Owner-ship Provide Percen-tage	Ultimate Controlling Entity(ies)/Person(s)	*
..0140	Nationwide		34-2012765	4288084			Nationwide Private Equity Fund, LLC	..OH	..NIA	Nationwide Mutual Insurance Company	Ownership	..100.000	Nationwide Mutual Insurance Company	
..0140	Nationwide	..37877	31-0970750	4287993			Nationwide Property and Casualty Insurance Company	..OH	..IA	Nationwide Mutual Insurance Company	Ownership	..100.000	Nationwide Mutual Insurance Company	
..0140	Nationwide		31-1486309	4288105			Nationwide Realty Investors, Ltd.	..OH	..NIA	Nationwide Mutual Insurance Company	Ownership	..96.800	Nationwide Mutual Insurance Company	
..0140	Nationwide		31-1486309	4288105			Nationwide Realty Investors, Ltd.	..OH	..NIA	Nationwide Indemnity Company	Ownership	..3.200	Nationwide Mutual Insurance Company	
..0140	Nationwide		31-1486309	4590264			Nationwide Realty Management, LLC	..OH	..NIA	Nationwide Realty Investors, Ltd.	Ownership	..100.000	Nationwide Mutual Insurance Company	
..0140	Nationwide			4288066			Nationwide Realty Services, Ltd.	..OH	..NIA	Nationwide Mutual Insurance Company	Ownership	..100.000	Nationwide Mutual Insurance Company	
..0140	Nationwide		06-0987812	4287117			Nationwide Retirement Solutions Insurance Agency, Inc.	..MA	..IA	Nationwide Retirement Solutions, Inc.	Ownership	..100.000	Nationwide Mutual Insurance Company	
..0140	Nationwide		73-0948330	4287096			Nationwide Retirement Solutions, Inc.	..DE	..NIA	NFS Distributors, Inc.	Ownership	..100.000	Nationwide Mutual Insurance Company	
..0140	Nationwide		86-0924069	4287108			Nationwide Retirement Solutions, Inc. of Arizona	..AZ	..NIA	Nationwide Retirement Solutions, Inc.	Ownership	..100.000	Nationwide Mutual Insurance Company	
..0140	Nationwide		31-1331479	4287126			Nationwide Retirement Solutions, Inc. of Ohio	..OH	..NIA	Nationwide Retirement Solutions, Inc.	Ownership	..100.000	Nationwide Mutual Insurance Company	
..0140	Nationwide		74-2200854	4287135			Nationwide Retirement Solutions, Inc. of Texas	..TX	..NIA	Nationwide Retirement Solutions, Inc.	Ownership	..100.000	Nationwide Mutual Insurance Company	
..0140	Nationwide		42-1373380	4287210			Nationwide Sales Solutions, Inc.	..IA	..NIA	ALLIED Group, Inc.	Ownership	..100.000	Nationwide Mutual Insurance Company	
..0140	Nationwide		36-2434406	4287078			Nationwide Securities, LLC	..OH	..NIA	NFS Distributors, Inc.	Ownership	..100.000	Nationwide Mutual Insurance Company	
..0140	Nationwide		31-4177100	4288093			Nationwide Services Company, LLC	..OH	..NIA	Nationwide Mutual Insurance Company	Ownership	..100.000	Nationwide Mutual Insurance Company	
..0140	Nationwide		27-0743545	4564041			Nationwide Tax Credit Partners 2009-G, LLC	..OH	..NIA	Nationwide Mutual Insurance Company	Other	..0.000	Nationwide Mutual Insurance Company	..2
..0140	Nationwide		27-0768791	4596891			Nationwide Tax Credit Partners 2009-H, LLC	..OH	..NIA	Nationwide Mutual Insurance Company	Other	..0.000	Nationwide Mutual Insurance Company	..2
..0140	Nationwide		27-1362364	4596622			Nationwide Tax Credit Partners 2009-I, LLC	..OH	..NIA	Nationwide Mutual Insurance Company	Other	..0.000	Nationwide Mutual Insurance Company	..2
..0140	Nationwide						Nationwide Tax Credit Partners 2013-A, LLC	..OH	..NIA	Nationwide Life Insurance Company	Other	..0.000	Nationwide Mutual Insurance Company	..2
..0140	Nationwide		46-1952215	4596566				..OH	..NIA	Nationwide Life Insurance Company	Ownership	..100.000	Nationwide Mutual Insurance Company	..2
..0140	Nationwide		11-3651828	4588168			ND La Quinta Partners, LLC	..DE	..NIA	Nationwide Realty Investors, Ltd.	Ownership	..95.000	Nationwide Mutual Insurance Company	..1
..0140	Nationwide			4286866			Newhouse Capital Partners II, LLC	..DE	..NIA	Nationwide Global Ventures, Inc.	Ownership	..80.000	Nationwide Mutual Insurance Company	
..0140	Nationwide			4286866			Newhouse Capital Partners II, LLC	..DE	..NIA	Nationwide Global Ventures, Inc.	Ownership	..99.000	Nationwide Mutual Insurance Company	
..0140	Nationwide			4286679			Newhouse Capital Partners, LLC	..DE	..NIA	NWD Investment Management, Inc.	Ownership	..19.000	Nationwide Mutual Insurance Company	
..0140	Nationwide			4286679			Newhouse Capital Partners, LLC	..DE	..NIA	Nationwide Mutual Insurance Company	Ownership	..70.000	Nationwide Mutual Insurance Company	
..0140	Nationwide			4286679			Newhouse Capital Partners, LLC	..DE	..NIA	Nationwide Mutual Fire Insurance Company	Ownership	..10.000	Nationwide Mutual Insurance Company	
..0140	Nationwide		31-1630871	4287032			NFS Distributors, Inc.	..DE	..NIA	Nationwide Financial Services, Inc.	Ownership	..100.000	Nationwide Mutual Insurance Company	
..0140	Nationwide		14-1892640	4596677			NHT XII Tax Credit Fund, LLC	..DC	..NIA	Nationwide Life Insurance Company	Ownership	..49.990	Nationwide Mutual Insurance Company	
..0140	Nationwide		14-1892640	4596677			NHT XII Tax Credit Fund, LLC	..DC	..NIA	Nationwide Assurance Company	Ownership	..25.000	Nationwide Mutual Insurance Company	
..0140	Nationwide		14-1892640	4596677			NHT XII Tax Credit Fund, LLC	..DC	..NIA	Nationwide Mutual Insurance Company	Ownership	..25.000	Nationwide Mutual Insurance Company	
..0140	Nationwide		46-3762545				NNOV8, LLC	..OH	..NIA	Nationwide Mutual Insurance Company	Ownership	..100.000	Nationwide Mutual Insurance Company	
..0140	Nationwide		26-0351004				North Bank Condominium Home Owners Association	..OH	..OTH	Other non-Nationwide	n/a	..0.000	Other non-Nationwide	..2
..0140	Nationwide		20-4939866	4590817			North of Third, LLC	..OH	..NIA	NRI Equity Land Investments, LLC	Ownership	..100.000	Nationwide Mutual Insurance Company	
..0140	Nationwide		26-4083207	4590385			Northstar Commercial Development, LLC	..OH	..NIA	Nationwide Realty Investors, Ltd.	Ownership	..50.000	Nationwide Mutual Insurance Company	
..0140	Nationwide		26-4083354	4594909			Northstar Residential Development, LLC	..OH	..NIA	Nationwide Realty Investors, Ltd.	Ownership	..50.000	Nationwide Mutual Insurance Company	
..0140	Nationwide		31-1486309	4593630			NRI 12325 Copper Way, LLC	..OH	..NIA	Nationwide Realty Investors, Ltd.	Ownership	..100.000	Nationwide Mutual Insurance Company	
..0140	Nationwide		31-1486309	4594936			NRI 220 Schrock, LLC	..OH	..NIA	Nationwide Realty Investors, Ltd.	Ownership	..100.000	Nationwide Mutual Insurance Company	
..0140	Nationwide		31-1486309	4594794			NRI Arena, LLC	..OH	..NIA	Nationwide Realty Investors, Ltd.	Ownership	..100.000	Nationwide Mutual Insurance Company	
..0140	Nationwide		31-1486309	4594815			NRI Brookside, LLC	..OH	..NIA	Nationwide Realty Investors, Ltd.	Ownership	..100.000	Nationwide Mutual Insurance Company	
..0140	Nationwide		31-1486309	4595027			NRI Builders, LLC	..OH	..NIA	Nationwide Realty Investors, Ltd.	Ownership	..100.000	Nationwide Mutual Insurance Company	
..0140	Nationwide		31-1486309	4594851			NRI Communities/Charlotte, LLC	..OH	..NIA	Nationwide Realty Investors, Ltd.	Ownership	..100.000	Nationwide Mutual Insurance Company	
..0140	Nationwide		31-1486309	4590246			NRI Communities/Harris Blvd., LLC	..OH	..NIA	Nationwide Realty Investors, Ltd.	Ownership	..100.000	Nationwide Mutual Insurance Company	

STATEMENT AS OF JUNE 30, 2014 OF THE SCOTTSDALE INSURANCE COMPANY

SCHEDULE Y

PART 1A - DETAIL OF INSURANCE HOLDING COMPANY SYSTEM

1	2	3	4	5	6	7	8	9	10	11	12	13	14	15
Group Code	Group Name	NAIC Company Code	Federal ID Number	Federal RSSD	CIK	Name of Securities Exchange if Publicly Traded (U.S. or International)	Names of Parent, Subsidiaries Or Affiliates	Domiciliary Location	Relationship to Reporting Entity	Directly Controlled by (Name of Entity/Person)	Type of Control (Ownership, Board, Management, Attorney-in-Fact, Influence, Other)	If Control is Ownership Provide Percentage	Ultimate Controlling Entity(ies)/Person(s)	*
0140	Nationwide		31-1486309	4590282			NRI Cramer Creek, LLC	OH	NIA	Nationwide Realty Investors, Ltd.	Ownership	100.000	Nationwide Mutual Insurance Company	
0140	Nationwide		20-4939866	4590460			NRI Equity Land Investments, LLC	OH	NIA	Nationwide Realty Investors, Ltd.	Ownership	80.000	Nationwide Mutual Insurance Company	
0140	Nationwide		26-0212217	4590394			NRI Equity Tampa, LLC	OH	OTH	Nationwide Realty Investors, Ltd.	Ownership	100.000	Nationwide Mutual Insurance Company	
0140	Nationwide		31-1486309	4590376			NRI Maxtown, LLC	OH	OTH	Nationwide Realty Investors, Ltd.	Ownership	100.000	Nationwide Mutual Insurance Company	
0140	Nationwide		30-4939866	4590406			NRI Office Ventures, Ltd	OH	NIA	Nationwide Realty Investors, Ltd.	Ownership	100.000	Nationwide Mutual Insurance Company	
0140	Nationwide		31-1486309	4596912			NRI Telecom, LLC	OH	NIA	NWD Investments, LLC	Ownership	100.000	Nationwide Mutual Insurance Company	
0140	Nationwide		31-1486309	4590349			NRI-Rivulon, LLC	OH	NIA	Nationwide Realty Investors, Ltd.	Ownership	100.000	Nationwide Mutual Insurance Company	
							Nationwide Property and Casualty Company							
0140	Nationwide		45-3123274	4595438			NTCIF-2011 Georgia State Investor, LLC	OH	NIA		Ownership	100.000	Nationwide Mutual Insurance Company	
0140	Nationwide		90-0729552	4596695			NTCIF-2011, LLC	OH	NIA	Nationwide Life Insurance Company	Ownership	50.000	Nationwide Mutual Insurance Company	
							Nationwide Mutual Fire Insurance Company							
0140	Nationwide		90-0729552	4596695			NTCIF-2011, LLC	OH	NIA		Ownership	50.000	Nationwide Mutual Insurance Company	
0140	Nationwide		27-4700627	4596716			NTCP 2011-A, LLC	OH	NIA	Nationwide Life Insurance Company	Ownership	100.000	Nationwide Mutual Insurance Company	
0140	Nationwide		46-0747898	4596752			NTCP 2011-B, LLC	OH	NIA	Nationwide Life Insurance Company	Ownership	100.000	Nationwide Mutual Insurance Company	
0140	Nationwide		46-0741029	4464703			NTCP 2012-A, LLC	OH	NIA	Nationwide Life Insurance Company	Ownership	100.000	Nationwide Mutual Insurance Company	
0140	Nationwide		46-3309896	4586164			NTCP 2013-C, LLC	OH	NIA	Nationwide Life Insurance Company	Ownership	100.000	Nationwide Mutual Insurance Company	
0140	Nationwide		46-4111078	4596743			NTCP 2014-A, LLC	OH	NIA	Nationwide Life Insurance Company	Ownership	100.000	Nationwide Mutual Insurance Company	
0140	Nationwide		26-1903919	4591421			NW REI, LLC	DE	NIA	Nationwide Mutual Insurance Company	Ownership	100.000	Nationwide Mutual Insurance Company	
0140	Nationwide		46-3654078	4593621			NW-Amesbury, LLC	OH	NIA	NE-REI, LLC	Ownership	100.000	Nationwide Mutual Insurance Company	
0140	Nationwide		36-4702264	4595054			NW-Arvada, LLC	OH	NIA	NW REI, LLC	Ownership	100.000	Nationwide Mutual Insurance Company	
0140	Nationwide		46-2943666	4594860			NW-Bandera, LLC	OH	NIA	NW REI, LLC	Ownership	100.000	Nationwide Mutual Insurance Company	
0140	Nationwide		45-5159092	4595063			NW-Bayshore, LLC	OH	NIA	NW REI, LLC	Ownership	100.000	Nationwide Mutual Insurance Company	
0140	Nationwide		46-2451156	4594879			NW-Bee Cave, LLC	OH	NIA	NW REI, LLC	Ownership	100.000	Nationwide Mutual Insurance Company	
0140	Nationwide		46-0999932	4591681			NW-Bencap, LLC	OH	NIA	NW REI, LLC	Ownership	100.000	Nationwide Mutual Insurance Company	
0140	Nationwide		46-3707480	4593612			NW-Brooklyn, LLC	OH	NIA	NW REI, LLC	Ownership	100.000	Nationwide Mutual Insurance Company	
0140	Nationwide		46-3968244	4591757			NW-Camelback, LLC	OH	NIA	NW REI, LLC	Ownership	100.000	Nationwide Mutual Insurance Company	
0140	Nationwide		45-2724980	4591690			NW-Cameron, LLC	OH	NIA	NW REI, LLC	Ownership	100.000	Nationwide Mutual Insurance Company	
0140	Nationwide		46-3674167	4590090			NW-Cedar Springs, LLC	OH	NIA	NW REI, LLC	Ownership	100.000	Nationwide Mutual Insurance Company	
0140	Nationwide		46-3994437	4591663			NW-Central Station, LLC	OH	NIA	NE-REI, LLC	Ownership	100.000	Nationwide Mutual Insurance Company	
0140	Nationwide		26-0901660	4505456			NW-CNC Coppel, LLC	DE	NIA	Nationwide Mutual Insurance Company	Ownership	100.000	Nationwide Mutual Insurance Company	
0140	Nationwide		27-2764819	4594888			NW-Commerce Center, LLC	DE	NIA	NW REI, LLC	Ownership	100.000	Nationwide Mutual Insurance Company	
0140	Nationwide		32-0359208	4595157			NW-Corvallis, LLC	OH	NIA	NW REI, LLC	Ownership	100.000	Nationwide Mutual Insurance Company	
0140	Nationwide		31-1580283	4591038			NWD 205 Vine, LLC	OH	NIA	NWD Investments, LLC	Ownership	100.000	Nationwide Mutual Insurance Company	
0140	Nationwide		31-1580283	4591261			NWD 225 Nationwide, LLC	OH	NIA	NWD Investments, LLC	Ownership	100.000	Nationwide Mutual Insurance Company	
0140	Nationwide		31-1580283	4591056			NWD 230 West, LLC	OH	NIA	NWD Investments, LLC	Ownership	100.000	Nationwide Mutual Insurance Company	
0140	Nationwide		31-1580283	4590545			NWD 240 Nationwide, LLC	OH	NIA	NWD Investments, LLC	Ownership	100.000	Nationwide Mutual Insurance Company	
0140	Nationwide		31-1580283	4590273			NWD 250 Brodbelt, LLC	OH	NIA	NWD Investments, LLC	Ownership	100.000	Nationwide Mutual Insurance Company	
0140	Nationwide		31-1580283	4590554			NWD 265 Neil, LLC	OH	NIA	NWD Investments, LLC	Ownership	100.000	Nationwide Mutual Insurance Company	
0140	Nationwide		31-1580283	4590518			NWD 275 Marconi, LLC	OH	NIA	NWD Investments, LLC	Ownership	100.000	Nationwide Mutual Insurance Company	
0140	Nationwide		31-1580283	4590563			NWD 295 McConnell, LLC	OH	NIA	NWD Investments, LLC	Ownership	100.000	Nationwide Mutual Insurance Company	
0140	Nationwide		31-1580283	4590509			NWD 300 Neil, LLC	OH	NIA	NWD Investments, LLC	Ownership	100.000	Nationwide Mutual Insurance Company	
0140	Nationwide		31-1580283	4590572			NWD 300 Spring, LLC	OH	NIA	NWD Investments, LLC	Ownership	100.000	Nationwide Mutual Insurance Company	
0140	Nationwide		31-1580283	4590527			NWD 355 McConnell, LLC	OH	NIA	NWD Investments, LLC	Ownership	100.000	Nationwide Mutual Insurance Company	
0140	Nationwide		31-1580283	4590581			NWD 425 Nationwide, LLC	OH	NIA	NWD Investments, LLC	Ownership	100.000	Nationwide Mutual Insurance Company	
0140	Nationwide		31-1580283	4590536			NWD 500 Nationwide, LLC	OH	NIA	NWD Investments, LLC	Ownership	100.000	Nationwide Mutual Insurance Company	
0140	Nationwide		31-1580283	4591298			NWD Arena Crossing, LLC	OH	NIA	NWD Investments, LLC	Ownership	100.000	Nationwide Mutual Insurance Company	
0140	Nationwide		31-1580283	4591083			NWD Arena District I, LLC	OH	NIA	NWD Investments, LLC	Ownership	100.000	Nationwide Mutual Insurance Company	
0140	Nationwide		31-1580283	4591300			NWD Arena District II, LLC	OH	NIA	NWD Investments, LLC	Ownership	100.000	Nationwide Mutual Insurance Company	
0140	Nationwide		31-1580283	4591113			NWD Arena District IM, LLC	OH	NIA	NWD Investments, LLC	Ownership	100.000	Nationwide Mutual Insurance Company	
0140	Nationwide		31-1580283	4591319			NWD Arena District PW, LLC	OH	NIA	NWD Investments, LLC	Ownership	100.000	Nationwide Mutual Insurance Company	
0140	Nationwide		31-1580283	4591131			NWD Arena District V, LLC	OH	NIA	NWD Investments, LLC	Ownership	100.000	Nationwide Mutual Insurance Company	

STATEMENT AS OF JUNE 30, 2014 OF THE SCOTTSDALE INSURANCE COMPANY

SCHEDULE Y

PART 1A - DETAIL OF INSURANCE HOLDING COMPANY SYSTEM

1	2	3	4	5	6	7	8	9	10	11	12	13	14	15
Group Code	Group Name	NAIC Company Code	Federal ID Number	Federal RSSD	CIK	Name of Securities Exchange if Publicly Traded (U.S. or International)	Names of Parent, Subsidiaries Or Affiliates	Domiciliary Location	Relationship to Reporting Entity	Directly Controlled by (Name of Entity/Person)	Type of Control (Ownership, Board, Management, Attorney-in-Fact, Influence, Other)	If Control is Ownership Provide Percentage	Ultimate Controlling Entity(ies)/Person(s)	*
0140	Nationwide		04-3679396	4286848			NWD Asset Management Holdings, Inc.	DE	NIA	NWD Investment Management, Inc.	Ownership	100.000	Nationwide Mutual Insurance Company	
0140	Nationwide		31-1580283	4591328			NWD Athletic Club, LLC	OH	NIA	NWD Investments, LLC	Ownership	100.000	Nationwide Mutual Insurance Company	
0140	Nationwide		31-1636299	4286594			NWD Investment Management, Inc.	DE	NIA	Nationwide Corporation	Ownership	100.000	Nationwide Mutual Insurance Company	
0140	Nationwide		31-1580283	4587965			NWD Investments, LLC	OH	NIA	Nationwide Realty Investors, Ltd.	Ownership	80.000	Nationwide Mutual Insurance Company	
0140	Nationwide		90-0732898	4591430			NW-Dulles, LLC	OH	NIA	NW REI, LLC	Ownership	100.000	Nationwide Mutual Insurance Company	
0140	Nationwide		46-3267884	4595465			NW-Franklin Mills, LLC	OH	NIA	Life Reo Holdings, LLC	Ownership	100.000	Nationwide Mutual Insurance Company	
0140	Nationwide		45-2647960	4591449			NW-Grapevine, LLC	OH	NIA	NW REI, LLC	Ownership	100.000	Nationwide Mutual Insurance Company	
0140	Nationwide		46-2997049	4591775			NW-Howell Mill, LLC	OH	NIA	NW REI, LLC	Ownership	100.000	Nationwide Mutual Insurance Company	
0140	Nationwide		46-4330384				NW-Hudnall, LLC	OH	NIA	NW REI, LLC	Ownership	100.000	Nationwide Mutual Insurance Company	
0140	Nationwide		45-5408178	4591458			NW-Kentwood Towne Center, LLC	OH	NIA	NW REI, LLC	Ownership	100.000	Nationwide Mutual Insurance Company	
0140	Nationwide		46-4857522				NW-Lawrence, LLC	OH	NIA	NW REI, LLC	Ownership	100.000	Nationwide Mutual Insurance Company	
0140	Nationwide		45-5314607	4593461			NW-Lovers Lane, LLC	OH	NIA	NW REI, LLC	Ownership	100.000	Nationwide Mutual Insurance Company	
0140	Nationwide		46-2457568	4591467			NW-Montrose, LLC	OH	NIA	NW REI, LLC	Ownership	100.000	Nationwide Mutual Insurance Company	
0140	Nationwide		45-4630497	4593470			NW-Mueller II, LLC	OH	NIA	NW REI, LLC	Ownership	100.000	Nationwide Mutual Insurance Company	
0140	Nationwide		27-4749848	4591476			NW-Northridge, LLC	OH	NIA	NW REI, LLC	Ownership	100.000	Nationwide Mutual Insurance Company	
0140	Nationwide		46-1089165	4593555			NW-Oakley Station, LLC	OH	NIA	NW REI, LLC	Ownership	100.000	Nationwide Mutual Insurance Company	
0140	Nationwide		46-3888719	4593603			NW-Park 288, LLC	OH	NIA	NW REI, LLC	Ownership	100.000	Nationwide Mutual Insurance Company	
0140	Nationwide		45-5388656	4591485			NW-Park Memorial, LLC	OH	NIA	NW REI, LLC	Ownership	100.000	Nationwide Mutual Insurance Company	
0140	Nationwide		46-2469044	4591494			NW-Portales, LLC	OH	NIA	NW REI, LLC	Ownership	100.000	Nationwide Mutual Insurance Company	
0140	Nationwide		45-5159117	4593573			NW-South Park, LLC	OH	NIA	NW REI, LLC	Ownership	100.000	Nationwide Mutual Insurance Company	
0140	Nationwide		35-2427470	4591506			NW-Southline, LLC	OH	NIA	NW REI, LLC	Ownership	100.000	Nationwide Mutual Insurance Company	
0140	Nationwide		27-4749587	4593582			NW-Taylor Farmer Jack, LLC	OH	NIA	NW REI, LLC	Ownership	100.000	Nationwide Mutual Insurance Company	
0140	Nationwide		46-1100378	4591524			NW-Triangle, LLC	OH	NIA	NW REI, LLC	Ownership	100.000	Nationwide Mutual Insurance Company	
0140	Nationwide		46-5764783				NW-Tyson's, LLC	OH	NIA	NW REI, LLC	Ownership	100.000	Nationwide Mutual Insurance Company	
0140	Nationwide		46-1077615	4593591			NW-West Ave., LLC	OH	NIA	NW REI, LLC	Ownership	100.000	Nationwide Mutual Insurance Company	
0140	Nationwide		46-4992444				NW-Windcross, LLC	OH	NIA	NW REI, LLC	Ownership	100.000	Nationwide Mutual Insurance Company	
0140	Nationwide		31-0947092	4590479			OCH Company, LLC	OH	NIA	Nationwide Realty Investors, Ltd.	Ownership	100.000	Nationwide Mutual Insurance Company	
0140	Nationwide		31-0947092	4590442			Ohio Center Hotel Company, Ltd.	OH	NIA	Nationwide Realty Investors, Ltd.	Ownership	56.250	Nationwide Mutual Insurance Company	
0140	Nationwide		26-0263012				Old Track Street Owners Association	OH	OTH	Other non-Nationwide	n/a	0.000	Other non-Nationwide	2
0140	Nationwide	13999	27-1712056	4286914			Olentangy Reinsurance, LLC	VT	IA	Nationwide Life and Annuity Insurance Company	Ownership	100.000	Nationwide Mutual Insurance Company	
0140	Nationwide			4596462			OYS Fund, LLC	DE	OTH	Nationwide Mutual Insurance Company	Ownership	100.000	Nationwide Mutual Insurance Company	
0140	Nationwide			4596480			Park 288 Industrial, LLC	TX	OTH	Nationwide Mutual Insurance Company	Investor member / no control	95.000	other non-Nationwide	2
0140	Nationwide		31-1486309	4590358			Perimeter A, Ltd	OH	NIA	Nationwide Realty Investors, Ltd.	Ownership	100.000	Nationwide Mutual Insurance Company	
0140	Nationwide		31-1677602	4590488			Pizzuti Properties, LLC	OH	NIA	Nationwide Realty Investors, Ltd.	Ownership	65.000	Nationwide Mutual Insurance Company	
0140	Nationwide		31-1486309	4590291			Polaris A, Ltd.	OH	NIA	Nationwide Realty Investors, Ltd.	Ownership	100.000	Nationwide Mutual Insurance Company	
0140	Nationwide		39-1907217	4287201			Premier Agency, Inc.	IA	NIA	ALLIED Group, Inc.	Ownership	100.000	Nationwide Mutual Insurance Company	
0140	Nationwide						Privilege Underwriters Reciprocal Exchange	FL	IA	Other non-Nationwide	n/a	0.000	Other non-Nationwide	2
0140	Pure	12873	20-8287105	4288253			Privilege Underwriters, Inc.	DE	IA	Other non-Nationwide	n/a	0.000	Other non-Nationwide	2
0140	Pure			4288150			Pure Insurance Company	FL	IA	Other non-Nationwide	n/a	0.000	Other non-Nationwide	2
0140	Pure	13204	26-3109178	4288226			Pure Risk Management, LLC	FL	IA	Other non-Nationwide	n/a	0.000	Other non-Nationwide	2
0140	Nationwide						Registered Investment Advisors Services, Inc.	TX	NIA	Nationwide Financial Services, Inc.	Ownership	100.000	Nationwide Mutual Insurance Company	
0140	Nationwide						Retention Alternatives, Ltd.	BMU	IA	Nationwide Mutual Fire Insurance Company	Ownership	100.000	Nationwide Mutual Insurance Company	1
0140	Nationwide						Riverview Diversified Opportunities Fund, LLC	DE	OTH	Nationwide Mutual Insurance Company	Ownership	0.000	Nationwide Mutual Insurance Company	1
0140	Nationwide						Riverview Diversified Opportunities Fund, LLC	DE	OTH	Nationwide Mutual Fire Insurance Company	Ownership	0.000	Nationwide Mutual Insurance Company	1

STATEMENT AS OF JUNE 30, 2014 OF THE SCOTTSDALE INSURANCE COMPANY

SCHEDULE Y
PART 1A - DETAIL OF INSURANCE HOLDING COMPANY SYSTEM

1	2	3	4	5	6	7	8	9	10	11	12	13	14	15
Group Code	Group Name	NAIC Company Code	Federal ID Number	Federal RSSD	CIK	Name of Securities Exchange if Publicly Traded (U.S. or International)	Names of Parent, Subsidiaries Or Affiliates	Domi-ciliary Location	Relation-ship to Reporting Entity	Directly Controlled by (Name of Entity/Person)	Type of Control (Ownership, Board, Management, Attorney-in-Fact, Influence, Other)	If Control is Owner-ship Provide Percen-tage	Ultimate Controlling Entity(ies)/Person(s)	*
...0140 ...	Nationwide	4595278	Riverview Diversified Opportunities Fund, LLCDEOTH.....	Nationwide Life Insurance Company	Ownership.....	...0.000	Nationwide Mutual Insurance Company
...0140 ...	Nationwide	22-3655264	4286530	Riverview International Group, Inc.DENIA	NWD Investment Management, Inc.	Ownership.....	...100.000	Nationwide Mutual Insurance Company
...0140 ...	Nationwide	4595287	Riverview Multi Series Fund, LL - Class EventDEOTH.....	Nationwide Mutual Insurance Company	Ownership.....	...100.000	Nationwide Mutual Insurance Company
...0140 ...	Nationwide	4595335	Riverview Multi Series Fund, LL - Class NDEOTH.....	Nationwide Mutual Insurance Company	Ownership.....	...100.000	Nationwide Mutual Insurance Company
...0140 ...	Nationwide	4564032	Riverview Polyphony Fund, LLCDEOTH.....	Nationwide Mutual Insurance Company	Ownership.....	...100.000	Nationwide Mutual Insurance Company
...0140 ...	Nationwide15580	31-1117969	4288002	Scottsdale Indemnity CompanyOHIA	Nationwide Mutual Insurance Company	Ownership.....	...100.000	Nationwide Mutual Insurance Company
...0140 ...	Nationwide41297	31-1024978	3091988	Scottsdale Insurance CompanyOHRE	Nationwide Mutual Insurance Company	Ownership.....	...100.000	Nationwide Mutual Insurance Company
...0140 ...	Nationwide	Scottsdale Surplus Lines Insurance Company
...0140 ...	Nationwide10672	86-0835870	4287649	Scottsdale Insurance CompanyAZIA	Scottsdale Insurance Company	Ownership.....	...100.000	Nationwide Mutual Insurance Company
...0140 ...	Nationwide	31-1486309	4590303	Streets of Toringdon, LLCOHNIA	Nationwide Realty Investors, Ltd.	Ownership.....	...100.000	Nationwide Mutual Insurance Company
...0140 ...	Nationwide	91-2158214	The Hideaway ClubCAOTH.....	Other non-Nationwide	n/a0.000	Other non-Nationwide2
...0140 ...	Nationwide	86-1094799	The Hideaway Owners AssociationCAOTH.....	Other non-Nationwide	n/a0.000	Other non-Nationwide2
...0140 ...	Nationwide	20-3541511	The Madison ClubCAOTH.....	Other non-Nationwide	n/a0.000	Other non-Nationwide2
...0140 ...	Nationwide	20-3541507	The Madison Club Owners AssociationCAOTH.....	Other non-Nationwide	n/a0.000	Other non-Nationwide2
...0140 ...	Nationwide	31-1610040	2989882	The Waterfront Partners, LLCOHNIA	Nationwide Realty Investors, Ltd.	Ownership.....	...50.000	Nationwide Mutual Insurance Company1
...0140 ...	Nationwide	52-2031677	4287751	THI Holdings (Delaware), Inc.DENIA	Nationwide Mutual Insurance Company	Ownership.....	...100.000	Nationwide Mutual Insurance Company
...0140 ...	Nationwide	74-2825853	4287863	Titan Auto Insurance of New Mexico, Inc.NMIA	THI Holdings (Delaware), Inc.	Ownership.....	...100.000	Nationwide Mutual Insurance Company
...0140 ...	Nationwide13242	74-2286759	4287797	Titan Indemnity CompanyTXIA	THI Holdings (Delaware), Inc.	Ownership.....	...100.000	Nationwide Mutual Insurance Company
...0140 ...	Nationwide36269	86-0619597	4287845	Titan Insurance CompanyMIIA	Titan Indemnity Company	Ownership.....	...100.000	Nationwide Mutual Insurance Company
...0140 ...	Nationwide	75-1284530	4287890	Titan Insurance Services, Inc.TXNIA	THI Holdings (Delaware), Inc.	Ownership.....	...100.000	Nationwide Mutual Insurance Company
...0140 ...	Nationwide	33-0160222	4653196	V.P.I. Services, Inc.CANIA	Veterinary Pet Insurance Company	Ownership.....	...100.000	Nationwide Mutual Insurance Company
...0140 ...	Nationwide42285	95-3750113	4287685	Veterinary Pet Insurance CompanyCAIA	Scottsdale Insurance Company	Ownership.....	...100.000	Nationwide Mutual Insurance Company
...0140 ...	Nationwide	Victoria Fire & Casualty Insurance CompanyOHIA	Victoria Fire & Casualty Insurance Company	Ownership.....	...100.000	Nationwide Mutual Insurance Company
...0140 ...	Nationwide42889	34-1394913	4287827	Victoria Fire & Casualty CompanyOHIA	THI Holdings (Delaware), Inc.	Ownership.....	...100.000	Nationwide Mutual Insurance Company
...0140 ...	Nationwide	Victoria National Insurance CompanyOHIA	Victoria Fire & Casualty Insurance Company	Ownership.....	...100.000	Nationwide Mutual Insurance Company
...0140 ...	Nationwide10778	34-1842604	4287920	Victoria National Insurance CompanyOHIA	Victoria Fire & Casualty Insurance Company	Ownership.....	...100.000	Nationwide Mutual Insurance Company
...0140 ...	Nationwide	Victoria Select Insurance CompanyOHIA	Victoria Fire & Casualty Insurance Company	Ownership.....	...100.000	Nationwide Mutual Insurance Company
...0140 ...	Nationwide10105	34-1777972	4287939	Victoria Select Insurance CompanyOHIA	Victoria Fire & Casualty Insurance Company	Ownership.....	...100.000	Nationwide Mutual Insurance Company
...0140 ...	Nationwide	Victoria Specialty Insurance CompanyOHIA	Victoria Fire & Casualty Insurance Company	Ownership.....	...100.000	Nationwide Mutual Insurance Company
...0140 ...	Nationwide37150	86-0561941	4287667	Western Heritage Insurance CompanyAZIA	Scottsdale Insurance Company	Ownership.....	...100.000	Nationwide Mutual Insurance Company
...0140 ...	Nationwide	4613341	Westport Capital Partners IICTOTH.....	Nationwide Mutual Insurance Company	Ownership.....
...0140 ...	Nationwide	31-1486309	4590321	Nationwide Defined Benefit Master TrustOHNIA	Nationwide Defined Benefit Master Trust	Investor member / no control71.000	other non-Nationwide2
...0140 ...	Nationwide	4590321	Wilson Road Developers, LLCOHNIA	Nationwide Realty Investors, Ltd.	Ownership.....	...100.000	Nationwide Mutual Insurance Company
...0140 ...	Nationwide	4613323	Zais Zephyr A-4, LLCDEOTH.....	Nationwide Life Insurance Company	limited member / no control60.000	other non-Nationwide2

Asterisk	Explanation
1	For the purposes of this schedule, Nationwide presumed control of these entities because they are owned by at least 10% and are not wholly-owned by a Nationwide entity.
2	Other ownership indicates a non-ownership circumstance by a Nationwide entity.

STATEMENT AS OF JUNE 30, 2014 OF THE SCOTTSDALE INSURANCE COMPANY

PART 1 - LOSS EXPERIENCE

Line of Business		Current Year to Date			4 Prior Year to Date Direct Loss Percentage
		1 Direct Premiums Earned	2 Direct Losses Incurred	3 Direct Loss Percentage	
1.	Fire	26,743,048	8,177,648	30.6	27.8
2.	Allied Lines	80,677,682	35,427,097	43.9	35.7
3.	Farmowners multiple peril	1,407,087	152,486	10.8	33.2
4.	Homeowners multiple peril	42,875,618	20,885,391	48.7	44.2
5.	Commercial multiple peril	167,601,846	97,434,301	58.1	54.0
6.	Mortgage guaranty				
8.	Ocean marine		6,528		387.5
9.	Inland marine	5,191,272	1,620,035	31.2	110.0
10.	Financial guaranty				
11.1	Medical professional liability - occurrence				
11.2	Medical professional liability - claims-made	49,126	12,143	24.7	(2.0)
12.	Earthquake	6,806,096	470,783	6.9	5.7
13.	Group accident and health				
14.	Credit accident and health				
15.	Other accident and health				
16.	Workers' compensation				
17.1	Other liability - occurrence	256,305,966	141,430,372	55.2	46.4
17.2	Other liability - claims-made	110,689,940	32,546,007	29.4	35.1
17.3	Excess workers' compensation				
18.1	Products liability - occurrence	7,073,171	9,572,927	135.3	40.9
18.2	Products liability - claims-made	107,627	20,133	18.7	(4.4)
19.1,19.2	Private passenger auto liability				
19.3,19.4	Commercial auto liability	32,024,903	24,512,437	76.5	93.9
21.	Auto physical damage	5,934,362	2,737,700	46.1	55.3
22.	Aircraft (all perils)				
23.	Fidelity	2,599			
24.	Surety				
26.	Burglary and theft	48,026			257.8
27.	Boiler and machinery	1,069,334	314,930	29.5	69.3
28.	Credit	354,129	207,776	58.7	(30.3)
29.	International				
30.	Warranty	1,798,298	1,929,951	107.3	105.6
31.	Reinsurance - Nonproportional Assumed Property	XXX	XXX	XXX	XXX
32.	Reinsurance - Nonproportional Assumed Liability	XXX	XXX	XXX	XXX
33.	Reinsurance - Nonproportional Assumed Financial Lines	XXX	XXX	XXX	XXX
34.	Aggregate write-ins for other lines of business				
35.	Totals	746,760,130	377,458,645	50.5	47.0
DETAILS OF WRITE-INS					
3401.				
3402.				
3403.				
3498.	Summary of remaining write-ins for Line 34 from overflow page				
3499.	Totals (Lines 3401 through 3403 plus 3498)(Line 34 above)				

PART 2 - DIRECT PREMIUMS WRITTEN

Line of Business		1	2	3
		Current Quarter	Current Year to Date	Prior Year Year to Date
1.	Fire	15,626,467	28,968,148	25,091,993
2.	Allied Lines	46,913,108	84,827,748	70,386,627
3.	Farmowners multiple peril	840,309	1,413,906	1,357,498
4.	Homeowners multiple peril	24,400,307	43,904,559	40,772,312
5.	Commercial multiple peril	85,159,111	165,566,981	158,772,537
6.	Mortgage guaranty			
8.	Ocean marine			(580)
9.	Inland marine	3,068,384	5,650,615	4,179,040
10.	Financial guaranty			
11.1	Medical professional liability - occurrence			
11.2	Medical professional liability - claims-made	40,479	52,071	36,415
12.	Earthquake	4,362,148	7,078,430	6,183,959
13.	Group accident and health			
14.	Credit accident and health			
15.	Other accident and health			
16.	Workers' compensation			
17.1	Other liability - occurrence	151,866,095	271,867,612	264,713,404
17.2	Other liability - claims-made	48,158,862	109,807,624	95,049,670
17.3	Excess workers' compensation			
18.1	Products liability - occurrence	1,833,422	3,774,250	7,191,017
18.2	Products liability - claims-made	10,703	10,703	10,750
19.1,19.2	Private passenger auto liability			
19.3,19.4	Commercial auto liability	16,636,442	31,382,793	25,629,734
21.	Auto physical damage	3,498,926	6,602,555	4,580,199
22.	Aircraft (all perils)			
23.	Fidelity	558	1,758	1,484
24.	Surety			
26.	Burglary and theft	14,863	29,183	60,037
27.	Boiler and machinery	573,974	1,082,651	1,024,313
28.	Credit	135,007	267,428	304,904
29.	International			
30.	Warranty	899,961	1,512,859	1,528,659
31.	Reinsurance - Nonproportional Assumed Property	XXX	XXX	XXX
32.	Reinsurance - Nonproportional Assumed Liability	XXX	XXX	XXX
33.	Reinsurance - Nonproportional Assumed Financial Lines	XXX	XXX	XXX
34.	Aggregate write-ins for other lines of business			
35.	Totals	404,039,126	763,801,874	706,873,972
DETAILS OF WRITE-INS				
3401.			
3402.			
3403.			
3498.	Summary of remaining write-ins for Line 34 from overflow page			
3499.	Totals (Lines 3401 through 3403 plus 3498)(Line 34 above)			

STATEMENT AS OF JUNE 30, 2014 OF THE SCOTTSDALE INSURANCE COMPANY

PART 3 (000 omitted)

LOSS AND LOSS ADJUSTMENT EXPENSE RESERVES SCHEDULE

	1	2	3	4	5	6	7	8	9	10	11	12	13									
Years in Which Losses Occurred	Prior Year-End Known Case Loss and LAE Reserves	Prior Year-End IBNR Loss and LAE Reserves	Total Prior Year-End Loss and LAE Reserves (Cols. 1+2)	2014 Loss and LAE Payments on Claims Reported as of Prior Year-End	2014 Loss and LAE Payments on Claims Unreported as of Prior Year-End	Total 2014 Loss and LAE Payments (Cols. 4+5)	Q.S. Date Known Case Loss and LAE Reserves on Claims Reported and Open as of Prior Year End	Q.S. Date Known Case Loss and LAE Reserves on Claims Reported or Reopened Subsequent to Prior Year End	Q.S. Date IBNR Loss and LAE Reserves	Total Q.S. Loss and LAE Reserves (Cols.7+8+9)	Prior Year-End Known Case Loss and LAE Reserves Developed (Savings)/ Deficiency (Cols.4+7 minus Col. 1)	Prior Year-End IBNR Loss and LAE Reserves Developed (Savings)/ Deficiency (Cols. 5+8+9 minus Col. 2)	Prior Year-End Total Loss and LAE Reserve Developed (Savings)/ Deficiency (Cols. 11+12)									
1. 2011 + Prior	109,730	72,499	182,229	29,047	478	29,525	94,023	83	58,257	152,363	13,340	(13,681)	(341)									
2. 2012	55,331	40,718	96,049	20,191	455	20,646	44,668	628	30,867	76,163	9,528	(8,768)	760									
3. Subtotals 2012 + Prior	165,061	113,217	278,278	49,238	933	50,171	138,691	711	89,124	228,526	22,868	(22,449)	419									
4. 2013	93,580	94,564	188,144	54,173	7,179	61,352	68,752	3,416	56,963	129,131	29,345	(27,006)	2,339									
5. Subtotals 2013 + Prior	258,641	207,781	466,422	103,411	8,112	111,523	207,443	4,127	146,087	357,657	52,213	(49,455)	2,758									
6. 2014	XXX	XXX	XXX	XXX	122,581	122,581	XXX	57,515	74,192	131,707	XXX	XXX	XXX									
7. Totals	258,641	207,781	466,422	103,411	130,693	234,104	207,443	61,642	220,279	489,364	52,213	(49,455)	2,758									
8. Prior Year-End Surplus As Regards Policyholders	716,365										Col. 11, Line 7 As % of Col. 1 Line 7	Col. 12, Line 7 As % of Col. 2 Line 7	Col. 13, Line 7 As % of Col. 3 Line 7									
											1. 20.2	2. (23.8)	3. 0.6									
											Col. 13, Line 7 As a % of Col. 1 Line 8											
											4. 0.4											

STATEMENT AS OF JUNE 30, 2014 OF THE SCOTTSDALE INSURANCE COMPANY

SUPPLEMENTAL EXHIBITS AND SCHEDULES INTERROGATORIES

The following supplemental reports are required to be filed as part of your statement filing. However, in the event that your company does not transact the type of business for which the special report must be filed, your response of NO to the specific interrogatory will be accepted in lieu of filing a "NONE" report and a bar code will be printed below. If the supplement is required of your company but is not being filed for whatever reason enter SEE EXPLANATION and provide an explanation following the interrogatory questions.

	Response
1. Will the Trusteed Surplus Statement be filed with the state of domicile and the NAIC with this statement?	NO
2. Will Supplement A to Schedule T (Medical Professional Liability Supplement) be filed with this statement?	YES
3. Will the Medicare Part D Coverage Supplement be filed with the state of domicile and the NAIC with this statement?	NO
4. Will the Director and Officer Insurance Coverage Supplement be filed with the state of domicile and the NAIC with this statement?	YES

Explanations:

1.
3.

Bar Codes:

1. Trusteed Surplus Statement [Document Identifier 490]
3. Medicare Part D Coverage Supplement [Document Identifier 365]



STATEMENT AS OF JUNE 30, 2014 OF THE SCOTTSDALE INSURANCE COMPANY

OVERFLOW PAGE FOR WRITE-INS

Additional Write-ins for Assets Line 25

	Current Statement Date			4 December 31 Prior Year Net Admitted Assets
	1 Assets	2 Nonadmitted Assets	3 Net Admitted Assets (Cols. 1 - 2)	
2504. Other assets nonadmitted	1,868,800	1,868,800		
2505. Recoupment receivable	1,860,995		1,860,995	1,154,671
2506. Third party administrator receivable	144,684		144,684	3,792
2507. Deductible receivables	100,365	8,595	91,770	
2597. Summary of remaining write-ins for Line 25 from overflow page	3,974,844	1,877,395	2,097,449	1,158,463

Additional Write-ins for Liabilities Line 25

	1 Current Statement Date	2 December 31, Prior Year
2504. Miscellaneous liabilities	(354,670)	145,648
2505. Reserve for state escheat payment	3,841,457	6,376,178
2506. State surcharge/recoupment payable	634,504	603,630
2597. Summary of remaining write-ins for Line 25 from overflow page	4,121,291	7,125,456

SCHEDULE A - VERIFICATION

Real Estate

	1	2
	Year to Date	Prior Year Ended December 31
1. Book/adjusted carrying value, December 31 of prior year		
2. Cost of acquired:		
2.1 Actual cost at time of acquisition		
2.2 Additional investment made after acquisition		
3. Current year change in encumbrances		
4. Total gain (loss) on disposals		
5. Deduct amounts received on disposals		
6. Total foreign exchange change in book/adjusted carrying value		
7. Deduct current year's other than temporary impairment recognized		
8. Deduct current year's depreciation		
9. Book/adjusted carrying value at the end of current period (Lines 1+2+3+4-5+6-7-8)		
10. Deduct total nonadmitted amounts		
11. Statement value at end of current period (Line 9 minus Line 10)		

SCHEDULE B - VERIFICATION

Mortgage Loans

	1	2
	Year to Date	Prior Year Ended December 31
1. Book value/recorded investment excluding accrued interest, December 31 of prior year	2,685,794	2,860,971
2. Cost of acquired:		
2.1 Actual cost at time of acquisition		
2.2 Additional investment made after acquisition		
3. Capitalized deferred interest and other		
4. Accrual of discount		
5. Unrealized valuation increase (decrease)		
6. Total gain (loss) on disposals		
7. Deduct amounts received on disposals	884,584	175,178
8. Deduct amortization of premium and mortgage interest points and commitment fees		
9. Total foreign exchange change in book value/recorded investment excluding accrued interest		
10. Deduct current year's other than temporary impairment recognized		
11. Book value/recorded investment excluding accrued interest at end of current period (Lines 1+2+3+4+5+6-7-8+9-10)	1,801,210	2,685,794
12. Total valuation allowance	(1,477)	(1,637)
13. Subtotal (Line 11 plus Line 12)	1,799,733	2,684,157
14. Deduct total nonadmitted amounts		
15. Statement value at end of current period (Line 13 minus Line 14)	1,799,733	2,684,157

SCHEDULE BA - VERIFICATION

Other Long-Term Invested Assets

	1	2
	Year to Date	Prior Year Ended December 31
1. Book/adjusted carrying value, December 31 of prior year		
2. Cost of acquired:		
2.1 Actual cost at time of acquisition		
2.2 Additional investment made after acquisition		
3. Capitalized deferred interest and other		
4. Accrual of discount		
5. Unrealized valuation increase (decrease)		
6. Total gain (loss) on disposals		
7. Deduct amounts received on disposals		
8. Deduct amortization of premium and depreciation		
9. Total foreign exchange change in book/adjusted carrying value		
10. Deduct current year's other than temporary impairment recognized		
11. Book/adjusted carrying value at end of current period (Lines 1+2+3+4+5+6-7-8+9-10)		
12. Deduct total nonadmitted amounts		
13. Statement value at end of current period (Line 11 minus Line 12)		

SCHEDULE D - VERIFICATION

Bonds and Stocks

	1	2
	Year to Date	Prior Year Ended December 31
1. Book/adjusted carrying value of bonds and stocks, December 31 of prior year	1,341,499,102	1,106,672,040
2. Cost of bonds and stocks acquired	110,793,934	332,972,203
3. Accrual of discount	1,863,694	1,344,324
4. Unrealized valuation increase (decrease)	15,037,289	10,126,092
5. Total gain (loss) on disposals	19,706	(537,042)
6. Deduct consideration for bonds and stocks disposed of	61,790,556	103,768,888
7. Deduct amortization of premium	2,783,326	4,852,339
8. Total foreign exchange change in book/adjusted carrying value	(28,108)	(457,288)
9. Deduct current year's other than temporary impairment recognized		
10. Book/adjusted carrying value at end of current period (Lines 1+2+3+4+5-6-7+8-9)	1,404,611,735	1,341,499,102
11. Deduct total nonadmitted amounts		
12. Statement value at end of current period (Line 10 minus Line 11)	1,404,611,735	1,341,499,102

STATEMENT AS OF JUNE 30, 2014 OF THE SCOTTSDALE INSURANCE COMPANY

SCHEDULE D - PART 1B

Showing the Acquisitions, Dispositions and Non-Trading Activity
During the Current Quarter for all Bonds and Preferred Stock by NAIC Designation

NAIC Designation	1 Book/Adjusted Carrying Value Beginning of Current Quarter	2 Acquisitions During Current Quarter	3 Dispositions During Current Quarter	4 Non-Trading Activity During Current Quarter	5 Book/Adjusted Carrying Value End of First Quarter	6 Book/Adjusted Carrying Value End of Second Quarter	7 Book/Adjusted Carrying Value End of Third Quarter	8 Book/Adjusted Carrying Value December 31 Prior Year
BONDS								
1. NAIC 1 (a)	822,902,051	10,327,080	30,461,797	6,767,153	822,902,051	809,534,487		833,744,886
2. NAIC 2 (a)	294,756,035	28,569,708	5,061,995	(2,487,688)	294,756,035	315,776,060		257,035,355
3. NAIC 3 (a)	1,159,491			(2,298)	1,159,491	1,157,193		1,474,355
4. NAIC 4 (a)	910,349		10,460	(899,889)	910,349			12,185,612
5. NAIC 5 (a)								
6. NAIC 6 (a)								
7. Total Bonds	1,119,727,926	38,896,788	35,534,252	3,377,278	1,119,727,926	1,126,467,740		1,104,440,208
PREFERRED STOCK								
8. NAIC 1								
9. NAIC 2								
10. NAIC 3								
11. NAIC 4								
12. NAIC 5								
13. NAIC 6								
14. Total Preferred Stock								
15. Total Bonds and Preferred Stock	1,119,727,926	38,896,788	35,534,252	3,377,278	1,119,727,926	1,126,467,740		1,104,440,208

(a) Book/Adjusted Carrying Value column for the end of the current reporting period includes the following amount of non-rated short-term and cash equivalent bonds by NAIC designation: NAIC 1 \$; NAIC 2 \$; NAIC 3 \$;
NAIC 4 \$; NAIC 5 \$; NAIC 6 \$

SCHEDULE DA - PART 1

Short-Term Investments

	1	2	3	4	5
	Book/Adjusted Carrying Value	Par Value	Actual Cost	Interest Collected Year-to-Date	Paid for Accrued Interest Year-to-Date
9199999 Totals	16,573,774	xxx	16,573,774	49	

SCHEDULE DA - VERIFICATION

Short-Term Investments

	1	2
	Year To Date	Prior Year Ended December 31
1. Book/adjusted carrying value, December 31 of prior year	20,400,317	107,631,487
2. Cost of short-term investments acquired	2,105,744,405	3,934,973,121
3. Accrual of discount		
4. Unrealized valuation increase (decrease)		
5. Total gain (loss) on disposals		
6. Deduct consideration received on disposals	2,109,570,948	4,022,204,291
7. Deduct amortization of premium		
8. Total foreign exchange change in book/adjusted carrying value		
9. Deduct current year's other than temporary impairment recognized		
10. Book/adjusted carrying value at end of current period (Lines 1+2+3+4+5-6-7+8-9)	16,573,774	20,400,317
11. Deduct total nonadmitted amounts		
12. Statement value at end of current period (Line 10 minus Line 11)	16,573,774	20,400,317

Schedule DB - Part A - Verification - Options, Caps, Floors, Collars, Swaps and Forwards

N O N E

Schedule DB - Part B - Verification - Futures Contracts

N O N E

Schedule DB - Part C - Section 1 - Replication (Synthetic Asset) Transactions (RSATs) Open

N O N E

Schedule DB-Part C-Section 2-Reconciliation of Replication (Synthetic Asset) Transactions Open

N O N E

Schedule DB - Verification - Book/Adjusted Carrying Value, Fair Value and Potential Exposure of
Derivatives

N O N E

Schedule E - Verification - Cash Equivalents

N O N E

Schedule A - Part 2 - Real Estate Acquired and Additions Made

N O N E

Schedule A - Part 3 - Real Estate Disposed

N O N E

STATEMENT AS OF JUNE 30, 2014 OF THE SCOTTSDALE INSURANCE COMPANY

SCHEDULE B - PART 2

Showing All Mortgage Loans ACQUIRED AND ADDITIONS MADE During the Current Quarter

[illegible]

SCHEDULE B - PART 3

Showing All Mortgage Loans DISPOSED, Transferred or Repaid During the Current Quarter

1 Loan Number	Location		4 Loan Type	5 Date Acquired	6 Disposal Date	7 Book Value/ Recorded Investment Excluding Accrued Interest Prior Year	Change in Book Value/Recorded Investment						14 Book Value/ Recorded Investment Excluding Accrued Interest on Disposal	15 Consid-eration	16 Foreign Exchange Gain (Loss) on Disposal	17 Realized Gain (Loss) on Disposal	18 Total Gain (Loss) on Disposal
	2 City	3 State					8 Unrealized Valuation Increase (Decrease)	9 Current Year's (Amortization)/Accretion	10 Current Year's Other Than Temporary Impairment Recognized	11 Capitalized Deferred Interest and Other	12 Total Change in Book Value (8+9-10+11)	13 Total Foreign Exchange Change in Book Value					
00--1000999	AURORA	CO		.03/03/2004	.04/30/2014	.800,776							.796,794	.796,794			
0199999. Mortgages closed by repayment																	
00--1001090	MASON	OH		.12/20/2002		1,630,922							11,749	11,749			
00--1001233	HOUSTON	TX		.11/20/2002		.254,095							30,486	30,486			
0299999. Mortgages with partial repayments						1,885,017							42,235	42,235			
0599999 - Totals						2,685,793							839,029	839,028			

Schedule BA - Part 2 - Other Long-Term Invested Assets Acquired

N O N E

Schedule BA - Part 3 - Other Long-Term Invested Assets Disposed, Transferred or Repaid

N O N E

STATEMENT AS OF JUNE 30, 2014 OF THE SCOTTSDALE INSURANCE COMPANY

SCHEDULE D - PART 3

Show All Long-Term Bonds and Stock Acquired During the Current Quarter

1	2	3	4	5	6	7	8	9	10
CUSIP Identification	Description	Foreign	Date Acquired	Name of Vendor	Number of Shares of Stock	Actual Cost	Par Value	Paid for Accrued Interest and Dividends	NAIC Designation or Market Indicator (a)
092113-AH-2	Black Hills Corp Sr Nt 4.250% 11/30/23		06/12/2014	RBC Dominion Securities		5,269,200	5,000,000	10,035	2FE
096630-AB-4	Boardwalk Pipelines LLC Nt 5.750% 09/1		04/30/2014	Sterne Agee		5,478,300	5,000,000	39,931	2FE
096630-AC-2	Boardwalk Pipelines LLC Sr Nt 3.375% 0		04/23/2014	Sterne Agee		4,509,800	5,000,000	40,781	2FE
233331-AS-6	DTE Energy Co Sr Nt 3.500% 06/01/24		05/06/2014	Bank of America BISO Dealer		1,748,495	1,750,000		2FE
26884T-AD-4	ERAC USA Finance Company Sr Nt 4.500%		05/12/2014	Jeffries & Co Inc		1,076,530	1,000,000	11,125	2FE
391164-AF-7	Great Plains Energy Sr Nt 5.292% 06/15		05/09/2014	Morgan/JP/Securities - Bonds		5,664,400	5,000,000	109,515	2FE
64828A-AA-1	New Residential Mtg Ln Tr RMBS Ser 2014-		05/22/2014	Citigroup		10,327,080	10,000,000	27,083	1FE
71270Q-EB-8	Peoples United Bank Sr Nt 4.000% 07/15		06/23/2014	Jeffries & Co Inc		3,727,838	3,750,000		2FE
720198-AD-2	Piedmont Operating Partnership Sr Nt 4		05/12/2014	Wachovia Capital Markets Inc		1,095,146	1,075,000	9,169	2FE
3899999. Subtotal - Bonds - Industrial and Miscellaneous (Unaffiliated)						38,896,789	37,575,000	247,639	XXX
8399997. Total - Bonds - Part 3						38,896,789	37,575,000	247,639	XXX
8399998. Total - Bonds - Part 5						XXX	XXX	XXX	XXX
8399999. Total - Bonds						38,896,789	37,575,000	247,639	XXX
8999997. Total - Preferred Stocks - Part 3							XXX		XXX
8999998. Total - Preferred Stocks - Part 5						XXX	XXX	XXX	XXX
8999999. Total - Preferred Stocks							XXX		XXX
810528-10-5	Scottsdale Surplus Lines Ins Co		05/31/2014	Capital Contribution	0.000	30,000,000			K
9199999. Subtotal - Common Stocks - Parent, Subsidiaries and Affiliates						30,000,000	XXX		XXX
9799997. Total - Common Stocks - Part 3						30,000,000	XXX		XXX
9799998. Total - Common Stocks - Part 5						XXX	XXX	XXX	XXX
9799999. Total - Common Stocks						30,000,000	XXX		XXX
9899999. Total - Preferred and Common Stocks						30,000,000	XXX		XXX
9999999 - Totals						68,896,789	XXX	247,639	XXX

(a) For all common stock bearing the NAIC market indicator "U" provide: the number of such issues

STATEMENT AS OF JUNE 30, 2014 OF THE SCOTTSDALE INSURANCE COMPANY

SCHEDULE D - PART 4

Show All Long-Term Bonds and Stock Sold, Redeemed or Otherwise Disposed of During the Current Quarter

1	2	3	4	5	6	7	8	9	10	Change In Book/Adjusted Carrying Value					16	17	18	19	20	21	22
										11	12	13	14	15							
CUSIP Ident-ification	Description	For-ign	Disposal Date	Name of Purchaser	Number of Shares of Stock	Consid-eration	Par Value	Actual Cost	Prior Year Book/ Adjusted Carrying Value	Unrealized Valuation Increase/ (Decrease)	Current Year's (Amor-tization)/ Accretion	Current Year's Other Than Temporary Impairment Recogn-ized	Total Change in Book/ Adjusted Carrying Value (11 + 12 - 13)	Total Foreign Exchange Change in Book /Adjusted Carrying Value	Book/ Adjusted Carrying Value at Disposal Date	Foreign Exchange Gain (Loss) on Disposal	Realized Gain (Loss) on Disposal	Total Gain (Loss) on Disposal	Bond Interest/ Stock Dividends Received During Year	Stated Con-tractual Maturity Date	NAIC Desig-nation or Market In-dicator (a)
383740-NF-6	GNMA REMIC Ser 1996-5 CI Z 7.000% 05/1		06/01/2014	Paydown		8,860	8,860	9,110	9,020		(160)		(160)		8,860				252	05/16/2026	1
911760-GT-7	Vendee Mtg Tr RMBS REMIC Ser 1995-3 12		06/01/2014	Paydown		35,428	35,428	36,415	35,915		(486)		(486)		35,428				1,058	09/15/2025	1
911760-HH-2	Vendee Mtg Tr RMBS REMIC Ser 1996-2 12		06/01/2014	Paydown		64,371	64,371	64,051	64,098		273		273		64,371				1,765	06/15/2026	1
0599999	Subtotal - Bonds - U.S. Governments					108,659	108,659	109,576	109,033		(373)		(373)		108,659				3,075	XXX	XXX
452150-R3-1	Illinois St GO First Ser 5.375% 04/01/		04/01/2014	Maturity		1,500,000	1,500,000	1,637,025	1,504,158		(4,158)		(4,158)		1,500,000				40,313	04/01/2014	1FE
1799999	Subtotal - Bonds - U.S. States, Territories and Possessions					1,500,000	1,500,000	1,637,025	1,504,158		(4,158)		(4,158)		1,500,000				40,313	XXX	XXX
011832-S3-7	Alaska St Hsg Fin Corp Rev LBASS AMT 1st		06/01/2014	Call 100.0000		75,000	75,000	75,000	75,000						75,000				1,453	12/01/2024	1FE
312905-YJ-5	FHLMC REMIC Ser 1077-E 9.000% 05/15/21		06/01/2014	Paydown		8,287	8,287	8,397	8,301		(14)		(14)		8,287				329	05/15/2021	1
313390-KD-9	FHLMC REMIC Ser 2415 OE 5.500% 02/15/1		06/01/2014	Paydown		57,956	57,956	59,984	58,296		(341)		(341)		57,956				1,363	02/15/2017	1
313373-Q2-7	FHLMC REMIC Ser 1674-Z 6.750% 02/15/24		06/01/2014	Paydown		17,013	17,013	17,602	17,317		(304)		(304)		17,013				543	02/15/2024	1
31337C-6P-8	FHLMC Structured Ser 2008 M 7.000% 11/		06/01/2014	Paydown		7,833	7,833	8,129	8,010		(177)		(177)		7,833				220	11/20/2027	1
31337C-AU-2	FHLMC Structured Ser FSPC T-9 A6 6.564		05/01/2014	Paydown		112	112	108	112		1		1		112				4	03/25/2029	1
31340Y-DB-2	FHLMC REMIC Ser 12-A 9.250% 11/15/19		06/15/2014	Paydown		714	714	725	714		(11)		(11)		714				28	11/15/2019	1
31340Y-GR-4	FHLMC REMIC Ser 22-C 9.500% 04/15/20		06/15/2014	Paydown		2,763	2,763	2,864	2,774		(10)		(10)		2,763				107	04/15/2020	1
31358E-XG-2	FNMA REMIC Ser 1990-83A 9.250% 07/25/2		06/01/2014	Paydown		808	808	806	804		4		4		808				32	07/25/2020	1
31358G-Y4-4	FNMA REMIC Ser 1991-56G 8.600% 06/25/2		06/01/2014	Paydown		9,067	9,067	9,081	9,050		17		17		9,067				326	06/25/2021	1
31358L-VM-5	FNMA REMIC Ser 692-14Z 7.000% 02/25/22		06/01/2014	Paydown		10,404	10,404	10,568	10,465		(62)		(62)		10,404				299	02/25/2022	1
31358N-SB-4	FNMA REMIC Ser 1992-124 PZ 7.000% 07/2		06/01/2014	Paydown		13,414	13,414	13,801	13,584		(169)		(169)		13,414				395	07/25/2022	1
31358N-RT-1	FNMA REMIC Ser G 1992-30Z 7.000% 06/25		06/01/2014	Paydown		4,248	4,248	4,316	4,285		(38)		(38)		4,248				124	06/25/2022	1
31359V-BH-5	FNMA REMIC Ser 1998-73 CI MZ 6.300% 10		06/01/2014	Paydown		2,610	2,610	2,678	2,651		(40)		(40)		2,610				69	10/17/2038	1
313603-GW-6	FNMA REMIC Ser 1989-86E 8.750% 11/25/1		06/01/2014	Paydown		1,334	1,334	1,306	1,320		13		13		1,334				49	11/25/2019	1
313603-YL-0	FNMA REMIC Ser 1990-16E 9.000% 03/25/2		06/01/2014	Paydown		3,172	3,172	3,452	3,251		(79)		(79)		3,172				119	03/25/2020	1
31392E-SX-9	FNMA REMIC Ser 2002-59 CI B 5.500% 09/		06/01/2014	Paydown		10,574	10,574	10,994	10,723		(149)		(149)		10,574				245	09/25/2017	1
31392T-WT-0	FHLMC REMIC Ser 2478 JF 6.000% 08/15/2		06/01/2014	Paydown		8,589	8,589	8,946	8,707		(118)		(118)		8,589				218	08/15/2022	1
31392U-KL-7	FHLMC REMIC Ser 2504 N 5.500% 09/15/1		06/01/2014	Paydown		19,498	19,498	20,339	19,749		(251)		(251)		19,498				450	09/15/2017	1
31392U-MQ-4	FHLMC REMIC Ser 2503 BH 5.500% 09/15/1		06/01/2014	Paydown		12,733	12,733	13,137	12,798		(65)		(65)		12,733				285	09/15/2017	1
31392U-RH-9	FHLMC REMIC Ser 2501 AN 5.500% 09/15/1		06/01/2014	Paydown		43,518	43,518	45,123	43,875		(357)		(357)		43,518				1,000	09/15/2017	1
31392V-2F-8	FHLMC REMIC Ser 2494 J 5.500% 09/15/17		06/01/2014	Paydown		38,036	38,036	38,767	38,096		(60)		(60)		38,036				894	09/15/2017	1
31392V-7G-1	FHLMC REMIC Ser 2498 BM 5.500% 09/15/1		06/01/2014	Paydown		20,480	20,480	21,053	20,588		(108)		(108)		20,480				461	09/15/2017	1
31392V-SN-3	FHLMC REMIC Ser 2496 BK 5.500% 09/15/1		06/01/2014	Paydown		11,854	11,854	12,225	11,927		(72)		(72)		11,854				274	09/15/2017	1
31393H-GS-6	FHLMC REMIC Ser 2543 CI AN 5.000% 12/1		06/01/2014	Paydown		25,449	25,449	25,226	25,364		85		85		25,449				534	12/15/2017	1
31396N-EM-4	FHLMC REMIC Ser 3140 CI UP 6.000% 03/1		06/01/2014	Paydown		303,838	303,838	301,986	302,294		1,544		1,544		303,838				7,351	03/15/2036	1
				Redemption 100.0000																	
649085-AA-5	New Valley Generation II Ser 2001 5.57		05/01/2014			166,272	166,272	173,802	169,091		(2,819)		(2,819)		166,272				4,632	05/01/2020	1
677560-JD-0	Ohio St Hsg Fin Agcy Mtg Rev LBASS AMT S		06/01/2014	Call 100.0000		200,000	200,000	200,000	200,000						200,000				8,438	09/01/2024	1FE
914063-I2-6	University AZ Univ Rev Sys Ser B 5.000		06/01/2014	Maturity		3,670,000	3,670,000	4,114,474	3,692,445		(22,445)		(22,445)		3,670,000				91,750	06/01/2014	1FE
3199999	Subtotal - Bonds - U.S. Special Revenues					4,745,576	4,745,576	5,204,913	4,771,602		(26,025)		(26,025)		4,745,576				121,992	XXX	XXX
01082#-AA-3	Alameda Cnty CA CTL Ser 2002-A 7.500%		06/15/2014	Redemption 100.0000		20,449	20,449	21,675	21,074		(626)		(626)		20,449				640	06/15/2021	1
030955-AB-4	Ameritech Capital Funding Corp Nt 9.10		06/01/2014	Redemption 100.0000		75,800	75,800	91,378	79,462		(3,662)		(3,662)		75,800				3,449	06/01/2016	1FE
05164#-AA-5	Aurora Health Care (Badger RE) CTL 6.9		06/15/2014	Redemption 100.0000		12,989	12,989	12,605	12,790		199		199		12,989				379	12/15/2022	1
05549#-AA-3	BJs Wholesale Club Inc CTL (HG Bowie Rea		06/15/2014	Redemption 100.0000		5,276	5,276	5,327	5,303		(27)		(27)		5,276				183	05/15/2022	2
05549#-AA-3	BJs Wholesale Club Inc CTL (HG Bowie Rea		05/15/2014	Redemption 100.0000		10,460	10,460	10,561	10,515		(54)		(54)		10,460				273	05/15/2022	4Z
126650-BP-4	CYS Caremark Corp ABS PTC Nt 6.036% 12		06/10/2014			10,740	10,740	12,475	12,415		(1,675)		(1,675)		10,740				270	12/10/2028	2FE
12669C-E4-8	CMBS Inc RMBS Ser 2002-8 CI A4 6.500%		05/01/2014	Paydown		202,305	202,305	209,638	202,298		7		7		202,305				5,380	07/25/2032	1FM
				Redemption 100.0000																	
151895-A*-0	CenterPoint Properties Tr CTL 7.530% 1		06/01/2014			26,827	26,827	26,827	26,827						26,827				842	10/01/2014	1
20173V-AC-4	Greenwich Cap Comm Funding CMBS Ser 2007		06/01/2014	Paydown		1,465,858	1,465,858	1,473,161	1,464,189		1,669		1,669		1,465,858				33,738	12/10/2049	1FM
22546B-AD-2	Credit Suisse Mortgage Capital CMBS Ser		06/01/2014	Paydown		164,596	164,596	164,969	164,301		295		295		164,596				4,686	09/15/2040	1FM
				Morgan Stanley & Co Inc																	
23311V-AD-9	DCP Midstream Operating Sr Nt 3.875% 0		04/23/2014			4,961,600	5,000,000	4,935,900	4,940,156		1,739		1,739		4,941,894		19,706	19,706	120,017	03/15/2023	2FE

STATEMENT AS OF JUNE 30, 2014 OF THE SCOTTSDALE INSURANCE COMPANY

SCHEDULE D - PART 4

Show All Long-Term Bonds and Stock Sold, Redeemed or Otherwise Disposed of During the Current Quarter

1	2	3	4	5	6	7	8	9	10	Change In Book/Adjusted Carrying Value					16	17	18	19	20	21	22
										11	12	13	14	15							
CUSIP Ident- ification	Description	For- eign	Disposal Date	Name of Purchaser	Number of Shares of Stock	Consid- eration	Par Value	Actual Cost	Prior Year Book/ Adjusted Carrying Value	Unrealized Valuation Increase/ (Decrease)	Current Year's (Amor- tization)/ Accretion	Current Year's Other Than Temporary Impairment Recog- nized	Total Change in Book/ Adjusted Carrying Value (11 + 12 - 13)	Total Foreign Exchange Change in Book /Adjusted Carrying Value	Book/ Adjusted Carrying Value at Disposal Date	Foreign Exchange Gain (Loss) on Disposal	Realized Gain (Loss) on Disposal	Total Gain (Loss) on Disposal	Bond Interest/ Stock Dividends Received During Year	Stated Con- tractual Maturity Date	NAIC Desig- nation or Market In- dicator (a)
50026*-AA-3	Kohls Corp CTL Shelby MI 7.600% 12/15/		06/15/2014	Redemption 100.0000		25,126	25,126	26,545	25,850		(724)		(724)		25,126				796	12/15/2022	2
52465#-BP-9	Legg Mason Mtg Cap Corp Ser 2003-CTL-21		06/01/2014	Redemption 100.0000		23,322	23,322	23,322	23,322						23,322				469	03/01/2023	1
653240-AA-9	Newtown CTL Ser 2002 6.082% 05/15/23		06/15/2014	Redemption 100.0000		39,460	39,460	39,458	39,459		1		1		39,460				1,001	05/15/2023	1
67020B-AA-8	NRRC-D Facilities Corp CTL GSA Rev Bd Ls		06/07/2014	Redemption 100.0000		24,037	24,037	24,037	24,037						24,037				651	11/07/2023	1
76126C-GB-2	RACERS Tr ABS Ser 1999-24-S-CCE CI A1		05/15/2014			35,265	35,265	32,741	34,478		788		788		35,265				1,168	05/15/2018	2
78442G-GG-5	SLM Student Loan Tr ABS Ser 2003-4 CI A5		06/16/2014	Paydown		18,232	18,232	18,692	18,498		(266)		(266)		18,232				91	03/15/2033	1FE
91737#-AA-3	United States Govt SS Ls FinTr CTL GSA G		06/15/2014	Redemption 100.0000		82,171	82,171	81,901	82,065		106		106		82,171				1,611	11/15/2018	1
92851@-AA-3	Vivendi SPC Tr CTL 6.630% 04/15/22		06/15/2014	Redemption 100.0000		13,537	13,537	13,537	13,537						13,537				374	04/15/2022	2
94978#-AT-4	Wells Fargo Bank Northwest NA CTL Ser 20		06/01/2014	Redemption 100.0000		8,561	8,561	8,561	8,561						8,561				237	08/01/2027	2
94978#-AU-1	Wells Fargo Bank Northwest NA CTL MWRA L		06/15/2014	Redemption 100.0000		10,977	10,977	11,493	11,349		(372)		(372)		10,977				338	05/15/2032	1
94978#-AX-5	Wells Fargo Bank Northwest NA CTL CVS Co		06/10/2014	Redemption 100.0000		21,597	21,597	21,597	21,597						21,597				598	10/10/2024	2
40536R-AA-7	Halcyon Structured Asset Mgmt CLO Ser 20	R	04/29/2014	Paydown		21,940,541	21,940,541	20,130,446	20,977,806		962,734		962,734		21,940,541				53,961	10/29/2021	1FE
3899999. Subtotal - Bonds - Industrial and Miscellaneous (Unaffiliated)						29,199,726	29,238,126	27,396,846	28,219,889		960,132		960,132		29,180,020		19,706	19,706	231,152	XXX	XXX
8399997. Total - Bonds - Part 4						35,553,961	35,592,361	34,348,360	34,604,682		929,576		929,576		35,534,255		19,706	19,706	396,532	XXX	XXX
8399998. Total - Bonds - Part 5						XXX	XXX	XXX	XXX	XXX	XXX	XXX	XXX	XXX	XXX	XXX	XXX	XXX	XXX	XXX	XXX
8399999. Total - Bonds						35,553,961	35,592,361	34,348,360	34,604,682		929,576		929,576		35,534,255		19,706	19,706	396,532	XXX	XXX
8999997. Total - Preferred Stocks - Part 4							XXX													XXX	XXX
8999998. Total - Preferred Stocks - Part 5						XXX	XXX	XXX	XXX	XXX	XXX	XXX	XXX	XXX	XXX	XXX	XXX	XXX	XXX	XXX	XXX
8999999. Total - Preferred Stocks							XXX													XXX	XXX
9799997. Total - Common Stocks - Part 4							XXX													XXX	XXX
9799998. Total - Common Stocks - Part 5						XXX	XXX	XXX	XXX	XXX	XXX	XXX	XXX	XXX	XXX	XXX	XXX	XXX	XXX	XXX	XXX
9799999. Total - Common Stocks							XXX													XXX	XXX
9899999. Total - Preferred and Common Stocks							XXX													XXX	XXX
9999999 - Totals						35,553,961	XXX	34,348,360	34,604,682		929,576		929,576		35,534,255		19,706	19,706	396,532	XXX	XXX

(a) For all common stock bearing the NAIC market indicator "U" provide: the number of such issues.....

Schedule DB - Part A - Section 1 - Options, Caps, Floors, Collars, Swaps and Forwards Open
N O N E

Schedule DB - Part B - Section 1 - Futures Contracts Open
N O N E

Schedule DB - Part B - Section 1B - Brokers with whom cash deposits have been made
N O N E

Schedule DB - Part D - Section 1 - Counterparty Exposure for Derivative Instruments Open
N O N E

Schedule DB - Part D-Section 2 - Collateral for Derivative Instruments Open - Pledged By
N O N E

Schedule DB - Part D-Section 2 - Collateral for Derivative Instruments Open - Pledged To
N O N E

SCHEDULE DL - PART 1
SECURITIES LENDING COLLATERAL ASSETS

Reinvested Collateral Assets Owned Current Statement Date						
1 CUSIP Identification	2 Description	3 Code	4 NAIC Designation/ Market Indicator	5 Fair Value	6 Book/Adjusted Carrying Value	7 Maturity Date
0599999. Total - U.S. Government Bonds						XXX
1099999. Total - All Other Government Bonds						XXX
1799999. Total - U.S. States, Territories and Possessions Bonds						XXX
2499999. Total - U.S. Political Subdivisions Bonds						XXX
3199999. Total - U.S. Special Revenues Bonds						XXX
362334-BQ-6	GSAA Home Equity Tr RMBS		1FIM	10,501	10,501	03/25/2036
813766-AC-4	Securitized AB Rec LLC RMBS		1FIM	68,130	68,130	09/25/2036
3399999. Subtotal - Bonds - Industrial and Miscellaneous (Unaffiliated) - Residential Mortgage-Backed Securities				78,631	78,631	XXX
3899999. Total - Industrial and Miscellaneous (Unaffiliated) Bonds				78,631	78,631	XXX
4899999. Total - Hybrid Securities						XXX
5599999. Total - Parent, Subsidiaries and Affiliates Bonds						XXX
6199999. Total - Issuer Obligations						XXX
6299999. Total - Residential Mortgage-Backed Securities				78,631	78,631	XXX
6399999. Total - Commercial Mortgage-Backed Securities						XXX
6499999. Total - Other Loan-Backed and Structured Securities						XXX
6599999. Total Bonds				78,631	78,631	XXX
7099999. Total - Preferred Stocks						XXX
7599999. Total - Common Stocks						XXX
7699999. Total - Preferred and Common Stocks						XXX
	Overnight Repo			130,809	130,809	07/01/2014
8999999. Total - Short-Term Invested Assets (Schedule DA type)				130,809	130,809	XXX
9999999 - Totals				209,440	209,440	XXX

General Interrogatories:

1. Total activity for the year to date Fair Value \$(1,258,392) Book/Adjusted Carrying Value \$(1,258,392)
2. Average balance for the year to date Fair Value \$629,605 Book/Adjusted Carrying Value \$629,605
3. Reinvested securities lending collateral assets book/adjusted carrying value included in this schedule by NAIC designation:
- NAIC 1 \$78,631 NAIC 2 \$ NAIC 3 \$ NAIC 4 \$ NAIC 5 \$ NAIC 6 \$

SCHEDULE DL - PART 2
SECURITIES LENDING COLLATERAL ASSETS

1 CUSIP Identification	2 Description	3 Code	4 NAIC Designation/ Market Indicator	5 Fair Value	6 Book/Adjusted Carrying Value	7 Maturity Date
NONE						
9999999 - Totals						XXX

General Interrogatories:

- E11

SCHEDULE E - PART 1 - CASH

[illegible]

STATEMENT AS OF JUNE 30, 2014 OF THE SCOTTSDALE INSURANCE COMPANY

SCHEDULE E - PART 2 - CASH EQUIVALENTS

Show Investments Owned End of Current Quarter

1	2	3	4	5	6	7	8
Description	Code	Date Acquired	Rate of Interest	Maturity Date	Book/Adjusted Carrying Value	Amount of Interest Due and Accrued	Amount Received During Year
NONE							
8699999 - Total Cash Equivalents							



SUPPLEMENT FOR THE QUARTER ENDING JUNE 30, 2014 OF THE SCOTTSDALE INSURANCE COMPANY

Designate the type of health care providers reported on this page:
Physicians, including surgeons and osteopaths

SUPPLEMENT A TO SCHEDULE T
EXHIBIT OF MEDICAL PROFESSIONAL LIABILITY PREMIUMS WRITTEN
ALLOCATED BY STATES AND TERRITORIES

States, etc.	1 Direct Premiums Written	2 Direct Premiums Earned	Direct Losses Paid		5 Direct Losses Incurred	Direct Losses Unpaid		8 Direct Losses Incurred But Not Reported
			3 Amount	4 No. of Claims		6 Amount Reported	7 No. of Claims	
1. Alabama.....AL								
2. Alaska.....AK								
3. Arizona.....AZ								
4. Arkansas.....AR					9			141
5. California.....CA	52,071	46,449			13,044			29,545
6. Colorado.....CO								
7. Connecticut.....CT								
8. Delaware.....DE								
9. District of Columbia.....DC								
10. Florida.....FL					(98)			41
11. Georgia.....GA								
12. Hawaii.....HI								
13. Idaho.....ID								
14. Illinois.....IL					(1)			185
15. Indiana.....IN						(60,000)	1	(59,593)
16. Iowa.....IA								
17. Kansas.....KS								
18. Kentucky.....KY								
19. Louisiana.....LA					(138)			15
20. Maine.....ME								
21. Maryland.....MD								
22. Massachusetts.....MA								
23. Michigan.....MI		2,677			187			3,838
24. Minnesota.....MN								
25. Mississippi.....MS					(25)			
26. Missouri.....MO					(60)			6
27. Montana.....MT								
28. Nebraska.....NE								
29. Nevada.....NV								
30. New Hampshire.....NH								
31. New Jersey.....NJ					(192)			28
32. New Mexico.....NM					(12)			(3,839)
33. New York.....NY					107			242
34. North Carolina.....NC								
35. North Dakota.....ND								
36. Ohio.....OH								
37. Oklahoma.....OK								
38. Oregon.....OR								
39. Pennsylvania.....PA					(398)			730
40. Rhode Island.....RI								
41. South Carolina.....SC								
42. South Dakota.....SD								
43. Tennessee.....TN								
44. Texas.....TX					(247)			21
45. Utah.....UT								
46. Vermont.....VT								
47. Virginia.....VA								
48. Washington.....WA								
49. West Virginia.....WV								
50. Wisconsin.....WI					(33)			
51. Wyoming.....WY								
52. American Samoa.....AS								
53. Guam.....GU								
54. Puerto Rico.....PR								
55. U.S. Virgin Islands.....VI								
56. Northern Mariana Islands.....MP								
57. Canada.....CAN								
58. Aggregate Other Aliens.....OT								
59. Totals	52,071	49,126			12,143	(60,000)	1	(28,640)
DETAILS OF WRITE-INS								
58001.								
58002.								
58003.								
58998. Summary of remaining write-ins for Line 58 from overflow page								
58999. Totals (Lines 58001 through 58003 plus 58998)(Line 58 above)								



SUPPLEMENT FOR THE QUARTER ENDING JUNE 30, 2014 OF THE SCOTTSDALE INSURANCE COMPANY

Designate the type of health care
providers reported on this page:
Hospitals

SUPPLEMENT A TO SCHEDULE T
EXHIBIT OF MEDICAL PROFESSIONAL LIABILITY PREMIUMS WRITTEN
ALLOCATED BY STATES AND TERRITORIES

			1	2	Direct Losses Paid		5	Direct Losses Unpaid		8
			Direct Premiums Written	Direct Premiums Earned	3 Amount	4 No. of Claims	Direct Losses Incurred	6 Amount Reported	7 No. of Claims	Direct Losses Incurred But Not Reported
States, etc.										
1.	Alabama	AL								
2.	Alaska	AK								
3.	Arizona	AZ								
4.	Arkansas	AR								
5.	California	CA								
6.	Colorado	CO								
7.	Connecticut	CT								
8.	Delaware	DE								
9.	District of Columbia	DC								
10.	Florida	FL								
11.	Georgia	GA								
12.	Hawaii	HI								
13.	Idaho	ID								
14.	Illinois	IL								
15.	Indiana	IN								
16.	Iowa	IA								
17.	Kansas	KS								
18.	Kentucky	KY								
19.	Louisiana	LA								
20.	Maine	ME								
21.	Maryland	MD								
22.	Massachusetts	MA								
23.	Michigan	MI								
24.	Minnesota	MN								
25.	Mississippi	MS								
26.	Missouri	MO								
27.	Montana	MT								
28.	Nebraska	NE								
29.	Nevada	NV								
30.	New Hampshire	NH								
31.	New Jersey	NJ								
32.	New Mexico	NM								
33.	New York	NY								
34.	North Carolina	NC								
35.	North Dakota	ND								
36.	Ohio	OH								
37.	Oklahoma	OK								
38.	Oregon	OR								
39.	Pennsylvania	PA								
40.	Rhode Island	RI								
41.	South Carolina	SC								
42.	South Dakota	SD								
43.	Tennessee	TN								
44.	Texas	TX								
45.	Utah	UT								
46.	Vermont	VT								
47.	Virginia	VA								
48.	Washington	WA								
49.	West Virginia	WV								
50.	Wisconsin	WI								
51.	Wyoming	WY								
52.	American Samoa	AS								
53.	Guam	GU								
54.	Puerto Rico	PR								
55.	U.S. Virgin Islands	VI								
56.	Nothern Mariana Islands	MP								
57.	Canada	CAN								
58.	Aggregate Other Aliens	OT								
59.	Totals									
DETAILS OF WRITE-INS										
58001.										
58002.										
58003.										
58998.	Summary of remaining write-ins for Line 58 from overflow page									
58999.	Totals (Lines 58001 through 58003 plus 58998)(Line 58 above)									



SUPPLEMENT FOR THE QUARTER ENDING JUNE 30, 2014 OF THE SCOTTSDALE INSURANCE COMPANY

Designate the type of health care providers reported on this page:
Other health care professionals, including dentists, chiropractors, and podiatrists

SUPPLEMENT A TO SCHEDULE T
EXHIBIT OF MEDICAL PROFESSIONAL LIABILITY PREMIUMS WRITTEN
ALLOCATED BY STATES AND TERRITORIES

		1	2	Direct Losses Paid		5	Direct Losses Unpaid		8
				3	4		6	7	
States, etc.		Direct Premiums Written	Direct Premiums Earned	Amount	No. of Claims	Direct Losses Incurred	Amount Reported	No. of Claims	Direct Losses Incurred But Not Reported
1.	Alabama.....AL								
2.	Alaska.....AK								
3.	Arizona.....AZ								
4.	Arkansas.....AR								
5.	California.....CA								
6.	Colorado.....CO								
7.	Connecticut.....CT								
8.	Delaware.....DE								
9.	District of Columbia.....DC								
10.	Florida.....FL								
11.	Georgia.....GA								
12.	Hawaii.....HI								
13.	Idaho.....ID								
14.	Illinois.....IL								
15.	Indiana.....IN								
16.	Iowa.....IA								
17.	Kansas.....KS								
18.	Kentucky.....KY								
19.	Louisiana.....LA								
20.	Maine.....ME								
21.	Maryland.....MD								
22.	Massachusetts.....MA								
23.	Michigan.....MI								
24.	Minnesota.....MN								
25.	Mississippi.....MS								
26.	Missouri.....MO								
27.	Montana.....MT								
28.	Nebraska.....NE								
29.	Nevada.....NV								
30.	New Hampshire.....NH								
31.	New Jersey.....NJ								
32.	New Mexico.....NM								
33.	New York.....NY								
34.	North Carolina.....NC								
35.	North Dakota.....ND								
36.	Ohio.....OH								
37.	Oklahoma.....OK								
38.	Oregon.....OR								
39.	Pennsylvania.....PA								
40.	Rhode Island.....RI								
41.	South Carolina.....SC								
42.	South Dakota.....SD								
43.	Tennessee.....TN								
44.	Texas.....TX								
45.	Utah.....UT								
46.	Vermont.....VT								
47.	Virginia.....VA								
48.	Washington.....WA								
49.	West Virginia.....WV								
50.	Wisconsin.....WI								
51.	Wyoming.....WY								
52.	American Samoa.....AS								
53.	Guam.....GU								
54.	Puerto Rico.....PR								
55.	U.S. Virgin Islands.....VI								
56.	Nothern Mariana Islands.....MP								
57.	Canada.....CAN								
58.	Aggregate Other Aliens.....OT								
59.	Totals								
DETAILS OF WRITE-INS									
58001.								
58002.								
58003.								
58998.	Summary of remaining write-ins for Line 58 from overflow page.....								
58999.	Totals (Lines 58001 through 58003 plus 58998)(Line 58 above)								

NONE



Designate the type of health care
providers reported on this page:
Other health care facilities

SUPPLEMENT A TO SCHEDULE T
EXHIBIT OF MEDICAL PROFESSIONAL LIABILITY PREMIUMS WRITTEN
ALLOCATED BY STATES AND TERRITORIES

			1	2	Direct Losses Paid		5	Direct Losses Unpaid		8
			Direct Premiums Written	Direct Premiums Earned	3	4	Direct Losses Incurred	6	7	Direct Losses Incurred But Not Reported
States, etc.					Amount	No. of Claims		Amount Reported	No. of Claims	
1.	Alabama	AL								
2.	Alaska	AK								
3.	Arizona	AZ								
4.	Arkansas	AR								
5.	California	CA								
6.	Colorado	CO								
7.	Connecticut	CT								
8.	Delaware	DE								
9.	District of Columbia	DC								
10.	Florida	FL								
11.	Georgia	GA								
12.	Hawaii	HI								
13.	Idaho	ID								
14.	Illinois	IL								
15.	Indiana	IN								
16.	Iowa	IA								
17.	Kansas	KS								
18.	Kentucky	KY								
19.	Louisiana	LA								
20.	Maine	ME								
21.	Maryland	MD								
22.	Massachusetts	MA								
23.	Michigan	MI								
24.	Minnesota	MN								
25.	Mississippi	MS								
26.	Missouri	MO								
27.	Montana	MT								
28.	Nebraska	NE								
29.	Nevada	NV								
30.	New Hampshire	NH								
31.	New Jersey	NJ								
32.	New Mexico	NM								
33.	New York	NY								
34.	North Carolina	NC								
35.	North Dakota	ND								
36.	Ohio	OH								
37.	Oklahoma	OK								
38.	Oregon	OR								
39.	Pennsylvania	PA								
40.	Rhode Island	RI								
41.	South Carolina	SC								
42.	South Dakota	SD								
43.	Tennessee	TN								
44.	Texas	TX								
45.	Utah	UT								
46.	Vermont	VT								
47.	Virginia	VA								
48.	Washington	WA								
49.	West Virginia	WV								
50.	Wisconsin	WI								
51.	Wyoming	WY								
52.	American Samoa	AS								
53.	Guam	GU								
54.	Puerto Rico	PR								
55.	U.S. Virgin Islands	VI								
56.	Nothern Mariana Islands	MP								
57.	Canada	CAN								
58.	Aggregate Other Aliens	OT								
59.	Totals									
DETAILS OF WRITE-INS										
58001.										
58002.										
58003.										
58998.	Summary of remaining write-ins for Line 58 from overflow page									
58999.	Totals (Lines 58001 through 58003 plus 58998)(Line 58 above)									

NONE



SUPPLEMENT FOR THE QUARTER ENDING JUNE 30, 2014 OF THE SCOTTSDALE INSURANCE COMPANY

DIRECTOR AND OFFICER INSURANCE COVERAGE SUPPLEMENT

Year To Date For The Period Ended JUNE 30, 2014

NAIC Group Code0140NAIC Company Code41297

Company NameSCOTTSDALE INSURANCE COMPANY

If the reporting entity writes any director and officer (D&O) business, please provide the following:

1. Monoline Policies

1 Direct Written Premium	2 Direct Earned Premium	3 Direct Losses Incurred
\$ 604,405	\$ 782,963	\$ 236,833

2. Commercial Multiple Peril (CMP) Packaged Policies

- 2.1 Does the reporting entity provide D&O liability coverage as part of a CMP packaged policy? Yes [] No [X]
- 2.2 Can the direct premium earned for D&O liability coverage provided as part of a CMP packaged policy be quantified or estimated? Yes [] No [X]
- 2.3 If the answer to question 2.2 is yes, provide the quantified or estimated direct premium earned amount for D&O liability coverage in CMP packaged policies

2.31 Amount quantified:\$

2.32 Amount estimated using reasonable assumptions:\$
- 2.4 If the answer to question 2.1 is yes, provide direct losses incurred (losses paid plus change in case reserves) for the D&O liability coverage provided in CMP packaged policies.\$