



QUARTERLY STATEMENT

AS OF JUNE 30, 2014  
OF THE CONDITION AND AFFAIRS OF THE

GRANGE INDEMNITY INSURANCE COMPANY

NAIC Group Code	00267	(Current Period)	00267	(Prior Period)	NAIC Company Code	10322	Employer's ID Number	31-1432675
Organized under the Laws of	Ohio				State of Domicile or Port of Entry	Ohio		
Country of Domicile	United States							
Incorporated/Organized	03/10/1995				Commenced Business	08/03/1995		
Statutory Home Office	671 South High Street				Columbus, OH, US 43206-1014			
	(Street and Number)				(City or Town, State, Country and Zip Code)			
Main Administrative Office	671 South High Street				Columbus, OH, US 43206-1014		614-445-2900	
	(Street and Number)				(City or Town, State, Country and Zip Code)		(Area Code) (Telephone Number)	
Mail Address	671 South High Street, P.O. Box 1218				Columbus, OH, US 43216-1218			
	(Street and Number or P.O. Box)				(City or Town, State, Country and Zip Code)			
Primary Location of Books and Records	671 South High Street				Columbus, OH, US 43206-1014		614-445-2900	
	(Street and Number)				(City or Town, State, Country and Zip Code)		(Area Code) (Telephone Number)	
Internet Web Site Address	www.grangeinsurance.com							
Statutory Statement Contact	David Sidney Ackermann				614-445-2900			
	(Name)				(Area Code) (Telephone Number) (Extension)			
	ackermannnd@grangeinsurance.com				614-449-3757			
	(E-Mail Address)				(Fax Number)			

OFFICERS

Name	Title	Name	Title
THOMAS HOWARD WELCH	PRESIDENT & CEO	LAVAWN DEE COLEMAN	VP & SECRETARY
JOHN PAUL MCCAFFREY	VP & CFO		

OTHER OFFICERS

JOHN CHRISTOPHER MONTGOMERY	VP - INVESTMENTS		
-----------------------------	------------------	--	--

DIRECTORS OR TRUSTEES

MARK LEWIS BOXER	DOUGLAS PAUL BUTH	GLENN EUGENE CORLETT	ROBERT ENLOW HOYT
JOHN PAUL MCCAFFREY	MARY MARNETTE PERRY	MELVIN GEORGE PYE JR	THOMAS SIMRALL STEWART
THOMAS HOWARD WELCH	DAVID CHARLES WETMORE	CHRISTIANNA (NMN) WOOD	

State of .....Ohio.....

County of .....Franklin.....ss

The officers of this reporting entity being duly sworn, each depose and say that they are the described officers of said reporting entity, and that on the reporting period stated above, all of the herein described assets were the absolute property of the said reporting entity, free and clear from any liens or claims thereon, except as herein stated, and that this statement, together with related exhibits, schedules and explanations therein contained, annexed or referred to, is a full and true statement of all the assets and liabilities and of the condition and affairs of the said reporting entity as of the reporting period stated above, and of its income and deductions therefrom for the period ended, and have been completed in accordance with the NAIC Annual Statement Instructions and Accounting Practices and Procedures manual except to the extent that: (1) state law may differ; or, (2) that state rules or regulations require differences in reporting not related to accounting practices and procedures, according to the best of their information, knowledge and belief, respectively. Furthermore, the scope of this attestation by the described officers also includes the related corresponding electronic filing with the NAIC, when required, that is an exact copy (except for formatting differences due to electronic filing) of the enclosed statement. The electronic filing may be requested by various regulators in lieu of or in addition to the enclosed statement.

THOMAS HOWARD WELCH PRESIDENT & CEO	LAVAWN DEE COLEMAN VP & SECRETARY	JOHN PAUL MCCAFFREY VP & CFO
--	--------------------------------------	---------------------------------

a. Is this an original filing? Yes [X] No [ ]

b. If no:

1. State the amendment number \_\_\_\_\_

2. Date filed \_\_\_\_\_

3. Number of pages attached \_\_\_\_\_

Subscribed and sworn to before me this  
12th day of August, 2014

Teresa J. Burchwell, Notary Public  
April 28, 2017

STATEMENT AS OF JUNE 30, 2014 OF THE GRANGE INDEMNITY INSURANCE COMPANY

ASSETS

	Current Statement Date			4  December 31 Prior Year Net Admitted Assets
	1  Assets	2  Nonadmitted Assets	3  Net Admitted Assets (Cols. 1 - 2)	
1. Bonds .....	74,890,145		74,890,145	74,280,267
2. Stocks:				
2.1 Preferred stocks .....			0	0
2.2 Common stocks .....			0	0
3. Mortgage loans on real estate:				
3.1 First liens .....			0	0
3.2 Other than first liens .....			0	0
4. Real estate:				
4.1 Properties occupied by the company (less \$ ..... encumbrances) .....			0	0
4.2 Properties held for the production of income (less \$ ..... encumbrances) .....			0	0
4.3 Properties held for sale (less \$ ..... encumbrances) .....			0	0
5. Cash (\$ .....873,807 ), cash equivalents (\$ .....0 ) and short-term investments (\$ .....0 ) .....	873,807		873,807	898,554
6. Contract loans (including \$ ..... premium notes) .....			0	0
7. Derivatives .....			0	0
8. Other invested assets .....	0		0	0
9. Receivables for securities .....	17,188		17,188	0
10. Securities lending reinvested collateral assets .....	3,625,149		3,625,149	853,938
11. Aggregate write-ins for invested assets .....	0	0	0	0
12. Subtotals, cash and invested assets (Lines 1 to 11) .....	79,406,289	0	79,406,289	76,032,759
13. Title plants less \$ ..... charged off (for Title insurers only) .....			0	0
14. Investment income due and accrued .....	806,477		806,477	813,478
15. Premiums and considerations:				
15.1 Uncollected premiums and agents' balances in the course of collection .....	9,980,217	54,363	9,925,854	8,659,208
15.2 Deferred premiums, agents' balances and installments booked but deferred and not yet due (including \$ .....16,965 earned but unbilled premiums) .....	17,776	811	16,965	14,433
15.3 Accrued retrospective premiums .....			0	0
16. Reinsurance:				
16.1 Amounts recoverable from reinsurers .....			0	0
16.2 Funds held by or deposited with reinsured companies .....			0	0
16.3 Other amounts receivable under reinsurance contracts .....			0	0
17. Amounts receivable relating to uninsured plans .....			0	0
18.1 Current federal and foreign income tax recoverable and interest thereon .....			0	0
18.2 Net deferred tax asset .....	1,713,504		1,713,504	1,610,015
19. Guaranty funds receivable or on deposit .....			0	0
20. Electronic data processing equipment and software .....			0	0
21. Furniture and equipment, including health care delivery assets (\$ ..... ) .....			0	0
22. Net adjustment in assets and liabilities due to foreign exchange rates .....			0	0
23. Receivables from parent, subsidiaries and affiliates .....	772,354		772,354	1,242,642
24. Health care (\$ ..... ) and other amounts receivable .....			0	0
25. Aggregate write-ins for other-than-invested assets .....	25,608	0	25,608	21,403
26. Total assets excluding Separate Accounts, Segregated Accounts and Protected Cell Accounts (Lines 12 to 25) .....	92,722,225	55,174	92,667,051	88,393,938
27. From Separate Accounts, Segregated Accounts and Protected Cell Accounts .....			0	0
28. Total (Lines 26 and 27) .....	92,722,225	55,174	92,667,051	88,393,938
<b>DETAILS OF WRITE-INS</b>				
1101. ....			0	0
1102. ....			0	0
1103. ....			0	0
1198. Summary of remaining write-ins for Line 11 from overflow page .....	0	0	0	0
1199. Totals (Lines 1101 through 1103 plus 1198) (Line 11 above) .....	0	0	0	0
2501. Equities in Pools .....	25,608		25,608	21,403
2502. ....			0	0
2503. ....			0	0
2598. Summary of remaining write-ins for Line 25 from overflow page .....	0	0	0	0
2599. Totals (Lines 2501 through 2503 plus 2598) (Line 25 above) .....	25,608	0	25,608	21,403

LIABILITIES, SURPLUS AND OTHER FUNDS

	1 Current Statement Date	2 December 31, Prior Year
1. Losses (current accident year \$ .....5,132,862 ) .....	17,120,802	16,804,371
2. Reinsurance payable on paid losses and loss adjustment expenses .....		0
3. Loss adjustment expenses .....	4,974,489	5,021,507
4. Commissions payable, contingent commissions and other similar charges .....	319,959	815,732
5. Other expenses (excluding taxes, licenses and fees) .....	1,314,928	1,537,697
6. Taxes, licenses and fees (excluding federal and foreign income taxes) .....	465,527	557,441
7.1 Current federal and foreign income taxes (including \$ .....(5,984) on realized capital gains (losses)) .....	542,407	1,240,872
7.2 Net deferred tax liability .....		0
8. Borrowed money \$ ..... and interest thereon \$ .....		0
9. Unearned premiums (after deducting unearned premiums for ceded reinsurance of \$ .....34,565,214 and including warranty reserves of \$ ..... and accrued accident and health experience rating refunds including \$ ..... for medical loss ratio rebate per the Public Health Service Act) .....	19,463,577	17,938,292
10. Advance premium .....	(210,620)	(149,029)
11. Dividends declared and unpaid:		
11.1 Stockholders .....		0
11.2 Policyholders .....	44,653	39,803
12. Ceded reinsurance premiums payable (net of ceding commissions) .....		0
13. Funds held by company under reinsurance treaties .....		0
14. Amounts withheld or retained by company for account of others .....		0
15. Remittances and items not allocated .....		0
16. Provision for reinsurance (including \$ ..... certified) .....		0
17. Net adjustments in assets and liabilities due to foreign exchange rates .....		0
18. Drafts outstanding .....		0
19. Payable to parent, subsidiaries and affiliates .....		0
20. Derivatives .....		0
21. Payable for securities .....		0
22. Payable for securities lending .....	3,625,149	853,938
23. Liability for amounts held under uninsured plans .....		0
24. Capital notes \$ ..... and interest thereon \$ .....		0
25. Aggregate write-ins for liabilities .....	0	0
26. Total liabilities excluding protected cell liabilities (Lines 1 through 25) .....	47,660,871	44,660,624
27. Protected cell liabilities .....		0
28. Total liabilities (Lines 26 and 27) .....	47,660,871	44,660,624
29. Aggregate write-ins for special surplus funds .....	0	0
30. Common capital stock .....	2,000,000	2,000,000
31. Preferred capital stock .....		0
32. Aggregate write-ins for other than special surplus funds .....	0	0
33. Surplus notes .....		0
34. Gross paid in and contributed surplus .....	5,000,000	5,000,000
35. Unassigned funds (surplus) .....	38,006,180	36,733,314
36. Less treasury stock, at cost:		
36.1 ..... shares common (value included in Line 30 \$ ..... ) .....		0
36.2 ..... shares preferred (value included in Line 31 \$ ..... ) .....		0
37. Surplus as regards policyholders (Lines 29 to 35, less 36) .....	45,006,180	43,733,314
38. Totals (Page 2, Line 28, Col. 3)	92,667,051	88,393,938
DETAILS OF WRITE-INS		
2501. ....		0
2502. ....		0
2503. ....		0
2598. Summary of remaining write-ins for Line 25 from overflow page .....	0	0
2599. Totals (Lines 2501 through 2503 plus 2598) (Line 25 above)	0	0
2901. ....		0
2902. ....		0
2903. ....		0
2998. Summary of remaining write-ins for Line 29 from overflow page .....	0	0
2999. Totals (Lines 2901 through 2903 plus 2998) (Line 29 above)	0	0
3201. ....		0
3202. ....		0
3203. ....		0
3298. Summary of remaining write-ins for Line 32 from overflow page .....	0	0
3299. Totals (Lines 3201 through 3203 plus 3298) (Line 32 above)	0	0

STATEMENT OF INCOME

	1	2	3
	Current Year	Prior Year	Prior Year Ended
	to Date	to Date	December 31
UNDERWRITING INCOME			
1. Premiums earned:			
1.1 Direct (written \$ 40,706,082 )	32,289,196	22,041,934	50,025,468
1.2 Assumed (written \$ 2,458,266 )	23,055,808	21,583,242	44,235,341
1.3 Ceded (written \$ 40,721,399 )	32,300,339	22,045,823	50,038,584
1.4 Net (written \$ 2,442,949 )	23,044,665	21,579,353	44,222,225
DEDUCTIONS:			
2. Losses incurred (current accident year \$ 13,022,047 ):			
2.1 Direct	20,762,353	11,912,829	29,519,513
2.2 Assumed	13,357,242	11,088,565	24,385,059
2.3 Ceded	20,770,268	11,916,373	29,527,197
2.4 Net	13,349,327	11,085,021	24,377,375
3. Loss adjustment expenses incurred	2,625,965	2,544,065	5,228,633
4. Other underwriting expenses incurred	7,334,890	7,409,394	14,622,090
5. Aggregate write-ins for underwriting deductions	0	0	0
6. Total underwriting deductions (Lines 2 through 5)	23,310,182	21,038,480	44,228,098
7. Net income of protected cells		0	0
8. Net underwriting gain (loss) (Line 1 minus Line 6 + Line 7)	(265,517)	.540,873	(5,873)
INVESTMENT INCOME			
9. Net investment income earned	1,355,779	1,305,679	2,686,069
10. Net realized capital gains (losses) less capital gains tax of \$ (5,984)	(11,114)	22,206	91,007
11. Net investment gain (loss) (Lines 9 + 10)	1,344,665	1,327,885	2,777,076
OTHER INCOME			
12. Net gain or (loss) from agents' or premium balances charged off (amount recovered \$ 2,121 amount charged off \$ 132,064 )	(129,943)	(102,139)	(222,539)
13. Finance and service charges not included in premiums	707,557	674,124	1,375,221
14. Aggregate write-ins for miscellaneous income	135,179	110,137	208,918
15. Total other income (Lines 12 through 14)	712,793	682,122	1,361,600
16. Net income before dividends to policyholders, after capital gains tax and before all other federal and foreign income taxes (Lines 8 + 11 + 15)	1,791,941	2,550,880	4,132,803
17. Dividends to policyholders	67,000	52,805	129,577
18. Net income, after dividends to policyholders, after capital gains tax and before all other federal and foreign income taxes (Line 16 minus Line 17)	1,724,941	2,498,075	4,003,226
19. Federal and foreign income taxes incurred	548,391	807,515	1,191,868
20. Net income (Line 18 minus Line 19)(to Line 22)	1,176,550	1,690,560	2,811,358
CAPITAL AND SURPLUS ACCOUNT			
21. Surplus as regards policyholders, December 31 prior year	43,733,314	40,786,493	40,786,493
22. Net income (from Line 20)	1,176,550	1,690,560	2,811,358
23. Net transfers (to) from Protected Cell accounts		0	0
24. Change in net unrealized capital gains or (losses) less capital gains tax of \$		0	0
25. Change in net unrealized foreign exchange capital gain (loss)		0	0
26. Change in net deferred income tax	103,489	92,682	128,511
27. Change in nonadmitted assets	(7,173)	(11,921)	.6,952
28. Change in provision for reinsurance	0	0	0
29. Change in surplus notes	0	0	0
30. Surplus (contributed to) withdrawn from protected cells	0	0	0
31. Cumulative effect of changes in accounting principles	0	0	0
32. Capital changes:			
32.1 Paid in		0	0
32.2 Transferred from surplus (Stock Dividend)		0	0
32.3 Transferred to surplus		0	0
33. Surplus adjustments:			
33.1 Paid in		0	0
33.2 Transferred to capital (Stock Dividend)		0	0
33.3 Transferred from capital		0	0
34. Net remittances from or (to) Home Office		0	0
35. Dividends to stockholders		0	0
36. Change in treasury stock		0	0
37. Aggregate write-ins for gains and losses in surplus	0	0	0
38. Change in surplus as regards policyholders (Lines 22 through 37)	1,272,866	1,771,321	2,946,821
39. Surplus as regards policyholders, as of statement date (Lines 21 plus 38)	45,006,180	42,557,814	43,733,314
DETAILS OF WRITE-INS			
0501.		0	0
0502.		0	0
0503.		0	0
0598. Summary of remaining write-ins for Line 5 from overflow page	0	0	0
0599. TOTALS (Lines 0501 through 0503 plus 0598) (Line 5 above)	0	0	0
1401. Miscellaneous Income.	135,179	110,137	208,918
1402.		0	0
1403.		0	0
1498. Summary of remaining write-ins for Line 14 from overflow page	0	0	0
1499. TOTALS (Lines 1401 through 1403 plus 1498) (Line 14 above)	135,179	110,137	208,918
3701.		0	0
3702.		0	0
3703.		0	0
3798. Summary of remaining write-ins for Line 37 from overflow page	0	0	0
3799. TOTALS (Lines 3701 through 3703 plus 3798) (Line 37 above)	0	0	0

CASH FLOW

	1	2	3
	Current Year To Date	Prior Year To Date	Prior Year Ended December 31
<b>Cash from Operations</b>			
1. Premiums collected net of reinsurance.....	23,232,007	21,886,974	44,569,583
2. Net investment income .....	1,629,507	1,489,950	3,070,799
3. Miscellaneous income .....	712,793	682,122	1,361,600
4. Total (Lines 1 to 3) .....	25,574,307	24,059,046	49,001,982
5. Benefit and loss related payments .....	13,032,896	11,476,235	23,180,108
6. Net transfers to Separate Accounts, Segregated Accounts and Protected Cell Accounts.....	0	0	0
7. Commissions, expenses paid and aggregate write-ins for deductions .....	10,818,329	9,972,655	18,983,377
8. Dividends paid to policyholders .....	62,150	59,220	125,759
9. Federal and foreign income taxes paid (recovered) net of \$ .....(5,984) tax on capital gains (losses).....	1,240,872	820,959	820,959
10. Total (Lines 5 through 9) .....	25,154,247	22,329,070	43,110,202
11. Net cash from operations (Line 4 minus Line 10) .....	420,060	1,729,977	5,891,779
<b>Cash from Investments</b>			
12. Proceeds from investments sold, matured or repaid:			
12.1 Bonds .....	3,967,964	5,348,057	9,190,903
12.2 Stocks .....	0	0	0
12.3 Mortgage loans .....	0	0	0
12.4 Real estate .....	0	0	0
12.5 Other invested assets .....	0	0	0
12.6 Net gains or (losses) on cash, cash equivalents and short-term investments .....	0	0	0
12.7 Miscellaneous proceeds .....	0	264,170	0
12.8 Total investment proceeds (Lines 12.1 to 12.7) .....	3,967,964	5,612,227	9,190,903
13. Cost of investments acquired (long-term only):			
13.1 Bonds .....	4,861,667	7,202,268	15,085,744
13.2 Stocks .....	0	0	0
13.3 Mortgage loans .....	0	0	0
13.4 Real estate .....	0	0	0
13.5 Other invested assets .....	0	0	0
13.6 Miscellaneous applications .....	17,188	0	0
13.7 Total investments acquired (Lines 13.1 to 13.6) .....	4,878,855	7,202,268	15,085,744
14. Net increase (or decrease) in contract loans and premium notes .....	0	0	0
15. Net cash from investments (Line 12.8 minus Line 13.7 and Line 14) .....	(910,891)	(1,590,041)	(5,894,841)
<b>Cash from Financing and Miscellaneous Sources</b>			
16. Cash provided (applied):			
16.1 Surplus notes, capital notes .....	0	0	0
16.2 Capital and paid in surplus, less treasury stock.....	0	0	0
16.3 Borrowed funds .....	0	0	0
16.4 Net deposits on deposit-type contracts and other insurance liabilities .....	0	0	0
16.5 Dividends to stockholders .....	0	0	0
16.6 Other cash provided (applied).....	466,084	246,559	(222,197)
17. Net cash from financing and miscellaneous sources (Line 16.1 through Line 16.4 minus Line 16.5 plus Line 16.6).....	466,084	246,559	(222,197)
<b>RECONCILIATION OF CASH, CASH EQUIVALENTS AND SHORT-TERM INVESTMENTS</b>			
18. Net change in cash, cash equivalents and short-term investments (Line 11, plus Lines 15 and 17) .....	(24,747)	386,495	(225,259)
19. Cash, cash equivalents and short-term investments:			
19.1 Beginning of year.....	898,554	1,123,813	1,123,813
19.2 End of period (Line 18 plus Line 19.1) .....	873,807	1,510,308	898,554

STATEMENT AS OF JUNE 30, 2014 OF THE  
GRANGE INDEMNITY INSURANCE COMPANY

NOTES TO FINANCIAL STATEMENTS

1. SUMMARY OF SIGNIFICANT ACCOUNT POLICIES

- A. The Company prepares its statutory financial statements in conformity with accounting practices prescribed or permitted by the State of Ohio. The State of Ohio requires that insurance companies domiciled in the State prepare their statutory basis financial statements in accordance with the NAIC Accounting Practices and Procedures manual subject to any deviations prescribed or permitted by the State of Ohio insurance commissioner. The Company does not employ accounting practices that depart from the NAIC Accounting Practices and Procedures Manual.

2. ACCOUNTING CHANGES AND CORRECTIONS OF ERRORS  
NONE

3. BUSINESS COMBINATIONS AND GOODWILL  
NONE

4. DISCONTINUED OPERATIONS  
NO CHANGE

5. INVESTMENTS

D. LOAN-BACKED SECURITIES

- 1) Prepayment assumptions for single class and multi-class mortgage-backed/asset-backed securities were obtained from Hub Data and Bloomberg. These assumptions are consistent with the current interest rate and economic environment.
- 2) NONE
- 3) NONE
- 4) Impaired securities (fair value is less than cost or amortized cost) for which an other-than-temporary impairment has not been recognized in earnings as a realized loss (including securities with a recognized other-than-temporary impairment for non-interest related declines when a non-recognized interest related impairment remains):

a.

Aggregate Amount of Unrealized Losses:

1	Less than 12 Months	(2,231)
2	Greater than 12 Months	(64,066)

b.

The Aggregate Related Fair Value of Securities with Unrealized Losses:

1	Less than 12 Months	637,126
2	Greater than 12 Months	1,429,571

5. According to SSAP 43R, loan-backed and structured securities with an unrealized loss position were reviewed for impairment. The best estimate of future cash flows using the appropriate discount rate was calculated for each affected security, with other-than-temporary impairments realized to the extent that present value was less than amortized cost. Securities with a present value greater than amortized cost were not other-than-temporarily impaired.

E. REPURCHASE AGREEMENTS AND SECURITIES LENDING TRANSACTIONS

3. COLLATERAL RECEIVED

The fair value of that collateral and of the portion of that collateral that it has sold or replpledged.

	Fair Value
Open	3,625,114
30 Days or Less	0
31 to 60 Days	0
61 to 90 Days	0
Greater than 90 Days	0
Sub-Total	3,625,114
Securities Received	0
Total Collateral Received	3,625,114

I. WORKING CAPITAL FINANCE INVESTMENTS

The Company has no working capital finance investments.

6. JOINT VENTURES, PARTNERSHIPS AND LIMITED LIABILITY COMPANIES  
NO CHANGE

7. INVESTMENT INCOME  
NO CHANGE

8. DERIVATIVE INSTRUMENTS  
NONE

STATEMENT AS OF JUNE 30, 2014 OF THE  
GRANGE INDEMNITY INSURANCE COMPANY

NOTES TO FINANCIAL STATEMENTS

9. FEDERAL INCOME TAXES

A. The components of the net deferred tax assets at June 30, 2014 and December 31, 2013 are as follows:

	June 30, 2014	December 31, 2013
Gross Deferred Tax Assets	\$ 1,864,130	\$ 1,721,687
Gross Deferred Tax Liabilities	120,627	111,672
Net Deferred Tax Asset (Liability)	1,713,504	1,610,015
Nonadmitted Deferred Tax Assets	0	0
Admitted Deferred Tax Asset	1,713,504	1,610,015
(Increase) Decrease in Deferred Tax Assets Nonadmitted	\$ 0	\$ 0

B. The Company has no deferred tax liabilities that are not recognized

C. Current income taxes incurred consist of the following major components:

	June 30, 2014	December 31, 2013
Current Income Tax Expense	\$ 548,391	\$ 1,166,153
Tax on Capital Gains/(Losses)	(5,984)	49,004
Prior Year Under Accrual (Over Accrual)	0	0
Federal Income Taxes Incurred	\$ 542,407	\$ 1,240,872

10. INFORMATION CONCERNING PARENT, SUBSIDIARIES AND AFFILIATES  
NO CHANGE

11. DEBT  
B. FHLB  
NONE

12. RETIREMENT PLANS, DEFERRED COMPENSATION, AND POSTRETIREMENT BENEFIT PLANS  
No Pension, Postretirement or Postemployment and Compensated Absence Benefit Plans

13. CAPITAL AND SURPLUS, DIVIDEND RESTRICTIONS AND QUSAI-REORGANIZATIONS  
NO CHANGE

14. CONTINGENCIES  
NO CHANGE

15. LEASES  
NO CHANGE

16. INFORMATION ABOUT FINANCIAL INSTRUMENTS WITH OFF-BALANCE SHEET RISK AND FINANCIAL INSTRUMENTS WITH  
CONCENTRATION OF CREDIT RISK.  
NONE

17. SALE, TRANSFER AND SERVICING OF FINANCIAL ASSETS AND EXTINGUISHMENTS OF LIABILITIES  
B. Transfer and Servicing of Financial Assets  
2. For all servicing assets and servicing liabilities:  
b) None  
4. For securitizations, asset-backed financing arrangements and similar transfers accounted for as sales when the transferor has continuing involvement (as defined in the Accounting Practices and Procedures Manual) with the transferred financial assets:  
a) None  
b) None  
C. Wash Sales  
None

18. GAINS OR LOSS TO THE REPORTING ENTITY FROM UNINSURED A&H PLANS AND THE UNINSURED PORTION OF PARTIALLY INSURED  
PLANS.  
NONE

19. DIRECT PREMIUM WRITTEN / PRODUCED BY MANAGING GENERAL AGENTS / THIRD PARTY ADMINISTRATORS  
NONE

STATEMENT AS OF JUNE 30, 2014 OF THE  
GRANGE INDEMNITY INSURANCE COMPANY

NOTES TO FINANCIAL STATEMENTS

20. FAIR VALUE MEASUREMENTS

- A.

1. NONE

2. NONE

3. The Company’s policy is to recognize transfers in and out as of the end of the reporting period.

4. As of June 30, 2014, the reported fair value of the entity's investments categorized within Level 2 and Level 3 of the fair value hierarchy are as follows:

According to statutory accounting rules, fixed income securities with a rating of NAIC 1 or 2 are reported at amortized cost. Securities with a rating of NAIC 3 thru 6, or non-investment grade ratings, are measured and reported at the lower of amortized cost or fair value on the statement of financial position. As of June 30, 2014, the Company did not have any bonds rated NAIC 3 thru 6, and therefore did not report any securities at fair value.

B. Not Required

C.
- | Type of Financial Instrument | Aggregate Fair Value | Admitted Assets | Level 1   | Level 2    | Level 3 | Not Practicable (CV) |
|------------------------------|----------------------|-----------------|-----------|------------|---------|----------------------|
| Bonds                        | 79,406,216           | 74,890,145      | 5,610,286 | 73,795,930 | 0       | 0                    |
| Common Stock                 | 0                    | 0               | 0         | 0          | 0       | 0                    |
| Perpetual Preferred          | 0                    | 0               | 0         | 0          | 0       | 0                    |
| Mortgage Loans               | 0                    | 0               | 0         | 0          | 0       | 0                    |
| Money Market                 | 0                    | 0               | 0         | 0          | 0       | 0                    |
| Total                        | 79,406,216           | 74,890,145      | 5,610,286 | 73,795,930 | 0       | 0                    |
- D. NONE
21. OTHER ITEMS
- G. Offsetting and Netting of Assets and Liabilities  
NONE

I. Risk Sharing Provisions of the Affordable Care Act (ACA)  
NONE
22. EVENTS SUBSEQUENT  
NO CHANGE
23. REINSURANCE  
NO CHANGE
24. RETROSPECTIVELY RATED CONTRACTS & CONTRACTS SUBJECT TO REDETERMINATION  
NONE
25. CHANGES IN INCURRED LOSSES AND LOSS ADJUSTMENT EXPENSES
- Reserves for incurred losses and loss adjustment expenses attributable to insured events of prior years has increased (decreased) by \$(0.156) million from \$35.983 million in 2013 to \$35.827 million in 2014 as a result of re-estimation of unpaid losses and loss adjustment expenses principally on private passenger auto liability and homeowners lines of insurance. This increase (decrease) is generally the result of ongoing analysis of recent loss development trends. Original estimates are increased or decreased as additional information becomes known regarding individual claims. Included in this increase (decrease), the Company experienced \$0 million of unfavorable (favorable) prior year loss development on retrospectively rated policies. However, since the business to which it relates is subject to premium adjustments, there was no significant impact on surplus.
- | LOSSES AND LAE                | June 30, 2014 | December 31, 2013 |
|-------------------------------|---------------|-------------------|
| BALANCE JANUARY 1             | 35,982,503    | 32,093,716        |
| LESS REINSURANCE RECOVERABLES | 14,156,625    | 11,814,025        |
| NET BALANCE JANUARY 1         | 21,825,878    | 20,279,691        |
| INCURRED RELATED TO:          |               |                   |
| CURRENT YEAR                  | 16,131,445    | 30,498,530        |
| PRIOR YEAR                    | (156,153)     | (892,522)         |
| TOTAL INCURRED                | 15,975,292    | 29,606,008        |
| PAID RELATED TO:              |               |                   |
| CURRENT YEAR                  | 9,507,219     | 18,973,685        |
| PRIOR YEAR                    | 6,198,660     | 9,086,136         |
| TOTAL PAID                    | 15,705,879    | 28,059,821        |
| NET BALANCE AT DECEMBER 31    | 22,095,290    | 21,825,878        |
| PLUS REINSURANCE RECOVERABLES | 14,347,110    | 14,156,625        |
| BALANCE AT DECEMBER 31        | 36,442,400    | 35,982,503        |
26. INTERCOMPANY POOLING AGREEMENTS  
NO CHANGE
27. STRUCTURED SETTLEMENTS  
NO CHANGE.
28. HEALTH CARE RECEIVABLES  
NONE
29. PARTICIPATING POLICIES  
NONE
30. PREMIUM DEFICIENCY RESERVES  
NO CHANGE
- 6.2



STATEMENT AS OF JUNE 30, 2014 OF THE  
GRANGE INDEMNITY INSURANCE COMPANY

NOTES TO FINANCIAL STATEMENTS

- 31. HIGH DEDUCTIBLES  
NONE
- 32. DISCOUNTING OF LIABILITIES FOR UNPAID LOSSES OR UNPAID LOSS ADJUSTMENT EXPENSES  
NONE
- 33. ASBESTOS/ENVIRONMENTAL RESERVES  
NONE
- 34. SUBSCRIBER SAVINGS ACCOUNTS  
NOT APPLICABLE
- 35. MULTIPLE PERIL CROP INSURANCE  
NONE
- 36. FINANCIAL GUARANTY INSURANCE  
No Financial Guaranty Insurance
- 37. CATASTROPHIC PLANNING  
NO CHANGE

GENERAL INTERROGATORIES

PART 1 - COMMON INTERROGATORIES  
GENERAL

- 1.1

Did the reporting entity experience any material transactions requiring the filing of Disclosure of Material Transactions with the State of Domicile, as required by the Model Act?

Yes ☐ No ☒
- 1.2

If yes, has the report been filed with the domiciliary state?

Yes ☐ No ☐
- 2.1

Has any change been made during the year of this statement in the charter, by-laws, articles of incorporation, or deed of settlement of the reporting entity?

Yes ☐ No ☒
- 2.2

If yes, date of change:

.01/01/3000
- 3.1

Is the reporting entity a member of an Insurance Holding Company System consisting of two or more affiliated persons, one or more of which is an insurer?

Yes ☒ No ☐

If yes, complete Schedule Y, Parts 1 and 1A.
- 3.2

Have there been any substantial changes in the organizational chart since the prior quarter end?

Yes ☐ No ☒
- 3.3

If the response to 3.2 is yes, provide a brief description of those changes.
- 4.1

Has the reporting entity been a party to a merger or consolidation during the period covered by this statement?

Yes ☐ No ☒
- 4.2

If yes, provide the name of entity, NAIC Company Code, and state of domicile (use two letter state abbreviation) for any entity that has ceased to exist as a result of the merger or consolidation.

1	2	3
Name of Entity	NAIC Company Code	State of Domicile

5.

If the reporting entity is subject to a management agreement, including third-party administrator(s), managing general agent(s), attorney-in-fact, or similar agreement, have there been any significant changes regarding the terms of the agreement or principals involved?

Yes ☐ No ☒ NA ☐

If yes, attach an explanation.
- 6.1

State as of what date the latest financial examination of the reporting entity was made or is being made.

.12/31/2009
- 6.2

State the as of date that the latest financial examination report became available from either the state of domicile or the reporting entity. This date should be the date of the examined balance sheet and not the date the report was completed or released.

.12/31/2009
- 6.3

State as of what date the latest financial examination report became available to other states or the public from either the state of domicile or the reporting entity. This is the release date or completion date of the examination report and not the date of the examination (balance sheet date).

.10/25/2010
- 6.4

By what department or departments?

Ohio
- 6.5

Have all financial statement adjustments within the latest financial examination report been accounted for in a subsequent financial statement filed with Departments?

Yes ☐ No ☐ NA ☒
- 6.6

Have all of the recommendations within the latest financial examination report been complied with?

Yes ☒ No ☐ NA ☐
- 7.1

Has this reporting entity had any Certificates of Authority, licenses or registrations (including corporate registration, if applicable) suspended or revoked by any governmental entity during the reporting period?

Yes ☐ No ☒
- 7.2

If yes, give full information:
- 8.1

Is the company a subsidiary of a bank holding company regulated by the Federal Reserve Board?

Yes ☐ No ☒
- 8.2

If response to 8.1 is yes, please identify the name of the bank holding company.
- 8.3

Is the company affiliated with one or more banks, thrifts or securities firms?

Yes ☐ No ☒
- 8.4

If response to 8.3 is yes, please provide below the names and location (city and state of the main office) of any affiliates regulated by a federal regulatory services agency [i.e. the Federal Reserve Board (FRB), the Office of the Comptroller of the Currency (OCC), the Federal Deposit Insurance Corporation (FDIC) and the Securities Exchange Commission (SEC)] and identify the affiliate's primary federal regulator.]

1	2	3	4	5	6
Affiliate Name	Location (City, State)	FRB	OCC	FDIC	SEC

GENERAL INTERROGATORIES

9.1

Are the senior officers (principal executive officer, principal financial officer, principal accounting officer or controller, or persons performing similar functions) of the reporting entity subject to a code of ethics, which includes the following standards? .....  
(a) Honest and ethical conduct, including the ethical handling of actual or apparent conflicts of interest between personal and professional relationships;  
(b) Full, fair, accurate, timely and understandable disclosure in the periodic reports required to be filed by the reporting entity;  
(c) Compliance with applicable governmental laws, rules and regulations;  
(d) The prompt internal reporting of violations to an appropriate person or persons identified in the code; and  
(e) Accountability for adherence to the code.

Yes [X] No [ ]

9.11

If the response to 9.1 is No, please explain:  
.....

9.2

Has the code of ethics for senior managers been amended? .....

Yes [ ] No [X]

9.21

If the response to 9.2 is Yes, provide information related to amendment(s).  
.....

9.3

Have any provisions of the code of ethics been waived for any of the specified officers? .....

Yes [ ] No [X]

9.31

If the response to 9.3 is Yes, provide the nature of any waiver(s).  
.....

FINANCIAL

10.1

Does the reporting entity report any amounts due from parent, subsidiaries or affiliates on Page 2 of this statement?.....

Yes [X] No [ ]

10.2

If yes, indicate any amounts receivable from parent included in the Page 2 amount:.....\$ .....772,354

INVESTMENT

11.1

Were any of the stocks, bonds, or other assets of the reporting entity loaned, placed under option agreement, or otherwise made available for use by another person? (Exclude securities under securities lending agreements.) .....

Yes [ ] No [X]

11.2

If yes, give full and complete information relating thereto:  
.....

12.

Amount of real estate and mortgages held in other invested assets in Schedule BA: .....\$ .....0

13.

Amount of real estate and mortgages held in short-term investments: .....\$ .....0

14.1

Does the reporting entity have any investments in parent, subsidiaries and affiliates? .....

Yes [ ] No [X]

14.2

If yes, please complete the following:

	1	2
	Prior Year-End Book/Adjusted Carrying Value	Current Quarter Book/Adjusted Carrying Value
14.21 Bonds .....	\$ .....	\$ .....
14.22 Preferred Stock .....	\$ .....	\$ .....
14.23 Common Stock .....	\$ .....	\$ .....
14.24 Short-Term Investments .....	\$ .....	\$ .....
14.25 Mortgage Loans on Real Estate .....	\$ .....	\$ .....
14.26 All Other .....	\$ .....	\$ .....
14.27 Total Investment in Parent, Subsidiaries and Affiliates (Subtotal Lines 14.21 to 14.26).....	\$ .....0	\$ .....0
14.28 Total Investment in Parent included in Lines 14.21 to 14.26 above .....	\$ .....	\$ .....

15.1

Has the reporting entity entered into any hedging transactions reported on Schedule DB? .....

Yes [ ] No [X]

15.2

If yes, has a comprehensive description of the hedging program been made available to the domiciliary state? .....

Yes [ ] No [ ]

If no, attach a description with this statement.

GENERAL INTERROGATORIES

16

For the reporting entity's security lending program, state the amount of the following as of the current statement date:

16.1

Total fair value of reinvested collateral assets reported on Schedule DL, Parts 1 and 2

\$.....3,625,191

16.2

Total book adjusted/carrying value of reinvested collateral assets reported on Schedule DL, Parts 1 and 2

\$.....3,625,149

16.3

Total payable for securities lending reported on the liability page

\$.....3,625,149

17

Excluding items in Schedule E – Part 3 – Special Deposits, real estate, mortgage loans and investments held physically in the reporting entity's offices, vaults or safety deposit boxes, were all stocks, bonds and other securities, owned throughout the current year held pursuant to a custodial agreement with a qualified bank or trust company in accordance with Section 1, III – General Examination Considerations, F. Outsourcing of Critical Functions, Custodial or Safekeeping Agreements of the NAIC *Financial Condition Examiners Handbook*? .....

Yes [X] No [ ]

17.1

For all agreements that comply with the requirements of the NAIC *Financial Condition Examiners Handbook*, complete the following:

1	2
Name of Custodian(s)	Custodian Address
JP Morgan Chase Bank, N.A.....	1111 Polaris Parkway, Columbus, OH 43240.....

17.2

For all agreements that do not comply with the requirements of the NAIC *Financial Condition Examiners Handbook*, provide the name, location and a complete explanation:

1	2	3
Name(s)	Location(s)	Complete Explanation(s)

17.3

Have there been any changes, including name changes, in the custodian(s) identified in 17.1 during the current quarter? .....

Yes [ ] No [X]

17.4

If yes, give full and complete information relating thereto:

1	2	3	4
Old Custodian	New Custodian	Date of Change	Reason

17.5

Identify all investment advisors, broker/dealers or individuals acting on behalf of broker/dealers that have access to the investment accounts, handle securities and have authority to make investments on behalf of the reporting entity:

1	2	3
Central Registration Depository	Name(s)	Address

18.1

Have all the filing requirements of the *Purposes and Procedures Manual* of the NAIC Securities Valuation Office been followed? .....

Yes [X] No [ ]

18.2

If no, list exceptions:

.....

GENERAL INTERROGATORIES  
PART 2 - PROPERTY & CASUALTY INTERROGATORIES

1. If the reporting entity is a member of a pooling arrangement, did the agreement or the reporting entity's participation change? ..... Yes [ ] No [X] NA [ ]  
If yes, attach an explanation.

2. Has the reporting entity reinsured any risk with any other reporting entity and agreed to release such entity from liability, in whole or in part, from any loss that may occur on the risk, or portion thereof, reinsured? ..... Yes [ ] No [X]  
If yes, attach an explanation.

3.1 Have any of the reporting entity's primary reinsurance contracts been canceled? ..... Yes [ ] No [X]

3.2 If yes, give full and complete information thereto.  
.....

4.1 Are any of the liabilities for unpaid losses and loss adjustment expenses other than certain workers' compensation tabular reserves (see *Annual Statement Instructions* pertaining to disclosure of discounting for definition of "tabular reserves,") discounted at a rate of interest greater than zero? ..... Yes [ ] No [X]

4.2 If yes, complete the following schedule:

			TOTAL DISCOUNT				DISCOUNT TAKEN DURING PERIOD			
1	2	3	4	5	6	7	8	9	10	11
Line of Business	Maximum Interest	Discount Rate	Unpaid Losses	Unpaid LAE	IBNR	TOTAL	Unpaid Losses	Unpaid LAE	IBNR	TOTAL
TOTAL			0	0	0	0	0	0	0	0

5. Operating Percentages:  
5.1 A&H loss percent ..... %  
5.2 A&H cost containment percent ..... %  
5.3 A&H expense percent excluding cost containment expenses ..... %

6.1 Do you act as a custodian for health savings accounts?..... Yes [ ] No [X]  
6.2 If yes, please provide the amount of custodial funds held as of the reporting date..... \$  
6.3 Do you act as an administrator for health savings accounts?..... Yes [ ] No [X]  
6.4 If yes, please provide the balance of the funds administered as of the reporting date..... \$

**STATEMENT AS OF JUNE 30, 2014 OF THE GRANGE INDEMNITY INSURANCE COMPANY**

## SCHEDULE F - CEDED REINSURANCE

Showing All New Reinsurance Treaties - Current Year to Date

[illegible]

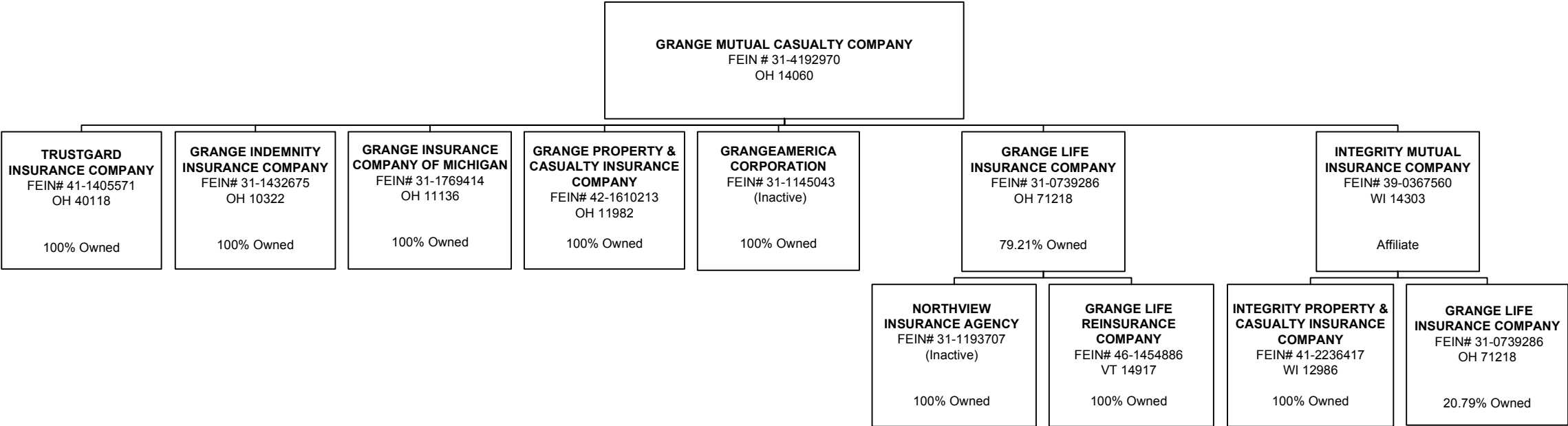
SCHEDULE T - EXHIBIT OF PREMIUMS WRITTEN

Current Year to Date - Allocated by States and Territories							
States, etc.	1	Direct Premiums Written		Direct Losses Paid (Deducting Salvage)		Direct Losses Unpaid	
		2	3	4	5	6	7
	Active Status	Current Year To Date	Prior Year To Date	Current Year To Date	Prior Year To Date	Current Year To Date	Prior Year To Date
1. Alabama	AL..N		0		0		0
2. Alaska	AK..N		0		0		0
3. Arizona	AZ..N		0		0		0
4. Arkansas	AR..N		0		0		0
5. California	CA..N		0		0		0
6. Colorado	CO..N		0		0		0
7. Connecticut	CT..N		0		0		0
8. Delaware	DE..N		0		0		0
9. Dist. Columbia	DC..N		0		0		0
10. Florida	FL..N		0		0		0
11. Georgia	GA..L	6,241,470	3,176,846	2,386,016	800,520	4,818,962	1,693,801
12. Hawaii	HI..N		0		0		0
13. Idaho	ID..N		0		0		0
14. Illinois	IL..L	11,030,729	7,632,491	2,365,715	1,248,879	8,797,617	4,526,164
15. Indiana	IN..L	6,039,540	5,583,486	3,460,728	2,470,948	4,152,225	3,641,891
16. Iowa	IA..L		0		0		0
17. Kansas	KS..L		0		0		0
18. Kentucky	KY..L	3,314,481	2,828,176	1,130,591	826,974	2,416,929	1,515,084
19. Louisiana	LA..N		0		0		0
20. Maine	ME..N		0		0		0
21. Maryland	MD..N		0		0		0
22. Massachusetts	MA..N		0		0		0
23. Michigan	MI..N		0		0		0
24. Minnesota	MN..L		0		0		0
25. Mississippi	MS..N		0		0		0
26. Missouri	MO..L		0		0		0
27. Montana	MT..N		0		0		0
28. Nebraska	NE..N		0		0		0
29. Nevada	NV..N		0		0		0
30. New Hampshire	NH..N		0		0		0
31. New Jersey	NJ..N		0		0		0
32. New Mexico	NM..N		0		0		0
33. New York	NY..N		0		0		0
34. No. Carolina	NC..N		0		0		0
35. No. Dakota	ND..N		0		0		0
36. Ohio	OH..L	6,757,396	5,853,253	2,811,738	3,031,128	5,715,408	4,562,829
37. Oklahoma	OK..N		0		0		0
38. Oregon	OR..N		0		0		0
39. Pennsylvania	PA..L	3,220,280	2,455,703	1,240,199	381,111	2,124,667	1,092,582
40. Rhode Island	RI..N		0		0		0
41. So. Carolina	SC..N		0		0		0
42. So. Dakota	SD..N		0		0		0
43. Tennessee	TN..L	4,102,187	3,067,572	1,455,258	814,860	2,072,076	1,314,749
44. Texas	TX..N		0		0		0
45. Utah	UT..N		0		0		0
46. Vermont	VT..N		0		0		0
47. Virginia	VA..N		0		0		0
48. Washington	WA..N		0		0		0
49. West Virginia	WV..N		0		0		0
50. Wisconsin	WI..L		0		0		0
51. Wyoming	WY..N		0		0		0
52. American Samoa	AS..N		0		0		0
53. Guam	GU..N		0		0		0
54. Puerto Rico	PR..N		0		0		0
55. U.S. Virgin Islands	VI..N		0		0		0
56. Northern Mariana Islands	MP..N		0		0		0
57. Canada	CAN..N		0		0		0
58. Aggregate Other Alien	OT..XXX	0	0	0	0	0	0
59. Totals	(a) 12	40,706,082	30,597,527	14,850,246	9,574,420	30,097,884	18,347,100
DETAILS OF WRITE-INS							
58001.	XXX						
58002.	XXX						
58003.	XXX						
58998. Summary of remaining write-ins for Line 58 from overflow page.	XXX	0	0	0	0	0	0
58999. TOTALS (Lines 58001 through 58003 plus 58998) (Line 58 above)	XXX	0	0	0	0	0	0

(L) Licensed or Chartered - Licensed Insurance Carrier or Domiciled RRG; (R) Registered - Non-domiciled RRGs; (Q) Qualified - Qualified or Accredited Reinsurer; (E) Eligible - Reporting Entities eligible or approved to write Surplus Lines in the state; (N) None of the above - Not allowed to write business in the state.  
(a) Insert the number of L responses except for Canada and Other Alien.

SCHEDULE Y – INFORMATION CONCERNING ACTIVITIES OF INSURER  
MEMBERS OF A HOLDING COMPANY GROUP

PART 1 – ORGANIZATIONAL CHART





## 12

## 12

## 12

1212

PART 1 - LOSS EXPERIENCE

Line of Business		Current Year to Date			4 Prior Year to Date Direct Loss Percentage
		1 Direct Premiums Earned	2 Direct Losses Incurred	3 Direct Loss Percentage	
1.	Fire .....			0.0	0.0
2.	Allied lines .....			0.0	0.0
3.	Farmowners multiple peril .....			0.0	0.0
4.	Homeowners multiple peril .....			0.0	0.0
5.	Commercial multiple peril .....			0.0	0.0
6.	Mortgage guaranty .....			0.0	0.0
8.	Ocean marine .....			0.0	0.0
9.	Inland marine .....			0.0	0.0
10.	Financial guaranty .....			0.0	0.0
11.1	Medical professional liability -occurrence .....			0.0	0.0
11.2	Medical professional liability -claims made .....			0.0	0.0
12.	Earthquake .....			0.0	0.0
13.	Group accident and health .....			0.0	0.0
14.	Credit accident and health .....			0.0	0.0
15.	Other accident and health .....			0.0	0.0
16.	Workers' compensation .....			0.0	0.0
17.1	Other liability occurrence .....			0.0	0.0
17.2	Other liability-claims made .....			0.0	0.0
17.3	Excess Workers' Compensation .....			0.0	0.0
18.1	Products liability-occurrence .....			0.0	0.0
18.2	Products liability-claims made .....			0.0	0.0
19.1,19.2	Private passenger auto liability .....	7,672,195	5,030,015	65.6	56.3
19.3,19.4	Commercial auto liability .....	15,651,935	9,724,585	62.1	53.5
21.	Auto physical damage .....	8,965,066	6,007,753	67.0	52.5
22.	Aircraft (all perils) .....			0.0	0.0
23.	Fidelity .....			0.0	0.0
24.	Surety .....			0.0	0.0
26.	Burglary and theft .....			0.0	0.0
27.	Boiler and machinery .....			0.0	0.0
28.	Credit .....			0.0	0.0
29.	International .....			0.0	0.0
30.	Warranty .....			0.0	0.0
31.	Reinsurance - Nonproportional Assumed Property .....	XXX	XXX	XXX	XXX
32.	Reinsurance - Nonproportional Assumed Liability .....	XXX	XXX	XXX	XXX
33.	Reinsurance - Nonproportional Assumed Financial Lines .....	XXX	XXX	XXX	XXX
34.	Aggregate write-ins for other lines of business .....	0	0	0.0	0.0
35.	TOTALS .....	32,289,196	20,762,353	64.3	54.0
DETAILS OF WRITE-INS					
3401.	.....			0.0	0.0
3402.	.....			0.0	0.0
3403.	.....			0.0	0.0
3498.	Sum. of remaining write-ins for Line 34 from overflow page .....	0	0	0.0	0.0
3499.	Totals (Lines 3401 through 3403 plus 3498) (Line 34) .....	0	0	0.0	0.0

PART 2 - DIRECT PREMIUMS WRITTEN

Line of Business		1 Current Quarter	2 Current Year to Date	3 Prior Year Year to Date
1.	Fire .....	0		0
2.	Allied lines .....	0		0
3.	Farmowners multiple peril .....	0		0
4.	Homeowners multiple peril .....	0		0
5.	Commercial multiple peril .....	0		0
6.	Mortgage guaranty .....	0		0
8.	Ocean marine .....	0		0
9.	Inland marine .....	0		0
10.	Financial guaranty .....	0		0
11.1	Medical professional liability-occurrence .....	0		0
11.2	Medical professional liability-claims made .....	0		0
12.	Earthquake .....	0		0
13.	Group accident and health .....	0		0
14.	Credit accident and health .....	0		0
15.	Other accident and health .....	0		0
16.	Workers' compensation .....	0		0
17.1	Other liability occurrence .....	0		0
17.2	Other liability-claims made .....	0		0
17.3	Excess Workers' Compensation .....	0		0
18.1	Products liability-occurrence .....	0		0
18.2	Products liability-claims made .....	0		0
19.1,19.2	Private passenger auto liability .....	4,586,240	8,594,683	7,261,614
19.3,19.4	Commercial auto liability .....	11,642,676	20,960,132	14,867,558
21.	Auto physical damage .....	6,189,311	11,151,267	8,468,355
22.	Aircraft (all perils) .....	0		0
23.	Fidelity .....	0		0
24.	Surety .....	0		0
26.	Burglary and theft .....	0		0
27.	Boiler and machinery .....	0		0
28.	Credit .....	0		0
29.	International .....	0		0
30.	Warranty .....	0		0
31.	Reinsurance - Nonproportional Assumed Property .....	XXX	XXX	XXX
32.	Reinsurance - Nonproportional Assumed Liability .....	XXX	XXX	XXX
33.	Reinsurance - Nonproportional Assumed Financial Lines .....	XXX	XXX	XXX
34.	Aggregate write-ins for other lines of business .....	0	0	0
35.	TOTALS .....	22,418,227	40,706,082	30,597,527
DETAILS OF WRITE-INS				
3401.	.....	0		0
3402.	.....	0		0
3403.	.....	0		0
3498.	Sum. of remaining write-ins for Line 34 from overflow page .....	0	0	0
3499.	Totals (Lines 3401 through 3403 plus 3498) (Line 34) .....	0	0	0

STATEMENT AS OF JUNE 30, 2014 OF THE GRANGE INDEMNITY INSURANCE COMPANY

PART 3 (000 omitted)

LOSS AND LOSS ADJUSTMENT EXPENSE RESERVES SCHEDULE

	1	2	3	4	5	6	7	8	9	10	11	12	13
Years in Which Losses Occurred	Prior Year-End Known Case Loss and LAE Reserves	Prior Year-End IBNR Loss and LAE Reserves	Total Prior Year-End Loss and LAE Reserves (Cols. 1 + 2)	2014 Loss and LAE Payments on Claims Reported as of Prior Year-End	2014 Loss and LAE Payments on Claims Unreported as of Prior Year-End	Total 2014 Loss and LAE Payments (Cols. 4 + 5)	Q.S. Date Known Case Loss and LAE Reserves on Claims Reported and Open as of Prior Year End	Q.S. Date Known Case Loss and LAE Reserves on Claims Reported or Reopened Subsequent to Prior Year End	Q.S. Date IBNR Loss and LAE Reserves	Total Q.S. Loss and LAE Reserves (Cols.7 + 8 + 9)	Prior Year-End Known Case Loss and LAE Reserves Developed (Savings)/ Deficiency (Cols. 4 + 7 minus Col. 1)	Prior Year-End IBNR Loss and LAE Reserves Developed (Savings)/ Deficiency (Cols. 5 + 8 + 9 minus Col. 2)	Prior Year-End Total Loss and LAE Reserve Developed (Savings)/ Deficiency (Cols. 11 + 12)
1. 2011 + Prior .....	3,525	1,921	5,446	1,463	75	1,538	2,615	37	1,276	3,927	553	(534)	19
2. 2012 .....	2,533	2,322	4,855	1,009	80	1,088	1,895	44	1,791	3,730	370	(408)	(37)
3. Subtotals 2012 + prior .....	6,058	4,243	10,301	2,472	154	2,626	4,510	80	3,067	7,657	924	(941)	(18)
4. 2013 .....	5,703	5,822	11,525	2,953	620	3,573	3,818	208	3,789	7,814	1,068	(1,206)	(138)
5. Subtotals 2013 + prior .....	11,761	10,065	21,826	5,425	774	6,199	8,327	288	6,855	15,471	1,992	(2,148)	(156)
6. 2014 .....	XXX	XXX	XXX	XXX	9,507	9,507	XXX	3,234	3,390	6,624	XXX	XXX	XXX
7. Totals .....	11,761	10,065	21,826	5,425	10,281	15,706	8,327	3,522	10,245	22,095	1,992	(2,148)	(156)
8. Prior Year-End Surplus As Regards Policy-holders	43,733										Col. 11, Line 7 As % of Col. 1, Line 7	Col. 12, Line 7 As % of Col. 2, Line 7	Col. 13, Line 7 As % of Col. 3, Line 7
											1. 16.9	2. (21.3)	3. (0.7)
											Col. 13, Line 7 Line 8		
											4. (0.4)		

SUPPLEMENTAL EXHIBITS AND SCHEDULES INTERROGATORIES

The following supplemental reports are required to be filed as part of your statement filing. However, in the event that your company does not transact the type of business for which the special report must be filed, your response of **NO** to the specific interrogatory will be accepted in lieu of filing a "NONE" report and a bar code will be printed below. If the supplement is required of your company but is not being filed for whatever reason enter **SEE EXPLANATION** and provide an explanation following the interrogatory questions.


	Response
1. Will the Trusteed Surplus Statement be filed with the state of domicile and the NAIC with this statement?	.....NO.....
2. Will Supplement A to Schedule T (Medical Professional Liability Supplement) be filed with this statement?	.....NO.....
3. Will the Medicare Part D Coverage Supplement be filed with the state of domicile and the NAIC with this statement?	.....NO.....
4. Will the Director and Officer Insurance Coverage Supplement be filed with the state of domicile and the NAIC with this statement?	.....NO.....

Explanation:

- 1.
- 2.
- 3.
- 4.


Bar Code:

1.




10322201449000002

2.




10322201445500002

3.



10322201436500002

4.



10322201450500002

OVERFLOW PAGE FOR WRITE-INS

SCHEDULE A – VERIFICATION

Real Estate

	1	2
	Year To Date	Prior Year Ended December 31
1. Book/adjusted carrying value, December 31 of prior year .....	.0	.0
2. Cost of acquired:		
2.1 Actual cost at time of acquisition .....		.0
2.2 Additional investment made after acquisition .....		.0
3. Current year change in encumbrances .....		.0
4. Total gain (loss) on disposals .....		.0
5. Deduct amounts received on disposals .....		.0
6. Total foreign exchange change in book/adjusted carrying value .....		.0
7. Deduct current year's other-than-temporary impairment recognized .....		.0
8. Deduct current year's depreciation .....		.0
9. Book/adjusted carrying value at the end of current period (Lines 1+2+3+4-5+6-7-8) .....	.0	.0
10. Deduct total nonadmitted amounts .....	.0	.0
11. Statement value at end of current period (Line 9 minus Line 10) .....	0	0

SCHEDULE B – VERIFICATION

Mortgage Loans

	1	2
	Year To Date	Prior Year Ended December 31
1. Book value/recorded investment excluding accrued interest, December 31 of prior year .....	.0	.0
2. Cost of acquired:		
2.1 Actual cost at time of acquisition .....		.0
2.2 Additional investment made after acquisition .....		.0
3. Capitalized deferred interest and other .....		.0
4. Accrual of discount .....		.0
5. Unrealized valuation increase (decrease) .....		.0
6. Total gain (loss) on disposals .....		.0
7. Deduct amounts received on disposals .....		.0
8. Deduct amortization of premium and mortgage interest points and commitment fees .....		.0
9. Total foreign exchange change in book value/recorded investment excluding accrued interest .....		.0
10. Deduct current year's other-than-temporary impairment recognized .....		.0
11. Book value/recorded investment excluding accrued interest at end of current period (Lines 1+2+3+4+5+6-7-8+9-10) .....	.0	.0
12. Total valuation allowance .....		.0
13. Subtotal (Line 11 plus Line 12) .....	.0	.0
14. Deduct total nonadmitted amounts .....	.0	.0
15. Statement value at end of current period (Line 13 minus Line 14) .....	0	0

SCHEDULE BA – VERIFICATION

Other Long-Term Invested Assets

	1	2
	Year To Date	Prior Year Ended December 31
1. Book/adjusted carrying value, December 31 of prior year .....	.0	.0
2. Cost of acquired:		
2.1 Actual cost at time of acquisition .....		.0
2.2 Additional investment made after acquisition .....		.0
3. Capitalized deferred interest and other .....		.0
4. Accrual of discount .....		.0
5. Unrealized valuation increase (decrease) .....		.0
6. Total gain (loss) on disposals .....		.0
7. Deduct amounts received on disposals .....		.0
8. Deduct amortization of premium and depreciation .....		.0
9. Total foreign exchange change in book/adjusted carrying value .....		.0
10. Deduct current year's other-than-temporary impairment recognized .....		.0
11. Book/adjusted carrying value at end of current period (Lines 1+2+3+4+5+6-7-8+9-10) .....	.0	.0
12. Deduct total nonadmitted amounts .....	.0	.0
13. Statement value at end of current period (Line 11 minus Line 12) .....	0	0

SCHEDULE D – VERIFICATION

Bonds and Stocks

	1	2
	Year To Date	Prior Year Ended December 31
1. Book/adjusted carrying value of bonds and stocks, December 31 of prior year .....	74,280,267	68,676,267
2. Cost of bonds and stocks acquired .....	4,861,667	15,085,744
3. Accrual of discount .....	25,033	59,885
4. Unrealized valuation increase (decrease) .....		.0
5. Total gain (loss) on disposals .....	(17,098)	140,011
6. Deduct consideration for bonds and stocks disposed of .....	3,967,964	9,190,903
7. Deduct amortization of premium .....	291,759	490,737
8. Total foreign exchange change in book/adjusted carrying value .....		.0
9. Deduct current year's other-than-temporary impairment recognized .....		.0
10. Book/adjusted carrying value at end of current period (Lines 1+2+3+4+5-6-7+8-9) .....	74,890,146	74,280,267
11. Deduct total nonadmitted amounts .....	.0	.0
12. Statement value at end of current period (Line 10 minus Line 11) .....	74,890,146	74,280,267

STATEMENT AS OF JUNE 30, 2014 OF THE GRANGE INDEMNITY INSURANCE COMPANY

SCHEDULE D - PART 1B

Showing the Acquisitions, Dispositions and Non-Trading Activity  
During the Current Quarter for all Bonds and Preferred Stock by NAIC Designation

NAIC Designation	1 Book/Adjusted Carrying Value Beginning of Current Quarter	2 Acquisitions During Current Quarter	3 Dispositions During Current Quarter	4 Non-Trading Activity During Current Quarter	5 Book/Adjusted Carrying Value End of First Quarter	6 Book/Adjusted Carrying Value End of Second Quarter	7 Book/Adjusted Carrying Value End of Third Quarter	8 Book/Adjusted Carrying Value December 31 Prior Year
<b>BONDS</b>								
1. NAIC 1 (a).....	63,291,837	1,128,178	1,986,480	(113,604)	63,291,837	62,319,931	0	62,049,759
2. NAIC 2 (a).....	12,920,281	469,461	794,324	(25,205)	12,920,281	12,570,215	0	12,230,508
3. NAIC 3 (a).....	0				0	0	0	0
4. NAIC 4 (a).....	0				0	0	0	0
5. NAIC 5 (a).....	0				0	0	0	0
6. NAIC 6 (a).....	0				0	0	0	0
7. Total Bonds	76,212,118	1,597,640	2,780,804	(138,809)	76,212,118	74,890,145	0	74,280,267
<b>PREFERRED STOCK</b>								
8. NAIC 1 .....	0				0	0	0	0
9. NAIC 2 .....	0				0	0	0	0
10. NAIC 3 .....	0				0	0	0	0
11. NAIC 4 .....	0				0	0	0	0
12. NAIC 5 .....	0				0	0	0	0
13. NAIC 6 .....	0				0	0	0	0
14. Total Preferred Stock.....	0	0	0	0	0	0	0	0
15. Total Bonds & Preferred Stock	76,212,118	1,597,640	2,780,804	(138,809)	76,212,118	74,890,145	0	74,280,267

(a) Book/Adjusted Carrying Value column for the end of the current reporting period includes the following amount of non-rated short-term and cash equivalent bonds by NAIC designation: NAIC 1 \$ ..... ; NAIC 2 \$ ..... ;  
NAIC 3 \$ ..... ; NAIC 4 \$ ..... ; NAIC 5 \$ ..... ; NAIC 6 \$ .....

SCHEDULE DA - PART 1  
Short-Term Investments

	1  Book/Adjusted Carrying Value	2  Par Value	3  Actual Cost	4  Interest Collected Year To Date	5  Paid for Accrued Interest Year To Date
9199999	0	XXX	0	0	0

SCHEDULE DA - VERIFICATION  
Short-Term Investments

	1  Year To Date	2  Prior Year Ended December 31
1. Book/adjusted carrying value, December 31 of prior year.....	0	1,123,813
2. Cost of short-term investments acquired .....		3,346,504
3. Accrual of discount .....		0
4. Unrealized valuation increase (decrease).....		0
5. Total gain (loss) on disposals .....		0
6. Deduct consideration received on disposals .....		4,470,317
7. Deduct amortization of premium.....		0
8. Total foreign exchange change in book/adjusted carrying value.....		0
9. Deduct current year's other-than-temporary impairment recognized.....		0
10. Book/adjusted carrying value at end of current period (Lines 1+2+3+4+5-6-7+8-9).....	0	0
11. Deduct total nonadmitted amounts.....		0
12. Statement value at end of current period (Line 10 minus Line 11)	0	0



Schedule DB - Part A - Verification

NONE

Schedule DB - Part B - Verification

NONE

Schedule DB - Part C - Section 1

NONE

Schedule DB - Part C - Section 2

NONE

Schedule DB - Verification

NONE

Schedule E - Verification

NONE

Schedule A - Part 2

NONE

Schedule A - Part 3

NONE

Schedule B - Part 2

NONE

Schedule B - Part 3

NONE

Schedule BA - Part 2

NONE

Schedule BA - Part 3

NONE

## E04

[illegible]

(a) For all common stock bearing the NAIC market indicator "U" provide: the number of such issues .....

STATEMENT AS OF JUNE 30, 2014 OF THE GRANGE INDEMNITY INSURANCE COMPANY

SCHEDULE D - PART 4

Show All Long-Term Bonds and Stock Sold, Redeemed or Otherwise Disposed of During the Current Quarter

1	2	3	4	5	6	7	8	9	10	Change in Book/Adjusted Carrying Value					16	17	18	19	20	21	22
										11	12	13	14	15							
CUSIP Identification	Description	F o r e i g n	Disposal Date	Name of Purchaser	Number of Shares of Stock	Consideration	Par Value	Actual Cost	Prior Year Book/Adjusted Carrying Value	Unrealized Valuation Increase/ (Decrease)	Current Year's (Amortization)/ Accretion	Current Year's Other Than Temporary Impairment Recognized	Total Change in B./A.C.V. (11+12-13)	Total Foreign Exchange Change in B./A.C.V.	Book/ Adjusted Carrying Value at Disposal Date	Foreign Exchange Gain (Loss) on Disposal	Realized Gain (Loss) on Disposal	Total Gain (Loss) on Disposal	Bond Interest/Stock Dividends Received During Year	Stated Contractual Maturity Date	NAIC Designation or Market Indicator (a)
Bonds - U.S. Governments																					
38374F-W6-7...	GNR 2004-21 PC 5.000%		04/20/33...	Paydown.....		18,297	18,297	18,051	18,185		112		112		18,297			0	385	04/20/2033...	1
38374L-VV-0...	GNR 2005-54 AW 5.000%		07/20/35...	Paydown.....		500,000	500,000	491,563	498,374		1,626		1,626		500,000			0	9,910	07/20/2035...	1
38376W-AM-7...	GNR 2010-14 DC 4.500%		07/20/37...	Paydown.....		9,945	9,945	10,229	10,063		(118)		(118)		9,945			0	224	07/20/2037...	1
38376V-FF-3...	GNR 2010-46 CH 4.000%		03/20/39...	Paydown.....		14,591	14,591	15,451		(860)			(860)		14,591			0	197	03/20/2039...	1
38378D-VT-9...	GNR 2012-36 MA 3.000%		06/20/39...	Paydown.....		10,755	10,755	11,448	11,378		(623)		(623)		10,755			0	135	06/20/2039...	1
38378V-XZ-3...	GNR 2013-119 TV 3.000%		08/20/43...	Paydown.....		3,978	3,978	4,057	4,052		(75)		(75)		3,978			0	50	08/20/2043...	1
0599999 - Bonds - U.S. Governments						557,566	557,566	550,798	542,053	0	62	0	62	0	557,566	0	0	0	10,901	XXX	XXX
Bonds - U.S. Special Revenue and Special Assessment and all Non-Guaranteed Obligations of Agencies and Authorities of Governments and Their Political Subdivisions																					
3137A3-KG-3...	FHR 3753 DC 3.500%		09/15/39...	Maxwell Simon Inc.....		975,938	1,000,000	1,021,094	1,015,502	(799)			(799)		1,014,703		(38,766)	(38,766)	13,708	09/15/2039...	1
3137AG-CA-6...	FHR 3947 BC 2.500%		10/15/26...	Paydown.....		8,184	8,184	8,464	8,406	(222)			(222)		8,184			0	86	10/15/2026...	1
3137AN-JP-1...	FHR 4013 WY 3.201%		11/15/40...	Paydown.....		5,327	5,327	5,477	5,441	(114)			(114)		5,327			0	73	11/15/2040...	1
3138M8-CJ-0...	FN AP4572 3.000%		09/01/27...	Paydown.....		21,580	21,580	23,036	22,938	(1,359)			(1,359)		21,580			0	270	09/01/2027...	1
31392E-SX-9...	FNR 2002-59 B 5.500%		09/25/17...	Paydown.....		2,643	2,643	2,691	2,658	(14)			(14)		2,643			0	61	09/25/2017...	1
31393A-GG-6...	FNR 2003-28 GA 4.000%		10/25/32...	Paydown.....		1,439	1,439	1,431	1,434	5			5		1,439			0	23	10/25/2032...	1
31395B-D7-5...	FNR 2006-22 CE 4.500%		08/25/23...	Paydown.....		14,471	14,471	14,859	14,644	(173)			(173)		14,471			0	270	08/25/2023...	1
31395J-5E-2...	FHR 2881 AG 4.500%		08/15/34...	Paydown.....		2,640	2,640	2,633	2,634	6			6		2,640			0	45	08/15/2034...	1
31395W-4L-8...	FHR 3003 LD 5.000%		12/15/34...	Paydown.....		11,982	11,982	12,581	12,312	(331)			(331)		11,982			0	256	12/15/2034...	1
31397L-DQ-9...	FNR 2008-24 AV 5.000%		03/25/19...	Paydown.....		5,736	5,736	5,736	5,736				0		5,736			0	99	03/25/2019...	1
31398L-NU-8...	FHR 3606 A 4.000%		07/15/23...	Paydown.....		13,978	13,978	14,670	14,338	(360)			(360)		13,978			0	228	07/15/2023...	1
31398N-3X-0...	FNR 2010-130 CA 4.500%		05/25/38...	Paydown.....		23,153	23,153	25,266		(2,113)			(2,113)		23,153			0	173	05/25/2038...	1
31398S-SG-9...	FNR 2010-136 BA 3.500%		12/25/30...	Paydown.....		4,372	4,372	4,526	4,477	(105)			(105)		4,372			0	65	12/25/2030...	1
31402C-4H-2...	FNMA Pool 725424 5.500%		04/01/34...	Paydown.....		4,775	4,775	4,724	4,726	49			49		4,775			0	109	04/01/2034...	1
31403B-4M-2...	FNMA Pool 744328 5.000%		09/01/33...	Paydown.....		5,728	5,728	5,502	5,510	218			218		5,728			0	126	09/01/2033...	1
31403D-GZ-6...	FNMA Pool 745516 5.500%		05/01/36...	Paydown.....		2,049	2,049	2,047	2,046	3			3		2,049			0	46	05/01/2036...	1
31418A-KN-7...	FN MA1200 3.000%		10/01/32...	Paydown.....		8,872	8,872	9,441	9,414	(542)			(542)		8,872			0	112	10/01/2032...	1
31419F-EB-B...	FN AE4629 4.000%		10/01/40...	Paydown.....		27,281	27,281	28,611	28,576	(1,295)			(1,295)		27,281			0	443	10/01/2040...	1
000000-00-0...										0			0					0			
3199999 - Bonds - U.S. Special Revenue and Special Assessment and all Non-Guaranteed Obligations of Agencies and Authorities of Governments and Their Political Subdivisions						1,140,148	1,164,211	1,192,789	1,160,794	0	(7,146)	0	(7,146)	0	1,178,914	0	(38,766)	(38,766)	16,196	XXX	XXX
Bonds - Industrial and Miscellaneous (Unaffiliated)																					
620076-BB-4...	Motorola Solutions Inc NC 3.750%		06/03/2014...	Stifel Nicolaus & Co.....		395,552	400,000	394,124		200			200		394,324		1,228	1,228	8,375	05/15/2022...	2FE
67021C-AB-3...	Nstar Electric Company NC 4.875%		04/15/2014...	Maturity.....		250,000	250,000	242,593	249,729	271			271		250,000			0	6,094	04/15/2014...	1FE
034863-AA-8...	Anglo American Capital 144A-NC 9.375%	F	04/08/2014...	Maturity.....		400,000	400,000	460,000	403,853	(3,853)			(3,853)		400,000			0	18,750	04/08/2014...	2FE
3899999 - Bonds - Industrial and Miscellaneous (Unaffiliated)						1,045,552	1,050,000	1,096,717	653,582	0	(3,382)	0	(3,382)	0	1,044,324	0	1,228	1,228	33,219	XXX	XXX
8399997 - Subtotals - Bonds - Part 4						2,743,266	2,771,777	2,840,303	2,356,429	0	(10,466)	0	(10,466)	0	2,780,804	0	(37,537)	(37,537)	60,315	XXX	XXX
8399999 - Subtotals - Bonds						2,743,266	2,771,777	2,840,303	2,356,429	0	(10,466)	0	(10,466)	0	2,780,804	0	(37,537)	(37,537)	60,315	XXX	XXX
9999999 Totals						2,743,266	XXX	2,840,303	2,356,429	0	(10,466)	0	(10,466)	0	2,780,804	0	(37,537)	(37,537)	60,315	XXX	XXX

STATEMENT AS OF JUNE 30, 2014 OF THE GRANGE INDEMNITY INSURANCE COMPANY

SCHEDULE D - PART 4

Show All Long-Term Bonds and Stock Sold, Redeemed or Otherwise Disposed of During the Current Quarter

1	2	3	4	5	6	7	8	9	10	Change in Book/Adjusted Carrying Value					16	17	18	19	20	21	22
										11	12	13	14	15							
CUSIP Identi- fication	Description	F o r e i g n	Disposal Date	Name of Purchaser	Number of Shares of Stock	Consideration	Par Value	Actual Cost	Prior Year Book/Adjusted Carrying Value	Unrealized Valuation Increase/ (Decrease)	Current Year's (Amortization)/ Accretion	Current Year's Other Than Temporary Impairment Recognized	Total Change in B./A.C.V. (11+12-13)	Total Foreign Exchange Change in B./A.C.V.	Book/ Adjusted Carrying Value at Disposal Date	Foreign Exchange Gain (Loss) on Disposal	Realized Gain (Loss) on Disposal	Total Gain (Loss) on Disposal	Bond Interest/Stock Dividends Received During Year	Stated Contractual Maturity Date	NAIC Desig- nation or Market Indicator (a)

(a) For all common stock bearing the NAIC market indicator "U" provide: the number of such issues .....

Schedule DB - Part A - Section 1

NONE

Schedule DB - Part B - Section 1

NONE

Schedule DB - Part D - Section 1

NONE

Schedule DB - Part D - Section 2

NONE

**SCHEDULE DL - PART 1**  
**SECURITIES LENDING COLLATERAL ASSETS**

General Interrogatories:				
1. Total activity for the year to date	Fair Value \$	3,625,191	Book/Adjusted Carrying Value	\$ 3,625,149
2. Average balance for the year to date	Fair Value \$	3,108,152	Book/Adjusted Carrying Value	\$ 3,108,220
3. Reinvested securities lending collateral assets book/adjusted carrying value included in this schedule by NAIC designation:				
NAIC 1 \$ 3,625,149	NAIC 2 \$	NAIC 3 \$	NAIC 4 \$	NAIC 5 \$
				NAIC 6 \$

**SCHEDULE DL - PART 2**  
**SECURITIES LENDING COLLATERAL ASSETS**

General Interrogatories:

1. Total activity for the year to date.....	Fair Value \$ .....	Book/Adjusted Carrying Value \$ .....
2. Average balance for the year to date.....	Fair Value \$ .....	Book/Adjusted Carrying Value \$ .....



## SCHEDULE E - PART 1 - CASH

E12

SCHEDULE E - PART 2 - CASH EQUIVALENTS

Show Investments Owned End of Current Quarter							
1 Description	2 Code	3 Date Acquired	4 Rate of Interest	5 Maturity Date	6 Book/Adjusted Carrying Value	7 Amount of Interest Due & Accrued	8 Amount Received During Year
NONE							
8699999 Total Cash Equivalents					0	0	0