



PROPERTY AND CASUALTY COMPANIES - ASSOCIATION EDITION

QUARTERLY STATEMENT

AS OF JUNE 30, 2014

OF THE CONDITION AND AFFAIRS OF THE

Allied Insurance Company of America

NAIC Group Code01400140NAIC Company Code10127Employer's ID Number27-0114983  
(Current)(Prior)

Organized under the Laws ofOhio, State of Domicile or Port of EntryOhio

Country of DomicileUnited States of America

Incorporated/Organized02/16/2005Commenced Business

Statutory Home OfficeOne West Nationwide Blvd.Columbus , OH, US 43215-2220  
(Street and Number)(City or Town, State, Country and Zip Code)

Main Administrative OfficeOne West Nationwide Blvd.Columbus , OH, US 43215-2220614-249-7111  
(Street and Number)(City or Town, State, Country and Zip Code)(Area Code) (Telephone Number)

Mail AddressOne West Nationwide Blvd., 1-04-701Columbus , OH, US 43215-2220  
(Street and Number or P.O. Box)(City or Town, State, Country and Zip Code)

Primary Location of Books and RecordsOne West Nationwide Blvd., 1-04-701Columbus , OH, US 43215-2220614-249-1545  
(Street and Number)(City or Town, State, Country and Zip Code)(Area Code) (Telephone Number)

Internet Website Addresswww.nationwide.com

Statutory Statement ContactMonda S. Caudill614-249-1545  
(Name)(Area Code) (Telephone Number)  
FinRpt@nationwide.com866-315-1430  
(E-mail Address)(FAX Number)

OFFICERS

President & COOWesley Kim AustenVP & TreasurerTimothy John Dwyer

VP & SecretaryRobert William Horner III

OTHER

Pamela Ann BieseckerSr VP-Head of Taxation

DIRECTORS OR TRUSTEES

Wesley Kim AustenThomas Edward ClarkWendell Paul Crosser #  
Robert Patrick O'Hollearn #Jeff Millard Rommel

State ofOhioSS:  
County ofFranklin

The officers of this reporting entity being duly sworn, each depose and say that they are the described officers of said reporting entity, and that on the reporting period stated above, all of the herein described assets were the absolute property of the said reporting entity, free and clear from any liens or claims thereon, except as herein stated, and that this statement, together with related exhibits, schedules and explanations therein contained, annexed or referred to, is a full and true statement of all the assets and liabilities and of the condition and affairs of the said reporting entity as of the reporting period stated above, and of its income and deductions therefrom for the period ended, and have been completed in accordance with the NAIC Annual Statement Instructions and Accounting Practices and Procedures manual except to the extent that: (1) state law may differ; or, (2) that state rules or regulations require differences in reporting not related to accounting practices and procedures, according to the best of their information, knowledge and belief, respectively. Furthermore, the scope of this attestation by the described officers also includes the related corresponding electronic filing with the NAIC, when required, that is an exact copy (except for formatting differences due to electronic filing) of the enclosed statement. The electronic filing may be requested by various regulators in lieu of or in addition to the enclosed statement.

Wesley Kim AustenRobert William Horner IIITimothy John Dwyer  
President & COOVP & SecretaryVP & Treasurer

Subscribed and sworn to before me thisa. Is this an original filing? .....Yes [ X ] No [ ]  
day of July, 2014b. If no,  
1. State the amendment number.....  
2. Date filed .....  
3. Number of pages attached.....

ASSETS

	Current Statement Date			4 December 31 Prior Year Net Admitted Assets
	1 Assets	2 Nonadmitted Assets	3 Net Admitted Assets (Cols. 1 - 2)	
1. Bonds .....	9,755,500		9,755,500	7,347,362
2. Stocks:				
2.1 Preferred stocks .....				
2.2 Common stocks .....				
3. Mortgage loans on real estate:				
3.1 First liens .....				
3.2 Other than first liens.....				
4. Real estate:				
4.1 Properties occupied by the company (less \$ ..... encumbrances) .....				
4.2 Properties held for the production of income (less \$ ..... encumbrances) .....				
4.3 Properties held for sale (less \$ ..... encumbrances) .....				
5. Cash (\$ ..... ), cash equivalents (\$ ..... ) and short-term investments (\$ .....4,642,817 ) .....	4,642,817		4,642,817	223,896
6. Contract loans (including \$ ..... premium notes) .....				
7. Derivatives .....				
8. Other invested assets .....				
9. Receivables for securities .....				
10. Securities lending reinvested collateral assets .....				
11. Aggregate write-ins for invested assets .....				
12. Subtotals, cash and invested assets (Lines 1 to 11) .....	14,398,317		14,398,317	7,571,258
13. Title plants less \$ ..... charged off (for Title insurers only) .....				
14. Investment income due and accrued .....	36,275		36,275	12,409
15. Premiums and considerations:				
15.1 Uncollected premiums and agents' balances in the course of collection .....				
15.2 Deferred premiums, agents' balances and installments booked but deferred and not yet due (including \$ ..... earned but unbilled premiums) .....				
15.3 Accrued retrospective premiums .....				
16. Reinsurance:				
16.1 Amounts recoverable from reinsurers .....				
16.2 Funds held by or deposited with reinsured companies .....				
16.3 Other amounts receivable under reinsurance contracts .....	4,875		4,875	950
17. Amounts receivable relating to uninsured plans .....				
18.1 Current federal and foreign income tax recoverable and interest thereon .....				
18.2 Net deferred tax asset .....				
19. Guaranty funds receivable or on deposit .....				
20. Electronic data processing equipment and software .....				
21. Furniture and equipment, including health care delivery assets (\$ ..... ) .....				
22. Net adjustment in assets and liabilities due to foreign exchange rates .....				
23. Receivables from parent, subsidiaries and affiliates .....				
24. Health care (\$ ..... ) and other amounts receivable .....				
25. Aggregate write-ins for other than invested assets .....				249,856
26. Total assets excluding Separate Accounts, Segregated Accounts and Protected Cell Accounts (Lines 12 to 25) .....	14,439,467		14,439,467	7,834,473
27. From Separate Accounts, Segregated Accounts and Protected Cell Accounts .....				
28. Total (Lines 26 and 27)	14,439,467		14,439,467	7,834,473
DETAILS OF WRITE-INS				
1101. ....				
1102. ....				
1103. ....				
1198. Summary of remaining write-ins for Line 11 from overflow page .....				
1199. Totals (Lines 1101 through 1103 plus 1198)(Line 11 above)				
2501. Miscellaneous assets .....				249,856
2502. ....				
2503. ....				
2598. Summary of remaining write-ins for Line 25 from overflow page .....				
2599. Totals (Lines 2501 through 2503 plus 2598)(Line 25 above)				249,856

## LIABILITIES, SURPLUS AND OTHER FUNDS

	1 Current Statement Date	2 December 31, Prior Year
1. Losses (current accident year \$ ..... ) .....		
2. Reinsurance payable on paid losses and loss adjustment expenses .....		
3. Loss adjustment expenses .....		
4. Commissions payable, contingent commissions and other similar charges .....		
5. Other expenses (excluding taxes, licenses and fees) .....		
6. Taxes, licenses and fees (excluding federal and foreign income taxes) .....		
7.1 Current federal and foreign income taxes (including \$ ..... on realized capital gains (losses)) .....	24,496	17,989
7.2 Net deferred tax liability .....	1,069	616
8. Borrowed money \$ ..... and interest thereon \$ ..... .....		
9. Unearned premiums (after deducting unearned premiums for ceded reinsurance of \$ ..... and including warranty reserves of \$ ..... and accrued accident and health experience rating refunds including \$ ..... for medical loss ratio rebate per the Public Health Service Act) .....		
10. Advance premium .....		
11. Dividends declared and unpaid:		
11.1 Stockholders .....		
11.2 Policyholders .....		
12. Ceded reinsurance premiums payable (net of ceding commissions) .....	(387,026)	
13. Funds held by company under reinsurance treaties .....		
14. Amounts withheld or retained by company for account of others .....		
15. Remittances and items not allocated .....	9,470	
16. Provision for reinsurance (including \$ ..... certified) .....		
17. Net adjustments in assets and liabilities due to foreign exchange rates .....		
18. Drafts outstanding .....		
19. Payable to parent, subsidiaries and affiliates .....	392,367	1,526
20. Derivatives .....		
21. Payable for securities .....	538,414	
22. Payable for securities lending .....		
23. Liability for amounts held under uninsured plans .....		
24. Capital notes \$ ..... and interest thereon \$ ..... .....		
25. Aggregate write-ins for liabilities .....		
26. Total liabilities excluding protected cell liabilities (Lines 1 through 25) .....	578,790	20,131
27. Protected cell liabilities .....		
28. Total liabilities (Lines 26 and 27) .....	578,790	20,131
29. Aggregate write-ins for special surplus funds .....		
30. Common capital stock .....	9,000,000	3,000,000
31. Preferred capital stock .....		
32. Aggregate write-ins for other than special surplus funds .....		
33. Surplus notes .....		
34. Gross paid in and contributed surplus .....	4,000,000	4,000,000
35. Unassigned funds (surplus) .....	860,677	814,342
36. Less treasury stock, at cost:		
36.1 ..... shares common (value included in Line 30 \$ ..... ) .....		
36.2 ..... shares preferred (value included in Line 31 \$ ..... ) .....		
37. Surplus as regards policyholders (Lines 29 to 35, less 36) .....	13,860,677	7,814,342
38. Totals (Page 2, Line 28, Col. 3)	14,439,467	7,834,473
DETAILS OF WRITE-INS		
2501. ....		
2502. ....		
2503. ....		
2598. Summary of remaining write-ins for Line 25 from overflow page .....		
2599. Totals (Lines 2501 through 2503 plus 2598)(Line 25 above)		
2901. ....		
2902. ....		
2903. ....		
2998. Summary of remaining write-ins for Line 29 from overflow page .....		
2999. Totals (Lines 2901 through 2903 plus 2998)(Line 29 above)		
3201. ....		
3202. ....		
3203. ....		
3298. Summary of remaining write-ins for Line 32 from overflow page .....		
3299. Totals (Lines 3201 through 3203 plus 3298)(Line 32 above)		

STATEMENT OF INCOME

	1 Current Year to Date	2 Prior Year to Date	3 Prior Year Ended December 31
UNDERWRITING INCOME			
1. Premiums earned:			
1.1 Direct (written \$ ..... )			
1.2 Assumed (written \$ ..... )			
1.3 Ceded (written \$ ..... )			
1.4 Net (written \$ ..... )			
DEDUCTIONS:			
2. Losses incurred (current accident year \$ ..... ):			
2.1 Direct .....			
2.2 Assumed .....			
2.3 Ceded .....			
2.4 Net .....			
3. Loss adjustment expenses incurred .....			
4. Other underwriting expenses incurred .....			
5. Aggregate write-ins for underwriting deductions .....			
6. Total underwriting deductions (Lines 2 through 5) .....			
7. Net income of protected cells .....			
8. Net underwriting gain or (loss) (Line 1 minus Line 6 + Line 7) .....			
INVESTMENT INCOME			
9. Net investment income earned .....	24,972	20,246	39,818
10. Net realized capital gains (losses) less capital gains tax of \$ .....			
11. Net investment gain (loss) (Lines 9 + 10) .....	24,972	20,246	39,818
OTHER INCOME			
12. Net gain or (loss) from agents' or premium balances charged off (amount recovered \$ ..... amount charged off \$ ..... ) .....			
13. Finance and service charges not included in premiums .....			
14. Aggregate write-ins for miscellaneous income .....			
15. Total other income (Lines 12 through 14) .....			
16. Net income before dividends to policyholders, after capital gains tax and before all other federal and foreign income taxes (Lines 8 + 11 + 15) .....	24,972	20,246	39,818
17. Dividends to policyholders .....			
18. Net income, after dividends to policyholders, after capital gains tax and before all other federal and foreign income taxes (Line 16 minus Line 17) .....	24,972	20,246	39,818
19. Federal and foreign income taxes incurred .....	24,496	6,789	17,989
20. Net income (Line 18 minus Line 19)(to Line 22) .....	476	13,457	21,829
CAPITAL AND SURPLUS ACCOUNT			
21. Surplus as regards policyholders, December 31 prior year .....	7,814,342	5,780,112	5,780,112
22. Net income (from Line 20) .....	476	13,457	21,829
23. Net transfers (to) from Protected Cell accounts .....			
24. Change in net unrealized capital gains (losses) less capital gains tax of \$ .....16,209	30,103	(337)	8,348
25. Change in net unrealized foreign exchange capital gain (loss) .....			
26. Change in net deferred income tax .....	15,756	(296)	4,053
27. Change in nonadmitted assets .....			
28. Change in provision for reinsurance .....			
29. Change in surplus notes .....			
30. Surplus (contributed to) withdrawn from protected cells .....			
31. Cumulative effect of changes in accounting principles .....			
32. Capital changes:			
32.1 Paid in .....	6,000,000	2,000,000	2,000,000
32.2 Transferred from surplus (Stock Dividend) .....			
32.3 Transferred to surplus .....			
33. Surplus adjustments:			
33.1 Paid in .....			
33.2 Transferred to capital (Stock Dividend) .....			
33.3 Transferred from capital .....			
34. Net remittances from or (to) Home Office .....			
35. Dividends to stockholders .....			
36. Change in treasury stock .....			
37. Aggregate write-ins for gains and losses in surplus .....			
38. Change in surplus as regards policyholders (Lines 22 through 37).....	6,046,335	2,012,824	2,034,230
39. Surplus as regards policyholders, as of statement date (Lines 21 plus 38)	13,860,677	7,792,936	7,814,342
DETAILS OF WRITE-INS			
0501. ....			
0502. ....			
0503. ....			
0598. Summary of remaining write-ins for Line 5 from overflow page .....			
0599. Totals (Lines 0501 through 0503 plus 0598)(Line 5 above)			
1401. ....			
1402. ....			
1403. ....			
1498. Summary of remaining write-ins for Line 14 from overflow page .....			
1499. Totals (Lines 1401 through 1403 plus 1498)(Line 14 above)			
3701. ....			
3702. ....			
3703. ....			
3798. Summary of remaining write-ins for Line 37 from overflow page .....			
3799. Totals (Lines 3701 through 3703 plus 3798)(Line 37 above)			

STATEMENT AS OF JUNE 30, 2014 OF THE ALLIED INSURANCE COMPANY OF AMERICA

CASH FLOW

	1 Current Year To Date	2 Prior Year To Date	3 Prior Year Ended December 31
Cash from Operations			
1. Premiums collected net of reinsurance .....	(387,026)	(6,155)	
2. Net investment income .....	6,935	18,235	41,100
3. Miscellaneous income .....	(3,925)	(1,733)	(350)
4. Total (Lines 1 to 3) .....	(384,016)	10,348	40,750
5. Benefit and loss related payments .....			
6. Net transfers to Separate Accounts, Segregated Accounts and Protected Cell Accounts .....			
7. Commissions, expenses paid and aggregate write-ins for deductions .....			
8. Dividends paid to policyholders .....			
9. Federal and foreign income taxes paid (recovered) net of \$ ..... tax on capital gains (losses) .....	17,989	4,156	4,156
10. Total (Lines 5 through 9) .....	17,989	4,156	4,156
11. Net cash from operations (Line 4 minus Line 10) .....	(402,005)	6,192	36,594
Cash from Investments			
12. Proceeds from investments sold, matured or repaid:			
12.1 Bonds .....			
12.2 Stocks .....			
12.3 Mortgage loans .....			
12.4 Real estate .....			
12.5 Other invested assets .....			
12.6 Net gains or (losses) on cash, cash equivalents and short-term investments .....			
12.7 Miscellaneous proceeds .....	538,414		
12.8 Total investment proceeds (Lines 12.1 to 12.7) .....	538,414		
13. Cost of investments acquired (long-term only):			
13.1 Bonds .....	2,367,656	3,577,354	3,577,354
13.2 Stocks .....			
13.3 Mortgage loans .....			
13.4 Real estate .....			
13.5 Other invested assets .....			
13.6 Miscellaneous applications .....			
13.7 Total investments acquired (Lines 13.1 to 13.6) .....	2,367,656	3,577,354	3,577,354
14. Net increase (or decrease) in contract loans and premium notes .....			
15. Net cash from investments (Line 12.8 minus Line 13.7 and Line 14) .....	(1,829,242)	(3,577,354)	(3,577,354)
Cash from Financing and Miscellaneous Sources			
16. Cash provided (applied):			
16.1 Surplus notes, capital notes .....			
16.2 Capital and paid in surplus, less treasury stock .....	6,000,000	2,000,000	2,000,000
16.3 Borrowed funds .....			
16.4 Net deposits on deposit-type contracts and other insurance liabilities .....			
16.5 Dividends to stockholders .....			
16.6 Other cash provided (applied) .....	650,168	18,678	(238,748)
17. Net cash from financing and miscellaneous sources (Line 16.1 through Line 16.4 minus Line 16.5 plus Line 16.6) .....	6,650,168	2,018,678	1,761,252
RECONCILIATION OF CASH, CASH EQUIVALENTS AND SHORT-TERM INVESTMENTS			
18. Net change in cash, cash equivalents and short-term investments (Line 11, plus Lines 15 and 17) .....	4,418,921	(1,552,484)	(1,779,508)
19. Cash, cash equivalents and short-term investments:			
19.1 Beginning of year .....	223,896	2,003,404	2,003,404
19.2 End of period (Line 18 plus Line 19.1) .....	4,642,817	450,920	223,896

Note: Supplemental disclosures of cash flow information for non-cash transactions:

--	--	--	--

NOTES TO FINANCIAL STATEMENTS

Note 1 - Summary of Significant Accounting Policies

A. Accounting Practices

The accompanying statutory financial statements of Allied Insurance Company of America (the Company) have been prepared in conformity with accounting practices prescribed or permitted by the National Association of Insurance Commissioners (NAIC) and the State of Ohio.

The Ohio Insurance Department recognizes only statutory accounting practices (SAP) prescribed or permitted by the State of Ohio for determining and reporting the financial condition and results of operations of an insurance company, as well as, determining its solvency under the Ohio Insurance law. The National Association of Insurance Commissioners' (NAIC) *Accounting Practices and Procedures Manual* (NAIC SAP) has been adopted as a component of prescribed or permitted practices by the State of Ohio.

A reconciliation of the Company's net income and capital and surplus between NAIC SAP and practices prescribed and permitted by the State of Ohio is shown below:

	State of Domicile	2014	2013
NET INCOME			
(1) Allied Insurance Company of America state basis (Page 4, Line 20, Columns 1 & 3)	OH	\$ 476	\$ 21,829
(2) State Prescribed Practices that increase/(decrease) NAIC SAP	OH	-	-
(3) State Permitted Practices that increase/(decrease) NAIC SAP	OH	-	-
(4) NAIC SAP (1-2-3=4)	OH	\$ 476	\$ 21,829
SURPLUS			
(5) Allied Insurance Company of America state basis (Page 3, Line 37, Columns 1 & 2)	OH	\$ 13,860,677	\$ 7,814,342
(6) State Prescribed Practices that increase/(decrease) NAIC SAP	OH	-	-
(7) State Permitted Practices that increase/(decrease) NAIC SAP	OH	-	-
(8) NAIC SAP (5-6-7=8)	OH	\$ 13,860,677	\$ 7,814,342

Note 2 - Accounting Changes and Corrections of Errors

No change.

Note 3 - Business Combinations and Goodwill

No change.

Note 4 - Discontinued Operations

No change.

Note 5 - Investments

A. Mortgage Loans

No change.

B. Troubled Debt Restructuring for Creditors

No change.

C. Reverse Mortgages

No change.

D. Loan-Backed Securities

- Prepayment assumptions are generally obtained using a model provided by a third-party vendor.
- Not applicable.
- Not applicable.
- Not applicable.
- The Company reviews all loan-backed and structured securities in which the fair value of the given security is less than the amortized cost to determine if a given security is other-than-temporarily impaired. The Company examines characteristics of the underlying collateral, such as delinquency and default rates, the quality of the underlying borrower, the type of collateral in the pool, the vintage year of the collateral, subordination levels within the structure of the collateral pool, and the quality of any credit guarantors, to determine the cash flows expected to be received for the security.

If the severity and duration of the security's unrealized loss indicates a risk of an other-than-temporary impairment, then the Company will evaluate if the amortized cost basis of the security will be recovered by comparing the present value of the cash flows expected to be received for the given security with the amortized cost basis of the security. If the present value of cash flows is greater than the amortized cost basis of a security then the security is deemed not to be other-than-temporarily impaired.

E. Repurchase Agreements and Securities Lending Transactions

Not applicable.

F. Real Estate

No change.

G. Low-Income Housing Tax Credits

No change.

## NOTES TO FINANCIAL STATEMENTS

H. Restricted Assets

No change.

I. Working Capital Finance Investments

Not applicable.

**Note 6 - Joint Ventures, Partnerships and Limited Liability Companies**

No change.

**Note 7 - Investment Income**

No change.

**Note 8 - Derivative Instruments**

No change.

**Note 9 - Income Taxes**

No change.

**Note 10 - Information Concerning Parent, Subsidiaries, Affiliates and Other Related Parties**

B. Detail of Transactions Greater than ½% of Admitted Assets

On March 5, 2014, the Company received a capital contribution of \$6 million from Nationwide Mutual Insurance Company.

C. Change in Terms of Intercompany Arrangements

Effective January 1, 2013, there are changes to the Nationwide Pool. See Note 26.

**Note 11 - Debt**

B. FHLB (Federal Home Loan Bank) Agreements

Not applicable.

**Note 12 - Retirement Plans, Deferred Compensation, Postemployment Benefits and Compensated Absences and Other Postretirement Benefit Plans**

No change.

**Note 13 - Capital and Surplus, Dividend Restrictions and Quasi-Reorganizations**

No change.

**Note 14 – Contingencies**

No change.

**Note 15 – Leases**

No change.

**Note 16 - Information About Financial Instruments With Off-Balance Sheet Risk And Financial Instruments With Concentrations of Credit Risk**

No change.

**Note 17 - Sale, Transfer and Servicing of Financial Assets and Extinguishments of Liabilities**

A. Transfers of Receivables Reported as Sales

No change.

B. Transfers and Servicing of Financial Assets

Not applicable.

C. Wash Sales

Not applicable.

**Note 18 - Gain or Loss to the Reporting Entity from Uninsured Plans and the Uninsured Portion of Partially Insured Plans**

No change.

**Note 19 - Direct Premiums Written/Produced by Managing General Agents/Third Party Administrators**

No change.

**Note 20 – Fair Value Measurements**

Fair value is defined as the price that would be received to sell an asset or paid to transfer a liability in an orderly transaction between market participants at the measurement date. Fair value measurements are based upon observable and unobservable inputs. Observable inputs reflect market data obtained from independent sources while unobservable inputs reflect the Company's view of market assumptions in the absence of observable market information. The Company utilizes valuation techniques that maximize the use of observable inputs and minimize the use of unobservable inputs. In determining fair value, the Company uses various methods including market, income and cost approaches.

NOTES TO FINANCIAL STATEMENTS

The Company categorizes its financial assets and liabilities into a three-level hierarchy based on the priority of the inputs to the valuation technique. The fair value hierarchy gives the highest priority to quoted prices in active markets for identical assets or liabilities (Level 1) and the lowest priority to unobservable inputs (Level 3). If the inputs used to measure fair value fall within different levels of the hierarchy, the category level is based on the lowest priority level input that is significant to the fair value measurement of the instrument in its entirety.

The Company categorizes financial assets and liabilities as follows:

*Level 1.* Unadjusted quoted prices accessible in active markets for identical assets or liabilities at the measurement date and mutual funds where the value per share (unit) is determined and published daily and is the basis for current transactions.

*Level 2.* Unadjusted quoted prices for similar assets or liabilities in active markets or inputs (other than quoted prices) that are observable or that are derived principally from or corroborated by observable market data through correlation or other means. Primary inputs to this valuation technique may include comparative trades, bid/asks, interest rate movements, U.S. Treasury rates, U.S. LIBOR, prime rates, cash flows, maturity dates, call ability, estimated prepayments and/or underlying collateral values.

*Level 3.* Prices or valuation techniques that require inputs that are both unobservable and significant to the overall fair value measurement. Inputs reflect management’s best estimate about the assumptions market participants would use at the measurement date in pricing the asset or liability. Consideration is given to the risk inherent in both the method of valuation and the valuation inputs. Primary inputs to this valuation technique include broker quotes and comparative trades.

The Company reviews its fair value hierarchy classifications for financial assets and liabilities quarterly. Changes in observability of significant valuation inputs identified during these reviews may trigger reclassifications. Reclassifications are reported as transfers at the beginning of the period in which the change occurs.

To determine the fair value of bonds and stocks for which market quotations are available, independent pricing services are most often utilized. For these bonds and stocks, the Company obtains the pricing services’ methodologies, inputs and assumptions and classifies the investments accordingly in the fair value hierarchy.

A corporate pricing matrix or an internally developed pricing model is used in valuing certain bonds. The corporate pricing matrix is developed using private spreads for bonds with varying weighted average lives and credit quality ratings. The weighted average life and credit quality rating of a particular bond to be priced using the corporate pricing matrix are important inputs into the model and are used to determine a corresponding spread that is added to the appropriate U.S. Treasury yield to create an estimated market yield for that bond. The estimated market yield and other relevant factors are then used to estimate the fair value of the particular bond.

Non-binding broker quotes are also utilized to determine the fair value of certain bonds when quotes are not available from independent pricing services, corporate pricing matrix or internal pricing models. These bonds are classified accordingly in the fair value hierarchy as only one broker quote is ordinarily obtained, the investment is not traded on an exchange, the pricing is not available to other entities and/or the transaction volume in the same or similar investments has decreased. Inputs used in the development of prices are not provided to the Company by the brokers as the brokers often do not provide the necessary transparency into their quotes and methodologies. Broker quotes are subject to validation of price movements that require approval from the Company’s management. Management uses its knowledge of the investment and current market conditions to determine if the price is indicative of the investment’s fair value.

Fair value of derivative instruments is determined using various valuation techniques relying predominately on observable market inputs. These inputs include interest rate swap curves, credit spreads, interest rates, counterparty credit risk, equity volatility and equity index levels. In cases where observable inputs are not available, the Company will utilize non-binding broker quotes to determine fair value and these instruments are classified accordingly in the fair value hierarchy.

No financial assets or liabilities were carried at fair value as of June 30, 2014.

The following table summarizes aggregate carrying value and fair value, by level, for all financial assets and liabilities, excluding assets and liabilities reported at fair value, as of June 30, 2014:

	Aggregate Fair Value	Admitted Assets	(Level 1)	(Level 2)	(Level 3)	Not Practicable (Carrying Value)
Assets						
Bonds	\$ 9,715,366	\$ 9,755,500	\$ 7,331,369	\$ 2,383,997	\$ -	\$ -
Stocks	-	-	-	-	-	-
Mortgage loans	-	-	-	-	-	-
Short-term investments	4,642,817	4,642,817	-	4,642,817	-	-
Derivative assets	-	-	-	-	-	-
Policy loans	-	-	-	-	-	-
Securities lending collateral assets	-	-	-	-	-	-
Total Assets	\$ 14,358,183	\$ 14,398,317	\$ 7,331,369	\$ 7,026,814	\$ -	\$ -
Liabilities						
Derivative liabilities	\$ -	\$ -	\$ -	\$ -	\$ -	\$ -
Total Liabilities	\$ -	\$ -	\$ -	\$ -	\$ -	\$ -

Note 21 - Other Items

C. Other Disclosures

On April 4, 2013, Nationwide Mutual Insurance Company (Mutual) and certain of its affiliates entered into a second agreement with Caelus Re 2013 Limited, a Cayman Islands Special Purpose Reinsurance Vehicle, for the purpose of securing additional collateralized, multi-year property catastrophe loss protection through the capital markets. The catastrophe bonds issued as part of this agreement, referred to as Caelus Re 2013 Limited Series 2013-2, also provide reinsurance coverage to Mutual for catastrophic events, including hurricanes and earthquakes. The catastrophe bonds are indemnity, trigger-based bonds where Mutual recovers losses in excess of a specified level of catastrophic claims, which is reset annually. Mutual’s attachment point on the Caelus Re 2013-2 Limited bond is \$1.5 billion. The agreement is effective June 1, 2013 and expires on March 31, 2017.

On March 7, 2013, Mutual and certain of its affiliates entered into an agreement with Caelus Re 2013 Limited, a Cayman Islands Special Purpose Reinsurance Vehicle, for the purpose of securing collateralized, multi-year property catastrophe loss protection through the capital markets. Catastrophe bonds issued as part of this agreement provide reinsurance coverage to Mutual for events including hurricanes and earthquakes. The catastrophe bonds are indemnity, trigger based bonds where Mutual recovers losses in excess of a specified level of catastrophic claims, which is reset annually. Mutual's attachment point on the Caelus Re 2013 Limited bond is \$1.9 billion. The Caelus Re 2013 Limited agreement is effective June 1, 2013 and expires on February 29, 2016.



STATEMENT AS OF JUNE 30, 2014 OF THE ALLIED INSURANCE COMPANY OF AMERICA

NOTES TO FINANCIAL STATEMENTS

On February 4, 2013, the Company issued 10,000 additional shares of common stock. The stock is owned by Mutual.

G. Offsetting and Netting of Assets and Liabilities

No assets or liabilities are offset and reported net in accordance with a valid right to offset per SSAP No. 64, Offsetting and Netting of Assets and Liabilities.

**Note 22 - Events Subsequent**

Subsequent events have been considered through August 4, 2014 for these statutory financial statements which are to be issued August 5, 2014. There were no events occurring subsequent to the end of the quarter that merited recognition or disclosure in these statements.

**Note 23 – Reinsurance**

No change.

**Note 24 - Retrospectively Rated Contracts and Contracts Subject to Redetermination**

No change.

**Note 25 - Changes in Incurred Losses and Loss Adjustment Expenses**

The Company is a participant in a 100% pooling reinsurance agreement with Mutual, and as such has zero net incurred losses and loss adjustment expenses.

**Note 26 - Intercompany Pooling Arrangements**

Mutual is the lead company in the Nationwide Pool. Each member contributes 100% of its underwriting results to the Nationwide Pool through the reinsurance pooling agreement.

Effective January 1, 2013, Mutual's pooling percentage changed to 83% from 83.7%. In addition, Nationwide Mutual Fire Insurance Company's pooling percentage changed to 12% from 11.3%.

The companies in the Nationwide Pool assuming a proportionate share of the pool as of January 1, 2013, are:

	<u>NAIC#</u>	<u>Pool</u>
Nationwide Mutual Insurance Company	23787	83%
Nationwide Mutual Fire Insurance Company	23779	12%
Scottsdale Insurance Company	41297	4%
Farmland Mutual Insurance Company	13838	1%

Also, effective January 1, 2013, the following companies became zero percent participants in the Nationwide Pool: Harleysville Preferred Insurance Company (NAIC #35696), Harleysville Insurance Company of New Jersey (NAIC #42900), Harleysville Worcester Insurance Company (NAIC #26182), Harleysville Insurance Company of New York (NAIC #10674), Harleysville Pennland Insurance Company (NAIC #40983), Harleysville Lake States Insurance Company (NAIC #14516), and Harleysville Insurance Company (NAIC #23582).

**Note 27 - Structured Settlements**

No change.

**Note 28 - Health Care Receivables**

No change.

**Note 29 - Participating Policies**

No change.

**Note 30 - Premium Deficiency Reserves**

No change.

**Note 31 - High Deductibles**

No change.

**Note 32 - Discounting of Liabilities for Unpaid Losses or Unpaid Loss Adjustment Expenses**

No change.

**Note 33 - Asbestos/Environmental Reserves**

No change.

**Note 34 - Subscriber Savings Accounts**

No change.

**Note 35 - Multiple Peril Crop Insurance**

No change.

**Note 36 – Financial Guaranty Insurance**

B. Schedule of Insured Financial Obligations at the End of the Period

Not applicable.

STATEMENT AS OF JUNE 30, 2014 OF THE ALLIED INSURANCE COMPANY OF AMERICA

GENERAL INTERROGATORIES

PART 1 - COMMON INTERROGATORIES

GENERAL

- 1.1

Did the reporting entity experience any material transactions requiring the filing of Disclosure of Material Transactions with the State of Domicile, as required by the Model Act?

Yes [ ] No [ X ]
- 1.2

If yes, has the report been filed with the domiciliary state?

Yes [ ] No [ ]
- 2.1

Has any change been made during the year of this statement in the charter, by-laws, articles of incorporation, or deed of settlement of the reporting entity?

Yes [ ] No [ X ]
- 2.2

If yes, date of change:
- 3.1

Is the reporting entity a member of an Insurance Holding Company System consisting of two or more affiliated persons, one or more of which is an insurer?  
If yes, complete Schedule Y, Parts 1 and 1A.

Yes [ X ] No [ ]
- 3.2

Have there been any substantial changes in the organizational chart since the prior quarter end?

Yes [ ] No [ X ]
- 3.3

If the response to 3.2 is yes, provide a brief description of those changes.
- 4.1

Has the reporting entity been a party to a merger or consolidation during the period covered by this statement?

Yes [ ] No [ X ]
- 4.2

If yes, provide the name of the entity, NAIC Company Code, and state of domicile (use two letter state abbreviation) for any entity that has ceased to exist as a result of the merger or consolidation.

1	2	3
Name of Entity	NAIC Company Code	State of Domicile

5.

If the reporting entity is subject to a management agreement, including third-party administrator(s), managing general agent(s), attorney-in-fact, or similar agreement, have there been any significant changes regarding the terms of the agreement or principals involved?  
If yes, attach an explanation.  
Investment Agency Cost Allocation Agreement was entered into between NCMC and AICOA effective June 12, 2014. This agreement replaces a prior agreement and was updated to comply with the current template and for model holding company act compliance. This agreement was approved in Ohio under its holding company act statute.

Yes [ X ] No [ ] N/A [ ]
- 6.1

State as of what date the latest financial examination of the reporting entity was made or is being made.

12/31/2011
- 6.2

State the as of date that the latest financial examination report became available from either the state of domicile or the reporting entity. This date should be the date of the examined balance sheet and not the date the report was completed or released.

12/31/2011
- 6.3

State as of what date the latest financial examination report became available to other states or the public from either the state of domicile or the reporting entity. This is the release date or completion date of the examination report and not the date of the examination (balance sheet date).

02/28/2013
- 6.4

By what department or departments?  
OH
- 6.5

Have all financial statement adjustments within the latest financial examination report been accounted for in a subsequent financial statement filed with Departments?

Yes [ ] No [ ] N/A [ X ]
- 6.6

Have all of the recommendations within the latest financial examination report been complied with?

Yes [ ] No [ ] N/A [ X ]
- 7.1

Has this reporting entity had any Certificates of Authority, licenses or registrations (including corporate registration, if applicable) suspended or revoked by any governmental entity during the reporting period?

Yes [ ] No [ X ]
- 7.2

If yes, give full information:
- 8.1

Is the company a subsidiary of a bank holding company regulated by the Federal Reserve Board?

Yes [ ] No [ X ]
- 8.2

If response to 8.1 is yes, please identify the name of the bank holding company.
- 8.3

Is the company affiliated with one or more banks, thrifts or securities firms?

Yes [ X ] No [ ]
- 8.4

If response to 8.3 is yes, please provide below the names and location (city and state of the main office) of any affiliates regulated by a federal regulatory services agency [i.e. the Federal Reserve Board (FRB), the Office of the Comptroller of the Currency (OCC), the Federal Deposit Insurance Corporation (FDIC) and the Securities Exchange Commission (SEC)] and identify the affiliate's primary federal regulator.

1	2	3	4	5	6
Affiliate Name	Location (City, State)	FRB	OCC	FDIC	SEC
Nationwide Bank	Columbus, OH	NO	YES	NO	NO
Nationwide Mutual Insurance Company	Columbus, OH	YES	NO	NO	NO
Nationwide Mutual Fire Insurance Company	Columbus, OH	YES	NO	NO	NO
Nationwide Corporation	Columbus, OH	YES	NO	NO	NO
Nationwide Financial Services, Inc.	Columbus, OH	YES	NO	NO	NO
Nationwide Investment Services Corp	Columbus, OH	NO	NO	NO	YES
Nationwide Investment Advisors, LLC	Columbus, OH	NO	NO	NO	YES
Nationwide Securities, LLC	Dublin, OH	NO	NO	NO	YES
Nationwide Fund Advisors	King of Prussia, PA	NO	NO	NO	YES
Nationwide Fund Distributors, LLC	King of Prussia, PA	NO	NO	NO	YES
Nationwide Asset Management, LLC	Columbus, OH	NO	NO	NO	YES

STATEMENT AS OF JUNE 30, 2014 OF THE ALLIED INSURANCE COMPANY OF AMERICA

GENERAL INTERROGATORIES

- 9.1

Are the senior officers (principal executive officer, principal financial officer, principal accounting officer or controller, or persons performing similar functions) of the reporting entity subject to a code of ethics, which includes the following standards? (a) Honest and ethical conduct, including the ethical handling of actual or apparent conflicts of interest between personal and professional relationships; (b) Full, fair, accurate, timely and understandable disclosure in the periodic reports required to be filed by the reporting entity; (c) Compliance with applicable governmental laws, rules and regulations; (d) The prompt internal reporting of violations to an appropriate person or persons identified in the code; and (e) Accountability for adherence to the code.

Yes ☒ No ☐
- 9.11

If the response to 9.1 is No, please explain:
- 9.2

Has the code of ethics for senior managers been amended?

Yes ☐ No ☒
- 9.21

If the response to 9.2 is Yes, provide information related to amendment(s).
- 9.3

Have any provisions of the code of ethics been waived for any of the specified officers?

Yes ☐ No ☒
- 9.31

If the response to 9.3 is Yes, provide the nature of any waiver(s).

FINANCIAL

- 10.1

Does the reporting entity report any amounts due from parent, subsidiaries or affiliates on Page 2 of this statement?

Yes ☐ No ☒
- 10.2

If yes, indicate any amounts receivable from parent included in the Page 2 amount:

\$

INVESTMENT

- 11.1

Were any of the stocks, bonds, or other assets of the reporting entity loaned, placed under option agreement, or otherwise made available for use by another person? (Exclude securities under securities lending agreements.)

Yes ☐ No ☒
- 11.2

If yes, give full and complete information relating thereto:
12.

Amount of real estate and mortgages held in other invested assets in Schedule BA:

\$
13.

Amount of real estate and mortgages held in short-term investments:

\$
- 14.1

Does the reporting entity have any investments in parent, subsidiaries and affiliates?

Yes ☐ No ☒
- 14.2

If yes, please complete the following:
- |   | 1   | 2  |
|---|---|--|
|   | Prior Year-End Book/Adjusted Carrying Value | Current Quarter Book/Adjusted Carrying Value |
| 14.21 Bonds   | \$  | \$   |
| 14.22 Preferred Stock   | \$  | \$   |
| 14.23 Common Stock  | \$  | \$   |
| 14.24 Short-Term Investments  | \$  | \$   |
| 14.25 Mortgage Loans on Real Estate   | \$  | \$   |
| 14.26 All Other   | \$  | \$   |
| 14.27 Total Investment in Parent, Subsidiaries and Affiliates (Subtotal Lines 14.21 to 14.26) | \$  | \$   |
| 14.28 Total Investment in Parent included in Lines 14.21 to 14.26 above                       | \$  | \$   |
- 15.1

Has the reporting entity entered into any hedging transactions reported on Schedule DB?

Yes ☐ No ☒
- 15.2

If yes, has a comprehensive description of the hedging program been made available to the domiciliary state? If no, attach a description with this statement.

Yes ☐ No ☐

STATEMENT AS OF JUNE 30, 2014 OF THE ALLIED INSURANCE COMPANY OF AMERICA

GENERAL INTERROGATORIES

16. For the reporting entity's security lending program, state the amount of the following as of the current statement date:
- 16.1 Total fair value of reinvested collateral assets reported on Schedule DL, Parts 1 and 2.

16.2 Total book adjusted/carrying value of reinvested collateral assets reported on Schedule DL, Parts 1 and 2

16.3 Total payable for securities lending reported on the liability page.
- \$

\$

\$

17. Excluding items in Schedule E - Part 3 - Special Deposits, real estate, mortgage loans and investments held physically in the reporting entity's offices, vaults or safety deposit boxes, were all stocks, bonds and other securities, owned throughout the current year held pursuant to a custodial agreement with a qualified bank or trust company in accordance with Section 1, III - General Examination Considerations, F. Outsourcing of Critical Functions, Custodial or Safekeeping Agreements of the NAIC Financial Condition Examiners Handbook?
- Yes [ X ] No [ ]

- 17.1 For all agreements that comply with the requirements of the NAIC Financial Condition Examiners Handbook, complete the following:

1 Name of Custodian(s)	2 Custodian Address
The Bank of New York Mellon	1 Wall Street, New York, NY 10286

- 17.2 For all agreements that do not comply with the requirements of the NAIC Financial Condition Examiners Handbook, provide the name, location and a complete explanation:

1 Name(s)	2 Location(s)	3 Complete Explanation(s)

- 17.3 Have there been any changes, including name changes, in the custodian(s) identified in 17.1 during the current quarter?
- Yes [ ] No [ X ]

- 17.4 If yes, give full information relating thereto:

1 Old Custodian	2 New Custodian	3 Date of Change	4 Reason

- 17.5 Identify all investment advisors, brokers/dealers or individuals acting on behalf of broker/dealers that have access to the investment accounts, handle securities and have authority to make investments on behalf of the reporting entity:

1 Central Registration Depository	2 Name(s)	3 Address
N/A	Members of the investment staff designated by the Chief Investment Officer as detailed in the Corporate Resolution.	One Nationwide Blvd, Columbus, OH 43215-2220

- 18.1 Have all the filing requirements of the Purposes and Procedures Manual of the NAIC Securities Valuation Office been followed?
- Yes [ X ] No [ ]

- 18.2 If no, list exceptions:

GENERAL INTERROGATORIES

PART 2 - PROPERTY & CASUALTY INTERROGATORIES

1.

If the reporting entity is a member of a pooling arrangement, did the agreement or the reporting entity's participation change? .....  
If yes, attach an explanation.

Yes [ ] No [ X ] N/A [ ]
2.

Has the reporting entity reinsured any risk with any other reporting entity and agreed to release such entity from liability, in whole or in part, from any loss that may occur on the risk, or portion thereof, reinsured? .....  
If yes, attach an explanation.

Yes [ ] No [ X ]
- 3.1

Have any of the reporting entity's primary reinsurance contracts been canceled? .....

Yes [ ] No [ X ]
- 3.2

If yes, give full and complete information thereto.
- 4.1

Are any of the liabilities for unpaid losses and loss adjustment expenses other than certain workers' compensation tabular reserves (see Annual Statement Instructions pertaining to disclosure of discounting for definition of " tabular reserves" ) discounted at a rate of interest greater than zero? .....

Yes [ ] No [ X ]

4.2 If yes, complete the following schedule:

			TOTAL DISCOUNT				DISCOUNT TAKEN DURING PERIOD			
1	2	3	4	5	6	7	8	9	10	11
Line of Business	Maximum Interest	Discount Rate	Unpaid Losses	Unpaid LAE	IBNR	TOTAL	Unpaid Losses	Unpaid LAE	IBNR	TOTAL
TOTAL										

5.

Operating Percentages:

5.1 A&H loss percent .....0.000 %

5.2 A&H cost containment percent .....0.000 %

5.3 A&H expense percent excluding cost containment expenses .....0.000 %
- 6.1

Do you act as a custodian for health savings accounts? .....

Yes [ ] No [ X ]
- 6.2

If yes, please provide the amount of custodial funds held as of the reporting date .....\$.....
- 6.3

Do you act as an administrator for health savings accounts? .....

Yes [ ] No [ X ]
- 6.4

If yes, please provide the balance of the funds administered as of the reporting date .....\$.....

## SCHEDULE F - CEDED REINSURANCE

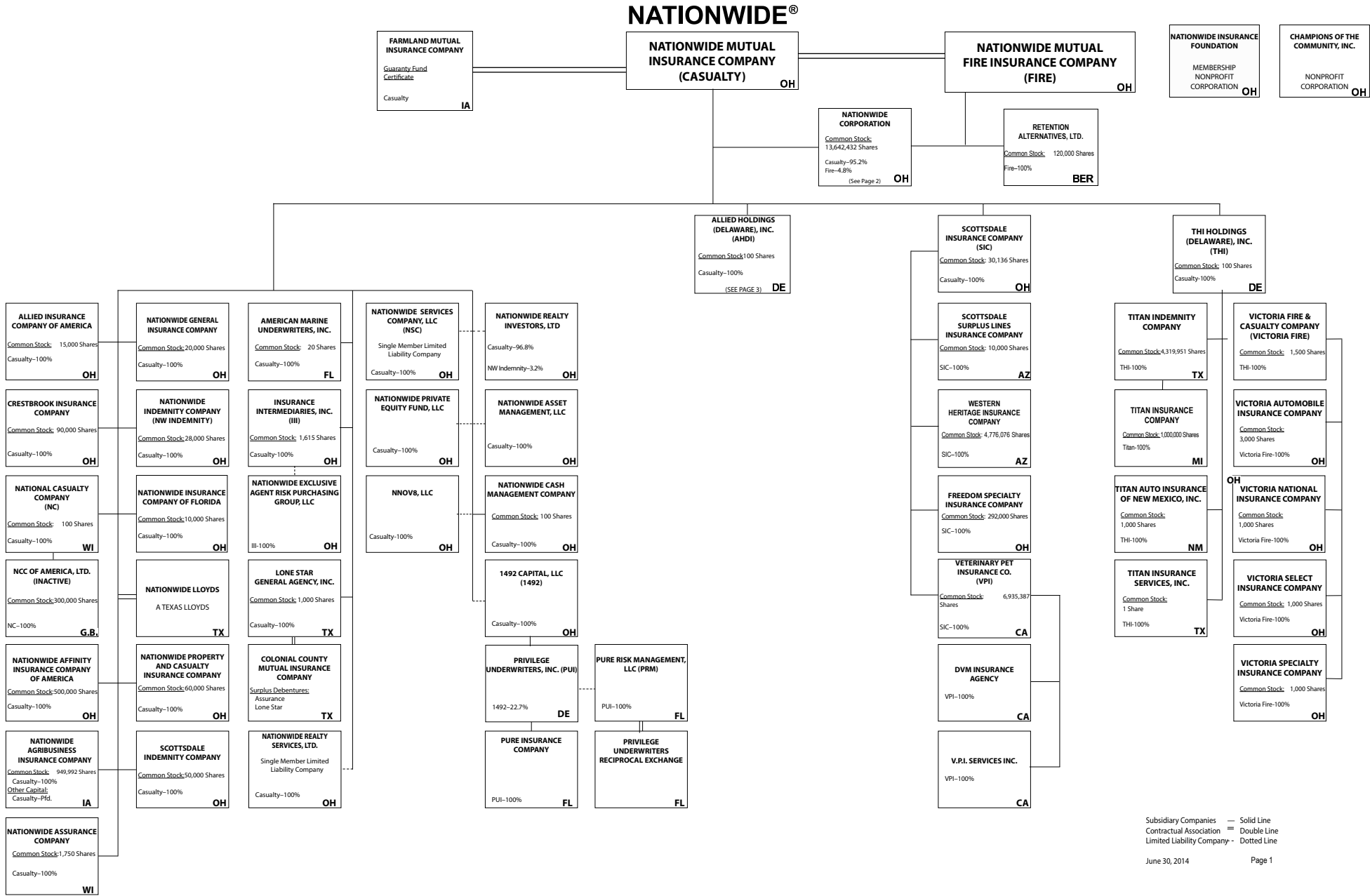
[illegible]

SCHEDULE T - EXHIBIT OF PREMIUMS WRITTEN

Current Year to Date - Allocated by States and Territories							
States, etc.	1 Active Status	Direct Premiums Written		Direct Losses Paid (Deducting Salvage)		Direct Losses Unpaid	
		2 Current Year To Date	3 Prior Year To Date	4 Current Year To Date	5 Prior Year To Date	6 Current Year To Date	7 Prior Year To Date
1. Alabama AL	L						
2. Alaska AK	N						
3. Arizona AZ	L						
4. Arkansas AR	L						
5. California CA	N						
6. Colorado CO	L						
7. Connecticut CT	L						
8. Delaware DE	L						
9. District of Columbia DC	L						
10. Florida FL	L						
11. Georgia GA	L						
12. Hawaii HI	N						
13. Idaho ID	L						
14. Illinois IL	L						
15. Indiana IN	L						
16. Iowa IA	L						
17. Kansas KS	L						
18. Kentucky KY	L						
19. Louisiana LA	N						
20. Maine ME	L						
21. Maryland MD	L						
22. Massachusetts MA	N						
23. Michigan MI	L						
24. Minnesota MN	L						
25. Mississippi MS	L						
26. Missouri MO	L						
27. Montana MT	L						
28. Nebraska NE	L						
29. Nevada NV	L						
30. New Hampshire NH	L						
31. New Jersey NJ	N						
32. New Mexico NM	N						
33. New York NY	N						
34. North Carolina NC	L						
35. North Dakota ND	L						
36. Ohio OH	L						
37. Oklahoma OK	N						
38. Oregon OR	L						
39. Pennsylvania PA	L						
40. Rhode Island RI	L						
41. South Carolina SC	L						
42. South Dakota SD	L						
43. Tennessee TN	L						
44. Texas TX	L						
45. Utah UT	L						
46. Vermont VT	L						
47. Virginia VA	L						
48. Washington WA	L						
49. West Virginia WV	L						
50. Wisconsin WI	N						
51. Wyoming WY	L						
52. American Samoa AS	N						
53. Guam GU	N						
54. Puerto Rico PR	N						
55. U.S. Virgin Islands VI	N						
56. Northern Mariana Islands MP	N						
57. Canada CAN	N						
58. Aggregate Other Alien OT	XXX						
59. Totals (a) 41							
DETAILS OF WRITE-INS							
58001. ....	XXX						
58002. ....	XXX						
58003. ....	XXX						
58998. Summary of remaining write-ins for Line 58 from overflow page	XXX						
58999. Totals (Lines 58001 through 58003 plus 58998)(Line 58 above)	XXX						

(L) Licensed or Chartered - Licensed Insurance Carrier or Domiciled RRG; (R) Registered - Non-domiciled RRGs; (Q) Qualified - Qualified or Accredited Reinsurer; (E) Eligible - Reporting Entities eligible or approved to write Surplus Lines in the state; (N) None of the above - Not allowed to write business in the state.

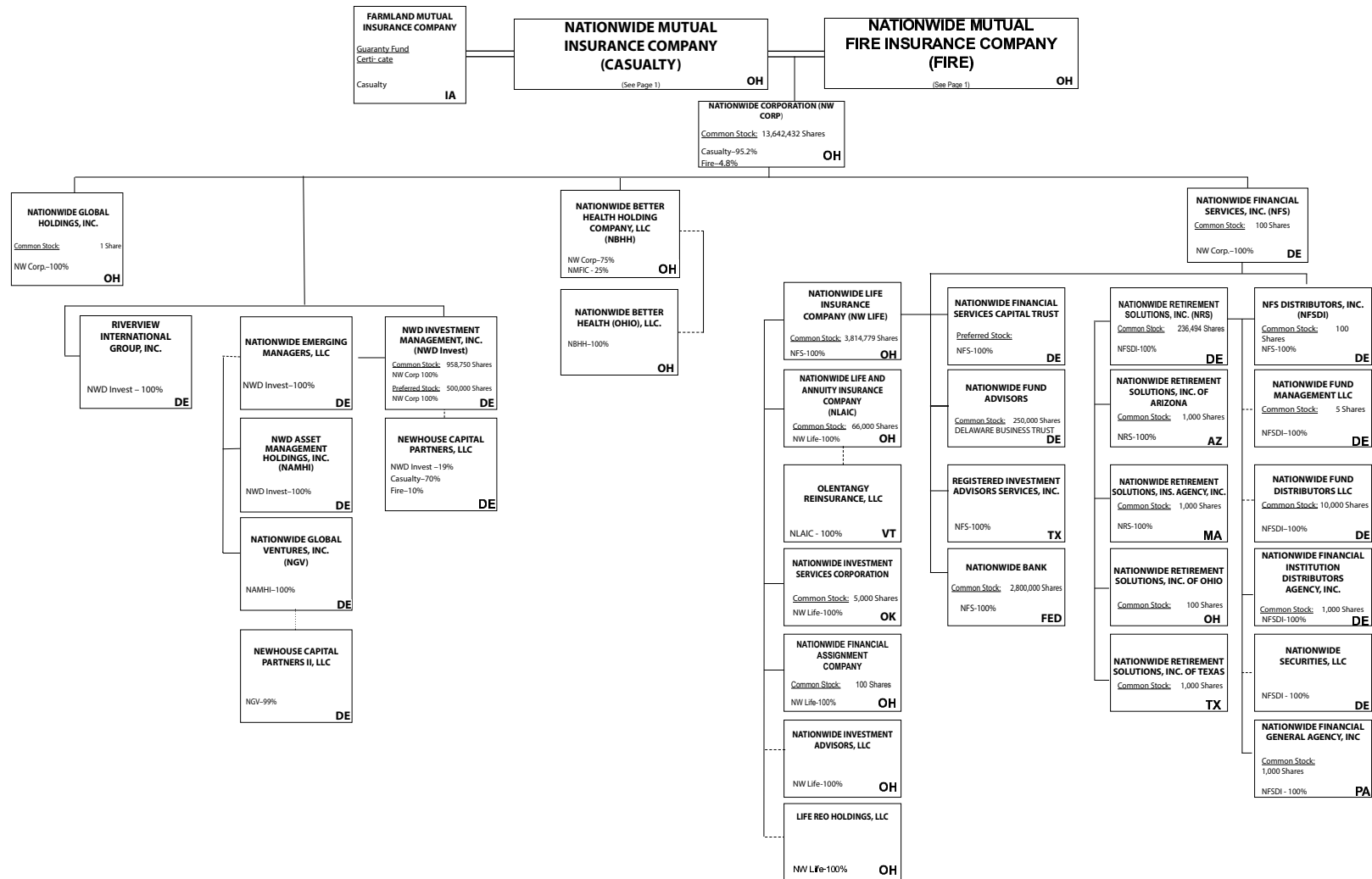
(a) Insert the number of L responses except for Canada and Other Alien.



(Casualty/Fire subsidiaries)



**NATIONWIDE®**

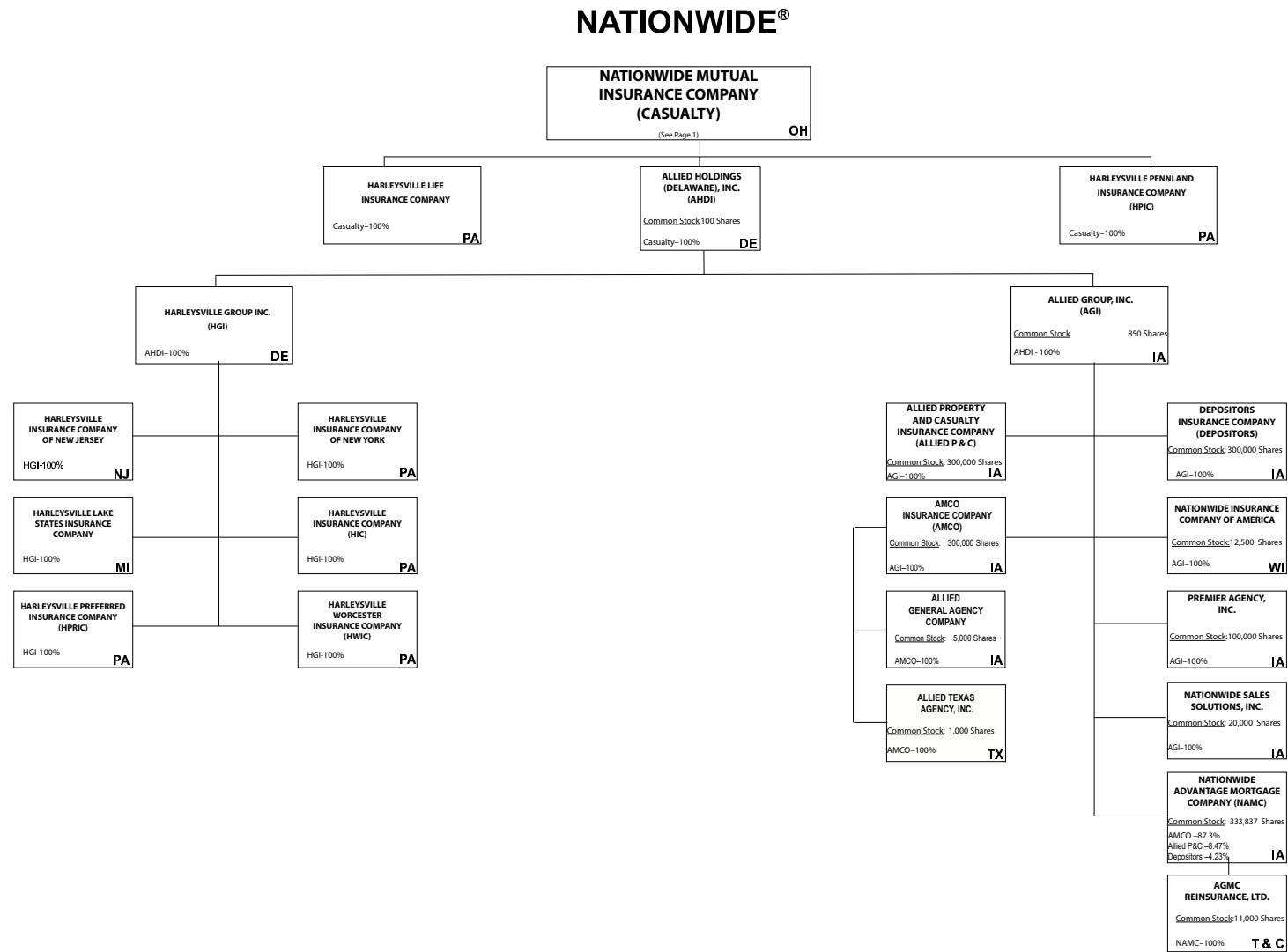


Subsidiary Companies — Solid Line  
Contractual Association = Double Line  
Limited Liability Company -- Dotted Line

June 30, 2014

Page 2

(Nationwide Corp. subsidiaries)



Subsidiary Companies — Solid Line  
Contractual Association = Double Line  
Limited Liability Company - - Dotted Line

June 30, 2014

Page 3

(ALLIED/Harleysville subsidiaries)

STATEMENT AS OF JUNE 30, 2014 OF THE ALLIED INSURANCE COMPANY OF AMERICA

NATIONWIDE INSURANCE COMPANIES

NAIC Group Code	Group Name	NAIC Company Code	State of Domicile	Federal ID Number	Name of Company
0140	Nationwide	10127	OH	27-0114983	Allied Insurance Company of America
0140	Nationwide	42579	IA	42-1201931	Allied Property and Casualty Insurance Company
0140	Nationwide	19100	IA	42-6054959	AMCO Insurance Company
0140	Nationwide	29262	TX	74-1061659	Colonial County Mutual Insurance Company
0140	Nationwide	18961	OH	68-0066866	Crestbrook Insurance Company
0140	Nationwide	42587	IA	42-1207150	Depositors Insurance Company
0140	Nationwide	13838	IA	42-0618271	Farmland Mutual Insurance Company
0140	Nationwide	22209	OH	75-6013587	Freedom Specialty Insurance Company
0140	Nationwide	23582	PA	41-0417250	Harleysville Insurance Company
0140	Nationwide	42900	NJ	23-2253669	Harleysville Insurance Company of New Jersey
0140	Nationwide	10674	PA	23-2864924	Harleysville Insurance Company of New York
0140	Nationwide	14516	MI	38-3198542	Harleysville Lake States Insurance Company
0140	Nationwide	64327	PA	23-1580983	Harleysville Life Insurance Company
0140	Nationwide	40983	PA	23-2612951	* Harleysville Pennland Insurance Company
0140	Nationwide	35696	PA	23-2384978	Harleysville Preferred Insurance Company
0140	Nationwide	26182	PA	04-1989660	Harleysville Worcester Insurance Company
0140	Nationwide	11991	WI	38-0865250	National Casualty Company
0140	Nationwide	26093	OH	48-0470690	Nationwide Affinity Insurance Company of America
0140	Nationwide	28223	IA	42-1015537	Nationwide Agribusiness Insurance Company
0140	Nationwide	10723	WI	95-0639970	Nationwide Assurance Company
0140	Nationwide	23760	OH	31-4425763	Nationwide General Insurance Company
0140	Nationwide	10070	OH	31-1399201	Nationwide Indemnity Company
0140	Nationwide	25453	WI	95-2130882	Nationwide Insurance Company of America
0140	Nationwide	10948	OH	31-1613686	Nationwide Insurance Company of Florida
0140	Nationwide	92657	OH	31-1000740	Nationwide Life and Annuity Insurance Company
0140	Nationwide	66869	OH	31-4156830	Nationwide Life Insurance Company
0140	Nationwide	42110	TX	75-1780981	Nationwide Lloyds
0140	Nationwide	23779	OH	31-4177110	Nationwide Mutual Fire Insurance Company
0140	Nationwide	23787	OH	31-4177100	Nationwide Mutual Insurance Company
0140	Nationwide	37877	OH	31-0970750	Nationwide Property & Casualty Insurance Company
0140	Nationwide	13999	VT	27-1712056	Olentangy Reinsurance, LLC
0140	Nationwide	15580	OH	31-1117969	Scottsdale Indemnity Company
0140	Nationwide	41297	OH	31-1024978	Scottsdale Insurance Company
0140	Nationwide	10672	AZ	86-0835870	Scottsdale Surplus Lines Insurance Company
0140	Nationwide	13242	TX	74-2286759	Titan Indemnity Company
0140	Nationwide	36269	MI	86-0619597	Titan Insurance Company
0140	Nationwide	42285	CA	95-3750113	Veterinary Pet Insurance Company
0140	Nationwide	10644	OH	34-1785903	Victoria Automobile Insurance Company
0140	Nationwide	42889	OH	34-1394913	Victoria Fire & Casualty Company
0140	Nationwide	10778	OH	34-1842604	Victoria National Insurance Company
0140	Nationwide	10105	OH	34-1777972	Victoria Select Insurance Company
0140	Nationwide	10777	OH	34-1842602	Victoria Specialty Insurance Company
0140	Nationwide	37150	AZ	86-0561941	Western Heritage Insurance Company
4664	PURE	12873	FL	20-8287105	Privilege Underwriters Reciprocal Exchange
4664	PURE	13204	FL	26-3109178	PURE Insurance Company

\* Harleysville Pennland surrendered its Certificate of Authority effective 11/2/2013

STATEMENT AS OF JUNE 30, 2014 OF THE ALLIED INSURANCE COMPANY OF AMERICA

SCHEDULE Y  
PART 1A - DETAIL OF INSURANCE HOLDING COMPANY SYSTEM

1	2	3	4	5	6	7	8	9	10	11	12	13	14	15
Group Code	Group Name	NAIC Company Code	Federal ID Number	Federal RSSD	CIK	Name of Securities Exchange if Publicly Traded (U.S. or International)	Names of Parent, Subsidiaries Or Affiliates	Domi-ciliary Location	Relation-ship to Reporting Entity	Directly Controlled by (Name of Entity/Person)	Type of Control (Ownership, Board, Management, Attorney-in-Fact, Influence, Other)	If Control is Owner-ship Provide Percen-tage	Ultimate Controlling Entity(ies)/Person(s)	*
0140	Nationwide		31-1486309	4590018			10 W. Nationwide, LLC	OH	NIA	Nationwide Realty Investors, Ltd.	Ownership	100.000	Nationwide Mutual Insurance Company	
0140	Nationwide		31-1486309	4594954			101 N. Twentieth St, LLC	OH	NIA	Nationwide Realty Investors, Ltd.	Ownership	100.000	Nationwide Mutual Insurance Company	
0140	Nationwide		31-1733036	4594963			120 Acre Partners, LLC	DE	NIA	Nationwide Realty Investors, Ltd.	Ownership	95.000	Nationwide Mutual Insurance Company	1
0140	Nationwide		26-2451988	4288132			1492 Capital, LLC	OH	NIA	Nationwide Mutual Insurance Company	Ownership	100.000	Nationwide Mutual Insurance Company	
0140	Nationwide		20-1347603	4594806			180 E. Broad Partners, LLC	OH	NIA	Nationwide Realty Investors, Ltd.	Ownership	33.330	Nationwide Mutual Insurance Company	1
0140	Nationwide		31-1580283	4590835			400 West Nationwide Boulevard, LLC	OH	NIA	NWD Investments, LLC	Ownership	100.000	Nationwide Mutual Insurance Company	
0140	Nationwide		31-1580283	4591140			425 West Nationwide Boulevard, LLC	OH	NIA	NWD Investments, LLC	Ownership	100.000	Nationwide Mutual Insurance Company	
0140	Nationwide		31-1486309	4595009			44 Chestnut, LLC	OH	NIA	Nationwide Realty Investors, Ltd.	Ownership	100.000	Nationwide Mutual Insurance Company	
0140	Nationwide		20-4939866	4590497			775 Yard Street Restaurant, LLC	OH	NIA	NRI Equity Land Investments, LLC	Ownership	100.000	Nationwide Mutual Insurance Company	
0140	Nationwide		20-4939866	4590750			775 Yard Street, LLC	OH	NIA	NRI Equity Land Investments, LLC	Ownership	100.000	Nationwide Mutual Insurance Company	
0140	Nationwide		20-4939866	4590602			800 Bobcat Avenue, LLC	OH	NIA	NRI Equity Land Investments, LLC	Ownership	100.000	Nationwide Mutual Insurance Company	
0140	Nationwide		20-4939866	4671499			800 Goodale Boulevard, LLC	OH	NIA	NRI Equity Land Investments, LLC	Ownership	100.000	Nationwide Mutual Insurance Company	
0140	Nationwide		20-4939866	4671583			800 Rail Street, LLC	OH	NIA	NRI Equity Land Investments, LLC	Ownership	100.000	Nationwide Mutual Insurance Company	
0140	Nationwide		20-4939866	4671789			800 Yard Street, LLC	OH	NIA	NRI Equity Land Investments, LLC	Ownership	100.000	Nationwide Mutual Insurance Company	
0140	Nationwide		20-4939866	4590778			805 Bobcat Avenue, LLC	OH	NIA	NRI Equity Land Investments, LLC	Ownership	100.000	Nationwide Mutual Insurance Company	
0140	Nationwide		20-4939866	4590611			845 Yard Street, LLC	OH	NIA	NRI Equity Land Investments, LLC	Ownership	100.000	Nationwide Mutual Insurance Company	
0140	Nationwide		20-4939866	4590787			850 Goodale Blvd., LLC	OH	NIA	NRI Equity Land Investments, LLC	Ownership	100.000	Nationwide Mutual Insurance Company	
0140	Nationwide		20-4939866	4590714			895 W. Third Ave., LLC	OH	NIA	NRI Equity Land Investments, LLC	Ownership	100.000	Nationwide Mutual Insurance Company	
0140	Nationwide		20-4939866	4590714			925 Burrell Avenue Acquisitions, LLC	OH	NIA	NRI Equity Land Investments, LLC	Ownership	100.000	Nationwide Mutual Insurance Company	
0140	Nationwide		31-1680808	4594833			AD Investments, LLC	OH	NIA	Nationwide Realty Investors, Ltd.	Ownership	60.000	Nationwide Mutual Insurance Company	1
0140	Nationwide		31-1580283	4590992			ADTV, LLC	OH	NIA	NWD Investments, LLC	Ownership	100.000	Nationwide Mutual Insurance Company	
0140	Nationwide		52-2227314	42877247			AGMC Reinsurance, Ltd.	TCA	IA	Nationwide Advantage Mortgage Company	Ownership	100.000	Nationwide Mutual Insurance Company	
0140	Nationwide		42-1011300	4287229			ALLIED General Agency Company	IA	IA	AMCO Insurance Company	Ownership	100.000	Nationwide Mutual Insurance Company	
0140	Nationwide		42-0958655	1677548			Allied Group, Inc.	IA	IA	Allied Holdings (Delaware), Inc.	Ownership	100.000	Nationwide Mutual Insurance Company	
0140	Nationwide		46-4628790	4613462			Allied Holdings (Delaware), Inc.	DE	IA	Nationwide Mutual Insurance Company	Ownership	100.000	Nationwide Mutual Insurance Company	
0140	Nationwide	10127	27-0114983	4288169			ALLIED Insurance Company of America	OH	RE	Nationwide Mutual Insurance Company	Ownership	100.000	Nationwide Mutual Insurance Company	
							ALLIED Property and Casualty Insurance Company	IA	IA	ALLIED Group, Inc.	Ownership	100.000	Nationwide Mutual Insurance Company	
0140	Nationwide	45279	42-1201931	4287144			ALLIED Texas Agency, Inc.	TX	IA	AMCO Insurance Company	Ownership	100.000	Nationwide Mutual Insurance Company	
0140	Nationwide	19100	42-6054959	4287153			AMCO Insurance Company	IA	IA	ALLIED Group, Inc.	Ownership	100.000	Nationwide Mutual Insurance Company	
0140	Nationwide		59-1031596	4288011			American Marine Underwriters, Inc.	FL	IA	Nationwide Mutual Insurance Company	Ownership	100.000	Nationwide Mutual Insurance Company	
0140	Nationwide		31-1486309	4595036			Anderson Meadows, LLC	OH	NIA	Nationwide Realty Investors, Ltd.	Ownership	100.000	Nationwide Mutual Insurance Company	
0140	Nationwide		31-1580283	4591177			Arena District CA I, LLC	OH	NIA	NWD Investments, LLC	Ownership	100.000	Nationwide Mutual Insurance Company	
			90-0280710				Arena District Owners Association	OH	OTH	Other non-Nationwide	n/a	0.000	Other non-Nationwide	2
0140	Nationwide		31-1580283	4591010			Arena Theatres, LLC	OH	NIA	NWD Investments, LLC	Ownership	100.000	Nationwide Mutual Insurance Company	
							Artessa at Quarry Village, LLC	TX	OTH	Other non-Nationwide	n/a	0.000	Other non-Nationwide	2
0140	Nationwide			4595371			BOCS Investment Fund LLC	DE	OTH	Nationwide Mutual Insurance Company	Ownership	100.000	Nationwide Mutual Insurance Company	
0140	Nationwide		31-1184438	4594842			Boulevard Inn Limited Liability Company	OH	NIA	Nationwide Realty Investors, Ltd.	Ownership	94.800	Nationwide Mutual Insurance Company	1
0140	Nationwide		31-1555487	4593658			Broad Street Retail, LLC	DE	NIA	Nationwide Realty Investors, Ltd.	Ownership	60.000	Nationwide Mutual Insurance Company	1
0140	Nationwide			4595531			Brooke School Investment Fund, LLC	DE	OTH	Nationwide Mutual Insurance Company	Ownership	100.000	Nationwide Mutual Insurance Company	
0140	Nationwide			3730540			CHP New Markets Investment Fund, LLC	OH	OTH	Nationwide Mutual Insurance Company	Limited partner /no control	50.000	other non-Nationwide	1
0140	Nationwide		20-1618232	4595241			CNRI-Cannonsport Condominium, LLC	OH	NIA	CNRI-Cannonsport, LLC	Ownership	100.000	Nationwide Mutual Insurance Company	
0140	Nationwide		20-1618232	4595045			CNRI-Cannonsport, LLC	OH	NIA	Nationwide Realty Investors, Ltd.	Ownership	100.000	Nationwide Mutual Insurance Company	
							Co-Investment Fund, LLC	DE	OTH	Other non-Nationwide	n/a	0.000	Other non-Nationwide	2
0140	Nationwide		31-1579973				COLHOC Limited Partnership	OH	NIA	NRI Limited Partnership	Ownership	30.760	Other non-Nationwide	1
0140	Nationwide	29262	74-1061659	4288057			Colonial County Mutual Insurance Company	TX	OTH	Other non-Nationwide	contract	0.000	Other non-Nationwide	
							Continental/NRI North Shore Investments, LLC	OH	NIA		Ownership	100.000	Nationwide Mutual Insurance Company	
0140	Nationwide		04-3750770	4595951			Continental/NRI North Shore Investments, LLC	OH	NIA		Ownership	100.000	Nationwide Mutual Insurance Company	

STATEMENT AS OF JUNE 30, 2014 OF THE ALLIED INSURANCE COMPANY OF AMERICA

SCHEDULE Y  
PART 1A - DETAIL OF INSURANCE HOLDING COMPANY SYSTEM

1	2	3	4	5	6	7	8	9	10	11	12	13	14	15
Group Code	Group Name	NAIC Company Code	Federal ID Number	Federal RSSD	CIK	Name of Securities Exchange if Publicly Traded (U.S. or International)	Names of Parent, Subsidiaries Or Affiliates	Domi-ciliary Location	Relation-ship to Reporting Entity	Directly Controlled by (Name of Entity/Person)	Type of Control (Ownership, Board, Management, Attorney-in-Fact, Influence, Other)	If Control is Owner-ship Provide Perce-ntage	Ultimate Controlling Entity(ies)/Person(s)	*
...0140 ...	Nationwide .....	.....	20-0142724 .....	4588177 .....	.....	.....	Continental/NRI North Shore Investments, LLC .....	..OH.....	..NIA.....	Nationwide Realty Investors, Ltd. ....	Ownership.....	..50.500 .....	Nationwide Mutual Insurance Company .....	...1 .....
...0140 ...	Nationwide .....	.....	.....	4595670 .....	.....	.....	Cotton Mill Partners, LLC .....	..VA.....	..OTH.....	Nationwide Mutual Insurance Company .....	Limited partner /no control .....	..2.000 .....	other non-Nationwide .....	...1 .....
...0140 ...	Nationwide .....	18961 .....	68-0068866 .....	4288178 .....	.....	.....	Crestbrook Insurance Company .....	..OH.....	..IA.....	Nationwide Mutual Insurance Company .....	Ownership.....	..100.000 .....	Nationwide Mutual Insurance Company .....	.....
...0140 ...	Nationwide .....	.....	31-1486309 .....	4590255 .....	.....	.....	Crewville, Ltd. ....	..OH.....	..NIA.....	Nationwide Realty Investors, Ltd. ....	Ownership.....	..100.000 .....	Nationwide Mutual Insurance Company .....	.....
...0140 ...	Nationwide .....	42587 .....	42-1207150 .....	4287162 .....	.....	.....	Depositors Insurance Company .....	..IA.....	..IA.....	ALLIED Group, Inc. ....	Ownership.....	..100.000 .....	Nationwide Mutual Insurance Company .....	.....
...0140 ...	Nationwide .....	.....	33-0096671 .....	4287694 .....	.....	.....	DVM Insurance Agency .....	..CA.....	..NIA.....	Veterinary Pet Insurance Company .....	Ownership.....	..100.000 .....	Nationwide Mutual Insurance Company .....	.....
...0140 ...	Nationwide .....	.....	20-1945276 .....	4590590 .....	.....	.....	East of Madison, LLC .....	..DE.....	..NIA.....	120 Acre Partners, Ltd. ....	Ownership.....	..24.910 .....	Nationwide Mutual Insurance Company .....	...1 .....
...0140 ...	Nationwide .....	.....	20-1945276 .....	4590590 .....	.....	.....	East of Madison, LLC .....	..DE.....	..NIA.....	ND La Quinta Partners, LLC .....	Ownership.....	..76.090 .....	Nationwide Mutual Insurance Company .....	...1 .....
...0140 ...	Nationwide .....	.....	.....	4595689 .....	.....	.....	ELH Investment LLC .....	..DE.....	..OTH.....	Nationwide Mutual Insurance Company .....	Other.....	..0.000 .....	Nationwide Mutual Insurance Company .....	...2 .....
...0140 ...	Nationwide .....	13838 .....	42-0618271 .....	4569372 .....	.....	.....	Farmland Mutual Insurance Company .....	..IA.....	..OTH.....	Other non-Nationwide .....	debt .....	..0.000 .....	Other non-Nationwide .....	...2 .....
...0140 ...	Nationwide .....	22209 .....	75-6013587 .....	4287676 .....	.....	.....	Freedom Specialty Insurance Company (fka Atlantic Insurance Company) .....	..OH.....	..IA.....	Scottsdale Insurance Company .....	Ownership.....	..100.000 .....	Nationwide Mutual Insurance Company .....	.....
...0140 ...	Nationwide .....	.....	46-4736379 .....	.....	.....	.....	GPN-1 Property Owners Association, Inc. ....	..OH.....	.....	other non-Nationwide .....	n/a .....	..0.000 .....	other non-Nationwide .....	...2 .....
...0140 ...	Nationwide .....	.....	20-4939866 .....	4590808 .....	.....	.....	Grandview Yard Hotel Holdings, LLC .....	..OH.....	..NIA.....	NRI Equity Land Investments, LLC .....	Ownership.....	..100.000 .....	Nationwide Mutual Insurance Company .....	.....
...0140 ...	Nationwide .....	.....	20-4939866 .....	4590826 .....	.....	.....	Grandview Yard Hotel, LLC .....	..OH.....	..NIA.....	Grandview Yard Hotel Holdings, LLC .....	Ownership.....	..100.000 .....	Nationwide Mutual Insurance Company .....	.....
...0140 ...	Nationwide .....	.....	51-0241172 .....	3582909 .....	.....	.....	Harleysville Group, Inc. ....	..DE.....	..NIA.....	Allied Holdings (Delaware), Inc. ....	Ownership.....	..100.000 .....	Nationwide Mutual Insurance Company .....	.....
...0140 ...	Nationwide .....	23582 .....	41-0417250 .....	4442260 .....	.....	.....	Harleysville Insurance Company .....	..PA.....	..IA.....	Harleysville Group, Inc. ....	Ownership.....	..100.000 .....	Nationwide Mutual Insurance Company .....	.....
...0140 ...	Nationwide .....	33235 .....	16-1075588 .....	4442158 .....	.....	.....	Harleysville Insurance Company of New Jersey .....	..NJ.....	..IA.....	Harleysville Group, Inc. ....	Ownership.....	..100.000 .....	Nationwide Mutual Insurance Company .....	.....
...0140 ...	Nationwide .....	10674 .....	23-2864924 .....	4442242 .....	.....	.....	Harleysville Insurance Company of New York .....	..PA.....	..IA.....	Harleysville Group, Inc. ....	Ownership.....	..100.000 .....	Nationwide Mutual Insurance Company .....	.....
...0140 ...	Nationwide .....	14516 .....	38-3198542 .....	4442251 .....	.....	.....	Harleysville Lake States Insurance Company .....	..MI.....	..IA.....	Harleysville Group, Inc. ....	Ownership.....	..100.000 .....	Nationwide Mutual Insurance Company .....	.....
...0140 ...	Nationwide .....	64327 .....	23-1580983 .....	4440659 .....	.....	.....	Harleysville Life Insurance Company .....	..PA.....	..IA.....	Nationwide Mutual Insurance Company .....	Ownership.....	..100.000 .....	Nationwide Mutual Insurance Company .....	.....
...0140 ...	Nationwide .....	40983 .....	23-2612951 .....	4442149 .....	.....	.....	Harleysville Pennland Insurance Company .....	..PA.....	..IA.....	Nationwide Mutual Insurance Company .....	Ownership.....	..100.000 .....	Nationwide Mutual Insurance Company .....	.....
...0140 ...	Nationwide .....	35896 .....	23-2384978 .....	4442288 .....	.....	.....	Harleysville Preferred Insurance Company .....	..PA.....	..IA.....	Harleysville Group, Inc. ....	Ownership.....	..100.000 .....	Nationwide Mutual Insurance Company .....	.....
...0140 ...	Nationwide .....	26182 .....	04-1989660 .....	4442372 .....	.....	.....	Harleysville Worcester Insurance Company .....	..PA.....	..IA.....	Harleysville Group, Inc. ....	Ownership.....	..100.000 .....	Nationwide Mutual Insurance Company .....	.....
...0140 ...	Nationwide .....	.....	32-0051216 .....	4596903 .....	.....	.....	Hideaway Properties Corp. ....	..CA.....	..OTH.....	Nationwide Realty Investors, Ltd. ....	Ownership.....	..50.000 .....	Nationwide Mutual Insurance Company .....	...1 .....
...0140 ...	Nationwide .....	.....	31-0871532 .....	4288020 .....	.....	.....	Insurance Intermediaries, Inc. ....	..OH.....	..IA.....	Nationwide Mutual Insurance Company .....	Ownership.....	..100.000 .....	Nationwide Mutual Insurance Company .....	.....
...0140 ...	Nationwide .....	.....	31-1486309 .....	4097802 .....	.....	.....	Jerome Village Company, LLC .....	..OH.....	..NIA.....	Nationwide Realty Investors, Ltd. ....	Ownership.....	..100.000 .....	Nationwide Mutual Insurance Company .....	.....
.....	.....	.....	.....	.....	.....	.....	Jerome Village Master Property Owners Association .....	..OH.....	..OTH.....	Other non-Nationwide .....	Ownership.....	..0.000 .....	Other non-Nationwide .....	...2 .....
.....	.....	.....	46-2956640 .....	.....	.....	.....	Jerome Village Residential Property Owners Association, Inc. ....	..OH.....	..OTH.....	Other non-Nationwide .....	Ownership.....	..0.000 .....	Other non-Nationwide .....	...2 .....
...0140 ...	Nationwide .....	.....	31-1486309 .....	4590312 .....	.....	.....	JV Developers, LLC .....	..OH.....	..NIA.....	Nationwide Realty Investors, Ltd. ....	Ownership.....	..100.000 .....	Nationwide Mutual Insurance Company .....	.....
...0140 ...	Nationwide .....	.....	.....	4595698 .....	.....	.....	Leaguers Investment Fund LLC .....	..DE.....	..OTH.....	Nationwide Mutual Insurance Company .....	Other.....	..0.000 .....	Nationwide Mutual Insurance Company .....	...2 .....
...0140 ...	Nationwide .....	.....	56-3789187 .....	4286969 .....	.....	.....	Life REO Holdings, LLC .....	..OH.....	..NIA.....	Nationwide Life Insurance Company .....	Ownership.....	..100.000 .....	Nationwide Mutual Insurance Company .....	.....
...0140 ...	Nationwide .....	.....	74-1395229 .....	4288039 .....	.....	.....	Lone Star General Agency, Inc. ....	..TX.....	..IA.....	Nationwide Mutual Insurance Company .....	Ownership.....	..100.000 .....	Nationwide Mutual Insurance Company .....	.....
...0140 ...	Nationwide .....	.....	.....	4595700 .....	.....	.....	Match School Investment Fund, LLC .....	..DE.....	..OTH.....	Nationwide Mutual Insurance Company .....	Ownership.....	..100.000 .....	Nationwide Mutual Insurance Company .....	.....
...0140 ...	Nationwide .....	11991 .....	38-0865250 .....	4288187 .....	.....	.....	National Casualty Company .....	..WI.....	..IA.....	Nationwide Mutual Insurance Company .....	Ownership.....	..100.000 .....	Nationwide Mutual Insurance Company .....	.....
.....	.....	.....	.....	.....	.....	.....	National Casualty Company of America, Ltd. ....	.....	.....	.....	.....	.....	.....	.....
...0140 ...	Nationwide .....	.....	42-1154244 .....	2889795 .....	.....	.....	Nationwide Advantage Mortgage Company .....	..IA.....	..NIA.....	Nationwide Mutual Insurance Company .....	Ownership.....	..100.000 .....	Nationwide Mutual Insurance Company .....	.....
.....	.....	.....	42-1154244 .....	2889795 .....	.....	.....	Nationwide Advantage Mortgage Company .....	..IA.....	..NIA.....	AMCO Insurance Company .....	Ownership.....	..87.300 .....	Nationwide Mutual Insurance Company .....	.....
...0140 ...	Nationwide .....	.....	42-1154244 .....	2889795 .....	.....	.....	Nationwide Advantage Mortgage Company .....	..IA.....	..NIA.....	ALLIED Property & Casualty Insurance Company .....	Ownership.....	..8.470 .....	Nationwide Mutual Insurance Company .....	.....
...0140 ...	Nationwide .....	.....	42-1154244 .....	2889795 .....	.....	.....	Nationwide Affinity Insurance Company of America .....	..IA.....	..NIA.....	Depositors Insurance Company .....	Ownership.....	..4.230 .....	Nationwide Mutual Insurance Company .....	.....
...0140 ...	Nationwide .....	26093 .....	48-0470690 .....	4288196 .....	.....	.....	Nationwide Agribusiness Insurance Company .....	..OH.....	..IA.....	Nationwide Mutual Insurance Company .....	Ownership.....	..100.000 .....	Nationwide Mutual Insurance Company .....	.....
...0140 ...	Nationwide .....	28223 .....	42-1015537 .....	4288208 .....	.....	.....	Nationwide Alternative Investments, LLC .....	..OH.....	..NIA.....	Nationwide Mutual Insurance Company .....	Ownership.....	..100.000 .....	Nationwide Mutual Insurance Company .....	.....
...0140 ...	Nationwide .....	.....	20-5976272 .....	4595910 .....	.....	.....	.....	.....	.....	Nationwide Mutual Insurance Company .....	Ownership.....	..100.000 .....	Nationwide Mutual Insurance Company .....	.....

STATEMENT AS OF JUNE 30, 2014 OF THE ALLIED INSURANCE COMPANY OF AMERICA

SCHEDULE Y  
PART 1A - DETAIL OF INSURANCE HOLDING COMPANY SYSTEM

1	2	3	4	5	6	7	8	9	10	11	12	13	14	15
Group Code	Group Name	NAIC Company Code	Federal ID Number	Federal RSSD	CIK	Name of Securities Exchange if Publicly Traded (U.S. or International)	Names of Parent, Subsidiaries Or Affiliates	Domi-ciliary Location	Relation-ship to Reporting Entity	Directly Controlled by (Name of Entity/Person)	Type of Control (Ownership, Board, Management, Attorney-in-Fact, Influence, Other)	If Control is Owner-ship Provide Percen-tage	Ultimate Controlling Entity(ies)/Person(s)	*
...0140	Nationwide		31-1578869	4288075			Nationwide Arena, LLC	..OH	..NIA	NRI Arena, Ltd.	Ownership.....	..90.000	Nationwide Mutual Insurance Company	.....
...0140	Nationwide		20-8670712	4288114			Nationwide Asset Management, LLC	..OH	..NIA	Nationwide Mutual Insurance Company	Ownership.....	..100.000	Nationwide Mutual Insurance Company	.....
...0140	Nationwide	10723	95-0639970	4288217			Nationwide Assurance Company	..WI	..IA	Nationwide Mutual Insurance Company	Ownership.....	..100.000	Nationwide Mutual Insurance Company	.....
...0140	Nationwide		31-1592130	2729677			Nationwide Bank	.....	..OTH	Nationwide Financial Services, Inc.	Ownership.....	..100.000	Nationwide Mutual Insurance Company	.....
...0140	Nationwide		52-1776258	4286875			Nationwide Better Health (Ohio), LLC	..OH	..NIA	Nationwide Better Health Holding Company, LLC	Ownership.....	..100.000	Nationwide Mutual Insurance Company	.....
...0140	Nationwide		11-3766032	4286428			Nationwide Better Health Holding Company, LLC	..OH	..NIA	Nationwide Corporation	Ownership.....	..75.000	Nationwide Mutual Insurance Company	.....
...0140	Nationwide		11-3766032	4286428			Nationwide Better Health Holding Company, LLC	..OH	..NIA	Nationwide Mutual Fire Insurance Company	Ownership.....	..25.000	Nationwide Mutual Insurance Company	.....
...0140	Nationwide		31-1036287	4288123			Nationwide Cash Management Company	..OH	..NIA	Nationwide Mutual Insurance Company	Ownership.....	..100.000	Nationwide Mutual Insurance Company	.....
...0140	Nationwide		31-4416546	3828081			Nationwide Corporation	..OH	..NIA	Nationwide Mutual Insurance Company	Ownership.....	..95.200	Nationwide Mutual Insurance Company	.....
...0140	Nationwide		31-4416546	3828081			Nationwide Corporation	..OH	..NIA	Nationwide Mutual Fire Insurance Company	Ownership.....	..4.800	Nationwide Mutual Insurance Company	.....
...0140	Nationwide		04-3679407	4286839			Nationwide Emerging Managers, LLC	..DE	..NIA	NWD Investment Management, Inc.	Ownership.....	..100.000	Nationwide Mutual Insurance Company	.....
...0140	Nationwide		05-0630007	4288048			Nationwide Exclusive Agent Risk Purchasing Group, LLC	..OH	..NIA	Insurance Intermediaries, Inc.	Ownership.....	..100.000	Nationwide Mutual Insurance Company	.....
...0140	Nationwide		31-1667326	4286932			Nationwide Financial Assignment Company	..OH	..NIA	Nationwide Life Insurance Company	Ownership.....	..100.000	Nationwide Mutual Insurance Company	.....
...0140	Nationwide		23-2412039	4287087			Nationwide Financial General Agency, Inc.	..PA	..NIA	NFS Distributors, Inc.	Ownership.....	..100.000	Nationwide Mutual Insurance Company	.....
...0140	Nationwide		31-1316276	4287069			Nationwide Financial Institution Distributors Agency, Inc.	..DE	..NIA	NFS Distributors, Inc.	Ownership.....	..100.000	Nationwide Mutual Insurance Company	.....
...0140	Nationwide		31-6554353	4286978			Nationwide Financial Services Capital Trust	..DE	..NIA	Nationwide Financial Services, Inc.	Ownership.....	..100.000	Nationwide Mutual Insurance Company	.....
...0140	Nationwide		31-1486870	3828063			Nationwide Financial Services, Inc.	..DE	..NIA	Nationwide Corporation	Ownership.....	..100.000	Nationwide Mutual Insurance Company	.....
...0140	Nationwide		52-6969857	4286996			Nationwide Fund Advisors	..DE	..NIA	Nationwide Financial Services, Inc.	Ownership.....	..100.000	Nationwide Mutual Insurance Company	.....
...0140	Nationwide		31-1748721	4287050			Nationwide Fund Distributors LLC	..DE	..NIA	NFS Distributors, Inc.	Ownership.....	..100.000	Nationwide Mutual Insurance Company	.....
...0140	Nationwide		31-0900518	4287041			Nationwide Fund Management LLC	..DE	..NIA	NFS Distributors, Inc.	Ownership.....	..100.000	Nationwide Mutual Insurance Company	.....
...0140	Nationwide	23760	31-4425763	4287957			Nationwide General Insurance Company	..OH	..IA	Nationwide Mutual Insurance Company	Ownership.....	..100.000	Nationwide Mutual Insurance Company	.....
...0140	Nationwide		31-1570938	4286398			Nationwide Global Holdings, Inc.	..OH	..NIA	Nationwide Corporation	Ownership.....	..100.000	Nationwide Mutual Insurance Company	.....
...0140	Nationwide		04-3732385	4286857			Nationwide Global Ventures, Inc.	..DE	..NIA	Nationwide Asset Management Holdings, Inc.	Ownership.....	..100.000	Nationwide Mutual Insurance Company	.....
...0140	Nationwide	10070	31-1399201	2839398			Nationwide Indemnity Company	..OH	..IA	Nationwide Mutual Insurance Company	Ownership.....	..100.000	Nationwide Mutual Insurance Company	.....
...0140	Nationwide	25453	95-2130882	4287180			Nationwide Insurance Company of America	..WI	..IA	ALLIED Group, Inc.	Ownership.....	..100.000	Nationwide Mutual Insurance Company	.....
...0140	Nationwide	10948	31-1613686	4287966			Nationwide Insurance Company of Florida	..OH	..IA	Nationwide Mutual Insurance Company	Ownership.....	..100.000	Nationwide Mutual Insurance Company	.....
...0140	Nationwide		31-6022301				Nationwide Insurance Foundation	..OH	..OTH	Other non-Nationwide	n/a	..0.000	Other non-Nationwide	.....2
...0140	Nationwide		41-2206199	4286950			Nationwide Investment Advisors, LLC	..OH	..NIA	Nationwide Life Insurance Company	Ownership.....	..100.000	Nationwide Mutual Insurance Company	.....
...0140	Nationwide		73-0988442	4286923			Nationwide Investment Services Corporation	..OK	..NIA	Nationwide Life Insurance Company	Ownership.....	..100.000	Nationwide Mutual Insurance Company	.....
...0140	Nationwide	92657	31-1000740	2995098			Nationwide Life and Annuity Insurance Company	..OH	..IA	Nationwide Life Insurance Company	Ownership.....	..100.000	Nationwide Mutual Insurance Company	.....
...0140	Nationwide	66869	31-4156830	2819288			Nationwide Life Insurance Company	..OH	..IA	Nationwide Financial Services, Inc.	Ownership.....	..100.000	Nationwide Mutual Insurance Company	.....
...0140	Nationwide		13-4212969	4596127			Nationwide Life Tax Credit Partners 2002-A, LLC	..OH	..NIA	Nationwide Life Insurance Company	Other.....	..0.000	Nationwide Mutual Insurance Company	.....2
...0140	Nationwide		01-0749754	4595960			Nationwide Life Tax Credit Partners 2002-B, LLC	..OH	..NIA	Nationwide Life Insurance Company	Other.....	..0.000	Nationwide Mutual Insurance Company	.....2
...0140	Nationwide		03-0498148	3262573			Nationwide Life Tax Credit Partners 2002-C, LLC	..OH	..NIA	Nationwide Life Insurance Company	Other.....	..0.000	Nationwide Mutual Insurance Company	.....2
...0140	Nationwide		54-2113175	4596127			Nationwide Life Tax Credit Partners 2003-A, LLC	..OH	..NIA	Nationwide Life Insurance Company	Other.....	..0.000	Nationwide Mutual Insurance Company	.....2
...0140	Nationwide		58-2672725	4596163			Nationwide Life Tax Credit Partners 2003-B, LLC	..OH	..NIA	Nationwide Life Insurance Company	Other.....	..0.000	Nationwide Mutual Insurance Company	.....2

STATEMENT AS OF JUNE 30, 2014 OF THE ALLIED INSURANCE COMPANY OF AMERICA

SCHEDULE Y  
PART 1A - DETAIL OF INSURANCE HOLDING COMPANY SYSTEM

1	2	3	4	5	6	7	8	9	10	11	12	13	14	15
Group Code	Group Name	NAIC Company Code	Federal ID Number	Federal RSSD	CIK	Name of Securities Exchange if Publicly Traded (U.S. or International)	Names of Parent, Subsidiaries Or Affiliates	Domi-ciliary Location	Relation-ship to Reporting Entity	Directly Controlled by (Name of Entity/Person)	Type of Control (Ownership, Board, Management, Attorney-in-Fact, Influence, Other)	If Control is Owner-ship Provide Percen-tage	Ultimate Controlling Entity(ies)/Person(s)	*
...0140	Nationwide		20-0357951	3811001			Nationwide Life Tax Credit Partners 2003-C, LLC	..OH.	...NIA.....	Nationwide Life Insurance Company	Other.....	...0.000	Nationwide Mutual Insurance Company	....2
...0140	Nationwide		20-0382144	4596707			Nationwide Life Tax Credit Partners 2004-A, LLC	..OH.	...NIA.....	Nationwide Life Insurance Company	Other.....	...0.000	Nationwide Mutual Insurance Company	....2
...0140	Nationwide		20-0745944	4596211			Nationwide Life Tax Credit Partners 2004-B, LLC	..OH.	...NIA.....	Nationwide Life Insurance Company	Other.....	...0.000	Nationwide Mutual Insurance Company	....2
...0140	Nationwide		20-0745965	4596239			Nationwide Life Tax Credit Partners 2004-C, LLC	..OH.	...NIA.....	Nationwide Life Insurance Company	Other.....	...0.000	Nationwide Mutual Insurance Company	....2
...0140	Nationwide		20-1128408	4596332			Nationwide Life Tax Credit Partners 2004-D, LLC	..OH.	...NIA.....	Nationwide Life Insurance Company	Other.....	...0.000	Nationwide Mutual Insurance Company	....2
...0140	Nationwide		20-1128472	4596350			Nationwide Life Tax Credit Partners 2004-E, LLC	..OH.	...NIA.....	Nationwide Life Insurance Company	Other.....	...0.000	Nationwide Mutual Insurance Company	....2
...0140	Nationwide		20-1918935	3318117			Nationwide Life Tax Credit Partners 2004-F, LLC	..OH.	...NIA.....	Nationwide Life Insurance Company	Other.....	...0.000	Nationwide Mutual Insurance Company	....2
...0140	Nationwide		20-2303694	4596369			Nationwide Life Tax Credit Partners 2005-A, LLC	..OH.	...NIA.....	Nationwide Life Insurance Company	Other.....	...0.000	Nationwide Mutual Insurance Company	....2
...0140	Nationwide		20-2303602	4596378			Nationwide Life Tax Credit Partners 2005-B, LLC	..OH.	...NIA.....	Nationwide Life Insurance Company	Other.....	...0.000	Nationwide Mutual Insurance Company	....2
...0140	Nationwide		20-2450960	4596387			Nationwide Life Tax Credit Partners 2005-C, LLC	..OH.	...NIA.....	Nationwide Life Insurance Company	Other.....	...0.000	Nationwide Mutual Insurance Company	....2
...0140	Nationwide		20-2451052	4596396			Nationwide Life Tax Credit Partners 2005-D, LLC	..OH.	...NIA.....	Nationwide Life Insurance Company	Other.....	...0.000	Nationwide Mutual Insurance Company	....2
...0140	Nationwide		20-2774223	4596408			Nationwide Life Tax Credit Partners 2005-E, LLC	..OH.	...NIA.....	Nationwide Life Insurance Company	Other.....	...0.000	Nationwide Mutual Insurance Company	....2
...0140	Nationwide		21-1288836	4596426			Nationwide Life Tax Credit Partners 2007-A, LLC	..OH.	...NIA.....	Nationwide Life Insurance Company	Other.....	...0.000	Nationwide Mutual Insurance Company	....2
...0140	Nationwide		26-3427373	4596435			Nationwide Life Tax Credit Partners 2009-A, LLC	..OH.	...NIA.....	Nationwide Life Insurance Company	Other.....	...0.000	Nationwide Mutual Insurance Company	....2
...0140	Nationwide		26-3427435	4596444			Nationwide Life Tax Credit Partners 2009-B, LLC	..OH.	...NIA.....	Nationwide Life Insurance Company	Other.....	...0.000	Nationwide Mutual Insurance Company	....2
...0140	Nationwide		26-3427479	4596499			Nationwide Life Tax Credit Partners 2009-C, LLC	..OH.	...NIA.....	Nationwide Life Insurance Company	Other.....	...0.000	Nationwide Mutual Insurance Company	....2
...0140	Nationwide		26-3427525	4596510			Nationwide Life Tax Credit Partners 2009-D, LLC	..OH.	...NIA.....	Nationwide Life Insurance Company	Other.....	...0.000	Nationwide Mutual Insurance Company	....2
...0140	Nationwide		26-4737055	4596529			Nationwide Life Tax Credit Partners 2009-E, LLC	..OH.	...NIA.....	Nationwide Life Insurance Company	Other.....	...0.000	Nationwide Mutual Insurance Company	....2
...0140	Nationwide		26-4737157	4596547			Nationwide Life Tax Credit Partners 2009-F, LLC	..OH.	...NIA.....	Nationwide Life Insurance Company	Other.....	...0.000	Nationwide Mutual Insurance Company	....2
...0140	Nationwide		27-1362364	4596622			Nationwide Life Tax Credit Partners 2009-I, LLC	..OH.	...NIA.....	Nationwide Life Insurance Company	Other.....	...0.000	Nationwide Mutual Insurance Company	....2
...0140	Nationwide		46-1952215	4596556			Nationwide Life Tax Credit Partners 2013-A, LLC	..OH.	...NIA.....	Nationwide Life Insurance Company	Other.....	...0.000	Nationwide Mutual Insurance Company	....2
...0140	Nationwide		46-1971926	4596592			Nationwide Life Tax Credit Partners 2013-B, LLC	..OH.	...NIA.....	Nationwide Life Insurance Company	Other.....	...0.000	Nationwide Mutual Insurance Company	....2
...0140	Nationwide			3779811			Nationwide Life Tax Credit Partners No. 1, LLC	..OH.	...NIA.....	Nationwide Life Insurance Company	Other.....	...0.000	Nationwide Mutual Insurance Company	....2
...0140	Nationwide	..42110	75-1780981	4287984			Nationwide Lloyds	..TX.	...IA.....	n/a	contract	...0.000	Nationwide Mutual Insurance Company	....
...0140	Nationwide			4597094			Nationwide Mutual Capital I, LLC	..DE.	...NIA.....	Nationwide Mutual Capital, LLC	Ownership.....	...100.000	Nationwide Mutual Insurance Company	....
...0140	Nationwide		75-3191025	4595269			Nationwide Mutual Capital, LLC	..OH.	...NIA.....	Nationwide Mutual Insurance Company	Ownership.....	...100.000	Nationwide Mutual Insurance Company	....
...0140	Nationwide	..23779	82-0549218	3828090			Nationwide Mutual Fire Insurance Company	..OH.	...OTH.....	Other non-Nationwide	n/a	...0.000	Other non-Nationwide	....
...0140	Nationwide	..23787	31-4177100	3828072			Nationwide Mutual Insurance Company	..OH.	...UDP.....	Other non-Nationwide	n/a	...0.000	Other non-Nationwide	....

STATEMENT AS OF JUNE 30, 2014 OF THE ALLIED INSURANCE COMPANY OF AMERICA

SCHEDULE Y  
PART 1A - DETAIL OF INSURANCE HOLDING COMPANY SYSTEM

1	2	3	4	5	6	7	8	9	10	11	12	13	14	15
Group Code	Group Name	NAIC Company Code	Federal ID Number	Federal RSSD	CIK	Name of Securities Exchange if Publicly Traded (U.S. or International)	Names of Parent, Subsidiaries Or Affiliates	Domi-ciliary Location	Relation-ship to Reporting Entity	Directly Controlled by (Name of Entity/Person)	Type of Control (Ownership, Board, Management, Attorney-in-Fact, Influence, Other)	If Control is Owner-ship Provide Percen-tage	Ultimate Controlling Entity(ies)/Person(s)	*
...0140 ...	Nationwide .....		34-2012765	4288084			Nationwide Private Equity Fund, LLC .....	..OH..	...NIA.....	Nationwide Mutual Insurance Company .....	Ownership.....	..100.000 .....	Nationwide Mutual Insurance Company .....	.....
...0140 ...	Nationwide .....	37877	31-0970750	4287993			Nationwide Property and Casualty Insurance Company .....	..OH..	...IA.....	Nationwide Mutual Insurance Company .....	Ownership.....	..100.000 .....	Nationwide Mutual Insurance Company .....	.....
...0140 ...	Nationwide .....		31-1486309	4288105			Nationwide Realty Investors, Ltd. ....	..OH..	...NIA.....	Nationwide Mutual Insurance Company .....	Ownership.....	..96.800 .....	Nationwide Mutual Insurance Company .....	.....
...0140 ...	Nationwide .....		31-1486309	4288105			Nationwide Realty Investors, Ltd. ....	..OH..	...NIA.....	Nationwide Indemnity Company .....	Ownership.....	..3.200 .....	Nationwide Mutual Insurance Company .....	.....
...0140 ...	Nationwide .....		31-1486309	4590264			Nationwide Realty Management, LLC .....	..OH..	...NIA.....	Nationwide Realty Investors, Ltd. ....	Ownership.....	..100.000 .....	Nationwide Mutual Insurance Company .....	.....
...0140 ...	Nationwide .....			4288066			Nationwide Realty Services, Ltd. ....	..OH..	...NIA.....	Nationwide Mutual Insurance Company .....	Ownership.....	..100.000 .....	Nationwide Mutual Insurance Company .....	.....
...0140 ...	Nationwide .....		06-0987812	4287117			Nationwide Retirement Solutions Insurance Agency, Inc. ....	..MA..	...IA.....	Nationwide Retirement Solutions, Inc. ....	Ownership.....	..100.000 .....	Nationwide Mutual Insurance Company .....	.....
...0140 ...	Nationwide .....		73-0948330	4287096			Nationwide Retirement Solutions, Inc. ....	..DE..	...NIA.....	NFS Distributors, Inc. ....	Ownership.....	..100.000 .....	Nationwide Mutual Insurance Company .....	.....
...0140 ...	Nationwide .....		86-0924069	4287108			Nationwide Retirement Solutions, Inc. of Arizona .....	..AZ..	...NIA.....	Nationwide Retirement Solutions, Inc. ....	Ownership.....	..100.000 .....	Nationwide Mutual Insurance Company .....	.....
...0140 ...	Nationwide .....		31-1331479	4287126			Nationwide Retirement Solutions, Inc. of Ohio .....	..OH..	...NIA.....	Nationwide Retirement Solutions, Inc. ....	Ownership.....	..100.000 .....	Nationwide Mutual Insurance Company .....	.....
...0140 ...	Nationwide .....		74-2200854	4287135			Nationwide Retirement Solutions, Inc. of Texas .....	..TX..	...NIA.....	Nationwide Retirement Solutions, Inc. ....	Ownership.....	..100.000 .....	Nationwide Mutual Insurance Company .....	.....
...0140 ...	Nationwide .....		42-1373380	4287210			Nationwide Sales Solutions, Inc. ....	..IA..	...NIA.....	ALLIED Group, Inc. ....	Ownership.....	..100.000 .....	Nationwide Mutual Insurance Company .....	.....
...0140 ...	Nationwide .....		36-2434406	4287078			Nationwide Securities, LLC .....	..OH..	...NIA.....	NFS Distributors, Inc. ....	Ownership.....	..100.000 .....	Nationwide Mutual Insurance Company .....	.....
...0140 ...	Nationwide .....		31-4177100	4288093			Nationwide Services Company, LLC .....	..OH..	...NIA.....	Nationwide Mutual Insurance Company .....	Ownership.....	..100.000 .....	Nationwide Mutual Insurance Company .....	.....
...0140 ...	Nationwide .....		27-0743545	4564041			Nationwide Tax Credit Partners 2009-G, LLC .....	..OH..	...NIA.....	Nationwide Mutual Insurance Company .....	Other.....	..0.000 .....	Nationwide Mutual Insurance Company .....	....2 .....
...0140 ...	Nationwide .....		27-0768791	4596891			Nationwide Tax Credit Partners 2009-H, LLC .....	..OH..	...NIA.....	Nationwide Mutual Insurance Company .....	Other.....	..0.000 .....	Nationwide Mutual Insurance Company .....	....2 .....
...0140 ...	Nationwide .....		27-1362364	4596622			Nationwide Tax Credit Partners 2009-I, LLC .....	..OH..	...NIA.....	Nationwide Mutual Insurance Company .....	Other.....	..0.000 .....	Nationwide Mutual Insurance Company .....	....2 .....
...0140 ...	Nationwide .....						Nationwide Tax Credit Partners 2013-A, LLC .....	..OH..	...NIA.....	Nationwide Life Insurance Company .....	Other.....	..0.000 .....	Nationwide Mutual Insurance Company .....	....2 .....
...0140 ...	Nationwide .....		46-1952215	4596566				..OH..	...NIA.....	Nationwide Life Insurance Company .....	Ownership.....	..100.000 .....	Nationwide Mutual Insurance Company .....	....2 .....
...0140 ...	Nationwide .....		11-3651828	4588168			ND La Quinta Partners, LLC .....	..DE..	...NIA.....	Nationwide Realty Investors, Ltd. ....	Ownership.....	..95.000 .....	Nationwide Mutual Insurance Company .....	....1 .....
...0140 ...	Nationwide .....			4286866			Newhouse Capital Partners II, LLC .....	..DE..	...NIA.....	Nationwide Global Ventures, Inc. ....	Ownership.....	..80.000 .....	Nationwide Mutual Insurance Company .....	.....
...0140 ...	Nationwide .....			4286866			Newhouse Capital Partners II, LLC .....	..DE..	...NIA.....	Nationwide Global Ventures, Inc. ....	Ownership.....	..99.000 .....	Nationwide Mutual Insurance Company .....	.....
...0140 ...	Nationwide .....			4286679			Newhouse Capital Partners, LLC .....	..DE..	...NIA.....	NWD Investment Management, Inc. ....	Ownership.....	..19.000 .....	Nationwide Mutual Insurance Company .....	.....
...0140 ...	Nationwide .....			4286679			Newhouse Capital Partners, LLC .....	..DE..	...NIA.....	Nationwide Mutual Insurance Company .....	Ownership.....	..70.000 .....	Nationwide Mutual Insurance Company .....	.....
...0140 ...	Nationwide .....			4286679			Newhouse Capital Partners, LLC .....	..DE..	...NIA.....	Nationwide Mutual Fire Insurance Company .....	Ownership.....	..10.000 .....	Nationwide Mutual Insurance Company .....	.....
...0140 ...	Nationwide .....		31-1630871	4287032			NFS Distributors, Inc. ....	..DE..	...NIA.....	Nationwide Financial Services, Inc. ....	Ownership.....	..100.000 .....	Nationwide Mutual Insurance Company .....	.....
...0140 ...	Nationwide .....		14-1892640	4596677			NHT XII Tax Credit Fund, LLC .....	..DC..	...NIA.....	Nationwide Life Insurance Company .....	Ownership.....	..49.990 .....	Nationwide Mutual Insurance Company .....	.....
...0140 ...	Nationwide .....		14-1892640	4596677			NHT XII Tax Credit Fund, LLC .....	..DC..	...NIA.....	Nationwide Assurance Company .....	Ownership.....	..25.000 .....	Nationwide Mutual Insurance Company .....	.....
...0140 ...	Nationwide .....		14-1892640	4596677			NHT XII Tax Credit Fund, LLC .....	..DC..	...NIA.....	Nationwide Mutual Insurance Company .....	Ownership.....	..25.000 .....	Nationwide Mutual Insurance Company .....	.....
...0140 ...	Nationwide .....		46-3762545				NNOV8, LLC .....	..OH..	...NIA.....	Nationwide Mutual Insurance Company .....	Ownership.....	..100.000 .....	Nationwide Mutual Insurance Company .....	.....
...0140 ...	Nationwide .....		26-0351004				North Bank Condominium Home Owners Association .....	..OH..	...OTH.....	Other non-Nationwide .....	n/a .....	..0.000 .....	Other non-Nationwide .....	....2 .....
...0140 ...	Nationwide .....		20-4939866	4590817			North of Third, LLC .....	..OH..	...NIA.....	NRI Equity Land Investments, LLC .....	Ownership.....	..100.000 .....	Nationwide Mutual Insurance Company .....	.....
...0140 ...	Nationwide .....		26-4083207	4590385			Northstar Commercial Development, LLC .....	..OH..	...NIA.....	Nationwide Realty Investors, Ltd. ....	Ownership.....	..50.000 .....	Nationwide Mutual Insurance Company .....	.....
...0140 ...	Nationwide .....		26-4083354	4594909			Northstar Residential Development, LLC .....	..OH..	...NIA.....	Nationwide Realty Investors, Ltd. ....	Ownership.....	..50.000 .....	Nationwide Mutual Insurance Company .....	.....
...0140 ...	Nationwide .....		31-1486309	4593630			NRI 12325 Copper Way, LLC .....	..OH..	...NIA.....	Nationwide Realty Investors, Ltd. ....	Ownership.....	..100.000 .....	Nationwide Mutual Insurance Company .....	.....
...0140 ...	Nationwide .....		31-1486309	4594936			NRI 220 Schrock, LLC .....	..OH..	...NIA.....	Nationwide Realty Investors, Ltd. ....	Ownership.....	..100.000 .....	Nationwide Mutual Insurance Company .....	.....
...0140 ...	Nationwide .....		31-1486309	4594794			NRI Arena, LLC .....	..OH..	...NIA.....	Nationwide Realty Investors, Ltd. ....	Ownership.....	..100.000 .....	Nationwide Mutual Insurance Company .....	.....
...0140 ...	Nationwide .....		31-1486309	4594815			NRI Brookledge, LLC .....	..OH..	...NIA.....	Nationwide Realty Investors, Ltd. ....	Ownership.....	..100.000 .....	Nationwide Mutual Insurance Company .....	.....
...0140 ...	Nationwide .....		31-1486309	4595027			NRI Builders, LLC .....	..OH..	...NIA.....	Nationwide Realty Investors, Ltd. ....	Ownership.....	..100.000 .....	Nationwide Mutual Insurance Company .....	.....
...0140 ...	Nationwide .....		31-1486309	4594851			NRI Communities/Charlotte, LLC .....	..OH..	...NIA.....	Nationwide Realty Investors, Ltd. ....	Ownership.....	..100.000 .....	Nationwide Mutual Insurance Company .....	.....
...0140 ...	Nationwide .....		31-1486309	4590246			NRI Communities/Harris Blvd., LLC .....	..OH..	...NIA.....	Nationwide Realty Investors, Ltd. ....	Ownership.....	..100.000 .....	Nationwide Mutual Insurance Company .....	.....



SCHEDULE Y  
PART 1A - DETAIL OF INSURANCE HOLDING COMPANY SYSTEM

1	2	3	4	5	6	7	8	9	10	11	12	13	14	15
Group Code	Group Name	NAIC Company Code	Federal ID Number	Federal RSSD	CIK	Name of Securities Exchange if Publicly Traded (U.S. or International)	Names of Parent, Subsidiaries Or Affiliates	Domi-ciliary Location	Relation-ship to Reporting Entity	Directly Controlled by (Name of Entity/Person)	Type of Control (Ownership, Board, Management, Attorney-in-Fact, Influence, Other)	If Control is Owner-ship Provide Percen-tage	Ultimate Controlling Entity(ies)/Person(s)	*
0140	Nationwide		31-1486309	4590282			NRI Cramer Creek, LLC	OH	NIA	Nationwide Realty Investors, Ltd.	Ownership	100.000	Nationwide Mutual Insurance Company	
0140	Nationwide		20-4939866	4590460			NRI Equity Land Investments, LLC	OH	NIA	Nationwide Realty Investors, Ltd.	Ownership	80.000	Nationwide Mutual Insurance Company	
0140	Nationwide		26-0212217	4590394			NRI Equity Tampa, LLC	OH	OTH	Nationwide Realty Investors, Ltd.	Ownership	100.000	Nationwide Mutual Insurance Company	
0140	Nationwide		31-1486309	4590376			NRI Maxtown, LLC	OH	OTH	Nationwide Realty Investors, Ltd.	Ownership	100.000	Nationwide Mutual Insurance Company	
0140	Nationwide		30-4939866	4590406			NRI Office Ventures, Ltd	OH	NIA	Nationwide Realty Investors, Ltd.	Ownership	100.000	Nationwide Mutual Insurance Company	
0140	Nationwide		31-1486309	4596912			NRI Telecom, LLC	OH	NIA	NWD Investments, LLC	Ownership	100.000	Nationwide Mutual Insurance Company	
0140	Nationwide		31-1486309	4590349			NRI-Rivulon, LLC	OH	NIA	Nationwide Realty Investors, Ltd.	Ownership	100.000	Nationwide Mutual Insurance Company	
							Nationwide Property and Casualty Company							
0140	Nationwide		45-3123274	4595438			NTCIF-2011 Georgia State Investor, LLC	OH	NIA		Ownership	100.000	Nationwide Mutual Insurance Company	
0140	Nationwide		90-0729552	4596695			NTCIF-2011, LLC	OH	NIA	Nationwide Life Insurance Company	Ownership	50.000	Nationwide Mutual Insurance Company	
							Nationwide Mutual Fire Insurance Company							
0140	Nationwide		90-0729552	4596695			NTCIF-2011, LLC	OH	NIA		Ownership	50.000	Nationwide Mutual Insurance Company	
0140	Nationwide		27-4700627	4596716			NTCP 2011-A, LLC	OH	NIA	Nationwide Life Insurance Company	Ownership	100.000	Nationwide Mutual Insurance Company	
0140	Nationwide		46-0747898	4596752			NTCP 2011-B, LLC	OH	NIA	Nationwide Life Insurance Company	Ownership	100.000	Nationwide Mutual Insurance Company	
0140	Nationwide		46-0741029	4464703			NTCP 2012-A, LLC	OH	NIA	Nationwide Life Insurance Company	Ownership	100.000	Nationwide Mutual Insurance Company	
0140	Nationwide		46-3309896	4586164			NTCP 2013-C, LLC	OH	NIA	Nationwide Life Insurance Company	Ownership	100.000	Nationwide Mutual Insurance Company	
0140	Nationwide		46-4111078	4596743			NTCP 2014-A, LLC	OH	NIA	Nationwide Life Insurance Company	Ownership	100.000	Nationwide Mutual Insurance Company	
0140	Nationwide		26-1903919	4591421			NW REI, LLC	DE	NIA	Nationwide Mutual Insurance Company	Ownership	100.000	Nationwide Mutual Insurance Company	
0140	Nationwide		46-3654078	4593621			NW-Amesbury, LLC	OH	NIA	NE-REI, LLC	Ownership	100.000	Nationwide Mutual Insurance Company	
0140	Nationwide		36-4702264	4595054			NW-Arvada, LLC	OH	NIA	NW REI, LLC	Ownership	100.000	Nationwide Mutual Insurance Company	
0140	Nationwide		46-2943666	4594860			NW-Bandera, LLC	OH	NIA	NW REI, LLC	Ownership	100.000	Nationwide Mutual Insurance Company	
0140	Nationwide		45-5159092	4595063			NW-Bayshore, LLC	OH	NIA	NW REI, LLC	Ownership	100.000	Nationwide Mutual Insurance Company	
0140	Nationwide		46-2451156	4594879			NW-Bee Cave, LLC	OH	NIA	NW REI, LLC	Ownership	100.000	Nationwide Mutual Insurance Company	
0140	Nationwide		46-0999932	4591681			NW-Bencap, LLC	OH	NIA	NW REI, LLC	Ownership	100.000	Nationwide Mutual Insurance Company	
0140	Nationwide		46-3707480	4593612			NW-Brooklyn, LLC	OH	NIA	NW REI, LLC	Ownership	100.000	Nationwide Mutual Insurance Company	
0140	Nationwide		46-3968244	4591757			NW-Camelback, LLC	OH	NIA	NW REI, LLC	Ownership	100.000	Nationwide Mutual Insurance Company	
0140	Nationwide		45-2724980	4591690			NW-Cameron, LLC	OH	NIA	NW REI, LLC	Ownership	100.000	Nationwide Mutual Insurance Company	
0140	Nationwide		46-3674167	4590090			NW-Cedar Springs, LLC	OH	NIA	NW REI, LLC	Ownership	100.000	Nationwide Mutual Insurance Company	
0140	Nationwide		46-3994437	4591663			NW-Central Station, LLC	OH	NIA	NE-REI, LLC	Ownership	100.000	Nationwide Mutual Insurance Company	
0140	Nationwide		26-0901660	4505456			NW-CNC Coppel, LLC	DE	NIA	Nationwide Mutual Insurance Company	Ownership	100.000	Nationwide Mutual Insurance Company	
0140	Nationwide		27-2764819	4594888			NW-Commerce Center, LLC	DE	NIA	NW REI, LLC	Ownership	100.000	Nationwide Mutual Insurance Company	
0140	Nationwide		32-0359208	4595157			NW-Corvallis, LLC	OH	NIA	NW REI, LLC	Ownership	100.000	Nationwide Mutual Insurance Company	
0140	Nationwide		31-1580283	4591038			NWD 205 Vine, LLC	OH	NIA	NWD Investments, LLC	Ownership	100.000	Nationwide Mutual Insurance Company	
0140	Nationwide		31-1580283	4591261			NWD 225 Nationwide, LLC	OH	NIA	NWD Investments, LLC	Ownership	100.000	Nationwide Mutual Insurance Company	
0140	Nationwide		31-1580283	4591056			NWD 230 West, LLC	OH	NIA	NWD Investments, LLC	Ownership	100.000	Nationwide Mutual Insurance Company	
0140	Nationwide		31-1580283	4590545			NWD 240 Nationwide, LLC	OH	NIA	NWD Investments, LLC	Ownership	100.000	Nationwide Mutual Insurance Company	
0140	Nationwide		31-1580283	4590273			NWD 250 Brodbelt, LLC	OH	NIA	NWD Investments, LLC	Ownership	100.000	Nationwide Mutual Insurance Company	
0140	Nationwide		31-1580283	4590554			NWD 265 Neil, LLC	OH	NIA	NWD Investments, LLC	Ownership	100.000	Nationwide Mutual Insurance Company	
0140	Nationwide		31-1580283	4590518			NWD 275 Marconi, LLC	OH	NIA	NWD Investments, LLC	Ownership	100.000	Nationwide Mutual Insurance Company	
0140	Nationwide		31-1580283	4590563			NWD 295 McConnell, LLC	OH	NIA	NWD Investments, LLC	Ownership	100.000	Nationwide Mutual Insurance Company	
0140	Nationwide		31-1580283	4590509			NWD 300 Neil, LLC	OH	NIA	NWD Investments, LLC	Ownership	100.000	Nationwide Mutual Insurance Company	
0140	Nationwide		31-1580283	4590572			NWD 300 Spring, LLC	OH	NIA	NWD Investments, LLC	Ownership	100.000	Nationwide Mutual Insurance Company	
0140	Nationwide		31-1580283	4590527			NWD 355 McConnell, LLC	OH	NIA	NWD Investments, LLC	Ownership	100.000	Nationwide Mutual Insurance Company	
0140	Nationwide		31-1580283	4590581			NWD 425 Nationwide, LLC	OH	NIA	NWD Investments, LLC	Ownership	100.000	Nationwide Mutual Insurance Company	
0140	Nationwide		31-1580283	4590536			NWD 500 Nationwide, LLC	OH	NIA	NWD Investments, LLC	Ownership	100.000	Nationwide Mutual Insurance Company	
0140	Nationwide		31-1580283	4591298			NWD Arena Crossing, LLC	OH	NIA	NWD Investments, LLC	Ownership	100.000	Nationwide Mutual Insurance Company	
0140	Nationwide		31-1580283	4591083			NWD Arena District I, LLC	OH	NIA	NWD Investments, LLC	Ownership	100.000	Nationwide Mutual Insurance Company	
0140	Nationwide		31-1580283	4591300			NWD Arena District II, LLC	OH	NIA	NWD Investments, LLC	Ownership	100.000	Nationwide Mutual Insurance Company	
0140	Nationwide		31-1580283	4591113			NWD Arena District IM, LLC	OH	NIA	NWD Investments, LLC	Ownership	100.000	Nationwide Mutual Insurance Company	
0140	Nationwide		31-1580283	4591319			NWD Arena District PW, LLC	OH	NIA	NWD Investments, LLC	Ownership	100.000	Nationwide Mutual Insurance Company	
0140	Nationwide		31-1580283	4591131			NWD Arena District V, LLC	OH	NIA	NWD Investments, LLC	Ownership	100.000	Nationwide Mutual Insurance Company	

SCHEDULE Y  
PART 1A - DETAIL OF INSURANCE HOLDING COMPANY SYSTEM

1	2	3	4	5	6	7	8	9	10	11	12	13	14	15
Group Code	Group Name	NAIC Company Code	Federal ID Number	Federal RSSD	CIK	Name of Securities Exchange if Publicly Traded (U.S. or International)	Names of Parent, Subsidiaries Or Affiliates	Domi-ciliary Location	Relation-ship to Reporting Entity	Directly Controlled by (Name of Entity/Person)	Type of Control (Ownership, Board, Management, Attorney-in-Fact, Influence, Other)	If Control is Owner-ship Provide Percen-tage	Ultimate Controlling Entity(ies)/Person(s)	*
0140	Nationwide		04-3679396	4286848			NWD Asset Management Holdings, Inc.	DE	NIA	NWD Investment Management, Inc.	Ownership	100.000	Nationwide Mutual Insurance Company	
0140	Nationwide		31-1580283	4591328			NWD Athletic Club, LLC	OH	NIA	NWD Investments, LLC	Ownership	100.000	Nationwide Mutual Insurance Company	
0140	Nationwide		31-1636299	4286594			NWD Investment Management, Inc.	DE	NIA	Nationwide Corporation	Ownership	100.000	Nationwide Mutual Insurance Company	
0140	Nationwide		31-1580283	4587965			NWD Investments, LLC	OH	NIA	Nationwide Realty Investors, Ltd.	Ownership	80.000	Nationwide Mutual Insurance Company	
0140	Nationwide		90-0732898	4591430			NW-Dulles, LLC	OH	NIA	NW REI, LLC	Ownership	100.000	Nationwide Mutual Insurance Company	
0140	Nationwide		46-3267884	4595465			NW-Franklin Mills, LLC	OH	NIA	Life Reo Holdings, LLC	Ownership	100.000	Nationwide Mutual Insurance Company	
0140	Nationwide		45-2647960	4591449			NW-Grapevine, LLC	OH	NIA	NW REI, LLC	Ownership	100.000	Nationwide Mutual Insurance Company	
0140	Nationwide		46-2997049	4591775			NW-Howell Mill, LLC	OH	NIA	NW REI, LLC	Ownership	100.000	Nationwide Mutual Insurance Company	
0140	Nationwide		46-4330384				NW-Hudnall, LLC	OH	NIA	NW REI, LLC	Ownership	100.000	Nationwide Mutual Insurance Company	
0140	Nationwide		45-5408178	4591458			NW-Kentwood Towne Center, LLC	OH	NIA	NW REI, LLC	Ownership	100.000	Nationwide Mutual Insurance Company	
0140	Nationwide		46-4857522				NW-Lawrence, LLC	OH	NIA	NW REI, LLC	Ownership	100.000	Nationwide Mutual Insurance Company	
0140	Nationwide		45-5314607	4593461			NW-Lovers Lane, LLC	OH	NIA	NW REI, LLC	Ownership	100.000	Nationwide Mutual Insurance Company	
0140	Nationwide		46-2457568	4591467			NW-Montrose, LLC	OH	NIA	NW REI, LLC	Ownership	100.000	Nationwide Mutual Insurance Company	
0140	Nationwide		45-4630497	4593470			NW-Mueller II, LLC	OH	NIA	NW REI, LLC	Ownership	100.000	Nationwide Mutual Insurance Company	
0140	Nationwide		27-4749848	4591476			NW-Northridge, LLC	OH	NIA	NW REI, LLC	Ownership	100.000	Nationwide Mutual Insurance Company	
0140	Nationwide		46-1089165	4593555			NW-Oakley Station, LLC	OH	NIA	NW REI, LLC	Ownership	100.000	Nationwide Mutual Insurance Company	
0140	Nationwide		46-3888719	4593603			NW-Park 288, LLC	OH	NIA	NW REI, LLC	Ownership	100.000	Nationwide Mutual Insurance Company	
0140	Nationwide		45-5388656	4591485			NW-Park Memorial, LLC	OH	NIA	NW REI, LLC	Ownership	100.000	Nationwide Mutual Insurance Company	
0140	Nationwide		46-2469044	4591494			NW-Portales, LLC	OH	NIA	NW REI, LLC	Ownership	100.000	Nationwide Mutual Insurance Company	
0140	Nationwide		45-5159117	4593573			NW-South Park, LLC	OH	NIA	NW REI, LLC	Ownership	100.000	Nationwide Mutual Insurance Company	
0140	Nationwide		35-2427470	4591506			NW-Southline, LLC	OH	NIA	NW REI, LLC	Ownership	100.000	Nationwide Mutual Insurance Company	
0140	Nationwide		27-4749587	4593582			NW-Taylor Farmer Jack, LLC	OH	NIA	NW REI, LLC	Ownership	100.000	Nationwide Mutual Insurance Company	
0140	Nationwide		46-1100378	4591524			NW-Triangle, LLC	OH	NIA	NW REI, LLC	Ownership	100.000	Nationwide Mutual Insurance Company	
0140	Nationwide		46-5764783				NW-Tyson's, LLC	OH	NIA	NW REI, LLC	Ownership	100.000	Nationwide Mutual Insurance Company	
0140	Nationwide		46-1077615	4593591			NW-West Ave., LLC	OH	NIA	NW REI, LLC	Ownership	100.000	Nationwide Mutual Insurance Company	
0140	Nationwide		46-4992444				NW-Windcross, LLC	OH	NIA	NW REI, LLC	Ownership	100.000	Nationwide Mutual Insurance Company	
0140	Nationwide		31-0947092	4590479			OCH Company, LLC	OH	NIA	Nationwide Realty Investors, Ltd.	Ownership	100.000	Nationwide Mutual Insurance Company	
0140	Nationwide		31-0947092	4590442			Ohio Center Hotel Company, Ltd.	OH	NIA	Nationwide Realty Investors, Ltd.	Ownership	56.250	Nationwide Mutual Insurance Company	
0140	Nationwide		26-0263012				Old Track Street Owners Association	OH	OTH	Other non-Nationwide	n/a	0.000	Other non-Nationwide	2
0140	Nationwide	13999	27-1712056	4286914			Olentangy Reinsurance, LLC	VT	IA	Nationwide Life and Annuity Insurance Company	Ownership	100.000	Nationwide Mutual Insurance Company	
0140	Nationwide			4596462			OYS Fund, LLC	DE	OTH	Nationwide Mutual Insurance Company	Ownership	100.000	Nationwide Mutual Insurance Company	
0140	Nationwide			4596480			Park 288 Industrial, LLC	TX	OTH	Nationwide Mutual Insurance Company	Investor member / no control	95.000	other non-Nationwide	2
0140	Nationwide		31-1486309	4590358			Perimeter A, Ltd	OH	NIA	Nationwide Realty Investors, Ltd.	Ownership	100.000	Nationwide Mutual Insurance Company	
0140	Nationwide		31-1677602	4590488			Pizzuti Properties, LLC	OH	NIA	Nationwide Realty Investors, Ltd.	Ownership	65.000	Nationwide Mutual Insurance Company	
0140	Nationwide		31-1486309	4590291			Polaris A, Ltd.	OH	NIA	Nationwide Realty Investors, Ltd.	Ownership	100.000	Nationwide Mutual Insurance Company	
0140	Nationwide		39-1907217	4287201			Premier Agency, Inc.	IA	NIA	ALLIED Group, Inc.	Ownership	100.000	Nationwide Mutual Insurance Company	
0140	Nationwide						Privilege Underwriters Reciprocal Exchange							
4664	Pure	12873	20-8287105	4288253				FL	IA	Other non-Nationwide	n/a	0.000	Other non-Nationwide	2
0140	Pure			4288150			Privilege Underwriters, Inc.	DE	IA	Other non-Nationwide	n/a	0.000	Other non-Nationwide	2
4664	Pure	13204	26-3109178	4288226			Pure Insurance Company	FL	IA	Other non-Nationwide	n/a	0.000	Other non-Nationwide	2
4664	Pure			4288235			Pure Risk Management, LLC	FL	IA	Other non-Nationwide	n/a	0.000	Other non-Nationwide	2
4664	Nationwide		75-2938844	4287005			Registered Investment Advisors Services, Inc.	TX	NIA	Nationwide Financial Services, Inc.	Ownership	100.000	Nationwide Mutual Insurance Company	
0140	Nationwide		82-0549218	4288244			Retention Alternatives, Ltd.	BMU	IA	Nationwide Mutual Fire Insurance Company	Ownership	100.000	Nationwide Mutual Insurance Company	1
0140	Nationwide			4595278			Riverview Diversified Opportunities Fund, LLC	DE	OTH	Nationwide Mutual Insurance Company	Ownership	0.000	Nationwide Mutual Insurance Company	1
0140	Nationwide			4595278			Riverview Diversified Opportunities Fund, LLC	DE	OTH	Nationwide Mutual Fire Insurance Company	Ownership	0.000	Nationwide Mutual Insurance Company	1

STATEMENT AS OF JUNE 30, 2014 OF THE ALLIED INSURANCE COMPANY OF AMERICA

SCHEDULE Y  
PART 1A - DETAIL OF INSURANCE HOLDING COMPANY SYSTEM

1	2	3	4	5	6	7	8	9	10	11	12	13	14	15
Group Code	Group Name	NAIC Company Code	Federal ID Number	Federal RSSD	CIK	Name of Securities Exchange if Publicly Traded (U.S. or International)	Names of Parent, Subsidiaries Or Affiliates	Domi-ciliary Location	Relation-ship to Reporting Entity	Directly Controlled by (Name of Entity/Person)	Type of Control (Ownership, Board, Management, Attorney-in-Fact, Influence, Other)	If Control is Owner-ship Provide Percen-tage	Ultimate Controlling Entity(ies)/Person(s)	*
...0140 ...	Nationwide .....	.....	.....	4595278 .....	.....	.....	Riverview Diversified Opportunities Fund, LLC .....	..DE .....	...OTH.....	Nationwide Life Insurance Company .....	Ownership.....	...0.000 .....	Nationwide Mutual Insurance Company .....	.....
...0140 ...	Nationwide .....	.....	22-3655264 .....	4286530 .....	.....	.....	Riverview International Group, Inc. ....	..DE .....	...NIA .....	NWD Investment Management, Inc. ....	Ownership.....	...100.000 .....	Nationwide Mutual Insurance Company .....	.....
...0140 ...	Nationwide .....	.....	.....	4595287 .....	.....	.....	Riverview Multi Series Fund, LL - Class Event .....	..DE .....	...OTH.....	Nationwide Mutual Insurance Company .....	Ownership.....	...100.000 .....	Nationwide Mutual Insurance Company .....	.....
...0140 ...	Nationwide .....	.....	.....	4595335 .....	.....	.....	Riverview Multi Series Fund, LL - Class N .....	..DE .....	...OTH.....	Nationwide Mutual Insurance Company .....	Ownership.....	...100.000 .....	Nationwide Mutual Insurance Company .....	.....
...0140 ...	Nationwide .....	.....	.....	4564032 .....	.....	.....	Riverview Polyphony Fund, LLC .....	..DE .....	...OTH.....	Nationwide Mutual Insurance Company .....	Ownership.....	...100.000 .....	Nationwide Mutual Insurance Company .....	.....
...0140 ...	Nationwide .....	..15580 .....	31-1117969 .....	4288002 .....	.....	.....	Scottsdale Indemnity Company .....	..OH .....	...IA .....	Nationwide Mutual Insurance Company .....	Ownership.....	...100.000 .....	Nationwide Mutual Insurance Company .....	.....
...0140 ...	Nationwide .....	..41297 .....	31-1024978 .....	3091988 .....	.....	.....	Scottsdale Insurance Company .....	..OH .....	...IA .....	Nationwide Mutual Insurance Company .....	Ownership.....	...100.000 .....	Nationwide Mutual Insurance Company .....	.....
...0140 ...	Nationwide .....	.....	.....	.....	.....	.....	Scottsdale Surplus Lines Insurance Company .....	.....	.....	.....	.....	.....	.....	.....
...0140 ...	Nationwide .....	..10672 .....	86-0835870 .....	4287649 .....	.....	.....	Scottsdale Insurance Company .....	..AZ .....	...IA .....	Scottsdale Insurance Company .....	Ownership.....	...100.000 .....	Nationwide Mutual Insurance Company .....	.....
...0140 ...	Nationwide .....	.....	31-1486309 .....	4590303 .....	.....	.....	Streets of Toringdon, LLC .....	..OH .....	...NIA .....	Nationwide Realty Investors, Ltd. ....	Ownership.....	...100.000 .....	Nationwide Mutual Insurance Company .....	.....
...0140 ...	Nationwide .....	.....	91-2158214 .....	.....	.....	.....	The Hideaway Club .....	..CA .....	...OTH.....	Other non-Nationwide .....	n/a .....	...0.000 .....	Other non-Nationwide .....	...2 .....
...0140 ...	Nationwide .....	.....	86-1094799 .....	.....	.....	.....	The Hideaway Owners Association .....	..CA .....	...OTH.....	Other non-Nationwide .....	n/a .....	...0.000 .....	Other non-Nationwide .....	...2 .....
...0140 ...	Nationwide .....	.....	20-3541511 .....	.....	.....	.....	The Madison Club .....	..CA .....	...OTH.....	Other non-Nationwide .....	n/a .....	...0.000 .....	Other non-Nationwide .....	...2 .....
...0140 ...	Nationwide .....	.....	20-3541507 .....	.....	.....	.....	The Madison Club Owners Association .....	..CA .....	...OTH.....	Other non-Nationwide .....	n/a .....	...0.000 .....	Other non-Nationwide .....	...2 .....
...0140 ...	Nationwide .....	.....	31-1610040 .....	2989882 .....	.....	.....	The Waterfront Partners, LLC .....	..OH .....	...NIA .....	Nationwide Realty Investors, Ltd. ....	Ownership.....	...50.000 .....	Nationwide Mutual Insurance Company .....	...1 .....
...0140 ...	Nationwide .....	.....	52-2031677 .....	4287751 .....	.....	.....	THI Holdings (Delaware), Inc. ....	..DE .....	...NIA .....	Nationwide Mutual Insurance Company .....	Ownership.....	...100.000 .....	Nationwide Mutual Insurance Company .....	.....
...0140 ...	Nationwide .....	.....	74-2825853 .....	4287863 .....	.....	.....	Titan Auto Insurance of New Mexico, Inc. ....	..NM .....	...IA .....	THI Holdings (Delaware), Inc. ....	Ownership.....	...100.000 .....	Nationwide Mutual Insurance Company .....	.....
...0140 ...	Nationwide .....	..13242 .....	74-2286759 .....	4287797 .....	.....	.....	Titan Indemnity Company .....	..TX .....	...IA .....	THI Holdings (Delaware), Inc. ....	Ownership.....	...100.000 .....	Nationwide Mutual Insurance Company .....	.....
...0140 ...	Nationwide .....	..36269 .....	86-0619597 .....	4287845 .....	.....	.....	Titan Insurance Company .....	..MI .....	...IA .....	Titan Indemnity Company .....	Ownership.....	...100.000 .....	Nationwide Mutual Insurance Company .....	.....
...0140 ...	Nationwide .....	.....	75-1284530 .....	4287890 .....	.....	.....	Titan Insurance Services, Inc. ....	..TX .....	...NIA .....	THI Holdings (Delaware), Inc. ....	Ownership.....	...100.000 .....	Nationwide Mutual Insurance Company .....	.....
...0140 ...	Nationwide .....	.....	33-0160222 .....	4653196 .....	.....	.....	V.P.I. Services, Inc. ....	..CA .....	...NIA .....	Veterinary Pet Insurance Company .....	Ownership.....	...100.000 .....	Nationwide Mutual Insurance Company .....	.....
...0140 ...	Nationwide .....	..42285 .....	95-3750113 .....	4287685 .....	.....	.....	Veterinary Pet Insurance Company .....	..CA .....	...IA .....	Scottsdale Insurance Company .....	Ownership.....	...100.000 .....	Nationwide Mutual Insurance Company .....	.....
...0140 ...	Nationwide .....	.....	.....	.....	.....	.....	Victoria Fire & Casualty Insurance Company .....	..OH .....	...IA .....	Victoria Fire & Casualty Insurance Company .....	Ownership.....	...100.000 .....	Nationwide Mutual Insurance Company .....	.....
...0140 ...	Nationwide .....	..42889 .....	34-1394913 .....	4287827 .....	.....	.....	Victoria Fire & Casualty Company .....	..OH .....	...IA .....	THI Holdings (Delaware), Inc. ....	Ownership.....	...100.000 .....	Nationwide Mutual Insurance Company .....	.....
...0140 ...	Nationwide .....	.....	.....	.....	.....	.....	Victoria National Insurance Company .....	..OH .....	...IA .....	Victoria Fire & Casualty Insurance Company .....	Ownership.....	...100.000 .....	Nationwide Mutual Insurance Company .....	.....
...0140 ...	Nationwide .....	..10778 .....	34-1842604 .....	4287920 .....	.....	.....	Victoria National Insurance Company .....	..OH .....	...IA .....	Victoria Fire & Casualty Insurance Company .....	Ownership.....	...100.000 .....	Nationwide Mutual Insurance Company .....	.....
...0140 ...	Nationwide .....	.....	34-1842602 .....	4287948 .....	.....	.....	Victoria Select Insurance Company .....	..OH .....	...IA .....	Victoria Fire & Casualty Insurance Company .....	Ownership.....	...100.000 .....	Nationwide Mutual Insurance Company .....	.....
...0140 ...	Nationwide .....	..10105 .....	34-1777972 .....	4287939 .....	.....	.....	Victoria Specialty Insurance Company .....	..OH .....	...IA .....	Victoria Fire & Casualty Insurance Company .....	Ownership.....	...100.000 .....	Nationwide Mutual Insurance Company .....	.....
...0140 ...	Nationwide .....	.....	86-0561941 .....	4287667 .....	.....	.....	Western Heritage Insurance Company .....	..AZ .....	...IA .....	Scottsdale Insurance Company .....	Ownership.....	...100.000 .....	Nationwide Mutual Insurance Company .....	.....
...0140 ...	Nationwide .....	.....	.....	4613341 .....	.....	.....	Westport Capital Partners II .....	..CT .....	...OTH.....	Nationwide Mutual Insurance Company .....	Ownership.....	...100.000 .....	Nationwide Mutual Insurance Company .....	.....
...0140 ...	Nationwide .....	.....	31-1486309 .....	4590321 .....	.....	.....	Nationwide Defined Benefit Master Trust .....	..OH .....	...NIA .....	Nationwide Defined Benefit Master Trust .....	Investor member / no control .....	...71.000 .....	other non-Nationwide .....	...2 .....
...0140 ...	Nationwide .....	.....	.....	4613323 .....	.....	.....	Wilson Road Developers, LLC .....	..OH .....	...NIA .....	Nationwide Realty Investors, Ltd. ....	Ownership.....	...100.000 .....	Nationwide Mutual Insurance Company .....	.....
...0140 ...	Nationwide .....	.....	.....	.....	.....	.....	Zais Zephyr A-4, LLC .....	..DE .....	...OTH.....	Nationwide Life Insurance Company .....	limited member / no control .....	...60.000 .....	other non-Nationwide .....	...2 .....

Asterisk	Explanation
1 .....	For the purposes of this schedule, Nationwide presumed control of these entities because they are owned by at least 10% and are not wholly-owned by a Nationwide entity. ....
2 .....	Other ownership indicates a non-ownership circumstance by a Nationwide entity. ....

Part 1 - Loss Experience

N O N E

Part 2 - Direct Premiums Written

N O N E

Part 3 (000 omitted) - Loss and Loss Adjustment Expense Reserves Schedule

N O N E

STATEMENT AS OF JUNE 30, 2014 OF THE ALLIED INSURANCE COMPANY OF AMERICA

SUPPLEMENTAL EXHIBITS AND SCHEDULES INTERROGATORIES

The following supplemental reports are required to be filed as part of your statement filing. However, in the event that your company does not transact the type of business for which the special report must be filed, your response of NO to the specific interrogatory will be accepted in lieu of filing a "NONE" report and a bar code will be printed below. If the supplement is required of your company but is not being filed for whatever reason enter SEE EXPLANATION and provide an explanation following the interrogatory questions.

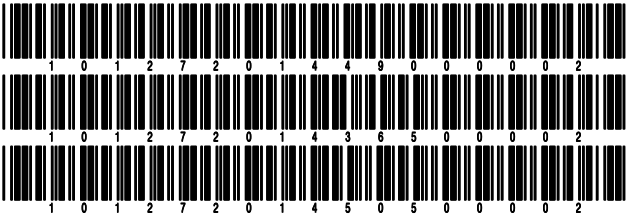
	Response
1. Will the Trusteed Surplus Statement be filed with the state of domicile and the NAIC with this statement? .....	NO
2. Will Supplement A to Schedule T (Medical Professional Liability Supplement) be filed with this statement? .....	YES
3. Will the Medicare Part D Coverage Supplement be filed with the state of domicile and the NAIC with this statement? .....	NO
4. Will the Director and Officer Insurance Coverage Supplement be filed with the state of domicile and the NAIC with this statement? .....	NO

Explanations:

1.
3.
4.

Bar Codes:

1. Trusteed Surplus Statement [Document Identifier 490]
3. Medicare Part D Coverage Supplement [Document Identifier 365]
4. Director and Officer Supplement [Document Identifier 505]



**NONE**

SCHEDULE A - VERIFICATION

Real Estate

	1	2
	Year to Date	Prior Year Ended December 31
1. Book/adjusted carrying value, December 31 of prior year .....		
2. Cost of acquired:		
2.1 Actual cost at time of acquisition .....		
2.2 Additional investment made after acquisition .....		
3. Current year change in encumbrances .....		
4. Total gain (loss) on disposals .....		
5. Deduct amounts received on disposals .....		
6. Total foreign exchange change in book/adjusted carrying value .....		
7. Deduct current year's other than temporary impairment recognized .....		
8. Deduct current year's depreciation .....		
9. Book/adjusted carrying value at the end of current period (Lines 1+2+3+4-5+6-7-8) .....		
10. Deduct total nonadmitted amounts .....		
11. Statement value at end of current period (Line 9 minus Line 10)		

SCHEDULE B - VERIFICATION

Mortgage Loans

	1	2
	Year to Date	Prior Year Ended December 31
1. Book value/recorded investment excluding accrued interest, December 31 of prior year .....		
2. Cost of acquired:		
2.1 Actual cost at time of acquisition .....		
2.2 Additional investment made after acquisition .....		
3. Capitalized deferred interest and other .....		
4. Accrual of discount .....		
5. Unrealized valuation increase (decrease) .....		
6. Total gain (loss) on disposals .....		
7. Deduct amounts received on disposals .....		
8. Deduct amortization of premium and mortgage interest points and commitment fees .....		
9. Total foreign exchange change in book value/recorded investment excluding accrued interest .....		
10. Deduct current year's other than temporary impairment recognized .....		
11. Book value/recorded investment excluding accrued interest at end of current period (Lines 1+2+3+4+5+6-7-8+9-10) .....		
12. Total valuation allowance .....		
13. Subtotal (Line 11 plus Line 12) .....		
14. Deduct total nonadmitted amounts .....		
15. Statement value at end of current period (Line 13 minus Line 14)		

SCHEDULE BA - VERIFICATION

Other Long-Term Invested Assets

	1	2
	Year to Date	Prior Year Ended December 31
1. Book/adjusted carrying value, December 31 of prior year .....		
2. Cost of acquired:		
2.1 Actual cost at time of acquisition .....		
2.2 Additional investment made after acquisition .....		
3. Capitalized deferred interest and other .....		
4. Accrual of discount .....		
5. Unrealized valuation increase (decrease) .....		
6. Total gain (loss) on disposals .....		
7. Deduct amounts received on disposals .....		
8. Deduct amortization of premium and depreciation .....		
9. Total foreign exchange change in book/adjusted carrying value .....		
10. Deduct current year's other than temporary impairment recognized .....		
11. Book/adjusted carrying value at end of current period (Lines 1+2+3+4+5+6-7-8+9-10) .....		
12. Deduct total nonadmitted amounts .....		
13. Statement value at end of current period (Line 11 minus Line 12)		

SCHEDULE D - VERIFICATION

Bonds and Stocks

	1	2
	Year to Date	Prior Year Ended December 31
1. Book/adjusted carrying value of bonds and stocks, December 31 of prior year .....	7,347,362	3,763,779
2. Cost of bonds and stocks acquired .....	2,367,656	3,577,354
3. Accrual of discount .....	737	1,075
4. Unrealized valuation increase (decrease) .....	46,312	12,843
5. Total gain (loss) on disposals .....		
6. Deduct consideration for bonds and stocks disposed of .....		
7. Deduct amortization of premium .....	6,566	7,689
8. Total foreign exchange change in book/adjusted carrying value .....		
9. Deduct current year's other than temporary impairment recognized .....		
10. Book/adjusted carrying value at end of current period (Lines 1+2+3+4+5-6-7+8-9) .....	9,755,501	7,347,362
11. Deduct total nonadmitted amounts .....		
12. Statement value at end of current period (Line 10 minus Line 11)	9,755,501	7,347,362

STATEMENT AS OF JUNE 30, 2014 OF THE ALLIED INSURANCE COMPANY OF AMERICA

SCHEDULE D - PART 1B

Showing the Acquisitions, Dispositions and Non-Trading Activity  
During the Current Quarter for all Bonds and Preferred Stock by NAIC Designation

NAIC Designation	1 Book/Adjusted Carrying Value Beginning of Current Quarter	2 Acquisitions During Current Quarter	3 Dispositions During Current Quarter	4 Non-Trading Activity During Current Quarter	5 Book/Adjusted Carrying Value End of First Quarter	6 Book/Adjusted Carrying Value End of Second Quarter	7 Book/Adjusted Carrying Value End of Third Quarter	8 Book/Adjusted Carrying Value December 31 Prior Year
BONDS								
1. NAIC 1 (a) .....	7,349,455	808,591		38,556	7,349,455	8,196,602		7,347,362
2. NAIC 2 (a) .....		1,559,065		(166)		1,558,899		
3. NAIC 3 (a) .....								
4. NAIC 4 (a) .....								
5. NAIC 5 (a) .....								
6. NAIC 6 (a) .....								
7. Total Bonds	7,349,455	2,367,656		38,390	7,349,455	9,755,501		7,347,362
PREFERRED STOCK								
8. NAIC 1 .....								
9. NAIC 2 .....								
10. NAIC 3 .....								
11. NAIC 4 .....								
12. NAIC 5 .....								
13. NAIC 6 .....								
14. Total Preferred Stock .....								
15. Total Bonds and Preferred Stock	7,349,455	2,367,656		38,390	7,349,455	9,755,501		7,347,362

(a) Book/Adjusted Carrying Value column for the end of the current reporting period includes the following amount of non-rated short-term and cash equivalent bonds by NAIC designation: NAIC 1 \$ ..... ; NAIC 2 \$ ..... ; NAIC 3 \$ ..... ;  
NAIC 4 \$ ..... ; NAIC 5 \$ ..... ; NAIC 6 \$ .....



SCHEDULE DA - PART 1

Short-Term Investments

	1	2	3	4	5
	Book/Adjusted Carrying Value	Par Value	Actual Cost	Interest Collected Year-to-Date	Paid for Accrued Interest Year-to-Date
9199999 Totals	4,642,817	xxx	4,642,817	1,657	

SCHEDULE DA - VERIFICATION

Short-Term Investments

	1	2
	Year To Date	Prior Year Ended December 31
1. Book/adjusted carrying value, December 31 of prior year .....	223,896	2,003,404
2. Cost of short-term investments acquired .....	6,794,887	2,622,671
3. Accrual of discount .....		
4. Unrealized valuation increase (decrease) .....		
5. Total gain (loss) on disposals .....		
6. Deduct consideration received on disposals .....	2,375,966	4,402,179
7. Deduct amortization of premium .....		
8. Total foreign exchange change in book/adjusted carrying value .....		
9. Deduct current year's other than temporary impairment recognized .....		
10. Book/adjusted carrying value at end of current period (Lines 1+2+3+4+5-6-7+8-9) .....	4,642,817	223,896
11. Deduct total nonadmitted amounts .....		
12. Statement value at end of current period (Line 10 minus Line 11)	4,642,817	223,896

Schedule DB - Part A - Verification - Options, Caps, Floors, Collars, Swaps and Forwards

**N O N E**

Schedule DB - Part B - Verification - Futures Contracts

**N O N E**

Schedule DB - Part C - Section 1 - Replication (Synthetic Asset) Transactions (RSATs) Open

**N O N E**

Schedule DB-Part C-Section 2-Reconciliation of Replication (Synthetic Asset) Transactions Open

**N O N E**

Schedule DB - Verification - Book/Adjusted Carrying Value, Fair Value and Potential Exposure of  
Derivatives

**N O N E**

Schedule E - Verification - Cash Equivalents

**N O N E**

Schedule A - Part 2 - Real Estate Acquired and Additions Made

**N O N E**

Schedule A - Part 3 - Real Estate Disposed

**N O N E**

Schedule B - Part 2 - Mortgage Loans Acquired

**N O N E**

Schedule B - Part 3 - Mortgage Loans Disposed, Transferred or Repaid

**N O N E**

Schedule BA - Part 2 - Other Long-Term Invested Assets Acquired

**N O N E**

Schedule BA - Part 3 - Other Long-Term Invested Assets Disposed, Transferred or Repaid

**N O N E**

STATEMENT AS OF JUNE 30, 2014 OF THE ALLIED INSURANCE COMPANY OF AMERICA

**SCHEDULE D - PART 3**

Show All Long-Term Bonds and Stock Acquired During the Current Quarter

1	2	3	4	5	6	7	8	9	10
CUSIP Identification	Description	Foreign	Date Acquired	Name of Vendor	Number of Shares of Stock	Actual Cost	Par Value	Paid for Accrued Interest and Dividends	NAIC Designation or Market Indicator (a)
092113-AH-2 .....	Black Hills Corp Sr Nt 4.250% 11/30/23 .....		.06/12/2014 .....	RBC Dominion Securities .....		263,460	250,000	502	2FE .....
12189L-AR-2 .....	Burlington Northern Santa Fe Basic 3.7 .....		.05/14/2014 .....	Jeffries & Co Inc .....		258,593	250,000	1,875	2FE .....
233331-AS-6 .....	DTE Energy Co Sr Nt 3.500% 06/01/24 .....		.05/06/2014 .....	Bank of America BIDS Dealer .....		249,785	250,000		2FE .....
26884T-AA-0 .....	ERAC USA Finance Company Sr Nt 5.250% .....		.06/30/2014 .....	Jeffries & Co Inc .....		285,210	250,000	3,354	2FE .....
46641W-AW-7 .....	JPMBB Comm Mtg Secs Tr Ser 2014-C19 Cl A .....		.04/29/2014 .....	Morgan/JP/Securities - Bonds .....		308,998	300,000	597	1FE .....
581557-BE-4 .....	McKesson Corp Sr Nt 3.796% 03/15/24 .....		.05/07/2014 .....	Goldman Sachs & Company .....		253,495	250,000	1,634	2FE .....
61166W-AU-5 .....	Monsanto Co Sr Nt 3.375% 07/15/24 .....		.06/26/2014 .....	Morgan/JP/Securities - Bonds .....		249,850	250,000		1FE .....
71270Q-EB-8 .....	Peoples United Bank Sr Nt 4.000% 07/15 .....		.06/23/2014 .....	Jeffries & Co Inc .....		248,523	250,000		2FE .....
94974B-FY-1 .....	Wells Fargo & Co Sr Nt 4.100% 06/03/26 .....		.05/27/2014 .....	Wells Fargo .....		249,743	250,000		1FE .....
3899999. Subtotal - Bonds - Industrial and Miscellaneous (Unaffiliated)						2,367,657	2,300,000	7,962	XXX
8399997. Total - Bonds - Part 3						2,367,657	2,300,000	7,962	XXX
8399998. Total - Bonds - Part 5						XXX	XXX	XXX	XXX
8399999. Total - Bonds						2,367,657	2,300,000	7,962	XXX
8999997. Total - Preferred Stocks - Part 3							XXX		XXX
8999998. Total - Preferred Stocks - Part 5						XXX	XXX	XXX	XXX
8999999. Total - Preferred Stocks							XXX		XXX
9799997. Total - Common Stocks - Part 3							XXX		XXX
9799998. Total - Common Stocks - Part 5						XXX	XXX	XXX	XXX
9799999. Total - Common Stocks							XXX		XXX
9899999. Total - Preferred and Common Stocks							XXX		XXX
9999999 - Totals						2,367,657	XXX	7,962	XXX

(a) For all common stock bearing the NAIC market indicator "U" provide: the number of such issues .....

Schedule D - Part 4 - Long-Term Bonds and Stocks Sold, Redeemed or Otherwise Disposed Of  
**N O N E**

Schedule DB - Part A - Section 1 - Options, Caps, Floors, Collars, Swaps and Forwards Open  
**N O N E**

Schedule DB - Part B - Section 1 - Futures Contracts Open  
**N O N E**

Schedule DB - Part B - Section 1B - Brokers with whom cash deposits have been made  
**N O N E**

Schedule DB - Part D - Section 1 - Counterparty Exposure for Derivative Instruments Open  
**N O N E**

Schedule DB - Part D-Section 2 - Collateral for Derivative Instruments Open - Pledged By  
**N O N E**

Schedule DB - Part D-Section 2 - Collateral for Derivative Instruments Open - Pledged To  
**N O N E**

Schedule DL - Part 1 - Reinvested Collateral Assets Owned  
**N O N E**

Schedule DL - Part 2 - Reinvested Collateral Assets Owned  
**N O N E**

Schedule E - Part 1 - Month End Depository Balances  
**N O N E**

Schedule E - Part 2 - Cash Equivalents - Investments Owned End of Current Quarter  
**N O N E**



SUPPLEMENT FOR THE QUARTER ENDING JUNE 30, 2014 OF THE ALLIED INSURANCE COMPANY OF AMERICA

Designate the type of health care providers reported on this page:  
Physicians, including surgeons and osteopaths

SUPPLEMENT A TO SCHEDULE T  
EXHIBIT OF MEDICAL PROFESSIONAL LIABILITY PREMIUMS WRITTEN  
ALLOCATED BY STATES AND TERRITORIES

		1	2	Direct Losses Paid		5	Direct Losses Unpaid		8
		Direct Premiums Written	Direct Premiums Earned	3  Amount	4  No. of Claims	Direct Losses Incurred	6  Amount Reported	7  No. of Claims	Direct Losses Incurred But Not Reported
States, etc.									
1.	Alabama .....	AL							
2.	Alaska .....	AK							
3.	Arizona .....	AZ							
4.	Arkansas .....	AR							
5.	California .....	CA							
6.	Colorado .....	CO							
7.	Connecticut .....	CT							
8.	Delaware .....	DE							
9.	District of Columbia .....	DC							
10.	Florida .....	FL							
11.	Georgia .....	GA							
12.	Hawaii .....	HI							
13.	Idaho .....	ID							
14.	Illinois .....	IL							
15.	Indiana .....	IN							
16.	Iowa .....	IA							
17.	Kansas .....	KS							
18.	Kentucky .....	KY							
19.	Louisiana .....	LA							
20.	Maine .....	ME							
21.	Maryland .....	MD							
22.	Massachusetts .....	MA							
23.	Michigan .....	MI							
24.	Minnesota .....	MN							
25.	Mississippi .....	MS							
26.	Missouri .....	MO							
27.	Montana .....	MT							
28.	Nebraska .....	NE							
29.	Nevada .....	NV							
30.	New Hampshire .....	NH							
31.	New Jersey .....	NJ							
32.	New Mexico .....	NM							
33.	New York .....	NY							
34.	North Carolina .....	NC							
35.	North Dakota .....	ND							
36.	Ohio .....	OH							
37.	Oklahoma .....	OK							
38.	Oregon .....	OR							
39.	Pennsylvania .....	PA							
40.	Rhode Island .....	RI							
41.	South Carolina .....	SC							
42.	South Dakota .....	SD							
43.	Tennessee .....	TN							
44.	Texas .....	TX							
45.	Utah .....	UT							
46.	Vermont .....	VT							
47.	Virginia .....	VA							
48.	Washington .....	WA							
49.	West Virginia .....	WV							
50.	Wisconsin .....	WI							
51.	Wyoming .....	WY							
52.	American Samoa .....	AS							
53.	Guam .....	GU							
54.	Puerto Rico .....	PR							
55.	U.S. Virgin Islands .....	VI							
56.	Nothern Mariana Islands .....	MP							
57.	Canada .....	CAN							
58.	Aggregate Other Aliens .....	OT							
59.	Totals								
DETAILS OF WRITE-INS									
58001.	.....								
58002.	.....								
58003.	.....								
58998.	Summary of remaining write-ins for Line 58 from overflow page .....								
58999.	Totals (Lines 58001 through 58003 plus 58998)(Line 58 above)								

NONE



Designate the type of health care  
providers reported on this page:  
Hospitals

SUPPLEMENT A TO SCHEDULE T  
EXHIBIT OF MEDICAL PROFESSIONAL LIABILITY PREMIUMS WRITTEN  
ALLOCATED BY STATES AND TERRITORIES

		1	2	Direct Losses Paid		5	Direct Losses Unpaid		8
				3	4		6	7	
States, etc.		Direct Premiums Written	Direct Premiums Earned	Amount	No. of Claims	Direct Losses Incurred	Amount Reported	No. of Claims	Direct Losses Incurred But Not Reported
1.	Alabama.....AL								
2.	Alaska.....AK								
3.	Arizona.....AZ								
4.	Arkansas.....AR								
5.	California.....CA								
6.	Colorado.....CO								
7.	Connecticut.....CT								
8.	Delaware.....DE								
9.	District of Columbia.....DC								
10.	Florida.....FL								
11.	Georgia.....GA								
12.	Hawaii.....HI								
13.	Idaho.....ID								
14.	Illinois.....IL								
15.	Indiana.....IN								
16.	Iowa.....IA								
17.	Kansas.....KS								
18.	Kentucky.....KY								
19.	Louisiana.....LA								
20.	Maine.....ME								
21.	Maryland.....MD								
22.	Massachusetts.....MA								
23.	Michigan.....MI								
24.	Minnesota.....MN								
25.	Mississippi.....MS								
26.	Missouri.....MO								
27.	Montana.....MT								
28.	Nebraska.....NE								
29.	Nevada.....NV								
30.	New Hampshire.....NH								
31.	New Jersey.....NJ								
32.	New Mexico.....NM								
33.	New York.....NY								
34.	North Carolina.....NC								
35.	North Dakota.....ND								
36.	Ohio.....OH								
37.	Oklahoma.....OK								
38.	Oregon.....OR								
39.	Pennsylvania.....PA								
40.	Rhode Island.....RI								
41.	South Carolina.....SC								
42.	South Dakota.....SD								
43.	Tennessee.....TN								
44.	Texas.....TX								
45.	Utah.....UT								
46.	Vermont.....VT								
47.	Virginia.....VA								
48.	Washington.....WA								
49.	West Virginia.....WV								
50.	Wisconsin.....WI								
51.	Wyoming.....WY								
52.	American Samoa.....AS								
53.	Guam.....GU								
54.	Puerto Rico.....PR								
55.	U.S. Virgin Islands.....VI								
56.	Nothern Mariana Islands.....MP								
57.	Canada.....CAN								
58.	Aggregate Other Aliens.....OT								
59.	Totals								
DETAILS OF WRITE-INS									
58001.	.....								
58002.	.....								
58003.	.....								
58998.	Summary of remaining write-ins for Line 58 from overflow page								
58999.	Totals (Lines 58001 through 58003 plus 58998)(Line 58 above)								

NONE



Designate the type of health care providers reported on this page:  
Other health care professionals, including dentists, chiropractors, and podiatrists

SUPPLEMENT A TO SCHEDULE T  
EXHIBIT OF MEDICAL PROFESSIONAL LIABILITY PREMIUMS WRITTEN  
ALLOCATED BY STATES AND TERRITORIES

		1	2	Direct Losses Paid		5	Direct Losses Unpaid		8
				3	4		6	7	
States, etc.		Direct Premiums Written	Direct Premiums Earned	Amount	No. of Claims	Direct Losses Incurred	Amount Reported	No. of Claims	Direct Losses Incurred But Not Reported
1.	Alabama.....AL								
2.	Alaska.....AK								
3.	Arizona.....AZ								
4.	Arkansas.....AR								
5.	California.....CA								
6.	Colorado.....CO								
7.	Connecticut.....CT								
8.	Delaware.....DE								
9.	District of Columbia.....DC								
10.	Florida.....FL								
11.	Georgia.....GA								
12.	Hawaii.....HI								
13.	Idaho.....ID								
14.	Illinois.....IL								
15.	Indiana.....IN								
16.	Iowa.....IA								
17.	Kansas.....KS								
18.	Kentucky.....KY								
19.	Louisiana.....LA								
20.	Maine.....ME								
21.	Maryland.....MD								
22.	Massachusetts.....MA								
23.	Michigan.....MI								
24.	Minnesota.....MN								
25.	Mississippi.....MS								
26.	Missouri.....MO								
27.	Montana.....MT								
28.	Nebraska.....NE								
29.	Nevada.....NV								
30.	New Hampshire.....NH								
31.	New Jersey.....NJ								
32.	New Mexico.....NM								
33.	New York.....NY								
34.	North Carolina.....NC								
35.	North Dakota.....ND								
36.	Ohio.....OH								
37.	Oklahoma.....OK								
38.	Oregon.....OR								
39.	Pennsylvania.....PA								
40.	Rhode Island.....RI								
41.	South Carolina.....SC								
42.	South Dakota.....SD								
43.	Tennessee.....TN								
44.	Texas.....TX								
45.	Utah.....UT								
46.	Vermont.....VT								
47.	Virginia.....VA								
48.	Washington.....WA								
49.	West Virginia.....WV								
50.	Wisconsin.....WI								
51.	Wyoming.....WY								
52.	American Samoa.....AS								
53.	Guam.....GU								
54.	Puerto Rico.....PR								
55.	U.S. Virgin Islands.....VI								
56.	Nothern Mariana Islands.....MP								
57.	Canada.....CAN								
58.	Aggregate Other Aliens.....OT								
59.	Totals								
DETAILS OF WRITE-INS									
58001.	.....								
58002.	.....								
58003.	.....								
58998.	Summary of remaining write-ins for Line 58 from overflow page.....								
58999.	Totals (Lines 58001 through 58003 plus 58998)(Line 58 above)								

NONE



Designate the type of health care  
providers reported on this page:  
Other health care facilities

SUPPLEMENT A TO SCHEDULE T  
EXHIBIT OF MEDICAL PROFESSIONAL LIABILITY PREMIUMS WRITTEN  
ALLOCATED BY STATES AND TERRITORIES

		1	2	Direct Losses Paid		5	Direct Losses Unpaid		8
				3	4		6	7	
States, etc.		Direct Premiums Written	Direct Premiums Earned	Amount	No. of Claims	Direct Losses Incurred	Amount Reported	No. of Claims	Direct Losses Incurred But Not Reported
1.	Alabama.....AL								
2.	Alaska.....AK								
3.	Arizona.....AZ								
4.	Arkansas.....AR								
5.	California.....CA								
6.	Colorado.....CO								
7.	Connecticut.....CT								
8.	Delaware.....DE								
9.	District of Columbia.....DC								
10.	Florida.....FL								
11.	Georgia.....GA								
12.	Hawaii.....HI								
13.	Idaho.....ID								
14.	Illinois.....IL								
15.	Indiana.....IN								
16.	Iowa.....IA								
17.	Kansas.....KS								
18.	Kentucky.....KY								
19.	Louisiana.....LA								
20.	Maine.....ME								
21.	Maryland.....MD								
22.	Massachusetts.....MA								
23.	Michigan.....MI								
24.	Minnesota.....MN								
25.	Mississippi.....MS								
26.	Missouri.....MO								
27.	Montana.....MT								
28.	Nebraska.....NE								
29.	Nevada.....NV								
30.	New Hampshire.....NH								
31.	New Jersey.....NJ								
32.	New Mexico.....NM								
33.	New York.....NY								
34.	North Carolina.....NC								
35.	North Dakota.....ND								
36.	Ohio.....OH								
37.	Oklahoma.....OK								
38.	Oregon.....OR								
39.	Pennsylvania.....PA								
40.	Rhode Island.....RI								
41.	South Carolina.....SC								
42.	South Dakota.....SD								
43.	Tennessee.....TN								
44.	Texas.....TX								
45.	Utah.....UT								
46.	Vermont.....VT								
47.	Virginia.....VA								
48.	Washington.....WA								
49.	West Virginia.....WV								
50.	Wisconsin.....WI								
51.	Wyoming.....WY								
52.	American Samoa.....AS								
53.	Guam.....GU								
54.	Puerto Rico.....PR								
55.	U.S. Virgin Islands.....VI								
56.	Nothern Mariana Islands.....MP								
57.	Canada.....CAN								
58.	Aggregate Other Aliens.....OT								
59.	Totals								
DETAILS OF WRITE-INS									
58001.	.....								
58002.	.....								
58003.	.....								
58998.	Summary of remaining write-ins for Line 58 from overflow page								
58999.	Totals (Lines 58001 through 58003 plus 58998)(Line 58 above)								