

ASSETS

	Current Statement Date			4 Prior Year Net Admitted Assets
	1 Assets	2 Nonadmitted Assets	3 Net Admitted Assets (Col. 1 minus Col. 2)	
1. Bonds	130,681,382		130,681,382	129,712,727
2. Stocks:				
2.1 Preferred stocks				
2.2 Common stocks	69,288,287		69,288,287	67,598,791
3. Mortgage loans on real estate:				
3.1 First liens				
3.2 Other than first liens				
4. Real estate:				
4.1 Properties occupied by the company (less \$ encumbrances)				
4.2 Properties held for the production of income (less \$ encumbrances)				
4.3 Properties held for sale (less \$ encumbrances)				
5. Cash (\$ (1,076,104)), cash equivalents (\$ 54,854,440) and short-term investments (\$ 59,539,886)	113,318,224		113,318,224	106,949,587
6. Contract loans (including \$ premium notes)				
7. Derivatives				
8. Other invested assets				
9. Receivables for securities				
10. Securities lending reinvested collateral assets				
11. Aggregate write-ins for invested assets				
12. Subtotals, cash and invested assets (Line 1 through Line 11)	313,287,893		313,287,893	304,261,105
13. Title plants less \$ charged off (for Title insurers only)				
14. Investment income due and accrued	971,684		971,684	955,960
15. Premiums and considerations:				
15.1 Uncollected premiums and agents' balances in the course of collection	12,624,353		12,624,353	17,026,945
15.2 Deferred premiums, agents' balances and installments booked but deferred and not yet due (including \$ earned but unbilled premiums)				
15.3 Accrued retrospective premiums				
16. Reinsurance:				
16.1 Amounts recoverable from reinsurers				
16.2 Funds held by or deposited with reinsured companies				
16.3 Other amounts receivable under reinsurance contracts				
17. Amounts receivable relating to uninsured plans	1,951,926		1,951,926	1,951,926
18.1 Current federal and foreign income tax recoverable and interest thereon				
18.2 Net deferred tax asset				
19. Guaranty funds receivable or on deposit				
20. Electronic data processing equipment and software	2,381		2,381	2,605
21. Furniture and equipment, including health care delivery assets (\$)				
22. Net adjustment in assets and liabilities due to foreign exchange rates				
23. Receivables from parent, subsidiaries and affiliates	94,733		94,733	81,876
24. Health care (\$) and other amounts receivable	6,474,028	3,179,891	3,294,137	1,899,242
25. Aggregate write-ins for other-than-invested assets	2,906,535	2,270,739	635,796	920,378
26. Total assets excluding Separate Accounts, Segregated Accounts and Protected Cell Accounts (Line 12 to Line 25)	338,313,533	5,450,630	332,862,903	327,100,037
27. From Separate Accounts, Segregated Accounts and Protected Cell Accounts				
28. Totals (Line 26 and Line 27)	338,313,533	5,450,630	332,862,903	327,100,037
DETAILS OF WRITE-INS				
1101.				
1102.				
1103.				
1198. Summary of remaining write-ins for Line 11 from overflow page				
1199. Totals (Line 1101 through Line 1103 plus Line 1198) (Line 11 above)				
2501. Misc Receivable	304,921		304,921	589,503
2502. QCP Receivable	330,875		330,875	330,875
2503. Prepaid Expenses	2,270,739	2,270,739		
2598. Summary of remaining write-ins for Line 25 from overflow page				
2599. Totals (Line 2501 through Line 2503 plus Line 2598) (Line 25 above)	2,906,535	2,270,739	635,796	920,378

LIABILITIES, CAPITAL AND SURPLUS

	Current Period			Prior Year
	1 Covered	2 Uncovered	3 Total	4 Total
1. Claims unpaid (less \$ reinsurance ceded)	25,790,274		25,790,274	25,161,978
2. Accrued medical incentive pool and bonus amounts				
3. Unpaid claims adjustment expenses	262,655		262,655	262,655
4. Aggregate health policy reserves, including the liability of \$ for medical loss ratio rebate per the Public Health Service Act				
5. Aggregate life policy reserves				
6. Property/casualty unearned premium reserve				
7. Aggregate health claim reserves				
8. Premiums received in advance	286,577		286,577	164,336
9. General expenses due or accrued	1,994,372		1,994,372	6,380,967
10.1 Current federal and foreign income tax payable and interest thereon (including \$ on realized gains (losses))				
10.2 Net deferred tax liability				
11. Ceded reinsurance premiums payable				
12. Amounts withheld or retained for the account of others				
13. Remittances and items not allocated				
14. Borrowed money (including \$ current) and interest thereon \$ (including \$ current)				
15. Amounts due to parent, subsidiaries and affiliates	4,616,843		4,616,843	3,707,876
16. Derivatives				
17. Payable for securities				
18. Payable for securities lending				
19. Funds held under reinsurance treaties (with \$ authorized reinsurers, \$ unauthorized reinsurers and \$ certified reinsurers)				
20. Reinsurance in unauthorized and certified (\$) companies				
21. Net adjustments in assets and liabilities due to foreign exchange rates				
22. Liability for amounts held under uninsured plans				
23. Aggregate write-ins for other liabilities (including \$ current)				
24. Total liabilities (Line 1 to Line 23)	32,950,721		32,950,721	35,677,812
25. Aggregate write-ins for special surplus funds	X X X	X X X		
26. Common capital stock	X X X	X X X	100	100
27. Preferred capital stock	X X X	X X X		
28. Gross paid in and contributed surplus	X X X	X X X	42,422,434	42,422,434
29. Surplus notes	X X X	X X X		
30. Aggregate write-ins for other-than-special surplus funds	X X X	X X X		
31. Unassigned funds (surplus)	X X X	X X X	257,489,648	248,999,691
32. Less treasury stock, at cost:				
32.1 shares common (value included in Line 26 \$)	X X X	X X X		
32.2 shares preferred (value included in Line 27 \$)	X X X	X X X		
33. Total capital and surplus (Line 25 to Line 31 minus Line 32)	X X X	X X X	299,912,182	291,422,225
34. Total Liabilities, capital and surplus (Line 24 and Line 33)	X X X	X X X	332,862,903	327,100,037
DETAILS OF WRITE-INS				
2301.				
2302.				
2303.				
2398. Summary of remaining write-ins for Line 23 from overflow page				
2399. Totals (Line 2301 through Line 2303 plus Line 2398) (Line 23 above)				
2501.	X X X	X X X		
2502.	X X X	X X X		
2503.	X X X	X X X		
2598. Summary of remaining write-ins for Line 25 from overflow page	X X X	X X X		
2599. Totals (Line 2501 through Line 2503 plus Line 2598) (Line 25 above)	X X X	X X X		
3001.	X X X	X X X		
3002.	X X X	X X X		
3003.	X X X	X X X		
3098. Summary of remaining write-ins for Line 30 from overflow page	X X X	X X X		
3099. Totals (Line 3001 through Line 3003 plus Line 3098) (Line 30 above)	X X X	X X X		

STATEMENT OF REVENUE AND EXPENSES

	Current Year to Date		Prior Year to Date	Prior Year Ended December 31
	1 Uncovered	2 Total	3 Total	4 Total
1. Member Months	X X X	137,053	110,540	445,756
2. Net premium income (including \$ non-health premium income)	X X X	125,302,349	100,581,318	405,202,597
3. Change in unearned premium reserves and reserve for rate credits	X X X	(4,524,833)	3,340,352	19,636,564
4. Fee-for-service (net of \$ medical expenses)	X X X			
5. Risk revenue	X X X			
6. Aggregate write-ins for other health care related revenues	X X X			
7. Aggregate write-ins for other non-health revenues	X X X			
8. Total revenues (Line 2 to Line 7)	X X X	120,777,516	103,921,670	424,839,161
Hospital and Medical:				
9. Hospital/medical benefits		54,108,516	48,476,274	190,902,088
10. Other professional services		29,890,836	25,325,498	108,874,156
11. Outside referrals				
12. Emergency room and out-of-area				
13. Prescription drugs		15,943,839	14,813,562	58,996,802
14. Aggregate write-ins for other hospital and medical				
15. Incentive pool, withhold adjustments and bonus amounts				
16. Subtotal (Line 9 to Line 15)		99,943,191	88,615,334	358,773,046
Less:				
17. Net reinsurance recoveries				
18. Total hospital and medical (Line 16 minus Line 17)		99,943,191	88,615,334	358,773,046
19. Non-health claims (net)				
20. Claims adjustment expenses, including \$ cost containment expenses				9,186,816
21. General administrative expenses		9,095,172	8,846,668	34,158,431
22. Increase in reserves for life and accident and health contracts (including \$ increase in reserves for life only)				
23. Total underwriting deductions (Line 18 through Line 22)		109,038,363	97,462,002	402,118,293
24. Net underwriting gain or (loss) (Line 8 minus Line 23)	X X X	11,739,153	6,459,668	22,720,868
25. Net investment income earned		128,471	789,325	4,329,181
26. Net realized capital gains (losses) less capital gains tax of \$		1,064,194	2,853,854	15,172,449
27. Net investment gains (losses) (Line 25 plus Line 26)		1,192,665	3,643,179	19,501,630
28. Net gain or (loss) from agents' or premium balances charged off [(amount recovered \$ (amount charged off \$)]				
29. Aggregate write-ins for other income or expenses		404,951	166,551	1,154,882
30. Net income or (loss) after capital gains tax and before all other federal income taxes (Line 24 plus Line 27 plus Line 28 plus Line 29)	X X X	13,336,769	10,269,398	43,377,380
31. Federal and foreign income taxes incurred	X X X			
32. Net income (loss) (Line 30 minus Line 31)	X X X	13,336,769	10,269,398	43,377,380
DETAILS OF WRITE-INS				
0601.	X X X			
0602.	X X X			
0603.	X X X			
0698. Summary of remaining write-ins for Line 6 from overflow page	X X X			
0699. Totals (Line 0601 through Line 0603 plus Line 0698) (Line 6 above)	X X X			
0701.	X X X			
0702.	X X X			
0703.	X X X			
0798. Summary of remaining write-ins for Line 7 from overflow page	X X X			
0799. Totals (Line 0701 through Line 0703 plus Line 0798) (Line 7 above)	X X X			
1401.				
1402.				
1403.				
1498. Summary of remaining write-ins for Line 14 from overflow page				
1499. Totals (Line 1401 through Line 1403 plus Line 1498) (Line 14 above)				
2901. Other Contractual Revenue		273,105	166,551	724,224
2902. Other Income		131,846		430,658
2903.				
2998. Summary of remaining write-ins for Line 29 from overflow page				
2999. Totals (Line 2901 through Line 2903 plus Line 2998) (Line 29 above)		404,951	166,551	1,154,882

STATEMENT OF REVENUE AND EXPENSES (continued)

CAPITAL AND SURPLUS ACCOUNT	1	2	3
	Current Year To Date	Prior Year To Date	Prior Year Ended December 31
33. Capital and surplus prior reporting year	291,422,225	264,742,389	264,742,389
34. Net income or (loss) from Line 32	13,336,769	10,269,398	43,377,380
35. Change in valuation basis of aggregate policy and claims reserves			
36. Change in net unrealized capital gains (losses) less capital gains tax of \$	1,390,146	3,947,716	4,196,109
37. Change in net unrealized foreign exchange capital gain or (loss)			
38. Change in net deferred income tax			
39. Change in nonadmitted assets	(1,236,958)	67,504	(893,653)
40. Change in unauthorized and certified reinsurance			
41. Change in treasury stock			
42. Change in surplus notes			
43. Cumulative effect of changes in accounting principles			
44. Capital Changes:			
44.1 Paid in			
44.2 Transferred from surplus (Stock Dividend)			
44.3 Transferred to surplus			
45. Surplus adjustments:			
45.1 Paid in			
45.2 Transferred to capital (Stock Dividend)			
45.3 Transferred from capital			
46. Dividends to stockholders	(5,000,000)	(5,000,000)	(20,000,000)
47. Aggregate write-ins for gains or (losses) in surplus			
48. Net change in capital and surplus (Line 34 to Line 47)	8,489,957	9,284,618	26,679,836
49. Capital and surplus end of reporting period (Line 33 plus Line 48)	299,912,182	274,027,007	291,422,225
DETAILS OF WRITE-INS			
4701.			
4702.			
4703.			
4798. Summary of remaining write-ins for Line 47 from overflow page			
4799. Totals (Line 4701 through Line 4703 plus Line 4798) (Line 47 above)			

CASH FLOW

	1	2	3
	Current Year To Date	Prior Year To Date	Prior Year Ended December 31
Cash from Operations			
1. Premiums collected net of reinsurance	125,302,349		405,202,597
2. Net investment income	(2,384,179)		3,002,592
3. Miscellaneous income	404,951		1,154,882
4. Total (Line 1 through Line 3)	123,323,121		409,360,071
5. Benefit and loss related payments	100,709,790		354,429,986
6. Net transfers to Separate Accounts, Segregated Accounts and Protected Cell Accounts			
7. Commissions, expenses paid and aggregate write-ins for deductions	13,481,767		40,758,146
8. Dividends paid to policyholders			
9. Federal and foreign income taxes paid (recovered) net of \$ tax on capital gains (losses)			
10. Total (Line 5 through Line 9)	114,191,557		395,188,132
11. Net cash from operations (Line 4 minus Line 10)	9,131,564		14,171,939
Cash from Investments			
12. Proceeds from investments sold, matured or repaid:			
12.1 Bonds	6,548,967		45,292,137
12.2 Stocks	5,392,026		82,981,510
12.3 Mortgage loans			
12.4 Real estate			
12.5 Other invested assets			
12.6 Net gains or (losses) on cash, cash equivalents and short-term investments			
12.7 Miscellaneous proceeds			
12.8 Total investment proceeds (Line 12.1 through Line 12.7)	11,940,993		128,273,647
13. Cost of investments acquired (long-term only):			
13.1 Bonds	7,649,641		56,678,387
13.2 Stocks	6,194,345		76,269,156
13.3 Mortgage loans			
13.4 Real estate			
13.5 Other invested assets			
13.6 Miscellaneous applications			
13.7 Total investments acquired (Line 13.1 through Line 13.6)	13,843,986		132,947,543
14. Net increase or (decrease) in contract loans and premium notes			
15. Net cash from investments (Line 12.8 minus Line 13.7 and Line 14)	(1,902,993)		(4,673,896)
Cash from Financing and Miscellaneous Sources			
16. Cash provided (applied):			
16.1 Surplus notes, capital notes			
16.2 Capital and paid in surplus, less treasury stock			
16.3 Borrowed funds			
16.4 Net deposits on deposit-type contracts and other insurance liabilities			
16.5 Dividends to stockholders	5,000,000		20,000,000
16.6 Other cash provided (applied)	4,140,066		1,304,514
17. Net cash from financing and miscellaneous sources (Line 16.1 through Line 16.4 minus Line 16.5 plus Line 16.6)	(859,934)		(18,695,486)
RECONCILIATION OF CASH, CASH EQUIVALENTS AND SHORT-TERM INVESTMENTS			
18. Net change in cash, cash equivalents and short-term investments (Line 11 plus Line 15 plus Line 17)	6,368,637		(9,197,443)
19. Cash, cash equivalents and short-term investments:			
19.1 Beginning of year	106,949,587		116,147,030
19.2 End of period (Line 18 plus Line 19.1)	113,318,224		106,949,587

Note: Supplemental disclosures of cash flow information for non-cash transactions:

20.0001			
20.0002			
20.0003			
20.0004			
20.0005			
20.0006			
20.0007			
20.0008			
20.0009			
20.0010			

EXHIBIT OF PREMIUMS, ENROLLMENT AND UTILIZATION

	1 Total	Comprehensive (Hospital and Medical)		4 Medicare Supplement	5 Vision Only	6 Dental Only	7 Federal Employees Health Benefits Plan	8 Title XVIII Medicare	9 Title XIX Medicaid	10 Other
		2 Individual	3 Group							
Total Members at end of:										
1. Prior Year	37,769							37,769		
2. First Quarter	45,746							45,746		
3. Second Quarter										
4. Third Quarter										
5. Current Year										
6. Current Year Member Months	137,053							137,053		
Total Member Ambulatory Encounters for Period:										
7. Physician										
8. Non-Physician										
9. Total										
10. Hospital Patient Days Incurred										
11. Number of Inpatient Admissions	2,216							2,216		
12. Health Premiums Written (a)	125,302,349							125,302,349		
13. Life Premiums Direct										
14. Property/Casualty Premiums Written										
15. Health Premiums Earned	120,777,516							120,777,516		
16. Property/Casualty Premiums Earned										
17. Amount Paid for Provision of Health Care Services	100,709,790							100,709,790		
18. Amount Incurred for Provision of Health Care Services	99,943,191							99,943,191		

(a) For health premiums written: amount of Medicare Title XVIII exempt from state taxes or fees \$ 125,302,349

CLAIMS UNPAID AND INCENTIVE POOL, WITHHOLD AND BONUS (Reported and Unreported)

Aging Analysis of Unpaid Claims

1 Account	2 1 - 30 Days	3 31 - 60 Days	4 61 - 90 Days	5 91 - 120 Days	6 Over 120 Days	7 Total
0599999 - Unreported claims and other claim reserves						25,790,274
0799999 - Total claims unpaid						25,790,274

UNDERWRITING AND INVESTMENT EXHIBIT

ANALYSIS OF CLAIMS UNPAID - PRIOR YEAR - NET OF REINSURANCE

Line of Business	Claims Paid Year to Date		Liability End of Current Quarter		5	6
	1 On Claims Incurred Prior to January 1 of Current Year	2 On Claims Incurred During the Year	3 On Claims Unpaid December 31 of Prior Year	4 On Claims Incurred During the Year	Claims Incurred in Prior Years (Columns 1 plus 3)	Estimated Claim Reserve and Claim Liability December 31 of Prior Year
1. Comprehensive (hospital and medical)						
2. Medicare Supplement						
3. Dental only						
4. Vision only						
5. Federal Employees Health Benefits Plan						
6. Title XVIII - Medicare	25,801,639	73,513,256	1,353,857	24,436,417	27,155,496	25,161,978
7. Title XIX - Medicaid						
8. Other health						
9. Health subtotal (Line 1 to Line 8)	25,801,639	73,513,256	1,353,857	24,436,417	27,155,496	25,161,978
10. Health care receivables (a)						
11. Other non-health						
12. Medical incentive pools and bonus amounts						
13. Totals (Line 9 minus Line 10 plus Line 11 plus Line 12)	25,801,639	73,513,256	1,353,857	24,436,417	27,155,496	25,161,978

(a) Excludes \$ loans or advances to providers not yet expensed.

NOTES TO FINANCIAL STATEMENTS

Notes to Financial Statements
Mount Carmel Health Plan, Inc.
Company Code: 95655

Quarter: 1
Calendar Year: 2014

1. Summary of Significant Accounting Policies
No change
2. Accounting Changes and Corrections of Errors
No change
3. Business Combinations and Goodwill:
No change
4. Discontinued Operations
No change
5. Investments
No change
6. Joint Ventures, Partnerships and Limited Liability Companies
No change
7. Investment Income
No change
8. Derivative Instruments
No change
9. Income Taxes
No change
10. Information Concerning Parent, Subsidiaries and Affiliates
No change
11. Debt
No change
12. Retirement Plans, Deferred Compensation, Postemployment Benefits and Compensated Absences and Other Postretirement Benefit Plans
No change
13. Capital and Surplus, Shareholders' Dividend Restrictions and Quasi-Reorganizations
No change
14. Contingencies
No change
15. Leases
No change
16. Information About Financial Instruments with Off-Balance Sheet Risk and Financial Instruments with Concentration of Credit Risk and Disclosures about Fair Value of Financial Instruments, for accounting guidance
No change
17. Sale, Transfer and Servicing of Financial Assets and Extinguishments of Liabilities
No change

NOTES TO FINANCIAL STATEMENTS

18. Gain or Loss to the Reporting Entity from Uninsured Plans and the Uninsured Portfolio of Partially Insured Plans
No change

19. Direct Premium Written/Produced by Managing General Agents/Third Party Administrators
N/A

20. Fair Value
No Change

21. Other Items
No change

22. Subsequent Events
No change

23. Reinsurance
No change

24. Retrospectively Rated Contracts & Contracts Subject to Re-determination
No change

25. Change in Incurred Claims and Claim Adjustments Expenses
No change

26. Intercompany Pooling Arrangements
No change

27. Structured Settlements
N/A

28. Health Care Receivables
No change

29. Participating Policies
No change

30. Premium Deficiency Reserves
No change

31. Anticipated Salvage and Subrogation
No change

GENERAL INTERROGATORIES

PART 1 - COMMON INTERROGATORIES

GENERAL

- 1.1 Did the reporting entity experience any material transactions requiring the filing of Disclosure of Material Transactions with the State of Domicile, as required by the Model Act? Yes () No (X)
- 1.2 If yes, has the report been filed with the domiciliary state? Yes () No ()
- 2.1 Has any change been made during the year of this statement in the charter, by-laws, articles of incorporation, or deed of settlement of the reporting entity? Yes () No (X)
- 2.2 If yes, date of change:
- 3.1 Is the reporting entity a member of an Insurance Holding Company System consisting of two or more affiliated persons, one or more of which is an insurer? Yes () No (X)
If yes, complete Schedule Y, Parts 1 and 1A.
- 3.2 Have there been any substantial changes in the organizational chart since the prior quarter end? Yes () No (X)
- 3.3 If the response to 3.2 is yes, provide a brief description of those changes.
.....
- 4.1 Has the reporting entity been a party to a merger or consolidation during the period covered by this statement? Yes () No (X)
- 4.2 If the response to 4.1 is yes, provide the name of entity, NAIC Company Code, and state of domicile (use two letter state abbreviation) for any entity that has ceased to exist as a result of the merger or consolidation.

1 Name of Entity	2 NAIC Company Code	3 State of Domicile
---------------------	------------------------	------------------------

- 5. If the reporting entity is subject to a management agreement, including third-party administrator(s), managing general agent(s), attorney-in-fact, or similar agreement, have there been any significant changes regarding the terms of the agreement or principals involved? Yes () No () N/A (X)
- 6.1 State as of what date the latest financial examination of the reporting entity was made or is being made. 12/31/2008
- 6.2 State the as of date that the latest financial examination report became available from either the state of domicile or the reporting entity. This date should be the date of the examined balance sheet and not the date the report was completed or released. 12/31/2008
- 6.3 State as of what date the latest financial examination report became available to other states or the public from either the state of domicile or the reporting entity. This is the release date or completion date of the examination report and not the date of the examination (balance sheet date). 06/12/2009
- 6.4 By what department or departments?
Ohio Department of Insurance
- 6.5 Have all financial statement adjustments within the latest financial examination report been accounted for in a subsequent financial statement filed with Departments? Yes (X) No () N/A ()
- 6.6 Have all of the recommendations within the latest financial examination report been complied with? Yes (X) No () N/A ()
- 7.1 Has this reporting entity had any Certificates of Authority, licenses or registrations (including corporate registration, if applicable) suspended or revoked by any governmental entity during the reporting period? Yes () No (X)
- 7.2 If yes, give full information
.....
- 8.1 Is the company a subsidiary of a bank holding company regulated by the Federal Reserve Board? Yes () No (X)
- 8.2 If response to 8.1 is yes, please identify the name of the bank holding company.
.....
- 8.3 Is the company affiliated with one or more banks, thrifts or securities firms? Yes () No (X)
- 8.4 If response to 8.3 is yes, please provide below the names and location (city and state of the main office) of any affiliates regulated by a federal regulatory services agency [i.e. the Federal Reserve Board (FRB), the Office of the Comptroller of the Currency (OCC), the Federal Deposit Insurance Corporation (FDIC) and the Securities Exchange Commission (SEC)] and identify the affiliate's primary federal regulator.

1 Affiliate Name	2 Location (City, State)	3 FRB	4 OCC	5 FDIC	6 SEC
---------------------	-----------------------------	----------	----------	-----------	----------

- 9.1 Are the senior officers (principal executive officer, principal financial officer, principal accounting officer or controller, or persons performing similar functions) of the reporting entity subject to a code of ethics, which includes the following standards? Yes (X) No ()
(a) Honest and ethical conduct, including the ethical handling of actual or apparent conflicts of interest between personal and professional relationships;
(b) Full, fair, accurate, timely and understandable disclosure in the periodic reports required to be filed by the reporting entity;
(c) Compliance with applicable governmental laws, rules and regulations;
(d) The prompt internal reporting of violations to an appropriate person or persons identified in the code; and
(e) Accountability for adherence to the code.
- 9.11 If the response to 9.1 is No, please explain:
.....
.....
- 9.2 Has the code of ethics for senior managers been amended? Yes () No (X)
- 9.21 If the response to 9.2 is Yes, provide information related to amendment(s).
.....
.....
- 9.3 Have any provisions of the code of ethics been waived for any of the specified officers? Yes () No (X)
- 9.31 If the response to 9.3 is Yes, provide the nature of any waiver(s).
.....
.....

GENERAL INTERROGATORIES

PART 1 - COMMON INTERROGATORIES

FINANCIAL

- 10.1 Does the reporting entity report any amounts due from parent, subsidiaries or affiliates on Page 2 of this statement? Yes (X) No ()
- 10.2 If yes, indicate the amounts receivable from parent included in the Page 2 amount: \$ 94,733

INVESTMENT

- 11.1 Were any of the stocks, bonds, or other assets of the reporting entity loaned, placed under option agreement, or otherwise made available for use by another person? (Exclude securities under securities lending agreements.) Yes () No (X)

11.2 If yes, give full and complete information relating thereto:

.....

12. Amount of real estate and mortgages held in other invested assets in Schedule BA: \$

13. Amount of real estate and mortgages held in short-term investments: \$

14.1 Does the reporting entity have any investments in parent, subsidiaries and affiliates? Yes () No (X)

14.2 If yes, please complete the following:

	1 Prior Year-End Book/ Adjusted Carrying Value	2 Current Quarter Book/ Adjusted Carrying Value
14.21 Bonds	\$	\$
14.22 Preferred Stock	\$	\$
14.23 Common Stock	\$	\$
14.24 Short-Term Investments	\$	\$
14.25 Mortgage Loans or Real Estate	\$	\$
14.26 All Other	\$	\$
14.27 Total Investment in Parent, Subsidiaries and Affiliates (Subtotal Line 14.21 to Line 14.26)	\$	\$
14.28 Total Investment in Parent included in Line 14.21 to Line 14.26 above	\$	\$

15.1 Has the reporting entity entered into any hedging transactions reported on Schedule DB? Yes () No (X)

15.2 If yes, has a comprehensive description of the hedging program been made available to the domiciliary state? Yes () No ()

If no, attach a description with this statement.

16. For the reporting entity's security lending program, state the amount of the following as of current statement date:

16.1 Total fair value of reinvested collateral assets reported on Schedule DL, Parts 1 and 2 \$

16.2 Total book adusted /carrying value of reinvested collateral assets reported on Schedule DL, Parts 1 and 2 \$

16.3 Total payable for securities lending reported on the liability page \$

17. Excluding items in Schedule E - Part 3 - Special Deposits, real estate, mortgage loans and investments held physically in the reporting entity's offices, vaults or safety deposit boxes, were all stocks, bonds and other securities, owned throughout the current year held pursuant to a custodial agreement with a qualified bank or trust company in accordance with Section 1, III - General Examination Considerations, F. Outsourcing of Critical Functions, Custodial or Safekeeping Agreements of the NAIC Financial Condition Examiners Handbook? Yes (X) No ()

17.1 For all agreements that comply with the requirements of the NAIC Financial Condition Examiners Handbook, complete the following:

1 Name of Custodian (s)	2 Custodian Address

17.2 For all agreements that do not comply with the requirements of the NAIC Financial Condition Examiners Handbook, provide the name, location and a complete explanation:

1 Name (s)	2 Location (s)	3 Complete Explanation (s)

17.3 Have there been any changes, including name changes, in the custodian(s) identified in 17.1 during the current quarter? Yes () No ()

17.4 If yes, give full and complete information relating thereto:

1 Old Custodian	2 New Custodian	3 Date of Change	4 Reason

17.5 Identify all investment advisors, broker/dealers or individuals acting on behalf of broker/dealers that have access to the investment accounts, handle securities and have authority to make investments on behalf of the reporting entity:

1 Central Registration Depository	2 Name(s)	3 Address

18.1 Have all the filing requirements of the Purposes and Procedures Manual of the NAIC Securities Valuation Office been followed? Yes (X) No ()

18.2 If no, list exceptions:

.....

GENERAL INTERROGATORIES

PART 2 - HEALTH INTERROGATORIES

1. Operating Percentages:
- 1.1 A&H loss percent 80.2 %
 - 1.2 A&H cost containment percent 0.6 %
 - 1.3 A&H expense percent excluding cost containment expenses 7.6 %
- 2.1 Do you act as a custodian for health savings accounts? Yes () No (X)
- 2.2 If yes, please provide the amount of custodial funds held as of the reporting date. \$.....
- 2.3 Do you act as an administrator for health savings accounts? Yes () No (X)
- 2.4 If yes, please provide the balance of the funds administered as of the reporting date. \$.....

Page 13

Schedule S - Ceded Reinsurance

NONE

SCHEDULE T - PREMIUMS AND OTHER CONSIDERATIONS

Current Year to Date - Allocated by States and Territories

States, Etc.	1		Direct Business Only Year to Date							
	Active Status		2 Accident and Health Premiums	3 Medicare Title XVIII	4 Medicaid Title XIX	5 Federal Employees Health Benefits Program Premiums	6 Life and Annuity Premiums and Other Considerations	7 Property/Casualty Premiums	8 Total Column 2 Through Column 7	9 Deposit-Type Contracts
1. Alabama	AL	N								
2. Alaska	AK	N								
3. Arizona	AZ	N								
4. Arkansas	AR	N								
5. California	CA	N								
6. Colorado	CO	N								
7. Connecticut	CT	N								
8. Delaware	DE	N								
9. District of Columbia	DC	N								
10. Florida	FL	N								
11. Georgia	GA	N								
12. Hawaii	HI	N								
13. Idaho	ID	N								
14. Illinois	IL	N								
15. Indiana	IN	N								
16. Iowa	IA	N								
17. Kansas	KS	N								
18. Kentucky	KY	N								
19. Louisiana	LA	N								
20. Maine	ME	N								
21. Maryland	MD	N								
22. Massachusetts	MA	N								
23. Michigan	MI	N								
24. Minnesota	MN	N								
25. Mississippi	MS	N								
26. Missouri	MO	N								
27. Montana	MT	N								
28. Nebraska	NE	N								
29. Nevada	NV	N								
30. New Hampshire	NH	N								
31. New Jersey	NJ	N								
32. New Mexico	NM	N								
33. New York	NY	N								
34. North Carolina	NC	N								
35. North Dakota	ND	N								
36. Ohio	OH	L		125,302,349				125,302,349		
37. Oklahoma	OK	N								
38. Oregon	OR	N								
39. Pennsylvania	PA	N								
40. Rhode Island	RI	N								
41. South Carolina	SC	N								
42. South Dakota	SD	N								
43. Tennessee	TN	N								
44. Texas	TX	N								
45. Utah	UT	N								
46. Vermont	VT	N								
47. Virginia	VA	N								
48. Washington	WA	N								
49. West Virginia	WV	N								
50. Wisconsin	WI	N								
51. Wyoming	WY	N								
52. American Samoa	AS	N								
53. Guam	GU	N								
54. Puerto Rico	PR	N								
55. U.S. Virgin Islands	VI	N								
56. Northern Mariana Islands	MP	N								
57. Canada	CAN	N								
58. Aggregate Other Alien	OT	X X X								
59. Subtotal		X X X		125,302,349				125,302,349		
60. Reporting entity contributions for Employee Benefit Plans		X X X								
61. Total (Direct Business)	(a)	1		125,302,349				125,302,349		
DETAILS OF WRITE-INS										
58001.										
58002.										
58003.										
58998.	Summary of remaining write-ins for Line 58 from overflow page									
58999.	Total (Line 58001 through Line 58003 plus Line 58998) (Line 58 above)									

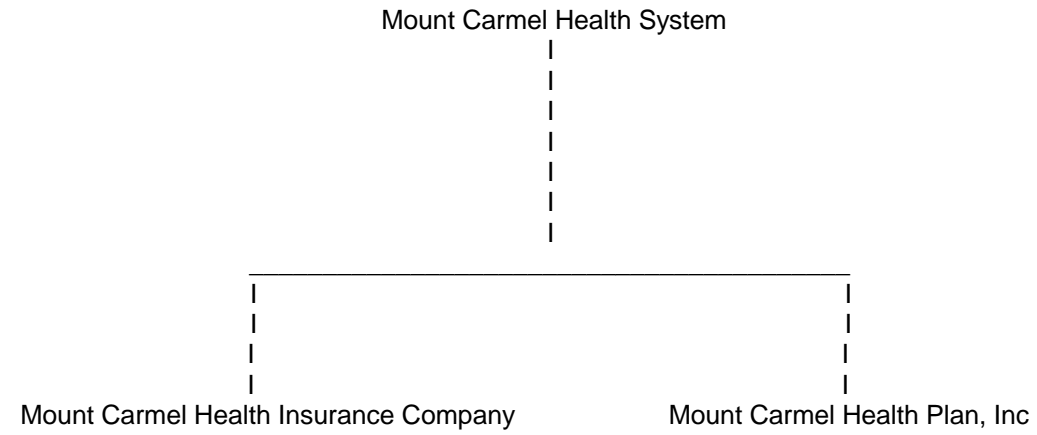
Active Status Codes (Column 1):

- (L) Licensed or Chartered - Licensed Insurance Carrier or Domiciled RRG
- (R) Registered - Non-domiciled RRGs
- (Q) Qualified - Qualified or Accredited Reinsurer
- (E) Eligible - Reporting Entities eligible or approved to write Surplus Lines in the state
- (N) None of the above - Not allowed to write business in the state

(a) Insert the number of "L" responses except for Canada and Other Alien.

**SCHEDULE Y - INFORMATION CONCERNING ACTIVITIES
OF INSURER MEMBERS OF A HOLDING COMPANY GROUP**

PART 1 - ORGANIZATIONAL CHART



SCHEDULE Y

PART 1A - DETAIL OF INSURANCE HOLDING COMPANY SYSTEM

1	2	3	4	5	6	7	8	9	10	11	12	13	14	15
Group Code	Group Name	NAIC Company Code	Federal ID Number	Federal RSSD	CIK	Name of Securities Exchange if Publicly Traded (U.S. or International)	Names of Parent, Subsidiaries or Affiliates	Domiciliary Location	Relationship to Reporting Entity	Directly Controlled by (Name of Entity/Person)	Type of Control (Ownership, Board, Management, Attorney-in-Fact, Influence, Other)	If Control is Ownership Provide Percentage	Ultimate Controlling Entity(ies) / Person(s)	*
2838	Mount Carmel Health Syste	13123	25-1912781				Mount Carmel Health Insurance Company			Mount Carmel Health System	Ownership	100.000		
2838	Mount Carmel Health Syste	95655	31-1471229				Mount Carmel Health Plan, Inc.			Mount Carmel Health System	Ownership	100.000		

Asterisk

Explanation

NONE

SUPPLEMENTAL EXHIBITS AND SCHEDULES INTERROGATORIES

The following supplemental reports are required to be filed as part of your statement filing. However, in the event that your company does not transact the type of business for which the special report must be filed, your response of NO to the specific interrogatory will be accepted in lieu of filing a "NONE" report and a bar code will be printed below. If the supplement is required of your company but is not being filed for whatever reason enter SEE EXPLANATIONS and provide an explanation following the interrogatory questions.

	RESPONSE
1. Will the Medicare Part D Coverage Supplement be filed with the state of domicile and the NAIC with this statement?	NO

EXPLANATIONS:

N/A

BAR CODE:

Document Identifier 365:



SCHEDULE A - VERIFICATION

Real Estate

	1 Year To Date	2 Prior Year Ended December 31
1. Book/adjusted carrying value, December		
2. Cost of acquired:		
2.1. Actual cost at time of acquisition		
2.2. Additional investment made after ac		
3. Current year change in encumbrances		
4. Total gain (loss) on disposals		
5. Deduct amounts received on disposals		
6. Total foreign exchange change in book/ac		
7. Deduct current year's other-than-temporal		
8. Deduct current year's depreciation		
9. Book/adjusted carrying value at end of current period (Line 1 plus Line 2 plus Line 3 plus Line 4 minus Line 5 plus Line 6 minus Line 7 minus Line 8)		
10. Deduct total nonadmitted amounts		
11. Statement value at end of current period (Line 9 minus Line 10)		

NONE

SCHEDULE B - VERIFICATION

Mortgage Loans

	1 Year To Date	2 Prior Year Ended December 31
1. Book value/recorded investment excluding		
2. Cost of acquired:		
2.1. Actual cost at time of acquisition		
2.2. Additional investment made after a		
3. Capitalized deferred interest and other		
4. Accrual of discount		
5. Unrealized valuation increase (decrease)		
6. Total gain (loss) on disposals		
7. Deduct amounts received on disposals		
8. Deduct amortization of premium and mort		
9. Total foreign exchange change in book value/recorded investment excluding accrued interest		
10. Deduct current year's other-than-temporary impairment recognized		
11. Book value/recorded investment excluding accrued interest at end of current period (Line 1 plus Line 2 plus Line 3 plus Line 4 plus Line 5 plus Line 6 minus Line 7 minus Line 8 plus Line 9 minus Line 10)		
12. Total Valuation Allowance		
13. Subtotal (Line 11 plus Line 12)		
14. Deduct total nonadmitted amounts		
15. Statement value at end of current period (Line 13 minus Line 14)		

NONE

SCHEDULE BA - VERIFICATION

Other Long-Term Invested Assets

	1 Year To Date	2 Prior Year Ended December 31
1. Book/adjusted carrying value, December		
2. Cost of acquired:		
2.1. Actual cost at time of acquisition		
2.2. Additional investment made after a		
3. Capitalized deferred interest and other		
4. Accrual of discount		
5. Unrealized valuation increase (decrease)		
6. Total gain (loss) on disposals		
7. Deduct amounts received on disposals		
8. Deduct amortization of premium and depreciation		
9. Total foreign exchange change in book/adjusted carrying value		
10. Deduct current year's other-than-temporary impairment recognized		
11. Book/adjusted carrying value at end of current period (Line 1 plus Line 2 plus Line 3 plus Line 4 plus Line 5 plus Line 6 minus Line 7 minus Line 8 plus Line 9 minus Line 10)		
12. Deduct total nonadmitted amounts		
13. Statement value at end of current period (Line 11 minus Line 12)		

NONE

SCHEDULE D - VERIFICATION

Bonds and Stocks

	1 Year To Date	2 Prior Year Ended December 31
1. Book/adjusted carrying value of bonds and stocks, December 31 of prior year	197,311,515	173,282,331
2. Cost of bonds and stocks acquired	13,843,985	132,947,542
3. Accrual of discount	22,623	88,449
4. Unrealized valuation increase (decrease)	458,904	4,481,688
5. Total gain (loss) on disposals	1,294,479	16,683,223
6. Deduct consideration for bonds and stocks disposed of	11,940,993	128,273,647
7. Deduct amortization of premium	99,753	387,297
8. Total foreign exchange change in book/adjusted carrying value		
9. Deduct current year's other-than-temporary impairment recognized	921,091	1,510,774
10. Book/adjusted carrying value at end of current period (Line 1 plus Line 2 plus Line 3 plus Line 4 plus Line 5 minus Line 6 minus Line 7 plus Line 8 minus Line 9)	199,969,669	197,311,515
11. Deduct total nonadmitted amounts		
12. Statement value at end of current period (Line 10 minus Line 11)	199,969,669	197,311,515

SCHEDULE D - PART 1B

Showing the Acquisitions, Dispositions and Non-Trading Activity
 During the Current Quarter for all Bonds and Preferred Stock by NAIC Designation

NAIC Designation	1 Book/Adjusted Carrying Value Beginning of Current Quarter	2 Acquisitions During Current Quarter	3 Dispositions During Current Quarter	4 Non-Trading Activity During Current Quarter	5 Book/Adjusted Carrying Value End of First Quarter	6 Book/Adjusted Carrying Value End of Second Quarter	7 Book/Adjusted Carrying Value End of Third Quarter	8 Book/Adjusted Carrying Value December 31 Prior Year
BONDS								
1. NAIC 1 (a)	218,008,906	224,844,720	213,520,184	(123,134)	229,210,308			218,008,906
2. NAIC 2 (a)	12,770,169	3,108,244		(13,008)	15,865,405			12,770,169
3. NAIC 3 (a)								
4. NAIC 4 (a)								
5. NAIC 5 (a)								
6. NAIC 6 (a)								
7. Total Bonds	230,779,075	227,952,964	213,520,184	(136,142)	245,075,713			230,779,075
PREFERRED STOCK								
8. NAIC 1								
9. NAIC 2								
10. NAIC 3								
11. NAIC 4								
12. NAIC 5								
13. NAIC 6								
14. Total Preferred Stock								
15. Total Bonds and Preferred Stock	230,779,075	227,952,964	213,520,184	(136,142)	245,075,713			230,779,075

(a) Book/Adjusted Carrying Value column for the end of the current reporting period includes the following amount of non-rated short-term and cash equivalent bonds by NAIC designation:
 NAIC 1 \$ 75,121,164 ; NAIC 2 \$; NAIC 3 \$; NAIC 4 \$; NAIC 5 \$; NAIC 6 \$

SCHEDULE DA - PART 1

Short-Term Investments

	1	2	3	4	5
	Book/Adjusted Carrying Value	Par Value	Actual Cost	Interest Collected Year To Date	Paid for Accrued Interest Year To Date
9199999	59,539,887	X X X	59,613,532	46,653	26

SCHEDULE DA - VERIFICATION

Short-Term Investments

	1	2
	Year To Date	Prior Year Ended December 31
1. Book / adjusted carrying value, December 31 of prior year	50,229,855	69,974,581
2. Cost of short-term investments acquired	30,142,474	148,101,582
3. Accrual of discount	2	1,358
4. Unrealized valuation increase (decrease)		
5. Total gain (loss) on disposals	(100)	158
6. Deduct consideration received on disposals	20,773,331	167,669,297
7. Deduct amortization of premium	59,014	178,527
8. Total foreign exchange change in book/adjusted carrying value		
9. Deduct current year's other-than-temporary impairment recognized		
10. Book/adjusted carrying value at end of current period (Line 1 + Line 2 + Line 3 + Line 4 + Line 5 - Line 6 - Line 7 + Line 8 - Line 9)	59,539,886	50,229,855
11. Deduct total nonadmitted amounts		
12. Statement value at end of current period (Line 10 minus Line 11)	59,539,886	50,229,855

SCHEDULE DB - PART A - VERIFICATION

Options, Caps, Floors, Collars, Swaps and Forwards

1. Book/Adjusted Carrying Value, December 31, prior year (Line 9, prior year)	
2. Cost Paid/ (Consideration Received) on additions	
3. Unrealized Valuation increase/ (decrease)	
4. Total gain (loss) on termination recognized	NONE
5. Considerations received/ (paid) on terminations	
6. Amortization	
7. Adjustment to the Book/Adjusted Carrying Value	
8. Total foreign exchange change in Book/Adjusted Carrying Value	
9. Book/Adjusted Carrying Value at End of Current Period (Line 1 plus Line 2 plus Line 3 plus Line 4 minus Line 5 plus Line 6 plus Line 7 plus Line 8)	
10. Deduct nonadmitted assets	
11. Statement value at end of current period (Line 9 minus Line 10)	

SCHEDULE DB - PART B - VERIFICATION

Futures Contracts

1. Book/Adjusted carrying value, December 31 of prior year (Line 6, prior year)	
2. Cumulative cash change (Section 1, Broker Name/Net Cash Deposits Footnote - Cumulative Cash Change column)	
3.1 Add:	
Change in variation margin on open contracts - Highly Effective Hedges	
3.11 Section 1, Column 15, current year to date minus	
3.12 Section 1, Column 15, prior year	
Change in variation margin on open contracts - All Other	
3.13 Section 1, Column 18, current year to date minus	
3.14 Section 1, Column 18, prior year	
3.2 Add:	NONE
Change in adjustment to basis of hedged item	
3.21 Section 1, Column 17, current year to date minus	
3.22 Section 1, Column 17, prior year	
Change in amount recognized	
3.23 Section 1, Column 19, current year to date minus	
3.24 Section 1, Column 19, prior year	
3.3 Subtotal (Line 3.1 minus Line 3.2)	
4.1 Cumulative variation margin on terminated contracts during the year	
4.2 Less:	
4.21 Amount used to adjust basis of hedged item	
4.22 Amount recognized	
4.3 Subtotal (Line 4.1 minus Line 4.2)	
5. Dispositions gains (losses) on contracts terminated in prior year:	
5.1 Total gain (loss) recognized for terminations in prior year	
5.2 Total gain (loss) adjusted into the hedged item(s) for terminations in prior year	
6. Book/Adjusted carrying value at end of current period (Line 1 plus Line 2 plus Line 3.3 minus Line 4.3 minus Line 5.1 minus Line 5.2)	
7. Deduct total nonadmitted amounts	
8. Statement value at end of current period (Line 6 minus Line 7)	

Page SI05

Schedule DB, Pt. C, Section 1, Replicated (Synthetic Assets) Open
NONE

Page SI06

Sch DB, Pt C, Sn 2, Replication (Syn Assets) Transactions Open
NONE

Page SI07

Schedule DB, Verification
NONE

SCHEDULE E - VERIFICATION

(Cash Equivalents)

	1	2
	Year To Date	Prior Year Ended December 31
1. Book/adjusted carrying value, December 31 of prior year	50,836,491	48,786,630
2. Cost of cash equivalents acquired	190,160,849	634,551,159
3. Accrual of discount		
4. Unrealized valuation increase (decrease)		
5. Total gain (loss) on disposals		
6. Deduct consideration received on disposals	186,142,900	632,501,298
7. Deduct amortization of premium		
8. Total foreign exchange change in book/adjusted carrying value		
9. Deduct current year's other-than-temporary impairment recognized		
10. Book/adjusted carrying value at end of current period (Line 1 + Line 2 + Line 3 + Line 4 + Line 5 - Line 6 - Line 7 + Line 8 - Line 9)	54,854,440	50,836,491
11. Deduct total nonadmitted amounts		
12. Statement value at end of current period (Line 10 minus Line 11)	54,854,440	50,836,491

Page E01

Sch. A, Pt. 2, Real Estate Acquired

NONE

Sch. A, Pt. 3, Real Estate Disposed

NONE

Page E02

Schedule B, Part 2, Mortgage Loans Acquired

NONE

Schedule B, Part 3, Mortgage Loans Disposed

NONE

Page E03

Sch. BA, Pt. 2, Other Long-Term Invested Assets Acquired

NONE

Sch. BA, Pt. 3, Other Long-Term Invested Assets Disposed

NONE

STATEMENT AS OF MARCH 31, 2014 OF THE Mount Carmel Health Plan, Inc

SCHEDULE D - PART 3

Show All Long-Term Bonds and Stock Acquired by the Company During the Current Quarter

1	2	3	4	5	6	7	8	9	10
CUSIP Identification	Description	Foreign	Date Acquired	Name of Vendor	Number of Shares of Stock	Actual Cost	Par Value	Paid for Accrued Interest and Dividends	NAIC Designation or Market Indicator (a)
Bonds - U. S. Governments									
912828-TP-5	UNITED STATES TREASURY NOTE		02/28/2014	Toronto Dominion Sec (USA)		200,125	200,000.00	233	1
0599999	Subtotal - Bonds - U. S. Governments					200,125	200,000.00	233	
Bonds - U. S. Special Revenue and Special Assessment and all Non-Guaranteed Obligations of Agencies and Authorities of Governments and Their Political Subdivisions									
3136FT-P3-7	FEDERAL NATL MTG ASSN		03/05/2014	PNC Institutional Investm		300,980	298,000.00	111	1
3199999	Subtotal - Bonds - U. S. Special Revenue and Special Assessment and all Non-Guaranteed Obligations of Agencies and Authorities of Governments and Their Political Subdivisions					300,980	298,000.00	111	
Bonds - Industrial and Miscellaneous (Unaffiliated)									
03524B-AE-6	ANHEUSER-BUSCH INBEV S. A.		03/20/2014	Morgan Stanley		402,880	400,000.00	2,384	1FE
31679J-AA-1	FIFTH THIRD AUTO TR 2014-1		02/12/2014	Credit Suisse First Bosto		500,000	500,000.00		1FE
40414L-AK-5	HCP INC		02/12/2014	Wells Fargo Secs LLC		572,338	575,000.00		2FE
44890R-AA-9	HYUNDAI AUTO RECV TR 2014-A		01/28/2014	CitiGroup Global Markets		150,000	150,000.00		1FE
494550-BT-2	KINDER MORGAN ENERGY PARTNERS		02/19/2014	Greenwich Capital Markets		994,940	1,000,000.00		2FE
609207-AA-3	MONDELEZ INTL INC		01/09/2014	Barclays Capital Le		995,410	1,000,000.00		2FE
92553P-AX-0	VIACOM INC NEW		03/04/2014	Deutsche Bank Securities,		545,556	550,000.00		2FE
92867Q-AA-9	VOLKSWAGEN AUTO LSE TR 2014-A		02/04/2014	Bank/America Sec Llc Mont		300,000	300,000.00		1FE
983919-AH-4	XILINX INC		03/05/2014	Chase Securities		1,439,575	1,450,000.00		1FE
20271R-AE-0	COMMONWEALTH BK AUSTRALIA	R	03/05/2014	Deutsche Bank Securities,		1,247,838	1,250,000.00		1FE
3899999	Subtotal - Bonds - Industrial and Miscellaneous (Unaffiliated)					7,148,536	7,175,000.00	2,384	
8399997	Subtotal - Bonds - Part 3					7,649,641	7,673,000.00	2,729	
8399999	Subtotal - Bonds					7,649,641	7,673,000.00	2,729	
Common Stocks - Industrial and Miscellaneous (Unaffiliated)									
88579Y-10-1	3M COMPANY		02/06/2014	J.P. Morgan Securities	22.000	2,836			L
002824-10-0	ABBOTT LABORATORIES		02/06/2014	J.P. Morgan Securities	53.000	1,943			L
00287Y-10-9	ABBVIE INC COM		02/06/2014	J.P. Morgan Securities	54.000	2,589			U
00724F-10-1	ADOBE SYS INC		02/06/2014	J.P. Morgan Securities	16.000	982			L
00130H-10-5	AES CORP		02/06/2014	J.P. Morgan Securities	21.000	293			L
00817Y-10-8	AETNA INC NEW		02/06/2014	J.P. Morgan Securities	13.000	883			L
001055-10-2	AFLAC INC		02/06/2014	J.P. Morgan Securities	16.000	988			L
00846U-10-1	AGILENT TECHNOLOGIES INC		02/06/2014	J.P. Morgan Securities	11.000	641			L
001204-10-6	AGL RES INC		02/06/2014	J.P. Morgan Securities	4.000	185			L
009158-10-6	AIR PRODS & CHEMS INC		02/06/2014	J.P. Morgan Securities	7.000	751			L
009363-10-2	AIRGAS INC		02/06/2014	J.P. Morgan Securities	2.000	205			L
00971T-10-1	AKAMAI TECHNOLOGIES		02/06/2014	J.P. Morgan Securities	6.000	343			L
013817-10-1	ALCOA INC		02/06/2014	J.P. Morgan Securities	36.000	398			L
015351-10-9	ALEXION PHARMACEUTICALS INC		02/06/2014	J.P. Morgan Securities	7.000	1,102			L
01741R-10-2	ALLEGHENY TECHNOLOGIES INC		02/06/2014	J.P. Morgan Securities	4.000	123			L
018490-10-2	ALLERGAN INC		02/06/2014	J.P. Morgan Securities	10.000	1,174			L
018581-10-8	ALLIANCE DATA SYSTEM CORP COM		02/06/2014	J.P. Morgan Securities	2.000	517			L
020002-10-1	ALLSTATE CORP		02/06/2014	J.P. Morgan Securities	16.000	838			L
021441-10-0	ALTERA CORP		02/06/2014	J.P. Morgan Securities	11.000	364			L
02209S-10-3	ALTRIA GROUP INC		02/06/2014	J.P. Morgan Securities	68.000	2,361			L
023135-10-6	AMAZON COM INC		03/21/2014	J.P. Morgan Securities	57.000	20,484			L
023608-10-2	AMEREN CORP		02/06/2014	J.P. Morgan Securities	8.000	297			L
025537-10-1	AMERICAN ELEC PWR INC		02/06/2014	J.P. Morgan Securities	17.000	809			L
025816-10-9	AMERICAN EXPRESS CO		02/06/2014	J.P. Morgan Securities	31.000	2,657			L

(continues)

(a) For all common stock bearing the NAIC market indicator "U" provide: the number of such issues 12 .

STATEMENT AS OF MARCH 31, 2014 OF THE Mount Carmel Health Plan, Inc

SCHEDULE D - PART 3

Show All Long-Term Bonds and Stock Acquired by the Company During the Current Quarter

1	2	3	4	5	6	7	8	9	10
CUSIP Identification	Description	Foreign	Date Acquired	Name of Vendor	Number of Shares of Stock	Actual Cost	Par Value	Paid for Accrued Interest and Dividends	NAIC Designation or Market Indicator (a)
Common Stocks - Industrial and Miscellaneous (Unaffiliated) (continued)									
026874-78-4	AMERICAN INTL GROUP INC		02/06/2014	J.P. Morgan Securities	50.000	2,387			L
03027X-10-0	AMERICAN TOWER CORP NEW		02/06/2014	J.P. Morgan Securities	13.000	1,037			L
03076C-10-6	AMERIPRISE FINANCIAL INC		02/06/2014	J.P. Morgan Securities	7.000	740			L
03073E-10-5	AMERISOURCEBERGEN CORP		02/06/2014	J.P. Morgan Securities	8.000	524			L
031100-10-0	AMETEK INC		02/06/2014	J.P. Morgan Securities	8.000	390			L
031162-10-0	AMGEN INC		02/06/2014	J.P. Morgan Securities	25.000	2,902			L
032095-10-1	AMPHENOL CORP CL A		02/06/2014	J.P. Morgan Securities	5.000	434			L
032511-10-7	ANADARKO PETROLEUM CORP		02/06/2014	J.P. Morgan Securities	17.000	1,341			L
032654-10-5	ANALOG DEVICES INC		02/06/2014	J.P. Morgan Securities	11.000	532			L
035255-10-8	ANIKA THERAPEUTICS INC		01/07/2014	Deutsche Morg Grenfell	5,041.000	177,284			L
037411-10-5	APACHE CORP		02/06/2014	J.P. Morgan Securities	14.000	1,119			L
03748R-10-1	APARTMENT INVT & MGMT CO		02/06/2014	J.P. Morgan Securities	5.000	144			L
037833-10-0	APPLE INC		03/21/2014	J.P. Morgan Securities	79.000	41,487			L
038222-10-5	APPLIED MATLS INC		02/06/2014	J.P. Morgan Securities	41.000	699			L
038465-10-0	ARABIAN AMERN DEV CO		02/21/2014	OPPENHEIMER & CO. INC	9,765.000	119,770			L
039483-10-2	ARCHER DANIELS MIDLAND CO		02/06/2014	J.P. Morgan Securities	22.000	861			L
04621X-10-8	ASSURANT INC		02/06/2014	J.P. Morgan Securities	3.000	192			L
046433-10-8	ASTRONICS CORP		01/24/2014	Morgan Stanley	2,925.000	173,972			L
00206R-10-2	AT&T INC		02/06/2014	J.P. Morgan Securities	178.000	5,698			L
052769-10-6	AUTODESK INC		02/06/2014	J.P. Morgan Securities	8.000	408			L
053015-10-3	AUTOMATIC DATA PROCESSING INC		02/06/2014	J.P. Morgan Securities	16.000	1,187			L
05329W-10-2	AUTONATION INC		02/06/2014	J.P. Morgan Securities	2.000	101			L
053332-10-2	AUTOZONE INC		02/06/2014	J.P. Morgan Securities	1.000	517			L
053484-10-1	AVALONBAY CMNTYS INC		02/06/2014	J.P. Morgan Securities	4.000	508			L
053611-10-9	AVERY DENNISON CORP		02/06/2014	J.P. Morgan Securities	3.000	143			L
054303-10-2	AVON PRODS INC		02/06/2014	J.P. Morgan Securities	15.000	218			L
057224-10-7	BAKER HUGHES INC		02/06/2014	J.P. Morgan Securities	15.000	873			L
058498-10-6	BALL CORP		02/06/2014	J.P. Morgan Securities	5.000	260			L
064058-10-0	BANK NEW YORK MELLON CORP		02/06/2014	J.P. Morgan Securities	39.000	1,228			L
060505-10-4	BANK OF AMERICA CORP		02/06/2014	J.P. Morgan Securities	357.000	5,962			L
067383-10-9	BARD C R INC		02/06/2014	J.P. Morgan Securities	3.000	385			L
071813-10-9	BAXTER INTERNATIONAL INC		02/06/2014	J.P. Morgan Securities	18.000	1,208			L
054937-10-7	BB&T CORP		02/06/2014	J.P. Morgan Securities	24.000	890			L
073730-10-3	BEAM INC		02/06/2014	J.P. Morgan Securities	5.000	416			L
075887-10-9	BECTON DICKISON & CO		02/06/2014	J.P. Morgan Securities	7.000	750			L
075896-10-0	BED BATH & BEYOND INC		02/06/2014	J.P. Morgan Securities	7.000	448			L
081437-10-5	BEMIS INC		02/06/2014	J.P. Morgan Securities	4.000	151			L
084670-70-2	BERKSHIRE HATHAWAY INC DEL		03/21/2014	J.P. Morgan Securities	92.000	10,602			L
086516-10-1	BEST BUY INC		02/06/2014	J.P. Morgan Securities	9.000	213			L
09062X-10-3	BIOGEN IDEC INC		02/06/2014	J.P. Morgan Securities	8.000	2,408			L
09247X-10-1	BLACKROCK INC		02/06/2014	J.P. Morgan Securities	4.000	1,180			L
093671-10-5	BLOCK H & R INC		02/06/2014	J.P. Morgan Securities	9.000	264			L
097023-10-5	BOEING CO		02/06/2014	J.P. Morgan Securities	23.000	2,822			L
099724-10-6	BORGWARNER INC COM		02/06/2014	J.P. Morgan Securities	8.000	428			L
101121-10-1	BOSTON PROPERTIES INC		02/06/2014	J.P. Morgan Securities	5.000	543			L
101137-10-7	BOSTON SCIENTIFIC CORP		02/06/2014	J.P. Morgan Securities	46.000	591			L
110122-10-8	BRISTOL MYERS SQUIBB CO		03/21/2014	J.P. Morgan Securities	151.000	7,690			L
111320-10-7	BROADCOM CORP CL A		02/06/2014	J.P. Morgan Securities	19.000	559			L
11133T-10-3	BROADRIDGE FINL SOLUTIONS INC		01/07/2014	Deutsche Morg Grenfell	6,002.000	235,151			L
115637-20-9	BROWN FORMAN CORP		02/06/2014	J.P. Morgan Securities	6.000	463			L
12541W-20-9	C H ROBINSON WORLDWIDE INC		02/06/2014	J.P. Morgan Securities	5.000	262			L

(continues)

STATEMENT AS OF MARCH 31, 2014 OF THE Mount Carmel Health Plan, Inc

SCHEDULE D - PART 3

Show All Long-Term Bonds and Stock Acquired by the Company During the Current Quarter

1	2	3	4	5	6	7	8	9	10
CUSIP Identification	Description	Foreign	Date Acquired	Name of Vendor	Number of Shares of Stock	Actual Cost	Par Value	Paid for Accrued Interest and Dividends	NAIC Designation or Market Indicator (a)
Common Stocks - Industrial and Miscellaneous (Unaffiliated) (continued)									
12673P-10-5	CA INC		02/06/2014	J.P. Morgan Securities	11.000	348			L
12686C-10-9	CABLEVISION SYSTEMS CORP NY GROUP		02/06/2014	J.P. Morgan Securities	7.000	114			L
127097-10-3	CABOT OIL & GAS CORP		02/06/2014	J.P. Morgan Securities	14.000	564			L
13342B-10-5	CAMERON INTERNATIONAL CORP		02/06/2014	J.P. Morgan Securities	8.000	476			L
134429-10-9	CAMPBELL SOUP CO		02/06/2014	J.P. Morgan Securities	6.000	240			L
14040H-10-5	CAPITAL ONE FINL CORP		02/06/2014	J.P. Morgan Securities	20.000	1,399			L
14149Y-10-8	CARDINAL HEALTH INC		02/06/2014	J.P. Morgan Securities	12.000	795			L
14170T-10-1	CAREFUSION CORP		02/06/2014	J.P. Morgan Securities	7.000	272			L
143130-10-2	CARMAX INC		02/06/2014	J.P. Morgan Securities	8.000	377			L
143436-40-0	CARMIKE CINEMAS INC		02/21/2014	OPPENHEIMER & CO. INC	4,085.000	119,720			L
149123-10-1	CATERPILLAR INC		02/06/2014	J.P. Morgan Securities	22.000	2,064			L
12503M-10-8	CBOE HLDGS INC		01/07/2014	Deutsche Morg Grenfell	1,143.000	57,999			L
12504L-10-9	CBRE GROUP INC		02/06/2014	J.P. Morgan Securities	9.000	233			L
124857-20-2	CBS CORP		02/06/2014	J.P. Morgan Securities	19.000	1,146			L
151020-10-4	CELGENE CORP		02/06/2014	J.P. Morgan Securities	14.000	2,099			L
15189T-10-7	CENTERPOINT ENERGY INC		02/06/2014	J.P. Morgan Securities	15.000	348			L
156700-10-6	CENTURYTEL INC		02/06/2014	J.P. Morgan Securities	20.000	566			L
156782-10-4	CERNER CORP		02/06/2014	J.P. Morgan Securities	10.000	536			L
125269-10-0	CF INDUSTRIES HOLDINGS INC		02/06/2014	J.P. Morgan Securities	2.000	460			L
165167-10-7	CHESAPEAKE ENERGY CORP		02/06/2014	J.P. Morgan Securities	17.000	415			L
166764-10-0	CHEVRON CORP		03/21/2014	J.P. Morgan Securities	119.000	13,482			L
169656-10-5	CHIPOTLE MEXICAN GRILL INC		02/06/2014	J.P. Morgan Securities	1.000	544			L
171232-10-1	CHUBB CORP		02/06/2014	J.P. Morgan Securities	9.000	756			L
171484-10-8	CHURCHILL DOWNS INC COM		01/24/2014	Morgan Stanley	1,920.000	177,508			L
125509-10-9	CIGNA CORPORATION		02/06/2014	J.P. Morgan Securities	10.000	854			L
172062-10-1	CINCINNATI FINL CORP		02/06/2014	J.P. Morgan Securities	5.000	226			L
172908-10-5	CINTAS CORP		02/06/2014	J.P. Morgan Securities	3.000	169			L
17275R-10-2	CISCO SYSTEMS INC		02/06/2014	J.P. Morgan Securities	181.000	4,073			L
172967-42-4	CITIGROUP INC		02/06/2014	J.P. Morgan Securities	102.000	4,923			L
177376-10-0	CITRIX SYS INC		02/06/2014	J.P. Morgan Securities	6.000	325			L
18683K-10-1	CLIFFS NATURAL RESOURCES INC		02/06/2014	J.P. Morgan Securities	5.000	104			L
189054-10-9	CLOROX CO DEL		02/06/2014	J.P. Morgan Securities	4.000	340			L
12572Q-10-5	CME GROUP INC		02/06/2014	J.P. Morgan Securities	11.000	836			L
125896-10-0	CMS ENERGY CORP		02/06/2014	J.P. Morgan Securities	9.000	243			L
189754-10-4	COACH INC		02/06/2014	J.P. Morgan Securities	10.000	464			L
19122T-10-9	COCA COLA ENTERPRISE INC NEW		02/06/2014	J.P. Morgan Securities	8.000	354			L
191216-10-0	COCA-COLA CO		02/06/2014	J.P. Morgan Securities	129.000	4,907			L
192446-10-2	COGNIZANT TECHNOLOGY SOLUTIONS		02/06/2014	J.P. Morgan Securities	10.000	955			L
194162-10-3	COLGATE-PALMOLIVE CO		02/06/2014	J.P. Morgan Securities	30.000	1,818			L
20030N-10-1	COMCAST CORP NEW CL A		03/21/2014	J.P. Morgan Securities	209.000	10,811			L
200340-10-7	COMERICA INC		02/06/2014	J.P. Morgan Securities	6.000	275			L
205363-10-4	COMPUTER SCIENCES CORP		02/06/2014	J.P. Morgan Securities	5.000	292			L
205887-10-2	CONAGRA FOODS INC		02/06/2014	J.P. Morgan Securities	14.000	430			L
20825C-10-4	CONOCOPHILLIPS		02/06/2014	J.P. Morgan Securities	41.000	2,637			L
20854P-10-9	CONSOL ENERGY INC		02/06/2014	J.P. Morgan Securities	8.000	297			L
209115-10-4	CONSOLIDATED EDISON INC		02/06/2014	J.P. Morgan Securities	10.000	538			L
21036P-10-8	CONSTELLATION BRANDS INC CL A		02/06/2014	J.P. Morgan Securities	6.000	466			L
219350-10-5	CORNING INC		02/06/2014	J.P. Morgan Securities	50.000	905			L
22160K-10-5	COSTCO WHSL CORP NEW		02/06/2014	J.P. Morgan Securities	15.000	1,714			L
228227-10-4	CROWN CASTLE INTL CORP		02/06/2014	J.P. Morgan Securities	11.000	776			L
126408-10-3	CSX CORP		02/06/2014	J.P. Morgan Securities	35.000	946			L

(continues)

STATEMENT AS OF MARCH 31, 2014 OF THE Mount Carmel Health Plan, Inc

SCHEDULE D - PART 3

Show All Long-Term Bonds and Stock Acquired by the Company During the Current Quarter

1	2	3	4	5	6	7	8	9	10
CUSIP Identification	Description	Foreign	Date Acquired	Name of Vendor	Number of Shares of Stock	Actual Cost	Par Value	Paid for Accrued Interest and Dividends	NAIC Designation or Market Indicator (a)
Common Stocks - Industrial and Miscellaneous (Unaffiliated) (continued)									
231021-10-6	CUMMINS INC		02/06/2014	J.P. Morgan Securities	6.000	785			L
231561-10-1	CURTISS WRIGHT CORP		02/07/2014	Citation Group	709.000	42,018			L
126650-10-0	CVS CAREMARK CORP		02/06/2014	J.P. Morgan Securities	40.000	2,645			L
23251P-10-2	CYBERONICS INC COM		02/07/2014	Citation Group	1,376.000	92,542			L
232820-10-0	CYTEC INDS INC		02/07/2014	Citation Group	531.000	48,115			L
23331A-10-9	D R HORTON INC COM		02/06/2014	J.P. Morgan Securities	10.000	236			L
235851-10-2	DANAHER CORP DEL COM		02/06/2014	J.P. Morgan Securities	20.000	1,474			L
237194-10-5	DARDEN RESTAURANTS INC		02/06/2014	J.P. Morgan Securities	4.000	191			L
23918K-10-8	DAVITA HEALTHCARE PARTNERS INC		02/06/2014	J.P. Morgan Securities	6.000	383			L
244199-10-5	DEERE & CO		02/06/2014	J.P. Morgan Securities	13.000	1,111			L
247361-70-2	DELTA AIR LINES INC DEL		02/06/2014	J.P. Morgan Securities	29.000	896			L
247916-20-8	DENBURY RES INC		02/06/2014	J.P. Morgan Securities	13.000	208			L
249030-10-7	DENTSPLY INTERNATIONAL INC		02/06/2014	J.P. Morgan Securities	5.000	227			L
25179M-10-3	DEVON ENERGY CORP NEW		02/06/2014	J.P. Morgan Securities	13.000	786			L
25271C-10-2	DIAMOND OFFSHORE DRILLING INC		02/06/2014	J.P. Morgan Securities	2.000	95			L
25490A-30-9	DIRECTV		02/06/2014	J.P. Morgan Securities	17.000	1,193			L
254709-10-8	DISCOVER FINANCIAL SERVICES		02/06/2014	J.P. Morgan Securities	16.000	864			L
25470F-10-4	DISCOVERY COMMUNICATNS NEW		02/06/2014	J.P. Morgan Securities	8.000	656			L
254687-10-6	DISNEY WALT CO		02/06/2014	J.P. Morgan Securities	56.000	4,232			L
256677-10-5	DOLLAR GEN CORP NEW		02/06/2014	J.P. Morgan Securities	10.000	573			L
256746-10-8	DOLLAR TREE INC		02/06/2014	J.P. Morgan Securities	7.000	356			L
25746U-10-9	DOMINION RES INC VA NEW		02/06/2014	J.P. Morgan Securities	20.000	1,319			L
260003-10-8	DOVER CORP		02/06/2014	J.P. Morgan Securities	6.000	496			L
260543-10-3	DOW CHEM CO		02/06/2014	J.P. Morgan Securities	41.000	1,870			L
26138E-10-9	DR PEPPER SNAPPLE GROUP INC		02/06/2014	J.P. Morgan Securities	7.000	335			L
233331-10-7	DTE ENERGY CO		02/06/2014	J.P. Morgan Securities	6.000	406			L
263534-10-9	DU PONT E I DE NEMOURS & CO		02/06/2014	J.P. Morgan Securities	31.000	1,952			L
26441C-20-4	DUKE ENERGY CORP NEW		03/21/2014	J.P. Morgan Securities	97.000	6,724			L
26483E-10-0	DUN & BRADSTREET CORP DEL NEW		02/06/2014	J.P. Morgan Securities	1.000	97			L
269246-40-1	E TRADE FINANCIAL CORP		02/06/2014	J.P. Morgan Securities	10.000	198			L
277432-10-0	EASTMAN CHEMICAL CO		02/06/2014	J.P. Morgan Securities	5.000	391			L
278642-10-3	EBAY INC		02/06/2014	J.P. Morgan Securities	39.000	2,121			L
278865-10-0	ECOLAB INC		02/06/2014	J.P. Morgan Securities	9.000	899			L
281020-10-7	EDISON INTL COM		02/06/2014	J.P. Morgan Securities	11.000	535			L
28176E-10-8	EDWARDS LIFESCIENCES CORP		02/06/2014	J.P. Morgan Securities	4.000	266			L
285512-10-9	ELECTRONIC ARTS INC		02/06/2014	J.P. Morgan Securities	10.000	265			L
286082-10-2	ELECTRONICS FOR IMAGING INC		01/07/2014	Deutsche Morg Grenfell	4,681.000	179,250			L
532457-10-8	ELI LILLY & CO		02/06/2014	J.P. Morgan Securities	34.000	1,793			L
268648-10-2	EMC CORP		02/06/2014	J.P. Morgan Securities	70.000	1,692			L
291011-10-4	EMERSON ELECTRIC CO		02/06/2014	J.P. Morgan Securities	24.000	1,535			L
292562-10-5	ENCORE WIRE CORP		02/07/2014	Citation Group	2,130.000	103,416			L
29364G-10-3	ENTERGY CORP NEW		02/06/2014	J.P. Morgan Securities	6.000	383			L
26875P-10-1	EOG RESOURCES INC		02/06/2014	J.P. Morgan Securities	9.000	1,559			L
26884L-10-9	EQT CORP		02/06/2014	J.P. Morgan Securities	5.000	471			L
294429-10-5	EQUIFAX INC COM		02/06/2014	J.P. Morgan Securities	4.000	281			L
29476L-10-7	EQUITY RESIDENTIAL		02/06/2014	J.P. Morgan Securities	11.000	621			L
518439-10-4	ESTEE LAUDER COMPANIES CL A		02/06/2014	J.P. Morgan Securities	9.000	601			L
30161N-10-1	EXELON CORP		02/06/2014	J.P. Morgan Securities	29.000	856			L
30212P-30-3	EXPEDIA INC DEL NEW CLASS		02/06/2014	J.P. Morgan Securities	4.000	261			L
302130-10-9	EXPEDITORS INTL WASH INC		02/06/2014	J.P. Morgan Securities	7.000	281			L
30219G-10-8	EXPRESS SCRIPTS HLDG CO		02/06/2014	J.P. Morgan Securities	28.000	2,072			L

(continues)

STATEMENT AS OF MARCH 31, 2014 OF THE Mount Carmel Health Plan, Inc

SCHEDULE D - PART 3

Show All Long-Term Bonds and Stock Acquired by the Company During the Current Quarter

1	2	3	4	5	6	7	8	9	10
CUSIP Identification	Description	Foreign	Date Acquired	Name of Vendor	Number of Shares of Stock	Actual Cost	Par Value	Paid for Accrued Interest and Dividends	NAIC Designation or Market Indicator (a)
Common Stocks - Industrial and Miscellaneous (Unaffiliated) (continued)									
30231G-10-2	EXXON MOBIL CORP		03/21/2014	J.P. Morgan Securities	308.000	28,397			L
302491-30-3	F M C CORP		02/06/2014	J.P. Morgan Securities	5.000	358			L
315616-10-2	F5 NETWORKS INC		02/06/2014	J.P. Morgan Securities	3.000	318			L
30303M-10-2	FACEBOOK INC		03/21/2014	J.P. Morgan Securities	425.000	28,307			U
307000-10-9	FAMILY DOLLAR STORES INC		02/06/2014	J.P. Morgan Securities	3.000	187			L
311900-10-4	FASTENAL CO		02/06/2014	J.P. Morgan Securities	9.000	399			L
31428X-10-6	FEDEX CORPORATION		02/06/2014	J.P. Morgan Securities	10.000	1,309			L
31620M-10-6	FIDELITY NATL INFORMATION SVCS		02/06/2014	J.P. Morgan Securities	10.000	525			L
316773-10-0	FIFTH THIRD BANCORP		02/06/2014	J.P. Morgan Securities	30.000	633			L
336433-10-7	FIRST SOLAR INC		02/06/2014	J.P. Morgan Securities	2.000	96			U
337932-10-7	FIRSTENERGY CORP		02/06/2014	J.P. Morgan Securities	14.000	427			L
337738-10-8	FISERV INC		02/06/2014	J.P. Morgan Securities	9.000	494			L
302445-10-1	FLIR SYS INC		02/06/2014	J.P. Morgan Securities	5.000	161			L
34354P-10-5	FLOWERVE CORP		02/06/2014	J.P. Morgan Securities	5.000	360			L
343412-10-2	FLUOR CORP NEW		02/06/2014	J.P. Morgan Securities	6.000	456			L
30249U-10-1	FMC TECHNOLOGIES INC		02/06/2014	J.P. Morgan Securities	8.000	400			L
345370-86-0	FORD MOTOR CO		02/06/2014	J.P. Morgan Securities	133.000	1,976			L
345838-10-6	FOREST LABS INC		02/06/2014	J.P. Morgan Securities	8.000	530			L
34988V-10-6	FOSSIL GROUP INC		02/06/2014	J.P. Morgan Securities	2.000	230			L
354613-10-1	FRANKLIN RESOURCES INC		02/06/2014	J.P. Morgan Securities	14.000	717			L
35671D-85-7	FREEPORT-MCMORAN COPPER & GOLD INC		02/06/2014	J.P. Morgan Securities	35.000	1,104			L
35906A-10-8	FRONTIER COMMUNICATIONS CORP		02/06/2014	J.P. Morgan Securities	34.000	155			L
361438-10-4	GAMCO INVESTORS INC		03/07/2014	J.P. Morgan Securities	3,026.000	258,213			L
36467W-10-9	GAMESTOP CORP NEW		02/06/2014	J.P. Morgan Securities	4.000	141			L
364730-10-1	GANNETT INC		02/06/2014	J.P. Morgan Securities	8.000	221			L
364760-10-8	GAP INC		02/06/2014	J.P. Morgan Securities	9.000	357			L
369550-10-8	GENERAL DYNAMICS CORP		02/06/2014	J.P. Morgan Securities	11.000	1,114			L
369604-10-3	GENERAL ELECTRIC CO		02/06/2014	J.P. Morgan Securities	345.000	8,611			L
370023-10-3	GENERAL GROWTH PPTYS INC NEW		02/06/2014	J.P. Morgan Securities	19.000	386			L
370334-10-4	GENERAL MILLS INC		02/06/2014	J.P. Morgan Securities	22.000	1,049			L
37045V-10-0	GENERAL MTRS CO		02/21/2014	J.P. Morgan Securities	438.000	16,019			L
372460-10-5	GENUINE PARTS CO		02/06/2014	J.P. Morgan Securities	5.000	403			L
37247D-10-6	GENWORTH FINL INC		02/06/2014	J.P. Morgan Securities	17.000	258			L
375558-10-3	GILEAD SCIENCES INC		03/21/2014	J.P. Morgan Securities	127.000	9,385			L
38141G-10-4	GOLDMAN SACHS GROUP INC		02/06/2014	J.P. Morgan Securities	14.000	2,265			L
382550-10-1	GOODYEAR TIRE & RUBBER CO		02/06/2014	J.P. Morgan Securities	8.000	186			L
38259P-50-8	GOOGLE INC		03/21/2014	J.P. Morgan Securities	20.000	23,453			L
384802-10-4	GRAINGER W W INC		02/06/2014	J.P. Morgan Securities	2.000	468			L
406216-10-1	HALLIBURTON CO		02/06/2014	J.P. Morgan Securities	29.000	1,472			L
412822-10-8	HARLEY DAVIDSON INC		02/06/2014	J.P. Morgan Securities	8.000	516			L
413086-10-9	HARMAN INTL INDS INC		02/06/2014	J.P. Morgan Securities	2.000	206			L
413875-10-5	HARRIS CORP DEL		02/06/2014	J.P. Morgan Securities	4.000	276			L
416515-10-4	HARTFORD FINL SVCS GROUP INC		02/06/2014	J.P. Morgan Securities	15.000	510			L
418056-10-7	HASBRO INC		02/06/2014	J.P. Morgan Securities	4.000	199			L
40414L-10-9	HCP INC COM		02/06/2014	J.P. Morgan Securities	15.000	572			L
42217K-10-6	HEALTH CARE REIT INC		02/06/2014	J.P. Morgan Securities	10.000	563			L
423452-10-1	HELMERICH & PAYNE INC COM		02/06/2014	J.P. Morgan Securities	4.000	348			L
427866-10-8	HERSHEY COMPANY		02/06/2014	J.P. Morgan Securities	5.000	503			L
42809H-10-7	HESS CORP		02/06/2014	J.P. Morgan Securities	10.000	763			L
428236-10-3	HEWLETT PACKARD CO		02/06/2014	J.P. Morgan Securities	65.000	1,853			L
437076-10-2	HOME DEPOT INC		02/06/2014	J.P. Morgan Securities	48.000	3,656			L

(continues)

E04.4

STATEMENT AS OF MARCH 31, 2014 OF THE Mount Carmel Health Plan, Inc

SCHEDULE D - PART 3

Show All Long-Term Bonds and Stock Acquired by the Company During the Current Quarter

1	2	3	4	5	6	7	8	9	10
CUSIP Identification	Description	Foreign	Date Acquired	Name of Vendor	Number of Shares of Stock	Actual Cost	Par Value	Paid for Accrued Interest and Dividends	NAIC Designation or Market Indicator (a)
Common Stocks - Industrial and Miscellaneous (Unaffiliated) (continued)									
438516-10-6	HONEYWELL INTL INC		02/06/2014	J.P. Morgan Securities	27.000	2,461			L
440452-10-0	HORMEL FOODS CORP		02/06/2014	J.P. Morgan Securities	5.000	217			L
441060-10-0	HOSPIRA INC		02/06/2014	J.P. Morgan Securities	6.000	255			L
44107P-10-4	HOST HOTELS & RESORTS INC		02/06/2014	J.P. Morgan Securities	25.000	459			L
443683-10-7	HUDSON CITY BANCORP		02/06/2014	J.P. Morgan Securities	16.000	146			L
444859-10-2	HUMANA INC		02/06/2014	J.P. Morgan Securities	5.000	483			L
446150-10-4	HUNTINGTON BANCSHARES INC COM		02/06/2014	J.P. Morgan Securities	28.000	253			L
452308-10-9	ILLINOIS TOOL WKS INC		02/06/2014	J.P. Morgan Securities	14.000	1,094			L
45822P-10-5	INTEGRYS ENERGY GROUP INC		02/06/2014	J.P. Morgan Securities	3.000	158			L
458140-10-0	INTEL CORP		02/06/2014	J.P. Morgan Securities	169.000	4,056			U
45866F-10-4	INTERCONTINENTALEXCHANGE GROUP COM		02/06/2014	J.P. Morgan Securities	4.000	842			U
459200-10-1	INTERNATIONAL BUSINESS MACHINES		02/06/2014	J.P. Morgan Securities	35.000	6,114			L
459506-10-1	INTERNATIONAL FLAVORS & FRAGRANCES		02/06/2014	J.P. Morgan Securities	3.000	258			L
459902-10-2	INTERNATIONAL GAME TECH COM		02/06/2014	J.P. Morgan Securities	9.000	131			L
460146-10-3	INTERNATIONAL PAPER CO		02/06/2014	J.P. Morgan Securities	15.000	705			L
460690-10-0	INTERPUBLIC GROUP COS INC		02/06/2014	J.P. Morgan Securities	14.000	234			L
461202-10-3	INTUIT		02/06/2014	J.P. Morgan Securities	10.000	710			L
46120E-60-2	INTUITIVE SURGICAL INC		02/06/2014	J.P. Morgan Securities	1.000	415			L
462846-10-6	IRON MOUNTAIN INC		02/06/2014	J.P. Morgan Securities	6.000	162			L
466313-10-3	JABIL CIRCUIT INC		02/06/2014	J.P. Morgan Securities	6.000	107			L
469814-10-7	JACOB ENGR GROUP INC DEL COM		02/06/2014	J.P. Morgan Securities	4.000	236			L
471109-10-8	JARDEN CORP COM		02/21/2014	OPPENHEIMER & CO . INC	1,802.000	111,647			L
478160-10-4	JOHNSON & JOHNSON		03/21/2014	J.P. Morgan Securities	176.000	16,203			L
478366-10-7	JOHNSON CTLS INC		02/06/2014	J.P. Morgan Securities	23.000	1,052			L
481165-10-8	JOY GLOBAL INC COM		02/06/2014	J.P. Morgan Securities	4.000	215			L
46625H-10-0	JPMORGAN CHASE & CO		02/06/2014	J.P. Morgan Securities	126.000	7,118			L
48203R-10-4	JUNIPER NETWORKS INC		02/06/2014	J.P. Morgan Securities	17.000	459			L
485170-30-2	KANSAS CITY SOUTHERN		02/06/2014	J.P. Morgan Securities	4.000	405			L
487836-10-8	KELLOGG CO		02/06/2014	J.P. Morgan Securities	9.000	520			L
49271M-10-0	KEURIG GREEN MTN INC		03/21/2014	J.P. Morgan Securities	288.000	32,259			L
493267-10-8	KEYCORP NEW		02/06/2014	J.P. Morgan Securities	31.000	392			L
494368-10-3	KIMBERLY-CLARK CORP		02/06/2014	J.P. Morgan Securities	13.000	1,383			L
49446R-10-9	KIMCO RLTY CORP		02/06/2014	J.P. Morgan Securities	14.000	291			L
49456B-10-1	KINDER MORGAN INC DEL		02/06/2014	J.P. Morgan Securities	23.000	774			L
482480-10-0	KLA-TENCOR CORP		02/06/2014	J.P. Morgan Securities	6.000	371			L
49926D-10-9	KNOWLES CORP COM		03/03/2014	VARIOUS	190.000	5,429			L
500255-10-4	KOHL'S CORP		02/06/2014	J.P. Morgan Securities	7.000	361			L
50076Q-10-6	KRAFT FOODS GROUP INC		02/06/2014	J.P. Morgan Securities	20.000	1,033			L
501044-10-1	KROGER CO		02/06/2014	J.P. Morgan Securities	18.000	662			L
501797-10-4	L BRANDS INC		02/06/2014	J.P. Morgan Securities	8.000	432			L
502424-10-4	L-3 COMMUNICATIONS HLDGS INC		02/06/2014	J.P. Morgan Securities	3.000	329			L
50540R-40-9	LABORATORY CORP AMER HLDGS		02/06/2014	J.P. Morgan Securities	3.000	271			L
512807-10-8	LAM RESEARCH CORP		02/06/2014	J.P. Morgan Securities	6.000	306			L
524901-10-5	LEGG MASON INC		02/06/2014	J.P. Morgan Securities	4.000	165			L
524660-10-7	LEGGETT & PLATT INC		02/06/2014	J.P. Morgan Securities	5.000	150			L
526057-10-4	LENNAR CORP		02/06/2014	J.P. Morgan Securities	6.000	250			L
527288-10-4	LEUCADIA NATL CORP		02/06/2014	J.P. Morgan Securities	11.000	297			L
534187-10-9	LINCOLN NATL CORP IND COM		02/06/2014	J.P. Morgan Securities	9.000	433			L
535678-10-6	LINEAR TECHNOLOGY CORP		02/06/2014	J.P. Morgan Securities	8.000	350			L
501889-20-8	LKQ CORP		01/07/2014	Deutsche Morg Grenfell	7,507.000	239,116			L
539830-10-9	LOCKHEED MARTIN CORP		02/06/2014	J.P. Morgan Securities	9.000	1,366			L

(continues)

STATEMENT AS OF MARCH 31, 2014 OF THE Mount Carmel Health Plan, Inc

SCHEDULE D - PART 3

Show All Long-Term Bonds and Stock Acquired by the Company During the Current Quarter

1	2	3	4	5	6	7	8	9	10
CUSIP Identification	Description	Foreign	Date Acquired	Name of Vendor	Number of Shares of Stock	Actual Cost	Par Value	Paid for Accrued Interest and Dividends	NAIC Designation or Market Indicator (a)
Common Stocks - Industrial and Miscellaneous (Unaffiliated) (continued)									
540424-10-8	LOEWS CORP		02/06/2014	J.P. Morgan Securities	10.000	448			L
544147-10-1	LORILLARD INC		02/06/2014	J.P. Morgan Securities	13.000	629			L
548661-10-7	LOWE'S COS INC		02/06/2014	J.P. Morgan Securities	36.000	1,677			L
502161-10-2	LSI CORPORATION		02/06/2014	J.P. Morgan Securities	19.000	210			L
55261F-10-4	M & T BK CORP		02/06/2014	J.P. Morgan Securities	4.000	450			L
554382-10-1	MACERICH CO		02/06/2014	J.P. Morgan Securities	5.000	292			L
55616P-10-4	MACYS INC		02/06/2014	J.P. Morgan Securities	13.000	683			L
565849-10-6	MARATHON OIL CORP		02/06/2014	J.P. Morgan Securities	24.000	764			L
56585A-10-2	MARATHON PETE CORP		02/06/2014	J.P. Morgan Securities	11.000	917			L
571903-20-2	MARRIOTT INTL INC NEW		02/06/2014	J.P. Morgan Securities	8.000	390			L
571748-10-2	MARSH & MCLENNAN COS INC		02/06/2014	J.P. Morgan Securities	19.000	844			L
G5876H-10-5	MARVELL TECHNOLOGY GROUP		02/21/2014	OPPENHEIMER & CO. INC	11,192.000	172,942			L
574599-10-6	MASCO CORP		02/06/2014	J.P. Morgan Securities	12.000	257			L
57636Q-10-4	MASTERCARD INC CL A		02/06/2014	J.P. Morgan Securities	35.000	2,622			L
577081-10-2	MATTEL INC		02/06/2014	J.P. Morgan Securities	12.000	441			L
579780-20-6	MCCORMICK & CO INC		02/06/2014	J.P. Morgan Securities	4.000	252			L
580135-10-1	MCDONALD'S CORP		03/21/2014	J.P. Morgan Securities	87.000	8,289			L
580645-10-9	MCGRAW HILL FINL INC		02/06/2014	J.P. Morgan Securities	9.000	696			L
58155Q-10-3	MCKESSON CORP		02/06/2014	J.P. Morgan Securities	8.000	1,379			L
582839-10-6	MEAD JOHNSON NUTRITION CO		02/06/2014	J.P. Morgan Securities	7.000	532			L
583334-10-7	MEADWESTVACO CORP		02/06/2014	J.P. Morgan Securities	6.000	207			L
585055-10-6	MEDTRONIC INC		02/06/2014	J.P. Morgan Securities	34.000	1,862			L
58933Y-10-5	MERCK & CO INC NEW		03/21/2014	J.P. Morgan Securities	296.000	16,094			L
59156R-10-8	METLIFE INC		02/06/2014	J.P. Morgan Securities	38.000	1,847			L
595017-10-4	MICROCHIP TECHNOLOGY INC		02/06/2014	J.P. Morgan Securities	7.000	306			U
595112-10-3	MICRON TECHNOLOGY INC		02/06/2014	J.P. Morgan Securities	35.000	844			L
594918-10-4	MICROSOFT CORP		02/06/2014	J.P. Morgan Securities	257.000	9,301			L
608190-10-4	MOHAWK INDS INC		02/07/2014	VARIOUS	776.000	113,752			L
60871R-20-9	MOLSON COORS BREWING CO		02/06/2014	J.P. Morgan Securities	5.000	258			L
609207-10-5	MONDELEZ INTL INC		02/06/2014	J.P. Morgan Securities	60.000	1,963			L
61166W-10-1	MONSANTO CO		02/06/2014	J.P. Morgan Securities	18.000	1,949			L
611740-10-1	MONSTER BEVERAGE CORP		02/06/2014	J.P. Morgan Securities	5.000	340			L
615369-10-5	MOODYS CORP		02/06/2014	J.P. Morgan Securities	7.000	537			L
617446-44-8	MORGAN STANLEY		02/06/2014	J.P. Morgan Securities	47.000	1,396			L
61945C-10-3	MOSAIC CO		02/06/2014	J.P. Morgan Securities	12.000	555			L
620076-30-7	MOTOROLA SOLUTIONS INC		02/06/2014	J.P. Morgan Securities	8.000	507			L
55354G-10-0	MSCI INC		01/07/2014	Deutsche Morg Grenfell	1,667.000	72,612			L
626717-10-2	MURPHY OIL CORP		02/06/2014	J.P. Morgan Securities	6.000	335			L
628530-10-7	MYLAN INC		02/06/2014	J.P. Morgan Securities	13.000	566			L
631103-10-8	NASDAQ OMX GROUP INC		02/06/2014	J.P. Morgan Securities	4.000	151			L
637071-10-1	NATIONAL OILWELL VARCO INC		02/06/2014	J.P. Morgan Securities	15.000	1,111			L
64110D-10-4	NETAPP INC		02/06/2014	J.P. Morgan Securities	12.000	501			L
64110L-10-6	NETFLIX INC		02/06/2014	J.P. Morgan Securities	2.000	816			L
651229-10-6	NEWELL RUBBERMAID INC		02/06/2014	J.P. Morgan Securities	10.000	305			L
651290-10-8	NEWFIELD EXPL CO COM		02/06/2014	J.P. Morgan Securities	5.000	120			L
651639-10-6	NEWMONT MINING CORP		02/06/2014	J.P. Morgan Securities	17.000	357			L
65249B-10-9	NEWS CORP NEW		02/06/2014	J.P. Morgan Securities	17.000	273			U
65339F-10-1	NEXTERA ENERGY INC COM		03/21/2014	J.P. Morgan Securities	64.000	5,986			L
654106-10-3	NIKE INC		02/06/2014	J.P. Morgan Securities	25.000	1,788			L
65473P-10-5	NISOURCE INC		02/06/2014	J.P. Morgan Securities	11.000	371			L
655044-10-5	NOBLE ENERGY INC		02/06/2014	J.P. Morgan Securities	12.000	751			L

(continues)

STATEMENT AS OF MARCH 31, 2014 OF THE Mount Carmel Health Plan, Inc

SCHEDULE D - PART 3

Show All Long-Term Bonds and Stock Acquired by the Company During the Current Quarter

1	2	3	4	5	6	7	8	9	10
CUSIP Identification	Description	Foreign	Date Acquired	Name of Vendor	Number of Shares of Stock	Actual Cost	Par Value	Paid for Accrued Interest and Dividends	NAIC Designation or Market Indicator (a)
Common Stocks - Industrial and Miscellaneous (Unaffiliated) (continued)									
655664-10-0	NORDSTROM INC		02/06/2014	J.P. Morgan Securities	5.000	294			L
655844-10-8	NORFOLK SOUTHERN CORP		02/06/2014	J.P. Morgan Securities	11.000	1,029			L
664397-10-6	NORTHEAST UTILS		02/06/2014	J.P. Morgan Securities	11.000	472			L
665859-10-4	NORTHERN TRUST CORP		02/06/2014	J.P. Morgan Securities	8.000	478			L
666807-10-2	NORTHROP GRUMMAN CORP		02/06/2014	J.P. Morgan Securities	8.000	898			L
629377-50-8	NRG ENERGY INC		02/06/2014	J.P. Morgan Securities	11.000	304			L
670346-10-5	NUCOR CORP		02/06/2014	J.P. Morgan Securities	11.000	532			L
67066G-10-4	NVIDIA CORP		02/06/2014	J.P. Morgan Securities	20.000	313			L
67103H-10-7	O'REILLY AUTOMOTIVE INC		02/06/2014	J.P. Morgan Securities	4.000	587			L
674599-10-5	OCCIDENTAL PETE CORP DEL		03/21/2014	J.P. Morgan Securities	114.000	10,574			L
675746-30-9	OCWEN FINL CORP		01/07/2014	Deutsche Morg Grenfell	825.000	45,696			L
681919-10-6	OMNICOM GROUP INC		02/06/2014	J.P. Morgan Securities	9.000	660			L
68235P-10-8	ONE GAS INC		02/06/2014	VARIOUS	115.000	3,432			L
682680-10-3	ONEOK INC NEW		02/06/2014	J.P. Morgan Securities	7.000	413			L
68389X-10-5	ORACLE CORP		02/06/2014	J.P. Morgan Securities	119.000	4,371			L
690768-40-3	OWENS ILL INC		02/06/2014	J.P. Morgan Securities	6.000	190			L
693718-10-8	PACCAR INC		02/06/2014	J.P. Morgan Securities	12.000	704			L
695156-10-9	PACKAGING CORP AMER COM		03/06/2014	J.P. Morgan Securities	1,392.000	103,473			L
696429-30-7	PALL CORP		02/06/2014	J.P. Morgan Securities	4.000	322			L
697435-10-5	PALO ALTO NETWORKS INC		02/07/2014	Credit Suisse First Bosto	3,396.000	226,923			U
701081-10-1	PARKER DRILLING CO		03/06/2014	J.P. Morgan Securities	17,786.000	140,244			L
701094-10-4	PARKER HANNIFIN CORP		02/06/2014	J.P. Morgan Securities	5.000	571			L
703395-10-3	PATTERSON COS INC		02/06/2014	J.P. Morgan Securities	3.000	119			L
704326-10-7	PAYCHEX INC		02/06/2014	J.P. Morgan Securities	11.000	451			L
704549-10-4	PEABODY ENERGY CORP		02/06/2014	J.P. Morgan Securities	9.000	148			L
712704-10-5	PEOPLES UNITED FINANCIAL INC		02/06/2014	J.P. Morgan Securities	11.000	153			L
713291-10-2	PEPCO HOLDINGS INC		02/06/2014	J.P. Morgan Securities	8.000	154			L
713448-10-8	PEPSICO INC		02/06/2014	J.P. Morgan Securities	52.000	4,129			L
714046-10-9	PERKINELMER INC		02/06/2014	J.P. Morgan Securities	4.000	171			L
716768-10-6	PET SMART INC		02/06/2014	J.P. Morgan Securities	4.000	258			L
717081-10-3	PFIZER INC		02/06/2014	J.P. Morgan Securities	219.000	6,756			L
69331C-10-8	PG&E CORP		02/06/2014	J.P. Morgan Securities	15.000	620			L
718172-10-9	PHILIP MORRIS INTL INC		02/06/2014	J.P. Morgan Securities	54.000	4,218			L
718546-10-4	PHILLIPS 66 COM		02/06/2014	J.P. Morgan Securities	21.000	1,540			L
718549-20-7	PHILLIPS 66 PARTNERS LP		02/07/2014	Credit Suisse First Bosto	7,159.000	280,616			L
723484-10-1	PINNACLE WEST CAP CORP		02/06/2014	J.P. Morgan Securities	4.000	208			L
723787-10-7	PIONEER NAT RES CO		02/06/2014	J.P. Morgan Securities	5.000	901			L
724479-10-0	PITNEY BOWES INC		02/06/2014	J.P. Morgan Securities	7.000	176			L
729251-10-8	PLUM CREEK TIMBER CO INC		02/06/2014	J.P. Morgan Securities	6.000	257			L
693475-10-5	PNC FINL SVCS GROUP INC		02/06/2014	J.P. Morgan Securities	18.000	1,437			L
69349H-10-7	PNM RES INC		02/07/2014	Citation Group	1,860.000	45,177			L
693506-10-7	PPG INDS INC		02/06/2014	J.P. Morgan Securities	5.000	895			L
69351T-10-6	PPL CORP		02/06/2014	J.P. Morgan Securities	21.000	636			L
74005P-10-4	PRAXAIR INC		02/06/2014	J.P. Morgan Securities	10.000	1,243			L
740189-10-5	PRECISION CASTPARTS CORP		02/06/2014	J.P. Morgan Securities	5.000	1,270			L
74144T-10-8	PRICE T ROWE GROUP INC		02/06/2014	J.P. Morgan Securities	9.000	697			L
741503-40-3	PRICELINE.COM INC		02/06/2014	J.P. Morgan Securities	2.000	2,277			L
74251V-10-2	PRINCIPAL FINL GROUP INC		02/06/2014	J.P. Morgan Securities	9.000	385			L
742718-10-9	PROCTER & GAMBLE CO		03/21/2014	J.P. Morgan Securities	297.000	23,043			L
743315-10-3	PROGRESSIVE CORP OHIO		02/06/2014	J.P. Morgan Securities	19.000	435			L
74340W-10-3	PROLOGIS INC		02/06/2014	J.P. Morgan Securities	17.000	673			L

(continues)

STATEMENT AS OF MARCH 31, 2014 OF THE Mount Carmel Health Plan, Inc

SCHEDULE D - PART 3

Show All Long-Term Bonds and Stock Acquired by the Company During the Current Quarter

1	2	3	4	5	6	7	8	9	10
CUSIP Identification	Description	Foreign	Date Acquired	Name of Vendor	Number of Shares of Stock	Actual Cost	Par Value	Paid for Accrued Interest and Dividends	NAIC Designation or Market Indicator (a)
Common Stocks - Industrial and Miscellaneous (Unaffiliated) (continued)									
744320-10-2	PRUDENTIAL FINL INC		02/06/2014	J.P. Morgan Securities	16.000	1,316			L
74460D-10-9	PUBLIC STORAGE COM		02/06/2014	J.P. Morgan Securities	5.000	792			L
744573-10-6	PUBLIC SVC ENTERPRISE GROUP		02/06/2014	J.P. Morgan Securities	17.000	571			L
745867-10-1	PULTE GROUP INC		02/06/2014	J.P. Morgan Securities	12.000	242			L
693656-10-0	PVH CORP		02/06/2014	J.P. Morgan Securities	3.000	362			L
74733V-10-0	QEP RES INC		02/06/2014	J.P. Morgan Securities	6.000	185			L
747525-10-3	QUALCOMM INC		02/06/2014	J.P. Morgan Securities	57.000	4,175			L
74762E-10-2	QUANTA SVCS INC		02/06/2014	J.P. Morgan Securities	7.000	215			L
74834L-10-0	QUEST DIAGNOSTICS INC		02/06/2014	J.P. Morgan Securities	5.000	255			L
751212-10-1	RALPH LAUREN CORP		02/06/2014	J.P. Morgan Securities	2.000	304			L
75281A-10-9	RANGE RES CORP		02/06/2014	J.P. Morgan Securities	6.000	504			L
754730-10-9	RAYMOND JAMES FINANCIAL INC		01/07/2014	Deutsche Morg Grenfell	1,558.000	82,152			L
755111-50-7	RAYTHEON CO		02/06/2014	J.P. Morgan Securities	11.000	1,030			L
756577-10-2	RED HAT INC		02/06/2014	J.P. Morgan Securities	6.000	333			L
75886F-10-7	REGENERON PHARMACEUTICALS		02/06/2014	J.P. Morgan Securities	3.000	861			L
7591EP-10-0	REGIONS FINL CORP NEW		02/06/2014	J.P. Morgan Securities	47.000	483			L
760759-10-0	REPUBLIC SVCS INC		02/06/2014	J.P. Morgan Securities	9.000	287			L
76169B-10-2	REXNORD CORP NEW		02/21/2014	OPPENHEIMER & CO. INC	6,238.000	180,424			L
761713-10-6	REYNOLDS AMERICAN INC		02/06/2014	J.P. Morgan Securities	11.000	526			L
770323-10-3	ROBERT HALF INTL INC		02/06/2014	J.P. Morgan Securities	5.000	200			L
773903-10-9	ROCKWELL AUTOMATION INC		02/06/2014	J.P. Morgan Securities	5.000	553			L
774341-10-1	ROCKWELL COLLINS INC		02/06/2014	J.P. Morgan Securities	5.000	381			L
77669E-10-6	ROPER INDUSTRIES INC		02/06/2014	J.P. Morgan Securities	3.000	398			L
778296-10-3	ROSS STORES INC		02/06/2014	J.P. Morgan Securities	7.000	485			L
783549-10-8	RYDER SYS INC		02/06/2014	J.P. Morgan Securities	2.000	141			L
786514-20-8	SAFEWAY INC		02/06/2014	J.P. Morgan Securities	8.000	247			L
790849-10-3	SAINT JUDE MEDICAL INC		02/06/2014	J.P. Morgan Securities	10.000	605			L
79466L-30-2	SALESFORCE COM INC		02/06/2014	J.P. Morgan Securities	19.000	1,172			L
80004C-10-1	SANDISK CORP		02/06/2014	J.P. Morgan Securities	8.000	562			L
80589M-10-2	SCANA CORP NEW		02/06/2014	J.P. Morgan Securities	5.000	232			L
806857-10-8	SCHLUMBERGER LTD		02/06/2014	J.P. Morgan Securities	45.000	3,983			L
808513-10-5	SCHWAB CHARLES CORP NEW		02/06/2014	J.P. Morgan Securities	39.000	954			L
811065-10-1	SCRIPPS NETWORKS INTERACTIVE		02/06/2014	J.P. Morgan Securities	4.000	298			L
81211K-10-0	SEALED AIR CORP NEW COM		02/06/2014	J.P. Morgan Securities	7.000	209			L
816851-10-9	SEMPRA ENERGY		02/06/2014	J.P. Morgan Securities	8.000	730			L
824348-10-6	SHERWIN WILLIAMS CO		02/06/2014	J.P. Morgan Securities	3.000	538			L
826552-10-1	SIGMA ALDRICH CORP		02/06/2014	J.P. Morgan Securities	4.000	364			L
828806-10-9	SIMON PROPERTY GROUP INC		03/21/2014	J.P. Morgan Securities	39.000	6,225			L
83088M-10-2	SKYWOKS SOLUTIONS INC		02/07/2014	Citation Group	1,935.000	59,077			L
78442P-10-6	SLM CORP		02/06/2014	J.P. Morgan Securities	15.000	338			L
832696-40-5	SMUCKER J M CO		02/06/2014	J.P. Morgan Securities	4.000	374			L
833034-10-1	SNAP ON INC COM		02/06/2014	J.P. Morgan Securities	2.000	210			L
842587-10-7	SOUTHERN CO		03/21/2014	J.P. Morgan Securities	133.000	5,649			L
844741-10-8	SOUTHWEST AIRLS CO		02/06/2014	J.P. Morgan Securities	24.000	503			L
845467-10-9	SOUTHWESTERN ENERGY CO		02/06/2014	J.P. Morgan Securities	12.000	510			L
846822-10-4	SPARTAN STORES INC		01/07/2014	Deutsche Morg Grenfell	4,924.000	120,074			L
847560-10-9	SPECTRA ENERGY CORP		02/06/2014	J.P. Morgan Securities	23.000	841			L
854502-10-1	STANLEY BLACK & DECKER INC		02/06/2014	J.P. Morgan Securities	5.000	382			L
855030-10-2	STAPLES INC		02/06/2014	J.P. Morgan Securities	22.000	292			L
855244-10-9	STARBUCKS CORP		02/06/2014	J.P. Morgan Securities	25.000	1,809			L
85590A-40-1	STARWOOD HOTELS & RESORTS		02/06/2014	J.P. Morgan Securities	7.000	525			L

(continues)

STATEMENT AS OF MARCH 31, 2014 OF THE Mount Carmel Health Plan, Inc

SCHEDULE D - PART 3

Show All Long-Term Bonds and Stock Acquired by the Company During the Current Quarter

1	2	3	4	5	6	7	8	9	10
CUSIP Identification	Description	Foreign	Date Acquired	Name of Vendor	Number of Shares of Stock	Actual Cost	Par Value	Paid for Accrued Interest and Dividends	NAIC Designation or Market Indicator (a)
Common Stocks - Industrial and Miscellaneous (Unaffiliated) (continued)									
85571B-10-5	STARWOOD PPTY TR INC		02/07/2014	J.P. Morgan Securities	15,544.000	372,425			L
857477-10-3	STATE STREET CORP		02/06/2014	J.P. Morgan Securities	15.000	989			L
858912-10-8	STERICYCLE INC		02/06/2014	J.P. Morgan Securities	3.000	344			L
863667-10-1	STRYKER CORP		02/06/2014	J.P. Morgan Securities	10.000	782			L
867914-10-3	SUNTRUST BANKS INC		02/06/2014	J.P. Morgan Securities	18.000	679			L
871503-10-8	SYMANTEC CORP		02/06/2014	J.P. Morgan Securities	24.000	492			L
871829-10-7	SYSCO CORP		02/06/2014	J.P. Morgan Securities	20.000	706			L
87612E-10-6	TARGET CORP		02/06/2014	J.P. Morgan Securities	21.000	1,173			L
872375-10-0	TECO ENERGY CORP		02/06/2014	J.P. Morgan Securities	7.000	114			L
88033G-40-7	TENET HEALTHCARE CORP		02/06/2014	J.P. Morgan Securities	3.000	134			L
88076W-10-3	TERADATA CORP DEL		02/06/2014	J.P. Morgan Securities	6.000	246			L
881609-10-1	TESORO CORP		02/06/2014	J.P. Morgan Securities	5.000	238			L
882508-10-4	TEXAS INSTRS INC		02/06/2014	J.P. Morgan Securities	37.000	1,526			L
883203-10-1	TEXTRON INC		02/06/2014	J.P. Morgan Securities	10.000	353			L
00101J-10-6	THE ADT CORPORATION		02/06/2014	J.P. Morgan Securities	7.000	210			L
034164-10-3	THE ANDERSONS INC		03/06/2014	J.P. Morgan Securities	5,823.000	335,416			L
89417E-10-9	THE TRAVELERS COS INC		02/06/2014	J.P. Morgan Securities	13.000	1,049			L
883556-10-2	THERMO FISHER SCIENTIFIC INC		02/14/2014	VARIOUS	95.000	11,587			L
886547-10-8	TIFFANY & CO		02/06/2014	J.P. Morgan Securities	4.000	345			L
88732J-20-7	TIME WARNER CABLE INC		02/06/2014	J.P. Morgan Securities	10.000	1,357			L
887317-30-3	TIME WARNER INC		02/06/2014	J.P. Morgan Securities	31.000	1,962			L
872540-10-9	TJX COS INC NEW		02/06/2014	J.P. Morgan Securities	24.000	1,426			L
891027-10-4	TORCHMARK CORP		02/06/2014	J.P. Morgan Securities	3.000	222			L
891906-10-9	TOTAL SYSTEM SERVICES INC		02/06/2014	J.P. Morgan Securities	6.000	173			L
892356-10-6	TRACTOR SUPPLY CO		02/06/2014	VARIOUS	314.000	22,064			L
896239-10-0	TRIMBLE NAVIGATION LTD		02/21/2014	OPPENHEIMER & CO. INC	1,829.000	70,385			L
896945-20-1	TRIPADVISOR INC		02/06/2014	J.P. Morgan Securities	4.000	309			L
90130A-10-1	TWENTY FIRST CENY FOX INC		02/06/2014	J.P. Morgan Securities	67.000	2,155			U
902494-10-3	TYSON FOODS INC		02/06/2014	J.P. Morgan Securities	9.000	321			L
907818-10-8	UNION PAC CORP		02/06/2014	J.P. Morgan Securities	16.000	2,802			L
91324P-10-2	UNITED HEALTH GROUP INC CORP		02/06/2014	J.P. Morgan Securities	34.000	2,410			L
911312-10-6	UNITED PARCEL SERVICE INC CL B		02/06/2014	J.P. Morgan Securities	24.000	2,274			L
912909-10-8	UNITED STATES STL CORP NEW		02/06/2014	J.P. Morgan Securities	5.000	128			L
913017-10-9	UNITED TECHNOLOGIES CORP		02/06/2014	J.P. Morgan Securities	29.000	3,174			L
91529Y-10-6	UNUM GROUP		02/06/2014	J.P. Morgan Securities	9.000	294			L
917047-10-2	URBAN OUTFITTERS INC		02/06/2014	J.P. Morgan Securities	4.000	142			L
902973-30-4	US BANCORP		02/06/2014	J.P. Morgan Securities	62.000	2,469			L
918204-10-8	V F CORP		02/06/2014	J.P. Morgan Securities	12.000	689			L
91913Y-10-0	VALERO ENERGY CORP		02/06/2014	J.P. Morgan Securities	18.000	849			L
92220P-10-5	VARIAN MED SYS INC		02/06/2014	J.P. Morgan Securities	4.000	316			L
92276F-10-0	VENTAS INC		02/06/2014	J.P. Morgan Securities	10.000	618			L
92343E-10-2	VERISIGN INC		02/06/2014	J.P. Morgan Securities	5.000	277			L
92343V-10-4	VERIZON COMMUNICATIONS INC		02/24/2014	VARIOUS	2,958.000	136,822			L
92532F-10-0	VERTEX PHARMACEUTICALS INC		02/06/2014	J.P. Morgan Securities	8.000	625			L
92553P-20-1	VIACOM INC CL B		02/06/2014	J.P. Morgan Securities	14.000	1,130			L
92826C-83-9	VISA INC CL A		02/06/2014	J.P. Morgan Securities	17.000	3,723			L
929042-10-9	VORNADO RLTY TR		02/06/2014	J.P. Morgan Securities	6.000	557			L
929160-10-9	VULCAN MATLS CO		02/06/2014	J.P. Morgan Securities	4.000	263			L
92927K-10-2	WABCO HLDGS INC		01/07/2014	Deutsche Morg Grenfell	1,025.000	96,418			L
931142-10-3	WAL-MART STORES INC		02/06/2014	J.P. Morgan Securities	55.000	4,006			L
931422-10-9	WALGREEN CO		03/21/2014	J.P. Morgan Securities	103.000	6,510			L

(continues)

SCHEDULE D - PART 3

Show All Long-Term Bonds and Stock Acquired by the Company During the Current Quarter

1	2	3	4	5	6	7	8	9	10
CUSIP Identification	Description	Foreign	Date Acquired	Name of Vendor	Number of Shares of Stock	Actual Cost	Par Value	Paid for Accrued Interest and Dividends	NAIC Designation or Market Indicator (a)
Common Stocks - Industrial and Miscellaneous (Unaffiliated) (continued)									
94106L-10-9	WASTE MGMT INC DEL		02/06/2014	J.P. Morgan Securities	15.000	631			L
941848-10-3	WATERS CORP		02/06/2014	J.P. Morgan Securities	3.000	321			L
94973V-10-7	WELLPOINT LLC		02/06/2014	J.P. Morgan Securities	10.000	866			L
949746-10-1	WELLS FARGO & CO		02/06/2014	J.P. Morgan Securities	161.000	7,211			L
958102-10-5	WESTERN DIGITAL CORP		02/06/2014	J.P. Morgan Securities	7.000	584			U
959802-10-9	WESTERN UN CO		02/06/2014	J.P. Morgan Securities	19.000	291			L
962166-10-4	WEYERHAEUSER CO		02/06/2014	J.P. Morgan Securities	20.000	590			L
963320-10-6	WHIRLPOOL CORP		02/06/2014	J.P. Morgan Securities	3.000	401			L
966837-10-6	WHOLE FOODS MARKET INC		02/06/2014	J.P. Morgan Securities	13.000	703			L
969457-10-0	WILLIAMS COS INC DEL		02/06/2014	J.P. Morgan Securities	23.000	945			L
97382A-10-1	WINDSTREAM HLDGS INC		02/06/2014	J.P. Morgan Securities	20.000	149			U
976657-10-6	WISCONSIN ENERGY CORP		02/06/2014	J.P. Morgan Securities	8.000	335			L
981811-10-2	WORTHINGTON INDS INC		01/07/2014	Deutsche Morg Grenfell	4,250.000	179,499			L
98212B-10-3	WPX ENERGY INC		02/06/2014	J.P. Morgan Securities	7.000	137			L
98310W-10-8	WYNDHAM WORLDWIDE CORP		02/06/2014	J.P. Morgan Securities	5.000	362			L
983134-10-7	WYNN RESORTS LTD		02/06/2014	J.P. Morgan Securities	3.000	650			L
98389B-10-0	XCEL ENERGY INC		02/06/2014	J.P. Morgan Securities	17.000	484			L
984121-10-3	XEROX CORP		02/06/2014	J.P. Morgan Securities	39.000	404			L
983919-10-1	XILINX INC		02/06/2014	J.P. Morgan Securities	9.000	409			L
98419M-10-0	XYLEM INC		02/06/2014	J.P. Morgan Securities	6.000	219			L
984332-10-6	YAHOO! INC		02/06/2014	J.P. Morgan Securities	32.000	1,160			L
988498-10-1	YUM BRANDS INC		02/06/2014	J.P. Morgan Securities	15.000	1,068			L
98956P-10-2	ZIMMER HOLDINGS INC		02/06/2014	J.P. Morgan Securities	6.000	555			L
989701-10-7	ZIONS BANCORPORATION		02/06/2014	J.P. Morgan Securities	6.000	174			L
98978V-10-3	ZOETIS INC		02/06/2014	J.P. Morgan Securities	17.000	511			L
G1151C-10-1	ACCENTURE PLC CLASS A	R	02/06/2014	J.P. Morgan Securities	22.000	1,728			L
H0023R-10-5	ACE LTD	R	02/06/2014	J.P. Morgan Securities	12.000	1,122			L
G0083B-10-8	ACTAVIS PLC	R	02/06/2014	J.P. Morgan Securities	6.000	1,097			L
G0176J-10-9	ALLEGION PUB LTD CO	R	02/06/2014	J.P. Morgan Securities	3.000	148			L
G0408V-10-2	AON PLC	R	02/06/2014	J.P. Morgan Securities	10.000	773			L
M20598-10-4	CAESARSTONE SDOT-YAM LTD	R	01/07/2014	Deutsche Morg Grenfell	3,418.000	177,755			L
143658-30-0	CARNIVAL CORP	R	02/06/2014	J.P. Morgan Securities	15.000	602			L
G2554F-11-3	COVIDIEN PLC	R	02/06/2014	J.P. Morgan Securities	16.000	1,065			U
G27823-10-6	DELPHI AUTOMOTIVE PLC	R	02/06/2014	J.P. Morgan Securities	10.000	616			L
G29183-10-3	EATON CORP PLC	R	02/06/2014	J.P. Morgan Securities	16.000	1,105			L
G3157S-10-6	ENSCO PLC	R	02/06/2014	J.P. Morgan Securities	8.000	401			L
H2906T-10-9	GARMIN LTD	R	02/06/2014	J.P. Morgan Securities	4.000	181			L
G47791-10-1	INGERSOLL-RAND PLC	R	02/06/2014	J.P. Morgan Securities	9.000	523			L
G491BT-10-8	INVESCO LTD	R	02/06/2014	J.P. Morgan Securities	15.000	491			L
G54050-10-2	LAZARD LTD	R	03/06/2014	J.P. Morgan Securities	5,031.000	232,999			L
N53745-10-0	LYONDELLBASELL INDUSTRIES N V	R	02/06/2014	J.P. Morgan Securities	15.000	1,187			L
G60754-10-1	MICHAEL KORS HLDGS LTD	R	02/06/2014	J.P. Morgan Securities	6.000	549			L
G6359F-10-3	NABORS INDUSTRIES INC	R	02/06/2014	J.P. Morgan Securities	9.000	158			L
N63218-10-6	NIELSEN HOLDINGS N V	R	02/06/2014	J.P. Morgan Securities	9.000	392			L
G65431-10-1	NOBLE CORP PLC	R	02/06/2014	J.P. Morgan Securities	9.000	275			L
H6169Q-10-8	PENTAIR LTD SHS	R	02/06/2014	J.P. Morgan Securities	7.000	525			L
G97822-10-3	PERRIGO CO PLC	R	02/06/2014	J.P. Morgan Securities	5.000	733			L
G7665A-10-1	ROWAN COMPANIES PLC	R	02/06/2014	J.P. Morgan Securities	4.000	127			L
G7945M-10-7	SEAGATE TECHNOLOGY PLC	R	02/06/2014	J.P. Morgan Securities	11.000	541			L
H84989-10-4	TE CONNECTIVITY LTD	R	02/06/2014	J.P. Morgan Securities	14.000	779			L
H8817H-10-0	TRANSOCEAN LTD REG SHS	R	02/06/2014	J.P. Morgan Securities	12.000	508			L

(continues)

STATEMENT AS OF MARCH 31, 2014 OF THE Mount Carmel Health Plan, Inc

SCHEDULE D - PART 3

Show All Long-Term Bonds and Stock Acquired by the Company During the Current Quarter

1	2	3	4	5	6	7	8	9	10
CUSIP Identification	Description	Foreign	Date Acquired	Name of Vendor	Number of Shares of Stock	Actual Cost	Par Value	Paid for Accrued Interest and Dividends	NAIC Designation or Market Indicator (a)
Common Stocks - Industrial and Miscellaneous (Unaffiliated) (continued)									
H89128-10-4	TYCO INTERNATIONAL LTD	R	02/06/2014	J.P. Morgan Securities	16.000	653			L
G98290-10-2	XL GROUP PLC	R	02/06/2014	J.P. Morgan Securities	10.000	286			L
9099999	Subtotal - Common Stocks - Industrial and Miscellaneous (Unaffiliated)					6,194,345			
9799997	Subtotal - Common Stocks - Part 3					6,194,345			
9799999	Subtotal - Common Stocks					6,194,345			
9899999	Subtotal - Preferred and Common Stocks					6,194,345			
9999999	TOTALS					13,843,985		2,729	

STATEMENT AS OF MARCH 31, 2014 OF THE Mount Carmel Health Plan, Inc

SCHEDULE D - PART 4

Show All Long-Term Bonds and Stock Sold, Redeemed or Otherwise Disposed of by the Company During the Current Quarter

1	2	3	4	5	6	7	8	9	10	Change in Book/Adjusted Carrying Value					16	17	18	19	20	21	22
										11	12	13	14	15							
CUSIP Identification	Description	Foreign	Disposal Date	Name of Purchaser	Number of Shares of Stock	Consideration	Par Value	Actual Cost	Prior Year Book/Adjusted Carrying Value	Unrealized Valuation Increase/(Decrease)	Current Year's (Amortization)/Accretion	Current Year's Other-Than-Temporary Impairment Recognized	Total Change in B./A.C.V. (11+12-13)	Total Foreign Exchange Change in B./A.C.V.	Book/Adjusted Carrying Value at Disposal Date	Foreign Exchange Gain (Loss) on Disposal	Realized Gain (Loss) on Disposal	Total Gain (Loss) on Disposal	Bond Interest/Stock Dividends Received During Year	Stated Contractual Maturity Date	NAIC Designation or Market Indicator (a)
Bonds - U. S. Governments																					
3620AA-TY-4	GNMA 30YR POOL #724267		03/17/2014	PRINCIPAL RECEIPT		32,422	32,421.94	33,719	33,696	(1,274)			(1,274)		32,422				272	09/15/2039	1
912828-SL-5	UNITED STATES TREASURY NOTE		03/31/2014	VARIOUS		2,600,062	2,600,000.00	2,601,475	2,600,354	(358)			(358)		2,599,996		66	66	3,140	03/31/2014	1
912828-TJ-9	UNITED STATES TREASURY NOTE		03/07/2014	VARIOUS		278,168	300,000.00	297,310	297,602	47			47		297,648		(19,480)	(19,480)	2,747	08/15/2022	1
912828-TP-5	UNITED STATES TREASURY NOTE		03/04/2014	VARIOUS		250,088	250,000.00	249,376	242,684	37			37		249,670		418	418	306	09/15/2015	1
912828-UF-5	UNITED STATES TREASURY NOTE		03/07/2014	Greenwich Capital Markets		887,094	925,000.00	924,350	924,513	8			8		924,521		(37,428)	(37,428)	1,668	12/31/2019	1
0599999	- Subtotal - Bonds - U. S. Governments					4,047,833	4,107,421.94	4,106,230	4,098,848	(1,540)			(1,540)		4,104,257		(56,424)	(56,424)	8,134		
Bonds - U. S. Special Revenue and Special Assessment and All Non-Guaranteed Obligations of Agencies and Authorities of Governments and Their Political Subdivisions																					
312935-M2-2	FHLMC 30YR (GOLD) POOL #A8847		03/17/2014	PRINCIPAL RECEIPT		22,118	22,118.46	23,072	23,068	(950)			(950)		22,118				161	09/01/2039	1
3128PL-A2-8	FHLMC PC GOLD 15 YR		03/17/2014	PRINCIPAL RECEIPT		5,234	5,234.46	5,279	5,272	(37)			(37)		5,234				36	06/01/2023	1
31416N-3J-9	FNMA 15YR POOL #AA5300		03/25/2014	PRINCIPAL RECEIPT		9,578	9,577.90	10,105	9,951	(373)			(373)		9,578				55	09/01/2020	1
31371L-6G-9	FNMA 30YR POOL #255671		03/25/2014	PRINCIPAL RECEIPT		13,538	13,537.66	13,519	13,519						13,519		19	19	138	04/01/2035	1
31402Q-WA-5	FNMA 30YR POOL #735141		03/25/2014	PRINCIPAL RECEIPT		24,318	24,318.49	23,802	23,813	506			506		24,318				214	01/01/2035	1
31408F-6B-0	FNMA 30YR POOL #850566		03/25/2014	PRINCIPAL RECEIPT		16,734	16,733.94	15,868	15,889	845			845		16,734				128	01/01/2036	1
31413V-UA-3	FNMA 30YR POOL #956977		03/25/2014	PRINCIPAL RECEIPT		10,969	10,969.30	10,988	10,987	(18)			(18)		10,969				157	12/01/2037	1
31416T-L5-6	FNMA 30YR POOL #AA9347		03/25/2014	PRINCIPAL RECEIPT		23,622	23,621.66	24,393	24,380	(758)			(758)		23,622				181	08/01/2039	1
3138AB-YR-4	FNMA PASS-THRU LONG 30 YEAR		03/25/2014	PRINCIPAL RECEIPT		15,578	15,577.76	16,111	16,107	(529)			(529)		15,578				124	04/01/2041	1
3138AK-QW-2	FNMA PASS-THRU LONG 30 YEAR		03/25/2014	PRINCIPAL RECEIPT		37,207	37,207.22	38,707	38,809	(1,601)			(1,601)		37,207				227	07/01/2041	1
3138E2-GH-2	FNMA PASS-THRU LONG 30 YEAR		03/25/2014	PRINCIPAL RECEIPT		22,937	22,936.99	24,604	24,597	(1,660)			(1,660)		22,937				131	01/01/2042	1
3138EG-HX-5	FNMA PASS-THRU LONG 30 YEAR		03/25/2014	PRINCIPAL RECEIPT		10,706	10,705.96	10,810	10,841	(135)			(135)		10,706				66	04/01/2041	1
31403C-6L-0	FNMA PASS-THRU LONG 30 YEAR		03/25/2014	PRINCIPAL RECEIPT		16,477	16,477.34	17,066	17,052	(575)			(575)		16,477				129	02/01/2036	1
31403D-WU-9	FNMA PASS-THRU LONG 30 YEAR		03/25/2014	PRINCIPAL RECEIPT		26,466	26,466.30	28,046	28,053	(1,587)			(1,587)		26,466				229	11/01/2036	1
31409W-LB-5	FNMA PASS-THRU LONG 30 YEAR		03/25/2014	PRINCIPAL RECEIPT		11,641	11,640.84	11,275	11,284	357			357		11,641				99	04/01/2036	1
31411E-2C-0	FNMA PASS-THRU LONG 30 YEAR		03/25/2014	PRINCIPAL RECEIPT		31,267	31,267.08	30,876	30,876						30,876		391	391	265	01/01/2037	1
31411E-YD-3	FNMA PASS-THRU LONG 30 YEAR		03/25/2014	PRINCIPAL RECEIPT		86,510	86,510.02	85,382	85,382						85,382		1,128	1,128	971	01/01/2037	1
31412P-6K-2	FNMA PASS-THRU LONG 30 YEAR		03/25/2014	PRINCIPAL RECEIPT		11,536	11,536.01	11,788	11,785	(249)			(249)		11,536				98	02/01/2035	1
31412W-N2-8	FNMA PASS-THRU LONG 30 YEAR		03/25/2014	PRINCIPAL RECEIPT		38,319	38,318.62	38,175	38,175	144			144		38,319				205	06/01/2037	1
3199999	- Subtotal - Bonds - U. S. Special Revenue and Special Assessment and All Non-Guaranteed Obligations of Agencies and Authorities of Governments and Their Political Subdivisions					434,756	434,756.01	439,865	439,836	(6,619)			(6,619)		433,218		1,538	1,538	3,614		
Bonds - Industrial and Miscellaneous (Unaffiliated)																					
12613S-AA-0	CNH EQUIPMENT TRUST SERIES		03/15/2014	PRINCIPAL RECEIPT		189,771	189,770.88	189,771	189,771						189,771				73	09/15/2014	1FE
31679G-AA-7	FIFTH THIRD AUTO TR		03/15/2014	PRINCIPAL RECEIPT		220,751	220,751.47	220,751	220,751						220,751				93	09/15/2014	1FE
31679J-AA-1	FIFTH THIRD AUTO TR 2014-1		03/17/2014	PRINCIPAL RECEIPT		64,774	64,774.00	64,774	64,774						64,774				9	03/16/2015	1FE
36830N-AA-7	GE EQUIP MID TCKT 2013-1		03/22/2014	PRINCIPAL RECEIPT		94,478	94,478.44	94,478	94,478						94,478				37	09/22/2014	1FE
43812X-AA-3	HONDA AUTO RECV 2013-3		03/14/2014	PRINCIPAL RECEIPT		265,350	265,349.68	265,350	265,350						265,350				100	08/15/2014	1FE
43814F-AA-0	HONDA AUTO RECV 2013-4		03/18/2014	PRINCIPAL RECEIPT		169,098	169,098.30	169,098	169,098						169,098				70	11/18/2014	1FE
44890Q-AA-1	HYUNDAI AUTO RECV TR		03/15/2014	PRINCIPAL RECEIPT		122,975	122,975.27	122,975	122,975						122,975				46	09/15/2014	1FE
44890R-AA-9	HYUNDAI AUTO RECV TR 2014-A		03/15/2014	PRINCIPAL RECEIPT		43,651	43,650.56	43,651	43,651						43,651				10	02/17/2015	1FE
58768V-AA-9	MERC BENZ AUTO LEASE		01/15/2014	PRINCIPAL RECEIPT		92,259	92,259.01	92,259	92,259						92,259				21	05/15/2014	1FE
58768W-AA-7	MERC BENZ AUTO RECV		03/15/2014	PRINCIPAL RECEIPT		105,137	105,137.47	105,137	105,137						105,137				34	08/15/2014	1FE
92867P-AA-1	VOLKSWAGEN AUTO		03/20/2014	PRINCIPAL RECEIPT		140,783	140,783.28	140,783	140,783						140,783				51	11/20/2014	1FE
92867N-AA-6	VOLKSWAGEN AUTO LEASE		02/19/2014	PRINCIPAL RECEIPT		163,665	163,665.14	163,665	163,665						163,665				44	08/15/2014	1FE
92867Q-AA-9	VOLKSWAGEN AUTO LSE TR 2014-A		03/20/2014	PRINCIPAL RECEIPT		93,159	93,159.27	93,159	93,159						93,159				10	02/20/2015	1FE
98158K-AD-1	WORLD OMNI AUTO TR 2011-A		03/15/2014	PRINCIPAL RECEIPT		144,790	144,790.23	147,963	145,570	(780)			(780)		144,790				481	04/15/2016	1FE
98160N-AA-7	WORLD OMNI AUTO TR 2013-B		03/15/2014	PRINCIPAL RECEIPT		155,734	155,734.35	155,734	155,734						155,734				64	11/17/2014	1FE
3899999	- Subtotal - Bonds - Industrial and Miscellaneous (Unaffiliated)					2,066,377	2,066,377.35	2,069,550	1,865,574	(780)			(780)		2,066,377				1,144		
8399997	- Subtotal - Bonds - Part 4					6,548,967	6,608,555.30	6,615,646	6,404,258	(8,939)			(8,939)		6,603,852		(54,886)	(54,886)	12,891		
(a) For all common stock bearing the NAIC market indicator 'U' provide: the number of such issues																					
5																					

EOB

STATEMENT AS OF MARCH 31, 2014 OF THE Mount Carmel Health Plan, Inc

SCHEDULE D - PART 4

Show All Long-Term Bonds and Stock Sold, Redeemed or Otherwise Disposed of by the Company During the Current Quarter

1	2	3	4	5	6	7	8	9	10	Change in Book/Adjusted Carrying Value					16	17	18	19	20	21	22
										11	12	13	14	15							
CUSIP Identification	Description	Foreign	Disposal Date	Name of Purchaser	Number of Shares of Stock	Consideration	Par Value	Actual Cost	Prior Year Book/Adjusted Carrying Value	Unrealized Valuation Increase/(Decrease)	Current Year's (Amortization)/Accretion	Current Year's Other-Than-Temporary Impairment Recognized	Total Change in B./A.C.V. (11+12-13)	Total Foreign Exchange Change in B./A.C.V.	Book/Adjusted Carrying Value at Disposal Date	Foreign Exchange Gain (Loss) on Disposal	Realized Gain (Loss) on Disposal	Total Gain (Loss) on Disposal	Bond Interest/Stock Dividends Received During Year	Stated Contractual Maturity Date	NAIC Designation or Market Indicator (a)
8399999	- Subtotal - Bonds					6,548,967	6,608,555.30	6,615,646	6,404,258		(8,939)		(8,939)		6,603,852		(54,886)	(54,886)		12,891	
Common Stocks - Industrial and Miscellaneous (Unaffiliated)																					
88579Y-10-1	3M COMPANY		03/21/2014	J. P. Morgan Securities	45,000	6,024		5,704	6,228	(601)			(601)	5,704			320	320		33	L
002824-10-0	ABBOTT LABORATORIES		01/03/2014	J. P. Morgan Securities	13,000	500		473	498	(26)			(26)	473			28	28			L
00287Y-10-9	ABBVIE INC COM		03/21/2014	J. P. Morgan Securities	90,000	4,792		4,474	4,691	(36)		238	(274)	4,474			319	319		30	U
001084-10-2	AGCO CORP		01/07/2014	Deutsche Morg Grenfell	1,606,000	92,499		80,605	95,059	(14,454)			(14,454)	80,605			11,894	11,894			L
01748X-10-2	ALLEGIAN T TRAVEL CO		01/07/2014	Deutsche Morg Grenfell	1,067,000	113,759		100,842	112,504	(11,662)			(11,662)	100,842			12,917	12,917		2,401	L
02209S-10-3	ALTRIA GROUP INC		01/03/2014	J. P. Morgan Securities	17,000	646		576	653	(77)			(77)	576			70	70			L
023135-10-6	AMAZON COM INC		01/03/2014	J. P. Morgan Securities	3,000	1,202		1,146	1,196	(50)			(50)	1,146			56	56			L
025816-10-9	AMERICAN EXPRESS CO		01/03/2014	J. P. Morgan Securities	8,000	715		385	726	(341)			(341)	385			331	331			L
026874-78-4	AMERICAN INTL GROUP INC		01/03/2014	J. P. Morgan Securities	13,000	661		644	664	(20)			(20)	644			18	18			L
030420-10-3	AMERICAN WTR WKS CO INC		01/07/2014	Deutsche Morg Grenfell	5,096,000	211,610		193,784	215,357	(21,573)			(21,573)	193,784			17,826	17,826			L
031162-10-0	AMGEN INC		01/03/2014	J. P. Morgan Securities	7,000	803		790	799	(9)			(9)	790			13	13			L
037833-10-0	APPLE INC		01/03/2014	J. P. Morgan Securities	16,000	8,739		6,598	8,976	(2,379)			(2,379)	6,598			2,141	2,141			L
044209-10-4	ASHLAND INC NEW COM		03/06/2014	J. P. Morgan Securities	598,000	57,979		41,545	58,030	(16,484)			(16,484)	41,545			16,434	16,434			L
00206R-10-2	AT&T INC		03/21/2014	J. P. Morgan Securities	449,000	15,421		14,431	15,571	(526)		811	(1,337)	14,431			990	990		183	L
05009S-10-8	ATWOOD OCEANICS INC		01/07/2014	Deutsche Morg Grenfell	2,369,000	122,758		115,118	126,481	(11,363)			(11,363)	115,118			7,640	7,640			L
064058-10-0	BANK NEW YORK MELLON CORP		03/21/2014	J. P. Morgan Securities	138,000	4,863		4,409	4,748	(275)		130	(405)	4,409			454	454		20	L
060505-10-4	BANK OF AMERICA CORP		03/21/2014	J. P. Morgan Securities	1,023,000	17,853		15,656	15,707	(288)			(288)	15,656			2,197	2,197			L
073302-10-1	BE AEROSPACE INC		02/07/2014	VARIOUS	474,000	37,813		16,141	41,252	(25,112)			(25,112)	16,141			21,673	21,673			L
084670-70-2	BERKSHIRE HATHAWAY INC DEL		01/03/2014	J. P. Morgan Securities	16,000	1,886		1,831	1,897	(66)			(66)	1,831			55	55			L
09062X-10-3	BIOGEN IDEC INC		03/21/2014	J. P. Morgan Securities	15,000	4,694		3,213	4,138	(985)			(985)	3,213			1,481	1,481			L
097023-10-5	BOEING CO		01/03/2014	J. P. Morgan Securities	6,000	828		500	819	(319)			(319)	500			328	328			L
110122-10-8	BRISTOL MYERS SQUIBB CO		01/03/2014	J. P. Morgan Securities	14,000	742		708	744	(37)			(37)	708			35	35			L
110394-10-3	BRISTOW GROUP INC		02/21/2014	OPPENHEIMER & CO. INC	1,753,000	129,222		102,046	131,580	(29,535)			(29,535)	102,046			27,177	27,177			L
13342B-10-5	CAMERON INTERNATIONAL CORP		03/21/2014	J. P. Morgan Securities	63,000	3,959		3,539	3,696	(212)			(212)	3,539			420	420			L
14040H-10-5	CAPITAL ONE FINL CORP		01/03/2014	J. P. Morgan Securities	5,000	386		326	383	(57)			(57)	326			59	59			L
14170T-10-1	CAREFUSION CORP		03/06/2014	J. P. Morgan Securities	1,628,000	67,832		38,991	64,827	(25,836)			(25,836)	38,991			28,842	28,842			L
149123-10-1	CATERPILLAR INC		01/03/2014	J. P. Morgan Securities	6,000	541		513	545	(32)			(32)	513			28	28			L
151020-10-4	CELGENE CORP		01/03/2014	J. P. Morgan Securities	4,000	680		314	676	(362)			(362)	314			366	366			L
166764-10-0	CHEVRON CORP		01/03/2014	J. P. Morgan Securities	16,000	1,990		1,463	1,999	(535)			(535)	1,463			527	527			L
125509-10-9	CIGNA CORPORATION		03/21/2014	J. P. Morgan Securities	57,000	4,676		4,537	4,907	(171)		277	(448)	4,537			139	139			L
17275R-10-2	CISCO SYSTEMS INC		03/21/2014	J. P. Morgan Securities	502,000	10,870		7,979	11,104	(3,281)			(3,281)	7,979			2,891	2,891		76	L
172967-42-4	CITIGROUP INC		03/21/2014	J. P. Morgan Securities	256,000	12,894		11,643	13,157	(1,684)			(1,684)	11,643			1,251	1,251		2	L
125896-10-0	CMS ENERGY CORP		01/07/2014	Deutsche Morg Grenfell	5,113,000	134,208		77,396	136,875	(59,479)			(59,479)	77,396			56,812	56,812			L
191216-10-0	COCA-COLA CO		01/03/2014	J. P. Morgan Securities	33,000	1,341		1,179	1,363	(184)			(184)	1,179			162	162			L
194162-10-3	COLGATE-PALMOLIVE CO		01/03/2014	J. P. Morgan Securities	8,000	515		512	522	(9)			(9)	512			3	3			L
20030N-10-1	COMCAST CORP NEW CL A		01/03/2014	J. P. Morgan Securities	23,000	1,180		853	1,195	(342)			(342)	853			327	327			L
20825C-10-4	CONOCOPHILLIPS		01/03/2014	J. P. Morgan Securities	11,000	772		756	777	(21)			(21)	756			16	16			L
22160K-10-5	COSTCO WHSL CORP NEW		01/03/2014	J. P. Morgan Securities	4,000	472		474	476	(2)			(2)	474			(2)	(2)			L
22410J-10-6	CRACKER BARREL OLD COUNTRY ST		02/21/2014	VARIOUS	2,645,000	258,098		162,535	291,135	(128,600)			(128,600)	162,535			95,562	95,562		1,984	L
126650-10-0	CVS CAREMARK CORP		01/03/2014	J. P. Morgan Securities	10,000	704		561	716	(155)			(155)	561			144	144			L
235851-10-2	DANAHER CORP DEL COM		01/03/2014	J. P. Morgan Securities	5,000	384		372	386	(14)			(14)	372			12	12			L
254687-10-6	DISNEY WALT CO		01/03/2014	J. P. Morgan Securities	14,000	1,072		741	1,070	(329)			(329)	741			332	332			L
260003-10-8	DOVER CORP		03/03/2014	COST ADJ		5,429		5,429	5,347					5,429							L
260543-10-3	DOW CHEM CO		01/03/2014	J. P. Morgan Securities	10,000	440		408	444	(36)			(36)	408			32	32			L
233326-10-7	DST SYS INC DEL		01/07/2014	Deutsche Morg Grenfell	258,000	23,774		15,487	23,411	(7,924)			(7,924)	15,487			8,287	8,287			L
23334L-10-2	DSW INC		01/24/2014	Morgan Stanley	6,062,000	224,912		245,188	259,029	(13,841)			(13,841)	245,188			(20,276)	(20,276)			U
263534-10-9	DU PONT E I DE NEMOURS & CO		01/03/2014	J. P. Morgan Securities	8,000	513		480	520	(40)			(40)	480			33	33			L

(continues)

E05_1

STATEMENT AS OF MARCH 31, 2014 OF THE Mount Carmel Health Plan, Inc

SCHEDULE D - PART 4

Show All Long-Term Bonds and Stock Sold, Redeemed or Otherwise Disposed of by the Company During the Current Quarter

1	2	3	4	5	6	7	8	9	10	Change In Book/Adjusted Carrying Value					16	17	18	19	20	21	22
										11	12	13	14	15							
CUSIP Identification	Description	Foreign	Disposal Date	Name of Purchaser	Number of Shares of Stock	Consideration	Par Value	Actual Cost	Prior Year Book/Adjusted Carrying Value	Unrealized Valuation Increase/(Decrease)	Current Year's (Amortization)/Accretion	Current Year's Other-Than-Temporary Impairment Recognized	Total Change in B./A.C.V. (11+12-13)	Total Foreign Exchange Change in B./A.C.V.	Book/Adjusted Carrying Value at Disposal Date	Foreign Exchange Gain (Loss) on Disposal	Realized Gain (Loss) on Disposal	Total Gain (Loss) on Disposal	Bond Interest/Stock Dividends Received During Year	Stated Contractual Maturity Date	NAIC Designation or Market Indicator (a)
Common Stocks - Industrial and Miscellaneous (Unaffiliated) (continued)																					
26441C-20-4	DUKE ENERGY CORP NEW		01/03/2014	J. P. Morgan Securities	6,000	409		409	414	(5)			(5)		409						L
27864E-10-3	EBAY INC		01/03/2014	J. P. Morgan Securities	10,000	536		388	549	(161)			(161)		388		148	148			L
532457-10-8	ELI LILLY & CO		01/03/2014	J. P. Morgan Securities	9,000	460		444	459	(15)			(15)		444		16	16			L
268648-10-2	EMC CORP		03/21/2014	J. P. Morgan Securities	161,000	4,451		3,739	3,995	(308)			(308)		3,739		712	712	14		L
291011-10-4	EMERSON ELECTRIC CO		01/03/2014	J. P. Morgan Securities	6,000	418		400	421	(21)			(21)		400		18	18			L
298736-10-9	EURONET WORLDWIDE INC		02/21/2014	OPPENHEIMER & CO. INC	4,634,000	167,940		174,284	221,737	(47,453)			(47,453)		174,284		(6,344)	(6,344)			L
30219G-10-8	EXPRESS SCRIPTS HLDG CO		03/21/2014	J. P. Morgan Securities	64,000	4,878		4,284	4,433	(215)			(215)		4,284		594	594			L
30231G-10-2	EXXON MOBIL CORP		01/03/2014	J. P. Morgan Securities	77,000	7,693		6,853	7,792	(940)			(940)		6,853		840	840			L
30303M-10-2	FACEBOOK INC		01/03/2014	J. P. Morgan Securities	14,000	771		765	765						765		6	6			U
31428X-10-6	FEDEX CORPORATION		01/03/2014	J. P. Morgan Securities	3,000	421		410	431	(21)			(21)		410		11	11			L
32023E-10-5	FIRST FINANCIAL HOLDINGS INC		02/21/2014	OPPENHEIMER & CO. INC	393,000	23,686		13,775	26,138	(12,364)			(12,364)		13,775		9,912	9,912	75		L
339041-10-5	FLEETCOR TECHNOLOGIES INC COM		02/21/2014	OPPENHEIMER & CO. INC	205,000	24,901		21,796	24,020		2,224		(2,224)		21,796		3,105	3,105			L
345370-86-0	FORD MOTOR CO		01/03/2014	J. P. Morgan Securities	34,000	524		525	525						525		(1)	(1)			L
346233-10-9	FORESTAR GROUP INC		03/06/2014	VARIOUS	9,159,000	176,441		104,229	194,812	(90,583)			(90,583)		104,229		72,212	72,212			L
369604-10-3	GENERAL ELECTRIC CO		01/03/2014	J. P. Morgan Securities	88,000	2,419		1,989	2,467	(477)			(477)		1,989		430	430			L
37045V-10-0	GENERAL MTRS CO		01/03/2014	J. P. Morgan Securities	10,000	398		401	409	(7)			(7)		401		(3)	(3)			L
375558-10-3	GILEAD SCIENCES INC		01/03/2014	J. P. Morgan Securities	13,000	970		918	976	(58)			(58)		918		51	51			L
38141G-10-4	GOLDMAN SACHS GROUP INC		01/03/2014	J. P. Morgan Securities	4,000	713		584	709	(125)			(125)		584		128	128			L
38259P-50-8	GOOGLE INC		01/03/2014	J. P. Morgan Securities	2,000	2,228		1,564	2,241	(677)			(677)		1,564		664	664			L
384109-10-4	GRACO INC COM		02/21/2014	OPPENHEIMER & CO. INC	316,000	24,101		21,959	24,686	(914)		1,813	(2,727)		21,959		2,143	2,143	87		L
384637-10-4	GRAHAM HLDGS CO COM		01/24/2014	VARIOUS	442,000	285,975		218,079	293,187	(75,109)			(75,109)		218,079		67,896	67,896			L
421924-30-9	HEALTHSOUTH CORP COM NEW		03/06/2014	VARIOUS	7,397,000	236,660		156,151	246,468	(90,317)			(90,317)		156,151		80,510	80,510	1,331		L
428236-10-3	HEWLETT PACKARD CO		03/21/2014	J. P. Morgan Securities	307,000	9,742		8,200	8,466	(392)			(392)		8,200		1,542	1,542			L
437076-10-2	HOME DEPOT INC		01/03/2014	J. P. Morgan Securities	12,000	989		596	988	(392)			(392)		596		393	393			L
438516-10-6	HONEYWELL INTL INC		01/03/2014	J. P. Morgan Securities	7,000	636		605	640	(34)			(34)		605		31	31			L
44267D-10-7	HOWARD HUGHES CORP		02/21/2014	OPPENHEIMER & CO. INC	172,000	23,032		17,578	20,657	(3,079)			(3,079)		17,578		5,454	5,454			L
45672H-10-4	INFOBOX INC COM		01/07/2014	Deutsche Morg Grenfell	4,346,000	149,191		138,116	143,505	(5,389)			(5,389)		138,116		11,075	11,075			L
458140-10-0	INTEL CORP		03/21/2014	J. P. Morgan Securities	219,000	5,537		4,930	5,614	(749)			(749)		4,930		607	607	39		U
459200-10-1	INTERNATIONAL BUSINESS MACHINES		03/21/2014	J. P. Morgan Securities	138,000	25,757		23,959	25,514	(1,900)			(1,900)		23,959		1,798	1,798	121		L
478160-10-4	JOHNSON & JOHNSON		01/03/2014	J. P. Morgan Securities	24,000	2,208		1,682	2,198	(516)			(516)		1,682		526	526			L
46625H-10-0	JPMORGAN CHASE & CO		03/21/2014	J. P. Morgan Securities	179,000	10,720		8,680	10,337	(1,783)			(1,783)		8,680		2,040	2,040	55		L
48282T-10-4	KADANT INC		02/07/2014	J. P. Morgan Securities	8,027,000	275,651		166,239	325,254	(159,015)			(159,015)		166,239		109,412	109,412	1,003		L
49926D-10-9	KNOWLES CORP COM		03/03/2014	Morgan Stanley	190,000	5,847		5,429	5,429						5,429		417	417			L
53217V-10-9	LIFE TECHNOLOGIES CORP		02/05/2014	Citation Group	379,000	28,854		28,669	28,728	(59)			(59)		28,669		185	185			L
548661-10-7	LOWE'S COS INC		01/03/2014	J. P. Morgan Securities	9,000	445		422	446	(24)			(24)		422		23	23			L
55933J-20-3	MAGNACHIP SEMICONDUCTOR CORP		01/07/2014	Deutsche Morg Grenfell	11,898,000	213,709		187,394	232,011	(44,618)			(44,618)		187,394		26,316	26,316			L
57636Q-10-4	MASTERCARD INC CL A		03/21/2014	J. P. Morgan Securities	50,000	4,556		4,491	4,867	(302)		130	(431)		4,491		65	65	5		L
55264U-10-8	MB FINANCIAL INC NEW COM		02/07/2014	Credit Suisse First Bosto	7,430,000	208,551		208,783	238,206	(9,880)			(9,880)		208,783		(232)	(232)			L
580135-10-1	MCDONALD'S CORP		01/03/2014	J. P. Morgan Securities	9,000	873		847	873	(26)			(26)		847		25	25			L
585055-10-6	MEDTRONIC INC		01/03/2014	J. P. Morgan Securities	9,000	521		502	517	(15)			(15)		502		19	19			L
587200-10-6	MENTOR GRAPHICS CORP		02/07/2014	J. P. Morgan Securities	4,689,000	92,482		80,323	112,864	(32,542)			(32,542)		80,323		12,159	12,159	211		L
58933Y-10-5	MERCK & CO INC NEW		01/03/2014	J. P. Morgan Securities	25,000	1,248		1,209	1,251	(43)			(43)		1,209		39	39			L
59156R-10-8	METLIFE INC		01/03/2014	J. P. Morgan Securities	10,000	536		380	539	(159)			(159)		380		156	156			L
594918-10-4	MICROSOFT CORP		03/21/2014	J. P. Morgan Securities	851,000	33,947		28,047	31,387	(3,774)			(3,774)		28,047		5,899	5,899	220		L
596278-10-1	MIDDLEBY CORP COM		01/07/2014	Deutsche Morg Grenfell	345,000	87,991		39,896	82,705	(42,809)			(42,809)		39,896		48,095	48,095			L
609207-10-5	MONDELEZ INTL INC		01/03/2014	J. P. Morgan Securities	15,000	524		510	530	(20)			(20)		510		14	14			L
61166W-10-1	MONSANTO CO		01/03/2014	J. P. Morgan Securities	5,000	580		552	583	(31)			(31)		552		28	28			L
617446-44-8	MORGAN STANLEY		01/03/2014	J. P. Morgan Securities	12,000	377		366	376	(10)			(10)		366		11	11			L
64110L-10-6	NETFLIX INC		01/03/2014	J. P. Morgan Securities	1,000	367		368	368						368		(2)	(2)			L

(continues)

STATEMENT AS OF MARCH 31, 2014 OF THE Mount Carmel Health Plan, Inc

SCHEDULE D - PART 4

Show All Long-Term Bonds and Stock Sold, Redeemed or Otherwise Disposed of
by the Company During the Current Quarter

1	2	3	4	5	6	7	8	9	10	Change in Book/Adjusted Carrying Value					16	17	18	19	20	21	22
										11	12	13	14	15							
CUSIP Identification	Description	Foreign	Disposal Date	Name of Purchaser	Number of Shares of Stock	Consideration	Par Value	Actual Cost	Prior Year Book/ Adjusted Carrying Value	Unrealized Valuation Increase/ (Decrease)	Current Year's (Amort- ization)/ Accretion	Current Year's Other- Than-Temporary Impairment Recognized	Total Change in B./A.C.V. (11+12-13)	Total Foreign Exchange Change in B./A.C.V.	Book/Adjusted Carrying Value at Disposal Date	Foreign Exchange Gain (Loss) on Disposal	Realized Gain (Loss) on Disposal	Total Gain (Loss) on Disposal	Bond Interest/ Stock Dividends Received During Year	Stated Contractual Maturity Date	NAIC Designa- tion or Market Indica- tor (a)
Common Stocks - Industrial and Miscellaneous (Unaffiliated) (continued)																					
654106-10-3	NIKE INC		01/03/2014	J. P. Morgan Securities	6,000	471	328	472	(143)				(143)		328		143	143			L
674599-10-5	OCCIDENTAL PETE CORP DEL		01/03/2014	J. P. Morgan Securities	7,000	654	640	666	(26)				(26)		640		14	14			L
675232-10-2	OCEANEERING INTERNATIONAL INC		03/06/2014	VARIOUS	4,000,000	278,437	141,644	315,520	(173,876)				(173,876)		141,644		136,793	136,793	532		L
681904-10-8	OMNICARE INC		03/06/2014	J. P. Morgan Securities	1,048,000	60,605	29,650	63,257	(33,607)				(33,607)		29,650		30,955	30,955			L
68235P-10-8	ONE GAS INC		03/21/2014	J. P. Morgan Securities	115,000	4,165	3,432								3,432		734	734			L
682680-10-3	ONEOK INC NEW		02/03/2014	COST ADJ		3,365	3,365	3,365							3,365						L
68389X-10-5	ORACLE CORP		01/03/2014	J. P. Morgan Securities	30,000	1,129	906	1,148	(242)				(242)		906		223	223			L
712704-10-5	PEOPLES UNITED FINANCIAL INC		03/06/2014	J. P. Morgan Securities	9,462,000	138,364	134,077	143,065	(8,516)		473		(8,989)		134,077		4,288	4,288	1,538		L
713448-10-8	PEPSICO INC		01/03/2014	J. P. Morgan Securities	13,000	1,076	1,056	1,056	(22)				(22)		1,056		19	19			L
717081-10-3	PFIZER INC		03/21/2014	J. P. Morgan Securities	231,000	7,345	6,289	6,994	(788)				(788)		6,289		1,057	1,057	45		L
718172-10-9	PHILIP MORRIS INTL INC		01/03/2014	J. P. Morgan Securities	14,000	1,208	1,195	1,220	(25)				(25)		1,195		14	14			L
718546-10-4	PHILLIPS 66 COM		01/03/2014	J. P. Morgan Securities	5,000	382	357	386	(29)				(29)		357		25	25			L
693475-10-5	PNC FINL SVCS GROUP INC		01/03/2014	J. P. Morgan Securities	5,000	385	380	388	(8)				(8)		380		6	6			L
69349H-10-7	PNM RES INC		01/07/2014	Deutsche Morg Grenfell	1,404,000	33,513	28,796	33,864	(5,068)				(5,068)		28,796		4,717	4,717			L
73278L-10-5	POOL CORPORATION COM		03/06/2014	J. P. Morgan Securities	1,077,000	64,104	44,185	62,617	(18,431)				(18,431)		44,185		19,919	19,919			L
74005P-10-4	PRAXAIR INC		01/03/2014	J. P. Morgan Securities	3,000	389	374	390	(16)				(16)		374		15	15			L
74112D-10-1	PRESTIGE BRANDS HOLDINGS INC		02/07/2014	Credit Suisse First Bosto	4,559,000	124,187	23,616	163,212	(139,597)				(139,597)		23,616		100,571	100,571			L
742718-10-9	PROCTER & GAMBLE CO		01/03/2014	J. P. Morgan Securities	23,000	1,854	1,496	1,872	(376)				(376)		1,496		357	357			L
744320-10-2	PRUDENTIAL FINL INC		01/03/2014	J. P. Morgan Securities	4,000	362	354	369	(15)				(15)		354		8	8			L
747525-10-3	QUALCOMM INC		03/21/2014	J. P. Morgan Securities	70,000	5,396	3,982	5,135	(1,215)				(1,215)		3,982		1,415	1,415			L
759509-10-2	RELIANCE STEEL & ALUMINIUM CO		01/07/2014	Deutsche Morg Grenfell	1,866,000	140,124	120,243	141,517	(21,274)				(21,274)		120,243		19,881	19,881			L
806857-10-8	SCHLUMBERGER LTD		01/03/2014	J. P. Morgan Securities	11,000	978	958	991	(33)				(33)		958		19	19			L
808513-10-5	SCHWAB CHARLES CORP NEW		03/21/2014	J. P. Morgan Securities	144,000	4,107	3,573	3,687	(167)				(167)		3,573		534	534	9		L
828806-10-9	SIMON PROPERTY GROUP INC		01/03/2014	J. P. Morgan Securities	3,000	462	446	456	(10)				(10)		446		16	16			L
846822-10-4	SPARTAN STORES INC		03/06/2014	J. P. Morgan Securities	662,000	15,073	14,955				1,189		(1,189)		14,955		119	119			L
853666-10-5	STANDARD MTR PRODS INC COM		02/21/2014	OPPENHEIMER & CO. INC	5,244,000	167,468	115,296	192,979	(77,684)				(77,684)		115,296		52,173	52,173	682		L
855244-10-9	STARBUCKS CORP		01/03/2014	J. P. Morgan Securities	7,000	541	528	528	(21)				(21)		528		14	14			L
857477-10-3	STATE STREET CORP		03/21/2014	J. P. Morgan Securities	60,000	4,128	3,940	4,337	(181)		276		(456)		3,940		188	188	15		L
882508-10-4	TEXAS INSTRS INC		03/21/2014	J. P. Morgan Securities	129,000	6,042	5,469	5,585	(177)		14		(191)		5,469		574	574	35		L
887317-30-3	TIME WARNER INC		01/03/2014	J. P. Morgan Securities	8,000	552	528	528	(30)				(30)		528		24	24			L
872540-10-9	TJX COS INC NEW		01/03/2014	J. P. Morgan Securities	6,000	384	368	382	(14)				(14)		368		16	16			L
891894-10-7	TOWERS WATSON & CO		03/06/2014	J. P. Morgan Securities	2,061,000	231,584	164,888	263,004	(98,116)				(98,116)		164,888		66,696	66,696	289		L
899896-10-4	TUPPERWARE BRANDS CORP		02/07/2014	Citation Group	1,819,000	139,736	95,352	171,950	(76,598)				(76,598)		95,352		44,384	44,384	1,128		L
90130A-10-1	TWENTY FIRST CENY FOX INC		01/03/2014	J. P. Morgan Securities	17,000	602	558	598	(40)				(40)		558		44	44			U
907818-10-8	UNION PAC CORP		01/03/2014	J. P. Morgan Securities	4,000	670	540	672	(132)				(132)		540		130	130	8		L
91324P-10-2	UNITED HEALTH GROUP INC CORP		03/21/2014	J. P. Morgan Securities	179,000	14,503	12,714	13,286	(753)				(753)		12,714		1,789	1,789			L
911312-10-6	UNITED PARCEL SERVICE INC CL B		01/03/2014	J. P. Morgan Securities	6,000	623	606	630	(24)				(24)		606		16	16			L
913017-10-9	UNITED TECHNOLOGIES CORP		01/03/2014	J. P. Morgan Securities	7,000	794	606	797	(191)				(191)		606		188	188			L
902973-30-4	US BANCORP		01/03/2014	J. P. Morgan Securities	16,000	641	628	646	(18)				(18)		628		13	13			L
92343V-10-4	VERIZON COMMUNICATIONS INC		01/03/2014	J. P. Morgan Securities	25,000	1,212	1,184	1,229	(44)				(44)		1,184		28	28			L
92826C-83-9	VISA INC CL A		01/03/2014	J. P. Morgan Securities	4,000	886	511	891	(380)				(380)		511		375	375			L
931142-10-3	WAL-MART STORES INC		01/03/2014	J. P. Morgan Securities	14,000	1,104	1,100	1,102	(2)				(2)		1,100		4	4			L
931422-10-9	WALGREEN CO		01/03/2014	J. P. Morgan Securities	8,000	454	460	460							460		(6)	(6)			L
94973V-10-7	WELLPOINT LLC		03/21/2014	J. P. Morgan Securities	65,000	6,484	5,591	5,915	(228)		181		(409)		5,591		894	894			L
949746-10-1	WELLS FARGO & CO		01/03/2014	J. P. Morgan Securities	41,000	1,860	1,305	1,861	(556)				(556)		1,305		555	555			L
98212B-10-3	WPX ENERGY INC		03/21/2014	J. P. Morgan Securities	447,000	8,301	7,876	8,967	(492)		736		(1,228)		7,876		424	424			L
G1151C-10-1	ACCENTURE PLC CLASS A	R	01/03/2014	J. P. Morgan Securities	6,000	489	445	493	(48)				(48)		445		44	44			L
G01767-10-5	ALKERMES PLC SHS	R	02/07/2014	Citation Group	1,837,000	90,984	28,694	74,692	(45,998)				(45,998)		28,694		62,290	62,290			L
G50871-10-5	JAZZ PHARMACEUTICALS PLC	R	02/07/2014	Credit Suisse First Bosto	264,000	40,589	11,971	33,412	(21,440)				(21,440)		11,971		28,618	28,618			L

(continues)

STATEMENT AS OF MARCH 31, 2014 OF THE Mount Carmel Health Plan, Inc

SCHEDULE D - PART 4

Show All Long-Term Bonds and Stock Sold, Redeemed or Otherwise Disposed of by the Company During the Current Quarter

1 CUSIP Identifi- cation	2 Description	3 Foreign	4 Disposal Date	5 Name of Purchaser	6 Number of Shares of Stock	7 Consideration	8 Par Value	9 Actual Cost	10 Prior Year Book/ Adjusted Carrying Value	Change In Book/Adjusted Carrying Value					16 Book/Adjusted Carrying Value at Disposal Date	17 Foreign Exchange Gain (Loss) on Disposal	18 Realized Gain (Loss) on Disposal	19 Total Gain (Loss) on Disposal	20 Bond Interest/ Stock Dividends Received During Year	21 Stated Contractual Maturity Date	22 NAIC Designa- tion or Market Indici- ator (a)
										11 Unrealized Valuation Increase/ (Decrease)	12 Current Year's (Amort- ization)/ Accretion	13 Current Year's Other- Than-Temporary Impairment Recognized	14 Total Change in B./A.C.V. (11+12-13)	15 Total Foreign Exchange Change in B./A.C.V.							
Common Stocks - Industrial and Miscellaneous (Unaffiliated) (continued)																					
74735M-10-8	QIWI PLC SPON ADR	R	02/21/2014	OPPENHEIMER & CO. INC	934.000	37,741	29,197	52,304	(23,107)						29,197		8,544	8,544			L
9099999	- Subtotal - Common Stocks - Industrial and Miscellaneous (Unaffiliated)					5,392,026	4,042,661	5,798,908	(1,756,452)		28,034	(1,784,486)			4,042,661		1,349,365	1,349,365			12,170
9799997	- Subtotal - Common Stocks - Part 4					5,392,026	4,042,661	5,798,908	(1,756,452)		28,034	(1,784,486)			4,042,661		1,349,365	1,349,365			12,170
9799999	- Subtotal - Common Stocks					5,392,026	4,042,661	5,798,908	(1,756,452)		28,034	(1,784,486)			4,042,661		1,349,365	1,349,365			12,170
9899999	- Subtotal - Preferred and Common Stocks					5,392,026	4,042,661	5,798,908	(1,756,452)		28,034	(1,784,486)			4,042,661		1,349,365	1,349,365			12,170
9999999	- TOTALS					11,940,993	10,658,307	12,203,166	(1,756,452)	(8,939)	28,034	(1,793,425)			10,646,514		1,294,479	1,294,479			25,061

Page E06

Schedule DB, Part A, Section 1

NONE

Description of Hedged Risk (s)

NONE

Financial or Economic Impact of the Hedge

NONE

Page E07

Schedule DB, Part B, Section 1

NONE

Schedule DB, Part B, Section 1, Broker Name

NONE

Schedule DB, Part B, Description of Hedged Risk (s)

NONE

Schedule DB, Part B, Financial or Economic Impact of the Hedge

NONE

Page E08

Schedule DB, Part D, Section 1

NONE

Page E09

Schedule DB, Part D, Section 2, By Reporting Entity

NONE

Schedule DB, Part D, Section 2, To Reporting Entity

NONE

Page E10

Schedule DL, Part 1

NONE

**SCHEDULE DL - PART 2
SECURITIES LENDING COLLATERAL ASSETS**

Reinvested Collateral Assets Owned Current Statement Date

1	2	3	4	5	6	7
CUSIP Identification	Description	Code	NAIC Designation/Market Indicator	Fair Value	Book/Adjusted Carrying Value	Maturity Dates

NONE

General Interrogatories:

1. Total activity for the year to date
2. Average Balance for the year to date

Fair Value \$
Fair Value \$

Book/Adjusted Carrying Value \$
Book/Adjusted Carrying Value \$

SCHEDULE E - PART 1 - CASH

Month End Depository Balances

1 Depository		2	3	4	5	Book Balance at End of Each Month During Current Quarter			9
						6	7	8	
Name	Location and Supplemental Information	Code	Rate of Interest	Amount of Interest Received During Current Quarter	Amount of Interest Accrued at Current Statement Date	First Month	Second Month	Third Month	*
Open Depositories									
	PNC Bank Account, Columbus, OH					(3,940,630)	(4,534,921)	(5,626,349)	
BANK MONTREAL CHICAGO BRH ILL CD	5879 Mt Carmel Short Term & Cash Equiv		0.210		751	800,000	800,000	800,000	
BANK NOVA SCOTIA HOUSTON TEX CD	5879 Mt Carmel Short Term & Cash Equiv		0.210		291		1,100,000	1,100,000	
NORDEA BK FINLAND PLC N Y BRH	5879 Mt Carmel Short Term & Cash Equiv		0.215		136			650,039	
OVERSEA CHINESE BKG CORP LTD	5879 Mt Carmel Short Term & Cash Equiv		0.180		336	800,000	800,000	800,000	
SVENSKA HANDELSBANKEN AB INSTL	5879 Mt Carmel Short Term & Cash Equiv		0.170		283	800,000	800,000	800,000	
SVENSKA HANDELSBANKEN AB INSTL	5879 Mt Carmel Short Term & Cash Equiv		0.175		25			400,006	
0199998 - Deposits in 10 depositories that do not exceed the allowable limit in any one depository (See Instructions) - Open Depositories									
				8,645		7,940,186	2,970,011		
0199999 - TOTAL - Open Depositories				8,645	1,823	6,399,556	1,935,090	(1,076,304)	
0399999 - TOTAL Cash on Deposit				8,645	1,823	6,399,556	1,935,090	(1,076,304)	
0499999 - Cash in Company's Office						200	200	200	
0599999 - TOTALS				8,645	1,823	6,399,756	1,935,290	(1,076,104)	

STATEMENT AS OF MARCH 31, 2014 OF THE Mount Carmel Health Plan, Inc

SCHEDULE E - PART 2 - CASH EQUIVALENTS

Show Investments Owned End of Current Quarter

1 Description	2 Code	3 Date Acquired	4 Rate of Interest	5 Maturity Date	6 Book / Adjusted Carrying Value	7 Amount of Interest Due and Accrued	8 Amount Received During Year
Bonds: U. S. Government - Issuer Obligations							
REPURCHASE AGREEMENT - PNC BANK		03/31/2014	0.150	04/01/2014	17,584,900	2,240	
0199999 - Bonds: U. S. Government - Issuer Obligations					17,584,900	2,240	
0599999 - Bonds: Subtotals - U. S. Government Bonds					17,584,900	2,240	
Bonds: Industrial and Miscellaneous (Unaffiliated) - Issuer Obligations							
ALPINE SECURITIZATIN CORP DISC C/P		03/12/2014		04/16/2014	349,963		21
ALPINE SECURITIZATIN CORP Disc C/P		02/26/2014		04/17/2014	1,499,485		411
ALPINE SECURITIZATIN CORP Disc C/P		01/22/2014		04/22/2014	649,724		212
AUSTRALIA&NEW ZEALAND BKG Disc C/P		02/14/2014		05/14/2014	1,599,407		307
BNP PARIBAS FINANCE Disc C/P		02/14/2014		05/06/2014	399,811		107
BANK TOKYO MITSUBISHI LTD Disc C/P		02/07/2014		04/14/2014	999,652		280
BANK TOKYO MITSUBISHI UFJ Disc C/P		02/21/2014		04/22/2014	749,788		138
CAFCO LLC 0% Disc C/P		02/26/2014		05/19/2014	849,690		128
CATHOLIC HEALTH INIT Disc C/P		02/03/2014		05/01/2014	1,649,402		392
CHARTA LLC Disc C/P		02/14/2014		05/14/2014	599,733		138
DNB BANK ASA DISC C/P		03/31/2014		04/16/2014	799,967		2
DNB NOR BK ASA Disc C/P		02/14/2014		05/14/2014	799,684		164
DEUTSCHE BK FINANCIAL LLC DISC C/P		03/06/2014		05/29/2014	699,641		111
ERSTAA CP Disc C/P		02/26/2014		04/08/2014	2,649,410		523
ERSTE ABWICKLUNGSTL Disc C/P		01/24/2014		04/16/2014	649,778		181
FAIRWAY FINANCE CORP DISC C/P		03/10/2014		05/12/2014	799,804		68
GEMINI SECURITIZATION DISC C/P		03/19/2014		06/17/2014	1,798,965		149
GOTFUN CP DISC C/P		03/13/2014		05/13/2014	399,892		34
GOVCO INC Disc C/P		02/11/2014		05/09/2014	1,049,569		243
JPMORGAN CHASE BANK Disc C/P		01/22/2014		04/09/2014	107,958		37
JPMORGAN CHASE BANK DISC C/P		03/04/2014		05/05/2014	312,908		41
LIBERTY STR FDG CORP Disc C/P		02/03/2014		04/04/2014	349,913		83
LIBERTY STREET FNDG CORP Disc C/P		01/14/2014		04/14/2014	599,745		218
LIBERTY STREET FNDG CORP DISC C/P		03/07/2014		04/28/2014	799,838		78
LIBERTY STREET FNDG CORP DISC C/P		03/27/2014		05/23/2014	449,886		10
METLIFE SHORT TERM FNDG DISC C/P		03/12/2014		05/12/2014	654,856		47
NEW YORK LIFE CAP CORP Disc C/P		02/05/2014		05/06/2014	749,813		115
NARCO CP Disc C/P		01/07/2014		04/01/2014	2,499,067		933
NORDEA BANK AB CP DISC C/P		03/25/2014		06/16/2014	899,658		29
OVERSEA CHINESE BKG CORP Disc C/P		02/20/2014		04/02/2014	834,857		139
PACCAR FINANCIAL CORP DISC C/P		03/28/2014		04/28/2014	1,299,922		10
REGENCY MARKET NO LLC DISC C/P		03/17/2014		04/15/2014	349,961		20
REGENCY MARKETS NO LLC CP DISC C/P		03/20/2014		04/22/2014	1,949,750		91
SHEFFIELD RECEIVABLES DISC C/P		03/04/2014		04/10/2014	299,954		35
SHEFFIELD RECEIVABLES COR Disc C/P		02/06/2014		04/14/2014	1,139,703		239
STANDARD CHARTERED BK Disc C/P		02/20/2014		04/02/2014	834,867		130
STANDARD CHARTERED BANK Disc C/P		01/10/2014		04/08/2014	834,694		282
SCHART CP DISC C/P		03/18/2014		06/06/2014	799,716		50
UBS FINANCE (DELW) DISC C/P		03/04/2014		04/30/2014	274,935		32
UBS FINANCE DISC C/P		03/20/2014		06/16/2014	2,234,180		112
3299999 - Bonds: Industrial and Miscellaneous (Unaffiliated) - Issuer Obligations					37,269,540		6,341
3899999 - Bonds: Subtotals - Industrial and Miscellaneous (Unaffiliated)					37,269,540		6,341

SCHEDULE E - PART 2 - CASH EQUIVALENTS

Show Investments Owned End of Current Quarter

1 Description	2 Code	3 Date Acquired	4 Rate of Interest	5 Maturity Date	6 Book / Adjusted Carrying Value	7 Amount of Interest Due and Accrued	8 Amount Received During Year
7799999 - Total Bonds - Subtotals - Issuer Obligations					54,854,441	8,581	
8399999 - Total Bonds - Subtotals - Bonds					54,854,441	8,581	
8699999 - Total Cash Equivalents					54,854,441	8,581	