



# QUARTERLY STATEMENT

AS OF MARCH 31, 2014  
OF THE CONDITION AND AFFAIRS OF THE

## Premier Health Plan, Inc.

NAIC Group Code 00000 (Current Period),                      (Prior Period) NAIC Company Code 15484 Employer's ID Number 46-3024049

Organized under the Laws of Ohio, State of Domicile or Port of Entry Ohio

Country of Domicile United States

Licensed as business type: Life, Accident & Health [ ] Property/Casualty [ ] Hospital, Medical & Dental Service or Indemnity [ ]  
 Dental Service Corporation [ ] Vision Service Corporation [ ] Health Maintenance Organization [ X ]  
 Other [ ] Is HMO Federally Qualified? Yes [ ] No [ ]

Incorporated/Organized 09/05/2013 Commenced Business 03/13/2014

Statutory Home Office 110 N MAIN ST STE 1200, Dayton, OH, US 45402  
(Street and Number) (City or Town, State, Country and Zip Code)

Main Administrative Office 110 N MAIN ST STE 1200, Dayton, OH, US 45402 937-499-9588  
(Street and Number) (City or Town, State, Country and Zip Code) (Area Code) (Telephone Number)

Mail Address 110 N MAIN ST STE 1200, Dayton, OH, US 45402  
(Street and Number or P.O. Box) (City or Town, State, Country and Zip Code)

Primary Location of Books and Records 110 N MAIN ST STE 1200, Dayton, OH, US 45402 937-499-9546  
(Street and Number) (City or Town, State, Country and Zip Code) (Area Code) (Telephone Number)

Internet Web Site Address N/A

Statutory Statement Contact Joshua Martin 937-499-9546  
(Name) (Area Code) (Telephone Number) (Extension)  
jamartin@premierhealth.com 937-341-8792  
(E-Mail Address) (FAX Number)

### OFFICERS

Name	Title	Name	Title
<u>Michael Maiberger #</u>	<u>Chief Executive Officer</u>	<u>Aaron Molitor #</u>	<u>President</u>
<u>Thomas Duncan #</u>	<u>Treasurer</u>	<u>Geoffrey Walker #</u>	<u>Secretary</u>

### OTHER OFFICERS

\_\_\_\_\_

### DIRECTORS OR TRUSTEES

<u>George Broderick #</u>	<u>Kathleen Carlson #</u>	<u>Jerry Clark #</u>	<u>Thomas Duncan #</u>
<u>Christopher Danis #</u>	<u>Michael Maiberger #</u>	<u>Frank von Maluski #</u>	<u>Aaron Molitor #</u>
<u>James Pancoast #</u>			

State of Ohio

ss

County of Montgomery

The officers of this reporting entity being duly sworn, each depose and say that they are the described officers of said reporting entity, and that on the reporting period stated above, all of the herein described assets were the absolute property of the said reporting entity, free and clear from any liens or claims thereon, except as herein stated, and that this statement, together with related exhibits, schedules and explanations therein contained, annexed or referred to, is a full and true statement of all the assets and liabilities and of the condition and affairs of the said reporting entity as of the reporting period stated above, and of its income and deductions therefrom for the period ended, and have been completed in accordance with the NAIC *Annual Statement Instructions and Accounting Practices and Procedures* manual except to the extent that: (1) state law may differ; or, (2) that state rules or regulations require differences in reporting not related to accounting practices and procedures, according to the best of their information, knowledge and belief, respectively. Furthermore, the scope of this attestation by the described officers also includes the related corresponding electronic filing with the NAIC, when required, that is an exact copy (except for formatting differences due to electronic filing) of the enclosed statement. The electronic filing may be requested by various regulators in lieu of or in addition to the enclosed statement.

Michael Maiberger  
Chief Executive Officer

Aaron Molitor  
President

Joshua Martin  
Vice President of Finance

a. Is this an original filing? Yes [ X ] No [ ]

b. If no:

1. State the amendment number \_\_\_\_\_
2. Date filed 05/15/2014
3. Number of pages attached \_\_\_\_\_

Subscribed and sworn to before me this  
15th day of May, 2014

STATEMENT AS OF MARCH 31, 2014 OF THE Premier Health Plan, Inc.

**ASSETS**

	Current Statement Date			4 December 31 Prior Year Net Admitted Assets
	1 Assets	2 Nonadmitted Assets	3 Net Admitted Assets (Cols. 1 - 2)	
1. Bonds .....	418,807		418,807	0
2. Stocks:				
2.1 Preferred stocks .....			0	0
2.2 Common stocks .....			0	0
3. Mortgage loans on real estate:				
3.1 First liens .....			0	0
3.2 Other than first liens .....			0	0
4. Real estate:				
4.1 Properties occupied by the company (less \$ ..... encumbrances) .....			0	0
4.2 Properties held for the production of income (less \$ ..... encumbrances) .....			0	0
4.3 Properties held for sale (less \$ ..... encumbrances) .....			0	0
5. Cash (\$ .....2,078,693 ), cash equivalents (\$ .....0 ) and short-term investments (\$ .....2,500 ) .....	2,081,193		2,081,193	0
6. Contract loans (including \$ ..... premium notes) .....			0	0
7. Derivatives .....			0	0
8. Other invested assets .....	0		0	0
9. Receivables for securities .....			0	0
10. Securities lending reinvested collateral assets .....			0	0
11. Aggregate write-ins for invested assets .....	0	0	0	0
12. Subtotals, cash and invested assets (Lines 1 to 11) .....	2,500,000	0	2,500,000	0
13. Title plants less \$ ..... charged off (for Title insurers only) .....			0	0
14. Investment income due and accrued .....	2,190		2,190	0
15. Premiums and considerations:				
15.1 Uncollected premiums and agents' balances in the course of collection .....			0	0
15.2 Deferred premiums, agents' balances and installments booked but deferred and not yet due (including \$ ..... earned but unbilled premiums) .....			0	0
15.3 Accrued retrospective premiums .....			0	0
16. Reinsurance:				
16.1 Amounts recoverable from reinsurers .....			0	0
16.2 Funds held by or deposited with reinsured companies .....			0	0
16.3 Other amounts receivable under reinsurance contracts .....			0	0
17. Amounts receivable relating to uninsured plans .....			0	0
18.1 Current federal and foreign income tax recoverable and interest thereon .....			0	0
18.2 Net deferred tax asset .....			0	0
19. Guaranty funds receivable or on deposit .....			0	0
20. Electronic data processing equipment and software .....			0	0
21. Furniture and equipment, including health care delivery assets (\$ ..... ) .....			0	0
22. Net adjustment in assets and liabilities due to foreign exchange rates .....			0	0
23. Receivables from parent, subsidiaries and affiliates .....	900,463		900,463	0
24. Health care (\$ ..... ) and other amounts receivable .....			0	0
25. Aggregate write-ins for other-than-invested assets .....	0	0	0	0
26. Total assets excluding Separate Accounts, Segregated Accounts and Protected Cell Accounts (Lines 12 to 25) .....	3,402,653	0	3,402,653	0
27. From Separate Accounts, Segregated Accounts and Protected Cell Accounts .....			0	0
28. Total (Lines 26 and 27) .....	3,402,653	0	3,402,653	0
<b>DETAILS OF WRITE-INS</b>				
1101. ....				
1102. ....				
1103. ....				
1198. Summary of remaining write-ins for Line 11 from overflow page .....	0	0	0	0
1199. Totals (Lines 1101 through 1103 plus 1198) (Line 11 above) .....	0	0	0	0
2501. ....				
2502. ....				
2503. ....				
2598. Summary of remaining write-ins for Line 25 from overflow page .....	0	0	0	0
2599. Totals (Lines 2501 through 2503 plus 2598) (Line 25 above) .....	0	0	0	0

**LIABILITIES, CAPITAL AND SURPLUS**

	Current Period			Prior Year
	1 Covered	2 Uncovered	3 Total	4 Total
1. Claims unpaid (less \$ ..... reinsurance ceded).....			0	0
2. Accrued medical incentive pool and bonus amounts .....			0	0
3. Unpaid claims adjustment expenses .....			0	0
4. Aggregate health policy reserves including the liability of \$ ..... for medical loss ratio rebate per the Public Health Service Act .....			0	0
5. Aggregate life policy reserves .....			0	0
6. Property/casualty unearned premium reserve .....			0	0
7. Aggregate health claim reserves .....			0	0
8. Premiums received in advance .....			0	0
9. General expenses due or accrued .....	400,463		400,463	0
10.1 Current federal and foreign income tax payable and interest thereon (including \$ ..... on realized gains (losses)) .....			0	0
10.2 Net deferred tax liability.....			0	0
11. Ceded reinsurance premiums payable .....			0	0
12. Amounts withheld or retained for the account of others .....			0	0
13. Remittances and items not allocated .....			0	0
14. Borrowed money (including \$ ..... current) and interest thereon \$ ..... (including \$ ..... current) .....			0	0
15. Amounts due to parent, subsidiaries and affiliates .....			0	0
16. Derivatives.....			0	0
17. Payable for securities .....			0	0
18. Payable for securities lending .....			0	0
19. Funds held under reinsurance treaties (with \$ ..... authorized reinsurers, \$ ..... unauthorized reinsurers and \$ ..... certified reinsurers) .....			0	0
20. Reinsurance in unauthorized and certified (\$ ..... ) companies .....			0	0
21. Net adjustments in assets and liabilities due to foreign exchange rates .....			0	0
22. Liability for amounts held under uninsured plans .....			0	0
23. Aggregate write-ins for other liabilities (including \$ ..... current) .....	0	0	0	0
24. Total liabilities (Lines 1 to 23).....	400,463	0	400,463	0
25. Aggregate write-ins for special surplus funds .....	XXX	XXX	0	0
26. Common capital stock .....	XXX	XXX	1,000,000	0
27. Preferred capital stock .....	XXX	XXX	0	0
28. Gross paid in and contributed surplus .....	XXX	XXX	3,697,419	0
29. Surplus notes .....	XXX	XXX	0	0
30. Aggregate write-ins for other-than-special surplus funds .....	XXX	XXX	0	0
31. Unassigned funds (surplus) .....	XXX	XXX	(1,695,229)	0
32. Less treasury stock, at cost:				
32.1 ..... shares common (value included in Line 26 \$ ..... ) .....	XXX	XXX		0
32.2 ..... shares preferred (value included in Line 27 \$ ..... ) .....	XXX	XXX		0
33. Total capital and surplus (Lines 25 to 31 minus Line 32) .....	XXX	XXX	3,002,190	0
34. Total liabilities, capital and surplus (Lines 24 and 33) .....	XXX	XXX	3,402,653	0
<b>DETAILS OF WRITE-INS</b>				
2301. ....				
2302. ....				
2303. ....				
2398. Summary of remaining write-ins for Line 23 from overflow page .....	0	0	0	0
2399. Totals (Lines 2301 through 2303 plus 2398) (Line 23 above) .....	0	0	0	0
2501. ....	XXX	XXX		
2502. ....	XXX	XXX		
2503. ....	XXX	XXX		
2598. Summary of remaining write-ins for Line 25 from overflow page .....	XXX	XXX	0	0
2599. Totals (Lines 2501 through 2503 plus 2598) (Line 25 above) .....	XXX	XXX	0	0
3001. ....	XXX	XXX		
3002. ....	XXX	XXX		
3003. ....	XXX	XXX		
3098. Summary of remaining write-ins for Line 30 from overflow page .....	XXX	XXX	0	0
3099. Totals (Lines 3001 through 3003 plus 3098) (Line 30 above) .....	XXX	XXX	0	0

**STATEMENT OF REVENUE AND EXPENSES**

	Current Year To Date		Prior Year To Date	Prior Year Ended December 31
	1 Uncovered	2 Total	3 Total	4 Total
1. Member Months.....	XXX		.0	.0
2. Net premium income (including \$ non-health premium income).....	XXX		.0	.0
3. Change in unearned premium reserves and reserve for rate credits .....	XXX		.0	.0
4. Fee-for-service (net of \$ medical expenses) .....	XXX		.0	.0
5. Risk revenue .....	XXX		.0	.0
6. Aggregate write-ins for other health care related revenues .....	XXX	.0	.0	.0
7. Aggregate write-ins for other non-health revenues .....	XXX	.0	.0	.0
8. Total revenues (Lines 2 to 7) .....	XXX	.0	.0	.0
<b>Hospital and Medical:</b>				
9. Hospital/medical benefits .....			.0	.0
10. Other professional services .....			.0	.0
11. Outside referrals .....			.0	.0
12. Emergency room and out-of-area .....			.0	.0
13. Prescription drugs .....			.0	.0
14. Aggregate write-ins for other hospital and medical .....	.0	.0	.0	.0
15. Incentive pool, withhold adjustments and bonus amounts .....			.0	.0
16. Subtotal (Lines 9 to 15) .....	.0	.0	.0	.0
<b>Less:</b>				
17. Net reinsurance recoveries .....			.0	.0
18. Total hospital and medical (Lines 16 minus 17) .....	.0	.0	.0	.0
19. Non-health claims (net).....			.0	.0
20. Claims adjustment expenses, including \$ cost containment expenses.....			.0	.0
21. General administrative expenses.....		1,693,601	.0	.0
22. Increase in reserves for life and accident and health contracts (including \$ increase in reserves for life only).....			.0	.0
23. Total underwriting deductions (Lines 18 through 22) .....	.0	1,693,601	.0	.0
24. Net underwriting gain or (loss) (Lines 8 minus 23) .....	XXX	(1,693,601)	.0	.0
25. Net investment income earned .....		(1,628)	.0	.0
26. Net realized capital gains (losses) less capital gains tax of \$ .....			.0	.0
27. Net investment gains (losses) (Lines 25 plus 26) .....	.0	(1,628)	.0	.0
28. Net gain or (loss) from agents' or premium balances charged off [(amount recovered \$ ) (amount charged off \$ )] .....			.0	.0
29. Aggregate write-ins for other income or expenses .....	.0	.0	.0	.0
30. Net income or (loss) after capital gains tax and before all other federal income taxes (Lines 24 plus 27 plus 28 plus 29) .....	XXX	(1,695,229)	.0	.0
31. Federal and foreign income taxes incurred .....	XXX		.0	.0
32. Net income (loss) (Lines 30 minus 31) .....	XXX	(1,695,229)	.0	.0
<b>DETAILS OF WRITE-INS</b>				
0601. ....	XXX			
0602. ....	XXX			
0603. ....	XXX			
0698. Summary of remaining write-ins for Line 6 from overflow page .....	XXX	.0	.0	.0
0699. Totals (Lines 0601 through 0603 plus 0698) (Line 6 above) .....	XXX	.0	.0	.0
0701. ....	XXX			
0702. ....	XXX			
0703. ....	XXX			
0798. Summary of remaining write-ins for Line 7 from overflow page .....	XXX	.0	.0	.0
0799. Totals (Lines 0701 through 0703 plus 0798) (Line 7 above) .....	XXX	.0	.0	.0
1401. ....				
1402. ....				
1403. ....				
1498. Summary of remaining write-ins for Line 14 from overflow page .....	.0	.0	.0	.0
1499. Totals (Lines 1401 through 1403 plus 1498) (Line 14 above) .....	.0	.0	.0	.0
2901. ....				
2902. ....				
2903. ....				
2998. Summary of remaining write-ins for Line 29 from overflow page .....	.0	.0	.0	.0
2999. Totals (Lines 2901 through 2903 plus 2998) (Line 29 above) .....	.0	.0	.0	.0

**STATEMENT OF REVENUE AND EXPENSES (Continued)**

	1	2	3
	Current Year To Date	Prior Year To Date	Prior Year Ended December 31
<b>CAPITAL &amp; SURPLUS ACCOUNT</b>			
33. Capital and surplus prior reporting year.....	0	0	0
34. Net income or (loss) from Line 32 .....	(1,695,229)	0	0
35. Change in valuation basis of aggregate policy and claim reserves .....		0	0
36. Change in net unrealized capital gains (losses) less capital gains tax of \$ .....		0	0
37. Change in net unrealized foreign exchange capital gain or (loss) .....		0	0
38. Change in net deferred income tax .....		0	0
39. Change in nonadmitted assets .....		0	0
40. Change in unauthorized and certified reinsurance .....	0	0	0
41. Change in treasury stock .....		0	0
42. Change in surplus notes .....	0	0	0
43. Cumulative effect of changes in accounting principles .....		0	0
44. Capital Changes:			
44.1 Paid in .....	1,000,000	0	0
44.2 Transferred from surplus (Stock Dividend) .....		0	0
44.3 Transferred to surplus .....		0	0
45. Surplus adjustments:			
45.1 Paid in .....	3,697,419	0	0
45.2 Transferred to capital (Stock Dividend) .....	0	0	0
45.3 Transferred from capital .....		0	0
46. Dividends to stockholders .....		0	0
47. Aggregate write-ins for gains or (losses) in surplus .....	0	0	0
48. Net change in capital and surplus (Lines 34 to 47) .....	3,002,190	0	0
49. Capital and surplus end of reporting period (Line 33 plus 48)	3,002,190	0	0
<b>DETAILS OF WRITE-INS</b>			
4701. ....			
4702. ....			
4703. ....			
4798. Summary of remaining write-ins for Line 47 from overflow page .....	0	0	0
4799. Totals (Lines 4701 through 4703 plus 4798) (Line 47 above)	0	0	0

## CASH FLOW

	1 Current Year To Date	2 Prior Year To Date	3 Prior Year Ended December 31
<b>Cash from Operations</b>			
1. Premiums collected net of reinsurance.....	0	0	0
2. Net investment income .....	(1,529)	0	0
3. Miscellaneous income .....	0	0	0
4. Total (Lines 1 to 3) .....	(1,529)	0	0
5. Benefit and loss related payments .....	0	0	0
6. Net transfers to Separate Accounts, Segregated Accounts and Protected Cell Accounts.....	0	0	0
7. Commissions, expenses paid and aggregate write-ins for deductions .....	1,293,138	0	0
8. Dividends paid to policyholders .....	0	0	0
9. Federal and foreign income taxes paid (recovered) net of \$ ..... tax on capital gains (losses).....	0	0	0
10. Total (Lines 5 through 9) .....	1,293,138	0	0
11. Net cash from operations (Line 4 minus Line 10) .....	(1,294,666)	0	0
<b>Cash from Investments</b>			
12. Proceeds from investments sold, matured or repaid:			
12.1 Bonds .....	0	0	0
12.2 Stocks .....	0	0	0
12.3 Mortgage loans .....	0	0	0
12.4 Real estate .....	0	0	0
12.5 Other invested assets .....	0	0	0
12.6 Net gains or (losses) on cash, cash equivalents and short-term investments .....	0	0	0
12.7 Miscellaneous proceeds .....	0	0	0
12.8 Total investment proceeds (Lines 12.1 to 12.7) .....	0	0	0
13. Cost of investments acquired (long-term only):			
13.1 Bonds .....	421,096	0	0
13.2 Stocks .....	0	0	0
13.3 Mortgage loans .....	0	0	0
13.4 Real estate .....	0	0	0
13.5 Other invested assets .....	0	0	0
13.6 Miscellaneous applications .....	0	0	0
13.7 Total investments acquired (Lines 13.1 to 13.6) .....	421,096	0	0
14. Net increase (or decrease) in contract loans and premium notes .....	0	0	0
15. Net cash from investments (Line 12.8 minus Line 13.7 and Line 14) .....	(421,096)	0	0
<b>Cash from Financing and Miscellaneous Sources</b>			
16. Cash provided (applied):			
16.1 Surplus notes, capital notes .....	0	0	0
16.2 Capital and paid in surplus, less treasury stock.....	4,697,419	0	0
16.3 Borrowed funds .....	0	0	0
16.4 Net deposits on deposit-type contracts and other insurance liabilities .....	0	0	0
16.5 Dividends to stockholders .....	0	0	0
16.6 Other cash provided (applied).....	(900,463)	0	0
17. Net cash from financing and miscellaneous sources (Line 16.1 through Line 16.4 minus Line 16.5 plus Line 16.6).....	3,796,956	0	0
<b>RECONCILIATION OF CASH, CASH EQUIVALENTS AND SHORT-TERM INVESTMENTS</b>			
18. Net change in cash, cash equivalents and short-term investments (Line 11, plus Lines 15 and 17) .....	2,081,194	0	0
19. Cash, cash equivalents and short-term investments:			
19.1 Beginning of year.....	0	0	0
19.2 End of period (Line 18 plus Line 19.1) .....	2,081,194	0	0

Prem., Enrollment

**NONE**

Claims Unpaid

**NONE**

Underwriting and Investment Exhibit

**NONE**

# NOTES TO FINANCIAL STATEMENTS

## NOTES TO FINANCIAL STATEMENTS

**1. Summary of Significant Accounting Policies**

A. Accounting Practices

Nature of Operations and Significant Accounting Policies

Premier Health Plan, Inc. (the Company) is a health insurance organization domiciled in Ohio. The Company is a wholly-owned subsidiary of Premier Health Insuring Corporation which is itself a wholly-owned subsidiary of Premier Health Partners.

The financial statements of Premier Health Plan, Inc. are presented on the basis of accounting practices prescribed or permitted by the Ohio Department of Insurance (ODI).

The Ohio Insurance Department recognizes only statutory accounting practices prescribed or permitted by the State of Ohio for determining and reporting the financial condition and results of operations of an insurance company, for determining its solvency under the Ohio Insurance Law. The Accounting Practices and Procedures Manual (NAIC SAP) has been adopted as a component of prescribed or permitted practices by the state of Ohio.

Premier Health Plan's insurance license in the State of Ohio was approved in March 2014. Therefore, many of the items below will be listed as "None" or "Not Applicable" at this point in time although many of the items will become applicable in the future.

**2. Accounting Changes and Corrections of Errors**

None.

**3. Business Combinations and Goodwill**

None.

**4. Discontinued Operations**

None.

**5. Investments**

D. Loan-Backed Securities

(1) – (5): Not applicable.

E. Repurchase Agreements and/or Securities Lending Transactions

(3)b: Not applicable.

I. Not Applicable

**6. Joint Ventures, Partnerships and Limited Liability Companies**

None.

**7. Investment Income**

No deviation from NAIC

**8. Derivative Instruments**

None.

**9. Income Taxes**

None.

**10. Information Concerning Parent, Subsidiaries, Affiliates and Other Related Parties**

Premier Health Plan, Inc. is a wholly-owned subsidiary of Premier Health Insuring Corporation which is itself a wholly-owned subsidiary of Premier Health Partners.

**11. Debt**

None.

**12. Retirement Plans, Deferred Compensation, Postemployment Benefits and Compensated Absences and Other Postretirement Benefit Plans.**

A. Defined Benefit Plan

None.

**13. Capital and Surplus, Shareholders' Dividend Restrictions and Quasi-Reorganizations**

None.

**14. Contingencies**

None.

**15. Leases**

None.

**16. Information About Financial Instruments With Off-Balance-Sheet Risk And Financial Instruments With Concentrations of Credit Risk**

None.

**17. Sale, Transfer and Servicing of Financial Assets and Extinguishments of Liabilities**

B-C. None

**18. Gain or Loss to the Reporting Entity from Uninsured Plans and the Uninsured Portion of Partially Insured Plans**

A. ASO Plans

The gain from operations from Administrative Services Only (ASO) uninsured plans and the uninsured portion of partially insured plans was as follows during 2014:

ASO	Uninsured Portion of Partially	Total
-----	-----------------------------------	-------

## NOTES TO FINANCIAL STATEMENTS

	<u>Uninsured Plans</u>	<u>Insured Plans</u>	<u>ASO</u>
a. Net reimbursement for administrative expenses (including administrative fees) in excess of actual expenses	\$.....0	\$.....0	\$.....0
b. Total net other income or expenses (including interest paid to or received from plans)	\$.....0	\$.....0	\$.....0
c. Net gain or (loss) from operations	\$.....0	\$.....0	\$.....0
B. ASC Plans			
None.			
<b>19. Direct Premium Written/Produced by Managing General Agents/Third Party Administrators</b>			
None.			
<b>20. Fair Value Measurements</b>			
Not applicable.			
<b>21. Other Items</b>			
None.			
E. State Transferable and Non-transferable Tax Credits			
None.			
G. Retained Assets			
None.			
<b>22. Events Subsequent</b>			
Not applicable.			
<b>23. Reinsurance</b>			
None.			
<b>24. Retrospectively Rated Contracts &amp; Contracts Subject to Redetermination</b>			
None.			
<b>25. Change in Incurred Claims and Claim Adjustment Expenses</b>			
None.			
<b>26. Intercompany Pooling Arrangements</b>			
None.			
<b>27. Structured Settlements</b>			
None.			
<b>28. Health Care Receivables</b>			
None.			
<b>29. Participating Policies</b>			
None.			
<b>30. Premium Deficiency Reserves</b>			
None.			
<b>31. Anticipated Salvage and Subrogation</b>			
None.			

# GENERAL INTERROGATORIES

## PART 1 - COMMON INTERROGATORIES GENERAL

- 1.1 Did the reporting entity experience any material transactions requiring the filing of Disclosure of Material Transactions with the State of Domicile, as required by the Model Act? ..... Yes  No
- 1.2 If yes, has the report been filed with the domiciliary state? ..... Yes  No
- 2.1 Has any change been made during the year of this statement in the charter, by-laws, articles of incorporation, or deed of settlement of the reporting entity? ..... Yes  No
- 2.2 If yes, date of change: .....
- 3.1 Is the reporting entity a member of an Insurance Holding Company System consisting of two or more affiliated persons, one or more of which is an insurer? ..... Yes  No   
If yes, complete Schedule Y, Parts 1 and 1A.
- 3.2 Have there been any substantial changes in the organizational chart since the prior quarter end? ..... Yes  No
- 3.3 If the response to 3.2 is yes, provide a brief description of those changes.  
.....
- 4.1 Has the reporting entity been a party to a merger or consolidation during the period covered by this statement? ..... Yes  No
- 4.2 If yes, provide the name of entity, NAIC Company Code, and state of domicile (use two letter state abbreviation) for any entity that has ceased to exist as a result of the merger or consolidation.

1 Name of Entity	2 NAIC Company Code	3 State of Domicile

5. If the reporting entity is subject to a management agreement, including third-party administrator(s), managing general agent(s), attorney-in-fact, or similar agreement, have there been any significant changes regarding the terms of the agreement or principals involved? ..... Yes  No  NA   
If yes, attach an explanation.
- 6.1 State as of what date the latest financial examination of the reporting entity was made or is being made. ....
- 6.2 State the as of date that the latest financial examination report became available from either the state of domicile or the reporting entity. This date should be the date of the examined balance sheet and not the date the report was completed or released. ....
- 6.3 State as of what date the latest financial examination report became available to other states or the public from either the state of domicile or the reporting entity. This is the release date or completion date of the examination report and not the date of the examination (balance sheet date). ....
- 6.4 By what department or departments?  
Ohio Department of Insurance.....
- 6.5 Have all financial statement adjustments within the latest financial examination report been accounted for in a subsequent financial statement filed with Departments? ..... Yes  No  NA
- 6.6 Have all of the recommendations within the latest financial examination report been complied with? ..... Yes  No  NA
- 7.1 Has this reporting entity had any Certificates of Authority, licenses or registrations (including corporate registration, if applicable) suspended or revoked by any governmental entity during the reporting period? ..... Yes  No
- 7.2 If yes, give full information:  
.....
- 8.1 Is the company a subsidiary of a bank holding company regulated by the Federal Reserve Board?..... Yes  No
- 8.2 If response to 8.1 is yes, please identify the name of the bank holding company.  
.....
- 8.3 Is the company affiliated with one or more banks, thrifts or securities firms?..... Yes  No
- 8.4 If response to 8.3 is yes, please provide below the names and location (city and state of the main office) of any affiliates regulated by a federal regulatory services agency [i.e. the Federal Reserve Board (FRB), the Office of the Comptroller of the Currency (OCC), the Federal Deposit Insurance Corporation (FDIC) and the Securities Exchange Commission (SEC)] and identify the affiliate's primary federal regulator.]

1 Affiliate Name	2 Location (City, State)	3 FRB	4 OCC	5 FDIC	6 SEC

## GENERAL INTERROGATORIES

- 9.1 Are the senior officers (principal executive officer, principal financial officer, principal accounting officer or controller, or persons performing similar functions) of the reporting entity subject to a code of ethics, which includes the following standards? ..... Yes  No
- (a) Honest and ethical conduct, including the ethical handling of actual or apparent conflicts of interest between personal and professional relationships;  
 (b) Full, fair, accurate, timely and understandable disclosure in the periodic reports required to be filed by the reporting entity;  
 (c) Compliance with applicable governmental laws, rules and regulations;  
 (d) The prompt internal reporting of violations to an appropriate person or persons identified in the code; and  
 (e) Accountability for adherence to the code.

9.11 If the response to 9.1 is No, please explain:  
 .....

- 9.2 Has the code of ethics for senior managers been amended? ..... Yes  No

9.21 If the response to 9.2 is Yes, provide information related to amendment(s).  
 .....

- 9.3 Have any provisions of the code of ethics been waived for any of the specified officers? ..... Yes  No

9.31 If the response to 9.3 is Yes, provide the nature of any waiver(s).  
 .....

### FINANCIAL

- 10.1 Does the reporting entity report any amounts due from parent, subsidiaries or affiliates on Page 2 of this statement? ..... Yes  No

10.2 If yes, indicate any amounts receivable from parent included in the Page 2 amount: ..... \$ .....900,463

### INVESTMENT

- 11.1 Were any of the stocks, bonds, or other assets of the reporting entity loaned, placed under option agreement, or otherwise made available for use by another person? (Exclude securities under securities lending agreements.) ..... Yes  No

11.2 If yes, give full and complete information relating thereto:  
 .....

12. Amount of real estate and mortgages held in other invested assets in Schedule BA: ..... \$ .....0

13. Amount of real estate and mortgages held in short-term investments: ..... \$ .....0

- 14.1 Does the reporting entity have any investments in parent, subsidiaries and affiliates? ..... Yes  No

14.2 If yes, please complete the following:

	1 Prior Year-End Book/Adjusted Carrying Value	2 Current Quarter Book/Adjusted Carrying Value
14.21 Bonds .....	\$ .....	\$ .....
14.22 Preferred Stock .....	\$ .....	\$ .....
14.23 Common Stock .....	\$ .....	\$ .....
14.24 Short-Term Investments .....	\$ .....	\$ .....
14.25 Mortgage Loans on Real Estate .....	\$ .....	\$ .....
14.26 All Other .....	\$ .....	\$ .....
14.27 Total Investment in Parent, Subsidiaries and Affiliates (Subtotal Lines 14.21 to 14.26).....	\$ .....0	\$ .....0
14.28 Total Investment in Parent included in Lines 14.21 to 14.26 above .....	\$ .....	\$ .....

- 15.1 Has the reporting entity entered into any hedging transactions reported on Schedule DB? ..... Yes  No

- 15.2 If yes, has a comprehensive description of the hedging program been made available to the domiciliary state? ..... Yes  No

If no, attach a description with this statement.

## GENERAL INTERROGATORIES

- 16 For the reporting entity's security lending program, state the amount of the following as of the current statement date:
- |  |           |
|--|-----------|
| 16.1 Total fair value of reinvested collateral assets reported on Schedule DL, Parts 1 and 2                   | \$ .....0 |
| 16.2 Total book adjusted/carrying value of reinvested collateral assets reported on Schedule DL, Parts 1 and 2 | \$ .....0 |
| 16.3 Total payable for securities lending reported on the liability page                                       | \$ .....0 |

17. Excluding items in Schedule E – Part 3 – Special Deposits, real estate, mortgage loans and investments held physically in the reporting entity's offices, vaults or safety deposit boxes, were all stocks, bonds and other securities, owned throughout the current year held pursuant to a custodial agreement with a qualified bank or trust company in accordance with Section 1, III – General Examination Considerations, F. Outsourcing of Critical Functions, Custodial or Safekeeping Agreements of the NAIC *Financial Condition Examiners Handbook*? ..... Yes  No

17.1 For all agreements that comply with the requirements of the NAIC *Financial Condition Examiners Handbook*, complete the following:

1 Name of Custodian(s)	2 Custodian Address
PNC Institutional Investments.....	PNC, 1900 E 9th St., Cleveland, OH 44114.....

17.2 For all agreements that do not comply with the requirements of the NAIC *Financial Condition Examiners Handbook*, provide the name, location and a complete explanation:

1 Name(s)	2 Location(s)	3 Complete Explanation(s)

17.3 Have there been any changes, including name changes, in the custodian(s) identified in 17.1 during the current quarter? ..... Yes  No

17.4 If yes, give full and complete information relating thereto:

1 Old Custodian	2 New Custodian	3 Date of Change	4 Reason

17.5 Identify all investment advisors, broker/dealers or individuals acting on behalf of broker/dealers that have access to the investment accounts, handle securities and have authority to make investments on behalf of the reporting entity:

1 Central Registration Depository	2 Name(s)	3 Address
	PNC Institutional Investments...	PNC, 1900 E 9th St., Cleveland, OH 44114...

18.1 Have all the filing requirements of the *Purposes and Procedures Manual* of the NAIC Securities Valuation Office been followed? ..... Yes  No

18.2 If no, list exceptions:  
.....

# GENERAL INTERROGATORIES

## PART 2 - HEALTH

1. Operating Percentages:
- 1.1 A&H loss percent..... 0.0 %
  - 1.2 A&H cost containment percent ..... 0.0 %
  - 1.3 A&H expense percent excluding cost containment expenses..... %
- 2.1 Do you act as a custodian for health savings accounts?..... Yes [ ] No [X]
- 2.2 If yes, please provide the amount of custodial funds held as of the reporting date..... \$
- 2.3 Do you act as an administrator for health savings accounts?..... Yes [ ] No [X]
- 2.4 If yes, please provide the balance of the funds administered as of the reporting date..... \$

**SCHEDULE S - CEDED REINSURANCE**

Showing All New Reinsurance Treaties - Current Year to Date

1 NAIC Company Code	2 ID Number	3 Effective Date	4 Name of Reinsurer	5 Domiciliary Jurisdiction	6 Type of Reinsurance Ceded	7 Type of Reinsurer	8 Certified Reinsurer Rating (1 through 6)	9 Effective Date of Certified Reinsurer Rating
<b>NONE</b>								

**SCHEDULE T - PREMIUMS AND OTHER CONSIDERATIONS**

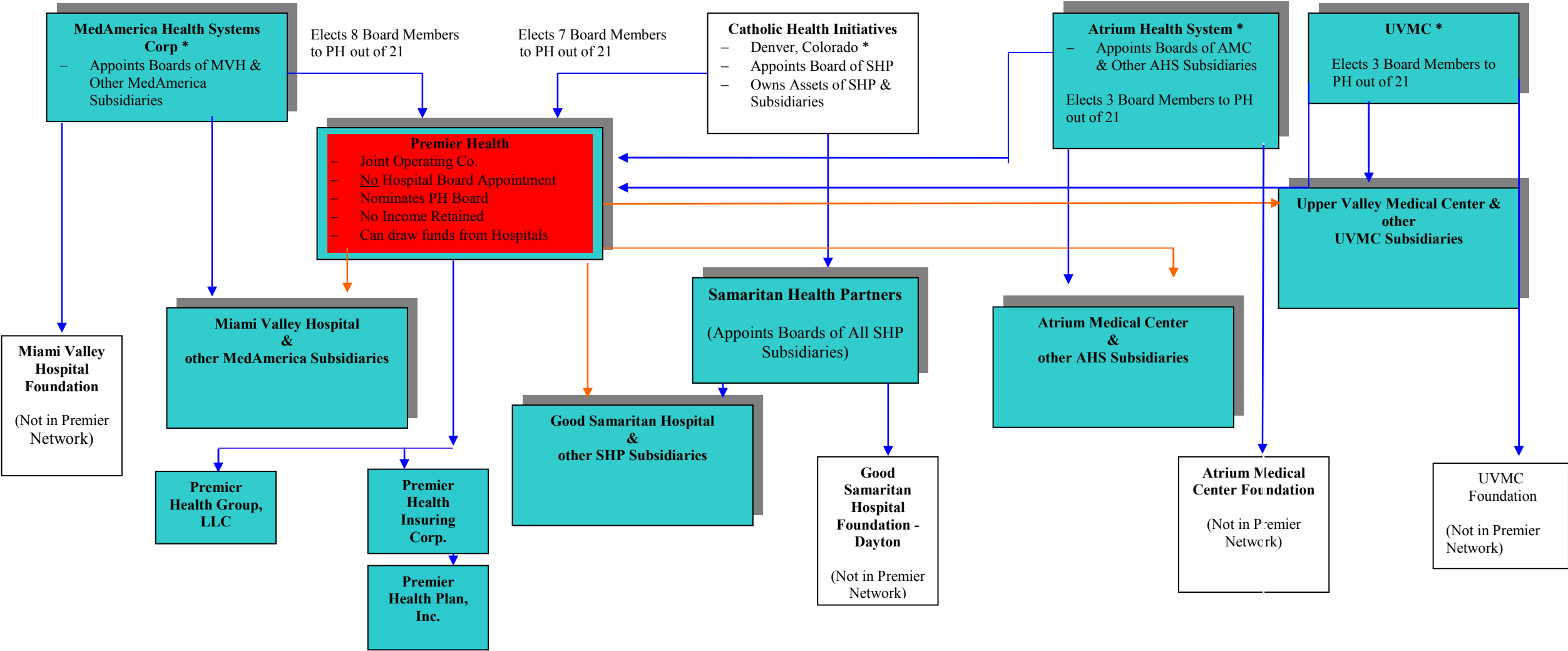
Current Year to Date - Allocated by States and Territories

States, Etc.	1 Active Status	Direct Business Only							8 Total Columns 2 Through 7	9 Deposit-Type Contracts
		2 Accident & Health Premiums	3 Medicare Title XVIII	4 Medicaid Title XIX	5 Federal Employees Health Benefits Program Premiums	6 Life & Annuity Premiums & Other Considerations	7 Property/Casualty Premiums			
1. Alabama	AL								0	
2. Alaska	AK								0	
3. Arizona	AZ								0	
4. Arkansas	AR								0	
5. California	CA								0	
6. Colorado	CO								0	
7. Connecticut	CT								0	
8. Delaware	DE								0	
9. Dist. Columbia	DC								0	
10. Florida	FL								0	
11. Georgia	GA								0	
12. Hawaii	HI								0	
13. Idaho	ID								0	
14. Illinois	IL								0	
15. Indiana	IN								0	
16. Iowa	IA								0	
17. Kansas	KS								0	
18. Kentucky	KY								0	
19. Louisiana	LA								0	
20. Maine	ME								0	
21. Maryland	MD								0	
22. Massachusetts	MA								0	
23. Michigan	MI								0	
24. Minnesota	MN								0	
25. Mississippi	MS								0	
26. Missouri	MO								0	
27. Montana	MT								0	
28. Nebraska	NE								0	
29. Nevada	NV								0	
30. New Hampshire	NH								0	
31. New Jersey	NJ								0	
32. New Mexico	NM								0	
33. New York	NY								0	
34. North Carolina	NC								0	
35. North Dakota	ND								0	
36. Ohio	OH	L	0	0					0	
37. Oklahoma	OK								0	
38. Oregon	OR								0	
39. Pennsylvania	PA								0	
40. Rhode Island	RI								0	
41. South Carolina	SC								0	
42. South Dakota	SD								0	
43. Tennessee	TN								0	
44. Texas	TX								0	
45. Utah	UT								0	
46. Vermont	VT								0	
47. Virginia	VA								0	
48. Washington	WA								0	
49. West Virginia	WV								0	
50. Wisconsin	WI								0	
51. Wyoming	WY								0	
52. American Samoa	AS								0	
53. Guam	GU								0	
54. Puerto Rico	PR								0	
55. U.S. Virgin Islands	VI								0	
56. Northern Mariana Islands	MP								0	
57. Canada	CAN								0	
58. Aggregate other alien	OT	XXX	0	0	0	0	0	0	0	0
59. Subtotal	XXX	0	0	0	0	0	0	0	0	0
60. Reporting entity contributions for Employee Benefit Plans	XXX								0	
61. Total (Direct Business)	(a) 1	0	0	0	0	0	0	0	0	0
<b>DETAILS OF WRITE-INS</b>										
58001	XXX									
58002	XXX									
58003	XXX									
58998 Summary of remaining write-ins for Line 58 from overflow page	XXX	0	0	0	0	0	0	0	0	0
58999 Totals (Lines 58001 through 58003 plus 58998) (Line 58 above)	XXX	0	0	0	0	0	0	0	0	0

(L) Licensed or Chartered - Licensed Insurance Carrier or Domiciled RRG; (R) Registered - Non-domiciled RRGs; (Q) Qualified - Qualified or Accredited Reinsurer; (E) Eligible - Reporting Entities eligible or approved to write Surplus Lines in the state; (N) None of the above - Not allowed to write business in the state.

(a) Insert the number of L responses except for Canada and other Alien.

# PREMIER HEALTH (“PH”) ORGANIZATIONAL/OPERATIONAL CHART



■ Shading denotes entities that are part of PH which serves as the joint operating company for all such entities (hereinafter referred to as “PH Network”)

- Total PH Network Income is aggregated annually and allocated back for operational support 55.35% to MedAmerica, 31.14% to SHP, 7% to UVMC and 6.51% to MRHS subject to PH’s authority to draw funds from the allocated percentages based upon PH’s Strategic, Operational and Financial Authority.
- ————— Denotes Ownership/Board Control (but see note below regarding MedAmerica, UVMC and MRHS ceding control to PH via the Joint Operating Agreement (JOA))
- ————— Denotes Strategic, Operating and Financial Authority (including the ability to draw cash in order to fund JOA operations and initiatives, including funds required for full support of insurance companies.)

\* Ceded all material strategic, operational and financial authority to PH per the JOA to operate the hospitals and their respective subsidiaries and affiliates.



## SUPPLEMENTAL EXHIBITS AND SCHEDULES INTERROGATORIES

The following supplemental reports are required to be filed as part of your statement filing. However, in the event that your company does not transact the type of business for which the special report must be filed, your response of **NO** to the specific interrogatory will be accepted in lieu of filing a "NONE" report and a bar code will be printed below. If the supplement is required of your company but is not being filed for whatever reason enter **SEE EXPLANATION** and provide an explanation following the interrogatory questions.

RESPONSE

1. Will the Medicare Part D Coverage Supplement be filed with the state of domicile and the NAIC with this statement?

.....NO.....

**Explanation:**

1.

**Bar Code:**

1.



**OVERFLOW PAGE FOR WRITE-INS**

---

### SCHEDULE A – VERIFICATION

Real Estate

	1 Year To Date	2 Prior Year Ended December 31
1. Book/adjusted carrying value, December 31 of prior year .....	.0	.0
2. Cost of acquired:		
2.1 Actual cost at time of acquisition .....		.0
2.2 Additional investment made after acquisition .....		.0
3. Current year change in encumbrances .....		.0
4. Total gain (loss) on disposals .....		.0
5. Deduct amounts received on disposals .....		.0
6. Total foreign exchange change in book/adjusted carrying value .....		.0
7. Deduct current year's other-than-temporary impairment recognized .....		.0
8. Deduct current year's depreciation .....		.0
9. Book/adjusted carrying value at the end of current period (Lines 1+2+3+4-5+6-7-8) .....	.0	.0
10. Deduct total nonadmitted amounts .....	.0	.0
11. Statement value at end of current period (Line 9 minus Line 10) .....	0	0

NONE

### SCHEDULE B – VERIFICATION

Mortgage Loans

	1 Year To Date	2 Prior Year Ended December 31
1. Book value/recorded investment excluding accrued interest, December 31 of prior year .....	.0	.0
2. Cost of acquired:		
2.1 Actual cost at time of acquisition .....		.0
2.2 Additional investment made after acquisition .....		.0
3. Capitalized deferred interest and other .....		.0
4. Accrual of discount .....		.0
5. Unrealized valuation increase (decrease) .....		.0
6. Total gain (loss) on disposals .....		.0
7. Deduct amounts received on disposals .....		.0
8. Deduct amortization of premium and mortgage interest points and commitment fees .....		.0
9. Total foreign exchange change in book value/recorded investment excluding accrued interest .....		.0
10. Deduct current year's other-than-temporary impairment recognized .....		.0
11. Book value/recorded investment excluding accrued interest at end of current period (Lines 1+2+3+4+5+6-7-8+9-10) .....	.0	.0
12. Total valuation allowance .....		.0
13. Subtotal (Line 11 plus Line 12) .....	.0	.0
14. Deduct total nonadmitted amounts .....	.0	.0
15. Statement value at end of current period (Line 13 minus Line 14) .....	0	0

NONE

### SCHEDULE BA – VERIFICATION

Other Long-Term Invested Assets

	1 Year To Date	2 Prior Year Ended December 31
1. Book/adjusted carrying value, December 31 of prior year .....	.0	.0
2. Cost of acquired:		
2.1 Actual cost at time of acquisition .....		.0
2.2 Additional investment made after acquisition .....		.0
3. Capitalized deferred interest and other .....		.0
4. Accrual of discount .....		.0
5. Unrealized valuation increase (decrease) .....		.0
6. Total gain (loss) on disposals .....		.0
7. Deduct amounts received on disposals .....		.0
8. Deduct amortization of premium and depreciation .....		.0
9. Total foreign exchange change in book/adjusted carrying value .....		.0
10. Deduct current year's other-than-temporary impairment recognized .....		.0
11. Book/adjusted carrying value at end of current period (Lines 1+2+3+4+5+6-7+8+9-10) .....	.0	.0
12. Deduct total nonadmitted amounts .....	.0	.0
13. Statement value at end of current period (Line 11 minus Line 12) .....	0	0

NONE

### SCHEDULE D – VERIFICATION

Bonds and Stocks

	1 Year To Date	2 Prior Year Ended December 31
1. Book/adjusted carrying value of bonds and stocks, December 31 of prior year .....	.0	.0
2. Cost of bonds and stocks acquired .....	421,096	.0
3. Accrual of discount .....		.0
4. Unrealized valuation increase (decrease) .....		.0
5. Total gain (loss) on disposals .....		.0
6. Deduct consideration for bonds and stocks disposed of .....		.0
7. Deduct amortization of premium .....	2,289	.0
8. Total foreign exchange change in book/adjusted carrying value .....		.0
9. Deduct current year's other-than-temporary impairment recognized .....		.0
10. Book/adjusted carrying value at end of current period (Lines 1+2+3+4+5-6-7+8-9) .....	418,807	.0
11. Deduct total nonadmitted amounts .....	.0	.0
12. Statement value at end of current period (Line 10 minus Line 11) .....	418,807	0

**STATEMENT AS OF MARCH 31, 2014 OF THE Premier Health Plan, Inc.**

**SCHEDULE D - PART 1B**

Showing the Acquisitions, Dispositions and Non-Trading Activity  
During the Current Quarter for all Bonds and Preferred Stock by NAIC Designation

NAIC Designation	1 Book/Adjusted Carrying Value Beginning of Current Quarter	2 Acquisitions During Current Quarter	3 Dispositions During Current Quarter	4 Non-Trading Activity During Current Quarter	5 Book/Adjusted Carrying Value End of First Quarter	6 Book/Adjusted Carrying Value End of Second Quarter	7 Book/Adjusted Carrying Value End of Third Quarter	8 Book/Adjusted Carrying Value December 31 Prior Year
<b>BONDS</b>								
1. NAIC 1 (a).....	.0	421,096		(2,289)	418,807	.0	.0	.0
2. NAIC 2 (a).....	.0				.0	.0	.0	.0
3. NAIC 3 (a).....	.0				.0	.0	.0	.0
4. NAIC 4 (a).....	.0				.0	.0	.0	.0
5. NAIC 5 (a).....	.0				.0	.0	.0	.0
6. NAIC 6 (a).....	0				0	0	0	0
7. Total Bonds	0	421,096	0	(2,289)	418,807	0	0	0
<b>PREFERRED STOCK</b>								
8. NAIC 1 .....	.0				.0	.0	.0	.0
9. NAIC 2 .....	.0				.0	.0	.0	.0
10. NAIC 3 .....	.0				.0	.0	.0	.0
11. NAIC 4 .....	.0				.0	.0	.0	.0
12. NAIC 5 .....	.0				.0	.0	.0	.0
13. NAIC 6 .....	0				0	0	0	0
14. Total Preferred Stock.....	0	0	0	0	0	0	0	0
15. Total Bonds & Preferred Stock	0	421,096	0	(2,289)	418,807	0	0	0

(a) Book/Adjusted Carrying Value column for the end of the current reporting period includes the following amount of non-rated short-term and cash equivalent bonds by NAIC designation: NAIC 1 \$ ..... ; NAIC 2 \$ ..... ; NAIC 3 \$ ..... ; NAIC 4 \$ ..... ; NAIC 5 \$ ..... ; NAIC 6 \$ .....

S102

## SCHEDULE DA - PART 1

Short-Term Investments

	1	2	3	4	5
	Book/Adjusted Carrying Value	Par Value	Actual Cost	Interest Collected Year To Date	Paid for Accrued Interest Year To Date
9199999	2,500	XXX	2,500		

## SCHEDULE DA - VERIFICATION

Short-Term Investments

	1	2
	Year To Date	Prior Year Ended December 31
1. Book/adjusted carrying value, December 31 of prior year.....	0	0
2. Cost of short-term investments acquired .....	2,500	0
3. Accrual of discount .....		0
4. Unrealized valuation increase (decrease).....		0
5. Total gain (loss) on disposals .....		0
6. Deduct consideration received on disposals .....		0
7. Deduct amortization of premium.....		0
8. Total foreign exchange change in book/adjusted carrying value.....		0
9. Deduct current year's other-than-temporary impairment recognized.....		0
10. Book/adjusted carrying value at end of current period (Lines 1+2+3+4+5-6-7+8-9).....	2,500	0
11. Deduct total nonadmitted amounts.....		0
12. Statement value at end of current period (Line 10 minus Line 11)	2,500	0

Schedule DB - Part A - Verification

**NONE**

Schedule DB - Part B - Verification

**NONE**

Schedule DB - Part C - Section 1

**NONE**

Schedule DB - Part C - Section 2

**NONE**

Schedule DB - Verification

**NONE**

Schedule E - Verification

**NONE**

Schedule A - Part 2

**NONE**

Schedule A - Part 3

**NONE**

Schedule B - Part 2

**NONE**

Schedule B - Part 3

**NONE**

Schedule BA - Part 2

**NONE**

Schedule BA - Part 3

**NONE**

STATEMENT AS OF MARCH 31, 2014 OF THE Premier Health Plan, Inc.

**SCHEDULE D - PART 3**

Show All Long-Term Bonds and Stock Acquired During the Current Quarter

1 CUSIP Identification	2 Description	3 Foreign	4 Date Acquired	5 Name of Vendor	6 Number of Shares of Stock	7 Actual Cost	8 Par Value	9 Paid for Accrued Interest and Dividends	10 NAIC Designation or Market Indicator (a)
<b>Bonds - U.S. Governments</b>									
313370-JB-5	FEDERAL HOME LOAN BANK BDS 1.75% 9/11/15		.03/12/2014	Nomura Securities Intl		102,208	100,000	.10	
3134A4-VG-6	FEDERAL HOME LOAN MTG CORP 4.75 11/17/15		.03/12/2014	RBC Capital Markets		107,491	100,000	1,531	
31359M-H8-9	FEDERAL NATL MTG ASSN NTS 5.0% 3/15/16		.03/12/2014	SG Americas Securities		109,184	100,000	2,472	
3137EA-CM-9	FEDERAL HOME LOAN MTG CORP 1.75% 9/10/15		.03/12/2014	Deutsche Morg Grenfell		102,213	100,000	.15	
<b>0599999 - Bonds - U.S. Governments</b>						421,096	400,000	4,027	XXX
<b>8399997 - Subtotals - Bonds - Part 3</b>						421,096	400,000	4,027	XXX
<b>8399999 - Subtotals - Bonds</b>						421,096	400,000	4,027	XXX
<b>9999999 Totals</b>						421,096	XXX	4,027	XXX

(a) For all common stock bearing the NAIC market indicator "U" provide: the number of such issues .....

E04

Schedule D - Part 4

**NONE**

Schedule DB - Part A - Section 1

**NONE**

Schedule DB - Part B - Section 1

**NONE**

Schedule DB - Part D - Section 1

**NONE**

Schedule DB - Part D - Section 2

**NONE**

Schedule DL - Part 1

**NONE**

Schedule DL - Part 2

**NONE**



STATEMENT AS OF MARCH 31, 2014 OF THE Premier Health Plan, Inc.

**SCHEDULE E - PART 2 - CASH EQUIVALENTS**

Show Investments Owned End of Current Quarter

1 Description	2 Code	3 Date Acquired	4 Rate of Interest	5 Maturity Date	6 Book/Adjusted Carrying Value	7 Amount of Interest Due & Accrued	8 Amount Received During Year
<p><b>NONE</b></p>							
8699999 Total Cash Equivalents					0	0	0