



PROPERTY AND CASUALTY COMPANIES - ASSOCIATION EDITION

QUARTERLY STATEMENT

AS OF SEPTEMBER 30, 2013
OF THE CONDITION AND AFFAIRS OF THE

Freedom Specialty Insurance Company

NAIC Group Code 0140 (Current) 0140 (Prior) NAIC Company Code 22209 Employer's ID Number 75-6013587

Organized under the Laws of Ohio, State of Domicile or Port of Entry Ohio

Country of Domicile United States of America

Incorporated/Organized 05/01/1929 Commenced Business 07/05/1929

Statutory Home Office One West Nationwide Blvd. (Street and Number) Columbus, OH, US 43215-2220 (City or Town, State, Country and Zip Code)

Main Administrative Office 8877 N. Gainey Center Drive (Street and Number) Scottsdale, AZ, US 85258-2108 (City or Town, State, Country and Zip Code) 480-365-4000 (Area Code) (Telephone Number)

Mail Address One West Nationwide Blvd., 1-04-701 (Street and Number or P.O. Box) Columbus, OH, US 43215-2220 (City or Town, State, Country and Zip Code)

Primary Location of Books and Records One West Nationwide Blvd., 1-04-701 (Street and Number) Columbus, OH, US 43215-2220 (City or Town, State, Country and Zip Code) 614-249-1545 (Area Code) (Telephone Number)

Internet Website Address www.scottsdaleins.com

Statutory Statement Contact Monda S. Caudill (Name) 614-249-1545 (Area Code) (Telephone Number) FinRpt@nationwide.com (E-mail Address) 866-315-1430 (FAX Number)

OFFICERS

President & COO Michael Dean Miller VP & Treasurer Michael Patrick Leach

VP & Secretary Robert William Horner III VP & Asst Secretary Randall Lee Orr

OTHER

Pamela Ann Biesecker Sr VP - Head of Taxation Craig Edward Landi Sr VP - Underwriting

DIRECTORS OR TRUSTEES

Craig Edward Landi Michael Patrick Leach Kenneth Ari Levine

Michael Dean Miller Anthony Jerome Washington #

State of Ohio SS:

County of Franklin

The officers of this reporting entity being duly sworn, each depose and say that they are the described officers of said reporting entity, and that on the reporting period stated above, all of the herein described assets were the absolute property of the said reporting entity, free and clear from any liens or claims thereon, except as herein stated, and that this statement, together with related exhibits, schedules and explanations therein contained, annexed or referred to, is a full and true statement of all the assets and liabilities and of the condition and affairs of the said reporting entity as of the reporting period stated above, and of its income and deductions therefrom for the period ended, and have been completed in accordance with the NAIC Annual Statement Instructions and Accounting Practices and Procedures manual except to the extent that: (1) state law may differ; or, (2) that state rules or regulations require differences in reporting not related to accounting practices and procedures, according to the best of their information, knowledge and belief, respectively. Furthermore, the scope of this attestation by the described officers also includes the related corresponding electronic filing with the NAIC, when required, that is an exact copy (except for formatting differences due to electronic filing) of the enclosed statement. The electronic filing may be requested by various regulators in lieu of or in addition to the enclosed statement.

Michael Dean Miller President & COO Robert William Horner III VP & Secretary Michael Patrick Leach VP & Treasurer

Subscribed and sworn to before me this day of October, 2013

a. Is this an original filing? Yes [X] No []

b. If no, 1. State the amendment number..... 2. Date filed 3. Number of pages attached.....

ASSETS

	Current Statement Date			4 December 31 Prior Year Net Admitted Assets
	1 Assets	2 Nonadmitted Assets	3 Net Admitted Assets (Cols. 1 - 2)	
1. Bonds	14,435,766		14,435,766	12,078,526
2. Stocks:				
2.1 Preferred stocks				
2.2 Common stocks				
3. Mortgage loans on real estate:				
3.1 First liens				
3.2 Other than first liens.....				
4. Real estate:				
4.1 Properties occupied by the company (less \$ encumbrances)				
4.2 Properties held for the production of income (less \$ encumbrances)				
4.3 Properties held for sale (less \$ encumbrances)				
5. Cash (\$(482,190)), cash equivalents (\$) and short-term investments (\$890,017)	407,827		407,827	2,411,875
6. Contract loans (including \$ premium notes)				
7. Derivatives				
8. Other invested assets				
9. Receivables for securities				
10. Securities lending reinvested collateral assets				
11. Aggregate write-ins for invested assets				
12. Subtotals, cash and invested assets (Lines 1 to 11)	14,843,593		14,843,593	14,490,401
13. Title plants less \$ charged off (for Title insurers only)				
14. Investment income due and accrued	118,863		118,863	110,766
15. Premiums and considerations:				
15.1 Uncollected premiums and agents' balances in the course of collection	6,560,172	2,745	6,557,427	8,783,206
15.2 Deferred premiums, agents' balances and installments booked but deferred and not yet due (including \$ earned but unbilled premiums)				
15.3 Accrued retrospective premiums				
16. Reinsurance:				
16.1 Amounts recoverable from reinsurers	62,430		62,430	3,112
16.2 Funds held by or deposited with reinsured companies				
16.3 Other amounts receivable under reinsurance contracts	2,329,622		2,329,622	879,996
17. Amounts receivable relating to uninsured plans				
18.1 Current federal and foreign income tax recoverable and interest thereon	115,817		115,817	46,653
18.2 Net deferred tax asset	1,807,271	1,636,644	170,627	145,671
19. Guaranty funds receivable or on deposit				
20. Electronic data processing equipment and software				
21. Furniture and equipment, including health care delivery assets (\$)				
22. Net adjustment in assets and liabilities due to foreign exchange rates				
23. Receivables from parent, subsidiaries and affiliates	413,793		413,793	29,605
24. Health care (\$) and other amounts receivable				
25. Aggregate write-ins for other than invested assets	290,384		290,384	807,062
26. Total assets excluding Separate Accounts, Segregated Accounts and Protected Cell Accounts (Lines 12 to 25)	26,541,945	1,639,389	24,902,556	25,296,472
27. From Separate Accounts, Segregated Accounts and Protected Cell Accounts				
28. Total (Lines 26 and 27)	26,541,945	1,639,389	24,902,556	25,296,472
DETAILS OF WRITE-INS				
1101.				
1102.				
1103.				
1198. Summary of remaining write-ins for Line 11 from overflow page				
1199. Totals (Lines 1101 through 1103 plus 1198)(Line 11 above)				
2501. Miscellaneous assets	290,384		290,384	807,062
2502.				
2503.				
2598. Summary of remaining write-ins for Line 25 from overflow page				
2599. Totals (Lines 2501 through 2503 plus 2598)(Line 25 above)	290,384		290,384	807,062

LIABILITIES, SURPLUS AND OTHER FUNDS

	1 Current Statement Date	2 December 31, Prior Year
1. Losses (current accident year \$)		
2. Reinsurance payable on paid losses and loss adjustment expenses		
3. Loss adjustment expenses		
4. Commissions payable, contingent commissions and other similar charges		
5. Other expenses (excluding taxes, licenses and fees)		
6. Taxes, licenses and fees (excluding federal and foreign income taxes)		
7.1 Current federal and foreign income taxes (including \$ on realized capital gains (losses))		
7.2 Net deferred tax liability		
8. Borrowed money \$ and interest thereon \$		
9. Unearned premiums (after deducting unearned premiums for ceded reinsurance of \$33,432,615 and including warranty reserves of \$ and accrued accident and health experience rating refunds including \$ for medical loss ratio rebate per the Public Health Service Act)		
10. Advance premium		
11. Dividends declared and unpaid:		
11.1 Stockholders		
11.2 Policyholders		
12. Ceded reinsurance premiums payable (net of ceding commissions)	9,608,213	12,485,154
13. Funds held by company under reinsurance treaties		
14. Amounts withheld or retained by company for account of others		
15. Remittances and items not allocated		
16. Provision for reinsurance (including \$ certified)		
17. Net adjustments in assets and liabilities due to foreign exchange rates		
18. Drafts outstanding		
19. Payable to parent, subsidiaries and affiliates	3,376,988	1,232,969
20. Derivatives		
21. Payable for securities		
22. Payable for securities lending		
23. Liability for amounts held under uninsured plans		
24. Capital notes \$ and interest thereon \$		
25. Aggregate write-ins for liabilities		
26. Total liabilities excluding protected cell liabilities (Lines 1 through 25)	12,985,201	13,718,123
27. Protected cell liabilities		
28. Total liabilities (Lines 26 and 27)	12,985,201	13,718,123
29. Aggregate write-ins for special surplus funds		
30. Common capital stock	3,504,000	3,504,000
31. Preferred capital stock		
32. Aggregate write-ins for other than special surplus funds		
33. Surplus notes		
34. Gross paid in and contributed surplus	1,000,000	1,000,000
35. Unassigned funds (surplus)	7,413,355	7,074,349
36. Less treasury stock, at cost:		
36.1 shares common (value included in Line 30 \$)		
36.2 shares preferred (value included in Line 31 \$)		
37. Surplus as regards policyholders (Lines 29 to 35, less 36)	11,917,355	11,578,349
38. Totals (Page 2, Line 28, Col. 3)	24,902,556	25,296,472
DETAILS OF WRITE-INS		
2501.		
2502.		
2503.		
2598. Summary of remaining write-ins for Line 25 from overflow page		
2599. Totals (Lines 2501 through 2503 plus 2598)(Line 25 above)		
2901.		
2902.		
2903.		
2998. Summary of remaining write-ins for Line 29 from overflow page		
2999. Totals (Lines 2901 through 2903 plus 2998)(Line 29 above)		
3201.		
3202.		
3203.		
3298. Summary of remaining write-ins for Line 32 from overflow page		
3299. Totals (Lines 3201 through 3203 plus 3298)(Line 32 above)		

STATEMENT OF INCOME

	1 Current Year to Date	2 Prior Year to Date	3 Prior Year Ended December 31
UNDERWRITING INCOME			
1. Premiums earned:			
1.1 Direct (written \$51,084,072)	48,222,078	29,585,477	42,763,010
1.2 Assumed (written \$)			
1.3 Ceded (written \$51,084,072)	48,222,078	29,585,477	42,763,010
1.4 Net (written \$)			
DEDUCTIONS:			
2. Losses incurred (current accident year \$):			
2.1 Direct	24,806,771	12,653,237	18,766,985
2.2 Assumed			
2.3 Ceded	24,806,771	12,653,237	18,766,985
2.4 Net			
3. Loss adjustment expenses incurred			
4. Other underwriting expenses incurred			
5. Aggregate write-ins for underwriting deductions			
6. Total underwriting deductions (Lines 2 through 5)			
7. Net income of protected cells			
8. Net underwriting gain or (loss) (Line 1 minus Line 6 + Line 7)			
INVESTMENT INCOME			
9. Net investment income earned	152,078	209,699	269,131
10. Net realized capital gains (losses) less capital gains tax of \$			
11. Net investment gain (loss) (Lines 9 + 10)	152,078	209,699	269,131
OTHER INCOME			
12. Net gain or (loss) from agents' or premium balances charged off (amount recovered \$ amount charged off \$)			
13. Finance and service charges not included in premiums			
14. Aggregate write-ins for miscellaneous income			
15. Total other income (Lines 12 through 14)			
16. Net income before dividends to policyholders, after capital gains tax and before all other federal and foreign income taxes (Lines 8 + 11 + 15)	152,078	209,699	269,131
17. Dividends to policyholders			
18. Net income, after dividends to policyholders, after capital gains tax and before all other federal and foreign income taxes (Line 16 minus Line 17)	152,078	209,699	269,131
19. Federal and foreign income taxes incurred	(116,126)	(68,471)	(41,120)
20. Net income (Line 18 minus Line 19)(to Line 22)	268,204	278,170	310,251
CAPITAL AND SURPLUS ACCOUNT			
21. Surplus as regards policyholders, December 31 prior year	11,578,349	10,827,488	10,827,488
22. Net income (from Line 20)	268,204	278,170	310,251
23. Net transfers (to) from Protected Cell accounts			
24. Change in net unrealized capital gains (losses) less capital gains tax of \$16,044	29,797		9,840
25. Change in net unrealized foreign exchange capital gain (loss)			
26. Change in net deferred income tax	(141,313)	(281,808)	(265,468)
27. Change in nonadmitted assets	182,318	610,690	605,693
28. Change in provision for reinsurance			
29. Change in surplus notes			
30. Surplus (contributed to) withdrawn from protected cells			
31. Cumulative effect of changes in accounting principles		90,545	90,545
32. Capital changes:			
32.1 Paid in			
32.2 Transferred from surplus (Stock Dividend)			
32.3 Transferred to surplus			
33. Surplus adjustments:			
33.1 Paid in			
33.2 Transferred to capital (Stock Dividend)			
33.3 Transferred from capital			
34. Net remittances from or (to) Home Office			
35. Dividends to stockholders			
36. Change in treasury stock			
37. Aggregate write-ins for gains and losses in surplus			
38. Change in surplus as regards policyholders (Lines 22 through 37).....	339,006	697,597	750,861
39. Surplus as regards policyholders, as of statement date (Lines 21 plus 38)	11,917,355	11,525,085	11,578,349
DETAILS OF WRITE-INS			
0501.			
0502.			
0503.			
0598. Summary of remaining write-ins for Line 5 from overflow page			
0599. Totals (Lines 0501 through 0503 plus 0598)(Line 5 above)			
1401.			
1402.			
1403.			
1498. Summary of remaining write-ins for Line 14 from overflow page			
1499. Totals (Lines 1401 through 1403 plus 1498)(Line 14 above)			
3701.			
3702.			
3703.			
3798. Summary of remaining write-ins for Line 37 from overflow page			
3799. Totals (Lines 3701 through 3703 plus 3798)(Line 37 above)			

CASH FLOW

	1 Current Year To Date	2 Prior Year To Date	3 Prior Year Ended December 31
Cash from Operations			
1. Premiums collected net of reinsurance	(651,162)	213,286	1,287,530
2. Net investment income	263,806	201,586	302,739
3. Miscellaneous income	(1,449,626)	427,284	(296,808)
4. Total (Lines 1 to 3)	(1,836,982)	842,156	1,293,461
5. Benefit and loss related payments	59,318	11,948	3,112
6. Net transfers to Separate Accounts, Segregated Accounts and Protected Cell Accounts			
7. Commissions, expenses paid and aggregate write-ins for deductions			
8. Dividends paid to policyholders			
9. Federal and foreign income taxes paid (recovered) net of \$ tax on capital gains (losses)	(46,962)	(76,172)	(71,046)
10. Total (Lines 5 through 9)	12,356	(64,224)	(67,934)
11. Net cash from operations (Line 4 minus Line 10)	(1,849,338)	906,380	1,361,395
Cash from Investments			
12. Proceeds from investments sold, matured or repaid:			
12.1 Bonds	605,000		800,000
12.2 Stocks			
12.3 Mortgage loans			
12.4 Real estate			
12.5 Other invested assets			
12.6 Net gains or (losses) on cash, cash equivalents and short-term investments			
12.7 Miscellaneous proceeds			
12.8 Total investment proceeds (Lines 12.1 to 12.7)	605,000		800,000
13. Cost of investments acquired (long-term only):			
13.1 Bonds	3,036,225		3,874,504
13.2 Stocks			
13.3 Mortgage loans			
13.4 Real estate			
13.5 Other invested assets			
13.6 Miscellaneous applications			
13.7 Total investments acquired (Lines 13.1 to 13.6)	3,036,225		3,874,504
14. Net increase (or decrease) in contract loans and premium notes			
15. Net cash from investments (Line 12.8 minus Line 13.7 and Line 14)	(2,431,225)		(3,074,504)
Cash from Financing and Miscellaneous Sources			
16. Cash provided (applied):			
16.1 Surplus notes, capital notes			
16.2 Capital and paid in surplus, less treasury stock			
16.3 Borrowed funds			
16.4 Net deposits on deposit-type contracts and other insurance liabilities			
16.5 Dividends to stockholders			
16.6 Other cash provided (applied)	2,276,514	388,688	545,696
17. Net cash from financing and miscellaneous sources (Line 16.1 through Line 16.4 minus Line 16.5 plus Line 16.6)	2,276,514	388,688	545,696
RECONCILIATION OF CASH, CASH EQUIVALENTS AND SHORT-TERM INVESTMENTS			
18. Net change in cash, cash equivalents and short-term investments (Line 11, plus Lines 15 and 17)	(2,004,049)	1,295,068	(1,167,413)
19. Cash, cash equivalents and short-term investments:			
19.1 Beginning of year	2,411,876	3,579,289	3,579,289
19.2 End of period (Line 18 plus Line 19.1)	407,827	4,874,357	2,411,876

Note: Supplemental disclosures of cash flow information for non-cash transactions:

--	--	--	--

NOTES TO FINANCIAL STATEMENTS

Note 1 - Summary of Significant Accounting Policies

A. Accounting Practices

The accompanying statutory financial statements of Freedom Specialty Insurance Company (the Company) have been prepared in conformity with accounting practices prescribed or permitted by the National Association of Insurance Commissioners (NAIC) and the State of Ohio.

The Ohio Insurance Department recognizes only statutory accounting practices (SAP) prescribed or permitted by the State of Ohio for determining and reporting the financial condition and results of operations of an insurance company, as well as, determining its solvency under the Ohio Insurance law. The National Association of Insurance Commissioners' (NAIC) *Accounting Practices and Procedures Manual* (NAIC SAP) has been adopted as a component of prescribed or permitted practices by the State of Ohio.

Note 2 - Accounting Changes and Corrections of Errors

No change.

Note 3 - Business Combinations and Goodwill

No change.

Note 4 - Discontinued Operations

No change.

Note 5 - Investments

A. Mortgage Loans

No change.

B. Troubled Debt Restructuring for Creditors

No change.

C. Reverse Mortgages

No change.

D. Loan-Backed Securities

- 1. Prepayment assumptions are generally obtained using a model provided by a third-party vendor.
- 2. Not applicable.
- 3. Not applicable.
- 4. All impaired securities (fair value is less than cost or amortized cost) for which an other-than-temporary impairment has not been recognized in earnings as a realized loss (including securities with a recognized other-than-temporary impairment for non-interest related declines when a non-recognized interest related impairment remains):

a.	The aggregate amount of unrealized losses:		
	1.	Less than 12 Months	\$ (25,950)
	2.	12 Months or Longer	\$ -

b.	The aggregate related fair value of securities with unrealized losses:		
	1.	Less than 12 Months	\$ 965,840
	2.	12 Months or Longer	\$ -

- 5. The Company reviews all loan-backed and structured securities in which the fair value of the given security is less than the amortized cost to determine if a given security is other-than-temporarily impaired. The Company examines characteristics of the underlying collateral, such as delinquency and default rates, the quality of the underlying borrower, the type of collateral in the pool, the vintage year of the collateral, subordination levels within the structure of the collateral pool, and the quality of any credit guarantors, to determine the cash flows expected to be received for the security.

If the severity and duration of the security's unrealized loss indicates a risk of an other-than-temporary impairment, then the Company will evaluate if the amortized cost basis of the security will be recovered by comparing the present value of the cash flows expected to be received for the given security with the amortized cost basis of the security. If the present value of cash flows is greater than the amortized cost basis of a security then the security is deemed not to be other-than-temporarily impaired.

E. Repurchase Agreements and Securities Lending Transactions

No change.

F. Real Estate

No change.

G. Low-Income Housing Tax Credits

No change.

Note 6 - Joint Ventures, Partnerships and Limited Liability Companies

No change.

NOTES TO FINANCIAL STATEMENTS

Note 7 - Investment Income

No change.

Note 8 - Derivative Instruments

No change.

Note 9 - Income Taxes

No change.

Note 10 - Information Concerning Parent, Subsidiaries, Affiliates and Other Related Parties

No change.

Note 11 - Debt

No change.

Note 12 - Retirement Plans, Deferred Compensation, Postemployment Benefits and Compensated Absences and Other Postretirement Benefit Plans

No change.

Note 13 - Capital and Surplus, Dividend Restrictions and Quasi-Reorganizations

No change.

Note 14 – Contingencies

No change.

Note 15 – Leases

No change.

Note 16 - Information About Financial Instruments With Off-Balance Sheet Risk And Financial Instruments With Concentrations of Credit Risk

No change.

Note 17 - Sale, Transfer and Servicing of Financial Assets and Extinguishments of Liabilities

A. Transfers of Receivables Reported as Sales

No change.

B. Transfers and Servicing of Financial Assets

No change.

C. Wash Sales

Not applicable.

Note 18 - Gain or Loss to the Reporting Entity from Uninsured Plans and the Uninsured Portion of Partially Insured Plans

No change.

Note 19 - Direct Premiums Written/Produced by Managing General Agents/Third Party Administrators

No change.

Note 20 – Fair Value Measurements

Fair value is defined as the price that would be received to sell an asset or paid to transfer a liability in an orderly transaction between market participants at the measurement date. Fair value measurements are based upon observable and unobservable inputs. Observable inputs reflect market data obtained from independent sources while unobservable inputs reflect the Company's view of market assumptions in the absence of observable market information. The Company utilizes valuation techniques that maximize the use of observable inputs and minimize the use of unobservable inputs. In determining fair value, the Company uses various methods including market, income and cost approaches.

The Company categorizes its financial assets and liabilities into a three-level hierarchy based on the priority of the inputs to the valuation technique. The fair value hierarchy gives the highest priority to quoted prices in active markets for identical assets or liabilities (Level 1) and the lowest priority to unobservable inputs (Level 3). If the inputs used to measure fair value fall within different levels of the hierarchy, the category level is based on the lowest priority level input that is significant to the fair value measurement of the instrument in its entirety.

The Company categorizes financial assets and liabilities as follows:

Level 1. Unadjusted quoted prices accessible in active markets for identical assets or liabilities at the measurement date and mutual funds where the value per share (unit) is determined and published daily and is the basis for current transactions.

Level 2. Unadjusted quoted prices for similar assets or liabilities in active markets or inputs (other than quoted prices) that are observable or that are derived principally from or corroborated by observable market data through correlation or other means. Primary inputs to this valuation technique may include comparative trades, bid/asks, interest rate movements, U.S. Treasury rates, U.S. LIBOR, prime rates, cash flows, maturity dates, call ability, estimated prepayments and/or underlying collateral values.

NOTES TO FINANCIAL STATEMENTS

Level 3. Prices or valuation techniques that require inputs that are both unobservable and significant to the overall fair value measurement. Inputs reflect management’s best estimate about the assumptions market participants would use at the measurement date in pricing the asset or liability. Consideration is given to the risk inherent in both the method of valuation and the valuation inputs. Primary inputs to this valuation technique include broker quotes and comparative trades.

The Company reviews its fair value hierarchy classifications for financial assets and liabilities quarterly. Changes in observability of significant valuation inputs identified during these reviews may trigger reclassifications. Reclassifications are reported as transfers at the beginning of the period in which the change occurs.

To determine the fair value of bonds and stocks for which market quotations are available, independent pricing services are most often utilized. For these bonds and stocks, the Company obtains the pricing services’ methodologies, inputs and assumptions and classifies the investments accordingly in the fair value hierarchy.

A corporate pricing matrix or an internally developed pricing model is used in valuing certain bonds. The corporate pricing matrix is developed using private spreads for bonds with varying weighted average lives and credit quality ratings. The weighted average life and credit quality rating of a particular bond to be priced using the corporate pricing matrix are important inputs into the model and are used to determine a corresponding spread that is added to the appropriate U.S. Treasury yield to create an estimated market yield for that bond. The estimated market yield and other relevant factors are then used to estimate the fair value of the particular bond.

Non-binding broker quotes are also utilized to determine the fair value of certain bonds when quotes are not available from independent pricing services, corporate pricing matrix or internal pricing models. These bonds are classified accordingly in the fair value hierarchy as only one broker quote is ordinarily obtained, the investment is not traded on an exchange, the pricing is not available to other entities and/or the transaction volume in the same or similar investments has decreased. Inputs used in the development of prices are not provided to the Company by the brokers as the brokers often do not provide the necessary transparency into their quotes and methodologies. Broker quotes are subject to validation of price movements that require approval from the Company’s management. Management uses its knowledge of the investment and current market conditions to determine if the price is indicative of the investment’s fair value.

Fair value of derivative instruments is determined using various valuation techniques relying predominately on observable market inputs. These inputs include interest rate swap curves, credit spreads, interest rates, counterparty credit risk, equity volatility and equity index levels. In cases where observable inputs are not available, the Company will utilize non-binding broker quotes to determine fair value and these instruments are classified accordingly in the fair value hierarchy.

No financial assets or liabilities were carried at fair value as of September 30, 2013.

The following table summarizes aggregate carrying value and fair value, by level, for all financial assets and liabilities, excluding assets and liabilities reported at fair value, as of September 30, 2013:

	Aggregate Fair		Admitted Assets		(Level 1)	(Level 2)	(Level 3)	Not Practicable
	Value							(Carrying Value)
Assets								
Bonds	\$	14,828,038	\$	14,435,766	\$	11,371,290	\$	3,456,748
Stocks		-		-		-		-
Mortgage loans		-		-		-		-
Short-term investments		890,017		890,017		-		890,017
Derivative assets		-		-		-		-
Policy loans		-		-		-		-
Securities lending collateral assets		-		-		-		-
Total Assets	\$	15,718,055	\$	15,325,783	\$	11,371,290	\$	4,346,765
Liabilities								
Derivative liabilities	\$	-	\$	-	\$	-	\$	-
Total Liabilities	\$	-	\$	-	\$	-	\$	-

Note 21 - Other Items

No change.

Note 22 - Events Subsequent

Subsequent events have been considered through October 30, 2013 for these statutory financial statements which are to be issued November 1, 2013. There were no events occurring subsequent to the end of the quarter that merited recognition or disclosure in these statements.

Note 23 – Reinsurance

No change.

Note 24 - Retrospectively Rated Contracts and Contracts Subject to Redetermination

No change.

Note 25 - Changes in Incurred Losses and Loss Adjustment Expenses

The Company is a participant in a 100% quota share reinsurance agreement with Scottsdale Insurance Company, and as such has zero net incurred losses and loss adjustment expenses.

Note 26 - Intercompany Pooling Arrangements

No change.

Note 27 - Structured Settlements

No change.

NOTES TO FINANCIAL STATEMENTS

Note 28 - Health Care Receivables

No change.

Note 29 - Participating Policies

No change.

Note 30 - Premium Deficiency Reserves

No change.

Note 31 - High Deductibles

No change.

Note 32 - Discounting of Liabilities for Unpaid Losses or Unpaid Loss Adjustment Expenses

No change.

Note 33 - Asbestos/Environmental Reserves

No change.

Note 34 - Subscriber Savings Accounts

No change.

Note 35 - Multiple Peril Crop Insurance

No change.

Note 36 – Financial Guaranty Insurance

A. and B. Not applicable.

GENERAL INTERROGATORIES

PART 1 - COMMON INTERROGATORIES

GENERAL

- 1.1

Did the reporting entity experience any material transactions requiring the filing of Disclosure of Material Transactions with the State of Domicile, as required by the Model Act?

Yes [☐] No [☒]
- 1.2

If yes, has the report been filed with the domiciliary state?

Yes [☐] No [☐]
- 2.1

Has any change been made during the year of this statement in the charter, by-laws, articles of incorporation, or deed of settlement of the reporting entity?

Yes [☐] No [☒]
- 2.2

If yes, date of change:
- 3.1

Have there been any substantial changes in the organizational chart since the prior quarter end?

Yes [☒] No [☐]
- 3.2

If the response to 3.1 is yes, provide a brief description of those changes.
In the third quarter, NNOV8, LLC, a single member limited liability company of Nationwide Mutual Insurance Company was added.
- 4.1

Has the reporting entity been a party to a merger or consolidation during the period covered by this statement?

Yes [☐] No [☒]
- 4.2

If yes, provide the name of the entity, NAIC Company Code, and state of domicile (use two letter state abbreviation) for any entity that has ceased to exist as a result of the merger or consolidation.
- | 1
Name of Entity | 2
NAIC Company Code | 3
State of Domicile |
|---------------------|------------------------|------------------------|
| | | |
5.

If the reporting entity is subject to a management agreement, including third-party administrator(s), managing general agent(s), attorney-in-fact, or similar agreement, have there been any significant changes regarding the terms of the agreement or principals involved? Yes [☐] No [☒] N/A [☐]
If yes, attach an explanation.
- 6.1

State as of what date the latest financial examination of the reporting entity was made or is being made.

12/31/2011
- 6.2

State the as of date that the latest financial examination report became available from either the state of domicile or the reporting entity. This date should be the date of the examined balance sheet and not the date the report was completed or released.

12/31/2011
- 6.3

State as of what date the latest financial examination report became available to other states or the public from either the state of domicile or the reporting entity. This is the release date or completion date of the examination report and not the date of the examination (balance sheet date).

03/13/2013
- 6.4

By what department or departments?
OH
- 6.5

Have all financial statement adjustments within the latest financial examination report been accounted for in a subsequent financial statement filed with Departments?

Yes [☐] No [☐] N/A [☒]
- 6.6

Have all of the recommendations within the latest financial examination report been complied with?

Yes [☐] No [☐] N/A [☒]
- 7.1

Has this reporting entity had any Certificates of Authority, licenses or registrations (including corporate registration, if applicable) suspended or revoked by any governmental entity during the reporting period?

Yes [☐] No [☒]
- 7.2

If yes, give full information:
- 8.1

Is the company a subsidiary of a bank holding company regulated by the Federal Reserve Board?

Yes [☐] No [☒]
- 8.2

If response to 8.1 is yes, please identify the name of the bank holding company.
- 8.3

Is the company affiliated with one or more banks, thrifts or securities firms?

Yes [☒] No [☐]
- 8.4

If response to 8.3 is yes, please provide below the names and location (city and state of the main office) of any affiliates regulated by a federal regulatory services agency [i.e. the Federal Reserve Board (FRB), the Office of the Comptroller of the Currency (OCC), the Federal Deposit Insurance Corporation (FDIC) and the Securities Exchange Commission (SEC)] and identify the affiliate's primary federal regulator.

1 Affiliate Name	2 Location (City, State)	3 FRB	4 OCC	5 FDIC	6 SEC
Nationwide Bank	Columbus, OH	NO	YES	NO	NO
Nationwide Investment Services Corp.	Columbus, OH	NO	NO	NO	YES
Nationwide Securities, LLC	Dublin, OH	NO	NO	NO	YES
Nationwide Fund Distributors, LLC	King of Prussia, PA	NO	NO	NO	YES
Nationwide Advantage Mortgage Company	Des Moines, IA	NO	NO	NO	NO

STATEMENT AS OF SEPTEMBER 30, 2013 OF THE FREEDOM SPECIALTY INSURANCE COMPANY

GENERAL INTERROGATORIES

9.1

Are the senior officers (principal executive officer, principal financial officer, principal accounting officer or controller, or persons performing similar functions) of the reporting entity subject to a code of ethics, which includes the following standards?
(a) Honest and ethical conduct, including the ethical handling of actual or apparent conflicts of interest between personal and professional relationships;
(b) Full, fair, accurate, timely and understandable disclosure in the periodic reports required to be filed by the reporting entity;
(c) Compliance with applicable governmental laws, rules and regulations;
(d) The prompt internal reporting of violations to an appropriate person or persons identified in the code; and
(e) Accountability for adherence to the code.

Yes [X] No []

9.11

If the response to 9.1 is No, please explain:

9.2

Has the code of ethics for senior managers been amended?

Yes [X] No []

9.21

If the response to 9.2 is Yes, provide information related to amendment(s).
All topics covered in the previous Code of Conduct have been retained without substantive change. New sample questions and answers have been added. New language has been added to cover social networking, securities laws, political contributions, corporate social responsibility, and vendor relationships.

9.3

Have any provisions of the code of ethics been waived for any of the specified officers?

Yes [] No [X]

9.31

If the response to 9.3 is Yes, provide the nature of any waiver(s).

FINANCIAL

10.1

Does the reporting entity report any amounts due from parent, subsidiaries or affiliates on Page 2 of this statement?

Yes [X] No []

10.2

If yes, indicate any amounts receivable from parent included in the Page 2 amount:

\$

INVESTMENT

11.1

Were any of the stocks, bonds, or other assets of the reporting entity loaned, placed under option agreement, or otherwise made available for use by another person? (Exclude securities under securities lending agreements.)

Yes [] No [X]

11.2

If yes, give full and complete information relating thereto:

12.

Amount of real estate and mortgages held in other invested assets in Schedule BA:

\$

13.

Amount of real estate and mortgages held in short-term investments:

\$

14.1

Does the reporting entity have any investments in parent, subsidiaries and affiliates?

Yes [] No [X]

14.2

If yes, please complete the following:

	1	2
	Prior Year-End Book/Adjusted Carrying Value	Current Quarter Book/Adjusted Carrying Value
14.21 Bonds	\$	\$
14.22 Preferred Stock	\$	\$
14.23 Common Stock	\$	\$
14.24 Short-Term Investments	\$	\$
14.25 Mortgage Loans on Real Estate	\$	\$
14.26 All Other	\$	\$
14.27 Total Investment in Parent, Subsidiaries and Affiliates (Subtotal Lines 14.21 to 14.26)	\$	\$
14.28 Total Investment in Parent included in Lines 14.21 to 14.26 above	\$	\$

15.1

Has the reporting entity entered into any hedging transactions reported on Schedule DB?

Yes [] No [X]

15.2

If yes, has a comprehensive description of the hedging program been made available to the domiciliary state?
If no, attach a description with this statement.

Yes [] No []

STATEMENT AS OF SEPTEMBER 30, 2013 OF THE FREEDOM SPECIALTY INSURANCE COMPANY

GENERAL INTERROGATORIES

16. For the reporting entity's security lending program, state the amount of the following as of the current statement date:
- 16.1 Total fair value of reinvested collateral assets reported on Schedule DL, Parts 1 and 2.

16.2 Total book adjusted/carrying value of reinvested collateral assets reported on Schedule DL, Parts 1 and 2

16.3 Total payable for securities lending reported on the liability page.
- \$
\$
\$

17. Excluding items in Schedule E - Part 3 - Special Deposits, real estate, mortgage loans and investments held physically in the reporting entity's offices, vaults or safety deposit boxes, were all stocks, bonds and other securities, owned throughout the current year held pursuant to a custodial agreement with a qualified bank or trust company in accordance with Section 1, III - General Examination Considerations, F. Outsourcing of Critical Functions, Custodial or Safekeeping Agreements of the NAIC Financial Condition Examiners Handbook? Yes [X] No []
- 17.1 For all agreements that comply with the requirements of the NAIC Financial Condition Examiners Handbook, complete the following:

1 Name of Custodian(s)	2 Custodian Address
The Bank of New York Mellon	1 Wall Street, New York, NY 10286

- 17.2 For all agreements that do not comply with the requirements of the NAIC Financial Condition Examiners Handbook, provide the name, location and a complete explanation:

1 Name(s)	2 Location(s)	3 Complete Explanation(s)

- 17.3 Have there been any changes, including name changes, in the custodian(s) identified in 17.1 during the current quarter? Yes [] No [X]
- 17.4 If yes, give full information relating thereto:

1 Old Custodian	2 New Custodian	3 Date of Change	4 Reason

- 17.5 Identify all investment advisors, brokers/dealers or individuals acting on behalf of broker/dealers that have access to the investment accounts, handle securities and have authority to make investments on behalf of the reporting entity:

1 Central Registration Depository	2 Name(s)	3 Address
N/A	Members of the investment staff designated by the Chief Investment Officer as detailed in the Corporate Resolution.	One Nationwide Blvd, Columbus, OH 43215-2220

- 18.1 Have all the filing requirements of the Purposes and Procedures Manual of the NAIC Securities Valuation Office been followed? Yes [X] No []
- 18.2 If no, list exceptions:

GENERAL INTERROGATORIES

PART 2 - PROPERTY & CASUALTY INTERROGATORIES

1.

If the reporting entity is a member of a pooling arrangement, did the agreement or the reporting entity's participation change?
If yes, attach an explanation.

Yes [] No [] N/A [X]
2.

Has the reporting entity reinsured any risk with any other reporting entity and agreed to release such entity from liability, in whole or in part, from any loss that may occur on the risk, or portion thereof, reinsured?
If yes, attach an explanation.

Yes [] No [X]
- 3.1

Have any of the reporting entity's primary reinsurance contracts been canceled?

Yes [] No [X]
- 3.2

If yes, give full and complete information thereto.
- 4.1

Are any of the liabilities for unpaid losses and loss adjustment expenses other than certain workers' compensation tabular reserves (see Annual Statement Instructions pertaining to disclosure of discounting for definition of " tabular reserves") discounted at a rate of interest greater than zero?

Yes [] No [X]
- 4.2

If yes, complete the following schedule:

			TOTAL DISCOUNT				DISCOUNT TAKEN DURING PERIOD			
1	2	3	4	5	6	7	8	9	10	11
Line of Business	Maximum Interest	Discount Rate	Unpaid Losses	Unpaid LAE	IBNR	TOTAL	Unpaid Losses	Unpaid LAE	IBNR	TOTAL
TOTAL										

5.

Operating Percentages:

5.1 A&H loss percent0.000 %

5.2 A&H cost containment percent0.000 %

5.3 A&H expense percent excluding cost containment expenses0.000 %
- 6.1

Do you act as a custodian for health savings accounts?

Yes [] No [X]
- 6.2

If yes, please provide the amount of custodial funds held as of the reporting date\$.....
- 6.3

Do you act as an administrator for health savings accounts?

Yes [] No [X]
- 6.4

If yes, please provide the balance of the funds administered as of the reporting date\$.....

STATEMENT AS OF SEPTEMBER 30, 2013 OF THE FREEDOM SPECIALTY INSURANCE COMPANY

SCHEDULE F - CEDED REINSURANCE

Showing All New Reinsurers - Current Year to Date

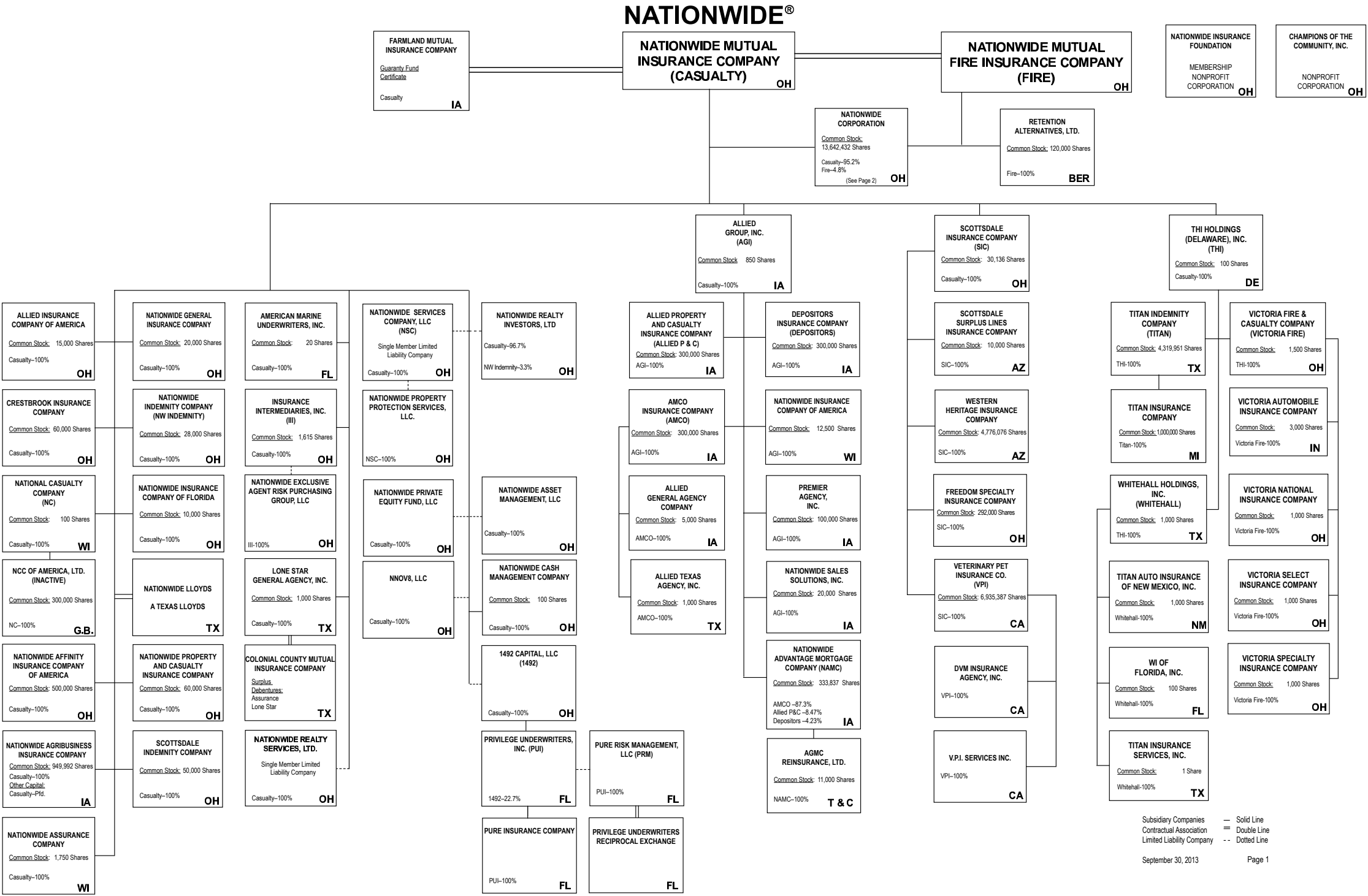
1 NAIC Company Code	2 Federal ID Number	3 Name of Reinsurer	4 Domiciliary Jurisdiction	5 Is Insurer Authorized? (Yes or No)
NONE				

SCHEDULE T - EXHIBIT OF PREMIUMS WRITTEN

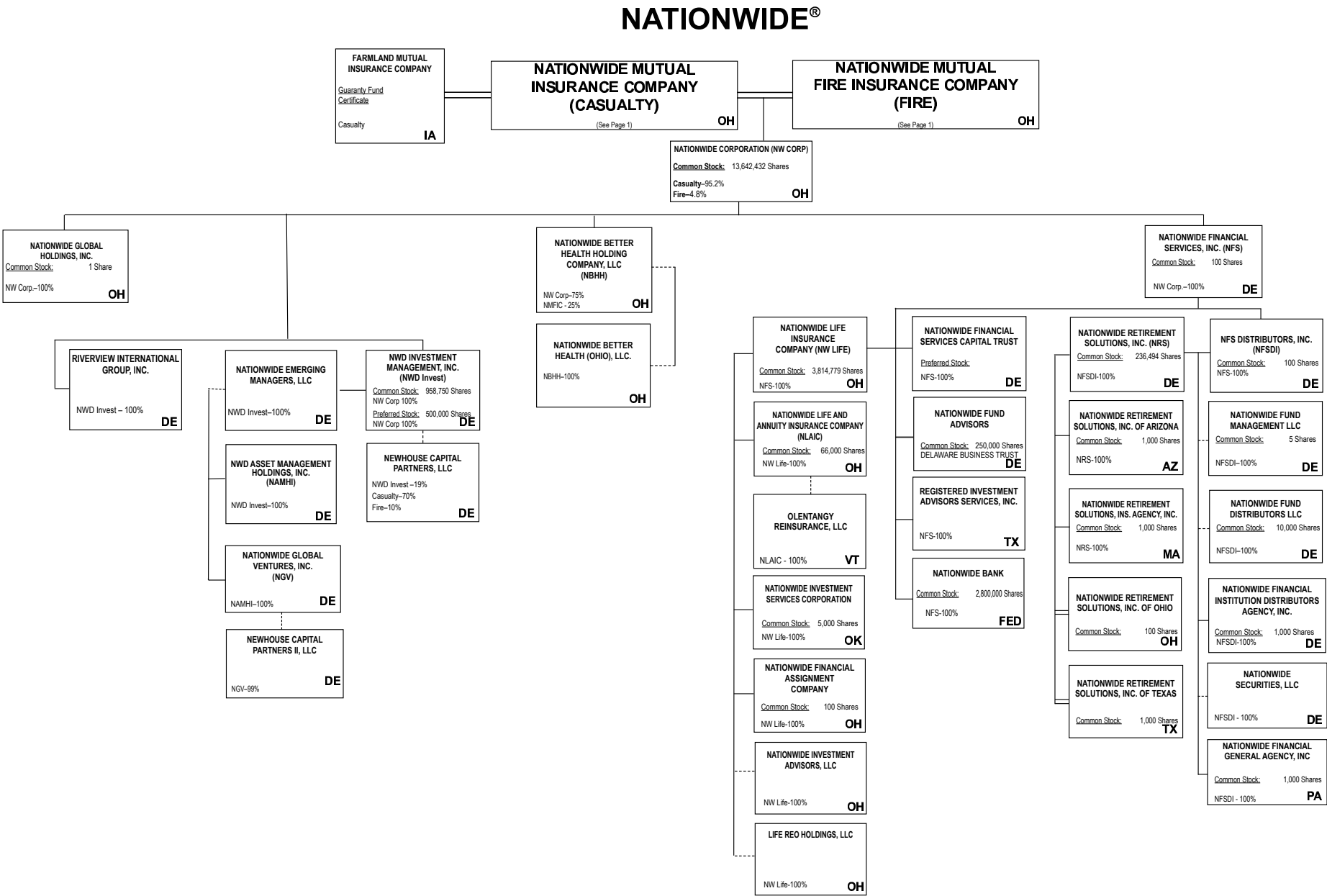
Current Year to Date - Allocated by States and Territories								
		1	Direct Premiums Written		Direct Losses Paid (Deducting Salvage)		Direct Losses Unpaid	
		Active Status	2 Current Year To Date	3 Prior Year To Date	4 Current Year To Date	5 Prior Year To Date	6 Current Year To Date	7 Prior Year To Date
States, etc.								
1. Alabama AL	L		323,783	250,683			473,984	108,054
2. Alaska AK	L							
3. Arizona AZ	L		274,699	120,000			116,464	45,286
4. Arkansas AR	L		800,790	742,650			593,912	290,855
5. California CA	L		8,130,787	5,803,545			5,985,952	2,284,967
6. Colorado CO	L		370,848	290,948			320,487	117,170
7. Connecticut CT	N							
8. Delaware DE	L		480,500	480,500			333,539	147,871
9. District of Columbia DC	L		1,051,276	760,898			808,193	337,406
10. Florida FL	L		135,736	132,991			148,964	22,311
11. Georgia GA	L		1,154,804	1,107,625			917,070	294,719
12. Hawaii HI	L							
13. Idaho ID	L							
14. Illinois IL	L		4,026,605	2,741,682			8,297,437	1,330,590
15. Indiana IN	L		330,000	235,000			258,861	80,513
16. Iowa IA	L		444,782	226,316			163,077	21,453
17. Kansas KS	L							
18. Kentucky KY	L		449,041	60,000			68,555	10,238
19. Louisiana LA	L		243,315	180,815			153,789	61,918
20. Maine ME	L							
21. Maryland MD	L		1,029,245	884,489			897,394	280,625
22. Massachusetts MA	L		4,440,317	3,233,487			2,791,454	1,029,285
23. Michigan MI	L		1,032,174	826,327			1,759,031	617,394
24. Minnesota MN	L		714,317	486,002			701,987	289,758
25. Mississippi MS	L						7,372	7,599
26. Missouri MO	L		700,017	533,940			919,540	379,450
27. Montana MT	L							
28. Nebraska NE	L							
29. Nevada NV	L		61,715		3,862		82,259	
30. New Hampshire NH	L			29,277			11,728	1,665
31. New Jersey NJ	L		419,250				52,372	
32. New Mexico NM	L							
33. New York NY	L		13,894,025	9,662,369			13,536,333	5,416,132
34. North Carolina NC	L		1,025,660	937,307	10,969		661,760	213,419
35. North Dakota ND	L							
36. Ohio OH	L		1,672,275	1,414,419			1,031,063	307,196
37. Oklahoma OK	L		768,000	98,000			312,887	75,372
38. Oregon OR	L		40,000	40,000			41,728	16,532
39. Pennsylvania PA	L		2,407,628	1,628,702	88		2,345,703	1,021,250
40. Rhode Island RI	L							
41. South Carolina SC	L		396,682	55,000	2,727		58,189	7,299
42. South Dakota SD	L		17,500				3,647	
43. Tennessee TN	L		501,724	383,825			472,068	195,687
44. Texas TX	L		2,938,766	2,436,093			2,592,257	1,275,160
45. Utah UT	L		25,000	25,000			22,459	15,268
46. Vermont VT	L							
47. Virginia VA	L		163,500				9,301	
48. Washington WA	L		13,970	9,436			3,399	2,096
49. West Virginia WV	L						23,006	33,155
50. Wisconsin WI	L							
51. Wyoming WY	N							
52. American Samoa AS	N							
53. Guam GU	N							
54. Puerto Rico PR	N							
55. U.S. Virgin Islands VI	N							
56. Northern Mariana Islands MP	N							
57. Canada CAN	N							
58. Aggregate Other Alien OT	XXX		605,341	489,603			496,983	233,639
59. Totals	(a) 49		51,084,072	36,306,929	17,646		47,474,204	16,571,332
DETAILS OF WRITE-INS								
58001. BMU Bermuda	XXX		605,341	489,603			496,983	233,639
58002.	XXX							
58003.	XXX							
58998. Summary of remaining write-ins for Line 58 from overflow page	XXX							
58999. Totals (Lines 58001 through 58003 plus 58998)(Line 58 above)	XXX		605,341	489,603			496,983	233,639

(L) Licensed or Chartered - Licensed Insurance Carrier or Domiciled RRG; (R) Registered - Non-domiciled RRGs; (Q) Qualified - Qualified or Accredited Reinsurer; (E) Eligible - Reporting Entities eligible or approved to write Surplus Lines in the state; (N) None of the above - Not allowed to write business in the state.

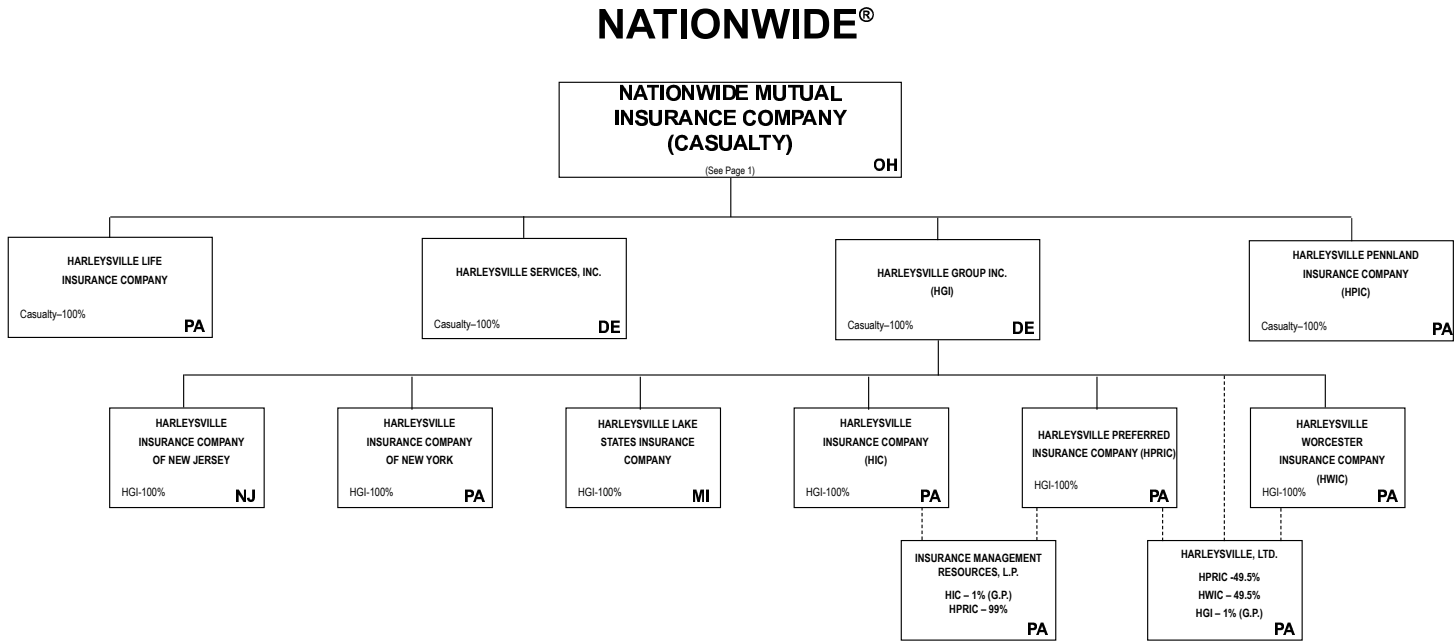
(a) Insert the number of L responses except for Canada and Other Alien.



(Casualty, Fire and insurance related subsidiaries)



Subsidiary Companies — Solid Line
Contractual Association = Double Line
Limited Liability Company - - Dotted Line



NATIONWIDE INSURANCE COMPANIES

NAIC Group Code	Group Name	NAIC Company Code	State of Domicile	Federal ID Number	Name of Company
0140	Nationwide	10127	OH	27-0114983	Allied Insurance Company of America
0140	Nationwide	42579	IA	42-1201931	Allied Property and Casualty Insurance Company
0140	Nationwide	19100	IA	42-6054959	AMCO Insurance Company
0140	Nationwide	29262	TX	74-1061659	Colonial County Mutual Insurance Company
0140	Nationwide	18961	OH	68-0066866	Crestbrook Insurance Company
0140	Nationwide	42587	IA	42-1207150	Depositors Insurance Company
0140	Nationwide	13838	IA	42-0618271	Farmland Mutual Insurance Company
0140	Nationwide	22209	OH	75-6013587	Freedom Specialty Insurance Company
0140	Nationwide	23582	PA	41-0417250	Harleysville Insurance Company
0140	Nationwide	42900	NJ	23-2253669	Harleysville Insurance Company of New Jersey
0140	Nationwide	10674	PA	23-2864924	Harleysville Insurance Company of New York
0140	Nationwide	14516	MI	38-3198542	Harleysville Lake States Insurance Company
0140	Nationwide	64327	PA	23-1580983	Harleysville Life Insurance Company
0140	Nationwide	40983	PA	23-2612951	Harleysville Pennland Insurance Company
0140	Nationwide	35696	PA	23-2384978	Harleysville Preferred Insurance Company
0140	Nationwide	26182	PA	04-1989660	Harleysville Worcester Insurance Company
0140	Nationwide	11991	WI	38-0865250	National Casualty Company
0140	Nationwide	26093	OH	48-0470690	Nationwide Affinity Insurance Company of America
0140	Nationwide	28223	IA	42-1015537	Nationwide Agribusiness Insurance Company
0140	Nationwide	10723	WI	95-0639970	Nationwide Assurance Company
0140	Nationwide	23760	OH	31-4425763	Nationwide General Insurance Company
0140	Nationwide	10070	OH	31-1399201	Nationwide Indemnity Company
0140	Nationwide	25453	WI	95-2130882	Nationwide Insurance Company of America
0140	Nationwide	10948	OH	31-1613686	Nationwide Insurance Company of Florida
0140	Nationwide	92657	OH	31-1000740	Nationwide Life and Annuity Insurance Company
0140	Nationwide	66869	OH	31-4156830	Nationwide Life Insurance Company
0140	Nationwide	42110	TX	75-1780981	Nationwide Lloyds
0140	Nationwide	23779	OH	31-4177110	Nationwide Mutual Fire Insurance Company
0140	Nationwide	23787	OH	31-4177100	Nationwide Mutual Insurance Company
0140	Nationwide	37877	OH	31-0970750	Nationwide Property & Casualty Insurance Company
0140	Nationwide	13999	VT	27-1712056	Olentangy Reinsurance, LLC
0140	Nationwide	15580	OH	31-1117969	Scottsdale Indemnity Company
0140	Nationwide	41297	OH	31-1024978	Scottsdale Insurance Company
0140	Nationwide	10672	AZ	86-0835870	Scottsdale Surplus Lines Insurance Company
0140	Nationwide	13242	TX	74-2286759	Titan Indemnity Company
0140	Nationwide	36269	MI	86-0619597	Titan Insurance Company
0140	Nationwide	42285	CA	95-3750113	Veterinary Pet Insurance Company
0140	Nationwide	10644	IN	34-1785903	Victoria Automobile Insurance Company
0140	Nationwide	42889	OH	34-1394913	Victoria Fire & Casualty Company
0140	Nationwide	10778	OH	34-1842604	Victoria National Insurance Company
0140	Nationwide	10105	OH	34-1777972	Victoria Select Insurance Company
0140	Nationwide	10777	OH	34-1842602	Victoria Specialty Insurance Company
0140	Nationwide	37150	AZ	86-0561941	Western Heritage Insurance Company
4664	PURE	12873	FL	20-8287105	Privilege Underwriters Reciprocal Exchange
4664	PURE	13204	FL	26-3109178	PURE Insurance Company

STATEMENT AS OF SEPTEMBER 30, 2013 OF THE FREEDOM SPECIALTY INSURANCE COMPANY

SCHEDULE Y
PART 1A - DETAIL OF INSURANCE HOLDING COMPANY SYSTEM

1	2	3	4	5	6	7	8	9	10	11	12	13	14	15
Group Code	Group Name	NAIC Company Code	Federal ID Number	Federal RSSD	CIK	Name of Securities Exchange if Publicly Traded (U.S. or International)	Names of Parent, Subsidiaries Or Affiliates	Domi-ciliary Location	Relation-ship to Reporting Entity	Directly Controlled by (Name of Entity/Person)	Type of Control (Ownership, Board, Management, Attorney-in-Fact, Influence, Other)	If Control is Owner-ship Provide Percen-tage	Ultimate Controlling Entity(ies)/Person(s)	*
0140	Nationwide		31-1486309				10 W. Nationwide, LLC	..OH	..NIA	Nationwide Realty Investors, Ltd.	Ownership	100.000	Nationwide Mutual Insurance Company	
0140	Nationwide		31-1486309				101 N. Twentieth St, LLC	..OH	..NIA	Nationwide Realty Investors, Ltd.	Ownership	100.000	Nationwide Mutual Insurance Company	
0140	Nationwide		31-1733036				120 Acre Partners, LLC	..DE	..NIA	Nationwide Realty Investors, Ltd.	Ownership	95.000	Nationwide Mutual Insurance Company	
0140	Nationwide		26-2451988	4288132			1492 Capital, LLC	..OH	..NIA	Nationwide Mutual Insurance Company	Ownership	100.000	Nationwide Mutual Insurance Company	
0140	Nationwide		20-1347603				180 E. Broad Partners, LLC	..OH	..NIA	Nationwide Realty Investors, Ltd.	Ownership	33.330	Nationwide Mutual Insurance Company	1
0140	Nationwide						3Stone Inflection Fund, LLC	..DE	..NIA	Other non-Nationwide	n/a		Other non-Nationwide	
0140	Nationwide		31-1580283				400 West Nationwide Boulevard, LLC	..OH	..NIA	NWD Investments, LLC	Ownership	100.000	Nationwide Mutual Insurance Company	
0140	Nationwide		31-1580283				425 West Nationwide Boulevard, LLC	..OH	..NIA	NWD Investments, LLC	Ownership	100.000	Nationwide Mutual Insurance Company	
0140	Nationwide		31-1486309				44 Chestnut, LLC	..OH	..NIA	Nationwide Realty Investors, Ltd.	Ownership	100.000	Nationwide Mutual Insurance Company	
0140	Nationwide		20-4939866				775 Yard Street Restaurant, LLC	..OH	..NIA	NRI Equity Land Investments, LLC	Ownership	100.000	Nationwide Mutual Insurance Company	
0140	Nationwide		20-4939866				775 Yard Street, LLC	..OH	..NIA	NRI Equity Land Investments, LLC	Ownership	100.000	Nationwide Mutual Insurance Company	
0140	Nationwide		20-4939866				800 Bobcat Avenue, LLC	..OH	..NIA	NRI Equity Land Investments, LLC	Ownership	100.000	Nationwide Mutual Insurance Company	
0140	Nationwide		20-4939866				805 Bobcat Avenue, LLC	..OH	..NIA	NRI Equity Land Investments, LLC	Ownership	100.000	Nationwide Mutual Insurance Company	
0140	Nationwide		20-4939866				845 Yard Street, LLC	..OH	..NIA	NRI Equity Land Investments, LLC	Ownership	100.000	Nationwide Mutual Insurance Company	
0140	Nationwide		20-4939866				850 Goodale Blvd., LLC	..OH	..NIA	NRI Equity Land Investments, LLC	Ownership	100.000	Nationwide Mutual Insurance Company	
0140	Nationwide		20-4939866				925 Burrell Avenue Acquisitions, LLC	..OH	..NIA	NRI Equity Land Investments, LLC	Ownership	100.000	Nationwide Mutual Insurance Company	
0140	Nationwide		31-1680808				AD Investments, LLC	..OH	..NIA	Nationwide Realty Investors, Ltd.	Ownership	60.000	Nationwide Mutual Insurance Company	
0140	Nationwide		31-1580283				ADTV, LLC	..OH	..NIA	NWD Investments, LLC	Ownership	100.000	Nationwide Mutual Insurance Company	
0140	Nationwide		52-2227314				AGMC Reinsurance, Ltd.	..TCA	..IA	Nationwide Advantage Mortgage Company	Ownership	100.000	Nationwide Mutual Insurance Company	
0140	Nationwide		42-1011300	4287229			ALLIED General Agency Company	..IA	..IA	AMCO Insurance Company	Ownership	100.000	Nationwide Mutual Insurance Company	
0140	Nationwide		42-0958655				ALLIED Group, Inc.	..IA	..IA	Nationwide Mutual Insurance Company	Ownership	100.000	Nationwide Mutual Insurance Company	
0140	Nationwide	10127	27-0114983	4288169			ALLIED Insurance Company of America (fka Atlantic Floridian Insurance Company)	..OH	..IA	Nationwide Mutual Insurance Company	Ownership	100.000	Nationwide Mutual Insurance Company	
0140	Nationwide	45279	42-1201931	4287144			ALLIED Property and Casualty Insurance Company	..IA	..IA	ALLIED Group, Inc.	Ownership	100.000	Nationwide Mutual Insurance Company	
0140	Nationwide		42-1527863	4287238			ALLIED Texas Agency, Inc.	..TX	..IA	AMCO Insurance Company	Ownership	100.000	Nationwide Mutual Insurance Company	
0140	Nationwide	19100	42-6054959	4287153			AMCO Insurance Company	..IA	..IA	ALLIED Group, Inc.	Ownership	100.000	Nationwide Mutual Insurance Company	
0140	Nationwide		59-1031596	4288011			American Marine Underwriters, Inc.	..FL	..IA	Nationwide Mutual Insurance Company	Ownership	100.000	Nationwide Mutual Insurance Company	
0140	Nationwide		31-1486309				Anderson Meadows, LLC	..OH	..NIA	Nationwide Realty Investors, Ltd.	Ownership	100.000	Nationwide Mutual Insurance Company	
0140	Nationwide		31-1580283				Arena District CA I, LLC	..OH	..NIA	NWD Investments, LLC	Ownership	100.000	Nationwide Mutual Insurance Company	
0140	Nationwide		90-0280710				Arena District Owners Association	..OH	..OTH	Other non-Nationwide	n/a		Other non-Nationwide	
0140	Nationwide		31-1580283				Arena Theatres, LLC	..OH	..NIA	NWD Investments, LLC	Ownership	100.000	Nationwide Mutual Insurance Company	
0140	Nationwide						Artessa at Quarry Village, LLC	..TX	..OTH	Other non-Nationwide	n/a		Other non-Nationwide	
0140	Nationwide						BCCS Investment Fund LLC	..DE	..OTH	Nationwide Mutual Insurance Company	Ownership	100.000	Nationwide Mutual Insurance Company	
0140	Nationwide		31-1184438				Boulevard Inn Limited Liability Company	..OH	..NIA	Nationwide Realty Investors, Ltd.	Ownership	94.800	Nationwide Mutual Insurance Company	
0140	Nationwide		31-1555487				Broad Street Retail, LLC	..DE	..NIA	Nationwide Realty Investors, Ltd.	Ownership	60.000	Nationwide Mutual Insurance Company	
0140	Nationwide						Brooke School Investment Fund, LLC	..DE	..OTH	Nationwide Mutual Insurance Company	Ownership	100.000	Nationwide Mutual Insurance Company	
0140	Nationwide			3730540			CHP New Markets Investment Fund, LLC	..OH	..OTH	Nationwide Mutual Insurance Company	Limited partner /no control	50.000	other non-Nationwide	
0140	Nationwide		20-1618232				CNRI-Cannonsport Condominium, LLC	..OH	..NIA	CNRI-Cannonsport, LLC	Ownership	100.000	Nationwide Mutual Insurance Company	
0140	Nationwide		20-1618232				CNRI-Cannonsport, LLC	..OH	..NIA	Nationwide Realty Investors, Ltd.	Ownership	100.000	Nationwide Mutual Insurance Company	
0140	Nationwide						Co-Investment Fund, L.P.	..DE	..OTH	Other non-Nationwide	n/a		Other non-Nationwide	
0140	Nationwide		31-1579973				COLHOC Limited Partnership	..OH	..NIA	NRI Limited Partnership	Ownership	30.760	Other non-Nationwide	
0140	Nationwide	29262	74-1061659	4288057			Colonial County Mutual Insurance Company	..TX	..OTH	Other non-Nationwide	contract		Other non-Nationwide	
0140	Nationwide		04-3750770				Continental/North Shore I, L.P.	..OH	..NIA	Continental/NRI North Shore Investments, LLC	Ownership	100.000	Nationwide Mutual Insurance Company	1
0140	Nationwide		20-0366090				Continental/North Shore II, L.P.	..OH	..NIA	Continental/NRI North Shore Investments, LLC	Ownership	100.000	Nationwide Mutual Insurance Company	1
0140	Nationwide		20-0142724				LLC	..OH	..NIA	Nationwide Realty Investors, Ltd.	Ownership	50.500	Nationwide Mutual Insurance Company	1
0140	Nationwide						Cotton Mill Partners, LLC	..VA	..OTH	Nationwide Mutual Insurance Company	Limited partner /no control	2.000	other non-Nationwide	
0140	Nationwide	18961	68-0066866	4288178			Crestbrook Insurance Company	..OH	..IA	Nationwide Mutual Insurance Company	Ownership	100.000	Nationwide Mutual Insurance Company	

STATEMENT AS OF SEPTEMBER 30, 2013 OF THE FREEDOM SPECIALTY INSURANCE COMPANY

SCHEDULE Y

PART 1A - DETAIL OF INSURANCE HOLDING COMPANY SYSTEM

1	2	3	4	5	6	7	8	9	10	11	12	13	14	15
Group Code	Group Name	NAIC Company Code	Federal ID Number	Federal RSSD	CIK	Name of Securities Exchange if Publicly Traded (U.S. or International)	Names of Parent, Subsidiaries Or Affiliates	Domiciliary Location	Relationship to Reporting Entity	Directly Controlled by (Name of Entity/Person)	Type of Control (Ownership, Board, Management, Attorney-in-Fact, Influence, Other)	If Control is Ownership Provide Percentage	Ultimate Controlling Entity(ies)/Person(s)	*
..0140	Nationwide		31-1486309				Crewville, Ltd.	..OH	..NIA	Nationwide Realty Investors, Ltd.	Ownership	100.000	Nationwide Mutual Insurance Company	
..0140	Nationwide	..42587	42-1207150	4287162			Depositors Insurance Company	..IA	..IA	ALLIED Group, Inc.	Ownership	100.000	Nationwide Mutual Insurance Company	
..0140	Nationwide		33-0096671	4287694			DVM Insurance Agency, Inc.	..CA	..NIA	Veterinary Pet Insurance Company	Ownership	100.000	Nationwide Mutual Insurance Company	
..0140	Nationwide		20-1945276				East of Madison, LLC	..DE	..NIA	120 Acre Partners, Ltd.	Ownership	24.910	Nationwide Mutual Insurance Company	..1
..0140	Nationwide		20-1945276				East of Madison, LLC	..DE	..NIA	ND La Quinta Partners, LLC	Ownership	76.090	Nationwide Mutual Insurance Company	..1
..0140	Nationwide						ELH Investment LLC	..DE	..OTH	Nationwide Mutual Insurance Company	Other		Nationwide Mutual Insurance Company	..2
..0140	Nationwide	..13838	42-0618271				Farmland Mutual Insurance Company	..IA	..OTH	Other non-Nationwide	debt		Other non-Nationwide	
..0140	Nationwide						Freedom Specialty Insurance Company (fka Atlantic Insurance Company)	..OH		Scottsdale Insurance Company	Ownership	100.000	Nationwide Mutual Insurance Company	
..0140	Nationwide	..22209	75-6013587	4287676			Grandview Yard Hotel Holdings, LLC	..OH	..NIA	NRI Equity Land Investments, LLC	Ownership	100.000	Nationwide Mutual Insurance Company	
..0140	Nationwide		20-4939866				Grandview Yard Hotel, LLC	..OH	..NIA	Grandview Yard Hotel Holdings, LLC	Ownership	100.000	Nationwide Mutual Insurance Company	
..0140	Nationwide		51-0241172				Harleysville Group, Inc.	..DE	..NIA	Nationwide Mutual Insurance Company	Ownership	100.000	Nationwide Mutual Insurance Company	
..0140	Nationwide	..23582	41-0417250	4442260			Harleysville Insurance Company	..PA	..IA	Harleysville Group, Inc.	Ownership	100.000	Nationwide Mutual Insurance Company	
..0140	Nationwide						Harleysville Insurance Company of New Jersey	..NJ	..IA	Harleysville Group, Inc.	Ownership	100.000	Nationwide Mutual Insurance Company	
..0140	Nationwide						Harleysville Insurance Company of New York							
..0140	Nationwide	..10674	23-2864924	4442242			Harleysville Lake States Insurance Company	..PA	..IA	Harleysville Group, Inc.	Ownership	100.000	Nationwide Mutual Insurance Company	
..0140	Nationwide		14516	38-3198542	4442251			..MI	..IA	Harleysville Group, Inc.	Ownership	100.000	Nationwide Mutual Insurance Company	
..0140	Nationwide		64327	23-1580983	4440659		Harleysville Life Insurance Company	..PA	..IA	Nationwide Mutual Insurance Company	Ownership	100.000	Nationwide Mutual Insurance Company	
..0140	Nationwide		40983	23-2612951	4442149		Harleysville Pennland Insurance Company	..PA	..IA	Nationwide Mutual Insurance Company	Ownership	100.000	Nationwide Mutual Insurance Company	
..0140	Nationwide		35896	23-2384978	4442288		Harleysville Preferred Insurance Company	..PA	..IA	Harleysville Group, Inc.	Ownership	100.000	Nationwide Mutual Insurance Company	
..0140	Nationwide		51-0259283	4442103			Harleysville Services, Inc.	..DE	..NIA	Nationwide Mutual Insurance Company	Ownership	100.000	Nationwide Mutual Insurance Company	
..0140	Nationwide		26182	04-1989660	4442372		Harleysville Worcester Insurance Company	..PA	..IA	Harleysville Group, Inc.	Ownership	100.000	Nationwide Mutual Insurance Company	
..0140	Nationwide						Harleysville, Ltd.	..PA	..NIA	Harleysville Preferred Insurance Company	Ownership	49.500	Nationwide Mutual Insurance Company	
..0140	Nationwide						Harleysville, Ltd.	..PA	..NIA	Harleysville Worcester Insurance Company	Ownership	49.500	Nationwide Mutual Insurance Company	
..0140	Nationwide						Harleysville, Ltd.	..PA	..NIA	Harleysville Group, Inc.	Ownership	1.000	Nationwide Mutual Insurance Company	
..0140	Nationwide						Hideaway Properties Corp.	..CA	..OTH	Nationwide Realty Investors, Ltd.	Ownership	50.000	Nationwide Mutual Insurance Company	..1
..0140	Nationwide						Insurance Intermediaries, Inc.	..OH	..IA	Nationwide Mutual Insurance Company	Ownership	100.000	Nationwide Mutual Insurance Company	
..0140	Nationwide						Insurance Management Resources, L.P.	..PA	..NIA	Harleysville Insurance Company	Ownership	1.000	Nationwide Mutual Insurance Company	
..0140	Nationwide						Insurance Management Resources, L.P.	..PA	..NIA	Harleysville Preferred Insurance Company	Ownership	99.000	Nationwide Mutual Insurance Company	
..0140	Nationwide						Jerome Village Company, LLC	..OH	..NIA	Nationwide Realty Investors, Ltd.	Ownership	100.000	Nationwide Mutual Insurance Company	
..0140	Nationwide						Jerome Village Master Property Owners Association	..OH	..OTH	Other non-Nationwide	Ownership		Other non-Nationwide	..2
..0140	Nationwide						Jerome Village Residential Property Owners Association, Inc.	..OH	..NIA	Other non-Nationwide	Ownership		Other non-Nationwide	..2
..0140	Nationwide						JV Developers, LLC	..OH	..OTH	Nationwide Realty Investors, Ltd.	Ownership	100.000	Nationwide Mutual Insurance Company	
..0140	Nationwide						Leaguers Investment Fund LLC	..DE	..OTH	Nationwide Mutual Insurance Company	Other		Nationwide Mutual Insurance Company	
..0140	Nationwide						Life REO Holdings, LLC	..OH	..NIA	Nationwide Life Insurance Company	Ownership	100.000	Nationwide Mutual Insurance Company	
..0140	Nationwide						Lone Star General Agency, Inc.	..TX	..IA	Nationwide Mutual Insurance Company	Ownership	100.000	Nationwide Mutual Insurance Company	
..0140	Nationwide						Match School Investment Fund, LLC	..DE	..OTH	Nationwide Mutual Insurance Company	Ownership	100.000	Nationwide Mutual Insurance Company	
..0140	Nationwide	..11991	38-0865250	4288187			National Casualty Company	..WI	..IA	Nationwide Mutual Insurance Company	Ownership	100.000	Nationwide Mutual Insurance Company	
..0140	Nationwide						National Casualty Company of America, Ltd.	..GBR	..IA	National Casualty Company	Ownership	100.000	Nationwide Mutual Insurance Company	
..0140	Nationwide						Nationwide Advantage Mortgage Company	..IA	..NIA	AMCO Insurance Company	Ownership	87.300	Nationwide Mutual Insurance Company	
..0140	Nationwide						Nationwide Advantage Mortgage Company	..IA	..NIA	ALLIED Property & Casualty Insurance Company	Ownership	8.470	Nationwide Mutual Insurance Company	
..0140	Nationwide						Nationwide Advantage Mortgage Company	..IA	..NIA	Depositors Insurance Company	Ownership	4.230	Nationwide Mutual Insurance Company	

STATEMENT AS OF SEPTEMBER 30, 2013 OF THE FREEDOM SPECIALTY INSURANCE COMPANY

SCHEDULE Y

PART 1A - DETAIL OF INSURANCE HOLDING COMPANY SYSTEM

1	2	3	4	5	6	7	8	9	10	11	12	13	14	15
Group Code	Group Name	NAIC Company Code	Federal ID Number	Federal RSSD	CIK	Name of Securities Exchange if Publicly Traded (U.S. or International)	Names of Parent, Subsidiaries Or Affiliates	Domi-ciliary Location	Relation-ship to Reporting Entity	Directly Controlled by (Name of Entity/Person)	Type of Control (Ownership, Board, Management, Attorney-in-Fact, Influence, Other)	If Control is Owner-ship Provide Percen-tage	Ultimate Controlling Entity(ies)/Person(s)	*
...0140 ...	Nationwide26093 ...	48-0470690 ...	4288196	Nationwide Affinity Insurance Company of AmericaOH.....	...IA.....	Nationwide Mutual Insurance Company	Ownership.....	...100.000 ...	Nationwide Mutual Insurance Company
...0140 ...	Nationwide28223 ...	42-1015537 ...	4288208	Nationwide Agribusiness Insurance CompanyIA.....	...IA.....	Nationwide Mutual Insurance Company	Ownership.....	...100.000 ...	Nationwide Mutual Insurance Company
...0140 ...	Nationwide	20-5976272	Nationwide Alternative Investments, LLCOH.....	...NIA.....	Nationwide Mutual Insurance Company	Ownership.....	...100.000 ...	Nationwide Mutual Insurance Company
...0140 ...	Nationwide	31-1578869 ...	4288075	Nationwide Arena, LLCOH.....	...NIA.....	NRI Arena, Ltd.	Ownership.....	...90.000 ...	Nationwide Mutual Insurance Company
...0140 ...	Nationwide	20-8670712 ...	4288114	Nationwide Asset Management, LLCOH.....	...NIA.....	Nationwide Mutual Insurance Company	Ownership.....	...100.000 ...	Nationwide Mutual Insurance Company
...0140 ...	Nationwide10723 ...	95-0639970 ...	4288217	Nationwide Assurance CompanyWI.....	...IA.....	Nationwide Mutual Insurance Company	Ownership.....	...100.000 ...	Nationwide Mutual Insurance Company
...0140 ...	Nationwide	31-1592130 ...	2729677	Nationwide BankOTH.....	Nationwide Financial Services, Inc.	Ownership.....	...100.000 ...	Nationwide Mutual Insurance Company
...0140 ...	Nationwide	52-1776258 ...	4286875	Nationwide Better Health (Ohio), LLCOH.....	...NIA.....	Nationwide Better Health Holding Company, LLC	Ownership.....	...100.000 ...	Nationwide Mutual Insurance Company
...0140 ...	Nationwide	11-3766032 ...	4286428	Nationwide Better Health Holding Company, LLCOH.....	...NIA.....	Nationwide Corporation	Ownership.....	...75.000 ...	Nationwide Mutual Insurance Company
...0140 ...	Nationwide	11-3766032 ...	4286428	Nationwide Better Health Holding Company, LLCOH.....	...NIA.....	Nationwide Mutual Fire Insurance Company	Ownership.....	...25.000 ...	Nationwide Mutual Insurance Company
...0140 ...	Nationwide	31-1036287 ...	4288123	Nationwide Cash Management CompanyOH.....	...NIA.....	Nationwide Mutual Insurance Company	Ownership.....	...100.000 ...	Nationwide Mutual Insurance Company
...0140 ...	Nationwide	31-4416546 ...	3828081	Nationwide CorporationOH.....	...NIA.....	Nationwide Mutual Insurance Company	Ownership.....	...95.200 ...	Nationwide Mutual Insurance Company
...0140 ...	Nationwide	31-4416546 ...	3828081	Nationwide CorporationOH.....	...NIA.....	Nationwide Mutual Fire Insurance Company	Ownership.....	...4.800 ...	Nationwide Mutual Insurance Company
...0140 ...	Nationwide	04-3679407 ...	4286839	Nationwide Emerging Managers, LLCDE.....	...NIA.....	NWD Investment Management, Inc.	Ownership.....	...100.000 ...	Nationwide Mutual Insurance Company
...0140 ...	Nationwide	05-0630007 ...	4288048	Nationwide Exclusive Agent Risk Purchasing Group, LLCOH.....	...NIA.....	Insurance Intermediaries, Inc.	Ownership.....	...100.000 ...	Nationwide Mutual Insurance Company
...0140 ...	Nationwide	31-1667326 ...	4286932	Nationwide Financial Assignment CompanyOH.....	...NIA.....	Nationwide Life Insurance Company	Ownership.....	...100.000 ...	Nationwide Mutual Insurance Company
...0140 ...	Nationwide	23-2412039 ...	4287087	Nationwide Financial General Agency, Inc.PA.....	...NIA.....	NFS Distributors, Inc.	Ownership.....	...100.000 ...	Nationwide Mutual Insurance Company
...0140 ...	Nationwide	31-1316276 ...	4287069	Nationwide Financial Institution Distributors Agency, Inc.DE.....	...NIA.....	NFS Distributors, Inc.	Ownership.....	...100.000 ...	Nationwide Mutual Insurance Company
...0140 ...	Nationwide	31-6554353 ...	4286978	Nationwide Financial Services Capital TrustDE.....	...NIA.....	Nationwide Financial Services, Inc.	Ownership.....	...100.000 ...	Nationwide Mutual Insurance Company
...0140 ...	Nationwide	31-1486870 ...	3828063	Nationwide Financial Services, Inc.DE.....	...NIA.....	Nationwide Corporation	Ownership.....	...100.000 ...	Nationwide Mutual Insurance Company
...0140 ...	Nationwide	52-6969857 ...	4286996	Nationwide Fund AdvisorsDE.....	...NIA.....	Nationwide Financial Services, Inc.	Ownership.....	...100.000 ...	Nationwide Mutual Insurance Company
...0140 ...	Nationwide	31-1748721 ...	42877050	Nationwide Fund Distributors LLCDE.....	...NIA.....	NFS Distributors, Inc.	Ownership.....	...100.000 ...	Nationwide Mutual Insurance Company
...0140 ...	Nationwide	31-0900518 ...	4287041	Nationwide Fund Management LLCDE.....	...NIA.....	NFS Distributors, Inc.	Ownership.....	...100.000 ...	Nationwide Mutual Insurance Company
...0140 ...	Nationwide23760 ...	31-4425763 ...	4287957	Nationwide General Insurance CompanyOH.....	...IA.....	Nationwide Mutual Insurance Company	Ownership.....	...100.000 ...	Nationwide Mutual Insurance Company
...0140 ...	Nationwide	31-1570938 ...	4286398	Nationwide Global Holdings, Inc.OH.....	...NIA.....	Nationwide Corporation	Ownership.....	...100.000 ...	Nationwide Mutual Insurance Company
...0140 ...	Nationwide	04-3732385 ...	4286857	Nationwide Global Ventures, Inc.DE.....	...NIA.....	Nationwide Asset Management Holdings, Inc.	Ownership.....	...100.000 ...	Nationwide Mutual Insurance Company
...0140 ...	Nationwide10070 ...	31-1399201	Nationwide Indemnity CompanyOH.....	...IA.....	Nationwide Mutual Insurance Company	Ownership.....	...100.000 ...	Nationwide Mutual Insurance Company
...0140 ...	Nationwide25453 ...	95-2130882 ...	4287180	Nationwide Insurance Company of AmericaWI.....	...IA.....	ALLIED Group, Inc.	Ownership.....	...100.000 ...	Nationwide Mutual Insurance Company
...0140 ...	Nationwide10948 ...	31-1613686 ...	4287966	Nationwide Insurance Company of FloridaOH.....	...IA.....	Nationwide Mutual Insurance Company	Ownership.....	...100.000 ...	Nationwide Mutual Insurance Company
...0140 ...	Nationwide	31-6022301	Nationwide Insurance FoundationOH.....	...OTH.....	Other non-Nationwide	n/a	Other non-Nationwide2
...0140 ...	Nationwide	41-2206199 ...	4286950	Nationwide Investment Advisors, LLCOH.....	...NIA.....	Nationwide Life Insurance Company	Ownership.....	...100.000 ...	Nationwide Mutual Insurance Company
...0140 ...	Nationwide	73-0988442 ...	4286923	Nationwide Investment Services CorporationOK.....	...NIA.....	Nationwide Life Insurance Company	Ownership.....	...100.000 ...	Nationwide Mutual Insurance Company
...0140 ...	Nationwide92657 ...	31-1000740	Nationwide Life and Annuity Insurance CompanyOH.....	...IA.....	Nationwide Life Insurance Company	Ownership.....	...100.000 ...	Nationwide Mutual Insurance Company
...0140 ...	Nationwide66869 ...	31-4156830	Nationwide Life Insurance CompanyOH.....	...IA.....	Nationwide Financial Services, Inc.	Ownership.....	...100.000 ...	Nationwide Mutual Insurance Company
...0140 ...	Nationwide	13-4212969	Nationwide Life Tax Credit Partners 2002-A, LLCOH.....	...NIA.....	Nationwide Life Insurance Company	Other.....	Nationwide Mutual Insurance Company
...0140 ...	Nationwide	01-0749754	Nationwide Life Tax Credit Partners 2002-B, LLCOH.....	...NIA.....	Nationwide Life Insurance Company	Other.....	Nationwide Mutual Insurance Company
...0140 ...	Nationwide	03-0498148 ...	3262573	Nationwide Life Tax Credit Partners 2002-C, LLCOH.....	...NIA.....	Nationwide Life Insurance Company	Other.....	Nationwide Mutual Insurance Company

STATEMENT AS OF SEPTEMBER 30, 2013 OF THE FREEDOM SPECIALTY INSURANCE COMPANY

SCHEDULE Y
PART 1A - DETAIL OF INSURANCE HOLDING COMPANY SYSTEM

1	2	3	4	5	6	7	8	9	10	11	12	13	14	15
Group Code	Group Name	NAIC Company Code	Federal ID Number	Federal RSSD	CIK	Name of Securities Exchange if Publicly Traded (U.S. or International)	Names of Parent, Subsidiaries Or Affiliates	Domi-ciliary Loca-tion	Relation-ship to Reporting Entity	Directly Controlled by (Name of Entity/Person)	Type of Control (Ownership, Board, Management, Attorney-in-Fact, Influence, Other)	If Control is Owner-ship Provide Percen-tage	Ultimate Controlling Entity(ies)/Person(s)	*
...0140	Nationwide		54-2113175				Nationwide Life Tax Credit Partners 2003-A, LLC	...OH	...NIA	Nationwide Life Insurance Company	Other		Nationwide Mutual Insurance Company	
...0140	Nationwide		58-2672725				Nationwide Life Tax Credit Partners 2003-B, LLC	...OH	...NIA	Nationwide Life Insurance Company	Other		Nationwide Mutual Insurance Company	
...0140	Nationwide		20-0357951	3811001			Nationwide Life Tax Credit Partners 2003-C, LLC	...OH	...NIA	Nationwide Life Insurance Company	Other		Nationwide Mutual Insurance Company	
...0140	Nationwide		20-0382144				Nationwide Life Tax Credit Partners 2004-A, LLC	...OH	...NIA	Nationwide Life Insurance Company	Other		Nationwide Mutual Insurance Company	
...0140	Nationwide		20-0745944				Nationwide Life Tax Credit Partners 2004-B, LLC	...OH	...NIA	Nationwide Life Insurance Company	Other		Nationwide Mutual Insurance Company	
...0140	Nationwide		20-0745965				Nationwide Life Tax Credit Partners 2004-C, LLC	...OH	...NIA	Nationwide Life Insurance Company	Other		Nationwide Mutual Insurance Company	
...0140	Nationwide		20-1128408				Nationwide Life Tax Credit Partners 2004-D, LLC	...OH	...NIA	Nationwide Life Insurance Company	Other		Nationwide Mutual Insurance Company	
...0140	Nationwide		20-1128472				Nationwide Life Tax Credit Partners 2004-E, LLC	...OH	...NIA	Nationwide Life Insurance Company	Other		Nationwide Mutual Insurance Company	
...0140	Nationwide		20-1918935	3318117			Nationwide Life Tax Credit Partners 2004-F, LLC	...OH	...NIA	Nationwide Life Insurance Company	Other		Nationwide Mutual Insurance Company	
...0140	Nationwide		20-2303694				Nationwide Life Tax Credit Partners 2005-A, LLC	...OH	...NIA	Nationwide Life Insurance Company	Other		Nationwide Mutual Insurance Company	
...0140	Nationwide		20-2303602				Nationwide Life Tax Credit Partners 2005-B, LLC	...OH	...NIA	Nationwide Life Insurance Company	Other		Nationwide Mutual Insurance Company	
...0140	Nationwide		20-2450960				Nationwide Life Tax Credit Partners 2005-C, LLC	...OH	...NIA	Nationwide Life Insurance Company	Other		Nationwide Mutual Insurance Company	
...0140	Nationwide		20-2451052				Nationwide Life Tax Credit Partners 2005-D, LLC	...OH	...NIA	Nationwide Life Insurance Company	Other		Nationwide Mutual Insurance Company	
...0140	Nationwide		20-2774223				Nationwide Life Tax Credit Partners 2005-E, LLC	...OH	...NIA	Nationwide Life Insurance Company	Other		Nationwide Mutual Insurance Company	
...0140	Nationwide		21-1288836				Nationwide Life Tax Credit Partners 2007-A, LLC	...OH	...NIA	Nationwide Life Insurance Company	Other		Nationwide Mutual Insurance Company	
...0140	Nationwide		26-3427373				Nationwide Life Tax Credit Partners 2009-A, LLC	...OH	...NIA	Nationwide Life Insurance Company	Other		Nationwide Mutual Insurance Company	
...0140	Nationwide		26-3427435				Nationwide Life Tax Credit Partners 2009-B, LLC	...OH	...NIA	Nationwide Life Insurance Company	Other		Nationwide Mutual Insurance Company	
...0140	Nationwide		26-3427479				Nationwide Life Tax Credit Partners 2009-C, LLC	...OH	...NIA	Nationwide Life Insurance Company	Other		Nationwide Mutual Insurance Company	
...0140	Nationwide		26-3427525				Nationwide Life Tax Credit Partners 2009-D, LLC	...OH	...NIA	Nationwide Life Insurance Company	Other		Nationwide Mutual Insurance Company	
...0140	Nationwide		26-4737055				Nationwide Life Tax Credit Partners 2009-E, LLC	...OH	...NIA	Nationwide Life Insurance Company	Other		Nationwide Mutual Insurance Company	
...0140	Nationwide		26-4737157				Nationwide Life Tax Credit Partners 2009-F, LLC	...OH	...NIA	Nationwide Life Insurance Company	Other		Nationwide Mutual Insurance Company	
...0140	Nationwide		27-1362364				Nationwide Life Tax Credit Partners 2009-I, LLC	...OH	...NIA	Nationwide Life Insurance Company	Other		Nationwide Mutual Insurance Company	
...0140	Nationwide		46-1952215				Nationwide Life Tax Credit Partners 2013-A, LLC	...OH	...NIA	Nationwide Life Insurance Company	Other		Nationwide Mutual Insurance Company	
...0140	Nationwide						Nationwide Life Tax Credit Partners 2013-B, LLC	...OH	...NIA	Nationwide Life Insurance Company	Other		Nationwide Mutual Insurance Company	
...0140	Nationwide			3779811			Nationwide Life Tax Credit Partners No. 1, LLC	...OH	...NIA	Nationwide Life Insurance Company	Other		Nationwide Mutual Insurance Company	
...0140	Nationwide	42110	75-1780981	4287984			Nationwide Lloyds	TX	IA	n/a	contract		Nationwide Mutual Insurance Company	

STATEMENT AS OF SEPTEMBER 30, 2013 OF THE FREEDOM SPECIALTY INSURANCE COMPANY

SCHEDULE Y

PART 1A - DETAIL OF INSURANCE HOLDING COMPANY SYSTEM

1	2	3	4	5	6	7	8	9	10	11	12	13	14	15
Group Code	Group Name	NAIC Company Code	Federal ID Number	Federal RSSD	CIK	Name of Securities Exchange if Publicly Traded (U.S. or International)	Names of Parent, Subsidiaries Or Affiliates	Domi-ciliary Location	Relation-ship to Reporting Entity	Directly Controlled by (Name of Entity/Person)	Type of Control (Ownership, Board, Management, Attorney-in-Fact, Influence, Other)	If Control is Owner-ship Provide Percen-tage	Ultimate Controlling Entity(ies)/Person(s)	*
...0140 ...	Nationwide						Nationwide Mutual Capital I, LLCDENIA	Nationwide Mutual Capital, LLC	Ownership.....	..100.000	Nationwide Mutual Insurance Company
...0140 ...	Nationwide		75-3191025				Nationwide Mutual Capital, LLCOHNIA	Nationwide Mutual Insurance Company	Ownership.....	..100.000	Nationwide Mutual Insurance Company
...0140 ...	Nationwide23779	82-0549218	3828090			Nationwide Mutual Fire Insurance CompanyOHOTH	Other non-Nationwide	n/a	Other non-Nationwide
...0140 ...	Nationwide23787	31-4177100	3828072			Nationwide Mutual Insurance CompanyOHUIP	Other non-Nationwide	n/a	Other non-Nationwide
...0140 ...	Nationwide		34-2012765	4288084			Nationwide Private Equity Fund, LLCOHNIA	Nationwide Mutual Insurance Company	Ownership.....	..100.000	Nationwide Mutual Insurance Company
...0140 ...	Nationwide37877	31-0970750	4287993			Nationwide Property and Casualty Insurance CompanyOHIA	Nationwide Mutual Insurance Company	Ownership.....	..100.000	Nationwide Mutual Insurance Company
...0140 ...	Nationwide		01-0852763	4288141			Nationwide Property Protection Services, LLCOHNIA	Nationwide Services Company, LLC	Ownership.....	..100.000	Nationwide Mutual Insurance Company
...0140 ...	Nationwide		31-1486309	4288105			Nationwide Realty Investors, Ltd.OHNIA	Nationwide Mutual Insurance Company	Ownership.....	..96.700	Nationwide Mutual Insurance Company
...0140 ...	Nationwide		31-1486309	4288105			Nationwide Realty Investors, Ltd.OHNIA	Nationwide Indemnity Company	Ownership.....	..3.300	Nationwide Mutual Insurance Company
...0140 ...	Nationwide		31-1486309				Nationwide Realty Management, LLCOHNIA	Nationwide Realty Investors, Ltd.	Ownership.....	..100.000	Nationwide Mutual Insurance Company
...0140 ...	Nationwide			4288066			Nationwide Realty Services, Ltd.OHNIA	Nationwide Mutual Insurance Company	Ownership.....	..100.000	Nationwide Mutual Insurance Company
...0140 ...	Nationwide		06-0987812	4287117			Nationwide Retirement Solutions Insurance Agency, Inc.MAIA	Nationwide Retirement Solutions, Inc.	Ownership.....	..100.000	Nationwide Mutual Insurance Company
...0140 ...	Nationwide		73-0948330	4287096			Nationwide Retirement Solutions, Inc.DENIA	NFS Distributors, Inc.	Ownership.....	..100.000	Nationwide Mutual Insurance Company
...0140 ...	Nationwide		86-0924069	4287108			Nationwide Retirement Solutions, Inc. of ArizonaAZNIA	Nationwide Retirement Solutions, Inc.	Ownership.....	..100.000	Nationwide Mutual Insurance Company
...0140 ...	Nationwide		31-1331479	4287126			Nationwide Retirement Solutions, Inc. of OhioOHNIA	Nationwide Retirement Solutions, Inc.	contract	Nationwide Mutual Insurance Company
...0140 ...	Nationwide		74-2200854	4287135			Nationwide Retirement Solutions, Inc. of TexasTXNIA	Nationwide Retirement Solutions, Inc.	contract	Nationwide Mutual Insurance Company
...0140 ...	Nationwide		42-1373380	4287210			Nationwide Sales Solutions, Inc.IANIA	ALLIED Group, Inc.	Ownership.....	..100.000	Nationwide Mutual Insurance Company
...0140 ...	Nationwide		36-2434406	4287078			Nationwide Securities, LLCOHNIA	NFS Distributors, Inc.	Ownership.....	..100.000	Nationwide Mutual Insurance Company
...0140 ...	Nationwide		31-4177100	4288093			Nationwide Services Company, LLCOHNIA	Nationwide Mutual Insurance Company	Ownership.....	..100.000	Nationwide Mutual Insurance Company
...0140 ...	Nationwide		27-0743545				Nationwide Tax Credit Partners 2009-G, LLCOHNIA	Nationwide Mutual Insurance Company	Other.....	Nationwide Mutual Insurance Company
...0140 ...	Nationwide		27-0768791				Nationwide Tax Credit Partners 2009-H, LLCOHNIA	Nationwide Mutual Insurance Company	Other.....	Nationwide Mutual Insurance Company
...0140 ...	Nationwide		11-3651828				ND La Quinta Partners, LLCDENIA	Nationwide Realty Investors, Ltd.	Ownership.....	..95.000	Nationwide Mutual Insurance Company
...0140 ...	Nationwide			4286866			Newhouse Capital Partners II, LLCDENIA	Nationwide Global Ventures, Inc.	Ownership.....	..80.000	Nationwide Mutual Insurance Company
...0140 ...	Nationwide			4286866			Newhouse Capital Partners II, LLCDENIA	Nationwide Global Ventures, Inc.	Ownership.....	..99.000	Nationwide Mutual Insurance Company
...0140 ...	Nationwide			4286679			Newhouse Capital Partners, LLCDENIA	NWD Investment Management, Inc.	Ownership.....	..19.000	Nationwide Mutual Insurance Company
...0140 ...	Nationwide			4286679			Newhouse Capital Partners, LLCDENIA	Nationwide Mutual Insurance Company	Ownership.....	..70.000	Nationwide Mutual Insurance Company
...0140 ...	Nationwide			4286679			Newhouse Capital Partners, LLCDENIA	Nationwide Mutual Fire Insurance Company	Ownership.....	..10.000	Nationwide Mutual Insurance Company
...0140 ...	Nationwide		31-1630871	4287032			NFS Distributors, Inc.DENIA	Nationwide Financial Services, Inc.	Ownership.....	..100.000	Nationwide Mutual Insurance Company
...0140 ...	Nationwide		14-1892640				NHT XII Tax Credit Fund, LLCDCNIA	Nationwide Life Insurance Company	Ownership.....	..49.990	Nationwide Mutual Insurance Company1
...0140 ...	Nationwide		14-1892640				NHT XII Tax Credit Fund, LLCDCNIA	Nationwide Assurance Company	Ownership.....	..25.000	Nationwide Mutual Insurance Company1
...0140 ...	Nationwide		14-1892640				NHT XII Tax Credit Fund, LLCDCNIA	Nationwide Mutual Insurance Company	Ownership.....	..25.000	Nationwide Mutual Insurance Company1
...0140 ...	Nationwide		26-0351004				North Bank Condominium Home Owners AssociationOHOTH	Other non-Nationwide	n/a	Other non-Nationwide2
...0140 ...	Nationwide		20-4939866				North of Third, LLCOHNIA	NRI Equity Land Investments, LLC	Ownership.....	..100.000	Nationwide Mutual Insurance Company
...0140 ...	Nationwide		26-4083207				Northstar Commercial Development, LLCOHNIA	Nationwide Realty Investors, Ltd.	Ownership.....	..50.000	Nationwide Mutual Insurance Company1
...0140 ...	Nationwide		26-4083354				Northstar Residential Development, LLCOHNIA	Nationwide Realty Investors, Ltd.	Ownership.....	..50.000	Nationwide Mutual Insurance Company1
...0140 ...	Nationwide		31-1486309				NRI 12325 Copper Way, LLCOHNIA	Nationwide Realty Investors, Ltd.	Ownership.....	..100.000	Nationwide Mutual Insurance Company
...0140 ...	Nationwide		31-1486309				NRI 220 Schrock, LLCOHNIA	Nationwide Realty Investors, Ltd.	Ownership.....	..100.000	Nationwide Mutual Insurance Company
...0140 ...	Nationwide		31-1486309				NRI Arena, LLCOHNIA	Nationwide Realty Investors, Ltd.	Ownership.....	..100.000	Nationwide Mutual Insurance Company
...0140 ...	Nationwide		31-1486309				NRI Brooksidege, LLCOHNIA	Nationwide Realty Investors, Ltd.	Ownership.....	..100.000	Nationwide Mutual Insurance Company
...0140 ...	Nationwide		31-1486309				NRI Builders, LLCOHNIA	Nationwide Realty Investors, Ltd.	Ownership.....	..100.000	Nationwide Mutual Insurance Company
...0140 ...	Nationwide		31-1486309				NRI Communities/Charlotte, LLCOHNIA	Nationwide Realty Investors, Ltd.	Ownership.....	..100.000	Nationwide Mutual Insurance Company

STATEMENT AS OF SEPTEMBER 30, 2013 OF THE FREEDOM SPECIALTY INSURANCE COMPANY

SCHEDULE Y
PART 1A - DETAIL OF INSURANCE HOLDING COMPANY SYSTEM

1	2	3	4	5	6	7	8	9	10	11	12	13	14	15
Group Code	Group Name	NAIC Company Code	Federal ID Number	Federal RSSD	CIK	Name of Securities Exchange if Publicly Traded (U.S. or International)	Names of Parent, Subsidiaries Or Affiliates	Domiciliary Location	Relationship to Reporting Entity	Directly Controlled by (Name of Entity/Person)	Type of Control (Ownership, Board, Management, Attorney-in-Fact, Influence, Other)	If Control is Ownership Provide Percentage	Ultimate Controlling Entity(ies)/Person(s)	*
0140	Nationwide		31-1486309				NRI Communities/Harris Blvd., LLC	OH	NIA	Nationwide Realty Investors, Ltd.	Ownership	100.000	Nationwide Mutual Insurance Company	
0140	Nationwide		31-1486309				NRI Cramer Creek, LLC	OH	NIA	Nationwide Realty Investors, Ltd.	Ownership	100.000	Nationwide Mutual Insurance Company	
0140	Nationwide		20-4939866				NRI Equity Land Investments, LLC	OH	NIA	Nationwide Realty Investors, Ltd.	Ownership	80.000	Nationwide Mutual Insurance Company	
0140	Nationwide		26-0212217				NRI Equity Tampa, LLC	OH	OTH	Nationwide Realty Investors, Ltd.	Ownership	100.000	Nationwide Mutual Insurance Company	
0140	Nationwide		31-1486309				NRI Maxtown, LLC	OH	OTH	Nationwide Realty Investors, Ltd.	Ownership	100.000	Nationwide Mutual Insurance Company	
0140	Nationwide		30-4939866				NRI Office Ventures, Ltd	OH	NIA	Nationwide Realty Investors, Ltd.	Ownership	100.000	Nationwide Mutual Insurance Company	
0140	Nationwide		31-1486309				NRI Telecom, LLC	OH	NIA	NWD Investments, LLC	Ownership	100.000	Nationwide Mutual Insurance Company	
0140	Nationwide		31-1486309				NRI-Rivulon, LLC	OH	NIA	Nationwide Realty Investors, Ltd.	Ownership	100.000	Nationwide Mutual Insurance Company	
							Nationwide Property and Casualty Company							
0140	Nationwide		45-3123274				NTCIF-2011 Georgia State Investor, LLC	OH	NIA		Ownership	100.000	Nationwide Mutual Insurance Company	
0140	Nationwide		90-0729552				NTCIF-2011, LLC	OH	NIA	Nationwide Life Insurance Company	Ownership	100.000	Nationwide Mutual Insurance Company	
0140	Nationwide		27-4700627				NTCP 2011-A, LLC	OH	NIA	Nationwide Life Insurance Company	Ownership	100.000	Nationwide Mutual Insurance Company	
0140	Nationwide		46-0747898				NTCP 2011-B, LLC	OH	NIA	Nationwide Life Insurance Company	Ownership	100.000	Nationwide Mutual Insurance Company	
0140	Nationwide		46-0741029	4464703			NTCP 2012-A, LLC	OH	NIA	Nationwide Life Insurance Company	Ownership	100.000	Nationwide Mutual Insurance Company	
0140	Nationwide		46-3309896				NTCP 2013-C, LLC	OH	NIA	Nationwide Life Insurance Company	Ownership	100.000	Nationwide Mutual Insurance Company	
0140	Nationwide		46-2601266				NW-515 W Market, LLC	OH	NIA	NE-REI, LLC	Ownership	100.000	Nationwide Mutual Insurance Company	
0140	Nationwide		46-3654078				NW-Amesbury, LLC	OH	NIA	NE-REI, LLC	Ownership	100.000	Nationwide Mutual Insurance Company	
0140	Nationwide		36-4702264				NW-Arvada, LLC	OH	NIA	NW-REI, LLC	Ownership	100.000	Nationwide Mutual Insurance Company	
0140	Nationwide		46-2943666				NW-Bandera, LLC	OH	NIA	NW-REI, LLC	Ownership	100.000	Nationwide Mutual Insurance Company	
0140	Nationwide		45-5159092				NW-Bayshore, LLC	OH	NIA	NW-REI, LLC	Ownership	100.000	Nationwide Mutual Insurance Company	
0140	Nationwide		46-2451156				NW-Bee Cave, LLC	OH	NIA	NW-REI, LLC	Ownership	100.000	Nationwide Mutual Insurance Company	
0140	Nationwide		46-0999932				NW-Bencap, LLC	OH	NIA	NW-REI, LLC	Ownership	100.000	Nationwide Mutual Insurance Company	
0140	Nationwide		46-3707480				NW-Brooklyn, LLC	OH	NIA	NW-REI, LLC	Ownership	100.000	Nationwide Mutual Insurance Company	
0140	Nationwide		45-2724980				NW-Cameron, LLC	OH	NIA	NW-REI, LLC	Ownership	100.000	Nationwide Mutual Insurance Company	
0140	Nationwide		46-3674167				NW-Cedar Springs, LLC	OH	NIA	NW-REI, LLC	Ownership	100.000	Nationwide Mutual Insurance Company	
0140	Nationwide		26-0901660				NW-CNC CoppelI, LLC	DE	NIA	Nationwide Mutual Insurance Company	Ownership	100.000	Nationwide Mutual Insurance Company	
0140	Nationwide		27-2764819				NW-Commerce Center, LLC	DE	NIA	NW-REI, LLC	Ownership	100.000	Nationwide Mutual Insurance Company	
0140	Nationwide						NW-Corvallis, LLC	OH	NIA	NW-REI, LLC	Ownership	100.000	Nationwide Mutual Insurance Company	
0140	Nationwide		31-1580283				NWD 205 Vine, LLC	OH	NIA	NWD Investments, LLC	Ownership	100.000	Nationwide Mutual Insurance Company	
0140	Nationwide		31-1580283				NWD 225 Nationwide, LLC	OH	NIA	NWD Investments, LLC	Ownership	100.000	Nationwide Mutual Insurance Company	
0140	Nationwide		31-1580283				NWD 230 West, LLC	OH	NIA	NWD Investments, LLC	Ownership	100.000	Nationwide Mutual Insurance Company	
0140	Nationwide		31-1580283				NWD 240 Nationwide, LLC	OH	NIA	NWD Investments, LLC	Ownership	100.000	Nationwide Mutual Insurance Company	
0140	Nationwide		31-1580283				NWD 250 Brodbelt, LLC	OH	NIA	NWD Investments, LLC	Ownership	100.000	Nationwide Mutual Insurance Company	
0140	Nationwide		31-1580283				NWD 265 Neil, LLC	OH	NIA	NWD Investments, LLC	Ownership	100.000	Nationwide Mutual Insurance Company	
0140	Nationwide		31-1580283				NWD 275 Marconi, LLC	OH	NIA	NWD Investments, LLC	Ownership	100.000	Nationwide Mutual Insurance Company	
0140	Nationwide		31-1580283				NWD 295 McConnell, LLC	OH	NIA	NWD Investments, LLC	Ownership	100.000	Nationwide Mutual Insurance Company	
0140	Nationwide		31-1580283				NWD 300 Neil, LLC	OH	NIA	NWD Investments, LLC	Ownership	100.000	Nationwide Mutual Insurance Company	
0140	Nationwide		31-1580283				NWD 300 Spring, LLC	OH	NIA	NWD Investments, LLC	Ownership	100.000	Nationwide Mutual Insurance Company	
0140	Nationwide		31-1580283				NWD 355 McConnell, LLC	OH	NIA	NWD Investments, LLC	Ownership	100.000	Nationwide Mutual Insurance Company	
0140	Nationwide		31-1580283				NWD 425 Nationwide, LLC	OH	NIA	NWD Investments, LLC	Ownership	100.000	Nationwide Mutual Insurance Company	
0140	Nationwide		31-1580283				NWD 500 Nationwide, LLC	OH	NIA	NWD Investments, LLC	Ownership	100.000	Nationwide Mutual Insurance Company	
0140	Nationwide		31-1580283				NWD Arena Crossing, LLC	OH	NIA	NWD Investments, LLC	Ownership	100.000	Nationwide Mutual Insurance Company	
0140	Nationwide		31-1580283				NWD Arena District I, LLC	OH	NIA	NWD Investments, LLC	Ownership	100.000	Nationwide Mutual Insurance Company	
0140	Nationwide		31-1580283				NWD Arena District II, LLC	OH	NIA	NWD Investments, LLC	Ownership	100.000	Nationwide Mutual Insurance Company	
0140	Nationwide		31-1580283				NWD Arena District IM, LLC	OH	NIA	NWD Investments, LLC	Ownership	100.000	Nationwide Mutual Insurance Company	
0140	Nationwide		31-1580283				NWD Arena District PW, LLC	OH	NIA	NWD Investments, LLC	Ownership	100.000	Nationwide Mutual Insurance Company	
0140	Nationwide		31-1580283				NWD Arena District V, LLC	OH	NIA	NWD Investments, LLC	Ownership	100.000	Nationwide Mutual Insurance Company	
0140	Nationwide		04-3679396	4286848			NWD Asset Management Holdings, Inc.	DE	NIA	NWD Investment Management, Inc.	Ownership	100.000	Nationwide Mutual Insurance Company	
0140	Nationwide		31-1580283				NWD Athletic Club, LLC	OH	NIA	NWD Investments, LLC	Ownership	100.000	Nationwide Mutual Insurance Company	
0140	Nationwide		31-1636299	4286594			NWD Investment Management, Inc.	DE	NIA	Nationwide Corporation	Ownership	100.000	Nationwide Mutual Insurance Company	
0140	Nationwide		31-1580283				NWD Investments, LLC	OH	NIA	Nationwide Realty Investors, Ltd.	Ownership	80.000	Nationwide Mutual Insurance Company	

STATEMENT AS OF SEPTEMBER 30, 2013 OF THE FREEDOM SPECIALTY INSURANCE COMPANY

SCHEDULE Y

PART 1A - DETAIL OF INSURANCE HOLDING COMPANY SYSTEM

1	2	3	4	5	6	7	8	9	10	11	12	13	14	15
Group Code	Group Name	NAIC Company Code	Federal ID Number	Federal RSSD	CIK	Name of Securities Exchange if Publicly Traded (U.S. or International)	Names of Parent, Subsidiaries Or Affiliates	Domiciliary Location	Relationship to Reporting Entity	Directly Controlled by (Name of Entity/Person)	Type of Control (Ownership, Board, Management, Attorney-in-Fact, Influence, Other)	If Control is Ownership Provide Percentage	Ultimate Controlling Entity(ies)/Person(s)	*
0140	Nationwide		90-0732898				NW-Dulles, LLC	OH	NIA	NW-REI, LLC	Ownership	100.000	Nationwide Mutual Insurance Company	
0140	Nationwide		45-5586006				NW-Eastpark, LLC	OH	NIA	NW-REI, LLC	Ownership	100.000	Nationwide Mutual Insurance Company	
0140	Nationwide		46-3267884				NW-Franklin Mills, LLC	OH	NIA	Life Reo Holdings, LLC	Ownership	100.000	Nationwide Mutual Insurance Company	
0140	Nationwide		45-2647960				NW-Grapevine, LLC	OH	NIA	NW-REI, LLC	Ownership	100.000	Nationwide Mutual Insurance Company	
0140	Nationwide		46-2997049				NW-Howell Mill, LLC	OH	NIA	NW-REI, LLC	Ownership	100.000	Nationwide Mutual Insurance Company	
0140	Nationwide		45-5408178				NW-Kentwood Towne Center, LLC	OH	NIA	NW-REI, LLC	Ownership	100.000	Nationwide Mutual Insurance Company	
0140	Nationwide		27-4749640				NW-Kohls Market, LLC	OH	NIA	NW-REI, LLC	Ownership	100.000	Nationwide Mutual Insurance Company	
0140	Nationwide		45-5314607				NW-Lovers Lane, LLC	OH	NIA	NW-REI, LLC	Ownership	100.000	Nationwide Mutual Insurance Company	
0140	Nationwide		46-2457568				NW-Montrose, LLC	OH	NIA	NW-REI, LLC	Ownership	100.000	Nationwide Mutual Insurance Company	
0140	Nationwide		45-4630497				NW-Mueller II, LLC	OH	NIA	NW-REI, LLC	Ownership	100.000	Nationwide Mutual Insurance Company	
0140	Nationwide		27-4749848				NW-Northridge, LLC	OH	NIA	NW-REI, LLC	Ownership	100.000	Nationwide Mutual Insurance Company	
0140	Nationwide		46-1089165				NW-Oakley Station, LLC	OH	NIA	NW-REI, LLC	Ownership	100.000	Nationwide Mutual Insurance Company	
0140	Nationwide		45-5388656				NW-Park Memorial, LLC	OH	NIA	NW-REI, LLC	Ownership	100.000	Nationwide Mutual Insurance Company	
0140	Nationwide		27-4749937				NW-Park Village, LLC	OH	NIA	NW-REI, LLC	Ownership	100.000	Nationwide Mutual Insurance Company	
0140	Nationwide		46-2469044				NW-Portales, LLC,	OH	NIA	NW-REI, LLC	Ownership	100.000	Nationwide Mutual Insurance Company	
0140	Nationwide		26-1903919				NW-REI, LLC	DE	NIA	Nationwide Mutual Insurance Company	Ownership	100.000	Nationwide Mutual Insurance Company	
0140	Nationwide		45-5159117				NW-South Park, LLC	OH	NIA	NW-REI, LLC	Ownership	100.000	Nationwide Mutual Insurance Company	
0140	Nationwide						NW-Southline, LLC	OH	NIA	NW-REI, LLC	Ownership	100.000	Nationwide Mutual Insurance Company	
0140	Nationwide		27-4749587				NW-Taylor Farmer Jack, LLC	OH	NIA	NW-REI, LLC	Ownership	100.000	Nationwide Mutual Insurance Company	
0140	Nationwide		46-1100378				NW-Triangle, LLC	OH	NIA	NW-REI, LLC	Ownership	100.000	Nationwide Mutual Insurance Company	
0140	Nationwide		46-1077615				NW-West Ave., LLC	OH	NIA	NW-REI, LLC	Ownership	100.000	Nationwide Mutual Insurance Company	
0140	Nationwide		31-0947092				OCH Company, LLC	OH	NIA	Nationwide Realty Investors, Ltd.	Ownership	100.000	Nationwide Mutual Insurance Company	
0140	Nationwide		31-0947092				Ohio Center Hotel Company, Ltd.	OH	NIA	Nationwide Realty Investors, Ltd.	Ownership	56.250	Nationwide Mutual Insurance Company	
0140	Nationwide		26-0263012				Old Track Street Owners Association	OH	OTH	Other non-Nationwide	n/a		Other non-Nationwide	2
0140	Nationwide	13999	27-1712056	4286914			Olentangy Reinsurance, LLC	VT	IA	Nationwide Life and Annuity Insurance Company	Ownership	100.000	Nationwide Mutual Insurance Company	
0140	Nationwide						OYS Fund, LLC	DE	OTH	Nationwide Mutual Insurance Company	Ownership	100.000	Nationwide Mutual Insurance Company	
0140	Nationwide						Park 288 Industrial, LLC	TX	OTH	Nationwide Mutual Insurance Company	Investor member / no control	95.000	other non-Nationwide	2
0140	Nationwide		31-1486309				Perimeter A, Ltd	OH	NIA	Nationwide Realty Investors, Ltd.	Ownership	100.000	Nationwide Mutual Insurance Company	
0140	Nationwide		31-1677602				Pizzuti Properties, LLC	OH	NIA	Nationwide Realty Investors, Ltd.	Ownership	65.000	Nationwide Mutual Insurance Company	
0140	Nationwide		31-1486309				Polaris A, Ltd.	OH	NIA	Nationwide Realty Investors, Ltd.	Ownership	100.000	Nationwide Mutual Insurance Company	
0140	Nationwide		39-1907217	4287201			Premier Agency, Inc.	IA	NIA	ALLIED Group, Inc.	Ownership	100.000	Nationwide Mutual Insurance Company	
4664	Pure	12873	20-8287105				Privilege Underwriters Reciprocal Exchange	FL	IA	Other non-Nationwide	n/a		Other non-Nationwide	2
0140	Pure			4288150			Privilege Underwriters, Inc.	FL	IA	Other non-Nationwide	n/a		Other non-Nationwide	2
4664	Pure	13204	26-3109178	4288226			Pure Insurance Company	FL	IA	Other non-Nationwide	n/a		Other non-Nationwide	2
4664	Pure			4288235			Pure Risk Management, LLC	FL	IA	Other non-Nationwide	n/a		Other non-Nationwide	2
4664	Nationwide		75-2938844	4287005			Registered Investment Advisors Services, Inc.	TX	NIA	Nationwide Financial Services, Inc.	Ownership	100.000	Nationwide Mutual Insurance Company	
0140	Nationwide		82-0549218				Retention Alternatives, Ltd.	BMU	IA	Nationwide Mutual Fire Insurance Company	Ownership	100.000	Nationwide Mutual Insurance Company	
0140	Nationwide						Riverview Diversified Opportunities Fund, LLC	DE	OTH	Nationwide Mutual Insurance Company	Ownership		Nationwide Mutual Insurance Company	1
0140	Nationwide						Riverview Diversified Opportunities Fund, LLC	DE	OTH	Nationwide Mutual Fire Insurance Company	Ownership		Nationwide Mutual Insurance Company	1
0140	Nationwide						Riverview Diversified Opportunities Fund, LLC	DE	OTH	Nationwide Life Insurance Company	Ownership		Nationwide Mutual Insurance Company	1
0140	Nationwide		22-3655264	4286530			Riverview International Group, Inc.	DE	NIA	NWD Investment Management, Inc.	Ownership	100.000	Nationwide Mutual Insurance Company	
0140	Nationwide						Riverview Multi Series Fund, LL - Class	DE	OTH	Nationwide Mutual Insurance Company	Ownership	100.000	Nationwide Mutual Insurance Company	
0140	Nationwide						Event	DE	OTH	Nationwide Mutual Insurance Company	Ownership	100.000	Nationwide Mutual Insurance Company	
0140	Nationwide						Riverview Multi Series Fund, LL - Class N	DE	OTH	Nationwide Mutual Insurance Company	Ownership	100.000	Nationwide Mutual Insurance Company	

STATEMENT AS OF SEPTEMBER 30, 2013 OF THE FREEDOM SPECIALTY INSURANCE COMPANY

SCHEDULE Y
PART 1A - DETAIL OF INSURANCE HOLDING COMPANY SYSTEM

1	2	3	4	5	6	7	8	9	10	11	12	13	14	15
Group Code	Group Name	NAIC Company Code	Federal ID Number	Federal RSSD	CIK	Name of Securities Exchange if Publicly Traded (U.S. or International)	Names of Parent, Subsidiaries Or Affiliates	Domi-ciliary Location	Relation-ship to Reporting Entity	Directly Controlled by (Name of Entity/Person)	Type of Control (Ownership, Board, Management, Attorney-in-Fact, Influence, Other)	If Control is Owner-ship Provide Percen-tage	Ultimate Controlling Entity(ies)/Person(s)	*
...0140 ...	Nationwide	Riverview Polyphony Fund, LLCDE.....	...OTH.....	Nationwide Mutual Insurance Company	Ownership.....	..100.000 ...	Nationwide Mutual Insurance Company
...0140 ...	Nationwide15580 ...	31-1117969	4288002	Scottsdale Indemnity CompanyOH.....	...IA.....	Nationwide Mutual Insurance Company	Ownership.....	..100.000 ...	Nationwide Mutual Insurance Company
...0140 ...	Nationwide41297 ...	31-1024978	Scottsdale Insurance CompanyOH.....	...UDP.....	Nationwide Mutual Insurance Company	Ownership.....	..100.000 ...	Nationwide Mutual Insurance Company
.....	Scottsdale Surplus Lines Insurance Company
...0140 ...	Nationwide10672 ...	86-0835870	4287649AZ.....	...IA.....	Scottsdale Insurance Company	Ownership.....	..100.000 ...	Nationwide Mutual Insurance Company
...0140 ...	Nationwide	31-1486309	Streets of Toringdon, LLCOH.....	...NIA.....	Nationwide Realty Investors, Ltd.	Ownership.....	..100.000 ...	Nationwide Mutual Insurance Company
...0140 ...	Nationwide	91-2158214	The Hideaway ClubCA.....	...OTH.....	Other non-Nationwide	n/a	Other non-Nationwide2
...0140 ...	Nationwide	86-1094799	The Hideaway Owners AssociationCA.....	...OTH.....	Other non-Nationwide	n/a	Other non-Nationwide2
...0140 ...	Nationwide	20-3541511	The Madison ClubCA.....	...OTH.....	Other non-Nationwide	n/a	Other non-Nationwide2
...0140 ...	Nationwide	20-3541507	The Madison Club Owners AssociationCA.....	...OTH.....	Other non-Nationwide	n/a	Other non-Nationwide2
...0140 ...	Nationwide	31-1610040	The Waterfront Partners, LLCOH.....	...NIA.....	Nationwide Realty Investors, Ltd.	Ownership.....	...50.000 ...	Nationwide Mutual Insurance Company1
...0140 ...	Nationwide	52-2031677	THI Holdings (Delaware), Inc.DE.....	...NIA.....	Nationwide Mutual Insurance Company	Ownership.....	..100.000 ...	Nationwide Mutual Insurance Company
...0140 ...	Nationwide	74-2825853	4287863	Titan Auto Insurance of New Mexico, Inc.NM.....	...IA.....	Whitehall Holdings, Inc.	Ownership.....	..100.000 ...	Nationwide Mutual Insurance Company
...0140 ...	Nationwide13242 ...	74-2286759	4287797	Titan Indemnity CompanyTX.....	...IA.....	THI Holdings (Delaware), Inc.	Ownership.....	..100.000 ...	Nationwide Mutual Insurance Company
...0140 ...	Nationwide36269 ...	86-0619597	4287845	Titan Insurance CompanyMI.....	...IA.....	Titan Indemnity Company	Ownership.....	..100.000 ...	Nationwide Mutual Insurance Company
...0140 ...	Nationwide	75-1284530	4287890	Titan Insurance Services, Inc.TX.....	...NIA.....	Whitehall Holdings, Inc.	Ownership.....	..100.000 ...	Nationwide Mutual Insurance Company
...0140 ...	Nationwide	33-0160222	V.P.I. Services, Inc.CA.....	...NIA.....	Veterinary Pet Insurance Company	Ownership.....	..100.000 ...	Nationwide Mutual Insurance Company
...0140 ...	Nationwide42285 ...	95-3750113	4287685	Veterinary Pet Insurance CompanyCA.....	...IA.....	Scottsdale Insurance Company	Ownership.....	..100.000 ...	Nationwide Mutual Insurance Company
.....	Victoria Fire & Casualty Insurance	Victoria Fire & Casualty Insurance
...0140 ...	Nationwide10644 ...	34-1785903	4287911	Victoria Automobile Insurance CompanyIN.....	...IA.....	Company	Ownership.....	..100.000 ...	Nationwide Mutual Insurance Company
...0140 ...	Nationwide42889 ...	34-1394913	4287827	Victoria Fire & Casualty CompanyOH.....	...IA.....	THI Holdings (Delaware), Inc.	Ownership.....	..100.000 ...	Nationwide Mutual Insurance Company
.....	Victoria National Insurance Company	Victoria Fire & Casualty Insurance
...0140 ...	Nationwide10778 ...	34-1842604	4287920	CompanyOH.....	...IA.....	Company	Ownership.....	..100.000 ...	Nationwide Mutual Insurance Company
.....	Victoria Fire & Casualty Insurance	Victoria Fire & Casualty Insurance
...0140 ...	Nationwide10105 ...	34-1777972	4287939	Victoria Select Insurance CompanyOH.....	...IA.....	Company	Ownership.....	..100.000 ...	Nationwide Mutual Insurance Company
.....	Victoria Fire & Casualty Insurance	Victoria Fire & Casualty Insurance
...0140 ...	Nationwide10777 ...	34-1842602	4287948	Victoria Specialty Insurance CompanyOH.....	...IA.....	Company	Ownership.....	..100.000 ...	Nationwide Mutual Insurance Company
...0140 ...	Nationwide37150 ...	86-0561941	4287667	Western Heritage Insurance CompanyAZ.....	...IA.....	Scottsdale Insurance Company	Ownership.....	..100.000 ...	Nationwide Mutual Insurance Company
.....	Nationwide Mutual Insurance Company	Nationwide Mutual Insurance Company
...0140 ...	Nationwide	Westport Capital Partners IICT.....	...OTH.....	Nationwide Defined Benefit Master Trust .	Investor member / no control71.000 ...	other non-Nationwide2
...0140 ...	Nationwide	74-2767942	4287818	Whitehall Holdings, Inc.TX.....	...NIA.....	THI Holdings (Delaware), Inc.	Ownership.....	..100.000 ...	Nationwide Mutual Insurance Company
...0140 ...	Nationwide	59-3471667	4287872	WI of Florida, Inc.FL.....	...NIA.....	Whitehall Holdings, Inc.	Ownership.....	..100.000 ...	Nationwide Mutual Insurance Company
...0140 ...	Nationwide	31-1486309	Wilson Road Developers, LLCOH.....	...NIA.....	Nationwide Realty Investors, Ltd.	Ownership.....	..100.000 ...	Nationwide Mutual Insurance Company
...0140 ...	Nationwide	Zais Zephyr A-4, LLCDE.....	...OTH.....	Nationwide Life Insurance Company	limited member / no control60.000 ...	other non-Nationwide2

Asterisk	Explanation
1	For the purposes of this schedule, Nationwide presumed control of these entities because they are owned by at least 10% and are not wholly-owned by a Nationwide entity.
2	Other ownership indicates a non-ownership circumstance by a Nationwide entity.

PART 1 - LOSS EXPERIENCE

Line of Business		Current Year to Date			4 Prior Year to Date Direct Loss Percentage
		1 Direct Premiums Earned	2 Direct Losses Incurred	3 Direct Loss Percentage	
1.	Fire	2,538	180	7.1	
2.	Allied Lines	3,271	322	9.8	
3.	Farmowners multiple peril				
4.	Homeowners multiple peril				
5.	Commercial multiple peril	58,025	38,962	67.1	
6.	Mortgage guaranty				
8.	Ocean marine				
9.	Inland marine				
10.	Financial guaranty				
11.1	Medical professional liability - occurrence	2,636			
11.2	Medical professional liability - claims-made	2,326,642	1,190,610	51.2	31.1
12.	Earthquake				
13.	Group accident and health				
14.	Credit accident and health				
15.	Other accident and health				
16.	Workers' compensation				
17.1	Other liability - occurrence	828,332	17,723,285	2,139.6	936.3
17.2	Other liability - claims-made	44,783,952	5,764,590	12.9	
17.3	Excess workers' compensation				
18.1	Products liability - occurrence	20			
18.2	Products liability - claims-made				
19.1,19.2	Private passenger auto liability				
19.3,19.4	Commercial auto liability	148,425	86,114	58.0	
21.	Auto physical damage	65,605	2,708	4.1	
22.	Aircraft (all perils)				
23.	Fidelity				
24.	Surety				
26.	Burglary and theft				
27.	Boiler and machinery	2,632			
28.	Credit				
29.	International				
30.	Warranty				
31.	Reinsurance - Nonproportional Assumed Property	XXX	XXX	XXX	XXX
32.	Reinsurance - Nonproportional Assumed Liability	XXX	XXX	XXX	XXX
33.	Reinsurance - Nonproportional Assumed Financial Lines	XXX	XXX	XXX	XXX
34.	Aggregate write-ins for other lines of business				
35.	Totals	48,222,078	24,806,771	51.4	42.8
DETAILS OF WRITE-INS					
3401.				
3402.				
3403.				
3498.	Summary of remaining write-ins for Line 34 from overflow page				
3499.	Totals (Lines 3401 through 3403 plus 3498)(Line 34 above)				

PART 2 - DIRECT PREMIUMS WRITTEN

Line of Business		1	2	3
		Current Quarter	Current Year to Date	Prior Year Year to Date
1.	Fire	4,633	8,346	
2.	Allied Lines	13,064	15,545	
3.	Farmowners multiple peril			
4.	Homeowners multiple peril			
5.	Commercial multiple peril	187,913	247,013	
6.	Mortgage guaranty			
8.	Ocean marine			
9.	Inland marine			
10.	Financial guaranty			
11.1	Medical professional liability - occurrence		3,012	
11.2	Medical professional liability - claims-made	581,334	2,671,811	2,090,367
12.	Earthquake			
13.	Group accident and health			
14.	Credit accident and health			
15.	Other accident and health			
16.	Workers' compensation			
17.1	Other liability - occurrence	323,124	331,831	598,395
17.2	Other liability - claims-made	14,202,043	46,896,659	33,618,167
17.3	Excess workers' compensation			
18.1	Products liability - occurrence	291	291	
18.2	Products liability - claims-made			
19.1,19.2	Private passenger auto liability			
19.3,19.4	Commercial auto liability	496,311	620,447	
21.	Auto physical damage	234,048	279,489	
22.	Aircraft (all perils)			
23.	Fidelity			
24.	Surety			
26.	Burglary and theft			
27.	Boiler and machinery	7,013	9,628	
28.	Credit			
29.	International			
30.	Warranty			
31.	Reinsurance - Nonproportional Assumed Property	XXX	XXX	XXX
32.	Reinsurance - Nonproportional Assumed Liability	XXX	XXX	XXX
33.	Reinsurance - Nonproportional Assumed Financial Lines	XXX	XXX	XXX
34.	Aggregate write-ins for other lines of business			
35.	Totals	16,049,774	51,084,072	36,306,929
DETAILS OF WRITE-INS				
3401.			
3402.			
3403.			
3498.	Summary of remaining write-ins for Line 34 from overflow page			
3499.	Totals (Lines 3401 through 3403 plus 3498)(Line 34 above)			

STATEMENT AS OF SEPTEMBER 30, 2013 OF THE FREEDOM SPECIALTY INSURANCE COMPANY

PART 3 (000 omitted)

LOSS AND LOSS ADJUSTMENT EXPENSE RESERVES SCHEDULE

	1	2	3	4	5	6	7	8	9	10	11	12	13
Years in Which Losses Occurred	Prior Year-End Known Case Loss and LAE Reserves	Prior Year-End IBNR Loss and LAE Reserves	Total Prior Year-End Loss and LAE Reserves (Cols. 1+2)	2013 Loss and LAE Payments on Claims Reported as of Prior Year-End	2013 Loss and LAE Payments on Claims Unreported as of Prior Year-End	Total 2013 Loss and LAE Payments (Cols. 4+5)	Q.S. Date Known Case Loss and LAE Reserves on Claims Reported and Open as of Prior Year End	Q.S. Date Known Case Loss and LAE Reserves on Claims Reported or Reopened Subsequent to Prior Year End	Q.S. Date IBNR Loss and LAE Reserves	Total Q.S. Loss and LAE Reserves (Cols.7+8+9)	Prior Year-End Known Case Loss and LAE Reserves Developed (Savings)/ Deficiency (Cols.4+7 minus Col. 1)	Prior Year-End IBNR Loss and LAE Reserves Developed (Savings)/ Deficiency (Cols. 5+8+9 minus Col. 2)	Prior Year-End Total Loss and LAE Reserve Developed (Savings)/ Deficiency (Cols. 11+12)
1. 2010 + Prior													
2. 2011													
3. Subtotals 2011 + Prior													
4. 2012													
5. Subtotals 2012 + Prior													
6. 2013	XXX	XXX	XXX	XXX			XXX				XXX	XXX	XXX
7. Totals													
8. Prior Year-End Surplus As Regards Policyholders											Col. 11, Line 7 As % of Col. 1 Line 7	Col. 12, Line 7 As % of Col. 2 Line 7	Col. 13, Line 7 As % of Col. 3 Line 7
											1.	2.	3.
													Col. 13, Line 7 As a % of Col. 1 Line 8
													4.

STATEMENT AS OF SEPTEMBER 30, 2013 OF THE FREEDOM SPECIALTY INSURANCE COMPANY

SUPPLEMENTAL EXHIBITS AND SCHEDULES INTERROGATORIES

The following supplemental reports are required to be filed as part of your statement filing. However, in the event that your company does not transact the type of business for which the special report must be filed, your response of NO to the specific interrogatory will be accepted in lieu of filing a "NONE" report and a bar code will be printed below. If the supplement is required of your company but is not being filed for whatever reason enter SEE EXPLANATION and provide an explanation following the interrogatory questions.

	Response
1. Will the Trusteed Surplus Statement be filed with the state of domicile and the NAIC with this statement?	NO
2. Will Supplement A to Schedule T (Medical Professional Liability Supplement) be filed with this statement?	YES
3. Will the Medicare Part D Coverage Supplement be filed with the state of domicile and the NAIC with this statement?	NO
4. Will the Director and Officer Insurance Coverage Supplement be filed with the state of domicile and the NAIC with this statement?	YES

Explanations:

1.
3.

Bar Codes:

1. Trusteed Surplus Statement [Document Identifier 490]



3. Medicare Part D Coverage Supplement [Document Identifier 365]



NONE

SCHEDULE A - VERIFICATION

Real Estate

	1	2
	Year to Date	Prior Year Ended December 31
1. Book/adjusted carrying value, December 31 of prior year		
2. Cost of acquired:		
2.1 Actual cost at time of acquisition		
2.2 Additional investment made after acquisition		
3. Current year change in encumbrances		
4. Total gain (loss) on disposals		
5. Deduct amounts received on disposals		
6. Total foreign exchange change in book/adjusted carrying value		
7. Deduct current year's other than temporary impairment recognized		
8. Deduct current year's depreciation		
9. Book/adjusted carrying value at the end of current period (Lines 1+2+3+4-5+6-7-8)		
10. Deduct total nonadmitted amounts		
11. Statement value at end of current period (Line 9 minus Line 10)		

SCHEDULE B - VERIFICATION

Mortgage Loans

	1	2
	Year to Date	Prior Year Ended December 31
1. Book value/recorded investment excluding accrued interest, December 31 of prior year		
2. Cost of acquired:		
2.1 Actual cost at time of acquisition		
2.2 Additional investment made after acquisition		
3. Capitalized deferred interest and other		
4. Accrual of discount		
5. Unrealized valuation increase (decrease)		
6. Total gain (loss) on disposals		
7. Deduct amounts received on disposals		
8. Deduct amortization of premium and mortgage interest points and commitment fees		
9. Total foreign exchange change in book value/recorded investment excluding accrued interest		
10. Deduct current year's other than temporary impairment recognized		
11. Book value/recorded investment excluding accrued interest at end of current period (Lines 1+2+3+4+5+6-7-8+9-10)		
12. Total valuation allowance		
13. Subtotal (Line 11 plus Line 12)		
14. Deduct total nonadmitted amounts		
15. Statement value at end of current period (Line 13 minus Line 14)		

SCHEDULE BA - VERIFICATION

Other Long-Term Invested Assets

	1	2
	Year to Date	Prior Year Ended December 31
1. Book/adjusted carrying value, December 31 of prior year		
2. Cost of acquired:		
2.1 Actual cost at time of acquisition		
2.2 Additional investment made after acquisition		
3. Capitalized deferred interest and other		
4. Accrual of discount		
5. Unrealized valuation increase (decrease)		
6. Total gain (loss) on disposals		
7. Deduct amounts received on disposals		
8. Deduct amortization of premium and depreciation		
9. Total foreign exchange change in book/adjusted carrying value		
10. Deduct current year's other than temporary impairment recognized		
11. Book/adjusted carrying value at end of current period (Lines 1+2+3+4+5+6-7-8+9-10)		
12. Deduct total nonadmitted amounts		
13. Statement value at end of current period (Line 11 minus Line 12)		

SCHEDULE D - VERIFICATION

Bonds and Stocks

	1	2
	Year to Date	Prior Year Ended December 31
1. Book/adjusted carrying value of bonds and stocks, December 31 of prior year	12,078,524	9,056,580
2. Cost of bonds and stocks acquired	3,036,225	3,874,504
3. Accrual of discount	5,091	6,222
4. Unrealized valuation increase (decrease)	45,841	15,139
5. Total gain (loss) on disposals		
6. Deduct consideration for bonds and stocks disposed of	605,000	800,000
7. Deduct amortization of premium	124,917	73,921
8. Total foreign exchange change in book/adjusted carrying value		
9. Deduct current year's other than temporary impairment recognized		
10. Book/adjusted carrying value at end of current period (Lines 1+2+3+4+5-6-7+8-9)	14,435,764	12,078,524
11. Deduct total nonadmitted amounts		
12. Statement value at end of current period (Line 10 minus Line 11)	14,435,764	12,078,524

SCHEDULE D - PART 1B

Showing the Acquisitions, Dispositions and Non-Trading Activity
During the Current Quarter for all Bonds and Preferred Stock by Rating Class

	1 Book/Adjusted Carrying Value Beginning of Current Quarter	2 Acquisitions During Current Quarter	3 Dispositions During Current Quarter	4 Non-Trading Activity During Current Quarter	5 Book/Adjusted Carrying Value End of First Quarter	6 Book/Adjusted Carrying Value End of Second Quarter	7 Book/Adjusted Carrying Value End of Third Quarter	8 Book/Adjusted Carrying Value December 31 Prior Year
BONDS								
1. Class 1 (a)	15,054,236		605,000	(13,469)	12,021,499	15,054,236	14,435,767	12,078,526
2. Class 2 (a)								
3. Class 3 (a)								
4. Class 4 (a)								
5. Class 5 (a)								
6. Class 6 (a)								
7. Total Bonds	15,054,236		605,000	(13,469)	12,021,499	15,054,236	14,435,767	12,078,526
PREFERRED STOCK								
8. Class 1								
9. Class 2								
10. Class 3								
11. Class 4								
12. Class 5								
13. Class 6								
14. Total Preferred Stock								
15. Total Bonds and Preferred Stock	15,054,236		605,000	(13,469)	12,021,499	15,054,236	14,435,767	12,078,526

(a) Book/Adjusted Carrying Value column for the end of the current reporting period includes the following amount of non-rated short-term and cash equivalent bonds by NAIC designation: NAIC 1 \$; NAIC 2 \$; NAIC 3 \$;
NAIC 4 \$; NAIC 5 \$; NAIC 6 \$

SCHEDULE DA - PART 1

Short-Term Investments

	1	2	3	4	5
	Book/Adjusted Carrying Value	Par Value	Actual Cost	Interest Collected Year-to-Date	Paid for Accrued Interest Year-to-Date
9199999 Totals	890,017	xxx	890,017	19	

SCHEDULE DA - VERIFICATION

Short-Term Investments

	1	2
	Year To Date	Prior Year Ended December 31
1. Book/adjusted carrying value, December 31 of prior year	3,155,243	3,645,987
2. Cost of short-term investments acquired	54,727,460	54,253,674
3. Accrual of discount		
4. Unrealized valuation increase (decrease)		
5. Total gain (loss) on disposals		
6. Deduct consideration received on disposals	56,992,686	54,744,418
7. Deduct amortization of premium		
8. Total foreign exchange change in book/adjusted carrying value		
9. Deduct current year's other than temporary impairment recognized		
10. Book/adjusted carrying value at end of current period (Lines 1+2+3+4+5-6-7+8-9)	890,017	3,155,243
11. Deduct total nonadmitted amounts		
12. Statement value at end of current period (Line 10 minus Line 11)	890,017	3,155,243

Schedule DB - Part A - Verification - Options, Caps, Floors, Collars, Swaps and Forwards
N O N E

Schedule DB - Part B - Verification - Futures Contracts
N O N E

Schedule DB - Part C - Section 1 - Replication (Synthetic Asset) Transactions (RSATs) Open
N O N E

Schedule DB-Part C-Section 2-Reconciliation of Replication (Synthetic Asset) Transactions Open
N O N E

Schedule DB - Verification - Book/Adjusted Carrying Value, Fair Value and Potential Exposure of
Derivatives
N O N E

Schedule E - Verification - Cash Equivalents
N O N E

Schedule A - Part 2 - Real Estate Acquired and Additions Made
N O N E

Schedule A - Part 3 - Real Estate Disposed
N O N E

Schedule B - Part 2 - Mortgage Loans Acquired
N O N E

Schedule B - Part 3 - Mortgage Loans Disposed, Transferred or Repaid
N O N E

Schedule BA - Part 2 - Other Long-Term Invested Assets Acquired
N O N E

Schedule BA - Part 3 - Other Long-Term Invested Assets Disposed, Transferred or Repaid
N O N E

Schedule D - Part 3 - Long-Term Bonds and Stocks Acquired
N O N E

STATEMENT AS OF SEPTEMBER 30, 2013 OF THE FREEDOM SPECIALTY INSURANCE COMPANY

SCHEDULE D - PART 4

Show All Long-Term Bonds and Stock Sold, Redeemed or Otherwise Disposed of During the Current Quarter

[illegible]

(a) For all common stock bearing the NAIC market indicator "U" provide: the number of such issues.....

Schedule DB - Part A - Section 1 - Options, Caps, Floors, Collars, Swaps and Forwards Open
N O N E

Schedule DB - Part B - Section 1 - Futures Contracts Open
N O N E

Schedule DB - Part B - Section 1B - Brokers with whom cash deposits have been made
N O N E

Schedule DB - Part D - Section 1 - Counterparty Exposure for Derivative Instruments Open
N O N E

Schedule DB - Part D - Section 2 - Collateral for Derivative Instruments Open
N O N E

Schedule DB - Part D - Section 2 - Collateral for Derivative Instruments Open
N O N E

Schedule DL - Part 1 - Reinvested Collateral Assets Owned
N O N E

Schedule DL - Part 2 - Reinvested Collateral Assets Owned
N O N E

SCHEDULE E - PART 1 - CASH

E12

SCHEDULE E - PART 2 - CASH EQUIVALENTS

Show Investments Owned End of Current Quarter

1	2	3	4	5	6	7	8
Description	Code	Date Acquired	Rate of Interest	Maturity Date	Book/Adjusted Carrying Value	Amount of Interest Due and Accrued	Amount Received During Year
NONE							
8699999 - Total Cash Equivalents							



SUPPLEMENT FOR THE QUARTER ENDING SEPTEMBER 30, 2013 OF THE FREEDOM SPECIALTY INSURANCE COMPANY

Designate the type of health care providers reported on this page:
Physicians, including surgeons and osteopaths

SUPPLEMENT A TO SCHEDULE T
EXHIBIT OF MEDICAL PROFESSIONAL LIABILITY PREMIUMS WRITTEN
ALLOCATED BY STATES AND TERRITORIES

States, etc.	1 Direct Premiums Written	2 Direct Premiums Earned	Direct Losses Paid		5 Direct Losses Incurred	Direct Losses Unpaid		8 Direct Losses Incurred But Not Reported
			3 Amount	4 No. of Claims		6 Amount Reported	7 No. of Claims	
1. Alabama.....AL								
2. Alaska.....AK								
3. Arizona.....AZ								
4. Arkansas.....AR								
5. California.....CA	1,739,470	1,444,534			605,040	642,500	1	564,848
6. Colorado.....CO								
7. Connecticut.....CT								
8. Delaware.....DE								
9. District of Columbia.....DC								
10. Florida.....FL								
11. Georgia.....GA								
12. Hawaii.....HI								
13. Idaho.....ID								
14. Illinois.....IL								
15. Indiana.....IN								
16. Iowa.....IA								
17. Kansas.....KS								
18. Kentucky.....KY								
19. Louisiana.....LA								
20. Maine.....ME								
21. Maryland.....MD								
22. Massachusetts.....MA								
23. Michigan.....MI	363,922	432,538			438,007	443,000	1	165,469
24. Minnesota.....MN								
25. Mississippi.....MS								
26. Missouri.....MO	26,042	21,262			1,405			7,349
27. Montana.....MT								
28. Nebraska.....NE								
29. Nevada.....NV								
30. New Hampshire.....NH								
31. New Jersey.....NJ								
32. New Mexico.....NM								
33. New York.....NY								
34. North Carolina.....NC								
35. North Dakota.....ND								
36. Ohio.....OH	177,788	150,572			62,659	53,750	1	54,476
37. Oklahoma.....OK								
38. Oregon.....OR								
39. Pennsylvania.....PA	353,631	270,642			82,877	80,000	1	131,210
40. Rhode Island.....RI								
41. South Carolina.....SC								
42. South Dakota.....SD								
43. Tennessee.....TN								
44. Texas.....TX								
45. Utah.....UT								
46. Vermont.....VT								
47. Virginia.....VA								
48. Washington.....WA	13,970	9,730			621			3,399
49. West Virginia.....WV								
50. Wisconsin.....WI								
51. Wyoming.....WY								
52. American Samoa.....AS								
53. Guam.....GU								
54. Puerto Rico.....PR								
55. U.S. Virgin Islands.....VI								
56. Nothern Mariana Islands.....MP								
57. Canada.....CAN								
58. Aggregate Other Aliens.....OT								
59. Totals	2,674,823	2,329,278			1,190,609	1,219,250	4	926,751
DETAILS OF WRITE-INS								
58001.								
58002.								
58003.								
58998. Summary of remaining write-ins for Line 58 from overflow page								
58999. Totals (Lines 58001 through 58003 plus 58998)(Line 58 above)								



SUPPLEMENT FOR THE QUARTER ENDING SEPTEMBER 30, 2013 OF THE FREEDOM SPECIALTY INSURANCE COMPANY

Designate the type of health care providers reported on this page:
Hospitals

SUPPLEMENT A TO SCHEDULE T
EXHIBIT OF MEDICAL PROFESSIONAL LIABILITY PREMIUMS WRITTEN
ALLOCATED BY STATES AND TERRITORIES

	States, etc.	1	2	Direct Losses Paid		5	Direct Losses Unpaid		8
		Direct Premiums Written	Direct Premiums Earned	3 Amount	4 No. of Claims	Direct Losses Incurred	6 Amount Reported	7 No. of Claims	Direct Losses Incurred But Not Reported
1.	Alabama.....AL								
2.	Alaska.....AK								
3.	Arizona.....AZ								
4.	Arkansas.....AR								
5.	California.....CA								
6.	Colorado.....CO								
7.	Connecticut.....CT								
8.	Delaware.....DE								
9.	District of Columbia.....DC								
10.	Florida.....FL								
11.	Georgia.....GA								
12.	Hawaii.....HI								
13.	Idaho.....ID								
14.	Illinois.....IL								
15.	Indiana.....IN								
16.	Iowa.....IA								
17.	Kansas.....KS								
18.	Kentucky.....KY								
19.	Louisiana.....LA								
20.	Maine.....ME								
21.	Maryland.....MD								
22.	Massachusetts.....MA								
23.	Michigan.....MI								
24.	Minnesota.....MN								
25.	Mississippi.....MS								
26.	Missouri.....MO								
27.	Montana.....MT								
28.	Nebraska.....NE								
29.	Nevada.....NV								
30.	New Hampshire.....NH								
31.	New Jersey.....NJ								
32.	New Mexico.....NM								
33.	New York.....NY								
34.	North Carolina.....NC								
35.	North Dakota.....ND								
36.	Ohio.....OH								
37.	Oklahoma.....OK								
38.	Oregon.....OR								
39.	Pennsylvania.....PA								
40.	Rhode Island.....RI								
41.	South Carolina.....SC								
42.	South Dakota.....SD								
43.	Tennessee.....TN								
44.	Texas.....TX								
45.	Utah.....UT								
46.	Vermont.....VT								
47.	Virginia.....VA								
48.	Washington.....WA								
49.	West Virginia.....WV								
50.	Wisconsin.....WI								
51.	Wyoming.....WY								
52.	American Samoa.....AS								
53.	Guam.....GU								
54.	Puerto Rico.....PR								
55.	U.S. Virgin Islands.....VI								
56.	Nothern Mariana Islands.....MP								
57.	Canada.....CAN								
58.	Aggregate Other Aliens.....OT								
59.	Totals								
DETAILS OF WRITE-INS									
58001.								
58002.								
58003.								
58998.	Summary of remaining write-ins for Line 58 from overflow page.....								
58999.	Totals (Lines 58001 through 58003 plus 58998)(Line 58 above)								

NONE



SUPPLEMENT FOR THE QUARTER ENDING SEPTEMBER 30, 2013 OF THE FREEDOM SPECIALTY INSURANCE COMPANY

Designate the type of health care providers reported on this page:
Other health care professionals, including dentists, chiropractors, and podiatrists

SUPPLEMENT A TO SCHEDULE T
EXHIBIT OF MEDICAL PROFESSIONAL LIABILITY PREMIUMS WRITTEN
ALLOCATED BY STATES AND TERRITORIES

	1	2	Direct Losses Paid		5	Direct Losses Unpaid		8
			3	4		6	7	
States, etc.	Direct Premiums Written	Direct Premiums Earned	Amount	No. of Claims	Direct Losses Incurred	Amount Reported	No. of Claims	Direct Losses Incurred But Not Reported
1. Alabama	AL							
2. Alaska	AK							
3. Arizona	AZ							
4. Arkansas	AR							
5. California	CA							
6. Colorado	CO							
7. Connecticut	CT							
8. Delaware	DE							
9. District of Columbia	DC							
10. Florida	FL							
11. Georgia	GA							
12. Hawaii	HI							
13. Idaho	ID							
14. Illinois	IL							
15. Indiana	IN							
16. Iowa	IA							
17. Kansas	KS							
18. Kentucky	KY							
19. Louisiana	LA							
20. Maine	ME							
21. Maryland	MD							
22. Massachusetts	MA							
23. Michigan	MI							
24. Minnesota	MN							
25. Mississippi	MS							
26. Missouri	MO							
27. Montana	MT							
28. Nebraska	NE							
29. Nevada	NV							
30. New Hampshire	NH							
31. New Jersey	NJ							
32. New Mexico	NM							
33. New York	NY							
34. North Carolina	NC							
35. North Dakota	ND							
36. Ohio	OH							
37. Oklahoma	OK							
38. Oregon	OR							
39. Pennsylvania	PA							
40. Rhode Island	RI							
41. South Carolina	SC							
42. South Dakota	SD							
43. Tennessee	TN							
44. Texas	TX							
45. Utah	UT							
46. Vermont	VT							
47. Virginia	VA							
48. Washington	WA							
49. West Virginia	WV							
50. Wisconsin	WI							
51. Wyoming	WY							
52. American Samoa	AS							
53. Guam	GU							
54. Puerto Rico	PR							
55. U.S. Virgin Islands	VI							
56. Northern Mariana Islands	MP							
57. Canada	CAN							
58. Aggregate Other Aliens	OT							
59. Totals								
DETAILS OF WRITE-INS								
58001.								
58002.								
58003.								
58998. Summary of remaining write-ins for Line 58 from overflow page								
58999. Totals (Lines 58001 through 58003 plus 58998)(Line 58 above)								

NONE



SUPPLEMENT FOR THE QUARTER ENDING SEPTEMBER 30, 2013 OF THE FREEDOM SPECIALTY INSURANCE COMPANY

Designate the type of health care providers reported on this page:
Other health care facilities

SUPPLEMENT A TO SCHEDULE T
EXHIBIT OF MEDICAL PROFESSIONAL LIABILITY PREMIUMS WRITTEN
ALLOCATED BY STATES AND TERRITORIES

	States, etc.	1 Direct Premiums Written	2 Direct Premiums Earned	Direct Losses Paid		5 Direct Losses Incurred	Direct Losses Unpaid		8 Direct Losses Incurred But Not Reported
				3 Amount	4 No. of Claims		6 Amount Reported	7 No. of Claims	
1.	Alabama	AL							
2.	Alaska	AK							
3.	Arizona	AZ							
4.	Arkansas	AR							
5.	California	CA							
6.	Colorado	CO							
7.	Connecticut	CT							
8.	Delaware	DE							
9.	District of Columbia	DC							
10.	Florida	FL							
11.	Georgia	GA							
12.	Hawaii	HI							
13.	Idaho	ID							
14.	Illinois	IL							
15.	Indiana	IN							
16.	Iowa	IA							
17.	Kansas	KS							
18.	Kentucky	KY							
19.	Louisiana	LA							
20.	Maine	ME							
21.	Maryland	MD							
22.	Massachusetts	MA							
23.	Michigan	MI							
24.	Minnesota	MN							
25.	Mississippi	MS							
26.	Missouri	MO							
27.	Montana	MT							
28.	Nebraska	NE							
29.	Nevada	NV							
30.	New Hampshire	NH							
31.	New Jersey	NJ							
32.	New Mexico	NM							
33.	New York	NY							
34.	North Carolina	NC							
35.	North Dakota	ND							
36.	Ohio	OH							
37.	Oklahoma	OK							
38.	Oregon	OR							
39.	Pennsylvania	PA							
40.	Rhode Island	RI							
41.	South Carolina	SC							
42.	South Dakota	SD							
43.	Tennessee	TN							
44.	Texas	TX							
45.	Utah	UT							
46.	Vermont	VT							
47.	Virginia	VA							
48.	Washington	WA							
49.	West Virginia	WV							
50.	Wisconsin	WI							
51.	Wyoming	WY							
52.	American Samoa	AS							
53.	Guam	GU							
54.	Puerto Rico	PR							
55.	U.S. Virgin Islands	VI							
56.	Nothern Mariana Islands	MP							
57.	Canada	CAN							
58.	Aggregate Other Aliens	OT							
59.	Totals								
DETAILS OF WRITE-INS									
58001.								
58002.								
58003.								
58998.	Summary of remaining write-ins for Line 58 from overflow page								
58999.	Totals (Lines 58001 through 58003 plus 58998)(Line 58 above)								

NONE



SUPPLEMENT FOR THE QUARTER ENDING SEPTEMBER 30, 2013 OF THE FREEDOM SPECIALTY INSURANCE COMPANY

DIRECTOR AND OFFICER INSURANCE COVERAGE SUPPLEMENT

Year To Date For The Period Ended SEPTEMBER 30, 2013

NAIC Group Code 0140 NAIC Company Code 22209

Company Name FREEDOM SPECIALTY INSURANCE COMPANY

If the reporting entity writes any director and officer (D&O) business, please provide the following:

1. Monoline Policies

1 Direct Written Premium	2 Direct Earned Premium	3 Direct Losses Incurred
\$ 14,497,211	\$ 15,729,036	\$ 11,155,122

2. Commercial Multiple Peril (CMP) Packaged Policies

- 2.1 Does the reporting entity provide D&O liability coverage as part of a CMP packaged policy?

Yes [] No [X]
- 2.2 Can the direct premium earned for D&O liability coverage provided as part of a CMP packaged policy be quantified or estimated?

Yes [] No [X]
- 2.3 If the answer to question 2.2 is yes, provide the quantified or estimated direct premium earned amount for D&O liability coverage in CMP packaged policies

2.31 Amount quantified:

\$

2.32 Amount estimated using reasonable assumptions:

\$
- 2.4 If the answer to question 2.1 is yes, provide direct losses incurred (losses paid plus change in case reserves) for the D&O liability coverage provided in CMP packaged policies.

\$