



QUARTERLY STATEMENT

AS OF SEPTEMBER 30, 2013
OF THE CONDITION AND AFFAIRS OF THE

GRANGE INDEMNITY INSURANCE COMPANY

NAIC Group Code	00267	00267	NAIC Company Code	10322	Employer's ID Number	31-1432675
	(Current Period)	(Prior Period)				
Organized under the Laws of	Ohio		State of Domicile or Port of Entry	Ohio		
Country of Domicile	United States					
Incorporated/Organized	03/10/1995		Commenced Business	08/03/1995		
Statutory Home Office	671 South High Street		Columbus, OH, US 43206-1014			
	(Street and Number)		(City or Town, State, Country and Zip Code)			
Main Administrative Office	671 South High Street		Columbus, OH, US 43206-1014		614-445-2900	
	(Street and Number)		(City or Town, State, Country and Zip Code)		(Area Code) (Telephone Number)	
Mail Address	671 South High Street, P.O. Box 1218		Columbus, OH, US 43216-1218			
	(Street and Number or P.O. Box)		(City or Town, State, Country and Zip Code)			
Primary Location of Books and Records	671 South High Street		Columbus, OH, US 43206-1014		614-445-2900	
	(Street and Number)		(City or Town, State, Country and Zip Code)		(Area Code) (Telephone Number)	
Internet Web Site Address	www.grangeinsurance.com					
Statutory Statement Contact	David Sidney Ackermann		614-445-2900			
	(Name)		(Area Code) (Telephone Number) (Extension)			
	ackermannnd@grangeinsurance.com		614-449-3757			
	(E-mail Address)		(Fax Number)			

OFFICERS

Name	Title	Name	Title
THOMAS HOWARD WELCH	PRESIDENT & CEO	LAVAWN DEE COLEMAN	VP & SECRETARY
JOHN PAUL MCCAFFREY	VP & CFO		

OTHER OFFICERS

JOHN CHRISTOPHER MONTGOMERY	VP - INVESTMENTS		
-----------------------------	------------------	--	--

DIRECTORS OR TRUSTEES

MARK LEWIS BOXER #	DOUGLAS PAUL BUTH	GLENN EUGENE CORLETT	ELWOOD GORDON GEE
ROBERT ENLOW HOYT	JOHN PAUL MCCAFFREY	MARY MARNETTE PERRY	MELVIN GEORGE PYE JR
THOMAS SIMRALL STEWART	THOMAS HOWARD WELCH	DAVID CHARLES WETMORE	CHRISTIANNA (NMN) WOOD #

State ofOhio.....

County ofFranklin.....ss

The officers of this reporting entity being duly sworn, each depose and say that they are the described officers of said reporting entity, and that on the reporting period stated above, all of the herein described assets were the absolute property of the said reporting entity, free and clear from any liens or claims thereon, except as herein stated, and that this statement, together with related exhibits, schedules and explanations therein contained, annexed or referred to, is a full and true statement of all the assets and liabilities and of the condition and affairs of the said reporting entity as of the reporting period stated above, and of its income and deductions therefrom for the period ended, and have been completed in accordance with the NAIC Annual Statement Instructions and Accounting Practices and Procedures manual except to the extent that: (1) state law may differ; or, (2) that state rules or regulations require differences in reporting not related to accounting practices and procedures, according to the best of their information, knowledge and belief, respectively. Furthermore, the scope of this attestation by the described officers also includes the related corresponding electronic filing with the NAIC, when required, that is an exact copy (except for formatting differences due to electronic filing) of the enclosed statement. The electronic filing may be requested by various regulators in lieu of or in addition to the enclosed statement.

THOMAS HOWARD WELCH PRESIDENT & CEO	LAVAWN DEE COLEMAN VP & SECRETARY	JOHN PAUL MCCAFFREY VP & CFO
--	--------------------------------------	---------------------------------

a. Is this an original filing? Yes [X] No []

b. If no:

1. State the amendment number

2. Date filed

3. Number of pages attached

Subscribed and sworn to before me this

8th day of November, 2013

Teresa J. Burchwell, Notary Public

April 28, 2017

STATEMENT AS OF SEPTEMBER 30, 2013 OF THE GRANGE INDEMNITY INSURANCE COMPANY

ASSETS

	Current Statement Date			4 December 31 Prior Year Net Admitted Assets
	1	2	3	
	Assets	Nonadmitted Assets	Net Admitted Assets (Cols. 1 - 2)	
1. Bonds	72,270,033		72,270,033	68,676,267
2. Stocks:				
2.1 Preferred stocks			0	0
2.2 Common stocks			0	0
3. Mortgage loans on real estate:				
3.1 First liens			0	0
3.2 Other than first liens			0	0
4. Real estate:				
4.1 Properties occupied by the company (less \$ encumbrances)			0	0
4.2 Properties held for the production of income (less \$ encumbrances)			0	0
4.3 Properties held for sale (less \$ encumbrances)			0	0
5. Cash (\$0), cash equivalents (\$0) and short-term investments (\$748,041)	748,041		748,041	1,123,813
6. Contract loans (including \$ premium notes)			0	0
7. Derivatives			0	0
8. Other invested assets	0		0	0
9. Receivables for securities	2,285		2,285	0
10. Securities lending reinvested collateral assets	1,267,936		1,267,936	4,088,245
11. Aggregate write-ins for invested assets	0	0	0	0
12. Subtotals, cash and invested assets (Lines 1 to 11)	74,288,295	0	74,288,295	73,888,325
13. Title plants less \$ charged off (for Title insurers only)			0	0
14. Investment income due and accrued	977,983		977,983	767,356
15. Premiums and considerations:				
15.1 Uncollected premiums and agents' balances in the course of collection	9,152,264	61,736	9,090,528	7,801,868
15.2 Deferred premiums, agents' balances and installments booked but deferred and not yet due (including \$14,919 earned but unbilled premiums)	15,309	390	14,919	(8,934)
15.3 Accrued retrospective premiums			0	0
16. Reinsurance:				
16.1 Amounts recoverable from reinsurers			0	0
16.2 Funds held by or deposited with reinsured companies			0	0
16.3 Other amounts receivable under reinsurance contracts			0	0
17. Amounts receivable relating to uninsured plans			0	0
18.1 Current federal and foreign income tax recoverable and interest thereon			0	0
18.2 Net deferred tax asset	1,609,730		1,609,730	1,481,504
19. Guaranty funds receivable or on deposit			0	0
20. Electronic data processing equipment and software			0	0
21. Furniture and equipment, including health care delivery assets (\$)			0	0
22. Net adjustment in assets and liabilities due to foreign exchange rates			0	0
23. Receivables from parent, subsidiaries and affiliates	1,180,983		1,180,983	1,020,873
24. Health care (\$) and other amounts receivable			0	0
25. Aggregate write-ins for other than invested assets	21,736	0	21,736	20,976
26. Total assets excluding Separate Accounts, Segregated Accounts and Protected Cell Accounts (Lines 12 to 25)	87,246,300	62,126	87,184,174	84,971,968
27. From Separate Accounts, Segregated Accounts and Protected Cell Accounts			0	0
28. Total (Lines 26 and 27)	87,246,300	62,126	87,184,174	84,971,968
DETAILS OF WRITE-INS				
1101.			0	0
1102.			0	0
1103.			0	0
1198. Summary of remaining write-ins for Line 11 from overflow page	0	0	0	0
1199. Totals (Lines 1101 through 1103 plus 1198) (Line 11 above)	0	0	0	0
2501. Equities in Pools	21,736		21,736	20,976
2502.			0	0
2503.			0	0
2598. Summary of remaining write-ins for Line 25 from overflow page	0	0	0	0
2599. Totals (Lines 2501 through 2503 plus 2598) (Line 25 above)	21,736	0	21,736	20,976

LIABILITIES, SURPLUS AND OTHER FUNDS

	1 Current Statement Date	2 December 31, Prior Year
1. Losses (current accident year \$ 6,728,492)	15,816,232	15,607,103
2. Reinsurance payable on paid losses and loss adjustment expenses		0
3. Loss adjustment expenses	4,891,573	4,672,588
4. Commissions payable, contingent commissions and other similar charges	641,707	568,490
5. Other expenses (excluding taxes, licenses and fees)	1,419,536	1,313,943
6. Taxes, licenses and fees (excluding federal and foreign income taxes)	426,357	510,011
7.1 Current federal and foreign income taxes (including \$ 41,865 on realized capital gains (losses))	1,088,036	820,959
7.2 Net deferred tax liability		0
8. Borrowed money \$ and interest thereon \$		0
9. Unearned premiums (after deducting unearned premiums for ceded reinsurance of \$ 26,235,237 and including warranty reserves of and accrued accident and health experience rating refunds including \$ for medical loss ratio rebate per the Public Health Service Act)	18,403,451	16,568,151
10. Advance premium	(26,399)	0
11. Dividends declared and unpaid:		
11.1 Stockholders		0
11.2 Policyholders	36,141	35,985
12. Ceded reinsurance premiums payable (net of ceding commissions)		0
13. Funds held by company under reinsurance treaties		0
14. Amounts withheld or retained by company for account of others		0
15. Remittances and items not allocated		0
16. Provision for reinsurance (including \$ certified)		0
17. Net adjustments in assets and liabilities due to foreign exchange rates		0
18. Drafts outstanding		0
19. Payable to parent, subsidiaries and affiliates		0
20. Derivatives		0
21. Payable for securities		0
22. Payable for securities lending	1,267,936	4,088,245
23. Liability for amounts held under uninsured plans		0
24. Capital notes \$ and interest thereon \$		0
25. Aggregate write-ins for liabilities	0	0
26. Total liabilities excluding protected cell liabilities (Lines 1 through 25)	43,964,570	44,185,475
27. Protected cell liabilities		0
28. Total liabilities (Lines 26 and 27)	43,964,570	44,185,475
29. Aggregate write-ins for special surplus funds	0	0
30. Common capital stock	2,000,000	2,000,000
31. Preferred capital stock		0
32. Aggregate write-ins for other than special surplus funds	0	0
33. Surplus notes		0
34. Gross paid in and contributed surplus	5,000,000	5,000,000
35. Unassigned funds (surplus)	36,219,604	33,786,493
36. Less treasury stock, at cost:		
36.1 shares common (value included in Line 30 \$)		0
36.2 shares preferred (value included in Line 31 \$)		0
37. Surplus as regards policyholders (Lines 29 to 35, less 36)	43,219,604	40,786,493
38. Totals (Page 2, Line 28, Col. 3)	87,184,174	84,971,968
DETAILS OF WRITE-INS		
2501.		0
2502.		0
2503.		0
2598. Summary of remaining write-ins for Line 25 from overflow page	0	0
2599. Totals (Lines 2501 through 2503 plus 2598) (Line 25 above)	0	0
2901.		0
2902.		0
2903.		0
2998. Summary of remaining write-ins for Line 29 from overflow page	0	0
2999. Totals (Lines 2901 through 2903 plus 2998) (Line 29 above)	0	0
3201.		0
3202.		0
3203.		0
3298. Summary of remaining write-ins for Line 32 from overflow page	0	0
3299. Totals (Lines 3201 through 3203 plus 3298) (Line 32 above)	0	0

STATEMENT OF INCOME

	1	2	3
	Current Year	Prior Year	Prior Year Ended
	to Date	to Date	December 31
UNDERWRITING INCOME			
1. Premiums earned:			
1.1 Direct (written \$ 45,264,253)	35,418,826	27,311,661	36,993,222
1.2 Assumed (written \$ 34,686,947)	32,844,028	30,802,446	41,391,853
1.3 Ceded (written \$ 45,280,408)	35,427,363	27,314,884	36,997,811
1.4 Net (written \$ 34,670,792)	32,835,491	30,799,223	41,387,264
DEDUCTIONS:			
2. Losses incurred (current accident year \$ 17,221,814):			
2.1 Direct	20,306,338	14,045,571	19,993,556
2.2 Assumed	17,514,547	18,430,577	24,020,036
2.3 Ceded	20,313,060	14,050,640	20,003,560
2.4 Net	17,507,825	18,425,508	24,010,032
3. Loss adjustment expenses incurred	3,828,499	3,355,981	4,550,280
4. Other underwriting expenses incurred	11,146,068	10,028,685	13,327,788
5. Aggregate write-ins for underwriting deductions	0	0	0
6. Total underwriting deductions (Lines 2 through 5)	32,482,392	31,810,174	41,888,100
7. Net income of protected cells		0	0
8. Net underwriting gain (loss) (Line 1 minus Line 6 + Line 7)	353,099	(1,010,951)	(500,836)
INVESTMENT INCOME			
9. Net investment income earned	1,969,573	1,918,152	2,583,060
10. Net realized capital gains (losses) less capital gains tax of \$ 41,865	77,748	17,091	107,146
11. Net investment gain (loss) (Lines 9 + 10)	2,047,321	1,935,243	2,690,206
OTHER INCOME			
12. Net gain or (loss) from agents' or premium balances charged off (amount recovered \$ 3,505 amount charged off \$ 159,307)	(155,802)	(146,574)	(201,358)
13. Finance and service charges not included in premiums	1,038,508	1,004,494	1,313,732
14. Aggregate write-ins for miscellaneous income	164,084	89,432	122,079
15. Total other income (Lines 12 through 14)	1,046,790	947,352	1,234,453
16. Net income before dividends to policyholders, after capital gains tax and before all other federal and foreign income taxes (Lines 8 + 11 + 15)	3,447,210	1,871,644	3,423,823
17. Dividends to policyholders	88,983	93,990	125,951
18. Net income, after dividends to policyholders, after capital gains tax and before all other federal and foreign income taxes (Line 16 minus Line 17)	3,358,227	1,777,654	3,297,872
19. Federal and foreign income taxes incurred	1,046,171	466,350	763,265
20. Net income (Line 18 minus Line 19)(to Line 22)	2,312,056	1,311,304	2,534,607
CAPITAL AND SURPLUS ACCOUNT			
21. Surplus as regards policyholders, December 31 prior year	40,786,493	38,312,366	38,312,366
22. Net income (from Line 20)	2,312,056	1,311,304	2,534,607
23. Net transfers (to) from Protected Cell accounts		0	0
24. Change in net unrealized capital gains or (losses) less capital gains tax of \$		0	0
25. Change in net unrealized foreign exchange capital gain (loss)		0	0
26. Change in net deferred income tax	128,226	69,165	(61,650)
27. Change in nonadmitted assets	(7,171)	(135,520)	1,171
28. Change in provision for reinsurance	0	0	0
29. Change in surplus notes	0	0	0
30. Surplus (contributed to) withdrawn from protected cells	0	0	0
31. Cumulative effect of changes in accounting principles	0	0	0
32. Capital changes:			
32.1 Paid in		0	0
32.2 Transferred from surplus (Stock Dividend)		0	0
32.3 Transferred to surplus		0	0
33. Surplus adjustments:			
33.1 Paid in		0	0
33.2 Transferred to capital (Stock Dividend)		0	0
33.3 Transferred from capital		0	0
34. Net remittances from or (to) Home Office		0	0
35. Dividends to stockholders		0	0
36. Change in treasury stock		0	0
37. Aggregate write-ins for gains and losses in surplus	0	0	0
38. Change in surplus as regards policyholders (Lines 22 through 37)	2,433,111	1,244,949	2,474,128
39. Surplus as regards policyholders, as of statement date (Lines 21 plus 38)	43,219,604	39,557,315	40,786,493
DETAILS OF WRITE-INS			
0501.		0	0
0502.		0	0
0503.		0	0
0598. Summary of remaining write-ins for Line 5 from overflow page	0	0	0
0599. TOTALS (Lines 0501 through 0503 plus 0598) (Line 5 above)	0	0	0
1401. Miscellaneous Income	164,084	89,432	122,079
1402.		0	0
1403.		0	0
1498. Summary of remaining write-ins for Line 14 from overflow page	0	0	0
1499. TOTALS (Lines 1401 through 1403 plus 1498) (Line 14 above)	164,084	89,432	122,079
3701.		0	0
3702.		0	0
3703.		0	0
3798. Summary of remaining write-ins for Line 37 from overflow page	0	0	0
3799. TOTALS (Lines 3701 through 3703 plus 3798) (Line 37 above)	0	0	0

CASH FLOW

	1 Current Year To Date	2 Prior Year To Date	3 Prior Year Ended December 31
Cash from Operations			
1. Premiums collected net of reinsurance.....	33,324,709	31,384,547	41,870,008
2. Net investment income	2,093,150	1,975,889	2,906,787
3. Miscellaneous income	1,046,790	947,352	1,234,453
4. Total (Lines 1 to 3)	36,464,649	34,307,788	46,011,248
5. Benefit and loss related payments	17,298,697	18,413,927	24,190,197
6. Net transfers to Separate Accounts, Segregated Accounts and Protected Cell Accounts	0	0	0
7. Commissions, expenses paid and aggregate write-ins for deductions	14,660,426	13,414,062	17,293,055
8. Dividends paid to policyholders	88,827	83,695	120,913
9. Federal and foreign income taxes paid (recovered) net of \$41,865 tax on capital gains (losses).....	820,959	636,817	636,817
10. Total (Lines 5 through 9)	32,868,910	32,548,501	42,240,982
11. Net cash from operations (Line 4 minus Line 10)	3,595,740	1,759,287	3,770,266
Cash from Investments			
12. Proceeds from investments sold, matured or repaid:			
12.1 Bonds	8,361,514	6,586,279	10,272,342
12.2 Stocks	0	0	0
12.3 Mortgage loans	0	0	0
12.4 Real estate	0	0	0
12.5 Other invested assets	0	0	0
12.6 Net gains or (losses) on cash, cash equivalents and short-term investments	0	0	0
12.7 Miscellaneous proceeds	0	0	0
12.8 Total investment proceeds (Lines 12.1 to 12.7)	8,361,514	6,586,279	10,272,342
13. Cost of investments acquired (long-term only):			
13.1 Bonds	12,169,870	10,057,283	13,981,587
13.2 Stocks	0	0	0
13.3 Mortgage loans	0	0	0
13.4 Real estate	0	0	0
13.5 Other invested assets	0	0	0
13.6 Miscellaneous applications	2,285	18,222	0
13.7 Total investments acquired (Lines 13.1 to 13.6)	12,172,155	10,075,505	13,981,587
14. Net increase (or decrease) in contract loans and premium notes	0	0	0
15. Net cash from investments (Line 12.8 minus Line 13.7 and Line 14)	(3,810,641)	(3,489,226)	(3,709,245)
Cash from Financing and Miscellaneous Sources			
16. Cash provided (applied):			
16.1 Surplus notes, capital notes	0	0	0
16.2 Capital and paid in surplus, less treasury stock.....	0	0	0
16.3 Borrowed funds	0	0	0
16.4 Net deposits on deposit-type contracts and other insurance liabilities	0	0	0
16.5 Dividends to stockholders	0	0	0
16.6 Other cash provided (applied).....	(160,871)	2,189,170	424,844
17. Net cash from financing and miscellaneous sources (Line 16.1 through Line 16.4 minus Line 16.5 plus Line 16.6).....	(160,871)	2,189,170	424,844
RECONCILIATION OF CASH, CASH EQUIVALENTS AND SHORT-TERM INVESTMENTS			
18. Net change in cash, cash equivalents and short-term investments (Line 11, plus Lines 15 and 17)	(375,772)	459,231	485,865
19. Cash, cash equivalents and short-term investments:			
19.1 Beginning of year.....	1,123,813	637,948	637,948
19.2 End of period (Line 18 plus Line 19.1)	748,041	1,097,179	1,123,813

STATEMENT AS OF SEPTEMBER 30, 2013 OF THE
GRANGE INDEMNITY INSURANCE COMPANY

NOTES TO FINANCIAL STATEMENTS

1. SUMMARY OF SIGNIFICANT ACCOUNT POLICIES

- A. The Company prepares its statutory financial statements in conformity with accounting practices prescribed or permitted by the State of Ohio. The State of Ohio requires that insurance companies domiciled in the State prepare their statutory basis financial statements in accordance with the NAIC Accounting Practices and Procedures manual subject to any deviations prescribed or permitted by the State of Ohio insurance commissioner. The Company does not employ accounting practices that depart from the NAIC Accounting Practices and Procedures Manual.

2. ACCOUNTING CHANGES AND CORRECTIONS OF ERRORS
NO CHANGE

3. BUSINESS COMBINATIONS AND GOODWILL
NONE

4. DISCONTINUED OPERATIONS
NO CHANGE

5. INVESTMENTS

D. LOAN-BACKED SECURITIES

- 1) Prepayment assumptions for single class and multi-class mortgage-backed/asset-backed securities were obtained from Hub Data and Bloomberg. These assumptions are consistent with the current interest rate and economic environment.
- 2) NONE
- 3) NONE
- 4) Impaired securities (fair value is less than cost or amortized cost) for which an other-than-temporary impairment has not been recognized in earnings as a realized loss (including securities with a recognized other-than-temporary impairment for non-interest related declines when a non-recognized interest related impairment remains):

a.

Aggregate Amount of Unrealized Losses:

1	Less than 12 Months	(91,685)
2	Greater than 12 Months	0

b.

The Aggregate Related Fair Value of Securities with Unrealized Losses:

1	Less than 12 Months	2,452,253
2	Greater than 12 Months	0

5. According to SSAP 43R, loan-backed and structured securities with an unrealized loss position were reviewed according to the pronouncement that became effective on 9/30/09. The best estimate of future cash flows using the appropriate discount rate was calculated for each affected security, with other-than-temporary impairments realized to the extent that present value was less than amortized cost. Securities with a present value greater than amortized cost were not other-than-temporarily impaired.

E. Repurchase Agreements and/or Securities Lending Transactions

b) Collateral Received

	Fair Value
The fair value of that collateral and of the portion of that collateral that it has sold or re-pledged	3,919,029

6. JOINT VENTURES, PARTNERSHIPS AND LIMITED LIABILITY COMPANIES
NO CHANGE

7. INVESTMENT INCOME
NO CHANGE

8. DERIVATIVE INSTRUMENTS
NONE

9. FEDERAL INCOME

- A. The components of the net deferred tax assets at September 30, 2013 and December 31, 2012 are as follows:

	September 30, 2013	December 31, 2012
Gross Deferred Tax Assets	\$ 1,841,164	\$ 1,701,685
Gross Deferred Tax Liabilities	231,434	220,181
Net Deferred Tax Asset (Liability)	1,609,730	1,481,504
Nonadmitted Deferred Tax Assets	0	0
Admitted Deferred Tax Asset	1,609,730	1,481,504
(Increase) Decrease in Deferred Tax Assets Nonadmitted	\$ 0	\$ 0

- B. The Company has no deferred tax liabilities that are not recognized

- C. Current income taxes incurred consist of the following major components:

	September 30, 2013	December 31, 2012
Current Income Tax Expense	\$ 1,046,171	\$ 763,265
Tax on Capital Gains/(Losses)	41,865	57,694
Prior Year Under Accrual (Over Accrual)	0	0
Federal Income Taxes Incurred	\$ 1,088,036	\$ 820,959

10. INFORMATION CONCERNING PARENT, SUBSIDIARIES AND AFFILIATES
NO CHANGE

11. DEBT
NONE

STATEMENT AS OF SEPTEMBER 30, 2013 OF THE
GRANGE INDEMNITY INSURANCE COMPANY

NOTES TO FINANCIAL STATEMENTS

12. RETIREMENT PLANS, DEFERRED COMPENSATION, AND POSTRETIREMENT BENEFIT PLANS
No Pension, Postretirement or Postemployment and Compensated Absence Benefit Plans
13. CAPITAL AND SURPLUS, DIVIDEND RESTRICTIONS AND QUSAI-REORGANIZATIONS
NO CHANGE
14. CONTINGENCIES
NO CHANGE
15. LEASES
NO CHANGE
16. INFORMATION ABOUT FINANCIAL INSTRUMENTS WITH OFF-BALANCE SHEET RISK AND FINANCIAL INSTRUMENTS WITH
CONCENTRATION OF CREDIT RISK.
NONE
17. SALE, TRANSFER AND SERVICING OF FINANCIAL ASSETS AND EXTINGUISHMENTS OF LIABILITIES

B. Transfer and Servicing of Financial Assets

2. For all servicing assets and servicing liabilities:

b) None

4. For securitizations, asset-backed financing arrangements and similar transfers accounted for as sales when the transferor has continuing involvement (as defined in the Accounting Practices and Procedures Manual) with the transferred financial assets:

a) None

b) None

C. Wash Sales
None
18. GAINS OR LOSS TO THE REPORTING ENTITY FROM UNINSURED A&H PLANS AND THE UNINSURED PORTION OF PARTIALLY INSURED
PLANS.
NONE
19. DIRECT PREMIUM WRITTEN / PRODUCED BY MANAGING GENERAL AGENTS / THIRD PARTY ADMINISTRATORS
NONE
20. FAIR VALUE MEASUREMENTS

A.

1. NONE

2. NONE

3. The Company’s policy is to recognize transfers in and out as of the end of the reporting period.

4. As of September 30, 2013, the reported fair value of the entity's investments categorized within Level 2 and Level 3 of the fair value hierarchy are as follows:

According to statutory accounting rules, fixed income securities with a rating of NAIC 1 or 2 are reported at amortized cost. Securities with a rating of NAIC 3 thru 6, or non-investment grade ratings, are measured and reported at the lower of amortized cost or fair value on the statement of financial position. As of September 30, 2013, the Company did not have any bonds rated NAIC 3 thru 6, and therefore did not report any securities at fair value.

B. Not Required

C.

Type of Financial Instrument	Aggregate Fair Value	Admitted Assets	Level 1	Level 2	Level 3	Not Practicable (CV)
Bonds	75,697,437	72,270,033	5,931,698	69,765,739	0	0
Common Stock	0	0	0	0	0	0
Perpetual Preferred	0	0	0	0	0	0
Mortgage Loans	0	0	0	0	0	0
Money Market	748,042	748,042	748,042	0	0	0
Total	76,445,479	73,018,075	6,679,740	69,765,739	0	0

D. NONE
21. OTHER ITEMS
NO CHANGE
22. EVENTS SUBSEQUENT

NO CHANGE
23. REINSURANCE
NO CHANGE
24. RETROSPECTIVELY RATED CONTRACTS & CONTRACTS SUBJECT TO REDETERMINATION
NONE

STATEMENT AS OF SEPTEMBER 30, 2013 OF THE
GRANGE INDEMNITY INSURANCE COMPANY

NOTES TO FINANCIAL STATEMENTS

25. CHANGES IN INCURRED LOSSES AND LOSS ADJUSTMENT EXPENSES

Reserves for incurred losses and loss adjustment expenses attributable to insured events of prior years has increased (decreased) by \$(0.156) million from \$32.094 million in 2012 to \$31.938 million in 2013 as a result of re-estimation of unpaid losses and loss adjustment expenses principally on private passenger auto liability and homeowners lines of insurance. This increase (decrease) is generally the result of ongoing analysis of recent loss development trends. Original estimates are increased or decreased as additional information becomes known regarding individual claims. Included in this increase (decrease), the Company experienced \$0 million of unfavorable (favorable) prior year loss development on retrospectively rated policies. However, since the business to which it relates is subject to premium adjustments, there was no significant impact on surplus.

LOSSES AND LAE	September 30, 2013	December 31, 2012
BALANCE JANUARY 1	32,093,716	30,665,999
LESS REINSURANCE RECOVERABLES	11,814,025	10,360,876
NET BALANCE JANUARY 1	20,279,691	20,305,123
INCURRED RELATED TO:		
CURRENT YEAR	21,492,289	30,299,791
PRIOR YEAR	(155,965)	(1,739,479)
TOTAL INCURRED	21,336,324	28,560,312
PAID RELATED TO:		
CURRENT YEAR	12,682,839	19,907,732
PRIOR YEAR	8,225,372	8,678,012
TOTAL PAID	20,908,211	28,585,744
NET BALANCE AT DECEMBER 31	20,707,805	20,279,691
PLUS REINSURANCE RECOVERABLES	13,897,675	11,814,025
BALANCE AT DECEMBER 31	34,605,480	32,093,716

26. INTERCOMPANY POOLING AGREEMENTS
NO CHANGE

27. STRUCTURED SETTLEMENTS
NO CHANGE.

28. HEALTH CARE RECEIVABLES
NONE

29. PARTICIPATING POLICIES
NONE

30. PREMIUM DEFICIENCY RESERVES
NO CHANGE

31. HIGH DEDUCTIBLES
NONE

32. DISCOUNTING OF LIABILITIES FOR UNPAID LOSSES OR UNPAID LOSS ADJUSTMENT EXPENSES
NONE

33. ASBESTOS/ENVIRONMENTAL RESERVES
NONE

34. SUBSCRIBER SAVINGS ACCOUNTS
NOT APPLICABLE

35. MULTIPLE PERIL CROP INSURANCE
NONE

36. FINANCIAL GUARANTY INSURANCE
No Financial Guaranty Insurance

37. CATASTROPHIC PLANNING
NO CHANGE

GENERAL INTERROGATORIES

PART 1 - COMMON INTERROGATORIES
GENERAL

- 1.1

Did the reporting entity experience any material transactions requiring the filing of Disclosure of Material Transactions with the State of Domicile, as required by the Model Act?

Yes ☐ No ☒
- 1.2

If yes, has the report been filed with the domiciliary state?

Yes ☐ No ☐
- 2.1

Has any change been made during the year of this statement in the charter, by-laws, articles of incorporation, or deed of settlement of the reporting entity?

Yes ☐ No ☒
- 2.2

If yes, date of change:

01/01/3000
- 3.1

Have there been any substantial changes in the organizational chart since the prior quarter end?

Yes ☐ No ☒
- 3.2

If the response to 3.1 is yes, provide a brief description of those changes.
- 4.1

Has the reporting entity been a party to a merger or consolidation during the period covered by this statement?

Yes ☐ No ☒
- 4.2

If yes, provide the name of entity, NAIC Company Code, and state of domicile (use two letter state abbreviation) for any entity that has ceased to exist as a result of the merger or consolidation.

1	2	3
Name of Entity	NAIC Company Code	State of Domicile

5.

If the reporting entity is subject to a management agreement, including third-party administrator(s), managing general agent(s), attorney-in-fact, or similar agreement, have there been any significant changes regarding the terms of the agreement or principals involved?

If yes, attach an explanation.

Yes ☐ No ☒ NA ☐
- 6.1

State as of what date the latest financial examination of the reporting entity was made or is being made.

12/31/2009
- 6.2

State the as of date that the latest financial examination report became available from either the state of domicile or the reporting entity. This date should be the date of the examined balance sheet and not the date the report was completed or released.

12/31/2009
- 6.3

State as of what date the latest financial examination report became available to other states or the public from either the state of domicile or the reporting entity. This is the release date or completion date of the examination report and not the date of the examination (balance sheet date).

10/25/2010
- 6.4

By what department or departments?

Ohio
- 6.5

Have all financial statement adjustments within the latest financial examination report been accounted for in a subsequent financial statement filed with Departments?

Yes ☐ No ☐ NA ☒
- 6.6

Have all of the recommendations within the latest financial examination report been complied with?

Yes ☒ No ☐ NA ☐
- 7.1

Has this reporting entity had any Certificates of Authority, licenses or registrations (including corporate registration, if applicable) suspended or revoked by any governmental entity during the reporting period?

Yes ☐ No ☒
- 7.2

If yes, give full information:
- 8.1

Is the company a subsidiary of a bank holding company regulated by the Federal Reserve Board?

Yes ☐ No ☒
- 8.2

If response to 8.1 is yes, please identify the name of the bank holding company.
- 8.3

Is the company affiliated with one or more banks, thrifts or securities firms?

Yes ☐ No ☒
- 8.4

If response to 8.3 is yes, please provide below the names and location (city and state of the main office) of any affiliates regulated by a federal regulatory services agency [i.e. the Federal Reserve Board (FRB), the Office of the Comptroller of the Currency (OCC), the Federal Deposit Insurance Corporation (FDIC) and the Securities Exchange Commission (SEC)] and identify the affiliate's primary federal regulator.]

1	2	3	4	5	6
Affiliate Name	Location (City, State)	FRB	OCC	FDIC	SEC

GENERAL INTERROGATORIES

9.1

Are the senior officers (principal executive officer, principal financial officer, principal accounting officer or controller, or persons performing similar functions) of the reporting entity subject to a code of ethics, which includes the following standards?
(a) Honest and ethical conduct, including the ethical handling of actual or apparent conflicts of interest between personal and professional relationships;
(b) Full, fair, accurate, timely and understandable disclosure in the periodic reports required to be filed by the reporting entity;
(c) Compliance with applicable governmental laws, rules and regulations;
(d) The prompt internal reporting of violations to an appropriate person or persons identified in the code; and
(e) Accountability for adherence to the code.

Yes [X] No []

9.11

If the response to 9.1 is No, please explain:
.....

9.2

Has the code of ethics for senior managers been amended?

Yes [] No [X]

9.21

If the response to 9.2 is Yes, provide information related to amendment(s).
.....

9.3

Have any provisions of the code of ethics been waived for any of the specified officers?

Yes [] No [X]

9.31

If the response to 9.3 is Yes, provide the nature of any waiver(s).
.....

FINANCIAL

10.1

Does the reporting entity report any amounts due from parent, subsidiaries or affiliates on Page 2 of this statement?.....

Yes [X] No []

10.2

If yes, indicate any amounts receivable from parent included in the Page 2 amount:.....\$1,180,983

INVESTMENT

11.1

Were any of the stocks, bonds, or other assets of the reporting entity loaned, placed under option agreement, or otherwise made available for use by another person? (Exclude securities under securities lending agreements.)

Yes [] No [X]

11.2

If yes, give full and complete information relating thereto:
.....

12.

Amount of real estate and mortgages held in other invested assets in Schedule BA:\$0

13.

Amount of real estate and mortgages held in short-term investments:\$0

14.1

Does the reporting entity have any investments in parent, subsidiaries and affiliates?

Yes [] No [X]

14.2

If yes, please complete the following:

	1	2
	Prior Year-End Book/Adjusted Carrying Value	Current Quarter Book/Adjusted Carrying Value
14.21 Bonds	\$	\$
14.22 Preferred Stock	\$	\$
14.23 Common Stock	\$	\$
14.24 Short-Term Investments	\$	\$
14.25 Mortgage Loans on Real Estate	\$	\$
14.26 All Other	\$	\$
14.27 Total Investment in Parent, Subsidiaries and Affiliates (Subtotal Lines 14.21 to 14.26).....	\$0	\$0
14.28 Total Investment in Parent included in Lines 14.21 to 14.26 above	\$	\$

15.1

Has the reporting entity entered into any hedging transactions reported on Schedule DB?

Yes [] No [X]

15.2

If yes, has a comprehensive description of the hedging program been made available to the domiciliary state?

Yes [] No []

If no, attach a description with this statement.

GENERAL INTERROGATORIES

16

For the reporting entity's security lending program, state the amount of the following as of the current statement date:

16.1

Total fair value of reinvested collateral assets reported on Schedule DL, Parts 1 and 2

\$.....1,267,956

16.2

Total book adjusted/carrying value of reinvested collateral assets reported on Schedule DL, Parts 1 and 2

\$.....1,267,936

16.3

Total payable for securities lending reported on the liability page

\$.....1,267,936

17

Excluding items in Schedule E – Part 3 – Special Deposits, real estate, mortgage loans and investments held physically in the reporting entity's offices, vaults or safety deposit boxes, were all stocks, bonds and other securities, owned throughout the current year held pursuant to a custodial agreement with a qualified bank or trust company in accordance with Section 1, III – General Examination Considerations, F. Outsourcing of Critical Functions, Custodial or Safekeeping Agreements of the NAIC *Financial Condition Examiners Handbook*?

Yes ☒ No ☐

17.1

For all agreements that comply with the requirements of the NAIC *Financial Condition Examiners Handbook*, complete the following:

1	2
Name of Custodian(s)	Custodian Address
JP Morgan Chase Bank, N.A.....	1111 Polaris Parkway, Columbus, OH 43240.....

17.2

For all agreements that do not comply with the requirements of the NAIC *Financial Condition Examiners Handbook*, provide the name, location and a complete explanation:

1	2	3
Name(s)	Location(s)	Complete Explanation(s)

17.3

Have there been any changes, including name changes, in the custodian(s) identified in 17.1 during the current quarter?

Yes ☐ No ☒

17.4

If yes, give full and complete information relating thereto:

1	2	3	4
Old Custodian	New Custodian	Date of Change	Reason

17.5

Identify all investment advisors, broker/dealers or individuals acting on behalf of broker/dealers that have access to the investment accounts, handle securities and have authority to make investments on behalf of the reporting entity:

1	2	3
Central Registration Depository	Name(s)	Address

18.1

Have all the filing requirements of the *Purposes and Procedures Manual* of the NAIC Securities Valuation Office been followed?

Yes ☒ No ☐

18.2

If no, list exceptions:
.....

GENERAL INTERROGATORIES
PART 2 - PROPERTY & CASUALTY INTERROGATORIES

1. If the reporting entity is a member of a pooling arrangement, did the agreement or the reporting entity's participation change? Yes [] No [X] NA []
If yes, attach an explanation.

2. Has the reporting entity reinsured any risk with any other reporting entity and agreed to release such entity from liability, in whole or in part, from any loss that may occur on the risk, or portion thereof, reinsured? Yes [] No [X]
If yes, attach an explanation.

3.1 Have any of the reporting entity's primary reinsurance contracts been canceled? Yes [] No [X]

3.2 If yes, give full and complete information thereto.
.....

4.1 Are any of the liabilities for unpaid losses and loss adjustment expenses other than certain workers' compensation tabular reserves (see *Annual Statement Instructions* pertaining to disclosure of discounting for definition of "tabular reserves,") discounted at a rate of interest greater than zero? Yes [] No [X]

4.2 If yes, complete the following schedule:

			TOTAL DISCOUNT				DISCOUNT TAKEN DURING PERIOD			
1	2	3	4	5	6	7	8	9	10	11
Line of Business	Maximum Interest	Discount Rate	Unpaid Losses	Unpaid LAE	IBNR	TOTAL	Unpaid Losses	Unpaid LAE	IBNR	TOTAL
TOTAL			0	0	0	0	0	0	0	0

5. Operating Percentages:
5.1 A&H loss percent %
5.2 A&H cost containment percent %
5.3 A&H expense percent excluding cost containment expenses %

6.1 Do you act as a custodian for health savings accounts?..... Yes [] No [X]
6.2 If yes, please provide the amount of custodial funds held as of the reporting date..... \$
6.3 Do you act as an administrator for health savings accounts?..... Yes [] No [X]
6.4 If yes, please provide the balance of the funds administered as of the reporting date..... \$

STATEMENT AS OF SEPTEMBER 30, 2013 OF THE GRANGE INDEMNITY INSURANCE COMPANY

SCHEDULE F - CEDED REINSURANCE

Showing All New Reinsurers - Current Year to Date

[illegible]

SCHEDULE T - EXHIBIT OF PREMIUMS WRITTEN

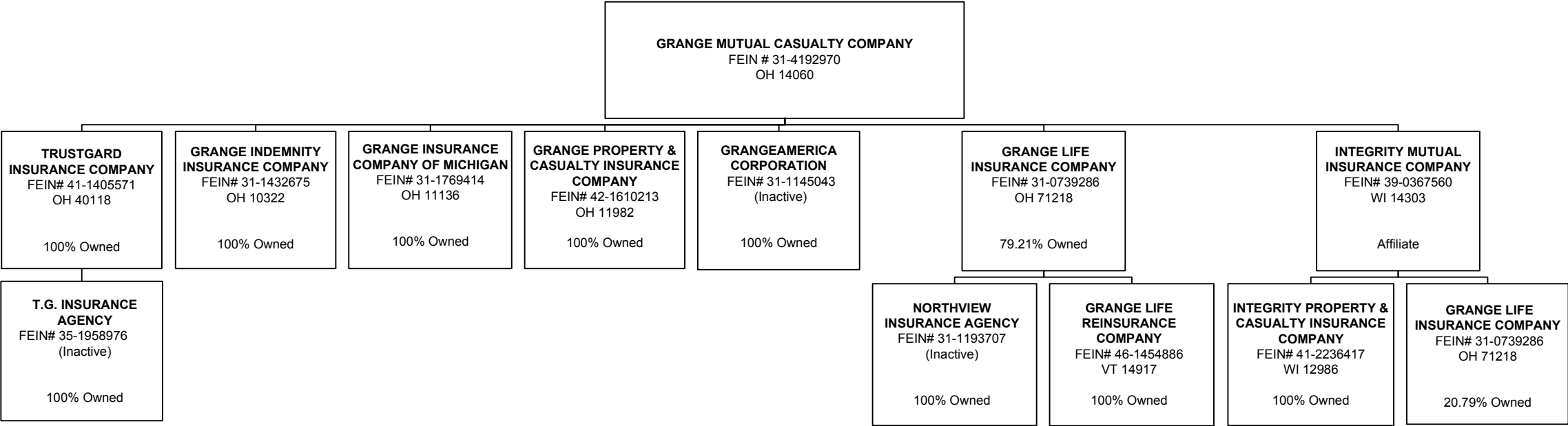
Current Year to Date - Allocated by States and Territories							
States, etc.	1	Direct Premiums Written		Direct Losses Paid (Deducting Salvage)		Direct Losses Unpaid	
		2	3	4	5	6	7
	Active Status	Current Year To Date	Prior Year To Date	Current Year To Date	Prior Year To Date	Current Year To Date	Prior Year To Date
1. Alabama	AL..N		.0		.0		.0
2. Alaska	AK..N		.0		.0		.0
3. Arizona	AZ..N		.0		.0		.0
4. Arkansas	AR..N		.0		.0		.0
5. California	CA..N		.0		.0		.0
6. Colorado	CO..N		.0		.0		.0
7. Connecticut	CT..N		.0		.0		.0
8. Delaware	DE..N		.0		.0		.0
9. Dist. Columbia	DC..N		.0		.0		.0
10. Florida	FL..N		.0		.0		.0
11. Georgia	GA..L	4,954,074	1,700,403	1,248,513	1,269,056	2,393,226	.852,345
12. Hawaii	HI..N		.0		.0		.0
13. Idaho	ID..N		.0		.0		.0
14. Illinois	IL..L	10,251,817	4,992,138	2,626,554	1,811,798	5,072,220	3,170,290
15. Indiana	IN..L	8,159,089	7,627,144	3,898,391	3,872,169	3,878,847	3,362,469
16. Iowa	IA..L		.0		.0		.0
17. Kansas	KS..L		.0		.0		.0
18. Kentucky	KY..L	4,142,358	3,458,436	1,410,072	2,392,990	1,760,165	1,519,232
19. Louisiana	LA..N		.0		.0		.0
20. Maine	ME..N		.0		.0		.0
21. Maryland	MD..N		.0		.0		.0
22. Massachusetts	MA..N		.0		.0		.0
23. Michigan	MI..N		.0		.0		.0
24. Minnesota	MN..L		.0		.0		.0
25. Mississippi	MS..N		.0		.0		.0
26. Missouri	MO..L		.0		.0		.0
27. Montana	MT..N		.0		.0		.0
28. Nebraska	NE..N		.0		.0		.0
29. Nevada	NV..N		.0		.0		.0
30. New Hampshire	NH..N		.0		.0		.0
31. New Jersey	NJ..N		.0		.0		.0
32. New Mexico	NM..N		.0		.0		.0
33. New York	NY..N		.0		.0		.0
34. No. Carolina	NC..N		.0		.0		.0
35. No. Dakota	ND..N		.0		.0		.0
36. Ohio	OH..L	9,303,552	8,297,501	4,291,359	3,473,729	5,022,458	4,823,990
37. Oklahoma	OK..N		.0		.0		.0
38. Oregon	OR..N		.0		.0		.0
39. Pennsylvania	PA..L	3,911,258	1,967,197	698,100	722,691	1,244,679	1,180,179
40. Rhode Island	RI..N		.0		.0		.0
41. So. Carolina	SC..N		.0		.0		.0
42. So. Dakota	SD..N		.0		.0		.0
43. Tennessee	TN..L	4,542,105	2,863,365	1,312,562	1,524,976	1,457,883	.895,567
44. Texas	TX..N		.0		.0		.0
45. Utah	UT..N		.0		.0		.0
46. Vermont	VT..N		.0		.0		.0
47. Virginia	VA..N		.0		.0		.0
48. Washington	WA..N		.0		.0		.0
49. West Virginia	WV..N		.0		.0		.0
50. Wisconsin	WI..L		.0		.0		.0
51. Wyoming	WY..N		.0		.0		.0
52. American Samoa	AS..N		.0		.0		.0
53. Guam	GU..N		.0		.0		.0
54. Puerto Rico	PR..N		.0		.0		.0
55. U.S. Virgin Islands	VI..N		.0		.0		.0
56. Northern Mariana Islands	MP..N		.0		.0		.0
57. Canada	CAN..N		.0		.0		.0
58. Aggregate Other Alien	OT..XXX	.0	.0	.0	.0	.0	.0
59. Totals	(a) 12	45,264,253	30,906,184	15,485,551	15,067,409	20,829,478	15,804,072
DETAILS OF WRITE-INS							
58001.	XXX						
58002.	XXX						
58003.	XXX						
58998. Summary of remaining write-ins for Line 58 from overflow page.	XXX	.0	.0	.0	.0	.0	.0
58999. TOTALS (Lines 58001 through 58003 plus 58998) (Line 58 above)	XXX	0	0	0	0	0	0

(L) Licensed or Chartered - Licensed Insurance Carrier or Domiciled RRG; (R) Registered - Non-domiciled RRGs; (Q) Qualified - Qualified or Accredited Reinsurer; (E) Eligible - Reporting Entities eligible or approved to write Surplus Lines in the state; (N) None of the above - Not allowed to write business in the state.

(a) Insert the number of L responses except for Canada and Other Alien.

SCHEDULE Y – INFORMATION CONCERNING ACTIVITIES OF INSURER
MEMBERS OF A HOLDING COMPANY GROUP

PART 1 – ORGANIZATIONAL CHART



STATEMENT AS OF SEPTEMBER 30, 2013 OF THE GRANGE INDEMNITY INSURANCE COMPANY

SCHEDULE Y
PART 1A – DETAIL OF INSURANCE HOLDING COMPANY SYSTEM

1	2	3	4	5	6	7	8	9	10	11	12	13	14	15
Group Code	Group Name	NAIC Company Code	Federal ID Number	Federal RSSD	CIK	Name of Securities Exchange if Publicly Traded (U.S. or International)	Name of Parent Subsidiaries or Affiliates	Domiciliary Location	Relationship to Reporting Entity	Directly Controlled by (Name of Entity/Person)	Type of Control (Ownership, Board, Management, Attorney-in-Fact, Influence, Other)	If Control is Ownership Provide Percentage	Ultimate Controlling Entity(ies)/ Person(s)	*
00267.....	GRANGE MUTUAL CASUALTY GROUP.....	14060.....	31-4192970.....				GRANGE MUTUAL CASUALTY COMPANY.....	.OH.....	UDP.....	GRANGE MUTUAL CASUALTY COMPANY.....	BOARD.....0.0	GRANGE MUTUAL CASUALTY COMPANY.....0
00267.....	GRANGE MUTUAL CASUALTY GROUP.....	71218.....	31-0739286.....				GRANGE LIFE INSURANCE COMPANY.....	.OH.....	.IA.....	GRANGE MUTUAL CASUALTY COMPANY.....	OWNERSHIP.....79.2	GRANGE MUTUAL CASUALTY COMPANY.....0
00267.....	GRANGE MUTUAL CASUALTY GROUP.....	71218.....	31-0739286.....				GRANGE LIFE INSURANCE COMPANY.....	.OH.....	.IA.....	INTEGRITY MUTUAL INSURANCE COMPANY.....	OWNERSHIP.....20.8	GRANGE MUTUAL CASUALTY COMPANY.....0
00267.....	GRANGE MUTUAL CASUALTY GROUP.....	40118.....	41-1405571.....				TRUSTGARD INSURANCE COMPANY.....	.OH.....	.IA.....	GRANGE MUTUAL CASUALTY COMPANY.....	OWNERSHIP.....100.0	GRANGE MUTUAL CASUALTY COMPANY.....0
00267.....	GRANGE MUTUAL CASUALTY GROUP.....	10322.....	31-1432675.....				GRANGE INDEMNITY INSURANCE COMPANY.....	.OH.....	.OTH.....	GRANGE MUTUAL CASUALTY COMPANY.....	OWNERSHIP.....100.0	GRANGE MUTUAL CASUALTY COMPANY.....1
00267.....	GRANGE MUTUAL CASUALTY GROUP.....	11136.....	31-1769414.....				GRANGE INSURANCE COMPANY OF MICHIGAN.....	.OH.....	.IA.....	GRANGE MUTUAL CASUALTY COMPANY.....	OWNERSHIP.....100.0	GRANGE MUTUAL CASUALTY COMPANY.....0
00267.....	GRANGE MUTUAL CASUALTY GROUP.....	14303.....	39-0367560.....				INTEGRITY MUTUAL INSURANCE COMPANY.....	.WI.....	.IA.....	GRANGE MUTUAL CASUALTY COMPANY.....	BOARD.....0.0	GRANGE MUTUAL CASUALTY COMPANY.....0
00267.....	GRANGE MUTUAL CASUALTY GROUP.....	11982.....	42-1610213.....				GRANGE PROPERTY & CASUALTY INSURANCE COMPANY.....	.OH.....	.IA.....	GRANGE MUTUAL CASUALTY COMPANY.....	OWNERSHIP.....100.0	GRANGE MUTUAL CASUALTY COMPANY.....0
00267.....	GRANGE MUTUAL CASUALTY GROUP.....	12986.....	41-2236417.....				INTEGRITY PROPERTY & CASUALTY INSURANCE COMPANY.....	.WI.....	.IA.....	INTEGRITY MUTUAL INSURANCE COMPANY.....	OWNERSHIP.....100.0	GRANGE MUTUAL CASUALTY COMPANY.....0
00267.....	GRANGE MUTUAL CASUALTY GROUP.....	14917.....	46-1454886.....				GRANGE LIFE REINSURANCE COMPANY.....	.VT.....	.IA.....	GRANGE LIFE INSURANCE COMPANY.....	OWNERSHIP.....100.0	GRANGE MUTUAL CASUALTY COMPANY.....0
		00000.....	31-1145043.....				GRANGEAMERICA.....	.OH.....	.NIA.....	GRANGE MUTUAL CASUALTY COMPANY.....	OWNERSHIP.....100.0	GRANGE MUTUAL CASUALTY COMPANY.....0
		00000.....	31-1193707.....				NORTHVIEW INSURANCE AGENCY.....	.OH.....	.NIA.....	GRANGE LIFE INSURANCE COMPANY.....	OWNERSHIP.....100.0	GRANGE MUTUAL CASUALTY COMPANY.....0
		00000.....	35-1958976.....				T.G. INSURANCE AGENCY.....	.OH.....	.NIA.....	TRUSTGARD INSURANCE COMPANY.....	OWNERSHIP.....100.0	GRANGE MUTUAL CASUALTY COMPANY.....0

Asterisk	Explanation
1	Reporting Entity.....

PART 1 - LOSS EXPERIENCE

Line of Business		Current Year to Date			4 Prior Year to Date Direct Loss Percentage
		1 Direct Premiums Earned	2 Direct Losses Incurred	3 Direct Loss Percentage	
1.	Fire			0.0	0.0
2.	Allied lines			0.0	0.0
3.	Farmowners multiple peril			0.0	0.0
4.	Homeowners multiple peril			0.0	0.0
5.	Commercial multiple peril			0.0	0.0
6.	Mortgage guaranty			0.0	0.0
8.	Ocean marine			0.0	0.0
9.	Inland marine			0.0	0.0
10.	Financial guaranty			0.0	0.0
11.1	Medical professional liability -occurrence			0.0	0.0
11.2	Medical professional liability -claims made			0.0	0.0
12.	Earthquake			0.0	0.0
13.	Group accident and health			0.0	0.0
14.	Credit accident and health			0.0	0.0
15.	Other accident and health			0.0	0.0
16.	Workers' compensation			0.0	0.0
17.1	Other liability occurrence			0.0	0.0
17.2	Other liability-claims made			0.0	0.0
17.3	Excess Workers' Compensation			0.0	0.0
18.1	Products liability-occurrence			0.0	0.0
18.2	Products liability-claims made			0.0	0.0
19.1,19.2	Private passenger auto liability	9,967,909	6,053,013	60.7	42.5
19.3,19.4	Commercial auto liability	15,269,788	8,309,158	54.4	52.1
21.	Auto physical damage	10,181,129	5,944,167	58.4	62.2
22.	Aircraft (all perils)			0.0	0.0
23.	Fidelity			0.0	0.0
24.	Surety			0.0	0.0
26.	Burglary and theft			0.0	0.0
27.	Boiler and machinery			0.0	0.0
28.	Credit			0.0	0.0
29.	International			0.0	0.0
30.	Warranty			0.0	0.0
31.	Reinsurance - Nonproportional Assumed Property	XXX	XXX	XXX	XXX
32.	Reinsurance - Nonproportional Assumed Liability	XXX	XXX	XXX	XXX
33.	Reinsurance - Nonproportional Assumed Financial Lines	XXX	XXX	XXX	XXX
34.	Aggregate write-ins for other lines of business	0	0	0.0	0.0
35.	TOTALS	35,418,826	20,306,338	57.3	51.4
DETAILS OF WRITE-INS					
3401.			0.0	0.0
3402.			0.0	0.0
3403.			0.0	0.0
3498.	Sum. of remaining write-ins for Line 34 from overflow page	0	0	0.0	0.0
3499.	Totals (Lines 3401 through 3403 plus 3498) (Line 34)	0	0	0.0	0.0

PART 2 - DIRECT PREMIUMS WRITTEN

Line of Business		1 Current Quarter	2 Current Year to Date	3 Prior Year Year to Date
1.	Fire	0		0
2.	Allied lines	0		0
3.	Farmowners multiple peril	0		0
4.	Homeowners multiple peril	0		0
5.	Commercial multiple peril	0		0
6.	Mortgage guaranty	0		0
8.	Ocean marine	0		0
9.	Inland marine	0		0
10.	Financial guaranty	0		0
11.1	Medical professional liability-occurrence	0		0
11.2	Medical professional liability-claims made	0		0
12.	Earthquake	0		0
13.	Group accident and health	0		0
14.	Credit accident and health	0		0
15.	Other accident and health	0		0
16.	Workers' compensation	0		0
17.1	Other liability occurrence	0		0
17.2	Other liability-claims made	0		0
17.3	Excess Workers' Compensation	0		0
18.1	Products liability-occurrence	0		0
18.2	Products liability-claims made	0		0
19.1,19.2	Private passenger auto liability	3,654,804	10,916,418	10,790,508
19.3,19.4	Commercial auto liability	6,923,642	21,791,200	10,984,135
21.	Auto physical damage	4,088,280	12,556,635	9,131,541
22.	Aircraft (all perils)	0		0
23.	Fidelity	0		0
24.	Surety	0		0
26.	Burglary and theft	0		0
27.	Boiler and machinery	0		0
28.	Credit	0		0
29.	International	0		0
30.	Warranty	0		0
31.	Reinsurance - Nonproportional Assumed Property	XXX	XXX	XXX
32.	Reinsurance - Nonproportional Assumed Liability	XXX	XXX	XXX
33.	Reinsurance - Nonproportional Assumed Financial Lines	XXX	XXX	XXX
34.	Aggregate write-ins for other lines of business	0	0	0
35.	TOTALS	14,666,726	45,264,253	30,906,184
DETAILS OF WRITE-INS				
3401.	0		0
3402.	0		0
3403.	0		0
3498.	Sum. of remaining write-ins for Line 34 from overflow page	0	0	0
3499.	Totals (Lines 3401 through 3403 plus 3498) (Line 34)	0	0	0

STATEMENT AS OF SEPTEMBER 30, 2013 OF THE GRANGE INDEMNITY INSURANCE COMPANY

PART 3 (000 omitted)

LOSS AND LOSS ADJUSTMENT EXPENSE RESERVES SCHEDULE

	1	2	3	4	5	6	7	8	9	10	11	12	13
Years in Which Losses Occurred	Prior Year-End Known Case Loss and LAE Reserves	Prior Year-End IBNR Loss and LAE Reserves	Total Prior Year-End Loss and LAE Reserves (Cols. 1 + 2)	2013 Loss and LAE Payments on Claims Reported as of Prior Year-End	2013 Loss and LAE Payments on Claims Unreported as of Prior Year-End	Total 2013 Loss and LAE Payments (Cols. 4 + 5)	Q.S. Date Known Case Loss and LAE Reserves on Claims Reported and Open as of Prior Year End	Q.S. Date Known Case Loss and LAE Reserves on Claims Reported or Reopened Subsequent to Prior Year End	Q.S. Date IBNR Loss and LAE Reserves	Total Q.S. Loss and LAE Reserves (Cols.7 + 8 + 9)	Prior Year-End Known Case Loss and LAE Reserves Developed (Savings)/ Deficiency (Cols. 4 + 7 minus Col. 1)	Prior Year-End IBNR Loss and LAE Reserves Developed (Savings)/ Deficiency (Cols. 5 + 8 + 9 minus Col. 2)	Prior Year-End Total Loss and LAE Reserve Developed (Savings)/ Deficiency (Cols. 11 + 12)
1. 2010 + Prior	3,428	1,935	5,363	2,493	420	2,913	1,986	61	500	2,547	1,051	(954)	97
2. 2011	2,502	2,023	4,525	1,171	133	1,304	1,743	63	1,309	3,115	412	(517)	(106)
3. Subtotals 2011 + prior	5,930	3,958	9,888	3,664	553	4,217	3,728	124	1,810	5,662	1,463	(1,471)	(9)
4. 2012	4,743	5,649	10,392	3,128	881	4,009	2,461	283	3,492	6,236	846	(993)	(147)
5. Subtotals 2012 + prior	10,673	9,606	20,280	6,792	1,433	8,225	6,190	407	5,302	11,898	2,308	(2,464)	(156)
6. 2013	XXX	XXX	XXX	XXX	12,683	12,683	XXX	4,278	4,532	8,809	XXX	XXX	XXX
7. Totals	10,673	9,606	20,280	6,792	14,116	20,908	6,190	4,685	9,833	20,708	2,308	(2,464)	(156)
8. Prior Year-End Surplus As Regards Policy-holders	40,786										Col. 11, Line 7 As % of Col. 1, Line 7	Col. 12, Line 7 As % of Col. 2, Line 7	Col. 13, Line 7 As % of Col. 3, Line 7
											1. 21.6	2. (25.7)	3. (0.8)
											Col. 13, Line 7 Line 8		
											4. (0.4)		

SUPPLEMENTAL EXHIBITS AND SCHEDULES INTERROGATORIES

The following supplemental reports are required to be filed as part of your statement filing. However, in the event that your company does not transact the type of business for which the special report must be filed, your response of **NO** to the specific interrogatory will be accepted in lieu of filing a "NONE" report and a bar code will be printed below. If the supplement is required of your company but is not being filed for whatever reason enter **SEE EXPLANATION** and provide an explanation following the interrogatory questions.


	Response
1. Will the Trusteed Surplus Statement be filed with the state of domicile and the NAIC with this statement?NO.....
2. Will Supplement A to Schedule T (Medical Professional Liability Supplement) be filed with this statement?NO.....
3. Will the Medicare Part D Coverage Supplement be filed with the state of domicile and the NAIC with this statement?NO.....
4. Will the Director and Officer Supplement be filed with the state of domicile and the NAIC with this statement?NO.....

Explanation:

- 1.
- 2.
- 3.
- 4.


Bar Code:

1.




1032201349000003

2.




1032201345500003

3.



1032201336500003

4.



1032201350500003

OVERFLOW PAGE FOR WRITE-INS

SCHEDULE A – VERIFICATION

Real Estate

	1	2
	Year To Date	Prior Year Ended December 31
1. Book/adjusted carrying value, December 31 of prior year0	.0
2. Cost of acquired:		
2.1 Actual cost at time of acquisition0
2.2 Additional investment made after acquisition0
3. Current year change in encumbrances0
4. Total gain (loss) on disposals0
5. Deduct amounts received on disposals0
6. Total foreign exchange change in book/adjusted carrying value0
7. Deduct current year's other than temporary impairment recognized0
8. Deduct current year's depreciation0
9. Book/adjusted carrying value at the end of current period (Lines 1+2+3+4-5+6-7-8)0	.0
10. Deduct total nonadmitted amounts0	.0
11. Statement value at end of current period (Line 9 minus Line 10)	0	0

SCHEDULE B – VERIFICATION

Mortgage Loans

	1	2
	Year To Date	Prior Year Ended December 31
1. Book value/recorded investment excluding accrued interest, December 31 of prior year0	.0
2. Cost of acquired:		
2.1 Actual cost at time of acquisition0
2.2 Additional investment made after acquisition0
3. Capitalized deferred interest and other0
4. Accrual of discount0
5. Unrealized valuation increase (decrease)0
6. Total gain (loss) on disposals0
7. Deduct amounts received on disposals0
8. Deduct amortization of premium and mortgage interest points and commitment fees0
9. Total foreign exchange change in book value/recorded investment excluding accrued interest0
10. Deduct current year's other than temporary impairment recognized0
11. Book value/recorded investment excluding accrued interest at end of current period (Lines 1+2+3+4+5+6-7-8+9-10)0	.0
12. Total valuation allowance0
13. Subtotal (Line 11 plus Line 12)0	.0
14. Deduct total nonadmitted amounts0	.0
15. Statement value at end of current period (Line 13 minus Line 14)	0	0

SCHEDULE BA – VERIFICATION

Other Long-Term Invested Assets

	1	2
	Year To Date	Prior Year Ended December 31
1. Book/adjusted carrying value, December 31 of prior year0	.0
2. Cost of acquired:		
2.1 Actual cost at time of acquisition0
2.2 Additional investment made after acquisition0
3. Capitalized deferred interest and other0
4. Accrual of discount0
5. Unrealized valuation increase (decrease)0
6. Total gain (loss) on disposals0
7. Deduct amounts received on disposals0
8. Deduct amortization of premium and depreciation0
9. Total foreign exchange change in book/adjusted carrying value0
10. Deduct current year's other than temporary impairment recognized0
11. Book/adjusted carrying value at end of current period (Lines 1+2+3+4+5+6-7-8+9-10)0	.0
12. Deduct total nonadmitted amounts0	.0
13. Statement value at end of current period (Line 11 minus Line 12)	0	0

SCHEDULE D – VERIFICATION

Bonds and Stocks

	1	2
	Year To Date	Prior Year Ended December 31
1. Book/adjusted carrying value of bonds and stocks, December 31 of prior year	68,676,267	65,162,148
2. Cost of bonds and stocks acquired	12,169,871	13,981,587
3. Accrual of discount	31,971	80,747
4. Unrealized valuation increase (decrease)0
5. Total gain (loss) on disposals	119,613	164,840
6. Deduct consideration for bonds and stocks disposed of	8,361,514	10,272,342
7. Deduct amortization of premium	366,175	440,713
8. Total foreign exchange change in book/adjusted carrying value0
9. Deduct current year's other than temporary impairment recognized0
10. Book/adjusted carrying value at end of current period (Lines 1+2+3+4+5-6-7+8-9)	72,270,033	68,676,267
11. Deduct total nonadmitted amounts0	.0
12. Statement value at end of current period (Line 10 minus Line 11)	72,270,033	68,676,267

STATEMENT AS OF SEPTEMBER 30, 2013 OF THE GRANGE INDEMNITY INSURANCE COMPANY

SCHEDULE D - PART 1B

Showing the Acquisitions, Dispositions and Non-Trading Activity
During the Current Quarter for all Bonds and Preferred Stock by Rating Class

	1 Book/Adjusted Carrying Value Beginning of Current Quarter	2 Acquisitions During Current Quarter	3 Dispositions During Current Quarter	4 Non-Trading Activity During Current Quarter	5 Book/Adjusted Carrying Value End of First Quarter	6 Book/Adjusted Carrying Value End of Second Quarter	7 Book/Adjusted Carrying Value End of Third Quarter	8 Book/Adjusted Carrying Value December 31 Prior Year
BONDS								
1. Class 1 (a).....	60,853,223	5,138,923	3,554,396	(936,736)	58,342,022	60,853,223	61,501,015	57,657,555
2. Class 2 (a).....	10,760,498	286,250	344,270	564,783	12,216,698	10,760,498	11,267,261	12,142,525
3. Class 3 (a).....	249,140		249,179	249,838	0	249,140	249,799	0
4. Class 4 (a).....	0				0	0	0	0
5. Class 5 (a).....	0				0	0	0	0
6. Class 6 (a).....	0				0	0	0	0
7. Total Bonds	71,862,862	5,425,173	4,147,845	(122,115)	70,558,720	71,862,862	73,018,075	69,800,079
PREFERRED STOCK								
8. Class 1	0				0	0	0	0
9. Class 2	0				0	0	0	0
10. Class 3	0				0	0	0	0
11. Class 4	0				0	0	0	0
12. Class 5	0				0	0	0	0
13. Class 6	0				0	0	0	0
14. Total Preferred Stock.....	0	0	0	0	0	0	0	0
15. Total Bonds & Preferred Stock	71,862,862	5,425,173	4,147,845	(122,115)	70,558,720	71,862,862	73,018,075	69,800,079

(a) Book/Adjusted Carrying Value column for the end of the current reporting period includes the following amount of non-rated short-term and cash equivalent bonds by NAIC designation: NAIC 1 \$748,042 ; NAIC 2 \$;

NAIC 3 \$; NAIC 4 \$; NAIC 5 \$; NAIC 6 \$

SCHEDULE DA - PART 1
Short-Term Investments

	1	2	3	4	5
	Book/Adjusted Carrying Value	Par Value	Actual Cost	Interest Collected Year To Date	Paid for Accrued Interest Year To Date
9199999	748,042	XXX	748,042	9	0

SCHEDULE DA - VERIFICATION
Short-Term Investments

	1	2
	Year To Date	Prior Year Ended December 31
1. Book/adjusted carrying value, December 31 of prior year.....	1,123,812	637,948
2. Cost of short-term investments acquired	2,199,620	3,944,105
3. Accrual of discount		0
4. Unrealized valuation increase (decrease).....		0
5. Total gain (loss) on disposals		0
6. Deduct consideration received on disposals	2,575,391	3,458,241
7. Deduct amortization of premium.....		0
8. Total foreign exchange change in book/adjusted carrying value.....		0
9. Deduct current year's other than temporary impairment recognized.....		0
10. Book/adjusted carrying value at end of current period (Lines 1+2+3+4+5-6-7+8-9).....	748,041	1,123,812
11. Deduct total nonadmitted amounts.....		0
12. Statement value at end of current period (Line 10 minus Line 11)	748,041	1,123,812

Schedule DB - Part A - Verification

NONE

Schedule DB - Part B - Verification

NONE

Schedule DB - Part C - Section 1

NONE

Schedule DB - Part C - Section 2

NONE

Schedule DB - Verification

NONE

Schedule E - Verification

NONE

Schedule A - Part 2

NONE

Schedule A - Part 3

NONE

Schedule B - Part 2

NONE

Schedule B - Part 3

NONE

Schedule BA - Part 2

NONE

Schedule BA - Part 3

NONE

STATEMENT AS OF SEPTEMBER 30, 2013 OF THE GRANGE INDEMNITY INSURANCE COMPANY

SCHEDULE D - PART 3

Show All Long-Term Bonds and Stock Acquired During the Current Quarter

1	2	3	4	5	6	7	8	9	10
CUSIP Identification	Description	Foreign	Date Acquired	Name of Vendor	Number of Shares of Stock	Actual Cost	Par Value	Paid for Accrued Interest and Dividends	NAIC Designation or Market Indicator ^(a)
Bonds - U.S. Governments									
313661-TT-6	FNMA Call 3.000% 09/12/28		08/15/2013	FTN Financial		500,000	500,000		1
38378V-XZ-3	GNR 2013-119 TV 3.000% 08/20/43		07/31/2013	Sterne, Agee & Leach		253,674	248,700	601	1
38378V-XZ-3	GNR 2013-119 TV 3.000% 08/20/43		07/31/2013	Sterne, Agee & Leach		1,326	1,300	3	1FE
0599999 - Bonds - U.S. Governments						755,000	750,000	604	XXX
Bonds - U.S. States, Territories and Possessions									
93974D-AW-8	Washington State Call 5.000% 08/01/25		08/19/2013	Stephens Inc		281,360	250,000	35	1FE
1799999 - Bonds - U.S. States, Territories and Possessions						281,360	250,000	35	XXX
Bonds - U.S. Political Subdivisions of States, Territories and Possessions									
235219-HU-9	Dallas, TX Call 5.000% 02/15/25		07/09/2013	Tax Free Exchange		304,584	250,000	5,000	1FE
485429-UA-0	Kansas State NC 5.000% 05/01/21		07/03/2013	Morgan Stanley		293,960	250,000		1FE
2499999 - Bonds - U.S. Political Subdivisions of States, Territories and Possessions						598,544	500,000	5,000	XXX
Bonds - U.S. Special Revenue									
31315P-YZ-6	FAMCA Call 2.375% 05/02/23		08/21/2013	Stifel Nicolaus & Co		449,865	500,000	3,628	1
677704-A3-2	Ohio University Call 5.000% 12/01/36		07/24/2013	Cantor Fitz		255,600	250,000	1,875	1FE
3199999 - Bonds - U.S. Special Revenue and Special Assessment and all Non-Guaranteed Obligations of Agencies and Authorities of Government and Their Political Subdivisions						705,465	750,000	5,503	XXX
Bonds - Industrial and Miscellaneous (Unaffiliated)									
02361D-AD-2	Ameren Illinois Company NC 6.250% 06/1		09/10/2013	Stifel Nicolaus & Co		447,284	400,000	6,111	2FE
03027W-AJ-1	American Tower Trust REITS-144A-Call 3		07/17/2013	Stifel Nicolaus & Co		239,570	250,000	149	1FE
217203-AE-8	Copano Energy LLC Call 7.125% 04/01/21		07/18/2013	Davidson, D.A., Co., Inc		286,250	250,000	5,542	2FE
372917-AS-3	Genzyme Corp NC 5.000% 06/15/20		09/24/2013	Sterne, Agee & Leach		280,218	250,000	3,542	1FE
70213B-AA-9	Partnerre Finance NC 5.500% 06/01/20		09/10/2013	National Financial Services		270,000	250,000	3,896	1FE
759891-AA-2	Renre North America Hldg NC 5.750% 03/		09/03/2013	National Financial Services		545,960	500,000	13,656	1FE
957674-AD-6	Western Atlas Inc NC 8.550% 06/15/24		07/29/2013	State Street Brokerage Service		557,952	400,000	4,370	1FE
3899999 - Bonds - Industrial and Miscellaneous (Unaffiliated)						2,627,234	2,300,000	37,266	XXX
8399997 - Subtotals- Bonds - Part 3						4,967,602	4,550,000	48,408	XXX
8399999 - Subtotals - Bonds						4,967,602	4,550,000	48,408	XXX
9999999 Totals						4,967,602	XXX	48,408	XXX

(a) For all common stock bearing the NAIC market indicator "U" provide: the number of such issues

STATEMENT AS OF SEPTEMBER 30, 2013 OF THE GRANGE INDEMNITY INSURANCE COMPANY

SCHEDULE D - PART 4

Show All Long-Term Bonds and Stock Sold, Redeemed or Otherwise Disposed of During the Current Quarter

1	2	3	4	5	6	7	8	9	10	Change in Book/Adjusted Carrying Value					16	17	18	19	20	21	22
										11	12	13	14	15							
CUSIP Identification	Description	F o r e i g n	Disposal Date	Name of Purchaser	Number of Shares of Stock	Consideration	Par Value	Actual Cost	Prior Year Book/Adjusted Carrying Value	Unrealized Valuation Increase/ (Decrease)	Current Year's (Amortization)/ Accretion	Current Year's Other Than Temporary Impairment Recognized	Total Change in B./A.C.V. (11+12-13)	Total Foreign Exchange Change in B./A.C.V.	Book/ Adjusted Carrying Value at Disposal Date	Foreign Exchange Gain (Loss) on Disposal	Realized Gain (Loss) on Disposal	Total Gain (Loss) on Disposal	Bond Interest/Stock Dividends Received During Year	Stated Contractual Maturity Date	NAIC Designation or Market Indicator (a)
Bonds - U.S. Governments																					
38374F-W6-7...	GNR 2004-21 PC 5.000%		04/20/33...	Paydown.....		40,209	40,209	39,668	39,987		222		222		40,209			0	1,328	04/20/2033..	1...
38378D-VT-9...	GNR 2012-36 MA 3.000%		06/20/39...	Paydown.....		8,326	8,326	8,862	8,780		(453)		(453)		8,326			0	167	06/20/2039..	1...
38378V-XZ-3...	GNR 2013-119 TV 3.000%		08/20/43...	Paydown.....		1,300	1,300	1,326			(26)		(26)		1,300			0	3	08/20/2043..	1FE...
0599999 - Bonds - U.S. Governments						49,835	49,835	49,856	48,766	0	(258)	0	(258)	0	49,835	0	0	0	1,499	XXX	XXX
Bonds - U.S. States, Territories and Possessions																					
93974B-HJ-4...	Washington State Call 5.000%		07/01/25...	Huntington Investment Co.,		1,081,620	1,000,000	1,021,300	1,008,170		(2,054)		(2,054)		1,006,116		75,504	75,504	57,778	07/01/2025..	1FE...
1799999 - Bonds - U.S. States, Territories and Possessions						1,081,620	1,000,000	1,021,300	1,008,170	0	(2,054)	0	(2,054)	0	1,006,116	0	75,504	75,504	57,778	XXX	XXX
Bonds - U.S. Political Subdivisions of States, Territories and Possessions																					
167610-5S-9...	Chicago, IL Call 5.000%		01/01/24...	Call 100.0000.....		500,000	500,000	504,415	500,000				0		500,000			0	30,208	01/01/2024..	1FE...
235219-DY-5...	Dallas, TX Call 5.000%		02/15/25...	Tax Free Exchange.....		304,584	250,000	306,710			(2,126)		(2,126)		304,584			0	5,000	02/15/2025..	1FE...
2499999 - Bonds - U.S. Political Subdivisions of States, Territories and Possessions						804,584	750,000	811,125	500,000	0	(2,126)	0	(2,126)	0	804,584	0	0	0	35,208	XXX	XXX
Bonds - U.S. Special Revenue and Special Assessment and all Non-Guaranteed Obligations of Agencies and Authorities of Governments and Their Political Subdivisions																					
3136AA-CD-5...	FNR 2012-131DZ 2.500%		05/25/41...	Paydown.....		15,399	15,399	15,389			10		10		15,399			0	206	05/25/2041..	1...
3137AG-CA-6...	FHR 3947 BC 2.500%		10/15/26...	Paydown.....		13,738	13,738	14,208	14,020		(283)		(283)		13,738			0	220	10/15/2026..	1...
3137AN-JP-1...	FHR 4013 WY 3.456%		11/15/40...	Paydown.....		12,096	12,096	12,436	12,407		(311)		(311)		12,096			0	292	11/15/2040..	1...
3138M8-CJ-0...	FN AP4572 3.000%		09/01/27...	Paydown.....		12,156	12,156	12,976	12,963		(808)		(808)		12,156			0	231	09/01/2027..	1...
31392E-SX-9...	FNR 2002-59 B 5.500%		09/25/17...	Paydown.....		3,483	3,483	3,545	3,488		(5)		(5)		3,483			0	129	09/25/2017..	1...
31393A-GG-6...	FNR 2003-28 GA 4.000%		10/25/32...	Paydown.....		3,003	3,003	2,986	2,994		9		9		3,003			0	79	10/25/2032..	1...
31394L-PM-8...	FHR 2698 BA 5.000%		11/15/32...	Paydown.....		3,208	3,208	3,200	3,201		6		6		3,208			0	107	11/15/2032..	1...
31395B-D7-5...	FNR 2006-22 CE 4.500%		06/25/23...	Paydown.....		22,308	22,308	22,907	22,609		(300)		(300)		22,308			0	695	08/25/2023..	1...
31395J-5E-2...	FHR 2881 AG 4.500%		08/15/34...	Paydown.....		4,709	4,709	4,697	4,700		9		9		4,709			0	141	08/15/2034..	1...
31395W-4L-8...	FHR 3003 LD 5.000%		12/15/34...	Paydown.....		28,983	28,983	30,432	29,711		(729)		(729)		28,983			0	957	12/15/2034..	1...
31397L-DQ-9...	FNR 2008-24 AV 5.000%		03/25/19...	Paydown.....		73,785	73,785	73,785	73,785		0		0		73,785			0	2,661	03/25/2019..	1...
31397S-ZF-4...	FNR 2011-42 VA 4.500%		06/25/22...	Paydown.....		159,880	159,880	169,248	161,409		(1,529)		(1,529)		159,880			0	4,825	06/25/2022..	1...
31398L-NU-8...	FHR 3606 A 4.000%		07/15/23...	Paydown.....		42,435	42,435	44,535	43,073		(638)		(638)		42,435			0	1,127	07/15/2023..	1...
31398S-SG-9...	FNR 2010-136 BA 3.500%		12/25/30...	Paydown.....		9,181	9,181	9,505	9,394		(213)		(213)		9,181			0	212	12/25/2030..	1...
31402C-4H-2...	FNMA Pool 725424 5.500%		04/01/34...	Paydown.....		11,531	11,531	11,409	11,411		120		120		11,531			0	420	04/01/2034..	1...
31403B-4M-2...	FNMA Pool 744328 5.000%		09/01/33...	Paydown.....		8,894	8,894	8,542	8,555		339		339		8,894			0	310	09/01/2033..	1...
31403D-GZ-6...	FNMA Pool 745516 5.500%		05/01/36...	Paydown.....		5,149	5,149	5,143	5,142		7		7		5,149			0	187	05/01/2036..	1...
31418A-KN-7...	FN MA1200 3.000%		10/01/32...	Paydown.....		13,437	13,437	14,297	14,287		(850)		(850)		13,437			0	263	10/01/2032..	1...
31419F-EB-8...	FN AE4629 4.000%		10/01/40...	Paydown.....		30,651	30,651	32,145	32,116		(1,465)		(1,465)		30,651			0	795	10/01/2040..	1...
3199999 - Bonds - U.S. Special Revenue and Special Assessment and all Non-Guaranteed Obligations of Agencies and Authorities of Governments and Their Political Subdivisions						474,024	474,024	491,385	465,266	0	(6,631)	0	(6,631)	0	474,024	0	0	0	13,857	XXX	XXX
Bonds - Industrial and Miscellaneous (Unaffiliated)																					
217203-AE-8...	Copano Energy LLC Call 7.125%		04/01/21...	Call 107.1250.....		94,270	88,000	100,760			(6,490)		(6,490)		94,270			0	2,665	04/01/2021..	2FE...

E05

SCHEDULE D - PART 4

[illegible]

E05.1

Schedule DB - Part A - Section 1

NONE

Schedule DB - Part B - Section 1

NONE

Schedule DB - Part D - Section 1

NONE

Schedule DB - Part D - Section 2

NONE

SCHEDULE DL - PART 1
SECURITIES LENDING COLLATERAL ASSETS

9999999 Totals	1,267,956	1,267,936	XXX
----------------	-----------	-----------	-----

NAIC 1 \$1,267,936 NAIC 2 \$ NAIC 3 \$ NAIC 4 \$ NAIC 5 \$ NAIC 6 \$

SCHEDULE DL - PART 2
SECURITIES LENDING COLLATERAL ASSETS

[illegible]

General Interrogatories:

1. Total activity for the year to date.....	Fair Value \$	Book/Adjusted Carrying Value \$
2. Average balance for the year to date.....	Fair Value \$	Book/Adjusted Carrying Value \$

Schedule E - Part 1

NONE

Schedule E - Part 2

NONE