



PROPERTY AND CASUALTY COMPANIES - ASSOCIATION EDITION

QUARTERLY STATEMENT

AS OF SEPTEMBER 30, 2013
OF THE CONDITION AND AFFAIRS OF THE

Nationwide Indemnity Company

NAIC Group Code	0140 (Current)	0140 (Prior)	NAIC Company Code	10070	Employer's ID Number	31-1399201
Organized under the Laws of	Ohio		, State of Domicile or Port of Entry		Ohio	
Country of Domicile	United States of America					
Incorporated/Organized	02/16/1994		Commenced Business		04/15/1994	
Statutory Home Office	One West Nationwide Blvd. (Street and Number)		Columbus , OH, US 43215-2220 (City or Town, State, Country and Zip Code)			
Main Administrative Office	One West Nationwide Blvd. (Street and Number)		Columbus , OH, US 43215-2220 (City or Town, State, Country and Zip Code)			
			614-249-7111 (Area Code) (Telephone Number)			
Mail Address	One West Nationwide Blvd., 1-04-701 (Street and Number or P.O. Box)		Columbus , OH, US 43215-2220 (City or Town, State, Country and Zip Code)			
Primary Location of Books and Records	One West Nationwide Blvd., 1-04-701 (Street and Number)		Columbus , OH, US 43215-2220 (City or Town, State, Country and Zip Code)			
			614-249-1545 (Area Code) (Telephone Number)			
Internet Website Address	www.nationwide.com					
Statutory Statement Contact	Monda S. Caudill (Name)		614-249-1545 (Area Code) (Telephone Number)			
	FinRpt@nationwide.com (E-mail Address)		866-315-1430 (FAX Number)			

OFFICERS

President & COO	David Alan Bano	VP & Treasurer	Carol Lynn Dove
VP & Secretary	Robert William Horner III		

OTHER

Pamela Ann Biesecker	Sr VP-Head of Taxation	Harry Hansen Hallowell	Sr VP - CIO	Mark Raymond Thresher	Exec VP - CFO
----------------------	------------------------	------------------------	-------------	-----------------------	---------------

DIRECTORS OR TRUSTEES

David Alan Bano	James David Benson	Kevin Thomas Hilyard
Michael Patrick Leach	Duane Lee Meyer	Mark Raymond Thresher

State of	Ohio	SS:
County of	Franklin	

The officers of this reporting entity being duly sworn, each depose and say that they are the described officers of said reporting entity, and that on the reporting period stated above, all of the herein described assets were the absolute property of the said reporting entity, free and clear from any liens or claims thereon, except as herein stated, and that this statement, together with related exhibits, schedules and explanations therein contained, annexed or referred to, is a full and true statement of all the assets and liabilities and of the condition and affairs of the said reporting entity as of the reporting period stated above, and of its income and deductions therefrom for the period ended, and have been completed in accordance with the NAIC Annual Statement Instructions and Accounting Practices and Procedures manual except to the extent that: (1) state law may differ; or, (2) that state rules or regulations require differences in reporting not related to accounting practices and procedures, according to the best of their information, knowledge and belief, respectively. Furthermore, the scope of this attestation by the described officers also includes the related corresponding electronic filing with the NAIC, when required, that is an exact copy (except for formatting differences due to electronic filing) of the enclosed statement. The electronic filing may be requested by various regulators in lieu of or in addition to the enclosed statement.

David Alan Bano President & COO	Robert William Horner III VP & Secretary	Carol Lynn Dove VP & Treasurer
Subscribed and sworn to before me this	a. Is this an original filing?	Yes [X] No []
day of	b. If no,	
October, 2013	1. State the amendment number.....	
	2. Date filed	
	3. Number of pages attached.....	

STATEMENT AS OF SEPTEMBER 30, 2013 OF THE NATIONWIDE INDEMNITY COMPANY

ASSETS

	Current Statement Date			4 December 31 Prior Year Net Admitted Assets
	1 Assets	2 Nonadmitted Assets	3 Net Admitted Assets (Cols. 1 - 2)	
1. Bonds	2,998,602,620		2,998,602,620	3,047,839,346
2. Stocks:				
2.1 Preferred stocks				
2.2 Common stocks	1,947,939		1,947,939	1,363,086
3. Mortgage loans on real estate:				
3.1 First liens	101,427,229		101,427,229	106,360,442
3.2 Other than first liens.....				
4. Real estate:				
4.1 Properties occupied by the company (less \$ encumbrances)				
4.2 Properties held for the production of income (less \$ encumbrances)				
4.3 Properties held for sale (less \$ encumbrances)				
5. Cash (\$(3,731,006)), cash equivalents (\$) and short-term investments (\$75,790,311)	72,059,307		72,059,307	56,479,948
6. Contract loans (including \$ premium notes)				
7. Derivatives				
8. Other invested assets	61,752,794	138,667	61,614,127	58,942,642
9. Receivables for securities				
10. Securities lending reinvested collateral assets	20,788,971	5,797,258	14,991,713	5,639,350
11. Aggregate write-ins for invested assets				
12. Subtotals, cash and invested assets (Lines 1 to 11)	3,256,578,860	5,935,925	3,250,642,935	3,276,624,814
13. Title plants less \$ charged off (for Title insurers only)				
14. Investment income due and accrued	31,565,757		31,565,757	36,720,615
15. Premiums and considerations:				
15.1 Uncollected premiums and agents' balances in the course of collection	1,320,923	1,320,923		
15.2 Deferred premiums, agents' balances and installments booked but deferred and not yet due (including \$ earned but unbilled premiums)				
15.3 Accrued retrospective premiums				
16. Reinsurance:				
16.1 Amounts recoverable from reinsurers				
16.2 Funds held by or deposited with reinsured companies	9,296,276		9,296,276	9,921,423
16.3 Other amounts receivable under reinsurance contracts				
17. Amounts receivable relating to uninsured plans				
18.1 Current federal and foreign income tax recoverable and interest thereon	26,371,667		26,371,667	
18.2 Net deferred tax asset	40,692,489	13,530,163	27,162,326	26,640,636
19. Guaranty funds receivable or on deposit				(150)
20. Electronic data processing equipment and software				
21. Furniture and equipment, including health care delivery assets (\$)				
22. Net adjustment in assets and liabilities due to foreign exchange rates	1,121,924		1,121,924	634,253
23. Receivables from parent, subsidiaries and affiliates	250,432		250,432	8,698
24. Health care (\$) and other amounts receivable				
25. Aggregate write-ins for other than invested assets	27,327,416	10,812,231	16,515,185	6,668,632
26. Total assets excluding Separate Accounts, Segregated Accounts and Protected Cell Accounts (Lines 12 to 25)	3,394,525,744	31,599,242	3,362,926,502	3,357,218,921
27. From Separate Accounts, Segregated Accounts and Protected Cell Accounts				
28. Total (Lines 26 and 27)	3,394,525,744	31,599,242	3,362,926,502	3,357,218,921
DETAILS OF WRITE-INS				
1101.				
1102.				
1103.				
1198. Summary of remaining write-ins for Line 11 from overflow page				
1199. Totals (Lines 1101 through 1103 plus 1198)(Line 11 above)				
2501. Third party administrative receivables	18,041,339	8,915,079	9,126,260	3,918,290
2502. Deposits and prepaid assets	1,897,152	1,897,152		
2503. Miscellaneous assets	7,388,925		7,388,925	2,750,342
2598. Summary of remaining write-ins for Line 25 from overflow page				
2599. Totals (Lines 2501 through 2503 plus 2598)(Line 25 above)	27,327,416	10,812,231	16,515,185	6,668,632

STATEMENT AS OF SEPTEMBER 30, 2013 OF THE NATIONWIDE INDEMNITY COMPANY

LIABILITIES, SURPLUS AND OTHER FUNDS

	1 Current Statement Date	2 December 31, Prior Year
1. Losses (current accident year \$)	1,261,740,396	1,311,832,952
2. Reinsurance payable on paid losses and loss adjustment expenses		
3. Loss adjustment expenses	920,995,949	837,496,257
4. Commissions payable, contingent commissions and other similar charges		
5. Other expenses (excluding taxes, licenses and fees)		54,713
6. Taxes, licenses and fees (excluding federal and foreign income taxes)		3,125
7.1 Current federal and foreign income taxes (including \$ on realized capital gains (losses))		17,589,654
7.2 Net deferred tax liability		
8. Borrowed money \$ and interest thereon \$		
9. Unearned premiums (after deducting unearned premiums for ceded reinsurance of \$ and including warranty reserves of \$ and accrued accident and health experience rating refunds including \$ for medical loss ratio rebate per the Public Health Service Act)	48,897	57,271
10. Advance premium		
11. Dividends declared and unpaid:		
11.1 Stockholders		
11.2 Policyholders		
12. Ceded reinsurance premiums payable (net of ceding commissions)		
13. Funds held by company under reinsurance treaties		
14. Amounts withheld or retained by company for account of others	2,151,416	2,115,604
15. Remittances and items not allocated	911,082	
16. Provision for reinsurance (including \$ certified)		
17. Net adjustments in assets and liabilities due to foreign exchange rates		
18. Drafts outstanding		
19. Payable to parent, subsidiaries and affiliates	1,847	9,718
20. Derivatives		
21. Payable for securities		
22. Payable for securities lending	27,087,223	19,607,715
23. Liability for amounts held under uninsured plans		
24. Capital notes \$ and interest thereon \$		
25. Aggregate write-ins for liabilities	39,392,733	47,821,939
26. Total liabilities excluding protected cell liabilities (Lines 1 through 25)	2,252,329,543	2,236,588,948
27. Protected cell liabilities		
28. Total liabilities (Lines 26 and 27)	2,252,329,543	2,236,588,948
29. Aggregate write-ins for special surplus funds	9,984,000	9,619,000
30. Common capital stock	3,080,000	3,080,000
31. Preferred capital stock		
32. Aggregate write-ins for other than special surplus funds		
33. Surplus notes		
34. Gross paid in and contributed surplus	1,346,449,000	1,346,449,000
35. Unassigned funds (surplus)	(248,916,041)	(238,518,027)
36. Less treasury stock, at cost:		
36.1 shares common (value included in Line 30 \$)		
36.2 shares preferred (value included in Line 31 \$)		
37. Surplus as regards policyholders (Lines 29 to 35, less 36)	1,110,596,959	1,120,629,973
38. Totals (Page 2, Line 28, Col. 3)	3,362,926,502	3,357,218,921
DETAILS OF WRITE-INS		
2501. Assumed reinsurance balances payable	39,389,259	47,821,949
2502. Miscellaneous liabilities	3,474	(10)
2503.		
2598. Summary of remaining write-ins for Line 25 from overflow page		
2599. Totals (Lines 2501 through 2503 plus 2598)(Line 25 above)	39,392,733	47,821,939
2901. EU Solvency 1 Directive	9,984,000	9,619,000
2902.		
2903.		
2998. Summary of remaining write-ins for Line 29 from overflow page		
2999. Totals (Lines 2901 through 2903 plus 2998)(Line 29 above)	9,984,000	9,619,000
3201.		
3202.		
3203.		
3298. Summary of remaining write-ins for Line 32 from overflow page		
3299. Totals (Lines 3201 through 3203 plus 3298)(Line 32 above)		

STATEMENT OF INCOME

	1	2	3
	Current	Prior Year	Prior Year Ended
	Year to Date	to Date	December 31
UNDERWRITING INCOME			
1. Premiums earned:			
1.1 Direct (written \$)			
1.2 Assumed (written \$ (142,240))	(133,866)	853,061	1,384,488
1.3 Ceded (written \$)			
1.4 Net (written \$ (142,240))	(133,866)	853,061	1,384,488
DEDUCTIONS:			
2. Losses incurred (current accident year \$):			
2.1 Direct			
2.2 Assumed	3,701,393	(61,577,057)	(57,528,752)
2.3 Ceded			
2.4 Net	3,701,393	(61,577,057)	(57,528,752)
3. Loss adjustment expenses incurred	148,700,557	144,572,250	180,523,145
4. Other underwriting expenses incurred	4,620,083	4,220,078	5,712,499
5. Aggregate write-ins for underwriting deductions			
6. Total underwriting deductions (Lines 2 through 5)	157,022,033	87,215,271	128,706,892
7. Net income of protected cells			
8. Net underwriting gain or (loss) (Line 1 minus Line 6 + Line 7)	(157,155,899)	(86,362,210)	(127,322,404)
INVESTMENT INCOME			
9. Net investment income earned	96,786,707	106,112,260	141,562,670
10. Net realized capital gains (losses) less capital gains tax of \$ 1,841,768	(137,569)	(3,557,654)	45,716,503
11. Net investment gain (loss) (Lines 9 + 10)	96,649,138	102,554,606	187,279,173
OTHER INCOME			
12. Net gain or (loss) from agents' or premium balances charged off (amount recovered \$ amount charged off \$)			
13. Finance and service charges not included in premiums			
14. Aggregate write-ins for miscellaneous income	(198,818)	(46,020)	(114,118)
15. Total other income (Lines 12 through 14)	(198,818)	(46,020)	(114,118)
16. Net income before dividends to policyholders, after capital gains tax and before all other federal and foreign income taxes (Lines 8 + 11 + 15)	(60,705,579)	16,146,376	59,842,651
17. Dividends to policyholders			
18. Net income, after dividends to policyholders, after capital gains tax and before all other federal and foreign income taxes (Line 16 minus Line 17)	(60,705,579)	16,146,376	59,842,651
19. Federal and foreign income taxes incurred	(30,564,773)	(3,207,148)	(5,754,163)
20. Net income (Line 18 minus Line 19)(to Line 22)	(30,140,806)	19,353,524	65,596,814
CAPITAL AND SURPLUS ACCOUNT			
21. Surplus as regards policyholders, December 31 prior year	1,120,629,973	1,123,585,222	1,123,585,222
22. Net income (from Line 20)	(30,140,806)	19,353,524	65,596,814
23. Net transfers (to) from Protected Cell accounts			
24. Change in net unrealized capital gains (losses) less capital gains tax of \$ 5,399,667	9,540,282	3,171,051	160,442
25. Change in net unrealized foreign exchange capital gain (loss)	518,576	39,767	100,828
26. Change in net deferred income tax	1,554,998	3,282,741	(1,464,788)
27. Change in nonadmitted assets	8,493,936	16,974,642	27,714,695
28. Change in provision for reinsurance			
29. Change in surplus notes			
30. Surplus (contributed to) withdrawn from protected cells			
31. Cumulative effect of changes in accounting principles		15,231,042	15,231,042
32. Capital changes:			
32.1 Paid in			
32.2 Transferred from surplus (Stock Dividend)			
32.3 Transferred to surplus			
33. Surplus adjustments:			
33.1 Paid in			(110,000,000)
33.2 Transferred to capital (Stock Dividend)			
33.3 Transferred from capital			
34. Net remittances from or (to) Home Office			
35. Dividends to stockholders			
36. Change in treasury stock			
37. Aggregate write-ins for gains and losses in surplus		(392,376)	(294,282)
38. Change in surplus as regards policyholders (Lines 22 through 37)	(10,033,014)	57,660,391	(2,955,249)
39. Surplus as regards policyholders, as of statement date (Lines 21 plus 38)	1,110,596,959	1,181,245,613	1,120,629,973
DETAILS OF WRITE-INS			
0501.			
0502.			
0503.			
0598. Summary of remaining write-ins for Line 5 from overflow page			
0599. Totals (Lines 0501 through 0503 plus 0598)(Line 5 above)			
1401. Miscellaneous expenses	(198,818)	(46,020)	(114,118)
1402.			
1403.			
1498. Summary of remaining write-ins for Line 14 from overflow page			
1499. Totals (Lines 1401 through 1403 plus 1498)(Line 14 above)	(198,818)	(46,020)	(114,118)
3701. Goodwill write off		(392,376)	(294,282)
3702.			
3703.			
3798. Summary of remaining write-ins for Line 37 from overflow page			
3799. Totals (Lines 3701 through 3703 plus 3798)(Line 37 above)		(392,376)	(294,282)

CASH FLOW

	1 Current Year To Date	2 Prior Year To Date	3 Prior Year Ended December 31
Cash from Operations			
1. Premiums collected net of reinsurance	257,370	1,001,301	1,816,539
2. Net investment income	105,591,542	113,914,600	148,012,709
3. Miscellaneous income	426,329	(1,589,149)	(1,784,158)
4. Total (Lines 1 to 3)	106,275,241	113,326,752	148,045,090
5. Benefit and loss related payments	53,793,949	74,474,401	112,459,973
6. Net transfers to Separate Accounts, Segregated Accounts and Protected Cell Accounts			
7. Commissions, expenses paid and aggregate write-ins for deductions	69,769,510	73,973,949	102,317,137
8. Dividends paid to policyholders			
9. Federal and foreign income taxes paid (recovered) net of \$ 18,856,354 tax on capital gains (losses)	15,238,316	42,728,012	40,904,688
10. Total (Lines 5 through 9)	138,801,775	191,176,362	255,681,798
11. Net cash from operations (Line 4 minus Line 10)	(32,526,534)	(77,849,610)	(107,636,708)
Cash from Investments			
12. Proceeds from investments sold, matured or repaid:			
12.1 Bonds	140,499,696	128,878,266	412,749,425
12.2 Stocks	59,965		
12.3 Mortgage loans	4,995,247	10,463,481	19,900,072
12.4 Real estate			
12.5 Other invested assets	570,082	10,874,703	12,223,237
12.6 Net gains or (losses) on cash, cash equivalents and short-term investments	575		
12.7 Miscellaneous proceeds			112,769
12.8 Total investment proceeds (Lines 12.1 to 12.7)	146,125,565	150,216,450	444,985,503
13. Cost of investments acquired (long-term only):			
13.1 Bonds	82,761,882	67,866,593	172,147,197
13.2 Stocks	8,234		
13.3 Mortgage loans			
13.4 Real estate			
13.5 Other invested assets	7,752,170		
13.6 Miscellaneous applications	66,929	1,328,539	1,304,549
13.7 Total investments acquired (Lines 13.1 to 13.6)	90,589,215	69,195,132	173,451,746
14. Net increase (or decrease) in contract loans and premium notes			
15. Net cash from investments (Line 12.8 minus Line 13.7 and Line 14)	55,536,350	81,021,318	271,533,757
Cash from Financing and Miscellaneous Sources			
16. Cash provided (applied):			
16.1 Surplus notes, capital notes			
16.2 Capital and paid in surplus, less treasury stock			(110,000,000)
16.3 Borrowed funds			
16.4 Net deposits on deposit-type contracts and other insurance liabilities			
16.5 Dividends to stockholders			
16.6 Other cash provided (applied)	(7,430,457)	(3,124,946)	747,926
17. Net cash from financing and miscellaneous sources (Line 16.1 through Line 16.4 minus Line 16.5 plus Line 16.6)	(7,430,457)	(3,124,946)	(109,252,074)
RECONCILIATION OF CASH, CASH EQUIVALENTS AND SHORT-TERM INVESTMENTS			
18. Net change in cash, cash equivalents and short-term investments (Line 11, plus Lines 15 and 17) ..	15,579,359	46,762	54,644,975
19. Cash, cash equivalents and short-term investments:			
19.1 Beginning of year	56,479,948	1,834,973	1,834,973
19.2 End of period (Line 18 plus Line 19.1)	72,059,307	1,881,735	56,479,948

Note: Supplemental disclosures of cash flow information for non-cash transactions:

--	--	--	--

NOTES TO FINANCIAL STATEMENTS

Note 1 - Summary of Significant Accounting Policies

A. Accounting Practices

The accompanying statutory financial statements of Nationwide Indemnity Company (the Company) have been prepared in conformity with accounting practices prescribed or permitted by the National Association of Insurance Commissioners (NAIC) and the State of Ohio.

The Ohio Insurance Department recognizes only statutory accounting practices (SAP) prescribed or permitted by the State of Ohio for determining and reporting the financial condition and results of operations of an insurance company, as well as, determining its solvency under the Ohio Insurance law. The National Association of Insurance Commissioners' (NAIC) *Accounting Practices and Procedures Manual* (NAIC SAP) has been adopted as a component of prescribed or permitted practices by the State of Ohio.

C. Accounting Policies

7. Investments in subsidiary and affiliated companies are stated as follows:

The admitted investments in all subsidiary, controlled, and affiliated (SCA) entities are valued using an equity method approach. Under this approach, investments in insurance affiliated companies are stated at underlying audited statutory surplus adjusted for unamortized goodwill. Investments in non-insurance affiliated companies that have no significant ongoing operations other than to hold assets that are primarily for the direct or indirect benefit or use of the reporting entity or its affiliates are stated at audited GAAP equity adjusted to a statutory basis of accounting. Investments in non-insurance affiliated companies that have significant ongoing operations beyond holding assets that are primarily for the direct or indirect benefit or use of the reporting entity or its affiliates are stated at audited GAAP equity. Unaudited affiliated companies of the reporting entity or its affiliates are non-admitted under prescribed SAP accounting practices. Goodwill arising from the acquisition of affiliated companies is amortized over a period of ten years. Investments in affiliated companies are generally included in stocks. Goodwill was fully amortized as of September 30, 2013.

Note 2 - Accounting Changes and Corrections of Errors

No change.

Note 3 - Business Combinations and Goodwill

No change.

Note 4 - Discontinued Operations

No change.

Note 5 - Investments

A. Mortgage Loans

No change.

B. Troubled Debt Restructuring for Creditors

No change.

C. Reverse Mortgages

No change.

D. Loan-Backed Securities

1. Prepayment assumptions are generally obtained using a model provided by a third-party vendor.
2. Not applicable.
3. The following table summarizes other-than-temporary impairments for loan-backed securities held at the end of the quarter based on the fact that the present value of projected cash flows expected to be collected was less than the amortized cost of the securities:

(1)	(2)	(3)	(4)	(5)	(6)	(7)
CUSIP	Amortized Cost Before Current Period OTTI	Present Value of Projected Cash Flows	Recognized Other-Than-Temporary Impairment	Amortized Cost After Other-Than-Temporary Impairment	Fair Value at time of OTTI	Date of Financial Statement Where Reported
02150WAB9	\$ 8,368,941	\$ 7,837,960	\$ 530,981	\$ 7,837,960	\$ 5,879,836	Q4'12
43739EAP2	\$ 4,184,040	\$ 4,024,868	\$ 159,172	\$ 4,024,868	\$ 2,425,577	Q4'11
12667GAX1	\$ 10,354,862	\$ 10,162,333	\$ 192,529	\$ 10,162,333	\$ 8,177,926	Q2 '11
761118HD3	\$ 4,358,301	\$ 4,012,299	\$ 346,002	\$ 4,012,299	\$ 3,498,380	Q2 '11
86363GAJ3	\$ 2,709,536	\$ 2,627,788	\$ 81,748	\$ 2,627,788	\$ 2,056,382	Q2 '11
43739EAP2	\$ 4,456,318	\$ 4,380,755	\$ 75,563	\$ 4,380,755	\$ 3,447,084	Q1 '11
12667GAX1	\$ 11,489,006	\$ 11,316,152	\$ 172,854	\$ 11,316,152	\$ 8,799,074	Q4 '10
43739EAP2	\$ 4,625,145	\$ 4,521,617	\$ 103,528	\$ 4,521,617	\$ 3,395,115	Q4 '10
74042TAC5	\$ 8,939,392	\$ 8,864,586	\$ 74,806	\$ 8,864,586	\$ 5,424,057	Q3 '10
785778HD6	\$ 1,660,514	\$ 1,608,726	\$ 51,788	\$ 1,608,726	\$ 758,956	Q3 '10
17307GYH5	\$ 6,485,902	\$ 6,032,699	\$ 453,203	\$ 6,032,699	\$ 5,256,058	Q2 '10
12667GXN8	\$ 14,208,403	\$ 13,806,788	\$ 401,615	\$ 13,806,788	\$ 11,325,389	Q1 '10
761118HD3	\$ 4,669,491	\$ 4,482,782	\$ 186,709	\$ 4,482,782	\$ 3,668,275	Q1 '10

NOTES TO FINANCIAL STATEMENTS

(1)	(2)	(3)	(4)	(5)	(6)	(7)
CUSIP	Amortized Cost Before Current Period OTTI	Present Value of Projected Cash Flow s	Recognized Other-Than- Temporary Impairment	Amortized Cost After Other-Than- Temporary Impairment	Fair Value at time of OTTI	Date of Financial Statement Where Reported
12667GXN8	\$ 14,381,599	\$ 14,208,403	\$ 173,196	\$ 14,208,403	\$ 11,250,613	Q4 '09
86363GAJ3	\$ 3,786,928	\$ 3,525,759	\$ 261,169	\$ 3,525,759	\$ 2,359,016	Q4 '09
12667GAX1	\$ 15,611,598	\$ 15,115,896	\$ 495,703	\$ 15,115,896	\$ 10,804,631	Q3 '09
126686AC8	\$ 1,698,091	\$ 2,268,179	\$ (570,088)	\$ 2,268,179	\$ 2,178,721	Q3 '09
59549RAC8	\$ 5,807,307	\$ 5,169,950	\$ 637,357	\$ 5,169,950	\$ 4,995,475	Q3 '09
74042TAC5	\$ 9,499,020	\$ 8,939,392	\$ 559,629	\$ 8,939,392	\$ 4,201,091	Q3 '09
89234NAB6	\$ 1,216,000	\$ 3,068,465	\$ (1,852,465)	\$ 3,068,465	\$ 1,200,778	Q3 '09
144527AB4	\$ 6,205,000	\$ 9,996,975	\$ (3,791,975)	\$ 9,996,975	\$ 4,763,699	Q3 '09
761118HD3	\$ 2,232,500	\$ 4,669,491	\$ (2,436,991)	\$ 4,669,491	\$ 3,635,050	Q3 '09
Total			\$ (3,693,968)			

4. All impaired securities (fair value is less than cost or amortized cost) for which an other-than-temporary impairment has not been recognized in earnings as a realized loss (including securities with a recognized other-than-temporary impairment for non-interest related declines when a non-recognized interest related impairment remains):

a.	The aggregate amount of unrealized losses:		
	1.	Less than 12 Months	\$ (1,086,399)
	2.	12 Months or Longer	\$ (6,946,073)
b.	The aggregate related fair value of securities with unrealized losses:		
	1.	Less than 12 Months	\$ 41,218,565
	2.	12 Months or Longer	\$ 50,258,143

5. The Company reviews all loan-backed and structured securities in which the fair value of the given security is less than the amortized cost to determine if a given security is other-than-temporarily impaired. The Company examines characteristics of the underlying collateral, such as delinquency and default rates, the quality of the underlying borrower, the type of collateral in the pool, the vintage year of the collateral, subordination levels within the structure of the collateral pool, and the quality of any credit guarantors, to determine the cash flows expected to be received for the security.

If the severity and duration of the security's unrealized loss indicates a risk of an other-than-temporary impairment, then the Company will evaluate if the amortized cost basis of the security will be recovered by comparing the present value of the cash flows expected to be received for the given security with the amortized cost basis of the security. If the present value of cash flows is greater than the amortized cost basis of a security then the security is deemed not to be other-than-temporarily impaired.

E. Repurchase Agreements and Securities Lending Transactions

3. Collateral Received

- b. The aggregate fair value of all securities acquired from the sale, trade or use of the accepted collateral (reinvested collateral) is \$20,755,802.

F. Real Estate

No change.

G. Low-Income Housing Tax Credits

No change.

Note 6 - Joint Ventures, Partnerships and Limited Liability Companies

No change.

Note 7 - Investment Income

No change.

Note 8 - Derivative Instruments

No change.

Note 9 - Income Taxes

No change.

Note 10 - Information Concerning Parent, Subsidiaries, Affiliates and Other Related Parties

No change.

Note 11 - Debt

No change.

NOTES TO FINANCIAL STATEMENTS

Note 12 - Retirement Plans, Deferred Compensation, Postemployment Benefits and Compensated Absences and Other Postretirement Benefit Plans

No change.

Note 13 - Capital and Surplus, Dividend Restrictions and Quasi-Reorganizations

No change.

Note 14 – Contingencies

No change.

Note 15 – Leases

No change.

Note 16 - Information About Financial Instruments With Off-Balance Sheet Risk And Financial Instruments With Concentrations of Credit Risk

No change.

Note 17 - Sale, Transfer and Servicing of Financial Assets and Extinguishments of Liabilities

A. Transfers of Receivables Reported as Sales

No change.

B. Transfers and Servicing of Financial Assets

No change.

C. Wash Sales

Not applicable.

Note 18 - Gain or Loss to the Reporting Entity from Uninsured Plans and the Uninsured Portion of Partially Insured Plans

No change.

Note 19 - Direct Premiums Written/Produced by Managing General Agents/Third Party Administrators

No change.

Note 20 – Fair Value Measurements

Fair value is defined as the price that would be received to sell an asset or paid to transfer a liability in an orderly transaction between market participants at the measurement date. Fair value measurements are based upon observable and unobservable inputs. Observable inputs reflect market data obtained from independent sources while unobservable inputs reflect the Company's view of market assumptions in the absence of observable market information. The Company utilizes valuation techniques that maximize the use of observable inputs and minimize the use of unobservable inputs. In determining fair value, the Company uses various methods including market, income and cost approaches.

The Company categorizes its financial assets and liabilities into a three-level hierarchy based on the priority of the inputs to the valuation technique. The fair value hierarchy gives the highest priority to quoted prices in active markets for identical assets or liabilities (Level 1) and the lowest priority to unobservable inputs (Level 3). If the inputs used to measure fair value fall within different levels of the hierarchy, the category level is based on the lowest priority level input that is significant to the fair value measurement of the instrument in its entirety.

The Company categorizes financial assets and liabilities as follows:

Level 1. Unadjusted quoted prices accessible in active markets for identical assets or liabilities at the measurement date and mutual funds where the value per share (unit) is determined and published daily and is the basis for current transactions.

Level 2. Unadjusted quoted prices for similar assets or liabilities in active markets or inputs (other than quoted prices) that are observable or that are derived principally from or corroborated by observable market data through correlation or other means. Primary inputs to this valuation technique may include comparative trades, bid/asks, interest rate movements, U.S. Treasury rates, U.S. LIBOR, prime rates, cash flows, maturity dates, call ability, estimated prepayments and/or underlying collateral values.

Level 3. Prices or valuation techniques that require inputs that are both unobservable and significant to the overall fair value measurement. Inputs reflect management's best estimate about the assumptions market participants would use at the measurement date in pricing the asset or liability. Consideration is given to the risk inherent in both the method of valuation and the valuation inputs. Primary inputs to this valuation technique include broker quotes and comparative trades.

The Company reviews its fair value hierarchy classifications for financial assets and liabilities quarterly. Changes in observability of significant valuation inputs identified during these reviews may trigger reclassifications. Reclassifications are reported as transfers at the beginning of the period in which the change occurs.

To determine the fair value of bonds and stocks for which market quotations are available, independent pricing services are most often utilized. For these bonds and stocks, the Company obtains the pricing services' methodologies, inputs and assumptions and classifies the investments accordingly in the fair value hierarchy.

A corporate pricing matrix or an internally developed pricing model is used in valuing certain bonds. The corporate pricing matrix is developed using private spreads for bonds with varying weighted average lives and credit quality ratings. The weighted average life and credit quality rating of a particular bond to be priced using the corporate pricing matrix are important inputs into the model and are used to determine a corresponding spread that is added to the appropriate U.S. Treasury yield to create an estimated market yield for that bond. The estimated market yield and other relevant factors are then used to estimate the fair value of the particular bond.

NOTES TO FINANCIAL STATEMENTS

Non-binding broker quotes are also utilized to determine the fair value of certain bonds when quotes are not available from independent pricing services, corporate pricing matrix or internal pricing models. These bonds are classified accordingly in the fair value hierarchy as only one broker quote is ordinarily obtained, the investment is not traded on an exchange, the pricing is not available to other entities and/or the transaction volume in the same or similar investments has decreased. Inputs used in the development of prices are not provided to the Company by the brokers as the brokers often do not provide the necessary transparency into their quotes and methodologies. Broker quotes are subject to validation of price movements that require approval from the Company's management. Management uses its knowledge of the investment and current market conditions to determine if the price is indicative of the investment's fair value.

Fair value of derivative instruments is determined using various valuation techniques relying predominately on observable market inputs. These inputs include interest rate swap curves, credit spreads, interest rates, counterparty credit risk, equity volatility and equity index levels. In cases where observable inputs are not available, the Company will utilize non-binding broker quotes to determine fair value and these instruments are classified accordingly in the fair value hierarchy.

The following table summarizes financial assets and liabilities measured at fair value as of September 30, 2013:

	Level 1	Level 2	Level 3	Total
Assets at Fair Value				
U.S. Government bonds	-	-	-	-
States, Territories and Possessions	-	-	-	-
Political subdivisions	-	-	-	-
Special revenues	-	-	-	-
Hybrid Securities	-	-	-	-
Credit tenant loans	-	-	-	-
Industrial & Misc.	-	39,142,352	1,550,000	40,692,352
Total Bonds	\$ -	\$ 39,142,352	\$ 1,550,000	\$ 40,692,352
Sec Lending	-	7,266,461	-	7,266,461
Preferred Stocks	-	-	-	-
Common Stocks	-	-	1,947,939	1,947,939
Loans held for sale	-	-	-	-
Separate Account Assets	-	-	-	-
Derivative Assets	-	-	-	-
Total Assets at Fair Value	\$ -	\$ 46,408,813	\$ 3,497,939	\$ 49,906,752
Liabilities at Fair Value				
Derivatives Liabilities	-	-	-	-
Total Liabilities at Fair Value	\$ -	\$ -	\$ -	\$ -

The following table presents the rollforward of Level 3 financial assets and liabilities held at fair value during the three months ended September 30, 2013:

	Beginning Balance at 6/30/2013	Transfers Into Level 3	Transfers Out of Level 3	Total Gains and (losses) included in Net Income	Total Gains and (losses) included in Surplus	Purchases	Issuances	Sales	Settlements	Ending Balance at 9/30/2013
Assets at Fair Value										
U.S. Government bonds	-	-	-	-	-	-	-	-	-	-
States, Territories and Possessions	-	-	-	-	-	-	-	-	-	-
Political subdivisions	-	-	-	-	-	-	-	-	-	-
Special revenues	-	-	-	-	-	-	-	-	-	-
Hybrid Securities	-	-	-	-	-	-	-	-	-	-
Credit tenant loans	-	-	-	-	-	-	-	-	-	-
Industrial & Misc.	1,550,000	-	-	-	-	-	-	-	-	1,550,000
Total Bonds	\$ 1,550,000	\$ -	\$ -	\$ -	\$ -	\$ -	\$ -	\$ -	\$ -	\$ 1,550,000
Sec Lending	-	-	-	-	-	-	-	-	-	-
Preferred Stocks	-	-	-	-	-	-	-	-	-	-
Common Stocks	1,820,905	-	-	8,234	127,034	-	-	(8,234)	-	1,947,939
Loans held for sale	-	-	-	-	-	-	-	-	-	-
Separate Account Assets	-	-	-	-	-	-	-	-	-	-
Derivative Assets	-	-	-	-	-	-	-	-	-	-
Total Assets at Fair Value	\$ 3,370,905	\$ -	\$ -	\$ 8,234	\$ 127,034	\$ -	\$ -	\$ (8,234)	\$ -	\$ 3,497,939
Liabilities										
Derivatives Liabilities	-	-	-	-	-	-	-	-	-	-
Total Liabilities	\$ -	\$ -	\$ -	\$ -	\$ -	\$ -	\$ -	\$ -	\$ -	\$ -

NOTES TO FINANCIAL STATEMENTS

The following table presents the rollforward of Level 3 financial assets and liabilities held at fair value during the nine months ended September 30, 2013:

	Beginning Balance at 12/31/2012	Transfers Into Level 3	Transfers Out of Level 3	Total Gains and (losses) included in Net Income	Total Gains and (losses) included in Surplus	Purchases	Issuances	Sales	Settlements	Ending Balance at 9/30/2013
Assets at Fair Value										
U.S. Government bonds	-	-	-	-	-	-	-	-	-	-
States, Territories and Possessions	-	-	-	-	-	-	-	-	-	-
Political subdivisions	-	-	-	-	-	-	-	-	-	-
Special revenues	-	-	-	-	-	-	-	-	-	-
Hybrid Securities	-	-	-	-	-	-	-	-	-	-
Credit tenant loans	-	-	-	-	-	-	-	-	-	-
Industrial & Misc.	1,400,000	-	-	-	150,000	-	-	-	-	1,550,000
Total Bonds	\$ 1,400,000	\$ -	\$ -	\$ -	\$ 150,000	\$ -	\$ -	\$ -	\$ -	\$ 1,550,000
Sec Lending	-	-	-	-	-	-	-	-	-	-
Preferred Stocks	-	-	-	-	-	-	-	-	-	-
Common Stocks	1,363,086	-	-	8,234	584,853	-	-	(8,234)	-	1,947,939
Loans held for sale	-	-	-	-	-	-	-	-	-	-
Separate Account Assets	-	-	-	-	-	-	-	-	-	-
Derivative Assets	-	-	-	-	-	-	-	-	-	-
Total Assets at Fair Value	\$ 2,763,086	\$ -	\$ -	\$ 8,234	\$ 734,853	\$ -	\$ -	\$ (8,234)	\$ -	\$ 3,497,939
Liabilities										
Derivatives Liabilities	-	-	-	-	-	-	-	-	-	-
Total Liabilities	\$ -	\$ -	\$ -	\$ -	\$ -	\$ -	\$ -	\$ -	\$ -	\$ -

The following table summarizes aggregate carrying value and fair value, by level, for all financial assets and liabilities, excluding assets and liabilities reported at fair value, as of September 30, 2013:

	Aggregate Fair Value	Admitted Assets	(Level 1)	(Level 2)	(Level 3)	Not Practicable (Carrying Value)
Assets						
Bonds	\$ 3,169,647,606	\$ 2,957,910,268	\$ 1,047,997,321	\$ 2,096,348,519	\$ 25,301,766	\$ -
Stocks	-	-	-	-	-	-
Mortgage loans	109,554,452	101,427,229	-	-	109,554,452	-
Short-term investments	75,790,311	75,790,311	-	75,790,311	-	-
Derivative assets	-	-	-	-	-	-
Policy loans	-	-	-	-	-	-
Securities lending collateral assets ¹	13,489,340	13,522,510	-	13,489,340	-	-
Total Assets	\$ 3,368,481,709	\$ 3,148,650,318	\$ 1,047,997,321	\$ 2,185,628,170	\$ 134,856,218	\$ -
Liabilities						
Derivative liabilities	\$ -	\$ -	\$ -	\$ -	\$ -	\$ -
Total Liabilities	\$ -	\$ -	\$ -	\$ -	\$ -	\$ -

1 - Includes non admitted assets

Note 21 - Other Items

No change.

Note 22 - Events Subsequent

Subsequent events have been considered through October 30, 2013 for these statutory financial statements which are to be issued November 1, 2013. There were no events occurring subsequent to the end of the quarter that merited recognition or disclosure in these statements.

Note 23 – Reinsurance

No change.

Note 24 - Retrospectively Rated Contracts and Contracts Subject to Redetermination

No change.

Note 25 - Changes in Incurred Losses and Loss Adjustment Expenses

The Company experienced a reserve strengthening of \$152.4 million during the year.

Note 26 - Intercompany Pooling Arrangements

Not applicable.

Note 27 - Structured Settlements

No change.

Note 28 - Health Care Receivables

No change.

Note 29 - Participating Policies

No change.

NOTES TO FINANCIAL STATEMENTS

Note 30 - Premium Deficiency Reserves

No change.

Note 31 - High Deductibles

No change.

Note 32 - Discounting of Liabilities for Unpaid Losses or Unpaid Loss Adjustment Expenses

No change.

Note 33 - Asbestos/Environmental Reserves

No change.

Note 34 - Subscriber Savings Accounts

No change.

Note 35 - Multiple Peril Crop Insurance

No change.

Note 36 – Financial Guaranty Insurance

A. and B. Not applicable.

STATEMENT AS OF SEPTEMBER 30, 2013 OF THE NATIONWIDE INDEMNITY COMPANY

GENERAL INTERROGATORIES

PART 1 - COMMON INTERROGATORIES

GENERAL

- 1.1

Did the reporting entity experience any material transactions requiring the filing of Disclosure of Material Transactions with the State of Domicile, as required by the Model Act?

Yes ☐ No ☒
- 1.2

If yes, has the report been filed with the domiciliary state?

Yes ☐ No ☐
- 2.1

Has any change been made during the year of this statement in the charter, by-laws, articles of incorporation, or deed of settlement of the reporting entity?

Yes ☐ No ☒
- 2.2

If yes, date of change:
- 3.1

Have there been any substantial changes in the organizational chart since the prior quarter end?

Yes ☒ No ☐
- 3.2

If the response to 3.1 is yes, provide a brief description of those changes.
In the third quarter, NNOV8, LLC, a single member limited liability company of Nationwide Mutual Insurance Company was added.
- 4.1

Has the reporting entity been a party to a merger or consolidation during the period covered by this statement?

Yes ☐ No ☒
- 4.2

If yes, provide the name of the entity, NAIC Company Code, and state of domicile (use two letter state abbreviation) for any entity that has ceased to exist as a result of the merger or consolidation.

1 Name of Entity	2 NAIC Company Code	3 State of Domicile
5.

If the reporting entity is subject to a management agreement, including third-party administrator(s), managing general agent(s), attorney-in-fact, or similar agreement, have there been any significant changes regarding the terms of the agreement or principals involved? If yes, attach an explanation.

Yes ☐ No ☒ N/A ☐
- 6.1

State as of what date the latest financial examination of the reporting entity was made or is being made.

12/31/2011
- 6.2

State the as of date that the latest financial examination report became available from either the state of domicile or the reporting entity. This date should be the date of the examined balance sheet and not the date the report was completed or released.

12/31/2011
- 6.3

State as of what date the latest financial examination report became available to other states or the public from either the state of domicile or the reporting entity. This is the release date or completion date of the examination report and not the date of the examination (balance sheet date).

03/25/2013
- 6.4

By what department or departments?
OH
- 6.5

Have all financial statement adjustments within the latest financial examination report been accounted for in a subsequent financial statement filed with Departments?

Yes ☐ No ☐ N/A ☒
- 6.6

Have all of the recommendations within the latest financial examination report been complied with?

Yes ☐ No ☐ N/A ☒
- 7.1

Has this reporting entity had any Certificates of Authority, licenses or registrations (including corporate registration, if applicable) suspended or revoked by any governmental entity during the reporting period?

Yes ☐ No ☒
- 7.2

If yes, give full information:
- 8.1

Is the company a subsidiary of a bank holding company regulated by the Federal Reserve Board?

Yes ☐ No ☒
- 8.2

If response to 8.1 is yes, please identify the name of the bank holding company.
- 8.3

Is the company affiliated with one or more banks, thrifts or securities firms?

Yes ☒ No ☐
- 8.4

If response to 8.3 is yes, please provide below the names and location (city and state of the main office) of any affiliates regulated by a federal regulatory services agency [i.e. the Federal Reserve Board (FRB), the Office of the Comptroller of the Currency (OCC), the Federal Deposit Insurance Corporation (FDIC) and the Securities Exchange Commission (SEC)] and identify the affiliate's primary federal regulator.

1 Affiliate Name	2 Location (City, State)	3 FRB	4 OCC	5 FDIC	6 SEC
Nationwide Bank	Columbus, OH	NO	YES	NO	NO
Nationwide Investment Services Corp.	Columbus, OH	NO	NO	NO	YES
Nationwide Securities, LLC	Dublin, OH	NO	NO	NO	YES
Nationwide Fund Distributors, LLC	King of Prussia, PA	NO	NO	NO	YES
Nationwide Advantage Mortgage Company	Des Moines, IA	NO	NO	NO	NO

STATEMENT AS OF SEPTEMBER 30, 2013 OF THE NATIONWIDE INDEMNITY COMPANY

GENERAL INTERROGATORIES

- 9.1

Are the senior officers (principal executive officer, principal financial officer, principal accounting officer or controller, or persons performing similar functions) of the reporting entity subject to a code of ethics, which includes the following standards? (a) Honest and ethical conduct, including the ethical handling of actual or apparent conflicts of interest between personal and professional relationships; (b) Full, fair, accurate, timely and understandable disclosure in the periodic reports required to be filed by the reporting entity; (c) Compliance with applicable governmental laws, rules and regulations; (d) The prompt internal reporting of violations to an appropriate person or persons identified in the code; and (e) Accountability for adherence to the code.

Yes [X] No []
- 9.11

If the response to 9.1 is No, please explain:
- 9.2

Has the code of ethics for senior managers been amended?

Yes [X] No []
- 9.21

If the response to 9.2 is Yes, provide information related to amendment(s). All topics covered in the previous Code of Conduct have been retained without substantive change. New sample questions and answers have been added. New language has been added to cover social networking, securities laws, political contributions, corporate social responsibility, and vendor relationships.
- 9.3

Have any provisions of the code of ethics been waived for any of the specified officers?

Yes [] No [X]
- 9.31

If the response to 9.3 is Yes, provide the nature of any waiver(s).

FINANCIAL

- 10.1

Does the reporting entity report any amounts due from parent, subsidiaries or affiliates on Page 2 of this statement?

Yes [X] No []
- 10.2

If yes, indicate any amounts receivable from parent included in the Page 2 amount:

\$134,529

INVESTMENT

- 11.1

Were any of the stocks, bonds, or other assets of the reporting entity loaned, placed under option agreement, or otherwise made available for use by another person? (Exclude securities under securities lending agreements.)

Yes [] No [X]
- 11.2

If yes, give full and complete information relating thereto:
12.

Amount of real estate and mortgages held in other invested assets in Schedule BA:

\$59,712,685
13.

Amount of real estate and mortgages held in short-term investments:

\$
- 14.1

Does the reporting entity have any investments in parent, subsidiaries and affiliates?

Yes [X] No []
- 14.2

If yes, please complete the following:
- | | 1 | 2 |
|---|---|--|
| | Prior Year-End Book/Adjusted Carrying Value | Current Quarter Book/Adjusted Carrying Value |
| 14.21 Bonds | \$ | \$ |
| 14.22 Preferred Stock | \$ | \$ |
| 14.23 Common Stock | \$ | \$ |
| 14.24 Short-Term Investments | \$ | \$ |
| 14.25 Mortgage Loans on Real Estate | \$ | \$ |
| 14.26 All Other | \$19,941,815 | \$22,647,651 |
| 14.27 Total Investment in Parent, Subsidiaries and Affiliates (Subtotal Lines 14.21 to 14.26) | \$19,941,815 | \$22,647,651 |
| 14.28 Total Investment in Parent included in Lines 14.21 to 14.26 above | \$ | \$ |
- 15.1

Has the reporting entity entered into any hedging transactions reported on Schedule DB?

Yes [] No [X]
- 15.2

If yes, has a comprehensive description of the hedging program been made available to the domiciliary state? If no, attach a description with this statement.

Yes [] No []

STATEMENT AS OF SEPTEMBER 30, 2013 OF THE NATIONWIDE INDEMNITY COMPANY

GENERAL INTERROGATORIES

16. For the reporting entity's security lending program, state the amount of the following as of the current statement date:

16.1 Total fair value of reinvested collateral assets reported on Schedule DL, Parts 1 and 2.

16.2 Total book adjusted/carrying value of reinvested collateral assets reported on Schedule DL, Parts 1 and 2

16.3 Total payable for securities lending reported on the liability page.

\$

20,755,802

\$

20,788,971

\$

27,087,223

17. Excluding items in Schedule E - Part 3 - Special Deposits, real estate, mortgage loans and investments held physically in the reporting entity's offices, vaults or safety deposit boxes, were all stocks, bonds and other securities, owned throughout the current year held pursuant to a custodial agreement with a qualified bank or trust company in accordance with Section 1, III - General Examination Considerations, F. Outsourcing of Critical Functions, Custodial or Safekeeping Agreements of the NAIC Financial Condition Examiners Handbook?

Yes [X] No []

17.1 For all agreements that comply with the requirements of the NAIC Financial Condition Examiners Handbook, complete the following:

1 Name of Custodian(s)	2 Custodian Address
The Bank of New York Mellon	1 Wall Street, New York, NY 10286

17.2 For all agreements that do not comply with the requirements of the NAIC Financial Condition Examiners Handbook, provide the name, location and a complete explanation:

1 Name(s)	2 Location(s)	3 Complete Explanation(s)

17.3 Have there been any changes, including name changes, in the custodian(s) identified in 17.1 during the current quarter?

Yes [] No [X]

17.4 If yes, give full information relating thereto:

1 Old Custodian	2 New Custodian	3 Date of Change	4 Reason

17.5 Identify all investment advisors, brokers/dealers or individuals acting on behalf of broker/dealers that have access to the investment accounts, handle securities and have authority to make investments on behalf of the reporting entity:

1 Central Registration Depository	2 Name(s)	3 Address
N/A	Members of the investment staff designated by the Chief Investment Officer as detailed in the Corporate Resolution.	One West Nationwide Blvd., Columbus, OH 43215

18.1 Have all the filing requirements of the Purposes and Procedures Manual of the NAIC Securities Valuation Office been followed?

Yes [X] No []

18.2 If no, list exceptions:

GENERAL INTERROGATORIES

PART 2 - PROPERTY & CASUALTY INTERROGATORIES

1.

If the reporting entity is a member of a pooling arrangement, did the agreement or the reporting entity's participation change?
If yes, attach an explanation.

Yes [] No [] N/A [X]
2.

Has the reporting entity reinsured any risk with any other reporting entity and agreed to release such entity from liability, in whole or in part, from any loss that may occur on the risk, or portion thereof, reinsured?
If yes, attach an explanation.

Yes [] No [X]
- 3.1

Have any of the reporting entity's primary reinsurance contracts been canceled?

Yes [] No [X]
- 3.2

If yes, give full and complete information thereto.
- 4.1

Are any of the liabilities for unpaid losses and loss adjustment expenses other than certain workers' compensation tabular reserves (see Annual Statement Instructions pertaining to disclosure of discounting for definition of " tabular reserves") discounted at a rate of interest greater than zero?

Yes [] No [X]
- 4.2

If yes, complete the following schedule:

			TOTAL DISCOUNT				DISCOUNT TAKEN DURING PERIOD			
1	2	3	4	5	6	7	8	9	10	11
Line of Business	Maximum Interest	Discount Rate	Unpaid Losses	Unpaid LAE	IBNR	TOTAL	Unpaid Losses	Unpaid LAE	IBNR	TOTAL
TOTAL										

5.

Operating Percentages:

5.1 A&H loss percent %

5.2 A&H cost containment percent %

5.3 A&H expense percent excluding cost containment expenses %
- 6.1

Do you act as a custodian for health savings accounts?

Yes [] No [X]
- 6.2

If yes, please provide the amount of custodial funds held as of the reporting date\$.....
- 6.3

Do you act as an administrator for health savings accounts?

Yes [] No [X]
- 6.4

If yes, please provide the balance of the funds administered as of the reporting date\$.....

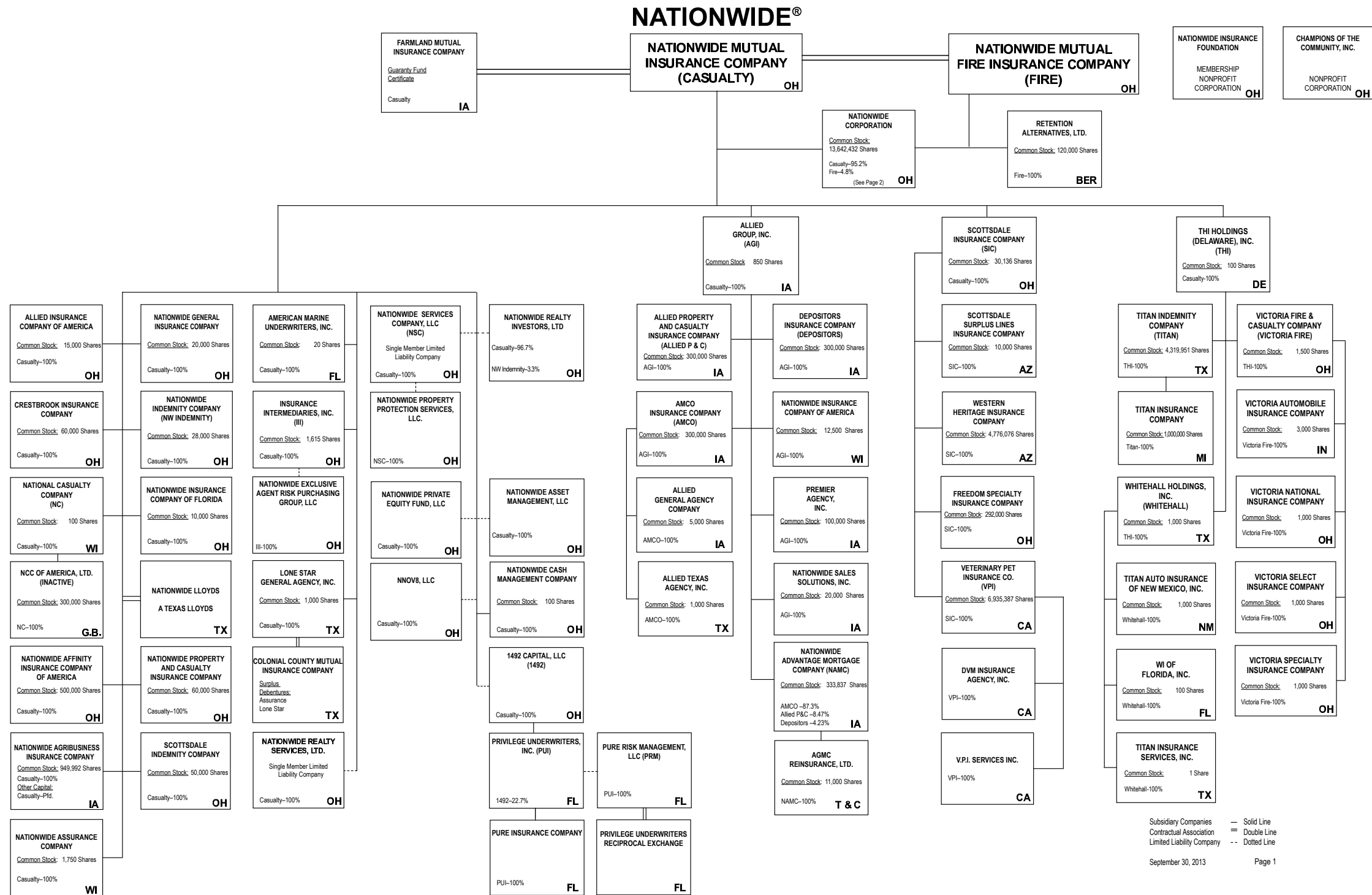
SCHEDULE F - CEDED REINSURANCE

[illegible]

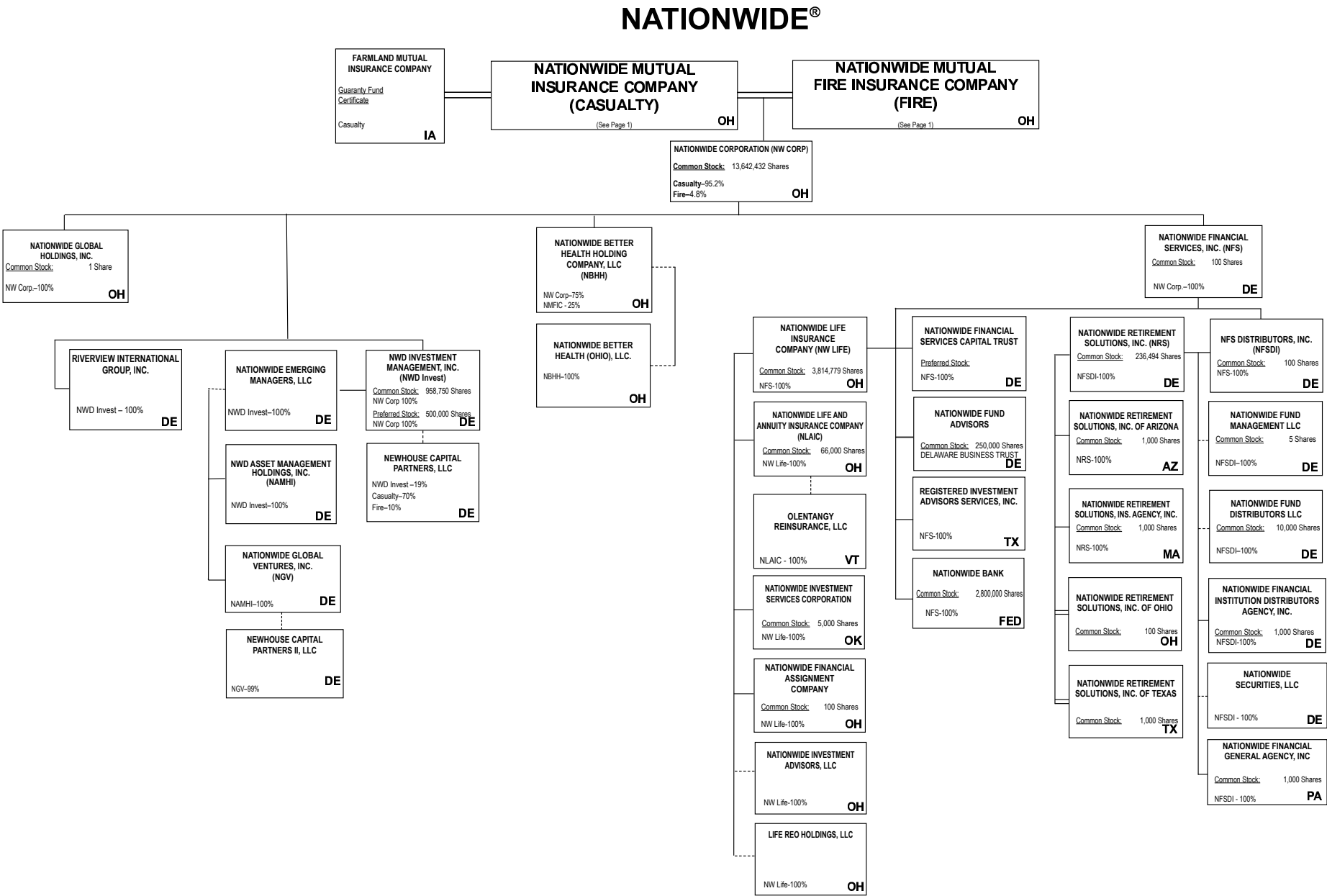
SCHEDULE T - EXHIBIT OF PREMIUMS WRITTEN

Current Year to Date - Allocated by States and Territories							
States, etc.	1 Active Status	Direct Premiums Written		Direct Losses Paid (Deducting Salvage)		Direct Losses Unpaid	
		2 Current Year To Date	3 Prior Year To Date	4 Current Year To Date	5 Prior Year To Date	6 Current Year To Date	7 Prior Year To Date
1. Alabama AL	N						
2. Alaska AK	N						
3. Arizona AZ	N						
4. Arkansas AR	N						
5. California CA	N						
6. Colorado CO	N						
7. Connecticut CT	N						
8. Delaware DE	N						
9. District of Columbia DC	N						
10. Florida FL	N						
11. Georgia GA	N						
12. Hawaii HI	N						
13. Idaho ID	N						
14. Illinois IL	L						
15. Indiana IN	N						
16. Iowa IA	Q						
17. Kansas KS	N						
18. Kentucky KY	N						
19. Louisiana LA	N						
20. Maine ME	N						
21. Maryland MD	N						
22. Massachusetts MA	N						
23. Michigan MI	N						
24. Minnesota MN	N						
25. Mississippi MS	N						
26. Missouri MO	N						
27. Montana MT	N						
28. Nebraska NE	N						
29. Nevada NV	N						
30. New Hampshire NH	N						
31. New Jersey NJ	N						
32. New Mexico NM	N						
33. New York NY	Q						
34. North Carolina NC	N						
35. North Dakota ND	N						
36. Ohio OH	L						
37. Oklahoma OK	N						
38. Oregon OR	N						
39. Pennsylvania PA	N						
40. Rhode Island RI	N						
41. South Carolina SC	N						
42. South Dakota SD	N						
43. Tennessee TN	N						
44. Texas TX	N						
45. Utah UT	N						
46. Vermont VT	N						
47. Virginia VA	N						
48. Washington WA	N						
49. West Virginia WV	N						
50. Wisconsin WI	Q						
51. Wyoming WY	N						
52. American Samoa AS	N						
53. Guam GU	N						
54. Puerto Rico PR	N						
55. U.S. Virgin Islands VI	N						
56. Northern Mariana Islands MP	N						
57. Canada CAN	N						
58. Aggregate Other Alien OT	XXX						
59. Totals (a)	2						
DETAILS OF WRITE-INS							
58001.	XXX						
58002.	XXX						
58003.	XXX						
58998. Summary of remaining write-ins for Line 58 from overflow page	XXX						
58999. Totals (Lines 58001 through 58003 plus 58998)(Line 58 above)	XXX						

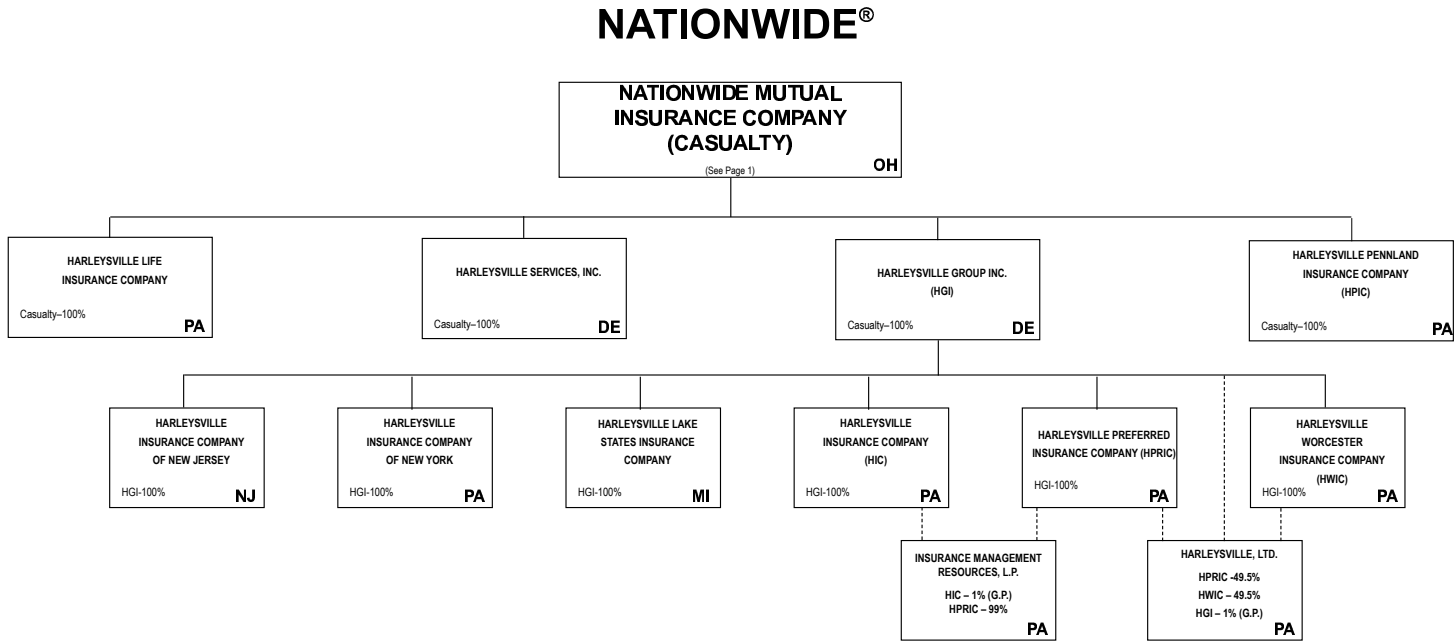
(L) Licensed or Chartered - Licensed Insurance Carrier or Domiciled RRG; (R) Registered - Non-domiciled RRGs; (Q) Qualified - Qualified or Accredited Reinsurer; (E) Eligible - Reporting Entities eligible or approved to write Surplus Lines in the state; (N) None of the above - Not allowed to write business in the state.
(a) Insert the number of L responses except for Canada and Other Alien.



(Casualty, Fire and insurance related subsidiaries)



Subsidiary Companies — Solid Line
Contractual Association == Double Line
Limited Liability Company --- Dotted Line



NATIONWIDE INSURANCE COMPANIES

NAIC Group Code	Group Name	NAIC Company Code	State of Domicile	Federal ID Number	Name of Company
0140	Nationwide	10127	OH	27-0114983	Allied Insurance Company of America
0140	Nationwide	42579	IA	42-1201931	Allied Property and Casualty Insurance Company
0140	Nationwide	19100	IA	42-6054959	AMCO Insurance Company
0140	Nationwide	29262	TX	74-1061659	Colonial County Mutual Insurance Company
0140	Nationwide	18961	OH	68-0066866	Crestbrook Insurance Company
0140	Nationwide	42587	IA	42-1207150	Depositors Insurance Company
0140	Nationwide	13838	IA	42-0618271	Farmland Mutual Insurance Company
0140	Nationwide	22209	OH	75-6013587	Freedom Specialty Insurance Company
0140	Nationwide	23582	PA	41-0417250	Harleysville Insurance Company
0140	Nationwide	42900	NJ	23-2253669	Harleysville Insurance Company of New Jersey
0140	Nationwide	10674	PA	23-2864924	Harleysville Insurance Company of New York
0140	Nationwide	14516	MI	38-3198542	Harleysville Lake States Insurance Company
0140	Nationwide	64327	PA	23-1580983	Harleysville Life Insurance Company
0140	Nationwide	40983	PA	23-2612951	Harleysville Pennland Insurance Company
0140	Nationwide	35696	PA	23-2384978	Harleysville Preferred Insurance Company
0140	Nationwide	26182	PA	04-1989660	Harleysville Worcester Insurance Company
0140	Nationwide	11991	WI	38-0865250	National Casualty Company
0140	Nationwide	26093	OH	48-0470690	Nationwide Affinity Insurance Company of America
0140	Nationwide	28223	IA	42-1015537	Nationwide Agribusiness Insurance Company
0140	Nationwide	10723	WI	95-0639970	Nationwide Assurance Company
0140	Nationwide	23760	OH	31-4425763	Nationwide General Insurance Company
0140	Nationwide	10070	OH	31-1399201	Nationwide Indemnity Company
0140	Nationwide	25453	WI	95-2130882	Nationwide Insurance Company of America
0140	Nationwide	10948	OH	31-1613686	Nationwide Insurance Company of Florida
0140	Nationwide	92657	OH	31-1000740	Nationwide Life and Annuity Insurance Company
0140	Nationwide	66869	OH	31-4156830	Nationwide Life Insurance Company
0140	Nationwide	42110	TX	75-1780981	Nationwide Lloyds
0140	Nationwide	23779	OH	31-4177110	Nationwide Mutual Fire Insurance Company
0140	Nationwide	23787	OH	31-4177100	Nationwide Mutual Insurance Company
0140	Nationwide	37877	OH	31-0970750	Nationwide Property & Casualty Insurance Company
0140	Nationwide	13999	VT	27-1712056	Olentangy Reinsurance, LLC
0140	Nationwide	15580	OH	31-1117969	Scottsdale Indemnity Company
0140	Nationwide	41297	OH	31-1024978	Scottsdale Insurance Company
0140	Nationwide	10672	AZ	86-0835870	Scottsdale Surplus Lines Insurance Company
0140	Nationwide	13242	TX	74-2286759	Titan Indemnity Company
0140	Nationwide	36269	MI	86-0619597	Titan Insurance Company
0140	Nationwide	42285	CA	95-3750113	Veterinary Pet Insurance Company
0140	Nationwide	10644	IN	34-1785903	Victoria Automobile Insurance Company
0140	Nationwide	42889	OH	34-1394913	Victoria Fire & Casualty Company
0140	Nationwide	10778	OH	34-1842604	Victoria National Insurance Company
0140	Nationwide	10105	OH	34-1777972	Victoria Select Insurance Company
0140	Nationwide	10777	OH	34-1842602	Victoria Specialty Insurance Company
0140	Nationwide	37150	AZ	86-0561941	Western Heritage Insurance Company
4664	PURE	12873	FL	20-8287105	Privilege Underwriters Reciprocal Exchange
4664	PURE	13204	FL	26-3109178	PURE Insurance Company

STATEMENT AS OF SEPTEMBER 30, 2013 OF THE NATIONWIDE INDEMNITY COMPANY

SCHEDULE Y
PART 1A - DETAIL OF INSURANCE HOLDING COMPANY SYSTEM

1	2	3	4	5	6	7	8	9	10	11	12	13	14	15
Group Code	Group Name	NAIC Company Code	Federal ID Number	Federal RSSD	CIK	Name of Securities Exchange if Publicly Traded (U.S. or International)	Names of Parent, Subsidiaries Or Affiliates	Domi-ciliary Location	Relation-ship to Reporting Entity	Directly Controlled by (Name of Entity/Person)	Type of Control (Ownership, Board, Management, Attorney-in-Fact, Influence, Other)	If Control is Owner-ship Provide Percen-tage	Ultimate Controlling Entity(ies)/Person(s)	*
..0140	Nationwide		31-1486309				10 W. Nationwide, LLC	..OH	..NIA	Nationwide Realty Investors, Ltd.	Ownership	100.000	Nationwide Mutual Insurance Company	
..0140	Nationwide		31-1486309				101 N. Twentieth St, LLC	..OH	..NIA	Nationwide Realty Investors, Ltd.	Ownership	100.000	Nationwide Mutual Insurance Company	
..0140	Nationwide		31-1733036				120 Acre Partners, LLC	..DE	..NIA	Nationwide Realty Investors, Ltd.	Ownership	95.000	Nationwide Mutual Insurance Company	
..0140	Nationwide		26-2451988	4288132			1492 Capital, LLC	..OH	..NIA	Nationwide Mutual Insurance Company	Ownership	100.000	Nationwide Mutual Insurance Company	
..0140	Nationwide		20-1347603				180 E. Broad Partners, LLC	..OH	..NIA	Nationwide Realty Investors, Ltd.	Ownership	33.330	Nationwide Mutual Insurance Company	1
..0140	Nationwide						3Stone Inflection Fund, LLC	..DE	..NIA	Other non-Nationwide	n/a		Other non-Nationwide	
..0140	Nationwide		31-1580283				400 West Nationwide Boulevard, LLC	..OH	..NIA	NWD Investments, LLC	Ownership	100.000	Nationwide Mutual Insurance Company	
..0140	Nationwide		31-1580283				425 West Nationwide Boulevard, LLC	..OH	..NIA	NWD Investments, LLC	Ownership	100.000	Nationwide Mutual Insurance Company	
..0140	Nationwide		31-1486309				44 Chestnut, LLC	..OH	..NIA	Nationwide Realty Investors, Ltd.	Ownership	100.000	Nationwide Mutual Insurance Company	
..0140	Nationwide		20-4939866				775 Yard Street Restaurant, LLC	..OH	..NIA	NRI Equity Land Investments, LLC	Ownership	100.000	Nationwide Mutual Insurance Company	
..0140	Nationwide		20-4939866				775 Yard Street, LLC	..OH	..NIA	NRI Equity Land Investments, LLC	Ownership	100.000	Nationwide Mutual Insurance Company	
..0140	Nationwide		20-4939866				800 Bobcat Avenue, LLC	..OH	..NIA	NRI Equity Land Investments, LLC	Ownership	100.000	Nationwide Mutual Insurance Company	
..0140	Nationwide		20-4939866				805 Bobcat Avenue, LLC	..OH	..NIA	NRI Equity Land Investments, LLC	Ownership	100.000	Nationwide Mutual Insurance Company	
..0140	Nationwide		20-4939866				845 Yard Street, LLC	..OH	..NIA	NRI Equity Land Investments, LLC	Ownership	100.000	Nationwide Mutual Insurance Company	
..0140	Nationwide		20-4939866				850 Goodale Blvd., LLC	..OH	..NIA	NRI Equity Land Investments, LLC	Ownership	100.000	Nationwide Mutual Insurance Company	
..0140	Nationwide		20-4939866				925 Burrell Avenue Acquisitions, LLC	..OH	..NIA	NRI Equity Land Investments, LLC	Ownership	100.000	Nationwide Mutual Insurance Company	
..0140	Nationwide		31-1680808				AD Investments, LLC	..OH	..NIA	Nationwide Realty Investors, Ltd.	Ownership	60.000	Nationwide Mutual Insurance Company	
..0140	Nationwide		31-1580283				ADTV, LLC	..OH	..NIA	NWD Investments, LLC	Ownership	100.000	Nationwide Mutual Insurance Company	
..0140	Nationwide		52-2227314				AGMC Reinsurance, Ltd.	..TCA	..IA	Nationwide Advantage Mortgage Company	Ownership	100.000	Nationwide Mutual Insurance Company	
..0140	Nationwide		42-1011300	4287229			ALLIED General Agency Company	..IA	..IA	AMCO Insurance Company	Ownership	100.000	Nationwide Mutual Insurance Company	
..0140	Nationwide		42-0958655				ALLIED Group, Inc.	..IA	..IA	Nationwide Mutual Insurance Company	Ownership	100.000	Nationwide Mutual Insurance Company	
..0140	Nationwide	10127	27-0114983	4288169			ALLIED Insurance Company of America (fka Atlantic Floridian Insurance Company)	..OH	..IA	Nationwide Mutual Insurance Company	Ownership	100.000	Nationwide Mutual Insurance Company	
..0140	Nationwide	45279	42-1201931	4287144			ALLIED Property and Casualty Insurance Company	..IA	..IA	ALLIED Group, Inc.	Ownership	100.000	Nationwide Mutual Insurance Company	
..0140	Nationwide		42-1527863	4287238			ALLIED Texas Agency, Inc.	..TX	..IA	AMCO Insurance Company	Ownership	100.000	Nationwide Mutual Insurance Company	
..0140	Nationwide	19100	42-6054959	4287153			AMCO Insurance Company	..IA	..IA	ALLIED Group, Inc.	Ownership	100.000	Nationwide Mutual Insurance Company	
..0140	Nationwide		59-1031596	4288011			American Marine Underwriters, Inc.	..FL	..IA	Nationwide Mutual Insurance Company	Ownership	100.000	Nationwide Mutual Insurance Company	
..0140	Nationwide		31-1486309				Anderson Meadows, LLC	..OH	..NIA	Nationwide Realty Investors, Ltd.	Ownership	100.000	Nationwide Mutual Insurance Company	
..0140	Nationwide		31-1580283				Arena District CA I, LLC	..OH	..NIA	NWD Investments, LLC	Ownership	100.000	Nationwide Mutual Insurance Company	
..0140	Nationwide		90-0280710				Arena District Owners Association	..OH	..OTH	Other non-Nationwide	n/a		Other non-Nationwide	
..0140	Nationwide		31-1580283				Arena Theatres, LLC	..OH	..NIA	NWD Investments, LLC	Ownership	100.000	Nationwide Mutual Insurance Company	
..0140	Nationwide						Artessa at Quarry Village, LLC	..TX	..OTH	Other non-Nationwide	n/a		Other non-Nationwide	
..0140	Nationwide						BCCS Investment Fund LLC	..DE	..OTH	Nationwide Mutual Insurance Company	Ownership	100.000	Nationwide Mutual Insurance Company	
..0140	Nationwide		31-1184438				Boulevard Inn Limited Liability Company	..OH	..NIA	Nationwide Realty Investors, Ltd.	Ownership	94.800	Nationwide Mutual Insurance Company	
..0140	Nationwide		31-1555487				Broad Street Retail, LLC	..DE	..NIA	Nationwide Realty Investors, Ltd.	Ownership	60.000	Nationwide Mutual Insurance Company	
..0140	Nationwide						Brooke School Investment Fund, LLC	..DE	..OTH	Nationwide Mutual Insurance Company	Ownership	100.000	Nationwide Mutual Insurance Company	
..0140	Nationwide			3730540			CHP New Markets Investment Fund, LLC	..OH	..OTH	Nationwide Mutual Insurance Company	Limited partner /no control	50.000	other non-Nationwide	
..0140	Nationwide		20-1618232				CNRI-Cannonsport Condominium, LLC	..OH	..NIA	CNRI-Cannonsport, LLC	Ownership	100.000	Nationwide Mutual Insurance Company	
..0140	Nationwide		20-1618232				CNRI-Cannonsport, LLC	..OH	..NIA	Nationwide Realty Investors, Ltd.	Ownership	100.000	Nationwide Mutual Insurance Company	
..0140	Nationwide						Co-Investment Fund, L.P.	..DE	..OTH	Other non-Nationwide	n/a		Other non-Nationwide	
..0140	Nationwide		31-1579973				COLHOC Limited Partnership	..OH	..NIA	NRI Limited Partnership	Ownership	30.760	Other non-Nationwide	
..0140	Nationwide	29262	74-1061659	4288057			Colonial County Mutual Insurance Company	..TX	..OTH	Other non-Nationwide	contract		Other non-Nationwide	
..0140	Nationwide		04-3750770				Continental/North Shore I, L.P.	..OH	..NIA	Continental/NRI North Shore Investments, LLC	Ownership	100.000	Nationwide Mutual Insurance Company	1
..0140	Nationwide		20-0366090				Continental/North Shore II, L.P.	..OH	..NIA	Continental/NRI North Shore Investments, LLC	Ownership	100.000	Nationwide Mutual Insurance Company	1
..0140	Nationwide		20-0142724				LLC	..OH	..NIA	Nationwide Realty Investors, Ltd.	Ownership	50.500	Nationwide Mutual Insurance Company	1
..0140	Nationwide						Cotton Mill Partners, LLC	..VA	..OTH	Nationwide Mutual Insurance Company	Limited partner /no control	2.000	other non-Nationwide	
..0140	Nationwide	18961	68-0066866	4288178			Crestbrook Insurance Company	..OH	..IA	Nationwide Mutual Insurance Company	Ownership	100.000	Nationwide Mutual Insurance Company	

STATEMENT AS OF SEPTEMBER 30, 2013 OF THE NATIONWIDE INDEMNITY COMPANY

SCHEDULE Y
PART 1A - DETAIL OF INSURANCE HOLDING COMPANY SYSTEM

1	2	3	4	5	6	7	8	9	10	11	12	13	14	15
Group Code	Group Name	NAIC Company Code	Federal ID Number	Federal RSSD	CIK	Name of Securities Exchange if Publicly Traded (U.S. or International)	Names of Parent, Subsidiaries Or Affiliates	Domi-ciliary Location	Relation-ship to Reporting Entity	Directly Controlled by (Name of Entity/Person)	Type of Control (Ownership, Board, Management, Attorney-in-Fact, Influence, Other)	If Control is Owner-ship Provide Perce-ntage	Ultimate Controlling Entity(ies)/Person(s)	*
...0140 ...	Nationwide		31-1486309				Crewville, Ltd.	...OH...	...NIA...	Nationwide Realty Investors, Ltd.	Ownership.....	100.000	Nationwide Mutual Insurance Company
...0140 ...	Nationwide	42587	42-1207150	4287162			Depositors Insurance Company	...IA...	...IA...	ALLIED Group, Inc.	Ownership.....	100.000	Nationwide Mutual Insurance Company
...0140 ...	Nationwide		33-0096671	4287694			DVM Insurance Agency, Inc.	...CA...	...NIA...	Veterinary Pet Insurance Company	Ownership.....	100.000	Nationwide Mutual Insurance Company
...0140 ...	Nationwide		20-1945276				East of Madison, LLC	...DE...	...NIA...	120 Acre Partners, Ltd.	Ownership.....	24.910	Nationwide Mutual Insurance Company	...1.....
...0140 ...	Nationwide		20-1945276				East of Madison, LLC	...DE...	...NIA...	ND La Quinta Partners, LLC	Ownership.....	76.090	Nationwide Mutual Insurance Company	...1.....
...0140 ...	Nationwide						ELH Investment LLC	...DE...	...OTH...	Nationwide Mutual Insurance Company	Other.....		Nationwide Mutual Insurance Company	...2.....
...0140 ...	Nationwide	13838	42-0618271				Farmland Mutual Insurance Company	...IA...	...OTH...	Other non-Nationwide	debt.....		Other non-Nationwide
...0140 ...	Nationwide						Freedom Specialty Insurance Company (fka Atlantic Insurance Company)	...OH...	...IA...	Scottsdale Insurance Company	Ownership.....	100.000	Nationwide Mutual Insurance Company
...0140 ...	Nationwide	22209	75-6013587	4287676			Grandview Yard Hotel Holdings, LLC	...OH...	...NIA...	NRI Equity Land Investments, LLC	Ownership.....	100.000	Nationwide Mutual Insurance Company
...0140 ...	Nationwide		20-4939866				Grandview Yard Hotel, LLC	...OH...	...NIA...	Grandview Yard Hotel Holdings, LLC	Ownership.....	100.000	Nationwide Mutual Insurance Company
...0140 ...	Nationwide		51-0241172				Harleysville Group, Inc.	...DE...	...NIA...	Nationwide Mutual Insurance Company	Ownership.....	100.000	Nationwide Mutual Insurance Company
...0140 ...	Nationwide	23582	41-0417250	4442260			Harleysville Insurance Company	...PA...	...IA...	Harleysville Group, Inc.	Ownership.....	100.000	Nationwide Mutual Insurance Company
...0140 ...	Nationwide						Harleysville Insurance Company of New Jersey	...NJ...	...IA...	Harleysville Group, Inc.	Ownership.....	100.000	Nationwide Mutual Insurance Company
...0140 ...	Nationwide	33235	16-1075588	4442158			Harleysville Insurance Company of New York							
...0140 ...	Nationwide	10674	23-2864924	4442242			Harleysville Lake States Insurance Company	...PA...	...IA...	Harleysville Group, Inc.	Ownership.....	100.000	Nationwide Mutual Insurance Company
...0140 ...	Nationwide		14516	38-3198542	4442251		Harleysville Life Insurance Company	...MI...	...IA...	Harleysville Group, Inc.	Ownership.....	100.000	Nationwide Mutual Insurance Company
...0140 ...	Nationwide	64327	23-1580983	4440659			Harleysville Pennland Insurance Company	...PA...	...IA...	Nationwide Mutual Insurance Company	Ownership.....	100.000	Nationwide Mutual Insurance Company
...0140 ...	Nationwide	40983	23-2612951	4442149			Harleysville Preferred Insurance Company	...PA...	...IA...	Nationwide Mutual Insurance Company	Ownership.....	100.000	Nationwide Mutual Insurance Company
...0140 ...	Nationwide	35896	23-2384978	4442288			Harleysville Preferred Insurance Company	...PA...	...IA...	Harleysville Group, Inc.	Ownership.....	100.000	Nationwide Mutual Insurance Company
...0140 ...	Nationwide		51-0259283	4442103			Harleysville Services, Inc.	...DE...	...NIA...	Nationwide Mutual Insurance Company	Ownership.....	100.000	Nationwide Mutual Insurance Company
...0140 ...	Nationwide	26182	04-1989660	4442372			Harleysville Worcester Insurance Company	...PA...	...IA...	Harleysville Group, Inc.	Ownership.....	100.000	Nationwide Mutual Insurance Company
...0140 ...	Nationwide						Harleysville, Ltd.	...PA...	...NIA...	Harleysville Preferred Insurance Company	Ownership.....	49.500	Nationwide Mutual Insurance Company
...0140 ...	Nationwide						Harleysville, Ltd.	...PA...	...NIA...	Harleysville Worcester Insurance Company	Ownership.....	49.500	Nationwide Mutual Insurance Company
...0140 ...	Nationwide		23-2403000	4442327			Harleysville, Ltd.	...PA...	...NIA...	Harleysville Group, Inc.	Ownership.....	1.000	Nationwide Mutual Insurance Company
...0140 ...	Nationwide		32-0051216				Hideaway Properties Corp.	...CA...	...OTH...	Nationwide Realty Investors, Ltd.	Ownership.....	50.000	Nationwide Mutual Insurance Company	...1.....
...0140 ...	Nationwide		31-0871532	4288020			Insurance Intermediaries, Inc.	...OH...	...IA...	Nationwide Mutual Insurance Company	Ownership.....	100.000	Nationwide Mutual Insurance Company
...0140 ...	Nationwide		23-2882311				Insurance Management Resources, L.P.	...PA...	...NIA...	Harleysville Insurance Company	Ownership.....	1.000	Nationwide Mutual Insurance Company
...0140 ...	Nationwide						Insurance Management Resources, L.P.	...PA...	...NIA...	Harleysville Preferred Insurance Company	Ownership.....	99.000	Nationwide Mutual Insurance Company
...0140 ...	Nationwide		23-2882311				Jerome Village Company, LLC	...OH...	...NIA...	Nationwide Realty Investors, Ltd.	Ownership.....	100.000	Nationwide Mutual Insurance Company
...0140 ...	Nationwide		31-1486309				Jerome Village Master Property Owners Association	...OH...	...OTH...	Other non-Nationwide	Ownership.....		Other non-Nationwide	...2.....
...0140 ...	Nationwide						Jerome Village Residential Property Owners Association, Inc.	...OH...	...NIA...	Other non-Nationwide	Ownership.....		Other non-Nationwide	...2.....
...0140 ...	Nationwide		46-2956640				JV Developers, LLC	...OH...	...OTH...	Nationwide Realty Investors, Ltd.	Ownership.....	100.000	Nationwide Mutual Insurance Company
...0140 ...	Nationwide		31-1486309				Leaguers Investment Fund LLC	...DE...	...OTH...	Nationwide Mutual Insurance Company	Other.....		Nationwide Mutual Insurance Company
...0140 ...	Nationwide		56-3789187	4286969			Life REO Holdings, LLC	...OH...	...NIA...	Nationwide Life Insurance Company	Ownership.....	100.000	Nationwide Mutual Insurance Company
...0140 ...	Nationwide		74-1395229				Lone Star General Agency, Inc.	...TX...	...IA...	Nationwide Mutual Insurance Company	Ownership.....	100.000	Nationwide Mutual Insurance Company
...0140 ...	Nationwide						Match School Investment Fund, LLC	...DE...	...OTH...	Nationwide Mutual Insurance Company	Ownership.....	100.000	Nationwide Mutual Insurance Company
...0140 ...	Nationwide	11991	38-0865250	4288187			National Casualty Company	...WI...	...IA...	Nationwide Mutual Insurance Company	Ownership.....	100.000	Nationwide Mutual Insurance Company
...0140 ...	Nationwide						National Casualty Company of America, Ltd.	...GBR...	...IA...	National Casualty Company	Ownership.....	100.000	Nationwide Mutual Insurance Company
...0140 ...	Nationwide		42-1154244				Nationwide Advantage Mortgage Company	...IA...	...NIA...	AMCO Insurance Company	Ownership.....	87.300	Nationwide Mutual Insurance Company
...0140 ...	Nationwide						Nationwide Advantage Mortgage Company	...IA...	...NIA...	ALLIED Property & Casualty Insurance Company	Ownership.....	8.470	Nationwide Mutual Insurance Company
...0140 ...	Nationwide		42-1154244				Nationwide Advantage Mortgage Company	...IA...	...NIA...	Depositors Insurance Company	Ownership.....	4.230	Nationwide Mutual Insurance Company

STATEMENT AS OF SEPTEMBER 30, 2013 OF THE NATIONWIDE INDEMNITY COMPANY

SCHEDULE Y

PART 1A - DETAIL OF INSURANCE HOLDING COMPANY SYSTEM

1	2	3	4	5	6	7	8	9	10	11	12	13	14	15
Group Code	Group Name	NAIC Company Code	Federal ID Number	Federal RSSD	CIK	Name of Securities Exchange if Publicly Traded (U.S. or International)	Names of Parent, Subsidiaries Or Affiliates	Domi-ciliary Location	Relation-ship to Reporting Entity	Directly Controlled by (Name of Entity/Person)	Type of Control (Ownership, Board, Management, Attorney-in-Fact, Influence, Other)	If Control is Owner-ship Provide Percen-tage	Ultimate Controlling Entity(ies)/Person(s)	*
...0140 ...	Nationwide26093 ..	48-0470690 ..	4288196	Nationwide Affinity Insurance Company of AmericaOH.....	..IA.....	Nationwide Mutual Insurance Company	Ownership.....	..100.000	Nationwide Mutual Insurance Company
...0140 ...	Nationwide28223 ..	42-1015537 ..	4288208	Nationwide Agribusiness Insurance CompanyIA.....	..IA.....	Nationwide Mutual Insurance Company	Ownership.....	..100.000	Nationwide Mutual Insurance Company
...0140 ...	Nationwide	20-5976272	Nationwide Alternative Investments, LLCOH.....	..NIA.....	Nationwide Mutual Insurance Company	Ownership.....	..100.000	Nationwide Mutual Insurance Company
...0140 ...	Nationwide	31-1578869 ..	4288075	Nationwide Arena, LLCOH.....	..NIA.....	NRI Arena, Ltd.	Ownership.....	..90.000	Nationwide Mutual Insurance Company
...0140 ...	Nationwide	20-8670712 ..	4288114	Nationwide Asset Management, LLCOH.....	..NIA.....	Nationwide Mutual Insurance Company	Ownership.....	..100.000	Nationwide Mutual Insurance Company
...0140 ...	Nationwide10723 ..	95-0639970 ..	4288217	Nationwide Assurance CompanyWI.....	..IA.....	Nationwide Mutual Insurance Company	Ownership.....	..100.000	Nationwide Mutual Insurance Company
...0140 ...	Nationwide	31-1592130 ..	2729677	Nationwide BankOTH.....	Nationwide Financial Services, Inc.	Ownership.....	..100.000	Nationwide Mutual Insurance Company
...0140 ...	Nationwide	52-1776258 ..	4286875	Nationwide Better Health (Ohio), LLCOH.....	..NIA.....	Nationwide Better Health Holding Company, LLC	Ownership.....	..100.000	Nationwide Mutual Insurance Company
...0140 ...	Nationwide	11-3766032 ..	4286428	Nationwide Better Health Holding Company, LLCOH.....	..NIA.....	Nationwide Corporation	Ownership.....	..75.000	Nationwide Mutual Insurance Company
...0140 ...	Nationwide	11-3766032 ..	4286428	Nationwide Better Health Holding Company, LLCOH.....	..NIA.....	Nationwide Mutual Fire Insurance Company	Ownership.....	..25.000	Nationwide Mutual Insurance Company
...0140 ...	Nationwide	31-1036287 ..	4288123	Nationwide Cash Management CompanyOH.....	..NIA.....	Nationwide Mutual Insurance Company	Ownership.....	..100.000	Nationwide Mutual Insurance Company
...0140 ...	Nationwide	31-4416546 ..	3828081	Nationwide CorporationOH.....	..NIA.....	Nationwide Mutual Insurance Company	Ownership.....	..95.200	Nationwide Mutual Insurance Company
...0140 ...	Nationwide	31-4416546 ..	3828081	Nationwide CorporationOH.....	..NIA.....	Nationwide Mutual Fire Insurance Company	Ownership.....	..4.800	Nationwide Mutual Insurance Company
...0140 ...	Nationwide	04-3679407 ..	4286839	Nationwide Emerging Managers, LLCDE.....	..NIA.....	NWD Investment Management, Inc.	Ownership.....	..100.000	Nationwide Mutual Insurance Company
...0140 ...	Nationwide	05-0630007 ..	4288048	Nationwide Exclusive Agent Risk Purchasing Group, LLCOH.....	..NIA.....	Insurance Intermediaries, Inc.	Ownership.....	..100.000	Nationwide Mutual Insurance Company
...0140 ...	Nationwide	31-1667326 ..	4286932	Nationwide Financial Assignment CompanyOH.....	..NIA.....	Nationwide Life Insurance Company	Ownership.....	..100.000	Nationwide Mutual Insurance Company
...0140 ...	Nationwide	23-2412039 ..	4287087	Nationwide Financial General Agency, Inc.PA.....	..NIA.....	NFS Distributors, Inc.	Ownership.....	..100.000	Nationwide Mutual Insurance Company
...0140 ...	Nationwide	31-1316276 ..	4287069	Nationwide Financial Institution Distributors Agency, Inc.DE.....	..NIA.....	NFS Distributors, Inc.	Ownership.....	..100.000	Nationwide Mutual Insurance Company
...0140 ...	Nationwide	31-6554353 ..	4286978	Nationwide Financial Services Capital TrustDE.....	..NIA.....	Nationwide Financial Services, Inc.	Ownership.....	..100.000	Nationwide Mutual Insurance Company
...0140 ...	Nationwide	31-1486870 ..	3828063	Nationwide Financial Services, Inc.DE.....	..NIA.....	Nationwide Corporation	Ownership.....	..100.000	Nationwide Mutual Insurance Company
...0140 ...	Nationwide	52-6969857 ..	4286996	Nationwide Fund AdvisorsDE.....	..NIA.....	Nationwide Financial Services, Inc.	Ownership.....	..100.000	Nationwide Mutual Insurance Company
...0140 ...	Nationwide	31-1748721 ..	42877050	Nationwide Fund Distributors LLCDE.....	..NIA.....	NFS Distributors, Inc.	Ownership.....	..100.000	Nationwide Mutual Insurance Company
...0140 ...	Nationwide	31-0900518 ..	4287041	Nationwide Fund Management LLCDE.....	..NIA.....	NFS Distributors, Inc.	Ownership.....	..100.000	Nationwide Mutual Insurance Company
...0140 ...	Nationwide23760 ..	31-4425763 ..	4287957	Nationwide General Insurance CompanyOH.....	..IA.....	Nationwide Mutual Insurance Company	Ownership.....	..100.000	Nationwide Mutual Insurance Company
...0140 ...	Nationwide	31-1570938 ..	4286398	Nationwide Global Holdings, Inc.OH.....	..NIA.....	Nationwide Corporation	Ownership.....	..100.000	Nationwide Mutual Insurance Company
...0140 ...	Nationwide	04-3732385 ..	4286857	Nationwide Global Ventures, Inc.DE.....	..NIA.....	Nationwide Asset Management Holdings, Inc.	Ownership.....	..100.000	Nationwide Mutual Insurance Company
...0140 ...	Nationwide10070 ..	31-1399201	Nationwide Indemnity CompanyOH.....	Nationwide Mutual Insurance Company	Ownership.....	..100.000	Nationwide Mutual Insurance Company
...0140 ...	Nationwide25453 ..	95-2130882 ..	4287180	Nationwide Insurance Company of AmericaWI.....	..IA.....	ALLIED Group, Inc.	Ownership.....	..100.000	Nationwide Mutual Insurance Company
...0140 ...	Nationwide10948 ..	31-1613686 ..	4287966	Nationwide Insurance Company of FloridaOH.....	..IA.....	Nationwide Mutual Insurance Company	Ownership.....	..100.000	Nationwide Mutual Insurance Company
...0140 ...	Nationwide	31-6022301	Nationwide Insurance FoundationOH.....	..OTH.....	Other non-Nationwide	n/a	Other non-Nationwide2
...0140 ...	Nationwide	41-2206199 ..	4286950	Nationwide Investment Advisors, LLCOH.....	..NIA.....	Nationwide Life Insurance Company	Ownership.....	..100.000	Nationwide Mutual Insurance Company
...0140 ...	Nationwide	73-0988442 ..	4286923	Nationwide Investment Services CorporationOK.....	..NIA.....	Nationwide Life Insurance Company	Ownership.....	..100.000	Nationwide Mutual Insurance Company
...0140 ...	Nationwide92657 ..	31-1000740	Nationwide Life and Annuity Insurance CompanyOH.....	..IA.....	Nationwide Life Insurance Company	Ownership.....	..100.000	Nationwide Mutual Insurance Company
...0140 ...	Nationwide66869 ..	31-4156830	Nationwide Life Insurance CompanyOH.....	..IA.....	Nationwide Financial Services, Inc.	Ownership.....	..100.000	Nationwide Mutual Insurance Company
...0140 ...	Nationwide	13-4212969	Nationwide Life Tax Credit Partners 2002-A, LLCOH.....	..NIA.....	Nationwide Life Insurance Company	Other.....	Nationwide Mutual Insurance Company
...0140 ...	Nationwide	01-0749754	Nationwide Life Tax Credit Partners 2002-B, LLCOH.....	..NIA.....	Nationwide Life Insurance Company	Other.....	Nationwide Mutual Insurance Company
...0140 ...	Nationwide	03-0498148 ..	3262573	Nationwide Life Tax Credit Partners 2002-C, LLCOH.....	..NIA.....	Nationwide Life Insurance Company	Other.....	Nationwide Mutual Insurance Company

STATEMENT AS OF SEPTEMBER 30, 2013 OF THE NATIONWIDE INDEMNITY COMPANY

SCHEDULE Y
PART 1A - DETAIL OF INSURANCE HOLDING COMPANY SYSTEM

1	2	3	4	5	6	7	8	9	10	11	12	13	14	15
Group Code	Group Name	NAIC Company Code	Federal ID Number	Federal RSSD	CIK	Name of Securities Exchange if Publicly Traded (U.S. or International)	Names of Parent, Subsidiaries Or Affiliates	Domi-ciliary Loca-tion	Relation-ship to Reporting Entity	Directly Controlled by (Name of Entity/Person)	Type of Control (Ownership, Board, Management, Attorney-in-Fact, Influence, Other)	If Control is Owner-ship Provide Percen-tage	Ultimate Controlling Entity(ies)/Person(s)	*
...0140	Nationwide		54-2113175				Nationwide Life Tax Credit Partners 2003-A, LLC	...OH	...NIA	Nationwide Life Insurance Company	Other		Nationwide Mutual Insurance Company	
...0140	Nationwide		58-2672725				Nationwide Life Tax Credit Partners 2003-B, LLC	...OH	...NIA	Nationwide Life Insurance Company	Other		Nationwide Mutual Insurance Company	
...0140	Nationwide		20-0357951	3811001			Nationwide Life Tax Credit Partners 2003-C, LLC	...OH	...NIA	Nationwide Life Insurance Company	Other		Nationwide Mutual Insurance Company	
...0140	Nationwide		20-0382144				Nationwide Life Tax Credit Partners 2004-A, LLC	...OH	...NIA	Nationwide Life Insurance Company	Other		Nationwide Mutual Insurance Company	
...0140	Nationwide		20-0745944				Nationwide Life Tax Credit Partners 2004-B, LLC	...OH	...NIA	Nationwide Life Insurance Company	Other		Nationwide Mutual Insurance Company	
...0140	Nationwide		20-0745965				Nationwide Life Tax Credit Partners 2004-C, LLC	...OH	...NIA	Nationwide Life Insurance Company	Other		Nationwide Mutual Insurance Company	
...0140	Nationwide		20-1128408				Nationwide Life Tax Credit Partners 2004-D, LLC	...OH	...NIA	Nationwide Life Insurance Company	Other		Nationwide Mutual Insurance Company	
...0140	Nationwide		20-1128472				Nationwide Life Tax Credit Partners 2004-E, LLC	...OH	...NIA	Nationwide Life Insurance Company	Other		Nationwide Mutual Insurance Company	
...0140	Nationwide		20-1918935	3318117			Nationwide Life Tax Credit Partners 2004-F, LLC	...OH	...NIA	Nationwide Life Insurance Company	Other		Nationwide Mutual Insurance Company	
...0140	Nationwide		20-2303694				Nationwide Life Tax Credit Partners 2005-A, LLC	...OH	...NIA	Nationwide Life Insurance Company	Other		Nationwide Mutual Insurance Company	
...0140	Nationwide		20-2303602				Nationwide Life Tax Credit Partners 2005-B, LLC	...OH	...NIA	Nationwide Life Insurance Company	Other		Nationwide Mutual Insurance Company	
...0140	Nationwide		20-2450960				Nationwide Life Tax Credit Partners 2005-C, LLC	...OH	...NIA	Nationwide Life Insurance Company	Other		Nationwide Mutual Insurance Company	
...0140	Nationwide		20-2451052				Nationwide Life Tax Credit Partners 2005-D, LLC	...OH	...NIA	Nationwide Life Insurance Company	Other		Nationwide Mutual Insurance Company	
...0140	Nationwide		20-2774223				Nationwide Life Tax Credit Partners 2005-E, LLC	...OH	...NIA	Nationwide Life Insurance Company	Other		Nationwide Mutual Insurance Company	
...0140	Nationwide		21-1288836				Nationwide Life Tax Credit Partners 2007-A, LLC	...OH	...NIA	Nationwide Life Insurance Company	Other		Nationwide Mutual Insurance Company	
...0140	Nationwide		26-3427373				Nationwide Life Tax Credit Partners 2009-A, LLC	...OH	...NIA	Nationwide Life Insurance Company	Other		Nationwide Mutual Insurance Company	
...0140	Nationwide		26-3427435				Nationwide Life Tax Credit Partners 2009-B, LLC	...OH	...NIA	Nationwide Life Insurance Company	Other		Nationwide Mutual Insurance Company	
...0140	Nationwide		26-3427479				Nationwide Life Tax Credit Partners 2009-C, LLC	...OH	...NIA	Nationwide Life Insurance Company	Other		Nationwide Mutual Insurance Company	
...0140	Nationwide		26-3427525				Nationwide Life Tax Credit Partners 2009-D, LLC	...OH	...NIA	Nationwide Life Insurance Company	Other		Nationwide Mutual Insurance Company	
...0140	Nationwide		26-4737055				Nationwide Life Tax Credit Partners 2009-E, LLC	...OH	...NIA	Nationwide Life Insurance Company	Other		Nationwide Mutual Insurance Company	
...0140	Nationwide		26-4737157				Nationwide Life Tax Credit Partners 2009-F, LLC	...OH	...NIA	Nationwide Life Insurance Company	Other		Nationwide Mutual Insurance Company	
...0140	Nationwide		27-1362364				Nationwide Life Tax Credit Partners 2009-I, LLC	...OH	...NIA	Nationwide Life Insurance Company	Other		Nationwide Mutual Insurance Company	
...0140	Nationwide		46-1952215				Nationwide Life Tax Credit Partners 2013-A, LLC	...OH	...NIA	Nationwide Life Insurance Company	Other		Nationwide Mutual Insurance Company	
...0140	Nationwide						Nationwide Life Tax Credit Partners 2013-B, LLC	...OH	...NIA	Nationwide Life Insurance Company	Other		Nationwide Mutual Insurance Company	
...0140	Nationwide			3779811			Nationwide Life Tax Credit Partners No. 1, LLC	...OH	...NIA	Nationwide Life Insurance Company	Other		Nationwide Mutual Insurance Company	
...0140	Nationwide	42110	75-1780981	4287984			Nationwide Lloyds	TX	IA	n/a	contract		Nationwide Mutual Insurance Company	

STATEMENT AS OF SEPTEMBER 30, 2013 OF THE NATIONWIDE INDEMNITY COMPANY

SCHEDULE Y
PART 1A - DETAIL OF INSURANCE HOLDING COMPANY SYSTEM

1	2	3	4	5	6	7	8	9	10	11	12	13	14	15
Group Code	Group Name	NAIC Company Code	Federal ID Number	Federal RSSD	CIK	Name of Securities Exchange if Publicly Traded (U.S. or International)	Names of Parent, Subsidiaries Or Affiliates	Domi-ciliary Location	Relation-ship to Reporting Entity	Directly Controlled by (Name of Entity/Person)	Type of Control (Ownership, Board, Management, Attorney-in-Fact, Influence, Other)	If Control is Owner-ship Provide Percen-tage	Ultimate Controlling Entity(ies)/Person(s)	*
...0140 ...	Nationwide						Nationwide Mutual Capital I, LLCDENIA	Nationwide Mutual Capital, LLC	Ownership.....	..100.000 ...	Nationwide Mutual Insurance Company
...0140 ...	Nationwide		75-3191025				Nationwide Mutual Capital, LLCOHNIA	Nationwide Mutual Insurance Company	Ownership.....	..100.000 ...	Nationwide Mutual Insurance Company
...0140 ...	Nationwide23779 ..	82-0549218	3828090			Nationwide Mutual Fire Insurance CompanyOHOTH	Other non-Nationwide	n/a	Other non-Nationwide
...0140 ...	Nationwide23787 ..	31-4177100	3828072			Nationwide Mutual Insurance CompanyOHUDP	Other non-Nationwide	n/a	Other non-Nationwide
...0140 ...	Nationwide		34-2012765	4288084			Nationwide Private Equity Fund, LLCOHNIA	Nationwide Mutual Insurance Company	Ownership.....	..100.000 ...	Nationwide Mutual Insurance Company
...0140 ...	Nationwide37877 ..	31-0970750	4287993			Nationwide Property and Casualty Insurance CompanyOHIA	Nationwide Mutual Insurance Company	Ownership.....	..100.000 ...	Nationwide Mutual Insurance Company
...0140 ...	Nationwide		01-0852763	4288141			Nationwide Property Protection Services, LLCOHNIA	Nationwide Services Company, LLC	Ownership.....	..100.000 ...	Nationwide Mutual Insurance Company
...0140 ...	Nationwide		31-1486309	4288105			Nationwide Realty Investors, Ltd.OHNIA	Nationwide Mutual Insurance Company	Ownership.....	..96.700 ...	Nationwide Mutual Insurance Company
...0140 ...	Nationwide		31-1486309	4288105			Nationwide Realty Investors, Ltd.OHNIA	Nationwide Indemnity Company	Ownership.....	..3.300 ...	Nationwide Mutual Insurance Company
...0140 ...	Nationwide		31-1486309				Nationwide Realty Management, LLCOHNIA	Nationwide Realty Investors, Ltd.	Ownership.....	..100.000 ...	Nationwide Mutual Insurance Company
...0140 ...	Nationwide			4288066			Nationwide Realty Services, Ltd.OHNIA	Nationwide Mutual Insurance Company	Ownership.....	..100.000 ...	Nationwide Mutual Insurance Company
...0140 ...	Nationwide		06-0987812	4287117			Nationwide Retirement Solutions Insurance Agency, Inc.MAIA	Nationwide Retirement Solutions, Inc.	Ownership.....	..100.000 ...	Nationwide Mutual Insurance Company
...0140 ...	Nationwide		73-0948330	4287096			Nationwide Retirement Solutions, Inc.DENIA	NFS Distributors, Inc.	Ownership.....	..100.000 ...	Nationwide Mutual Insurance Company
...0140 ...	Nationwide		86-0924069	4287108			Nationwide Retirement Solutions, Inc. of ArizonaAZNIA	Nationwide Retirement Solutions, Inc.	Ownership.....	..100.000 ...	Nationwide Mutual Insurance Company
...0140 ...	Nationwide		31-1331479	4287126			Nationwide Retirement Solutions, Inc. of OhioOHNIA	Nationwide Retirement Solutions, Inc.	contract	Nationwide Mutual Insurance Company
...0140 ...	Nationwide		74-2200854	4287135			Nationwide Retirement Solutions, Inc. of TexasTXNIA	Nationwide Retirement Solutions, Inc.	contract	Nationwide Mutual Insurance Company
...0140 ...	Nationwide		42-1373380	4287210			Nationwide Sales Solutions, Inc.IANIA	ALLIED Group, Inc.	Ownership.....	..100.000 ...	Nationwide Mutual Insurance Company
...0140 ...	Nationwide		36-2434406	4287078			Nationwide Securities, LLCOHNIA	NFS Distributors, Inc.	Ownership.....	..100.000 ...	Nationwide Mutual Insurance Company
...0140 ...	Nationwide		31-4177100	4288093			Nationwide Services Company, LLCOHNIA	Nationwide Mutual Insurance Company	Ownership.....	..100.000 ...	Nationwide Mutual Insurance Company
...0140 ...	Nationwide		27-0743545				Nationwide Tax Credit Partners 2009-G, LLCOHNIA	Nationwide Mutual Insurance Company	Other.....	Nationwide Mutual Insurance Company
...0140 ...	Nationwide		27-0768791				Nationwide Tax Credit Partners 2009-H, LLCOHNIA	Nationwide Mutual Insurance Company	Other.....	Nationwide Mutual Insurance Company
...0140 ...	Nationwide		11-3651828				ND La Quinta Partners, LLCDENIA	Nationwide Realty Investors, Ltd.	Ownership.....	..95.000 ...	Nationwide Mutual Insurance Company
...0140 ...	Nationwide			4286866			Newhouse Capital Partners II, LLCDENIA	Nationwide Global Ventures, Inc.	Ownership.....	..80.000 ...	Nationwide Mutual Insurance Company
...0140 ...	Nationwide			4286866			Newhouse Capital Partners II, LLCDENIA	Nationwide Global Ventures, Inc.	Ownership.....	..99.000 ...	Nationwide Mutual Insurance Company
...0140 ...	Nationwide			4286679			Newhouse Capital Partners, LLCDENIA	NWD Investment Management, Inc.	Ownership.....	..19.000 ...	Nationwide Mutual Insurance Company
...0140 ...	Nationwide			4286679			Newhouse Capital Partners, LLCDENIA	Nationwide Mutual Insurance Company	Ownership.....	..70.000 ...	Nationwide Mutual Insurance Company
...0140 ...	Nationwide			4286679			Newhouse Capital Partners, LLCDENIA	Nationwide Mutual Fire Insurance Company	Ownership.....	..10.000 ...	Nationwide Mutual Insurance Company
...0140 ...	Nationwide		31-1630871	4287032			NFS Distributors, Inc.DENIA	Nationwide Financial Services, Inc.	Ownership.....	..100.000 ...	Nationwide Mutual Insurance Company
...0140 ...	Nationwide		14-1892640				NHT XII Tax Credit Fund, LLCDCNIA	Nationwide Life Insurance Company	Ownership.....	..49.990 ...	Nationwide Mutual Insurance Company1
...0140 ...	Nationwide		14-1892640				NHT XII Tax Credit Fund, LLCDCNIA	Nationwide Assurance Company	Ownership.....	..25.000 ...	Nationwide Mutual Insurance Company1
...0140 ...	Nationwide		14-1892640				NHT XII Tax Credit Fund, LLCDCNIA	Nationwide Mutual Insurance Company	Ownership.....	..25.000 ...	Nationwide Mutual Insurance Company1
...0140 ...	Nationwide		26-0351004				North Bank Condominium Home Owners AssociationOHOTH	Other non-Nationwide	n/a	Other non-Nationwide2
...0140 ...	Nationwide		20-4939866				North of Third, LLCOHNIA	NRI Equity Land Investments, LLC	Ownership.....	..100.000 ...	Nationwide Mutual Insurance Company
...0140 ...	Nationwide		26-4083207				Northstar Commercial Development, LLCOHNIA	Nationwide Realty Investors, Ltd.	Ownership.....	..50.000 ...	Nationwide Mutual Insurance Company1
...0140 ...	Nationwide		26-4083354				Northstar Residential Development, LLCOHNIA	Nationwide Realty Investors, Ltd.	Ownership.....	..50.000 ...	Nationwide Mutual Insurance Company1
...0140 ...	Nationwide		31-1486309				NRI 12325 Copper Way, LLCOHNIA	Nationwide Realty Investors, Ltd.	Ownership.....	..100.000 ...	Nationwide Mutual Insurance Company
...0140 ...	Nationwide		31-1486309				NRI 220 Schrock, LLCOHNIA	Nationwide Realty Investors, Ltd.	Ownership.....	..100.000 ...	Nationwide Mutual Insurance Company
...0140 ...	Nationwide		31-1486309				NRI Arena, LLCOHNIA	Nationwide Realty Investors, Ltd.	Ownership.....	..100.000 ...	Nationwide Mutual Insurance Company
...0140 ...	Nationwide		31-1486309				NRI Brooksidege, LLCOHNIA	Nationwide Realty Investors, Ltd.	Ownership.....	..100.000 ...	Nationwide Mutual Insurance Company
...0140 ...	Nationwide		31-1486309				NRI Builders, LLCOHNIA	Nationwide Realty Investors, Ltd.	Ownership.....	..100.000 ...	Nationwide Mutual Insurance Company
...0140 ...	Nationwide		31-1486309				NRI Communities/Charlotte, LLCOHNIA	Nationwide Realty Investors, Ltd.	Ownership.....	..100.000 ...	Nationwide Mutual Insurance Company

STATEMENT AS OF SEPTEMBER 30, 2013 OF THE NATIONWIDE INDEMNITY COMPANY

SCHEDULE Y
PART 1A - DETAIL OF INSURANCE HOLDING COMPANY SYSTEM

1	2	3	4	5	6	7	8	9	10	11	12	13	14	15
Group Code	Group Name	NAIC Company Code	Federal ID Number	Federal RSSD	CIK	Name of Securities Exchange if Publicly Traded (U.S. or International)	Names of Parent, Subsidiaries Or Affiliates	Domiciliary Location	Relationship to Reporting Entity	Directly Controlled by (Name of Entity/Person)	Type of Control (Ownership, Board, Management, Attorney-in-Fact, Influence, Other)	If Control is Ownership Provide Percentage	Ultimate Controlling Entity(ies)/Person(s)	*
0140	Nationwide		31-1486309				NRI Communities/Harris Blvd., LLC	OH	NIA	Nationwide Realty Investors, Ltd.	Ownership	100.000	Nationwide Mutual Insurance Company	
0140	Nationwide		31-1486309				NRI Cramer Creek, LLC	OH	NIA	Nationwide Realty Investors, Ltd.	Ownership	100.000	Nationwide Mutual Insurance Company	
0140	Nationwide		20-4939866				NRI Equity Land Investments, LLC	OH	NIA	Nationwide Realty Investors, Ltd.	Ownership	80.000	Nationwide Mutual Insurance Company	
0140	Nationwide		26-0212217				NRI Equity Tampa, LLC	OH	OTH	Nationwide Realty Investors, Ltd.	Ownership	100.000	Nationwide Mutual Insurance Company	
0140	Nationwide		31-1486309				NRI Maxtown, LLC	OH	OTH	Nationwide Realty Investors, Ltd.	Ownership	100.000	Nationwide Mutual Insurance Company	
0140	Nationwide		30-4939866				NRI Office Ventures, Ltd	OH	NIA	Nationwide Realty Investors, Ltd.	Ownership	100.000	Nationwide Mutual Insurance Company	
0140	Nationwide		31-1486309				NRI Telecom, LLC	OH	NIA	NWD Investments, LLC	Ownership	100.000	Nationwide Mutual Insurance Company	
0140	Nationwide		31-1486309				NRI-Rivulon, LLC	OH	NIA	Nationwide Realty Investors, Ltd.	Ownership	100.000	Nationwide Mutual Insurance Company	
							Nationwide Property and Casualty Company							
0140	Nationwide		45-3123274				NTCIF-2011 Georgia State Investor, LLC	OH	NIA		Ownership	100.000	Nationwide Mutual Insurance Company	
0140	Nationwide		90-0729552				NTCIF-2011, LLC	OH	NIA	Nationwide Life Insurance Company	Ownership	100.000	Nationwide Mutual Insurance Company	
0140	Nationwide		27-4700627				NTCP 2011-A, LLC	OH	NIA	Nationwide Life Insurance Company	Ownership	100.000	Nationwide Mutual Insurance Company	
0140	Nationwide		46-0747898				NTCP 2011-B, LLC	OH	NIA	Nationwide Life Insurance Company	Ownership	100.000	Nationwide Mutual Insurance Company	
0140	Nationwide		46-0741029	4464703			NTCP 2012-A, LLC	OH	NIA	Nationwide Life Insurance Company	Ownership	100.000	Nationwide Mutual Insurance Company	
0140	Nationwide		46-3309896				NTCP 2013-C, LLC	OH	NIA	Nationwide Life Insurance Company	Ownership	100.000	Nationwide Mutual Insurance Company	
0140	Nationwide		46-2601266				NW-515 W Market, LLC	OH	NIA	NE-REI, LLC	Ownership	100.000	Nationwide Mutual Insurance Company	
0140	Nationwide		46-3654078				NW-Amesbury, LLC	OH	NIA	NE-REI, LLC	Ownership	100.000	Nationwide Mutual Insurance Company	
0140	Nationwide		36-4702264				NW-Arvada, LLC	OH	NIA	NW-REI, LLC	Ownership	100.000	Nationwide Mutual Insurance Company	
0140	Nationwide		46-2943666				NW-Bandera, LLC	OH	NIA	NW-REI, LLC	Ownership	100.000	Nationwide Mutual Insurance Company	
0140	Nationwide		45-5159092				NW-Bayshore, LLC	OH	NIA	NW-REI, LLC	Ownership	100.000	Nationwide Mutual Insurance Company	
0140	Nationwide		46-2451156				NW-Bee Cave, LLC	OH	NIA	NW-REI, LLC	Ownership	100.000	Nationwide Mutual Insurance Company	
0140	Nationwide		46-0999932				NW-Bencap, LLC	OH	NIA	NW-REI, LLC	Ownership	100.000	Nationwide Mutual Insurance Company	
0140	Nationwide		46-3707480				NW-Brooklyn, LLC	OH	NIA	NW-REI, LLC	Ownership	100.000	Nationwide Mutual Insurance Company	
0140	Nationwide		45-2724980				NW-Cameron, LLC	OH	NIA	NW-REI, LLC	Ownership	100.000	Nationwide Mutual Insurance Company	
0140	Nationwide		46-3674167				NW-Cedar Springs, LLC	OH	NIA	NW-REI, LLC	Ownership	100.000	Nationwide Mutual Insurance Company	
0140	Nationwide		26-0901660				NW-CNC Coppel, LLC	DE	NIA	Nationwide Mutual Insurance Company	Ownership	100.000	Nationwide Mutual Insurance Company	
0140	Nationwide		27-2764819				NW-Commerce Center, LLC	DE	NIA	NW-REI, LLC	Ownership	100.000	Nationwide Mutual Insurance Company	
0140	Nationwide						NW-Corvallis, LLC	OH	NIA	NW-REI, LLC	Ownership	100.000	Nationwide Mutual Insurance Company	
0140	Nationwide		31-1580283				NWD 205 Vine, LLC	OH	NIA	NWD Investments, LLC	Ownership	100.000	Nationwide Mutual Insurance Company	
0140	Nationwide		31-1580283				NWD 225 Nationwide, LLC	OH	NIA	NWD Investments, LLC	Ownership	100.000	Nationwide Mutual Insurance Company	
0140	Nationwide		31-1580283				NWD 230 West, LLC	OH	NIA	NWD Investments, LLC	Ownership	100.000	Nationwide Mutual Insurance Company	
0140	Nationwide		31-1580283				NWD 240 Nationwide, LLC	OH	NIA	NWD Investments, LLC	Ownership	100.000	Nationwide Mutual Insurance Company	
0140	Nationwide		31-1580283				NWD 250 Brodbelt, LLC	OH	NIA	NWD Investments, LLC	Ownership	100.000	Nationwide Mutual Insurance Company	
0140	Nationwide		31-1580283				NWD 265 Neil, LLC	OH	NIA	NWD Investments, LLC	Ownership	100.000	Nationwide Mutual Insurance Company	
0140	Nationwide		31-1580283				NWD 275 Marconi, LLC	OH	NIA	NWD Investments, LLC	Ownership	100.000	Nationwide Mutual Insurance Company	
0140	Nationwide		31-1580283				NWD 295 McConnell, LLC	OH	NIA	NWD Investments, LLC	Ownership	100.000	Nationwide Mutual Insurance Company	
0140	Nationwide		31-1580283				NWD 300 Neil, LLC	OH	NIA	NWD Investments, LLC	Ownership	100.000	Nationwide Mutual Insurance Company	
0140	Nationwide		31-1580283				NWD 300 Spring, LLC	OH	NIA	NWD Investments, LLC	Ownership	100.000	Nationwide Mutual Insurance Company	
0140	Nationwide		31-1580283				NWD 355 McConnell, LLC	OH	NIA	NWD Investments, LLC	Ownership	100.000	Nationwide Mutual Insurance Company	
0140	Nationwide		31-1580283				NWD 425 Nationwide, LLC	OH	NIA	NWD Investments, LLC	Ownership	100.000	Nationwide Mutual Insurance Company	
0140	Nationwide		31-1580283				NWD 500 Nationwide, LLC	OH	NIA	NWD Investments, LLC	Ownership	100.000	Nationwide Mutual Insurance Company	
0140	Nationwide		31-1580283				NWD Arena Crossing, LLC	OH	NIA	NWD Investments, LLC	Ownership	100.000	Nationwide Mutual Insurance Company	
0140	Nationwide		31-1580283				NWD Arena District I, LLC	OH	NIA	NWD Investments, LLC	Ownership	100.000	Nationwide Mutual Insurance Company	
0140	Nationwide		31-1580283				NWD Arena District II, LLC	OH	NIA	NWD Investments, LLC	Ownership	100.000	Nationwide Mutual Insurance Company	
0140	Nationwide		31-1580283				NWD Arena District IM, LLC	OH	NIA	NWD Investments, LLC	Ownership	100.000	Nationwide Mutual Insurance Company	
0140	Nationwide		31-1580283				NWD Arena District PW, LLC	OH	NIA	NWD Investments, LLC	Ownership	100.000	Nationwide Mutual Insurance Company	
0140	Nationwide		31-1580283				NWD Arena District V, LLC	OH	NIA	NWD Investments, LLC	Ownership	100.000	Nationwide Mutual Insurance Company	
0140	Nationwide		04-3679396	4286848			NWD Asset Management Holdings, Inc.	DE	NIA	NWD Investment Management, Inc.	Ownership	100.000	Nationwide Mutual Insurance Company	
0140	Nationwide		31-1580283				NWD Athletic Club, LLC	OH	NIA	NWD Investments, LLC	Ownership	100.000	Nationwide Mutual Insurance Company	
0140	Nationwide		31-1636299	4286594			NWD Investment Management, Inc.	DE	NIA	Nationwide Corporation	Ownership	100.000	Nationwide Mutual Insurance Company	
0140	Nationwide		31-1580283				NWD Investments, LLC	OH	NIA	Nationwide Realty Investors, Ltd.	Ownership	80.000	Nationwide Mutual Insurance Company	

STATEMENT AS OF SEPTEMBER 30, 2013 OF THE NATIONWIDE INDEMNITY COMPANY

SCHEDULE Y
PART 1A - DETAIL OF INSURANCE HOLDING COMPANY SYSTEM

1	2	3	4	5	6	7	8	9	10	11	12	13	14	15
Group Code	Group Name	NAIC Company Code	Federal ID Number	Federal RSSD	CIK	Name of Securities Exchange if Publicly Traded (U.S. or International)	Names of Parent, Subsidiaries Or Affiliates	Domiciliary Location	Relationship to Reporting Entity	Directly Controlled by (Name of Entity/Person)	Type of Control (Ownership, Board, Management, Attorney-in-Fact, Influence, Other)	If Control is Ownership Provide Percentage	Ultimate Controlling Entity(ies)/Person(s)	*
0140	Nationwide		90-0732898				NW-Dulles, LLC	OH	NIA	NW-REI, LLC	Ownership	100.000	Nationwide Mutual Insurance Company	
0140	Nationwide		45-5586006				NW-Eastpark, LLC	OH	NIA	NW-REI, LLC	Ownership	100.000	Nationwide Mutual Insurance Company	
0140	Nationwide		46-3267884				NW-Franklin Mills, LLC	OH	NIA	Life Reo Holdings, LLC	Ownership	100.000	Nationwide Mutual Insurance Company	
0140	Nationwide		45-2647960				NW-Grapevine, LLC	OH	NIA	NW-REI, LLC	Ownership	100.000	Nationwide Mutual Insurance Company	
0140	Nationwide		46-2997049				NW-Howell Mill, LLC	OH	NIA	NW-REI, LLC	Ownership	100.000	Nationwide Mutual Insurance Company	
0140	Nationwide		45-5408178				NW-Kentwood Towne Center, LLC	OH	NIA	NW-REI, LLC	Ownership	100.000	Nationwide Mutual Insurance Company	
0140	Nationwide		27-4749640				NW-Kohls Market, LLC	OH	NIA	NW-REI, LLC	Ownership	100.000	Nationwide Mutual Insurance Company	
0140	Nationwide		45-5314607				NW-Lovers Lane, LLC	OH	NIA	NW-REI, LLC	Ownership	100.000	Nationwide Mutual Insurance Company	
0140	Nationwide		46-2457568				NW-Montrose, LLC	OH	NIA	NW-REI, LLC	Ownership	100.000	Nationwide Mutual Insurance Company	
0140	Nationwide		45-4630497				NW-Mueller II, LLC	OH	NIA	NW-REI, LLC	Ownership	100.000	Nationwide Mutual Insurance Company	
0140	Nationwide		27-4749848				NW-Northridge, LLC	OH	NIA	NW-REI, LLC	Ownership	100.000	Nationwide Mutual Insurance Company	
0140	Nationwide		46-1089165				NW-Oakley Station, LLC	OH	NIA	NW-REI, LLC	Ownership	100.000	Nationwide Mutual Insurance Company	
0140	Nationwide		45-5388656				NW-Park Memorial, LLC	OH	NIA	NW-REI, LLC	Ownership	100.000	Nationwide Mutual Insurance Company	
0140	Nationwide		27-4749937				NW-Park Village, LLC	OH	NIA	NW-REI, LLC	Ownership	100.000	Nationwide Mutual Insurance Company	
0140	Nationwide		46-2469044				NW-Portales, LLC,	OH	NIA	NW-REI, LLC	Ownership	100.000	Nationwide Mutual Insurance Company	
0140	Nationwide		26-1903919				NW-REI, LLC	DE	NIA	Nationwide Mutual Insurance Company	Ownership	100.000	Nationwide Mutual Insurance Company	
0140	Nationwide		45-5159117				NW-South Park, LLC	OH	NIA	NW-REI, LLC	Ownership	100.000	Nationwide Mutual Insurance Company	
0140	Nationwide						NW-Southline, LLC	OH	NIA	NW-REI, LLC	Ownership	100.000	Nationwide Mutual Insurance Company	
0140	Nationwide		27-4749587				NW-Taylor Farmer Jack, LLC	OH	NIA	NW-REI, LLC	Ownership	100.000	Nationwide Mutual Insurance Company	
0140	Nationwide		46-1100378				NW-Triangle, LLC	OH	NIA	NW-REI, LLC	Ownership	100.000	Nationwide Mutual Insurance Company	
0140	Nationwide		46-1077615				NW-West Ave., LLC	OH	NIA	NW-REI, LLC	Ownership	100.000	Nationwide Mutual Insurance Company	
0140	Nationwide		31-0947092				OCH Company, LLC	OH	NIA	Nationwide Realty Investors, Ltd.	Ownership	100.000	Nationwide Mutual Insurance Company	
0140	Nationwide		31-0947092				Ohio Center Hotel Company, Ltd.	OH	NIA	Nationwide Realty Investors, Ltd.	Ownership	56.250	Nationwide Mutual Insurance Company	
0140	Nationwide		26-0263012				Old Track Street Owners Association	OH	OTH	Other non-Nationwide	n/a		Other non-Nationwide	2
0140	Nationwide	13999	27-1712056	4286914			Olentangy Reinsurance, LLC	VT	IA	Nationwide Life and Annuity Insurance Company	Ownership	100.000	Nationwide Mutual Insurance Company	
0140	Nationwide						OYS Fund, LLC	DE	OTH	Nationwide Mutual Insurance Company	Ownership	100.000	Nationwide Mutual Insurance Company	
0140	Nationwide						Park 288 Industrial, LLC	TX	OTH	Nationwide Mutual Insurance Company	Investor member / no control	95.000	other non-Nationwide	2
0140	Nationwide		31-1486309				Perimeter A, Ltd	OH	NIA	Nationwide Realty Investors, Ltd.	Ownership	100.000	Nationwide Mutual Insurance Company	
0140	Nationwide		31-1677602				Pizzuti Properties, LLC	OH	NIA	Nationwide Realty Investors, Ltd.	Ownership	65.000	Nationwide Mutual Insurance Company	
0140	Nationwide		31-1486309				Polaris A, Ltd.	OH	NIA	Nationwide Realty Investors, Ltd.	Ownership	100.000	Nationwide Mutual Insurance Company	
0140	Nationwide		39-1907217	4287201			Premier Agency, Inc.	IA	NIA	ALLIED Group, Inc.	Ownership	100.000	Nationwide Mutual Insurance Company	
4664	Pure	12873	20-8287105				Privilege Underwriters Reciprocal Exchange	FL	IA	Other non-Nationwide	n/a		Other non-Nationwide	2
0140	Pure			4288150			Privilege Underwriters, Inc.	FL	IA	Other non-Nationwide	n/a		Other non-Nationwide	2
4664	Pure	13204	26-3109178	4288226			Pure Insurance Company	FL	IA	Other non-Nationwide	n/a		Other non-Nationwide	2
4664	Pure			4288235			Pure Risk Management, LLC	FL	IA	Other non-Nationwide	n/a		Other non-Nationwide	2
4664	Nationwide		75-2938844	4287005			Registered Investment Advisors Services, Inc.	TX	NIA	Nationwide Financial Services, Inc.	Ownership	100.000	Nationwide Mutual Insurance Company	
0140	Nationwide		82-0549218				Retention Alternatives, Ltd.	BMU	IA	Nationwide Mutual Fire Insurance Company	Ownership	100.000	Nationwide Mutual Insurance Company	
0140	Nationwide						Riverview Diversified Opportunities Fund, LLC	DE	OTH	Nationwide Mutual Insurance Company	Ownership		Nationwide Mutual Insurance Company	1
0140	Nationwide						Riverview Diversified Opportunities Fund, LLC	DE	OTH	Nationwide Mutual Fire Insurance Company	Ownership		Nationwide Mutual Insurance Company	1
0140	Nationwide						Riverview Diversified Opportunities Fund, LLC	DE	OTH	Nationwide Life Insurance Company	Ownership		Nationwide Mutual Insurance Company	1
0140	Nationwide		22-3655264	4286530			Riverview International Group, Inc.	DE	NIA	NWD Investment Management, Inc.	Ownership	100.000	Nationwide Mutual Insurance Company	
0140	Nationwide						Riverview Multi Series Fund, LL - Class	DE	OTH	Nationwide Mutual Insurance Company	Ownership	100.000	Nationwide Mutual Insurance Company	
0140	Nationwide						Event	DE	OTH	Nationwide Mutual Insurance Company	Ownership	100.000	Nationwide Mutual Insurance Company	
0140	Nationwide						Riverview Multi Series Fund, LL - Class N	DE	OTH	Nationwide Mutual Insurance Company	Ownership	100.000	Nationwide Mutual Insurance Company	

STATEMENT AS OF SEPTEMBER 30, 2013 OF THE NATIONWIDE INDEMNITY COMPANY

SCHEDULE Y
PART 1A - DETAIL OF INSURANCE HOLDING COMPANY SYSTEM

1	2	3	4	5	6	7	8	9	10	11	12	13	14	15
Group Code	Group Name	NAIC Company Code	Federal ID Number	Federal RSSD	CIK	Name of Securities Exchange if Publicly Traded (U.S. or International)	Names of Parent, Subsidiaries Or Affiliates	Domi-ciliary Location	Relation-ship to Reporting Entity	Directly Controlled by (Name of Entity/Person)	Type of Control (Ownership, Board, Management, Attorney-in-Fact, Influence, Other)	If Control is Owner-ship Provide Percen-tage	Ultimate Controlling Entity(ies)/Person(s)	*
...0140 ...	Nationwide	Riverview Polyphony Fund, LLCDE.....	...OTH.....	Nationwide Mutual Insurance Company	Ownership.....	..100.000 ...	Nationwide Mutual Insurance Company
...0140 ...	Nationwide15580 ...	31-1117969	4288002	Scottsdale Indemnity CompanyOH.....	...IA.....	Nationwide Mutual Insurance Company	Ownership.....	..100.000 ...	Nationwide Mutual Insurance Company
...0140 ...	Nationwide41297 ...	31-1024978	Scottsdale Insurance CompanyOH.....	...IA.....	Nationwide Mutual Insurance Company	Ownership.....	..100.000 ...	Nationwide Mutual Insurance Company
.....	Scottsdale Surplus Lines Insurance Company
...0140 ...	Nationwide10672 ...	86-0835870	4287649AZ.....	...IA.....	Scottsdale Insurance Company	Ownership.....	..100.000 ...	Nationwide Mutual Insurance Company
...0140 ...	Nationwide	31-1486309	Streets of Toringdon, LLCOH.....	...NIA.....	Nationwide Realty Investors, Ltd.	Ownership.....	..100.000 ...	Nationwide Mutual Insurance Company
...0140 ...	Nationwide	91-2158214	The Hideaway ClubCA.....	...OTH.....	Other non-Nationwide	n/a	Other non-Nationwide2
...0140 ...	Nationwide	86-1094799	The Hideaway Owners AssociationCA.....	...OTH.....	Other non-Nationwide	n/a	Other non-Nationwide2
...0140 ...	Nationwide	20-3541511	The Madison ClubCA.....	...OTH.....	Other non-Nationwide	n/a	Other non-Nationwide2
...0140 ...	Nationwide	20-3541507	The Madison Club Owners AssociationCA.....	...OTH.....	Other non-Nationwide	n/a	Other non-Nationwide2
...0140 ...	Nationwide	31-1610040	The Waterfront Partners, LLCOH.....	...NIA.....	Nationwide Realty Investors, Ltd.	Ownership.....	...50.000 ...	Nationwide Mutual Insurance Company1
...0140 ...	Nationwide	52-2031677	THI Holdings (Delaware), Inc.DE.....	...NIA.....	Nationwide Mutual Insurance Company	Ownership.....	..100.000 ...	Nationwide Mutual Insurance Company
...0140 ...	Nationwide	74-2825853	4287863	Titan Auto Insurance of New Mexico, Inc.NM.....	...IA.....	Whitehall Holdings, Inc.	Ownership.....	..100.000 ...	Nationwide Mutual Insurance Company
...0140 ...	Nationwide13242 ...	74-2286759	4287797	Titan Indemnity CompanyTX.....	...IA.....	THI Holdings (Delaware), Inc.	Ownership.....	..100.000 ...	Nationwide Mutual Insurance Company
...0140 ...	Nationwide36269 ...	86-0619597	4287845	Titan Insurance CompanyMI.....	...IA.....	Titan Indemnity Company	Ownership.....	..100.000 ...	Nationwide Mutual Insurance Company
...0140 ...	Nationwide	75-1284530	4287890	Titan Insurance Services, Inc.TX.....	...NIA.....	Whitehall Holdings, Inc.	Ownership.....	..100.000 ...	Nationwide Mutual Insurance Company
...0140 ...	Nationwide	33-0160222	V.P.I. Services, Inc.CA.....	...NIA.....	Veterinary Pet Insurance Company	Ownership.....	..100.000 ...	Nationwide Mutual Insurance Company
...0140 ...	Nationwide42285 ...	95-3750113	4287685	Veterinary Pet Insurance CompanyCA.....	...IA.....	Scottsdale Insurance Company	Ownership.....	..100.000 ...	Nationwide Mutual Insurance Company
.....	Victoria Fire & Casualty Insurance	Victoria Fire & Casualty Insurance
...0140 ...	Nationwide10644 ...	34-1785903	4287911	Victoria Automobile Insurance CompanyIN.....	...IA.....	Company	Ownership.....	..100.000 ...	Nationwide Mutual Insurance Company
...0140 ...	Nationwide42889 ...	34-1394913	4287827	Victoria Fire & Casualty CompanyOH.....	...IA.....	THI Holdings (Delaware), Inc.	Ownership.....	..100.000 ...	Nationwide Mutual Insurance Company
.....	Victoria National Insurance CompanyOH.....	...IA.....	Company	Ownership.....	..100.000 ...	Nationwide Mutual Insurance Company
...0140 ...	Nationwide10778 ...	34-1842604	4287920	Victoria Fire & Casualty Insurance	Victoria Fire & Casualty Insurance
.....	Victoria Select Insurance CompanyOH.....	...IA.....	Company	Ownership.....	..100.000 ...	Nationwide Mutual Insurance Company
...0140 ...	Nationwide10105 ...	34-1777972	4287939	Victoria Fire & Casualty Insurance	Victoria Fire & Casualty Insurance
...0140 ...	Nationwide10777 ...	34-1842602	4287948	Victoria Specialty Insurance CompanyOH.....	...IA.....	Company	Ownership.....	..100.000 ...	Nationwide Mutual Insurance Company
...0140 ...	Nationwide37150 ...	86-0561941	4287667	Western Heritage Insurance CompanyAZ.....	...IA.....	Scottsdale Insurance Company	Ownership.....	..100.000 ...	Nationwide Mutual Insurance Company
.....	Nationwide Mutual Insurance Company	Nationwide Mutual Insurance Company
...0140 ...	Nationwide	Westport Capital Partners IICT.....	...OTH.....	Nationwide Defined Benefit Master Trust ..	Investor member / no control71.000 ...	other non-Nationwide2
...0140 ...	Nationwide	74-2767942	4287818	Whitehall Holdings, Inc.TX.....	...NIA.....	THI Holdings (Delaware), Inc.	Ownership.....	..100.000 ...	Nationwide Mutual Insurance Company
...0140 ...	Nationwide	59-3471667	4287872	WI of Florida, Inc.FL.....	...NIA.....	Whitehall Holdings, Inc.	Ownership.....	..100.000 ...	Nationwide Mutual Insurance Company
...0140 ...	Nationwide	31-1486309	Wilson Road Developers, LLCOH.....	...NIA.....	Nationwide Realty Investors, Ltd.	Ownership.....	..100.000 ...	Nationwide Mutual Insurance Company
...0140 ...	Nationwide	Zais Zephyr A-4, LLCDE.....	...OTH.....	Nationwide Life Insurance Company	limited member / no control60.000 ...	other non-Nationwide2

Asterisk	Explanation
1	For the purposes of this schedule, Nationwide presumed control of these entities because they are owned by at least 10% and are not wholly-owned by a Nationwide entity.
2	Other ownership indicates a non-ownership circumstance by a Nationwide entity.

Part 1 - Loss Experience
N O N E

Part 2 - Direct Premiums Written
N O N E

STATEMENT AS OF SEPTEMBER 30, 2013 OF THE NATIONWIDE INDEMNITY COMPANY

PART 3 (000 omitted)

LOSS AND LOSS ADJUSTMENT EXPENSE RESERVES SCHEDULE

	1	2	3	4	5	6	7	8	9	10	11	12	13									
Years in Which Losses Occurred	Prior Year-End Known Case Loss and LAE Reserves	Prior Year-End IBNR Loss and LAE Reserves	Total Prior Year-End Loss and LAE Reserves (Cols. 1+2)	2013 Loss and LAE Payments on Claims Reported as of Prior Year-End	2013 Loss and LAE Payments on Claims Unreported as of Prior Year-End	Total 2013 Loss and LAE Payments (Cols. 4+5)	Q.S. Date Known Case Loss and LAE Reserves on Claims Reported and Open as of Prior Year End	Q.S. Date Known Case Loss and LAE Reserves on Claims Reported or Reopened Subsequent to Prior Year End	Q.S. Date IBNR Loss and LAE Reserves	Total Q.S. Loss and LAE Reserves (Cols.7+8+9)	Prior Year-End Known Case Loss and LAE Reserves Developed (Savings)/ Deficiency (Cols.4+7 minus Col. 1)	Prior Year-End IBNR Loss and LAE Reserves Developed (Savings)/ Deficiency (Cols. 5+8+9 minus Col. 2)	Prior Year-End Total Loss and LAE Reserve Developed (Savings)/ Deficiency (Cols. 11+12)									
1. 2010 + Prior	582,871	1,566,458	2,149,329	118,940	54	118,994	520,807	12,987	1,648,943	2,182,737	56,876	95,526	152,402									
2. 2011																						
3. Subtotals 2011 + Prior	582,871	1,566,458	2,149,329	118,940	54	118,994	520,807	12,987	1,648,943	2,182,737	56,876	95,526	152,402									
4. 2012																						
5. Subtotals 2012 + Prior	582,871	1,566,458	2,149,329	118,940	54	118,994	520,807	12,987	1,648,943	2,182,737	56,876	95,526	152,402									
6. 2013	XXX	XXX	XXX	XXX			XXX				XXX	XXX	XXX									
7. Totals	582,871	1,566,458	2,149,329	118,940	54	118,994	520,807	12,987	1,648,943	2,182,737	56,876	95,526	152,402									
8. Prior Year-End Surplus As Regards Policyholders	1,120,630										Col. 11, Line 7 As % of Col. 1 Line 7	Col. 12, Line 7 As % of Col. 2 Line 7	Col. 13, Line 7 As % of Col. 3 Line 7									
											1. 9.8	2. 6.1	3. 7.1									
											Col. 13, Line 7 As a % of Col. 1 Line 8											
											4. 13.6											

STATEMENT AS OF SEPTEMBER 30, 2013 OF THE NATIONWIDE INDEMNITY COMPANY

SUPPLEMENTAL EXHIBITS AND SCHEDULES INTERROGATORIES

The following supplemental reports are required to be filed as part of your statement filing. However, in the event that your company does not transact the type of business for which the special report must be filed, your response of NO to the specific interrogatory will be accepted in lieu of filing a "NONE" report and a bar code will be printed below. If the supplement is required of your company but is not being filed for whatever reason enter SEE EXPLANATION and provide an explanation following the interrogatory questions.

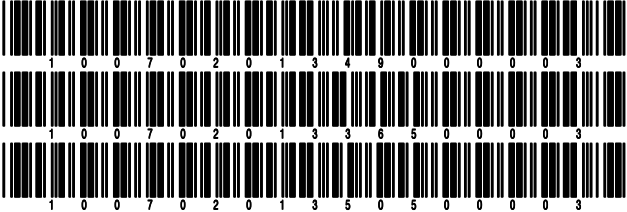
	Response
1. Will the Trusteed Surplus Statement be filed with the state of domicile and the NAIC with this statement?	NO
2. Will Supplement A to Schedule T (Medical Professional Liability Supplement) be filed with this statement?	YES
3. Will the Medicare Part D Coverage Supplement be filed with the state of domicile and the NAIC with this statement?	NO
4. Will the Director and Officer Insurance Coverage Supplement be filed with the state of domicile and the NAIC with this statement?	NO

Explanations:

1.
3.
4.

Bar Codes:

1. Trusteed Surplus Statement [Document Identifier 490]
3. Medicare Part D Coverage Supplement [Document Identifier 365]
4. Director and Officer Supplement [Document Identifier 505]



NONE

SCHEDULE A - VERIFICATION

Real Estate

	1	2
	Year to Date	Prior Year Ended December 31
1. Book/adjusted carrying value, December 31 of prior year		
2. Cost of acquired:		
2.1 Actual cost at time of acquisition		
2.2 Additional investment made after acquisition		
3. Current year change in encumbrances		
4. Total gain (loss) on disposals		
5. Deduct amounts received on disposals		
6. Total foreign exchange change in book/adjusted carrying value		
7. Deduct current year's other than temporary impairment recognized		
8. Deduct current year's depreciation		
9. Book/adjusted carrying value at the end of current period (Lines 1+2+3+4-5+6-7-8)		
10. Deduct total nonadmitted amounts		
11. Statement value at end of current period (Line 9 minus Line 10)		

SCHEDULE B - VERIFICATION

Mortgage Loans

	1	2
	Year to Date	Prior Year Ended December 31
1. Book value/recorded investment excluding accrued interest, December 31 of prior year	106,814,087	126,711,073
2. Cost of acquired:		
2.1 Actual cost at time of acquisition		
2.2 Additional investment made after acquisition		
3. Capitalized deferred interest and other		
4. Accrual of discount		
5. Unrealized valuation increase (decrease)		
6. Total gain (loss) on disposals		3,086
7. Deduct amounts received on disposals	4,995,247	19,900,073
8. Deduct amortization of premium and mortgage interest points and commitment fees		
9. Total foreign exchange change in book value/recorded investment excluding accrued interest		
10. Deduct current year's other than temporary impairment recognized		
11. Book value/recorded investment excluding accrued interest at end of current period (Lines 1+2+3+4+5+6-7-8+9-10)	101,818,840	106,814,087
12. Total valuation allowance	(391,610)	(453,644)
13. Subtotal (Line 11 plus Line 12)	101,427,230	106,360,443
14. Deduct total nonadmitted amounts		
15. Statement value at end of current period (Line 13 minus Line 14)	101,427,230	106,360,443

SCHEDULE BA - VERIFICATION

Other Long-Term Invested Assets

	1	2
	Year to Date	Prior Year Ended December 31
1. Book/adjusted carrying value, December 31 of prior year	59,081,315	64,952,415
2. Cost of acquired:		
2.1 Actual cost at time of acquisition		
2.2 Additional investment made after acquisition	158,610	
3. Capitalized deferred interest and other		(294,282)
4. Accrual of discount		
5. Unrealized valuation increase (decrease)	3,241,566	(1,514,280)
6. Total gain (loss) on disposals		
7. Deduct amounts received on disposals	150,000	3,100,551
8. Deduct amortization of premium and depreciation	578,691	961,987
9. Total foreign exchange change in book/adjusted carrying value		
10. Deduct current year's other than temporary impairment recognized		
11. Book/adjusted carrying value at end of current period (Lines 1+2+3+4+5+6-7-8+9-10)	61,752,800	59,081,315
12. Deduct total nonadmitted amounts	138,667	138,667
13. Statement value at end of current period (Line 11 minus Line 12)	61,614,133	58,942,648

SCHEDULE D - VERIFICATION

Bonds and Stocks

	1	2
	Year to Date	Prior Year Ended December 31
1. Book/adjusted carrying value of bonds and stocks, December 31 of prior year	3,049,202,417	3,214,173,337
2. Cost of bonds and stocks acquired	82,770,116	168,824,759
3. Accrual of discount	4,565,106	5,970,024
4. Unrealized valuation increase (decrease)	11,014,466	15,111,211
5. Total gain (loss) on disposals	1,770,553	68,062,269
6. Deduct consideration for bonds and stocks disposed of	140,559,661	412,341,667
7. Deduct amortization of premium	8,212,454	10,066,535
8. Total foreign exchange change in book/adjusted carrying value		
9. Deduct current year's other than temporary impairment recognized		530,981
10. Book/adjusted carrying value at end of current period (Lines 1+2+3+4+5-6-7+8-9)	3,000,550,543	3,049,202,417
11. Deduct total nonadmitted amounts		
12. Statement value at end of current period (Line 10 minus Line 11)	3,000,550,543	3,049,202,417

STATEMENT AS OF SEPTEMBER 30, 2013 OF THE NATIONWIDE INDEMNITY COMPANY

SCHEDULE D - PART 1B

Showing the Acquisitions, Dispositions and Non-Trading Activity
During the Current Quarter for all Bonds and Preferred Stock by Rating Class

	1 Book/Adjusted Carrying Value Beginning of Current Quarter	2 Acquisitions During Current Quarter	3 Dispositions During Current Quarter	4 Non-Trading Activity During Current Quarter	5 Book/Adjusted Carrying Value End of First Quarter	6 Book/Adjusted Carrying Value End of Second Quarter	7 Book/Adjusted Carrying Value End of Third Quarter	8 Book/Adjusted Carrying Value December 31 Prior Year
BONDS								
1. Class 1 (a)	2,585,248,743	32,158,919	50,615,362	(38,989,853)	2,588,207,605	2,585,248,743	2,527,802,447	2,535,950,449
2. Class 2 (a)	372,584,997	10,389,142	8,104,608	40,065,772	420,747,191	372,584,997	414,935,303	449,547,238
3. Class 3 (a)	29,596,873		16,443,806	314,358	24,587,082	29,596,873	13,467,425	22,551,992
4. Class 4 (a)	36,925,537		735,650	2,931,374	37,809,398	36,925,537	39,121,261	28,018,759
5. Class 5 (a)								8,525,116
6. Class 6 (a)	3,320,275		118,730	74,641	3,206,433	3,320,275	3,276,186	3,245,793
7. Total Bonds	3,027,676,425	42,548,061	76,018,156	4,396,292	3,074,557,709	3,027,676,425	2,998,602,622	3,047,839,347
PREFERRED STOCK								
8. Class 1								
9. Class 2								
10. Class 3								
11. Class 4								
12. Class 5								
13. Class 6								
14. Total Preferred Stock								
15. Total Bonds and Preferred Stock	3,027,676,425	42,548,061	76,018,156	4,396,292	3,074,557,709	3,027,676,425	2,998,602,622	3,047,839,347

(a) Book/Adjusted Carrying Value column for the end of the current reporting period includes the following amount of non-rated short-term and cash equivalent bonds by NAIC designation: NAIC 1 \$; NAIC 2 \$; NAIC 3 \$;
NAIC 4 \$; NAIC 5 \$; NAIC 6 \$

SCHEDULE DA - PART 1

Short-Term Investments

	1	2	3	4	5
	Book/Adjusted Carrying Value	Par Value	Actual Cost	Interest Collected Year-to-Date	Paid for Accrued Interest Year-to-Date
9199999 Totals	75,790,311	xxx	75,790,311	69,830	

SCHEDULE DA - VERIFICATION

Short-Term Investments

	1	2
	Year To Date	Prior Year Ended December 31
1. Book/adjusted carrying value, December 31 of prior year	58,840,716	833,702
2. Cost of short-term investments acquired	305,534,685	844,010,135
3. Accrual of discount		
4. Unrealized valuation increase (decrease)		
5. Total gain (loss) on disposals		
6. Deduct consideration received on disposals	288,585,090	786,003,121
7. Deduct amortization of premium		
8. Total foreign exchange change in book/adjusted carrying value		
9. Deduct current year's other than temporary impairment recognized		
10. Book/adjusted carrying value at end of current period (Lines 1+2+3+4+5-6-7+8-9)	75,790,311	58,840,716
11. Deduct total nonadmitted amounts		
12. Statement value at end of current period (Line 10 minus Line 11)	75,790,311	58,840,716

Schedule DB - Part A - Verification - Options, Caps, Floors, Collars, Swaps and Forwards
N O N E

Schedule DB - Part B - Verification - Futures Contracts
N O N E

Schedule DB - Part C - Section 1 - Replication (Synthetic Asset) Transactions (RSATs) Open
N O N E

Schedule DB-Part C-Section 2-Reconciliation of Replication (Synthetic Asset) Transactions Open
N O N E

Schedule DB - Verification - Book/Adjusted Carrying Value, Fair Value and Potential Exposure of
Derivatives
N O N E

Schedule E - Verification - Cash Equivalents
N O N E

Schedule A - Part 2 - Real Estate Acquired and Additions Made
N O N E

Schedule A - Part 3 - Real Estate Disposed
N O N E

SCHEDULE B - PART 2

[illegible]

SCHEDULE B - PART 3

1	Location		4	5	6	7	Change in Book Value/Recorded Investment						14	15	16	17	18
	2	3					8	9	10	11	12	13					
Loan Number	City	State	Loan Type	Date Acquired	Disposal Date	Book Value/Recorded Investment Excluding Accrued Interest Prior Year	Unrealized Valuation Increase (Decrease)	Current Year's (Amortization)/Accretion	Current Year's Other Than Temporary Impairment Recognized	Capitalized Deferred Interest and Other	Total Change in Book Value (8+9-10+11)	Total Foreign Exchange Change in Book Value	Book Value/Recorded Investment Excluding Accrued Interest on Disposal	Consid-eration	Foreign Exchange Gain (Loss) on Disposal	Realized Gain (Loss) on Disposal	Total Gain (Loss) on Disposal
00-1100032	BLOOMINGTON	IN		08/07/2003	08/09/2013	765,226							746,448	749,165			
00-1100074	SAN DIEGO	CA		08/07/2003	07/19/2013	771,126							752,574	755,259			
0199999. Mortgages closed by repayment						1,536,351							1,499,022	1,504,425			
00-1000541	COLUMBUS	OH		04/30/2001		3,620,082							80,721	80,721			
00-1000570	WEST PALM BEACH	FL		06/20/2001		1,037,532							66,290	66,290			
00-1000588	CINCINNATI	OH		06/01/2001		644,903							42,445	42,445			
00-1000696	FT. LAUDERDALE	FL		05/08/2002		3,906,960							39,259	39,259			
00-1000701	VILLANOVA	PA		12/17/2001		3,159,968							64,085	64,085			
00-1000714	CLOSTER	NJ		11/08/2001		1,591,722							32,140	32,140			
00-1000774	FLINT	MI		12/20/2001		3,422,041							97,848	97,848			
00-1000789	COOPER CITY	FL		11/30/2001		729,445							21,105	21,105			
00-1000875	SCOTTSDALE	AZ		09/18/2002		2,324,099							40,749	40,749			
00-1000932	HARRISON TOWNSHIP	MI		05/29/2002		4,015,142							37,213	37,213			
00-1000941	SPARTANBURG	SC		05/07/2002		789,724							7,773	7,773			
00-1000949	STOW	OH		05/30/2002		1,437,903							27,070	27,070			
00-1001152	DALLAS	TX		12/20/2002		1,985,596							16,802	16,802			
00-1001164	CHESTERFIELD	VA		11/20/2002		3,578,616							24,913	24,913			
00-1001203	NILES	IL		12/30/2002		2,508,618							16,957	16,957			
00-1001237	DALLAS	TX		11/20/2002		2,182,039							46,188	46,188			
00-1100159	WOODLAWN	MD		02/27/2004		1,187,813							11,656	11,656			
00-1100248	OCEANSIDE	CA		02/05/2004		801,403							10,330	10,330			
00-1100317	BUFFALO	NY		03/09/2004		1,687,092							27,200	27,200			
00-1100363	LAS VEGAS	NV		04/07/2004		822,205							6,708	6,708			
00-1100762	BEAVERTON	OR		06/21/2005		2,628,748							15,630	15,630			
00-1100768	FRISCO	TX		06/02/2005		1,591,847							11,446	11,446			
00-1100774	SOLANA BEACH	CA		03/24/2005		2,137,073							45,903	45,903			

STATEMENT AS OF SEPTEMBER 30, 2013 OF THE NATIONWIDE INDEMNITY COMPANY

SCHEDULE B - PART 3

Showing All Mortgage Loans DISPOSED, Transferred or Repaid During the Current Quarter

1	Location		4	5	6	7	Change in Book Value/Recorded Investment						14	15	16	17	18
	2	3					8	9	10	11	12	13					
Loan Number	City	State	Loan Type	Date Acquired	Disposal Date	Book Value/Recorded Investment Excluding Accrued Interest Prior Year	Unrealized Valuation Increase (Decrease)	Current Year's (Amortization) /Accretion	Current Year's Other Than Temporary Impairment Recognized	Capitalized Deferred Interest and Other	Total Change in Book Value (8+9-10+11)	Total Foreign Exchange Change in Book Value	Book Value/Recorded Investment Excluding Accrued Interest on Disposal	Consid-eration	Foreign Exchange Gain (Loss) on Disposal	Realized Gain (Loss) on Disposal	Total Gain (Loss) on Disposal
00-1100810	ST. CLAIR SHORES	MI05/05/2005		2,018,455							9,840	9,840			
00-1100820	LEXINGTON	KY05/12/2005		8,974,309							45,132	45,132			
00-1100828	VARIOUS CITIES	TN07/08/2005		1,943,762							27,671	27,671			
00-1100844	ORLAND PARK	IL07/22/2005		744,803							10,778	10,778			
00-1100865	ANN ARBOR	MI07/20/2005		4,963,339							44,015	44,015			
00-1100889	REDWOOD CITY	CA06/21/2005		4,386,719							25,883	25,883			
00-1100904	DENVER	CO08/29/2005		1,654,543							14,735	14,735			
00-1100905	AUSTIN	TX07/07/2005		3,858,316							16,600	16,600			
00-1100925	PLANO	TX09/15/2005		6,983,635							25,460	25,460			
00-1100927	ANN ARBOR	MI08/09/2005		1,223,526							7,476	7,476			
00-1100947	ELDERSBURG	MD08/31/2005		1,659,935							14,586	14,586			
00-1100952	KANSAS CITY	KS08/18/2005		2,477,738							22,214	22,214			
03-0307261	GAINESVILLE	FL06/11/1995		1,096,010							20,407	20,407			
28-0001469	WASHINGTON TOWNSHIP	OH07/07/1999		3,125,532							94,965	94,965			
0299999. Mortgages with partial repayments						92,901,191							1,170,194	1,170,194			
0599999 - Totals						94,437,542							2,669,215	2,674,618			

STATEMENT AS OF SEPTEMBER 30, 2013 OF THE NATIONWIDE INDEMNITY COMPANY

SCHEDULE BA - PART 2

Showing Other Long-Term Invested Assets ACQUIRED AND ADDITIONS MADE During the Current Quarter

[illegible]

SCHEDULE BA - PART 3

Showing Other Long-Term Invested Assets DISPOSED, Transferred or Repaid During the Current Quarter

[illegible]

STATEMENT AS OF SEPTEMBER 30, 2013 OF THE NATIONWIDE INDEMNITY COMPANY

SCHEDULE D - PART 3

Show All Long-Term Bonds and Stock Acquired During the Current Quarter

1	2	3	4	5	6	7	8	9	10
CUSIP Identification	Description	Foreign	Date Acquired	Name of Vendor	Number of Shares of Stock	Actual Cost	Par Value	Paid for Accrued Interest and Dividends	NAIC Designation or Market Indicator (a)
241721-8J-1	De Soto TX Ind Sch Dist GO Cap Apprec Pr09/12/2013	Tax Free Exchange633,275955,000		1Z
241721-8K-8	De Soto TX Ind Sch Dist GO Cap Apprec Pr09/12/2013	Tax Free Exchange2,024,2643,255,000		1Z
241721-8S-1	De Soto TX Ind Sch Dist GO Cap Apprec Un09/12/2013	Tax Free Exchange581,659910,000		1Z
241721-8T-9	De Soto TX Ind Sch Dist GO Cap Apprec Un09/12/2013	Tax Free Exchange370,089620,000		1Z
2499999. Subtotal - Bonds - U.S. Political Subdivisions of States, Territories and Possessions									XXX
23338V-AB-2	DTE Electric Co Sr Nt 3.650% 03/15/2408/20/2013	Bank of America BIRD Dealer1,991,8202,000,000		1FE
25470D-AF-6	Discovery Communications Nt 3.300% 05/08/23/2013	Goldman Sachs & Company943,5201,000,0009,442	2FE
375558-AU-7	Gilead Sciences Inc Sr Nt 4.400% 12/0108/27/2013	Credit Suisse First Boston7,139,8356,725,00071,466	2FE
50076Q-AX-4	Kraft Foods Group Inc Sr Nt 6.125% 08/08/27/2013	Citigroup2,305,7871,970,0002,346	2FE
90270R-BF-0	UBS-Barclays Comm Mort Tr CMBS Ser 2012-08/16/2013	Deutsche Bank Securities9,557,81310,000,00013,661	1FM
3899999. Subtotal - Bonds - Industrial and Miscellaneous (Unaffiliated)						21,938,775	21,695,000	96,915	XXX
8399997. Total - Bonds - Part 3						25,548,062	27,435,000	96,915	XXX
8399998. Total - Bonds - Part 5						XXX	XXX	XXX	XXX
8399999. Total - Bonds						25,548,062	27,435,000	96,915	XXX
8999997. Total - Preferred Stocks - Part 3							XXX		XXX
8999998. Total - Preferred Stocks - Part 5						XXX	XXX	XXX	XXX
8999999. Total - Preferred Stocks							XXX		XXX
686954-10-7	Taylor Wimpey PLC Com (GBP)	D08/30/2013	Direct30,440,0008,234			L
9099999. Subtotal - Common Stocks - Industrial and Miscellaneous (Unaffiliated)						8,234	XXX		XXX
9799997. Total - Common Stocks - Part 3						8,234	XXX		XXX
9799998. Total - Common Stocks - Part 5						XXX	XXX	XXX	XXX
9799999. Total - Common Stocks						8,234	XXX		XXX
9899999. Total - Preferred and Common Stocks						8,234	XXX		XXX
9999999 - Totals						25,556,296	XXX	96,915	XXX

(a) For all common stock bearing the NAIC market indicator "U" provide: the number of such issues

STATEMENT AS OF SEPTEMBER 30, 2013 OF THE NATIONWIDE INDEMNITY COMPANY

SCHEDULE D - PART 4

Show All Long-Term Bonds and Stock Sold, Redeemed or Otherwise Disposed of During the Current Quarter

1	2	3	4	5	6	7	8	9	10	Change In Book/Adjusted Carrying Value					16	17	18	19	20	21	22
										11	12	13	14	15							
CUSIP Identification	Description	For- eign	Disposal Date	Name of Purchaser	Number of Shares of Stock	Consid- eration	Par Value	Actual Cost	Prior Year Book/ Adjusted Carrying Value	Unrealized Valuation Increase/ (Decrease)	Current Year's (Amor- tization)/ Accretion	Current Year's Other Than Temporary Impairment Recogn- ized	Total Change in Book/ Adjusted Carrying Value (11 + 12 - 13)	Total Foreign Exchange Change in Book /Adjusted Carrying Value	Book/ Adjusted Carrying Value at Disposal Date	Foreign Exchange Gain (Loss) on Disposal	Realized Gain (Loss) on Disposal	Total Gain (Loss) on Disposal	Bond Interest/ Stock Dividends Received During Year	Stated Con- tractual Maturity Date	NAIC Desig- nation or Market In- dicator (a)
34459R-AB-1	Morocco AID Gtd SF Bd 7.550% 07/15/26		07/15/2013	Redemption 100.0000		17,960	17,960	21,507	20,104		(2,144)		(2,144)		17,960				1,356	01/15/2026	1FE
911760-EJ-1	Vendee Mtg Tr RMBS REMIC Ser 1994-2 3ZB		09/01/2013	Paydown		71,195	71,195	69,632	70,239		956		956		71,195				3,138	06/15/2024	1
911760-HH-2	Vendee Mtg Tr RMBS REMIC Ser 1996-2 1Z		09/01/2013	Paydown		218,205	218,205	217,120	217,240		965		965		218,205				9,781	06/15/2026	1
0599999. Subtotal - Bonds - U.S. Governments						307,360	307,360	308,259	307,583		(223)		(223)		307,360				14,275	XXX	XXX
241721-2A-6	De Soto TX Ind Sch Dist GO Cap Apprec Re		09/12/2013	Tax Free Exchange		2,394,352	3,875,000	1,654,974	2,314,729		79,624		79,624		2,394,352					08/15/2023	1FE
241721-29-3	De Soto TX Ind Sch Dist GO Cap Apprec Re		09/12/2013	Tax Free Exchange		1,214,934	1,865,000	842,887	1,174,932		40,003		40,003		1,214,934					08/15/2022	1FE
2499999. Subtotal - Bonds - U.S. Political Subdivisions of States, Territories and Possessions						3,609,286	5,740,000	2,497,861	3,489,661		119,627		119,627		3,609,286					XXX	XXX
011832-S3-7	Alaska St Hsg Fin Corp Rev LBASS AMT 1st		09/01/2013	Call 100.0000		370,000	370,000	370,000	370,000						370,000				11,819	12/01/2024	1FE
254773-AG-9	District Columbia Hsg Fin Rev LBASS Agcy		09/01/2013	Call 100.0000		50,000	50,000	50,000	50,000						50,000				1,725	06/01/2020	1FE
312903-HR-1	FHLMC REMIC Ser 113-C 8.500% 05/15/21		09/15/2013	Paydown		3,117	3,117	3,248	3,196		(78)		(78)		3,117				175	05/15/2021	1
312905-YJ-5	FHLMC REMIC Ser 1077-E 9.000% 05/15/21		09/01/2013	Paydown		15,804	15,804	16,463	16,317		(513)		(513)		15,804				949	05/15/2021	1
312906-E5-5	FHLMC REMIC Ser 1116-XA 8.400% 08/15/2		09/01/2013	Paydown		1,930	1,930	1,984	1,930		(40)		(40)		1,930				107	08/15/2021	1
312909-MY-7	FHLMC REMIC Ser 1251-Z 8.000% 04/15/22		09/01/2013	Paydown		32,809	32,809	34,306	33,759		(950)		(950)		32,809				1,863	04/15/2022	1
312915-UF-6	FHLMC REMIC Ser 1504 Z 7.000% 05/15/23		09/01/2013	Paydown		17,509	17,509	18,010	17,799		(291)		(291)		17,509				805	05/15/2023	1
313373-X8-6	FHLMC REMIC Ser 1683 Z 6.500% 02/15/24		09/01/2013	Paydown		140,642	140,642	141,507	140,861		(219)		(219)		140,642				6,042	02/15/2024	1
31337A-CQ-3	FHLMC REMIC Ser 1967-BA 7.000% 06/17/2		09/01/2013	Paydown		17,188	17,188	17,589	17,369		(181)		(181)		17,188				795	06/17/2027	1
31340Y-BH-1	FHLMC REMIC Ser 6-C 9.050% 06/15/19		09/15/2013	Paydown		1,116	1,116	1,170	1,139		(23)		(23)		1,116				68	06/15/2019	1
31340Y-DB-2	FHLMC REMIC Ser 12-A 9.250% 11/15/19		09/15/2013	Paydown		1,294	1,294	1,360	1,321		(27)		(27)		1,294				80	11/15/2019	1
31340Y-KF-5	FHLMC REMIC Ser 31-E 7.550% 05/15/20		09/15/2013	Paydown		7,817	7,817	8,066	7,817		(62)		(62)		7,817				367	05/15/2020	1
31340Y-KX-6	FHLMC REMIC Ser 33-D 8.000% 04/15/20		09/15/2013	Paydown		7,773	7,773	8,050	7,886		(114)		(114)		7,773				422	04/15/2020	1
31340Y-QS-1	FHLMC REMIC Ser 46-B 7.800% 09/15/20		09/15/2013	Paydown		4,860	4,860	5,001	4,918		(57)		(57)		4,860				254	09/15/2020	1
31358E-XG-2	FNMA REMIC Ser 1990-83A 9.250% 07/25/2		09/01/2013	Paydown		6,453	6,453	6,878	6,785		(332)		(332)		6,453				433	07/25/2020	1
31358G-X4-4	FNMA REMIC Ser 1991-56G 8.600% 06/25/2		09/01/2013	Paydown		2,962	2,962	3,101	3,063		(101)		(101)		2,962				167	06/25/2021	1
31359E-YL-9	FNMA REMIC Ser 1993-199PF 6.500% 10/25		09/01/2013	Paydown		43,524	43,524	44,233	43,580		(56)		(56)		43,524				1,937	10/25/2023	1
31359F-DE-5	FNMA REMIC Ser 1993-202M 6.500% 11/25/		09/01/2013	Paydown		237,159	237,159	241,110	237,154		5		5		237,159				10,414	11/25/2023	1
31359K-2K-2	FNMA REMIC Ser 1996-M7 CI Z 6.575% 05/		09/01/2013	Paydown		259	259	261	261		(2)		(2)		259				12	05/17/2036	1
31359K-ZR-1	FNMA REMIC Ser 1996-45 CI K 7.000% 09/		09/01/2013	Paydown		6,016	6,016	6,136	6,100		(85)		(85)		6,016				284	09/25/2021	1
31359P-DJ-2	FNMA ACES Ser 1997-M2 CI Z 7.125% 01/1		09/01/2013	Paydown		3,202	3,202	3,439	3,412		(210)		(210)		3,202				152	01/17/2037	1
313602-GQ-1	FNMA REMIC Ser 1988-25B 9.250% 10/25/1		09/01/2013	Paydown		1,943	1,943	2,062	2,007		(65)		(65)		1,943				119	10/25/2018	1
313603-2H-4	FNMA REMIC Ser 1990-35E 9.500% 04/25/2		09/01/2013	Paydown		331	331	351	346		(16)		(16)		331				20	04/25/2020	1
313603-5J-7	FNMA REMIC Ser 1990-41D 9.500% 04/25/2		09/01/2013	Paydown		4,986	4,986	5,292	5,212		(226)		(226)		4,986				309	04/25/2020	1
31377R-BH-2	FNMA DUS Pool #384440 6.600% 10/25/26		09/01/2013	Paydown		12,704	12,704	14,070	13,562		(857)		(857)		12,704				559	10/25/2026	1
31381H-TQ-9	FNMA DUS Pool #461459 5.450% 11/25/23		09/01/2013	Paydown		46,758	46,758	48,124	47,506		(748)		(748)		46,758				1,700	11/25/2023	1
31392E-FL-9	FNMA REMIC Ser 2002-55 CI GC 5.500% 09		09/01/2013	Paydown		50,612	50,612	52,272	51,018		(406)		(406)		50,612				1,858	09/25/2017	1
31392E-SX-9	FNMA REMIC Ser 2002-59 CI B 5.500% 09/		09/01/2013	Paydown		17,416	17,416	18,107	17,719		(303)		(303)		17,416				644	09/25/2017	1
31392U-RH-9	FHLMC REMIC Ser 2501 AN 5.500% 09/15/1		09/01/2013	Paydown		110,346	110,346	114,415	111,435		(1,089)		(1,089)		110,346				4,060	09/15/2017	1
31392V-2F-8	FHLMC REMIC Ser 2494 J 5.500% 09/15/17		09/01/2013	Paydown		199,589	199,589	209,856	201,439		(1,850)		(1,850)		199,589				7,200	09/15/2017	1
31392V-SN-3	FHLMC REMIC Ser 2496 BK 5.500% 09/15/1		09/01/2013	Paydown		127,667	127,667	132,823	129,044		(1,377)		(1,377)		127,667				4,734	09/15/2017	1
31393A-2V-8	FNMA REMIC Ser 2003-38 CI MP 5.500% 05		09/01/2013	Paydown		245,372	245,372	250,893	246,446		(1,073)		(1,073)		245,372				9,120	05/25/2023	1
31394J-KW-6	FHLMC REMIC Ser 2673 CI QL 5.500% 09/1		09/01/2013	Paydown		209,275	209,275	212,676	210,058		(783)		(783)		209,275				7,702	09/15/2023	1
31394L-HM-7	FHLMC REMIC Ser 2691 CI VU 5.500% 08/1		09/01/2013	Paydown		367,313	367,313	373,397	368,029		(716)		(716)		367,313				14,397	08/15/2023	1
454806-BV-1	Indiana St Hsg & Cmnty Dev Rev LBASS Aut		07/01/2013	Call 100.0000		470,000	470,000	470,000	470,000						470,000				21,855	07/01/2021	1FE
454806-BW-9	Indiana St Hsg & Cmnty Dev Rev LBASS Aut		07/01/2013	Call 100.0000		870,000	870,000	870,000	870,000						870,000				41,760	07/01/2027	1FE
49130T-DY-9	Kentucky Hsg Corp Rev LBASS AMT Sgl Fam		08/09/2013	Call 100.0000		4,655,000	4,655,000	4,655,000	4,655,000						4,655,000				274,850	07/01/2023	1FE
60415N-G2-2	Minnesota St Hsg Fin Agcy Rev LBASS AMT S		07/01/2013	Call 100.0000		25,000	25,000	25,000	25,000						25,000				1,156	07/01/2021	1FE
60534Q-VK-4	Mississippi Dev Bk Rev Spl Oblg 5.000%		08/15/2013	Call 100.0000		790,000	790,000	857,190	830,210		(40,210)		(40,210)		790,000				44,328	07/01/2019	1FE
658207-KG-9	North Carolina Hsg Fin Agcy Rev LBASS AMT		09/01/2013	Call 100.0000		300,000	300,000	300,000	300,000						300,000				18,813	07/01/2028	1FE
67756Q-HN-0	Ohio St Hsg Fin Agcy Mtg Rev LBASS AMT S		09/01/2013	Call 100.0000		215,000	215,000	215,000	215,000						215,000				11,395	09/01/2028	1FE
3199999. Subtotal - Bonds - U.S. Special Revenues						9,690,746	9,690,746	9,808,440	9,743,799		(53,055)		(53,055)		9,690,746				505,449	XXX	XXX
01082#-AA-3	Alameda Cnty CA CTL Ser 2002-A 7.500%		09/15/2013	Redemption 100.0000		33,834	33,834	35,864	34,970		(1,136)		(1,136)		33,834				1,693	06/15/2021	1
01448Y-AB-9	ALESCO Pfd Fdg Ltd ABS Ser 7A CI A1B 0		09/23/2013	Paydown		215,730	215,730	174,741			40,989		40,989		215,730					07/23/2035	1
01877K-AB-9	Alliance Pipeline LP Sr Nt 6.996% 12/3		07/10/2013	Redemption 100.0000		35,714	35,714	38,167	39,574		(3,860)		(3,860)		35,714				3,248	12/31/2019	2FE
02150W-AB-9	Countryside Alternative Ln Tr RMBS Ser 2		09/01/2013	Paydown		294,124	442,555	412,874	309,728	103,147			103,147		412,874	(118,750)	(118,750)		15,149	03/25/2047	1FIM
02377V-AA-0	American Airlines Pt Trst ABS PTC Ser A		08/08/2013	Call 100.0000		9,099,863	9,099,863	9,134,969	9,130,630		(30,767)		(30,767)		9,099,863				632,350	10/15/2021	2FE

STATEMENT AS OF SEPTEMBER 30, 2013 OF THE NATIONWIDE INDEMNITY COMPANY

SCHEDULE D - PART 4

Show All Long-Term Bonds and Stock Sold, Redeemed or Otherwise Disposed of During the Current Quarter

1	2	3	4	5	6	7	8	9	10	Change In Book/Adjusted Carrying Value					16	17	18	19	20	21	22
										11	12	13	14	15							
CUSIP Ident- ification	Description	For- eign	Disposal Date	Name of Purchaser	Number of Shares of Stock	Consid- eration	Par Value	Actual Cost	Prior Year Book/ Adjusted Carrying Value	Unrealized Valuation Increase/ (Decrease)	Current Year's (Amor- tization)/ Accretion	Current Year's Other Than Temporary Impairment Recogn- ized	Total Change in Book/ Adjusted Carrying Value (11 + 12 - 13)	Total Foreign Exchange Change in Book /Adjusted Carrying Value	Book/ Adjusted Carrying Value at Disposal Date	Foreign Exchange Gain (Loss) on Disposal	Realized Gain (Loss) on Disposal	Total Gain (Loss) on Disposal	Bond Interest/ Stock Dividends Received During Year	Stated Con- tractual Maturity Date	NAIC Desig- nation or Market In- dicator (a)
031162-BM-1	Amgen Inc Sr Nt 3.875% 11/15/21		08/23/2013	Morgan Stanley & Co Inc		990,170	1,000,000	1,088,080							1,083,422				30,462	11/15/2021	2FE
03215P-CD-9	Amresco Resdlt Sec Mtg Loan RMBS Ser 199		09/01/2013	Paydown		10,018	10,018	10,156	9,975						10,018				413	06/25/2027	1FM
03334@-AA-7	AnchoragePermit Ctr Bldg Ls Tr CTL 6.3		09/15/2013	Redemption 100.0000		20,634	20,634	20,634	20,634						20,634				873	02/15/2025	1.....
04626R-AA-4	Astoria Power Project ABS PTC Ser A 5.		09/01/2013	Redemption 100.0000		272,092	272,092	272,092	272,092						272,092				10,441	05/01/2016	2AM
05549@-AA-3	Bjs Wholesale Club Inc CTL (HG Bowie Rea		09/15/2013	Redemption 100.0000		26,715	26,715	26,972	26,866						26,715				1,238	05/15/2022	2.....
08183*-AA-0	Benenson Parsippany LLC CTL 7.050% 04/		09/10/2013	Redemption 100.0000		83,200	83,200	83,200	83,200						83,200				3,912	04/10/2016	1.....
11448*-BU-0	Brookshire Grocery Co Ser A-1 7.010% 0		09/01/2013	Redemption 100.0000		67,644	67,644	67,644	67,644						67,644				3,163	09/01/2014	2.....
11448*-BV-8	Brookshire Grocery Co Ser A-2 7.010% 0		09/01/2013	Redemption 100.0000		65,159	65,159	65,159	65,159						65,159				3,047	09/01/2014	2.....
117017-AB-9	Brunswick & Glynn Co Dev Auth CTL Rev Le		08/15/2013			70,602	70,602	70,602	70,602						70,602				4,420	02/15/2023	1.....
12189P-AH-5	Burlington Northern Santa Fe ABS ETC Ser		07/15/2013	Paydown		11,744	11,744	13,298	12,274						11,744				929	01/15/2020	1FE
12644*-AC-1	CTL Cap Tr CTL Ser 2002-3 Anchorage 7.		09/15/2013	Redemption 100.0000		44,435	44,435	44,435	44,435						44,435				2,161	12/15/2026	1.....
12644@-AX-3	CTL Cap Tr CTL Lowes 7.070% 08/15/21		08/15/2013	Redemption 100.0000		130,949	130,949	130,949	130,949						130,949				9,258	08/14/2021	1.....
12644@-BR-5	CTL Cap Tr CTLSer 2002-21Aurora Heathcar		09/15/2013			49,116	49,116	49,116	49,116						49,116				2,179	10/15/2022	2.....
12667G-AX-1	Countrywide Alternative Ln Tr RMBS Ser 2		09/25/2013	Paydown		145,543	145,543	136,221	105,049	31,172					145,543				.627	05/25/2035	1FM
12667G-XN-8	Countrywide Alternative Ln Tr RMBS Ser 2		09/01/2013	Paydown		467,300	467,300	437,418	437,418						467,300				17,013	08/25/2035	4FM
12668@-AC-8	CWABS Inc RMBS Ser 2006-H CI 2A1B 0.33		09/16/2013	Paydown		114,455	114,455	39,624	39,624						114,455				.277	11/15/2036	6FM
126694-NS-3	CWHL Inc RMBS Ser 2005-27 CI 1A3 5.500		09/01/2013	Paydown		149,841	149,841	145,837	142,330	6,061					149,841				5,524	12/25/2035	2FM
12669C-E4-8	CWMBIS Inc RMBS Ser 2002-8 CI A4 6.500%		09/01/2013	Paydown		83,429	83,429	86,454	83,631						83,429				3,532	07/25/2032	1FM
12669F-D2-6	CWHL Inc RMBS Ser 2004-10 CI A10 5.000		09/01/2013	Paydown		63,110	63,110	59,087	61,895						63,110				2,129	07/25/2034	1FM
12669G-R3-7	Countrywide Home Loans RMBS Ser 2005-15		09/01/2013	Paydown		88,738	100,040	98,462	98,544	960					99,832				3,543	08/25/2035	2FM
144527-AB-4	Carrington Mtg Loan Tr RMBS Ser 2007-FRE		09/25/2013	Paydown		275,797	275,797	275,714	218,089	57,625					275,797				.766	02/25/2037	1FM
151895-A*-0	CenterPoint Properties Tr CTL 7.530% 1		09/01/2013			30,373	30,373	30,373	30,373						30,373				1,526	10/01/2014	1.....
165167-BY-2	Chesapeake Energy Corp Sr Nt 7.625% 07		07/15/2013	Maturity		400,000	400,000	393,064	399,329						400,000				30,500	07/15/2013	3FE
16675H-AL-6	Chevron Corp Trust Fund Gtd Amortizing N		07/01/2013	Call 103.5444		301,683	291,356	291,356	291,356						301,683				21,348	01/01/2014	1FE
17306U-CE-6	Citifinancial Mtg Sec Inc RMBS Ser 2004-		09/01/2013	Paydown		33,438	33,438	33,436	33,398						33,438				.872	04/25/2034	1FM
17307G-YH-5	Citigroup Mtg Ln Tr RMBS Ser 2005-5 CI 2		09/01/2013	Paydown		98,306	98,306	90,848	90,848						98,306				3,567	08/25/2035	1FM
223889-AA-4	Cowperwood McAllen I LP CTL 6.880% 07/		09/15/2013			66,018	66,018	66,018	66,018						66,018				3,030	05/15/2022	1.....
23321M-AL-9	DLJ Mtg Accept Tr I RMBS CMO Ser 89-1-F		09/01/2013	Paydown		607	607	668	644						607				.46	08/01/2019	6*
251563-CB-6	Deutsche Mtg Sec Inc RMBS Ser 2004-1 CI		09/01/2013	Paydown		160,946	160,946	160,901	160,644						160,946				5,121	12/25/2033	1FM
251563-DM-1	Deutsche Mtg Sec Inc RMBS Ser 2004-2 CI		09/01/2013	Paydown		65,856	65,856	65,840	65,751						65,856				2,005	01/25/2034	1FM
36157R-SX-1	GE Cap Mtg Serv Inc RMBS Ser 1999-HE2 CI		09/01/2013	Paydown		35,272	35,272	35,272	35,272						35,272				(.744)	07/25/2029	2FM
36157R-DB-5	GE Cap Mtg Serv Inc RMBS Ser 1999-HE1 CI		09/01/2013	Paydown		2,036	2,036	2,036	2,036						2,036				.87	04/25/2029	1FM
36242D-7Q-0	GS Mortgage Securities Corp RMBS Ser 200		09/01/2013	Paydown		102,790	102,790	97,683	98,737						102,790				3,615	06/25/2035	1FM
36312K-AA-0	Gaithersburg Fin Tr CTL 7.010% 04/11/1		09/11/2013			146,609	146,609	156,395	148,076						146,609				6,937	04/11/2014	1.....
393513-AC-0	Green Tree Mtg Ln Tr RMBS Ser 2005-HE1 A		08/26/2013	Paydown		674,280	674,280	674,280	674,280						674,280				2,322	12/25/2032	1FM
400756-BG-6	Guaranteed Mtg Corp III CMBIS CMO Ser L-5		09/20/2013	Paydown		3,668	3,668	3,940	3,708						3,668				(.84)	07/20/2019	6*
43739E-AP-2	Homebanc Mortgage Tr RMBS Ser 2005-1 CI		09/25/2013	Paydown		109,836	109,836	101,541	101,541						109,836				336	03/25/2035	1FM
441060-AJ-9	Hospira Inc Sr Nt 6.050% 03/30/17		08/13/2013	Various		6,796,665	6,300,000	7,132,551	7,041,654						6,943,943				323,472	03/30/2017	3FE
45254N-JG-3	IMPAC CMB Tr RMBS Ser 2004-5 CI 1A1 0.		09/25/2013	Paydown		101,112	101,112	101,298	101,264						101,112				.619	10/25/2034	1FM
45254N-KX-4	IMPAC CMB Tr RMBS Ser 2004-9 CI 1A1 0.		09/25/2013	Paydown		25,930	25,930	25,995	23,297	2,684					25,930				.170	01/25/2035	1FM
46625Y-GL-1	JP Morgan Chase Comm Mtg Secs CMBIS Ser 2		09/01/2013	Paydown		540,662	540,662	544,928	540,368						540,662				14,738	03/15/2046	1FM
50026*-AA-3	Kohls Corp CTL Shelby MI 7.600% 12/15/		09/15/2013	Redemption 100.0000		23,738	23,738	25,078	24,489						23,738				1,203	12/15/2022	2.....

STATEMENT AS OF SEPTEMBER 30, 2013 OF THE NATIONWIDE INDEMNITY COMPANY

SCHEDULE D - PART 4

Show All Long-Term Bonds and Stock Sold, Redeemed or Otherwise Disposed of During the Current Quarter

1	2	3	4	5	6	7	8	9	10	Change In Book/Adjusted Carrying Value					16	17	18	19	20	21	22
										11	12	13	14	15							
CUSIP Identification	Description	For- eign	Disposal Date	Name of Purchaser	Number of Shares of Stock	Consid- eration	Par Value	Actual Cost	Prior Year Book/ Adjusted Carrying Value	Unrealized Valuation Increase/ (Decrease)	Current Year's (Amor- tization)/ Accretion	Current Year's Other Than Temporary Impairment Recogn- ized	Total Change in Book/ Adjusted Carrying Value (11 + 12 - 13)	Total Foreign Exchange Change in Book /Adjusted Carrying Value	Book/ Adjusted Carrying Value at Disposal Date	Foreign Exchange Gain (Loss) on Disposal	Realized Gain (Loss) on Disposal	Total Gain (Loss) on Disposal	Bond Interest/ Stock Dividends Received During Year	Stated Con- tractual Maturity Date	NAIC Desig- nation or Market In- dicator (a)
52467@-AA-3	Legg Mason Mtg Cap Corp CTL 7.400% 12/		09/15/2013	Redemption 100.0000		14,457	14,457	15,238	14,836		(379)		(379)		14,457				714	12/15/2021	1
52467@-AA-3	Legg Mason Mtg Cap Corp CTL 7.400% 12/		09/15/2013	Redemption 100.0000																	
52467@-AH-8	Legg Mason Mtg Cap Corp CTL 7.750% 01/		09/15/2013			21,367	21,367	22,410	21,886		(519)		(519)		21,367				1,105	01/15/2021	4
55265W-CA-9	Master Seasoned Securities Tr RMBS Ser 2		09/01/2013	Paydown		7,940	7,940	8,203	8,185		(245)		(245)		7,940				339	08/25/2032	1FM
58929-9K-6	Merrill Lynch Mtg Investors RMBS Ser 199		09/01/2013	Paydown		3,236	3,236	3,105	3,215		21		21		3,236				235	07/25/2027	1FM
59022H-HG-0	Merrill Lynch Mortgage Tr CMBS Ser 2005-		08/01/2013	Paydown		727,847	727,847	731,809	727,138		709		709		727,847				22,680	06/12/2043	1FM
59549R-AC-8	Mid State Tr X ABS Ser 10 Cl M1 6.280%		09/15/2013	Paydown		83,514	83,514	70,226	70,226		13,289		13,289		83,514				3,471	02/15/2036	1AM
61745M-SP-4	Morgan Stanley Cap I CMBS Ser 2005-T19 C		07/01/2013	Paydown				1,598,763	139,118		(139,118)		(139,118)						152,612	06/12/2047	1FE
636516-AB-2	National Inst of Hlth Fishers CTL Pl I B		07/15/2013	Redemption 100.0000		30,354	30,354	30,354	30,354						30,354				2,125	01/15/2024	1
636517-AA-2	National Inst of Hlth Fishers CTLPl II B		07/15/2013	Redemption 100.0000		151,061	151,061	151,061	151,061						151,061				10,680	07/15/2022	1
63860H-AC-3	Nationstar Home Equity Loan Tr RMBS Ser		09/25/2013	Paydown		365,696	365,696	330,155	331,405		34,291		34,291		365,696				866	03/25/2037	1FM
64508Q-AA-3	New Haven Fed Office Bldg Ls CTL GSA Gtd		07/15/2013	Redemption 100.0000		67,215	67,215	67,215	67,215						67,215				3,966	01/15/2020	1
653240-AA-9	Newtown CTL Ser 2002 6.082% 05/15/23		09/15/2013	Redemption 100.0000		62,841	62,841	62,839	62,839		1		1		62,841				2,549	05/15/2023	1
67020B-AA-8	NRRC-D Facilities Corp CTL GSA Rev Bd Ls		09/07/2013	Redemption 100.0000		45,792	45,792	45,792	45,792						45,792				1,985	11/07/2023	1
72153*-AA-2	Pillsbury Winthrop LLP Sr Nt Ser A-1 4		07/18/2013	Redemption 100.0000		111,111	111,111	111,111	111,111						111,111				4,567	07/18/2015	2
73664#-AA-8	Portland Natural Gas Trans Sys Sr Sec Nt		09/30/2013	Redemption 100.0000		34,342	34,342	34,342	34,342						34,342				1,520	12/31/2018	2
742741-AA-9	Procter & Gamble ESOP Deb Ser A 9.360%		07/01/2013	Various		104,790	104,790	142,647	122,246		(17,456)		(17,456)		104,790				9,808	01/01/2021	1FE
755920-AG-0	Receipts on Corp Sec Tr ABS Coll Tr Ser		08/01/2013	Redemption 100.0000		68,388	68,388	74,648	70,565		(2,178)		(2,178)		68,388				4,445	08/01/2017	4AM
760985-M9-9	Residential Asset Mtg Prod Inc RMBS Ser		09/01/2013	Paydown		27,781	27,781	27,781	27,744		37		37		27,781				813	01/25/2034	1FM
761118-HD-3	Residential Accredit Loans Inc RMBS Ser		09/01/2013	Paydown		232,417	232,417	191,832	191,832		40,585		40,585		232,417				8,824	09/25/2035	1FM
771196-AS-1	Roche Hldgs Inc Co Gtd Nt 6.000% 03/01		08/29/2013	Call 120.2350		353,491	294,000	310,270	305,277		48,213		48,213		353,491				17,542	03/01/2019	1FE
78402C-AA-1	SC Commercial Mtg Pass Through CTL Ser 2		09/01/2013	Redemption 100.0000		9,084	9,084	9,499	9,342		(258)		(258)		9,084				418	11/01/2026	2
78442G-GG-5	SLM Student Loan Tr ABS Ser 2003-4 Cl A5		09/16/2013	Paydown		193,833	193,833	195,422	190,787		3,045		3,045		193,833				2,082	03/15/2033	1FE
785778-HD-6	SACO I Tr RMBS Ser 2005-6 Cl A 0.759%		09/25/2013	Paydown		87,692	87,692	84,688	84,688		3,004		3,004		87,692				508	09/25/2035	1FM
79548K-ZJ-0	Salomon Bros Mtg Sec VII Inc RMBS Ser 19		09/01/2013	Paydown		1,663	1,677	1,656	1,656		7		7		1,663				77	06/25/2028	1FM
81441P-CE-9	Security Natl Mtg Loan Tr RMBS Ser 2005-		09/01/2013	Paydown		137,456	137,456	136,640	137,022		435		435		137,456				3,884	02/25/2035	1FM
85231C-AA-3	St Louis Fed Office Bldg Tr CTL GSA Gtd		07/15/2013	Redemption 100.0000		146,932	146,932	146,932	146,932						146,932				10,153	01/15/2019	1
86363G-AJ-3	Structured Asset Sec Corp RMBS Ser 2007-		09/01/2013	Paydown		118,219	135,530	122,309	122,309						122,309		(4,090)	(4,090)	4,554	04/25/2047	4FM
89222*-AB-1	Townsend Norwalk LLC CTL 7.100% 03/30/		09/26/2013	Call 125.2760		5,170,496	4,127,283	4,127,283	4,127,283		1,043,213		1,043,213		5,170,496				216,522	03/30/2021	1
89222*-AB-1	Townsend Norwalk LLC CTL 7.100% 03/30/		08/30/2013	Redemption 100.0000		37,561	37,561	37,561	37,561						37,561				1,667	03/30/2021	1
89655M-AA-0	Trinity Rail Leasing I LLC LBASS ETC 6		09/20/2013	Redemption 100.0000		65,725	65,725	65,725	65,725						65,725				3,138	04/20/2020	1FE
91737#-AA-3	United States Govt SS Ls FinTr CTL GSA G		09/15/2013	Redemption 100.0000		126,925	126,925	126,507	126,734		191		191		126,925				3,982	11/15/2018	1
92851@-AA-3	Vivendi SPC Tr CTL 6.630% 04/15/22		09/15/2013	Paydown		19,374	19,374	19,374	19,374						19,374				857	04/15/2022	2
939348-AE-8	Washington Mutual MSC Mtg PT RMBS Ser 20		09/01/2013	Redemption 100.0000		142,915	209,772	161,252	139,152		22,099		22,099		161,252		(18,336)	(18,336)	5,433	04/25/2037	1FM
94978#-AT-4	Wells Fargo Bank Northwest NA CTL Ser 20		09/01/2013	Redemption 100.0000		16,143	16,143	16,143	16,143						16,143				716	08/01/2027	2
96928#-AC-7	William Blair CTL CTL PTC Ser 2004-1 7		09/25/2013	Paydown		10,165	10,165	11,655	10,923		(757)		(757)		10,165				519	01/25/2023	2
967201-AE-6	Rio Tinto Finance USA Ltd Co Gtd Nt 5	R	07/15/2013	Maturity		12,500,000	12,500,000	12,167,683	12,455,093		44,907		44,907		12,500,000				734,375	07/15/2013	1FE
85804P-AA-1	Stedman Loan Fund Ltd CLOSer2008-1A CIC	R	07/15/2013	Direct		691,438	691,438										691,438	691,438		05/15/2015	6*
F9731#-AB-3	Vicat S A Sr Nt 5.510% 08/05/13	F	08/05/2013	Maturity		1,000,000	1,000,000	1,000,000	1,000,000						1,000,000				55,100	08/05/2013	2

STATEMENT AS OF SEPTEMBER 30, 2013 OF THE NATIONWIDE INDEMNITY COMPANY

SCHEDULE D - PART 4

Show All Long-Term Bonds and Stock Sold, Redeemed or Otherwise Disposed of During the Current Quarter

1	2	3	4	5	6	7	8	9	10	Change In Book/Adjusted Carrying Value					16	17	18	19	20	21	22
										11	12	13	14	15							
CUSIP Ident- ification	Description	For- eign	Disposal Date	Name of Purchaser	Number of Shares of Stock	Consid- eration	Par Value	Actual Cost	Prior Year Book/ Adjusted Carrying Value	Unrealized Valuation Increase/ (Decrease)	Current Year's (Amor- tization)/ Accretion	Current Year's Other Than Temporary Impairment Recog- nized	Total Change in Book/ Adjusted Carrying Value (11 + 12 - 13)	Total Foreign Exchange Change in Book /Adjusted Carrying Value	Book/ Adjusted Carrying Value at Disposal Date	Foreign Exchange Gain (Loss) on Disposal	Realized Gain (Loss) on Disposal	Total Gain (Loss) on Disposal	Bond Interest/ Stock Dividends Received During Year	Stated Con- tractual Maturity Date	NAIC Desig- nation or Market In- dicator (a)
G1981@-AA-0	Cayman Turtle Farm Ltd Gtd Sr Nt 4.850	F	09/01/2013	Redemption 100.0000		90,359	90,359	90,359	90,359						90,359				3,287	03/01/2019	1
3899999. Subtotal - Bonds - Industrial and Miscellaneous (Unaffiliated)						45,709,401	44,353,436	45,601,780	42,804,981	223,748	1,119,215		1,342,963		45,410,764		298,638	298,638	2,478,278	XXX	XXX
8399997. Total - Bonds - Part 4						59,316,793	60,091,542	58,216,340	56,346,024	223,748	1,185,564		1,409,312		59,018,156		298,638	298,638	2,998,002	XXX	XXX
8399998. Total - Bonds - Part 5						XXX	XXX	XXX	XXX	XXX	XXX	XXX	XXX	XXX	XXX	XXX	XXX	XXX	XXX	XXX	XXX
8399999. Total - Bonds						59,316,793	60,091,542	58,216,340	56,346,024	223,748	1,185,564		1,409,312		59,018,156		298,638	298,638	2,998,002	XXX	XXX
8999997. Total - Preferred Stocks - Part 4							XXX													XXX	XXX
8999998. Total - Preferred Stocks - Part 5						XXX	XXX	XXX	XXX	XXX	XXX	XXX	XXX	XXX	XXX	XXX	XXX	XXX	XXX	XXX	XXX
8999999. Total - Preferred Stocks							XXX													XXX	XXX
000000-00-0	George Wimpey Plc Warrants (GBP) AK5	D	08/30/2013	Direct	30,440,000	8,234			22,761	(22,761)			(22,761)				8,234	8,234			
086954-10-7	Taylor Wimpey PLC Com (GBP)	D	09/10/2013	Direct	30,440,000	51,731		8,234							8,356	122	43,374	43,496			
9099999. Subtotal - Common Stocks - Industrial and Miscellaneous (Unaffiliated)						59,965	XXX	8,234	22,761	(22,761)			(22,761)		8,356	122	51,608	51,730		XXX	XXX
9799997. Total - Common Stocks - Part 4						59,965	XXX	8,234	22,761	(22,761)			(22,761)		8,356	122	51,608	51,730		XXX	XXX
9799998. Total - Common Stocks - Part 5						XXX	XXX	XXX	XXX	XXX	XXX	XXX	XXX	XXX	XXX	XXX	XXX	XXX	XXX	XXX	XXX
9799999. Total - Common Stocks						59,965	XXX	8,234	22,761	(22,761)			(22,761)		8,356	122	51,608	51,730		XXX	XXX
9899999. Total - Preferred and Common Stocks						59,965	XXX	8,234	22,761	(22,761)			(22,761)		8,356	122	51,608	51,730		XXX	XXX
9999999 - Totals						59,376,758	XXX	58,224,574	56,368,785	200,987	1,185,564		1,386,551		59,026,512	122	350,246	350,368	2,998,002	XXX	XXX

(a) For all common stock bearing the NAIC market indicator "U" provide: the number of such issues.....1

Schedule DB - Part A - Section 1 - Options, Caps, Floors, Collars, Swaps and Forwards Open
N O N E

Schedule DB - Part B - Section 1 - Futures Contracts Open
N O N E

Schedule DB - Part B - Section 1B - Brokers with whom cash deposits have been made
N O N E

Schedule DB - Part D - Section 1 - Counterparty Exposure for Derivative Instruments Open
N O N E

Schedule DB - Part D - Section 2 - Collateral for Derivative Instruments Open
N O N E

Schedule DB - Part D - Section 2 - Collateral for Derivative Instruments Open
N O N E

SCHEDULE DL - PART 1
SECURITIES LENDING COLLATERAL ASSETS

Reinvested Collateral Assets Owned Current Statement Date						
1 CUSIP Identification	2 Description	3 Code	4 NAIC Designation/ Market Indicator	5 Fair Value	6 Book/Adjusted Carrying Value	7 Maturity Date
0599999. Total - U.S. Government Bonds						XXX
1099999. Total - All Other Government Bonds						XXX
1799999. Total - U.S. States, Territories and Possessions Bonds						XXX
2499999. Total - U.S. Political Subdivisions Bonds						XXX
3199999. Total - U.S. Special Revenues Bonds						XXX
04012M-AP-4	Argent Securities Inc RMBS		1FHL	206,292	206,292	07/25/2036
14454A-AE-9	Carrington Mtg Loan Tr RMBS		1FHL	1,596,408	1,629,577	10/25/2036
29445U-AA-3	Equifirst Mtg Loan Tr RMBS		1FHL	2,418,533	2,418,533	04/25/2037
362351-AA-6	GSAA Home Equity Tr RMBS		1FHL	784,882	784,882	12/25/2046
617487-AB-9	Morgan Stanley Mtg Tr RMBS		1FHL	515,551	515,551	11/25/2036
81378E-AA-1	Sec AB Rec LLC RMBS		1FHL	3,341,204	3,341,204	05/25/2037
3399999. Subtotal - Bonds - Industrial and Miscellaneous (Unaffiliated) - Residential Mortgage-Backed Securities				8,862,870	8,896,039	XXX
3899999. Total - Industrial and Miscellaneous (Unaffiliated) Bonds				8,862,870	8,896,039	XXX
4899999. Total - Hybrid Securities						XXX
5599999. Total - Parent, Subsidiaries and Affiliates Bonds						XXX
6199999. Total - Issuer Obligations						XXX
6299999. Total - Residential Mortgage-Backed Securities				8,862,870	8,896,039	XXX
6399999. Total - Commercial Mortgage-Backed Securities						XXX
6499999. Total - Other Loan-Backed and Structured Securities						XXX
6599999. Total Bonds				8,862,870	8,896,039	XXX
7099999. Total - Preferred Stocks						XXX
7599999. Total - Common Stocks						XXX
7699999. Total - Preferred and Common Stocks						XXX
	Overnight repo			11,892,932	11,892,932	10/01/2013
8999999. Total - Short-Term Invested Assets (Schedule DA type)				11,892,932	11,892,932	XXX
9999999 - Totals				20,755,802	20,788,971	XXX

General Interrogatories:

1. Total activity for the year to date Fair Value \$8,310,452 Book/Adjusted Carrying Value \$8,374,051
2. Average balance for the year to date Fair Value \$14,531,624 Book/Adjusted Carrying Value \$14,423,568
3. Reinvested securities lending collateral assets book/adjusted carrying value included in this schedule by NAIC designation:
NAIC 1 \$8,896,039 NAIC 2 \$ NAIC 3 \$ NAIC 4 \$ NAIC 5 \$ NAIC 6 \$

SCHEDULE DL - PART 2
SECURITIES LENDING COLLATERAL ASSETS

1	2	3	4	5	6	7
CUSIP Identification	Description	Code	NAIC Designation/ Market Indicator	Fair Value	Book/Adjusted Carrying Value	Maturity Date
NONE						
9999999 - Totals						XXX

1. Total activity for the year to date	Fair Value \$	Book/Adjusted Carrying Value \$
2. Average balance for the year to date	Fair Value \$	Book/Adjusted Carrying Value \$

SCHEDULE E - PART 1 - CASH

E12

STATEMENT AS OF SEPTEMBER 30, 2013 OF THE NATIONWIDE INDEMNITY COMPANY

SCHEDULE E - PART 2 - CASH EQUIVALENTS

Show Investments Owned End of Current Quarter

1	2	3	4	5	6	7	8
Description	Code	Date Acquired	Rate of Interest	Maturity Date	Book/Adjusted Carrying Value	Amount of Interest Due and Accrued	Amount Received During Year
NONE							
8699999 - Total Cash Equivalents							



SUPPLEMENT FOR THE QUARTER ENDING SEPTEMBER 30, 2013 OF THE NATIONWIDE INDEMNITY COMPANY

Designate the type of health care
providers reported on this page:
Physicians, including surgeons and
osteopaths

SUPPLEMENT A TO SCHEDULE T
EXHIBIT OF MEDICAL PROFESSIONAL LIABILITY PREMIUMS WRITTEN
ALLOCATED BY STATES AND TERRITORIES

States, etc.	1	2	Direct Losses Paid		5	Direct Losses Unpaid		8
	Direct Premiums Written	Direct Premiums Earned	3	4	Direct Losses Incurred	6	7	Direct Losses Incurred But Not Reported
			Amount	No. of Claims		Amount Reported	No. of Claims	
1. Alabama	AL							
2. Alaska	AK							
3. Arizona	AZ							
4. Arkansas	AR							
5. California	CA							
6. Colorado	CO							
7. Connecticut	CT							
8. Delaware	DE							
9. District of Columbia	DC							
10. Florida	FL							
11. Georgia	GA							
12. Hawaii	HI							
13. Idaho	ID							
14. Illinois	IL							
15. Indiana	IN							
16. Iowa	IA							
17. Kansas	KS							
18. Kentucky	KY							
19. Louisiana	LA							
20. Maine	ME							
21. Maryland	MD							
22. Massachusetts	MA							
23. Michigan	MI							
24. Minnesota	MN							
25. Mississippi	MS							
26. Missouri	MO							
27. Montana	MT							
28. Nebraska	NE							
29. Nevada	NV							
30. New Hampshire	NH							
31. New Jersey	NJ							
32. New Mexico	NM							
33. New York	NY							
34. North Carolina	NC							
35. North Dakota	ND							
36. Ohio	OH							
37. Oklahoma	OK							
38. Oregon	OR							
39. Pennsylvania	PA							
40. Rhode Island	RI							
41. South Carolina	SC							
42. South Dakota	SD							
43. Tennessee	TN							
44. Texas	TX							
45. Utah	UT							
46. Vermont	VT							
47. Virginia	VA							
48. Washington	WA							
49. West Virginia	WV							
50. Wisconsin	WI							
51. Wyoming	WY							
52. American Samoa	AS							
53. Guam	GU							
54. Puerto Rico	PR							
55. U.S. Virgin Islands	VI							
56. Notherrn Mariana Islands	MP							
57. Canada	CAN							
58. Aggregate Other Aliens	OT							
59. Totals								
NONE								
DETAILS OF WRITE-INS								
58001.								
58002.								
58003.								
58998. Summary of remaining write-ins for Line 58 from overflow page								
58999. Totals (Lines 58001 through 58003 plus 58998)(Line 58 above)								

NONE



Designate the type of health care
providers reported on this page:
Hospitals

SUPPLEMENT A TO SCHEDULE T
EXHIBIT OF MEDICAL PROFESSIONAL LIABILITY PREMIUMS WRITTEN
ALLOCATED BY STATES AND TERRITORIES

	1	2	Direct Losses Paid		5	Direct Losses Unpaid		8
			3	4		6	7	
States, etc.	Direct Premiums Written	Direct Premiums Earned	Amount	No. of Claims	Direct Losses Incurred	Amount Reported	No. of Claims	Direct Losses Incurred But Not Reported
1. Alabama.....AL								
2. Alaska.....AK								
3. Arizona.....AZ								
4. Arkansas.....AR								
5. California.....CA								
6. Colorado.....CO								
7. Connecticut.....CT								
8. Delaware.....DE								
9. District of Columbia.....DC								
10. Florida.....FL								
11. Georgia.....GA								
12. Hawaii.....HI								
13. Idaho.....ID								
14. Illinois.....IL								
15. Indiana.....IN								
16. Iowa.....IA								
17. Kansas.....KS								
18. Kentucky.....KY								
19. Louisiana.....LA								
20. Maine.....ME								
21. Maryland.....MD								
22. Massachusetts.....MA								
23. Michigan.....MI								
24. Minnesota.....MN								
25. Mississippi.....MS								
26. Missouri.....MO								
27. Montana.....MT								
28. Nebraska.....NE								
29. Nevada.....NV								
30. New Hampshire.....NH								
31. New Jersey.....NJ								
32. New Mexico.....NM								
33. New York.....NY								
34. North Carolina.....NC								
35. North Dakota.....ND								
36. Ohio.....OH								
37. Oklahoma.....OK								
38. Oregon.....OR								
39. Pennsylvania.....PA								
40. Rhode Island.....RI								
41. South Carolina.....SC								
42. South Dakota.....SD								
43. Tennessee.....TN								
44. Texas.....TX								
45. Utah.....UT								
46. Vermont.....VT								
47. Virginia.....VA								
48. Washington.....WA								
49. West Virginia.....WV								
50. Wisconsin.....WI								
51. Wyoming.....WY								
52. American Samoa.....AS								
53. Guam.....GU								
54. Puerto Rico.....PR								
55. U.S. Virgin Islands.....VI								
56. Northern Mariana Islands.....MP								
57. Canada.....CAN								
58. Aggregate Other Aliens.....OT								
59. Totals								
DETAILS OF WRITE-INS								
58001.								
58002.								
58003.								
58998. Summary of remaining write-ins for Line 58 from overflow page								
58999. Totals (Lines 58001 through 58003 plus 58998)(Line 58 above)								



Designate the type of health care providers reported on this page:
Other health care professionals, including dentists, chiropractors, and podiatrists

SUPPLEMENT A TO SCHEDULE T
EXHIBIT OF MEDICAL PROFESSIONAL LIABILITY PREMIUMS WRITTEN
ALLOCATED BY STATES AND TERRITORIES

		1	2	Direct Losses Paid		5	Direct Losses Unpaid		8
				3	4		6	7	
States, etc.		Direct Premiums Written	Direct Premiums Earned	Amount	No. of Claims	Direct Losses Incurred	Amount Reported	No. of Claims	Direct Losses Incurred But Not Reported
1.	Alabama.....AL								
2.	Alaska.....AK								
3.	Arizona.....AZ								
4.	Arkansas.....AR								
5.	California.....CA								
6.	Colorado.....CO								
7.	Connecticut.....CT								
8.	Delaware.....DE								
9.	District of Columbia.....DC								
10.	Florida.....FL								
11.	Georgia.....GA								
12.	Hawaii.....HI								
13.	Idaho.....ID								
14.	Illinois.....IL								
15.	Indiana.....IN								
16.	Iowa.....IA								
17.	Kansas.....KS								
18.	Kentucky.....KY								
19.	Louisiana.....LA								
20.	Maine.....ME								
21.	Maryland.....MD								
22.	Massachusetts.....MA								
23.	Michigan.....MI								
24.	Minnesota.....MN								
25.	Mississippi.....MS								
26.	Missouri.....MO								
27.	Montana.....MT								
28.	Nebraska.....NE								
29.	Nevada.....NV								
30.	New Hampshire.....NH								
31.	New Jersey.....NJ								
32.	New Mexico.....NM								
33.	New York.....NY								
34.	North Carolina.....NC								
35.	North Dakota.....ND								
36.	Ohio.....OH								
37.	Oklahoma.....OK								
38.	Oregon.....OR								
39.	Pennsylvania.....PA								
40.	Rhode Island.....RI								
41.	South Carolina.....SC								
42.	South Dakota.....SD								
43.	Tennessee.....TN								
44.	Texas.....TX								
45.	Utah.....UT								
46.	Vermont.....VT								
47.	Virginia.....VA								
48.	Washington.....WA								
49.	West Virginia.....WV								
50.	Wisconsin.....WI								
51.	Wyoming.....WY								
52.	American Samoa.....AS								
53.	Guam.....GU								
54.	Puerto Rico.....PR								
55.	U.S. Virgin Islands.....VI								
56.	Nothern Mariana Islands.....MP								
57.	Canada.....CAN								
58.	Aggregate Other Aliens.....OT								
59.	Totals								
DETAILS OF WRITE-INS									
58001.								
58002.								
58003.								
58998.	Summary of remaining write-ins for Line 58 from overflow page.....								
58999.	Totals (Lines 58001 through 58003 plus 58998)(Line 58 above)								

NONE



Designate the type of health care
providers reported on this page:
Other health care facilities

SUPPLEMENT A TO SCHEDULE T
EXHIBIT OF MEDICAL PROFESSIONAL LIABILITY PREMIUMS WRITTEN
ALLOCATED BY STATES AND TERRITORIES

	1	2	Direct Losses Paid		5	Direct Losses Unpaid		8
			3	4		6	7	
States, etc.	Direct Premiums Written	Direct Premiums Earned	Amount	No. of Claims	Direct Losses Incurred	Amount Reported	No. of Claims	Direct Losses Incurred But Not Reported
1. Alabama.....AL								
2. Alaska.....AK								
3. Arizona.....AZ								
4. Arkansas.....AR								
5. California.....CA								
6. Colorado.....CO								
7. Connecticut.....CT								
8. Delaware.....DE								
9. District of Columbia.....DC								
10. Florida.....FL								
11. Georgia.....GA								
12. Hawaii.....HI								
13. Idaho.....ID								
14. Illinois.....IL								
15. Indiana.....IN								
16. Iowa.....IA								
17. Kansas.....KS								
18. Kentucky.....KY								
19. Louisiana.....LA								
20. Maine.....ME								
21. Maryland.....MD								
22. Massachusetts.....MA								
23. Michigan.....MI								
24. Minnesota.....MN								
25. Mississippi.....MS								
26. Missouri.....MO								
27. Montana.....MT								
28. Nebraska.....NE								
29. Nevada.....NV								
30. New Hampshire.....NH								
31. New Jersey.....NJ								
32. New Mexico.....NM								
33. New York.....NY								
34. North Carolina.....NC								
35. North Dakota.....ND								
36. Ohio.....OH								
37. Oklahoma.....OK								
38. Oregon.....OR								
39. Pennsylvania.....PA								
40. Rhode Island.....RI								
41. South Carolina.....SC								
42. South Dakota.....SD								
43. Tennessee.....TN								
44. Texas.....TX								
45. Utah.....UT								
46. Vermont.....VT								
47. Virginia.....VA								
48. Washington.....WA								
49. West Virginia.....WV								
50. Wisconsin.....WI								
51. Wyoming.....WY								
52. American Samoa.....AS								
53. Guam.....GU								
54. Puerto Rico.....PR								
55. U.S. Virgin Islands.....VI								
56. Northern Mariana Islands.....MP								
57. Canada.....CAN								
58. Aggregate Other Aliens.....OT								
59. Totals								
DETAILS OF WRITE-INS								
58001.								
58002.								
58003.								
58998. Summary of remaining write-ins for Line 58 from overflow page								
58999. Totals (Lines 58001 through 58003 plus 58998)(Line 58 above)								