



PROPERTY AND CASUALTY COMPANIES—ASSOCIATION EDITION

QUARTERLY STATEMENT

AS OF JUNE 30, 2013
OF THE CONDITION AND AFFAIRS OF THE

Permanent General Assurance Corporation

NAIC Group Code00473, 00473NAIC Company Code37648Employer's ID Number13-2960609

(Current Period)(Prior Period)

Organized under the Laws ofOhio, State of Domicile or Port of EntryOhio

Country of DomicileUnited States

Incorporated/Organized09/28/1994Commenced Business09/28/1994

Statutory Home Office9700 Rockside Road, Suite 250Valley View, OH, US 44125

(Street and Number)(City or Town, State, Country and Zip Code)

Main Administrative Office2636 Elm Hill Pike, Suite 510Nashville, TN, US 37214615-242-1961

(Street and Number)(City or Town, State, Country and Zip Code)(Area Code) (Telephone Number)

Mail AddressP.O. Box 305054Nashville, TN, US 37230-5054

(Street and Number or P.O. Box)(City or Town, State, Country and Zip Code)

Primary Location of Books and Records2636 Elm Hill Pike, Suite 510Nashville, TN, US 37214615-744-1221

(Street and Number)(City or Town, State, Country and Zip Code)(Area Code) (Telephone Number)

Internet Web Site Addresswww.pgac.com

Statutory Statement ContactR Burton Barnes Jr615-744-1221

(Name)(Area Code) (Telephone Number) (Extension)

barnes@thegeneral.com615-744-1608

(E-mail Address)(Fax Number)

OFFICERS

Name	Title	Name	Title
Randy Philip Parker	Chairman, President & CEO	David Lee Hettinger	Sr. V.P., Chief Administrative Officer
Brian Michael Donovan	CFO, Treasurer & Assistant Secretary		

OTHER OFFICERS

Robert Eugene Nelson	Assistant Secretary	Sherrill Cleek Kaiser	Secretary
Allison Walker Garretson	V.P., Underwriting & Customer Service	Barry Scot Dice	V.P., Direct Sales & Marketing
Charles Wesley Kirkland	V.P., Claims	William Joseph Yeager	Sr. V.P., Claims
John Allen Hollar	Sr. V.P., Product Management	Eileen Manners	Assistant V.P., Claims
Kenton Lee Fourman	V.P., Chief Information Officer	Eric William Bur	V.P., IA Sales & Distribution
Andrew Peter Martin	Sr. V.P., Corporate-wide Sales & Distribution	Elizabeth Ann Roberts	V.P., Human Resources
Todd Raymond Hakala	V.P., Actuary Services		

DIRECTORS OR TRUSTEES

Randy Philip Parker	David Lee Hettinger	Brian Michael Donovan	Andrew Peter Martin
Elizabeth Ann Roberts			

State of Tennessee

County of Davidsonss

The officers of this reporting entity being duly sworn, each depose and say that they are the described officers of said reporting entity, and that on the reporting period stated above, all of the herein described assets were the absolute property of the said reporting entity, free and clear from any liens or claims thereon, except as herein stated, and that this statement, together with related exhibits, schedules and explanations therein contained, annexed or referred to, is a full and true statement of all the assets and liabilities and of the condition and affairs of the said reporting entity as of the reporting period stated above, and of its income and deductions therefrom for the period ended, and have been completed in accordance with the NAIC Annual Statement Instructions and Accounting Practices and Procedures manual except to the extent that: (1) state law may differ; or, (2) that state rules or regulations require differences in reporting not related to accounting practices and procedures, according to the best of their information, knowledge and belief, respectively. Furthermore, the scope of this attestation by the described officers also includes the related corresponding electronic filing with the NAIC, when required, that is an exact copy (except for formatting differences due to electronic filing) of the enclosed statement. The electronic filing may be requested by various regulators in lieu of or in addition to the enclosed statement.

David Lee HettingerSr. V.P., Chief Administrative Officer

Brian Michael DonovanCFO, Treasurer & Assistant Secretary

Sherrill Cleek KaiserSecretary

a. Is this an original filing?Yes [X] No []

b. If no:

1. State the amendment number

2. Date filed

3. Number of pages attached

Subscribed and sworn to before me this12th day of August, 2013

Susan Hawk, Notary PublicMay 5, 2015

STATEMENT AS OF JUNE 30, 2013 OF THE Permanent General Assurance Corporation

ASSETS

	Current Statement Date			4 December 31 Prior Year Net Admitted Assets
	1 Assets	2 Nonadmitted Assets	3 Net Admitted Assets (Cols. 1 - 2)	
1. Bonds	128,591,982		128,591,982	118,263,854
2. Stocks:				
2.1 Preferred stocks			0	0
2.2 Common stocks	903,953	903,953	0	0
3. Mortgage loans on real estate:				
3.1 First liens			0	0
3.2 Other than first liens			0	0
4. Real estate:				
4.1 Properties occupied by the company (less \$ encumbrances)			0	0
4.2 Properties held for the production of income (less \$ encumbrances)			0	0
4.3 Properties held for sale (less \$ encumbrances)			0	0
5. Cash (\$200,000), cash equivalents (\$0) and short-term investments (\$12,865,460)	13,065,460		13,065,460	25,059,363
6. Contract loans (including \$ premium notes)			0	0
7. Derivatives			0	0
8. Other invested assets	0		0	0
9. Receivables for securities			0	0
10. Securities lending reinvested collateral assets			0	0
11. Aggregate write-ins for invested assets	30,375	0	30,375	25,407
12. Subtotals, cash and invested assets (Lines 1 to 11)	142,591,770	903,953	141,687,817	143,348,624
13. Title plants less \$ charged off (for Title insurers only)			0	0
14. Investment income due and accrued	1,322,995		1,322,995	1,246,451
15. Premiums and considerations:				
15.1 Uncollected premiums and agents' balances in the course of collection	9,246,223	30,807	9,215,416	7,041,958
15.2 Deferred premiums, agents' balances and installments booked but deferred and not yet due (including \$ earned but unbilled premiums)	60,633,815	0	60,633,815	53,146,178
15.3 Accrued retrospective premiums			0	0
16. Reinsurance:				
16.1 Amounts recoverable from reinsurers	1,963,088		1,963,088	2,717,527
16.2 Funds held by or deposited with reinsured companies			0	0
16.3 Other amounts receivable under reinsurance contracts			0	0
17. Amounts receivable relating to uninsured plans			0	0
18.1 Current federal and foreign income tax recoverable and interest thereon	2,825,601		2,825,601	0
18.2 Net deferred tax asset	7,331,156	512,357	6,818,799	6,203,258
19. Guaranty funds receivable or on deposit			0	0
20. Electronic data processing equipment and software			0	0
21. Furniture and equipment, including health care delivery assets (\$)			0	0
22. Net adjustment in assets and liabilities due to foreign exchange rates			0	0
23. Receivables from parent, subsidiaries and affiliates	7,063,308		7,063,308	0
24. Health care (\$) and other amounts receivable			0	0
25. Aggregate write-ins for other than invested assets	0	0	0	0
26. Total assets excluding Separate Accounts, Segregated Accounts and Protected Cell Accounts (Lines 12 to 25)	232,977,956	1,447,117	231,530,839	213,703,996
27. From Separate Accounts, Segregated Accounts and Protected Cell Accounts			0	0
28. Total (Lines 26 and 27)	232,977,956	1,447,117	231,530,839	213,703,996
DETAILS OF WRITE-INS				
1101. Income due on security	30,375		30,375	25,407
1102.				
1103.				
1198. Summary of remaining write-ins for Line 11 from overflow page	0	0	0	0
1199. Totals (Lines 1101 through 1103 plus 1198) (Line 11 above)	30,375	0	30,375	25,407
2501.				
2502.				
2503.				
2598. Summary of remaining write-ins for Line 25 from overflow page	0	0	0	0
2599. Totals (Lines 2501 through 2503 plus 2598) (Line 25 above)	0	0	0	0

LIABILITIES, SURPLUS AND OTHER FUNDS

	1 Current Statement Date	2 December 31, Prior Year
1. Losses (current accident year \$ 28,082,275)	49,910,494	45,568,627
2. Reinsurance payable on paid losses and loss adjustment expenses		0
3. Loss adjustment expenses	10,031,557	9,817,101
4. Commissions payable, contingent commissions and other similar charges	108,291	21,025
5. Other expenses (excluding taxes, licenses and fees)		0
6. Taxes, licenses and fees (excluding federal and foreign income taxes)	701,544	722,069
7.1 Current federal and foreign income taxes (including \$ on realized capital gains (losses))		608,935
7.2 Net deferred tax liability		0
8. Borrowed money \$ and interest thereon \$		0
9. Unearned premiums (after deducting unearned premiums for ceded reinsurance of \$ 52,237,839 and including warranty reserves of and accrued accident and health experience rating refunds including \$ for medical loss ratio rebate per the Public Health Service Act)	74,832,208	64,870,162
10. Advance premium	232,676	222,389
11. Dividends declared and unpaid:		
11.1 Stockholders		0
11.2 Policyholders		0
12. Ceded reinsurance premiums payable (net of ceding commissions)	568,603	913,713
13. Funds held by company under reinsurance treaties		0
14. Amounts withheld or retained by company for account of others		0
15. Remittances and items not allocated		0
16. Provision for reinsurance (including \$ certified)		0
17. Net adjustments in assets and liabilities due to foreign exchange rates		0
18. Drafts outstanding		0
19. Payable to parent, subsidiaries and affiliates		409,013
20. Derivatives		0
21. Payable for securities	4,104,509	0
22. Payable for securities lending		0
23. Liability for amounts held under uninsured plans		0
24. Capital notes \$ and interest thereon \$		0
25. Aggregate write-ins for liabilities	0	0
26. Total liabilities excluding protected cell liabilities (Lines 1 through 25)	140,489,882	123,153,034
27. Protected cell liabilities		0
28. Total liabilities (Lines 26 and 27)	140,489,882	123,153,034
29. Aggregate write-ins for special surplus funds	0	0
30. Common capital stock	5,000,000	5,000,000
31. Preferred capital stock		0
32. Aggregate write-ins for other than special surplus funds	0	0
33. Surplus notes		0
34. Gross paid in and contributed surplus	34,274,183	34,274,183
35. Unassigned funds (surplus)	51,766,774	51,276,779
36. Less treasury stock, at cost:		
36.1 shares common (value included in Line 30 \$)		0
36.2 shares preferred (value included in Line 31 \$)		0
37. Surplus as regards policyholders (Lines 29 to 35, less 36)	91,040,957	90,550,962
38. Totals (Page 2, Line 28, Col. 3)	231,530,839	213,703,996
DETAILS OF WRITE-INS		
2501.		
2502.		
2503.		
2598. Summary of remaining write-ins for Line 25 from overflow page	0	0
2599. Totals (Lines 2501 through 2503 plus 2598) (Line 25 above)	0	0
2901.		
2902.		
2903.		
2998. Summary of remaining write-ins for Line 29 from overflow page	0	0
2999. Totals (Lines 2901 through 2903 plus 2998) (Line 29 above)	0	0
3201.		
3202.		
3203.		
3298. Summary of remaining write-ins for Line 32 from overflow page	0	0
3299. Totals (Lines 3201 through 3203 plus 3298) (Line 32 above)	0	0

STATEMENT OF INCOME

	1	2	3
	Current Year	Prior Year	Prior Year Ended
	to Date	to Date	December 31
UNDERWRITING INCOME			
1. Premiums earned:			
1.1 Direct (written \$ 107,516,160)	96,641,072	90,770,430	177,804,219
1.2 Assumed (written \$ 61,288,952)	55,275,848	49,063,411	96,069,798
1.3 Ceded (written \$ 69,377,694)	62,451,549	57,562,105	112,691,479
1.4 Net (written \$ 99,427,418)	89,465,371	82,271,736	161,182,538
DEDUCTIONS:			
2. Losses incurred (current accident year \$ 53,949,111):			
2.1 Direct	58,320,423	53,016,517	105,037,858
2.2 Assumed	39,324,224	30,323,308	60,907,291
2.3 Ceded	41,191,206	35,517,478	68,050,018
2.4 Net	56,453,441	47,822,347	97,895,131
3. Loss adjustment expenses incurred	8,582,448	8,964,312	15,214,929
4. Other underwriting expenses incurred	38,707,674	35,510,966	67,394,829
5. Aggregate write-ins for underwriting deductions	0	0	0
6. Total underwriting deductions (Lines 2 through 5)	103,743,563	92,297,625	180,504,889
7. Net income of protected cells	0	0	0
8. Net underwriting gain (loss) (Line 1 minus Line 6 + Line 7)	(14,278,192)	(10,025,889)	(19,322,351)
INVESTMENT INCOME			
9. Net investment income earned	2,154,680	2,718,676	5,157,503
10. Net realized capital gains (losses) less capital gains tax of \$	684,396	1,178,980	3,985,349
11. Net investment gain (loss) (Lines 9 + 10)	2,839,076	3,897,656	9,142,852
OTHER INCOME			
12. Net gain or (loss) from agents' or premium balances charged off (amount recovered \$ amount charged off \$)	0	0	0
13. Finance and service charges not included in premiums	10,209,695	9,468,482	18,528,824
14. Aggregate write-ins for miscellaneous income	44,661	68,167	179,793
15. Total other income (Lines 12 through 14)	10,254,356	9,536,649	18,708,617
16. Net income before dividends to policyholders, after capital gains tax and before all other federal and foreign income taxes (Lines 8 + 11 + 15)	(1,184,760)	3,408,416	8,529,118
17. Dividends to policyholders	0	0	0
18. Net income, after dividends to policyholders, after capital gains tax and before all other federal and foreign income taxes (Line 16 minus Line 17)	(1,184,760)	3,408,416	8,529,118
19. Federal and foreign income taxes incurred	(578,216)	1,028,684	2,551,334
20. Net income (Line 18 minus Line 19)(to Line 22)	(606,544)	2,379,732	5,977,784
CAPITAL AND SURPLUS ACCOUNT			
21. Surplus as regards policyholders, December 31 prior year	90,550,962	85,545,788	85,545,788
22. Net income (from Line 20)	(606,544)	2,379,732	5,977,784
23. Net transfers (to) from Protected Cell accounts		0	0
24. Change in net unrealized capital gains or (losses) less capital gains tax of \$ 131,750	453,529	770,735	1,604,486
25. Change in net unrealized foreign exchange capital gain (loss)		0	0
26. Change in net deferred income tax	615,682	165,323	(626,998)
27. Change in nonadmitted assets	(88,170)	(1,381,087)	(1,003,977)
28. Change in provision for reinsurance		0	0
29. Change in surplus notes		0	0
30. Surplus (contributed to) withdrawn from protected cells		0	0
31. Cumulative effect of changes in accounting principles		54,722	54,722
32. Capital changes:			
32.1 Paid in		0	0
32.2 Transferred from surplus (Stock Dividend)		0	0
32.3 Transferred to surplus		0	0
33. Surplus adjustments:			
33.1 Paid in		0	0
33.2 Transferred to capital (Stock Dividend)		0	0
33.3 Transferred from capital		0	0
34. Net remittances from or (to) Home Office		0	0
35. Dividends to stockholders		0	(1,000,000)
36. Change in treasury stock		0	0
37. Aggregate write-ins for gains and losses in surplus	115,498	(587)	(843)
38. Change in surplus as regards policyholders (Lines 22 through 37)	489,995	1,988,838	5,005,174
39. Surplus as regards policyholders, as of statement date (Lines 21 plus 38)	91,040,957	87,534,626	90,550,962
DETAILS OF WRITE-INS			
0501.			
0502.			
0503.			
0598. Summary of remaining write-ins for Line 5 from overflow page	0	0	0
0599. TOTALS (Lines 0501 through 0503 plus 0598) (Line 5 above)	0	0	0
1401. FINANCE ROYALTY INCOME	0	0	0
1402. OTHER INTEREST (EXPENSE)	31,253	49,704	146,831
1403. OTHER INCOME	0	0	0
1498. Summary of remaining write-ins for Line 14 from overflow page	13,408	18,463	32,962
1499. TOTALS (Lines 1401 through 1403 plus 1498) (Line 14 above)	44,661	68,167	179,793
3701. OTHER INCREASES / (DECREASES)		(587)	(843)
3702. GAAP TO STAT TAX ADJUSTMENTS	115,498		
3703.			
3798. Summary of remaining write-ins for Line 37 from overflow page	0	0	0
3799. TOTALS (Lines 3701 through 3703 plus 3798) (Line 37 above)	115,498	(587)	(843)

CASH FLOW

	1 Current Year To Date	2 Prior Year To Date	3 Prior Year Ended December 31
Cash from Operations			
1. Premiums collected net of reinsurance.....	89,420,571	83,262,417	160,208,239
2. Net investment income	2,439,406	3,185,527	5,610,758
3. Miscellaneous income	10,254,356	9,536,649	18,708,617
4. Total (Lines 1 to 3)	102,114,333	95,984,593	184,527,614
5. Benefit and loss related payments	51,357,135	47,672,207	96,268,196
6. Net transfers to Separate Accounts, Segregated Accounts and Protected Cell Accounts	0	0	0
7. Commissions, expenses paid and aggregate write-ins for deductions	47,008,925	44,379,445	83,735,177
8. Dividends paid to policyholders	0	0	0
9. Federal and foreign income taxes paid (recovered) net of \$ tax on capital gains (losses).....	2,856,320	(1,373,569)	(950,911)
10. Total (Lines 5 through 9)	101,222,380	90,678,083	179,052,462
11. Net cash from operations (Line 4 minus Line 10)	891,953	5,306,510	5,475,152
Cash from Investments			
12. Proceeds from investments sold, matured or repaid:			
12.1 Bonds	28,596,977	23,649,908	69,650,363
12.2 Stocks	0	0	0
12.3 Mortgage loans	0	0	0
12.4 Real estate	0	0	0
12.5 Other invested assets	0	0	0
12.6 Net gains or (losses) on cash, cash equivalents and short-term investments	0	0	0
12.7 Miscellaneous proceeds	4,104,509	427,946	0
12.8 Total investment proceeds (Lines 12.1 to 12.7)	32,701,486	24,077,854	69,650,363
13. Cost of investments acquired (long-term only):			
13.1 Bonds	38,225,550	25,766,176	62,623,610
13.2 Stocks	0	0	0
13.3 Mortgage loans	0	0	0
13.4 Real estate	0	0	0
13.5 Other invested assets	0	0	0
13.6 Miscellaneous applications	1	0	29,391
13.7 Total investments acquired (Lines 13.1 to 13.6)	38,225,551	25,766,176	62,653,001
14. Net increase (or decrease) in contract loans and premium notes	0	0	0
15. Net cash from investments (Line 12.8 minus Line 13.7 and Line 14)	(5,524,065)	(1,688,322)	6,997,362
Cash from Financing and Miscellaneous Sources			
16. Cash provided (applied):			
16.1 Surplus notes, capital notes	0	0	0
16.2 Capital and paid in surplus, less treasury stock.....	0	0	0
16.3 Borrowed funds	0	0	0
16.4 Net deposits on deposit-type contracts and other insurance liabilities	0	0	0
16.5 Dividends to stockholders	0	0	1,000,000
16.6 Other cash provided (applied).....	(7,361,791)	(1,470,532)	1,846,482
17. Net cash from financing and miscellaneous sources (Line 16.1 through Line 16.4 minus Line 16.5 plus Line 16.6).....	(7,361,791)	(1,470,532)	846,482
RECONCILIATION OF CASH, CASH EQUIVALENTS AND SHORT-TERM INVESTMENTS			
18. Net change in cash, cash equivalents and short-term investments (Line 11, plus Lines 15 and 17)	(11,993,903)	2,147,656	13,318,996
19. Cash, cash equivalents and short-term investments:			
19.1 Beginning of year.....	25,059,363	11,740,367	11,740,367
19.2 End of period (Line 18 plus Line 19.1)	13,065,460	13,888,023	25,059,363

NOTES TO FINANCIAL STATEMENTS

1. Summary of Significant Accounting Policies

A. The accompanying financial statements of Permanent General Assurance Corporation have been prepared in accordance with the NAIC Accounting Practices and Procedures Manual except to the extent that Ohio law differs. However, as of this Statement date, there have been no requests from the State of Ohio to depart from the prescribed NAIC guidelines.

A reconciliation of the Company's net income and capital and surplus between NAIC SAP and practices prescribed and permitted by the state of Ohio is shown below:

	<u>2013</u>	<u>2012</u>
<u>Net Income</u>		
(1) Ohio company state basis (Page 4, Line 20, Column 1 & 3)	(\$607)	\$5,978
(2) State prescribed practices that increase / (decrease) NAIC SAP:		
(3) State permitted practices that increase / (decrease) NAIC SAP:		
(4) NAIC SAP	(\$607)	\$5,978
<u>Surplus</u>		
(5) Ohio company state basis (Page 3, Line 37, Column 1 & 2)	\$91,041	\$90,551
(6) State prescribed practices that increase / (decrease) NAIC SAP:		
(7) State permitted practices that increase / (decrease) NAIC SAP:		
(8) NAIC SAP	\$91,041	\$90,551

B. Use of Estimates in the Preparation of the Financial Statements

The preparation of financial statements in conformity with Statutory Accounting Principles requires management to make estimates and assumptions that affect the reported amounts of assets, liabilities, revenues and expenses. It also requires disclosure of contingent assets and liabilities at the date of the financial statements and the reported amounts of revenue and expenses during the period. Actual results could differ from those estimates.

C. Accounting Policy

Premiums are earned over the terms of the related insurance policies. Unearned premium reserves are established to cover the unexpired portion of premiums written. Such reserves are computed by pro rata methods for direct business.

Expenses incurred in connection with acquiring new insurance business, including such acquisition costs as sales commissions, are charged to operations as incurred. Expenses incurred are reduced for ceding allowances received or receivable.

- (1) Short-term investments are stated at cost.
- (2) Bonds are stated at amortized cost using the yield to maturity method.
- (3) Common stocks, if owned are stated at lower of cost or market with exception to the stock of PGAC’s wholly owned subsidiary (which is valued as described in the NAIC Valuation of Securities Manual).
- (4) The Company holds no preferred stock as of the statement date.
- (5) The Company holds no mortgage loans.
- (6) The basis for loan backed securities is amortized cost or the lower of amortized cost or fair market value. The adjustment methodology used for each type of security is prospective for securities which an OTTI loss has been recognized and retrospective for all other securities.
- (7) The Company values PGA Service Corporation (a wholly owned subsidiary) in accordance with the NAIC policies and procedures manual.
- (8) The company has no investments in joint ventures, partnerships & limited liability company.
- (9) The company has no investments in derivatives.
- (10) The Company does not anticipate investment income as a factor in the premium deficiency calculation.
- (11) Reserve for losses represents the estimated liability for claims reported to the Company and an amount, based on actuarially determined reserves for losses incurred but not reported. Such liabilities are necessarily based on assumptions and estimates and while management believes the amount is adequate, the ultimate liability may be in excess of or less than the amount provided. The methods for making such estimates and for establishing the resulting liability is continually reviewed and any adjustments are reflected in the period determined.
- (12) The Company has not modified its capitalization policy from the prior year.
- (13) The Company has no pharmaceutical rebate receivables.

2. Accounting Changes and Corrections of Errors:
None.

3. Business Combinations and Goodwill
None.

4. Discontinued Operations
None.

5. Investments

- A) The Company has no mortgage loans.
- B) The Company did not restructure any debt.
- C) The Company has no reverse mortgages.
- D) Loan-Backed Securities
 - (1) The source used to determine prepayment assumptions is Intex.
 - (2) Not applicable.
 - (3) Securities with recognized impairments currently held

NOTES TO FINANCIAL STATEMENTS

<u>Cusip</u>	<u>Book / Adjusted Carry Value Before Current Period OTTI</u>	<u>Present Value of Projected Cashflows</u>	<u>Recognized Other Than Temporary Impairment CY</u>	<u>Amortized Cost After Other Than Temporary Impairment</u>	<u>Fair Value at time of OTTI</u>	<u>Date of Financial Statement Where Reported</u>
12669GHZ7	124,107	107,005	0	124,107	99,058	06/30/2013
22545LAG4	1,427,626	1,599,301	0	1,427,626	1,588,138	06/30/2013
466247WV1	23,342	41,210	0	23,342	42,214	06/30/2013
73316PBB5	299,169	323,118	0	299,169	333,254	06/30/2013
73316PCK4	602,588	555,306	0	602,588	496,638	06/30/2013
Total	2,476,832	2,625,940	0	2,476,832	2,559,302	

(4) All impaired securities (fair value is less than amortized cost) for which an other-than-temporary impairment has not been recognized in earnings as a realized loss (including securities with a recognized other-than-temporary impairment for non-interest related declines when a non-recognized interest related impairment remains):

Continuous Unrealized Loss	Less than 12 Months	\$59,896
	12 Months or Longer	\$ -

Fair Value of Security with Continuous Unrealized Loss

Less than 12 Months	\$4,811,238
12 Months or Longer	\$ -

(5) Not Applicable

- E) The Company has no repurchase agreements.
- F) The Company has no real estate investments.
- G) The Company has no low-income housing tax credits (LIHTC).

6. Joint Ventures, Partnerships and Limited Liability Companies
None.

7. Investment Income
All investment income due and accrued is admitted.

8. Derivative Instruments
None.

9. Income Taxes

A. The components of the net deferred tax asset / (liability) at June 30 are as follows:

	30-June.-13			31-Dec-12			Change		
	Ordinary	Capital	Total	Ordinary	Capital	Total	Ordinary	Capital	Total
Total gross deferred tax assets	6,826,299	504,857	7,331,156	6,210,617	636,607	6,847,224	615,682	(131,750)	483,932
Stat valuation allowance adj		-	-	-	-	-	-	-	-
Adj gross deferred tax assets	6,826,299	504,857	7,331,156	6,210,617	636,607	6,847,224	615,682	(131,750)	483,932
Total gross deferred tax liab									
Net deferred tax assets	6,826,299	504,857	7,331,156	6,210,617	636,607	6,847,224	615,682	(131,750)	483,932
Def tax assets nonadmitted	(7,500)	(504,857)	(512,357)	(7,359)	(636,607)	(643,966)	(141)	131,750	131,609
Net admitted def tax asset	6,818,799		6,818,799	6,203,258		6,203,258	615,541		615,541

The Company has not elected to admit additional DTAs pursuant to SSAP 10R, paragraph 10e. The current period election does not differ from the prior reporting period.

<u>Admission Calculation Components SSAP 101</u>	<u>Ordinary</u>	<u>30-Jun.-13 Capital</u>	<u>Total</u>	<u>Ordinary</u>	<u>31-Dec-12 Capital</u>	<u>Total</u>	<u>Ordinary</u>	<u>Change Capital</u>	<u>Total</u>
Federal income taxes paid in prior years recoverable through loss carrybacks	3,098,053		3,098,053	3,098,053		3,098,053			
Adj gross deferred tax assets expected to be realized after application of the threshold limitation	3,720,746		3,720,746	3,105,205		3,105,205	615,541		615,541
1. Adj gross deferred tax assets expected to be	3,720,746		3,720,746	3,105,205		3,105,205	615,541		615,541

NOTES TO FINANCIAL STATEMENTS

realized following the balance sheet date						
2. Adj gross dtas allowed per limitation threshold		12,633,324		12,637,306		(3,982)
Adj gross dtas offset by gross deferred tax liabilities						
Total	6,818,799	6,818,799	6,203,258	6,203,258	615,541	615,541

	30-Jun.-13	31-Dec-12
Ratio percentage used to determine recovery period and threshold limitation amount.	440%	440%

Amount of adjusted capital and surplus used to determine recovery period and threshold limitation.	84,222,159	84,248,704
---	------------	------------

	30-Jun.-13			31-Dec-12			Change		
Impact of tax planning strategies:	Ordinary	Capital	Total	Ordinary	Capital	Total	Ordinary	Capital	Total
Adjusted gross DTAs (% of Total Adjusted Gross DTAs)	0.0%	6.9%	6.9%	0.0%	9.3%	9.3%	0.0%	(2.4%)	(2.4%)
Net Admitted Gross DTAs (% of Total Net Admitted Adj Gross DTAs)	0.0%	0.0%	0.0%	0.0%	0.0%	0.0%	0.0%	0.0%	0.0%

The Company's tax strategies do not include the use of reinsurance.

B. Unrecognized DTLs
Not applicable

C. Current Tax and Change in Deferred Tax

Current income tax:	30-Jun.-13	31-Dec-12	Change
Current federal income tax provision	(578,216)	3,199,040	(3,777,255)
Prior year (overaccrual)/underaccrual	-	(79,889)	79,889
Other adjustments	-	(567,817)	567,817
Federal and foreign income taxes incurred	<u>(578,216)</u>	<u>2,551,334</u>	<u>(3,129,550)</u>

Deferred income tax:	30-Jun.-13	31-Dec-12	Change
Ordinary:			
Unearned premium reserve@ 20%	5,318,219	4,556,479	761,741
Discounted loss reserves	527,256	502,851	24,405
Guaranty fund accrual			
Allowance for Bad Debts	645,124	577,092	68,032
Accrued Bonus	328,200	566,836	(238,637)
Net Operating loss carryover			
Unearned Provisional Commission	<u>7,500</u>	<u>7,359</u>	<u>141</u>
Subtotal	6,826,299	6,210,617	615,682
Statutory valuation allowance adjustment			
Nonadmitted	<u>(7,500)</u>	<u>(7,359)</u>	<u>(141)</u>
Admitted ordinary deferred tax assets	<u>6,818,799</u>	<u>6,203,258</u>	<u>615,541</u>

Capital:			
Impairment Loss on Investments	434,022	434,022	-
Capital loss carryover			
Net unrealized capital losses - SAP	<u>70,835</u>	<u>202,585</u>	<u>(131,750)</u>
Subtotal	504,857	636,607	(131,750)
Statutory valuation allowance adjustment			
Nonadmitted	<u>(504,857)</u>	<u>(636,607)</u>	<u>131,750</u>
Admitted capital deferred tax assets	<u>-</u>	<u>-</u>	<u>-</u>

Admitted deferred tax assets	<u>6,818,799</u>	<u>6,203,258</u>	<u>615,541</u>
------------------------------	------------------	------------------	----------------

Deferred Tax Liabilities:	30-Jun-13	31-Dec-12	Change
Ordinary:			
Sec. 481 adjustment	<u>-</u>	<u>-</u>	<u>-</u>
Subtotal	-	-	-

Capital:
Subtotal

Deferred tax liabilities	<u>-</u>	<u>-</u>	<u>-</u>
--------------------------	----------	----------	----------

NOTES TO FINANCIAL STATEMENTS

Net deferred tax assets / liabilities	6,818,799	6,203,258	615,541
---------------------------------------	-----------	-----------	---------

D. Reconciliation of Federal Income Tax Rate to Actual Effective Rate
The significant items causing a difference between the statutory federal income tax rate and the Company's effective income tax rate are as follows:

	30-Jun-13	Effective Rate
Provision computed at statutory rate	(1,156,886)	35.00%
Tax exempt interest	(77,056)	2.33%
Other permanent differences	40,045	-1.21%
State tax	-	0.00%
Rate differential	-	0.00%
Provision to return adjustment	-	0.00%
Total	(1,193,898)	36.12%

	30-Jun-13	Effective Rate
Federal and foreign income taxes incurred	(578,216)	17.49%
Current taxes on realized capital gains	-	0.00%
Change in net deferred income taxes	(615,682)	18.63%
Total statutory income taxes	(1,193,898)	36.12%

E. Operating Loss and Tax Credit Carryforwards
At the end of the year, the Company did not have any unused operating loss carryforwards generated in prior years available to offset against future taxable income.

Income tax expense for 2013 and 2012 in the amounts of \$0 and \$3,199,040 are available for recoupment in the event of future losses.

The company does not have any protective tax deposits under Sec. 6603 of the Internal Revenue Code.

F. Consolidated Federal Income Tax Return for the 2013 tax year.

1) The Company's federal income tax return will be consolidated with the following entities:

American Family Mutual Ins. Co. (Parent)	American Standard Insurance Co. of Wisconsin
American Family Life Ins. Co	American Family Financial Services, Inc.
AmFam, Inc.	American Family Brokerage, Inc.
American Family Ins. Co	American Standard Ins. Co. of Ohio
Lumbermens Casualty Ins. Co.	
PGC Holdings Corp.	The General Automobile Insurance Services, Inc.
Permanent General Companies, Inc.	The General Automobile Insurance Services of Georgia, Inc.
Permanent General Assurance Corporation of Ohio	The General Automobile Insurance Services of Louisiana, Inc.
PGA Service Corporation	The General Automobile Insurance Services of Ohio, Inc.
The General Automobile Insurance Company, Inc.	The General Automobile Insurance Services of Texas, Inc.

2) The method of allocation between the companies is subject to written agreement, approved by the Board of Directors. Allocation is based upon separate return calculations with current credit for net losses. Intercompany tax balances are settled quarterly.

G. Federal or Foreign Federal Income Tax Loss Contingencies
The Company has no loss contingencies for which it is reasonably possible that the total liability will significantly increase within twelve months of the reporting date.

10. Information Concerning Parent, Subsidiaries Affiliates and Other Related Parties

- A,B,C. No change.
- D. At June 30, 2013, the Company reported \$7,063,308 net receivable from it's parent and affiliates. The terms of the settlement require these amounts are settled within 90 days.
- E. The Company has made no guarantees or undertakings for the benefit of the parent or affiliates.
- F. PGAC has a service agreement in place with its parent Permanent General Companies, Inc (PGC), which is also a wholly owned subsidiary of PGC Holdings Corp. Under this agreement PGC performs administrative services on behalf of PGAC. These services include; claims administration, underwriting, policy issuance and record keeping, legal services, data processing and accounting.
- G. All outstanding shares of the company are owned by the parent company, Permanent General Companies, Inc., a non-insurance holding company domiciled in the State of Tennessee.
- H. The Company wholly owns PGA Service Corporation, an insurance premium finance company domiciled in the State of Tennessee.
- I,J. The Company has no investments in an SCA entity that exceeds 10% of admitted assets.
- K. None.
- L. None.

11. Debt
None.

NOTES TO FINANCIAL STATEMENTS

12. Retirement Plans, Deferred Compensation, Postemployment Benefits and Compensated Absences and Other Postretirement Benefit Plans.
None.

13. Capital and Surplus, Dividend Restrictions and Quasi-Reorganizations

- (1) The company has 20,000 shares authorized; 10,000 shares issued of \$500 par common stock; & 10,000 shares outstanding. All shares are Class A.
- (2) The company has no preferred stock issued.
- (3) The maximum amount of dividends which can be paid by an Ohio domiciled company without approval of the insurance commissioner is subject to restrictions based upon statutory surplus.
- (4) No change.
- (5) The portion of the Company's profits that may be paid as ordinary dividends to stockholders is limited by # (3) above. However, the maximum dividend payout which can be made in 2013 without prior approval is \$9,055,096.
- (6) The company has no restrictions on the unassigned surplus.
- (7) The company has not made advances of surplus.
- (8) The stock of the company has not been allocated for any special purposes.
- (9) The company has no special surplus funds.
- (10) Refer to page 4 lines 21 through 37 and Exhibit of Capital Gain (Losses) .
- (11) The company has no surplus notes.
- (12) The company has not been reorganized.
- (13) N/A

14. Contingencies

- (A) The company has no contingent commitments to an SCA entity, joint ventures, partnerships, or limited liability companies.
- (B) The company has not been notified of any assessments that could have a material financial effect.
- (C) The company has no gain contingencies.
- (D) Claims related extra contractual obligations and bad faith losses stemming from lawsuits.

The company paid the following amounts in the reporting period to settle claims related extra contractual obligations or bad faith claims stemming from lawsuits.

	<u>Direct</u>
Claim payments made during reporting period	\$672,924

Number of claims where amounts were paid to settle claims resulting from lawsuits during the reporting period.

(A)	(B)	(C)	(D)	(E)
0-25	26-50	51-100	101-500	More than 500 Claims
X				

Indicate whether claim count information is disclosed per claim or claimant.

(F) Per Claim [X] (G) Per Claimant []

(E) The company has no warranty liabilities.

(F) All Other Contingencies.

Various lawsuits against the Company have arisen in the course of the Company's business. Contingent liabilities arising from litigation, income taxes and other matters are not considered material in relation to the financial position of the Company.

15. Leases.
None.

16. Information about Financial Instruments with Off-balance Sheet Risk and Financial Instruments with Concentrations of Credit Risk.
None.

17. Sale, Transfer and Servicing of Financial Assets and Extinguishments of Liabilities.
None.

18. Gain or Loss to the Report Entity from Uninsured Plans and the Uninsured Portion of Partially Insured Plans.
None.

19. Direct Premium Written/Produced by MGA/3rd Party Administration
None.

20. Fair Value Measurements.

A. (1) Fair Value Measurements at Reporting Date

NOTES TO FINANCIAL STATEMENTS

Description	Level 1	Level 2	Level 3	Total
<u>Assets at fair value</u>				
<u>Bonds</u>				
U.S. Governments				
Industrial & Misc.		4,213,201		4,213,201
RMBS				
CMBS				
Special Revenue		636,670		636,670
Other				
Total	<u>0</u>	<u>4,849,871</u>	<u>0</u>	<u>4,849,871</u>

(2) Fair Value Measurements in Level 3 of the Fair Value Hierachy

Description	Bal. @ 01/01/13	Trans. into Level 3	Trans. out of Level 3	Gains / (Losses) in Net Income	Gains / (Losses) in Surplus	Purch.	Iss.	Sales	Sett.	Bal. @ 06/30/13
<u>Assets</u>										
<u>Bonds</u>										
U.S. Govts.										
Ind & Misc.										0
RMBS										
CMBS										0
Special Rev.										
Other										
Total Assets	<u>0</u>	<u>0</u>	<u>0</u>	<u>0</u>	<u>0</u>	<u>0</u>	<u>0</u>	<u>0</u>	<u>0</u>	<u>0</u>

- (3) Transfers between levels are recognized at the end of the reporting period.
- (4) As of June 30, 2013, the reported fair value of the reporting entity's investment in level 2 commercial and residential mortgage-backed securities was \$3,149,568. The company had one level 2 corporate bond with a fair value of \$1,063,633 and one level 2 municipal bond with a fair value of \$636,670. These securities have a weighted average coupon rate of 5.35% and a weighted average maturity of 23.5 years. These securities are currently rated below investment grade. To measure the securities fair value the reporting entity uses third party information from various pricing services. The input assumptions include but are not limited to prepayments, delinquency percentage, loan status, etc.

21. Other Items.

- A. Extraordinary Items
None.
- B. Troubled Debt Restructuring. Debtors
None.
- C. Other Disclosers
Assets in the amount of \$2,741,693 and \$2,747,473 at June 30, 2013 and December 31, 2012, respectively, were on deposit with government authorities or trustees as required by law.
- D. The Company routinely assesses the collectibility of premium and agent balances. The uncollectible amounts are not material to the Company's financial condition.
- E. Business Interruption Insurance Recoveries.
None.
- F. State Transferable Tax Credits
None.
- G. Subprime Mortgage Related Risk Exposure
- (1) Factors used to determine the investment in a specific sub-prime security include the quality of underwriter / loan servicer, types of loans (fixed, floating, hybrid ARM), loan quality (documentation, purpose, occupancy), loan origination year (vintage), loan geographic distribution, average loan to values, average FICO scores and the securities credit support level. Loan loss estimates are computed based on historical loan delinquency and foreclosure statistics and projecting future delinquencies and losses under multiple economic scenarios including various home price changes and employment estimates, as well as servicer style and the foreclosure rules for each state. Total projected losses for all mortgages in each deal are then compared to the credit support (subordination plus over collateralization) to determine the percentage of principal loss expected for each tranche. To minimize specific security risk and concentration risk to the sector, issue limitations and sector limitations as a percentage of the portfolio have been established.
- (2) Direct Exposure through investment in subprime mortgage loans.
None.
- (3) Direct Exposure through other investments.

Description	Cost	Book adjusted carry value	Fair value	OTTI to date
Other Assets	\$902,409	\$794,289	\$829,892	\$1,063,264

NOTES TO FINANCIAL STATEMENTS

(4) Underwriting exposure to subprime mortgage risk through Mortgage Guaranty or Financial Guaranty insurance coverage.
None.

22. **Events Subsequent.**
None.

23. **Reinsurance**
A. Unsecured Reinsurance Recoverable
None.
B. Reinsurance Recoverable in Dispute.
None.
C. Reinsurance Assumed and Ceded
No change.

	Assumed Reinsurance		Ceded Reinsurance		Net	
	Premium Reserve	Commission Equity	Premium Reserve	Commission Equity	Premium Reserve	Commission Equity
a. Affiliates	48,223,319	16,878,161	52,001,717	19,760,652	(3,778,398)	(2,882,491)
b. All Other			236,122	28,334	(236,122)	(28,334)
c. Total	48,223,319	16,878,161	52,237,839	19,788,986	(4,014,520)	(2,910,825)
d. Dir. UE Prem Res.	78,846,728					

D. Uncollectible Reinsurance.
None.
E. Commutation of Ceded Reinsurance
None.
F. Retroactive Reinsurance
None.
G. Reinsurance Accounted for as a Deposit.
None.
H. Transfer of Property and Casualty Run-Off Agreements.
None.

24. **Retrospectively Rated Contracts & Contracts Subject to Redetermination.**
None.

25. **Change in Incurred Losses and Loss Adjustment Expenses**
Loss & lae reserves as of December 31, 2012 were \$55,386,000. As of June 30, 2013, \$30,003,000 has been paid for incurred loss & lae expenses attributable to insured events or prior years. Reserves remaining for prior years are now \$27,887,000 as a result of re-estimation of unpaid claims and lae expenses. Therefore, there has been a \$2,504,000 unfavorable prior year development from 12/31/2012 to 06/30/2013 principally on liability lines of business.

We saw development of year-end 2012 reserves of \$2,504,000. Over half of this is from the 2012 accident year, about 15% from the 2011 accident year, and the balance from prior years. The variance is a result of an earlier recognition of Bodily Injury Liability exposures due to a reworking of the claims handling process. BI exposures are being set up earlier than in past accident periods, and manual reserve adjustments are also up, as the investigation of potential liability is being more closely evaluated and at an earlier point in time than prior. This process affected both newly reported claims, and many open exposures. Georgia, New York and Texas combined for more than half of the adverse development due to claim frequency and severity coming in higher than projected at year-end 2012.

The development is generally the result of an ongoing analysis of recent loss development trends and are increased or decreased as additional information becomes known regarding individual claims. The Company has no retrospectively rated policies that are subject to premium adjustments. The development is generally the result of an ongoing analysis of recent loss development trends and are increased or decreased as additional information becomes known regarding individual claims. The Company has no retrospectively rated policies that are subject to premium adjustments.

26. **Intercompany Pooling Arrangements**
Effective January 1, 2010, the Company (lead entity) entered into a reinsurance pooling agreement with PGAC of Ohio (NAIC company code - 22906) and The General Automobile Insurance Company, Inc. (GAIC) (NAIC company code - 13703), both of which are affiliated property and casualty insurance companies incorporated in Ohio. The business includes private passenger auto liability & auto physical damage with PGAC receiving 59%, PGAC-Ohio receiving 33%, & GAIC receiving 8%. This Agreement applies only to that portion of any insurance or reinsurance which the parties hereto retain net for their own account and in calculating the amount of any loss hereunder, only loss or losses in respect of that portion of any insurance or reinsurance which the parties hereto retain net for their own account shall be included. The Company has a net receivable balance of \$1,288,822 at 06/30/2013.

27. **Structured Settlements**
None.

28. **Health Care Receivables**
None.

29. **Participating Policies**
None.

30. **Premium Deficiency Reserves**
1. Liability carried for premium deficiency reserves. \$0
2. Date of the most recent evaluation of this liability. 06/30/2013
3. Was anticipated investment income utilized in the calculation? Yes _ No X

31. **High Deductibles**
None.

NOTES TO FINANCIAL STATEMENTS

32.

Discounting of Liabilities for Unpaid Losses or Unpaid Loss Adjustment Expenses

None.
33.

Asbestos/Environmental Reserves

None.
34.

Subscriber Savings accounts

None.
35.

Multi Peril Crop Insurance

None.
36.

Financial Guaranty Insurance

None.

GENERAL INTERROGATORIES

PART 1 - COMMON INTERROGATORIES
GENERAL

- 1.1

Did the reporting entity experience any material transactions requiring the filing of Disclosure of Material Transactions with the State of Domicile, as required by the Model Act?

Yes ☐ No ☒
- 1.2

If yes, has the report been filed with the domiciliary state?

Yes ☐ No ☐
- 2.1

Has any change been made during the year of this statement in the charter, by-laws, articles of incorporation, or deed of settlement of the reporting entity?

Yes ☐ No ☒
- 2.2

If yes, date of change:
- 3.1

Have there been any substantial changes in the organizational chart since the prior quarter end?

Yes ☐ No ☒
- 3.2

If the response to 3.1 is yes, provide a brief description of those changes.
- 4.1

Has the reporting entity been a party to a merger or consolidation during the period covered by this statement?

Yes ☐ No ☒
- 4.2

If yes, provide the name of entity, NAIC Company Code, and state of domicile (use two letter state abbreviation) for any entity that has ceased to exist as a result of the merger or consolidation.

1	2	3
Name of Entity	NAIC Company Code	State of Domicile

5.

If the reporting entity is subject to a management agreement, including third-party administrator(s), managing general agent(s), attorney-in-fact, or similar agreement, have there been any significant changes regarding the terms of the agreement or principals involved?

Yes ☐ No ☒ NA ☐

If yes, attach an explanation.
- 6.1

State as of what date the latest financial examination of the reporting entity was made or is being made.

12/31/2009
- 6.2

State the as of date that the latest financial examination report became available from either the state of domicile or the reporting entity. This date should be the date of the examined balance sheet and not the date the report was completed or released.

12/31/2009
- 6.3

State as of what date the latest financial examination report became available to other states or the public from either the state of domicile or the reporting entity. This is the release date or completion date of the examination report and not the date of the examination (balance sheet date).

02/28/2011
- 6.4

By what department or departments?

Ohio Department of Insurance
- 6.5

Have all financial statement adjustments within the latest financial examination report been accounted for in a subsequent financial statement filed with Departments?

Yes ☐ No ☐ NA ☒
- 6.6

Have all of the recommendations within the latest financial examination report been complied with?

Yes ☒ No ☐ NA ☐
- 7.1

Has this reporting entity had any Certificates of Authority, licenses or registrations (including corporate registration, if applicable) suspended or revoked by any governmental entity during the reporting period?

Yes ☐ No ☒
- 7.2

If yes, give full information:
- 8.1

Is the company a subsidiary of a bank holding company regulated by the Federal Reserve Board?

Yes ☐ No ☒
- 8.2

If response to 8.1 is yes, please identify the name of the bank holding company.
- 8.3

Is the company affiliated with one or more banks, thrifts or securities firms?

Yes ☐ No ☒
- 8.4

If response to 8.3 is yes, please provide below the names and location (city and state of the main office) of any affiliates regulated by a federal regulatory services agency [i.e. the Federal Reserve Board (FRB), the Office of the Comptroller of the Currency (OCC), the Federal Deposit Insurance Corporation (FDIC) and the Securities Exchange Commission (SEC)] and identify the affiliate's primary federal regulator.]

1	2	3	4	5	6
Affiliate Name	Location (City, State)	FRB	OCC	FDIC	SEC

GENERAL INTERROGATORIES

9.1

Are the senior officers (principal executive officer, principal financial officer, principal accounting officer or controller, or persons performing similar functions) of the reporting entity subject to a code of ethics, which includes the following standards?
(a) Honest and ethical conduct, including the ethical handling of actual or apparent conflicts of interest between personal and professional relationships;
(b) Full, fair, accurate, timely and understandable disclosure in the periodic reports required to be filed by the reporting entity;
(c) Compliance with applicable governmental laws, rules and regulations;
(d) The prompt internal reporting of violations to an appropriate person or persons identified in the code; and
(e) Accountability for adherence to the code.

Yes [X] No []

9.11

If the response to 9.1 is No, please explain:
.....

9.2

Has the code of ethics for senior managers been amended?

Yes [] No [X]

9.21

If the response to 9.2 is Yes, provide information related to amendment(s).
.....

9.3

Have any provisions of the code of ethics been waived for any of the specified officers?

Yes [] No [X]

9.31

If the response to 9.3 is Yes, provide the nature of any waiver(s).
.....

FINANCIAL

10.1

Does the reporting entity report any amounts due from parent, subsidiaries or affiliates on Page 2 of this statement?.....

Yes [X] No []

10.2

If yes, indicate any amounts receivable from parent included in the Page 2 amount:.....\$0

INVESTMENT

11.1

Were any of the stocks, bonds, or other assets of the reporting entity loaned, placed under option agreement, or otherwise made available for use by another person? (Exclude securities under securities lending agreements.)

Yes [] No [X]

11.2

If yes, give full and complete information relating thereto:
.....

12.

Amount of real estate and mortgages held in other invested assets in Schedule BA:\$0

13.

Amount of real estate and mortgages held in short-term investments:\$0

14.1

Does the reporting entity have any investments in parent, subsidiaries and affiliates?

Yes [X] No []

14.2

If yes, please complete the following:

	1	2
	Prior Year-End Book/Adjusted Carrying Value	Current Quarter Book/Adjusted Carrying Value
14.21 Bonds	\$	\$
14.22 Preferred Stock	\$	\$
14.23 Common Stock	\$695,102	\$903,953
14.24 Short-Term Investments	\$	\$
14.25 Mortgage Loans on Real Estate	\$	\$
14.26 All Other	\$	\$
14.27 Total Investment in Parent, Subsidiaries and Affiliates (Subtotal Lines 14.21 to 14.26).....	\$695,102	\$903,953
14.28 Total Investment in Parent included in Lines 14.21 to 14.26 above	\$	\$

15.1

Has the reporting entity entered into any hedging transactions reported on Schedule DB?

Yes [] No [X]

15.2

If yes, has a comprehensive description of the hedging program been made available to the domiciliary state?

Yes [] No []

If no, attach a description with this statement.

GENERAL INTERROGATORIES

- 16 For the reporting entity’s security lending program, state the amount of the following as of the current statement date:
- 16.1 Total fair value of reinvested collateral assets reported on Schedule DL, Parts 1 and 2

\$0
- 16.2 Total book adjusted/carrying value of reinvested collateral assets reported on Schedule DL, Parts 1 and 2

\$0
- 16.3 Total payable for securities lending reported on the liability page

\$0

17. Excluding items in Schedule E – Part 3 – Special Deposits, real estate, mortgage loans and investments held physically in the reporting entity’s offices, vaults or safety deposit boxes, were all stocks, bonds and other securities, owned throughout the current year held pursuant to a custodial agreement with a qualified bank or trust company in accordance with Section 1, III – General Examination Considerations, F. Outsourcing of Critical Functions, Custodial or Safekeeping Agreements of the NAIC *Financial Condition Examiners Handbook*?
- Yes ☒ No ☐

- 17.1 For all agreements that comply with the requirements of the NAIC *Financial Condition Examiners Handbook*, complete the following:

1	2
Name of Custodian(s)	Custodian Address
Bank of America.....	225 Franklin Street, Boston, Ma. 02110.....

- 17.2 For all agreements that do not comply with the requirements of the NAIC *Financial Condition Examiners Handbook*, provide the name, location and a complete explanation:

1	2	3
Name(s)	Location(s)	Complete Explanation(s)

- 17.3 Have there been any changes, including name changes, in the custodian(s) identified in 17.1 during the current quarter?
- Yes ☐ No ☒

- 17.4 If yes, give full and complete information relating thereto:

1	2	3	4
Old Custodian	New Custodian	Date of Change	Reason

- 17.5 Identify all investment advisors, broker/dealers or individuals acting on behalf of broker/dealers that have access to the investment accounts, handle securities and have authority to make investments on behalf of the reporting entity:

1	2	3
Central Registration Depository	Name(s)	Address
110497.....	Brookfield Investment Management Inc.....	Three World Financial Center, New York, N.Y. 10281.....

- 18.1 Have all the filing requirements of the *Purposes and Procedures Manual* of the NAIC Securities Valuation Office been followed?
- Yes ☒ No ☐

- 18.2 If no, list exceptions:
-

GENERAL INTERROGATORIES
PART 2 - PROPERTY & CASUALTY INTERROGATORIES

1. If the reporting entity is a member of a pooling arrangement, did the agreement or the reporting entity's participation change? Yes [] No [X] NA []
If yes, attach an explanation.

2. Has the reporting entity reinsured any risk with any other reporting entity and agreed to release such entity from liability, in whole or in part, from any loss that may occur on the risk, or portion thereof, reinsured? Yes [] No [X]
If yes, attach an explanation.

3.1 Have any of the reporting entity's primary reinsurance contracts been canceled? Yes [] No [X]
3.2 If yes, give full and complete information thereto.
.....

4.1 Are any of the liabilities for unpaid losses and loss adjustment expenses other than certain workers' compensation tabular reserves (see *Annual Statement Instructions* pertaining to disclosure of discounting for definition of "tabular reserves,") discounted at a rate of interest greater than zero? Yes [] No [X]

4.2 If yes, complete the following schedule:

			TOTAL DISCOUNT				DISCOUNT TAKEN DURING PERIOD			
1	2	3	4	5	6	7	8	9	10	11
Line of Business	Maximum Interest	Discount Rate	Unpaid Losses	Unpaid LAE	IBNR	TOTAL	Unpaid Losses	Unpaid LAE	IBNR	TOTAL
.....
.....
.....
.....
.....
TOTAL			0	0	0	0	0	0	0	0

5. Operating Percentages:
5.1 A&H loss percent 0.0 %
5.2 A&H cost containment percent 0.0 %
5.3 A&H expense percent excluding cost containment expenses 0.0 %
6.1 Do you act as a custodian for health savings accounts?..... Yes [] No [X]
6.2 If yes, please provide the amount of custodial funds held as of the reporting date..... \$
6.3 Do you act as an administrator for health savings accounts?..... Yes [] No [X]
6.4 If yes, please provide the balance of the funds administered as of the reporting date..... \$

STATEMENT AS OF JUNE 30, 2013 OF THE Permanent General Assurance Corporation

SCHEDULE F - CEDED REINSURANCE

Showing All New Reinsurers - Current Year to Date

[illegible]

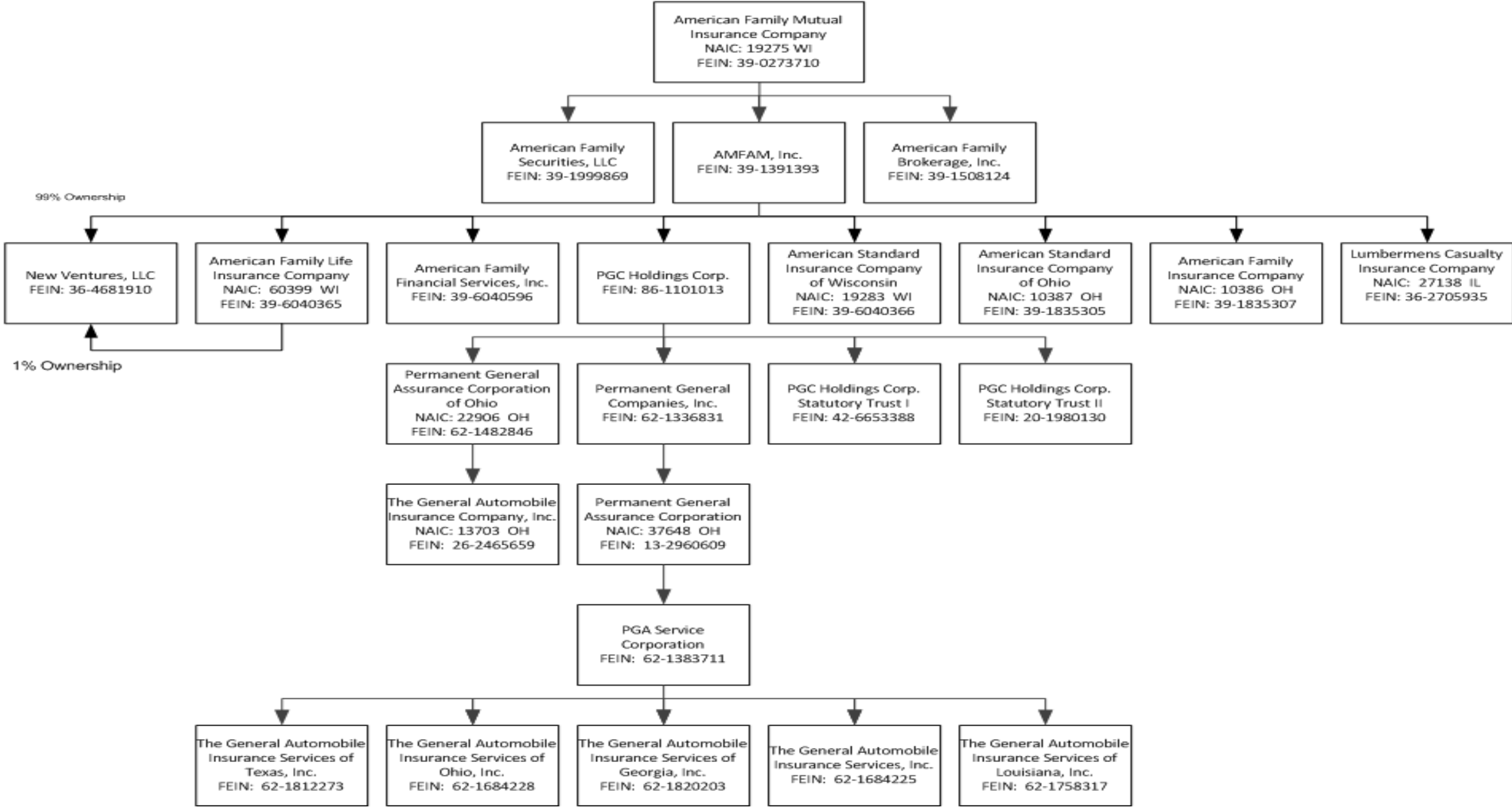
SCHEDULE T - EXHIBIT OF PREMIUMS WRITTEN

Current Year to Date - Allocated by States and Territories							
States, etc.	1	Direct Premiums Written		Direct Losses Paid (Deducting Salvage)		Direct Losses Unpaid	
		2	3	4	5	6	7
	Active Status	Current Year To Date	Prior Year To Date	Current Year To Date	Prior Year To Date	Current Year To Date	Prior Year To Date
1. Alabama	AL L	2,547,085	755,802	683,549	146,266	694,010	203,566
2. Alaska	AK N		0		0		0
3. Arizona	AZ L	6,432,944	6,349,650	3,421,298	3,321,229	3,667,081	3,118,298
4. Arkansas	AR N		0		0		0
5. California	CA L	22,377,193	23,330,367	11,935,775	11,493,975	9,268,161	9,889,382
6. Colorado	CO L	5,563,804	3,774,761	2,487,175	1,998,639	2,265,041	2,107,155
7. Connecticut	CT L	1,606,104	1,051,725	611,274	357,763	828,638	588,533
8. Delaware	DE L		0		0		0
9. Dist. Columbia	DC N		0		0		0
10. Florida	FL L	11,184,322	10,818,118	4,859,912	7,132,215	4,721,164	6,574,895
11. Georgia	GA L	3,737,769	2,703,612	3,003,677	1,772,940	2,224,061	1,331,009
12. Hawaii	HI N		0		0		0
13. Idaho	ID L		0		0		0
14. Illinois	IL L	1,790,069	1,841,390	849,464	815,828	1,024,338	1,196,867
15. Indiana	IN L	3,976,670	4,224,476	2,043,080	2,537,182	2,398,146	2,479,785
16. Iowa	IA L		0		0		0
17. Kansas	KS L		0		0		0
18. Kentucky	KY N		0		0		0
19. Louisiana	LA L	1,993,558	2,366,203	1,189,635	1,548,795	1,033,424	1,468,227
20. Maine	ME N		0		0		0
21. Maryland	MD N		0		0		0
22. Massachusetts	MA L		0		0		0
23. Michigan	MI N		0		0		0
24. Minnesota	MN N		0		0		0
25. Mississippi	MS L	846,498	67,573	269,947	0	156,928	2,400
26. Missouri	MO L	3,440,940	2,041,177	1,306,646	1,164,743	1,367,581	849,726
27. Montana	MT L		0		0		0
28. Nebraska	NE L		0		0		0
29. Nevada	NV L	2,172,406	2,080,960	1,236,864	1,299,201	1,295,584	1,186,583
30. New Hampshire	NH N		0		0		0
31. New Jersey	NJ L		0		0		0
32. New Mexico	NM N		0		0		0
33. New York	NY L	1,310,739	3,609,519	2,850,617	3,742,582	4,206,601	5,440,000
34. No. Carolina	NC L		0		0		0
35. No. Dakota	ND L		0		0		0
36. Ohio	OH L	1,294,543	1,683,345	1,203,414	1,438,415	984,361	1,056,563
37. Oklahoma	OK L	3,360,906	545,891	966,437	46,834	798,082	48,584
38. Oregon	OR L		0		0		0
39. Pennsylvania	PA L	11,695,590	11,040,348	5,514,175	4,879,703	6,099,930	5,667,305
40. Rhode Island	RI L		0		0		0
41. So. Carolina	SC L	1,413,169	1,272,107	768,995	789,767	1,090,853	578,562
42. So. Dakota	SD L		0		0		0
43. Tennessee	TN L	9,992,360	8,213,112	4,126,477	3,774,331	3,965,011	3,205,443
44. Texas	TX L	4,492,292	2,833,772	3,511,026	1,146,003	2,213,709	927,067
45. Utah	UT L	85,278	0		0	3,000	0
46. Vermont	VT N		0		0		0
47. Virginia	VA L	4,897,096	4,886,356	2,579,637	2,480,306	2,831,313	2,877,675
48. Washington	WA L	357,273	133,543	60,296	0	59,838	0
49. West Virginia	WV L		0		0		0
50. Wisconsin	WI L	947,552	373,207	339,314	96,497	388,941	17,614
51. Wyoming	WY N		0		0		0
52. American Samoa	AS N		0		0		0
53. Guam	GU N		0		0		0
54. Puerto Rico	PR N		0		0		0
55. U.S. Virgin Islands	VI N		0		0		0
56. Northern Mariana Islands	MP N		0		0		0
57. Canada	CAN N		0		0		0
58. Aggregate Other Alien	OT XXX	0	0	0	0	0	0
59. Totals	(a) 38	107,516,160	95,997,014	55,818,684	51,983,214	53,585,796	50,815,239
DETAILS OF WRITE-INS							
58001.	XXX						
58002.	XXX						
58003.	XXX						
58998. Summary of remaining write-ins for Line 58 from overflow page.	XXX	0	0	0	0	0	0
58999. TOTALS (Lines 58001 through 58003 plus 58998) (Line 58 above)	XXX	0	0	0	0	0	0

(L) Licensed or Chartered - Licensed Insurance Carrier or Domiciled RRG; (R) Registered - Non-domiciled RRGs; (Q) Qualified - Qualified or Accredited Reinsurer; (E) Eligible - Reporting Entities eligible or approved to write Surplus Lines in the state; (N) None of the above - Not allowed to write business in the state.

(a) Insert the number of L responses except for Canada and Other Alien.

SCHEDULE Y - INFORMATION CONCERNING ACTIVITIES OF INSURER MEMBERS OF A HOLDING COMPANY GROUP
PART 1 - ORGANIZATIONAL CHART



SCHEDULE Y
PART 1A – DETAIL OF INSURANCE HOLDING COMPANY SYSTEM

1	2	3	4	5	6	7	8	9	10	11	12	13	14	15
Group Code	Group Name	NAIC Company Code	Federal ID Number	Federal RSSD	CIK	Name of Securities Exchange if Publicly Traded (U.S. or International)	Name of Parent Subsidiaries or Affiliates	Domiciliary Location	Relationship to Reporting Entity	Directly Controlled by (Name of Entity/Person)	Type of Control (Ownership, Board, Management, Attorney-in-Fact, Influence, Other)	If Control is Ownership Provide Percentage	Ultimate Controlling Entity(ies)/ Person(s)	*
00473	American Family Insurance Group	19275	39-0273710				American Family Mutual Insurance Company	WI		American Family Mutual Insurance Company - Board of Directors	Board of Directors	0.0	American Family Mutual Insurance Company - Board of Directors	0
		00000	39-1999869				American Family Securities, LLC	WI	DS	American Family Mutual Insurance Company	Ownership	100.0	American Family Mutual Insurance Company	0
		00000	39-1508124				American Family Brokerage, Inc.	WI	DS	American Family Mutual Insurance Company	Ownership	100.0	American Family Mutual Insurance Company	0
		00000	39-1391393				AMFAM, Inc.	WI	DS	American Family Mutual Insurance Company	Ownership	100.0	American Family Mutual Insurance Company	0
00473	American Family Insurance Group	19283	39-6040366				American Standard Insurance Co. of WI	WI	IA	AMFAM, Inc.	Ownership	100.0	American Family Mutual Insurance Company	0
00473	American Family Insurance Group	10386	39-1835307				American Family Insurance Company	OH	IA	AMFAM, Inc.	Ownership	100.0	American Family Mutual Insurance Company	0
00473	American Family Insurance Group	10387	39-1835305				American Standard Insurance Co. of OH	OH	IA	AMFAM, Inc.	Ownership	100.0	American Family Mutual Insurance Company	0
00473	American Family Insurance Group	60399	39-6040365				American Family Life Insurance Co.	WI	IA	AMFAM, Inc.	Ownership	100.0	American Family Mutual Insurance Company	0
		00000	39-6040596				American Family Financial Services, Inc.	WI	IA	AMFAM, Inc.	Ownership	100.0	American Family Mutual Insurance Company	0
		00000	36-4681910				New Ventures, LLC	WI	NIA	AMFAM, Inc.	Ownership	99.0	American Family Mutual Insurance Company	0
		00000	36-4681910				New Ventures, LLC	WI	NIA	American Family Life Insurance Co.	Ownership	1.0	American Family Mutual Insurance Company	0
		27138	36-2705935				Lumbermens Casualty Insurance Company	IL	IA	AMFAM, Inc.	Ownership	100.0	American Family Mutual Insurance Company	0
		00000	86-1101013				PGC Holdings Corporation	DE	NIA	AMFAM, Inc.	Ownership	100.0	American Family Mutual Insurance Company	0
		00000	42-6653388				PGC Holdings Statutory Trust 1	DE	NIA	PGC Holdings Corporation	Ownership	100.0	American Family Mutual Insurance Company	0
		00000	20-1980130				PGC Holdings Statutory Trust 2	DE	NIA	PGC Holdings Corporation	Ownership	100.0	American Family Mutual Insurance Company	0

12.1

12.1

12.1

12.1

12.1

PART 1 - LOSS EXPERIENCE

Line of Business		Current Year to Date			4 Prior Year to Date Direct Loss Percentage
		1 Direct Premiums Earned	2 Direct Losses Incurred	3 Direct Loss Percentage	
1.	Fire			0.0	0.0
2.	Allied lines			0.0	0.0
3.	Farmowners multiple peril			0.0	0.0
4.	Homeowners multiple peril			0.0	0.0
5.	Commercial multiple peril			0.0	0.0
6.	Mortgage guaranty			0.0	0.0
8.	Ocean marine			0.0	0.0
9.	Inland marine			0.0	0.0
10.	Financial guaranty			0.0	0.0
11.1	Medical professional liability -occurrence			0.0	0.0
11.2	Medical professional liability -claims made			0.0	0.0
12.	Earthquake			0.0	0.0
13.	Group accident and health			0.0	0.0
14.	Credit accident and health			0.0	0.0
15.	Other accident and health			0.0	0.0
16.	Workers' compensation			0.0	0.0
17.1	Other liability occurrence			0.0	0.0
17.2	Other liability-claims made			0.0	0.0
17.3	Excess Workers' Compensation			0.0	0.0
18.1	Products liability-occurrence			0.0	0.0
18.2	Products liability-claims made			0.0	0.0
19.1,19.2	Private passenger auto liability	73,893,545	44,656,406	60.4	60.2
19.3,19.4	Commercial auto liability			0.0	0.0
21.	Auto physical damage	22,747,527	13,664,017	60.1	52.5
22.	Aircraft (all perils)			0.0	0.0
23.	Fidelity			0.0	0.0
24.	Surety			0.0	0.0
26.	Burglary and theft			0.0	0.0
27.	Boiler and machinery			0.0	0.0
28.	Credit			0.0	0.0
29.	International			0.0	0.0
30.	Warranty			0.0	0.0
31.	Reinsurance - Nonproportional Assumed Property	XXX	XXX	XXX	XXX
32.	Reinsurance - Nonproportional Assumed Liability	XXX	XXX	XXX	XXX
33.	Reinsurance - Nonproportional Assumed Financial Lines	XXX	XXX	XXX	XXX
34.	Aggregate write-ins for other lines of business	0	0	0.0	0.0
35.	TOTALS	96,641,072	58,320,423	60.3	58.4
DETAILS OF WRITE-INS					
3401.				
3402.				
3403.				
3498.	Sum. of remaining write-ins for Line 34 from overflow page	0	0	0.0	0.0
3499.	Totals (Lines 3401 through 3403 plus 3498) (Line 34)	0	0	0.0	0.0

PART 2 - DIRECT PREMIUMS WRITTEN

Line of Business		1 Current Quarter	2 Current Year to Date	3 Prior Year Year to Date
1.	Fire	0		0
2.	Allied lines	0		0
3.	Farmowners multiple peril	0		0
4.	Homeowners multiple peril	0		0
5.	Commercial multiple peril	0		0
6.	Mortgage guaranty	0		0
8.	Ocean marine	0		0
9.	Inland marine	0		0
10.	Financial guaranty	0		0
11.1	Medical professional liability-occurrence	0		0
11.2	Medical professional liability-claims made	0		0
12.	Earthquake	0		0
13.	Group accident and health	0		0
14.	Credit accident and health	0		0
15.	Other accident and health	0		0
16.	Workers' compensation	0		0
17.1	Other liability occurrence	0		0
17.2	Other liability-claims made	0		0
17.3	Excess Workers' Compensation	0		0
18.1	Products liability-occurrence	0		0
18.2	Products liability-claims made	0		0
19.1,19.2	Private passenger auto liability	32,447,275	82,317,369	73,543,580
19.3,19.4	Commercial auto liability	0		0
21.	Auto physical damage	10,276,037	25,198,791	22,453,434
22.	Aircraft (all perils)	0		0
23.	Fidelity	0		0
24.	Surety	0		0
26.	Burglary and theft	0		0
27.	Boiler and machinery	0		0
28.	Credit	0		0
29.	International	0		0
30.	Warranty	0		0
31.	Reinsurance - Nonproportional Assumed Property	XXX	XXX	XXX
32.	Reinsurance - Nonproportional Assumed Liability	XXX	XXX	XXX
33.	Reinsurance - Nonproportional Assumed Financial Lines	XXX	XXX	XXX
34.	Aggregate write-ins for other lines of business	0	0	0
35.	TOTALS	42,723,312	107,516,160	95,997,014
DETAILS OF WRITE-INS				
3401.			
3402.			
3403.			
3498.	Sum. of remaining write-ins for Line 34 from overflow page	0	0	0
3499.	Totals (Lines 3401 through 3403 plus 3498) (Line 34)	0	0	0

PART 3 (000 omitted)

LOSS AND LOSS ADJUSTMENT EXPENSE RESERVES SCHEDULE

	1	2	3	4	5	6	7	8	9	10	11	12	13
Years in Which Losses Occurred	Prior Year-End Known Case Loss and LAE Reserves	Prior Year-End IBNR Loss and LAE Reserves	Total Prior Year-End Loss and LAE Reserves (Cols. 1 + 2)	2013 Loss and LAE Payments on Claims Reported as of Prior Year-End	2013 Loss and LAE Payments on Claims Unreported as of Prior Year-End	Total 2013 Loss and LAE Payments (Cols. 4 + 5)	Q.S. Date Known Case Loss and LAE Reserves on Claims Reported and Open as of Prior Year End	Q.S. Date Known Case Loss and LAE Reserves on Claims Reported or Reopened Subsequent to Prior Year End	Q.S. Date IBNR Loss and LAE Reserves	Total Q.S. Loss and LAE Reserves (Cols.7 + 8 + 9)	Prior Year-End Known Case Loss and LAE Reserves Developed (Savings)/ Deficiency (Cols. 4 + 7 minus Col. 1)	Prior Year-End IBNR Loss and LAE Reserves Developed (Savings)/ Deficiency (Cols. 5 + 8 + 9 minus Col. 2)	Prior Year-End Total Loss and LAE Reserve Developed (Savings)/ Deficiency (Cols. 11 + 12)
1. 2010 + Prior	3,086	929	4,015	2,212	34	2,246	1,925	29	456	2,410	1,051	(410)	641
2. 2011	7,390	3,513	10,903	4,874	74	4,948	4,198	64	2,058	6,320	1,682	(1,317)	365
3. Subtotals 2011 + prior	10,476	4,442	14,918	7,086	108	7,194	6,123	93	2,514	8,730	2,733	(1,727)	1,006
4. 2012	26,151	14,317	40,468	22,467	342	22,809	13,665	208	5,284	19,157	9,981	(8,483)	1,498
5. Subtotals 2012 + prior	36,627	18,759	55,386	29,553	450	30,003	19,788	301	7,798	27,887	12,714	(10,210)	2,504
6. 2013	XXX	XXX	XXX	XXX	30,477	30,477	XXX	22,110	9,945	32,055	XXX	XXX	XXX
7. Totals	36,627	18,759	55,386	29,553	30,927	60,480	19,788	22,411	17,743	59,942	12,714	(10,210)	2,504
8. Prior Year-End Surplus As Regards Policy-holders	90,551										Col. 11, Line 7 As % of Col. 1, Line 7	Col. 12, Line 7 As % of Col. 2, Line 7	Col. 13, Line 7 As % of Col. 3, Line 7
											1. 34.7	2. (54.4)	3. 4.5
											Col. 13, Line 7 Line 8		
											4. 2.8		

SUPPLEMENTAL EXHIBITS AND SCHEDULES INTERROGATORIES

The following supplemental reports are required to be filed as part of your statement filing. However, in the event that your company does not transact the type of business for which the special report must be filed, your response of **NO** to the specific interrogatory will be accepted in lieu of filing a "NONE" report and a bar code will be printed below. If the supplement is required of your company but is not being filed for whatever reason enter **SEE EXPLANATION** and provide an explanation following the interrogatory questions.


	Response
1. Will the Trusteed Surplus Statement be filed with the state of domicile and the NAIC with this statement?NO.....
2. Will Supplement A to Schedule T (Medical Professional Liability Supplement) be filed with this statement?NO.....
3. Will the Medicare Part D Coverage Supplement be filed with the state of domicile and the NAIC with this statement?NO.....
4. Will the Director and Officer Supplement be filed with the state of domicile and the NAIC with this statement?NO.....

Explanation:

- 1.
- 2.
- 3.
- 4.


Bar Code:

1.




37648201349000002

2.




37648201345500002

3.



37648201336500002

4.



37648201350500002

OVERFLOW PAGE FOR WRITE-INS

PQ004 Additional Aggregate Lines for Page 04 Line 14.
*STMTINCOME

	1 Current Year to Date	2 Prior Year to Date	3 Prior Year Ended December 31
1404. SUBROGATION FEES.....	13,408	18,463	32,962
1497. Summary of remaining write-ins for Line 14 from Page 04	13,408	18,463	32,962

SCHEDULE A – VERIFICATION

Real Estate

	1	2
	Year To Date	Prior Year Ended December 31
1. Book/adjusted carrying value, December 31 of prior year	0	0
2. Cost of acquired:		
2.1 Actual cost at time of acquisition		0
2.2 Additional investment made after acquisition		0
3. Current year change in encumbrances		0
4. Total gain (loss) on disposals		0
5. Deduct amounts received on disposals		0
6. Total foreign exchange change in book/adjusted carrying value		0
7. Deduct current year's other than temporary impairment recognized		0
8. Deduct current year's depreciation		0
9. Book/adjusted carrying value at the end of current period (Lines 1+2+3+4-5+6-7-8)	0	0
10. Deduct total nonadmitted amounts	0	0
11. Statement value at end of current period (Line 9 minus Line 10)	0	0

SCHEDULE B – VERIFICATION

Mortgage Loans

	1	2
	Year To Date	Prior Year Ended December 31
1. Book value/recorded investment excluding accrued interest, December 31 of prior year	0	0
2. Cost of acquired:		
2.1 Actual cost at time of acquisition		0
2.2 Additional investment made after acquisition		0
3. Capitalized deferred interest and other		0
4. Accrual of discount		0
5. Unrealized valuation increase (decrease)		0
6. Total gain (loss) on disposals		0
7. Deduct amounts received on disposals		0
8. Deduct amortization of premium and mortgage interest points and commitment fees		0
9. Total foreign exchange change in book value/recorded investment excluding accrued interest		0
10. Deduct current year's other than temporary impairment recognized		0
11. Book value/recorded investment excluding accrued interest at end of current period (Lines 1+2+3+4+5+6-7-8+9-10)	0	0
12. Total valuation allowance		0
13. Subtotal (Line 11 plus Line 12)	0	0
14. Deduct total nonadmitted amounts	0	0
15. Statement value at end of current period (Line 13 minus Line 14)	0	0

SCHEDULE BA – VERIFICATION

Other Long-Term Invested Assets

	1	2
	Year To Date	Prior Year Ended December 31
1. Book/adjusted carrying value, December 31 of prior year	0	0
2. Cost of acquired:		
2.1 Actual cost at time of acquisition		0
2.2 Additional investment made after acquisition		0
3. Capitalized deferred interest and other		0
4. Accrual of discount		0
5. Unrealized valuation increase (decrease)		0
6. Total gain (loss) on disposals		0
7. Deduct amounts received on disposals		0
8. Deduct amortization of premium and depreciation		0
9. Total foreign exchange change in book/adjusted carrying value		0
10. Deduct current year's other than temporary impairment recognized		0
11. Book/adjusted carrying value at end of current period (Lines 1+2+3+4+5+6-7-8+9-10)	0	0
12. Deduct total nonadmitted amounts	0	0
13. Statement value at end of current period (Line 11 minus Line 12)	0	0

SCHEDULE D – VERIFICATION

Bonds and Stocks

	1	2
	Year To Date	Prior Year Ended December 31
1. Book/adjusted carrying value of bonds and stocks, December 31 of prior year	118,958,956	120,836,592
2. Cost of bonds and stocks acquired	38,225,551	62,623,610
3. Accrual of discount	149,012	285,137
4. Unrealized valuation increase (decrease)	585,279	1,604,486
5. Total gain (loss) on disposals	684,396	4,841,769
6. Deduct consideration for bonds and stocks disposed of	28,596,978	69,650,363
7. Deduct amortization of premium	510,281	725,856
8. Total foreign exchange change in book/adjusted carrying value	0	0
9. Deduct current year's other than temporary impairment recognized	0	856,419
10. Book/adjusted carrying value at end of current period (Lines 1+2+3+4+5-6-7+8-9)	129,495,935	118,958,956
11. Deduct total nonadmitted amounts	903,953	695,102
12. Statement value at end of current period (Line 10 minus Line 11)	128,591,982	118,263,854

STATEMENT AS OF JUNE 30, 2013 OF THE Permanent General Assurance Corporation

SCHEDULE D - PART 1B

Showing the Acquisitions, Dispositions and Non-Trading Activity
During the Current Quarter for all Bonds and Preferred Stock by Rating Class

	1 Book/Adjusted Carrying Value Beginning of Current Quarter	2 Acquisitions During Current Quarter	3 Dispositions During Current Quarter	4 Non-Trading Activity During Current Quarter	5 Book/Adjusted Carrying Value End of First Quarter	6 Book/Adjusted Carrying Value End of Second Quarter	7 Book/Adjusted Carrying Value End of Third Quarter	8 Book/Adjusted Carrying Value December 31 Prior Year
BONDS								
1. Class 1 (a).....	112,250,237	30,562,341	32,899,214	(296,456)	112,250,237	109,616,909	0	111,350,267
2. Class 2 (a).....	24,239,538	2,260,085	1,827,129	255,834	24,239,538	24,928,327	0	25,153,777
3. Class 3 (a).....	3,965,675			(998,534)	3,965,675	2,967,141	0	3,989,909
4. Class 4 (a).....	2,621,167			(67,294)	2,621,167	2,553,872	0	2,629,263
5. Class 5 (a).....	299,160			1,092,033	299,160	1,391,193	0	0
6. Class 6 (a).....	0				0	0	0	0
7. Total Bonds	143,375,776	32,822,426	34,726,343	(14,417)	143,375,776	141,457,442	0	143,123,217
PREFERRED STOCK								
8. Class 1	0				0	0	0	0
9. Class 2	0				0	0	0	0
10. Class 3	0				0	0	0	0
11. Class 4	0				0	0	0	0
12. Class 5	0				0	0	0	0
13. Class 6	0				0	0	0	0
14. Total Preferred Stock.....	0	0	0	0	0	0	0	0
15. Total Bonds & Preferred Stock	143,375,776	32,822,426	34,726,343	(14,417)	143,375,776	141,457,442	0	143,123,217

(a) Book/Adjusted Carrying Value column for the end of the current reporting period includes the following amount of non-rated short-term and cash equivalent bonds by NAIC designation: NAIC 1 \$0 ; NAIC 2 \$0 ;
NAIC 3 \$0 ; NAIC 4 \$0 ; NAIC 5 \$0 ; NAIC 6 \$0

SCHEDULE DA - PART 1
Short-Term Investments

	1	2	3	4	5
	Book/Adjusted Carrying Value	Par Value	Actual Cost	Interest Collected Year To Date	Paid for Accrued Interest Year To Date
9199999	12,865,460	XXX	12,865,460	3	0

SCHEDULE DA - VERIFICATION
Short-Term Investments

	1	2
	Year To Date	Prior Year Ended December 31
1. Book/adjusted carrying value, December 31 of prior year.....	24,859,363	11,740,367
2. Cost of short-term investments acquired	24,377,265	61,106,354
3. Accrual of discount		0
4. Unrealized valuation increase (decrease).....		0
5. Total gain (loss) on disposals		0
6. Deduct consideration received on disposals	36,371,168	47,987,358
7. Deduct amortization of premium.....		0
8. Total foreign exchange change in book/adjusted carrying value.....		0
9. Deduct current year's other than temporary impairment recognized.....		0
10. Book/adjusted carrying value at end of current period (Lines 1+2+3+4+5-6-7+8-9).....	12,865,460	24,859,363
11. Deduct total nonadmitted amounts.....		0
12. Statement value at end of current period (Line 10 minus Line 11)	12,865,460	24,859,363

Schedule DB - Part A - Verification

NONE

Schedule DB - Part B - Verification

NONE

Schedule DB - Part C - Section 1

NONE

Schedule DB - Part C - Section 2

NONE

Schedule DB - Verification

NONE

Schedule E - Verification

NONE

Schedule A - Part 2

NONE

Schedule A - Part 3

NONE

Schedule B - Part 2

NONE

Schedule B - Part 3

NONE

Schedule BA - Part 2

NONE

Schedule BA - Part 3

NONE

STATEMENT AS OF JUNE 30, 2013 OF THE Permanent General Assurance Corporation

SCHEDULE D - PART 3

Show All Long-Term Bonds and Stock Acquired During the Current Quarter

1	2	3	4	5	6	7	8	9	10
CUSIP Identification	Description	Foreign	Date Acquired	Name of Vendor	Number of Shares of Stock	Actual Cost	Par Value	Paid for Accrued Interest and Dividends	NAIC Designation or Market Indicator ^(a)
Bonds - U.S. States, Territories and Possessions									
60242M-CZ-4	MILWAUKEE WIS SEW REV 5 06/01/2023 5.0		06/12/2013	WILLIAM BLAIR & CO		1,778,610	1,500,000		1FE
783186-QK-8	RUTGERS ST UNIV NJ 5 05/01/2023 5.000%		06/14/2013	MORGAN STANLEY		587,380	500,000		1FE
1799999 - Bonds - U.S. States, Territories and Possessions						2,365,990	2,000,000	0	XXX
Bonds - U.S. Special Revenue									
02R032-66-1	FGLMC 5 30YR 3.5% 3.500% 06/01/42		05/10/2013	CREDIT SUISSE		2,107,109	2,000,000	2,333	1Z
02R032-66-1	FGLMC 5 30YR 3.5% 3.500% 06/01/42		05/22/2013	BANK OF AMERICA		(2,092,500)	(2,000,000)	(2,333)	1Z
3132J9-HP-6	FG POOL #017937 3.500% 05/01/43		05/22/2013	BANK OF AMERICA		2,091,488	1,995,456	2,328	1
3138WS-QE-1	FN POOL #AT4952 3.500% 05/01/43		05/23/2013	BARCLAYS		4,177,909	3,993,521	4,659	1
34074G-DH-4	FLORIDA ST HURRICANE CATASTROP 2.995 07/		04/10/2013	BARCLAYS		500,000	500,000		1FE
45506D-BG-9	INDIANA ST FIN AUTH REVENUE CALLABLE 07/		06/14/2013	NW Capital		1,171,020	1,000,000	23,333	1FE
3199999 - Bonds - U.S. Special Revenue and Special Assessment and all Non-Guaranteed Obligations of Agencies and Authorities of Government and Their Political Subdivisions						7,955,026	7,488,977	30,320	XXX
Bonds - Industrial and Miscellaneous (Unaffiliated)									
071813-BJ-7	BAXTER INTERNATIONAL INC 1.85 06/15/2018		06/04/2013	CITIGROUP GLOBAL MARKETS		499,950	500,000		1FE
09256B-AA-5	BLACKSTONE HOLDINGS FINA 6.625 08/15/201		05/01/2013	STERNE AGEE & LEACH INC.		1,230,370	1,000,000	14,906	1FE
12646X-AJ-1	CSMC 2013-1VR3 A2 3.000% 05/25/43		05/08/2013	CREDIT SUISSE		1,010,931	998,065	2,495	1FE
12646X-AJ-1	CSMC 2013-1VR3 A2 3.000% 05/25/43		05/08/2013	CREDIT SUISSE		1,960	1,935	5	1Z
166764-AE-0	CHEVRONTEXACO CORP CALLABLE 05/24/2018 @		06/17/2013	BARCLAYS		500,000	500,000		1FE
172967-GS-4	CITIGROUP INC 1.75 05/01/2018 1.750% 0		04/24/2013	CITIGROUP GLOBAL MARKETS		999,290	1,000,000		1FE
17313K-AF-8	CGCMT 2008-C7 A4 6.135% 12/10/49		06/26/2013	WELLS FARGO ADVISORS		2,281,563	2,000,000		1FM
25459H-AT-2	DIRECTV HOLDINGS LLC 5.2 03/15/2020 5		05/22/2013	BANK OF AMERICA		575,020	500,000	5,272	2FE
61747Y-CJ-2	MORGAN STANLEY 5.625 09/23/2019 5.625%		06/24/2013	MORGAN STANLEY		536,165	500,000	7,344	1FE
61756U-AE-1	MSC 2007-1Q16 A4 5.809% 12/12/49		06/26/2013	CITIGROUP GLOBAL MARKETS		2,261,484	2,000,000		1FM
714046-AE-9	PERKINELMER INC CALLABLE 08/15/2021 @ 10		04/02/2013	CANTOR FITZGERALD		547,735	500,000	9,722	2FE
920253-AD-3	VALMONT INDUSTRIES 6.625 04/20/2020 6		06/25/2013	CANTOR FITZGERALD		1,137,330	1,000,000	12,514	2FE
3899999 - Bonds - Industrial and Miscellaneous (Unaffiliated)						11,581,798	10,500,000	52,258	XXX
8399997 - Subtotals- Bonds - Part 3						21,902,813	19,988,977	82,579	XXX
8399999 - Subtotals - Bonds						21,902,813	19,988,977	82,579	XXX
9999999 Totals						21,902,813	XXX	82,579	XXX

(a) For all common stock bearing the NAIC market indicator "U" provide: the number of such issues

STATEMENT AS OF JUNE 30, 2013 OF THE Permanent General Assurance Corporation

SCHEDULE D - PART 4

Show All Long-Term Bonds and Stock Sold, Redeemed or Otherwise Disposed of During the Current Quarter

1	2	3	4	5	6	7	8	9	10	Change in Book/Adjusted Carrying Value					16	17	18	19	20	21	22
										11	12	13	14	15							
CUSIP Identification	Description	Foreign	Disposal Date	Name of Purchaser	Number of Shares of Stock	Consideration	Par Value	Actual Cost	Prior Year Book/Adjusted Carrying Value	Unrealized Valuation Increase/ (Decrease)	Current Year's (Amortization)/ Accretion	Current Year's Other Than Temporary Impairment Recognized	Total Change in B./A.C.V. (11+12-13)	Total Foreign Exchange Change in B./A.C.V.	Book/ Adjusted Carrying Value at Disposal Date	Foreign Exchange Gain (Loss) on Disposal	Realized Gain (Loss) on Disposal	Total Gain (Loss) on Disposal	Bond Interest/Stock Dividends Received During Year	Stated Contractual Maturity Date	NAIC Designation or Market Indicator (a)
Bonds - U.S. Governments																					
36241K-XF-01	GNMA POOL#782478 5.000% 11/15/38		06/01/2013	Paydown		77,538	77,538	78,168	78,338		(800)		(800)		77,538			0	1,634	11/15/2038	1
36290V-RT-3	GNMA POOL #618898 5.500% 09/15/33		06/01/2013	Paydown		86	86	88	89		(2)		(2)		86			0	2	09/15/2033	1FE
36291C-AF-2	GNMA POOL #623806 5.500% 11/15/33		06/01/2013	Paydown		1,627	1,627	1,646	1,650		(22)		(22)		1,627			0	37	11/15/2033	1FE
0599999 - Bonds - U.S. Governments						79,252	79,252	79,902	80,077	0	(825)	0	(825)	0	79,252	0	0	0	1,673	XXX	XXX
Bonds - U.S. States, Territories and Possessions																					
574218-KL-6	MARYLAND ST HLTH & HGR EDUCNTL CALLABLE		05/15/2013	Redemption	100.0000		100,000	100,000	100,000				0		100,000			0	401	05/15/2038	1FE
645918-YG-2	NEW JERSEY ECONOMIC DEV AUTH 1.48 06/15/11		06/15/2013	Maturity		1,350,000	1,350,000	1,350,000	1,350,000				0		1,350,000			0	8,834	06/15/2013	1FE
1799999 - Bonds - U.S. States, Territories and Possessions						1,450,000	1,450,000	1,450,000	1,450,000	0	0	0	0	0	1,450,000	0	0	0	9,235	XXX	XXX
Bonds - U.S. Political Subdivisions of States, Territories and Possessions																					
054375-MP-2	AVONDALE MICH SCH DIST CALLABLE 5/1/13 @ 100%		05/01/2013	Call	100.0000		450,000	450,000	504,711	455,970	(5,970)		(5,970)		450,000			0	11,813	05/01/2016	1FE
613664-H5-3	MONTGOMERY CNTY TENN CALLABLE 5/1/13 @100%		05/01/2013	Call	100.0000		150,000	150,000	162,353	150,513	(513)		(513)		150,000			0	3,563	05/01/2014	1FE
613664-K5-9	MONTGOMERY CNTY TENN CALLABLE 5/1/13 @100%		05/01/2013	Call	100.0000		625,000	625,000	680,856	627,234	(2,234)		(2,234)		625,000			0	15,625	05/01/2019	1FE
746673-TG-7	PUTNAM CNTY TENN 5.250% 04/01/13		04/01/2013	Maturity		100,000	100,000	108,497	100,227	(227)			(227)		100,000			0	2,625	04/01/2013	1FE
2499999 - Bonds - U.S. Political Subdivisions of States, Territories and Possessions						1,325,000	1,325,000	1,456,417	1,333,944	0	(8,944)	0	(8,944)	0	1,325,000	0	0	0	33,625	XXX	XXX
Bonds - U.S. Special Revenue and Special Assessment and all Non-Guaranteed Obligations of Agencies and Authorities of Governments and Their Political Subdivisions																					
02R032-66-1	FGLMC 5 30YR 3.5% 3.500% 06/01/42		06/10/2013	CREDIT SUISSE		2,059,375	2,000,000	2,107,109					0		2,107,109		(47,734)	(47,734)	2,333	06/01/2042	1Z
02R032-66-1	FGLMC 5 30YR 3.5% 3.500% 06/01/42		06/10/2013	BANK OF AMERICA		(2,059,375)	(2,000,000)	(2,092,500)					0		(2,092,500)		33,125	33,125	(2,333)	06/01/2042	1Z
3128MJ-RM-4	FHLMC GOLD POOL #608491 3.500% 05/01/4		06/01/2013	Paydown		134,759	134,759	142,487	142,401		(7,642)		(7,642)		134,759			0	2,031	05/01/2042	1
3128NH-W8-2	FHARM ARM POOL #1J1571 2.817% 04/01/37		06/01/2013	Paydown		18	18	18	17		2		2		18			0		04/01/2037	1
3128X1-KG-1	FHLMC 4 06/12/2013 4.000% 06/12/13		06/12/2013	Maturity		1,000,000	1,000,000	1,027,500	1,002,495		(2,495)		(2,495)		1,000,000			0	20,000	06/12/2013	1FE
312931-E7-9	FHLMC GOLD POOL# A84658 4.500% 02/01/3		06/01/2013	Paydown		93,683	93,683	93,946	93,941		(258)		(258)		93,683			0	1,673	02/01/2039	1FE
312933-ML-5	FGLMC POOL# A86663 4.500% 06/01/39		06/01/2013	Paydown		113,340	113,340	113,305	113,272		68		68		113,340			0	2,118	06/01/2039	1
312962-VE-0	FHLMC POOL #B10613 4.500% 10/01/18		06/01/2013	Paydown		1,405	1,405	1,399	1,403		1		1		1,405			0	26	10/01/2018	1FE
31377U-JH-7	FNMA DUS POOL #387364 (TN) 5.005% 05/01/12		06/01/2013	Paydown		4,753	4,753	4,757	4,741		12		12		4,753			0	100	05/01/2015	1FE
31387H-R9-3	FNMA POOL #680142 6.500% 05/01/31		06/01/2013	Paydown		228	228	239	244		(16)		(16)		228			0	6	05/01/2031	1FE
31391X-S7-5	FNMA POOL #680142 5.000% 01/01/18		06/01/2013	Paydown		1,012	1,012	1,027	1,018		(6)		(6)		1,012			0	21	01/01/2018	1FE
31392E-40-0	FNR 2002-72 B 6.500% 11/25/17		06/01/2013	Paydown		3,300	3,300	3,498	3,404		(105)		(105)		3,300			0	88	11/25/2017	1FE
31395F-NK-6	FHR 2853 EY 4.500% 09/15/24		06/01/2013	Paydown		46,298	46,298	43,105	44,657		1,641		1,641		46,298			0	849	09/15/2024	1FE
31396J-NB-7	FHR 3131 MC 5.500% 04/15/33		06/01/2013	Paydown		223,162	223,162	222,219	222,607		555		555		223,162			0	5,172	04/15/2033	1
31397H-SD-1	FHR 3338 BK 5.000% 10/15/34		05/01/2013	Paydown		32,064	32,064	29,880	31,779		286		286		32,064			0	538	10/15/2034	1
31401P-A6-1	FNMA POOL #713829 4.500% 10/01/18		06/01/2013	Paydown		1,786	1,786	1,800	1,795		(9)		(9)		1,786			0	34	10/01/2018	1FE
31403Y-BN-2	FNMA POOL #761545 (TENN) 5.000% 11/01/19		06/01/2013	Paydown		9,583	9,583	9,772	9,685		(102)		(102)		9,583			0	200	11/01/2019	1FE
31405A-3E-1	FNMA POOL #783897 100% TN 5.000% 12/01/20		06/01/2013	Paydown		2,589	2,589	2,579	2,580		9		9		2,589			0	54	12/01/2034	1FE
31405C-XD-6	FNMA POOL #785576 (TENN) 5.000% 11/01/19		06/01/2013	Paydown		12,826	12,826	13,071	12,938		(112)		(112)		12,826			0	267	11/01/2019	1FE
31405C-XG-9	FNMA POOL #785579 100% TN 5.000% 12/01/19		06/01/2013	Paydown		86,544	86,544	88,363	87,531		(986)		(986)		86,544			0	1,800	12/01/2019	1FE

SCHEDULE D - PART 4

E05.1

(a) For all common stock bearing the NAIC market indicator "U" provide: the number of such issues

Schedule DB - Part A - Section 1

NONE

Schedule DB - Part B - Section 1

NONE

Schedule DB - Part D - Section 1

NONE

Schedule DB - Part D - Section 2

NONE

Schedule DL - Part 1

NONE

Schedule DL - Part 2

NONE

SCHEDULE E - PART 2 - CASH EQUIVALENTS

Show Investments Owned End of Current Quarter							
1 Description	2 Code	3 Date Acquired	4 Rate of Interest	5 Maturity Date	6 Book/Adjusted Carrying Value	7 Amount of Interest Due & Accrued	8 Amount Received During Year
NONE							
8699999 Total Cash Equivalents					0	0	0