



QUARTERLY STATEMENT

As of June 30, 2013  
of the Condition and Affairs of the

PROGRESSIVE PREMIER INSURANCE COMPANY OF ILLINOIS

NAIC Group Code.....155, 155  
(Current Period) (Prior Period)  
Organized under the Laws of OH  
Incorporated/Organized..... September 13, 1992  
Statutory Home Office  
Main Administrative Office  
Mail Address  
Primary Location of Books and Records  
Internet Web Site Address  
Statutory Statement Contact

NAIC Company Code..... 21735  
State of Domicile or Port of Entry OH  
Commenced Business..... November 16, 1992  
6300 WILSON MILLS ROAD, W33..... CLEVELAND ..... OH ..... US ..... 44143-2182  
(Street and Number) (City or Town, State, Country and Zip Code)  
6300 WILSON MILLS ROAD, W33..... CLEVELAND ..... OH ..... US ..... 44143-2182 440-461-5000  
(Street and Number) (City or Town, State, Country and Zip Code) (Area Code) (Telephone Number)  
P.O. BOX 89490..... CLEVELAND ..... OH ..... US ..... 44101-6490  
(Street and Number or P. O. Box) (City or Town, State, Country and Zip Code)  
6300 WILSON MILLS ROAD, W33..... CLEVELAND ..... OH ..... US ..... 44143-2182 440-395-4460  
(Street and Number) (City or Town, State, Country and Zip Code) (Area Code) (Telephone Number)  
PROGRESSIVE.COM  
MARY BETH ANDREANO  
(Name)  
FINANCIAL\_REPORTING@PROGRESSIVE.COM  
(E-Mail Address)  
440-395-4460  
(Area Code) (Telephone Number) (Extension)  
440-446-7168  
(Fax Number)

POLICYHOLDER SERVICES AND CLAIMS REPORTING -- 1-800-PROGRESSIVE (1-800-776-4737)

OFFICERS

<b>Name</b>	<b>Title</b>	<b>Name</b>	<b>Title</b>
TOBY KRAMER ALFRED	PRESIDENT	MICHAEL ROBERT UTH	SECRETARY
DANIEL JOSEPH WITALEC	TREASURER		

OTHER

SCOTT EDWARD COLEMAN	(ASST. TREASURER)	CAROLINE MAE KORAN	(VICE PRESIDENT)
KAREN ANN KOSUDA	(ASST. SECRETARY)	MARIANN WOJTKUN MARSHALL	(VICE PRESIDENT)

DIRECTORS OR TRUSTEES

TOBY KRAMER ALFRED	STEVEN ANTHONY BROZ	JAMES RUSSELL HAAS	CAROLINE MAE KORAN
SCOTT WESLEY ZIEGLER			

State of..... OHIO  
County of..... CUYAHOGA

The officers of this reporting entity being duly sworn, each depose and say that they are the described officers of said reporting entity, and that on the reporting period stated above, all of the herein described assets were the absolute property of the said reporting entity, free and clear from any liens or claims thereon, except as herein stated, and that this statement, together with related exhibits, schedules and explanations therein contained, annexed or referred to, is a full and true statement of all the assets and liabilities and of the condition and affairs of the said reporting entity as of the reporting period stated above, and of its income and deductions therefrom for the period ended, and have been completed in accordance with the NAIC *Annual Statement Instructions and Accounting Practices and Procedures* manual except to the extent that: (1) state law may differ; or, (2) that state rules or regulations require differences in reporting not related to accounting practices and procedures, according to the best of their information, knowledge and belief, respectively. Furthermore, the scope of this attestation by the described officers also includes the related corresponding electronic filing with the NAIC, when required, that is an exact copy (except for formatting differences due to electronic filing) of the enclosed statement. The electronic filing may be requested by various regulators in lieu of or in addition to the enclosed statement.

(Signature)	(Signature)	(Signature)
TOBY KRAMER ALFRED	MICHAEL ROBERT UTH	SCOTT EDWARD COLEMAN
1. (Printed Name)	2. (Printed Name)	3. (Printed Name)
PRESIDENT	SECRETARY	ASSISTANT TREASURER
(Title)	(Title)	(Title)

Subscribed and sworn to before me	a. Is this an original filing?	Yes [ X ] No [ ]
This 6TH day of AUGUST, 2013	b. If no:	
	1. State the amendment number	
	2. Date filed	
	3. Number of pages attached	

PROGRESSIVE PREMIER INSURANCE COMPANY OF ILLINOIS  
ASSETS

	Current Statement Date			4
	1	2	3	
	Assets	Nonadmitted Assets	Net Admitted Assets (Cols. 1 - 2)	December 31 Prior Year Net Admitted Assets
1. Bonds.....	101,657,416		101,657,416	107,286,361
2. Stocks:				
2.1 Preferred stocks.....			0	
2.2 Common stocks.....			0	
3. Mortgage loans on real estate:				
3.1 First liens.....			0	
3.2 Other than first liens.....			0	
4. Real estate:				
4.1 Properties occupied by the company (less \$.....0 encumbrances).....			0	
4.2 Properties held for the production of income (less \$.....0 encumbrances).....			0	
4.3 Properties held for sale (less \$.....0 encumbrances).....			0	
5. Cash (\$.....0), cash equivalents (\$.....0) and short-term investments (\$.....0).....			0	
6. Contract loans (including \$.....0 premium notes).....			0	
7. Derivatives.....			0	
8. Other invested assets.....			0	
9. Receivables for securities.....			0	
10. Securities lending reinvested collateral assets.....			0	
11. Aggregate write-ins for invested assets.....	0	0	0	0
12. Subtotals, cash and invested assets (Lines 1 to 11).....	101,657,416	0	101,657,416	107,286,361
13. Title plants less \$.....0 charged off (for Title insurers only).....			0	
14. Investment income due and accrued.....	1,336,846		1,336,846	1,403,493
15. Premiums and considerations:				
15.1 Uncollected premiums and agents' balances in the course of collection.....	10,745,314	2,615,261	8,130,053	7,223,243
15.2 Deferred premiums, agents' balances and installments booked but deferred and not yet due (including \$.....0 earned but unbilled premiums).....	47,175,161		47,175,161	43,129,202
15.3 Accrued retrospective premiums.....			0	
16. Reinsurance:				
16.1 Amounts recoverable from reinsurers.....	4,467,983		4,467,983	3,029,450
16.2 Funds held by or deposited with reinsured companies.....			0	
16.3 Other amounts receivable under reinsurance contracts.....			0	
17. Amounts receivable relating to uninsured plans.....			0	
18.1 Current federal and foreign income tax recoverable and interest thereon.....			0	
18.2 Net deferred tax asset.....	4,312,081		4,312,081	4,179,679
19. Guaranty funds receivable or on deposit.....			0	
20. Electronic data processing equipment and software.....			0	
21. Furniture and equipment, including health care delivery assets (\$.....0).....			0	
22. Net adjustment in assets and liabilities due to foreign exchange rates.....			0	
23. Receivables from parent, subsidiaries and affiliates.....			0	
24. Health care (\$.....0) and other amounts receivable.....			0	
25. Aggregate write-ins for other than invested assets.....	270,082	52,669	217,413	785,734
26. Total assets excluding Separate Accounts, Segregated Accounts and Protected Cell Accounts (Lines 12 through 25).....	169,964,883	2,667,930	167,296,953	167,037,162
27. From Separate Accounts, Segregated Accounts and Protected Cell Accounts.....			0	
28. Total (Lines 26 and 27).....	169,964,883	2,667,930	167,296,953	167,037,162

DETAILS OF WRITE-INS

1101. ....			0	
1102. ....			0	
1103. ....			0	
1198. Summary of remaining write-ins for Line 11 from overflow page.....	0	0	0	0
1199. Totals (Lines 1101 thru 1103 plus 1198) (Line 11 above).....	0	0	0	0
2501. STATE UNEARNED SURCHARGE RECOVERABLE.....	217,413		217,413	291,814
2502. PREPAID EXPENSES.....	40,259	40,259	0	
2503. MISCELLANEOUS OTHER ASSETS.....	12,410	12,410	0	
2598. Summary of remaining write-ins for Line 25 from overflow page.....	0	0	0	493,920
2599. Totals (Lines 2501 thru 2503 plus 2598) (Line 25 above).....	270,082	52,669	217,413	785,734

PROGRESSIVE PREMIER INSURANCE COMPANY OF ILLINOIS  
LIABILITIES, SURPLUS AND OTHER FUNDS

	1 Current Statement Date	2 December 31 Prior Year
1. Losses (current accident year \$.....14,039,262).....	36,693,280	36,052,287
2. Reinsurance payable on paid losses and loss adjustment expenses.....	982,766	604,696
3. Loss adjustment expenses.....	7,589,428	7,512,914
4. Commissions payable, contingent commissions and other similar charges.....	2,151	1,018
5. Other expenses (excluding taxes, licenses and fees).....	464,256	325,930
6. Taxes, licenses and fees (excluding federal and foreign income taxes).....	886,986	903,159
7.1 Current federal and foreign income taxes (including \$.....(19,954) on realized capital gains (losses)).....	1,540,335	392,423
7.2 Net deferred tax liability.....		
8. Borrowed money \$.....0 and interest thereon \$.....0.....		
9. Unearned premiums (after deducting unearned premiums for ceded reinsurance of \$.....77,992,877 and including warranty reserves of \$.....0 and accrued accident and health experience rating refunds including \$.....0 for medical loss ratio rebate per the Public Health Service Act.....	30,862,032	28,545,039
10. Advance premium.....	1,395,232	1,119,440
11. Dividends declared and unpaid:		
11.1 Stockholders.....		2,000,000
11.2 Policyholders.....		
12. Ceded reinsurance premiums payable (net of ceding commissions).....	3,213,213	3,212,835
13. Funds held by company under reinsurance treaties.....		
14. Amounts withheld or retained by company for account of others.....		
15. Remittances and items not allocated.....		
16. Provision for reinsurance (including \$.....0 certified).....		
17. Net adjustments in assets and liabilities due to foreign exchange rates.....		
18. Drafts outstanding.....	11,388,955	10,057,299
19. Payable to parent, subsidiaries and affiliates.....	21,589,002	14,488,230
20. Derivatives.....		
21. Payable for securities.....		
22. Payable for securities lending.....		
23. Liability for amounts held under uninsured plans.....		
24. Capital notes \$.....0 and interest thereon \$.....0.....		
25. Aggregate write-ins for liabilities.....	5,082,671	19,569,264
26. Total liabilities excluding protected cell liabilities (Lines 1 through 25).....	121,690,307	124,784,534
27. Protected cell liabilities.....		
28. Total liabilities (Lines 26 and 27).....	121,690,307	124,784,534
29. Aggregate write-ins for special surplus funds.....	0	0
30. Common capital stock.....	2,500,400	2,500,400
31. Preferred capital stock.....		
32. Aggregate write-ins for other than special surplus funds.....	0	0
33. Surplus notes.....		
34. Gross paid in and contributed surplus.....	12,249,600	12,249,600
35. Unassigned funds (surplus).....	30,856,646	27,502,628
36. Less treasury stock, at cost:		
36.1 .....0.000 shares common (value included in Line 30 \$.....0).....		
36.2 .....0.000 shares preferred (value included in Line 31 \$.....0).....		
37. Surplus as regards policyholders (Lines 29 to 35, less 36).....	45,606,646	42,252,628
38. Totals (Page 2, Line 28, Col. 3).....	167,296,953	167,037,162

DETAILS OF WRITE-INS		
2501. RECEIVABLE FACTORING LIABILITY.....	4,300,000	18,900,000
2502. MISCELLANEOUS OTHER LIABILITIES.....	557,780	466,632
2503. STATE PLAN LIABILITY.....	197,638	200,579
2598. Summary of remaining write-ins for Line 25 from overflow page.....	27,253	2,053
2599. Totals (Lines 2501 thru 2503 plus 2598) (Line 25 above).....	5,082,671	19,569,264
2901. ....		
2902. ....		
2903. ....		
2998. Summary of remaining write-ins for Line 29 from overflow page.....	0	0
2999. Totals (Lines 2901 thru 2903 plus 2998) (Line 29 above).....	0	0
3201. ....		
3202. ....		
3203. ....		
3298. Summary of remaining write-ins for Line 32 from overflow page.....	0	0
3299. Totals (Lines 3201 thru 3203 plus 3298) (Line 32 above).....	0	0

PROGRESSIVE PREMIER INSURANCE COMPANY OF ILLINOIS  
STATEMENT OF INCOME

	1 Current Year to Date	2 Prior Year to Date	3 Prior Year Ended December 31
UNDERWRITING INCOME			
1. Premiums earned:			
1.1 Direct..... (written \$.....151,557,399).....	144,475,212	126,551,675	260,176,917
1.2 Assumed..... (written \$.....58,012,359).....	55,695,366	53,248,494	108,154,736
1.3 Ceded..... (written \$.....151,557,399).....	144,475,212	126,551,675	260,176,917
1.4 Net..... (written \$.....58,012,359).....	55,695,366	53,248,494	108,154,736
DEDUCTIONS:			
2. Losses incurred (current accident year \$.....33,841,330):			
2.1 Direct.....	95,410,730	79,601,716	166,702,015
2.2 Assumed.....	33,867,203	33,201,919	68,544,661
2.3 Ceded.....	95,410,730	79,601,716	166,702,015
2.4 Net.....	33,867,203	33,201,919	68,544,661
3. Loss adjustment expenses incurred.....	5,953,543	5,977,307	11,729,292
4. Other underwriting expenses incurred.....	11,827,839	12,535,209	23,273,260
5. Aggregate write-ins for underwriting deductions.....	0	0	0
6. Total underwriting deductions (Lines 2 through 5).....	51,648,585	51,714,435	103,547,213
7. Net income of protected cells.....			
8. Net underwriting gain (loss) (Line 1 minus Line 6 + Line 7).....	4,046,781	1,534,059	4,607,523
INVESTMENT INCOME			
9. Net investment income earned.....	859,155	777,439	1,590,230
10. Net realized capital gains (losses) less capital gains tax of \$.....(19,954).....	22,300	1,372,434	1,355,539
11. Net investment gain (loss) (Lines 9 + 10).....	881,455	2,149,873	2,945,769
OTHER INCOME			
12. Net gain or (loss) from agents' or premium balances charged off (amount recovered \$.....93,159 amount charged off \$.....2,988,905).....	(2,895,746)	(2,291,783)	(4,511,850)
13. Finance and service charges not included in premiums.....	2,556,069	2,154,495	4,729,684
14. Aggregate write-ins for miscellaneous income.....	12,703	21,718	23,877
15. Total other income (Lines 12 through 14).....	(326,974)	(115,570)	241,711
16. Net income before dividends to policyholders, after capital gains tax and before all other federal and foreign income taxes (Lines 8 + 11 + 15).....	4,601,262	3,568,362	7,795,003
17. Dividends to policyholders.....			
18. Net income after dividends to policyholders, after capital gains tax and before all other federal and foreign income taxes (Line 16 minus Line 17).....	4,601,262	3,568,362	7,795,003
19. Federal and foreign income taxes incurred.....	1,560,289	820,916	1,964,543
20. Net income (Line 18 minus Line 19) (to Line 22).....	3,040,973	2,747,446	5,830,460
CAPITAL AND SURPLUS ACCOUNT			
21. Surplus as regards policyholders, December 31 prior year.....	42,252,628	38,355,115	38,355,115
22. Net income (from Line 20).....	3,040,973	2,747,446	5,830,460
23. Net transfers (to) from Protected Cell accounts.....			
24. Change in net unrealized capital gains or (losses) less capital gains tax of \$.....0.....			
25. Change in net unrealized foreign exchange capital gain (loss).....			
26. Change in net deferred income tax.....	132,402	189,083	415,473
27. Change in nonadmitted assets.....	180,643	265,839	(627,597)
28. Change in provision for reinsurance.....			
29. Change in surplus notes.....			
30. Surplus (contributed to) withdrawn from protected cells.....			
31. Cumulative effect of changes in accounting principles.....		279,177	279,177
32. Capital changes:			
32.1 Paid in.....			
32.2 Transferred from surplus (Stock Dividend).....			
32.3 Transferred to surplus.....			
33. Surplus adjustments:			
33.1 Paid in.....			
33.2 Transferred to capital (Stock Dividend).....			
33.3 Transferred from capital.....			
34. Net remittances from or (to) Home Office.....			
35. Dividends to stockholders.....			(2,000,000)
36. Change in treasury stock.....			
37. Aggregate write-ins for gains and losses in surplus.....	0	0	0
38. Change in surplus as regards policyholders (Lines 22 through 37).....	3,354,018	3,481,545	3,897,513
39. Surplus as regards policyholders, as of statement date (Lines 21 plus 38).....	45,606,646	41,836,660	42,252,628
DETAILS OF WRITE-INS			
0501. ....			
0502. ....			
0503. ....			
0598. Summary of remaining write-ins for Line 5 from overflow page.....	0	0	0
0599. Totals (Lines 0501 thru 0503 plus 0598) (Line 5 above).....	0	0	0
1401. MISCELLANEOUS OTHER INCOME.....	13,215	15,774	14,310
1402. INTEREST INCOME ON INTERCOMPANY BALANCES.....	5,671	6,549	15,187
1403. LOSS ON RECEIVABLE FACTORING.....	(6,183)	(605)	(5,620)
1498. Summary of remaining write-ins for Line 14 from overflow page.....	0	0	0
1499. Totals (Lines 1401 thru 1403 plus 1498) (Line 14 above).....	12,703	21,718	23,877
3701. ....			
3702. ....			
3703. ....			
3798. Summary of remaining write-ins for Line 37 from overflow page.....	0	0	0
3799. Totals (Lines 3701 thru 3703 plus 3798) (Line 37 above).....	0	0	0

PROGRESSIVE PREMIER INSURANCE COMPANY OF ILLINOIS  
CASH FLOW

	1 Current Year to Date	2 Prior Year To Date	3 Prior Year Ended December 31
CASH FROM OPERATIONS			
1. Premiums collected net of reinsurance.....	53,446,968	52,540,692	103,362,024
2. Net investment income.....	2,155,033	2,452,472	3,672,457
3. Miscellaneous income.....	(235,329)	38,084	661,653
4. Total (Lines 1 through 3).....	55,366,672	55,031,248	107,696,134
5. Benefit and loss related payments.....	34,286,673	31,578,799	65,883,693
6. Net transfers to Separate Accounts, Segregated Accounts and Protected Cell Accounts.....			
7. Commissions, expenses paid and aggregate write-ins for deductions.....	17,581,582	18,066,009	34,543,052
8. Dividends paid to policyholders.....			
9. Federal and foreign income taxes paid (recovered) net of \$.....87 tax on capital gains (losses).....	392,423	526,679	2,854,334
10. Total (Lines 5 through 9).....	52,260,678	50,171,487	103,281,079
11. Net cash from operations (Line 4 minus Line 10).....	3,105,994	4,859,761	4,415,055
CASH FROM INVESTMENTS			
12. Proceeds from investments sold, matured or repaid:			
12.1 Bonds.....	4,402,059	44,271,260	46,881,260
12.2 Stocks.....			
12.3 Mortgage loans.....			
12.4 Real estate.....			
12.5 Other invested assets.....			
12.6 Net gains or (losses) on cash, cash equivalents and short-term investments.....			
12.7 Miscellaneous proceeds.....			
12.8 Total investment proceeds (Lines 12.1 to 12.7).....	4,402,059	44,271,260	46,881,260
13. Cost of investments acquired (long-term only):			
13.1 Bonds.....		993,359	46,569,582
13.2 Stocks.....			
13.3 Mortgage loans.....			
13.4 Real estate.....			
13.5 Other invested assets.....			
13.6 Miscellaneous applications.....			
13.7 Total investments acquired (Lines 13.1 to 13.6).....	0	993,359	46,569,582
14. Net increase (decrease) in contract loans and premium notes.....			
15. Net cash from investments (Line 12.8 minus Line 13.7 and Line 14).....	4,402,059	43,277,901	311,678
CASH FROM FINANCING AND MISCELLANEOUS SOURCES			
16. Cash provided (applied):			
16.1 Surplus notes, capital notes.....			
16.2 Capital and paid in surplus, less treasury stock.....			
16.3 Borrowed funds.....			
16.4 Net deposits on deposit-type contracts and other insurance liabilities.....			
16.5 Dividends to stockholders.....	2,000,000	3,500,000	3,500,000
16.6 Other cash provided (applied).....	(5,508,053)	(44,637,662)	(1,226,733)
17. Net cash from financing and miscellaneous sources (Lines 16.1 through 16.4 minus Line 16.5 plus Line 16.6).....	(7,508,053)	(48,137,662)	(4,726,733)
RECONCILIATION OF CASH, CASH EQUIVALENTS AND SHORT-TERM INVESTMENTS			
18. Net change in cash, cash equivalents and short-term investments (Line 11 plus Line 15 plus Line 17).....	0	(0)	0
19. Cash, cash equivalents and short-term investments:			
19.1 Beginning of year.....	(0)	0	(0)
19.2 End of period (Line 18 plus Line 19.1).....	(0)	0	(0)

Note: Supplemental disclosures of cash flow information for non-cash transactions:

20.0001			
---------	--	--	--

PROGRESSIVE PREMIER INSURANCE COMPANY OF ILLINOIS

NOTES TO FINANCIAL STATEMENTS

1. Summary of Significant Accounting Policies

A. Accounting Practices

The accompanying statutory-basis financial statements of Progressive Premier Insurance Company of Illinois (the “Company”) were prepared on the basis of accounting practices prescribed or permitted by the Ohio Department of Insurance (“DOI”).

The Ohio DOI requires insurance companies domiciled in the state of Ohio to prepare their statutory-basis financial statements in accordance with the National Association of Insurance Commissioners’ (“NAIC”) *Accounting Practices and Procedures Manual* subject to any deviations prescribed or permitted by the Ohio DOI. No deviations from NAIC statutory accounting practices (“NAIC SAP”) were used in preparing these statutory-basis financial statements as illustrated in the table below:

Description	State of Domicile	June 30, 2013	December 31, 2012
Net income			
(1) Net income, state basis	OH	\$ 3,040,973	\$ 5,830,460
(2) Effect of state prescribed practices		--	--
(3) Effect of state permitted practices		--	--
(4) Net income, NAIC SAP basis (1-2-3=4)	OH	\$ 3,040,973	\$ 5,830,460
Surplus			
(5) Policyholders' surplus, state basis	OH	\$ 45,606,646	\$ 42,252,628
(6) Effect of state prescribed practices		--	--
(7) Effect of state permitted practices		--	--
(8) Policyholders' surplus, NAIC SAP basis(5-6-7=8)	OH	\$ 45,606,646	\$ 42,252,628

2. Accounting Changes and Corrections of Errors

No significant change

3. Business Combinations and Goodwill

No significant change

4. Discontinued Operations

No significant change

5. Investments

D. Loan-Backed Securities

The Company does not own any loan-backed or structured debt securities.

6. Joint Ventures, Partnerships and Limited Liability Companies

No significant change

7. Investment Income

No significant change

8. Derivative Instruments

No significant change

9. Income Taxes

No significant change

10. Information Concerning Parent, Subsidiaries, Affiliates and Other Related Parties

See Note 17B

11. Debt

No significant change

12. Retirement Plans, Deferred Compensation, Postemployment Benefits and Compensated Absences and Other Postretirement Benefit Plans

No significant change

13. Capital and Surplus, Dividend Restrictions and Quasi-Reorganizations

No significant change

14. Contingencies

F. All Other Contingencies

All legal actions relating to claims made under insurance policies are considered by the Company in establishing its loss and LAE reserves. The Company also has, on a net basis, potential exposure relating to lawsuits due to its participation in the 100% pooling reinsurance agreement for which it is allocated litigation expenses.

15. Leases

No significant change

16. Information about Financial Instruments with Off-Balance Sheet Risk and with Concentrations of Credit Risk

No significant change

PROGRESSIVE PREMIER INSURANCE COMPANY OF ILLINOIS

NOTES TO FINANCIAL STATEMENTS

17. Sale, Transfer, and Servicing of Financial Assets and Extinguishments of Liabilities

B. Transfers and Servicing of Financial Assets

The Company transferred \$4,300,000 of premiums receivable to Progressive Investment Company, Inc. ("PICI"), a non-insurance affiliate, for \$4,299,932 in cash and/or securities in June, 2013. The related premiums receivable remain in the Company's assets, and a corresponding liability was established. As the related cash is collected, it is transferred to PICI, and the liability is reduced. These premiums receivable transactions were approved by the Ohio Department of Insurance.

C. Wash Sales

The Company had no wash sales of securities with a NAIC rating of 3 or below during the reporting period.

18. Gain or Loss from Uninsured Plans and the Uninsured Portion of Partially Insured Plans

No significant change

19. Direct Premiums Written / Produced by Managing General Agents / Third Party Administrators

No significant change

20. Fair Value Measurements

A. Inputs Used for Assets and Liabilities Measured at Fair Value in the Company's Financial Statements

1. Fair Value Measurements by Levels 1, 2 and 3

The Company categorizes its financial instruments, based on the degree of subjectivity inherent in the method by which they are valued, into a fair value hierarchy of three levels, as follows:

Level 1 - Inputs are unadjusted, quoted prices in active markets for identical instruments at the measurement date (e.g., active exchange-traded equity securities).

Level 2 - Inputs (other than quoted prices included within Level 1) that are observable for the instrument either directly or indirectly. This includes: (i) quoted prices for similar instruments in active markets, (ii) quoted prices for identical or similar instruments in markets that are not active, (iii) inputs other than quoted prices that are observable for the instruments, and (iv) inputs that are derived principally from or corroborated by observable market data by correlation or other means.

Level 3 - Inputs that are unobservable. Unobservable inputs reflect the Company's subjective evaluation about the assumptions market participants would use in pricing the financial instrument.

The Company's management evaluated whether the market was distressed or inactive in determining the fair value of the Company's securities and reviewed certain market level inputs to evaluate whether sufficient activity, volume, and new issuances existed to create an active market. Based on this evaluation, management concluded that there was sufficient activity in determining the fair market value of the Company's securities.

As of June 30, 2013, the Company did not measure and report any securities at fair value on the balance sheet. All bonds were carried at amortized cost.

2. Roll forward of Level 3 Items

Not applicable

3. Policy on Transfers Into and Out of Level 3

At the end of each reporting period, the Company evaluates whether or not any event has occurred or circumstances have changed that would cause an instrument to be transferred into or out of Level 3.

4. Inputs and Techniques Used for Level 2 and Level 3 Fair Values

See Note 20A above.

5. Derivative Fair Values

Not applicable

B. Other Fair Value Disclosures

Not applicable

C. Fair Values for all Financial Instruments by Levels 1, 2, and 3

The table below represents the fair value of all financial instruments however, not all financial instruments are reported at fair value in the Company's financial statements.

Type of Financial Instrument	Aggregate Fair Value	Admitted Assets	Level 1	Level 2	Level 3	Not Practicable (Carrying Value)
Bonds	\$ 102,073,777	\$ 101,657,417	\$ 3,685,220	\$ 98,388,557	\$ --	\$ --
Cash equivalents	--	--	--	--	--	--
Short term investments	--	--	--	--	--	--
Common stock	--	--	--	--	--	--
Preferred stock	--	--	--	--	--	--
Total	\$ 102,073,777	\$ 101,657,417	\$ 3,685,220	\$ 98,388,557	\$ --	\$ --

D. Financial Instruments for Which it is Not Practicable to Estimate Fair Values

Not applicable

21. Other Items

No significant change

**PROGRESSIVE PREMIER INSURANCE COMPANY OF ILLINOIS**  
**NOTES TO FINANCIAL STATEMENTS**

22.	Events Subsequent	
		Subsequent events have been considered through August 9, 2013 for the statutory statement that was available for issuance by August 15, 2013. There were no subsequent events to report.
23.	Reinsurance	
		No significant change
24.	Retrospectively Rated Contracts and Contracts Subject to Redetermination	
		No significant change
25.	Changes in Incurred Losses and Loss Adjustment Expenses	
		Incurred losses and LAE attributable to insured events of prior accident years increased by \$99,000 in 2013 which is less than 1% of the total prior year net unpaid losses and LAE of \$43,565,201. The unfavorable development is primarily due to auto physical damage late emerging losses from accident year 2012, which was partially offset by favorable development of private passenger auto liability reserves due to originally anticipated severity for accident year 2012 decreasing by 0.5%. The LAE reserves developed unfavorably primarily due to unfavorable adjusting and other expense reserve development.
26.	Intercompany Pooling Arrangements	
		No significant change
27.	Structured Settlements	
		No significant change
28.	Health Care Receivables	
		No significant change
29.	Participating Accident and Health Policies	
		No significant change
30.	Premium Deficiency Reserves	
		No significant change
31.	High Deductibles	
		No significant change
32.	Discounting of Liabilities for Unpaid Losses and Unpaid Loss Adjustment Expenses	
		No significant change
33.	Asbestos and Environmental Reserves	
		No significant change
34.	Subscriber Savings Accounts	
		No significant change
35.	Multiple Peril Crop Insurance	
		No significant change
36.	Financial Guaranty Insurance	
		No significant change



PROGRESSIVE PREMIER INSURANCE COMPANY OF ILLINOIS  
GENERAL INTERROGATORIES

PART 1 - COMMON INTERROGATORIES - GENERAL

- 1.1

Did the reporting entity experience any material transactions requiring the filing of Disclosure of Material Transactions with the State of Domicile, as required by the Model Act?

Yes [ ☐ ]      No [ ☒ ]
- 1.2

If yes, has the report been filed with the domiciliary state?

Yes [ ☐ ]      No [ ☐ ]
- 2.1

Has any change been made during the year of this statement in the charter, by-laws, articles of incorporation, or deed of settlement of the reporting entity?

Yes [ ☐ ]      No [ ☒ ]
- 2.2

If yes, date of change:

.....
- 3.1

Have there been any substantial changes in the organizational chart since the prior quarter end?

Yes [ ☐ ]      No [ ☒ ]
- 3.2

If the response to 3.1 is yes, provide a brief description of those changes.

- 4.1

Has the reporting entity been a party to a merger or consolidation during the period covered by this statement?

Yes [ ☐ ]      No [ ☒ ]
- 4.2

If yes, provide name of entity, NAIC Company Code, and state of domicile (use two letter state abbreviation) for any entity that has ceased to exist as a result of the merger or consolidation.

1	2	3
Name of Entity	NAIC Company Code	State of Domicile

5.

If the reporting entity is subject to a management agreement, including third-party administrator(s), managing general agent(s), attorney-in-fact, or similar agreement, have there been any significant changes regarding the terms of the agreement or principals involved?  
If yes, attach an explanation.

Yes [ ☐ ]    No [ ☒ ]    N/A [ ☐ ]
- 

- 6.1

State as of what date the latest financial examination of the reporting entity was made or is being made.

12/31/2012.....
- 6.2

State the as of date that the latest financial examination report became available from either the state of domicile or the reporting entity. This date should be the date of the examined balance sheet and not the date the report was completed or released.

12/31/2007.....
- 6.3

State as of what date the latest financial examination report became available to other states or the public from either the state of domicile or the reporting entity. This is the release date or completion date of the examination report and not the date of the examination (balance sheet date).

4/7/2009.....
- 6.4

By what department or departments?  
OHIO

- 6.5

Have all financial statement adjustments within the latest financial examination report been accounted for in a subsequent financial statement filed with Departments?

Yes [ ☐ ]    No [ ☐ ]    N/A [ ☒ ]
- 6.6

Have all of the recommendations within the latest financial examination report been complied with?

Yes [ ☒ ]    No [ ☐ ]    N/A [ ☐ ]

- 7.1

Has this reporting entity had any Certificates of Authority, licenses or registrations (including corporate registration, if applicable) suspended or revoked by any governmental entity during the reporting period?

Yes [ ☐ ]      No [ ☒ ]
- 7.2

If yes, give full information:

- 8.1

Is the company a subsidiary of a bank holding company regulated by the Federal Reserve Board?

Yes [ ☐ ]      No [ ☒ ]
- 8.2

If response to 8.1 is yes, please identify the name of the bank holding company.

- 8.3

Is the company affiliated with one or more banks, thrifts or securities firms?

Yes [ ☐ ]      No [ ☒ ]
- 8.4

If the response to 8.3 is yes, please provide below the names and location (city and state of the main office) of any affiliates regulated by a federal regulatory services agency [i.e. the Federal Reserve Board (FRB), the Office of the Comptroller of the Currency (OCC), the Federal Deposit Insurance Corporation (FDIC) and the Securities Exchange Commission (SEC)] and identify the affiliate's primary federal regulator].

1	2	3	4	5	6
Affiliate Name	Location (City, State)	FRB	OCC	FDIC	SEC

- 9.1

Are the senior officers (principal executive officer, principal financial officer, principal accounting officer or controller, or persons performing similar functions) of the reporting entity subject to a code of ethics, which includes the following standards?  
(a) Honest and ethical conduct, including the ethical handling of actual or apparent conflicts of interest between personal and professional relationships;  
(b) Full, fair, accurate, timely and understandable disclosure in the periodic reports required to be filed by the reporting entity;  
(c) Compliance with applicable governmental laws, rules and regulations;  
(d) The prompt internal reporting of violations to an appropriate person or persons identified in the code; and  
(e) Accountability for adherence to the code.

Yes [ ☒ ]      No [ ☐ ]
- 9.11

If the response to 9.1 is No, please explain:

- 9.2

Has the code of ethics for senior managers been amended?

Yes [ ☐ ]      No [ ☒ ]
- 9.21

If the response to 9.2 is Yes, provide information related to amendment(s).

- 9.3

Have any provisions of the code of ethics been waived for any of the specified officers?

Yes [ ☐ ]      No [ ☒ ]
- 9.31

If the response to 9.3 is Yes, provide the nature of any waiver(s).

PART 1 - FINANCIAL

- 10.1

Does the reporting entity report any amounts due from parent, subsidiaries or affiliates on Page 2 of this statement?

Yes [ ☐ ]      No [ ☒ ]
- 10.2

If yes, indicate any amounts receivable from parent included in the Page 2 amount:

.....

PROGRESSIVE PREMIER INSURANCE COMPANY OF ILLINOIS

PART 1 - INVESTMENT

11.1 Were any of the stocks, bonds, or other assets of the reporting entity loaned, placed under option agreement, or otherwise made available for use by another person? (Exclude securities under securities lending agreements.)

Yes [ ]No [X]

11.2 If yes, give full and complete information relating thereto:

12. Amount of real estate and mortgages held in other invested assets in Schedule BA:

\$.....0

13. Amount of real estate and mortgages held in short-term investments:

\$.....0

14.1 Does the reporting entity have any investments in parent, subsidiaries and affiliates?

Yes [ ]No [X]

14.2 If yes, please complete the following:

	1	2
	Prior Year-End	Current Quarter
	Book/Adjusted Carrying Value	Book/Adjusted Carrying Value
14.21 Bonds.....	\$ .....0	\$ .....0
14.22 Preferred Stock.....	\$ .....0	\$ .....0
14.23 Common Stock.....	\$ .....0	\$ .....0
14.24 Short-Term Investments.....	\$ .....0	\$ .....0
14.25 Mortgage Loans on Real Estate.....	\$ .....0	\$ .....0
14.26 All Other.....	\$ .....0	\$ .....0
14.27 Total Investment in Parent, Subsidiaries and Affiliates (Subtotal Lines 14.21 to 14.26).....	\$ .....0	\$ .....0
14.28 Total Investment in Parent included in Lines 14.21 to 14.26 above.....	\$ .....0	\$ .....0

15.1 Has the reporting entity entered into any hedging transactions reported on Schedule DB?

Yes [ ]No [X]

15.2 If yes, has a comprehensive description of the hedging program been made available to the domiciliary state?  
If no, attach a description with this statement.

Yes [ ]No [ ]

16. For the reporting entity's security lending program, state the amount of the following as current statement date:

16.1 Total fair value of reinvested collateral assets reported on Schedule DL, Parts 1 and 2: \$.....0

16.2 Total book adjusted/carrying value of reinvested collateral assets reported on Schedule DL, Parts 1 and 2: \$.....0

16.3 Total payable for securities lending reporting on the liability page: \$.....0

17. Excluding items in Schedule E-Part 3-Special Deposits, real estate, mortgage loans and investments held physically in the reporting entity's offices, vaults or safety deposit boxes, were all stocks, bonds and other securities, owned throughout the current year held pursuant to a custodial agreement with a qualified bank or trust company in accordance with Section 1, III - General Examination Considerations, F. Outsourcing of Critical Functions, Custodial or Safekeeping Agreements of the NAIC Financial Condition Examiners Handbook?

Yes [X]No [ ]

17.1 For all agreements that comply with the requirements of the NAIC Financial Condition Examiners Handbook, complete the following:

1	2
Name of Custodian(s)	Custodian Address
CITIBANK, N.A.	338 GREENWICH STREET, NEW YORK, NY 10013

17.2 For all agreements that do not comply with the requirements of the NAIC Financial Condition Examiners Handbook, provide the name, location and a complete explanation.

1	2	3
Name(s)	Location(s)	Complete Explanation(s)
NONE		

17.3 Have there been any changes, including name changes, in the custodian(s) identified in 17.1 during the current quarter?

Yes [ ]No [X]

17.4 If yes, give full and complete information relating thereto:

1	2	3	4
Old Custodian	New Custodian	Date of Change	Reason
NONE			

17.5 Identify all investment advisors, broker/dealers or individuals acting on behalf of broker/dealers that have access to the investment accounts, handle securities and have authority to make investments on behalf of the reporting entity:

1	2	3
Central Registration Depository	Name(s)	Address
NONE		

18.1 Have all the filing requirements of the Purposes and Procedures Manual of the NAIC Securities Valuation Office been followed?

Yes [X]No [ ]

18.2 If no, list exceptions:

PROGRESSIVE PREMIER INSURANCE COMPANY OF ILLINOIS  
GENERAL INTERROGATORIES (continued)

PART 2

PROPERTY & CASUALTY INTERROGATORIES

1.

If the reporting entity is a member of a pooling arrangement, did the agreement or the reporting entity's participation change?  
If yes, attach an explanation.

Yes [ ☐ ] No [ ☒ ] N/A [ ☐ ]

2.

Has the reporting entity reinsured any risk with any other reporting entity and agreed to release such entity from liability, in whole or in part, from any loss that may occur on the risk, or portion thereof, reinsured?  
If yes, attach an explanation.

Yes [ ☐ ] No [ ☒ ]

3.1

Have any of the reporting entity's primary reinsurance contracts been canceled?

Yes [ ☐ ] No [ ☒ ]

3.2

If yes, give full and complete information thereto:

4.1

Are any of the liabilities for unpaid losses and loss adjustment expenses other than certain workers' compensation tabular reserves (see Annual Statement Instructions pertaining to disclosure of discounting for definition of "tabular reserves,") discounted at a rate of interest greater than zero?

Yes [ ☐ ] No [ ☒ ]

4.2

If yes, complete the following schedule:

1	2	3	Total Discount				Discount Taken During Period			
	Maximum Interest	Disc. Rate	4 Unpaid Losses	5 Unpaid LAE	6 IBNR	7 Total	8 Unpaid Losses	9 Unpaid LAE	10 IBNR	11 Total
Line of Business	.....	.....	.....	.....	.....	.....0	.....	.....	.....	.....0
Total.....	.....XXX...	.....XXX.....	.....0	.....0	.....0	.....0	.....0	.....0	.....0	.....0

5.

Operating Percentages:

5.1

A&H loss percent

0.0 %

5.2

A&H cost containment percent

0.0 %

5.3

A&H expense percent excluding cost containment expenses

0.0 %

6.1

Do you act as a custodian for health savings accounts?

Yes [ ☐ ] No [ ☒ ]

6.2

If yes, please provide the amount of custodial funds held as of the reporting date.

0

6.3

Do you act as an administrator for health savings accounts?

Yes [ ☐ ] No [ ☒ ]

6.4

If yes, please provide the amount of funds administered as of the reporting date.

0

Q08

PROGRESSIVE PREMIER INSURANCE COMPANY OF ILLINOIS  
SCHEDULE F - CEDED REINSURANCE

Showing All New Reinsurers - Current Year to Date

1 NAIC Company Code	2 Federal ID Number	3  Name of Reinsurer	4  Domiciliary Jurisdiction	5 Is Insurer Authorized? (YES or NO)
U.S. Insurers				
22039.....	13-2673100.....	General Reinsurance Corporation.....	DE.....	YES.....

PROGRESSIVE PREMIER INSURANCE COMPANY OF ILLINOIS  
SCHEDULE T - EXHIBIT OF PREMIUMS WRITTEN

Current Year to Date - Allocated by States and Territories

		1 Active Status	Direct Premiums Written		Direct Losses Paid (Deducting Salvage)		Direct Losses Unpaid	
			2 Current Year to Date	3 Prior Year to Date	4 Current Year to Date	5 Prior Year to Date	6 Current Year to Date	7 Prior Year to Date
States, Etc.								
1.	Alabama.....	AL.....N.....						
2.	Alaska.....	AK.....N.....						
3.	Arizona.....	AZ.....N.....						
4.	Arkansas.....	AR.....N.....						
5.	California.....	CA.....N.....						
6.	Colorado.....	CO.....N.....						
7.	Connecticut.....	CT.....N.....						
8.	Delaware.....	DE.....N.....						
9.	District of Columbia.....	DC.....N.....						
10.	Florida.....	FL.....N.....						
11.	Georgia.....	GA.....L.....	121,990,893	105,228,926	76,604,607	60,456,411	57,877,851	50,779,819
12.	Hawaii.....	HI.....L.....						
13.	Idaho.....	ID.....L.....						
14.	Illinois.....	IL.....L.....	1,547,376	2,058,976	920,910	1,038,093	3,686,831	4,888,041
15.	Indiana.....	IN.....N.....						
16.	Iowa.....	IA.....N.....						
17.	Kansas.....	KS.....N.....						
18.	Kentucky.....	KY.....N.....						
19.	Louisiana.....	LA.....N.....						
20.	Maine.....	ME.....L.....	66,608	77,214	2,396	8,874	39,720	7,849
21.	Maryland.....	MD.....N.....						
22.	Massachusetts.....	MA.....N.....						
23.	Michigan.....	MI.....N.....						
24.	Minnesota.....	MN.....L.....						
25.	Mississippi.....	MS.....N.....						
26.	Missouri.....	MO.....N.....						
27.	Montana.....	MT.....N.....						
28.	Nebraska.....	NE.....N.....						
29.	Nevada.....	NV.....N.....						
30.	New Hampshire.....	NH.....N.....						
31.	New Jersey.....	NJ.....N.....						
32.	New Mexico.....	NM.....N.....						
33.	New York.....	NY.....N.....						
34.	North Carolina.....	NC.....L.....	27,952,522	25,065,019	15,707,823	13,516,408	13,163,195	12,817,832
35.	North Dakota.....	ND.....N.....						
36.	Ohio.....	OH.....L.....						
37.	Oklahoma.....	OK.....L.....						
38.	Oregon.....	OR.....N.....						
39.	Pennsylvania.....	PA.....N.....						
40.	Rhode Island.....	RI.....L.....						
41.	South Carolina.....	SC.....N.....						
42.	South Dakota.....	SD.....N.....						
43.	Tennessee.....	TN.....N.....						
44.	Texas.....	TX.....N.....						
45.	Utah.....	UT.....N.....						
46.	Vermont.....	VT.....N.....						
47.	Virginia.....	VA.....L.....						
48.	Washington.....	WA.....N.....						
49.	West Virginia.....	WV.....N.....						
50.	Wisconsin.....	WI.....N.....						
51.	Wyoming.....	WY.....N.....						
52.	American Samoa.....	AS.....N.....						
53.	Guam.....	GU.....N.....						
54.	Puerto Rico.....	PR.....N.....						
55.	US Virgin Islands.....	VI.....N.....						
56.	Northern Mariana Islands.....	MP.....N.....						
57.	Canada.....	CAN.....N.....						
58.	Aggregate Other Alien.....	OT.....XXX.....	0	0	0	0	0	0
59.	Totals.....	(a).....11.....	151,557,399	132,430,135	93,235,737	75,019,786	74,767,598	68,493,541

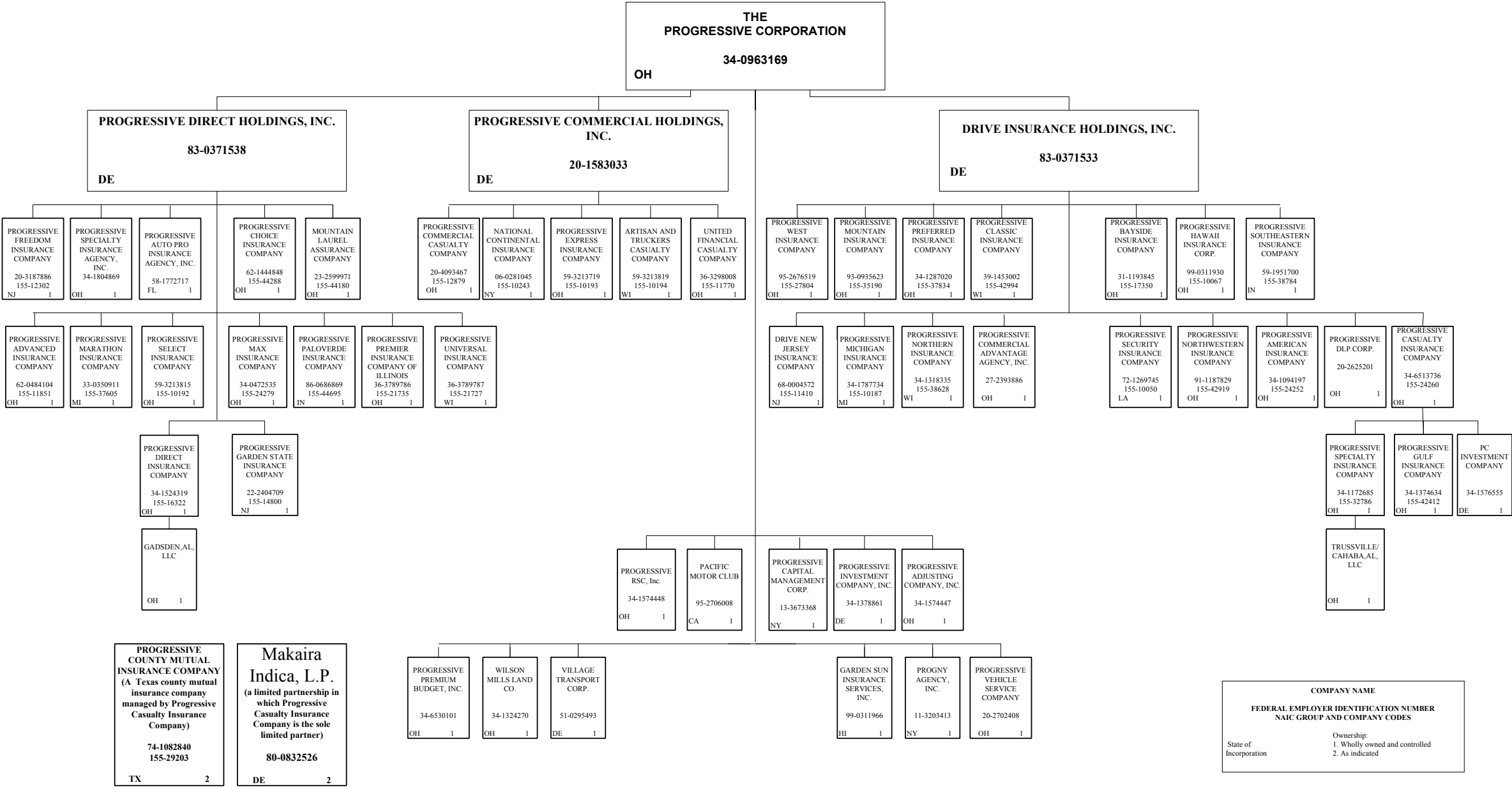
DETAILS OF WRITE-INS

58001. ....	XXX.....						
58002. ....	XXX.....						
58003. ....	XXX.....						
58998. Summary of remaining write-ins for Line 58 from overflow page....	XXX.....	0	0	0	0	0	0
58999. Totals (Lines 58001 thru 58003+ Line 58998) (Line 58 above).....	XXX.....	0	0	0	0	0	0

(L) - Licensed or Chartered - Licensed Insurance Carrier or Domiciled RRG; (R) - Registered - Non-domiciled RRGs; (Q) - Qualified - Qualified or Accredited Reinsurer;  
(E) - Eligible - Reporting Entities eligible or approved to write Surplus Lines in the state; (N) - None of the above - Not allowed to write business in the state.  
(a) Insert the number of L responses except for Canada and Other Alien.

**SCHEDULE Y – INFORMATION CONCERNING ACTIVITIES OF INSURER MEMBERS OF A HOLDING COMPANY GROUP**  
PART 1 – ORGANIZATIONAL CHART

Q11



PROGRESSIVE PREMIER INSURANCE COMPANY OF ILLINOIS

SCHEDULE Y

PART 1A - DETAIL OF INSURANCE HOLDING COMPANY SYSTEM

1	2	3	4	5	6	7	8	9	10	11	12	13	14	15
Group Code	Group Name	NAIC Company Code	Federal ID Number	Federal RSSD	CIK	Name of Securities Exchange if Publicly Traded (U.S. or International)	Names of Parent, Subsidiaries or Affiliates	Domiciliary Location	Relationship to Reporting Entity	Directly Controlled by (Name of Entity/Person)	Type of Control (Ownership Board, Management Attorney-in-Fact, Influence, Other)	If Control is Ownership Provide Percentage	Ultimate Controlling Entity(ies)/Person(s)	*
Members														
0155.....	The Progressive Insurance Group...	00000.....	34-0963169	.....	0000080661	New York Stock Exchange..	The Progressive Corporation.....	OH.....	UIP.....	Board, Management.....	Board.....	.....	The Progressive Corporation.	1, 3.....
0155.....	The Progressive Insurance Group...	00000.....	83-0371533	.....			Drive Insurance Holdings, Inc.....	DE.....	NIA.....	The Progressive Corporation.....	Ownership.....	...100.000	The Progressive Corporation.	1, 3.....
0155.....	The Progressive Insurance Group...	11410.....	68-0004572	.....			Drive New Jersey Insurance Company.....	NJ.....	IA.....	Drive Insurance Holdings, Inc.....	Ownership.....	...100.000	The Progressive Corporation.	1, 3.....
0155.....	The Progressive Insurance Group...	24252.....	34-1094197	.....			Progressive American Insurance Company.....	OH.....	IA.....	Drive Insurance Holdings, Inc.....	Ownership.....	...100.000	The Progressive Corporation.	1, 3.....
0155.....	The Progressive Insurance Group...	17350.....	31-1193845	.....			Progressive Bayside Insurance Company.....	OH.....	IA.....	Drive Insurance Holdings, Inc.....	Ownership.....	...100.000	The Progressive Corporation.	1, 3.....
0155.....	The Progressive Insurance Group...	24260.....	34-6513736	.....			Progressive Casualty Insurance Company.....	OH.....	IA.....	Drive Insurance Holdings, Inc.....	Ownership.....	...100.000	The Progressive Corporation.	1, 3.....
0155.....	The Progressive Insurance Group...	00000.....	34-1576555	.....			PC Investment Company.....	DE.....	NIA.....	Progressive Casualty Insurance Company.....	Ownership.....	...100.000	The Progressive Corporation.	1, 3.....
0155.....	The Progressive Insurance Group...	29203.....	74-1082840	.....			Progressive County Mutual Insurance Company.....	TX.....	IA.....	Progressive Casualty Insurance Company.....	Management.....	.....	The Progressive Corporation.	2, 3.....
0155.....	The Progressive Insurance Group...	42412.....	34-1374634	.....			Progressive Gulf Insurance Company.....	OH.....	IA.....	Progressive Casualty Insurance Company.....	Ownership.....	...100.000	The Progressive Corporation.	1, 3.....
0155.....	The Progressive Insurance Group...	32786.....	34-1172685	.....			Progressive Specialty Insurance Company.....	OH.....	IA.....	Progressive Casualty Insurance Company.....	Ownership.....	...100.000	The Progressive Corporation.	1, 3.....
0155.....	The Progressive Insurance Group...	00000.....		.....			Trussville/Cahaba, AL , LLC.....	OH.....	NIA.....	Progressive Specialty Insurance Company.....	Ownership.....	...100.000	The Progressive Corporation.	1, 3.....
0155.....	The Progressive Insurance Group...	42994.....	39-1453002	.....			Progressive Classic Insurance Company.....	WI.....	IA.....	Drive Insurance Holdings, Inc.....	Ownership.....	...100.000	The Progressive Corporation.	1, 3.....
0155.....	The Progressive Insurance Group...	00000.....	20-2625201	.....			Progressive DLP Corp.....	OH.....	NIA.....	Drive Insurance Holdings, Inc.....	Ownership.....	...100.000	The Progressive Corporation.	1, 3.....
0155.....	The Progressive Insurance Group...	10067.....	99-0311930	.....			Progressive Hawaii Insurance Corp.....	OH.....	IA.....	Drive Insurance Holdings, Inc.....	Ownership.....	...100.000	The Progressive Corporation.	1, 3.....
0155.....	The Progressive Insurance Group...	10187.....	34-1787734	.....			Progressive Michigan Insurance Company.....	MI.....	IA.....	Drive Insurance Holdings, Inc.....	Ownership.....	...100.000	The Progressive Corporation.	1, 3.....
0155.....	The Progressive Insurance Group...	35190.....	93-0935623	.....			Progressive Mountain Insurance Company.....	OH.....	IA.....	Drive Insurance Holdings, Inc.....	Ownership.....	...100.000	The Progressive Corporation.	1, 3.....
0155.....	The Progressive Insurance Group...	38628.....	34-1318335	.....			Progressive Northern insurance Company.....	WI.....	IA.....	Drive Insurance Holdings, Inc.....	Ownership.....	...100.000	The Progressive Corporation.	1, 3.....
0155.....	The Progressive Insurance Group...	42919.....	91-1187829	.....			Progressive Northwestern Insurance Company.....	OH.....	IA.....	Drive Insurance Holdings, Inc.....	Ownership.....	...100.000	The Progressive Corporation.	1, 3.....
0155.....	The Progressive Insurance Group...	37834.....	34-1287020	.....			Progressive Preferred Insurance Company.....	OH.....	IA.....	Drive Insurance Holdings, Inc.....	Ownership.....	...100.000	The Progressive Corporation.	1, 3.....
0155.....	The Progressive Insurance Group...	10050.....	72-1269745	.....			Progressive Security Insurance Company.....	LA.....	IA.....	Drive Insurance Holdings, Inc.....	Ownership.....	...100.000	The Progressive Corporation.	1, 3.....
0155.....	The Progressive Insurance Group...	38784.....	59-1951700	.....			Progressive Southeastern Insurance Company.....	IN.....	IA.....	Drive Insurance Holdings, Inc.....	Ownership.....	...100.000	The Progressive Corporation.	1, 3.....
0155.....	The Progressive Insurance Group...	27804.....	95-2676519	.....			Progressive West Insurance Company.....	OH.....	IA.....	Drive Insurance Holdings, Inc.....	Ownership.....	...100.000	The Progressive Corporation.	1, 3.....
0155.....	The Progressive Insurance Group...	00000.....	27-2393886	.....			Progressive Commercial Advantage Agency, Inc.....	OH.....	NIA.....	Drive Insurance Holdings, Inc.....	Ownership.....	...100.000	The Progressive Corporation.	1, 3.....
0155.....	The Progressive Insurance Group...	00000.....	20-1583033	.....			Progressive Commercial Holdings, Inc.....	DE.....	NIA.....	The Progressive Corporation.....	Ownership.....	...100.000	The Progressive Corporation.	1, 3.....
0155.....	The Progressive Insurance Group...	10194.....	59-3213819	.....			Artisan and Truckers Casualty Company.....	WI.....	IA.....	Progressive Commercial Holdings, Inc.....	Ownership.....	...100.000	The Progressive Corporation.	1, 3.....
0155.....	The Progressive Insurance Group...	10243.....	06-0281045	.....			National Continental Insurance Company.....	NY.....	IA.....	Progressive Commercial Holdings, Inc.....	Ownership.....	...100.000	The Progressive Corporation.	1, 3.....
0155.....	The Progressive Insurance Group...	12879.....	20-4093467	.....			Progressive Commercial Casualty Company.....	OH.....	IA.....	Progressive Commercial Holdings, Inc.....	Ownership.....	...100.000	The Progressive Corporation.	1, 3.....
0155.....	The Progressive Insurance Group...	10193.....	59-3213719	.....			Progressive Express Insurance Company.....	OH.....	IA.....	Progressive Commercial Holdings, Inc.....	Ownership.....	...100.000	The Progressive Corporation.	1, 3.....
0155.....	The Progressive Insurance Group...	11770.....	36-3298008	.....			United Financial Casualty Company.....	OH.....	IA.....	Progressive Commercial Holdings, Inc.....	Ownership.....	...100.000	The Progressive Corporation.	1, 3.....
0155.....	The Progressive Insurance Group...	00000.....	83-0371538	.....			Progressive Direct Holdings, Inc.....	DE.....	UDP.....	The Progressive Corporation.....	Ownership.....	...100.000	The Progressive Corporation.	1, 3.....
0155.....	The Progressive Insurance Group...	44180.....	23-2599971	.....			Mountain Laurel Assurance Company.....	OH.....	IA.....	Progressive Direct Holdings, Inc.....	Ownership.....	...100.000	The Progressive Corporation.	1, 3.....
0155.....	The Progressive Insurance Group...	11851.....	62-0484104	.....			Progressive Advanced Insurance Company.....	OH.....	IA.....	Progressive Direct Holdings, Inc.....	Ownership.....	...100.000	The Progressive Corporation.	1, 3.....
0155.....	The Progressive Insurance Group...	00000.....	58-1772717	.....			Progressive Auto Pro Insurance Agency, Inc.....	FL.....	NIA.....	Progressive Direct Holdings, Inc.....	Ownership.....	...100.000	The Progressive Corporation.	1, 3.....
0155.....	The Progressive Insurance Group...	44288.....	62-1444848	.....			Progressive Choice Insurance Company.....	OH.....	IA.....	Progressive Direct Holdings, Inc.....	Ownership.....	...100.000	The Progressive Corporation.	1, 3.....
0155.....	The Progressive Insurance Group...	16322.....	34-1524319	.....			Progressive Direct Insurance Company.....	OH.....	IA.....	Progressive Direct Holdings, Inc.....	Ownership.....	...100.000	The Progressive Corporation.	1, 3.....
0155.....	The Progressive Insurance Group...	00000.....		.....			Gadsden, AL, LLC.....	OH.....	NIA.....	Progressive Direct Insurance Company.....	Ownership.....	...100.000	The Progressive Corporation.	1, 3.....

SCHEDULE Y

PART 1A - DETAIL OF INSURANCE HOLDING COMPANY SYSTEM

1	2	3	4	5	6	7	8	9	10	11	12	13	14	15
Group Code	Group Name	NAIC Company Code	Federal ID Number	Federal RSSD	CIK	Name of Securities Exchange if Publicly Traded (U.S. or International)	Names of Parent, Subsidiaries or Affiliates	Domiciliary Location	Relationship to Reporting Entity	Directly Controlled by (Name of Entity/Person)	Type of Control (Ownership Board, Management Attorney-in-Fact, Influence, Other)	If Control is Ownership Provide Percentage	Ultimate Controlling Entity(ies)/Person(s)	*
0155.....	The Progressive Insurance Group...	12302.....	20-3187886	.....	.....	.....	Progressive Freedom Insurance Company.....	NJ.....	IA.....	Progressive Direct Holdings, Inc.....	Ownership.....	...100.000	The Progressive Corporation.	1, 3.....
0155.....	The Progressive Insurance Group...	14800.....	22-2404709	.....	.....	.....	Progressive Garden State Insurance Company.....	NJ.....	IA.....	Progressive Direct Holdings, Inc.....	Ownership.....	...100.000	The Progressive Corporation.	1, 3.....
0155.....	The Progressive Insurance Group...	37605.....	33-0350911	.....	.....	.....	Progressive Marathon Insurance Company.....	MI.....	IA.....	Progressive Direct Holdings, Inc.....	Ownership.....	...100.000	The Progressive Corporation.	1, 3.....
0155.....	The Progressive Insurance Group...	24279.....	34-0472535	.....	.....	.....	Progressive Max Insurance Company.....	OH.....	IA.....	Progressive Direct Holdings, Inc.....	Ownership.....	...100.000	The Progressive Corporation.	1, 3.....
0155.....	The Progressive Insurance Group...	44695.....	86-0686869	.....	.....	.....	Progressive Paloverde Insurance Company.....	IN.....	IA.....	Progressive Direct Holdings, Inc.....	Ownership.....	...100.000	The Progressive Corporation.	1, 3.....
0155.....	The Progressive Insurance Group...	21735.....	36-3789786	.....	.....	.....	Progressive Premier Insurance Company of Illinois.....	OH.....	.....	Progressive Direct Holdings, Inc.....	Ownership.....	...100.000	The Progressive Corporation.	1, 3.....
0155.....	The Progressive Insurance Group...	10192.....	59-3213815	.....	.....	.....	Progressive Select Insurance Company.....	OH.....	IA.....	Progressive Direct Holdings, Inc.....	Ownership.....	...100.000	The Progressive Corporation.	1, 3.....
0155.....	The Progressive Insurance Group...	00000.....	34-1804869	.....	.....	.....	Progressive Specialty Insurance Agency, Inc.....	OH.....	NIA.....	Progressive Direct Holdings, Inc.....	Ownership.....	...100.000	The Progressive Corporation.	1, 3.....
0155.....	The Progressive Insurance Group...	21727.....	36-3789787	.....	.....	.....	Progressive Universal Insurance Company.....	WI.....	IA.....	Progressive Direct Holdings, Inc.....	Ownership.....	...100.000	The Progressive Corporation.	1, 3.....
0155.....	The Progressive Insurance Group...	00000.....	99-0311966	.....	.....	.....	Garden Sun Insurance Services, ilc.....	HI.....	NIA.....	The Progressive Corporation.....	Ownership.....	...100.000	The Progressive Corporation.	1, 3.....
0155.....	The Progressive Insurance Group...	00000.....	95-2706008	.....	.....	.....	Pacific Motor Club.....	CA.....	NIA.....	The Progressive Corporation.....	Ownership.....	...100.000	The Progressive Corporation.	1, 3.....
0155.....	The Progressive Insurance Group...	00000.....	11-3203413	.....	.....	.....	PROGNY Agency, Inc.....	NY.....	NIA.....	The Progressive Corporation.....	Ownership.....	...100.000	The Progressive Corporation.	1, 3.....
0155.....	The Progressive Insurance Group...	00000.....	34-1574447	.....	.....	.....	Progressive Adjusting Company, Inc.....	OH.....	NIA.....	The Progressive Corporation.....	Ownership.....	...100.000	The Progressive Corporation.	1, 3.....
0155.....	The Progressive Insurance Group...	00000.....	13-3673368	.....	.....	.....	Progressive Capital Management Corp.....	NY.....	NIA.....	The Progressive Corporation.....	Ownership.....	...100.000	The Progressive Corporation.	1, 3.....
0155.....	The Progressive Insurance Group...	00000.....	34-1378861	.....	.....	.....	Progressive Investment Company, Inc.....	DE.....	NIA.....	The Progressive Corporation.....	Ownership.....	...100.000	The Progressive Corporation.	1, 3.....
0155.....	The Progressive Insurance Group...	00000.....	34-6530101	.....	.....	.....	Progressive Premium Budget, Inc.....	OH.....	NIA.....	The Progressive Corporation.....	Ownership.....	...100.000	The Progressive Corporation.	1, 3.....
0155.....	The Progressive Insurance Group...	00000.....	34-1574448	.....	.....	.....	Progressive RSC, Inc.....	OH.....	NIA.....	The Progressive Corporation.....	Ownership.....	...100.000	The Progressive Corporation.	1, 3.....
0155.....	The Progressive Insurance Group...	00000.....	20-2702408	.....	.....	.....	Progressive Vehicle Service Company.....	OH.....	NIA.....	The Progressive Corporation.....	Ownership.....	...100.000	The Progressive Corporation.	1, 3.....
0155.....	The Progressive Insurance Group...	00000.....	51-0295493	.....	.....	.....	Village Transport Corp.....	DE.....	NIA.....	The Progressive Corporation.....	Ownership.....	...100.000	The Progressive Corporation.	1, 3.....
0155.....	The Progressive Insurance Group...	00000.....	34-1324270	.....	.....	.....	Wilson Mills Land Co.....	OH.....	NIA.....	The Progressive Corporation.....	Ownership.....	...100.000	The Progressive Corporation.	1, 3.....
0155.....	The Progressive Insurance Group...	00000.....	80-0832526	.....	.....	.....	Makaira Indica, LP.....	CA.....	NIA.....	Progressive Casualty Insurance Company.....	Other.....	.....	The Progressive Corporation.	1, 3, 4...

Asterisk	Explanation
1	Schedule Y Part 1A is a common schedule for all companies in The Progressive Insurance Group, however column 10 requires specific relationship information relative to the reporting entity.
2	Progressive County Mutual Insurance Company is a Texas county mutual insurance company that is controlled, but not owned by Progressive Casualty Insurance Company.
3	None of the companies in The Progressive Insurance Group are Federally chartered or insured institutions and therefore, do not have Federal RSSD numbers.
4	Makaira Indica, LP is a limited partnership in which Progressive Casualty Insurance Company is the sole limited partner.

Q12.1



PROGRESSIVE PREMIER INSURANCE COMPANY OF ILLINOIS  
PART 1 - LOSS EXPERIENCE

Lines of Business	Current Year to Date			Prior Year to Date Direct Loss Percentage
	1 Direct Premiums Earned	2 Direct Losses Incurred	3 Direct Loss Percentage	
1. Fire.....			0.0	
2. Allied lines.....			0.0	
3. Farmowners multiple peril.....			0.0	
4. Homeowners multiple peril.....			0.0	
5. Commercial multiple peril.....			0.0	
6. Mortgage guaranty.....			0.0	
8. Ocean marine.....			0.0	
9. Inland marine.....	782,397	315,228	40.3	34.2
10. Financial guaranty.....			0.0	
11.1. Medical professional liability - occurrence.....			0.0	
11.2. Medical professional liability - claims-made.....			0.0	
12. Earthquake.....			0.0	
13. Group accident and health.....			0.0	
14. Credit accident and health.....			0.0	
15. Other accident and health.....			0.0	
16. Workers' compensation.....			0.0	
17.1 Other liability-occurrence.....	360,376	23,497	6.5	(0.7)
17.2 Other liability-claims made.....			0.0	
17.3 Excess workers' compensation.....			0.0	
18.1 Products liability-occurrence.....			0.0	
18.2 Products liability-claims made.....			0.0	
19.1, 19.2 Private passenger auto liability.....	89,073,719	54,543,846	61.2	66.0
19.3, 19.4 Commercial auto liability.....	1,094,995	279,412	25.5	55.3
21. Auto physical damage.....	53,163,725	40,248,747	75.7	59.3
22. Aircraft (all perils).....			0.0	
23. Fidelity.....			0.0	
24. Surety.....			0.0	
26. Burglary and theft.....			0.0	
27. Boiler and machinery.....			0.0	
28. Credit.....			0.0	
29. International.....			0.0	
30. Warranty.....			0.0	
31. Reinsurance-nonproportional assumed property.....	XXX	XXX	XXX	XXX
32. Reinsurance-nonproportional assumed liability.....	XXX	XXX	XXX	XXX
33. Reinsurance-nonproportional assumed financial lines.....	XXX	XXX	XXX	XXX
34. Aggregate write-ins for other lines of business.....	0	0	0.0	
35. Totals.....	144,475,212	95,410,730	66.0	62.9
DETAILS OF WRITE-INS				
3401. ....			0.0	
3402. ....			0.0	
3403. ....			0.0	
3498. Sum. of remaining write-ins for Line 34 from overflow page.....	0	0	0.0	XXX
3499. Totals (Lines 3401 thru 3403 plus 3498) (Line 34).....	0	0	0.0	

PART 2 - DIRECT PREMIUMS WRITTEN

Lines of Business	1 Current Quarter	2 Current Year to Date	3 Prior Year Year to Date
1. Fire.....			
2. Allied lines.....			
3. Farmowners multiple peril.....			
4. Homeowners multiple peril.....			
5. Commercial multiple peril.....			
6. Mortgage guaranty.....			
8. Ocean marine.....			
9. Inland marine.....	723,929	1,042,109	986,904
10. Financial guaranty.....			
11.1 Medical professional liability - occurrence.....			
11.2 Medical professional liability - claims made.....			
12. Earthquake.....			
13. Group accident and health.....			
14. Credit accident and health.....			
15. Other accident and health.....			
16. Workers' compensation.....			
17.1 Other liability-occurrence.....	350,412	483,636	462,277
17.2 Other liability-claims made.....			
17.3 Excess workers' compensation.....			
18.1 Products liability-occurrence.....			
18.2 Products liability-claims made.....			
19.1 19.2 Private passenger auto liability.....	42,837,854	93,324,602	78,413,623
19.3 19.4 Commercial auto liability.....	546,956	1,111,252	1,510,017
21. Auto physical damage.....	26,348,574	55,595,800	51,057,313
22. Aircraft (all perils).....			
23. Fidelity.....			
24. Surety.....			
26. Burglary and theft.....			
27. Boiler and machinery.....			
28. Credit.....			
29. International.....			
30. Warranty.....			
31. Reinsurance-nonproportional assumed property.....	XXX	XXX	XXX
32. Reinsurance-nonproportional assumed liability.....	XXX	XXX	XXX
33. Reinsurance-nonproportional assumed financial lines.....	XXX	XXX	XXX
34. Aggregate write-ins for other lines of business.....	0	0	0
35. Totals.....	70,807,725	151,557,399	132,430,134
DETAILS OF WRITE-INS			
3401. ....			
3402. ....			
3403. ....			
3498. Sum. of remaining write-ins for Line 34 from overflow page.....	0	0	0
3499. Totals (Lines 3401 thru 3403 plus 3498) (Line 34).....	0	0	0

**PART 3 (000 omitted)**

**LOSS AND LOSS ADJUSTMENT EXPENSE RESERVES SCHEDULE**

	1	2	3	4	5	6	7	8	9	10	11	12	13
Years in Which Losses Occurred	Prior Year-End Known Case Loss and LAE Reserves	Prior Year-End IBNR Loss and LAE Reserves	Total Prior Year-End Loss and LAE Reserves (Cols. 1 + 2)	2013 Loss and LAE Payments on Claims Reported as of Prior Year-End	2013 Loss and LAE Payments on Claims Unreported as of Prior Year-End	Total 2013 Loss and LAE Payments (Cols. 4 + 5)	Q.S. Date Known Case Loss and LAE Reserves on Claims Reported and Open as of Prior Year-End	Q.S. Date Known Case Loss and LAE Reserves on Claims Reported or Reopened Subsequent to Prior Year-End	Q.S. Date IBNR Loss and LAE Reserves	Total Q.S. Loss and LAE Reserves (Cols. 7 + 8 + 9)	Prior Year-End Known Case Loss and LAE Reserves Developed (Savings)/Deficiency (Cols. 4 + 7 minus Col. 1)	Prior Year-End IBNR Loss and LAE Reserves Developed (Savings)/Deficiency (Cols. 5 + 8 + 9 minus Col. 2)	Prior Year-End Total Loss and LAE Reserve Developed (Savings)/Deficiency (Cols. 11 + 12)
1. 2010 + Prior.....	.....6,209	.....1,321	.....7,529	.....2,233	.....121	.....2,354	.....3,867	.....254	.....1,003	.....5,124	.....(108)	.....57	.....(51)
2. 2011.....	.....8,049	.....1,980	.....10,029	.....2,911	.....214	.....3,125	.....5,017	.....778	.....1,254	.....7,049	.....(121)	.....266	.....145
3. Subtotals 2011 + Prior.....	.....14,258	.....3,300	.....17,558	.....5,144	.....334	.....5,479	.....8,884	.....1,032	.....2,257	.....12,173	.....(230)	.....323	.....93
4. 2012.....	.....19,593	.....6,414	.....26,007	.....9,202	.....1,224	.....10,427	.....9,059	.....3,094	.....3,434	.....15,586	.....(1,333)	.....1,338	.....6
5. Subtotals 2012 + Prior.....	.....33,851	.....9,714	.....43,565	.....14,347	.....1,559	.....15,905	.....17,942	.....4,126	.....5,691	.....27,759	.....(1,562)	.....1,662	.....99
6. 2013.....	.....XXX.....	.....XXX.....	.....XXX.....	.....XXX.....	.....23,198	.....23,198	.....XXX.....	.....11,968	.....4,555	.....16,524	.....XXX.....	.....XXX.....	.....XXX.....
7. Totals.....	.....33,851	.....9,714	.....43,565	.....14,347	.....24,757	.....39,103	.....17,942	.....16,094	.....10,246	.....44,283	.....(1,562)	.....1,662	.....99
8. Prior Year-End's Surplus As Regards Policyholders	.....42,253										Col. 11, Line 7 As % of Col. 1, Line 7	Col. 12, Line 7 As % of Col. 2, Line 7	Col. 13, Line 7 As % of Col. 3, Line 7
											1. ....(4.6)%	2. ....17.1 %	3. ....0.2 %
											Col. 13, Line 7 Line 8		
											4. ....0.2 %		

PROGRESSIVE PREMIER INSURANCE COMPANY OF ILLINOIS

SUPPLEMENTAL EXHIBITS AND SCHEDULES INTERROGATORIES

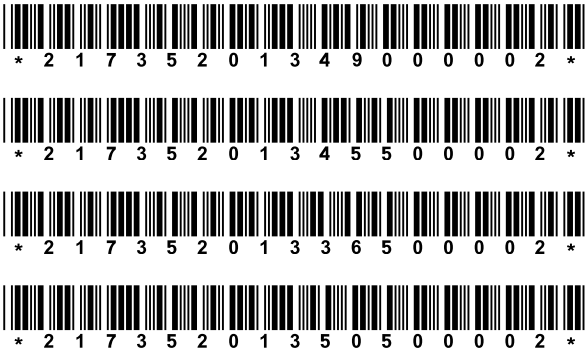
The following supplemental reports are required to be filed as part of your statement filing. However, in the event that your company does not transact the type of business for which the special report must be filed, your response of NO to the specific interrogatory will be accepted in lieu of filing a "NONE" report and a bar code will be printed below. If the supplement is required of your company but is not being filed for whatever reason, enter SEE EXPLANATION and provide an explanation following the interrogatory questions.

	Response
1. Will the Trusteed Surplus Statement be filed with the state of domicile and the NAIC with this statement?	<div>NO</div>
2. Will Supplement A to Schedule T (Medical Professional Liability Supplement) be filed with this statement?	<div>NO</div>
3. Will the Medicare Part D Coverage Supplement be filed with the state of domicile and the NAIC with this statement?	<div>NO</div>
4. Will the Director and Officer Supplement be filed with the state of domicile and the NAIC with this statement?	<div>NO</div>

Explanation:

1.
2.
3.
4.

Bar Code:



PROGRESSIVE PREMIER INSURANCE COMPANY OF ILLINOIS  
Overflow Page for Write-Ins

Additional Write-ins for Assets:

	Current Statement Date			4  December 31, Prior Year Net Admitted Assets
	1  Assets	2  Nonadmitted Assets	3  Net Admitted Assets (Cols. 1 - 2)	
2504. STATE TAX CREDITS.....			0	493,920
2597. Summary of remaining write-ins for Line 25.....	0	0	0	493,920

Additional Write-ins for Liabilities:

	1 Current Statement Date	2 December 31, Prior Year
2504. ESCHEATABLE PROPERTY.....	27,253	2,053
2597. Summary of remaining write-ins for Line 25.....	27,253	2,053

PROGRESSIVE PREMIER INSURANCE COMPANY OF ILLINOIS  
SCHEDULE A - VERIFICATION

Real Estate

	1	2
	Year to Date	Prior Year Ended December 31
1. Book/adjusted carrying value, December 31 of prior year.....	0	
2. Cost of acquired:		
2.1 Actual cost at time of acquisition.....		
2.2 Additional investment made after acquisition.....		
3. Current year change in encumbrances.....		
4. Total gain (loss) on disposals.....		
5. Deduct amounts received on disposals.....		
6. Total foreign exchange change in book/adjusted carrying value.....		
7. Deduct current year's other than temporary impairment recognized.....		
8. Deduct current year's depreciation.....		
9. Book/adjusted carrying value at end of current period (Lines 1+2+3+4-5+6-7-8).....	0	0
10. Deduct total nonadmitted amounts.....		
11. Statement value at end of current period (Line 9 minus Line 10).....	0	0

SCHEDULE B - VERIFICATION

Mortgage Loans

	1	2
	Year to Date	Prior Year Ended December 31
1. Book value/recorded investment excluding accrued interest, December 31 of prior year.....	0	
2. Cost of acquired:		
2.1 Actual cost at time of acquisition.....		
2.2 Additional investment made after acquisition.....		
3. Capitalized deferred interest and other.....		
4. Accrual of discount.....		
5. Unrealized valuation increase (decrease).....		
6. Total gain (loss) on disposals.....		
7. Deduct amounts received on disposals.....		
8. Deduct amortization of premium and mortgage interest points and commitment fees.....		
9. Total foreign exchange change in book value/recorded investment excluding accrued interest.....		
10. Deduct current year's other than temporary impairment recognized.....		
11. Book value/recorded investment excluding accrued interest at end of current period (Lines 1+2+3+4+5+6-7-8+9-10).....	0	0
12. Total valuation allowance.....		
13. Subtotal (Line 11 plus Line 12).....	0	0
14. Deduct total nonadmitted amounts.....		
15. Statement value at end of current period (Line 13 minus Line 14).....	0	0

SCHEDULE BA - VERIFICATION

Other Long-Term Invested Assets

	1	2
	Year to Date	Prior Year Ended December 31
1. Book/adjusted carrying value, December 31 of prior year.....	0	
2. Cost of acquired:		
2.1 Actual cost at time of acquisition.....		
2.2 Additional investment made after acquisition.....		
3. Capitalized deferred interest and other.....		
4. Accrual of discount.....		
5. Unrealized valuation increase (decrease).....		
6. Total gain (loss) on disposals.....		
7. Deduct amounts received on disposals.....		
8. Deduct amortization of premium and depreciation.....		
9. Total foreign exchange change in book/adjusted carrying value.....		
10. Deduct current year's other than temporary impairment recognized.....		
11. Book/adjusted carrying value at end of current period (Lines 1+2+3+4+5+6-7-8+9-10).....	0	0
12. Deduct total nonadmitted amounts.....		
13. Statement value at end of current period (Line 11 minus Line 12).....	0	0

SCHEDULE D - VERIFICATION

Bonds and Stocks

	1	2
	Year to Date	Prior Year Ended December 31
1. Book/adjusted carrying value of bonds and stocks, December 31 of prior year.....	107,286,360	107,288,077
2. Cost of bonds and stocks acquired.....		46,569,582
3. Accrual of discount.....	1,367	3,269
4. Unrealized valuation increase (decrease).....		
5. Total gain (loss) on disposals.....	2,346	2,111,073
6. Deduct consideration for bonds and stocks disposed of.....	4,402,059	46,881,260
7. Deduct amortization of premium.....	1,230,598	1,804,381
8. Total foreign exchange change in book/adjusted carrying value.....		
9. Deduct current year's other than temporary impairment recognized.....		
10. Book/adjusted carrying value at end of current period (Lines 1+2+3+4+5-6-7+8-9).....	101,657,416	107,286,360
11. Deduct total nonadmitted amounts.....		
12. Statement value at end of current period (Line 10 minus Line 11).....	101,657,416	107,286,360

SCHEDULE D - PART 1B

Showing the Acquisitions, Dispositions and Non-Trading Activity  
During the Current Quarter for all Bonds and Preferred Stock by Rating Class

QSI02

	1	2	3	4	5	6	7	8
	Book/Adjusted Carrying Value Beginning of Current Quarter	Acquisitions During Current Quarter	Dispositions During Current Quarter	Non-Trading Activity During Current Quarter	Book/Adjusted Carrying Value End of First Quarter	Book/Adjusted Carrying Value End of Second Quarter	Book/Adjusted Carrying Value End of Third Quarter	Book/Adjusted Carrying Value December 31 Prior Year
BONDS								
1. Class 1 (a).....	102,667,589		395,000	(615,173)	102,667,589	101,657,416		107,286,363
2. Class 2 (a).....								
3. Class 3 (a).....								
4. Class 4 (a).....								
5. Class 5 (a).....								
6. Class 6 (a).....								
7. Total Bonds.....	102,667,589	0	395,000	(615,173)	102,667,589	101,657,416	0	107,286,363
PREFERRED STOCK								
8. Class 1.....								
9. Class 2.....								
10. Class 3.....								
11. Class 4.....								
12. Class 5.....								
13. Class 6.....								
14. Total Preferred Stock.....	0	0	0	0	0	0	0	0
15. Total Bonds and Preferred Stock.....	102,667,589	0	395,000	(615,173)	102,667,589	101,657,416	0	107,286,363

(a) Book/Adjusted Carrying Value column for the end of the current reporting period includes the following amount of non-rated short-term and cash equivalent bonds by NAIC designation:  
NAIC 1 \$.....0; NAIC 2 \$.....0; NAIC 3 \$.....0; NAIC 4 \$.....0; NAIC 5 \$.....0; NAIC 6 \$.....0.

Sch. DA-Pt 1  
NONE

Sch. DA-Verification  
NONE

Sch. DB-Pt A-Verification  
NONE

Sch. DB-Pt B-Verification  
NONE

Sch. DB-Pt C-Sn 1  
NONE

Sch. DB-Pt C-Sn 2  
NONE

Sch. DB-Verification  
NONE

Sch. E-Verification  
NONE

Sch. A-Pt 2  
NONE

Sch. A-Pt 3  
NONE

Sch. B-Pt 2  
NONE

Sch. B-Pt 3  
NONE

Sch. BA-Pt 2  
NONE

Sch. BA-Pt 3  
NONE

Sch. D-Pt 3  
NONE

SCHEDULE D - PART 4

Show All Long-Term Bonds and Stock Sold, Redeemed or Otherwise Disposed of During the Current Quarter

1	2	3 F o r e i g n	4	5	6	7	8	9	10	Change in Book/Adjusted Carrying Value					16	17	18	19	20	21	22
										11	12	13	14	15							
CUSIP Identification	Description		Disposal Date	Name of Purchaser	Number of Shares of Stock	Consideration	Par Value	Actual Cost	Prior Year Book/ Adjusted Carrying Value	Unrealized Valuation Increase/ (Decrease)	Current Year's (Amortization)/ Accretion	Current Year's Temporary Impairment Recognized	Total Change in B./A.C.V. (11+12-13)	Total Foreign Exchange Change in B./A.C.V.	Book/ Adjusted Carrying Value At Disposal Date	Foreign Exchange Gain (Loss) on Disposal	Realized Gain (Loss) on Disposal	Total Gain (Loss) on Disposal	Bond Interest/ Stock Dividends Received During Year	Stated Contractual Maturity Date	NAIC Desig- nation or Market Indicator (a)
Bonds - U.S. Special Revenue and Special Assessment																					
373539 A4 7	GEORGIA ST HSG & FIN AU 4.000% 12/01/29.....	.....	05/15/2013	Call	100.0000.....																
3199999.	Total - Bonds - U.S. Special Revenue & Assessment.....																				
8399997.	Total - Bonds - Part 4.....																				
8399999.	Total - Bonds.....																				
9999999.	Total - Bonds, Preferred and Common Stocks.....																				

(a) For all common stock bearing the NAIC market indicator "U" provide: the number of such issues:.....0.



Sch. DB-Pt A-Sn 1  
NONE

Sch. DB-Pt B-Sn 1  
NONE

Sch. DB-Pt B-Sn 1B-Broker List  
NONE

Sch. DB-Pt D-Sn 1  
NONE

Sch. DB-Pt D-Sn 2  
NONE

Sch. DL-Pt. 1  
NONE

Sch. DL-Pt. 2  
NONE

PROGRESSIVE PREMIER INSURANCE COMPANY OF ILLINOIS  
SCHEDULE E - PART 1 - CASH

Month End Depository Balances

1	2	3	4	5	Book Balance at End of Each Month During Current Quarter			9
					6	7	8	
Depository	Code	Rate of Interest	Amount of Interest Received During Current Quarter	Amount of Interest Accrued at Current Statement Date	First Month	Second Month	Third Month	*
Open Depositories								
CITIBANK.....	NEW YORK, NY.....							XXX..
0199999. Total Open Depositories.....	...XXX.....	...XXX.....	.....0	.....0	.....0	.....0	.....0	XXX..
0399999. Total Cash on Deposit.....	...XXX.....	...XXX.....	.....0	.....0	.....0	.....0	.....0	XXX..
0599999. Total Cash.....	...XXX.....	...XXX.....	.....0	.....0	.....0	.....0	.....0	XXX..

SCHEDULE E - PART 2 - CASH EQUIVALENTS

Show Investments Owned End of Current Quarter

1	2	3	4	5	6	7	8
Description	Code	Date Acquired	Rate of Interest	Maturity Date	Book/Adjusted Carrying Value	Amount of Interest Due & Accrued	Amount Received During Year

NONE