



HEALTH QUARTERLY STATEMENT

AS OF MARCH 31, 2013
OF THE CONDITION AND AFFAIRS OF THE

UnitedHealthcare of Ohio, Inc.

NAIC Group Code07070707NAIC Company Code95186Employer's ID Number31-1142815
(Current)(Prior)

Organized under the Laws ofOhio, State of Domicile or Port of EntryOhio

Country of DomicileUnited States of America

Licensed as business type:Health Maintenance Organization

Is HMO Federally Qualified? Yes [] No [X]

Incorporated/Organized05/14/1985Commenced Business08/06/1985

Statutory Home OfficeOH020-3010, 9200 Worthington RoadWesterville , OH, US 43082-8823
(Street and Number)(City or Town, State, Country and Zip Code)

Main Administrative OfficeOH020-3010, 9200 Worthington RoadWesterville , OH, US 43082-8823614-410-7000
(Street and Number)(City or Town, State, Country and Zip Code)(Area Code) (Telephone Number)

Mail AddressOH020-3010, 9200 Worthington RoadWesterville , OH, US 43082-8823
(Street and Number or P.O. Box)(City or Town, State, Country and Zip Code)

Primary Location of Books and RecordsMN017-E900, 9700 Health Care LaneMinnetonka , MN, US 55343847-619-3670
(Street and Number)(City or Town, State, Country and Zip Code)(Area Code) (Telephone Number)

Internet Website Addresswww.uhc.com

Statutory Statement ContactJiang Wang847-619-3670
(Name)(Area Code) (Telephone Number)

jiang_wang@uhc.com952-979-7826
(E-mail Address)(FAX Number)

OFFICERS

Chair and PresidentJefferson Brooks Walters IIITreasurerRobert Worth Oberrender

SecretaryChristina Regina Palme-KrizakChief Financial OfficerWilliam Joseph Hnath

OTHER

Nyle Brent CottingtonAssistant TreasurerRichard Gordon DunlopVice President, FinanceRobert Charles FalkenbergChief Executive Officer, Commercial

Michelle Marie Huntley DillAssistant SecretaryJuanita Bolland LuisAssistant Secretary

DIRECTORS OR TRUSTEES

Richard Gordon DunlopRobert Charles FalkenbergWilliam Joseph Hnath

David Scott LubyJefferson Brooks Walters IIILeonard Alan Wilkerson DO

State ofCounty of

State ofCounty of

State ofCounty of

The officers of this reporting entity being duly sworn, each depose and say that they are the described officers of said reporting entity, and that on the reporting period stated above, all of the herein described assets were the absolute property of the said reporting entity, free and clear from any liens or claims thereon, except as herein stated, and that this statement, together with related exhibits, schedules and explanations therein contained, annexed or referred to, is a full and true statement of all the assets and liabilities and of the condition and affairs of the said reporting entity as of the reporting period stated above, and of its income and deductions therefrom for the period ended, and have been completed in accordance with the NAIC Annual Statement Instructions and Accounting Practices and Procedures manual except to the extent that: (1) state law may differ; or, (2) that state rules or regulations require differences in reporting not related to accounting practices and procedures, according to the best of their information, knowledge and belief, respectively. Furthermore, the scope of this attestation by the described officers also includes the related corresponding electronic filing with the NAIC, when required, that is an exact copy (except for formatting differences due to electronic filing) of the enclosed statement. The electronic filing may be requested by various regulators in lieu of or in addition to the enclosed statement.

Jefferson Brooks Walters IIIChair and President

Christina Regina Palme-KrizakSecretary

William Joseph HnathChief Financial Officer

Subscribed and sworn to before me this day of

Subscribed and sworn to before me this day of

Subscribed and sworn to before me this day of

a. Is this an original filing?Yes [X] No []

b. If no,

1. State the amendment number.

2. Date filed.

3. Number of pages attached.

ASSETS

	Current Statement Date			4 December 31 Prior Year Net Admitted Assets
	1 Assets	2 Nonadmitted Assets	3 Net Admitted Assets (Cols. 1 - 2)	
1. Bonds	173,099,380		173,099,380	167,609,944
2. Stocks:				
2.1 Preferred stocks	506,485		506,485	0
2.2 Common stocks			0	0
3. Mortgage loans on real estate:				
3.1 First liens			0	0
3.2 Other than first liens.....			0	0
4. Real estate:				
4.1 Properties occupied by the company (less \$ encumbrances)			0	0
4.2 Properties held for the production of income (less \$ encumbrances)			0	0
4.3 Properties held for sale (less \$ encumbrances)			0	0
5. Cash (\$(3,922,393)), cash equivalents (\$0) and short-term investments (\$65,306,299)	61,383,906		61,383,906	52,969,633
6. Contract loans (including \$ premium notes)			0	0
7. Derivatives			0	0
8. Other invested assets			0	0
9. Receivables for securities	76,265		76,265	121,842
10. Securities lending reinvested collateral assets			0	0
11. Aggregate write-ins for invested assets	0	0	0	0
12. Subtotals, cash and invested assets (Lines 1 to 11)	235,066,036	0	235,066,036	220,701,419
13. Title plants less \$ charged off (for Title insurers only)			0	0
14. Investment income due and accrued	1,679,560		1,679,560	2,057,571
15. Premiums and considerations:				
15.1 Uncollected premiums and agents' balances in the course of collection	19,806,897	270,797	19,536,100	4,951,991
15.2 Deferred premiums, agents' balances and installments booked but deferred and not yet due (including \$ earned but unbilled premiums)			0	0
15.3 Accrued retrospective premiums			0	0
16. Reinsurance:				
16.1 Amounts recoverable from reinsurers			0	0
16.2 Funds held by or deposited with reinsured companies			0	0
16.3 Other amounts receivable under reinsurance contracts			0	0
17. Amounts receivable relating to uninsured plans	2,088,974	548,969	1,540,005	8,596,966
18.1 Current federal and foreign income tax recoverable and interest thereon	1,326,622		1,326,622	4,714,086
18.2 Net deferred tax asset	2,780,606	0	2,780,606	2,216,856
19. Guaranty funds receivable or on deposit			0	0
20. Electronic data processing equipment and software			0	0
21. Furniture and equipment, including health care delivery assets (\$)			0	0
22. Net adjustment in assets and liabilities due to foreign exchange rates			0	0
23. Receivables from parent, subsidiaries and affiliates			0	0
24. Health care (\$14,032,940) and other amounts receivable	17,258,886	3,225,946	14,032,940	13,137,211
25. Aggregate write-ins for other than invested assets	560	560	0	0
26. Total assets excluding Separate Accounts, Segregated Accounts and Protected Cell Accounts (Lines 12 to 25)	280,008,141	4,046,272	275,961,869	256,376,100
27. From Separate Accounts, Segregated Accounts and Protected Cell Accounts			0	0
28. Total (Lines 26 and 27)	280,008,141	4,046,272	275,961,869	256,376,100
DETAILS OF WRITE-INS				
1101.				
1102.				
1103.				
1198. Summary of remaining write-ins for Line 11 from overflow page	0	0	0	0
1199. Totals (Lines 1101 through 1103 plus 1198)(Line 11 above)	0	0	0	0
2501. Prepaid Expenses	560	560	0	0
2502.				
2503.				
2598. Summary of remaining write-ins for Line 25 from overflow page	0	0	0	0
2599. Totals (Lines 2501 through 2503 plus 2598)(Line 25 above)	560	560	0	0

LIABILITIES, CAPITAL AND SURPLUS

	Current Period			Prior Year
	1 Covered	2 Uncovered	3 Total	4 Total
1. Claims unpaid (less \$ reinsurance ceded)	136,948,277		136,948,277	111,602,104
2. Accrued medical incentive pool and bonus amounts	367,949		367,949	405,660
3. Unpaid claims adjustment expenses	2,500,583		2,500,583	2,069,678
4. Aggregate health policy reserves, including the liability of \$0 for medical loss ratio rebate per the Public Health Service Act	9,420,157		9,420,157	7,034,133
5. Aggregate life policy reserves			0	0
6. Property/casualty unearned premium reserve			0	0
7. Aggregate health claim reserves	169,583		169,583	147,743
8. Premiums received in advance	729,246		729,246	796,580
9. General expenses due or accrued	167,119		167,119	540,556
10.1 Current federal and foreign income tax payable and interest thereon (including \$0 on realized gains (losses))	0		0	0
10.2 Net deferred tax liability	0		0	0
11. Ceded reinsurance premiums payable	89,396		89,396	80,521
12. Amounts withheld or retained for the account of others.....			0	0
13. Remittances and items not allocated	17,390		17,390	18,579
14. Borrowed money (including \$ current) and interest thereon \$ (including \$ current)			0	0
15. Amounts due to parent, subsidiaries and affiliates	4,631,659		4,631,659	8,397,012
16. Derivatives			0	0
17. Payable for securities			0	0
18. Payable for securities lending			0	0
19. Funds held under reinsurance treaties (with \$ authorized reinsurers, \$ unauthorized reinsurers and \$ certified reinsurers).....			0	0
20. Reinsurance in unauthorized and certified (\$) companies			0	0
21. Net adjustments in assets and liabilities due to foreign exchange rates			0	0
22. Liability for amounts held under uninsured plans	2,060,655		2,060,655	2,538,973
23. Aggregate write-ins for other liabilities (including \$ current)	16,761	0	16,761	10,328
24. Total liabilities (Lines 1 to 23)	157,118,775	0	157,118,775	133,641,867
25. Aggregate write-ins for special surplus funds	XXX	XXX	0	0
26. Common capital stock	XXX	XXX	37,329,784	37,329,784
27. Preferred capital stock	XXX	XXX		
28. Gross paid in and contributed surplus	XXX	XXX	42,000,000	42,000,000
29. Surplus notes	XXX	XXX		
30. Aggregate write-ins for other than special surplus funds	XXX	XXX	0	0
31. Unassigned funds (surplus)	XXX	XXX	39,513,310	43,404,449
32. Less treasury stock, at cost:				
32.1 shares common (value included in Line 26 \$)	XXX	XXX		
32.2 shares preferred (value included in Line 27 \$)	XXX	XXX		
33. Total capital and surplus (Lines 25 to 31 minus Line 32)	XXX	XXX	118,843,094	122,734,233
34. Total liabilities, capital and surplus (Lines 24 and 33)	XXX	XXX	275,961,869	256,376,100
DETAILS OF WRITE-INS				
2301. Unclaimed Property	16,761		16,761	10,328
2302.				
2303.				
2398. Summary of remaining write-ins for Line 23 from overflow page	0	0	0	0
2399. Totals (Lines 2301 through 2303 plus 2398)(Line 23 above)	16,761	0	16,761	10,328
2501.	XXX	XXX		
2502.	XXX	XXX		
2503.	XXX	XXX		
2598. Summary of remaining write-ins for Line 25 from overflow page	XXX	XXX	0	0
2599. Totals (Lines 2501 through 2503 plus 2598)(Line 25 above)	XXX	XXX	0	0
3001.	XXX	XXX		
3002.	XXX	XXX		
3003.	XXX	XXX		
3098. Summary of remaining write-ins for Line 30 from overflow page	XXX	XXX	0	0
3099. Totals (Lines 3001 through 3003 plus 3098)(Line 30 above)	XXX	XXX	0	0

STATEMENT OF REVENUE AND EXPENSES

	Current Year To Date		Prior Year To Date	Prior Year Ended December 31
	1 Uncovered	2 Total	3 Total	4 Total
1. Member Months	XXX	319,916	277,573	1,126,735
2. Net premium income (including \$ non-health premium income).....	XXX	264,705,632	240,296,725	930,046,289
3. Change in unearned premium reserves and reserve for rate credits.....	XXX	(323,024)	(1,052,475)	(3,965,021)
4. Fee-for-service (net of \$ medical expenses).....	XXX			
5. Risk revenue	XXX			
6. Aggregate write-ins for other health care related revenues	XXX	0	0	0
7. Aggregate write-ins for other non-health revenues	XXX	0	0	0
8. Total revenues (Lines 2 to 7)	XXX	264,382,608	239,244,250	926,081,268
Hospital and Medical:				
9. Hospital/medical benefits		217,878,227	166,596,727	722,858,190
10. Other professional services		944,879	133,043	2,674,571
11. Outside referrals				
12. Emergency room and out-of-area				
13. Prescription drugs		24,307,136	22,209,299	56,502,179
14. Aggregate write-ins for other hospital and medical	0	0	0	0
15. Incentive pool, withhold adjustments and bonus amounts		85,419	45,597	326,503
16. Subtotal (Lines 9 to 15)	0	243,215,661	188,984,666	782,361,443
Less:				
17. Net reinsurance recoveries				
18. Total hospital and medical (Lines 16 minus 17)	0	243,215,661	188,984,666	782,361,443
19. Non-health claims (net)				
20. Claims adjustment expenses, including \$4,966,774 cost containment expenses		8,313,794	6,643,734	29,778,767
21. General administrative expenses		19,090,068	28,446,443	68,377,767
22. Increase in reserves for life and accident and health contracts (including \$ increase in reserves for life only)		2,063,000		170,000
23. Total underwriting deductions (Lines 18 through 22).....	0	272,682,523	224,074,843	880,687,977
24. Net underwriting gain or (loss) (Lines 8 minus 23)	XXX	(8,299,915)	15,169,407	45,393,291
25. Net investment income earned		1,241,873	1,394,662	5,392,900
26. Net realized capital gains (losses) less capital gains tax of \$292,683		537,118	8,114	543,686
27. Net investment gains (losses) (Lines 25 plus 26)	0	1,778,991	1,402,776	5,936,586
28. Net gain or (loss) from agents' or premium balances charged off [(amount recovered \$) (amount charged off \$5,472)].....		(5,472)		(302,942)
29. Aggregate write-ins for other income or expenses	0	0	0	(25,000)
30. Net income or (loss) after capital gains tax and before all other federal income taxes (Lines 24 plus 27 plus 28 plus 29)	XXX	(6,526,396)	16,572,183	51,001,935
31. Federal and foreign income taxes incurred	XXX	(1,619,219)	9,598,930	16,676,947
32. Net income (loss) (Lines 30 minus 31)	XXX	(4,907,177)	6,973,253	34,324,988
DETAILS OF WRITE-INS				
0601.	XXX			
0602.	XXX			
0603.	XXX			
0698. Summary of remaining write-ins for Line 6 from overflow page	XXX	0	0	0
0699. Totals (Lines 0601 through 0603 plus 0698)(Line 6 above)	XXX	0	0	0
0701.	XXX			
0702.	XXX			
0703.	XXX			
0798. Summary of remaining write-ins for Line 7 from overflow page	XXX	0	0	0
0799. Totals (Lines 0701 through 0703 plus 0798)(Line 7 above)	XXX	0	0	0
1401.				
1402.				
1403.				
1498. Summary of remaining write-ins for Line 14 from overflow page	0	0	0	0
1499. Totals (Lines 1401 through 1403 plus 1498)(Line 14 above)	0	0	0	0
2901. Fines and Penalties				(25,000)
2902.				
2903.				
2998. Summary of remaining write-ins for Line 29 from overflow page	0	0	0	0
2999. Totals (Lines 2901 through 2903 plus 2998)(Line 29 above)	0	0	0	(25,000)

STATEMENT OF REVENUE AND EXPENSES (Continued)

	1 Current Year to Date	2 Prior Year to Date	3 Prior Year Ended December 31
CAPITAL AND SURPLUS ACCOUNT			
33. Capital and surplus prior reporting year.....	122,734,233	99,911,784	99,911,784
34. Net income or (loss) from Line 32	(4,907,177)	6,973,253	34,324,988
35. Change in valuation basis of aggregate policy and claim reserves			
36. Change in net unrealized capital gains (losses) less capital gains tax of \$ 2,269	4,215		
37. Change in net unrealized foreign exchange capital gain or (loss)			
38. Change in net deferred income tax	566,019	4,913,285	985,255
39. Change in nonadmitted assets	445,804	424,169	(3,487,794)
40. Change in unauthorized and certified reinsurance	0	0	0
41. Change in treasury stock	0	0	0
42. Change in surplus notes	0	0	0
43. Cumulative effect of changes in accounting principles.....			
44. Capital Changes:			
44.1 Paid in	0	0	0
44.2 Transferred from surplus (Stock Dividend).....	0	0	0
44.3 Transferred to surplus.....			
45. Surplus adjustments:			
45.1 Paid in	0	0	0
45.2 Transferred to capital (Stock Dividend)			
45.3 Transferred from capital			
46. Dividends to stockholders			(9,000,000)
47. Aggregate write-ins for gains or (losses) in surplus	0	0	0
48. Net change in capital & surplus (Lines 34 to 47)	(3,891,139)	12,310,707	22,822,449
49. Capital and surplus end of reporting period (Line 33 plus 48)	118,843,094	112,222,491	122,734,233
DETAILS OF WRITE-INS			
4701.			
4702.			
4703.			
4798. Summary of remaining write-ins for Line 47 from overflow page	0	0	0
4799. Totals (Lines 4701 through 4703 plus 4798)(Line 47 above)	0	0	0

CASH FLOW

	1 Current Year To Date	2 Prior Year To Date	3 Prior Year Ended December 31
Cash from Operations			
1. Premiums collected net of reinsurance	250,022,342	295,605,363	937,569,926
2. Net investment income	2,131,836	2,003,469	7,338,538
3. Miscellaneous income	0	0	0
4. Total (Lines 1 to 3)	252,154,178	297,608,832	944,908,464
5. Benefit and loss related payments	218,177,799	188,850,728	784,640,866
6. Net transfers to Separate Accounts, Segregated Accounts and Protected Cell Accounts			
7. Commissions, expenses paid and aggregate write-ins for deductions	20,868,697	27,998,821	107,501,592
8. Dividends paid to policyholders			
9. Federal and foreign income taxes paid (recovered) net of \$292,683 tax on capital gains (losses)	(4,713,999)	(8,196,000)	13,546,905
10. Total (Lines 5 through 9)	234,332,497	208,653,549	905,689,363
11. Net cash from operations (Line 4 minus Line 10)	17,821,681	88,955,283	39,219,101
Cash from Investments			
12. Proceeds from investments sold, matured or repaid:			
12.1 Bonds	21,678,935	5,123,384	43,248,739
12.2 Stocks	0	0	0
12.3 Mortgage loans	0	0	0
12.4 Real estate	0	0	0
12.5 Other invested assets	0	0	0
12.6 Net gains or (losses) on cash, cash equivalents and short-term investments	1,165	277	1,393
12.7 Miscellaneous proceeds	45,577	0	0
12.8 Total investment proceeds (Lines 12.1 to 12.7)	21,725,677	5,123,661	43,250,132
13. Cost of investments acquired (long-term only):			
13.1 Bonds	27,372,975	6,542,842	42,108,636
13.2 Stocks	0	0	0
13.3 Mortgage loans	0	0	0
13.4 Real estate	0	0	0
13.5 Other invested assets	0	0	0
13.6 Miscellaneous applications	0	794,158	819,834
13.7 Total investments acquired (Lines 13.1 to 13.6)	27,372,975	7,337,000	42,928,470
14. Net increase (or decrease) in contract loans and premium notes	0	0	0
15. Net cash from investments (Line 12.8 minus Line 13.7 and Line 14)	(5,647,298)	(2,213,339)	321,662
Cash from Financing and Miscellaneous Sources			
16. Cash provided (applied):			
16.1 Surplus notes, capital notes	0	0	0
16.2 Capital and paid in surplus, less treasury stock	0	0	0
16.3 Borrowed funds	0	0	0
16.4 Net deposits on deposit-type contracts and other insurance liabilities	0	0	0
16.5 Dividends to stockholders	0	0	9,000,000
16.6 Other cash provided (applied)	(3,760,110)	(3,427,146)	5,023,581
17. Net cash from financing and miscellaneous sources (Line 16.1 through Line 16.4 minus Line 16.5 plus Line 16.6)	(3,760,110)	(3,427,146)	(3,976,419)
RECONCILIATION OF CASH, CASH EQUIVALENTS AND SHORT-TERM INVESTMENTS			
18. Net change in cash, cash equivalents and short-term investments (Line 11, plus Lines 15 and 17)	8,414,273	83,314,798	35,564,344
19. Cash, cash equivalents and short-term investments:			
19.1 Beginning of year	52,969,633	17,405,289	17,405,289
19.2 End of period (Line 18 plus Line 19.1)	61,383,906	100,720,087	52,969,633

Note: Supplemental disclosures of cash flow information for non-cash transactions:

--	--	--	--

EXHIBIT OF PREMIUMS, ENROLLMENT AND UTILIZATION

	1 Total	Comprehensive (Hospital & Medical)		4 Medicare Supplement	5 Vision Only	6 Dental Only	7 Federal Employees Health Benefit Plan	8 Title XVIII Medicare	9 Title XIX Medicaid	10 Other
		2 Individual	3 Group							
Total Members at end of:										
1. Prior Year	95,709	46	6,542	0	0	0	0	89,121	0	0
2. First Quarter	106,914	45	6,373					100,496		
3. Second Quarter	0									
4. Third Quarter	0									
5. Current Year	0									
6. Current Year Member Months	319,916	136	19,508					300,272		
Total Member Ambulatory Encounters for Period:										
7. Physician	550,191	85	16,272					533,834		
8. Non-Physician	262,263	4	668					261,591		
9. Total	812,454	89	16,940	0	0	0	0	795,425	0	0
10. Hospital Patient Days Incurred	58,819		519					58,300		
11. Number of Inpatient Admissions	10,175		129					10,046		
12. Health Premiums Written (a)	264,970,279	160,200	7,361,217					257,448,862		
13. Life Premiums Direct	0									
14. Property/Casualty Premiums Written	0									
15. Health Premiums Earned	264,647,255	160,200	7,361,143					257,125,912		
16. Property/Casualty Premiums Earned	0									
17. Amount Paid for Provision of Health Care Services.....	218,177,798	41,632	6,961,755					211,174,411		
18. Amount Incurred for Provision of Health Care Services	243,215,661	42,808	9,088,600					234,084,253		

(a) For health premiums written: amount of Medicare Title XVIII exempt from state taxes or fees \$257,448,862

CLAIMS UNPAID AND INCENTIVE POOL, WITHHOLD AND BONUS (Reported and Unreported)

oo

UNDERWRITING AND INVESTMENT EXHIBIT

ANALYSIS OF CLAIMS UNPAID - PRIOR YEAR - NET OF REINSURANCE

Line of Business	Claims Paid Year to Date		Liability End of Current Quarter		5 Claims Incurred in Prior Years (Columns 1 + 3)	6 Estimated Claim Reserve and Claim Liability December 31 of Prior Year
	1 On Claims Incurred Prior to January 1 of Current Year	2 On Claims Incurred During the Year	3 On Claims Unpaid Dec. 31 of Prior Year	4 On Claims Incurred During the Year		
1. Comprehensive (hospital and medical)	1,656,578	5,340,570	980,895	3,158,272	2,637,473	1,823,282
2. Medicare Supplement					0	0
3. Dental Only					0	0
4. Vision Only					0	0
5. Federal Employees Health Benefits Plan					0	0
6. Title XVIII - Medicare	78,831,230	132,226,291	18,635,588	114,343,105	97,466,818	109,926,564
7. Title XIX - Medicaid					0	0
8. Other health					0	0
9. Health subtotal (Lines 1 to 8)	80,487,808	137,566,861	19,616,483	117,501,377	100,104,291	111,749,846
10. Healthcare receivables (a)	7,675,009	6,396,612		3,187,265	7,675,009	16,966,446
11. Other non-health					0	0
12. Medical incentive pools and bonus amounts	119,814	3,315	331,469	36,480	451,283	405,660
13. Totals (Lines 9-10+11+12)	72,932,613	131,173,564	19,947,952	114,350,592	92,880,565	95,189,060

(a) Excludes \$ loans or advances to providers not yet expensed.

NOTES TO FINANCIAL STATEMENTS

1. SUMMARY OF SIGNIFICANT ACCOUNTING POLICIES

A. Accounting Practices

The financial statements of UnitedHealthcare of Ohio, Inc. (the “Company”) are presented on the basis of accounting practices prescribed or permitted by the Ohio Department of Insurance (the “Department”).

The Department recognizes only statutory accounting practices, prescribed or permitted by the State of Ohio, for determining and reporting the financial condition and results of operations of an insurance company, for determining its solvency under Ohio Insurance Law. The state prescribes the use of the National Association of Insurance Commissioners’ (“NAIC”) Accounting Practices and Procedures manual (“NAIC SAP”) in effect for the accounting periods covered in the financial statement.

(1-8) No significant differences exist between the practices prescribed or permitted by the State of Ohio and those prescribed or permitted by the NAIC SAP which materially affect the statutory basis net (loss) income, capital and surplus, and total admitted assets, as illustrated in the table below (in thousands):

	State of Domicile	March 31, 2013	2012
NET (LOSS) INCOME			
(1) Company state basis	Ohio	\$ (4,907)	\$ 34,325
(2) State Prescribed Practices that increase/(decrease) NAIC SAP: Not Applicable	Ohio	-	-
(3) State Permitted Practices that increase/(decrease) NAIC SAP: Not Applicable	Ohio	-	-
(4) NAIC SAP	Ohio	\$ (4,907)	\$ 34,325
SURPLUS			
(5) Company state basis	Ohio	\$ 118,843	\$ 122,734
(6) State Prescribed Practices that increase/(decrease) NAIC SAP: Not Applicable	Ohio	-	-
(7) State Permitted Practices that increase/(decrease) NAIC SAP: Not Applicable	Ohio	-	-
(8) NAIC SAP	Ohio	\$ 118,843	\$ 122,734

B. Use of Estimates in the Preparation of the Statutory Basis Financial Statements

No significant change.

C. Accounting Policy

No significant change.

2. ACCOUNTING CHANGES AND CORRECTION OF ERRORS

No significant change.

3. BUSINESS COMBINATIONS AND GOODWILL

A–D. No significant change.

4. DISCONTINUED OPERATIONS

(1–5) No significant change.

5. INVESTMENTS AND OTHER INVESTED ASSETS

A. Mortgage Loans, including Mezzanine Real Estate Loans

No significant change.

NOTES TO FINANCIAL STATEMENTS

B. Debt restructuring

No significant change.

C. Reverse Mortgages

No significant change.

D. Loan-Backed Securities

- (1) Corporate bonds and government obligations include mortgage-backed securities, which are valued using the retrospective adjustment methodology. Prepayment assumptions for single class and multi-class mortgage-backed/asset-backed securities were obtained from an external data source vendor.
- (2) The Company did not recognize any other-than-temporary impairments on mortgage-type investments as of March 31, 2013.
- (3) As of March 31, 2013, the Company did not have mortgage-type investments with any other-than-temporary impairment to report by CUSIP.
- (4) The following table illustrates the fair value, gross unrealized losses, and length of time that the mortgage-backed securities have been in a continuous unrealized loss position at March 31, 2013 and December 31, 2012 (in thousands):

	March 31, 2013
The aggregate amount of unrealized losses:	
1. Less than 12 months	\$ (89)
2. 12 Months or longer	-
The aggregate related fair value of securities with unrealized losses:	
1. Less than 12 months	4,827
2. 12 Months or longer	-
	2012
The aggregate amount of unrealized losses:	
1. Less than 12 months	\$ (4)
2. 12 Months or longer	-
The aggregate related fair value of securities with unrealized losses:	
1. Less than 12 months	-
2. 12 Months or longer	4,951

E. Repurchase Agreements and/or Securities Lending Transactions

No significant change.

F. Real Estate

No significant change.

G. Investments in Low-Income Housing Tax Credits

No significant change.

6. JOINT VENTURES, PARTNERSHIPS, AND LIMITED LIABILITY COMPANIES

A–B. No significant change.

7. INVESTMENT INCOME

A–B. No significant change.

8. DERIVATIVE INSTRUMENTS

A–F. No significant change.

NOTES TO FINANCIAL STATEMENTS

9. INCOME TAXES

A–G. No significant change

10. INFORMATION CONCERNING PARENT, SUBSIDIARIES, AND AFFILIATES**A–L. Material Related Party Transactions**

Effective January 1, 2013, the Company entered into a pharmaceutical benefits management agreement with an affiliated entity, OptumRx, Inc. to provide pharmaceutical benefits management services for the commercial product. The agreement has been approved by the Department and will replace the previous agreement with Medco Health Solutions, Inc.

11. DEBT

A–B. No significant change.

12. RETIREMENT PLANS, DEFERRED COMPENSATION, POSTEMPLOYMENT BENEFITS AND COMPENSATED ABSENCES, AND OTHER POSTRETIREMENT BENEFIT PLANS

A–F. No significant change.

13. CAPITAL AND SURPLUS, SHAREHOLDERS' DIVIDEND RESTRICTIONS, AND QUASI-REORGANIZATIONS

(1–13) No significant change.

14. CONTINGENCIES

A–E. No significant change.

15. LEASES

A–B. No significant change.

16. INFORMATION ABOUT FINANCIAL INSTRUMENTS WITH OFF-BALANCE-SHEET RISK AND FINANCIAL INSTRUMENTS WITH CONCENTRATIONS OF CREDIT RISK

(1–4) No significant change.

17. SALE, TRANSFER, AND SERVICING OF FINANCIAL ASSETS AND EXTINGUISHMENTS OF LIABILITIES

A–C. No significant change.

18. GAIN OR LOSS TO THE REPORTING ENTITY FROM UNINSURED PLANS AND THE UNINSURED PORTION OF PARTIALLY INSURED PLANS

A–B. No significant change.

C. Medicare or Other Similarly Structured Cost Based Reimbursement Contract

The Medicare Part D program is a partially insured plan. The Company recorded a receivable of approximately \$940,000 and \$6,537,000 as of March 31, 2013 and December 31, 2012, respectively, for cost reimbursement under the Medicare Part D program for the catastrophic reinsurance and low-income member cost-sharing subsidies. The Company also recorded a receivable of approximately \$600,000 and \$2,060,000 and a payable of approximately \$2,061,000 and \$2,539,000 as of March 31, 2013 and December 31, 2012, respectively, for the Medicare Part D Coverage Gap Discount Program. These amounts are recorded as amounts receivable relating to uninsured plans and liability for amounts held under uninsured plans in the accompanying statutory basis statements of admitted assets, liabilities, and capital surplus.

NOTES TO FINANCIAL STATEMENTS

19. DIRECT PREMIUM WRITTEN/PRODUCED BY MANAGING GENERAL AGENTS/THIRD-PARTY ADMINISTRATORS

No significant change.

20. FAIR VALUE MEASUREMENT

The NAIC SAP defines fair value, establishes a framework for measuring fair value, and outlines the disclosure requirements related to fair value measurements. The fair value hierarchy is as follows:

Level 1 — Quoted (unadjusted) prices for identical assets in active markets.

Level 2 — Other observable inputs, either directly or indirectly, including:

- Quoted prices for similar assets in active markets
- Quoted prices for identical or similar assets in nonactive markets (few transactions, limited information, noncurrent prices, high variability over time, etc.)
- Inputs other than quoted prices that are observable for the asset (interest rates, yield curves, volatilities, default rates, etc.)
- Inputs that are derived principally from or corroborated by other observable market data

Level 3 — Unobservable inputs that cannot be corroborated by observable market data.

The estimated fair values of bonds, short-term investments, and preferred stocks (investments) are based on quoted market prices, where available. The Company obtains one price for each security primarily from a third-party pricing service (“pricing service”), which generally uses quoted prices or other observable inputs for the determination of fair value. The pricing service normally derives the security prices through recently reported trades for identical or similar securities, making adjustments through the reporting date based upon available observable market information. For securities not actively traded, the pricing service may use quoted market prices of comparable instruments or discounted cash flow analyses, incorporating inputs that are currently observable in the markets for similar securities. Inputs that are often used in the valuation methodologies include, but are not limited to, non-binding broker quotes, benchmark yields, credit spreads, default rates and prepayment speeds. As the Company is responsible for the determination of fair value, it performs quarterly analyses on the prices received from the pricing service to determine whether the prices are reasonable estimates of fair value. Specifically, the Company compares the prices received from the pricing service to prices reported by its custodian, its investment consultant and third-party investment advisors. Additionally, the Company compares changes in the reported market values and returns to relevant market indices to test the reasonableness of the reported prices. Based on the Company’s internal price verification procedures and review of fair value methodology documentation provided by independent pricing services, the Company has not historically adjusted the prices obtained from the pricing service.

In instances in which the inputs used to measure fair value fall into different levels of the fair value hierarchy, the fair value measurement has been determined based on the lowest level input that is significant to the fair value measurement in its entirety. The Company’s assessment of the significance of a particular item to the fair value measurement in its entirety requires judgment, including the consideration of inputs specific to the asset or liability.

NOTES TO FINANCIAL STATEMENTS

A. Fair Value

(1) Fair Value Measurements at Reporting Date

The following table presents information about the Company’s financial assets that are measured and reported at fair value at March 31, 2013 and December 31, 2012, in the statutory basis statements of admitted assets, liabilities, and capital and surplus according to the valuation techniques the Company used to determine their fair values (in thousands):

Description for each class of asset or liability	March 31, 2013			Total
	(Level 1)	(Level 2)	(Level 3)	
Assets at fair value:				
Perpetual preferred stock				
Industrial and misc	(a) \$ -	\$ 506	\$ -	\$ 506
Parent, subsidiaries and affiliates	-	-	-	-
Total perpetual preferred stocks	-	506	-	506
Bonds:				
U.S. governments	-	-	-	-
Industrial and misc	-	-	-	-
Hybrid securities	-	-	-	-
Parent, subsidiaries and affiliates	-	-	-	-
Total bonds	-	-	-	-
Common stock:				
Industrial and misc	-	-	-	-
Parent, subsidiaries and affiliates	-	-	-	-
Total common stock	-	-	-	-
Derivative assets:				
Interest rate contracts	-	-	-	-
Foreign exchange contracts	-	-	-	-
Credit contracts	-	-	-	-
Commodity futures contracts	-	-	-	-
Commodity forward contracts	-	-	-	-
Total derivatives	-	-	-	-
Separate account assets	-	-	-	-
Total assets at fair value	\$ -	\$ 506	\$ -	\$ 506
Liabilities at fair value:				
Derivative liabilities	\$ -	\$ -	\$ -	\$ -
Total liabilities at fair value	\$ -	\$ -	\$ -	\$ -

(a) \$0 transferred from Level 1 to Level 2 as an alternative method was utilized to determine fair value as active market price was not readily available.

NOTES TO FINANCIAL STATEMENTS

Description for each class of asset or liability	December 31, 2012			
	(Level 1)	(Level 2)	(Level 3)	Total
Assets at fair value:				
Perpetual preferred stock				
Industrial and misc	(a) \$ -	\$ -	\$ -	\$ -
Parent, subsidiaries and affiliates	-	-	-	-
Total perpetual preferred stocks	-	-	-	-
Bonds:				
U.S. governments	-	-	-	-
Industrial and misc	-	273	-	273
Hybrid securities	-	-	-	-
Parent, subsidiaries and affiliates	-	-	-	-
Total bonds	-	273	-	273
Common stock:				
Industrial and misc	-	-	-	-
Parent, subsidiaries and affiliates	-	-	-	-
Total common stock	-	-	-	-
Derivative assets:				
Interest rate contracts	-	-	-	-
Foreign exchange contracts	-	-	-	-
Credit contracts	-	-	-	-
Commodity futures contracts	-	-	-	-
Commodity forward contracts	-	-	-	-
Total derivatives	-	-	-	-
Separate account assets	-	-	-	-
Total assets at fair value	\$ -	\$ 273	\$ -	\$ 273
Liabilities at fair value:				
Derivative liabilities	\$ -	\$ -	\$ -	\$ -
Total liabilities at fair value	\$ -	\$ -	\$ -	\$ -

(a) \$0 transferred from Level 1 to Level 2 as an alternative method was utilized to determine fair value as active market price was not readily available.

There were no transfers between Levels 1 and 2 during the three months ended March 31, 2013 and the year ended December 31, 2012.

(2) The Company does not have any financial assets with a fair value hierarchy of level 3.

- B. Fair Value Combination — Not applicable
- C. The aggregate fair value by hierarchy of all financial instruments as of March 31, 2013 and December 31, 2012, is presented in the table below (in thousands):

Types of Financial Investment	March 31, 2013					Not Practical Carrying Value
	Aggregate Fair Value	Admitted Assets	(Level 1)	(Level 2)	(Level 3)	
Bonds	\$ 246,659	\$ 238,406	\$ 75,057	\$ 171,602	\$ -	\$ -
Common stock	-	-	-	-	-	-
Perpetual preferred stock	506	506	-	506	-	-
Mortgage loans	-	-	-	-	-	-

Types of Financial Investment	December 31, 2012					Not Practical Carrying Value
	Aggregate Fair Value	Admitted Assets	(Level 1)	(Level 2)	(Level 3)	
Bonds	\$ 233,603	\$ 223,843	\$ 65,917	\$ 167,686	\$ -	\$ -
Common stock	-	-	-	-	-	-
Perpetual preferred stock	-	-	-	-	-	-
Mortgage loans	-	-	-	-	-	-

Included as Level 1 in bonds in the fair value hierarchy table above is money market instruments of \$63,308 and \$49,540 as of March 31, 2013 and December 31, 2012, respectively. Money market instruments are reflected in cash overdrafts and short-term investments in the statutory basis statements of admitted assets, liabilities, and capital and surplus.

NOTES TO FINANCIAL STATEMENTS

D. Not Practicable to Estimate Fair Value — Not applicable

21. OTHER ITEMS

A–H. No significant change.

22. EVENTS SUBSEQUENT

No significant change.

23. REINSURANCE

A–C. No significant change.

24. RETROSPECTIVELY RATED CONTRACTS AND CONTRACTS SUBJECT TO REDETERMINATION

A–B. No significant change.

C. The Company has Medicare Part D program business which is subject to a retrospective rating feature related to Part D Premiums. The Company has estimated accrued retrospective premiums related to certain Part D premiums based on guidelines determined by CMS. The formula is tiered and based on the bid medical loss ratio. The amount of Part D earned premiums subject to retrospective rating was approximately \$18,107,000 and \$69,083,000 representing 6.8% and 7.3% of total direct premium income as of March 31, 2013 and December 31, 2012, respectively.

D. The Company is required to maintain specific minimum loss ratios. These minimum loss ratios apply to comprehensive major medical coverage and vary depending on group size. The following table discloses the minimum medical loss ratio rebates required pursuant to the Health Reform Legislation for the three months ended March 31, 2013 and the year ended December 31, 2012 (in thousands):

	1	2	3	4	5
	Individual	Small Group Employer	Large Group Employer	Other Categories with Rebates	Total
Prior reporting year:					
(1) Medical loss ratio rebates incurred	\$ -	\$ -	\$ 304	\$ -	\$ 304
(2) Medical loss ratio rebates paid	-	-	311	-	311
(3) Medical loss rebates unpaid	-	-	-	-	-
(4) Plus reinsurance assumed amounts	XXX	XXX	XXX	XXX	-
(5) Less reinsurance ceded amounts	XXX	XXX	XXX	XXX	-
(6) Rebates unpaid net of reinsurance	XXX	XXX	XXX	XXX	\$ -
Current reporting year-to-date:					
(7) Medical loss ratio rebates incurred	\$ -	\$ -	\$ -	\$ -	\$ -
(8) Medical loss ratio rebates paid	-	-	-	-	-
(9) Medical loss rebates unpaid	-	-	-	-	-
(10) Plus reinsurance assumed amounts	XXX	XXX	XXX	XXX	-
(11) Less reinsurance ceded amounts	XXX	XXX	XXX	XXX	-
(12) Rebates unpaid net of reinsurance	XXX	XXX	XXX	XXX	\$ -

NOTES TO FINANCIAL STATEMENTS

25. CHANGE IN INCURRED CLAIMS AND CLAIMS ADJUSTMENT EXPENSES

Changes in estimates related to the prior year incurred claims are included in total hospital and medical expenses in the current year in the accompanying statutory basis statements of operations. The following tables disclose paid claims, incurred claims, and the balance in the claims unpaid, accrued medical incentive pool and bonus amounts, aggregate health claim reserves and health care receivables at March 31, 2013 and December 31, 2012 (in thousands):

	March 31, 2013		
	Current Year Incurred Claims	Prior Years Incurred Claims	Total
Beginning of year claim reserve	\$ -	\$ (112,156)	\$ (112,156)
Paid claims, net of health care receivables	137,570	80,608	218,178
End of year claim reserve	<u>117,538</u>	<u>19,948</u>	<u>137,486</u>
Incurred claims excluding the change in health care receivables	255,108	(11,600)	243,508
Beginning of year health care receivables	-	16,966	16,966
End of year health care receivables	<u>(9,584)</u>	<u>(7,675)</u>	<u>(17,259)</u>
Total incurred claims	<u>\$ 245,524</u>	<u>\$ (2,309)</u>	<u>\$ 243,215</u>

	2012		
	Current Year Incurred Claims	Prior Years Incurred Claims	Total
Beginning of year claim reserve	\$ -	\$ (109,469)	\$ (109,469)
Paid claims, net of health care receivables	703,063	81,578	784,641
End of year claim reserve	<u>108,431</u>	<u>3,725</u>	<u>112,156</u>
Incurred claims excluding the change in health care receivables	811,494	(24,166)	787,328
Beginning of year health care receivables	-	12,000	12,000
End of year health care receivables	<u>(14,047)</u>	<u>(2,919)</u>	<u>(16,966)</u>
Total incurred claims	<u>\$ 797,447</u>	<u>\$ (15,085)</u>	<u>\$ 782,362</u>

The liability for claims unpaid, accrued medical incentive pool and bonus amounts, aggregate health claim reserves and health care receivables as of December 31, 2012 were approximately \$95,190,000. As of March 31, 2013, approximately \$80,608,000 has been paid for incurred claims attributable to insured events of prior years. Reserves remaining for prior years are now approximately \$12,273,000 as a result of re-estimation of unpaid claims. Therefore, there has been approximately \$2,309,000 favorable prior year development since December 31, 2012 to March 31, 2013. The primary drivers consist of favorable development as a result of a change in the provision for adverse deviations in experience of approximately \$5,138,000 offset by unfavorable development of approximately \$2,518,000 in retroactivity for inpatient, outpatient, physician, and pharmacy claims, and by unfavorable development in pharmacy rebates of approximately \$139,000. At December 31, 2012, the Company recorded approximately \$15,085,000 of favorable prior-year development since December 31, 2011 to December 31, 2012. The primary drivers consist of favorable development was a result of a change in the provision for adverse deviations in experience of approximately \$5,810,000 and by favorable development of approximately \$8,638,000 in retroactivity for inpatient, outpatient, physician, and pharmacy claims. Original estimates are increased or decreased, as additional information becomes known regarding individual claims. Included in this favorable development is the impact related to retrospectively rated policies. As a result of the prior-year effects, on a regular basis, the Company adjusts revenue and the corresponding liability and/or receivable related to retrospectively rated policies and the impact of the change is included as a component of change in unearned premium reserves and reserve for rate credits in the statutory basis statements of operations.

NOTES TO FINANCIAL STATEMENTS

The Company incurred claims adjustment expenses (CAE) of approximately \$8,314,000 and \$29,779,000 for the three months ended March 31, 2013 and the year ended December 31, 2012, respectively. These costs are included in the management service fees paid by the Company to United HealthCare Services, Inc. as a part of its management agreement. The following tables disclose paid CAE, incurred CAE, and the balance in the unpaid claim adjustment expenses reserve for the three months ended March 31, 2013 and the year ended December 31, 2012 (in thousands):

	March 31, 2013	2012
Total claims adjustment expenses incurred	\$ 8,314	\$ 29,779
Less current year unpaid claims adjustment expenses	(2,501)	(2,070)
Add prior year unpaid claims adjustment expenses	<u>2,070</u>	<u>2,058</u>
Total claims adjustment expenses paid	<u>\$ 7,883</u>	<u>\$ 29,767</u>

26. INTERCOMPANY POOLING ARRANGEMENTS

A–G. No significant change.

27. STRUCTURED SETTLEMENTS

A–B. No significant change.

28. HEALTH CARE AND OTHER AMOUNTS RECEIVABLES

A–B. No significant change.

29. PARTICIPATING POLICIES

No significant change.

30. PREMIUM DEFICIENCY RESERVES

The following table summarizes the Company’s premium deficiency reserves as of March 31, 2013 and December 31, 2012 (in thousands):

	March 31, 2013
1. Liability carried for premium deficiency reserves	\$ 2,233
2. Date of the most recent evaluation of this liability	<u>3/31/2013</u>
3. Was anticipated investment income utilized in this calculation?	Yes <input checked="" type="checkbox"/> No <input type="checkbox"/>

	2012
1. Liability carried for premium deficiency reserves	\$ 170
2. Date of the most recent evaluation of this liability	<u>12/31/2012</u>
3. Was anticipated investment income utilized in this calculation?	Yes <input checked="" type="checkbox"/> No <input type="checkbox"/>

31. ANTICIPATED SALVAGE AND SUBROGATION

No significant change.

GENERAL INTERROGATORIES

PART 1 - COMMON INTERROGATORIES

GENERAL

- 1.1

Did the reporting entity experience any material transactions requiring the filing of Disclosure of Material Transactions with the State of Domicile, as required by the Model Act?

Yes [☐] No [☒]
- 1.2

If yes, has the report been filed with the domiciliary state?

Yes [☐] No [☐]
- 2.1

Has any change been made during the year of this statement in the charter, by-laws, articles of incorporation, or deed of settlement of the reporting entity?

Yes [☐] No [☒]
- 2.2

If yes, date of change:
- 3.1

Have there been any substantial changes in the organizational chart since the prior quarter end?

Yes [☒] No [☐]
- 3.2

If the response to 3.1 is yes, provide a brief description of those changes.
January 17, 2013: Hickory Acquisition Subsidiary, Inc., merged into Humedica, Inc. with Humedica, Inc. surviving the merger as a wholly owned subsidiary of United HealthCare Services, Inc.

January 31, 2013: UnitedHealthcare of South Carolina, Inc was sold.

February 8, 2013: Physicians Health Choice of Arkansas, Inc. was dissolved.

February 25, 2013: Exlogs EBT Holdings Limited was struck off.

March 1, 2013: AMIL International S.a.r.l. acquired a 100% ownership interest in HPP- Hospitais Privados del Portual, SGPS., S.A. HPP- Hospitais Privados de Portual, SGPS, S.A. is the sole shareholder of the following enties: HPP Boavista, S.A.; HPP Lusiadas, S.A.; HPP Algarve, S.A.; HPP Saude- Parcerias Cascais, S.A.; Carlton Life- Residencias e Servicos S.A.
- 4.1

Has the reporting entity been a party to a merger or consolidation during the period covered by this statement?

Yes [☐] No [☒]
- 4.2

If yes, provide the name of the entity, NAIC Company Code, and state of domicile (use two letter state abbreviation) for any entity that has ceased to exist as a result of the merger or consolidation.

1 Name of Entity	2 NAIC Company Code	3 State of Domicile
5.

If the reporting entity is subject to a management agreement, including third-party administrator(s), managing general agent(s), attorney-in-fact, or similar agreement, have there been any significant changes regarding the terms of the agreement or principals involved?
If yes, attach an explanation.

Yes [☐] No [☒] N/A [☐]
- 6.1

State as of what date the latest financial examination of the reporting entity was made or is being made.

12/31/2009
- 6.2

State the as of date that the latest financial examination report became available from either the state of domicile or the reporting entity. This date should be the date of the examined balance sheet and not the date the report was completed or released.

12/31/2009
- 6.3

State as of what date the latest financial examination report became available to other states or the public from either the state of domicile or the reporting entity. This is the release date or completion date of the examination report and not the date of the examination (balance sheet date).

01/01/2011
- 6.4

By what department or departments?
Ohio Department of Insurance
- 6.5

Have all financial statement adjustments within the latest financial examination report been accounted for in a subsequent financial statement filed with Departments?

Yes [☐] No [☐] N/A [☒]
- 6.6

Have all of the recommendations within the latest financial examination report been complied with?

Yes [☐] No [☐] N/A [☒]
- 7.1

Has this reporting entity had any Certificates of Authority, licenses or registrations (including corporate registration, if applicable) suspended or revoked by any governmental entity during the reporting period?

Yes [☐] No [☒]
- 7.2

If yes, give full information:
- 8.1

Is the company a subsidiary of a bank holding company regulated by the Federal Reserve Board?

Yes [☐] No [☒]
- 8.2

If response to 8.1 is yes, please identify the name of the bank holding company.
- 8.3

Is the company affiliated with one or more banks, thrifts or securities firms?

Yes [☒] No [☐]
- 8.4

If response to 8.3 is yes, please provide below the names and location (city and state of the main office) of any affiliates regulated by a federal regulatory services agency [i.e. the Federal Reserve Board (FRB), the Office of the Comptroller of the Currency (OCC), the Federal Deposit Insurance Corporation (FDIC) and the Securities Exchange Commission (SEC)] and identify the affiliate's primary federal regulator.

1 Affiliate Name	2 Location (City, State)	3 FRB	4 OCC	5 FDIC	6 SEC
OptumHealth Bank, Inc.	Salt Lake City, Utah	NO	NO	YES	NO

GENERAL INTERROGATORIES

- 9.1

Are the senior officers (principal executive officer, principal financial officer, principal accounting officer or controller, or persons performing similar functions) of the reporting entity subject to a code of ethics, which includes the following standards?
(a) Honest and ethical conduct, including the ethical handling of actual or apparent conflicts of interest between personal and professional relationships;
(b) Full, fair, accurate, timely and understandable disclosure in the periodic reports required to be filed by the reporting entity;
(c) Compliance with applicable governmental laws, rules and regulations;
(d) The prompt internal reporting of violations to an appropriate person or persons identified in the code; and
(e) Accountability for adherence to the code.

Yes [X] No []
- 9.11

If the response to 9.1 is No, please explain:
- 9.2

Has the code of ethics for senior managers been amended?

Yes [] No [X]
- 9.21

If the response to 9.2 is Yes, provide information related to amendment(s).
- 9.3

Have any provisions of the code of ethics been waived for any of the specified officers?

Yes [] No [X]
- 9.31

If the response to 9.3 is Yes, provide the nature of any waiver(s).

FINANCIAL

- 10.1

Does the reporting entity report any amounts due from parent, subsidiaries or affiliates on Page 2 of this statement?

Yes [] No [X]
- 10.2

If yes, indicate any amounts receivable from parent included in the Page 2 amount:

\$

INVESTMENT

- 11.1

Were any of the stocks, bonds, or other assets of the reporting entity loaned, placed under option agreement, or otherwise made available for use by another person? (Exclude securities under securities lending agreements.)

Yes [] No [X]
- 11.2

If yes, give full and complete information relating thereto:
12.

Amount of real estate and mortgages held in other invested assets in Schedule BA:

\$
13.

Amount of real estate and mortgages held in short-term investments:

\$
- 14.1

Does the reporting entity have any investments in parent, subsidiaries and affiliates?

Yes [] No [X]
- 14.2

If yes, please complete the following:
- | | 1 | 2 |
|---|---|--|
| | Prior Year-End
Book/Adjusted
Carrying Value | Current Quarter
Book/Adjusted
Carrying Value |
| 14.21 Bonds | \$0 | \$ |
| 14.22 Preferred Stock | \$0 | \$ |
| 14.23 Common Stock | \$0 | \$ |
| 14.24 Short-Term Investments | \$0 | \$ |
| 14.25 Mortgage Loans on Real Estate | \$0 | \$ |
| 14.26 All Other | \$0 | \$ |
| 14.27 Total Investment in Parent, Subsidiaries and Affiliates (Subtotal Lines 14.21 to 14.26) | \$0 | \$0 |
| 14.28 Total Investment in Parent included in Lines 14.21 to 14.26 above | \$ | \$ |
- 15.1

Has the reporting entity entered into any hedging transactions reported on Schedule DB?

Yes [] No [X]
- 15.2

If yes, has a comprehensive description of the hedging program been made available to the domiciliary state?
If no, attach a description with this statement.

Yes [] No []

GENERAL INTERROGATORIES

16. For the reporting entity's security lending program, state the amount of the following as of the current statement date:
- 16.1 Total fair value of reinvested collateral assets reported on Schedule DL, Parts 1 and 2

\$ 0
- 16.2 Total book adjusted/carrying value of reinvested collateral assets reported on Schedule DL, Parts 1 and 2

\$ 0
- 16.3 Total payable for securities lending reported on the liability page

\$ 0

17. Excluding items in Schedule E - Part 3 - Special Deposits, real estate, mortgage loans and investments held physically in the reporting entity's offices, vaults or safety deposit boxes, were all stocks, bonds and other securities, owned throughout the current year held pursuant to a custodial agreement with a qualified bank or trust company in accordance with Section 1, III - General Examination Considerations, F. Outsourcing of Critical Functions, Custodial or Safekeeping Agreements of the NAIC Financial Condition Examiners Handbook?
- Yes ☒ No ☐

- 17.1 For all agreements that comply with the requirements of the NAIC Financial Condition Examiners Handbook, complete the following:

1 Name of Custodian(s)	2 Custodian Address
Northern Trust	50 S. LaSalle, Chicago, IL 60675
Bank of New York Mellon	Global Liquidity Services, 1 Wall St, 14th Floor, New York NY 10286

- 17.2 For all agreements that do not comply with the requirements of the NAIC Financial Condition Examiners Handbook, provide the name, location and a complete explanation:

1 Name(s)	2 Location(s)	3 Complete Explanation(s)

- 17.3 Have there been any changes, including name changes, in the custodian(s) identified in 17.1 during the current quarter?
- Yes ☐ No ☒

- 17.4 If yes, give full information relating thereto:

1 Old Custodian	2 New Custodian	3 Date of Change	4 Reason

- 17.5 Identify all investment advisors, brokers/dealers or individuals acting on behalf of broker/dealers that have access to the investment accounts, handle securities and have authority to make investments on behalf of the reporting entity:

1 Central Registration Depository	2 Name(s)	3 Address
107105	BlackRock Financial Management, Inc	55 East 52nd Street, NY,NY 10055

- 18.1 Have all the filing requirements of the Purposes and Procedures Manual of the NAIC Securities Valuation Office been followed?
- Yes ☒ No ☐

- 18.2 If no, list exceptions:

GENERAL INTERROGATORIES

PART 2 - HEALTH

1. Operating Percentages:
- 1.1 A&H loss percent

94.7 %
- 1.2 A&H cost containment percent

1.9 %
- 1.3 A&H expense percent excluding cost containment expenses

8.5 %
- 2.1 Do you act as a custodian for health savings accounts?

Yes [] No [X]
- 2.2 If yes, please provide the amount of custodial funds held as of the reporting date

\$.
- 2.3 Do you act as an administrator for health savings accounts?

Yes [] No [X]
- 2.4 If yes, please provide the balance of the funds administered as of the reporting date

\$.

SCHEDULE S - CEDED REINSURANCE

Showing All New Reinsurance Treaties - Current Year to Date

1 NAIC Company Code	2 Federal ID Number	3 Effective Date	4 Name of Reinsurer	5 Domiciliary Jurisdiction	6 Type of Reinsurance Ceded	7 Is Insurer Authorized? (Yes or No)
			NONE			

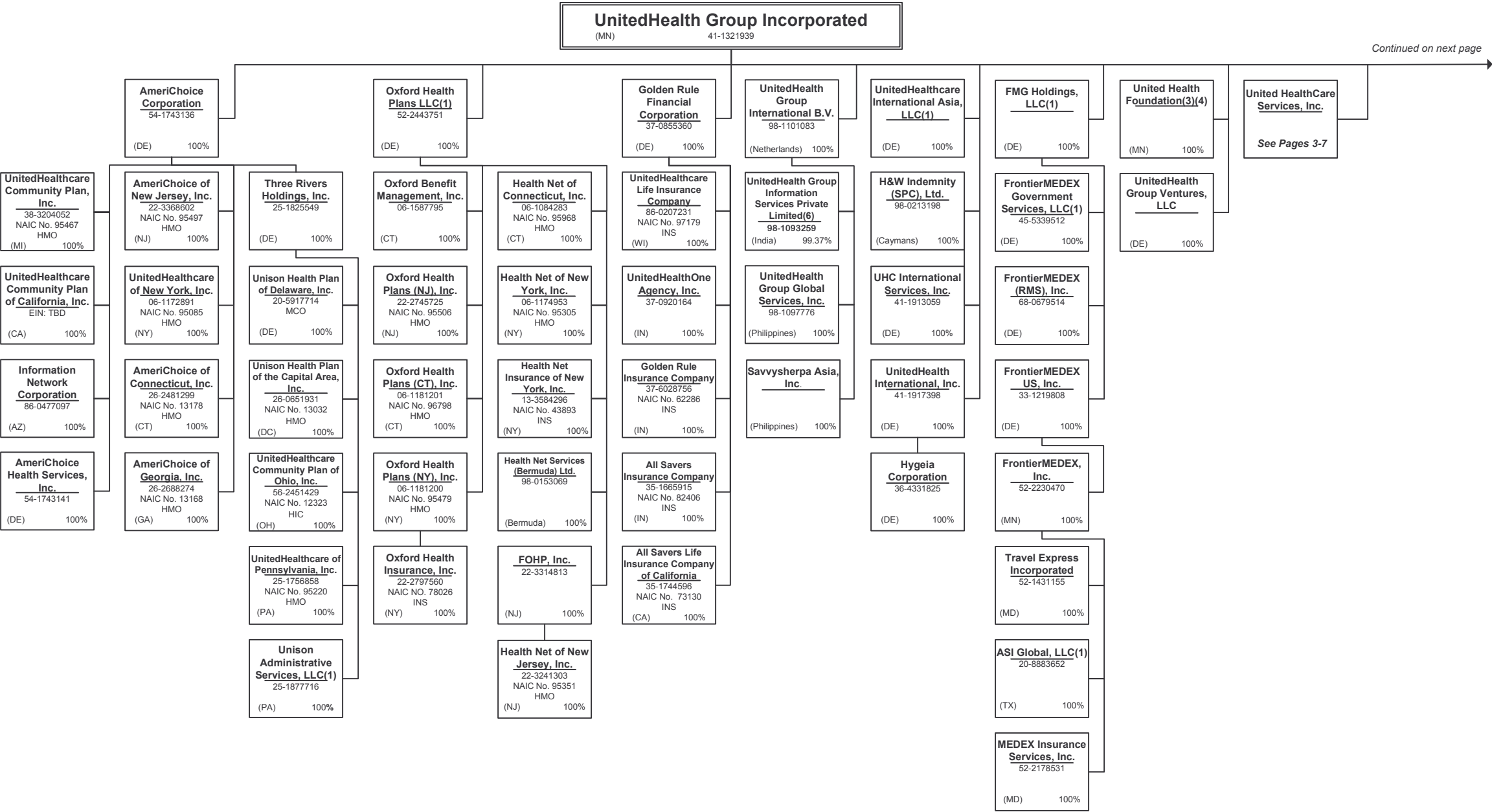
SCHEDULE T - PREMIUMS AND OTHER CONSIDERATIONS

Current Year to Date - Allocated by States and Territories									
States, etc.	1	Direct Business Only							
		2	3	4	5	6	7	8	9
	Active Status	Accident and Health Premiums	Medicare Title XVIII	Medicaid Title XIX	Federal Employees Health Benefits Program Premiums	Life and Annuity Premiums & Other Considerations	Property/Casualty Premiums	Total Columns 2 Through 7	Deposit-Type Contracts
1. Alabama	AL	N						0	
2. Alaska	AK	N						0	
3. Arizona	AZ	N						0	
4. Arkansas	AR	N						0	
5. California	CA	N						0	
6. Colorado	CO	N						0	
7. Connecticut	CT	N						0	
8. Delaware	DE	N						0	
9. District of Columbia	DC	N						0	
10. Florida	FL	N						0	
11. Georgia	GA	N						0	
12. Hawaii	HI	N						0	
13. Idaho	ID	N						0	
14. Illinois	IL	N						0	
15. Indiana	IN	N						0	
16. Iowa	IA	N						0	
17. Kansas	KS	N						0	
18. Kentucky	KY	L	3,761,700	7,392,183				11,153,883	
19. Louisiana	LA	N						0	
20. Maine	ME	N						0	
21. Maryland	MD	N						0	
22. Massachusetts	MA	N						0	
23. Michigan	MI	N						0	
24. Minnesota	MN	N						0	
25. Mississippi	MS	N						0	
26. Missouri	MO	N						0	
27. Montana	MT	N						0	
28. Nebraska	NE	N						0	
29. Nevada	NV	N						0	
30. New Hampshire	NH	N						0	
31. New Jersey	NJ	N						0	
32. New Mexico	NM	N						0	
33. New York	NY	N						0	
34. North Carolina	NC	N						0	
35. North Dakota	ND	N						0	
36. Ohio	OH	L	3,759,717	250,056,679				253,816,396	
37. Oklahoma	OK	N						0	
38. Oregon	OR	N						0	
39. Pennsylvania	PA	N						0	
40. Rhode Island	RI	N						0	
41. South Carolina	SC	N						0	
42. South Dakota	SD	N						0	
43. Tennessee	TN	N						0	
44. Texas	TX	N						0	
45. Utah	UT	N						0	
46. Vermont	VT	N						0	
47. Virginia	VA	N						0	
48. Washington	WA	N						0	
49. West Virginia	WV	N						0	
50. Wisconsin	WI	N						0	
51. Wyoming	WY	N						0	
52. American Samoa	AS	N						0	
53. Guam	GU	N						0	
54. Puerto Rico	PR	N						0	
55. U.S. Virgin Islands	VI	N						0	
56. Northern Mariana Islands	MP	N						0	
57. Canada	CAN	N						0	
58. Aggregate Other Aliens	OT	XXX	0	0	0	0	0	0	0
59. Subtotal	XXX	7,521,417	257,448,862	0	0	0	0	264,970,279	0
60. Reporting Entity Contributions for Employee Benefit Plans	XXX							0	
61. Totals (Direct Business)	(a) 2	7,521,417	257,448,862	0	0	0	0	264,970,279	0
DETAILS OF WRITE-INS									
58001.	XXX								
58002.	XXX								
58003.	XXX								
58998. Summary of remaining write-ins for Line 58 from overflow page	XXX	0	0	0	0	0	0	0	0
58999. Totals (Lines 58001 through 58003 plus 58998)(Line 58 above)	XXX	0	0	0	0	0	0	0	0

(L) Licensed or Chartered - Licensed Insurance Carrier or Domiciled RRG; (R) Registered - Non-domiciled RRGs; (Q) Qualified - Qualified or Accredited Reinsurer; (E) Eligible - Reporting Entities eligible or approved to write Surplus Lines in the state; (N) None of the above - Not allowed to write business in the state.
(a) Insert the number of L responses except for Canada and Other Alien.
Premiums are allocated by state based on geographic market

SCHEDULE Y - INFORMATION CONCERNING ACTIVITIES OF INSURER MEMBERS OF A HOLDING COMPANY GROUP

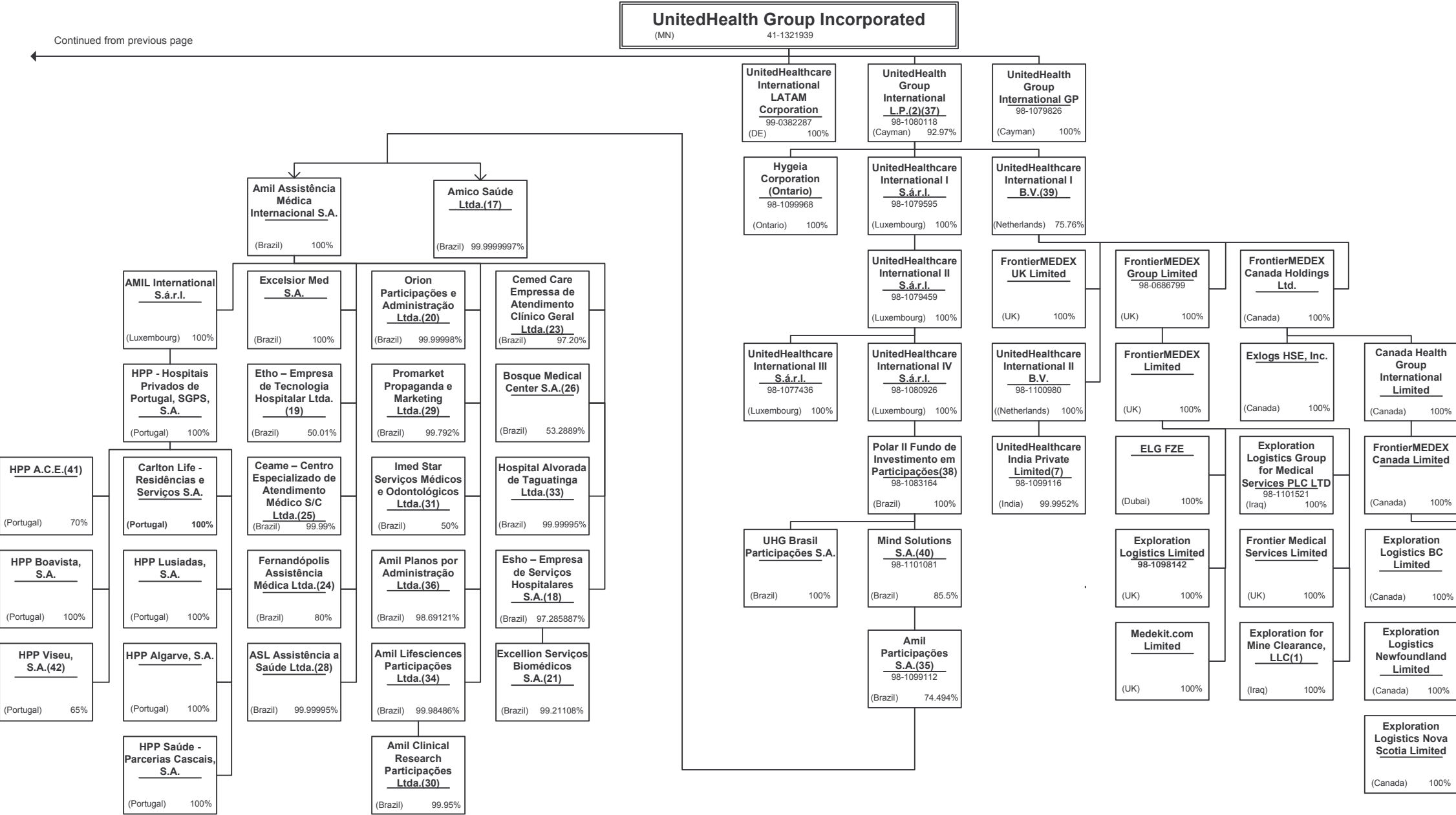
PART 1 - ORGANIZATIONAL CHART



Continued on next page

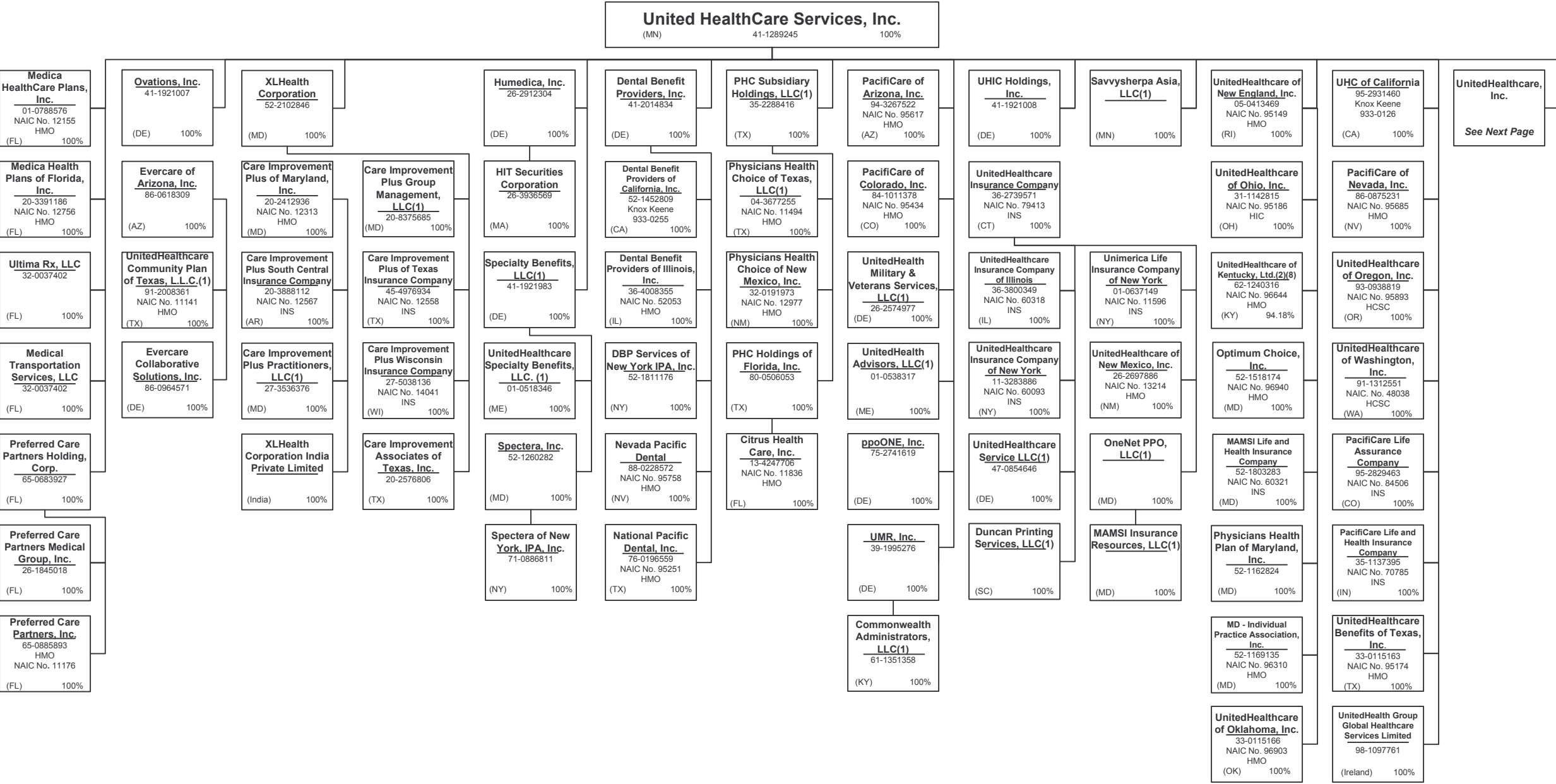
SCHEDULE Y - INFORMATION CONCERNING ACTIVITIES OF INSURER MEMBERS OF A HOLDING COMPANY GROUP

PART 1 - ORGANIZATIONAL CHART



SCHEDULE Y - INFORMATION CONCERNING ACTIVITIES OF INSURER MEMBERS OF A HOLDING COMPANY GROUP

PART 1 - ORGANIZATIONAL CHART

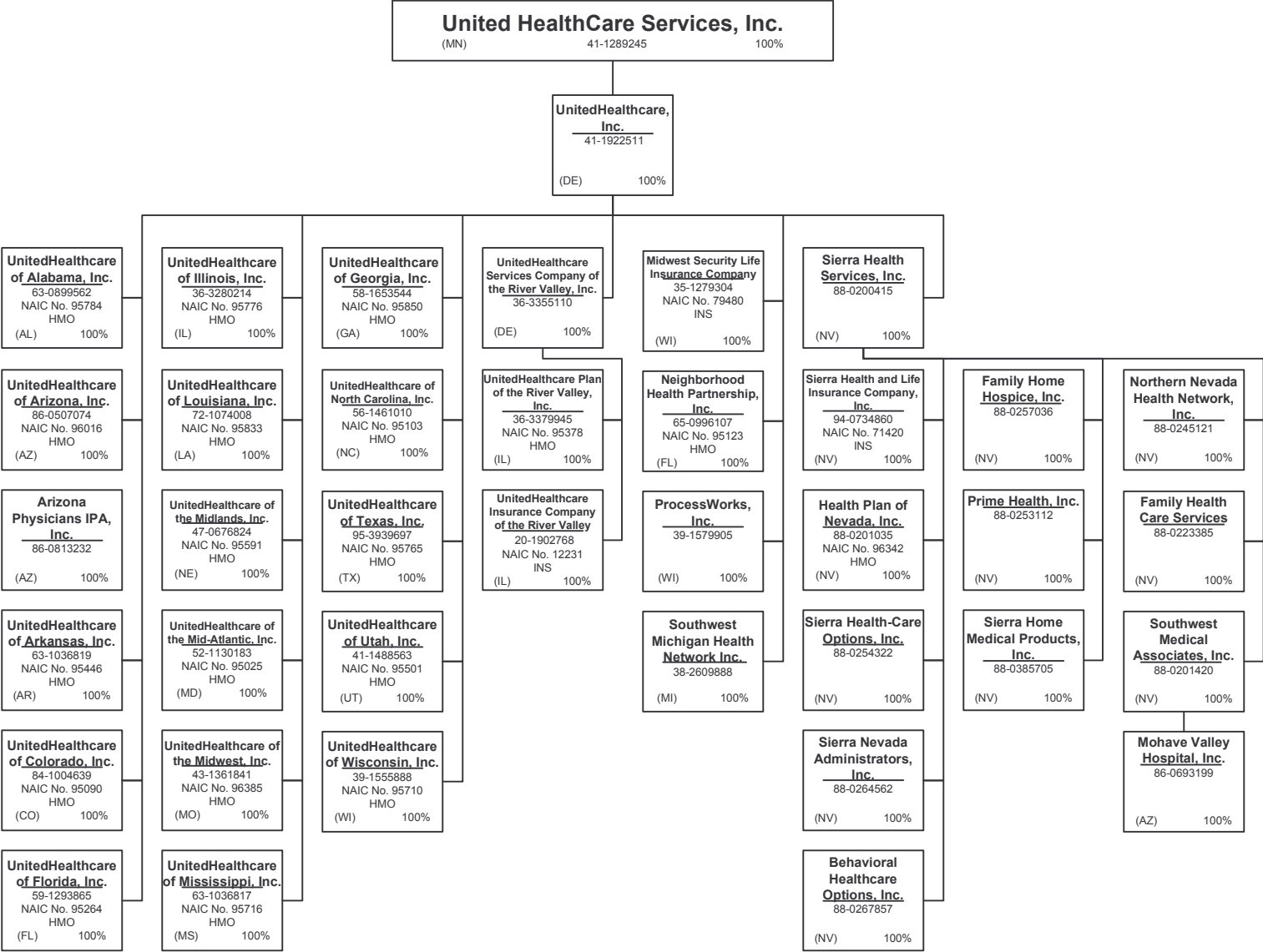


UnitedHealthcare, Inc.

See Next Page

SCHEDULE Y - INFORMATION CONCERNING ACTIVITIES OF INSURER MEMBERS OF A HOLDING COMPANY GROUP

PART 1 - ORGANIZATIONAL CHART



15.4

15.4



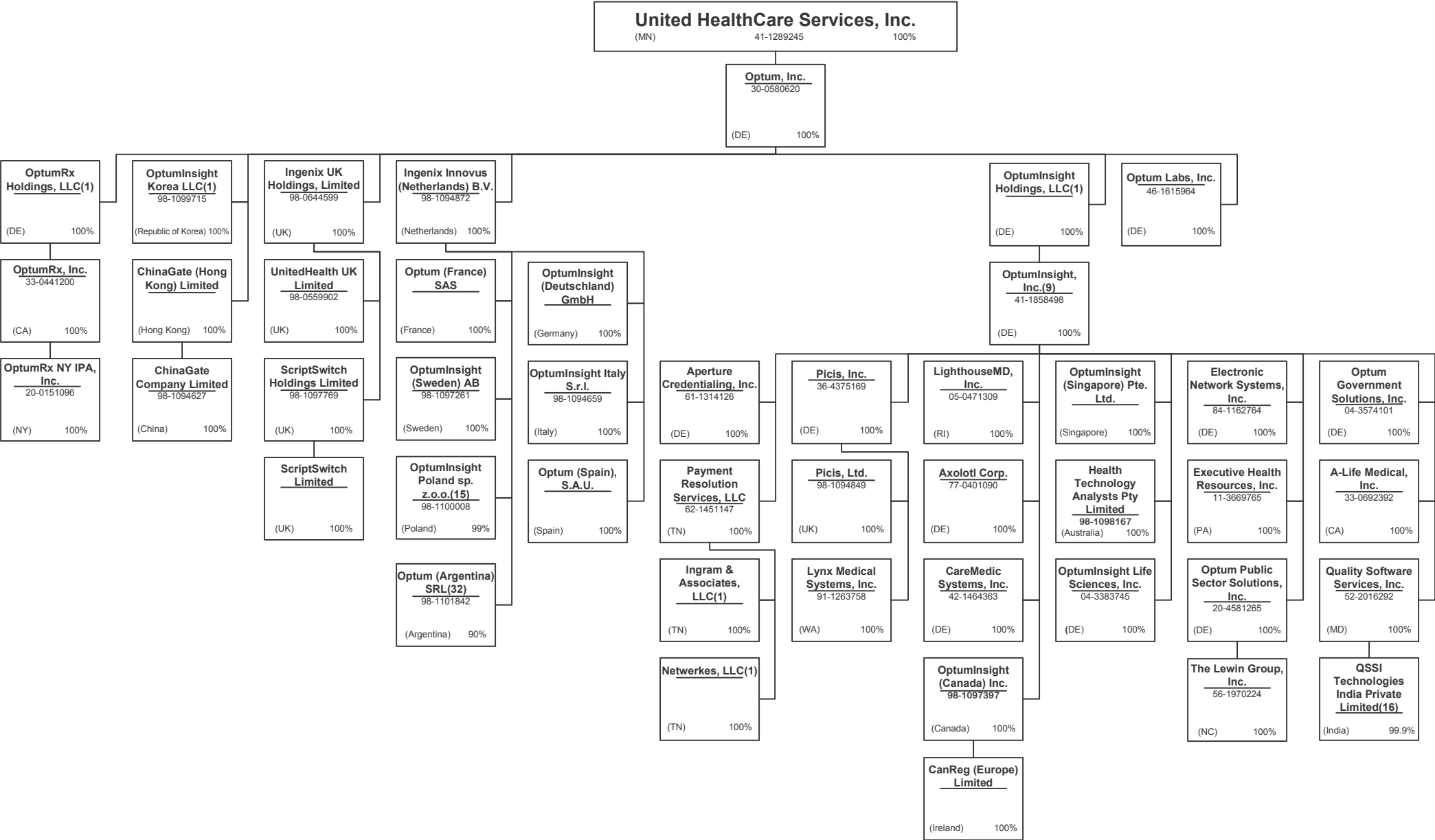
15.5

15.5



SCHEDULE Y - INFORMATION CONCERNING ACTIVITIES OF INSURER MEMBERS OF A HOLDING COMPANY GROUP

PART 1 - ORGANIZATIONAL CHART



SCHEDULE Y - INFORMATION CONCERNING ACTIVITIES OF INSURER MEMBERS OF A HOLDING COMPANY GROUP

PART 1 - ORGANIZATIONAL CHART

Notes

All legal entities on the Organization Chart are Corporations unless otherwise indicated.	(17) Amico Saúde Ltda. is 99.9999997% owned by Amil Participações S.A. and 0.0000003% owned by and officer of Amil.	(33) Hospital Alvorada Taguatinga Ltda. Is 99.99995% owned by Amil Assistência Médica Internacional S.A. and 0.00005% owned by an officer of Amil.
(1) Entity is a Limited Liability Company		
(2) Entity is a Partnership	(18) Esho – Empresa de Serviços Hospitalares S.A is 97.285887% owned by Amil Assistência Médica Internacional S.A.; 0.224917% owned by Amico Saúde Ltda.; 0.094901 owned by Treasury Shares and 2.4% owned by external shareholders.	(34) Amil Lifesciences Participações Ltda. Is 99.98486% owned by Amil Assistência Médica Internacional S.A and 0.01514% owned by an officer of Amil.
(3) Entity is a Non-Profit Corporation	(19) Etho – Empresa de Tecnologia Hospitalar Ltda. 50.01% owned by Amil Assistência Médica Internacional S.A.and 49.99% owned by an external shareholder.	(35) As of December 31, 2012, Amil Participações S.A. was 74.494% owned by Mind Solutions S.A and the remaining 25.506% was owned by other public shareholders.
(4) Control of the Foundation is based on sole membership, not the ownership of voting securities	(20) Orion Participações e Administração Ltda. is 99.99998% owned by Amil Assistência Médica Internacional S.A. and 0.00002% owned by Amico Saúde Ltda.	(36) Amil Planos por Administração Ltda. is 98.69121% owned by Amil Assistência Médica Internacional S.A; 1.30196% owned by Amico Saúde Ltd and 0.00683% owned by an officer of Amil.
(5) Monarch Financial Services, LLC is 85% owned by Monarch Management Services, Inc. and 15% owned by external shareholders.	(21) Excellion Serviços Biomédicos S.A.is 99.21108% owned by Esho – Empresa de Serviços Hospitalares S.A and 0.78892% owned by external shareholders.	(37) The limited partners of UnitedHealth Group International, L.P. include FMG Holdings, LLC (4.41%), UnitedHealthcare International LATAM Corporation (2.3%), Hygeia Corporation (DE) (0.33%) and UnitedHealth Group Incorporated (92.97%). UnitedHealth Group International GP is the general partner of UnitedHealth Group International, L.P.
(6) UnitedHealth Group Information Services Private Limited is 99.37% owned by UnitedHealth Group International B.V.. The remaining 0.63% is owned by UnitedHealth International, Inc.	(22) [TBD]	
(7) United Healthcare India Private Limited is 99.9952% owned by UnitedHealthcare International II B.V. and 0.0048% owned by UnitedHealth International, Inc.	(23) Cemed Care Empresa de Atendimento Clínico Geral Ltda. Is 97.20% owned by Amil Assistência Médica Internacional S.A. and 2.8% owned by Amico Saúde Ltd.	(38) Polar II Fundo de Investimento em Participações is a Brazilian private equity investment fund incorporated in the form of a closed-end condominium.
(8) General partnership interests are held by United HealthCare Services, Inc. (89.77%) and by UnitedHealthcare, Inc. (10.23%). United HealthCare Services, Inc. also holds 100% of the limited partnership interests. When combining general and limited partner interests, United HealthCare Services, Inc. owns 94.18% and UnitedHealthcare, Inc. owns 5.83%.	(24) Fernandópolis Assistência Médica Ltda. is 80% owned by Amil Assistência Médica Internacional S.A. and 20% owned by an external shareholder.	(39) UnitedHealthcare International I, B.V. is 75.76% owned by UnitedHealth Group International L.P. and 24.24% owned by UnitedHealth Group International B.V.
(9) Established a branch, Ingenix, Inc. – Abu Dhabi, located in Abut Dhabi, UAE.	(25) Ceame – Centro Especializado de Atendimento Médico S/C Ltda. Is 99.99% onwed by Amil Assistência Médica Internacional S.A. and 0.01% owned by Cemed Care Empresa de Atendimento Clínico Geral Ltda.	(40) As of December 31, 2012, Polar II Fundo de Investimento em Participações, a Brazilian private equity investment fund incorporated in the form of a closed-end condominium, owned 85.5% of Mind Solutions S.A.'s common stock and Amil's founders owned the remaining 14.5%. Under the contractual arrangements among the parties, upon the completion of the merger of Mind Solutions S.A. into Amil Participações S.A. (in which Amil Participações S.A. will be the surviving company), Polar II Fundo de Investimento em Participações S.A. will own 90% of Amil Participações S.A. and Amil's founders will own the remaining 10%.
(10) WellMed Medical Management, Inc. is 80% owned by Collaborative Care Holdings, LLC and 20% owned by WMG Healthcare Partners, L.P.	(26) Bosque Medical Center S.A. is 53.2889% owned by Amil Assistência Médica Internacional S.A.; 33.7727% owned by Amico Saúde Ltd. and 12.9384% owned by Esho – Empresa de Serviços Hospitalares S.A.	(41) HPP A.C.E. is 70% owned by HPP - Hospitais Privados de Portugal, SGPS, S.A. The remaining 30% is owned by (1) HPP Boavista, S.A..(2) HPP Lusiadas, S.A., (3) HPP Algarve, S.A., (4) HPP Saúde - Parcerias Cascais, S.A., and (5) HPP Viseu, S.A.; each owning 6%.
(11) Physicians Choice Insurance Service, LLC is 70% owned by Monarch Financial Services, LLC and 30% owned by external shareholders.	(27) AHJV, Inc. is 75% owned by NAMD Holdings, Inc. and 25% owned by Humana, Inc.	(42) HPP Viseu, S.A. is 65% owned by HPP - Hospitais Privados de Portugal, SGPS, S.A.. The remaining 35% is jointly owned VISABEIRA Saúde - Serviços de Saúde, S.A.,VISABEIRA Participações Financeiras, SGPS, S.A., VISABEIRA Investimentos Financeiros SGPS, S.A. and Ciclorama - Estudos, Projectos e Produções, Lda.
(12) Personal Performance Consultants India Private Limited is 99.996% owned by OptumHealth International B.V. and 0.004 % owned by United Behavioral Health.	(28) ASL Assistência a Saúde Ltda. Is 99.99995% owned by Amil Assistência Médica Internacional S.A and 0.00005% owned by an officer of Amil.	
(13) INSPIRIS of Texas Physicians Group is a Texas non-profit (taxable) whose sole member is Inspiris Services Company.	(29) Promarket Propaganda e Marketing Ltda.is 99.792% owned by Amil Assistência Médica Internacional S.A and 0.208% owned by Amico Saúde Ltd.	
(14) PrimeCare of Citrus Valley, Inc. is 80% owned by PrimeCare Medical Network, Inc. and 20% owned by Citrus Valley Medical Associates, Inc.	(30) Amil Clinical Research Participações Ltda. is 99.95% owned by Amil Lifesciences Participações Ltda. and .05% owned by an officer of Amil.	
(15) OptumInsight Poland sp. z.o.o. is 99% owned by Ingenix Innovus (Netherlands) B.V. The remaining 1% is owned by OptumInsight, Inc.	(31) Imed Star Serviços Médicos e Odontológicos Ltda.is 50% owned by Amil Assistência Médica Internacional S.A and 50% owned by Amico Saúde Ltd.	
(16) QSSI Technologies India Private Limited is 99.9% owned by Quality Software Services, Inc. and 0.1% owned by an Indian citizen.	(32) Optum Argentina is 90% owned by Ingenix Innovus (Netherlands) BV and 10% owned by ScriptSwitch Holdings Limited.	

SCHEDULE Y
PART 1A - DETAIL OF INSURANCE HOLDING COMPANY SYSTEM

1	2	3	4	5	6	7	8	9	10	11	12	13	14	15
Group Code	Group Name	NAIC Company Code	Federal ID Number	Federal RSSD	CIK	Name of Securities Exchange if Publicly Traded (U.S. or International)	Names of Parent, Subsidiaries Or Affiliates	Domi-ciliary Location	Relation-ship to Reporting Entity	Directly Controlled by (Name of Entity/Person)	Type of Control (Ownership, Board, Management, Attorney-in-Fact, Influence, Other)	If Control is Owner-ship Provide Per-cent-age	Ultimate Controlling Entity(ies)/Person(s)	*
		00000					310 Canyon Medical, LLC	CA	NIA	Monarch Management Services, Inc.	Ownership	100.000	UnitedHealth Group Incorporated	
		00000	41-1913523				ACN Group IPA of New York, Inc.	NY	NIA	OptumHealth Care Solutions, Inc.	Ownership	100.000	UnitedHealth Group Incorporated	
		00000	27-0015861				ACN Group of California, Inc.	CA	IA	OptumHealth Care Solutions, Inc.	Ownership	100.000	UnitedHealth Group Incorporated	
		00000	38-3849068				AHJV MSO, Inc.	DE	NIA	AHJV, Inc.	Ownership	100.000	UnitedHealth Group Incorporated	
		00000	38-3849066				AHJV, Inc.	CA	NIA	NAMM Holdings, Inc.	Ownership	75.000	UnitedHealth Group Incorporated	8
		00000	33-0692392				A-Life Medical, Inc.	CA	NIA	OptumInsight, Inc.	Ownership	100.000	UnitedHealth Group Incorporated	
0707	UnitedHealth Group Incorporated	82406	35-1665915				All Savers Insurance Company	IN	IA	Golden Rule Financial Corporation	Ownership	100.000	UnitedHealth Group Incorporated	
							All Savers Life Insurance Company of California	CA	IA	Golden Rule Financial Corporation	Ownership	100.000	UnitedHealth Group Incorporated	
0707	UnitedHealth Group Incorporated	73130	35-1744596				AmeriChoice Corporation	DE	NIA	UnitedHealth Group Incorporated	Ownership	100.000	UnitedHealth Group Incorporated	
		00000	54-1743136				AmeriChoice Health Services, Inc.	DE	NIA	AmeriChoice Corporation	Ownership	100.000	UnitedHealth Group Incorporated	
0707	UnitedHealth Group Incorporated	00000	54-1743141				AmeriChoice of Connecticut, Inc.	CT	IA	AmeriChoice Corporation	Ownership	100.000	UnitedHealth Group Incorporated	
0707	UnitedHealth Group Incorporated	13178	26-2481299				AmeriChoice of Georgia, Inc.	GA	IA	AmeriChoice Corporation	Ownership	100.000	UnitedHealth Group Incorporated	
0707	UnitedHealth Group Incorporated	13168	26-2688274				AmeriChoice of New Jersey, Inc.	NJ	IA	AmeriChoice Corporation	Ownership	100.000	UnitedHealth Group Incorporated	
0707	UnitedHealth Group Incorporated	95497	22-3368602				Amico Saúde Ltda.	BRA	NIA	Amil Participações S.A.	Ownership	100.000	UnitedHealth Group Incorporated	9
		00000					Amil Assistência Médica Internacional S.A.	BRA	NIA	Amil Participações S.A.	Ownership	100.000	UnitedHealth Group Incorporated	
		00000					Amil Clinical Research Participações Ltda.	BRA	NIA	Amil Lifesciences Participações Ltda.	Ownership	99.950	UnitedHealth Group Incorporated	9
		00000					AMIL International S.á.r.l.	LUX	NIA	Amil Assistência Médica Internacional S.A.	Ownership	100.000	UnitedHealth Group Incorporated	
		00000	98-1099112				Amil Lifesciences Participações Ltda.	BRA	NIA	Amil Assistência Médica Internacional S.A.	Ownership	99.985	UnitedHealth Group Incorporated	9
		00000					Amil Participações S.A.	BRA	NIA	Mind Solutions S.A.	Ownership	74.490	UnitedHealth Group Incorporated	2
		00000					Amil Planos por Administração Ltda.	BRA	NIA	Amil Assistência Médica Internacional S.A.	Ownership	98.691	UnitedHealth Group Incorporated	10
		00000					Amil Planos por Administração Ltda.	BRA	NIA	Amico Saúde Ltda.	Ownership	1.302	UnitedHealth Group Incorporated	10
		00000	61-1314126				Aperture Credentialing, Inc.	DE	NIA	OptumInsight, Inc.	Ownership	100.000	UnitedHealth Group Incorporated	
		00000	86-0813232				Arizona Physicians IPA, Inc.	AZ	IA	UnitedHealthcare, Inc.	Ownership	100.000	UnitedHealth Group Incorporated	
		00000	20-8883652				ASI Global, LLC	TX	NIA	FrontierMEDEX, Inc.	Ownership	100.000	UnitedHealth Group Incorporated	
		00000					ASL Assistência a Saúde Ltda.	BRA	NIA	Amil Assistência Médica Internacional S.A.	Ownership	100.000	UnitedHealth Group Incorporated	9
		00000	80-0368187				Aveta Arizona, Inc.	AZ	NIA	NAMM Holdings, Inc.	Ownership	100.000	UnitedHealth Group Incorporated	
		00000	35-2416318				Aveta Colorado, Inc.	DE	NIA	NAMM Holdings, Inc.	Ownership	100.000	UnitedHealth Group Incorporated	
		00000	90-0632302				Aveta Health Solutions Inc.	DE	NIA	NAMM Holdings, Inc.	Ownership	100.000	UnitedHealth Group Incorporated	
		00000	20-4057813				Aveta Inc.	DE	NIA	Collaborative Care Holdings, LLC	Ownership	100.000	UnitedHealth Group Incorporated	
		00000	27-2823524				Aveta Kansas City, Inc.	KS	NIA	NAMM Holdings, Inc.	Ownership	100.000	UnitedHealth Group Incorporated	
		00000	36-4704309				Aveta Tennessee, Inc.	DE	NIA	NAMM Holdings, Inc.	Ownership	100.000	UnitedHealth Group Incorporated	
		00000	77-0401090				Axolotl Corp.	DE	NIA	OptumInsight, Inc.	Ownership	100.000	UnitedHealth Group Incorporated	
		00000	84-1544013				bConnected Software, Inc.	DE	NIA	Connexions, Inc.	Ownership	100.000	UnitedHealth Group Incorporated	
		00000	88-0267857				Behavioral Healthcare Options, Inc.	NV	NIA	Sierra Health Services, Inc.	Ownership	100.000	UnitedHealth Group Incorporated	
		00000					Bosque Medical Center S.A.	BRA	NIA	Amil Assistência Médica Internacional S.A.	Ownership	53.289	UnitedHealth Group Incorporated	11
		00000					Bosque Medical Center S.A.	BRA	NIA	Amico Saúde Ltda.	Ownership	33.773	UnitedHealth Group Incorporated	11
		00000					Canada Health Group International Limited	CAN	NIA	FrontierMEDEX Canada Holdings Ltd.	Ownership	100.000	UnitedHealth Group Incorporated	
		00000					CanReg (Europe) Limited	JRL	NIA	OptumInsight (Canada) Inc.	Ownership	100.000	UnitedHealth Group Incorporated	
		00000	20-2576806				Care Improvement Associates of Texas, Inc.	TX	NIA	XLHealth Corporation	Ownership	100.000	UnitedHealth Group Incorporated	
		00000	20-8375685				Care Improvement Plus Group Management, LLC	MD	NIA	XLHealth Corporation	Ownership	100.000	UnitedHealth Group Incorporated	
0707	UnitedHealth Group Incorporated	12313	20-2412936				Care Improvement Plus of Maryland, Inc.	MD	IA	XLHealth Corporation	Ownership	100.000	UnitedHealth Group Incorporated	

16.1

PART 1A - DETAIL OF INSURANCE HOLDING COMPANY SYSTEM

1	2	3	4	5	6	7	8	9	10	11	12	13	14	15
Group Code	Group Name	NAIC Company Code	Federal ID Number	Federal RSSD	CIK	Name of Securities Exchange if Publicly Traded (U.S. or International)	Names of Parent, Subsidiaries Or Affiliates	Domi-ciliary Location	Relation-ship to Reporting Entity	Directly Controlled by (Name of Entity/Person)	Type of Control (Ownership, Board, Management, Attorney-in-Fact, Influence, Other)	If Control is Owner-ship Provide Percen-tage	Ultimate Controlling Entity(ies)/Person(s)	*
0707	UnitedHealth Group Incorporated	12558-00000	45-4976934-27-3536376				Care Improvement Plus of Texas Insurance Company Care Improvement Plus Practitioners, LLC Care Improvement Plus South Central Insurance Company Care Improvement Plus Wisconsin Insurance Company	TX MD AR WI	IA NIA IA IA	XLHealth Corporation XLHealth Corporation XLHealth Corporation XLHealth Corporation	Ownership Ownership Ownership Ownership	100.000 100.000 100.000 100.000	UnitedHealth Group Incorporated UnitedHealth Group Incorporated UnitedHealth Group Incorporated UnitedHealth Group Incorporated	
0707	UnitedHealth Group Incorporated	12567	20-3888112				CareMedic Systems, Inc. Carlton Life - Residências e Serviços S.A.	CA PRT	NIA NIA	OptumInsight, Inc. HPP - Hospitais Privados de Portugal, SGPS, S.A.	Ownership Ownership	100.000 100.000	UnitedHealth Group Incorporated UnitedHealth Group Incorporated	
0707	UnitedHealth Group Incorporated	14041-00000	27-5038136-42-1464363				Ceame - Centro Especializado de Atendimento Médico S/C Ltda. Ceame - Centro Especializado de Atendimento Médico S/C Ltda. Cemed Care Empresa de Atendimento Clínico Geral Ltda. Cemed Care Empresa de Atendimento Clínico Geral Ltda.	BRA BRA BRA BRA	NIA NIA NIA NIA	Amil Assistência Médica Internacional S.A. Cemed Care Empresa de Atendimento Clínico Geral Ltda. Amil Assistência Médica Internacional S.A. Amico Saúde Ltda.	Ownership Ownership Ownership Ownership	99.990 0.010 97.200 2.800	UnitedHealth Group Incorporated UnitedHealth Group Incorporated UnitedHealth Group Incorporated UnitedHealth Group Incorporated	12 12 13 13
0707	UnitedHealth Group Incorporated	11836	98-1094627-13-4247706				ChinaGate (Hong Kong) Limited ChinaGate Company Limited Citrus Health Care, Inc. Coachella Valley Physicians of PrimeCare, Inc.	HKG CHN FL CA	NIA NIA IA NIA	Optum, Inc. ChinaGate (Hong Kong) Limited PHC Holdings of Florida, Inc. PrimeCare Medical Network, Inc.	Ownership Ownership Ownership Ownership	100.000 100.000 100.000 100.000	UnitedHealth Group Incorporated UnitedHealth Group Incorporated UnitedHealth Group Incorporated UnitedHealth Group Incorporated	
		00000	56-2674371				Collaborative Care Holdings, LLC Collaborative Care Services, Inc. Collaborative Care Solutions, LLC Comfort Care Transportation, LLC	DE DE DE TX	NIA NIA NIA NIA	OptumHealth Holdings, LLC Collaborative Care Holdings, LLC Collaborative Care Services, Inc. WellMed Medical Management, Inc.	Ownership Ownership Ownership Ownership	100.000 100.000 100.000 100.000	UnitedHealth Group Incorporated UnitedHealth Group Incorporated UnitedHealth Group Incorporated UnitedHealth Group Incorporated	
		00000	61-1351358				Commonwealth Administrators, LLC Connexions HCI NM, LLC Connexions HCI, LLC Connexions, Inc.	KY NM FL FL	NIA NIA NIA NIA	UMR, Inc. Connexions, Inc. Connexions, Inc. OptumHealth Holdings, LLC	Ownership Ownership Ownership Ownership	100.000 100.000 100.000 100.000	UnitedHealth Group Incorporated UnitedHealth Group Incorporated UnitedHealth Group Incorporated UnitedHealth Group Incorporated	
		00000	52-1811176				Corporate Support Limited DBP Services of New York IPA, Inc. Dental Benefit Providers of California, Inc. Dental Benefit Providers of Illinois, Inc.	GBR NY CA CA	NIA NIA IA IA	Personal Performance Consultants UK Limited Dental Benefit Providers, Inc. Dental Benefit Providers, Inc. Dental Benefit Providers, Inc.	Ownership Ownership Ownership Ownership	100.000 100.000 100.000 100.000	UnitedHealth Group Incorporated UnitedHealth Group Incorporated UnitedHealth Group Incorporated UnitedHealth Group Incorporated	
0707	UnitedHealth Group Incorporated	52053	36-4008355				Dental Benefit Providers, Inc. Distance Learning Network, Inc. Duncan Printing Services, LLC Electronic Network Systems, Inc.	IL DE DE SC	IA NIA NIA NIA	Dental Benefit Providers, Inc. United HealthCare Services, Inc. OptumHealth Holdings, LLC UnitedHealthcare Insurance Company	Ownership Ownership Ownership Ownership	100.000 100.000 100.000 100.000	UnitedHealth Group Incorporated UnitedHealth Group Incorporated UnitedHealth Group Incorporated UnitedHealth Group Incorporated	
		00000	30-0238641				ELG FZE Esho - Empresa de Serviços Hospitalares S.A. Esho - Empresa de Serviços Hospitalares S.A. Etho - Empresa de Tecnologia Hospitalar Ltda.	ARE BRA BRA BRA	NIA NIA NIA NIA	FrontierMEDEX Limited Amil Assistência Médica Internacional S.A. Amico Saúde Ltda. Amil Assistência Médica Internacional S.A.	Ownership Ownership Ownership Ownership	100.000 97.286 0.225 50.010	UnitedHealth Group Incorporated UnitedHealth Group Incorporated UnitedHealth Group Incorporated UnitedHealth Group Incorporated	14 14 14 2
		00000	86-0964571				Evercare Collaborative Solutions, Inc. Evercare Hospice, Inc.	DE DE	NIA NIA	Ovations, Inc. Collaborative Care Holdings, LLC	Ownership Ownership	100.000 100.000	UnitedHealth Group Incorporated UnitedHealth Group Incorporated	

SCHEDULE Y
PART 1A - DETAIL OF INSURANCE HOLDING COMPANY SYSTEM

1	2	3	4	5	6	7	8	9	10	11	12	13	14	15
Group Code	Group Name	NAIC Company Code	Federal ID Number	Federal RSSD	CIK	Name of Securities Exchange if Publicly Traded (U.S. or International)	Names of Parent, Subsidiaries Or Affiliates	Domi-ciliary Location	Relation-ship to Reporting Entity	Directly Controlled by (Name of Entity/Person)	Type of Control (Ownership, Board, Management, Attorney-in-Fact, Influence, Other)	If Control is Owner-ship Provide Percen-tage	Ultimate Controlling Entity(ies)/Person(s)	*
		00000	86-0618309				Evercare of Arizona, Inc.	AZ	IA	Ovations, Inc.	Ownership	100.000	UnitedHealth Group Incorporated	
		00000					Excellion Serviços Biomédicos S.A.	BRA	NIA	Esho – Emp. Serv. Hosopitalares S.A	Ownership	99.211	UnitedHealth Group Incorporated	2
		00000								Amil Assistência Médica Internacional S.A.	Ownership	100.000	UnitedHealth Group Incorporated	
		00000	11-3669765				Excelsior Med S.A.	BRA	NIA	OptumInsight, Inc.	Ownership	100.000	UnitedHealth Group Incorporated	
		00000					Executive Health Resources, Inc.	PA	NIA	FrontierMEDEX Canada Holdings Ltd.	Ownership	100.000	UnitedHealth Group Incorporated	
		00000					Exlogs HSE, Inc. (Canada)	CAN	NIA	FrontierMEDEX Limited	Ownership	100.000	UnitedHealth Group Incorporated	
		00000					Exploration for Mine Clearance, LLC	IRQ	NIA	FrontierMEDEX Canada Limited	Ownership	100.000	UnitedHealth Group Incorporated	
		00000					Exploration Logistics BC Limited	CAN	NIA		Ownership	100.000	UnitedHealth Group Incorporated	
		00000					Exploration Logistics Group for Medical Services PLC LTD	IRQ	NIA	FrontierMEDEX Limited	Ownership	100.000	UnitedHealth Group Incorporated	
		00000	98-1098142				Exploration Logistics Limited	GBR	NIA	FrontierMEDEX Limited	Ownership	100.000	UnitedHealth Group Incorporated	
		00000					Exploration Logistics Newfoundland Limited							
		00000						CAN	NIA	FrontierMEDEX Canada Limited	Ownership	100.000	UnitedHealth Group Incorporated	
		00000					Exploration Logistics Nova Scotia Limited	CAN	NIA	FrontierMEDEX Canada Limited	Ownership	100.000	UnitedHealth Group Incorporated	
		00000	88-0223385				Family Health Care Services	NV	NIA	Sierra Health Services, Inc.	Ownership	100.000	UnitedHealth Group Incorporated	
		00000	88-0257036				Family Home Hospice, Inc.	NV	NIA	Sierra Health Services, Inc.	Ownership	100.000	UnitedHealth Group Incorporated	
		00000								Amil Assistência Médica Internacional S.A.	Ownership	80.000	UnitedHealth Group Incorporated	2
		00000	35-2456267				Fernandópolis Assistência Médica Ltda.	BRA	NIA	UnitedHealth Group Incorporated	Ownership	100.000	UnitedHealth Group Incorporated	
		00000					FMG Holdings, LLC	DE	NIA	Personal Performance Consultants UK Limited	Ownership	100.000	UnitedHealth Group Incorporated	
		00000					Focus EAP Ltd.	GBR	NIA	Oxford Health Plans LLC	Ownership	100.000	UnitedHealth Group Incorporated	
		00000	22-3314813				FOHP, Inc.	NJ	NIA	For Health, Inc.	Ownership	100.000	UnitedHealth Group Incorporated	
		00000	86-0908902				FOR HEALTH OF ARIZONA, INC.	AZ	NIA	Inspiris, Inc.	Ownership	100.000	UnitedHealth Group Incorporated	
		00000	33-0766617				For Health, Inc.	DE	NIA	FrontierMEDEX Limited	Ownership	100.000	UnitedHealth Group Incorporated	
		00000					Frontier Medical Services Limited	GBR	NIA	FMG Holdings, LLC	Ownership	100.000	UnitedHealth Group Incorporated	
		00000	68-0679514				FrontierMEDEX (RMS), Inc.	DE	NIA	UnitedHealthcare International I B.V.	Ownership	100.000	UnitedHealth Group Incorporated	
		00000					FrontierMEDEX Canada Holdings Ltd.	CAN	NIA	Canada Health Group International Limited	Ownership	100.000	UnitedHealth Group Incorporated	
		00000					FrontierMEDEX Canada Limited	CAN	NIA	FMG Holdings, LLC	Ownership	100.000	UnitedHealth Group Incorporated	
		00000	45-5339512				FrontierMEDEX Government Services, LLC	DE	NIA	UnitedHealthcare International I B.V.	Ownership	100.000	UnitedHealth Group Incorporated	
		00000	98-0686799				FrontierMEDEX Group Limited	GBR	NIA	UnitedHealthcare International I B.V.	Ownership	100.000	UnitedHealth Group Incorporated	
		00000					FrontierMEDEX Limited	GBR	NIA	FrontierMEDEX Group Limited	Ownership	100.000	UnitedHealth Group Incorporated	
		00000					FrontierMEDEX UK Limited	GBR	NIA	FMG Holdings, LLC	Ownership	100.000	UnitedHealth Group Incorporated	
		00000	33-1219808				FrontierMEDEX US, Inc.	DE	NIA	FrontierMEDEX US, Inc.	Ownership	100.000	UnitedHealth Group Incorporated	
		00000	52-2230470				FrontierMEDEX, Inc.	IN	NIA	UnitedHealth Group Incorporated	Ownership	100.000	UnitedHealth Group Incorporated	
		00000	37-0855360				Golden Rule Financial Corporation	DE	NIA	Oxford Health Plans LLC	Ownership	100.000	UnitedHealth Group Incorporated	
0707	UnitedHealth Group Incorporated	62286	37-6028756	3057283			Golden Rule Insurance Company	IN	IA	Oxford Health Plans LLC	Ownership	100.000	UnitedHealth Group Incorporated	
		00000	98-0213198				H&W Indemnity (SPC), Ltd.	CYM	NIA	FOHP, Inc.	Ownership	100.000	UnitedHealth Group Incorporated	
0707	UnitedHealth Group Incorporated	43893	13-3584296				Health Net Insurance of New York, Inc.	NY	IA	Oxford Health Plans LLC	Ownership	100.000	UnitedHealth Group Incorporated	
0707	UnitedHealth Group Incorporated	95968	06-1084283				Health Net of Connecticut, Inc.	CT	IA	Sierra Health Services, Inc.	Ownership	100.000	UnitedHealth Group Incorporated	
0707	UnitedHealth Group Incorporated	95351	22-3241303				Health Net of New Jersey, Inc.	NJ	IA	OptumHealth Holdings, LLC	Ownership	100.000	UnitedHealth Group Incorporated	
0707	UnitedHealth Group Incorporated	95305	06-1174953				Health Net of New York, Inc.	NY	IA	Humedica, Inc.	Ownership	100.000	UnitedHealth Group Incorporated	
		00000	98-0153069				Health Net Services (Bermuda) Ltd.	BMU	NIA	Inspiris, Inc.	Ownership	100.000	UnitedHealth Group Incorporated	
0707	UnitedHealth Group Incorporated	96342	88-0201035				Health Plan of Nevada, Inc.	NV	IA	Hospice Inspiris Holdings, Inc.	Ownership	100.000	UnitedHealth Group Incorporated	
		00000	98-1098167				Health Technology Analysts Pty Limited	AUS	NIA	Hospice Inspiris Holdings, Inc.	Ownership	100.000	UnitedHealth Group Incorporated	
		00000	95-4763349				HealthAllies, Inc.	DE	NIA	Hospice Inspiris Holdings, Inc.	Ownership	100.000	UnitedHealth Group Incorporated	
		00000	26-3936569				HIT Securities Corporation	MA	NIA	FOR HEALTH OF ARIZONA, INC.	Ownership	100.000	UnitedHealth Group Incorporated	
		00000	20-8910978				Hospice Inspiris Holdings, Inc.	TN	NIA		Ownership	100.000	UnitedHealth Group Incorporated	
		00000	20-8911466				Hospice Inspiris of Pennsylvania, Inc.	TN	NIA		Ownership	100.000	UnitedHealth Group Incorporated	
		00000	20-8911303				Hospice Inspiris of Texas, Inc.	TN	NIA		Ownership	100.000	UnitedHealth Group Incorporated	
		00000	82-0586676				Hospice Inspiris, LLC	TN	NIA		Ownership	100.000	UnitedHealth Group Incorporated	

SCHEDULE Y
PART 1A - DETAIL OF INSURANCE HOLDING COMPANY SYSTEM

1	2	3	4	5	6	7	8	9	10	11	12	13	14	15
Group Code	Group Name	NAIC Company Code	Federal ID Number	Federal RSSD	CIK	Name of Securities Exchange if Publicly Traded (U.S. or International)	Names of Parent, Subsidiaries Or Affiliates	Domiciliary Location	Relationship to Reporting Entity	Directly Controlled by (Name of Entity/Person)	Type of Control (Ownership, Board, Management, Attorney-in-Fact, Influence, Other)	If Control is Ownership Provide Percentage	Ultimate Controlling Entity(ies)/Person(s)	*
		00000					Hospital Alvorada de Taguatinga Ltda.	BRA	NIA	Amil Assistência Médica Internacional S.A.	Ownership.....	100.000	UnitedHealth Group Incorporated	9
		00000					HPP – Hospitais Privados de Portugal, SGPS, S.A.	PRT	NIA	Amil International S.á.r.l.	Ownership.....	100.000	UnitedHealth Group Incorporated	
		00000					HPP A.C.E.	PRT	NIA	HPP – Hospitais Privados de Portugal, SGPS, S.A.	Ownership.....	70.000	UnitedHealth Group Incorporated	15
		00000					HPP A.C.E.	PRT	NIA	HPP Algarve, S.A.	Ownership.....	6.000	UnitedHealth Group Incorporated	15
		00000					HPP A.C.E.	PRT	NIA	HPP Lusiadas, S.A.	Ownership.....	6.000	UnitedHealth Group Incorporated	15
		00000					HPP A.C.E.	PRT	NIA	HPP Viseu, S.A.	Ownership.....	6.000	UnitedHealth Group Incorporated	15
		00000					HPP A.C.E.	PRT	NIA	HPP Saúde – Parcerias Cascais, S.A.	Ownership.....	6.000	UnitedHealth Group Incorporated	15
		00000					HPP A.C.E.	PRT	NIA	HPP Boavista, S.A.	Ownership.....	6.000	UnitedHealth Group Incorporated	15
		00000					HPP Algarve, S.A.	PRT	NIA	HPP – Hospitais Privados de Portugal, SGPS, S.A.	Ownership.....	100.000	UnitedHealth Group Incorporated	
		00000					HPP Boavista, S.A.	PRT	NIA	HPP – Hospitais Privados de Portugal, SGPS, S.A.	Ownership.....	100.000	UnitedHealth Group Incorporated	
		00000					HPP Lusiadas, S.A.	PRT	NIA	HPP – Hospitais Privados de Portugal, SGPS, S.A.	Ownership.....	100.000	UnitedHealth Group Incorporated	
		00000					HPP Saúde – Parcerias Cascais, S.A.	PRT	NIA	HPP – Hospitais Privados de Portugal, SGPS, S.A.	Ownership.....	100.000	UnitedHealth Group Incorporated	
		00000					HPP Viseu, S.A.	PRT	NIA	HPP – Hospitais Privados de Portugal, SGPS, S.A.	Ownership.....	65.000	UnitedHealth Group Incorporated	16
		00000	26-2912304				Humedica, Inc.	DE	NIA	United HealthCare Services, Inc.	Ownership.....	100.000	UnitedHealth Group Incorporated	
		00000	36-4331825				Hygeia Corporation	DE	NIA	UnitedHealth International, Inc.	Ownership.....	100.000	UnitedHealth Group Incorporated	
		00000	41-1917398				Hygeia Corporation (Ontario)	CAN	NIA	UnitedHealth Group International L.P.	Ownership.....	100.000	UnitedHealth Group Incorporated	
		00000					Imed Star Serviços Médicos e Odontológicos Ltda.	BRA	NIA	Amico Saúde Ltda.	Ownership.....	50.000	UnitedHealth Group Incorporated	17
		00000					Imed Star Serviços Médicos e Odontológicos Ltda.	BRA	NIA	Amil Assistência Médica Internacional S.A.	Ownership.....	50.000	UnitedHealth Group Incorporated	17
		00000	27-4603968				Independent Physician Management Services, Inc.	DE	NIA	Collaborative Care Holdings, LLC	Ownership.....	100.000	UnitedHealth Group Incorporated	
		00000	86-0477097				Information Network Corporation	AZ	NIA	AmeriChoice Corporation	Ownership.....	100.000	UnitedHealth Group Incorporated	
		00000	36-4733428				Informed Choice HealthCare Alliance, Inc.	IL	NIA	North American Medical Management – Illinois, Inc.	Ownership.....	100.000	UnitedHealth Group Incorporated	
		00000	98-1094872				Ingenix Innovus (Netherlands) B.V.	NLD	NIA	Optum, Inc.	Ownership.....	100.000	UnitedHealth Group Incorporated	
		00000	98-0644599				Ingenix UK Holdings Limited	GBR	NIA	Optum, Inc.	Ownership.....	100.000	UnitedHealth Group Incorporated	
		00000	62-1641102				Ingram & Associates, LLC	TN	NIA	Payment Resolution Services, LLC	Ownership.....	100.000	UnitedHealth Group Incorporated	
		00000	13-4138668				INSPIRIS of New York IPA, Inc.	NY	NIA	Inspiris, Inc.	Ownership.....	100.000	UnitedHealth Group Incorporated	
		00000	13-4138665				INSPIRIS of New York Management, Inc.	NY	NIA	Inspiris, Inc.	Ownership.....	100.000	UnitedHealth Group Incorporated	
		00000	20-5355196				Inspiris of Tennessee, Inc.	TN	NIA	Inspiris, Inc.	Ownership.....	100.000	UnitedHealth Group Incorporated	
		00000	26-2885572				INSPIRIS of Texas Physician Group	TX	NIA	Inspiris Services Company	Ownership.....	100.000	UnitedHealth Group Incorporated	
		00000	26-0683057				Inspiris Services Company	TN	NIA	Inspiris, Inc.	Ownership.....	100.000	UnitedHealth Group Incorporated	
		00000	33-0766366				Inspiris, Inc.	DE	NIA	Collaborative Care Holdings, LLC	Ownership.....	100.000	UnitedHealth Group Incorporated	
		00000	98-1097022				International Psychological Services Pty Limited	AUS	NIA	PPC Worldwide Pty Ltd	Ownership.....	100.000	UnitedHealth Group Incorporated	
		00000	45-3143218				Lifeprint East, Inc.	DE	NIA	Collaborative Care Holdings, LLC	Ownership.....	100.000	UnitedHealth Group Incorporated	
		00000	27-2309024				Lifeprint Health, Inc.	DE	NIA	Collaborative Care Holdings, LLC	Ownership.....	100.000	UnitedHealth Group Incorporated	
		00000	05-0471309				LighthouseMD, Inc.	RI	NIA	OptumInsight, Inc.	Ownership.....	100.000	UnitedHealth Group Incorporated	
		00000	39-1974851				Logistics Health, Inc.	WI	NIA	OptumHealth Holdings, LLC	Ownership.....	100.000	UnitedHealth Group Incorporated	
		00000	91-1263758				Lynx Medical Systems, Inc.	VA	NIA	Picis, Inc.	Ownership.....	100.000	UnitedHealth Group Incorporated	
		00000	52-2129787				MAMSI Insurance Resources, LLC	MD	NIA	OneNet PPO, LLC	Ownership.....	100.000	UnitedHealth Group Incorporated	
0707	UnitedHealth Group Incorporated	60321	52-1803283				MAMSI Life and Health Insurance Company	MD	IA	United HealthCare Services, Inc.	Ownership.....	100.000	UnitedHealth Group Incorporated	

SCHEDULE Y
PART 1A - DETAIL OF INSURANCE HOLDING COMPANY SYSTEM

1	2	3	4	5	6	7	8	9	10	11	12	13	14	15
Group Code	Group Name	NAIC Company Code	Federal ID Number	Federal RSSD	CIK	Name of Securities Exchange if Publicly Traded (U.S. or International)	Names of Parent, Subsidiaries Or Affiliates	Domi-ciliary Location	Relation-ship to Reporting Entity	Directly Controlled by (Name of Entity/Person)	Type of Control (Ownership, Board, Management, Attorney-in-Fact, Influence, Other)	If Control is Owner-ship Provide Percen-tage	Ultimate Controlling Entity(ies)/Person(s)	*
		00000	14-1782475				Managed Physical Network, Inc.	..NY	..NIA	OptumHealth Care Solutions, Inc.	Ownership	100.000	UnitedHealth Group Incorporated	
		00000	42-1741594				MD Ops, Inc.	..CA	..NIA	North American Medical Management				
0707	UnitedHealth Group Incorporated	96310	52-1169135				MD-Individual Practice Association, Inc.	..MD	..IA	California, Inc.	Ownership	100.000	UnitedHealth Group Incorporated	
		00000					Medekit.com Limited	..GBR	..NIA	United HealthCare Services, Inc.	Ownership	100.000	UnitedHealth Group Incorporated	
0707	UnitedHealth Group Incorporated	00000	52-2178531				MEDEX Insurance Services, Inc.	..MD	..NIA	FrontierMEDEX Limited	Ownership	100.000	UnitedHealth Group Incorporated	
0707	UnitedHealth Group Incorporated	12756	20-3391186				Medica Health Plans of Florida, Inc.	..FL	..IA	FrontierMEDEX, Inc.	Ownership	100.000	UnitedHealth Group Incorporated	
		12155	01-0788576				Medica HealthCare Plans, Inc.	..FL	..IA	United HealthCare Services, Inc.	Ownership	100.000	UnitedHealth Group Incorporated	
		00000	26-4808018				Medical Preparatory School of Allied Health, LLC	..TX	..NIA	United HealthCare Services, Inc.	Ownership	100.000	UnitedHealth Group Incorporated	
		00000	32-0037402				Medical Transportation Services, LLC	..FL	..NIA	WellMed Medical Management, Inc.	Ownership	100.000	UnitedHealth Group Incorporated	
0707	UnitedHealth Group Incorporated	00000					MHC Real Estate Holdings, LLC	..CA	..NIA	United HealthCare Services, Inc.	Ownership	100.000	UnitedHealth Group Incorporated	
		79480	35-1279304				Midwest Security Life Insurance Company	..WI	..IA	Monarch Management Services, Inc.	Ownership	100.000	UnitedHealth Group Incorporated	
		00000					Mind Solutions S.A.	..BRA	..NIA	UnitedHealthcare, Inc.	Ownership	100.000	UnitedHealth Group Incorporated	
		00000	86-0693199				Mohave Valley Hospital, Inc.	..AZ	..NIA	Polar II Fundo de Investmento em Participacoes	Ownership	85.500	UnitedHealth Group Incorporated	9
		00000					Monarch Financial Services, LLC	..CA	..NIA	Southwest Medical Associates, Inc.	Ownership	100.000	UnitedHealth Group Incorporated	
		00000	45-3142852				Monarch Management Services, Inc.	..DE	..NIA	Monarach Management Services, Inc.	Ownership	85.000	UnitedHealth Group Incorporated	2
		00000	20-3236839				NAMM Holdings, Inc.	..DE	..NIA	Collaborative Care Holdings, LLC	Ownership	100.000	UnitedHealth Group Incorporated	
		00000					NAMM West, Inc.	..CA	..NIA	Aveta Inc.	Ownership	100.000	UnitedHealth Group Incorporated	
0707	UnitedHealth Group Incorporated	95251	76-0196559				National Pacific Dental, Inc.	..TX	..IA	North American Medical Management	Ownership	100.000	UnitedHealth Group Incorporated	
0707	UnitedHealth Group Incorporated	95123	65-0996107				Neighborhood Health Partnership, Inc.	..FL	..IA	California, Inc.	Ownership	100.000	UnitedHealth Group Incorporated	
		00000	20-4755277				Netwerkes, LLC	..TN	..NIA	Dental Benefit Providers, Inc.	Ownership	100.000	UnitedHealth Group Incorporated	
0707	UnitedHealth Group Incorporated	00000					Nevada Medical Services LLC	..NV	..NIA	UnitedHealthcare, Inc.	Ownership	100.000	UnitedHealth Group Incorporated	
		95758	88-0228572				Nevada Pacific Dental	..NV	..IA	Payment Resolution Services, LLC.	Ownership	100.000	UnitedHealth Group Incorporated	
		00000					North American Medical Management - Illinois, Inc.	..IL	..NIA	Collaborative Care Services, Inc.	Ownership	100.000	UnitedHealth Group Incorporated	
		00000	36-3984647				North American Medical Management			Dental Benefit Providers, Inc.	Ownership	100.000	UnitedHealth Group Incorporated	
		00000	33-0673955				California, Inc.	..TN	..NIA	NAMM Holdings, Inc.	Ownership	100.000	UnitedHealth Group Incorporated	
		00000	88-0245121				Northern Nevada Health Network, Inc.	..NV	..NIA	NAMM Holdings, Inc.	Ownership	100.000	UnitedHealth Group Incorporated	
0707	UnitedHealth Group Incorporated	00000	52-2129786				OneNet PPO, LLC	..MD	..NIA	Sierra Health Services, Inc.	Ownership	100.000	UnitedHealth Group Incorporated	
		96940	52-1518174				Optimum Choice, Inc.	..MD	..IA	UnitedHealthcare Insurance Company	Ownership	100.000	UnitedHealth Group Incorporated	
		00000					Optum (Argentina) SRL	..ARG	..NIA	United HealthCare Services, Inc.	Ownership	100.000	UnitedHealth Group Incorporated	
		00000					Optum (Argentina) SRL	..ARG	..NIA	Ingenix Innovus (Netherlands) B.V.	Ownership	90.000	UnitedHealth Group Incorporated	18
		00000					Optum (France) SAS	..FRA	..NIA	ScriptSwitch Holdings Limited	Ownership	10.000	UnitedHealth Group Incorporated	18
		00000					Optum (Spain), S.A.U.	..ESP	..NIA	Ingenix Innovus (Netherlands) B.V.	Ownership	100.000	UnitedHealth Group Incorporated	
		00000	47-0858534	3202702			Optum Bank, Inc.	..UT	..NIA	Ingenix Innovus (Netherlands) B.V.	Ownership	100.000	UnitedHealth Group Incorporated	
		00000	45-3142512				Optum Clinical Services, Inc.	..DE	..NIA	OptumHealth Financial Services, Inc.	Ownership	100.000	UnitedHealth Group Incorporated	
		00000	04-3574101				Optum Government Solutions, Inc.	..DE	..NIA	Collaborative Care Holdings, LLC	Ownership	100.000	UnitedHealth Group Incorporated	
		00000	46-1615964				Optum Labs, Inc.	..DE	..NIA	OptumInsight, Inc.	Ownership	100.000	UnitedHealth Group Incorporated	
		00000	20-4581265				Optum Public Sector Solutions, Inc.	..DE	..NIA	Optum, Inc.	Ownership	100.000	UnitedHealth Group Incorporated	
		00000	45-4683454				Optum Services, Inc.	..DE	..NIA	OptumInsight, Inc.	Ownership	100.000	UnitedHealth Group Incorporated	
		00000	30-0580620	3119994			Optum, Inc.	..DE	..NIA	Optum, Inc.	Ownership	100.000	UnitedHealth Group Incorporated	
		00000	41-1591944				OptumHealth Care Solutions, Inc.	..MN	..NIA	United HealthCare Services, Inc.	Ownership	100.000	UnitedHealth Group Incorporated	
		00000	47-0858530				OptumHealth Financial Services, Inc.	..DE	..NIA	OptumHealth Holdings, LLC	Ownership	100.000	UnitedHealth Group Incorporated	
		00000					OptumHealth Holdings, LLC	..DE	..NIA	OptumHealth Holdings, LLC	Ownership	100.000	UnitedHealth Group Incorporated	
		00000					OptumHealth International B.V.	..NLD	..NIA	Optum, Inc.	Ownership	100.000	UnitedHealth Group Incorporated	
		00000	98-1097397				OptumInsight (Canada) Inc.	..CAN	..NIA	Optum, Inc.	Ownership	100.000	UnitedHealth Group Incorporated	
		00000					OptumInsight (Deutschland) GmbH	..DEU	..NIA	OptumInsight, Inc.	Ownership	100.000	UnitedHealth Group Incorporated	
		00000					OptumInsight (Singapore) Pte. Ltd.	..SGP	..NIA	Ingenix Innovus (Netherlands) B.V.	Ownership	100.000	UnitedHealth Group Incorporated	

SCHEDULE Y
PART 1A - DETAIL OF INSURANCE HOLDING COMPANY SYSTEM

1	2	3	4	5	6	7	8	9	10	11	12	13	14	15
Group Code	Group Name	NAIC Company Code	Federal ID Number	Federal RSSD	CIK	Name of Securities Exchange if Publicly Traded (U.S. or International)	Names of Parent, Subsidiaries Or Affiliates	Domiciliary Location	Relationship to Reporting Entity	Directly Controlled by (Name of Entity/Person)	Type of Control (Ownership, Board, Management, Attorney-in-Fact, Influence, Other)	If Control is Ownership Provide Percentage	Ultimate Controlling Entity(ies)/Person(s)	*
		00000	98-1097261				OptumInsight (Sweden) AB	SWE	NIA	Ingenix Innovus (Netherlands) B.V.	Ownership	100.000	UnitedHealth Group Incorporated	
		00000					OptumInsight Holdings, LLC	DE	NIA	Optum, Inc.	Ownership	100.000	UnitedHealth Group Incorporated	
		00000	98-1094659				OptumInsight Italy S.r.l.	ITA	NIA	Ingenix Innovus (Netherlands) B.V.	Ownership	100.000	UnitedHealth Group Incorporated	
		00000	98-1099715				OptumInsight Korea LLC	KOR	NIA	Optum, Inc.	Ownership	100.000	UnitedHealth Group Incorporated	
		00000	04-3383745				OptumInsight Life Sciences, Inc.	DE	NIA	OptumInsight, Inc.	Ownership	100.000	UnitedHealth Group Incorporated	
		00000					OptumInsight Poland sp. z o.o.	POL	NIA	Ingenix Innovus (Netherlands) B.V.	Ownership	99.000	UnitedHealth Group Incorporated	19
		00000					OptumInsight Poland sp. z o.o.	POL	NIA	OptumInsight, Inc.	Ownership	1.000	UnitedHealth Group Incorporated	19
		00000	41-1858498				OptumInsight, Inc.	DE	NIA	OptumInsight Holdings, LLC	Ownership	100.000	UnitedHealth Group Incorporated	
		00000					OptumRx Holdings, LLC	DE	NIA	Optum, Inc.	Ownership	100.000	UnitedHealth Group Incorporated	
		00000	20-0151096				OptumRx NY IPA, Inc.	NY	NIA	OptumRx, Inc.	Ownership	100.000	UnitedHealth Group Incorporated	
		00000	33-0441200				OptumRx, Inc.	CA	NIA	OptumRx Holdings, LLC	Ownership	100.000	UnitedHealth Group Incorporated	
		00000					Orion Participações e Administração Ltda.	BRA	NIA	Amil Assistência Médica Internacional S.A.	Ownership	100.000	UnitedHealth Group Incorporated	20
		00000					Orion Participações e Administração Ltda.	BRA	NIA	Amico Saúde Ltda.	Ownership		UnitedHealth Group Incorporated	20
		00000	41-1921007				Ovations, Inc.	DE	NIA	United HealthCare Services, Inc.	Ownership	100.000	UnitedHealth Group Incorporated	
		00000	06-1587795				Oxford Benefit Management, Inc.	CT	NIA	Oxford Health Plans LLC	Ownership	100.000	UnitedHealth Group Incorporated	
0707	UnitedHealth Group Incorporated	78026	22-2797560				Oxford Health Insurance, Inc.	NY	IA	Oxford Health Plans (NY), Inc.	Ownership	100.000	UnitedHealth Group Incorporated	
0707	UnitedHealth Group Incorporated	96798	06-1181201				Oxford Health Plans (CT), Inc.	CT	IA	Oxford Health Plans LLC	Ownership	100.000	UnitedHealth Group Incorporated	
0707	UnitedHealth Group Incorporated	95506	22-2745725				Oxford Health Plans (NJ), Inc.	NJ	IA	Oxford Health Plans LLC	Ownership	100.000	UnitedHealth Group Incorporated	
0707	UnitedHealth Group Incorporated	95479	06-1181200				Oxford Health Plans (NY), Inc.	NY	IA	Oxford Health Plans LLC	Ownership	100.000	UnitedHealth Group Incorporated	
		00000	52-2443751				Oxford Health Plans LLC	DE	NIA	UnitedHealth Group Incorporated	Ownership	100.000	UnitedHealth Group Incorporated	
0707	UnitedHealth Group Incorporated	70785	35-1137395				PacifiCare Life and Health Insurance Company	IN	IA	United HealthCare Services, Inc.	Ownership	100.000	UnitedHealth Group Incorporated	
0707	UnitedHealth Group Incorporated	84506	95-2829463				PacifiCare Life Assurance Company	CO	IA	United HealthCare Services, Inc.	Ownership	100.000	UnitedHealth Group Incorporated	
0707	UnitedHealth Group Incorporated	95617	94-3267522				PacifiCare of Arizona, Inc.	AZ	IA	United HealthCare Services, Inc.	Ownership	100.000	UnitedHealth Group Incorporated	
0707	UnitedHealth Group Incorporated	95434	84-1011378				PacifiCare of Colorado, Inc.	CO	IA	United HealthCare Services, Inc.	Ownership	100.000	UnitedHealth Group Incorporated	
0707	UnitedHealth Group Incorporated	95685	86-0875231				PacifiCare of Nevada, Inc.	NV	IA	United HealthCare Services, Inc.	Ownership	100.000	UnitedHealth Group Incorporated	
		00000	33-0861832				Paularino Third Party Administrators, Inc.	CA	NIA	For Health, Inc.	Ownership	100.000	UnitedHealth Group Incorporated	
		00000	62-1451147				Payment Resolution Services, LLC	TN	NIA	OptumInsight, Inc.	Ownership	100.000	UnitedHealth Group Incorporated	
		00000	98-1095799				Personal Performance Consultants India Private Limited	IND	NIA	OptumHealth International B.V.	Ownership	99.996	UnitedHealth Group Incorporated	21
		00000	98-1095799				Personal Performance Consultants India Private Limited	IND	NIA	United Behavioral Health	Ownership	0.004	UnitedHealth Group Incorporated	21
		00000	98-1095879				Personal Performance Consultants UK Limited	GBR	NIA	PPC International, L.L.C.	Ownership	100.000	UnitedHealth Group Incorporated	
		00000	80-0506053				PHC Holdings of Florida, Inc.	TX	NIA	PHC Subsidiary Holdings, LLC	Ownership	100.000	UnitedHealth Group Incorporated	
		00000	35-2288416				PHC Subsidiary Holdings, LLC	TX	NIA	United HealthCare Services, Inc.	Ownership	100.000	UnitedHealth Group Incorporated	
		00000	80-0654665				Physician Care Partners, Inc.	IL	NIA	Illinois, Inc.	Ownership	100.000	UnitedHealth Group Incorporated	
		00000					Physicians Choice Insurance Service, LLC	CA	NIA	Monarch Financial Services, LLC	Ownership	70.000	UnitedHealth Group Incorporated	2
							Physicians Health Choice of New Mexico, Inc.							
0707	UnitedHealth Group Incorporated	12977	32-0191973				Inc.	NM	IA	PHC Subsidiary Holdings, LLC	Ownership	100.000	UnitedHealth Group Incorporated	
0707	UnitedHealth Group Incorporated	11494	04-3677255				Physicians Health Choice of Texas, LLC	TX	IA	PHC Subsidiary Holdings, LLC	Ownership	100.000	UnitedHealth Group Incorporated	
		00000	52-1162824				Physicians Health Plan of Maryland, Inc.	MD	NIA	United HealthCare Services, Inc.	Ownership	100.000	UnitedHealth Group Incorporated	
		00000	36-4375169	3886791			Picis, Inc.	DE	NIA	OptumInsight, Inc.	Ownership	100.000	UnitedHealth Group Incorporated	
		00000	98-1094849				Picis, Ltd.	GBR	NIA	Picis, Inc.	Ownership	100.000	UnitedHealth Group Incorporated	
		00000					Polar II Fundo de Investimento em Participações	BRA	NIA	S.á.r.l.	Ownership	100.000	UnitedHealth Group Incorporated	
		00000	98-1098190				Positive People Company	CHN	NIA	PPC International, L.L.C.	Ownership	100.000	UnitedHealth Group Incorporated	
		00000	20-2149493				PPC International II, LLC	MO	NIA	United Behavioral Health	Ownership	100.000	UnitedHealth Group Incorporated	

SCHEDULE Y
PART 1A - DETAIL OF INSURANCE HOLDING COMPANY SYSTEM

1	2	3	4	5	6	7	8	9	10	11	12	13	14	15
Group Code	Group Name	NAIC Company Code	Federal ID Number	Federal RSSD	CIK	Name of Securities Exchange if Publicly Traded (U.S. or International)	Names of Parent, Subsidiaries Or Affiliates	Domiciliary Location	Relationship to Reporting Entity	Directly Controlled by (Name of Entity/Person)	Type of Control (Ownership, Board, Management, Attorney-in-Fact, Influence, Other)	If Control is Ownership Provide Percentage	Ultimate Controlling Entity(ies)/Person(s)	*
0707	UnitedHealth Group Incorporated	00000	43-1747235				PPC International, L.L.C.	MO	NIA	Optum, Inc.	Ownership	100.000	UnitedHealth Group Incorporated	
		00000	98-1097921				PPC Worldwide Canada EAP Services Ltd.	CAN	NIA	PPC International, L.L.C.	Ownership	100.000	UnitedHealth Group Incorporated	
		00000					PPC Worldwide Pte. Ltd.	SGP	NIA	International Psychological Services Pty Limited	Ownership	100.000	UnitedHealth Group Incorporated	
		00000					PPC Worldwide Pty Ltd	AUS	NIA	Personal Performance Consultants UK Limited	Ownership	100.000	UnitedHealth Group Incorporated	
		00000	75-2741619				ppoONE, Inc.	DE	NIA	United HealthCare Services, Inc.	Ownership	100.000	UnitedHealth Group Incorporated	
		00000	65-0683927				Preferred Care Partners Holding, Corp.	FL	NIA	United HealthCare Services, Inc.	Ownership	100.000	UnitedHealth Group Incorporated	
		00000	26-1845018				Preferred Care Partners Medical Group, Inc.	FL	NIA	Preferred Care Partners Holding, Corp.	Ownership	100.000	UnitedHealth Group Incorporated	
		00000	26-1845018				Preferred Care Partners Medical Group, Inc.	FL	NIA	Preferred Care Partners Holding, Corp.	Ownership	100.000	UnitedHealth Group Incorporated	
		11176	65-0885893				Preferred Care Partners, Inc.	FL	IA	Preferred Care Partners Holding, Corp.	Ownership	100.000	UnitedHealth Group Incorporated	
		00000	75-3265059				Premier Choice ACO, Inc.	CA	NIA	PrimeCare Medical Network, Inc.	Ownership	100.000	UnitedHealth Group Incorporated	
		00000	75-3265056				Prime Community Care of Central Valley, Inc.	CA	NIA	PrimeCare Medical Network, Inc.	Ownership	100.000	UnitedHealth Group Incorporated	
		00000	88-0253112				Prime Health, Inc.	NV	NIA	Sierra Health Services, Inc.	Ownership	100.000	UnitedHealth Group Incorporated	
		00000	33-0607478				PrimeCare Medical Network, Inc.	CA	IA	NAMM Holdings, Inc.	Ownership	100.000	UnitedHealth Group Incorporated	
		00000	75-3265058				PrimeCare of Banning-Beaumont, Inc.	CA	NIA	PrimeCare Medical Network, Inc.	Ownership	100.000	UnitedHealth Group Incorporated	
		00000	87-0757397				PrimeCare of Citrus Valley, Inc.	CA	NIA	PrimeCare Medical Network, Inc.	Ownership	80.000	UnitedHealth Group Incorporated	8
		00000	33-0674407				PrimeCare of Corona, Inc.	CA	NIA	PrimeCare Medical Network, Inc.	Ownership	100.000	UnitedHealth Group Incorporated	
		00000	33-0674401				PrimeCare of Hemet Valley, Inc.	CA	NIA	PrimeCare Medical Network, Inc.	Ownership	100.000	UnitedHealth Group Incorporated	
		00000	33-0674408				PrimeCare of Inland Valley, Inc.	CA	NIA	PrimeCare Medical Network, Inc.	Ownership	100.000	UnitedHealth Group Incorporated	
		00000	33-0674402				PrimeCare of Moreno Valley, Inc.	CA	NIA	PrimeCare Medical Network, Inc.	Ownership	100.000	UnitedHealth Group Incorporated	
		00000	75-3265060				PrimeCare of Pomona Valley, Inc.	CA	NIA	PrimeCare Medical Network, Inc.	Ownership	100.000	UnitedHealth Group Incorporated	
		00000	33-0674400				PrimeCare of Redlands, Inc.	CA	NIA	PrimeCare Medical Network, Inc.	Ownership	100.000	UnitedHealth Group Incorporated	
		00000	33-0674404				PrimeCare of Riverside, Inc.	CA	NIA	PrimeCare Medical Network, Inc.	Ownership	100.000	UnitedHealth Group Incorporated	
		00000	14-1915328				PrimeCare of San Bernardino, Inc.	CA	NIA	PrimeCare Medical Network, Inc.	Ownership	100.000	UnitedHealth Group Incorporated	
		00000	33-0698439				PrimeCare of Sun City, Inc.	CA	NIA	PrimeCare Medical Network, Inc.	Ownership	100.000	UnitedHealth Group Incorporated	
		00000	33-0674409				PrimeCare of Temecula, Inc.	CA	NIA	PrimeCare Medical Network, Inc.	Ownership	100.000	UnitedHealth Group Incorporated	
		00000	39-1579905				ProcessWorks, Inc.	WI	NIA	UnitedHealthcare, Inc.	Ownership	100.000	UnitedHealth Group Incorporated	
		00000					Promarket Propaganda e Marketing Ltda.	BRA	NIA	Amil Assistência Médica Internacional S.A.	Ownership	99.792	UnitedHealth Group Incorporated	1
		00000					Promarket Propaganda e Marketing Ltda.	BRA	NIA	Amico Saúde Ltda.	Ownership	0.208	UnitedHealth Group Incorporated	1
		00000					QSSI Technologies India Private Limited	IND	NIA	Quality Software Services, Inc.	Ownership	99.900	UnitedHealth Group Incorporated	2
		00000	52-2016292				Quality Software Services, Inc.	MD	NIA	OptumInsight, Inc.	Ownership	100.000	UnitedHealth Group Incorporated	
		00000	26-3168754				R&H Family Fitness Unlimited LLC	TX	NIA	WellMed Medical Management, Inc.	Ownership	100.000	UnitedHealth Group Incorporated	
		00000					Savvysherpa Asia, Inc.	PHL	NIA	UnitedHealth Group International B.V.	Ownership	100.000	UnitedHealth Group Incorporated	
		00000					Savvysherpa Asia, LLC	MN	NIA	United HealthCare Services, Inc.	Ownership	100.000	UnitedHealth Group Incorporated	
		00000	98-1097769				ScriptSwitch Holdings Limited	GBR	NIA	Ingenix UK Holdings Limited	Ownership	100.000	UnitedHealth Group Incorporated	
		00000					ScriptSwitch Limited	GBR	NIA	ScriptSwitch Holdings Limited	Ownership	100.000	UnitedHealth Group Incorporated	
		00000	20-4763091				Senior Care Partners, Inc.	IL	NIA	North American Medical Management - Illinois, Inc.	Ownership	100.000	UnitedHealth Group Incorporated	
		71420	94-0734860				Sierra Health and Life Insurance Company, Inc.	NV	IA	Sierra Health Services, Inc.	Ownership	100.000	UnitedHealth Group Incorporated	
		00000	88-0200415				Sierra Health Services, Inc.	NV	NIA	UnitedHealthcare, Inc.	Ownership	100.000	UnitedHealth Group Incorporated	
		00000	88-0254322				Sierra Health-Care Options, Inc.	NV	NIA	Sierra Health Services, Inc.	Ownership	100.000	UnitedHealth Group Incorporated	
		00000	88-0385705				Sierra Home Medical Products, Inc.	NV	NIA	Sierra Health Services, Inc.	Ownership	100.000	UnitedHealth Group Incorporated	
		00000	88-0264562				Sierra Nevada Administrators, Inc.	NV	NIA	Sierra Health Services, Inc.	Ownership	100.000	UnitedHealth Group Incorporated	
		00000	88-0201420				Southwest Medical Associates, Inc.	NV	NIA	Sierra Health Services, Inc.	Ownership	100.000	UnitedHealth Group Incorporated	
		00000	38-2609888				Southwest Michigan Health Network Inc.	MI	NIA	UnitedHealthcare, Inc.	Ownership	100.000	UnitedHealth Group Incorporated	

SCHEDULE Y
PART 1A - DETAIL OF INSURANCE HOLDING COMPANY SYSTEM

1	2	3	4	5	6	7	8	9	10	11	12	13	14	15
Group Code	Group Name	NAIC Company Code	Federal ID Number	Federal RSSD	CIK	Name of Securities Exchange if Publicly Traded (U.S. or International)	Names of Parent, Subsidiaries Or Affiliates	Domiciliary Location	Relationship to Reporting Entity	Directly Controlled by (Name of Entity/Person)	Type of Control (Ownership, Board, Management, Attorney-in-Fact, Influence, Other)	If Control is Ownership Provide Percentage	Ultimate Controlling Entity(ies)/Person(s)	*
		.00000	41-1921983				Specialty Benefits, LLC	.DE	.NIA	United HealthCare Services, Inc.	Ownership	100.000	UnitedHealth Group Incorporated	
		.00000	71-0886811				Spectera of New York, IPA, Inc.	.NY	.NIA	Spectera, Inc.	Ownership	100.000	UnitedHealth Group Incorporated	
		.00000	52-1260282				Spectera, Inc.	.MD	.NIA	Specialty Benefits, LLC	Ownership	100.000	UnitedHealth Group Incorporated	
		.00000	56-1970224				The Lewin Group, Inc.	.NC	.NIA	Optum Public Sector Solutions, Inc.	Ownership	100.000	UnitedHealth Group Incorporated	
		.00000	25-1825549				Three Rivers Holdings, Inc.	.DE	.NIA	AmeriChoice Corporation	Ownership	100.000	UnitedHealth Group Incorporated	
		.00000	52-1431155				Travel Express Incorporated	.MD	.NIA	FrontierMEDEX, Inc.	Ownership	100.000	UnitedHealth Group Incorporated	
		.00000	94-3077084				U.S. Behavioral Health Plan, California	.CA	.IA	United Behavioral Health	Ownership	100.000	UnitedHealth Group Incorporated	
		.00000	41-1913059				UHC International Services, Inc.	.DE	.NIA	UnitedHealth Group Incorporated	Ownership	100.000	UnitedHealth Group Incorporated	
		.00000	95-2931460				UHC of California	.CA	.IA	United HealthCare Services, Inc.	Ownership	100.000	UnitedHealth Group Incorporated	
		.00000					UHG Brasil Participações S.A.	.BRA	.NIA	Polar II Fundo de Investimento em Participações	Ownership	100.000	UnitedHealth Group Incorporated	
		.00000	41-1921008				UHC Holdings, Inc.	.DE	.NIA	United HealthCare Services, Inc.	Ownership	100.000	UnitedHealth Group Incorporated	
		.00000	14-1892398				Ultima Rx, LLC	.FL	.NIA	United HealthCare Services, Inc.	Ownership	100.000	UnitedHealth Group Incorporated	
		.00000	39-1995276				UMR, Inc.	.DE	.NIA	United HealthCare Services, Inc.	Ownership	100.000	UnitedHealth Group Incorporated	
.0707	UnitedHealth Group Incorporated	.91529	52-1996029				Unimerica Insurance Company	.WI	.IA	OptumHealth Holdings, LLC	Ownership	100.000	UnitedHealth Group Incorporated	
							Unimerica Life Insurance Company of New York	.NY	.IA	UnitedHealthcare Insurance Company	Ownership	100.000	UnitedHealth Group Incorporated	
.0707	UnitedHealth Group Incorporated	.11596	01-0637149				Unison Administrative Services, LLC	.PA	.NIA	Three Rivers Holdings, Inc.	Ownership	100.000	UnitedHealth Group Incorporated	
		.00000	25-1877716				Unison Health Plan of Delaware, Inc.	.DE	.IA	Three Rivers Holdings, Inc.	Ownership	100.000	UnitedHealth Group Incorporated	
		.00000	20-5917714				Unison Health Plan of the Capital Area, Inc.	.DC	.IA	Three Rivers Holdings, Inc.	Ownership	100.000	UnitedHealth Group Incorporated	
.0707	UnitedHealth Group Incorporated	.13032	26-0651931				United Behavioral Health	.CA	.NIA	OptumHealth Holdings, LLC	Ownership	100.000	UnitedHealth Group Incorporated	
		.00000	94-2649097				United Behavioral Health of New York, I.P.A., Inc.	.NY	.NIA	United Behavioral Health	Ownership	100.000	UnitedHealth Group Incorporated	
		.00000	41-1868911				United Health Foundation	.MN	.NIA	UnitedHealth Group Incorporated	Ownership	100.000	UnitedHealth Group Incorporated	
		.00000	41-1289245	3410132			United HealthCare Services, Inc.	.MN	.UDP	UnitedHealth Group Incorporated	Ownership	100.000	UnitedHealth Group Incorporated	
		.00000	30-0318238				United Resource Networks IPA of New York, Inc.	.NY	.NIA	OptumHealth Care Solutions, Inc.	Ownership	100.000	UnitedHealth Group Incorporated	
		.00000	01-0538317				UnitedHealth Advisors, LLC	.ME	.NIA	United HealthCare Services, Inc.	Ownership	100.000	UnitedHealth Group Incorporated	
		.00000	98-1097761				UnitedHealth Group Global Healthcare Services Limited	.JRL	.NIA	United HealthCare Services, Inc.	Ownership	100.000	UnitedHealth Group Incorporated	
		.00000	98-1097776				UnitedHealth Group Global Services, Inc.	.PHL	.NIA	UnitedHealth Group International B.V.	Ownership	100.000	UnitedHealth Group Incorporated	
		.00000	41-1321939		0000731766	New York Stock Exchange	UnitedHealth Group Incorporated	.MN	.UIP					
		.00000	98-1093259				UnitedHealth Group Information Services Private Limited	.IND	.NIA	UnitedHealth Group International B.V.	Ownership	99.370	UnitedHealth Group Incorporated	3
		.00000	98-1093259				UnitedHealth Group Information Services Private Limited	.IND	.NIA	UnitedHealth International, Inc.	Ownership	0.630	UnitedHealth Group Incorporated	3
		.00000					UnitedHealth Group International B.V.	.NLD	.NIA	UnitedHealth Group Incorporated	Ownership	100.000	UnitedHealth Group Incorporated	
		.00000	98-1079826				UnitedHealth Group International GP	.CYM	.NIA	UnitedHealth Group Incorporated	Ownership	100.000	UnitedHealth Group Incorporated	
		.00000	98-1080118				UnitedHealth Group International L.P.	.CYM	.NIA	UnitedHealth Group Incorporated	Ownership	92.970	UnitedHealth Group Incorporated	4
		.00000	98-1080118				UnitedHealth Group International L.P.	.CYM	.NIA	FMG Holdings, LLC	Ownership	4.410	UnitedHealth Group Incorporated	4
		.00000					UnitedHealthcare International LATAM Corporation	.CYM	.NIA		Ownership	2.300	UnitedHealth Group Incorporated	4
		.00000	98-1080118				UnitedHealth Group International L.P.	.CYM	.NIA	Hygeia Corporation	Ownership	0.330	UnitedHealth Group Incorporated	4
		.00000					UnitedHealth Group Ventures, LLC	.DE	.NIA	UnitedHealth Group Incorporated	Ownership	100.000	UnitedHealth Group Incorporated	
		.00000	41-1917398				UnitedHealth International, Inc.	.DE	.NIA	UnitedHealth Group Incorporated	Ownership	100.000	UnitedHealth Group Incorporated	
		.00000					UnitedHealth Military & Veterans Services, LLC	.DE	.NIA	United HealthCare Services, Inc.	Ownership	100.000	UnitedHealth Group Incorporated	
		.00000	26-2574977				UnitedHealth UK Limited	.GBR	.NIA	Ingenix UK Holdings Limited	Ownership	100.000	UnitedHealth Group Incorporated	
.0707	UnitedHealth Group Incorporated	.95174	33-0115163				UnitedHealthcare Benefits of Texas, Inc.	.TX	.IA	United HealthCare Services, Inc.	Ownership	100.000	UnitedHealth Group Incorporated	

SCHEDULE Y
PART 1A - DETAIL OF INSURANCE HOLDING COMPANY SYSTEM

1	2	3	4	5	6	7	8	9	10	11	12	13	14	15
Group Code	Group Name	NAIC Company Code	Federal ID Number	Federal RSSD	CIK	Name of Securities Exchange if Publicly Traded (U.S. or International)	Names of Parent, Subsidiaries Or Affiliates	Domiciliary Location	Relationship to Reporting Entity	Directly Controlled by (Name of Entity/Person)	Type of Control (Ownership, Board, Management, Attorney-in-Fact, Influence, Other)	If Control is Ownership Provide Percentage	Ultimate Controlling Entity(ies)/Person(s)	*
		00000					UnitedHealthcare Community Plan of California, Inc.		NIA	AmeriChoice Corporation	Ownership	100.000	UnitedHealth Group Incorporated	
0707	UnitedHealth Group Incorporated	12323	56-2451429				UnitedHealthcare Community Plan of Ohio, Inc.	OH	IA	Three Rivers Holdings, Inc.	Ownership	100.000	UnitedHealth Group Incorporated	
0707	UnitedHealth Group Incorporated	11141	91-2008361				UnitedHealthcare Community Plan of Texas, L.L.C.	TX	IA	Ovations, Inc.	Ownership	100.000	UnitedHealth Group Incorporated	
0707	UnitedHealth Group Incorporated	95467	38-3204052				UnitedHealthcare Community Plan, Inc.	MI	IA	AmeriChoice Corporation	Ownership	100.000	UnitedHealth Group Incorporated	
		00000	98-1099116				UnitedHealthcare India Private Limited	JND	NIA	UnitedHealthcare International II B.V.	Ownership	99.995	UnitedHealth Group Incorporated	5
		00000	98-1099116				UnitedHealthcare India Private Limited	JND	NIA	UnitedHealth International, Inc.	Ownership	0.005	UnitedHealth Group Incorporated	5
0707	UnitedHealth Group Incorporated	79413	36-2739571				UnitedHealthcare Insurance Company	CT	IA	UHC Holdings, Inc.	Ownership	100.000	UnitedHealth Group Incorporated	
0707	UnitedHealth Group Incorporated	60318	36-3800349				UnitedHealthcare Insurance Company of Illinois	IL	IA	UnitedHealthcare Insurance Company	Ownership	100.000	UnitedHealth Group Incorporated	
0707	UnitedHealth Group Incorporated	60093	11-3283886				UnitedHealthcare Insurance Company of New York	NY	IA	UnitedHealthcare Insurance Company	Ownership	100.000	UnitedHealth Group Incorporated	
0707	UnitedHealth Group Incorporated	12231	20-1902768				UnitedHealthcare Insurance Company of the River Valley	IL	IA	UnitedHealthcare Services Company of the River Valley, Inc.	Ownership	100.000	UnitedHealth Group Incorporated	
		00000	41-1988797				UnitedHealthcare International Asia, LLC	DE	NIA	UnitedHealth Group Incorporated	Ownership	100.000	UnitedHealth Group Incorporated	
		00000					UnitedHealthcare International I B.V.	NLD	NIA	UnitedHealth Group International L.P.	Ownership	75.760	UnitedHealth Group Incorporated	
		00000					UnitedHealthcare International I B.V.	NLD	NIA	UnitedHealth Group International L.P.	Ownership	75.760	UnitedHealth Group Incorporated	6
		00000					UnitedHealthcare International I B.V.	NLD	NIA	UnitedHealth Group International B.V.	Ownership	24.240	UnitedHealth Group Incorporated	6
		00000	98-1079595				UnitedHealthcare International I S.á.r.l.	LUX	NIA	UnitedHealth Group International L.P.	Ownership	100.000	UnitedHealth Group Incorporated	
		00000					UnitedHealthcare International II B.V.	NLD	NIA	UnitedHealth Group International B.V.	Ownership	100.000	UnitedHealth Group Incorporated	
							UnitedHealthcare International II S.á.r.l.			UnitedHealthcare International I				
		00000	98-1079459					LUX	NIA	S.á.r.l.	Ownership	100.000	UnitedHealth Group Incorporated	
		00000	98-1077436				UnitedHealthcare International III S.á.r.l.	LUX	NIA	UnitedHealthcare International II S.á.r.l.	Ownership	100.000	UnitedHealth Group Incorporated	
		00000	98-1080926				UnitedHealthcare International IV S.á.r.l.	LUX	NIA	UnitedHealthcare International II S.á.r.l.	Ownership	100.000	UnitedHealth Group Incorporated	
		00000					UnitedHealthcare International LATAM Corporation	DE	NIA	UnitedHealth Group Incorporated	Ownership	100.000	UnitedHealth Group Incorporated	
0707	UnitedHealth Group Incorporated	97179	86-0207231				UnitedHealthcare Life insurance Company	WI	IA	Golden Rule Financial Corporation	Ownership	100.000	UnitedHealth Group Incorporated	
0707	UnitedHealth Group Incorporated	95784	63-0899562				UnitedHealthcare of Alabama, Inc.	AL	IA	UnitedHealthcare, Inc.	Ownership	100.000	UnitedHealth Group Incorporated	
0707	UnitedHealth Group Incorporated	96016	86-0507074				UnitedHealthcare of Arizona, Inc.	AZ	IA	UnitedHealthcare, Inc.	Ownership	100.000	UnitedHealth Group Incorporated	
0707	UnitedHealth Group Incorporated	95446	63-1036819				UnitedHealthcare of Arkansas, Inc.	AR	IA	UnitedHealthcare, Inc.	Ownership	100.000	UnitedHealth Group Incorporated	
0707	UnitedHealth Group Incorporated	95090	84-1004639				UnitedHealthcare of Colorado, Inc.	CO	IA	UnitedHealthcare, Inc.	Ownership	100.000	UnitedHealth Group Incorporated	
0707	UnitedHealth Group Incorporated	95264	59-1293865				UnitedHealthcare of Florida, Inc.	FL	IA	UnitedHealthcare, Inc.	Ownership	100.000	UnitedHealth Group Incorporated	
0707	UnitedHealth Group Incorporated	95850	58-1653544				UnitedHealthcare of Georgia, Inc.	GA	IA	UnitedHealthcare, Inc.	Ownership	100.000	UnitedHealth Group Incorporated	
0707	UnitedHealth Group Incorporated	95776	36-3280214				UnitedHealthcare of Illinois, Inc.	IL	IA	UnitedHealthcare, Inc.	Ownership	100.000	UnitedHealth Group Incorporated	
0707	UnitedHealth Group Incorporated	96644	62-1240316				UnitedHealthcare of Kentucky, Ltd.	KY	IA	United HealthCare Services, Inc.	Ownership	94.180	UnitedHealth Group Incorporated	7
0707	UnitedHealth Group Incorporated	96644	62-1240316				UnitedHealthcare of Kentucky, Ltd.	KY	IA	UnitedHealthcare, Inc.	Ownership	5.820	UnitedHealth Group Incorporated	7
0707	UnitedHealth Group Incorporated	95833	72-1074008				UnitedHealthcare of Louisiana, Inc.	LA	IA	UnitedHealthcare, Inc.	Ownership	100.000	UnitedHealth Group Incorporated	
0707	UnitedHealth Group Incorporated	95716	63-1036817				UnitedHealthcare of Mississippi, Inc.	MS	IA	UnitedHealthcare, Inc.	Ownership	100.000	UnitedHealth Group Incorporated	
0707	UnitedHealth Group Incorporated	95149	05-0413469				UnitedHealthcare of New England, Inc.	RI	IA	United HealthCare Services, Inc.	Ownership	100.000	UnitedHealth Group Incorporated	
0707	UnitedHealth Group Incorporated	13214	26-2697886				UnitedHealthcare of New Mexico, Inc.	NM	IA	UnitedHealthcare Insurance Company	Ownership	100.000	UnitedHealth Group Incorporated	
0707	UnitedHealth Group Incorporated	95085	06-1172891				UnitedHealthcare of New York, Inc.	NY	IA	AmeriChoice Corporation	Ownership	100.000	UnitedHealth Group Incorporated	
0707	UnitedHealth Group Incorporated	95103	56-1461010				UnitedHealthcare of North Carolina, Inc.	NC	IA	UnitedHealthcare, Inc.	Ownership	100.000	UnitedHealth Group Incorporated	
0707	UnitedHealth Group Incorporated	95186	31-1142815				UnitedHealthcare of Ohio, Inc.	OH	IA	United HealthCare Services, Inc.	Ownership	100.000	UnitedHealth Group Incorporated	
0707	UnitedHealth Group Incorporated	96903	33-0115166				UnitedHealthcare of Oklahoma, Inc.	OK	IA	United HealthCare Services, Inc.	Ownership	100.000	UnitedHealth Group Incorporated	
0707	UnitedHealth Group Incorporated	95893	93-0938819				UnitedHealthcare of Oregon, Inc.	OR	IA	United HealthCare Services, Inc.	Ownership	100.000	UnitedHealth Group Incorporated	
0707	UnitedHealth Group Incorporated	95220	25-1756858				UnitedHealthcare of Pennsylvania, Inc.	PA	IA	Three Rivers Holdings, Inc.	Ownership	100.000	UnitedHealth Group Incorporated	
0707	UnitedHealth Group Incorporated	95765	95-3939697				UnitedHealthcare of Texas, Inc.	TX	IA	UnitedHealthcare, Inc.	Ownership	100.000	UnitedHealth Group Incorporated	

SCHEDULE Y
PART 1A - DETAIL OF INSURANCE HOLDING COMPANY SYSTEM

1	2	3	4	5	6	7	8	9	10	11	12	13	14	15
Group Code	Group Name	NAIC Company Code	Federal ID Number	Federal RSSD	CIK	Name of Securities Exchange if Publicly Traded (U.S. or International)	Names of Parent, Subsidiaries Or Affiliates	Domi-ciliary Loca-tion	Rela-tion-ship to Reporting Entity	Directly Controlled by (Name of Entity/Person)	Type of Control (Ownership, Board, Management, Attorney-in-Fact, Influence, Other)	If Control is Owner-ship Provide Percen-tage	Ultimate Controlling Entity(ies)/Person(s)	*
.....0707.....	UnitedHealth Group Incorporated95025	52-1130183	UnitedHealthcare of the Mid-Atlantic, Inc.MD.....	..IA.....	UnitedHealthcare, Inc.	Ownership.....	..100.000	UnitedHealth Group Incorporated
.....0707.....	UnitedHealth Group Incorporated95591	47-0676824	UnitedHealthcare of the Midlands, Inc.NE.....	..IA.....	UnitedHealthcare, Inc.	Ownership.....	..100.000	UnitedHealth Group Incorporated
.....0707.....	UnitedHealth Group Incorporated96385	43-1361841	UnitedHealthcare of the Midwest, Inc.MO.....	..IA.....	UnitedHealthcare, Inc.	Ownership.....	..100.000	UnitedHealth Group Incorporated
.....0707.....	UnitedHealth Group Incorporated95501	41-1488563	UnitedHealthcare of Utah, Inc.UT.....	..IA.....	UnitedHealthcare, Inc.	Ownership.....	..100.000	UnitedHealth Group Incorporated
.....0707.....	UnitedHealth Group Incorporated48038	91-1312551	UnitedHealthcare of Washington, Inc.WA.....	..IA.....	United HealthCare Services, Inc.	Ownership.....	..100.000	UnitedHealth Group Incorporated
.....0707.....	UnitedHealth Group Incorporated95710	39-1555888	UnitedHealthcare of Wisconsin, Inc.WI.....	..IA.....	UnitedHealthcare, Inc.	Ownership.....	..100.000	UnitedHealth Group Incorporated
.....0707.....	UnitedHealth Group Incorporated95378	36-3379945	UnitedHealthcare Plan of the River Valley, Inc.IL.....	..IA.....	UnitedHealthcare Services Company of the River Valley, Inc.	Ownership.....	..100.000	UnitedHealth Group Incorporated
.....00000	47-0854646	UnitedHealthcare Service LLCDE.....	..NIA.....	UnitedHealthcare Insurance Company	Ownership.....	..100.000	UnitedHealth Group Incorporated
.....00000	36-3355110	UnitedHealthcare Services Company of the River Valley, Inc.DE.....	..NIA.....	UnitedHealthcare, Inc.	Ownership.....	..100.000	UnitedHealth Group Incorporated
.....00000	01-0518346	UnitedHealthcare Specialty Benefits, LLCME.....	..NIA.....	Specialty Benefits, LLC	Ownership.....	..100.000	UnitedHealth Group Incorporated
.....00000	41-1922511	UnitedHealthcare, Inc.DE.....	..NIA.....	United HealthCare Services, Inc.	Ownership.....	..100.000	UnitedHealth Group Incorporated
.....00000	37-0920164	UnitedHealthOne Agency, Inc.IN.....	..NIA.....	Golden Rule Financial Corporation	Ownership.....	..100.000	UnitedHealth Group Incorporated
.....00000	87-0757396	Valley Physicians Network, Inc.CA.....	..NIA.....	PrimeCare Medical Network, Inc.	Ownership.....	..100.000	UnitedHealth Group Incorporated
.....00000	74-2797745	WellMed Medical Management of Florida, Inc.FL.....	..NIA.....	WellMed Medical Management, Inc.	Ownership.....	..100.000	UnitedHealth Group Incorporated
.....00000	74-2786364	WellMed Medical Management, Inc.TX.....	..NIA.....	Collaborative Care Holdings, LLC	Ownership.....	..80.000	UnitedHealth Group Incorporated8.....
.....00000	36-3437660	Wellness, Inc.IL.....	..NIA.....	OptumHealth Care Solutions, Inc.	Ownership.....	..100.000	UnitedHealth Group Incorporated
.....00000	52-2102846	XLHealth CorporationMD.....	..NIA.....	United HealthCare Services, Inc.	Ownership.....	..100.000	UnitedHealth Group Incorporated
.....00000	XLHealth Corporation India Private LimitedNIA.....	XLHealth Corporation	Ownership.....	..100.000	UnitedHealth Group Incorporated
.....00000	11-3764012	Your Health Options Insurance Services, Inc.CA.....	..NIA.....	PrimeCare Medical Network, Inc.	Ownership.....	..100.000	UnitedHealth Group Incorporated
.....00000	27-0172594	Your Partners in Health Services, Inc.IL.....	..NIA.....	North American Medical Management - Illinois, Inc.	Ownership.....	..100.000	UnitedHealth Group Incorporated

Asterisk	Explanation
01	The remaining 0.208% is owned by Amico Saúde Ltda.
02	The remaining percent is owned by outside parties.
03	The remaining 0.63% is owned by UnitedHealth International, Inc.
04	The limited partners include FMG Holdings, LLC (4.41%), UnitedHealthcare International LATAM Corporation (2.3%), Hygeia Corporation (DE) (0.33%) and UnitedHealth Group Incorporated (92.97%). The general partner is UnitedHealth Group International GP.
05	The remaining 0.0048% is owned by UnitedHealth International, Inc.
06	The remaining 24.24% is owned by UnitedHealth Group International B.V.
07	The general partnership interest of 89.77% is held by United HealthCare Services, Inc. (UHS) and 10.23% is held by UnitedHealthcare, Inc. (UHC). UHS also holds 100% of the limited partnership interests. When combining general and limited partner interests, UHS owns 94.18% and UHC owns 5.83%
08	The remaining percent is owned by a non-affiliated company.
09	The remaining percent is owned by Amil's founders.
10	The remaining 1.30196% is owned by Amico Saúde Ltda.and an officer of Amil owns 0.00683%.
11	The remaining 33.7727% is owned by Amico Saúde Ltda. and 12.9384% by Esho – Empresa de Serviços Hospitalares S.A.
12	The remaining 0.01% is owned by Cemed Care Empresa de Atendimento Clínico Geral Ltda.
13	The remaining 2.8% is owned by Amico Saúde Ltda.
14	The remaining 0.224917% is owned by Amico Saúde Ltda.; 0.094901% by Treasury Shares and 2.4% owned by external shareholders.
15	The remaining 30% is owned by (owning 6% each): HPP Boavista, S.A., HPP Lusiadas, S.A., HPP Algarve, S.A., HPP Saúde – Parcerias Cascais, S.A., and HPP Viseu, S.A.
16	The remainig 35% is owned by non-affiliated Portuguese companies.
17	The remaining 50% is owned by Amico Saúde Ltda.
18	The remaining 10% is owned by ScriptSwitch Holdings Limited.
19	The remaining 1% is owned by OptumInsight, Inc.
20	The remaining 0.000021% is owned by Amico Saúde Ltda.

STATEMENT AS OF MARCH 31, 2013 OF THE UnitedHealthcare of Ohio, Inc.

Asterisk	Explanation
21	The remaining 0.004 % is owned by United Behavioral Health.

SUPPLEMENTAL EXHIBITS AND SCHEDULES INTERROGATORIES

The following supplemental reports are required to be filed as part of your statement filing. However, in the event that your company does not transact the type of business for which the special report must be filed, your response of NO to the specific interrogatory will be accepted in lieu of filing a "NONE" report and a bar code will be printed below. If the supplement is required of your company but is not being filed for whatever reason enter SEE EXPLANATION and provide an explanation following the interrogatory questions.

Response

1. Will the Medicare Part D Coverage Supplement be filed with the state of domicile and the NAIC with this statement?

NO

Explanation:

1. The Company does not offer Medicare Part D Supplement Product.

Bar Code:

1. Medicare Part D Coverage Supplement [Document Identifier 365]



OVERFLOW PAGE FOR WRITE-INS

SCHEDULE A - VERIFICATION

Real Estate

	1 Year to Date	2 Prior Year Ended December 31
1. Book/adjusted carrying value, December 31 of prior year		
2. Cost of acquired:		
2.1 Actual cost at time of acquisition		
2.2 Additional investment made after acquisition		
3. Current year change in encumbrances		
4. Total gain (loss) on disposals		
5. Deduct amounts received on disposals		
6. Total foreign exchange change in book/adjusted carrying value		
7. Deduct current year's other than temporary impairment recognized		
8. Deduct current year's depreciation		
9. Book/adjusted carrying value at the end of current period (Lines 1+2+3+4-5+6-7-8)		
10. Deduct total nonadmitted amounts		
11. Statement value at end of current period (Line 9 minus Line 10)		

SCHEDULE B - VERIFICATION

Mortgage Loans

	1 Year to Date	2 Prior Year Ended December 31
1. Book value/recorded investment excluding accrued interest, December 31 of prior year		
2. Cost of acquired:		
2.1 Actual cost at time of acquisition		
2.2 Additional investment made after acquisition		
3. Capitalized deferred interest and other		
4. Accrual of discount		
5. Unrealized valuation increase (decrease)		
6. Total gain (loss) on disposals		
7. Deduct amounts received on disposals		
8. Deduct amortization of premium and mortgage interest points and commitment fees		
9. Total foreign exchange change in book value/recorded investment excluding accrued interest		
10. Deduct current year's other than temporary impairment recognized		
11. Book value/recorded investment excluding accrued interest at end of current period (Lines 1+2+3+4+5+6-7-8+9-10)		
12. Total valuation allowance		
13. Subtotal (Line 11 plus Line 12)		
14. Deduct total nonadmitted amounts		
15. Statement value at end of current period (Line 13 minus Line 14)		

SCHEDULE BA - VERIFICATION

Other Long-Term Invested Assets

	1 Year to Date	2 Prior Year Ended December 31
1. Book/adjusted carrying value, December 31 of prior year		
2. Cost of acquired:		
2.1 Actual cost at time of acquisition		
2.2 Additional investment made after acquisition		
3. Capitalized deferred interest and other		
4. Accrual of discount		
5. Unrealized valuation increase (decrease)		
6. Total gain (loss) on disposals		
7. Deduct amounts received on disposals		
8. Deduct amortization of premium and depreciation		
9. Total foreign exchange change in book/adjusted carrying value		
10. Deduct current year's other than temporary impairment recognized		
11. Book/adjusted carrying value at end of current period (Lines 1+2+3+4+5+6-7-8+9-10)		
12. Deduct total nonadmitted amounts		
13. Statement value at end of current period (Line 11 minus Line 12)		

SCHEDULE D - VERIFICATION

Bonds and Stocks

	1 Year to Date	2 Prior Year Ended December 31
1. Book/adjusted carrying value of bonds and stocks, December 31 of prior year	167,609,944	169,857,425
2. Cost of bonds and stocks acquired	27,372,975	42,108,636
3. Accrual of discount	8,856	131,760
4. Unrealized valuation increase (decrease)	6,485	
5. Total gain (loss) on disposals	828,636	896,193
6. Deduct consideration for bonds and stocks disposed of	21,678,935	43,248,739
7. Deduct amortization of premium	542,096	2,133,395
8. Total foreign exchange change in book/adjusted carrying value		
9. Deduct current year's other than temporary impairment recognized		1,936
10. Book/adjusted carrying value at end of current period (Lines 1+2+3+4+5-6-7+8-9)	173,605,865	167,609,944
11. Deduct total nonadmitted amounts		
12. Statement value at end of current period (Line 10 minus Line 11)	173,605,865	167,609,944

SCHEDULE D - PART 1B

Showing the Acquisitions, Dispositions and Non-Trading Activity
During the Current Quarter for all Bonds and Preferred Stock by Rating Class

	1 Book/Adjusted Carrying Value Beginning of Current Quarter	2 Acquisitions During Current Quarter	3 Dispositions During Current Quarter	4 Non-Trading Activity During Current Quarter	5 Book/Adjusted Carrying Value End of First Quarter	6 Book/Adjusted Carrying Value End of Second Quarter	7 Book/Adjusted Carrying Value End of Third Quarter	8 Book/Adjusted Carrying Value December 31 Prior Year
BONDS								
1. Class 1 (a)	198,760,639	301,148,483	287,644,835	3,856,545	216,120,832	0	0	198,760,639
2. Class 2 (a)	25,082,232	5,145,420	3,556,460	(4,386,345)	22,284,847	0	0	25,082,232
3. Class 3 (a)	0				0			
4. Class 4 (a)	0				0			
5. Class 5 (a)	0				0			
6. Class 6 (a)	0				0			
7. Total Bonds	223,842,871	306,293,903	291,201,295	(529,800)	238,405,679	0	0	223,842,871
PREFERRED STOCK								
8. Class 1	0				0			
9. Class 2	0	500,000	0	6,485	506,485	0	0	0
10. Class 3	0				0			
11. Class 4	0				0			
12. Class 5	0				0			
13. Class 6	0				0			
14. Total Preferred Stock	0	500,000	0	6,485	506,485	0	0	0
15. Total Bonds and Preferred Stock	223,842,871	306,793,903	291,201,295	(523,315)	238,912,164	0	0	223,842,871

(a) Book/Adjusted Carrying Value column for the end of the current reporting period includes the following amount of non-rated short-term and cash equivalent bonds by NAIC designation: NAIC 1 \$; NAIC 2 \$; NAIC 3 \$;
NAIC 4 \$; NAIC 5 \$; NAIC 6 \$

SCHEDULE DA - PART 1

Short-Term Investments

	1	2	3	4	5
	Book/Adjusted Carrying Value	Par Value	Actual Cost	Interest Collected Year-to-Date	Paid for Accrued Interest Year-to-Date
9199999 Totals	65,306,299	xxx	65,303,233	15,946	0

SCHEDULE DA - VERIFICATION

Short-Term Investments

	1	2
	Year To Date	Prior Year Ended December 31
1. Book/adjusted carrying value, December 31 of prior year	56,232,927	21,619,008
2. Cost of short-term investments acquired	279,420,928	1,025,957,264
3. Accrual of discount	3,440	7,152
4. Unrealized valuation increase (decrease)		
5. Total gain (loss) on disposals	1,165	1,372
6. Deduct consideration received on disposals	270,352,161	991,351,869
7. Deduct amortization of premium		
8. Total foreign exchange change in book/adjusted carrying value		
9. Deduct current year's other than temporary impairment recognized		
10. Book/adjusted carrying value at end of current period (Lines 1+2+3+4+5-6-7+8-9)	65,306,299	56,232,927
11. Deduct total nonadmitted amounts		
12. Statement value at end of current period (Line 10 minus Line 11)	65,306,299	56,232,927

Schedule DB - Part A - Verification - Options, Caps, Floors, Collars, Swaps and Forwards
N O N E

Schedule DB - Part B - Verification - Futures Contracts
N O N E

Schedule DB - Part C - Section 1 - Replication (Synthetic Asset) Transactions (RSATs) Open
N O N E

Schedule DB-Part C-Section 2-Reconciliation of Replication (Synthetic Asset) Transactions Open
N O N E

Schedule DB - Verification - Book/Adjusted Carrying Value, Fair Value and Potential Exposure of
Derivatives
N O N E

SCHEDULE E - VERIFICATION

(Cash Equivalents)

	1	2
	Year To Date	Prior Year Ended December 31
1. Book/adjusted carrying value, December 31 of prior year	0	0
2. Cost of cash equivalents acquired		3,999,784
3. Accrual of discount		156
4. Unrealized valuation increase (decrease)		0
5. Total gain (loss) on disposals		21
6. Deduct consideration received on disposals		3,999,961
7. Deduct amortization of premium		0
8. Total foreign exchange change in book/adjusted carrying value		0
9. Deduct current year's other than temporary impairment recognized		0
10. Book/adjusted carrying value at end of current period (Lines 1+2+3+4+5-6-7+8-9)	0	0
11. Deduct total nonadmitted amounts		0
12. Statement value at end of current period (Line 10 minus Line 11)	0	0

Schedule A - Part 2 - Real Estate Acquired and Additions Made
N O N E

Schedule A - Part 3 - Real Estate Disposed
N O N E

Schedule B - Part 2 - Mortgage Loans Acquired
N O N E

Schedule B - Part 3 - Mortgage Loans Disposed, Transferred or Repaid
N O N E

Schedule BA - Part 2 - Other Long-Term Invested Assets Acquired
N O N E

Schedule BA - Part 3 - Other Long-Term Invested Assets Disposed, Transferred or Repaid
N O N E

STATEMENT AS OF MARCH 31, 2013 OF THE UnitedHealthcare of Ohio, Inc.

SCHEDULE D - PART 3

Show All Long-Term Bonds and Stock Acquired During the Current Quarter

1	2	3	4	5	6	7	8	9	10
CUSIP Identification	Description	Foreign	Date Acquired	Name of Vendor	Number of Shares of Stock	Actual Cost	Par Value	Paid for Accrued Interest and Dividends	NAIC Designation or Market Indicator (a)
36179M-2Q-2	GNMA Pool MA0783 MBS 3.500% 02/20/43		.03/14/2013	Merrill Lynch		.933,050	.872,901	1,528	1
912828-HZ-6	US Treasury Note 3.875% 05/15/18		.02/06/2013	Bank New York Mellon		.577,031	.500,000	4,496	1
0599999. Subtotal - Bonds - U.S. Governments						1,510,081	1,372,901	6,024	XXX
3138EJ-XP-8	FNMA Pool AL2485 MBS 4.000% 09/01/42		.03/14/2013	Merrill Lynch		.462,668	.425,533	.851	1
3138EK-QF-5	FNMA Pool AL3153 MBS 4.000% 09/01/42		.03/14/2013	Wachovia Bank		3,363,469	3,100,865	6,202	1
3138MA-W6-5	FNMA Pool AP1568 MBS 3.500% 02/01/43		.03/12/2013	JP Morgan Chase		2,100,834	1,997,005	2,718	1
3138ML-CP-7	FNMA Pool A04577 MBS 3.500% 12/01/42		.03/08/2013	Merrill Lynch		2,802,067	2,663,483	2,848	1
59447P-MN-8	MI St Fin Auth Rev Bond Non Call 5.000% 07/01/17		.02/26/2013	Merrill Lynch		1,953,072	1,650,000	13,750	1FE
59447P-MN-8	MI St Fin Auth Rev Bond Non Call 5.000% 07/01/17		.02/26/2013	Merrill Lynch		1,183,680	1,000,000	8,333	1FE
641480-FT-0	NV St Hwy Imprv Rev Bond Cont Call 4.250% 12/01/20		.02/13/2013	Stifel Nicolaus & Co.		.861,773	.750,000	6,906	1FE
64986A-UB-2	NY St Env Fascorp Rev Bond Cont Call 5.000% 06/15/23		.03/27/2013	RBC Capital Markets		1,786,584	1,430,000	20,457	1FE
3199999. Subtotal - Bonds - U.S. Special Revenues						14,514,147	13,016,886	62,065	XXX
06051G-EII-5	Bank of America Corp Note Non Call 1.354% 03/22/18		.03/19/2013	Merrill Lynch		1,200,000	1,200,000	.0	1FE
14042E-3V-0	Capital One Corp Note Call 1.500% 03/22/18		.03/19/2013	Wachovia Bank		2,986,500	3,000,000	.0	1FE
14309U-AA-0	Carlyle Holding Fin Corp Note MW 30BP Prv Plc 3.875% 02/01/23		.01/15/2013	JP Morgan Chase		.124,958	.125,000	.0	1FE
361448-AP-8	GATX Corp Note MW 25BP 2.375% 07/30/18		.03/14/2013	CitiGroup		1,122,030	1,125,000	.0	2FE
585055-BA-3	Medtronic Inc Corp Note MW 10BP 1.375% 04/01/18		.03/19/2013	Goldman Sachs		.224,663	.225,000	.0	1FE
63946C-AD-0	NBC Universal Corp Note MW 120BP Prv Plc 1.974% 04/15/19		.03/20/2013	JP Morgan Chase		2,823,390	2,825,000	1,084	1FE
74977E-PZ-0	Rabobank Corp Note Non Call 1.700% 03/19/18	F	.03/12/2013	Barclays Group Inc.		1,297,153	1,300,000	.0	1FE
92857W-BE-9	Vodafone Group Corp Note MW 12.5BP 1.500% 02/19/18	F	.02/11/2013	JP Morgan Chase		1,070,053	1,075,000	.0	1FE
3899999. Subtotal - Bonds - Industrial and Miscellaneous (Unaffiliated)						10,848,747	10,875,000	1,084	XXX
8399997. Total - Bonds - Part 3						26,872,975	25,264,787	69,173	XXX
8399998. Total - Bonds - Part 5						XXX	XXX	XXX	XXX
8399999. Total - Bonds						26,872,975	25,264,787	69,173	XXX
63946C-AE-8	NBC Universal Preferred Stock Perp		.03/19/2013	Morgan Stanley	500,000.000	500,000	0.00	.0	P2LFE
8499999. Subtotal - Preferred Stocks - Industrial and Miscellaneous (Unaffiliated)						500,000	XXX	0	XXX
8999997. Total - Preferred Stocks - Part 3						500,000	XXX	0	XXX
8999998. Total - Preferred Stocks - Part 5						XXX	XXX	XXX	XXX
8999999. Total - Preferred Stocks						500,000	XXX	0	XXX
9799997. Total - Common Stocks - Part 3						0	XXX	0	XXX
9799998. Total - Common Stocks - Part 5						XXX	XXX	XXX	XXX
9799999. Total - Common Stocks						0	XXX	0	XXX
9899999. Total - Preferred and Common Stocks						500,000	XXX	0	XXX
9999999 - Totals						27,372,975	XXX	69,173	XXX

(a) For all common stock bearing the NAIC market indicator "U" provide: the number of such issues

STATEMENT AS OF MARCH 31, 2013 OF THE UnitedHealthcare of Ohio, Inc.

SCHEDULE D - PART 4

Show All Long-Term Bonds and Stock Sold, Redeemed or Otherwise Disposed of During the Current Quarter

1	2		3	4	5	6	7	8	9	10	Change In Book/Adjusted Carrying Value					16	17	18	19	20	21	22
											11	12	13	14	15							
CUSIP Ident-ification	Description		For-ign	Disposal Date	Name of Purchaser	Number of Shares of Stock	Consid-eration	Par Value	Actual Cost	Prior Year Book/ Adjusted Carrying Value	Unrealized Valuation Increase/ (Decrease)	Current Year's (Amor-tization)/ Accretion	Current Year's Other Than Temporary Impairment Recogn-ized	Total Change in Book/ Adjusted Carrying Value (11 + 12 - 13)	Total Foreign Exchange Change in Book /Adjusted Carrying Value	Book/ Adjusted Carrying Value at Disposal Date	Foreign Exchange Gain (Loss) on Disposal	Realized Gain (Loss) on Disposal	Total Gain (Loss) on Disposal	Bond Interest/ Stock Dividends Received During Year	Stated Con-tractual Maturity Date	NAIC Design-ation or Market In-dicator (a)
36179M-VR-8	GNMA Pool	MA0624 MBS 3.000% 12/20/42		01/01/2013	Paydown		10,300	10,300	10,978	10,976	.0	(676)	.0	(676)	.0	10,300	.0	.0	.0	26	12/20/2042	1
36179M-VR-8	GNMA Pool	MA0624 MBS 3.000% 12/20/42		02/01/2013	Paydown		10,952	10,952	11,672	11,671	.0	(719)	.0	(719)	.0	10,952	.0	.0	.0	55	12/20/2042	1
36179M-VR-8	GNMA Pool	MA0624 MBS 3.000% 12/20/42		03/01/2013	Paydown		13,704	13,704	14,606	14,604	.0	(900)	.0	(900)	.0	13,704	.0	.0	.0	103	12/20/2042	1
36296Q-E7-0	GNMA Pool	697758 MBS 4.500% 04/15/24		01/01/2013	Paydown		3,753	3,753	3,915	3,896	.0	(143)	.0	(143)	.0	3,753	.0	.0	.0	14	04/15/2024	1
36296Q-E7-0	GNMA Pool	697758 MBS 4.500% 04/15/24		02/01/2013	Paydown		38,596	38,596	40,066	39,511	.0	(1,471)	.0	(1,471)	.0	38,596	.0	.0	.0	289	04/15/2024	1
36296Q-E7-0	GNMA Pool	697758 MBS 4.500% 04/15/24		03/01/2013	Paydown		3,427	3,427	3,576	3,558	.0	(131)	.0	(131)	.0	3,427	.0	.0	.0	39	04/15/2024	1
36296Q-FA-2	GNMA Pool	697761 MBS 4.500% 04/15/24		01/01/2013	Paydown		35,511	35,511	37,048	36,873	.0	(1,362)	.0	(1,362)	.0	35,511	.0	.0	.0	133	04/15/2024	1
36296Q-FA-2	GNMA Pool	697761 MBS 4.500% 04/15/24		02/01/2013	Paydown		31,233	31,233	32,584	32,430	.0	(1,198)	.0	(1,198)	.0	31,233	.0	.0	.0	234	04/15/2024	1
36296Q-FA-2	GNMA Pool	697761 MBS 4.500% 04/15/24		03/01/2013	Paydown		31,718	31,718	33,091	32,934	.0	(1,217)	.0	(1,217)	.0	31,718	.0	.0	.0	357	04/15/2024	1
912828-AU-4	US Treasury Note	3.875% 02/15/13		02/15/2013	Maturity		500,000	500,000	526,719	502,275	.0	(2,275)	.0	(2,275)	.0	500,000	.0	.0	.0	9,688	02/15/2013	1
0599999	Subtotal - Bonds - U.S. Governments						679,194	679,194	714,455	689,283	0	(10,092)	0	(10,092)	0	679,194	0	0	0	10,938	XXX	XXX
20772G-4G-0	CT St GO Non Call	5.000% 01/01/13		01/01/2013	Maturity		1,215,000	1,215,000	1,305,858	1,215,000	.0	.0	.0	.0	.0	1,215,000	.0	.0	.0	30,375	01/01/2013	1FE
1799999	Subtotal - Bonds - U.S. States, Territories and Possessions						1,215,000	1,215,000	1,305,858	1,215,000	0	0	0	0	0	1,215,000	0	0	0	30,375	XXX	XXX
03588E-ZQ-9	Anne Arundel Cnty MD GO Non Call	5.000% 03/01/13		03/01/2013	Maturity		1,650,000	1,650,000	1,776,704	1,653,350	.0	(3,350)	.0	(3,350)	.0	1,650,000	.0	.0	.0	41,250	03/01/2013	1FE
64966F-7K-4	NYC NY GO Non Call	5.000% 01/01/13		01/01/2013	Maturity		1,745,000	1,745,000	1,909,868	1,745,000	.0	.0	.0	.0	.0	1,745,000	.0	.0	.0	43,625	01/01/2013	1FE
2499999	Subtotal - Bonds - U.S. Political Subdivisions of States, Territories and Possessions						3,395,000	3,395,000	3,686,572	3,398,350	0	(3,350)	0	(3,350)	0	3,395,000	0	0	0	84,875	XXX	XXX
130178-SC-1	CA Facs Auth Rev Bond Cont Call	5.250% 10/01/39		03/13/2013	CitiGroup		691,680	600,000	607,626	605,047	.0	(158)	.0	(158)	.0	604,889	.0	86,791	86,791	14,613	10/01/2039	1FE
13033L-EJ-2	CA St Hlth Facs Rev Bond Cont Call Sink	5.000% 08/15/39		03/13/2013	RBC Capital Markets		817,200	750,000	744,195	744,437	.0	21	.0	21	.0	744,458	.0	72,742	72,742	22,188	08/15/2039	1FE
136542-JQ-1	Canadian River TX Wtr Auth Rev Bond Non Call	5.000% 02/15/13		02/15/2013	Maturity		1,000,000	1,000,000	1,050,810	1,005,427	.0	(5,427)	.0	(5,427)	.0	1,000,000	.0	.0	.0	25,000	02/15/2013	1FE
160853-PG-6	Charlotte NC Mecklenburg Rev Bond Cont Call Sink	5.250% 01/15/39		03/19/2013	Davidson DA & Co		1,017,657	925,000	924,935	924,935	.0	.0	.0	.0	.0	924,935	.0	92,722	92,722	33,319	01/15/2039	1FE
312867-U6-8	FHLMC Pool	E73305 MBS 6.000% 11/01/13		01/01/2013	Paydown		216	216	203	213	.0	2	.0	2	.0	216	.0	.0	.0	1	11/01/2013	1
312867-U6-8	FHLMC Pool	E73305 MBS 6.000% 11/01/13		02/01/2013	Paydown		172	172	162	171	.0	2	.0	2	.0	172	.0	.0	.0	2	11/01/2013	1
312867-U6-8	FHLMC Pool	E73305 MBS 6.000% 11/01/13		03/01/2013	Paydown		184	184	173	182	.0	2	.0	2	.0	184	.0	.0	.0	3	11/01/2013	1
3128PQ-O6-1	FHLMC Pool	J11377 MBS 4.500% 12/01/24		01/01/2013	Paydown		7,348	7,348	7,704	7,677	.0	(329)	.0	(329)	.0	7,348	.0	.0	.0	28	12/01/2024	1
3128PQ-O6-1	FHLMC Pool	J11377 MBS 4.500% 12/01/24		02/01/2013	Paydown		30,436	30,436	31,911	31,800	.0	(1,364)	.0	(1,364)	.0	30,436	.0	.0	.0	228	12/01/2024	1
3128PQ-O6-1	FHLMC Pool	J11377 MBS 4.500% 12/01/24		03/01/2013	Paydown		28,285	28,285	29,656	29,553	.0	(1,267)	.0	(1,267)	.0	28,285	.0	.0	.0	318	12/01/2024	1
3128Q5-Y7-5	FHLMC Pool	162534 MBS ARM 2.698% 10/01/36		01/01/2013	Paydown		42,461	42,461	42,605	42,581	.0	(120)	.0	(120)	.0	42,461	.0	.0	.0	96	10/01/2036	1
3128Q5-Y7-5	FHLMC Pool	162534 MBS ARM 2.698% 10/01/36		02/01/2013	Paydown		44,928	44,928	45,080	45,055	.0	(127)	.0	(127)	.0	44,928	.0	.0	.0	202	10/01/2036	1
3128Q5-Y7-5	FHLMC Pool	162534 MBS ARM 2.698% 10/01/36		03/01/2013	Paydown		2,497	2,497	2,506	2,504	.0	(7)	.0	(7)	.0	2,497	.0	.0	.0	17	10/01/2036	1
3128S4-DN-4	FHLMC Pool	100109 MBS ARM 5.456% 09/01/36		01/01/2013	Paydown		56,961	56,961	57,130	57,103	.0	(143)	.0	(143)	.0	56,961	.0	.0	.0	270	09/01/2036	1
3128S4-DN-4	FHLMC Pool	100109 MBS ARM 5.456% 09/01/36		02/01/2013	Paydown		17,657	17,657	17,709	17,701	.0	(44)	.0	(44)	.0	17,657	.0	.0	.0	167	09/01/2036	1
3128S4-DN-4	FHLMC Pool	100109 MBS ARM 5.456% 09/01/36		03/01/2013	Paydown		73,767	73,767	73,986	73,952	.0	(185)	.0	(185)	.0	73,767	.0	.0	.0	1,043	09/01/2036	1
31294J-XE-3	FHLMC Pool	E00677 MBS 6.000% 06/01/14		01/01/2013	Paydown		3,026	3,026	2,848	2,981	.0	45	.0	45	.0	3,026	.0	.0	.0	15	06/01/2014	1
31294J-XE-3	FHLMC Pool	E00677 MBS 6.000% 06/01/14		02/01/2013	Paydown		3,118	3,118	2,934	3,072	.0	46	.0	46	.0	3,118	.0	.0	.0	31	06/01/2014	1
31294J-XE-3	FHLMC Pool	E00677 MBS 6.000% 06/01/14		03/01/2013	Paydown		3,111	3,111	2,927	3,064	.0	46	.0	46	.0	3,111	.0	.0	.0	47	06/01/2014	1
31358N-M5-8	FNMA FNR	1992-119 Z CMO 8.000% 07/25/22		01/01/2013	Paydown		746	746	747	743	.0	3	.0	3	.0	746	.0	.0	.0	5	07/25/2022	1
31358N-M5-8	FNMA FNR	1992-119 Z CMO 8.000% 07/25/22		02/01/2013	Paydown		454	454	455	452	.0	2	.0	2	.0	454	.0	.0	.0	6	07/25/2022	1
31358N-M5-8	FNMA FNR	1992-119 Z CMO 8.000% 07/25/22		03/01/2013	Paydown		341	341	341	339	.0	1	.0	1	.0	341	.0	.0	.0	7	07/25/2022	1
31371G-TS-9	FNMA Pool	251761 MBS 6.500% 06/01/13		01/01/2013	Paydown		64	64	65	64	.0	.0	.0	.0	.0	64	.0	.0	.0	0	06/01/2013	1
31371G-TS-9	FNMA Pool	251761 MBS 6.500% 06/01/13		02/01/2013	Paydown		62	62	62	62	.0	.0	.0	.0	.0	62	.0	.0	.0	1	06/01/2013	1
31371G-TS-9	FNMA Pool	251761 MBS 6.500% 06/01/13		03/01/2013	Paydown		57	57	58	57	.0	.0	.0	.0	.0	57	.0	.0	.0	1	06/01/2013	1
31371M-AA-5	FNMA Pool	255701 MBS 5.000% 04/01/25		01/01/2013	Paydown		3,118	3,118	3,128	3,126	.0	(8)	.0	(8)	.0	3,118	.0	.0	.0	13	04/01/2025	1
31371M-AA-5	FNMA Pool	255701 MBS 5.000% 04/01/25		02/01/2013	Paydown		2,855	2,855	2,863	2,863	.0	(7)	.0	(7)	.0	2,855	.0	.0	.0	24	04/01/2025	1
31371M-AA-5	FNMA Pool	255701 MBS 5.000% 04/01/25		03/01/2013	Paydown		2,311	2,311	2,319	2,317	.0	(6)	.0	(6)	.0	2,311	.0	.0	.0	29	04/01/2025	1
31374S-2U-4	FNMA Pool	323087 MBS 6.000% 03/01/13		01/01/2013	Paydown		284	284	271	282	.0	2	.0	2	.0	284	.0	.0	.0	1	03/01/2013	1
31374S-2U-4	FNMA Pool	323087 MBS 6.000% 03/01/13		02/01/2013	Paydown		63	63	60	63	.0	.0	.0	.0	.0	63	.0	.0	.0	1	03/01/2013	1
31374S-2U-4	FNMA Pool	323087 MBS 6.000% 03/01/13		03/01/2013	Paydown		0	0	0	0	.0	.0	.0	.0	.0	0	.0	.0	.0	0	03/01/2013	1
31374S-5U-1	FNMA Pool	323159 MBS 7.500% 04/01/28		01/01/2013	Paydown		700	700	701	700	.0	(1)	.0	(1)	.0	700	.0	.0	.0	4	04/01/2028	1
31374S-5U-1	FNMA Pool	323159 MBS 7.500% 04/01/28		02/01/2013	Paydown		279	279	280	280	.0	.0	.0	.0	.0	279	.0	.0	.0	4	04/01/2028	1
31374S-5U-1	FNMA Pool	323159 MBS 7.500% 04/01/28		03/01/2013	Paydown		1,262	1,262	1,264	1,263	.0	(1)	.0	(1)	.0	1,262	.0	.0	.0	24	04/01/2028	1
31374T-RH-4	FNMA Pool	323688 MBS 7.500% 03/01/29		01/01/2013	Paydown		30	30	30	30	.0	.0	.0	.0	.0	30	.0	.0	.0	0	03/01/2029	1
31374T-RH-4	FNMA Pool	323688 MBS 7.500% 03/01/29		02/01/2013	Paydown		56	56	57	57	.0	.0	.0	.0	.0	56	.0	.0	.0	1	03/01/2029	1

STATEMENT AS OF MARCH 31, 2013 OF THE UnitedHealthcare of Ohio, Inc.

SCHEDULE D - PART 4

Show All Long-Term Bonds and Stock Sold, Redeemed or Otherwise Disposed of During the Current Quarter

1	2	3	4	5	6	7	8	9	10	Change In Book/Adjusted Carrying Value					16	17	18	19	20	21	22
										11	12	13	14	15							
CUSIP Ident-ification	Description	For-ign	Disposal Date	Name of Purchaser	Number of Shares of Stock	Consid-eration	Par Value	Actual Cost	Prior Year Book/ Adjusted Carrying Value	Unrealized Valuation Increase/ (Decrease)	Current Year's (Amor-tization)/ Accretion	Current Year's Other Than Temporary Impairment Recogn-ized	Total Change in Book/ Adjusted Carrying Value (11 + 12 - 13)	Total Foreign Exchange Change in Book /Adjusted Carrying Value	Book/ Adjusted Carrying Value at Disposal Date	Foreign Exchange Gain (Loss) on Disposal	Realized Gain (Loss) on Disposal	Total Gain (Loss) on Disposal	Bond Interest/ Stock Dividends Received During Year	Stated Con-tractual Maturity Date	NAIC Desig-nation or Market In-dicator (a)
31374T-RH-4	FNMA Pool 323688 MBS 7.500% 03/01/29		03/01/2013	Paydown		.66	.66	.66	.66	.0	.0	.0	.0	.0	.66	.0	.0	.0	.1	03/01/2029	1
31376A-YZ-5	FNMA Pool 350028 MBS 7.500% 12/01/25		01/01/2013	Paydown		.245	.245	.246	.245	.0	.0	.0	.0	.0	.245	.0	.0	.0	.2	12/01/2025	1
31376A-YZ-5	FNMA Pool 350028 MBS 7.500% 12/01/25		02/01/2013	Paydown		.669	.669	.671	.670	.0	.0	.0	.0	.0	.669	.0	.0	.0	.8	12/01/2025	1
31376A-YZ-5	FNMA Pool 350028 MBS 7.500% 12/01/25		03/01/2013	Paydown		.47	.47	.47	.47	.0	.0	.0	.0	.0	.47	.0	.0	.0	.1	12/01/2025	1
31379A-AK-1	FNMA Pool 413210 MBS 6.000% 04/01/28		01/01/2013	Paydown		.7	.7	.7	.7	.0	.0	.0	.0	.0	.7	.0	.0	.0	.0	04/01/2028	1
31379A-AK-1	FNMA Pool 413210 MBS 6.000% 04/01/28		02/01/2013	Paydown		.9	.9	.8	.8	.0	.0	.0	.0	.0	.9	.0	.0	.0	.0	04/01/2028	1
31379A-AK-1	FNMA Pool 413210 MBS 6.000% 04/01/28		03/01/2013	Paydown		.0	.0	.0	.0	.0	.0	.0	.0	.0	.0	.0	.0	.0	.0	04/01/2028	1
31379J-4J-2	FNMA Pool 421225 MBS 6.500% 05/01/13		01/01/2013	Paydown		.9	.9	.9	.9	.0	.0	.0	.0	.0	.9	.0	.0	.0	.0	05/01/2013	1
31379J-4J-2	FNMA Pool 421225 MBS 6.500% 05/01/13		02/01/2013	Paydown		.5	.5	.5	.5	.0	.0	.0	.0	.0	.5	.0	.0	.0	.0	05/01/2013	1
31379J-4J-2	FNMA Pool 421225 MBS 6.500% 05/01/13		03/01/2013	Paydown		.4	.4	.4	.4	.0	.0	.0	.0	.0	.4	.0	.0	.0	.0	05/01/2013	1
31379J-4N-3	FNMA Pool 421229 MBS 6.500% 05/01/13		01/01/2013	Paydown		.75	.75	.75	.74	.0	.0	.0	.0	.0	.75	.0	.0	.0	.0	05/01/2013	1
31379J-4N-3	FNMA Pool 421229 MBS 6.500% 05/01/13		02/01/2013	Paydown		.52	.52	.52	.51	.0	.0	.0	.0	.0	.52	.0	.0	.0	.1	05/01/2013	1
31379J-4N-3	FNMA Pool 421229 MBS 6.500% 05/01/13		03/01/2013	Paydown		.89	.89	.90	.89	.0	.0	.0	.0	.0	.89	.0	.0	.0	.1	05/01/2013	1
31379J-S9-8	FNMA Pool 420944 MBS 6.500% 03/01/13		01/01/2013	Paydown		.21	.21	.21	.21	.0	.0	.0	.0	.0	.21	.0	.0	.0	.0	03/01/2013	1
31380K-KF-6	FNMA Pool 442294 MBS 6.000% 10/01/28		01/01/2013	Paydown		.193	.193	.191	.191	.0	.2	.0	.2	.0	.193	.0	.0	.0	.1	10/01/2028	1
31380K-KF-6	FNMA Pool 442294 MBS 6.000% 10/01/28		02/01/2013	Paydown		.5	.5	.5	.5	.0	.0	.0	.0	.0	.5	.0	.0	.0	.0	10/01/2028	1
31380K-KF-6	FNMA Pool 442294 MBS 6.000% 10/01/28		03/01/2013	Paydown		.5	.5	.5	.5	.0	.0	.0	.0	.0	.5	.0	.0	.0	.0	10/01/2028	1
31382X-OP-8	FNMA Pool 495562 MBS 6.000% 05/01/14		01/01/2013	Paydown		2,915	2,915	2,811	2,883	.0	.32	.0	.32	.0	2,915	.0	.0	.0	.15	05/01/2014	1
31382X-OP-8	FNMA Pool 495562 MBS 6.000% 05/01/14		02/01/2013	Paydown		1,478	1,478	1,425	1,462	.0	.16	.0	.16	.0	1,478	.0	.0	.0	.15	05/01/2014	1
31382X-OP-8	FNMA Pool 495562 MBS 6.000% 05/01/14		03/01/2013	Paydown		1,278	1,278	1,233	1,264	.0	.14	.0	.14	.0	1,278	.0	.0	.0	.19	05/01/2014	1
31383C-V6-9	FNMA Pool 499337 MBS 7.500% 08/01/29		01/01/2013	Paydown		.74	.74	.74	.74	.0	.0	.0	.0	.0	.74	.0	.0	.0	.0	08/01/2029	1
31383C-V6-9	FNMA Pool 499337 MBS 7.500% 08/01/29		02/01/2013	Paydown		.78	.78	.79	.79	.0	.0	.0	.0	.0	.78	.0	.0	.0	.1	08/01/2029	1
31383C-V6-9	FNMA Pool 499337 MBS 7.500% 08/01/29		03/01/2013	Paydown		.78	.78	.78	.78	.0	.0	.0	.0	.0	.78	.0	.0	.0	.1	08/01/2029	1
31385H-N8-1	FNMA Pool 545015 MBS 6.000% 06/01/16		01/01/2013	Paydown		2,360	2,360	2,333	2,343	.0	.17	.0	.17	.0	2,360	.0	.0	.0	.12	06/01/2016	1
31385H-N8-1	FNMA Pool 545015 MBS 6.000% 06/01/16		02/01/2013	Paydown		2,343	2,343	2,316	2,326	.0	.17	.0	.17	.0	2,343	.0	.0	.0	.23	06/01/2016	1
31385H-N8-1	FNMA Pool 545015 MBS 6.000% 06/01/16		03/01/2013	Paydown		2,572	2,572	2,543	2,554	.0	.19	.0	.19	.0	2,572	.0	.0	.0	.39	06/01/2016	1
31386X-ND-4	FNMA Pool 576488 MBS 6.000% 04/01/16		01/01/2013	Paydown		9,492	9,492	9,553	9,495	.0	(2)	.0	(2)	.0	9,492	.0	.0	.0	.47	04/01/2016	1
31386X-ND-4	FNMA Pool 576488 MBS 6.000% 04/01/16		02/01/2013	Paydown		4,652	4,652	4,682	4,654	.0	(1)	.0	(1)	.0	4,652	.0	.0	.0	.47	04/01/2016	1
31386X-ND-4	FNMA Pool 576488 MBS 6.000% 04/01/16		03/01/2013	Paydown		4,745	4,745	4,775	4,746	.0	(1)	.0	(1)	.0	4,745	.0	.0	.0	.71	04/01/2016	1
31386X-RX-6	FNMA Pool 576602 MBS 6.000% 12/01/13		01/01/2013	Paydown		2,816	2,816	2,815	2,807	.0	.10	.0	.10	.0	2,816	.0	.0	.0	.14	12/01/2013	1
31386X-RX-6	FNMA Pool 576602 MBS 6.000% 12/01/13		02/01/2013	Paydown		2,196	2,196	2,195	2,188	.0	.8	.0	.8	.0	2,196	.0	.0	.0	.22	12/01/2013	1
31386X-RX-6	FNMA Pool 576602 MBS 6.000% 12/01/13		03/01/2013	Paydown		2,169	2,169	2,168	2,162	.0	.8	.0	.8	.0	2,169	.0	.0	.0	.33	12/01/2013	1
31387D-J9-1	FNMA Pool 580888 MBS 6.000% 05/01/16		01/01/2013	Paydown		1,129	1,129	1,122	1,124	.0	.6	.0	.6	.0	1,129	.0	.0	.0	.6	05/01/2016	1
31387D-J9-1	FNMA Pool 580888 MBS 6.000% 05/01/16		02/01/2013	Paydown		.810	.810	.804	.806	.0	.4	.0	.4	.0	.810	.0	.0	.0	.8	05/01/2016	1
31387D-J9-1	FNMA Pool 580888 MBS 6.000% 05/01/16		03/01/2013	Paydown		1,038	1,038	1,031	1,032	.0	.5	.0	.5	.0	1,038	.0	.0	.0	.16	05/01/2016	1
31387J-VT-0	FNMA Pool 585726 MBS 6.000% 05/01/16		01/01/2013	Paydown		2,437	2,437	2,395	2,413	.0	.23	.0	.23	.0	2,437	.0	.0	.0	.12	05/01/2016	1
31387J-VT-0	FNMA Pool 585726 MBS 6.000% 05/01/16		02/01/2013	Paydown		3,315	3,315	3,259	3,283	.0	.32	.0	.32	.0	3,315	.0	.0	.0	.33	05/01/2016	1
31387J-VT-0	FNMA Pool 585726 MBS 6.000% 05/01/16		03/01/2013	Paydown		1,596	1,596	1,580	1,596	.0	.15	.0	.15	.0	1,596	.0	.0	.0	.24	05/01/2016	1
31389D-QH-3	FNMA Pool 622456 MBS 6.000% 12/01/16		01/01/2013	Paydown		3,989	3,989	4,010	3,990	.0	(2)	.0	(2)	.0	3,989	.0	.0	.0	.20	12/01/2016	1
31389D-QH-3	FNMA Pool 622456 MBS 6.000% 12/01/16		02/01/2013	Paydown		4,291	4,291	4,313	4,293	.0	(2)	.0	(2)	.0	4,291	.0	.0	.0	.43	12/01/2016	1
31389D-QH-3	FNMA Pool 622456 MBS 6.000% 12/01/16		03/01/2013	Paydown		1,796	1,796	1,805	1,796	.0	(1)	.0	(1)	.0	1,796	.0	.0	.0	.27	12/01/2016	1
3138LT-Z5-0	FNMA Pool A03463 MBS 2.500% 05/01/27		01/01/2013	Paydown		.115,272	.115,272	.118,442	.118,368	.0	(3,096)	.0	(3,096)	.0	.115,272	.0	.0	.0	.240	05/01/2027	1
3138LT-Z5-0	FNMA Pool A03463 MBS 2.500% 05/01/27		02/01/2013	Paydown		104,157	104,157	107,021	106,954	.0	(2,797)	.0	(2,797)	.0	104,157	.0	.0	.0	.434	05/01/2027	1
3138LT-Z5-0	FNMA Pool A03463 MBS 2.500% 05/01/27		03/01/2013	Paydown		.80,748	.80,748	.82,968	.82,916	.0	(2,168)	.0	(2,168)	.0	.80,748	.0	.0	.0	.505	05/01/2027	1
3138LT-Z5-0	FNMA Pool A03463 MBS 2.500% 05/01/27		03/15/2013	Merrill Lynch		2,167,063	2,092,833	2,150,386	2,149,036	.0	.13	.0	.13	.0	2,149,049	.0	1				

STATEMENT AS OF MARCH 31, 2013 OF THE UnitedHealthcare of Ohio, Inc.

SCHEDULE D - PART 4

Show All Long-Term Bonds and Stock Sold, Redeemed or Otherwise Disposed of During the Current Quarter

1	2	3	4	5	6	7	8	9	10	Change In Book/Adjusted Carrying Value					16	17	18	19	20	21	22	
										11	12	13	14	15								
CUSIP Ident-ification	Description	For-eign	Disposal Date	Name of Purchaser	Number of Shares of Stock	Consid-eration	Par Value	Actual Cost	Prior Year Book/ Adjusted Carrying Value	Unrealized Valuation Increase/ (Decrease)	Current Year's (Amor-tization)/ Accretion	Current Year's Other Than Temporary Impairment Recog-nized	Total Change in Book/ Adjusted Carrying Value (11 + 12 - 13)	Total Foreign Exchange Change in Book /Adjusted Carrying Value	Book/ Adjusted Carrying Value at Disposal Date	Foreign Exchange Gain (Loss) on Disposal	Realized Gain (Loss) on Disposal	Total Gain (Loss) on Disposal	Bond Interest/ Stock Dividends Received During Year	Stated Con-tractual Maturity Date	NAIC Desig-nation or Market In-dicator (a)	
31418W-QP-8	FNMA Pool AD8561 MBS 4.000% 08/01/25		01/01/2013	Paydown		36,951	36,951	38,781	38,677	0	(1,726)	0	(1,726)	0	36,951	0	0	0	123	08/01/2025	1	
31418W-QP-8	FNMA Pool AD8561 MBS 4.000% 08/01/25		02/01/2013	Paydown		33,326	33,326	34,976	34,882	0	(1,556)	0	(1,556)	0	33,326	0	0	0	222	08/01/2025	1	
31418W-QP-8	FNMA Pool AD8561 MBS 4.000% 08/01/25		03/01/2013	Paydown		46,405	46,405	48,703	48,572	0	(2,167)	0	(2,167)	0	46,405	0	0	0	464	08/01/2025	1	
31418W-QP-8	FNMA Pool AD8561 MBS 4.000% 08/01/25		03/14/2013	RBC Capital Markets		1,157,161	1,077,054	1,130,401	1,127,357	0	(212)	0	(212)	0	1,127,145	0	30,014	30,014	12,925	08/01/2025	1	
57586C-3S-2	MA St Hlth & Ed Rev Bond Cont Call Sink 5.125% 07/01/38		03/13/2013	Merrill Lynch		191,179	175,000	171,187	171,464	0	14	0	14	0	171,479	0	19,702	19,702	6,403	07/01/2038	1FE	
3199999	Subtotal - Bonds - U.S. Special Revenues					9,005,381	8,521,590	8,755,628	8,698,128	0	(45,378)	0	(45,378)	0	8,652,751	0	352,630	352,630	147,113	XXX	XXX	
013817-AU-5	Alcoa Inc Corp Note MW 50BP PPut 6.150% 08/15/20		03/11/2013	Morgan Stanley		1,424,371	1,300,000	1,407,133	1,400,095	0	(2,142)	0	(2,142)	0	1,397,952	0	26,419	26,419	46,415	08/15/2020	2FE	
172967-FW-6	Citigroup Inc Corp Note Non Call 4.450% 01/10/17		03/22/2013	Deutsche Bank		2,478,510	2,250,000	2,347,988	2,331,724	0	(4,472)	0	(4,472)	0	2,327,252	0	151,258	151,258	71,478	01/10/2017	1FE	
22548M-AD-9	Credit Suisse Mtg CSMC 2006-C4 A3 CMBS 5.467% 09/15/39		03/01/2013	Paydown		25,883	25,883	27,582	26,916	0	(1,033)	0	(1,033)	0	25,883	0	0	0	354	09/15/2039	1FM	
428236-BQ-5	Hewlett Packard Co Corp Note MW 35BP 4.375% 09/15/21		03/11/2013	Merrill Lynch		276,727	275,000	272,610	272,610	0	61	0	61	0	272,672	0	4,055	4,055	5,982	09/15/2021	2FE	
46625H-HX-1	JP Morgan Chase Corp Note Non Call 3.450% 03/01/16		03/22/2013	JP Morgan Chase		1,065,280	1,000,000	997,940	998,665	0	94	0	94	0	998,758	0	66,522	66,522	19,742	03/01/2016	1FE	
87875U-AJ-1	Teco Finance Corp Note MW 25BP 4.000% 03/15/16		03/11/2013	KEYBANC CAP/ McDonald		161,429	150,000	149,391	149,657	0	20	0	20	0	149,677	0	11,752	11,752	2,983	03/15/2016	2FE	
94973V-AK-3	Wellpoint Inc Corp Note Cont Call 5.250% 01/15/16		03/11/2013	Pershing		1,952,160	1,750,000	1,709,925	1,735,266	0	893	0	893	0	1,736,159	0	216,000	216,000	60,995	01/15/2016	2FE	
3899999	Subtotal - Bonds - Industrial and Miscellaneous (Unaffiliated)					7,384,360	6,750,883	6,912,569	6,914,933	0	(6,579)	0	(6,579)	0	6,908,353	0	476,006	476,006	207,949	XXX	XXX	
8399997	Total - Bonds - Part 4					21,678,935	20,561,667	21,375,082	20,915,694	0	(65,399)	0	(65,399)	0	20,850,298	0	828,636	828,636	481,250	XXX	XXX	
8399998	Total - Bonds - Part 5					XXX	XXX	XXX	XXX	XXX	XXX	XXX	XXX	XXX	XXX	XXX	XXX	XXX	XXX	XXX	XXX	XXX
8399999	Total - Bonds					21,678,935	20,561,667	21,375,082	20,915,694	0	(65,399)	0	(65,399)	0	20,850,298	0	828,636	828,636	481,250	XXX	XXX	
8999997	Total - Preferred Stocks - Part 4					0	XXX	0	0	0	0	0	0	0	0	0	0	0	0	XXX	XXX	
8999998	Total - Preferred Stocks - Part 5					XXX	XXX	XXX	XXX	XXX	XXX	XXX	XXX	XXX	XXX	XXX	XXX	XXX	XXX	XXX	XXX	
8999999	Total - Preferred Stocks					0	XXX	0	0	0	0	0	0	0	0	0	0	0	0	XXX	XXX	
9799997	Total - Common Stocks - Part 4					0	XXX	0	0	0	0	0	0	0	0	0	0	0	0	XXX	XXX	
9799998	Total - Common Stocks - Part 5					XXX	XXX	XXX	XXX	XXX	XXX	XXX	XXX	XXX	XXX	XXX	XXX	XXX	XXX	XXX	XXX	
9799999	Total - Common Stocks					0	XXX	0	0	0	0	0	0	0	0	0	0	0	0	XXX	XXX	
9899999	Total - Preferred and Common Stocks					0	XXX	0	0	0	0	0	0	0	0	0	0	0	0	XXX	XXX	
9999999	Totals					21,678,935	XXX	21,375,082	20,915,694	0	(65,399)	0	(65,399)	0	20,850,298	0	828,636	828,636	481,250	XXX	XXX	

(a) For all common stock bearing the NAIC market indicator "U" provide: the number of such issues.....

Schedule DB - Part A - Section 1 - Options, Caps, Floors, Collars, Swaps and Forwards Open
N O N E

Schedule DB - Part B - Section 1 - Futures Contracts Open
N O N E

Schedule DB - Part B - Section 1B - Brokers with whom cash deposits have been made
N O N E

Schedule DB - Part D - Section 1 - Counterparty Exposure for Derivative Instruments Open
N O N E

Schedule DB - Part D - Section 2 - Collateral for Derivative Instruments Open
N O N E

Schedule DB - Part D - Section 2 - Collateral for Derivative Instruments Open
N O N E

Schedule DL - Part 1 - Reinvested Collateral Assets Owned
N O N E

Schedule DL - Part 2 - Reinvested Collateral Assets Owned
N O N E

SCHEDULE E - PART 1 - CASH

[illegible]

STATEMENT AS OF MARCH 31, 2013 OF THE UnitedHealthcare of Ohio, Inc.

SCHEDULE E - PART 2 - CASH EQUIVALENTS

Show Investments Owned End of Current Quarter

1	2	3	4	5	6	7	8
Description	Code	Date Acquired	Rate of Interest	Maturity Date	Book/Adjusted Carrying Value	Amount of Interest Due and Accrued	Amount Received During Year
NONE							
8699999 - Total Cash Equivalents							