



PROPERTY AND CASUALTY COMPANIES - ASSOCIATION EDITION

QUARTERLY STATEMENT

AS OF MARCH 31, 2013

OF THE CONDITION AND AFFAIRS OF THE

Miami Mutual Insurance Company

NAIC Group Code00350035NAIC Company Code16764Employer's ID Number31-0617569
(Current)(Prior)

Organized under the Laws ofOhio, State of Domicile or Port of EntryOhio

Country of DomicileUnited States of America

Incorporated/Organized08/10/1877Commenced Business12/31/1877

Statutory Home Office1 Insurance Square, Celina , OH, US 45822-1690
(Street and Number)(City or Town, State, Country and Zip Code)

Main Administrative Office1 Insurance Square, Celina , OH, US 45822-1690
(Street and Number)(City or Town, State, Country and Zip Code)419-586-5181
(Area Code) (Telephone Number)

Mail Address1 Insurance Square, Celina , OH, US 45822-1690
(Street and Number or P.O. Box)(City or Town, State, Country and Zip Code)

Primary Location of Books and Records1 Insurance Square, Celina , OH, US 45822-1690
(Street and Number)(City or Town, State, Country and Zip Code)419-586-5181-8227
(Area Code) (Telephone Number)

Internet Website Addresswww.celinainsurance.com

Statutory Statement ContactPhilip Marion Fullenkamp, 419-586-5181-8227
(Name)(Area Code) (Telephone Number)
pfullenkamp@celinainsurance.com, 419-586-6068
(E-mail Address)(FAX Number)

OFFICERS

PresidentWilliam West MontgomeryTreasurerPhilip Marion Fullenkamp

SecretaryMichael Stanley Kleinhenz

OTHER

William Rodney Stapleton Sr. VP and COORobert Mark Shoenfelt Sr. VP - CIOVincent Miles Franz VP - Chief Actuary

Martha Jane Meinerding VP - Human ResourcesTheodore Joseph Wissman VP- Claims

DIRECTORS OR TRUSTEES

William West MontgomeryPhilip Marion FullenkampNancy Montgomery Goldberg

David Thomas MellinWesley Moore JetterJohn Michael Lazarich

Collin Jay Bryan

State ofOhioSS:

County ofMercer

The officers of this reporting entity being duly sworn, each depose and say that they are the described officers of said reporting entity, and that on the reporting period stated above, all of the herein described assets were the absolute property of the said reporting entity, free and clear from any liens or claims thereon, except as herein stated, and that this statement, together with related exhibits, schedules and explanations therein contained, annexed or referred to, is a full and true statement of all the assets and liabilities and of the condition and affairs of the said reporting entity as of the reporting period stated above, and of its income and deductions therefrom for the period ended, and have been completed in accordance with the NAIC Annual Statement Instructions and Accounting Practices and Procedures manual except to the extent that: (1) state law may differ; or, (2) that state rules or regulations require differences in reporting not related to accounting practices and procedures, according to the best of their information, knowledge and belief, respectively. Furthermore, the scope of this attestation by the described officers also includes the related corresponding electronic filing with the NAIC, when required, that is an exact copy (except for formatting differences due to electronic filing) of the enclosed statement. The electronic filing may be requested by various regulators in lieu of or in addition to the enclosed statement.

William West MontgomeryChairman, President, and CEO

Michael Stanley KleinhenzSecretary

Philip Marion FullenkampSr. VP - CFO and Treasurer

Subscribed and sworn to before me thisa. Is this an original filing? Yes [X] No []
day ofMay, 2013b. If no,
1. State the amendment number.....
2. Date filed
3. Number of pages attached.....

Lori Homan

February 28, 2017

STATEMENT AS OF MARCH 31, 2013 OF THE Miami Mutual Insurance Company

ASSETS

	Current Statement Date			4 December 31 Prior Year Net Admitted Assets
	1 Assets	2 Nonadmitted Assets	3 Net Admitted Assets (Cols. 1 - 2)	
1. Bonds	30,308,278		30,308,278	29,534,485
2. Stocks:				
2.1 Preferred stocks	390,229		390,229	213,178
2.2 Common stocks	3,795,818		3,795,818	3,435,088
3. Mortgage loans on real estate:				
3.1 First liens				
3.2 Other than first liens.....				
4. Real estate:				
4.1 Properties occupied by the company (less \$ encumbrances)	58,839		58,839	59,895
4.2 Properties held for the production of income (less \$ encumbrances)				
4.3 Properties held for sale (less \$ encumbrances)	552,259		552,259	559,300
5. Cash (\$(8,659)), cash equivalents (\$) and short-term investments (\$1,638,851)	1,630,191		1,630,191	3,289,036
6. Contract loans (including \$ premium notes)				
7. Derivatives				
8. Other invested assets				
9. Receivables for securities				
10. Securities lending reinvested collateral assets				
11. Aggregate write-ins for invested assets				
12. Subtotals, cash and invested assets (Lines 1 to 11)	36,735,614		36,735,614	37,090,983
13. Title plants less \$ charged off (for Title insurers only)				
14. Investment income due and accrued	220,533		220,533	207,360
15. Premiums and considerations:				
15.1 Uncollected premiums and agents' balances in the course of collection	2,329,048		2,329,048	2,546,357
15.2 Deferred premiums, agents' balances and installments booked but deferred and not yet due (including \$ earned but unbilled premiums)	6,556,911		6,556,911	6,299,232
15.3 Accrued retrospective premiums				
16. Reinsurance:				
16.1 Amounts recoverable from reinsurers	281,238		281,238	253,145
16.2 Funds held by or deposited with reinsured companies				
16.3 Other amounts receivable under reinsurance contracts				
17. Amounts receivable relating to uninsured plans				
18.1 Current federal and foreign income tax recoverable and interest thereon				300,097
18.2 Net deferred tax asset	1,422,374	116,015	1,306,359	1,531,124
19. Guaranty funds receivable or on deposit				
20. Electronic data processing equipment and software	122,539	15,518	107,021	117,594
21. Furniture and equipment, including health care delivery assets (\$)	810	810		
22. Net adjustment in assets and liabilities due to foreign exchange rates				
23. Receivables from parent, subsidiaries and affiliates	76,537		76,537	
24. Health care (\$) and other amounts receivable				
25. Aggregate write-ins for other than invested assets	290,369	23,678	266,691	257,001
26. Total assets excluding Separate Accounts, Segregated Accounts and Protected Cell Accounts (Lines 12 to 25)	48,035,973	156,021	47,879,952	48,602,893
27. From Separate Accounts, Segregated Accounts and Protected Cell Accounts				
28. Total (Lines 26 and 27)	48,035,973	156,021	47,879,952	48,602,893
DETAILS OF WRITE-INS				
1101.				
1102.				
1103.				
1198. Summary of remaining write-ins for Line 11 from overflow page				
1199. Totals (Lines 1101 through 1103 plus 1198)(Line 11 above)				
2501. Deferred Compensation	266,691		266,691	257,001
2502. Prepaid Items	23,678	23,678		
2503.				
2598. Summary of remaining write-ins for Line 25 from overflow page				
2599. Totals (Lines 2501 through 2503 plus 2598)(Line 25 above)	290,369	23,678	266,691	257,001

STATEMENT AS OF MARCH 31, 2013 OF THE Miami Mutual Insurance Company

LIABILITIES, SURPLUS AND OTHER FUNDS

	1 Current Statement Date	2 December 31, Prior Year
1. Losses (current accident year \$ 2,041,356)	7,813,786	8,005,120
2. Reinsurance payable on paid losses and loss adjustment expenses	1,243,233	1,292,508
3. Loss adjustment expenses	2,211,600	2,209,500
4. Commissions payable, contingent commissions and other similar charges	67,222	199,890
5. Other expenses (excluding taxes, licenses and fees)	139,272	154,613
6. Taxes, licenses and fees (excluding federal and foreign income taxes)	312,263	279,251
7.1 Current federal and foreign income taxes (including \$ 17,599 on realized capital gains (losses))	158,689	
7.2 Net deferred tax liability		
8. Borrowed money \$ and interest thereon \$		
9. Unearned premiums (after deducting unearned premiums for ceded reinsurance of \$ 1,302,211 and including warranty reserves of \$ and accrued accident and health experience rating refunds including \$ for medical loss ratio rebate per the Public Health Service Act)	15,052,953	15,839,380
10. Advance premium	31,107	28,273
11. Dividends declared and unpaid:		
11.1 Stockholders		
11.2 Policyholders		
12. Ceded reinsurance premiums payable (net of ceding commissions)	216,143	278,498
13. Funds held by company under reinsurance treaties		
14. Amounts withheld or retained by company for account of others	863,582	856,230
15. Remittances and items not allocated	8,595	8,905
16. Provision for reinsurance (including \$ certified)		
17. Net adjustments in assets and liabilities due to foreign exchange rates		
18. Drafts outstanding		
19. Payable to parent, subsidiaries and affiliates		717,592
20. Derivatives		
21. Payable for securities		
22. Payable for securities lending		
23. Liability for amounts held under uninsured plans		
24. Capital notes \$ and interest thereon \$		
25. Aggregate write-ins for liabilities		
26. Total liabilities excluding protected cell liabilities (Lines 1 through 25)	28,118,444	29,869,760
27. Protected cell liabilities		
28. Total liabilities (Lines 26 and 27)	28,118,444	29,869,760
29. Aggregate write-ins for special surplus funds		
30. Common capital stock		
31. Preferred capital stock		
32. Aggregate write-ins for other than special surplus funds		
33. Surplus notes		
34. Gross paid in and contributed surplus		
35. Unassigned funds (surplus)	19,761,509	18,733,133
36. Less treasury stock, at cost:		
36.1 shares common (value included in Line 30 \$)		
36.2 shares preferred (value included in Line 31 \$)		
37. Surplus as regards policyholders (Lines 29 to 35, less 36)	19,761,509	18,733,133
38. Totals (Page 2, Line 28, Col. 3)	47,879,952	48,602,893
DETAILS OF WRITE-INS		
2501.		
2502.		
2503.		
2598. Summary of remaining write-ins for Line 25 from overflow page		
2599. Totals (Lines 2501 through 2503 plus 2598)(Line 25 above)		
2901.		
2902.		
2903.		
2998. Summary of remaining write-ins for Line 29 from overflow page		
2999. Totals (Lines 2901 through 2903 plus 2998)(Line 29 above)		
3201.		
3202.		
3203.		
3298. Summary of remaining write-ins for Line 32 from overflow page		
3299. Totals (Lines 3201 through 3203 plus 3298)(Line 32 above)		

STATEMENT OF INCOME

	1	2	3
	Current	Prior Year	Prior Year Ended
	Year to Date	to Date	December 31
UNDERWRITING INCOME			
1. Premiums earned:			
1.1 Direct (written \$ 1,002,955)	853,303	1,047,750	3,820,138
1.2 Assumed (written \$ 6,315,951)	7,102,378	6,695,092	28,239,552
1.3 Ceded (written \$ 1,002,955)	853,303	1,047,750	3,820,138
1.4 Net (written \$ 6,315,951)	7,102,378	6,695,092	28,239,552
DEDUCTIONS:			
2. Losses incurred (current accident year \$ 4,008,966):			
2.1 Direct	223,316	569,525	2,209,437
2.2 Assumed	3,705,415	4,478,026	17,576,834
2.3 Ceded	224,667	567,862	2,207,475
2.4 Net	3,704,064	4,479,689	17,578,797
3. Loss adjustment expenses incurred	611,332	599,915	2,158,894
4. Other underwriting expenses incurred	2,092,111	2,328,992	9,789,563
5. Aggregate write-ins for underwriting deductions			
6. Total underwriting deductions (Lines 2 through 5)	6,407,507	7,408,596	29,527,254
7. Net income of protected cells			
8. Net underwriting gain or (loss) (Line 1 minus Line 6 + Line 7)	694,872	(713,504)	(1,287,703)
INVESTMENT INCOME			
9. Net investment income earned	185,626	229,645	915,558
10. Net realized capital gains (losses) less capital gains tax of \$ 17,599	54,193	189,079	481,047
11. Net investment gain (loss) (Lines 9 + 10)	239,819	418,724	1,396,605
OTHER INCOME			
12. Net gain or (loss) from agents' or premium balances charged off (amount recovered \$ 8,334 amount charged off \$ 18,777)	(10,443)	(9,413)	(42,172)
13. Finance and service charges not included in premiums	108,873	105,165	423,366
14. Aggregate write-ins for miscellaneous income	(1,311)	(2,053)	(5,780)
15. Total other income (Lines 12 through 14)	97,119	93,700	375,414
16. Net income before dividends to policyholders, after capital gains tax and before all other federal and foreign income taxes (Lines 8 + 11 + 15)	1,031,809	(201,081)	484,317
17. Dividends to policyholders			
18. Net income, after dividends to policyholders, after capital gains tax and before all other federal and foreign income taxes (Line 16 minus Line 17)	1,031,809	(201,081)	484,317
19. Federal and foreign income taxes incurred	143,710	(4,404)	6,860
20. Net income (Line 18 minus Line 19)(to Line 22)	888,099	(196,677)	477,457
CAPITAL AND SURPLUS ACCOUNT			
21. Surplus as regards policyholders, December 31 prior year	18,733,133	17,885,330	17,885,330
22. Net income (from Line 20)	888,099	(196,677)	477,457
23. Net transfers (to) from Protected Cell accounts			
24. Change in net unrealized capital gains (losses) less capital gains tax of \$ 128,623	249,681	151,196	233,409
25. Change in net unrealized foreign exchange capital gain (loss)			
26. Change in net deferred income tax	(208,620)	136,694	(13,995)
27. Change in nonadmitted assets	99,216	84,195	324,192
28. Change in provision for reinsurance			
29. Change in surplus notes			
30. Surplus (contributed to) withdrawn from protected cells			
31. Cumulative effect of changes in accounting principles			
32. Capital changes:			
32.1 Paid in			
32.2 Transferred from surplus (Stock Dividend)			
32.3 Transferred to surplus			
33. Surplus adjustments:			
33.1 Paid in			
33.2 Transferred to capital (Stock Dividend)			
33.3 Transferred from capital			
34. Net remittances from or (to) Home Office			
35. Dividends to stockholders			
36. Change in treasury stock			
37. Aggregate write-ins for gains and losses in surplus			(173,260)
38. Change in surplus as regards policyholders (Lines 22 through 37)	1,028,375	175,408	847,803
39. Surplus as regards policyholders, as of statement date (Lines 21 plus 38)	19,761,509	18,060,739	18,733,133
DETAILS OF WRITE-INS			
0501.			
0502.			
0503.			
0598. Summary of remaining write-ins for Line 5 from overflow page			
0599. Totals (Lines 0501 through 0503 plus 0598)(Line 5 above)			
1401. Cash Short and Over	(2,189)	(2,185)	(9,970)
1402. Other income (expense)	878	132	4,190
1403.			
1498. Summary of remaining write-ins for Line 14 from overflow page			
1499. Totals (Lines 1401 through 1403 plus 1498)(Line 14 above)	(1,311)	(2,053)	(5,780)
3701. Change in benefit under 10e admissibility tests			(173,260)
3702.			
3703.			
3798. Summary of remaining write-ins for Line 37 from overflow page			
3799. Totals (Lines 3701 through 3703 plus 3798)(Line 37 above)			(173,260)

STATEMENT AS OF MARCH 31, 2013 OF THE Miami Mutual Insurance Company

CASH FLOW

	1 Current Year To Date	2 Prior Year To Date	3 Prior Year Ended December 31
Cash from Operations			
1. Premiums collected net of reinsurance	6,216,060	6,719,358	28,984,949
2. Net investment income	236,997	283,698	1,213,825
3. Miscellaneous income	97,119	93,700	375,414
4. Total (Lines 1 to 3)	6,550,175	7,096,756	30,574,188
5. Benefit and loss related payments	3,972,766	3,469,170	16,773,335
6. Net transfers to Separate Accounts, Segregated Accounts and Protected Cell Accounts			
7. Commissions, expenses paid and aggregate write-ins for deductions	2,793,325	2,987,206	11,900,343
8. Dividends paid to policyholders			
9. Federal and foreign income taxes paid (recovered) net of \$ tax on capital gains (losses)	(297,477)	(22,558)	(195,818)
10. Total (Lines 5 through 9)	6,468,613	6,433,819	28,477,859
11. Net cash from operations (Line 4 minus Line 10)	81,562	662,937	2,096,329
Cash from Investments			
12. Proceeds from investments sold, matured or repaid:			
12.1 Bonds		1,437,798	11,236,227
12.2 Stocks	1,396,191	1,680,982	1,917,591
12.3 Mortgage loans			
12.4 Real estate			
12.5 Other invested assets			
12.6 Net gains or (losses) on cash, cash equivalents and short-term investments			(54)
12.7 Miscellaneous proceeds		6,316	
12.8 Total investment proceeds (Lines 12.1 to 12.7)	1,396,191	3,125,095	13,153,763
13. Cost of investments acquired (long-term only):			
13.1 Bonds	2,122,751	2,604,340	11,989,553
13.2 Stocks	191,364	845,122	1,096,542
13.3 Mortgage loans			
13.4 Real estate			1,055
13.5 Other invested assets			
13.6 Miscellaneous applications			
13.7 Total investments acquired (Lines 13.1 to 13.6)	2,314,115	3,449,462	13,087,150
14. Net increase (or decrease) in contract loans and premium notes			
15. Net cash from investments (Line 12.8 minus Line 13.7 and Line 14)	(917,924)	(324,367)	66,614
Cash from Financing and Miscellaneous Sources			
16. Cash provided (applied):			
16.1 Surplus notes, capital notes			
16.2 Capital and paid in surplus, less treasury stock			
16.3 Borrowed funds			
16.4 Net deposits on deposit-type contracts and other insurance liabilities			
16.5 Dividends to stockholders			
16.6 Other cash provided (applied)	(822,483)	(763,201)	23,235
17. Net cash from financing and miscellaneous sources (Line 16.1 through Line 16.4 minus Line 16.5 plus Line 16.6)	(822,483)	(763,201)	23,235
RECONCILIATION OF CASH, CASH EQUIVALENTS AND SHORT-TERM INVESTMENTS			
18. Net change in cash, cash equivalents and short-term investments (Line 11, plus Lines 15 and 17)	(1,658,845)	(424,630)	2,186,178
19. Cash, cash equivalents and short-term investments:			
19.1 Beginning of year	3,289,036	1,102,858	1,102,858
19.2 End of period (Line 18 plus Line 19.1)	1,630,191	678,228	3,289,036

Note: Supplemental disclosures of cash flow information for non-cash transactions:

--	--	--	--

STATEMENT AS OF MARCH 31, 2013 OF THE MIAMI MUTUAL INSURANCE COMPANY
NOTES TO FINANCIAL STATEMENTS

1. Summary of Significant Accounting Policies

A. Accounting Practices

The accompanying statutory-basis financial statements of The Miami Mutual Insurance Company (the “Company”) have been prepared on the basis of accounting practices prescribed or permitted by the Ohio Department of Insurance.

The Ohio Department of Insurance requires insurance companies domiciled in Ohio to prepare their statements in conformity with the NAIC Annual Statement Instructions and Accounting Practices and Procedures Manual subject to any deviations prescribed or permitted by the Ohio Department of Insurance. The Company has not implemented any accounting practices which are prescribed or permitted by the State of Ohio that differ from those found in the NAIC Accounting Practices and Procedures Manual.

B. Use of Estimates in Preparation of Financial Statements - No significant changes.

C. Accounting Policy - No significant changes.

2. Accounting Changes and Corrections of Errors – None to Report.

3. Business Combinations and Goodwill - None to report.

4. Discontinued Operations - None to report.

5. Investments

A. Mortgage Loans – None to report.

B. Debt Restructuring – None to report.

C. Reverse Mortgages – None to report.

D. Loan-backed Securities

- (1) Prepayment assumptions for loan-backed bonds or structured securities were obtained from broker dealer survey values or internal estimates. Significant changes in estimated cash flows from the original purchase assumptions are accounted for using the prospective method.

The aggregate Fair Value of loan-backed securities at March 31, 2013 is \$10,998,387 with approximately 82% represented by agency-backed securities. Fair Values represent quoted prices in active markets, quoted prices in active markets for similar securities, or modeled valuations using the present value of estimated future cash flows.

- (2) Securities with a recognized other-than-temporary impairment, disclosed in the aggregate, classified on the basis for the impairment are – None to report.
- (3) Securities with a recognized other-than-temporary impairment, currently held, where the present value of expected cash flows are less than the amortized costs are – None to report.
- (4) Aggregate values for securities with unrealized losses are:

a. The aggregate amount of unrealized losses:		
1. Less than 12 months	\$	7,663
2. 12 months or Longer	\$	59,431
b. The aggregate related fair value of securities with unrealized losses:		
1. Less than 12 months	\$	1,506,731
2. 12 months or Longer	\$	2,786,206

- (5) The Company uses information from several sources to evaluate impairments for other-than-temporary recognition. These categories include security ratings from nationally recognized statistical rating organizations, analysis of issuers’ financial condition, estimates of principal recovery, and the ability to hold the security until recovery.

E. Repurchase Agreements - None to report.

F. Real Estate - No significant changes.

G. Investment in Low-income Housing Credits – None to report.

STATEMENT AS OF MARCH 31,2013 OF THE MIAMI MUTUAL INSURANCE COMPANY

NOTES TO FINANCIAL STATEMENTS

6. Joint Ventures, Partnerships and Limited Liability Corporations - None to report.
7. Investment Income - No significant changes.
8. Derivative Investments - None to report.
9. Income Taxes

A. 1. The components of the net DTA recognized in Assets, Liabilities, Surplus and Other Funds are as follows:									
	03/31/2013			12/31/2012			Change		
	(1)	(2)	(3)	(4)	(5)	(6)	(7)	(8)	(9)
	(Col 1+2)			(Col 4+5)			(Col 1-4)	(Col 2-5)	(Col 7+8)
	Ordinary	Capital	Total	Ordinary	Capital	Total	Ordinary	Capital	Total
a. Gross Deferred Tax Assets	\$ 1,585,769	\$ 110,199	\$ 1,695,968	\$ 1,788,362	\$ 117,007	\$ 1,905,369	\$ (202,593)	\$ (6,808)	\$ (209,401)
b. Statutory Valuation Allowance Adjustments	-	-	-	-	-	-	-	-	-
c. Adjusted Gross Deferred Tax Assets (1a-1b)	1,585,769	110,199	1,695,968	1,788,362	117,007	1,905,369	(202,593)	(6,808)	(209,401)
d. Deferred Tax Assets Nonadmitted	116,015	-	116,015	194,969	33,524	228,493	(78,954)	(33,524)	(112,478)
e. Subtotal Net Admitted Deferred Tax Asset	1,469,754	110,199	1,579,953	1,593,393	83,483	1,676,876	(123,639)	26,716	(96,923)
f. Deferred Tax Liabilities	61,488	212,106	273,594	62,269	83,483	145,752	(781)	128,623	127,842
g. Net admitted deferred tax asset (net deferred tax liability) (1e-1f)	\$ 1,408,266	\$ (101,907)	\$ 1,306,359	\$ 1,531,124	\$ -	\$ 1,531,124	\$ (122,858)	\$ (101,907)	\$ (224,765)
(Increase) decrease in nonadmitted asset			\$ 112,478			\$ 332,156			

- A. 2. Admission Calculation Components - No significant changes.
- A. 3. Ratio and Adjusted Capital - No significant changes.
- A. 4. Impact of Tax Planning Strategies - No significant changes.
- B. The Company has no deferred tax liabilities that are not recognized.
- C. Current Tax and Change in Deferred Tax

Current income taxes incurred consist of the following major components:

1. Current Income Tax	(1)	(2)	(3)
	As of End of Current Period	12/31/2012	(Col. 1-2) Change
a. Federal	\$ 144,687	\$ 6,860	\$ 137,827
b. Foreign	-	-	-
c. Subtotal	144,687	6,860	137,827
d. Federal income tax on net capital gains	17,599	2,380	15,219
e. Utilization of capital loss carry-forwards	-	-	-
f. Other	-	-	-
g. Federal and foreign income taxes incurred	\$ 162,286	\$ 9,240	\$ 153,046

- D. Reconciliation of Federal Income Tax Rate to Actual Effective Rate - No significant changes.

STATEMENT AS OF MARCH 31,2013 OF THE MIAMI MUTUAL INSURANCE COMPANY

NOTES TO FINANCIAL STATEMENTS

E. Operating Loss and Tax Credit Carry-forwards

- 1. At March 31, 2013, the Company had no unused operating loss carry-forwards available to offset against future taxable income.
- 2. The following income tax expense for 2013 and 2012 is available for recoupment in the event of future net losses:

Year	Amount
2013	\$159,906
2012	\$2,380

- 3. The Company did not have any protective tax deposits under Section 6603 of the Internal Revenue Code.

F. The Company does not consolidate its federal income tax return with any other entity.

10. Information Concerning Parent, Subsidiaries and Affiliates - No significant changes.

11. Debt - None to report.

12. Retirement Plans, Deferred Compensation, Post-employment Benefits and Compensated Absences and Other Postretirement Benefit Plans

A. Defined Benefit Plans

The Company has non-qualified pension and postretirement health care plans for a limited number of retirees. The health care plan provides for reimbursement of premiums for the participant and surviving spouse for a limited period. Costs for these plans are paid with cash flows from current operations and no plan assets are maintained.

	Pension Benefits		Postretirement Benefits		Postemployment & Compensated Absence Benefits	
	2013	2012	2013	2012	2013	2012
6. Components of net periodic benefit cost						
a. Service cost	\$ -	\$ -	\$ -	\$ -	\$ -	\$ -
b. Interest cost	4,818	24,946	587	3,517	-	-
c. Expected return on plan assets	-	-	-	-	-	-
d. Transition asset or obligation	-	-	-	-	-	-
e. Gains and losses	2,049	87,165	847	8,939	-	-
f. Prior service cost or credit	-	-	-	-	-	-
g. Gain or loss recognized due to a settlement or curtailment	-	-	-	-	-	-
h. Total net periodic benefit cost	\$ 6,867	\$ 112,111	\$ 1,434	\$ 12,456	N/A	N/A

B. Defined Contribution Plan - No significant changes.

13. Capital and Surplus, Dividend Restrictions, and Quasi-Reorganizations - No significant changes.

14. Contingencies - No significant changes.

15. Leases - No significant changes.

16. Information about Financial Instruments with Off-Balance Sheet Risk and Financial Instruments with Concentrations of Credit - None to report.

17. Sale, Transfer and Servicing of Financial Assets and Extinguishment of Liabilities - None to report.

18. Gain or Loss to the Reporting Entity from Uninsured A&H Plans and the Uninsured Portion of Partially Insured Plans - None to report.

19. Direct Premium Written/Produced by Managing General Agents/Third Party Administrators - None to report.

STATEMENT AS OF MARCH 31,2013 OF THE MIAMI MUTUAL INSURANCE COMPANY
NOTES TO FINANCIAL STATEMENTS

20. Fair Value Measurements

A. Financial assets carried at fair value have been classified, for disclosure purposes, based on a hierarchy defined by Statement of Statutory Accounting Principle No. 100, Fair Value Measurements. Level 1 inputs in the hierarchy consist of unadjusted quoted prices for identical assets and liabilities in active markets. Level 2 inputs consist of quoted prices in active markets for similar assets or liabilities or quoted prices from those willing to trade in markets that are not active, or other inputs that are observable or can be corroborated by market data for the term of the instrument. Level 3 inputs consist of unobservable inputs (supported by little or no market activity) and reflect management’s best estimate of what hypothetical market participants would use to determine a transaction price at the reporting date.

1. Assets Measured at Fair Value

Description for each class of asset or liability	Level 1	Level 2	Level 3	Total
a. Assets at Fair Value				
Perpetual Preferred Stock				
Industrial and Misc	\$ -	\$ -	\$ -	\$ -
Parent, Subsidiaries and Affiliates	-	-	-	-
Total Perpetual Preferred Stocks	\$ -	\$ -	\$ -	\$ -
Bonds				
U.S. Governments	\$ -	\$ -	\$ -	\$ -
Industrial and Misc	-	685,290	-	685,290
Hybrid Securities	-	-	-	-
Parent, Subsidiaries and Affiliates	-	-	-	-
Total bonds	\$ -	\$ 685,290	\$ -	\$ 685,290
Common stock				
Industrial and Misc	\$ 3,777,793	\$ 18,025	\$ -	\$ 3,795,818
Parent, Subsidiaries and Affiliates	-	-	-	-
Total common stock	\$ 3,777,793	\$ 18,025	\$ -	\$ 3,795,818
Derivative assets				
Interest rate contracts	\$ -	\$ -	\$ -	\$ -
Foreign exchange contracts	-	-	-	-
Credit Contracts	-	-	-	-
Commodity futures contracts	-	-	-	-
Commodity forward contracts	-	-	-	-
Total Derivatives	\$ -	\$ -	\$ -	\$ -
Separate account assets	\$ -	\$ -	\$ -	\$ -
Total assets at fair value	\$ 3,777,793	\$ 703,315	\$ -	\$ 4,481,108
b. Liabilities at fair value				
Derivative liabilities	\$ -	\$ -	\$ -	\$ -
Total liabilities at fair value	\$ -	\$ -	\$ -	\$ -

(2) Level Fair Value Measurements in Level 3 of the Fair Value hierarchy – None to report.

(3) Level 2 inputs are obtained from external pricing services, either Interactive Data or Pricing Direct. Level 3 inputs represent values for bonds which are not actively traded in the market. The carrying values reflect management’s best estimate of value at the reporting date.

B. Other Fair Value Disclosures – None to report.

STATEMENT AS OF MARCH 31,2013 OF THE MIAMI MUTUAL INSURANCE COMPANY

NOTES TO FINANCIAL STATEMENTS

C. Aggregate Fair Value of Assets

Type of Financial Instrument	Aggregate Fair Value	Admitted Assets	Level 1	Level 2	Level 3	Not Practicable (Carrying Value)
Bonds	\$ 18,485,545	\$ 17,267,456	\$ -	\$ 18,485,545	\$ -	\$ -
CMO	9,196,695	8,971,489	-	9,196,695	-	-
MBS	4,275,565	4,069,332	-	4,275,565	-	-
Preferred Stock	460,943	390,229	-	460,943	-	-
Common Stock	3,795,818	3,795,818	3,777,793	18,025	-	-
Short Term	1,646,050	1,638,851	1,354,059	291,991	-	-
Total	\$ 37,860,616	\$ 36,133,175	\$ 5,131,852	\$ 32,728,764	\$ -	\$ -

D. Not Practicable to Estimate Fair Value – None to report.

21. Other Items - No significant changes

22. Events Subsequent – None to report.

23. Reinsurance

(A) Unsecured Reinsurance Recoverables

The Company has an unsecured aggregate recoverable for losses, loss adjustment expenses and unearned premiums that exceeds 3% of surplus from the following reinsurers:

	NAIC #	FEIN #	Amount
The National Mutual Ins Co	20184	34-4312510	\$ 2,661,678

(B) Reinsurance Recoverable in Dispute - None to report.

(C) Reinsurance Assumed and Ceded

(1) The following table presents the maximum amount of return commission which would be due to or from reinsurers in the event all reinsurance contracts were canceled as of March 31, 2013, with a return of the unearned premium reserve.

	Assumed Reinsurance		Ceded Reinsurance		Net	
	Premium Reserve	Commission Equity	Premium Reserve	Commission Equity	Premium Reserve	Commission Equity
a. Affiliates	\$ 15,052,953	\$ 1,926,778	\$ 1,302,211	\$ 173,192	\$ 13,750,742	\$ 1,753,586
b. All Other	-	-	-	-	-	-
c. Total	\$ 15,052,953	\$ 1,926,778	\$ 1,302,211	\$ 173,192	\$ 13,750,742	\$ 1,753,586

d. Direct Unearned Premium Reserve \$ 1,302,211

(2) The additional or return commission, predicated on loss experience or on any other form of profit sharing arrangements in this statement as a result of existing contractual arrangements are accrued as follows:

Reinsurance				
	Direct	Assumed	Ceded	Net
a. Contingent Commissions	\$ 4,384	\$ 67,222	\$ 4,384	\$ 67,222
b. Sliding Scale Adjustments	-	-	-	-
c. Other Profit Commissions Arrangements	-	-	-	-
d. Total	\$ 4,384	\$ 67,222	\$ 4,384	\$ 67,222

(D) Uncollectible Reinsurance - None to report.

(E) Commutation of Ceded Reinsurance - None to report.

(F) Retroactive Reinsurance - None to report.

(G) Reinsurance Accounted for as a Deposit - None to report.

STATEMENT AS OF MARCH 31,2013 OF THE MIAMI MUTUAL INSURANCE COMPANY

NOTES TO FINANCIAL STATEMENTS

24. Retrospectively Rated Contracts and Contracts Subject to Redetermination - None to report.

25. Change in Incurred Losses and Loss Adjustment Expenses

Net reserves for losses and loss adjustment expenses as of December 31, 2012 were \$10.2 million. As of March 31, 2013, \$2.2 million has been paid for claims and adjustment expenses attributable to insured events of prior years. Reserves remaining for prior years are now \$7.7 million as a result of re-estimation of unpaid claims and adjustment expenses. The company has recorded approximately \$337,000 favorable development on prior-year losses since year-end.

26. Inter-company Pooling Arrangements

The pool participation percentages remain unchanged from the prior year, and currently are:

<u>NAIC #</u>	<u>Company</u>	<u>Percent</u>
20176	Celina Mutual Insurance Company	36%
20182	National Mutual Insurance Company	34%
16764	Miami Mutual Insurance Company	30%

27. Structured Settlements - No significant changes.

28. Health Care Receivables - None to report.

29. Participating Policies - None to report.

30. Premium Deficiency Reserves - None to report.

31. High Deductibles - None to report.

32. Discounting of Liabilities for Unpaid Losses of Unpaid Loss Adjustment Expenses

The Company does not discount liabilities for unpaid losses or unpaid loss adjustment expenses.

33. Asbestos/Environmental Reserves

34. Subscriber Savings Accounts - None to report.

35. Multiple Peril Crop Insurance - None to report.

36. Financial Guaranty Insurance – None to report.

STATEMENT AS OF MARCH 31, 2013 OF THE Miami Mutual Insurance Company

GENERAL INTERROGATORIES

PART 1 - COMMON INTERROGATORIES

GENERAL

- 1.1

Did the reporting entity experience any material transactions requiring the filing of Disclosure of Material Transactions with the State of Domicile, as required by the Model Act?

Yes [] No [X]
- 1.2

If yes, has the report been filed with the domiciliary state?

Yes [] No []
- 2.1

Has any change been made during the year of this statement in the charter, by-laws, articles of incorporation, or deed of settlement of the reporting entity?

Yes [] No [X]
- 2.2

If yes, date of change:
- 3.1

Have there been any substantial changes in the organizational chart since the prior quarter end?

Yes [] No [X]
- 3.2

If the response to 3.1 is yes, provide a brief description of those changes.
- 4.1

Has the reporting entity been a party to a merger or consolidation during the period covered by this statement?

Yes [] No [X]
- 4.2

If yes, provide the name of the entity, NAIC Company Code, and state of domicile (use two letter state abbreviation) for any entity that has ceased to exist as a result of the merger or consolidation.

1 Name of Entity	2 NAIC Company Code	3 State of Domicile
5.

If the reporting entity is subject to a management agreement, including third-party administrator(s), managing general agent(s), attorney-in-fact, or similar agreement, have there been any significant changes regarding the terms of the agreement or principals involved? If yes, attach an explanation.

Yes [] No [X] N/A []
- 6.1

State as of what date the latest financial examination of the reporting entity was made or is being made.

12/31/2009
- 6.2

State the as of date that the latest financial examination report became available from either the state of domicile or the reporting entity. This date should be the date of the examined balance sheet and not the date the report was completed or released.

12/31/2009
- 6.3

State as of what date the latest financial examination report became available to other states or the public from either the state of domicile or the reporting entity. This is the release date or completion date of the examination report and not the date of the examination (balance sheet date).

06/16/2011
- 6.4

By what department or departments?
Ohio
- 6.5

Have all financial statement adjustments within the latest financial examination report been accounted for in a subsequent financial statement filed with Departments?

Yes [] No [] N/A [X]
- 6.6

Have all of the recommendations within the latest financial examination report been complied with?

Yes [] No [] N/A [X]
- 7.1

Has this reporting entity had any Certificates of Authority, licenses or registrations (including corporate registration, if applicable) suspended or revoked by any governmental entity during the reporting period?

Yes [] No [X]
- 7.2

If yes, give full information:
- 8.1

Is the company a subsidiary of a bank holding company regulated by the Federal Reserve Board?

Yes [] No [X]
- 8.2

If response to 8.1 is yes, please identify the name of the bank holding company.
- 8.3

Is the company affiliated with one or more banks, thrifts or securities firms?

Yes [] No [X]
- 8.4

If response to 8.3 is yes, please provide below the names and location (city and state of the main office) of any affiliates regulated by a federal regulatory services agency [i.e. the Federal Reserve Board (FRB), the Office of the Comptroller of the Currency (OCC), the Federal Deposit Insurance Corporation (FDIC) and the Securities Exchange Commission (SEC)] and identify the affiliate's primary federal regulator.

1 Affiliate Name	2 Location (City, State)	3 FRB	4 OCC	5 FDIC	6 SEC

STATEMENT AS OF MARCH 31, 2013 OF THE Miami Mutual Insurance Company

GENERAL INTERROGATORIES

9.1

Are the senior officers (principal executive officer, principal financial officer, principal accounting officer or controller, or persons performing similar functions) of the reporting entity subject to a code of ethics, which includes the following standards? (a) Honest and ethical conduct, including the ethical handling of actual or apparent conflicts of interest between personal and professional relationships; (b) Full, fair, accurate, timely and understandable disclosure in the periodic reports required to be filed by the reporting entity; (c) Compliance with applicable governmental laws, rules and regulations; (d) The prompt internal reporting of violations to an appropriate person or persons identified in the code; and (e) Accountability for adherence to the code.

Yes [X] No []

9.11

If the response to 9.1 is No, please explain:

9.2

Has the code of ethics for senior managers been amended?

Yes [] No [X]

9.21

If the response to 9.2 is Yes, provide information related to amendment(s).

9.3

Have any provisions of the code of ethics been waived for any of the specified officers?

Yes [] No [X]

9.31

If the response to 9.3 is Yes, provide the nature of any waiver(s).

FINANCIAL

10.1

Does the reporting entity report any amounts due from parent, subsidiaries or affiliates on Page 2 of this statement?

Yes [X] No []

10.2

If yes, indicate any amounts receivable from parent included in the Page 2 amount:

\$

INVESTMENT

11.1

Were any of the stocks, bonds, or other assets of the reporting entity loaned, placed under option agreement, or otherwise made available for use by another person? (Exclude securities under securities lending agreements.)

Yes [] No [X]

11.2

If yes, give full and complete information relating thereto:

12.

Amount of real estate and mortgages held in other invested assets in Schedule BA:

\$

13.

Amount of real estate and mortgages held in short-term investments:

\$

14.1

Does the reporting entity have any investments in parent, subsidiaries and affiliates?

Yes [] No [X]

14.2

If yes, please complete the following:

	1	2
	Prior Year-End Book/Adjusted Carrying Value	Current Quarter Book/Adjusted Carrying Value
14.21 Bonds	\$	\$
14.22 Preferred Stock	\$	\$
14.23 Common Stock	\$	\$
14.24 Short-Term Investments	\$	\$
14.25 Mortgage Loans on Real Estate	\$	\$
14.26 All Other	\$	\$
14.27 Total Investment in Parent, Subsidiaries and Affiliates (Subtotal Lines 14.21 to 14.26)	\$	\$
14.28 Total Investment in Parent included in Lines 14.21 to 14.26 above	\$	\$

15.1

Has the reporting entity entered into any hedging transactions reported on Schedule DB?

Yes [] No [X]

15.2

If yes, has a comprehensive description of the hedging program been made available to the domiciliary state? If no, attach a description with this statement.

Yes [] No []

STATEMENT AS OF MARCH 31, 2013 OF THE Miami Mutual Insurance Company

GENERAL INTERROGATORIES

16. For the reporting entity's security lending program, state the amount of the following as of the current statement date:
- 16.1 Total fair value of reinvested collateral assets reported on Schedule DL, Parts 1 and 2.

16.2 Total book adjusted/carrying value of reinvested collateral assets reported on Schedule DL, Parts 1 and 2.

16.3 Total payable for securities lending reported on the liability page.
- \$

\$

\$

17. Excluding items in Schedule E - Part 3 - Special Deposits, real estate, mortgage loans and investments held physically in the reporting entity's offices, vaults or safety deposit boxes, were all stocks, bonds and other securities, owned throughout the current year held pursuant to a custodial agreement with a qualified bank or trust company in accordance with Section 1, III - General Examination Considerations, F. Outsourcing of Critical Functions, Custodial or Safekeeping Agreements of the NAIC Financial Condition Examiners Handbook?
- Yes [X] No []

- 17.1 For all agreements that comply with the requirements of the NAIC Financial Condition Examiners Handbook, complete the following:

1 Name of Custodian(s)	2 Custodian Address
FIRST FINANCIAL BANK	225 N. MAIN STREET, CELINA, OHIO 45822
FEDERAL HOME LOAN BANK OF CINCINNATI	P.O. BOX 598, CINCINNATI, OHIO 45201

- 17.2 For all agreements that do not comply with the requirements of the NAIC Financial Condition Examiners Handbook, provide the name, location and a complete explanation:

1 Name(s)	2 Location(s)	3 Complete Explanation(s)

- 17.3 Have there been any changes, including name changes, in the custodian(s) identified in 17.1 during the current quarter?
- Yes [] No [X]

- 17.4 If yes, give full information relating thereto:

1 Old Custodian	2 New Custodian	3 Date of Change	4 Reason

- 17.5 Identify all investment advisors, brokers/dealers or individuals acting on behalf of broker/dealers that have access to the investment accounts, handle securities and have authority to make investments on behalf of the reporting entity:

1 Central Registration Depository	2 Name(s)	3 Address
109875	ASSET ALLOCATION & MANAGEMENT COMPANY LLC	30 N. LASALLE STREET, 35TH FLOOR CHICAGO, ILLINOIS 60602
104751	ZAZOVE & ASSOCIATES, LLC	940 SOUTHWOOD BOULEVARD, SUITE 200 INCLINE VILLAGE, NV 89451

- 18.1 Have all the filing requirements of the Purposes and Procedures Manual of the NAIC Securities Valuation Office been followed?
- Yes [X] No []

- 18.2 If no, list exceptions:

STATEMENT AS OF MARCH 31, 2013 OF THE Miami Mutual Insurance Company

GENERAL INTERROGATORIES

PART 2 - PROPERTY & CASUALTY INTERROGATORIES

1.

If the reporting entity is a member of a pooling arrangement, did the agreement or the reporting entity's participation change?
If yes, attach an explanation.

Yes [] No [X] N/A []
2.

Has the reporting entity reinsured any risk with any other reporting entity and agreed to release such entity from liability, in whole or in part, from any loss that may occur on the risk, or portion thereof, reinsured?
If yes, attach an explanation.

Yes [] No [X]
- 3.1

Have any of the reporting entity's primary reinsurance contracts been canceled?

Yes [] No [X]
- 3.2

If yes, give full and complete information thereto.
- 4.1

Are any of the liabilities for unpaid losses and loss adjustment expenses other than certain workers' compensation tabular reserves (see Annual Statement Instructions pertaining to disclosure of discounting for definition of " tabular reserves") discounted at a rate of interest greater than zero?

Yes [] No [X]

4.2 If yes, complete the following schedule:

			TOTAL DISCOUNT				DISCOUNT TAKEN DURING PERIOD			
1	2	3	4	5	6	7	8	9	10	11
Line of Business	Maximum Interest	Discount Rate	Unpaid Losses	Unpaid LAE	IBNR	TOTAL	Unpaid Losses	Unpaid LAE	IBNR	TOTAL
TOTAL										

5.

Operating Percentages:

5.1 A&H loss percent %

5.2 A&H cost containment percent %

5.3 A&H expense percent excluding cost containment expenses %
- 6.1

Do you act as a custodian for health savings accounts?

Yes [] No [X]
- 6.2

If yes, please provide the amount of custodial funds held as of the reporting date\$.....
- 6.3

Do you act as an administrator for health savings accounts?

Yes [] No [X]
- 6.4

If yes, please provide the balance of the funds administered as of the reporting date\$.....

SCHEDULE F - CEDED REINSURANCE

[illegible]

STATEMENT AS OF MARCH 31, 2013 OF THE Miami Mutual Insurance Company

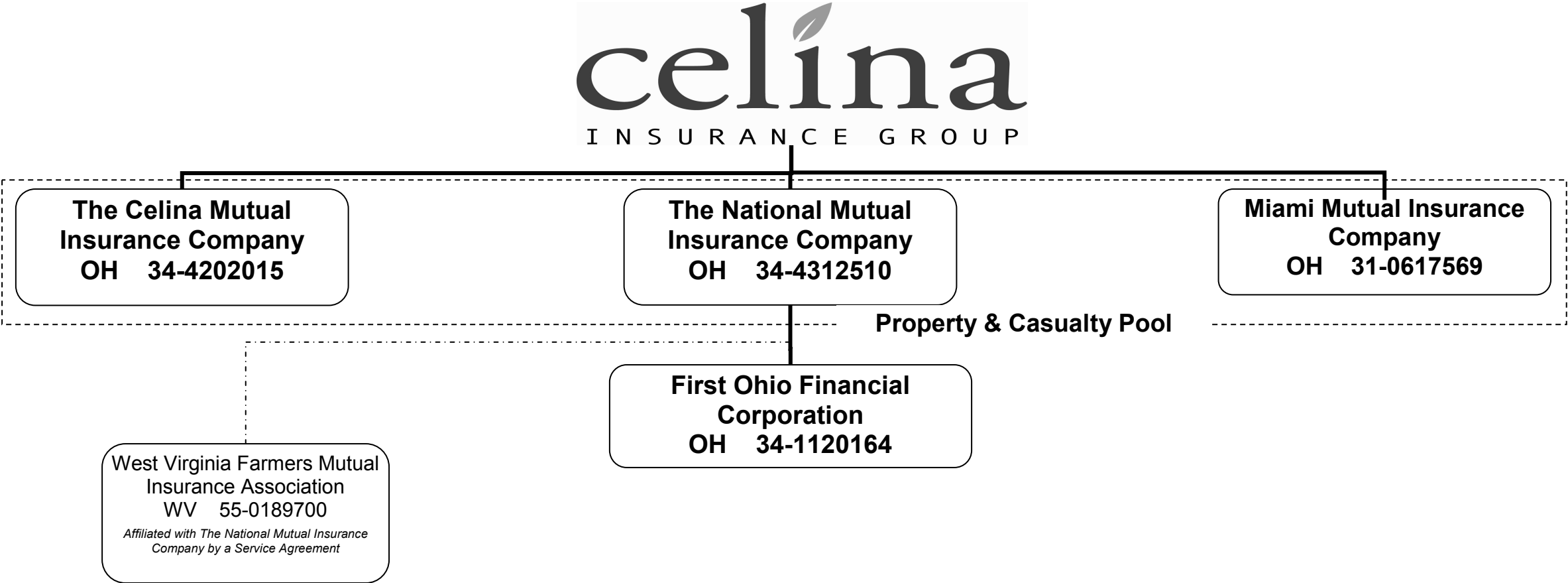
SCHEDULE T - EXHIBIT OF PREMIUMS WRITTEN

Current Year to Date - Allocated by States and Territories							
States, etc.	1 Active Status	Direct Premiums Written		Direct Losses Paid (Deducting Salvage)		Direct Losses Unpaid	
		2 Current Year To Date	3 Prior Year To Date	4 Current Year To Date	5 Prior Year To Date	6 Current Year To Date	7 Prior Year To Date
1. Alabama AL	N						
2. Alaska AK	N						
3. Arizona AZ	N						
4. Arkansas AR	N						
5. California CA	N						
6. Colorado CO	N						
7. Connecticut CT	N						
8. Delaware DE	N						
9. District of Columbia DC	N						
10. Florida FL	N						
11. Georgia GA	N						
12. Hawaii HI	N						
13. Idaho ID	N						
14. Illinois IL	N						
15. Indiana IN	L	261,346	252,066	313,519	262,848	231,813	521,658
16. Iowa IA	L						
17. Kansas KS	N						
18. Kentucky KY	N						
19. Louisiana LA	N						
20. Maine ME	N						
21. Maryland MD	N						
22. Massachusetts MA	N						
23. Michigan MI	N						
24. Minnesota MN	L		(105)		983	8,500	12,500
25. Mississippi MS	N						
26. Missouri MO	N						
27. Montana MT	N						
28. Nebraska NE	N						
29. Nevada NV	N						
30. New Hampshire NH	N						
31. New Jersey NJ	N						
32. New Mexico NM	N						
33. New York NY	N						
34. North Carolina NC	N						
35. North Dakota ND	N						
36. Ohio OH	L	454,553	421,038	316,923	239,329	574,896	977,438
37. Oklahoma OK	N						
38. Oregon OR	N						
39. Pennsylvania PA	N			2,436	8,260	86,060	85,331
40. Rhode Island RI	N						
41. South Carolina SC	N						
42. South Dakota SD	N						
43. Tennessee TN	L	287,056	273,629	96,918	212,628	194,000	275,807
44. Texas TX	N						
45. Utah UT	N						
46. Vermont VT	N						
47. Virginia VA	N						
48. Washington WA	N						
49. West Virginia WV	N			(121)	(105)		
50. Wisconsin WI	N						
51. Wyoming WY	N						
52. American Samoa AS	N						
53. Guam GU	N						
54. Puerto Rico PR	N						
55. U.S. Virgin Islands VI	N						
56. Northern Mariana Islands MP	N						
57. Canada CAN	N						
58. Aggregate Other Alien OT	XXX						
59. Totals	(a) 5	1,002,955	946,628	729,676	723,943	1,095,268	1,872,735
DETAILS OF WRITE-INS							
58001.	XXX						
58002.	XXX						
58003.	XXX						
58998. Summary of remaining write-ins for Line 58 from overflow page	XXX						
58999. Totals (Lines 58001 through 58003 plus 58998)(Line 58 above)	XXX						

(L) Licensed or Chartered - Licensed Insurance Carrier or Domiciled RRG; (R) Registered - Non-domiciled RRGs; (Q) Qualified - Qualified or Accredited Reinsurer; (E) Eligible - Reporting Entities eligible or approved to write Surplus Lines in the state; (N) None of the above - Not allowed to write business in the state.

(a) Insert the number of L responses except for Canada and Other Alien.

Schedule Y – Information Concerning Activities of Insurer Members Of a Holding Company Group
Part 1 – Organization Chart



STATEMENT AS OF MARCH 31, 2013 OF THE Miami Mutual Insurance Company

SCHEDULE Y

PART 1A - DETAIL OF INSURANCE HOLDING COMPANY SYSTEM

[illegible]

Asterisk	Explanation

PART 1 - LOSS EXPERIENCE

Line of Business		Current Year to Date			4 Prior Year to Date Direct Loss Percentage
		1 Direct Premiums Earned	2 Direct Losses Incurred	3 Direct Loss Percentage	
1.	Fire	73,899	(300)	(0.4)	72.8
2.	Allied Lines	33,753	913	2.7	81.2
3.	Farmowners multiple peril		11,759		147.2
4.	Homeowners multiple peril		(35,423)		54.5
5.	Commercial multiple peril		2		2,116,418.8
6.	Mortgage guaranty				
8.	Ocean marine				
9.	Inland marine				192.4
10.	Financial guaranty				
11.1	Medical professional liability - occurrence				
11.2	Medical professional liability - claims-made				
12.	Earthquake				
13.	Group accident and health				
14.	Credit accident and health				
15.	Other accident and health				
16.	Workers' compensation				
17.1	Other liability - occurrence	14,910	(75,000)	(503.0)	30.8
17.2	Other liability - claims-made				
17.3	Excess workers' compensation				
18.1	Products liability - occurrence				
18.2	Products liability - claims-made				
19.1,19.2	Private passenger auto liability	460,929	212,301	46.1	7.1
19.3,19.4	Commercial auto liability				
21.	Auto physical damage	269,812	109,065	40.4	48.6
22.	Aircraft (all perils)				
23.	Fidelity				
24.	Surety				
26.	Burglary and theft				
27.	Boiler and machinery				
28.	Credit				
29.	International				
30.	Warranty				
31.	Reinsurance - Nonproportional Assumed Property	XXX	XXX	XXX	XXX
32.	Reinsurance - Nonproportional Assumed Liability	XXX	XXX	XXX	XXX
33.	Reinsurance - Nonproportional Assumed Financial Lines	XXX	XXX	XXX	XXX
34.	Aggregate write-ins for other lines of business				
35.	Totals	853,303	223,316	26.2	54.4
DETAILS OF WRITE-INS					
3401.				
3402.				
3403.				
3498.	Summary of remaining write-ins for Line 34 from overflow page				
3499.	Totals (Lines 3401 through 3403 plus 3498)(Line 34 above)				

PART 2 - DIRECT PREMIUMS WRITTEN

Line of Business		1	2	3
		Current Quarter	Current Year to Date	Prior Year Year to Date
1.	Fire	77,121	77,121	72,402
2.	Allied Lines	35,595	35,595	32,626
3.	Farmowners multiple peril			(446)
4.	Homeowners multiple peril			(11,432)
5.	Commercial multiple peril			
6.	Mortgage guaranty			
8.	Ocean marine			
9.	Inland marine			
10.	Financial guaranty			
11.1	Medical professional liability - occurrence			
11.2	Medical professional liability - claims-made			
12.	Earthquake			42
13.	Group accident and health			
14.	Credit accident and health			
15.	Other accident and health			
16.	Workers' compensation			
17.1	Other liability - occurrence	15,170	15,170	15,185
17.2	Other liability - claims-made			
17.3	Excess workers' compensation			
18.1	Products liability - occurrence			
18.2	Products liability - claims-made			
19.1,19.2	Private passenger auto liability	546,253	546,253	537,116
19.3,19.4	Commercial auto liability			(658)
21.	Auto physical damage	328,816	328,816	301,793
22.	Aircraft (all perils)			
23.	Fidelity			
24.	Surety			
26.	Burglary and theft			
27.	Boiler and machinery			
28.	Credit			
29.	International			
30.	Warranty			
31.	Reinsurance - Nonproportional Assumed Property	XXX	XXX	XXX
32.	Reinsurance - Nonproportional Assumed Liability	XXX	XXX	XXX
33.	Reinsurance - Nonproportional Assumed Financial Lines	XXX	XXX	XXX
34.	Aggregate write-ins for other lines of business			
35.	Totals	1,002,955	1,002,955	946,628
DETAILS OF WRITE-INS				
3401.			
3402.			
3403.			
3498.	Summary of remaining write-ins for Line 34 from overflow page			
3499.	Totals (Lines 3401 through 3403 plus 3498)(Line 34 above)			

STATEMENT AS OF MARCH 31, 2013 OF THE Miami Mutual Insurance Company

PART 3 (000 omitted)

LOSS AND LOSS ADJUSTMENT EXPENSE RESERVES SCHEDULE

	1	2	3	4	5	6	7	8	9	10	11	12	13											
Years in Which Losses Occurred	Prior Year-End Known Case Loss and LAE Reserves	Prior Year-End IBNR Loss and LAE Reserves	Total Prior Year-End Loss and LAE Reserves (Cols. 1+2)	2013 Loss and LAE Payments on Claims Reported as of Prior Year-End	2013 Loss and LAE Payments on Claims Unreported as of Prior Year-End	Total 2013 Loss and LAE Payments (Cols. 4+5)	Q.S. Date Known Case Loss and LAE Reserves on Claims Reported and Open as of Prior Year End	Q.S. Date Known Case Loss and LAE Reserves on Claims Reported or Reopened Subsequent to Prior Year End	Q.S. Date IBNR Loss and LAE Reserves	Total Q.S. Loss and LAE Reserves (Cols.7+8+9)	Prior Year-End Known Case Loss and LAE Reserves Developed (Savings)/ Deficiency (Cols.4+7 minus Col. 1)	Prior Year-End IBNR Loss and LAE Reserves Developed (Savings)/ Deficiency (Cols. 5+8+9 minus Col. 2)	Prior Year-End Total Loss and LAE Reserve Developed (Savings)/ Deficiency (Cols. 11+12)											
1. 2010 + Prior	1,176	1,289	2,465	270		270	1,044	9	1,098	2,150	138	(183)	(45)											
2. 2011	772	998	1,770	95	7	102	690	5	944	1,639	13	(42)	(30)											
3. Subtotals 2011 + Prior	1,948	2,287	4,235	365	7	372	1,734	14	2,042	3,789	151	(225)	(74)											
4. 2012	3,183	2,797	5,980	1,573	245	1,818	2,096	56	1,746	3,899	487	(749)	(263)											
5. Subtotals 2012 + Prior	5,131	5,084	10,215	1,938	252	2,190	3,830	70	3,788	7,688	638	(975)	(337)											
6. 2013	XXX	XXX	XXX	XXX	2,315	2,315	XXX	1,109	1,228	2,338	XXX	XXX	XXX											
7. Totals	5,131	5,084	10,215	1,938	2,566	4,505	3,830	1,179	5,016	10,025	638	(975)	(337)											
8. Prior Year-End Surplus As Regards Policyholders	18,733											Col. 11, Line 7 As % of Col. 1 Line 7	Col. 12, Line 7 As % of Col. 2 Line 7	Col. 13, Line 7 As % of Col. 3 Line 7										
												1. 12.4	2. (19.2)	3. (3.3)										
														Col. 13, Line 7 As a % of Col. 1 Line 8 4. (1.8)										

SUPPLEMENTAL EXHIBITS AND SCHEDULES INTERROGATORIES

The following supplemental reports are required to be filed as part of your statement filing. However, in the event that your company does not transact the type of business for which the special report must be filed, your response of NO to the specific interrogatory will be accepted in lieu of filing a "NONE" report and a bar code will be printed below. If the supplement is required of your company but is not being filed for whatever reason enter SEE EXPLANATION and provide an explanation following the interrogatory questions.

	Response
1. Will the Trusteed Surplus Statement be filed with the state of domicile and the NAIC with this statement?	NO
2. Will Supplement A to Schedule T (Medical Professional Liability Supplement) be filed with this statement?	NO
3. Will the Medicare Part D Coverage Supplement be filed with the state of domicile and the NAIC with this statement?	NO
4. Will the Director and Officer Insurance Coverage Supplement be filed with the state of domicile and the NAIC with this statement?	NO

Explanations:

- 1. Not Applicable
- 2. Not Applicable
- 3. Not Applicable
- 4. Not Applicable

Bar Codes:

1. Trusteed Surplus Statement [Document Identifier 490]	
2. Supplement A to Schedule T [Document Identifier 455]	
3. Medicare Part D Coverage Supplement [Document Identifier 365]	
4. Director and Officer Supplement [Document Identifier 505]	

OVERFLOW PAGE FOR WRITE-INS

NONE

SCHEDULE A - VERIFICATION

Real Estate

	1	2
	Year to Date	Prior Year Ended December 31
1. Book/adjusted carrying value, December 31 of prior year	619,195	692,025
2. Cost of acquired:		
2.1 Actual cost at time of acquisition		
2.2 Additional investment made after acquisition		1,055
3. Current year change in encumbrances		
4. Total gain (loss) on disposals		
5. Deduct amounts received on disposals		
6. Total foreign exchange change in book/adjusted carrying value		
7. Deduct current year's other than temporary impairment recognized		41,433
8. Deduct current year's depreciation	8,097	32,452
9. Book/adjusted carrying value at the end of current period (Lines 1+2+3+4-5+6-7-8)	611,098	619,195
10. Deduct total nonadmitted amounts		
11. Statement value at end of current period (Line 9 minus Line 10)	611,098	619,195

SCHEDULE B - VERIFICATION

Mortgage Loans

	1	2
	Year to Date	Prior Year Ended December 31
1. Book value/recorded investment excluding accrued interest, December 31 of prior year		
2. Cost of acquired:		
2.1 Actual cost at time of acquisition		
2.2 Additional investment made after acquisition		
3. Capitalized deferred interest and other		
4. Accrual of discount		
5. Unrealized valuation increase (decrease)		
6. Total gain (loss) on disposals		
7. Deduct amounts received on disposals		
8. Deduct amortization of premium and mortgage interest points and commitment fees		
9. Total foreign exchange change in book value/recorded investment excluding accrued interest		
10. Deduct current year's other than temporary impairment recognized		
11. Book value/recorded investment excluding accrued interest at end of current period (Lines 1+2+3+4+5+6-7-8+9-10)		
12. Total valuation allowance		
13. Subtotal (Line 11 plus Line 12)		
14. Deduct total nonadmitted amounts		
15. Statement value at end of current period (Line 13 minus Line 14)		

SCHEDULE BA - VERIFICATION

Other Long-Term Invested Assets

	1	2
	Year to Date	Prior Year Ended December 31
1. Book/adjusted carrying value, December 31 of prior year		
2. Cost of acquired:		
2.1 Actual cost at time of acquisition		
2.2 Additional investment made after acquisition		
3. Capitalized deferred interest and other		
4. Accrual of discount		
5. Unrealized valuation increase (decrease)		
6. Total gain (loss) on disposals		
7. Deduct amounts received on disposals		
8. Deduct amortization of premium and depreciation		
9. Total foreign exchange change in book/adjusted carrying value		
10. Deduct current year's other than temporary impairment recognized		
11. Book/adjusted carrying value at end of current period (Lines 1+2+3+4+5+6-7-8+9-10)		
12. Deduct total nonadmitted amounts		
13. Statement value at end of current period (Line 11 minus Line 12)		

SCHEDULE D - VERIFICATION

Bonds and Stocks

	1	2
	Year to Date	Prior Year Ended December 31
1. Book/adjusted carrying value of bonds and stocks, December 31 of prior year	33,182,752	32,610,767
2. Cost of bonds and stocks acquired	2,314,115	13,086,094
3. Accrual of discount	9,022	48,159
4. Unrealized valuation increase (decrease)	378,304	353,650
5. Total gain (loss) on disposals	71,792	535,978
6. Deduct consideration for bonds and stocks disposed of	1,396,191	13,153,818
7. Deduct amortization of premium	65,469	287,015
8. Total foreign exchange change in book/adjusted carrying value		
9. Deduct current year's other than temporary impairment recognized		11,063
10. Book/adjusted carrying value at end of current period (Lines 1+2+3+4+5-6-7+8-9)	34,494,325	33,182,752
11. Deduct total nonadmitted amounts		
12. Statement value at end of current period (Line 10 minus Line 11)	34,494,325	33,182,752

STATEMENT AS OF MARCH 31, 2013 OF THE Miami Mutual Insurance Company

SCHEDULE D - PART 1B

Showing the Acquisitions, Dispositions and Non-Trading Activity
During the Current Quarter for all Bonds and Preferred Stock by Rating Class

	1 Book/Adjusted Carrying Value Beginning of Current Quarter	2 Acquisitions During Current Quarter	3 Dispositions During Current Quarter	4 Non-Trading Activity During Current Quarter	5 Book/Adjusted Carrying Value End of First Quarter	6 Book/Adjusted Carrying Value End of Second Quarter	7 Book/Adjusted Carrying Value End of Third Quarter	8 Book/Adjusted Carrying Value December 31 Prior Year
BONDS								
1. Class 1 (a)	26,620,331	6,600,150	6,721,928	69,442	26,567,995			26,620,331
2. Class 2 (a)	4,261,090	719,533	165,988	(165,072)	4,649,564			4,261,090
3. Class 3 (a)	421,938	167,310	64,823	11,948	536,374			421,938
4. Class 4 (a)	152,303		3,699	11	148,615			152,303
5. Class 5 (a)	17,426		(855)	7,207	25,488			17,426
6. Class 6 (a)			1,099	20,192	19,092			
7. Total Bonds	31,473,088	7,486,994	6,956,681	(56,272)	31,947,128			31,473,088
PREFERRED STOCK								
8. Class 1								
9. Class 2	181,930				181,930			181,930
10. Class 3	31,248	177,051			208,299			31,248
11. Class 4								
12. Class 5								
13. Class 6								
14. Total Preferred Stock	213,178	177,051			390,229			213,178
15. Total Bonds and Preferred Stock	31,686,266	7,664,044	6,956,681	(56,272)	32,337,357			31,686,266

(a) Book/Adjusted Carrying Value column for the end of the current reporting period includes the following amount of non-rated short-term and cash equivalent bonds by NAIC designation: NAIC 1 \$20,409 ; NAIC 2 \$175,755 ; NAIC 3 \$88,628 ;
NAIC 4 \$; NAIC 5 \$; NAIC 6 \$

SCHEDULE DA - PART 1

Short-Term Investments

	1	2	3	4	5
	Book/Adjusted Carrying Value	Par Value	Actual Cost	Interest Collected Year-to-Date	Paid for Accrued Interest Year-to-Date
9199999 Totals	1,638,851	xxx	1,646,163	47	1,560

SCHEDULE DA - VERIFICATION

Short-Term Investments

	1	2
	Year To Date	Prior Year Ended December 31
1. Book/adjusted carrying value, December 31 of prior year	1,938,603	569,524
2. Cost of short-term investments acquired	5,364,242	12,069,812
3. Accrual of discount		30
4. Unrealized valuation increase (decrease)		
5. Total gain (loss) on disposals		(54)
6. Deduct consideration received on disposals	5,656,682	10,699,920
7. Deduct amortization of premium	7,312	789
8. Total foreign exchange change in book/adjusted carrying value		
9. Deduct current year's other than temporary impairment recognized		
10. Book/adjusted carrying value at end of current period (Lines 1+2+3+4+5-6-7+8-9)	1,638,851	1,938,603
11. Deduct total nonadmitted amounts		
12. Statement value at end of current period (Line 10 minus Line 11)	1,638,851	1,938,603

Schedule DB - Part A - Verification - Options, Caps, Floors, Collars, Swaps and Forwards

N O N E

Schedule DB - Part B - Verification - Futures Contracts

N O N E

Schedule DB - Part C - Section 1 - Replication (Synthetic Asset) Transactions (RSATs) Open

N O N E

Schedule DB-Part C-Section 2-Reconciliation of Replication (Synthetic Asset) Transactions Open

N O N E

Schedule DB - Verification - Book/Adjusted Carrying Value, Fair Value and Potential Exposure of
Derivatives

N O N E

Schedule E - Verification - Cash Equivalents

N O N E

Schedule A - Part 2 - Real Estate Acquired and Additions Made

N O N E

Schedule A - Part 3 - Real Estate Disposed

N O N E

Schedule B - Part 2 - Mortgage Loans Acquired

N O N E

Schedule B - Part 3 - Mortgage Loans Disposed, Transferred or Repaid

N O N E

Schedule BA - Part 2 - Other Long-Term Invested Assets Acquired

N O N E

Schedule BA - Part 3 - Other Long-Term Invested Assets Disposed, Transferred or Repaid

N O N E

STATEMENT AS OF MARCH 31, 2013 OF THE Miami Mutual Insurance Company

SCHEDULE D - PART 3

Show All Long-Term Bonds and Stock Acquired During the Current Quarter

1	2	3	4	5	6	7	8	9	10
CUSIP Identification	Description	Foreign	Date Acquired	Name of Vendor	Number of Shares of Stock	Actual Cost	Par Value	Paid for Accrued Interest and Dividends	NAIC Designation or Market Indicator (a)
3136A6-TP-9	FANNIE MAE FNR 2012-63 HB		.02/06/2013	FIRST TN		239,692	235,280	.131	1
30254Q-AA-0	FDIC 2013 R1 A		.03/20/2013	JEFFERIES & CO		174,795	175,000	.145	1
3137AY-YA-3	FREDDIE MAC FHR 4170 PE		.02/22/2013	FIRST TN		255,859	250,000	.422	1
3199999. Subtotal - Bonds - U.S. Special Revenues						670,346	660,280	698	XXX
L4370R-AJ-0	GLENORE FINANCE EUROPE	R	.03/20/2013	NOMURA		119,250	100,000	1.181	2FE
NRT23V-AC-5	SIEMENS FINANCIERINGSMAT	R	.02/07/2013	J P MORGAN		257,350	250,000	1.283	1FE
94707V-AC-4	WEATHERFORD BERMUDA	R	.01/07/2013	BARCLAYS		132,198	125,000	1.314	2FE
013817-AT-8	ALCOA INC		.03/04/2013	NOMURA		6,837	5,000	.125	2FE
01741R-AD-4	ALLEGHENY TECHNOLOGIES INC		.03/04/2013	VARIOUS		10,825	10,000	.82	2FE
15200W-AA-3	CENTERPOINT ENERGY		.03/21/2013	NOMURA		225,620	224,245	.904	1FE
36162N-AC-1	GE EQUIPMENT TRANSPORTATION LLC		.03/08/2013	BARCLAYS		100,422	100,000	.58	1FE
380956-AB-8	GOLDCORP INC		.02/14/2013	UBS SECURITIES INC.		15,956	15,000	.16	2FE
44890G-AD-7	HYUNDAI AUTO RECEIVABLE TRUST		.03/21/2013	NOMURA		251,953	250,000	.73	1FE
50540R-AG-7	LABORATORY CORP OF AMER		.02/26/2013	NOMURA		11,811	10,000		2FE
615369-AB-1	MOODY'S CORPORATION		.02/05/2013	BANC OF AMERICA SECURITIE		103,409	100,000	2.100	2FE
651639-AJ-5	NEWMONT MINING		.02/15/2013	DAIWA SE		6,186	5,000	.8	2FE
693320-AN-3	PHH CORP		.03/18/2013	CITIGROUP		55,025	50,000	.101	3FE
845467-AH-2	SOUTHWESTERN ENERGY CO		.02/07/2013	SEAPORT		133,208	125,000	2.093	2FE
858119-AP-5	STEEL DYNAMICS INC		.03/19/2013	JEFFERIES & CO		22,356	20,000	.276	3FE
3899999. Subtotal - Bonds - Industrial and Miscellaneous (Unaffiliated)						1,452,405	1,389,245	9,614	XXX
8399997. Total - Bonds - Part 3						2,122,751	2,049,525	10,312	XXX
8399998. Total - Bonds - Part 5						XXX	XXX	XXX	XXX
8399999. Total - Bonds						2,122,751	2,049,525	10,312	XXX
15189T-20-6	CENTERPOINT ENERGY INC		.03/06/2013	VARIOUS	4,040,000	177,051	100.00		RP3UFE
8499999. Subtotal - Preferred Stocks - Industrial and Miscellaneous (Unaffiliated)						177,051	XXX		XXX
8999997. Total - Preferred Stocks - Part 3						177,051	XXX		XXX
8999998. Total - Preferred Stocks - Part 5						XXX	XXX	XXX	XXX
8999999. Total - Preferred Stocks						177,051	XXX		XXX
922906-20-1	VANGUARD PRIME MONEY MARKET		.03/28/2013	VANGUARD GROUP	14,313.320	14,313			A
9299999. Subtotal - Common Stocks - Mutual Funds						14,313	XXX		XXX
9799997. Total - Common Stocks - Part 3						14,313	XXX		XXX
9799998. Total - Common Stocks - Part 5						XXX	XXX	XXX	XXX
9799999. Total - Common Stocks						14,313	XXX		XXX
9899999. Total - Preferred and Common Stocks						191,364	XXX		XXX
9999999 - Totals						2,314,115	XXX	10,312	XXX

(a) For all common stock bearing the NAIC market indicator "U" provide: the number of such issues

STATEMENT AS OF MARCH 31, 2013 OF THE Miami Mutual Insurance Company

SCHEDULE D - PART 4

Show All Long-Term Bonds and Stock Sold, Redeemed or Otherwise Disposed of During the Current Quarter

1	2	3	4	5	6	7	8	9	10	Change In Book/Adjusted Carrying Value					16	17	18	19	20	21	22
										11	12	13	14	15							
CUSIP Identification	Description	For- eign	Disposal Date	Name of Purchaser	Number of Shares of Stock	Consid- eration	Par Value	Actual Cost	Prior Year Book/ Adjusted Carrying Value	Unrealized Valuation Increase/ (Decrease)	Current Year's (Amor- tization)/ Accretion	Current Year's Other Than Temporary Impairment Recogn- ized	Total Change in Book/ Adjusted Carrying Value (11 + 12 - 13)	Total Foreign Exchange Change in Book /Adjusted Carrying Value	Book/ Adjusted Carrying Value at Disposal Date	Foreign Exchange Gain (Loss) on Disposal	Realized Gain (Loss) on Disposal	Total Gain (Loss) on Disposal	Bond Interest/ Stock Dividends Received During Year	Stated Con- tractual Maturity Date	NAIC Design- ation or Market In- dicator (a)
38373M-LB-4	GNMA 2004-20 D		03/16/2013	PRINCIPAL RECEIPT		19,551	19,551	20,604	19,981		(431)		(431)		19,551				230	09/16/2037	1
38373M-VW-7	GNMA 2006-39C		01/16/2013	PRINCIPAL RECEIPT		3,263	3,263	3,414	3,294		(31)		(31)		3,263				15	05/16/2034	1
38373M-Y4-6	GNMA 2008-48D		02/16/2013	PRINCIPAL RECEIPT		58,656	58,656	56,897	57,928		728		728		58,656				277	10/16/2039	1
38375Q-N9-6	GNMA 2008-55 PG		03/20/2013	PRINCIPAL RECEIPT		11,437	11,437	11,429	11,417		20		20		11,437				95	07/20/2037	1
38373M-Z3-7	GNMA 2008-59 B		03/16/2013	PRINCIPAL RECEIPT		53,082	53,082	53,215	52,973		109		109		53,082				696	11/16/2032	1
38376V-WX-1	GNMA 2010-17PK		03/16/2013	PRINCIPAL RECEIPT		40,479	40,479	42,306	41,782		(1,303)		(1,303)		40,479				303	01/16/2038	1
38378B-EF-2	GNMA 2012-28 A		03/16/2013	PRINCIPAL RECEIPT		1,409	1,409	1,423	1,421		(12)		(12)		1,409				4	12/16/2032	1
36290S-OK-5	GNMA 615774		03/15/2013	PRINCIPAL RECEIPT		2,800	2,800	2,770	2,782		17		17		2,800				17	09/15/2018	1
36296R-3Q-8	GNMA POOL 699307		03/15/2013	PRINCIPAL RECEIPT		6,390	6,390	6,412	6,409		(19)		(19)		6,390				70	10/15/2038	1
36241K-AP-3	GNMA POOL 781814		03/15/2013	PRINCIPAL RECEIPT		6,875	6,875	6,961	6,947		(72)		(72)		6,875				53	10/15/2034	1
0599999. Subtotal - Bonds - U.S. Governments						203,942	203,942	205,431	204,936		(994)		(994)		203,942				1,760	XXX	XXX
31419A-2T-3	FANNIE MAE		03/25/2013	PRINCIPAL RECEIPT		12,515	12,515	12,552	12,557		(42)		(42)		12,515				60	01/25/2026	1
31381Y-D5-3	FANNIE MAE A07323		03/15/2013	PRINCIPAL RECEIPT		6,977	6,977	7,403	7,399		(422)		(422)		6,977				37	07/25/2042	1
31416Y-BX-5	FANNIE MAE B2753		03/25/2013	PRINCIPAL RECEIPT		12,246	12,246	12,278	12,275		(29)		(29)		12,246				78	04/25/2026	1
3136A8-V6-4	FANNIE MAE FNR 2012-113 PB		03/25/2013	PRINCIPAL RECEIPT		3,051	3,051	3,116	3,115		(64)		(64)		3,051				10	10/25/2040	1
3136AA-MP-7	FANNIE MAE FNR 2012-139MC		03/25/2013	PRINCIPAL RECEIPT		3,992	3,992	4,080	4,080		(88)		(88)		3,992				14	11/25/2042	1
3136AB-LF-8	FANNIE MAE FNR 2012-148 KB		03/25/2013	PRINCIPAL RECEIPT		3,827	3,827	3,909	3,908		(81)		(81)		3,827				13	03/25/2042	1
3136A6-TP-9	FANNIE MAE FNR 2012-63 HB		03/25/2013	PRINCIPAL RECEIPT		1,945	1,945	1,981	1,967		(36)		(36)		1,945				3	08/25/2041	1
3128K2-C7-2	FEDERAL HOME LOAN MTG		03/15/2013	PRINCIPAL RECEIPT		2,478	2,478	2,397	2,409		69		69		2,478				21	01/15/2036	1
31297F-JD-6	FEDERAL HOME LOAN MTG		03/15/2013	PRINCIPAL RECEIPT		1,895	1,895	1,963	1,949		(55)		(55)		1,895				19	10/15/2034	1
3128H8-CC-2	FEDERAL HOME LOAN MTG CORP		03/15/2013	PRINCIPAL RECEIPT		1,950	1,950	1,996	1,967		(17)		(17)		1,950				15	10/01/2018	1
31401J-D9-6	FEDERAL NATIONAL MORT ASSOC		03/25/2013	PRINCIPAL RECEIPT		877	877	879	877		1		1		877				9	07/01/2018	1
31371K-4E-8	FEDERAL NATIONAL MORTG ASSOC		03/25/2013	PRINCIPAL RECEIPT		1,652	1,652	1,697	1,665		(1)		(1)		1,664		(13)	(13)	14	04/01/2018	1
31382N-GR-7	FEDERAL NATIONAL MORTG ASSOC		03/25/2013	PRINCIPAL RECEIPT		1,905	1,905	1,924	1,900		6		6		1,905				19	02/01/2014	1
31389T-EW-8	FEDERAL NATIONAL MORTG ASSOC		03/25/2013	PRINCIPAL RECEIPT		6,057	6,057	6,201	6,105		(4)		(4)		6,101		(45)	(45)	55	03/01/2017	1
3128GK-BL-7	FGCI POOL E82743		03/15/2013	PRINCIPAL RECEIPT		4,962	4,962	4,971	4,961		1		1		4,962				45	04/01/2016	1
3128M1-PJ-7	FGCI POOL G12335		03/15/2013	PRINCIPAL RECEIPT		4,348	4,348	4,370	4,359		(11)		(11)		4,348				35	05/15/2021	1
3128MB-KT-3	FGCI POOL G12806		03/15/2013	PRINCIPAL RECEIPT		4,267	4,267	4,330	4,309		(42)		(42)		4,267				37	09/15/2022	1
3128KT-D8-0	FGLMC		03/15/2013	PRINCIPAL RECEIPT		2,010	2,010	2,034	2,031		(21)		(21)		2,010				22	06/01/2037	1
3128M4-SS-3	FGLMC POOL G02929		03/15/2013	PRINCIPAL RECEIPT		5,892	5,892	5,953	5,944		(52)		(52)		5,892				50	04/01/2037	1
3128PL-B5-0	FHLNC		03/15/2013	PRINCIPAL RECEIPT		2,626	2,626	2,574	2,588		39		39		2,626				23	12/15/2022	1
31394H-Y5-4	FHLNC		03/15/2013	PRINCIPAL RECEIPT		34,760	34,760	33,890	34,448		312		312		34,760				302	11/15/2022	1
31288L-SS-1	FHLNC POOL 50529		03/15/2013	PRINCIPAL RECEIPT		12,429	12,429	12,497	12,485		(56)		(56)		12,429				167	11/15/2036	1
31371K-SV-9	FNCI POOL 254760		03/25/2013	PRINCIPAL RECEIPT		2,279	2,279	2,205	2,237		42		42		2,279				19	06/01/2018	1
31400D-EE-8	FNCI POOL 684233		03/25/2013	PRINCIPAL RECEIPT		2,939	2,939	2,835	2,882		57		57		2,939				21	01/01/2018	1
31402R-DG-1	FNCL POOL 735503		03/25/2013	PRINCIPAL RECEIPT		4,873	4,873	4,848	4,849		24		24		4,873				48	04/01/2035	1
31410S-NL-7	FNCL POOL 895995		03/25/2013	PRINCIPAL RECEIPT		5,955	5,955	6,012	6,003		(48)		(48)		5,955				72	07/01/2036	1
31395L-6U-0	FNMA		03/15/2013	PRINCIPAL RECEIPT		24,233	24,233	24,109	24,162		71		71		24,233				197	06/15/2033	1
31419B-YG-4	FNMA 1610		03/25/2013	PRINCIPAL RECEIPT		17,762	17,762	18,284	18,254		(491)		(491)		17,762				117	10/25/2040	1
31416R-FA-6	FNMA 7360		03/25/2013	PRINCIPAL RECEIPT		12,489	12,489	12,425	12,428		61		61		12,489				99	01/25/2034	1
31417V-PZ-0	FNMA AC8539		03/25/2013	PRINCIPAL RECEIPT		9,758	9,758	10,002	9,952		(194)		(194)		9,758				62	12/25/2024	1
31371K-SU-1	FNMA POOL 254759		03/25/2013	PRINCIPAL RECEIPT		4,450	4,450	4,310	4,373		77		77		4,450				32	06/25/2018	1
31371M-EP-8	FNMA POOL 255842		03/25/2013	PRINCIPAL RECEIPT		10,702	10,702	10,648	10,651		51		51		10,702				86	09/25/2035	1
31371M-UK-1	FNMA POOL 256286		03/25/2013	PRINCIPAL RECEIPT		2,137	2,137	2,097	2,100		37		37		2,137				20	06/25/2036	1
31371M-4P-9	FNMA POOL 256530		03/25/2013	PRINCIPAL RECEIPT		7,747	7,747	7,552	7,571		176		176		7,747				68	12/01/2036	1
31371N-CJ-2	FNMA POOL 256673		03/25/2013	PRINCIPAL RECEIPT		7,746	7,746	7,780	7,774		(28)		(28)		7,746				73	04/25/2037	1
31371N-CY-9	FNMA POOL 256687		03/25/2013	PRINCIPAL RECEIPT		9,518	9,518	9,378	9,390		128		128		9,518				84	04/01/2037	1
31371N-QN-8	FNMA POOL 257061		03/25/2013	PRINCIPAL RECEIPT		5,830	5,830	5,802	5,804		26		26		5,830				42	01/25/2023	1
31385W-Z5-1	FNMA POOL 555264		02/25/2013	PRINCIPAL RECEIPT		18,660	18,660	18,115	18,582		78		78		18,660				136	02/01/2013	1
31402C-VZ-2	FNMA POOL 725232		03/25/2013	PRINCIPAL RECEIPT		3,524	3,524	3,437	3,453		71		71		3,524				29	03/01/2034	1
31402D-MP-2	FNMA POOL 725866		03/25/2013	PRINCIPAL RECEIPT		4,462	4,462	4,334	4,359		103		103		4,462				32	09/25/2034	1
31403C-6L-0	FNMA POOL 745275		03/25/2013	PRINCIPAL RECEIPT		10,868	10,868	10,846	10,846		23		23		10,868				88	02/25/2036	1
31403J-SA-5	FNMA POOL 750313		03/25/2013	PRINCIPAL RECEIPT		4,353	4,353	4,413	4,398		(45)		(45)		4,353				42	11/25/2033	1
31403K-G9-8	FNMA POOL 750924		03/25/2013	PRINCIPAL RECEIPT		2,913	2,913	2,830	2,875		39		39		2,913				19	10/01/2018	1
	PARTIAL RETURN OF PRINC.																				
31403X-ER-2	FNMA POOL 760744		02/25/2013			8,870	8,870	8,490	8,722		7		7		8,730				70	03/25/2015	1
31407H-KS-4	FNMA POOL 831105		03/25/2013	PRINCIPAL RECEIPT		11,088	11,088	11,254	11,227		(139)		(139)		11,088		140	140	109	11/25/2035	1

SCHEDULE D - PART 4

E05.1

1	2	3	4	5	6	7	8	9	10	Change In Book/Adjusted Carrying Value					16	17	18	19	20	21	22
CUSIP Ident-ification	Description	For-ign	Disposal Date	Name of Purchaser	Number of Shares of Stock	Consid-eration	Par Value	Actual Cost	Prior Year Book/ Adjusted Carrying Value	11	12	13	14 Total Change in Book/ Adjusted Carrying Value (11 + 12 - 13)	15 Total Foreign Exchange Change in Book /Adjusted Carrying Value	Book/ Adjusted Carrying Value at Disposal Date	Foreign Exchange Gain (Loss) on Disposal	Realized Gain (Loss) on Disposal	Total Gain (Loss) on Disposal	Bond Interest/ Stock Dividends Received During Year	Stated Con-tractual Maturity Date	NAIC Desig-nation or Market In-dicator (a)
.31409G-N6-9	FNMA POOL 870813		.03/25/2013	PRINCIPAL RECEIPT		5,687	5,687	5,597	5,605		.82		.82		5,687				.55	10/25/2036	1
.31409X-NT-2	FNMA POOL 881602		.03/25/2013	PRINCIPAL RECEIPT		1,643	1,643	1,669	1,656		(13)		(13)		1,643				.12	02/25/2036	1
.31410E-SV-6	FNMA POOL 887460		.03/25/2013	PRINCIPAL RECEIPT		6,024	6,024	6,180	6,163		(139)		(139)		6,024				.70	09/25/2036	1
.31410G-AF-0	FNMA POOL 888406		.03/25/2013	PRINCIPAL RECEIPT		7,680	7,680	7,322	7,369		.311		.311		7,680				.59	08/25/2036	1
.31410G-PR-8	FNMA POOL 888832		.03/25/2013	PRINCIPAL RECEIPT		10,238	10,238	10,489	10,460		(222)		(222)		10,238				.111	11/25/2037	1
.31411L-K4-2	FNMA POOL 911215		.03/25/2013	PRINCIPAL RECEIPT		7,149	7,149	7,337	7,314		(165)		(165)		7,149				.51	05/25/2037	1
.31416R-HJ-5	FNMA POOL AA7432		.03/25/2013	PRINCIPAL RECEIPT		12,668	12,668	12,639	12,638		.30		.30		12,668				.92	06/25/2039	1
.31294N-S2-6	FREDDIE MAC		.03/15/2013	PRINCIPAL RECEIPT		7,639	7,639	7,988	7,986		(347)		(347)		7,639				.34	11/15/2027	1
.3132GG-C6-8	FREDDIE MAC		.03/15/2013	PRINCIPAL RECEIPT		9,027	9,027	9,381	9,369		(342)		(342)		9,027				.68	08/15/2041	1
.3128MM-KR-3	FREDDIE MAC 18303		.03/15/2013	PRINCIPAL RECEIPT		9,540	9,540	9,721	9,677		(137)		(137)		9,540				.68	03/15/2024	1
.31393H-LN-0	FREDDIE MAC 2562 PG		.03/15/2013	PRINCIPAL RECEIPT		5,711	5,711	5,614	5,661		.50		.50		5,711				.47	01/15/2018	1
.31394W-XU-7	FREDDIE MAC 2785 VD		.03/15/2013	PRINCIPAL RECEIPT		58,358	58,358	58,522	58,336		.22		.22		58,358				.613	05/15/2015	1
.3137A9-YB-6	FREDDIE MAC 3838 AE		.03/15/2013	PRINCIPAL RECEIPT		14,050	14,050	14,296	14,237		(187)		(187)		14,050				.56	11/15/2018	1
.3137AT-6B-3	FREDDIE MAC 4098 HA		.03/15/2013	PRINCIPAL RECEIPT		5,142	5,142	5,206	5,204		(62)		(62)		5,142				.17	07/15/2042	1
.3137AU-L2-3	FREDDIE MAC 4102 CH		.03/15/2013	PRINCIPAL RECEIPT		3,892	3,892	3,977	3,977		(85)		(85)		3,892				.13	11/15/2040	1
.31292L-YA-7	FREDDIE MAC FG C04305		.03/15/2013	PRINCIPAL RECEIPT		3,430	3,430	3,601	3,602		(172)		(172)		3,430				.18	11/15/2042	1
.3132GL-VB-7	FREDDIE MAC FG005410		.03/15/2013	PRINCIPAL RECEIPT		30,484	30,484	31,208	31,188		(705)		(705)		30,484				.154	01/15/2042	1
.3137GA-HR-1	FREDDIE MAC FHR 3743 PA		.03/15/2013	PRINCIPAL RECEIPT		10,013	10,013	10,277	10,251		(239)		(239)		10,013				.42	12/15/2039	1
.3137AT-GC-0	FREDDIE MAC FHR 4091TH		.03/15/2013	PRINCIPAL RECEIPT		4,532	4,532	4,653	4,652		(121)		(121)		4,532				.15	05/15/2041	1
.3137AS-VD-3	FREDDIE MAC FHR 4094 KA		.03/15/2013	PRINCIPAL RECEIPT		3,022	3,022	3,051	3,051		(29)		(29)		3,022				.9	08/15/2041	1
.3137AY-YA-3	FREDDIE MAC FHR 4170 PE		.03/15/2013	PRINCIPAL RECEIPT		910	910	932			(21)		(21)		910				.2	01/15/2033	1
.3128MJ-Q3-7	FREDIE MAC FG08473		.03/15/2013	PRINCIPAL RECEIPT		17,116	17,116	17,617	17,604		(489)		(489)		17,116				.92	01/15/2042	1
.62888V-AB-4	NGN 2010-R1 2A		.03/01/2013	PRINCIPAL RECEIPT		10,245	10,245	10,278	10,271		(26)		(26)		10,245				.31	10/04/2020	1FE
31999999. Subtotal - Bonds - U.S. Special Revenues						570,014	570,014	572,570	570,492		(3,474)		(3,474)		569,932		83	83	4,342	XXX	XXX
.031162-AQ-3	AMGEN INC		.02/01/2013	VARIOUS		33,304	30,000	30,075	30,006		(6)		(6)		30,000		3,304	3,304	.56	02/01/2013	2FE
.05947U-PS-1	BANC OF AMERICA COMM MTG INC		.03/10/2013	PRINCIPAL RECEIPT		1,582	1,582	1,516	1,574		.8		.8		1,582				.13	11/10/2039	1FML
.05949A-SA-4	BANC OF AMERICA MTG SECS INC		.03/25/2013	PRINCIPAL RECEIPT		2,208	2,208	2,249	2,228	5	(25)		(20)		2,208				.20	05/25/2035	3FML
.06606W-AN-4	BANK BOSTON HOME EQUITY		.03/25/2013	PRINCIPAL RECEIPT		37	37	39	37						37					06/25/2013	1FML
.05541T-AD-3	BGC PARTNERS INC		.03/25/2013	BARCLAYS		4,963	5,000	4,463	4,507		.28		.28		4,536		427	427	.158	07/15/2016	2FE
.055921-AB-6	BMC SOFTWARE INC		.03/19/2013	J P MORGAN		74,525	75,000	75,493	75,457		(8)		(8)		75,448		(924)	(924)	1,877	02/15/2022	2FE
.17312X-AQ-7	CITICORP MORTGAGE SECURITIES INC		.03/25/2013	PRINCIPAL RECEIPT		3,326	3,326	3,299	3,314		.11		.11		3,326				.34	05/25/2037	4FML
.23242N-AD-3	COUNTRYWIDE ASSET BACKED CERT		.03/26/2013	PRINCIPAL RECEIPT			1,605	1,099	885		.215		.215		1,099		(1,099)	(1,099)	.25	01/25/2029	6FML
.23243N-AF-5	COUNTRYWIDE ASSET BACKED CERT		.03/26/2013	VARIOUS		2,140	2,665	(848)	1,641	(2,611)	.115		(2,497)		(855)		2,995	2,995	.26	07/25/2034	1FML
.126685-CZ-7	COUNTRYWIDE HOME EQUITY		.03/26/2013	VARIOUS		1,514	1,658	(292)	861	(1,340)	.188		(1,152)		(292)		1,806	1,806	.16	08/25/2021	1FML
.12669G-YP-0	COUNTRYWIDE HOME LOAN		.03/25/2013	PRINCIPAL RECEIPT		1,755	1,755	1,231	1,229						1,229				.12	05/25/2035	3FML
.1248MG-AP-9	CREDIT BASED ASSET SERVICING & SEC		.03/25/2013	PRINCIPAL RECEIPT		717	717	400	387	.13			.13		400		527	527	.5	01/25/2037	1FML
.22541Q-J2-9	CREDIT SUISSE FIRST BOSTON		.03/15/2013	PRINCIPAL RECEIPT		3,804	3,804	3,720	3,787		.17		.17		3,804				.23	12/15/2036	1FML
.22541Q-DJ-8	CREDIT SUISSE FIRST BOSTON MORT		.03/15/2013	PRINCIPAL RECEIPT		86,446	86,446	80,020	85,868		.577		.577		86,446				.495	05/15/2038	1FML
.22541Q-SF-0	CREDIT SUISSE FIRST BOSTON MTG SEC		.03/15/2013	PRINCIPAL RECEIPT		60,122	60,122	60,630	60,050		.73		.73		60,122				.582	08/15/2036	1FML
.12667F-RY-3	CWALT 2004-22CB		.03/25/2013	PRINCIPAL RECEIPT		1,347	1,347	1,341	1,341		.5		.5		1,347				.14	10/25/2034	2FML
.235851-AF-9	DANAHER CORPORATION		.01/17/2013	NOMURA		78,557	45,000	39,064	40,868		.20		.20		40,888		37,669	37,669	.33	01/22/2021	1FE
.45660N-SZ-4	INDYMAC MBS INC		.03/25/2013	PRINCIPAL RECEIPT		2,624	2,624	2,677	2,635		(12)		(12)		2,624				.26	12/25/2034	3FML
.54627R-AA-8	LODA 2010-ELL A1		.02/01/2013	PRINCIPAL RECEIPT		28,652	28,652	28,697	28,669		(17)		(17)		28,652				.159	02/01/2016	1FE
.530715-AR-2	LIBERTY MEDIA CORP		.02/21/2013	NOMURA		80,601	80,000	58,500	58,500						58,500		22,101	22,101	1,156	03/15/2031	3FE
.653356-JL-8	NOMURA ASSET SECURITIES CORP		.01/15/2013	PRINCIPAL RECEIPT		17,339	17,339	18,978	17,371		(33)		(33)		17,339				.104	03/15/2030	1FML
.759950-FX-1	RENAISSANCE HOME EQUITY LOAN		.03/25/2013	PRINCIPAL RECEIPT		262	262	262	218	.44			.44		262				.2	02/25/2036	3FML
.86359B-J2-8	STRUCTURED ASSET SECS CORP		.03/25/2013	PRINCIPAL RECEIPT		374	374	387	374						374				.5	11/25/2034	4FML
.92553P-AG-7	VIACOM INC		.02/01/2013	WELLS FARGO		59,244	55,000	54,526	54,651		.6		.6		54,657		4,586	4,586	.66	04/01/2017	2FE
.98158K-AC-3	WORLD OMNI AUTO REC TRUST		.03/15/2013	PRINCIPAL RECEIPT		52,393	52,393	52,391	52,393						52,393				.98	05/15/2015	1FE
38999999. Subtotal - Bonds - Industrial and Miscellaneous (Unaffiliated)						597,836	558,916	519,916	528,850	(3,675)	950		(2,724)		526,126		71,710	71,710	5,607	XXX	XXX
83999997. Total - Bonds - Part 4						1,371,791	1,332,872	1,297,916	1,304,278	(3,675)	(3,518)		(7,192)		1,299,999		71,792	71,792	11,708	XXX	XXX
83999998. Total - Bonds - Part 5						XXX	XXX	XXX	XXX	XXX	XXX		XXX	XXX	XXX	XXX	XXX	XXX	XXX	XXX	XXX
83999999. Total - Bonds						1,371,791	1,332,872	1,297,916	1,304,278	(3,675)	(3,518)		(7,192)		1,299,999		71,792	71,792	11,708	XXX	XXX
89999997. Total - Preferred Stocks - Part 4							XXX													XXX	XXX
89999998. Total - Preferred Stocks - Part 5						XXX	XXX	XXX	XXX	XXX	XXX		XXX	XXX	XXX	XXX	XXX	XXX	XXX	XXX	XXX
89999999. Total - Preferred Stocks							XXX													XXX	XXX

STATEMENT AS OF MARCH 31, 2013 OF THE Miami Mutual Insurance Company

SCHEDULE D - PART 4

Show All Long-Term Bonds and Stock Sold, Redeemed or Otherwise Disposed of During the Current Quarter

1	2	3	4	5	6	7	8	9	10	Change In Book/Adjusted Carrying Value					16	17	18	19	20	21	22
										11	12	13	14	15							
CUSIP Ident- ification	Description	For- eign	Disposal Date	Name of Purchaser	Number of Shares of Stock	Consid- eration	Par Value	Actual Cost	Prior Year Book/ Adjusted Carrying Value	Unrealized Valuation Increase/ (Decrease)	Current Year's (Amor- tization)/ Accretion	Current Year's Other Than Temporary Impairment Recog- nized	Total Change in Book/ Adjusted Carrying Value (11 + 12 - 13)	Total Foreign Exchange Change in Book /Adjusted Carrying Value	Book/ Adjusted Carrying Value at Disposal Date	Foreign Exchange Gain (Loss) on Disposal	Realized Gain (Loss) on Disposal	Total Gain (Loss) on Disposal	Bond Interest/ Stock Dividends Received DuringYear	Stated Con- tractual Maturity Date	NAIC Desig- nation or Market In- dicator (a)
922906-20-1	VANGUARD PRIME MONEY MARKET		01/03/2013	VANGUARD GROUP	24,400.000	24,400		24,400	24,400						24,400						A
9299999. Subtotal - Common Stocks - Mutual Funds						24,400	XXX	24,400	24,400						24,400					XXX	XXX
9799997. Total - Common Stocks - Part 4						24,400	XXX	24,400	24,400						24,400					XXX	XXX
9799998. Total - Common Stocks - Part 5						XXX	XXX	XXX	XXX	XXX	XXX	XXX	XXX	XXX	XXX	XXX	XXX	XXX	XXX	XXX	XXX
9799999. Total - Common Stocks						24,400	XXX	24,400	24,400						24,400					XXX	XXX
9899999. Total - Preferred and Common Stocks						24,400	XXX	24,400	24,400						24,400					XXX	XXX
9999999 - Totals						1,396,191	XXX	1,322,316	1,328,678	(3,675)	(3,518)		(7,192)		1,324,399		71,792	71,792	11,708	XXX	XXX

(a) For all common stock bearing the NAIC market indicator "U" provide: the number of such issues.....

Schedule DB - Part A - Section 1 - Options, Caps, Floors, Collars, Swaps and Forwards Open
N O N E

Schedule DB - Part B - Section 1 - Futures Contracts Open
N O N E

Schedule DB - Part B - Section 1B - Brokers with whom cash deposits have been made
N O N E

Schedule DB - Part D - Section 1 - Counterparty Exposure for Derivative Instruments Open
N O N E

Schedule DB - Part D - Section 2 - Collateral for Derivative Instruments Open
N O N E

Schedule DB - Part D - Section 2 - Collateral for Derivative Instruments Open
N O N E

Schedule DL - Part 1 - Reinvested Collateral Assets Owned
N O N E

Schedule DL - Part 2 - Reinvested Collateral Assets Owned
N O N E

SCHEDULE E - PART 1 - CASH

[illegible]

STATEMENT AS OF MARCH 31, 2013 OF THE Miami Mutual Insurance Company

SCHEDULE E - PART 2 - CASH EQUIVALENTS

Show Investments Owned End of Current Quarter

1	2	3	4	5	6	7	8
Description	Code	Date Acquired	Rate of Interest	Maturity Date	Book/Adjusted Carrying Value	Amount of Interest Due and Accrued	Amount Received During Year
NONE							
8699999 - Total Cash Equivalents							