



HEALTH QUARTERLY STATEMENT

AS OF MARCH 31, 2013

OF THE CONDITION AND AFFAIRS OF THE

UnitedHealthcare Community Plan of Ohio, Inc.

 NAIC Group Code 0707 0707 NAIC Company Code 12323 Employer's ID Number 56-2451429
 (Current) (Prior)
Organized under the Laws of Ohio, State of Domicile or Port of Entry OhioCountry of Domicile United States of AmericaLicensed as business type: Health Maintenance Organization

Is HMO Federally Qualified? Yes [] No [X]

Incorporated/Organized 03/29/2004 Commenced Business 10/01/2005
 Statutory Home Office 9200 Worthington Road OH020-1000 Westerville, OH, US 43082
 (Street and Number) (City or Town, State, Country and Zip Code)

 Main Administrative Office 9700 Health Care Lane MN017-E900
 (Street and Number)
Minnetonka, MN, US 55343 952-979-6171
 (City or Town, State, Country and Zip Code) (Area Code) (Telephone Number)

 Mail Address 9700 Health Care Lane MN017-E900 Minnetonka, MN, US 55343
 (Street and Number or P.O. Box) (City or Town, State, Country and Zip Code)

 Primary Location of Books and Records 9700 Health Care Lane MN017-E900
 (Street and Number)
Minnetonka, MN, US 55343 952-979-6171
 (City or Town, State, Country and Zip Code) (Area Code) (Telephone Number)
Internet Website Address www.uhccommunityplan.com
 Statutory Statement Contact Mollie Beth Viola 952-979-6171
 (Name) (Area Code) (Telephone Number)
mollie_viola@uhc.com 952-979-7825
 (E-mail Address) (FAX Number)

OFFICERS

 President Tracy Lynn Davidson Treasurer Robert Worth Oberrender
 Secretary Christina Regina Palme-Krizak Chief Financial Officer Dale Ray Moore

OTHER

Michelle Marie Huntley Dill Assistant Secretary

DIRECTORS OR TRUSTEES

Richard Gordon Dunlop Joseph Gilbert Gaudio Bror Olof Hultgren

 State of Ohio State of MN State of Ohio
 County of Franklin County of Kennecott County of Franklin

The officers of this reporting entity being duly sworn, each depose and say that they are the described officers of said reporting entity, and that on the reporting period stated above, all of the herein described assets were the absolute property of the said reporting entity, free and clear from any liens or claims thereon, except as herein stated, and that this statement, together with related exhibits, schedules and explanations therein contained, annexed or referred to, is a full and true statement of all the assets and liabilities and of the condition and affairs of the said reporting entity as of the reporting period stated above, and of its income and deductions therefrom for the period ended, and have been completed in accordance with the NAIC Annual Statement Instructions and Accounting Practices and Procedures manual except to the extent that: (1) state law may differ; or, (2) that state rules or regulations require differences in reporting not related to accounting practices and procedures, according to the best of their information, knowledge and belief, respectively. Furthermore, the scope of this attestation by the described officers also includes the related corresponding electronic filing with the NAIC, when required, that is an exact copy (except for formatting differences due to electronic filing) of the enclosed statement. The electronic filing may be requested by various regulators in lieu of or in addition to the enclosed statement.

Tracy Lynn Davidson
 President

Christina Regina Palme-Krizak
 Secretary

Dale Ray Moore
 Chief Financial Officer

Subscribed and sworn to before me this

26th day of April, 2013

Stacey W. Friedman

Subscribed and sworn to before me this

24 day of April, 2013

Christina Regina Palme-Krizak

Subscribed and sworn to before me this

26th day of April, 2013

Stacey W. Friedman

a. Is this an original filing?.....

Yes [X] No []

b. If no,

1. State the amendment number.....

2. Date filed.....

3. Number of pages attached.....


 STACEY W. FRIEDMAN
 Notary Public, State of Ohio
 My Commission Expires 02-02-2016

 STACEY W. FRIEDMAN
 Notary Public, State of Ohio
 My Commission Expires 02-02-2016

JURAT

ASSETS

	Current Statement Date			4 December 31 Prior Year Net Admitted Assets
	1 Assets	2 Nonadmitted Assets	3 Net Admitted Assets (Cols. 1 - 2)	
1. Bonds	63,549,856		63,549,856	61,964,458
2. Stocks:				
2.1 Preferred stocks			0	0
2.2 Common stocks			0	0
3. Mortgage loans on real estate:				
3.1 First liens			0	0
3.2 Other than first liens.....			0	0
4. Real estate:				
4.1 Properties occupied by the company (less \$ encumbrances)			0	0
4.2 Properties held for the production of income (less \$ encumbrances)			0	0
4.3 Properties held for sale (less \$ encumbrances)			0	0
5. Cash (\$(1,372,549)), cash equivalents (\$0) and short-term investments (\$91,755,486)	90,382,937		90,382,937	87,644,248
6. Contract loans (including \$ premium notes)			0	0
7. Derivatives			0	0
8. Other invested assets			0	0
9. Receivables for securities			0	0
10. Securities lending reinvested collateral assets			0	0
11. Aggregate write-ins for invested assets	0	0	0	0
12. Subtotals, cash and invested assets (Lines 1 to 11)	153,932,793	0	153,932,793	149,608,706
13. Title plants less \$ charged off (for Title insurers only)			0	0
14. Investment income due and accrued	594,622		594,622	692,489
15. Premiums and considerations:				
15.1 Uncollected premiums and agents' balances in the course of collection	9,412,165		9,412,165	6,772,914
15.2 Deferred premiums, agents' balances and installments booked but deferred and not yet due (including \$ earned but unbilled premiums)			0	0
15.3 Accrued retrospective premiums			0	0
16. Reinsurance:				
16.1 Amounts recoverable from reinsurers			0	962,399
16.2 Funds held by or deposited with reinsured companies			0	0
16.3 Other amounts receivable under reinsurance contracts			0	0
17. Amounts receivable relating to uninsured plans			0	0
18.1 Current federal and foreign income tax recoverable and interest thereon			0	0
18.2 Net deferred tax asset	1,661,337	0	1,661,337	1,584,102
19. Guaranty funds receivable or on deposit			0	0
20. Electronic data processing equipment and software			0	0
21. Furniture and equipment, including health care delivery assets (\$)			0	0
22. Net adjustment in assets and liabilities due to foreign exchange rates			0	0
23. Receivables from parent, subsidiaries and affiliates			0	0
24. Health care (\$3,856,951) and other amounts receivable	5,884,498	2,027,547	3,856,951	3,786,477
25. Aggregate write-ins for other than invested assets	7,247	7,247	0	0
26. Total assets excluding Separate Accounts, Segregated Accounts and Protected Cell Accounts (Lines 12 to 25)	171,492,662	2,034,794	169,457,868	163,407,087
27. From Separate Accounts, Segregated Accounts and Protected Cell Accounts			0	0
28. Total (Lines 26 and 27)	171,492,662	2,034,794	169,457,868	163,407,087
DETAILS OF WRITE-INS				
1101.				
1102.				
1103.				
1198. Summary of remaining write-ins for Line 11 from overflow page	0	0	0	0
1199. Totals (Lines 1101 through 1103 plus 1198)(Line 11 above)	0	0	0	0
2501. Prepaid Expense	7,247	7,247	0	0
2502.				
2503.				
2598. Summary of remaining write-ins for Line 25 from overflow page	0	0	0	0
2599. Totals (Lines 2501 through 2503 plus 2598)(Line 25 above)	7,247	7,247	0	0

LIABILITIES, CAPITAL AND SURPLUS

	Current Period			Prior Year
	1 Covered	2 Uncovered	3 Total	4 Total
1. Claims unpaid (less \$ 490,995 reinsurance ceded)	33,343,716		33,343,716	39,641,175
2. Accrued medical incentive pool and bonus amounts	1,062,234		1,062,234	850,000
3. Unpaid claims adjustment expenses	859,581		859,581	918,208
4. Aggregate health policy reserves, including the liability of \$ for medical loss ratio rebate per the Public Health Service Act			0	0
5. Aggregate life policy reserves			0	0
6. Property/casualty unearned premium reserve			0	0
7. Aggregate health claim reserves	1,224,924		1,224,924	1,181,766
8. Premiums received in advance			0	0
9. General expenses due or accrued	10,306,805		10,306,805	8,703,281
10.1 Current federal and foreign income tax payable and interest thereon (including \$ 7,875 on realized gains (losses))	4,066,368		4,066,368	1,255,957
10.2 Net deferred tax liability			0	0
11. Ceded reinsurance premiums payable	373,947		373,947	41,964
12. Amounts withheld or retained for the account of others			0	0
13. Remittances and items not allocated			0	0
14. Borrowed money (including \$ current) and interest thereon \$ (including \$ current)			0	0
15. Amounts due to parent, subsidiaries and affiliates	3,601,293		3,601,293	2,063,450
16. Derivatives			0	0
17. Payable for securities			0	0
18. Payable for securities lending			0	0
19. Funds held under reinsurance treaties (with \$ authorized reinsurers, \$ unauthorized reinsurers and \$ certified reinsurers)			0	0
20. Reinsurance in unauthorized and certified (\$) companies			0	0
21. Net adjustments in assets and liabilities due to foreign exchange rates			0	0
22. Liability for amounts held under uninsured plans			0	0
23. Aggregate write-ins for other liabilities (including \$ 66,536 current)	66,536	0	66,536	1,651,813
24. Total liabilities (Lines 1 to 23)	54,905,404	0	54,905,404	56,307,614
25. Aggregate write-ins for special surplus funds	XXX	XXX	0	0
26. Common capital stock	XXX	XXX	1,000	1,000
27. Preferred capital stock	XXX	XXX		
28. Gross paid in and contributed surplus	XXX	XXX	21,227,057	21,227,057
29. Surplus notes	XXX	XXX		
30. Aggregate write-ins for other than special surplus funds	XXX	XXX	0	0
31. Unassigned funds (surplus)	XXX	XXX	93,324,407	85,871,416
32. Less treasury stock, at cost:				
32.1 shares common (value included in Line 26 \$)	XXX	XXX		
32.2 shares preferred (value included in Line 27 \$)	XXX	XXX		
33. Total capital and surplus (Lines 25 to 31 minus Line 32)	XXX	XXX	114,552,464	107,099,473
34. Total liabilities, capital and surplus (Lines 24 and 33)	XXX	XXX	169,457,868	163,407,087
DETAILS OF WRITE-INS				
2301. Unearned Pay for Performance	27,308		27,308	1,633,601
2302. Unclaimed Property	39,228		39,228	18,212
2303.				
2398. Summary of remaining write-ins for Line 23 from overflow page	0	0	0	0
2399. Totals (Lines 2301 through 2303 plus 2398)(Line 23 above)	66,536	0	66,536	1,651,813
2501.	XXX	XXX		
2502.	XXX	XXX		
2503.	XXX	XXX		
2598. Summary of remaining write-ins for Line 25 from overflow page	XXX	XXX	0	0
2599. Totals (Lines 2501 through 2503 plus 2598)(Line 25 above)	XXX	XXX	0	0
3001.	XXX	XXX		
3002.	XXX	XXX		
3003.	XXX	XXX		
3098. Summary of remaining write-ins for Line 30 from overflow page	XXX	XXX	0	0
3099. Totals (Lines 3001 through 3003 plus 3098)(Line 30 above)	XXX	XXX	0	0

STATEMENT OF REVENUE AND EXPENSES

	Current Year To Date		Prior Year To Date	Prior Year Ended December 31
	1 Uncovered	2 Total	3 Total	4 Total
1. Member Months	XXX	343,694	360,629	1,445,169
2. Net premium income (including \$ non-health premium income).....	XXX	129,734,838	133,110,229	531,028,434
3. Change in unearned premium reserves and reserve for rate credits.....	XXX		(653)	(653)
4. Fee-for-service (net of \$ medical expenses).....	XXX			
5. Risk revenue	XXX			
6. Aggregate write-ins for other health care related revenues	XXX	5,775	0	1,645,711
7. Aggregate write-ins for other non-health revenues	XXX	0	0	0
8. Total revenues (Lines 2 to 7)	XXX	129,740,613	133,109,576	532,673,492
Hospital and Medical:				
9. Hospital/medical benefits		61,416,519	61,525,236	247,504,140
10. Other professional services		7,613,894	9,283,872	36,765,422
11. Outside referrals				
12. Emergency room and out-of-area		4,865,559	4,168,125	19,868,259
13. Prescription drugs		23,681,977	26,267,271	93,160,152
14. Aggregate write-ins for other hospital and medical	0	0	0	0
15. Incentive pool, withhold adjustments and bonus amounts		218,259	213,306	831,449
16. Subtotal (Lines 9 to 15)	0	97,796,208	101,457,810	398,129,422
Less:				
17. Net reinsurance recoveries		516,270	2,024,615	5,738,717
18. Total hospital and medical (Lines 16 minus 17)	0	97,279,938	99,433,195	392,390,705
19. Non-health claims (net)				
20. Claims adjustment expenses, including \$3,101,488 cost containment expenses		4,999,936	4,575,269	20,285,633
21. General administrative expenses		16,162,718	16,729,064	65,575,034
22. Increase in reserves for life and accident and health contracts (including \$ increase in reserves for life only)				0
23. Total underwriting deductions (Lines 18 through 22).....	0	118,442,592	120,737,528	478,251,372
24. Net underwriting gain or (loss) (Lines 8 minus 23)	XXX	11,298,021	12,372,048	54,422,120
25. Net investment income earned		362,388	379,443	1,535,756
26. Net realized capital gains (losses) less capital gains tax of \$7,875		14,556	17,822	111,753
27. Net investment gains (losses) (Lines 25 plus 26)	0	376,944	397,265	1,647,509
28. Net gain or (loss) from agents' or premium balances charged off [(amount recovered \$) (amount charged off \$)].....				
29. Aggregate write-ins for other income or expenses	0	(20,000)	0	0
30. Net income or (loss) after capital gains tax and before all other federal income taxes (Lines 24 plus 27 plus 28 plus 29)	XXX	11,654,965	12,769,313	56,069,629
31. Federal and foreign income taxes incurred	XXX	4,058,536	4,341,574	19,828,336
32. Net income (loss) (Lines 30 minus 31)	XXX	7,596,429	8,427,739	36,241,293
DETAILS OF WRITE-INS				
0601. Performance Based Revenue	XXX	5,775	0	1,645,711
0602.	XXX			
0603.	XXX			
0698. Summary of remaining write-ins for Line 6 from overflow page	XXX	0	0	0
0699. Totals (Lines 0601 through 0603 plus 0698)(Line 6 above)	XXX	5,775	0	1,645,711
0701.	XXX			
0702.	XXX			
0703.	XXX			
0798. Summary of remaining write-ins for Line 7 from overflow page	XXX	0	0	0
0799. Totals (Lines 0701 through 0703 plus 0798)(Line 7 above)	XXX	0	0	0
1401.				
1402.				
1403.				
1498. Summary of remaining write-ins for Line 14 from overflow page	0	0	0	0
1499. Totals (Lines 1401 through 1403 plus 1498)(Line 14 above)	0	0	0	0
2901. Ohio Department of Jobs and Family Services Fine		(20,000)	0	0
2902.				
2903.				
2998. Summary of remaining write-ins for Line 29 from overflow page	0	0	0	0
2999. Totals (Lines 2901 through 2903 plus 2998)(Line 29 above)	0	(20,000)	0	0

STATEMENT OF REVENUE AND EXPENSES (Continued)

	1 Current Year to Date	2 Prior Year to Date	3 Prior Year Ended December 31
CAPITAL AND SURPLUS ACCOUNT			
33. Capital and surplus prior reporting year.....	107,099,473	71,223,489	71,223,489
34. Net income or (loss) from Line 32	7,596,429	8,427,739	36,241,293
35. Change in valuation basis of aggregate policy and claim reserves			
36. Change in net unrealized capital gains (losses) less capital gains tax of \$			
37. Change in net unrealized foreign exchange capital gain or (loss)			
38. Change in net deferred income tax	77,235	554,637	816,234
39. Change in nonadmitted assets	(220,673)	(1,584,677)	(1,181,543)
40. Change in unauthorized and certified reinsurance	0	0	0
41. Change in treasury stock	0	0	0
42. Change in surplus notes	0	0	0
43. Cumulative effect of changes in accounting principles.....			
44. Capital Changes:			
44.1 Paid in	0	0	0
44.2 Transferred from surplus (Stock Dividend).....	0	0	0
44.3 Transferred to surplus.....			
45. Surplus adjustments:			
45.1 Paid in	0	0	0
45.2 Transferred to capital (Stock Dividend)			
45.3 Transferred from capital			
46. Dividends to stockholders			
47. Aggregate write-ins for gains or (losses) in surplus	0	0	0
48. Net change in capital & surplus (Lines 34 to 47)	7,452,991	7,397,699	35,875,984
49. Capital and surplus end of reporting period (Line 33 plus 48)	114,552,464	78,621,188	107,099,473
DETAILS OF WRITE-INS			
4701.			
4702.			
4703.			
4798. Summary of remaining write-ins for Line 47 from overflow page	0	0	0
4799. Totals (Lines 4701 through 4703 plus 4798)(Line 47 above)	0	0	0

CASH FLOW

	1 Current Year To Date	2 Prior Year To Date	3 Prior Year Ended December 31
Cash from Operations			
1. Premiums collected net of reinsurance	127,427,570	134,124,465	531,237,725
2. Net investment income	754,196	843,939	2,752,307
3. Miscellaneous income	(1,600,518)	(1,970,844)	(958,221)
4. Total (Lines 1 to 3)	126,581,248	132,997,560	533,031,811
5. Benefit and loss related payments	102,658,004	108,050,360	404,758,957
6. Net transfers to Separate Accounts, Segregated Accounts and Protected Cell Accounts			
7. Commissions, expenses paid and aggregate write-ins for deductions	19,630,037	20,611,986	85,831,696
8. Dividends paid to policyholders			
9. Federal and foreign income taxes paid (recovered) net of \$ tax on capital gains (losses)	1,256,000	4,125,999	22,754,376
10. Total (Lines 5 through 9)	123,544,041	132,788,345	513,345,029
11. Net cash from operations (Line 4 minus Line 10)	3,037,207	209,215	19,686,782
Cash from Investments			
12. Proceeds from investments sold, matured or repaid:			
12.1 Bonds	1,943,094	1,771,809	10,906,893
12.2 Stocks	0	0	0
12.3 Mortgage loans	0	0	0
12.4 Real estate	0	0	0
12.5 Other invested assets	0	0	0
12.6 Net gains or (losses) on cash, cash equivalents and short-term investments	0	0	0
12.7 Miscellaneous proceeds	0	293,930	0
12.8 Total investment proceeds (Lines 12.1 to 12.7)	1,943,094	2,065,739	10,906,893
13. Cost of investments acquired (long-term only):			
13.1 Bonds	3,800,471	2,222,618	9,847,349
13.2 Stocks	0	0	0
13.3 Mortgage loans	0	0	0
13.4 Real estate	0	0	0
13.5 Other invested assets	0	0	0
13.6 Miscellaneous applications	0	0	0
13.7 Total investments acquired (Lines 13.1 to 13.6)	3,800,471	2,222,618	9,847,349
14. Net increase (or decrease) in contract loans and premium notes	0	0	0
15. Net cash from investments (Line 12.8 minus Line 13.7 and Line 14)	(1,857,377)	(156,879)	1,059,544
Cash from Financing and Miscellaneous Sources			
16. Cash provided (applied):			
16.1 Surplus notes, capital notes	0	0	0
16.2 Capital and paid in surplus, less treasury stock	0	0	0
16.3 Borrowed funds	0	0	0
16.4 Net deposits on deposit-type contracts and other insurance liabilities	0	0	0
16.5 Dividends to stockholders	0	0	0
16.6 Other cash provided (applied)	1,558,859	(6,042,505)	(2,540,195)
17. Net cash from financing and miscellaneous sources (Line 16.1 through Line 16.4 minus Line 16.5 plus Line 16.6)	1,558,859	(6,042,505)	(2,540,195)
RECONCILIATION OF CASH, CASH EQUIVALENTS AND SHORT-TERM INVESTMENTS			
18. Net change in cash, cash equivalents and short-term investments (Line 11, plus Lines 15 and 17) ..	2,738,689	(5,990,169)	18,206,131
19. Cash, cash equivalents and short-term investments:			
19.1 Beginning of year	87,644,248	69,438,117	69,438,117
19.2 End of period (Line 18 plus Line 19.1)	90,382,937	63,447,948	87,644,248

Note: Supplemental disclosures of cash flow information for non-cash transactions:

--	--	--	--

EXHIBIT OF PREMIUMS, ENROLLMENT AND UTILIZATION

	1 Total	Comprehensive (Hospital & Medical)		4 Medicare Supplement	5 Vision Only	6 Dental Only	7 Federal Employees Health Benefit Plan	8 Title XVIII Medicare	9 Title XIX Medicaid	10 Other
		2 Individual	3 Group							
Total Members at end of:										
1. Prior Year	115,096	0	0	0	0	0	0	0	115,096	0
2. First Quarter	114,999								114,999	
3. Second Quarter	0									
4. Third Quarter	0									
5. Current Year	0									
6. Current Year Member Months	343,694								343,694	
Total Member Ambulatory Encounters for Period:										
7. Physician	316,061								316,061	
8. Non-Physician	66,381								66,381	
9. Total	382,442	0	0	0	0	0	0	0	382,442	0
10. Hospital Patient Days Incurred	21,878								21,878	
11. Number of Inpatient Admissions	3,937								3,937	
12. Health Premiums Written (a)	130,853,008								130,853,008	
13. Life Premiums Direct	0									
14. Property/Casualty Premiums Written	0									
15. Health Premiums Earned	130,853,008								130,853,008	
16. Property/Casualty Premiums Earned	0									
17. Amount Paid for Provision of Health Care Services.....	104,619,624								104,619,624	
18. Amount Incurred for Provision of Health Care Services	97,796,208								97,796,208	

(a) For health premiums written: amount of Medicare Title XVIII exempt from state taxes or fees \$ 0

CLAIMS UNPAID AND INCENTIVE POOL, WITHHOLD AND BONUS (Reported and Unreported)

[illegible]

UNDERWRITING AND INVESTMENT EXHIBIT

ANALYSIS OF CLAIMS UNPAID - PRIOR YEAR - NET OF REINSURANCE

Line of Business	Claims Paid Year to Date		Liability End of Current Quarter		5 Claims Incurred in Prior Years (Columns 1 + 3)	6 Estimated Claim Reserve and Claim Liability December 31 of Prior Year
	1 On Claims Incurred Prior to January 1 of Current Year	2 On Claims Incurred During the Year	3 On Claims Unpaid Dec. 31 of Prior Year	4 On Claims Incurred During the Year		
1. Comprehensive (hospital and medical)					0	0
2. Medicare Supplement					0	0
3. Dental Only					0	0
4. Vision Only					0	0
5. Federal Employees Health Benefits Plan					0	0
6. Title XVIII - Medicare					0	0
7. Title XIX - Medicaid	28,607,983	75,006,395	6,396,778	28,171,862	35,004,761	40,822,941
8. Other health					0	0
9. Health subtotal (Lines 1 to 8)	28,607,983	75,006,395	6,396,778	28,171,862	35,004,761	40,822,941
10. Healthcare receivables (a)	1,665,617	3,926,124		292,757	1,665,617	5,586,100
11. Other non-health					0	0
12. Medical incentive pools and bonus amounts		6,025	850,000	212,234	850,000	850,000
13. Totals (Lines 9-10+11+12)	26,942,366	71,086,296	7,246,778	28,091,339	34,189,144	36,086,841

(a) Excludes \$ 0 loans or advances to providers not yet expensed.

NOTES TO FINANCIAL STATEMENTS

1. SUMMARY OF SIGNIFICANT ACCOUNTING POLICIES

A. Accounting Practices

The financial statements of UnitedHealthcare Community Plan of Ohio (the “Company”) are presented on the basis of accounting practices prescribed or permitted by the Ohio Department of Insurance (the “Department”).

The Department recognizes only statutory accounting practices, prescribed or permitted by the State of Ohio, for determining and reporting the financial condition and results of operations of a health insuring company, for determining its solvency under Ohio Insurance Law. The state prescribes the use of the National Association of Insurance Commissioners’ (“NAIC”) Accounting Practices and Procedures manual (“NAIC SAP”) in effect for the accounting periods covered in the financial statement.

(1-8) No significant differences exist between the practices prescribed or permitted by the State of Ohio and those prescribed or permitted by the NAIC SAP which materially affect the statutory basis net income, capital and surplus, and total admitted assets, as illustrated in the table below (in thousands):

	State of Domicile	March 31, 2013	December 31, 2012
NET INCOME			
(1) Company state basis	Ohio	\$ 7,596	\$ 36,241
(2) State Prescribed Practices that increase/(decrease) NAIC SAP: Not Applicable	Ohio	-	-
(3) State Permitted Practices that increase/(decrease) NAIC SAP: Not Applicable	Ohio	-	-
(4) NAIC SAP	Ohio	\$ 7,596	\$ 36,241
SURPLUS			
(5) Company state basis	Ohio	\$ 114,552	\$ 107,099
(6) State Prescribed Practices that increase/(decrease) NAIC SAP: Not Applicable	Ohio	-	-
Not Applicable	Ohio	-	-
(7) State Permitted Practices that increase/(decrease) NAIC SAP: Not Applicable	Ohio	-	-
(8) NAIC SAP	Ohio	\$ 114,552	\$ 107,099

B. Use of Estimates in the Preparation of the Statutory Basis Financial Statements

No significant change.

C. Accounting Policy

No significant change.

2. ACCOUNTING CHANGES AND CORRECTION OF ERRORS

No significant change.

3. BUSINESS COMBINATIONS AND GOODWILL

A–D. No significant change.

4. DISCONTINUED OPERATIONS

(1–5) No significant change.

5. INVESTMENTS AND OTHER INVESTED ASSETS

A. Mortgage Loans, including Mezzanine Real Estate Loans

No significant change.

NOTES TO FINANCIAL STATEMENTS

B. Debt restructuring

No significant change.

C. Reverse Mortgages

No significant change.

D. Loan-Backed Securities

- (1) Corporate bonds and government obligations include mortgage-backed securities, which are valued using the retrospective adjustment methodology. Prepayment assumptions for single class and multi-class mortgage-backed/asset-backed securities were obtained from an external data source vendor.
- (2) The Company did not recognize any other-than-temporary impairments on mortgage-type investments as of March 31, 2013.
- (3) As of March 31, 2013, the Company did not have mortgage-type investments with any other-than-temporary impairment to report by CUSIP.
- (4) The following table illustrates the fair value, gross unrealized losses, and length of time that the mortgage-backed securities have been in a continuous unrealized loss position at March 31, 2013 and December 31, 2012 (in thousands):

	March 31, 2013
The aggregate amount of unrealized losses:	
1. Less than 12 months	\$ (30)
2. 12 Months or longer	-
The aggregate related fair value of securities with unrealized losses:	
1. Less than 12 months	\$ 2,435
2. 12 Months or longer	-
	December 31, 2012
The aggregate amount of unrealized losses:	
1. Less than 12 months	\$ -
2. 12 Months or longer	-
The aggregate related fair value of securities with unrealized losses:	
1. Less than 12 months	\$ 983
2. 12 Months or longer	-

E. Repurchase Agreements and/or Securities Lending Transactions

No significant change.

F. Real Estate

No significant change.

G. Investments in Low-Income Housing Tax Credits

No significant change.

6. JOINT VENTURES, PARTNERSHIPS, AND LIMITED LIABILITY COMPANIES

A–B. No significant change.

7. INVESTMENT INCOME

A–B. No significant change.

8. DERIVATIVE INSTRUMENTS

A–F. No significant change.

NOTES TO FINANCIAL STATEMENTS

9. INCOME TAXES

A–G. No significant change

10. INFORMATION CONCERNING PARENT, SUBSIDIARIES, AND AFFILIATES

A–L. Material Related Party Transactions

No significant change.

11. DEBT

A–B. No significant change.

12. RETIREMENT PLANS, DEFERRED COMPENSATION, POSTEMPLOYMENT BENEFITS AND COMPENSATED ABSENCES, AND OTHER POSTRETIREMENT BENEFIT PLANS

A–F. No significant change.

13. CAPITAL AND SURPLUS, SHAREHOLDERS' DIVIDEND RESTRICTIONS, AND QUASI-REORGANIZATIONS

(1–13) No significant change.

14. CONTINGENCIES

A–E. No significant change.

15. LEASES

A–B. No significant change.

16. INFORMATION ABOUT FINANCIAL INSTRUMENTS WITH OFF-BALANCE-SHEET RISK AND FINANCIAL INSTRUMENTS WITH CONCENTRATIONS OF CREDIT RISK

(1–4) No significant change.

17. SALE, TRANSFER, AND SERVICING OF FINANCIAL ASSETS AND EXTINGUISHMENTS OF LIABILITIES

A–C. No significant change.

18. GAIN OR LOSS TO THE REPORTING ENTITY FROM UNINSURED PLANS AND THE UNINSURED PORTION OF PARTIALLY INSURED PLANS

A–C. No significant change.

19. DIRECT PREMIUM WRITTEN/PRODUCED BY MANAGING GENERAL AGENTS/THIRD-PARTY ADMINISTRATORS

No significant change.

20. FAIR VALUE MEASUREMENT

The NAIC SAP defines fair value, establishes a framework for measuring fair value, and outlines the disclosure requirements related to fair value measurements. The fair value hierarchy is as follows:

Level 1 — Quoted (unadjusted) prices for identical assets in active markets.

Level 2 — Other observable inputs, either directly or indirectly, including:

- Quoted prices for similar assets in active markets
- Quoted prices for identical or similar assets in nonactive markets (few transactions, limited information, noncurrent prices, high variability over time, etc.)

NOTES TO FINANCIAL STATEMENTS

- Inputs other than quoted prices that are observable for the asset (interest rates, yield curves, volatilities, default rates, etc.)
- Inputs that are derived principally from or corroborated by other observable market data

Level 3 — Unobservable inputs that cannot be corroborated by observable market data.

The estimated fair values of bonds and short-term investments (investments) are based on quoted market prices, where available. The Company obtains one price for each security primarily from a third-party pricing service (“pricing service”), which generally uses quoted prices or other observable inputs for the determination of fair value. The pricing service normally derives the security prices through recently reported trades for identical or similar securities, making adjustments through the reporting date based upon available observable market information. For securities not actively traded, the pricing service may use quoted market prices of comparable instruments or discounted cash flow analyses, incorporating inputs that are currently observable in the markets for similar securities. Inputs that are often used in the valuation methodologies include, but are not limited to, non-binding broker quotes, benchmark yields, credit spreads, default rates and prepayment speeds. As the Company is responsible for the determination of fair value, it performs quarterly analyses on the prices received from the pricing service to determine whether the prices are reasonable estimates of fair value. Specifically, the Company compares the prices received from the pricing service to prices reported by its custodian, its investment consultant and third-party investment advisors. Additionally, the Company compares changes in the reported market values and returns to relevant market indices to test the reasonableness of the reported prices. Based on the Company’s internal price verification procedures and review of fair value methodology documentation provided by independent pricing services, the Company has not historically adjusted the prices obtained from the pricing service.

In instances in which the inputs used to measure fair value fall into different levels of the fair value hierarchy, the fair value measurement has been determined based on the lowest level input that is significant to the fair value measurement in its entirety. The Company’s assessment of the significance of a particular item to the fair value measurement in its entirety requires judgment, including the consideration of inputs specific to the asset or liability.

A. Fair Value

The Company has does not have any financial assets that are measured and reported at fair value on the statutory basis statements of admitted assets, liabilities, and capital and surplus at March 31, 2013 and December 31, 2012.

The Company does not have any financial assets with a fair value hierarchy of level 3.

B. Fair Value Combination — Not applicable

C. The aggregate fair value by hierarchy of all financial instruments as of March 31, 2013 and December 31, 2012, is presented in the table below (in thousands):

Types of Financial Investment	March 31, 2013					
	Aggregate Fair Value	Admitted Assets	(Level 1)	(Level 2)	(Level 3)	Not Practical Carrying Value
Bonds	\$ 157,654	\$ 155,305	\$ 95,480	\$ 62,174	\$ -	\$ -
Common stock	-	-	-	-	-	-
Perpetual preferred stock	-	-	-	-	-	-
Mortgage loans	-	-	-	-	-	-

Types of Financial Investment	December 31, 2012					
	Aggregate Fair Value	Admitted Assets	(Level 1)	(Level 2)	(Level 3)	Not Practical Carrying Value
Bonds	\$ 155,053	\$ 152,583	\$ 94,949	\$ 60,105	\$ -	\$ -
Common stock	-	-	-	-	-	-
Perpetual preferred stock	-	-	-	-	-	-
Mortgage loans	-	-	-	-	-	-

Included as Level 1 in bonds in the fair value hierarchy table above is money market instruments of \$91,755,000 and \$90,619,000 as of March 31, 2013 and December 31, 2012, respectively. Money market instruments are reflected in cash and short-term investments in the statutory basis statements of admitted assets, liabilities, and capital and surplus.

C. Not Practicable to Estimate Fair Value — Not applicable

NOTES TO FINANCIAL STATEMENTS

21. OTHER ITEMS

A–H. No significant change.

22. EVENTS SUBSEQUENT

No significant change.

23. REINSURANCE

A–C. No significant change.

24. RETROSPECTIVELY RATED CONTRACTS AND CONTRACTS SUBJECT TO REDETERMINATION

A–B. No significant change.

- C. The Medicaid business contract with the state of Ohio includes Aged, Blind, and Disabled (ABD) program which is subject to retrospective rating features. The Company estimates accrued retrospective premium adjustments for its ABD program based on the contract with the Ohio Department of Jobs and Family Services (ODJFS). The amount of net premium income that is subject to the ABD program contract retrospective rating feature was approximately \$54,393,000 and \$216,250,000, representing 41.9% and 40.7% of total net premium income as of March 31, 2013 and December 31, 2012, respectively.
- D. Pursuant to the Health Reform Legislation, the Company does not have any business subject to specific minimum loss ratio requirements as of March 31, 2013 and December 31, 2012.

NOTES TO FINANCIAL STATEMENTS

25. CHANGE IN INCURRED CLAIMS AND CLAIMS ADJUSTMENT EXPENSES

Changes in estimates related to the prior year incurred claims are included in total hospital and medical expenses in the current year in the accompanying statutory basis statements of operations. The following tables disclose paid claims, incurred claims, and the balance in the claims unpaid, accrued medical incentive pool and bonus amounts, aggregate health claim reserves and health care receivables at March 31, 2013 and December 31, 2012 (in thousands):

	March 31, 2013		
	Current Year Incurred Claims	Prior Years Incurred Claims	Total
Beginning of year claim reserve	\$ -	\$ (41,673)	\$ (41,673)
Paid claims, net of health care receivables	75,012	27,646	102,658
End of year claim reserve	<u>28,384</u>	<u>7,247</u>	<u>35,631</u>
Incurred claims excluding the change in health care receivables and reinsurance recoverables as presented below	103,396	(6,780)	96,616
Beginning of year health care receivables and reinsurance recoverables	-	6,548	6,548
End of year health care receivables	<u>(4,219)</u>	<u>(1,665)</u>	<u>(5,884)</u>
Total incurred claims	<u>\$ 99,177</u>	<u>\$ (1,897)</u>	<u>\$ 97,280</u>

	December 31, 2012		
	Current Year Incurred Claims	Prior Years Incurred Claims	Total
Beginning of year claim reserve	\$ -	\$ (49,300)	\$ (49,300)
Paid claims, net of health care receivables and reinsurance recoveries collected	375,032	29,727	404,759
End of year claim reserve	<u>40,393</u>	<u>1,280</u>	<u>41,673</u>
Incurred claims excluding the change in health care receivables and reinsurance recoverables as presented below	415,425	(18,293)	397,132
Beginning of year health care receivables	-	1,807	1,807
End of year health care receivables and reinsurance recoverables	<u>(4,582)</u>	<u>(1,966)</u>	<u>(6,548)</u>
Total incurred claims	<u>\$ 410,843</u>	<u>\$ (18,452)</u>	<u>\$ 392,391</u>

The liability for claims unpaid, accrued medical incentive pool and bonus amounts, aggregate health claim reserves and health care receivables as of December 31, 2012 were approximately \$35,125,000. As of March 31, 2013, approximately \$27,646,000 has been paid for incurred claims attributable to insured events of prior years. Reserves remaining for prior years are now approximately \$5,582,000 as a result of re-estimation of unpaid claims. Therefore, there has been approximately \$1,897,000 favorable prior year development since December 31, 2012 to March 31, 2013. The primary drivers consist of favorable development as a result of a change in the provision for adverse deviations in experience of approximately \$2,642,000 offset by unfavorable development of approximately \$741,000 in retroactivity for inpatient, outpatient, physician, and pharmacy claims. At December 31, 2012, the Company recorded approximately \$18,452,000 of favorable development related to insured events of prior years primarily as a result of ongoing analysis of loss development trends and changes to the provider settlement reserves. Original estimates are increased or decreased, as additional information becomes known regarding individual claims. The favorable development also impacts the original estimates and calculations for retrospectively rated policies. As a result of the prior year effects, on a regular basis, the Company adjusts revenue and the corresponding liability and/or receivable related to retrospectively rated policies and the impact of the change is included as a component of change in unearned premium reserves and reserve for rate credits in the statutory basis statements of operations.

The Company incurred claims adjustment expenses of approximately \$5,000,000 and \$20,286,000 for the three months ended March 31, 2013 and the year ended December 31, 2012, respectively. These costs are included in the management service fees paid by the Company to UnitedHealthcare Services, Inc. (UHS) as a part of its management agreement. The following tables disclose paid CAE, incurred CAE, and the balance

NOTES TO FINANCIAL STATEMENTS

in the unpaid claim adjustment expenses reserve for the three months ended March 31, 2013 and the year ended December 31, 2012 (in thousands):

	March 31, 2013	December 31, 2012
Total claims adjustment expenses incurred	\$ 5,000	\$ 20,286
Less current year unpaid claims adjustment expenses	(860)	(918)
Add prior year unpaid claims adjustment expenses	<u>918</u>	<u>1,026</u>
Total claims adjustment expenses paid	<u>\$ 5,058</u>	<u>\$ 20,394</u>

26. INTERCOMPANY POOLING ARRANGEMENTS

A–G. No significant change.

27. STRUCTURED SETTLEMENTS

A–B. No significant change.

28. HEALTH CARE AND OTHER AMOUNTS RECEIVABLES

A–B. No significant change.

29. PARTICIPATING POLICIES

No significant change.

30. PREMIUM DEFICIENCY RESERVES

No significant change.

31. ANTICIPATED SALVAGE AND SUBROGATION

No significant change.

GENERAL INTERROGATORIES

PART 1 - COMMON INTERROGATORIES

GENERAL

1.1

Did the reporting entity experience any material transactions requiring the filing of Disclosure of Material Transactions with the State of Domicile, as required by the Model Act?

Yes [☐] No [☒]

1.2

If yes, has the report been filed with the domiciliary state?

Yes [☐] No [☐]

2.1

Has any change been made during the year of this statement in the charter, by-laws, articles of incorporation, or deed of settlement of the reporting entity?

Yes [☐] No [☒]

2.2

If yes, date of change:

3.1

Have there been any substantial changes in the organizational chart since the prior quarter end?

Yes [☒] No [☐]

3.2

If the response to 3.1 is yes, provide a brief description of those changes.
January 17, 2013: Hickory Acquisition Subsidiary, Inc., merged into Humedica, Inc. with Humedica, Inc. surviving the merger as a wholly owned subsidiary of United HealthCare Services, Inc.

January 31, 2013: UnitedHealthcare of South Carolina, Inc. was sold.

February 8, 2013: Physicians Health Choice of Arkansas, Inc. was dissolved.

February 25, 2013: Exlogs EBT Holdings Limited was struck off.

March 1, 2013: AMIL International S.a.r.l acquired a 100% ownership interest in HPP - Hospitais Privados de Portugal, SGPS. HPP - Hospitais Privados de Portugal, SGPS, S.A. is the sole shareholder of the following entities: HPP Boavista, S.A.; HPP Lusiadas, S.A.; HPP Algarve, S.A.; HPP Saude - Parcerias Cascais, S.A.; Carlton Life - Residencias e Servicos S.A.

4.1

Has the reporting entity been a party to a merger or consolidation during the period covered by this statement?

Yes [☐] No [☒]

4.2

If yes, provide the name of the entity, NAIC Company Code, and state of domicile (use two letter state abbreviation) for any entity that has ceased to exist as a result of the merger or consolidation.

1 Name of Entity	2 NAIC Company Code	3 State of Domicile

5.

If the reporting entity is subject to a management agreement, including third-party administrator(s), managing general agent(s), attorney-in-fact, or similar agreement, have there been any significant changes regarding the terms of the agreement or principals involved?
If yes, attach an explanation.

Yes [☐] No [☒] N/A [☐]

6.1

State as of what date the latest financial examination of the reporting entity was made or is being made.

12/31/2009

6.2

State the as of date that the latest financial examination report became available from either the state of domicile or the reporting entity. This date should be the date of the examined balance sheet and not the date the report was completed or released.

12/31/2009

6.3

State as of what date the latest financial examination report became available to other states or the public from either the state of domicile or the reporting entity. This is the release date or completion date of the examination report and not the date of the examination (balance sheet date).

10/01/2010

6.4

By what department or departments?
Ohio Department of Insurance

6.5

Have all financial statement adjustments within the latest financial examination report been accounted for in a subsequent financial statement filed with Departments?

Yes [☐] No [☐] N/A [☒]

6.6

Have all of the recommendations within the latest financial examination report been complied with?

Yes [☐] No [☐] N/A [☒]

7.1

Has this reporting entity had any Certificates of Authority, licenses or registrations (including corporate registration, if applicable) suspended or revoked by any governmental entity during the reporting period?

Yes [☐] No [☒]

7.2

If yes, give full information:

8.1

Is the company a subsidiary of a bank holding company regulated by the Federal Reserve Board?

Yes [☐] No [☒]

8.2

If response to 8.1 is yes, please identify the name of the bank holding company.

8.3

Is the company affiliated with one or more banks, thrifts or securities firms?

Yes [☒] No [☐]

8.4

If response to 8.3 is yes, please provide below the names and location (city and state of the main office) of any affiliates regulated by a federal regulatory services agency [i.e. the Federal Reserve Board (FRB), the Office of the Comptroller of the Currency (OCC), the Federal Deposit Insurance Corporation (FDIC) and the Securities Exchange Commission (SEC)] and identify the affiliate's primary federal regulator.

1 Affiliate Name	2 Location (City, State)	3 FRB	4 OCC	5 FDIC	6 SEC
OptumHealth Bank Inc.	Salt Lake City, Utah	NO	NO	YES	NO

GENERAL INTERROGATORIES

- 9.1

Are the senior officers (principal executive officer, principal financial officer, principal accounting officer or controller, or persons performing similar functions) of the reporting entity subject to a code of ethics, which includes the following standards?
(a) Honest and ethical conduct, including the ethical handling of actual or apparent conflicts of interest between personal and professional relationships;
(b) Full, fair, accurate, timely and understandable disclosure in the periodic reports required to be filed by the reporting entity;
(c) Compliance with applicable governmental laws, rules and regulations;
(d) The prompt internal reporting of violations to an appropriate person or persons identified in the code; and
(e) Accountability for adherence to the code.

Yes [X] No []
- 9.11

If the response to 9.1 is No, please explain:
- 9.2

Has the code of ethics for senior managers been amended?

Yes [] No [X]
- 9.21

If the response to 9.2 is Yes, provide information related to amendment(s).
- 9.3

Have any provisions of the code of ethics been waived for any of the specified officers?

Yes [] No [X]
- 9.31

If the response to 9.3 is Yes, provide the nature of any waiver(s).

FINANCIAL

- 10.1

Does the reporting entity report any amounts due from parent, subsidiaries or affiliates on Page 2 of this statement?

Yes [] No [X]
- 10.2

If yes, indicate any amounts receivable from parent included in the Page 2 amount:

\$

INVESTMENT

- 11.1

Were any of the stocks, bonds, or other assets of the reporting entity loaned, placed under option agreement, or otherwise made available for use by another person? (Exclude securities under securities lending agreements.)

Yes [] No [X]
- 11.2

If yes, give full and complete information relating thereto:
12.

Amount of real estate and mortgages held in other invested assets in Schedule BA:

\$
13.

Amount of real estate and mortgages held in short-term investments:

\$
- 14.1

Does the reporting entity have any investments in parent, subsidiaries and affiliates?

Yes [] No [X]
- 14.2

If yes, please complete the following:
- | | 1 | 2 |
|---|---|--|
| | Prior Year-End
Book/Adjusted
Carrying Value | Current Quarter
Book/Adjusted
Carrying Value |
| 14.21 Bonds | \$0 | \$ |
| 14.22 Preferred Stock | \$0 | \$ |
| 14.23 Common Stock | \$0 | \$ |
| 14.24 Short-Term Investments | \$0 | \$ |
| 14.25 Mortgage Loans on Real Estate | \$0 | \$ |
| 14.26 All Other | \$0 | \$ |
| 14.27 Total Investment in Parent, Subsidiaries and Affiliates (Subtotal Lines 14.21 to 14.26) | \$0 | \$0 |
| 14.28 Total Investment in Parent included in Lines 14.21 to 14.26 above | \$ | \$ |
- 15.1

Has the reporting entity entered into any hedging transactions reported on Schedule DB?

Yes [] No [X]
- 15.2

If yes, has a comprehensive description of the hedging program been made available to the domiciliary state?
If no, attach a description with this statement.

Yes [] No []

STATEMENT AS OF MARCH 31, 2013 OF THE UnitedHealthcare Community Plan of Ohio, Inc.

GENERAL INTERROGATORIES

16. For the reporting entity's security lending program, state the amount of the following as of the current statement date:
- 16.1 Total fair value of reinvested collateral assets reported on Schedule DL, Parts 1 and 2

\$ 0
- 16.2 Total book adjusted/carrying value of reinvested collateral assets reported on Schedule DL, Parts 1 and 2

\$ 0
- 16.3 Total payable for securities lending reported on the liability page

\$ 0

17. Excluding items in Schedule E - Part 3 - Special Deposits, real estate, mortgage loans and investments held physically in the reporting entity's offices, vaults or safety deposit boxes, were all stocks, bonds and other securities, owned throughout the current year held pursuant to a custodial agreement with a qualified bank or trust company in accordance with Section 1, III - General Examination Considerations, F. Outsourcing of Critical Functions, Custodial or Safekeeping Agreements of the NAIC Financial Condition Examiners Handbook? Yes ☒ No ☐
- 17.1 For all agreements that comply with the requirements of the NAIC Financial Condition Examiners Handbook, complete the following:

1 Name of Custodian(s)	2 Custodian Address
Northern Trust	50 S. LaSalle, Chicago, IL 60675
Bank of New York Mellon	Global Liquidity Services, 1 Wall St, 14th Floor, New York, NY 10286

- 17.2 For all agreements that do not comply with the requirements of the NAIC Financial Condition Examiners Handbook, provide the name, location and a complete explanation:

1 Name(s)	2 Location(s)	3 Complete Explanation(s)

- 17.3 Have there been any changes, including name changes, in the custodian(s) identified in 17.1 during the current quarter? Yes ☐ No ☒
- 17.4 If yes, give full information relating thereto:

1 Old Custodian	2 New Custodian	3 Date of Change	4 Reason

- 17.5 Identify all investment advisors, brokers/dealers or individuals acting on behalf of broker/dealers that have access to the investment accounts, handle securities and have authority to make investments on behalf of the reporting entity:

1 Central Registration Depository	2 Name(s)	3 Address
113972	Standish Mellon Asset Management Company	201 Washington Street, Suite 2900, Boston, MN 02108

- 18.1 Have all the filing requirements of the Purposes and Procedures Manual of the NAIC Securities Valuation Office been followed? Yes ☒ No ☐
- 18.2 If no, list exceptions:

GENERAL INTERROGATORIES

PART 2 - HEALTH

1. Operating Percentages:
- 1.1 A&H loss percent

77.4 %
- 1.2 A&H cost containment percent

2.4 %
- 1.3 A&H expense percent excluding cost containment expenses

13.9 %
- 2.1 Do you act as a custodian for health savings accounts?

Yes [] No [X]
- 2.2 If yes, please provide the amount of custodial funds held as of the reporting date

\$.
- 2.3 Do you act as an administrator for health savings accounts?

Yes [] No [X]
- 2.4 If yes, please provide the balance of the funds administered as of the reporting date

\$.

SCHEDULE S - CEDED REINSURANCE

Showing All New Reinsurance Treaties - Current Year to Date

1 NAIC Company Code	2 Federal ID Number	3 Effective Date	4 Name of Reinsurer	5 Domiciliary Jurisdiction	6 Type of Reinsurance Ceded	7 Is Insurer Authorized? (Yes or No)
			NONE			

STATEMENT AS OF MARCH 31, 2013 OF THE UnitedHealthcare Community Plan of Ohio, Inc.

SCHEDULE T - PREMIUMS AND OTHER CONSIDERATIONS

Current Year to Date - Allocated by States and Territories										
		1	Direct Business Only							
			2	3	4	5	6	7	8	9
States, etc.		Active Status	Accident and Health Premiums	Medicare Title XVIII	Medicaid Title XIX	Federal Employees Health Benefits Program Premiums	Life and Annuity Premiums & Other Considerations	Property/ Casualty Premiums	Total Columns 2 Through 7	Deposit-Type Contracts
1.	Alabama	AL	N						.0	
2.	Alaska	AK	N						.0	
3.	Arizona	AZ	N						.0	
4.	Arkansas	AR	N						.0	
5.	California	CA	N						.0	
6.	Colorado	CO	N						.0	
7.	Connecticut	CT	N						.0	
8.	Delaware	DE	N						.0	
9.	District of Columbia ..	DC	N						.0	
10.	Florida	FL	N						.0	
11.	Georgia	GA	N						.0	
12.	Hawaii	HI	N						.0	
13.	Idaho	ID	N						.0	
14.	Illinois	IL	N						.0	
15.	Indiana	IN	N						.0	
16.	Iowa	IA	N						.0	
17.	Kansas	KS	N						.0	
18.	Kentucky	KY	N						.0	
19.	Louisiana	LA	N						.0	
20.	Maine	ME	N						.0	
21.	Maryland	MD	N						.0	
22.	Massachusetts	MA	N						.0	
23.	Michigan	MI	N						.0	
24.	Minnesota	MN	N						.0	
25.	Mississippi	MS	N						.0	
26.	Missouri	MO	N						.0	
27.	Montana	MT	N						.0	
28.	Nebraska	NE	N						.0	
29.	Nevada	NV	N						.0	
30.	New Hampshire	NH	N						.0	
31.	New Jersey	NJ	N						.0	
32.	New Mexico	NM	N						.0	
33.	New York	NY	N						.0	
34.	North Carolina	NC	N						.0	
35.	North Dakota	ND	N						.0	
36.	Ohio	OH	L		130,853,008				130,853,008	
37.	Oklahoma	OK	N						.0	
38.	Oregon	OR	N						.0	
39.	Pennsylvania	PA	N						.0	
40.	Rhode Island	RI	N						.0	
41.	South Carolina	SC	N						.0	
42.	South Dakota	SD	N						.0	
43.	Tennessee	TN	N						.0	
44.	Texas	TX	N						.0	
45.	Utah	UT	N						.0	
46.	Vermont	VT	N						.0	
47.	Virginia	VA	N						.0	
48.	Washington	WA	N						.0	
49.	West Virginia	WV	N						.0	
50.	Wisconsin	WI	N						.0	
51.	Wyoming	WY	N						.0	
52.	American Samoa	AS	N						.0	
53.	Guam	GU	N						.0	
54.	Puerto Rico	PR	N						.0	
55.	U.S. Virgin Islands	VI	N						.0	
56.	Northern Mariana Islands	MP	N						.0	
57.	Canada	CAN	N						.0	
58.	Aggregate Other Aliens	OT	XXX	.0	.0	.0	.0	.0	.0	.0
59.	Subtotal	XXX	.0	.0	130,853,008	.0	.0	.0	130,853,008	.0
60.	Reporting Entity Contributions for Employee Benefit Plans	XXX							.0	
61.	Totals (Direct Business)	(a) 1	0	0	130,853,008	0	0	0	130,853,008	0
DETAILS OF WRITE-INS										
58001.			XXX							
58002.			XXX							
58003.			XXX							
58998.	Summary of remaining write-ins for Line 58 from overflow page		XXX	.0	.0	.0	.0	.0	.0	.0
58999.	Totals (Lines 58001 through 58003 plus 58998)(Line 58 above)		XXX	0	0	0	0	0	0	0

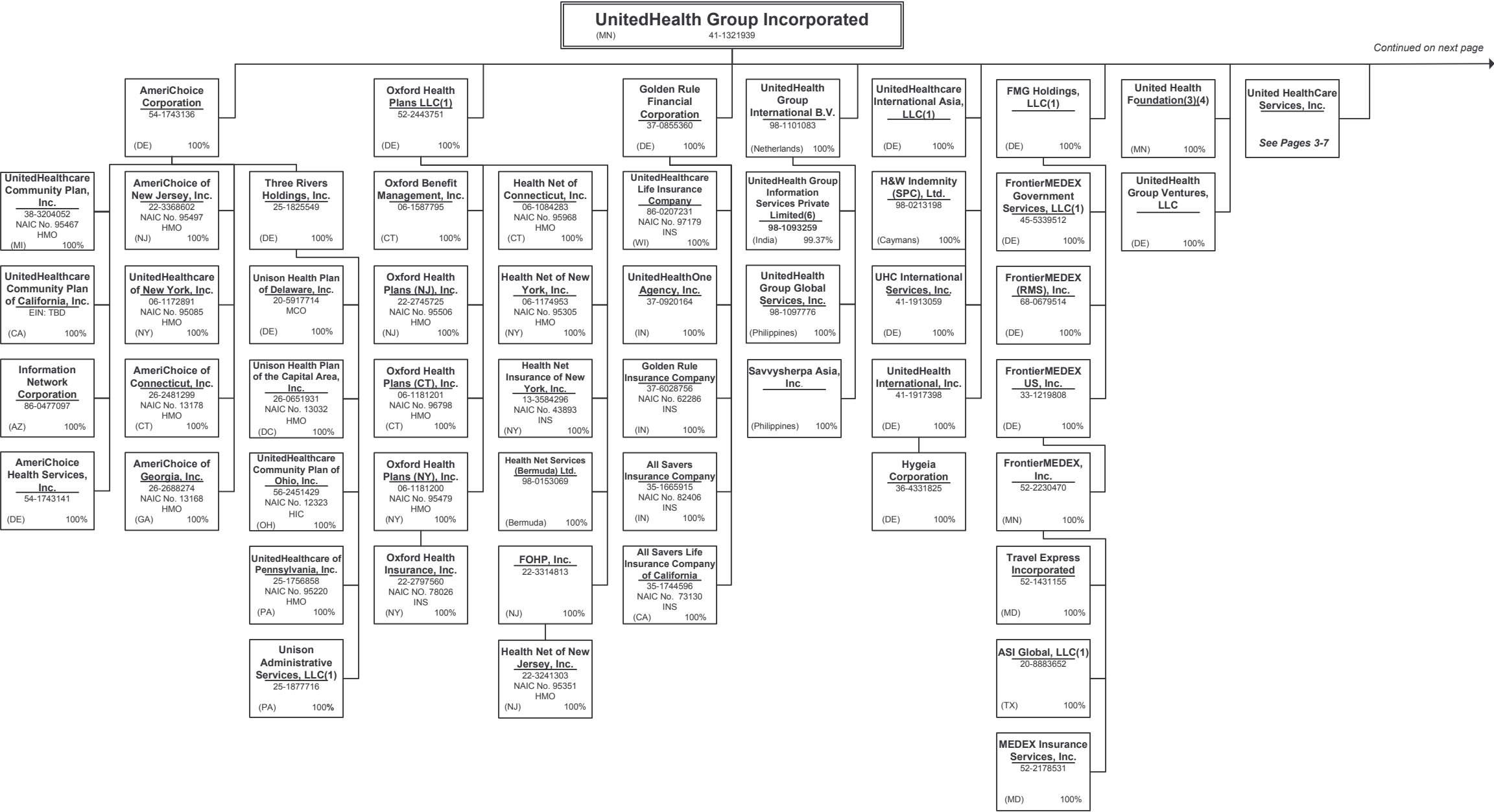
(L) Licensed or Chartered - Licensed Insurance Carrier or Domiciled RRG; (R) Registered - Non-domiciled RRGs; (Q) Qualified - Qualified or Accredited Reinsurer; (E) Eligible - Reporting Entities eligible or approved to write Surplus Lines in the state; (N) None of the above - Not allowed to write business in the state.

(a) Insert the number of L responses except for Canada and Other Alien.

Premiums allocated by state based upon Geographic Market.

SCHEDULE Y - INFORMATION CONCERNING ACTIVITIES OF INSURER MEMBERS OF A HOLDING COMPANY GROUP

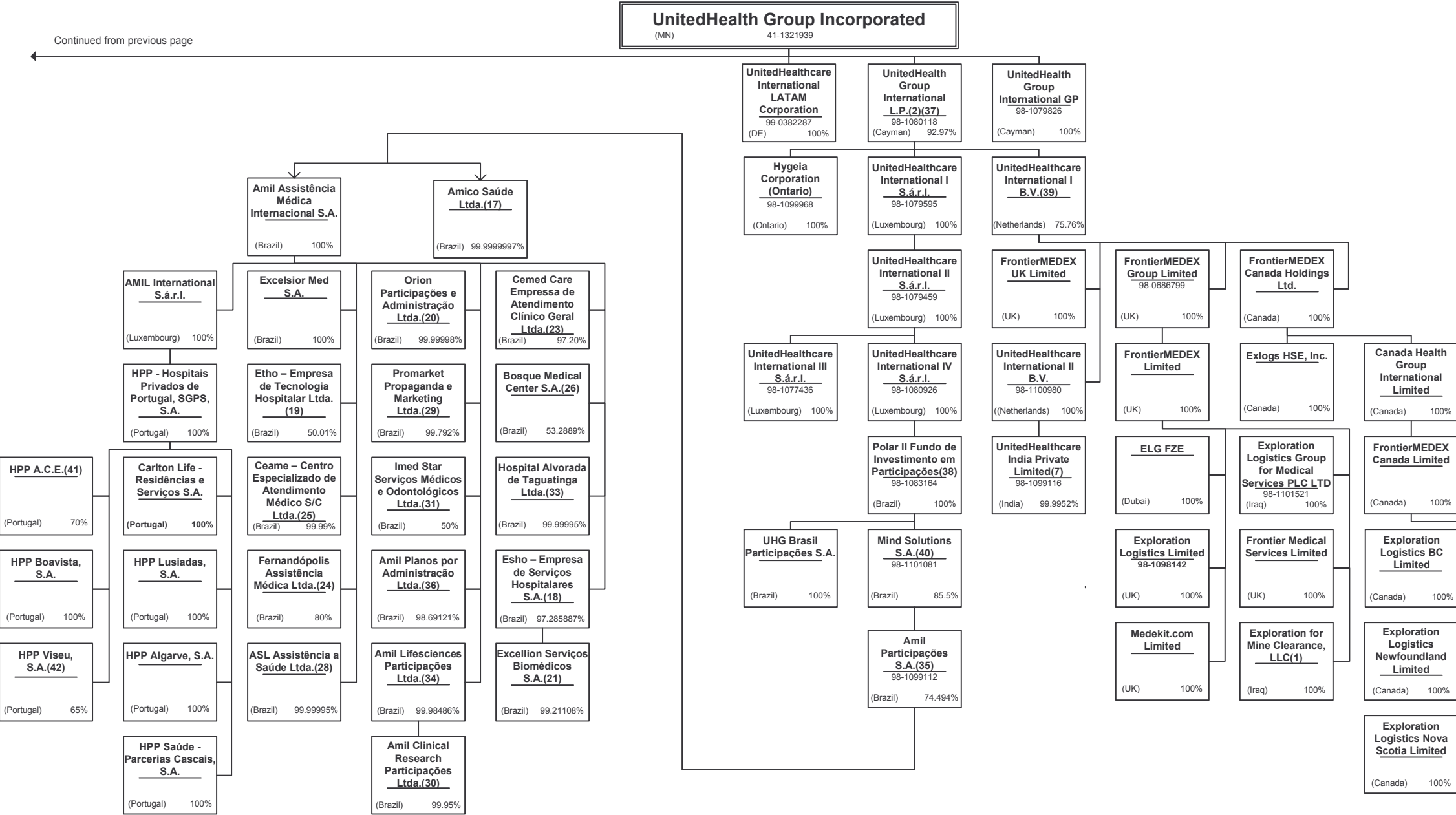
PART 1 - ORGANIZATIONAL CHART



Continued on next page

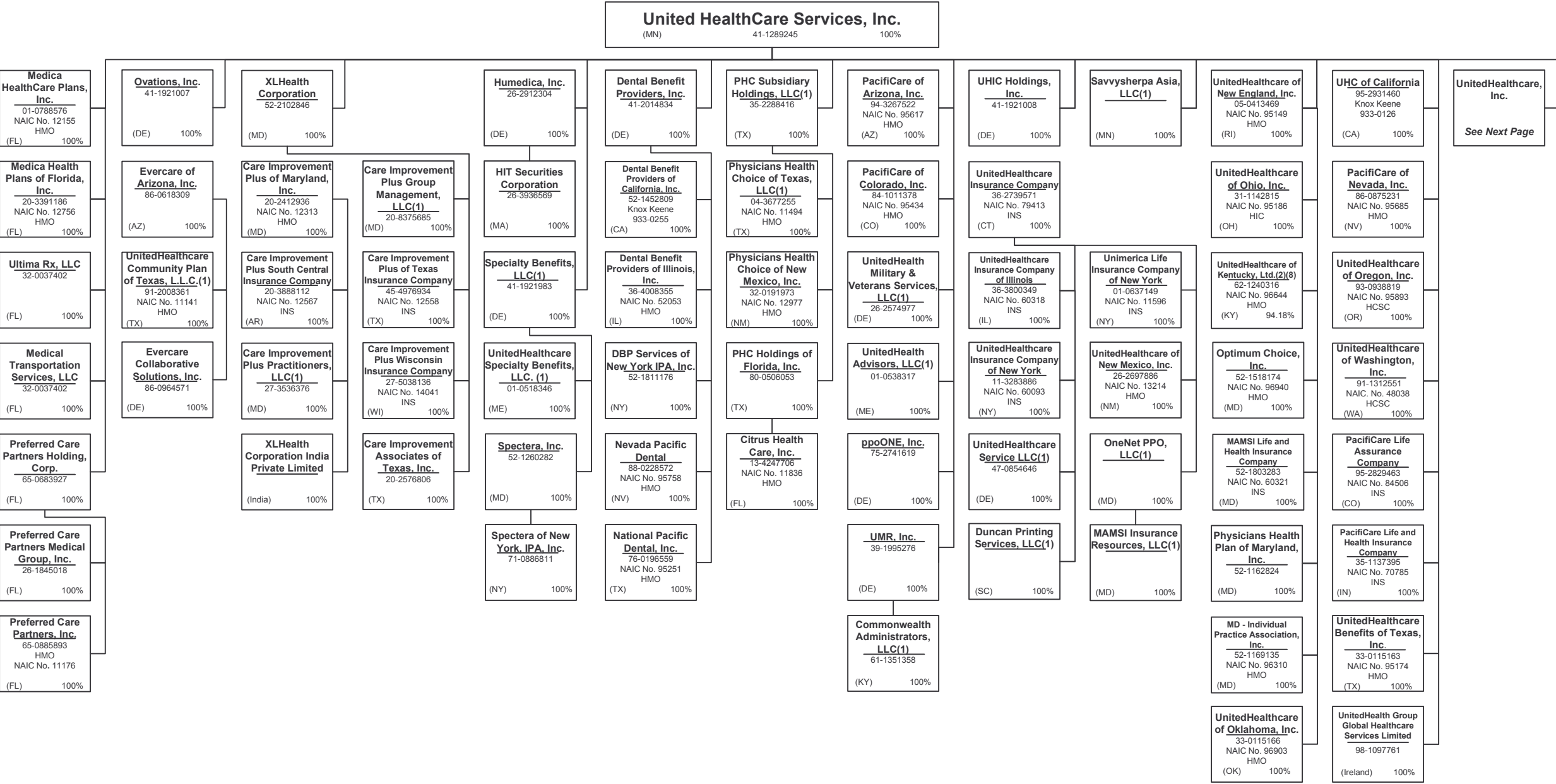
SCHEDULE Y - INFORMATION CONCERNING ACTIVITIES OF INSURER MEMBERS OF A HOLDING COMPANY GROUP

PART 1 - ORGANIZATIONAL CHART



SCHEDULE Y - INFORMATION CONCERNING ACTIVITIES OF INSURER MEMBERS OF A HOLDING COMPANY GROUP

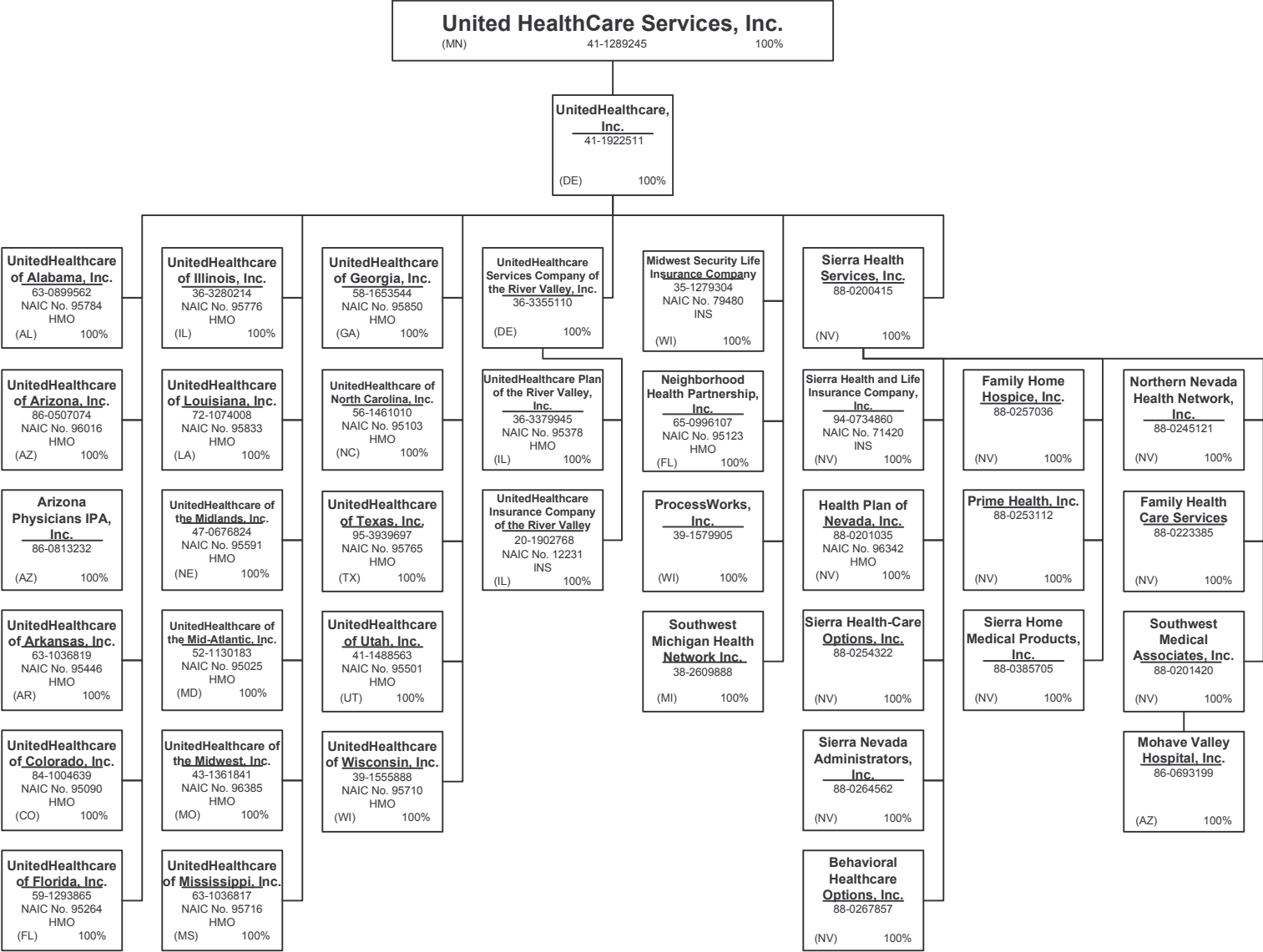
PART 1 - ORGANIZATIONAL CHART



See Next Page

SCHEDULE Y - INFORMATION CONCERNING ACTIVITIES OF INSURER MEMBERS OF A HOLDING COMPANY GROUP

PART 1 - ORGANIZATIONAL CHART



15.4

15.4



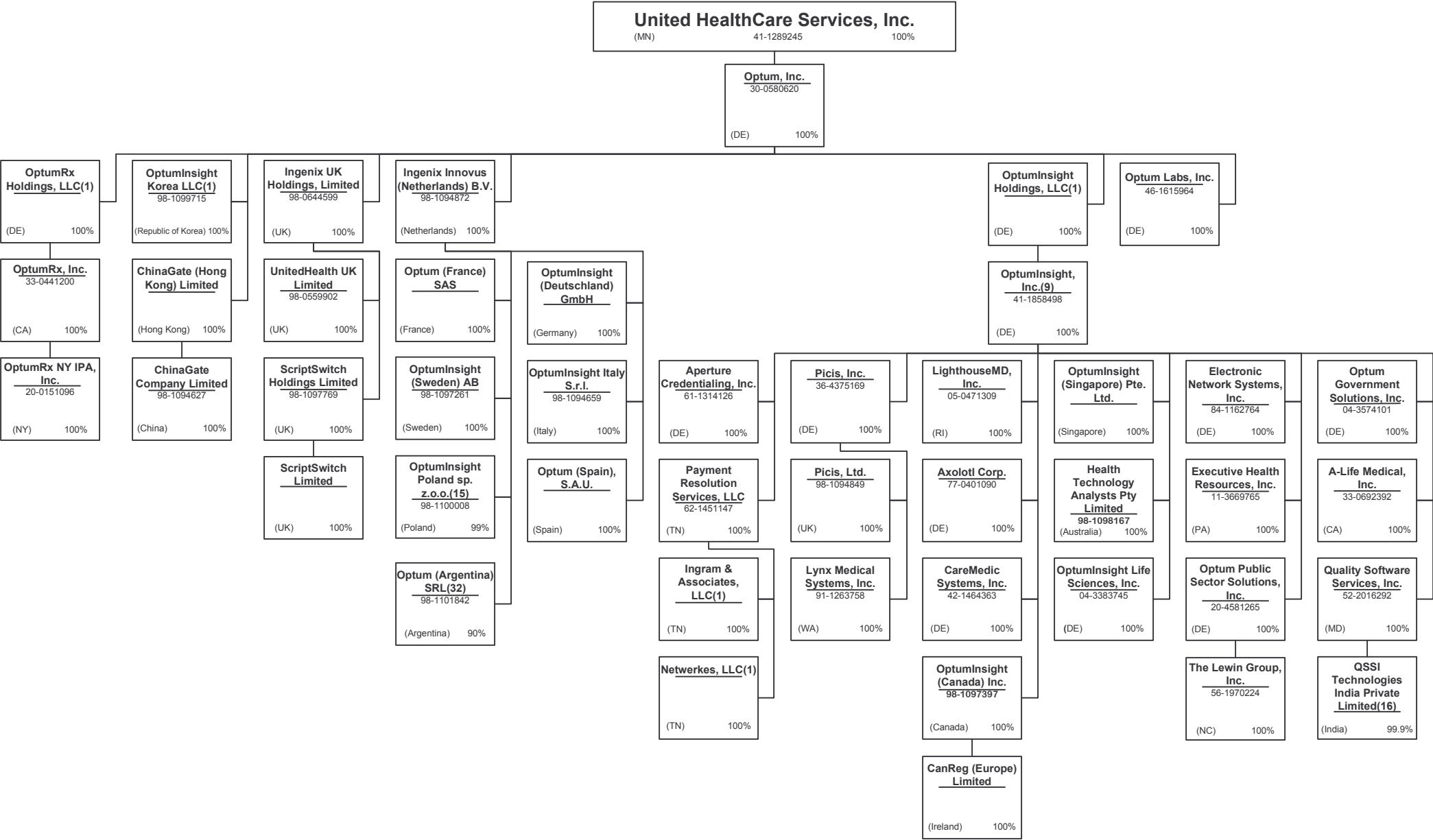
15.5

15.5



SCHEDULE Y - INFORMATION CONCERNING ACTIVITIES OF INSURER MEMBERS OF A HOLDING COMPANY GROUP

PART 1 - ORGANIZATIONAL CHART



SCHEDULE Y - INFORMATION CONCERNING ACTIVITIES OF INSURER MEMBERS OF A HOLDING COMPANY GROUP

PART 1 - ORGANIZATIONAL CHART

Notes

All legal entities on the Organization Chart are Corporations unless otherwise indicated.	(17) Amico Saúde Ltda. is 99.9999997% owned by Amil Participações S.A. and 0.0000003% owned by and officer of Amil.	(33) Hospital Alvorada Taguatinga Ltda. Is 99.99995% owned by Amil Assistência Médica Internacional S.A. and 0.00005% owned by an officer of Amil.
(1) Entity is a Limited Liability Company		
(2) Entity is a Partnership	(18) Esho – Empresa de Serviços Hospitalares S.A is 97.285887% owned by Amil Assistência Médica Internacional S.A.; 0.224917% owned by Amico Saúde Ltda.; 0.094901 owned by Treasury Shares and 2.4% owned by external shareholders.	(34) Amil Lifesciences Participações Ltda. Is 99.98486% owned by Amil Assistência Médica Internacional S.A and 0.01514% owned by an officer of Amil.
(3) Entity is a Non-Profit Corporation	(19) Etho – Empresa de Tecnologia Hospitalar Ltda. 50.01% owned by Amil Assistência Médica Internacional S.A.and 49.99% owned by an external shareholder.	(35) As of December 31, 2012, Amil Participações S.A. was 74.494% owned by Mind Solutions S.A and the remaining 25.506% was owned by other public shareholders.
(4) Control of the Foundation is based on sole membership, not the ownership of voting securities	(20) Orion Participações e Administração Ltda. is 99.99998% owned by Amil Assistência Médica Internacional S.A. and 0.00002% owned by Amico Saúde Ltda.	(36) Amil Planos por Administração Ltda. is 98.69121% owned by Amil Assistência Médica Internacional S.A; 1.30196% owned by Amico Saúde Ltd and 0.00683% owned by an officer of Amil.
(5) Monarch Financial Services, LLC is 85% owned by Monarch Management Services, Inc. and 15% owned by external shareholders.	(21) Excellion Serviços Biomédicos S.A.is 99.21108% owned by Esho – Empresa de Serviços Hospitalares S.A and 0.78892% owned by external shareholders.	(37) The limited partners of UnitedHealth Group International, L.P. include FMG Holdings, LLC (4.41%), UnitedHealthcare International LATAM Corporation (2.3%), Hygeia Corporation (DE) (0.33%) and UnitedHealth Group Incorporated (92.97%). UnitedHealth Group International GP is the general partner of UnitedHealth Group International, L.P.
(6) UnitedHealth Group Information Services Private Limited is 99.37% owned by UnitedHealth Group International B.V.. The remaining 0.63% is owned by UnitedHealth International, Inc.	(22) [TBD]	
(7) United Healthcare India Private Limited is 99.9952% owned by UnitedHealthcare International II B.V. and 0.0048% owned by UnitedHealth International, Inc.	(23) Cemed Care Empresa de Atendimento Clínico Geral Ltda. Is 97.20% owned by Amil Assistência Médica Internacional S.A. and 2.8% owned by Amico Saúde Ltd.	(38) Polar II Fundo de Investimento em Participações is a Brazilian private equity investment fund incorporated in the form of a closed-end condominium.
(8) General partnership interests are held by United HealthCare Services, Inc. (89.77%) and by UnitedHealthcare, Inc. (10.23%). United HealthCare Services, Inc. also holds 100% of the limited partnership interests. When combining general and limited partner interests, United HealthCare Services, Inc. owns 94.18% and UnitedHealthcare, Inc. owns 5.83%.	(24) Fernandópolis Assistência Médica Ltda. is 80% owned by Amil Assistência Médica Internacional S.A. and 20% owned by an external shareholder.	(39) UnitedHealthcare International I, B.V. is 75.76% owned by UnitedHealth Group International L.P. and 24.24% owned by UnitedHealth Group International B.V.
(9) Established a branch, Ingenix, Inc. – Abu Dhabi, located in Abut Dhabi, UAE.	(25) Ceame – Centro Especializado de Atendimento Médico S/C Ltda. Is 99.99% onwed by Amil Assistência Médica Internacional S.A. and 0.01% owned by Cemed Care Empresa de Atendimento Clínico Geral Ltda.	(40) As of December 31, 2012, Polar II Fundo de Investimento em Participações, a Brazilian private equity investment fund incorporated in the form of a closed-end condominium, owned 85.5% of Mind Solutions S.A.'s common stock and Amil's founders owned the remaining 14.5%. Under the contractual arrangements among the parties, upon the completion of the merger of Mind Solutions S.A. into Amil Participações S.A. (in which Amil Participações S.A. will be the surviving company), Polar II Fundo de Investimento em Participações S.A. will own 90% of Amil Participações S.A. and Amil's founders will own the remaining 10%.
(10) WellMed Medical Management, Inc. is 80% owned by Collaborative Care Holdings, LLC and 20% owned by WMG Healthcare Partners, L.P.	(26) Bosque Medical Center S.A. is 53.2889% owned by Amil Assistência Médica Internacional S.A.; 33.7727% owned by Amico Saúde Ltd. and 12.9384% owned by Esho – Empresa de Serviços Hospitalares S.A.	(41) HPP A.C.E. is 70% owned by HPP - Hospitais Privados de Portugal, SGPS, S.A. The remaining 30% is owned by (1) HPP Boavista, S.A..(2) HPP Lusiadas, S.A., (3) HPP Algarve, S.A., (4) HPP Saúde - Parcerias Cascais, S.A., and (5) HPP Viseu, S.A.; each owning 6%.
(11) Physicians Choice Insurance Service, LLC is 70% owned by Monarch Financial Services, LLC and 30% owned by external shareholders.	(27) AHJV, Inc. is 75% owned by NAMD Holdings, Inc. and 25% owned by Humana, Inc.	(42) HPP Viseu, S.A. is 65% owned by HPP - Hospitais Privados de Portugal, SGPS, S.A.. The remaining 35% is jointly owned VISABEIRA Saúde - Serviços de Saúde, S.A.,VISABEIRA Participações Financeiras, SGPS, S.A., VISABEIRA Investimentos Financeiros SGPS, S.A. and Ciclorama - Estudos, Projectos e Produções, Lda.
(12) Personal Performance Consultants India Private Limited is 99.996% owned by OptumHealth International B.V. and 0.004 % owned by United Behavioral Health.	(28) ASL Assistência a Saúde Ltda. Is 99.99995% owned by Amil Assistência Médica Internacional S.A and 0.00005% owned by an officer of Amil.	
(13) INSPIRIS of Texas Physicians Group is a Texas non-profit (taxable) whose sole member is Inspiris Services Company.	(29) Promarket Propaganda e Marketing Ltda.is 99.792% owned by Amil Assistência Médica Internacional S.A and 0.208% owned by Amico Saúde Ltd.	
(14) PrimeCare of Citrus Valley, Inc. is 80% owned by PrimeCare Medical Network, Inc. and 20% owned by Citrus Valley Medical Associates, Inc.	(30) Amil Clinical Research Participações Ltda. is 99.95% owned by Amil Lifesciences Participações Ltda. and .05% owned by an officer of Amil.	
(15) OptumInsight Poland sp. z.o.o. is 99% owned by Ingenix Innovus (Netherlands) B.V. The remaining 1% is owned by OptumInsight, Inc.	(31) Imed Star Serviços Médicos e Odontológicos Ltda.is 50% owned by Amil Assistência Médica Internacional S.A and 50% owned by Amico Saúde Ltd.	
(16) QSSI Technologies India Private Limited is 99.9% owned by Quality Software Services, Inc. and 0.1% owned by an Indian citizen.	(32) Optum Argentina is 90% owned by Ingenix Innovus (Netherlands) BV and 10% owned by ScriptSwitch Holdings Limited.	

SCHEDULE Y
PART 1A - DETAIL OF INSURANCE HOLDING COMPANY SYSTEM

1	2	3	4	5	6	7	8	9	10	11	12	13	14	15
Group Code	Group Name	NAIC Company Code	Federal ID Number	Federal RSSD	CIK	Name of Securities Exchange if Publicly Traded (U.S. or International)	Names of Parent, Subsidiaries Or Affiliates	Domi-ciliary Location	Relation-ship to Reporting Entity	Directly Controlled by (Name of Entity/Person)	Type of Control (Ownership, Board, Management, Attorney-in-Fact, Influence, Other)	If Control is Owner-ship Provide Percen-tage	Ultimate Controlling Entity(ies)/Person(s)	*
		.00000					310 Canyon Medical, LLC	.CA	NIA	Monarch Management Services, Inc.	Ownership	100.000	UnitedHealth Group Incorporated	
		.00000	41-1913523				ACN Group IPA of New York, Inc.	.NY	NIA	OptumHealth Care Solutions, Inc.	Ownership	100.000	UnitedHealth Group Incorporated	
		.00000	27-0015861				ACN Group of California, Inc.	.CA	IA	OptumHealth Care Solutions, Inc.	Ownership	100.000	UnitedHealth Group Incorporated	
		.00000	38-3849068				AHJV MSO, Inc.	.DE	NIA	AHJV, Inc.	Ownership	100.000	UnitedHealth Group Incorporated	
		.00000	38-3849066				AHJV, Inc.	.CA	NIA	NAMM Holdings, Inc.	Ownership	75.000	UnitedHealth Group Incorporated	8
		.00000	33-0692392				A-Life Medical, Inc.	.CA	NIA	OptumInsight, Inc.	Ownership	100.000	UnitedHealth Group Incorporated	
.0707	UnitedHealth Group Incorporated	.82406	35-1665915				All Savers Insurance Company	.IN	IA	Golden Rule Financial Corporation	Ownership	100.000	UnitedHealth Group Incorporated	
							All Savers Life Insurance Company of California	.CA	IA	Golden Rule Financial Corporation	Ownership	100.000	UnitedHealth Group Incorporated	
.0707	UnitedHealth Group Incorporated	.73130	35-1744596				AmeriChoice Corporation	.DE	UIP	UnitedHealth Group Incorporated	Ownership	100.000	UnitedHealth Group Incorporated	
		.00000	54-1743136				AmeriChoice Health Services, Inc.	.DE	NIA	AmeriChoice Corporation	Ownership	100.000	UnitedHealth Group Incorporated	
.0707	UnitedHealth Group Incorporated	.13178	26-2481299				AmeriChoice of Connecticut, Inc.	.CT	IA	AmeriChoice Corporation	Ownership	100.000	UnitedHealth Group Incorporated	
.0707	UnitedHealth Group Incorporated	.13168	26-2688274				AmeriChoice of Georgia, Inc.	.GA	IA	AmeriChoice Corporation	Ownership	100.000	UnitedHealth Group Incorporated	
.0707	UnitedHealth Group Incorporated	.95497	22-3368602				AmeriChoice of New Jersey, Inc.	.NJ	IA	AmeriChoice Corporation	Ownership	100.000	UnitedHealth Group Incorporated	
		.00000					Amico Saúde Ltda.	.BRA	NIA	Amil Participações S.A.	Ownership	100.000	UnitedHealth Group Incorporated	9
							Amil Assistência Médica Internacional S.A.	.BRA	NIA	Amil Participações S.A.	Ownership	100.000	UnitedHealth Group Incorporated	
		.00000					Amil Clinical Research Participações Ltda.	.BRA	NIA	Amil Lifesciences Participações Ltda.	Ownership	99.950	UnitedHealth Group Incorporated	9
		.00000					AMIL International S.á.r.l.	.LUX	NIA	Amil Assistência Médica Internacional S.A.	Ownership	100.000	UnitedHealth Group Incorporated	
		.00000	98-1099112				Amil Lifesciences Participações Ltda.	.BRA	NIA	Amil Assistência Médica Internacional S.A.	Ownership	99.985	UnitedHealth Group Incorporated	9
		.00000					Amil Participações S.A.	.BRA	NIA	Mind Solutions S.A.	Ownership	74.490	UnitedHealth Group Incorporated	2
		.00000					Amil Planos por Administração Ltda.	.BRA	NIA	Amil Assistência Médica Internacional S.A.	Ownership	98.691	UnitedHealth Group Incorporated	10
		.00000					Amil Planos por Administração Ltda.	.BRA	NIA	Amico Saúde Ltda.	Ownership	1.302	UnitedHealth Group Incorporated	10
		.00000	61-1314126				Aperture Credentialing, Inc.	.DE	NIA	OptumInsight, Inc.	Ownership	100.000	UnitedHealth Group Incorporated	
		.00000	86-0813232				Arizona Physicians IPA, Inc.	.AZ	IA	UnitedHealthcare, Inc.	Ownership	100.000	UnitedHealth Group Incorporated	
		.00000	20-8883652				ASI Global, LLC	.TX	NIA	FrontierMEDEX, Inc.	Ownership	100.000	UnitedHealth Group Incorporated	
		.00000					ASL Assistência a Saúde Ltda.	.BRA	NIA	Amil Assistência Médica Internacional S.A.	Ownership	100.000	UnitedHealth Group Incorporated	9
		.00000	80-0368187				Aveta Arizona, Inc.	.AZ	NIA	NAMM Holdings, Inc.	Ownership	100.000	UnitedHealth Group Incorporated	
		.00000	35-2416318				Aveta Colorado, Inc.	.DE	NIA	NAMM Holdings, Inc.	Ownership	100.000	UnitedHealth Group Incorporated	
		.00000	90-0632302				Aveta Health Solutions Inc.	.DE	NIA	NAMM Holdings, Inc.	Ownership	100.000	UnitedHealth Group Incorporated	
		.00000	20-4057813				Aveta Inc.	.DE	NIA	Collaborative Care Holdings, LLC	Ownership	100.000	UnitedHealth Group Incorporated	
		.00000	27-2823524				Aveta Kansas City, Inc.	.KS	NIA	NAMM Holdings, Inc.	Ownership	100.000	UnitedHealth Group Incorporated	
		.00000	36-4704309				Aveta Tennessee, Inc.	.DE	NIA	NAMM Holdings, Inc.	Ownership	100.000	UnitedHealth Group Incorporated	
		.00000	77-0401090				Axolotl Corp.	.DE	NIA	OptumInsight, Inc.	Ownership	100.000	UnitedHealth Group Incorporated	
		.00000	84-1544013				bConnected Software, Inc.	.DE	NIA	Connexions, Inc.	Ownership	100.000	UnitedHealth Group Incorporated	
		.00000	88-0267857				Behavioral Healthcare Options, Inc.	.NV	NIA	Sierra Health Services, Inc.	Ownership	100.000	UnitedHealth Group Incorporated	
		.00000					Bosque Medical Center S.A.	.BRA	NIA	Amil Assistência Médica Internacional S.A.	Ownership	53.289	UnitedHealth Group Incorporated	11
		.00000					Bosque Medical Center S.A.	.BRA	NIA	Amico Saúde Ltda.	Ownership	33.773	UnitedHealth Group Incorporated	11
		.00000					Canada Health Group International Limited	.CAN	NIA	FrontierMEDEX Canada Holdings Ltd.	Ownership	100.000	UnitedHealth Group Incorporated	
		.00000					CanReg (Europe) Limited	.JRL	NIA	OptumInsight (Canada) Inc.	Ownership	100.000	UnitedHealth Group Incorporated	
		.00000	20-2576806				Care Improvement Associates of Texas, Inc.	.TX	NIA	XLHealth Corporation	Ownership	100.000	UnitedHealth Group Incorporated	
		.00000	20-8375685				Care Improvement Plus Group Management, LLC	.MD	NIA	XLHealth Corporation	Ownership	100.000	UnitedHealth Group Incorporated	
.0707	UnitedHealth Group Incorporated	.12313	20-2412936				Care Improvement Plus of Maryland, Inc.	.MD	IA	XLHealth Corporation	Ownership	100.000	UnitedHealth Group Incorporated	

16.1

PART 1A - DETAIL OF INSURANCE HOLDING COMPANY SYSTEM

1	2	3	4	5	6	7	8	9	10	11	12	13	14	15
Group Code	Group Name	NAIC Company Code	Federal ID Number	Federal RSSD	CIK	Name of Securities Exchange if Publicly Traded (U.S. or International)	Names of Parent, Subsidiaries Or Affiliates	Domi- ciliary Location	Relation- ship to Reporting Entity	Directly Controlled by (Name of Entity/Person)	Type of Control (Ownership, Board, Management, Attorney-in-Fact, Influence, Other)	If Control is Owner- ship Provide Perce- ntage	Ultimate Controlling Entity(ies)/Person(s)	*
.0707	UnitedHealth Group Incorporated	..1255800000	45-4976934 27-3536376				Care Improvement Plus of Texas Insurance Company .. Care Improvement Plus Practitioners, LLC ... Care Improvement Plus South Central Insurance Company .. Care Improvement Plus Wisconsin Insurance Company .. CareMedic Systems, Inc. Carlton Life - Residências e Serviços S.A.	TX MD AR WI CA	IA IA NIA	XLHealth Corporation XLHealth Corporation XLHealth Corporation OptumInsight, Inc. HPP – Hospitais Privados de Portugal, SGPS, S.A.	Ownership..... Ownership..... Ownership..... Ownership..... Ownership.....	...100.000 ...100.000 ...100.000 ...100.000 ...100.000	UnitedHealth Group Incorporated UnitedHealth Group Incorporated UnitedHealth Group Incorporated UnitedHealth Group Incorporated UnitedHealth Group Incorporated
.0707	UnitedHealth Group Incorporated	..12567	20-3888112				Ceame – Centro Especializado de Atendimento Médico S/C Ltda. Ceame – Centro Especializado de Atendimento Médico S/C Ltda. Cemed Care Empresa de Atendimento Clínico Geral Ltda. Cemed Care Empresa de Atendimento Clínico Geral Ltda. ChinaGate (Hong Kong) Limited ChinaGate Company Limited	BRA BRA BRA BRA HKG CHN	NIA NIA NIA NIA	Amil Assistência Médica Internacional S.A. Cemed Care Empresa de Atendimento Clínico Geral Ltda. Amil Assistência Médica Internacional S.A. Amico Saúde Ltda. Optum, Inc. ChinaGate (Hong Kong) Limited	Ownership..... Ownership..... Ownership..... Ownership..... Ownership..... Ownership.....	...99.990 ...0.010 ...97.200 ...2.800 ...100.000 ...100.000	UnitedHealth Group Incorporated UnitedHealth Group Incorporated UnitedHealth Group Incorporated UnitedHealth Group Incorporated UnitedHealth Group Incorporated UnitedHealth Group Incorporated12
.0707	UnitedHealth Group Incorporated	..11836	13-4247706				Citrus Health Care, Inc. Coachella Valley Physicians of PrimeCare, Inc. Collaborative Care Holdings, LLC Collaborative Care Services, Inc. Collaborative Care Solutions, LLC Comfort Care Transportation, LLC Commonwealth Administrators, LLC Connexions HCI NM, LLC Connexions HCI, LLC Connexions, Inc. Corporate Support Limited DBP Services of New York IPA, Inc.	FL CA DE DE DE TX KY NM FL FL GBR NY	IA NIA NIA NIA NIA NIA NIA NIA NIA NIA NIA NIA	PHC Holdings of Florida, Inc. PrimeCare Medical Network, Inc. OptumHealth Holdings, LLC Collaborative Care Holdings, LLC Collaborative Care Services, Inc. Wellmed Medical Management, Inc. UMR, Inc. Connexions, Inc. Connexions, Inc. OptumHealth Holdings, LLC Personal Performance Consultants UK Limited Dental Benefit Providers, Inc.	Ownership..... Ownership..... Ownership..... Ownership..... Ownership..... Ownership..... Ownership..... Ownership..... Ownership..... Ownership..... Ownership..... Ownership.....	...100.000 ...100.000 ...100.000 ...100.000 ...100.000 ...100.000 ...100.000 ...100.000 ...100.000 ...100.000 ...100.000 ...100.000	UnitedHealth Group Incorporated UnitedHealth Group Incorporated UnitedHealth Group Incorporated UnitedHealth Group Incorporated UnitedHealth Group Incorporated UnitedHealth Group Incorporated UnitedHealth Group Incorporated UnitedHealth Group Incorporated UnitedHealth Group Incorporated UnitedHealth Group Incorporated UnitedHealth Group Incorporated UnitedHealth Group Incorporated
.0707	UnitedHealth Group Incorporated	..52053	36-4008355				Dental Benefit Providers of California, Inc. Dental Benefit Providers of Illinois, Inc. Dental Benefit Providers, Inc. Distance Learning Network, Inc. Duncan Printing Services, LLC Electronic Network Systems, Inc. ELG FZE Esho – Empresa de Serviços Hospitalares S.A. Esho – Empresa de Serviços Hospitalares S.A. Etho – Empresa de Tecnologia Hospitalar Ltda. Evercare Collaborative Solutions, Inc. Evercore Hospice, Inc.	CA CA IL DE DE SC DE ARE BRA BRA BRA DE DE	IA IA NIA NIA NIA NIA NIA NIA NIA NIA NIA NIA NIA	Dental Benefit Providers, Inc. United HealthCare Services, Inc. OptumHealth Holdings, LLC UnitedHealthcare Insurance Company OptumInsight, Inc. FrontierMEDEX Limited Amil Assistência Médica Internacional S.A. Amico Saúde Ltda. Amil Assistência Médica Internacional S.A. Ovations, Inc. Collaborative Care Holdings, LLC	Ownership..... Ownership..... Ownership..... Ownership..... Ownership..... Ownership..... Ownership..... Ownership..... Ownership..... Ownership..... Ownership..... Ownership.....	...100.000 ...100.000 ...100.000 ...100.000 ...100.000 ...100.000 ...100.000 ...97.286 ...0.225 ...50.010 ...100.000 ...100.000	UnitedHealth Group Incorporated UnitedHealth Group Incorporated UnitedHealth Group Incorporated UnitedHealth Group Incorporated UnitedHealth Group Incorporated UnitedHealth Group Incorporated UnitedHealth Group Incorporated UnitedHealth Group Incorporated UnitedHealth Group Incorporated UnitedHealth Group Incorporated UnitedHealth Group Incorporated UnitedHealth Group Incorporated1414

SCHEDULE Y
PART 1A - DETAIL OF INSURANCE HOLDING COMPANY SYSTEM

1	2	3	4	5	6	7	8	9	10	11	12	13	14	15
Group Code	Group Name	NAIC Company Code	Federal ID Number	Federal RSSD	CIK	Name of Securities Exchange if Publicly Traded (U.S. or International)	Names of Parent, Subsidiaries Or Affiliates	Domi-ciliary Location	Relation-ship to Reporting Entity	Directly Controlled by (Name of Entity/Person)	Type of Control (Ownership, Board, Management, Attorney-in-Fact, Influence, Other)	If Control is Owner-ship Provide Percen-tage	Ultimate Controlling Entity(ies)/Person(s)	*
		00000	86-0618309				Evercare of Arizona, Inc.	AZ	IA	Ovations, Inc.	Ownership	100.000	UnitedHealth Group Incorporated	
		00000					Excellion Serviços Biomédicos S.A.	BRA	NIA	Esho – Emp. Serv. Hosopitalares S.A	Ownership	99.211	UnitedHealth Group Incorporated	2
		00000					Excelsior Med S.A.	BRA	NIA	Amil Assistência Médica Internacional S.A.	Ownership	100.000	UnitedHealth Group Incorporated	
		00000	11-3669765				Executive Health Resources, Inc.	PA	NIA	OptumInsight, Inc.	Ownership	100.000	UnitedHealth Group Incorporated	
		00000					Exlogs HSE, Inc. (Canada)	CAN	NIA	FrontierMEDEX Canada Holdings Ltd.	Ownership	100.000	UnitedHealth Group Incorporated	
		00000					Exploration for Mine Clearance, LLC	IRQ	NIA	FrontierMEDEX Limited	Ownership	100.000	UnitedHealth Group Incorporated	
		00000					Exploration Logistics BC Limited	CAN	NIA	FrontierMEDEX Canada Limited	Ownership	100.000	UnitedHealth Group Incorporated	
		00000					Exploration Logistics Group for Medical Services PLC LTD	IRQ	NIA	FrontierMEDEX Limited	Ownership	100.000	UnitedHealth Group Incorporated	
		00000	98-1098142				Exploration Logistics Limited	GBR	NIA	FrontierMEDEX Limited	Ownership	100.000	UnitedHealth Group Incorporated	
		00000					Exploration Logistics Newfoundland Limited	CAN	NIA	FrontierMEDEX Canada Limited	Ownership	100.000	UnitedHealth Group Incorporated	
		00000					Exploration Logistics Nova Scotia Limited	CAN	NIA	FrontierMEDEX Canada Limited	Ownership	100.000	UnitedHealth Group Incorporated	
		00000	88-0223385				Family Health Care Services	NV	NIA	Sierra Health Services, Inc.	Ownership	100.000	UnitedHealth Group Incorporated	
		00000	88-0257036				Family Home Hospice, Inc.	NV	NIA	Sierra Health Services, Inc.	Ownership	100.000	UnitedHealth Group Incorporated	
		00000					Fernandópolis Assistência Médica Ltda.	BRA	NIA	Amil Assistência Médica Internacional S.A.	Ownership	80.000	UnitedHealth Group Incorporated	2
		00000	35-2456267				FMG Holdings, LLC	DE	NIA	UnitedHealth Group Incorporated	Ownership	100.000	UnitedHealth Group Incorporated	
		00000					Focus EAP Ltd.	GBR	NIA	Personal Performance Consultants UK Limited	Ownership	100.000	UnitedHealth Group Incorporated	
		00000	22-3314813				FOHP, Inc.	NJ	NIA	Oxford Health Plans LLC	Ownership	100.000	UnitedHealth Group Incorporated	
		00000	86-0908902				FOR HEALTH OF ARIZONA, INC.	AZ	NIA	For Health, Inc.	Ownership	100.000	UnitedHealth Group Incorporated	
		00000	33-0766617				For Health, Inc.	DE	NIA	Inspiris, Inc.	Ownership	100.000	UnitedHealth Group Incorporated	
		00000					Frontier Medical Services Limited	GBR	NIA	FrontierMEDEX Limited	Ownership	100.000	UnitedHealth Group Incorporated	
		00000	68-0679514				FrontierMEDEX (RMS), Inc.	DE	NIA	FMG Holdings, LLC	Ownership	100.000	UnitedHealth Group Incorporated	
		00000					FrontierMEDEX Canada Holdings Ltd.	CAN	NIA	UnitedHealthcare International I B.V.	Ownership	100.000	UnitedHealth Group Incorporated	
		00000					FrontierMEDEX Canada Limited	CAN	NIA	Canada Health Group International Limited	Ownership	100.000	UnitedHealth Group Incorporated	
		00000	45-5339512				FrontierMEDEX Government Services, LLC	DE	NIA	FMG Holdings, LLC	Ownership	100.000	UnitedHealth Group Incorporated	
		00000	98-0686799				FrontierMEDEX Group Limited	GBR	NIA	UnitedHealthcare International I B.V.	Ownership	100.000	UnitedHealth Group Incorporated	
		00000					FrontierMEDEX Limited	GBR	NIA	UnitedHealthcare International I B.V.	Ownership	100.000	UnitedHealth Group Incorporated	
		00000					FrontierMEDEX UK Limited	GBR	NIA	FrontierMEDEX Group Limited	Ownership	100.000	UnitedHealth Group Incorporated	
		00000	33-1219808				FrontierMEDEX US, Inc.	DE	NIA	FMG Holdings, LLC	Ownership	100.000	UnitedHealth Group Incorporated	
		00000	52-2230470				FrontierMEDEX, Inc.	MN	NIA	FrontierMEDEX US, Inc.	Ownership	100.000	UnitedHealth Group Incorporated	
		00000	37-0855360				Golden Rule Financial Corporation	DE	NIA	UnitedHealth Group Incorporated	Ownership	100.000	UnitedHealth Group Incorporated	
0707	UnitedHealth Group Incorporated	62286	37-6028756	3057283			Golden Rule Insurance Company	IN	IA	Golden Rule Financial Corporation	Ownership	100.000	UnitedHealth Group Incorporated	
0707	UnitedHealth Group Incorporated	00000	98-0213198				H&W Indemnity (SPC), Ltd.	CYM	NIA	UnitedHealth Group Incorporated	Ownership	100.000	UnitedHealth Group Incorporated	
0707	UnitedHealth Group Incorporated	43893	13-3584296				Health Net Insurance of New York, Inc.	NY	IA	Oxford Health Plans LLC	Ownership	100.000	UnitedHealth Group Incorporated	
0707	UnitedHealth Group Incorporated	95968	06-1084283				Health Net of Connecticut, Inc.	CT	IA	Oxford Health Plans LLC	Ownership	100.000	UnitedHealth Group Incorporated	
0707	UnitedHealth Group Incorporated	95351	22-3241303				Health Net of New Jersey, Inc.	NJ	IA	FOHP, Inc.	Ownership	100.000	UnitedHealth Group Incorporated	
0707	UnitedHealth Group Incorporated	95305	06-1174953				Health Net of New York, Inc.	NY	IA	Oxford Health Plans LLC	Ownership	100.000	UnitedHealth Group Incorporated	
0707	UnitedHealth Group Incorporated	00000	98-0153069				Health Net Services (Bermuda) Ltd.	BMU	NIA	Oxford Health Plans LLC	Ownership	100.000	UnitedHealth Group Incorporated	
0707	UnitedHealth Group Incorporated	96342	88-0201035				Health Plan of Nevada, Inc.	NV	IA	Sierra Health Services, Inc.	Ownership	100.000	UnitedHealth Group Incorporated	
		00000	98-1098167				Health Technology Analysts Pty Limited	AUS	NIA	OptumInsight, Inc.	Ownership	100.000	UnitedHealth Group Incorporated	
		00000	95-4763349				HealthAllies, Inc.	DE	NIA	OptumHealth Holdings, LLC	Ownership	100.000	UnitedHealth Group Incorporated	
		00000	26-3936569				HIT Securities Corporation	MA	NIA	Humedica, Inc.	Ownership	100.000	UnitedHealth Group Incorporated	
		00000	20-8910978				Hospice Inspiris Holdings, Inc.	TN	NIA	Inspiris, Inc.	Ownership	100.000	UnitedHealth Group Incorporated	
		00000	20-8911466				Hospice Inspiris of Pennsylvania, Inc.	TN	NIA	Hospice Inspiris Holdings, Inc.	Ownership	100.000	UnitedHealth Group Incorporated	
		00000	20-8911303				Hospice Inspiris of Texas, Inc.	TN	NIA	Hospice Inspiris Holdings, Inc.	Ownership	100.000	UnitedHealth Group Incorporated	
		00000	82-0586676				Hospice Inspiris, LLC	TN	NIA	FOR HEALTH OF ARIZONA, INC.	Ownership	100.000	UnitedHealth Group Incorporated	

SCHEDULE Y
PART 1A - DETAIL OF INSURANCE HOLDING COMPANY SYSTEM

1	2	3	4	5	6	7	8	9	10	11	12	13	14	15
Group Code	Group Name	NAIC Company Code	Federal ID Number	Federal RSSD	CIK	Name of Securities Exchange if Publicly Traded (U.S. or International)	Names of Parent, Subsidiaries Or Affiliates	Domi-ciliary Location	Relation-ship to Reporting Entity	Directly Controlled by (Name of Entity/Person)	Type of Control (Ownership, Board, Management, Attorney-in-Fact, Influence, Other)	If Control is Owner-ship Provide Perce-ntage	Ultimate Controlling Entity(ies)/Person(s)	*
		..00000					Hospital Alvorada de Taguatinga Ltda.BRANIA.....	Amil Assistência Médica Internacional S.A.	Ownership.....	..100.000	UnitedHealth Group Incorporated9
		..00000					HPP – Hospitais Privados de Portugal, SGPS, S.A.PRTNIA.....	Amil International S.á.r.l.	Ownership.....	..100.000	UnitedHealth Group Incorporated9
		..00000					HPP A.C.E.PRTNIA.....	HPP – Hospitais Privados de Portugal, SGPS, S.A.	Ownership.....	..70.000	UnitedHealth Group Incorporated15
		..00000					HPP A.C.E.PRTNIA.....	HPP Algarve, S.A.	Ownership.....	..6.000	UnitedHealth Group Incorporated15
		..00000					HPP A.C.E.PRTNIA.....	HPP Lusiadas, S.A.	Ownership.....	..6.000	UnitedHealth Group Incorporated15
		..00000					HPP A.C.E.PRTNIA.....	HPP Viseu, S.A.	Ownership.....	..6.000	UnitedHealth Group Incorporated15
		..00000					HPP A.C.E.PRTNIA.....	HPP Saúde – Parcerias Cascais, S.A.	Ownership.....	..6.000	UnitedHealth Group Incorporated15
		..00000					HPP A.C.E.PRTNIA.....	HPP Boavista, S.A.	Ownership.....	..6.000	UnitedHealth Group Incorporated15
		..00000					HPP Algarve, S.A.PRTNIA.....	HPP – Hospitais Privados de Portugal, SGPS, S.A.	Ownership.....	..100.000	UnitedHealth Group Incorporated9
		..00000					HPP Boavista, S.A.PRTNIA.....	HPP – Hospitais Privados de Portugal, SGPS, S.A.	Ownership.....	..100.000	UnitedHealth Group Incorporated9
		..00000					HPP Lusiadas, S.A.PRTNIA.....	HPP – Hospitais Privados de Portugal, SGPS, S.A.	Ownership.....	..100.000	UnitedHealth Group Incorporated9
		..00000					HPP Saúde – Parcerias Cascais, S.A.PRTNIA.....	HPP – Hospitais Privados de Portugal, SGPS, S.A.	Ownership.....	..100.000	UnitedHealth Group Incorporated9
		..00000					HPP Viseu, S.A.PRTNIA.....	HPP – Hospitais Privados de Portugal, SGPS, S.A.	Ownership.....	..65.000	UnitedHealth Group Incorporated16
		..00000	26-2912304				Humedica, Inc.DENIA.....	United HealthCare Services, Inc.	Ownership.....	..100.000	UnitedHealth Group Incorporated9
		..00000	36-4331825				Hygeia CorporationDENIA.....	UnitedHealth International, Inc.	Ownership.....	..100.000	UnitedHealth Group Incorporated9
		..00000	41-1917398				Hygeia Corporation (Ontario)CANNIA.....	UnitedHealth Group International L.P.	Ownership.....	..100.000	UnitedHealth Group Incorporated9
		..00000					Imed Star Serviços Médicos e Odontológicos Ltda.BRANIA.....	Amico Saúde Ltda.	Ownership.....	..50.000	UnitedHealth Group Incorporated17
		..00000					Imed Star Serviços Médicos e Odontológicos Ltda.BRANIA.....	Amil Assistência Médica Internacional S.A.	Ownership.....	..50.000	UnitedHealth Group Incorporated17
		..00000	27-4603968				Independent Physician Management Services, Inc.DENIA.....	Collaborative Care Holdings, LLC	Ownership.....	..100.000	UnitedHealth Group Incorporated9
		..00000	86-0477097				Information Network CorporationAZNIA.....	AmeriChoice Corporation	Ownership.....	..100.000	UnitedHealth Group Incorporated9
		..00000	36-4733428				Informed Choice HealthCare Alliance, Inc.ILNIA.....	North American Medical Management – Illinois, Inc.	Ownership.....	..100.000	UnitedHealth Group Incorporated9
		..00000	98-1094872				Ingenix Innovus (Netherlands) B.V.NLDNIA.....	Optum, Inc.	Ownership.....	..100.000	UnitedHealth Group Incorporated9
		..00000	98-0644599				Ingenix UK Holdings LimitedGBRNIA.....	Optum, Inc.	Ownership.....	..100.000	UnitedHealth Group Incorporated9
		..00000	62-1641102				Ingram & Associates, LLCTNNIA.....	Payment Resolution Services, LLC	Ownership.....	..100.000	UnitedHealth Group Incorporated9
		..00000	13-4138668				INSPIRIS of New York IPA, Inc.NYNIA.....	Inspiris, Inc.	Ownership.....	..100.000	UnitedHealth Group Incorporated9
		..00000	13-4138665				INSPIRIS of New York Management, Inc.NYNIA.....	Inspiris, Inc.	Ownership.....	..100.000	UnitedHealth Group Incorporated9
		..00000	20-5355196				Inspiris of Tennessee, Inc.TNNIA.....	Inspiris, Inc.	Ownership.....	..100.000	UnitedHealth Group Incorporated9
		..00000	26-2885572				INSPIRIS of Texas Physician GroupTXNIA.....	Inspiris Services Company	Ownership.....	..100.000	UnitedHealth Group Incorporated9
		..00000	26-0683057				Inspiris Services CompanyTNNIA.....	Inspiris, Inc.	Ownership.....	..100.000	UnitedHealth Group Incorporated9
		..00000	33-0766366				Inspiris, Inc.DENIA.....	Collaborative Care Holdings, LLC	Ownership.....	..100.000	UnitedHealth Group Incorporated9
		..00000	98-1097022				International Psychological Services Pty LimitedAUSNIA.....	PPC Worldwide Pty Ltd	Ownership.....	..100.000	UnitedHealth Group Incorporated9
		..00000	45-3143218				Lifeprint East, Inc.DENIA.....	Collaborative Care Holdings, LLC	Ownership.....	..100.000	UnitedHealth Group Incorporated9
		..00000	27-2309024				Lifeprint Health, Inc.DENIA.....	Collaborative Care Holdings, LLC	Ownership.....	..100.000	UnitedHealth Group Incorporated9
		..00000	05-0471309				LighthouseMD, Inc.RINIA.....	OptumInsight, Inc.	Ownership.....	..100.000	UnitedHealth Group Incorporated9
		..00000	39-1974851				Logistics Health, Inc.WINIA.....	OptumHealth Holdings, LLC	Ownership.....	..100.000	UnitedHealth Group Incorporated9
		..00000	91-1263758				Lynx Medical Systems, Inc.VANIA.....	Picis, Inc.	Ownership.....	..100.000	UnitedHealth Group Incorporated9
		..00000	52-2129787				MAMSI Insurance Resources, LLCMDNIA.....	OneNet PPO, LLC	Ownership.....	..100.000	UnitedHealth Group Incorporated9
..0707	UnitedHealth Group Incorporated	60321	52-1803283				MAMSI Life and Health Insurance CompanyMDIA.....	United HealthCare Services, Inc.	Ownership.....	..100.000	UnitedHealth Group Incorporated9

SCHEDULE Y
PART 1A - DETAIL OF INSURANCE HOLDING COMPANY SYSTEM

1	2	3	4	5	6	7	8	9	10	11	12	13	14	15
Group Code	Group Name	NAIC Company Code	Federal ID Number	Federal RSSD	CIK	Name of Securities Exchange if Publicly Traded (U.S. or International)	Names of Parent, Subsidiaries Or Affiliates	Domi-ciliary Location	Relation-ship to Reporting Entity	Directly Controlled by (Name of Entity/Person)	Type of Control (Ownership, Board, Management, Attorney-in-Fact, Influence, Other)	If Control is Owner-ship Provide Percen-tage	Ultimate Controlling Entity(ies)/Person(s)	*
		00000	14-1782475				Managed Physical Network, Inc.	..NY	..NIA	OptumHealth Care Solutions, Inc.	Ownership	100.000	UnitedHealth Group Incorporated	
		00000	42-1741594				MD Ops, Inc.	..CA	..NIA	North American Medical Management	Ownership	100.000	UnitedHealth Group Incorporated	
0707	UnitedHealth Group Incorporated	96310	52-1169135				MD-Individual Practice Association, Inc.	..MD	..IA	California, Inc.	Ownership	100.000	UnitedHealth Group Incorporated	
		00000					Medekit.com Limited	..GBR	..NIA	UnitedHealthCare Services, Inc.	Ownership	100.000	UnitedHealth Group Incorporated	
0707	UnitedHealth Group Incorporated	00000	52-2178531				MEDEX Insurance Services, Inc.	..MD	..NIA	FrontierMEDEX Limited	Ownership	100.000	UnitedHealth Group Incorporated	
0707	UnitedHealth Group Incorporated	12756	20-3391186				Medica Health Plans of Florida, Inc.	..FL	..IA	FrontierMEDEX, Inc.	Ownership	100.000	UnitedHealth Group Incorporated	
		12155	01-0788576				Medica HealthCare Plans, Inc.	..FL	..IA	United HealthCare Services, Inc.	Ownership	100.000	UnitedHealth Group Incorporated	
		00000	26-4808018				Medical Preparatory School of Allied Health, LLC	..TX	..NIA	United HealthCare Services, Inc.	Ownership	100.000	UnitedHealth Group Incorporated	
		00000	32-0037402				Medical Transportation Services, LLC	..FL	..NIA	WellMed Medical Management, Inc.	Ownership	100.000	UnitedHealth Group Incorporated	
0707	UnitedHealth Group Incorporated	00000					MHC Real Estate Holdings, LLC	..CA	..NIA	United HealthCare Services, Inc.	Ownership	100.000	UnitedHealth Group Incorporated	
		79480	35-1279304				Midwest Security Life Insurance Company	..WI	..IA	Monarch Management Services, Inc.	Ownership	100.000	UnitedHealth Group Incorporated	
		00000					Mind Solutions S.A.	..BRA	..NIA	UnitedHealthcare, Inc.	Ownership	100.000	UnitedHealth Group Incorporated	
		00000	86-0693199				Mohave Valley Hospital, Inc.	..AZ	..NIA	Polar II Fundo de Investmento em Participacoes	Ownership	85.500	UnitedHealth Group Incorporated	9
		00000					Monarch Financial Services, LLC	..CA	..NIA	Southwest Medical Associates, Inc.	Ownership	100.000	UnitedHealth Group Incorporated	
		00000	45-3142852				Monarch Management Services, Inc.	..DE	..NIA	Monarach Management Services, Inc.	Ownership	85.000	UnitedHealth Group Incorporated	2
		00000	20-3236839				NAMM Holdings, Inc.	..DE	..NIA	Collaborative Care Holdings, LLC	Ownership	100.000	UnitedHealth Group Incorporated	
		00000					NAMM West, Inc.	..CA	..NIA	Aveta Inc.	Ownership	100.000	UnitedHealth Group Incorporated	
0707	UnitedHealth Group Incorporated	95251	76-0196559				National Pacific Dental, Inc.	..TX	..IA	North American Medical Management	Ownership	100.000	UnitedHealth Group Incorporated	
0707	UnitedHealth Group Incorporated	95123	65-0996107				Neighborhood Health Partnership, Inc.	..FL	..IA	California, Inc.	Ownership	100.000	UnitedHealth Group Incorporated	
		00000	20-4755277				Netwerkes, LLC	..TN	..NIA	Dental Benefit Providers, Inc.	Ownership	100.000	UnitedHealth Group Incorporated	
0707	UnitedHealth Group Incorporated	95758	88-0228572				Nevada Medical Services LLC	..NV	..NIA	UnitedHealthcare, Inc.	Ownership	100.000	UnitedHealth Group Incorporated	
		00000					Nevada Pacific Dental	..NV	..IA	Payment Resolution Services, LLC.	Ownership	100.000	UnitedHealth Group Incorporated	
		00000	36-3984647				North American Medical Management - Illinois, Inc.	..IL	..NIA	Collaborative Care Services, Inc.	Ownership	100.000	UnitedHealth Group Incorporated	
		00000					North American Medical Management California, Inc.	..TN	..NIA	Dental Benefit Providers, Inc.	Ownership	100.000	UnitedHealth Group Incorporated	
		00000	88-0245121				Northern Nevada Health Network, Inc.	..NV	..NIA	NAMM Holdings, Inc.	Ownership	100.000	UnitedHealth Group Incorporated	
0707	UnitedHealth Group Incorporated	96940	52-2129786				OneNet PPO, LLC	..MD	..NIA	Sierra Health Services, Inc.	Ownership	100.000	UnitedHealth Group Incorporated	
		00000	52-1518174				Optimum Choice, Inc.	..MD	..IA	UnitedHealthcare Insurance Company	Ownership	100.000	UnitedHealth Group Incorporated	
		00000					Optum (Argentina) SRL	..ARG	..NIA	United HealthCare Services, Inc.	Ownership	100.000	UnitedHealth Group Incorporated	
		00000					Optum (Argentina) SRL	..ARG	..NIA	Ingenix Innovus (Netherlands) B.V.	Ownership	90.000	UnitedHealth Group Incorporated	18
		00000					Optum (France) SAS	..FRA	..NIA	ScriptSwitch Holdings Limited	Ownership	10.000	UnitedHealth Group Incorporated	18
		00000					Optum (Spain), S.A.U.	..ESP	..NIA	Ingenix Innovus (Netherlands) B.V.	Ownership	100.000	UnitedHealth Group Incorporated	
		00000	47-0858534	3202702			Optum Bank, Inc.	..UT	..NIA	Ingenix Innovus (Netherlands) B.V.	Ownership	100.000	UnitedHealth Group Incorporated	
		00000	45-3142512				Optum Clinical Services, Inc.	..DE	..NIA	OptumHealth Financial Services, Inc.	Ownership	100.000	UnitedHealth Group Incorporated	
		00000	04-3574101				Optum Government Solutions, Inc.	..DE	..NIA	Collaborative Care Holdings, LLC	Ownership	100.000	UnitedHealth Group Incorporated	
		00000	46-1615964				Optum Labs, Inc.	..DE	..NIA	OptumInsight, Inc.	Ownership	100.000	UnitedHealth Group Incorporated	
		00000	20-4581265				Optum Public Sector Solutions, Inc.	..DE	..NIA	Optum, Inc.	Ownership	100.000	UnitedHealth Group Incorporated	
		00000	45-4683454				Optum Services, Inc.	..DE	..NIA	OptumInsight, Inc.	Ownership	100.000	UnitedHealth Group Incorporated	
		00000	30-0580620	3119994			Optum, Inc.	..DE	..NIA	Optum, Inc.	Ownership	100.000	UnitedHealth Group Incorporated	
		00000	41-1591944				OptumHealth Care Solutions, Inc.	..MN	..NIA	United HealthCare Services, Inc.	Ownership	100.000	UnitedHealth Group Incorporated	
		00000	47-0858530				OptumHealth Financial Services, Inc.	..DE	..NIA	OptumHealth Holdings, LLC	Ownership	100.000	UnitedHealth Group Incorporated	
		00000					OptumHealth Holdings, LLC	..DE	..NIA	OptumHealth Holdings, LLC	Ownership	100.000	UnitedHealth Group Incorporated	
		00000					OptumHealth International B.V.	..NLD	..NIA	Optum, Inc.	Ownership	100.000	UnitedHealth Group Incorporated	
		00000	98-1097397				OptumInsight (Canada) Inc.	..CAN	..NIA	Optum, Inc.	Ownership	100.000	UnitedHealth Group Incorporated	
		00000					OptumInsight (Deutschland) GmbH	..DEU	..NIA	OptumInsight, Inc.	Ownership	100.000	UnitedHealth Group Incorporated	
		00000					OptumInsight (Singapore) Pte. Ltd.	..SGP	..NIA	Ingenix Innovus (Netherlands) B.V.	Ownership	100.000	UnitedHealth Group Incorporated	

SCHEDULE Y
PART 1A - DETAIL OF INSURANCE HOLDING COMPANY SYSTEM

1	2	3	4	5	6	7	8	9	10	11	12	13	14	15
Group Code	Group Name	NAIC Company Code	Federal ID Number	Federal RSSD	CIK	Name of Securities Exchange if Publicly Traded (U.S. or International)	Names of Parent, Subsidiaries Or Affiliates	Domiciliary Location	Relationship to Reporting Entity	Directly Controlled by (Name of Entity/Person)	Type of Control (Ownership, Board, Management, Attorney-in-Fact, Influence, Other)	If Control is Ownership Provide Percentage	Ultimate Controlling Entity(ies)/Person(s)	*
		00000	98-1097261				OptumInsight (Sweden) AB	..SWE	..NIA	Ingenix Innovus (Netherlands) B.V.	Ownership	100.000	UnitedHealth Group Incorporated	
		00000					OptumInsight Holdings, LLC	..DE	..NIA	Optum, Inc.	Ownership	100.000	UnitedHealth Group Incorporated	
		00000	98-1094659				OptumInsight Italy S.r.l.	..ITA	..NIA	Ingenix Innovus (Netherlands) B.V.	Ownership	100.000	UnitedHealth Group Incorporated	
		00000	98-1099715				OptumInsight Korea LLC	..KOR	..NIA	Optum, Inc.	Ownership	100.000	UnitedHealth Group Incorporated	
		00000	04-3383745				OptumInsight Life Sciences, Inc.	..DE	..NIA	OptumInsight, Inc.	Ownership	100.000	UnitedHealth Group Incorporated	
		00000					OptumInsight Poland sp. z o.o.	..POL	..NIA	Ingenix Innovus (Netherlands) B.V.	Ownership	99.000	UnitedHealth Group Incorporated	19
		00000					OptumInsight Poland sp. z o.o.	..POL	..NIA	OptumInsight, Inc.	Ownership	1.000	UnitedHealth Group Incorporated	19
		00000	41-1858498				OptumInsight, Inc.	..DE	..NIA	OptumInsight Holdings, LLC	Ownership	100.000	UnitedHealth Group Incorporated	
		00000					OptumRx Holdings, LLC	..DE	..NIA	Optum, Inc.	Ownership	100.000	UnitedHealth Group Incorporated	
		00000	20-0151096				OptumRx NY IPA, Inc.	..NY	..NIA	OptumRx, Inc.	Ownership	100.000	UnitedHealth Group Incorporated	
		00000	33-0441200				OptumRx, Inc.	..CA	..NIA	OptumRx Holdings, LLC	Ownership	100.000	UnitedHealth Group Incorporated	
		00000					Orion Participações e Administração Ltda.	..BRA	..NIA	Amil Assistência Médica Internacional S.A.	Ownership	100.000	UnitedHealth Group Incorporated	20
		00000					Orion Participações e Administração Ltda.	..BRA	..NIA	Amico Saúde Ltda.	Ownership	0.000	UnitedHealth Group Incorporated	20
		00000	41-1921007				Ovations, Inc.	..DE	..NIA	United HealthCare Services, Inc.	Ownership	100.000	UnitedHealth Group Incorporated	
		00000	06-1587795				Oxford Benefit Management, Inc.	..CT	..NIA	Oxford Health Plans LLC	Ownership	100.000	UnitedHealth Group Incorporated	
0707	UnitedHealth Group Incorporated	78026	22-2797560				Oxford Health Insurance, Inc.	..NY	..IA	Oxford Health Plans (NY), Inc.	Ownership	100.000	UnitedHealth Group Incorporated	
0707	UnitedHealth Group Incorporated	96798	06-1181201				Oxford Health Plans (CT), Inc.	..CT	..IA	Oxford Health Plans LLC	Ownership	100.000	UnitedHealth Group Incorporated	
0707	UnitedHealth Group Incorporated	95506	22-2745725				Oxford Health Plans (NJ), Inc.	..NJ	..IA	Oxford Health Plans LLC	Ownership	100.000	UnitedHealth Group Incorporated	
0707	UnitedHealth Group Incorporated	95479	06-1181200				Oxford Health Plans (NY), Inc.	..NY	..IA	Oxford Health Plans LLC	Ownership	100.000	UnitedHealth Group Incorporated	
		00000	52-2443751				Oxford Health Plans LLC	..DE	..NIA	UnitedHealth Group Incorporated	Ownership	100.000	UnitedHealth Group Incorporated	
0707	UnitedHealth Group Incorporated	70785	35-1137395				PacifiCare Life and Health Insurance Company	..IN	..IA	United HealthCare Services, Inc.	Ownership	100.000	UnitedHealth Group Incorporated	
0707	UnitedHealth Group Incorporated	84506	95-2829463				PacifiCare Life Assurance Company	..CO	..IA	United HealthCare Services, Inc.	Ownership	100.000	UnitedHealth Group Incorporated	
0707	UnitedHealth Group Incorporated	95617	94-3267522				PacifiCare of Arizona, Inc.	..AZ	..IA	United HealthCare Services, Inc.	Ownership	100.000	UnitedHealth Group Incorporated	
0707	UnitedHealth Group Incorporated	95434	84-1011378				PacifiCare of Colorado, Inc.	..CO	..IA	United HealthCare Services, Inc.	Ownership	100.000	UnitedHealth Group Incorporated	
0707	UnitedHealth Group Incorporated	95685	86-0875231				PacifiCare of Nevada, Inc.	..NV	..IA	United HealthCare Services, Inc.	Ownership	100.000	UnitedHealth Group Incorporated	
		00000	33-0861832				Paularino Third Party Administrators, Inc.	..CA	..NIA	For Health, Inc.	Ownership	100.000	UnitedHealth Group Incorporated	
		00000	62-1451147				Payment Resolution Services, LLC	..TN	..NIA	OptumInsight, Inc.	Ownership	100.000	UnitedHealth Group Incorporated	
		00000	98-1095799				Personal Performance Consultants India Private Limited	..IND	..NIA	OptumHealth International B.V.	Ownership	99.996	UnitedHealth Group Incorporated	21
		00000	98-1095799				Personal Performance Consultants India Private Limited	..IND	..NIA	United Behavioral Health	Ownership	0.004	UnitedHealth Group Incorporated	21
		00000	98-1095879				Personal Performance Consultants UK Limited	..GBR	..NIA	PPC International, L.L.C.	Ownership	100.000	UnitedHealth Group Incorporated	
		00000	80-0506053				PHC Holdings of Florida, Inc.	..TX	..NIA	PHC Subsidiary Holdings, LLC	Ownership	100.000	UnitedHealth Group Incorporated	
		00000	35-2288416				PHC Subsidiary Holdings, LLC	..TX	..NIA	United HealthCare Services, Inc.	Ownership	100.000	UnitedHealth Group Incorporated	
		00000	80-0654665				Physician Care Partners, Inc.	..IL	..NIA	Illinois, Inc.	Ownership	100.000	UnitedHealth Group Incorporated	
		00000					Physicians Choice Insurance Service, LLC	..CA	..NIA	Monarch Financial Services, LLC	Ownership	70.000	UnitedHealth Group Incorporated	2
							Physicians Health Choice of New Mexico, Inc.	..NM	..IA	PHC Subsidiary Holdings, LLC	Ownership	100.000	UnitedHealth Group Incorporated	
0707	UnitedHealth Group Incorporated	12977	32-0191973				Physicians Health Choice of Texas, LLC	..TX	..IA	PHC Subsidiary Holdings, LLC	Ownership	100.000	UnitedHealth Group Incorporated	
0707	UnitedHealth Group Incorporated	11494	04-3677255				Physicians Health Plan of Maryland, Inc.	..MD	..NIA	United HealthCare Services, Inc.	Ownership	100.000	UnitedHealth Group Incorporated	
		00000	52-1162824				Picis, Inc.	..DE	..NIA	OptumInsight, Inc.	Ownership	100.000	UnitedHealth Group Incorporated	
		00000	36-4375169	3886791			Picis, Ltd.	..GBR	..NIA	Picis, Inc.	Ownership	100.000	UnitedHealth Group Incorporated	
		00000	98-1094849				Polar II Fundo de Investimento em Participações	..BRA	..NIA	UnitedHealthcare International IV S.á.r.l.	Ownership	100.000	UnitedHealth Group Incorporated	
		00000	98-1098190				Positive People Company	..CHN	..NIA	PPC International, L.L.C.	Ownership	100.000	UnitedHealth Group Incorporated	
		00000	20-2149493				PPC International II, LLC	..MO	..NIA	United Behavioral Health	Ownership	100.000	UnitedHealth Group Incorporated	

SCHEDULE Y
PART 1A - DETAIL OF INSURANCE HOLDING COMPANY SYSTEM

1	2	3	4	5	6	7	8	9	10	11	12	13	14	15
Group Code	Group Name	NAIC Company Code	Federal ID Number	Federal RSSD	CIK	Name of Securities Exchange if Publicly Traded (U.S. or International)	Names of Parent, Subsidiaries Or Affiliates	Domiciliary Location	Relationship to Reporting Entity	Directly Controlled by (Name of Entity/Person)	Type of Control (Ownership, Board, Management, Attorney-in-Fact, Influence, Other)	If Control is Ownership Provide Percentage	Ultimate Controlling Entity(ies)/Person(s)	*
0707	UnitedHealth Group Incorporated	00000	43-1747235				PPC International, L.L.C.	MO	NIA	Optum, Inc.	Ownership	100.000	UnitedHealth Group Incorporated	
		00000	98-1097921				PPC Worldwide Canada EAP Services Ltd.	CAN	NIA	PPC International, L.L.C.	Ownership	100.000	UnitedHealth Group Incorporated	
		00000					PPC Worldwide Pte. Ltd.	SGP	NIA	International Psychological Services Pty Limited	Ownership	100.000	UnitedHealth Group Incorporated	
		00000					PPC Worldwide Pty Ltd	AUS	NIA	Personal Performance Consultants UK Limited	Ownership	100.000	UnitedHealth Group Incorporated	
		00000	75-2741619				ppoONE, Inc.	DE	NIA	United HealthCare Services, Inc.	Ownership	100.000	UnitedHealth Group Incorporated	
		00000	65-0683927				Preferred Care Partners Holding, Corp.	FL	NIA	United HealthCare Services, Inc.	Ownership	100.000	UnitedHealth Group Incorporated	
		00000	26-1845018				Preferred Care Partners Medical Group, Inc.	FL	NIA	Preferred Care Partners Holding, Corp.	Ownership	100.000	UnitedHealth Group Incorporated	
		00000	26-1845018				Preferred Care Partners Medical Group, Inc.	FL	NIA	Preferred Care Partners Holding, Corp.	Ownership	100.000	UnitedHealth Group Incorporated	
		11176	65-0885893				Preferred Care Partners, Inc.	FL	IA	Preferred Care Partners Holding, Corp.	Ownership	100.000	UnitedHealth Group Incorporated	
		00000	75-3265059				Premier Choice ACO, Inc.	CA	NIA	PrimeCare Medical Network, Inc.	Ownership	100.000	UnitedHealth Group Incorporated	
		00000	75-3265056				Prime Community Care of Central Valley, Inc.	CA	NIA	PrimeCare Medical Network, Inc.	Ownership	100.000	UnitedHealth Group Incorporated	
		00000	88-0253112				Prime Health, Inc.	NV	NIA	Sierra Health Services, Inc.	Ownership	100.000	UnitedHealth Group Incorporated	
		00000	33-0607478				PrimeCare Medical Network, Inc.	CA	IA	NAMM Holdings, Inc.	Ownership	100.000	UnitedHealth Group Incorporated	
		00000	75-3265058				PrimeCare of Banning-Beaumont, Inc.	CA	NIA	PrimeCare Medical Network, Inc.	Ownership	100.000	UnitedHealth Group Incorporated	
		00000	87-0757397				PrimeCare of Citrus Valley, Inc.	CA	NIA	PrimeCare Medical Network, Inc.	Ownership	80.000	UnitedHealth Group Incorporated	8
		00000	33-0674407				PrimeCare of Corona, Inc.	CA	NIA	PrimeCare Medical Network, Inc.	Ownership	100.000	UnitedHealth Group Incorporated	
		00000	33-0674401				PrimeCare of Hemet Valley, Inc.	CA	NIA	PrimeCare Medical Network, Inc.	Ownership	100.000	UnitedHealth Group Incorporated	
		00000	33-0674408				PrimeCare of Inland Valley, Inc.	CA	NIA	PrimeCare Medical Network, Inc.	Ownership	100.000	UnitedHealth Group Incorporated	
		00000	33-0674402				PrimeCare of Moreno Valley, Inc.	CA	NIA	PrimeCare Medical Network, Inc.	Ownership	100.000	UnitedHealth Group Incorporated	
		00000	75-3265060				PrimeCare of Pomona Valley, Inc.	CA	NIA	PrimeCare Medical Network, Inc.	Ownership	100.000	UnitedHealth Group Incorporated	
		00000	33-0674400				PrimeCare of Redlands, Inc.	CA	NIA	PrimeCare Medical Network, Inc.	Ownership	100.000	UnitedHealth Group Incorporated	
		00000	33-0674404				PrimeCare of Riverside, Inc.	CA	NIA	PrimeCare Medical Network, Inc.	Ownership	100.000	UnitedHealth Group Incorporated	
		00000	14-1915328				PrimeCare of San Bernardino, Inc.	CA	NIA	PrimeCare Medical Network, Inc.	Ownership	100.000	UnitedHealth Group Incorporated	
		00000	33-0698439				PrimeCare of Sun City, Inc.	CA	NIA	PrimeCare Medical Network, Inc.	Ownership	100.000	UnitedHealth Group Incorporated	
		00000	33-0674409				PrimeCare of Temecula, Inc.	CA	NIA	PrimeCare Medical Network, Inc.	Ownership	100.000	UnitedHealth Group Incorporated	
		00000	39-1579905				ProcessWorks, Inc.	WI	NIA	UnitedHealthcare, Inc.	Ownership	100.000	UnitedHealth Group Incorporated	
		00000					Promarket Propaganda e Marketing Ltda.	BRA	NIA	Amil Assistência Médica Internacional S.A.	Ownership	99.792	UnitedHealth Group Incorporated	1
		00000					Promarket Propaganda e Marketing Ltda.	BRA	NIA	Amico Saúde Ltda.	Ownership	0.208	UnitedHealth Group Incorporated	1
		00000					QSSI Technologies India Private Limited	IND	NIA	Quality Software Services, Inc.	Ownership	99.900	UnitedHealth Group Incorporated	2
		00000	52-2016292				Quality Software Services, Inc.	MD	NIA	OptumInsight, Inc.	Ownership	100.000	UnitedHealth Group Incorporated	
		00000	26-3168754				R&H Family Fitness Unlimited LLC	TX	NIA	WellMed Medical Management, Inc.	Ownership	100.000	UnitedHealth Group Incorporated	
		00000					Savvysherpa Asia, Inc.	PHL	NIA	UnitedHealth Group International B.V.	Ownership	100.000	UnitedHealth Group Incorporated	
		00000					Savvysherpa Asia, LLC	MN	NIA	United HealthCare Services, Inc.	Ownership	100.000	UnitedHealth Group Incorporated	
		00000	98-1097769				ScriptSwitch Holdings Limited	GBR	NIA	Ingenix UK Holdings Limited	Ownership	100.000	UnitedHealth Group Incorporated	
		00000					ScriptSwitch Limited	GBR	NIA	ScriptSwitch Holdings Limited	Ownership	100.000	UnitedHealth Group Incorporated	
		00000	20-4763091				Senior Care Partners, Inc.	IL	NIA	North American Medical Management - Illinois, Inc.	Ownership	100.000	UnitedHealth Group Incorporated	
		71420	94-0734860				Sierra Health and Life Insurance Company, Inc.	NV	IA	Sierra Health Services, Inc.	Ownership	100.000	UnitedHealth Group Incorporated	
		00000	88-0200415				Sierra Health Services, Inc.	NV	NIA	UnitedHealthcare, Inc.	Ownership	100.000	UnitedHealth Group Incorporated	
		00000	88-0254322				Sierra Health-Care Options, Inc.	NV	NIA	Sierra Health Services, Inc.	Ownership	100.000	UnitedHealth Group Incorporated	
		00000	88-0385705				Sierra Home Medical Products, Inc.	NV	NIA	Sierra Health Services, Inc.	Ownership	100.000	UnitedHealth Group Incorporated	
		00000	88-0264562				Sierra Nevada Administrators, Inc.	NV	NIA	Sierra Health Services, Inc.	Ownership	100.000	UnitedHealth Group Incorporated	
		00000	88-0201420				Southwest Medical Associates, Inc.	NV	NIA	Sierra Health Services, Inc.	Ownership	100.000	UnitedHealth Group Incorporated	
		00000	38-2609888				Southwest Michigan Health Network Inc.	MI	NIA	UnitedHealthcare, Inc.	Ownership	100.000	UnitedHealth Group Incorporated	

SCHEDULE Y
PART 1A - DETAIL OF INSURANCE HOLDING COMPANY SYSTEM

1	2	3	4	5	6	7	8	9	10	11	12	13	14	15
Group Code	Group Name	NAIC Company Code	Federal ID Number	Federal RSSD	CIK	Name of Securities Exchange if Publicly Traded (U.S. or International)	Names of Parent, Subsidiaries Or Affiliates	Domi-ciliary Location	Relation-ship to Reporting Entity	Directly Controlled by (Name of Entity/Person)	Type of Control (Ownership, Board, Management, Attorney-in-Fact, Influence, Other)	If Control is Owner-ship Provide Percen-tage	Ultimate Controlling Entity(ies)/Person(s)	*
		.00000	41-1921983				Specialty Benefits, LLC	.DE	.NIA	United HealthCare Services, Inc.	Ownership	.100.000	UnitedHealth Group Incorporated	
		.00000	71-0886811				Spectera of New York, IPA, Inc.	.NY	.NIA	Spectera, Inc.	Ownership	.100.000	UnitedHealth Group Incorporated	
		.00000	52-1260282				Spectera, Inc.	.MD	.NIA	Specialty Benefits, LLC	Ownership	.100.000	UnitedHealth Group Incorporated	
		.00000	56-1970224				The Lewin Group, Inc.	.NC	.NIA	Optum Public Sector Solutions, Inc.	Ownership	.100.000	UnitedHealth Group Incorporated	
		.00000	25-1825549				Three Rivers Holdings, Inc.	.DE	.UDP	AmeriChoice Corporation	Ownership	.100.000	UnitedHealth Group Incorporated	
		.00000	52-1431155				Travel Express Incorporated	.MD	.NIA	FrontierMEDEX, Inc.	Ownership	.100.000	UnitedHealth Group Incorporated	
		.00000	94-3077084				U.S. Behavioral Health Plan, California	.CA	.IA	United Behavioral Health	Ownership	.100.000	UnitedHealth Group Incorporated	
		.00000	41-1913059				UHC International Services, Inc.	.DE	.NIA	UnitedHealth Group Incorporated	Ownership	.100.000	UnitedHealth Group Incorporated	
		.00000	95-2931460				UHC of California	.CA	.IA	United HealthCare Services, Inc.	Ownership	.100.000	UnitedHealth Group Incorporated	
		.00000					UHG Brasil Participações S.A.	.BRA	.NIA	Polar II Fundo de Investimento em Participações	Ownership	.100.000	UnitedHealth Group Incorporated	
		.00000	41-1921008				UHC Holdings, Inc.	.DE	.NIA	United HealthCare Services, Inc.	Ownership	.100.000	UnitedHealth Group Incorporated	
		.00000	14-1892398				Ultima Rx, LLC	.FL	.NIA	United HealthCare Services, Inc.	Ownership	.100.000	UnitedHealth Group Incorporated	
		.00000	39-1995276				UMR, Inc.	.DE	.NIA	United HealthCare Services, Inc.	Ownership	.100.000	UnitedHealth Group Incorporated	
.0707	UnitedHealth Group Incorporated	.91529	52-1996029				Unimerica Insurance Company	.WI	.IA	OptumHealth Holdings, LLC	Ownership	.100.000	UnitedHealth Group Incorporated	
							Unimerica Life Insurance Company of New York	.NY	.IA	UnitedHealthcare Insurance Company	Ownership	.100.000	UnitedHealth Group Incorporated	
.0707	UnitedHealth Group Incorporated	.11596	01-0637149				Unison Administrative Services, LLC	.PA	.NIA	Three Rivers Holdings, Inc.	Ownership	.100.000	UnitedHealth Group Incorporated	
		.00000	25-1877716				Unison Health Plan of Delaware, Inc.	.DE	.IA	Three Rivers Holdings, Inc.	Ownership	.100.000	UnitedHealth Group Incorporated	
		.00000	20-5917714				Unison Health Plan of the Capital Area, Inc.	.DC	.IA	Three Rivers Holdings, Inc.	Ownership	.100.000	UnitedHealth Group Incorporated	
.0707	UnitedHealth Group Incorporated	.13032	26-0651931				United Behavioral Health	.CA	.NIA	OptumHealth Holdings, LLC	Ownership	.100.000	UnitedHealth Group Incorporated	
		.00000	94-2649097				United Behavioral Health of New York, I.P.A., Inc.	.NY	.NIA	United Behavioral Health	Ownership	.100.000	UnitedHealth Group Incorporated	
		.00000	41-1868911				United Health Foundation	.MN	.NIA	UnitedHealth Group Incorporated	Ownership	.100.000	UnitedHealth Group Incorporated	
		.00000	41-1289245	3410132			United HealthCare Services, Inc.	.MN	.NIA	UnitedHealth Group Incorporated	Ownership	.100.000	UnitedHealth Group Incorporated	
		.00000	30-0318238				United Resource Networks IPA of New York, Inc.	.NY	.NIA	OptumHealth Care Solutions, Inc.	Ownership	.100.000	UnitedHealth Group Incorporated	
		.00000	01-0538317				UnitedHealth Advisors, LLC	.ME	.NIA	United HealthCare Services, Inc.	Ownership	.100.000	UnitedHealth Group Incorporated	
		.00000	98-1097761				UnitedHealth Group Global Healthcare Services Limited	.JRL	.NIA	United HealthCare Services, Inc.	Ownership	.100.000	UnitedHealth Group Incorporated	
		.00000	98-1097776				UnitedHealth Group Global Services, Inc.	.PHL	.NIA	UnitedHealth Group International B.V.	Ownership	.100.000	UnitedHealth Group Incorporated	
		.00000	41-1321939		0000731766	New York Stock Exchange	UnitedHealth Group Incorporated	.MN	.UIP					
		.00000	98-1093259				UnitedHealth Group Information Services Private Limited	.IND	.NIA	UnitedHealth Group International B.V.	Ownership	.99.370	UnitedHealth Group Incorporated	3
		.00000	98-1093259				UnitedHealth Group Information Services Private Limited	.IND	.NIA	UnitedHealth International, Inc.	Ownership	.0.630	UnitedHealth Group Incorporated	3
		.00000					UnitedHealth Group International B.V.	.NLD	.NIA	UnitedHealth Group Incorporated	Ownership	.100.000	UnitedHealth Group Incorporated	
		.00000	98-1079826				UnitedHealth Group International GP	.CYM	.NIA	UnitedHealth Group Incorporated	Ownership	.100.000	UnitedHealth Group Incorporated	
		.00000	98-1080118				UnitedHealth Group International L.P.	.CYM	.NIA	UnitedHealth Group Incorporated	Ownership	.92.970	UnitedHealth Group Incorporated	4
		.00000	98-1080118				UnitedHealth Group International L.P.	.CYM	.NIA	FMG Holdings, LLC	Ownership	.4.410	UnitedHealth Group Incorporated	4
		.00000					UnitedHealthcare International LATAM Corporation	.CYM	.NIA		Ownership	.2.300	UnitedHealth Group Incorporated	4
		.00000	98-1080118				UnitedHealth Group International L.P.	.CYM	.NIA	Hygeia Corporation	Ownership	.0.330	UnitedHealth Group Incorporated	4
		.00000					UnitedHealth Group Ventures, LLC	.DE	.NIA	UnitedHealth Group Incorporated	Ownership	.100.000	UnitedHealth Group Incorporated	
		.00000	41-1917398				UnitedHealth International, Inc.	.DE	.NIA	UnitedHealth Group Incorporated	Ownership	.100.000	UnitedHealth Group Incorporated	
		.00000					UnitedHealth Military & Veterans Services, LLC	.DE	.NIA	United HealthCare Services, Inc.	Ownership	.100.000	UnitedHealth Group Incorporated	
		.00000	26-2574977				UnitedHealth UK Limited	.GBR	.NIA	Ingenix UK Holdings Limited	Ownership	.100.000	UnitedHealth Group Incorporated	
.0707	UnitedHealth Group Incorporated	.95174	33-0115163				UnitedHealthcare Benefits of Texas, Inc.	.TX	.IA	United HealthCare Services, Inc.	Ownership	.100.000	UnitedHealth Group Incorporated	

SCHEDULE Y
PART 1A - DETAIL OF INSURANCE HOLDING COMPANY SYSTEM

1	2	3	4	5	6	7	8	9	10	11	12	13	14	15
Group Code	Group Name	NAIC Company Code	Federal ID Number	Federal RSSD	CIK	Name of Securities Exchange if Publicly Traded (U.S. or International)	Names of Parent, Subsidiaries Or Affiliates	Domiciliary Location	Relationship to Reporting Entity	Directly Controlled by (Name of Entity/Person)	Type of Control (Ownership, Board, Management, Attorney-in-Fact, Influence, Other)	If Control is Ownership Provide Percentage	Ultimate Controlling Entity(ies)/Person(s)	*
		00000					UnitedHealthcare Community Plan of California, Inc.		NIA	AmeriChoice Corporation	Ownership	100.000	UnitedHealth Group Incorporated	
0707	UnitedHealth Group Incorporated	12323	56-2451429				UnitedHealthcare Community Plan of Ohio, Inc.	OH		Three Rivers Holdings, Inc.	Ownership	100.000	UnitedHealth Group Incorporated	
0707	UnitedHealth Group Incorporated	11141	91-2008361				UnitedHealthcare Community Plan of Texas, L.L.C.	TX	IA	Ovations, Inc.	Ownership	100.000	UnitedHealth Group Incorporated	
0707	UnitedHealth Group Incorporated	95467	38-3204052				UnitedHealthcare Community Plan, Inc.	MI	IA	AmeriChoice Corporation	Ownership	100.000	UnitedHealth Group Incorporated	
		00000	98-1099116				UnitedHealthcare India Private Limited	JND	NIA	UnitedHealthcare International II B.V.	Ownership	99.995	UnitedHealth Group Incorporated	5
		00000	98-1099116				UnitedHealthcare India Private Limited	JND	NIA	UnitedHealth International, Inc.	Ownership	0.005	UnitedHealth Group Incorporated	5
0707	UnitedHealth Group Incorporated	79413	36-2739571				UnitedHealthcare Insurance Company	CT	IA	UHC Holdings, Inc.	Ownership	100.000	UnitedHealth Group Incorporated	
							UnitedHealthcare Insurance Company of Illinois							
0707	UnitedHealth Group Incorporated	60318	36-3800349				UnitedHealthcare Insurance Company of New York	IL	IA	UnitedHealthcare Insurance Company	Ownership	100.000	UnitedHealth Group Incorporated	
0707	UnitedHealth Group Incorporated	60093	11-3283886				UnitedHealthcare Insurance Company of the River Valley	NY	IA	UnitedHealthcare Insurance Company	Ownership	100.000	UnitedHealth Group Incorporated	
							UnitedHealthcare Insurance Company of the River Valley							
0707	UnitedHealth Group Incorporated	12231	20-1902768				UnitedHealthcare International Asia, LLC	IL	IA	River Valley, Inc.	Ownership	100.000	UnitedHealth Group Incorporated	
		00000	41-1988797				UnitedHealthcare International I B.V.	DE	NIA	UnitedHealth Group Incorporated	Ownership	100.000	UnitedHealth Group Incorporated	
		00000					UnitedHealthcare International I B.V.	NLD	NIA	UnitedHealth Group International L.P.	Ownership	75.760	UnitedHealth Group Incorporated	
		00000					"UnitedHealthcare International I B.V.	NLD	NIA	UnitedHealth Group International L.P.	Ownership	75.760	UnitedHealth Group Incorporated	6
		00000					"	NLD	NIA	UnitedHealth Group International B.V.	Ownership	24.240	UnitedHealth Group Incorporated	6
		00000	98-1079595				"	LUX	NIA	UnitedHealth Group International L.P.	Ownership	100.000	UnitedHealth Group Incorporated	
		00000					"UnitedHealthcare International I B.V.	NLD	NIA	UnitedHealth Group International B.V.	Ownership	100.000	UnitedHealth Group Incorporated	
		00000	98-1079459					LUX	NIA	UnitedHealthcare International I	Ownership	100.000	UnitedHealth Group Incorporated	
		00000	98-1077436				"	LUX	NIA	UnitedHealthcare International II	Ownership	100.000	UnitedHealth Group Incorporated	
		00000	98-1080926				UnitedHealthcare International I S.á.r.l.	LUX	NIA	UnitedHealthcare International II	Ownership	100.000	UnitedHealth Group Incorporated	
		00000	99-0382287				UnitedHealthcare International II B.V.	DE	NIA	UnitedHealth Group Incorporated	Ownership	100.000	UnitedHealth Group Incorporated	
							UnitedHealthcare International II S.á.r.l.							
0707	UnitedHealth Group Incorporated	97179	86-0207231					WI	IA	Golden Rule Financial Corporation	Ownership	100.000	UnitedHealth Group Incorporated	
0707	UnitedHealth Group Incorporated	95784	63-0899562				UnitedHealthcare International III	AL	IA	UnitedHealthcare, Inc.	Ownership	100.000	UnitedHealth Group Incorporated	
0707	UnitedHealth Group Incorporated	96016	86-0507074				UnitedHealthcare International IV S.á.r.l.	AZ	IA	UnitedHealthcare, Inc.	Ownership	100.000	UnitedHealth Group Incorporated	
0707	UnitedHealth Group Incorporated	95446	63-1036819				UnitedHealthcare International LATAM Corporation	AR	IA	UnitedHealthcare, Inc.	Ownership	100.000	UnitedHealth Group Incorporated	
0707	UnitedHealth Group Incorporated	95090	84-1004639				UnitedHealthcare Life Insurance Company	CO	IA	UnitedHealthcare, Inc.	Ownership	100.000	UnitedHealth Group Incorporated	
0707	UnitedHealth Group Incorporated	95264	59-1293865				UnitedHealthcare of Alabama, Inc.	FL	IA	UnitedHealthcare, Inc.	Ownership	100.000	UnitedHealth Group Incorporated	
0707	UnitedHealth Group Incorporated	95850	58-1653544				UnitedHealthcare of Arizona, Inc.	GA	IA	UnitedHealthcare, Inc.	Ownership	100.000	UnitedHealth Group Incorporated	
0707	UnitedHealth Group Incorporated	95776	36-3280214				UnitedHealthcare of Arkansas, Inc.	IL	IA	UnitedHealthcare, Inc.	Ownership	100.000	UnitedHealth Group Incorporated	
0707	UnitedHealth Group Incorporated	96644	62-1240316				UnitedHealthcare of Colorado, Inc.	KY	IA	United HealthCare Services, Inc.	Ownership	94.180	UnitedHealth Group Incorporated	7
0707	UnitedHealth Group Incorporated	96644	62-1240316				UnitedHealthcare of Florida, Inc.	KY	IA	UnitedHealthcare, Inc.	Ownership	5.820	UnitedHealth Group Incorporated	7
0707	UnitedHealth Group Incorporated	95833	72-1074008				UnitedHealthcare of Georgia, Inc.	LA	IA	UnitedHealthcare, Inc.	Ownership	100.000	UnitedHealth Group Incorporated	
0707	UnitedHealth Group Incorporated	95716	63-1036817				UnitedHealthcare of Illinois, Inc.	MS	IA	UnitedHealthcare, Inc.	Ownership	100.000	UnitedHealth Group Incorporated	
0707	UnitedHealth Group Incorporated	95149	05-0413469				UnitedHealthcare of Kentucky, Ltd.	RI	IA	United HealthCare Services, Inc.	Ownership	100.000	UnitedHealth Group Incorporated	
0707	UnitedHealth Group Incorporated	13214	26-2697886				UnitedHealthcare of Kentucky, Ltd.	NM	IA	UnitedHealthcare Insurance Company	Ownership	100.000	UnitedHealth Group Incorporated	
0707	UnitedHealth Group Incorporated	95085	06-1172891				UnitedHealthcare of Louisiana, Inc.	NY	IA	AmeriChoice Corporation	Ownership	100.000	UnitedHealth Group Incorporated	
0707	UnitedHealth Group Incorporated	95103	56-1461010				UnitedHealthcare of Mississippi, Inc.	NC	IA	UnitedHealthcare, Inc.	Ownership	100.000	UnitedHealth Group Incorporated	
0707	UnitedHealth Group Incorporated	95186	31-1142815				UnitedHealthcare of New England, Inc.	OH	IA	United HealthCare Services, Inc.	Ownership	100.000	UnitedHealth Group Incorporated	
0707	UnitedHealth Group Incorporated	96903	33-0115166				UnitedHealthcare of New Mexico, Inc.	OK	IA	United HealthCare Services, Inc.	Ownership	100.000	UnitedHealth Group Incorporated	

STATEMENT AS OF MARCH 31, 2013 OF THE UnitedHealthcare Community Plan of Ohio, Inc.

SCHEDULE Y
PART 1A - DETAIL OF INSURANCE HOLDING COMPANY SYSTEM

1	2	3	4	5	6	7	8	9	10	11	12	13	14	15
Group Code	Group Name	NAIC Company Code	Federal ID Number	Federal RSSD	CIK	Name of Securities Exchange if Publicly Traded (U.S. or International)	Names of Parent, Subsidiaries Or Affiliates	Domi-ciliary Location	Relation-ship to Reporting Entity	Directly Controlled by (Name of Entity/Person)	Type of Control (Ownership, Board, Management, Attorney-in-Fact, Influence, Other)	If Control is Owner-ship Provide Percen-tage	Ultimate Controlling Entity(ies)/Person(s)	*
..0707	UnitedHealth Group Incorporated	..95893	93-0938819				UnitedHealthcare of New York, Inc.	..OR	..IA	United HealthCare Services, Inc.	Ownership	..100.000	UnitedHealth Group Incorporated	
..0707	UnitedHealth Group Incorporated	..95220	25-1756858				UnitedHealthcare of North Carolina, Inc.	..PA	..IA	Three Rivers Holdings, Inc.	Ownership	..100.000	UnitedHealth Group Incorporated	
..0707	UnitedHealth Group Incorporated	..95765	95-3939697				UnitedHealthcare of Ohio, Inc.	..TX	..IA	UnitedHealthcare, Inc.	Ownership	..100.000	UnitedHealth Group Incorporated	
..0707	UnitedHealth Group Incorporated	..95025	52-1130183				UnitedHealthcare of Oklahoma, Inc.	..MD	..IA	UnitedHealthcare, Inc.	Ownership	..100.000	UnitedHealth Group Incorporated	
..0707	UnitedHealth Group Incorporated	..95591	47-0676824				UnitedHealthcare of Oregon, Inc.	..NE	..IA	UnitedHealthcare, Inc.	Ownership	..100.000	UnitedHealth Group Incorporated	
..0707	UnitedHealth Group Incorporated	..96385	43-1361841				UnitedHealthcare of Pennsylvania, Inc.	..MO	..IA	UnitedHealthcare, Inc.	Ownership	..100.000	UnitedHealth Group Incorporated	
..0707	UnitedHealth Group Incorporated	..95501	41-1488563				UnitedHealthcare of Texas, Inc.	..UT	..IA	UnitedHealthcare, Inc.	Ownership	..100.000	UnitedHealth Group Incorporated	
							UnitedHealthcare of the Mid-Atlantic, Inc.							
..0707	UnitedHealth Group Incorporated	..48038	91-1312551					..WA	..IA	United HealthCare Services, Inc.	Ownership	..100.000	UnitedHealth Group Incorporated	
..0707	UnitedHealth Group Incorporated	..95710	39-1555888				UnitedHealthcare of the Midlands, Inc.	..WI	..IA	UnitedHealthcare, Inc.	Ownership	..100.000	UnitedHealth Group Incorporated	
										UnitedHealthcare Services Company of the				
..0707	UnitedHealth Group Incorporated	..95378	36-3379945				UnitedHealthcare of the Midwest, Inc.	..IL	..IA	River Valley, Inc.	Ownership	..100.000	UnitedHealth Group Incorporated	
		..00000	47-0854646				UnitedHealthcare of Utah, Inc.	..DE	..NIA	UnitedHealthcare Insurance Company	Ownership	..100.000	UnitedHealth Group Incorporated	
		..00000	36-3355110				UnitedHealthcare of Washington, Inc.	..DE	..NIA	UnitedHealthcare, Inc.	Ownership	..100.000	UnitedHealth Group Incorporated	
		..00000	01-0518346				UnitedHealthcare of Wisconsin, Inc.	..ME	..NIA	Specialty Benefits, LLC	Ownership	..100.000	UnitedHealth Group Incorporated	
							UnitedHealthcare Plan of the River Valley, Inc.	..DE	..NIA	United HealthCare Services, Inc.	Ownership	..100.000	UnitedHealth Group Incorporated	
		..00000	41-1922511				UnitedHealthcare Service LLC	..IN	..NIA	Golden Rule Financial Corporation	Ownership	..100.000	UnitedHealth Group Incorporated	
							UnitedHealthcare Services Company of the River Valley, Inc.	..CA	..NIA	PrimeCare Medical Network, Inc.	Ownership	..100.000	UnitedHealth Group Incorporated	
		..00000	87-0757396				UnitedHealthcare Specialty Benefits, LLC	..FL	..NIA	WellMed Medical Management, Inc.	Ownership	..100.000	UnitedHealth Group Incorporated	
		..00000	74-2797745				UnitedHealthcare, Inc.	..TX	..NIA	Collaborative Care Holdings, LLC	Ownership	..80.000	UnitedHealth Group Incorporated	..B
		..00000	74-2786364				UnitedHealthOne Agency, Inc.	..IL	..NIA	OptumHealth Care Solutions, Inc.	Ownership	..100.000	UnitedHealth Group Incorporated	
		..00000	36-3437660				Valley Physicians Network, Inc.	..MD	..NIA	United HealthCare Services, Inc.	Ownership	..100.000	UnitedHealth Group Incorporated	
		..00000	52-2102846				WellMed Medical Management of Florida, Inc.	..IND	..NIA	XLHealth Corporation	Ownership	..100.000	UnitedHealth Group Incorporated	
		..00000	11-3764012				WellMed Medical Management, Inc.	..CA	..NIA	PrimeCare Medical Network, Inc.	Ownership	..100.000	UnitedHealth Group Incorporated	
		..00000	27-0172594				Wellness, Inc.	..IL	..NIA	North American Medical Management - Illinois, Inc.	Ownership	..100.000	UnitedHealth Group Incorporated	

Asterisk	Explanation
01	The remaining 0.208% is owned by Amico Saúde Ltda.
02	The remaining percent is owned by outside parties.
03	The remaining 0.63% is owned by UnitedHealth International, Inc.
04	The limited partners include FMG Holdings, LLC (4.41%), UnitedHealthcare International LATAM Corporation (2.3%), Hygeia Corporation (DE) (0.33%) and UnitedHealth Group Incorporated (92.97%). The general partner is UnitedHealth Group International GP.
05	The remaining 0.0048% is owned by UnitedHealth International, Inc.
06	The remaining 24.24% is owned by UnitedHealth Group International B.V.
07	The general partnership interest of 89.77% is held by United HealthCare Services, Inc. (UHS) and 10.23% is held by UnitedHealthcare, Inc. (UHC). UHS also holds 100% of the limited partnership interests. When combining general and limited partner interests, UHS owns 94.18% and UHC owns 5.83%
08	The remaining percent is owned by a non-affiliated company.
09	The remaining percent is owned by Amil's founders.
10	The remaining 1.30196% is owned by Amico Saúde Ltda.and an officer of Amil owns 0.00683%.
11	The remaining 33.7727% is owned by Amico Saúde Ltda. and 12.9384% by Esho – Empresa de Serviços Hospitalares S.A.
12	The remaining 0.01% is owned by Cemed Care Empresa de Atendimento Clínico Geral Ltda.
13	The remaining 2.8% is owned by Amico Saúde Ltda.
14	The remaining 0.224917% is owned by Amico Saúde Ltda.; 0.094901% by Treasury Shares and 2.4% owned by external shareholders.
15	The remaining 30% is owned by (owning 6% each): HPP Boavista, S.A., HPP Lusiadas, S.A., HPP Algarve, S.A., HPP Saúde – Parcerias Cascais, S.A., and HPP Viseu, S.A.
16	The remainig 35% is owned by non-affiliated Portuguese companies.
17	The remaining 50% is owned by Amico Saúde Ltda.
18	The remaining 10% is owned by ScriptSwitch Holdings Limited.

STATEMENT AS OF MARCH 31, 2013 OF THE UnitedHealthcare Community Plan of Ohio, Inc.

Asterisk	Explanation
19	The remaining 1% is owned by OptumInsight, Inc.
20	The remaining 0.000021% is owned by Amico Saúde Ltda.
21	The remaining 0.004 % is owned by United Behavioral Health.

SUPPLEMENTAL EXHIBITS AND SCHEDULES INTERROGATORIES

The following supplemental reports are required to be filed as part of your statement filing. However, in the event that your company does not transact the type of business for which the special report must be filed, your response of NO to the specific interrogatory will be accepted in lieu of filing a "NONE" report and a bar code will be printed below. If the supplement is required of your company but is not being filed for whatever reason enter SEE EXPLANATION and provide an explanation following the interrogatory questions.

Response

1. Will the Medicare Part D Coverage Supplement be filed with the state of domicile and the NAIC with this statement?

NO

Explanation:

1. Not Applicable

Bar Code:

1. Medicare Part D Coverage Supplement [Document Identifier 365]



OVERFLOW PAGE FOR WRITE-INS

SCHEDULE A - VERIFICATION

Real Estate

	1 Year to Date	2 Prior Year Ended December 31
1. Book/adjusted carrying value, December 31 of prior year		
2. Cost of acquired:		
2.1 Actual cost at time of acquisition		
2.2 Additional investment made after acquisition		
3. Current year change in encumbrances		
4. Total gain (loss) on disposals		
5. Deduct amounts received on disposals		
6. Total foreign exchange change in book/adjusted carrying value		
7. Deduct current year's other than temporary impairment recognized		
8. Deduct current year's depreciation		
9. Book/adjusted carrying value at the end of current period (Lines 1+2+3+4-5+6-7-8)		
10. Deduct total nonadmitted amounts		
11. Statement value at end of current period (Line 9 minus Line 10)		

SCHEDULE B - VERIFICATION

Mortgage Loans

	1 Year to Date	2 Prior Year Ended December 31
1. Book value/recorded investment excluding accrued interest, December 31 of prior year		
2. Cost of acquired:		
2.1 Actual cost at time of acquisition		
2.2 Additional investment made after acquisition		
3. Capitalized deferred interest and other		
4. Accrual of discount		
5. Unrealized valuation increase (decrease)		
6. Total gain (loss) on disposals		
7. Deduct amounts received on disposals		
8. Deduct amortization of premium and mortgage interest points and commitment fees		
9. Total foreign exchange change in book value/recorded investment excluding accrued interest		
10. Deduct current year's other than temporary impairment recognized		
11. Book value/recorded investment excluding accrued interest at end of current period (Lines 1+2+3+4+5+6-7-8+9-10)		
12. Total valuation allowance		
13. Subtotal (Line 11 plus Line 12)		
14. Deduct total nonadmitted amounts		
15. Statement value at end of current period (Line 13 minus Line 14)		

SCHEDULE BA - VERIFICATION

Other Long-Term Invested Assets

	1 Year to Date	2 Prior Year Ended December 31
1. Book/adjusted carrying value, December 31 of prior year		
2. Cost of acquired:		
2.1 Actual cost at time of acquisition		
2.2 Additional investment made after acquisition		
3. Capitalized deferred interest and other		
4. Accrual of discount		
5. Unrealized valuation increase (decrease)		
6. Total gain (loss) on disposals		
7. Deduct amounts received on disposals		
8. Deduct amortization of premium and depreciation		
9. Total foreign exchange change in book/adjusted carrying value		
10. Deduct current year's other than temporary impairment recognized		
11. Book/adjusted carrying value at end of current period (Lines 1+2+3+4+5+6-7-8+9-10)		
12. Deduct total nonadmitted amounts		
13. Statement value at end of current period (Line 11 minus Line 12)		

SCHEDULE D - VERIFICATION

Bonds and Stocks

	1 Year to Date	2 Prior Year Ended December 31
1. Book/adjusted carrying value of bonds and stocks, December 31 of prior year	61,964,458	64,031,829
2. Cost of bonds and stocks acquired	3,800,471	9,847,349
3. Accrual of discount	480	2,605
4. Unrealized valuation increase (decrease)		
5. Total gain (loss) on disposals	22,431	167,868
6. Deduct consideration for bonds and stocks disposed of	1,943,094	10,906,893
7. Deduct amortization of premium	294,890	1,178,300
8. Total foreign exchange change in book/adjusted carrying value		
9. Deduct current year's other than temporary impairment recognized		
10. Book/adjusted carrying value at end of current period (Lines 1+2+3+4+5-6-7+8-9)	63,549,856	61,964,458
11. Deduct total nonadmitted amounts		
12. Statement value at end of current period (Line 10 minus Line 11)	63,549,856	61,964,458

STATEMENT AS OF MARCH 31, 2013 OF THE UnitedHealthcare Community Plan of Ohio, Inc.

SCHEDULE D - PART 1B

Showing the Acquisitions, Dispositions and Non-Trading Activity
During the Current Quarter for all Bonds and Preferred Stock by Rating Class

	1 Book/Adjusted Carrying Value Beginning of Current Quarter	2 Acquisitions During Current Quarter	3 Dispositions During Current Quarter	4 Non-Trading Activity During Current Quarter	5 Book/Adjusted Carrying Value End of First Quarter	6 Book/Adjusted Carrying Value End of Second Quarter	7 Book/Adjusted Carrying Value End of Third Quarter	8 Book/Adjusted Carrying Value December 31 Prior Year
BONDS								
1. Class 1 (a)	147,871,620	118,688,308	117,263,476	284,625	149,581,077	0	0	147,871,620
2. Class 2 (a)	5,711,383	591,892	0	(579,010)	5,724,265	0	0	5,711,383
3. Class 3 (a)	0				0			
4. Class 4 (a)	0				0			
5. Class 5 (a)	0				0			
6. Class 6 (a)	0				0			
7. Total Bonds	153,583,003	119,280,200	117,263,476	(294,385)	155,305,342	0	0	153,583,003
PREFERRED STOCK								
8. Class 1	0				0			
9. Class 2	0				0			
10. Class 3	0				0			
11. Class 4	0				0			
12. Class 5	0				0			
13. Class 6	0				0			
14. Total Preferred Stock	0	0	0	0	0	0	0	0
15. Total Bonds and Preferred Stock	153,583,003	119,280,200	117,263,476	(294,385)	155,305,342	0	0	153,583,003

(a) Book/Adjusted Carrying Value column for the end of the current reporting period includes the following amount of non-rated short-term and cash equivalent bonds by NAIC designation: NAIC 1 \$; NAIC 2 \$; NAIC 3 \$;
NAIC 4 \$; NAIC 5 \$; NAIC 6 \$

SCHEDULE DA - PART 1

Short-Term Investments

	1	2	3	4	5
	Book/Adjusted Carrying Value	Par Value	Actual Cost	Interest Collected Year-to-Date	Paid for Accrued Interest Year-to-Date
9199999 Totals	91,755,486	xxx	91,755,486	16,336	0

SCHEDULE DA - VERIFICATION

Short-Term Investments

	1	2
	Year To Date	Prior Year Ended December 31
1. Book/adjusted carrying value, December 31 of prior year	90,618,571	69,436,259
2. Cost of short-term investments acquired	115,479,728	513,868,369
3. Accrual of discount		
4. Unrealized valuation increase (decrease)		
5. Total gain (loss) on disposals		
6. Deduct consideration received on disposals	114,342,813	492,675,737
7. Deduct amortization of premium		10,320
8. Total foreign exchange change in book/adjusted carrying value		
9. Deduct current year's other than temporary impairment recognized		
10. Book/adjusted carrying value at end of current period (Lines 1+2+3+4+5-6-7+8-9)	91,755,486	90,618,571
11. Deduct total nonadmitted amounts		
12. Statement value at end of current period (Line 10 minus Line 11)	91,755,486	90,618,571

Schedule DB - Part A - Verification - Options, Caps, Floors, Collars, Swaps and Forwards
N O N E

Schedule DB - Part B - Verification - Futures Contracts
N O N E

Schedule DB - Part C - Section 1 - Replication (Synthetic Asset) Transactions (RSATs) Open
N O N E

Schedule DB-Part C-Section 2-Reconciliation of Replication (Synthetic Asset) Transactions Open
N O N E

Schedule DB - Verification - Book/Adjusted Carrying Value, Fair Value and Potential Exposure of
Derivatives
N O N E

SCHEDULE E - VERIFICATION

(Cash Equivalents)

	1	2
	Year To Date	Prior Year Ended December 31
1. Book/adjusted carrying value, December 31 of prior year	999,974	
2. Cost of cash equivalents acquired		999,968
3. Accrual of discount	26	6
4. Unrealized valuation increase (decrease)		
5. Total gain (loss) on disposals		
6. Deduct consideration received on disposals	1,000,000	
7. Deduct amortization of premium		
8. Total foreign exchange change in book/adjusted carrying value		
9. Deduct current year's other than temporary impairment recognized		
10. Book/adjusted carrying value at end of current period (Lines 1+2+3+4+5-6-7+8-9)	0	999,974
11. Deduct total nonadmitted amounts		
12. Statement value at end of current period (Line 10 minus Line 11)	0	999,974

Schedule A - Part 2 - Real Estate Acquired and Additions Made
N O N E

Schedule A - Part 3 - Real Estate Disposed
N O N E

Schedule B - Part 2 - Mortgage Loans Acquired
N O N E

Schedule B - Part 3 - Mortgage Loans Disposed, Transferred or Repaid
N O N E

Schedule BA - Part 2 - Other Long-Term Invested Assets Acquired
N O N E

Schedule BA - Part 3 - Other Long-Term Invested Assets Disposed, Transferred or Repaid
N O N E

STATEMENT AS OF MARCH 31, 2013 OF THE UnitedHealthcare Community Plan of Ohio, Inc.

SCHEDULE D - PART 3

Show All Long-Term Bonds and Stock Acquired During the Current Quarter

1	2	3	4	5	6	7	8	9	10
CUSIP Identification	Description	Foreign	Date Acquired	Name of Vendor	Number of Shares of Stock	Actual Cost	Par Value	Paid for Accrued Interest and Dividends	NAIC Designation or Market Indicator (a)
13063B-05-4	CA St GO Non Call 5.000% 02/01/18		03/15/2013	JP Morgan Chase		471,732	400,000	0	1FE
13063B-06-2	CA St GO Non Call 5.000% 02/01/19		03/15/2013	JP Morgan Chase		239,024	200,000	0	1FE
1799999. Subtotal - Bonds - U.S. States, Territories and Possessions						710,756	600,000	0	XXX
3137EA-DB-2	FHLMC Note Non Call 2.375% 01/13/22		03/04/2013	Nomura Securities		494,792	475,000	1,630	1
3138MH-3J-0	FNMA Pool AQ2600 MBS 3.500% 12/01/42		01/03/2013	Merrill Lynch		86,997	80,951	102	1
3138ML-FS-8	FNMA Pool AQ4676 MBS 3.500% 11/01/42		01/03/2013	Nomura Securities		207,779	193,762	245	1
3138MN-R2-8	FNMA Pool AQ6804 MBS 3.500% 11/01/42		01/03/2013	Nomura Securities		127,920	119,151	151	1
3199999. Subtotal - Bonds - U.S. Special Revenues						917,488	868,864	2,128	XXX
172967-GL-9	Citigroup Inc Corp Note Non Call 3.375% 03/01/23		02/14/2013	CitiGroup		199,526	200,000	0	1FE
205887-BR-2	Conagra Inc Corp Note Call MW 25BP 3.200% 01/25/23		02/12/2013	UBS Financial Services		129,416	130,000	231	2FE
29273R-AH-2	Energy Transfer Partners Corp Note MW 50BP 6.700% 07/01/18		02/04/2013	Wachovia Bank		132,963	110,000	737	2FE
35671D-BE-4	Freeport McMoran C&G Corp Note MW 25BP Prv Plc 2.375% 03/15/18		02/28/2013	Merrill Lynch		129,987	130,000	0	2FE
39153V-BK-9	Great America Leasing Rec GALC 2013-1 A4 ABS Prv Plc 1.160% 05/15/18		02/05/2013	Merrill Lynch		209,971	210,000	0	1FE
46625H-JH-4	JP Morgan Chase Corp Note Non Call 3.200% 01/25/23		01/28/2013	Merrill Lynch		164,454	165,000	88	1FE
46639J-AH-6	JP Morgan Chase JPMCC 2013-C10 A2 CMBS 2.072% 12/15/47		03/01/2013	JP Morgan Chase		319,299	310,000	232	1FE
493268-BY-1	Keycorp Student Loan Tr KSLT 2004-A 2A2 ABS 0.601% 10/28/41		03/15/2013	JP Morgan Chase		40,635	41,066	35	1FE
61761Q-AB-9	Morgan Stanley Baml Tr MSBAM 2013-C8 A2 CMBS 1.689% 12/15/48		02/05/2013	Merrill Lynch		161,600	160,000	150	1FE
90270Y-BC-2	UBS-Barclays Comm Mtge Tr UBSBB 2013-C5 A1 CMBS 0.779% 03/10/46		02/15/2013	UBS Financial Services		329,999	330,000	193	1FE
92937F-AA-9	WF-RBS Comm Mtg WFRBS 2013-C12 A1 CMBS 0.735% 03/15/48		03/06/2013	Wachovia Bank		144,997	145,000	56	1FE
94974B-FC-9	Wells Fargo Corp Note Non Call 3.500% 03/08/22		01/28/2013	JP Morgan Chase		99,375	95,000	1,321	1FE
89153J-AE-1	Total Capital Corp Note MW 12.5BP 1.450% 01/15/18	A	01/10/2013	Nomura Securities		30,082	30,000	0	1FE
89153J-AE-1	Total Capital Corp Note MW 12.5BP 1.450% 01/15/18	A	01/10/2013	Barclays Group Inc.		79,923	80,000	0	1FE
3899999. Subtotal - Bonds - Industrial and Miscellaneous (Unaffiliated)						2,172,227	2,136,066	3,043	XXX
8399997. Total - Bonds - Part 3						3,800,471	3,604,930	5,171	XXX
8399998. Total - Bonds - Part 5						XXX	XXX	XXX	XXX
8399999. Total - Bonds						3,800,471	3,604,930	5,171	XXX
8999997. Total - Preferred Stocks - Part 3						0	XXX	0	XXX
8999998. Total - Preferred Stocks - Part 5						XXX	XXX	XXX	XXX
8999999. Total - Preferred Stocks						0	XXX	0	XXX
9799997. Total - Common Stocks - Part 3						0	XXX	0	XXX
9799998. Total - Common Stocks - Part 5						XXX	XXX	XXX	XXX
9799999. Total - Common Stocks						0	XXX	0	XXX
9899999. Total - Preferred and Common Stocks						0	XXX	0	XXX
9999999 - Totals						3,800,471	XXX	5,171	XXX

(a) For all common stock bearing the NAIC market indicator "U" provide: the number of such issues

SCHEDULE D - PART 4

Show All Long-Term Bonds and Stock Sold, Redeemed or Otherwise Disposed of During the Current Quarter

CUSIP Identification	Description	For- eign	Disposal Date	Name of Purchaser	Number of Shares of Stock	Consid- eration	Par Value	Actual Cost	Prior Year Book/ Adjusted Carrying Value	Change In Book/Adjusted Carrying Value					16 Book/ Adjusted Carrying Value at Disposal Date	17 Foreign Exchange Gain (Loss) on Disposal	18 Realized Gain (Loss) on Disposal	19 Total Gain (Loss) on Disposal	20 Bond Interest/ Stock Dividends Received During Year	21 Stated Con- tractual Maturity Date	22 NAIC Desig- nation or Market In- dicator (a)				
										11 Unrealized Valuation Increase/ (Decrease)	12 Current Year's (Amor- tization)/ Accretion	13 Other Than Temporary Impairment Recogn- ized	14 Total Change in Book/ Adjusted Carrying Value (11 + 12 - 13)	15 Total Foreign Exchange Change in Book /Adjusted Carrying Value											
3620A5-GC-7	GNMA Pool 719395 MBS 4.000% 07/15/25		01/01/2013	Paydown		3,703	3,703	3,900	3,886	.0	(184)	.0	(184)	.0	3,703	.0	.0	.0	.12	07/15/2025	1				
3620A5-GC-7	GNMA Pool 719395 MBS 4.000% 07/15/25		02/01/2013	Paydown		3,667	3,667	3,862	3,849	.0	(182)	.0	(182)	.0	3,667	.0	.0	.0	.24	07/15/2025	1				
3620A5-GC-7	GNMA Pool 719395 MBS 4.000% 07/15/25		03/01/2013	Paydown		3,639	3,639	3,833	3,820	.0	(180)	.0	(180)	.0	3,639	.0	.0	.0	.36	07/15/2025	1				
3620A5-GD-5	GNMA Pool 719396 MBS 4.500% 07/15/25		01/01/2013	Paydown		27,344	27,344	29,168	29,041	.0	(1,697)	.0	(1,697)	.0	27,344	.0	.0	.0	.103	07/15/2025	1				
3620A5-GD-5	GNMA Pool 719396 MBS 4.500% 07/15/25		02/01/2013	Paydown		2,817	2,817	3,005	2,991	.0	(175)	.0	(175)	.0	2,817	.0	.0	.0	.21	07/15/2025	1				
3620A5-GD-5	GNMA Pool 719396 MBS 4.500% 07/15/25		03/01/2013	Paydown		63,730	63,730	67,982	67,684	.0	(3,954)	.0	(3,954)	.0	63,730	.0	.0	.0	.717	07/15/2025	1				
912828-JU-1	US Treasury Note 1.500% 12/31/13		03/13/2013	JP Morgan Chase		581,175	575,000	581,381	576,885	.0	(375)	.0	(375)	.0	576,510	.0	4,664	4,664	1,739	12/31/2013	1				
0599999. Subtotal - Bonds - U.S. Governments										686,075	679,900	693,131	688,156	.0	(6,747)	.0	(6,747)	.0	681,410	.0	4,664	4,664	2,652	XXX	XXX
3128PQ-LF-6	FHLMC Pool J11226 MBS 5.000% 11/01/24		01/01/2013	Paydown		2,553	2,553	2,723	2,711	.0	(158)	.0	(158)	.0	2,553	.0	.0	.0	.11	11/01/2024	1				
3128PQ-LF-6	FHLMC Pool J11226 MBS 5.000% 11/01/24		02/01/2013	Paydown		39,717	39,717	42,355	42,175	.0	(2,458)	.0	(2,458)	.0	39,717	.0	.0	.0	.331	11/01/2024	1				
3128PQ-LF-6	FHLMC Pool J11226 MBS 5.000% 11/01/24		03/01/2013	Paydown		2,407	2,407	2,567	2,556	.0	(149)	.0	(149)	.0	2,407	.0	.0	.0	.30	11/01/2024	1				
3128PR-LN-7	FHLMC Pool J12133 MBS 4.000% 05/01/25		01/01/2013	Paydown		73,968	73,968	77,447	77,190	.0	(3,221)	.0	(3,221)	.0	73,968	.0	.0	.0	.247	05/01/2025	1				
3128PR-LN-7	FHLMC Pool J12133 MBS 4.000% 05/01/25		02/01/2013	Paydown		8,037	8,037	8,415	8,387	.0	(350)	.0	(350)	.0	8,037	.0	.0	.0	.54	05/01/2025	1				
3128PR-LN-7	FHLMC Pool J12133 MBS 4.000% 05/01/25		03/01/2013	Paydown		16,589	16,589	17,369	17,311	.0	(722)	.0	(722)	.0	16,589	.0	.0	.0	.166	05/01/2025	1				
3128PT-FL-4	FHLMC Pool J13771 MBS 3.500% 12/01/25		01/01/2013	Paydown		451	451	454	454	.0	(3)	.0	(3)	.0	451	.0	.0	.0	.1	12/01/2025	1				
3128PT-FL-4	FHLMC Pool J13771 MBS 3.500% 12/01/25		02/01/2013	Paydown		6,470	6,470	6,513	6,470	.0	(43)	.0	(43)	.0	6,470	.0	.0	.0	.38	12/01/2025	1				
3128PT-FL-4	FHLMC Pool J13771 MBS 3.500% 12/01/25		03/01/2013	Paydown		3,362	3,362	3,386	3,384	.0	(22)	.0	(22)	.0	3,362	.0	.0	.0	.29	12/01/2025	1				
3128PT-MF-9	FHLMC Pool J13958 MBS 4.000% 12/01/25		01/01/2013	Paydown		21,548	21,548	22,252	22,207	.0	(659)	.0	(659)	.0	21,548	.0	.0	.0	.72	12/01/2025	1				
3128PT-MF-9	FHLMC Pool J13958 MBS 4.000% 12/01/25		02/01/2013	Paydown		3,342	3,342	3,451	3,444	.0	(102)	.0	(102)	.0	3,342	.0	.0	.0	.22	12/01/2025	1				
3128PT-MF-9	FHLMC Pool J13958 MBS 4.000% 12/01/25		03/01/2013	Paydown		11,428	11,428	11,801	11,777	.0	(350)	.0	(350)	.0	11,428	.0	.0	.0	.114	12/01/2025	1				
3128PV-ZL-3	FHLMC Pool J16179 MBS 3.500% 07/01/26		01/01/2013	Paydown		869	869	911	909	.0	(40)	.0	(40)	.0	869	.0	.0	.0	.3	07/01/2026	1				
3128PV-ZL-3	FHLMC Pool J16179 MBS 3.500% 07/01/26		02/01/2013	Paydown		13,187	13,187	13,817	13,794	.0	(607)	.0	(607)	.0	13,187	.0	.0	.0	.77	07/01/2026	1				
3128PV-ZL-3	FHLMC Pool J16179 MBS 3.500% 07/01/26		03/01/2013	Paydown		931	931	975	974	.0	(43)	.0	(43)	.0	931	.0	.0	.0	.8	07/01/2026	1				
3128PV-QQ-6	FHLMC Pool J15863 MBS 4.000% 06/01/26		01/01/2013	Paydown		971	971	1,021	1,019	.0	(48)	.0	(48)	.0	971	.0	.0	.0	.3	06/01/2026	1				
3128PV-QQ-6	FHLMC Pool J15863 MBS 4.000% 06/01/26		02/01/2013	Paydown		974	974	1,022	1,022	.0	(48)	.0	(48)	.0	974	.0	.0	.0	.7	06/01/2026	1				
3128PV-QQ-6	FHLMC Pool J15863 MBS 4.000% 06/01/26		03/01/2013	Paydown		1,326	1,326	1,394	1,391	.0	(65)	.0	(65)	.0	1,326	.0	.0	.0	.13	06/01/2026	1				
3128PV-ZN-3	FHLMC Pool J16149 MBS 3.500% 07/01/26		01/01/2013	Paydown		483	483	507	507	.0	(23)	.0	(23)	.0	483	.0	.0	.0	.1	07/01/2026	1				
3128PV-ZN-3	FHLMC Pool J16149 MBS 3.500% 07/01/26		02/01/2013	Paydown		465	465	489	488	.0	(22)	.0	(22)	.0	465	.0	.0	.0	.3	07/01/2026	1				
3128PV-ZN-3	FHLMC Pool J16149 MBS 3.500% 07/01/26		03/01/2013	Paydown		487	487	511	510	.0	(23)	.0	(23)	.0	487	.0	.0	.0	.4	07/01/2026	1				
31292L-YA-7	FHLMC Pool C04305 MBS 3.000% 11/01/42		01/01/2013	Paydown		262	262	273	273	.0	(11)	.0	(11)	.0	262	.0	.0	.0	.1	11/01/2042	1				
31292L-YA-7	FHLMC Pool C04305 MBS 3.000% 11/01/42		02/01/2013	Paydown		405	405	423	423	.0	(17)	.0	(17)	.0	405	.0	.0	.0	.2	11/01/2042	1				
31292L-YA-7	FHLMC Pool C04305 MBS 3.000% 11/01/42		03/01/2013	Paydown		373	373	389	389	.0	(16)	.0	(16)	.0	373	.0	.0	.0	.3	11/01/2042	1				
3132HQ-DB-5	FHLMC Pool Q13698 MBS 3.000% 12/01/42		01/01/2013	Paydown		410	410	429	429	.0	(19)	.0	(19)	.0	410	.0	.0	.0	.1	12/01/2042	1				
3132HQ-DB-5	FHLMC Pool Q13698 MBS 3.000% 12/01/42		02/01/2013	Paydown		331	331	346	346	.0	(16)	.0	(16)	.0	331	.0	.0	.0	.2	12/01/2042	1				
3132HQ-DB-5	FHLMC Pool Q13698 MBS 3.000% 12/01/42		03/01/2013	Paydown		334	334	349	349	.0	(16)	.0	(16)	.0	334	.0	.0	.0	.2	12/01/2042	1				
3132HQ-M4-1	FHLMC Pool Q13979 MBS 3.000% 12/01/42		01/01/2013	Paydown		216	216	226	226	.0	(10)	.0	(10)	.0	216	.0	.0	.0	.1	12/01/2042	1				
3132HQ-M4-1	FHLMC Pool Q13979 MBS 3.000% 12/01/42		02/01/2013	Paydown		216	216	227	227	.0	(10)	.0	(10)	.0	216	.0	.0	.0	.1	12/01/2042	1				
3132HQ-M4-1	FHLMC Pool Q13979 MBS 3.000% 12/01/42		03/01/2013	Paydown		217	217	227	227	.0	(10)	.0	(10)	.0	217	.0	.0	.0	.2	12/01/2042	1				
3132HQ-MR-0	FHLMC Pool Q13968 MBS 3.000% 12/01/42		01/01/2013	Paydown		175	175	184	184	.0	(9)	.0	(9)	.0	175	.0	.0	.0	.0	12/01/2042	1				
3132HQ-MR-0	FHLMC Pool Q13968 MBS 3.000% 12/01/42		02/01/2013	Paydown		175	175	184	184	.0	(9)	.0	(9)	.0	175	.0	.0	.0	.1	12/01/2042	1				
3132HQ-MR-0	FHLMC Pool Q13968 MBS 3.000% 12/01/42		03/01/2013	Paydown		179	179	188	188	.0	(9)	.0	(9)	.0	179	.0	.0	.0	.1	12/01/2042	1				
3138AD-FS-9	FNMA Pool A10176 MBS 4.500% 04/01/26		01/01/2013	Paydown		2,450	2,450	2,576	2,569	.0	(119)	.0	(119)	.0	2,450	.0	.0	.0	.9	04/01/2026	1				
3138AD-FS-9	FNMA Pool A10176 MBS 4.500% 04/01/26		02/01/2013	Paydown		2,480	2,480	2,608	2,601	.0	(121)	.0	(121)	.0	2,480	.0	.0	.0	.19	04/01/2026	1				
3138AD-FS-9	FNMA Pool A10176 MBS 4.500% 04/01/26		03/01/2013	Paydown		2,490	2,490	2,619	2,611	.0	(121)	.0													

STATEMENT AS OF MARCH 31, 2013 OF THE UnitedHealthcare Community Plan of Ohio, Inc.

SCHEDULE D - PART 4

Show All Long-Term Bonds and Stock Sold, Redeemed or Otherwise Disposed of During the Current Quarter

1	2	3	4	5	6	7	8	9	10	Change In Book/Adjusted Carrying Value					16	17	18	19	20	21	22
										11	12	13	14	15							
CUSIP Ident-ification	Description	For-ign	Disposal Date	Name of Purchaser	Number of Shares of Stock	Consid-eration	Par Value	Actual Cost	Prior Year Book/ Adjusted Carrying Value	Unrealized Valuation Increase/ (Decrease)	Current Year's (Amor-tization)/ Accretion	Current Year's Other Than Temporary Impairment Recogn-ized	Total Change in Book/ Adjusted Carrying Value (11 + 12 - 13)	Total Foreign Exchange Change in Book /Adjusted Carrying Value	Book/ Adjusted Carrying Value at Disposal Date	Foreign Exchange Gain (Loss) on Disposal	Realized Gain (Loss) on Disposal	Total Gain (Loss) on Disposal	Bond Interest/ Stock Dividends Received During Year	Stated Con-tractual Maturity Date	NAIC Desig-nation or Market In-dicator (a)
3138LR-Q5-4	FNMA Pool A01375 MBS 3.500% 08/01/42		02/01/2013	Paydown		151	151	160	160	.0	(9)	.0	(9)	.0	151	.0	.0	.0	.1	08/01/2042	1
3138LR-Q5-4	FNMA Pool A01375 MBS 3.500% 08/01/42		03/01/2013	Paydown		171	171	181	181	.0	(10)	.0	(10)	.0	171	.0	.0	.0	.2	08/01/2042	1
3138LY-HB-6	FNMA Pool A07425 MBS 3.500% 08/01/42		01/01/2013	Paydown		261	276	277	276	.0	(15)	.0	(15)	.0	261	.0	.0	.0	.1	08/01/2042	1
3138LY-HB-6	FNMA Pool A07425 MBS 3.500% 08/01/42		02/01/2013	Paydown		2,369	2,369	2,506	2,505	.0	(136)	.0	(136)	.0	2,369	.0	.0	.0	.14	08/01/2042	1
3138LY-HB-6	FNMA Pool A07425 MBS 3.500% 08/01/42		03/01/2013	Paydown		271	256	271	256	.0	(15)	.0	(15)	.0	256	.0	.0	.0	.2	08/01/2042	1
3138M1-JG-4	FNMA Pool A09262 MBS 3.500% 07/01/42		01/01/2013	Paydown		5,316	5,316	5,607	5,605	.0	(289)	.0	(289)	.0	5,316	.0	.0	.0	.16	07/01/2042	1
3138M1-JG-4	FNMA Pool A09262 MBS 3.500% 07/01/42		02/01/2013	Paydown		5,762	5,762	6,075	6,075	.0	(314)	.0	(314)	.0	5,762	.0	.0	.0	.34	07/01/2042	1
3138M1-JG-4	FNMA Pool A09262 MBS 3.500% 07/01/42		03/01/2013	Paydown		321	321	338	338	.0	(17)	.0	(17)	.0	321	.0	.0	.0	.3	07/01/2042	1
3138MH-3J-0	FNMA Pool A02600 MBS 3.500% 12/01/42		02/01/2013	Paydown		215	215	231	.0	.0	(16)	.0	(16)	.0	215	.0	.0	.0	.1	12/01/2042	1
3138MH-3J-0	FNMA Pool A02600 MBS 3.500% 12/01/42		03/01/2013	Paydown		151	151	162	.0	.0	(11)	.0	(11)	.0	151	.0	.0	.0	.1	12/01/2042	1
3138ML-FS-8	FNMA Pool A04676 MBS 3.500% 11/01/42		02/01/2013	Paydown		395	395	424	.0	.0	(29)	.0	(29)	.0	395	.0	.0	.0	.1	11/01/2042	1
3138ML-FS-8	FNMA Pool A04676 MBS 3.500% 11/01/42		03/01/2013	Paydown		359	359	385	.0	.0	(26)	.0	(26)	.0	359	.0	.0	.0	.2	11/01/2042	1
3138MM-NT-5	FNMA Pool A05801 MBS 3.000% 11/01/42		01/01/2013	Paydown		457	457	482	482	.0	(24)	.0	(24)	.0	457	.0	.0	.0	.1	11/01/2042	1
3138MM-NT-5	FNMA Pool A05801 MBS 3.000% 11/01/42		02/01/2013	Paydown		435	435	458	458	.0	(23)	.0	(23)	.0	435	.0	.0	.0	.2	11/01/2042	1
3138MM-NT-5	FNMA Pool A05801 MBS 3.000% 11/01/42		03/01/2013	Paydown		481	481	507	507	.0	(26)	.0	(26)	.0	481	.0	.0	.0	.4	11/01/2042	1
3138MN-R2-8	FNMA Pool A06804 MBS 3.500% 11/01/42		02/01/2013	Paydown		3,329	3,329	3,574	.0	.0	(245)	.0	(245)	.0	3,329	.0	.0	.0	.10	11/01/2042	1
3138MN-R2-8	FNMA Pool A06804 MBS 3.500% 11/01/42		03/01/2013	Paydown		202	202	217	.0	.0	(15)	.0	(15)	.0	202	.0	.0	.0	.1	11/01/2042	1
3138MS-A4-1	FNMA Pool A09926 MBS 3.000% 12/01/42		01/01/2013	Paydown		156	156	164	164	.0	(8)	.0	(8)	.0	156	.0	.0	.0	.0	12/01/2042	1
3138MS-A4-1	FNMA Pool A09926 MBS 3.000% 12/01/42		02/01/2013	Paydown		159	159	167	167	.0	(8)	.0	(8)	.0	159	.0	.0	.0	.1	12/01/2042	1
3138MS-A4-1	FNMA Pool A09926 MBS 3.000% 12/01/42		03/01/2013	Paydown		158	158	166	166	.0	(8)	.0	(8)	.0	158	.0	.0	.0	.1	12/01/2042	1
3138NW-YS-3	FNMA Pool A06888 MBS 3.000% 12/01/42		01/01/2013	Paydown		77	77	81	81	.0	(4)	.0	(4)	.0	77	.0	.0	.0	.0	12/01/2042	1
3138NW-YS-3	FNMA Pool A06888 MBS 3.000% 12/01/42		02/01/2013	Paydown		74	74	78	78	.0	(4)	.0	(4)	.0	74	.0	.0	.0	.0	12/01/2042	1
3138NW-YS-3	FNMA Pool A06888 MBS 3.000% 12/01/42		03/01/2013	Paydown		255	255	268	268	.0	(13)	.0	(13)	.0	255	.0	.0	.0	.2	12/01/2042	1
31416B-RB-6	FNMA Pool 995182 MBS 5.500% 06/01/20		01/01/2013	Paydown		3,262	3,262	3,567	3,523	.0	(260)	.0	(260)	.0	3,262	.0	.0	.0	.15	06/01/2020	1
31416B-RB-6	FNMA Pool 995182 MBS 5.500% 06/01/20		02/01/2013	Paydown		3,255	3,255	3,559	3,515	.0	(260)	.0	(260)	.0	3,255	.0	.0	.0	.30	06/01/2020	1
31416B-RB-6	FNMA Pool 995182 MBS 5.500% 06/01/20		03/01/2013	Paydown		3,155	3,155	3,450	3,407	.0	(252)	.0	(252)	.0	3,155	.0	.0	.0	.43	06/01/2020	1
31416W-GZ-9	FNMA Pool AB1115 MBS 4.000% 06/01/25		01/01/2013	Paydown		2,993	2,993	3,131	3,122	.0	(130)	.0	(130)	.0	2,993	.0	.0	.0	.10	06/01/2025	1
31416W-GZ-9	FNMA Pool AB1115 MBS 4.000% 06/01/25		02/01/2013	Paydown		2,941	2,941	3,077	3,069	.0	(128)	.0	(128)	.0	2,941	.0	.0	.0	.20	06/01/2025	1
31416W-GZ-9	FNMA Pool AB1115 MBS 4.000% 06/01/25		03/01/2013	Paydown		24,189	24,189	25,307	25,238	.0	(1,049)	.0	(1,049)	.0	24,189	.0	.0	.0	.242	06/01/2025	1
31417A-4Z-9	FNMA Pool AB4439 MBS 3.500% 02/01/42		01/01/2013	Paydown		279	279	296	296	.0	(16)	.0	(16)	.0	279	.0	.0	.0	.1	02/01/2042	1
31417A-4Z-9	FNMA Pool AB4439 MBS 3.500% 02/01/42		02/01/2013	Paydown		280	280	297	297	.0	(16)	.0	(16)	.0	280	.0	.0	.0	.2	02/01/2042	1
31417A-4Z-9	FNMA Pool AB4439 MBS 3.500% 02/01/42		03/01/2013	Paydown		281	281	298	298	.0	(16)	.0	(16)	.0	281	.0	.0	.0	.2	02/01/2042	1
31417D-M7-5	FNMA Pool AB6681 MBS 3.000% 10/01/42		01/01/2013	Paydown		249	249	262	262	.0	(12)	.0	(12)	.0	249	.0	.0	.0	.1	10/01/2042	1
31417D-M7-5	FNMA Pool AB6681 MBS 3.000% 10/01/42		02/01/2013	Paydown		248	248	261	261	.0	(12)	.0	(12)	.0	248	.0	.0	.0	.1	10/01/2042	1
31417D-M7-5	FNMA Pool AB6681 MBS 3.000% 10/01/42		03/01/2013	Paydown		249	249	261	261	.0	(12)	.0	(12)	.0	249	.0	.0	.0	.2	10/01/2042	1
31417E-CM-1	FNMA Pool AB7275 MBS 3.000% 12/01/42		01/01/2013	Paydown		745	745	782	782	.0	(37)	.0	(37)	.0	745	.0	.0	.0	.2	12/01/2042	1
31417E-CM-1	FNMA Pool AB7275 MBS 3.000% 12/01/42		02/01/2013	Paydown		828	828	869	869	.0	(41)	.0	(41)	.0	828	.0	.0	.0	.4	12/01/2042	1
31417E-CM-1	FNMA Pool AB7275 MBS 3.000% 12/01/42		03/01/2013	Paydown		339	339	356	356	.0	(17)	.0	(17)	.0	339	.0	.0	.0	.3	12/01/2042	1
31418T-HC-4	FNMA Pool AD5626 MBS 4.500% 04/01/25		01/01/2013	Paydown		5,299	5,299	5,630	5,604	.0	(305)	.0	(305)	.0	5,299	.0	.0	.0	.20	04/01/2025	1
31418T-HC-4	FNMA Pool AD5626 MBS 4.500% 04/01/25		02/01/2013	Paydown		23,421	23,421	24,885	24,768	.0	(1,347)	.0	(1,347)	.0	23,421	.0	.0	.0	.176	04/01/2025	1
31418T-HC-4	FNMA Pool AD5626 MBS 4.500% 04/01/25		03/01/2013	Paydown		50,519	50,519	53,677	53,424	.0	(2,905)	.0	(2,905)	.0	50,519	.0	.0	.0	.568	04/01/2025	1
31418V-CB-6	FNMA Pool AD7265 MBS 4.000% 07/01/25		01/01/2013	Paydown		27,720	27,720	29,028	28,942	.0	(1,222)	.0	(1,222)	.0	27,720	.0	.0	.0	.92	07/01/2025	1
31418V-CB-6	FNMA Pool AD7265 MBS 4.000% 07/01/25		02/01/2013	Paydown		14,569	14,569	15,256	15,211	.0	(642)	.0	(642)	.0	14,569	.0	.0	.0	.97	07/01/2025	1
31418V-CB-6	FNMA Pool AD7265 MBS 4.000% 07/01/25		03/01/2013	Paydown		13,977	13,977	14,637	14,594	.0	(616)	.0	(616)	.0	13,977	.0	.0	.0	.140	07/01/2025	1
31418X-SF-6	FNMA Pool AD9517 MBS 4.000% 07/01/25		01/01/2013	Paydown		3,966	3,966	4,146	4,135	.0	(168)	.0	(168)	.0	3,966	.0	.0	.0	.13	07/01/2025	1
31418X-SF-6	FNMA Pool AD9517 MBS 4.000% 07/01/25		02/01/2013	Paydown		4,160	4,160	4,349	4,337	.0	(177)	.0	(177)	.0	4,160	.0	.0	.0	.28	07/01/2025	1
31418X-SF-6	FNMA Pool AD9517 MBS 4.000% 07/01/25		03/01/2013	Paydown		3,997	3,997	4,178	4,167	.0	(170)	.0	(170)	.0	3,997	.0	.0	.0	.40	07/01/2025	1
31419H-A2-8	FNMA Pool AE6324 MBS 4.000% 11/01/25		01/01/2013	Paydown		13,907	13,907	14,791	14,727	.0	(820)	.0	(820)	.0	13,907	.0	.0	.0	.46	11/01/2025	1
31419H-A2-8	FNMA Pool AE6324 MBS 4.000% 11/01/25		02/01/2013	Paydown		6,384	6,384	6,791	6,761	.0	(377)	.0	(377)	.0	6,384	.0	.0	.0	.43	11/01/2025	1
31419H-A2-8	FNMA Pool AE6324 MBS 4.000% 11/01/25		03/01/2013	Paydown		9,051	9,051	9,626	9,585	.0	(534)	.0	(534)	.0	9,051	.0	.0	.0	.91	11/01/2025	1
876443-BE-1	Tarrant TX Regl Wtr Dist Rev Bond Non Call 5.000% 03/01/13		03/01/2013	Maturity		500,000	500,000	551,840	503,492	.0	(3,492)	.0	(3,492)	.0	500,000	.0	.0	.0	.12,500	03/01/2013	1FE
31999999	Subtotal - Bonds - U.S. Special Revenues					985,673	985,673	1,062,873	1,007,833	0	(27,143)	0	(27,143)	0	985,673	0	0	0	15,800	XXX	XXX
29372E-AB-4	Enterprise Fleet EFF 2011-2 A2 ABS Prv Plc 1.430% 10/20/16		01/20/2013	Paydown		14,438	14,438	14,437	14,437	.0	.0	.0	.0	.0	14,438	.0	.0	.0	.17	10/20/2016	1FE
29372E-AB-4	Enterprise Fleet EFF 2011-2 A2 ABS Prv Plc 1.430% 10/20/16		02/20/2013	Paydown		14,693	14,693	14,693	14,693	.0	.0	.0	.0	.0	14,693	.0	.0	.0	.35	10/20/2016	1FE

SCHEDULE D - PART 4

Show All Long-Term Bonds and Stock Sold, Redeemed or Otherwise Disposed of During the Current Quarter

1	2	3	4	5	6	7	8	9	10	Change In Book/Adjusted Carrying Value					16	17	18	19	20	21	22
										11	12	13	14	15							
CUSIP Ident- ification	Description	For- eign	Disposal Date	Name of Purchaser	Number of Shares of Stock	Consid- eration	Par Value	Actual Cost	Prior Year Book/ Adjusted Carrying Value	Unrealized Valuation Increase/ (Decrease)	Current Year's (Amor- tization)/ Accretion	Current Year's Other Than Temporary Impairment Recog- nized	Total Change in Book/ Adjusted Carrying Value (11 + 12 - 13)	Total Foreign Exchange Change in Book /Adjusted Carrying Value	Book/ Adjusted Carrying Value at Disposal Date	Foreign Exchange Gain (Loss) on Disposal	Realized Gain (Loss) on Disposal	Total Gain (Loss) on Disposal	Bond Interest/ Stock Dividends Received DuringYear	Stated Con- tractual Maturity Date	NAIC Desig- nation or Market In- dicator (a)
29372E-AB-4	Enterprise Fleet EFF 2011-2 A2 ABS Prv Plc 1.430% 10/20/16		03/20/2013	Paydown		14,105	14,105	14,104	14,105	0	0	0	0	0	14,105	0	0	0	50	10/20/2016	1FE
87612E-AV-8	Target Corp Note MW 15BP PPut 3.875% 07/15/20		03/13/2013	Wachovia Bank		111,151	100,000	99,713	99,774	0	5	0	5	0	99,779	0	11,372	11,372	2,616	07/15/2020	1FE
90270Y-BC-2	UBS-Barclays Comm Mtge Tr UBSBB 2013-C5 A1 OMBS 0.779% 03/10/46		03/01/2013	Paydown		5,577	5,577	5,577	0	0	0	0	0	0	5,577	0	0	0	4	03/10/2046	1FE
92933W-AA-6	WEA Property Trust Corp Note MW 50BP Prv Plc 5.750% 09/02/15		03/13/2013	Wachovia Bank		111,382	100,000	109,869	105,388	0	(403)	0	(403)	0	104,985	0	6,395	6,395	3,131	09/02/2015	1FE
3899999. Subtotal - Bonds - Industrial and Miscellaneous (Unaffiliated)						271,346	248,813	258,393	248,397	0	(398)	0	(398)	0	253,577	0	17,767	17,767	5,853	XXX	XXX
8399997. Total - Bonds - Part 4						1,943,094	1,914,386	2,014,397	1,944,386	0	(34,288)	0	(34,288)	0	1,920,660	0	22,431	22,431	24,305	XXX	XXX
8399998. Total - Bonds - Part 5						XXX	XXX	XXX	XXX	XXX	XXX	XXX	XXX	XXX	XXX	XXX	XXX	XXX	XXX	XXX	XXX
8399999. Total - Bonds						1,943,094	1,914,386	2,014,397	1,944,386	0	(34,288)	0	(34,288)	0	1,920,660	0	22,431	22,431	24,305	XXX	XXX
8999997. Total - Preferred Stocks - Part 4						0	XXX	0	0	0	0	0	0	0	0	0	0	0	0	XXX	XXX
8999998. Total - Preferred Stocks - Part 5						XXX	XXX	XXX	XXX	XXX	XXX	XXX	XXX	XXX	XXX	XXX	XXX	XXX	XXX	XXX	XXX
8999999. Total - Preferred Stocks						0	XXX	0	0	0	0	0	0	0	0	0	0	0	0	XXX	XXX
9799997. Total - Common Stocks - Part 4						0	XXX	0	0	0	0	0	0	0	0	0	0	0	0	XXX	XXX
9799998. Total - Common Stocks - Part 5						XXX	XXX	XXX	XXX	XXX	XXX	XXX	XXX	XXX	XXX	XXX	XXX	XXX	XXX	XXX	XXX
9799999. Total - Common Stocks						0	XXX	0	0	0	0	0	0	0	0	0	0	0	0	XXX	XXX
9899999. Total - Preferred and Common Stocks						0	XXX	0	0	0	0	0	0	0	0	0	0	0	0	XXX	XXX
9999999 - Totals						1,943,094	XXX	2,014,397	1,944,386	0	(34,288)	0	(34,288)	0	1,920,660	0	22,431	22,431	24,305	XXX	XXX

(a) For all common stock bearing the NAIC market indicator "U" provide: the number of such issues.....

Schedule DB - Part A - Section 1 - Options, Caps, Floors, Collars, Swaps and Forwards Open
N O N E

Schedule DB - Part B - Section 1 - Futures Contracts Open
N O N E

Schedule DB - Part B - Section 1B - Brokers with whom cash deposits have been made
N O N E

Schedule DB - Part D - Section 1 - Counterparty Exposure for Derivative Instruments Open
N O N E

Schedule DB - Part D - Section 2 - Collateral for Derivative Instruments Open
N O N E

Schedule DB - Part D - Section 2 - Collateral for Derivative Instruments Open
N O N E

Schedule DL - Part 1 - Reinvested Collateral Assets Owned
N O N E

Schedule DL - Part 2 - Reinvested Collateral Assets Owned
N O N E

STATEMENT AS OF MARCH 31, 2013 OF THE UnitedHealthcare Community Plan of Ohio, Inc.

SCHEDULE E - PART 1 - CASH

Month End Depository Balances

[illegible]

Schedule E - Part 2 - Cash Equivalents - Investments Owned End of Current Quarter

N O N E