



ANNUAL STATEMENT
For the Year Ended December 31, 2012
OF THE CONDITION AND AFFAIRS OF THE
Permanent General Assurance Corporation

NAIC Group Code 00473, 3638 NAIC Company Code 37648 Employer's ID Number 13-2960609
Organized under the Laws of Ohio, State of Domicile or Port of Entry Ohio
Country of Domicile United States
Incorporated/Organized 09/28/1994 Commenced Business 09/28/1994
Statutory Home Office 9700 Rockside Road, Suite 250, Valley View, OH, 44125
Main Administrative Office 2636 Elm Hill Pike, Suite 510, Nashville, TN, 37214 615-242-1961
Mail Address P.O. Box 305054, Nashville, TN, 37230-5054
Primary Location of Books and Records 2636 Elm Hill Pike, Suite 510, Nashville, TN, 37214 615-744-1221
Internet Web Site Address www.pgac.com
Statutory Statement Contact R Burton Barnes Jr, 615-744-1221
bbarnes@thegeneral.com (E-Mail Address) 615-744-1608 (Fax Number)

OFFICERS

Table with 4 columns: Name, Title, Name, Title. Includes Randy Philip Parker (Chairman, President & CEO), David Lee Hettinger (Sr. V.P., Chief Administrative Officer), Brian Michael Donovan (Secretary).

OTHER OFFICERS

Table with 4 columns: Name, Title, Name, Title. Includes Robert Eugene Nelson (Assistant Secretary), Sherrill Cleek Kaiser (Secretary), Allison Walker Garretson (V.P., Underwriting & Customer Service), Barry Scot Dice (V.P., Direct Sales & Marketing), Charles Wesley Kirkland (V.P., Claims), William Joseph Yeager (Sr. V.P., Claims), John Allen Hollar (Sr. V.P., Product Management), Eileen Manners (Assistant V.P., Claims), Kenton Lee Fourman (V.P., Chief Information Officer), Eric William Bur (V.P., IA Sales & Distribution), Andrew Peter Martin (Sr. V.P., Corporate-wide Sales & Distribution), Elizabeth Ann Roberts (V.P., Human Resources), Todd Raymond Hakala (V.P., Actuary Services).

DIRECTORS OR TRUSTEES

Table with 4 columns: Name, Name, Name, Name. Includes Randy Philip Parker, David Lee Hettinger, Brian Michael Donovan, Andrew Peter Martin, Elizabeth Ann Roberts.

State of Tennessee

ss

County of Davidson

The officers of this reporting entity, being duly sworn, each depose and say that they are the described officers of said reporting entity, and that on the reporting period stated above, all of the herein described assets were the absolute property of the said reporting entity, free and clear from any liens or claims thereon, except as herein stated, and that this statement, together with related exhibits, schedules and explanations therein contained, annexed or referred to, is a full and true statement of all the assets and liabilities and of the condition and affairs of the said reporting entity as of the reporting period stated above, and of its income and deductions therefrom for the period ended, and have been completed in accordance with the NAIC Annual Statement Instructions and Accounting Practices and Procedures manual except to the extent that: (1) state law may differ; or, (2) that state rules or regulations require differences in reporting not related to accounting practices and procedures, according to the best of their information, knowledge and belief, respectively. Furthermore, the scope of this attestation by the described officers also includes the related corresponding electronic filing with the NAIC, when required, that is an exact copy (except for formatting differences due to electronic filing) of the enclosed statement. The electronic filing may be requested by various regulators in lieu of or in addition to the enclosed statement.

Randy Philip Parker
Chairman, President & CEO

David Lee Hettinger
Sr. V.P., Chief Administrative Officer

Brian Michael Donovan
CFO, Treasurer & Assistant Secretary

Subscribed and sworn to before me
this 25th day of February, 2013

- a. Is this an original filing? Yes [X] No []
b. If no:
1. State the amendment number
2. Date filed
3. Number of pages attached

Susan Hawk, Notary Public
May 5, 2015

ANNUAL STATEMENT FOR THE YEAR 2012 OF THE Permanent General Assurance Corporation

ASSETS

	Current Year			Prior Year
	1 Assets	2 Nonadmitted Assets	3 Net Admitted Assets (Cols. 1 - 2)	4 Net Admitted Assets
1. Bonds (Schedule D).....	118,263,854		118,263,854	120,819,559
2. Stocks (Schedule D):				
2.1 Preferred stocks	0		0	0
2.2 Common stocks	695,102	695,102	0	0
3. Mortgage loans on real estate (Schedule B):				
3.1 First liens			0	0
3.2 Other than first liens			0	0
4. Real estate (Schedule A):				
4.1 Properties occupied by the company (less \$ encumbrances).....			0	0
4.2 Properties held for the production of income (less \$ encumbrances)			0	0
4.3 Properties held for sale (less \$ encumbrances)			0	0
5. Cash (\$200,000 , Schedule E-Part 1), cash equivalents (\$0 , Schedule E-Part 2) and short-term investments (\$24,859,363 , Schedule DA).....	25,059,363		25,059,363	11,740,367
6. Contract loans (including \$ premium notes).....			0	0
7. Derivatives (Schedule DB).....			0	0
8. Other invested assets (Schedule BA)	0		0	0
9. Receivables for securities			0	0
10. Securities lending reinvested collateral assets (Schedule DL).....			0	0
11. Aggregate write-ins for invested assets	25,407	0	25,407	0
12. Subtotals, cash and invested assets (Lines 1 to 11)	144,043,726	695,102	143,348,624	132,559,926
13. Title plants less \$ charged off (for Title insurers only).....			0	0
14. Investment income due and accrued	1,246,451		1,246,451	1,258,987
15. Premiums and considerations:				
15.1 Uncollected premiums and agents' balances in the course of collection	7,061,837	19,879	7,041,958	13,458,895
15.2 Deferred premiums, agents' balances and installments booked but deferred and not yet due (including \$ earned but unbilled premiums).....	53,146,178		53,146,178	47,343,617
15.3 Accrued retrospective premiums.....			0	0
16. Reinsurance:				
16.1 Amounts recoverable from reinsurers	2,717,527		2,717,527	2,204,901
16.2 Funds held by or deposited with reinsured companies			0	0
16.3 Other amounts receivable under reinsurance contracts			0	0
17. Amounts receivable relating to uninsured plans			0	0
18.1 Current federal and foreign income tax recoverable and interest thereon			0	2,893,310
18.2 Net deferred tax asset.....	6,847,224	643,966	6,203,258	7,143,329
19. Guaranty funds receivable or on deposit			0	0
20. Electronic data processing equipment and software.....			0	0
21. Furniture and equipment, including health care delivery assets (\$)			0	0
22. Net adjustment in assets and liabilities due to foreign exchange rates			0	0
23. Receivables from parent, subsidiaries and affiliates			0	1,438,312
24. Health care (\$) and other amounts receivable.....			0	0
25. Aggregate write-ins for other than invested assets	0	0	0	0
26. Total assets excluding Separate Accounts, Segregated Accounts and Protected Cell Accounts (Lines 12 to 25).....	215,062,943	1,358,947	213,703,996	208,301,277
27. From Separate Accounts, Segregated Accounts and Protected Cell Accounts.....			0	0
28. Total (Lines 26 and 27)	215,062,943	1,358,947	213,703,996	208,301,277
DETAILS OF WRITE-INS				
1101. Income due on security.....	25,407		25,407	0
1102.				
1103.				
1198. Summary of remaining write-ins for Line 11 from overflow page	0	0	0	0
1199. Totals (Lines 1101 through 1103 plus 1198) (Line 11 above)	25,407	0	25,407	0
2501.				
2502.				
2503.				
2598. Summary of remaining write-ins for Line 25 from overflow page	0	0	0	0
2599. Totals (Lines 2501 through 2503 plus 2598) (Line 25 above)	0	0	0	0

LIABILITIES, SURPLUS AND OTHER FUNDS

	1 Current Year	2 Prior Year
1. Losses (Part 2A, Line 35, Column 8)	45,568,627	43,429,066
2. Reinsurance payable on paid losses and loss adjustment expenses (Schedule F, Part 1, Column 6)	0	0
3. Loss adjustment expenses (Part 2A, Line 35, Column 9)	9,817,101	10,550,706
4. Commissions payable, contingent commissions and other similar charges	21,025	0
5. Other expenses (excluding taxes, licenses and fees)	0	0
6. Taxes, licenses and fees (excluding federal and foreign income taxes)	722,069	1,134,908
7.1 Current federal and foreign income taxes (including \$ on realized capital gains (losses))	608,935	0
7.2 Net deferred tax liability	0	0
8. Borrowed money \$ and interest thereon \$	0	0
9. Unearned premiums (Part 1A, Line 38, Column 5) (after deducting unearned premiums for ceded reinsurance of \$45,311,694 and including warranty reserves of \$ and accrued accident and health experience rating refunds including \$ for medical loss ratio rebate per the Public Health Service Act)	64,870,162	64,360,301
10. Advance premium	222,389	275,205
11. Dividends declared and unpaid:		
11.1 Stockholders	0	0
11.2 Policyholders	0	0
12. Ceded reinsurance premiums payable (net of ceding commissions)	913,713	3,001,319
13. Funds held by company under reinsurance treaties (Schedule F, Part 3, Column 19)	0	0
14. Amounts withheld or retained by company for account of others	0	0
15. Remittances and items not allocated	0	0
16. Provision for reinsurance (including \$ certified) (Schedule F, Part 8)	0	0
17. Net adjustments in assets and liabilities due to foreign exchange rates	0	0
18. Drafts outstanding	0	0
19. Payable to parent, subsidiaries and affiliates	409,013	0
20. Derivatives	0	0
21. Payable for securities	0	3,984
22. Payable for securities lending	0	0
23. Liability for amounts held under uninsured plans	0	0
24. Capital notes \$ and interest thereon \$	0	0
25. Aggregate write-ins for liabilities	0	0
26. Total liabilities excluding protected cell liabilities (Lines 1 through 25)	123,153,034	122,755,489
27. Protected cell liabilities	0	0
28. Total liabilities (Lines 26 and 27)	123,153,034	122,755,489
29. Aggregate write-ins for special surplus funds	0	0
30. Common capital stock	5,000,000	5,000,000
31. Preferred capital stock	0	0
32. Aggregate write-ins for other than special surplus funds	0	0
33. Surplus notes	0	0
34. Gross paid in and contributed surplus	34,274,183	34,274,183
35. Unassigned funds (surplus)	51,276,779	46,271,605
36. Less treasury stock, at cost:		
36.1 shares common (value included in Line 30 \$)	0	0
36.2 shares preferred (value included in Line 31 \$)	0	0
37. Surplus as regards policyholders (Lines 29 to 35, less 36) (Page 4, Line 39)	90,550,962	85,545,788
38. Totals (Page 2, Line 28, Col. 3)	213,703,996	208,301,277
DETAILS OF WRITE-INS		
2501.		
2502.		
2503.		
2598. Summary of remaining write-ins for Line 25 from overflow page	0	0
2599. Totals (Lines 2501 through 2503 plus 2598) (Line 25 above)	0	0
2901.		
2902.		
2903.		
2998. Summary of remaining write-ins for Line 29 from overflow page	0	0
2999. Totals (Lines 2901 through 2903 plus 2998) (Line 29 above)	0	0
3201.		
3202.		
3203.		
3298. Summary of remaining write-ins for Line 32 from overflow page	0	0
3299. Totals (Lines 3201 through 3203 plus 3298) (Line 32 above)	0	0

ANNUAL STATEMENT FOR THE YEAR 2012 OF THE Permanent General Assurance Corporation

STATEMENT OF INCOME

	1 Current Year	2 Prior Year
UNDERWRITING INCOME		
1. Premiums earned (Part 1, Line 35, Column 4)	161,182,538	166,676,286
DEDUCTIONS:		
2. Losses incurred (Part 2, Line 35, Column 7)	97,895,131	107,933,651
3. Loss adjustment expenses incurred (Part 3, Line 25, Column 1)	15,214,929	19,928,554
4. Other underwriting expenses incurred (Part 3, Line 25, Column 2)	67,394,829	66,784,541
5. Aggregate write-ins for underwriting deductions	0	0
6. Total underwriting deductions (Lines 2 through 5)	180,504,889	194,646,746
7. Net income of protected cells	0	0
8. Net underwriting gain (loss) (Line 1 minus Line 6 plus Line 7)	(19,322,351)	(27,970,460)
INVESTMENT INCOME		
9. Net investment income earned (Exhibit of Net Investment Income, Line 17)	5,157,503	5,692,410
10. Net realized capital gains (losses) less capital gains tax of \$ (Exhibit of Capital Gains (Losses))	3,985,349	3,331,192
11. Net investment gain (loss) (Lines 9 + 10)	9,142,852	9,023,602
OTHER INCOME		
12. Net gain (loss) from agents' or premium balances charged off (amount recovered \$ amount charged off \$)	0	0
13. Finance and service charges not included in premiums	18,528,824	18,925,725
14. Aggregate write-ins for miscellaneous income	179,793	172,929
15. Total other income (Lines 12 through 14)	18,708,617	19,098,654
16. Net income before dividends to policyholders, after capital gains tax and before all other federal and foreign income taxes (Lines 8 + 11 + 15)	8,529,118	151,796
17. Dividends to policyholders	0	0
18. Net income, after dividends to policyholders, after capital gains tax and before all other federal and foreign income taxes (Line 16 minus Line 17)	8,529,118	151,796
19. Federal and foreign income taxes incurred	2,551,334	(473,007)
20. Net income (Line 18 minus Line 19) (to Line 22)	5,977,784	624,803
CAPITAL AND SURPLUS ACCOUNT		
21. Surplus as regards policyholders, December 31 prior year (Page 4, Line 39, Column 2)	85,545,788	83,095,694
22. Net income (from Line 20)	5,977,784	624,803
23. Net transfers (to) from Protected Cell accounts	0	0
24. Change in net unrealized capital gains or (losses) less capital gains tax of \$	1,604,486	(958,695)
25. Change in net unrealized foreign exchange capital gain (loss)	0	0
26. Change in net deferred income tax	(626,998)	229,903
27. Change in nonadmitted assets (Exhibit of Nonadmitted Assets, Line 28, Col. 3)	(1,003,977)	2,854,083
28. Change in provision for reinsurance (Page 3, Line 16, Column 2 minus Column 1)	0	0
29. Change in surplus notes	0	0
30. Surplus (contributed to) withdrawn from protected cells	0	0
31. Cumulative effect of changes in accounting principles	54,722	0
32. Capital changes:		
32.1 Paid in	0	0
32.2 Transferred from surplus (Stock Dividend)	0	0
32.3 Transferred to surplus	0	0
33. Surplus adjustments:		
33.1 Paid in	0	700,000
33.2 Transferred to capital (Stock Dividend)	0	0
33.3 Transferred from capital	0	0
34. Net remittances from or (to) Home Office	0	0
35. Dividends to stockholders	(1,000,000)	(1,000,000)
36. Change in treasury stock (Page 3, Lines 36.1 and 36.2, Column 2 minus Column 1)	0	0
37. Aggregate write-ins for gains and losses in surplus	(843)	0
38. Change in surplus as regards policyholders for the year (Lines 22 through 37)	5,005,174	2,450,094
39. Surplus as regards policyholders, December 31 current year (Line 21 plus Line 38) (Page 3, Line 37)	90,550,962	85,545,788
DETAILS OF WRITE-INS		
0501.		
0502.		
0503.		
0598. Summary of remaining write-ins for Line 5 from overflow page	0	0
0599. Totals (Lines 0501 through 0503 plus 0598) (Line 5 above)	0	0
1401. FINANCE ROYALTY INCOME		508
1402. OTHER INTEREST (EXPENSE)	146,831	172,421
1403. OTHER INCOME		0
1498. Summary of remaining write-ins for Line 14 from overflow page	32,962	0
1499. Totals (Lines 1401 through 1403 plus 1498) (Line 14 above)	179,793	172,929
3701. OTHER INCREASES / (DECREASES)	(843)	0
3702.		
3703.		
3798. Summary of remaining write-ins for Line 37 from overflow page	0	0
3799. Totals (Lines 3701 through 3703 plus 3798) (Line 37 above)	(843)	0

CASH FLOW

	1 Current Year	2 Prior Year
Cash from Operations		
1. Premiums collected net of reinsurance.....	160,208,239	165,876,722
2. Net investment income.....	5,610,758	6,242,394
3. Miscellaneous income.....	18,708,617	19,098,654
4. Total (Lines 1 through 3).....	184,527,614	191,217,770
5. Benefit and loss related payments.....	96,268,196	103,323,702
6. Net transfers to Separate Accounts, Segregated Accounts and Protected Cell Accounts.....	0	0
7. Commissions, expenses paid and aggregate write-ins for deductions.....	83,735,177	82,596,834
8. Dividends paid to policyholders.....	0	0
9. Federal and foreign income taxes paid (recovered) net of \$ tax on capital gains (losses).....	(950,911)	319,625
10. Total (Lines 5 through 9).....	179,052,462	186,240,161
11. Net cash from operations (Line 4 minus Line 10).....	5,475,152	4,977,609
Cash from Investments		
12. Proceeds from investments sold, matured or repaid:		
12.1 Bonds.....	69,650,363	57,560,016
12.2 Stocks.....	0	7,101,863
12.3 Mortgage loans.....	0	0
12.4 Real estate.....	0	0
12.5 Other invested assets.....	0	0
12.6 Net gains or (losses) on cash, cash equivalents and short-term investments.....	0	0
12.7 Miscellaneous proceeds.....	0	3,984
12.8 Total investment proceeds (Lines 12.1 to 12.7).....	69,650,363	64,665,863
13. Cost of investments acquired (long-term only):		
13.1 Bonds.....	62,623,610	66,511,349
13.2 Stocks.....	0	4,994,781
13.3 Mortgage loans.....	0	0
13.4 Real estate.....	0	0
13.5 Other invested assets.....	0	0
13.6 Miscellaneous applications.....	29,391	0
13.7 Total investments acquired (Lines 13.1 to 13.6).....	62,653,001	71,506,130
14. Net increase (decrease) in contract loans and premium notes.....	0	0
15. Net cash from investments (Line 12.8 minus Line 13.7 minus Line 14).....	6,997,362	(6,840,267)
Cash from Financing and Miscellaneous Sources		
16. Cash provided (applied):		
16.1 Surplus notes, capital notes.....	0	0
16.2 Capital and paid in surplus, less treasury stock.....	0	700,000
16.3 Borrowed funds.....	0	0
16.4 Net deposits on deposit-type contracts and other insurance liabilities.....	0	0
16.5 Dividends to stockholders.....	1,000,000	1,000,000
16.6 Other cash provided (applied).....	1,846,482	(957,795)
17. Net cash from financing and miscellaneous sources (Lines 16.1 to 16.4 minus Line 16.5 plus Line 16.6).....	846,482	(1,257,795)
RECONCILIATION OF CASH, CASH EQUIVALENTS AND SHORT-TERM INVESTMENTS		
18. Net change in cash, cash equivalents and short-term investments (Line 11, plus Lines 15 and 17).....	13,318,996	(3,120,453)
19. Cash, cash equivalents and short-term investments:		
19.1 Beginning of year.....	11,740,367	14,860,820
19.2 End of year (Line 18 plus Line 19.1).....	25,059,363	11,740,367

UNDERWRITING AND INVESTMENT EXHIBIT

PART 1 - PREMIUMS EARNED

Line of Business		1	2	3	4
		Net Premiums Written per Column 6, Part 1B	Unearned Premiums Dec. 31 Prior Year - per Col. 3, Last Year's Part 1	Unearned Premiums Dec. 31 Current Year - per Col. 5 Part 1A	Premiums Earned During Year (Cols. 1 + 2 - 3)
1.	Fire	0	0	0	0
2.	Allied lines	0	0	0	0
3.	Farmowners multiple peril	0	0	0	0
4.	Homeowners multiple peril	0	0	0	0
5.	Commercial multiple peril	0	0	0	0
6.	Mortgage guaranty	0	0	0	0
8.	Ocean marine	0	0	0	0
9.	Inland marine	0	0	0	0
10.	Financial guaranty	0	0	0	0
11.1	Medical professional liability-occurrence	0	0	0	0
11.2	Medical professional liability-claims-made	0	0	0	0
12.	Earthquake	0	0	0	0
13.	Group accident and health	0	0	0	0
14.	Credit accident and health (group and individual)	0	0	0	0
15.	Other accident and health	0	0	0	0
16.	Workers' compensation	0	0	0	0
17.1	Other liability - occurrence	0	0	0	0
17.2	Other liability - claims-made	0	0	0	0
17.3	Excess workers' compensation.....	0	0	0	0
18.1	Products liability-occurrence	0	0	0	0
18.2	Products liability-claims-made	0	0	0	0
19.1,19.2	Private passenger auto liability	123,078,430	48,812,185	48,853,907	123,036,708
19.3,19.4	Commercial auto liability	0	0	0	0
21.	Auto physical damage	38,613,969	15,548,116	16,016,255	38,145,830
22.	Aircraft (all perils)	0	0	0	0
23.	Fidelity	0	0	0	0
24.	Surety	0	0	0	0
26.	Burglary and theft	0	0	0	0
27.	Boiler and machinery	0	0	0	0
28.	Credit	0	0	0	0
29.	International	0	0	0	0
30.	Warranty	0	0	0	0
31.	Reinsurance-nonproportional assumed property	0	0	0	0
32.	Reinsurance-nonproportional assumed liability	0	0	0	0
33.	Reinsurance-nonproportional assumed financial lines	0	0	0	0
34.	Aggregate write-ins for other lines of business	0	0	0	0
35.	TOTALS	161,692,399	64,360,301	64,870,162	161,182,538
DETAILS OF WRITE-INS					
3401.				
3402.				
3403.				
3498.	Sum. of remaining write-ins for Line 34 from overflow page	0	0	0	0
3499.	Totals (Lines 3401 through 3403 plus 3498) (Line 34 above)	0	0	0	0

UNDERWRITING AND INVESTMENT EXHIBIT

PART 1A - RECAPITULATION OF ALL PREMIUMS

Line of Business	1 Amount Unearned (Running One Year or Less from Date of Policy) (a)	2 Amount Unearned (Running More Than One Year from Date of Policy) (a)	3 Earned but Unbilled Premium	4 Reserve for Rate Credits and Retrospective Adjustments Based on Experience	5 Total Reserve for Unearned Premiums Cols. 1 + 2 + 3 + 4
1. Fire					0
2. Allied lines					0
3. Farmowners multiple peril					0
4. Homeowners multiple peril					0
5. Commercial multiple peril					0
6. Mortgage guaranty					0
8. Ocean marine					0
9. Inland marine					0
10. Financial guaranty					0
11.1 Medical professional liability-occurrence					0
11.2 Medical professional liability-claims-made					0
12. Earthquake					0
13. Group accident and health					0
14. Credit accident and health (group and individual)					0
15. Other accident and health					0
16. Workers' compensation					0
17.1 Other liability-occurrence					0
17.2 Other liability-claims-made					0
17.3 Excess workers' compensation					0
18.1 Products liability-occurrence					0
18.2 Products liability-claims-made					0
19.1,19.2 Private passenger auto liability	48,853,907				48,853,907
19.3,19.4 Commercial auto liability					0
21. Auto physical damage	16,016,255				16,016,255
22. Aircraft (all perils)					0
23. Fidelity					0
24. Surety					0
26. Burglary and theft					0
27. Boiler and machinery					0
28. Credit					0
29. International					0
30. Warranty					0
31. Reinsurance-nonproportional assumed property					0
32. Reinsurance-nonproportional assumed liability					0
33. Reinsurance-nonproportional assumed financial lines					0
34. Aggregate write-ins for other lines of business	0	0	0	0	0
35. TOTALS	64,870,162	0	0	0	64,870,162
36. Accrued retrospective premiums based on experience					
37. Earned but unbilled premiums					
38. Balance (Sum of Lines 35 through 37)					64,870,162
DETAILS OF WRITE-INS					
3401.					
3402.					
3403.					
3498. Sum. of remaining write-ins for Line 34 from overflow page	0	0	0	0	0
3499. Totals (Lines 3401 through 3403 plus 3498) (Line 34 above)	0	0	0	0	0

(a) State here basis of computation used in each case. Daili Pro-Rata

UNDERWRITING AND INVESTMENT EXHIBIT

PART 1B - PREMIUMS WRITTEN

Line of Business	1 Direct Business (a)	Reinsurance Assumed		Reinsurance Ceded		6 Net Premiums Written Cols. 1 + 2 + 3 - 4 - 5
		2 From Affiliates	3 From Non-Affiliates	4 To Affiliates	5 To Non-Affiliates	
1. Fire						0
2. Allied lines						0
3. Farmowners multiple peril						0
4. Homeowners multiple peril						0
5. Commercial multiple peril						0
6. Mortgage guaranty						0
8. Ocean marine						0
9. Inland marine						0
10. Financial guaranty						0
11.1 Medical professional liability-occurrence						0
11.2 Medical professional liability-claims-made						0
12. Earthquake						0
13. Group accident and health						0
14. Credit accident and health (group and individual)						0
15. Other accident and health						0
16. Workers' compensation						0
17.1 Other liability-occurrence						0
17.2 Other liability-claims-made						0
17.3 Excess workers' compensation						0
18.1 Products liability-occurrence						0
18.2 Products liability-claims-made						0
19.1,19.2 Private passenger auto liability	136,466,596	73,002,198		85,529,079	861,285	123,078,430
19.3,19.4 Commercial auto liability						0
21. Auto physical damage	42,034,595	23,412,810		26,833,436		38,613,969
22. Aircraft (all perils)						0
23. Fidelity						0
24. Surety						0
26. Burglary and theft						0
27. Boiler and machinery						0
28. Credit						0
29. International						0
30. Warranty						0
31. Reinsurance-nonproportional assumed property	XXX					0
32. Reinsurance-nonproportional assumed liability	XXX					0
33. Reinsurance-nonproportional assumed financial lines	XXX					0
34. Aggregate write-ins for other lines of business	0	0	0	0	0	0
35. TOTALS	178,501,191	96,415,008	0	112,362,515	861,285	161,692,399
DETAILS OF WRITE-INS						
3401.						
3402.						
3403.						
3498. Sum. of remaining write-ins for Line 34 from overflow page	0	0	0	0	0	0
3499. Totals (Lines 3401 through 3403 plus 3498) (Line 34 above)	0	0	0	0	0	0

(a) Does the company's direct premiums written include premiums recorded on an installment basis? Yes [] No [X]

If yes: 1. The amount of such installment premiums \$0

2. Amount at which such installment premiums would have been reported had they been recorded on an annualized basis \$0

ANNUAL STATEMENT FOR THE YEAR 2012 OF THE Permanent General Assurance Corporation

UNDERWRITING AND INVESTMENT EXHIBIT

PART 2 - LOSSES PAID AND INCURRED

Line of Business	Losses Paid Less Salvage				5 Net Losses Unpaid Current Year (Part 2A, Col. 8)	6 Net Losses Unpaid Prior Year	7 Losses Incurred Current Year (Cols. 4 + 5 - 6)	8 Percentage of Losses Incurred (Col. 7, Part 2) to Premiums Earned (Col. 4, Part 1)
	1 Direct Business	2 Reinsurance Assumed	3 Reinsurance Recovered	4 Net Payments (Cols. 1 + 2 - 3)				
1. Fire				.0	.0	0	.0	
2. Allied lines				.0	.0	0	.0	
3. Farmowners multiple peril				.0	.0	0	.0	
4. Homeowners multiple peril				.0	.0	0	.0	
5. Commercial multiple peril				.0	.0	0	.0	
6. Mortgage guaranty				.0	.0	0	.0	
8. Ocean marine				.0	.0	0	.0	
9. Inland marine				.0	.0	0	.0	
10. Financial guaranty				.0	.0	0	.0	
11.1 Medical professional liability-occurrence				.0	.0	0	.0	
11.2 Medical professional liability-claims-made				.0	.0	0	.0	
12. Earthquake				.0	.0	0	.0	
13. Group accident and health				.0	.0	0	.0	
14. Credit accident and health (group and individual)				.0	.0	0	.0	
15. Other accident and health				.0	.0	0	.0	
16. Workers' compensation				.0	.0	0	.0	
17.1 Other liability-occurrence				.0	.0	0	.0	
17.2 Other liability-claims-made				.0	.0	0	.0	
17.3 Excess workers' compensation				.0	.0	0	.0	
18.1 Products liability-occurrence				.0	.0	0	.0	
18.2 Products liability-claims-made				.0	.0	0	.0	
19.1,19.2 Private passenger auto liability	81,970,497	45,488,378	52,295,890	75,162,985	44,683,209	43,261,214	76,584,980	
19.3,19.4 Commercial auto liability				.0	.0	0	.0	
21. Auto physical damage	21,765,238	13,131,717	14,304,370	20,592,585	885,418	167,852	21,310,151	
22. Aircraft (all perils)				.0	.0	0	.0	
23. Fidelity				.0	.0	0	.0	
24. Surety				.0	.0	0	.0	
26. Burglary and theft				.0	.0	0	.0	
27. Boiler and machinery				.0	.0	0	.0	
28. Credit				.0	.0	0	.0	
29. International				.0	.0	0	.0	
30. Warranty				.0	.0	0	.0	
31. Reinsurance-nonproportional assumed property	XXX			.0	.0	0	.0	
32. Reinsurance-nonproportional assumed liability	XXX			.0	.0	0	.0	
33. Reinsurance-nonproportional assumed financial lines	XXX			.0	.0	0	.0	
34. Aggregate write-ins for other lines of business	0	0	0	0	0	0	0.0	
35. TOTALS	103,735,735	58,620,095	66,600,260	95,755,570	45,568,627	43,429,066	97,895,131	
DETAILS OF WRITE-INS								
3401.								
3402.								
3403.								
3498. Sum. of remaining write-ins for Line 34 from overflow page	0	0	0	0	0	0	.0	
3499. Totals (Lines 3401 through 3403 + 3498) (Line 34 above)	0	0	0	0	0	0	0.0	

ANNUAL STATEMENT FOR THE YEAR 2012 OF THE Permanent General Assurance Corporation

**UNDERWRITING AND INVESTMENT EXHIBIT
PART 2A - UNPAID LOSSES AND LOSS ADJUSTMENT EXPENSES**

Line of Business	Reported Losses				Incurred But Not Reported			8 Net Losses Unpaid (Cols. 4 + 5 + 6 - 7)	9 Net Unpaid Loss Adjustment Expenses
	1 Direct	2 Reinsurance Assumed	3 Deduct Reinsurance Recoverable from Authorized and Unauthorized Companies	4 Net Losses Excl. Incurred But Not Reported (Cols. 1 + 2 - 3)	5 Direct	6 Reinsurance Assumed	7 Reinsurance Ceded		
1. Fire				.0				.0	
2. Allied lines				.0				.0	
3. Farmowners multiple peril				.0				.0	
4. Homeowners multiple peril				.0				.0	
5. Commercial multiple peril				.0				.0	
6. Mortgage guaranty				.0				.0	
8. Ocean marine				.0				.0	
9. Inland marine				.0				.0	
10. Financial guaranty				.0				.0	
11.1 Medical professional liability-occurrence				.0				.0	
11.2 Medical professional liability-claims-made				.0				.0	
12. Earthquake				.0				.0	
13. Group accident and health				.0				(a) .0	
14. Credit accident and health (group and individual)				.0				(a) .0	
15. Other accident and health				.0				(a) .0	
16. Workers' compensation				.0				.0	
17.1 Other liability-occurrence				.0				.0	
17.2 Other liability-claims-made				.0				.0	
17.3 Excess workers' compensation				.0				.0	
18.1 Products liability-occurrence				.0				.0	
18.2 Products liability-claims-made				.0				.0	
19.1,19.2 Private passenger auto liability	38,292,953	20,325,955	24,174,467	34,444,441	11,909,689	5,648,160	7,319,081	44,683,209	9,390,460
19.3,19.4 Commercial auto liability				.0				.0	
21. Auto physical damage	2,465,878	1,233,933	1,516,922	2,182,889	(1,584,462)	(614,640)	(901,631)	885,418	426,641
22. Aircraft (all perils)				.0				.0	
23. Fidelity				.0				.0	
24. Surety				.0				.0	
26. Burglary and theft				.0				.0	
27. Boiler and machinery				.0				.0	
28. Credit				.0				.0	
29. International				.0				.0	
30. Warranty				.0				.0	
31. Reinsurance-nonproportional assumed property	XXX			.0	XXX			.0	
32. Reinsurance-nonproportional assumed liability	XXX			.0	XXX			.0	
33. Reinsurance-nonproportional assumed financial lines	XXX			.0	XXX			.0	
34. Aggregate write-ins for other lines of business	.0	.0	.0	.0	.0	.0	.0	.0	.0
35. TOTALS	40,758,831	21,559,888	25,691,389	36,627,330	10,325,227	5,033,520	6,417,450	45,568,627	9,817,101
DETAILS OF WRITE-INS									
3401.									
3402.									
3403.									
3498. Sum. of remaining write-ins for Line 34 from overflow page	.0	.0	.0	.0	.0	.0	.0	.0	.0
3499. Totals (Lines 3401 through 3403 + 3498) (Line 34 above)	0	0	0	0	0	0	0	0	0

(a) Including \$ for present value of life indemnity claims.

UNDERWRITING AND INVESTMENT EXHIBIT

PART 3 - EXPENSES

	1 Loss Adjustment Expenses	2 Other Underwriting Expenses	3 Investment Expenses	4 Total
1. Claim adjustment services:				
1.1 Direct	3,622,975			3,622,975
1.2 Reinsurance assumed	1,446,410			1,446,410
1.3 Reinsurance ceded	1,961,440			1,961,440
1.4 Net claim adjustment services (1.1 + 1.2 - 1.3)	3,107,945	0	0	3,107,945
2. Commission and brokerage:				
2.1 Direct, excluding contingent		40,516,658		40,516,658
2.2 Reinsurance assumed, excluding contingent	7,724,311	26,676,391		34,400,702
2.3 Reinsurance ceded, excluding contingent	8,413,480	34,382,330		42,795,810
2.4 Contingent-direct		59,147		59,147
2.5 Contingent-reinsurance assumed				0
2.6 Contingent-reinsurance ceded				0
2.7 Policy and membership fees				0
2.8 Net commission and brokerage (2.1 + 2.2 - 2.3 + 2.4 + 2.5 - 2.6 + 2.7)	(689,169)	32,869,866	0	32,180,697
3. Allowances to manager and agents			234,951	234,951
4. Advertising		132,027		132,027
5. Boards, bureaus and associations		10,423		10,423
6. Surveys and underwriting reports	1,960,883	3,540,006		5,500,889
7. Audit of assureds' records				0
8. Salary and related items:				
8.1 Salaries	8,220,667	12,739,385		20,960,052
8.2 Payroll taxes	627,947	857,251		1,485,198
9. Employee relations and welfare	64,229	3,123,333		3,187,562
10. Insurance		372,812		372,812
11. Directors' fees				0
12. Travel and travel items	340,725	295,411		636,136
13. Rent and rent items	3,330	1,405,155		1,408,485
14. Equipment	195,598	2,054,930		2,250,528
15. Cost or depreciation of EDP equipment and software				0
16. Printing and stationery	64,155	374,435		438,590
17. Postage, telephone and telegraph, exchange and express	139,270	2,494,729		2,633,999
18. Legal and auditing	447,417	594,248		1,041,665
19. Totals (Lines 3 to 18)	12,064,221	27,994,145	234,951	40,293,317
20. Taxes, licenses and fees:				
20.1 State and local insurance taxes deducting guaranty association credits of \$		4,939,425		4,939,425
20.2 Insurance department licenses and fees	23,151	125,595		148,746
20.3 Gross guaranty association assessments		3,046		3,046
20.4 All other (excluding federal and foreign income and real estate)		78,948		78,948
20.5 Total taxes, licenses and fees (20.1 + 20.2 + 20.3 + 20.4)	23,151	5,147,014	0	5,170,165
21. Real estate expenses				0
22. Real estate taxes				0
23. Reimbursements by uninsured plans				0
24. Aggregate write-ins for miscellaneous expenses	708,781	1,383,804	0	2,092,585
25. Total expenses incurred	15,214,929	67,394,829	234,951	82,844,709
26. Less unpaid expenses-current year	9,817,101	743,094	0	10,560,195
27. Add unpaid expenses-prior year	10,550,706	1,134,908	0	11,685,614
28. Amounts receivable relating to uninsured plans, prior year	0	0	0	0
29. Amounts receivable relating to uninsured plans, current year				0
30. TOTAL EXPENSES PAID (Lines 25 - 26 + 27 - 28 + 29)	15,948,534	67,786,643	234,951	83,970,128
DETAILS OF WRITE-INS				
2401. Bank Charges		1,143,793		1,143,793
2402. Miscellaneous Expense	94,881	(53,541)		41,340
2403. Outside Services	44	67,767		67,811
2498. Summary of remaining write-ins for Line 24 from overflow page	613,856	225,785	0	839,641
2499. Totals (Lines 2401 through 2403 plus 2498) (Line 24 above)	708,781	1,383,804	0	2,092,585

(a) Includes management fees of \$ 0 to affiliates and \$ 0 to non-affiliates.

EXHIBIT OF NET INVESTMENT INCOME

	1 Collected During Year	2 Earned During Year
1. U.S. Government bonds	(a) 89,004	87,447
1.1 Bonds exempt from U.S. tax	(a) 537,448	540,987
1.2 Other bonds (unaffiliated)	(a) 4,774,538	4,760,020
1.3 Bonds of affiliates	(a) 0	
2.1 Preferred stocks (unaffiliated)	(b) 0	
2.11 Preferred stocks of affiliates	(b) 0	
2.2 Common stocks (unaffiliated)	0	
2.21 Common stocks of affiliates	0	
3. Mortgage loans	(c)	
4. Real estate	(d)	
5. Contract loans		
6. Cash, cash equivalents and short-term investments	(e) 4,000	4,000
7. Derivative instruments	(f)	
8. Other invested assets		
9. Aggregate write-ins for investment income	0	0
10. Total gross investment income	5,404,990	5,392,454
11. Investment expenses		(g) 234,951
12. Investment taxes, licenses and fees, excluding federal income taxes		(g)
13. Interest expense		(h)
14. Depreciation on real estate and other invested assets		(i)
15. Aggregate write-ins for deductions from investment income		0
16. Total deductions (Lines 11 through 15)		234,951
17. Net investment income (Line 10 minus Line 16)		5,157,503
DETAILS OF WRITE-INS		
0901.		
0902.		
0903.		
0998. Summary of remaining write-ins for Line 9 from overflow page	0	0
0999. Totals (Lines 0901 through 0903) plus 0998 (Line 9 above)	0	0
1501.		
1502.		
1503.		
1598. Summary of remaining write-ins for Line 15 from overflow page		0
1599. Totals (Lines 1501 through 1503) plus 1598 (Line 15 above)		0

- (a) Includes \$ 285,137 accrual of discount less \$ 725,856 amortization of premium and less \$ 521,520 paid for accrued interest on purchases.
- (b) Includes \$ accrual of discount less \$ amortization of premium and less \$ 0 paid for accrued dividends on purchases.
- (c) Includes \$ 0 accrual of discount less \$ 0 amortization of premium and less \$ paid for accrued interest on purchases.
- (d) Includes \$ for company's occupancy of its own buildings; and excludes \$ interest on encumbrances.
- (e) Includes \$ accrual of discount less \$ amortization of premium and less \$ paid for accrued interest on purchases.
- (f) Includes \$ accrual of discount less \$ amortization of premium.
- (g) Includes \$ investment expenses and \$ investment taxes, licenses and fees, excluding federal income taxes, attributable to segregated and Separate Accounts.
- (h) Includes \$ interest on surplus notes and \$ interest on capital notes.
- (i) Includes \$ depreciation on real estate and \$ depreciation on other invested assets.

EXHIBIT OF CAPITAL GAINS (LOSSES)

	1 Realized Gain (Loss) On Sales or Maturity	2 Other Realized Adjustments	3 Total Realized Capital Gain (Loss) (Columns 1 + 2)	4 Change in Unrealized Capital Gain (Loss)	5 Change in Unrealized Foreign Exchange Capital Gain (Loss)
1. U.S. Government bonds			0		
1.1 Bonds exempt from U.S. tax	8,434		8,434		
1.2 Other bonds (unaffiliated)	4,833,334	(856,419)	3,976,915	926,418	
1.3 Bonds of affiliates	0	0	0	0	0
2.1 Preferred stocks (unaffiliated)	0	0	0	0	0
2.11 Preferred stocks of affiliates	0	0	0	0	0
2.2 Common stocks (unaffiliated)	0	0	0	0	0
2.21 Common stocks of affiliates	0	0	0	678,068	0
3. Mortgage loans	0	0	0	0	0
4. Real estate	0	0	0	0	0
5. Contract loans	0	0	0	0	0
6. Cash, cash equivalents and short-term investments	0	0	0	0	0
7. Derivative instruments	0	0	0	0	0
8. Other invested assets	0	0	0	0	0
9. Aggregate write-ins for capital gains (losses)	0	0	0	0	0
10. Total capital gains (losses)	4,841,768	(856,419)	3,985,349	1,604,486	0
DETAILS OF WRITE-INS					
0901.					
0902.					
0903.					
0998. Summary of remaining write-ins for Line 9 from overflow page	0	0	0	0	0
0999. Totals (Lines 0901 through 0903) plus 0998 (Line 9 above)	0	0	0	0	0

EXHIBIT OF NONADMITTED ASSETS

	1	2	3
	Current Year Total Nonadmitted Assets	Prior Year Total Nonadmitted Assets	Change in Total Nonadmitted Assets (Col. 2 - Col. 1)
1. Bonds (Schedule D).....	0	0	0
2. Stocks (Schedule D):			
2.1 Preferred stocks	0	0	0
2.2 Common stocks	695,102	17,034	(678,068)
3. Mortgage loans on real estate (Schedule B):			
3.1 First liens	0	0	0
3.2 Other than first liens	0	0	0
4. Real estate (Schedule A):			
4.1 Properties occupied by the company	0	0	0
4.2 Properties held for the production of income.....	0	0	0
4.3 Properties held for sale	0	0	0
5. Cash (Schedule E-Part 1), cash equivalents (Schedule E-Part 2) and short-term investments (Schedule DA).....	0	0	0
6. Contract loans	0	0	0
7. Derivatives (Schedule DB).....	0	0	0
8. Other invested assets (Schedule BA)	0	0	0
9. Receivables for securities	0	0	0
10. Securities lending reinvested collateral assets (Schedule DL).....	0	0	0
11. Aggregate write-ins for invested assets	0	0	0
12. Subtotals, cash and invested assets (Lines 1 to 11)	695,102	17,034	(678,068)
13. Title plants (for Title insurers only).....	0	0	0
14. Investment income due and accrued	0	0	0
15. Premiums and considerations:			
15.1 Uncollected premiums and agents' balances in the course of collection.....	19,879	61,765	41,886
15.2 Deferred premiums, agents' balances and installments booked but deferred and not yet due.....	0	0	0
15.3 Accrued retrospective premiums.....	0	0	0
16. Reinsurance:			
16.1 Amounts recoverable from reinsurers	0	0	0
16.2 Funds held by or deposited with reinsured companies	0	0	0
16.3 Other amounts receivable under reinsurance contracts	0	0	0
17. Amounts receivable relating to uninsured plans	0	0	0
18.1 Current federal and foreign income tax recoverable and interest thereon	0	0	0
18.2 Net deferred tax asset.....	643,966	330,893	(313,073)
19. Guaranty funds receivable or on deposit	0	0	0
20. Electronic data processing equipment and software.....	0	0	0
21. Furniture and equipment, including health care delivery assets	0	0	0
22. Net adjustment in assets and liabilities due to foreign exchange rates	0	0	0
23. Receivables from parent, subsidiaries and affiliates	0	0	0
24. Health care and other amounts receivable.....	0	0	0
25. Aggregate write-ins for other than invested assets	0	(54,722)	(54,722)
26. Total assets excluding Separate Accounts, Segregated Accounts and Protected Cell Accounts (Lines 12 to 25).....	1,358,947	354,970	(1,003,977)
27. From Separate Accounts, Segregated Accounts and Protected Cell Accounts.....	0	0	0
28. Total (Lines 26 and 27)	1,358,947	354,970	(1,003,977)
DETAILS OF WRITE-INS			
1101.			
1102.			
1103.			
1198. Summary of remaining write-ins for Line 11 from overflow page	0	0	0
1199. Totals (Lines 1101 through 1103 plus 1198) (Line 11 above)	0	0	0
2501. DTA cumulative effect of changes in accounting principles.....	0	(54,722)	(54,722)
2502.			
2503.			
2598. Summary of remaining write-ins for Line 25 from overflow page	0	0	0
2599. Totals (Lines 2501 through 2503 plus 2598) (Line 25 above)	0	(54,722)	(54,722)

NOTES TO FINANCIAL STATEMENTS

1. Summary of Significant Accounting Policies

- A. The accompanying financial statements of Permanent General Assurance Corporation have been prepared in accordance with the NAIC Accounting Practices and Procedures Manual except to the extent that Ohio law differs. However, as of this Statement date, there have been no requests from the State of Ohio to depart from the prescribed NAIC guidelines.

A reconciliation of the Company's net income and capital and surplus between NAIC SAP and practices prescribed and permitted by the state of Ohio is shown below:

	<u>2012</u>	<u>2011</u>
<u>Net Income</u>		
(1) Ohio company state basis (Page 4, Line 20, Column 1 & 2)	\$5,978	\$625
(2) State prescribed practices that increase / (decrease) NAIC SAP:		
(3) State permitted practices that increase / (decrease) NAIC SAP:		
(4) NAIC SAP	\$5,978	\$625
<u>Surplus</u>		
(5) Ohio company state basis (Page 3, Line 37, Column 1 & 2)	\$90,551	\$85,546
(6) State prescribed practices that increase / (decrease) NAIC SAP:		
(7) State permitted practices that increase / (decrease) NAIC SAP:		
(8) NAIC SAP	\$90,551	\$85,546

B. Use of Estimates in the Preparation of the Financial Statements

The preparation of financial statements in conformity with Statutory Accounting Principles requires management to make estimates and assumptions that affect the reported amounts of assets and liabilities. It also requires disclosure of contingent assets and liabilities at the date of the financial statements and the reported amounts of revenue and expenses during the period. Actual results could differ from those estimates.

C. Accounting Policy

Premiums are earned over the terms of the related insurance policies. Unearned premium reserves are established to cover the unexpired portion of premiums written. Such reserves are computed by pro rata methods for direct business.

Expenses incurred in connection with acquiring new insurance business, including such acquisition costs as sales commissions, are charged to operations as incurred. Expenses incurred are reduced for ceding allowances received or receivable.

- (1) Short-term investments are stated at cost.
- (2) Bonds are stated at amortized cost using the yield to maturity method.
- (3) Common stocks, if owned are stated at lower of cost or market with exception to the stock of PGAC's wholly owned subsidiary (which is valued as described in the NAIC Valuation of Securities Manual).
- (4) The Company holds no preferred stock as of the statement date.
- (5) The Company holds no mortgage loans.
- (6) The basis for loan backed securities is amortized cost or the lower of amortized cost or fair market value. The adjustment methodology used for each type of security is prospective for securities which an OTTI loss has been recognized and retrospective for all other securities.
- (7) The Company values PGA Service Corporation (a wholly owned subsidiary) in accordance with the NAIC policies and procedures manual.
- (8) The company has no investments in joint ventures, partnerships & limited liability company.
- (9) The company has no investments in derivatives.
- (10) The Company does not anticipate investment income as a factor in the premium deficiency calculation.
- (11) Reserve for losses represents the estimated liability for claims reported to the Company and an amount, based on actuarially determined reserves for losses incurred but not reported. Such liabilities are necessarily based on assumptions and estimates and while management believes the amount is adequate, the ultimate liability may be in excess of or less than the amount provided. The methods for making such estimates and for establishing the resulting liability is continually reviewed and any adjustments are reflected in the period determined.
- (12) The Company has not modified its capitalization policy from the prior year.
- (13) The Company has no pharmaceutical rebate receivables.

2. Accounting Changes and Corrections of Errors:

On November 6, 2011, SSAP No. 101, Income Taxes, A Replacement of SSAP No. 10R and SSAP No. 10, was adopted by the NAIC. SSAP No. 101 contains changes to accounting for current and deferred federal and foreign income taxes, effective January 1, 2012. This guidance provides that the deferred tax asset admissibility guidance is no longer elective, and the reversal and surplus limitation parameters in the admissibility test are determined based on the risk-based capital level. It also requires gross deferred tax assets to be reduced by a statutory valuation allowance if it is more likely than not that some portion or all of the gross deferred tax assets will not be realized. Finally, the guidance set a more likely than not threshold for the recording of contingent tax liabilities. The cumulative effect of adopting this pronouncement is \$54,722.

The following summarizes the impact of the adoption (000's omitted).

	1/1/2012	12/31/2011	Change
Gross DTA	\$7,775	\$7,775	-
SVA	-	-	-
Adj. Gross DTA	\$7,775	\$7,775	-
Gross DTL	(301)	(301)	-
Non admitted DTA	(276)	(331)	55
Net Admitted DTA/(DTL)	\$7,198	\$7,143	\$55
Contingent tax liability	-	-	-
Penalty / Interest	-	-	-

NOTES TO FINANCIAL STATEMENTS

Net impact to surplus \$55 - \$55 **

** The net impact to surplus is the sum of any change in the net admitted DTA / (DTL), contingent tax liability, and penalty and interest.

3. Business Combinations and Goodwill

Refer to Note 21.A Extraordinary Items.

4. Discontinued Operations

None.

5. Investments

- A) The Company has no mortgage loans.
- B) The Company did not restructure any debt.
- C) The Company has no reverse mortgages.
- D) Loan-Backed Securities
 - (1) The source used to determine prepayment assumptions is Intex.
 - (2) Not applicable.
 - (3) Securities with recognized impairments currently held

<u>Cusip</u>	<u>Book / Adjusted Carry Value Before Current Period OTTI</u>	<u>Present Value of Projected Cashflows</u>	<u>Recognized Other Than Temporary Impairment</u>	<u>Amortized Cost After Other Than Temporary Impairment</u>	<u>Fair Value at time of OTTI</u>	<u>Date of Financial Statement Where Reported</u>
07387MAP4	974,419	118,000	856,419	118,000	330,000	12/31/2012
Total	974,419	118,000	856,419	118,000	330,000	

- (4) All impaired securities (fair value is less than amortized cost) for which an other-than-temporary impairment has not been recognized in earnings as a realized loss (including securities with a recognized other-than-temporary impairment for non-interest related declines when a non-recognized interest related impairment remains):

Continuous Unrealized Loss	Less than 12 Months	\$3,091
	12 Months or Longer	\$ -

Fair Value of Security with Continuous Unrealized Loss

Less than 12 Months	\$562,848
12 Months or Longer	\$ -

- (5) Not Applicable

- E) The Company has no repurchase agreements.
- F) The Company has no real estate investments.
- G) The Company has no low-income housing tax credits (LIHTC).

6. Joint Ventures, Partnerships and Limited Liability Companies

None.

7. Investment Income

All investment income due and accrued is admitted.

8. Derivative Instruments

None.

9. Income Taxes

A. The components of the net deferred tax asset / (liability) at December 31 are as follows:

	31-Dec.-12			31-Dec-11			Change Capital	Total
	Ordinary	Capital	Total	Ordinary	Capital	Total		
Total gross deferred tax assets	6,210,617	636,607	6,847,224	6,509,865	1,264,766	7,774,631	(299,248)	(927,407)
Stat valuation allowance adj	-	-	-	-	-	-	-	-
Adj gross deferred tax assets	6,210,617	636,607	6,847,224	6,509,865	1,264,766	7,774,631	(299,248)	(927,407)
Total gross deferred tax liab				(300,409)		(300,409)	300,409	300,409
Net deferred tax assets	6,210,617	636,607	6,847,224	6,209,456	1,264,766	7,474,222	1,161	(628,159)
Def tax assets nonadmitted	(7,359)	(636,607)	(643,966)		(330,893)	(330,893)	(7,359)	(305,714)
Net admitted def tax asset	6,203,258		6,203,258	6,209,456	933,873	7,143,329	(6,198)	(933,873)

The Company has not elected to admit additional DTAs pursuant to SSAP 10R, paragraph 10e. The current period election does not differ from the prior reporting period.

NOTES TO FINANCIAL STATEMENTS

Admission Calculation Components SSAP 101	31-Dec.-12			31-Dec-11			Change		
	Ordinary	Capital	Total	Ordinary	Capital	Total	Ordinary	Capital	Total
Federal income taxes paid in prior years recoverable through loss carrybacks	3,098,053		3,098,053	1,442,495		1,442,495	1,655,558		1,655,558
Adj gross deferred tax assets expected to be realized after application of the threshold limitation	3,105,205		3,105,205	4,766,961	933,873	5,700,834	(1,661,756)	(933,873)	(2,595,629)
1. Adj gross deferred tax assets expected to be realized following the balance sheet date	3,105,205		3,105,205	4,766,961	933,873	5,700,834	(1,661,756)	(933,873)	(2,595,629)
2. Adj gross dtas allowed per limitation threshold			12,637,306			8,111,468			4,525,838
Adj gross dtas offset by gross deferred tax liabilities				300,409		300,409	(300,409)		(300,409)
Total	6,203,258		6,203,258	6,509,865	933,873	7,443,738	(306,607)	(933,873)	(1,240,480)

Ratio percentage used to determine recovery period and threshold limitation amount.

	31-Dec.-12	31-Dec-11
	440%	410%

Amount of adjusted capital and surplus used to determine recovery period and threshold limitation.

	31-Dec.-12	31-Dec-11
	84,248,704	78,402,459

Impact of tax planning strategies:	31-Dec.-12			31-Dec-11			Change		
	Ordinary	Capital	Total	Ordinary	Capital	Total	Ordinary	Capital	Total
Adjusted gross DTAs (% of Total Adjusted Gross DTAs)	0.0%	9.3%	9.3%	0.0%	16.3%	16.3%	0.0%	(7.0%)	(7.0%)
Net Admitted Gross DTAs (% of Total Net Admitted Adj Gross DTAs)	0.0%	0.0%	0.0%	0.0%	13.1%	13.1%	0.0%	(13.1%)	(13.1%)

The Company's tax strategies do not include the use of reinsurance.

B. Unrecognized DTLs
Not applicable

C. Current Tax and Change in Deferred Tax

Current income tax:	31-Dec.-12	31-Dec-11	Change
Current federal income tax provision	3,199,040	0	3,199,040
Prior year (overaccrual)/underaccrual	(79,889)	(439,631)	359,752
Other adjustments	(567,817)	(33,367)	(534,450)
Federal and foreign income taxes incurred	<u>2,551,334</u>	<u>(473,008)</u>	<u>3,024,342</u>

Deferred income tax:	31-Dec.-12	31-Dec-11	Change
Ordinary:			
Unearned premium reserve@ 20%	4,556,479	4,615,881	(59,403)
Discounted loss reserves	502,851	561,737	(58,886)
Guaranty fund accrual			
Allowance for Bad Debts	577,092	747,730	(170,638)
Accrued Bonus	566,836		566,836
Net Operating loss carryover		584,517	(584,517)
Unearned Provisional Commission	7,359		7,359
Subtotal	6,210,617	6,509,865	(299,248)
Statutory valuation allowance adjustment			
Nonadmitted	(7,359)		(7,359)
Admitted ordinary deferred tax assets	<u>6,203,258</u>	<u>6,509,865</u>	<u>(306,607)</u>

Capital:	31-Dec.-12	31-Dec-11	Change
Impairment Loss on Investments	434,022	737,934	(303,912)
Capital loss carryover			
Net unrealized capital losses - SAP	202,585	526,832	(324,247)
Subtotal	636,607	1,264,766	(628,159)
Statutory valuation allowance adjustment			
Nonadmitted	(636,607)	(330,893)	(305,714)
Admitted capital deferred tax assets	<u>-</u>	<u>933,873</u>	<u>(933,873)</u>

NOTES TO FINANCIAL STATEMENTS

Admitted deferred tax assets	<u>6,203,258</u>	<u>7,443,738</u>	<u>(1,240,480)</u>
Deferred Tax Liabilities:	31-Dec.-12	31-Dec-11	Change
Ordinary:			
Sec. 481 adjustment	<u>-</u>	<u>(300,409)</u>	<u>300,409</u>
Subtotal		<u>(300,409)</u>	<u>300,409</u>
Capital:			
Subtotal			
Deferred tax liabilities	<u>-</u>	<u>(300,409)</u>	<u>300,409</u>
Net deferred tax assets / liabilities	<u>6,203,258</u>	<u>7,143,329</u>	<u>(940,071)</u>

D. Reconciliation of Federal Income Tax Rate to Actual Effective Rate

The significant items causing a difference between the statutory federal income tax rate and the Company's effective income tax rate are as follows:

	31-Dec.-12	Effective Rate
Provision computed at statutory rate	3,012,823	35.00%
Tax exempt interest	(160,944)	-1.87%
Other permanent differences	61,762	0.72%
State tax	(27,632)	-0.32%
Rate differential	(77,389)	-0.90%
Provision to return adjustment	<u>45,465</u>	<u>0.53%</u>
Total	2,854,085	33.16%

	31-Dec.-12	Effective Rate
Federal and foreign income taxes incurred	2,551,334	29.64%
Current taxes on realized capital gains	-	0.00%
Change in net deferred income taxes	<u>302,751</u>	<u>3.52%</u>
Total statutory income taxes	2,854,085	33.16%

E. Operating Loss and Tax Credit Carryforwards

At the end of the year, the Company did not have any unused operating loss carryforwards generated in prior years available to offset against future taxable income.

Income tax expense for 2012 and 2011 in the amounts of \$9,408,941 and \$0 are available for recoupment in the event of future losses.

The company does not have any protective tax deposits under Sec. 6603 of the Internal Revenue Code.

F. Consolidated Federal Income Tax Return

1) The Company's federal income tax return will be consolidated with the following entities:

PGC Holdings Corp. (parent)	The General Automobile Insurance Services, Inc.
Permanent General Companies, Inc.	The General Automobile Insurance Services of Georgia, Inc.
Permanent General Assurance Corporation of Ohio	The General Automobile Insurance Services of Louisiana, Inc.
PGA Service Corporation	The General Automobile Insurance Services of Ohio, Inc.
The General Automobile Insurance Company, Inc.	The General Automobile Insurance Services of Texas, Inc.

2) The method of allocation between the companies is subject to written agreement, approved by the Board of Directors. Allocation is based upon separate return calculations with current credit for net losses. Intercompany tax balances are settled quarterly.

G. Federal or Foreign Federal Income Tax Loss Contingencies

The Company has no loss contingencies for which it is reasonably possible that the total liability will significantly increase within twelve months of the reporting date.

10. Information Concerning Parent, Subsidiaries Affiliates and Other Related Parties

A,B,C. At December 31, 2012 PGAC declared a dividend of \$1,000,000 to its parent Permanent General Companies who in turn paid a dividend of \$1,000,000 to its parent PGC Holdings Corporation.

D. At December 31, 2012, the Company reported \$409,013 net payable to its parent and affiliates. The terms of the settlement require these amounts are settled within 90 days.

E. The Company has made no guarantees or undertakings for the benefit of the parent or affiliates.

F. PGAC is a affiliate of PGC Holdings Corp. and as such has a tax agreement in place with this affiliated company. PGAC also has a service agreement in place with its parent Permanent General Companies, Inc (PGC), which is also a wholly owned subsidiary of PGC Holdings Corp. Under this agreement PGC performs administrative services on behalf of PGAC. These services include;

NOTES TO FINANCIAL STATEMENTS

- claims administration, underwriting, policy issuance and record keeping, legal services, data processing and accounting.
- G. All outstanding shares of the company are owned by the parent company, Permanent General Companies, Inc., a non-insurance holding company domiciled in the State of Tennessee.
- H. The Company wholly owns PGA Service Corporation, an insurance premium finance company domiciled in the State of Tennessee.
- I.J. The Company has no investments in an SCA entity that exceeds 10% of admitted assets.
- K. None.
- L. None.

11. Debt
None.

12. Retirement Plans, Deferred Compensation, Postemployment Benefits and Compensated Absences and Other Postretirement Benefit Plans.
None.

13. Capital and Surplus, Dividend Restrictions and Quasi-Reorganizations

- (1) The company has 20,000 shares authorized; 10,000 shares issued of \$500 par common stock; & 10,000 shares outstanding. All shares are Class A.
- (2) The company has no preferred stock issued.
- (3) The maximum amount of dividends which can be paid by an Ohio domiciled company without approval of the insurance commissioner is subject to restrictions based upon statutory surplus.
- (4) The company declared a ordinary dividend of \$1,000,000 to it's parent Permanent General Companies at December 31, 2012.
- (5) The portion of the Company's profits that may be paid as ordinary dividends to stockholders is limited by # (3) above. However, the maximum dividend payout which can be made in 2013 without prior approval is \$9,055,096.
- (6) The company has no restrictions on the unassigned surplus.
- (7) The company has not made advances of surplus.
- (8) The stock of the company has not been allocated for any special purposes.
- (9) The company has no special surplus funds.
- (10) Refer to page 4 lines 21 through 37 and Exhibit of Capital Gain (Losses) .
- (11) The company has no surplus notes.
- (12) The company has not been reorganized.
- (13) N/A

14. Contingencies

- (A) The company has no contingent commitments to an SCA entity, joint ventures, partnerships, or limited liability companies.
- (B) The company has not been notified of any assessments that could have a material financial effect.
- (C) The company has no gain contingencies.
- (D) Claims related extra contractual obligations and bad faith losses stemming from lawsuits.

The company paid the following amounts in the reporting period to settle claims related extra contractual obligations or bad faith claims stemming from lawsuits.

	<u>Direct</u>
Claim payments made during reporting period	\$0

Number of claims where amounts were paid to settle claims resulting from lawsuits during the reporting period.

(A)	(B)	(C)	(D)	(E)
0-25	26-50	51-100	101-500	More than 500 Claims
X				

Indicate whether claim count information is disclosed per claim or claimant.

(F) Per Claim [X] (G) Per Claimant []

- (E) The company has no warranty liabilities.
- (F) All Other Contingencies.

Various lawsuits against the Company have arisen in the course of the Company's business. Contingent liabilities arising from litigation, income taxes and other matters are not considered material in relation to the financial position of the Company.

15. Leases.
None.

16. Information about Financial Instruments with Off-balance Sheet Risk and Financial Instruments with Concentrations of Credit Risk.
None.

17. Sale, Transfer and Servicing of Financial Assets and Extinguishments of Liabilities.

NOTES TO FINANCIAL STATEMENTS

None.

18. Gain or Loss to the Report Entity from Uninsured Plans and the Uninsured Portion of Partially Insured Plans.

None.

19. Direct Premium Written/Produced by MGA/3rd Party Administration

None.

20. Fair Value Measurements.

A. (1) Fair Value Measurements at Reporting Date

<u>Description</u>	<u>Level 1</u>	<u>Level 2</u>	<u>Level 3</u>	<u>Total</u>
<u>Assets at fair value</u>				
<u>Bonds</u>				
U.S. Governments				
Industrial & Misc.		1,000,000		1,000,000
RMBS				
CMBS		562,848		562,848
Special Revenue				
Other				
Total	<u>0</u>	<u>1,562,848</u>	<u>0</u>	<u>1,562,848</u>

(2) Fair Value Measurements in Level 3 of the Fair Value Hierachy

<u>Description</u>	<u>Bal. @</u> <u>01/01/12</u>	<u>Trans.</u> <u>into</u> <u>Level 3</u>	<u>Trans. out</u> <u>of Level 3</u>	<u>Gains /</u> <u>(Losses)</u> <u>in Net</u> <u>Income</u>	<u>Gains /</u> <u>(Losses)</u> <u>in</u> <u>Surplus</u>	<u>Purch.</u>	<u>Iss.</u>	<u>Sales</u>	<u>Sett.</u>	<u>Bal. @</u> <u>12/31/12</u>
<u>Assets</u>										
<u>Bonds</u>										
U.S. Govts.										
Ind & Misc.	1,790,415		(1,023,903)		133,488			(900,000)		0
RMBS										
CMBS	310,000		(330,000)		20,000					0
Special Rev.										
Other										
Total Assets	<u>2,100,415</u>	<u>0</u>	<u>(1,353,903)</u>	<u>0</u>	<u>153,488</u>	<u>0</u>	<u>0</u>	<u>(900,000)</u>	<u>0</u>	<u>0</u>

(3) Transfers between levels are recognized at the end of the reporting period.

(4) As of December 31, 2012, the reported fair value of the reporting entity's investment in level 2 commercial mortgage-backed securities was \$562,848. The company had one level 2 corporate bond with a fair value of \$1,000,000. These securities have a weighted average coupon rate of 5.05% and a weighted average maturity of 27.5 years. These securities are currently rated below investment grade. To measure the securities fair value the reporting entity uses third party information from various pricing services. The input assumptions include but are not limited to prepayments, delinquency percentage, loan status, etc.

21. Other Items.

A. Extraordinary Items

On December 31, 2012 American Family Mutual Insurance Company through a wholly owned non-insurance holding company, Am Fam, Inc., acquired 100% of the ownership interest in PGC Holdings Corp. (PGC) for \$241,636,000 in cash. PGC was the ultimate parent of the Company prior to the acquisition. Refer to Schedule Y for the organizational chart following the acquisition.

B. Troubled Debt Restructuring. Debtors

None.

C. Other Disclosers

None.

D. The Company routinely assesses the collectibility of premium and agent balances. The uncollectible amounts are not material to the Company's financial condition.

E. Business Interruption Insurance Recoveries.

None.

F. State Transferable Tax Credits

None.

G. Subprime Mortgage Related Risk Exposure

(1) Factors used to determine the investment in a specific sub-prime security include the quality of underwriter / loan servicer, types of loans (fixed, floating, hybrid ARM), loan quality (documentation, purpose, occupancy), loan origination year (vintage), loan geographic distribution, average loan to values, average FICO scores and the securities credit support level. Loan loss estimates are computed based on historical loan delinquency and foreclosure statistics and projecting future delinquencies and losses under multiple economic scenarios including various home price changes and employment estimates, as well as servicer style and the foreclosure rules for each

NOTES TO FINANCIAL STATEMENTS

state. Total projected losses for all mortgages in each deal are then compared to the credit support (subordination plus over collateralization) to determine the percentage of principal loss expected for each tranche. To minimize specific security risk and concentration risk to the sector, issue limitations and sector limitations as a percentage of the portfolio have been established.

(2) Direct Exposure through investment in subprime mortgage loans.
None.

(3) Direct Exposure through other investments.

Description	Cost	Book adjusted carry value	Fair value	OTTI to date
Other Assets	\$924,013	\$666,477	\$680,996	\$1,063,264

(4) Underwriting exposure to subprime mortgage risk through Mortgage Guaranty or Financial Guaranty insurance coverage.
None.

22. Events Subsequent.

None.

23. Reinsurance

A. Unsecured Reinsurance Recoverable

None.

B. Reinsurance Recoverable in Dispute.

None.

C. Reinsurance Assumed and Ceded

	Assumed Reinsurance		Ceded Reinsurance		Net	
	Premium Reserve	Commission Equity	Premium Reserve	Commission Equity	Premium Reserve	Commission Equity
a. Affiliates	42,210,215	15,060,605	45,078,938	17,134,504	(2,868,722)	(2,073,899)
b. All Other			232,756	27,931	(232,756)	(27,931)
c. Total	42,210,215	15,060,605	45,311,694	17,162,435	(3,101,478)	(2,101,830)
d. Dir. UE Prem Res.	67,971,640					

D. Uncollectible Reinsurance.

None.

E. Commutation of Ceded Reinsurance

None.

F. Retroactive Reinsurance

None.

G. Reinsurance Accounted for as a Deposit.

None.

H. Transfer of Property and Casualty Run-Off Agreements.

None.

24. Retrospectively Rated Contracts & Contracts Subject to Redetermination.

None.

25. Change in Incurred Losses and Loss Adjustment Expenses

Loss & lae reserves as of December 31, 2011 were \$53.980 million. As of December 31, 2012, \$40.377 million has been paid for incurred loss & lae expenses attributable to insured events or prior years. Reserves remaining for prior years are now \$14.917 million as a result of re-estimation of unpaid claims and lae expenses. Therefore, there has been a \$1.314 million unfavorable prior year development from 12/31/2011 to 12/31/2012 principally on liability lines of business.

For the 2011 accident year, liability and PIP reserves for Florida are now projected at lower levels with California liability now developing more favorably. There was unfavorable development in the 2009 and 2010 accident years from New York and Florida PIP due to severity levels coming in higher than previously projected.

The development is generally the result of an ongoing analysis of recent loss development trends and are increased or decreased as additional information becomes known regarding individual claims. The Company has no retrospectively rated policies that are subject to premium adjustments. The development is generally the result of an ongoing analysis of recent loss development trends and are increased or decreased as additional information becomes known regarding individual claims. The Company has no retrospectively rated policies that are subject to premium adjustments.

26. Intercompany Pooling Arrangements

Effective January 1, 2010, the Company (lead entity) entered into a reinsurance pooling agreement with PGAC of Ohio (NAIC company code - 22906) and The General Automobile Insurance Company, Inc. (GAIC) (NAIC company code - 13703), both of which are affiliated property and casualty insurance companies incorporated in Ohio. The business includes private passenger auto liability & auto physical damage with PGAC receiving 59%, PGAC-Ohio receiving 33%, & GAIC receiving 8%. This Agreement applies only to that portion of any insurance or reinsurance which the parties hereto retain net for their own account and in calculating the amount of any loss hereunder, only loss or losses in respect of that portion of any insurance or reinsurance which the parties hereto retain net for their own account shall be included. The Company has a net receivable balance of \$2,036,745 at 12/31/2012.

27. Structured Settlements

None.

28. Health Care Receivables

None.

29. Participating Policies

NOTES TO FINANCIAL STATEMENTS

None.

30. Premium Deficiency Reserves

1. Liability carried for premium deficiency reserves. \$0
2. Date of the most recent evaluation of this liability. 12/31/2012
3. Was anticipated investment income utilized in the calculation? Yes No

31. High Deductibles

None.

32. Discounting of Liabilities for Unpaid Losses or Unpaid Loss Adjustment Expenses

None.

33. Asbestos/Environmental Reserves

None.

34. Subscriber Savings accounts

None.

35. Multi Peril Crop Insurance

None.

36. Financial Guaranty Insurance

None.

GENERAL INTERROGATORIES

PART 1 - COMMON INTERROGATORIES

GENERAL

- 1.1 Is the reporting entity a member of an Insurance Holding Company System consisting of two or more affiliated persons, one or more of which is an insurer? Yes No
- 1.2 If yes, did the reporting entity register and file with its domiciliary State Insurance Commissioner, Director or Superintendent or with such regulatory official of the state of domicile of the principal insurer in the Holding Company System, a registration statement providing disclosure substantially similar to the standards adopted by the National Association of Insurance Commissioners (NAIC) in its Model Insurance Holding Company System Regulatory Act and model regulations pertaining thereto, or is the reporting entity subject to standards and disclosure requirements substantially similar to those required by such Act and regulations? Yes No N/A
- 1.3 State Regulating? Ohio.....
- 2.1 Has any change been made during the year of this statement in the charter, by-laws, articles of incorporation, or deed of settlement of the reporting entity? Yes No
- 2.2 If yes, date of change:
- 3.1 State as of what date the latest financial examination of the reporting entity was made or is being made.12/31/2009
- 3.2 State the as of date that the latest financial examination report became available from either the state of domicile or the reporting entity. This date should be the date of the examined balance sheet and not the date the report was completed or released.12/31/2009
- 3.3 State as of what date the latest financial examination report became available to other states or the public from either the state of domicile or the reporting entity. This is the release date or completion date of the examination report and not the date of the examination (balance sheet date).02/28/2011
- 3.4 By what department or departments? Ohio Department of Insurance.....
- 3.5 Have all financial statement adjustments within the latest financial examination report been accounted for in a subsequent financial statement filed with Departments? Yes No N/A
- 3.6 Have all of the recommendations within the latest financial examination report been complied with? Yes No N/A
- 4.1 During the period covered by this statement, did any agent, broker, sales representative, non-affiliated sales/service organization or any combination thereof under common control (other than salaried employees of the reporting entity) receive credit or commissions for or control a substantial part (more than 20 percent of any major line of business measured on direct premiums) of:
- 4.11 sales of new business? Yes No
- 4.12 renewals? Yes No
- 4.2 During the period covered by this statement, did any sales/service organization owned in whole or in part by the reporting entity or an affiliate, receive credit or commissions for or control a substantial part (more than 20 percent of any major line of business measured on direct premiums) of:
- 4.21 sales of new business? Yes No
- 4.22 renewals? Yes No
- 5.1 Has the reporting entity been a party to a merger or consolidation during the period covered by this statement? Yes No
- 5.2 If yes, provide the name of the entity, NAIC company code, and state of domicile (use two letter state abbreviation) for any entity that has ceased to exist as a result of the merger or consolidation.

1 Name of Entity	2 NAIC Company Code	3 State of Domicile

- 6.1 Has the reporting entity had any Certificates of Authority, licenses or registrations (including corporate registration, if applicable) suspended or revoked by any governmental entity during the reporting period? Yes No
- 6.2 If yes, give full information
- 7.1 Does any foreign (non-United States) person or entity directly or indirectly control 10% or more of the reporting entity? Yes No
- 7.2 If yes, 7.21 State the percentage of foreign control0.0
- 7.22 State the nationality(s) of the foreign person(s) or entity(s); or if the entity is a mutual or reciprocal, the nationality of its manager or attorney-in-fact and identify the type of entity(s) (e.g., individual, corporation, government, manager or attorney-in-fact).

1 Nationality	2 Type of Entity

GENERAL INTERROGATORIES

- 8.1 Is the company a subsidiary of a bank holding company regulated by the Federal Reserve Board? Yes [] No [X]
- 8.2 If response to 8.1 is yes, please identify the name of the bank holding company.

- 8.3 Is the company affiliated with one or more banks, thrifts or securities firms? Yes [] No [X]
- 8.4 If response to 8.3 is yes, please provide the names and locations (city and state of the main office) of any affiliates regulated by a federal financial regulatory services agency [i.e. the Federal Reserve Board (FRB), the Office of the Comptroller of the Currency (OCC), the Federal Deposit Insurance Corporation (FDIC) and the Securities Exchange Commission (SEC)] and identify the affiliate's primary federal regulator.

1 Affiliate Name	2 Location (City, State)	3 FRB	4 OCC	5 FDIC	6 SEC

9. What is the name and address of the independent certified public accountant or accounting firm retained to conduct the annual audit?
Pricewaterhouse Coopers, 830 Crescent Center Drive, Franklin, Tn. 37067.....
- 10.1 Has the insurer been granted any exemptions to the prohibited non-audit services provided by the certified independent public accountant requirements as allowed in Section 7H of the Annual Financial Reporting Model Regulation (Model Audit Rule), or substantially similar state law or regulation? Yes [] No [X]
- 10.2 If the response to 10.1 is yes, provide information related to this exemption:
- 10.3 Has the insurer been granted any exemptions related to the other requirements of the Annual Financial Reporting Model Regulation as allowed for in Section 17A of the Model Regulation, or substantially similar state law or regulation? Yes [] No [X]
- 10.4 If the response to 10.3 is yes, provide information related to this exemption:
- 10.5 Has the reporting entity established an Audit Committee in compliance with the domiciliary state insurance laws? Yes [X] No [] N/A []
- 10.6 If the response to 10.5 is no or n/a, please explain

11. What is the name, address and affiliation (officer/employee of the reporting entity or actuary/consultant associated with an actuarial consulting firm) of the individual providing the statement of actuarial opinion/certification?
Jeff Kimble, ACAS, MAAA, Towers Watson, 101 South Hanley, Saint Louis Mo. 63105. Actuary / Consultant.....
- 12.1 Does the reporting entity own any securities of a real estate holding company or otherwise hold real estate indirectly? Yes [] No [X]
- 12.11 Name of real estate holding company N/A.....
- 12.12 Number of parcels involved0
- 12.13 Total book/adjusted carrying value \$0
- 12.2 If yes, provide explanation

13. FOR UNITED STATES BRANCHES OF ALIEN REPORTING ENTITIES ONLY:
- 13.1 What changes have been made during the year in the United States manager or the United States trustees of the reporting entity?
- 13.2 Does this statement contain all business transacted for the reporting entity through its United States Branch on risks wherever located? Yes [] No []
- 13.3 Have there been any changes made to any of the trust indentures during the year? Yes [] No []
- 13.4 If answer to (13.3) is yes, has the domiciliary or entry state approved the changes? Yes [] No [] N/A []
- 14.1 Are the senior officers (principal executive officer, principal financial officer, principal accounting officer or controller, or persons performing similar functions) of the reporting entity subject to a code of ethics, which includes the following standards? Yes [X] No []
- a. Honest and ethical conduct, including the ethical handling of actual or apparent conflicts of interest between personal and professional relationships;
- b. Full, fair, accurate, timely and understandable disclosure in the periodic reports required to be filed by the reporting entity;
- c. Compliance with applicable governmental laws, rules and regulations;
- d. The prompt internal reporting of violations to an appropriate person or persons identified in the code; and
- e. Accountability for adherence to the code.
- 14.11 If the response to 14.1 is no, please explain:
- 14.2 Has the code of ethics for senior managers been amended? Yes [] No [X]
- 14.21 If the response to 14.2 is yes, provide information related to amendment(s)
- 14.3 Have any provisions of the code of ethics been waived for any of the specified officers? Yes [] No [X]
- 14.31 If the response to 14.3 is yes, provide the nature of any waiver(s).

GENERAL INTERROGATORIES

- 15.1 Is the reporting entity the beneficiary of a Letter of Credit that is unrelated to reinsurance where the issuing or confirming bank is not on the SVO Bank List? Yes [] No [X]
- 15.2 If the response to 15.1 is yes, indicate the American Bankers Association (ABA) Routing Number and the name of the issuing or confirming bank of the Letter of Credit and describe the circumstances in which the Letter of Credit is triggered.

1 American Bankers Association (ABA) Routing Number	2 Issuing or Confirming Bank Name	3 Circumstances That Can Trigger the Letter of Credit	4 Amount

BOARD OF DIRECTORS

16. Is the purchase or sale of all investments of the reporting entity passed upon either by the board of directors or a subordinate committee thereof? Yes [X] No []
17. Does the reporting entity keep a complete permanent record of the proceedings of its board of directors and all subordinate committees thereof? Yes [X] No []
18. Has the reporting entity an established procedure for disclosure to its board of directors or trustees of any material interest or affiliation on the part of any of its officers, directors, trustees or responsible employees that is in conflict or is likely to conflict with the official duties of such person? Yes [X] No []

FINANCIAL

19. Has this statement been prepared using a basis of accounting other than Statutory Accounting Principles (e.g., Generally Accepted Accounting Principles)? Yes [] No [X]
- 20.1 Total amount loaned during the year (inclusive of Separate Accounts, exclusive of policy loans):
- | | | |
|---|----|---|
| 20.11 To directors or other officers | \$ | 0 |
| 20.12 To stockholders not officers | \$ | 0 |
| 20.13 Trustees, supreme or grand (Fraternal only) | \$ | 0 |
- 20.2 Total amount of loans outstanding at the end of year (inclusive of Separate Accounts, exclusive of policy loans):
- | | | |
|---|----|---|
| 20.21 To directors or other officers | \$ | 0 |
| 20.22 To stockholders not officers | \$ | 0 |
| 20.23 Trustees, supreme or grand (Fraternal only) | \$ | 0 |
- 21.1 Were any assets reported in this statement subject to a contractual obligation to transfer to another party without the liability for such obligation being reported in the statement? Yes [] No [X]
- 21.2 If yes, state the amount thereof at December 31 of the current year:
- | | | |
|----------------------------|----|---|
| 21.21 Rented from others | \$ | 0 |
| 21.22 Borrowed from others | \$ | 0 |
| 21.23 Leased from others | \$ | 0 |
| 21.24 Other | \$ | 0 |
- 22.1 Does this statement include payments for assessments as described in the *Annual Statement Instructions* other than guaranty fund or guaranty association assessments? Yes [] No [X]
- 22.2 If answer is yes:
- | | | |
|--|----|---|
| 22.21 Amount paid as losses or risk adjustment | \$ | 0 |
| 22.22 Amount paid as expenses | \$ | 0 |
| 22.23 Other amounts paid | \$ | 0 |
- 23.1 Does the reporting entity report any amounts due from parent, subsidiaries or affiliates on Page 2 of this statement? Yes [] No [X]
- 23.2 If yes, indicate any amounts receivable from parent included in the Page 2 amount: \$ 0

INVESTMENT

- 24.01 Were all the stocks, bonds and other securities owned December 31 of current year, over which the reporting entity has exclusive control, in the actual possession of the reporting entity on said date? (other than securities lending programs addressed in 24.03) Yes [X] No []
- 24.02 If no, give full and complete information, relating thereto
- 24.03 For security lending programs, provide a description of the program including value for collateral and amount of loaned securities, and whether collateral is carried on or off-balance sheet. (an alternative is to reference Note 17 where this information is also provided)
N/A.....
- 24.04 Does the company's security lending program meet the requirements for a conforming program as outlined in the Risk-Based Capital Instructions? Yes [] No [] NA [X]
- 24.05 If answer to 24.04 is yes, report amount of collateral for conforming programs. \$ 0
- 24.06 If answer to 24.04 is no, report amount of collateral for other programs. \$ 0
- 24.07 Does your securities lending program require 102% (domestic securities) and 105% (foreign securities) from the counterparty at the outset of the contract? Yes [] No [] NA [X]
- 24.08 Does the reporting entity non-admit when the collateral received from the counterparty falls below 100%? Yes [] No [] NA [X]
- 24.09 Does the reporting entity or the reporting entity's securities lending agent utilize the Master Securities Lending Agreement (MSLA) to conduct securities lending? Yes [] No [] NA [X]
- 24.10 For the reporting entity's security lending program, state the amount of the following as of December 31 of the current year:
- | | | |
|--|----|---|
| 24.101 Total fair value of reinvested collateral assets reported on Schedule DL, Parts 1 and 2 | \$ | 0 |
| 24.102 Total book adjusted/carrying value of reinvested collateral assets reported on Schedule DL, Parts 1 and 2 | \$ | 0 |
| 24.103 Total payable for securities lending reported on the liability page | \$ | 0 |

GENERAL INTERROGATORIES

25.1 Were any of the stocks, bonds or other assets of the reporting entity owned at December 31 of the current year not exclusively under the control of the reporting entity or has the reporting entity sold or transferred any assets subject to a put option contract that is currently in force? (Exclude securities subject to Interrogatory 21.1 and 24.03). Yes No

25.2 If yes, state the amount thereof at December 31 of the current year:

25.21	Subject to repurchase agreements	\$	0
25.22	Subject to reverse repurchase agreements	\$	0
25.23	Subject to dollar repurchase agreements	\$	0
25.24	Subject to reverse dollar repurchase agreements	\$	0
25.25	Pledged as collateral	\$	0
25.26	Placed under option agreements	\$	0
25.27	Letter stock or securities restricted as to sale	\$	0
25.28	On deposit with state or other regulatory body	\$	2,747,473
25.29	Other	\$	0

25.3 For category (25.27) provide the following:

1 Nature of Restriction	2 Description	3 Amount

26.1 Does the reporting entity have any hedging transactions reported on Schedule DB? Yes No

26.2 If yes, has a comprehensive description of the hedging program been made available to the domiciliary state? Yes No N/A
If no, attach a description with this statement.

27.1 Were any preferred stocks or bonds owned as of December 31 of the current year mandatorily convertible into equity, or, at the option of the issuer, convertible into equity? Yes No

27.2 If yes, state the amount thereof at December 31 of the current year. \$

28. Excluding items in Schedule E – Part 3 – Special Deposits, real estate, mortgage loans and investments held physically in the reporting entity’s offices, vaults or safety deposit boxes, were all stocks, bonds and other securities, owned throughout the current year held pursuant to a custodial agreement with a qualified bank or trust company in accordance with Section 1, III – General Examination Considerations, F. Outsourcing of Critical Functions, Custodial or Safekeeping agreements of the NAIC *Financial Condition Examiners Handbook*? Yes No

28.01 For agreements that comply with the requirements of the NAIC *Financial Condition Examiners Handbook*, complete the following:

1 Name of Custodian(s)	2 Custodian’s Address
Bank of America.....	225 Franklin Street, Boston, Ma.02110.....

28.02 For all agreements that do not comply with the requirements of the NAIC *Financial Condition Examiners Handbook*, provide the name, location and a complete explanation:

1 Name(s)	2 Location(s)	3 Complete Explanation(s)

28.03 Have there been any changes, including name changes, in the custodian(s) identified in 28.01 during the current year? Yes No

28.04 If yes, give full and complete information relating thereto:

1 Old Custodian	2 New Custodian	3 Date of Change	4 Reason

28.05 Identify all investment advisors, brokers/dealers or individuals acting on behalf of broker/dealers that have access to the investment accounts, handle securities and have authority to make investments on behalf of the reporting entity:

1 Central Registration Depository Number(s)	2 Name	3 Address
110497.....	Brookfield Investment Management Inc.....	Three World Financial Center, New York, N.Y. 10281.....

GENERAL INTERROGATORIES

- 29.1 Does the reporting entity have any diversified mutual funds reported in Schedule D - Part 2 (diversified according to the Securities and Exchange Commission (SEC) in the Investment Company Act of 1940 [Section 5 (b) (1)])? Yes [] No []
- 29.2 If yes, complete the following schedule:

1 CUSIP #	2 Name of Mutual Fund	3 Book/Adjusted Carrying Value
29.2999 TOTAL		0

- 29.3 For each mutual fund listed in the table above, complete the following schedule:

1 Name of Mutual Fund (from above table)	2 Name of Significant Holding of the Mutual Fund	3 Amount of Mutual Fund's Book/Adjusted Carrying Value Attributable to the Holding	4 Date of Valuation

30. Provide the following information for all short-term and long-term bonds and all preferred stocks. Do not substitute amortized value or statement value for fair value.

	1 Statement (Admitted) Value	2 Fair Value	3 Excess of Statement over Fair Value (-), or Fair Value over Statement (+)
30.1 Bonds.....	143,123,218	148,961,528	5,838,310
30.2 Preferred Stocks.....	0	0	0
30.3 Totals	143,123,218	148,961,528	5,838,310

- 30.4 Describe the sources or methods utilized in determining the fair values:

Fair values are based on methods prescribed by the SVO of the NAIC. For securities with no published NAIC rate, fair values are obtained from either quoted market prices or independent pricing services or in limited cases quotes from brokers.....

- 31.1 Was the rate used to calculate fair value determined by a broker or custodian for any of the securities in Schedule D? Yes [] No []
- 31.2 If the answer to 31.1 is yes, does the reporting entity have a copy of the broker's or custodian's pricing policy (hard copy or electronic copy) for all brokers or custodians used as a pricing source? Yes [] No []
- 31.3 If the answer to 31.2 is no, describe the reporting entity's process for determining a reliable pricing source for purposes of disclosure of fair value for Schedule D:
The company relies on our investment manager in limited cases where prices are obtained from brokers.....
- 32.1 Have all the filing requirements of the *Purposes and Procedures Manual* of the NAIC Securities Valuation Office been followed? Yes [] No []
- 32.2 If no, list exceptions:

GENERAL INTERROGATORIES

OTHER

33.1 Amount of payments to Trade associations, service organizations and statistical or rating bureaus, if any? \$99,084

33.2 List the name of the organization and the amount paid if any such payment represented 25% or more of the total payments to trade associations, service organizations and statistical or rating bureaus during the period covered by this statement.

1 Name	2 Amount Paid
Insurance Services Office.....	\$.....99,084

34.1 Amount of payments for legal expenses, if any? \$0

34.2 List the name of the firm and the amount paid if any such payment represented 25% or more of the total payments for legal expenses during the period covered by this statement.

1 Name	2 Amount Paid
.....	\$.....
.....	\$.....
.....	\$.....

35.1 Amount of payments for expenditures in connection with matters before legislative bodies, officers or departments of government, if any? \$100,780

35.2 List the name of the firm and the amount paid if any such payment represented 25% or more of the total payment expenditures in connection with matters before legislative bodies, officers or departments of government during the period covered by this statement.

1 Name	2 Amount Paid
Property Casualty Insurers Association.....	\$.....100,780

GENERAL INTERROGATORIES
PART 2 - PROPERTY & CASUALTY INTERROGATORIES

1.1 Does the reporting entity have any direct Medicare Supplement Insurance in force? Yes [] No [X]
 1.2 If yes, indicate premium earned on U. S. business only \$0
 1.3 What portion of Item (1.2) is not reported on the Medicare Supplement Insurance Experience Exhibit? \$0

1.31 Reason for excluding
 N/A.....

1.4 Indicate amount of earned premium attributable to Canadian and/or Other Alien not included in Item (1.2) above. \$0
 1.5 Indicate total incurred claims on all Medicare Supplement insurance. \$0

1.6 Individual policies:

Most current three years:

1.61 Total premium earned \$0
 1.62 Total incurred claims \$0
 1.63 Number of covered lives0

All years prior to most current three years:

1.64 Total premium earned \$0
 1.65 Total incurred claims \$0
 1.66 Number of covered lives0

1.7 Group policies:

Most current three years:

1.71 Total premium earned \$0
 1.72 Total incurred claims \$0
 1.73 Number of covered lives0

All years prior to most current three years:

1.74 Total premium earned \$0
 1.75 Total incurred claims \$0
 1.76 Number of covered lives0

2. Health Test:

		1		2
		Current Year		Prior Year
2.1	Premium Numerator	\$0	\$0
2.2	Premium Denominator	\$161,182,538	\$166,676,286
2.3	Premium Ratio (2.1/2.2)0.000	0.000
2.4	Reserve Numerator	\$0	\$0
2.5	Reserve Denominator	\$120,255,890	\$118,340,073
2.6	Reserve Ratio (2.4/2.5)0.000	0.000

3.1 Does the reporting entity issue both participating and non-participating policies? Yes [] No [X]
 3.2 If yes, state the amount of calendar year premiums written on:

3.21 Participating policies..... \$0
 3.22 Non-participating policies..... \$0

4. For Mutual reporting entities and Reciprocal Exchanges only:

4.1 Does the reporting entity issue assessable policies?..... Yes [] No []
 4.2 Does the reporting entity issue non-assessable policies?..... Yes [] No []
 4.3 If assessable policies are issued, what is the extent of the contingent liability of the policyholders?.....0.0 %
 4.4 Total amount of assessments paid or ordered to be paid during the year on deposit notes or contingent premiums. \$0

5. For Reciprocal Exchanges Only:

5.1 Does the exchange appoint local agents?..... Yes [] No []
 5.2 If yes, is the commission paid:
 5.21 Out of Attorney's-in-fact compensation..... Yes [] No [] N/A [X]
 5.22 As a direct expense of the exchange..... Yes [] No [] N/A [X]

5.3 What expenses of the Exchange are not paid out of the compensation of the Attorney-in-fact?

5.4 Has any Attorney-in-fact compensation, contingent on fulfillment of certain conditions, been deferred?..... Yes [] No [X]

5.5 If yes, give full information

N/A.....

GENERAL INTERROGATORIES
PART 2 - PROPERTY & CASUALTY INTERROGATORIES

- 6.1 What provision has this reporting entity made to protect itself from an excessive loss in the event of a catastrophe under a workers' compensation contract issued without limit of loss:
 N/A.....
- 6.2 Describe the method used to estimate this reporting entity's probable maximum insurance loss, and identify the type of insured exposures comprising that probable maximum loss, the locations of concentrations of those exposures and the external resources (such as consulting firms or computer software models), if any, used in the estimation process:
 N/A.....
- 6.3 What provision has this reporting entity made (such as a catastrophic reinsurance program) to protect itself from an excessive loss arising from the types and concentrations of insured exposures comprising its probable maximum property insurance loss?.....
 N/A.....
- 6.4 Does the reporting entity carry catastrophe reinsurance protection for at least one reinstatement, in an amount sufficient to cover its estimated probable maximum loss attributable to a single loss event or occurrence?..... Yes [] No [X]
- 6.5 If no, describe any arrangements or mechanisms employed by the reporting entity to supplement its catastrophe reinsurance program or to hedge its exposure to unreinsured catastrophe loss
 The company does a break-even analysis annually and historically has found it to be more cost effective to be self insured....
- 7.1 Has the reporting entity reinsured any risk with any other entity under a quota share reinsurance contract that includes a provision that would limit the reinsurer's losses below the stated quota share percentage (e.g., a deductible, a loss ratio corridor, a loss cap, an aggregate limit or any similar provisions)?..... Yes [] No [X]
- 7.2 If yes, indicate the number of reinsurance contracts containing such provisions.....0
- 7.3 If yes, does the amount of reinsurance credit taken reflect the reduction in quota share coverage caused by any applicable limiting provision(s)?..... Yes [] No []
- 8.1 Has this reporting entity reinsured any risk with any other entity and agreed to release such entity from liability, in whole or in part, from any loss that may occur on this risk, or portion thereof, reinsured?..... Yes [] No [X]
- 8.2 If yes, give full information
- 9.1 Has the reporting entity ceded any risk under any reinsurance contract (or under multiple contracts with the same reinsurer or its affiliates) for which during the period covered by the statement: (i) it recorded a positive or negative underwriting result greater than 5% of prior year-end surplus as regards policyholders or it reported calendar year written premium ceded or year-end loss and loss expense reserves ceded greater than 5% of prior year-end surplus as regards policyholders; (ii) it accounted for that contract as reinsurance and not as a deposit; and (iii) the contract(s) contain one or more of the following features or other features that would have similar results:
 (a) A contract term longer than two years and the contract is noncancellable by the reporting entity during the contract term;
 (b) A limited or conditional cancellation provision under which cancellation triggers an obligation by the reporting entity, or an affiliate of the reporting entity, to enter into a new reinsurance contract with the reinsurer, or an affiliate of the reinsurer;
 (c) Aggregate stop loss reinsurance coverage;
 (d) A unilateral right by either party (or both parties) to commute the reinsurance contract, whether conditional or not, except for such provisions which are only triggered by a decline in the credit status of the other party;
 (e) A provision permitting reporting of losses, or payment of losses, less frequently than on a quarterly basis (unless there is no activity during the period); or
 (f) Payment schedule, accumulating retentions from multiple years or any features inherently designed to delay timing of the reimbursement to the ceding entity..... Yes [] No [X]
- 9.2 Has the reporting entity during the period covered by the statement ceded any risk under any reinsurance contract (or under multiple contracts with the same reinsurer or its affiliates), for which, during the period covered by the statement, it recorded a positive or negative underwriting result greater than 5% of prior year-end surplus as regards policyholders or it reported calendar year written premium ceded or year-end loss and loss expense reserves ceded greater than 5% of prior year-end surplus as regards policyholders; excluding cessions to approved pooling arrangements or to captive insurance companies that are directly or indirectly controlling, controlled by, or under common control with (i) one or more unaffiliated policyholders of the reporting entity, or (ii) an association of which one or more unaffiliated policyholders of the reporting entity is a member where:
 (a) The written premium ceded to the reinsurer by the reporting entity or its affiliates represents fifty percent (50%) or more of the entire direct and assumed premium written by the reinsurer based on its most recently available financial statement; or
 (b) Twenty-five percent (25%) or more of the written premium ceded to the reinsurer has been retroceded back to the reporting entity or its affiliates in a separate reinsurance contract. Yes [] No [X]
- 9.3 If yes to 9.1 or 9.2, please provide the following information in the Reinsurance Summary Supplemental Filing for General Interrogatory 9:
 (a) The aggregate financial statement impact gross of all such ceded reinsurance contracts on the balance sheet and statement of income;
 (b) A summary of the reinsurance contract terms and indicate whether it applies to the contracts meeting the criteria in 9.1 or 9.2; and
 (c) A brief discussion of management's principle objectives in entering into the reinsurance contract including the economic purpose to be achieved.
- 9.4 Except for transactions meeting the requirements of paragraph 31 of SSAP No. 62R, Property and Casualty Reinsurance, has the reporting entity ceded any risk under any reinsurance contract (or multiple contracts with the same reinsurer or its affiliates) during the period covered by the financial statement, and either:
 (a) Accounted for that contract as reinsurance (either prospective or retroactive) under statutory accounting principles ("SAP") and as a deposit under generally accepted accounting principles ("GAAP"); or
 (b) Accounted for that contract as reinsurance under GAAP and as a deposit under SAP? Yes [] No [X]
- 9.5 If yes to 9.4, explain in the Reinsurance Summary Supplemental Filing for General Interrogatory 9 (Section D) why the contract(s) is treated differently for GAAP and SAP.
- 9.6 The reporting entity is exempt from the Reinsurance Attestation Supplement under one or more of the following criteria:
 (a) The entity does not utilize reinsurance; or, Yes [] No [X]
 (b) The entity only engages in a 100% quota share contract with an affiliate and the affiliated or lead company has filed an attestation supplement; or Yes [] No [X]
 (c) The entity has no external cessions and only participates in an intercompany pool and the affiliated or lead company has filed an attestation supplement. Yes [] No [X]
10. If the reporting entity has assumed risks from another entity, there should be charged on account of such reinsurances a reserve equal to that which the original entity would have been required to charge had it retained the risks. Has this been done? Yes [X] No [] N/A []

GENERAL INTERROGATORIES
PART 2 - PROPERTY & CASUALTY INTERROGATORIES

- 11.1 Has the reporting entity guaranteed policies issued by any other entity and now in force:..... Yes [] No [X]
 11.2 If yes, give full information
- 12.1 If the reporting entity recorded accrued retrospective premiums on insurance contracts on Line 15.3 of the asset schedule, Page 2, state the amount of corresponding liabilities recorded for:
 12.11 Unpaid losses..... \$0
 12.12 Unpaid underwriting expenses (including loss adjustment expenses)..... \$0
 12.2 Of the amount on Line 15.3, Page 2, state the amount that is secured by letters of credit, collateral and other funds?..... \$0
 12.3 If the reporting entity underwrites commercial insurance risks, such as workers' compensation, are premium notes or promissory notes accepted from its insureds covering unpaid premiums and/or unpaid losses? Yes [] No [] N/A [X]
 12.4 If yes, provide the range of interest rates charged under such notes during the period covered by this statement:
 12.41 From..... 0.0 %
 12.42 To..... 0.0 %
 12.5 Are letters of credit or collateral and other funds received from insureds being utilized by the reporting entity to secure premium notes or promissory notes taken by a reporting entity, or to secure any of the reporting entity's reported direct unpaid loss reserves, including unpaid losses under loss deductible features of commercial policies? Yes [] No [X]
 12.6 If yes, state the amount thereof at December 31 of current year:
 12.61 Letters of Credit..... \$0
 12.62 Collateral and other funds..... \$0
 13.1 Largest net aggregate amount insured in any one risk (excluding workers' compensation): \$127,500
 13.2 Does any reinsurance contract considered in the calculation of this amount include an aggregate limit of recovery without also including a reinstatement provision? Yes [] No [X]
 13.3 State the number of reinsurance contracts (excluding individual facultative risk certificates, but including facultative programs, automatic facilities or facultative obligatory contracts) considered in the calculation of the amount.1
 14.1 Is the company a cedant in a multiple cedant reinsurance contract?..... Yes [X] No []
 14.2 If yes, please describe the method of allocating and recording reinsurance among the cedants:
 Allocated based on each companies respective premium and loss numbers.....
 14.3 If the answer to 14.1 is yes, are the methods described in item 14.2 entirely contained in the respective multiple cedant reinsurance contracts?..... Yes [X] No []
 14.4 If the answer to 14.3 is no, are all the methods described in 14.2 entirely contained in written agreements?..... Yes [] No []
 14.5 If the answer to 14.4 is no, please explain:

 15.1 Has the reporting entity guaranteed any financed premium accounts?..... Yes [] No [X]
 15.2 If yes, give full information

- 16.1 Does the reporting entity write any warranty business? Yes [] No [X]
 If yes, disclose the following information for each of the following types of warranty coverage:

	1 Direct Losses Incurred	2 Direct Losses Unpaid	3 Direct Written Premium	4 Direct Premium Unearned	5 Direct Premium Earned
16.11 Home	\$0	\$0	\$0	\$0	\$0
16.12 Products	\$0	\$0	\$0	\$0	\$0
16.13 Automobile	\$0	\$0	\$0	\$0	\$0
16.14 Other*	\$0	\$0	\$0	\$0	\$0

* Disclose type of coverage:

GENERAL INTERROGATORIES
PART 2 - PROPERTY & CASUALTY INTERROGATORIES

17.1 Does the reporting entity include amounts recoverable on unauthorized reinsurance in Schedule F – Part 3 that it excludes from Schedule F – Part 5. Yes [] No [X]

Incurred but not reported losses on contracts in force prior to July 1, 1984, and not subsequently renewed are exempt from inclusion in Schedule F – Part 5. Provide the following information for this exemption:

17.11	Gross amount of unauthorized reinsurance in Schedule F – Part 3 excluded from Schedule F – Part 5.....	\$.....0
17.12	Unfunded portion of Interrogatory 17.11.....	\$.....0
17.13	Paid losses and loss adjustment expenses portion of Interrogatory 17.11.....	\$.....0
17.14	Case reserves portion of Interrogatory 17.11.....	\$.....0
17.15	Incurred but not reported portion of Interrogatory 17.11.....	\$.....0
17.16	Unearned premium portion of Interrogatory 17.11.....	\$.....0
17.17	Contingent commission portion of Interrogatory 17.11.....	\$.....0

Provide the following information for all other amounts included in Schedule F – Part 3 and excluded from Schedule F – Part 5, not included above.

17.18	Gross amount of unauthorized reinsurance in Schedule F – Part 3 excluded from Schedule F – Part 5.....	\$.....0
17.19	Unfunded portion of Interrogatory 17.18.....	\$.....0
17.20	Paid losses and loss adjustment expenses portion of Interrogatory 17.18.....	\$.....0
17.21	Case reserves portion of Interrogatory 17.18.....	\$.....0
17.22	Incurred but not reported portion of Interrogatory 17.18.....	\$.....0
17.23	Unearned premium portion of Interrogatory 17.18.....	\$.....0
17.24	Contingent commission portion of Interrogatory 17.18.....	\$.....0

18.1 Do you act as a custodian for health savings accounts? Yes [] No [X]
 18.2 If yes, please provide the amount of custodial funds held as of the reporting date. \$.....
 18.3 Do you act as an administrator for health savings accounts? Yes [] No [X]
 18.4 If yes, please provide the balance of the funds administered as of the reporting date. \$.....

ANNUAL STATEMENT FOR THE YEAR 2012 OF THE Permanent General Assurance Corporation

FIVE-YEAR HISTORICAL DATA

Show amounts in whole dollars only, no cents; show percentages to one decimal place, i.e., 17.6.

	1 2012	2 2011	3 2010	4 2009	5 2008
Gross Premiums Written (Page 8, Part 1B, Cols. 1, 2 & 3)					
1. Liability lines (Lines 11.1, 11.2, 16, 17.1, 17.2, 17.3, 18.1, 18.2, 19.1, 19.2 & 19.3, 19.4)	209,468,794	214,886,535	206,046,201	157,785,446	148,525,181
2. Property lines (Lines 1, 2, 9, 12, 21 & 26)	65,447,405	65,179,850	64,660,942	59,783,316	68,459,791
3. Property and liability combined lines (Lines 3, 4, 5, 8, 22 & 27)	0	0	0	0	0
4. All other lines (Lines 6, 10, 13, 14, 15, 23, 24, 28, 29, 30 & 34)	0	0	0	0	0
5. Nonproportional reinsurance lines (Lines 31, 32 & 33)	0	0	0	0	0
6. Total (Line 35)	274,916,199	280,066,385	270,707,143	217,568,762	216,984,972
Net Premiums Written (Page 8, Part 1B, Col. 6)					
7. Liability lines (Lines 11.1, 11.2, 16, 17.1, 17.2, 17.3, 18.1, 18.2, 19.1, 19.2 & 19.3, 19.4)	123,078,430	126,783,056	111,882,858	113,626,599	106,633,272
8. Property lines (Lines 1, 2, 9, 12, 21 & 26)	38,613,969	38,456,111	34,502,044	43,043,987	49,291,050
9. Property and liability combined lines (Lines 3, 4, 5, 8, 22 & 27)	0	0	0	0	0
10. All other lines (Lines 6, 10, 13, 14, 15, 23, 24, 28, 29, 30 & 34)	0	0	0	0	0
11. Nonproportional reinsurance lines (Lines 31, 32 & 33)	0	0	0	0	0
12. Total (Line 35)	161,692,399	165,239,167	146,384,902	156,670,586	155,924,322
Statement of Income (Page 4)					
13. Net underwriting gain (loss) (Line 8)	(19,322,351)	(27,970,460)	(16,815,636)	(11,200,660)	3,586,672
14. Net investment gain (loss) (Line 11)	9,142,852	9,023,602	5,126,658	3,882,572	5,251,204
15. Total other income (Line 15)	18,708,617	19,098,654	18,767,082	17,083,348	73,400
16. Dividends to policyholders (Line 17)	0	0	0	0	0
17. Federal and foreign income taxes incurred (Line 19)	2,551,334	(473,007)	2,184,098	3,771,046	3,024,398
18. Net income (Line 20)	5,977,784	624,803	4,894,006	5,994,214	5,886,878
Balance Sheet Lines (Pages 2 and 3)					
19. Total admitted assets excluding protected cell business (Page 2, Line 26, Col. 3)	213,703,996	208,301,277	196,698,545	198,545,840	211,072,101
20. Premiums and considerations (Page 2, Col. 3)					
20.1 In course of collection (Line 15.1)	7,041,958	13,458,895	11,538,715	9,854,751	15,837,164
20.2 Deferred and not yet due (Line 15.2)	53,146,178	47,343,617	49,939,951	50,613,251	51,540,133
20.3 Accrued retrospective premiums (Line 15.3)	0	0	0	0	0
21. Total liabilities excluding protected cell business (Page 3, Line 26)	123,153,034	122,755,489	113,602,851	121,638,668	132,447,427
22. Losses (Page 3, Line 1)	45,568,627	43,429,066	36,537,302	35,681,064	36,721,132
23. Loss adjustment expenses (Page 3, Line 3)	9,817,101	10,550,706	6,624,134	8,115,032	7,333,470
24. Unearned premiums (Page 3, Line 9)	64,870,162	64,360,301	65,797,420	73,840,502	74,398,840
25. Capital paid up (Page 3, Lines 30 & 31)	5,000,000	5,000,000	5,000,000	5,000,000	5,000,000
26. Surplus as regards policyholders (Page 3, Line 37)	90,550,962	85,545,788	83,095,694	76,907,172	78,624,674
Cash Flow (Page 5)					
27. Net cash from operations (Line 11)	5,475,152	4,977,609	(5,339,859)	14,465,565	(6,956,262)
Risk-Based Capital Analysis					
28. Total adjusted capital	90,550,962	85,545,788	83,095,694	76,907,172	78,624,674
29. Authorized control level risk-based capital	19,624,360	19,108,373	18,136,975	16,789,084	13,081,120
Percentage Distribution of Cash, Cash Equivalents and Invested Assets (Page 2, Col. 3)(Item divided by Page 2, Line 12, Col. 3) x 100.0					
30. Bonds (Line 1)	82.5	91.1	88.2	96.3	98.0
31. Stocks (Lines 2.1 & 2.2)	0.0	0.0	0.0	0.0	0.0
32. Mortgage loans on real estate (Lines 3.1 and 3.2)	0.0	0.0	0.0	0.0	0.0
33. Real estate (Lines 4.1, 4.2 & 4.3)	0.0	0.0	0.0	0.0	0.0
34. Cash, cash equivalents and short-term investments (Line 5)	17.5	8.9	11.8	3.6	2.0
35. Contract loans (Line 6)	0.0	0.0	0.0	0.0	0.0
36. Derivatives (Line 7)	0.0	0.0	0.0	XXX	XXX
37. Other invested assets (Line 8)	0.0	0.0	0.0	0.0	0.0
38. Receivables for securities (Line 9)	0.0	0.0	0.0	0.0	0.0
39. Securities lending reinvested collateral assets (Line 10)	0.0	0.0	0.0	XXX	XXX
40. Aggregate write-ins for invested assets (Line 11)	0.0	0.0	0.0	0.0	0.0
41. Cash, cash equivalents and invested assets (Line 12)	100.0	100.0	100.0	100.0	100.0
Investments in Parent, Subsidiaries and Affiliates					
42. Affiliated bonds, (Sch. D, Summary, Line 12, Col. 1)	0	0	0	0	0
43. Affiliated preferred stocks (Sch. D, Summary, Line 18, Col. 1)	0	0	0	0	0
44. Affiliated common stocks (Sch. D, Summary, Line 24, Col. 1)	695,102	17,034	1,538,425	65,741	1,250,672
45. Affiliated short-term investments (subtotals included in Schedule DA Verification, Col. 5, Line 10)	0	0	0	0	0
46. Affiliated mortgage loans on real estate	0	0	0	0	0
47. All other affiliated	0	0	0	0	0
48. Total of above Lines 42 to 47	695,102	17,034	1,538,425	65,741	1,250,672
49. Total Investment in parent included in Lines 42 to 47 above					
50. Percentage of investments in parent, subsidiaries and affiliates to surplus as regards policyholders (Line 48 above divided by Page 3, Col. 1, Line 37 x 100.0)	0.8	0.0	1.9	0.1	1.6

ANNUAL STATEMENT FOR THE YEAR 2012 OF THE Permanent General Assurance Corporation

FIVE-YEAR HISTORICAL DATA

(Continued)

	1 2012	2 2011	3 2010	4 2009	5 2008
Capital and Surplus Accounts (Page 4)					
51. Net unrealized capital gains (losses) (Line 24)	1,604,486	(958,695)	3,101,954	(2,486,762)	385,847
52. Dividends to stockholders (Line 35)	(1,000,000)	(1,000,000)	0	(7,700,000)	0
53. Change in surplus as regards policyholders for the year (Line 38)	5,005,174	2,450,094	6,188,522	(1,717,502)	4,229,014
Gross Losses Paid (Page 9, Part 2, Cols. 1 & 2)					
54. Liability lines (Lines 11.1, 11.2, 16, 17.1, 17.2, 17.3, 18.1, 18.2, 19.1, 19.2 & 19.3, 19.4)	127,458,875	131,703,361	115,609,887	96,301,173	95,273,940
55. Property lines (Lines 1, 2, 9, 12, 21 & 26)	34,896,955	39,631,703	33,886,399	35,749,764	42,142,552
56. Property and liability combined lines (Lines 3, 4, 5, 8, 22 & 27)	0	0	0	0	0
57. All other lines (Lines 6, 10, 13, 14, 15, 23, 24, 28, 29, 30 & 34)	0	0	0	0	0
58. Nonproportional reinsurance lines (Lines 31, 32 & 33)	0	0	0	0	0
59. Total (Line 35)	162,355,830	171,335,064	149,496,286	132,050,937	137,416,492
Net Losses Paid (Page 9, Part 2, Col. 4)					
60. Liability lines (Lines 11.1, 11.2, 16, 17.1, 17.2, 17.3, 18.1, 18.2, 19.1, 19.2 & 19.3, 19.4)	75,162,985	77,654,083	74,290,318	69,147,881	67,773,720
61. Property lines (Lines 1, 2, 9, 12, 21 & 26)	20,592,585	23,387,804	20,312,550	25,744,937	30,358,709
62. Property and liability combined lines (Lines 3, 4, 5, 8, 22 & 27)	0	0	0	0	0
63. All other lines (Lines 6, 10, 13, 14, 15, 23, 24, 28, 29, 30 & 34)	0	0	0	0	0
64. Nonproportional reinsurance lines (Lines 31, 32 & 33)	0	0	0	0	0
65. Total (Line 35)	95,755,570	101,041,887	94,602,868	94,892,818	98,132,429
Operating Percentages (Page 4) (Item divided by Page 4, Line 1) x 100.0					
66. Premiums earned (Line 1)	100.0	100.0	100.0	100.0	100.0
67. Losses incurred (Line 2)	60.7	64.8	61.8	59.7	60.4
68. Loss expenses incurred (Line 3)	9.4	12.0	9.1	9.6	5.8
69. Other underwriting expenses incurred (Line 4)	41.8	40.1	40.0	37.9	31.5
70. Net underwriting gain (loss) (Line 8)	(12.0)	(16.8)	(10.9)	(7.1)	2.3
Other Percentages					
71. Other underwriting expenses to net premiums written (Page 4, Lines 4 + 5 - 15 divided by Page 8, Part 1B, Col. 6, Line 35 x 100.0)	30.1	28.9	29.4	27.1	31.6
72. Losses and loss expenses incurred to premiums earned (Page 4, Lines 2 + 3 divided by Page 4, Line 1 x 100.0)	70.2	76.7	70.9	69.3	66.2
73. Net premiums written to policyholders' surplus (Page 8, Part 1B, Col. 6, Line 35 divided by Page 3, Line 37, Col. 1 x 100.0)	178.6	193.2	176.2	203.7	198.3
One Year Loss Development (000 omitted)					
74. Development in estimated losses and loss expenses incurred prior to current year (Schedule P, Part 2-Summary, Line 12, Col. 11)	1,315	5,003	3,395	227	(875)
75. Percent of development of losses and loss expenses incurred to policyholders' surplus of prior year end (Line 74 above divided by Page 4, Line 21, Col. 1 x 100.0)	1.5	6.0	4.4	0.3	(1.2)
Two Year Loss Development (000 omitted)					
76. Development in estimated losses and loss expenses incurred 2 years before the current year and prior year (Schedule P, Part 2 - Summary, Line 12, Col. 12)	7,313	4,471	1,262	(586)	(3,009)
77. Percent of development of losses and loss expenses incurred to reported policyholders' surplus of second prior year end (Line 76 above divided by Page 4, Line 21, Col. 2 x 100.0)	8.8	5.8	1.6	(0.8)	(3.8)

NOTE: If a party to a merger, have the two most recent years of this exhibit been restated due to a merger in compliance with the disclosure requirements of SSAP No. 3, Accounting Changes and Correction of Errors?

Yes [] No []

If no, please explain

SCHEDULE P - ANALYSIS OF LOSSES AND LOSS EXPENSES
SCHEDULE P - PART 1 - SUMMARY

(\$000 Omitted)

Years in Which Premiums Were Earned and Losses Were Incurred	Premiums Earned			Loss and Loss Expense Payments							12 Number of Claims Reported Direct and Assumed	
	1 Direct and Assumed	2 Ceded	3 Net (Cols. 1 - 2)	Loss Payments		Defense and Cost Containment Payments		Adjusting and Other Payments		10 Salvage and Subrogation Received		11 Total Net Paid (Cols. 4 - 5 + 6 - 7 + 8 - 9)
				4 Direct and Assumed	5 Ceded	6 Direct and Assumed	7 Ceded	8 Direct and Assumed	9 Ceded			
1. Prior	XXX	XXX	XXX	(36)	(13)	1	0	1	0	30	(22)	XXX
2. 2003	105,885	25,692	80,193	61,641	13,765	2,137	444	7,050	1,913	2,756	54,705	XXX
3. 2004	114,237	20,886	93,351	68,427	14,028	2,031	393	8,409	2,050	3,680	62,396	XXX
4. 2005	117,451	7,038	110,413	65,913	4,100	2,214	127	6,601	406	5,045	70,095	XXX
5. 2006	118,073	566	117,507	72,294	494	1,751	10	7,843	1	4,866	81,383	XXX
6. 2007	127,734	399	127,336	80,154	375	2,279	39	7,845	0	5,566	89,864	XXX
7. 2008	128,569	385	128,183	78,587	230	2,086	10	6,496	0	4,817	86,929	XXX
8. 2009	128,975	135	128,840	79,947	145	2,596	13	9,394	0	4,401	91,779	XXX
9. 2010	154,428	0	154,428	94,055	0	3,641	0	11,187	0	4,750	108,882	XXX
10. 2011	166,676	0	166,676	96,087	0	2,085	0	12,603	0	5,149	110,774	XXX
11. 2012	161,870	688	161,183	60,949	25	487	0	9,824	0	2,685	71,235	XXX
12. Totals	XXX	XXX	XXX	758,017	33,147	21,309	1,036	87,250	4,371	43,745	828,021	XXX

	Losses Unpaid				Defense and Cost Containment Unpaid				Adjusting and Other Unpaid		23 Salvage and Subrogation Anticipated	24 Total Net Losses and Expenses Unpaid	25 Number of Claims Outstanding Direct and Assumed
	Case Basis		Bulk + IBNR		Case Basis		Bulk + IBNR		21 Direct and Assumed	22 Ceded			
	13	14	15	16	17	18	19	20					
	Direct and Assumed	Ceded	Direct and Assumed	Ceded	Direct and Assumed	Ceded	Direct and Assumed	Ceded					
1.	0	(1)	0	0	0	0	0	0	1	0	0	2	XXX
2.	0	0	0	0	0	0	0	0	0	0	8	0	XXX
3.	3	0	0	0	0	0	0	0	0	0	36	3	XXX
4.	3	0	(18)	0	0	0	3	0	0	0	74	(12)	XXX
5.	41	4	(43)	1	0	0	13	0	1	0	102	8	XXX
6.	373	137	(111)	3	0	0	42	0	3	0	151	168	XXX
7.	95	0	(155)	2	0	0	97	0	6	0	174	41	XXX
8.	589	0	(191)	0	0	0	307	0	29	0	219	734	XXX
9.	2,122	0	(481)	0	0	0	1,320	0	109	0	364	3,071	XXX
10.	7,390	0	724	0	0	0	2,389	0	400	0	715	10,903	XXX
11.	26,175	24	9,409	187	0	0	2,600	0	2,495	0	1,969	40,468	XXX
12.	36,791	164	9,135	194	0	0	6,772	0	3,045	0	3,811	55,386	XXX

	Total Losses and Loss Expenses Incurred			Loss and Loss Expense Percentage (Incurred/Premiums Earned)			Nontabular Discount		34 Inter-Company Pooling Participation Percentage	Net Balance Sheet Reserves After Discount	
	26 Direct and Assumed	27 Ceded	28 Net	29 Direct and Assumed	30 Ceded	31 Net	32 Loss	33 Loss Expense		35 Losses Unpaid	36 Loss Expenses Unpaid
1.	XXX	XXX	XXX	XXX	XXX	XXX	0	0	XXX	1	1
2.	70,828	16,123	54,705	66.9	62.8	68.2	0	0	59.0	0	0
3.	78,869	16,470	62,399	69.0	78.9	66.8	0	0	59.0	3	0
4.	74,716	4,634	70,082	63.6	65.8	63.5	0	0	59.0	(15)	3
5.	81,901	510	81,391	69.4	90.1	69.3	0	0	59.0	(7)	15
6.	90,586	554	90,032	70.9	139.0	70.7	0	0	59.0	123	46
7.	87,212	242	86,970	67.8	62.8	67.8	0	0	59.0	(62)	103
8.	92,670	157	92,513	71.9	116.4	71.8	0	0	59.0	398	336
9.	111,953	0	111,953	72.5	0.0	72.5	0	0	59.0	1,642	1,429
10.	121,677	0	121,677	73.0	0.0	73.0	0	0	59.0	8,114	2,789
11.	111,939	236	111,703	69.2	34.3	69.3	0	0	59.0	35,373	5,095
12.	XXX	XXX	XXX	XXX	XXX	XXX	0	0	XXX	45,569	9,817

Note: Parts 2 and 4 are gross of all discounting, including tabular discounting. Part 1 is gross of only nontabular discounting, which is reported in Columns 32 and 33 of Part 1. The tabular discount, if any, is reported in the Notes to Financial Statements, which will reconcile Part 1 with Parts 2 and 4.

ANNUAL STATEMENT FOR THE YEAR 2012 OF THE Permanent General Assurance Corporation

SCHEDULE P - PART 2 - SUMMARY

Years in Which Losses Were Incurred	INCURRED NET LOSSES AND DEFENSE AND COST CONTAINMENT EXPENSES REPORTED AT YEAR END (\$000 OMITTED)										DEVELOPMENT	
	1	2	3	4	5	6	7	8	9	10	11	12
	2003	2004	2005	2006	2007	2008	2009	2010	2011	2012	One Year	Two Year
1. Prior	5,993	5,757	8,984	7,748	7,932	7,896	7,879	7,828	7,792	7,770	(22)	(58)
2. 2003	51,188	49,233	49,373	49,516	49,447	49,455	49,453	49,603	49,582	49,568	(14)	(34)
3. 2004	XXX	59,097	56,970	56,505	56,265	56,130	56,103	56,073	56,065	56,040	(25)	(33)
4. 2005	XXX	XXX	66,763	64,560	63,845	63,894	63,902	63,931	63,876	63,888	12	(43)
5. 2006	XXX	XXX	XXX	74,717	73,897	73,218	73,429	73,450	73,526	73,548	22	99
6. 2007	XXX	XXX	XXX	XXX	81,202	81,290	81,357	81,686	81,948	82,184	236	498
7. 2008	XXX	XXX	XXX	XXX	XXX	79,539	79,489	80,113	80,340	80,468	128	355
8. 2009	XXX	XXX	XXX	XXX	XXX	XXX	79,577	81,901	82,529	83,090	561	1,190
9. 2010	XXX	XXX	XXX	XXX	XXX	XXX	XXX	95,318	99,245	100,657	1,412	5,340
10. 2011	XXX	XXX	XXX	XXX	XXX	XXX	XXX	XXX	109,670	108,675	(995)	XXX
11. 2012	XXX	XXX	XXX	XXX	XXX	XXX	XXX	XXX	XXX	99,384	XXX	XXX
										12. Totals	1,315	7,313

SCHEDULE P - PART 3 - SUMMARY

Years in Which Losses Were Incurred	CUMULATIVE PAID NET LOSSES AND DEFENSE AND COST CONTAINMENT EXPENSES REPORTED AT YEAR END (\$000 OMITTED)										11	12
	1	2	3	4	5	6	7	8	9	10	Number of Claims Closed With Loss Payment	Number of Claims Closed Without Loss Payment
	2003	2004	2005	2006	2007	2008	2009	2010	2011	2012		
1. Prior	000	3,381	4,913	7,414	7,837	7,852	7,859	7,817	7,791	7,769	XXX	XXX
2. 2003	30,960	44,303	47,610	49,057	49,299	49,403	49,438	49,600	49,582	49,568	XXX	XXX
3. 2004	XXX	33,160	48,751	54,531	55,604	56,014	56,088	56,066	56,063	56,038	XXX	XXX
4. 2005	XXX	XXX	41,884	58,709	62,362	63,539	63,851	63,916	63,900	63,900	XXX	XXX
5. 2006	XXX	XXX	XXX	48,711	67,718	71,760	73,101	73,410	73,490	73,542	XXX	XXX
6. 2007	XXX	XXX	XXX	XXX	52,303	75,535	79,887	81,285	81,863	82,019	XXX	XXX
7. 2008	XXX	XXX	XXX	XXX	XXX	53,475	74,673	78,945	80,109	80,433	XXX	XXX
8. 2009	XXX	XXX	XXX	XXX	XXX	XXX	52,661	76,568	80,845	82,385	XXX	XXX
9. 2010	XXX	XXX	XXX	XXX	XXX	XXX	XXX	61,388	90,883	97,696	XXX	XXX
10. 2011	XXX	XXX	XXX	XXX	XXX	XXX	XXX	XXX	68,810	98,172	XXX	XXX
11. 2012	XXX	XXX	XXX	XXX	XXX	XXX	XXX	XXX	XXX	61,412	XXX	XXX

SCHEDULE P - PART 4 - SUMMARY

Years in Which Losses Were Incurred	BULK AND IBNR RESERVES ON NET LOSSES AND DEFENSE AND COST CONTAINMENT EXPENSES REPORTED AT YEAR END (\$000 OMITTED)									
	1	2	3	4	5	6	7	8	9	10
	2003	2004	2005	2006	2007	2008	2009	2010	2011	2012
1. Prior	1,900	654	218	75	0	0	0	0	0	0
2. 2003	7,720	2,054	618	166	23	0	0	0	0	0
3. 2004	XXX	9,692	2,266	588	93	12	0	0	0	0
4. 2005	XXX	XXX	7,744	1,822	281	(4)	(43)	0	(36)	(15)
5. 2006	XXX	XXX	XXX	7,339	1,395	43	(131)	(121)	(81)	(31)
6. 2007	XXX	XXX	XXX	XXX	7,390	935	(11)	(163)	(133)	(71)
7. 2008	XXX	XXX	XXX	XXX	XXX	6,522	433	104	(86)	(59)
8. 2009	XXX	XXX	XXX	XXX	XXX	XXX	6,784	907	175	116
9. 2010	XXX	XXX	XXX	XXX	XXX	XXX	XXX	9,578	2,101	840
10. 2011	XXX	XXX	XXX	XXX	XXX	XXX	XXX	XXX	14,525	3,113
11. 2012	XXX	XXX	XXX	XXX	XXX	XXX	XXX	XXX	XXX	11,821

ANNUAL STATEMENT FOR THE YEAR 2012 OF THE Permanent General Assurance Corporation

SCHEDULE T - EXHIBIT OF PREMIUMS WRITTEN

Allocated By States And Territories

States, etc.	1 Active Status	Gross Premiums, Including Policy and Membership Fees Less Return Premiums and Premiums on Policies Not Taken		4 Dividends Paid or Credited to Policyholders on Direct Business	5 Direct Losses Paid (Deducting Salvage)	6 Direct Losses Incurred	7 Direct Losses Unpaid	8 Finance and Service Charges Not Included in Premiums	9 Direct Premium Written for Federal Purchasing Groups (Included in Col. 2)
		2 Direct Premiums Written	3 Direct Premiums Earned						
1. Alabama	AL	L	1,904,902	1,474,402	0	389,437	633,485	301,368	117,722
2. Alaska	AK	N	0	0	0	0	0	0	0
3. Arizona	AZ	L	11,769,750	11,525,592	0	6,435,308	6,811,201	3,460,313	1,353,285
4. Arkansas	AR	N	0	0	0	0	0	0	0
5. California	CA	L	41,553,410	42,369,329	0	22,192,731	23,056,100	10,257,310	5,543,637
6. Colorado	CO	L	7,142,849	6,645,262	0	4,462,506	4,674,559	2,222,490	624,199
7. Connecticut	CT	L	2,176,380	2,031,011	0	814,498	1,032,719	599,970	130,886
8. Delaware	DE	L	0	0	0	0	0	0	0
9. Dist. Columbia	DC	N	0	0	0	0	0	0	0
10. Florida	FL	L	19,145,599	20,610,270	0	13,374,854	11,284,532	4,919,942	988,055
11. Georgia	GA	L	6,445,917	5,892,324	0	3,788,443	4,299,514	1,701,758	470,852
12. Hawaii	HI	N	0	0	0	0	0	0	0
13. Idaho	ID	L	0	0	0	0	0	0	0
14. Illinois	IL	L	3,356,847	3,450,328	0	1,956,244	2,158,895	1,102,651	372,474
15. Indiana	IN	L	7,385,642	7,991,717	0	4,861,871	4,550,138	1,994,548	1,172,502
16. Iowa	IA	L	0	0	0	0	0	0	0
17. Kansas	KS	L	0	0	0	0	0	0	0
18. Kentucky	KY	N	0	0	0	0	0	0	0
19. Louisiana	LA	L	4,247,889	4,596,258	0	2,925,781	2,362,472	945,773	228,041
20. Maine	ME	N	0	0	0	0	0	0	0
21. Maryland	MD	N	0	0	0	0	0	0	0
22. Massachusetts	MA	L	0	0	0	0	0	0	0
23. Michigan	MI	N	0	0	0	0	0	0	0
24. Minnesota	MN	N	0	0	0	0	0	0	0
25. Mississippi	MS	L	268,672	96,606	0	8,099	71,911	63,812	10,202
26. Missouri	MO	L	4,179,622	3,825,936	0	2,142,257	2,057,867	846,703	405,192
27. Montana	MT	L	0	0	0	0	0	0	0
28. Nebraska	NE	L	0	0	0	0	0	0	0
29. Nevada	NV	L	3,947,619	4,169,778	0	2,370,614	2,536,176	1,387,038	343,571
30. New Hampshire	NH	N	0	0	0	0	0	0	0
31. New Jersey	NJ	L	0	0	0	0	0	0	0
32. New Mexico	NM	N	0	0	0	0	0	0	0
33. New York	NY	L	5,625,876	6,840,414	0	7,272,222	6,154,710	4,744,568	632,991
34. No. Carolina	NC	L	0	0	0	0	0	0	0
35. No. Dakota	ND	L	0	0	0	0	0	0	0
36. Ohio	OH	L	3,960,770	4,107,331	0	2,839,319	2,500,810	1,084,302	599,152
37. Oklahoma	OK	L	2,077,815	1,165,354	0	329,467	687,360	357,892	162,634
38. Oregon	OR	L	0	0	0	0	0	0	0
39. Pennsylvania	PA	L	19,736,908	19,488,589	0	10,012,637	11,105,706	6,109,895	2,397,660
40. Rhode Island	RI	L	0	0	0	0	0	0	0
41. So. Carolina	SC	L	2,548,896	2,512,813	0	1,753,805	1,936,480	622,050	291,770
42. So. Dakota	SD	L	0	0	0	0	0	0	0
43. Tennessee	TN	L	15,013,321	14,153,345	0	7,475,385	7,836,277	3,659,751	1,425,191
44. Texas	TX	L	6,230,393	4,988,432	0	3,200,851	4,082,445	1,583,975	334,114
45. Utah	UT	L	0	0	0	0	0	0	0
46. Vermont	VT	N	0	0	0	0	0	0	0
47. Virginia	VA	L	8,587,570	8,999,242	0	4,900,069	4,790,508	2,903,639	845,412
48. Washington	WA	L	319,576	182,971	0	0	54,490	54,490	8,724
49. West Virginia	WV	L	0	0	0	0	0	0	0
50. Wisconsin	WI	L	874,968	686,915	0	229,338	359,503	159,819	70,557
51. Wyoming	WY	N	0	0	0	0	0	0	0
52. American Samoa	AS	N	0	0	0	0	0	0	0
53. Guam	GU	N	0	0	0	0	0	0	0
54. Puerto Rico	PR	N	0	0	0	0	0	0	0
55. U.S. Virgin Islands	VI	N	0	0	0	0	0	0	0
56. Northern Mariana Islands	MP	N	0	0	0	0	0	0	0
57. Canada	CAN	N	0	0	0	0	0	0	0
58. Aggregate other alien	OT	XXX	0	0	0	0	0	0	0
59. Totals	(a)	38	178,501,191	177,804,219	0	103,735,736	105,037,858	51,084,057	18,528,823
DETAILS OF WRITE-INS									
58001.		XXX							
58002.		XXX							
58003.		XXX							
58998. Sum. of remaining write-ins for Line 58 from overflow page		XXX	0	0	0	0	0	0	0
58999. Totals (Lines 58001 through 58003 + 58998) (Line 58 above)		XXX	0	0	0	0	0	0	0

(L) Licensed or Chartered - Licensed Insurance Carrier or Domiciled RRG; (R) Registered - Non-domiciled RRGs; (Q) Qualified - Qualified or Accredited Reinsurer; (E) Eligible - Reporting Entities eligible or approved to write Surplus Lines in the state; (N) None of the above - Not allowed to write business in the state.

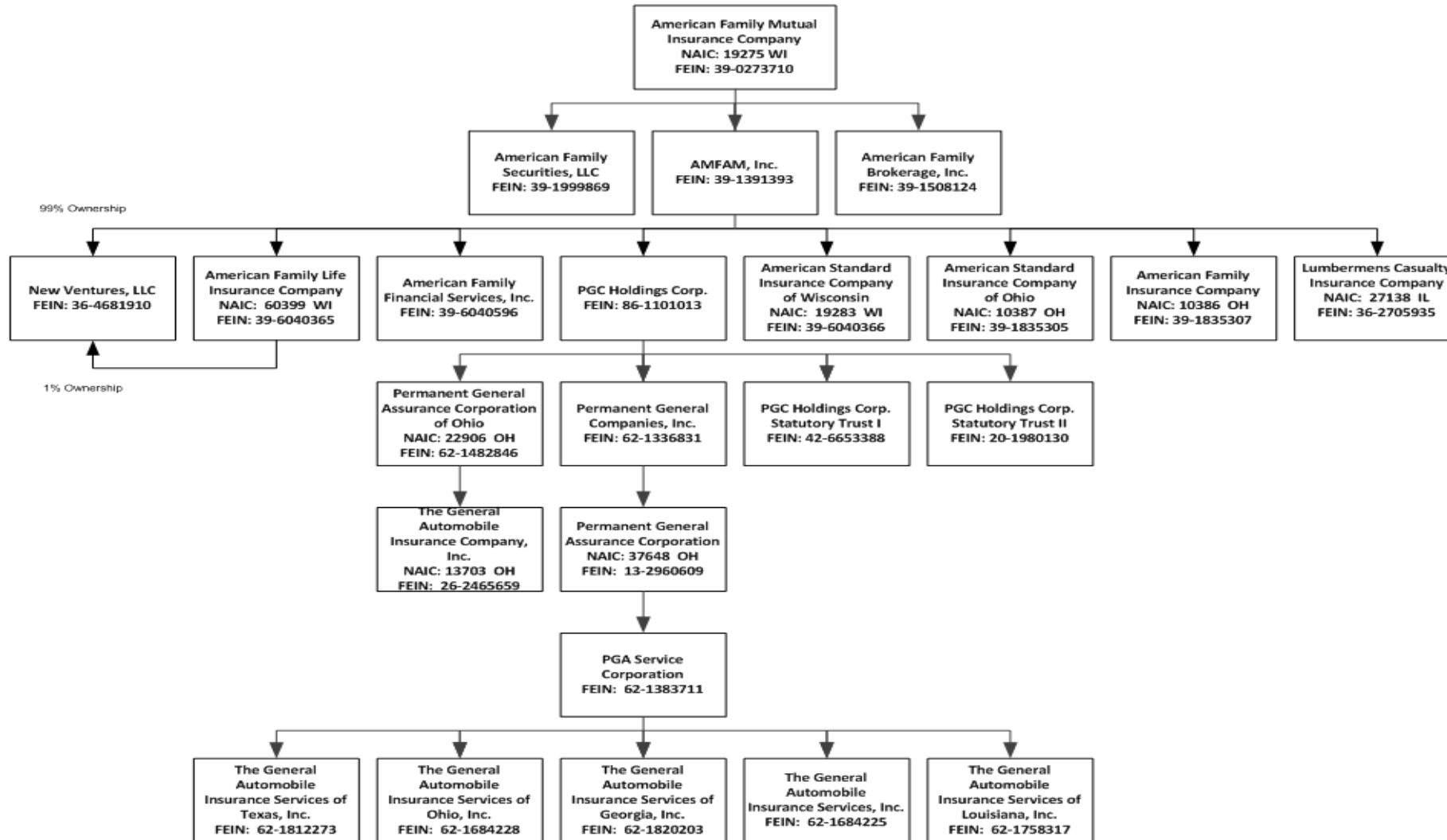
Explanation of basis of allocation of premiums by states, etc.

Premiums are not allocated but are based on the policyholders residence address

(a) Insert the number of L responses except for Canada and Other Alien

SCHEDULE Y - INFORMATION CONCERNING ACTIVITIES OF INSURER MEMBERS OF A HOLDING COMPANY GROUP

PART 1 - ORGANIZATIONAL CHART



ALPHABETICAL INDEX

ANNUAL STATEMENT BLANK

Assets	2
Cash Flow	5
Exhibit of Capital Gains (Losses)	12
Exhibit of Net Investment Income	12
Exhibit of Nonadmitted Assets	13
Exhibit of Premiums and Losses (State Page)	19
Five-Year Historical Data	17
General Interrogatories	15
Jurat Page	1
Liabilities, Surplus and Other Funds	3
Notes To Financial Statements	14
Overflow Page For Write-Ins	101
Schedule A – Part 1	E01
Schedule A – Part 2	E02
Schedule A – Part 3	E03
Schedule A – Verification Between Years	SI02
Schedule B – Part 1	E04
Schedule B – Part 2	E05
Schedule B – Part 3	E06
Schedule B – Verification Between Years	SI02
Schedule BA – Part 1	E07
Schedule BA – Part 2	E08
Schedule BA – Part 3	E09
Schedule BA – Verification Between Years	SI03
Schedule D – Part 1	E10
Schedule D – Part 1A – Section 1	SI05
Schedule D – Part 1A – Section 2	SI08
Schedule D – Part 2 – Section 1	E11
Schedule D – Part 2 – Section 2	E12
Schedule D – Part 3	E13
Schedule D – Part 4	E14
Schedule D – Part 5	E15
Schedule D – Part 6 – Section 1	E16
Schedule D – Part 6 – Section 2	E16
Schedule D – Summary By Country	SI04
Schedule D – Verification Between Years	SI03
Schedule DA – Part 1	E17

ALPHABETICAL INDEX

ANNUAL STATEMENT BLANK (Continued)

Schedule DA – Verification Between Years	SI10
Schedule DB – Part A – Section 1	E18
Schedule DB – Part A – Section 2	E19
Schedule DB – Part A – Verification Between Years	SI11
Schedule DB – Part B – Section 1	E20
Schedule DB – Part B – Section 2	E21
Schedule DB – Part B – Verification Between Years	SI11
Schedule DB – Part C – Section 1	SI12
Schedule DB – Part C – Section 2	SI13
Schedule DB – Part D	E22
Schedule DB – Verification	SI14
Schedule DL – Part 1	E23
Schedule DL – Part 2	E24
Schedule E – Part 1 – Cash	E25
Schedule E – Part 2 – Cash Equivalents	E26
Schedule E – Part 3 – Special Deposits	E27
Schedule E – Verification Between Years	SI15
Schedule F – Part 1	20
Schedule F – Part 2	21
Schedule F – Part 3	22
Schedule F – Part 4	23
Schedule F – Part 5	24
Schedule F – Part 6 – Section 1	25
Schedule F – Part 6 – Section 2	27
Schedule F – Part 7	28
Schedule F – Part 8	29
Schedule F – Part 9	30
Schedule H – Accident and Health Exhibit – Part 1	31
Schedule H – Part 2, Part 3, and Part 4	32
Schedule H – Part 5 – Health Claims	33
Schedule P – Part 1 – Summary	34
Schedule P – Part 1A – Homeowners/Farmowners	36
Schedule P – Part 1B – Private Passenger Auto Liability/Medical	37
Schedule P – Part 1C – Commercial Auto/Truck Liability/Medical	38
Schedule P – Part 1D – Workers’ Compensation (Excluding Excess Workers’ Compensation)	39

ALPHABETICAL INDEX

ANNUAL STATEMENT BLANK (Continued)

Schedule P – Part 1E – Commercial Multiple Peril	40
Schedule P – Part 1F – Section 1 – Medical Professional Liability – Occurrence	41
Schedule P – Part 1F – Section 2 – Medical Professional Liability – Claims-Made	42
Schedule P – Part 1G – Special Liability (Ocean, Marine, Aircraft (All Perils), Boiler and Machinery)	43
Schedule P – Part 1H – Section 1 – Other Liability–Occurrence	44
Schedule P – Part 1H – Section 2 – Other Liability – Claims-Made	45
Schedule P – Part 1I – Special Property (Fire, Allied Lines, Inland Marine, Earthquake, Burglary & Theft)	46
Schedule P – Part 1J – Auto Physical Damage	47
Schedule P – Part 1K – Fidelity/Surety	48
Schedule P – Part 1L – Other (Including Credit, Accident and Health)	49
Schedule P – Part 1M – International	50
Schedule P – Part 1N – Reinsurance – Nonproportional Assumed Property	51
Schedule P – Part 1O – Reinsurance – Nonproportional Assumed Liability	52
Schedule P – Part 1P – Reinsurance – Nonproportional Assumed Financial Lines	53
Schedule P – Part 1R – Section 1 – Products Liability – Occurrence	54
Schedule P – Part 1R – Section 2 – Products Liability – Claims – Made	55
Schedule P – Part 1S – Financial Guaranty/Mortgage Guaranty	56
Schedule P – Part 1T – Warranty	57
Schedule P – Part 2, Part 3 and Part 4 – Summary	35
Schedule P – Part 2A – Homeowners/Farmowners	58
Schedule P – Part 2B – Private Passenger Auto Liability/Medical	58
Schedule P – Part 2C – Commercial Auto/Truck Liability/Medical	58
Schedule P – Part 2D – Workers’ Compensation (Excluding Excess Workers’ Compensation)	58
Schedule P – Part 2E – Commercial Multiple Peril	58
Schedule P – Part 2F – Section 1 – Medical Professional Liability – Occurrence	59
Schedule P – Part 2F – Section 2 – Medical Professional Liability – Claims – Made	59
Schedule P – Part 2G – Special Liability (Ocean Marine, Aircraft (All Perils), Boiler and Machinery)	59
Schedule P – Part 2H – Section 1 – Other Liability – Occurrence	59
Schedule P – Part 2H – Section 2 – Other Liability – Claims – Made	59
Schedule P – Part 2I – Special Property (Fire, Allied Lines, Inland Marine, Earthquake, Burglary, and Theft)	60
Schedule P – Part 2J – Auto Physical Damage	60
Schedule P – Part 2K – Fidelity, Surety	60
Schedule P – Part 2L – Other (Including Credit, Accident and Health)	60
Schedule P – Part 2M – International	60
Schedule P – Part 2N – Reinsurance – Nonproportional Assumed Property	61
Schedule P – Part 2O – Reinsurance – Nonproportional Assumed Liability	61
Schedule P – Part 2P – Reinsurance – Nonproportional Assumed Financial Lines	61
Schedule P – Part 2R – Section 1 – Products Liability – Occurrence	62
Schedule P – Part 2R – Section 2 – Products Liability – Claims-Made	62
Schedule P – Part 2S – Financial Guaranty/Mortgage Guaranty	62
Schedule P – Part 2T – Warranty	62
Schedule P – Part 3A – Homeowners/Farmowners	63

ALPHABETICAL INDEX

ANNUAL STATEMENT BLANK (Continued)

Schedule P – Part 3B – Private Passenger Auto Liability/Medical	63
Schedule P – Part 3C – Commercial Auto/Truck Liability/Medical	63
Schedule P – Part 3D – Workers’ Compensation (Excluding Excess Workers’ Compensation)	63
Schedule P – Part 3E – Commercial Multiple Peril	63
Schedule P – Part 3F – Section 1 – Medical Professional Liability – Occurrence	64
Schedule P – Part 3F – Section 2 – Medical Professional Liability – Claims-Made	64
Schedule P – Part 3G – Special Liability (Ocean Marine, Aircraft (All Perils), Boiler and Machinery)	64
Schedule P – Part 3H – Section 1 – Other Liability – Occurrence	64
Schedule P – Part 3H – Section 2 – Other Liability – Claims-Made	64
Schedule P – Part 3I – Special Property (Fire, Allied Lines, Inland Marine, Earthquake, Burglary, and Theft)	65
Schedule P – Part 3J – Auto Physical Damage	65
Schedule P – Part 3K – Fidelity/Surety	65
Schedule P – Part 3L – Other (Including Credit, Accident and Health)	65
Schedule P – Part 3M – International	65
Schedule P – Part 3N – Reinsurance – Nonproportional Assumed Property	66
Schedule P – Part 3O – Reinsurance – Nonproportional Assumed Liability	66
Schedule P – Part 3P – Reinsurance – Nonproportional Assumed Financial Lines	66
Schedule P – Part 3R – Section 1 – Products Liability – Occurrence	67
Schedule P – Part 3R – Section 2 – Products Liability – Claims-Made	67
Schedule P – Part 3S – Financial Guaranty/Mortgage Guaranty	67
Schedule P – Part 3T – Warranty	67
Schedule P – Part 4A – Homeowners/Farmowners	68
Schedule P – Part 4B – Private Passenger Auto Liability/Medical	68
Schedule P – Part 4C – Commercial Auto/Truck Liability/Medical	68
Schedule P – Part 4D – Workers’ Compensation (Excluding Excess Workers’ Compensation)	68
Schedule P – Part 4E – Commercial Multiple Peril	68
Schedule P – Part 4F – Section 1 – Medical Professional Liability – Occurrence	69
Schedule P – Part 4F – Section 2 – Medical Professional Liability – Claims-Made	69
Schedule P – Part 4G – Special Liability (Ocean Marine, Aircraft (All Perils), Boiler and Machinery)	69
Schedule P – Part 4H – Section 1 – Other Liability – Occurrence	69
Schedule P – Part 4H – Section 2 – Other Liability – Claims-Made	69
Schedule P – Part 4I – Special Property (Fire, Allied Lines, Inland Marine, Earthquake, Burglary and Theft)	70
Schedule P – Part 4J – Auto Physical Damage	70
Schedule P – Part 4K – Fidelity/Surety	70
Schedule P – Part 4L – Other (Including Credit, Accident and Health)	70
Schedule P – Part 4M – International	70
Schedule P – Part 4N – Reinsurance – Nonproportional Assumed Property	71
Schedule P – Part 4O – Reinsurance – Nonproportional Assumed Liability	71
Schedule P – Part 4P – Reinsurance – Nonproportional Assumed Financial Lines	71
Schedule P – Part 4R – Section 1 – Products Liability – Occurrence	72
Schedule P – Part 4R – Section 2 – Products Liability – Claims-Made	72

ALPHABETICAL INDEX

ANNUAL STATEMENT BLANK (Continued)

Schedule P – Part 4S – Financial Guaranty/Mortgage Guaranty	72
Schedule P – Part 4T – Warranty	72
Schedule P – Part 5A – Homeowners/Farmowners	73
Schedule P – Part 5B – Private Passenger Auto Liability/Medical	74
Schedule P – Part 5C – Commercial Auto/Truck Liability/Medical	75
Schedule P – Part 5D – Workers’ Compensation (Excluding Excess Workers’ Compensation)	76
Schedule P – Part 5E – Commercial Multiple Peril	77
Schedule P – Part 5F – Medical Professional Liability – Claims-Made	79
Schedule P – Part 5F – Medical Professional Liability – Occurrence	78
Schedule P – Part 5H – Other Liability – Claims-Made	81
Schedule P – Part 5H – Other Liability – Occurrence	80
Schedule P – Part 5R – Products Liability – Claims-Made	83
Schedule P – Part 5R – Products Liability – Occurrence	82
Schedule P – Part 5T – Warranty	84
Schedule P – Part 6C – Commercial Auto/Truck Liability/Medical	85
Schedule P – Part 6D – Workers’ Compensation (Excluding Excess Workers’ Compensation)	85
Schedule P – Part 6E – Commercial Multiple Peril	86
Schedule P – Part 6H – Other Liability – Claims-Made	87
Schedule P – Part 6H – Other Liability – Occurrence	86
Schedule P – Part 6M – International	87
Schedule P – Part 6N – Reinsurance – Nonproportional Assumed Property	88
Schedule P – Part 6O – Reinsurance – Nonproportional Assumed Liability	88
Schedule P – Part 6R – Products Liability – Claims-Made	89
Schedule P – Part 6R – Products Liability – Occurrence	89
Schedule P – Part 7A – Primary Loss Sensitive Contracts	90
Schedule P – Part 7B – Reinsurance Loss Sensitive Contracts	92
Schedule P Interrogatories	93
Schedule T – Exhibit of Premiums Written	95
Schedule T – Part 2 – Interstate Compact	96
Schedule Y – Information Concerning Activities of Insurer Members of a Holding Company Group	97
Schedule Y – Part 1A – Detail of Insurance Holding Company System	98
Schedule Y – Part 2 – Summary of Insurer’s Transactions With Any Affiliates	99
Statement of Income	4
Summary Investment Schedule	SI01
Supplemental Exhibits and Schedules Interrogatories	100
Underwriting and Investment Exhibit Part 1	6
Underwriting and Investment Exhibit Part 1A	7
Underwriting and Investment Exhibit Part 1B	8
Underwriting and Investment Exhibit Part 2	9
Underwriting and Investment Exhibit Part 2A	10
Underwriting and Investment Exhibit Part 3	11

