



ANNUAL STATEMENT

For the Year Ended December 31, 2012
of the Condition and Affairs of the

Stonewood National Insurance Company

NAIC Group Code.....3494, 3494 (Current Period) (Prior Period)	NAIC Company Code..... 31925	Employer's ID Number..... 42-1019055
Organized under the Laws of Ohio	State of Domicile or Port of Entry Ohio	Country of Domicile US
Incorporated/Organized..... February 6, 1974	Commenced Business..... February 21, 1974	
Statutory Home Office	52 East Gay Street..... Columbus OH US 43215 <i>(Street and Number) (City or Town, State, Country and Zip Code)</i>	
Main Administrative Office	6131 Falls of Neuse Rd., Suite 306..... Raleigh NC US..... 27609 <i>(Street and Number) (City or Town, State, Country and Zip Code)</i>	919-900-1200 <i>(Area Code) (Telephone Number)</i>
Mail Address	6131 Falls of Neuse Rd., Suite 306..... Raleigh NC US 27609 <i>(Street and Number or P. O. Box) (City or Town, State, Country and Zip Code)</i>	
Primary Location of Books and Records	6131 Falls of Neuse Rd., Suite 306..... Raleigh NC US 27609 <i>(Street and Number) (City or Town, State, Country and Zip Code)</i>	919-900-1200 <i>(Area Code) (Telephone Number)</i>
Internet Web Site Address	www.stonewoodins.com	
Statutory Statement Contact	Aileen K. Celentano <i>(Name)</i> acelentano@stonewoodins.com <i>(E-Mail Address)</i>	919-882-3536 <i>(Area Code) (Telephone Number) (Extension)</i> 919-900-1201 <i>(Fax Number)</i>

OFFICERS

Name	Title	Name	Title
1. Steven J. Hartman #	President	2. Thomas R. Fauerbach #	Chief Financial Officer/Secretary
3. Michael E. Crow	Treasurer	4. Gregg T. Davis	Chairman

OTHER

Thomas R. Fauerbach # Chief Financial Officer

DIRECTORS OR TRUSTEES

Gregg T. Davis	Steven J. Hartman #	Ann Person	Michael E. Crow
Thomas R. Fauerbach #			

State of..... North Carolina
County of..... Wake

The officers of this reporting entity being duly sworn, each depose and say that they are the described officers of said reporting entity, and that on the reporting period stated above, all of the herein described assets were the absolute property of the said reporting entity, free and clear from any liens or claims thereon, except as herein stated, and that this statement, together with related exhibits, schedules and explanations therein contained, annexed or referred to, is a full and true statement of all the assets and liabilities and of the condition and affairs of the said reporting entity as of the reporting period stated above, and of its income and deductions therefrom for the period ended, and have been completed in accordance with the NAIC *Annual Statement Instructions and Accounting Practices and Procedures* manual except to the extent that: (1) state law may differ; or, (2) that state rules or regulations require differences in reporting not related to accounting practices and procedures, according to the best of their information, knowledge and belief, respectively. Furthermore, the scope of this attestation by the described officers also includes the related corresponding electronic filing with the NAIC, when required, that is an exact copy (except for formatting differences due to electronic filing) of the enclosed statement. The electronic filing may be requested by various regulators in lieu of or in addition to the enclosed statement.

_____ (Signature) Steven J. Hartman	_____ (Signature) Thomas R. Fauerbach	_____ (Signature) Michael E. Crow
1. (Printed Name) President	2. (Printed Name) Chief Financial Officer/Secretary	3. (Printed Name) Treasurer
_____ (Title)	_____ (Title)	_____ (Title)

Subscribed and sworn to before me
This _____ day of _____ 2013

a. Is this an original filing? Yes [X] No []
b. If no

1. State the amendment number _____
2. Date filed _____
3. Number of pages attached _____

ASSETS

	Current Year			Prior Year
	1 Assets	2 Nonadmitted Assets	3 Net Admitted Assets (Cols. 1 - 2)	4 Net Admitted Assets
1. Bonds (Schedule D).....	2,450,925		2,450,925	7,983,259
2. Stocks (Schedule D):				
2.1 Preferred stocks.....			.0	
2.2 Common stocks.....	33,584,874		33,584,874	
3. Mortgage loans on real estate (Schedule B):				
3.1 First liens.....			.0	
3.2 Other than first liens.....			.0	
4. Real estate (Schedule A):				
4.1 Properties occupied by the company (less \$.....0 encumbrances).....			.0	
4.2 Properties held for the production of income (less \$.....0 encumbrances).....			.0	
4.3 Properties held for sale (less \$.....0 encumbrances).....			.0	
5. Cash (\$.....423,905, Schedule E-Part 1), cash equivalents (\$.....0, Schedule E-Part 2) and short-term investments (\$.....5,932,774, Schedule DA).....	6,356,679		6,356,679	44,036
6. Contract loans (including \$.....0 premium notes).....			.0	
7. Derivatives (Schedule DB).....			.0	
8. Other invested assets (Schedule BA).....			.0	
9. Receivables for securities.....			.0	
10. Securities lending reinvested collateral assets (Schedule DL).....			.0	
11. Aggregate write-ins for invested assets.....	.0	.0	.0	.0
12. Subtotals, cash and invested assets (Lines 1 to 11).....	42,392,478	.0	42,392,478	8,027,295
13. Title plants less \$.....0 charged off (for Title insurers only).....			.0	
14. Investment income due and accrued.....	20,831		20,831	52,775
15. Premiums and considerations:				
15.1 Uncollected premiums and agents' balances in the course of collection.....			.0	
15.2 Deferred premiums, agents' balances and installments booked but deferred and not yet due (including \$.....0 earned but unbilled premiums).....			.0	
15.3 Accrued retrospective premiums.....			.0	
16. Reinsurance:				
16.1 Amounts recoverable from reinsurers.....			.0	
16.2 Funds held by or deposited with reinsured companies.....			.0	
16.3 Other amounts receivable under reinsurance contracts.....			.0	
17. Amounts receivable relating to uninsured plans.....			.0	
18.1 Current federal and foreign income tax recoverable and interest thereon.....	135,174		135,174	
18.2 Net deferred tax asset.....			.0	
19. Guaranty funds receivable or on deposit.....			.0	
20. Electronic data processing equipment and software.....			.0	
21. Furniture and equipment, including health care delivery assets (\$.....0).....			.0	
22. Net adjustment in assets and liabilities due to foreign exchange rates.....			.0	
23. Receivables from parent, subsidiaries and affiliates.....			.0	
24. Health care (\$.....0) and other amounts receivable.....			.0	
25. Aggregate write-ins for other than invested assets.....	14,917	14,917	.0	47,894
26. Total assets excluding Separate Accounts, Segregated Accounts and Protected Cell Accounts (Lines 12 to 25).....	42,563,400	14,917	42,548,483	8,127,964
27. From Separate Accounts, Segregated Accounts and Protected Cell Accounts.....			.0	
28. TOTALS (Lines 26 and 27).....	42,563,400	14,917	42,548,483	8,127,964

DETAILS OF WRITE-INS

1101.....			.0	
1102.....			.0	
1103.....			.0	
1198. Summary of remaining write-ins for Line 11 from overflow page.....	.0	.0	.0	.0
1199. Totals (Lines 1101 thru 1103 plus 1198) (Line 11 above).....	.0	.0	.0	.0
2501. Accounts receivable.....			.0	47,894
2502. Prepaid expenses.....	14,917	14,917	.0	
2503.....			.0	
2598. Summary of remaining write-ins for Line 25 from overflow page.....	.0	.0	.0	.0
2599. Totals (Lines 2501 thru 2503 plus 2598) (Line 25 above).....	14,917	14,917	.0	47,894

LIABILITIES, SURPLUS AND OTHER FUNDS

	1 Current Year	2 Prior Year
1. Losses (Part 2A, Line 35, Column 8).....		
2. Reinsurance payable on paid losses and loss adjustment expenses (Schedule F, Part 1, Column 6).....		
3. Loss adjustment expenses (Part 2A, Line 35, Column 9).....		
4. Commissions payable, contingent commissions and other similar charges.....		
5. Other expenses (excluding taxes, licenses and fees).....	93,158	
6. Taxes, licenses and fees (excluding federal and foreign income taxes).....		
7.1 Current federal and foreign income taxes (including \$.....0 on realized capital gains (losses)).....		
7.2 Net deferred tax liability.....		
8. Borrowed money \$.....0 and interest thereon \$.....0.....		
9. Unearned premiums (Part 1A, Line 38, Column 5) (after deducting unearned premiums for ceded reinsurance of \$.....0 and including warranty reserves of \$.....0 and accrued accident and health experience rating refunds including \$.....0 for medical loss ratio rebate per the Public Health Service Act).....		
10. Advance premium.....		
11. Dividends declared and unpaid:		
11.1 Stockholders.....		
11.2 Policyholders.....		
12. Ceded reinsurance premiums payable (net of ceding commissions).....		
13. Funds held by company under reinsurance treaties (Schedule F, Part 3, Column 19).....		
14. Amounts withheld or retained by company for account of others.....		
15. Remittances and items not allocated.....		
16. Provision for reinsurance (including \$.....0 certified) (Schedule F, Part 8).....		
17. Net adjustments in assets and liabilities due to foreign exchange rates.....		
18. Drafts outstanding.....		
19. Payable to parent, subsidiaries and affiliates.....	378,379	
20. Derivatives.....		
21. Payable for securities.....		
22. Payable for securities lending.....		
23. Liability for amounts held under uninsured plans.....		
24. Capital notes \$.....0 and interest thereon \$.....0.....		
25. Aggregate write-ins for liabilities.....	0	0
26. Total liabilities excluding protected cell liabilities (Lines 1 through 25).....	471,537	0
27. Protected cell liabilities.....		
28. Total liabilities (Lines 26 and 27).....	471,537	0
29. Aggregate write-ins for special surplus funds.....	0	0
30. Common capital stock.....	4,200,000	3,000,528
31. Preferred capital stock.....		
32. Aggregate write-ins for other than special surplus funds.....	0	0
33. Surplus notes.....		
34. Gross paid in and contributed surplus.....	38,558,551	3,402,481
35. Unassigned funds (surplus).....	(681,605)	1,724,955
36. Less treasury stock, at cost:		
36.10.000 shares common (value included in Line 30 \$.....0).....		
36.20.000 shares preferred (value included in Line 31 \$.....0).....		
37. Surplus as regards policyholders (Lines 29 to 35, less 36) (Page 4, Line 39).....	42,076,946	8,127,964
38. TOTALS (Page 2, Line 28, Col. 3).....	42,548,483	8,127,964

DETAILS OF WRITE-INS

2501.		
2502.		
2503.		
2598. Summary of remaining write-ins for Line 25 from overflow page.....	0	0
2599. Totals (Lines 2501 thru 2503 plus 2598) (Line 25 above).....	0	0
2901.		
2902.		
2903.		
2998. Summary of remaining write-ins for Line 29 from overflow page.....	0	0
2999. Totals (Lines 2901 thru 2903 plus 2998) (Line 29 above).....	0	0
3201.		
3202.		
3203.		
3298. Summary of remaining write-ins for Line 32 from overflow page.....	0	0
3299. Totals (Lines 3201 thru 3203 plus 3298) (Line 32 above).....	0	0

STATEMENT OF INCOME

	1 Current Year	2 Prior Year
UNDERWRITING INCOME		
1. Premiums earned (Part 1, Line 35, Column 4).....		1,019,060
DEDUCTIONS		
2. Losses incurred (Part 2, Line 35, Column 7).....		628,584
3. Loss adjustment expenses incurred (Part 3, Line 25, Column 1).....		139,877
4. Other underwriting expenses incurred (Part 3, Line 25, Column 2).....	831,323	242,326
5. Aggregate write-ins for underwriting deductions.....	0	0
6. Total underwriting deductions (Lines 2 through 5).....	831,323	1,010,787
7. Net income of protected cells.....		
8. Net underwriting gain (loss) (Line 1 minus Line 6 plus Line 7).....	(831,323)	8,273
INVESTMENT INCOME		
9. Net investment income earned (Exhibit of Net Investment Income, Line 17).....	125,659	212,519
10. Net realized capital gains (losses) less capital gains tax of \$.....0 (Exhibit of Capital Gains (Losses)).....		(34,899)
11. Net investment gain (loss) (Lines 9 + 10).....	125,659	177,620
OTHER INCOME		
12. Net gain (loss) from agents' or premium balances charged off (amount recovered \$.....0 amount charged off \$.....0).....	0	(19,974)
13. Finance and service charges not included in premiums.....		61,992
14. Aggregate write-ins for miscellaneous income.....	0	20,062
15. Total other income (Lines 12 through 14).....	0	62,080
16. Net income before dividends to policyholders, after capital gains tax and before all other federal and foreign income taxes (Lines 8 + 11 + 15).....	(705,664)	247,973
17. Dividends to policyholders.....		
18. Net income, after dividends to policyholders, after capital gains tax and before all other federal and foreign income taxes (Line 16 minus Line 17).....	(705,664)	247,973
19. Federal and foreign income taxes incurred.....	(385,291)	1,379,288
20. Net income (Line 18 minus Line 19) (to Line 22).....	(320,373)	(1,131,315)
CAPITAL AND SURPLUS ACCOUNT		
21. Surplus as regards policyholders, December 31 prior year (Page 4, Line 39, Column 2).....	8,127,964	7,893,921
22. Net income (from Line 20).....	(320,373)	(1,131,315)
23. Net transfers (to) from Protected Cell accounts.....		
24. Change in net unrealized capital gains or (losses) less capital gains tax of \$.....0.....	(2,071,270)	
25. Change in net unrealized foreign exchange capital gain (loss).....		
26. Change in net deferred income tax.....		(37,191)
27. Change in nonadmitted assets (Exhibit of Nonadmitted Assets, Line 28, Column 3).....	(14,917)	68
28. Change in provision for reinsurance (Page 3, Line 16, Column 2 minus Column 1).....		
29. Change in surplus notes.....		
30. Surplus (contributed to) withdrawn from protected cells.....		
31. Cumulative effect of changes in accounting principles.....		
32. Capital changes:		
32.1 Paid in.....	1,199,472	
32.2 Transferred from surplus (Stock Dividend).....		
32.3 Transferred to surplus.....		
33. Surplus adjustments:		
33.1 Paid in.....	35,156,070	1,402,481
33.2 Transferred to capital (Stock Dividend).....		
33.3. Transferred from capital.....		
34. Net remittances from or (to) Home Office.....		
35. Dividends to stockholders.....		
36. Change in treasury stock (Page 3, Lines 36.1 and 36.2, Column 2 minus Column 1).....		
37. Aggregate write-ins for gains and losses in surplus.....	0	0
38. Change in surplus as regards policyholders for the year (Lines 22 through 37).....	33,948,982	234,043
39. Surplus as regards policyholders, December 31 current year (Line 21 plus Line 38) (Page 3, Line 37).....	42,076,946	8,127,964

DETAILS OF WRITE-INS

0501.		
0502.		
0503.		
0598. Summary of remaining write-ins for Line 5 from overflow page.....	0	0
0599. Totals (Lines 0501 thru 0503 plus 0598) (Line 5 above).....	0	0
1401. Other fee income.....		20,692
1402. Miscellaneous income or (expense).....		(630)
1403.		
1498. Summary of remaining write-ins for Line 14 from overflow page.....	0	0
1499. Totals (Lines 1401 thru 1403 plus 1498) (Line 14 above).....	0	20,062
3701.		
3702.		
3703.		
3798. Summary of remaining write-ins for Line 37 from overflow page.....	0	0
3799. Totals (Lines 3701 thru 3703 plus 3798) (Line 37 above).....	0	0

CASH FLOW

	1 Current Year	2 Prior Year
CASH FROM OPERATIONS		
1. Premiums collected net of reinsurance.....		.667,285
2. Net investment income.....	157,937	245,979
3. Miscellaneous income.....		.62,080
4. Total (Lines 1 through 3).....	157,937	975,344
5. Benefit and loss related payments.....		1,007,517
6. Net transfers to Separate Accounts, Segregated Accounts and Protected Cell Accounts.....		
7. Commissions, expenses paid and aggregate write-ins for deductions.....	738,165	537,815
8. Dividends paid to policyholders.....		
9. Federal and foreign income taxes paid (recovered) net of \$.....0 tax on capital gains (losses).....	(250,117)	1,489,904
10. Total (Lines 5 through 9).....	488,048	3,035,236
11. Net cash from operations (Line 4 minus Line 10).....	(330,111)	(2,059,892)
CASH FROM INVESTMENTS		
12. Proceeds from investments sold, matured or repaid:		
12.1 Bonds.....	5,532,000	2,993,600
12.2 Stocks.....		
12.3 Mortgage loans.....		
12.4 Real estate.....		
12.5 Other invested assets.....		
12.6 Net gains or (losses) on cash, cash equivalents and short-term investments.....		
12.7 Miscellaneous proceeds.....		
12.8 Total investment proceeds (Lines 12.1 to 12.7).....	5,532,000	2,993,600
13. Cost of investments acquired (long-term only):		
13.1 Bonds.....		2,272,964
13.2 Stocks.....		
13.3 Mortgage loans.....		
13.4 Real estate.....		
13.5 Other invested assets.....		
13.6 Miscellaneous applications.....		
13.7 Total investments acquired (Lines 13.1 to 13.6).....	0	2,272,964
14. Net increase (decrease) in contract loans and premium notes.....		
15. Net cash from investments (Line 12.8 minus Lines 13.7 minus Line 14).....	5,532,000	720,636
CASH FROM FINANCING AND MISCELLANEOUS SOURCES		
16. Cash provided (applied):		
16.1 Surplus notes, capital notes.....		
16.2 Capital and paid in surplus, less treasury stock.....	699,398	1,402,481
16.3 Borrowed funds.....		
16.4 Net deposits on deposit-type contracts and other insurance liabilities.....		
16.5 Dividends to stockholders.....		
16.6 Other cash provided (applied).....	411,356	(66,476)
17. Net cash from financing and miscellaneous sources (Lines 16.1 to 16.4 minus Line 16.5 plus Line 16.6).....	1,110,754	1,336,005
RECONCILIATION OF CASH, CASH EQUIVALENTS AND SHORT-TERM INVESTMENTS		
18. Net change in cash, cash equivalents and short-term investments (Line 11 plus Line 15 plus Line 17).....	6,312,643	(3,251)
19. Cash, cash equivalents and short-term investments:		
19.1 Beginning of year.....	44,036	47,287
19.2 End of year (Line 18 plus Line 19.1).....	6,356,679	44,036
Note: Supplemental disclosures of cash flow information for non-cash transactions:		
20.0001 Surplus contribution in settlement of intercompany payable balance.....		1,402,481
20.0002 Securities transferred in satisfaction of intercompany payable balance.....		(936,315)
20.0003 Subsidiary common stock contributed by parent.....	35,656,144	
20.0004 Subsidiary common stock contributed by parent.....	(35,656,144)	

**Pt. 1-Premiums Earned
NONE**

**Pt. 1A-Recapitulation of All Premiums
NONE**

UNDERWRITING AND INVESTMENT EXHIBIT

PART 1B - PREMIUMS WRITTEN

Line of Business	1 Direct Business (a)	Reinsurance Assumed		Reinsurance Ceded		6 Net Premiums Written (Cols. 1 + 2 + 3 - 4 - 5)
		2 From Affiliates	3 From Non-Affiliates	4 To Affiliates	5 To Non-Affiliates	
1. Fire.....						.0
2. Allied lines.....						.0
3. Farmowners multiple peril.....						.0
4. Homeowners multiple peril.....						.0
5. Commercial multiple peril.....						.0
6. Mortgage guaranty.....						.0
8. Ocean marine.....						.0
9. Inland marine.....						.0
10. Financial guaranty.....						.0
11.1 Medical professional liability - occurrence.....						.0
11.2 Medical professional liability - claims-made.....						.0
12. Earthquake.....						.0
13. Group accident and health.....						.0
14. Credit accident and health (group and individual).....						.0
15. Other accident and health.....						.0
16. Workers' compensation.....						.0
17.1 Other liability - occurrence.....						.0
17.2 Other liability - claims-made.....						.0
17.3 Excess workers' compensation.....						.0
18.1 Products liability - occurrence.....						.0
18.2 Products liability - claims-made.....						.0
19.1, 19.2 Private passenger auto liability.....	516,214				516,214	.0
19.3, 19.4 Commercial auto liability.....						.0
21. Auto physical damage.....	12,115				12,115	.0
22. Aircraft (all perils).....						.0
23. Fidelity.....						.0
24. Surety.....						.0
26. Burglary and theft.....						.0
27. Boiler and machinery.....						.0
28. Credit.....						.0
29. International.....						.0
30. Warranty.....						.0
31. Reinsurance - nonproportional assumed property.....	.XXX					.0
32. Reinsurance - nonproportional assumed liability.....	.XXX					.0
33. Reinsurance - nonproportional assumed financial lines.....	.XXX					.0
34. Aggregate write-ins for other lines of business.....	.0	.0	.0	.0	.0	.0
35. TOTALS.....	528,329	.0	.0	.0	528,329	.0

DETAILS OF WRITE-INS

3401.0
3402.0
3403.0
3498. Summary of remaining write-ins for Line 34 from overflow page..	.0	.0	.0	.0	.0	.0
3499. Totals (Lines 3401 thru 3403 plus 3498) (Line 34 above).....	.0	.0	.0	.0	.0	.0

(a) Does the company's direct premiums written include premiums recorded on an installment basis? Yes [] No [X]

If yes: 1. The amount of such installment premiums \$.0

2. Amount at which such installment premiums would have been reported had they been recorded on an annualized basis \$.0

UNDERWRITING AND INVESTMENT EXHIBIT

PART 2 - LOSSES PAID AND INCURRED

Line of Business	Losses Paid Less Salvage				5 Net Losses Unpaid Current Year (Part 2A, Col. 8)	6 Net Losses Unpaid Prior Year	7 Losses Incurred Current Year (Cols. 4 + 5 - 6)	8 Percentage of Losses Incurred (Col. 7, Part 2) to Premiums Earned (Col. 4, Part 1)
	1 Direct Business	2 Reinsurance Assumed	3 Reinsurance Recovered	4 Net Payments (Cols. 1 + 2 - 3)				
1. Fire.....				.0			.0	
2. Allied lines.....				.0			.0	
3. Farmowners multiple peril.....				.0			.0	
4. Homeowners multiple peril.....				.0			.0	
5. Commercial multiple peril.....				.0			.0	
6. Mortgage guaranty.....				.0			.0	
8. Ocean marine.....				.0			.0	
9. Inland marine.....				.0			.0	
10. Financial guaranty.....				.0			.0	
11.1 Medical professional liability - occurrence.....				.0			.0	
11.2 Medical professional liability - claims-made.....				.0			.0	
12. Earthquake.....				.0			.0	
13. Group accident and health.....				.0			.0	
14. Credit accident and health (group and individual).....				.0			.0	
15. Other accident and health.....				.0			.0	
16. Workers' compensation.....				.0			.0	
17.1 Other liability - occurrence.....				.0			.0	
17.2 Other liability - claims-made.....				.0			.0	
17.3 Excess workers' compensation.....				.0			.0	
18.1 Products liability - occurrence.....				.0			.0	
18.2 Products liability - claims-made.....				.0			.0	
19.1, 19.2 Private passenger auto liability.....	771,244		771,244	.0			.0	
19.3, 19.4 Commercial auto liability.....				.0			.0	
21. Auto physical damage.....	237		237	.0			.0	
22. Aircraft (all perils).....				.0			.0	
23. Fidelity.....				.0			.0	
24. Surety.....				.0			.0	
26. Burglary and theft.....				.0			.0	
27. Boiler and machinery.....				.0			.0	
28. Credit.....				.0			.0	
29. International.....				.0			.0	
30. Warranty.....				.0			.0	
31. Reinsurance - nonproportional assumed property.....	XXX			.0			.0	
32. Reinsurance - nonproportional assumed liability.....	XXX			.0			.0	
33. Reinsurance - nonproportional assumed financial lines.....	XXX			.0			.0	
34. Aggregate write-ins for other lines of business.....	.0	.0	.0	.0			.0	
35. TOTALS.....	771,481	.0	771,481	.0			.0	

DETAILS OF WRITE-INS

3401.0			.0	
3402.0			.0	
3403.0			.0	
3498. Summary of remaining write-ins for Line 34 from overflow page.....	.0	.0	.0	.0			.0	XXX
3499. Totals (Lines 3401 thru 3403 plus 3498) (Line 34 above).....	.0	.0	.0	.0			.0	

UNDERWRITING AND INVESTMENT EXHIBIT
PART 2A - UNPAID LOSSES AND LOSS ADJUSTMENT EXPENSES

Line of Business	Reported Losses				Incurred But Not Reported			8 Net Losses Unpaid (Cols. 4 + 5 + 6 - 7)	9 Net Unpaid Loss Adjustment Expenses
	1 Direct	2 Reinsurance Assumed	3 Deduct Reinsurance Recoverable from Authorized and Unauthorized Companies	4 Net Losses Excluding Incurred but not Reported (Cols. 1 + 2 - 3)	5 Direct	6 Reinsurance Assumed	7 Reinsurance Ceded		
1. Fire.....				0				0	
2. Allied lines.....				0				0	
3. Farmowners multiple peril.....				0				0	
4. Homeowners multiple peril.....				0				0	
5. Commercial multiple peril.....				0				0	
6. Mortgage guaranty.....				0				0	
8. Ocean marine.....				0				0	
9. Inland marine.....				0				0	
10. Financial guaranty.....				0				0	
11.1 Medical professional liability - occurrence.....				0				0	
11.2 Medical professional liability - claims-made.....				0				0	
12. Earthquake.....				0				0	
13. Group accident and health.....				0				(a) 0	
14. Credit accident and health (group and individual).....				0				(a) 0	
15. Other accident and health.....				0				0	
16. Workers' compensation.....				0				0	
17.1 Other liability - occurrence.....				0				0	
17.2 Other liability - claims-made.....				0				0	
17.3 Excess workers' compensation.....				0				0	
18.1 Products liability - occurrence.....				0				0	
18.2 Products liability - claims-made.....				0				0	
19.1, 19.2 Private passenger auto liability.....	18,732		18,732	0	125,286		125,286	0	
19.3, 19.4 Commercial auto liability.....				0				0	
21. Auto physical damage.....				0				0	
22. Aircraft (all perils).....				0				0	
23. Fidelity.....				0				0	
24. Surety.....				0				0	
26. Burglary and theft.....				0				0	
27. Boiler and machinery.....				0				0	
28. Credit.....				0				0	
29. International.....				0				0	
30. Warranty.....				0				0	
31. Reinsurance - nonproportional assumed property.....	XXX			0	XXX			0	
32. Reinsurance - nonproportional assumed liability.....	XXX			0	XXX			0	
33. Reinsurance - nonproportional assumed financial lines.....	XXX			0	XXX			0	
34. Aggregate write-ins for other lines of business.....	0	0	0	0	0	0	0	0	0
35. TOTALS.....	18,732	0	18,732	0	125,286	0	125,286	0	0
DETAILS OF WRITE-INS									
3401.				0				0	
3402.				0				0	
3403.				0				0	
3498. Summary of remaining write-ins for Line 34 from overflow page.....	0	0	0	0	0	0	0	0	0
3499. Totals (Lines 3401 thru 3403 plus 3498) (Line 34 above).....	0	0	0	0	0	0	0	0	0

10

(a) Including \$.....0 for present value of life indemnity claims.

UNDERWRITING AND INVESTMENT EXHIBIT

PART 3 - EXPENSES

	1	2	3	4
	Loss Adjustment Expenses	Other Underwriting Expenses	Investment Expenses	Total
1. Claim adjustment services:				
1.1 Direct.....	209,562			209,562
1.2 Reinsurance assumed.....				0
1.3 Reinsurance ceded.....	209,562			209,562
1.4 Net claim adjustment services (1.1 + 1.2 - 1.3).....	0	0	0	0
2. Commission and brokerage:				
2.1 Direct, excluding contingent.....		97,530		97,530
2.2 Reinsurance assumed, excluding contingent.....				0
2.3 Reinsurance ceded, excluding contingent.....		97,530		97,530
2.4 Contingent - direct.....				0
2.5 Contingent - reinsurance assumed.....				0
2.6 Contingent - reinsurance ceded.....				0
2.7 Policy and membership fees.....				0
2.8 Net commission and brokerage (2.1 + 2.2 - 2.3 + 2.4 + 2.5 - 2.6 + 2.7).....	0	0	0	0
3. Allowances to manager and agents.....				0
4. Advertising.....		1,337		1,337
5. Boards, bureaus and associations.....		102,247		102,247
6. Surveys and underwriting reports.....				0
7. Audit of assureds' records.....				0
8. Salary and related items:				
8.1 Salaries.....		38,827		38,827
8.2 Payroll taxes.....		2,194		2,194
9. Employee relations and welfare.....		2,415		2,415
10. Insurance.....				0
11. Directors' fees.....				0
12. Travel and travel items.....		34,780		34,780
13. Rent and rent items.....				0
14. Equipment.....				0
15. Cost or depreciation of EDP equipment and software.....		127,420		127,420
16. Printing and stationery.....		641		641
17. Postage, telephone and telegraph, exchange and express.....		140		140
18. Legal and auditing.....		140,061	40,149	180,210
19. Totals (Lines 3 to 18).....	0	450,062	40,149	490,211
20. Taxes, licenses and fees:				
20.1 State and local insurance taxes deducting guaranty association credits of \$.....0.....		1,471		1,471
20.2 Insurance department licenses and fees.....		40,531		40,531
20.3 Gross guaranty association assessments.....		1,556		1,556
20.4 All other (excluding federal and foreign income and real estate).....		934		934
20.5 Total taxes, licenses and fees (20.1 + 20.2 + 20.3 + 20.4).....	0	44,492	0	44,492
21. Real estate expenses.....				0
22. Real estate taxes.....				0
23. Reimbursements by uninsured plans.....				0
24. Aggregate write-ins for miscellaneous expenses.....	0	336,769	0	336,769
25. Total expenses incurred.....	0	831,323	40,149	(a) 871,472
26. Less unpaid expenses - current year.....				0
27. Add unpaid expenses - prior year.....				0
28. Amounts receivable relating to uninsured plans, prior year.....				0
29. Amounts receivable relating to uninsured plans, current year.....				0
30. TOTAL EXPENSES PAID (Lines 25 - 26 + 27 - 28 + 29).....	0	831,323	40,149	871,472

DETAILS OF WRITE-INS

2401. Consulting Expenses.....		336,769		336,769
2402.				0
2403.				0
2498. Summary of remaining write-ins for Line 24 from overflow page.....	0	0	0	0
2499. Totals (Lines 2401 thru 2403 plus 2498) (Line 24 above).....	0	336,769	0	336,769

(a) Includes management fees of \$.....250,117 to affiliates and \$.....0 to non-affiliates.

EXHIBIT OF NET INVESTMENT INCOME

	1 Collected During Year	2 Earned During Year
1. U.S. government bonds.....	(a).....197,752165,808
1.1 Bonds exempt from U.S. tax.....	(a).....	
1.2 Other bonds (unaffiliated).....	(a).....	
1.3 Bonds of affiliates.....	(a).....	
2.1 Preferred stocks (unaffiliated).....	(b).....	
2.11 Preferred stocks of affiliates.....	(b).....	
2.2 Common stocks (unaffiliated).....		
2.21 Common stocks of affiliates.....		
3. Mortgage loans.....	(c).....	
4. Real estate.....	(d).....	
5. Contract loans.....		
6. Cash, cash equivalents and short-term investments.....	(e).....	
7. Derivative instruments.....	(f).....	
8. Other invested assets.....		
9. Aggregate write-ins for investment income.....00
10. Total gross investment income.....197,752165,808
11. Investment expenses.....		(g).....40,149
12. Investment taxes, licenses and fees, excluding federal income taxes.....		(g).....
13. Interest expense.....		(h).....
14. Depreciation on real estate and other invested assets.....		(i).....0
15. Aggregate write-ins for deductions from investment income.....	0
16. Total deductions (Lines 11 through 15).....	40,149
17. Net investment income (Line 10 minus Line 16).....	125,659

DETAILS OF WRITE-INS

0901.		
0902.		
0903.		
0998. Summary of remaining write-ins for Line 9 from overflow page.....00
0999. Totals (Lines 0901 thru 0903 plus 0998) (Line 9 above).....00
1501.		
1502.		
1503.		
1598. Summary of remaining write-ins for Line 15 from overflow page.....	0
1599. Totals (Lines 1501 thru 1503 plus 1598) (Line 15 above).....	0

- (a) Includes \$.....2,441 accrual of discount less \$.....2,775 amortization of premium and less \$.....0 paid for accrued interest on purchases.
- (b) Includes \$.....0 accrual of discount less \$.....0 amortization of premium and less \$.....0 paid for accrued dividends on purchases.
- (c) Includes \$.....0 accrual of discount less \$.....0 amortization of premium and less \$.....0 paid for accrued interest on purchases.
- (d) Includes \$.....0 for company's occupancy of its own buildings; and excludes \$.....0 interest on encumbrances.
- (e) Includes \$.....0 accrual of discount less \$.....0 amortization of premium and less \$.....0 paid for accrued interest on purchases.
- (f) Includes \$.....0 accrual of discount less \$.....0 amortization of premium.
- (g) Includes \$.....40,149 investment expenses and \$.....0 investment taxes, licenses and fees, excluding federal income taxes, attributable to Segregated and Separate Accounts.
- (h) Includes \$.....0 interest on surplus notes and \$.....0 interest on capital notes.
- (i) Includes \$.....0 depreciation on real estate and \$.....0 depreciation on other invested assets.

EXHIBIT OF CAPITAL GAINS (LOSSES)

	1 Realized Gain (Loss) on Sales or Maturity	2 Other Realized Adjustments	3 Total Realized Capital Gain (Loss) (Columns 1 + 2)	4 Change in Unrealized Capital Gain (Loss)	5 Change in Unrealized Foreign Exchange Capital Gain (Loss)
1. U.S. government bonds.....		0		
1.1 Bonds exempt from U.S. tax.....		0		
1.2 Other bonds (unaffiliated).....		0		
1.3 Bonds of affiliates.....		0		
2.1 Preferred stocks (unaffiliated).....		0		
2.11 Preferred stocks of affiliates.....		0		
2.2 Common stocks (unaffiliated).....		0		
2.21 Common stocks of affiliates.....		0	(2,071,270)	
3. Mortgage loans.....		0		
4. Real estate.....		0		
5. Contract loans.....		0		
6. Cash, cash equivalents and short-term investments.....		0		
7. Derivative instruments.....		0		
8. Other invested assets.....		0		
9. Aggregate write-ins for capital gains (losses).....00000
10. Total capital gains (losses).....000	(2,071,270)0

DETAILS OF WRITE-INS

0901.0		
0902.0		
0903.0		
0998. Summary of remaining write-ins for Line 9 from overflow page.....00000
0999. Totals (Lines 0901 thru 0903 plus 0998) (Line 9 above).....00000

EXHIBIT OF NONADMITTED ASSETS

	1 Current Year Total Nonadmitted Assets	2 Prior Year Total Nonadmitted Assets	3 Change in Total Nonadmitted Assets (Col. 2 - Col. 1)
1. Bonds (Schedule D).....			.0
2. Stocks (Schedule D):			
2.1 Preferred stocks.....			.0
2.2 Common stocks.....			.0
3. Mortgage loans on real estate (Schedule B):			
3.1 First liens.....			.0
3.2 Other than first liens.....			.0
4. Real estate (Schedule A):			
4.1 Properties occupied by the company.....			.0
4.2 Properties held for the production of income.....			.0
4.3 Properties held for sale.....			.0
5. Cash (Schedule E-Part 1), cash equivalents (Schedule E-Part 2) and short-term investments (Schedule DA).....			.0
6. Contract loans.....			.0
7. Derivatives (Schedule DB).....			.0
8. Other invested assets (Schedule BA).....			.0
9. Receivables for securities.....			.0
10. Securities lending reinvested collateral assets (Schedule DL).....			.0
11. Aggregate write-ins for invested assets.....	.0	.0	.0
12. Subtotals, cash and invested assets (Lines 1 to 11).....	.0	.0	.0
13. Title plants (for Title insurers only).....			.0
14. Investment income due and accrued.....			.0
15. Premiums and considerations:			
15.1 Uncollected premiums and agents' balances in the course of collection.....			.0
15.2 Deferred premiums, agents' balances and installments booked but deferred and not yet due.....			.0
15.3 Accrued retrospective premiums.....			.0
16. Reinsurance:			
16.1 Amounts recoverable from reinsurers.....			.0
16.2 Funds held by or deposited with reinsured companies.....			.0
16.3 Other amounts receivable under reinsurance contracts.....			.0
17. Amounts receivable relating to uninsured plans.....			.0
18.1 Current federal and foreign income tax recoverable and interest thereon.....			.0
18.2 Net deferred tax asset.....			.0
19. Guaranty funds receivable or on deposit.....			.0
20. Electronic data processing equipment and software.....			.0
21. Furniture and equipment, including health care delivery assets.....			.0
22. Net adjustment in assets and liabilities due to foreign exchange rates.....			.0
23. Receivables from parent, subsidiaries and affiliates.....			.0
24. Health care and other amounts receivable.....			.0
25. Aggregate write-ins for other than invested assets.....	14,917	.0	(14,917)
26. Total assets excluding Separate Accounts, Segregated Accounts and Protected Cell Accounts (Lines 12 through 25).....	14,917	.0	(14,917)
27. From Separate Accounts, Segregated Accounts and Protected Cell Accounts.....			.0
28. TOTALS (Lines 26 and 27).....	14,917	.0	(14,917)

DETAILS OF WRITE-INS

1101.0
1102.0
1103.0
1198. Summary of remaining write-ins for Line 11 from overflow page.....	.0	.0	.0
1199. Totals (Lines 1101 thru 1103 plus 1198) (Line 11 above).....	.0	.0	.0
2501. Prepaid Expenses.....	14,917		(14,917)
2502.0
2503.0
2598. Summary of remaining write-ins for Line 25 from overflow page.....	.0	.0	.0
2599. Totals (Lines 2501 thru 2503 plus 2598) (Line 25 above).....	14,917	.0	(14,917)

NOTES TO FINANCIAL STATEMENTS

1. Summary of Significant Accounting Policies

A. Accounting Practices

The financial statements of Stonewood National Insurance Company ("the Company") are presented on the basis of accounting practices prescribed or permitted by the Ohio Department of Insurance.

The Ohio Department of Insurance recognizes only statutory accounting practices prescribed or permitted by the state of Ohio for determining and reporting the financial condition and results of operations of an insurance company, for purposes of determining its solvency under the Ohio Insurance Law. The National Association of Insurance Commissioners ("NAIC") *Accounting Practices and Procedures Manual* (NAIC SAP) has been adopted as a component of prescribed or permitted practices by the state of Ohio. The Insurance Commissioner has the right to permit other specific practices that deviate from prescribed practices.

There are no accounting practices used by the Company which differ from NAIC SAP.

B. Use of Estimates in the Preparation of the Financial Statements

The preparation of financial statements in conformity with NAIC SAP requires management to make estimates and assumptions that affect the reported amounts of assets and liabilities. It also requires disclosure of contingent assets and liabilities at the date of the financial statements and the reported amounts of revenue and expenses during the period. Actual results could differ from those estimates.

C. Accounting Policy

Premiums are earned over the terms of the related insurance policies and reinsurance contracts. Unearned premium reserves are established to cover the unexpired portion of premiums written. Such reserves are computed by pro rata methods for direct business and are based on reports received from ceding companies for reinsurance.

Expenses incurred in connection with acquiring new business, including such acquisition costs as sales commissions, are charged to operations as incurred. Expenses incurred are reduced for ceding allowances received or receivable.

In addition, the Company uses the following accounting policies:

1. Short-term investments are stated at amortized cost.
2. Bonds are stated at amortized cost using the interest method.
3. Common stocks are stated at market except that investments in stocks of uncombined subsidiaries and affiliates in which the Company has an interest of 20% or more are carried on the equity basis.
4. The Company does not have any investments in preferred stocks.
5. The Company does not have any mortgage loans on real estate.
6. The Company does not have any loan-backed securities.
7. The Company carries its investments in wholly-owned insurance subsidiaries at statutory equity in accordance with SSAP No. 97, Investments in Subsidiary, Controlled and Affiliated Entities.
8. The Company does not have any minor ownership interests in joint ventures.
9. The Company does not have any derivatives investments.
10. The Company anticipates investment income as a factor in the premium deficiency calculation, in accordance with SSAP No. 53, Property-Casualty Contracts-Premiums.
11. Unpaid losses and loss adjustment expenses include net liabilities stated for unpaid claims and for expenses of investigation and adjustment of unpaid claims and are based upon (a) the accumulation of case estimates for losses reported prior to the close of the accounting period on the direct business written; (b) estimates received from ceding reinsurers and insurance pools and associations; (c) estimates of unreported losses and development on reported losses based on past experience net of salvage and subrogation recoveries; and (d) estimates based on experience of expenses for investigating and adjusting claims. The total of these factors is reduced for portions ceded to other insurers. These liabilities are subject to the impact of changes in claim amounts, frequency and other factors. In spite of the variability inherent in such estimates, management believes that the liabilities for unpaid losses and loss adjustment expenses ("LAE") are adequate. Changes in estimates of the liabilities for losses and LAE are reflected in the statement of income in the period in which determined.
12. The Company has not modified its capitalization policy from the prior period.
13. The Company does not have pharmaceutical rebate receivables.

2. Accounting Changes and Corrections of Errors

Effective January 1, 2012, the Company adopted SSAP No. 101, Income Taxes, A Replacement of SSAP No. 10R and SSAP No. 10. SSAP No. 101 contains changes to the accounting for current and deferred federal and foreign income taxes. The deferred tax asset admissibility guidance is no longer elective, and the reversal and surplus limitation parameters in the admissibility tests are determined based on the risk-based capital level. Gross deferred tax assets are required to be reduced by a statutory valuation allowance if it is more likely than not that some portion or all of the gross deferred tax assets will not be realized and sets a more likely than not threshold for the recording of contingent tax liabilities. There is no cumulative effect of adopting this pronouncement to the Company's surplus.

The Company had no correction of errors from the prior year to report.

NOTES TO FINANCIAL STATEMENTS

3. Business Combinations and Goodwill

A. Statutory Purchase Method

The Company was not involved in any business combinations during 2012.

B. Statutory Merger

The Company was not involved in any statutory mergers during 2012.

C. Impairment Loss

The Company did not recognize any impairment loss during 2012.

4. Discontinued Operations

The Company did not have any discontinued operations during 2012.

5. Investments

A. Mortgage Loans

The Company does not have investments in mortgage loans.

B. Debt Restructuring

The Company did not restructure any debt during 2012.

C. Reverse Mortgages

The Company does not have investments in reverse mortgages.

D. Loan-Backed Securities

The Company does not have any investments in loan-backed securities.

E. Repurchase Agreements and Securities Lending Transactions

The Company does not participate in repurchase agreements or securities lending activities.

F. Real Estate

The Company does not own any real estate investments.

G. Low-Income Housing Tax Credits

The Company does not have any low-income housing tax credits.

6. Joint Ventures, Partnerships and Limited Liability Companies

A. The Company has no investments in joint ventures, partnerships or limited liability companies that exceed 10% of its admitted assets.

B. The Company did not recognize any impairment write-down for its investments in joint ventures, partnerships and limited liability companies during 2012.

7. Investment Income

The Company did not exclude any due and accrued investment income from surplus at December 31, 2012.

8. Derivative Instruments

The Company's investment objectives do not include holding or issuing derivative financial instruments.

NOTES TO FINANCIAL STATEMENTS**9. Income Taxes**

A. The components of the net deferred tax asset/(liability) as of December 31 are as follows:

	2012			2011			Change		
	Ordinary	Capital	Total	Ordinary	Capital	Total	Ordinary	Capital	Total
Total gross deferred tax assets	\$ 1,978,939	\$ -0-	\$ 1,978,939	\$ -0-	\$ -0-	\$ -0-	\$ 1,978,939	\$ -0-	\$ 1,978,939
Statutory valuation allowance	(1,978,939)	-0-	(1,978,939)	-0-	-0-	-0-	(1,978,939)	-0-	(1,978,939)
Adjusted gross deferred tax assets	-0-	-0-	-0-	-0-	-0-	-0-	-0-	-0-	-0-
Deferred tax assets nonadmitted	-0-	-0-	-0-	-0-	-0-	-0-	-0-	-0-	-0-
Subtotal net admitted deferred tax asset	-0-	-0-	-0-	-0-	-0-	-0-	-0-	-0-	-0-
Deferred tax liabilities	-0-	-0-	-0-	-0-	-0-	-0-	-0-	-0-	-0-
Net admitted deferred tax asset	\$ -0-	\$ -0-	\$ -0-	\$ -0-	\$ -0-	\$ -0-	\$ -0-	\$ -0-	\$ -0-
Admission calculation components SSAP No. 101 (paragraph 11):									
a. Federal income taxes paid in prior years recoverable through loss carrybacks.	-0-	-0-	-0-	-0-	-0-	-0-	-0-	-0-	-0-
b. Adjusted gross deferred tax assets expected to be realized (excluding the amount of deferred tax assets from a, above) after application of the threshold	-0-	-0-	-0-	-0-	-0-	-0-	-0-	-0-	-0-
i. Adjusted gross deferred tax assets expected to be realized following the balance sheet date	-0-	-0-	-0-	-0-	-0-	-0-	-0-	-0-	-0-
ii. Adjusted gross deferred tax assets allowed per limitation threshold.	-0-	-0-	-0-	-0-	-0-	-0-	-0-	-0-	-0-
c. Adjusted gross deferred tax assets (excluding the amount of deferred tax assets from a. and b. above) offset by gross deferred tax liabilities.	-0-	-0-	-0-	-0-	-0-	-0-	-0-	-0-	-0-
Deferred tax assets admitted as the result of application of SSAP No. 101. Total (a. + b. + c.)	-0-	-0-	-0-	-0-	-0-	-0-	-0-	-0-	-0-

On November 6, 2011, SSAP No. 101, Income Taxes, A Replacement of SSAP No. 10R and SSAP No. 10, was adopted by the NAIC. SSAP No. 101 contains changes to accounting for current and deferred federal and foreign income taxes, effective on January 1, 2012. This guidance provides that the deferred tax asset admissibility guidance is no longer elective, and the reversal and surplus limitation parameters in the admissibility tests are determined based on the risk-based capital level. It also requires gross deferred tax assets to be reduced by a statutory valuation allowance if it is more likely than not that some portion or all of the gross deferred tax assets will not be realized. Finally, the guidance sets a more likely than not threshold for the recording of contingent tax liabilities. There is no cumulative effect of adopting this pronouncement to the Company's surplus.

NOTES TO FINANCIAL STATEMENTS

The following summarizes the impact of adoption:

	1/1/2012	12/31/2011	Change
Gross deferred tax assets	\$ -0-	\$ -0-	\$ -0-
Statutory valuation allowance adjustment	-0-	-0-	-0-
Adjusted gross deferred tax assets	-0-	-0-	-0-
Gross deferred tax liabilities	-0-	-0-	-0-
Net deferred tax asset/(liabilities)	-0-	-0-	-0-
Deferred tax assets nonadmitted	-0-	-0-	-0-
Net admitted deferred tax assets	-0-	-0-	-0-
Contingent tax liability	-0-	-0-	-0-
Penalty/interest	-0-	-0-	-0-
Net increase/ (decrease) to surplus	\$ -0-	\$ -0-	\$ -0-

	12/31/2012			12/31/2011			Change		
	Ordinary	Capital	Total	Ordinary	Capital	Total	Ordinary	Capital	Total
Ratio percentage used to determine recovery period and threshold limitation amount	N/A	N/A	N/A	N/A	N/A	N/A	N/A	N/A	(N/A)

Amount of adjusted capital and surplus used to determine recovery period and threshold limitation	N/A	N/A	N/A	N/A	N/A	N/A	N/A	N/A	N/A
---	-----	-----	-----	-----	-----	-----	-----	-----	-----

	12/31/2012			12/31/2011			Change		
	Ordinary	Capital	Total	Ordinary	Capital	Total	Ordinary	Capital	Total
Impact of tax planning strategies									
Adjusted gross DTAs (% of total adjusted gross DTAs)	N/A	N/A	N/A	N/A	N/A	N/A	N/A	N/A	N/A

Net admitted adjusted gross DTAs (% of total net admitted adjusted gross DTAs)	N/A	N/A	N/A	N/A	N/A	N/A	N/A	N/A	N/A
--	-----	-----	-----	-----	-----	-----	-----	-----	-----

B. The Company does not have any deferred tax liabilities not recognized.

C. The provision for federal income taxes incurred for the years ended December 31 are:

	2012	2011
Current federal income taxes	\$ (385,291)	\$1,379,278
Federal income tax on net capital gains	-0-	109,831
Federal income taxes incurred	\$ (385,291)	\$1,489,119

NOTES TO FINANCIAL STATEMENTS

The tax effects of temporary differences that give rise to significant portions of the deferred tax assets and deferred tax liabilities at December 31 are as follows:

	2012	2011	Character
Gross deferred tax assets:			
Bond basis differences	\$ 24,214	\$ -0-	Ordinary
Intangible assets	1,229,780	-0-	Ordinary
Unrealized losses on investments	724,945	-0-	Capital
Total gross deferred tax assets	1,978,939	-0-	
Statutory valuation allowance	(1,978,939)	-0-	
Nonadmitted deferred tax assets	-0-	-0-	
Admitted deferred tax assets	\$ -0-	\$ -0-	
Deferred tax liabilities:			
Total deferred tax liabilities	\$ -0-	\$ -0-	
Net admitted deferred tax asset	\$ -0-	\$ -0-	

Income taxes as a component of the change in capital and surplus for the year ended December 31 is as follows:

	2012	2011	Change
Total deferred tax assets	\$ 1,978,939	\$ -0-	\$ 1,978,939
Statutory valuation allowance	(1,978,939)	-0-	(1,978,939)
Total deferred tax liabilities	-0-	-0-	-0-
Net deferred tax assets	\$ -0-	\$ -0-	-0-
Tax effect of net unrealized losses			-0-
Change in net deferred taxes			\$ -0-

- D. The provision for federal income for 2012 and 2011 varies from that which would be obtained by applying the statutory federal income tax rate to income before income taxes due to the following:

	2012	2011
Computed at statutory rate	\$ (246,982)	\$ 125,231
Tax exempt interest deduction	-0-	(5,401)
Gain on deemed asset sale	-0-	1,398,804
Other	(138,309)	7,676
Total	\$ (385,291)	\$ 1,526,310
Federal income taxes incurred	\$ (385,291)	\$ 1,379,288
Current taxes on realized capital gains	-0-	109,831
Change in net deferred income taxes	-0-	37,191
Total statutory federal income taxes	\$ (385,291)	\$ 1,526,310

The application of SSAP 101 requires the Company to evaluate the recoverability of deferred tax assets and establish a valuation allowance, if necessary, to reduce the deferred tax asset to an amount that is more likely than not to be realized (a likelihood of more than 50 percent). Significant judgment is required to determine whether a valuation allowance is necessary and the amount of such valuation allowance, if appropriate.

- E. (1) At December 31, 2012, the Company had \$-0- of net operating loss and tax credit carry forwards.
- (2) The following are income taxes incurred in the current and prior year that will be available for recoupment in the event of future net losses:
- | | |
|---------------------|--------------|
| Current Year (2012) | \$ -0- |
| Prior Year (2011) | \$ 1,489,119 |
- (3) The Company has not made any deposits pursuant to Internal Revenue Code Section 6603. Accordingly, the aggregate amount of deposits admitted under IRC Section 6603 as of December 31, 2012 is \$-0-.

F.

- i. The Company's federal income tax return is consolidated with the following entities:

James River Group, Inc.
James River Management Company, Inc.
James River Insurance Company
Stonewood Insurance Management Company, Inc.
James River Casualty Company
Potomac Risk Services, Inc.
Stonewood National Insurance Company (formerly Infinity Specialty Insurance Company)
Stonewood General Insurance Company (formerly Infinity General Insurance Company)

- ii. The method of allocation among companies is subject to a written agreement, whereby allocation is made primarily on a separate return basis with current credit for any net operating losses or other items utilized in the consolidated tax return. Intercompany tax balances are settled quarterly.

- G. The Company has no liability related to any federal or foreign tax loss contingencies as of December 31, 2012.

10. Information Concerning Parent, Subsidiaries and Affiliates

- A. The Company is an indirect subsidiary of Franklin Holdings (Bermuda), Ltd.; 100% of the outstanding stock of the Company is directly owned by James River Group, Inc. See Schedule Y, Part 1, Organizational Chart. The Company was purchased by James River Group, Inc. from Infinity Insurance Company ("Infinity") on December 31, 2011.

NOTES TO FINANCIAL STATEMENTS

- B. The Company had no transactions greater than ½% of admitted assets during 2012.
- C. The Company did not have any intercompany arrangements as of December 31, 2012 except as discussed in Note 9F and 10F.
- D. At December 31, 2012, the Company had a payable due to its parent of \$378,379 primarily to reimburse James River Group for other underwriting expenses it paid on the Company's behalf.
- E. The Company is not a party to any guarantee or undertaking for the benefit of an affiliate or related party that could result in a material contingent exposure of the Company's or any related party's assets or liabilities.
- F. The Company and Stonewood Insurance Management Company, Inc. are parties to a Management Services Agreement. Pursuant to this agreement, Stonewood Insurance Management Company, Inc. provides various services to the Company, including but not limited to management, administration, underwriting, premium collection, claims, operations, accounting, actuarial, information technology and human resources.
- G. All outstanding shares of the Company are owned by James River Group, Inc
- H. The Company owns no shares, either directly or indirectly, of an upstream intermediate or ultimate parent.
- I.
- (1) On January 3, 2012, James River Group, Inc. contributed to the Company all the issued and outstanding common stock of Stonewood Insurance (NAIC #11828) and Infinity General Insurance Company (NAIC #35211) (renamed Stonewood General Insurance Company on January 27, 2012. The Company values its investments in its wholly-owned insurance subsidiaries using the statutory equity method in accordance with SSAP No. 97, *Investments in Subsidiary, Controlled and Affiliated Entities, A Replacement of SSAP No. 88.*

(2) Not applicable

(3)

Company	Assets	Liabilities	Surplus	Net Income
Stonewood Insurance Company	\$64,177,967	\$34,505,372	\$29,672,595	(\$1,130,318)
Stonewood General Insurance Company	3,932,347	\$20,068	\$3,912,279	16,986

(4) Not applicable

(5) Not applicable

- J. The Company has no investments in impaired subsidiary, controlled or affiliated companies.
- K. The Company has no investments in foreign insurance subsidiaries.
- L. The Company has no investment in a downstream non-insurance holding company.

11. Debt

- A. The Company does not have debt outstanding at December 31, 2012.
- B. The Company does not have any FHLB (Federal Home Loan Bank) loan agreements at December 31, 2012.

12. Retirement Plans, Deferred Compensation, Postemployment Benefits and Compensated Absences and other Postretirement Benefit Plans

- A. The Company does not have a defined benefit pension plan.
- B. The Company does not have a defined contribution retirement plan.
- C. The Company does not participate in a multiemployer plan.
- D. The Company does not participate in a consolidated/holding company plan.
- E. The Company does not provide postretirement benefits to retired employees or compensated absences.
- F. The Medicare Modernization Act on Postretirement Benefits had no impact on the Company.

13. Capital and Surplus, Dividend Restrictions and Quasi-Reorganizations

- (1) The Company has 300,000 shares of common stock authorized, of which 300,000 shares are issued and outstanding with a par value of \$14 per share.
- (2) The Company has no preferred stock outstanding.
- (3) The maximum amount of dividends or distributions which may be paid to stockholders by property/casualty insurance companies domiciled in the state of Ohio without (i) prior approval or (ii) expiration of a 30 day waiting period without disapproval of the Director of Insurance, is the greater of net income or 10% of capital and surplus as of the preceding December 31, but only to the extent of earned surplus as of the preceding December 31. The

NOTES TO FINANCIAL STATEMENTS

maximum amount of ordinary dividends or distributions which may be paid in 2013 based on capital and surplus is \$4,207,695.

- (4) The Company did not pay dividends in 2012.
- (5) Within the limitations of (3) above, there are not specific restrictions placed on the portion of the Company's profits that may be paid as ordinary dividends to stockholders.
- (6) There are no restrictions placed on unassigned surplus other than those described above in paragraphs (3) and (5). These unassigned funds are held for the benefit of the owner and policyholders.
- (7) The Company does not have any advances to surplus not repaid.
- (8) The Company does not hold stock for special purposes.
- (9) The Company does not have special surplus funds.
- (10) The portion of unassigned surplus represented by cumulative net unrealized gains (losses) as of December 31, 2012 is \$(2,071,270).
- (11) The Company does not have surplus notes or similar obligations.
- (12) The Company has not entered into any quasi-reorganization.
- (13) The Company has not entered into any quasi-reorganization.

14. Contingencies

- A. The Company has no contingent commitments and/or guarantees of indebtedness of others at December 31, 2012.
- B. The Company receives notification of insolvency of other insurance companies from state insurance departments or guaranty funds. These insolvencies could result in future assessments against the Company. At this time the Company is unable to estimate the possible amounts, if any, of such assessments. Accordingly the Company is unable to determine the impact, if any; such assessments may have on the Company's financial position or results of operations.
- C. The Company has no gain contingencies at December 31, 2012.
- D. The Company has not paid any amounts to settle claims related to extra contractual obligations or bad faith losses during 2012.
- E. The Company has no product warranty liabilities.
- F. Various lawsuits against the Company arise during the normal course of business. The Company's management believes that contingent liabilities arising from such litigation and other matters will not have material effect on the financial position or the results of operations of the Company.

15. Leases

The Company does not have any material lease obligations at December 31, 2012.

16. Information about Financial Instruments with Off-Balance Sheet Risk and Financial Instruments with Concentrations of Credit Risk

- (1) The Company does not own any financial instruments with off-balance sheet risk.
- (2) Financial instruments and other assets, which potentially expose the Company to concentrations of credit risk, consist primarily of cash and short-term investments. The Company has not experienced any losses from bank accounts or short-term investments.
- (3) At December 31, 2012, the Company did not have any individual unsecured aggregate reinsurance recoverable that exceeded 3% of the Company's capital and surplus.
- (4) The Company does not require collateral for its depository cash balances, short-term investments, marketable securities, premiums in the course of collection, and balances recoverable from reinsurers.

17. Sale, Transfer and Servicing of Financial Assets and Extinguishments of Liabilities

- A. The Company did not sell any receivable balances during 2012.
- B. The Company did not transfer or service any financial assets or extinguish liabilities during 2012.
- C. The Company did not enter into any wash sale transactions during 2012.

18. Gain or Loss to the Reporting Entity from Uninsured A&H Plans and the Uninsured Portion of Partially Insured Plans

The Company did not serve as administrator for any uninsured or partially insured accident and health plans during 2012.

NOTES TO FINANCIAL STATEMENTS**19. Direct Premium Written/Produced by Managing General Agents/Third Party Administrators**

The Company did not have any direct premium written by or produced through a managing general agent or third party administrator during 2012.

20. Fair Value Measurements

- A. Fair value measurements for fixed income and equity securities are based on values either published by the NAIC's Security Valuation Office (SVO) or from an independent pricing service vendor. Under certain circumstances, if neither an SVO price nor vendor price is available, a price may be obtained from a broker. Short term securities and cash equivalents are valued at amortized cost.

When published prices from the SVO are not available, the Company's investment manager relies predominantly on independent pricing service vendors that have been evaluated and approved by the investment manager's internal pricing policy committee. Generally, pricing service vendors use a pricing methodology involving the market approach, including pricing models, which use prices and relevant market information regarding a particular security or securities with similar characteristics to establish a valuation.

For statutory accounting, certain investments are carried at fair value, while others may periodically be carried at fair value based on certain factors such as the NAIC's lower of cost or market rule or an impairment. Assets recorded at fair value are categorized based on an evaluation of the various inputs used to measure the fair value. Supporting documentation received from pricing vendors detailing the inputs, models and processes used in the vendor's evaluation process is used to determine the appropriate fair value hierarchy. Documentation from each pricing vendor is reviewed and monitored periodically to ensure they are consistent with the investment manager's pricing policy procedures. Market information obtained from brokers with respect to security valuations is also considered in the pricing hierarchy.

The Company attempts to maximize the use of observable inputs and minimize the use of unobservable inputs when measuring fair value. There are three levels of inputs that may be used to measure fair value: (1) Level 1: quoted price (unadjusted) in active markets for identical assets, (2) Level 2: inputs to the valuation methodology include quoted prices for similar assets and liabilities in active markets, and inputs that are observable for the asset or liability, either directly or indirectly, for substantially the full term of the instrument, and (3) Level 3: inputs to the valuation methodology are unobservable for the asset or liability.

Fair value is defined as the exchange price that would be received for an asset or paid to transfer a liability (an exit price) in the principal or most advantageous market for the asset or liability in an orderly transaction between market participants on the measurement date.

To measure fair value, the Company obtains quoted market prices for its investment securities. If a quoted market price is not available, the Company uses prices of similar securities. Values for U.S. Treasury and publicly traded equity securities are generally based on Level 1 inputs which use the market approach valuation technique. The values for all other bonds (including state and municipal securities and obligations of U.S. government corporations and agencies) generally incorporate significant Level 2 inputs using the market approach and income approach valuation techniques. There have been no changes in the Company's use of valuation techniques during 2012 and 2011. There were no transfers between Level 1 and Level 2 or between Level 2 and Level 3 during 2012.

(1) Fair Value Measurements at Reporting Date

Description for each class of asset or liability	(Level 1)	(Level 2)	(Level 3)	(Total)
a. Assets at fair value				
Bonds – all are reported at amortized cost	\$ -0-	\$ -0-	\$ -0-	\$ -0-
Short-term investments	5,932,774			5,932,774
Total assets at fair value	\$ 5,932,774	\$ -0-	\$ -0-	\$ 5,932,774
b. Liabilities at fair value	\$ -0-	\$ -0-	\$ -0-	\$ -0-

- (2) The Company has no Level 3 assets at December 31, 2012.
(3) The Company has a policy to recognize transfers between levels at the beginning of the reporting period.
(4) The Company does not have any Level 2 or Level 3 assets.
(5) The Company does not own derivative assets or liabilities.

B. Not applicable**C.**

Type of Financial Instrument	Aggregate Fair Value	Admitted Assets	(Level 1)	(Level 2)	(Level 3)	Not Practicable (Carrying Value)
Bonds	\$2,540,725	\$2,450,925	\$2,540,725	\$-0-	\$-0-	\$-0-
Short-term investments	5,932,774	5,932,774	5,932,774	\$-0-	\$-0-	\$-0-

Investments accounted for under the equity method are not required to be included in the table above.

- D. The Company does not own financial instruments, whereby it is not practicable for the Company to estimate the fair value of that financial instrument or class of financial instrument.

NOTES TO FINANCIAL STATEMENTS**21. Other Items**

- A. The Company did not have any extraordinary items (events or transactions) reported during 2012.
- B. The Company did not have any troubled debt restructurings during 2012.
- C. The amortized cost of bonds and short term investments on deposit with regulatory authorities at December 31, 2012 was \$4,913,512.

Effective January 1, 2012, the Company adopted SSAP No. 101, Income Taxes, A Replacement of SSAP No. 10R and SSAP No. 10. See Note 2 for details.

On October 27, 2011, James River Group, Inc. entered into a stock purchase agreement to acquire the Company and Infinity General Insurance Company (NAIC #35211) for a purchase price of \$4.0 million plus the statutory-basis capital and surplus of the acquired insurance companies from their parent, Infinity Insurance Company (NAIC #22268). The acquisition was completed on December 31, 2011 and did not have any effect on the Company's operations for the year then ended or total capital and surplus on that date. All of the officers and directors of the Company were replaced on the date of close, December 31, 2011.

On December 31, 2011, immediately following the sale to James River Group, Inc., the Company entered into a reinsurance agreement with Infinity Insurance Company whereby the Company ceded 100% of its liability with respect to all insurance business written or assumed by the Company prior to the sale.

On January 3, 2012, following the acquisition by James River Group, Inc., and the receipt of all necessary regulatory approvals, James River Group, Inc. contributed to the Company all of the issued and outstanding common stock of Infinity General Insurance Company (renamed Stonewood General Insurance Company on January 27, 2012) and Stonewood Insurance Company (NAIC #11828) to the Company.

On January 27, 2012, following the receipt of all necessary regulatory approvals, the Company was renamed Stonewood National Insurance Company.

- D. At December, 31, 2012, the Company had admitted assets of \$-0- in premiums receivable.
- E. The Company did not have any events giving rise to business interruption insurance recoveries during 2012.
- F. The Company does not have any state transferable tax credits available at December 31, 2012.
- G. The Company does not have any exposure to subprime mortgage-related risk.

22. Events Subsequent

There are no material events (recognized and nonrecognized) occurring subsequent to December 31, 2012. Subsequent events have been considered through February 27, 2013 for the statutory statement issued on February 27, 2013.

23. Reinsurance

- A. At December 31, 2012, the Company did not have any individual unsecured aggregate reinsurance recoverable that exceeded 3% of the Company's capital and surplus.
- B. The Company does not have any reinsurance recoverable in dispute at December 31, 2012.
- C. Reinsurance Assumed and Ceded

(1)

	Assumed Reinsurance		Ceded Reinsurance		Net	
	Premium Reserve	Commission Equity	Premium Reserve	Commission Equity	Premium Reserve	Commission Equity
Affiliates	\$-0-	\$-0-	\$-0-	\$-0-	\$-0-	\$-0-
All Other	-0-	-0-	-0-	-0-	-0-	-0-
Total	\$-0-	\$-0-	\$-0-	\$-0-	\$-0-	-0-

Direct Unearned Premium Reserve	-0-
---------------------------------	-----

(2) The additional or return commission, predicated on loss experience or on any other form of profit sharing arrangements in this annual statement as a result of existing contractual arrangements is accrued as follows:

	Direct	Assumed	Ceded	Net
a. Contingent Commission	\$-0-	\$-0-	\$-0-	\$-0-
b. Sliding Scale Adjustments	-0-	-0-	-0-	-0-
c. Other Profit Commission Arrangements	-0-	-0-	-0-	-0-
d. Total	\$-0-	\$-0-	\$-0-	\$-0-

(3) The Company does not use protected cells as an alternative to traditional reinsurance.

NOTES TO FINANCIAL STATEMENTS

- D. The Company did not have any uncollectible reinsurance during 2012.
- E. No reinsurance contracts were commuted during 2012.
- F. The Company does not engage in retroactive reinsurance contracts.
- G. The Company does not have any reinsurance contracts that have been accounted for as deposits.
- H. The Company has not entered into any reinsurance agreements that have qualified to receive property and casualty run-off accounting treatment.

24. Retrospectively Rated Contracts & Contracts Subject to Redetermination

The Company does not write any contracts with retroactive rated contract terms.

25. Changes in Incurred Losses and Loss Adjustment Expenses

The following table provides an analysis of the change in loss and loss adjustment reserves, net of reinsurance recoverables (in thousands):

	2012	2011
Balance at beginning of period	\$ -0-	\$ 461
Losses and loss adjustment expenses incurred:		
Current accident year	-0-	764
Prior accident years	-0-	5
	-0-	769
Losses and loss adjustment expenses payments made for:		
Current accident year	-0-	(764)
Prior accident years	-0-	(466)
	-0-	(1,230)
Balance at end of period	\$ -0-	\$ -0-

There was no prior-year development during 2012 and \$5,000 of unfavorable prior-year development during 2011. Original estimates are increased or decreased as additional information becomes known regarding individual claims.

26. Intercompany Pooling Arrangements

The Company was not subject to intercompany pooling arrangements during 2012.

27. Structured Settlements

The Company has not purchased annuities to fund future claims payments.

28. Health Care Receivables

The Company does not have health care receivables.

29. Participating Policies

The Company does not write accident and health insurance participating contracts.

30. Premium Deficiency Reserves

At December 31, 2012, the Company did not have any liabilities related to premium deficiency reserves. The Company considers anticipated investment income when testing for a premium deficiency.

31. High Deductibles

The Company does not issue high deductible policies.

32. Discounting of Liabilities for Unpaid Losses or Unpaid Loss Adjustment Expenses

The Company does not discount liabilities for unpaid losses or unpaid loss adjustment expenses.

33. Asbestos/Environmental Reserves

The Company does not have exposure to asbestos or environmental claims.

NOTES TO FINANCIAL STATEMENTS

34. Subscriber Savings Accounts

The Company is not a reciprocal insurance company and has no subscriber savings accounts.

35. Multiple Peril Crop Insurance

The Company does not write multiple peril crop insurance.

36. Financial Guaranty Insurance

The Company does not write financial guarantee insurance contracts

GENERAL INTERROGATORIES

PART 1 - COMMON INTERROGATORIES - GENERAL

- 1.1 Is the reporting entity a member of an Insurance Holding Company System consisting of two or more affiliated persons, one or more of which is an insurer? Yes [X] No []
- 1.2 If yes, did the reporting entity register and file with its domiciliary State Insurance Commissioner, Director or Superintendent or with such regulatory official of the state of domicile of the principal insurer in the Holding Company System, a registration statement providing disclosure substantially similar to the standards adopted by the National Association of Insurance Commissioners (NAIC) in its Model Insurance Holding Company System Regulatory Act and model regulations pertaining thereto, or is the reporting entity subject to standards and disclosure requirements substantially similar to those required by such Act and regulations? Yes [X] No [] N/A []
- 1.3 State regulating? Ohio
- 2.1 Has any change been made during the year of this statement in the charter, by-laws, articles of incorporation, or deed of settlement of the reporting entity? Yes [] No [X]
- 2.2 If yes, date of change: _____
- 3.1 State as of what date the latest financial examination of the reporting entity was made or is being made. 12/31/2011
- 3.2 State the as of date that the latest financial examination report became available from either the state of domicile or the reporting entity. This date should be the date of the examined balance sheet and not the date the report was completed or released. 12/31/2006
- 3.3 State as of what date the latest financial examination report became available to other states or the public from either the state of domicile or the reporting entity. This is the release date or completion date of the examination report and not the date of the examination (balance sheet date). 12/15/2007
- 3.4 By what department or departments?
Ohio

- 3.5 Have all financial statement adjustments within the latest financial examination report been accounted for in a subsequent financial statement filed with departments? Yes [] No [] N/A [X]
- 3.6 Have all of the recommendations within the latest financial examination report been complied with? Yes [] No [] N/A [X]
- 4.1 During the period covered by this statement, did any agent, broker, sales representative, non-affiliated sales/service organization or any combination thereof under common control (other than salaried employees of the reporting entity) receive credit or commissions for or control a substantial part (more than 20 percent of any major line of business measured on direct premiums) of:
- 4.11 sales of new business? Yes [] No [X]
- 4.12 renewals? Yes [] No [X]
- 4.2 During the period covered by this statement, did any sales/service organization owned in whole or in part by the reporting entity or an affiliate, receive credit or commissions for or control a substantial part (more than 20 percent of any major line of business measured on direct premiums) of:
- 4.21 sales of new business? Yes [] No [X]
- 4.22 renewals? Yes [] No [X]
- 5.1 Has the reporting entity been a party to a merger or consolidation during the period covered by this statement? Yes [] No [X]
- 5.2 If yes, provide the name of the entity, NAIC company code, and state of domicile (use two letter state abbreviation) for any entity that has ceased to exist as a result of the merger or consolidation.

1 Name of Entity	2 NAIC Co. Code	3 State of Domicile
Not Applicable		

- 6.1 Has the reporting entity had any Certificates of Authority, licenses or registrations (including corporate registration, if applicable) suspended or revoked by any governmental entity during the reporting period? Yes [] No [X]
- 6.2 If yes, give full information:
Not Applicable

- 7.1 Does any foreign (non-United States) person or entity directly or indirectly control 10% or more of the reporting entity? Yes [X] No []
- 7.2 If yes,
- 7.21 State the percentage of foreign control100.000 %
- 7.22 State the nationality(ies) of the foreign person(s) or entity(ies); or if the entity is a mutual or reciprocal, the nationality of its manager or attorney-in-fact and identify the type of entity(ies) (e.g., individual, corporation, government, manager or attorney-in-fact)

1 Nationality	2 Type of Entity
Bermuda	Corporation

- 8.1 Is the company a subsidiary of a bank holding company regulated by the Federal Reserve Board? Yes [] No [X]
- 8.2 If response to 8.1 is yes, please identify the name of the bank holding company.
Not Applicable

- 8.3 Is the company affiliated with one or more banks, thrifts or securities firms? Yes [] No [X]
- 8.4 If response to 8.3 is yes, please provide the names and locations (city and state of the main office) of any affiliates regulated by a federal financial regulatory services agency [i.e. the Federal Reserve Board (FRB), the Office of the Comptroller of the Currency (OCC), the Federal Deposit Insurance Corporation (FDIC) and the Securities Exchange Commission (SEC)] and identify the affiliate's primary federal regulator.

1 Affiliate Name	2 Location (City, State)	3 FRB	4 OCC	5 FDIC	6 SEC
Not Applicable					

9. What is the name and address of the independent certified public accountant or accounting firm retained to conduct the annual audit?
Ernst & Young LLP, The Edgeworth Building, Suite 201, 2100 E. Cary Street, Richmond, VA 23223
Ernst & Young LLP has been retained to audit the insurance group. The Company has requested an exemption from a statutory-basis audit and from filing audited statutory financial statements at the Company level.

- 10.1 Has the insurer been granted any exemptions to the prohibited non-audit services provided by the certified independent public accountant requirements as allowed in Section 7H of the Annual Financial Reporting Model Regulation (Model Audit Rule), or substantially similar state law or regulation? Yes [] No [X]
- 10.2 If the response to 10.1 is yes, provide information related to this exemption:
Not Applicable

- 10.3 Has the insurer been granted any exemptions related to the other requirements of the Annual Financial Reporting Model Regulation as allowed for in Section 17A of the Model Regulation, or substantially similar state law or regulation? Yes [] No [X]
- 10.4 If the response to 10.3 is yes, provide information related to this exemption:
Not Applicable

- 10.5 Has the reporting entity established an Audit Committee in compliance with the domiciliary state insurance laws? Yes [X] No [] N/A []
- 10.6 If the answer to 10.5 is no or n/a, please explain.
Not Applicable

11. What is the name, address and affiliation (officer/employee of the reporting entity or actuary/consultant associated with an actuarial consulting firm) of the individual providing the statement of actuarial opinion/certification?
The Company has received an exemption to file an actuarial opinion.

GENERAL INTERROGATORIES

12.1 Does the reporting entity own any securities of a real estate holding company or otherwise hold real estate indirectly? Yes [] No [X]

12.11 Name of real estate holding company
Not Applicable

12.12 Number of parcels involved
12.13 Total book/adjusted carrying value

12.2 If yes, provide explanation.
Not Applicable

13. FOR UNITED STATES BRANCHES OF ALIEN REPORTING ENTITIES ONLY:

13.1 What changes have been made during the year in the United States manager or the United States trustees of the reporting entity?

13.2 Does this statement contain all business transacted for the reporting entity through its United States Branch on risks wherever located? Yes [] No []
13.3 Have there been any changes made to any of the trust indentures during the year? Yes [] No []
13.4 If answer to (13.3) is yes, has the domiciliary or entry state approved the changes? Yes [] No [] N/A []

14.1 Are the senior officers (principal executive officer, principal financial officer, principal accounting officer or controller, or persons performing similar functions) of the reporting entity subject to a code of ethics, which includes the following standards? Yes [X] No []

a. Honest and ethical conduct, including the ethical handling of actual or apparent conflicts of interest between personal and professional relationships;
b. Full, fair, accurate, timely and understandable disclosure in the periodic reports required to be filed by the reporting entity;
c. Compliance with applicable governmental laws, rules and regulations;
d. The prompt internal reporting of violations to an appropriate person or persons identified in the code; and
e. Accountability for adherence to the code.

14.11 If the response to 14.1 is no, please explain:
Not Applicable

14.2 Has the code of ethics for senior managers been amended? Yes [] No [X]

14.21 If the response to 14.2 is yes, provide information related to amendment(s).
Not Applicable

14.3 Have any provisions of the code of ethics been waived for any of the specified officers? Yes [] No [X]

14.31 If the response to 14.3 is yes, provide the nature of any waiver(s).
Not Applicable

15.1 Is the reporting entity the beneficiary of a Letter of Credit that is unrelated to reinsurance where the issuing or confirming bank is not on the SVO Bank List? Yes [] No [X]

15.2 If the response to 15.1 is yes, indicate the American Bankers Association (ABA) Routing Number and the name of the issuing or confirming bank of the Letter of Credit and describe the circumstances in which the Letter of Credit is triggered.

1	2	3	4
American Bankers Association (ABA) Routing Number	Issuing or Confirming Bank Name	Circumstances That Can Trigger the Letter of Credit	Amount
	Not Applicable		

PART 1 - COMMON INTERROGATORIES - BOARD OF DIRECTORS

16. Is the purchase or sale of all investments of the reporting entity passed upon either by the Board of Directors or a subordinate committee thereof? Yes [X] No []

17. Does the reporting entity keep a complete permanent record of the proceedings of its Board of Directors and all subordinate committees thereof? Yes [X] No []

18. Has the reporting entity an established procedure for disclosure to its Board of Directors or trustees of any material interest or affiliation on the part of any of its officers, directors, trustees or responsible employees that is in conflict or is likely to conflict with the official duties of such person? Yes [X] No []

PART 1 - COMMON INTERROGATORIES - FINANCIAL

19. Has this statement been prepared using a basis of accounting other than Statutory Accounting Principles (e.g., Generally Accepted Accounting Principles)? Yes [] No [X]

20.1 Total amount loaned during the year (inclusive of Separate Accounts, exclusive of policy loans):

20.11 To directors or other officers \$.....0
20.12 To stockholders not officers \$.....0
20.13 Trustees, supreme or grand (Fraternal only) \$.....0

20.2 Total amount of loans outstanding at the end of year (inclusive of Separate Accounts, exclusive of policy loans):

20.21 To directors or other officers \$.....0
20.22 To stockholders not officers \$.....0
20.23 Trustees, supreme or grand (Fraternal only) \$.....0

21.1 Were any assets reported in this statement subject to a contractual obligation to transfer to another party without the liability for such obligation being reported in the statement? Yes [] No [X]

21.2 If yes, state the amount thereof at December 31 of the current year:

21.21 Rented from others
21.22 Borrowed from others
21.23 Leased from others
21.24 Other

22.1 Does this statement include payments for assessments as described in the Annual Statement Instructions other than guaranty fund or guaranty association assessments? Yes [] No [X]

22.2 If answer is yes:

22.21 Amount paid as losses or risk adjustment
22.22 Amount paid as expenses
22.23 Other amounts paid

23.1 Does the reporting entity report any amounts due from parent, subsidiaries or affiliates on Page 2 of this statement? Yes [] No [X]

23.2 If yes, indicate any amounts receivable from parent included in the Page 2 amount.

PART 1 - COMMON INTERROGATORIES - INVESTMENT

24.01 Were all the stocks, bonds and other securities owned December 31 of current year, over which the reporting entity has exclusive control, in the actual possession of the reporting entity on said date (other than securities lending programs addressed in 24.03)? Yes [X] No []

24.02 If no, give full and complete information relating thereto.
Not Applicable

PART 1 - COMMON INTERROGATORIES - INVESTMENT

24.03 For security lending programs, provide a description of the program including value for collateral and amount of loaned securities, and whether collateral is carried on or off-balance sheet (an alternative is to reference Note 17 where this information is also provided).
The Company is not involved in security lending programs.

24.04 Does the company's security lending program meet the requirements for a conforming program as outlined in the Risk-Based Capital Instructions? Yes [] No [] N/A [X]

24.05 If answer to 24.04 is yes, report amount of collateral for conforming programs.

24.06 If answer to 24.04 is no, report amount of collateral for other programs.

24.07 Does your securities lending program require 102% (domestic securities) and 105% (foreign securities) from the counterparty at the outset of the contract? Yes [] No [] N/A [X]

24.08 Does the reporting entity non-admit when the collateral received from the counterparty falls below 100%? Yes [] No [] N/A [X]

24.09 Does the reporting entity or the reporting entity's securities lending agent utilize the Master Securities Lending Agreement (MSLA) to conduct securities lending? Yes [] No [] N/A [X]

24.10 For the reporting entity's security lending program, state the amount of the following as of December 31 of the current year:

24.101 Total fair value of reinvested collateral assets reported on Schedule DL, Parts 1 and 2.

24.102 Total book adjusted/carrying value of reinvested collateral assets reported on Schedule DL, Parts 1 and 2.

24.103 Total payable for securities lending reported on the liability page.

25.1 Were any of the stocks, bonds or other assets of the reporting entity owned at December 31 of the current year not exclusively under the control of the reporting entity or has the reporting entity sold or transferred any assets subject to a put option contract that is currently in force? (Exclude securities subject to Interrogatory 21.1 and 24.03) Yes [X] No []

25.2 If yes, state the amount thereof at December 31 of the current year:

25.21 Subject to repurchase agreements \$.....0

25.22 Subject to reverse repurchase agreements \$.....0

25.23 Subject to dollar repurchase agreements \$.....0

25.24 Subject to reverse dollar repurchase agreements \$.....0

25.25 Pledged as collateral \$.....0

25.26 Placed under option agreements \$.....0

25.27 Letter stock or securities restricted as to sale \$.....0

25.28 On deposit with state or other regulatory body \$.....4,913,512

25.29 Other \$.....0

25.3 For category (25.27) provide the following:

1 Nature of Restriction	2 Description	3 Amount
Not Applicable		

26.1 Does the reporting entity have any hedging transactions reported on Schedule DB? Yes [] No [X]

26.2 If yes, has a comprehensive description of the hedging program been made available to the domiciliary state? Yes [] No [] N/A [X]

If no, attach a description with this statement.

Not Applicable

27.1 Were any preferred stocks or bonds owned as of December 31 of the current year mandatorily convertible into equity, or, at the option of the issuer, convertible into equity? Yes [] No [X]

27.2 If yes, state the amount thereof at December 31 of the current year:

28. Excluding items in Schedule E-Part 3-Special Deposits, real estate, mortgage loans and investments held physically in the reporting entity's offices, vaults or safety deposit boxes, were all stocks, bonds and other securities, owned throughout the current year held pursuant to a custodial agreement with a qualified bank or trust company in accordance with Section 1, III - General Examination Considerations, F. Outsourcing of Critical Functions Custodial or Safekeeping Agreements of the NAIC Financial Condition Examiners Handbook? Yes [X] No []

28.01 For agreements that comply with the requirements of the NAIC Financial Condition Examiners Handbook, complete the following:

1 Name of Custodian(s)	2 Custodian's Address
U.S. Bank, N.A.	225 Water Street, Suite 700, Jacksonville, FL 32202

28.02 For all agreements that do not comply with the requirements of the NAIC Financial Condition Examiners Handbook, provide the name, location and a complete explanation:

1 Name(s)	2 Location(s)	3 Complete Explanation(s)
Not Applicable		

28.03 Have there been any changes, including name changes, in the custodian(s) identified in 28.01 during the current year? Yes [X] No []

28.04 If yes, give full and complete information relating thereto:

1 Old Custodian	2 New Custodian	3 Date of Change	4 Reason
The Bank of New York Mellon	U.S. Bank, N.A.	03/31/2012	Sale of the Company

28.05 Identify all investment advisors, brokers/dealers or individuals acting on behalf of broker/dealers that have access to the investment accounts, handle securities and have authority to make investments on behalf of the reporting entity:

1 Central Registration Depository Number(s)	2 Name	3 Address
Not Applicable	Gen Re-New England Asset Management, Inc.	76 Batterson Park Road, Farmington, CT 06032

29.1 Does the reporting entity have any diversified mutual funds reported in Schedule D-Part 2 (diversified according to the Securities and Exchange Commission (SEC) in the Investment Company Act of 1940 [Section 5 (b) (1)])? Yes [] No [X]

29.2 If yes, complete the following schedule:

1 CUSIP #	2 Name of Mutual Fund	3 Book/Adj. Carrying Value
Not Applicable		
29.2999. TOTAL		0

29.3 For each mutual fund listed in the table above, complete the following schedule:

1 Name of Mutual Fund (from the above table)	2 Name of Significant Holding of the Mutual Fund	3 Amount of Mutual Fund's Book/Adjusted Carrying Value Attributable to Holding	4 Date of Valuation
Not Applicable			

30. Provide the following information for all short-term and long-term bonds and all preferred stocks. Do not substitute amortized value or statement value for fair value.

	1 Statement (Admitted) Value	2 Fair Value	3 Excess of Statement over Fair Value (-), or Fair Value over Statement (+)
30.1 Bonds.....	8,388,576	8,478,376	89,800
30.2 Preferred stocks.....			0
30.3 Totals.....	8,388,576	8,478,376	89,800

30.4 Describe the sources or methods utilized in determining the fair values:

Generally, market values for publicly traded bonds not available from the Securities Valuation Office of the National Association of Insurance Commissioners are obtained from Interactive Data Corporation (IDC), a global provider of financial market data and related services to financial institutions. Should IDC not price a bond, fair value information is obtained from other globally recognized pricing sources, including Reuters and Bloomberg.

PART 1 - COMMON INTERROGATORIES - INVESTMENT

- 31.1 Was the rate used to calculate fair value determined by a broker or custodian for any of the securities in Schedule D? Yes [] No [X]
- 31.2 If the answer to 31.1 is yes, does the reporting entity have a copy of the broker's or custodian's pricing policy (hard copy or electronic copy) for all brokers or custodians used as a pricing source? Yes [] No []
- 31.3 If the answer to 31.2 is no, describe the reporting entity's process for determining a reliable pricing source for purposes of disclosure of fair value for Schedule D.
Not Applicable
-
- 32.1 Have all the filing requirements of the Purposes and Procedures Manual of the NAIC Securities Valuation Office been followed? Yes [X] No []
- 32.2 If no, list exceptions:
Not Applicable
-

PART 1 - COMMON INTERROGATORIES - OTHER

- 33.1 Amount of payments to trade associations, service organizations and statistical or rating bureaus, if any? \$.....102,247
- 33.2 List the name of the organization and the amount paid if any such payment represented 25% or more of the total payments to trade associations, service organizations and statistical or rating bureaus during the period covered by this statement.

1 Name	2 Amount Paid
ISO	89,500

- 34.1 Amount of payments for legal expenses, if any? \$.....100,184
- 34.2 List the name of the firm and the amount paid if any such payment represented 25% or more of the total payments for legal expenses during the period covered by this statement.

1 Name	2 Amount Paid
Vorys, Sater, Seymour & Pease LLP	88,965

- 35.1 Amount of payments for expenditures in connection with matters before legislative bodies, officers or departments of government, if any? \$.....0
- 35.2 List the name of the firm and the amount paid if any such payment represented 25% or more of the total payment expenditures in connection with matters before legislative bodies, officers or departments of government during the period covered by this statement.

1 Name	2 Amount Paid
Not Applicable	

GENERAL INTERROGATORIES

PART 2 - PROPERTY AND CASUALTY INTERROGATORIES

- 1.1 Does the reporting entity have any direct Medicare Supplement Insurance in force? Yes [] No [X]
- 1.2 If yes, indicate premium earned on U.S. business only.
- 1.3 What portion of item (1.2) is not reported on the Medicare Supplement Insurance Experience Exhibit?
- 1.31 Reason for excluding:
Not Applicable
-
- 1.4 Indicate amount of earned premium attributable to Canadian and/or Other Alien not included in Item (1.2) above.
- 1.5 Indicate total incurred claims on all Medicare Supplement insurance.
- 1.6 Individual policies:
- Most current three years:
- 1.61 Total premium earned
- 1.62 Total incurred claims
- 1.63 Number of covered lives
- All years prior to most current three years:
- 1.64 Total premium earned
- 1.65 Total incurred claims
- 1.66 Number of covered lives
- 1.7 Group policies:
- Most current three years:
- 1.71 Total premium earned
- 1.72 Total incurred claims
- 1.73 Number of covered lives
- All years prior to most current three years:
- 1.74 Total premium earned
- 1.75 Total incurred claims
- 1.76 Number of covered lives

2. Health test:

	1 Current Year	2 Prior Year
2.1 Premium Numerator.....	\$.....0	\$.....0
2.2 Premium Denominator.....	\$.....0	\$.....0
2.3 Premium Ratio (2.1/2.2).....0.00.0
2.4 Reserve Numerator.....	\$.....0	\$.....0
2.5 Reserve Denominator.....	\$.....0	\$.....0
2.6 Reserve Ratio (2.4/2.5).....0.00.0

- 3.1 Does the reporting entity issue both participating and non-participating policies? Yes [] No [X]
- 3.2 If yes, state the amount of calendar year premiums written on:
- 3.21 Participating policies
- 3.22 Non-participating policies

4. FOR MUTUAL REPORTING ENTITIES AND RECIPROCAL EXCHANGES ONLY:

- 4.1 Does the reporting entity issue assessable policies? Yes [] No []
- 4.2 Does the reporting entity issue non-assessable policies? Yes [] No []
- 4.3 If assessable policies are issued, what is the extent of the contingent liability of the policyholders?%
- 4.4 Total amount of assessments paid or ordered to be paid during the year on deposit notes or contingent premiums.

5. FOR RECIPROCAL EXCHANGES ONLY:

- 5.1 Does the exchange appoint local agents? Yes [] No []
- 5.2 If yes, is the commission paid:
- 5.21 Out of Attorney's-in-fact compensation Yes [] No [] N/A []
- 5.22 As a direct expense of the exchange Yes [] No [] N/A []
- 5.3 What expenses of the exchange are not paid out of the compensation of the Attorney-in-fact?

- 5.4 Has any Attorney-in-fact compensation, contingent on fulfillment of certain conditions, been deferred? Yes [] No []
- 5.5 If yes, give full information:

- 6.1 What provision has this reporting entity made to protect itself from an excessive loss in the event of a catastrophe under a workers' compensation contract issued without limit of loss?
Not Applicable - line of business not written

- 6.2 Describe the method used to estimate this reporting entity's probable maximum insurance loss, and identify the type of insured exposures comprising that probable maximum loss, the locations of concentrations of those exposures and the external resources (such as consulting firms or computer software models), if any, used in the estimation process:
The Company is a party to a reinsurance agreement with Infinity Insurance Company (NAIC #22268) whereby the Company cedes 100% of its liability with respect to all insurance business written or assumed by the Company through December 31, 2011.

- 6.3 What provision has this reporting entity made (such as a catastrophic reinsurance program) to protect itself from an excessive loss arising from the types and concentrations of insured exposures comprising its probable maximum property insurance loss?
The Company is a party to a reinsurance agreement with Infinity Insurance Company (NAIC #22268) whereby the Company cedes 100% of its liability with respect to all insurance business written or assumed by the Company through December 31, 2011.

- 6.4 Does the reporting entity carry catastrophe reinsurance protection for at least one reinstatement, in an amount sufficient to cover its estimated probable maximum loss attributable to a single loss event or occurrence? Yes [] No [X]

- 6.5 If no, describe any arrangements or mechanisms employed by the reporting entity to supplement its catastrophe reinsurance program or to hedge its exposure to uninsured catastrophic loss:
The Company is a party to a reinsurance agreement with Infinity Insurance Company (NAIC #22268) whereby the Company cedes 100% of its liability with respect to all insurance business written or assumed by the Company through December 31, 2011.

- 7.1 Has the reporting entity reinsured any risk with any other entity under a quota share reinsurance contract that includes a provision that would limit the reinsurer's losses below the stated quota share percentage (e.g., a deductible, a loss ratio corridor, a loss cap, an aggregate limit or any similar provisions)? Yes [] No [X]

- 7.2 If yes, indicate the number of reinsurance contracts containing such provisions.

- 7.3 If yes, does the amount of reinsurance credit taken reflect the reduction in quota share coverage caused by any applicable limiting provision(s)? Yes [] No []

GENERAL INTERROGATORIES

PART 2 - PROPERTY AND CASUALTY INTERROGATORIES

- 8.1 Has this reporting entity reinsured any risk with any other entity and agreed to release such entity from liability, in whole or in part, from any loss that may occur on this risk, or portion thereof, reinsured? Yes [] No [X]
- 8.2 If yes, give full information:
Not Applicable
-
- 9.1 Has the reporting entity ceded any risk under any reinsurance contract (or under multiple contracts with the same reinsurer or its affiliates) for which during the period covered by the statement: (i) it recorded a positive or negative underwriting result greater than 5% of prior year-end surplus as regards policyholders or it reported calendar year written premium ceded or year-end loss and loss expense reserves ceded greater than 5% of prior year-end surplus as regards policyholders; (ii) it accounted for that contract as reinsurance and not as a deposit; and (iii) the contract(s) contain one or more of the following features or other features that would have similar results:
- (a) A contract term longer than two years and the contract is noncancellable by the reporting entity during the contract term;
 - (b) A limited or conditional cancellation provision under which cancellation triggers an obligation by the reporting entity, or an affiliate of the reporting entity, to enter into a new reinsurance contract with the reinsurer, or an affiliate of the reinsurer;
 - (c) Aggregate stop loss reinsurance coverage;
 - (d) A unilateral right by either party (or both parties) to commute the reinsurance contract, whether conditional or not, except for such provisions which are only triggered by a decline in the credit status of the other party;
 - (e) A provision permitting reporting of losses, or payment of losses, less frequently than on a quarterly basis (unless there is no activity during the period); or
 - (f) Payment schedule, accumulating retentions from multiple years or any features inherently designed to delay timing of the reimbursement to the ceding entity?
- Yes [] No [X]
- 9.2 Has the reporting entity during the period covered by the statement ceded any risk under any reinsurance contract (or under multiple contracts with the same reinsurer or its affiliates), for which, during the period covered by the statement, it recorded a positive or negative underwriting result greater than 5% of prior year-end surplus as regards policyholders or it reported calendar year written premium ceded or year-end loss and loss expense reserves ceded greater than 5% of prior year-end surplus as regards policyholders; excluding cessions to approved pooling arrangements or to captive insurance companies that are directly or indirectly controlling, controlled by, or under control with (i) one or more unaffiliated policyholders of the reporting entity, or (ii) an association of which one or more unaffiliated policyholders of the reporting entity is a member where:
- (a) The written premium ceded to the reinsurer by the reporting entity or its affiliates represents fifty percent (50%) or more of the entire direct and assumed premium written by the reinsurer based on its most recently available financial statement; or
 - (b) Twenty-five percent (25%) or more of the written premium ceded to the reinsurer has been retroceded back to the reporting entity or its affiliates in a separate reinsurance contract?
- Yes [] No [X]
- 9.3 If yes to 9.1 or 9.2, please provide the following information in the Reinsurance Summary Supplemental Filing for General Interrogatory 9:
- (a) The aggregate financial statement impact gross of all such ceded reinsurance contracts on the balance sheet and statement of income;
 - (b) A summary of the reinsurance contract terms and indicate whether it applies to the contracts meeting the criteria in 9.1 or 9.2; and
 - (c) A brief discussion of management's principle objectives in entering into the reinsurance contract including the economic purpose to be achieved.
- 9.4 Except for transactions meeting the requirements of paragraph 31 of SSAP No. 62R, Property and Casualty Reinsurance, has the reporting entity ceded any risk under any reinsurance contract (or multiple contracts with the same reinsurer or its affiliates) during the period covered by the financial statement, and either:
- (a) Accounted for that contract as reinsurance (either prospective or retroactive) under statutory accounting principles ("SAP") and as a deposit under generally accepted accounting principles ("GAAP"); or
 - (b) Accounted for that contract as reinsurance under GAAP and as a deposit under SAP?
- Yes [] No [X]
- 9.5 If yes to 9.4, explain in the Reinsurance Summary Supplemental Filing for General Interrogatory 9 (Section D) why the contract(s) is treated differently for GAAP and SAP.
- 9.6 The reporting entity is exempt from the Reinsurance Attestation Supplement under one or more of the following criteria:
- (a) The entity does not utilize reinsurance; or Yes [] No [X]
 - (b) The entity only engages in a 100% quota share contract with an affiliate and the affiliated or lead company has filed an attestation supplement; or Yes [] No [X]
 - (c) The entity has no external cessions and only participates in an intercompany pool and the affiliated or lead company has filed an attestation supplement. Yes [] No [X]
10. If the reporting entity has assumed risks from another entity, there should be charged on account of such reinsurance a reserve equal to that which the original entity would have been required to charge had it retained the risks. Has this been done? Yes [] No [] N/A [X]
- 11.1 Has this reporting entity guaranteed policies issued by any other reporting entity and now in force? Yes [] No [X]
- 11.2 If yes, give full information:
Not Applicable
-
- 12.1 If the reporting entity recorded accrued retrospective premiums on insurance contracts on Line 15.3 of the assets schedule, Page 2, state the amount of corresponding liabilities recorded for:
- 12.11 Unpaid losses \$.....0
 - 12.12 Unpaid underwriting expenses (including loss adjustment expenses) \$.....0
- 12.2 Of the amount on Line 15.3, Page 2, state the amount that is secured by letters of credit, collateral and other funds: \$.....0
- 12.3 If the reporting entity underwrites commercial insurance risks, such as workers' compensation, are premium notes or promissory notes accepted from its insureds covering unpaid premiums and/or unpaid losses? Yes [] No [] N/A [X]
- 12.4 If yes, provide the range of interest rates charged under such notes during the period covered by this statement:
- 12.41 From%
 - 12.42 To%
- 12.5 Are letters of credit or collateral and other funds received from insureds being utilized by the reporting entity to secure premium notes or promissory notes taken by a reporting entity, or to secure any of the reporting entity's reported direct unpaid loss reserves, including unpaid losses under loss deductible features of commercial policies? Yes [] No [X]
- 12.6 If yes, state the amount thereof at December 31 of current year:
- 12.61 Letters of credit
 - 12.62 Collateral and other funds
- 13.1 Largest net aggregate amount insured in any one risk (excluding workers' compensation): \$.....1,100
- 13.2 Does any reinsurance contract considered in the calculation of this amount include an aggregate limit of recovery without also including a reinstatement provision? Yes [] No [X]
- 13.3 State the number of reinsurance contracts (excluding individual facultative risk certificates, but including facultative programs, automatic facilities or facultative obligatory contracts) considered in the calculation of the amount.1

GENERAL INTERROGATORIES

PART 2 - PROPERTY AND CASUALTY INTERROGATORIES

14.1 Is the company a cedant in a multiple cedant reinsurance contract? Yes [] No [X]
 14.2 If yes, please describe the method of allocating and recording reinsurance among the cedants:
Not Applicable

14.3 If the answer to 14.1 is yes, are the methods described in item 14.2 entirely contained in the respective multiple cedant reinsurance contracts? Yes [] No []
 14.4 If the answer to 14.3 is no, are all the methods described in 14.2 entirely contained in written agreements? Yes [] No []
 14.5 If the answer to 14.4 is no, please explain:
Not Applicable

15.1 Has the reporting entity guaranteed any financed premium accounts? Yes [] No [X]
 15.2 If yes, give full information:
Not Applicable

16.1 Does the reporting entity write any warranty business? Yes [] No [X]
 If yes, disclose the following information for each of the following types of warranty coverage:

	1 Direct Losses Incurred	2 Direct Losses Unpaid	3 Direct Written Premium	4 Direct Premium Unearned	5 Direct Premium Earned
16.11 Home.....					
16.12 Products.....					
16.13 Automobile.....					
16.14 Other*.....					

* Disclose type of coverage: Not Applicable

17.1 Does the reporting entity include amounts recoverable on unauthorized reinsurance in Schedule F-Part 3 that it excludes from Schedule F-Part 5? Yes [] No [X]
 Incurred but not reported losses on contracts in force prior to July 1, 1984, and not subsequently renewed are exempt from inclusion in Schedule F-Part 5.

Provide the following information for this exemption:

17.11 Gross amount of unauthorized reinsurance in Schedule F-Part 3 excluded from Schedule F-Part 5
 17.12 Unfunded portion of Interrogatory 17.11
 17.13 Paid losses and loss adjustment expenses portion of Interrogatory 17.11
 17.14 Case reserves portion of Interrogatory 17.11
 17.15 Incurred but not reported portion of Interrogatory 17.11
 17.16 Unearned premium portion of Interrogatory 17.11
 17.17 Contingent commission portion of Interrogatory 17.11

Provide the following information for all other amounts included in Schedule F-Part 3 and excluded from Schedule F-Part 5, not included above:

17.18 Gross amount of unauthorized reinsurance in Schedule F-Part 3 excluded from Schedule F-Part 5
 17.19 Unfunded portion of Interrogatory 17.18
 17.20 Paid losses and loss adjustment expenses portion of Interrogatory 17.18
 17.21 Case reserves portion of Interrogatory 17.18
 17.22 Incurred but not reported portion of Interrogatory 17.18
 17.23 Unearned premium portion of Interrogatory 17.18
 17.24 Contingent commission portion of Interrogatory 17.18

18.1 Do you act as a custodian for health savings account? Yes [] No [X]
 18.2 If yes, please provide the amount of custodial funds held as of the reporting date.
 18.3 Do you act as an administrator for health savings accounts? Yes [] No [X]
 18.4 If yes, please provide the balance of the funds administered as of the reporting date.

FIVE-YEAR HISTORICAL DATA

Show amounts in whole dollars only, no cents; show percentages to one decimal place, i.e. 17.6.

	1 2012	2 2011	3 2010	4 2009	5 2008
Gross Premiums Written (Page 8, Part 1B, Cols. 1, 2 & 3)					
1. Liability lines (Lines 11.1, 11.2, 16, 17.1, 17.2, 17.3, 18.1, 18.2, 19.1, 19.2 & 19.3, 19.4).....	516,214	410,809	726,121	2,181,819	4,136,756
2. Property lines (Lines 1, 2, 9, 12, 21 & 26).....	12,115	197,829	351,750	950,465	2,001,256
3. Property and liability combined lines (Lines 3, 4, 5, 8, 22 & 27).....					
4. All other lines (Lines 6, 10, 13, 14, 15, 23, 24, 28, 29, 30 & 34).....					
5. Nonproportional reinsurance lines (Lines 31, 32 & 33).....					
6. Total (Line 35).....	528,329	608,638	1,077,871	3,132,284	6,138,012
Net Premiums Written (Page 8, Part 1B, Col. 6)					
7. Liability lines (Lines 11.1, 11.2, 16, 17.1, 17.2, 17.3, 18.1, 18.2, 19.1, 19.2 & 19.3, 19.4).....		407,109	636,763	549,866	565,923
8. Property lines (Lines 1, 2, 9, 12, 21 & 26).....		196,470	310,106	294,003	326,167
9. Property and liability combined lines (Lines 3, 4, 5, 8, 22 & 27).....					
10. All other lines (Lines 6, 10, 13, 14, 15, 23, 24, 28, 29, 30 & 34).....					
11. Nonproportional reinsurance lines (Lines 31, 32 & 33).....					
12. Total (Line 35).....	0	603,579	946,869	843,869	892,090
Statement of Income (Page 4)					
13. Net underwriting gain (loss) (Line 8).....	(831,323)	8,273	26,279	48,334	23,615
14. Net investment gain (loss) (Line 11).....	125,659	177,620	268,065	362,726	429,352
15. Total other income (Line 15).....		62,080	59,802	48,807	46,303
16. Dividends to policyholders (Line 17).....					
17. Federal and foreign income taxes incurred (Line 19).....	(385,291)	1,379,288	112,819	124,907	86,879
18. Net income (Line 20).....	(320,373)	(1,131,315)	241,327	334,960	412,391
Balance Sheet Lines (Pages 2 and 3)					
19. Total admitted assets excluding protected cell business (Page 2, Line 26, Col. 3).....	42,548,483	8,127,964	8,865,986	8,824,620	10,022,958
20. Premiums and considerations (Page 2, Col. 3):					
20.1 In course of collection (Line 15.1).....			63,706	55,941	52,365
20.2 Deferred and not yet due (Line 15.2).....					
20.3 Accrued retrospective premiums (Line 15.3).....					
21. Total liabilities excluding protected cell business (Page 3, Line 26).....	471,537		972,065	950,788	996,799
22. Losses (Page 3, Line 1).....			328,201	340,915	356,058
23. Loss adjustment expenses (Page 3, Line 3).....			132,880	150,346	167,878
24. Unearned premiums (Page 3, Line 9).....			415,481	374,531	379,053
25. Capital paid up (Page 3, Lines 30 & 31).....	4,200,000	3,000,528	3,000,528	3,000,528	3,000,528
26. Surplus as regards policyholders (Page 3, Line 37).....	42,076,946	8,127,964	7,893,921	7,873,832	9,026,159
Cash Flow (Page 5)					
27. Net cash from operations (Line 11).....	(330,111)	(2,059,892)	269,256	275,928	254,306
Risk-Based Capital Analysis					
28. Total adjusted capital.....	42,076,946	8,127,964	7,893,921	7,873,832	9,026,159
29. Authorized control level risk-based capital.....	3,610,970	97,029	89,997	83,533	95,995
Percentage Distribution of Cash, Cash Equivalents and Invested Assets (Page 2, Col. 3) (Item divided by Page 2, Line 12, Col. 3) x 100.0					
30. Bonds (Line 1).....	5.8	99.5	99.5	99.3	99.9
31. Stocks (Lines 2.1 & 2.2).....	79.2				
32. Mortgage loans on real estate (Lines 3.1 & 3.2).....					
33. Real estate (Lines 4.1, 4.2 & 4.3).....					
34. Cash, cash equivalents and short-term investments (Line 5).....	15.0	0.5	0.5	0.7	0.1
35. Contract loans (Line 6).....					
36. Derivatives (Line 7).....				XXX	XXX
37. Other invested assets (Line 8).....					
38. Receivable for securities (Line 9).....					
39. Securities lending reinvested collateral assets (Line 10).....				XXX	XXX
40. Aggregate write-ins for invested assets (Line 11).....					
41. Cash, cash equivalents and invested assets (Line 12).....	100.0	100.0	100.0	100.0	100.0
Investments in Parent, Subsidiaries and Affiliates					
42. Affiliated bonds (Sch. D, Summary, Line 12, Col. 1).....					
43. Affiliated preferred stocks (Sch. D, Summary, Line 18, Col. 1).....					
44. Affiliated common stocks (Sch. D, Summary, Line 24, Col. 1).....	33,584,874				
45. Affiliated short-term investments (subtotals included in Schedule DA, Verification, Column 5, Line 10).....					
46. Affiliated mortgage loans on real estate.....					
47. All other affiliated.....					
48. Total of above lines 42 to 47.....	33,584,874	0	0	0	0
49. Total investment in parent included in Lines 42 to 47 above.....					
50. Percentage of investments in parent, subsidiaries and affiliates to surplus as regards policyholders (Line 48 above divided by Page 3, Col. 1, Line 37 x 100.0).....	79.8				

FIVE-YEAR HISTORICAL DATA

(Continued)

	1	2	3	4	5
	2012	2011	2010	2009	2008
Capital and Surplus Accounts (Page 4)					
51. Net unrealized capital gains (losses) (Line 24).....	(2,071,270)				
52. Dividends to stockholders (Line 35).....			(225,000)	(450,000)	
53. Change in surplus as regards policyholders for the year (Line 38).....	33,948,982	234,043	20,089	(1,152,327)	389,861
Gross Losses Paid (Page 9, Part 2, Cols. 1 & 2)					
54. Liability lines (Lines 11.1, 11.2, 16, 17.1, 17.2, 17.3, 18.1, 18.2, 19.1, 19.2 & 19.3, 19.4).....	771,244	969,638	840,895	2,019,638	3,880,857
55. Property lines (Lines 1, 2, 9, 12, 21 & 26).....	237	184,927	184,566	519,901	896,390
56. Property and liability combined lines (Lines 3, 4, 5, 8, 22 & 27).....		787	166	366	368
57. All other lines (Lines 6, 10, 13, 14, 15, 23, 24, 28, 29, 30 & 34).....					
58. Nonproportional reinsurance lines (Lines 31, 32 & 33).....					
59. Total (Line 35).....	771,481	1,155,352	1,025,627	2,539,905	4,777,615
Net Losses Paid (Page 9, Part 2, Col. 4)					
60. Liability lines (Lines 11.1, 11.2, 16, 17.1, 17.2, 17.3, 18.1, 18.2, 19.1, 19.2 & 19.3, 19.4).....		755,757	356,833	333,072	404,419
61. Property lines (Lines 1, 2, 9, 12, 21 & 26).....		200,241	156,710	148,361	178,426
62. Property and liability combined lines (Lines 3, 4, 5, 8, 22 & 27).....		787	166	366	368
63. All other lines (Lines 6, 10, 13, 14, 15, 23, 24, 28, 29, 30 & 34).....					
64. Nonproportional reinsurance lines (Lines 31, 32 & 33).....					
65. Total (Line 35).....	0	956,785	513,709	481,799	583,213
Operating Percentages (Page 4) (Item divided by Page 4, Line 1) x 100.0					
66. Premiums earned (Line 1).....	100.0	100.0	100.0	100.0	100.0
67. Losses incurred (Line 2).....		61.7	55.3	55.0	60.2
68. Loss expenses incurred (Line 3).....		13.7	11.7	11.5	10.1
69. Other underwriting expenses incurred (Line 4).....		23.8	30.1	27.8	27.1
70. Net underwriting gain (loss) (Line 8).....		0.8	2.9	5.7	2.6
Other Percentages					
71. Other underwriting expenses to net premiums written (Page 4, Lines 4 + 5 - 15 divided by Page 8, Part 1B, Col. 6, Line 35 x 100.0).....		29.9	22.5	22.2	22.8
72. Losses and loss expenses incurred to premiums earned (Page 4, Lines 2 + 3 divided by Page 4, Line 1 x 100.0).....		75.4	67.0	66.5	70.3
73. Net premiums written to policyholders' surplus (Page 8, Part 1B, Col. 6, Line 35, divided by Page 3, Line 37, Col. 1 x 100.0).....		7.4	12.0	10.7	9.9
One Year Loss Development (000 omitted)					
74. Development in estimated losses and loss expenses incurred prior to current year (Schedule P, Part 2-Summary, Line 12, Col. 11).....		(3)	(74)	(65)	(21)
75. Percent of development of losses and loss expenses incurred to policyholders' surplus of prior year end (Line 74 above divided by Page 4, Line 21, Col. 1 x 100).....		(0.0)	(0.9)	(0.7)	(0.2)
Two Year Loss Development (000 omitted)					
76. Development in estimated losses and loss expenses incurred 2 years before the current year and prior year (Schedule P, Part 2-Summary, Line 12, Col. 12).....	(3)	(89)	(111)	(71)	(48)
77. Percent of development of losses and loss expenses incurred to reported policyholders' surplus of second prior year end (Line 76 above divided by Page 4, Line 21, Col. 2 x 100.0).....	(0.0)	(1.1)	(1.2)	(0.8)	(0.6)

If a party to a merger, have the two most recent years of this exhibit been restated due to a merger in compliance with the disclosure requirements of SSAP No. 3, Accounting Changes and Correction of Errors?

Yes [] No []

If no, please explain:

SCHEDULE P - ANALYSIS OF LOSSES AND LOSS EXPENSES

SCHEDULE P - PART 1 - SUMMARY

(\$000 Omitted)

Years in Which Premiums Were Earned and Losses Were Incurred	Premiums Earned			Loss and Loss Expense Payments						12 Number of Claims Reported-Direct and Assumed		
	1 Direct and Assumed	2 Ceded	3 Net (Cols. 1 - 2)	Loss Payments		Defense and Cost Containment Payments		Adjusting and Other Payments			10 Salvage and Subrogation Received	11 Total Net Paid (Cols. 4 - 5 + 6 - 7 + 8 - 9)
				4 Direct and Assumed	5 Ceded	6 Direct and Assumed	7 Ceded	8 Direct and Assumed	9 Ceded			
1. Prior.....	XXX	XXX	XXX	452	452	60	60				0	XXX
2. 2003.....	142	34	108	58	249	(5)	17	(27)	4	94	(245)	XXX
3. 2004.....	5,380	430	4,950	2,704	202	171	6	653	3	96	3,316	XXX
4. 2005.....	988	27	961	507	17	17	1	111		37	617	XXX
5. 2006.....	964	15	949	516	17	143	125	115		39	631	XXX
6. 2007.....	1,039	7	1,032	616	30	27	3	110		47	719	XXX
7. 2008.....	928	5	923	521	6	24	0	103		41	642	XXX
8. 2009.....	853	5	848	515	31	46	21	93		40	602	XXX
9. 2010.....	911	5	906	594	27	33	2	97		48	695	XXX
10. 2011.....	1,025	6	1,019	625		31		107		33	763	XXX
11. 2012.....	528	528	0								0	XXX
12. Totals.....	XXX	XXX	XXX	7,108	1,029	545	236	1,361	7	475	7,741	XXX

	Losses Unpaid				Defense and Cost Containment Unpaid				Adjusting and Other Unpaid		23 Salvage and Subrogation Anticipated	24 Total Net Losses and Expenses Unpaid	25 Number of Claims Outstanding-Direct and Assumed
	Case Basis		Bulk + IBNR		Case Basis		Bulk + IBNR		21 Direct and Assumed	22 Ceded			
	13 Direct and Assumed	14 Ceded	15 Direct and Assumed	16 Ceded	17 Direct and Assumed	18 Ceded	19 Direct and Assumed	20 Ceded					
1. Prior.....	4	4			25	25					0	XXX	
2. 2003.....											0	XXX	
3. 2004.....											0	XXX	
4. 2005.....											0	XXX	
5. 2006.....											0	XXX	
6. 2007.....			43	43			2	2	1	1	0	XXX	
7. 2008.....	10	10	28	28	1	1	1	1	1	1	0	XXX	
8. 2009.....			33	33	50	50	1	1	1	1	0	XXX	
9. 2010.....	8	8	18	18			1	1			0	XXX	
10. 2011.....											0	XXX	
11. 2012.....											0	XXX	
12. Totals.....	22	22	122	122	76	76	5	5	3	3	0	XXX	

	Total Losses and Loss Expenses Incurred			Loss and Loss Expense Percentage (Incurred/Premiums Earned)			Nontabular Discount		34 Inter-Company Pooling Participation Percentage	Net Balance Sheet Reserves after Discount	
	26 Direct and Assumed	27 Ceded	28 Net	29 Direct and Assumed	30 Ceded	31 Net	32 Loss	33 Loss Expense		35 Losses Unpaid	36 Loss Expenses Unpaid
1. Prior..	XXX	XXX	XXX	XXX	XXX	XXX			XXX	0	0
2. 2003.	25	270	(245)	17.6	794.1	(226.9)				0	0
3. 2004.	3,527	211	3,316	65.6	49.1	67.0				0	0
4. 2005.	635	18	617	64.2	66.4	64.2				0	0
5. 2006.	773	142	631	80.2	947.5	66.5				0	0
6. 2007.	798	79	719	76.8	1,129.6	69.7				0	0
7. 2008.	689	47	642	74.2	934.6	69.6				0	0
8. 2009.	739	137	602	86.6	2,855.5	71.0				0	0
9. 2010.	751	56	695	82.4	1,070.9	76.7				0	0
10. 2011.	763	0	763	74.5	0.0	74.9				0	0
11. 2012.	0	0	0	0.0	0.0	0.0				0	0
12. Totals	XXX	XXX	XXX	XXX	XXX	XXX	0	0	XXX	0	0

Note: Parts 2 and 4 are gross of all discounting, including tabular discounting. Part 1 is gross of only nontabular discounting, which is reported in Columns 32 and 33 of Part 1. The tabular discount, if any, is reported in the Notes to Financial Statements, which will reconcile Part 1 with Parts 2 and 4.

SCHEDULE P - PART 2 - SUMMARY

Years in Which Losses Were Incurred	Incurred Net Losses and Defense and Cost Containment Expenses Reported at Year End (\$000 omitted)										DEVELOPMENT	
	1	2	3	4	5	6	7	8	9	10	11	12
	2003	2004	2005	2006	2007	2008	2009	2010	2011	2012	One Year	Two Year
1. Prior.....	66	68	74	72	80	95	91	90	91	91	0	1
2. 2003.....	64	(190)	(199)	(200)	(204)	(211)	(212)	(214)	(214)	(214)	0	(0)
3. 2004.....	XXX	2,707	2,702	2,689	2,684	2,677	2,670	2,667	2,666	2,666	0	(1)
4. 2005.....	XXX	XXX	560	546	536	521	513	508	506	506	0	(2)
5. 2006.....	XXX	XXX	XXX	560	555	537	525	519	516	516	0	(3)
6. 2007.....	XXX	XXX	XXX	XXX	632	643	626	614	609	609	0	(4)
7. 2008.....	XXX	XXX	XXX	XXX	XXX	577	562	543	539	539	0	(4)
8. 2009.....	XXX	XXX	XXX	XXX	XXX	XXX	539	511	510	510	0	(1)
9. 2010.....	XXX	XXX	XXX	XXX	XXX	XXX	XXX	587	598	598	0	11
10. 2011.....	XXX	XXX	XXX	XXX	XXX	XXX	XXX	XXX	656	656	0	XXX
11. 2012.....	XXX	XXX	XXX	XXX	XXX	XXX	XXX	XXX	XXX	XXX	XXX	XXX
12. Totals.....											0	(3)

SCHEDULE P - PART 3 - SUMMARY

Years in Which Losses Were Incurred	Cumulative Paid Net Losses and Defense and Cost Containment Expenses Reported at Year End (\$000 omitted)										11	12
	1	2	3	4	5	6	7	8	9	10	Number of Claims Closed With Loss Payment	Number of Claims Closed Without Loss Payment
	2003	2004	2005	2006	2007	2008	2009	2010	2011	2012		
1. Prior.....	000	(589)	(17)	31	46	80	83	85	91	91	XXX	XXX
2. 2003.....	30	(805)	(263)	(232)	(221)	(217)	(215)	(215)	(214)	(214)	XXX	XXX
3. 2004.....	XXX	1,344	2,590	2,634	2,655	2,662	2,664	2,665	2,666	2,666	XXX	XXX
4. 2005.....	XXX	XXX	300	440	483	497	503	504	506	506	XXX	XXX
5. 2006.....	XXX	XXX	XXX	316	452	493	505	510	516	516	XXX	XXX
6. 2007.....	XXX	XXX	XXX	XXX	373	544	580	594	609	609	XXX	XXX
7. 2008.....	XXX	XXX	XXX	XXX	XXX	335	474	509	539	539	XXX	XXX
8. 2009.....	XXX	XXX	XXX	XXX	XXX	XXX	303	436	510	510	XXX	XXX
9. 2010.....	XXX	XXX	XXX	XXX	XXX	XXX	XXX	345	598	598	XXX	XXX
10. 2011.....	XXX	XXX	XXX	XXX	XXX	XXX	XXX	XXX	656	656	XXX	XXX
11. 2012.....	XXX	XXX	XXX	XXX	XXX	XXX	XXX	XXX	XXX	XXX	XXX	XXX

SCHEDULE P - PART 4 - SUMMARY

Years in Which Losses Were Incurred	Bulk and IBNR Reserves on Net Losses and Defense and Cost Containment Expenses Reported at Year End (\$000 omitted)									
	1	2	3	4	5	6	7	8	9	10
	2003	2004	2005	2006	2007	2008	2009	2010	2011	2012
1. Prior.....	15	141	29	10	4	4	2	1		
2. 2003.....	12	243	24	12	8	3	2	1		
3. 2004.....	XXX	437	48	17	16	9	3	1		
4. 2005.....	XXX	XXX	112	45	27	16	7	3		
5. 2006.....	XXX	XXX	XXX	113	50	25	12	5		
6. 2007.....	XXX	XXX	XXX	XXX	123	53	25	10		
7. 2008.....	XXX	XXX	XXX	XXX	XXX	127	50	16		
8. 2009.....	XXX	XXX	XXX	XXX	XXX	XXX	129	33		
9. 2010.....	XXX	XXX	XXX	XXX	XXX	XXX	XXX	118		
10. 2011.....	XXX	XXX	XXX	XXX	XXX	XXX	XXX	XXX		
11. 2012.....	XXX	XXX	XXX	XXX	XXX	XXX	XXX	XXX	XXX	

SCHEDULE T - EXHIBIT OF PREMIUMS WRITTEN

Allocated by States and Territories

States, Etc.	1 Active Status	Gross Premiums, Including Policy and Membership Fees Less Return Premiums and Premiums on Policies Not Taken		4 Dividends Paid or Credited to Policyholders on Direct Business	5 Direct Losses Paid (Deducting Salvage)	6 Direct Losses Incurred	7 Direct Losses Unpaid	8 Finance and Service Charges not Included in Premiums	9 Direct Premiums Written for Federal Purchasing Groups (Incl. in Col. 2)
		2 Direct Premiums Written	3 Direct Premiums Earned						
1. Alabama.....AL	L				13,437	(21,728)	45,465		
2. Alaska.....AK	L								
3. Arizona.....AZ	L								
4. Arkansas.....AR	L								
5. California.....CA	N								
6. Colorado.....CO	L				(84)	(84)			
7. Connecticut.....CT	N								
8. Delaware.....DE	L								
9. District of Columbia.....DC	L								
10. Florida.....FL	L	528,261	528,261		668,276	556,967	53,001		
11. Georgia.....GA	L				91,165	7,391	30,372		
12. Hawaii.....HI	N								
13. Idaho.....ID	L								
14. Illinois.....IL	L								
15. Indiana.....IN	L								
16. Iowa.....IA	L								
17. Kansas.....KS	L								
18. Kentucky.....KY	L								
19. Louisiana.....LA	L								
20. Maine.....ME	N								
21. Maryland.....MD	L								
22. Massachusetts.....MA	N								
23. Michigan.....MI	N								
24. Minnesota.....MN	L								
25. Mississippi.....MS	L								
26. Missouri.....MO	L	68	68		37	37			
27. Montana.....MT	L								
28. Nebraska.....NE	L								
29. Nevada.....NV	L								
30. New Hampshire.....NH	N								
31. New Jersey.....NJ	L								
32. New Mexico.....NM	L								
33. New York.....NY	L					2,865	15,180		
34. North Carolina.....NC	L								
35. North Dakota.....ND	L								
36. Ohio.....OH	L								
37. Oklahoma.....OK	L								
38. Oregon.....OR	L								
39. Pennsylvania.....PA	L								
40. Rhode Island.....RI	L								
41. South Carolina.....SC	N				(1,350)	(1,350)			
42. South Dakota.....SD	L								
43. Tennessee.....TN	L								
44. Texas.....TX	L								
45. Utah.....UT	L								
46. Vermont.....VT	N								
47. Virginia.....VA	L								
48. Washington.....WA	L								
49. West Virginia.....WV	N								
50. Wisconsin.....WI	L								
51. Wyoming.....WY	L								
52. American Samoa.....AS	N								
53. Guam.....GU	N								
54. Puerto Rico.....PR	N								
55. US Virgin Islands.....VI	N								
56. Northern Mariana Islands.....MP	N								
57. Canada.....CAN	N								
58. Aggregate Other Alien.....OT	XXX	0	0	0	0	0	0	0	0
59. Totals.....(a) 41		528,329	528,329	0	771,481	544,098	144,018	0	0

DETAILS OF WRITE-INS

58001.....	XXX								
58002.....	XXX								
58003.....	XXX								
58998. Summary of remaining write-ins for Line 58 from overflow page	XXX	0	0	0	0	0	0	0	0
58999. Totals (Lines 58001 thru 58003+ Line 58998) (Line 58 above)	XXX	0	0	0	0	0	0	0	0

(a) Insert the number of "L" responses except for Canada and Other Alien.

(L) - Licensed or Chartered - Licensed Insurance Carrier or Domiciled RRG; (R) - Registered - Non-domiciled RRGs; (Q) - Qualified - Qualified or Accredited Reinsurer;

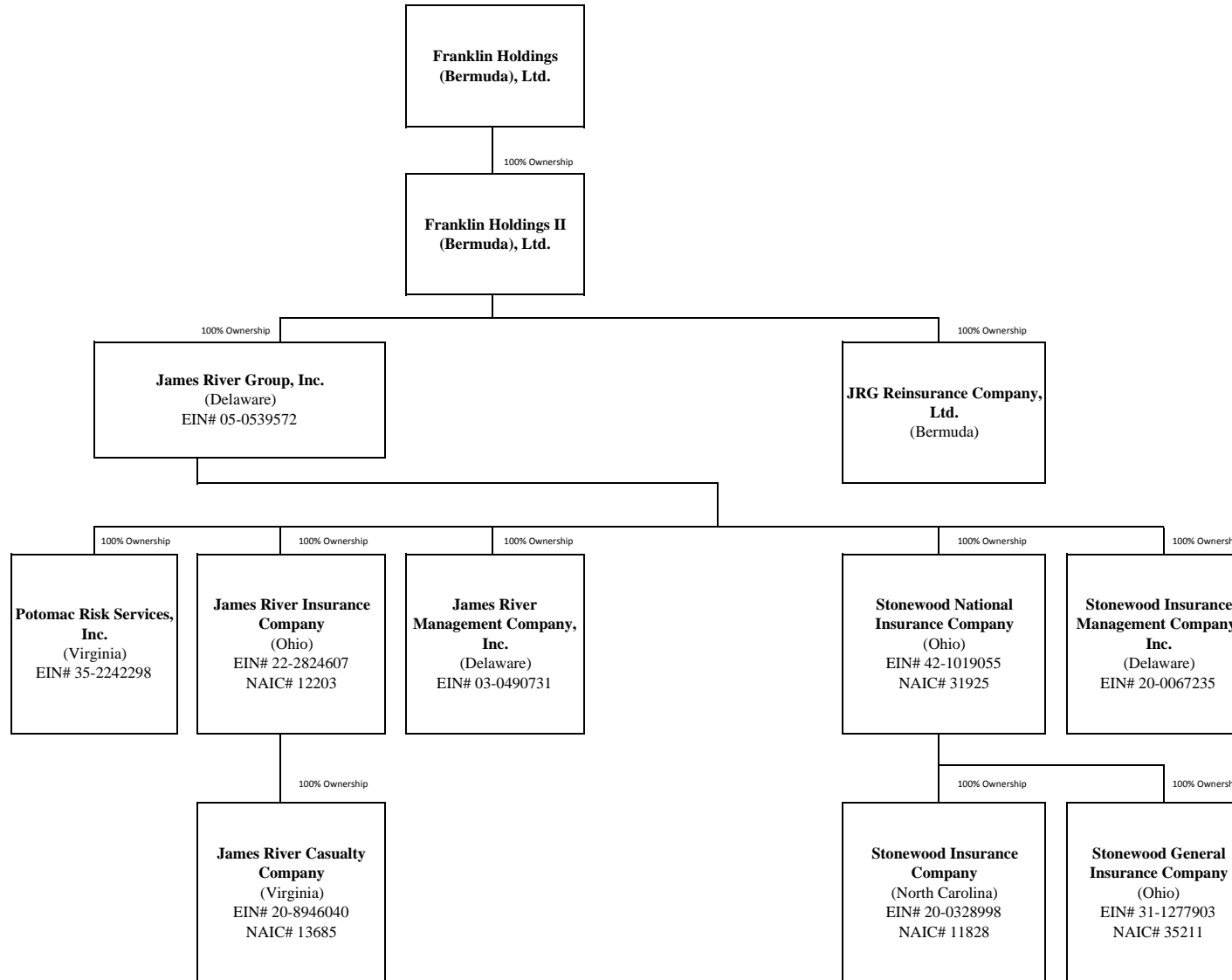
(E) - Eligible - Reporting Entities eligible or approved to write Surplus Lines in the state; (N) - None of the above - Not allowed to write business in the state.

Explanation of Basis of Allocation of Premiums by States, etc.

Auto Liability and Auto Physical Damage - Location of principal garage of insured

SCHEDULE Y - INFORMATION CONCERNING ACTIVITIES OF INSURER MEMBERS OF A HOLDING COMPANY

PART 1 - ORGANIZATIONAL CHART



2012 ALPHABETICAL INDEX -- PROPERTY & CASUALTY ANNUAL STATEMENT BLANK

Assets	2	Schedule P-Part 2G-Special Liability (Ocean Marine, Aircraft (All Perils), Boiler & Machinery)	59
Cash Flow	5	Schedule P-Part 2H-Section 1-Other Liability-Occurrence	59
Exhibit of Capital Gains (Losses)	12	Schedule P-Part 2H-Section 2-Other Liability-Claims-Made	59
Exhibit of Net Investment Income	12	Schedule P-Part 2I-Spec. Prop. (Fire, Allied Lines, Inland Marine, Earthquake, Burglary, Theft)	60
Exhibit of Nonadmitted Assets	13	Schedule P-Part 2J-Auto Physical Damage	60
Exhibit of Premiums and Losses (State Page)	19	Schedule P-Part 2K-Fidelity, Surety	60
Five-Year Historical Data	17	Schedule P-Part 2L-Other (Including Credit, Accident and Health)	60
General Interrogatories	15	Schedule P-Part 2M-International	60
Jurat Page	1	Schedule P-Part 2N-Reinsurance - Nonproportional Assumed Property	61
Liabilities, Surplus and Other Funds	3	Schedule P-Part 2O-Reinsurance - Nonproportional Assumed Liability	61
Notes To Financial Statements	14	Schedule P-Part 2P-Reinsurance - Nonproportional Assumed Financial Lines	61
Overflow Page For Write-ins	101	Schedule P-Part 2R-Section 1-Products Liability-Occurrence	62
Schedule A-Part 1	E01	Schedule P-Part 2R-Section 2-Products Liability-Claims-Made	62
Schedule A-Part 2	E02	Schedule P-Part 2S-Financial Guaranty/Mortgage Guaranty	62
Schedule A-Part 3	E03	Schedule P-Part 2T-Warranty	62
Schedule A-Verification Between Years	SI02	Schedule P-Part 3A-Homeowners/Farmowners	63
Schedule B-Part 1	E04	Schedule P-Part 3B-Private Passenger Auto Liability/Medical	63
Schedule B-Part 2	E05	Schedule P-Part 3C-Commercial Auto/Truck Liability/Medical	63
Schedule B-Part 3	E06	Schedule P-Part 3D-Workers' Compensation (Excluding Excess Workers Compensation)	63
Schedule B-Verification Between Years	SI02	Schedule P-Part 3E-Commercial Multiple Peril	63
Schedule BA-Part 1	E07	Schedule P-Part 3F-Section 1-Medical Professional Liability-Occurrence	64
Schedule BA-Part 2	E08	Schedule P-Part 3F-Section 2-Medical Professional Liability-Claims-Made	64
Schedule BA-Part 3	E09	Schedule P-Part 3G-Special Liability (Ocean Marine, Aircraft (All Perils), Boiler & Machinery)	64
Schedule BA-Verification Between Years	SI03	Schedule P-Part 3H-Section 1-Other Liability-Occurrence	64
Schedule D-Part 1	E10	Schedule P-Part 3H-Section 2-Other Liability-Claims-Made	64
Schedule D-Part 1A-Section 1	SI05	Schedule P-Part 3I-Spec. Prop. (Fire, Allied Lines, Inland Marine, Earthquake, Burglary, Theft)	65
Schedule D-Part 1A-Section 2	SI08	Schedule P-Part 3J-Auto Physical Damage	65
Schedule D-Part 2-Section 1	E11	Schedule P-Part 3K-Fidelity/Surety	65
Schedule D-Part 2-Section 2	E12	Schedule P-Part 3L-Other (Including Credit, Accident and Health)	65
Schedule D-Part 3	E13	Schedule P-Part 3M-International	65
Schedule D-Part 4	E14	Schedule P-Part 3N-Reinsurance - Nonproportional Assumed Property	66
Schedule D-Part 5	E15	Schedule P-Part 3O-Reinsurance - Nonproportional Assumed Liability	66
Schedule D-Part 6-Section 1	E16	Schedule P-Part 3P-Reinsurance - Nonproportional Assumed Financial Lines	66
Schedule D-Part 6-Section 2	E16	Schedule P-Part 3R-Section 1-Products Liability-Occurrence	67
Schedule D-Summary By Country	SI04	Schedule P-Part 3R-Section 2-Products Liability-Claims-Made	67
Schedule D-Verification Between Years	SI03	Schedule P-Part 3S-Financial Guaranty/Mortgage Guaranty	67
Schedule DA-Part 1	E17	Schedule P-Part 3T-Warranty	67
Schedule DA-Verification Between Years	SI10	Schedule P-Part 4A-Homeowners/Farmowners	68
Schedule DB-Part A-Section 1	E18	Schedule P-Part 4B-Private Passenger Auto Liability/Medical	68
Schedule DB-Part A-Section 2	E19	Schedule P-Part 4C-Commercial Auto/Truck Liability/Medical	68
Schedule DB-Part A-Verification Between Years	SI11	Schedule P-Part 4D-Workers' Compensation (Excluding Excess Workers Compensation)	68
Schedule DB-Part B-Section 1	E20	Schedule P-Part 4E-Commercial Multiple Peril	68
Schedule DB-Part B-Section 2	E21	Schedule P-Part 4F-Section 1-Medical Professional Liability-Occurrence	69
Schedule DB-Part B-Verification Between Years	SI11	Schedule P-Part 4F-Section 2-Medical Professional Liability-Claims-Made	69
Schedule DB-Part C-Section 1	SI12	Schedule P-Part 4G-Special Liability (Ocean Marine, Aircraft (All Perils), Boiler & Machinery)	69
Schedule DB-Part C-Section 2	SI13	Schedule P-Part 4H-Section 1-Other Liability-Occurrence	69
Schedule DB-Part D	E22	Schedule P-Part 4H-Section 2-Other Liability-Claims-Made	69
Schedule DB-Verification	SI14	Schedule P-Part 4I-Spec. Prop. (Fire, Allied Lines, Inland Marine, Earthquake, Burglary & Theft)	70
Schedule DL-Part 1	E23	Schedule P-Part 4J-Auto Physical Damage	70
Schedule DL-Part 2	E24	Schedule P-Part 4K-Fidelity/Surety	70
Schedule E-Part 1-Cash	E25	Schedule P-Part 4L-Other (Including Credit, Accident and Health)	70
Schedule E-Part 2-Cash Equivalents	E26	Schedule P-Part 4M-International	70
Schedule E-Part 3-Special Deposits	E27	Schedule P-Part 4N-Reinsurance - Nonproportional Assumed Property	71
Schedule E-Verification Between Years	SI15	Schedule P-Part 4O-Reinsurance - Nonproportional Assumed Liability	71
Schedule F-Part 1	20	Schedule P-Part 4P-Reinsurance - Nonproportional Assumed Financial Lines	71
Schedule F-Part 2	21	Schedule P-Part 4R-Section 1-Products Liability-Occurrence	72
Schedule F-Part 3	22	Schedule P-Part 4R-Section 2-Products Liability-Claims-Made	72
Schedule F-Part 4	23	Schedule P-Part 4S-Financial Guaranty/Mortgage Guaranty	72
Schedule F-Part 5	24	Schedule P-Part 4T-Warranty	72
Schedule F-Part 6-Section 1	25	Schedule P-Part 5A-Homeowners/Farmowners	73
Schedule F-Part 6-Section 2	27	Schedule P-Part 5B-Private Passenger Auto Liability/Medical	74
Schedule F-Part 7	28	Schedule P-Part 5C-Commercial Auto/Truck Liability/Medical	75
Schedule F-Part 8	29	Schedule P-Part 5D-Workers' Compensation (Excluding Excess Workers Compensation)	76
Schedule F-Part 9	30	Schedule P-Part 5E-Commercial Multiple Peril	77
Schedule H-Accident and Health Exhibit-Part 1	31	Schedule P-Part 5F-Medical Professional Liability-Claims-Made	79
Schedule H-Part 2, Part 3 and Part 4	32	Schedule P-Part 5F-Medical Professional Liability-Occurrence	78
Schedule H-Part 5-Health Claims	33	Schedule P-Part 5H-Other Liability-Claims-Made	81
Schedule P-Part 1-Summary	34	Schedule P-Part 5H-Other Liability-Occurrence	80
Schedule P-Part 1A-Homeowners/Farmowners	36	Schedule P-Part 5R-Products Liability-Claims-Made	83
Schedule P-Part 1B-Private Passenger Auto Liability/Medical	37	Schedule P-Part 5R-Products Liability-Occurrence	82
Schedule P-Part 1C-Commercial Auto/Truck Liability/Medical	38	Schedule P-Part 5T-Warranty	84
Schedule P-Part 1D-Workers' Compensation (Excluding Excess Workers Compensation)	39	Schedule P-Part 6C-Commercial Auto/Truck Liability/Medical	85
Schedule P-Part 1E-Commercial Multiple Peril	40	Schedule P-Part 6D-Workers' Compensation (Excluding Excess Workers Compensation)	85
Schedule P-Part 1F-Section 1-Medical Professional Liability-Occurrence	41	Schedule P-Part 6E-Commercial Multiple Peril	86
Schedule P-Part 1F-Section 2-Medical Professional Liability-Claims-Made	42	Schedule P-Part 6H-Other Liability-Claims-Made	87
Schedule P-Part 1G-Special Liability (Ocean, Marine, Aircraft (All Perils), Boiler & Machinery)	43	Schedule P-Part 6H-Other Liability-Occurrence	86
Schedule P-Part 1H-Section 1-Other Liability-Occurrence	44	Schedule P-Part 6M-International	87
Schedule P-Part 1H-Section 2-Other Liability-Claims-Made	45	Schedule P-Part 6N-Reinsurance - Nonproportional Assumed Property	88
Schedule P-Part 1I-Spec. Prop. (Fire, Allied Lines, Inland Marine, Earthquake, Burglary & Theft)	46	Schedule P-Part 6O-Reinsurance - Nonproportional Assumed Liability	88
Schedule P-Part 1J-Auto Physical Damage	47	Schedule P-Part 6R-Products Liability-Claims-Made	89
Schedule P-Part 1K-Fidelity/Surety	48	Schedule P-Part 6R-Products Liability-Occurrence	89
Schedule P-Part 1L-Other (Including Credit, Accident and Health)	49	Schedule P-Part 7A-Primary Loss Sensitive Contracts	90
Schedule P-Part 1M-International	50	Schedule P-Part 7B-Reinsurance Loss Sensitive Contracts	92
Schedule P-Part 1N-Reinsurance - Nonproportional Assumed Property	51	Schedule P Interrogatories	94
Schedule P-Part 1O-Reinsurance - Nonproportional Assumed Liability	52	Schedule T-Exhibit of Premiums Written	95
Schedule P-Part 1P-Reinsurance - Nonproportional Assumed Financial Lines	53	Schedule T-Part 2-Interstate Compact	96
Schedule P-Part 1R-Section 1-Products Liability-Occurrence	54	Schedule Y-Information Concerning Activities of Insurer Members of a Holding Company Group	97
Schedule P-Part 1R-Section 2-Products Liability-Claims-Made	55	Schedule Y-Detail of Insurance Holding Company System	98
Schedule P-Part 1S-Financial Guaranty/Mortgage Guaranty	56	Schedule Y-Part 2-Summary of Insurer's Transactions With Any Affiliates	99
Schedule P-Part 1T-Warranty	57	Statement of Income	4
Schedule P-Part 2, Part 3 and Part 4 - Summary	35	Summary Investment Schedule	SI01
Schedule P-Part 2A-Homeowners/Farmowners	58	Supplemental Exhibits and Schedules Interrogatories	100
Schedule P-Part 2B-Private Passenger Auto Liability/Medical	58	Underwriting and Investment Exhibit Part 1	6
Schedule P-Part 2C-Commercial Auto/Truck Liability/Medical	58	Underwriting and Investment Exhibit Part 1A	7
Schedule P-Part 2D-Workers' Compensation (Excluding Excess Workers Compensation)	58	Underwriting and Investment Exhibit Part 1B	8
Schedule P-Part 2E-Commercial Multiple Peril	58	Underwriting and Investment Exhibit Part 2	9
Schedule P-Part 2F-Section 1-Medical Professional Liability-Occurrence	59	Underwriting and Investment Exhibit Part 2A	10
Schedule P-Part 2F-Section 2-Medical Professional Liability-Claims-Made	59	Underwriting and Investment Exhibit Part 3	11