



ANNUAL STATEMENT
FOR THE YEAR ENDED DECEMBER 31, 2012
OF THE CONDITION AND AFFAIRS OF THE
Old Guard Insurance Company

NAIC Group Code 0228, 0228 NAIC Company Code 17558 Employer's ID Number 23-0929640
(Current Period) (Prior Period)

Organized under the Laws of Ohio, State of Domicile or Port of Entry Ohio

Country of Domicile US

Incorporated/Organized December 9, 1896 Commenced Business December 9, 1896

Statutory Home Office One Park Circle, Westfield Center, Ohio, US 44251-5001
(Street and Number, City or Town, State, Country and Zip Code)

Main Administrative Office One Park Circle, Westfield Center, Ohio 44251-5001 330-887-0101
(Street and Number, City or Town, State, Country and Zip Code) (Area Code) (Telephone Number)

Mail Address P.O. Box 5001, Westfield Center, Ohio 44251-5001
(Street and Number or P.O. Box, City or Town, State, Country and Zip Code)

Primary Location of Books and Records One Park Circle, Westfield Center, Ohio 44251-5001
(Street and Number, City or Town, State, Country and Zip Code)
330-887-0101
(Area Code) (Telephone Number)

Internet Website Address www.westfieldgrp.com

Statutory Statement Contact Bambi Ann Beshire 330-887-0101
(Name) (Area Code) (Telephone Number) (Extension)
FinancialReporting@westfieldgrp.com 330-887-0840
(E-Mail Address) (Fax Number)

OFFICERS

Edward James Largent (Westfield Insurance Leader & President)
Joseph Christian Kohmann (Group Finance Leader & Treasurer)
Frank Anthony Carrino (Group Legal Leader & Secretary)

OTHER OFFICERS

James Robert Clay# (Chairman & CEO)
Dennis Paul Baus# (National Surety Leader)
Bambi Ann Beshire (Group Finance & Accounting Leader)
Stephen Edward Lehecka (Group Actuarial Leader)
Heidi Storch Mack (National UW & Product Leader)
Martha Haskins Oakes (National Middle Market Leader)
Marianne Colette Parkinson# (Group Customer & Marketing Leader)
Christopher Michael Paterakis (Group HR Leader)
David Campbell Peterson (National PL & SBA Leader)
Michael Joseph Prandi (National Claims Leader)
Stuart Wayne Rosenberg (Group Administration Leader)
Peter Robert Schwanke (Group Risk Management Leader)
Philip Harold Swettenham# (National Distribution Leader)
Stephen John Tien (Group IT Leader)
George Krieg Wiswesser (Group Investment Leader)

DIRECTORS OR TRUSTEES

Michael John Bernaski
Cheryl Lila Carlisle#
James Robert Clay
Fariborz Ghadar
Gary Dean Hallman
Susan Jane Insley
Edward James Largent#
Deborah Denine Pryce
John Lewis Watson
Thomas Eldon Workman

State of Ohio }
County of Medina } SS

The officers of this reporting entity being duly sworn, each depose and say that they are the described officers of said reporting entity, and that on the reporting period stated above, all of the herein described assets were the absolute property of the said reporting entity, free and clear from any liens or claims thereon, except as herein stated, and that this statement, together with related exhibits, schedules and explanations therein contained, annexed or referred to, is a full and true statement of all the assets and liabilities and of the condition and affairs of the said reporting entity as of the reporting period stated above, and of its income and deductions therefrom for the period ended, and have been completed in accordance with the NAIC Annual Statement Instructions and Accounting Practices and Procedures manual except to the extent that: (1) state law may differ; or, (2) that state rules or regulations require differences in reporting not related to accounting practices and procedures, according to the best of their information, knowledge and belief, respectively. Furthermore, the scope of this attestation by the described officers also includes the related corresponding electronic filing with the NAIC, when required, that is an exact copy (except for formatting differences due to electronic filing) of the enclosed statement. The electronic filing may be requested by various regulators in lieu of or in addition to the enclosed statement.

Edward James Largent
Westfield Insurance Leader & President

Joseph Christian Kohmann
Group Finance Leader & Treasurer

Frank Anthony Carrino
Group Legal Leader & Secretary

Subscribed and sworn to before me this
15th day of February, 2013

a. Is this an original filing? Yes (X) No ()
b. If no: 1. State the amendment number 0
2. Date filed _____
3. Number of pages attached 0

ASSETS

| | Current Year | | | Prior Year |
|---|--------------|----------------------------|--|-----------------------------|
| | 1 Assets | 2 Nonadmitted Assets | 3 Net Admitted Assets (Col 1 - Col 2) | 4 Net Admitted Assets |
| 1. Bonds (Schedule D) | 198,026,077 | 0 | 198,026,077 | 208,641,412 |
| 2. Stocks (Schedule D): | | | | |
| 2.1 Preferred stocks | 0 | 0 | 0 | 0 |
| 2.2 Common stocks | 96,116,806 | 0 | 96,116,806 | 71,251,133 |
| 3. Mortgage loans on real estate (Schedule B): | | | | |
| 3.1 First liens | 0 | 0 | 0 | 0 |
| 3.2 Other than first liens | 0 | 0 | 0 | 0 |
| 4. Real estate (Schedule A): | | | | |
| 4.1 Properties occupied by the company (less \$ 0 encumbrances) | 0 | 0 | 0 | 0 |
| 4.2 Properties held for the production of income (less \$ 0 encumbrances) | 0 | 0 | 0 | 0 |
| 4.3 Properties held for sale (less \$ 0 encumbrances) | 0 | 0 | 0 | 0 |
| 5. Cash (\$ 0, Schedule E - Part 1), cash equivalents (\$ 0, Schedule E - Part 2) and short-term investments (\$ 716,009, Schedule DA) | 716,009 | 0 | 716,009 | 470,465 |
| 6. Contract loans (including \$ 0 premium notes) | 0 | 0 | 0 | 0 |
| 7. Derivatives (Schedule DB) | 0 | 0 | 0 | 0 |
| 8. Other invested assets (Schedule BA) | 3,283,594 | 0 | 3,283,594 | 3,357,170 |
| 9. Receivables for securities | 0 | 0 | 0 | 3,315 |
| 10. Securities lending reinvested collateral assets (Schedule DL) | 0 | 0 | 0 | 0 |
| 11. Aggregate write-ins for invested assets | 0 | 0 | 0 | 0 |
| 12. Subtotals, cash and invested assets (Line 1 through Line 11) | 298,142,486 | 0 | 298,142,486 | 283,723,495 |
| 13. Title plants less \$ 0 charged off (for Title insurers only) | 0 | 0 | 0 | 0 |
| 14. Investment income due and accrued | 2,979,442 | 0 | 2,979,442 | 2,783,729 |
| 15. Premiums and considerations: | | | | |
| 15.1 Uncollected premiums and agents' balances in the course of collection | 7,949,521 | 870,612 | 7,078,909 | 6,948,427 |
| 15.2 Deferred premiums, agents' balances and installments booked but deferred and not yet due (including \$ 56,417 earned but unbilled premiums) | 43,699,865 | 5,642 | 43,694,223 | 41,779,189 |
| 15.3 Accrued retrospective premiums | 0 | 0 | 0 | 0 |
| 16. Reinsurance: | | | | |
| 16.1 Amounts recoverable from reinsurers | 0 | 0 | 0 | 0 |
| 16.2 Funds held by or deposited with reinsured companies | 0 | 0 | 0 | 0 |
| 16.3 Other amounts receivable under reinsurance contracts | 0 | 0 | 0 | 0 |
| 17. Amounts receivable relating to uninsured plans | 0 | 0 | 0 | 0 |
| 18.1 Current federal and foreign income tax recoverable and interest thereon | 0 | 0 | 0 | 0 |
| 18.2 Net deferred tax asset | 3,483,812 | 0 | 3,483,812 | 2,034,944 |
| 19. Guaranty funds receivable or on deposit | 0 | 0 | 0 | 0 |
| 20. Electronic data processing equipment and software | 0 | 0 | 0 | 0 |
| 21. Furniture and equipment, including health care delivery assets (\$ 0) | 0 | 0 | 0 | 0 |
| 22. Net adjustment in assets and liabilities due to foreign exchange rates | 0 | 0 | 0 | 0 |
| 23. Receivables from parent, subsidiaries and affiliates | 791,832 | 0 | 791,832 | 0 |
| 24. Health care (\$ 0) and other amounts receivable | 0 | 0 | 0 | 0 |
| 25. Aggregate write-ins for other than invested assets | 0 | 0 | 0 | 0 |
| 26. Total assets excluding Separate Accounts, Segregated Accounts and Protected Cell Accounts (Line 12 to Line 25) | 357,046,958 | 876,254 | 356,170,704 | 337,269,784 |
| 27. From Separate Accounts, Segregated Accounts and Protected Cell Accounts | 0 | 0 | 0 | 0 |
| 28. Total (Line 26 and Line 27) | 357,046,958 | 876,254 | 356,170,704 | 337,269,784 |
| DETAILS OF WRITE-INS | | | | |
| 1101. | 0 | 0 | 0 | 0 |
| 1102. | 0 | 0 | 0 | 0 |
| 1103. | 0 | 0 | 0 | 0 |
| 1198. Summary of remaining write-ins for Line 11 from overflow page | 0 | 0 | 0 | 0 |
| 1199. Totals (Line 1101 through Line 1103 plus Line 1198) (Line 11 above) | 0 | 0 | 0 | 0 |
| 2501. | 0 | 0 | 0 | 0 |
| 2502. | 0 | 0 | 0 | 0 |
| 2503. | 0 | 0 | 0 | 0 |
| 2598. Summary of remaining write-ins for Line 25 from overflow page | 0 | 0 | 0 | 0 |
| 2599. Totals (Line 2501 through Line 2503 plus Line 2598) (Line 25 above) | 0 | 0 | 0 | 0 |

LIABILITIES, SURPLUS AND OTHER FUNDS

| | 1 Current Year | 2 Prior Year |
|--|-------------------|-----------------|
| 1. Losses (Part 2A, Line 35, Column 8) | 102,078,093 | 106,817,538 |
| 2. Reinsurance payable on paid losses and loss adjustment expenses (Schedule F, Part 1, Column 6) | 0 | 0 |
| 3. Loss adjustment expenses (Part 2A, Line 35, Column 9) | 31,126,407 | 29,567,900 |
| 4. Commissions payable, contingent commissions and other similar charges | 9,079,991 | 8,048,192 |
| 5. Other expenses (excluding taxes, licenses and fees) | 4,861,160 | 3,992,409 |
| 6. Taxes, licenses and fees (excluding federal and foreign income taxes) | 2,122,417 | 2,213,009 |
| 7.1 Current federal and foreign income taxes (including \$ 0 on realized capital gains (losses)) | 775,055 | 165,833 |
| 7.2 Net deferred tax liability | 0 | 0 |
| 8. Borrowed money \$ 0 and interest thereon \$ 0 | 0 | 0 |
| 9. Unearned premiums (Part 1A, Line 38, Column 5) (after deducting unearned premiums for ceded reinsurance of \$ 0 and including warranty reserves of \$ 0 and accrued accident and health experience rating refunds including \$ 0 for medical loss ratio rebate per the Public Health Service Act) | 68,779,159 | 66,650,773 |
| 10. Advance premium | 0 | 0 |
| 11. Dividends declared and unpaid: | | |
| 11.1 Stockholders | 0 | 0 |
| 11.2 Policyholders | 0 | 0 |
| 12. Ceded reinsurance premiums payable (net of ceding commissions) | 513,069 | 695,403 |
| 13. Funds held by company under reinsurance treaties (Schedule F, Part 3, Column 19) | 0 | 0 |
| 14. Amounts withheld or retained by company for account of others | 0 | 0 |
| 15. Remittances and items not allocated | 0 | 0 |
| 16. Provision for reinsurance (including \$ 0 certified) (Schedule F, Part 8) | 0 | 0 |
| 17. Net adjustments in assets and liabilities due to foreign exchange rates | 0 | 0 |
| 18. Drafts outstanding | 0 | 0 |
| 19. Payable to parent, subsidiaries and affiliates | 0 | 955,677 |
| 20. Derivatives | 0 | 0 |
| 21. Payable for securities | 0 | 0 |
| 22. Payable for securities lending | 0 | 0 |
| 23. Liability for amounts held under uninsured plans | 0 | 0 |
| 24. Capital notes \$ 0 and interest thereon \$ 0 | 0 | 0 |
| 25. Aggregate write-ins for liabilities | 0 | 0 |
| 26. Total liabilities excluding protected cell liabilities (Line 1 through Line 25) | 219,335,351 | 219,106,734 |
| 27. Protected cell liabilities | 0 | 0 |
| 28. Total liabilities (Line 26 and Line 27) | 219,335,351 | 219,106,734 |
| 29. Aggregate write-ins for special surplus funds | 20,878,355 | 19,623,908 |
| 30. Common capital stock | 2,500,000 | 2,500,000 |
| 31. Preferred capital stock | 0 | 0 |
| 32. Aggregate write-ins for other than special surplus funds | 0 | 1,019,559 |
| 33. Surplus notes | 0 | 0 |
| 34. Gross paid in and contributed surplus | 31,870,941 | 31,870,940 |
| 35. Unassigned funds (surplus) | 81,586,057 | 63,148,643 |
| 36. Less treasury stock, at cost: | | |
| 36.1 0 shares common (value included in Line 30 \$ 0) | 0 | 0 |
| 36.2 0 shares preferred (value included in Line 31 \$ 0) | 0 | 0 |
| 37. Surplus as regards policyholders (Line 29 to Line 35, less Line 36) (Page 4, Line 39) | 136,835,353 | 118,163,050 |
| 38. Totals (Page 2, Line 28, Column 3) | 356,170,704 | 337,269,784 |
| DETAILS OF WRITE-INS | | |
| 2501. | 0 | 0 |
| 2502. | 0 | 0 |
| 2503. | 0 | 0 |
| 2598. Summary of remaining write-ins for Line 25 from overflow page | 0 | 0 |
| 2599. Totals (Line 2501 through Line 2503 plus Line 2598) (Line 25 above) | 0 | 0 |
| 2901. General voluntary reserve | 20,878,355 | 19,623,908 |
| 2902. | 0 | 0 |
| 2903. | 0 | 0 |
| 2998. Summary of remaining write-ins for Line 29 from overflow page | 0 | 0 |
| 2999. Totals (Line 2901 through Line 2903 plus Line 2998) (Line 29 above) | 20,878,355 | 19,623,908 |
| 3201. Increased amount of surplus due to SSAP 10R, paragraph 10. e. | 0 | 1,019,559 |
| 3202. | 0 | 0 |
| 3203. | 0 | 0 |
| 3298. Summary of remaining write-ins for Line 32 from overflow page | 0 | 0 |
| 3299. Totals (Line 3201 through Line 3203 plus Line 3298) (Line 32 above) | 0 | 1,019,559 |

STATEMENT OF INCOME

| UNDERWRITING INCOME | 1 Current Year | 2 Prior Year |
|--|-------------------|-----------------|
| 1. Premiums earned (Part 1, Line 35, Column 4) | 142,499,999 | 135,671,291 |
| DEDUCTIONS | | |
| 2. Losses incurred (Part 2, Line 35, Column 7) | 75,915,660 | 91,519,295 |
| 3. Loss adjustment expenses incurred (Part 3, Line 25, Column 1) | 16,512,101 | 16,015,662 |
| 4. Other underwriting expenses incurred (Part 3, Line 25, Column 2) | 49,629,846 | 44,819,073 |
| 5. Aggregate write-ins for underwriting deductions | 0 | 0 |
| 6. Total underwriting deductions (Line 2 through Line 5) | 142,057,607 | 152,354,030 |
| 7. Net income of protected cells | 0 | 0 |
| 8. Net underwriting gain (loss) (Line 1 minus Line 6 plus Line 7) | 442,392 | (16,682,739) |
| INVESTMENT INCOME | | |
| 9. Net investment income earned (Exhibit of Net Investment Income, Line 17) | 11,364,030 | 11,654,538 |
| 10. Net realized capital gains (losses) less capital gains tax of \$ 4,136,468 (Exhibit of Capital Gains (Losses)) | 7,687,322 | 1,627,510 |
| 11. Net investment gain (loss) (Line 9 plus Line 10) | 19,051,352 | 13,282,048 |
| OTHER INCOME | | |
| 12. Net gain (loss) from agents' or premium balances charged off (amount recovered \$ 523,848 , amount charged off \$ 696,616) | (172,768) | (202,255) |
| 13. Finance and service charges not included in premiums | 0 | 0 |
| 14. Aggregate write-ins for miscellaneous income | 7,000 | 12,135 |
| 15. Total other income (Line 12 through Line 14) | (165,768) | (190,120) |
| 16. Net income before dividends to policyholders, after capital gains tax and before all other federal and foreign income taxes (Line 8 plus Line 11 plus Line 15) | 19,327,976 | (3,590,811) |
| 17. Dividends to policyholders | 0 | 0 |
| 18. Net income, after dividends to policyholders, after capital gains tax and before all other federal and foreign income taxes (Line 16 minus Line 17) | 19,327,976 | (3,590,811) |
| 19. Federal and foreign income taxes incurred | 3,269,620 | (2,270,145) |
| 20. Net income (Line 18 minus Line 19) (to Line 22) | 16,058,356 | (1,320,666) |
| CAPITAL AND SURPLUS ACCOUNT | | |
| 21. Surplus as regards policyholders, December 31 prior year (Page 4, Line 39, Column 2) | 118,163,050 | 121,887,972 |
| 22. Net income (from Line 20) | 16,058,356 | (1,320,666) |
| 23. Net transfers (to) from Protected Cell accounts | 0 | 0 |
| 24. Change in net unrealized capital gains or (losses) less capital gains tax of \$ 440,915 | 813,532 | (377,759) |
| 25. Change in net unrealized foreign exchange capital gain (loss) | 0 | 0 |
| 26. Change in net deferred income tax | 27,592 | (142,740) |
| 27. Change in nonadmitted assets (Exhibit of Nonadmitted Assets, Line 28, Column 3) | 1,772,823 | (1,883,757) |
| 28. Change in provision for reinsurance (Page 3, Line 16, Column 2 minus Column 1) | 0 | 0 |
| 29. Change in surplus notes | 0 | 0 |
| 30. Surplus (contributed to) withdrawn from protected cells | 0 | 0 |
| 31. Cumulative effect of changes in accounting principles | 0 | 0 |
| 32. Capital changes: | | |
| 32.1 Paid in | 0 | 0 |
| 32.2 Transferred from surplus (Stock Dividend) | 0 | 0 |
| 32.3 Transferred to surplus | 0 | 0 |
| 33. Surplus adjustments: | | |
| 33.1 Paid in | 0 | 0 |
| 33.2 Transferred to capital (Stock Dividend) | 0 | 0 |
| 33.3 Transferred from capital | 0 | 0 |
| 34. Net remittances from or (to) Home Office | 0 | 0 |
| 35. Dividends to stockholders | 0 | 0 |
| 36. Change in treasury stock (Page 3, Line 36.1 and Line 36.2, Column 2 minus Column 1) | 0 | 0 |
| 37. Aggregate write-ins for gains and losses in surplus | 0 | 0 |
| 38. Change in surplus as regards policyholders for the year (Line 22 through Line 37) | 18,672,303 | (3,724,922) |
| 39. Surplus as regards policyholders, December 31 current year (Line 21 plus Line 38) (Page 3, Line 37) | 136,835,353 | 118,163,050 |
| DETAILS OF WRITE-INS | | |
| 0501. | 0 | 0 |
| 0502. | 0 | 0 |
| 0503. | 0 | 0 |
| 0598. Summary of remaining write-ins for Line 5 from overflow page | 0 | 0 |
| 0599. Totals (Line 0501 through Line 0503 plus Line 0598) (Line 5 above) | 0 | 0 |
| 1401. Net other interest income | 7,000 | 12,135 |
| 1402. | 0 | 0 |
| 1403. | 0 | 0 |
| 1498. Summary of remaining write-ins for Line 14 from overflow page | 0 | 0 |
| 1499. Totals (Line 1401 through Line 1403 plus Line 1498) (Line 14 above) | 7,000 | 12,135 |
| 3701. Increased amount of nonadmitted asset reported on line 27, due to SSAP 10R, paragraph 10.e. | 0 | 308,426 |
| 3702. Decreased amount of surplus due to SSAP 10R, paragraph 10.e. | 0 | (308,426) |
| 3703. | 0 | 0 |
| 3798. Summary of remaining write-ins for Line 37 from overflow page | 0 | 0 |
| 3799. Totals (Line 3701 through Line 3703 plus Line 3798) (Line 37 above) | 0 | 0 |

CASH FLOW

| | 1 | 2 |
|--|--------------|--------------|
| | Current Year | Prior Year |
| Cash from Operations | | |
| 1. Premiums collected net of reinsurance | 142,311,167 | 136,358,998 |
| 2. Net investment income | 13,823,127 | 13,647,894 |
| 3. Miscellaneous income | (165,768) | (190,119) |
| 4. Total (Line 1 through Line 3) | 155,968,526 | 149,816,773 |
| 5. Benefit and loss related payments | 80,655,106 | 82,642,024 |
| 6. Net transfers to Separate Accounts, Segregated Accounts and Protected Cell Accounts | 0 | 0 |
| 7. Commissions, expenses paid and aggregate write-ins for deductions | 62,777,714 | 58,293,939 |
| 8. Dividends paid to policyholders | 0 | 0 |
| 9. Federal and foreign income taxes paid (recovered) net of \$ 4,136,468 tax on capital gains (losses) | 6,796,866 | (981,658) |
| 10. Total (Line 5 through Line 9) | 150,229,686 | 139,954,305 |
| 11. Net cash from operations (Line 4 minus Line 10) | 5,738,840 | 9,862,468 |
| Cash from Investments | | |
| 12. Proceeds from investments sold, matured or repaid: | | |
| 12.1 Bonds | 44,799,676 | 43,933,117 |
| 12.2 Stocks | 19,342,389 | 5,359,723 |
| 12.3 Mortgage loans | 0 | 0 |
| 12.4 Real estate | 0 | 0 |
| 12.5 Other invested assets | 0 | 1,743,006 |
| 12.6 Net gains or (losses) on cash, cash equivalents and short-term investments | 0 | 0 |
| 12.7 Miscellaneous proceeds | 3,315 | 0 |
| 12.8 Total investment proceeds (Line 12.1 through Line 12.7) | 64,145,380 | 51,035,846 |
| 13. Cost of investments acquired (long-term only): | | |
| 13.1 Bonds | 31,955,741 | 54,735,643 |
| 13.2 Stocks | 35,935,426 | 7,917,027 |
| 13.3 Mortgage loans | 0 | 0 |
| 13.4 Real estate | 0 | 0 |
| 13.5 Other invested assets | 0 | 0 |
| 13.6 Miscellaneous applications | 0 | 3,315 |
| 13.7 Total investments acquired (Line 13.1 through Line 13.6) | 67,891,167 | 62,655,985 |
| 14. Net increase (decrease) in contract loans and premium notes | 0 | 0 |
| 15. Net cash from investments (Line 12.8 minus Line 13.7 minus Line 14) | (3,745,787) | (11,620,139) |
| Cash from Financing and Miscellaneous Sources | | |
| 16. Cash provided (applied): | | |
| 16.1 Surplus notes, capital notes | 0 | 0 |
| 16.2 Capital and paid in surplus, less treasury stock | 0 | 0 |
| 16.3 Borrowed funds | 0 | 0 |
| 16.4 Net deposits on deposit-type contracts and other insurance liabilities | 0 | 0 |
| 16.5 Dividends to stockholders | 0 | 0 |
| 16.6 Other cash provided (applied) | (1,747,509) | 1,104,640 |
| 17. Net cash from financing and miscellaneous sources (Line 16.1 through Line 16.4 minus Line 16.5 plus Line 16.6) | (1,747,509) | 1,104,640 |
| RECONCILIATION OF CASH, CASH EQUIVALENTS AND SHORT-TERM INVESTMENTS | | |
| 18. Net change in cash, cash equivalents and short-term investments (Line 11 plus Line 15 plus Line 17) | 245,544 | (653,031) |
| 19. Cash, cash equivalents and short-term investments: | | |
| 19.1 Beginning of year | 470,465 | 1,123,496 |
| 19.2 End of year (Line 18 plus Line 19.1) | 716,009 | 470,465 |

Note: Supplemental disclosures of cash flow information for non-cash transactions:

| | | |
|---------|---|---|
| 20.0001 | 0 | 0 |
| 20.0002 | 0 | 0 |
| 20.0003 | 0 | 0 |
| 20.0004 | 0 | 0 |
| 20.0005 | 0 | 0 |
| 20.0006 | 0 | 0 |
| 20.0007 | 0 | 0 |
| 20.0008 | 0 | 0 |
| 20.0009 | 0 | 0 |
| 20.0010 | 0 | 0 |

UNDERWRITING AND INVESTMENT EXHIBIT

PART 1 - PREMIUMS EARNED

| Line of Business | 1 Net Premiums Written per Column 6, Part 1B | 2 Unearned Premiums December 31 Prior Year- per Column 3, Last Year's Part 1 | 3 Unearned Premiums December 31 Current Year- per Column 5 Part 1A | 4 Premiums Earned During Year (Columns 1 plus 2 minus 3) |
|---|--|--|--|---|
| 1. Fire | 1,260,471 | 610,920 | 637,136 | 1,234,255 |
| 2. Allied lines | 1,058,354 | 503,402 | 556,440 | 1,005,316 |
| 3. Farmowners multiple peril | 4,662,990 | 2,178,317 | 2,282,928 | 4,558,379 |
| 4. Homeowners multiple peril | 17,819,508 | 9,030,257 | 9,677,117 | 17,172,648 |
| 5. Commercial multiple peril | 30,323,228 | 14,273,989 | 14,738,133 | 29,859,084 |
| 6. Mortgage guaranty | 0 | 0 | 0 | 0 |
| 8. Ocean marine | 0 | 0 | 0 | 0 |
| 9. Inland marine | 5,842,574 | 2,824,641 | 2,790,975 | 5,876,240 |
| 10. Financial guaranty | 0 | 0 | 0 | 0 |
| 11.1 Medical professional liability - occurrence | 0 | 0 | 0 | 0 |
| 11.2 Medical professional liability - claims-made | 0 | 0 | 0 | 0 |
| 12. Earthquake | 299,286 | 198,559 | 186,003 | 311,842 |
| 13. Group accident and health | 0 | 0 | 0 | 0 |
| 14. Credit accident and health (group and individual) | 0 | 0 | 0 | 0 |
| 15. Other accident and health | 0 | 0 | 0 | 0 |
| 16. Workers' compensation | 11,265,330 | 5,030,802 | 4,872,297 | 11,423,835 |
| 17.1 Other liability - occurrence | 9,772,770 | 4,865,891 | 4,980,475 | 9,658,186 |
| 17.2 Other liability - claims-made | 152,266 | 72,233 | 68,840 | 155,659 |
| 17.3 Excess Workers' Compensation | 0 | 0 | 0 | 0 |
| 18.1 Products liability - occurrence | 245,993 | 111,554 | 116,454 | 241,093 |
| 18.2 Products liability - claims-made | 0 | 0 | 0 | 0 |
| 19.1, 19.2 Private passenger auto liability | 15,783,089 | 7,957,823 | 7,922,375 | 15,818,537 |
| 19.3, 19.4 Commercial auto liability | 16,414,915 | 7,016,522 | 7,605,035 | 15,826,402 |
| 21. Auto physical damage | 18,549,117 | 8,523,760 | 9,008,519 | 18,064,358 |
| 22. Aircraft (all perils) | 0 | 0 | 0 | 0 |
| 23. Fidelity | 245,111 | 143,451 | 149,419 | 239,143 |
| 24. Surety | 4,213,997 | 2,674,283 | 2,433,200 | 4,455,080 |
| 26. Burglary and theft | 25,086 | 13,369 | 10,957 | 27,498 |
| 27. Boiler and machinery | 0 | 0 | 0 | 0 |
| 28. Credit | 0 | 0 | 0 | 0 |
| 29. International | 0 | 0 | 0 | 0 |
| 30. Warranty | 0 | 0 | 0 | 0 |
| 31. Reinsurance - Nonproportional Assumed Property | 6,694,300 | 621,000 | 742,855 | 6,572,445 |
| 32. Reinsurance - Nonproportional Assumed Liability | 0 | 0 | 0 | 0 |
| 33. Reinsurance - Nonproportional Assumed Financial Lines | 0 | 0 | 0 | 0 |
| 34. Aggregate write-ins for other lines of business | 0 | 0 | 0 | 0 |
| 35. TOTALS | 144,628,385 | 66,650,773 | 68,779,158 | 142,500,000 |
| DETAILS OF WRITE-INS | | | | |
| 3401. | 0 | 0 | 0 | 0 |
| 3402. | 0 | 0 | 0 | 0 |
| 3403. | 0 | 0 | 0 | 0 |
| 3498. Summary of remaining write-ins for Line 34 from overflow page | 0 | 0 | 0 | 0 |
| 3499. Totals (Line 3401 through Line 3403 plus Line 3498) (Line 34 above) | 0 | 0 | 0 | 0 |

UNDERWRITING AND INVESTMENT EXHIBIT

PART 1A-RECAPITULATION OF ALL PREMIUMS

| Line of Business | 1 Amount Unearned (Running One Year or Less from Date of Policy) (a) | 2 Amount Unearned (Running More Than One Year from Date of Policy) (a) | 3 Earned but Unbilled Premium | 4 Reserve for Rate Credits and Retrospective Adjustments Based on Experience | 5 Total Reserve for Unearned Premiums Columns 1 + 2 + 3 + 4 |
|---|---|---|---|---|--|
| 1. Fire | 637,136 | 0 | 0 | 0 | 637,136 |
| 2. Allied lines | 556,440 | 0 | 0 | 0 | 556,440 |
| 3. Farmowners multiple peril | 2,282,928 | 0 | 0 | 0 | 2,282,928 |
| 4. Homeowners multiple peril | 9,677,117 | 0 | 0 | 0 | 9,677,117 |
| 5. Commercial multiple peril | 14,738,133 | 0 | 0 | 0 | 14,738,133 |
| 6. Mortgage guaranty | 0 | 0 | 0 | 0 | 0 |
| 8. Ocean marine | 0 | 0 | 0 | 0 | 0 |
| 9. Inland marine | 2,790,975 | 0 | 0 | 0 | 2,790,975 |
| 10. Financial guaranty | 0 | 0 | 0 | 0 | 0 |
| 11.1 Medical professional liability - occurrence | 0 | 0 | 0 | 0 | 0 |
| 11.2 Medical professional liability - claims-made | 0 | 0 | 0 | 0 | 0 |
| 12. Earthquake | 186,003 | 0 | 0 | 0 | 186,003 |
| 13. Group accident and health | 0 | 0 | 0 | 0 | 0 |
| 14. Credit accident and health (group and individual) | 0 | 0 | 0 | 0 | 0 |
| 15. Other accident and health | 0 | 0 | 0 | 0 | 0 |
| 16. Workers' compensation | 4,872,179 | 118 | 0 | 0 | 4,872,297 |
| 17.1 Other liability - occurrence | 4,980,408 | 67 | 0 | 0 | 4,980,475 |
| 17.2 Other liability - claims-made | 68,840 | 0 | 0 | 0 | 68,840 |
| 17.3 Excess Workers' Compensation | 0 | 0 | 0 | 0 | 0 |
| 18.1 Products liability - occurrence | 116,341 | 113 | 0 | 0 | 116,454 |
| 18.2 Products liability - claims-made | 0 | 0 | 0 | 0 | 0 |
| 19.1, 19.2 Private passenger auto liability | 7,922,375 | 0 | 0 | 0 | 7,922,375 |
| 19.3, 19.4 Commercial auto liability | 7,605,035 | 0 | 0 | 0 | 7,605,035 |
| 21. Auto physical damage | 9,008,519 | 0 | 0 | 0 | 9,008,519 |
| 22. Aircraft (all perils) | 0 | 0 | 0 | 0 | 0 |
| 23. Fidelity | 93,713 | 55,706 | 0 | 0 | 149,419 |
| 24. Surety | 729,099 | 1,704,101 | 0 | 0 | 2,433,200 |
| 26. Burglary and theft | 10,895 | 62 | 0 | 0 | 10,957 |
| 27. Boiler and machinery | 0 | 0 | 0 | 0 | 0 |
| 28. Credit | 0 | 0 | 0 | 0 | 0 |
| 29. International | 0 | 0 | 0 | 0 | 0 |
| 30. Warranty | 0 | 0 | 0 | 0 | 0 |
| 31. Reinsurance - Nonproportional Assumed Property | 742,855 | 0 | 0 | 0 | 742,855 |
| 32. Reinsurance - Nonproportional Assumed Liability | 0 | 0 | 0 | 0 | 0 |
| 33. Reinsurance - Nonproportional Assumed Financial Lines | 0 | 0 | 0 | 0 | 0 |
| 34. Aggregate write-ins for other lines of business | 0 | 0 | 0 | 0 | 0 |
| 35. TOTALS | 67,018,991 | 1,760,167 | 0 | 0 | 68,779,158 |
| 36. Accrued retrospective premiums based on experience | | | | | 0 |
| 37. Earned but unbilled premiums | | | | | 0 |
| 38. Balance (Sum of Line 35 through Line 37) | | | | | 68,779,158 |
| DETAILS OF WRITE-INS | | | | | |
| 3401. | 0 | 0 | 0 | 0 | 0 |
| 3402. | 0 | 0 | 0 | 0 | 0 |
| 3403. | 0 | 0 | 0 | 0 | 0 |
| 3498. Summary of remaining write-ins for Line 34 from overflow page | 0 | 0 | 0 | 0 | 0 |
| 3499. Totals (Line 3401 through Line 3403 plus Line 3498) (Line 34 above) | 0 | 0 | 0 | 0 | 0 |

(a) State here basis of computation used in each case.
Daily Pro-Rata

UNDERWRITING AND INVESTMENT EXHIBIT

PART 1B-PREMIUMS WRITTEN

| Line of Business | 1 Direct Business (a) | Reinsurance Assumed | | Reinsurance Ceded | | 6 Net Premiums Written Columns 1 + 2 + 3 - 4 - 5 |
|---|-----------------------------|-------------------------|-----------------------------|-----------------------|---------------------------|--|
| | | 2 From Affiliates | 3 From Non-Affiliates | 4 To Affiliates | 5 To Non-Affiliates | |
| 1. Fire | 0 | 1,260,471 | 0 | 0 | 0 | 1,260,471 |
| 2. Allied lines | 0 | 1,058,354 | 0 | 0 | 0 | 1,058,354 |
| 3. Farmowners multiple peril | 0 | 4,662,990 | 0 | 0 | 0 | 4,662,990 |
| 4. Homeowners multiple peril | 0 | 17,819,508 | 0 | 0 | 0 | 17,819,508 |
| 5. Commercial multiple peril | (1,945) | 30,323,228 | 0 | (1,945) | 0 | 30,323,228 |
| 6. Mortgage guaranty | 0 | 0 | 0 | 0 | 0 | 0 |
| 8. Ocean marine | 0 | 0 | 0 | 0 | 0 | 0 |
| 9. Inland marine | 0 | 5,842,574 | 0 | 0 | 0 | 5,842,574 |
| 10. Financial guaranty | 0 | 0 | 0 | 0 | 0 | 0 |
| 11.1 Medical professional liability - occurrence | 0 | 0 | 0 | 0 | 0 | 0 |
| 11.2 Medical professional liability - claims-made | 0 | 0 | 0 | 0 | 0 | 0 |
| 12. Earthquake | (43) | 299,286 | 0 | (43) | 0 | 299,286 |
| 13. Group accident and health | 0 | 0 | 0 | 0 | 0 | 0 |
| 14. Credit accident and health (group and individual) | 0 | 0 | 0 | 0 | 0 | 0 |
| 15. Other accident and health | 0 | 0 | 0 | 0 | 0 | 0 |
| 16. Workers' compensation | 0 | 11,265,330 | 0 | (28,236) | 28,235 | 11,265,331 |
| 17.1 Other liability - occurrence | 0 | 9,772,770 | 0 | 0 | 0 | 9,772,770 |
| 17.2 Other liability - claims-made | 0 | 152,266 | 0 | 0 | 0 | 152,266 |
| 17.3 Excess Workers' Compensation | 0 | 0 | 0 | 0 | 0 | 0 |
| 18.1 Products liability - occurrence | 0 | 245,993 | 0 | 0 | 0 | 245,993 |
| 18.2 Products liability - claims-made | 0 | 0 | 0 | 0 | 0 | 0 |
| 19.1, 19.2 Private passenger auto liability | 0 | 15,783,089 | 0 | 0 | 0 | 15,783,089 |
| 19.3, 19.4 Commercial auto liability | (14) | 16,414,915 | 0 | (14) | 0 | 16,414,915 |
| 21. Auto physical damage | 0 | 18,549,117 | 0 | 0 | 0 | 18,549,117 |
| 22. Aircraft (all perils) | 0 | 0 | 0 | 0 | 0 | 0 |
| 23. Fidelity | 0 | 245,111 | 0 | 0 | 0 | 245,111 |
| 24. Surety | 0 | 4,213,997 | 0 | 0 | 0 | 4,213,997 |
| 26. Burglary and theft | 0 | 25,086 | 0 | 0 | 0 | 25,086 |
| 27. Boiler and machinery | 0 | 0 | 0 | 0 | 0 | 0 |
| 28. Credit | 0 | 0 | 0 | 0 | 0 | 0 |
| 29. International | 0 | 0 | 0 | 0 | 0 | 0 |
| 30. Warranty | 0 | 0 | 0 | 0 | 0 | 0 |
| 31. Reinsurance - Nonproportional Assumed Property | X X X | 6,694,300 | 0 | 0 | 0 | 6,694,300 |
| 32. Reinsurance - Nonproportional Assumed Liability | X X X | 0 | 0 | 0 | 0 | 0 |
| 33. Reinsurance - Nonproportional Assumed Financial Lines | X X X | 0 | 0 | 0 | 0 | 0 |
| 34. Aggregate write-ins for other lines of business | 0 | 0 | 0 | 0 | 0 | 0 |
| 35. TOTALS | (2,002) | 144,628,385 | 0 | (30,238) | 28,235 | 144,628,386 |
| DETAILS OF WRITE-INS | | | | | | |
| 3401. | 0 | 0 | 0 | 0 | 0 | 0 |
| 3402. | 0 | 0 | 0 | 0 | 0 | 0 |
| 3403. | 0 | 0 | 0 | 0 | 0 | 0 |
| 3498. Summary of remaining write-ins for Line 34 from overflow page | 0 | 0 | 0 | 0 | 0 | 0 |
| 3499. Totals (Line 3401 through Line 3403 plus Line 3498) (Line 34 above) | 0 | 0 | 0 | 0 | 0 | 0 |

(a) Does the company's direct premiums written include premiums recorded on an installment basis? Yes () No (X)
 If yes: 1. The amount of such installment premiums \$ 0
 2. Amount at which such installment premiums would have been reported had they been recorded on an annualized basis \$ 0

ANNUAL STATEMENT FOR THE YEAR 2012 OF THE Old Guard Insurance Company

UNDERWRITING AND INVESTMENT EXHIBIT

PART 2 - LOSSES PAID AND INCURRED

| Line of Business | Losses Paid Less Salvage | | | | 5 | 6 | 7 | 8 |
|---|--------------------------|--------------------------|----------------------------|--|--|------------------------------|---|--|
| | 1 Direct Business | 2 Reinsurance Assumed | 3 Reinsurance Recovered | 4 Net Payments (Columns 1 plus 2 minus 3) | Net Losses Unpaid Current Year (Part 2A, Column 8) | Net Losses Unpaid Prior Year | Losses Incurred Current Year (Columns 4 plus 5 minus 6) | Percentage of Losses Incurred (Column 7, Part 2) to Premiums Earned (Column 4, Part 1) |
| 1. Fire | (2,105) | 682,788 | (2,105) | 682,788 | 77,948 | 121,692 | 639,044 | 51.8 |
| 2. Allied lines | (2,691) | 832,817 | (2,691) | 832,817 | 180,599 | 230,191 | 783,225 | 77.9 |
| 3. Farmowners multiple peril | (3,818) | 2,760,166 | (3,818) | 2,760,166 | 760,929 | 793,916 | 2,727,179 | 59.8 |
| 4. Homeowners multiple peril | 45,321 | 12,141,678 | 45,321 | 12,141,678 | 3,615,598 | 4,662,940 | 11,094,336 | 64.6 |
| 5. Commercial multiple peril | (169) | 15,406,986 | (169) | 15,406,986 | 23,498,364 | 24,967,447 | 13,937,903 | 46.7 |
| 6. Mortgage guaranty | 0 | 0 | 0 | 0 | 0 | 0 | 0 | 0.0 |
| 8. Ocean marine | 0 | 0 | 0 | 0 | 0 | 0 | 0 | 0.0 |
| 9. Inland marine | 0 | 2,314,417 | 0 | 2,314,417 | 518,749 | 768,161 | 2,065,005 | 35.1 |
| 10. Financial guaranty | 0 | 0 | 0 | 0 | 0 | 0 | 0 | 0.0 |
| 11.1 Medical professional liability - occurrence | 0 | 0 | 0 | 0 | 0 | 0 | 0 | 0.0 |
| 11.2 Medical professional liability - claims-made | 0 | 0 | 0 | 0 | 0 | 0 | 0 | 0.0 |
| 12. Earthquake | 0 | 0 | 0 | 0 | 4 | 315 | (311) | (0.1) |
| 13. Group accident and health | 0 | 0 | 0 | 0 | 0 | 0 | 0 | 0.0 |
| 14. Credit accident and health (group and individual) | 0 | 0 | 0 | 0 | 0 | 0 | 0 | 0.0 |
| 15. Other accident and health | 0 | 0 | 0 | 0 | 0 | 0 | 0 | 0.0 |
| 16. Workers' compensation | 325,012 | 7,999,548 | 339,029 | 7,985,531 | 22,460,573 | 22,225,760 | 8,220,344 | 72.0 |
| 17.1 Other liability - occurrence | 112 | 2,237,271 | 112 | 2,237,271 | 14,124,270 | 13,848,922 | 2,512,619 | 26.0 |
| 17.2 Other liability - claims-made | 0 | 803 | 0 | 803 | 25,729 | 46,654 | (20,122) | (12.9) |
| 17.3 Excess Workers' Compensation | 0 | 0 | 0 | 0 | 0 | 0 | 0 | 0.0 |
| 18.1 Products liability - occurrence | 0 | 61,612 | 0 | 61,612 | 2,827,391 | 2,808,817 | 80,186 | 33.3 |
| 18.2 Products liability - claims-made | 0 | 0 | 0 | 0 | 0 | 0 | 0 | 0.0 |
| 19.1, 19.2 Private passenger auto liability | 13,764 | 9,345,525 | 13,764 | 9,345,525 | 11,940,834 | 12,572,593 | 8,713,766 | 55.1 |
| 19.3, 19.4 Commercial auto liability | 0 | 8,287,077 | 0 | 8,287,077 | 16,961,026 | 17,011,971 | 8,236,132 | 52.0 |
| 21. Auto physical damage | (5,123) | 10,599,766 | (5,123) | 10,599,766 | 1,325,420 | 1,398,438 | 10,526,748 | 58.3 |
| 22. Aircraft (all perils) | 0 | 0 | 0 | 0 | 39 | 39 | 0 | 0.0 |
| 23. Fidelity | 0 | 84,944 | 0 | 84,944 | 227,254 | 170,182 | 142,016 | 59.4 |
| 24. Surety | 0 | 2,549,633 | 0 | 2,549,633 | 1,209,295 | 1,067,464 | 2,691,464 | 60.4 |
| 26. Burglary and theft | 0 | 9,033 | 0 | 9,033 | 5,566 | 2,680 | 11,919 | 43.3 |
| 27. Boiler and machinery | 0 | 0 | 0 | 0 | 0 | 0 | 0 | 0.0 |
| 28. Credit | 0 | 0 | 0 | 0 | 0 | 0 | 0 | 0.0 |
| 29. International | 0 | 0 | 0 | 0 | 0 | 0 | 0 | 0.0 |
| 30. Warranty | 0 | 0 | 0 | 0 | 0 | 0 | 0 | 0.0 |
| 31. Reinsurance- Nonproportional Assumed Property | X X X | 5,355,058 | 0 | 5,355,058 | 2,318,505 | 4,119,357 | 3,554,206 | 54.1 |
| 32. Reinsurance- Nonproportional Assumed Liability | X X X | 0 | 0 | 0 | 0 | 0 | 0 | 0.0 |
| 33. Reinsurance- Nonproportional Assumed Financial Lines | X X X | 0 | 0 | 0 | 0 | 0 | 0 | 0.0 |
| 34. Aggregate write-ins for other lines of business | 0 | 0 | 0 | 0 | 0 | 0 | 0 | 0.0 |
| 35. TOTALS | 370,303 | 80,669,122 | 384,320 | 80,655,105 | 102,078,093 | 106,817,539 | 75,915,659 | 53.3 |
| DETAILS OF WRITE-INS | | | | | | | | |
| 3401 | 0 | 0 | 0 | 0 | 0 | 0 | 0 | 0.0 |
| 3402 | 0 | 0 | 0 | 0 | 0 | 0 | 0 | 0.0 |
| 3403 | 0 | 0 | 0 | 0 | 0 | 0 | 0 | 0.0 |
| 3498. Summary of remaining write-ins for Line 34 from overflow page | 0 | 0 | 0 | 0 | 0 | 0 | 0 | 0.0 |
| 3499. Totals (Line 3401 through Line 3403 plus Line 3498) (Line 34 above) | 0 | 0 | 0 | 0 | 0 | 0 | 0 | 0.0 |

ANNUAL STATEMENT FOR THE YEAR 2012 OF THE Old Guard Insurance Company

UNDERWRITING AND INVESTMENT EXHIBIT

PART 2A - UNPAID LOSSES AND LOSS ADJUSTMENT EXPENSES

| Line of Business | Reported Losses | | | | Incurred But Not Reported | | | 8 Net Losses Unpaid (Columns 4 plus 5 plus 6 minus 7) | 9 Net Unpaid Loss Adjustment Expenses |
|---|-----------------|--------------------------|--|--|---------------------------|-----------------------------|---------------------------|--|--|
| | 1 Direct | 2 Reinsurance Assumed | 3 Deduct Reinsurance Recoverable from Authorized and Unauthorized Companies | 4 Net Losses Excluding Incurred But Not Reported (Columns 1 plus 2 minus 3) | 5 Direct | 6 Reinsurance Assumed | 7 Reinsurance Ceded | | |
| 1. Fire | 0 | 52,165 | 0 | 52,165 | 0 | 25,782 | 0 | 77,947 | 20,625 |
| 2. Allied lines | 0 | 100,586 | 0 | 100,586 | 0 | 80,013 | 0 | 180,599 | 25,036 |
| 3. Farmowners multiple peril | 3 | 559,597 | 3 | 559,597 | 8,905 | 201,332 | 8,905 | 760,929 | 130,465 |
| 4. Homeowners multiple peril | 125,000 | 2,739,656 | 125,000 | 2,739,656 | 594 | 875,941 | 594 | 3,615,597 | 655,784 |
| 5. Commercial multiple peril | 0 | 14,436,114 | 0 | 14,436,114 | 125,328 | 9,062,250 | 125,328 | 23,498,364 | 12,954,616 |
| 6. Mortgage guaranty | 0 | 0 | 0 | 0 | 0 | 0 | 0 | 0 | 0 |
| 8. Ocean marine | 0 | 0 | 0 | 0 | 0 | 0 | 0 | 0 | 0 |
| 9. Inland marine | 0 | 416,100 | 0 | 416,100 | 0 | 102,650 | 0 | 518,750 | 81,998 |
| 10. Financial guaranty | 0 | 0 | 0 | 0 | 0 | 0 | 0 | 0 | 0 |
| 11.1 Medical professional liability - occurrence | 0 | 0 | 0 | 0 | 0 | 0 | 0 | 0 | 0 |
| 11.2 Medical professional liability - claims-made | 0 | 0 | 0 | 0 | 0 | 0 | 0 | 0 | 0 |
| 12. Earthquake | 0 | 0 | 0 | 0 | 0 | 4 | 0 | 4 | 211 |
| 13. Group accident and health | 0 | 0 | 0 | 0 | 0 | 0 | 0 | (a) 0 | 0 |
| 14. Credit accident and health (group and individual) | 0 | 0 | 0 | 0 | 0 | 0 | 0 | (a) 0 | 0 |
| 15. Other accident and health | 0 | 0 | 0 | 0 | 0 | 0 | 0 | (a) 0 | 0 |
| 16. Workers' compensation | 3,169,478 | 12,881,749 | 3,402,916 | 12,648,311 | 1,145,291 | 9,906,965 | 1,239,995 | 22,460,572 | 3,626,729 |
| 17.1 Other liability - occurrence | 324,785 | 3,614,996 | 324,785 | 3,614,996 | 352,672 | 10,509,274 | 352,672 | 14,124,270 | 3,435,991 |
| 17.2 Other liability - claims-made | 0 | 22,819 | 0 | 22,819 | 0 | 2,910 | 0 | 25,729 | 1,626 |
| 17.3 Excess Workers' Compensation | 0 | 0 | 0 | 0 | 0 | 0 | 0 | 0 | 0 |
| 18.1 Products liability - occurrence | 0 | 494,620 | 0 | 494,620 | 151 | 2,332,771 | 151 | 2,827,391 | 1,205,938 |
| 18.2 Products liability - claims-made | 0 | 0 | 0 | 0 | 0 | 0 | 0 | 0 | 0 |
| 19.1, 19.2 Private passenger auto liability | 82,716 | 10,172,579 | 82,716 | 10,172,579 | 27,638 | 1,768,255 | 27,638 | 11,940,834 | 3,084,467 |
| 19.3, 19.4 Commercial auto liability | 0 | 11,720,471 | 0 | 11,720,471 | 24,433 | 5,240,555 | 24,433 | 16,961,026 | 4,759,174 |
| 21. Auto physical damage | 3 | 662,455 | 3 | 662,455 | 0 | 662,965 | 0 | 1,325,420 | 239,710 |
| 22. Aircraft (all perils) | 0 | 39 | 0 | 39 | 0 | 0 | 0 | 39 | 0 |
| 23. Fidelity | 0 | 194,427 | 0 | 194,427 | 3 | 32,827 | 3 | 227,254 | 58,892 |
| 24. Surety | 0 | 979,357 | 0 | 979,357 | 0 | 229,938 | 0 | 1,209,295 | 844,575 |
| 26. Burglary and theft | 0 | 4,869 | 0 | 4,869 | 0 | 698 | 0 | 5,567 | 572 |
| 27. Boiler and machinery | 0 | 0 | 0 | 0 | 0 | 0 | 0 | 0 | 0 |
| 28. Credit | 0 | 0 | 0 | 0 | 0 | 0 | 0 | 0 | 0 |
| 29. International | 0 | 0 | 0 | 0 | 0 | 0 | 0 | 0 | 0 |
| 30. Warranty | 0 | 0 | 0 | 0 | 0 | 0 | 0 | 0 | 0 |
| 31. Reinsurance- Nonproportional Assumed Property | X X X | 173,520 | 0 | 173,520 | X X X | 2,144,985 | 0 | 2,318,505 | 0 |
| 32. Reinsurance- Nonproportional Assumed Liability | X X X | 0 | 0 | 0 | X X X | 0 | 0 | 0 | 0 |
| 33. Reinsurance- Nonproportional Assumed Financial Lines | X X X | 0 | 0 | 0 | X X X | 0 | 0 | 0 | 0 |
| 34. Aggregate write-ins for other lines of business | 0 | 0 | 0 | 0 | 0 | 0 | 0 | 0 | 0 |
| 35. TOTALS | 3,701,985 | 59,226,119 | 3,935,423 | 58,992,681 | 1,685,015 | 43,180,115 | 1,779,719 | 102,078,092 | 31,126,409 |
| DETAILS OF WRITE-INS | | | | | | | | | |
| 3401. | 0 | 0 | 0 | 0 | 0 | 0 | 0 | 0 | 0 |
| 3402. | 0 | 0 | 0 | 0 | 0 | 0 | 0 | 0 | 0 |
| 3403. | 0 | 0 | 0 | 0 | 0 | 0 | 0 | 0 | 0 |
| 3498. Summary of remaining write-ins for Line 34 from overflow page | 0 | 0 | 0 | 0 | 0 | 0 | 0 | 0 | 0 |
| 3499. Totals (Line 3401 through Line 3403 plus Line 3498) (Line 34 above) | 0 | 0 | 0 | 0 | 0 | 0 | 0 | 0 | 0 |

(a) Including \$ 0 for present value of life indemnity claims.

UNDERWRITING AND INVESTMENT EXHIBIT

PART 3 - EXPENSES

| | 1 | 2 | 3 | 4 |
|---|--------------------------|-----------------------------|---------------------|----------------|
| | Loss Adjustment Expenses | Other Underwriting Expenses | Investment Expenses | Total |
| 1. Claim adjustment services: | | | | |
| 1.1 Direct | (150,301) | 0 | 0 | (150,301) |
| 1.2 Reinsurance assumed | 7,284,703 | 0 | 0 | 7,284,703 |
| 1.3 Reinsurance ceded | (149,702) | 0 | 0 | (149,702) |
| 1.4 Net claim adjustment services (Line 1.1 plus Line 1.2 minus Line 1.3) | 7,284,104 | 0 | 0 | 7,284,104 |
| 2. Commission and brokerage: | | | | |
| 2.1 Direct excluding contingent | 0 | (396) | 0 | (396) |
| 2.2 Reinsurance assumed excluding contingent | 0 | 22,784,796 | 0 | 22,784,796 |
| 2.3 Reinsurance ceded excluding contingent | 0 | 511 | 0 | 511 |
| 2.4 Contingent - direct | 0 | 1 | 0 | 1 |
| 2.5 Contingent - reinsurance assumed | 0 | 3,084,160 | 0 | 3,084,160 |
| 2.6 Contingent - reinsurance ceded | 0 | 1 | 0 | 1 |
| 2.7 Policy and membership fees | 0 | 0 | 0 | 0 |
| 2.8 Net commission and brokerage (Line 2.1 plus Line 2.2 minus Line 2.3 plus Line 2.4 plus Line 2.5 minus Line 2.6 plus Line 2.7) | 0 | 25,868,049 | 0 | 25,868,049 |
| 3. Allowances to manager and agents | 0 | 181,228 | 0 | 181,228 |
| 4. Advertising | 0 | 241,106 | 0 | 241,106 |
| 5. Boards, bureaus and associations | 102,964 | 562,479 | 0 | 665,443 |
| 6. Surveys and underwriting reports | 0 | 624,627 | 0 | 624,627 |
| 7. Audit of assureds' records | 0 | 73,418 | 0 | 73,418 |
| 8. Salary and related items: | | | | |
| 8.1 Salaries | 4,309,513 | 8,592,578 | 190,277 | 13,092,368 |
| 8.2 Payroll taxes | 332,317 | 640,766 | 12,372 | 985,455 |
| 9. Employee relations and welfare | 1,109,187 | 2,096,023 | 45,345 | 3,250,555 |
| 10. Insurance | 205 | 239,877 | (6) | 240,076 |
| 11. Directors' fees | 0 | 0 | 0 | 0 |
| 12. Travel and travel items | 376,262 | 481,456 | 6,364 | 864,082 |
| 13. Rent and rent items | 407,595 | 796,891 | 9,891 | 1,214,377 |
| 14. Equipment | 53,775 | 193,847 | 1,032 | 248,654 |
| 15. Cost or depreciation of EDP equipment and software | 35,613 | 507,291 | 1,721 | 544,625 |
| 16. Printing and stationery | 58,358 | 127,089 | 1,843 | 187,290 |
| 17. Postage, telephone and telegraph, exchange and express | 103,941 | 492,742 | 15,260 | 611,943 |
| 18. Legal and auditing | 27,838 | 282,395 | 16,244 | 326,477 |
| 19. Totals (Line 3 through Line 18) | 6,917,568 | 16,133,813 | 300,343 | 23,351,724 |
| 20. Taxes, licenses and fees: | | | | |
| 20.1 State and local insurance taxes deducting guaranty association credits of \$ 2,808 | 0 | 3,074,605 | 0 | 3,074,605 |
| 20.2 Insurance department licenses and fees | 0 | 139,617 | 0 | 139,617 |
| 20.3 Gross guaranty association assessments | 0 | (394) | 0 | (394) |
| 20.4 All other (excluding federal and foreign income and real estate) | 0 | 107,998 | 0 | 107,998 |
| 20.5 Total taxes, licenses and fees (Line 20.1 plus Line 20.2 plus Line 20.3 plus Line 20.4) | 0 | 3,321,826 | 0 | 3,321,826 |
| 21. Real estate expenses | 0 | 0 | 0 | 0 |
| 22. Real estate taxes | 0 | 0 | 0 | 0 |
| 23. Reimbursements by uninsured plans | 0 | 0 | 0 | 0 |
| 24. Aggregate write-ins for miscellaneous expenses | 2,310,430 | 4,306,157 | 199,117 | 6,815,704 |
| 25. Total expenses incurred | 16,512,102 | 49,629,845 | 499,460 | (a) 66,641,407 |
| 26. Less unpaid expenses - current year | 31,126,407 | 15,698,828 | 364,741 | 47,189,976 |
| 27. Add unpaid expenses - prior year | 29,567,900 | 13,893,103 | 360,509 | 43,821,512 |
| 28. Amounts receivable relating to uninsured plans, prior year | 0 | 0 | 0 | 0 |
| 29. Amounts receivable relating to uninsured plans, current year | 0 | 0 | 0 | 0 |
| 30. TOTAL EXPENSES PAID (Line 25 minus Line 26 plus Line 27 minus Line 28 plus Line 29) | 14,953,595 | 47,824,120 | 495,228 | 63,272,943 |
| DETAILS OF WRITE-INS | | | | |
| 2401. Electronic data processing service | 444,186 | 3,090,504 | 51,531 | 3,586,221 |
| 2402. Unallocated LAE reserve change and other ULAE | 1,581,423 | 0 | 0 | 1,581,423 |
| 2403. Management fee | 231,683 | 1,082,068 | 143,472 | 1,457,223 |
| 2498. Summary of remaining write-ins for Line 24 from overflow page | 53,138 | 133,585 | 4,114 | 190,837 |
| 2499. Totals (Line 2401 through Line 2403 plus Line 2498) (Line 24 above) | 2,310,430 | 4,306,157 | 199,117 | 6,815,704 |

(a) Includes management fees of \$ 1,457,223 to affiliates and \$ 0 to non-affiliates.

EXHIBIT OF NET INVESTMENT INCOME

| | 1 | 2 |
|---|--------------------------|-----------------------|
| | Collected During Year | Earned During Year |
| 1. U.S. Government bonds | (a) 4,049,720 | 4,009,963 |
| 1.1 Bonds exempt from U.S. tax | (a) 431,858 | 1,093,849 |
| 1.2 Other bonds (unaffiliated) | (a) 4,340,226 | 3,897,537 |
| 1.3 Bonds of affiliates | (a) 0 | 0 |
| 2.1 Preferred stocks (unaffiliated) | (b) 0 | 0 |
| 2.11 Preferred stocks of affiliates | (b) 0 | 0 |
| 2.2 Common stocks (unaffiliated) | 2,656,570 | 2,672,737 |
| 2.21 Common stocks of affiliates | 0 | 0 |
| 3. Mortgage loans | (c) 0 | 0 |
| 4. Real estate | (d) 0 | 0 |
| 5. Contract loans | 0 | 0 |
| 6. Cash, cash equivalents and short-term investments | (e) 45 | 45 |
| 7. Derivative instruments | (f) 0 | 0 |
| 8. Other invested assets | 189,360 | 189,360 |
| 9. Aggregate write-ins for investment income | 0 | 0 |
| 10. Total gross investment income | 11,667,779 | 11,863,491 |
| 11. Investment expenses | | (g) 499,461 |
| 12. Investment taxes, licenses and fees, excluding federal income taxes | | (g) 0 |
| 13. Interest expense | | (h) 0 |
| 14. Depreciation on real estate and other invested assets | | (i) 0 |
| 15. Aggregate write-ins for deductions from investment income | | 0 |
| 16. Total deductions (Line 11 through Line 15) | | 499,461 |
| 17. Net investment income (Line 10 minus Line 16) | | 11,364,030 |
| DETAILS OF WRITE-INS | | |
| 0901. | 0 | 0 |
| 0902. | 0 | 0 |
| 0903. | 0 | 0 |
| 0998. Summary of remaining write-ins for Line 9 from overflow page | 0 | 0 |
| 0999. Totals (Line 0901 through Line 0903 plus Line 0998) (Line 9 above) | 0 | 0 |
| 1501. | | 0 |
| 1502. | | 0 |
| 1503. | | 0 |
| 1598. Summary of remaining write-ins for Line 15 from overflow page | | 0 |
| 1599. Totals (Line 1501 through Line 1503 plus Line 1598) (Line 15 above) | | 0 |

(a) Includes \$ 17,458 accrual of discount less \$ 2,668,036 amortization of premium and less \$ 247,614 paid for accrued interest on purchases.
 (b) Includes \$ 0 accrual of discount less \$ 0 amortization of premium and less \$ 0 paid for accrued dividends on purchases.
 (c) Includes \$ 0 accrual of discount less \$ 0 amortization of premium and less \$ 0 paid for accrued interest on purchases.
 (d) Includes \$ 0 for company's occupancy of its own buildings; and excludes \$ 0 interest on encumbrances.
 (e) Includes \$ 0 accrual of discount less \$ 0 amortization of premium and less \$ 0 paid for accrued interest on purchases.

(f) Includes \$ 0 accrual of discount less \$ 0 amortization of premium.
 (g) Includes \$ 0 investment expenses and \$ 0 investment taxes, licenses and fees, excluding federal income taxes, attributable to segregated and Separate Accounts.
 (h) Includes \$ 0 interest on surplus notes and \$ 0 interest on capital notes.
 (i) Includes \$ 0 depreciation on real estate and \$ 0 depreciation on other invested assets.

EXHIBIT OF CAPITAL GAINS (LOSSES)

| | 1 | 2 | 3 | 4 | 5 |
|--|---|-------------------------------|---|---|---|
| | Realized Gain (Loss) on Sales or Maturity | Other Realized Adjustments | Total Realized Capital Gain (Loss) (Col. 1 + Col. 2) | Change in Unrealized Capital Gain (Loss) | Change in Unrealized Foreign Exchange Capital Gain (Loss) |
| 1. U.S. Government bonds | 225,467 | 0 | 225,467 | 0 | 0 |
| 1.1 Bonds exempt from U.S. tax | 0 | 0 | 0 | 0 | 0 |
| 1.2 Other bonds (unaffiliated) | 4,653,709 | 0 | 4,653,709 | 0 | 0 |
| 1.3 Bonds of affiliates | 0 | 0 | 0 | 0 | 0 |
| 2.1 Preferred stocks (unaffiliated) | 0 | 0 | 0 | 0 | 0 |
| 2.11 Preferred stocks of affiliates | 0 | 0 | 0 | 0 | 0 |
| 2.2 Common stocks (unaffiliated) | 7,685,381 | (740,766) | 6,944,615 | 1,328,023 | 0 |
| 2.21 Common stocks of affiliates | 0 | 0 | 0 | 0 | 0 |
| 3. Mortgage loans | 0 | 0 | 0 | 0 | 0 |
| 4. Real estate | 0 | 0 | 0 | 0 | 0 |
| 5. Contract loans | 0 | 0 | 0 | 0 | 0 |
| 6. Cash, cash equivalents and short-term investments | 0 | 0 | 0 | 0 | 0 |
| 7. Derivative instruments | 0 | 0 | 0 | 0 | 0 |
| 8. Other invested assets | 0 | 0 | 0 | (73,576) | 0 |
| 9. Aggregate write-ins for capital gains (losses) | 0 | 0 | 0 | 0 | 0 |
| 10. Total capital gains (losses) | 12,564,557 | (740,766) | 11,823,791 | 1,254,447 | 0 |
| DETAILS OF WRITE-INS | | | | | |
| 0901. | 0 | 0 | 0 | 0 | 0 |
| 0902. | 0 | 0 | 0 | 0 | 0 |
| 0903. | 0 | 0 | 0 | 0 | 0 |
| 0998. Summary of remaining write-ins for Line 9 from overflow page | 0 | 0 | 0 | 0 | 0 |
| 0999. Totals (Line 0901 through Line 0903 plus Line 0998) (Line 9 above) | 0 | 0 | 0 | 0 | 0 |

EXHIBIT OF NONADMITTED ASSETS

| | 1 | 2 | 3 |
|---|--|--|--|
| | Current Year Total Nonadmitted Assets | Prior Year Total Nonadmitted Assets | Change in Total Nonadmitted Assets (Col. 2 - Col. 1) |
| 1. Bonds (Schedule D) | 0 | 0 | 0 |
| 2. Stocks (Schedule D): | | | |
| 2.1 Preferred stocks | 0 | 0 | 0 |
| 2.2 Common stocks | 0 | 0 | 0 |
| 3. Mortgage loans on real estate (Schedule B): | | | |
| 3.1 First liens | 0 | 0 | 0 |
| 3.2 Other than first liens | 0 | 0 | 0 |
| 4. Real estate (Schedule A): | | | |
| 4.1 Properties occupied by the company | 0 | 0 | 0 |
| 4.2 Properties held for the production of income | 0 | 0 | 0 |
| 4.3 Properties held for sale | 0 | 0 | 0 |
| 5. Cash (Schedule E-Part 1), cash equivalents (Schedule E-Part 2) and short-term investments (Schedule DA) | 0 | 0 | 0 |
| 6. Contract loans | 0 | 0 | 0 |
| 7. Derivatives (Schedule DB) | 0 | 0 | 0 |
| 8. Other invested assets (Schedule BA) | 0 | 0 | 0 |
| 9. Receivables for securities | 0 | 0 | 0 |
| 10. Securities lending reinvested collateral assets (Schedule DL) | 0 | 0 | 0 |
| 11. Aggregate write-ins for invested assets | 0 | 0 | 0 |
| 12. Subtotals, cash and invested assets (Line 1 to Line 11) | 0 | 0 | 0 |
| 13. Title plants (for Title insurers only) | 0 | 0 | 0 |
| 14. Investment income due and accrued | 0 | 0 | 0 |
| 15. Premiums and considerations: | | | |
| 15.1 Uncollected premiums and agents' balances in the course of collection | 870,612 | 786,885 | (83,727) |
| 15.2 Deferred premiums, agents' balances and installments booked but deferred and not yet due | 5,642 | 0 | (5,642) |
| 15.3 Accrued retrospective premiums | 0 | 0 | 0 |
| 16. Reinsurance: | | | |
| 16.1 Amounts recoverable from reinsurers | 0 | 0 | 0 |
| 16.2 Funds held by or deposited with reinsured companies | 0 | 0 | 0 |
| 16.3 Other amounts receivable under reinsurance contracts | 0 | 0 | 0 |
| Amounts receivable relating to uninsured plans | 0 | 0 | 0 |
| 18.1 Current federal and foreign income tax recoverable and interest thereon | 0 | 0 | 0 |
| 18.2 Net deferred tax asset | 0 | 1,862,192 | 1,862,192 |
| 19. Guaranty funds receivable or on deposit | 0 | 0 | 0 |
| 20. Electronic data processing equipment and software | 0 | 0 | 0 |
| 21. Furniture and equipment, including health care delivery assets | 0 | 0 | 0 |
| 22. Net adjustment in assets and liabilities due to foreign exchange rates | 0 | 0 | 0 |
| 23. Receivable from parent, subsidiaries and affiliates | 0 | 0 | 0 |
| 24. Health care and other amounts receivable | 0 | 0 | 0 |
| 25. Aggregate write-ins for other than invested assets | 0 | 0 | 0 |
| 26. Total assets excluding Separate Accounts, Segregated Accounts and Protected Cell Accounts (Line 12 to Line 25) | 876,254 | 2,649,077 | 1,772,823 |
| 27. From Separate Accounts, Segregated Accounts and Protected Cell Accounts | 0 | 0 | 0 |
| 28. Total (Line 26 and Line 27) | 876,254 | 2,649,077 | 1,772,823 |
| DETAILS OF WRITE-INS | | | |
| 1101. | 0 | 0 | 0 |
| 1102. | 0 | 0 | 0 |
| 1103. | 0 | 0 | 0 |
| 1198. Summary of remaining write-ins for Line 11 from overflow page | 0 | 0 | 0 |
| 1199. Totals (Line 1101 through Line 1103 plus Line 1198) (Line 11 above) | 0 | 0 | 0 |
| 2501. | 0 | 0 | 0 |
| 2502. | 0 | 0 | 0 |
| 2503. | 0 | 0 | 0 |
| 2598. Summary of remaining write-ins for Line 25 from overflow page | 0 | 0 | 0 |
| 2599. Totals (Line 2501 through Line 2503 plus Line 2598) (Line 25 above) | 0 | 0 | 0 |

NOTES TO FINANCIAL STATEMENTS

General Notes

1. Summary of Significant Accounting Policies-

A. Accounting Practices

The financial statements of Old Guard Insurance Company (the Company) are presented on the basis of accounting practices prescribed or permitted by the Ohio Department of Insurance.

The Ohio Department of Insurance recognizes only statutory accounting practices (SAP) prescribed or permitted by the State of Ohio for determining and reporting the financial condition and results of operations of an insurance company, for determining its solvency under the Ohio Insurance law. The National Association of Insurance Commissioners' (NAIC) *Accounting Practices and Procedures Manual* (NAIC SAP) has been adopted as a component of prescribed or permitted practices by the State of Ohio.

The Company has not implemented any prescribed or permitted accounting practices by the State of Ohio that differ from those found in NAIC SAP.

A reconciliation of the Company's net income and capital and surplus between NAIC SAP and practices prescribed and permitted by the State of Ohio is shown below:

| | State of Domicile | 2012 | 2011 |
|--|-------------------|-----------------------|-----------------------|
| NET INCOME | | | |
| (1) Old Guard Insurance Company state basis (Page 4, Line 20, Columns 1 & 2) | Ohio | \$ 16,058,356 | \$ (1,320,666) |
| (2) State Prescribed Practices that increase/ (decrease) NAIC SAP | Ohio | 0 | 0 |
| (3) State Permitted Practices that increase/ (decrease) NAIC SAP | Ohio | 0 | 0 |
| (4) NAIC SAP (1-2-3=4) | Ohio | <u>\$ 16,058,356</u> | <u>\$ (1,320,666)</u> |
| SURPLUS | | | |
| (5) Old Guard Insurance Company state basis (Page 3, Line 37, Columns 1 & 2) | Ohio | \$ 136,835,353 | \$ 118,163,050 |
| (6) State Prescribed Practices that increase/ (decrease) NAIC SAP | Ohio | 0 | 0 |
| (7) State Permitted Practices that increase/ (decrease) NAIC SAP | Ohio | 0 | 0 |
| (8) NAIC SAP (5-6-7=8) | Ohio | <u>\$ 136,835,353</u> | <u>\$ 118,163,050</u> |

B. Use of Estimates in the Preparation of the Financial Statements

The preparation of financial statements in conformity with SAP requires management to make estimates and assumptions that affect the reported amounts of assets and liabilities. It also requires disclosure of contingent assets and liabilities at the date of the financial statements and the reported amounts of revenue and expenses during the period. Actual results could differ from those estimates.

C. Accounting Policy

Premiums are earned over the terms of the related insurance policies and reinsurance contracts. Unearned premium reserves are established to cover the unexpired portion of premiums written. Such reserves are computed by pro rata methods for direct business and are based on reports received from ceding companies for reinsurance.

Expenses incurred in connection with acquiring new insurance business, including such acquisition costs as sales commissions, are charged to operations as incurred. Expenses incurred are reduced for ceding allowances received or receivable. In addition, the Company uses the following accounting policies:

- (1) Short-term investments are reported in the same manner as similar long-term investments per Statements of Statutory Accounting Principles (SSAP) No. 2.
- (2) Bonds not backed by other loans are stated at amortized cost using the scientific interest method per SSAP No. 26.
- (3) Common stocks are stated at market per SSAP No. 30, except for investments in stocks of uncombined subsidiaries in which the Company has an interest of 20% or more, which are carried on the equity basis per SSAP No. 97.
- (4) Redeemable preferred stocks, which have underlying characteristics of debt, are stated at amortized cost. Perpetual preferred stocks are stated at cost. Preferred stocks with NAIC designations 3 - 6 are stated at the lower of cost, amortized cost, or fair value in accordance with SSAP No. 32.
- (5) The Company does not hold any mortgage loans.
- (6) Loan-backed securities are stated at either amortized cost or the lower of amortized cost or fair market value. The retrospective adjustment method is used to value all securities. If a security has been written down due to an other-than-temporary impairment, the prospective adjustment method is used subsequent to the loss recognition in accordance with SSAP No. 43R.
- (7) The Company has no subsidiaries, controlled or affiliated company investments.
- (8) The Company has minor ownership interests in partnerships. These have underlying characteristics of common stock and are carried at market value per SSAP No. 30.
- (9) The Company does not invest in derivative instruments.
- (10) The Company anticipates investment income as a factor in the premium deficiency calculation, in accordance with SSAP No. 53, Property-Casualty Contracts-Premiums.
- (11) Unpaid losses and loss adjustment expenses include an amount determined from individual case estimates and loss reports and an amount, based on past experience, for losses incurred but not reported. Such liabilities are necessarily based on assumptions and estimates and, while management believes the amount is adequate, the ultimate liability may be in excess of or less than the amount provided. The methods for making such estimates and for establishing the resulting liability are continually reviewed and any adjustments are reflected in the period determined. The Company has limited exposure to asbestos and environmental claims and management believes the reserve for such claims is adequate.
- (12) The Company has not modified its capitalization policy from the prior period.
- (13) Pharmaceutical rebate receivables are applicable to health insurance entities. The Company does not offer health insurance policies.

2. Accounting Changes and Corrections of Errors-

A. The Company did not have any material changes in accounting principles or correction of errors during the year.

3. Business Combinations and Goodwill-

A. Statutory Purchase Method- Not applicable

B. Statutory Merger- Not applicable

C. Impairment Loss- Not applicable

4. Discontinued Operations-

No events or transactions occurred during the year that would give rise to discontinued operations.

5. Investments-

A. Mortgage Loans, including Mezzanine Real Estate Loans

The Company does not invest in mortgage loans. No mezzanine real estate loans are held.

B. Debt Restructuring

The Company is not a creditor for any loans that have been restructured.

C. Reverse Mortgages

The Company does not invest in reverse mortgages.

D. Loan-Backed Securities

- (1) Prepayment assumptions for single class and multi class mortgage-backed/asset-backed securities were obtained from broker dealer survey values or internal estimates. The Company used Interactive Data Corp. in determining the market value of its loan-backed securities.
- (2-3) No other-than-temporary impairments have been recognized on loan-backed securities.
- (4) The Company held no loan-backed securities in an unrealized loss position at December 31, 2012.
- (5) In concluding that the impairments are not other-than-temporary, the Company has considered the following general categories of information:
 - Length of time and extent to which the fair value has been less than cost
 - Issuer credit quality
 - Industry sector considerations
 - General interest rate environment
 - Probability of collecting future cash flows

NOTES TO FINANCIAL STATEMENTS

- E. Repurchase Agreements
The Company does not have any investments in repurchase agreements.
- F. Real Estate- Not applicable
- G. Investments in low-income housing tax credits (LIHTC)
The Company does not invest in any low income housing which qualifies for tax credits.

- 6. Joint Ventures, Partnerships, and Limited Liability Companies-
 - A. The Company has no investments in Joint Ventures, Partnerships, or Limited Liability Companies that exceed 10% of its admitted assets.
 - B. The Company did not recognize any impairment write down for its investments in Joint Venture, Partnerships, and Limited Liability Companies during the statement period.

- 7. Investment Income-
The Company did not exclude any due and accrued income from surplus.

- 8. Derivative Instruments-
The Company does not hold derivative instruments.

- 9. Income Taxes-
 - A. The components of the net deferred tax assets/ (liability) at December 31 are as follows:

| | | 12/31/2012 | | | 12/31/2011 | | | Change | | |
|---|--|-----------------|----------------|---------------------------|-----------------|----------------|---------------------------|------------------------------|-----------------------------|---------------------------|
| | | (\$000 OMITTED) | | | | | | | | |
| | | (1) Ordinary | (2) Capital | (3) (Col 1+2) Total | (4) Ordinary | (5) Capital | (6) (Col 4+5) Total | (7) (Col 1-4) Ordinary | (8) (Col 2-5) Capital | (9) (Col 7+8) Total |
| 1 | (a) Gross deferred tax assets | 9,224 | 2,648 | 11,872 | 9,280 | 2,477 | 11,757 | (56) | 171 | 115 |
| | (b) Statutory valuation allowance adjustment | 0 | 0 | 0 | 0 | 0 | 0 | 0 | 0 | 0 |
| | (c) Adjusted gross deferred tax assets (1a - 1b) | 9,224 | 2,648 | 11,872 | 9,280 | 2,477 | 11,757 | (56) | 171 | 115 |
| | (d) Deferred tax assets nonadmitted | 0 | 0 | 0 | 1,862 | 0 | 1,862 | (1,862) | 0 | (1,862) |
| | (e) Subtotal net admitted deferred tax asset (1c - 1d) | 9,224 | 2,648 | 11,872 | 7,418 | 2,477 | 9,895 | 1,806 | 171 | 1,977 |
| | (f) Deferred tax liabilities | 379 | 8,009 | 8,388 | 371 | 7,489 | 7,860 | 8 | 520 | 528 |
| | (g) Net admitted deferred tax asset/ (Net admitted deferred tax liability) (1e-1f) | 8,845 | (5,361) | 3,484 | 7,047 | (5,012) | 2,035 | 1,798 | (349) | 1,449 |

- 2 Admission calculation components SSAP No. 101:

| | | 12/31/2012 | | | 12/31/2011 | | | Change | | |
|--|--|-----------------|----------------|---------------------------|-----------------|----------------|---------------------------|------------------------------|-----------------------------|---------------------------|
| | | (\$000 OMITTED) | | | | | | | | |
| | | (1) Ordinary | (2) Capital | (3) (Col 1+2) Total | (4) Ordinary | (5) Capital | (6) (Col 4+5) Total | (7) (Col 1-4) Ordinary | (8) (Col 2-5) Capital | (9) (Col 7+8) Total |
| | (a) Federal Income taxes paid in prior years recoverable through loss carrybacks | 3,356 | 989 | 4,345 | 1,435 | 881 | 2,316 | 1,921 | 108 | 2,029 |
| | (b) Adjusted gross DTA expected to be realized (Excluding the amount of DTA from 2 (a) above) after application of the threshold limitation. (Lessor of b.i and b.ii below). | 5,776 | 626 | 6,402 | 5,612 | 551 | 6,163 | 164 | 75 | 239 |
| | i Adjusted gross DTA expected to be realized following BS date. | 5,776 | 626 | 6,402 | 7,801 | 551 | 8,352 | (2,025) | 75 | (1,950) |
| | ii Adjusted gross DTA allowed per limitation threshold | 7,088 | 989 | 8,077 | 5,612 | 881 | 6,493 | 1,476 | 108 | 1,584 |
| | (c) Adjusted gross DTA excluding the amount of DTA from a. and b. above offset by gross DTL | 91 | 1,034 | 1,125 | 371 | 1,045 | 1,416 | (280) | (11) | (291) |
| | (d) Deferred tax assets admitted as the result of application of SSAP No. 101. Total (a+b+c) | 9,223 | 2,649 | 11,872 | 7,418 | 2,477 | 9,895 | 1,805 | 172 | 1,977 |

| | | 2012 | 2011 |
|-----|---|-----------------|---------|
| | | (\$000 OMITTED) | |
| (a) | Ratio percentage used to determine recovery period and threshold limitation amount. | 737.3% | 716.1% |
| (b) | Amount of adjusted capital and surplus used to determine recovery period and threshold limitation in 2 (b) 2 above. | 130,108 | 106,746 |

- 4 Impact of tax planning strategies

| | | 12/31/2012 | | | 12/31/2011* | | | Change | | |
|-----|--|----------------------------|---------------------------|--------------------------------------|----------------------------|---------------------------|--------------------------------------|---|--|--------------------------------------|
| | | (1) Ordinary Percent | (2) Capital Percent | (3) (Col 1+2) Total Percent | (4) Ordinary Percent | (5) Capital Percent | (6) (Col 4+5) Total Percent | (7) (Col 1-4) Ordinary Percent | (8) (Col 2-5) Capital Percent | (9) (Col 7+8) Total Percent |
| (a) | Adjusted Gross DTA (% of total adjusted gross DTAs) | 0.0% | 0.0% | 0.0% | 0.0% | 0.0% | 0.0% | 0.0% | 0.0% | 0.0% |
| (b) | Net admitted adjusted gross DTAs (% of total net admitted adjusted gross DTAs) | 0.0% | 0.0% | 0.0% | 0.0% | 0.0% | 0.0% | 0.0% | 0.0% | 0.0% |
| (c) | Does the company's tax planning strategies include the use of reinsurance? | Yes _____ No <u>X</u> | | | | | | | | |

* As reported on the statutory balance sheet for the most recently filed statement with the domiciliary state commissioner adjusted in accordance with SSAP No 10R. Paragraph 10bii

- B Deferred tax liabilities that are not recognized:
There are no temporary differences for which deferred tax liabilities are not recognized.

- C
 - 1 Current income taxes incurred consist of the following major components:

| | | (1) 12/31/2012 | (2) 12/31/2011 | (Col 1-2) Change |
|-----|----------|-------------------|-------------------|---------------------|
| | | (\$000 OMITTED) | | |
| (a) | Federal | 7,492 | (1,196) | 8,688 |
| (b) | Foreign | 6 | 12 | (6) |
| (c) | Subtotal | 7,498 | (1,184) | 8,682 |

NOTES TO FINANCIAL STATEMENTS

| | | | | |
|---|--|-----------------|------------|---------|
| (d) | Federal income tax on net capital gain | (4,136) | (876) | (3,260) |
| (e) | Utilization of capital loss carry-forward | 0 | 0 | 0 |
| (f) | Other | (92) | (210) | 118 |
| (g) | Federal and foreign income taxes incurred, | 3,270 | (2,270) | 5,540 |
| 2 The tax effects of temporary differences that give rise to significant portions of the deferred tax assets and deferred tax liabilities are as follows: | | | | |
| Deferred tax assets: | | | | |
| (a) | Ordinary deferred tax assets: | | | |
| 1 | Loss reserve discounting | 2,105 | 2,289 | (184) |
| 2 | Unearned premium reserve | 4,522 | 4,373 | 149 |
| 3 | Investments | 5 | 6 | (1) |
| 4 | Guarantee fund accrual | 0 | 0 | 0 |
| 5 | Salvage and subrogation | 1,246 | 1,252 | (6) |
| 6 | Fixed assets | 145 | 145 | 0 |
| 7 | Deferred compensation | 0 | 0 | 0 |
| 8 | Pension accrual | 1,193 | 1,195 | (2) |
| 9 | Other assets (including item <5% of total) | 7 | 21 | (14) |
| | (99) Subtotal | 9,223 | 9,280 | (57) |
| (b) | Statutory valuation allowance adjustment | 0 | 0 | 0 |
| (c) | Nonadmitted ordinary deferred tax assets | 0 | 1,862 | (1,862) |
| (d) | Admitted ordinary deferred tax assets (2a99-2b-2c) | 9,223 | 7,418 | 1,805 |
| | | | | |
| (e) | Capital deferred tax assets: | | | |
| 1 | Investments | 2,429 | 2,277 | 152 |
| 2 | Net capital loss carry-forward | 0 | 0 | 0 |
| 3 | Fixed assets | 0 | 0 | 0 |
| 4 | Other assets (including item <5% of total) | 219 | 200 | 19 |
| | (99) Subtotal | 2,648 | 2,477 | 171 |
| (f) | Statutory valuation allowance adjustment | 0 | 0 | 0 |
| (g) | Nonadmitted ordinary deferred tax assets | 0 | 0 | 0 |
| (h) | Admitted capital deferred tax assets (2e99 - 2f - 2g) | 2,648 | 2,477 | 171 |
| (i) | Admitted deferred tax assets (2d + 2h) | 11,871 | 9,895 | 1,976 |
| 3 Deferred tax liabilities: | | | | |
| (a) | Ordinary deferred tax liabilities | | | |
| 1 | Investments | 50 | 44 | 6 |
| 2 | Fixed assets | 3 | 3 | 0 |
| 3 | Deferred and uncollected premiums | 0 | 26 | (26) |
| 4 | Deferred compensation | 0 | 262 | (262) |
| 5 | Other liabilities (including item <5% of total) | 326 | 36 | 290 |
| | (99) Subtotal | 379 | 371 | 8 |
| (b) | Capital deferred tax liabilities | | | |
| 1 | Unrealized gain/ (losses) | 7,297 | 6,857 | 440 |
| 2 | Investments | 711 | 632 | 79 |
| 3 | Real estate | 0 | 0 | 0 |
| 4 | Other liabilities (including item <5% of total) | 0 | 0 | 0 |
| | (99) Subtotal | 8,008 | 7,489 | 519 |
| (c) | Deferred tax liabilities (3a99 + 3b99) | 8,387 | 7,860 | 527 |
| 4 | Net admitted deferred tax asset/ (liability) (2i - 3c) | 3,484 | 2,035 | 1,449 |
| 5 The change in deferred income taxes reported in surplus before consideration of nonadmitted assets is comprised of the following components: | | | | |
| | | 12/31/2012 | 12/31/2011 | Change |
| | | (\$000 OMITTED) | | |
| | Net deferred tax asset (liability) | 3,484 | 3,897 | (413) |
| | Tax-effect of unrealized gains and losses | (7,297) | (6,857) | (440) |
| | Net tax effect without unrealized gains and losses | 10,781 | 10,754 | 27 |
| | Change in deferred income tax | | | 27 |
| D The Company's income tax incurred and change in deferred income tax differs from the amount obtained by applying the federal statutory rate of 35% to income before income taxes as follows: | | | | |
| | | 12/31/2012 | 12/31/2011 | |
| | | (\$000 OMITTED) | | |
| 1 | Income taxes incurred, gross of capital gains tax (benefit) | 7,406 | (1,394) | |
| 2 | Change in deferred income tax (without tax on unrealized gains and losses) | (27) | (245) | |
| 3 | Total income tax reported | 7,379 | (1,639) | |
| 4 | Statutory income before taxes, gross of capital gains tax (benefit) | 23,464 | (2,714) | |
| | 35% | | 35% | |
| 5 | Expected income tax expense (benefit) at 35% statutory rate | 8,212 | (950) | |
| 6 | Increase (decrease) in actual tax reported resulting from: | | | |
| a. | Dividend received deduction | (563) | (462) | |
| b. | Nondeductible expenses for meals, penalties, and lobbying | 50 | 54 | |
| c. | Tax exempt income | (457) | (120) | |
| d. | Prior period adjustment | 5 | (7) | |
| e. | Deferred tax benefit (expense) on nonadmitted assets | (20) | 147 | |
| f. | Appreciation on donated property | 0 | 0 | |
| g. | IRC 832 (b) (5) adjustment | 153 | 87 | |
| h. | Other | (1) | 0 | |
| 7 | Total federal income tax reported | 7,379 | (1,251) | |
| E Operating loss carryforward | | | | |
| 1 | As of the end of the current period, there are no operating loss or tax credit carryforwards available for tax purposes. | | | |

NOTES TO FINANCIAL STATEMENTS

- 2 The amount of federal income taxes incurred that are available for recoupment in the event of future net losses are:

| | Ordinary | Capital | Total |
|------|----------|---------|-------|
| 2012 | 3,356 | 4,136 | 7,492 |
| 2011 | 0 | 588,000 | 588 |
| 2010 | XXX | 810,000 | 810 |

- 3 The Company did not have any protective tax deposits under Section 6603 of the Internal Revenue Code.

F Consolidated Federal Income Tax Return

- 1 The Company's federal income tax return is consolidated with its affiliates. Ohio Farmers Insurance Company is the parent company of the consolidated return. The following subsidiaries will be included in the consolidated federal income tax return:

| | |
|--------------------------------------|--------------------------|
| Westfield Insurance Company | Westfield Services, Inc. |
| Westfield National Insurance Company | Westfield Bancorp, Inc. |
| American Select Insurance Company | Westfield Bank, FSB |
| Old Guard Insurance Company | Westfield Credit Corp. |
| Westfield Management Company | |

- 2 Each company in the consolidation has agreed to share any tax or recovery of tax based on their individual taxable income or loss. Each company's current taxable income or loss will be adjusted by any prior taxable income or loss which can be carried forward to the current year.

10. Information Concerning Parent, Subsidiaries, and Affiliates-

- A. The Company is owned and operated by its parent company, Ohio Farmers Insurance Company.
- B. The Company has no exceptional transactions with affiliates to report.
- C. The Company has made no changes in methods of establishing terms.
- D. Affiliated Balances due to and from Old Guard Insurance Company at 12/31/2012 and 12/31/2011 respectively were:

| | 12/31/2012 | 12/31/2011 |
|---|------------|------------|
| Ohio Farmers Insurance Company Affiliated Receivable | \$ 791,832 | \$ 0 |
| Ohio Farmers Insurance Company Affiliated Payable | \$ 0 | \$ 955,677 |

Every ninety (90) days the affiliated balances are reviewed and settled in either cash or the transfer of securities.

- E. The Company did not make any guarantees for the benefit of an affiliate or related party resulting in material contingent exposure.
- F. The Company does not have any management or non-GAAP cost sharing arrangements with any affiliated insurers.
- G. The Company is owned and operated by its parent company, Ohio Farmers Insurance Company.
- H. The Company holds no shares of an upstream parent.
- I. The Company did not have any investments in subsidiaries or affiliates that exceeded 10% of its admitted assets.
- J. The Company did not recognize any impairment write down for its investments in Subsidiary, Controlled, or Affiliated Companies during the statement period.
- K. The Company has no investment in a foreign insurance subsidiary.
- L. The Company does not hold an investment in a downstream non-insurance holding company.
11. Debt-
- A. Holding Company Obligations- Not applicable
- B. Federal Home Loan Bank Agreements (FHLB) - Not applicable

12. Retirement Plans, Deferred Compensation, Postemployment Benefits and Compensated Absences and Other Postretirement Benefit Plans-

- A. Defined Benefit Pension Plan and the Postretirement (Other) Benefit Plans

The Company's parent, Ohio Farmers Insurance Company (OFIC), sponsors a non-contributory defined benefit pension plan covering U.S. employees. As of December 31, 2012, there was accrued, in accordance with actuarially determined amounts with an offset to the pension cost accrual for the incremental asset amortization, amounts representing the present value of future benefit obligations.

A summary of assets, obligations and assumptions of the Pension and Other Postretirement Benefit Plans is as follows at December 31, 2012 and 2011:

1. Change in benefit obligation

| | Pension | | Other Benefits | |
|--|----------------|----------------|----------------|---------------|
| | 2012 | 2011 | 2012 | 2011 |
| a. Benefit obligation at beginning of year | \$ 287,827,003 | \$ 249,145,440 | \$ 24,332,644 | \$ 24,056,845 |
| b. Service cost | 10,687,706 | 9,612,484 | 1,424,507 | 1,526,508 |
| c. Interest cost | 14,772,273 | 14,803,677 | 1,283,661 | 1,363,533 |
| d. Contribution by plan participants | 0 | 0 | 948,362 | 1,160,461 |
| e. Actuarial (gain) loss | 47,482,603 | 24,955,554 | 2,996,465 | (11,346) |
| f. Foreign currency exchange rate changes | 0 | 0 | 0 | 0 |
| g. Benefits paid | (25,338,677) | (10,690,152) | (3,413,384) | (3,763,357) |
| h. Plan amendments | 0 | 0 | 0 | 0 |
| i. Business combinations, divestitures, curtailments, settlements and special termination benefits | 0 | 0 | 0 | 0 |
| j. Benefit obligation at end of year | \$ 335,430,908 | \$ 287,827,003 | \$ 27,572,255 | \$ 24,332,644 |

2. Change in plan assets

| | Pension | | Other Benefits | |
|---|----------------|----------------|----------------|---------------|
| | 2012 | 2011 | 2012 | 2011 |
| a. Fair value of plan assets at beginning of year | \$ 252,646,720 | \$ 236,754,142 | \$ 28,237,863 | \$ 29,904,233 |
| b. Actual return on plan assets | 26,120,472 | 18,282,730 | 2,569,142 | 734,227 |
| c. Foreign currency exchange rate changes | 0 | 0 | 0 | 0 |
| d. Employer contribution | 8,900,000 | 8,300,000 | 395,719 | 529,051 |
| e. Plan participants' contributions | 0 | 0 | 948,362 | 1,160,461 |
| f. Benefits paid | (25,338,677) | (10,690,152) | (3,736,937) | (4,090,109) |
| g. Business combinations, divestitures, and settlements | 0 | 0 | 0 | 0 |
| h. Fair value of plan assets at end of year | \$ 262,328,515 | \$ 252,646,720 | \$ 28,414,149 | \$ 28,237,863 |

NOTES TO FINANCIAL STATEMENTS

| 3. Funded Status | Pension | | Other Benefits | |
|---|-----------------------------|----------------|-----------------------------|----------------|
| | 2012 | 2011 | 2012 | 2011 |
| a. Unamortized prior service cost (credit) | \$ 4,441,508 | \$ 5,442,317 | \$ (6,607,330) | \$ (7,039,113) |
| b. Unrecognized net gain or (loss) | \$ 119,774,393 | \$ 83,135,662 | \$ 11,395,891 | \$ 9,173,011 |
| c. Remaining net obligation or net asset at initial date of application | \$ 0 | \$ 0 | \$ 0 | \$ 0 |
| d. Prepaid assets or (accrued liabilities) | \$ 51,113,508 | \$ 53,397,696 | \$ 5,630,455 | \$ 6,039,117 |
| e. Intangible asset | \$ 0 | \$ 0 | \$ 0 | \$ 0 |
| 4. Accumulated benefit obligation for vested employees and partially vested employees to the extent vested | Pension | | Other Benefits | |
| | 2012 | 2011 | 2012 | 2011 |
| | \$ 295,144,322 | \$ 258,109,662 | \$ 27,572,255 | \$ 24,332,644 |
| 5. Benefit obligation for non-vested employees | Pension | | Other Benefits | |
| | 2012 | 2011 | 2012 | 2011 |
| a. Projected benefit obligation | \$ 3,591,420 | \$ 3,545,544 | \$ 12,505,503 | \$ 9,866,079 |
| b. Accumulated benefit obligation | \$ 2,437,326 | \$ 2,526,324 | \$ 12,505,503 | \$ 9,866,079 |
| 6. Components of net periodic benefit cost | Pension | | Other Benefits | |
| | 2012 | 2011 | 2012 | 2011 |
| a. Service cost | \$ 10,687,706 | \$ 9,612,484 | \$ 1,424,507 | \$ 1,526,508 |
| b. Interest cost | 14,772,273 | 14,803,677 | 1,283,661 | 1,363,533 |
| c. Expected return on plan assets | (20,571,562) | (19,937,124) | (2,168,487) | (2,295,784) |
| d. Amortization of unrecognized transition obligation or transition asset | 0 | 0 | 0 | 0 |
| e. Amount of recognized gains and losses | 5,294,962 | 3,812,935 | 354,497 | 256,754 |
| f. Amount of prior service cost recognized | 1,000,809 | 1,000,809 | (431,783) | (431,783) |
| g. Amount of gain or loss recognized due to a settlement or curtailment | 0 | 0 | 0 | 0 |
| h. Total net periodic benefit cost | \$ 11,184,188 | \$ 9,292,781 | \$ 462,395 | \$ 419,228 |
| 7. An additional minimum pension liability adjustment is required when the actuarial present value of accumulated benefits exceeds net plan assets. The additional minimum liability adjustment, less allowable intangible assets, net of tax benefit, is reported as a reduction in surplus. At December 31, 2012, the additional minimum liability for the pension plan is \$32,815,807. The reduction in surplus, net of tax, is \$21,330,275. At December 31, 2011, the additional minimum liability for the pension plan was \$5,462,942. The reduction in surplus, net of tax, was \$3,550,912. | | | | |
| 8. Weighted-average assumptions used to determine net periodic benefit cost as of Dec. 31: | Pension | | Other Benefits | |
| | 2012 | 2011 | 2012 | 2011 |
| a. Weighted-average discount rate | 5.21% | 5.74% | 5.15% | 5.65% |
| b. Expected long-term rate of return on plan assets | 8.375% | 8.375% | 8.00% | 8.00% |
| c. Rate of compensation increase | 3.00% | 3.00% | NA | NA |
| Weighted-average assumptions used to determine projected benefit obligations as of Dec. 31: | | | | |
| d. Weighted-average discount rate | 4.23% | 5.21% | 4.14% | 5.15% |
| e. Rate of compensation increase* | 3.00% | 3.00% | NA | NA |
| * Rate of compensation increase assumed to be 3.0% for 2013-2015; and 3.5% for 2016+. | | | | |
| 9. The measurement date (annual valuation) used to determine other postretirement benefit measurements for postretirement benefit plans that make up at least the majority of plan assets and benefit obligation is January 1. The fair market value of assets is measured and updated as of December 31. | | | | |
| 10. For measurement purposes, an 7.50% annual rate of increase in the per capita cost of covered health care benefits was assumed for 2012. The rate is assumed to decrease to 7.25% for 2013, then decrease gradually to 5.00% for 2022, and remain at that level thereafter. | | | | |
| 11. Due to the caps in OFIC's post retirement health care plan, assumed health care cost trend rates have a limited effect on the amounts reported for the health care plans. A one-percentage-point change in assumed health care cost trend rates, including the effects of Medicare Part D subsidies, would have the following effects: | | | | |
| | 1 Percentage Point Increase | | 1 Percentage Point Decrease | |
| a. Effect on total of service cost and interest cost components | \$ (63,274) | | \$ 56,379 | |
| b. Effect on postretirement benefit obligation | \$ (796,954) | | \$ 719,633 | |
| 12. Plan asset information: | | | | |
| The defined benefit pension plan asset allocation as of the measurement date, December 31, and the target allocation, and the target asset allocations, presented as a percentage of total plan assets were as follows: | | | | |
| | 2012 | 2011 | Target Allocation | |
| a. Debt Securities | 37.0% | 38.0% | 35.0% - 45.0% | |
| b. Equity Securities | 62.0% | 61.0% | 55.0% - 65.0% | |
| c. Real Estate | 0.0% | 0.0% | 0.0% | |
| d. Other | 1.0% | 1.0% | 0.0% | |
| e. Total | 100.0% | 100.0% | | |

OFIC's policy of investment is based on a standard plan and formula. The investment plan and formula states that all assets of the pension trust except dividends and interest received from portfolio securities will be a part of the investment fund (formula). This income will be used to pay benefits, but may be allocated to the investment fund after an amount approximately equal to three months' benefits have accumulated. The investment fund will normally consist of debt instruments, including those of governments, government agencies and publicly owned corporations and properly diversified number of common and/or preferred stocks of publicly owned corporations. The investment fund will be divided between these two normal portions. The debt instruments comprise the Bond Fund and shall be considered normal when it is 40% of the investment fund and is generally maintained in a range of 35.0% to 45.0% of the fund. The equities comprise the Stock Fund and shall be considered normal when it is 60% of the investment fund and is generally maintained in a range of 55.0% to 65.0% of the fund. The measurement date for these funds is December 31, annually.

The investments fund portfolio will have the following overall characteristics:

- Complies with provisions of the Ohio Farmers Pension Trust Investment Plan and Formula
- Above average financial quality
- Broadly diversified
- Liquidity requirements minimal
- Fully invested (minimal cash reserves)
- Growing investment income
- Long term time horizon

NOTES TO FINANCIAL STATEMENTS

Additionally the following constraints are placed on individual investments within the portfolio. In the case of equity investments, no equity shall be held unless:

- Dividends are paid (except in the case of mutual funds), and
- Foreign common stock may not exceed 15% of the common stock portfolio.

In the case of debt instruments, no debt shall be held unless:

- Straight bonds will have a duration range of 7-10 years and be of BBB-/AAA quality,
- Foreign bonds may not exceed 15% of the bond fund, and
- Convertible bonds may not exceed 20% of the bond fund and be of BBB- or higher quality, unless company is held in other portfolios.

The funds shall be managed by five trustees, elected by the Board of Directors, utilizing investment advice provided under an agreement with OFIC. The trustees annually review the investment plan and formula.

The long-term rates of return were determined using a combination of actual results and published market data. The rates are within the high and low ends of an expected return range. The low end of the range was calculated by multiplying the percentage of portfolio composition of each asset category by published historical return data for the category. The high end of the range was calculated by combining the published market data with actual historical returns for the pension plan weighting the percentages, 80% published and 20% historical.

Additional asset categories and associated risk- Not applicable.

13. The following estimated future benefit payments, which reflect expected future service, as appropriate, are expected to be paid in the years indicated:

| | Year (s) | Amount |
|----|------------------|---------------|
| a. | 2013 | \$ 14,416,208 |
| b. | 2014 | \$ 15,113,427 |
| c. | 2015 | \$ 15,698,411 |
| d. | 2016 | \$ 16,397,094 |
| e. | 2017 | \$ 17,179,204 |
| f. | Thereafter Total | \$ 99,104,365 |

14. OFIC does not have any regulatory contribution requirements for 2013; however, OFIC currently intends to make voluntary contributions of approximately \$10.2 million to the defined benefit pension plan and 401 (h) contributions of approximately \$0.3 million in 2013 with reference to OFIC's contribution funding guidelines.

OFIC's contribution funding guidelines were developed during 2006 and address the contribution and funding limitations as adjusted by the Pension Protection Act of 2006. The guidelines provide that OFIC will generally contribute an amount equal to the value of benefits earned each year regardless of whether or not a minimum contribution is required with an option to not fund in years where a minimum contribution is not projected during the subsequent five (5) years. Minimum required contributions will always be funded. Contributions are at the final discretion of the Ohio Farmers Insurance Company Board of Directors.

Additionally, OFIC's postretirement health care plan is contributory, with participants' contributions adjusted annually; the life insurance plan is non-contributory.

15. Securities, Insurance Contracts, and other Employer Transactions- Not applicable.
16. Prior service cost is amortized on a straight-line basis over participants' average future service, not on a weighted-average basis.
17. Substantive commitment used as basis for accounting for the benefit obligation- Not applicable.
18. Cost of providing special or contractual termination benefits recognized during the period- Not applicable.
19. Explanation of significant change in the benefit obligation or plan assets not otherwise apparent- Not applicable.

B. Defined Contribution Plan

The Company's employees are covered by a qualified defined contribution pension plan (under IRC Section 401 (k)) sponsored by OFIC. The plan began operation on January 1, 2000, in accordance with "Safe Harbor" Treasury regulations.

Contributions of three percent (3%) of each employee's eligible compensation are made during the year. The Company's non-elective contribution for the plan was \$350,249 and \$346,303 for 2012 and 2011, respectively.

At December 31, 2012, the total fair market value of the defined contribution plan assets was \$168,197,259, including unrealized gains and losses and participant loans.

- C. Multiemployer Plans- Not applicable
- D. Consolidated/Holding Company Plans- Not applicable
- E. Post-employment Benefits and Compensated Absences- Not applicable
- F. Impact of Medicare Modernization Act on Postretirement Benefits (INT 04-17)

1. Pre-adoption note regarding existence of Act- Not applicable.
2. Effects of the Subsidy in Measuring the Net Postretirement Benefit Cost- Not applicable

The Medicare Prescription Drug, Improvement and Modernization Act of 2003 (the Act) was signed into law in December of 2003. The Act includes the following two new features to Medicare Part D that could affect the measurement of the accumulated postretirement benefit obligation (APBO) and net periodic postretirement cost for the Plan:

- A federal subsidy (based on 28% of an individual beneficiary's annual prescription drug costs between \$250 and \$5,000) to sponsors of retiree healthcare benefit plans that provide a prescription drug benefit that is at least actuarially equivalent to Medicare Part D; and
- The opportunity for a retiree to obtain a prescription drug benefit under Medicare.

3. Gross benefits payments and the amount of the subsidy for the period:

| | 2012 | 2011 |
|-------------------------|--------------|--------------|
| Medical | \$ 1,398,646 | \$ 1,777,877 |
| Dental | 262,575 | 240,173 |
| Prescription | 1,723,975 | 1,640,253 |
| Life insurance premiums | 172,362 | 199,803 |
| Administration fees | 179,379 | 232,003 |
| Gross benefits paid | \$ 3,736,937 | \$ 4,090,109 |

Future gross benefits payments are estimated to be at approximately the same level.

NOTES TO FINANCIAL STATEMENTS

| | | | | |
|---|----|---------|----|---------|
| Subsidy received during calendar year (for plan years 2011/2010 and 2009, respectively) | \$ | 684,846 | \$ | 358,710 |
| Expected subsidy receivable (for plan years 2012 and 2011, respectively) | \$ | 323,553 | \$ | 326,752 |

13. Capital and Surplus, Dividend Restrictions and Quasi-Reorganizations-
- (1-10) The Company is 100% owned and operated by its parent, Ohio Farmers Insurance Company. Dividend restrictions are provided by the Insurance Regulations of the Ohio Revised Code. The Company does not have any cumulative unrealized gains or losses in unassigned funds.
- (11) Surplus Notes- Not applicable
- (12-13) Quasi-Reorganizations- Not applicable
14. Contingencies-
- A. Contingent Commitments- Not applicable
- B. Assessments
- (1) On February 8, 2012, the Company received notification of the insolvency of First Seaford Surety, Inc. On November 16, 2012, the Company received notification of the insolvency of Frontier Insurance Company. It is expected that these insolvencies will result in retrospective premium-based guaranty fund assessments against the Company of \$2,645 that have been charged to operations in the current period.
- The Company has accrued \$500,248 for guaranty fund and other assessments. This represents management's best estimates on the information received from the states in which the Company writes business and may change due to many factors including the Company's share in the ultimate cost of current insolvencies.
- (2)
- | | | |
|---|----|-------|
| a. Assets recognized from paid and accrued premium tax offsets and policy surcharges prior year-end | \$ | 3,554 |
| b. Decreases current year: Premium tax offsets expired | \$ | 1,259 |
| c. Increases current year: Premium tax offsets added | \$ | 513 |
| d. Assets recognized from paid and accrued premium tax offsets and policy surcharges current year-end | \$ | 2,808 |
- C. Gain Contingencies- Not applicable
- D. Claims related extra contractual obligation and bad faith losses stemming from lawsuits- Not applicable
- E. Product Warranties- Not applicable
- F. All Other Contingencies
Various lawsuits against the Company have arisen in the course of the Company's business. Contingent liabilities arising from litigation, income taxes, and other matters are not considered material in relation to the financial position of the Company.
15. Leases-
The Company does not have any material lease obligations.
16. Information about Financial Instruments with Off-Balance Sheet Risk and Financial Instruments with Concentrations of Credit Risk-
The Company does not invest in financial instruments with off-balance sheet risk.
17. Sale, Transfer and Servicing of Financial Assets and Extinguishments of Liabilities-
- A. Transfer of Receivables Reported as Sales
The Company has not sold or transferred any receivables to any other parties.
- B. Transfer and Servicing of Financial Assets- Not applicable
- C. Wash Sales
The Company did not have any wash sales involving transactions for securities with a NAIC designation of 3 or below.
18. Gain or Loss to the Reporting Entity from Uninsured A&H Plans and the Uninsured Portion of Partially Insured Plans- Not applicable
19. Direct Premium Written / Produced by Managing General Agents / Third Party Administrators- Not applicable
20. Fair Value Measurements-
- A. For assets that are measured and reported at fair value in the statement of financial position after initial recognition, the valuation techniques and the inputs used to develop those measurements are as follows:

Level 1 - Values are unadjusted quoted prices for identical assets and liabilities in active markets accessible at the measurement date.

Level 2 - Inputs include quoted prices for similar assets or liabilities in active markets, quoted prices from those willing to trade in markets that are not active, or other inputs that are observable or can be corroborated by market data for the term of the instrument. Such inputs include market interest rates and volatilities, spreads and yield curves.

Level 3 - Certain inputs are unobservable (supported by little or no market activity) and significant to the fair value measurement. Unobservable inputs reflect the Company's best estimate of what hypothetical market participants would use to determine a transaction price for the asset or liability at the reporting date.

The Company has no liabilities that are measured at fair value in the statement of financial position.

(1) Fair Value Measurements at December 31, 2012

| Description | (1) | (2) | (3) | (4) | (5) |
|---|---------------|-----------|-----------|---------------|-----|
| | (Level 1) | (Level 2) | (Level 3) | Total | |
| Assets at Fair Value: | | | | | |
| Common Stock | | | | | |
| Industrial and Miscellaneous | \$ 96,116,806 | \$ 0 | \$ 0 | \$ 96,116,806 | |
| Total Common Stocks | \$ 96,116,806 | \$ 0 | \$ 0 | \$ 96,116,806 | |
| Other Invested Assets | | | | | |
| Joint Venture, Ptr or LLC, char. of Com Stks - Unaffiliated | \$ 3,283,594 | \$ 0 | \$ 0 | \$ 3,283,594 | |
| Total Other Invested Assets | \$ 3,283,594 | \$ 0 | \$ 0 | \$ 3,283,594 | |
| Total Assets at Fair Value | \$ 99,400,400 | \$ 0 | \$ 0 | \$ 99,400,400 | |

(2) At December 31, 2012, the Company held no investments in assets or liabilities measured and reported at fair value that were classified as Level 3.

NOTES TO FINANCIAL STATEMENTS

(3) The Company's policy for determining when transfers between levels is required is based upon change in the inputs used to determine fair value measurement. If an input changes, the Company evaluates the new input (s) and makes the determination whether or not a transfer between levels is appropriate. If an asset or liability is transferred between levels, it is the Company's policy to record the transfer as of the beginning of the quarter in which the transfer occurs. The Company held no assets or liabilities categorized as Level 1, 2 or 3 during the reporting period that were transferred into or out of the level categorization held at January 1, 2012.

(4) As of December 31, 2012, the Company held no investments in assets or liabilities measured and reported at fair value that were classified as Level 2 or Level 3. Historically, fair values in the Level 2 category are provided by independent pricing services. Where independent pricing services provide fair values, the Company has obtained an understanding of the methods, models, and inputs used in pricing and has controls in place to validate that amounts provided represent current fair values. Estimated fair values of investments categorized as Level 3 generally include inputs for which no readily observable inputs are available and require management judgment.

(5) As of December 31, 2012, the Company had no holdings classified as either a derivative asset or liability.

B. Combining Fair Value Information- Not required

C. The method(s) and significant assumptions used to estimate the fair value of financial instruments are as follows:

Investment Securities - Fair values for bonds, are based on the values prescribed by an independent pricing service or from brokers. For bonds that are not actively traded, estimated fair values are based on values of bonds of comparable yield and credit quality. The fair values for common stocks are based on quoted market prices, where available, which are provided to the Company by an independent pricing service.

Short-term investments, Uncollected premiums and agents' balances in the course of collection, and Deferred premiums, agents' balances and installments booked but deferred and not yet due - The carrying amounts reported as admitted assets or liabilities for these financial instruments approximate their fair values due to the short-term nature of these financial instruments.

Other Invested Assets - The estimated fair value of publicly traded limited partnerships is based on the values prescribed by an independent pricing service.

| Type of Financial Instrument | Aggregate Fair Value | Admitted Assets | (Level 1) | (Level 2) | (Level 3) | Not Practicable (Carrying Value) |
|---|-------------------------|--------------------|---------------|----------------|-----------|---|
| a. Financial Assets: | | | | | | |
| Bonds | \$ 226,413,908 | \$ 198,026,077 | \$ 33,362,692 | \$ 192,997,790 | \$ 53,426 | \$ 0 |
| Common stocks | 96,116,806 | 96,116,806 | 96,116,806 | 0 | 0 | 0 |
| Short-term investments | 716,009 | 716,009 | 0 | 716,009 | 0 | 0 |
| Other invested assets | 3,283,594 | 3,283,594 | 3,283,594 | 0 | 0 | 0 |
| Uncollected premiums and agents' balances in the course of collection | 7,078,909 | 7,078,909 | 0 | 7,078,909 | 0 | 0 |
| Deferred premiums, agents' balances and installments booked but deferred and not yet due | 43,694,223 | 43,694,223 | 0 | 43,694,223 | 0 | 0 |

b. Financial Liabilities: Not applicable

D. Fair Value Estimating- Not applicable

21. Other Items-

A. Extraordinary Items- Not applicable

B. Troubled Debt Restructuring: Debtors- Not applicable

C. Other Disclosures- Not applicable

D. Uncollectible Balances

At December 31, 2012 and 2011, the Company had admitted assets of \$50,773,132 and \$48,727,616, respectively, in accounts receivable for Agents' Balances or Uncollected Premiums. The Company routinely assesses the collectability of these receivables. Based upon company experience, less than 1% of the balance may become uncollectable and the potential loss is not material to the Company's financial condition.

E. Business Interruption Insurance Recoveries

The Company had no business interruption insurance recoveries in 2012.

F. State Transferable Tax Credits

The Company does not have State Transferable Tax Credits.

G. Subprime Mortgage Related Risk Exposure

(1) The subprime lending sector is the sector of the mortgage lending industry that lends to borrowers who do not qualify for prime market interest rates because of poor or insufficient credit history. The term also applies to paper taken on property that cannot be sold on the primary market, including loans on certain types of investment properties and certain types of self-employed individuals.

For purposes of this disclosure, subprime exposure is defined as the potential for financial loss through direct investment, or underwriting risk associated with the risk from the subprime lending sector. This includes any direct risk through investments in debt securities, asset backed or structured securities, hedge funds, subsidiaries and affiliates, and insurance product issuance. The Company views the following features as common characteristics of subprime mortgage loans:

- An interest rate above prime to borrowers who do not qualify for prime rate
- Borrowers with low credit ratings (FICO scores)
- Interest-only or negative amortizing loans
- Unconventionally high initial loan-to-value ratios
- Low initial payments based on a fixed introductory rate that expires after a short initial period, then adjusts to a variable rate plus a margin for the remaining term of the loan
- Borrowers with less than conventional documentation of their home and/or assets
- Very high or no limits on how much the payment amount or the interest rate may increase at reset periods, potentially causing a substantial increase in the monthly payment amount
- Include substantial prepayment penalties

The Company's strategy to manage or mitigate subprime exposure is to avoid making direct investments in, or insuring any of the sources of risk identified above.

(2) The Company has no direct exposure through investments in subprime mortgage loans.

(3) The Company has no direct exposure through other investments.

(4) The Company has no underwriting exposure to subprime mortgage related risk.

22. Events Subsequent-

Subsequent events have been considered through February 15, 2013 for the statutory statements issued as of December 31, 2012. No events or transactions have occurred that would give rise to a Type I or Type II subsequent event.

NOTES TO FINANCIAL STATEMENTS

P & C Specific Notes

23. Reinsurance-

- A. Unsecured Reinsurance Recoverables
The Company has an intercompany recoverable with an affiliated company that has an unsecured aggregate recoverable for paid and unpaid losses, including IBNR, loss adjustment expenses, and unearned premium that exceeds 3% of the Company's policyholder surplus with the following reinsurer:

Ohio Farmers Insurance Company FEIN 34-0438190 \$ 6,057,899

- B. Reinsurance Recoverable in Dispute
The Company has no material recoverable to disclose.

C. Reinsurance Assumed and Ceded

| | Assumed Reinsurance | | Ceded Reinsurance | | Net | |
|------------------------------------|---------------------|-------------------|-------------------|-------------------|-----------------|-------------------|
| | Premium Reserve | Commission Equity | Premium Reserve | Commission Equity | Premium Reserve | Commission Equity |
| a. Affiliates | \$ 68,779,160 | \$ 10,835,056 | \$ 0 | \$ 0 | \$ 68,779,160 | \$ 10,835,056 |
| b. All Other | 0 | 0 | 0 | 0 | 0 | 0 |
| c. TOTAL | \$ 68,779,160 | \$ 10,835,056 | \$ 0 | \$ 0 | \$ 68,779,160 | \$ 10,835,056 |
| d. Direct Unearned Premium Reserve | | \$ 0 | | | | |

- (2) The additional or return commission, predicated on loss experience or on any other form of profit sharing arrangements in this annual statement as a result of existing contractual arrangements is accrued as follows:

REINSURANCE

| | Direct | Assumed | Ceded | Net |
|---|--------|---------|-------|------|
| a. Contingent Commission | \$ 0 | \$ 0 | \$ 0 | \$ 0 |
| b. Sliding Scale Adjustments | 0 | 0 | 0 | 0 |
| c. Other Profit Commission Arrangements | 0 | 0 | 0 | 0 |
| d. TOTAL | \$ 0 | \$ 0 | \$ 0 | \$ 0 |

The above figures do not include the intercompany pooling of Agents' Contingent Commission in the Assumed and Ceded columns.

- (3) Protected Cells- Not applicable

- D. Uncollectible Reinsurance- Not applicable
E. Commutation of Ceded Reinsurance- Not applicable
F. Retroactive Reinsurance- Not applicable
G. Reinsurance Accounted for as a Deposit- Not applicable
H. Disclosures for the Transfer of Property and Casualty Run-off Agreements- Not applicable
I. Certified Reinsurer Downgraded or Status Subject to Revocation- Not applicable

24. Retrospectively Rated Contracts and Contracts Subject to Redetermination- Not applicable

25. Changes in Incurred Losses and Loss Adjustment Expenses-

Reserves as of December 31, 2011 were \$136.4 million. In calendar year 2012, \$45.6 million has been paid for incurred losses and loss adjustment expenses attributable to insured events of prior years. Reserves remaining for prior years are now \$82.5 million. Therefore, there has been a \$8.3 million favorable prior-year development from December 31, 2011 to December 31, 2012. The favorable development is principally from decreases in the estimates of loss and loss adjustment expenses for the following lines of business: commercial multiple peril, other liability - occurrence, homeowners/farmowners, and private passenger auto liability. These decreases were offset, in part, by increases in fidelity/surety estimates. This change is generally the result of ongoing analysis of recent loss development trends. Original estimates are increased or decreased, as additional information becomes known regarding individual claims. The estimates are not affected by prior year loss development on retrospectively rated policies, as the Company does not write this type of policy.

26. Intercompany Pooling Arrangements-

Effective January 1, 2011, the reinsurance pooling arrangement was amended to increase Ohio Farmers Insurance Company's participation from 9% to 19% and decrease Westfield Insurance Company's participation from 64% to 54%. No other companies in the pool were impacted. This amendment was approved by the Ohio Department of Insurance in December, 2010.

Below is a detail of participation percentages by company:

| | NAIC Number | Effective 1/1/2011 | Prior to 1/1/2011 |
|--------------------------------------|-------------|--------------------|-------------------|
| Ohio Farmers Insurance Company | 24104 | 19.0% | 9.0% |
| Westfield Insurance Company | 24112 | 54.0% | 64.0% |
| Westfield National Insurance Company | 24120 | 13.0% | 13.0% |
| American Select Insurance Company | 19992 | 5.0% | 5.0% |
| Old Guard Insurance Company | 17558 | 9.0% | 9.0% |

- A. The lead company, Ohio Farmers Insurance Company, and its property-casualty companies participate in a single 100% reinsurance pooling arrangement. The following companies are participants:

| Company | NAIC Number | Percent |
|--------------------------------------|-------------|---------|
| Ohio Farmers Insurance Company | 24104 | 19.0% |
| Westfield Insurance Company | 24112 | 54.0% |
| Westfield National Insurance Company | 24120 | 13.0% |
| American Select Insurance Company | 19992 | 5.0% |
| Old Guard Insurance Company | 17558 | 9.0% |

- B. Each participating company shares in all lines and types of business.
C. Any cession to non-affiliated reinsurers is prior to the cession of pooling business from the affiliated pool member to the lead company.
D. All pool members have contractual right of direct recovery from the non-affiliated reinsurer per the terms of such reinsurance agreements.
E. No discrepancies exist between pooled business entries on the assumed and ceded reinsurance schedule of the lead company and corresponding entries on the assumed and ceded reinsurance schedules of other pool participants.

NOTES TO FINANCIAL STATEMENTS

F. The Provision for Reinsurance is recorded in accordance with the percentages set forth in the intercompany pooling arrangement.

G. Affiliated Balances due to and from Old Guard Insurance Company at 12/31/2012 and 12/31/2011 respectively were:

| | 12/31/2012 | 12/31/2011 |
|--|------------|------------|
| Ohio Farmers Insurance Company* Affiliated Receivable | \$ 791,832 | \$ 0 |
| | \$ 791,832 | \$ 0 |
| Ohio Farmers Insurance Company* Affiliated Payable | \$ 0 | \$ 955,677 |
| | \$ 0 | \$ 955,677 |

*Ohio Farmers Insurance Company is included in the intercompany pooling arrangement.

27. Structured Settlements-

A. The Company has purchased annuities from life insurers under which the claimants are payees. These annuities have been used to reduce unpaid losses by \$392,650 as of December 31, 2012. The Company has a contingent liability of \$392,650 should the issuers of these annuities fail to perform under the terms of the annuities.

B. The Company has purchased annuities of which the claimant is payee but for which the Company is contingently liable. However, the total value of all annuities due from any one life insurer does not equal or exceed 1% of the Company's policyholder surplus.

28. Health Care Receivables- Not applicable

29. Participating Policies- Not applicable

30. Premium Deficiency Reserves-

- | | |
|---|------------|
| 1. Liability carried for premium deficiency reserves: | \$ 0 |
| 2. Date of the most recent evaluation of this liability: | 12/31/2012 |
| 3. Was anticipated investment income utilized in the calculation? | Yes |

31. High Deductibles- Not applicable

32. Discounting of Liabilities for Unpaid Losses and Unpaid Loss Adjustment Expenses-

The Company does not discount the liabilities for unpaid losses or unpaid loss adjustment expenses for Workers' Compensation or any other line of business.

33. Asbestos/Environmental Reserves-

The Company's exposure to asbestos and environmental claims arises from general liability and commercial multiple peril lines of business. The Company tries to estimate the full impact of the asbestos and environmental exposure by establishing full case basis reserves on all known claims and computing incurred but not reported losses based on market share tempered by previous experience. In addition, reserves are held for future allocated loss adjustment expenses including coverage dispute costs.

A. Does the company have on the books, or has it ever written an insured for which you have identified a potential for the existence of a liability due to asbestos losses?
Yes (X) No ()

The Company's asbestos related losses (including coverage dispute costs) for each of the five most recent years were as follows after intercompany pooling:

(1) Direct Basis:

| | 2008 | 2009 | 2010 | 2011 | 2012 |
|--|--------------|--------------|--------------|--------------|--------------|
| a. Beginning reserves: | \$ 4,544,794 | \$ 4,432,987 | \$ 4,307,422 | \$ 4,195,790 | \$ 4,097,165 |
| b. Incurred losses and loss adjustment expense: | (2,250) | 0 | 0 | 0 | 0 |
| c. Calendar year payments for losses and loss adjustment expenses: | 109,556 | 125,565 | 111,633 | 98,625 | 110,675 |
| d. Ending reserves: | \$ 4,432,987 | \$ 4,307,422 | \$ 4,195,790 | \$ 4,097,165 | \$ 3,986,490 |

(2) Assumed Reinsurance:

| | | | | | |
|--|------|------|------|------|------|
| a. Beginning reserves: | \$ 0 | \$ 0 | \$ 0 | \$ 0 | \$ 0 |
| b. Incurred losses and loss adjustment expense: | 0 | 0 | 0 | 0 | 0 |
| c. Calendar year payments for losses and loss adjustment expenses: | 0 | 0 | 0 | 0 | 0 |
| d. Ending reserves: | \$ 0 | \$ 0 | \$ 0 | \$ 0 | \$ 0 |

(3) Net of Ceded Reinsurance:

| | | | | | |
|--|--------------|--------------|--------------|--------------|--------------|
| a. Beginning reserves: | \$ 4,542,542 | \$ 4,432,986 | \$ 4,307,421 | \$ 4,195,788 | \$ 4,097,164 |
| b. Incurred losses and loss adjustment expense: | 0 | 0 | 0 | 0 | 0 |
| c. Calendar year payments for losses and loss adjustment expenses: | 109,556 | 125,565 | 111,633 | 98,625 | 110,675 |
| d. Ending reserves: | \$ 4,432,986 | \$ 4,307,421 | \$ 4,195,788 | \$ 4,097,164 | \$ 3,986,489 |

B. State the amount of the ending reserves for Bulk + IBNR included in A (Loss & LAE):

| | |
|-------------------------------------|--------------|
| (1) Direct Basis: | \$ 3,464,142 |
| (2) Assumed Reinsurance Basis: | \$ 0 |
| (3) Net of Ceded Reinsurance Basis: | \$ 3,464,142 |

C. State the amount of the ending reserves for loss adjustment expenses included in A (Case, Bulk + IBNR):

| | |
|-------------------------------------|------------|
| (1) Direct Basis: | \$ 992,923 |
| (2) Assumed Reinsurance Basis: | \$ 0 |
| (3) Net of Ceded Reinsurance Basis: | \$ 992,923 |

D. Does the company have on the books, or has it ever written an insured for which you have identified a potential for the existence of a liability due to environmental losses?
Yes (X) No ()

NOTES TO FINANCIAL STATEMENTS

The Company's environmental related losses (including coverage dispute costs) for each of the five most recent years were as follows after intercompany pooling:

| | | | | | | |
|--|----|---------|------------|------------|------------|------------|
| (1) Direct Basis: | | 2008 | 2009 | 2010 | 2011 | 2012 |
| a. Beginning reserves: | \$ | 966,006 | \$ 925,163 | \$ 883,871 | \$ 862,568 | \$ 766,495 |
| b. Incurred losses and loss adjustment expense: | | 0 | 0 | 0 | 0 | 0 |
| c. Calendar year payments for losses and loss adjustment expenses: | | 40,843 | 41,292 | 21,303 | 96,073 | 72,631 |
| d. Ending reserves: | \$ | 925,163 | \$ 883,871 | \$ 862,568 | \$ 766,495 | \$ 693,864 |
| (2) Assumed Reinsurance: | | | | | | |
| a. Beginning reserves: | \$ | 0 | \$ 0 | \$ 0 | \$ 0 | \$ 0 |
| b. Incurred losses and loss adjustment expense: | | 0 | 0 | 0 | 0 | 0 |
| c. Calendar year payments for losses and loss adjustment expenses: | | 0 | 0 | 0 | 0 | 0 |
| d. Ending reserves: | \$ | 0 | \$ 0 | \$ 0 | \$ 0 | \$ 0 |
| (3) Net of Ceded Reinsurance: | | | | | | |
| a. Beginning reserves: | \$ | 966,006 | \$ 925,163 | \$ 883,871 | \$ 862,568 | \$ 766,495 |
| b. Incurred losses and loss adjustment expense: | | 0 | 0 | 0 | 0 | 0 |
| c. Calendar year payments for losses and loss adjustment expenses: | | 40,843 | 41,292 | 21,303 | 96,073 | 72,631 |
| d. Ending reserves: | \$ | 925,163 | \$ 883,871 | \$ 862,568 | \$ 766,495 | \$ 693,863 |

E. State the amount of the ending reserves for Bulk + IBNR included in D (Loss & LAE):

| | | |
|-------------------------------------|----|---------|
| (1) Direct Basis: | \$ | 431,378 |
| (2) Assumed Reinsurance Basis: | \$ | 0 |
| (3) Net of Ceded Reinsurance Basis: | \$ | 431,378 |

F. State the amount of the ending reserves for loss adjustment expenses included in D (Case, Bulk + IBNR):

| | | |
|-------------------------------------|----|---------|
| (1) Direct Basis: | \$ | 153,583 |
| (2) Assumed Reinsurance Basis: | \$ | 0 |
| (3) Net of Ceded Reinsurance Basis: | \$ | 153,583 |

34. Subscriber Savings Accounts- Not applicable

35. Multiple Peril Crop Insurance- Not applicable

36. Financial Guaranty Insurance- Not applicable

GENERAL INTERROGATORIES
PART 1 - COMMON INTERROGATORIES

GENERAL

- | | |
|--|------------------------|
| 1.1 Is the reporting entity a member of an Insurance Holding Company System consisting of two or more affiliated persons, one or more of which is an insurer? | Yes (X) No () |
| 1.2 If yes, did the reporting entity register and file with its domiciliary State Insurance Commissioner, Director or Superintendent, or with such regulatory official of the state of domicile of the principal insurer in the Holding Company System, a registration statement providing disclosure substantially similar to the standards adopted by the National Association of Insurance Commissioners (NAIC) in its Model Insurance Holding Company System Regulatory Act and model regulations pertaining thereto, or is the reporting entity subject to standards and disclosure requirements substantially similar to those required by such Act and regulations? | Yes (X) No () N/A () |
| 1.3 State Regulating? | Ohio |
| 2.1 Has any change been made during the year of this statement in the charter, by-laws, articles of incorporation, or deed of settlement of the reporting entity? | Yes () No (X) |
| 2.2 If yes, date of change: | |
| 3.1 State as of what date the latest financial examination of the reporting entity was made or is being made. | 12/31/2007 |
| 3.2 State the as of date of the latest financial examination report became available from either the state of domicile or the reporting entity. This date should be the date of the examined balance sheet and not the date the report was completed or released. | 12/31/2007 |
| 3.3 State as of what date the latest financial examination report became available to other states or the public from either the state of domicile or the reporting entity. This is the release date or completion date of the examination report and not the date of the examination (balance sheet date). | 08/07/2008 |
| 3.4 By what department or departments? Ohio | |
| 3.5 Have all financial statement adjustments within the latest financial examination report been accounted for in a subsequent financial statement filed with Departments? | Yes () No () N/A (X) |
| 3.6 Have all of the recommendations within the latest financial examination report been complied with? | Yes () No () N/A (X) |
| 4.1 During the period covered by this statement, did any agent, broker, sales representative, non-affiliated sales/service organization or any combination thereof under common control (other than salaried employees of the reporting entity) receive credit or commissions for or control a substantial part (more than 20 percent of any major line of business measured on direct premiums) of: | |
| 4.11 sales of new business? | Yes () No (X) |
| 4.12 renewals? | Yes () No (X) |
| 4.2 During the period covered by this statement, did any sales/service organization owned in whole or in part by the reporting entity or an affiliate, receive credit or commissions for or control a substantial part (more than 20 percent of any major line of business measured on direct premiums) of: | |
| 4.21 sales of new business? | Yes () No (X) |
| 4.22 renewals? | Yes () No (X) |

GENERAL INTERROGATORIES
PART 1 - COMMON INTERROGATORIES

GENERAL

5.1 Has the reporting entity been a party to a merger or consolidation during the period covered by this statement? Yes () No (X)

5.2 If yes, provide the name of entity, the NAIC company code, and state of domicile for any entity that has ceased to exist as a result of the merger or consolidation.

| 1 Name of Entity | 2 NAIC Company Code | 3 State of Domicile |
|---------------------|------------------------|------------------------|
|---------------------|------------------------|------------------------|

6.1 Has the reporting entity had any Certificates of Authority, licenses or registrations (including corporate registration, if applicable) suspended or revoked by any governmental entity during the reporting period? Yes () No (X)

6.2 If yes, give full information:
.....

7.1 Does any foreign (non-United States) person or entity directly or indirectly control 10% or more of the reporting entity? Yes () No (X)

7.2 If yes, 7.21 State the percentage of foreign control; 0.0 %

7.22 State the nationality(s) or entity(s); or if the entity is a mutual or reciprocal, the nationality of its manager or attorney-in-fact and identify the type of entity(s) (e.g., individual, corporation, government, manager or attorney-in-fact).

| 1 Nationality | 2 Type of Entity |
|------------------|---------------------|
|------------------|---------------------|

8.1 Is the company a subsidiary of a bank holding company regulated by the Federal Reserve Board? Yes (X) No ()

8.2 If response to 8.1 is yes, please identify the name of the bank holding company.
Ohio Farmers Insurance Company

8.3 Is the company affiliated with one or more banks, thrifts or securities firms? Yes (X) No ()

8.4 If response to 8.3 is yes, please provide the names and locations (city and state of the main office) of any any affiliates regulated by a federal financial regulatory services agency [i.e. the Federal Reserve Board (FRB), the Office of the Comptroller of the Currency (OCC), the Federal Deposit Insurance Corporation (FDIC) and the Securities Exchange Commission (SEC)] and identify the affiliate's primary federal regulator.

| 1 Affiliate Name | 2 Location (City, State) | 3 FRB | 4 OCC | 5 FDIC | 6 SEC |
|---------------------|-----------------------------|----------|----------|-----------|----------|
|---------------------|-----------------------------|----------|----------|-----------|----------|

| | | | | | |
|--------------------------------------|------------------------------|---------|---------|---------|---------|
| Ohio Farmers Insurance Company | Westfield Center, Ohio | Y | N | N | N |
| Westfield Insurance Company | Westfield Center, Ohio | Y | N | N | N |
| Westfield Bancorp, Inc. | Westfield Center, Ohio | Y | N | N | N |
| Westfield Bank, FSB | Westfield Center, Ohio | N | Y | N | N |

GENERAL INTERROGATORIES
PART 1 - COMMON INTERROGATORIES

GENERAL

9. What is the name and address of the independent certified public accountant or accounting firm retained to conduct the annual audit?
KPMG LLP, 191 West Nationwide Blvd., Suite 500, Columbus, OH 43215
- 10.1 Has the insurer been granted any exemptions to the prohibited non-audit services provided by the certified independent public accountant requirements as allowed in Section 7H of the Annual Financial Reporting Model Regulation (Model Audit Rule), or substantially similar state law or regulation? Yes () No (X)
- 10.2 If the response to 10.1 is yes, provide information related to this exemption:
.....
- 10.3 Has the insurer been granted any exemptions related to the other requirements of the Annual Financial Model Reporting Model Regulation as allowed for in Section 17A of the Model Regulation, or substantially similar state law or regulation? Yes () No (X)
- 10.4 If the response to 10.3 is yes, provide information related to this exemption:
.....
- 10.5 Has the reporting entity established an Audit Committee in compliance with domiciliary state insurance laws? Yes (X) No () N/A ()
- 10.6 If the response to 10.5 is no or n/a, please explain:
.....
11. What is the name, address and affiliation (officer/employee of the reporting entity or actuary/consultant associated with an actuarial consulting firm) of the individual providing the statement of actuarial opinion/certification?
Scott Weinstein, FCAS; KPMG LLP, 303 Peachtree St., Suite 2000, Atlanta, GA 30308-3210
- 12.1 Does the reporting entity own any securities of a real estate holding company or otherwise hold real estate indirectly? Yes () No (X)
- 12.11 Name of real estate holding company
.....
- 12.12 Number of parcels involved 0
- 12.13 Total book/adjusted carrying value \$ 0
- 12.2 If yes, provide explanation
.....
13. FOR UNITED STATES BRANCHES OF ALIEN REPORTING ENTITIES ONLY:
- 13.1 What changes have been made during the year in the United States manager or the United States trustees of the reporting entity?
.....
- 13.2 Does this statement contain all business transacted for the reporting entity through its United States branch on risks wherever located? Yes () No (X)
- 13.3 Have there been any changes made to any of the trust indentures during the year? Yes () No (X)
- 13.4 If answer to (13.3) is yes, has the domiciliary or entry state approved the changes? Yes () No () N/A (X)
- 14.1 Are the senior officers (principal executive officer, principal financial officer, principal accounting officer or controller, or persons performing similar functions) of the reporting entity subject to a code of ethics, which includes the following standards? Yes (X) No ()
- (a) Honest and ethical conduct, including the ethical handling of actual or apparent conflicts of interest between personal and professional relationships;
(b) Full, fair, accurate, timely and understandable disclosure in the periodic reports required to be filed by the reporting entity;
(c) Compliance with applicable governmental laws, rules and regulations;
(d) The prompt internal reporting of violations to an appropriate person or persons identified in the code; and
(e) Accountability for adherence to the code.
- 14.11 If the response to 14.1 is No, please explain:
.....
- 14.2 Has the code of ethics for senior managers been amended? Yes () No (X)
- 14.21 If the response to 14.2 is Yes, provide information related to amendment(s).
.....
- 14.3 Have any provisions of the code of ethics been waived for any of the specified officers? Yes () No (X)
- 14.31 If the response to 14.3 is Yes, provide the nature of any waiver(s).
.....
- 15.1 Is the reporting entity the beneficiary of a Letter of Credit that is unrelated to reinsurance where the issuing or confirming bank is not on the SVO Bank List? Yes () No (X)
- 15.2 If the response to 15.1 is yes, indicated the American Bankers Association (ABA) Routing Number and the name of issuing or confirming bank of the Letter of Credit and describe the circumstances in which the Letter of Credit is triggered.

| 1 American Bankers Association (ABA) Routing Number | 2 Issuing or Confirming Bank Name | 3 Circumstances That Can Trigger the Letter of Credit | 4 Amount |
|--|--------------------------------------|--|-------------|
| | | | |

GENERAL INTERROGATORIES
PART 1 - COMMON INTERROGATORIES

BOARD OF DIRECTORS

- | | | |
|-----|--|----------------|
| 16. | Is the purchase or sale of all investments of the reporting entity passed upon either by the board of directors or a subordinate committee thereof? | Yes (X) No () |
| 17. | Does the reporting entity keep a complete permanent record of the proceedings of its board of directors and all subordinate committees thereof? | Yes (X) No () |
| 18. | Has the reporting entity an established procedure for disclosure to its board of directors or trustees of any material interest or affiliation on the part of any of its officers, directors, trustees, or responsible employees that is in conflict or is likely to conflict with the official duties of such person? | Yes (X) No () |

FINANCIAL

- | | | |
|------|--|------------------|
| 19. | Has this statement been prepared using a basis of accounting other than Statutory Accounting Principles (e.g., Generally Accepted Accounting Principles)? | Yes () No (X) |
| 20.1 | Total amount loaned during the year (inclusive of Separate Accounts, exclusive of policy loans): | |
| | 20.11 To directors or other officers | \$ 0 |
| | 20.12 To stockholders not officers | \$ 0 |
| | 20.13 Trustees, supreme or grand (Fraternal only) | \$ 0 |
| 20.2 | Total amount of loans outstanding at end of year (inclusive of Separate Accounts, exclusive of policy loans): | |
| | 20.21 To directors or other officers | \$ 0 |
| | 20.22 To stockholders not officers | \$ 0 |
| | 20.23 Trustees, supreme or grand (Fraternal only) | \$ 0 |
| 21.1 | Were any assets reported in this statement subject to a contractual obligation to transfer to another party without the liability for such obligation being reported in the statement? | Yes () No (X) |
| 21.2 | If yes, state the amount thereof at December 31 of the current year: | |
| | 21.21 Rented from others | \$ 0 |
| | 21.22 Borrowed from others | \$ 0 |
| | 21.23 Leased from others | \$ 0 |
| | 21.24 Other | \$ 0 |
| 22.1 | Does this statement include payments for assessments as described in the Annual Statement Instructions other than guaranty fund or guaranty association assessments? | Yes () No (X) |
| 22.2 | If answer is yes: | |
| | 22.21 Amount paid as losses or risk adjustment | \$ 0 |
| | 22.22 Amount paid as expenses | \$ 0 |
| | 22.23 Other amounts paid | \$ 0 |
| 23.1 | Does the reporting entity report any amounts due from parent, subsidiaries or affiliates on Page 2 of this statement? | Yes (X) No () |
| 23.2 | If yes, indicate any amounts receivable from parent included in the Page 2 amount: | \$ 791,832 |

GENERAL INTERROGATORIES
PART 1 - COMMON INTERROGATORIES

INVESTMENT

- 24.01 Were all the stocks, bonds and other securities owned December 31 of current year, over which the reporting entity has exclusive control, in the actual possession of the reporting entity on said date? (other than securities lending programs addressed in 24.03) Yes (X) No ()
- 24.02 If no, give full and complete information relating thereto:
.....
.....
- 24.03 For the security lending programs, provide a description of the program including value for collateral and amount of loaned securities, and whether collateral is carried on or off-balance sheet. (an alternative is to reference Note 17 where this information is also provided)
The Company has no securities lending agreements as of December 31, 2012.
.....
- 24.04 Does the Company's security lending program meet the requirements for a conforming program as outlined in Risk-Based Capital Instructions? Yes () No () N/A (X)
- 24.05 If answer to 24.04 is YES, report amount of collateral for conforming programs. \$ 0
- 24.06 If answer to 24.04 is NO, report amount of collateral for other programs. \$ 0
- 24.07 Does your security lending program require 102% (domestic securities) and 105% (foreign securities) from the counterparty at the outset of the contract? Yes () No () N/A (X)
- 24.08 Does the reporting entity non-admit when the collateral received from the counterparty falls below 100%? Yes () No () N/A (X)
- 24.09 Does the reporting entity or the reporting entity's securities lending agent utilize the Master Securities Lending Agreement (MSLA) to conduct securities lending? Yes () No () N/A (X)
- 24.10 For the reporting entity's security lending program, state the amount of the following as of December 31 of the current year:
- 24.101 Total fair value of reinvented collateral assets reported on Schedule DL, Parts 1 and 2 \$ 0
- 24.102 Total book adjusted/carrying value of reinvested collateral assets reported on Schedule DL, Parts 1 and 2 \$ 0
- 24.103 Total payable for securities lending reported on the liability page \$ 0
- 25.1 Were any of the stocks, bonds or other assets of the reporting entity owned at December 31 of the current year not exclusively under the control of the reporting entity, or has the reporting entity sold or transferred any assets subject to a put option contract that is currently in force? (Exclude securities subject to Interrogatory 21.1 and 24.03) Yes (X) No ()
- 25.2 If yes, state the amount thereof at December 31 of the current year:
- | | |
|--|--------------------|
| 25.21 Subject to repurchase agreements | \$ 0 |
| 25.22 Subject to reverse repurchase agreements | \$ 0 |
| 25.23 Subject to dollar repurchase agreements | \$ 0 |
| 25.24 Subject to reverse dollar repurchase agreements | \$ 0 |
| 25.25 Pledged as collateral | \$ 0 |
| 25.26 Placed under option agreements | \$ 0 |
| 25.27 Letter stock or securities restricted as to sale | \$ 0 |
| 25.28 On deposit with state or other regulatory body | \$ 3,964,334 |
| 25.29 Other | \$ 0 |

GENERAL INTERROGATORIES
PART 1 - COMMON INTERROGATORIES

INVESTMENT

25.3 For category (25.27) provide the following:

| 1 Nature of Restriction | 2 Description | 3 Amount |
|----------------------------|------------------|-------------|
|----------------------------|------------------|-------------|

- 26.1 Does the reporting entity have any hedging transactions reported on Schedule DB? Yes () No (X)
- 26.2 If yes, has a comprehensive description of the hedging program been made available to the domiciliary state? Yes () No () N/A (X)
If no, attach a description with this statement.
- 27.1 Were any preferred stocks or bonds owned as of December 31 of the current year mandatorily convertible into equity, or, at the option of the issuer, convertible into equity? Yes () No (X)
- 27.2 If yes, state the amount thereof at December 31 of the current year. \$ 0
28. Excluding items in Schedule E - Part 3 - Special Deposits, real estate, mortgage loans and investments held physically in the reporting entity's offices, vaults or safety deposit boxes, were all stocks, bonds, and other securities, owned throughout the current year held pursuant to a custodial agreement with a qualified bank or trust company in accordance with Section 1, III General Examination Considerations, F - Outsourcing of Critical Functions, Custodial or Safekeeping Agreements of the NAIC Financial Condition Examiners Handbook? Yes (X) No ()

28.01 For agreements that comply with the requirements of the NAIC Financial Condition Examiners Handbook, complete the following:

| 1 Name of Custodian(s) | 2 Custodian's Address |
|---------------------------|--------------------------|
|---------------------------|--------------------------|

JPMorgan Chase 1 Chase Manhattan Plaza - 19th Floor, New York, NY 10005

28.02 For all agreements that do not comply with the requirements of the NAIC Financial Condition Examiners Handbook, provide the name, location and a complete explanation:

| 1 Name(s) | 2 Location(s) | 3 Complete Explanation(s) |
|--------------|------------------|------------------------------|
|--------------|------------------|------------------------------|

GENERAL INTERROGATORIES
PART 1 - COMMON INTERROGATORIES

INVESTMENT

28.03 Have there been any changes, including name changes, in the custodian(s) identified in 28.01 during the current year? Yes () No (X)

28.04 If yes, give full and complete information relating thereto:

| 1 Old Custodian | 2 New Custodian | 3 Date of Change | 4 Reason |
|--------------------|--------------------|---------------------|-------------|
|--------------------|--------------------|---------------------|-------------|

28.05 Identify all investment advisors, broker/dealers or individuals acting on behalf of broker/dealers that have access to the investment accounts, handle securities and have authority to make investments on behalf of the reporting entity:

| 1 Central Registration Depository Number(s) | 2 Name | 3 Address |
|--|-----------|--------------|
|--|-----------|--------------|

29.1 Does the reporting entity have any diversified mutual funds reported in Schedule D, Part 2 (diversified according to the Securities and Exchange Commission (SEC) in the Investment Company Act of 1940 [Section 5 (b) (1)])? Yes () No (X)

29.2 If yes, complete the following schedule:

| 1 CUSIP Number | 2 Name of Mutual Fund | 3 Book/Adjusted Carrying Value |
|-------------------|--------------------------|-----------------------------------|
|-------------------|--------------------------|-----------------------------------|

29.3 For each mutual fund listed in the table above, complete the following schedule:

| 1 Name of Mutual Fund (from question 29.2) | 2 Name of Significant Holding of the Mutual Fund | 3 Amount of Mutual Fund's Book/Adjusted Carrying Value Attributable to the Holding | 4 Date of Valuation |
|--|--|---|------------------------|
|--|--|---|------------------------|

GENERAL INTERROGATORIES
PART 1 - COMMON INTERROGATORIES

INVESTMENT

30. Provide the following information for all short-term and long-term bonds and all preferred stocks. Do not substitute amortized value or statement value for fair value.

| | 1 Statement (Admitted) Value | 2 Fair Value | 3 Excess of Statement over Fair Value (-), or Fair Value over Statement (+) |
|-----------------------------|------------------------------------|----------------------|---|
| 30.1 Bonds | \$ 198,742,086 | \$ 227,129,918 | \$ 28,387,832 |
| 30.2 Preferred stocks | \$ 0 | \$ 0 | \$ 0 |
| 30.3 Totals | \$ 198,742,086 | \$ 227,129,918 | \$ 28,387,832 |

30.4 Describe the sources or methods utilized in determining the fair values:
Interactive Data Corp (IDC), Bloomberg Financial Services

.....

31.1 Was the rate used to calculate fair value determined by a broker or custodian for any of the securities in Schedule D? Yes () No (X)

31.2 If the answer to 31.1 is yes, does the reporting entity have a copy of the broker's or custodian's pricing policy (hard copy or electronic copy) for all brokers or custodians used as a pricing source? Yes () No ()

31.3 If the answer to 31.2 is no, describe the reporting entity's process for determining a reliable pricing source for purposes of disclosure of fair value for Schedule D:
.....
.....

32.1 Have all the filing requirements of the Purposes and Procedures Manual of the NAIC Securities Valuation Office been followed? Yes (X) No ()

32.2 If no, list exceptions:
.....
.....

GENERAL INTERROGATORIES
PART 1 - COMMON INTERROGATORIES

OTHER

33.1 Amount of payments to Trade Associations, service organizations and statistical or Rating Bureaus, if any? \$ 660,040

33.2 List the name of the organization and the amount paid if any such payment represented 25% or more of the total payments to trade associations, service organizations and statistical or rating bureaus during the period covered by this statement.

| 1 Name | 2 Amount Paid |
|-------------------------------------|------------------|
| INSURANCE SERVICES OFFICE INC. | \$ 347,498 |
| | \$ 0 |
| | \$ 0 |
| | \$ 0 |

34.1 Amount of payments for legal expenses, if any? \$ 239,722

34.2 List the name of the firm and the amount paid if any such payment represented 25% or more of the total payments for legal expenses during the period covered by this statement.

| 1 Name | 2 Amount Paid |
|--------------------------|------------------|
| FOX ROTHSCHILD LLP | \$ 173,526 |
| | \$ 0 |
| | \$ 0 |
| | \$ 0 |

35.1 Amount of payments for expenditures in connection with matters before legislative bodies, officers or departments of government, if any? \$ 23,487

35.2 List the name of the firm and the amount paid if any such payment represented 25% or more of the total payment expenditures in connection with matters before legislative bodies, officers or departments of government during the period covered by this statement.

| 1 Name | 2 Amount Paid |
|---|------------------|
| US CHAMBER INSTITUTE FOR LEGAL REFORM | \$ 9,000 |
| POLICY MATTERS CONSULTING, LLC | \$ 6,480 |
| | \$ 0 |
| | \$ 0 |

GENERAL INTERROGATORIES
PART 2 - PROPERTY AND CASUALTY INTERROGATORIES

1.1 Does the reporting entity have any direct Medicare Supplement Insurance in force? Yes () No (X)

1.2 If yes, indicate premium earned on U.S. business only. \$ 0

1.3 What portion of Item (1.2) is not reported on the Medicare Supplement Insurance Experience Exhibit? \$ 0

1.31 Reason for excluding:

.....

1.4 Indicate amount of earned premium attributable to Canadian and/or Other Alien not included in Line (1.2) above. \$ 0

1.5 Indicate total incurred claims on all Medicare Supplement insurance. \$ 0

1.6 Individual policies:

Most current three years:

1.61 Total premium earned \$ 0

1.62 Total incurred claims \$ 0

1.63 Number of covered lives 0

All years prior to most current three years:

1.64 Total premium earned \$ 0

1.65 Total incurred claims \$ 0

1.66 Number of covered lives 0

1.7 Group policies:

Most current three years:

1.71 Total premium earned \$ 0

1.72 Total incurred claims \$ 0

1.73 Number of covered lives 0

All years prior to most current three years:

1.74 Total premium earned \$ 0

1.75 Total incurred claims \$ 0

1.76 Number of covered lives 0

2. Health Test:

| | 1 Current Year | 2 Prior Year |
|---------------------------------------|----------------------|----------------------|
| 2.1 Premium Numerator | \$ 0 | \$ 0 |
| 2.2 Premium Denominator | \$ 142,500,000 | \$ 135,671,291 |
| 2.3 Premium Ratio (Line 2.1/Line 2.2) | 0.000 | 0.000 |
| 2.4 Reserve Numerator | \$ 0 | \$ 0 |
| 2.5 Reserve Denominator | \$ 201,983,659 | \$ 203,036,211 |
| 2.6 Reserve Ratio (Line 2.4/Line 2.5) | 0.000 | 0.000 |

3.1 Does the reporting entity issue both participating and non-participating policies? Yes () No (X)

3.2 If yes, state the amount of calendar year premiums written on:

3.21 Participating policies \$ 0

3.22 Non-participating policies \$ 0

4. For Mutual reporting entities and Reciprocal Exchange only:

4.1 Does the reporting entity issue assessable policies? Yes () No (X)

4.2 Does the reporting entity issue non-assessable policies? Yes () No (X)

4.3 If assessable policies are issued, what is the extent of the contingent liability of the policyholders? 0.0 %

4.4 Total amount of assessments paid or ordered to be paid during the year on deposit notes or contingent premiums. \$ 0

5. For Reciprocal Exchanges only:

5.1 Does the exchange appoint local agents? Yes () No (X)

5.2 If yes, is the commission paid:

5.21 Out of Attorney's-in-fact compensation Yes () No () N/A (X)

5.22 As a direct expense of the exchange Yes () No () N/A (X)

5.3 What expenses of the Exchange are not paid out of the compensation of the Attorney-in-fact?

.....

5.4 Has any Attorney-in-fact compensation, contingent on fulfillment of certain conditions, been deferred? Yes () No (X)

5.5 If yes, give full information.

.....

GENERAL INTERROGATORIES
PART 2 - PROPERTY AND CASUALTY INTERROGATORIES

- 6.1 What provision has this reporting entity made to protect itself from an excessive loss in the event of a catastrophe under a workers' compensation contract issued without limit of loss?
 Reinsurance protection totaling \$57,000,000 above a \$3,000,000 retention per occurrence.

- 6.2 Describe the method used to estimate this reporting entity's probable maximum insurance loss, and identify the type of insured exposures comprising that probable maximum loss, the locations of concentrations of those exposures and the external resources (such as consulting firms or computer software models), if any, used in the estimation process:
 See Exhibit A located in the MISC additional statement pages.

- 6.3 What provision has this reporting entity made (such as a catastrophic reinsurance program) to protect itself from an excessive loss arising from the types and concentrations of insured exposures comprising its probable maximum property insurance loss?
 Westfield Group purchased \$245,900,000 of property catastrophe reinsurance excess of a \$35,000,000 net retention per loss occurrence.

- 6.4 Does the reporting entity carry catastrophe reinsurance protection for at least one reinstatement, in an amount sufficient to cover its estimated probable maximum loss attributable to a single loss event or occurrence? Yes (X) No ()
- 6.5 If no, describe any arrangements or mechanisms employed by the reporting entity to supplement its catastrophe reinsurance program or to hedge its exposure to unreinsured catastrophic loss.

- 7.1 Has the reporting entity reinsured any risk with any other entity under a quota share reinsurance contract that includes a provision that would limit the reinsurer's losses below the stated quota share percentage (e.g., a deductible, a loss ratio corridor, a loss cap, an aggregate limit or any similar provisions)? Yes (X) No ()
- 7.2 If yes, indicate the number of reinsurance contracts containing such provisions. 1
- 7.3 If yes, does the amount of reinsurance credit taken reflect the reduction in quota share coverage caused by any applicable limiting provision(s)? Yes () No (X)
- 8.1 Has this reporting entity reinsured any risk with any other entity and agreed to release such entity from liability, in whole or in part, from any loss that may occur on this risk, or portion thereof, reinsured? Yes () No (X)
- 8.2 If yes, give full information.

- 9.1 Has the reporting entity ceded any risk under any reinsurance contract (or under multiple contracts with the same reinsurer or its affiliates) for which during the period covered by the statement: (i) it recorded a positive or negative underwriting result greater than 5% of prior year-end surplus as regards policyholders or it reported calendar year written premium ceded or year-end loss and loss expense reserves ceded greater than 5% of prior year-end surplus as regards policyholders; (ii) it accounted for that contract as reinsurance and not as a deposit; and (iii) the contract(s) contain one or more of the following features or other features that would have similar results:
 (a) A contract term longer than two years and the contract is noncancellable by the reporting entity during the contract term;
 (b) A limited or conditional cancellation provision under which cancellation triggers an obligation by the reporting entity, or an affiliate of the reporting entity, to enter into a new reinsurance contract with the reinsurer, or an affiliate of the reinsurer;
 (c) Aggregate stop loss reinsurance coverage;
 (d) A unilateral right by either party (or both parties) to commute the reinsurance contract, whether conditional or not, except for such provisions which are only triggered by a decline in the credit status of the other party;
 (e) A provision permitting reporting of losses, or payment of losses, less frequently than on a quarterly basis (unless there is no activity during the period); or
 (f) Payment schedule, accumulating retentions from multiple years or any features inherently designed to delay timing of the reimbursement to the ceding entity. Yes () No (X)
- 9.2 Has the reporting entity during the period covered by the statement ceded any risk under any reinsurance contract (or under multiple contracts with the same reinsurer or its affiliates), for which, during the period covered by the statement, it recorded a positive or negative underwriting result greater than 5% of the prior year-end surplus as regards policyholders or it reported calendar year written premium ceded or year-end loss and loss expense reserves ceded greater than 5% of prior year-end surplus as regards policyholders; excluding cessions to approved pooling arrangements or to captive insurance companies that are directly or indirectly controlling, controlled by, or under common control with (i) one or more unaffiliated policyholders of the reporting entity, or (ii) an association of which one or more unaffiliated policyholders of the reporting entity is a member where:
 (a) The written premium ceded to the reinsurer by the reporting entity or its affiliates represents fifty percent (50%) or more of the entire direct and assumed premium written by the reinsurer based on its most recently available financial statement; or
 (b) Twenty-five percent (25%) or more of the written premium ceded to the reinsurer has been retroceded back to the reporting entity or its affiliates in a separate reinsurance contract. Yes () No (X)
- 9.3 If yes to 9.1 or 9.2, please provide the following information in the Reinsurance Summary Supplemental Filing for General Interrogatory 9:
 (a) The aggregate financial statement impact gross of all such ceded reinsurance contracts on the balance sheet and statement of income;
 (b) A summary of the reinsurance contract terms and indicate whether it applies to the contracts meeting the criteria in 9.1 or 9.2; and
 (c) A brief discussion of management's principle objectives in entering into the reinsurance contract including the economic purpose to be achieved.
- 9.4 Except for transactions meeting the requirements of paragraph 31 of SSAP No. 62R, Property and Casualty Reinsurance, has the reporting entity ceded any risk under any reinsurance contract (or multiple contracts with the same reinsurer or its affiliates) during the period covered by the financial statement, and either:
 (a) Accounted for that contract as reinsurance (either prospective or retroactive) under statutory accounting principles ("SAP") and as a deposit under generally accepted accounting principles ("GAAP"); or
 (b) Accounted for that contract as reinsurance under GAAP and as a deposit under SAP? Yes () No (X)
- 9.5 If yes to 9.4, explain in the Reinsurance Summary Supplemental Filing for General Interrogatory 9 (Section D) why the contract(s) is treated differently for GAAP and SAP.
- 9.6 The reporting entity is exempt from the Reinsurance Attestation Supplement under one or more of the following criteria:
 (a) The entity does not utilize reinsurance; or Yes () No (X)
 (b) The entity only engages in a 100% quota share contract with an affiliate and the affiliated or lead company has filed an attestation supplement; or, Yes () No (X)
 (c) The entity has no external cessions and only participates in an intercompany pool and the affiliated or lead company has filed an attestation supplement. Yes () No (X)

GENERAL INTERROGATORIES
PART 2 - PROPERTY AND CASUALTY INTERROGATORIES

10. If the reporting entity has assumed risks from another entity, there should be charged on account of such reinsurances a reserve equal to that which the original reporting entity would have been required to charge had it retained the risks. Has this been done? Yes (X) No () N/A ()
- 11.1 Has this reporting entity guaranteed policies issued by any other entity and now in force? Yes () No (X)
- 11.2 If yes, give full information.

- 12.1 If the reporting entity recorded accrued retrospective premiums on insurance contracts on Line 15.3 of the asset schedule, Page 2, state the amount of corresponding liabilities recorded for:
- | | | |
|---|----------|---|
| 12.11 Unpaid losses | \$ | 0 |
| 12.12 Unpaid underwriting expenses (including loss adjustment expenses) | \$ | 0 |
- 12.2 Of the amount on Line 15.3 of the asset schedule, Page 2, state the amount which is secured by letters of credit, collateral and other funds: \$ 0
- 12.3 If the reporting entity underwrites commercial insurance risks, such as workers' compensation, are premium notes or promissory notes accepted from its insureds covering unpaid premiums and/or unpaid losses? Yes () No (X) N/A ()
- 12.4 If yes, provide the range of interest rates charged under such notes during the period covered by this statement:
- | | | |
|------------|-------|---------|
| 12.41 From | | 0.000 % |
| 12.42 To | | 0.000 % |
- 12.5 Are letters of credit or collateral and other funds received from insureds being utilized by the reporting entity to secure premium notes or promissory notes taken by the reporting entity, or to secure any of the reporting entity's reported direct unpaid loss reserves, including unpaid losses under loss deductible features of commercial policies? Yes () No (X)
- 12.6 If yes, state the amount thereof at December 31 of the current year:
- | | | |
|----------------------------------|----------|---|
| 12.61 Letters of credit | \$ | 0 |
| 12.62 Collateral and other funds | \$ | 0 |
- 13.1 Largest net aggregate amount insured in any one risk (excluding workers' compensation): \$ 3,000,000
- 13.2 Does any reinsurance contract considered in the calculation of this amount include an aggregate limit of recovery without also including a reinstatement provision? Yes (X) No ()
- 13.3 State the number of reinsurance contracts (excluding individual facultative risk certificates, but including facultative programs, automatic facilities or facultative obligatory contracts) considered in the calculation of the amount. 4
- 14.1 Is the company a cedant in a multiple cedant reinsurance contract? Yes (X) No ()
- 14.2 If yes, please describe the method of allocating and recording reinsurance among the cedants:
 Reinsurance would first be allocated to a company at the policy level then reallocated if necessary according to the intercompany pooling agreement.

- 14.3 If the answer to 14.1 is yes, are the methods described in item 14.2 entirely contained in the respective multiple cedant reinsurance contracts? Yes () No (X)
- 14.4 If the answer to 14.3 is no, are the methods described in 14.2 entirely contained in written agreements? Yes (X) No ()
- 14.5 If the answer to 14.4 is no, please explain:

- 15.1 Has the reporting entity guaranteed any financed premium accounts? Yes () No (X)
- 15.2 If yes, give full information.

GENERAL INTERROGATORIES
PART 2 - PROPERTY AND CASUALTY INTERROGATORIES

16.1 Does the reporting entity write any warranty business? Yes () No (X)

If yes, disclose the following information for each of the following types of warranty coverage:

| | 1 Direct Losses Incurred | 2 Direct Losses Unpaid | 3 Direct Written Premium | 4 Direct Premium Unearned | 5 Direct Premium Earned |
|------------------|--------------------------------|------------------------------|--------------------------------|---------------------------------|-------------------------------|
| 16.11 Home | \$..... 0 | \$..... 0 | \$..... 0 | \$..... 0 | \$..... 0 |
| 16.12 Products | \$..... 0 | \$..... 0 | \$..... 0 | \$..... 0 | \$..... 0 |
| 16.13 Automobile | \$..... 0 | \$..... 0 | \$..... 0 | \$..... 0 | \$..... 0 |
| 16.14 Other* | \$..... 0 | \$..... 0 | \$..... 0 | \$..... 0 | \$..... 0 |

* Disclose type of coverage:
.....
.....

17.1 Does the reporting entity include amounts recoverable on unauthorized reinsurance in Schedule F - Part 3 that it excludes from Schedule F - Part 5? Yes () No (X)

Included but not reported losses on contracts in force prior to July 1, 1984, and not subsequently renewed are exempt from inclusion in Schedule F - Part 5.
Provide the following information for this exemption:

| | | |
|---|--|-----------|
| 17.11 Gross amount of unauthorized reinsurance in Schedule F - Part 3 excluded from Schedule F - Part 5 | | \$..... 0 |
| 17.12 Unfunded portion of Interrogatory 17.11 | | \$..... 0 |
| 17.13 Paid losses and loss adjustment expenses portion of Interrogatory 17.11 | | \$..... 0 |
| 17.14 Case reserves portion of Interrogatory 17.11 | | \$..... 0 |
| 17.15 Incurred but not reported portion of Interrogatory 17.11 | | \$..... 0 |
| 17.16 Unearned premium portion of Interrogatory 17.11 | | \$..... 0 |
| 17.17 Contingent commission portion of Interrogatory 17.11 | | \$..... 0 |

Provide the following information for all other amounts included in Schedule F - Part 3 and excluded from Schedule F - Part 5, not included above.

| | | |
|---|--|-----------|
| 17.18 Gross amount of unauthorized reinsurance in Schedule F - Part 3 excluded from Schedule F - Part 5 | | \$..... 0 |
| 17.19 Unfunded portion of Interrogatory 17.18 | | \$..... 0 |
| 17.20 Paid losses and loss adjustment expenses portion of Interrogatory 17.18 | | \$..... 0 |
| 17.21 Case reserves portion of Interrogatory 17.18 | | \$..... 0 |
| 17.22 Incurred but not reported portion of Interrogatory 17.18 | | \$..... 0 |
| 17.23 Unearned premium portion of Interrogatory 17.18 | | \$..... 0 |
| 17.24 Contingent commission portion of Interrogatory 17.18 | | \$..... 0 |

18.1 Do you act as a custodian for health savings accounts? Yes () No (X)

18.2 If yes, please provide the amount of custodial funds held as of the reporting date. \$..... 0

18.3 Do you act as an administrator for health savings accounts? Yes () No (X)

18.4 If yes, please provide the balance of the funds administered as of the reporting date. \$..... 0

FIVE-YEAR HISTORICAL DATA

Show amounts in whole dollars only, no cents; show percentages to one decimal place, i. e. 17.6.

| | 1 2012 | 2 2011 | 3 2010 | 4 2009 | 5 2008 |
|---|-------------|--------------|-------------|-------------|-------------|
| Gross Premiums Written (Page 8, Part 1B, Columns 1, 2 and 3) | | | | | |
| 1. Liability lines (Lines 11.1, 11.2, 16, 17.1, 17.2, 17.3, 18.1, 18.2, 19.1, 19.2 and 19.3, 19.4) | 53,634,349 | 51,842,842 | 50,392,901 | 50,364,108 | 51,647,783 |
| 2. Property lines (Lines 1, 2, 9, 12, 21 and 26) | 27,034,845 | 26,050,864 | 25,307,940 | 24,971,380 | 41,941,709 |
| 3. Property and liability combined lines (Lines 3, 4, 5, 8, 22 and 27) | 52,803,781 | 49,719,429 | 46,705,941 | 45,847,701 | 44,674,728 |
| 4. All other lines (Lines 6, 10, 13, 14, 15, 23, 24, 28, 29, 30 and 34) | 4,459,108 | 4,898,024 | 5,218,498 | 5,173,636 | 5,849,039 |
| 5. Nonproportional reinsurance lines (Lines 31, 32 and 33) | 6,694,300 | 5,711,384 | 5,375,721 | 3,600,000 | 3,600,000 |
| 6. Total (Line 35) | 144,626,383 | 138,222,543 | 133,001,001 | 129,956,825 | 147,713,259 |
| Net Premiums Written (Page 8, Part 1B, Column 6) | | | | | |
| 7. Liability lines (Lines 11.1, 11.2, 16, 17.1, 17.2, 17.3, 18.1, 18.2, 19.1, 19.2 and 19.3, 19.4) | 53,634,364 | 51,833,103 | 50,390,420 | 50,364,108 | 51,646,441 |
| 8. Property lines (Lines 1, 2, 9, 12, 21 and 26) | 27,034,888 | 26,050,517 | 25,307,940 | 24,971,380 | 41,941,709 |
| 9. Property and liability combined lines (Lines 3, 4, 5, 8, 22 and 27) | 52,805,726 | 49,705,260 | 46,699,800 | 45,847,701 | 44,674,728 |
| 10. All other lines (Lines 6, 10, 13, 14, 15, 23, 24, 28, 29, 30 and 34) | 4,459,108 | 4,898,024 | 5,218,498 | 5,173,636 | 5,849,039 |
| 11. Nonproportional reinsurance lines (Line 31, 32 and 33) | 6,694,300 | 5,711,384 | 5,375,721 | 3,600,000 | 3,600,000 |
| 12. Total (Line 35) | 144,628,386 | 138,198,288 | 132,992,379 | 129,956,825 | 147,711,917 |
| Statement of Income (Page 4) | | | | | |
| 13. Net underwriting gain (loss) (Line 8) | 442,392 | (16,682,739) | 461,675 | 2,976,071 | 772,003 |
| 14. Net investment gain (loss) (Line 11) | 19,051,352 | 13,282,048 | 12,728,650 | 12,968,831 | 899,650 |
| 15. Total other income (Line 15) | (165,768) | (190,120) | (257,993) | (261,926) | (238,803) |
| 16. Dividends to policyholders (Line 17) | 0 | 0 | 0 | 0 | 0 |
| 17. Federal and foreign income taxes incurred (Line 19) | 3,269,620 | (2,270,145) | 4,479,463 | 3,348,926 | 3,369,420 |
| 18. Net income (Line 20) | 16,058,356 | (1,320,666) | 8,452,869 | 12,334,050 | (1,936,570) |
| Balance Sheet Lines (Pages 2 and 3) | | | | | |
| 19. Total admitted assets excluding protected cell business (Page 2, Line 26, Column 3) | 356,170,704 | 337,269,784 | 325,724,972 | 303,691,648 | 302,053,500 |
| 20. Premiums and considerations (Page 2, Column 3) | | | | | |
| 20.1 In course of collection (Line 15.1) | 7,078,909 | 6,948,427 | 6,519,845 | 6,595,056 | 7,816,799 |
| 20.2 Deferred and not yet due (Line 15.2) | 43,694,223 | 41,779,189 | 39,672,700 | 37,526,091 | 37,369,397 |
| 20.3 Accrued retrospective premiums (Line 15.3) | 0 | 0 | 0 | 0 | 0 |
| 21. Total liabilities excluding protected cell business (Page 3, Line 26) | 219,335,351 | 219,106,734 | 203,837,000 | 195,525,450 | 205,542,056 |
| 22. Losses (Page 3, Line 1) | 102,078,093 | 106,817,538 | 97,940,267 | 90,777,690 | 97,299,420 |
| 23. Loss adjustment expenses (Page 3, Line 3) | 31,126,407 | 29,567,900 | 26,902,535 | 25,687,211 | 24,572,315 |
| 24. Unearned premiums (Page 3, Line 9) | 68,779,159 | 66,650,773 | 64,123,775 | 63,870,882 | 63,860,714 |
| 25. Capital paid up (Page 3, Line 30 and Line 31) | 2,500,000 | 2,500,000 | 2,500,000 | 2,500,000 | 2,500,000 |
| 26. Surplus as regards policyholders (Page 3, Line 37) | 136,835,353 | 118,163,050 | 121,887,972 | 108,166,198 | 96,511,444 |
| Cash Flow (Page 5) | | | | | |
| 27. Net cash from operations (Line 11) | 5,738,840 | 9,862,468 | 14,483,300 | 1,363,803 | 23,747,566 |
| Risk-Based Capital Analysis | | | | | |
| 28. Total adjusted capital | 136,835,353 | 118,163,050 | 121,887,972 | 108,166,198 | 96,511,444 |
| 29. Authorized control level risk-based capital | 18,085,602 | 16,500,388 | 15,343,826 | 13,303,435 | 13,466,539 |
| Percentage Distribution of Cash, Cash Equivalents and Invested Assets (Page 2, Column 3) (Item divided by Page 2, Line 12, Column 3) x 100.0 | | | | | |
| 30. Bonds (Line 1) | 66.4 | 73.5 | 72.7 | 80.2 | 79.7 |
| 31. Stocks (Line 2.1 and Line 2.2) | 32.2 | 25.1 | 25.2 | 17.2 | 17.8 |
| 32. Mortgage loans on real estate (Line 3.1 and Line 3.2) | 0.0 | 0.0 | 0.0 | 0.0 | 0.0 |
| 33. Real estate (Lines 4.1, 4.2 and 4.3) | 0.0 | 0.0 | 0.0 | 0.0 | 0.0 |
| 34. Cash, cash equivalents and short-term investments (Line 5) | 0.2 | 0.2 | 0.4 | 1.6 | 1.7 |
| 35. Contact loans (Line 6) | 0.0 | 0.0 | 0.0 | 0.0 | 0.0 |
| 36. Derivatives (Line 7) | 0.0 | 0.0 | 0.0 | X X X | X X X |
| 37. Other invested assets (Line 8) | 1.1 | 1.2 | 1.7 | 1.0 | 0.8 |
| 38. Receivables for securities (Line 9) | 0.0 | 0.0 | 0.0 | 0.0 | 0.0 |
| 39. Securities lending reinvested collateral assets (Line 10) | 0.0 | 0.0 | 0.0 | X X X | X X X |
| 40. Aggregate write-ins for invested assets (Line 11) | 0.0 | 0.0 | 0.0 | 0.0 | 0.0 |
| 41. Cash, cash equivalents and invested assets (Line 12) | 100.0 | 100.0 | 100.0 | 100.0 | 100.0 |
| Investments in Parent, Subsidiaries and Affiliates | | | | | |
| 42. Affiliated bonds (Schedule D, Summary, Line 12, Column 1) | 0 | 0 | 0 | 0 | 0 |
| 43. Affiliated preferred stocks (Schedule D, Summary, Line 18, Column 1) | 0 | 0 | 0 | 0 | 0 |
| 44. Affiliated common stocks (Schedule D, Summary, Line 24, Column 1) | 0 | 0 | 0 | 0 | 0 |
| 45. Affiliated short-term investments (Schedule DA Verification, Column 5, Line 10) | 0 | 0 | 0 | 0 | 0 |
| 46. Affiliated mortgage loans on real estate | 0 | 0 | 0 | 0 | 0 |
| 47. All other affiliated | 0 | 0 | 0 | 0 | 0 |
| 48. Total of above Line 42 through Line 47 | 0 | 0 | 0 | 0 | 0 |
| 49. Total investment in parent included in Line 42 through Line 47 above | 0 | 0 | 0 | 0 | 0 |
| 50. Percentage of investments in parent, subsidiaries and affiliates to surplus as regards policyholders (Line 48 above divided by Page 3, Column 1, Line 37 x 100.0) | 0.0 | 0.0 | 0.0 | 0.0 | 0.0 |

FIVE-YEAR HISTORICAL DATA

(Continued)

| | 1 2012 | 2 2011 | 3 2010 | 4 2009 | 5 2008 |
|--|------------|-------------|------------|-------------|-------------|
| Capital and Surplus Accounts (Page 4) | | | | | |
| 51. Net unrealized capital gains (losses) (Line 24) | 813,532 | (377,759) | 3,784,353 | 3,573,102 | (6,103,882) |
| 52. Dividends to stockholders (Line 35) | 0 | 0 | 0 | (3,461,538) | (1,500,000) |
| 53. Change in surplus as regards policyholders for the year (Line 38) | 18,672,303 | (3,724,922) | 13,721,774 | 11,654,754 | (9,860,348) |
| Gross Losses Paid (Page 9, Part 2, Columns 1 and 2) | | | | | |
| 54. Liability lines (Lines 11.1, 11.2, 16, 17.1, 17.2, 17.3, 18.1, 18.2, 19.1, 19.2 and 19.3, 19.4) | 28,270,724 | 28,548,016 | 27,204,586 | 31,546,460 | 31,801,918 |
| 55. Property lines (Lines 1, 2, 9, 12, 21 and 26) | 14,428,902 | 14,918,593 | 13,775,787 | 20,362,200 | 23,460,305 |
| 56. Property and liability combined lines (Lines 3, 4, 5, 8, 22 and 27) | 30,350,164 | 34,711,098 | 26,452,524 | 26,689,856 | 25,542,492 |
| 57. All other lines (Lines 6, 10, 13, 14, 15, 23, 24, 28, 29, 30 and 34) | 2,634,577 | 795,473 | 771,531 | 336,711 | 191,242 |
| 58. Nonproportional reinsurance lines (Lines 31, 32, and 33) | 5,355,058 | 5,367,383 | 236,858 | 1,697,390 | 360,701 |
| 59. Total (Line 35) | 81,039,425 | 84,340,563 | 68,441,286 | 80,632,617 | 81,356,658 |
| Net Losses Paid (Page 9, Part 2, Column 4) | | | | | |
| 60. Liability lines (Lines 11.1, 11.2, 16, 17.1, 17.2, 17.3, 18.1, 18.2, 19.1, 19.2 and 19.3, 19.4) | 27,917,819 | 26,892,045 | 26,466,026 | 27,060,169 | 27,922,258 |
| 61. Property lines (Lines 1, 2, 9, 12, 21 and 26) | 14,438,821 | 14,924,103 | 13,788,878 | 20,557,987 | 23,484,496 |
| 62. Property and liability combined lines (Lines 3, 4, 5, 8, 22 and 27) | 30,308,830 | 34,663,020 | 26,460,329 | 26,636,849 | 26,159,848 |
| 63. All other lines (Lines 6, 10, 13, 14, 15, 23, 24, 28, 29, 30 and 34) | 2,634,577 | 795,473 | 771,531 | 336,711 | 191,242 |
| 64. Nonproportional reinsurance lines (Lines 31, 32, and 33) | 5,355,058 | 5,367,383 | 236,858 | 1,698,060 | 362,139 |
| 65. Total (Line 35) | 80,655,105 | 82,642,024 | 67,723,622 | 76,289,776 | 78,119,983 |
| Operating Percentages (Page 4) (Item divided by Page 4, Line 1) x 100.0 | | | | | |
| 66. Premiums earned (Line 1) | 100.0 | 100.0 | 100.0 | 100.0 | 100.0 |
| 67. Losses incurred (Line 2) | 53.3 | 67.5 | 56.4 | 53.7 | 57.9 |
| 68. Loss expenses incurred (Line 3) | 11.6 | 11.8 | 10.1 | 10.4 | 8.8 |
| 69. Other underwriting expenses incurred (Line 4) | 34.8 | 33.0 | 33.1 | 33.7 | 32.7 |
| 70. Net underwriting gain (loss) (Line 8) | 0.3 | (12.3) | 0.3 | 2.3 | 0.5 |
| Other Percentages | | | | | |
| 71. Other underwriting expenses to net premiums written (Page 4, Line 4 plus Line 5 minus Line 15 divided by Page 8, Part 1B, Column 6, Line 35 x 100.0) | 34.4 | 32.6 | 33.3 | 33.9 | 33.0 |
| 72. Losses and loss expenses incurred to premiums earned (Page 4, Line 2 plus Line 3 divided by Page 4, Line 1 x 100.0) | 64.9 | 79.3 | 66.5 | 64.0 | 66.7 |
| 73. Net premiums written to policyholders' surplus (Page 8, Part 1B, Column 6, Line 35 divided by Page 3, Line 37, Column 1 x 100.0) | 105.7 | 117.0 | 109.1 | 120.1 | 153.1 |
| One Year Loss Development (000 omitted) | | | | | |
| 74. Development in estimated losses and loss expenses incurred prior to current year (Schedule P, Part 2 - Summary, Line 12, Column 11) | (8,371) | (9,652) | (8,575) | (5,074) | (8,981) |
| 75. Percent of development of losses and loss expenses incurred to policyholders' surplus of prior year end (Line 74 above divided by Page 4, Line 21, Column 1 x 100.0) | (7.1) | (7.9) | (7.9) | (5.3) | (8.4) |
| Two Year Loss Development (000 omitted) | | | | | |
| 76. Development in estimated losses and loss expenses incurred 2 years before the current year and prior year (Schedule P, Part 2 - Summary, Line 12, Column 12) | (15,127) | (13,940) | (10,617) | (13,197) | (3,853) |
| 77. Percent of development of losses and loss expenses incurred to reported policyholders' surplus of second prior year end (Line 76 above divided by Page 4, Line 21, Column 2 x 100.0) | (12.4) | (12.9) | (11.0) | (12.4) | (3.8) |

Note: If a party to a merger, have the two most recent years of this exhibit been restated due to a merger in compliance with the disclosure requirements of SSAP No. 3, Accounting Changes and Correction of Errors? If no, please explain:

Yes () No ()

SCHEDULE P - ANALYSIS OF LOSSES AND LOSS EXPENSES

SCHEDULE P - PART 1 - SUMMARY

(\$000 Omitted)

| Years in Which Premiums Were Earned and Losses Were Incurred | Premiums Earned | | | Loss and Loss Expense Payments | | | | | | | 12 Number of Claims Reported - Direct and Assumed | |
|--|-------------------------|------------|-----------------------------|--------------------------------|------------|---------------------------------------|------------|------------------------------|------------|--|--|---|
| | 1 Direct and Assumed | 2 Ceded | 3 Net (Columns 1 - 2) | Loss Payments | | Defense and Cost Containment Payments | | Adjusting and Other Payments | | 10 Salvage and Subrogation Received | | 11 Total Net Paid (Columns 4 - 5 + 6 - 7 + 8 - 9) |
| | | | | 4 Direct and Assumed | 5 Ceded | 6 Direct and Assumed | 7 Ceded | 8 Direct and Assumed | 9 Ceded | | | |
| | | | | | | | | | | | | |
| 1. Prior | X X X | X X X | X X X | 738 | 67 | 240 | 2 | 55 | 0 | 33 | 964 | X X X |
| 2. 2003 | 122,709 | 4,543 | 118,166 | 60,817 | 1,259 | 3,720 | 283 | 7,967 | 0 | 2,548 | 70,962 | X X X |
| 3. 2004 | 128,564 | 3,695 | 124,869 | 61,705 | 486 | 3,834 | 17 | 7,730 | 0 | 2,612 | 72,765 | X X X |
| 4. 2005 | 135,633 | 5,674 | 129,960 | 60,789 | 1,662 | 4,212 | 75 | 6,966 | 1 | 2,838 | 70,228 | X X X |
| 5. 2006 | 144,388 | 9,793 | 134,595 | 68,968 | 6,838 | 4,208 | 166 | 7,703 | 3 | 2,543 | 73,873 | X X X |
| 6. 2007 | 153,382 | 11,723 | 141,659 | 68,913 | 3,067 | 4,435 | 97 | 7,772 | 0 | 2,601 | 77,955 | X X X |
| 7. 2008 | 168,039 | 19,761 | 148,278 | 98,958 | 15,006 | 4,726 | 183 | 7,702 | 0 | 2,786 | 96,196 | X X X |
| 8. 2009 | 136,294 | 6,348 | 129,947 | 61,607 | 1,137 | 3,732 | 31 | 7,282 | 2 | 2,530 | 71,451 | X X X |
| 9. 2010 | 138,929 | 6,189 | 132,739 | 65,256 | 801 | 2,594 | 24 | 7,525 | (1) | 2,665 | 74,550 | X X X |
| 10. 2011 | 142,994 | 7,323 | 135,671 | 84,005 | 8,659 | 1,486 | 140 | 8,071 | (2) | 2,530 | 84,765 | X X X |
| 11. 2012 | 150,395 | 7,895 | 142,500 | 45,674 | 2,556 | 375 | 65 | 6,579 | 0 | 1,271 | 50,006 | X X X |
| 12. Totals | X X X | X X X | X X X | 677,430 | 41,539 | 33,561 | 1,083 | 75,351 | 5 | 24,958 | 743,715 | X X X |

| | Losses Unpaid | | | | Defense and Cost Containment Unpaid | | | | Adjusting and Other Unpaid | | 23 Salvage and Subrogation Anticipated | 24 Total Net Losses and Expenses Unpaid | 25 Number of Claims Outstanding - Direct & Assumed |
|-----|--------------------------|-------------|--------------------------|-------------|-------------------------------------|-------------|--------------------------|-------------|----------------------------|-------------|---|--|---|
| | Case Basis | | Bulk + IBNR | | Case Basis | | Bulk + IBNR | | 21 Direct and Assumed | 22 Ceded | | | |
| | 13 Direct and Assumed | 14 Ceded | 15 Direct and Assumed | 16 Ceded | 17 Direct and Assumed | 18 Ceded | 19 Direct and Assumed | 20 Ceded | | | | | |
| | | | | | | | | | | | | | |
| 1. | 4,435 | 1,315 | 4,367 | 0 | 266 | 0 | 1,083 | 0 | 394 | 0 | 0 | 9,230 | X X X |
| 2. | 581 | 139 | 457 | 0 | 33 | 0 | 55 | 0 | 75 | 0 | 0 | 1,063 | X X X |
| 3. | 578 | 116 | 534 | 0 | 35 | 0 | 113 | 0 | 75 | 0 | 0 | 1,220 | X X X |
| 4. | 579 | 57 | 706 | 46 | 76 | 0 | 164 | 0 | 101 | 0 | 0 | 1,523 | X X X |
| 5. | 1,412 | 286 | 821 | 37 | 105 | 0 | 344 | 0 | 172 | 0 | 0 | 2,532 | X X X |
| 6. | 1,550 | 132 | 1,078 | 29 | 156 | 0 | 500 | 0 | 226 | 0 | 0 | 3,348 | X X X |
| 7. | 3,325 | 382 | 1,460 | 62 | 379 | 0 | 786 | 5 | 526 | 0 | 0 | 6,028 | X X X |
| 8. | 4,881 | 399 | 2,670 | 201 | 650 | 0 | 1,352 | 11 | 609 | 0 | 0 | 9,552 | X X X |
| 9. | 8,447 | 172 | 4,188 | 307 | 1,475 | 0 | 2,288 | 27 | 1,166 | 0 | 0 | 17,058 | X X X |
| 10. | 17,153 | 1,847 | 7,372 | 488 | 2,741 | 0 | 3,724 | 47 | 2,321 | 0 | 0 | 30,929 | X X X |
| 11. | 21,355 | 459 | 21,610 | 1,009 | 2,958 | 0 | 3,793 | 104 | 2,578 | 0 | 0 | 50,721 | X X X |
| 12. | 64,297 | 5,305 | 45,264 | 2,179 | 8,874 | 0 | 14,203 | 194 | 8,243 | 0 | 0 | 133,204 | X X X |

| | Total Losses and Loss Expenses Incurred | | | Loss and Loss Expense Percentage (Incurred/Premiums Earned) | | | Nontabular Discount | | 34 Inter - Company Pooling Participation Percentage | Net Balance Sheet Reserves After Discount | |
|-----|---|-------------|-----------|--|-------------|-----------|---------------------|--------------------|--|---|----------------------------|
| | 26 Direct and Assumed | 27 Ceded | 28 Net | 29 Direct and Assumed | 30 Ceded | 31 Net | 32 Loss | 33 Loss Expense | | 35 Losses Unpaid | 36 Loss Expenses Unpaid |
| | | | | | | | | | | | |
| 1. | X X X | X X X | X X X | X X X | X X X | X X X | 0 | 0 | X X X | 7,487 | 1,743 |
| 2. | 73,706 | 1,681 | 72,026 | 60.1 | 37.0 | 61.0 | 0 | 0 | 9.0 | 900 | 163 |
| 3. | 74,604 | 619 | 73,985 | 58.0 | 16.8 | 59.3 | 0 | 0 | 9.0 | 997 | 223 |
| 4. | 73,592 | 1,842 | 71,751 | 54.3 | 32.5 | 55.2 | 0 | 0 | 9.0 | 1,182 | 341 |
| 5. | 83,734 | 7,329 | 76,405 | 58.0 | 74.8 | 56.8 | 0 | 0 | 9.0 | 1,911 | 621 |
| 6. | 84,629 | 3,327 | 81,303 | 55.2 | 28.4 | 57.4 | 0 | 0 | 9.0 | 2,466 | 882 |
| 7. | 117,861 | 15,637 | 102,224 | 70.1 | 79.1 | 68.9 | 0 | 0 | 9.0 | 4,342 | 1,686 |
| 8. | 82,784 | 1,781 | 81,003 | 60.7 | 28.1 | 62.3 | 0 | 0 | 9.0 | 6,952 | 2,600 |
| 9. | 92,939 | 1,331 | 91,608 | 66.9 | 21.5 | 69.0 | 0 | 0 | 9.0 | 12,156 | 4,902 |
| 10. | 126,873 | 11,180 | 115,694 | 88.7 | 152.7 | 85.3 | 0 | 0 | 9.0 | 22,190 | 8,739 |
| 11. | 104,921 | 4,194 | 100,728 | 69.8 | 53.1 | 70.7 | 0 | 0 | 9.0 | 41,496 | 9,225 |
| 12. | X X X | X X X | X X X | X X X | X X X | X X X | 0 | 0 | X X X | 102,078 | 31,126 |

Note: Parts 2 and 4 are gross of all discounting, including tabular discounting. Part 1 is gross of only nontabular discounting, which is reported in Columns 32 and 33 of Part 1. The tabular discount, if any, is reported in the Notes to Financial Statements which will reconcile Part 1 with Parts 2 and 4.

SCHEDULE P - PART 2 - SUMMARY

| Years in Which Losses Were Incurred | INCURRED NET LOSSES AND DEFENSE AND COST CONTAINMENT EXPENSES REPORTED AT YEAR END (\$000 OMITTED) | | | | | | | | | | DEVELOPMENT | |
|-------------------------------------|--|-----------|-----------|-----------|-----------|-----------|-----------|-----------|-----------|------------|----------------|----------------|
| | 1 2003 | 2 2004 | 3 2005 | 4 2006 | 5 2007 | 6 2008 | 7 2009 | 8 2010 | 9 2011 | 10 2012 | 11 One Year | 12 Two Year |
| 1. Prior | 46,860 | 49,016 | 51,405 | 52,279 | 53,105 | 53,008 | 53,258 | 53,232 | 53,949 | 53,629 | (320) | 397 |
| 2. 2003 | 68,218 | 64,505 | 64,449 | 64,755 | 64,860 | 64,761 | 64,376 | 64,144 | 63,995 | 63,984 | (11) | (160) |
| 3. 2004 | X X X | 66,894 | 66,852 | 67,819 | 67,112 | 66,888 | 66,621 | 66,354 | 66,152 | 66,180 | 28 | (173) |
| 4. 2005 | X X X | X X X | 69,174 | 66,751 | 66,765 | 66,437 | 65,705 | 65,039 | 64,789 | 64,685 | (104) | (354) |
| 5. 2006 | X X X | X X X | X X X | 74,210 | 72,223 | 70,866 | 69,458 | 68,733 | 68,362 | 68,532 | 170 | (201) |
| 6. 2007 | X X X | X X X | X X X | X X X | 84,399 | 77,523 | 75,849 | 74,445 | 73,848 | 73,306 | (542) | (1,140) |
| 7. 2008 | X X X | X X X | X X X | X X X | X X X | 99,780 | 98,922 | 96,699 | 94,759 | 93,997 | (762) | (2,702) |
| 8. 2009 | X X X | X X X | X X X | X X X | X X X | X X X | 80,421 | 77,389 | 74,816 | 73,114 | (1,701) | (4,275) |
| 9. 2010 | X X X | X X X | X X X | X X X | X X X | X X X | X X X | 89,437 | 85,150 | 82,917 | (2,234) | (6,520) |
| 10. 2011 | X X X | X X X | X X X | X X X | X X X | X X X | X X X | X X X | 108,195 | 105,300 | (2,895) | X X X |
| 11. 2012 | X X X | X X X | X X X | X X X | X X X | X X X | X X X | X X X | X X X | 91,570 | X X X | X X X |
| 12. Totals | | | | | | | | | | | (8,371) | (15,127) |

SCHEDULE P - PART 3 - SUMMARY

| Years in Which Losses Were Incurred | CUMULATIVE PAID NET LOSSES AND DEFENSE AND COST CONTAINMENT EXPENSES REPORTED AT YEAR END (\$000 OMITTED) | | | | | | | | | | 11 | 12 |
|-------------------------------------|---|-----------|-----------|-----------|-----------|-----------|-----------|-----------|-----------|------------|---|--|
| | 1 2003 | 2 2004 | 3 2005 | 4 2006 | 5 2007 | 6 2008 | 7 2009 | 8 2010 | 9 2011 | 10 2012 | Number of Claims Closed With Loss Payment | Number of Claims Closed Without Loss Payment |
| 1. Prior | 0 0 0 | 15,413 | 26,232 | 32,336 | 37,178 | 39,870 | 41,578 | 42,323 | 43,883 | 44,793 | X X X | X X X |
| 2. 2003 | 34,533 | 47,499 | 53,913 | 58,016 | 60,651 | 62,036 | 62,416 | 62,696 | 62,816 | 62,996 | X X X | X X X |
| 3. 2004 | X X X | 33,661 | 48,920 | 55,755 | 60,205 | 62,687 | 63,902 | 64,505 | 64,894 | 65,036 | X X X | X X X |
| 4. 2005 | X X X | X X X | 33,482 | 47,227 | 54,088 | 58,758 | 61,302 | 62,373 | 63,026 | 63,263 | X X X | X X X |
| 5. 2006 | X X X | X X X | X X X | 36,451 | 50,762 | 57,920 | 62,275 | 64,188 | 65,213 | 66,173 | X X X | X X X |
| 6. 2007 | X X X | X X X | X X X | X X X | 38,968 | 54,405 | 61,761 | 66,612 | 68,871 | 70,183 | X X X | X X X |
| 7. 2008 | X X X | X X X | X X X | X X X | X X X | 48,895 | 74,532 | 81,477 | 85,679 | 88,495 | X X X | X X X |
| 8. 2009 | X X X | X X X | X X X | X X X | X X X | X X X | 38,048 | 52,624 | 59,511 | 64,171 | X X X | X X X |
| 9. 2010 | X X X | X X X | X X X | X X X | X X X | X X X | X X X | 41,418 | 58,929 | 67,025 | X X X | X X X |
| 10. 2011 | X X X | X X X | X X X | X X X | X X X | X X X | X X X | X X X | 53,180 | 76,692 | X X X | X X X |
| 11. 2012 | X X X | X X X | X X X | X X X | X X X | X X X | X X X | X X X | X X X | 43,427 | X X X | X X X |

SCHEDULE P - PART 4 - SUMMARY

| Years in Which Losses Were Incurred | BULK AND IBNR RESERVES ON NET LOSSES AND DEFENSE AND COST CONTAINMENT EXPENSES REPORTED AT YEAR END (\$000 OMITTED) | | | | | | | | | |
|-------------------------------------|---|-----------|-----------|-----------|-----------|-----------|-----------|-----------|-----------|------------|
| | 1 2003 | 2 2004 | 3 2005 | 4 2006 | 5 2007 | 6 2008 | 7 2009 | 8 2010 | 9 2011 | 10 2012 |
| 1. Prior | 13,988 | 12,868 | 12,849 | 10,741 | 9,264 | 8,241 | 7,691 | 7,194 | 6,294 | 5,450 |
| 2. 2003 | 11,127 | 4,055 | 2,442 | 1,651 | 1,468 | 1,348 | 1,082 | 839 | 591 | 513 |
| 3. 2004 | X X X | 11,844 | 4,963 | 3,942 | 2,171 | 1,928 | 1,408 | 1,036 | 739 | 647 |
| 4. 2005 | X X X | X X X | 13,913 | 6,244 | 3,527 | 2,653 | 2,071 | 1,367 | 1,045 | 824 |
| 5. 2006 | X X X | X X X | X X X | 15,563 | 7,299 | 4,577 | 3,108 | 1,943 | 1,156 | 1,128 |
| 6. 2007 | X X X | X X X | X X X | X X X | 19,949 | 8,504 | 5,875 | 3,662 | 2,274 | 1,549 |
| 7. 2008 | X X X | X X X | X X X | X X X | X X X | 19,142 | 10,027 | 5,840 | 3,438 | 2,180 |
| 8. 2009 | X X X | X X X | X X X | X X X | X X X | X X X | 20,938 | 10,663 | 6,490 | 3,811 |
| 9. 2010 | X X X | X X X | X X X | X X X | X X X | X X X | X X X | 23,036 | 10,381 | 6,142 |
| 10. 2011 | X X X | X X X | X X X | X X X | X X X | X X X | X X X | X X X | 25,983 | 10,561 |
| 11. 2012 | X X X | X X X | X X X | X X X | X X X | X X X | X X X | X X X | X X X | 24,290 |

SCHEDULE T - EXHIBIT OF PREMIUMS WRITTEN

Allocated by States and Territories

| States, Etc. | 1 | | Gross Premiums, Including Policy and Membership Fees Less Return Premiums and Premiums on Policies Not Taken | | 4 | 5 | 6 | 7 | 8 | 9 |
|---|---------------|-------|--|--|---|---------|-----------|-----------|---|---|
| | Active Status | 2 | 3 | Dividends Paid or Credited to Policyholders on Direct Business | | | | | | |
| 1. Alabama | AL | N | 0 | 0 | 0 | 0 | 0 | 0 | 0 | 0 |
| 2. Alaska | AK | N | 0 | 0 | 0 | 0 | 0 | 0 | 0 | 0 |
| 3. Arizona | AZ | N | 0 | 0 | 0 | 0 | 0 | 0 | 0 | 0 |
| 4. Arkansas | AR | N | 0 | 0 | 0 | 0 | 0 | 0 | 0 | 0 |
| 5. California | CA | N | 0 | 0 | 0 | 0 | 0 | 0 | 0 | 0 |
| 6. Colorado | CO | N | 0 | 0 | 0 | 0 | 0 | 0 | 0 | 0 |
| 7. Connecticut | CT | N | 0 | 0 | 0 | 0 | 0 | 0 | 0 | 0 |
| 8. Delaware | DE | L | 0 | 0 | 0 | 222,304 | 40,737 | 1,669,967 | 0 | 0 |
| 9. Dist. Columbia | DC | N | 0 | 0 | 0 | 0 | 0 | 0 | 0 | 0 |
| 10. Florida | FL | N | 0 | 0 | 0 | 0 | 0 | 0 | 0 | 0 |
| 11. Georgia | GA | N | 0 | 0 | 0 | 0 | 0 | 0 | 0 | 0 |
| 12. Hawaii | HI | N | 0 | 0 | 0 | 0 | 0 | 0 | 0 | 0 |
| 13. Idaho | ID | N | 0 | 0 | 0 | 0 | 0 | 0 | 0 | 0 |
| 14. Illinois | IL | N | 0 | 0 | 0 | 0 | 0 | 0 | 0 | 0 |
| 15. Indiana | IN | L | 0 | 0 | 0 | 0 | 0 | 0 | 0 | 0 |
| 16. Iowa | IA | L | 0 | 0 | 0 | 0 | 0 | 0 | 0 | 0 |
| 17. Kansas | KS | N | 0 | 0 | 0 | 0 | 0 | 0 | 0 | 0 |
| 18. Kentucky | KY | L | 0 | 0 | 0 | 0 | 0 | 0 | 0 | 0 |
| 19. Louisiana | LA | N | 0 | 0 | 0 | 0 | 0 | 0 | 0 | 0 |
| 20. Maine | ME | N | 0 | 0 | 0 | 0 | 0 | 0 | 0 | 0 |
| 21. Maryland | MD | L | 0 | 0 | 0 | (623) | (8,714) | 92,453 | 0 | 0 |
| 22. Massachusetts | MA | N | 0 | 0 | 0 | 0 | 0 | 0 | 0 | 0 |
| 23. Michigan | MI | N | 0 | 0 | 0 | 0 | 0 | 0 | 0 | 0 |
| 24. Minnesota | MN | N | 0 | 0 | 0 | 0 | 0 | 0 | 0 | 0 |
| 25. Mississippi | MS | N | 0 | 0 | 0 | 0 | 0 | 0 | 0 | 0 |
| 26. Missouri | MO | N | 0 | 0 | 0 | 0 | 0 | 0 | 0 | 0 |
| 27. Montana | MT | N | 0 | 0 | 0 | 0 | 0 | 0 | 0 | 0 |
| 28. Nebraska | NE | N | 0 | 0 | 0 | 0 | 0 | 0 | 0 | 0 |
| 29. Nevada | NV | N | 0 | 0 | 0 | 0 | 0 | 0 | 0 | 0 |
| 30. New Hampshire | NH | N | 0 | 0 | 0 | 0 | 0 | 0 | 0 | 0 |
| 31. New Jersey | NJ | N | 0 | 0 | 0 | 0 | 0 | 0 | 0 | 0 |
| 32. New Mexico | NM | N | 0 | 0 | 0 | 0 | 0 | 0 | 0 | 0 |
| 33. New York | NY | N | 0 | 0 | 0 | 0 | 0 | 0 | 0 | 0 |
| 34. North Carolina | NC | N | 0 | 0 | 0 | 0 | 0 | 0 | 0 | 0 |
| 35. North Dakota | ND | L | 0 | 0 | 0 | 0 | 0 | 0 | 0 | 0 |
| 36. Ohio | OH | L | 0 | 0 | 0 | 0 | 0 | 0 | 0 | 0 |
| 37. Oklahoma | OK | N | 0 | 0 | 0 | 0 | 0 | 0 | 0 | 0 |
| 38. Oregon | OR | E | (2,002) | (2,002) | 0 | 0 | 0 | 0 | 0 | 0 |
| 39. Pennsylvania | PA | L | 0 | 0 | 0 | 148,622 | (695,349) | 3,624,579 | 0 | 0 |
| 40. Rhode Island | RI | N | 0 | 0 | 0 | 0 | 0 | 0 | 0 | 0 |
| 41. South Carolina | SC | N | 0 | 0 | 0 | 0 | 0 | 0 | 0 | 0 |
| 42. South Dakota | SD | L | 0 | 0 | 0 | 0 | 0 | 0 | 0 | 0 |
| 43. Tennessee | TN | N | 0 | 0 | 0 | 0 | 0 | 0 | 0 | 0 |
| 44. Texas | TX | N | 0 | 0 | 0 | 0 | 0 | 0 | 0 | 0 |
| 45. Utah | UT | N | 0 | 0 | 0 | 0 | 0 | 0 | 0 | 0 |
| 46. Vermont | VT | N | 0 | 0 | 0 | 0 | 0 | 0 | 0 | 0 |
| 47. Virginia | VA | L | 0 | 0 | 0 | 0 | 0 | 0 | 0 | 0 |
| 48. Washington | WA | N | 0 | 0 | 0 | 0 | 0 | 0 | 0 | 0 |
| 49. West Virginia | WV | L | 0 | 0 | 0 | 0 | 0 | 0 | 0 | 0 |
| 50. Wisconsin | WI | N | 0 | 0 | 0 | 0 | 0 | 0 | 0 | 0 |
| 51. Wyoming | WY | N | 0 | 0 | 0 | 0 | 0 | 0 | 0 | 0 |
| 52. American Samoa | AS | N | 0 | 0 | 0 | 0 | 0 | 0 | 0 | 0 |
| 53. Guam | GU | N | 0 | 0 | 0 | 0 | 0 | 0 | 0 | 0 |
| 54. Puerto Rico | PR | N | 0 | 0 | 0 | 0 | 0 | 0 | 0 | 0 |
| 55. U.S. Virgin Islands | VI | N | 0 | 0 | 0 | 0 | 0 | 0 | 0 | 0 |
| 56. Northern Mariana Islands | MP | N | 0 | 0 | 0 | 0 | 0 | 0 | 0 | 0 |
| 57. Canada | CAN | N | 0 | 0 | 0 | 0 | 0 | 0 | 0 | 0 |
| 58. Aggregate other alien | OT | X X X | 0 | 0 | 0 | 0 | 0 | 0 | 0 | 0 |
| 59. Totals | (a) | 11 | (2,002) | (2,002) | 0 | 370,303 | (663,326) | 5,386,999 | 0 | 0 |
| DETAILS OF WRITE-INS | | | | | | | | | | |
| 58001. | X X X | | 0 | 0 | 0 | 0 | 0 | 0 | 0 | 0 |
| 58002. | X X X | | 0 | 0 | 0 | 0 | 0 | 0 | 0 | 0 |
| 58003. | X X X | | 0 | 0 | 0 | 0 | 0 | 0 | 0 | 0 |
| 58998. Summary of remaining write-ins for Line 58 from overflow page | X X X | | 0 | 0 | 0 | 0 | 0 | 0 | 0 | 0 |
| 58999. Totals (Line 58001 through Line 58003 plus Line 58998) (Line 58 above) | X X X | | 0 | 0 | 0 | 0 | 0 | 0 | 0 | 0 |

(L) Licensed or Chartered - Licensed Insurance Carrier or Domiciled RRG; (R) Registered - Non-domiciled RRGs; (Q) Qualified - Qualified or Accredited Reinsurer; (E) Eligible - Reporting Entities eligible or approved to write Surplus Lines in the state; (N) None of the above - Not allowed to write business in the state.

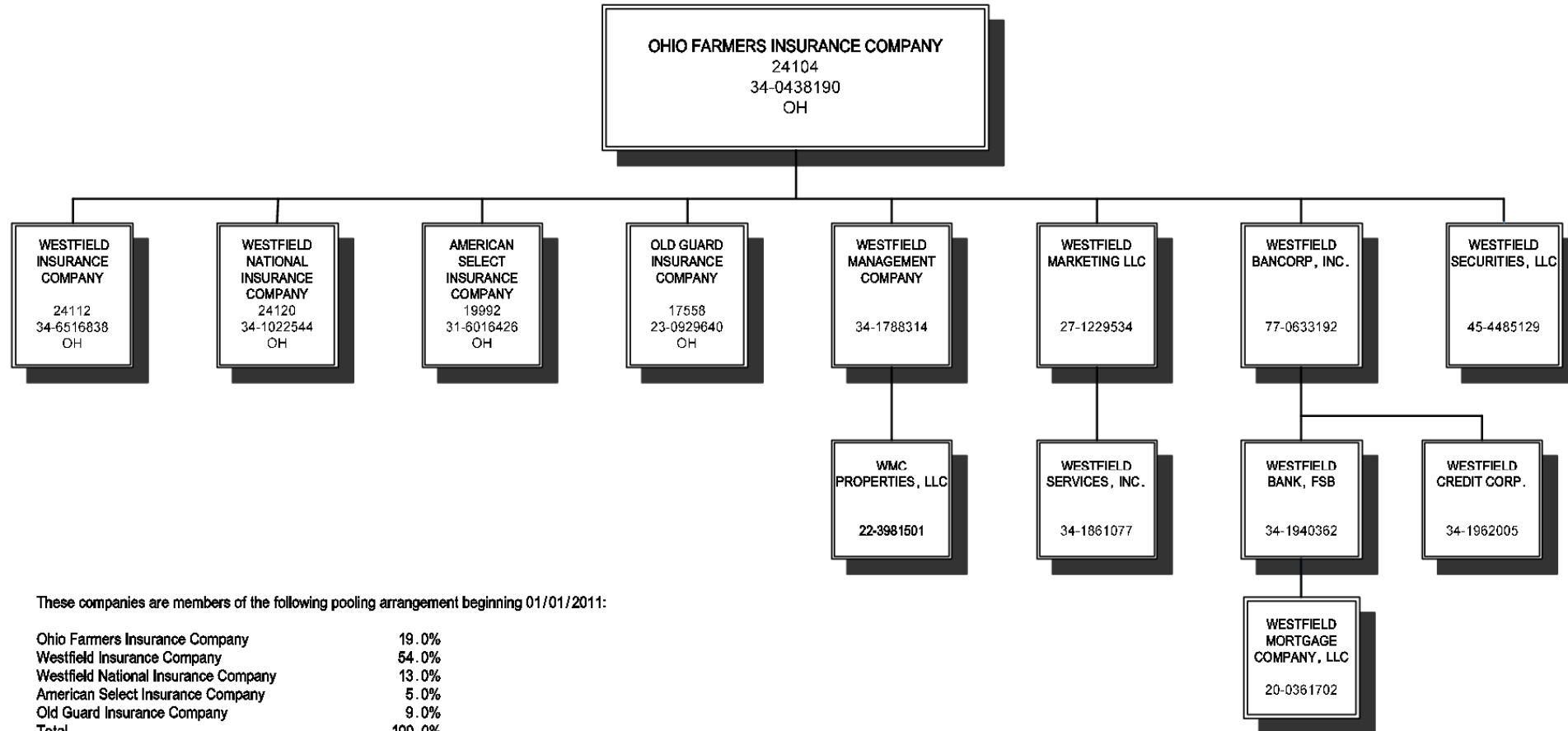
Explanation of basis of allocation of premiums by states, etc.

Inland Marine and Other Accident and Health - Residence of Insured

All Other Lines - Location of Risk

(a) Insert the number of "L" responses except for Canada and Other Alien.

ANNUAL STATEMENT FOR THE YEAR 2012 OF THE Old Guard Insurance Company
 SCHEDULE Y - INFORMATION CONCERNING ACTIVITIES OF INSURER MEMBERS OF A HOLDING COMPANY GROUP
 PART 1 - ORGANIZATIONAL CHART



These companies are members of the following pooling arrangement beginning 01/01/2011:

| | |
|--------------------------------------|--------|
| Ohio Farmers Insurance Company | 19.0% |
| Westfield Insurance Company | 54.0% |
| Westfield National Insurance Company | 13.0% |
| American Select Insurance Company | 5.0% |
| Old Guard Insurance Company | 9.0% |
| Total | 100.0% |

Property and Casualty

Annual Statement Blank Alphabetical Index

| | | | |
|---|------|---|----|
| Assets | 2 | Schedule H - Parts 2, 3, and 4 | 32 |
| Cash Flow | 5 | Schedule H - Part 5 - Health Claims | 33 |
| Exhibit of Capital Gains (Losses) | 12 | Schedule P - Part 1 - Summary | 34 |
| Exhibit of Net Investment Income | 12 | Schedule P - Part 1A - Homeowners/ Farmowners | 36 |
| Exhibit of Nonadmitted Assets | 13 | Schedule P - Part 1B - Private Passenger Auto Liability/Medical | 37 |
| Exhibit of Premiums and Losses (State Page) | 19 | Schedule P - Part 1C - Commercial Auto/Truck Liability/Medical | 38 |
| Five-Year Historical Data | 17 | Schedule P - Part 1D - Workers' Compensation | 39 |
| General Interrogatories | 15 | Schedule P - Part 1E - Commercial Multiple Peril | 40 |
| Jurat Page | 1 | Schedule P - Part 1F - Section 1 - Medical Professional Liability - Occurrence | 41 |
| Liabilities, Surplus and Other Funds | 3 | Schedule P - Part 1F - Section 2 - Medical Professional Liability - Claims-Made | 42 |
| Notes To Financial Statements | 14 | Schedule P - Part 1G - Special Liability (Ocean, Marine, Aircraft (All Perils), Boiler and Machinery) | 43 |
| Overflow Page For Write-ins | 101 | Schedule P - Part 1H - Section 1 - Other Liability - Occurrence | 44 |
| Schedule A - Part 1 | E01 | Schedule P - Part 1H - Section 2 - Other Liability - Claims-Made | 45 |
| Schedule A - Part 2 | E02 | Schedule P - Part 1I - Special Property (Fire, Allied Lines, Inland Marine, Earthquake, Burglary and Theft) | 46 |
| Schedule A - Part 3 | E03 | Schedule P - Part 1J - Auto Physical Damage | 47 |
| Schedule A - Verification Between Years | SI02 | Schedule P - Part 1K - Fidelity/Surety | 48 |
| Schedule B - Part 1 | E04 | Schedule P - Part 1L - Other (Including Credit, Accident and Health) | 49 |
| Schedule B - Part 2 | E05 | Schedule P - Part 1M - International | 50 |
| Schedule B - Part 3 | E06 | Schedule P - Part 1N - Reinsurance | 51 |
| Schedule B - Verification Between Years | SI02 | Schedule P - Part 1O - Reinsurance | 52 |
| Schedule BA - Part 1 | E07 | Schedule P - Part 1P - Reinsurance | 53 |
| Schedule BA - Part 2 | E08 | Schedule P - Part 1R - Section 1 - Products Liability - Occurrence | 54 |
| Schedule BA - Part 3 | E09 | Schedule P - Part 1R - Section 2 - Products Liability - Claims-Made | 55 |
| Schedule BA - Verification Between Years | SI03 | Schedule P - Part 1S - Financial Guaranty/Mortgage Guaranty | 56 |
| Schedule D - Part 1 | E10 | Schedule P - Part 1T - Warranty | 57 |
| Schedule D - Part 1A - Section 1 | SI05 | Schedule P - Parts 2, 3, and 4 - Summary | 35 |
| Schedule D - Part 1A - Section 2 | SI08 | Schedule P - Part 2A - Homeowners/ Farmowners | 58 |
| Schedule D - Part 2 - Section 1 | E11 | Schedule P - Part 2B - Private Passenger Auto Liability/Medical | 58 |
| Schedule D - Part 2 - Section 2 | E12 | Schedule P - Part 2C - Commercial Auto/Truck Liability/Medical | 58 |
| Schedule D - Part 3 | E13 | Schedule P - Part 2D - Workers' Compensation | 58 |
| Schedule D - Part 4 | E14 | Schedule P - Part 2E - Commercial Multiple Peril | 58 |
| Schedule D - Part 5 | E15 | Schedule P - Part 2F - Section 1 - Medical Professional Liability - Occurrence | 59 |
| Schedule D - Part 6 - Section 1 | E16 | Schedule P - Part 2F - Section 2 - Medical Professional Liability - Claims-Made | 59 |
| Schedule D - Part 6 - Section 2 | E16 | Schedule P - Part 2G - Special Liability (Ocean Marine, Aircraft (All Perils), Boiler and Machinery) | 59 |
| Schedule D - Summary By Country | SI04 | Schedule P - Part 2H - Section 1 - Other Liability - Occurrence | 59 |
| Schedule D - Verification Between Years | SI03 | Schedule P - Part 2H - Section 2 - Other Liability - Claims-Made | 59 |
| Schedule DA - Part 1 | E17 | Schedule P - Part 2I - Special Property (Fire, Allied Lines, Inland Marine, Earthquake, Burglary and Theft) | 60 |
| Schedule DA - Verification Between Years | SI10 | Schedule P - Part 2J - Auto Physical Damage | 60 |
| Schedule DB - Part A - Section 1 | E18 | Schedule P - Part 2K - Fidelity/Surety | 60 |
| Schedule DB - Part A - Section 2 | E19 | Schedule P - Part 2L - Other (Including Credit, Accident and Health) | 60 |
| Schedule DB - Part A - Verification Between Years | SI11 | Schedule P - Part 2M - International | 60 |
| Schedule DB - Part B - Section 1 | E20 | Schedule P - Part 2N - Reinsurance | 61 |
| Schedule DB - Part B - Section 2 | E21 | Schedule P - Part 2O - Reinsurance | 61 |
| Schedule DB - Part B - Verification Between Years | SI11 | Schedule P - Part 2P - Reinsurance | 61 |
| Schedule DB - Part C - Section 1 | SI12 | Schedule P - Part 2R - Section 1 - Products Liability - Occurrence | 62 |
| Schedule DB - Part C - Section 2 | SI13 | Schedule P - Part 2R - Section 2 - Products Liability - Claims-Made | 62 |
| Schedule DB - Part D | E22 | Schedule P - Part 2S - Financial Guaranty/Mortgage Guaranty | 62 |
| Schedule DB - Verification | SI14 | Schedule P - Part 2T - Warranty | 62 |
| Schedule DL - Part 1 | E23 | Schedule P - Part 3A - Homeowners/ Farmowners | 63 |
| Schedule DL - Part 2 | E24 | Schedule P - Part 3B - Private Passenger Auto Liability/Medical | 63 |
| Schedule E - Part 1 - Cash | E25 | Schedule P - Part 3C - Commercial Auto/Truck Liability/Medical | 63 |
| Schedule E - Part 2 - Cash Equivalents | E26 | Schedule P - Part 3D - Workers' Compensation | 63 |
| Schedule E - Part 3 - Special Deposits | E27 | Schedule P - Part 3E - Commercial Multiple Peril | 63 |
| Schedule E - Verification Between Years | SI15 | Schedule P - Part 3F - Section 1 - Medical Professional Liability - Occurrence | 64 |
| Schedule F - Part 1 | 20 | Schedule P - Part 3F - Section 2 - Medical Professional Liability - Claims-Made | 64 |
| Schedule F - Part 2 | 21 | Schedule P - Part 3G - Special Liability (Ocean Marine, Aircraft (All Perils), Boiler and Machinery) | 64 |
| Schedule F - Part 3 | 22 | Schedule P - Part 3H - Section 1 - Other Liability - Occurrence | 64 |
| Schedule F - Part 4 | 23 | Schedule P - Part 3H - Section 2 - Other Liability - Claims-Made | 64 |
| Schedule F - Part 5 | 24 | Schedule P - Part 3I - Special Property (Fire, Allied Lines, Inland Marine, Earthquake, Burglary and Theft) | 65 |
| Schedule F - Part 6 - Section 1 | 25 | Schedule P - Part 3J - Auto Physical Damage | 65 |
| Schedule F - Part 6 - Section 2 | 27 | Schedule P - Part 3K - Fidelity/Surety | 65 |
| Schedule F - Part 7 | 28 | | |
| Schedule F - Part 8 | 29 | | |
| Schedule F - Part 9 | 30 | | |
| Schedule H - Accident and Health Exhibit - Part 1 | 31 | | |

Property and Casualty

Annual Statement Blank Alphabetical Index (cont.)

| | | | |
|---|------|---|-----|
| Schedule P - Part 3L - Other (Including Credit, Accident and Health) | 65 | Supplemental Exhibits and Schedules Interrogatories | 100 |
| Schedule P - Part 3M - International | 65 | Underwriting and Investment Exhibit Part 1 | 6 |
| Schedule P - Part 3N - Reinsurance | 66 | Underwriting and Investment Exhibit Part 1A | 7 |
| Schedule P - Part 3O - Reinsurance | 66 | Underwriting and Investment Exhibit Part 1B | 8 |
| Schedule P - Part 3P - Reinsurance | 66 | Underwriting and Investment Exhibit Part 2 | 9 |
| Schedule P - Part 3R - Section 1 - Products Liability - Occurrence | 67 | Underwriting and Investment Exhibit Part 2A | 10 |
| Schedule P - Part 3R - Section 2 - Products Liability - Claims-Made | 67 | Underwriting and Investment Exhibit Part 3 | 11 |
| Schedule P - Part 3S - Financial Guaranty/Mortgage Guaranty | 67 | | |
| Schedule P - Part 3T - Warranty | 67 | | |
| Schedule P - Part 4A - Homeowners/Farmowners | 68 | | |
| Schedule P - Part 4B - Private Passenger Auto Liability/Medical | 68 | | |
| Schedule P - Part 4C - Commercial Auto/Truck Liability/Medical | 68 | | |
| Schedule P - Part 4D - Workers' Compensation | 68 | | |
| Schedule P - Part 4E - Commercial Multiple Peril | 68 | | |
| Schedule P - Part 4F - Section 1 - Medical Professional Liability - Occurrence | 69 | | |
| Schedule P - Part 4F - Section 2 - Medical Professional Liability - Claims-Made | 69 | | |
| Schedule P - Part 4G - Special Liability (Ocean Marine, Aircraft (All Perils), Boiler and Machinery) | 69 | | |
| Schedule P - Part 4H - Section 1 - Other Liability - Occurrence | 69 | | |
| Schedule P - Part 4H - Section 2 - Other Liability - Claims-Made | 69 | | |
| Schedule P - Part 4I - Special Property (Fire, Allied Lines, Inland Marine, Earthquake, Burglary and Theft) | 70 | | |
| Schedule P - Part 4J - Auto Physical Damage | 70 | | |
| Schedule P - Part 4K - Fidelity/Surety | 70 | | |
| Schedule P - Part 4L - Other (Including Credit, Accident and Health) | 70 | | |
| Schedule P - Part 4M - International | 70 | | |
| Schedule P - Part 4N - Reinsurance | 71 | | |
| Schedule P - Part 4O - Reinsurance | 71 | | |
| Schedule P - Part 4P - Reinsurance | 71 | | |
| Schedule P - Part 4R - Section 1 - Products Liability - Occurrence | 72 | | |
| Schedule P - Part 4R - Section 2 - Products Liability - Claims-Made | 72 | | |
| Schedule P - Part 4S - Financial Guaranty/Mortgage Guaranty | 72 | | |
| Schedule P - Part 4T - Warranty | 72 | | |
| Schedule P - Part 5A - Homeowners/Farmowners | 73 | | |
| Schedule P - Part 5B - Private Passenger Auto Liability/Medical | 74 | | |
| Schedule P - Part 5C - Commercial Auto/Truck Liability/Medical | 75 | | |
| Schedule P - Part 5D - Workers' Compensation | 76 | | |
| Schedule P - Part 5E - Commercial Multiple Peril | 77 | | |
| Schedule P - Part 5F - Medical Professional Liability - Claims-Made | 79 | | |
| Schedule P - Part 5F - Medical Professional Liability - Occurrence | 78 | | |
| Schedule P - Part 5H - Other Liability - Claims-Made | 81 | | |
| Schedule P - Part 5H - Other Liability - Occurrence | 80 | | |
| Schedule P - Part 5R - Products Liability - Claims-Made | 83 | | |
| Schedule P - Part 5R - Products Liability - Occurrence | 82 | | |
| Schedule P - Part 5T - Warranty | 84 | | |
| Schedule P - Part 6C - Commercial Auto/Truck Liability/Medical | 85 | | |
| Schedule P - Part 6D - Workers' Compensation | 85 | | |
| Schedule P - Part 6E - Commercial Multiple Peril | 86 | | |
| Schedule P - Part 6H - Other Liability - Claims-Made | 87 | | |
| Schedule P - Part 6H - Other Liability - Occurrence | 86 | | |
| Schedule P - Part 6M - International | 87 | | |
| Schedule P - Part 6N - Reinsurance | 88 | | |
| Schedule P - Part 6O - Reinsurance | 88 | | |
| Schedule P - Part 6R - Products Liability - Claims-Made | 89 | | |
| Schedule P - Part 6R - Products Liability - Occurrence | 89 | | |
| Schedule P - Part 7A - Primary Loss Sensitive Contracts | 90 | | |
| Schedule P - Part 7B - Reinsurance Loss Sensitive Contracts | 92 | | |
| Schedule P Interrogatories | 94 | | |
| Schedule T - Exhibit of Premiums Written | 95 | | |
| Schedule T - Part 2 - Interstate Compact | 96 | | |
| Schedule Y - Information Concerning Activities of Insurer Members of a Holding Company Group | 97 | | |
| Schedule Y - Part 1A - Detail of Insurance Holding Company System | 98 | | |
| Schedule Y - Part 2 - Summary of Insurer's Transactions With Any Affiliates | 99 | | |
| Statement of Income | 4 | | |
| Summary Investment Schedule | SI01 | | |