



ANNUAL STATEMENT

For the Year Ended December 31, 2012
of the Condition and Affairs of the

PROGRESSIVE COMMERCIAL CASUALTY COMPANY

NAIC Group Code.....155, 155 (Current Period) (Prior Period)	NAIC Company Code..... 12879	Employer's ID Number..... 20-4093467
Organized under the Laws of OH	State of Domicile or Port of Entry OH	Country of Domicile US
Incorporated/Organized..... July 14, 2006	Commenced Business.....	
Statutory Home Office	6300 WILSON MILLS ROAD, W33..... CLEVELAND OH US 44143-2182 <i>(Street and Number) (City or Town, State, Country and Zip Code)</i>	
Main Administrative Office	6300 WILSON MILLS ROAD, W33..... CLEVELAND OH US..... 44143-2182 440-461-5000 <i>(Street and Number) (City or Town, State, Country and Zip Code) (Area Code) (Telephone Number)</i>	
Mail Address	P.O. BOX 89490..... CLEVELAND OH US 44101-6490 <i>(Street and Number or P. O. Box) (City or Town, State, Country and Zip Code)</i>	
Primary Location of Books and Records	6300 WILSON MILLS ROAD, W33..... CLEVELAND OH US 44143-2182 440-395-4460 <i>(Street and Number) (City or Town, State, Country and Zip Code) (Area Code) (Telephone Number)</i>	
Internet Web Site Address	PROGRESSIVE.COM	
Statutory Statement Contact	MARY BETH ANDREANO <i>(Name)</i> FINANCIAL_REPORTING@PROGRESSIVE.COM <i>(E-Mail Address)</i>	440-395-4460 <i>(Area Code) (Telephone Number) (Extension)</i> 440-446-7168 <i>(Fax Number)</i>

POLICYHOLDER SERVICES AND CLAIMS REPORTING -- 1-800-PROGRESSIVE (1-800-776-4737)

OFFICERS

Name WILLIAM RAYMOND KAMPF KEVIN PATRICK MAHER	Title PRESIDENT TREASURER	Name PATRICIA MITCHELL CORWIN	Title SECRETARY
---	--	---	---------------------------

OTHER

MICHAEL JOHN MILLER SANDRA LEE RIHVALSKY	(VICE PRESIDENT) (VICE PRESIDENT)	JEANETTE LOUISE HISEK MARGARET ANN ROSE	(VICE PRESIDENT) (ASST. SECRETARY)
---	--------------------------------------	--	---------------------------------------

DIRECTORS OR TRUSTEES

MICHAEL WILLIAM BISSLER MICHAEL JOHN MILLER	JEANETTE LOUISE HISEK	WILLIAM RAYMOND KAMPF	KEVIN PATRICK MAHER
--	-----------------------	-----------------------	---------------------

State of..... OHIO
County of..... CUYAHOGA

The officers of this reporting entity being duly sworn, each depose and say that they are the described officers of said reporting entity, and that on the reporting period stated above, all of the herein described assets were the absolute property of the said reporting entity, free and clear from any liens or claims thereon, except as herein stated, and that this statement, together with related exhibits, schedules and explanations therein contained, annexed or referred to, is a full and true statement of all the assets and liabilities and of the condition and affairs of the said reporting entity as of the reporting period stated above, and of its income and deductions therefrom for the period ended, and have been completed in accordance with the NAIC *Annual Statement Instructions and Accounting Practices and Procedures* manual except to the extent that: (1) state law may differ; or, (2) that state rules or regulations require differences in reporting not related to accounting practices and procedures, according to the best of their information, knowledge and belief, respectively. Furthermore, the scope of this attestation by the described officers also includes the related corresponding electronic filing with the NAIC, when required, that is an exact copy (except for formatting differences due to electronic filing) of the enclosed statement. The electronic filing may be requested by various regulators in lieu of or in addition to the enclosed statement.

_____ (Signature) WILLIAM RAYMOND KAMPF _____ 1. (Printed Name) PRESIDENT _____ (Title)	_____ (Signature) MARGARET ANN ROSE _____ 2. (Printed Name) ASSISTANT SECRETARY _____ (Title)	_____ (Signature) KEVIN PATRICK MAHER _____ 3. (Printed Name) TREASURER _____ (Title)
--	--	--

Subscribed and sworn to before me
This 14TH day of FEBRUARY, 2013

a. Is this an original filing? Yes [X] No []
b. If no 1. State the amendment number _____
2. Date filed _____
3. Number of pages attached _____

ASSETS

	Current Year			Prior Year
	1 Assets	2 Nonadmitted Assets	3 Net Admitted Assets (Cols. 1 - 2)	4 Net Admitted Assets
1. Bonds (Schedule D).....	9,172,617		9,172,617	8,403,850
2. Stocks (Schedule D):				
2.1 Preferred stocks.....			.0	
2.2 Common stocks.....			.0	
3. Mortgage loans on real estate (Schedule B):				
3.1 First liens.....			.0	
3.2 Other than first liens.....			.0	
4. Real estate (Schedule A):				
4.1 Properties occupied by the company (less \$.....0 encumbrances).....			.0	
4.2 Properties held for the production of income (less \$.....0 encumbrances).....			.0	
4.3 Properties held for sale (less \$.....0 encumbrances).....			.0	
5. Cash (\$.....0, Schedule E-Part 1), cash equivalents (\$.....0, Schedule E-Part 2) and short-term investments (\$.....0, Schedule DA).....			.0	499,999
6. Contract loans (including \$.....0 premium notes).....			.0	
7. Derivatives (Schedule DB).....			.0	
8. Other invested assets (Schedule BA).....			.0	
9. Receivables for securities.....			.0	37,188
10. Securities lending reinvested collateral assets (Schedule DL).....			.0	
11. Aggregate write-ins for invested assets.....	.0	.0	.0	.0
12. Subtotals, cash and invested assets (Lines 1 to 11).....	9,172,617	.0	9,172,617	8,941,037
13. Title plants less \$.....0 charged off (for Title insurers only).....			.0	
14. Investment income due and accrued.....	36,226		36,226	36,237
15. Premiums and considerations:				
15.1 Uncollected premiums and agents' balances in the course of collection.....			.0	
15.2 Deferred premiums, agents' balances and installments booked but deferred and not yet due (including \$.....0 earned but unbilled premiums).....			.0	
15.3 Accrued retrospective premiums.....			.0	
16. Reinsurance:				
16.1 Amounts recoverable from reinsurers.....			.0	
16.2 Funds held by or deposited with reinsured companies.....			.0	
16.3 Other amounts receivable under reinsurance contracts.....			.0	
17. Amounts receivable relating to uninsured plans.....			.0	
18.1 Current federal and foreign income tax recoverable and interest thereon.....	1,950		1,950	
18.2 Net deferred tax asset.....	32,589	32,589	.0	
19. Guaranty funds receivable or on deposit.....			.0	
20. Electronic data processing equipment and software.....			.0	
21. Furniture and equipment, including health care delivery assets (\$.....0).....			.0	
22. Net adjustment in assets and liabilities due to foreign exchange rates.....			.0	
23. Receivables from parent, subsidiaries and affiliates.....			.0	85,420
24. Health care (\$.....0) and other amounts receivable.....			.0	
25. Aggregate write-ins for other than invested assets.....	1,024	1,024	.0	.0
26. Total assets excluding Separate Accounts, Segregated Accounts and Protected Cell Accounts (Lines 12 to 25).....	9,244,406	33,613	9,210,793	9,062,694
27. From Separate Accounts, Segregated Accounts and Protected Cell Accounts.....			.0	
28. TOTALS (Lines 26 and 27).....	9,244,406	33,613	9,210,793	9,062,694

DETAILS OF WRITE-INS

1101.....			.0	
1102.....			.0	
1103.....			.0	
1198. Summary of remaining write-ins for Line 11 from overflow page.....	.0	.0	.0	.0
1199. Totals (Lines 1101 thru 1103 plus 1198) (Line 11 above).....	.0	.0	.0	.0
2501. MISCELLANEOUS OTHER ASSETS.....	1,024	1,024	.0	
2502.....			.0	
2503.....			.0	
2598. Summary of remaining write-ins for Line 25 from overflow page.....	.0	.0	.0	.0
2599. Totals (Lines 2501 thru 2503 plus 2598) (Line 25 above).....	1,024	1,024	.0	.0

LIABILITIES, SURPLUS AND OTHER FUNDS

	1 Current Year	2 Prior Year
1. Losses (Part 2A, Line 35, Column 8).....		
2. Reinsurance payable on paid losses and loss adjustment expenses (Schedule F, Part 1, Column 6).....		
3. Loss adjustment expenses (Part 2A, Line 35, Column 9).....		
4. Commissions payable, contingent commissions and other similar charges.....		
5. Other expenses (excluding taxes, licenses and fees).....	3,784	3,010
6. Taxes, licenses and fees (excluding federal and foreign income taxes).....		37,098
7.1 Current federal and foreign income taxes (including \$.....0 on realized capital gains (losses)).....		15,163
7.2 Net deferred tax liability.....		
8. Borrowed money \$.....0 and interest thereon \$.....0.....		
9. Unearned premiums (Part 1A, Line 38, Column 5) (after deducting unearned premiums for ceded reinsurance of \$.....0 and including warranty reserves of \$.....0 and accrued accident and health experience rating refunds including \$.....0 for medical loss ratio rebate per the Public Health Service Act).....		
10. Advance premium.....		
11. Dividends declared and unpaid:		
11.1 Stockholders.....		
11.2 Policyholders.....		
12. Ceded reinsurance premiums payable (net of ceding commissions).....		
13. Funds held by company under reinsurance treaties (Schedule F, Part 3, Column 19).....		
14. Amounts withheld or retained by company for account of others.....		
15. Remittances and items not allocated.....		
16. Provision for reinsurance (including \$.....0 certified) (Schedule F, Part 8).....		
17. Net adjustments in assets and liabilities due to foreign exchange rates.....		
18. Drafts outstanding.....	500	555
19. Payable to parent, subsidiaries and affiliates.....	56,497	
20. Derivatives.....		
21. Payable for securities.....		
22. Payable for securities lending.....		
23. Liability for amounts held under uninsured plans.....		
24. Capital notes \$.....0 and interest thereon \$.....0.....		
25. Aggregate write-ins for liabilities.....	0	0
26. Total liabilities excluding protected cell liabilities (Lines 1 through 25).....	60,781	55,826
27. Protected cell liabilities.....		
28. Total liabilities (Lines 26 and 27).....	60,781	55,826
29. Aggregate write-ins for special surplus funds.....	0	0
30. Common capital stock.....	3,000,000	3,000,000
31. Preferred capital stock.....		
32. Aggregate write-ins for other than special surplus funds.....	0	0
33. Surplus notes.....		
34. Gross paid in and contributed surplus.....	4,200,000	4,200,000
35. Unassigned funds (surplus).....	1,950,012	1,806,868
36. Less treasury stock, at cost:		
36.10.000 shares common (value included in Line 30 \$.....0).....		
36.20.000 shares preferred (value included in Line 31 \$.....0).....		
37. Surplus as regards policyholders (Lines 29 to 35, less 36) (Page 4, Line 39).....	9,150,012	9,006,868
38. TOTALS (Page 2, Line 28, Col. 3).....	9,210,793	9,062,694

DETAILS OF WRITE-INS

2501.		
2502.		
2503.		
2598. Summary of remaining write-ins for Line 25 from overflow page.....	0	0
2599. Totals (Lines 2501 thru 2503 plus 2598) (Line 25 above).....	0	0
2901.		
2902.		
2903.		
2998. Summary of remaining write-ins for Line 29 from overflow page.....	0	0
2999. Totals (Lines 2901 thru 2903 plus 2998) (Line 29 above).....	0	0
3201.		
3202.		
3203.		
3298. Summary of remaining write-ins for Line 32 from overflow page.....	0	0
3299. Totals (Lines 3201 thru 3203 plus 3298) (Line 32 above).....	0	0

**PROGRESSIVE COMMERCIAL CASUALTY COMPANY
STATEMENT OF INCOME**

	1 Current Year	2 Prior Year
UNDERWRITING INCOME		
1. Premiums earned (Part 1, Line 35, Column 4).....		
DEDUCTIONS		
2. Losses incurred (Part 2, Line 35, Column 7).....		
3. Loss adjustment expenses incurred (Part 3, Line 25, Column 1).....		
4. Other underwriting expenses incurred (Part 3, Line 25, Column 2).....	7,718	7,377
5. Aggregate write-ins for underwriting deductions.....	0	0
6. Total underwriting deductions (Lines 2 through 5).....	7,718	7,377
7. Net income of protected cells.....		
8. Net underwriting gain (loss) (Line 1 minus Line 6 plus Line 7).....	(7,718)	(7,377)
INVESTMENT INCOME		
9. Net investment income earned (Exhibit of Net Investment Income, Line 17).....	193,399	197,814
10. Net realized capital gains (losses) less capital gains tax of \$.....(1,053) (Exhibit of Capital Gains (Losses)).....	1,053	15,489
11. Net investment gain (loss) (Lines 9 + 10).....	194,452	213,303
OTHER INCOME		
12. Net gain (loss) from agents' or premium balances charged off (amount recovered \$.....0 amount charged off \$.....0).....	0	
13. Finance and service charges not included in premiums.....		
14. Aggregate write-ins for miscellaneous income.....	14	15
15. Total other income (Lines 12 through 14).....	14	15
16. Net income before dividends to policyholders, after capital gains tax and before all other federal and foreign income taxes (Lines 8 + 11 + 15).....	186,748	205,941
17. Dividends to policyholders.....		
18. Net income, after dividends to policyholders, after capital gains tax and before all other federal and foreign income taxes (Line 16 minus Line 17).....	186,748	205,941
19. Federal and foreign income taxes incurred.....	42,580	57,546
20. Net income (Line 18 minus Line 19) (to Line 22).....	144,168	148,395
CAPITAL AND SURPLUS ACCOUNT		
21. Surplus as regards policyholders, December 31 prior year (Page 4, Line 39, Column 2).....	9,006,868	8,857,773
22. Net income (from Line 20).....	144,168	148,395
23. Net transfers (to) from Protected Cell accounts.....		
24. Change in net unrealized capital gains or (losses) less capital gains tax of \$.....0.....		
25. Change in net unrealized foreign exchange capital gain (loss).....		
26. Change in net deferred income tax.....	(21,695)	(6,374)
27. Change in nonadmitted assets (Exhibit of Nonadmitted Assets, Line 28, Column 3).....	7,411	7,074
28. Change in provision for reinsurance (Page 3, Line 16, Column 2 minus Column 1).....		
29. Change in surplus notes.....		
30. Surplus (contributed to) withdrawn from protected cells.....		
31. Cumulative effect of changes in accounting principles.....	13,260	
32. Capital changes:		
32.1 Paid in.....		
32.2 Transferred from surplus (Stock Dividend).....		
32.3 Transferred to surplus.....		
33. Surplus adjustments:		
33.1 Paid in.....		
33.2 Transferred to capital (Stock Dividend).....		
33.3. Transferred from capital.....		
34. Net remittances from or (to) Home Office.....		
35. Dividends to stockholders.....		
36. Change in treasury stock (Page 3, Lines 36.1 and 36.2, Column 2 minus Column 1).....		
37. Aggregate write-ins for gains and losses in surplus.....	0	0
38. Change in surplus as regards policyholders for the year (Lines 22 through 37).....	143,144	149,095
39. Surplus as regards policyholders, December 31 current year (Line 21 plus Line 38) (Page 3, Line 37).....	9,150,012	9,006,868
DETAILS OF WRITE-INS		
0501.		
0502.		
0503.		
0598. Summary of remaining write-ins for Line 5 from overflow page.....	0	0
0599. Totals (Lines 0501 thru 0503 plus 0598) (Line 5 above).....	0	0
1401. INTEREST INCOME ON INTERCOMPANY BALANCES.....	14	15
1402.		
1403.		
1498. Summary of remaining write-ins for Line 14 from overflow page.....	0	0
1499. Totals (Lines 1401 thru 1403 plus 1498) (Line 14 above).....	14	15
3701.		
3702.		
3703.		
3798. Summary of remaining write-ins for Line 37 from overflow page.....	0	0
3799. Totals (Lines 3701 thru 3703 plus 3798) (Line 37 above).....	0	0

CASH FLOW

	1 Current Year	2 Prior Year
CASH FROM OPERATIONS		
1. Premiums collected net of reinsurance.....		3,662
2. Net investment income.....	210,281	239,324
3. Miscellaneous income.....	14	15
4. Total (Lines 1 through 3).....	210,295	243,001
5. Benefit and loss related payments.....		
6. Net transfers to Separate Accounts, Segregated Accounts and Protected Cell Accounts.....		
7. Commissions, expenses paid and aggregate write-ins for deductions.....	43,938	585
8. Dividends paid to policyholders.....		
9. Federal and foreign income taxes paid (recovered) net of \$....2 tax on capital gains (losses).....	58,640	69,504
10. Total (Lines 5 through 9).....	102,578	70,089
11. Net cash from operations (Line 4 minus Line 10).....	107,717	172,912
CASH FROM INVESTMENTS		
12. Proceeds from investments sold, matured or repaid:		
12.1 Bonds.....	215,000	3,748,695
12.2 Stocks.....		
12.3 Mortgage loans.....		
12.4 Real estate.....		
12.5 Other invested assets.....		
12.6 Net gains or (losses) on cash, cash equivalents and short-term investments.....		
12.7 Miscellaneous proceeds.....	37,188	
12.8 Total investment proceeds (Lines 12.1 to 12.7).....	252,188	3,748,695
13. Cost of investments acquired (long-term only):		
13.1 Bonds.....	1,000,742	3,500,820
13.2 Stocks.....		
13.3 Mortgage loans.....		
13.4 Real estate.....		
13.5 Other invested assets.....		
13.6 Miscellaneous applications.....		37,188
13.7 Total investments acquired (Lines 13.1 to 13.6).....	1,000,742	3,538,008
14. Net increase (decrease) in contract loans and premium notes.....		
15. Net cash from investments (Line 12.8 minus Lines 13.7 minus Line 14).....	(748,554)	210,687
CASH FROM FINANCING AND MISCELLANEOUS SOURCES		
16. Cash provided (applied):		
16.1 Surplus notes, capital notes.....		
16.2 Capital and paid in surplus, less treasury stock.....		
16.3 Borrowed funds.....		
16.4 Net deposits on deposit-type contracts and other insurance liabilities.....		
16.5 Dividends to stockholders.....		
16.6 Other cash provided (applied).....	140,838	116,400
17. Net cash from financing and miscellaneous sources (Lines 16.1 to 16.4 minus Line 16.5 plus Line 16.6).....	140,838	116,400
RECONCILIATION OF CASH, CASH EQUIVALENTS AND SHORT-TERM INVESTMENTS		
18. Net change in cash, cash equivalents and short-term investments (Line 11 plus Line 15 plus Line 17).....	(499,999)	499,999
19. Cash, cash equivalents and short-term investments:		
19.1 Beginning of year.....	499,999	
19.2 End of year (Line 18 plus Line 19.1).....	.0	499,999

Note: Supplemental disclosures of cash flow information for non-cash transactions:

20.0001		
---------------	--	--

**Pt. 1-Premiums Earned
NONE**

**Pt. 1A-Recapitulation of All Premiums
NONE**

**Pt. 1B-Premiums Written
NONE**

**Pt. 2-Losses Paid & Incurred
NONE**

**Pt. 2A-Unpaid Losses & LAE
NONE**

PROGRESSIVE COMMERCIAL CASUALTY COMPANY

UNDERWRITING AND INVESTMENT EXHIBIT

PART 3 - EXPENSES

	1	2	3	4
	Loss Adjustment Expenses	Other Underwriting Expenses	Investment Expenses	Total
1. Claim adjustment services:				
1.1 Direct.....				.0
1.2 Reinsurance assumed.....				.0
1.3 Reinsurance ceded.....				.0
1.4 Net claim adjustment services (1.1 + 1.2 - 1.3).....	.0	.0	.0	.0
2. Commission and brokerage:				
2.1 Direct, excluding contingent.....				.0
2.2 Reinsurance assumed, excluding contingent.....				.0
2.3 Reinsurance ceded, excluding contingent.....				.0
2.4 Contingent - direct.....				.0
2.5 Contingent - reinsurance assumed.....				.0
2.6 Contingent - reinsurance ceded.....				.0
2.7 Policy and membership fees.....				.0
2.8 Net commission and brokerage (2.1 + 2.2 - 2.3 + 2.4 + 2.5 - 2.6 + 2.7).....	.0	.0	.0	.0
3. Allowances to manager and agents.....				.0
4. Advertising.....				.0
5. Boards, bureaus and associations.....		25		25
6. Surveys and underwriting reports.....				.0
7. Audit of assureds' records.....				.0
8. Salary and related items:				
8.1 Salaries.....			5,272	5,272
8.2 Payroll taxes.....			167	167
9. Employee relations and welfare.....			251	251
10. Insurance.....				.0
11. Directors' fees.....				.0
12. Travel and travel items.....			14	14
13. Rent and rent items.....			203	203
14. Equipment.....				.0
15. Cost or depreciation of EDP equipment and software.....			1	1
16. Printing and stationery.....			13	13
17. Postage, telephone and telegraph, exchange and express.....			41	41
18. Legal and auditing.....			11,568	11,568
19. Totals (Lines 3 to 18).....	.0	25	17,530	17,555
20. Taxes, licenses and fees:				
20.1 State and local insurance taxes deducting guaranty association credits of \$.....0.....		2,295		2,295
20.2 Insurance department licenses and fees.....		2,827		2,827
20.3 Gross guaranty association assessments.....		90		90
20.4 All other (excluding federal and foreign income and real estate).....		2,237		2,237
20.5 Total taxes, licenses and fees (20.1 + 20.2 + 20.3 + 20.4).....	.0	7,450	.0	7,450
21. Real estate expenses.....				.0
22. Real estate taxes.....				.0
23. Reimbursements by uninsured plans.....				.0
24. Aggregate write-ins for miscellaneous expenses.....	.0	244	1,278	1,522
25. Total expenses incurred.....	.0	7,718	18,808	(a) 26,526
26. Less unpaid expenses - current year.....		108	2,653	2,761
27. Add unpaid expenses - prior year.....		37,348	2,757	40,105
28. Amounts receivable relating to uninsured plans, prior year.....				.0
29. Amounts receivable relating to uninsured plans, current year.....				.0
30. TOTAL EXPENSES PAID (Lines 25 - 26 + 27 - 28 + 29).....	.0	44,959	18,912	63,871

DETAILS OF WRITE-INS

2401. MISCELLANEOUS EXPENSES.....		244	1,278	1,522
2402.0
2403.0
2498. Summary of remaining write-ins for Line 24 from overflow page.....	.0	.0	.0	.0
2499. Totals (Lines 2401 thru 2403 plus 2498) (Line 24 above).....	.0	244	1,278	1,522

(a) Includes management fees of \$....7,261 to affiliates and \$.....0 to non-affiliates.

EXHIBIT OF NET INVESTMENT INCOME

	1 Collected During Year	2 Earned During Year
1. U.S. government bonds.....	(a).....182,587184,561
1.1 Bonds exempt from U.S. tax.....	(a).....29,60527,621
1.2 Other bonds (unaffiliated).....	(a).....
1.3 Bonds of affiliates.....	(a).....
2.1 Preferred stocks (unaffiliated).....	(b).....
2.11 Preferred stocks of affiliates.....	(b).....
2.2 Common stocks (unaffiliated).....
2.21 Common stocks of affiliates.....
3. Mortgage loans.....	(c).....
4. Real estate.....	(d).....
5. Contract loans.....
6. Cash, cash equivalents and short-term investments.....	(e).....2525
7. Derivative instruments.....	(f).....
8. Other invested assets.....
9. Aggregate write-ins for investment income.....00
10. Total gross investment income.....212,217212,207
11. Investment expenses.....	(g).....18,808
12. Investment taxes, licenses and fees, excluding federal income taxes.....	(g).....
13. Interest expense.....	(h).....
14. Depreciation on real estate and other invested assets.....	(i).....0
15. Aggregate write-ins for deductions from investment income.....0
16. Total deductions (Lines 11 through 15).....18,808
17. Net investment income (Line 10 minus Line 16).....193,399

DETAILS OF WRITE-INS

0901.
0902.
0903.
0998. Summary of remaining write-ins for Line 9 from overflow page.....00
0999. Totals (Lines 0901 thru 0903 plus 0998) (Line 9 above).....00
1501.
1502.
1503.
1598. Summary of remaining write-ins for Line 15 from overflow page.....0
1599. Totals (Lines 1501 thru 1503 plus 1598) (Line 15 above).....0

- (a) Includes \$.....2,670 accrual of discount less \$.....19,645 amortization of premium and less \$.....120 paid for accrued interest on purchases.
- (b) Includes \$.....0 accrual of discount less \$.....0 amortization of premium and less \$.....0 paid for accrued dividends on purchases.
- (c) Includes \$.....0 accrual of discount less \$.....0 amortization of premium and less \$.....0 paid for accrued interest on purchases.
- (d) Includes \$.....0 for company's occupancy of its own buildings; and excludes \$.....0 interest on encumbrances.
- (e) Includes \$.....25 accrual of discount less \$.....0 amortization of premium and less \$.....0 paid for accrued interest on purchases.
- (f) Includes \$.....0 accrual of discount less \$.....0 amortization of premium.
- (g) Includes \$.....0 investment expenses and \$.....0 investment taxes, licenses and fees, excluding federal income taxes, attributable to Segregated and Separate Accounts.
- (h) Includes \$.....0 interest on surplus notes and \$.....0 interest on capital notes.
- (i) Includes \$.....0 depreciation on real estate and \$.....0 depreciation on other invested assets.

EXHIBIT OF CAPITAL GAINS (LOSSES)

	1 Realized Gain (Loss) on Sales or Maturity	2 Other Realized Adjustments	3 Total Realized Capital Gain (Loss) (Columns 1 + 2)	4 Change in Unrealized Capital Gain (Loss)	5 Change in Unrealized Foreign Exchange Capital Gain (Loss)
1. U.S. government bonds.....0
1.1 Bonds exempt from U.S. tax.....0
1.2 Other bonds (unaffiliated).....0
1.3 Bonds of affiliates.....0
2.1 Preferred stocks (unaffiliated).....0
2.11 Preferred stocks of affiliates.....0
2.2 Common stocks (unaffiliated).....0
2.21 Common stocks of affiliates.....0
3. Mortgage loans.....0
4. Real estate.....0
5. Contract loans.....0
6. Cash, cash equivalents and short-term investments.....0
7. Derivative instruments.....0
8. Other invested assets.....0
9. Aggregate write-ins for capital gains (losses).....00000
10. Total capital gains (losses).....00000

DETAILS OF WRITE-INS

0901.0
0902.0
0903.0
0998. Summary of remaining write-ins for Line 9 from overflow page.....00000
0999. Totals (Lines 0901 thru 0903 plus 0998) (Line 9 above).....00000

EXHIBIT OF NONADMITTED ASSETS

	1 Current Year Total Nonadmitted Assets	2 Prior Year Total Nonadmitted Assets	3 Change in Total Nonadmitted Assets (Col. 2 - Col. 1)
1. Bonds (Schedule D).....			.0
2. Stocks (Schedule D):			
2.1 Preferred stocks.....			.0
2.2 Common stocks.....			.0
3. Mortgage loans on real estate (Schedule B):			
3.1 First liens.....			.0
3.2 Other than first liens.....			.0
4. Real estate (Schedule A):			
4.1 Properties occupied by the company.....			.0
4.2 Properties held for the production of income.....			.0
4.3 Properties held for sale.....			.0
5. Cash (Schedule E-Part 1), cash equivalents (Schedule E-Part 2) and short-term investments (Schedule DA).....			.0
6. Contract loans.....			.0
7. Derivatives (Schedule DB).....			.0
8. Other invested assets (Schedule BA).....			.0
9. Receivables for securities.....			.0
10. Securities lending reinvested collateral assets (Schedule DL).....			.0
11. Aggregate write-ins for invested assets.....	.0	.0	.0
12. Subtotals, cash and invested assets (Lines 1 to 11).....	.0	.0	.0
13. Title plants (for Title insurers only).....			.0
14. Investment income due and accrued.....			.0
15. Premiums and considerations:			
15.1 Uncollected premiums and agents' balances in the course of collection.....			.0
15.2 Deferred premiums, agents' balances and installments booked but deferred and not yet due.....			.0
15.3 Accrued retrospective premiums.....			.0
16. Reinsurance:			
16.1 Amounts recoverable from reinsurers.....			.0
16.2 Funds held by or deposited with reinsured companies.....			.0
16.3 Other amounts receivable under reinsurance contracts.....			.0
17. Amounts receivable relating to uninsured plans.....			.0
18.1 Current federal and foreign income tax recoverable and interest thereon.....			.0
18.2 Net deferred tax asset.....	32,589	54,284	21,695
19. Guaranty funds receivable or on deposit.....			.0
20. Electronic data processing equipment and software.....			.0
21. Furniture and equipment, including health care delivery assets.....			.0
22. Net adjustment in assets and liabilities due to foreign exchange rates.....			.0
23. Receivables from parent, subsidiaries and affiliates.....			.0
24. Health care and other amounts receivable.....			.0
25. Aggregate write-ins for other than invested assets.....	1,024	.0	(1,024)
26. Total assets excluding Separate Accounts, Segregated Accounts and Protected Cell Accounts (Lines 12 through 25).....	33,613	54,284	20,671
27. From Separate Accounts, Segregated Accounts and Protected Cell Accounts.....			.0
28. TOTALS (Lines 26 and 27).....	33,613	54,284	20,671

DETAILS OF WRITE-INS

1101.....			.0
1102.....			.0
1103.....			.0
1198. Summary of remaining write-ins for Line 11 from overflow page.....	.0	.0	.0
1199. Totals (Lines 1101 thru 1103 plus 1198) (Line 11 above).....	.0	.0	.0
2501. MISCELLANEOUS OTHER ASSETS.....	1,024		(1,024)
2502.....			.0
2503.....			.0
2598. Summary of remaining write-ins for Line 25 from overflow page.....	.0	.0	.0
2599. Totals (Lines 2501 thru 2503 plus 2598) (Line 25 above).....	1,024	.0	(1,024)

NOTES TO FINANCIAL STATEMENTS

<u>Note #</u>	<u>Description</u>	<u>Page #</u>
1	Summary of Significant Accounting Policies	14.1
2	Accounting Changes and Corrections of Errors	14.2
3	Business Combinations and Goodwill	14.2
4	Discontinued Operations	14.2
5	Investments	14.2
6	Joint Ventures, Partnerships and Limited Liability Companies	14.3
7	Investment Income	14.3
8	Derivative Instruments	14.3
9	Income Taxes	14.3
10	Information Concerning Parent, Subsidiaries, Affiliates and Other Related Parties	14.6
11	Debt	14.6
12	Retirement Plans, Deferred Compensation, Postemployment Benefits and Compensated Absences and Other Postretirement Benefit Plans	14.6
13	Capital and Surplus, Dividend Restrictions and Quasi-Reorganizations	14.6
14	Contingencies	14.7
15	Leases	14.7
16	Information about Financial Instruments with Off-Balance Sheet Risk and with Concentrations of Credit Risk	14.7
17	Sale, Transfer, and Servicing of Financial Assets and Extinguishments of Liabilities	14.7
18	Gain or Loss from Uninsured Plans and the Uninsured Portion of Partially Insured Plans	14.7
19	Direct Premiums Written / Produced by Managing General Agents / Third Party Administrators	14.7
20	Fair Value Measurements	14.8
21	Other Items	14.8
22	Events Subsequent	14.9
23	Reinsurance	14.9
24	Retrospectively Rated Contracts and Contracts Subject to Redetermination	14.9
25	Changes in Incurred Losses and Loss Adjustment Expenses	14.9
26	Intercompany Pooling Arrangements	14.9
27	Structured Settlements	14.9
28	Health Care Receivables	14.9
29	Participating Accident and Health Policies	14.9
30	Premium Deficiency Reserves	14.9
31	High Deductibles	14.9
32	Discounting of Liabilities for Unpaid Losses and Unpaid Loss Adjustment Expenses	14.9
33	Asbestos and Environmental Reserves	14.9
34	Subscriber Savings Accounts	14.10
35	Multiple Peril Crop Insurance	14.10
36	Financial Guaranty Insurance	14.10

NOTES TO FINANCIAL STATEMENTS

1. Summary of Significant Accounting Policies

A. Accounting Practices

The accompanying statutory-basis financial statements of Progressive Commercial Casualty Company (the "Company"), were prepared on the basis of accounting practices prescribed or permitted by the Ohio Department of Insurance ("DOI").

The Ohio DOI requires insurance companies domiciled in the state of Ohio to prepare their statutory-basis financial statements in accordance with the National Association of Insurance Commissioners' ("NAIC") *Accounting Practices and Procedures Manual* subject to any deviations prescribed or permitted by the Ohio DOI. No deviations from NAIC statutory accounting practices ("NAIC SAP") were used in preparing these statutory-basis financial statements as illustrated in the table below:

Description	State of Domicile	2012	2011
Net income			
(1) Net income, state basis	OH	\$ 144,168	\$ 148,395
(2) Effect of state prescribed practices			
(3) Effect of state permitted practices			
(4) Net income, NAIC SAP basis (1-2-3=4)	OH	\$ 144,168	\$ 148,395
Surplus			
(5) Policyholders' surplus, state basis	OH	\$ 9,150,012	\$ 9,006,868
(6) Effect of state prescribed practices			
(7) Effect of state permitted practices			
(8) Policyholders' surplus, NAIC SAP basis(5-6-7=8)	OH	\$ 9,150,012	\$ 9,006,868

B. Use of Estimates

The Company is required to make estimates and assumptions when preparing its financial statements and accompanying notes in conformity with NAIC SAP. Actual results may differ from those estimates.

C. Accounting Policies

Insurance premiums once written will be earned into income on a pro-rata basis over the period of risk based on a daily earnings convention. Unearned premiums will be established to cover the unexpired portion of premiums written. The Company will offer a variety of payment plans to meet individual customer needs. Generally, insurance premiums are collected in advance of providing risk coverage, minimizing the Company's exposure to credit risk.

Acquisition costs, such as agents' commissions, premium taxes, and other policy initiation costs, are charged to operations as incurred. Advertising costs are expensed as incurred.

Certain assets designated as "nonadmitted assets", in accordance with Statement of Statutory Accounting Principles ("SSAP") No. 4, Assets and Nonadmitted Assets, are reported on page 13, Exhibit of Nonadmitted Assets. The change in nonadmitted assets is charged directly against surplus as regards policyholders on page 4, Statement of Income, capital and surplus section.

In addition, the Company uses the following accounting policies:

Investments

- Cash and cash equivalents include bank accounts and certificates of deposit as well as short-term investments with original maturities of three months or less that are reported at amortized cost which approximates market value.
- Short-term investments include securities acquired within one year of maturity except for those with original maturities of three months or less (see cash and cash equivalents above) and are reported at amortized cost which approximates market value.
- Investment grade bond valuations are based on NAIC designations or NAIC Credit Rating Provider ("CRP") designations from the Acceptable Rating Organization ("ARO") list and are reported at amortized cost using the scientific method which closely approximates the effective interest method. Non-investment grade bond valuations are also based on NAIC designations or NAIC CRP-ARO designations and are reported at the lower of amortized cost or fair market value. Loan-backed and structured securities follow the guidance prescribed by SSAP No. 43R, Loan-backed and Structured Securities ("SSAP No. 43R"), for the determination of the bond valuation and reporting designation. The difference between the original cost and redemption value of these securities is recognized over the lives of the respective issues and included in net investment gain.
- Common stocks, other than investments in stocks of subsidiaries and affiliates, are reported at fair market values based on active market closing quotations from a regulated exchange. Changes in the fair market values of these securities are reflected directly as unrealized gains or losses in statutory surplus, net of deferred income taxes.
- Non-redeemable preferred stocks are reported at fair market values. Changes in the fair market values of these securities are reflected directly as unrealized gains or losses in statutory surplus, net of deferred income taxes. Investment grade redeemable preferred stocks are reported at amortized cost, while non-investment grade redeemable preferred stocks are reported at the lower of amortized cost or fair market value. The difference between the original cost and redemption value of the redeemable preferred securities is recognized using the scientific method, which closely approximates the effective interest method, over the lives of the respective issues and included in net investment gain.
- The fair market values reported are derived from independent and observable market input evaluations provided by reputable pricing services, independent broker/dealer bid lists, independent broker/dealer quotations, independent broker/dealer pricing services, or active market closing quotations from a regulated exchange. In very rare cases, if none of the aforementioned primary sources are available, matrix pricing using the reporting entity's own market based assumptions may be utilized. The approved methods for computation of fair market value are prescribed in Part Five of the Securities Valuation Office Purposes and Procedures Manual.
- The Company has no investments in mortgage loans.
- Loan-backed and structured securities are accounted for as prescribed by SSAP No. 43R. These securities are generally stated at amortized cost as determined by the estimated value of future cash flows. Prepayment assumptions for loan-backed and structured securities are obtained from available market data, broker/dealers, and/or internal estimates, and are consistent with current interest rate and economic trends.
- The Company has no investments in joint ventures, partnerships, or limited liability companies.
- The Company has no investments in derivatives.

NOTES TO FINANCIAL STATEMENTS

- The Company may enter into repurchase agreements in which it borrows cash by providing certain underlying securities as collateral for the arrangement. The cash borrowed is invested in cash equivalents and an offsetting liability is established. The cash equivalent investment maturities and the term of the borrowing arrangement on the collateralized securities match, eliminating duration risk exposure to the Company. The Company did not have any open repurchase agreements at December 31, 2012 and December 31, 2011.
- Realized gains and losses on sales of securities are computed based on the first-in, first-out method.
- The Company's management routinely monitors individual securities in its investment portfolio for pricing changes that might indicate potential impairments and performs detailed reviews of securities with unrealized losses based on predetermined guidelines to determine whether a decline in the value of a security is other-than-temporary. A review for other-than-temporary impairment ("OTTI") requires making certain judgments regarding the materiality of the decline, its effect on the financial statements, the probability, extent, and timing of a valuation recovery, and the Company's ability and intent to hold the security. The scope of this review is broad and requires a forward-looking assessment of the fundamental characteristics of a security, as well as the market-related prospects of the issuer and its industry.

Management assesses valuation declines to determine the extent to which such changes are attributable to (i) fundamental factors specific to the issuer, such as financial conditions, business prospects or other factors, or (ii) market-related factors such as interest rates or equity market declines (i.e., negative returns at either a sector index level or the broader market level), or (iii) credit-related losses where the present value of cash flows expected to be collected are lower than the amortized cost basis of the security (includes only those securities covered under SSAP No. 43R). This evaluation reflects management's assessment of current conditions, as well as predictions of uncertain future events that may have a material effect on the financial statements related to security valuation.

When persuasive evidence exists that causes management to conclude that a decline in fair value is other-than-temporary, the book value of such security is written down and recognized as a realized loss. All other unrealized gains or losses are reflected in statutory surplus.

Capitalization of Assets

- Prepaid assets above a \$100,000 threshold are capitalized. Under certain circumstances, the Company may decide to establish a prepaid expense for amounts less than the threshold. Prepaid assets are nonadmitted.

2. Accounting Changes and Corrections of Errors

A. Material Changes in Accounting Principles

Accounting changes adopted to conform to the provisions of the NAIC statutory accounting practices are reported as changes in accounting principle. Effective January 1, 2012, the Company adopted SSAP No. 101, Income Taxes. SSAP No. 101 reflects a revision to the accounting principles regarding deferred tax asset admissibility calculations (see Note 9). In applying the provisions of SSAP No. 101, the Company was able to recognize additional admitted deferred tax assets. As a result, the Company recorded adjustments to the opening balances as of January 1, 2012 as detailed below:

Description	Amount
Assets at December 31, 2011	\$ 9,062,694
Impact on net deferred tax asset	13,260
Assets at January 1, 2012	\$ 9,075,954
Surplus as regards policyholders at December 31, 2011	\$ 9,006,868
Decrease in non-admitted assets	13,260
Surplus as regards policyholders at January 1, 2012	\$ 9,020,128

3. Business Combinations and Goodwill

Not applicable

4. Discontinued Operations

Not applicable

5. Investments

A. Mortgage Loans, Including Mezzanine Real Estate Loans

Not applicable

B. Troubled Debt Restructuring for Creditors

Not applicable

C. Reverse Mortgages

Not applicable

D. Loan-Backed Securities

The Company does not own any loan-backed or structured debt securities.

E. Repurchase Agreements

Not applicable (see Note 1C Investments)

F. Real Estate

Not applicable

G. Low Income Housing Tax Credits

Not applicable

NOTES TO FINANCIAL STATEMENTS

6. Joint Ventures, Partnerships and Limited Liability Companies

Not applicable

7. Investment Income

A. Accrued Investment Income

The Company nonadmits investment income due and accrued if the amounts are greater than 90 days past due.

B. Amounts Nonadmitted

Not applicable

8. Derivative Instruments

Not applicable

9. Income Taxes

A. Components of the net deferred tax asset (liability) ("DTA"/"DTL")

1. The components of the net deferred tax asset/(liability) at December 31 are as follows:

Description	December 31, 2012			December 31, 2011			Change		
	(1) Ordinary Income	(2) Capital gain (loss)	(3) (Col 1+2) Total	(4) Ordinary Income	(5) Capital gain (loss)	(6) (Col 4+5) Total	(7) (Col 1-4) Ordinary Income	(8) (Col 2-5) Capital gain (loss)	(9) (Col 7+8) Total
(a) Gross deferred tax assets	\$ -	\$ 35,070	\$ 35,070	\$ 13,505	\$ 42,570	\$ 56,075	\$ (13,505)	\$ (7,500)	\$ (21,005)
(b) Statutory valuation allowance adjustment	-	-	-	-	-	-	-	-	-
(c) Adjusted gross deferred tax assets (1a-1b)	\$ -	\$ 35,070	\$ 35,070	\$ 13,505	\$ 42,570	\$ 56,075	\$ (13,505)	\$ (7,500)	\$ (21,005)
(d) Deferred tax assets nonadmitted	-	32,589	32,589	13,260	41,024	54,284	(13,260)	(8,435)	(21,695)
(e) Subtotal (net deferred tax asset) (1c-1d)	\$ -	\$ 2,481	\$ 2,481	\$ 245	\$ 1,546	\$ 1,791	\$ (245)	\$ 935	\$ 690
(f) Deferred tax liabilities	-	2,481	2,481	245	1,546	1,791	(245)	935	690
(g) Net admitted deferred tax assets (net deferred tax liability) (1e-1f)	\$ -	\$ -	\$ -	\$ -	\$ -	\$ -	\$ -	\$ -	\$ -

2. The admission calculation components of the DTA in accordance with SSAP No. 101, Income Taxes, are as follows:

Description	December 31, 2012			December 31, 2011			Change		
	(1) Ordinary Income	(2) Capital gain (loss)	(3) (Col 1+2) Total	(4) Ordinary Income	(5) Capital gain (loss)	(6) (Col 4+5) Total	(7) (Col 1-4) Ordinary Income	(8) (Col 2-5) Capital gain (loss)	(9) (Col 7+8) Total
(a) Federal income taxes paid in prior years recoverable through loss carrybacks	\$ -	\$ -	\$ -	\$ -	\$ -	\$ -	\$ -	\$ -	\$ -
(b) Adjusted gross deferred tax assets expected to be realized (excluding the amount of deferred tax assets from 2(a) above) after application of the threshold limitation. (The lesser of 2(b)1 and 2(b)2 below)	-	-	-	-	-	-	-	-	-
1. Adjusted gross deferred tax assets expected to be realized following the balance sheet date	-	-	-	-	-	-	-	-	-
2. Adjusted gross deferred tax assets allowed per limitation threshold			1,372,655			897,339			475,316
(c) Adjusted gross deferred tax assets(excluding the amount of deferred tax assets from 2(a) and 2(b) above) offset by gross deferred tax liabilities	-	2,481	2,481	245	1,546	1,791	(245)	935	690
(d) Deferred tax assets admitted as result of application of SSAP No. 101. Total (2(a)+2(b)+2(c))	\$ -	\$ 2,481	\$ 2,481	\$ 245	\$ 1,546	\$ 1,791	\$ (245)	\$ 935	\$ 690

3. Recovery period and threshold limitation information is as follows:

Description	2012	2011
(a) Ratio percentage used to determine recovery period and threshold limitation amount	29118%	n/a
(b) Amount of adjusted capital and surplus used to determine recovery period and threshold limitation in 2(b)2 above	\$ 9,151,036	n/a

NOTES TO FINANCIAL STATEMENTS

4. The impact of tax planning strategies is as follows:

Description	December 31, 2012			December 31, 2011			Change		
	(1) Ordinary Percent	(2) Capital Percent	(3) (Col 1+2) Total	(4) Ordinary Percent	(5) Capital Percent	(6) (Col 4+5) Total	(7) (Col 1-4) Ordinary Percent	(8) (Col 2-5) Capital Percent	(9) (Col 7+8) Total
(a) Adjusted gross DTAs (% of total adjusted gross DTAs)	0%	93%	93%	0%	0%	0%	0%	93%	93%
(b) Net admitted adjusted gross DTAs (% of total net admitted adjusted gross DTAs)	0%	0%	0%	0%	0%	0%	0%	0%	0%
(c) Does the Company's tax planning strategies include the use of reinsurance? Yes <input type="checkbox"/> No <input checked="" type="checkbox"/>									

- B. Regarding deferred tax liabilities that are not recognized:

Not applicable

- C. Current and deferred income taxes consist of the following major components:

1. Current Income Tax:

Description	(1) December 31, 2012	(2) December 31, 2011	(3) (Col 1-2) Change
(a) Federal	\$ 42,580	\$ 57,546	\$ (14,966)
(b) Foreign	-	-	-
(c) Subtotal	\$ 42,580	\$ 57,546	\$ (14,966)
(d) Federal income tax on net capital gains	(1,053)	13,985	(15,038)
(e) Utilization of capital loss carry-forwards	-	-	-
(f) Other	-	-	-
(g) Federal and foreign income taxes incurred	\$ 41,527	\$ 71,531	\$ (30,004)

2. Deferred Tax Assets:

Description	(1) December 31, 2012	(2) December 31, 2011	(3) (Col 1-2) Change
(a) Ordinary			
(1) Discounting of unpaid losses	\$ -	\$ -	\$ -
(2) Unearned premium reserve	-	-	-
(3) Policyholder reserves	-	-	-
(4) Investments	-	-	-
(5) Deferred acquisition costs	-	-	-
(6) Policyholder dividends accrual	-	-	-
(7) Fixed assets	-	-	-
(8) Compensation and benefits accrual	-	-	-
(9) Pension accrual	-	-	-
(10) Receivables - nonadmitted	-	-	-
(11) Net operating loss carry-forward	-	-	-
(12) Tax credit carry-forward	-	-	-
(13) Other Bad debt reserve	-	-	-
(14) Intangible assets	-	-	-
(15) Other (including items <5% of total ordinary tax assets)	-	13,505	(13,505)
(99) Subtotal	\$ -	\$ 13,505	\$ (13,505)
(b) Statutory valuation allowance adjustment	-	-	-
(c) Nonadmitted	-	13,260	(13,260)
(d) Admitted ordinary deferred tax assets (2a99-2b-2c)	\$ -	\$ 245	\$ (245)
(e) Capital			
(1) Investments	35,070	42,570	(7,500)
(2) Net capital loss carry-forward	-	-	-
(3) Real estate	-	-	-
(4) Other (including items <5% of total capital tax assets)	-	-	-
(99) Subtotal	\$ 35,070	\$ 42,570	\$ (7,500)
(f) Statutory valuation allowance adjustment	-	-	-
(g) Nonadmitted	32,589	41,024	(8,435)
(h) Admitted capital deferred tax assets (2e99-2f-2g)	\$ 2,481	\$ 1,546	\$ 935
(i) Admitted deferred tax assets (2d+2h)	\$ 2,481	\$ 1,791	\$ 690

NOTES TO FINANCIAL STATEMENTS

3. Deferred Tax Liabilities:

Description	(1) December 31, 2012	(2) December 31, 2011	(3) (Col 1-2) Change
(a) Ordinary			
(1) Investments	\$ -	\$ -	\$ -
(2) Fixed Assets	-	-	-
(3) Deferred and uncollected premium	-	-	-
(4) Policyholder reserves	-	-	-
(5) Other liabilities- prepaid expenses	-	245	(245)
(6) Other liabilities - salvage and subrogation	-	-	-
(7) Other (including items <5% of total ordinary tax liabilities)	-	-	-
(99) Subtotal	\$ -	\$ 245	\$ (245)
(b) Capital			
(1) Investments	2,481	1,546	935
(2) Real estate	-	-	-
(3) Other (including items <5% of total capital tax liabilities)	-	-	-
(99) Subtotal	\$ 2,481	\$ 1,546	\$ 935
(c) Deferred tax liabilities (3a99+3b99)	\$ 2,481	\$ 1,791	\$ 690

4. Net Deferred Tax Asset (Liability) (2i – 3c):

Description	(1) December 31, 2012	(2) December 31, 2011	(3) (Col 1-2) Change
Net deferred tax asset (liability) (2i-3c)	\$ -	\$ -	\$ -

The change in net deferred income tax is comprised of the following (this analysis excludes nonadmitted assets; the change in nonadmitted assets is reported separately from the change in net deferred income tax in the Statement of Income, Surplus section):

Description	December 31, 2012	December 31, 2011	Change
Total deferred tax assets	\$ 35,070	\$ 56,075	\$ (21,005)
Total deferred tax liabilities	2,481	1,791	690
Net deferred tax asset (liability)	\$ 32,589	\$ 54,284	\$ (21,695)
Tax effect of unrealized gains (losses)			-
Change in net deferred income tax			\$ (21,695)

D. Reconciliation of Federal Income Tax Rate to Actual Effective Rate

The provision for Federal income taxes is different than that which would be obtained by applying the statutory Federal income tax rate to pre-tax income. The significant book to tax adjustments causing this difference are as follows:

Description	Tax Effect Amount	Effective Tax Rate
Provision computed at statutory rate	\$ 64,993	35%
Exempt interest income	(8,217)	-4%
Dividends received deduction	-	0%
Impact of nonadmitted assets	-	0%
Other	6,446	3%
Total	\$ 63,222	34%
Federal and foreign income taxes incurred	\$ 41,527	
Change in net deferred income tax	21,695	
Total statutory income taxes	\$ 63,222	

E. Operating Loss and Tax Credit Carryforwards

- The Company has no operating loss or tax credit carryforwards available.
- The amount of Federal income taxes incurred and available for recoupment by the Company in the event of future net losses is equal to approximately:

Period	Amount
Current tax year:	\$ 41,282
First preceding tax year:	\$ 72,020

The amounts that can be recouped may be subject to the alternative minimum tax rules, and therefore may be limited.

- Protective Tax Deposits
Not applicable

F. Consolidated Federal Income Tax Return

- The Company's Federal income tax return is consolidated with The Progressive Corporation ("TPC"), a publicly traded holding company incorporated in Ohio, and all of its wholly-owned United States subsidiaries (the "Group") as detailed in Schedule Y, Part 1.

NOTES TO FINANCIAL STATEMENTS

- 2) The method of allocation between the companies is subject to written agreement and is jointly approved by an officer of TPC and the Company. The allocation is based upon separate tax return calculations with current credit for net losses or other items utilized in the consolidated tax return. Intercompany tax balances are settled quarterly.

10. Information Concerning Parent, Subsidiaries, Affiliates and Other Related Parties

A. Nature of Relationships

The Company is wholly owned by Progressive Commercial Holdings, Inc. ("PCH"), a holding company incorporated in Delaware. The structure of the holding company organization is shown on Schedule Y, Part 1.

B. Detail of Transactions Greater than ½% of Admitted Assets

All significant 2012 transactions by the Company or any affiliated insurer with any affiliate are summarized in Schedule Y, Part 2.

C. Change in Terms of Intercompany Arrangements

Not applicable

D. Amounts Due to or from Related Parties

The Company reported a \$56,497 payable to parent, subsidiaries and affiliates at December 31, 2012 and an \$85,420 receivable from parent, subsidiaries, and affiliates at December 31, 2011. These balances are due to the timing of security purchases and cash collections and disbursements under the Group's centralized cash management system and the reinsurance and management agreements in which the Company participates. The Company also reported a \$1,950 current Federal income tax receivable at December 31, 2012 which is due from TPC for the Company's Federal income tax recoverable and a \$15,163 current Federal income tax payable at December 31, 2011 which is due to TPC for the Company's Federal income tax liability. The intercompany balances are settled quarterly.

E. Guarantees or Contingencies for Related Parties

Not applicable

F. Management, Service Contracts, Cost Sharing Arrangements

The Company does not have employees or facilities. Management, operations and claims services are provided under a management agreement with UFCC. Under the terms of the agreement, the Company is provided underwriting and loss adjustment services for business produced in exchange for a management fee based on the Company's use of services.

The Company participates in an investment services agreement with Progressive Capital Management Corp., a non-insurance affiliate. Under the terms of the agreement, the Company is provided investment and capital management services in exchange for an investment management fee based on its use of services.

All intercompany agreements are approved by the participating insurance companies' states of domicile when established.

G. Nature of Relationships that Could Affect Operations

All outstanding shares of the Company are owned by PCH.

H. Amount Deducted for Investment in Upstream Company

Not applicable

I. Detail of Investments in Affiliates Greater than 10% of Admitted Assets

Not applicable

J. Write-Downs for Impairments of Investments in Affiliates

Not applicable

K. Investment in Foreign Insurance Subsidiary

Not applicable

L. Investment in Downstream Non-Insurance Holding Company

Not applicable

11. Debt

Not applicable

12. Retirement Plans, Deferred Compensation, Postemployment Benefits and Compensated Absences and Other Postretirement Benefit Plans

The Company has no direct payroll (see Note 10F).

13. Capital and Surplus, Dividend Restrictions and Quasi-Reorganizations

1. Outstanding Shares

The Company has 50,000 shares of \$100 par value common stock authorized and 30,000 shares issued and outstanding. The Company has no preferred stock authorized, issued, or outstanding.

2. Dividend Rate of Preferred Stock

Not applicable

3,4,5,6. Dividends

The maximum amount of dividends the Company can pay to PCH in 2013 without prior regulatory approval is limited by insurance laws in Ohio. Based on the dividend laws currently in effect, the Company may pay dividends of \$915,001 in 2013 without prior approval from the Ohio DOI, provided the dividend payment is not made within 12 months of the previous payment.

Within the limitations described above, there are no additional restrictions placed on the portion of Company profits that may be paid as ordinary dividends to stockholders.

NOTES TO FINANCIAL STATEMENTS

7. Mutual Surplus Advances
Not applicable
8. Company Stock Held for Special Purposes
Not applicable
9. Changes in Special Surplus Funds
Not applicable
10. Changes in Unassigned Funds (Surplus)

As of December 31, 2012, the portion of unassigned funds (surplus) represented or reduced by each item below is as follows:

Description	Cumulative Increase (Decrease) in Surplus
Unrealized gain (loss)	\$ --
Nonadmitted assets	(32,589)
Provision for reinsurance	--
Total	\$ (32,589)

11. Surplus Notes
Not applicable
- 12,13. Quasi Reorganizations
Not applicable
14. Contingencies
- A. Contingent Commitments
Not applicable
- B. Assessments
Not applicable
- C. Gain Contingencies
Not applicable
- D. Claims Related Extra Contractual Obligations and Bad Faith Losses Stemming from Lawsuits
Not applicable
- E. Product Warranties
Not applicable
- F. All Other Contingencies
The Company has potential exposure relating to lawsuits due to its participation in a management agreement for which it is allocated litigation expenses (see Note 10F).
15. Leases
Not applicable
16. Information about Financial Instruments with Off-Balance Sheet Risk and with Concentrations of Credit Risk
Not applicable
17. Sale, Transfer, and Servicing of Financial Assets and Extinguishments of Liabilities
- A. Transfers of Receivables Reported as Sales
Not applicable
- B. Transfers and Servicing of Financial Assets
Not applicable
- C. Wash Sales
The Company had no wash sales of securities with a NAIC rating of 3 or below during the year.
18. Gain or Loss from Uninsured Plans and the Uninsured Portion of Partially Insured Plans
Not applicable
19. Direct Premiums Written / Produced by Managing General Agents / Third Party Administrators
Not applicable

NOTES TO FINANCIAL STATEMENTS

20. Fair Value Measurements

A. Inputs Used for Assets and Liabilities Measured at Fair Value in the Company's Financial Statements

1. Fair Value Measurements by Levels 1, 2 and 3

The Company categorizes its financial instruments, based on the degree of subjectivity inherent in the method by which they are valued, into a fair value hierarchy of three levels, as follows:

Level 1 - Inputs are unadjusted, quoted prices in active markets for identical instruments at the measurement date (e.g., active exchange-traded equity securities).

Level 2 - Inputs (other than quoted prices included within Level 1) are observable for the instrument either directly or indirectly. This includes: (i) quoted prices for similar instruments in active markets, (ii) quoted prices for identical or similar instruments in markets that are not active, (iii) inputs other than quoted prices that are observable for the instruments, and (iv) inputs that are derived principally from or corroborated by observable market data by correlation or other means.

Level 3 - Inputs that are unobservable. Unobservable inputs reflect the Company's subjective evaluation about the assumptions market participants would use in pricing the financial instrument.

The Company evaluated whether the market was distressed or inactive in determining the fair value for those securities reported and reviewed certain market level inputs to evaluate whether sufficient activity, volume, and new issuances existed to create an active market. Based on this evaluation, the Company concluded that there was sufficient activity in determining the fair value for those securities reported.

As of December 31, 2012, the Company did not measure and report any securities at fair value on the balance sheet. All bonds were carried at amortized cost.

2. Roll forward of Level 3 Items

Not applicable

3. Policy on Transfers Into and Out of Level 3

At the end of each reporting period, the Company evaluates whether or not any event has occurred or circumstances have changed that would cause an instrument to be transferred into or out of Level 3.

4. Inputs and Techniques Used for Level 2 and Level 3 Fair Values

See Note 1C and refer to narrative in Note 20A

5. Derivative Fair Values

Not applicable

B. Other Fair Value Disclosures

Not applicable

C. Fair Values for all Financial Instruments by Levels 1, 2, and 3

The table below represents the fair value of all financial instruments however, not all financial instruments are reported at fair value in the Company's financial statements (see Note 1C).

Type of Financial Instrument	Aggregate Fair Value	Admitted Assets	Level 1	Level 2	Level 3	Not Practicable (Carrying Value)
Bonds	\$ 9,593,945	\$ 9,172,617	\$ 8,534,372	\$ 1,059,573	\$ -	\$ -
Cash equivalents	-	-	-	-	-	-
Short term investments	-	-	-	-	-	-
Common stock	-	-	-	-	-	-
Preferred stock	-	-	-	-	-	-
Total	\$ 9,593,945	\$ 9,172,617	\$ 8,534,372	\$ 1,059,573	\$ -	\$ -

D. Financial Instruments for Which it is Not Practicable to Estimate Fair Values

Not applicable

21. Other Items

A. Extraordinary Items

Not applicable

B. Troubled Debt Restructuring for Debtors

Not applicable

C. Other Disclosures

Segregated Funds

At December 31, 2012, securities at the amortized cost of \$4,126,002 were on deposit with various regulatory agencies to meet statutory requirements (see Schedule E, Part 3).

D. Uncollectible Premiums Receivable

Not applicable

NOTES TO FINANCIAL STATEMENTS

- E. Business Interruption Insurance Recoveries
Not applicable
- F. State Transferable and Non-transferable Tax Credits
Not applicable
- G. Sub-Prime Mortgage Related Risk Exposure
1. Exposure to Sub-Prime Mortgage Related Risk

The following sub-prime disclosure and the review and procedures described within are completed at a consolidated level for all the Progressive companies. To the extent the Company had any direct sub-prime exposure, those securities would be listed in Note 21.G.3.

Management's review of the investment portfolio for securities with direct sub-prime exposure, such as Alt-A residential mortgage loan-backed bonds and home equity loan-backed bonds is performed in conjunction with the OTTI analysis and procedures (see Note 1C). Additionally, securities that were determined to have an indirect sub-prime exposure were also reviewed as part of the OTTI process.

The Company's management continues to perform a detailed review of its investment portfolio, paying particular attention to the credit profile of the issuers to identify the extent to which any asset values may have been impacted by direct or indirect exposure to the sub-prime mortgage loan disruption, as well as broader credit and financial market events.

In 2012, the Company recorded no OTTI write-downs on any securities as a result of direct sub-prime exposure.
 2. Direct Investment in Sub-Prime Mortgage Loans
Not applicable
 3. Direct Investment in Securities with Underlying Sub-Prime Exposure
Not applicable
 4. Mortgage or Financial Guaranty Sub-Prime Exposure
Not applicable
22. Events Subsequent

The Company was not impacted by any subsequent events. Subsequent events have been considered through February 15, 2013 for the statutory statement that was available for issuance by March 1, 2013.
23. Reinsurance
Not applicable
24. Retrospectively Rated Contracts and Contracts Subject to Redetermination
Not applicable
25. Changes in Incurred Losses and Loss Adjustment Expenses
Not applicable
26. Intercompany Pooling Arrangements
Not applicable
27. Structured Settlements
Not applicable
28. Health Care Receivables
Not applicable
29. Participating Accident and Health Policies
Not applicable
30. Premium Deficiency Reserves

The Company has not yet commenced writing business and therefore has no need for a premium deficiency reserve.
1. Liability carried for premium deficiency reserves \$0
 2. Date of most recent evaluation of this liability January 5, 2013
 3. Was anticipated investment income utilized in the calculation? Yes [X] No []
31. High Deductibles
Not applicable
32. Discounting of Liabilities for Unpaid Losses and Unpaid Loss Adjustment Expenses
Not applicable
33. Asbestos and Environmental Reserves
Not applicable

NOTES TO FINANCIAL STATEMENTS

- 34. Subscriber Savings Accounts
Not applicable
- 35. Multiple Peril Crop Insurance
Not applicable
- 36. Financial Guaranty Insurance
Not applicable

GENERAL INTERROGATORIES

PART 1 - COMMON INTERROGATORIES - GENERAL

- 1.1 Is the reporting entity a member of an Insurance Holding Company System consisting of two or more affiliated persons, one or more of which is an insurer? Yes [X] No []
- 1.2 If yes, did the reporting entity register and file with its domiciliary State Insurance Commissioner, Director or Superintendent or with such regulatory official of the state of domicile of the principal insurer in the Holding Company System, a registration statement providing disclosure substantially similar to the standards adopted by the National Association of Insurance Commissioners (NAIC) in its Model Insurance Holding Company System Regulatory Act and model regulations pertaining thereto, or is the reporting entity subject to standards and disclosure requirements substantially similar to those required by such Act and regulations? Yes [X] No [] N/A []
- 1.3 State regulating? OHIO
- 2.1 Has any change been made during the year of this statement in the charter, by-laws, articles of incorporation, or deed of settlement of the reporting entity? Yes [] No [X]
- 2.2 If yes, date of change: _____
- 3.1 State as of what date the latest financial examination of the reporting entity was made or is being made. 12/31/2007
- 3.2 State the as of date that the latest financial examination report became available from either the state of domicile or the reporting entity. This date should be the date of the examined balance sheet and not the date the report was completed or released. 12/31/2007
- 3.3 State as of what date the latest financial examination report became available to other states or the public from either the state of domicile or the reporting entity. This is the release date or completion date of the examination report and not the date of the examination (balance sheet date). 04/07/2009
- 3.4 By what department or departments?
OHIO

- 3.5 Have all financial statement adjustments within the latest financial examination report been accounted for in a subsequent financial statement filed with departments? Yes [] No [] N/A [X]
- 3.6 Have all of the recommendations within the latest financial examination report been complied with? Yes [X] No [] N/A []
- 4.1 During the period covered by this statement, did any agent, broker, sales representative, non-affiliated sales/service organization or any combination thereof under common control (other than salaried employees of the reporting entity) receive credit or commissions for or control a substantial part (more than 20 percent of any major line of business measured on direct premiums) of:
 - 4.11 sales of new business? Yes [] No [X]
 - 4.12 renewals? Yes [] No [X]
- 4.2 During the period covered by this statement, did any sales/service organization owned in whole or in part by the reporting entity or an affiliate, receive credit or commissions for or control a substantial part (more than 20 percent of any major line of business measured on direct premiums) of:
 - 4.21 sales of new business? Yes [] No [X]
 - 4.22 renewals? Yes [] No [X]
- 5.1 Has the reporting entity been a party to a merger or consolidation during the period covered by this statement? Yes [] No [X]
- 5.2 If yes, provide the name of the entity, NAIC company code, and state of domicile (use two letter state abbreviation) for any entity that has ceased to exist as a result of the merger or consolidation.

1 Name of Entity	2 NAIC Co. Code	3 State of Domicile

- 6.1 Has the reporting entity had any Certificates of Authority, licenses or registrations (including corporate registration, if applicable) suspended or revoked by any governmental entity during the reporting period? Yes [] No [X]
- 6.2 If yes, give full information: _____

- 7.1 Does any foreign (non-United States) person or entity directly or indirectly control 10% or more of the reporting entity? Yes [] No [X]
- 7.2 If yes,
 - 7.21 State the percentage of foreign control%
 - 7.22 State the nationality(ies) of the foreign person(s) or entity(ies); or if the entity is a mutual or reciprocal, the nationality of its manager or attorney-in-fact and identify the type of entity(ies) (e.g., individual, corporation, government, manager or attorney-in-fact)

1 Nationality	2 Type of Entity

- 8.1 Is the company a subsidiary of a bank holding company regulated by the Federal Reserve Board? Yes [] No [X]
- 8.2 If response to 8.1 is yes, please identify the name of the bank holding company. _____

- 8.3 Is the company affiliated with one or more banks, thrifts or securities firms? Yes [] No [X]
- 8.4 If response to 8.3 is yes, please provide the names and locations (city and state of the main office) of any affiliates regulated by a federal financial regulatory services agency [i.e. the Federal Reserve Board (FRB), the Office of the Comptroller of the Currency (OCC), the Federal Deposit Insurance Corporation (FDIC) and the Securities Exchange Commission (SEC)] and identify the affiliate's primary federal regulator.

1 Affiliate Name	2 Location (City, State)	3 FRB	4 OCC	5 FDIC	6 SEC

- 9. What is the name and address of the independent certified public accountant or accounting firm retained to conduct the annual audit?
THE COMPANY HAS BEEN GRANTED AN EXEMPTION FROM FILING AUDITED FINANCIAL STATEMENTS AS OF AND FOR THE YEAR ENDING DECEMBER 31, 2012 BY THE OHIO DEPARTMENT OF INSURANCE.
- 10.1 Has the insurer been granted any exemptions to the prohibited non-audit services provided by the certified independent public accountant requirements as allowed in Section 7H of the Annual Financial Reporting Model Regulation (Model Audit Rule), or substantially similar state law or regulation? Yes [] No [X]
- 10.2 If the response to 10.1 is yes, provide information related to this exemption: _____

- 10.3 Has the insurer been granted any exemptions related to the other requirements of the Annual Financial Reporting Model Regulation as allowed for in Section 17A of the Model Regulation, or substantially similar state law or regulation? Yes [X] No []
- 10.4 If the response to 10.3 is yes, provide information related to this exemption:
THE COMPANY (PROGRESSIVE COMMERCIAL CASUALTY COMPANY) HAS BEEN GRANTED AN EXEMPTION BY THE OHIO DOI FROM COMPLETING THE ANNUAL AUDITED FINANCIAL REPORT, MANAGEMENT'S REPORT OF INTERNAL CONTROL OVER FINANCIAL REPORTING, AND THE COMMUNICATION OF INTERNAL CONTROL MATTERS NOTED IN AN AUDIT AS A RESULT OF NOT YET COMMENCING TO WRITE BUSINESS.

- 10.5 Has the reporting entity established an Audit Committee in compliance with the domiciliary state insurance laws? Yes [X] No [] N/A []
- 10.6 If the answer to 10.5 is no or n/a, please explain. _____

- 11. What is the name, address and affiliation (officer/employee of the reporting entity or actuary/consultant associated with an actuarial consulting firm) of the individual providing the statement of actuarial opinion/certification?
GARY S. TRAIKOFF, FCAS, MAAA CORPORATE ACTUARY
6300 WILSON MILLS ROAD MAYFIELD VILLAGE, OH 44143-2182

GENERAL INTERROGATORIES

- 12.1 Does the reporting entity own any securities of a real estate holding company or otherwise hold real estate indirectly? Yes [] No [X]
 12.11 Name of real estate holding company _____

 12.12 Number of parcels involved
 12.13 Total book/adjusted carrying value

- 12.2 If yes, provide explanation. _____

 13. FOR UNITED STATES BRANCHES OF ALIEN REPORTING ENTITIES ONLY:
 13.1 What changes have been made during the year in the United States manager or the United States trustees of the reporting entity?
 N/A

- 13.2 Does this statement contain all business transacted for the reporting entity through its United States Branch on risks wherever located? Yes [] No []
 13.3 Have there been any changes made to any of the trust indentures during the year? Yes [] No []
 13.4 If answer to (13.3) is yes, has the domiciliary or entry state approved the changes? Yes [] No [] N/A []
 14.1 Are the senior officers (principal executive officer, principal financial officer, principal accounting officer or controller, or persons performing similar functions) of the reporting entity subject to a code of ethics, which includes the following standards? Yes [X] No []
 a. Honest and ethical conduct, including the ethical handling of actual or apparent conflicts of interest between personal and professional relationships;
 b. Full, fair, accurate, timely and understandable disclosure in the periodic reports required to be filed by the reporting entity;
 c. Compliance with applicable governmental laws, rules and regulations;
 d. The prompt internal reporting of violations to an appropriate person or persons identified in the code; and
 e. Accountability for adherence to the code.
 14.11 If the response to 14.1 is no, please explain: _____

- 14.2 Has the code of ethics for senior managers been amended? Yes [X] No []
 14.21 If the response to 14.2 is yes, provide information related to amendment(s).
 THE COMPANY'S CODE OF ETHICS POLICIES WERE UPDATED WITH THE FOLLOWING:
 - A NEW SECTION ON ETHICAL DECISION-MAKING.
 - REVISED PROVISIONS ON 1)REPORTING CONCERNS ABOUT POTENTIAL MISCONDUCT, 2)DIVERSITY AND INCLUSION, 3) SOCIAL RESPONSIBILITY, 4)PERSONAL USE OF COMPANY PROVIDED MOBILE DEVICES 5)ALCOHOLIC BEVERAGES, 6)DISCLOSURE OF MINOR TRAFFIC VIOLATIONS, AND 7)CONFLICT OF INTEREST RULES FOR CLAIMS PERSONNEL.
 14.3 Have any provisions of the code of ethics been waived for any of the specified officers? Yes [] No [X]
 14.31 If the response to 14.3 is yes, provide the nature of any waiver(s). _____

- 15.1 Is the reporting entity the beneficiary of a Letter of Credit that is unrelated to reinsurance where the issuing or confirming bank is not on the SVO Bank List? Yes [] No [X]
 15.2 If the response to 15.1 is yes, indicate the American Bankers Association (ABA) Routing Number and the name of the issuing or confirming bank of the Letter of Credit and describe the circumstances in which the Letter of Credit is triggered.

1 American Bankers Association (ABA) Routing Number	2 Issuing or Confirming Bank Name	3 Circumstances That Can Trigger the Letter of Credit	4 Amount

PART 1 - COMMON INTERROGATORIES - BOARD OF DIRECTORS

16. Is the purchase or sale of all investments of the reporting entity passed upon either by the Board of Directors or a subordinate committee thereof? Yes [X] No []
 17. Does the reporting entity keep a complete permanent record of the proceedings of its Board of Directors and all subordinate committees thereof? Yes [X] No []
 18. Has the reporting entity an established procedure for disclosure to its Board of Directors or trustees of any material interest or affiliation on the part of any of its officers, directors, trustees or responsible employees that is in conflict or is likely to conflict with the official duties of such person? Yes [X] No []

PART 1 - COMMON INTERROGATORIES - FINANCIAL

19. Has this statement been prepared using a basis of accounting other than Statutory Accounting Principles (e.g., Generally Accepted Accounting Principles)? Yes [] No [X]
 20.1 Total amount loaned during the year (inclusive of Separate Accounts, exclusive of policy loans):
 20.11 To directors or other officers \$.....0
 20.12 To stockholders not officers \$.....0
 20.13 Trustees, supreme or grand (Fraternal only) \$.....0
 20.2 Total amount of loans outstanding at the end of year (inclusive of Separate Accounts, exclusive of policy loans):
 20.21 To directors or other officers \$.....0
 20.22 To stockholders not officers \$.....0
 20.23 Trustees, supreme or grand (Fraternal only) \$.....0
 21.1 Were any assets reported in this statement subject to a contractual obligation to transfer to another party without the liability for such obligation being reported in the statement? Yes [] No [X]
 21.2 If yes, state the amount thereof at December 31 of the current year:
 21.21 Rented from others
 21.22 Borrowed from others
 21.23 Leased from others
 21.24 Other
 22.1 Does this statement include payments for assessments as described in the Annual Statement Instructions other than guaranty fund or guaranty association assessments? Yes [] No [X]
 22.2 If answer is yes:
 22.21 Amount paid as losses or risk adjustment
 22.22 Amount paid as expenses
 22.23 Other amounts paid
 23.1 Does the reporting entity report any amounts due from parent, subsidiaries or affiliates on Page 2 of this statement? Yes [] No [X]
 23.2 If yes, indicate any amounts receivable from parent included in the Page 2 amount.

PART 1 - COMMON INTERROGATORIES - INVESTMENT

- 24.01 Were all the stocks, bonds and other securities owned December 31 of current year, over which the reporting entity has exclusive control, in the actual possession of the reporting entity on said date (other than securities lending programs addressed in 24.03)? Yes [X] No []
 24.02 If no, give full and complete information relating thereto. _____

PART 1 - COMMON INTERROGATORIES - INVESTMENT

24.03 For security lending programs, provide a description of the program including value for collateral and amount of loaned securities, and whether collateral is carried on or off-balance sheet (an alternative is to reference Note 17 where this information is also provided).
N/A

24.04 Does the company's security lending program meet the requirements for a conforming program as outlined in the Risk-Based Capital Instructions? Yes [] No [] N/A [X]

24.05 If answer to 24.04 is yes, report amount of collateral for conforming programs.

24.06 If answer to 24.04 is no, report amount of collateral for other programs.

24.07 Does your securities lending program require 102% (domestic securities) and 105% (foreign securities) from the counterparty at the outset of the contract? Yes [] No [] N/A [X]

24.08 Does the reporting entity non-admit when the collateral received from the counterparty falls below 100%? Yes [] No [] N/A [X]

24.09 Does the reporting entity or the reporting entity's securities lending agent utilize the Master Securities Lending Agreement (MSLA) to conduct securities lending? Yes [] No [] N/A [X]

24.10 For the reporting entity's security lending program, state the amount of the following as of December 31 of the current year:

24.101 Total fair value of reinvested collateral assets reported on Schedule DL, Parts 1 and 2.

24.102 Total book adjusted/carrying value of reinvested collateral assets reported on Schedule DL, Parts 1 and 2.

24.103 Total payable for securities lending reported on the liability page.

25.1 Were any of the stocks, bonds or other assets of the reporting entity owned at December 31 of the current year not exclusively under the control of the reporting entity or has the reporting entity sold or transferred any assets subject to a put option contract that is currently in force? (Exclude securities subject to Interrogatory 21.1 and 24.03) Yes [X] No []

25.2 If yes, state the amount thereof at December 31 of the current year:

25.21 Subject to repurchase agreements \$.....0

25.22 Subject to reverse repurchase agreements \$.....0

25.23 Subject to dollar repurchase agreements \$.....0

25.24 Subject to reverse dollar repurchase agreements \$.....0

25.25 Pledged as collateral \$.....0

25.26 Placed under option agreements \$.....0

25.27 Letter stock or securities restricted as to sale \$.....0

25.28 On deposit with state or other regulatory body \$.....4,126,002

25.29 Other \$.....0

25.3 For category (25.27) provide the following:

1 Nature of Restriction	2 Description	3 Amount
----------------------------	------------------	-------------

26.1 Does the reporting entity have any hedging transactions reported on Schedule DB? Yes [] No [X]

26.2 If yes, has a comprehensive description of the hedging program been made available to the domiciliary state? Yes [] No [] N/A [X]
If no, attach a description with this statement.

27.1 Were any preferred stocks or bonds owned as of December 31 of the current year mandatorily convertible into equity, or, at the option of the issuer, convertible into equity? Yes [] No [X]

27.2 If yes, state the amount thereof at December 31 of the current year:

28. Excluding items in Schedule E-Part 3-Special Deposits, real estate, mortgage loans and investments held physically in the reporting entity's offices, vaults or safety deposit boxes, were all stocks, bonds and other securities, owned throughout the current year held pursuant to a custodial agreement with a qualified bank or trust company in accordance with Section 1, III - General Examination Considerations, F. Outsourcing of Critical Functions Custodial or Safekeeping Agreements of the NAIC Financial Condition Examiners Handbook? Yes [X] No []

28.01 For agreements that comply with the requirements of the NAIC Financial Condition Examiners Handbook, complete the following:

1 Name of Custodian(s)	2 Custodian's Address
CITIBANK, N.A.	338 GREENWICH STREET, NEW YORK, NY 10013

28.02 For all agreements that do not comply with the requirements of the NAIC Financial Condition Examiners Handbook, provide the name, location and a complete explanation:

1 Name(s)	2 Location(s)	3 Complete Explanation(s)
NONE		

28.03 Have there been any changes, including name changes, in the custodian(s) identified in 28.01 during the current year? Yes [] No [X]

28.04 If yes, give full and complete information relating thereto:

1 Old Custodian	2 New Custodian	3 Date of Change	4 Reason
NONE			

28.05 Identify all investment advisors, brokers/dealers or individuals acting on behalf of broker/dealers that have access to the investment accounts, handle securities and have authority to make investments on behalf of the reporting entity:

1 Central Registration Depository Number(s)	2 Name	3 Address
NONE		

29.1 Does the reporting entity have any diversified mutual funds reported in Schedule D-Part 2 (diversified according to the Securities and Exchange Commission (SEC) in the Investment Company Act of 1940 [Section 5 (b) (1)])? Yes [] No [X]

29.2 If yes, complete the following schedule:

1 CUSIP #	2 Name of Mutual Fund	3 Book/Adj. Carrying Value
29.2999. TOTAL		0

29.3 For each mutual fund listed in the table above, complete the following schedule:

1 Name of Mutual Fund (from the above table)	2 Name of Significant Holding of the Mutual Fund	3 Amount of Mutual Fund's Book/Adjusted Carrying Value Attributable to Holding	4 Date of Valuation
--	--	--	------------------------

30. Provide the following information for all short-term and long-term bonds and all preferred stocks. Do not substitute amortized value or statement value for fair value.

	1 Statement (Admitted) Value	2 Fair Value	3 Excess of Statement over Fair Value (-), or Fair Value over Statement (+)
30.1 Bonds.....	9,172,617	9,593,945	421,328
30.2 Preferred stocks.....			0
30.3 Totals.....	9,172,617	9,593,945	421,328

PROGRESSIVE COMMERCIAL CASUALTY COMPANY

PART 1 - COMMON INTERROGATORIES - INVESTMENT

30.4 Describe the sources or methods utilized in determining the fair values:

THE FAIR MARKET VALUES REPORTED ARE DERIVED FROM INDEPENDENT AND OBSERVABLE MARKET INPUT EVALUATIONS PROVIDED BY WIDELY UTILIZED REPUTABLE PRICING SERVICES, INDEPENDENT BROKER/DEALER BID LISTS, INDEPENDENT BROKER/DEALER QUOTATIONS, INDEPENDENT BROKER/DEALER PRICING SERVICES, OR ACTIVE MARKET CLOSING QUOTATIONS FROM A REGULATED EXCHANGE. IN VERY RARE CASES, IF NONE OF THE AFOREMENTIONED PRIMARY SOURCES ARE AVAILABLE, MATRIX PRICING USING THE REPORTING ENTITY'S OWN MARKET BASED ASSUMPTIONS MAY BE UTILIZED. THE APPROVED METHODS FOR COMPUTATION OF FAIR MARKET VALUE ARE PRESCRIBED IN PART FIVE OF THE SECURITIES VALUATION OFFICE PURPOSES AND PROCEDURES MANUAL.

- 31.1 Was the rate used to calculate fair value determined by a broker or custodian for any of the securities in Schedule D? Yes [] No [X]
- 31.2 If the answer to 31.1 is yes, does the reporting entity have a copy of the broker's or custodian's pricing policy (hard copy or electronic copy) for all brokers or custodians used as a pricing source? Yes [] No []
- 31.3 If the answer to 31.2 is no, describe the reporting entity's process for determining a reliable pricing source for purposes of disclosure of fair value for Schedule D.

- 32.1 Have all the filing requirements of the Purposes and Procedures Manual of the NAIC Securities Valuation Office been followed? Yes [X] No []
- 32.2 If no, list exceptions:

PART 1 - COMMON INTERROGATORIES - OTHER

- 33.1 Amount of payments to trade associations, service organizations and statistical or rating bureaus, if any? \$.....0
- 33.2 List the name of the organization and the amount paid if any such payment represented 25% or more of the total payments to trade associations, service organizations and statistical or rating bureaus during the period covered by this statement.

1 Name	2 Amount Paid
NONE	

- 34.1 Amount of payments for legal expenses, if any? \$.....0
- 34.2 List the name of the firm and the amount paid if any such payment represented 25% or more of the total payments for legal expenses during the period covered by this statement.

1 Name	2 Amount Paid
NONE	

- 35.1 Amount of payments for expenditures in connection with matters before legislative bodies, officers or departments of government, if any? \$.....0
- 35.2 List the name of the firm and the amount paid if any such payment represented 25% or more of the total payment expenditures in connection with matters before legislative bodies, officers or departments of government during the period covered by this statement.

1 Name	2 Amount Paid
NONE	

GENERAL INTERROGATORIES

PART 2 - PROPERTY AND CASUALTY INTERROGATORIES

- 1.1 Does the reporting entity have any direct Medicare Supplement Insurance in force? Yes [] No [X]
- 1.2 If yes, indicate premium earned on U.S. business only.
- 1.3 What portion of item (1.2) is not reported on the Medicare Supplement Insurance Experience Exhibit?
 - 1.31 Reason for excluding:

- 1.4 Indicate amount of earned premium attributable to Canadian and/or Other Alien not included in Item (1.2) above.
- 1.5 Indicate total incurred claims on all Medicare Supplement insurance.
- 1.6 Individual policies:
 - Most current three years:
 - 1.61 Total premium earned
 - 1.62 Total incurred claims
 - 1.63 Number of covered lives
 - All years prior to most current three years:
 - 1.64 Total premium earned
 - 1.65 Total incurred claims
 - 1.66 Number of covered lives
- 1.7 Group policies:
 - Most current three years:
 - 1.71 Total premium earned
 - 1.72 Total incurred claims
 - 1.73 Number of covered lives
 - All years prior to most current three years:
 - 1.74 Total premium earned
 - 1.75 Total incurred claims
 - 1.76 Number of covered lives

2. Health test:

	1 Current Year	2 Prior Year
2.1 Premium Numerator.....	\$.....0	\$.....0
2.2 Premium Denominator.....	\$.....0	\$.....0
2.3 Premium Ratio (2.1/2.2).....0.00.0
2.4 Reserve Numerator.....	\$.....0	\$.....0
2.5 Reserve Denominator.....	\$.....0	\$.....0
2.6 Reserve Ratio (2.4/2.5).....0.00.0

- 3.1 Does the reporting entity issue both participating and non-participating policies? Yes [] No [X]
- 3.2 If yes, state the amount of calendar year premiums written on:
 - 3.21 Participating policies
 - 3.22 Non-participating policies

4. FOR MUTUAL REPORTING ENTITIES AND RECIPROCAL EXCHANGES ONLY:

- 4.1 Does the reporting entity issue assessable policies? Yes [] No []
- 4.2 Does the reporting entity issue non-assessable policies? Yes [] No []
- 4.3 If assessable policies are issued, what is the extent of the contingent liability of the policyholders?%
- 4.4 Total amount of assessments paid or ordered to be paid during the year on deposit notes or contingent premiums.

5. FOR RECIPROCAL EXCHANGES ONLY:

- 5.1 Does the exchange appoint local agents? Yes [] No []
- 5.2 If yes, is the commission paid:
 - 5.21 Out of Attorney's-in-fact compensation Yes [] No [] N/A []
 - 5.22 As a direct expense of the exchange Yes [] No [] N/A []
- 5.3 What expenses of the exchange are not paid out of the compensation of the Attorney-in-fact?

- 5.4 Has any Attorney-in-fact compensation, contingent on fulfillment of certain conditions, been deferred? Yes [] No []
- 5.5 If yes, give full information:

- 6.1 What provision has this reporting entity made to protect itself from an excessive loss in the event of a catastrophe under a workers' compensation contract issued without limit of loss?
THE COMPANY DOES NOT WRITE WORKERS' COMPENSATION INSURANCE.

- 6.2 Describe the method used to estimate this reporting entity's probable maximum insurance loss, and identify the type of insured exposures comprising that probable maximum loss, the locations of concentrations of those exposures and the external resources (such as consulting firms or computer software models), if any, used in the estimation process:
THE COMPANY HAS NOT WRITTEN ANY BUSINESS THROUGH 2012 AND THUS THERE WAS NO ESTIMATE MADE.

- 6.3 What provision has this reporting entity made (such as a catastrophic reinsurance program) to protect itself from an excessive loss arising from the types and concentrations of insured exposures comprising its probable maximum property insurance loss?
AGAIN THE COMPANY HAS NOT WRITTEN ANY BUSINESS THROUGH 2012 AND CARRIES NO EXTERNAL CATASTROPHE REINSURANCE.

- 6.4 Does the reporting entity carry catastrophe reinsurance protection for at least one reinstatement, in an amount sufficient to cover its estimated probable maximum loss attributable to a single loss event or occurrence? Yes [] No [X]

- 6.5 If no, describe any arrangements or mechanisms employed by the reporting entity to supplement its catastrophe reinsurance program or to hedge its exposure to unreinsured catastrophic loss:
NONE

- 7.1 Has the reporting entity reinsured any risk with any other entity under a quota share reinsurance contract that includes a provision that would limit the reinsurer's losses below the stated quota share percentage (e.g., a deductible, a loss ratio corridor, a loss cap, an aggregate limit or any similar provisions)? Yes [] No [X]

- 7.2 If yes, indicate the number of reinsurance contracts containing such provisions.
- 7.3 If yes, does the amount of reinsurance credit taken reflect the reduction in quota share coverage caused by any applicable limiting provision(s)? Yes [] No []

GENERAL INTERROGATORIES

PART 2 - PROPERTY AND CASUALTY INTERROGATORIES

- 8.1 Has this reporting entity reinsured any risk with any other entity and agreed to release such entity from liability, in whole or in part, from any loss that may occur on this risk, or portion thereof, reinsured? Yes [] No [X]
- 8.2 If yes, give full information:
-
- 9.1 Has the reporting entity ceded any risk under any reinsurance contract (or under multiple contracts with the same reinsurer or its affiliates) for which during the period covered by the statement: (i) it recorded a positive or negative underwriting result greater than 5% of prior year-end surplus as regards policyholders or it reported calendar year written premium ceded or year-end loss and loss expense reserves ceded greater than 5% of prior year-end surplus as regards policyholders; (ii) it accounted for that contract as reinsurance and not as a deposit; and (iii) the contract(s) contain one or more of the following features or other features that would have similar results:
- (a) A contract term longer than two years and the contract is noncancellable by the reporting entity during the contract term;
- (b) A limited or conditional cancellation provision under which cancellation triggers an obligation by the reporting entity, or an affiliate of the reporting entity, to enter into a new reinsurance contract with the reinsurer, or an affiliate of the reinsurer;
- (c) Aggregate stop loss reinsurance coverage;
- (d) A unilateral right by either party (or both parties) to commute the reinsurance contract, whether conditional or not, except for such provisions which are only triggered by a decline in the credit status of the other party;
- (e) A provision permitting reporting of losses, or payment of losses, less frequently than on a quarterly basis (unless there is no activity during the period); or
- (f) Payment schedule, accumulating retentions from multiple years or any features inherently designed to delay timing of the reimbursement to the ceding entity? Yes [] No [X]
- 9.2 Has the reporting entity during the period covered by the statement ceded any risk under any reinsurance contract (or under multiple contracts with the same reinsurer or its affiliates), for which, during the period covered by the statement, it recorded a positive or negative underwriting result greater than 5% of prior year-end surplus as regards policyholders or it reported calendar year written premium ceded or year-end loss and loss expense reserves ceded greater than 5% of prior year-end surplus as regards policyholders; excluding cessions to approved pooling arrangements or to captive insurance companies that are directly or indirectly controlling, controlled by, or under control with (i) one or more unaffiliated policyholders of the reporting entity, or (ii) an association of which one or more unaffiliated policyholders of the reporting entity is a member where:
- (a) The written premium ceded to the reinsurer by the reporting entity or its affiliates represents fifty percent (50%) or more of the entire direct and assumed premium written by the reinsurer based on its most recently available financial statement; or
- (b) Twenty-five percent (25%) or more of the written premium ceded to the reinsurer has been retroceded back to the reporting entity or its affiliates in a separate reinsurance contract? Yes [] No [X]
- 9.3 If yes to 9.1 or 9.2, please provide the following information in the Reinsurance Summary Supplemental Filing for General Interrogatory 9:
- (a) The aggregate financial statement impact gross of all such ceded reinsurance contracts on the balance sheet and statement of income;
- (b) A summary of the reinsurance contract terms and indicate whether it applies to the contracts meeting the criteria in 9.1 or 9.2; and
- (c) A brief discussion of management's principle objectives in entering into the reinsurance contract including the economic purpose to be achieved.
- 9.4 Except for transactions meeting the requirements of paragraph 31 of SSAP No. 62R, Property and Casualty Reinsurance, has the reporting entity ceded any risk under any reinsurance contract (or multiple contracts with the same reinsurer or its affiliates) during the period covered by the financial statement, and either:
- (a) Accounted for that contract as reinsurance (either prospective or retroactive) under statutory accounting principles ("SAP") and as a deposit under generally accepted accounting principles ("GAAP"); or
- (b) Accounted for that contract as reinsurance under GAAP and as a deposit under SAP? Yes [] No [X]
- 9.5 If yes to 9.4, explain in the Reinsurance Summary Supplemental Filing for General Interrogatory 9 (Section D) why the contract(s) is treated differently for GAAP and SAP.
- 9.6 The reporting entity is exempt from the Reinsurance Attestation Supplement under one or more of the following criteria:
- (a) The entity does not utilize reinsurance; or Yes [] No [X]
- (b) The entity only engages in a 100% quota share contract with an affiliate and the affiliated or lead company has filed an attestation supplement; or Yes [] No [X]
- (c) The entity has no external cessions and only participates in an intercompany pool and the affiliated or lead company has filed an attestation supplement. Yes [] No [X]
10. If the reporting entity has assumed risks from another entity, there should be charged on account of such reinsurance a reserve equal to that which the original entity would have been required to charge had it retained the risks. Has this been done? Yes [] No [] N/A [X]
- 11.1 Has this reporting entity guaranteed policies issued by any other reporting entity and now in force? Yes [] No [X]
- 11.2 If yes, give full information:
-
- 12.1 If the reporting entity recorded accrued retrospective premiums on insurance contracts on Line 15.3 of the assets schedule, Page 2, state the amount of corresponding liabilities recorded for:
- 12.11 Unpaid losses \$.....0
- 12.12 Unpaid underwriting expenses (including loss adjustment expenses) \$.....0
- 12.2 Of the amount on Line 15.3, Page 2, state the amount that is secured by letters of credit, collateral and other funds: \$.....0
- 12.3 If the reporting entity underwrites commercial insurance risks, such as workers' compensation, are premium notes or promissory notes accepted from its insureds covering unpaid premiums and/or unpaid losses? Yes [] No [] N/A [X]
- 12.4 If yes, provide the range of interest rates charged under such notes during the period covered by this statement:
- 12.41 From%
- 12.42 To%
- 12.5 Are letters of credit or collateral and other funds received from insureds being utilized by the reporting entity to secure premium notes or promissory notes taken by a reporting entity, or to secure any of the reporting entity's reported direct unpaid loss reserves, including unpaid losses under loss deductible features of commercial policies? Yes [] No [X]
- 12.6 If yes, state the amount thereof at December 31 of current year:
- 12.61 Letters of credit
- 12.62 Collateral and other funds
- 13.1 Largest net aggregate amount insured in any one risk (excluding workers' compensation): \$.....0
- 13.2 Does any reinsurance contract considered in the calculation of this amount include an aggregate limit of recovery without also including a reinstatement provision? Yes [] No [X]
- 13.3 State the number of reinsurance contracts (excluding individual facultative risk certificates, but including facultative programs, automatic facilities or facultative obligatory contracts) considered in the calculation of the amount.1

GENERAL INTERROGATORIES

PART 2 - PROPERTY AND CASUALTY INTERROGATORIES

14.1 Is the company a cedant in a multiple cedant reinsurance contract? Yes [] No [X]

14.2 If yes, please describe the method of allocating and recording reinsurance among the cedants:

14.3 If the answer to 14.1 is yes, are the methods described in item 14.2 entirely contained in the respective multiple cedant reinsurance contracts? Yes [] No []

14.4 If the answer to 14.3 is no, are all the methods described in 14.2 entirely contained in written agreements? Yes [] No []

14.5 If the answer to 14.4 is no, please explain:

15.1 Has the reporting entity guaranteed any financed premium accounts? Yes [] No [X]

15.2 If yes, give full information:

16.1 Does the reporting entity write any warranty business? Yes [] No [X]

If yes, disclose the following information for each of the following types of warranty coverage:

	1 Direct Losses Incurred	2 Direct Losses Unpaid	3 Direct Written Premium	4 Direct Premium Unearned	5 Direct Premium Earned
16.11 Home.....
16.12 Products.....
16.13 Automobile.....
16.14 Other*.....

* Disclose type of coverage:

17.1 Does the reporting entity include amounts recoverable on unauthorized reinsurance in Schedule F-Part 3 that it excludes from Schedule F-Part 5? Yes [] No [X]

Incurred but not reported losses on contracts in force prior to July 1, 1984, and not subsequently renewed are exempt from inclusion in Schedule F-Part 5.

Provide the following information for this exemption:

- 17.11 Gross amount of unauthorized reinsurance in Schedule F-Part 3 excluded from Schedule F-Part 5
- 17.12 Unfunded portion of Interrogatory 17.11
- 17.13 Paid losses and loss adjustment expenses portion of Interrogatory 17.11
- 17.14 Case reserves portion of Interrogatory 17.11
- 17.15 Incurred but not reported portion of Interrogatory 17.11
- 17.16 Unearned premium portion of Interrogatory 17.11
- 17.17 Contingent commission portion of Interrogatory 17.11

Provide the following information for all other amounts included in Schedule F-Part 3 and excluded from Schedule F-Part 5, not included above:

- 17.18 Gross amount of unauthorized reinsurance in Schedule F-Part 3 excluded from Schedule F-Part 5
- 17.19 Unfunded portion of Interrogatory 17.18
- 17.20 Paid losses and loss adjustment expenses portion of Interrogatory 17.18
- 17.21 Case reserves portion of Interrogatory 17.18
- 17.22 Incurred but not reported portion of Interrogatory 17.18
- 17.23 Unearned premium portion of Interrogatory 17.18
- 17.24 Contingent commission portion of Interrogatory 17.18

18.1 Do you act as a custodian for health savings account? Yes [] No [X]

18.2 If yes, please provide the amount of custodial funds held as of the reporting date.

18.3 Do you act as an administrator for health savings accounts? Yes [] No [X]

18.4 If yes, please provide the balance of the funds administered as of the reporting date.

FIVE-YEAR HISTORICAL DATA

Show amounts in whole dollars only, no cents; show percentages to one decimal place, i.e. 17.6.

	1 2012	2 2011	3 2010	4 2009	5 2008
Gross Premiums Written (Page 8, Part 1B, Cols. 1, 2 & 3)					
1. Liability lines (Lines 11.1, 11.2, 16, 17.1, 17.2, 17.3, 18.1, 18.2, 19.1, 19.2 & 19.3, 19.4).....					
2. Property lines (Lines 1, 2, 9, 12, 21 & 26).....					
3. Property and liability combined lines (Lines 3, 4, 5, 8, 22 & 27).....					
4. All other lines (Lines 6, 10, 13, 14, 15, 23, 24, 28, 29, 30 & 34).....					
5. Nonproportional reinsurance lines (Lines 31, 32 & 33).....					
6. Total (Line 35).....	0	0	0	0	0
Net Premiums Written (Page 8, Part 1B, Col. 6)					
7. Liability lines (Lines 11.1, 11.2, 16, 17.1, 17.2, 17.3, 18.1, 18.2, 19.1, 19.2 & 19.3, 19.4).....					
8. Property lines (Lines 1, 2, 9, 12, 21 & 26).....					
9. Property and liability combined lines (Lines 3, 4, 5, 8, 22 & 27).....					
10. All other lines (Lines 6, 10, 13, 14, 15, 23, 24, 28, 29, 30 & 34).....					
11. Nonproportional reinsurance lines (Lines 31, 32 & 33).....					
12. Total (Line 35).....	0	0	0	0	0
Statement of Income (Page 4)					
13. Net underwriting gain (loss) (Line 8).....	(7,718)	(7,377)	(7,224)	(6,192)	(18,771)
14. Net investment gain (loss) (Line 11).....	194,452	213,303	287,785	362,465	845,812
15. Total other income (Line 15).....	14	15	55	82	1,403
16. Dividends to policyholders (Line 17).....					
17. Federal and foreign income taxes incurred (Line 19).....	42,580	57,546	68,059	79,515	109,219
18. Net income (Line 20).....	144,168	148,395	212,557	276,840	719,225
Balance Sheet Lines (Pages 2 and 3)					
19. Total admitted assets excluding protected cell business (Page 2, Line 26, Col. 3).....	9,210,793	9,062,694	8,900,365	8,686,689	8,413,429
20. Premiums and considerations (Page 2, Col. 3):					
20.1 In course of collection (Line 15.1).....					
20.2 Deferred and not yet due (Line 15.2).....					
20.3 Accrued retrospective premiums (Line 15.3).....					
21. Total liabilities excluding protected cell business (Page 3, Line 26).....	60,781	55,826	42,592	38,124	42,888
22. Losses (Page 3, Line 1).....					
23. Loss adjustment expenses (Page 3, Line 3).....					
24. Unearned premiums (Page 3, Line 9).....					
25. Capital paid up (Page 3, Lines 30 & 31).....	3,000,000	3,000,000	3,000,000	3,000,000	3,000,000
26. Surplus as regards policyholders (Page 3, Line 37).....	9,150,012	9,006,868	8,857,773	8,648,565	8,370,541
Cash Flow (Page 5)					
27. Net cash from operations (Line 11).....	107,717	172,912	203,894	74,749	292,947
Risk-Based Capital Analysis					
28. Total adjusted capital.....	9,150,012	9,006,868	8,857,773	8,648,565	8,370,541
29. Authorized control level risk-based capital.....	31,427	26,281	27,185	26,902	20,476
Percentage Distribution of Cash, Cash Equivalents and Invested Assets (Page 2, Col. 3) (Item divided by Page 2, Line 12, Col. 3) x 100.0					
30. Bonds (Line 1).....	100.0	94.0	100.0	100.0	100.0
31. Stocks (Lines 2.1 & 2.2).....					
32. Mortgage loans on real estate (Lines 3.1 & 3.2).....					
33. Real estate (Lines 4.1, 4.2 & 4.3).....					
34. Cash, cash equivalents and short-term investments (Line 5).....		5.6			
35. Contract loans (Line 6).....					
36. Derivatives (Line 7).....				XXX	XXX
37. Other invested assets (Line 8).....					
38. Receivable for securities (Line 9).....		0.4			
39. Securities lending reinvested collateral assets (Line 10).....				XXX	XXX
40. Aggregate write-ins for invested assets (Line 11).....					
41. Cash, cash equivalents and invested assets (Line 12).....	100.0	100.0	100.0	100.0	100.0
Investments in Parent, Subsidiaries and Affiliates					
42. Affiliated bonds (Sch. D, Summary, Line 12, Col. 1).....					
43. Affiliated preferred stocks (Sch. D, Summary, Line 18, Col. 1).....					
44. Affiliated common stocks (Sch. D, Summary, Line 24, Col. 1).....					
45. Affiliated short-term investments (subtotals included in Schedule DA, Verification, Column 5, Line 10).....					
46. Affiliated mortgage loans on real estate.....					
47. All other affiliated.....					
48. Total of above lines 42 to 47.....	0	0	0	0	0
49. Total investment in parent included in Lines 42 to 47 above.....					
50. Percentage of investments in parent, subsidiaries and affiliates to surplus as regards policyholders (Line 48 above divided by Page 3, Col. 1, Line 37 x 100.0).....	0.0				

FIVE-YEAR HISTORICAL DATA

(Continued)

	1	2	3	4	5
	2012	2011	2010	2009	2008
Capital and Surplus Accounts (Page 4)					
51. Net unrealized capital gains (losses) (Line 24).....					
52. Dividends to stockholders (Line 35).....					
53. Change in surplus as regards policyholders for the year (Line 38).....	143,144	149,095	209,208	278,024	(5,280,325)
Gross Losses Paid (Page 9, Part 2, Cols. 1 & 2)					
54. Liability lines (Lines 11.1, 11.2, 16, 17.1, 17.2, 17.3, 18.1, 18.2, 19.1, 19.2 & 19.3, 19.4).....					
55. Property lines (Lines 1, 2, 9, 12, 21 & 26).....					
56. Property and liability combined lines (Lines 3, 4, 5, 8, 22 & 27).....					
57. All other lines (Lines 6, 10, 13, 14, 15, 23, 24, 28, 29, 30 & 34).....					
58. Nonproportional reinsurance lines (Lines 31, 32 & 33).....					
59. Total (Line 35).....	.0	.0	.0	.0	.0
Net Losses Paid (Page 9, Part 2, Col. 4)					
60. Liability lines (Lines 11.1, 11.2, 16, 17.1, 17.2, 17.3, 18.1, 18.2, 19.1, 19.2 & 19.3, 19.4).....					
61. Property lines (Lines 1, 2, 9, 12, 21 & 26).....					
62. Property and liability combined lines (Lines 3, 4, 5, 8, 22 & 27).....					
63. All other lines (Lines 6, 10, 13, 14, 15, 23, 24, 28, 29, 30 & 34).....					
64. Nonproportional reinsurance lines (Lines 31, 32 & 33).....					
65. Total (Line 35).....	.0	.0	.0	.0	.0
Operating Percentages (Page 4) (Item divided by Page 4, Line 1) x 100.0					
66. Premiums earned (Line 1).....	100.0	100.0	100.0	100.0	100.0
67. Losses incurred (Line 2).....					
68. Loss expenses incurred (Line 3).....					
69. Other underwriting expenses incurred (Line 4).....					
70. Net underwriting gain (loss) (Line 8).....					
Other Percentages					
71. Other underwriting expenses to net premiums written (Page 4, Lines 4 + 5 - 15 divided by Page 8, Part 1B, Col. 6, Line 35 x 100.0).....					
72. Losses and loss expenses incurred to premiums earned (Page 4, Lines 2 + 3 divided by Page 4, Line 1 x 100.0).....					
73. Net premiums written to policyholders' surplus (Page 8, Part 1B, Col. 6, Line 35, divided by Page 3, Line 37, Col. 1 x 100.0).....					
One Year Loss Development (000 omitted)					
74. Development in estimated losses and loss expenses incurred prior to current year (Schedule P, Part 2-Summary, Line 12, Col. 11).....					
75. Percent of development of losses and loss expenses incurred to policyholders' surplus of prior year end (Line 74 above divided by Page 4, Line 21, Col. 1 x 100).....					
Two Year Loss Development (000 omitted)					
76. Development in estimated losses and loss expenses incurred 2 years before the current year and prior year (Schedule P, Part 2-Summary, Line 12, Col. 12).....					
77. Percent of development of losses and loss expenses incurred to reported policyholders' surplus of second prior year end (Line 76 above divided by Page 4, Line 21, Col. 2 x 100.0).....					

If a party to a merger, have the two most recent years of this exhibit been restated due to a merger in compliance with the disclosure requirements of

SSAP No. 3, Accounting Changes and Correction of Errors?

Yes [] No []

If no, please explain:

**Sch. P-Pt. 1-Summary
NONE**

**Sch. P-Pt. 2-Summary
NONE**

**Sch. P-Pt. 3-Summary
NONE**

**Sch. P-Pt. 4-Summary
NONE**

PROGRESSIVE COMMERCIAL CASUALTY COMPANY SCHEDULE T - EXHIBIT OF PREMIUMS WRITTEN

Allocated by States and Territories

States, Etc.	1 Active Status	Gross Premiums, Including Policy and Membership Fees Less Return Premiums and Premiums on Policies Not Taken		4 Dividends Paid or Credited to Policyholders on Direct Business	5 Direct Losses Paid (Deducting Salvage)	6 Direct Losses Incurred	7 Direct Losses Unpaid	8 Finance and Service Charges not Included in Premiums	9 Direct Premiums Written for Federal Purchasing Groups (Incl. in Col. 2)
		2 Direct Premiums Written	3 Direct Premiums Earned						
1. Alabama.....AL	L								
2. Alaska.....AK	L								
3. Arizona.....AZ	L								
4. Arkansas.....AR	L								
5. California.....CA	L								
6. Colorado.....CO	N								
7. Connecticut.....CT	N								
8. Delaware.....DE	L								
9. District of Columbia.....DC	N								
10. Florida.....FL	N								
11. Georgia.....GA	N								
12. Hawaii.....HI	L								
13. Idaho.....ID	N								
14. Illinois.....IL	L								
15. Indiana.....IN	L								
16. Iowa.....IA	L								
17. Kansas.....KS	L								
18. Kentucky.....KY	L								
19. Louisiana.....LA	N								
20. Maine.....ME	L								
21. Maryland.....MD	L								
22. Massachusetts.....MA	L								
23. Michigan.....MI	N								
24. Minnesota.....MN	L								
25. Mississippi.....MS	N								
26. Missouri.....MO	N								
27. Montana.....MT	L								
28. Nebraska.....NE	L								
29. Nevada.....NV	L								
30. New Hampshire.....NH	N								
31. New Jersey.....NJ	N								
32. New Mexico.....NM	L								
33. New York.....NY	N								
34. North Carolina.....NC	N								
35. North Dakota.....ND	L								
36. Ohio.....OH	L								
37. Oklahoma.....OK	L								
38. Oregon.....OR	L								
39. Pennsylvania.....PA	L								
40. Rhode Island.....RI	L								
41. South Carolina.....SC	L								
42. South Dakota.....SD	L								
43. Tennessee.....TN	L								
44. Texas.....TX	L								
45. Utah.....UT	L								
46. Vermont.....VT	L								
47. Virginia.....VA	L								
48. Washington.....WA	L								
49. West Virginia.....WV	L								
50. Wisconsin.....WI	N								
51. Wyoming.....WY	L								
52. American Samoa.....AS	N								
53. Guam.....GU	N								
54. Puerto Rico.....PR	N								
55. US Virgin Islands.....VI	N								
56. Northern Mariana Islands.....MP	N								
57. Canada.....CAN	N								
58. Aggregate Other Alien.....OT	XXX	0	0	0	0	0	0	0	0
59. Totals.....	(a) 36	0	0	0	0	0	0	0	0

DETAILS OF WRITE-INS

58001.....	XXX								
58002.....	XXX								
58003.....	XXX								
58998. Summary of remaining write-ins for Line 58 from overflow page	XXX	0	0	0	0	0	0	0	0
58999. Totals (Lines 58001 thru 58003+ Line 58998) (Line 58 above)	XXX	0	0	0	0	0	0	0	0

(a) Insert the number of "L" responses except for Canada and Other Alien.

(L) - Licensed or Chartered - Licensed Insurance Carrier or Domiciled RRG; (R) - Registered - Non-domiciled RRGs; (Q) - Qualified - Qualified or Accredited Reinsurer;

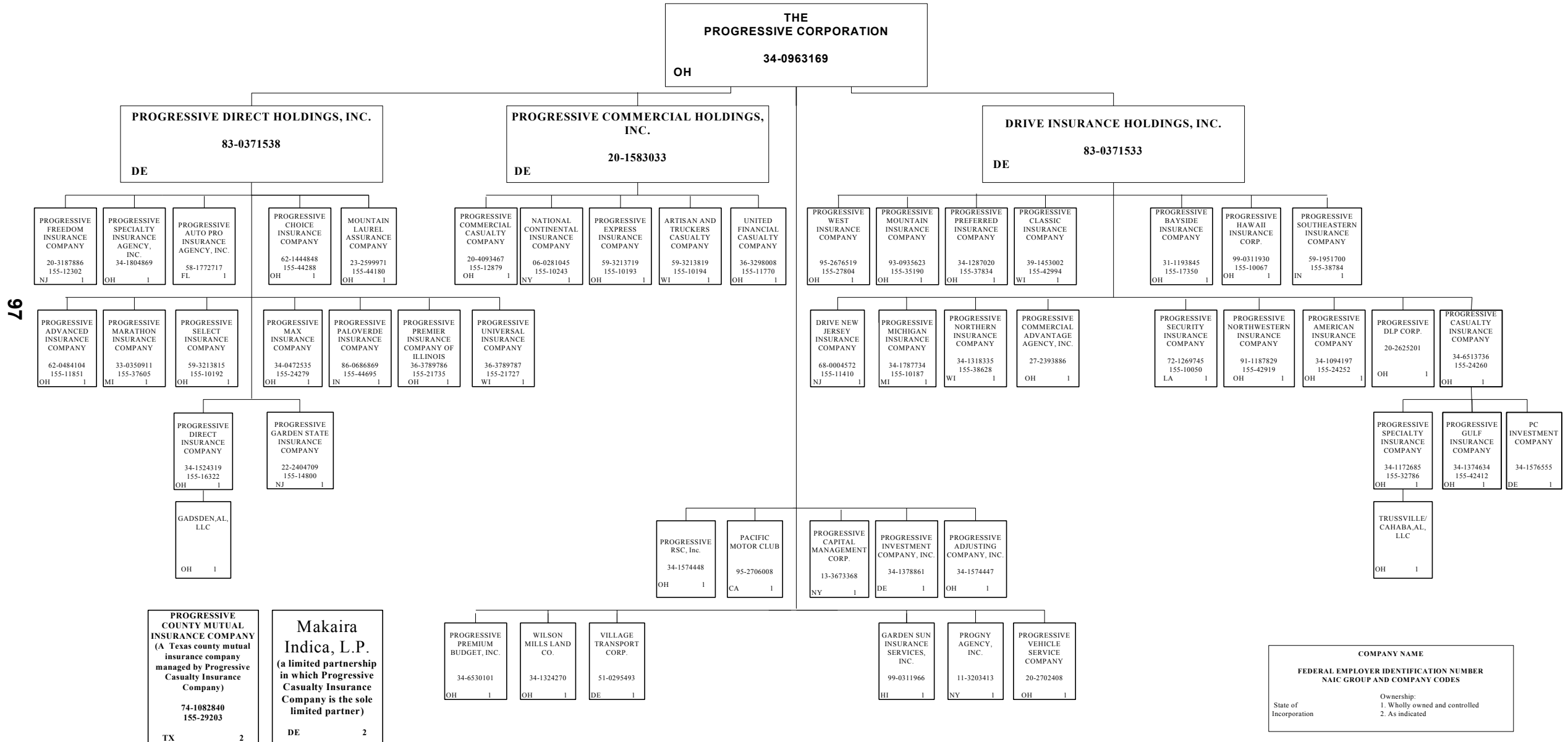
(E) - Eligible - Reporting Entities eligible or approved to write Surplus Lines in the state; (N) - None of the above - Not allowed to write business in the state.

Explanation of Basis of Allocation of Premiums by States, etc.

Allocation on the basis of the location where the vehicle is principally garaged and used.

SCHEDULE Y – INFORMATION CONCERNING ACTIVITIES OF INSURER MEMBERS OF A HOLDING COMPANY GROUP

PART 1 – ORGANIZATIONAL CHART



97

COMPANY NAME	
FEDERAL EMPLOYER IDENTIFICATION NUMBER NAIC GROUP AND COMPANY CODES	
State of Incorporation	Ownership: 1. Wholly owned and controlled 2. As indicated

2012 ALPHABETICAL INDEX -- PROPERTY & CASUALTY ANNUAL STATEMENT BLANK

Assets	2	Schedule P-Part 2G-Special Liability (Ocean Marine, Aircraft (All Perils), Boiler & Machinery)	59
Cash Flow	5	Schedule P-Part 2H-Section 1-Other Liability-Occurrence	59
Exhibit of Capital Gains (Losses)	12	Schedule P-Part 2H-Section 2-Other Liability-Claims-Made	59
Exhibit of Net Investment Income	12	Schedule P-Part 2I-Spec. Prop. (Fire, Allied Lines, Inland Marine, Earthquake, Burglary, Theft)	60
Exhibit of Nonadmitted Assets	13	Schedule P-Part 2J-Auto Physical Damage	60
Exhibit of Premiums and Losses (State Page)	19	Schedule P-Part 2K-Fidelity, Surety	60
Five-Year Historical Data	17	Schedule P-Part 2L-Other (Including Credit, Accident and Health)	60
General Interrogatories	15	Schedule P-Part 2M-International	60
Jurat Page	1	Schedule P-Part 2N-Reinsurance - Nonproportional Assumed Property	61
Liabilities, Surplus and Other Funds	3	Schedule P-Part 2O-Reinsurance - Nonproportional Assumed Liability	61
Notes To Financial Statements	14	Schedule P-Part 2P-Reinsurance - Nonproportional Assumed Financial Lines	61
Overflow Page For Write-ins	101	Schedule P-Part 2R-Section 1-Products Liability-Occurrence	62
Schedule A-Part 1	E01	Schedule P-Part 2R-Section 2-Products Liability-Claims-Made	62
Schedule A-Part 2	E02	Schedule P-Part 2S-Financial Guaranty/Mortgage Guaranty	62
Schedule A-Part 3	E03	Schedule P-Part 2T-Warranty	62
Schedule A-Verification Between Years	SI02	Schedule P-Part 3A-Homeowners/Farmowners	63
Schedule B-Part 1	E04	Schedule P-Part 3B-Private Passenger Auto Liability/Medical	63
Schedule B-Part 2	E05	Schedule P-Part 3C-Commercial Auto/Truck Liability/Medical	63
Schedule B-Part 3	E06	Schedule P-Part 3D-Workers' Compensation (Excluding Excess Workers Compensation)	63
Schedule B-Verification Between Years	SI02	Schedule P-Part 3E-Commercial Multiple Peril	63
Schedule BA-Part 1	E07	Schedule P-Part 3F-Section 1-Medical Professional Liability-Occurrence	64
Schedule BA-Part 2	E08	Schedule P-Part 3F-Section 2-Medical Professional Liability-Claims-Made	64
Schedule BA-Part 3	E09	Schedule P-Part 3G-Special Liability (Ocean Marine, Aircraft (All Perils), Boiler & Machinery)	64
Schedule BA-Verification Between Years	SI03	Schedule P-Part 3H-Section 1-Other Liability-Occurrence	64
Schedule D-Part 1	E10	Schedule P-Part 3H-Section 2-Other Liability-Claims-Made	64
Schedule D-Part 1A-Section 1	SI05	Schedule P-Part 3I-Spec. Prop. (Fire, Allied Lines, Inland Marine, Earthquake, Burglary, Theft)	65
Schedule D-Part 1A-Section 2	SI08	Schedule P-Part 3J-Auto Physical Damage	65
Schedule D-Part 2-Section 1	E11	Schedule P-Part 3K-Fidelity/Surety	65
Schedule D-Part 2-Section 2	E12	Schedule P-Part 3L-Other (Including Credit, Accident and Health)	65
Schedule D-Part 3	E13	Schedule P-Part 3M-International	65
Schedule D-Part 4	E14	Schedule P-Part 3N-Reinsurance - Nonproportional Assumed Property	66
Schedule D-Part 5	E15	Schedule P-Part 3O-Reinsurance - Nonproportional Assumed Liability	66
Schedule D-Part 6-Section 1	E16	Schedule P-Part 3P-Reinsurance - Nonproportional Assumed Financial Lines	66
Schedule D-Part 6-Section 2	E16	Schedule P-Part 3R-Section 1-Products Liability-Occurrence	67
Schedule D-Summary By Country	SI04	Schedule P-Part 3R-Section 2-Products Liability-Claims-Made	67
Schedule D-Verification Between Years	SI03	Schedule P-Part 3S-Financial Guaranty/Mortgage Guaranty	67
Schedule DA-Part 1	E17	Schedule P-Part 3T-Warranty	67
Schedule DA-Verification Between Years	SI10	Schedule P-Part 4A-Homeowners/Farmowners	68
Schedule DB-Part A-Section 1	E18	Schedule P-Part 4B-Private Passenger Auto Liability/Medical	68
Schedule DB-Part A-Section 2	E19	Schedule P-Part 4C-Commercial Auto/Truck Liability/Medical	68
Schedule DB-Part A-Verification Between Years	SI11	Schedule P-Part 4D-Workers' Compensation (Excluding Excess Workers Compensation)	68
Schedule DB-Part B-Section 1	E20	Schedule P-Part 4E-Commercial Multiple Peril	68
Schedule DB-Part B-Section 2	E21	Schedule P-Part 4F-Section 1-Medical Professional Liability-Occurrence	69
Schedule DB-Part B-Verification Between Years	SI11	Schedule P-Part 4F-Section 2-Medical Professional Liability-Claims-Made	69
Schedule DB-Part C-Section 1	SI12	Schedule P-Part 4G-Special Liability (Ocean Marine, Aircraft (All Perils), Boiler & Machinery)	69
Schedule DB-Part C-Section 2	SI13	Schedule P-Part 4H-Section 1-Other Liability-Occurrence	69
Schedule DB-Part D	E22	Schedule P-Part 4H-Section 2-Other Liability-Claims-Made	69
Schedule DB-Verification	SI14	Schedule P-Part 4I-Spec. Prop. (Fire, Allied Lines, Inland Marine, Earthquake, Burglary & Theft)	70
Schedule DL-Part 1	E23	Schedule P-Part 4J-Auto Physical Damage	70
Schedule DL-Part 2	E24	Schedule P-Part 4K-Fidelity/Surety	70
Schedule E-Part 1-Cash	E25	Schedule P-Part 4L-Other (Including Credit, Accident and Health)	70
Schedule E-Part 2-Cash Equivalents	E26	Schedule P-Part 4M-International	70
Schedule E-Part 3-Special Deposits	E27	Schedule P-Part 4N-Reinsurance - Nonproportional Assumed Property	71
Schedule E-Verification Between Years	SI15	Schedule P-Part 4O-Reinsurance - Nonproportional Assumed Liability	71
Schedule F-Part 1	20	Schedule P-Part 4P-Reinsurance - Nonproportional Assumed Financial Lines	71
Schedule F-Part 2	21	Schedule P-Part 4R-Section 1-Products Liability-Occurrence	72
Schedule F-Part 3	22	Schedule P-Part 4R-Section 2-Products Liability-Claims-Made	72
Schedule F-Part 4	23	Schedule P-Part 4S-Financial Guaranty/Mortgage Guaranty	72
Schedule F-Part 5	24	Schedule P-Part 4T-Warranty	72
Schedule F-Part 6-Section 1	25	Schedule P-Part 5A-Homeowners/Farmowners	73
Schedule F-Part 6-Section 2	27	Schedule P-Part 5B-Private Passenger Auto Liability/Medical	74
Schedule F-Part 7	28	Schedule P-Part 5C-Commercial Auto/Truck Liability/Medical	75
Schedule F-Part 8	29	Schedule P-Part 5D-Workers' Compensation (Excluding Excess Workers Compensation)	76
Schedule F-Part 9	30	Schedule P-Part 5E-Commercial Multiple Peril	77
Schedule H-Accident and Health Exhibit-Part 1	31	Schedule P-Part 5F-Medical Professional Liability-Claims-Made	79
Schedule H-Part 2, Part 3 and Part 4	32	Schedule P-Part 5F-Medical Professional Liability-Occurrence	78
Schedule H-Part 5-Health Claims	33	Schedule P-Part 5H-Other Liability-Claims-Made	81
Schedule P-Part 1-Summary	34	Schedule P-Part 5H-Other Liability-Occurrence	80
Schedule P-Part 1A-Homeowners/Farmowners	36	Schedule P-Part 5R-Products Liability-Claims-Made	83
Schedule P-Part 1B-Private Passenger Auto Liability/Medical	37	Schedule P-Part 5R-Products Liability-Occurrence	82
Schedule P-Part 1C-Commercial Auto/Truck Liability/Medical	38	Schedule P-Part 5T-Warranty	84
Schedule P-Part 1D-Workers' Compensation (Excluding Excess Workers Compensation)	39	Schedule P-Part 6C-Commercial Auto/Truck Liability/Medical	85
Schedule P-Part 1E-Commercial Multiple Peril	40	Schedule P-Part 6D-Workers' Compensation (Excluding Excess Workers Compensation)	85
Schedule P-Part 1F-Section 1-Medical Professional Liability-Occurrence	41	Schedule P-Part 6E-Commercial Multiple Peril	86
Schedule P-Part 1F-Section 2-Medical Professional Liability-Claims-Made	42	Schedule P-Part 6H-Other Liability-Claims-Made	87
Schedule P-Part 1G-Special Liability (Ocean, Marine, Aircraft (All Perils), Boiler & Machinery)	43	Schedule P-Part 6H-Other Liability-Occurrence	86
Schedule P-Part 1H-Section 1-Other Liability-Occurrence	44	Schedule P-Part 6M-International	87
Schedule P-Part 1H-Section 2-Other Liability-Claims-Made	45	Schedule P-Part 6N-Reinsurance - Nonproportional Assumed Property	88
Schedule P-Part 1I-Spec. Prop. (Fire, Allied Lines, Inland Marine, Earthquake, Burglary & Theft)	46	Schedule P-Part 6O-Reinsurance - Nonproportional Assumed Liability	88
Schedule P-Part 1J-Auto Physical Damage	47	Schedule P-Part 6R-Products Liability-Claims-Made	89
Schedule P-Part 1K-Fidelity/Surety	48	Schedule P-Part 6R-Products Liability-Occurrence	89
Schedule P-Part 1L-Other (Including Credit, Accident and Health)	49	Schedule P-Part 7A-Primary Loss Sensitive Contracts	90
Schedule P-Part 1M-International	50	Schedule P-Part 7B-Reinsurance Loss Sensitive Contracts	92
Schedule P-Part 1N-Reinsurance - Nonproportional Assumed Property	51	Schedule P Interrogatories	94
Schedule P-Part 1O-Reinsurance - Nonproportional Assumed Liability	52	Schedule T-Exhibit of Premiums Written	95
Schedule P-Part 1P-Reinsurance - Nonproportional Assumed Financial Lines	53	Schedule T-Part 2-Interstate Compact	96
Schedule P-Part 1R-Section 1-Products Liability-Occurrence	54	Schedule Y-Information Concerning Activities of Insurer Members of a Holding Company Group	97
Schedule P-Part 1R-Section 2-Products Liability-Claims-Made	55	Schedule Y-Detail of Insurance Holding Company System	98
Schedule P-Part 1S-Financial Guaranty/Mortgage Guaranty	56	Schedule Y-Part 2-Summary of Insurer's Transactions With Any Affiliates	99
Schedule P-Part 1T-Warranty	57	Statement of Income	4
Schedule P-Part 2, Part 3 and Part 4 - Summary	35	Summary Investment Schedule	SI01
Schedule P-Part 2A-Homeowners/Farmowners	58	Supplemental Exhibits and Schedules Interrogatories	100
Schedule P-Part 2B-Private Passenger Auto Liability/Medical	58	Underwriting and Investment Exhibit Part 1	6
Schedule P-Part 2C-Commercial Auto/Truck Liability/Medical	58	Underwriting and Investment Exhibit Part 1A	7
Schedule P-Part 2D-Workers' Compensation (Excluding Excess Workers Compensation)	58	Underwriting and Investment Exhibit Part 1B	8
Schedule P-Part 2E-Commercial Multiple Peril	58	Underwriting and Investment Exhibit Part 2	9
Schedule P-Part 2F-Section 1-Medical Professional Liability-Occurrence	59	Underwriting and Investment Exhibit Part 2A	10
Schedule P-Part 2F-Section 2-Medical Professional Liability-Claims-Made	59	Underwriting and Investment Exhibit Part 3	11