



# ANNUAL STATEMENT

For the Year Ended December 31, 2012  
of the Condition and Affairs of the

## PROGRESSIVE ADVANCED INSURANCE COMPANY

NAIC Group Code.....155, 155 (Current Period) (Prior Period)	NAIC Company Code..... 11851	Employer's ID Number..... 62-0484104
Organized under the Laws of OH	State of Domicile or Port of Entry OH	Country of Domicile US
Incorporated/Organized..... June 5, 1930	Commenced Business..... August 26, 1930	
Statutory Home Office	6300 WILSON MILLS ROAD, W33..... CLEVELAND ..... OH ..... US ..... 44143-2182 <i>(Street and Number) (City or Town, State, Country and Zip Code)</i>	
Main Administrative Office	6300 WILSON MILLS ROAD, W33..... CLEVELAND ..... OH ..... US..... 44143-2182 440-461-5000 <i>(Street and Number) (City or Town, State, Country and Zip Code) (Area Code) (Telephone Number)</i>	
Mail Address	P.O. BOX 89490..... CLEVELAND ..... OH ..... US ..... 44101-6490 <i>(Street and Number or P. O. Box) (City or Town, State, Country and Zip Code)</i>	
Primary Location of Books and Records	6300 WILSON MILLS ROAD, W33..... CLEVELAND ..... OH ..... US ..... 44143-2182 440-395-4460 <i>(Street and Number) (City or Town, State, Country and Zip Code) (Area Code) (Telephone Number)</i>	
Internet Web Site Address	PROGRESSIVE.COM	
Statutory Statement Contact	MARY BETH ANDREANO <i>(Name)</i> FINANCIAL_REPORTING@PROGRESSIVE.COM <i>(E-Mail Address)</i>	440-395-4460 <i>(Area Code) (Telephone Number) (Extension)</i> 440-446-7168 <i>(Fax Number)</i>

### POLICYHOLDER SERVICES AND CLAIMS REPORTING -- 1-800-PROGRESSIVE (1-800-776-4737)

#### OFFICERS

<b>Name</b>	<b>Title</b>	<b>Name</b>	<b>Title</b>
SANJAY MAHESH VYAS	PRESIDENT	MICHAEL ROBERT UTH	SECRETARY
DANIEL JOSEPH WITALEC #	TREASURER		

#### OTHER

SCOTT EDWARD COLEMAN	(ASST. TREASURER)	JAMES RUSSELL HAAS	(VICE PRESIDENT)
CAROLINE MAE KORAN	(VICE PRESIDENT)	KAREN ANN KOSUDA	(ASST. SECRETARY)
MARIANN WOJTKUN MARSHALL	(VICE PRESIDENT)		

#### DIRECTORS OR TRUSTEES

TOBY KRAMER ALFRED	JAMES RUSSELL HAAS	CAROLINE MAE KORAN	SANJAY MAHESH VYAS
SCOTT WESLEY ZIEGLER			

State of..... OHIO  
County of.... CUYAHOGA

The officers of this reporting entity being duly sworn, each depose and say that they are the described officers of said reporting entity, and that on the reporting period stated above, all of the herein described assets were the absolute property of the said reporting entity, free and clear from any liens or claims thereon, except as herein stated, and that this statement, together with related exhibits, schedules and explanations therein contained, annexed or referred to, is a full and true statement of all the assets and liabilities and of the condition and affairs of the said reporting entity as of the reporting period stated above, and of its income and deductions therefrom for the period ended, and have been completed in accordance with the NAIC *Annual Statement Instructions and Accounting Practices and Procedures* manual except to the extent that: (1) state law may differ; or, (2) that state rules or regulations require differences in reporting not related to accounting practices and procedures, according to the best of their information, knowledge and belief, respectively. Furthermore, the scope of this attestation by the described officers also includes the related corresponding electronic filing with the NAIC, when required, that is an exact copy (except for formatting differences due to electronic filing) of the enclosed statement. The electronic filing may be requested by various regulators in lieu of or in addition to the enclosed statement.

_____ (Signature) SANJAY MAHESH VYAS	_____ (Signature) KAREN ANN KOSUDA	_____ (Signature) SCOTT EDWARD COLEMAN
1. (Printed Name) PRESIDENT	2. (Printed Name) ASSISTANT SECRETARY	3. (Printed Name) ASSISTANT TREASURER
_____ (Title)	_____ (Title)	_____ (Title)

Subscribed and sworn to before me  
This 14TH day of FEBRUARY, 2013

a. Is this an original filing? Yes [ X ] No [ ]

b. If no

1. State the amendment number \_\_\_\_\_

2. Date filed \_\_\_\_\_

3. Number of pages attached \_\_\_\_\_

## ASSETS

	Current Year			Prior Year
	1 Assets	2 Nonadmitted Assets	3 Net Admitted Assets (Cols. 1 - 2)	4 Net Admitted Assets
1. Bonds (Schedule D).....	128,183,523		128,183,523	117,953,427
2. Stocks (Schedule D):				
2.1 Preferred stocks.....			0	
2.2 Common stocks.....			0	
3. Mortgage loans on real estate (Schedule B):				
3.1 First liens.....			0	
3.2 Other than first liens.....			0	
4. Real estate (Schedule A):				
4.1 Properties occupied by the company (less \$.....0 encumbrances).....			0	
4.2 Properties held for the production of income (less \$.....0 encumbrances).....			0	
4.3 Properties held for sale (less \$.....0 encumbrances).....			0	
5. Cash (\$.....0, Schedule E-Part 1), cash equivalents (\$.....0, Schedule E-Part 2) and short-term investments (\$.....0, Schedule DA).....			0	
6. Contract loans (including \$.....0 premium notes).....			0	
7. Derivatives (Schedule DB).....			0	
8. Other invested assets (Schedule BA).....			0	
9. Receivables for securities.....			0	
10. Securities lending reinvested collateral assets (Schedule DL).....			0	
11. Aggregate write-ins for invested assets.....	0	0	0	0
12. Subtotals, cash and invested assets (Lines 1 to 11).....	128,183,523	0	128,183,523	117,953,427
13. Title plants less \$.....0 charged off (for Title insurers only).....			0	
14. Investment income due and accrued.....	642,492		642,492	646,665
15. Premiums and considerations:				
15.1 Uncollected premiums and agents' balances in the course of collection.....	22,176,366	5,886,399	16,289,967	14,915,524
15.2 Deferred premiums, agents' balances and installments booked but deferred and not yet due (including \$.....0 earned but unbilled premiums).....	111,528,187		111,528,187	98,708,834
15.3 Accrued retrospective premiums.....			0	
16. Reinsurance:				
16.1 Amounts recoverable from reinsurers.....	5,925,744		5,925,744	3,939,994
16.2 Funds held by or deposited with reinsured companies.....			0	
16.3 Other amounts receivable under reinsurance contracts.....			0	
17. Amounts receivable relating to uninsured plans.....			0	
18.1 Current federal and foreign income tax recoverable and interest thereon.....			0	
18.2 Net deferred tax asset.....	9,272,562	813,895	8,458,667	7,861,921
19. Guaranty funds receivable or on deposit.....			0	
20. Electronic data processing equipment and software.....			0	
21. Furniture and equipment, including health care delivery assets (\$.....0).....			0	
22. Net adjustment in assets and liabilities due to foreign exchange rates.....			0	
23. Receivables from parent, subsidiaries and affiliates.....	25,762,208		25,762,208	25,455,478
24. Health care (\$.....0) and other amounts receivable.....			0	
25. Aggregate write-ins for other than invested assets.....	183,893	99,221	84,672	597
26. Total assets excluding Separate Accounts, Segregated Accounts and Protected Cell Accounts (Lines 12 to 25).....	303,674,975	6,799,515	296,875,460	269,482,440
27. From Separate Accounts, Segregated Accounts and Protected Cell Accounts.....			0	
28. TOTALS (Lines 26 and 27).....	303,674,975	6,799,515	296,875,460	269,482,440

## DETAILS OF WRITE-INS

1101.....			0	
1102.....			0	
1103.....			0	
1198. Summary of remaining write-ins for Line 11 from overflow page.....	0	0	0	0
1199. Totals (Lines 1101 thru 1103 plus 1198) (Line 11 above).....	0	0	0	0
2501. STATE TAX CREDITS.....	84,672		84,672	
2502. MISCELLANEOUS OTHER ASSETS.....	87,353	87,353	0	
2503. PREPAID EXPENSES.....	11,868	11,868	0	
2598. Summary of remaining write-ins for Line 25 from overflow page.....	0	0	0	597
2599. Totals (Lines 2501 thru 2503 plus 2598) (Line 25 above).....	183,893	99,221	84,672	597

# PROGRESSIVE ADVANCED INSURANCE COMPANY

## LIABILITIES, SURPLUS AND OTHER FUNDS

	1 Current Year	2 Prior Year
1. Losses (Part 2A, Line 35, Column 8).....	72,104,573	65,390,276
2. Reinsurance payable on paid losses and loss adjustment expenses (Schedule F, Part 1, Column 6).....	1,209,396	1,492,002
3. Loss adjustment expenses (Part 2A, Line 35, Column 9).....	15,025,828	14,341,518
4. Commissions payable, contingent commissions and other similar charges.....	2,036	24,439
5. Other expenses (excluding taxes, licenses and fees).....	652,258	662,669
6. Taxes, licenses and fees (excluding federal and foreign income taxes).....	1,806,317	1,538,879
7.1 Current federal and foreign income taxes (including \$.....2,752 on realized capital gains (losses)).....	696,417	1,319,810
7.2 Net deferred tax liability.....		
8. Borrowed money \$.....0 and interest thereon \$.....0.....		
9. Unearned premiums (Part 1A, Line 38, Column 5) (after deducting unearned premiums for ceded reinsurance of \$.....188,211,691 and including warranty reserves of \$.....0 and accrued accident and health experience rating refunds including \$.....0 for medical loss ratio rebate per the Public Health Service Act).....	57,090,077	54,213,475
10. Advance premium.....	3,225,492	3,001,407
11. Dividends declared and unpaid:		
11.1 Stockholders.....		
11.2 Policyholders.....		
12. Ceded reinsurance premiums payable (net of ceding commissions).....	3,803,084	1,809,758
13. Funds held by company under reinsurance treaties (Schedule F, Part 3, Column 19).....		
14. Amounts withheld or retained by company for account of others.....		
15. Remittances and items not allocated.....		
16. Provision for reinsurance (including \$.....0 certified) (Schedule F, Part 8).....		
17. Net adjustments in assets and liabilities due to foreign exchange rates.....		
18. Drafts outstanding.....	22,799,913	19,508,898
19. Payable to parent, subsidiaries and affiliates.....		
20. Derivatives.....		
21. Payable for securities.....		
22. Payable for securities lending.....		
23. Liability for amounts held under uninsured plans.....		
24. Capital notes \$.....0 and interest thereon \$.....0.....		
25. Aggregate write-ins for liabilities.....	1,039,285	1,143,192
26. Total liabilities excluding protected cell liabilities (Lines 1 through 25).....	179,454,676	164,446,323
27. Protected cell liabilities.....		
28. Total liabilities (Lines 26 and 27).....	179,454,676	164,446,323
29. Aggregate write-ins for special surplus funds.....	0	0
30. Common capital stock.....	3,000,000	3,000,000
31. Preferred capital stock.....		
32. Aggregate write-ins for other than special surplus funds.....	0	0
33. Surplus notes.....		
34. Gross paid in and contributed surplus.....	98,925,602	94,925,602
35. Unassigned funds (surplus).....	15,495,182	7,110,515
36. Less treasury stock, at cost:		
36.1 .....0.000 shares common (value included in Line 30 \$.....0).....		
36.2 .....0.000 shares preferred (value included in Line 31 \$.....0).....		
37. Surplus as regards policyholders (Lines 29 to 35, less 36) (Page 4, Line 39).....	117,420,784	105,036,117
38. TOTALS (Page 2, Line 28, Col. 3).....	296,875,460	269,482,440

### DETAILS OF WRITE-INS

2501. MISCELLANEOUS OTHER LIABILITIES.....	1,023,504	1,085,867
2502. ESCHEATABLE PROPERTY.....	15,078	57,325
2503. STATE PLAN LIABILITY.....	703	
2598. Summary of remaining write-ins for Line 25 from overflow page.....	0	0
2599. Totals (Lines 2501 thru 2503 plus 2598) (Line 25 above).....	1,039,285	1,143,192
2901. ....		
2902. ....		
2903. ....		
2998. Summary of remaining write-ins for Line 29 from overflow page.....	0	0
2999. Totals (Lines 2901 thru 2903 plus 2998) (Line 29 above).....	0	0
3201. ....		
3202. ....		
3203. ....		
3298. Summary of remaining write-ins for Line 32 from overflow page.....	0	0
3299. Totals (Lines 3201 thru 3203 plus 3298) (Line 32 above).....	0	0

**PROGRESSIVE ADVANCED INSURANCE COMPANY**  
**STATEMENT OF INCOME**

UNDERWRITING INCOME	1 Current Year	2 Prior Year
1. Premiums earned (Part 1, Line 35, Column 4).....	216,309,471	200,187,869
DEDUCTIONS		
2. Losses incurred (Part 2, Line 35, Column 7).....	137,089,322	121,240,468
3. Loss adjustment expenses incurred (Part 3, Line 25, Column 1).....	23,458,584	22,329,026
4. Other underwriting expenses incurred (Part 3, Line 25, Column 2).....	46,546,520	46,180,343
5. Aggregate write-ins for underwriting deductions.....	0	2
6. Total underwriting deductions (Lines 2 through 5).....	207,094,426	189,749,839
7. Net income of protected cells.....		
8. Net underwriting gain (loss) (Line 1 minus Line 6 plus Line 7).....	9,215,045	10,438,030
INVESTMENT INCOME		
9. Net investment income earned (Exhibit of Net Investment Income, Line 17).....	1,602,502	1,746,107
10. Net realized capital gains (losses) less capital gains tax of \$.....78,914 (Exhibit of Capital Gains (Losses)).....	(51,415)	39,072
11. Net investment gain (loss) (Lines 9 + 10).....	1,551,087	1,785,179
OTHER INCOME		
12. Net gain (loss) from agents' or premium balances charged off (amount recovered \$.....472,418 amount charged off \$.....10,680,596).....	(10,208,178)	(9,073,579)
13. Finance and service charges not included in premiums.....	10,693,017	9,177,157
14. Aggregate write-ins for miscellaneous income.....	69,957	88,438
15. Total other income (Lines 12 through 14).....	554,796	192,016
16. Net income before dividends to policyholders, after capital gains tax and before all other federal and foreign income taxes (Lines 8 + 11 + 15).....	11,320,928	12,415,225
17. Dividends to policyholders.....		
18. Net income, after dividends to policyholders, after capital gains tax and before all other federal and foreign income taxes (Line 16 minus Line 17).....	11,320,928	12,415,225
19. Federal and foreign income taxes incurred.....	3,975,055	4,563,609
20. Net income (Line 18 minus Line 19) (to Line 22).....	7,345,873	7,851,616
CAPITAL AND SURPLUS ACCOUNT		
21. Surplus as regards policyholders, December 31 prior year (Page 4, Line 39, Column 2).....	105,036,117	93,612,772
22. Net income (from Line 20).....	7,345,873	7,851,616
23. Net transfers (to) from Protected Cell accounts.....		
24. Change in net unrealized capital gains or (losses) less capital gains tax of \$.....0.....		276,829
25. Change in net unrealized foreign exchange capital gain (loss).....		
26. Change in net deferred income tax.....	75,510	1,360,497
27. Change in nonadmitted assets (Exhibit of Nonadmitted Assets, Line 28, Column 3).....	404,934	(1,565,597)
28. Change in provision for reinsurance (Page 3, Line 16, Column 2 minus Column 1).....		
29. Change in surplus notes.....		
30. Surplus (contributed to) withdrawn from protected cells.....		
31. Cumulative effect of changes in accounting principles.....	558,350	
32. Capital changes:		
32.1 Paid in.....		
32.2 Transferred from surplus (Stock Dividend).....		
32.3 Transferred to surplus.....		
33. Surplus adjustments:		
33.1 Paid in.....	4,000,000	3,500,000
33.2 Transferred to capital (Stock Dividend).....		
33.3. Transferred from capital.....		
34. Net remittances from or (to) Home Office.....		
35. Dividends to stockholders.....		
36. Change in treasury stock (Page 3, Lines 36.1 and 36.2, Column 2 minus Column 1).....		
37. Aggregate write-ins for gains and losses in surplus.....	0	0
38. Change in surplus as regards policyholders for the year (Lines 22 through 37).....	12,384,667	11,423,345
39. Surplus as regards policyholders, December 31 current year (Line 21 plus Line 38) (Page 3, Line 37).....	117,420,784	105,036,117
DETAILS OF WRITE-INS		
0501. 2008 NORTH CAROLINA PRIVATE PASSENGER AUTO ESCROW (REFUNDS).....		2
0502. ....		
0503. ....		
0598. Summary of remaining write-ins for Line 5 from overflow page.....	0	0
0599. Totals (Lines 0501 thru 0503 plus 0598) (Line 5 above).....	0	2
1401. INTEREST INCOME ON INTERCOMPANY BALANCES.....	42,788	23,641
1402. MISCELLANEOUS OTHER INCOME.....	28,620	64,797
1403. LOSS ON RECEIVABLE FACTORING.....	(1,451)	
1498. Summary of remaining write-ins for Line 14 from overflow page.....	0	0
1499. Totals (Lines 1401 thru 1403 plus 1498) (Line 14 above).....	69,957	88,438
3701. ....		
3702. ....		
3703. ....		
3798. Summary of remaining write-ins for Line 37 from overflow page.....	0	0
3799. Totals (Lines 3701 thru 3703 plus 3798) (Line 37 above).....	0	0

## CASH FLOW

	1 Current Year	2 Prior Year
<b>CASH FROM OPERATIONS</b>		
1. Premiums collected net of reinsurance.....	206,160,141	192,742,772
2. Net investment income.....	2,616,871	3,064,997
3. Miscellaneous income.....	912,073	514,530
4. Total (Lines 1 through 3).....	209,689,085	196,322,299
5. Benefit and loss related payments.....	132,643,381	121,466,705
6. Net transfers to Separate Accounts, Segregated Accounts and Protected Cell Accounts.....		
7. Commissions, expenses paid and aggregate write-ins for deductions.....	69,086,113	67,871,645
8. Dividends paid to policyholders.....		
9. Federal and foreign income taxes paid (recovered) net of \$.....241,623 tax on capital gains (losses).....	4,677,362	4,895,220
10. Total (Lines 5 through 9).....	206,406,856	194,233,570
11. Net cash from operations (Line 4 minus Line 10).....	3,282,229	2,088,729
<b>CASH FROM INVESTMENTS</b>		
12. Proceeds from investments sold, matured or repaid:		
12.1 Bonds.....	27,641,516	110,411,758
12.2 Stocks.....		
12.3 Mortgage loans.....		
12.4 Real estate.....		
12.5 Other invested assets.....		
12.6 Net gains or (losses) on cash, cash equivalents and short-term investments.....		
12.7 Miscellaneous proceeds.....		
12.8 Total investment proceeds (Lines 12.1 to 12.7).....	27,641,516	110,411,758
13. Cost of investments acquired (long-term only):		
13.1 Bonds.....	38,854,366	114,270,515
13.2 Stocks.....		
13.3 Mortgage loans.....		
13.4 Real estate.....		
13.5 Other invested assets.....		
13.6 Miscellaneous applications.....		
13.7 Total investments acquired (Lines 13.1 to 13.6).....	38,854,366	114,270,515
14. Net increase (decrease) in contract loans and premium notes.....		
15. Net cash from investments (Line 12.8 minus Lines 13.7 minus Line 14).....	(11,212,850)	(3,858,757)
<b>CASH FROM FINANCING AND MISCELLANEOUS SOURCES</b>		
16. Cash provided (applied):		
16.1 Surplus notes, capital notes.....		
16.2 Capital and paid in surplus, less treasury stock.....	4,000,000	3,500,000
16.3 Borrowed funds.....		
16.4 Net deposits on deposit-type contracts and other insurance liabilities.....		
16.5 Dividends to stockholders.....		
16.6 Other cash provided (applied).....	3,930,621	(2,529,970)
17. Net cash from financing and miscellaneous sources (Lines 16.1 to 16.4 minus Line 16.5 plus Line 16.6).....	7,930,621	970,030
<b>RECONCILIATION OF CASH, CASH EQUIVALENTS AND SHORT-TERM INVESTMENTS</b>		
18. Net change in cash, cash equivalents and short-term investments (Line 11 plus Line 15 plus Line 17).....	0	(799,998)
19. Cash, cash equivalents and short-term investments:		
19.1 Beginning of year.....	0	799,998
19.2 End of year (Line 18 plus Line 19.1).....	0	0

Note: Supplemental disclosures of cash flow information for non-cash transactions:

20.0001 .....		
---------------	--	--

**PROGRESSIVE ADVANCED INSURANCE COMPANY  
UNDERWRITING AND INVESTMENT EXHIBIT**

**PART 1 - PREMIUMS EARNED**

Line of Business		1 Net Premiums Written per Column 6, Part 1B	2 Unearned Premiums December 31 Prior Year- per Col. 3, Last Year's Part 1	3 Unearned Premiums December 31 Current Year- per Col. 5, Part 1A	4 Premiums Earned During Year (Cols. 1 + 2 - 3)
1.	Fire.....				0
2.	Allied lines.....				0
3.	Farmowners multiple peril.....				0
4.	Homeowners multiple peril.....	141,589	67,930	72,264	137,255
5.	Commercial multiple peril.....				0
6.	Mortgage guaranty.....				0
8.	Ocean marine.....				0
9.	Inland marine.....	2,279,296	973,230	1,074,032	2,178,494
10.	Financial guaranty.....				0
11.1	Medical professional liability - occurrence.....				0
11.2	Medical professional liability - claims-made.....				0
12.	Earthquake.....				0
13.	Group accident and health.....				0
14.	Credit accident and health (group and individual).....				0
15.	Other accident and health.....				0
16.	Workers' compensation.....				0
17.1	Other liability - occurrence.....	892,703	405,286	421,491	876,497
17.2	Other liability - claims-made.....	10,000	877	929	9,948
17.3	Excess workers' compensation.....				0
18.1	Products liability - occurrence.....				0
18.2	Products liability - claims-made.....				0
19.1, 19.2	Private passenger auto liability.....	143,258,331	34,414,864	36,381,189	141,292,007
19.3, 19.4	Commercial auto liability.....	1,118,989	456,850	507,452	1,068,387
21.	Auto physical damage.....	71,485,167	17,894,438	18,632,721	70,746,884
22.	Aircraft (all perils).....				0
23.	Fidelity.....				0
24.	Surety.....				0
26.	Burglary and theft.....				0
27.	Boiler and machinery.....				0
28.	Credit.....				0
29.	International.....				0
30.	Warranty.....				0
31.	Reinsurance - nonproportional assumed property.....				0
32.	Reinsurance - nonproportional assumed liability.....				0
33.	Reinsurance - nonproportional assumed financial lines.....				0
34.	Aggregate write-ins for other lines of business.....	0	0	0	0
35.	<b>TOTALS.....</b>	<b>219,186,074</b>	<b>54,213,475</b>	<b>57,090,077</b>	<b>216,309,471</b>

**DETAILS OF WRITE-INS**

3401.	.....				0
3402.	.....				0
3403.	.....				0
3498.	Summary of remaining write-ins for Line 34 from overflow page.....	0	0	0	0
3499.	Totals (Lines 3401 thru 3403 plus 3498) (Line 34 above).....	0	0	0	0

**PROGRESSIVE ADVANCED INSURANCE COMPANY  
UNDERWRITING AND INVESTMENT EXHIBIT**

**PART 1A - RECAPITULATION OF ALL PREMIUMS**

Line of Business		1 Amount Unearned (Running One Year or Less from Date of Policy) (a)	2 Amount Unearned (Running More Than One Year from Date of Policy) (a)	3 Earned But Unbilled Premium	4 Reserve for Rate Credits and Retrospective Adjustments Based on Experience	5 Total Reserve for Unearned Premiums Cols. 1 + 2 + 3 + 4
1.	Fire.....					0
2.	Allied lines.....					0
3.	Farmowners multiple peril.....					0
4.	Homeowners multiple peril.....	72,264				72,264
5.	Commercial multiple peril.....					0
6.	Mortgage guaranty.....					0
8.	Ocean marine.....					0
9.	Inland marine.....	1,074,032				1,074,032
10.	Financial guaranty.....					0
11.1	Medical professional liability - occurrence.....					0
11.2	Medical professional liability - claims-made.....					0
12.	Earthquake.....					0
13.	Group accident and health.....					0
14.	Credit accident and health (group and individual).....					0
15.	Other accident and health.....					0
16.	Workers' compensation.....					0
17.1	Other liability - occurrence.....	421,491				421,491
17.2	Other liability - claims-made.....	929				929
17.3	Excess workers' compensation.....					0
18.1	Products liability - occurrence.....					0
18.2	Products liability - claims-made.....					0
19.1, 19.2	Private passenger auto liability.....	36,381,189				36,381,189
19.3, 19.4	Commercial auto liability.....	507,452				507,452
21.	Auto physical damage.....	18,632,721				18,632,721
22.	Aircraft (all perils).....					0
23.	Fidelity.....					0
24.	Surety.....					0
26.	Burglary and theft.....					0
27.	Boiler and machinery.....					0
28.	Credit.....					0
29.	International.....					0
30.	Warranty.....					0
31.	Reinsurance - nonproportional assumed property.....					0
32.	Reinsurance - nonproportional assumed liability.....					0
33.	Reinsurance - nonproportional assumed financial lines.....					0
34.	Aggregate write-ins for other lines of business.....	0	0	0	0	0
35.	TOTALS.....	57,090,077	0	0	0	57,090,077
36.	Accrued retrospective premiums based on experience.....					
37.	Earned but unbilled premiums.....					0
38.	Balance (sum of Lines 35 through 37).....					57,090,077

**DETAILS OF WRITE-INS**

3401.	.....					0
3402.	.....					0
3403.	.....					0
3498.	Summary of remaining write-ins for Line 34 from overflow page.....	0	0	0	0	0
3499.	Totals (Lines 3401 thru 3403 plus 3498) (Line 34 above).....	0	0	0	0	0

(a) State here basis of computation used in each case: Pro Rata

**PROGRESSIVE ADVANCED INSURANCE COMPANY  
UNDERWRITING AND INVESTMENT EXHIBIT**

**PART 1B - PREMIUMS WRITTEN**

Line of Business	1 Direct Business (a)	Reinsurance Assumed		Reinsurance Ceded		6 Net Premiums Written (Cols. 1 + 2 + 3 - 4 - 5)
		2 From Affiliates	3 From Non-Affiliates	4 To Affiliates	5 To Non-Affiliates	
1. Fire.....						0
2. Allied lines.....						0
3. Farmowners multiple peril.....						0
4. Homeowners multiple peril.....		141,589				141,589
5. Commercial multiple peril.....						0
6. Mortgage guaranty.....						0
8. Ocean marine.....						0
9. Inland marine.....	9,055,200	2,279,296		9,055,200		2,279,296
10. Financial guaranty.....						0
11.1 Medical professional liability - occurrence.....						0
11.2 Medical professional liability - claims-made.....						0
12. Earthquake.....						0
13. Group accident and health.....						0
14. Credit accident and health (group and individual).....						0
15. Other accident and health.....						0
16. Workers' compensation.....						0
17.1 Other liability - occurrence.....	2,644,856	892,703		2,644,856		892,703
17.2 Other liability - claims-made.....		10,000				10,000
17.3 Excess workers' compensation.....						0
18.1 Products liability - occurrence.....						0
18.2 Products liability - claims-made.....						0
19.1, 19.2 Private passenger auto liability.....	464,334,407	143,258,331		464,334,407		143,258,331
19.3, 19.4 Commercial auto liability.....		1,118,989				1,118,989
21. Auto physical damage.....	243,717,912	71,485,167		243,717,912		71,485,167
22. Aircraft (all perils).....						0
23. Fidelity.....						0
24. Surety.....						0
26. Burglary and theft.....						0
27. Boiler and machinery.....						0
28. Credit.....						0
29. International.....						0
30. Warranty.....						0
31. Reinsurance - nonproportional assumed property.....	XXX					0
32. Reinsurance - nonproportional assumed liability.....	XXX					0
33. Reinsurance - nonproportional assumed financial lines.....	XXX					0
34. Aggregate write-ins for other lines of business.....	0	0	0	0	0	0
35. TOTALS.....	719,752,375	219,186,074	0	719,752,375	0	219,186,074

**DETAILS OF WRITE-INS**

3401. ....						0
3402. ....						0
3403. ....						0
3498. Summary of remaining write-ins for Line 34 from overflow page..	0	0	0	0	0	0
3499. Totals (Lines 3401 thru 3403 plus 3498) (Line 34 above).....	0	0	0	0	0	0

(a) Does the company's direct premiums written include premiums recorded on an installment basis? Yes [ ] No [ X ]

If yes: 1. The amount of such installment premiums \$.....0.

2. Amount at which such installment premiums would have been reported had they been recorded on an annualized basis \$.....0.

## UNDERWRITING AND INVESTMENT EXHIBIT

### PART 2 - LOSSES PAID AND INCURRED

Line of Business	Losses Paid Less Salvage				5 Net Losses Unpaid Current Year (Part 2A, Col. 8)	6 Net Losses Unpaid Prior Year	7 Losses Incurred Current Year (Cols. 4 + 5 - 6)	8 Percentage of Losses Incurred (Col. 7, Part 2) to Premiums Earned (Col. 4, Part 1)
	1 Direct Business	2 Reinsurance Assumed	3 Reinsurance Recovered	4 Net Payments (Cols. 1 + 2 - 3)				
1. Fire.....				.0			.0	
2. Allied lines.....				.0			.0	
3. Farmowners multiple peril.....				.0			.0	
4. Homeowners multiple peril.....		93,492		93,492	14,983	20,212	88,262	64.3
5. Commercial multiple peril.....				.0			.0	
6. Mortgage guaranty.....				.0			.0	
8. Ocean marine.....				.0			.0	
9. Inland marine.....	3,726,085	1,262,034	3,726,085	1,262,034	145,234	106,469	1,300,799	59.7
10. Financial guaranty.....				.0			.0	
11.1 Medical professional liability - occurrence.....				.0			.0	
11.2 Medical professional liability - claims-made.....				.0			.0	
12. Earthquake.....				.0			.0	
13. Group accident and health.....				.0			.0	
14. Credit accident and health (group and individual).....				.0			.0	
15. Other accident and health.....				.0			.0	
16. Workers' compensation.....				.0			.0	
17.1 Other liability - occurrence.....	623,178	269,403	623,178	269,403	241,089	286,407	224,085	25.6
17.2 Other liability - claims-made.....				.0	77,360	28,498	48,862	491.2
17.3 Excess workers' compensation.....				.0			.0	
18.1 Products liability - occurrence.....				.0			.0	
18.2 Products liability - claims-made.....				.0			.0	
19.1, 19.2 Private passenger auto liability.....	231,877,923	77,361,845	231,877,923	77,361,845	70,280,201	63,968,383	83,673,663	59.2
19.3, 19.4 Commercial auto liability.....		714,050		714,050	1,147,822	931,998	929,874	87.0
21. Auto physical damage.....	176,570,894	50,674,201	176,570,894	50,674,201	197,886	48,310	50,823,777	71.8
22. Aircraft (all perils).....				.0			.0	
23. Fidelity.....				.0			.0	
24. Surety.....				.0			.0	
26. Burglary and theft.....				.0			.0	
27. Boiler and machinery.....				.0			.0	
28. Credit.....				.0			.0	
29. International.....				.0			.0	
30. Warranty.....				.0			.0	
31. Reinsurance - nonproportional assumed property.....	XXX			.0			.0	
32. Reinsurance - nonproportional assumed liability.....	XXX			.0			.0	
33. Reinsurance - nonproportional assumed financial lines.....	XXX			.0			.0	
34. Aggregate write-ins for other lines of business.....	0	0	0	.0	.0	.0	.0	
35. TOTALS.....	412,798,080	130,375,025	412,798,080	130,375,025	72,104,573	65,390,277	137,089,322	63.4

#### DETAILS OF WRITE-INS

3401. ....				.0			.0	
3402. ....				.0			.0	
3403. ....				.0			.0	
3498. Summary of remaining write-ins for Line 34 from overflow page.....	0	0	0	.0	.0	.0	.0	XXX
3499. Totals (Lines 3401 thru 3403 plus 3498) (Line 34 above).....	0	0	0	.0	.0	.0	.0	

**UNDERWRITING AND INVESTMENT EXHIBIT**  
**PART 2A - UNPAID LOSSES AND LOSS ADJUSTMENT EXPENSES**

Line of Business	Reported Losses				Incurred But Not Reported			8 Net Losses Unpaid (Cols. 4 + 5 + 6 - 7)	9 Net Unpaid Loss Adjustment Expenses
	1 Direct	2 Reinsurance Assumed	3 Deduct Reinsurance Recoverable from Authorized and Unauthorized Companies	4 Net Losses Excluding Incurred but not Reported (Cols. 1 + 2 - 3)	5 Direct	6 Reinsurance Assumed	7 Reinsurance Ceded		
1. Fire.....				.0				.0	
2. Allied lines.....				.0				.0	
3. Farmowners multiple peril.....				.0				.0	
4. Homeowners multiple peril.....		8,637		8,637		6,346		14,983	3,064
5. Commercial multiple peril.....				.0				.0	
6. Mortgage guaranty.....				.0				.0	
8. Ocean marine.....				.0				.0	
9. Inland marine.....	149,240	82,258	149,240	82,258	254,366	62,976	254,366	145,234	24,263
10. Financial guaranty.....				.0				.0	
11.1 Medical professional liability - occurrence.....				.0				.0	
11.2 Medical professional liability - claims-made.....				.0				.0	
12. Earthquake.....				.0				.0	
13. Group accident and health.....				.0				(a) .0	
14. Credit accident and health (group and individual).....				.0				.0	
15. Other accident and health.....				.0				(a) .0	
16. Workers' compensation.....				.0				.0	
17.1 Other liability - occurrence.....	843,242	173,379	843,242	173,379	216,227	67,710	216,227	241,089	54,710
17.2 Other liability - claims-made.....				.0		77,360		77,360	10,058
17.3 Excess workers' compensation.....				.0				.0	
18.1 Products liability - occurrence.....				.0				.0	
18.2 Products liability - claims-made.....				.0				.0	
19.1, 19.2 Private passenger auto liability.....	159,887,092	53,194,730	159,887,092	53,194,730	50,830,177	17,085,471	50,830,177	70,280,201	14,319,953
19.3, 19.4 Commercial auto liability.....		992,632		992,632		155,189		1,147,822	185,385
21. Auto physical damage.....	9,799,575	2,734,732	9,799,575	2,734,732	(9,627,981)	(2,536,846)	(9,627,981)	197,886	428,394
22. Aircraft (all perils).....				.0				.0	
23. Fidelity.....				.0				.0	
24. Surety.....				.0				.0	
26. Burglary and theft.....				.0				.0	
27. Boiler and machinery.....				.0				.0	
28. Credit.....				.0				.0	
29. International.....				.0				.0	
30. Warranty.....				.0				.0	
31. Reinsurance - nonproportional assumed property.....	XXX			.0	XXX			.0	
32. Reinsurance - nonproportional assumed liability.....	XXX			.0	XXX			.0	
33. Reinsurance - nonproportional assumed financial lines.....	XXX			.0	XXX			.0	
34. Aggregate write-ins for other lines of business.....	0	0	0	0	0	0	0	0	0
35. TOTALS.....	170,679,149	57,186,367	170,679,149	57,186,367	41,672,789	14,918,206	41,672,789	72,104,573	15,025,827

**DETAILS OF WRITE-INS**

3401. ....				.0				.0	
3402. ....				.0				.0	
3403. ....				.0				.0	
3498. Summary of remaining write-ins for Line 34 from overflow page.....	0	0	0	0	0	0	0	0	0
3499. Totals (Lines 3401 thru 3403 plus 3498) (Line 34 above).....	0	0	0	0	0	0	0	0	0

(a) Including \$.....0 for present value of life indemnity claims.

**PROGRESSIVE ADVANCED INSURANCE COMPANY**  
**UNDERWRITING AND INVESTMENT EXHIBIT**

**PART 3 - EXPENSES**

	1	2	3	4
	Loss Adjustment Expenses	Other Underwriting Expenses	Investment Expenses	Total
1. Claim adjustment services:				
1.1 Direct.....	9,201,830			9,201,830
1.2 Reinsurance assumed.....	3,208,978			3,208,978
1.3 Reinsurance ceded.....	9,201,830			9,201,830
1.4 Net claim adjustment services (1.1 + 1.2 - 1.3).....	3,208,978	.0	.0	3,208,978
2. Commission and brokerage:				
2.1 Direct, excluding contingent.....		1,348,101		1,348,101
2.2 Reinsurance assumed, excluding contingent.....		321,529		321,529
2.3 Reinsurance ceded, excluding contingent.....		1,348,101		1,348,101
2.4 Contingent - direct.....		1,856		1,856
2.5 Contingent - reinsurance assumed.....		2,423		2,423
2.6 Contingent - reinsurance ceded.....		1,856		1,856
2.7 Policy and membership fees.....				.0
2.8 Net commission and brokerage (2.1 + 2.2 - 2.3 + 2.4 + 2.5 - 2.6 + 2.7).....	.0	323,952	.0	323,952
3. Allowances to manager and agents.....				.0
4. Advertising.....		16,144,924		16,144,924
5. Boards, bureaus and associations.....	64,847	86,266		151,113
6. Surveys and underwriting reports.....		1,939,548		1,939,548
7. Audit of assureds' records.....				.0
8. Salary and related items:				
8.1 Salaries.....	13,029,436	12,850,569	68,913	25,948,918
8.2 Payroll taxes.....	914,299	964,811	2,164	1,881,274
9. Employee relations and welfare.....	2,345,868	2,094,567	3,281	4,443,716
10. Insurance.....	15,341	57,281		72,622
11. Directors' fees.....				.0
12. Travel and travel items.....	781,499	274,593	193	1,056,284
13. Rent and rent items.....	1,104,889	1,887,880	2,642	2,995,411
14. Equipment.....	76,389	354,201		430,590
15. Cost or depreciation of EDP equipment and software.....	812,537	2,316,993	16	3,129,546
16. Printing and stationery.....	86,546	292,557	169	379,271
17. Postage, telephone and telegraph, exchange and express.....	820,947	1,915,019	538	2,736,505
18. Legal and auditing.....	90,813	279,511	12,336	382,660
19. Totals (Lines 3 to 18).....	20,143,411	41,458,720	90,251	61,692,382
20. Taxes, licenses and fees:				
20.1 State and local insurance taxes deducting guaranty association credits of \$.....301.....		3,564,467		3,564,467
20.2 Insurance department licenses and fees.....	19,921	228,386		248,307
20.3 Gross guaranty association assessments.....		7,954		7,954
20.4 All other (excluding federal and foreign income and real estate).....	6,646	771,613		778,258
20.5 Total taxes, licenses and fees (20.1 + 20.2 + 20.3 + 20.4).....	26,567	4,572,419	.0	4,598,986
21. Real estate expenses.....				.0
22. Real estate taxes.....				.0
23. Reimbursements by uninsured plans.....				.0
24. Aggregate write-ins for miscellaneous expenses.....	79,628	191,428	16,685	287,741
25. Total expenses incurred.....	23,458,584	46,546,520	106,936	(a) 70,112,040
26. Less unpaid expenses - current year.....	15,025,828	2,457,590	3,028	17,486,445
27. Add unpaid expenses - prior year.....	14,341,518	2,222,904	3,085	16,567,507
28. Amounts receivable relating to uninsured plans, prior year.....				.0
29. Amounts receivable relating to uninsured plans, current year.....				.0
30. TOTAL EXPENSES PAID (Lines 25 - 26 + 27 - 28 + 29).....	22,774,274	46,311,834	106,993	69,193,101

**DETAILS OF WRITE-INS**

2401. MISCELLANEOUS EXPENSES.....	79,628	191,428	16,685	287,741
2402. ....				.0
2403. ....				.0
2498. Summary of remaining write-ins for Line 24 from overflow page.....	.0	.0	.0	.0
2499. Totals (Lines 2401 thru 2403 plus 2498) (Line 24 above).....	79,628	191,428	16,685	287,741

(a) Includes management fees of \$.....61,980,124 to affiliates and \$.....0 to non-affiliates.

**EXHIBIT OF NET INVESTMENT INCOME**

	1 Collected During Year	2 Earned During Year
1. U.S. government bonds.....	(a).....1,043,122	.....1,087,772
1.1 Bonds exempt from U.S. tax.....	(a).....668,785	.....619,963
1.2 Other bonds (unaffiliated).....	(a).....	.....
1.3 Bonds of affiliates.....	(a).....	.....
2.1 Preferred stocks (unaffiliated).....	(b).....	.....
2.11 Preferred stocks of affiliates.....	(b).....	.....
2.2 Common stocks (unaffiliated).....	.....	.....
2.21 Common stocks of affiliates.....	.....	.....
3. Mortgage loans.....	(c).....	.....
4. Real estate.....	(d).....	.....
5. Contract loans.....	.....	.....
6. Cash, cash equivalents and short-term investments.....	(e).....1,704	.....1,704
7. Derivative instruments.....	(f).....	.....
8. Other invested assets.....	.....	.....
9. Aggregate write-ins for investment income.....	.....0	.....0
10. Total gross investment income.....	.....1,713,611	.....1,709,439
11. Investment expenses.....	.....	(g).....106,936
12. Investment taxes, licenses and fees, excluding federal income taxes.....	.....	(g).....
13. Interest expense.....	.....	(h).....
14. Depreciation on real estate and other invested assets.....	.....	(i).....0
15. Aggregate write-ins for deductions from investment income.....	.....	.....0
16. Total deductions (Lines 11 through 15).....	.....	.....106,936
17. Net investment income (Line 10 minus Line 16).....	.....	.....1,602,503

**DETAILS OF WRITE-INS**

0901. ....	.....	.....
0902. ....	.....	.....
0903. ....	.....	.....
0998. Summary of remaining write-ins for Line 9 from overflow page.....	.....0	.....0
0999. Totals (Lines 0901 thru 0903 plus 0998) (Line 9 above).....	.....0	.....0
1501. ....	.....	.....
1502. ....	.....	.....
1503. ....	.....	.....
1598. Summary of remaining write-ins for Line 15 from overflow page.....	.....	.....0
1599. Totals (Lines 1501 thru 1503 plus 1598) (Line 15 above).....	.....	.....0

- (a) Includes \$.....35,938 accrual of discount less \$.....1,046,191 amortization of premium and less \$.....143,417 paid for accrued interest on purchases.
- (b) Includes \$.....0 accrual of discount less \$.....0 amortization of premium and less \$.....0 paid for accrued dividends on purchases.
- (c) Includes \$.....0 accrual of discount less \$.....0 amortization of premium and less \$.....0 paid for accrued interest on purchases.
- (d) Includes \$.....0 for company's occupancy of its own buildings; and excludes \$.....0 interest on encumbrances.
- (e) Includes \$.....1,704 accrual of discount less \$.....0 amortization of premium and less \$.....0 paid for accrued interest on purchases.
- (f) Includes \$.....0 accrual of discount less \$.....0 amortization of premium.
- (g) Includes \$.....0 investment expenses and \$.....0 investment taxes, licenses and fees, excluding federal income taxes, attributable to Segregated and Separate Accounts.
- (h) Includes \$.....0 interest on surplus notes and \$.....0 interest on capital notes.
- (i) Includes \$.....0 depreciation on real estate and \$.....0 depreciation on other invested assets.

**EXHIBIT OF CAPITAL GAINS (LOSSES)**

	1 Realized Gain (Loss) on Sales or Maturity	2 Other Realized Adjustments	3 Total Realized Capital Gain (Loss) (Columns 1 + 2)	4 Change in Unrealized Capital Gain (Loss)	5 Change in Unrealized Foreign Exchange Capital Gain (Loss)
1. U.S. government bonds.....	.....27,499	.....	.....27,499	.....	.....
1.1 Bonds exempt from U.S. tax.....	.....	.....	.....0	.....	.....
1.2 Other bonds (unaffiliated).....	.....	.....	.....0	.....	.....
1.3 Bonds of affiliates.....	.....	.....	.....0	.....	.....
2.1 Preferred stocks (unaffiliated).....	.....	.....	.....0	.....	.....
2.11 Preferred stocks of affiliates.....	.....	.....	.....0	.....	.....
2.2 Common stocks (unaffiliated).....	.....	.....	.....0	.....	.....
2.21 Common stocks of affiliates.....	.....	.....	.....0	.....	.....
3. Mortgage loans.....	.....	.....	.....0	.....	.....
4. Real estate.....	.....	.....	.....0	.....	.....
5. Contract loans.....	.....	.....	.....0	.....	.....
6. Cash, cash equivalents and short-term investments.....	.....	.....	.....0	.....	.....
7. Derivative instruments.....	.....	.....	.....0	.....	.....
8. Other invested assets.....	.....	.....	.....0	.....	.....
9. Aggregate write-ins for capital gains (losses).....	.....0	.....0	.....0	.....0	.....0
10. Total capital gains (losses).....	.....27,499	.....0	.....27,499	.....0	.....0

**DETAILS OF WRITE-INS**

0901. ....	.....	.....	.....0	.....	.....
0902. ....	.....	.....	.....0	.....	.....
0903. ....	.....	.....	.....0	.....	.....
0998. Summary of remaining write-ins for Line 9 from overflow page.....	.....0	.....0	.....0	.....0	.....0
0999. Totals (Lines 0901 thru 0903 plus 0998) (Line 9 above).....	.....0	.....0	.....0	.....0	.....0

**EXHIBIT OF NONADMITTED ASSETS**

	1 Current Year Total Nonadmitted Assets	2 Prior Year Total Nonadmitted Assets	3 Change in Total Nonadmitted Assets (Col. 2 - Col. 1)
1. Bonds (Schedule D).....			.0
2. Stocks (Schedule D):			
2.1 Preferred stocks.....			.0
2.2 Common stocks.....			.0
3. Mortgage loans on real estate (Schedule B):			
3.1 First liens.....			.0
3.2 Other than first liens.....			.0
4. Real estate (Schedule A):			
4.1 Properties occupied by the company.....			.0
4.2 Properties held for the production of income.....			.0
4.3 Properties held for sale.....			.0
5. Cash (Schedule E-Part 1), cash equivalents (Schedule E-Part 2) and short-term investments (Schedule DA).....			.0
6. Contract loans.....			.0
7. Derivatives (Schedule DB).....			.0
8. Other invested assets (Schedule BA).....			.0
9. Receivables for securities.....			.0
10. Securities lending reinvested collateral assets (Schedule DL).....			.0
11. Aggregate write-ins for invested assets.....	.0	.0	.0
12. Subtotals, cash and invested assets (Lines 1 to 11).....	.0	.0	.0
13. Title plants (for Title insurers only).....			.0
14. Investment income due and accrued.....			.0
15. Premiums and considerations:			
15.1 Uncollected premiums and agents' balances in the course of collection.....	5,886,399	5,194,129	(692,270)
15.2 Deferred premiums, agents' balances and installments booked but deferred and not yet due.....			.0
15.3 Accrued retrospective premiums.....			.0
16. Reinsurance:			
16.1 Amounts recoverable from reinsurers.....			.0
16.2 Funds held by or deposited with reinsured companies.....			.0
16.3 Other amounts receivable under reinsurance contracts.....			.0
17. Amounts receivable relating to uninsured plans.....			.0
18.1 Current federal and foreign income tax recoverable and interest thereon.....			.0
18.2 Net deferred tax asset.....	813,895	1,335,131	521,236
19. Guaranty funds receivable or on deposit.....			.0
20. Electronic data processing equipment and software.....			.0
21. Furniture and equipment, including health care delivery assets.....			.0
22. Net adjustment in assets and liabilities due to foreign exchange rates.....			.0
23. Receivables from parent, subsidiaries and affiliates.....			.0
24. Health care and other amounts receivable.....			.0
25. Aggregate write-ins for other than invested assets.....	99,221	1,233,539	1,134,318
26. Total assets excluding Separate Accounts, Segregated Accounts and Protected Cell Accounts (Lines 12 through 25).....	6,799,515	7,762,799	963,284
27. From Separate Accounts, Segregated Accounts and Protected Cell Accounts.....			.0
28. TOTALS (Lines 26 and 27).....	6,799,515	7,762,799	963,284

**DETAILS OF WRITE-INS**

1101.....			.0
1102.....			.0
1103.....			.0
1198. Summary of remaining write-ins for Line 11 from overflow page.....	.0	.0	.0
1199. Totals (Lines 1101 thru 1103 plus 1198) (Line 11 above).....	.0	.0	.0
2501. MISCELLANEOUS OTHER ASSETS.....	87,353	1,221,851	1,134,498
2502. PREPAID EXPENSES.....	11,868	11,688	(180)
2503.....			.0
2598. Summary of remaining write-ins for Line 25 from overflow page.....	.0	.0	.0
2599. Totals (Lines 2501 thru 2503 plus 2598) (Line 25 above).....	99,221	1,233,539	1,134,318

## NOTES TO FINANCIAL STATEMENTS

<u>Note #</u>	<u>Description</u>	<u>Page #</u>
1	Summary of Significant Accounting Policies	14.1
2	Accounting Changes and Corrections of Errors	14.2
3	Business Combinations and Goodwill	14.2
4	Discontinued Operations	14.2
5	Investments	14.2
6	Joint Ventures, Partnerships and Limited Liability Companies	14.3
7	Investment Income	14.3
8	Derivative Instruments	14.3
9	Income Taxes	14.3
10	Information Concerning Parent, Subsidiaries, Affiliates and Other Related Parties	14.6
11	Debt	14.6
12	Retirement Plans, Deferred Compensation, Postemployment Benefits and Compensated Absences and Other Postretirement Benefit Plans	14.6
13	Capital and Surplus, Dividend Restrictions and Quasi-Reorganizations	14.6
14	Contingencies	14.7
15	Leases	14.8
16	Information about Financial Instruments with Off-Balance Sheet Risk and with Concentrations of Credit Risk	14.8
17	Sale, Transfer, and Servicing of Financial Assets and Extinguishments of Liabilities	14.8
18	Gain or Loss from Uninsured Plans and the Uninsured Portion of Partially Insured Plans	14.8
19	Direct Premiums Written / Produced by Managing General Agents / Third Party Administrators	14.8
20	Fair Value Measurements	14.8
21	Other Items	14.9
22	Events Subsequent	14.10
23	Reinsurance	14.10
24	Retrospectively Rated Contracts and Contracts Subject to Redetermination	14.10
25	Changes in Incurred Losses and Loss Adjustment Expenses	14.10
26	Intercompany Pooling Arrangements	14.11
27	Structured Settlements	14.11
28	Health Care Receivables	14.11
29	Participating Accident and Health Policies	14.11
30	Premium Deficiency Reserves	14.11
31	High Deductibles	14.11
32	Discounting of Liabilities for Unpaid Losses and Unpaid Loss Adjustment Expenses	14.11
33	Asbestos and Environmental Reserves	14.11
34	Subscriber Savings Accounts	14.11
35	Multiple Peril Crop Insurance	14.11
36	Financial Guaranty Insurance	14.11

## NOTES TO FINANCIAL STATEMENTS

## 1. Summary of Significant Accounting Policies

## A. Accounting Practices

The accompanying statutory-basis financial statements of Progressive Advanced Insurance Company (the "Company") were prepared on the basis of accounting practices prescribed or permitted by the Ohio Department of Insurance ("DOI").

The Ohio DOI requires insurance companies domiciled in the state of Ohio to prepare their statutory-basis financial statements in accordance with the National Association of Insurance Commissioners' ("NAIC") *Accounting Practices and Procedures Manual* subject to any deviations prescribed or permitted by the Ohio DOI. No deviations from NAIC statutory accounting practices ("NAIC SAP") were used in preparing these statutory-basis financial statements as illustrated in the table below:

Description	State of Domicile	2012	2011
<b>Net income</b>			
(1) Net income, state basis	OH	\$ 7,345,873	\$ 7,851,616
(2) Effect of state prescribed practices			
(3) Effect of state permitted practices			
(4) Net income, NAIC SAP basis (1-2-3=4)	OH	\$ 7,345,873	\$ 7,851,616
<b>Surplus</b>			
(5) Policyholders' surplus, state basis	OH	\$ 117,420,784	\$ 105,036,117
(6) Effect of state prescribed practices			
(7) Effect of state permitted practices			
(8) Policyholders' surplus, NAIC SAP basis(5-6-7=8)	OH	\$ 117,420,784	\$ 105,036,117

## B. Use of Estimates

The Company is required to make estimates and assumptions when preparing its financial statements and accompanying notes in conformity with NAIC SAP. Actual results may differ from those estimates. Material estimates that are susceptible to significant changes in the near term include the loss and loss adjustment expense ("LAE") reserves.

## C. Accounting Policies

Insurance premiums written are being earned into income on a pro-rata basis over the period of risk based on a daily earnings convention. Unearned premiums are established to cover the unexpired portion of premiums written. The Company offers a variety of payment plans to meet individual customer needs. Generally, insurance premiums are collected in advance of providing risk coverage, minimizing the Company's exposure to credit risk.

Acquisition costs, such as agents' commissions, premium taxes, and other policy initiation costs, are charged to operations as incurred. Advertising costs are expensed as incurred.

Certain assets designated as "nonadmitted assets", in accordance with Statement of Statutory Accounting Principles ("SSAP") No. 4, Assets and Nonadmitted Assets, are reported on page 13, Exhibit of Nonadmitted Assets. The change in nonadmitted assets is charged directly against surplus as regards policyholders on page 4, Statement of Income, capital and surplus section.

In addition, the Company uses the following accounting policies:

## Investments

- Cash and cash equivalents include bank accounts and certificates of deposit as well as short-term investments with original maturities of three months or less that are reported at amortized cost which approximates market value.
- Short-term investments include securities acquired within one year of maturity except for those with original maturities of three months or less (see cash and cash equivalents above) and are reported at amortized cost which approximates market value.
- Investment grade bond valuations are based on NAIC designations or NAIC Credit Rating Provider ("CRP") designations from the Acceptable Rating Organization ("ARO") list and are reported at amortized cost using the scientific method which closely approximates the effective interest method. Non-investment grade bond valuations are also based on NAIC designations or NAIC CRP-ARO designations and are reported at the lower of amortized cost or fair market value. Loan-backed and structured securities follow the guidance prescribed by SSAP No. 43R, Loan-backed and Structured Securities ("SSAP No. 43R"), for the determination of the bond valuation and reporting designation. The difference between the original cost and redemption value of these securities is recognized over the lives of the respective issues and included in net investment gain.
- Common stocks, other than investments in stocks of subsidiaries and affiliates, are reported at fair market values based on active market closing quotations from a regulated exchange. Changes in the fair market values of these securities are reflected directly as unrealized gains or losses in statutory surplus, net of deferred income taxes.
- Non-redeemable preferred stocks are reported at fair market values. Changes in the fair market values of these securities are reflected directly as unrealized gains or losses in statutory surplus, net of deferred income taxes. Investment grade redeemable preferred stocks are reported at amortized cost, while non-investment grade redeemable preferred stocks are reported at the lower of amortized cost or fair market value. The difference between the original cost and redemption value of the redeemable preferred securities is recognized using the scientific method, which closely approximates the effective interest method, over the lives of the respective issues and included in net investment gain.
- The fair market values reported are derived from independent and observable market input evaluations provided by reputable pricing services, independent broker/dealer bid lists, independent broker/dealer quotations, independent broker/dealer pricing services, or active market closing quotations from a regulated exchange. In very rare cases, if none of the aforementioned primary sources are available, matrix pricing using the reporting entity's own market based assumptions may be utilized. The approved methods for computation of fair market value are prescribed in Part Five of the Securities Valuation Office Purposes and Procedures Manual.
- The Company has no investments in mortgage loans.
- Loan-backed and structured securities are accounted for as prescribed by SSAP No. 43R. These securities are generally stated at amortized cost as determined by the estimated value of future cash flows. Prepayment assumptions for loan-backed and structured debt securities are obtained from available market data, broker/dealers, and/or internal estimates, and are consistent with current interest rate and economic trends.
- The Company has no investments in joint ventures, partnerships, or limited liability companies.
- The Company has no investments in derivatives.

## NOTES TO FINANCIAL STATEMENTS

- The Company may enter into repurchase agreements in which it borrows cash by providing certain underlying securities as collateral for the arrangement. The cash borrowed is invested in cash equivalents and an offsetting liability is established. The cash equivalent investment maturities and the term of the borrowing arrangement on the collateralized securities match, eliminating duration risk exposure to the Company. The Company did not have any open repurchase agreements at December 31, 2012 and December 31, 2011.
- Realized gains and losses on sales of securities are computed based on the first-in, first-out method.
- The Company's management routinely monitors individual securities in its investment portfolio for pricing changes that might indicate potential impairments and performs detailed reviews of securities with unrealized losses based on predetermined guidelines to determine whether a decline in the value of a security is other-than-temporary. A review for other-than-temporary impairment ("OTTI") requires making certain judgments regarding the materiality of the decline, its effect on the financial statements, the probability, extent, and timing of a valuation recovery, and the Company's ability and intent to hold the security. The scope of this review is broad and requires a forward-looking assessment of the fundamental characteristics of a security, as well as the market-related prospects of the issuer and its industry.

Management assesses valuation declines to determine the extent to which such changes are attributable to (i) fundamental factors specific to the issuer, such as financial conditions, business prospects or other factors, or (ii) market-related factors such as interest rates or equity market declines (i.e., negative returns at either a sector index level or the broader market level), or (iii) credit-related losses where the present value of cash flows expected to be collected are lower than the amortized cost basis of the security (includes only those securities covered under SSAP No. 43R). This evaluation reflects management's assessment of current conditions, as well as predictions of uncertain future events that may have a material effect on the financial statements related to security valuation.

When persuasive evidence exists that causes management to conclude that a decline in fair value is other-than-temporary, the book value of such security is written down and recognized as a realized loss. All other unrealized gains or losses are reflected in statutory surplus.

## Loss and Loss Adjustment Expense Reserves

- Loss reserves represent the estimated liability on claims reported to the Company, plus reserves for losses incurred but not yet reported ("IBNR"). These estimates are reported net of amounts recoverable from salvage and subrogation. LAE reserves represent the estimated expenses required to settle reported claims and IBNR losses. Such loss and LAE reserves could be susceptible to significant change in the near term. The Company conducts extensive reviews each month on portions of its business to help ensure that the Company is meeting its objective of always having reserves that are adequate with minimal variation. Results would differ if different assumptions were made (see Note 25).

## Capitalization of Assets

- Prepaid assets above a \$100,000 threshold are capitalized. Under certain circumstances, the Company may decide to establish a prepaid expense for amounts less than the threshold. Prepaid assets are nonadmitted.

## 2. Accounting Changes and Corrections of Errors

## A. Material Changes in Accounting Principles

Accounting changes adopted to conform to the provisions of the NAIC statutory accounting practices are reported as changes in accounting principle. Effective January 1, 2012, the Company adopted SSAP No. 101, Income Taxes. SSAP No. 101 reflects a revision to the accounting principles regarding deferred tax asset admissibility calculations (see Note 9). In applying the provisions of SSAP No. 101, the Company was able to recognize additional admitted deferred tax assets. As a result, the Company recorded adjustments to the opening balances as of January 1, 2012 as detailed below:

Description	Amount
Assets at December 31, 2011	\$ 269,482,440
Impact on net deferred tax asset	558,350
Assets at January 1, 2012	\$ 270,040,790
Surplus as regards policyholders at December 31, 2011	\$ 105,036,117
Decrease in non-admitted assets	558,350
Surplus as regards policyholders at January 1, 2012	\$ 105,594,467

## 3. Business Combinations and Goodwill

Not applicable

## 4. Discontinued Operations

Not applicable

## 5. Investments

## A. Mortgage Loans, Including Mezzanine Real Estate Loans

Not applicable

## B. Troubled Debt Restructuring for Creditors

Not applicable

## C. Reverse Mortgages

Not applicable

## D. Loan-Backed Securities

The Company does not own any loan-backed or structured debt securities.

## NOTES TO FINANCIAL STATEMENTS

- E. Repurchase Agreements  
Not applicable (see Note 1C Investments)
- F. Real Estate  
Not applicable
- G. Low Income Housing Tax Credits  
Not applicable
6. Joint Ventures, Partnerships and Limited Liability Companies  
Not applicable
7. Investment Income
- A. Accrued Investment Income  
The Company nonadmits investment income due and accrued if the amounts are greater than 90 days past due.
- B. Amounts Nonadmitted  
Not applicable
8. Derivative Instruments  
Not applicable
9. Income Taxes
- A. Components of the net deferred tax asset (liability) ("DTA"/"DTL")

1. The components of the net deferred tax asset/(liability) at December 31 are as follows:

Description	December 31, 2012			December 31, 2011			Change		
	(1) Ordinary Income	(2) Capital gain (loss)	(3) (Col 1+2) Total	(4) Ordinary Income	(5) Capital gain (loss)	(6) (Col 4+5) Total	(7) (Col 1-4) Ordinary Income	(8) (Col 2-5) Capital gain (loss)	(9) (Col 7+8) Total
(a) Gross deferred tax assets	\$ 8,583,485	\$ 1,155,715	\$ 9,739,200	\$ 8,574,801	\$ 1,423,191	\$ 9,997,992	\$ 8,684	\$ (267,476)	\$ (258,792)
(b) Statutory valuation allowance adjustment	-	-	-	-	-	-	-	-	-
(c) Adjusted gross deferred tax assets (1a-1b)	\$ 8,583,485	\$ 1,155,715	\$ 9,739,200	\$ 8,574,801	\$ 1,423,191	\$ 9,997,992	\$ 8,684	\$ (267,476)	\$ (258,792)
(d) Deferred tax assets nonadmitted	-	813,895	813,895	558,350	776,781	1,335,131	(558,350)	37,114	(521,236)
(e) Subtotal (net deferred tax asset) (1c-1d)	\$ 8,583,485	\$ 341,820	\$ 8,925,305	\$ 8,016,451	\$ 646,410	\$ 8,662,861	\$ 567,034	\$ (304,590)	\$ 262,444
(f) Deferred tax liabilities	126,823	339,815	466,638	154,530	646,410	800,940	(27,707)	(306,595)	(334,302)
(g) Net admitted deferred tax assets (net deferred tax liability) (1e-1f)	\$ 8,456,662	\$ 2,005	\$ 8,458,667	\$ 7,861,921	\$ -	\$ 7,861,921	\$ 594,741	\$ 2,005	\$ 596,746

2. The admission calculation components of the DTA in accordance with SSAP No. 101, Income Taxes, are as follows:

Description	December 31, 2012			December 31, 2011			Change		
	(1) Ordinary Income	(2) Capital gain (loss)	(3) (Col 1+2) Total	(4) Ordinary Income	(5) Capital gain (loss)	(6) (Col 4+5) Total	(7) (Col 1-4) Ordinary Income	(8) (Col 2-5) Capital gain (loss)	(9) (Col 7+8) Total
(a) Federal income taxes paid in prior years recoverable through loss carrybacks	\$ 8,295,295	\$ 2,005	\$ 8,297,300	\$ 7,861,921	\$ -	\$ 7,861,921	\$ 433,374	\$ 2,005	\$ 435,379
(b) Adjusted gross deferred tax assets expected to be realized (excluding the amount of deferred tax assets from 2(a) above) after application of the threshold limitation. (The lesser of 2(b)1 and 2(b)2 below)	170,114	-	170,114	-	-	-	170,114	-	170,114
1. Adjusted gross deferred tax assets expected to be realized following the balance sheet date	170,114	-	170,114	-	-	-	170,114	-	170,114
2. Adjusted gross deferred tax assets allowed per limitation threshold			16,344,318			9,196,817			7,147,501
(c) Adjusted gross deferred tax assets(excluding the amount of deferred tax assets from 2(a) and 2(b) above) offset by gross deferred tax liabilities	118,076	339,815	457,891	154,530	646,410	800,940	(36,454)	(306,595)	(343,049)
(d) Deferred tax assets admitted as result of application of SSAP No. 101.									
Total (2(a)+2(b)+2(c))	\$ 8,583,485	\$ 341,820	\$ 8,925,305	\$ 8,016,451	\$ 646,410	\$ 8,662,861	\$ 567,034	\$ (304,590)	\$ 262,444

**NOTES TO FINANCIAL STATEMENTS**

3. Recovery period and threshold limitation information is as follows:

Description	2012	2011
(a) Ratio percentage used to determine recovery period and threshold limitation amount	1420%	n/a
(b) Amount of adjusted capital and surplus used to determine recovery period and threshold limitation in 2(b)2 above	\$ 108,962,117	n/a

4. The impact of tax planning strategies is as follows:

Description	December 31, 2012			December 31, 2011			Change		
	(1) Ordinary Percent	(2) Capital Percent	(3) (Col 1+2) Total	(4) Ordinary Percent	(5) Capital Percent	(6) (Col 4+5) Total	(7) (Col 1-4) Ordinary Percent	(8) (Col 2-5) Capital Percent	(9) (Col 7+8) Total
(a) Adjusted gross DTAs (% of total adjusted gross DTAs)	0%	70%	70%	0%	0%	0%	0%	70%	70%
(b) Net admitted adjusted gross DTAs (% of total net admitted adjusted gross DTAs)	0%	0%	0%	0%	0%	0%	0%	0%	0%
(c) Does the Company's tax planning strategies include the use of reinsurance? Yes <input type="checkbox"/> No <input checked="" type="checkbox"/>									

- B. Regarding deferred tax liabilities that are not recognized:

Not applicable

- C. Current and deferred income taxes consist of the following major components:

1. Current Income Tax:

Description	(1) December 31, 2012	(2) December 31, 2011	(3) (Col 1-2) Change
(a) Federal	\$ 3,975,055	\$ 4,563,609	\$ (588,554)
(b) Foreign	-	-	-
(c) Subtotal	\$ 3,975,055	\$ 4,563,609	\$ (588,554)
(d) Federal income tax on net capital gains	78,914	961,391	(882,477)
(e) Utilization of capital loss carry-forwards	-	-	-
(f) Other	-	-	-
(g) Federal and foreign income taxes incurred	\$ 4,053,969	\$ 5,525,000	\$ (1,471,031)

2. Deferred Tax Assets:

Description	(1) December 31, 2012	(2) December 31, 2011	(3) (Col 1-2) Change
(a) Ordinary			
(1) Discounting of unpaid losses	\$ 1,435,655	\$ 1,579,175	\$ (143,520)
(2) Unearned premium reserve	4,026,337	3,822,556	203,781
(3) Policyholder reserves	-	-	-
(4) Investments	-	-	-
(5) Deferred acquisition costs	-	-	-
(6) Policyholder dividends accrual	-	-	-
(7) Fixed assets	788	4,266	(3,478)
(8) Compensation and benefits accrual	39,803	54,413	(14,610)
(9) Pension accrual	-	-	-
(10) Receivables - nonadmitted	2,060,240	1,817,945	242,295
(11) Net operating loss carry-forward	-	-	-
(12) Tax credit carry-forward	-	-	-
bad debt reserve	985,935	860,888	125,047
(14) Other (including items <5% of total ordinary tax assets)	34,727	435,558	(400,831)
(99) Subtotal	\$ 8,583,485	\$ 8,574,801	\$ 8,684
(b) Statutory valuation allowance adjustment	-	-	-
(c) Nonadmitted	-	558,350	(558,350)
(d) Admitted ordinary deferred tax assets (2a99-2b-2c)	\$ 8,583,485	\$ 8,016,451	\$ 567,034
(e) Capital			
(1) Investments	1,155,715	1,423,191	(267,476)
(2) Net capital loss carry-forward	-	-	-
(3) Real estate	-	-	-
(4) Other (including items <5% of total capital tax assets)	-	-	-
(99) Subtotal	\$ 1,155,715	\$ 1,423,191	\$ (267,476)
(f) Statutory valuation allowance adjustment	-	-	-
(g) Nonadmitted	813,895	776,781	37,114
(h) Admitted capital deferred tax assets (2e99-2f-2g)	\$ 341,820	\$ 646,410	\$ (304,590)
(i) Admitted deferred tax assets (2d+2h)	\$ 8,925,305	\$ 8,662,861	\$ 262,444

**NOTES TO FINANCIAL STATEMENTS**

## 3. Deferred Tax Liabilities:

Description	(1) December 31, 2012	(2) December 31, 2011	(3) (Col 1-2) Change
(a) Ordinary			
(1) Investments	\$ -	\$ -	\$ -
(2) Fixed Assets	22,854	45,506	(22,652)
(3) Deferred and uncollected premium	-	-	-
(4) Policyholder reserves	-	-	-
(5) Other liabilities- prepaid expenses	11,593	18,297	(6,704)
(6) Other liabilities - salvage and subrogation	92,377	90,727	1,650
(7) Other liabilities - foreign currency translation	-	-	-
(8) Other (including items <5% of total ordinary tax liabilities)	(1)	-	(1)
(99) Subtotal	\$ 126,823	\$ 154,530	\$ (27,707)
(b) Capital			
(1) Investments	339,815	646,410	(306,595)
(2) Real estate	-	-	-
(3) Other (including items <5% of total capital tax liabilities)	-	-	-
(99) Subtotal	\$ 339,815	\$ 646,410	\$ (306,595)
(c) Deferred tax liabilities (3a99+3b99)	\$ 466,638	\$ 800,940	\$ (334,302)

## 4. Net Deferred Tax Asset (Liability) (2i – 3c):

Description	(1) December 31, 2012	(2) December 31, 2011	(3) (Col 1-2) Change
Net deferred tax asset (liability) (2i-3c)	\$ 8,458,667	\$ 7,861,921	\$ 596,746

The change in net deferred income tax is comprised of the following (this analysis excludes nonadmitted assets; the change in nonadmitted assets is reported separately from the change in net deferred income tax in the Statement of Income, Surplus section):

Description	December 31, 2012	December 31, 2011	Change
Total deferred tax assets	\$ 9,739,200	\$ 9,997,992	\$ (258,792)
Total deferred tax liabilities	466,638	800,940	(334,302)
Net deferred tax asset (liability)	\$ 9,272,562	\$ 9,197,052	\$ 75,510
Tax effect of unrealized gains (losses)			-
Change in net deferred income tax			\$ 75,510

## D. Reconciliation of Federal Income Tax Rate to Actual Effective Rate

The provision for Federal income taxes is different than that which would be obtained by applying the statutory Federal income tax rate to pre-tax income. The significant book to tax adjustments causing this difference are as follows:

Description	Tax Effect Amount	Effective Tax Rate
Provision computed at statutory rate	\$ 3,989,945	35%
Exempt interest income	(184,439)	-1%
Dividends received deduction	-	0%
Impact of nonadmitted assets	154,717	1%
Other	18,236	0%
Total	\$ 3,978,459	35%
Federal and foreign income taxes incurred	\$ 4,053,969	
Change in net deferred income tax	(75,510)	
Total statutory income taxes	\$ 3,978,459	

## E. Operating Loss and Tax Credit Carryforwards

- The Company has no operating loss or tax credit carryforwards available.
- The amount of Federal income taxes incurred and available for recoupment by the Company in the event of future net losses is equal to approximately:

Period	Amount
Current tax year:	\$ 4,031,955
First preceding tax year:	\$ 4,813,221

The amounts that can be recouped may be subject to the alternative minimum tax rules, and therefore may be limited.

- Protective Tax Deposits

Not applicable

**NOTES TO FINANCIAL STATEMENTS**

- F. Consolidated Federal Income Tax Return
- 1) The Company's Federal income tax return is consolidated with The Progressive Corporation ("TPC"), a publicly traded holding company incorporated in Ohio, and all of its wholly-owned United States subsidiaries (the "Group") as detailed in Schedule Y, Part 1.
  - 2) The method of allocation between the companies is subject to written agreement and is jointly approved by an officer of TPC and the Company. The allocation is based upon separate tax return calculations with current credit for net losses or other items utilized in the consolidated tax return. Intercompany tax balances are settled quarterly.
10. Information Concerning Parent, Subsidiaries, Affiliates and Other Related Parties
- A. Nature of Relationships
 

The Company is wholly owned by Progressive Direct Holdings, Inc. ("PDH"), a holding company incorporated in Delaware. The structure of the holding company organization is shown on Schedule Y, Part 1.
  - B. Detail of Transactions Greater than ½% of Admitted Assets
 

The Company received capital contributions of \$4,000,000 and \$3,500,000 from PDH in 2012 and 2011, respectively.

All significant 2012 transactions by the Company or any affiliated insurer with any affiliate are summarized in Schedule Y, Part 2.

See Note 17B
  - C. Change in Terms of Intercompany Arrangements
 

Not applicable
  - D. Amounts Due to or from Related Parties
 

The Company reported a \$25,762,208 and \$25,455,478 receivable from parent, subsidiaries, and affiliates at December 31, 2012 and 2011, respectively. These balances are due to the timing of security purchases and cash collections and disbursements under the Group's centralized cash management system and the reinsurance and management agreements in which the Company participates. The Company also reported a \$696,417 and \$1,319,810 current Federal income tax payable at December 31, 2012 and 2011, respectively. These balances are due to TPC for the Company's Federal income tax liability. The intercompany balances are settled quarterly.
  - E. Guarantees or Contingencies for Related Parties
 

Not applicable
  - F. Management and Service Agreements
 

Management, operations and claims services are provided under a joint management services agreement with Progressive Direct Insurance Company ("Progressive Direct"), an insurance affiliate domiciled in Ohio. Under the terms of the agreement, Progressive Direct provides the Company with underwriting and loss adjustment services for specific business produced, and the Company may, from time to time, provide Progressive Direct with similar services for other specific business produced. In exchange for these services, the companies charge management fees based on each company's use of the other's services.

The Company participates in an investment services agreement with Progressive Capital Management Corp., a non-insurance affiliate. Under the terms of the agreement, the Company is provided investment and capital management services in exchange for an investment management fee based on its use of services.

All intercompany agreements are approved by the participating insurance companies' states of domicile when established. Upon redomestication, intercompany agreements are not required to be approved by the new state of domicile.
  - G. Nature of Relationships that Could Affect Operations
 

All outstanding shares of the Company are owned by PDH.
  - H. Amount Deducted for Investment in Upstream Company
 

Not applicable
  - I. Detail of Investments in Affiliates Greater than 10% of Admitted Assets
 

Not applicable
  - J. Write-Downs for Impairments of Investments in Affiliates
 

Not applicable
  - K. Investment in Foreign Insurance Subsidiary
 

Not applicable
  - L. Investment in Downstream Non-Insurance Holding Company
 

Not applicable
11. Debt
 

Not applicable
12. Retirement Plans, Deferred Compensation, Postemployment Benefits and Compensated Absences and Other Postretirement Benefit Plans
 

The Company has no direct payroll (see Note 10F).
13. Capital and Surplus, Dividend Restrictions and Quasi-Reorganizations
1. Outstanding Shares
 

The Company has 5,000,000 shares of \$1 par value common stock authorized and 3,000,000 shares issued and outstanding. The Company has 60,000 shares of \$100 par value, Series A preferred stock authorized and none issued and outstanding.

**NOTES TO FINANCIAL STATEMENTS**

## 2. Dividend Rate of Preferred Stock

Not applicable

## 3,4,5,6. Dividends

The maximum amount of dividends the Company can pay to PDH in 2013 without prior regulatory approval is limited by insurance laws in Ohio. Based on the dividend laws currently in effect, the Company may pay dividends of \$11,742,078 in 2013 without prior approval from the Ohio DOI, provided the dividend payment is not made within 12 months of the previous payment.

Within the limitations described above, there are no additional restrictions placed on the portion of Company profits that may be paid as ordinary dividends to stockholders.

## 7. Mutual Surplus Advances

Not applicable

## 8. Company Stock Held for Special Purposes

Not applicable

## 9. Changes in Special Surplus Funds

Not applicable

## 10. Changes in Unassigned Funds (Surplus)

As of December 31, 2012, the portion of unassigned funds (surplus) represented or reduced by each item below is as follows:

Description	Cumulative Increase (Decrease) in Surplus
Unrealized gain (loss)	\$ --
Nonadmitted assets	(6,799,515)
Provision for reinsurance	--
<b>Total</b>	<b>\$ (6,799,515)</b>

## 11. Surplus Notes

Not applicable

## 12,13. Quasi Reorganizations

Not applicable

## 14. Contingencies

## A. Contingent Commitments

Not applicable

## B. Assessments

The Company is subject to state guaranty fund and other assessments by the states in which it writes business. State guaranty fund assessments are accrued at the time of any known insolvencies. Other assessments are accrued either at the time of assessment or at the time the premiums are written. These accruals are based on information received from the states in which the Company writes business and may change due to many factors including the Company's share of the ultimate cost of current insolvencies.

As of December 31, 2012 and 2011, the Company's estimated liability for state guaranty fund and other assessments was \$1,631,884 and \$1,355,056, respectively. The Company did not recognize any premium tax benefit associated with its various assessments.

As of December 31, 2012 and 2011, the Company's estimated liability for various surcharges was \$154,692 and \$148,046, respectively.

## C. Gain Contingencies

Not applicable

## D. Claims Related Extra Contractual Obligations and Bad Faith Losses Stemming from Lawsuits

The Company paid the following amounts in 2012 to settle claims related extra contractual obligations ("ECO") or bad faith claims stemming from lawsuits.

	Direct
Claims related ECO and bad faith losses paid in 2012	\$ 175,000

The table below indicates the number of claims where amounts were paid to settle claims related ECO or bad faith claims resulting from lawsuits during 2012.

(a) 0-25 Claims	(b) 26-50 Claims	(c) 51-100 Claims	(d) 101-500 Claims	(e) More than 500 Claims
X				

(f) Per Claim [ ] (g) Per Claimant [x]

## E. Product Warranties

Not applicable

## NOTES TO FINANCIAL STATEMENTS

## F. All Other Contingencies

The Company is named as defendant in various lawsuits arising out of its insurance operations. All legal actions relating to claims made under insurance policies are considered by the Company in establishing its loss and LAE reserves. The Company also has, on a net basis, potential exposure relating to lawsuits due to its participation in a 100% pooling reinsurance agreement for which it is allocated litigation expenses (see Note 26).

The following is a discussion of potentially significant pending case at December 31, 2012. Unless specifically noted, the Company does not consider a loss from this case to be probable and is unable to estimate a range of loss, if any, at this time.

As of December 31, 2012, there was a putative class action lawsuit alleging the Company improperly applies a preferred provider discount to medical payment claims.

## 15. Leases

Not applicable

## 16. Information about Financial Instruments with Off-Balance Sheet Risk and with Concentrations of Credit Risk

Not applicable

## 17. Sale, Transfer, and Servicing of Financial Assets and Extinguishments of Liabilities

## A. Transfers of Receivables Reported as Sales

Not applicable

## B. Transfers and Servicing of Financial Assets

The Company transferred \$23,800,000 of premiums receivable to Progressive Investment Company, Inc. ("PICI"), a non-insurance affiliate, for \$23,798,549 in cash and/or securities in 2012. The related premiums receivable remained in the Company's assets, and a corresponding liability was established. As the related cash was collected, it was transferred to PICI and the liability was reduced. These premiums receivable transactions were approved by the Ohio DOI.

## C. Wash Sales

The Company had no wash sales of securities with a NAIC rating of 3 or below during the year.

## 18. Gain or Loss from Uninsured Plans and the Uninsured Portion of Partially Insured Plans

Not applicable

## 19. Direct Premiums Written / Produced by Managing General Agents / Third Party Administrators

Not applicable

## 20. Fair Value Measurements

## A. Inputs Used for Assets and Liabilities Measured at Fair Value

## 1. Fair Value Measurements by Levels 1, 2 and 3

The Company categorizes its financial instruments, based on the degree of subjectivity inherent in the method by which they are valued, into a fair value hierarchy of three levels, as follows:

Level 1 - Inputs are unadjusted, quoted prices in active markets for identical instruments at the measurement date (e.g., active exchange-traded equity securities).

Level 2 - Inputs (other than quoted prices included within Level 1) are observable for the instrument either directly or indirectly. This includes: (i) quoted prices for similar instruments in active markets, (ii) quoted prices for identical or similar instruments in markets that are not active, (iii) inputs other than quoted prices that are observable for the instruments, and (iv) inputs that are derived principally from or corroborated by observable market data by correlation or other means.

Level 3 - Inputs that are unobservable. Unobservable inputs reflect the Company's subjective evaluation about the assumptions market participants would use in pricing the financial instrument.

The Company evaluated whether the market was distressed or inactive in determining the fair value for those securities reported and reviewed certain market level inputs to evaluate whether sufficient activity, volume, and new issuances existed to create an active market. Based on this evaluation, the Company concluded that there was sufficient activity in determining the fair value for those securities reported.

As of December 31, 2012, the Company did not measure and report any securities at fair value on the balance sheet. All bonds were carried at amortized cost.

## 2. Roll forward of Level 3 Items

Not applicable

## 3. Policy on Transfers Into and Out of Level 3

At the end of each reporting period, the Company evaluates whether or not any event has occurred or circumstances have changed that would cause an instrument to be transferred into or out of Level 3.

## 4. Inputs and Techniques Used for Level 2 and Level 3 Fair Values

See Note 1C and refer to narrative in Note 20A

## 5. Derivative Fair Values

Not applicable

## B. Other Fair Value Disclosures

Not applicable

## NOTES TO FINANCIAL STATEMENTS

## C. Fair Values for all Financial Instruments by Levels 1, 2, and 3

The table below represents the fair value of all financial instruments however, not all financial instruments are reported at fair value in the Company's financial statements (see Note 1C).

Type of Financial Instrument	Aggregate Fair Value	Admitted Assets	Level 1	Level 2	Level 3	Not Practicable (Carrying Value)
Bonds	\$ 131,135,993	\$ 128,183,523	\$ 100,243,364	\$ 30,892,629	\$ -	\$ -
Cash equivalents	-	-	-	-	-	-
Short term investments	-	-	-	-	-	-
Common stock	-	-	-	-	-	-
Preferred stock	-	-	-	-	-	-
Total	\$ 131,135,993	\$ 128,183,523	\$ 100,243,364	\$ 30,892,629	\$ -	\$ -

## D. Financial Instruments for Which it is Not Practicable to Estimate Fair Values

Not applicable

## 21. Other Items

## A. Extraordinary Items

Not applicable

## B. Troubled Debt Restructuring for Debtors

Not applicable

## C. Other Disclosures

Segregated Funds

At December 31, 2012, securities at the amortized cost of \$4,533,318 were on deposit with various regulatory agencies to meet statutory requirements (see Schedule E, Part 3).

## D. Uncollectible Premiums Receivable

The Company routinely assesses the collectibility of premiums and agents' balances receivable and records a bad debt reserve for amounts exceeding the nonadmitted balance that the Company believes are uncollectible.

## E. Business Interruption Insurance Recoveries

Not applicable

## F. State Transferable and Non-transferable Tax Credits

1. The carrying value of transferable and non-transferable state tax credits, gross of any related tax liabilities, and total unused transferable and non-transferable state tax credits by state and in total at December 31, 2012 are as follows:

Description of state transferable and non-transferable tax credits	State	Carrying Value	Unused Amount
Low Income Housing Tax Credit	GA	\$ 84,672	\$ 180,000
Total		\$ 84,672	\$ 180,000

2. The Company estimated the utilization of the remaining transferable and non-transferable state tax credits by projecting future premium, taking into account policy growth and rate changes, projecting the future tax liability based on projected premium, tax rates, and tax credits, and comparing the projected future tax liability to the availability of remaining transferable and non-transferable state tax credits.
3. The Company recognized an impairment loss of \$0 related to write-downs as a result of impairment analysis of the carrying amount for transferable and non-transferable state tax credits.
4. State tax credits admitted and nonadmitted are as follows:

Type	Total Admitted	Total Nonadmitted
Transferable	\$ -	\$ -
Non-transferable	\$ 84,672	\$ -

## G. Sub-Prime Mortgage Related Risk Exposure

## 1. Exposure to Sub-Prime Mortgage Related Risk

The following sub-prime disclosure and the review and procedures described within are completed at a consolidated level for all the Progressive companies. To the extent the Company had any direct sub-prime exposure, those securities would be listed in Note 21.G.3.

Management's review of the investment portfolio for securities with direct sub-prime exposure, such as Alt-A residential mortgage loan-backed bonds and home equity loan-backed bonds is performed in conjunction with the OTTI analysis and procedures (see Note 1C). Additionally, securities that were determined to have an indirect sub-prime exposure were also reviewed as part of the OTTI process.

The Company's management continues to perform a detailed review of its investment portfolio, paying particular attention to the credit profile of the issuers to identify the extent to which any asset values may have been impacted by direct or indirect exposure to the sub-prime mortgage loan disruption, as well as broader credit and financial market events.

**NOTES TO FINANCIAL STATEMENTS**

In 2012, the Company recorded no OTTI write-downs on any securities as a result of direct sub-prime exposure.

2. Direct Investment in Sub-Prime Mortgage Loans

Not applicable

3. Direct Investment in Securities with Underlying Sub-Prime Exposure

Not applicable

4. Mortgage or Financial Guaranty Sub-Prime Exposure

Not applicable

H. Agents' Balances Certification, Florida Statute 625.012 (5):

At December 31, 2012 and 2011, the Company reported net admitted premiums and agents' balances in course of collection of \$16,289,967 and \$14,915,524, respectively. Of this amount there were no premiums due from a controlled or controlling person as defined in Florida statute 625.012 (5).

22. Events Subsequent

The Company was not impacted by any subsequent events. Subsequent events have been considered through February 15, 2013 for the statutory statement that was available for issuance by March 1, 2013.

23. Reinsurance

A. Unsecured Reinsurance Recoverable (all amounts in 000's)

At December 31, 2012, the Company had the following unsecured reinsurance recoverable balance which exceeded 3% of policyholders' surplus:

Reinsurer	NAIC Code	Federal ID#	Amount
Progressive Direct Insurance Company	16322	34-1524319	\$ 454,466
Total			\$ 454,466

B. Reinsurance Recoverable in Dispute

Not applicable

C. Reinsurance Assumed and Ceded (all amounts in 000's)

1) The table below summarizes ceded and assumed unearned premiums and the related commission equity at December 31, 2012.

	ASSUMED		CEDED		NET	
	Unearned Premiums	Commission Equity	Unearned Premiums	Commission Equity	Unearned Premiums	Commission Equity
(a) Affiliates	\$ 57,090	\$ --	\$ 188,212	\$ --	\$ (131,122)	\$ --
(b) All Other	--	--	--	--	--	--
(c) Totals	\$ 57,090	\$ --	\$ 188,212	\$ --	\$ (131,122)	\$ --
(d) Direct Unearned Premium Reserve is \$188,212						

2) The Company has no return commission or profit sharing arrangements.

D. Uncollectible Reinsurance

Not applicable

E. Commutation of Ceded Reinsurance

Not applicable

F. Retroactive Reinsurance

Not applicable

G. Reinsurance Accounted for as a Deposit

Not applicable

H. Disclosures for the Transfer of Property and Casualty Run-off Agreements

Not applicable

24. Retrospectively Rated Contracts and Contracts Subject to Redetermination

Not applicable

25. Changes in Incurred Losses and Loss Adjustment Expenses

Incurred losses and LAE attributable to insured events of prior accident years decreased by \$804,320 in 2012, which is approximately 1% of the total prior year net unpaid losses and LAE of \$79,731,794. The decrease is primarily due to a decrease in originally anticipated severity of 1.5% for accident year 2011 auto physical damage reserves. Private passenger auto liability reserves experienced favorable development for accident years 2009 and prior, partially offset by an increase in originally anticipated severity of .9% for accident year 2011. The Company also experienced favorable LAE reserve development in 2012.

**NOTES TO FINANCIAL STATEMENTS**

## 26. Intercompany Pooling Arrangements

The Company participates in a pooling reinsurance agreement with the property-casualty affiliates listed below (the "Direct Pool") under which 100% of the underwriting business of each member company, net of external reinsurance, is ceded to Progressive Direct, the Direct Pool manager and a Direct Pool participant. The combined premiums, losses, and expenses are then retroceded to each Direct Pool member based on pre-determined pooling percentages.

Mountain Laurel Assurance Company ("Mountain Laurel"), an insurance affiliate domiciled in Ohio, terminated its future participation in the Direct Pool effective November 5, 2005. Mountain Laurel has a zero percent retrocession participation in the Direct Pool for all policies written prior to that date.

The pooling percentages for each Direct Pool member as of December 31, 2012 and 2011, were as follows:

Company	NAIC Code	2012 Pool %	2011 Pool %
Progressive Direct Insurance Company	16322	77.5 %	77.5 %
Progressive Marathon Insurance Company	37605	6.0	6.0
Progressive Max Insurance Company	24279	6.0	6.0
Progressive Advanced Insurance Company	11851	4.0	4.0
Progressive Universal Insurance Company	21727	4.0	4.0
Progressive Premier Insurance Company of Illinois	21735	2.0	2.0
Progressive Paloverde Insurance Company	44695	0.5	0.5
Mountain Laurel Assurance Company	44180	--	--
		100.0 %	100.0 %

All business written by each Direct Pool member is subject to pooling with the exception of loss reserves from Progressive Max Insurance Company's assumed asbestos and environmental claims, for which the Company has no exposure. Business ceded by Direct Pool members to non-affiliated reinsurers prior to pooling, is primarily to state-provided reinsurance programs. The Direct Pool does not participate in any intercompany sharing of the provision for reinsurance and the write-offs of uncollectible reinsurance.

At December 31, 2012, amounts recoverable from and payable to Progressive Direct and all affiliates participating in the Direct Pool are as follows:

Company	Amounts Recoverable	Amounts Payable
Progressive Direct Insurance Company (Lead)	\$ 18,486,987	\$ 13,255,582
Progressive Marathon Insurance Company	811,444	1,814,097
Progressive Max Insurance Company	3,121,959	1,814,097
Progressive Advanced Insurance Company	5,925,743	5,012,480
Progressive Universal Insurance Company	1,800,314	4,930,677
Progressive Premier Insurance Company of Illinois	1,596,122	2,599,884
Progressive Paloverde Insurance Company	--	2,313,996
Mountain Laurel Assurance Company	--	1,756
Total	\$ 31,742,569	\$ 31,742,569

## 27. Structured Settlements

Not applicable

## 28. Health Care Receivables

Not applicable

## 29. Participating Accident and Health Policies

Not applicable

## 30. Premium Deficiency Reserves

- Liability carried for premium deficiency reserves \$0
- Date of most recent evaluation of this liability January 5, 2013
- Was anticipated investment income utilized in the calculation? Yes [X] No [ ]

## 31. High Deductibles

Not applicable

## 32. Discounting of Liabilities for Unpaid Losses and Unpaid Loss Adjustment Expenses

Not applicable

## 33. Asbestos and Environmental Reserves

Not applicable

## 34. Subscriber Savings Accounts

Not applicable

## 35. Multiple Peril Crop Insurance

Not applicable

## 36. Financial Guaranty Insurance

Not applicable

**GENERAL INTERROGATORIES**

**PART 1 - COMMON INTERROGATORIES - GENERAL**

- 1.1 Is the reporting entity a member of an Insurance Holding Company System consisting of two or more affiliated persons, one or more of which is an insurer? Yes [ X ] No [ ]
- 1.2 If yes, did the reporting entity register and file with its domiciliary State Insurance Commissioner, Director or Superintendent or with such regulatory official of the state of domicile of the principal insurer in the Holding Company System, a registration statement providing disclosure substantially similar to the standards adopted by the National Association of Insurance Commissioners (NAIC) in its Model Insurance Holding Company System Regulatory Act and model regulations pertaining thereto, or is the reporting entity subject to standards and disclosure requirements substantially similar to those required by such Act and regulations? Yes [ X ] No [ ] N/A [ ]
- 1.3 State regulating? OHIO
- 2.1 Has any change been made during the year of this statement in the charter, by-laws, articles of incorporation, or deed of settlement of the reporting entity? Yes [ ] No [ X ]
- 2.2 If yes, date of change: \_\_\_\_\_
- 3.1 State as of what date the latest financial examination of the reporting entity was made or is being made. 12/31/2007
- 3.2 State the as of date that the latest financial examination report became available from either the state of domicile or the reporting entity. This date should be the date of the examined balance sheet and not the date the report was completed or released. 12/31/2007
- 3.3 State as of what date the latest financial examination report became available to other states or the public from either the state of domicile or the reporting entity. This is the release date or completion date of the examination report and not the date of the examination (balance sheet date). 04/07/2009
- 3.4 By what department or departments? OHIO

- 3.5 Have all financial statement adjustments within the latest financial examination report been accounted for in a subsequent financial statement filed with departments? Yes [ ] No [ ] N/A [ X ]
- 3.6 Have all of the recommendations within the latest financial examination report been complied with? Yes [ X ] No [ ] N/A [ ]
- 4.1 During the period covered by this statement, did any agent, broker, sales representative, non-affiliated sales/service organization or any combination thereof under common control (other than salaried employees of the reporting entity) receive credit or commissions for or control a substantial part (more than 20 percent of any major line of business measured on direct premiums) of:
- 4.11 sales of new business? Yes [ ] No [ X ]
- 4.12 renewals? Yes [ ] No [ X ]
- 4.2 During the period covered by this statement, did any sales/service organization owned in whole or in part by the reporting entity or an affiliate, receive credit or commissions for or control a substantial part (more than 20 percent of any major line of business measured on direct premiums) of:
- 4.21 sales of new business? Yes [ ] No [ X ]
- 4.22 renewals? Yes [ ] No [ X ]
- 5.1 Has the reporting entity been a party to a merger or consolidation during the period covered by this statement? Yes [ ] No [ X ]
- 5.2 If yes, provide the name of the entity, NAIC company code, and state of domicile (use two letter state abbreviation) for any entity that has ceased to exist as a result of the merger or consolidation.

1 Name of Entity	2 NAIC Co. Code	3 State of Domicile

- 6.1 Has the reporting entity had any Certificates of Authority, licenses or registrations (including corporate registration, if applicable) suspended or revoked by any governmental entity during the reporting period? Yes [ ] No [ X ]
- 6.2 If yes, give full information: \_\_\_\_\_

- 7.1 Does any foreign (non-United States) person or entity directly or indirectly control 10% or more of the reporting entity? Yes [ ] No [ X ]
- 7.2 If yes,
- 7.21 State the percentage of foreign control .....%
- 7.22 State the nationality(ies) of the foreign person(s) or entity(ies); or if the entity is a mutual or reciprocal, the nationality of its manager or attorney-in-fact and identify the type of entity(ies) (e.g., individual, corporation, government, manager or attorney-in-fact)

1 Nationality	2 Type of Entity

- 8.1 Is the company a subsidiary of a bank holding company regulated by the Federal Reserve Board? Yes [ ] No [ X ]
- 8.2 If response to 8.1 is yes, please identify the name of the bank holding company. \_\_\_\_\_

- 8.3 Is the company affiliated with one or more banks, thrifts or securities firms? Yes [ ] No [ X ]
- 8.4 If response to 8.3 is yes, please provide the names and locations (city and state of the main office) of any affiliates regulated by a federal financial regulatory services agency [i.e. the Federal Reserve Board (FRB), the Office of the Comptroller of the Currency (OCC), the Federal Deposit Insurance Corporation (FDIC) and the Securities Exchange Commission (SEC)] and identify the affiliate's primary federal regulator.

1 Affiliate Name	2 Location (City, State)	3 FRB	4 OCC	5 FDIC	6 SEC

9. What is the name and address of the independent certified public accountant or accounting firm retained to conduct the annual audit?  
PRICEWATERHOUSECOOPERS, LLP  
200 PUBLIC SQUARE, 18TH FLOOR CLEVELAND, OH 44114-2301
- 10.1 Has the insurer been granted any exemptions to the prohibited non-audit services provided by the certified independent public accountant requirements as allowed in Section 7H of the Annual Financial Reporting Model Regulation (Model Audit Rule), or substantially similar state law or regulation? Yes [ ] No [ X ]
- 10.2 If the response to 10.1 is yes, provide information related to this exemption: \_\_\_\_\_
- 10.3 Has the insurer been granted any exemptions related to the other requirements of the Annual Financial Reporting Model Regulation as allowed for in Section 17A of the Model Regulation, or substantially similar state law or regulation? Yes [ ] No [ X ]
- 10.4 If the response to 10.3 is yes, provide information related to this exemption: \_\_\_\_\_
- 10.5 Has the reporting entity established an Audit Committee in compliance with the domiciliary state insurance laws? Yes [ X ] No [ ] N/A [ ]
- 10.6 If the answer to 10.5 is no or n/a, please explain. \_\_\_\_\_

11. What is the name, address and affiliation (officer/employee of the reporting entity or actuary/consultant associated with an actuarial consulting firm) of the individual providing the statement of actuarial opinion/certification?  
GARY S. TRACOFF, FCAS, MAAA CORPORATE ACTUARY  
6300 WILSON MILLS ROAD MAYFIELD VILLAGE, OH 44143-2182

**GENERAL INTERROGATORIES**

12.1 Does the reporting entity own any securities of a real estate holding company or otherwise hold real estate indirectly? Yes [ ] No [X]

12.11 Name of real estate holding company

12.12 Number of parcels involved

12.13 Total book/adjusted carrying value

12.2 If yes, provide explanation.

**13. FOR UNITED STATES BRANCHES OF ALIEN REPORTING ENTITIES ONLY:**

13.1 What changes have been made during the year in the United States manager or the United States trustees of the reporting entity?

N/A

13.2 Does this statement contain all business transacted for the reporting entity through its United States Branch on risks wherever located? Yes [ ] No [ ]

13.3 Have there been any changes made to any of the trust indentures during the year? Yes [ ] No [ ]

13.4 If answer to (13.3) is yes, has the domiciliary or entry state approved the changes? Yes [ ] No [ ] N/A [ ]

14.1 Are the senior officers (principal executive officer, principal financial officer, principal accounting officer or controller, or persons performing similar functions) of the reporting entity subject to a code of ethics, which includes the following standards? Yes [X] No [ ]

- a. Honest and ethical conduct, including the ethical handling of actual or apparent conflicts of interest between personal and professional relationships;
- b. Full, fair, accurate, timely and understandable disclosure in the periodic reports required to be filed by the reporting entity;
- c. Compliance with applicable governmental laws, rules and regulations;
- d. The prompt internal reporting of violations to an appropriate person or persons identified in the code; and
- e. Accountability for adherence to the code.

14.11 If the response to 14.1 is no, please explain:

14.2 Has the code of ethics for senior managers been amended? Yes [X] No [ ]

14.21 If the response to 14.2 is yes, provide information related to amendment(s).

THE COMPANY'S CODE OF ETHICS POLICIES WERE UPDATED WITH THE FOLLOWING:

- A NEW SECTION ON ETHICAL DECISION-MAKING.

- REVISED PROVISIONS ON 1)REPORTING CONCERNS ABOUT POTENTIAL MISCONDUCT, 2)DIVERSITY AND INCLUSION, 3) SOCIAL RESPONSIBILITY, 4)PERSONAL USE OF COMPANY PROVIDED MOBILE DEVICES 5)ALCOHOLIC BEVERAGES, 6)DISCLOSURE OF MINOR TRAFFIC VIOLATIONS, AND 7)CONFLICT OF INTEREST RULES FOR CLAIMS PERSONNEL.

14.3 Have any provisions of the code of ethics been waived for any of the specified officers? Yes [ ] No [X]

14.31 If the response to 14.3 is yes, provide the nature of any waiver(s).

15.1 Is the reporting entity the beneficiary of a Letter of Credit that is unrelated to reinsurance where the issuing or confirming bank is not on the SVO Bank List? Yes [ ] No [X]

15.2 If the response to 15.1 is yes, indicate the American Bankers Association (ABA) Routing Number and the name of the issuing or confirming bank of the Letter of Credit and describe the circumstances in which the Letter of Credit is triggered.

1 American Bankers Association (ABA) Routing Number	2 Issuing or Confirming Bank Name	3 Circumstances That Can Trigger the Letter of Credit	4 Amount

**PART 1 - COMMON INTERROGATORIES - BOARD OF DIRECTORS**

16. Is the purchase or sale of all investments of the reporting entity passed upon either by the Board of Directors or a subordinate committee thereof? Yes [X] No [ ]

17. Does the reporting entity keep a complete permanent record of the proceedings of its Board of Directors and all subordinate committees thereof? Yes [X] No [ ]

18. Has the reporting entity an established procedure for disclosure to its Board of Directors or trustees of any material interest or affiliation on the part of any of its officers, directors, trustees or responsible employees that is in conflict or is likely to conflict with the official duties of such person? Yes [X] No [ ]

**PART 1 - COMMON INTERROGATORIES - FINANCIAL**

19. Has this statement been prepared using a basis of accounting other than Statutory Accounting Principles (e.g., Generally Accepted Accounting Principles)? Yes [ ] No [X]

20.1 Total amount loaned during the year (inclusive of Separate Accounts, exclusive of policy loans):

20.11 To directors or other officers \$.....0

20.12 To stockholders not officers \$.....0

20.13 Trustees, supreme or grand (Fraternal only) \$.....0

20.2 Total amount of loans outstanding at the end of year (inclusive of Separate Accounts, exclusive of policy loans):

20.21 To directors or other officers \$.....0

20.22 To stockholders not officers \$.....0

20.23 Trustees, supreme or grand (Fraternal only) \$.....0

21.1 Were any assets reported in this statement subject to a contractual obligation to transfer to another party without the liability for such obligation being reported in the statement? Yes [ ] No [X]

21.2 If yes, state the amount thereof at December 31 of the current year:

21.21 Rented from others .....

21.22 Borrowed from others .....

21.23 Leased from others .....

21.24 Other .....

22.1 Does this statement include payments for assessments as described in the Annual Statement Instructions other than guaranty fund or guaranty association assessments? Yes [ ] No [X]

22.2 If answer is yes:

22.21 Amount paid as losses or risk adjustment .....

22.22 Amount paid as expenses .....

22.23 Other amounts paid .....

23.1 Does the reporting entity report any amounts due from parent, subsidiaries or affiliates on Page 2 of this statement? Yes [X] No [ ]

23.2 If yes, indicate any amounts receivable from parent included in the Page 2 amount. \$.....0

**PART 1 - COMMON INTERROGATORIES - INVESTMENT**

24.01 Were all the stocks, bonds and other securities owned December 31 of current year, over which the reporting entity has exclusive control, in the actual possession of the reporting entity on said date (other than securities lending programs addressed in 24.03)? Yes [X] No [ ]

24.02 If no, give full and complete information relating thereto.

**PART 1 - COMMON INTERROGATORIES - INVESTMENT**

24.03 For security lending programs, provide a description of the program including value for collateral and amount of loaned securities, and whether collateral is carried on or off-balance sheet (an alternative is to reference Note 17 where this information is also provided).

N/A

24.04 Does the company's security lending program meet the requirements for a conforming program as outlined in the Risk-Based Capital Instructions? Yes [ ] No [ ] N/A [X]

24.05 If answer to 24.04 is yes, report amount of collateral for conforming programs.

24.06 If answer to 24.04 is no, report amount of collateral for other programs.

24.07 Does your securities lending program require 102% (domestic securities) and 105% (foreign securities) from the counterparty at the outset of the contract? Yes [ ] No [ ] N/A [X]

24.08 Does the reporting entity non-admit when the collateral received from the counterparty falls below 100%? Yes [ ] No [ ] N/A [X]

24.09 Does the reporting entity or the reporting entity's securities lending agent utilize the Master Securities Lending Agreement (MSLA) to conduct securities lending? Yes [ ] No [ ] N/A [X]

24.10 For the reporting entity's security lending program, state the amount of the following as of December 31 of the current year:

24.101 Total fair value of reinvested collateral assets reported on Schedule DL, Parts 1 and 2.

24.102 Total book adjusted/carrying value of reinvested collateral assets reported on Schedule DL, Parts 1 and 2.

24.103 Total payable for securities lending reported on the liability page.

25.1 Were any of the stocks, bonds or other assets of the reporting entity owned at December 31 of the current year not exclusively under the control of the reporting entity or has the reporting entity sold or transferred any assets subject to a put option contract that is currently in force? (Exclude securities subject to Interrogatory 21.1 and 24.03) Yes [X] No [ ]

25.2 If yes, state the amount thereof at December 31 of the current year:

25.21 Subject to repurchase agreements \$.....0

25.22 Subject to reverse repurchase agreements \$.....0

25.23 Subject to dollar repurchase agreements \$.....0

25.24 Subject to reverse dollar repurchase agreements \$.....0

25.25 Pledged as collateral \$.....0

25.26 Placed under option agreements \$.....0

25.27 Letter stock or securities restricted as to sale \$.....0

25.28 On deposit with state or other regulatory body \$.....4,533,318

25.29 Other \$.....0

25.3 For category (25.27) provide the following:

1 Nature of Restriction	2 Description	3 Amount
----------------------------	------------------	-------------

26.1 Does the reporting entity have any hedging transactions reported on Schedule DB? Yes [ ] No [X]

26.2 If yes, has a comprehensive description of the hedging program been made available to the domiciliary state? Yes [ ] No [ ] N/A [X]

If no, attach a description with this statement.

27.1 Were any preferred stocks or bonds owned as of December 31 of the current year mandatorily convertible into equity, or, at the option of the issuer, convertible into equity? Yes [ ] No [X]

27.2 If yes, state the amount thereof at December 31 of the current year: .....

28. Excluding items in Schedule E-Part 3-Special Deposits, real estate, mortgage loans and investments held physically in the reporting entity's offices, vaults or safety deposit boxes, were all stocks, bonds and other securities, owned throughout the current year held pursuant to a custodial agreement with a qualified bank or trust company in accordance with Section 1, III - General Examination Considerations, F. Outsourcing of Critical Functions Custodial or Safekeeping Agreements of the NAIC Financial Condition Examiners Handbook? Yes [X] No [ ]

28.01 For agreements that comply with the requirements of the NAIC Financial Condition Examiners Handbook, complete the following:

1 Name of Custodian(s)	2 Custodian's Address
CITIBANK, N.A.	338 GREENWICH STREET, NEW YORK, NY 10013

28.02 For all agreements that do not comply with the requirements of the NAIC Financial Condition Examiners Handbook, provide the name, location and a complete explanation:

1 Name(s)	2 Location(s)	3 Complete Explanation(s)
NONE		

28.03 Have there been any changes, including name changes, in the custodian(s) identified in 28.01 during the current year? Yes [ ] No [X]

28.04 If yes, give full and complete information relating thereto:

1 Old Custodian	2 New Custodian	3 Date of Change	4 Reason
NONE			

28.05 Identify all investment advisors, brokers/dealers or individuals acting on behalf of broker/dealers that have access to the investment accounts, handle securities and have authority to make investments on behalf of the reporting entity:

1 Central Registration Depository Number(s)	2 Name	3 Address
NONE		

29.1 Does the reporting entity have any diversified mutual funds reported in Schedule D-Part 2 (diversified according to the Securities and Exchange Commission (SEC) in the Investment Company Act of 1940 [Section 5 (b) (1)])? Yes [ ] No [X]

29.2 If yes, complete the following schedule:

1 CUSIP #	2 Name of Mutual Fund	3 Book/Adj. Carrying Value
29.2999. TOTAL		0

29.3 For each mutual fund listed in the table above, complete the following schedule:

1 Name of Mutual Fund (from the above table)	2 Name of Significant Holding of the Mutual Fund	3 Amount of Mutual Fund's Book/Adjusted Carrying Value Attributable to Holding	4 Date of Valuation
--	--	--	------------------------

30. Provide the following information for all short-term and long-term bonds and all preferred stocks. Do not substitute amortized value or statement value for fair value.

	1 Statement (Admitted) Value	2 Fair Value	3 Excess of Statement over Fair Value (-), or Fair Value over Statement (+)
30.1 Bonds.....	128,183,521	131,135,994	2,952,473
30.2 Preferred stocks.....			0
30.3 Totals.....	128,183,521	131,135,994	2,952,473

**PROGRESSIVE ADVANCED INSURANCE COMPANY**

**PART 1 - COMMON INTERROGATORIES - INVESTMENT**

30.4 Describe the sources or methods utilized in determining the fair values:

THE FAIR MARKET VALUES REPORTED ARE DERIVED FROM INDEPENDENT AND OBSERVABLE MARKET INPUT EVALUATIONS PROVIDED BY WIDELY UTILIZED REPUTABLE PRICING SERVICES, INDEPENDENT BROKER/DEALER BID LISTS, INDEPENDENT BROKER/DEALER QUOTATIONS, INDEPENDENT BROKER/DEALER PRICING SERVICES, OR ACTIVE MARKET CLOSING QUOTATIONS FROM A REGULATED EXCHANGE. IN VERY RARE CASES, IF NONE OF THE AFOREMENTIONED PRIMARY SOURCES ARE AVAILABLE, MATRIX PRICING USING THE REPORTING ENTITY'S OWN MARKET BASED ASSUMPTIONS MAY BE UTILIZED. THE APPROVED METHODS FOR COMPUTATION OF FAIR MARKET VALUE ARE PRESCRIBED IN PART FIVE OF THE SECURITIES VALUATION OFFICE PURPOSES AND PROCEDURES MANUAL.

- 31.1 Was the rate used to calculate fair value determined by a broker or custodian for any of the securities in Schedule D? Yes [ ] No [X]
- 31.2 If the answer to 31.1 is yes, does the reporting entity have a copy of the broker's or custodian's pricing policy (hard copy or electronic copy) for all brokers or custodians used as a pricing source? Yes [ ] No [ ]
- 31.3 If the answer to 31.2 is no, describe the reporting entity's process for determining a reliable pricing source for purposes of disclosure of fair value for Schedule D.

- 32.1 Have all the filing requirements of the Purposes and Procedures Manual of the NAIC Securities Valuation Office been followed? Yes [X] No [ ]
- 32.2 If no, list exceptions:

**PART 1 - COMMON INTERROGATORIES - OTHER**

- 33.1 Amount of payments to trade associations, service organizations and statistical or rating bureaus, if any? \$.....44,268
- 33.2 List the name of the organization and the amount paid if any such payment represented 25% or more of the total payments to trade associations, service organizations and statistical or rating bureaus during the period covered by this statement.

1 Name	2 Amount Paid
INDEPENDENT STATISTICAL SVCS	42,810

- 34.1 Amount of payments for legal expenses, if any? \$.....0

- 34.2 List the name of the firm and the amount paid if any such payment represented 25% or more of the total payments for legal expenses during the period covered by this statement.

1 Name	2 Amount Paid
NONE	

- 35.1 Amount of payments for expenditures in connection with matters before legislative bodies, officers or departments of government, if any? \$.....0

- 35.2 List the name of the firm and the amount paid if any such payment represented 25% or more of the total payment expenditures in connection with matters before legislative bodies, officers or departments of government during the period covered by this statement.

1 Name	2 Amount Paid
NONE	

**GENERAL INTERROGATORIES**

**PART 2 - PROPERTY AND CASUALTY INTERROGATORIES**

- 1.1 Does the reporting entity have any direct Medicare Supplement Insurance in force? Yes [ ] No [X]
- 1.2 If yes, indicate premium earned on U.S. business only. .....
- 1.3 What portion of item (1.2) is not reported on the Medicare Supplement Insurance Experience Exhibit? .....
  - 1.31 Reason for excluding: .....

---

- 1.4 Indicate amount of earned premium attributable to Canadian and/or Other Alien not included in Item (1.2) above. .....
- 1.5 Indicate total incurred claims on all Medicare Supplement insurance. .....
- 1.6 Individual policies:
  - Most current three years:
    - 1.61 Total premium earned .....
    - 1.62 Total incurred claims .....
    - 1.63 Number of covered lives .....
  - All years prior to most current three years:
    - 1.64 Total premium earned .....
    - 1.65 Total incurred claims .....
    - 1.66 Number of covered lives .....
- 1.7 Group policies:
  - Most current three years:
    - 1.71 Total premium earned .....
    - 1.72 Total incurred claims .....
    - 1.73 Number of covered lives .....
  - All years prior to most current three years:
    - 1.74 Total premium earned .....
    - 1.75 Total incurred claims .....
    - 1.76 Number of covered lives .....

2. Health test:

	1 Current Year	2 Prior Year
2.1 Premium Numerator.....	\$.....0	\$.....0
2.2 Premium Denominator.....	\$.....216,309,471	\$.....200,187,869
2.3 Premium Ratio (2.1/2.2).....	.....0.0	.....0.0
2.4 Reserve Numerator.....	\$.....0	\$.....0
2.5 Reserve Denominator.....	\$.....145,429,874	\$.....135,437,271
2.6 Reserve Ratio (2.4/2.5).....	.....0.0	.....0.0

- 3.1 Does the reporting entity issue both participating and non-participating policies? Yes [ ] No [X]
- 3.2 If yes, state the amount of calendar year premiums written on:
  - 3.21 Participating policies .....
  - 3.22 Non-participating policies .....
- 4. FOR MUTUAL REPORTING ENTITIES AND RECIPROCAL EXCHANGES ONLY:
  - 4.1 Does the reporting entity issue assessable policies? Yes [ ] No [ ]
  - 4.2 Does the reporting entity issue non-assessable policies? Yes [ ] No [ ]
  - 4.3 If assessable policies are issued, what is the extent of the contingent liability of the policyholders? .....%
  - 4.4 Total amount of assessments paid or ordered to be paid during the year on deposit notes or contingent premiums. .....
- 5. FOR RECIPROCAL EXCHANGES ONLY:
  - 5.1 Does the exchange appoint local agents? Yes [ ] No [ ]
  - 5.2 If yes, is the commission paid:
    - 5.21 Out of Attorney's-in-fact compensation Yes [ ] No [ ] N/A [ ]
    - 5.22 As a direct expense of the exchange Yes [ ] No [ ] N/A [ ]
  - 5.3 What expenses of the exchange are not paid out of the compensation of the Attorney-in-fact? .....

---

- 5.4 Has any Attorney-in-fact compensation, contingent on fulfillment of certain conditions, been deferred? Yes [ ] No [ ]
- 5.5 If yes, give full information: .....

6.1 What provision has this reporting entity made to protect itself from an excessive loss in the event of a catastrophe under a workers' compensation contract issued without limit of loss?  
THE COMPANY DOES NOT WRITE WORKERS' COMPENSATION INSURANCE.

6.2 Describe the method used to estimate this reporting entity's probable maximum insurance loss, and identify the type of insured exposures comprising that probable maximum loss, the locations of concentrations of those exposures and the external resources (such as consulting firms or computer software models), if any, used in the estimation process:  
THE COMPANY'S PROBABLE MAXIMUM LOSS (PML) IS ESTIMATED BY ANALYZING HISTORICAL MAJOR OCCURRENCES AND ESTIMATING FREQUENCY OF LOSS AND SEVERITY BASED ON THE POTENTIAL FORCE OF AN OCCURRENCE AND THE TOTAL NUMBER OF AUTOS AND BOATS EXPOSED. THE ESTIMATE OF THE PML WAS COMPLETED BY PROGRESSIVE EMPLOYEES. THE COMPANY'S NET COMPREHENSIVE EXPOSURE IN THE CATASTROPHE PRONE STATES OF FLORIDA, LOUISIANA, TEXAS, MISSISSIPPI, ALABAMA, NEW YORK, NEW JERSEY AND CALIFORNIA IS LIMITED SINCE THE COMPANY IS A MEMBER OF A 100% POOLING REINSURANCE ARRANGEMENT WITH 6 OF ITS PROPERTY AND CASUALTY AFFILIATES. THE PRIMARY PROPERTY COVERAGE SOLD BY THE COMPANY IS COMPREHENSIVE FOR AUTOMOBILE AND INLAND MARINE FOR BOATS. THE ESTIMATE OF THE PML IS LESS THAN 11% OF THE SURPLUS.

6.3 What provision has this reporting entity made (such as a catastrophic reinsurance program) to protect itself from an excessive loss arising from the types and concentrations of insured exposures comprising its probable maximum property insurance loss?  
SINCE THE COMPANY'S ESTIMATED PML IS LESS THAN 11% OF THE SURPLUS, THE COMPANY CARRIES NO EXTERNAL CATASTROPHE REINSURANCE TO COVER ITS LIMITED CATASTROPHE EXPOSURE. THE COMPANY PARTICIPATES IN A POOLING ARRANGEMENT WHICH SPREADS THE UNDERWRITING RISK INCLUDING THE CATASTROPHE EXPOSURE AMONG ALL PARTIES TO THE POOLING AGREEMENT.

6.4 Does the reporting entity carry catastrophe reinsurance protection for at least one reinstatement, in an amount sufficient to cover its estimated probable maximum loss attributable to a single loss event or occurrence? Yes [ ] No [X]

6.5 If no, describe any arrangements or mechanisms employed by the reporting entity to supplement its catastrophe reinsurance program or to hedge its exposure to uninsured catastrophic loss:  
NONE

**GENERAL INTERROGATORIES**

**PART 2 - PROPERTY AND CASUALTY INTERROGATORIES**

- 7.1 Has the reporting entity reinsured any risk with any other entity under a quota share reinsurance contract that includes a provision that would limit the reinsurer's losses below the stated quota share percentage (e.g., a deductible, a loss ratio corridor, a loss cap, an aggregate limit or any similar provisions)? Yes [ ] No [X]
- 7.2 If yes, indicate the number of reinsurance contracts containing such provisions. .....
- 7.3 If yes, does the amount of reinsurance credit taken reflect the reduction in quota share coverage caused by any applicable limiting provision(s)? Yes [ ] No [ ]
- 8.1 Has this reporting entity reinsured any risk with any other entity and agreed to release such entity from liability, in whole or in part, from any loss that may occur on this risk, or portion thereof, reinsured? Yes [ ] No [X]
- 8.2 If yes, give full information:
- 
- 9.1 Has the reporting entity ceded any risk under any reinsurance contract (or under multiple contracts with the same reinsurer or its affiliates) for which during the period covered by the statement: (i) it recorded a positive or negative underwriting result greater than 5% of prior year-end surplus as regards policyholders or it reported calendar year written premium ceded or year-end loss and loss expense reserves ceded greater than 5% of prior year-end surplus as regards policyholders; (ii) it accounted for that contract as reinsurance and not as a deposit; and (iii) the contract(s) contain one or more of the following features or other features that would have similar results:
- (a) A contract term longer than two years and the contract is noncancellable by the reporting entity during the contract term;
  - (b) A limited or conditional cancellation provision under which cancellation triggers an obligation by the reporting entity, or an affiliate of the reporting entity, to enter into a new reinsurance contract with the reinsurer, or an affiliate of the reinsurer;
  - (c) Aggregate stop loss reinsurance coverage;
  - (d) A unilateral right by either party (or both parties) to commute the reinsurance contract, whether conditional or not, except for such provisions which are only triggered by a decline in the credit status of the other party;
  - (e) A provision permitting reporting of losses, or payment of losses, less frequently than on a quarterly basis (unless there is no activity during the period); or
  - (f) Payment schedule, accumulating retentions from multiple years or any features inherently designed to delay timing of the reimbursement to the ceding entity?
- Yes [ ] No [X]
- 9.2 Has the reporting entity during the period covered by the statement ceded any risk under any reinsurance contract (or under multiple contracts with the same reinsurer or its affiliates), for which, during the period covered by the statement, it recorded a positive or negative underwriting result greater than 5% of prior year-end surplus as regards policyholders or it reported calendar year written premium ceded or year-end loss and loss expense reserves ceded greater than 5% of prior year-end surplus as regards policyholders; excluding cessions to approved pooling arrangements or to captive insurance companies that are directly or indirectly controlling, controlled by, or under control with (i) one or more unaffiliated policyholders of the reporting entity, or (ii) an association of which one or more unaffiliated policyholders of the reporting entity is a member where:
- (a) The written premium ceded to the reinsurer by the reporting entity or its affiliates represents fifty percent (50%) or more of the entire direct and assumed premium written by the reinsurer based on its most recently available financial statement; or
  - (b) Twenty-five percent (25%) or more of the written premium ceded to the reinsurer has been retroceded back to the reporting entity or its affiliates in a separate reinsurance contract?
- Yes [ ] No [X]
- 9.3 If yes to 9.1 or 9.2, please provide the following information in the Reinsurance Summary Supplemental Filing for General Interrogatory 9:
- (a) The aggregate financial statement impact gross of all such ceded reinsurance contracts on the balance sheet and statement of income;
  - (b) A summary of the reinsurance contract terms and indicate whether it applies to the contracts meeting the criteria in 9.1 or 9.2; and
  - (c) A brief discussion of management's principle objectives in entering into the reinsurance contract including the economic purpose to be achieved.
- 9.4 Except for transactions meeting the requirements of paragraph 31 of SSAP No. 62R, Property and Casualty Reinsurance, has the reporting entity ceded any risk under any reinsurance contract (or multiple contracts with the same reinsurer or its affiliates) during the period covered by the financial statement, and either:
- (a) Accounted for that contract as reinsurance (either prospective or retroactive) under statutory accounting principles ("SAP") and as a deposit under generally accepted accounting principles ("GAAP"); or
  - (b) Accounted for that contract as reinsurance under GAAP and as a deposit under SAP?
- Yes [ ] No [X]
- 9.5 If yes to 9.4, explain in the Reinsurance Summary Supplemental Filing for General Interrogatory 9 (Section D) why the contract(s) is treated differently for GAAP and SAP.
- 9.6 The reporting entity is exempt from the Reinsurance Attestation Supplement under one or more of the following criteria:
- (a) The entity does not utilize reinsurance; or Yes [ ] No [X]
  - (b) The entity only engages in a 100% quota share contract with an affiliate and the affiliated or lead company has filed an attestation supplement; or Yes [ ] No [X]
  - (c) The entity has no external cessions and only participates in an intercompany pool and the affiliated or lead company has filed an attestation supplement. Yes [X] No [ ]
10. If the reporting entity has assumed risks from another entity, there should be charged on account of such reinsurance a reserve equal to that which the original entity would have been required to charge had it retained the risks. Has this been done? Yes [X] No [ ] N/A [ ]
- 11.1 Has this reporting entity guaranteed policies issued by any other reporting entity and now in force? Yes [ ] No [X]
- 11.2 If yes, give full information:
- 
- 12.1 If the reporting entity recorded accrued retrospective premiums on insurance contracts on Line 15.3 of the assets schedule, Page 2, state the amount of corresponding liabilities recorded for:
- 12.11 Unpaid losses \$.....0
  - 12.12 Unpaid underwriting expenses (including loss adjustment expenses) \$.....0
- 12.2 Of the amount on Line 15.3, Page 2, state the amount that is secured by letters of credit, collateral and other funds: \$.....0
- 12.3 If the reporting entity underwrites commercial insurance risks, such as workers' compensation, are premium notes or promissory notes accepted from its insureds covering unpaid premiums and/or unpaid losses? Yes [ ] No [ ] N/A [X]
- 12.4 If yes, provide the range of interest rates charged under such notes during the period covered by this statement:
- 12.41 From .....%
  - 12.42 To .....%
- 12.5 Are letters of credit or collateral and other funds received from insureds being utilized by the reporting entity to secure premium notes or promissory notes taken by a reporting entity, or to secure any of the reporting entity's reported direct unpaid loss reserves, including unpaid losses under loss deductible features of commercial policies? Yes [ ] No [X]
- 12.6 If yes, state the amount thereof at December 31 of current year:
- 12.61 Letters of credit .....
  - 12.62 Collateral and other funds .....

**GENERAL INTERROGATORIES**

**PART 2 - PROPERTY AND CASUALTY INTERROGATORIES**

13.1 Largest net aggregate amount insured in any one risk (excluding workers' compensation): \$.....800,000

13.2 Does any reinsurance contract considered in the calculation of this amount include an aggregate limit of recovery without also including a reinstatement provision? Yes [ ] No [X]

13.3 State the number of reinsurance contracts (excluding individual facultative risk certificates, but including facultative programs, automatic facilities or facultative obligatory contracts) considered in the calculation of the amount. ....1

14.1 Is the company a cedant in a multiple cedant reinsurance contract? Yes [ ] No [X]

14.2 If yes, please describe the method of allocating and recording reinsurance among the cedants:

---

14.3 If the answer to 14.1 is yes, are the methods described in item 14.2 entirely contained in the respective multiple cedant reinsurance contracts? Yes [ ] No [ ]

14.4 If the answer to 14.3 is no, are all the methods described in 14.2 entirely contained in written agreements? Yes [ ] No [ ]

14.5 If the answer to 14.4 is no, please explain:

---

15.1 Has the reporting entity guaranteed any financed premium accounts? Yes [ ] No [X]

15.2 If yes, give full information:

---

16.1 Does the reporting entity write any warranty business? Yes [ ] No [X]

If yes, disclose the following information for each of the following types of warranty coverage:

	1 Direct Losses Incurred	2 Direct Losses Unpaid	3 Direct Written Premium	4 Direct Premium Unearned	5 Direct Premium Earned
16.11 Home.....					
16.12 Products.....					
16.13 Automobile.....					
16.14 Other*.....					

\* Disclose type of coverage: .....

17.1 Does the reporting entity include amounts recoverable on unauthorized reinsurance in Schedule F-Part 3 that it excludes from Schedule F-Part 5? Yes [ ] No [X]

Included but not reported losses on contracts in force prior to July 1, 1984, and not subsequently renewed are exempt from inclusion in Schedule F-Part 5.

Provide the following information for this exemption:

17.11 Gross amount of unauthorized reinsurance in Schedule F-Part 3 excluded from Schedule F-Part 5 .....

17.12 Unfunded portion of Interrogatory 17.11 .....

17.13 Paid losses and loss adjustment expenses portion of Interrogatory 17.11 .....

17.14 Case reserves portion of Interrogatory 17.11 .....

17.15 Incurred but not reported portion of Interrogatory 17.11 .....

17.16 Unearned premium portion of Interrogatory 17.11 .....

17.17 Contingent commission portion of Interrogatory 17.11 .....

Provide the following information for all other amounts included in Schedule F-Part 3 and excluded from Schedule F-Part 5, not included above:

17.18 Gross amount of unauthorized reinsurance in Schedule F-Part 3 excluded from Schedule F-Part 5 .....

17.19 Unfunded portion of Interrogatory 17.18 .....

17.20 Paid losses and loss adjustment expenses portion of Interrogatory 17.18 .....

17.21 Case reserves portion of Interrogatory 17.18 .....

17.22 Incurred but not reported portion of Interrogatory 17.18 .....

17.23 Unearned premium portion of Interrogatory 17.18 .....

17.24 Contingent commission portion of Interrogatory 17.18 .....

18.1 Do you act as a custodian for health savings account? Yes [ ] No [X]

18.2 If yes, please provide the amount of custodial funds held as of the reporting date. ....

18.3 Do you act as an administrator for health savings accounts? Yes [ ] No [X]

18.4 If yes, please provide the balance of the funds administered as of the reporting date. ....

**FIVE-YEAR HISTORICAL DATA**

Show amounts in whole dollars only, no cents; show percentages to one decimal place, i.e. 17.6.

	1 2012	2 2011	3 2010	4 2009	5 2008
<b>Gross Premiums Written (Page 8, Part 1B, Cols. 1, 2 &amp; 3)</b>					
1. Liability lines (Lines 11.1, 11.2, 16, 17.1, 17.2, 17.3, 18.1, 18.2, 19.1, 19.2 & 19.3, 19.4).....	612,259,285	559,502,070	490,722,914	371,120,818	275,227,624
2. Property lines (Lines 1, 2, 9, 12, 21 & 26).....	326,537,574	291,421,743	257,436,238	218,152,137	175,212,784
3. Property and liability combined lines (Lines 3, 4, 5, 8, 22 & 27).....	141,589	132,281	126,990	114,713	103,366
4. All other lines (Lines 6, 10, 13, 14, 15, 23, 24, 28, 29, 30 & 34).....					
5. Nonproportional reinsurance lines (Lines 31, 32 & 33).....					
6. Total (Line 35).....	938,938,449	851,056,094	748,286,143	589,387,668	450,543,773
<b>Net Premiums Written (Page 8, Part 1B, Col. 6)</b>					
7. Liability lines (Lines 11.1, 11.2, 16, 17.1, 17.2, 17.3, 18.1, 18.2, 19.1, 19.2 & 19.3, 19.4).....	145,280,022	134,701,563	123,772,551	108,004,825	93,408,177
8. Property lines (Lines 1, 2, 9, 12, 21 & 26).....	73,764,462	69,335,332	65,926,101	63,048,739	57,543,374
9. Property and liability combined lines (Lines 3, 4, 5, 8, 22 & 27).....	141,589	132,281	126,990	114,713	103,366
10. All other lines (Lines 6, 10, 13, 14, 15, 23, 24, 28, 29, 30 & 34).....					
11. Nonproportional reinsurance lines (Lines 31, 32 & 33).....					
12. Total (Line 35).....	219,186,074	204,169,176	189,825,643	171,168,277	151,054,916
<b>Statement of Income (Page 4)</b>					
13. Net underwriting gain (loss) (Line 8).....	9,215,045	10,438,030	7,702,915	9,674,692	8,128,065
14. Net investment gain (loss) (Line 11).....	1,551,087	1,785,179	1,682,279	4,301,519	4,243,317
15. Total other income (Line 15).....	554,796	192,016	(851,811)	(1,318,155)	(732,926)
16. Dividends to policyholders (Line 17).....					
17. Federal and foreign income taxes incurred (Line 19).....	3,975,055	4,563,609	4,118,753	4,421,799	3,672,711
18. Net income (Line 20).....	7,345,873	7,851,616	4,414,630	8,236,257	7,965,745
<b>Balance Sheet Lines (Pages 2 and 3)</b>					
19. Total admitted assets excluding protected cell business (Page 2, Line 26, Col. 3).....	296,875,460	269,482,440	245,128,528	207,687,410	165,941,825
20. Premiums and considerations (Page 2, Col. 3):					
20.1 In course of collection (Line 15.1).....	16,289,967	14,915,524	12,866,688	9,345,917	6,645,249
20.2 Deferred and not yet due (Line 15.2).....	111,528,187	98,708,834	87,999,078	64,329,440	45,075,073
20.3 Accrued retrospective premiums (Line 15.3).....					
21. Total liabilities excluding protected cell business (Page 3, Line 26).....	179,454,676	164,446,323	151,515,756	130,577,659	110,576,361
22. Losses (Page 3, Line 1).....	72,104,573	65,390,276	62,222,875	53,920,990	46,168,494
23. Loss adjustment expenses (Page 3, Line 3).....	15,025,828	14,341,518	13,595,460	11,890,304	10,524,241
24. Unearned premiums (Page 3, Line 9).....	57,090,077	54,213,475	50,232,168	45,158,763	40,447,486
25. Capital paid up (Page 3, Lines 30 & 31).....	3,000,000	3,000,000	3,000,000	3,000,000	3,000,000
26. Surplus as regards policyholders (Page 3, Line 37).....	117,420,784	105,036,117	93,612,772	77,109,751	55,365,464
<b>Cash Flow (Page 5)</b>					
27. Net cash from operations (Line 11).....	3,282,229	2,088,729	(5,881,654)	1,273,081	8,049,093
<b>Risk-Based Capital Analysis</b>					
28. Total adjusted capital.....	117,420,784	105,036,117	93,612,772	77,109,751	55,365,464
29. Authorized control level risk-based capital.....	7,673,144	7,766,443	8,631,787	7,069,496	7,432,448
<b>Percentage Distribution of Cash, Cash Equivalents and Invested Assets</b> (Page 2, Col. 3) (Item divided by Page 2, Line 12, Col. 3) x 100.0					
30. Bonds (Line 1).....	100.0	100.0	99.3	100.0	99.9
31. Stocks (Lines 2.1 & 2.2).....				0.0	0.0
32. Mortgage loans on real estate (Lines 3.1 & 3.2).....					
33. Real estate (Lines 4.1, 4.2 & 4.3).....					
34. Cash, cash equivalents and short-term investments (Line 5).....			0.7		0.1
35. Contract loans (Line 6).....					
36. Derivatives (Line 7).....				XXX	XXX
37. Other invested assets (Line 8).....					
38. Receivable for securities (Line 9).....					
39. Securities lending reinvested collateral assets (Line 10).....				XXX	XXX
40. Aggregate write-ins for invested assets (Line 11).....					
41. Cash, cash equivalents and invested assets (Line 12).....	100.0	100.0	100.0	100.0	100.0
<b>Investments in Parent, Subsidiaries and Affiliates</b>					
42. Affiliated bonds (Sch. D, Summary, Line 12, Col. 1).....					
43. Affiliated preferred stocks (Sch. D, Summary, Line 18, Col. 1).....					
44. Affiliated common stocks (Sch. D, Summary, Line 24, Col. 1).....					
45. Affiliated short-term investments (subtotals included in Schedule DA, Verification, Column 5, Line 10).....					
46. Affiliated mortgage loans on real estate.....					
47. All other affiliated.....					
48. Total of above lines 42 to 47.....	0	0	0	0	0
49. Total investment in parent included in Lines 42 to 47 above.....					
50. Percentage of investments in parent, subsidiaries and affiliates to surplus as regards policyholders (Line 48 above divided by Page 3, Col. 1, Line 37 x 100.0).....	0.0				

## FIVE-YEAR HISTORICAL DATA

(Continued)

	1	2	3	4	5
	2012	2011	2010	2009	2008
<b>Capital and Surplus Accounts (Page 4)</b>					
51. Net unrealized capital gains (losses) (Line 24).....		276,829	(276,829)		
52. Dividends to stockholders (Line 35).....					
53. Change in surplus as regards policyholders for the year (Line 38).....	12,384,667	11,423,345	16,503,021	21,744,288	9,389,961
<b>Gross Losses Paid (Page 9, Part 2, Cols. 1 &amp; 2)</b>					
54. Liability lines (Lines 11.1, 11.2, 16, 17.1, 17.2, 17.3, 18.1, 18.2, 19.1, 19.2 & 19.3, 19.4).....	310,846,399	270,819,081	214,215,137	159,752,342	125,196,143
55. Property lines (Lines 1, 2, 9, 12, 21 & 26).....	232,233,215	210,159,175	177,314,938	129,144,963	108,943,460
56. Property and liability combined lines (Lines 3, 4, 5, 8, 22 & 27).....	93,492	92,662	53,489	99,797	97,108
57. All other lines (Lines 6, 10, 13, 14, 15, 23, 24, 28, 29, 30 & 34).....					
58. Nonproportional reinsurance lines (Lines 31, 32 & 33).....					
59. Total (Line 35).....	543,173,105	481,070,918	391,583,564	288,997,102	234,236,711
<b>Net Losses Paid (Page 9, Part 2, Col. 4)</b>					
60. Liability lines (Lines 11.1, 11.2, 16, 17.1, 17.2, 17.3, 18.1, 18.2, 19.1, 19.2 & 19.3, 19.4).....	78,345,298	70,041,556	62,429,590	55,812,207	49,155,564
61. Property lines (Lines 1, 2, 9, 12, 21 & 26).....	51,936,236	47,938,847	42,424,008	38,409,652	35,406,473
62. Property and liability combined lines (Lines 3, 4, 5, 8, 22 & 27).....	93,492	92,662	53,489	104,213	75,989
63. All other lines (Lines 6, 10, 13, 14, 15, 23, 24, 28, 29, 30 & 34).....					
64. Nonproportional reinsurance lines (Lines 31, 32 & 33).....					
65. Total (Line 35).....	130,375,025	118,073,065	104,907,087	94,326,072	84,638,026
<b>Operating Percentages</b> (Page 4) (Item divided by Page 4, Line 1) x 100.0					
66. Premiums earned (Line 1).....	100.0	100.0	100.0	100.0	100.0
67. Losses incurred (Line 2).....	63.4	60.6	61.3	61.3	61.1
68. Loss expenses incurred (Line 3).....	10.8	11.2	12.0	12.0	12.7
69. Other underwriting expenses incurred (Line 4).....	21.5	23.1	22.6	20.9	20.8
70. Net underwriting gain (loss) (Line 8).....	4.3	5.2	4.2	5.8	5.5
<b>Other Percentages</b>					
71. Other underwriting expenses to net premiums written (Page 4, Lines 4 + 5 - 15 divided by Page 8, Part 1B, Col. 6, Line 35 x 100.0).....	21.0	22.5	22.4	21.1	20.9
72. Losses and loss expenses incurred to premiums earned (Page 4, Lines 2 + 3 divided by Page 4, Line 1 x 100.0).....	74.2	71.7	73.3	73.3	73.7
73. Net premiums written to policyholders' surplus (Page 8, Part 1B, Col. 6, Line 35, divided by Page 3, Line 37, Col. 1 x 100.0).....	186.7	194.4	202.8	222.0	272.8
<b>One Year Loss Development (000 omitted)</b>					
74. Development in estimated losses and loss expenses incurred prior to current year (Schedule P, Part 2-Summary, Line 12, Col. 11).....	(489)	(3,915)	(4,256)	(1,743)	(346)
75. Percent of development of losses and loss expenses incurred to policyholders' surplus of prior year end (Line 74 above divided by Page 4, Line 21, Col. 1 x 100).....	(0.5)	(4.2)	(5.5)	(3.1)	(0.8)
<b>Two Year Loss Development (000 omitted)</b>					
76. Development in estimated losses and loss expenses incurred 2 years before the current year and prior year (Schedule P, Part 2-Summary, Line 12, Col. 12).....	(4,769)	(6,355)	(2,997)	(1,351)	(164)
77. Percent of development of losses and loss expenses incurred to reported policyholders' surplus of second prior year end (Line 76 above divided by Page 4, Line 21, Col. 2 x 100.0).....	(5.1)	(8.2)	(5.4)	(2.9)	(0.4)

If a party to a merger, have the two most recent years of this exhibit been restated due to a merger in compliance with the disclosure requirements of

SSAP No. 3, Accounting Changes and Correction of Errors?

Yes [ ] No [ ]

If no, please explain:

**SCHEDULE P - ANALYSIS OF LOSSES AND LOSS EXPENSES**

**SCHEDULE P - PART 1 - SUMMARY**

(\$000 Omitted)

Years in Which Premiums Were Earned and Losses Were Incurred	Premiums Earned			Loss and Loss Expense Payments						10 Salvage and Subrogation Received	11 Total Net Paid (Cols. 4 - 5 + 6 - 7 + 8 - 9)	12 Number of Claims Reported-Direct and Assumed
	1 Direct and Assumed	2 Ceded	3 Net (Cols. 1 - 2)	Loss Payments		Defense and Cost Containment Payments		Adjusting and Other Payments				
				4 Direct and Assumed	5 Ceded	6 Direct and Assumed	7 Ceded	8 Direct and Assumed	9 Ceded			
1. Prior.....	.....XXX.....	.....XXX.....	.....XXX.....	.....7.....	.....1.....	.....1.....	.....1.....	.....1.....	.....7.....	.....10.....	.....XXX.....	
2. 2003.....	.....70,402.....	.....58,652.....	.....11,751.....	.....37,227.....	.....31,954.....	.....1,010.....	.....980.....	.....8,069.....	.....6,818.....	.....2,156.....	.....6,554.....	.....XXX.....
3. 2004.....	.....94,326.....	.....3.....	.....94,323.....	.....48,969.....	.....5.....	.....1,490.....	.....0.....	.....10,779.....	.....1.....	.....4,825.....	.....61,232.....	.....XXX.....
4. 2005.....	.....118,594.....	.....589.....	.....118,005.....	.....67,460.....	.....505.....	.....1,917.....	.....1.....	.....14,504.....	.....38.....	.....6,755.....	.....83,337.....	.....XXX.....
5. 2006.....	.....133,650.....	.....1,023.....	.....132,627.....	.....74,488.....	.....506.....	.....1,998.....	.....1.....	.....15,935.....	.....0.....	.....8,188.....	.....91,913.....	.....XXX.....
6. 2007.....	.....142,496.....	.....1,295.....	.....141,201.....	.....82,831.....	.....587.....	.....2,107.....	.....1.....	.....15,835.....	.....9,831.....	.....100,185.....	.....XXX.....	
7. 2008.....	.....149,456.....	.....1,352.....	.....148,103.....	.....88,169.....	.....605.....	.....1,974.....	.....0.....	.....17,051.....	.....10,246.....	.....106,588.....	.....XXX.....	
8. 2009.....	.....168,136.....	.....1,679.....	.....166,457.....	.....97,036.....	.....720.....	.....2,094.....	.....1.....	.....16,810.....	.....11,397.....	.....115,220.....	.....XXX.....	
9. 2010.....	.....186,788.....	.....2,036.....	.....184,752.....	.....108,926.....	.....1,013.....	.....1,895.....	.....1.....	.....18,422.....	.....12,654.....	.....128,228.....	.....XXX.....	
10. 2011.....	.....202,798.....	.....2,610.....	.....200,188.....	.....109,458.....	.....872.....	.....1,124.....	.....1.....	.....18,028.....	.....13,718.....	.....127,737.....	.....XXX.....	
11. 2012.....	.....219,032.....	.....2,723.....	.....216,310.....	.....94,287.....	.....526.....	.....296.....	.....0.....	.....15,282.....	.....10,122.....	.....109,338.....	.....XXX.....	
12. Totals.....	.....XXX.....	.....XXX.....	.....XXX.....	.....808,857.....	.....37,294.....	.....15,906.....	.....986.....	.....150,716.....	.....6,857.....	.....89,900.....	.....930,342.....	.....XXX.....

	Losses Unpaid				Defense and Cost Containment Unpaid				Adjusting and Other Unpaid		23 Salvage and Subrogation Anticipated	24 Total Net Losses and Expenses Unpaid	25 Number of Claims Outstanding-Direct and Assumed
	Case Basis		Bulk + IBNR		Case Basis		Bulk + IBNR		21 Direct and Assumed	22 Ceded			
	13 Direct and Assumed	14 Ceded	15 Direct and Assumed	16 Ceded	17 Direct and Assumed	18 Ceded	19 Direct and Assumed	20 Ceded					
1. Prior.....	.....41.....	.....0.....	.....0.....	.....0.....	.....2.....	.....2.....	.....1.....	.....1.....	.....1.....	.....1.....	.....43.....	.....XXX.....	
2. 2003.....	.....17.....	.....0.....	.....0.....	.....0.....	.....2.....	.....0.....	.....1.....	.....1.....	.....1.....	.....1.....	.....19.....	.....XXX.....	
3. 2004.....	.....25.....	.....9.....	.....9.....	.....9.....	.....3.....	.....3.....	.....1.....	.....1.....	.....1.....	.....7.....	.....38.....	.....XXX.....	
4. 2005.....	.....609.....	.....483.....	.....9.....	.....9.....	.....7.....	.....7.....	.....3.....	.....3.....	.....3.....	.....15.....	.....144.....	.....XXX.....	
5. 2006.....	.....145.....	.....21.....	.....9.....	.....9.....	.....19.....	.....19.....	.....8.....	.....8.....	.....8.....	.....26.....	.....160.....	.....XXX.....	
6. 2007.....	.....696.....	.....376.....	.....9.....	.....9.....	.....46.....	.....46.....	.....22.....	.....22.....	.....22.....	.....43.....	.....397.....	.....XXX.....	
7. 2008.....	.....1,440.....	.....677.....	.....24.....	.....16.....	.....131.....	.....131.....	.....48.....	.....48.....	.....48.....	.....76.....	.....951.....	.....XXX.....	
8. 2009.....	.....2,619.....	.....382.....	.....998.....	.....225.....	.....396.....	.....396.....	.....190.....	.....190.....	.....190.....	.....173.....	.....3,738.....	.....XXX.....	
9. 2010.....	.....8,367.....	.....1,983.....	.....1,320.....	.....98.....	.....1,132.....	.....1,132.....	.....594.....	.....594.....	.....594.....	.....438.....	.....9,569.....	.....XXX.....	
10. 2011.....	.....14,251.....	.....888.....	.....3,615.....	.....632.....	.....1,722.....	.....1,722.....	.....1,545.....	.....1,545.....	.....1,545.....	.....1,050.....	.....20,057.....	.....XXX.....	
11. 2012.....	.....35,784.....	.....1,997.....	.....10,225.....	.....328.....	.....2,388.....	.....2,388.....	.....4,963.....	.....4,963.....	.....4,963.....	.....6,379.....	.....52,014.....	.....XXX.....	
12. Totals.....	.....63,992.....	.....6,806.....	.....16,216.....	.....1,298.....	.....5,848.....	.....5,848.....	.....7,376.....	.....7,376.....	.....7,376.....	.....8,207.....	.....87,130.....	.....XXX.....	

	Total Losses and Loss Expenses Incurred			Loss and Loss Expense Percentage (Incurred/Premiums Earned)			Nontabular Discount		34 Inter-Company Pooling Participation Percentage	Net Balance Sheet Reserves after Discount	
	26 Direct and Assumed	27 Ceded	28 Net	29 Direct and Assumed	30 Ceded	31 Net	32 Loss	33 Loss Expense		35 Losses Unpaid	36 Loss Expenses Unpaid
1. Prior..	.....XXX.....	.....XXX.....	.....XXX.....	.....XXX.....	.....XXX.....	.....XXX.....	.....0.....	.....0.....	.....XXX.....	.....41.....	.....2.....
2. 2003..	.....46,326.....	.....39,752.....	.....6,574.....	.....65.8.....	.....67.8.....	.....55.9.....	.....0.....	.....0.....	.....4.00.....	.....17.....	.....3.....
3. 2004..	.....61,275.....	.....6.....	.....61,270.....	.....65.0.....	.....180.3.....	.....65.0.....	.....0.....	.....0.....	.....4.00.....	.....34.....	.....4.....
4. 2005..	.....84,507.....	.....1,027.....	.....83,481.....	.....71.3.....	.....174.3.....	.....70.7.....	.....0.....	.....0.....	.....4.00.....	.....134.....	.....10.....
5. 2006..	.....92,602.....	.....529.....	.....92,073.....	.....69.3.....	.....51.7.....	.....69.4.....	.....0.....	.....0.....	.....4.00.....	.....132.....	.....27.....
6. 2007..	.....101,546.....	.....964.....	.....100,582.....	.....71.3.....	.....74.4.....	.....71.2.....	.....0.....	.....0.....	.....4.00.....	.....329.....	.....68.....
7. 2008..	.....108,837.....	.....1,298.....	.....107,539.....	.....72.8.....	.....96.0.....	.....72.6.....	.....0.....	.....0.....	.....4.00.....	.....771.....	.....179.....
8. 2009..	.....120,285.....	.....1,327.....	.....118,958.....	.....71.5.....	.....79.0.....	.....71.5.....	.....0.....	.....0.....	.....4.00.....	.....3,010.....	.....728.....
9. 2010..	.....140,892.....	.....3,095.....	.....137,797.....	.....75.4.....	.....152.0.....	.....74.6.....	.....0.....	.....0.....	.....4.00.....	.....7,606.....	.....1,963.....
10. 2011..	.....150,187.....	.....2,392.....	.....147,794.....	.....74.1.....	.....91.7.....	.....73.8.....	.....0.....	.....0.....	.....4.00.....	.....16,346.....	.....3,711.....
11. 2012..	.....164,203.....	.....2,851.....	.....161,352.....	.....75.0.....	.....104.7.....	.....74.6.....	.....0.....	.....0.....	.....4.00.....	.....43,684.....	.....8,330.....
12. Totals	.....XXX.....	.....XXX.....	.....XXX.....	.....XXX.....	.....XXX.....	.....XXX.....	.....0.....	.....0.....	.....XXX.....	.....72,104.....	.....15,026.....

Note: Parts 2 and 4 are gross of all discounting, including tabular discounting. Part 1 is gross of only nontabular discounting, which is reported in Columns 32 and 33 of Part 1. The tabular discount, if any, is reported in the Notes to Financial Statements, which will reconcile Part 1 with Parts 2 and 4.

**SCHEDULE P - PART 2 - SUMMARY**

Years in Which Losses Were Incurred	Incurred Net Losses and Defense and Cost Containment Expenses Reported at Year End (\$000 omitted)										DEVELOPMENT	
	1	2	3	4	5	6	7	8	9	10	11	12
	2003	2004	2005	2006	2007	2008	2009	2010	2011	2012	One Year	Two Year
1. Prior.....	1,411	1,339	1,149	1,064	1,085	1,012	970	968	978	1,011	33	43
2. 2003.....	6,560	6,463	5,810	5,408	5,383	5,274	5,301	5,323	5,311	5,322	11	(2)
3. 2004.....	XXX	52,595	51,218	50,759	50,586	50,349	50,402	50,390	50,482	50,490	8	100
4. 2005.....	XXX	XXX	70,524	69,297	69,534	69,336	68,954	68,955	69,016	69,012	(5)	57
5. 2006.....	XXX	XXX	XXX	76,713	76,463	77,105	76,600	76,143	76,081	76,130	49	(13)
6. 2007.....	XXX	XXX	XXX	XXX	86,346	85,974	85,819	85,366	84,649	84,725	75	(641)
7. 2008.....	XXX	XXX	XXX	XXX	XXX	92,927	92,189	91,835	91,073	90,440	(633)	(1,396)
8. 2009.....	XXX	XXX	XXX	XXX	XXX	XXX	106,396	103,394	102,686	101,959	(727)	(1,435)
9. 2010.....	XXX	XXX	XXX	XXX	XXX	XXX	XXX	120,265	118,448	118,781	333	(1,483)
10. 2011.....	XXX	XXX	XXX	XXX	XXX	XXX	XXX	XXX	127,855	128,221	365	XXX
11. 2012.....	XXX	XXX	XXX	XXX	XXX	XXX	XXX	XXX	XXX	141,107	XXX	XXX
12. Totals.....											(489)	(4,769)

**SCHEDULE P - PART 3 - SUMMARY**

Years in Which Losses Were Incurred	Cumulative Paid Net Losses and Defense and Cost Containment Expenses Reported at Year End (\$000 omitted)										11	12
	1	2	3	4	5	6	7	8	9	10	Number of Claims Closed With Loss Payment	Number of Claims Closed Without Loss Payment
	2003	2004	2005	2006	2007	2008	2009	2010	2011	2012		
1. Prior.....	000	(2,167)	(415)	449	794	882	901	913	960	968	XXX	XXX
2. 2003.....	4,358	(402)	2,362	4,051	4,832	5,115	5,218	5,258	5,297	5,303	XXX	XXX
3. 2004.....	XXX	34,703	42,765	46,490	48,677	49,726	50,127	50,277	50,424	50,454	XXX	XXX
4. 2005.....	XXX	XXX	47,812	59,289	64,485	67,347	68,276	68,657	68,789	68,871	XXX	XXX
5. 2006.....	XXX	XXX	XXX	52,986	65,611	71,310	74,292	75,443	75,811	75,979	XXX	XXX
6. 2007.....	XXX	XXX	XXX	XXX	58,855	73,778	79,815	82,671	83,950	84,350	XXX	XXX
7. 2008.....	XXX	XXX	XXX	XXX	XXX	61,741	79,401	85,286	88,199	89,537	XXX	XXX
8. 2009.....	XXX	XXX	XXX	XXX	XXX	XXX	68,282	87,206	94,402	98,410	XXX	XXX
9. 2010.....	XXX	XXX	XXX	XXX	XXX	XXX	XXX	77,671	100,497	109,806	XXX	XXX
10. 2011.....	XXX	XXX	XXX	XXX	XXX	XXX	XXX	XXX	85,678	109,709	XXX	XXX
11. 2012.....	XXX	XXX	XXX	XXX	XXX	XXX	XXX	XXX	XXX	94,056	XXX	XXX

**SCHEDULE P - PART 4 - SUMMARY**

Years in Which Losses Were Incurred	Bulk and IBNR Reserves on Net Losses and Defense and Cost Containment Expenses Reported at Year End (\$000 omitted)									
	1	2	3	4	5	6	7	8	9	10
	2003	2004	2005	2006	2007	2008	2009	2010	2011	2012
1. Prior.....	224	617	141	42	31	32	35	32	0	0
2. 2003.....	527	1,403	587	151	0	0	2	3	3	0
3. 2004.....	XXX	4,445	1,647	650	211	1	2	4	4	9
4. 2005.....	XXX	XXX	5,421	1,868	858	331	0	5	4	9
5. 2006.....	XXX	XXX	XXX	6,078	2,087	1,068	410	5	5	9
6. 2007.....	XXX	XXX	XXX	XXX	6,813	2,245	1,143	606	7	9
7. 2008.....	XXX	XXX	XXX	XXX	XXX	8,012	2,524	1,377	634	9
8. 2009.....	XXX	XXX	XXX	XXX	XXX	XXX	8,681	2,927	1,569	915
9. 2010.....	XXX	XXX	XXX	XXX	XXX	XXX	XXX	9,045	3,097	1,459
10. 2011.....	XXX	XXX	XXX	XXX	XXX	XXX	XXX	XXX	9,141	3,426
11. 2012.....	XXX	XXX	XXX	XXX	XXX	XXX	XXX	XXX	XXX	10,876

**PROGRESSIVE ADVANCED INSURANCE COMPANY**  
**SCHEDULE T - EXHIBIT OF PREMIUMS WRITTEN**

Allocated by States and Territories

States, Etc.	1 Active Status	Gross Premiums, Including Policy and Membership Fees Less Return Premiums and Premiums on Policies Not Taken		4 Dividends Paid or Credited to Policyholders on Direct Business	5 Direct Losses Paid (Deducting Salvage)	6 Direct Losses Incurred	7 Direct Losses Unpaid	8 Finance and Service Charges not Included in Premiums	9 Direct Premiums Written for Federal Purchasing Groups (Incl. in Col. 2)
		2 Direct Premiums Written	3 Direct Premiums Earned						
1. Alabama.....AL	L								
2. Alaska.....AK	L								
3. Arizona.....AZ	L	195,755,505	191,957,220		121,241,212	123,380,681	57,127,808	2,701,702	
4. Arkansas.....AR	L								
5. California.....CA	L					(781)	680		
6. Colorado.....CO	L								
7. Connecticut.....CT	N								
8. Delaware.....DE	L								
9. District of Columbia.....DC	L								
10. Florida.....FL	L								
11. Georgia.....GA	L	13,757,827	11,720,334		5,778,765	6,428,649	3,548,733	177,045	
12. Hawaii.....HI	L								
13. Idaho.....ID	L								
14. Illinois.....IL	L								
15. Indiana.....IN	L								
16. Iowa.....IA	L								
17. Kansas.....KS	L								
18. Kentucky.....KY	L								
19. Louisiana.....LA	L								
20. Maine.....ME	L								
21. Maryland.....MD	L	54,720,922	59,650,346		38,398,035	32,787,276	21,546,257	609,087	
22. Massachusetts.....MA	N								
23. Michigan.....MI	N								
24. Minnesota.....MN	N								
25. Mississippi.....MS	L				25,196	196			
26. Missouri.....MO	L	55,047,412	53,421,158		30,411,828	34,484,661	12,105,233	959,332	
27. Montana.....MT	L								
28. Nebraska.....NE	L								
29. Nevada.....NV	L								
30. New Hampshire.....NH	L								
31. New Jersey.....NJ	N								
32. New Mexico.....NM	L								
33. New York.....NY	L	93,949,634	91,138,201		53,862,497	58,321,428	35,614,861	1,136,909	
34. North Carolina.....NC	L								
35. North Dakota.....ND	L								
36. Ohio.....OH	L								
37. Oklahoma.....OK	L								
38. Oregon.....OR	L								
39. Pennsylvania.....PA	L	186,625,154	181,895,693		101,046,852	109,920,790	56,477,775	3,043,105	
40. Rhode Island.....RI	L								
41. South Carolina.....SC	L								
42. South Dakota.....SD	L								
43. Tennessee.....TN	L								
44. Texas.....TX	L	9,260,522	9,125,153		3,674,234	3,516,420	725,026	119,038	
45. Utah.....UT	L								
46. Vermont.....VT	L								
47. Virginia.....VA	L	110,635,398	103,071,037		58,359,459	68,974,357	25,205,566	1,946,798	
48. Washington.....WA	L								
49. West Virginia.....WV	L								
50. Wisconsin.....WI	L								
51. Wyoming.....WY	N								
52. American Samoa.....AS	N								
53. Guam.....GU	N								
54. Puerto Rico.....PR	N								
55. US Virgin Islands.....VI	N								
56. Northern Mariana Islands.....MP	N								
57. Canada.....CAN	N								
58. Aggregate Other Alien.....OT	XXX	0	0	0	0	0	0	0	0
59. Totals.....(a) .45		719,752,374	701,979,142	0	412,798,078	437,813,677	212,351,939	10,693,016	0

**DETAILS OF WRITE-INS**

58001.....	XXX								
58002.....	XXX								
58003.....	XXX								
58998. Summary of remaining write-ins for Line 58 from overflow page	XXX	0	0	0	0	0	0	0	0
58999. Totals (Lines 58001 thru 58003+ Line 58998) (Line 58 above)	XXX	0	0	0	0	0	0	0	0

(a) Insert the number of "L" responses except for Canada and Other Alien.

(L) - Licensed or Chartered - Licensed Insurance Carrier or Domiciled RRG; (R) - Registered - Non-domiciled RRGs; (Q) - Qualified - Qualified or Accredited Reinsurer;

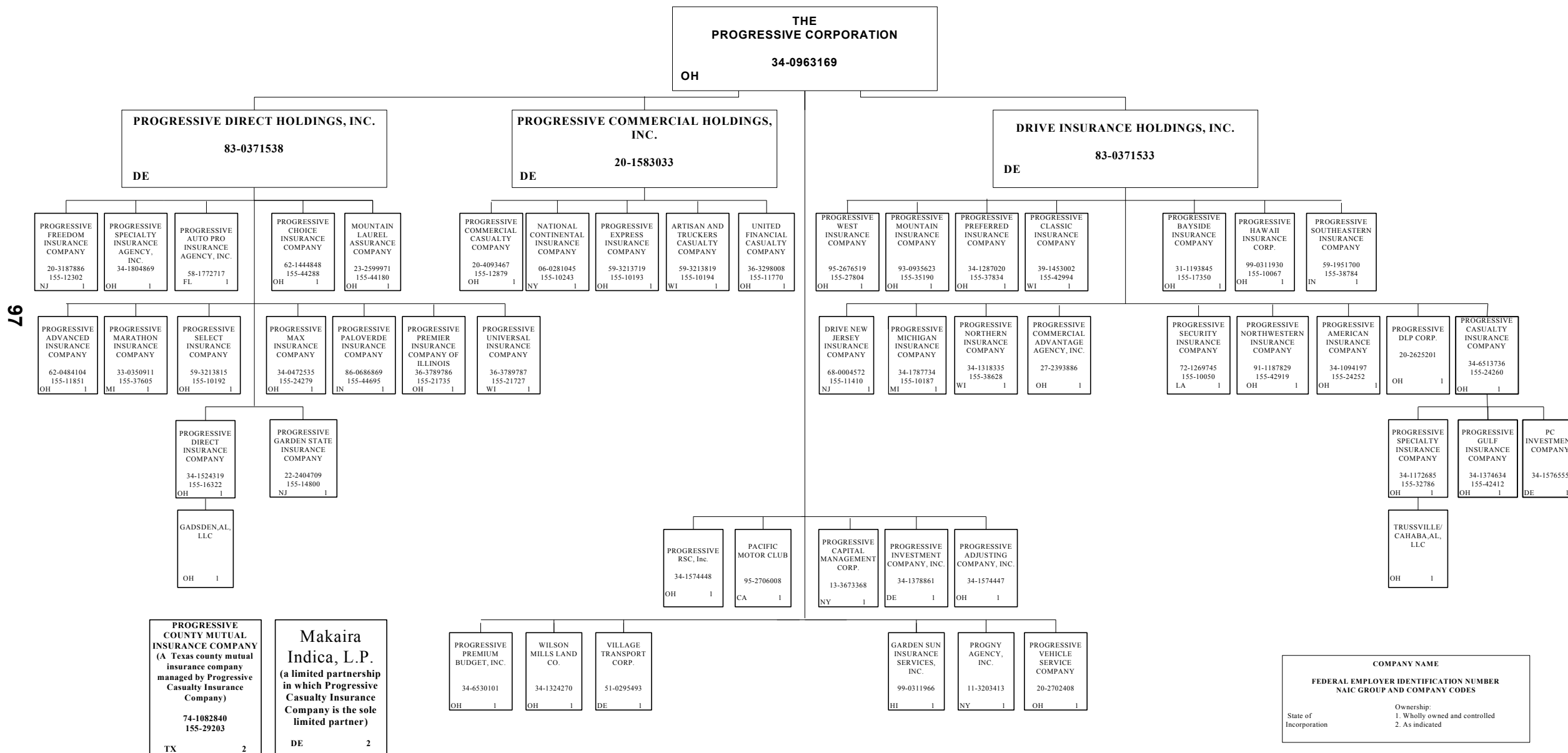
(E) - Eligible - Reporting Entities eligible or approved to write Surplus Lines in the state; (N) - None of the above - Not allowed to write business in the state.

Explanation of Basis of Allocation of Premiums by States, etc.

Allocation on the basis of the location where the vehicle is principally garaged and used.

# SCHEDULE Y – INFORMATION CONCERNING ACTIVITIES OF INSURER MEMBERS OF A HOLDING COMPANY GROUP

## PART 1 – ORGANIZATIONAL CHART



97

## 2012 ALPHABETICAL INDEX -- PROPERTY & CASUALTY ANNUAL STATEMENT BLANK

Assets	2	Schedule P-Part 2G-Special Liability (Ocean Marine, Aircraft (All Perils), Boiler & Machinery)	59
Cash Flow	5	Schedule P-Part 2H-Section 1-Other Liability-Occurrence	59
Exhibit of Capital Gains (Losses)	12	Schedule P-Part 2H-Section 2-Other Liability-Claims-Made	59
Exhibit of Net Investment Income	12	Schedule P-Part 2I-Spec. Prop. (Fire, Allied Lines, Inland Marine, Earthquake, Burglary, Theft)	60
Exhibit of Nonadmitted Assets	13	Schedule P-Part 2J-Auto Physical Damage	60
Exhibit of Premiums and Losses (State Page)	19	Schedule P-Part 2K-Fidelity, Surety	60
Five-Year Historical Data	17	Schedule P-Part 2L-Other (Including Credit, Accident and Health)	60
General Interrogatories	15	Schedule P-Part 2M-International	60
Jurat Page	1	Schedule P-Part 2N-Reinsurance - Nonproportional Assumed Property	61
Liabilities, Surplus and Other Funds	3	Schedule P-Part 2O-Reinsurance - Nonproportional Assumed Liability	61
Notes To Financial Statements	14	Schedule P-Part 2P-Reinsurance - Nonproportional Assumed Financial Lines	61
Overflow Page For Write-ins	101	Schedule P-Part 2R-Section 1-Products Liability-Occurrence	62
Schedule A-Part 1	E01	Schedule P-Part 2R-Section 2-Products Liability-Claims-Made	62
Schedule A-Part 2	E02	Schedule P-Part 2S-Financial Guaranty/Mortgage Guaranty	62
Schedule A-Part 3	E03	Schedule P-Part 2T-Warranty	62
Schedule A-Verification Between Years	SI02	Schedule P-Part 3A-Homeowners/Farmowners	63
Schedule B-Part 1	E04	Schedule P-Part 3B-Private Passenger Auto Liability/Medical	63
Schedule B-Part 2	E05	Schedule P-Part 3C-Commercial Auto/Truck Liability/Medical	63
Schedule B-Part 3	E06	Schedule P-Part 3D-Workers' Compensation (Excluding Excess Workers Compensation)	63
Schedule B-Verification Between Years	SI02	Schedule P-Part 3E-Commercial Multiple Peril	63
Schedule BA-Part 1	E07	Schedule P-Part 3F-Section 1 -Medical Professional Liability-Occurrence	64
Schedule BA-Part 2	E08	Schedule P-Part 3F-Section 2-Medical Professional Liability-Claims-Made	64
Schedule BA-Part 3	E09	Schedule P-Part 3G-Special Liability (Ocean Marine, Aircraft (All Perils), Boiler & Machinery)	64
Schedule BA-Verification Between Years	SI03	Schedule P-Part 3H-Section 1-Other Liability-Occurrence	64
Schedule D-Part 1	E10	Schedule P-Part 3H-Section 2-Other Liability-Claims-Made	64
Schedule D-Part 1A-Section 1	SI05	Schedule P-Part 3I-Spec. Prop. (Fire, Allied Lines, Inland Marine, Earthquake, Burglary, Theft)	65
Schedule D-Part 1A-Section 2	SI08	Schedule P-Part 3J-Auto Physical Damage	65
Schedule D-Part 2-Section 1	E11	Schedule P-Part 3K-Fidelity/Surety	65
Schedule D-Part 2-Section 2	E12	Schedule P-Part 3L-Other (Including Credit, Accident and Health)	65
Schedule D-Part 3	E13	Schedule P-Part 3M-International	65
Schedule D-Part 4	E14	Schedule P-Part 3N-Reinsurance - Nonproportional Assumed Property	66
Schedule D-Part 5	E15	Schedule P-Part 3O-Reinsurance - Nonproportional Assumed Liability	66
Schedule D-Part 6-Section 1	E16	Schedule P-Part 3P-Reinsurance - Nonproportional Assumed Financial Lines	66
Schedule D-Part 6-Section 2	E16	Schedule P-Part 3R-Section 1-Products Liability-Occurrence	67
Schedule D-Summary By Country	SI04	Schedule P-Part 3R-Section 2-Products Liability-Claims-Made	67
Schedule D-Verification Between Years	SI03	Schedule P-Part 3S-Financial Guaranty/Mortgage Guaranty	67
Schedule DA-Part 1	E17	Schedule P-Part 3T-Warranty	67
Schedule DA-Verification Between Years	SI10	Schedule P-Part 4A-Homeowners/Farmowners	68
Schedule DB-Part A-Section 1	E18	Schedule P-Part 4B-Private Passenger Auto Liability/Medical	68
Schedule DB-Part A-Section 2	E19	Schedule P-Part 4C-Commercial Auto/Truck Liability/Medical	68
Schedule DB-Part A-Verification Between Years	SI11	Schedule P-Part 4D-Workers' Compensation (Excluding Excess Workers Compensation)	68
Schedule DB-Part B-Section 1	E20	Schedule P-Part 4E-Commercial Multiple Peril	68
Schedule DB-Part B-Section 2	E21	Schedule P-Part 4F-Section 1-Medical Professional Liability-Occurrence	69
Schedule DB-Part B-Verification Between Years	SI11	Schedule P-Part 4F-Section 2-Medical Professional Liability-Claims-Made	69
Schedule DB-Part C-Section 1	SI12	Schedule P-Part 4G-Special Liability (Ocean Marine, Aircraft (All Perils), Boiler & Machinery)	69
Schedule DB-Part C-Section 2	SI13	Schedule P-Part 4H-Section 1-Other Liability-Occurrence	69
Schedule DB-Part D	E22	Schedule P-Part 4H-Section 2-Other Liability-Claims-Made	69
Schedule DB-Verification	SI14	Schedule P-Part 4I-Spec. Prop. (Fire, Allied Lines, Inland Marine, Earthquake, Burglary & Theft)	70
Schedule DL-Part 1	E23	Schedule P-Part 4J-Auto Physical Damage	70
Schedule DL-Part 2	E24	Schedule P-Part 4K-Fidelity/Surety	70
Schedule E-Part 1-Cash	E25	Schedule P-Part 4L-Other (Including Credit, Accident and Health)	70
Schedule E-Part 2-Cash Equivalents	E26	Schedule P-Part 4M-International	70
Schedule E-Part 3-Special Deposits	E27	Schedule P-Part 4N-Reinsurance - Nonproportional Assumed Property	71
Schedule E-Verification Between Years	SI15	Schedule P-Part 4O-Reinsurance - Nonproportional Assumed Liability	71
Schedule F-Part 1	20	Schedule P-Part 4P-Reinsurance - Nonproportional Assumed Financial Lines	71
Schedule F-Part 2	21	Schedule P-Part 4R-Section 1-Products Liability-Occurrence	72
Schedule F-Part 3	22	Schedule P-Part 4R-Section 2-Products Liability-Claims-Made	72
Schedule F-Part 4	23	Schedule P-Part 4S-Financial Guaranty/Mortgage Guaranty	72
Schedule F-Part 5	24	Schedule P-Part 4T-Warranty	72
Schedule F-Part 6-Section 1	25	Schedule P-Part 5A-Homeowners/Farmowners	73
Schedule F-Part 6-Section 2	27	Schedule P-Part 5B-Private Passenger Auto Liability/Medical	74
Schedule F-Part 7	28	Schedule P-Part 5C-Commercial Auto/Truck Liability/Medical	75
Schedule F-Part 8	29	Schedule P-Part 5D-Workers' Compensation (Excluding Excess Workers Compensation)	76
Schedule F-Part 9	30	Schedule P-Part 5E-Commercial Multiple Peril	77
Schedule H-Accident and Health Exhibit-Part 1	31	Schedule P-Part 5F-Medical Professional Liability-Claims-Made	79
Schedule H-Part 2, Part 3 and Part 4	32	Schedule P-Part 5F-Medical Professional Liability-Occurrence	78
Schedule H-Part 5-Health Claims	33	Schedule P-Part 5H-Other Liability-Claims-Made	81
Schedule P-Part 1-Summary	34	Schedule P-Part 5H-Other Liability-Occurrence	80
Schedule P-Part 1A-Homeowners/Farmowners	36	Schedule P-Part 5R-Products Liability-Claims-Made	83
Schedule P-Part 1B-Private Passenger Auto Liability/Medical	37	Schedule P-Part 5R-Products Liability-Occurrence	82
Schedule P-Part 1C-Commercial Auto/Truck Liability/Medical	38	Schedule P-Part 5T-Warranty	84
Schedule P-Part 1D-Workers' Compensation (Excluding Excess Workers Compensation)	39	Schedule P-Part 6C-Commercial Auto/Truck Liability/Medical	85
Schedule P-Part 1E-Commercial Multiple Peril	40	Schedule P-Part 6D-Workers' Compensation (Excluding Excess Workers Compensation)	85
Schedule P-Part 1F-Section 1-Medical Professional Liability-Occurrence	41	Schedule P-Part 6E-Commercial Multiple Peril	86
Schedule P-Part 1F-Section 2-Medical Professional Liability-Claims-Made	42	Schedule P-Part 6H-Other Liability-Claims-Made	87
Schedule P-Part 1G-Special Liability (Ocean, Marine, Aircraft (All Perils), Boiler & Machinery)	43	Schedule P-Part 6H-Other Liability-Occurrence	86
Schedule P-Part 1H-Section 1-Other Liability-Occurrence	44	Schedule P-Part 6M-International	87
Schedule P-Part 1H-Section 2-Other Liability-Claims-Made	45	Schedule P-Part 6N-Reinsurance - Nonproportional Assumed Property	88
Schedule P-Part 1I-Spec. Prop. (Fire, Allied Lines, Inland Marine, Earthquake, Burglary & Theft)	46	Schedule P-Part 6O-Reinsurance - Nonproportional Assumed Liability	88
Schedule P-Part 1J-Auto Physical Damage	47	Schedule P-Part 6R-Products Liability-Claims-Made	89
Schedule P-Part 1K-Fidelity/Surety	48	Schedule P-Part 6R-Products Liability-Occurrence	89
Schedule P-Part 1L-Other (Including Credit, Accident and Health)	49	Schedule P-Part 7A-Primary Loss Sensitive Contracts	90
Schedule P-Part 1M-International	50	Schedule P-Part 7B-Reinsurance Loss Sensitive Contracts	92
Schedule P-Part 1N-Reinsurance - Nonproportional Assumed Property	51	Schedule P Interrogatories	94
Schedule P-Part 1O-Reinsurance - Nonproportional Assumed Liability	52	Schedule T-Exhibit of Premiums Written	95
Schedule P-Part 1P-Reinsurance - Nonproportional Assumed Financial Lines	53	Schedule T-Part 2-Interstate Compact	96
Schedule P-Part 1R-Section 1-Products Liability-Occurrence	54	Schedule Y-Information Concerning Activities of Insurer Members of a Holding Company Group	97
Schedule P-Part 1R-Section 2-Products Liability-Claims-Made	55	Schedule Y-Detail of Insurance Holding Company System	98
Schedule P-Part 1S-Financial Guaranty/Mortgage Guaranty	56	Schedule Y-Part 2-Summary of Insurer's Transactions With Any Affiliates	99
Schedule P-Part 1T-Warranty	57	Statement of Income	4
Schedule P-Part 2, Part 3 and Part 4 - Summary	35	Summary Investment Schedule	SI01
Schedule P-Part 2A-Homeowners/Farmowners	58	Supplemental Exhibits and Schedules Interrogatories	100
Schedule P-Part 2B-Private Passenger Auto Liability/Medical	58	Underwriting and Investment Exhibit Part 1	6
Schedule P-Part 2C-Commercial Auto/Truck Liability/Medical	58	Underwriting and Investment Exhibit Part 1A	7
Schedule P-Part 2D-Workers' Compensation (Excluding Excess Workers Compensation)	58	Underwriting and Investment Exhibit Part 1B	8
Schedule P-Part 2E-Commercial Multiple Peril	58	Underwriting and Investment Exhibit Part 2	9
Schedule P-Part 2F-Section 1-Medical Professional Liability-Occurrence	59	Underwriting and Investment Exhibit Part 2A	10
Schedule P-Part 2F-Section 2-Medical Professional Liability-Claims-Made	59	Underwriting and Investment Exhibit Part 3	11