



PROPERTY AND CASUALTY COMPANIES - ASSOCIATION EDITION

# ANNUAL STATEMENT

FOR THE YEAR ENDED DECEMBER 31, 2012  
OF THE CONDITION AND AFFAIRS OF THE

## Nationwide Insurance Company of Florida

NAIC Group Code 0140 0140 NAIC Company Code 10948 Employer's ID Number 31-1613686  
(Current) (Prior)

Organized under the Laws of Ohio, State of Domicile or Port of Entry Ohio  
Country of Domicile United States of America

Incorporated/Organized 08/18/1998 Commenced Business 08/18/1998

Statutory Home Office One West Nationwide Blvd., Columbus, OH, US 43215-2220  
(Street and Number) (City or Town, State, Country and Zip Code)

Main Administrative Office 1100 Locust Street  
(Street and Number)  
Des Moines, IA, US 50391-1100 614-249-7111  
(City or Town, State, Country and Zip Code) (Area Code) (Telephone Number)

Mail Address One West Nationwide Blvd., 1-04-701, Columbus, OH, US 43215-2220  
(Street and Number or P.O. Box) (City or Town, State, Country and Zip Code)

Primary Location of Books and Records One West Nationwide Blvd., 1-04-701  
(Street and Number)  
Columbus, OH, US 43215-2220 614-249-1545  
(City or Town, State, Country and Zip Code) (Area Code) (Telephone Number)

Internet Website Address www.nationwide.com

Statutory Statement Contact Monda S. Caudill, 614-249-1545  
(Name) (Area Code) (Telephone Number)  
FinRpt@nationwide.com 866-315-1430  
(E-mail Address) (FAX Number)

### OFFICERS

President Thomas Edward Clark # VP & Treasurer Wendell Paul Crosser  
VP & Secretary Robert William Horner III

### OTHER

Pamela Ann Biesecker Sr VP-Head of Taxation

### DIRECTORS OR TRUSTEES

David Gerard Arango Wesley Kim Austen Mark Allen Berven  
Martha Lovette Frye Jeff Millard Rommel

State of Ohio SS:  
County of Franklin

The officers of this reporting entity being duly sworn, each depose and say that they are the described officers of said reporting entity, and that on the reporting period stated above, all of the herein described assets were the absolute property of the said reporting entity, free and clear from any liens or claims thereon, except as herein stated, and that this statement, together with related exhibits, schedules and explanations therein contained, annexed or referred to, is a full and true statement of all the assets and liabilities and of the condition and affairs of the said reporting entity as of the reporting period stated above, and of its income and deductions therefrom for the period ended, and have been completed in accordance with the NAIC Annual Statement Instructions and Accounting Practices and Procedures manual except to the extent that: (1) state law may differ; or, (2) that state rules or regulations require differences in reporting not related to accounting practices and procedures, according to the best of their information, knowledge and belief, respectively. Furthermore, the scope of this attestation by the described officers also includes the related corresponding electronic filing with the NAIC, when required, that is an exact copy (except for formatting differences due to electronic filing) of the enclosed statement. The electronic filing may be requested by various regulators in lieu of or in addition to the enclosed statement.

Thomas Edward Clark  
President

Robert William Horner, III  
VP & Secretary

Wendell Paul Crosser  
VP & Treasurer

Subscribed and sworn to before me this \_\_\_\_\_ day of January, 2013

- a. Is this an original filing? ..... Yes [ X ] No [ ]  
b. If no,  
1. State the amendment number.....  
2. Date filed .....  
3. Number of pages attached.....

ANNUAL STATEMENT FOR THE YEAR 2012 OF THE NATIONWIDE INSURANCE COMPANY OF FLORIDA

**ASSETS**

	Current Year			Prior Year
	1 Assets	2 Nonadmitted Assets	3 Net Admitted Assets (Cols. 1 - 2)	4 Net Admitted Assets
1. Bonds (Schedule D) .....	304,058,077		304,058,077	334,986,767
2. Stocks (Schedule D):				
2.1 Preferred stocks .....				
2.2 Common stocks .....				
3. Mortgage loans on real estate (Schedule B):				
3.1 First liens .....				
3.2 Other than first liens .....				
4. Real estate (Schedule A):				
4.1 Properties occupied by the company (less \$ .....				
encumbrances) .....				
4.2 Properties held for the production of income (less				
\$ .....				
encumbrances) .....				
4.3 Properties held for sale (less \$ .....				
encumbrances) .....				
5. Cash (\$ .....81,444 , Schedule E - Part 1), cash equivalents				
(\$ .....				
, Schedule E - Part 2) and short-term				
investments (\$ .....7,718,678 , Schedule DA) .....	7,800,122		7,800,122	15,847,106
6. Contract loans (including \$ ..... premium notes) .....				
7. Derivatives (Schedule DB) .....				
8. Other invested assets (Schedule BA) .....				
9. Receivable for securities .....				
10. Securities lending reinvested collateral assets (Schedule DL) .....				
11. Aggregate write-ins for invested assets .....				
12. Subtotals, cash and invested assets (Lines 1 to 11) .....	311,858,199		311,858,199	350,833,873
13. Title plants less \$ ..... charged off (for Title insurers				
only) .....				
14. Investment income due and accrued .....	3,562,528		3,562,528	3,806,363
15. Premiums and considerations:				
15.1 Uncollected premiums and agents' balances in the course of collection .....	484,351		484,351	16,340
15.2 Deferred premiums, agents' balances and installments booked but				
deferred and not yet due (including \$ .....				
earned but unbilled premiums) .....	6,510,485	14,309	6,496,176	654
15.3 Accrued retrospective premiums .....				
16. Reinsurance:				
16.1 Amounts recoverable from reinsurers .....				
16.2 Funds held by or deposited with reinsured companies .....				
16.3 Other amounts receivable under reinsurance contracts .....				
17. Amounts receivable relating to uninsured plans .....				
18.1 Current federal and foreign income tax recoverable and interest thereon .....				
18.2 Net deferred tax asset .....	4,218,359	3,485,875	732,484	2,753,863
19. Guaranty funds receivable or on deposit .....				
20. Electronic data processing equipment and software .....				
21. Furniture and equipment, including health care delivery assets				
(\$ ..... ) .....				
22. Net adjustment in assets and liabilities due to foreign exchange rates .....				
23. Receivables from parent, subsidiaries and affiliates .....	6,931,420		6,931,420	10,317,542
24. Health care (\$ ..... ) and other amounts receivable .....				
25. Aggregate write-ins for other than invested assets .....				360,376
26. Total assets excluding Separate Accounts, Segregated Accounts and				
Protected Cell Accounts (Lines 12 to 25) .....	333,565,342	3,500,184	330,065,158	368,089,011
27. From Separate Accounts, Segregated Accounts and Protected Cell				
Accounts .....				
28. Total (Lines 26 and 27) .....	333,565,342	3,500,184	330,065,158	368,089,011
<b>DETAILS OF WRITE-INS</b>				
1101. ....				
1102. ....				
1103. ....				
1198. Summary of remaining write-ins for Line 11 from overflow page .....				
1199. Totals (Lines 1101 thru 1103 plus 1198)(Line 11 above) .....				
2501. FL recoupment receivable .....				360,376
2502. ....				
2503. ....				
2598. Summary of remaining write-ins for Line 25 from overflow page .....				
2599. Totals (Lines 2501 thru 2503 plus 2598)(Line 25 above) .....				360,376

ANNUAL STATEMENT FOR THE YEAR 2012 OF THE NATIONWIDE INSURANCE COMPANY OF FLORIDA  
**LIABILITIES, SURPLUS AND OTHER FUNDS**

	1 Current Year	2 Prior Year
1. Losses (Part 2A, Line 35, Column 8) .....	31,565,629	49,212,795
2. Reinsurance payable on paid losses and loss adjustment expenses (Schedule F, Part 1, Column 6) .....		
3. Loss adjustment expenses (Part 2A, Line 35, Column 9) .....	5,102,440	6,563,478
4. Commissions payable, contingent commissions and other similar charges .....	209,437	217,751
5. Other expenses (excluding taxes, licenses and fees) .....		
6. Taxes, licenses and fees (excluding federal and foreign income taxes) .....		
7.1 Current federal and foreign income taxes (including \$ .....711,612 on realized capital gains (losses)) .....	347,486	74,519
7.2 Net deferred tax liability .....		
8. Borrowed money \$ ..... and interest thereon \$ .....		
9. Unearned premiums (Part 1A, Line 38, Column 5) (after deducting unearned premiums for ceded reinsurance of \$ .....724,733 and including warranty reserves of \$ ..... and accrued accident and health experience rating refunds including \$ ..... for medical loss ratio rebate per the Public Health Service Act) .....	26,089,622	27,310,008
10. Advance premium .....	681,382	
11. Dividends declared and unpaid:		
11.1 Stockholders .....		
11.2 Policyholders .....		
12. Ceded reinsurance premiums payable (net of ceding commissions) .....	(1,523,035)	(975,151)
13. Funds held by company under reinsurance treaties (Schedule F, Part 3, Column 19) .....		
14. Amounts withheld or retained by company for account of others .....		1,813
15. Remittances and items not allocated .....	9,271,276	6,787,282
16. Provision for reinsurance (including \$ ..... certified) (Schedule F, Part 8) .....	88,000	108,000
17. Net adjustments in assets and liabilities due to foreign exchange rates .....		
18. Drafts outstanding .....		
19. Payable to parent, subsidiaries and affiliates .....	32,090	44,133
20. Derivatives .....		
21. Payable for securities .....		
22. Payable for securities lending .....		
23. Liability for amounts held under uninsured plans .....		
24. Capital notes \$ ..... and interest thereon \$ .....		
25. Aggregate write-ins for liabilities .....	443,209	552,810
26. Total liabilities excluding protected cell liabilities (Lines 1 through 25) .....	72,307,536	89,897,438
27. Protected cell liabilities .....		
28. Total liabilities (Lines 26 and 27) .....	72,307,536	89,897,438
29. Aggregate write-ins for special surplus funds .....		
30. Common capital stock .....	1,200,000	1,200,000
31. Preferred capital stock .....		
32. Aggregate write-ins for other than special surplus funds .....		
33. Surplus notes .....		
34. Gross paid in and contributed surplus .....	523,800,000	548,800,000
35. Unassigned funds (surplus) .....	(267,242,378)	(271,808,427)
36. Less treasury stock, at cost:		
36.1 ..... shares common (value included in Line 30 \$ ..... ) .....		
36.2 ..... shares preferred (value included in Line 31 \$ ..... ) .....		
37. Surplus as regards policyholders (Lines 29 to 35, less 36) (Page 4, Line 39) .....	257,757,622	278,191,573
38. TOTALS (Page 2, Line 28, Col. 3)	330,065,158	368,089,011
<b>DETAILS OF WRITE-INS</b>		
2501. State surcharge/recoupment payable .....	258,254	361,215
2502. Escrow liability .....	181,652	181,652
2503. Contingent suit liabilities .....	3,303	9,943
2598. Summary of remaining write-ins for Line 25 from overflow page .....		
2599. Totals (Lines 2501 thru 2503 plus 2598)(Line 25 above)	443,209	552,810
2901. ....		
2902. ....		
2903. ....		
2998. Summary of remaining write-ins for Line 29 from overflow page .....		
2999. Totals (Lines 2901 thru 2903 plus 2998)(Line 29 above)		
3201. ....		
3202. ....		
3203. ....		
3298. Summary of remaining write-ins for Line 32 from overflow page .....		
3299. Totals (Lines 3201 thru 3203 plus 3298)(Line 32 above)		

**STATEMENT OF INCOME**

	1 Current Year	2 Prior Year
<b>UNDERWRITING INCOME</b>		
1. Premiums earned (Part 1, Line 35, Column 4) .....	34,774,526	42,138,305
<b>DEDUCTIONS:</b>		
2. Losses incurred (Part 2, Line 35, Column 7) .....	22,785,014	30,942,584
3. Loss adjustment expenses incurred (Part 3, Line 25, Column 1) .....	5,311,627	6,534,534
4. Other underwriting expenses incurred (Part 3, Line 25, Column 2) .....	14,831,922	14,684,143
5. Aggregate write-ins for underwriting deductions .....		
6. Total underwriting deductions (Lines 2 through 5) .....	42,928,563	52,161,261
7. Net income of protected cells .....		
8. Net underwriting gain or (loss) (Line 1 minus Line 6 plus Line 7) .....	(8,154,037)	(10,022,956)
<b>INVESTMENT INCOME</b>		
9. Net investment income earned (Exhibit of Net Investment Income, Line 17) .....	11,595,740	11,922,565
10. Net realized capital gains or (losses) less capital gains tax of \$ 711,612 (Exhibit of Capital Gains (Losses) ) .....	1,456,637	1,939,659
11. Net investment gain (loss) (Lines 9 + 10) .....	13,052,377	13,862,224
<b>OTHER INCOME</b>		
12. Net gain (loss) from agents' or premium balances charged off (amount recovered \$ 766 amount charged off \$ 64,633 ) .....	(63,867)	(63,824)
13. Finance and service charges not included in premiums .....	416,892	495,083
14. Aggregate write-ins for miscellaneous income .....	(231,354)	(434,847)
15. Total other income (Lines 12 through 14) .....	121,671	(3,588)
16. Net income before dividends to policyholders, after capital gains tax and before all other federal and foreign income taxes (Lines 8 + 11 + 15) .....	5,020,011	3,835,680
17. Dividends to policyholders .....		
18. Net income, after dividends to policyholders, after capital gains tax and before all other federal and foreign income taxes (Line 16 minus Line 17) .....	5,020,011	3,835,680
19. Federal and foreign income taxes incurred .....	(275,112)	(1,243,338)
20. Net income (Line 18 minus Line 19)(to Line 22) .....	5,295,123	5,079,018
<b>CAPITAL AND SURPLUS ACCOUNT</b>		
21. Surplus as regards policyholders, December 31 prior year (Page 4, Line 39, Column 2) .....	278,191,573	267,913,629
22. Net income (from Line 20) .....	5,295,123	5,079,018
23. Net transfers (to) from Protected Cell accounts .....		
24. Change in net unrealized capital gains or (losses) less capital gains tax of \$ 1,016,540 .....	255,661	1,903,707
25. Change in net unrealized foreign exchange capital gain (loss) .....		
26. Change in net deferred income tax .....	519,415	476,815
27. Change in nonadmitted assets (Exhibit of Nonadmitted Assets, Line 28, Col. 3) .....	(2,127,278)	2,616,704
28. Change in provision for reinsurance (Page 3, Line 16, Column 2 minus Column 1) .....	20,000	201,700
29. Change in surplus notes .....		
30. Surplus (contributed to) withdrawn from protected cells .....		
31. Cumulative effect of changes in accounting principles .....	603,128	
32. Capital changes:		
32.1 Paid in .....		
32.2 Transferred from surplus (Stock Dividend) .....		
32.3 Transferred to surplus .....		
33. Surplus adjustments:		
33.1 Paid in .....	(25,000,000)	
33.2 Transferred to capital (Stock Dividend) .....		
33.3 Transferred from capital .....		
34. Net remittances from or (to) Home Office .....		
35. Dividends to stockholders .....		
36. Change in treasury stock (Page 3, Lines 36.1 and 36.2, Column 2 minus Column 1) .....		
37. Aggregate write-ins for gains and losses in surplus .....		
38. Change in surplus as regards policyholders for the year (Lines 22 through 37) .....	(20,433,951)	10,277,944
39. Surplus as regards policyholders, December 31 current year (Line 21 plus Line 38) (Page 3, Line 37) .....	257,757,622	278,191,573
<b>DETAILS OF WRITE-INS</b>		
0501. ....		
0502. ....		
0503. ....		
0598. Summary of remaining write-ins for Line 5 from overflow page .....		
0599. Totals (Lines 0501 thru 0503 plus 0598)(Line 5 above) .....		
1401. FL recoupment receivable .....		(588,589)
1402. Miscellaneous .....	(237,993)	156,396
1403. Change in contingent suit liability .....	6,639	(2,654)
1498. Summary of remaining write-ins for Line 14 from overflow page .....		
1499. Totals (Lines 1401 thru 1403 plus 1498)(Line 14 above) .....	(231,354)	(434,847)
3701. ....		
3702. ....		
3703. ....		
3798. Summary of remaining write-ins for Line 37 from overflow page .....		
3799. Totals (Lines 3701 thru 3703 plus 3798)(Line 37 above) .....		

**CASH FLOW**

	1	2
	Current Year	Prior Year
<b>Cash from Operations</b>		
1. Premiums collected net of reinsurance .....	26,709,797	32,987,790
2. Net investment income .....	12,964,698	13,741,003
3. Miscellaneous income .....	121,669	(3,588)
4. Total (Lines 1 through 3) .....	39,796,165	46,725,205
5. Benefit and loss related payments .....	40,432,180	56,613,665
6. Net transfers to Separate Accounts, Segregated Accounts and Protected Cell Accounts .....		
7. Commissions, expenses paid and aggregate write-ins for deductions .....	21,612,901	24,572,549
8. Dividends paid to policyholders .....		
9. Federal and foreign income taxes paid (recovered) net of \$ ..... 1,318,374 tax on capital gains (losses) .....	163,533	(7,280,789)
10. Total (Lines 5 through 9) .....	62,208,614	73,905,425
11. Net cash from operations (Line 4 minus Line 10) .....	(22,412,449)	(27,180,220)
<b>Cash from Investments</b>		
12. Proceeds from investments sold, matured or repaid:		
12.1 Bonds .....	40,383,957	147,811,949
12.2 Stocks .....		
12.3 Mortgage loans .....		
12.4 Real estate .....		
12.5 Other invested assets .....		
12.6 Net gains or (losses) on cash, cash equivalents and short-term investments .....		
12.7 Miscellaneous proceeds .....		13,282
12.8 Total investment proceeds (Lines 12.1 to 12.7) .....	40,383,957	147,825,231
13. Cost of investments acquired (long-term only):		
13.1 Bonds .....	7,139,942	111,637,124
13.2 Stocks .....		
13.3 Mortgage loans .....		
13.4 Real estate .....		
13.5 Other invested assets .....		
13.6 Miscellaneous applications .....		
13.7 Total investments acquired (Lines 13.1 to 13.6) .....	7,139,942	111,637,124
14. Net increase (decrease) in contract loans and premium notes .....		
15. Net cash from investments (Line 12.8 minus Line 13.7 minus Line 14) .....	33,244,015	36,188,107
<b>Cash from Financing and Miscellaneous Sources</b>		
16. Cash provided (applied):		
16.1 Surplus notes, capital notes .....		
16.2 Capital and paid in surplus, less treasury stock .....	(25,000,000)	
16.3 Borrowed funds .....		
16.4 Net deposits on deposit-type contracts and other insurance liabilities .....		
16.5 Dividends to stockholders .....		
16.6 Other cash provided (applied) .....	6,121,450	(15,328)
17. Net cash from financing and miscellaneous sources (Lines 16.1 to 16.4 minus Line 16.5 plus Line 16.6) .....	(18,878,550)	(15,328)
<b>RECONCILIATION OF CASH, CASH EQUIVALENTS AND SHORT-TERM INVESTMENTS</b>		
18. Net change in cash, cash equivalents and short-term investments (Line 11, plus Lines 15 and 17) .....	(8,046,984)	8,992,559
19. Cash, cash equivalents and short-term investments:		
19.1 Beginning of year .....	15,847,106	6,854,547
19.2 End of period (Line 18 plus Line 19.1) .....	7,800,122	15,847,106

Note: Supplemental disclosures of cash flow information for non-cash transactions:

--	--	--

**UNDERWRITING AND INVESTMENT EXHIBIT**

PART 1 - PREMIUMS EARNED

Line of Business		1 Net Premiums Written per Column 6, Part 1B	2 Unearned Premiums Dec. 31 Prior Year - per Col. 3, Last Year's Part 1	3 Unearned Premiums Dec. 31 Current Year - per Col. 5 Part 1A	4 Premiums Earned During Year (Cols. 1 + 2 - 3)
1.	Fire .....				
2.	Allied lines .....				
3.	Farmowners multiple peril .....				
4.	Homeowners multiple peril .....	32,619,358	26,790,378	25,617,902	33,791,834
5.	Commercial multiple peril .....				
6.	Mortgage guaranty .....				
8.	Ocean marine .....				
9.	Inland marine .....	917,936	510,457	463,099	965,294
10.	Financial guaranty .....				
11.1	Medical professional liability - occurrence .....				
11.2	Medical professional liability - claims-made .....				
12.	Earthquake .....	16,847	9,173	8,622	17,398
13.	Group accident and health .....				
14.	Credit accident and health (group and individual) .....				
15.	Other accident and health .....				
16.	Workers' compensation .....				
17.1	Other liability - occurrence .....				
17.2	Other liability - claims-made .....				
17.3	Excess workers' compensation .....				
18.1	Products liability - occurrence .....				
18.2	Products liability - claims-made .....				
19.1, 19.2	Private passenger auto liability .....				
19.3, 19.4	Commercial auto liability .....				
21.	Auto physical damage .....				
22.	Aircraft (all perils) .....				
23.	Fidelity .....				
24.	Surety .....				
26.	Burglary and theft .....				
27.	Boiler and machinery .....				
28.	Credit .....				
29.	International .....				
30.	Warranty .....				
31.	Reinsurance - nonproportional assumed property .....				
32.	Reinsurance - nonproportional assumed liability .....				
33.	Reinsurance - nonproportional assumed financial lines .....				
34.	Aggregate write-ins for other lines of business .....				
35.	<b>TOTALS</b>	<b>33,554,141</b>	<b>27,310,008</b>	<b>26,089,623</b>	<b>34,774,526</b>
<b>DETAILS OF WRITE-INS</b>					
3401.	.....				
3402.	.....				
3403.	.....				
3498.	Summary of remaining write-ins for Line 34 from overflow page .....				
3499.	Totals (Lines 3401 thru 3403 plus 3498)(Line 34 above)				

**UNDERWRITING AND INVESTMENT EXHIBIT**

PART 1A - RECAPITULATION OF ALL PREMIUMS

Line of Business		1 Amount Unearned (Running One Year or Less from Date of Policy) (a)	2 Amount Unearned (Running More Than One Year from Date of Policy) (a)	3 Earned But Unbilled Premium	4 Reserve for Rate Credits and Retrospective Adjustments Based on Experience	5 Total Reserve for Unearned Premiums Cols. 1 + 2 + 3 + 4
1.	Fire .....					
2.	Allied lines .....					
3.	Farmowners multiple peril .....					
4.	Homeowners multiple peril .....	25,617,902				25,617,902
5.	Commercial multiple peril .....					
6.	Mortgage guaranty .....					
8.	Ocean marine .....					
9.	Inland marine .....	463,099				463,099
10.	Financial guaranty .....					
11.1	Medical professional liability - occurrence .....					
11.2	Medical professional liability - claims-made .....					
12.	Earthquake .....	8,622				8,622
13.	Group accident and health .....					
14.	Credit accident and health (group and individual) .....					
15.	Other accident and health .....					
16.	Workers' compensation .....					
17.1	Other liability - occurrence .....					
17.2	Other liability - claims-made .....					
17.3	Excess workers' compensation .....					
18.1	Products liability - occurrence .....					
18.2	Products liability - claims-made .....					
19.1, 19.2	Private passenger auto liability .....					
19.3, 19.4	Commercial auto liability .....					
21.	Auto physical damage .....					
22.	Aircraft (all perils) .....					
23.	Fidelity .....					
24.	Surety .....					
26.	Burglary and theft .....					
27.	Boiler and machinery .....					
28.	Credit .....					
29.	International .....					
30.	Warranty .....					
31.	Reinsurance - nonproportional assumed property .....					
32.	Reinsurance - nonproportional assumed liability .....					
33.	Reinsurance - nonproportional assumed financial lines .....					
34.	Aggregate write-ins for other lines of business .....					
35.	<b>TOTALS</b>	<b>26,089,623</b>				<b>26,089,623</b>
36.	Accrued retrospective premiums based on experience .....					
37.	Earned but unbilled premiums .....					
38.	<b>Balance (Sum of Line 35 through 37)</b>					<b>26,089,623</b>
<b>DETAILS OF WRITE-INS</b>						
3401.	.....					
3402.	.....					
3403.	.....					
3498.	Summary of remaining write-ins for Line 34 from overflow page .....					
3499.	Totals (Lines 3401 thru 3403 plus 3498)(Line 34 above)					

(a) State here basis of computation used in each case See Notes to Financial Statement #1c .....

**UNDERWRITING AND INVESTMENT EXHIBIT**

PART 1B - PREMIUMS WRITTEN

Line of Business	1	Reinsurance Assumed		Reinsurance Ceded		6
	Direct Business (a)	2 From Affiliates	3 From Non-Affiliates	4 To Affiliates	5 To Non-Affiliates	Net Premiums Written Cols. 1+2+3-4-5
1. Fire						
2. Allied lines						
3. Farmowners multiple peril						
4. Homeowners multiple peril	53,245,165			14,051,667	6,574,140	32,619,358
5. Commercial multiple peril						
6. Mortgage guaranty						
8. Ocean marine						
9. Inland marine	942,262				24,326	917,936
10. Financial guaranty						
11.1 Medical professional liability - occurrence						
11.2 Medical professional liability - claims-made						
12. Earthquake	16,847					16,847
13. Group accident and health						
14. Credit accident and health (group and individual)						
15. Other accident and health						
16. Workers' compensation						
17.1 Other liability - occurrence						
17.2 Other liability - claims-made						
17.3 Excess workers' compensation						
18.1 Products liability - occurrence						
18.2 Products liability - claims-made						
19.1, 19.2 Private passenger auto liability						
19.3, 19.4 Commercial auto liability						
21. Auto physical damage						
22. Aircraft (all perils)						
23. Fidelity						
24. Surety						
26. Burglary and theft						
27. Boiler and machinery						
28. Credit						
29. International						
30. Warranty						
31. Reinsurance - nonproportional assumed property	XXX					
32. Reinsurance - nonproportional assumed liability	XXX					
33. Reinsurance - nonproportional assumed financial lines	XXX					
34. Aggregate write-ins for other lines of business						
35. TOTALS	54,204,274			14,051,667	6,598,466	33,554,141
<b>DETAILS OF WRITE-INS</b>						
3401.						
3402.						
3403.						
3498. Summary of remaining write-ins for Line 34 from overflow page						
3499. Totals (Lines 3401 thru 3403 plus 3498)(Line 34 above)						

(a) Does the company's direct premiums written include premiums recorded on an installment basis? Yes [ ] No [ X ]

If yes: 1. The amount of such installment premiums \$ .....

2. Amount at which such installment premiums would have been reported had they been reported on an annualized basis \$ .....

ANNUAL STATEMENT FOR THE YEAR 2012 OF THE NATIONWIDE INSURANCE COMPANY OF FLORIDA

**UNDERWRITING AND INVESTMENT EXHIBIT**

PART 2 - LOSSES PAID AND INCURRED

Line of Business	Losses Paid Less Salvage				5 Net Losses Unpaid Current Year (Part 2A , Col. 8)	6 Net Losses Unpaid Prior Year	7 Losses Incurred Current Year (Cols. 4 + 5 - 6)	8 Percentage of Losses Incurred (Col. 7, Part 2) to Premiums Earned (Col. 4, Part 1)
	1 Direct Business	2 Reinsurance Assumed	3 Reinsurance Recovered	4 Net Payments (Cols. 1 + 2 -3 )				
1. Fire .....					197	3,456	(3,259)	
2. Allied lines .....	73,172			73,172	18,269	85,827	5,614	
3. Farmowners multiple peril .....								
4. Homeowners multiple peril .....	40,158,893			40,158,893	31,528,408	48,997,835	22,689,466	67.1
5. Commercial multiple peril .....								
6. Mortgage guaranty .....								
8. Ocean marine .....								
9. Inland marine .....	155,099			155,099	18,276	79,570	93,805	9.7
10. Financial guaranty .....								
11.1 Medical professional liability - occurrence .....								
11.2 Medical professional liability - claims-made .....								
12. Earthquake .....	17			17	484	927	(426)	(2.4)
13. Group accident and health .....								
14. Credit accident and health (group and individual) .....								
15. Other accident and health .....								
16. Workers' compensation .....								
17.1 Other liability - occurrence .....	45,000			45,000	(6)	45,180	(186)	
17.2 Other liability - claims-made .....								
17.3 Excess workers' compensation .....								
18.1 Products liability - occurrence .....								
18.2 Products liability - claims-made .....								
19.1, 19.2 Private passenger auto liability .....								
19.3, 19.4 Commercial auto liability .....								
21. Auto physical damage .....								
22. Aircraft (all perils) .....								
23. Fidelity .....								
24. Surety .....								
26. Burglary and theft .....								
27. Boiler and machinery .....								
28. Credit .....								
29. International .....								
30. Warranty .....								
31. Reinsurance - nonproportional assumed property .....	XXX							
32. Reinsurance - nonproportional assumed liability .....	XXX							
33. Reinsurance - nonproportional assumed financial lines .....	XXX							
34. Aggregate write-ins for other lines of business .....								
35. TOTALS	40,432,181			40,432,181	31,565,628	49,212,795	22,785,014	65.5
<b>DETAILS OF WRITE-INS</b>								
3401. ....								
3402. ....								
3403. ....								
3498. Summary of remaining write-ins for Line 34 from overflow page .....								
3499. Totals (Lines 3401 thru 3403 plus 3498)(Line 34 above)								

ANNUAL STATEMENT FOR THE YEAR 2012 OF THE NATIONWIDE INSURANCE COMPANY OF FLORIDA

**UNDERWRITING AND INVESTMENT EXHIBIT**

**PART 2A - UNPAID LOSSES AND LOSS ADJUSTMENT EXPENSES**

Line of Business	Reported Losses				Incurred But Not Reported			8 Net Losses Unpaid (Cols. 4 + 5 + 6 - 7)	9 Net Unpaid Loss Adjustment Expenses
	1 Direct	2 Reinsurance Assumed	3 Deduct Reinsurance Recoverable from Authorized and Unauthorized Companies	4 Net Losses Excl. Incurred But Not Reported (Cols. 1 + 2 - 3)	5 Direct	6 Reinsurance Assumed	7 Reinsurance Ceded		
1. Fire	197			197				197	(584)
2. Allied lines	18,269			18,269				18,269	(1,713)
3. Farmowners multiple peril									
4. Homeowners multiple peril	21,214,038			21,214,038	10,314,370			31,528,408	5,103,830
5. Commercial multiple peril									
6. Mortgage guaranty									
8. Ocean marine									
9. Inland marine	1,685			1,685	16,591			18,276	330
10. Financial guaranty									
11.1 Medical professional liability - occurrence									
11.2 Medical professional liability - claims-made									
12. Earthquake						484		484	372
13. Group accident and health								(a)	
14. Credit accident and health (group and individual)								(a)	
15. Other accident and health									
16. Workers' compensation									
17.1 Other liability - occurrence	(6)			(6)				(6)	204
17.2 Other liability - claims-made									
17.3 Excess workers' compensation									
18.1 Products liability - occurrence									
18.2 Products liability - claims-made									
19.1, 19.2 Private passenger auto liability									
19.3, 19.4 Commercial auto liability									
21. Auto physical damage									
22. Aircraft (all perils)									
23. Fidelity									
24. Surety									
26. Burglary and theft									
27. Boiler and machinery									
28. Credit									
29. International									
30. Warranty									
31. Reinsurance - nonproportional assumed property	XXX				XXX				
32. Reinsurance - nonproportional assumed liability	XXX				XXX				
33. Reinsurance - nonproportional assumed financial lines	XXX				XXX				
34. Aggregate write-ins for other lines of business									
35. TOTALS	21,234,183			21,234,183	10,331,445			31,565,628	5,102,439
<b>DETAILS OF WRITE-INS</b>									
3401.									
3402.									
3403.									
3498.	Summary of remaining write-ins for Line 34 from overflow page								
3499.	Totals (Lines 3401 thru 3403 plus 3498)(Line 34 above)								

(a) Including \$ ..... for present value of life indemnity claims.

ANNUAL STATEMENT FOR THE YEAR 2012 OF THE NATIONWIDE INSURANCE COMPANY OF FLORIDA

**UNDERWRITING AND INVESTMENT EXHIBIT**

PART 3 - EXPENSES

	1	2	3	4
	Loss Adjustment Expenses	Other Underwriting Expenses	Investment Expenses	Total
1. Claim adjustment services:				
1.1 Direct .....	2,777,761			2,777,761
1.2 Reinsurance assumed .....				
1.3 Reinsurance ceded .....				
1.4 Net claim adjustment service (1.1 + 1.2 - 1.3) .....	2,777,761			2,777,761
2. Commission and brokerage:				
2.1 Direct excluding contingent .....		5,454,261		5,454,261
2.2 Reinsurance assumed, excluding contingent .....				
2.3 Reinsurance ceded, excluding contingent .....				
2.4 Contingent - direct .....		432,152		432,152
2.5 Contingent - reinsurance assumed .....				
2.6 Contingent - reinsurance ceded .....				
2.7 Policy and membership fees .....				
2.8 Net commission and brokerage (2.1 + 2.2 - 2.3 + 2.4 + 2.5 - 2.6 + 2.7) .....		5,886,413		5,886,413
3. Allowances to managers and agents .....	10	201,037		201,047
4. Advertising .....	1,689	86,913	95	88,697
5. Boards, bureaus and associations .....	52,682	129,906	3,933	186,521
6. Surveys and underwriting reports .....	12,201	524,859		537,060
7. Audit of assureds' records .....				
8. Salary and related items:				
8.1 Salaries .....	1,182,020	2,838,546	371,403	4,391,969
8.2 Payroll taxes .....	10	361,421		361,431
9. Employee relations and welfare .....	245,468	283,910	67,325	596,703
10. Insurance .....	368	(827)		(459)
11. Directors' fees .....		2	1,867	1,869
12. Travel and travel items .....	200,164	205,908	10,817	416,889
13. Rent and rent items .....	77,377	238,080	14,700	330,157
14. Equipment .....	56,748	138,421	50,967	246,136
15. Cost or depreciation of EDP equipment and software .....	1,089	330,517	304	331,910
16. Printing and stationery .....	16,564	245,061	252	261,877
17. Postage, telephone and telegraph, exchange and express .....	61,789	284,450	8,827	355,066
18. Legal and auditing .....	168,095	941,191	5,453	1,114,739
19. Totals (Lines 3 to 18) .....	2,076,274	6,809,395	535,943	9,421,612
20. Taxes, licenses and fees:				
20.1 State and local insurance taxes deducting guaranty association credits of \$ .....		1,011,138		1,011,138
20.2 Insurance department licenses and fees .....		56,423		56,423
20.3 Gross guaranty association assessments .....				
20.4 All other (excluding federal and foreign income and real estate) .....		2,981		2,981
20.5 Total taxes, licenses and fees (20.1 + 20.2 + 20.3 + 20.4) .....		1,070,542		1,070,542
21. Real estate expenses .....				
22. Real estate taxes .....				
23. Reimbursements by uninsured plans .....				
24. Aggregate write-ins for miscellaneous expenses .....	457,592	1,065,572	9,639	1,532,803
25. Total expenses incurred .....	5,311,627	14,831,922	545,582	20,689,131
26. Less unpaid expenses - current year .....	5,102,439	209,437		5,311,876
27. Add unpaid expenses - prior year .....	6,563,478	217,751		6,781,229
28. Amounts receivable relating to uninsured plans, prior year .....				
29. Amounts receivable relating to uninsured plans, current year .....				
30. TOTAL EXPENSES PAID (Lines 25 - 26 + 27 - 28 + 29)	6,772,666	14,840,236	545,582	22,158,484
<b>DETAILS OF WRITE-INS</b>				
2401. Service fees .....		47,028		47,028
2402. Other expenses .....	453,839	934,255	8,990	1,397,084
2403. Outside services and income .....	3,753	84,289	649	88,691
2498. Summary of remaining write-ins for Line 24 from overflow page .....				
2499. Totals (Lines 2401 thru 2403 plus 2498)(Line 24 above)	457,592	1,065,572	9,639	1,532,803

(a) Includes management fees of \$ ..... to affiliates and \$ ..... to non-affiliates.

**EXHIBIT OF NET INVESTMENT INCOME**

	1	2
	Collected During Year	Earned During Year
1. U.S. Government bonds .....	(a) 1,594,599	1,539,829
1.1 Bonds exempt from U.S. tax .....	(a) 7,177,307	6,962,995
1.2 Other bonds (unaffiliated) .....	(a) 3,625,101	3,637,068
1.3 Bonds of affiliates .....	(a) .....	.....
2.1 Preferred stocks (unaffiliated) .....	(b) .....	.....
2.11 Preferred stocks of affiliates .....	(b) .....	.....
2.2 Common stocks (unaffiliated) .....	.....	.....
2.21 Common stocks of affiliates .....	.....	.....
3. Mortgage loans .....	(c) .....	.....
4. Real estate .....	(d) .....	.....
5. Contract loans .....	.....	.....
6. Cash, cash equivalents and short-term investments .....	(e) 3,710	3,710
7. Derivative instruments .....	(f) .....	.....
8. Other invested assets .....	.....	.....
9. Aggregate write-ins for investment income .....	.....	.....
10. Total gross investment income .....	12,400,717	12,143,602
11. Investment expenses .....	.....	(g) 545,582
12. Investment taxes, licenses and fees, excluding federal income taxes .....	.....	(g) .....
13. Interest expense .....	.....	(h) 2,264
14. Depreciation on real estate and other invested assets .....	.....	(i) .....
15. Aggregate write-ins for deductions from investment income .....	.....	15
16. Total deductions (Lines 11 through 15) .....	.....	547,861
17. Net investment income (Line 10 minus Line 16) .....	.....	11,595,741
<b>DETAILS OF WRITE-INS</b>		
0901. ....	.....	.....
0902. ....	.....	.....
0903. ....	.....	.....
0998. Summary of remaining write-ins for Line 9 from overflow page .....	.....	.....
0999. Totals (Lines 0901 thru 0903 plus 0998) (Line 9, above) .....	.....	.....
1501. Miscellaneous expenses .....	.....	15
1502. ....	.....	.....
1503. ....	.....	.....
1598. Summary of remaining write-ins for Line 15 from overflow page .....	.....	.....
1599. Totals (Lines 1501 thru 1503 plus 1598) (Line 15, above) .....	.....	15

- (a) Includes \$ 341,362 accrual of discount less \$ 1,466,486 amortization of premium and less \$ 38,081 paid for accrued interest on purchases.
- (b) Includes \$ ..... accrual of discount less \$ ..... amortization of premium and less \$ ..... paid for accrued dividends on purchases.
- (c) Includes \$ ..... accrual of discount less \$ ..... amortization of premium and less \$ ..... paid for accrued interest on purchases.
- (d) Includes \$ ..... for company's occupancy of its own buildings; and excludes \$ ..... interest on encumbrances.
- (e) Includes \$ ..... accrual of discount less \$ ..... amortization of premium and less \$ ..... paid for accrued interest on purchases.
- (f) Includes \$ ..... accrual of discount less \$ ..... amortization of premium.
- (g) Includes \$ ..... investment expenses and \$ ..... investment taxes, licenses and fees, excluding federal income taxes, attributable to segregated and Separate Accounts.
- (h) Includes \$ ..... interest on surplus notes and \$ ..... interest on capital notes.
- (i) Includes \$ ..... depreciation on real estate and \$ ..... depreciation on other invested assets.

**EXHIBIT OF CAPITAL GAINS (LOSSES)**

	1	2	3	4	5
	Realized Gain (Loss) On Sales or Maturity	Other Realized Adjustments	Total Realized Capital Gain (Loss) (Columns 1 + 2)	Change in Unrealized Capital Gain (Loss)	Change in Unrealized Foreign Exchange Capital Gain (Loss)
1. U.S. Government bonds .....	2,174,714	.....	2,174,714	1,082,235	.....
1.1 Bonds exempt from U.S. tax .....	.....	.....	.....	.....	.....
1.2 Other bonds (unaffiliated) .....	(6,465)	.....	(6,465)	189,965	.....
1.3 Bonds of affiliates .....	.....	.....	.....	.....	.....
2.1 Preferred stocks (unaffiliated) .....	.....	.....	.....	.....	.....
2.11 Preferred stocks of affiliates .....	.....	.....	.....	.....	.....
2.2 Common stocks (unaffiliated) .....	.....	.....	.....	.....	.....
2.21 Common stocks of affiliates .....	.....	.....	.....	.....	.....
3. Mortgage loans .....	.....	.....	.....	.....	.....
4. Real estate .....	.....	.....	.....	.....	.....
5. Contract loans .....	.....	.....	.....	.....	.....
6. Cash, cash equivalents and short-term investments .....	.....	.....	.....	.....	.....
7. Derivative instruments .....	.....	.....	.....	.....	.....
8. Other invested assets .....	.....	.....	.....	.....	.....
9. Aggregate write-ins for capital gains (losses) .....	.....	.....	.....	.....	.....
10. Total capital gains (losses) .....	2,168,249	.....	2,168,249	1,272,200	.....
<b>DETAILS OF WRITE-INS</b>					
0901. ....	.....	.....	.....	.....	.....
0902. ....	.....	.....	.....	.....	.....
0903. ....	.....	.....	.....	.....	.....
0998. Summary of remaining write-ins for Line 9 from overflow page .....	.....	.....	.....	.....	.....
0999. Totals (Lines 0901 thru 0903 plus 0998) (Line 9, above) .....	.....	.....	.....	.....	.....

**EXHIBIT OF NON-ADMITTED ASSETS**

	1	2	3
	Current Year Total Nonadmitted Assets	Prior Year Total Nonadmitted Assets	Change in Total Nonadmitted Assets (Col. 2 - Col. 1)
1. Bonds (Schedule D) .....			
2. Stocks (Schedule D):			
2.1 Preferred stocks .....			
2.2 Common stocks .....			
3. Mortgage loans on real estate (Schedule B):			
3.1 First liens .....			
3.2 Other than first liens .....			
4. Real estate (Schedule A):			
4.1 Properties occupied by the company .....			
4.2 Properties held for the production of income .....			
4.3 Properties held for sale .....			
5. Cash (Schedule E - Part 1), cash equivalents (Schedule E - Part 2) and short-term investments (Schedule DA) .....			
6. Contract loans .....			
7. Derivatives (Schedule DB) .....			
8. Other invested assets (Schedule BA) .....			
9. Receivables for securities .....			
10. Securities lending reinvested collateral assets (Schedule DL) .....			
11. Aggregate write-ins for invested assets .....			
12. Subtotals, cash and invested assets (Lines 1 to 11) .....			
13. Title plants (for Title insurers only) .....			
14. Investment income due and accrued .....			
15. Premiums and considerations:			
15.1 Uncollected premiums and agents' balances in the course of collection .....			
15.2 Deferred premiums, agents' balances and installments booked but deferred and not yet due .....	14,309		(14,309)
15.3 Accrued retrospective premiums .....			
16. Reinsurance:			
16.1 Amounts recoverable from reinsurers .....			
16.2 Funds held by or deposited with reinsured companies .....			
16.3 Other amounts receivable under reinsurance contracts .....			
17. Amounts receivable relating to uninsured plans .....			
18.1 Current federal and foreign income tax recoverable and interest thereon .....			
18.2 Net deferred tax asset .....	3,485,875	1,358,493	(2,127,382)
19. Guaranty funds receivable or on deposit .....			
20. Electronic data processing equipment and software .....			
21. Furniture and equipment, including health care delivery assets .....			
22. Net adjustment in assets and liabilities due to foreign exchange rates .....			
23. Receivables from parent, subsidiaries and affiliates .....			
24. Health care and other amounts receivable .....			
25. Aggregate write-ins for other than invested assets .....		14,413	14,413
26. Total assets excluding Separate Accounts, Segregated Accounts and Protected Cell Accounts (Lines 12 to 25) .....	3,500,184	1,372,906	(2,127,278)
27. From Separate Accounts, Segregated Accounts and Protected Cell Accounts .....			
28. Total (Lines 26 and 27) .....	3,500,184	1,372,906	(2,127,278)
<b>DETAILS OF WRITE-INS</b>			
1101. ....			
1102. ....			
1103. ....			
1198. Summary of remaining write-ins for Line 11 from overflow page .....			
1199. Totals (Lines 1101 thru 1103 plus 1198)(Line 11 above)			
2501. Miscellaneous .....		13,281	13,281
2502. Other assets non admitted .....		1,132	1,132
2503. ....			
2598. Summary of remaining write-ins for Line 25 from overflow page .....			
2599. Totals (Lines 2501 thru 2503 plus 2598)(Line 25 above)		14,413	14,413

## NOTES TO FINANCIAL STATEMENTS

### Note 1 - Summary of Significant Accounting Policies

#### A. Accounting Practices

The accompanying statutory financial statements of Nationwide Insurance Company of Florida (the Company) have been prepared in conformity with accounting practices prescribed or permitted by the National Association of Insurance Commissioners (NAIC) and the State of Ohio.

The Ohio Insurance Department recognizes only statutory accounting practices (SAP) prescribed or permitted by the State of Ohio for determining and reporting the financial condition and results of operations of an insurance company, as well as, determining its solvency under the Ohio Insurance law. The National Association of Insurance Commissioners' (NAIC) *Accounting Practices and Procedures Manual* (NAIC SAP) has been adopted as a component of prescribed or permitted practices by the State of Ohio. The Company has no statutory accounting practices that differ from NAIC SAP.

#### B. Use of Estimates in the Preparation of the Financial Statements

The preparation of statutory financial statements in conformity with Statutory Accounting Principles requires management to make estimates and assumptions that affect the reported amounts of assets and liabilities. It also requires disclosure of contingent assets and liabilities at the date of the financial statements and the reported amounts of revenue and expenses during the period. Actual results could differ from those estimates.

#### C. Accounting Policies

**Federal Income Taxes.** The Company's parent, Nationwide Mutual Insurance Company (Mutual), files a consolidated federal income tax return, which includes all eligible U.S. subsidiaries and affiliates and eligible Harleysville Companies as of the Merger Date. In this regard, the included subsidiaries and affiliates pay to Mutual the amount which would have been payable on a separate return basis without regard to the alternative minimum tax. Mutual pays tax due on a consolidated basis.

The Company provides for federal income taxes based on amounts the Company believes it will ultimately owe. Inherent in the provision for federal income taxes are estimates regarding the deductibility of certain items and the realization of certain tax credits. In the event the ultimate deductibility of certain items or the realization of certain tax credits differs from estimates, the Company may be required to change the provision for federal income taxes recorded in the financial statements which could be significant. Management has used best estimates to establish reserves based on current facts and circumstances regarding tax exposure items where the ultimate deductibility is open to interpretation.

In accordance with guidance specified in the NAIC SAP, the Company utilizes the asset and liability method of accounting for income taxes. Under this method, deferred tax assets (DTA), net of any non-admitted portion and statutory valuation allowance, and deferred tax liabilities are recognized for the future tax consequences attributable to differences between the financial statement carrying amounts of existing assets and liabilities and their respective tax basis. Deferred tax assets and liabilities are measured using enacted tax rates expected to apply to taxable income in the years in which those temporary differences are expected to be recovered or settled. The change in deferred taxes, excluding the impact of taxes on unrealized capital gains or losses and nonadmitted deferred taxes, is charged directly to surplus.

**Reinsurance Recoverables.** The Company cedes insurance to other companies in order to limit potential losses and diversify its exposure. Such agreements do not relieve the Company of its primary obligation to the policyholder in the event the reinsurer is unable to meet the obligations it has assumed. The Company monitors the financial condition of reinsurers on an ongoing basis and reviews its reinsurance agreements regularly in an attempt to minimize its exposure to significant losses from reinsurer insolvencies. Reinsurance recoverables include amounts billed to reinsurers on losses paid. Estimates of amounts expected to be recovered from reinsurers that have not yet been paid on losses are estimated in a manner consistent with the claim liability associated with the underlying policy. Such reinsurance recoverables and reserved deductions partially offset claim costs in the Company's statutory statements of operations and are included as an offset to losses and loss expense reserves in the accompanying statutory statements of admitted assets, liabilities and surplus. There were no contracts using deposit accounting as of December 31, 2012 and 2011.

Statutory accounting principles require recognition of a minimum liability for certain unsecured or overdue reinsurance recoverables. These conditional reserves were \$88,000 and \$108,000 as of December 31, 2012 and 2011, respectively.

In addition, the Company uses the following accounting policies:

1. Short-term investments consist of investments with maturities of twelve months or less at acquisition and are stated at amortized cost, which approximates fair value.
2. Bonds, excluding loan-backed and structured securities, are stated at amortized cost except those with a NAIC designation of "3" through "6" which are stated at the lower of amortized cost or fair value. Amortization of premiums and discounts is calculated using the effective yield method.
3. Unaffiliated common stocks are stated at fair value.
4. Redeemable preferred stocks are stated at amortized cost except those with an NAIC designation of "3" through "6" which are stated at the lower of amortized cost or fair value. Perpetual preferred stocks are stated at fair value except those with an NAIC designation of "3" through "6" which are stated at the lower of amortized cost or fair value.
5. Mortgage loans are carried at the unpaid principal balance adjusted for premiums, discounts, less a valuation allowance. The valuation allowance for mortgage loans reflects management's best estimate of probable credit losses.
6. Loan-backed and structured securities (collectively, loan-backed securities) are stated at amortized cost or the lower of amortized cost or fair value in accordance with the provisions of Statement of Statutory Accounting Principles No. 43-Revised and the Purposes and Procedures Manual of the NAIC Securities Valuation Office. The retrospective adjustment method is used to value loan-backed securities where the collection of all contractual cash flows is probable. For all other loan-backed securities, the Company uses the prospective adjustment method.
7. Investments in subsidiary and affiliated companies are stated as follows:

Not applicable.

## NOTES TO FINANCIAL STATEMENTS

8. Other invested assets consist primarily of investments in partnerships, limited liability companies and joint ventures. Underlying investments primarily include hedge funds, private equity funds and low income housing tax credits. Except for investments in low income housing tax credit partnerships, interests are reported using the equity method of accounting. Changes in carrying value as a result of the equity method are reflected as net unrealized capital gains and losses as a direct adjustment to surplus. Realized gains and losses are generally recognized through income at the time of disposal or when operating distributions are received. Partnership interests in low income housing tax credits are carried at amortized cost with amortization charged to investment income over the period in which the tax benefits, primarily credits, are utilized.
9. Accounting for derivatives  
  
Not applicable.
10. Insurance premiums are generally earned ratably over the policy term. The liability for unearned premiums represents the portion of premiums written relating to the unexpired terms of coverage. Such reserves are computed by pro rata methods for direct business and are based on reports received from ceding companies for reinsurance assumed. Premiums in course of collection represent agent balances and uncollected premiums from policyholders for current policies in force and policy premiums assumed from others, including amounts placed with affiliates. As of December 31, 2012 and 2011, the Company had no liabilities related to premium deficiency reserves. The Company includes anticipated investment income when calculating its premium deficiency reserves, in accordance with SSAP No. 53, Property-Casualty Contracts – Premiums.
11. The Company establishes losses and loss expense reserves for reported claims and claims incurred but not yet reported (IBNR). Estimating the liability for losses and loss expense reserves involves significant judgment and multiple assumptions. Management considers the Company's experience with similar claims, historical trends, economic factors and judicial, legislative and regulatory changes in establishing reserves. The Company's losses and loss expense reserves are recorded net of reinsurance and amounts expected to be received from salvage (the amount recovered from property after the Company pays for a total loss) and subrogation (the right to recover payments from third parties).  
  
Assumptions and estimates for losses and loss expense reserves are updated as new information becomes available. Due to the inherent uncertainty in estimating losses and loss expense reserves, the actual cost of settling claims may differ materially from recorded amounts. Changes in losses and loss expense reserve estimates are included in results of operations in the period the estimates are revised.
12. The Company has a written capitalization policy for prepaid expenses and purchases of items such as electronic data processing equipment, software, furniture, vehicles, other equipment and leasehold improvements. The Company has not modified its capitalization policy from the prior period.
13. Not applicable as the Company does not write major medical insurance with prescription drug coverage.

### **Note 2 - Accounting Changes and Corrections of Errors**

#### A. Accounting Changes and Corrections of Errors

##### **Adopted Accounting Standards**

On January 1, 2012, the Company adopted a new standard, SSAP No. 101, Income Taxes, which supersedes SSAP No. 10R, Income Taxes Revised - A Temporary Replacement of SSAP No. 10. The standard applies a 'more likely than not' threshold for the recognition of federal and foreign tax loss contingencies, establishes a new framework for determining the admissibility of DTAs and adopts new disclosure requirements. The difference between the recalculated amounts as of January 1, 2012, and the amount actually reported in the prior year financial statements is treated as a change in accounting principle in accordance with SSAP No. 3, Accounting Changes and Corrections of Errors. The cumulative effect of this change in accounting principle resulted in a \$603,128 increase in unassigned funds as of January 1, 2012.

On December 31, 2011, the Company adopted revisions to SSAP No. 5R, *Liabilities, Contingencies and Impairments of Assets* (SSAP No. 5R) which require insurance entities to recognize, at inception of a guarantee, a liability for the obligations it has undertaken in issuing the guarantee, even if the likelihood of having to make payments under the guarantee is remote. The revised guidance does not require liability recognition for guarantees made to or on behalf of direct or indirect wholly-owned insurance and non-insurance subsidiaries or for guarantees considered unlimited. The Company also adopted additional revisions related to disclosure requirements of SSAP No. 25, *Accounting for and Disclosures about Transactions with Affiliated and Other Related Parties* to correspond with SSAP No. 5R. The guidance is effective for all guarantees issued or outstanding as of December 31, 2011, and disclosure of all guarantees must be reported annually. Refer to Note 14 for the required disclosures and financial impact of this guidance.

On January 1, 2011, the Company adopted changes to the definition of loan-backed and structured securities within SSAP No. 43R, *Loan-backed and Structured Securities*. These changes required certain securities to be reclassified into the loan-backed and structured securities classification and resulted in an immaterial impact to the Company upon adoption. Refer to Note 5 for required disclosures and financial impact.

##### **Pending Accounting Standards**

On January 1, 2013, the Company adopted SSAP No. 103, Accounting for Transfers and Servicing of Financial Assets and Extinguishments of Liabilities. The standard establishes accounting for transfers and servicing of financial assets, including asset securitizations and securitizations of policy acquisition costs, extinguishments of liabilities, repurchase agreements, repurchase financing and reverse repurchase agreements, including dollar repurchase and dollar reverse repurchase agreements. The guidance provides criteria to determine whether a transferor has surrendered control over transferred financial assets. It also forbids offsetting for repurchase and reverse repurchase transactions in accordance with master netting agreements. The Company is currently in the process of determining the impact of adoption of this standard.

On December 31, 2013, the Company will adopt revisions to SSAP No. 34, Investment Income Due and Accrued and SSAP No. 37, Mortgage Loans. The revisions enhance required disclosures related to mortgage loans to assist financial statement users in assessing an entity's credit risk exposures and evaluating the adequacy of its allowance for credit losses. The adoption will result in increased disclosures only and will have no impact on the Company's financial statements.

On December 31, 2013, the Company will adopt revisions to SSAP No. 35R, Guaranty Fund and Other Assessments. The revisions require disclosure of the nature of fees paid to the federal government by health insurers under the Affordable Care Act and an estimate of their financial impact, including the impact on the Company's risk based capital position. The adoption will result in increased disclosures only and will have no impact on the Company's financial statements.

## NOTES TO FINANCIAL STATEMENTS

### Note 3 - Business Combinations and Goodwill

Not applicable.

### Note 4 - Discontinued Operations

Not applicable.

### Note 5 - Investments

#### A. Mortgage Loans

Not applicable.

#### B. Troubled Debt Restructuring for Creditors

Not applicable.

#### C. Reverse Mortgages

Not applicable.

#### D. Loan-Backed Securities

1. Prepayment assumptions are generally obtained using a model provided by a third-party vendor.

2. Not applicable.

3. Not applicable.

4. All impaired securities (fair value is less than cost or amortized cost) for which an other-than-temporary impairment has not been recognized in earnings as a realized loss (including securities with a recognized other-than-temporary impairment for non-interest related declines when a non-recognized interest related impairment remains):

a. The aggregate amount of unrealized losses:

1.	Less than 12 Months	\$	-
2.	12 Months or Longer	\$	(299,714)
			-

b. The aggregate related fair value of securities with unrealized losses:

1.	Less than 12 Months	\$	-
2.	12 Months or Longer	\$	2,342,459
			2,342,459

5. The Company reviews all loan-backed and structured securities in which the fair value of the given security is less than the amortized cost to determine if a given security is other-than-temporarily impaired. The Company examines characteristics of the underlying collateral, such as delinquency and default rates, the quality of the underlying borrower, the type of collateral in the pool, the vintage year of the collateral, subordination levels within the structure of the collateral pool, and the quality of any credit guarantors, to determine the cash flows expected to be received for the security.

If the severity and duration of the security's unrealized loss indicates a risk of an other-than-temporary impairment, then the Company will evaluate if the amortized cost basis of the security will be recovered by comparing the present value of the cash flows expected to be received for the given security with the amortized cost basis of the security. If the present value of cash flows is greater than the amortized cost basis of a security then the security is deemed not to be other-than-temporarily impaired.

#### E. Repurchase Agreements and Securities Lending Transactions

1. For repurchase agreements, Company policy requires a minimum of 102% of the fair value of securities purchased under repurchase agreements to be maintained as collateral. Cash collateral received is invested in short-term investments and the offsetting collateral liability is included in aggregate write-ins for liabilities. There were no open repurchase agreements as of year-end.

The Company does not participate in a securities lending program.

2.-5. Not applicable as the Company has no open repurchase agreements of securities lending transactions as of year-end.

#### F. Real Estate

Not applicable.

#### G. Low-Income Housing Tax Credits

Not applicable.

### Note 6 - Joint Ventures, Partnerships and Limited Liability Companies

#### A. Detail for Those Greater than 10% of Admitted Assets

Not applicable.

#### B. Write-downs for Impairments

Not applicable.

## NOTES TO FINANCIAL STATEMENTS

### Note 7 - Investment Income

A. Accrued Investment Income

The Company nonadmits investment income due and accrued if amounts are over 90 days past due with the exception of mortgage loans in default which are nonadmitted if amounts are over 180 days past due.

B. Amounts Nonadmitted

The total amount of investment income nonadmitted at December 31, 2012 was \$0.

### Note 8 - Derivative Instruments

Not applicable.

### Note 9 - Income Taxes

A. The components of the deferred tax asset/(liability) at December 31 are as follows:

	12/31/2012		
	Ordinary	Capital	Total
(1a) Gross deferred tax assets	\$ 4,176,428	\$ 1,878,166	\$ 6,054,594
(1b) Statutory valuation allowance adjustment	\$ -	\$ -	\$ -
(1c) Adjusted gross deferred tax assets	\$ 4,176,428	\$ 1,878,166	\$ 6,054,594
(1d) Deferred tax assets nonadmitted	\$ 3,485,875	\$ -	\$ 3,485,875
(1e) Subtotal net admitted deferred tax asset	\$ 690,553	\$ 1,878,166	\$ 2,568,719
(1f) Deferred tax liabilities	\$ -	\$ 1,836,235	\$ 1,836,235
(1g) Net admitted deferred tax asset/(net deferred tax liability)	\$ 690,553	\$ 41,931	\$ 732,484

	12/31/2011		
	Ordinary	Capital	Total
(1a) Gross deferred tax assets	\$ 4,232,369	\$ 1,565,634	\$ 5,798,003
(1b) Statutory valuation allowance adjustment	\$ -	\$ -	\$ -
(1c) Adjusted gross deferred tax assets	\$ 4,232,369	\$ 1,565,634	\$ 5,798,003
(1d) Deferred tax assets nonadmitted	\$ 1,523,026	\$ 438,595	\$ 1,961,621
(1e) Subtotal net admitted deferred tax asset	\$ 2,709,343	\$ 1,127,039	\$ 3,836,382
(1f) Deferred tax liabilities	\$ 126,132	\$ 956,387	\$ 1,082,519
(1g) Net admitted deferred tax asset/(net deferred tax liability)	\$ 2,583,211	\$ 170,652	\$ 2,753,863

	Change		
	Ordinary	Capital	Total
(1a) Gross deferred tax assets	\$ (55,941)	\$ 312,532	\$ 256,591
(1b) Statutory valuation allowance adjustment	\$ -	\$ -	\$ -
(1c) Adjusted gross deferred tax assets	\$ (55,941)	\$ 312,532	\$ 256,591
(1d) Deferred tax assets nonadmitted	\$ 1,962,849	\$ (438,595)	\$ 1,524,254
(1e) Subtotal net admitted deferred tax asset	\$ (2,018,790)	\$ 751,127	\$ (1,267,663)
(1f) Deferred tax liabilities	\$ (126,132)	\$ 879,848	\$ 753,716
(1g) Net admitted deferred tax asset/(net deferred tax liability)	\$ (1,892,658)	\$ (128,721)	\$ (2,021,379)

#### Admission Calculation Components SSAP No. 101

	12/31/2012		
	Ordinary	Capital	Total
(2a) Federal income taxes paid in prior years recoverable through loss carrybacks	\$ -	\$ -	\$ -
(2b) Adjusted gross deferred tax assets expected to be realized (excluding the amount of deferred tax assets from (2a) above) after application of the threshold limitation (the less of (2b)1 and (2b)2 below)	\$ -	\$ 732,484	\$ 732,484
1. Adjusted gross deferred tax assets expected to be realized following the balance sheet date	\$ -	\$ 732,484	\$ 732,484
2. Adjusted gross deferred tax assets allowed per limitation threshold	XXX	XXX	\$ 38,717,619
(2c) Adjusted gross deferred tax assets (excluding the amount of deferred tax assets from (2a) and (2b) above) offset by gross deferred tax liabilities	\$ 690,553	\$ 1,145,682	\$ 1,836,235
(2d) Deferred tax assets admitted as the result of application of SSAP No. 101			
Total ((2a) + (2b) + (2c))	\$ 690,553	\$ 1,878,166	\$ 2,568,719

	12/31/2011		
	Ordinary	Capital	Total
(2a) Federal income taxes paid in prior years recoverable through loss carrybacks	\$ -	\$ -	\$ -
(2b) Adjusted gross deferred tax assets expected to be realized (excluding the amount of deferred tax assets from (2a) above) after application of the threshold limitation (the less of (2b)1 and (2b)2 below)	\$ 2,583,211	\$ 170,652	\$ 2,753,863
1. Adjusted gross deferred tax assets expected to be realized following the balance sheet date	\$ 2,583,211	\$ 170,652	\$ 2,753,863
2. Adjusted gross deferred tax assets allowed per limitation threshold	XXX	XXX	\$ 27,197,933
(2c) Adjusted gross deferred tax assets (excluding the amount of deferred tax assets from (2a) and (2b) above) offset by gross deferred tax liabilities	\$ 126,132	\$ 956,387	\$ 1,082,519
(2d) Deferred tax assets admitted as the result of application of SSAP No. 101			
Total ((2a) + (2b) + (2c))	\$ 2,709,343	\$ 1,127,039	\$ 3,836,382

**NOTES TO FINANCIAL STATEMENTS**

	Change		
	Ordinary	Capital	Total
(2a) Federal income taxes paid in prior years recoverable through loss carrybacks	\$ -	\$ -	\$ -
(2b) Adjusted gross deferred tax assets expected to be realized (excluding the amount of deferred tax assets from (2a) above) after application of the threshold limitation (the less of (2b)1 and (2b)2 below)	\$ (2,583,211)	\$ 561,832	\$ (2,021,379)
1. Adjusted gross deferred tax assets expected to be realized following the balance sheet date	\$ (2,583,211)	\$ 561,832	\$ (2,021,379)
2. Adjusted gross deferred tax assets allowed per limitation threshold	XXX	XXX	\$ 166,848
(2c) Adjusted gross deferred tax assets (excluding the amount of deferred tax assets from (2a) and (2b) above) offset by gross deferred tax liabilities	\$ 564,421	\$ 189,295	\$ 753,716
(2d) Deferred tax assets admitted as the result of application of SSAP No. 101 Total ((2a) + (2b) + (2c))	\$ (2,018,790)	\$ 751,127	\$ (1,267,663)
		12/31/2012	12/31/2011
(3a) Ratio percentage used to determine recovery period and threshold limitation amount		2863.208%	3020.0%
(3b) Amount of adjusted capital and surplus used to determine recovery period and threshold limitation in (2b)2 above	\$	257,005,138	\$ 271,979,332

**Impact of Tax Planning Strategies**

	12/31/2012		
	Ordinary	Capital	Total
(4a) Adjusted Gross DTAs (% of total adjusted gross DTAs)	0.00%	0.00%	0.00%
(4b) Net admitted adjusted gross DTAs (% of the total net admitted adjusted gross DTAs)	0.00%	100.00%	0.00%
		12/31/2011	
(4a) Adjusted Gross DTAs (% of total adjusted gross DTAs)	0.00%	0.00%	0.00%
(4b) Net admitted adjusted gross DTAs (% of the total net admitted adjusted gross DTAs)	0.00%	6.20%	6.20%
		Change	
(4a) Adjusted Gross DTAs (% of total adjusted gross DTAs)	0.00%	0.00%	0.00%
(4b) Net admitted adjusted gross DTAs (% of the total net admitted adjusted gross DTAs)	0.00%	93.80%	-6.20%
(4c) Does this Company's tax-planning strategies include the use of reinsurance?	Yes [ ]	No [ X ]	

B. There are no temporary differences for which deferred tax liabilities are not recognized.

C. Current income taxes incurred consist of the following major components:

	12/31/2012	12/31/2011	Change
<b>1. Current Income Tax</b>			
(a) Federal	\$ (275,112)	\$ (1,243,338)	\$ 968,226
(b) Foreign	\$ -	\$ -	\$ -
(c) Subtotal	\$ (275,112)	\$ (1,243,338)	\$ 968,226
(d) Federal income tax on net capital gains	\$ 728,601	\$ 1,310,576	\$ (581,975)
(e) Utilization of capital loss carry-forwards	\$ (16,989)	\$ -	\$ (16,989)
(f) Other	\$ -	\$ -	\$ -
(g) Federal and foreign income taxes incurred	\$ 436,500	\$ 67,238	\$ 369,262
<b>2. Deferred Tax Assets</b>			
(a) Ordinary:			
(1) Discounting of unpaid losses	\$ 1,021,761	\$ 1,613,719	\$ (591,958)
(2) Unearned premium reserve	\$ 1,838,805	\$ 1,911,701	\$ (72,896)
(3) Policyholder reserves	\$ -	\$ -	\$ -
(4) Investments	\$ -	\$ -	\$ -
(5) Deferred acquisition costs	\$ -	\$ -	\$ -
(6) Policyholder dividends accrual	\$ -	\$ -	\$ -
(7) Fixed Assets	\$ -	\$ -	\$ -
(8) Compensation benefits accrual	\$ -	\$ -	\$ -
(9) Pension accrual	\$ 77,979	\$ 32,063	\$ 45,916
(10) Receivables - nonadmitted	\$ -	\$ -	\$ -
(11) Net operating loss carry-forward	\$ 1,231,717	\$ 666,361	\$ 565,356
(12) Tax credit carry-forward	\$ -	\$ -	\$ -
(13) Other (including items <5% of total ordinary tax assets)	\$ 6,166	\$ 8,525	\$ (2,359)
(99) Subtotal	\$ 4,176,428	\$ 4,232,369	\$ (55,941)

**NOTES TO FINANCIAL STATEMENTS**

(b) Statutory valuation allowance adjustment	\$ -	\$ -	\$ -
(c) Nonadmitted	\$ 4,176,428	\$ 1,523,026	\$ 2,653,402
(d) Admitted ordinary deferred tax assets (2a99 - 2b - 2c)	\$ -	\$ 2,709,343	\$ (2,709,343)
 (e) Capital:			
(1) Investments	\$ 1,878,166	\$ 1,548,645	\$ 329,521
(2) Net capital loss carry-forward	\$ -	\$ 16,989	\$ (16,989)
(3) Real estate	\$ -	\$ -	\$ -
(4) Other (including items <5% of total capital tax assets)	\$ -	\$ -	\$ -
(99) Subtotal	\$ 1,878,166	\$ 1,565,634	\$ 312,532
 (f) Statutory valuation allowance adjustment			
(g) Nonadmitted	\$ 41,931	\$ 438,595	\$ (396,664)
(h) Admitted capital deferred tax assets (2e99 - 2f - 2g)	\$ 1,836,235	\$ 1,127,039	\$ 709,196
 (i) Admitted deferred tax assets (2d + 2h)			
	\$ 1,836,235	\$ 3,836,382	\$ (2,000,147)

**3. Deferred Tax Liabilities**

	12/31/2012	12/31/2011	Change
(a) Ordinary:			
(1) Investments	\$ -	\$ -	\$ -
(2) Fixed assets	\$ -	\$ -	\$ -
(3) Deferred and uncollected premium	\$ -	\$ -	\$ -
(4) Policyholder reserves	\$ -	\$ -	\$ -
(5) Other (including items <5% of total ordinary tax liabilities)	\$ -	\$ -	\$ -
(6) Unearned surcharge income	\$ -	\$ 126,132	\$ (126,132)
(99) Subtotal	\$ -	\$ 126,132	\$ (126,132)
 (b) Capital:			
(1) Investments	\$ 1,836,235	\$ 956,387	\$ 879,848
(2) Real estate	\$ -	\$ -	\$ -
(3) Other (including items <5% of total capital tax liabilities)	\$ -	\$ -	\$ -
(99) Subtotal	\$ 1,836,235	\$ 956,387	\$ 879,848
 (c) Deferred tax liabilities (3a99 + 3b99)			
	\$ 1,836,235	\$ 1,082,519	\$ 753,716
 <b>4. Net deferred tax asset/(liability) (2i - 3c)</b>			
	\$ -	\$ 2,753,863	\$ (2,753,863)

5. The change in deferred income taxes is comprised of the following (this analysis is exclusive of nonadmitted assets as the Change in Nonadmitted Assets are reported separately from the Change in Net Deferred Income Taxes in the surplus section of the Annual Statement):

	12/31/2012	12/31/2011	Change
(a) Adjusted gross deferred tax assets	\$ 6,054,594	\$ 5,798,003	\$ 256,591
(b) Deferred tax liabilities	1,836,235	1,082,519	753,716
(c) Net deferred tax assets (liabilities)	\$ 4,218,359	\$ 4,715,484	\$ (497,125)
(d) Tax effect of unrealized gains (losses)			(1,016,540)
(e) Change in deferred income tax			\$ 519,415

D. The provision for federal income taxes incurred is different from that which would be obtained by applying the statutory Federal income tax rate to pre-tax income. The significant book to tax adjustments causing this difference are as follows:

	12/31/2012	12/31/2011
(a) Current income taxes incurred	\$ 436,500	\$ 67,238
(b) Change in deferred income tax	\$ (519,415)	\$ (476,814)
(c) Total income tax reported	\$ (82,915)	\$ (409,576)
 (d) Income before taxes		
	\$ 5,731,622	\$ 5,146,256
(e) Federal statutory tax rate	35%	35%
(f) Expected income tax expense (benefit) at 35% statutory rate	\$ 2,006,068	\$ 1,801,190
 (1) Tax-exempt income		
	\$ (2,092,798)	\$ (2,213,220)
(2) Dividends received deduction	\$ -	\$ -
(3) Nondeductible expenses	\$ 5,202	\$ 7,499
(4) Deferred tax benefit on nonadmitted assets	\$ 36	\$ (5,045)
(5) Change in tax reserves	\$ -	\$ -
(6) Tax credits	\$ -	\$ -
(7) Other	\$ (1,423)	\$ -
(g) Total	\$ (82,915)	\$ (409,576)

## NOTES TO FINANCIAL STATEMENTS

### E. Operating Loss and Tax Credit Carryforwards and Protective Tax Deposits

1. As of December 31, operating loss or tax credit carryforwards are available as follows:

	Amount	Origination	Expiration
Operating loss carryforwards	\$ 2,176,611	2011	2031
Operating loss carryforwards	\$ 1,342,581	2012	2032
Amount of AMT tax credits	\$ -		
Business credits	\$ -		

2. The amount of Federal income taxes incurred that are available for recoupment in the event of future net losses are:

2012	\$ -
2011	\$ -

3. The Company did not have any protective tax deposits under Section 6603 of the Internal Revenue Code.

### F. Consolidated Federal Income Tax Return

1. The Company's federal income tax return is consolidated with the following entities:

AGMC Reinsurance, Ltd.	Nationwide Insurance Company of Florida
Allied General Agency Company	Nationwide Lloyds
Allied Group, Inc.	Nationwide Mutual Insurance Company
Allied Insurance Company of America	Nationwide Property and Casualty Ins. Company
Allied Property and Casualty Insurance Company	Nationwide Retirement Solutions, Inc.
Allied Texas Agency, Inc.	Nationwide Retirement Solutions, Inc. of Arizona
AMCO Insurance Company	Nationwide Retirement Solutions, Inc. of Ohio
American Marine Underwriters, Inc.	Nationwide Retirement Solutions, Inc. of Texas
Crestbrook Insurance Company	Nationwide Retirement Solutions Insurance Agency, Inc.
Depositors Insurance Company	Nationwide SA Capital Trust
DVM Insurance Agency, Inc.	Nationwide Sales Solutions, Inc.
Freedom Specialty Insurance Company	NFS Distributors, Inc.
Harleysville Group, Inc.	NWD Asset Management Holdings, Inc.
Harleysville Insurance Company	NWD Investment Management, Inc.
Harleysville Insurance Company of New Jersey	NWD Management & Research Trust
Harleysville Insurance Company of New York	Pension Associates, Inc.
Harleysville Lake States Insurance Company	Premier Agency, Inc.
Harleysville Pennland Insurance Company	Provfirst America Corporation
Harleysville Preferred Insurance Company	Provident Mutual Holding Company
Harleysville Services, Inc.	Registered Investment Advisors Services, Inc.
Harleysville Worcester Insurance Company	Riverview International Group, Inc.
Insurance Intermediaries, Inc.	Scottsdale Indemnity Company
Lone Star General Agency, Inc.	Scottsdale Insurance Company
National Casualty Company	Scottsdale Surplus Lines Insurance Company
Nationwide Advantage Mortgage Company	THI Holdings (Delaware), Inc.
Nationwide Affinity Insurance Company of America	Titan Auto Insurance of New Mexico, Inc.
Nationwide Agribusiness Insurance Company	Titan Indemnity Company
Nationwide Assurance Company	Titan Insurance Company
Nationwide Bank	Titan Insurance Services, Inc.
Nationwide Cash Management Company	V.P.I. Services, Inc.
Nationwide Corporation	Veterinary Pet Insurance Company
Nationwide Financial General Agency, Inc.	Victoria Automobile Insurance Company
Nationwide Financial Institution Distribution Agency, Inc.	Victoria Fire & Casualty Company
Nationwide Financial Services, Inc.	Victoria National Insurance Company
Nationwide General Insurance Company	Victoria Select Insurance Company
Nationwide Global Holdings, Inc.	Victoria Specialty Insurance Company
Nationwide Global Ventures, Inc.	WI of Florida, Inc.
Nationwide Indemnity Company	Western Heritage Insurance Company
Nationwide Insurance Company of America	Whitehall Holdings, Inc.

2. The method of allocation among the companies is subject to the resolution approved by the Board of Directors. Allocation is based upon separate return or sub-group aggregated separate return calculations with the company being reimbursed for the actual Federal income tax benefit of its net operating losses which are actually used to reduce the taxable income of the other companies in the consolidated return.

### G. Federal or Foreign Federal Income Tax Loss Contingencies

The Company does not have any tax loss contingencies for which it is reasonably possible that the total liability will significantly increase within twelve months of the reporting date.

### **Note 10 - Information Concerning Parent, Subsidiaries, Affiliates and Other Related Parties**

#### A. Nature of Relationships

All outstanding shares of the Company are owned by Mutual, domiciled in the State of Ohio.

Bonds and stocks, if any, owned, acquired or disposed of in any year by the Company in any subsidiary or affiliate are set forth in Schedule D of either this statement or those of prior years. Intercompany relationships and specific holdings are detailed in the Nationwide Corporate Organizational Chart, which appears as Schedule Y of this statement.

## NOTES TO FINANCIAL STATEMENTS

The Company and various affiliates have entered into agreements with Nationwide Cash Management Company (NCMC) a subsidiary of Mutual, under which NCMC acts as a common agent in handling the purchases and sales of short-term investments for the respective accounts of the participants. Amounts on deposit with NCMC were \$7.7 million and \$15.7 million as of December 31, 2012 and 2011, respectively.

B. Detail of Transactions Greater than ½ % of Admitted Assets

Not applicable.

C. Change in Terms of Intercompany Arrangements

There were no changes to the intercompany arrangements in 2012 or 2011.

D. Amounts Due to or from Related Parties

Affiliate receivables and payables are the result of cost sharing and intercompany service agreements between the Company and its parent and affiliates in which settlement has not yet occurred. Affiliate receivables are presented gross of affiliate payables when the Company has the right to offset. The Company reported \$5.5 million and \$9.4 million due from parent at December 31, 2012 and 2011, respectively. The Company reported gross amounts of \$6.9 million and \$10.3 million due from parent and affiliates and \$32 thousand and \$44.1 thousand due to parent and affiliates at December 31, 2012 and 2011, respectively. These arrangements are subject to written agreements which require that intercompany balances be settled within 30 days.

E. Guarantees or Undertakings for Related Parties

The Company has no guarantees or contingent commitments to affiliates other than indicated in Note 14 A.

F. Management, Service Contracts, Cost Sharing Arrangements

The Company and various affiliates share a home office, other facilities, equipment, common management and administrative services. Pursuant to a cost sharing agreement between the companies, the amounts associated with these services are subject to allocation based on standard allocation techniques and procedures acceptable under general cost accounting techniques and procedures in conformity with the NAIC SAP. Measures used to determine the allocation among companies includes individual employee estimates of time spent, special cost studies, the number of full-time employees, and other methods agreed to by the participating companies. The Company does not believe amounts recognized under the intercompany agreement are materially different than what would have been recognized had the Company operated on a stand-alone basis.

G. Nature of Relationships that Could Affect Operations

Not applicable.

H. Amount Deducted for Investment in Upstream Company

Not applicable.

I. Detail of Investment in Affiliates Greater than 10% of Admitted Assets

Not applicable.

J. Write-down for Impairments of Investments in Subsidiary, Controlled or Affiliated Companies

Not applicable.

K. Investment in a foreign insurance subsidiary

Not applicable.

L. Downstream Holding Company

Not applicable.

**Note 11 - Debt**

A. All Other Debt

Not applicable.

B. Funding Agreements with Federal Home Loan Bank (FHLB)

Not applicable.

**Note 12 - Retirement Plans, Deferred Compensation, Postemployment Benefits and Compensated Absences and Other Postretirement Benefit Plans**

A. Defined Benefit Plans

Not applicable.

B. Defined Contribution Plans

Not applicable.

C. Multiemployer Plans

Not applicable.

D. Consolidated/Holding Company Plans

Not applicable.

## NOTES TO FINANCIAL STATEMENTS

E. Postemployment Benefits and Compensated Absences

Not applicable.

F. Impact of Medicare Modernization Act on Postretirement Benefits

Not applicable.

### **Note 13 - Capital and Surplus, Dividend Restrictions and Quasi-Reorganizations**

A. Outstanding Shares

The Company has 20,000 shares of \$120 par value stock authorized and 10,000 shares issued and outstanding.

B. Dividend Rate of Preferred Stock

Not applicable.

C. Dividend Restrictions

The maximum amount of dividends which can be paid to shareholders by a State of Ohio domiciled insurance company without prior approval of the Director of Insurance is limited to, together with that of other dividends or distributions made within the preceding twelve months, the greater of either 10% of surplus as regards policyholders as of the preceding December 31, or the net income for the twelve month period ending December 31 of the previous calendar year. Additionally, any dividend or distribution paid from other than earned surplus shall require prior approval of the Director of Insurance. Subject to applicable regulatory approval(s), dividends are paid as determined by the insurer's board of directors.

D. Dividends Paid

On April 27, 2012, the Company paid an extraordinary dividend of \$25 million to its parent, Mutual.

No dividends were paid by the Company during 2011.

E. Profits Available for Ordinary Dividends

Within the limitations of (C) above, there are no restrictions placed on the portion of Company profits that may be paid as ordinary dividends to shareholders.

F. Restrictions on Surplus

There is no restriction on the use of the Company's unassigned surplus and such surplus is held for the benefit of the shareholder.

G. Advances to Surplus Not Repaid

Not applicable.

H. Stock Held by Company for Special Purposes

Not applicable.

I. Changes in Special Surplus Funds

Not applicable.

J. Changes in Unassigned Funds

The portion of unassigned funds (surplus) represented by cumulative unrealized capital gains is \$5.2 million less applicable deferred taxes of \$1.8 million for a net unrealized capital gain of \$3.4 million.

K. Surplus Notes

Not applicable.

L. and M. Quasi Reorganizations

Not applicable.

### **Note 14 – Contingencies**

A. Contingent Commitments

The Company has no commitments or contingent commitment to affiliates or other entities. As indicated in Note 10 E, the Company has made no guarantees on behalf of affiliates.

B. Guaranty Fund and Other Assessments

The Company is subject to guaranty fund and other assessments by the states in which it writes business. Guaranty fund assessments should be accrued at the time of insolvencies. Other assessments should be accrued either at the time of assessments or in the case of premium based assessments, at the time the premiums were written. In the case of loss-based assessments, the assessments should be accrued at the time the losses are incurred.

C. Gain Contingencies

Not applicable.

## NOTES TO FINANCIAL STATEMENTS

D. Claims Related Extra Contractual Obligations and bad Faith Losses Stemming From Lawsuits

The Company paid the following amounts in the reporting period to settle claims related extra contractual obligations or bad faith claims stemming from lawsuits.

Claims related ECO and bad faith losses paid during the reporting period: \$347 thousand

Number of claims where amounts were paid to settle claims related extra contractual obligations or bad faith claims resulting from lawsuits during the reporting period.

( a ) 0 - 25 claims	( b ) 26 - 50 claims	( c ) 51 - 100 claims	( d ) 101- 500 claims	( e ) More than 500 claims
X				

(f) Per Claim [ X ] Per Claimant [ ]

E. Product Warranties

Not applicable.

F. All Other Contingencies

Various lawsuits arise against the Company in the normal course of the Company's business. Contingent liabilities arising from litigation and other matters were \$418 thousand and \$177 thousand at December 31, 2012 and 2011, respectively.

**Note 15 – Leases**

A. Lessee Leasing Arrangements

Not applicable.

B. Lessor Leasing Arrangements

Not applicable.

**Note 16 - Information About Financial Instruments With Off-Balance Sheet Risk And Financial Instruments With Concentrations of Credit Risk**

A. Financial Instruments with Off-Balance Sheet Risk

Not applicable.

B. Financial Instruments with Concentrations of Credit-Risk

Not applicable.

C. Exposure to Credit-Related Losses

Not applicable.

D. Collateral Policy

Not applicable.

**Note 17 - Sale, Transfer and Servicing of Financial Assets and Extinguishments of Liabilities**

A. Transfers of Receivables Reported as Sales

Not applicable.

B. Transfers and Servicing of Financial Assets

1. There were no assets or liabilities obtained in transfers of financials assets where it was not practicable to estimate their fair value.
2. The Company does not participate in securities lending.
3. No servicing assets or liabilities were recognized during the period.
4. There were no assets securitized during the period.
5. There were no retained interests since there were no securitized financial assets.
6. There were no transfers of receivables with recourse.

C. Wash Sales

Not applicable.

**Note 18 - Gain or Loss to the Reporting Entity from Uninsured Plans and the Uninsured Portion of Partially Insured Plans**

A. Administrative Services Only (ASO) Plans

Not applicable.

B. Administrative Services Contract (ASC) Plans

Not applicable.

C. Medicare or Other Similarly Structured Cost Based Reimbursement Contracts

Not applicable.

## NOTES TO FINANCIAL STATEMENTS

### Note 19 - Direct Premiums Written/Produced by Managing General Agents/Third Party Administrators

Not applicable.

### Note 20 – Fair Value Measurements

Fair value is defined as the price that would be received to sell an asset or paid to transfer a liability in an orderly transaction between market participants at the measurement date. Fair value measurements are based upon observable and unobservable inputs. Observable inputs reflect market data obtained from independent sources while unobservable inputs reflect the Company's view of market assumptions in the absence of observable market information. The Company utilizes valuation techniques that maximize the use of observable inputs and minimize the use of unobservable inputs. In determining fair value, the Company uses various methods including market, income and cost approaches.

The Company categorizes its financial assets and liabilities into a three-level hierarchy based on the priority of the inputs to the valuation technique. The fair value hierarchy gives the highest priority to quoted prices in active markets for identical assets or liabilities (Level 1) and the lowest priority to unobservable inputs (Level 3). If the inputs used to measure fair value fall within different levels of the hierarchy, the category level is based on the lowest priority level input that is significant to the fair value measurement of the instrument in its entirety.

The Company categorizes financial assets and liabilities as follows:

*Level 1.* Unadjusted quoted prices accessible in active markets for identical assets or liabilities at the measurement date and mutual funds where the value per share (unit) is determined and published daily and is the basis for current transactions.

*Level 2.* Unadjusted quoted prices for similar assets or liabilities in active markets or inputs (other than quoted prices) that are observable or that are derived principally from or corroborated by observable market data through correlation or other means. Primary inputs to this valuation technique may include comparative trades, bid/asks, interest rate movements, U.S. Treasury rates, U.S. LIBOR, prime rates, cash flows, maturity dates, call ability, estimated prepayments and/or underlying collateral values.

*Level 3.* Prices or valuation techniques that require inputs that are both unobservable and significant to the overall fair value measurement. Inputs reflect management's best estimate about the assumptions market participants would use at the measurement date in pricing the asset or liability. Consideration is given to the risk inherent in both the method of valuation and the valuation inputs. Primary inputs to this valuation technique include broker quotes and comparative trades.

The Company reviews its fair value hierarchy classifications for financial assets and liabilities quarterly. Changes in observability of significant valuation inputs identified during these reviews may trigger reclassifications. Reclassifications are reported as transfers at the beginning of the period in which the change occurs.

To determine the fair value of bonds and stocks for which market quotations are available, independent pricing services are most often utilized. For these bonds and stocks, the Company obtains the pricing services' methodologies, inputs and assumptions and classifies the investments accordingly in the fair value hierarchy.

A corporate pricing matrix or an internally developed pricing model is used in valuing certain bonds. The corporate pricing matrix is developed using private spreads for bonds with varying weighted average lives and credit quality ratings. The weighted average life and credit quality rating of a particular bond to be priced using the corporate pricing matrix are important inputs into the model and are used to determine a corresponding spread that is added to the appropriate U.S. Treasury yield to create an estimated market yield for that bond. The estimated market yield and other relevant factors are then used to estimate the fair value of the particular bond.

Non-binding broker quotes are also utilized to determine the fair value of certain bonds when quotes are not available from independent pricing services, corporate pricing matrix or internal pricing models. These bonds are classified accordingly in the fair value hierarchy as only one broker quote is ordinarily obtained, the investment is not traded on an exchange, the pricing is not available to other entities and/or the transaction volume in the same or similar investments has decreased. Inputs used in the development of prices are not provided to the Company by the brokers as the brokers often do not provide the necessary transparency into their quotes and methodologies. Broker quotes are subject to validation of price movements that require approval from the Company's management. Management uses its knowledge of the investment and current market conditions to determine if the price is indicative of the investment's fair value.

Fair value of derivative instruments is determined using various valuation techniques relying predominately on observable market inputs. These inputs include interest rate swap curves, credit spreads, interest rates, counterparty credit risk, equity volatility and equity index levels. In cases where observable inputs are not available, the Company will utilize non-binding broker quotes to determine fair value and these instruments are classified accordingly in the fair value hierarchy.

The following table summarizes financial assets and liabilities measured at fair value as of December 31, 2012:

	Level 1	Level 2	Level 3	Total
<b>Assets at Fair Value</b>				
U.S. Government bonds	-	-	-	-
States, Territories and Possessions	-	-	-	-
Political subdivisions	-	-	-	-
Special revenues	-	-	-	-
Hybrid Securities	-	-	-	-
Credit tenant loans	-	-	-	-
Industrial & Misc.	-	98,333	-	98,333
<b>Total Bonds</b>	<b>\$ -</b>	<b>\$ 98,333</b>	<b>\$ -</b>	<b>\$ 98,333</b>
Sec Lending	-	-	-	-
Preferred Stocks	-	-	-	-
Common Stocks	-	-	-	-
Loans held for sale	-	-	-	-
Separate Account Assets	-	-	-	-
Derivative Assets	-	-	-	-
<b>Total Assets at Fair Value</b>	<b>\$ -</b>	<b>\$ 98,333</b>	<b>\$ -</b>	<b>\$ 98,333</b>
<b>Liabilities at Fair Value</b>				
Derivatives Liabilities	-	-	-	-
<b>Total Liabilities at Fair Value</b>	<b>\$ -</b>	<b>\$ -</b>	<b>\$ -</b>	<b>\$ -</b>

## NOTES TO FINANCIAL STATEMENTS

The following table summarizes aggregate carrying value and fair value, by level, for all financial assets and liabilities, excluding assets and liabilities reported at fair value, as of December 31, 2012:

Type of Financial Instrument	Aggregate Fair Value	Admitted Assets	(Level 1)	(Level 2)	(Level 3)	Not Practicable (Carrying Value)
<b>Assets</b>						
Bonds	\$ 351,466,666	\$ 303,959,745	\$ 146,795,027	\$ 204,671,639		
Stocks						
Mortgage loans						
Short-term investments	7,718,678	7,718,678		7,718,678		
Derivative assets						
Policy loans						
Securities lending collateral assets						
<b>Total Assets</b>	<b>\$ 359,185,344</b>	<b>\$ 311,678,422</b>	<b>\$ 146,795,027</b>	<b>\$ 212,390,317</b>		
<b>Liabilities</b>						
Derivative liabilities						
<b>Total Liabilities</b>						

### Note 21 - Other Items

A. Extraordinary Items

Not applicable.

B. Troubled Debt Restructuring for Debtors

Not applicable.

C. Other Disclosures

Effective June 1, 2012, Nationwide Mutual Insurance Company renewed its agreement with the Company for its Property Catastrophe Program as follows: first layer 10% of \$36.4 million excess of \$14.2 million; second layer 100% of \$71.5 million excess of \$50.6 million.

D. Uncollectible Premiums Receivable

Not applicable.

E. Business Interruption Insurance Recoveries

Not applicable.

F. State Transferable and Non-Transferable Tax Credits

Not applicable.

G. Subprime Mortgage Related Risk Exposure

1. The Company evaluates many characteristics when classifying collateral as subprime, including the credit quality of the borrower as defined by Fair Isaac Credit Organization (FICO) scores, as well as other factors, such as loan-to-value ratios and type of real estate.
2. The Company has no direct exposure through investments in subprime mortgage loans.
3. Direct exposure through other investments:

	Actual Cost	Book/Adjusted Carrying Value (excluding interest)	Fair Value	Other Than Temporary Impairment Losses Recognized
a. Residential mortgage backed securities	728,079	565,132	561,596	-
b. Commercial mortgage backed securities				
c. Collateralized debt obligations				
d. Structured securities				
e. Equity investments in SCAs*				
f. Other Assets				
<b>g. Total</b>	<b>\$ 728,079</b>	<b>\$ 565,132</b>	<b>\$ 561,596</b>	<b>\$ -</b>

4. The Company has no exposure to subprime mortgage risk through Mortgage Guaranty or Financial Guaranty insurance coverage.

### Note 22 - Events Subsequent

Type I – Recognized Subsequent Events:

Subsequent events have been considered through February 8, 2013 for the statutory statement issued on February 12, 2013.

Type II – Nonrecognized Subsequent Events:

Subsequent events have been considered through February 8, 2013 for the statutory statement issued on February 12, 2013.

## NOTES TO FINANCIAL STATEMENTS

### Note 23 – Reinsurance

#### A. Unsecured Reinsurance Recoverables

The Company does not have an unsecured aggregate recoverable for paid and unpaid losses, loss adjustment expenses and unearned premiums from any individual reinsurer, authorized or unauthorized, that exceeds 3% of policyholders' surplus.

#### B. Reinsurance Recoverable in Dispute

The Company does not have reinsurance recoverables in dispute for paid losses and loss adjustment expenses that exceed 5% of policyholders' surplus from an individual reinsurer or exceed 10% of policyholders' surplus in aggregate.

#### C. Reinsurance Assumed and Ceded

1. The following table summarizes ceded and assumed unearned premiums and the related commission equity at December 31, 2012.

(000's)	Assumed		Ceded		Assumed Less Ceded	
	Unearned Premiums	Commission Equity	Unearned Premiums	Commission Equity	Unearned Premiums	Commission Equity
a. Affiliates	\$0	\$0	\$546	\$0	(\$546)	\$0
b. All Others	0	0	178	0	(\$178)	\$0
<b>c. Totals</b>	<b>\$0</b>	<b>\$0</b>	<b>\$725</b>	<b>\$0</b>	<b>(\$725)</b>	<b>\$0</b>
d. Direct Unearned Premium Reserve			\$26,814			

2. Certain agency agreements and ceded reinsurance contracts provide for additional or return commissions based on the actual loss experience of the produced or reinsured business. Amounts accrued at December 31, 2012 are as follows:

(\$000's) Description	Direct	Assumed	Ceded	Net
a. Contingent Commissions	\$209	\$0	\$0	\$209
b. Sliding Scale Adjustments	0	0	0	0
c. Other Profit Commissions	0	0	0	0
<b>d. Totals</b>	<b>\$209</b>	<b>\$0</b>	<b>\$0</b>	<b>\$209</b>

3. The Company does not use protected cells as an alternative to traditional reinsurance.

#### D. Uncollectible Reinsurance

No reinsurance recoverables were written off during 2012.

#### E. Commutation of Ceded Reinsurance

The Company did not enter into any commutation during 2012.

#### F. Retroactive Reinsurance

There was no retroactive reinsurance affected during 2012.

#### G. Reinsurance Accounted for as a Deposit

There were no reinsurance agreements that were accounted for as deposits during 2012.

#### H. There was no transfer of any property and casualty run-off agreements requiring approval of regulators and qualifying under SSAP No. 62R, Property and Casualty Reinsurance, to receive property & casualty run-off accounting treatment.

#### I. Certified Reinsurer Downgrades or Status Subject to Revocation

Not applicable.

### Note 24 - Retrospectively Rated Contracts and Contracts Subject to Redetermination

Not applicable.

### Note 25 - Changes in Incurred Losses and Loss Adjustment Expenses

(000's) Line of Business	2012 Calendar Year Losses and LAE Incurred			2012 Loss Year Losses and LAE Incurred	Shortage (Redundancy)	Loss & DCC Shortage (Redundancy)	Impact of AO on Total Shortage (Redundancy)
	Losses Incurred	LAE Incurred	Totals				
Homeowners / Farmers	\$22,689	\$5,264	\$27,953	\$27,395	\$559	(\$25)	\$583
Commercial Multiple Peril	0	0	0	0	0	0	0
Workers' Compensation	0	0	0	0	0	0	0
Other Liability	0	9	9	2	6	6	0
Product Liability	0	0	0	0	0	0	0
Auto	0	0	0	0	0	0	0
All Others	96	39	135	134	1	(8)	8
<b>Totals</b>	<b>\$22,785</b>	<b>\$5,312</b>	<b>\$28,097</b>	<b>\$27,531</b>	<b>\$566</b>	<b>(\$26)</b>	<b>\$592</b>

The estimated cost of loss adjustment expenses attributable to insured events of prior years increased by \$0.6 million (1.0% of prior year reserves) during 2012, as shown in the chart above, which is not significant or material.

## NOTES TO FINANCIAL STATEMENTS

### **Note 26 - Intercompany Pooling Arrangements**

Not applicable.

### **Note 27 - Structured Settlements**

A. Reserves Released due to Purchases of Annuities

Not applicable.

B. Annuity Insurers with Balances due Greater than 1% of Policyholders' Surplus

Not applicable.

### **Note 28 - Health Care Receivables**

A. Pharmaceutical Rebate Receivables

Not applicable.

B. Risk Sharing Receivables

Not applicable.

### **Note 29 - Participating Policies**

Not applicable.

### **Note 30 - Premium Deficiency Reserves**

The Company's liability for premium deficiency reserves as of December 31, 2012 is as follows:

1. Liability carried for premium deficiency reserves	\$0.00
2. Date of the most recent evaluation of this liability	January 8, 2013
3. Was anticipated investment income utilized in the calculation?	Yes

### **Note 31 - High Deductibles**

Not applicable.

### **Note 32 - Discounting of Liabilities for Unpaid Losses or Unpaid Loss Adjustment Expenses**

A. Tabular Discounts

Not applicable.

B. Non-Tabular Discounts

Not applicable.

C. Changes in Discount Assumptions

Not applicable.

### **Note 33 - Asbestos/Environmental Reserves**

Not applicable.

### **Note 34 - Subscriber Savings Accounts**

Not applicable.

### **Note 35 - Multiple Peril Crop Insurance**

Not applicable.

### **Note 36 - Financial Guaranty Insurance**

A. and B. Not applicable.

ANNUAL STATEMENT FOR THE YEAR 2012 OF THE NATIONWIDE INSURANCE COMPANY OF FLORIDA  
**GENERAL INTERROGATORIES**

**PART 1 - COMMON INTERROGATORIES  
GENERAL**

- 1.1 Is the reporting entity a member of an Insurance Holding Company System consisting of two or more affiliated persons, one or more of which is an insurer? ..... Yes [ X ] No [ ]
- 1.2 If yes, did the reporting entity register and file with its domiciliary State Insurance Commissioner, Director or Superintendent, or with such regulatory official of the state of domicile of the principal insurer in the Holding Company System, a registration statement providing disclosure substantially similar to the standards adopted by the National Association of Insurance Commissioners (NAIC) in its Model Insurance Holding Company System Regulatory Act and model regulations pertaining thereto, or is the reporting entity subject to standards and disclosure requirements substantially similar to those required by such Act and regulations? ..... Yes [ X ] No [ ] N/A [ ]
- 1.3 State Regulating? ..... OH
- 2.1 Has any change been made during the year of this statement in the charter, by-laws, articles of incorporation, or deed of settlement of the reporting entity? ..... Yes [ ] No [ X ]
- 2.2 If yes, date of change: .....
- 3.1 State as of what date the latest financial examination of the reporting entity was made or is being made. .... 12/31/2011
- 3.2 State the as of date that the latest financial examination report became available from either the state of domicile or the reporting entity. This date should be the date of the examined balance sheet and not the date the report was completed or released. .... 12/31/2011
- 3.3 State as of what date the latest financial examination report became available to other states or the public from either the state of domicile or the reporting entity. This is the release date or completion date of the examination report and not the date of the examination (balance sheet date). .... 03/29/2008
- 3.4 By what department or departments?  
OH .....
- 3.5 Have all financial statement adjustments within the latest financial examination report been accounted for in a subsequent financial statement filed with Departments? ..... Yes [ ] No [ ] N/A [ X ]
- 3.6 Have all of the recommendations within the latest financial examination report been complied with? ..... Yes [ ] No [ ] N/A [ X ]
- 4.1 During the period covered by this statement, did any agent, broker, sales representative, non-affiliated sales/service organization or any combination thereof under common control (other than salaried employees of the reporting entity), receive credit or commissions for or control a substantial part (more than 20 percent of any major line of business measured on direct premiums) of:  
4.11 sales of new business? ..... Yes [ ] No [ X ]  
4.12 renewals? ..... Yes [ ] No [ X ]
- 4.2 During the period covered by this statement, did any sales/service organization owned in whole or in part by the reporting entity or an affiliate, receive credit or commissions for or control a substantial part (more than 20 percent of any major line of business measured on direct premiums) of:  
4.21 sales of new business? ..... Yes [ ] No [ X ]  
4.22 renewals? ..... Yes [ ] No [ X ]
- 5.1 Has the reporting entity been a party to a merger or consolidation during the period covered by this statement? ..... Yes [ ] No [ X ]
- 5.2 If yes, provide the name of the entity, NAIC Company Code, and state of domicile (use two letter state abbreviation) for any entity that has ceased to exist as a result of the merger or consolidation.

1 Name of Entity	2 NAIC Company Code	3 State of Domicile

- 6.1 Has the reporting entity had any Certificates of Authority, licenses or registrations (including corporate registration, if applicable) suspended or revoked by any governmental entity during the reporting period? ..... Yes [ ] No [ X ]
- 6.2 If yes, give full information:  
.....
- 7.1 Does any foreign (non-United States) person or entity directly or indirectly control 10% or more of the reporting entity? ..... Yes [ ] No [ X ]
- 7.2 If yes,  
7.21 State the percentage of foreign control; ..... %  
7.22 State the nationality(s) of the foreign person(s) or entity(s) or if the entity is a mutual or reciprocal, the nationality of its manager or attorney-in-fact; and identify the type of entity(s) (e.g., individual, corporation or government, manager or attorney in fact).

1 Nationality	2 Type of Entity

**ANNUAL STATEMENT FOR THE YEAR 2012 OF THE NATIONWIDE INSURANCE COMPANY OF FLORIDA  
GENERAL INTERROGATORIES**

- 8.1 Is the company a subsidiary of a bank holding company regulated by the Federal Reserve Board? ..... Yes [ ] No [ X ]
- 8.2 If response to 8.1 is yes, please identify the name of the bank holding company.  
.....
- 8.3 Is the company affiliated with one or more banks, thrifts or securities firms? ..... Yes [ X ] No [ ]
- 8.4 If response to 8.3 is yes, please provide below the names and location (city and state of the main office) of any affiliates regulated by a federal regulatory services agency [i.e. the Federal Reserve Board (FRB), the Office of the Comptroller of the Currency (OCC), the Federal Deposit Insurance Corporation (FDIC) and the Securities Exchange Commission (SEC)] and identify the affiliate's primary federal regulator.

1 Affiliate Name	2 Location (City, State)	3 FRB	4 OCC	5 FDIC	6 SEC
Nationwide Bank .....	Columbus, OH .....	NO	YES	NO	NO
Nationwide Investment Services Corp. ....	Columbus, OH .....	NO	NO	NO	YES
Nationwide Securities, LLC .....	Dublin, OH .....	NO	NO	NO	YES
Nationwide Fund Distributors, LLC .....	King of Prussia, PA .....	NO	NO	NO	YES
Nationwide Advantage Mortgage Company .....	Des Moines, IA .....	NO	NO	NO	NO

9. What is the name and address of the independent certified public accountant or accounting firm retained to conduct the annual audit?  
KPMG LLP, 191 W. Nationwide Blvd., Suite 500, Columbus, OH 43215
- 10.1 Has the insurer been granted any exemptions to the prohibited non-audit services provided by the certified independent public accountant requirements as allowed in Section 7H of the Annual Financial Reporting Model Regulation (Model Audit Rule), or substantially similar state law or regulation? ..... Yes [ ] No [ X ]
- 10.2 If the response to 10.1 is yes, provide information related to this exemption:  
.....
- 10.3 Has the insurer been granted any exemptions related to the other requirements of the Annual Financial Reporting Model Regulation as allowed for in Section 17A of the Model Regulation, or substantially similar state law or regulation? ..... Yes [ ] No [ X ]
- 10.4 If the response to 10.3 is yes, provide information related to this exemption:  
.....
- 10.5 Has the reporting entity established an Audit Committee in compliance with the domiciliary state insurance laws? ..... Yes [ X ] No [ ] N/A [ ]
- 10.6 If the response to 10.5 is no or n/a, please explain  
.....
11. What is the name, address and affiliation (officer/employee of the reporting entity or actuary/consultant associated with an actuarial consulting firm) of the individual providing the statement of actuarial opinion/certification?  
Gregory S. Beaulieu, FCAS, MAAA, Nationwide Insurance, One Nationwide Blvd., Columbus, OH 43215, Nationwide Elected Officer .....
- 12.1 Does the reporting entity own any securities of a real estate holding company or otherwise hold real estate indirectly? ..... Yes [ ] No [ X ]
- 12.11 Name of real estate holding company .....
- 12.12 Number of parcels involved .....
- 12.13 Total book/adjusted carrying value ..... \$ .....
- 12.2 If, yes provide explanation:  
.....
- 13. FOR UNITED STATES BRANCHES OF ALIEN REPORTING ENTITIES ONLY:**
- 13.1 What changes have been made during the year in the United States manager or the United States trustees of the reporting entity?  
.....
- 13.2 Does this statement contain all business transacted for the reporting entity through its United States Branch on risks wherever located? ..... Yes [ ] No [ ]
- 13.3 Have there been any changes made to any of the trust indentures during the year? ..... Yes [ ] No [ ]
- 13.4 If answer to (13.3) is yes, has the domiciliary or entry state approved the changes? ..... Yes [ ] No [ ] N/A [ ]
- 14.1 Are the senior officers (principal executive officer, principal financial officer, principal accounting officer or controller, or persons performing similar functions) of the reporting entity subject to a code of ethics, which includes the following standards? ..... Yes [ X ] No [ ]
- (a) Honest and ethical conduct, including the ethical handling of actual or apparent conflicts of interest between personal and professional relationships;
- (b) Full, fair, accurate, timely and understandable disclosure in the periodic reports required to be filed by the reporting entity;
- (c) Compliance with applicable governmental laws, rules and regulations;
- (d) The prompt internal reporting of violations to an appropriate person or persons identified in the code; and
- (e) Accountability for adherence to the code.
- 14.11 If the response to 14.1 is No, please explain:  
.....
- 14.2 Has the code of ethics for senior managers been amended? ..... Yes [ X ] No [ ]
- 14.21 If the response to 14.2 is yes, provide information related to amendment(s).  
All topics covered in the previous Code of Conduct have been retained without substantive change. New sample questions and answers have been added. New language has been added to cover social networking, securities laws, political contributions, corporate social responsibility, and vendor relationships. ....
- 14.3 Have any provisions of the code of ethics been waived for any of the specified officers? ..... Yes [ ] No [ X ]
- 14.31 If the response to 14.3 is yes, provide the nature of any waiver(s).  
.....

**ANNUAL STATEMENT FOR THE YEAR 2012 OF THE NATIONWIDE INSURANCE COMPANY OF FLORIDA  
GENERAL INTERROGATORIES**

- 15.1 Is the reporting entity the beneficiary of a Letter of Credit that is unrelated to reinsurance where the issuing or confirming bank is not on the SVO Bank List? Yes [ ] No [ X ]
- 15.2 If the response to 15.1 is yes, indicate the American Bankers Association (ABA) Routing Number and the name of the issuing or confirming bank of the Letter of Credit and describe the circumstances in which the Letter of Credit is triggered.

1 American Bankers Association (ABA) Routing Number	2 Issuing or Confirming Bank Name	3 Circumstances That Can Trigger the Letter of Credit	4 Amount

**BOARD OF DIRECTORS**

16. Is the purchase or sale of all investments of the reporting entity passed upon either by the board of directors or a subordinate committee thereof? Yes [ X ] No [ ]
17. Does the reporting entity keep a complete permanent record of the proceedings of its board of directors and all subordinate committees thereof? Yes [ X ] No [ ]
18. Has the reporting entity an established procedure for disclosure to its board of directors or trustees of any material interest or affiliation on the part of any of its officers, directors, trustees or responsible employees that is in conflict with the official duties of such person? Yes [ X ] No [ ]

**FINANCIAL**

19. Has this statement been prepared using a basis of accounting other than Statutory Accounting Principles (e.g., Generally Accepted Accounting Principles)? Yes [ ] No [ X ]
- 20.1 Total amount loaned during the year (inclusive of Separate Accounts, exclusive of policy loans):
- 20.11 To directors or other officers.....\$
  - 20.12 To stockholders not officers.....\$
  - 20.13 Trustees, supreme or grand (Fraternal Only).....\$
- 20.2 Total amount of loans outstanding at the end of year (inclusive of Separate Accounts, exclusive of policy loans):
- 20.21 To directors or other officers.....\$
  - 20.22 To stockholders not officers.....\$
  - 20.23 Trustees, supreme or grand (Fraternal Only).....\$
- 21.1 Were any assets reported in this statement subject to a contractual obligation to transfer to another party without the liability for such obligation being reported in the statement? Yes [ ] No [ X ]
- 21.2 If yes, state the amount thereof at December 31 of the current year:
- 21.21 Rented from others.....\$
  - 21.22 Borrowed from others.....\$
  - 21.23 Leased from others.....\$
  - 21.24 Other.....\$
- 22.1 Does this statement include payments for assessments as described in the Annual Statement Instructions other than guaranty fund or guaranty association assessments? Yes [ ] No [ X ]
- 22.2 If answer is yes:
- 22.21 Amount paid as losses or risk adjustment \$
  - 22.22 Amount paid as expenses.....\$
  - 22.23 Other amounts paid.....\$
- 23.1 Does the reporting entity report any amounts due from parent, subsidiaries or affiliates on Page 2 of this statement? Yes [ X ] No [ ]
- 23.2 If yes, indicate any amounts receivable from parent included in the Page 2 amount: \$ 5,494,914

**INVESTMENT**

- 24.01 Were all the stocks, bonds and other securities owned December 31 of current year, over which the reporting entity has exclusive control, in the actual possession of the reporting entity on said date? (other than securities lending programs addressed in 24.03) Yes [ ] No [ X ]
- 24.02 If no, give full and complete information relating thereto  
Held on Deposit with States .....
- 24.03 For security lending programs, provide a description of the program including value for collateral and amount of loaned securities, and whether collateral is carried on or off-balance sheet. (an alternative is to reference Note 17 where this information is also provided)  
N/A .....
- 24.04 Does the Company's security lending program meet the requirements for a conforming program as outlined in the Risk-Based Capital Instructions? Yes [ ] No [ ] N/A [ X ]
- 24.05 If answer to 24.04 is yes, report amount of collateral for conforming programs. \$
- 24.06 If answer to 24.04 is no, report amount of collateral for other programs. \$
- 24.07 Does your securities lending program require 102% (domestic securities) and 105% (foreign securities) from the counterparty at the outset of the contract? Yes [ ] No [ ] N/A [ X ]
- 24.08 Does the reporting entity non-admit when the collateral received from the counterparty falls below 100%? Yes [ ] No [ ] N/A [ X ]
- 24.09 Does the reporting entity or the reporting entity's securities lending agent utilize the Master Securities lending Agreement (MSLA) to conduct securities lending? Yes [ ] No [ ] N/A [ X ]

**ANNUAL STATEMENT FOR THE YEAR 2012 OF THE NATIONWIDE INSURANCE COMPANY OF FLORIDA  
GENERAL INTERROGATORIES**

24.10 For the reporting entity's security lending program state the amount of the following as December 31 of the current year:

24.101 Total fair value of reinvested collateral assets reported on Schedule DL, Parts 1 and 2 .....	\$ .....
24.102 Total book adjusted/carrying value of reinvested collateral assets reported on Schedule DL, Parts 1 and 2 .....	\$ .....
24.103 Total payable for securities lending reported on the liability page .....	\$ .....

25.1 Were any of the stocks, bonds or other assets of the reporting entity owned at December 31 of the current year not exclusively under the control of the reporting entity, or has the reporting entity sold or transferred any assets subject to a put option contract that is currently in force? (Exclude securities subject to Interrogatory 21.1 and 24.03). ..... Yes  No

25.2 If yes, state the amount thereof at December 31 of the current year:

25.21 Subject to repurchase agreements .....	\$ .....
25.22 Subject to reverse repurchase agreements .....	\$ .....
25.23 Subject to dollar repurchase agreements .....	\$ .....
25.24 Subject to reverse dollar repurchase agreements .....	\$ .....
25.25 Pledged as collateral .....	\$ .....
25.26 Placed under option agreements .....	\$ .....
25.27 Letter stock or other securities restricted as to sale .....	\$ .....
25.28 On deposit with state or other regulatory body .....	\$ 3,065,811
25.29 Other .....	\$ .....

25.3 For category (25.27) provide the following:

1 Nature of Restriction	2 Description	3 Amount

26.1 Does the reporting entity have any hedging transactions reported on Schedule DB? ..... Yes  No

26.2 If yes, has a comprehensive description of the hedging program been made available to the domiciliary state? ..... Yes  No  N/A   
If no, attach a description with this statement.

27.1 Were any preferred stocks or bonds owned as of December 31 of the current year mandatorily convertible into equity, or, at the option of the issuer, convertible into equity? ..... Yes  No

27.2 If yes, state the amount thereof at December 31 of the current year. .... \$ .....

28. Excluding items in Schedule E - Part 3 - Special Deposits, real estate, mortgage loans and investments held physically in the reporting entity's offices, vaults or safety deposit boxes, were all stocks, bonds and other securities, owned throughout the current year held pursuant to a custodial agreement with a qualified bank or trust company in accordance with Section 1, III - General Examination Considerations, F. Outsourcing of Critical Functions, Custodial or Safekeeping Agreements of the NAIC Financial Condition Examiners Handbook? ..... Yes  No

28.01 For agreements that comply with the requirements of the NAIC Financial Condition Examiners Handbook, complete the following:

1 Name of Custodian(s)	2 Custodian's Address
The Bank of New York Mellon .....	1 Wall Street, New York, NY 10286 .....

28.02 For all agreements that do not comply with the requirements of the NAIC Financial Condition Examiners Handbook, provide the name, location and a complete explanation:

1 Name(s)	2 Location(s)	3 Complete Explanation(s)

28.03 Have there been any changes, including name changes, in the custodian(s) identified in 28.01 during the current year? ..... Yes  No

28.04 If yes, give full and complete information relating thereto:

1 Old Custodian	2 New Custodian	3 Date of Change	4 Reason

28.05 Identify all investment advisors, brokers/dealers or individuals acting on behalf of brokers/dealers that have access to the investment accounts, handle securities and have authority to make investments on behalf of the reporting entity:

1 Central Registration Depository Number(s)	2 Name	3 Address
N/A .....	Members of the investment staff designated by the Chief Investment Officer as detailed in the Corporate Resolution .....	One Nationwide Blvd., Columbus, OH 43215-2220 .....

**ANNUAL STATEMENT FOR THE YEAR 2012 OF THE NATIONWIDE INSURANCE COMPANY OF FLORIDA  
GENERAL INTERROGATORIES**

- 29.1 Does the reporting entity have any diversified mutual funds reported in Schedule D, Part 2 (diversified according to the Securities and Exchange Commission (SEC) in the Investment Company Act of 1940 [Section 5(b)(1)])? Yes [ ] No [ X ]
- 29.2 If yes, complete the following schedule:

1 CUSIP #	2 Name of Mutual Fund	3 Book/Adjusted Carrying Value
29.2999 - Total		

- 29.3 For each mutual fund listed in the table above, complete the following schedule:

1 Name of Mutual Fund (from above table)	2 Name of Significant Holding of the Mutual Fund	3 Amount of Mutual Fund's Book/Adjusted Carrying Value Attributable to the Holding	4 Date of Valuation
.....	.....	.....	.....

30. Provide the following information for all short-term and long-term bonds and all preferred stocks. Do not substitute amortized value or statement value for fair value.

	1 Statement (Admitted) Value	2 Fair Value	3 Excess of Statement over Fair Value (-), or Fair Value over Statement (+)
30.1 Bonds .....	304,058,078	351,565,001	47,506,923
30.2 Preferred stocks .....			
30.3 Totals	304,058,078	351,565,001	47,506,923

- 30.4 Describe the sources or methods utilized in determining the fair values:

For fixed maturity and marketable equity securities for which market quotations generally are available, Nationwide generally uses independent pricing services to assist in determining the fair value measurement. For certain fixed maturity securities not priced by independent services (generally private placement securities without quoted market prices), an internally developed pricing model or "corporate pricing matrix" is most often used. The corporate pricing matrix is developed by obtaining private spreads versus the U.S. Treasury yield for corporate securities with varying weighted average lives and bond ratings. The weighted average life and bond rating of a particular fixed maturity security to be priced using the corporate matrix are important inputs into the model and are used to determine a corresponding spread that is added to the U.S. Treasury yield to create an estimated market yield for that bond. The estimated market yield and other relevant factors are then used to estimate the fair value of the particular fixed maturity security. Nationwide also utilized broker quotes to assist in pricing securities or to validate modeled prices. ....

- 31.1 Was the rate used to calculate fair value determined by a broker or custodian for any of the securities in Schedule D? ..... Yes [ X ] No [ ]
- 31.2 If the answer to 31.1 is yes, does the reporting entity have a copy of the broker's or custodian's pricing policy (hard copy or electronic copy) for all brokers or custodians used as a pricing source? ..... Yes [ ] No [ X ]
- 31.3 If the answer to 31.2 is no, describe the reporting entity's process for determining a reliable pricing source for purposes of disclosure of fair value for Schedule D:  
Nationwide relies on broker valuations only when an approved third party vendor evaluation is not available. Any exceptions are approved by Risk Management and the Middle Office and reviewed by the Investments Pricing Committee. The brokers used to value securities are deemed to be main market makers for each individual security and therefore have in depth knowledge of the particular issue. ....
- 32.1 Have all the filing requirements of the Purposes and Procedures Manual of the NAIC Securities Valuation Office been followed? ..... Yes [ X ] No [ ]
- 32.2 If no, list exceptions:  
.....

ANNUAL STATEMENT FOR THE YEAR 2012 OF THE NATIONWIDE INSURANCE COMPANY OF FLORIDA  
**GENERAL INTERROGATORIES**

**OTHER**

33.1 Amount of payments to trade associations, service organizations and statistical or rating bureaus, if any? .....\$ .....

33.2 List the name of the organization and the amount paid if any such payment represented 25% or more of the total payments to trade associations, service organizations and statistical or rating bureaus during the period covered by this statement.

1 Name	2 Amount Paid
All payments are made by Nationwide Mutual Insurance Company and are reported in its Annual Statement. ....	

34.1 Amount of payments for legal expenses, if any? .....\$ .....

34.2 List the name of the firm and the amount paid if any such payment represented 25% or more of the total payments for legal expenses during the period covered by this statement.

1 Name	2 Amount Paid
All payments are made by Nationwide Mutual Insurance Company and are reported in its Annual Statement. ....	

35.1 Amount of payments for expenditures in connection with matters before legislative bodies, officers or departments of government, if any? .....\$ .....

35.2 List the name of the firm and the amount paid if any such payment represented 25% or more of the total payment expenditures in connection with matters before legislative bodies, officers or departments of government during the period covered by this statement.

1 Name	2 Amount Paid
All payments are made by Nationwide Mutual Insurance Company and are reported in its Annual Statement. ....	

# GENERAL INTERROGATORIES

## PART 2 - PROPERTY AND CASUALTY INTERROGATORIES

1.1 Does the reporting entity have any direct Medicare Supplement Insurance in force? ..... Yes [ ] No [ X ]

1.2 If yes, indicate premium earned on U. S. business only. .... \$ \_\_\_\_\_

1.3 What portion of Item (1.2) is not reported on the Medicare Supplement Insurance Experience Exhibit? ..... \$ \_\_\_\_\_  
 1.31 Reason for excluding  
 .....

1.4 Indicate amount of earned premium attributable to Canadian and/or Other Alien not included in Item (1.2) above. .... \$ \_\_\_\_\_

1.5 Indicate total incurred claims on all Medicare Supplement Insurance. .... \$ \_\_\_\_\_

1.6 Individual policies:

	Most current three years:	
1.61 Total premium earned .....		\$ .....
1.62 Total incurred claims .....		\$ .....
1.63 Number of covered lives .....		.....
All years prior to most current three years		
1.64 Total premium earned .....		\$ .....
1.65 Total incurred claims .....		\$ .....
1.66 Number of covered lives .....		.....

1.7 Group policies:

	Most current three years:	
1.71 Total premium earned .....		\$ .....
1.72 Total incurred claims .....		\$ .....
1.73 Number of covered lives .....		.....
All years prior to most current three years		
1.74 Total premium earned .....		\$ .....
1.75 Total incurred claims .....		\$ .....
1.76 Number of covered lives .....		.....

2. Health Test:

	1 Current Year	2 Prior Year
2.1 Premium Numerator .....		
2.2 Premium Denominator .....	34,774,526	42,138,305
2.3 Premium Ratio (2.1/2.2) .....	0.000	0.000
2.4 Reserve Numerator .....		
2.5 Reserve Denominator .....	62,757,692	83,086,281
2.6 Reserve Ratio (2.4/2.5) .....	0.000	0.000

3.1 Does the reporting entity issue both participating and non-participating policies? ..... Yes [ ] No [ X ]

3.2 If yes, state the amount of calendar year premiums written on:

3.21 Participating policies .....	\$ .....
3.22 Non-participating policies .....	\$ .....

4. For mutual reporting Entities and Reciprocal Exchanges Only:

4.1 Does the reporting entity issue assessable policies? ..... Yes [ ] No [ ]

4.2 Does the reporting entity issue non-assessable policies? ..... Yes [ ] No [ ]

4.3 If assessable policies are issued, what is the extent of the contingent liability of the policyholders? ..... % \_\_\_\_\_

4.4 Total amount of assessments paid or ordered to be paid during the year on deposit notes or contingent premiums. .... \$ \_\_\_\_\_

5. For Reciprocal Exchanges Only:

5.1 Does the Exchange appoint local agents? ..... Yes [ ] No [ ]

5.2 If yes, is the commission paid:

5.21 Out of Attorney's-in-fact compensation.....	Yes [ ] No [ ]	N/A [ ]
5.22 As a direct expense of the exchange.....	Yes [ ] No [ ]	N/A [ ]

5.3 What expenses of the Exchange are not paid out of the compensation of the Attorney-in-fact?  
 .....

5.4 Has any Attorney-in-fact compensation, contingent on fulfillment of certain conditions, been deferred? ..... Yes [ ] No [ ]

5.5 If yes, give full information  
 .....

# GENERAL INTERROGATORIES

## PART 2 - PROPERTY AND CASUALTY INTERROGATORIES

- 6.1 What provision has this reporting entity made to protect itself from an excessive loss in the event of a catastrophe under a workers' compensation contract issued without limit of loss?  
 No exposure .....
- 6.2 Describe the method used to estimate this reporting entity's probable maximum insurance loss, and identify the type of insured exposures comprising that probable maximum loss, the locations of concentrations of those exposures and the external resources (such as consulting firms or computer software models), if any, used in the estimation process.  
 The Company is exposed to windstorm events in Florida affecting personal lines. The Company's property exposures are aggregated with the other Nationwide companies and modeled using Applied Insurance Research (AIR) CLASIC/2. ....
- 6.3 What provision has this reporting entity made (such as a catastrophic reinsurance program) to protect itself from an excessive loss arising from the types and concentrations of insured exposures comprising its probable maximum property insurance loss?  
 The Company's net property-catastrophe exposures, if any, are mitigated through managed coastal growth, purchase of excess of loss reinsurance, policy provisions such as higher deductibles, and enforcement of underwriting guidelines related to building construction, etc. ....
- 6.4 Does the reporting entity carry catastrophe reinsurance protection for at least one reinstatement, in an amount sufficient to cover its estimated probable maximum loss attributable to a single loss event or occurrence? ..... Yes [ X ] No [ ]
- 6.5 If no, describe any arrangements or mechanisms employed by the reporting entity to supplement its catastrophe reinsurance program or to hedge its exposure to unreinsured catastrophic loss.  
 .....
- 7.1 Has this reporting entity reinsured any risk with any other entity under a quota share reinsurance contract that includes a provision that would limit the reinsurer's losses below the stated quota share percentage (e.g., a deductible, a loss ratio corridor, a loss ratio cap, an aggregate limit or any similar provisions)? ..... Yes [ ] No [ X ]
- 7.2 If yes, indicate the number of reinsurance contracts containing such provisions: .....
- 7.3 If yes, does the amount of reinsurance credit taken reflect the reduction in quota share coverage caused by any applicable limiting provision(s)? ..... Yes [ ] No [ ]
- 8.1 Has this reporting entity reinsured any risk with any other entity and agreed to release such entity from liability, in whole or in part, from any loss that may occur on this risk, or portion thereof, reinsured? ..... Yes [ ] No [ X ]
- 8.2 If yes, give full information  
 .....
- 9.1 Has the reporting entity ceded any risk under any reinsurance contract (or under multiple contracts with the same reinsurer or its affiliates) for which during the period covered by the statement: (i) it recorded a positive or negative underwriting result greater than 5% of prior year-end surplus as regards policyholders or it reported calendar year written premium ceded or year-end loss and loss expense reserves ceded greater than 5% of prior year-end surplus as regards policyholders; (ii) it accounted for that contract as reinsurance and not as a deposit; and (iii) the contract(s) contain one or more of the following features or other features that would have similar results:  
 (a) A contract term longer than two years and the contract is noncancellable by the reporting entity during the contract term;  
 (b) A limited or conditional cancellation provision under which cancellation triggers an obligation by the reporting entity, or an affiliate of the reporting entity, to enter into a new reinsurance contract with the reinsurer, or an affiliate of the reinsurer;  
 (c) Aggregate stop loss reinsurance coverage;  
 (d) A unilateral right by either party (or both parties) to commute the reinsurance contract, whether conditional or not, except for such provisions which are only triggered by a decline in the credit status of the other party;  
 (e) A provision permitting reporting of losses, or payment of losses, less frequently than on a quarterly basis (unless there is no activity during the period); or  
 (f) Payment schedule, accumulating retentions from multiple years or any features inherently designed to delay timing of the reimbursement to the ceding entity. .... Yes [ ] No [ X ]
- 9.2 Has the reporting entity during the period covered by the statement ceded any risk under any reinsurance contract (or under multiple contracts with the same reinsurer or its affiliates), for which, during the period covered by the statement, it recorded a positive or negative underwriting result greater than 5% of prior year-end surplus as regards policyholders or it reported calendar year written premium ceded or year-end loss and loss expense reserves ceded greater than 5% of prior year-end surplus as regards policyholders; excluding cessions to approved pooling arrangements or to captive insurance companies that are directly or indirectly controlling, controlled by, or under common control with (i) one or more unaffiliated policyholders of the reporting entity, or (ii) an association of which one or more unaffiliated policyholders of the reporting entity is a member where:  
 (a) The written premium ceded to the reinsurer by the reporting entity or its affiliates represents fifty percent (50%) or more of the entire direct and assumed premium written by the reinsurer based on its most recently available financial statement; or  
 (b) Twenty-five percent (25%) or more of the written premium ceded to the reinsurer has been retroceded back to the reporting entity or its affiliates in a separate reinsurance contract. .... Yes [ ] No [ X ]
- 9.3 If yes to 9.1 or 9.2, please provide the following information in the Reinsurance Summary Supplemental Filing for General Interrogatory 9:  
 (a) The aggregate financial statement impact gross of all such ceded reinsurance contracts on the balance sheet and statement of income;  
 (b) A summary of the reinsurance contract terms and indicate whether it applies to the contracts meeting the criteria in 9.1 or 9.2; and  
 (c) A brief discussion of management's principle objectives in entering into the reinsurance contract including the economic purpose to be achieved.
- 9.4 Except for transactions meeting the requirements of paragraph 32 of SSAP No. 62R, Property and Casualty Reinsurance, has the reporting entity ceded any risk under any reinsurance contract (or multiple contracts with the same reinsurer or its affiliates) during the period covered by the financial statement, and either:  
 (a) Accounted for that contract as reinsurance (either prospective or retroactive) under statutory accounting principles ("SAP") and as a deposit under generally accepted accounting principles ("GAAP"); or  
 (b) Accounted for that contract as reinsurance under GAAP and as a deposit under SAP? ..... Yes [ ] No [ X ]
- 9.5 If yes to 9.4, explain in the Reinsurance Summary Supplemental Filing for General Interrogatory 9 (Section D) why the contract(s) is treated differently for GAAP and SAP.
- 9.6 The reporting entity is exempt from the Reinsurance Attestation Supplement under one or more of the following criteria:  
 (a) The entity does not utilize reinsurance; or, ..... Yes [ ] No [ X ]  
 (b) The entity only engages in a 100% quota share contract with an affiliate and the affiliated or lead company has filed an attestation supplement; or ..... Yes [ ] No [ X ]  
 (c) The entity has no external cessions and only participates in an intercompany pool and the affiliated or lead company has filed an attestation supplement. .... Yes [ ] No [ X ]
10. If the reporting entity has assumed risks from another entity, there should be charged on account of such reinsurances a reserve equal to that which the original entity would have been required to charge had it retained the risks. Has this been done? ..... Yes [ ] No [ ] N/A [ X ]

# GENERAL INTERROGATORIES

## PART 2 - PROPERTY AND CASUALTY INTERROGATORIES

- 11.1 Has the reporting entity guaranteed policies issued by any other entity and now in force? ..... Yes [ ] No [ X ]
- 11.2 If yes, give full information  
.....
- 12.1 If the reporting entity recorded accrued retrospective premiums on insurance contracts on Line 15.3 of the asset schedule, Page 2, state the amount of corresponding liabilities recorded for:
- 12.11 Unpaid losses .....\$ .....
- 12.12 Unpaid underwriting expenses (including loss adjustment expenses) .....\$ .....
- 12.2 Of the amount on Line 15.3, Page 2, state the amount which is secured by letters of credit, collateral, and other funds .....\$ .....
- 12.3 If the reporting entity underwrites commercial insurance risks, such as workers' compensation, are premium notes or promissory notes accepted from its insureds covering unpaid premiums and/or unpaid losses? ..... Yes [ ] No [ X ] N/A [ ]
- 12.4 If yes, provide the range of interest rates charged under such notes during the period covered by this statement:
- 12.41 From ..... %
- 12.42 To ..... %
- 12.5 Are letters of credit or collateral and other funds received from insureds being utilized by the reporting entity to secure premium notes or promissory notes taken by a reporting entity, or to secure any of the reporting entity's reported direct unpaid loss reserves, including unpaid losses under loss deductible features of commercial policies? ..... Yes [ ] No [ X ]
- 12.6 If yes, state the amount thereof at December 31 of the current year:
- 12.61 Letters of credit .....\$ .....
- 12.62 Collateral and other funds .....\$ .....
- 13.1 Largest net aggregate amount insured in any one risk (excluding workers' compensation): .....\$ 24,000,000
- 13.2 Does any reinsurance contract considered in the calculation of this amount include an aggregate limit of recovery without also including a reinstatement provision? ..... Yes [ ] No [ X ]
- 13.3 State the number of reinsurance contracts (excluding individual facultative risk certificates, but including facultative programs, automatic facilities or facultative obligatory contracts) considered in the calculation of the amount: .....2
- 14.1 Is the company a cedant in a multiple cedant reinsurance contract? ..... Yes [ X ] No [ ]
- 14.2 If yes, please describe the method of allocating and recording reinsurance among the cedants:  
Companies that are not part of the Nationwide Mutual Insurance Company Pooling and Quota Share Arrangements receive a fair and equitable allocation of ceded premium and loss. The terms of the Nationwide Pooling and Quota Share Agreements govern the allocation and recording of ceded premium and loss for the participating companies. ....
- 14.3 If the answer to 14.1 is yes, are the methods described in item 14.2 entirely contained in the respective multiple cedant reinsurance contracts? ..... Yes [ ] No [ X ]
- 14.4 If the answer to 14.3 is no, are all the methods described in 14.2 entirely contained in written agreements? ..... Yes [ ] No [ X ]
- 14.5 If the answer to 14.4 is no, please explain:  
Written agreements are in place for all multi-cedant reinsurance treaties that cover any company that does not participate in the Nationwide Mutual Insurance Company Pooling and Quota Share Arrangements. ....
- 15.1 Has the reporting entity guaranteed any financed premium accounts? ..... Yes [ ] No [ X ]
- 15.2 If yes, give full information  
.....
- 16.1 Does the reporting entity write any warranty business? ..... Yes [ ] No [ X ]  
If yes, disclose the following information for each of the following types of warranty coverage:

	1 Direct Losses Incurred	2 Direct Losses Unpaid	3 Direct Written Premium	4 Direct Premium Unearned	5 Direct Premium Earned
16.11 Home .....					
16.12 Products .....					
16.13 Automobile .....					
16.14 Other*					

\* Disclose type of coverage:  
.....

# GENERAL INTERROGATORIES

## PART 2 - PROPERTY AND CASUALTY INTERROGATORIES

17.1 Does the reporting entity include amounts recoverable on unauthorized reinsurance in Schedule F - Part 3 that it excludes from Schedule F - Part 5? ..... Yes [ ] No [ X ]

Incurred but not reported losses on contracts in force prior to July 1, 1984, and not subsequently renewed are exempt from inclusion in Schedule F - Part 5. Provide the following information for this exemption:

17.11 Gross amount of unauthorized reinsurance in Schedule F - Part 3 excluded from Schedule F - Part 5 ..... \$ .....  
 17.12 Unfunded portion of Interrogatory 17.11 ..... \$ .....  
 17.13 Paid losses and loss adjustment expenses portion of Interrogatory 17.11... \$ .....  
 17.14 Case reserves portion of Interrogatory 17.11 ..... \$ .....  
 17.15 Incurred but not reported portion of Interrogatory 17.11 ..... \$ .....  
 17.16 Unearned premium portion of Interrogatory 17.11 ..... \$ .....  
 17.17 Contingent commission portion of Interrogatory 17.11 ..... \$ .....

Provide the following information for all other amounts included in Schedule F - P art 3 and excluded from Schedule F - Part 5, not included above.

17.18 Gross amount of unauthorized reinsurance in Schedule F - Part 3 excluded from Schedule F - Part 5 ..... \$ .....  
 17.19 Unfunded portion of Interrogatory 17.18 ..... \$ .....  
 17.20 Paid losses and loss adjustment expenses portion of Interrogatory 17.18... \$ .....  
 17.21 Case reserves portion of Interrogatory 17.18 ..... \$ .....  
 17.22 Incurred but not reported portion of Interrogatory 17.18 ..... \$ .....  
 17.23 Unearned premium portion of Interrogatory 17.18 ..... \$ .....  
 17.24 Contingent commission portion of Interrogatory 17.18 ..... \$ .....

18.1 Do you act as a custodian for health savings accounts? ..... Yes [ ] No [ X ]

18.2 If yes, please provide the amount of custodial funds held as of the reporting date. .... \$ .....

18.3 Do you act as an administrator for health savings accounts? ..... Yes [ ] No [ X ]

18.4 If yes, please provide the balance of funds administered as of the reporting date. .... \$ .....

ANNUAL STATEMENT FOR THE YEAR 2012 OF THE NATIONWIDE INSURANCE COMPANY OF FLORIDA

**FIVE-YEAR HISTORICAL DATA**

Show amounts in whole dollars only, no cents; show percentages to one decimal place, i.e. 17.6.

	1 2012	2 2011	3 2010	4 2009	5 2008
<b>Gross Premiums Written (Page 8, Part 1B Cols. 1, 2 &amp; 3)</b>					
1. Liability lines (Lines 11.1, 11.2, 16, 17.1, 17.2, 17.3, 18.1, 18.2, 19.1, 19.2 & 19.3, 19.4)			(129)	105,441	587,668
2. Property lines (Lines 1, 2, 9, 12, 21 & 26)	959,109	1,046,966	1,410,688	2,490,127	7,551,192
3. Property and liability combined lines (Lines 3, 4, 5, 8, 22 & 27)	53,245,165	54,871,890	88,535,681	128,325,482	140,456,356
4. All other lines (Lines 6, 10, 13, 14, 15, 23, 24, 28, 29, 30 & 34)					
5. Nonproportional reinsurance lines (Lines 31, 32 & 33)					
6. Total (Line 35)	54,204,274	55,918,856	89,946,240	130,921,050	148,595,216
<b>Net Premiums Written (Page 8, Part 1B, Col. 6)</b>					
7. Liability lines (Lines 11.1, 11.2, 16, 17.1, 17.2, 17.3, 18.1, 18.2, 19.1, 19.2 & 19.3, 19.4)			(129)	105,441	587,668
8. Property lines (Lines 1, 2, 9, 12, 21 & 26)	934,783	1,018,639	1,410,688	2,490,127	7,551,192
9. Property and liability combined lines (Lines 3, 4, 5, 8, 22 & 27)	32,619,358	31,345,637	64,802,832	107,624,768	96,610,038
10. All other lines (Lines 6, 10, 13, 14, 15, 23, 24, 28, 29, 30 & 34)					
11. Nonproportional reinsurance lines (Lines 31, 32 & 33)					
12. Total (Line 35)	33,554,141	32,364,276	66,213,391	110,220,336	104,748,898
<b>Statement of Income (Page 4)</b>					
13. Net underwriting gain (loss) (Line 8)	(8,154,037)	(10,022,956)	(27,238,908)	2,859,610	(25,665,428)
14. Net investment gain or (loss) (Line 11)	13,052,377	13,862,224	13,258,821	18,102,751	29,282,455
15. Total other income (Line 15)	121,671	(3,588)	2,161,385	929,703	6,671,072
16. Dividends to policyholders (Line 17)					
17. Federal and foreign income taxes incurred (Line 19)	(275,112)	(1,243,338)	(7,196,789)	9,300,460	(17,341,848)
18. Net income (Line 20)	5,295,123	5,079,018	(4,621,913)	12,591,604	27,629,947
<b>Balance Sheet Lines (Pages 2 and 3)</b>					
19. Total admitted assets excluding protected cell business (Page 2, Line 26, Col. 3)	330,065,158	368,089,011	393,492,048	438,747,057	429,827,019
20. Premiums and considerations (Page 2, Col. 3)					
20.1 In course of collection (Line 15.1)	484,351	16,340	4,986	41,886	3,607,881
20.2 Deferred and not yet due (Line 15.2)	6,496,176	654	654	154,606	13,937,021
20.3 Accrued retrospective premiums (Line 15.3)					
21. Total liabilities excluding protected cell business (Page 3, Line 26)	72,307,536	89,897,438	125,578,419	162,530,023	180,566,883
22. Losses (Page 3, Line 1)	31,565,629	49,212,795	76,599,576	76,242,209	85,562,562
23. Loss adjustment expenses (Page 3, Line 3)	5,102,440	6,563,478	8,304,389	8,010,242	8,722,021
24. Unearned premiums (Page 3, Line 9)	26,089,622	27,310,008	37,084,038	62,884,873	73,688,678
25. Capital paid up (Page 3, Lines 30 & 31)	1,200,000	1,200,000	1,200,000	1,200,000	1,200,000
26. Surplus as regards policyholders (Page 3, Line 37)	257,757,622	278,191,573	267,913,629	276,217,034	249,260,136
<b>Cash Flow (Page 5)</b>					
27. Net cash from operations (Line 11)	(22,412,449)	(27,180,220)	(37,220,579)	15,905,753	(94,303,167)
<b>Risk-Based Capital Analysis</b>					
28. Total adjusted capital	257,757,622	278,191,573	267,913,629	276,217,034	249,260,136
29. Authorized control level risk-based capital	8,976,825	9,211,097	14,042,085	19,172,747	14,059,504
<b>Percentage Distribution of Cash, Cash Equivalents and Invested Assets (Page 2, Col. 3) (Line divided by Page 2, Line 12, Col. 3) x100.0</b>					
30. Bonds (Line 1)	97.5	95.5	98.2	88.3	95.5
31. Stocks (Lines 2.1 & 2.2)					
32. Mortgage loans on real estate (Lines 3.1 and 3.2)					
33. Real estate (Lines 4.1, 4.2 & 4.3)					
34. Cash, cash equivalents and short-term investments (Line 5)	2.5	4.5	1.8	11.7	4.5
35. Contract loans (Line 6)					
36. Derivatives (Line 7)				XXX	XXX
37. Other invested assets (Line 8)					
38. Receivables for securities (Line 9)			0.0		
39. Securities lending reinvested collateral assets (Line 10)				XXX	XXX
40. Aggregate write-ins for invested assets (Line 11)					
41. Cash, cash equivalents and invested assets (Line 12)	100.0	100.0	100.0	100.0	100.0
<b>Investments in Parent, Subsidiaries and Affiliates</b>					
42. Affiliated bonds (Schedule D, Summary, Line 12, Col. 1)					
43. Affiliated preferred stocks (Schedule D, Summary, Line 18, Col. 1)					
44. Affiliated common stocks (Schedule D, Summary, Line 24, Col. 1)					
45. Affiliated short-term investments (subtotals included in Schedule DA Verification, Col. 5, Line 10)					
46. Affiliated mortgage loans on real estate					
47. All other affiliated					
48. Total of above Lines 42 to 47					
49. Total Investment in Parent included in Lines 42 to 47 above					
50. Percentage of investments in parent, subsidiaries and affiliates to surplus as regards policyholders (Line 48 above divided by Page 3, Col. 1, Line 37 x 100.0)					

ANNUAL STATEMENT FOR THE YEAR 2012 OF THE NATIONWIDE INSURANCE COMPANY OF FLORIDA

**FIVE-YEAR HISTORICAL DATA**

(Continued)

	1 2012	2 2011	3 2010	4 2009	5 2008
<b>Capital and Surplus Accounts (Page 4)</b>					
51. Net unrealized capital gains (losses) (Line 24) .....	255,661	1,903,707	945,116	639,159	(250,775)
52. Dividends to stockholders (Line 35) .....					
53. Change in surplus as regards policyholders for the year (Line 38) .....	(20,433,951)	10,277,944	(8,303,405)	26,956,898	10,703,058
<b>Gross Losses Paid (Page 9, Part 2, Cols. 1 &amp; 2)</b>					
54. Liability lines (Lines 11.1, 11.2, 16, 17.1, 17.2, 17.3, 18.1, 18.2, 19.1, 19.2 & 19.3, 19.4) .....	45,000	4,878	113,238	111,382	823,509
55. Property lines (Lines 1, 2, 9, 12, 21 & 26) .....	228,288	408,207	882,657	2,608,932	3,922,259
56. Property and liability combined lines (Lines 3, 4, 5, 8, 22 & 27) .....	40,158,893	59,739,933	85,154,627	91,326,673	105,624,407
57. All other lines (Lines 6, 10, 13, 14, 15, 23, 24, 28, 29, 30 & 34) .....					
58. Nonproportional reinsurance lines (Lines 31, 32 & 33) .....					
59. Total (Line 35) .....	40,432,181	60,153,018	86,150,522	94,046,987	110,370,175
<b>Net Losses Paid (Page 9, Part 2, Col. 4)</b>					
60. Liability lines (Lines 11.1, 11.2, 16, 17.1, 17.2, 17.3, 18.1, 18.2, 19.1, 19.2 & 19.3, 19.4) .....	45,000	4,285	(466,539)	111,382	823,509
61. Property lines (Lines 1, 2, 9, 12, 21 & 26) .....	228,288	408,207	882,657	2,608,932	3,922,259
62. Property and liability combined lines (Lines 3, 4, 5, 8, 22 & 27) .....	40,158,893	57,916,873	81,543,687	80,443,948	96,383,531
63. All other lines (Lines 6, 10, 13, 14, 15, 23, 24, 28, 29, 30 & 34) .....					
64. Nonproportional reinsurance lines (Lines 31, 32 & 33) .....					
65. Total (Line 35) .....	40,432,181	58,329,365	81,959,805	83,164,262	101,129,299
<b>Operating Percentages (Page 4) (Line divided by Page 4, Line 1) x 100.0</b>					
66. Premiums earned (Line 1) .....	100.0	100.0	100.0	100.0	100.0
67. Losses incurred (Line 2) .....	65.5	73.4	89.5	61.0	84.6
68. Loss expenses incurred (Line 3) .....	15.3	15.5	15.1	10.3	8.4
69. Other underwriting expenses incurred (Line 4) .....	42.7	34.8	25.1	26.3	24.8
70. Net underwriting gain (loss) (Line 8) .....	(23.4)	(23.8)	(29.6)	2.4	(17.7)
<b>Other Percentages</b>					
71. Other underwriting expenses to net premiums written (Page 4, Lines 4 + 5 - 15 divided by Page 8, Part 1B, Col. 6, Line 35 x 100.0) .....	43.8	45.4	31.6	28.0	27.9
72. Losses and loss expenses incurred to premiums earned (Page 4, Lines 2 + 3 divided by Page 4, Line 1 x 100.0) .....	80.8	88.9	104.5	71.3	92.9
73. Net premiums written to policyholders' surplus (Page 8, Part 1B, Col. 6, Line 35 divided by Page 3, Line 37, Col. 1 x 100.0) .....	13.0	11.6	24.7	39.9	42.0
<b>One Year Loss Development (000 omitted)</b>					
74. Development in estimated losses and loss expenses incurred prior to current year (Schedule P - Part 2 - Summary, Line 12, Col. 11) .....	(26)	(5,528)	7,503	(2,553)	29,592
75. Percent of development of losses and loss expenses incurred to policyholders' surplus of prior year end (Line 74 above divided by Page 4, Line 21, Col. 1 x 100.0) .....	0.0	(2.1)	2.7	(1.0)	12.4
<b>Two Year Loss Development (000 omitted)</b>					
76. Development in estimated losses and loss expenses incurred two years before the current year and prior year (Schedule P, Part 2 - Summary, Line 12, Col. 12) .....	(4,619)	6,688	604	30,703	29,356
77. Percent of development of losses and loss expenses incurred to reported policyholders' surplus of second prior year end (Line 76 above divided by Page 4, Line 21, Col. 2 x 100.0) .....	(1.7)	2.4	0.2	12.9	11.9

NOTE: If a party to a merger, have the two most recent years of this exhibit been restated due to a merger in compliance with the disclosure requirements of SSAP No. 3, Accounting Changes and Correction of Errors? Yes [ ] No [ ]  
 If no, please explain: .....

**SCHEDULE P - ANALYSIS OF LOSSES AND LOSS EXPENSES**  
**SCHEDULE P - PART 1 - SUMMARY**

(\$000 OMITTED)

Years in Which Premiums Were Earned and Losses Were Incurred	Premiums Earned			Loss and Loss Expense Payments						12 Number of Claims Reported Direct and Assumed		
	1 Direct and Assumed	2 Ceded	3 Net (1 - 2)	Loss Payments		Defense and Cost Containment Payments		Adjusting and Other Payments			10 Salvage and Subrogation Received	11 Total Net Paid Cols (4 - 5 + 6 - 7 + 8 - 9)
				4 Direct and Assumed	5 Ceded	6 Direct and Assumed	7 Ceded	8 Direct and Assumed	9 Ceded			
1. Prior	XXX	XXX	XXX	(105)		(10)		18		1	(97)	XXX
2. 2003	188,437	49,942	138,495	73,406	1,037	3,261	72	7,398		979	82,956	XXX
3. 2004	222,044	36,056	185,988	777,178	184,062	9,309	7,375	71,280	1,401	1,759	664,930	XXX
4. 2005	266,775	28,689	238,086	262,984	35,885	6,969	262	18,234	2,028	1,884	250,012	XXX
5. 2006	304,217	112,373	191,844	80,565		4,205		16,358	2	1,318	101,125	XXX
6. 2007	289,434	123,358	166,076	92,902		4,350		5,601		1,174	102,853	XXX
7. 2008	188,655	43,757	144,898	86,305		4,408		6,661		867	97,375	XXX
8. 2009	141,571	20,547	121,024	76,040		4,516		7,174		735	87,730	XXX
9. 2010	115,712	23,698	92,014	65,306		4,075		4,760		297	74,141	XXX
10. 2011	65,772	23,634	42,138	31,016		1,575		2,201		77	34,792	XXX
11. 2012	55,546	20,771	34,775	15,239		528		1,994		38	17,761	XXX
12. Totals	XXX	XXX	XXX	1,560,837	220,985	43,185	7,708	141,681	3,431	9,129	1,513,578	XXX

	Losses Unpaid				Defense and Cost Containment Unpaid				Adjusting and Other Unpaid		23 Salvage and Subrogation Anticipated	24 Total Net Losses and Expenses Unpaid	25 Number of Claims Outstanding Direct and Assumed
	Case Basis		Bulk + IBNR		Case Basis		Bulk + IBNR		21 Direct and Assumed	22 Ceded			
	13 Direct and Assumed	14 Ceded	15 Direct and Assumed	16 Ceded	17 Direct and Assumed	18 Ceded	19 Direct and Assumed	20 Ceded					
1. Prior	743						12		29			784	XXX
2. 2003	126							14	2			141	XXX
3. 2004	693							35	33			762	XXX
4. 2005	979		36					86	11			1,112	XXX
5. 2006	884		69					159	28			1,140	XXX
6. 2007	938		186					272	26			1,421	XXX
7. 2008	1,378		448					426	61	2	2,313	XXX	
8. 2009	3,346		1,120					706	61	8	5,233	XXX	
9. 2010	4,923		1,865					1,069	44	20	7,901	XXX	
10. 2011	3,422		1,828					796	45	31	6,091	XXX	
11. 2012	3,803		4,780					1,028	159	56	9,770	XXX	
12. Totals	21,234		10,331					4,603	499	118	36,668	XXX	

	Total Losses and Loss Expenses Incurred			Loss and Loss Expense Percentage (Incurred / Premiums Earned)			Nontabular Discount		34 Inter-Company Pooling Participation Percentage	Net Balance Sheet Reserves After Discount	
	26 Direct and Assumed	27 Ceded	28 Net	29 Direct and Assumed	30 Ceded	31 Net	32 Loss	33 Loss Expense		35 Losses Unpaid	36 Loss Expenses Unpaid
1. Prior	XXX	XXX	XXX	XXX	XXX	XXX			XXX	743	41
2. 2003	84,206	1,109	83,097	44.7	2.2	60.0				126	16
3. 2004	858,530	192,838	665,692	386.6	534.8	357.9				693	69
4. 2005	289,300	38,175	251,124	108.4	133.1	105.5				1,015	97
5. 2006	102,268	2	102,266	33.6	0.0	53.3				953	188
6. 2007	104,274		104,274	36.0		62.8				1,124	297
7. 2008	99,688		99,688	52.8		68.8				1,826	487
8. 2009	92,963		92,963	65.7		76.8				4,466	767
9. 2010	82,042		82,042	70.9		89.2				6,788	1,113
10. 2011	40,883		40,883	62.2		97.0				5,250	840
11. 2012	27,531		27,531	49.6		79.2				8,583	1,187
12. Totals	XXX	XXX	XXX	XXX	XXX	XXX			XXX	31,566	5,102

Note: Parts 2 and 4 are gross of all discounting, including tabular discounting. Part 1 is gross of only nontabular discounting, which is reported in Columns 32 and 33 of Part 1. The tabular discount, if any, is reported in the Notes to Financial Statements which will reconcile Part 1 with Parts 2 and 4.

ANNUAL STATEMENT FOR THE YEAR 2012 OF THE NATIONWIDE INSURANCE COMPANY OF FLORIDA

**SCHEDULE P - PART 2 - SUMMARY**

Years in Which Losses Were Incurred	INCURRED NET LOSSES AND DEFENSE AND COST CONTAINMENT EXPENSES REPORTED AT YEAR END (\$000 OMITTED)										DEVELOPMENT	
	1 2003	2 2004	3 2005	4 2006	5 2007	6 2008	7 2009	8 2010	9 2011	10 2012	11 One Year	12 Two Year
1. Prior.....	15,842	18,988	19,304	21,564	21,608	22,506	22,755	23,025	23,092	23,453	361	428
2. 2003.....	77,212	76,409	73,944	73,132	73,360	77,504	75,525	75,691	75,803	75,697	(105)	6
3. 2004.....	XXX	558,879	615,527	586,517	589,999	592,677	594,168	595,075	595,785	595,779	(6)	704
4. 2005.....	XXX	XXX	214,785	217,959	220,701	228,137	230,579	232,802	234,497	234,907	410	2,105
5. 2006.....	XXX	XXX	XXX	77,207	77,757	84,910	85,858	85,654	86,178	85,882	(296)	228
6. 2007.....	XXX	XXX	XXX	XXX	93,484	100,766	98,727	100,290	98,875	98,648	(227)	(1,643)
7. 2008.....	XXX	XXX	XXX	XXX	XXX	99,413	95,750	93,981	92,092	92,965	874	(1,016)
8. 2009.....	XXX	XXX	XXX	XXX	XXX	XXX	82,100	86,447	85,830	85,727	(103)	(720)
9. 2010.....	XXX	XXX	XXX	XXX	XXX	XXX	XXX	81,950	77,236	77,238	1	(4,712)
10. 2011.....	XXX	XXX	XXX	XXX	XXX	XXX	XXX	XXX	39,572	38,637	(935)	XXX
11. 2012.....	XXX	XXX	XXX	XXX	XXX	XXX	XXX	XXX	XXX	25,378	XXX	XXX
12. Totals											(26)	(4,619)

**SCHEDULE P - PART 3 - SUMMARY**

Years in Which Losses Were Incurred	CUMULATIVE PAID NET LOSSES AND DEFENSE AND COST CONTAINMENT EXPENSES REPORTED AT YEAR END (\$000 OMITTED)										11 Number of Claims Closed With Loss Payment	12 Number of Claims Closed Without Loss Payment
	1 2003	2 2004	3 2005	4 2006	5 2007	6 2008	7 2009	8 2010	9 2011	10 2012		
1. Prior.....	000	8,973	13,457	18,137	19,815	21,219	21,907	22,583	22,814	22,699	XXX	XXX
2. 2003.....	43,473	63,561	67,388	69,092	71,662	73,026	73,266	76,198	75,623	75,558	XXX	XXX
3. 2004.....	XXX	502,038	557,579	575,093	583,642	587,722	590,498	592,604	594,635	595,051	XXX	XXX
4. 2005.....	XXX	XXX	145,642	203,918	213,805	221,367	225,966	231,044	232,305	233,806	XXX	XXX
5. 2006.....	XXX	XXX	XXX	39,005	64,967	74,003	79,853	82,088	84,417	84,770	XXX	XXX
6. 2007.....	XXX	XXX	XXX	XXX	51,966	82,688	88,592	92,572	95,561	97,252	XXX	XXX
7. 2008.....	XXX	XXX	XXX	XXX	XXX	52,280	77,580	84,577	86,773	90,713	XXX	XXX
8. 2009.....	XXX	XXX	XXX	XXX	XXX	XXX	43,621	67,898	75,782	80,556	XXX	XXX
9. 2010.....	XXX	XXX	XXX	XXX	XXX	XXX	XXX	40,555	63,151	69,381	XXX	XXX
10. 2011.....	XXX	XXX	XXX	XXX	XXX	XXX	XXX	XXX	22,560	32,591	XXX	XXX
11. 2012.....	XXX	XXX	XXX	XXX	XXX	XXX	XXX	XXX	XXX	15,767	XXX	XXX

**SCHEDULE P - PART 4 - SUMMARY**

Years in Which Losses Were Incurred	BULK AND IBNR RESERVES ON NET LOSSES AND DEFENSE AND COST CONTAINMENT EXPENSES REPORTED AT YEAR END (\$000 OMITTED)									
	1 2003	2 2004	3 2005	4 2006	5 2007	6 2008	7 2009	8 2010	9 2011	10 2012
1. Prior.....	6,291	3,265	2,128	1,511	339	173	174	25	17	12
2. 2003.....	20,864	5,621	2,507	1,364	438	429	393	43	30	14
3. 2004.....	XXX	(70,613)	(36,305)	(12,702)	(3,318)	(1,569)	(1,963)	218	84	35
4. 2005.....	XXX	XXX	45,546	2,589	(278)	(155)	(2,197)	(2,710)	214	122
5. 2006.....	XXX	XXX	XXX	19,822	2,697	3,497	2,075	1,202	389	228
6. 2007.....	XXX	XXX	XXX	XXX	18,724	7,998	5,101	2,921	992	457
7. 2008.....	XXX	XXX	XXX	XXX	XXX	25,227	8,777	4,821	1,970	874
8. 2009.....	XXX	XXX	XXX	XXX	XXX	XXX	18,574	7,390	3,394	1,826
9. 2010.....	XXX	XXX	XXX	XXX	XXX	XXX	XXX	19,774	4,570	2,934
10. 2011.....	XXX	XXX	XXX	XXX	XXX	XXX	XXX	XXX	7,424	2,624
11. 2012.....	XXX	XXX	XXX	XXX	XXX	XXX	XXX	XXX	XXX	5,808

**SCHEDULE T - EXHIBIT OF PREMIUMS WRITTEN**

Allocated by States and Territories

States, Etc.	1 Active Status	Gross Premiums, Including Policy and Membership Fees, Less Return Premiums and Premiums on Policies Not Taken		4 Dividends Paid or Credited to Policyholders on Direct Business	5 Direct Losses Paid (Deducting Salvage)	6 Direct Losses Incurred	7 Direct Losses Unpaid	8 Finance and Service Charges Not Included in Premiums	9 Direct Premiums Written for Federal Purchasing Groups (Included in Column 2)
		2 Direct Premiums Written	3 Direct Premiums Earned						
1. Alabama AL	N								
2. Alaska AK	N								
3. Arizona AZ	N								
4. Arkansas AR	N								
5. California CA	N								
6. Colorado CO	N								
7. Connecticut CT	N								
8. Delaware DE	N								
9. District of Columbia DC	N								
10. Florida FL	L	54,204,274	55,545,607		40,432,181	22,785,015	31,565,629	416,891	
11. Georgia GA	N								
12. Hawaii HI	N								
13. Idaho ID	N								
14. Illinois IL	N								
15. Indiana IN	N								
16. Iowa IA	N								
17. Kansas KS	N								
18. Kentucky KY	N								
19. Louisiana LA	N								
20. Maine ME	N								
21. Maryland MD	N								
22. Massachusetts MA	N								
23. Michigan MI	N								
24. Minnesota MN	N								
25. Mississippi MS	N								
26. Missouri MO	N								
27. Montana MT	N								
28. Nebraska NE	N								
29. Nevada NV	N								
30. New Hampshire NH	N								
31. New Jersey NJ	N								
32. New Mexico NM	N								
33. New York NY	N								
34. North Carolina NC	N								
35. North Dakota ND	N								
36. Ohio OH	L								
37. Oklahoma OK	N								
38. Oregon OR	N								
39. Pennsylvania PA	N								
40. Rhode Island RI	N								
41. South Carolina SC	N								
42. South Dakota SD	N								
43. Tennessee TN	N								
44. Texas TX	N								
45. Utah UT	N								
46. Vermont VT	N								
47. Virginia VA	N								
48. Washington WA	N								
49. West Virginia WV	N								
50. Wisconsin WI	N								
51. Wyoming WY	N								
52. American Samoa AS	N								
53. Guam GU	N								
54. Puerto Rico PR	N								
55. U.S. Virgin Islands VI	N								
56. Northern Mariana Islands MP	N								
57. Canada CAN	N								
58. Aggregate other alien OT	XXX								
59. Totals	(a) 2	54,204,274	55,545,607		40,432,181	22,785,015	31,565,629	416,891	
DETAILS OF WRITE-INS									
58001.	XXX								
58002.	XXX								
58003.	XXX								
58998. Summary of remaining write-ins for Line 58 from overflow page	XXX								
58999. Totals (Lines 58001 through 58003 plus 58998)(Line 58 above)	XXX								

(L) Licensed or Chartered - Licensed Insurance Carrier or Domiciled RRG; (R) Registered - Non-domiciled RRGs; (Q) Qualified - Qualified or Accredited Reinsurer; (E) Eligible - Reporting Entities eligible or approved to write Surplus Lines in the state; (N) None of the above - Not allowed to write business in the state.

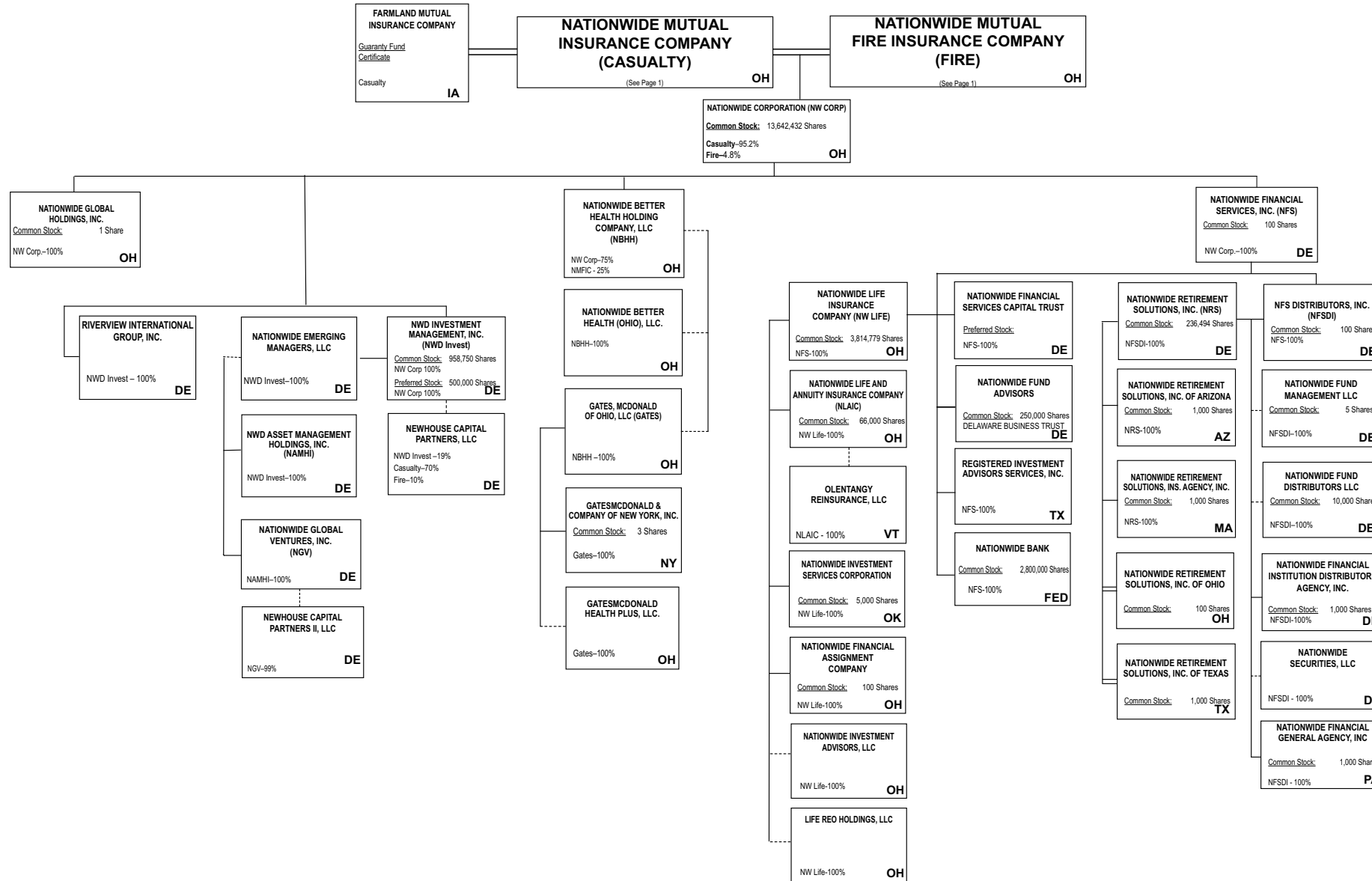
Explanation of basis of allocation of premiums by states, etc.

Premiums are allocated to those states where the insured risks are located: principle garage for automobile, physical address for homeowners, commercial multiple peril and other liability and main place of work for workers' compensation. Allocation of premiums for individual and group health insurance is based on the situs of the contract.

(a) Insert the number of L responses except for Canada and Other Alien.



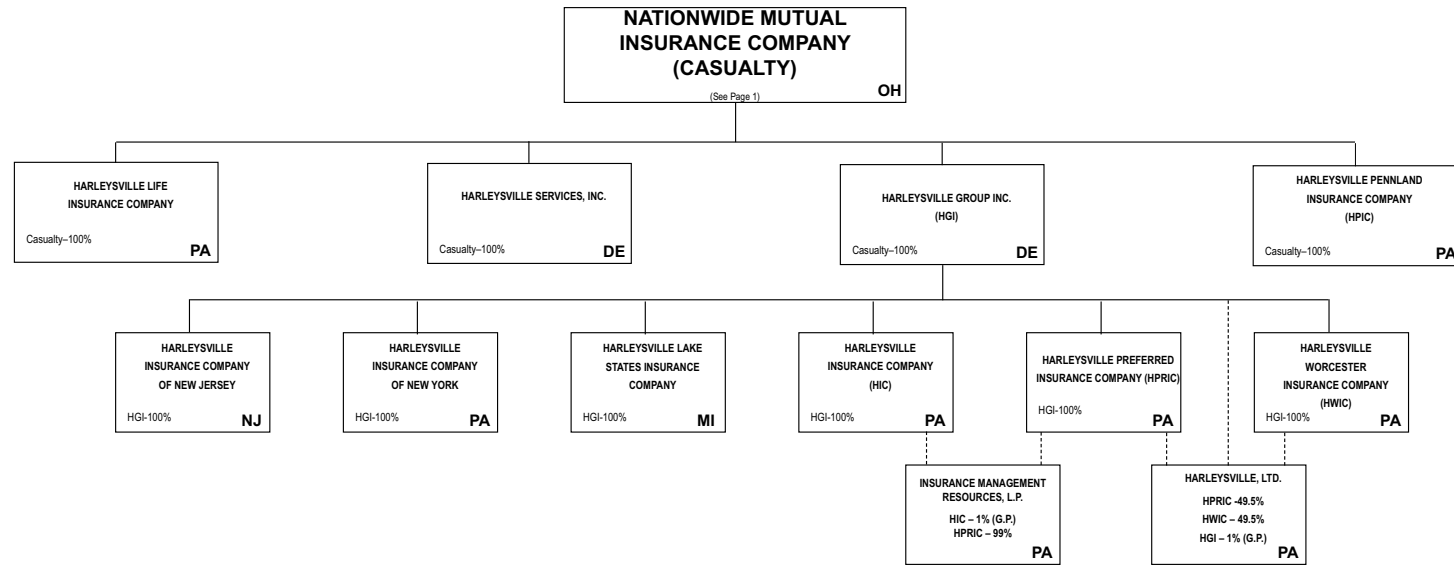
# NATIONWIDE®



Subsidiary Companies — Solid Line  
 Contractual Association = Double Line  
 Limited Liability Company - - Dotted Line

December 31, 2012

# NATIONWIDE®



Subsidiary Companies — Solid Line  
 Contractual Association = Double Line  
 Limited Liability Company - - Dotted Line

December 31, 2012

**NATIONWIDE INSURANCE COMPANIES**

NAIC Group Code	Group Name	NAIC Company Code	State of Domicile	Federal ID Number	Name of Company
0140	Nationwide	10127	OH	27-0114983	Allied Insurance Company of America
0140	Nationwide	42579	IA	42-1201931	Allied Property and Casualty Insurance Company
0140	Nationwide	19100	IA	42-6054959	AMCO Insurance Company
0140	Nationwide	29262	TX	74-1061659	Colonial County Mutual Insurance Company
0140	Nationwide	18961	OH	68-0066866	Crestbrook Insurance Company
0140	Nationwide	42587	IA	42-1207150	Depositors Insurance Company
0140	Nationwide	13838	IA	42-0618271	Farmland Mutual Insurance Company
0140	Nationwide	22209	OH	75-6013587	Freedom Specialty Insurance Company
0140	Nationwide	23582	PA	41-0417250	Harleysville Insurance Company
0140	Nationwide	42900	NJ	23-2253669	Harleysville Insurance Company of New Jersey
0140	Nationwide	10674	PA	23-2864924	Harleysville Insurance Company of New York
0140	Nationwide	14516	MI	38-3198542	Harleysville Lake States Insurance Company
0140	Nationwide	64327	PA	23-1580983	Harleysville Life Insurance Company
0140	Nationwide	40983	PA	23-2612951	Harleysville Pennland Insurance Company
0140	Nationwide	35696	PA	23-2384978	Harleysville Preferred Insurance Company
0140	Nationwide	26182	PA	04-1989660	Harleysville Worcester Insurance Company
0140	Nationwide	11991	WI	38-0865250	National Casualty Company
0140	Nationwide	26093	OH	48-0470690	Nationwide Affinity Insurance Company of America
0140	Nationwide	28223	IA	42-1015537	Nationwide Agribusiness Insurance Company
0140	Nationwide	10723	WI	95-0639970	Nationwide Assurance Company
0140	Nationwide	23760	OH	31-4425763	Nationwide General Insurance Company
0140	Nationwide	10070	OH	31-1399201	Nationwide Indemnity Company
0140	Nationwide	25453	WI	95-2130882	Nationwide Insurance Company of America
0140	Nationwide	10948	OH	31-1613686	Nationwide Insurance Company of Florida
0140	Nationwide	92657	OH	31-1000740	Nationwide Life and Annuity Insurance Company
0140	Nationwide	66869	OH	31-4156830	Nationwide Life Insurance Company
0140	Nationwide	42110	TX	75-1780981	Nationwide Lloyds
0140	Nationwide	23779	OH	31-4177110	Nationwide Mutual Fire Insurance Company
0140	Nationwide	23787	OH	31-4177100	Nationwide Mutual Insurance Company
0140	Nationwide	37877	OH	31-0970750	Nationwide Property & Casualty Insurance Company
0140	Nationwide	13999	VT	27-1712056	Olentangy Reinsurance, LLC
0140	Nationwide	15580	OH	31-1117969	Scottsdale Indemnity Company
0140	Nationwide	41297	OH	31-1024978	Scottsdale Insurance Company
0140	Nationwide	10672	AZ	86-0835870	Scottsdale Surplus Lines Insurance Company
0140	Nationwide	13242	TX	74-2286759	Titan Indemnity Company
0140	Nationwide	36269	MI	86-0619597	Titan Insurance Company
0140	Nationwide	42285	CA	95-3750113	Veterinary Pet Insurance Company
0140	Nationwide	10644	IN	34-1785903	Victoria Automobile Insurance Company
0140	Nationwide	42889	OH	34-1394913	Victoria Fire & Casualty Company
0140	Nationwide	10778	OH	34-1842604	Victoria National Insurance Company
0140	Nationwide	10105	OH	34-1777972	Victoria Select Insurance Company
0140	Nationwide	10777	OH	34-1842602	Victoria Specialty Insurance Company
0140	Nationwide	37150	AZ	86-0561941	Western Heritage Insurance Company
4664	PURE	12873	FL	20-8287105	Privilege Underwriters Reciprocal Exchange
4664	PURE	13204	FL	26-3109178	PURE Insurance Company

**NONE**

## ALPHABETICAL INDEX

### ANNUAL STATEMENT BLANK

Assets .....	2
Cash Flow .....	5
Exhibit of Capital Gains (Losses) .....	12
Exhibit of Net Investment Income .....	12
Exhibit of Nonadmitted Assets .....	13
Exhibit of Premiums and Losses (State Page) .....	19
Five-Year Historical Data .....	17
General Interrogatories .....	15
Jurat Page .....	1
Liabilities, Surplus and Other Funds .....	3
Notes To Financial Statements .....	14
Overflow Page For Write-ins .....	101
Schedule A - Part 1 .....	E01
Schedule A - Part 2 .....	E02
Schedule A - Part 3 .....	E03
Schedule A - Verification Between Years .....	SI02
Schedule B - Part 1 .....	E04
Schedule B - Part 2 .....	E05
Schedule B - Part 3 .....	E06
Schedule B - Verification Between Years .....	SI02
Schedule BA - Part 1 .....	E07
Schedule BA - Part 2 .....	E08
Schedule BA - Part 3 .....	E09
Schedule BA - Verification Between Years .....	SI03
Schedule D - Part 1 .....	E10
Schedule D - Part 1A - Section 1 .....	SI05
Schedule D - Part 1A - Section 2 .....	SI08
Schedule D - Part 2 - Section 1 .....	E11
Schedule D - Part 2 - Section 2 .....	E12
Schedule D - Part 3 .....	E13
Schedule D - Part 4 .....	E14
Schedule D - Part 5 .....	E15
Schedule D - Part 6 - Section 1 .....	E16
Schedule D - Part 6 - Section 2 .....	E16
Schedule D - Summary By Country .....	SI04
Schedule D - Verification Between Years .....	SI03
Schedule DA - Part 1 .....	E17
Schedule DA - Verification Between Years .....	SI10
Schedule DB - Part A - Section 1 .....	E18
Schedule DB - Part A - Section 2 .....	E19
Schedule DB - Part A - Verification Between Years .....	SI11
Schedule DB - Part B - Section 1 .....	E20
Schedule DB - Part B - Section 2 .....	E21
Schedule DB - Part B - Verification Between Years .....	SI11
Schedule DB - Part C - Section 1 .....	SI12
Schedule DB - Part C - Section 2 .....	SI13
Schedule DB - Part D .....	E22
Schedule DB - Verification .....	SI14
Schedule DL - Part 1 .....	E23
Schedule DL - Part 2 .....	E24
Schedule E - Part 1 - Cash .....	E25
Schedule E - Part 2 - Cash Equivalents .....	E26
Schedule E - Part 3 - Special Deposits .....	E27
Schedule E - Verification Between Years .....	SI15
Schedule F - Part 1 .....	20
Schedule F - Part 2 .....	21
Schedule F - Part 3 .....	22
Schedule F - Part 4 .....	23
Schedule F - Part 5 .....	24
Schedule F - Part 6 - Section 1 .....	25
Schedule F - Part 6 - Section 2 .....	27
Schedule F - Part 7 .....	28
Schedule F - Part 8 .....	29
Schedule F - Part 9 .....	30

**ANNUAL STATEMENT BLANK (Continued)**

Schedule H - Accident and Health Exhibit - Part 1 .....	31
Schedule H - Part 2, Part 3 and 4 .....	32
Schedule H - Part 5 - Health Claims .....	33
Schedule P - Part 1 - Summary .....	34
Schedule P - Part 1A - Homeowners/Farmowners .....	36
Schedule P - Part 1B - Private Passenger Auto Liability/Medical .....	37
Schedule P - Part 1C - Commercial Auto/Truck Liability/Medical .....	38
Schedule P - Part 1D - Workers' Compensation (Excluding Excess Workers' Compensation) .....	39
Schedule P - Part 1E - Commercial Multiple Peril .....	40
Schedule P - Part 1F - Section 1 - Medical Professional Liability - Occurrence .....	41
Schedule P - Part 1F - Section 2 - Medical Professional Liability - Claims-Made .....	42
Schedule P - Part 1G - Special Liability (Ocean, Marine, Aircraft (All Perils), Boiler and Machinery) .....	43
Schedule P - Part 1H - Section 1 - Other Liability - Occurrence .....	44
Schedule P - Part 1H - Section 2 - Other Liability - Claims-Made .....	45
Schedule P - Part 1I - Special Property (Fire, Allied Lines, Inland Marine, Earthquake, Burglary & Theft) .....	46
Schedule P - Part 1J - Auto Physical Damage .....	47
Schedule P - Part 1K - Fidelity/Surety .....	48
Schedule P - Part 1L - Other (Including Credit, Accident and Health) .....	49
Schedule P - Part 1M - International .....	50
Schedule P - Part 1N - Reinsurance - Nonproportional Assumed Property .....	51
Schedule P - Part 1O - Reinsurance - Nonproportional Assumed Liability .....	52
Schedule P - Part 1P - Reinsurance - Nonproportional Assumed Financial Lines .....	53
Schedule P - Part 1R - Section 1 - Products Liability - Occurrence .....	54
Schedule P - Part 1R - Section 2 - Products Liability - Claims-Made .....	55
Schedule P - Part 1S - Financial Guaranty/Mortgage Guaranty .....	56
Schedule P - Part 1T - Warranty .....	57
Schedule P - Part 2, Part 3 and Part 4 - Summary .....	35
Schedule P - Part 2A - Homeowners/Farmowners .....	58
Schedule P - Part 2B - Private Passenger Auto Liability/Medical .....	58
Schedule P - Part 2C - Commercial Auto/Truck Liability/Medical .....	58
Schedule P - Part 2D - Workers' Compensation (Excluding Excess Workers' Compensation) .....	58
Schedule P - Part 2E - Commercial Multiple Peril .....	58
Schedule P - Part 2F - Section 1 - Medical Professional Liability - Occurrence .....	59
Schedule P - Part 2F - Section 2 - Medical Professional Liability - Claims-Made .....	59
Schedule P - Part 2G - Special Liability (Ocean Marine, Aircraft (All Perils), Boiler and Machinery) .....	59
Schedule P - Part 2H - Section 1 - Other Liability - Occurrence .....	59
Schedule P - Part 2H - Section 2 - Other Liability - Claims-Made .....	59
Schedule P - Part 2I - Special Property (Fire, Allied Lines, Inland Marine, Earthquake, Burglary, and Theft) .....	60
Schedule P - Part 2J - Auto Physical Damage .....	60
Schedule P - Part 2K - Fidelity, Surety .....	60
Schedule P - Part 2L - Other (Including Credit, Accident and Health) .....	60
Schedule P - Part 2M - International .....	60
Schedule P - Part 2N - Reinsurance - Nonproportional Assumed Property .....	61
Schedule P - Part 2O - Reinsurance - Nonproportional Assumed Liability .....	61
Schedule P - Part 2P - Reinsurance - Nonproportional Assumed Financial Lines .....	61
Schedule P - Part 2R - Section 1 - Products Liability - Occurrence .....	62
Schedule P - Part 2R - Section 2 - Products Liability - Claims-Made .....	62
Schedule P - Part 2S - Financial Guaranty/Mortgage Guaranty .....	62
Schedule P - Part 2T - Warranty .....	62
Schedule P - Part 3A - Homeowners/Farmowners .....	63
Schedule P - Part 3B - Private Passenger Auto Liability/Medical .....	63
Schedule P - Part 3C - Commercial Auto/Truck Liability/Medical .....	63
Schedule P - Part 3D - Workers' Compensation (Excluding Excess Workers' Compensation) .....	63
Schedule P - Part 3E - Commercial Multiple Peril .....	63
Schedule P - Part 3F - Section 1 - Medical Professional Liability - Occurrence .....	64
Schedule P - Part 3F - Section 2 - Medical Professional Liability - Claims-Made .....	64
Schedule P - Part 3G - Special Liability (Ocean Marine, Aircraft (All Perils), Boiler and Machinery) .....	64
Schedule P - Part 3H - Section 1 - Other Liability - Occurrence .....	64
Schedule P - Part 3H - Section 2 - Other Liability - Claims-Made .....	64
Schedule P - Part 3I - Special Property (Fire, Allied Lines, Inland Marine, Earthquake, Burglary, and Theft) .....	65
Schedule P - Part 3J - Auto Physical Damage .....	65
Schedule P - Part 3K - Fidelity/Surety .....	65
Schedule P - Part 3L - Other (Including Credit, Accident and Health) .....	65
Schedule P - Part 3M - International .....	65
Schedule P - Part 3N - Reinsurance - Nonproportional Assumed Property .....	66
Schedule P - Part 3O - Reinsurance - Nonproportional Assumed Liability .....	66
Schedule P - Part 3P - Reinsurance - Nonproportional Assumed Financial Lines .....	66
Schedule P - Part 3R - Section 1 - Products Liability - Occurrence .....	67
Schedule P - Part 3R - Section 2 - Products Liability - Claims-Made .....	67
Schedule P - Part 3S - Financial Guaranty/Mortgage Guaranty .....	67
Schedule P - Part 3T - Warranty .....	67

**ANNUAL STATEMENT BLANK (Continued)**

Schedule P - Part 4A - Homeowners/Farmowners .....	68
Schedule P - Part 4B - Private Passenger Auto Liability/Medical .....	68
Schedule P - Part 4C - Commercial Auto/Truck Liability/Medical .....	68
Schedule P - Part 4D - Workers' Compensation (Excluding Excess Workers' Compensation) .....	68
Schedule P - Part 4E - Commercial Multiple Peril .....	68
Schedule P - Part 4F - Section 1 - Medical Professional Liability - Occurrence .....	69
Schedule P - Part 4F - Section 2 - Medical Professional Liability - Claims-Made .....	69
Schedule P - Part 4G - Special Liability (Ocean Marine, Aircraft (All Perils), Boiler and Machinery) .....	69
Schedule P - Part 4H - Section 1 - Other Liability - Occurrence .....	69
Schedule P - Part 4H - Section 2 - Other Liability - Claims-Made .....	69
Schedule P - Part 4I - Special Property (Fire, Allied Lines, Inland Marine, Earthquake, Burglary and Theft) .....	70
Schedule P - Part 4J - Auto Physical Damage .....	70
Schedule P - Part 4K - Fidelity/Surety .....	70
Schedule P - Part 4L - Other (Including Credit, Accident and Health) .....	70
Schedule P - Part 4M - International .....	70
Schedule P - Part 4N - Reinsurance - Nonproportional Assumed Property .....	71
Schedule P - Part 4O - Reinsurance - Nonproportional Assumed Liability .....	71
Schedule P - Part 4P - Reinsurance - Nonproportional Assumed Financial Lines .....	71
Schedule P - Part 4R - Section 1 - Products Liability - Occurrence .....	72
Schedule P - Part 4R - Section 2 - Products Liability - Claims-Made .....	72
Schedule P - Part 4S - Financial Guaranty/Mortgage Guaranty .....	72
Schedule P - Part 4T - Warranty .....	72
Schedule P - Part 5A - Homeowners/Farmowners .....	73
Schedule P - Part 5B - Private Passenger Auto Liability/Medical .....	74
Schedule P - Part 5C - Commercial Auto/Truck Liability/Medical .....	75
Schedule P - Part 5D - Workers' Compensation (Excluding Excess Workers' Compensation) .....	76
Schedule P - Part 5E - Commercial Multiple Peril .....	77
Schedule P - Part 5F - Medical Professional Liability - Claims-Made .....	79
Schedule P - Part 5F - Medical Professional Liability - Occurrence .....	78
Schedule P - Part 5H - Other Liability - Claims-Made .....	81
Schedule P - Part 5H - Other Liability - Occurrence .....	80
Schedule P - Part 5R - Products Liability - Claims-Made .....	83
Schedule P - Part 5R - Products Liability - Occurrence .....	82
Schedule P - Part 5T - Warranty .....	84
Schedule P - Part 6C - Commercial Auto/Truck Liability/Medical .....	85
Schedule P - Part 6D - Workers' Compensation (Excluding Excess Workers' Compensation) .....	85
Schedule P - Part 6E - Commercial Multiple Peril .....	86
Schedule P - Part 6H - Other Liability - Claims-Made .....	87
Schedule P - Part 6H - Other Liability - Occurrence .....	86
Schedule P - Part 6M - International .....	87
Schedule P - Part 6N - Reinsurance - Nonproportional Assumed Property .....	88
Schedule P - Part 6O - Reinsurance - Nonproportional Assumed Liability .....	88
Schedule P - Part 6R - Products Liability - Claims-Made .....	89
Schedule P - Part 6R - Products Liability - Occurrence .....	89
Schedule P - Part 7A - Primary Loss Sensitive Contracts .....	90
Schedule P - Part 7B - Reinsurance Loss Sensitive Contracts .....	92
Schedule P Interrogatories .....	94
Schedule T - Exhibit of Premiums Written .....	95
Schedule T - Part 2 - Interstate Compact .....	96
Schedule Y - Information Concerning Activities of Insurer Members of a Holding Company Group .....	97
Schedule Y - Part 1A - Detail of Insurance Holding Company System .....	98
Schedule Y - Part 2 - Summary of Insurer's Transactions With Any Affiliates .....	99
Statement of Income .....	4
Summary Investment Schedule .....	SI01
Supplemental Exhibits and Schedules Interrogatories .....	100
Underwriting and Investment Exhibit Part 1 .....	6
Underwriting and Investment Exhibit Part 1A .....	7
Underwriting and Investment Exhibit Part 1B .....	8
Underwriting and Investment Exhibit Part 2 .....	9
Underwriting and Investment Exhibit Part 2A .....	10
Underwriting and Investment Exhibit Part 3 .....	11