



PROPERTY AND CASUALTY COMPANIES - ASSOCIATION EDITION

QUARTERLY STATEMENT

AS OF SEPTEMBER 30, 2012
OF THE CONDITION AND AFFAIRS OF THE

Scottsdale Insurance Company

NAIC Group Code 0140 (Current) 0140 (Prior) NAIC Company Code 41297 Employer's ID Number 31-1024978

Organized under the Laws of Ohio, State of Domicile or Port of Entry Ohio

Country of Domicile United States of America

Incorporated/Organized 01/04/1982 Commenced Business 07/01/1982

Statutory Home Office One West Nationwide Blvd. (Street and Number) Columbus, OH 43215-2220 (City or Town, State and Zip Code)

Main Administrative Office 8877 N. Gainey Center Drive (Street and Number) Scottsdale, AZ 85258-2108 (City or Town, State and Zip Code) 480-365-4000 (Area Code) (Telephone Number)

Mail Address One West Nationwide Blvd., 1-04-701 (Street and Number or P.O. Box) Columbus, OH 43215-2220 (City or Town, State and Zip Code)

Primary Location of Books and Records One West Nationwide Blvd., 1-04-701 (Street and Number) Columbus, OH 43215-2220 (City or Town, State and Zip Code) 614-249-1545 (Area Code) (Telephone Number)

Internet Web Site Address www.scottsdaleins.com

Statutory Statement Contact Arlene E. Swanson (Name) 614-249-1545 (Area Code) (Telephone Number) FinRpt@nationwide.com (E-mail Address) 866-315-1430 (FAX Number)

OFFICERS

President & COO Michael Dean Miller VP & Treasurer Michael Patrick Leach #

VP & Asst Secretary Randall Lee Orr VP & Secretary Robert William Horner III

OTHER

Pamela Ann Biesecker Sr VP-Head of Taxation Thomas Williams Dietrich Sr VP-Div General Counsel John Edward Goodloe # Sr VP Brokerage Scottsdale

Craig Edward Landi Sr VP-Underwriting Gary Lynn Tiepelman Sr VP-Underwriting Susan Feola Wain Sr VP-Claims

DIRECTORS OR TRUSTEES

Michael Patrick Leach # Michael Dean Miller Doreen Katherine Reinke

Gary Lynn Tiepelman Susan Feola Wain

State of Arizona SS:

County of Maricopa

The officers of this reporting entity being duly sworn, each depose and say that they are the described officers of said reporting entity, and that on the reporting period stated above, all of the herein described assets were the absolute property of the said reporting entity, free and clear from any liens or claims thereon, except as herein stated, and that this statement, together with related exhibits, schedules and explanations therein contained, annexed or referred to, is a full and true statement of all the assets and liabilities and of the condition and affairs of the said reporting entity as of the reporting period stated above, and of its income and deductions therefrom for the period ended, and have been completed in accordance with the NAIC Annual Statement Instructions and Accounting Practices and Procedures manual except to the extent that: (1) state law may differ; or, (2) that state rules or regulations require differences in reporting not related to accounting practices and procedures, according to the best of their information, knowledge and belief, respectively. Furthermore, the scope of this attestation by the described officers also includes the related corresponding electronic filing with the NAIC, when required, that is an exact copy (except for formatting differences due to electronic filing) of the enclosed statement. The electronic filing may be requested by various regulators in lieu of or in addition to the enclosed statement.

Michael Dean Miller President & COO Randall Lee Orr VP & Asst Secretary Michael Patrick Leach VP & Treasurer

Subscribed and sworn to before me this day of October, 2012

a. Is this an original filing? Yes [X] No []

b. If no, 1. State the amendment number..... 2. Date filed 3. Number of pages attached.....

STATEMENT AS OF SEPTEMBER 30, 2012 OF THE SCOTTSDALE INSURANCE COMPANY

ASSETS

	Current Statement Date			4 December 31 Prior Year Net Admitted Assets
	1 Assets	2 Nonadmitted Assets	3 Net Admitted Assets (Cols. 1 - 2)	
1. Bonds	898,409,909		898,409,909	891,782,192
2. Stocks:				
2.1 Preferred stocks				
2.2 Common stocks	221,858,322		221,858,322	199,843,451
3. Mortgage loans on real estate:				
3.1 First liens	2,897,646		2,897,646	3,193,281
3.2 Other than first liens.....				
4. Real estate:				
4.1 Properties occupied by the company (less \$ encumbrances)				
4.2 Properties held for the production of income (less \$ encumbrances)				
4.3 Properties held for sale (less \$ encumbrances)				
5. Cash (\$(50,306,124)), cash equivalents (\$) and short-term investments (\$77,878,147)	27,572,023		27,572,023	14,466,451
6. Contract loans (including \$ premium notes)				
7. Derivatives				
8. Other invested assets				
9. Receivables for securities				
10. Securities lending reinvested collateral assets	14,713,427		14,713,427	14,652,947
11. Aggregate write-ins for invested assets				
12. Subtotals, cash and invested assets (Lines 1 to 11)	1,165,451,327		1,165,451,327	1,123,938,322
13. Title plants less \$ charged off (for Title insurers only)				
14. Investment income due and accrued	8,797,954	8,250	8,789,704	9,052,347
15. Premiums and considerations:				
15.1 Uncollected premiums and agents' balances in the course of collection	392,221,059	71,734,937	320,486,122	166,745,426
15.2 Deferred premiums, agents' balances and installments booked but deferred and not yet due (including \$ earned but unbilled premiums)	98,699,814	223,705	98,476,109	89,769,118
15.3 Accrued retrospective premiums				
16. Reinsurance:				
16.1 Amounts recoverable from reinsurers	118,114,012		118,114,012	166,225,695
16.2 Funds held by or deposited with reinsured companies	28,618		28,618	1,432
16.3 Other amounts receivable under reinsurance contracts	2,920,325		2,920,325	
17. Amounts receivable relating to uninsured plans				
18.1 Current federal and foreign income tax recoverable and interest thereon	128,108		128,108	4,796,659
18.2 Net deferred tax asset	37,689,868	2,629,670	35,060,198	36,746,828
19. Guaranty funds receivable or on deposit	984,933		984,933	1,034,544
20. Electronic data processing equipment and software				
21. Furniture and equipment, including health care delivery assets (\$)				
22. Net adjustment in assets and liabilities due to foreign exchange rates	3,824		3,824	
23. Receivables from parent, subsidiaries and affiliates	98,803,107	384	98,802,723	141,928,910
24. Health care (\$) and other amounts receivable				
25. Aggregate write-ins for other than invested assets	25,543,001	11,847,744	13,695,257	7,236,015
26. Total assets excluding Separate Accounts, Segregated Accounts and Protected Cell Accounts (Lines 12 to 25)	1,949,385,950	86,444,690	1,862,941,260	1,747,475,296
27. From Separate Accounts, Segregated Accounts and Protected Cell Accounts				
28. Total (Lines 26 and 27)	1,949,385,950	86,444,690	1,862,941,260	1,747,475,296
DETAILS OF WRITE-INS				
1101.				
1102.				
1103.				
1198. Summary of remaining write-ins for Line 11 from overflow page				
1199. Totals (Lines 1101 through 1103 plus 1198)(Line 11 above)				
2501. Miscellaneous assets	5,836,189	357,398	5,478,791	7,236,015
2502. Deposits and prepaid assets	5,351,292	5,351,292		
2503. Other assets nonadmitted	6,139,054	6,139,054		
2598. Summary of remaining write-ins for Line 25 from overflow page	8,216,466		8,216,466	
2599. Totals (Lines 2501 through 2503 plus 2598)(Line 25 above)	25,543,001	11,847,744	13,695,257	7,236,015

STATEMENT AS OF SEPTEMBER 30, 2012 OF THE SCOTTSDALE INSURANCE COMPANY

LIABILITIES, SURPLUS AND OTHER FUNDS

	1 Current Statement Date	2 December 31, Prior Year
1. Losses (current accident year \$115,918,721)	310,419,756	310,802,977
2. Reinsurance payable on paid losses and loss adjustment expenses	79,845,509	89,196,665
3. Loss adjustment expenses	67,050,454	66,904,127
4. Commissions payable, contingent commissions and other similar charges	11,868,721	14,869,803
5. Other expenses (excluding taxes, licenses and fees)	3,687,614	3,806,406
6. Taxes, licenses and fees (excluding federal and foreign income taxes)	2,260,108	2,981,913
7.1 Current federal and foreign income taxes (including \$ on realized capital gains (losses))		
7.2 Net deferred tax liability		
8. Borrowed money \$ and interest thereon \$		
9. Unearned premiums (after deducting unearned premiums for ceded reinsurance of \$1,098,642,588 and including warranty reserves of \$1,453,085 and accrued accident and health experience rating refunds including \$ for medical loss ratio rebate per the Public Health Service Act)	240,031,377	224,670,185
10. Advance premium	5,316,272	4,580,490
11. Dividends declared and unpaid:		
11.1 Stockholders		
11.2 Policyholders	286,010	251,061
12. Ceded reinsurance premiums payable (net of ceding commissions)	366,935,432	316,029,388
13. Funds held by company under reinsurance treaties	59,857	60,436
14. Amounts withheld or retained by company for account of others	5,984,622	5,136,430
15. Remittances and items not allocated		
16. Provision for reinsurance	3,321,518	3,321,518
17. Net adjustments in assets and liabilities due to foreign exchange rates		275
18. Drafts outstanding		
19. Payable to parent, subsidiaries and affiliates	78,532,843	3,424,606
20. Derivatives		
21. Payable for securities		98,409
22. Payable for securities lending	14,877,500	14,828,900
23. Liability for amounts held under uninsured plans		
24. Capital notes \$ and interest thereon \$		
25. Aggregate write-ins for liabilities	6,749,608	7,742,815
26. Total liabilities excluding protected cell liabilities (Lines 1 through 25)	1,197,227,201	1,068,706,404
27. Protected cell liabilities		
28. Total liabilities (Lines 26 and 27)	1,197,227,201	1,068,706,404
29. Aggregate write-ins for special surplus funds		
30. Common capital stock	6,027,200	6,027,200
31. Preferred capital stock		
32. Aggregate write-ins for other than special surplus funds		10,073,643
33. Surplus notes		
34. Gross paid in and contributed surplus	143,973,300	143,973,300
35. Unassigned funds (surplus)	515,713,559	518,694,749
36. Less treasury stock, at cost:		
36.1 shares common (value included in Line 30 \$)		
36.2 shares preferred (value included in Line 31 \$)		
37. Surplus as regards policyholders (Lines 29 to 35, less 36)	665,714,059	678,768,892
38. Totals (Page 2, Line 28, Col. 3)	1,862,941,260	1,747,475,296
DETAILS OF WRITE-INS		
2501. Contingent suits liability	334,035	397,926
2502. Loss based assessment	429,117	429,117
2503. Reserve for state escheat payment	4,700,471	5,970,187
2598. Summary of remaining write-ins for Line 25 from overflow page	1,285,985	945,585
2599. Totals (Lines 2501 through 2503 plus 2598)(Line 25 above)	6,749,608	7,742,815
2901.		
2902.		
2903.		
2998. Summary of remaining write-ins for Line 29 from overflow page		
2999. Totals (Lines 2901 through 2903 plus 2998)(Line 29 above)		
3201. SSAP 10 DTA		10,073,643
3202.		
3203.		
3298. Summary of remaining write-ins for Line 32 from overflow page		
3299. Totals (Lines 3201 through 3203 plus 3298)(Line 32 above)		10,073,643

STATEMENT OF INCOME

	1	2	3
	Current Year to Date	Prior Year to Date	Prior Year Ended December 31
UNDERWRITING INCOME			
1. Premiums earned:			
1.1 Direct (written \$ 967,668,429)	889,571,306	783,159,524	1,061,197,310
1.2 Assumed (written \$ 1,310,638,432)	1,241,669,677	1,129,677,480	1,518,183,880
1.3 Ceded (written \$ 1,824,485,228)	1,692,778,184	1,486,245,190	2,010,192,775
1.4 Net (written \$ 453,821,633)	438,462,799	426,591,814	569,188,415
DEDUCTIONS:			
2. Losses incurred (current accident year \$ 268,664,771):			
2.1 Direct	414,123,313	374,318,919	479,438,622
2.2 Assumed	736,742,946	703,045,898	930,856,906
2.3 Ceded	887,564,787	788,039,550	1,036,812,859
2.4 Net	263,301,472	289,325,267	373,482,669
3. Loss adjustment expenses incurred	47,441,588	47,861,659	64,487,769
4. Other underwriting expenses incurred	154,729,860	145,845,240	193,540,993
5. Aggregate write-ins for underwriting deductions			5,283
6. Total underwriting deductions (Lines 2 through 5)	465,472,920	483,032,166	631,516,714
7. Net income of protected cells			
8. Net underwriting gain or (loss) (Line 1 minus Line 6 + Line 7)	(27,010,121)	(56,440,352)	(62,328,299)
INVESTMENT INCOME			
9. Net investment income earned	25,723,155	30,055,629	38,807,765
10. Net realized capital gains (losses) less capital gains tax of \$ (11,104)	(399,218)	404,165	311,035
11. Net investment gain (loss) (Lines 9 + 10)	25,323,937	30,459,794	39,118,800
OTHER INCOME			
12. Net gain or (loss) from agents' or premium balances charged off (amount recovered \$ 47,314 amount charged off \$ 2,156,004)	(2,108,691)	(1,919,345)	(2,504,497)
13. Finance and service charges not included in premiums	5,050,712	5,221,635	6,914,565
14. Aggregate write-ins for miscellaneous income	909,080	1,444,473	2,173,718
15. Total other income (Lines 12 through 14)	3,851,101	4,746,763	6,583,786
16. Net income before dividends to policyholders, after capital gains tax and before all other federal and foreign income taxes (Lines 8 + 11 + 15)	2,164,917	(21,233,795)	(16,625,713)
17. Dividends to policyholders	252,811	193,954	306,958
18. Net income, after dividends to policyholders, after capital gains tax and before all other federal and foreign income taxes (Line 16 minus Line 17)	1,912,106	(21,427,749)	(16,932,671)
19. Federal and foreign income taxes incurred	170,526	(6,675,124)	(5,347,897)
20. Net income (Line 18 minus Line 19)(to Line 22)	1,741,580	(14,752,625)	(11,584,774)
CAPITAL AND SURPLUS ACCOUNT			
21. Surplus as regards policyholders, December 31 prior year	678,768,892	655,121,410	655,121,410
22. Net income (from Line 20)	1,741,580	(14,752,625)	(11,584,774)
23. Net transfers (to) from Protected Cell accounts			
24. Change in net unrealized capital gains (losses) less capital gains tax of \$ 3,738,002	22,587,021	8,924,264	6,356,175
25. Change in net unrealized foreign exchange capital gain (loss)	296,550	(174,077)	(80,190)
26. Change in net deferred income tax	751,962	2,224,096	2,014,685
27. Change in nonadmitted assets	16,641,697	7,852,737	14,201,048
28. Change in provision for reinsurance			12,370,480
29. Change in surplus notes			
30. Surplus (contributed to) withdrawn from protected cells			
31. Cumulative effect of changes in accounting principles			
32. Capital changes:			
32.1 Paid in			
32.2 Transferred from surplus (Stock Dividend)			
32.3 Transferred to surplus			
33. Surplus adjustments:			
33.1 Paid in			
33.2 Transferred to capital (Stock Dividend)			
33.3 Transferred from capital			
34. Net remittances from or (to) Home Office			
35. Dividends to stockholders	(45,000,000)		
36. Change in treasury stock			
37. Aggregate write-ins for gains and losses in surplus	(10,073,643)	70,158	370,058
38. Change in surplus as regards policyholders (Lines 22 through 37)	(13,054,833)	4,144,553	23,647,482
39. Surplus as regards policyholders, as of statement date (Lines 21 plus 38)	665,714,059	659,265,963	678,768,892
DETAILS OF WRITE-INS			
0501. Loss based assessment			5,283
0502.			
0503.			
0598. Summary of remaining write-ins for Line 5 from overflow page			
0599. Totals (Lines 0501 through 0503 plus 0598)(Line 5 above)			5,283
1401. Change in contingent suit liability	63,891	34,233	106,161
1402. Other income	845,189	1,410,240	2,067,557
1403.			
1498. Summary of remaining write-ins for Line 14 from overflow page			
1499. Totals (Lines 1401 through 1403 plus 1498)(Line 14 above)	909,080	1,444,473	2,173,718
3701. SSAP 10 DTA	(10,073,643)	70,158	370,058
3702.			
3703.			
3798. Summary of remaining write-ins for Line 37 from overflow page			
3799. Totals (Lines 3701 through 3703 plus 3798)(Line 37 above)	(10,073,643)	70,158	370,058

CASH FLOW

	1 Current Year To Date	2 Prior Year To Date	3 Prior Year Ended December 31
Cash from Operations			
1. Premiums collected net of reinsurance	343,292,179	426,878,232	663,361,028
2. Net investment income	27,327,806	32,750,367	41,614,484
3. Miscellaneous income	111,633	6,716,748	8,762,762
4. Total (Lines 1 to 3)	370,731,618	466,345,347	713,738,274
5. Benefit and loss related payments	224,924,162	284,693,688	422,448,414
6. Net transfers to Separate Accounts, Segregated Accounts and Protected Cell Accounts			
7. Commissions, expenses paid and aggregate write-ins for deductions	205,817,190	197,728,727	256,994,804
8. Dividends paid to policyholders	217,862	186,480	266,479
9. Federal and foreign income taxes paid (recovered) net of \$ 172,450 tax on capital gains (losses)	(4,509,129)	7,974,454	7,929,995
10. Total (Lines 5 through 9)	426,450,085	490,583,348	687,639,693
11. Net cash from operations (Line 4 minus Line 10)	(55,718,467)	(24,238,002)	26,098,581
Cash from Investments			
12. Proceeds from investments sold, matured or repaid:			
12.1 Bonds	76,494,938	129,932,343	149,537,020
12.2 Stocks	58,323		49,577
12.3 Mortgage loans	306,120	118,795	159,837
12.4 Real estate			
12.5 Other invested assets			
12.6 Net gains or (losses) on cash, cash equivalents and short-term investments	(31,270)	1,536	1,536
12.7 Miscellaneous proceeds			210,412
12.8 Total investment proceeds (Lines 12.1 to 12.7)	76,828,111	130,052,674	149,958,381
13. Cost of investments acquired (long-term only):			
13.1 Bonds	80,184,102	114,955,513	129,440,513
13.2 Stocks		504,000	553,577
13.3 Mortgage loans			
13.4 Real estate			
13.5 Other invested assets	29,147	13,790,082	14,194,617
13.6 Miscellaneous applications	240,532	1,019,497	182,885
13.7 Total investments acquired (Lines 13.1 to 13.6)	80,453,781	130,269,091	144,371,593
14. Net increase (or decrease) in contract loans and premium notes			
15. Net cash from investments (Line 12.8 minus Line 13.7 and Line 14)	(3,625,670)	(216,417)	5,586,789
Cash from Financing and Miscellaneous Sources			
16. Cash provided (applied):			
16.1 Surplus notes, capital notes			
16.2 Capital and paid in surplus, less treasury stock			
16.3 Borrowed funds			
16.4 Net deposits on deposit-type contracts and other insurance liabilities			
16.5 Dividends to stockholders	45,000,000		
16.6 Other cash provided (applied)	117,449,709	2,120,278	(94,979,202)
17. Net cash from financing and miscellaneous sources (Line 16.1 through Line 16.4 minus Line 16.5 plus Line 16.6)	72,449,709	2,120,278	(94,979,202)
RECONCILIATION OF CASH, CASH EQUIVALENTS AND SHORT-TERM INVESTMENTS			
18. Net change in cash, cash equivalents and short-term investments (Line 11, plus Lines 15 and 17)	13,105,572	(22,334,141)	(63,293,832)
19. Cash, cash equivalents and short-term investments:			
19.1 Beginning of year	14,466,451	77,760,283	77,760,283
19.2 End of period (Line 18 plus Line 19.1)	27,572,023	55,426,142	14,466,451

Note: Supplemental disclosures of cash flow information for non-cash transactions:

--	--	--	--

NOTES TO FINANCIAL STATEMENTS

A. Accounting Practices

The Ohio Insurance Department recognizes only statutory accounting practices (SAP) prescribed or permitted by the State of Ohio for determining and reporting the financial condition and results of operations of an insurance company, as well as, determining its solvency under the Ohio Insurance law. The National Association of Insurance Commissioners' (NAIC) *Accounting Practices and Procedures Manual* (NAIC SAP) has been adopted as a component of prescribed or permitted practices by the State of Ohio.

C. Accounting Policies

7. Investments in subsidiary and affiliated companies are stated as follows:

Note 2 - Accounting Changes and Corrections of Errors

Note 3 - Business Combinations and Goodwill

No change.

Note 4 - Discontinued Operations

No change.

Note 5 - Investments

A. Mortgage Loans

No change.

B. Troubled Debt Restructuring for Creditors

No change.

C. Reverse Mortgages

No change.

D. Loan-Backed Securities

- | (1) | (2) | (3) |
|---|--|---------------------|
| Amortized Cost Basis Before Other-than-Temporary Impairment | Other-than-Temporary Impairment Recognized in Loss | Fair Value
1 - 2 |

OTTI recognized 1st Quarter

- | | | |
|------|------|------|
| \$ - | \$ - | \$ - |
| \$ - | \$ - | \$ - |
| \$ - | \$ - | \$ - |

NOTES TO FINANCIAL STATEMENTS

(1)	(2)	(3)
Amortized Cost Basis Before Other-than- Temporary Impairment	Other-than- Temporary Impairment Recognized in Loss	Fair Value 1 - 2

OTTI recognized 2nd Quarter

d. Intent to Sell	\$ -	\$ -	\$ -
e. Inability or lack of intent to retain the investment in the security for a period of time sufficient to recover the amortized cost basis	\$ -	\$ -	\$ -
f. Total 2nd Quarter	\$ -	\$ -	\$ -

OTTI recognized 3rd Quarter

g. Intent to Sell	\$ -	\$ -	\$ -
h. Inability or lack of intent to retain the investment in the security for a period of time sufficient to recover the amortized cost basis	\$ -	\$ -	\$ -
i. Total 3rd Quarter	\$ -	\$ -	\$ -

OTTI recognized 4th Quarter

j. Intent to Sell	\$ -	\$ -	\$ -
k. Inability or lack of intent to retain the investment in the security for a period of time sufficient to recover the amortized cost basis	\$ -	\$ -	\$ -
l. Total 4th Quarter	\$ -	\$ -	\$ -

m. Annual Aggregate Total	\$ -
---------------------------	------

3. The following table summarizes other-than-temporary impairments for loan-backed securities held at the end of the quarter based on the fact that the present value of projected cash flows expected to be collected was less than the amortized cost of the securities:

(1)	(2)	(3)	(4)	(5)	(6)	(7)
CUSIP	Amortized Cost Before Current Period OTTI	Present Value of Projected Cash Flow s	Recognized Other-Than- Temporary Impairment	Amortized Cost After Other-Than- Temporary Impairment	Fair Value at time of OTTI	Date of Financial Statement Where Reported
Total			\$ -			

4. All impaired securities (fair value is less than cost or amortized cost) for which an other-than-temporary impairment has not been recognized in earnings as a realized loss (including securities with a recognized other-than-temporary impairment for non-interest related declines when a non-recognized interest related impairment remains):

a. The aggregate amount of unrealized losses:	1. Less than 12 Months	\$ (12,496)
	2. 12 Months or Longer	\$ (392,282)
b. The aggregate related fair value of securities w ith unrealized losses:	1. Less than 12 Months	\$ 1,090,088
	2. 12 Months or Longer	\$ 6,576,149

5. The Company reviews all loan-backed and structured securities in which the fair value of the given security is less than the amortized cost to determine if a given security is other-than-temporarily impaired. The Company examines characteristics of the underlying collateral, such as delinquency and default rates, the quality of the underlying borrower, the type of collateral in the pool, the vintage year of the collateral, subordination levels within the structure of the collateral pool, the quality of any credit guarantors, to determine the cash flows expected to be received for the security.

If the severity and duration of the security's unrealized loss indicates a risk of an other-than-temporary impairment, then the Company will evaluate if the amortized cost basis of the security will be recovered by comparing the present value of the cash flows expected to be received for the given security with the amortized cost basis of the security. If the present value of cash flows is greater than the amortized cost basis of a security then the security is deemed not to be other-than-temporarily impaired.

E. Repurchase Agreements and Securities Lending Transactions

No change.

F. Real Estate

No change.

G. Low-Income Housing Tax Credits

No change.

Note 6 - Joint Ventures, Partnerships and Limited Liability Companies

No change.

NOTES TO FINANCIAL STATEMENTS

Note 7 - Investment Income

No change.

Note 8 - Derivative Instruments

No change.

Note 9 - Income Taxes

No change.

Note 10 - Information Concerning Parent, Subsidiaries, Affiliates and Other Related Parties

No change.

Note 11 - Debt

No change.

Note 12 - Retirement Plans, Deferred Compensation, Postemployment Benefits and Compensated Absences and Other Postretirement Benefit Plans

No change.

Note 13 - Capital and Surplus, Dividend Restrictions and Quasi-Reorganizations

D. Dividends Paid

On April 25, the Company paid an ordinary dividend of \$45 million to its parent, Nationwide Mutual Insurance Company.

Note 14 – Contingencies

No change.

Note 15 – Leases

No change.

Note 16 - Information About Financial Instruments With Off-Balance Sheet Risk And Financial Instruments With Concentrations of Credit Risk

No change.

Note 17 - Sale, Transfer and Servicing of Financial Assets and Extinguishments of Liabilities

A. Transfers of Receivables Reported as Sales

No change.

B. Transfers and Servicing of Financial Assets

No change.

C. Wash Sales

Not applicable.

Note 18 - Gain or Loss to the Reporting Entity from Uninsured Plans and the Uninsured Portion of Partially Insured Plans

No change.

Note 19 - Direct Premiums Written/Produced by Managing General Agents/Third Party Administrators

No change.

Note 20 – Fair Value Measurements

Fair value is defined as the price that would be received to sell an asset or paid to transfer a liability in an orderly transaction between market participants at the measurement date. Fair value measurements are based upon observable and unobservable inputs. Observable inputs reflect market data obtained from independent sources while unobservable inputs reflect the Company's view of market assumptions in the absence of observable market information. The Company utilizes valuation techniques that maximize the use of observable inputs and minimize the use of unobservable inputs. In determining fair value, the Company uses various methods including market, income and cost approaches.

The Company categorizes its assets and liabilities reported at fair value in the quarterly statement into a three-level hierarchy based on the priority of the inputs to the valuation technique. The fair value hierarchy gives the highest priority to quoted prices in active markets for identical assets or liabilities (Level 1) and the lowest priority to unobservable inputs (Level 3). If the inputs used to measure fair value fall within different levels of the hierarchy, the category level is based on the lowest priority level input that is significant to the fair value measurement of the instrument in its entirety.

The fair value hierarchy levels are as follows:

Level 1. Unadjusted quoted prices accessible in active markets for identical assets or liabilities at the measurement date and mutual funds where the value per share (unit) is determined and published daily and is the basis for current transactions.

Level 2. Unadjusted quoted prices for similar assets or liabilities in active markets or inputs (other than quoted prices) that are observable or that are derived principally from or corroborated by observable market data through correlation or other means.

Level 3. Prices or valuation techniques that require inputs that are both unobservable and significant to the overall fair value measurement. Inputs reflect management's best estimate about the assumptions market participants would use at the measurement date in pricing the asset or liability. Consideration is given to the risk inherent in both the method of valuation and the valuation inputs.

NOTES TO FINANCIAL STATEMENTS

The Company periodically reviews its fair value hierarchy classifications for financial assets and liabilities. Changes in observability of significant valuation inputs identified during these reviews may trigger reclassifications. Reclassifications into/out of the fair value hierarchy levels are reported as transfers at the beginning of the period in which the change occurs.

To determine the fair value of bonds and stocks for which market quotations are available, independent pricing services are most often utilized. For these bonds and stocks, the Company obtains the pricing services' methodologies, inputs and assumptions and classifies the investments accordingly in the fair value hierarchy.

Non-binding broker quotes are also utilized to determine the fair value of certain bonds when quotes are not available from independent pricing services. Broker quotes are considered unobservable inputs, and these bonds are classified accordingly in the fair value hierarchy as only one broker quote is ordinarily obtained, the investment is not traded on an exchange, the pricing is not available to other entities and/or the transaction volume in the same or similar investments has decreased such that generally only one quotation is available. As the brokers often do not provide the necessary transparency into their quotes and methodologies, the Company periodically performs reviews and tests to ensure that quotes are a reasonable estimate of the investments' fair value.

For certain bonds not valued using independent services or broker quotes, a corporate pricing matrix or internally developed pricing model is most often used. The corporate pricing matrix is developed using private spreads for bonds with varying weighted average lives and credit quality ratings. The weighted average life and credit quality rating of a particular bond to be priced using the corporate pricing matrix are important inputs into the model and are used to determine a corresponding spread that is added to the appropriate U.S. Treasury yield to create an estimated market yield for that security. The estimated market yield and other relevant factors are then used to estimate the fair value of the particular bond.

The following table summarizes assets and liabilities reported at fair value as of September 30, 2012:

	Level 1	Level 2	Level 3	Total
Assets at Fair Value				
U.S. Government bonds	-	-	-	-
States, Territories and Possessions	-	-	-	-
Political subdivisions	-	-	-	-
Special revenues	-	-	-	-
Hybrid Securities	-	-	-	-
Credit tenant loans	-	-	-	-
Industrial & Misc.	-	3,754,169	-	3,754,169
Total Bonds	\$ -	\$ 3,754,169	\$ -	\$ 3,754,169
Sec Lending	-	65,845	-	65,845
Preferred Stocks	-	-	-	-
Common Stocks	-	-	-	-
Loans held for sale	-	-	-	-
Separate Account Assets	-	-	-	-
Derivative Assets	-	-	-	-
Total Assets at Fair Value	\$ -	\$ 3,820,014	\$ -	\$ 3,820,014
Liabilities at Fair Value				
Derivatives Liabilities	-	-	-	-
Total Liabilities at Fair Value	\$ -	\$ -	\$ -	\$ -

The following table summarizes aggregate carrying value and fair value, by level, for all financial instruments, excluding assets and liabilities reported at fair value, as of September 30, 2012:

	Carrying Value	Aggregate Fair Value	Level 1	Level 2	Level 3
Assets					
Bonds	\$ 894,655,740	\$ 1,031,918,956	\$ 340,579,806	\$ 642,946,047	\$ 48,393,103
Stocks	221,858,322	221,858,322	-	-	221,858,322
Mortgage loans	2,897,646	3,137,727	-	-	3,137,727
Short-term investments	77,878,147	77,878,147	-	77,878,147	-
Securities lending collateral assets	14,647,582	14,647,582	-	14,647,582	-
Total Assets	\$ 1,211,937,437	\$ 1,349,440,734	\$ 340,579,806	\$ 735,471,776	\$ 273,389,152

Note 21 - Other Items

C. Other Disclosures

Effective June 1, 2012, the Company renewed its Property Catastrophe Program at 90% of \$100 million in excess of \$300 million.

Effective April 1, 2012, the reinsurance layering on the Company's Ocean Marine contract was modified. The Company now retains the first \$5 million of the \$25 million excess of loss program. Previously, the layers were ceded at \$22.5 million excess of the Company's \$2.5 million retention.

Note 22 - Events Subsequent

Subsequent events have been considered through November 5, 2012 for these statutory financial statements which are to be issued November 7, 2012. There were no events occurring subsequent to the end of the quarter that merited recognition or disclosure in these statements.

Note 23 – Reinsurance

No change.

Note 24 - Retrospectively Rated Contracts and Contracts Subject to Redetermination

No change.

NOTES TO FINANCIAL STATEMENTS

Note 25 - Changes in Incurred Losses and Loss Adjustment Expenses

No change.

Note 26 - Intercompany Pooling Arrangements

No change.

Note 27 - Structured Settlements

No change.

Note 28 - Health Care Receivables

No change.

Note 29 - Participating Policies

No change.

Note 30 - Premium Deficiency Reserves

No change.

Note 31 - High Deductibles

No change.

Note 32 - Discounting of Liabilities for Unpaid Losses or Unpaid Loss Adjustment Expenses

No change.

Note 33 - Asbestos/Environmental Reserves

No change.

Note 34 - Subscriber Savings Accounts

No change.

Note 35 - Multiple Peril Crop Insurance

No change.

Note 36 – Financial Guaranty Insurance

A. and B. Not applicable.

STATEMENT AS OF SEPTEMBER 30, 2012 OF THE SCOTTSDALE INSURANCE COMPANY

GENERAL INTERROGATORIES

PART 1 - COMMON INTERROGATORIES

GENERAL

- 1.1

Did the reporting entity experience any material transactions requiring the filing of Disclosure of Material Transactions with the State of Domicile, as required by the Model Act?

Yes [] No [X]
- 1.2

If yes, has the report been filed with the domiciliary state?

Yes [] No []
- 2.1

Has any change been made during the year of this statement in the charter, by-laws, articles of incorporation, or deed of settlement of the reporting entity?

Yes [] No [X]
- 2.2

If yes, date of change:
3.

Have there been any substantial changes in the organizational chart since the prior quarter end?

Yes [] No [X]

If yes, complete the Schedule Y - Part 1 - organizational chart.
- 4.1

Has the reporting entity been a party to a merger or consolidation during the period covered by this statement?

Yes [] No [X]
- 4.2

If yes, provide the name of the entity, NAIC Company Code, and state of domicile (use two letter state abbreviation) for any entity that has ceased to exist as a result of the merger or consolidation.

1	2	3
Name of Entity	NAIC Company Code	State of Domicile

5.

If the reporting entity is subject to a management agreement, including third-party administrator(s), managing general agent(s), attorney-in-fact, or similar agreement, have there been any significant changes regarding the terms of the agreement or principals involved?

Yes [] No [X] N/A []

If yes, attach an explanation.
- 6.1

State as of what date the latest financial examination of the reporting entity was made or is being made.

12/31/2011
- 6.2

State the as of date that the latest financial examination report became available from either the state of domicile or the reporting entity. This date should be the date of the examined balance sheet and not the date the report was completed or released.

12/31/2006
- 6.3

State as of what date the latest financial examination report became available to other states or the public from either the state of domicile or the reporting entity. This is the release date or completion date of the examination report and not the date of the examination (balance sheet date).

03/29/2008
- 6.4

By what department or departments?
OH
- 6.5

Have all financial statement adjustments within the latest financial examination report been accounted for in a subsequent financial statement filed with Departments?

Yes [] No [] N/A [X]
- 6.6

Have all of the recommendations within the latest financial examination report been complied with?

Yes [] No [] N/A [X]
- 7.1

Has this reporting entity had any Certificates of Authority, licenses or registrations (including corporate registration, if applicable) suspended or revoked by any governmental entity during the reporting period?

Yes [] No [X]
- 7.2

If yes, give full information:
- 8.1

Is the company a subsidiary of a bank holding company regulated by the Federal Reserve Board?

Yes [] No [X]
- 8.2

If response to 8.1 is yes, please identify the name of the bank holding company.
- 8.3

Is the company affiliated with one or more banks, thrifts or securities firms?

Yes [X] No []
- 8.4

If response to 8.3 is yes, please provide below the names and location (city and state of the main office) of any affiliates regulated by a federal regulatory services agency [i.e. the Federal Reserve Board (FRB), the Office of the Comptroller of the Currency (OCC), the Federal Deposit Insurance Corporation (FDIC) and the Securities Exchange Commission (SEC)] and identify the affiliate's primary federal regulator.

1	2	3	4	5	6
Affiliate Name	Location (City, State)	FRB	OCC	FDIC	SEC
Nationwide Bank	Columbus, OH	NO	YES	NO	NO
Nationwide Investment Services Corp.	Columbus, OH	NO	NO	NO	YES
Nationwide Securities, LLC	Dublin, OH	NO	NO	NO	YES
Nationwide Fund Distributors, LLC	King of Prussia, PA	NO	NO	NO	YES

STATEMENT AS OF SEPTEMBER 30, 2012 OF THE SCOTTSDALE INSURANCE COMPANY

GENERAL INTERROGATORIES

9.1

Are the senior officers (principal executive officer, principal financial officer, principal accounting officer or controller, or persons performing similar functions) of the reporting entity subject to a code of ethics, which includes the following standards? (a) Honest and ethical conduct, including the ethical handling of actual or apparent conflicts of interest between personal and professional relationships; (b) Full, fair, accurate, timely and understandable disclosure in the periodic reports required to be filed by the reporting entity; (c) Compliance with applicable governmental laws, rules and regulations; (d) The prompt internal reporting of violations to an appropriate person or persons identified in the code; and (e) Accountability for adherence to the code.

Yes [X] No []

9.11

If the response to 9.1 is No, please explain:

9.2

Has the code of ethics for senior managers been amended?

Yes [] No [X]

9.21

If the response to 9.2 is Yes, provide information related to amendment(s).

9.3

Have any provisions of the code of ethics been waived for any of the specified officers?

Yes [] No [X]

9.31

If the response to 9.3 is Yes, provide the nature of any waiver(s).

FINANCIAL

10.1

Does the reporting entity report any amounts due from parent, subsidiaries or affiliates on Page 2 of this statement?

Yes [X] No []

10.2

If yes, indicate any amounts receivable from parent included in the Page 2 amount:

\$33,878,462

INVESTMENT

11.1

Were any of the stocks, bonds, or other assets of the reporting entity loaned, placed under option agreement, or otherwise made available for use by another person? (Exclude securities under securities lending agreements.)

Yes [] No [X]

11.2

If yes, give full and complete information relating thereto:

12.

Amount of real estate and mortgages held in other invested assets in Schedule BA:

\$

13.

Amount of real estate and mortgages held in short-term investments:

\$

14.1

Does the reporting entity have any investments in parent, subsidiaries and affiliates?

Yes [X] No []

14.2

If yes, please complete the following:

	1	2
	Prior Year-End Book/Adjusted Carrying Value	Current Quarter Book/Adjusted Carrying Value
14.21 Bonds	\$	\$
14.22 Preferred Stock	\$	\$
14.23 Common Stock	\$199,775,817	\$221,858,322
14.24 Short-Term Investments	\$	\$
14.25 Mortgage Loans on Real Estate	\$	\$
14.26 All Other	\$	\$
14.27 Total Investment in Parent, Subsidiaries and Affiliates (Subtotal Lines 14.21 to 14.26)	\$199,775,817	\$221,858,322
14.28 Total Investment in Parent included in Lines 14.21 to 14.26 above	\$	\$

15.1

Has the reporting entity entered into any hedging transactions reported on Schedule DB?

Yes [] No [X]

15.2

If yes, has a comprehensive description of the hedging program been made available to the domiciliary state?

Yes [] No []

If no, attach a description with this statement.

STATEMENT AS OF SEPTEMBER 30, 2012 OF THE SCOTTSDALE INSURANCE COMPANY

GENERAL INTERROGATORIES

16. Excluding items in Schedule E - Part 3 - Special Deposits, real estate, mortgage loans and investments held physically in the reporting entity's offices, vaults or safety deposit boxes, were all stocks, bonds and other securities, owned throughout the current year held pursuant to a custodial agreement with a qualified bank or trust company in accordance with Section 1, III - General Examination Considerations, F. Outsourcing of Critical Functions, Custodial or Safekeeping Agreements of the NAIC Financial Condition Examiners Handbook? Yes [X] No []
- 16.1 For all agreements that comply with the requirements of the NAIC Financial Condition Examiners Handbook, complete the following:

1 Name of Custodian(s)	2 Custodian Address
The Bank of New York Mellon RBC Investor Services Trust (Trademark of Royal Bank of Canada)	1 Wall Street, New York, NY 10286 155 Wellington Street, 2nd Floor Toronto, ON Canada M5V 3L3

- 16.2 For all agreements that do not comply with the requirements of the NAIC Financial Condition Examiners Handbook, provide the name, location and a complete explanation:

1 Name(s)	2 Location(s)	3 Complete Explanation(s)

- 16.3 Have there been any changes, including name changes, in the custodian(s) identified in 16.1 during the current quarter? Yes [] No [X]
- 16.4 If yes, give full information relating thereto:

1 Old Custodian	2 New Custodian	3 Date of Change	4 Reason

- 16.5 Identify all investment advisors, brokers/dealers or individuals acting on behalf of broker/dealers that have access to the investment accounts, handle securities and have authority to make investments on behalf of the reporting entity:

1 Central Registration Depository	2 Name(s)	3 Address
N/A	Members of the investment staff designated by the Chief Investment Officer as detailed in the Corporate Resolution	One Nationwide Blvd., Columbus, OH 43215-2220

- 17.1 Have all the filing requirements of the Purposes and Procedures Manual of the NAIC Securities Valuation Office been followed? Yes [X] No []
- 17.2 If no, list exceptions:

GENERAL INTERROGATORIES

PART 2 - PROPERTY & CASUALTY INTERROGATORIES

1.

If the reporting entity is a member of a pooling arrangement, did the agreement or the reporting entity's participation change?
If yes, attach an explanation.

Yes [] No [X] N/A []
2.

Has the reporting entity reinsured any risk with any other reporting entity and agreed to release such entity from liability, in whole or in part, from any loss that may occur on the risk, or portion thereof, reinsured?
If yes, attach an explanation.

Yes [] No [X]
- 3.1

Have any of the reporting entity's primary reinsurance contracts been canceled?

Yes [] No [X]
- 3.2

If yes, give full and complete information thereto.
- 4.1

Are any of the liabilities for unpaid losses and loss adjustment expenses other than certain workers' compensation tabular reserves (see Annual Statement Instructions pertaining to disclosure of discounting for definition of " tabular reserves") discounted at a rate of interest greater than zero?

Yes [] No [X]
- 4.2

If yes, complete the following schedule:

			TOTAL DISCOUNT				DISCOUNT TAKEN DURING PERIOD			
1	2	3	4	5	6	7	8	9	10	11
Line of Business	Maximum Interest	Discount Rate	Unpaid Losses	Unpaid LAE	IBNR	TOTAL	Unpaid Losses	Unpaid LAE	IBNR	TOTAL
TOTAL										

5.

Operating Percentages:
- 5.1

A&H loss percent

69.000 %
- 5.2

A&H cost containment percent

%
- 5.3

A&H expense percent excluding cost containment expenses

41.000 %
- 6.1

Do you act as a custodian for health savings accounts?

Yes [] No [X]
- 6.2

If yes, please provide the amount of custodial funds held as of the reporting date\$.....
- 6.3

Do you act as an administrator for health savings accounts?

Yes [] No [X]
- 6.4

If yes, please provide the balance of the funds administered as of the reporting date\$.....

SCHEDULE F - CEDED REINSURANCE

[illegible]

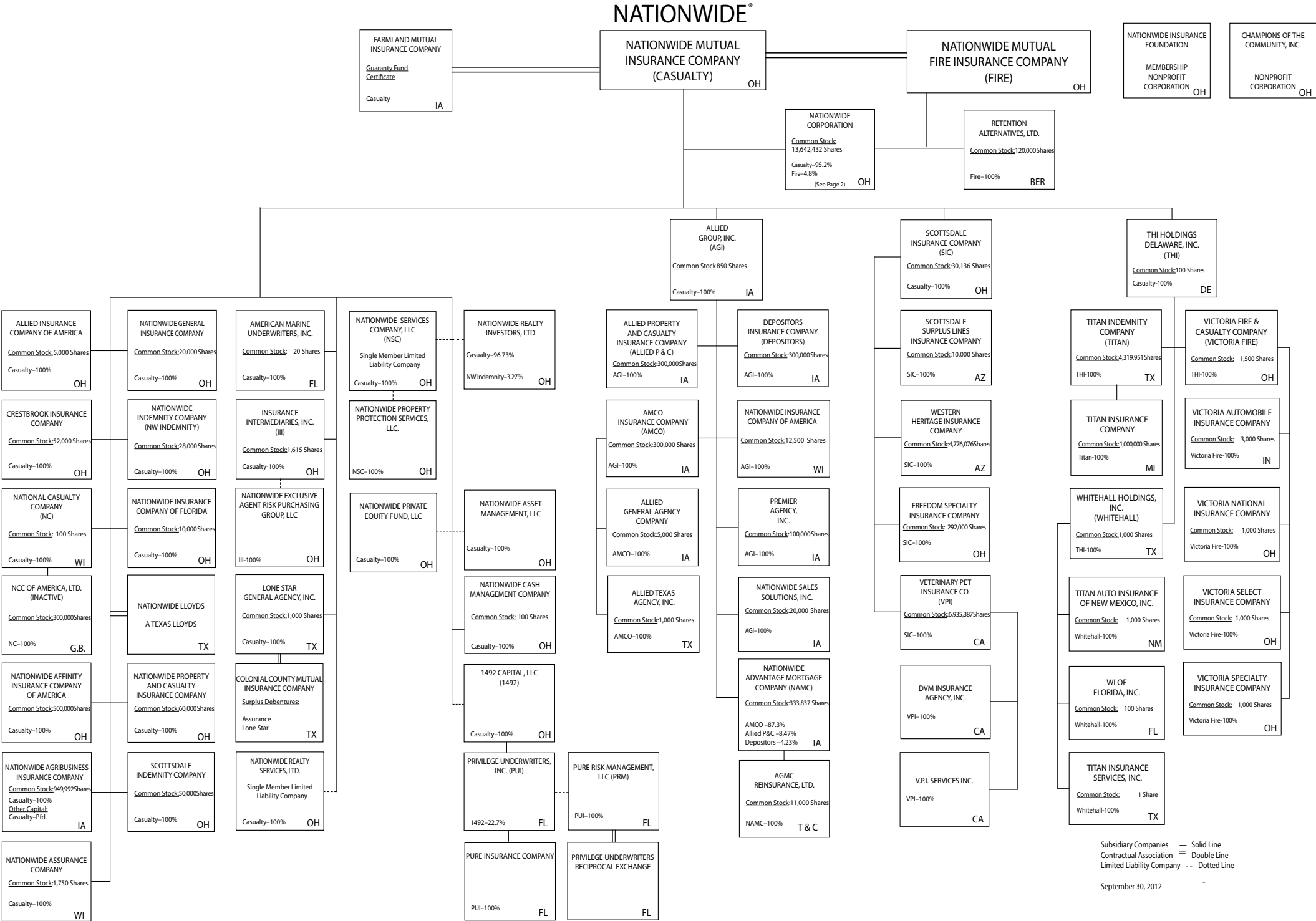
STATEMENT AS OF SEPTEMBER 30, 2012 OF THE SCOTTSDALE INSURANCE COMPANY

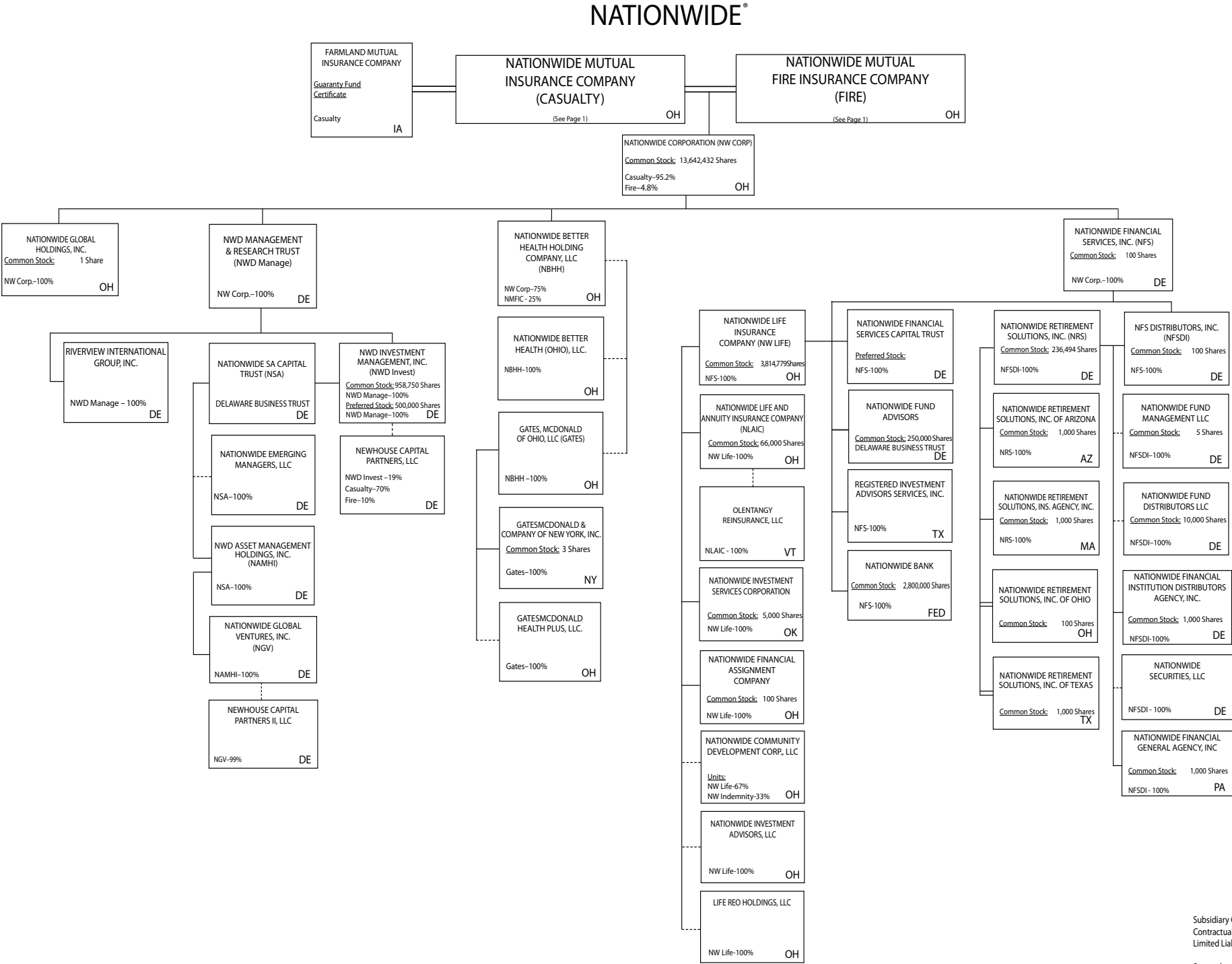
SCHEDULE T - EXHIBIT OF PREMIUMS WRITTEN

Current Year to Date - Allocated by States and Territories

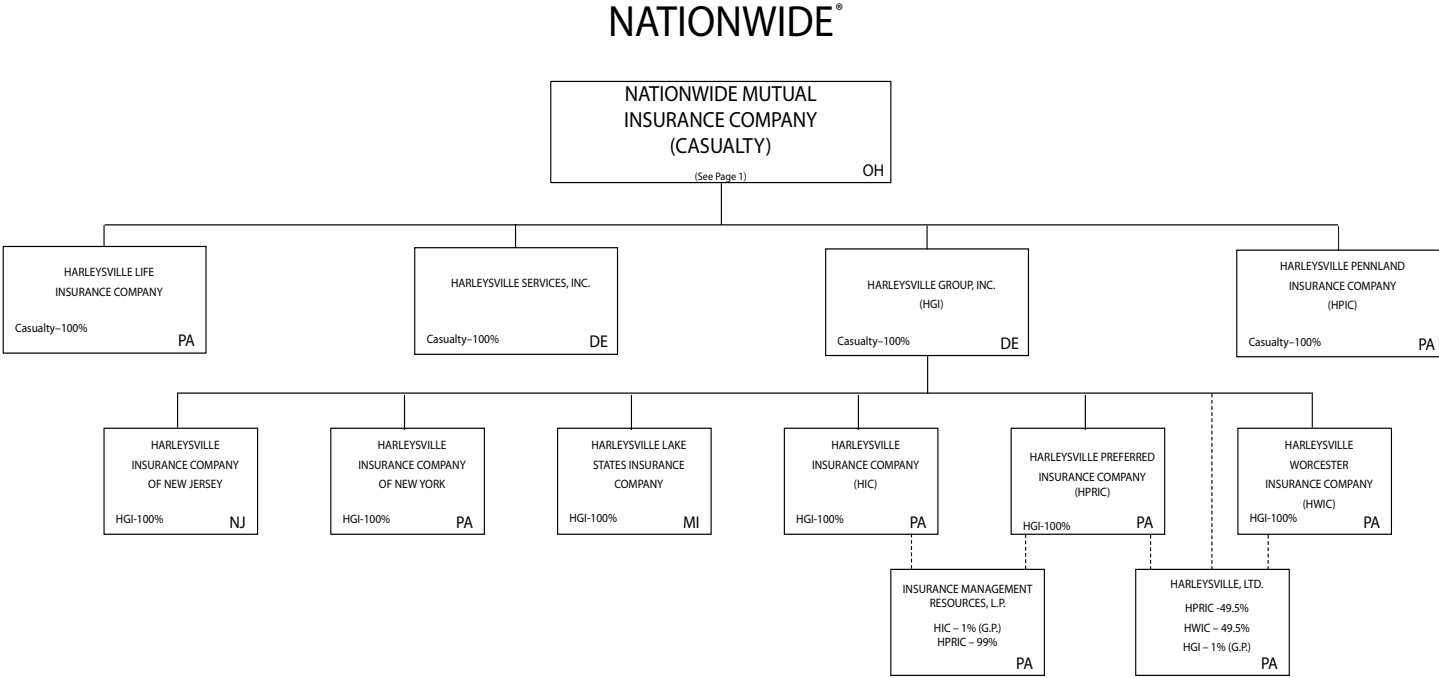
			1	Direct Premiums Written		Direct Losses Paid (Deducting Salvage)		Direct Losses Unpaid	
			Active Status	2 Current Year To Date	3 Prior Year To Date	4 Current Year To Date	5 Prior Year To Date	6 Current Year To Date	7 Prior Year To Date
States, etc.									
1.	Alabama	AL	E	17,861,663	17,434,042	8,092,116	11,194,426	11,560,661	17,011,557
2.	Alaska	AK	E	2,843,031	1,975,760	219,315	232,453	2,864,225	2,438,994
3.	Arizona	AZ	L	7,801,207	7,433,503	3,119,992	12,175,922	4,780,177	5,306,216
4.	Arkansas	AR	E	6,006,185	5,149,456	5,727,477	2,963,053	4,476,380	5,012,640
5.	California	CA	E	157,900,069	138,493,741	52,815,929	51,327,007	195,847,058	185,057,199
6.	Colorado	CO	E	10,891,954	8,392,059	2,947,844	3,162,262	12,233,463	12,937,194
7.	Connecticut	CT	E	6,286,370	6,613,979	2,061,048	1,907,058	12,140,575	10,840,822
8.	Delaware	DE	L	954,466	894,099	360,251	244,334	961,281	1,135,495
9.	District of Columbia	DC	E	2,039,609	1,603,098	2,780,667	389,570	3,025,505	1,557,463
10.	Florida	FL	E	131,585,986	122,718,145	37,928,776	43,940,717	116,311,474	119,778,563
11.	Georgia	GA	E	24,064,879	22,570,211	7,731,809	9,854,752	27,979,861	22,047,642
12.	Hawaii	HI	E	7,895,983	9,255,297	1,621,012	2,954,350	8,950,929	9,898,726
13.	Idaho	ID	E	2,640,517	2,261,977	250,762	245,964	3,316,607	3,139,248
14.	Illinois	IL	E	23,062,796	20,686,088	17,142,620	20,616,682	51,852,202	48,631,509
15.	Indiana	IN	E	12,238,632	9,891,970	5,512,192	4,328,674	12,186,124	12,493,619
16.	Iowa	IA	E	6,319,796	5,685,117	4,298,489	1,306,579	7,952,566	5,859,288
17.	Kansas	KS	E	6,004,325	4,516,828	3,366,985	1,936,035	3,977,733	4,517,434
18.	Kentucky	KY	E	4,776,550	4,965,596	10,753,931	1,196,353	5,304,178	15,364,054
19.	Louisiana	LA	E	63,510,816	52,031,442	13,450,061	18,971,600	69,686,371	111,628,106
20.	Maine	ME	E	1,728,337	1,309,928	467,270	233,129	2,021,461	2,055,021
21.	Maryland	MD	E	10,805,473	9,982,502	15,932,085	6,894,674	14,800,786	18,069,768
22.	Massachusetts	MA	E	20,688,312	17,493,584	9,428,767	5,711,533	33,892,548	28,962,045
23.	Michigan	MI	E	6,698,281	5,708,309	1,078,541	1,833,692	10,514,695	9,919,508
24.	Minnesota	MN	E	6,296,056	4,816,129	5,028,272	2,235,699	9,600,926	14,011,878
25.	Mississippi	MS	E	12,187,664	11,075,520	4,231,010	3,898,921	7,672,409	7,170,649
26.	Missouri	MO	E	14,134,060	9,344,667	5,298,963	6,082,960	10,535,526	11,904,747
27.	Montana	MT	E	3,492,534	2,737,312	1,664,893	1,731,666	2,668,370	5,452,039
28.	Nebraska	NE	E	3,887,450	3,546,620	1,445,389	1,158,497	3,874,705	4,112,891
29.	Nevada	NV	E	5,424,019	5,684,774	3,080,897	9,634,149	8,142,288	10,802,748
30.	New Hampshire	NH	E	1,471,160	1,454,781	23,661	194,023	2,259,606	2,205,440
31.	New Jersey	NJ	E	44,227,216	36,234,253	18,251,716	19,914,641	56,066,570	61,899,638
32.	New Mexico	NM	E	4,135,506	3,977,872	1,379,739	2,759,345	5,932,796	4,963,623
33.	New York	NY	E	95,986,791	67,850,014	51,061,562	34,606,891	203,881,113	206,918,612
34.	North Carolina	NC	E	21,704,829	19,017,243	6,712,200	7,507,699	12,777,941	15,338,602
35.	North Dakota	ND	E	1,516,180	744,322	366,983	287,221	992,608	901,955
36.	Ohio	OH	L	4,118,303	4,871,164	4,367,923	3,926,449	3,555,372	6,241,875
37.	Oklahoma	OK	E	9,538,006	8,553,779	8,215,873	9,672,332	7,979,551	7,802,224
38.	Oregon	OR	E	7,672,418	6,859,216	2,239,324	6,002,530	11,027,070	10,977,680
39.	Pennsylvania	PA	E	17,516,783	15,678,365	6,840,191	9,492,690	30,137,977	33,485,468
40.	Rhode Island	RI	E	2,091,579	1,959,868	829,406	902,531	3,674,553	3,265,646
41.	South Carolina	SC	E	19,139,477	19,586,419	9,021,556	9,694,248	13,934,046	14,257,273
42.	South Dakota	SD	E	855,760	675,087	111,360	8,061	909,876	930,902
43.	Tennessee	TN	E	13,683,752	10,965,031	7,040,531	9,691,377	12,931,886	11,921,724
44.	Texas	TX	E	101,430,678	89,447,995	51,321,751	46,410,262	94,979,843	96,376,091
45.	Utah	UT	E	4,174,489	4,161,059	913,857	1,022,933	7,046,689	6,893,295
46.	Vermont	VT	E	895,041	860,898	33,004	30,946	1,361,489	1,270,582
47.	Virginia	VA	E	13,851,670	11,904,504	4,229,929	2,781,681	15,471,096	15,042,198
48.	Washington	WA	E	13,864,497	13,663,646	10,926,484	15,349,651	21,020,194	29,685,772
49.	West Virginia	WV	E	3,651,316	3,153,178	1,578,954	831,512	3,466,107	3,586,067
50.	Wisconsin	WI	E	4,468,767	3,875,122	4,570,570	991,217	6,864,883	9,510,957
51.	Wyoming	WY	E	1,529,072	1,357,396	1,346,790	635,488	847,667	1,517,332
52.	American Samoa	AS	N						
53.	Guam	GU	N						
54.	Puerto Rico	PR	E	33,683	62,902	59,900	(2,498)	214,965	142,517
55.	U.S. Virgin Islands	VI	N						
56.	Northern Mariana Islands	MP	N						
57.	Canada	CN	N						
58.	Aggregate Other Alien	OT	XXX	84,436	58,125			58,123	23,643
59.	Totals	(a)	3	967,668,429	841,243,992	419,280,627	411,073,941	1,176,523,105	1,252,276,179
DETAILS OF WRITE-INS									
5801.	Bermuda		XXX	120,000				11,375	
5802.	England		XXX	(35,564)	58,125			46,748	23,643
5803.			XXX						
5898.	Summary of remaining write-ins for Line 58 from overflow page		XXX						
5899.	Totals (Lines 5801 through 5803 plus 5898)(Line 58 above)		XXX	84,436	58,125			58,123	23,643

(L) Licensed or Chartered - Licensed Insurance Carrier or Domiciled RRG; (R) Registered - Non-domiciled RRGs; (Q) Qualified - Qualified or Accredited Reinsurer; (E) Eligible - Reporting Entities eligible or approved to write Surplus Lines in the state; (N) None of the above - Not allowed to write business in the state.
(a) Insert the number of L responses except for Canada and Other Alien.





Subsidiary Companies — Solid Line
Contractual Association = Double Line
Limited Liability Company - - Dotted Line



NATIONWIDE INSURANCE COMPANIES

NAIC Group Code	Group Name	NAIC Company Code	State of Domicile	Federal ID Number	Name of Company
0140	Nationwide	10127	OH	27-0114983	Allied Insurance Company of America
0140	Nationwide	42579	IA	42-1201931	Allied Property and Casualty Insurance Company
0140	Nationwide	19100	IA	42-6054959	AMCO Insurance Company
0140	Nationwide	29262	TX	74-1061659	Colonial County Mutual Insurance Company
0140	Nationwide	18961	OH	68-0066866	Crestbrook Insurance Company
0140	Nationwide	42587	IA	42-1207150	Depositors Insurance Company
0140	Nationwide	13838	IA	42-0618271	Farmland Mutual Insurance Company
0140	Nationwide	22209	OH	75-6013587	Freedom Specialty Insurance Company
0140	Nationwide	23582	PA	41-0417250	Harleysville Insurance Company
0140	Nationwide	42900	NJ	23-2253669	Harleysville Insurance Company of New Jersey
0140	Nationwide	10674	PA	23-2864924	Harleysville Insurance Company of New York
0140	Nationwide	14516	MI	38-3198542	Harleysville Lake States Insurance Company
0140	Nationwide	64327	PA	23-1580983	Harleysville Life Insurance Company
0140	Nationwide	40983	PA	23-2612951	Harleysville Pennland Insurance Company
0140	Nationwide	35696	PA	23-2384978	Harleysville Preferred Insurance Company
0140	Nationwide	26182	PA	04-1989660	Harleysville Worcester Insurance Company
0140	Nationwide	11991	WI	38-0865250	National Casualty Company
0140	Nationwide	26093	OH	48-0470690	Nationwide Affinity Insurance Company of America
0140	Nationwide	28223	IA	42-1015537	Nationwide Agribusiness Insurance Company
0140	Nationwide	10723	WI	95-0639970	Nationwide Assurance Company
0140	Nationwide	23760	OH	31-4425763	Nationwide General Insurance Company
0140	Nationwide	10070	OH	31-1399201	Nationwide Indemnity Company
0140	Nationwide	25453	WI	95-2130882	Nationwide Insurance Company of America
0140	Nationwide	10948	OH	31-1613686	Nationwide Insurance Company of Florida
0140	Nationwide	92657	OH	31-1000740	Nationwide Life and Annuity Insurance Company
0140	Nationwide	66869	OH	31-4156830	Nationwide Life Insurance Company
0140	Nationwide	42110	TX	75-1780981	Nationwide Lloyds
0140	Nationwide	23779	OH	31-4177110	Nationwide Mutual Fire Insurance Company
0140	Nationwide	23787	OH	31-4177100	Nationwide Mutual Insurance Company
0140	Nationwide	37877	OH	31-0970750	Nationwide Property & Casualty Insurance Company
0140	Nationwide	13999	VT	27-1712056	Olentangy Reinsurance, LLC
0140	Nationwide	15580	OH	31-1117969	Scottsdale Indemnity Company
0140	Nationwide	41297	OH	31-1024978	Scottsdale Insurance Company
0140	Nationwide	10672	AZ	86-0835870	Scottsdale Surplus Lines Insurance Company
0140	Nationwide	13242	TX	74-2286759	Titan Indemnity Company
0140	Nationwide	36269	MI	86-0619597	Titan Insurance Company
0140	Nationwide	42285	CA	95-3750113	Veterinary Pet Insurance Company
0140	Nationwide	10644	IN	34-1785903	Victoria Automobile Insurance Company
0140	Nationwide	42889	OH	34-1394913	Victoria Fire & Casualty Company
0140	Nationwide	10778	OH	34-1842604	Victoria National Insurance Company
0140	Nationwide	10105	OH	34-1777972	Victoria Select Insurance Company
0140	Nationwide	10777	OH	34-1842602	Victoria Specialty Insurance Company
0140	Nationwide	37150	AZ	86-0561941	Western Heritage Insurance Company
4664	PURE	12873	FL	20-8287105	Privilege Underwriters Reciprocal Exchange
4664	PURE	13204	FL	26-3109178	PURE Insurance Company

STATEMENT AS OF SEPTEMBER 30, 2012 OF THE SCOTTSDALE INSURANCE COMPANY

SCHEDULE Y

PART 1A - DETAIL OF INSURANCE HOLDING COMPANY SYSTEM

1	2	3	4	5	6	7	8	9	10	11	12	13	14	15
Group Code	Group Name	NAIC Company Code	Federal ID Number	Federal RSSD	CIK	Name of Securities Exchange if Publicly Traded (U.S. or International)	Names of Parent, Subsidiaries Or Affiliates	Domi-ciliary Location	Relationship to Reporting Entity	Directly Controlled by (Name of Entity/Person)	Type of Control (Ownership, Board, Management, Attorney-in-Fact, Influence, Other)	If Control is Owner-ship Provide Percen-tage	Ultimate Controlling Entity(ies)/Person(s)	*
...0140	Nationwide		31-1486309				10 W. Nationwide, LLC	OH	NIA	Nationwide Realty Investors, Ltd.	Ownership	100.000	Nationwide Mutual Insurance Company	
...0140	Nationwide		31-1486309				101 N. Twentieth St, LLC	OH	NIA	Nationwide Realty Investors, Ltd.	Ownership	100.000	Nationwide Mutual Insurance Company	
...0140	Nationwide		31-1733036				120 Acre Partners, LLC	DE	NIA	Nationwide Realty Investors, Ltd.	Ownership	95.000	Nationwide Mutual Insurance Company	
...0140	Nationwide		26-2451988				1492 Capital, LLC	OH	NIA	Nationwide Mutual Insurance Company	Ownership	100.000	Nationwide Mutual Insurance Company	
...0140	Nationwide		20-1347603				180 E. Broad Partners, LLC	OH	NIA	Nationwide Realty Investors, Ltd.	Ownership	33.330	Nationwide Mutual Insurance Company	1
...0140	Nationwide						3Stone Inflection Fund, LLC	DE	OTH	Other non-Nationwide	n/a		Other non-Nationwide	
...0140	Nationwide		31-1580283				400 West Nationwide Boulevard, LLC	OH	NIA	NWD Investments, LLC	Ownership	100.000	Nationwide Mutual Insurance Company	
...0140	Nationwide		31-1580283				425 West Nationwide Boulevard, LLC	OH	NIA	NWD Investments, LLC	Ownership	100.000	Nationwide Mutual Insurance Company	
...0140	Nationwide		31-1486309				44 Chestnut, LLC	OH	NIA	Nationwide Realty Investors, Ltd.	Ownership	100.000	Nationwide Mutual Insurance Company	
...0140	Nationwide		20-4939866				775 Yard Street Restaurant, LLC	OH	NIA	NRI Equity Land Investments, LLC	Ownership	100.000	Nationwide Mutual Insurance Company	
...0140	Nationwide		20-4939866				775 Yard Street, LLC	OH	NIA	NRI Equity Land Investments, LLC	Ownership	100.000	Nationwide Mutual Insurance Company	
...0140	Nationwide		20-4939866				800 Bobcat Avenue, LLC	OH	NIA	NRI Equity Land Investments, LLC	Ownership	100.000	Nationwide Mutual Insurance Company	
...0140	Nationwide		20-4939866				805 Bobcat Avenue, LLC	OH	NIA	NRI Equity Land Investments, LLC	Ownership	100.000	Nationwide Mutual Insurance Company	
...0140	Nationwide		20-4939866				850 Goodale Blvd., LLC	OH	NIA	NRI Equity Land Investments, LLC	Ownership	100.000	Nationwide Mutual Insurance Company	
...0140	Nationwide						925 Burrell Avenue Acquisitions, LLC							
...0140	Nationwide		20-4939866					OH	NIA	NRI Equity Land Investments, LLC	Ownership	100.000	Nationwide Mutual Insurance Company	
...0140	Nationwide		31-1680808				AD Investments, LLC	OH	NIA	Nationwide Realty Investors, Ltd.	Ownership	60.000	Nationwide Mutual Insurance Company	
...0140	Nationwide		31-1580283				ADTV, LLC	OH	NIA	NWD Investments, LLC	Ownership	100.000	Nationwide Mutual Insurance Company	
...0140	Nationwide						Nationwide Advantage Mortgage Company							
...0140	Nationwide		52-2227314				AGMC Reinsurance, Ltd.	Turk/Caic	JA		Ownership	100.000	Nationwide Mutual Insurance Company	
...0140	Nationwide		42-1011300				ALLIED General Agency Company	JA	JA	AMCO Insurance Company	Ownership	100.000	Nationwide Mutual Insurance Company	
...0140	Nationwide		42-0958655				ALLIED Group, Inc.	JA	NIA	Nationwide Mutual Insurance Company	Ownership	100.000	Nationwide Mutual Insurance Company	
...0140	Nationwide						ALLIED Insurance Company of America (fka Atlantic Floridian Insurance Company)							
...0140	Nationwide	10127	27-0114983					OH	JA	Nationwide Mutual Insurance Company	Ownership	100.000	Nationwide Mutual Insurance Company	
...0140	Nationwide						ALLIED Property and Casualty Insurance Company	JA	JA	ALLIED Group, Inc.	Ownership	100.000	Nationwide Mutual Insurance Company	
...0140	Nationwide	45279	42-1201931					TX	JA	AMCO Insurance Company	Ownership	100.000	Nationwide Mutual Insurance Company	
...0140	Nationwide	19100	42-1527863				ALLIED Texas Agency, Inc.	JA	JA	ALLIED Group, Inc.	Ownership	100.000	Nationwide Mutual Insurance Company	
...0140	Nationwide		42-6054959				AMCO Insurance Company	JA	JA	ALLIED Group, Inc.	Ownership	100.000	Nationwide Mutual Insurance Company	
...0140	Nationwide		59-1031596				American Marine Underwriters, Inc.	FL	JA	Nationwide Mutual Insurance Company	Ownership	100.000	Nationwide Mutual Insurance Company	
...0140	Nationwide		31-1486309				Anderson Meadows, LLC	OH	NIA	Nationwide Realty Investors, Ltd.	Ownership	100.000	Nationwide Mutual Insurance Company	
...0140	Nationwide		31-1580283				Arena District CA I, LLC	OH	NIA	NWD Investments, LLC	Ownership	100.000	Nationwide Mutual Insurance Company	
...0140	Nationwide		90-0280710				Arena District Owners Association	OH	OTH	Other non-Nationwide	n/a		Other non-Nationwide	
...0140	Nationwide		31-1580283				Arena Theatres, LLC	OH	NIA	NWD Investments, LLC	Ownership	100.000	Nationwide Mutual Insurance Company	
...0140	Nationwide						Artesa at Quarry Village, LLC	TX	OTH	Other non-Nationwide	n/a		Other non-Nationwide	
...0140	Nationwide						BCCS Investment Fund LLC	DE	OTH	Nationwide Mutual Insurance Company	Ownership	100.000	Nationwide Mutual Insurance Company	
...0140	Nationwide						Boulevard Inn Limited Liability Company							
...0140	Nationwide		31-1184438					OH	NIA	Nationwide Realty Investors, Ltd.	Ownership	94.800	Nationwide Mutual Insurance Company	
...0140	Nationwide		31-1555487				Broad Street Retail, LLC	DE	NIA	Nationwide Realty Investors, Ltd.	Ownership	60.000	Nationwide Mutual Insurance Company	
...0140	Nationwide						Brooke School Investment Fund, LLC	DE	OTH	Nationwide Mutual Insurance Company	Ownership	100.000	Nationwide Mutual Insurance Company	
...0140	Nationwide						CHP New Markets Investment Fund, LLC				Limited partner /no control	50.000	other non-Nationwide	
...0140	Nationwide							OH	OTH	Nationwide Mutual Insurance Company				
...0140	Nationwide		20-1618232				CNRI-Cannonsport Condominium, LLC	OH	NIA	CNRI-Cannonsport, LLC	Ownership	100.000	Nationwide Mutual Insurance Company	
...0140	Nationwide		20-1618232				CNRI-Cannonsport, LLC	OH	NIA	Nationwide Realty Investors, Ltd.	Ownership	100.000	Nationwide Mutual Insurance Company	
...0140	Nationwide						Co-Investment Fund, L.P.	DE	OTH	Other non-Nationwide	n/a		Other non-Nationwide	
...0140	Nationwide						COLHOC Limited Partnership	OH	NIA	Nationwide Realty Investors, Ltd.	Ownership	30.760	Other non-Nationwide	
...0140	Nationwide						Colonial County Mutual Insurance Company							
...0140	Nationwide	29262	74-1061659					TX	OTH	Other non-Nationwide	contract		Other non-Nationwide	
...0140	Nationwide													
...0140	Nationwide		04-3750770				Continental/North Shore I, L.P.	OH	NIA	Continental/NRI North Shore Investments, LLC	Ownership	100.000	Nationwide Mutual Insurance Company	1

STATEMENT AS OF SEPTEMBER 30, 2012 OF THE SCOTTSDALE INSURANCE COMPANY

SCHEDULE Y
PART 1A - DETAIL OF INSURANCE HOLDING COMPANY SYSTEM

1	2	3	4	5	6	7	8	9	10	11	12	13	14	15
Group Code	Group Name	NAIC Company Code	Federal ID Number	Federal RSSD	CIK	Name of Securities Exchange if Publicly Traded (U.S. or International)	Names of Parent, Subsidiaries Or Affiliates	Domi-ciliary Location	Relationship to Reporting Entity	Directly Controlled by (Name of Entity/Person)	Type of Control (Ownership, Board, Management, Attorney-in-Fact, Influence, Other)	If Control is Owner-ship Provide Percen-tage	Ultimate Controlling Entity(ies)/Person(s)	*
...0140 ...	Nationwide ...		20-0366090 ...				Continental/North Shore II, L.P.	OH.....	NIA.....	Continental/NRI North Shore Investments, LLC	Ownership.....	100.000 ...	Nationwide Mutual Insurance Company1 ...
...0140 ...	Nationwide ...		20-0142724 ...				Continental/NRI North Shore Investments, LLC	OH.....	NIA.....	Nationwide Realty Investors, Ltd.	Ownership.....	50.500 ...	Nationwide Mutual Insurance Company1 ...
...0140 ...	Nationwide ...						Cotton Mill Partners, LLC	VA.....	OTH.....	Nationwide Mutual Insurance Company .	Limited partner /no control	2.000 ...	other non-Nationwide	
...0140 ...	Nationwide ...	18961	68-0066866 ...				Crestbrook Insurance Company	OH.....	JA.....	Nationwide Mutual Insurance Company .	Ownership.....	100.000 ...	Nationwide Mutual Insurance Company .	
...0140 ...	Nationwide ...		31-1486309 ...				Crewville, Ltd.	OH.....	NIA.....	Nationwide Realty Investors, Ltd.	Ownership.....	100.000 ...	Nationwide Mutual Insurance Company .	
...0140 ...	Nationwide ...	42587	42-1207150 ...				Depositors Insurance Company	JA.....	JA.....	ALLIED Group, Inc.	Ownership.....	100.000 ...	Nationwide Mutual Insurance Company .	
...0140 ...	Nationwide ...		33-0096671 ...				DVM Insurance Agency, Inc.	CA.....	NIA.....	Veterinary Pet Insurance Company	Ownership.....	100.000 ...	Nationwide Mutual Insurance Company .	
...0140 ...	Nationwide ...		20-1945276 ...				East of Madison, LLC	DE.....	NIA.....	120 Acre Partners, Ltd.	Ownership.....	24.910 ...	Nationwide Mutual Insurance Company1 ...
...0140 ...	Nationwide ...						ELH Investment LLC	DE.....	OTH.....	Nationwide Mutual Insurance Company .	Other		Nationwide Mutual Insurance Company2 ...
...0140 ...	Nationwide ...	13838	42-0618271 ...				Farmland Mutual Insurance Company	JA.....	OTH.....	Other non-Nationwide	debt		Other non-Nationwide	
...0140 ...	Nationwide ...	22209	75-6013587 ...				Freedom Specialty Insurance Company (fka Atlantic Insurance Company)	OH.....	JA.....	Scottsdale Insurance Company	Ownership.....	100.000 ...	Nationwide Mutual Insurance Company .	
...0140 ...	Nationwide ...		31-4187660 ...				Nationwide Better Health Holding Company, LLC	OH.....	NIA.....	Nationwide Better Health Holding Company, LLC	Ownership.....	100.000 ...	Nationwide Mutual Insurance Company .	
...0140 ...	Nationwide ...		13-4933584 ...				Gates McDonald of Ohio, LLC			Gates McDonald of Ohio, LLC	Ownership.....	100.000 ...	Nationwide Mutual Insurance Company .	
...0140 ...	Nationwide ...		76-0810957 ...				Gates, McDonald & Company of New York, Inc.	NY.....	NIA.....	Gates McDonald of Ohio, LLC	Ownership.....	100.000 ...	Nationwide Mutual Insurance Company .	
...0140 ...	Nationwide ...		76-0810957 ...				GatesMcDonald DTAO, LLC	OH.....	NIA.....	Gates McDonald of Ohio, LLC	Ownership.....	100.000 ...	Nationwide Mutual Insurance Company .	
...0140 ...	Nationwide ...		76-0810958 ...				GatesMcDonald DTC, LLC	OH.....	NIA.....	Gates McDonald of Ohio, LLC	Ownership.....	100.000 ...	Nationwide Mutual Insurance Company .	
...0140 ...	Nationwide ...		31-1478706 ...				GatesMcDonald Health Plus, LLC	OH.....	NIA.....	Gates McDonald of Ohio, LLC	Ownership.....	100.000 ...	Nationwide Mutual Insurance Company .	
...0140 ...	Nationwide ...		20-4939866 ...				Grandview Yard Hotel Holdings, LLC ...	OH.....	NIA.....	NRI Equity Land Investments, LLC	Ownership.....	100.000 ...	Nationwide Mutual Insurance Company .	
...0140 ...	Nationwide ...		20-4939866 ...				Grandview Yard Hotel, LLC	OH.....	NIA.....	NRI Equity Land Investments, LLC	Ownership.....	100.000 ...	Nationwide Mutual Insurance Company .	
...0140 ...	Nationwide ...		51-0241172 ...				Grandview Yard Hotel, LLC	OH.....	NIA.....	Grandview Yard Hotel Holdings, LLC ...	Ownership.....	100.000 ...	Nationwide Mutual Insurance Company .	
...0140 ...	Nationwide ...						Harleysville Group, Inc.	DE.....	NIA.....	Nationwide Mutual Insurance Company .	Ownership.....	100.000 ...	Nationwide Mutual Insurance Company .	
...0140 ...	Nationwide ...	23582	41-0417250 ...				Harleysville Insurance Company	PA.....	JA.....	Nationwide Mutual Insurance Company .	Ownership.....	100.000 ...	Nationwide Mutual Insurance Company .	
...0140 ...	Nationwide ...	33235	16-1075588 ...				Harleysville Insurance Company of New Jersey	NJ.....	JA.....	Nationwide Mutual Insurance Company .	Ownership.....	100.000 ...	Nationwide Mutual Insurance Company .	
...0140 ...	Nationwide ...	10674	23-2864924 ...				Harleysville Insurance Company of New York	PA.....	JA.....	Harleysville Group, Inc.	Ownership.....	100.000 ...	Nationwide Mutual Insurance Company .	
...0140 ...	Nationwide ...	14516	38-3198542 ...				Harleysville Lake States Insurance Company	MI.....	JA.....	Harleysville Group, Inc.	Ownership.....	100.000 ...	Nationwide Mutual Insurance Company .	
...0140 ...	Nationwide ...	64327	23-1580983 ...				Harleysville Life Insurance Company ..	PA.....	JA.....	Nationwide Mutual Insurance Company .	Ownership.....	100.000 ...	Nationwide Mutual Insurance Company .	
...0140 ...	Nationwide ...	40983	23-2612951 ...				Harleysville Pennland Insurance Company	PA.....	JA.....	Nationwide Mutual Insurance Company .	Ownership.....	100.000 ...	Nationwide Mutual Insurance Company .	
...0140 ...	Nationwide ...	35896	23-2384978 ...				Harleysville Preferred Insurance Company	PA.....	JA.....	Nationwide Mutual Insurance Company .	Ownership.....	100.000 ...	Nationwide Mutual Insurance Company .	
...0140 ...	Nationwide ...		51-0259283 ...				Harleysville Group, Inc.	PA.....	JA.....	Harleysville Group, Inc.	Ownership.....	100.000 ...	Nationwide Mutual Insurance Company .	
...0140 ...	Nationwide ...						Harleysville Services, Inc.	DE.....	NIA.....	Nationwide Mutual Insurance Company .	Ownership.....	100.000 ...	Nationwide Mutual Insurance Company .	
...0140 ...	Nationwide ...	26182	04-1989660 ...				Harleysville Worcester Insurance Company	PA.....	JA.....	Nationwide Mutual Insurance Company .	Ownership.....	100.000 ...	Nationwide Mutual Insurance Company .	
...0140 ...	Nationwide ...		23-2403000 ...				Harleysville Preferred Insurance Company	PA.....	JA.....	Harleysville Group, Inc.	Ownership.....	100.000 ...	Nationwide Mutual Insurance Company .	
...0140 ...	Nationwide ...						Harleysville, Ltd.	PA.....	NIA.....	Harleysville Preferred Insurance Company	Ownership.....	49.500 ...	Nationwide Mutual Insurance Company .	
...0140 ...	Nationwide ...		23-2403000 ...				Harleysville, Ltd.	PA.....	NIA.....	Harleysville Worcester Insurance Company	Ownership.....	49.500 ...	Nationwide Mutual Insurance Company .	
...0140 ...	Nationwide ...		23-2403000 ...				Harleysville, Ltd.	PA.....	NIA.....	Harleysville Group, Inc.	Ownership.....	1.000 ...	Nationwide Mutual Insurance Company .	
...0140 ...	Nationwide ...		32-0051216 ...				Hideaway Properties Corp.	CA.....	OTH.....	Nationwide Realty Investors, Ltd.	Ownership.....	50.000 ...	Nationwide Mutual Insurance Company1 ...
...0140 ...	Nationwide ...		31-0871532 ...				Insurance Intermediaries, Inc.	OH.....	JA.....	Nationwide Mutual Insurance Company .	Ownership.....	100.000 ...	Nationwide Mutual Insurance Company .	
...0140 ...	Nationwide ...		23-2882311 ...				Insurance Management Services, L.P. ...	PA.....	NIA.....	Harleysville Insurance Company	Ownership.....	1.000 ...	Nationwide Mutual Insurance Company .	
...0140 ...	Nationwide ...						Harleysville Preferred Insurance Company			Harleysville Preferred Insurance Company	Ownership.....	99.000 ...	Nationwide Mutual Insurance Company .	
...0140 ...	Nationwide ...		23-2882311 ...				Insurance Management Services, L.P. ...	PA.....	NIA.....	Company	Ownership.....	99.000 ...	Nationwide Mutual Insurance Company .	
...0140 ...	Nationwide ...		31-1486309 ...				Jerome Village Company, LLC	OH.....	NIA.....	Nationwide Realty Investors, Ltd.	Ownership.....	100.000 ...	Nationwide Mutual Insurance Company .	

STATEMENT AS OF SEPTEMBER 30, 2012 OF THE SCOTTSDALE INSURANCE COMPANY

SCHEDULE Y
PART 1A - DETAIL OF INSURANCE HOLDING COMPANY SYSTEM

1	2	3	4	5	6	7	8	9	10	11	12	13	14	15
Group Code	Group Name	NAIC Company Code	Federal ID Number	Federal RSSD	CIK	Name of Securities Exchange if Publicly Traded (U.S. or International)	Names of Parent, Subsidiaries Or Affiliates	Domi-ciliary Location	Relationship to Reporting Entity	Directly Controlled by (Name of Entity/Person)	Type of Control (Ownership, Board, Management, Attorney-in-Fact, Influence, Other)	If Control is Owner-ship Provide Percen-tage	Ultimate Controlling Entity(ies)/Person(s)	*
...0140	Nationwide		31-1486309				Jerome Village Master Property Owners Association	OH	NIA	Jerome Village Company, LLC	Ownership	100.000	Nationwide Mutual Insurance Company	
...0140	Nationwide		31-1486309				Jerome Village Residential Property Owners Association, Inc.	OH	NIA	Jerome Village Company, LLC	Ownership	100.000	Nationwide Mutual Insurance Company	
...0140	Nationwide		56-3789189				Leaguers Investment Fund LLC	DE	OTH	Nationwide Mutual Insurance Company	Other	100.000	Nationwide Mutual Insurance Company	2
...0140	Nationwide		56-3789187				Life REO Holdings, LLC	OH	NIA	Nationwide Life Insurance Company	Ownership	100.000	Nationwide Mutual Insurance Company	
...0140	Nationwide		74-1395229				Life REO Holdings, LLC	OH	NIA	Nationwide Life Insurance Company	Ownership	100.000	Nationwide Mutual Insurance Company	
...0140	Nationwide		74-1395229				Lone Star General Agency, Inc.	TX	JA	Nationwide Mutual Insurance Company	Ownership	100.000	Nationwide Mutual Insurance Company	
...0140	Nationwide		38-0865250				Match School Investment Fund, LLC	DE	OTH	Nationwide Mutual Insurance Company	Ownership	100.000	Nationwide Mutual Insurance Company	
...0140	Nationwide	11991	38-0865250				National Casualty Company	WI	JA	Nationwide Mutual Insurance Company	Ownership	100.000	Nationwide Mutual Insurance Company	
...0140							National Casualty Company of America, Ltd.	GB	JA	National Casualty Company	Ownership	100.000	Nationwide Mutual Insurance Company	
...0140	Nationwide		42-1154244				Nationwide Advantage Mortgage Company	JA	NIA	AMCO Insurance Company	Ownership	87.300	Nationwide Mutual Insurance Company	
...0140	Nationwide		42-1154244				Nationwide Advantage Mortgage Company	JA	NIA	ALLIED Property & Casualty Insurance Company	Ownership	8.470	Nationwide Mutual Insurance Company	
...0140	Nationwide		42-1154244				Nationwide Advantage Mortgage Company	JA	NIA	Depositors Insurance Company	Ownership	4.230	Nationwide Mutual Insurance Company	
...0140	Nationwide	26093	48-0470690				Nationwide Affinity Insurance Company of America	OH	JA	Nationwide Mutual Insurance Company	Ownership	100.000	Nationwide Mutual Insurance Company	
...0140	Nationwide	28223	42-1015537				Nationwide Agribusiness Insurance Company	JA	JA	Nationwide Mutual Insurance Company	Ownership	100.000	Nationwide Mutual Insurance Company	
...0140	Nationwide		20-5976272				Nationwide Alternative Investments, LLC	OH	NIA	Nationwide Mutual Insurance Company	Ownership	100.000	Nationwide Mutual Insurance Company	
...0140	Nationwide		31-1578869				Nationwide Arena, LLC	OH	NIA	NRI Arena, LLC	Ownership	90.000	Nationwide Mutual Insurance Company	
...0140	Nationwide		31-1578869				Nationwide Arena, LLC	OH	NIA	Nationwide Realty Investors, LLC	Ownership	90.000	Nationwide Mutual Insurance Company	
...0140	Nationwide		20-8670712				Nationwide Asset Management, LLC	OH	NIA	Nationwide Mutual Insurance Company	Ownership	100.000	Nationwide Mutual Insurance Company	
...0140	Nationwide		20-8670712				Nationwide Asset Management, LLC	OH	DS	Nationwide Mutual Insurance Company	Ownership	100.000	Nationwide Mutual Insurance Company	
...0140	Nationwide	10723	95-0639970				Nationwide Assurance Company	WI	JA	Nationwide Mutual Insurance Company	Ownership	100.000	Nationwide Mutual Insurance Company	
...0140	Nationwide		31-1592130				Nationwide Bank	FED	OTH	Nationwide Financial Services, Inc.	Ownership	100.000	Nationwide Mutual Insurance Company	
...0140	Nationwide		52-1776258				Nationwide Better Health (Ohio), LLC	OH	NIA	Nationwide Better Health Holding Company, LLC	Ownership	100.000	Nationwide Mutual Insurance Company	
...0140	Nationwide		11-3766032				Nationwide Better Health Holding Company, LLC	OH	NIA	Nationwide Corporation	Ownership	75.000	Nationwide Mutual Insurance Company	
...0140	Nationwide		11-3766032				Nationwide Better Health Holding Company, LLC	OH	NIA	Nationwide Mutual Fire Insurance Company	Ownership	25.000	Nationwide Mutual Insurance Company	
...0140	Nationwide		31-1036287				Nationwide Cash Management Company	OH	NIA	Nationwide Mutual Insurance Company	Ownership	100.000	Nationwide Mutual Insurance Company	
...0140	Nationwide		31-1752320				Nationwide Community Development Corporation, LLC	OH	NIA	Nationwide Indemnity Company	Ownership	33.000	Nationwide Mutual Insurance Company	
...0140	Nationwide		31-4416546				Nationwide Corporation	OH	NIA	Nationwide Mutual Insurance Company	Ownership	95.200	Nationwide Mutual Insurance Company	
...0140	Nationwide		31-4416546				Nationwide Corporation	OH	NIA	Nationwide Mutual Fire Insurance Company	Ownership	4.800	Nationwide Mutual Insurance Company	
...0140	Nationwide		04-3679407				Nationwide Emerging Managers, LLC	DE	NIA	Nationwide SA Capital Trust	Ownership	100.000	Nationwide Mutual Insurance Company	
...0140	Nationwide		05-0630007				Nationwide Exclusive Agent Risk Purchasing Group, LLC	OH	NIA	Insurance Intermediaries, Inc.	Ownership	100.000	Nationwide Mutual Insurance Company	
...0140	Nationwide		31-1667326				Nationwide Financial Assignment Company	OH	NIA	Nationwide Life Insurance Company	Ownership	100.000	Nationwide Mutual Insurance Company	
...0140	Nationwide		23-2412039				Nationwide Financial General Agency, Inc.	PA	NIA	NFS Distributors, Inc.	Ownership	100.000	Nationwide Mutual Insurance Company	
...0140	Nationwide		31-1316276				Nationwide Financial Institution Distributors Agency, Inc.	DE	NIA	NFS Distributors, Inc.	Ownership	100.000	Nationwide Mutual Insurance Company	

STATEMENT AS OF SEPTEMBER 30, 2012 OF THE SCOTTSDALE INSURANCE COMPANY

SCHEDULE Y
PART 1A - DETAIL OF INSURANCE HOLDING COMPANY SYSTEM

1	2	3	4	5	6	7	8	9	10	11	12	13	14	15
Group Code	Group Name	NAIC Company Code	Federal ID Number	Federal RSSD	CIK	Name of Securities Exchange if Publicly Traded (U.S. or International)	Names of Parent, Subsidiaries Or Affiliates	Domi-ciliary Location	Relationship to Reporting Entity	Directly Controlled by (Name of Entity/Person)	Type of Control (Ownership, Board, Management, Attorney-in-Fact, Influence, Other)	If Control is Owner-ship Provide Percen-tage	Ultimate Controlling Entity(ies)/Person(s)	*
...0140 ...	Nationwide		31-6554353				Nationwide Financial Services Capital Trust	DE	NIA	Nationwide Financial Services, Inc. ...	Ownership.....	100.000 ...	Nationwide Mutual Insurance Company
...0140 ...	Nationwide		31-1486870				Nationwide Financial Services, Inc. ...	DE	NIA	Nationwide Corporation	Ownership.....	100.000 ...	Nationwide Mutual Insurance Company
...0140 ...	Nationwide		52-6969857				Nationwide Fund Advisors	DE	NIA	Nationwide Financial Services, Inc. ...	Ownership.....	100.000 ...	Nationwide Mutual Insurance Company
...0140 ...	Nationwide		31-1748721				Nationwide Fund Distributors LLC	DE	NIA	NFS Distributors, Inc.	Ownership.....	100.000 ...	Nationwide Mutual Insurance Company
...0140 ...	Nationwide		31-0900518				Nationwide Fund Management LLC	DE	NIA	NFS Distributors, Inc.	Ownership.....	100.000 ...	Nationwide Mutual Insurance Company
...0140 ...	Nationwide	23760	31-4425763				Nationwide General Insurance Company	OH	JA	Nationwide Mutual Insurance Company .	Ownership.....	100.000 ...	Nationwide Mutual Insurance Company
...0140 ...	Nationwide		31-1570938				Nationwide Global Holdings, Inc.	OH	NIA	Nationwide Corporation	Ownership.....	100.000 ...	Nationwide Mutual Insurance Company
...0140 ...	Nationwide		04-3732385				Nationwide Global Ventures, Inc.	DE	NIA	Nationwide Asset Management Holdings, Inc.	Ownership.....	100.000 ...	Nationwide Mutual Insurance Company
...0140 ...	Nationwide		31-1399201				Nationwide Indemnity Company	OH	JA	Nationwide Mutual Insurance Company .	Ownership.....	100.000 ...	Nationwide Mutual Insurance Company
...0140 ...	Nationwide	25453	95-2130882				Nationwide Insurance Company of America	WI	JA	ALLIED Group, Inc.	Ownership.....	100.000 ...	Nationwide Mutual Insurance Company
...0140 ...	Nationwide	10948	31-1613686				Nationwide Insurance Company of Florida	OH	JA	Nationwide Mutual Insurance Company .	Ownership.....	100.000 ...	Nationwide Mutual Insurance Company
...0140 ...	Nationwide		31-6022301				Nationwide Insurance Foundation	OH	OTH	Other non-Nationwide	n/a		Other non-Nationwide
...0140 ...	Nationwide		41-2206199				Nationwide Investment Advisors, LLC ..	OH	NIA	Nationwide Life Insurance Company	Ownership.....	100.000 ...	Nationwide Mutual Insurance Company
...0140 ...	Nationwide		73-0988442				Nationwide Investment Services Corporation	OK	NIA	Nationwide Life Insurance Company	Ownership.....	100.000 ...	Nationwide Mutual Insurance Company
...0140 ...	Nationwide	92657	31-1000740				Nationwide Life and Annuity Insurance Company	OH	JA	Nationwide Life Insurance Company	Ownership.....	100.000 ...	Nationwide Mutual Insurance Company
...0140 ...	Nationwide	66869	31-4156830				Nationwide Life Insurance Company	OH	JA	Nationwide Financial Services, Inc. ...	Ownership.....	100.000 ...	Nationwide Mutual Insurance Company
...0140 ...	Nationwide		13-4212969				Nationwide Life Tax Credit Partners 2002-A, LLC	OH	NIA	Nationwide Life Insurance Company	Other.....		Nationwide Mutual Insurance Company
...0140 ...	Nationwide		01-0749754				Nationwide Life Tax Credit Partners 2002-B, LLC	OH	NIA	Nationwide Life Insurance Company	Other.....		Nationwide Mutual Insurance Company
...0140 ...	Nationwide		03-0498148				Nationwide Life Tax Credit Partners 2002-C, LLC	OH	NIA	Nationwide Life Insurance Company	Other.....		Nationwide Mutual Insurance Company
...0140 ...	Nationwide		54-2113175				Nationwide Life Tax Credit Partners 2003-A, LLC	OH	NIA	Nationwide Life Insurance Company	Other.....		Nationwide Mutual Insurance Company
...0140 ...	Nationwide		58-2672725				Nationwide Life Tax Credit Partners 2003-B, LLC	OH	NIA	Nationwide Life Insurance Company	Other.....		Nationwide Mutual Insurance Company
...0140 ...	Nationwide		20-0357951				Nationwide Life Tax Credit Partners 2003-C, LLC	OH	NIA	Nationwide Life Insurance Company	Other.....		Nationwide Mutual Insurance Company
...0140 ...	Nationwide		20-0382144				Nationwide Life Tax Credit Partners 2004-A, LLC	OH	NIA	Nationwide Life Insurance Company	Other.....		Nationwide Mutual Insurance Company
...0140 ...	Nationwide		20-0745944				Nationwide Life Tax Credit Partners 2004-B, LLC	OH	NIA	Nationwide Life Insurance Company	Other.....		Nationwide Mutual Insurance Company
...0140 ...	Nationwide		20-0745965				Nationwide Life Tax Credit Partners 2004-C, LLC	OH	NIA	Nationwide Life Insurance Company	Other.....		Nationwide Mutual Insurance Company
...0140 ...	Nationwide		20-1128408				Nationwide Life Tax Credit Partners 2004-D, LLC	OH	NIA	Nationwide Life Insurance Company	Other.....		Nationwide Mutual Insurance Company
...0140 ...	Nationwide		20-1128472				Nationwide Life Tax Credit Partners 2004-E, LLC	OH	NIA	Nationwide Life Insurance Company	Other.....		Nationwide Mutual Insurance Company
...0140 ...	Nationwide		20-1918935				Nationwide Life Tax Credit Partners 2004-F, LLC	OH	NIA	Nationwide Life Insurance Company	Other.....		Nationwide Mutual Insurance Company
...0140 ...	Nationwide		20-2303694				Nationwide Life Tax Credit Partners 2005-A, LLC	OH	NIA	Nationwide Life Insurance Company	Other.....		Nationwide Mutual Insurance Company
...0140 ...	Nationwide		20-2303602				Nationwide Life Tax Credit Partners 2005-B, LLC	OH	NIA	Nationwide Life Insurance Company	Other.....		Nationwide Mutual Insurance Company

STATEMENT AS OF SEPTEMBER 30, 2012 OF THE SCOTTSDALE INSURANCE COMPANY

SCHEDULE Y
PART 1A - DETAIL OF INSURANCE HOLDING COMPANY SYSTEM

1	2	3	4	5	6	7	8	9	10	11	12	13	14	15
Group Code	Group Name	NAIC Company Code	Federal ID Number	Federal RSSD	CIK	Name of Securities Exchange if Publicly Traded (U.S. or International)	Names of Parent, Subsidiaries Or Affiliates	Domi-ciliary Location	Relationship to Reporting Entity	Directly Controlled by (Name of Entity/Person)	Type of Control (Ownership, Board, Management, Attorney-in-Fact, Influence, Other)	If Control is Owner-ship Provide Per-centage	Ultimate Controlling Entity(ies)/Person(s)	*
...0140 ...	Nationwide		20-2450960				Nationwide Life Tax Credit Partners 2005-C, LLC	OH.....	NIA.....	Nationwide Life Insurance Company	Other.....		Nationwide Mutual Insurance Company	
...0140 ...	Nationwide		20-2451052				Nationwide Life Tax Credit Partners 2005-D, LLC	OH.....	NIA.....	Nationwide Life Insurance Company	Other.....		Nationwide Mutual Insurance Company	
...0140 ...	Nationwide		20-2774223				Nationwide Life Tax Credit Partners 2005-E, LLC	OH.....	NIA.....	Nationwide Life Insurance Company	Other.....		Nationwide Mutual Insurance Company	
...0140 ...	Nationwide		21-1288836				Nationwide Life Tax Credit Partners 2007-A, LLC	OH.....	NIA.....	Nationwide Life Insurance Company	Other.....		Nationwide Mutual Insurance Company	
...0140 ...	Nationwide		26-3427373				Nationwide Life Tax Credit Partners 2009-A, LLC	OH.....	NIA.....	Nationwide Life Insurance Company	Other.....		Nationwide Mutual Insurance Company	
...0140 ...	Nationwide		26-3427435				Nationwide Life Tax Credit Partners 2009-B, LLC	OH.....	NIA.....	Nationwide Life Insurance Company	Other.....		Nationwide Mutual Insurance Company	
...0140 ...	Nationwide		26-3427479				Nationwide Life Tax Credit Partners 2009-C, LLC	OH.....	NIA.....	Nationwide Life Insurance Company	Other.....		Nationwide Mutual Insurance Company	
...0140 ...	Nationwide		26-3427525				Nationwide Life Tax Credit Partners 2009-D, LLC	OH.....	NIA.....	Nationwide Life Insurance Company	Other.....		Nationwide Mutual Insurance Company	
...0140 ...	Nationwide		26-4737055				Nationwide Life Tax Credit Partners 2009-E, LLC	OH.....	NIA.....	Nationwide Life Insurance Company	Other.....		Nationwide Mutual Insurance Company	
...0140 ...	Nationwide		26-4737157				Nationwide Life Tax Credit Partners 2009-F, LLC	OH.....	NIA.....	Nationwide Life Insurance Company	Other.....		Nationwide Mutual Insurance Company	
...0140 ...	Nationwide		27-1362364				Nationwide Life Tax Credit Partners 2009-I, LLC	OH.....	NIA.....	Nationwide Life Insurance Company	Other.....		Nationwide Mutual Insurance Company	
...0140 ...	Nationwide						Nationwide Life Tax Credit Partners No. 1, LLC	OH.....	NIA.....	Nationwide Life Insurance Company	Other.....		Nationwide Mutual Insurance Company	
...0140 ...	Nationwide42110	75-1780981				Nationwide Lloyds	TX.....	JA.....	n/a	contract		Nationwide Mutual Insurance Company	
...0140 ...	Nationwide						Nationwide Mutual Capital I, LLC	DE.....	NIA.....	Nationwide Mutual Capital, LLC	Ownership.....	..100.000	Nationwide Mutual Insurance Company	
...0140 ...	Nationwide		75-3191025				Nationwide Mutual Capital, LLC	OH.....	NIA.....	Nationwide Mutual Insurance Company	Ownership.....	..100.000	Nationwide Mutual Insurance Company	
...0140 ...	Nationwide23779	82-0549218				Nationwide Mutual Fire Insurance Company	OH.....	OTH.....	Other non-Nationwide	n/a		Other non-Nationwide	
...0140 ...	Nationwide23787	31-4177100				Nationwide Mutual Insurance Company	OH.....	UDP.....	Other non-Nationwide	n/a		Other non-Nationwide	
...0140 ...	Nationwide		34-2012765				Nationwide Private Equity Fund, LLC	OH.....	NIA.....	Nationwide Mutual Insurance Company	Ownership.....	..100.000	Nationwide Mutual Insurance Company	
...0140 ...	Nationwide		34-2012765				Nationwide Private Equity Fund, LLC	OH.....	NIA.....	Nationwide Mutual Insurance Company	Ownership.....	..100.000	Nationwide Mutual Insurance Company	
...0140 ...	Nationwide37877	31-0970750				Nationwide Property and Casualty Insurance Company	OH.....	JA.....	Nationwide Mutual Insurance Company	Ownership.....	..100.000	Nationwide Mutual Insurance Company	
...0140 ...	Nationwide						Nationwide Property Protection Services, LLC	OH.....	NIA.....	Nationwide Services Company, LLC	Ownership.....	..100.000	Nationwide Mutual Insurance Company	
...0140 ...	Nationwide		31-1486309				Nationwide Realty Investors, Ltd.	OH.....	NIA.....	Nationwide Mutual Insurance Company	Ownership.....	..95.790	Nationwide Mutual Insurance Company	
...0140 ...	Nationwide		31-1486309				Nationwide Realty Investors, Ltd.	OH.....	NIA.....	Nationwide Indemnity Company	Ownership.....	..4.210	Nationwide Mutual Insurance Company	
...0140 ...	Nationwide		31-1486309				Nationwide Realty Management, LLC	OH.....	NIA.....	Nationwide Realty Investors, Ltd.	Ownership.....	..100.000	Nationwide Mutual Insurance Company	
...0140 ...	Nationwide		04-3833929				Nationwide Realty Management, LLC	OH.....	NIA.....	Nationwide Realty Investors, Ltd.	Ownership.....	..100.000	Nationwide Mutual Insurance Company	
...0140 ...	Nationwide						Nationwide Realty Services, Ltd.	OH.....	NIA.....	Nationwide Mutual Insurance Company	Ownership.....	..100.000	Nationwide Mutual Insurance Company	
...0140 ...	Nationwide		06-0987812				Nationwide Retirement Solutions Insurance Agency, Inc.	MA.....	JA.....	Nationwide Retirement Solutions, Inc.	Ownership.....	..100.000	Nationwide Mutual Insurance Company	
...0140 ...	Nationwide		73-0948330				Nationwide Retirement Solutions, Inc.	DE.....	NIA.....	NFS Distributors, Inc.	Ownership.....	..100.000	Nationwide Mutual Insurance Company	
...0140 ...	Nationwide		86-0924069				Nationwide Retirement Solutions, Inc. of Arizona	AZ.....	NIA.....	Nationwide Retirement Solutions, Inc.	Ownership.....	..100.000	Nationwide Mutual Insurance Company	
...0140 ...	Nationwide		31-1331479				Nationwide Retirement Solutions, Inc. of Ohio	OH.....	NIA.....	Nationwide Retirement Solutions, Inc.	contract		Nationwide Mutual Insurance Company	
...0140 ...	Nationwide		74-2200854				Nationwide Retirement Solutions, Inc. of Texas	TX.....	NIA.....	Nationwide Retirement Solutions, Inc.	contract		Nationwide Mutual Insurance Company	

STATEMENT AS OF SEPTEMBER 30, 2012 OF THE SCOTTSDALE INSURANCE COMPANY

SCHEDULE Y

PART 1A - DETAIL OF INSURANCE HOLDING COMPANY SYSTEM

1	2	3	4	5	6	7	8	9	10	11	12	13	14	15
Group Code	Group Name	NAIC Company Code	Federal ID Number	Federal RSSD	CIK	Name of Securities Exchange if Publicly Traded (U.S. or International)	Names of Parent, Subsidiaries Or Affiliates	Domi-ciliary Location	Relationship to Reporting Entity	Directly Controlled by (Name of Entity/Person)	Type of Control (Ownership, Board, Management, Attorney-in-Fact, Influence, Other)	If Control is Owner-ship Provide Percen-tage	Ultimate Controlling Entity(ies)/Person(s)	*
0140	Nationwide		52-6969856				Nationwide SA Capital Trust	DE	NIA	NWD Investment Management, Inc.	Ownership	100.000	Nationwide Mutual Insurance Company	
0140	Nationwide		42-1373380				Nationwide Sales Solutions, Inc.	JA	NIA	ALLIED Group, Inc.	Ownership	100.000	Nationwide Mutual Insurance Company	
0140	Nationwide		36-2434406				Nationwide Securities, LLC	OH	NIA	NFS Distributors, Inc.	Ownership	100.000	Nationwide Mutual Insurance Company	
0140	Nationwide		31-4177100				Nationwide Services Company, LLC	OH	NIA	Nationwide Mutual Insurance Company	Ownership	100.000	Nationwide Mutual Insurance Company	
0140	Nationwide		27-0743545				Nationwide Tax Credit Partners 2009-G, LLC	OH	NIA	Nationwide Mutual Insurance Company	Other		Nationwide Mutual Insurance Company	
0140	Nationwide		27-0768791				Nationwide Tax Credit Partners 2009-H, LLC	OH	NIA	Nationwide Mutual Insurance Company	Other		Nationwide Mutual Insurance Company	
0140	Nationwide		11-3651828				ND La Quinta Partners, LLC	DE	NIA	Nationwide Realty Investors, Ltd.	Ownership	94.500	Nationwide Mutual Insurance Company	
0140	Nationwide						Newhouse Capital Partners II, LLC	DE	NIA	Nationwide Global Ventures, Inc.	Ownership	80.000	Nationwide Mutual Insurance Company	
0140	Nationwide						Newhouse Capital Partners II, LLC	DE	NIA	Nationwide Global Ventures, Inc.	Ownership	99.000	Nationwide Mutual Insurance Company	
0140	Nationwide						Newhouse Capital Partners, LLC	DE	NIA	NWD Investment Management, Inc.	Ownership	19.000	Nationwide Mutual Insurance Company	
0140	Nationwide						Newhouse Capital Partners, LLC	DE	NIA	Nationwide Mutual Insurance Company	Ownership	70.000	Nationwide Mutual Insurance Company	
0140	Nationwide						Newhouse Capital Partners, LLC	DE	NIA	Nationwide Mutual Fire Insurance Company	Ownership	10.000	Nationwide Mutual Insurance Company	
0140	Nationwide		31-1630871				NFS Distributors, Inc.	DE	NIA	Nationwide Financial Services, Inc.	Ownership	100.000	Nationwide Mutual Insurance Company	
0140	Nationwide		14-1892640				NHT XII Tax Credit Fund, LLC	DC	NIA	Nationwide Life Insurance Company	Ownership	49.990	Nationwide Mutual Insurance Company	1
0140	Nationwide		14-1892640				NHT XII Tax Credit Fund, LLC	DC	NIA	Nationwide Assurance Company	Ownership	25.000	Nationwide Mutual Insurance Company	1
0140	Nationwide		14-1892640				NHT XII Tax Credit Fund, LLC	DC	NIA	Nationwide Mutual Insurance Company	Ownership	25.000	Nationwide Mutual Insurance Company	1
0140	Nationwide		26-0351004				North Bank Condominium Home Owners Association	OH	OTH	Other non-Nationwide	n/a		Other non-Nationwide	
0140	Nationwide		20-4939866				North of Third, LLC	OH	NIA	NRI Equity Land Investments, LLC		100.000	Nationwide Mutual Insurance Company	
0140	Nationwide		26-4083207				Northstar Commercial Development, LLC	OH	NIA	Nationwide Realty Investors, Ltd.	Ownership	50.000	Nationwide Mutual Insurance Company	1
0140	Nationwide		26-4083354				Northstar Residential Development, LLC	OH	NIA	Nationwide Realty Investors, Ltd.	Ownership	50.000	Nationwide Mutual Insurance Company	1
0140	Nationwide		31-1486309				NRI 12325 Copper Way, LLC	OH	NIA	Nationwide Realty Investors, Ltd.	Ownership	100.000	Nationwide Mutual Insurance Company	
0140	Nationwide		31-1486309				NRI 220 Schrock, LLC	OH	NIA	Nationwide Realty Investors, Ltd.	Ownership	100.000	Nationwide Mutual Insurance Company	
0140	Nationwide		31-1486309				NRI Arena, LLC	OH	NIA	Nationwide Realty Investors, Ltd.	Ownership	100.000	Nationwide Mutual Insurance Company	
0140	Nationwide		31-1486309				NRI Brooksedg, LLC	OH	NIA	Nationwide Realty Investors, Ltd.	Ownership	100.000	Nationwide Mutual Insurance Company	
0140	Nationwide		31-1486309				NRI Builders, LLC	OH	NIA	Nationwide Realty Investors, Ltd.	Ownership	100.000	Nationwide Mutual Insurance Company	
0140	Nationwide		31-1486309				NRI Communities/Charlotte, LLC	OH	NIA	Nationwide Realty Investors, Ltd.	Ownership	100.000	Nationwide Mutual Insurance Company	
0140	Nationwide		31-1486309				NRI Communities/Harris Blvd., LLC	OH	NIA	Nationwide Realty Investors, Ltd.	Ownership	100.000	Nationwide Mutual Insurance Company	
0140	Nationwide		31-1486309				NRI Cramer Creek, LLC	OH	NIA	Nationwide Realty Investors, Ltd.	Ownership	100.000	Nationwide Mutual Insurance Company	
0140	Nationwide		20-4939866				NRI Equity Land Investments, LLC	OH	NIA	Nationwide Realty Investors, Ltd.	Ownership	80.000	Nationwide Mutual Insurance Company	
0140	Nationwide						NRI Equity Tampa, LLC	OH	OTH	Nationwide Realty Investors, Ltd.	Ownership	50.000	Nationwide Mutual Insurance Company	
0140	Nationwide		31-1486309				NRI Maxtown, LLC	OH	OTH	Nationwide Realty Investors, Ltd.	Ownership	100.000	Nationwide Mutual Insurance Company	
0140	Nationwide		30-4939866				NRI Office Ventures, Ltd.	OH	NIA	Nationwide Realty Investors, Ltd.	Ownership	100.000	Nationwide Mutual Insurance Company	
0140	Nationwide		31-1486309				NRI Telecom, LLC	OH	NIA	NWD Investments, LLC	Ownership	100.000	Nationwide Mutual Insurance Company	
0140	Nationwide						NTCIF-2011 Georgia State Investor, LLC	OH	NIA	Nationwide Property and Casualty Company	Ownership	100.000	Nationwide Mutual Insurance Company	
0140	Nationwide		45-3123274				NTCIF-2011, LLC	OH	NIA	Nationwide Life Insurance Company	Ownership	100.000	Nationwide Mutual Insurance Company	
0140	Nationwide		90-0729552				NTCP 2011-A, LLC	OH	NIA	Nationwide Life Insurance Company	Ownership	100.000	Nationwide Mutual Insurance Company	
0140	Nationwide		27-4700627				NTCP 2011-B, LLC	OH	NIA	Nationwide Life Insurance Company	Ownership	100.000	Nationwide Mutual Insurance Company	
0140	Nationwide		46-0747898				NTCP 2012-A, LLC	OH	NIA	Nationwide Life Insurance Company	Ownership	100.000	Nationwide Mutual Insurance Company	
0140	Nationwide		46-0741029				NW - Camerom, LLC	OH	NIA	NW-REI, LLC	Ownership	100.000	Nationwide Mutual Insurance Company	
0140	Nationwide		45-2724980				NW-2100 Latham, LLC	DE	NIA	NW-REI, LLC	Ownership	100.000	Nationwide Mutual Insurance Company	
0140	Nationwide		27-2076516				NW-Arvida, LLC	OH	NIA	NW-REI, LLC	Ownership	100.000	Nationwide Mutual Insurance Company	
0140	Nationwide		36-4702264				NW-Bayshore, LLC	OH	NIA	NW-REI, LLC	Ownership	100.000	Nationwide Mutual Insurance Company	
0140	Nationwide		45-5159092				NW-Bencap, LLC	OH	NIA	NW-REI, LLC	Ownership	100.000	Nationwide Mutual Insurance Company	
0140	Nationwide		46-0999932				NW-CNC Coppell, LLC	DE	NIA	Nationwide Mutual Insurance Company	Ownership	100.000	Nationwide Mutual Insurance Company	

STATEMENT AS OF SEPTEMBER 30, 2012 OF THE SCOTTSDALE INSURANCE COMPANY

SCHEDULE Y
PART 1A - DETAIL OF INSURANCE HOLDING COMPANY SYSTEM

1	2	3	4	5	6	7	8	9	10	11	12	13	14	15
Group Code	Group Name	NAIC Company Code	Federal ID Number	Federal RSSD	CIK	Name of Securities Exchange if Publicly Traded (U.S. or International)	Names of Parent, Subsidiaries Or Affiliates	Domi-ciliary Location	Relationship to Reporting Entity	Directly Controlled by (Name of Entity/Person)	Type of Control (Ownership, Board, Management, Attorney-in-Fact, Influence, Other)	If Control is Owner-ship Provide Percen-tage	Ultimate Controlling Entity(ies)/Person(s)	*
.0140	Nationwide		27-4431267				NW-Collection, LLC	DE	NIA	NW-REI, LLC	Ownership	100.000	Nationwide Mutual Insurance Company	
.0140	Nationwide		27-2764819				NW-Commerce Center, LLC	DE	NIA	NW REI, LLC	Ownership	100.000	Nationwide Mutual Insurance Company	
.0140	Nationwide						NW-Corvallis, LLC	OH	NIA	NW-REI, LLC	Ownership	100.000	Nationwide Mutual Insurance Company	
.0140	Nationwide		31-1580283				NWD 205 Vine, LLC	OH	NIA	NWD Investments, LLC	Ownership	100.000	Nationwide Mutual Insurance Company	
.0140	Nationwide		31-1580283				NWD 225 Nationwide, LLC	OH	NIA	NWD Investments, LLC	Ownership	100.000	Nationwide Mutual Insurance Company	
.0140	Nationwide		31-1580283				NWD 230 West, LLC	OH	NIA	NWD Investments, LLC	Ownership	100.000	Nationwide Mutual Insurance Company	
.0140	Nationwide		31-1580283				NWD 265 Neil, LLC	OH	NIA	NWD Investments, LLC	Ownership	100.000	Nationwide Mutual Insurance Company	
.0140	Nationwide		31-1580283				NWD 275 Marconi, LLC	OH	NIA	NWD Investments, LLC	Ownership	100.000	Nationwide Mutual Insurance Company	
.0140	Nationwide		31-1580283				NWD 295 McConnell, LLC	OH	NIA	NWD Investments, LLC	Ownership	100.000	Nationwide Mutual Insurance Company	
.0140	Nationwide		31-1580283				NWD 300 Neil, LLC	OH	NIA	NWD Investments, LLC	Ownership	100.000	Nationwide Mutual Insurance Company	
.0140	Nationwide		31-1580283				NWD 300 Spring, LLC	OH	NIA	NWD Investments, LLC	Ownership	100.000	Nationwide Mutual Insurance Company	
.0140	Nationwide		31-1580283				NWD 355 McConnell, LLC	OH	NIA	NWD Investments, LLC	Ownership	100.000	Nationwide Mutual Insurance Company	
.0140	Nationwide		31-1580283				NWD 425 Nationwide, LLC	OH	NIA	NWD Investments, LLC	Ownership	100.000	Nationwide Mutual Insurance Company	
.0140	Nationwide		31-1580283				NWD 500 Nationwide, LLC	OH	NIA	NWD Investments, LLC	Ownership	100.000	Nationwide Mutual Insurance Company	
.0140	Nationwide		31-1580283				NWD Arena Crossing, LLC	OH	NIA	NWD Investments, LLC	Ownership	100.000	Nationwide Mutual Insurance Company	
.0140	Nationwide		31-1580283				NWD Arena District I, LLC	OH	NIA	NWD Investments, LLC	Ownership	100.000	Nationwide Mutual Insurance Company	
.0140	Nationwide		31-1580283				NWD Arena District II, LLC	OH	NIA	NWD Investments, LLC	Ownership	100.000	Nationwide Mutual Insurance Company	
.0140	Nationwide		31-1580283				NWD Arena District MM, LLC	OH	NIA	NWD Investments, LLC	Ownership	100.000	Nationwide Mutual Insurance Company	
.0140	Nationwide		31-1580283				NWD Arena District PW, LLC	OH	NIA	NWD Investments, LLC	Ownership	100.000	Nationwide Mutual Insurance Company	
.0140	Nationwide		31-1580283				NWD Arena District V, LLC	OH	NIA	NWD Investments, LLC	Ownership	100.000	Nationwide Mutual Insurance Company	
.0140	Nationwide		04-3679396				NWD Asset Management Holdings, Inc.	DE	NIA	Nationwide SA Capital Trust	Ownership	100.000	Nationwide Mutual Insurance Company	
.0140	Nationwide		31-1580283				NWD Athletic Club, LLC	OH	NIA	NWD Investments, LLC	Ownership	100.000	Nationwide Mutual Insurance Company	
.0140	Nationwide		31-1636299				NWD Investment Management, Inc.	DE	NIA	NWD Management & Research Trust	Ownership	100.000	Nationwide Mutual Insurance Company	
.0140	Nationwide		31-1580283				NWD Investments, LLC	OH	NIA	Nationwide Realty Investors, Ltd.	Ownership	80.000	Nationwide Mutual Insurance Company	
.0140	Nationwide		25-6711069				NWD Management & Research Trust	DE	NIA	Nationwide Corporation	Ownership	100.000	Nationwide Mutual Insurance Company	
.0140	Nationwide		90-0732898				NW-Dulles, LLC	OH	NIA	NW-REI, LLC	Ownership	100.000	Nationwide Mutual Insurance Company	
.0140	Nationwide						NW-Eastpark, LLC	OH	NIA	NW-REI, LLC	Ownership	100.000	Nationwide Mutual Insurance Company	
.0140	Nationwide		45-2647960				NW-Grapevine, LLC	OH	NIA	NW-REI, LLC	Ownership	100.000	Nationwide Mutual Insurance Company	
.0140	Nationwide		27-4750498				NW-Harvard Row, LLC	OH	NIA	NW-REI, LLC	Ownership	100.000	Nationwide Mutual Insurance Company	
.0140	Nationwide		26-3336778				NW-Highland Park, LLC	DE	NIA	NW-REI, LLC	Ownership	100.000	Nationwide Mutual Insurance Company	
.0140	Nationwide		27-4387718				NW-Highmeadow, LLC	DE	NIA	NW-REI, LLC	Ownership	100.000	Nationwide Mutual Insurance Company	
.0140	Nationwide		45-5408178				NW-Kentwood Towne Center, LLC	OH	NIA	NW-REI, LLC	Ownership	100.000	Nationwide Mutual Insurance Company	
.0140	Nationwide		27-4749640				NW-Kohls Market, LLC	OH	NIA	NW-REI, LLC	Ownership	100.000	Nationwide Mutual Insurance Company	
.0140	Nationwide		45-5314607				NW-Lovers Lane, LLC	OH	NIA	NW-REI, LLC	Ownership	100.000	Nationwide Mutual Insurance Company	
.0140	Nationwide		45-4630497				NW-Mueller II, LLC	OH	NIA	NW-REI, LLC	Ownership	100.000	Nationwide Mutual Insurance Company	
.0140	Nationwide		27-4749848				NW-Northridge, LLC	OH	NIA	NW-REI, LLC	Ownership	100.000	Nationwide Mutual Insurance Company	
.0140	Nationwide		46-1089165				NW-Oakley Station, LLC	OH	NIA	NW-REI, LLC	Ownership	100.000	Nationwide Mutual Insurance Company	
.0140	Nationwide		45-5388656				NW-Park Memorial, LLC	OH	NIA	NW-REI, LLC	Ownership	100.000	Nationwide Mutual Insurance Company	
.0140	Nationwide		27-4749937				NW-Park Village, LLC	OH	NIA	NW-REI, LLC	Ownership	100.000	Nationwide Mutual Insurance Company	
.0140	Nationwide		26-1903919				NW-REI, LLC	DE	NIA	Nationwide Mutual Insurance Company	Ownership	100.000	Nationwide Mutual Insurance Company	
.0140	Nationwide		27-4387647				NW-Ross Hall, LLC	DE	NIA	NW-REI, LLC	Ownership	100.000	Nationwide Mutual Insurance Company	
.0140	Nationwide		45-4439608				NW-Sanibel Beach Place, LLC	OH	NIA	NW-REI, LLC	Ownership	100.000	Nationwide Mutual Insurance Company	
.0140	Nationwide		45-5159117				NW-South Park, LLC	OH	NIA	NW-REI, LLC	Ownership	100.000	Nationwide Mutual Insurance Company	
.0140	Nationwide						NW-Southline, LLC	OH	NIA	NW-REI, LLC	Ownership	100.000	Nationwide Mutual Insurance Company	
.0140	Nationwide		27-4749587				NW-Taylor Farmer Jack, LLC	OH	NIA	NW-REI, LLC	Ownership	100.000	Nationwide Mutual Insurance Company	
.0140	Nationwide		46-1100378				NW-Triangle, LLC	OH	NIA	NW-REI, LLC	Ownership	100.000	Nationwide Mutual Insurance Company	
.0140	Nationwide		27-4387563				NW-University, LLC	DE	NIA	NW-REI, LLC	Ownership	100.000	Nationwide Mutual Insurance Company	
.0140	Nationwide		46-1077615				NW-West Ave., LLC	OH	NIA	NW-REI, LLC	Ownership	100.000	Nationwide Mutual Insurance Company	
.0140	Nationwide		31-0947092				OCH Company, LLC	OH	NIA	Nationwide Realty Investors, Ltd.	Ownership	100.000	Nationwide Mutual Insurance Company	
.0140	Nationwide		31-0947092				Ohio Center Hotel Company, Ltd.	OH	NIA	Nationwide Realty Investors, Ltd.	Ownership	56.250	Nationwide Mutual Insurance Company	
.0140	Nationwide		26-0263012				Old Track Street Owners Association	OH	OTH	Other non-Nationwide	n/a		Other non-Nationwide	

12.7

12.7

12.7

12.7

STATEMENT AS OF SEPTEMBER 30, 2012 OF THE SCOTTSDALE INSURANCE COMPANY

SCHEDULE Y

PART 1A - DETAIL OF INSURANCE HOLDING COMPANY SYSTEM

1	2	3	4	5	6	7	8	9	10	11	12	13	14	15
Group Code	Group Name	NAIC Company Code	Federal ID Number	Federal RSSD	CIK	Name of Securities Exchange if Publicly Traded (U.S. or International)	Names of Parent, Subsidiaries Or Affiliates	Domi-ciliary Location	Relationship to Reporting Entity	Directly Controlled by (Name of Entity/Person)	Type of Control (Ownership, Board, Management, Attorney-in-Fact, Influence, Other)	If Control is Owner-ship Provide Percen-tage	Ultimate Controlling Entity(ies)/Person(s)	*
...0140 ...	Nationwide10644 ...	34-1785903	Victoria Automobile Insurance Company	..JN.....	...JA.....	Victoria Fire & Casulaty Insurance Company	Ownership.....	..100.000 ...	Nationwide Mutual Insurance Company
...0140 ...	Nationwide42889 ...	34-1394913	Victoria Fire & Casualty CompanyOH.....	...JA.....	THI Holdings (Delaware), Inc.	Ownership.....	..100.000 ...	Nationwide Mutual Insurance Company
...0140 ...	Nationwide10778 ...	34-1842604	Victoria National Insurance CompanyOH.....	...JA.....	Victoria Fire & Casulaty Insurance Company	Ownership.....	..100.000 ...	Nationwide Mutual Insurance Company
...0140 ...	Nationwide10105 ...	34-1777972	Victoria Select Insurance CompanyOH.....	...JA.....	Victoria Fire & Casulaty Insurance Company	Ownership.....	..100.000 ...	Nationwide Mutual Insurance Company
...0140 ...	Nationwide10777 ...	34-1842602	Victoria Specialty Insurance Company	..OH.....	...JA.....	Victoria Fire & Casulaty Insurance Company	Ownership.....	..100.000 ...	Nationwide Mutual Insurance Company
...0140 ...	Nationwide37150 ...	86-0561941	Western Heritage Insurance CompanyAZ.....	...JA.....	Scottsdale Insurance Company	Ownership.....	..100.000 ...	Nationwide Mutual Insurance Company
...0140 ...	Nationwide	Westport Capital Partners IICT.....	...OTH.....	Nationwide Mutual Insurance Company	Investor member / no control71.000 ...	other non-Nationwide
...0140 ...	Nationwide	74-2767942	Whitehall Holdings, Inc.TX.....	...NIA.....	THI Holdings (Delaware), Inc.	Ownership.....	..100.000 ...	Nationwide Mutual Insurance Company
...0140 ...	Nationwide	59-3471667	WI of Florida, Inc.FL.....	...NIA.....	Whitehall Holdings, Inc.	Ownership.....	..100.000 ...	Nationwide Mutual Insurance Company
...0140 ...	Nationwide	31-1486309	Wilson Road Developers, LLCOH.....	...NIA.....	Nationwide Realty Investors, Ltd.	Ownership.....	..100.000 ...	Nationwide Mutual Insurance Company
...0140 ...	Nationwide	Zais Zephyr A-4, LLCDE.....	...OTH.....	Nationwide Life Insurance Company	limited member / no control60.000 ...	other non-Nationwide

Asterisk	Explanation
1	For the purposes of this schedule, Nationwide presumed control of these entities because they are owned by at least 10% and are not wholly-owned by a Nationwide entity.
2	Other ownership indicates a non-ownership circumstance by a Nationwide entity.

STATEMENT AS OF SEPTEMBER 30, 2012 OF THE SCOTTSDALE INSURANCE COMPANY

PART 1 - LOSS EXPERIENCE

Line of Business		Current Year to Date			4 Prior Year to Date Direct Loss Percentage
		1 Direct Premiums Earned	2 Direct Losses Incurred	3 Direct Loss Percentage	
1.	Fire	30,961,853	8,003,100	25.8	21.8
2.	Allied Lines	81,730,416	45,390,356	55.5	52.7
3.	Farmowners multiple peril	1,959,887	520,915	26.6	57.2
4.	Homeowners multiple peril	47,631,400	25,593,443	53.7	66.1
5.	Commercial multiple peril	211,003,814	115,845,612	54.9	53.1
6.	Mortgage guaranty				
8.	Ocean marine	26,214	(774,492)	(2,954.5)	785.9
9.	Inland marine	10,222,795	2,585,203	25.3	14.6
10.	Financial guaranty				
11.1	Medical professional liability - occurrence		2,821		
11.2	Medical professional liability - claims-made	26,063	(70,332)	(269.9)	
12.	Earthquake	3,140,404			(35.3)
13.	Group accident and health				
14.	Credit accident and health				
15.	Other accident and health				
16.	Workers' compensation				
17.1	Other liability - occurrence	332,240,206	144,804,568	43.6	46.5
17.2	Other liability - claims-made	111,774,618	34,267,886	30.7	26.8
17.3	Excess workers' compensation				
18.1	Products liability - occurrence	12,966,703	8,777,298	67.7	74.0
18.2	Products liability - claims-made	288,139	74,000	25.7	2.1
19.1,19.2	Private passenger auto liability				
19.3,19.4	Commercial auto liability	31,844,204	19,643,113	61.7	71.0
21.	Auto physical damage	6,035,139	4,197,110	69.5	52.0
22.	Aircraft (all perils)				
23.	Fidelity	2,335			(116.1)
24.	Surety				
26.	Burglary and theft	172,778	(67,809)	(39.2)	(34.1)
27.	Boiler and machinery	1,429,466	655,028	45.8	54.0
28.	Credit	649,503	303,649	46.8	478.3
29.	International				
30.	Warranty	5,465,369	4,371,844	80.0	83.1
31.	Reinsurance - Nonproportional Assumed Property	XXX	XXX	XXX	XXX
32.	Reinsurance - Nonproportional Assumed Liability	XXX	XXX	XXX	XXX
33.	Reinsurance - Nonproportional Assumed Financial Lines	XXX	XXX	XXX	XXX
34.	Aggregate write-ins for other lines of business				
35.	Totals	889,571,306	414,123,313	46.6	47.8
DETAILS OF WRITE-INS					
3401.				
3402.				
3403.				
3498.	Summary of remaining write-ins for Line 34 from overflow page				
3499.	Totals (Lines 3401 through 3403 plus 3498)(Line 34 above)				

PART 2 - DIRECT PREMIUMS WRITTEN

Line of Business		1 Current Quarter	2 Current Year to Date	3 Prior Year Year to Date
1.	Fire	12,099,062	34,111,252	29,669,380
2.	Allied Lines	31,972,999	89,463,459	78,370,494
3.	Farmowners multiple peril	746,523	2,070,206	1,890,705
4.	Homeowners multiple peril	19,372,582	52,544,368	46,474,428
5.	Commercial multiple peril	72,718,614	232,076,157	202,024,488
6.	Mortgage guaranty			
8.	Ocean marine	25,362	32,499	26,355
9.	Inland marine	2,037,723	6,177,262	12,787,361
10.	Financial guaranty			
11.1	Medical professional liability - occurrence			
11.2	Medical professional liability - claims-made		34,600	
12.	Earthquake	2,630,007	8,208,952	60,143
13.	Group accident and health			
14.	Credit accident and health			
15.	Other accident and health			
16.	Workers' compensation			
17.1	Other liability - occurrence	114,654,090	353,349,305	318,147,715
17.2	Other liability - claims-made	49,842,878	122,976,231	100,823,482
17.3	Excess workers' compensation			
18.1	Products liability - occurrence	4,661,494	13,525,302	10,852,988
18.2	Products liability - claims-made	241,291	318,099	272,009
19.1,19.2	Private passenger auto liability			
19.3,19.4	Commercial auto liability	13,949,960	39,043,559	27,332,573
21.	Auto physical damage	2,096,690	6,724,572	5,271,443
22.	Aircraft (all perils)			
23.	Fidelity	1,650	2,986	2,628
24.	Surety			
26.	Burglary and theft	69,370	185,021	155,808
27.	Boiler and machinery	384,431	1,645,569	1,467,736
28.	Credit	182,378	526,059	685,437
29.	International			
30.	Warranty	1,160,625	4,652,971	4,928,819
31.	Reinsurance - Nonproportional Assumed Property	XXX	XXX	XXX
32.	Reinsurance - Nonproportional Assumed Liability	XXX	XXX	XXX
33.	Reinsurance - Nonproportional Assumed Financial Lines	XXX	XXX	XXX
34.	Aggregate write-ins for other lines of business			
35.	Totals	328,847,729	967,668,429	841,243,992
DETAILS OF WRITE-INS				
3401.			
3402.			
3403.			
3498.	Summary of remaining write-ins for Line 34 from overflow page			
3499.	Totals (Lines 3401 through 3403 plus 3498)(Line 34 above)			

STATEMENT AS OF SEPTEMBER 30, 2012 OF THE SCOTTSDALE INSURANCE COMPANY

PART 3 (000 omitted)

LOSS AND LOSS ADJUSTMENT EXPENSE RESERVES SCHEDULE

	1	2	3	4	5	6	7	8	9	10	11	12	13									
Years in Which Losses Occurred	Prior Year-End Known Case Loss and LAE Reserves	Prior Year-End IBNR Loss and LAE Reserves	Total Prior Year-End Loss and LAE Reserves (Cols. 1+2)	2012 Loss and LAE Payments on Claims Reported as of Prior Year-End	2012 Loss and LAE Payments on Claims Unreported as of Prior Year-End	Total 2012 Loss and LAE Payments (Cols. 4+5)	Q.S. Date Known Case Loss and LAE Reserves on Claims Reported and Open as of Prior Year End	Q.S. Date Known Case Loss and LAE Reserves on Claims Reported or Reopened Subsequent to Prior Year End	Q.S. Date IBNR Loss and LAE Reserves	Total Q.S. Loss and LAE Reserves (Cols.7+8+9)	Prior Year-End Known Case Loss and LAE Reserves Developed (Savings)/ Deficiency (Cols.4+7 minus Col. 1)	Prior Year-End IBNR Loss and LAE Reserves Developed (Savings)/ Deficiency (Cols. 5+8+9 minus Col. 2)	Prior Year-End Total Loss and LAE Reserve Developed (Savings)/ Deficiency (Cols. 11+12)									
1. 2009 + Prior	90,017	49,462	139,479	35,622	1,051	36,673	65,761	1,445	33,349	100,555	11,366	(13,617)	(2,251)									
2. 2010	46,704	30,109	76,813	22,697	1,380	24,077	29,995	2,279	18,601	50,875	5,988	(7,849)	(1,861)									
3. Subtotals 2010 + Prior	136,721	79,571	216,292	58,319	2,431	60,750	95,756	3,724	51,950	151,430	17,354	(21,466)	(4,112)									
4. 2011	86,132	75,284	161,416	50,560	20,560	71,120	50,516	6,750	34,692	91,958	14,944	(13,282)	1,662									
5. Subtotals 2011 + Prior	222,853	154,855	377,708	108,879	22,991	131,870	146,272	10,474	86,642	243,388	32,298	(34,748)	(2,450)									
6. 2012	XXX	XXX	XXX	XXX	179,111	179,111	XXX	65,391	68,691	134,082	XXX	XXX	XXX									
7. Totals	222,853	154,855	377,708	108,879	202,102	310,981	146,272	75,865	155,333	377,470	32,298	(34,748)	(2,450)									
8. Prior Year-End Surplus As Regards Policyholders	678,769										Col. 11, Line 7 As % of Col. 1 Line 7	Col. 12, Line 7 As % of Col. 2 Line 7	Col. 13, Line 7 As % of Col. 3 Line 7									
											1. 14.5	2. (22.4)	3. (0.6)									
											Col. 13, Line 7 As a % of Col. 1 Line 8											
											4. (0.4)											

STATEMENT AS OF SEPTEMBER 30, 2012 OF THE SCOTTSDALE INSURANCE COMPANY

SUPPLEMENTAL EXHIBITS AND SCHEDULES INTERROGATORIES

The following supplemental reports are required to be filed as part of your statement filing. However, in the event that your company does not transact the type of business for which the special report must be filed, your response of NO to the specific interrogatory will be accepted in lieu of filing a "NONE" report and a bar code will be printed below. If the supplement is required of your company but is not being filed for whatever reason enter SEE EXPLANATION and provide an explanation following the interrogatory questions.

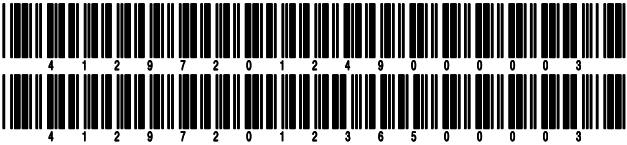
	Response
1. Will the Trusteed Surplus Statement be filed with the state of domicile and the NAIC with this statement?	NO
2. Will Supplement A to Schedule T (Medical Professional Liability Supplement) be filed with this statement?	YES
3. Will the Medicare Part D Coverage Supplement be filed with the state of domicile and the NAIC with this statement?	NO
4. Will the Director and Officer Supplement be filed with the state of domicile and the NAIC with this statement?	YES

Explanations:

1.
3.

Bar Codes:

1. Trusteed Surplus Statement [Document Identifier 490]
3. Medicare Part D Coverage Supplement [Document Identifier 365]



STATEMENT AS OF SEPTEMBER 30, 2012 OF THE SCOTTSDALE INSURANCE COMPANY

OVERFLOW PAGE FOR WRITE-INS

Additional Write-ins for Assets Line 25

		Current Statement Date			4 December 31 Prior Year Net Admitted Assets
		1 Assets	2 Nonadmitted Assets	3 Net Admitted Assets (Cols. 1 - 2)	
2504.	Funds held equity pools & associations	6,402,459		6,402,459	
2505.	Recoupment receivable	1,783,764		1,783,764	
2506.	Third party administrator receivable	30,243		30,243	
2597.	Summary of remaining write-ins for Line 25 from overflow page	8,216,466		8,216,466	

Additional Write-ins for Liabilities Line 25

		1 Current Statement Date	2 December 31, Prior Year
2504.	Miscellaneous liabilities	166,751	152,911
2505.	Escrow liability	761,181	
2506.	State surcharge/recoupment payable	358,053	
2507.	Funds held equity pools & associations		717
2508.	Pooling expense payable		791,957
2597.	Summary of remaining write-ins for Line 25 from overflow page	1,285,985	945,585

SCHEDULE A - VERIFICATION

Real Estate

	1	2
	Year to Date	Prior Year Ended December 31
1. Book/adjusted carrying value, December 31 of prior year		
2. Cost of acquired:		
2.1 Actual cost at time of acquisition		
2.2 Additional investment made after acquisition		
3. Current year change in encumbrances		
4. Total gain (loss) on disposals		
5. Deduct amounts received on disposals		
6. Total foreign exchange change in book/adjusted carrying value		
7. Deduct current year's other than temporary impairment recognized		
8. Deduct current year's depreciation		
9. Book/adjusted carrying value at the end of current period (Lines 1+2+3+4-5+6-7-8)		
10. Deduct total nonadmitted amounts		
11. Statement value at end of current period (Line 9 minus Line 10)		

SCHEDULE B - VERIFICATION

Mortgage Loans

	1	2
	Year to Date	Prior Year Ended December 31
1. Book value/recorded investment excluding accrued interest, December 31 of prior year	3,209,179	3,369,016
2. Cost of acquired:		
2.1 Actual cost at time of acquisition		
2.2 Additional investment made after acquisition		
3. Capitalized deferred interest and other		
4. Accrual of discount		
5. Unrealized valuation increase (decrease)		
6. Total gain (loss) on disposals		
7. Deduct amounts received on disposals	306,120	159,837
8. Deduct amortization of premium and mortgage interest points and commitment fees		
9. Total foreign exchange change in book value/recorded investment excluding accrued interest		
10. Deduct current year's other than temporary impairment recognized		
11. Book value/recorded investment excluding accrued interest at end of current period (Lines 1+2+3+4+5+6-7-8+9-10)	2,903,059	3,209,179
12. Total valuation allowance	(5,412)	(15,897)
13. Subtotal (Line 11 plus Line 12)	2,897,647	3,193,282
14. Deduct total nonadmitted amounts		
15. Statement value at end of current period (Line 13 minus Line 14)	2,897,647	3,193,282

SCHEDULE BA - VERIFICATION

Other Long-Term Invested Assets

	1	2
	Year to Date	Prior Year Ended December 31
1. Book/adjusted carrying value, December 31 of prior year		
2. Cost of acquired:		
2.1 Actual cost at time of acquisition		
2.2 Additional investment made after acquisition		
3. Capitalized deferred interest and other		
4. Accrual of discount		
5. Unrealized valuation increase (decrease)		
6. Total gain (loss) on disposals		
7. Deduct amounts received on disposals		
8. Deduct amortization of premium and depreciation		
9. Total foreign exchange change in book/adjusted carrying value		
10. Deduct current year's other than temporary impairment recognized		
11. Book/adjusted carrying value at end of current period (Lines 1+2+3+4+5+6-7-8+9-10)		
12. Deduct total nonadmitted amounts		
13. Statement value at end of current period (Line 11 minus Line 12)		

SCHEDULE D - VERIFICATION

Bonds and Stocks

	1	2
	Year to Date	Prior Year Ended December 31
1. Book/adjusted carrying value of bonds and stocks, December 31 of prior year	1,091,625,645	1,104,380,610
2. Cost of bonds and stocks acquired	80,184,102	129,994,090
3. Accrual of discount	1,217,209	1,378,670
4. Unrealized valuation increase (decrease)	26,283,206	8,383,522
5. Total gain (loss) on disposals	(213,652)	644,964
6. Deduct consideration for bonds and stocks disposed of	76,553,261	149,598,587
7. Deduct amortization of premium	2,571,566	3,477,433
8. Total foreign exchange change in book/adjusted carrying value	296,550	(80,191)
9. Deduct current year's other than temporary impairment recognized		
10. Book/adjusted carrying value at end of current period (Lines 1+2+3+4+5-6-7+8-9)	1,120,268,233	1,091,625,645
11. Deduct total nonadmitted amounts		
12. Statement value at end of current period (Line 10 minus Line 11)	1,120,268,233	1,091,625,645

STATEMENT AS OF SEPTEMBER 30, 2012 OF THE SCOTTSDALE INSURANCE COMPANY

SCHEDULE D - PART 1B

Showing the Acquisitions, Dispositions and Non-Trading Activity
During the Current Quarter for all Bonds and Preferred Stock by Rating Class

	1 Book/Adjusted Carrying Value Beginning of Current Quarter	2 Acquisitions During Current Quarter	3 Dispositions During Current Quarter	4 Non-Trading Activity During Current Quarter	5 Book/Adjusted Carrying Value End of First Quarter	6 Book/Adjusted Carrying Value End of Second Quarter	7 Book/Adjusted Carrying Value End of Third Quarter	8 Book/Adjusted Carrying Value December 31 Prior Year
BONDS								
1. Class 1 (a)	797,022,025	6,542,614	15,838,064	(1,781,419)	812,314,631	797,022,025	785,945,156	822,474,324
2. Class 2 (a)	106,649,450	11,235,690	15,562,549	5,293,504	48,989,837	106,649,450	107,616,095	50,639,558
3. Class 3 (a)	1,095,339	5,063,800		(5,064,651)	1,096,103	1,095,339	1,094,488	1,119,199
4. Class 4 (a)	3,730,168	3,741,760	3,741,760	(75,357)	17,313,320	3,730,168	3,654,811	17,319,494
5. Class 5 (a)	103,969		9,874	5,262	111,738	103,969	99,357	229,616
6. Class 6 (a)								
7. Total Bonds	908,600,951	26,583,864	35,152,247	(1,622,661)	879,825,629	908,600,951	898,409,907	891,782,191
PREFERRED STOCK								
8. Class 1								
9. Class 2								
10. Class 3								
11. Class 4								
12. Class 5								
13. Class 6								
14. Total Preferred Stock								
15. Total Bonds and Preferred Stock	908,600,951	26,583,864	35,152,247	(1,622,661)	879,825,629	908,600,951	898,409,907	891,782,191

(a) Book/Adjusted Carrying Value column for the end of the current reporting period includes the following amount of non-rated short-term and cash equivalent bonds by NAIC designation: NAIC 1 \$; NAIC 2 \$; NAIC 3 \$;
NAIC 4 \$; NAIC 5 \$; NAIC 6 \$

SCHEDULE DA - PART 1

Short-Term Investments

	1	2	3	4	5
	Book/Adjusted Carrying Value	Par Value	Actual Cost	Interest Collected Year-to-Date	Paid for Accrued Interest Year-to-Date
9199999 Totals	77,878,147	xxx	77,878,147	558	

SCHEDULE DA - VERIFICATION

Short-Term Investments

	1	2
	Year To Date	Prior Year Ended December 31
1. Book/adjusted carrying value, December 31 of prior year	64,257,609	78,143,085
2. Cost of short-term investments acquired	1,979,578,512	2,251,780,214
3. Accrual of discount		
4. Unrealized valuation increase (decrease)		
5. Total gain (loss) on disposals		
6. Deduct consideration received on disposals	1,965,957,974	2,265,665,690
7. Deduct amortization of premium		
8. Total foreign exchange change in book/adjusted carrying value		
9. Deduct current year's other than temporary impairment recognized		
10. Book/adjusted carrying value at end of current period (Lines 1+2+3+4+5-6-7+8-9)	77,878,147	64,257,609
11. Deduct total nonadmitted amounts		
12. Statement value at end of current period (Line 10 minus Line 11)	77,878,147	64,257,609

Schedule DB - Part A - Verification - Options, Caps, Floors, Collars, Swaps and Forwards
N O N E

Schedule DB - Part B - Verification - Futures Contracts
N O N E

Schedule DB - Part C - Section 1 - Replication (Synthetic Asset) Transactions (RSATs) Open
N O N E

Schedule DB-Part C-Section 2-Reconciliation of Replication (Synthetic Asset) Transactions Open
N O N E

Schedule DB - Verification - Book/Adjusted Carrying Value, Fair Value and Potential Exposure of
Derivatives
N O N E

Schedule E - Verification - Cash Equivalents
N O N E

Schedule A - Part 2 - Real Estate Acquired and Additions Made
N O N E

Schedule A - Part 3 - Real Estate Disposed
N O N E

STATEMENT AS OF SEPTEMBER 30, 2012 OF THE SCOTTSDALE INSURANCE COMPANY

SCHEDULE B - PART 2

Showing All Mortgage Loans ACQUIRED AND ADDITIONS MADE During the Current Quarter

[illegible]

SCHEDULE B - PART 3

Showing All Mortgage Loans DISPOSED, Transferred or Repaid During the Current Quarter

1 Loan Number	Location		4 Loan Type	5 Date Acquired	6 Disposal Date	7 Book Value/ Recorded Investment Excluding Accrued Interest Prior Year	Change in Book Value/Recorded Investment						14 Book Value/ Recorded Investment Excluding Accrued Interest on Disposal	15 Consid-eration	16 Foreign Exchange Gain (Loss) on Disposal	17 Realized Gain (Loss) on Disposal	18 Total Gain (Loss) on Disposal
	2 City	3 State					8 Unrealized Valuation Increase (Decrease)	9 Current Year's (Amortization)/Accretion	10 Current Year's Other Than Temporary Impairment Recognized	11 Capitalized Deferred Interest and Other	12 Total Change in Book Value (8+9-10+11)	13 Total Foreign Exchange Change in Book Value					
00-9000147	SAN DIEGO	CA09/03/200208/31/2012	183,780							180,621	180,621			
0199999. Mortgages closed by repayment						183,780							180,621	180,621			
00-1000999	AURORA	CO03/03/2004		830,387							3,609	3,609			
00-1001090	MASON	OH12/20/2002		1,717,584							10,588	10,588			
00-1001233	HOUSTON	TX11/20/2002		477,427							27,231	27,231			
0299999. Mortgages with partial repayments						3,025,398							41,427	41,427			
0599999 - Totals						3,209,178							222,048	222,048			

Schedule BA - Part 2 - Other Long-Term Invested Assets Acquired

N O N E

Schedule BA - Part 3 - Other Long-Term Invested Assets Disposed, Transferred or Repaid

N O N E

STATEMENT AS OF SEPTEMBER 30, 2012 OF THE SCOTTSDALE INSURANCE COMPANY

SCHEDULE D - PART 3

Show All Long-Term Bonds and Stock Acquired During the Current Quarter

1	2	3	4	5	6	7	8	9	10
CUSIP Identification	Description	Foreign	Date Acquired	Name of Vendor	Number of Shares of Stock	Actual Cost	Par Value	Paid for Accrued Interest and Dividends	NAIC Designation or Market Indicator (a)
874458-HM-7	Tallahassee FL Cap Bd Rev Preref 201208/02/2012	Tax Free Exchange396,596390,0006,554	1FE
874458-HU-9	Tallahassee FL Cap Bd Rev Unref 2012 508/02/2012	Tax Free Exchange1,046,0171,030,00017,310	1FE
3199999. Subtotal - Bonds - U.S. Special Revenues						1,442,613	1,420,000	23,864	XXX
23317H-AA-0	DDR Corp Sr Nt 4.625% 07/15/2207/10/2012	Wachovia Capital Markets Inc5,063,8005,000,00013,490	2FE
71944B-AF-2	Physician Oncology Services (Vantage) Te09/26/2012	Tax Free Exchange3,741,7603,767,84818,970	4FE
292505-AF-1	EnCana Corp Sr Nt 5.900% 12/01/17	A07/11/2012	RBC Dominion Securities5,744,3505,000,00036,875	2FE
292505-AJ-3	EnCana Corp Sr Nt 3.900% 11/15/21	A07/12/2012	Citigroup2,018,9602,000,00013,433	2FE
947075-AD-9	Weatherford Intl Inc Gtd Nt 6.000% 03/	R07/17/2012	Pressprich R W3,472,3803,000,00062,500	2FE
3899999. Subtotal - Bonds - Industrial and Miscellaneous (Unaffiliated)						20,041,250	18,767,848	145,268	XXX
8399997. Total - Bonds - Part 3						21,483,863	20,187,848	169,132	XXX
8399998. Total - Bonds - Part 5						XXX	XXX	XXX	XXX
8399999. Total - Bonds						21,483,863	20,187,848	169,132	XXX
8999997. Total - Preferred Stocks - Part 3							XXX		XXX
8999998. Total - Preferred Stocks - Part 5						XXX	XXX	XXX	XXX
8999999. Total - Preferred Stocks							XXX		XXX
9799997. Total - Common Stocks - Part 3							XXX		XXX
9799998. Total - Common Stocks - Part 5						XXX	XXX	XXX	XXX
9799999. Total - Common Stocks							XXX		XXX
9899999. Total - Preferred and Common Stocks							XXX		XXX
9999999 - Totals						21,483,863	XXX	169,132	XXX

(a) For all common stock bearing the NAIC market indicator "U" provide: the number of such issues

STATEMENT AS OF SEPTEMBER 30, 2012 OF THE SCOTTSDALE INSURANCE COMPANY

SCHEDULE D - PART 4

Show All Long-Term Bonds and Stock Sold, Redeemed or Otherwise Disposed of During the Current Quarter

1	2	3	4	5	6	7	8	9	10	Change In Book/Adjusted Carrying Value					16	17	18	19	20	21	22
										11	12	13	14	15							
CUSIP Ident-ification	Description	For-ign	Disposal Date	Name of Purchaser	Number of Shares of Stock	Consid-eration	Par Value	Actual Cost	Prior Year Book/ Adjusted Carrying Value	Unrealized Valuation Increase/ (Decrease)	Current Year's (Amor-tization)/ Accretion	Current Year's Other Than Temporary Impairment Recogn-ized	Total Change in Book/ Adjusted Carrying Value (11 + 12 - 13)	Total Foreign Exchange Change in Book /Adjusted Carrying Value	Book/ Adjusted Carrying Value at Disposal Date	Foreign Exchange Gain (Loss) on Disposal	Realized Gain (Loss) on Disposal	Total Gain (Loss) on Disposal	Bond Interest/ Stock Dividends Received During Year	Stated Con-tractual Maturity Date	NAIC Desig-nation or Market In-dicator (a)
.3837HO-NF-6	GNMA REMIC Ser 1996-5 CI Z 7.000% 05/1		09/01/2012	Paydown		10,670	10,670	10,971	10,873		(203)		(203)		10,670				505	05/16/2026	1
.911760-GT-7	Vendee Mtg Tr REMIC Ser 1995-3 1Z RMBS		09/01/2012	Paydown		45,601	45,601	46,871	46,353		(752)		(752)		45,601				2,233	09/15/2025	1
.911760-HH-2	Vendee Mtg Tr REMIC Ser 1996-2 1Z RMBS		09/01/2012	Paydown		57,816	57,816	57,529	57,555		262		262		57,816				2,660	06/15/2026	1
0599999	Subtotal - Bonds - U.S. Governments					114,087	114,087	115,371	114,781		(693)		(693)		114,087				5,398	XXX	XXX
.011832-S3-7	Alaska St Hsg Fin Corp Rev AMT 1st Vets		09/01/2012	Call 100.0000		575,000	575,000	575,000	575,000					575,000					18,503	12/01/2024	1FE
.312905-YJ-5	FHLMC REMIC Ser 1077-E 9.000% 05/15/21		09/01/2012	Paydown		5,202	5,202	5,271	5,213		(11)		(11)	5,202					312	05/15/2021	1
.313390-KD-9	FHLMC REMIC Ser 2415 CE 5.500% 02/15/1		09/01/2012	Paydown		104,740	104,740	108,406	105,669		(930)		(930)	104,740					3,840	02/15/2017	1
.313373-Q2-7	FHLMC REMIC Ser 1674-Z 6.750% 02/15/24		09/01/2012	Paydown		16,869	16,869	17,452	17,196		(327)		(327)	16,869					760	02/15/2024	1
.31337C-6P-8	FHLMC Structured Ser 2008 M 7.000% 11/		09/01/2012	Paydown		9,773	9,773	10,142	10,001		(228)		(228)	9,773					453	11/20/2027	1
.31337C-AU-2	FHLMC Structured Ser FSPC T-9 A6 6.564		09/01/2012	Paydown		875	875	842	871		4		4	875					37	03/25/2029	1
.31340Y-DB-2	FHLMC REMIC Ser 12-A 9.250% 11/15/19		09/15/2012	Paydown		711	711	746	726		(15)		(15)	711					49	11/15/2019	1
.31340Y-GR-4	FHLMC REMIC Ser 22-C 9.500% 04/15/20		09/15/2012	Paydown		2,682	2,682	2,779	2,699		(17)		(17)	2,682					194	04/15/2020	1
.31358E-XG-2	FHLMC REMIC Ser 1990-83A 9.250% 07/25/2		09/01/2012	Paydown		1,011	1,011	1,008	1,006		5		5	1,011					63	07/25/2020	1
.31358G-X4-4	FNMA REMIC Ser 1991-56G 8.600% 06/25/2		09/01/2012	Paydown		7,377	7,377	7,389	7,367		10		10	7,377					439	06/25/2021	1
.31358L-VM-5	FNMA REMIC Ser G92-14Z 7.000% 02/25/22		09/01/2012	Paydown		15,251	15,251	15,491	15,360		(109)		(109)	15,251					730	02/25/2022	1
.31358N-SB-4	FNMA REMIC Ser 1992-124 PZ 7.000% 07/2		09/01/2012	Paydown		13,249	13,249	13,631	13,434		(185)		(185)	13,249					622	07/25/2022	1
.31358N-RT-1	FNMA REMIC Ser G 1992-30Z 7.000% 06/25		09/01/2012	Paydown		8,152	8,152	8,283	8,235		(83)		(83)	8,152					393	06/25/2022	1
.31359V-BH-5	FNMA Ser 1998-73 CI MZ 6.300% 10/17/38		09/01/2012	Paydown		18,284	18,284	18,757	18,571		(287)		(287)	18,284					685	10/17/2038	1
.313603-GH-6	FNMA REMIC Ser 1989-86E 8.750% 11/25/1		09/01/2012	Paydown		1,344	1,344	1,317	1,330		14		14	1,344					79	11/25/2019	1
.313603-YL-0	FNMA REMIC Ser 1990-16E 9.000% 03/25/2		09/01/2012	Paydown		10,226	10,226	11,130	10,516		(290)		(290)	10,226					645	03/25/2020	1
.31392E-SX-9	FNMA REMIC Ser 2002-59 CI B 5.500% 09/		09/01/2012	Paydown		21,319	21,319	22,165	21,750		(432)		(432)	21,319					768	09/25/2017	1
.31392T-WT-0	FHLMC REMIC Ser 2478 JF 6.000% 08/15/2		09/01/2012	Paydown		23,539	23,539	24,517	23,888		(349)		(349)	23,539					940	08/15/2022	1
.31392U-KL-7	FHLMC REMIC Ser 2504 N 5.500% 09/15/1		09/01/2012	Paydown		36,260	36,260	37,824	36,888		(628)		(628)	36,260					1,326	09/15/2017	1
.31392U-MQ-4	FHLMC REMIC Ser 2503 BH 5.500% 09/15/1		09/01/2012	Paydown		24,938	24,938	25,729	25,120		(182)		(182)	24,938					942	09/15/2017	1
.31392U-RH-9	FHLMC REMIC Ser 2501 AN 5.500% 09/15/1		09/01/2012	Paydown		74,710	74,710	77,465	75,571		(861)		(861)	74,710					2,765	09/15/2017	1
.31392V-2F-8	FHLMC REMIC Ser 2494 J 5.500% 09/15/17		09/01/2012	Paydown		70,532	70,532	71,888	70,730		(198)		(198)	70,532					2,590	09/15/2017	1
.31392V-TG-1	FHLMC REMIC Ser 2498 BM 5.500% 09/15/1		09/01/2012	Paydown		27,664	27,664	28,438	27,879		(214)		(214)	27,664					1,019	09/15/2017	1
.31392V-SN-3	FHLMC REMIC Ser 2496 BK 5.500% 09/15/1		09/01/2012	Paydown		21,191	21,191	21,853	21,366		(175)		(175)	21,191					769	09/15/2017	1
.31393D-J6-9	FNMA REMIC Ser 2003-59 CI VJ 5.000% 08		07/01/2012	Paydown		161,168	161,168	162,931	161,116		52		52	161,168					4,701	08/25/2020	1
.31393H-GS-6	FHLMC REMIC Ser 2543 CI AN 5.000% 12/1		09/01/2012	Paydown		51,434	51,434	50,984	51,238		196		196	51,434					1,722	12/15/2017	1
.31394J-A8-0	FHLMC REMIC Ser 2678 CI VB 5.500% 09/1		09/01/2012	Paydown		357,629	357,629	361,373	357,408		221		221	357,629					14,344	09/15/2018	1
.31396N-EM-4	FHLMC REMIC Ser 3140 CI UP 6.000% 03/1		09/01/2012	Paydown		475,503	475,503	472,606	472,995		2,508		2,508	475,503					18,494	03/15/2036	1
.677560-JD-0	Ohio St Hsg Fin Agcy Mtg Rev AMT SF Mtg		09/01/2012	Call 100.0000		735,000	735,000	735,000	735,000					735,000					41,344	09/01/2024	1FE
.874458-G0-9	Tallahassee FL Cap Bd Rev Unref 5.000%		08/02/2012	Tax Free Exchange		1,442,614	1,420,000	1,468,459	1,453,632		(11,018)		(11,018)	1,442,614					59,364	10/01/2013	1FE
.88275F-MS-5	Texas St Dept Hsg & Cmnty Rev Sgl Fan Se		09/01/2012	Call 100.0000		110,000	110,000	110,470	110,392		(392)		(392)	110,000					5,665	09/01/2027	1FE
.977123-US-5	Wisconsin St Trans Rev Ref Ser 1 Preref		07/01/2012	Call 100.0000		1,160,000	1,160,000	1,344,886	1,174,191		(14,191)		(14,191)	1,160,000					66,700	07/01/2014	1FE
.977123-UT-3	Wisconsin St Trans Rev Ref Ser 1 Preref		07/01/2012	Call 100.0000		1,215,000	1,215,000	1,332,113	1,224,261		(9,261)		(9,261)	1,215,000					69,863	07/01/2015	1FE
.977123-UU-0	Wisconsin St Trans Rev Ref Ser 1 5.750		07/01/2012	Call 100.0000		1,490,000	1,490,000	1,727,483	1,508,228		(18,228)		(18,228)	1,490,000					85,675	07/01/2014	1FE
.977123-UV-8	Wisconsin St Trans Rev Ref Ser 1 5.750		07/01/2012	Call 100.0000		785,000	785,000	860,666	790,983		(5,983)		(5,983)	785,000					45,138	07/01/2015	1FE
3199999	Subtotal - Bonds - U.S. Special Revenues					9,074,247	9,051,633	9,734,494	9,135,830		(61,584)		(61,584)		9,074,247				451,933	XXX	XXX
.01082#-AA-3	Alameda Cnty CA Ser 2002-A CTL 7.500%		09/15/2012	Redemption 100.0000		17,941	17,941	19,017	18,594		(653)		(653)		17,941				898	06/15/2021	1
.05164#-AA-5	Aurora Health Care (Badger RE) CTL 6.9		09/15/2012	Redemption 100.0000		11,497	11,497	11,157	11,288		209		209		11,497				536	12/15/2022	2
.05549#-AA-3	BJs Wholesale Club Inc RMBS Ser 2002-2 C		09/15/2012	Redemption 100.0000		13,939	13,939	14,073	14,024		(85)		(85)		13,939				646	05/15/2022	2
.059513-AC-5	Banc of America Comm Mtg Inc Ser 2007-4		09/01/2012	Paydown		140,773	140,773	141,016	140,703		70		70		140,773				5,332	02/10/2051	1FM
.117017-AC-7	Brunswick & Glynn Co Dev Auth Rev Lease		07/15/2012	Redemption 100.0000		41,628	41,628	41,628	41,628						41,628				2,489	01/15/2024	1
.12669C-E4-8	CIWBS Inc Ser 2002-8 CI A4 RMBS 6.500%		09/01/2012	Paydown		31,420	31,420	32,559	31,561		(81)		(81)		31,479		(59)	(59)	1,341	07/25/2032	1FM
.151895-A*-0	CenterPoint Properties Tr CTL 7.530% 1		09/01/2012	Redemption 100.0000		23,525	23,525	23,525	23,525						23,525				1,182	10/01/2014	1
.277432-AM-2	Eastman Chem Co Sr Nt 2.400% 06/01/17		07/11/2012	Merrill Lynch Redemption 100.0000		10,197,000	10,000,000	9,966,400			710		710		9,967,110		229,890	229,890	27,333	06/01/2017	2FE
.50026*-AA-3	Kohls Corp Shelby MI CTL 7.600% 12/15/		09/15/2012	Redemption 100.0000		22,006	22,006	23,249	22,763		(757)		(757)		22,006				1,116	12/15/2022	2
.52465#-BP-9	Legg Mason Mtg Cap Corp Ser 2003-CTL-21		09/01/2012	Redemption 100.0000		21,574	21,574	21,574	21,574						21,574				694	03/01/2023	1

STATEMENT AS OF SEPTEMBER 30, 2012 OF THE SCOTTSDALE INSURANCE COMPANY

SCHEDULE D - PART 4

Show All Long-Term Bonds and Stock Sold, Redeemed or Otherwise Disposed of During the Current Quarter

1	2	3	4	5	6	7	8	9	10	Change In Book/Adjusted Carrying Value					16	17	18	19	20	21	22
										11	12	13	14	15							
CUSIP Ident-ification	Description	For-eign	Disposal Date	Name of Purchaser	Number of Shares of Stock	Consid-eration	Par Value	Actual Cost	Prior Year Book/ Adjusted Carrying Value	Unrealized Valuation Increase/ (Decrease)	Current Year's (Amor-tization)/ Accretion	Current Year's Other Than Temporary Impairment Recog-nized	Total Change in Book/ Adjusted Carrying Value (11 + 12 - 13)	Total Foreign Exchange Change in Book /Adjusted Carrying Value	Book/ Adjusted Carrying Value at Disposal Date	Foreign Exchange Gain (Loss) on Disposal	Realized Gain (Loss) on Disposal	Total Gain (Loss) on Disposal	Bond Interest/ Stock Dividends Received DuringYear	Stated Con-tractual Maturity Date	NAIC Desig-nation or Market In-dicator (a)
..52467@-AW-5	Legg Mason Mtg Cap Corp CTL 5.070% 02/	09/05/2012	Redemption 100.0000	10,33110,33110,33110,331					10,331			349	..02/05/2013	1.....
..64508@-AA-3	New Haven Fed Office Bldg Ls GSA Gtd Tr	07/15/2012	Redemption 100.0000	21,13921,13921,13921,139					21,139			1,247	..01/15/2020	1.....
..65324@-AA-9	Newtown Ser 2002 CTL 6.082% 05/15/23	09/15/2012	Redemption 100.0000	31,83331,83331,83231,832	1	1	31,833			1,291	..05/15/2023	1.....
..67020@-AA-8	NRRC-D Facilities Corp GSA Rev Bd Ls Ren	09/07/2012	Redemption 100.0000	21,45921,45921,45921,459					21,459			930	..11/07/2023	1.....
..674135-CT-3	Oakwood Mtg Inv Inc Sr Sub PTC 1997-D A3	09/01/2012	Paydown	882882888880	2	2	882			38	..02/15/2028	1FE.....
..71944@-AF-2	Physician Oncology Services (Vantage) Te	09/26/2012	Tax Free Exchange	3,741,7603,767,8483,734,2513,598,294139,8083,657	143,465	3,741,760			210,476	..02/28/2017	4FE.....
..72153*-AA-2	Pillsbury Winthrop LLP Sr Nt Ser A-1 4	07/18/2012	Redemption 100.0000	111,111111,111111,111111,111					111,111			4,567	..07/18/2015	2.....
..78442@-GG-5	SLM Student Loan Tr Ser 2003-4 CI ASD AB	09/17/2012	Paydown	24,87924,87925,50525,247	(368)	(368)	24,879			238	..03/15/2033	1FE.....
..844741-AG-3	Southwest Airlines Co PTC Ser 1993-B ABS	09/24/2012	Redemption 100.0000	60,84360,84356,71160,320	523	523	60,843			3,809	..09/24/2012	2FE.....
..88285@-CM-0	Texas Utils Elec Co Sec Facility Bd ABS	07/01/2012	Redemption 100.0000	9,8749,8749,5299,837	38	38	9,874			737	..01/01/2015	5AM.....
..90265@-AG-5	UDR Inc Co Gtd Nt 4.625% 01/10/22	07/10/2012	Wachovia Capital Markets Inc	5,403,3005,000,0005,324,300		(2,736)	(2,736)	5,321,564	81,73681,736117,552	..01/10/2022	2FE.....
..91737*-AA-3	United States Govt SS Ls FinTr GSA Gtd P	09/15/2012	Redemption 100.0000	75,69075,69075,44175,560	129	129	75,690			2,374	..11/15/2018	1.....
..92179@-HB-7	Vanderbilt Mtg Fin Ser 1999-C CI 1A4 ABS	09/01/2012	Paydown	28,31228,31228,31228,312					28,312			1,442	..06/07/2026	1FE.....
..92851@-AA-3	Vivendi SPC Tr CTL 6.630% 04/15/22	09/15/2012	Redemption 100.0000	12,05812,05812,05812,058					12,058			533	..04/15/2022	2.....
..94978*-AT-4	Wells Fargo Bank Northwest NA Ser 2002 C	09/01/2012	Redemption 100.0000	7,5547,5547,5547,554					7,554			335	..08/01/2027	1.....
..94978*-AU-1	Wells Fargo Bank Northwest NA MWRA Ls Bk	09/15/2012	Redemption 100.0000	9,6519,65110,10510,004	(353)	(353)	9,651			475	..05/15/2032	1.....
..94978*-AX-5	Wells Fargo Bank Northwest NA CVS Corp C	09/10/2012	Redemption 100.0000	19,23419,23419,23419,234					19,234			852	..10/10/2024	2.....
..98881@-AA-4	ZC Specialty Ins Co Ser 2002-31 CTL 7	07/25/2012	Redemption 100.0000	23,18823,18823,18823,188					23,188			1,702	..12/23/2022	2.....
..963203-AA-8	Gale Force CLO LTD Ser 2005-1A CLO 0.7	F.....	08/15/2012	Paydown	1,041,0841,041,0841,005,9481,010,422	30,663	30,663	1,041,084			5,906	..11/15/2017	1FE.....
38999999. Subtotal - Bonds - Industrial and Miscellaneous (Unaffiliated)						21,175,485	20,601,273	20,823,094	5,402,442	139,808	30,969		170,777		20,863,918		311,567	311,567	396,420	XXX	XXX
83999997. Total - Bonds - Part 4						30,363,819	29,766,993	30,672,959	14,653,053	139,808	(31,308)		108,500		30,052,252		311,567	311,567	853,751	XXX	XXX
83999998. Total - Bonds - Part 5						XXX	XXX	XXX	XXX	XXX	XXX	XXX	XXX	XXX	XXX	XXX	XXX	XXX	XXX	XXX	XXX
83999999. Total - Bonds						30,363,819	29,766,993	30,672,959	14,653,053	139,808	(31,308)		108,500		30,052,252		311,567	311,567	853,751	XXX	XXX
89999997. Total - Preferred Stocks - Part 4							XXX													XXX	XXX
89999998. Total - Preferred Stocks - Part 5						XXX	XXX	XXX	XXX	XXX	XXX	XXX	XXX	XXX	XXX	XXX	XXX	XXX	XXX	XXX	XXX
89999999. Total - Preferred Stocks							XXX													XXX	XXX
97999997. Total - Common Stocks - Part 4							XXX													XXX	XXX
97999998. Total - Common Stocks - Part 5						XXX	XXX	XXX	XXX	XXX	XXX	XXX	XXX	XXX	XXX	XXX	XXX	XXX	XXX	XXX	XXX
97999999. Total - Common Stocks							XXX													XXX	XXX
98999999. Total - Preferred and Common Stocks							XXX													XXX	XXX
99999999 - Totals						30,363,819	XXX	30,672,959	14,653,053	139,808	(31,308)		108,500		30,052,252		311,567	311,567	853,751	XXX	XXX

(a) For all common stock bearing the NAIC market indicator "U" provide: the number of such issues.....

Schedule DB - Part A - Section 1 - Options, Caps, Floors, Collars, Swaps and Forwards Open
N O N E

Schedule DB - Part B - Section 1 - Futures Contracts Open
N O N E

Schedule DB - Part B - Section 1B - Brokers with whom cash deposits have been made
N O N E

Schedule DB - Part D - Counterparty Exposure for Derivative Instruments Open
N O N E

SCHEDULE DL - PART 1
SECURITIES LENDING COLLATERAL ASSETS

Reinvested Collateral Assets Owned Current Statement Date						
1	2	3	4	5	6	7
CUSIP Identification	Description	Code	NAIC Designation/ Market Indicator	Fair Value	Book/Adjusted Carrying Value	Maturity Date
0599999. Total - U.S. Government Bonds						XXX
1099999. Total - All Other Government Bonds						XXX
1799999. Total - U.S. States, Territories and Possessions Bonds						XXX
2499999. Total - U.S. Political Subdivisions Bonds						XXX
3199999. Total - U.S. Special Revenues Bonds						XXX
362334-BQ-6	RMBS GSAA Home Equity Tr Ser 2006-3 CI A1 RMB		1FM	11,298	11,298	10/25/2022
81376G-AC-4	RMBS Securitized AB Receivables LLC Ser 2006-		6FE	54,547	54,547	08/25/2036
3399999. Subtotal - Bonds - Industrial and Miscellaneous (Unaffiliated) - Residential Mortgage-Backed Securities				65,845	65,845	XXX
3899999. Total - Industrial and Miscellaneous (Unaffiliated) Bonds				65,845	65,845	XXX
4899999. Total - Hybrid Securities						XXX
5599999. Total - Parent, Subsidiaries and Affiliates Bonds						XXX
6199999. Total - Issuer Obligations						XXX
6299999. Total - Residential Mortgage-Backed Securities				65,845	65,845	XXX
6399999. Total - Commercial Mortgage-Backed Securities						XXX
6499999. Total - Other Loan-Backed and Structured Securities						XXX
6599999. Total Bonds				65,845	65,845	XXX
7099999. Total - Preferred Stocks						XXX
7599999. Total - Common Stocks						XXX
7699999. Total - Preferred and Common Stocks						XXX
	Overnight Repos			14,647,582	14,647,582	10/01/2012
8999999. Total - Short-Term Invested Assets (Schedule DA type)				14,647,582	14,647,582	XXX
9999999 - Totals				14,713,427	14,713,427	XXX

General Interrogatories:

1. Total activity for the year to date
- Fair Value \$ 60,480
- Book/Adjusted Carrying Value \$ 60,480
2. Average balance for the year to date
- Fair Value \$ 14,450,454
- Book/Adjusted Carrying Value \$ 14,450,454
3. Reinvested securities lending collateral assets book/adjusted carrying valure included in this schedule by NAIC designation:
- NAIC 1 \$ 11,298
- NAIC 2 \$
- NAIC 3 \$
- NAIC 4 \$
- NAIC 5 \$
- NAIC 6 \$ 54,547

SCHEDULE DL - PART 2
SECURITIES LENDING COLLATERAL ASSETS

Reinvested Collateral Assets Owned Current Statement Date						
1	2	3	4	5	6	7
CUSIP Identification	Description	Code	NAIC Designation/ Market Indicator	Fair Value	Book/Adjusted Carrying Value	Maturity Date
0599999. Total - U.S. Government Bonds						XXX
1099999. Total - All Other Government Bonds						XXX
1799999. Total - U.S. States, Territories and Possessions Bonds						XXX
2499999. Total - U.S. Political Subdivisions Bonds						XXX
3199999. Total - U.S. Special Revenues Bonds						XXX
3899999. Total - Industrial and Miscellaneous (Unaffiliated) Bonds						XXX
4899999. Total - Hybrid Securities						XXX
5599999. Total - Parent, Subsidiaries and Affiliates Bonds						XXX
6199999. Total - Issuer Obligations						XXX
6299999. Total - Residential Mortgage-Backed Securities						XXX
6399999. Total - Commercial Mortgage-Backed Securities						XXX
6499999. Total - Other Loan-Backed and Structured Securities						XXX
6599999. Total Bonds						XXX
7099999. Total - Preferred Stocks						XXX
7599999. Total - Common Stocks						XXX
7699999. Total - Preferred and Common Stocks						XXX
9999999 - Totals						XXX

General Interrogatories:

1.	Total activity for the year to date	Fair Value \$	Book/Adjusted Carrying Value \$
2.	Average balance for the year to date	Fair Value \$	Book/Adjusted Carrying Value \$
3.	Grand Total Schedule DL Part 1 and Part 2	Fair Value \$14,713,427	Book/Adjusted Carrying Value \$14,713,427

SCHEDULE E - PART 1 - CASH

E11

STATEMENT AS OF SEPTEMBER 30, 2012 OF THE SCOTTSDALE INSURANCE COMPANY

SCHEDULE E - PART 2 - CASH EQUIVALENTS

Show Investments Owned End of Current Quarter

1	2	3	4	5	6	7	8
Description	Code	Date Acquired	Rate of Interest	Maturity Date	Book/Adjusted Carrying Value	Amount of Interest Due and Accrued	Amount Received During Year
NONE							
8699999 - Total Cash Equivalents							



SUPPLEMENT FOR THE QUARTER ENDING SEPTEMBER 30, 2012 OF THE SCOTTSDALE INSURANCE COMPANY

Designate the type of health care providers reported on this page:
Physicians, including surgeons and osteopaths

SUPPLEMENT A TO SCHEDULE T
EXHIBIT OF MEDICAL PROFESSIONAL LIABILITY PREMIUMS WRITTEN
ALLOCATED BY STATES AND TERRITORIES

States, etc.	1 Direct Premiums Written	2 Direct Premiums Earned	Direct Losses Paid		5 Direct Losses Incurred	Direct Losses Unpaid		8 Direct Losses Incurred But Not Reported
			3 Amount	4 No. of Claims		6 Amount Reported	7 No. of Claims	
1. Alabama	AL							
2. Alaska	AK							
3. Arizona	AZ							
4. Arkansas	AR				(234)			401
5. California	CA	24,250	17,177		5,280			5,280
6. Colorado	CO							
7. Connecticut	CT							
8. Delaware	DE							
9. District of Columbia	DC							
10. Florida	FL				(216)			329
11. Georgia	GA							
12. Hawaii	HI							
13. Idaho	ID							
14. Illinois	IL				(273)			506
15. Indiana	IN							
16. Iowa	IA							
17. Kansas	KS							
18. Kentucky	KY							
19. Louisiana	LA				(72)			122
20. Maine	ME							
21. Maryland	MD							
22. Massachusetts	MA							
23. Michigan	MI	10,350	8,885		2,178			3,586
24. Minnesota	MN							
25. Mississippi	MS				(4)			8
26. Missouri	MO				(48)			78
27. Montana	MT							
28. Nebraska	NE							
29. Nevada	NV							
30. New Hampshire	NH							
31. New Jersey	NJ				(161)			248
32. New Mexico	NM				(20)			(3,811)
33. New York	NY				(289)			562
34. North Carolina	NC							
35. North Dakota	ND							
36. Ohio	OH							
37. Oklahoma	OK							
38. Oregon	OR							
39. Pennsylvania	PA				(76,353)			2,402
40. Rhode Island	RI							
41. South Carolina	SC							
42. South Dakota	SD							
43. Tennessee	TN							
44. Texas	TX				(113)			174
45. Utah	UT							
46. Vermont	VT							
47. Virginia	VA							
48. Washington	WA							
49. West Virginia	WV							
50. Wisconsin	WI				(6)			11
51. Wyoming	WY							
52. American Samoa	AS							
53. Guam	GU							
54. Puerto Rico	PR							
55. U.S. Virgin Islands	VI							
56. Northern Mariana Islands	MP							
57. Canada	CN							
58. Aggregate Other Aliens	OT							
59. Totals	34,600	26,062			(70,331)			9,896
DETAILS OF WRITE-INS								
5801.								
5802.								
5803.								
5898. Summary of remaining write-ins for Line 58 from overflow page								
5899. Totals (Lines 5801 through 5803 plus 5898)(Line 58 above)								



Designate the type of health care
providers reported on this page:
Hospitals

SUPPLEMENT A TO SCHEDULE T
EXHIBIT OF MEDICAL PROFESSIONAL LIABILITY PREMIUMS WRITTEN
ALLOCATED BY STATES AND TERRITORIES

	1	2	Direct Losses Paid		5	Direct Losses Unpaid		8
			3	4		6	7	
States, etc.	Direct Premiums Written	Direct Premiums Earned	Amount	No. of Claims	Direct Losses Incurred	Amount Reported	No. of Claims	Direct Losses Incurred But Not Reported
1. Alabama.....AL								
2. Alaska.....AK								
3. Arizona.....AZ								
4. Arkansas.....AR								
5. California.....CA								
6. Colorado.....CO								
7. Connecticut.....CT								
8. Delaware.....DE								
9. District of Columbia.....DC								
10. Florida.....FL								
11. Georgia.....GA								
12. Hawaii.....HI								
13. Idaho.....ID								
14. Illinois.....IL								
15. Indiana.....IN								
16. Iowa.....IA								
17. Kansas.....KS								
18. Kentucky.....KY								
19. Louisiana.....LA								
20. Maine.....ME								
21. Maryland.....MD								
22. Massachusetts.....MA								
23. Michigan.....MI								
24. Minnesota.....MN								
25. Mississippi.....MS								
26. Missouri.....MO								
27. Montana.....MT								
28. Nebraska.....NE								
29. Nevada.....NV								
30. New Hampshire.....NH								
31. New Jersey.....NJ								
32. New Mexico.....NM								
33. New York.....NY								
34. North Carolina.....NC								
35. North Dakota.....ND								
36. Ohio.....OH								
37. Oklahoma.....OK								
38. Oregon.....OR								
39. Pennsylvania.....PA								
40. Rhode Island.....RI								
41. South Carolina.....SC								
42. South Dakota.....SD								
43. Tennessee.....TN								
44. Texas.....TX								
45. Utah.....UT								
46. Vermont.....VT								
47. Virginia.....VA								
48. Washington.....WA								
49. West Virginia.....WV								
50. Wisconsin.....WI								
51. Wyoming.....WY								
52. American Samoa.....AS								
53. Guam.....GU								
54. Puerto Rico.....PR								
55. U.S. Virgin Islands.....VI								
56. Nothern Mariana Islands.....MP								
57. Canada.....CN								
58. Aggregate Other Aliens.....OT								
59. Totals								
DETAILS OF WRITE-INS								
5801.								
5802.								
5803.								
5898. Summary of remaining write-ins for Line 58 from overflow page								
5899. Totals (Lines 5801 through 5803 plus 5898)(Line 58 above)								



SUPPLEMENT FOR THE QUARTER ENDING SEPTEMBER 30, 2012 OF THE SCOTTSDALE INSURANCE COMPANY

Designate the type of health care providers reported on this page:
Other health care professionals, including dentists, chiropractors, and podiatrists

SUPPLEMENT A TO SCHEDULE T
EXHIBIT OF MEDICAL PROFESSIONAL LIABILITY PREMIUMS WRITTEN
ALLOCATED BY STATES AND TERRITORIES

		1	2	Direct Losses Paid		5	Direct Losses Unpaid		8
				3	4		6	7	
States, etc.		Direct Premiums Written	Direct Premiums Earned	Amount	No. of Claims	Direct Losses Incurred	Amount Reported	No. of Claims	Direct Losses Incurred But Not Reported
1.	Alabama.....AL								
2.	Alaska.....AK								
3.	Arizona.....AZ								
4.	Arkansas.....AR								
5.	California.....CA					202			434
6.	Colorado.....CO								
7.	Connecticut.....CT								
8.	Delaware.....DE								
9.	District of Columbia.....DC								
10.	Florida.....FL					305			667
11.	Georgia.....GA					36			36
12.	Hawaii.....HI								
13.	Idaho.....ID								
14.	Illinois.....IL					442			442
15.	Indiana.....IN					148	(60,000)	1	(59,445)
16.	Iowa.....IA								
17.	Kansas.....KS								
18.	Kentucky.....KY								
19.	Louisiana.....LA								
20.	Maine.....ME								
21.	Maryland.....MD								
22.	Massachusetts.....MA								
23.	Michigan.....MI					253			352
24.	Minnesota.....MN								
25.	Mississippi.....MS								
26.	Missouri.....MO								
27.	Montana.....MT								
28.	Nebraska.....NE								
29.	Nevada.....NV								
30.	New Hampshire.....NH								
31.	New Jersey.....NJ					320			501
32.	New Mexico.....NM								
33.	New York.....NY					348			531
34.	North Carolina.....NC								
35.	North Dakota.....ND								
36.	Ohio.....OH								
37.	Oklahoma.....OK								
38.	Oregon.....OR								
39.	Pennsylvania.....PA					424			727
40.	Rhode Island.....RI								
41.	South Carolina.....SC								
42.	South Dakota.....SD								
43.	Tennessee.....TN					260			316
44.	Texas.....TX								
45.	Utah.....UT								
46.	Vermont.....VT								
47.	Virginia.....VA					82			128
48.	Washington.....WA								
49.	West Virginia.....WV								
50.	Wisconsin.....WI								
51.	Wyoming.....WY								
52.	American Samoa.....AS								
53.	Guam.....GU								
54.	Puerto Rico.....PR								
55.	U.S. Virgin Islands.....VI								
56.	Nothern Mariana Islands.....MP								
57.	Canada.....CN								
58.	Aggregate Other Aliens.....OT								
59.	Totals					2,820	(60,000)	1	(55,311)
DETAILS OF WRITE-INS									
5801.								
5802.								
5803.								
5898.	Summary of remaining write-ins for Line 58 from overflow page.....								
5899.	Totals (Lines 5801 through 5803 plus 5898)(Line 58 above)								



Designate the type of health care
providers reported on this page:
Other health care facilities

SUPPLEMENT A TO SCHEDULE T
EXHIBIT OF MEDICAL PROFESSIONAL LIABILITY PREMIUMS WRITTEN
ALLOCATED BY STATES AND TERRITORIES

	1	2	Direct Losses Paid		5	Direct Losses Unpaid		8
			3	4		6	7	
States, etc.	Direct Premiums Written	Direct Premiums Earned	Amount	No. of Claims	Direct Losses Incurred	Amount Reported	No. of Claims	Direct Losses Incurred But Not Reported
1. Alabama.....AL								
2. Alaska.....AK								
3. Arizona.....AZ								
4. Arkansas.....AR								
5. California.....CA								
6. Colorado.....CO								
7. Connecticut.....CT								
8. Delaware.....DE								
9. District of Columbia.....DC								
10. Florida.....FL								
11. Georgia.....GA								
12. Hawaii.....HI								
13. Idaho.....ID								
14. Illinois.....IL								
15. Indiana.....IN								
16. Iowa.....IA								
17. Kansas.....KS								
18. Kentucky.....KY								
19. Louisiana.....LA								
20. Maine.....ME								
21. Maryland.....MD								
22. Massachusetts.....MA								
23. Michigan.....MI								
24. Minnesota.....MN								
25. Mississippi.....MS								
26. Missouri.....MO								
27. Montana.....MT								
28. Nebraska.....NE								
29. Nevada.....NV								
30. New Hampshire.....NH								
31. New Jersey.....NJ								
32. New Mexico.....NM								
33. New York.....NY								
34. North Carolina.....NC								
35. North Dakota.....ND								
36. Ohio.....OH								
37. Oklahoma.....OK								
38. Oregon.....OR								
39. Pennsylvania.....PA								
40. Rhode Island.....RI								
41. South Carolina.....SC								
42. South Dakota.....SD								
43. Tennessee.....TN								
44. Texas.....TX								
45. Utah.....UT								
46. Vermont.....VT								
47. Virginia.....VA								
48. Washington.....WA								
49. West Virginia.....WV								
50. Wisconsin.....WI								
51. Wyoming.....WY								
52. American Samoa.....AS								
53. Guam.....GU								
54. Puerto Rico.....PR								
55. U.S. Virgin Islands.....VI								
56. Nothern Mariana Islands.....MP								
57. Canada.....CN								
58. Aggregate Other Aliens.....OT								
59. Totals								
DETAILS OF WRITE-INS								
5801.								
5802.								
5803.								
5898. Summary of remaining write-ins for Line 58 from overflow page								
5899. Totals (Lines 5801 through 5803 plus 5898)(Line 58 above)								



SUPPLEMENT FOR THE QUARTER ENDING SEPTEMBER 30, 2012 OF THE SCOTTSDALE INSURANCE COMPANY

DIRECTOR AND OFFICER INSURANCE COVERAGE SUPPLEMENT

Year To Date For The Period Ended SEPTEMBER 30, 2012

NAIC Group Code 0140 NAIC Company Code 41297

Company Name SCOTTSDALE INSURANCE COMPANY

If the reporting entity writes any director and officer (D&O) business, please provide the following:

1. Monoline Policies

1 Direct Written Premium	2 Direct Earned Premium	3 Direct Losses Incurred
\$ 2,082,910	\$ 620,970	\$ 55,324

2. Commercial Multiple Peril (CMP) Packaged Policies

- 2.1 Does the reporting entity provide D&O liability coverage as part of a CMP packaged policy?

Yes [] No [X]
- 2.2 Can the direct premium earned for D&O liability coverage provided as part of a CMP packaged policy be quantified or estimated?

Yes [] No [X]
- 2.3 If the answer to question 2.2 is yes, provide the quantified or estimated direct premium earned amount for D&O liability coverage in CMP packaged policies

2.31 Amount quantified:

\$

2.32 Amount estimated using reasonable assumptions:

\$
- 2.4 If the answer to question 2.1 is yes, provide direct losses incurred (losses paid plus change in case reserves) for the D&O liability coverage provided in CMP packaged policies.

\$