



HEALTH QUARTERLY STATEMENT
AS OF SEPTEMBER 30, 2012
OF THE CONDITION AND AFFAIRS OF THE
UnitedHealthcare Community Plan of Ohio, Inc.

NAIC Group Code 0707 0707 NAIC Company Code 12323 Employer's ID Number 56-2451429
(Current) (Prior)

Organized under the Laws of Ohio, State of Domicile or Port of Entry Ohio

Country of Domicile United States of America

Licensed as business type: Health Maintenance Organization

Is HMO Federally Qualified? Yes [] No [X]

Incorporated/Organized 03/29/2004 Commenced Business 10/01/2005

Statutory Home Office 9200 Worthington Road, Westerville, OH 43082
(Street and Number) (City or Town, State and Zip Code)

Main Administrative Office 9700 Health Care Lane MN017-E900
(Street and Number)
Minnetonka, MN 55343, 952-979-6171
(City or Town, State and Zip Code) (Area Code) (Telephone Number)

Mail Address 9700 Health Care Lane MN017-E900, Minnetonka, MN 55343
(Street and Number or P.O. Box) (City or Town, State and Zip Code)

Primary Location of Books and Records 9700 Health Care Lane MN017-E900
(Street and Number)
Minnetonka, MN 55343, 952-979-6171
(City or Town, State and Zip Code) (Area Code) (Telephone Number)

Internet Web Site Address www.uhccommunityplan.com

Statutory Statement Contact Mollie Beth Viola, 952-979-6171
(Name) (Area Code) (Telephone Number)
mollie_viola@uhc.com, 952-979-7825
(E-mail Address) (FAX Number)

OFFICERS

President Tracy Lynn Davidson Chief Financial Officer Timothy Ray Binkley
Secretary Christina Regina Palme-Krizak Treasurer Robert Worth Oberrender

OTHER

Michelle Marie Huntley Dill Assistant Secretary

DIRECTORS OR TRUSTEES

Bror Olof Hultgren # Joseph Gilbert Gaudio # Richard Gordon Dunlop

State of _____ State of _____ State of _____
County of _____ County of _____ County of _____

The officers of this reporting entity being duly sworn, each depose and say that they are the described officers of said reporting entity, and that on the reporting period stated above, all of the herein described assets were the absolute property of the said reporting entity, free and clear from any liens or claims thereon, except as herein stated, and that this statement, together with related exhibits, schedules and explanations therein contained, annexed or referred to, is a full and true statement of all the assets and liabilities and of the condition and affairs of the said reporting entity as of the reporting period stated above, and of its income and deductions therefrom for the period ended, and have been completed in accordance with the NAIC Annual Statement Instructions and Accounting Practices and Procedures manual except to the extent that: (1) state law may differ; or, (2) that state rules or regulations require differences in reporting not related to accounting practices and procedures, according to the best of their information, knowledge and belief, respectively. Furthermore, the scope of this attestation by the described officers also includes the related corresponding electronic filing with the NAIC, when required, that is an exact copy (except for formatting differences due to electronic filing) of the enclosed statement. The electronic filing may be requested by various regulators in lieu of or in addition to the enclosed statement.

Tracy Lynn Davidson Christina Regina Palme-Krizak Timothy Ray Binkley
President Secretary Chief Financial Officer

Subscribed and sworn to before me this _____ day of _____
Subscribed and sworn to before me this _____ day of _____
Subscribed and sworn to before me this _____ day of _____

- a. Is this an original filing?..... Yes [X] No []
- b. If no,
1. State the amendment number.....
2. Date filed.....
3. Number of pages attached.....

ASSETS

	Current Statement Date			4 December 31 Prior Year Net Admitted Assets
	1 Assets	2 Nonadmitted Assets	3 Net Admitted Assets (Cols. 1 - 2)	
1. Bonds	62,239,254		62,239,254	64,031,829
2. Stocks:				
2.1 Preferred stocks			0	0
2.2 Common stocks			0	0
3. Mortgage loans on real estate:				
3.1 First liens			0	0
3.2 Other than first liens.....			0	0
4. Real estate:				
4.1 Properties occupied by the company (less \$ encumbrances)			0	0
4.2 Properties held for the production of income (less \$ encumbrances)			0	0
4.3 Properties held for sale (less \$ encumbrances)			0	0
5. Cash (\$(3,707,986)), cash equivalents (\$0) and short-term investments (\$89,468,881)	85,760,895		85,760,895	69,438,117
6. Contract loans (including \$ premium notes)			0	0
7. Derivatives			0	0
8. Other invested assets			0	0
9. Receivables for securities			0	0
10. Securities lending reinvested collateral assets			0	0
11. Aggregate write-ins for invested assets	0	0	0	0
12. Subtotals, cash and invested assets (Lines 1 to 11)	148,000,149	0	148,000,149	133,469,946
13. Title plants less \$ charged off (for Title insurers only)			0	0
14. Investment income due and accrued	599,588		599,588	741,410
15. Premiums and considerations:				
15.1 Uncollected premiums and agents' balances in the course of collection	6,977,766		6,977,766	6,985,883
15.2 Deferred premiums, agents' balances and installments booked but deferred and not yet due (including \$ earned but unbilled premiums)			0	0
15.3 Accrued retrospective premiums			0	653
16. Reinsurance:				
16.1 Amounts recoverable from reinsurers	132,771		132,771	0
16.2 Funds held by or deposited with reinsured companies			0	0
16.3 Other amounts receivable under reinsurance contracts			0	0
17. Amounts receivable relating to uninsured plans	9,371		9,371	7,989
18.1 Current federal and foreign income tax recoverable and interest thereon	0		0	0
18.2 Net deferred tax asset	920,908	0	920,908	767,868
19. Guaranty funds receivable or on deposit			0	0
20. Electronic data processing equipment and software			0	0
21. Furniture and equipment, including health care delivery assets (\$)			0	0
22. Net adjustment in assets and liabilities due to foreign exchange rates			0	0
23. Receivables from parent, subsidiaries and affiliates			0	0
24. Health care (\$2,754,177) and other amounts receivable	3,802,265	1,048,088	2,754,177	1,188,995
25. Aggregate write-ins for other than invested assets	21,749	21,749	0	0
26. Total assets excluding Separate Accounts, Segregated Accounts and Protected Cell Accounts (Lines 12 to 25)	160,464,567	1,069,837	159,394,730	143,162,744
27. From Separate Accounts, Segregated Accounts and Protected Cell Accounts			0	0
28. Total (Lines 26 and 27)	160,464,567	1,069,837	159,394,730	143,162,744
DETAILS OF WRITE-INS				
1101.				
1102.				
1103.				
1198. Summary of remaining write-ins for Line 11 from overflow page	0	0	0	0
1199. Totals (Lines 1101 through 1103 plus 1198)(Line 11 above)	0	0	0	0
2501. Prepaid Expense	21,749	21,749	0	0
2502.				
2503.				
2598. Summary of remaining write-ins for Line 25 from overflow page	0	0	0	0
2599. Totals (Lines 2501 through 2503 plus 2598)(Line 25 above)	21,749	21,749	0	0

LIABILITIES, CAPITAL AND SURPLUS

	Current Period			Prior Year
	1 Covered	2 Uncovered	3 Total	4 Total
1. Claims unpaid (less \$ 217,288 reinsurance ceded)	44,692,906		44,692,906	46,795,594
2. Accrued medical incentive pool and bonus amounts	637,766		637,766	800,000
3. Unpaid claims adjustment expenses	962,419		962,419	1,025,972
4. Aggregate health policy reserves, including the liability of \$ for medical loss ratio rebate per the Public Health Service Act			0	0
5. Aggregate life policy reserves			0	0
6. Property/casualty unearned premium reserve			0	0
7. Aggregate health claim reserves	1,188,245		1,188,245	1,704,175
8. Premiums received in advance			0	0
9. General expenses due or accrued	7,536,705		7,536,705	8,582,031
10.1 Current federal and foreign income tax payable and interest thereon (including \$ on realized gains (losses))	836,662		836,662	4,125,882
10.2 Net deferred tax liability			0	0
11. Ceded reinsurance premiums payable	44,980		44,980	45,642
12. Amounts withheld or retained for the account of others			0	0
13. Remittances and items not allocated	0		0	0
14. Borrowed money (including \$ current) and interest thereon \$ (including \$ current)			0	0
15. Amounts due to parent, subsidiaries and affiliates	3,931,746		3,931,746	4,620,006
16. Derivatives			0	0
17. Payable for securities			0	0
18. Payable for securities lending			0	0
19. Funds held under reinsurance treaties (with \$ authorized reinsurers and \$ unauthorized reinsurers)			0	0
20. Reinsurance in unauthorized companies			0	0
21. Net adjustments in assets and liabilities due to foreign exchange rates			0	0
22. Liability for amounts held under uninsured plans			0	569
23. Aggregate write-ins for other liabilities (including \$ 2,279,874 current)	2,290,881	0	2,290,881	4,239,384
24. Total liabilities (Lines 1 to 23)	62,122,310	0	62,122,310	71,939,255
25. Aggregate write-ins for special surplus funds	XXX	XXX	0	0
26. Common capital stock	XXX	XXX	1,000	1,000
27. Preferred capital stock	XXX	XXX		
28. Gross paid in and contributed surplus	XXX	XXX	21,227,057	21,227,057
29. Surplus notes	XXX	XXX		
30. Aggregate write-ins for other than special surplus funds	XXX	XXX	0	0
31. Unassigned funds (surplus)	XXX	XXX	76,044,363	49,995,432
32. Less treasury stock, at cost:				
32.1 shares common (value included in Line 26 \$)	XXX	XXX		
32.2 shares preferred (value included in Line 27 \$)	XXX	XXX		
33. Total capital and surplus (Lines 25 to 31 minus Line 32)	XXX	XXX	97,272,420	71,223,489
34. Total liabilities, capital and surplus (Lines 24 and 33)	XXX	XXX	159,394,730	143,162,744
DETAILS OF WRITE-INS				
2301. Unearned Pay for Performance (current)	2,279,874		2,279,874	4,237,533
2302. Unclaimed Property (non-current)	11,007		11,007	1,851
2303.				
2398. Summary of remaining write-ins for Line 23 from overflow page	0	0	0	0
2399. Totals (Lines 2301 through 2303 plus 2398)(Line 23 above)	2,290,881	0	2,290,881	4,239,384
2501.	XXX	XXX		
2502.	XXX	XXX		
2503.	XXX	XXX		
2598. Summary of remaining write-ins for Line 25 from overflow page	XXX	XXX	0	0
2599. Totals (Lines 2501 through 2503 plus 2598)(Line 25 above)	XXX	XXX	0	0
3001.	XXX	XXX		
3002.	XXX	XXX		
3003.	XXX	XXX		
3098. Summary of remaining write-ins for Line 30 from overflow page	XXX	XXX	0	0
3099. Totals (Lines 3001 through 3003 plus 3098)(Line 30 above)	XXX	XXX	0	0

STATEMENT OF REVENUE AND EXPENSES

	Current Year To Date		Prior Year To Date	Prior Year Ended December 31
	1 Uncovered	2 Total	3 Total	4 Total
1. Member Months	XXX	1,095,246	1,075,634	1,436,935
2. Net premium income (including \$ non-health premium income).....	XXX	402,420,292	305,066,698	446,089,758
3. Change in unearned premium reserves and reserve for rate credits.....	XXX	(653)	(8,919)	12,849
4. Fee-for-service (net of \$ medical expenses).....	XXX			0
5. Risk revenue	XXX			0
6. Aggregate write-ins for other health care related revenues	XXX	0	0	2,410,597
7. Aggregate write-ins for other non-health revenues	XXX	0	0	0
8. Total revenues (Lines 2 to 7)	XXX	402,419,639	305,057,779	448,513,204
Hospital and Medical:				
9. Hospital/medical benefits		185,620,025	185,489,779	252,826,656
10. Other professional services		27,883,393	28,628,949	37,407,618
11. Outside referrals				0
12. Emergency room and out-of-area		14,479,598	18,091,439	24,106,870
13. Prescription drugs		70,960,931	1,300,405	26,341,557
14. Aggregate write-ins for other hospital and medical	0	0	0	0
15. Incentive pool, withhold adjustments and bonus amounts		607,781	579,944	795,368
16. Subtotal (Lines 9 to 15)	0	299,551,728	234,090,516	341,478,069
Less:				
17. Net reinsurance recoveries		2,217,945	1,320,105	2,171,502
18. Total hospital and medical (Lines 16 minus 17)	0	297,333,783	232,770,411	339,306,567
19. Non-health claims (net)				
20. Claims adjustment expenses, including \$10,139,859 cost containment expenses		14,171,008	5,769,660	16,055,586
21. General administrative expenses		51,815,032	48,659,742	58,705,823
22. Increase in reserves for life and accident and health contracts (including \$ increase in reserves for life only)				0
23. Total underwriting deductions (Lines 18 through 22).....	0	363,319,823	287,199,814	414,067,976
24. Net underwriting gain or (loss) (Lines 8 minus 23)	XXX	39,099,816	17,857,966	34,445,228
25. Net investment income earned		1,155,023	1,098,665	1,469,594
26. Net realized capital gains (losses) less capital gains tax of \$5,533		17,935	12,361	(2,591)
27. Net investment gains (losses) (Lines 25 plus 26)	0	1,172,958	1,111,026	1,467,003
28. Net gain or (loss) from agents' or premium balances charged off [(amount recovered \$) (amount charged off \$)].				
29. Aggregate write-ins for other income or expenses	0	0	0	0
30. Net income or (loss) after capital gains tax and before all other federal income taxes (Lines 24 plus 27 plus 28 plus 29)	XXX	40,272,774	18,968,992	35,912,231
31. Federal and foreign income taxes incurred	XXX	13,939,624	6,520,376	12,645,478
32. Net income (loss) (Lines 30 minus 31)	XXX	26,333,150	12,448,616	23,266,753
DETAILS OF WRITE-INS				
0601. Performance Based Revenue	XXX			2,410,597
0602.	XXX			
0603.	XXX			
0698. Summary of remaining write-ins for Line 6 from overflow page	XXX	0	0	0
0699. Totals (Lines 0601 through 0603 plus 0698)(Line 6 above)	XXX	0	0	2,410,597
0701.	XXX			
0702.	XXX			
0703.	XXX			
0798. Summary of remaining write-ins for Line 7 from overflow page	XXX	0	0	0
0799. Totals (Lines 0701 through 0703 plus 0798)(Line 7 above)	XXX	0	0	0
1401.				
1402.				
1403.				
1498. Summary of remaining write-ins for Line 14 from overflow page	0	0	0	0
1499. Totals (Lines 1401 through 1403 plus 1498)(Line 14 above)	0	0	0	0
2901.				
2902.				
2903.				
2998. Summary of remaining write-ins for Line 29 from overflow page	0	0	0	0
2999. Totals (Lines 2901 through 2903 plus 2998)(Line 29 above)	0	0	0	0

STATEMENT OF REVENUE AND EXPENSES (Continued)

	1 Current Year to Date	2 Prior Year to Date	3 Prior Year Ended December 31
CAPITAL AND SURPLUS ACCOUNT			
33. Capital and surplus prior reporting year.....	71,223,489	60,424,315	60,424,315
34. Net income or (loss) from Line 32	26,333,150	12,448,616	23,266,753
35. Change in valuation basis of aggregate policy and claim reserves			
36. Change in net unrealized capital gains (losses) less capital gains tax of \$			
37. Change in net unrealized foreign exchange capital gain or (loss)			
38. Change in net deferred income tax	153,040	(28,329)	222,930
39. Change in nonadmitted assets	(437,259)	80,939	(190,509)
40. Change in unauthorized reinsurance	0	0	0
41. Change in treasury stock	0	0	0
42. Change in surplus notes	0	0	0
43. Cumulative effect of changes in accounting principles.....			
44. Capital Changes:			
44.1 Paid in	0	0	0
44.2 Transferred from surplus (Stock Dividend).....	0	0	0
44.3 Transferred to surplus.....			
45. Surplus adjustments:			
45.1 Paid in	0	0	0
45.2 Transferred to capital (Stock Dividend)			
45.3 Transferred from capital			
46. Dividends to stockholders		(12,500,000)	(12,500,000)
47. Aggregate write-ins for gains or (losses) in surplus	0	0	0
48. Net change in capital & surplus (Lines 34 to 47)	26,048,931	1,226	10,799,174
49. Capital and surplus end of reporting period (Line 33 plus 48)	97,272,420	60,425,541	71,223,489
DETAILS OF WRITE-INS			
4701.			
4702.			
4703.			
4798. Summary of remaining write-ins for Line 47 from overflow page	0	0	0
4799. Totals (Lines 4701 through 4703 plus 4798)(Line 47 above)	0	0	0

CASH FLOW

	1 Current Year To Date	2 Prior Year To Date	3 Prior Year Ended December 31
Cash from Operations			
1. Premiums collected net of reinsurance	402,427,747	302,603,498	443,420,905
2. Net investment income	2,176,702	2,097,193	2,603,794
3. Miscellaneous income	(1,957,659)	0	2,850,543
4. Total (Lines 1 to 3)	402,646,790	304,700,691	448,875,242
5. Benefit and loss related payments	302,242,595	236,461,606	330,588,252
6. Net transfers to Separate Accounts, Segregated Accounts and Protected Cell Accounts			
7. Commissions, expenses paid and aggregate write-ins for deductions	67,095,916	54,122,506	72,187,759
8. Dividends paid to policyholders			
9. Federal and foreign income taxes paid (recovered) net of \$5,533 tax on capital gains (losses)	17,234,377	828,036	3,861,035
10. Total (Lines 5 through 9)	386,572,888	291,412,147	406,637,046
11. Net cash from operations (Line 4 minus Line 10)	16,073,902	13,288,544	42,238,196
Cash from Investments			
12. Proceeds from investments sold, matured or repaid:			
12.1 Bonds	8,289,393	5,039,548	6,053,886
12.2 Stocks	0	0	0
12.3 Mortgage loans	0	0	0
12.4 Real estate	0	0	0
12.5 Other invested assets	0	0	0
12.6 Net gains or (losses) on cash, cash equivalents and short-term investments	0	0	0
12.7 Miscellaneous proceeds	0	0	0
12.8 Total investment proceeds (Lines 12.1 to 12.7)	8,289,393	5,039,548	6,053,886
13. Cost of investments acquired (long-term only):			
13.1 Bonds	7,361,413	12,435,439	13,457,066
13.2 Stocks	0	0	0
13.3 Mortgage loans	0	0	0
13.4 Real estate	0	0	0
13.5 Other invested assets	0	0	0
13.6 Miscellaneous applications	0	0	0
13.7 Total investments acquired (Lines 13.1 to 13.6)	7,361,413	12,435,439	13,457,066
14. Net increase (or decrease) in contract loans and premium notes	0	0	0
15. Net cash from investments (Line 12.8 minus Line 13.7 and Line 14)	927,980	(7,395,891)	(7,403,180)
Cash from Financing and Miscellaneous Sources			
16. Cash provided (applied):			
16.1 Surplus notes, capital notes	0	0	0
16.2 Capital and paid in surplus, less treasury stock	0	0	0
16.3 Borrowed funds	0	0	0
16.4 Net deposits on deposit-type contracts and other insurance liabilities	0	0	0
16.5 Dividends to stockholders	0	12,500,000	12,500,000
16.6 Other cash provided (applied)	(679,104)	(6,020,998)	(2,628,301)
17. Net cash from financing and miscellaneous sources (Line 16.1 through Line 16.4 minus Line 16.5 plus Line 16.6)	(679,104)	(18,520,998)	(15,128,301)
RECONCILIATION OF CASH, CASH EQUIVALENTS AND SHORT-TERM INVESTMENTS			
18. Net change in cash, cash equivalents and short-term investments (Line 11, plus Lines 15 and 17) ..	16,322,778	(12,628,345)	19,706,715
19. Cash, cash equivalents and short-term investments:			
19.1 Beginning of year	69,438,117	49,731,402	49,731,402
19.2 End of period (Line 18 plus Line 19.1)	85,760,895	37,103,057	69,438,117

Note: Supplemental disclosures of cash flow information for non-cash transactions:

--	--	--	--

EXHIBIT OF PREMIUMS, ENROLLMENT AND UTILIZATION

	1 Total	Comprehensive (Hospital & Medical)		4 Medicare Supplement	5 Vision Only	6 Dental Only	7 Federal Employees Health Benefit Plan	8 Title XVIII Medicare	9 Title XIX Medicaid	10 Other
		2 Individual	3 Group							
Total Members at end of:										
1. Prior Year	119,766	0	0	0	0	0	0	0	119,766	0
2. First Quarter	120,517								120,517	
3. Second Quarter	121,424								121,424	
4. Third Quarter	126,092								126,092	
5. Current Year	0									
6. Current Year Member Months	1,095,246								1,095,246	
Total Member Ambulatory Encounters for Period:										
7. Physician	895,931								895,931	
8. Non-Physician	179,493								179,493	
9. Total	1,075,424	0	0	0	0	0	0	0	1,075,424	0
10. Hospital Patient Days Incurred	52,912								52,912	
11. Number of Inpatient Admissions	10,229								10,229	
12. Health Premiums Written (a)	405,907,786							(23,349)	405,931,135	
13. Life Premiums Direct	0									
14. Property/Casualty Premiums Written	0									
15. Health Premiums Earned	405,907,133							(24,002)	405,931,135	
16. Property/Casualty Premiums Earned	0									
17. Amount Paid for Provision of Health Care Services.....	304,588,940							1,858	304,587,082	
18. Amount Incurred for Provision of Health Care Services	299,551,728							4,916	299,546,812	

(a) For health premiums written: amount of Medicare Title XVIII exempt from state taxes or fees \$ (23,349)

CLAIMS UNPAID AND INCENTIVE POOL, WITHHOLD AND BONUS (Reported and Unreported)

oo

UNDERWRITING AND INVESTMENT EXHIBIT

ANALYSIS OF CLAIMS UNPAID - PRIOR YEAR - NET OF REINSURANCE

Line of Business	Claims Paid Year to Date		Liability End of Current Quarter		5 Claims Incurred in Prior Years (Columns 1 + 3)	6 Estimated Claim Reserve and Claim Liability December 31 of Prior Year
	1 On Claims Incurred Prior to January 1 of Current Year	2 On Claims Incurred During the Year	3 On Claims Unpaid Dec. 31 of Prior Year	4 On Claims Incurred During the Year		
1. Comprehensive (hospital and medical)					0	0
2. Medicare Supplement					0	0
3. Dental Only					0	0
4. Vision Only					0	0
5. Federal Employees Health Benefits Plan					0	0
6. Title XVIII - Medicare	1,843				1,843	(3,061)
7. Title XIX - Medicaid	30,352,516	270,985,449	1,286,425	44,594,726	31,638,941	48,502,830
8. Other health					0	0
9. Health subtotal (Lines 1 to 8)	30,354,359	270,985,449	1,286,425	44,594,726	31,640,784	48,499,769
10. Healthcare receivables (a)	995,726	2,806,538			995,726	1,807,076
11. Other non-health					0	0
12. Medical incentive pools and bonus amounts	770,015			637,766	770,015	800,000
13. Totals (Lines 9-10+11+12)	30,128,648	268,178,911	1,286,425	45,232,492	31,415,073	47,492,693

(a) Excludes \$ loans or advances to providers not yet expensed.

NOTES TO FINANCIAL STATEMENTS

Note 1 - Summary of Significant Accounting Policies

Accounting Practices

The financial statements of UnitedHealthcare Community Plan of Ohio, Inc. (the Company) are presented on the basis of accounting practices prescribed or permitted by the Ohio Department of Insurance (the Department).

The Department recognizes only statutory accounting practices, prescribed or permitted by the State of Ohio, for determining and reporting the financial condition and results of operations of a health maintenance organization, for determining its solvency under Ohio Insurance Law. The state prescribes the use of the National Association of Insurance Commissioners' (NAIC) Accounting Practices and Procedures manual (NAIC SAP) in effect for the accounting periods covered in the financial statement.

1-8. No significant differences exist between the practices prescribed or permitted by the State of Ohio and those prescribed or permitted by the NAIC SAP which materially affect the statutory basis net income and capital and surplus, as illustrated in the table below (in thousands):

	<u>State of Domicile</u>	<u>2012</u>	<u>2011</u>
<u>NET INCOME</u>			
(1) UnitedHealthcare Community Plan of Ohio, Inc. state basis (Page 4, Line 32, Columns 2 & 4)	Ohio	\$ 26,333	\$ 23,267
(2) State Prescribed Practices that increase/(decrease) NAIC SAP: Not Applicable	Ohio	-	-
(3) State Permitted Practices that increase/(decrease) NAIC SAP: Not Applicable	Ohio	-	-
(4) NAIC SAP (1-2-3=4)	Ohio	\$ 26,333	\$ 23,267
<u>SURPLUS</u>			
(5) UnitedHealthcare Community Plan of Ohio, Inc. state basis (Page 3, Line 33, Columns 3 & 4)	Ohio	\$ 97,272	\$ 71,223
(6) State Prescribed Practices that increase/(decrease) NAIC SAP: Not Applicable	Ohio	-	-
Not Applicable	Ohio	-	-
(7) State Permitted Practices that increase/(decrease) NAIC SAP: Not Applicable	Ohio	-	-
(8) NAIC SAP (5-6-7=8)	Ohio	\$ 97,272	\$ 71,223

Note 2 - Accounting Changes and Corrections of Errors

No significant change.

Note 3 - Business Combinations and Goodwill

No significant change.

Note 4 - Discontinued Operations

No significant change.

Note 5 – Investments

A. Mortgage Loans, including Mezzanine Real Estate Loans

No significant change.

B. Debt restructuring.

No significant change.

C. Reverse Mortgages.

No significant change.

NOTES TO FINANCIAL STATEMENTS

D. Loan-Backed Securities

- 1) Prepayment assumptions for single class and multi-class mortgage-backed/asset-backed securities were obtained from an external data source vendor.
- 2) The Company did not recognize other-than-temporary impairments on mortgage-type investments as of September 30, 2012.
- 3) The Company did not have mortgage-type investments with an other-than-temporary impairment to report by CUSIP as of September 30, 2012.
- 4) The table below represents impaired Mortgages, Collateralized Mortgage Obligations and Asset Backed Securities - Structured Assets Only for which an other-than-temporary impairment has not been recognized in earnings as of September 30, 2012:

	Less Than 12 Months		12 Months or Greater		Total Unrealized	
	Fair Value	Gross Unrealized Losses	Fair Value	Gross Unrealized Losses	Fair Value	Gross Unrealized Losses
Fixed Income-Mortgage	\$ 139,987	\$ (1)	\$ -	\$ -	\$ 139,987	\$ (1)

- 5) The Company believes that it will collect all principal and interest due on all investments that have an amortized cost in excess of fair value. The unrealized losses as of September 30, 2012 were primarily caused by interest rate increases and not by unfavorable changes in the credit ratings associated with these securities.

E. Repurchase Agreements and/or Securities Lending Transactions

No significant change.

F. Real Estate

No significant change.

G. Investments in Low-Income Housing Tax Credits

No significant change.

Note 6 - Joint Ventures, Partnerships and Limited Liability Companies

No significant change.

Note 7 - Investment Income

No significant change.

Note 8 - Derivative Instruments

No significant change.

Note 9 - Income Taxes

Statement of Statutory Accounting Principles (SSAP) No. 101, *Income Taxes – A Replacement of SSAP No. 10R and SSAP No. 10*, is effective for 2012 interim and annual financial statements and beyond. The new standard includes revised guidance for tax contingencies, non-elective deferred tax asset admissibility test along with significant modifications to the deferred tax assets admissibility test, and disclosure modifications. A change resulting from this adoption should be accounted for prospectively and reflected as a change in accounting principle in accordance with SSAP No. 3 — *Accounting Changes and Corrections of Errors* (see Note 2). The adoption of this pronouncement does not have a material impact on the financial statements, including capital and surplus.

The Company’s net deferred tax asset increased approximately \$153,000 from December 31, 2011 to September 30, 2012 as a result of the increase in non-admitted assets.

Note 10 - Information Concerning Parent, Subsidiaries and Affiliates

No significant change.

Note 11 - Debt

No significant change.

NOTES TO FINANCIAL STATEMENTS

Note 12 - Retirement Plans, Deferred Compensation, Postemployment Benefits and Compensated Absences and Other Postretirement Benefit Plans

No significant change.

Note 13 - Capital and Surplus, Shareholders' Dividend Restrictions and Quasi-Reorganizations

No significant change.

Note 14 - Contingencies

No significant change.

Note 15 - Leases

No significant change.

Note 16 - Information About Financial Instruments With Off-Balance Sheet Risk and Financial Instruments With Concentrations of Credit Risk

No significant change.

Note 17 - Sale, Transfer and Servicing of Financial Assets and Extinguishments of Liabilities

- A. The Company did not have any transfers of receivables reported as sales as of September 30, 2012 or December 31, 2011.
- B. The Company did not have any transfer and servicing of financial assets as of September 30, 2012 or December 31, 2011.
- C. No transactions involving wash sales of securities with an NAIC designation of 3 or below or unrated securities occurred as of September 30, 2012 or the year ended December 31, 2011.

Note 18 - Gain or Loss to the Reporting Entity from Uninsured Plans and the Uninsured Portion of Partially Insured Plans

No significant change.

Note 19 - Direct Premium Written/Produced by Managing General Agents/Third Party Administrators

No significant change.

Note 20 – Fair Value Measurement

The NAIC SAP defines fair value, establishes a framework for measuring fair value, and outlines the disclosure requirements related to fair value measurements. The fair value hierarchy is as follows:

Level 1 — Quoted (unadjusted) prices for identical assets in active markets.

Level 2 — Other observable inputs, either directly or indirectly, including:

- Quoted prices for similar assets in active markets
- Quoted prices for identical or similar assets in inactive markets (few transactions, limited information, noncurrent prices, high variability over time, etc.)
- Inputs other than quoted prices that are observable for the asset (interest rates, yield curves, volatilities, default rates, etc.)
- Inputs that are derived principally from or corroborated by other observable market data

Level 3 — Unobservable inputs that cannot be corroborated by observable market data.

The estimated fair values of bonds and short-term investments (investments) are based on quoted market prices, where available. The Company obtains one price for each security primarily from a third-party pricing service (pricing service), which generally uses quoted or other observable inputs for the determination of fair value. The pricing service normally derives the security prices through recently reported trades for identical or similar securities, making adjustments through the reporting date based upon available observable market information. For securities not actively traded, the pricing service may use quoted market prices of comparable instruments or discounted cash flow analyses, incorporating inputs that are currently observable in the markets for similar securities. Inputs that are often used in the valuation methodologies include, but are not limited to, non-binding broker quotes,

NOTES TO FINANCIAL STATEMENTS

benchmark yields, credit spreads, default rates and prepayment speeds. As the Company is responsible for the determination of fair value, it performs quarterly analyses on the prices received from the pricing service to determine whether the prices are reasonable estimates of fair value. Specifically, the Company compares the prices received from the pricing service to prices reported by its custodian, its investment consultant and third-party investment advisors. Additionally, the Company compares changes in the reported market values and returns to relevant market indices to test the reasonableness of the reported prices. Based on the Company’s internal price verification procedures and review of fair value methodology documentation provided by independent pricing services, the Company has not historically adjusted the prices obtained from the pricing service.

In instances in which the inputs used to measure fair value fall into different levels of the fair value hierarchy, the fair value measurement has been determined based on the lowest level input that is significant to the fair value measurement in its entirety. The Company’s assessment of the significance of a particular item to the fair value measurement in its entirety requires judgment, including the consideration of inputs specific to the asset or liability.

The following table presents information about the Company’s financial assets that are measured and reported at fair value at September 30, 2012 and December 31, 2011, in the statutory basis statements of admitted assets, liabilities, and capital and surplus according to the valuation techniques the Company used to determine their fair values (in thousands):

	2011			
	Quoted Prices in Active Markets (Level 1)	Other Observable Inputs (Level 2)	Unobservable Inputs (Level 3)	Total Fair Value
Corporate bonds	-	191	-	191
Total bonds, short-term investments, and preferred stocks	\$ -	\$ 191	\$ -	\$ 191

The Company does not have any financial assets that are measured and reported at fair value on the statutory basis statements of admitted assets, liabilities, and capital and surplus at September 30, 2012.

The Company does not have any financial assets with a fair value hierarchy of level 3.

The aggregate fair value by hierarchy of all financial instruments as of September 30, 2012 and December 31, 2011 is presented in the table below (in thousands):

	September 30, 2012				
	Total Fair Value	Total Admitted Assets	Quoted Prices in Active Markets (Level 1)	Other Observable Inputs (Level 2)	Unobservable Inputs (Level 3)
U.S. government and Agency Securities	\$ 14,711	\$ 14,086	\$ 4,360	\$ 10,351	\$ -
State and Agency Municipalities	24,389	23,340	-	24,389	-
City and County Municipalities	12,089	11,745	-	12,089	-
Corporate Debt Securities	14,200	13,401	-	14,200	-
Commercial Paper and Money-Market Funds	89,136	89,136	89,136	-	-
Total	\$ 154,525	\$ 151,708	\$ 93,496	\$ 61,029	\$ -

	2011				
	Total Fair Value	Total Admitted Assets	Quoted Prices in Active Markets (Level 1)	Other Observable Inputs (Level 2)	Unobservable Inputs (Level 3)
U.S. government and Agency Securities	\$ 18,591	\$ 18,145	\$ 7,877	\$ 10,714	\$ -
State and Agency Municipalities	22,015	21,310	-	22,015	-
City and County Municipalities	11,179	10,925	-	11,179	-
Corporate Debt Securities	14,008	13,652	-	14,008	-
Commercial Paper and Money-Market Funds	69,436	69,436	69,436	-	-
Total	\$ 135,229	\$ 133,468	\$ 77,313	\$ 57,916	\$ -

NOTES TO FINANCIAL STATEMENTS

There were no financial instruments that were not practicable to estimate at fair value.

Fair values of investments are based on quoted market prices, where available. The Company obtains one price for each security primarily from a third-party pricing service (pricing service), which generally uses quoted or other observable inputs for the determination of fair value. The pricing service normally derives the security prices through recently reported trades for identical or similar securities, making adjustments through the reporting date based upon available observable market information. For securities not actively traded, the pricing service may use quoted market prices of comparable instruments or discounted cash flow analyses, incorporating inputs that are currently observable in the markets for similar securities. Inputs that are often used in the valuation methodologies include, but are not limited to, benchmark yields, credit spreads, default rates, prepayment speeds and non-binding broker quotes. As the Company is responsible for the determination of fair value, it performs quarterly analyses on the prices received from the pricing service to determine whether the prices are reasonable estimates of fair value. Specifically, the Company compares the prices received from the pricing service to a secondary pricing source, prices reported by its custodian, its investment consultant and third-party investment advisors. Additionally, the Company compares changes in the reported market values and returns to relevant market indices to test the reasonableness of the reported prices. The Company's internal price verification procedures and review of fair value methodology documentation provided by independent pricing services has not historically resulted in adjustment in the prices obtained from the pricing service.

Note 21 - Other Items

The Company elected to use rounding in reporting amounts in the notes to statutory basis statements.

Note 22 - Events Subsequent

No significant change.

Note 23 - Reinsurance

No significant change.

Note 24 - Retrospectively Rated Contracts & Contracts Subject to Redetermination

No significant change.

Note 25 - Change in Incurred Losses and Loss Adjustment Expenses

Changes in estimates related to the prior year incurred claims are included in total hospital and medical expenses in the current year in the accompanying statutory basis statements of operations. The following tables disclose paid claims, incurred claims, and the balance in the claims unpaid, accrued medical incentive pool and bonus amounts, aggregate health claim reserves and health care receivables, and reinsurance recoverables at September 30, 2012 and December 31, 2011 (in thousands):

	September 30, 2012		
	Current Year	Prior Years	Total
	Incurred Claims	Incurred Claims	
Beginning of year claim reserve	\$ -	\$ (49,300)	\$ (49,300)
Paid claims, net of health care receivables and reinsurance recoveries collected	271,119	31,124	302,243
End of year claim reserve	<u>45,233</u>	<u>1,286</u>	<u>46,519</u>
Incurred claims excluding the change in health care receivables and reinsurance recoverables as presented below	316,352	(16,890)	299,462
Beginning of year health care receivables	-	1,807	1,807
End of year health care receivables and reinsurance recoverables	<u>(2,939)</u>	<u>(996)</u>	<u>(3,935)</u>
Total incurred claims	<u>\$ 313,413</u>	<u>\$ (16,079)</u>	<u>\$ 297,334</u>

NOTES TO FINANCIAL STATEMENTS

	2011		
	Current Year Incurred Claims	Prior Years Incurred Claims	Total
Beginning of year claim reserve	\$ -	\$ (40,992)	\$ (40,992)
Paid claims, net of health care receivables and reinsurance recoveries collected	290,498	40,090	330,588
End of year claim reserve	<u>49,001</u>	<u>299</u>	<u>49,300</u>
Incurred claims excluding the change in health care receivables and reinsurance recoverables as presented below	339,499	(603)	338,896
Beginning of year health care receivables		2,218	2,218
End of year health care receivables and reinsurance recoverables	<u>(1,456)</u>	<u>(351)</u>	<u>(1,807)</u>
Total incurred claims	<u>\$ 338,043</u>	<u>\$ 1,264</u>	<u>\$ 339,307</u>

The liability for claims unpaid, accrued medical incentive pool and bonus amounts, aggregate health claim reserves and health care receivables as of December 31, 2011 were approximately \$47,493,000. As of September 30, 2012, approximately \$31,124,000 has been paid for incurred claims attributable to insured events of prior years. Reserves remaining for prior years are now approximately \$290,000 as a result of re-estimation of unpaid claims. Therefore, there has been approximately \$16,079,000 favorable prior-year development since December 31, 2011 to September 30, 2012. The primary drivers consist of favorable development as a result of ongoing analysis of loss development trends related to the release and reestablishment of approximately \$1,704,000 in extended benefits, \$3,114,000 in known environmental claims and \$5,138,000 in retroactivity for inpatient, outpatient, physician, and pharmacy claims. At December 31, 2011, the Company recorded \$(1,264,000) of unfavorable development related to insured events of prior years primarily as a result of ongoing analysis of loss development trends and changes to the provider settlement reserves. Original estimates are increased or decreased, as additional information becomes known regarding individual claims. Included in this favorable (unfavorable) development is the impact related to retrospectively rated policies. As a result of the prior-year effects, on a regular basis, the Company adjusts revenue and the corresponding liability and/or receivable related to retrospectively rated policies and the impact of the change is included as a component of change in unearned premium reserves and reserve for rate credits in the statutory basis statements of operations.

The Company incurred claims adjustment expenses (CAE) of approximately \$14,171,000 and \$16,056,000 for the nine months ended September 30, 2012 and the year ended December 31, 2011, respectively. These costs are included in the management service fees paid by the Company to Unison Administrative Services, LLC as a part of its management agreement.

The following table discloses paid CAE and incurred CAE for the nine months ended September 30, 2012 and the year ended December 31, 2011, and the balance in the unpaid claim adjustment expenses reserve as of September 30, 2012 and December 31, 2011 (in thousands):

	September 30, 2012	2011
Total claims adjustment expenses incurred	\$ 14,171	\$ 16,056
Less current year unpaid claims adjustment expenses	(962)	(1,026)
Add prior year unpaid claims adjustment expenses	<u>1,026</u>	<u>783</u>
Total claims adjustment expenses paid	<u>\$ 14,235</u>	<u>\$ 15,813</u>

Note 26 - Intercompany Pooling Arrangements

No significant change.

Note 27 - Structured Settlements

No significant change.

Note 28 - Health Care Receivables

No significant change.

Note 29 - Participating Policies

No significant change.

NOTES TO FINANCIAL STATEMENTS

Note 30 - Premium Deficiency Reserves

No significant change.

Note 31 – Anticipated Salvage and Subrogation

No significant change.

GENERAL INTERROGATORIES

PART 1 - COMMON INTERROGATORIES

GENERAL

- 1.1

Did the reporting entity experience any material transactions requiring the filing of Disclosure of Material Transactions with the State of Domicile, as required by the Model Act?

Yes ☐ No ☒
- 1.2

If yes, has the report been filed with the domiciliary state?

Yes ☐ No ☐
- 2.1

Has any change been made during the year of this statement in the charter, by-laws, articles of incorporation, or deed of settlement of the reporting entity?

Yes ☐ No ☒
- 2.2

If yes, date of change:
3.

Have there been any substantial changes in the organizational chart since the prior quarter end?
If yes, complete the Schedule Y - Part 1 - organizational chart.

Yes ☒ No ☐
- 4.1

Has the reporting entity been a party to a merger or consolidation during the period covered by this statement?

Yes ☐ No ☒
- 4.2

If yes, provide the name of the entity, NAIC Company Code, and state of domicile (use two letter state abbreviation) for any entity that has ceased to exist as a result of the merger or consolidation.

1 Name of Entity	2 NAIC Company Code	3 State of Domicile
5.

If the reporting entity is subject to a management agreement, including third-party administrator(s), managing general agent(s), attorney-in-fact, or similar agreement, have there been any significant changes regarding the terms of the agreement or principals involved?
If yes, attach an explanation.

Yes ☐ No ☒ N/A ☐
- 6.1

State as of what date the latest financial examination of the reporting entity was made or is being made.

12/31/2009
- 6.2

State the as of date that the latest financial examination report became available from either the state of domicile or the reporting entity. This date should be the date of the examined balance sheet and not the date the report was completed or released.

12/31/2009
- 6.3

State as of what date the latest financial examination report became available to other states or the public from either the state of domicile or the reporting entity. This is the release date or completion date of the examination report and not the date of the examination (balance sheet date).

01/01/2011
- 6.4

By what department or departments?
Ohio Department of Insurance
- 6.5

Have all financial statement adjustments within the latest financial examination report been accounted for in a subsequent financial statement filed with Departments?

Yes ☐ No ☐ N/A ☒
- 6.6

Have all of the recommendations within the latest financial examination report been complied with?

Yes ☐ No ☐ N/A ☒
- 7.1

Has this reporting entity had any Certificates of Authority, licenses or registrations (including corporate registration, if applicable) suspended or revoked by any governmental entity during the reporting period?

Yes ☐ No ☒
- 7.2

If yes, give full information:
- 8.1

Is the company a subsidiary of a bank holding company regulated by the Federal Reserve Board?

Yes ☐ No ☒
- 8.2

If response to 8.1 is yes, please identify the name of the bank holding company.
- 8.3

Is the company affiliated with one or more banks, thrifts or securities firms?

Yes ☒ No ☐
- 8.4

If response to 8.3 is yes, please provide below the names and location (city and state of the main office) of any affiliates regulated by a federal regulatory services agency [i.e. the Federal Reserve Board (FRB), the Office of the Comptroller of the Currency (OCC), the Federal Deposit Insurance Corporation (FDIC) and the Securities Exchange Commission (SEC)] and identify the affiliate's primary federal regulator.

1 Affiliate Name	2 Location (City, State)	3 FRB	4 OCC	5 FDIC	6 SEC
OptumHealth Bank, Inc.	Salt Lake City, Ohio	NO	NO	YES	NO

GENERAL INTERROGATORIES

- 9.1

Are the senior officers (principal executive officer, principal financial officer, principal accounting officer or controller, or persons performing similar functions) of the reporting entity subject to a code of ethics, which includes the following standards?
(a) Honest and ethical conduct, including the ethical handling of actual or apparent conflicts of interest between personal and professional relationships;
(b) Full, fair, accurate, timely and understandable disclosure in the periodic reports required to be filed by the reporting entity;
(c) Compliance with applicable governmental laws, rules and regulations;
(d) The prompt internal reporting of violations to an appropriate person or persons identified in the code; and
(e) Accountability for adherence to the code.

Yes [X] No []
- 9.11

If the response to 9.1 is No, please explain:
- 9.2

Has the code of ethics for senior managers been amended?

Yes [] No [X]
- 9.21

If the response to 9.2 is Yes, provide information related to amendment(s).
- 9.3

Have any provisions of the code of ethics been waived for any of the specified officers?

Yes [] No [X]
- 9.31

If the response to 9.3 is Yes, provide the nature of any waiver(s).

FINANCIAL

- 10.1

Does the reporting entity report any amounts due from parent, subsidiaries or affiliates on Page 2 of this statement?

Yes [] No [X]
- 10.2

If yes, indicate any amounts receivable from parent included in the Page 2 amount:\$

INVESTMENT

- 11.1

Were any of the stocks, bonds, or other assets of the reporting entity loaned, placed under option agreement, or otherwise made available for use by another person? (Exclude securities under securities lending agreements.)

Yes [] No [X]
- 11.2

If yes, give full and complete information relating thereto:
12.

Amount of real estate and mortgages held in other invested assets in Schedule BA:

\$
13.

Amount of real estate and mortgages held in short-term investments:

\$
- 14.1

Does the reporting entity have any investments in parent, subsidiaries and affiliates?

Yes [] No [X]
- 14.2

If yes, please complete the following:
- | | 1 | 2 |
|---|---|--|
| | Prior Year-End
Book/Adjusted
Carrying Value | Current Quarter
Book/Adjusted
Carrying Value |
| 14.21 Bonds | \$0 | \$ |
| 14.22 Preferred Stock | \$0 | \$ |
| 14.23 Common Stock | \$0 | \$ |
| 14.24 Short-Term Investments | \$0 | \$ |
| 14.25 Mortgage Loans on Real Estate | \$0 | \$ |
| 14.26 All Other | \$0 | \$ |
| 14.27 Total Investment in Parent, Subsidiaries and Affiliates (Subtotal Lines 14.21 to 14.26) | \$0 | \$0 |
| 14.28 Total Investment in Parent included in Lines 14.21 to 14.26 above | \$ | \$ |
- 15.1

Has the reporting entity entered into any hedging transactions reported on Schedule DB?

Yes [] No [X]
- 15.2

If yes, has a comprehensive description of the hedging program been made available to the domiciliary state?

Yes [] No []
- If no, attach a description with this statement.

GENERAL INTERROGATORIES

16. Excluding items in Schedule E - Part 3 - Special Deposits, real estate, mortgage loans and investments held physically in the reporting entity's offices, vaults or safety deposit boxes, were all stocks, bonds and other securities, owned throughout the current year held pursuant to a custodial agreement with a qualified bank or trust company in accordance with Section 1, III - General Examination Considerations, F. Outsourcing of Critical Functions, Custodial or Safekeeping Agreements of the NAIC Financial Condition Examiners Handbook? Yes [X] No []
- 16.1 For all agreements that comply with the requirements of the NAIC Financial Condition Examiners Handbook, complete the following:

1 Name of Custodian(s)	2 Custodian Address
Bank of New York Mellon	Global Liquidity Services, 1 Wall St, 14th Floor, New York, NY 10286
Northern Trust	50 S. LaSalle, Chicago, IL 60675

- 16.2 For all agreements that do not comply with the requirements of the NAIC Financial Condition Examiners Handbook, provide the name, location and a complete explanation:

1 Name(s)	2 Location(s)	3 Complete Explanation(s)

- 16.3 Have there been any changes, including name changes, in the custodian(s) identified in 16.1 during the current quarter? Yes [] No [X]
- 16.4 If yes, give full information relating thereto:

1 Old Custodian	2 New Custodian	3 Date of Change	4 Reason

- 16.5 Identify all investment advisors, brokers/dealers or individuals acting on behalf of broker/dealers that have access to the investment accounts, handle securities and have authority to make investments on behalf of the reporting entity:

1 Central Registration Depository	2 Name(s)	3 Address
113972	Standish Mellon Asset Management Company	201 Washington Street Suite 2900 Boston, MA 02108-4408
N/A	Internally Managed	N/A

- 17.1 Have all the filing requirements of the Purposes and Procedures Manual of the NAIC Securities Valuation Office been followed? Yes [X] No []
- 17.2 If no, list exceptions:

GENERAL INTERROGATORIES

PART 2 - HEALTH

1. Operating Percentages:

1.1 A&H loss percent76.4 %

1.2 A&H cost containment percent2.5 %

1.3 A&H expense percent excluding cost containment expenses13.9 %
- 2.1 Do you act as a custodian for health savings accounts? Yes [] No [X]
- 2.2 If yes, please provide the amount of custodial funds held as of the reporting date\$.....
- 2.3 Do you act as an administrator for health savings accounts? Yes [] No [X]
- 2.4 If yes, please provide the balance of the funds administered as of the reporting date\$.....

SCHEDULE S - CEDED REINSURANCE

Showing All New Reinsurance Treaties - Current Year to Date

1 NAIC Company Code	2 Federal ID Number	3 Effective Date	4 Name of Reinsurer	5 Domiciliary Jurisdiction	6 Type of Reinsurance Ceded	7 Is Insurer Authorized? (Yes or No)
			NONE			

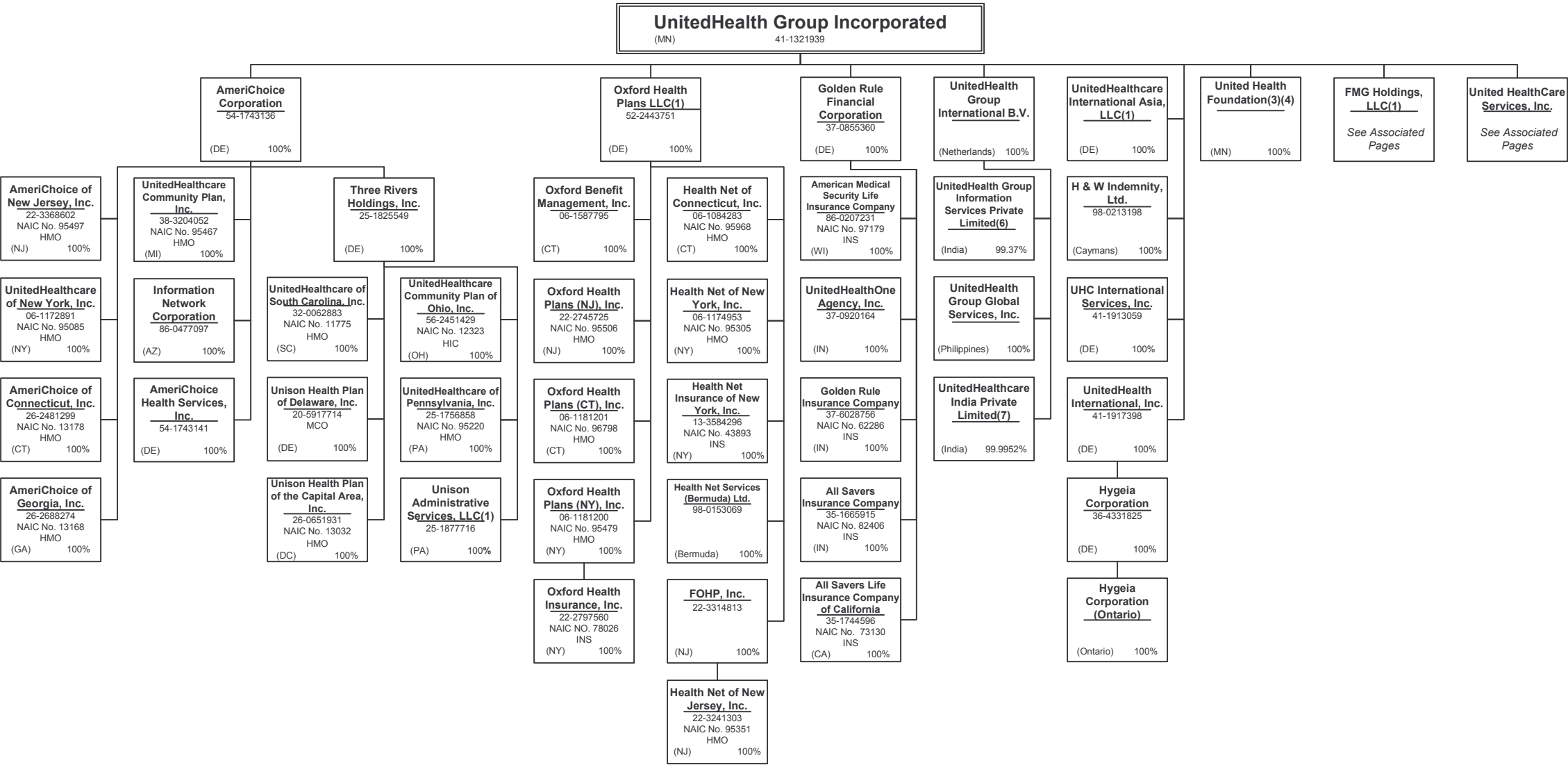
SCHEDULE T - PREMIUMS AND OTHER CONSIDERATIONS

Current Year to Date - Allocated by States and Territories

		1	Direct Business Only							
			2	3	4	5	6	7	8	9
States, etc.		Active Status	Accident and Health Premiums	Medicare Title XVIII	Medicaid Title XIX	Federal Employees Health Benefits Program Premiums	Life and Annuity Premiums & Other Considerations	Property/ Casualty Premiums	Total Columns 2 Through 7	Deposit-Type Contracts
1.	Alabama	AL	N						0	
2.	Alaska	AK	N						0	
3.	Arizona	AZ	N						0	
4.	Arkansas	AR	N						0	
5.	California	CA	N						0	
6.	Colorado	CO	N						0	
7.	Connecticut	CT	N						0	
8.	Delaware	DE	N						0	
9.	District of Columbia	DC	N						0	
10.	Florida	FL	N						0	
11.	Georgia	GA	N						0	
12.	Hawaii	HI	N						0	
13.	Idaho	ID	N						0	
14.	Illinois	IL	N						0	
15.	Indiana	IN	N						0	
16.	Iowa	IA	N						0	
17.	Kansas	KS	N						0	
18.	Kentucky	KY	N						0	
19.	Louisiana	LA	N						0	
20.	Maine	ME	N						0	
21.	Maryland	MD	N						0	
22.	Massachusetts	MA	N						0	
23.	Michigan	MI	N						0	
24.	Minnesota	MN	N						0	
25.	Mississippi	MS	N						0	
26.	Missouri	MO	N						0	
27.	Montana	MT	N						0	
28.	Nebraska	NE	N						0	
29.	Nevada	NV	N						0	
30.	New Hampshire	NH	N						0	
31.	New Jersey	NJ	N						0	
32.	New Mexico	NM	N						0	
33.	New York	NY	N						0	
34.	North Carolina	NC	N						0	
35.	North Dakota	ND	N						0	
36.	Ohio	OH	L	(23,349)	405,931,135				405,907,786	
37.	Oklahoma	OK	N						0	
38.	Oregon	OR	N						0	
39.	Pennsylvania	PA	N						0	
40.	Rhode Island	RI	N						0	
41.	South Carolina	SC	N						0	
42.	South Dakota	SD	N						0	
43.	Tennessee	TN	N						0	
44.	Texas	TX	N						0	
45.	Utah	UT	N						0	
46.	Vermont	VT	N						0	
47.	Virginia	VA	N						0	
48.	Washington	WA	N						0	
49.	West Virginia	WV	N						0	
50.	Wisconsin	WI	N						0	
51.	Wyoming	WY	N						0	
52.	American Samoa	AS	N						0	
53.	Guam	GU	N						0	
54.	Puerto Rico	PR	N						0	
55.	U.S. Virgin Islands	VI	N						0	
56.	Northern Mariana Islands	MP	N						0	
57.	Canada	CN	N						0	
58.	Aggregate Other Aliens	OT	XXX	0	0	0	0	0	0	0
59.	Subtotal	XXX	0	(23,349)	405,931,135	0	0	0	405,907,786	0
60.	Reporting Entity Contributions for Employee Benefit Plans	XXX							0	
61.	Totals (Direct Business)	(a) 1	0	(23,349)	405,931,135	0	0	0	405,907,786	0
DETAILS OF WRITE-INS										
5801.	XXX								
5802.	XXX								
5803.	XXX								
5898.	Summary of remaining write-ins for Line 58 from overflow page	XXX	0	0	0	0	0	0	0	0
5899.	Totals (Lines 5801 through 5803 plus 5898)(Line 58 above)	XXX	0	0	0	0	0	0	0	0

(L) Licensed or Chartered - Licensed Insurance Carrier or Domiciled RRG; (R) Registered - Non-domiciled RRGs; (Q) Qualified - Qualified or Accredited Reinsurer; (E) Eligible - Reporting Entities eligible or approved to write Surplus Lines in the state; (N) None of the above - Not allowed to write business in the state.
(a) Insert the number of L responses except for Canada and Other Alien.
Premiums allocated by state based upon Geographic Market.

SCHEDULE Y - INFORMATION CONCERNING ACTIVITIES OF INSURER MEMBERS OF A HOLDING COMPANY GROUP
PART 1 - ORGANIZATIONAL CHART



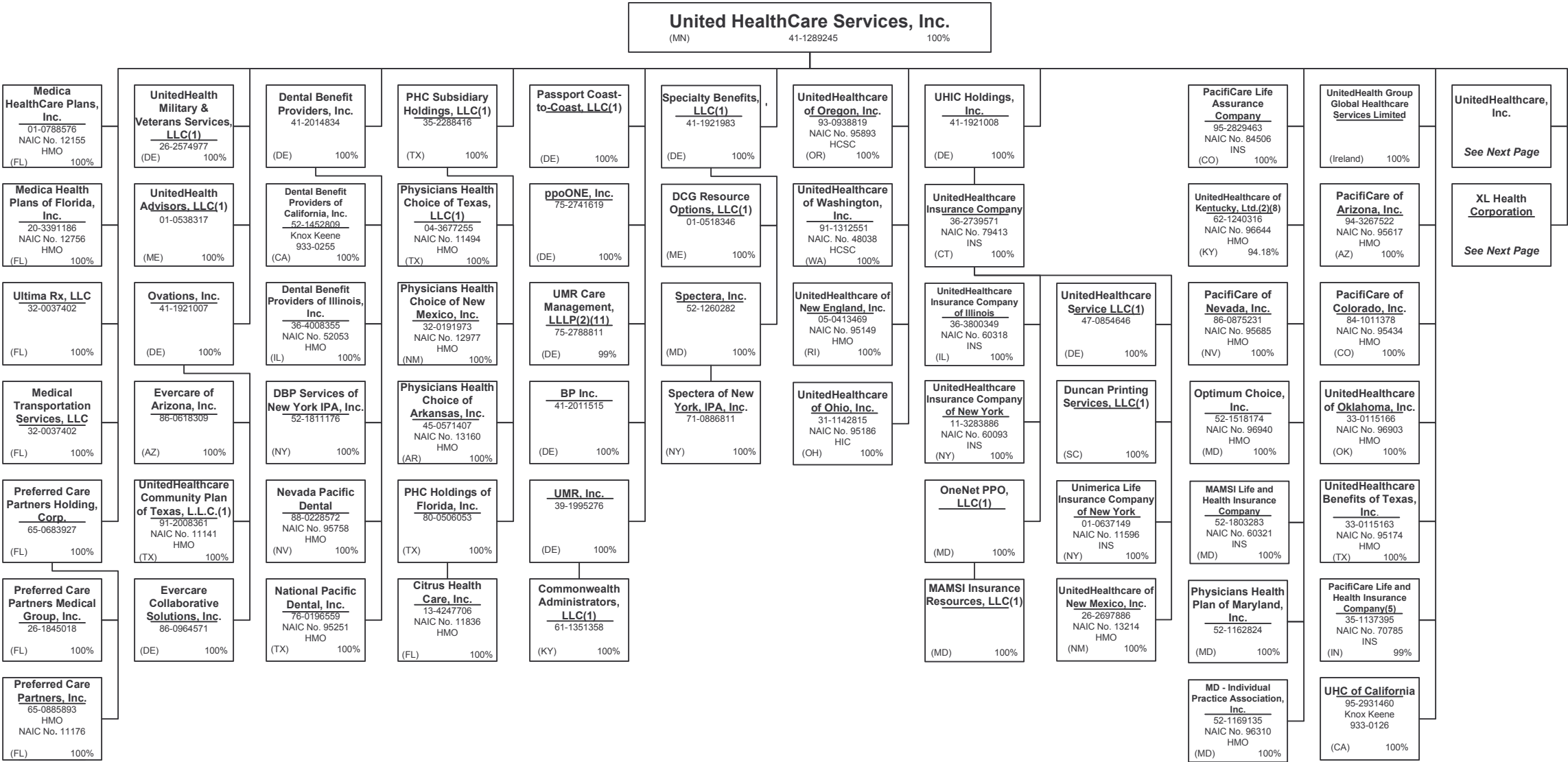
15.1

15.1

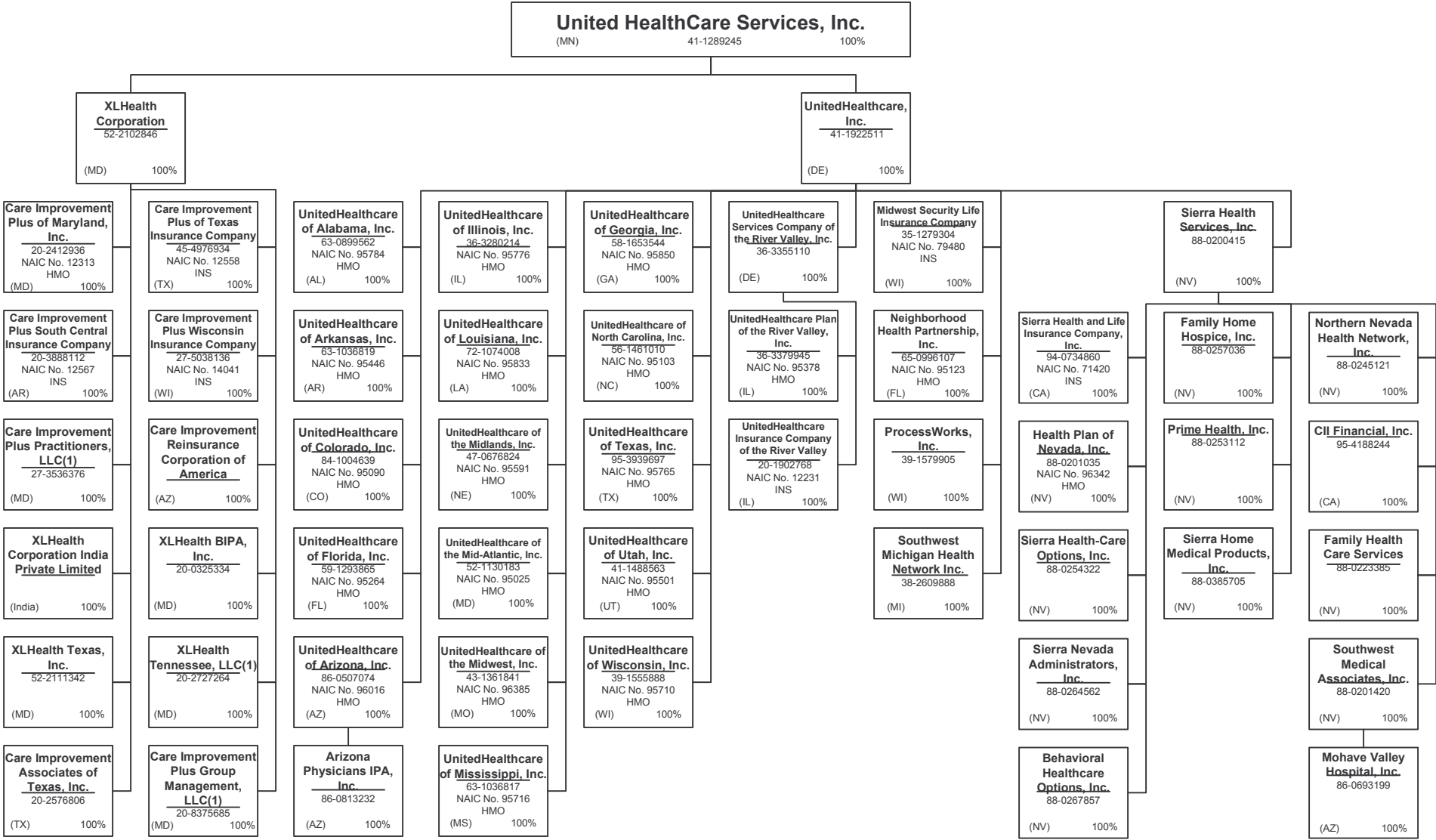


SCHEDULE Y - INFORMATION CONCERNING ACTIVITIES OF INSURER MEMBERS OF A HOLDING COMPANY GROUP
PART 1 - ORGANIZATIONAL CHART

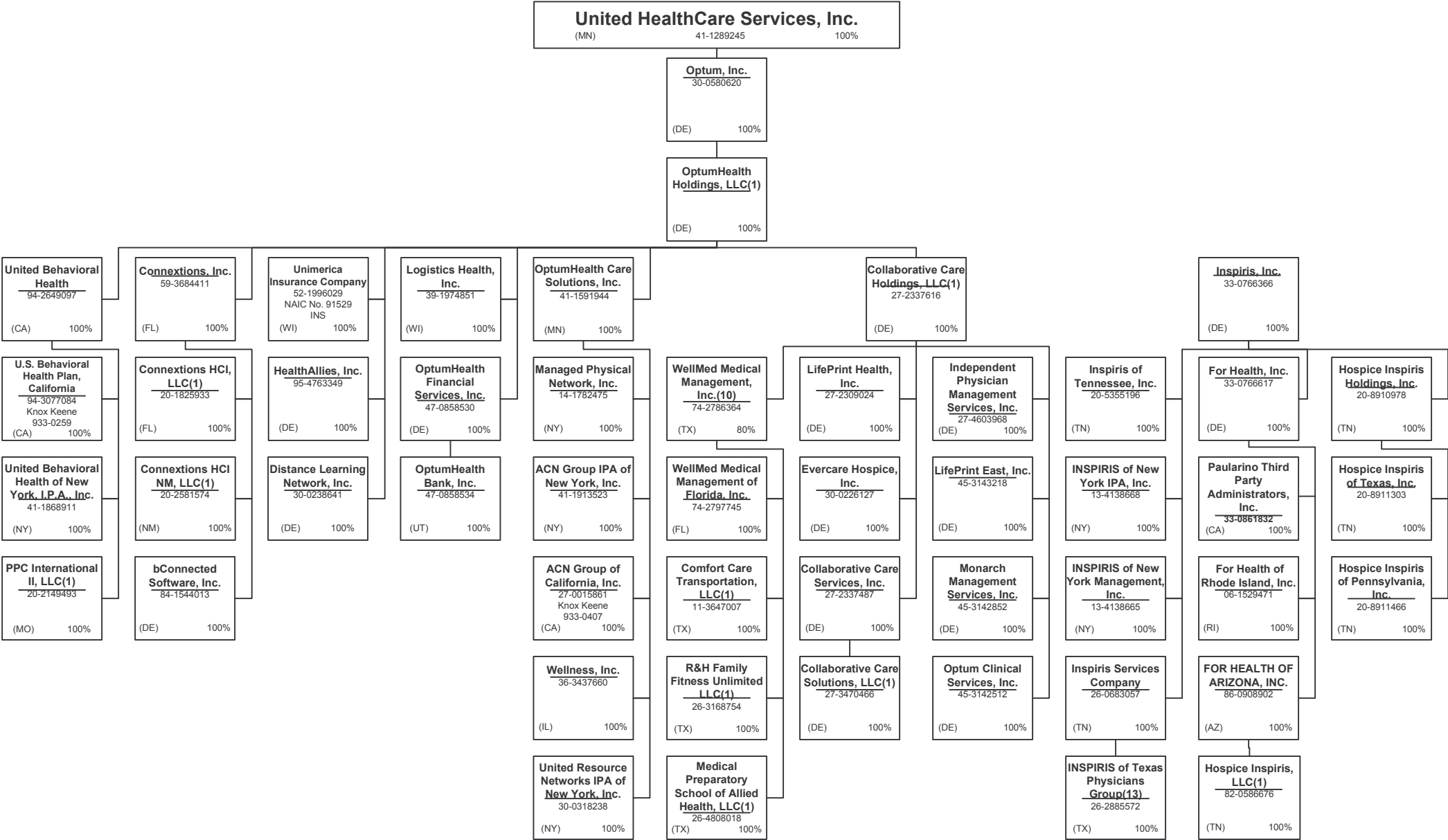
15.2



SCHEDULE Y - INFORMATION CONCERNING ACTIVITIES OF INSURER MEMBERS OF A HOLDING COMPANY GROUP
PART 1 - ORGANIZATIONAL CHART

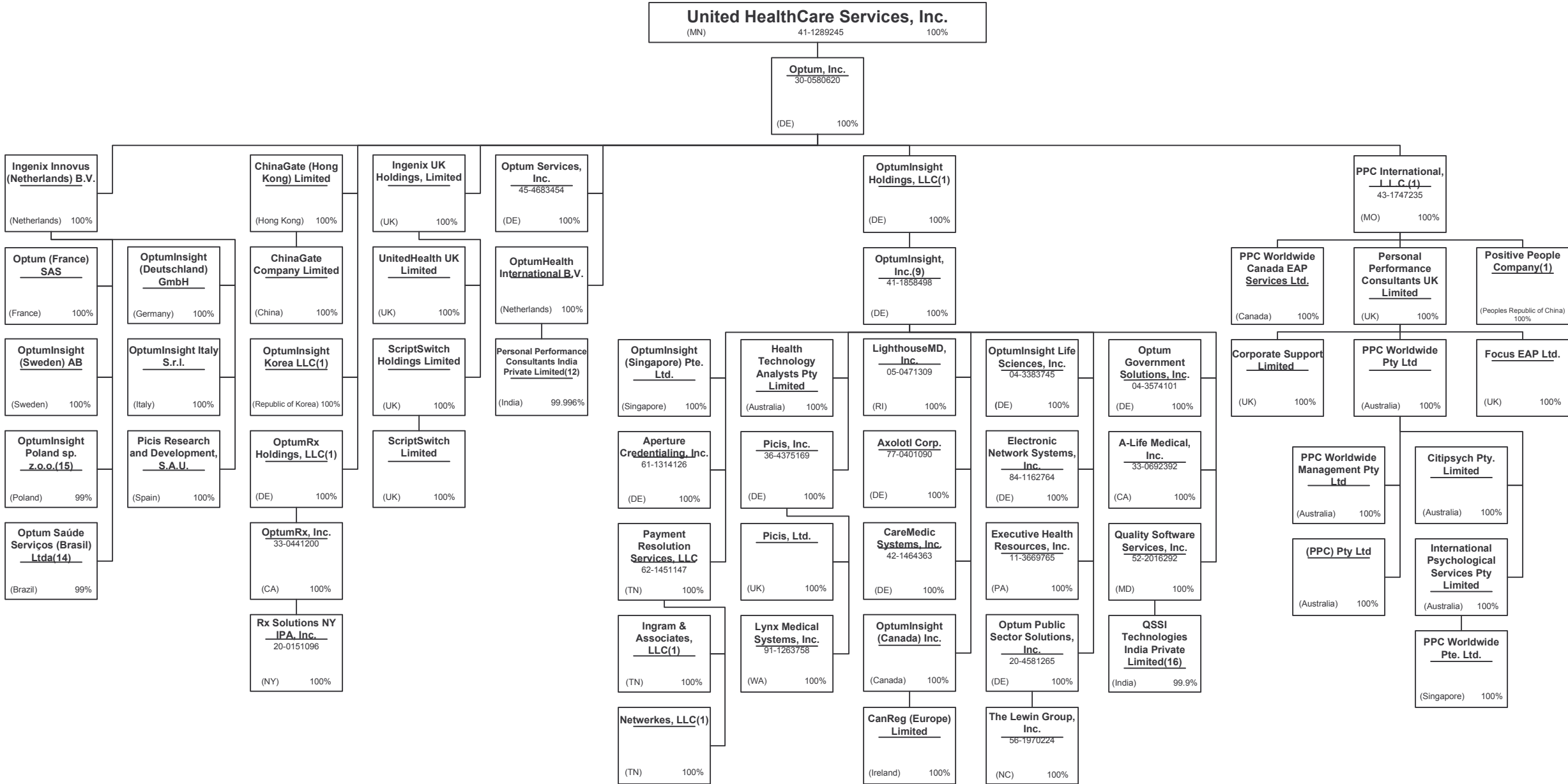


SCHEDULE Y - INFORMATION CONCERNING ACTIVITIES OF INSURER MEMBERS OF A HOLDING COMPANY GROUP
PART 1 - ORGANIZATIONAL CHART



SCHEDULE Y - INFORMATION CONCERNING ACTIVITIES OF INSURER MEMBERS OF A HOLDING COMPANY GROUP
PART 1 - ORGANIZATIONAL CHART

15.5



SCHEDULE Y - INFORMATION CONCERNING ACTIVITIES OF INSURER MEMBERS OF A HOLDING COMPANY GROUP
PART 1 - ORGANIZATIONAL CHART

Notes

All legal entities on the Organization Chart are Corporations unless otherwise indicated.

(1) Entity is a Limited Liability Company

(2) Entity is a Partnership

(3) Entity is a Non-Profit Corporation

(4) Control of the Foundation is based on sole membership, not the ownership of voting securities

(5) PacifiCare Life and Health Insurance Company is 99% owned by PacifiCare Health Plan Administrators, Inc. and 1% owned by PacifiCare Health Systems, LLC

(6) UnitedHealth Group Information Services Private Limited is 99.37% owned by UnitedHealth Group International B.V.. The remaining 0.63% is owned by UnitedHealth International, Inc.

(7) United Healthcare India Private Limited is 99.9952% owned by UnitedHealth Group International B.V. and 0.0048% owned by UnitedHealth International, Inc.

(8) General partnership interests are held by United HealthCare Services, Inc. (89.77%) and by UnitedHealthcare, Inc. (10.23%). United HealthCare Services, Inc. also holds 100% of the limited partnership interests. When combining general and limited partner interests, United HealthCare Services, Inc. owns 94.18% and UnitedHealthcare, Inc. owns 5.83%.

(9) Established a branch, Ingenix, Inc. – Abu Dhabi, located in Abut Dhabi, UAE.

(10) WellMed Medical Management, Inc. is 80% owned by Collaborative Care Holdings, LLC and 20% owned by WMG Healthcare Partners, L.P.

(11) Limited partnership interest is held by United HealthCare Services, Inc. (99%). General partnership interest is held by UMR, Inc. (1%)

(12) Personal Performance Consultants India Private Limited is 99.996% owned by OptumHealth International B.V. and 0.004 % owned by United Behavioral Health.

(13) INSPIRIS of Texas Physicians Group is a Texas non-profit (taxable) whose sole member is Inspiris of Texas, Inc.

(14) Optum Saúde Serviços (Brasil) Ltda. Is 99% owned by Ingenix Innovus (Netherlands) B.V. The remaining 1% is owned by OptumInsight, Inc.

(15) OptumInsight Poland sp. z.o.o. is 99% owned by Ingenix Innovus (Netherlands) B.V. The remaining 1% is owned by OptumInsight, Inc.

(16) QSSI Technologies India Private Limited is 99.9% owned by Quality Software Services, Inc. and 0.1% owned by an Indian citizen.

SCHEDULE Y
PART 1A - DETAIL OF INSURANCE HOLDING COMPANY SYSTEM

1	2	3	4	5	6	7	8	9	10	11	12	13	14	15
Group Code	Group Name	NAIC Company Code	Federal ID Number	Federal RSSD	CIK	Name of Securities Exchange if Publicly Traded (U.S. or International)	Names of Parent, Subsidiaries Or Affiliates	Domi-ciliary Location	Relationship to Reporting Entity	Directly Controlled by (Name of Entity/Person)	Type of Control (Ownership, Board, Management, Attorney-in-Fact, Influence, Other)	If Control is Owner-ship Provide Percen-tage	Ultimate Controlling Entity(ies)/Person(s)	*
		.00000					(PPC) Pty Ltd	AU	NIA	PPC Worldwide Pty Ltd	Ownership.....	100.000	UnitedHealth Group Incorporated	
		.00000	41-1913523				ACN Group IPA of New York, Inc.	NY	NIA	OptumHealth Care Solutions, Inc.	Ownership.....	100.000	UnitedHealth Group Incorporated	
		.00000	27-0015861				ACN Group of California, Inc.	CA	JA	OptumHealth Care Solutions, Inc.	Ownership.....	100.000	UnitedHealth Group Incorporated	
		.00000	33-0692392				A-Life Medical, Inc.	CA	NIA	OptumInsight, Inc.	Ownership.....	100.000	UnitedHealth Group Incorporated	
0707	UnitedHealth Group Incorporated	82406	35-1665915				All Savers Insurance Company	IN	JA	Golden Rule Financial Corporation	Ownership.....	100.000	UnitedHealth Group Incorporated	
0707	UnitedHealth Group Incorporated	73130	35-1744596				All Savers Life Insurance Company of California	CA	JA	Golden Rule Financial Corporation	Ownership.....	100.000	UnitedHealth Group Incorporated	
0707	UnitedHealth Group Incorporated	97179	86-0207231				American Medical Security Life Insurance Company	WI	JA	Golden Rule Financial Corporation	Ownership.....	100.000	UnitedHealth Group Incorporated	
		.00000	54-1743136				AmeriChoice Corporation	DE	UIP	UnitedHealth Group Incorporated	Ownership.....	100.000	UnitedHealth Group Incorporated	
		.00000	54-1743141				AmeriChoice Health Services, Inc.	DE	NIA	AmeriChoice Corporation	Ownership.....	100.000	UnitedHealth Group Incorporated	
0707	UnitedHealth Group Incorporated	13178	26-2481299				AmeriChoice of Connecticut, Inc.	CT	JA	AmeriChoice Corporation	Ownership.....	100.000	UnitedHealth Group Incorporated	
0707	UnitedHealth Group Incorporated	13168	26-2688274				AmeriChoice of Georgia, Inc.	GA	JA	AmeriChoice Corporation	Ownership.....	100.000	UnitedHealth Group Incorporated	
0707	UnitedHealth Group Incorporated	95497	22-3368602				AmeriChoice of New Jersey, Inc.	NJ	JA	AmeriChoice Corporation	Ownership.....	100.000	UnitedHealth Group Incorporated	
		.00000	61-1314126				Aperture Credentialing, Inc.	DE	NIA	OptumInsight, Inc.	Ownership.....	100.000	UnitedHealth Group Incorporated	
		.00000	86-0813232				Arizona Physicians IPA, Inc.	AZ	JA	UnitedHealthcare of Arizona, Inc.	Ownership.....	100.000	UnitedHealth Group Incorporated	
		.00000					ASI Global, LLC	TX	NIA	FrontierMEDEX, Inc.	Ownership.....	100.000	UnitedHealth Group Incorporated	
		.00000	77-0401090				Axolotl Corp.	DE	NIA	OptumInsight, Inc.	Ownership.....	100.000	UnitedHealth Group Incorporated	
		.00000	84-1544013				bConnected Software, Inc.	DE	NIA	Connexions, Inc.	Ownership.....	100.000	UnitedHealth Group Incorporated	
		.00000	88-0267857				Behavioral Healthcare Options, Inc.	NV	NIA	Sierra Health Services, Inc.	Ownership.....	100.000	UnitedHealth Group Incorporated	
		.00000	41-2011515				BP Inc.	DE	NIA	United HealthCare Services, Inc.	Ownership.....	100.000	UnitedHealth Group Incorporated	
		.00000					Canada Health Group International Limited	CA	NIA	FrontierMEDEX Canada Holdings Ltd.	Ownership.....	100.000	UnitedHealth Group Incorporated	
		.00000					CanReg (Europe) Limited	IE	NIA	OptumInsight (Canada) Inc.	Ownership.....	100.000	UnitedHealth Group Incorporated	
		.00000	20-2576806				Care Improvement Associates of Texas, Inc.	TX	NIA	XLHealth Corporation	Ownership.....	100.000	UnitedHealth Group Incorporated	
		.00000	20-8375685				Care Improvement Plus Group Management, LLC	MD	NIA	XLHealth Corporation	Ownership.....	100.000	UnitedHealth Group Incorporated	
0707	UnitedHealth Group Incorporated	12313	20-2412936				Care Improvement Plus of Maryland, Inc.	MD	JA	XLHealth Corporation	Ownership.....	100.000	UnitedHealth Group Incorporated	
0707	UnitedHealth Group Incorporated	12558	45-4976934				Care Improvement Plus of Texas Insurance Company	TX	JA	XLHealth Corporation	Ownership.....	100.000	UnitedHealth Group Incorporated	
		.00000	27-3536376				Care Improvement Plus Practitioners, LLC	MD	NIA	XLHealth Corporation	Ownership.....	100.000	UnitedHealth Group Incorporated	
0707	UnitedHealth Group Incorporated	12567	20-3888112				Care Improvement Plus South Central Insurance Company	AR	JA	XLHealth Corporation	Ownership.....	100.000	UnitedHealth Group Incorporated	
0707	UnitedHealth Group Incorporated	14041	27-5038136				Care Improvement Plus Wisconsin Insurance Company	WI	JA	XLHealth Corporation	Ownership.....	100.000	UnitedHealth Group Incorporated	
		.00000	26-1358634				Care Improvement Reinsurance Corporation of America	AZ	NIA	XLHealth Corporation	Ownership.....	100.000	UnitedHealth Group Incorporated	
		.00000	42-1464363				CareMedic Systems, Inc.	DE	NIA	OptumInsight, Inc.	Ownership.....	100.000	UnitedHealth Group Incorporated	
		.00000					ChinaGate (Hong Kong) Limited	HK	NIA	Optum, Inc.	Ownership.....	100.000	UnitedHealth Group Incorporated	
		.00000					ChinaGate Company Limited	CN	NIA	ChinaGate (Hong Kong) Limited	Ownership.....	100.000	UnitedHealth Group Incorporated	
		.00000	95-4188244				CII Financial, Inc.	CA	NIA	Sierra Health Services, Inc.	Ownership.....	100.000	UnitedHealth Group Incorporated	
		.00000					Citipsych Pty. Limited	AU	NIA	PPC Worldwide Pty Ltd	Ownership.....	100.000	UnitedHealth Group Incorporated	
0707	UnitedHealth Group Incorporated	11836	13-4247706				Citrus Health Care, Inc.	FL	JA	PHC Holdings of Florida, Inc.	Ownership.....	100.000	UnitedHealth Group Incorporated	
		.00000	27-2337616				Collaborative Care Holdings, LLC	DE	NIA	OptumHealth Holdings, LLC	Ownership.....	100.000	UnitedHealth Group Incorporated	
		.00000	27-2337487				Collaborative Care Services, Inc.	DE	NIA	Collaborative Care Holdings, LLC	Ownership.....	100.000	UnitedHealth Group Incorporated	
		.00000	27-3470466				Collaborative Care Solutions, LLC	DE	NIA	Collaborative Care Services, Inc.	Ownership.....	100.000	UnitedHealth Group Incorporated	
		.00000	11-3647007				Comfort Care Transportation, LLC	TX	NIA	WellMed Medical Management, Inc.	Ownership.....	100.000	UnitedHealth Group Incorporated	
		.00000	61-1351358				Commonwealth Administrators, LLC	KY	NIA	UMR, Inc.	Ownership.....	100.000	UnitedHealth Group Incorporated	

SCHEDULE Y
PART 1A - DETAIL OF INSURANCE HOLDING COMPANY SYSTEM

1	2	3	4	5	6	7	8	9	10	11	12 Type of Control (Ownership, Board, Management, Attorney-in-Fact, Influence, Other)	13 If Control is Owner- ship Provide Percent- age	14 Ultimate Controlling Entity(ies)/Person(s)	15
Group Code	Group Name	NAIC Company Code	Federal ID Number	Federal RSSD	CIK	Name of Securities Exchange if Publicly Traded (U.S. or International)	Names of Parent, Subsidiaries Or Affiliates	Domi- ciliary Location	Relationship to Reporting Entity	Directly Controlled by (Name of Entity/Person)				*
		.00000	20-2581574				Connexions HCl NM, LLC	NM	NIA	Connexions, Inc.	Ownership	100.000	UnitedHealth Group Incorporated	
		.00000	20-1825933				Connexions HCl, LLC	FL	NIA	Connexions, Inc.	Ownership	100.000	UnitedHealth Group Incorporated	
		.00000	59-3684411				Connexions, Inc.	FL	NIA	OptumHealth Holdings, LLC	Ownership	100.000	UnitedHealth Group Incorporated	
		.00000					Corporate Support Limited	UK	NIA	Personal Performance Consultants UK Limited	Ownership	100.000	UnitedHealth Group Incorporated	
		.00000	52-1811176				DBP Services of New York IPA, Inc.	NY	NIA	Dental Benefit Providers, Inc.	Ownership	100.000	UnitedHealth Group Incorporated	
		.00000	01-0518346				DCG Resource Options, LLC	ME	NIA	Specialty Benefits, LLC	Ownership	100.000	UnitedHealth Group Incorporated	
		.00000	52-1452809				Dental Benefit Providers of California, Inc.	CA	JA	Dental Benefit Providers, Inc.	Ownership	100.000	UnitedHealth Group Incorporated	
0707	UnitedHealth Group Incorporated	.52053	36-4008355				Dental Benefit Providers of Illinois, Inc.	IL	JA	Dental Benefit Providers, Inc.	Ownership	100.000	UnitedHealth Group Incorporated	
		.00000	41-2014834				Dental Benefit Providers, Inc.	DE	NIA	United HealthCare Services, Inc.	Ownership	100.000	UnitedHealth Group Incorporated	
		.00000	30-0238641				Distance Learning Network, Inc.	DE	NIA	OptumHealth Holdings, LLC	Ownership	100.000	UnitedHealth Group Incorporated	
		.00000					Duncan Printing Services, LLC	SC	NIA	UnitedHealthcare Insurance Company	Ownership	100.000	UnitedHealth Group Incorporated	
		.00000	84-1162764				Electronic Network Systems, Inc.	DE	NIA	OptumInsight, Inc.	Ownership	100.000	UnitedHealth Group Incorporated	
		.00000					ELG FZE	AE	NIA	FrontierMEDEX Limited	Ownership	100.000	UnitedHealth Group Incorporated	
		.00000	86-0964571				Evercare Collaborative Solutions, Inc.	DE	NIA	Ovations, Inc.	Ownership	100.000	UnitedHealth Group Incorporated	
		.00000	30-0226127				Evercare Hospice, Inc.	DE	NIA	Collaborative Care Holdings, LLC	Ownership	100.000	UnitedHealth Group Incorporated	
		.00000	86-0618309				Evercare of Arizona, Inc.	AZ	JA	Ovations, Inc.	Ownership	100.000	UnitedHealth Group Incorporated	
		.00000	11-3669765				Executive Health Resources, Inc.	PA	NIA	OptumInsight, Inc.	Ownership	100.000	UnitedHealth Group Incorporated	
		.00000					Exlogs EBT Holdings Limited	JE	NIA	FrontierMEDEX Limited	Ownership	100.000	UnitedHealth Group Incorporated	
		.00000					Exlogs HSE, Inc. (Canada)	CA	NIA	FrontierMEDEX Canada Holdings Ltd.	Ownership	100.000	UnitedHealth Group Incorporated	
		.00000					Exploration for Mine Clearance, LLC	IQ	NIA	FrontierMEDEX Limited	Ownership	100.000	UnitedHealth Group Incorporated	
		.00000					Exploration Logisitics Group for Medical Services PLC LTD	IQ	NIA	FrontierMEDEX Limited	Ownership	100.000	UnitedHealth Group Incorporated	
		.00000					Exploration Logistics BC Limited	CA	NIA	FrontierMEDEX Canada Limited	Ownership	100.000	UnitedHealth Group Incorporated	
		.00000	68-0679516				Exploration Logistics Group Inc.	DE	NIA	FrontierMEDEX Limited	Ownership	100.000	UnitedHealth Group Incorporated	
		.00000	68-0679514				Exploration Logistics Inc.	DE	NIA	Exploration Logistics Group Inc.	Ownership	100.000	UnitedHealth Group Incorporated	
		.00000					Exploration Logistics Limited	UK	NIA	FrontierMEDEX Limited	Ownership	100.000	UnitedHealth Group Incorporated	
		.00000					Exploration Logistics Newfoundland Limited	CA	NIA	FrontierMEDEX Canada Limited	Ownership	100.000	UnitedHealth Group Incorporated	
		.00000					Exploration Logistics Nova Scotia Limited	CA	NIA	FrontierMEDEX Canada Limited	Ownership	100.000	UnitedHealth Group Incorporated	
		.00000	88-0223385				Family Health Care Services	NV	NIA	Sierra Health Services, Inc.	Ownership	100.000	UnitedHealth Group Incorporated	
		.00000	88-0257036				Family Home Hospice, Inc.	NV	NIA	Sierra Health Services, Inc.	Ownership	100.000	UnitedHealth Group Incorporated	
		.00000					FMG Holdings, LLC	DE	NIA	UnitedHealth Group Incorporated	Ownership	100.000	UnitedHealth Group Incorporated	
		.00000					Focus EAP Ltd.	UK	NIA	Personal Performance Consultants UK Limited	Ownership	100.000	UnitedHealth Group Incorporated	
		.00000	22-3314813				FOHP, Inc.	NJ	NIA	Oxford Health Plans LLC	Ownership	100.000	UnitedHealth Group Incorporated	
		.00000	86-0908902				FOR HEALTH OF ARIZONA, INC.	AZ	NIA	For Health, Inc.	Ownership	100.000	UnitedHealth Group Incorporated	
		.00000	06-1529471				For Health of Rhode Island, Inc.	RI	NIA	For Health, Inc.	Ownership	100.000	UnitedHealth Group Incorporated	
		.00000	33-0766617				For Health, Inc.	DE	NIA	Inspiris, Inc.	Ownership	100.000	UnitedHealth Group Incorporated	
		.00000					Frontier Medical Services Limited	UK	NIA	FrontierMEDEX Limited	Ownership	100.000	UnitedHealth Group Incorporated	
		.00000					FrontierMEDEX Canada Holdings Ltd.	CA	NIA	FrontierMEDEX Limited	Ownership	100.000	UnitedHealth Group Incorporated	
		.00000					FrontierMEDEX Canada Limited	CA	NIA	Canada Health Group International Limited	Ownership	100.000	UnitedHealth Group Incorporated	
		.00000	45-5339512				FrontierMEDEX Governement Services, LLC	DE	NIA	FMG Holdings, LLC	Ownership	100.000	UnitedHealth Group Incorporated	
		.00000					FrontierMEDEX Group Limited	UK	NIA	FMG Holdings, LLC	Ownership	100.000	UnitedHealth Group Incorporated	
		.00000					FrontierMEDEX Limited	UK	NIA	FrontierMEDEX UK Limited	Ownership	100.000	UnitedHealth Group Incorporated	

SCHEDULE Y
PART 1A - DETAIL OF INSURANCE HOLDING COMPANY SYSTEM

1	2	3	4	5	6	7	8	9	10	11	12	13	14	15
Group Code	Group Name	NAIC Company Code	Federal ID Number	Federal RSSD	CIK	Name of Securities Exchange if Publicly Traded (U.S. or International)	Names of Parent, Subsidiaries Or Affiliates	Domi-ciliary Location	Relationship to Reporting Entity	Directly Controlled by (Name of Entity/Person)	Type of Control (Ownership, Board, Management, Attorney-in-Fact, Influence, Other)	If Control is Owner-ship Provide Percen-tage	Ultimate Controlling Entity(ies)/Person(s)	*
		.00000					FrontierMEDEX UK Limited	UK	NIA	FrontierMEDEX Group Limited	Ownership	100.000	UnitedHealth Group Incorporated	
		.00000	33-1219808				FrontierMEDEX US, Inc.	DE	NIA	FrontierMEDEX Group Limited	Ownership	100.000	UnitedHealth Group Incorporated	
		.00000	52-2230470				FrontierMEDEX, Inc.	MN	NIA	FrontierMEDEX US, Inc.	Ownership	100.000	UnitedHealth Group Incorporated	
		.00000	37-0855360				Golden Rule Financial Corporation	DE	NIA	UnitedHealth Group Incorporated	Ownership	100.000	UnitedHealth Group Incorporated	
..0707	UnitedHealth Group Incorporated	.62286	37-6028756	3057283			Golden Rule Insurance Company	JN	JA	Golden Rule Financial Corporation	Ownership	100.000	UnitedHealth Group Incorporated	
		.00000	98-0213198				H & W Indemnity, Ltd.	KY	NIA	UnitedHealth Group Incorporated	Ownership	100.000	UnitedHealth Group Incorporated	
							Health Net Insurance of New York, Inc.	NY	JA	Oxford Health Plans LLC	Ownership	100.000	UnitedHealth Group Incorporated	
..0707	UnitedHealth Group Incorporated	.43893	13-3584296				Health Net of Connecticut, Inc.	CT	JA	Oxford Health Plans LLC	Ownership	100.000	UnitedHealth Group Incorporated	
..0707	UnitedHealth Group Incorporated	.95968	06-1084283				Health Net of New Jersey, Inc.	NJ	JA	FOHP, Inc.	Ownership	100.000	UnitedHealth Group Incorporated	
..0707	UnitedHealth Group Incorporated	.95351	22-3241303				Health Net of New York, Inc.	NY	JA	Oxford Health Plans LLC	Ownership	100.000	UnitedHealth Group Incorporated	
..0707	UnitedHealth Group Incorporated	.95305	06-1174953				Health Net Services (Bermuda) Ltd.	BM	NIA	Oxford Health Plans LLC	Ownership	100.000	UnitedHealth Group Incorporated	
..0707	UnitedHealth Group Incorporated	.00000	98-0153069				Health Plan of Nevada, Inc.	NV	JA	Sierra Health Services, Inc.	Ownership	100.000	UnitedHealth Group Incorporated	
		.96342	88-0201035				Health Technology Analysts Pty Limited	AU	NIA	OptumInsight, Inc.	Ownership	100.000	UnitedHealth Group Incorporated	
		.00000					HealthAllies, Inc.	DE	NIA	OptumHealth Holdings, LLC	Ownership	100.000	UnitedHealth Group Incorporated	
		.00000	95-4763349				Hospice Inspiris Holdings, Inc.	TN	NIA	Inspiris, Inc.	Ownership	100.000	UnitedHealth Group Incorporated	
			20-8910978				Hospice Inspiris of Pennsylvania, Inc.	TN	NIA	Hospice Inspiris Holdings, Inc.	Ownership	100.000	UnitedHealth Group Incorporated	
		.00000	20-8911466				Hospice Inspiris of Texas, Inc.	TN	NIA	Hospice Inspiris Holdings, Inc.	Ownership	100.000	UnitedHealth Group Incorporated	
		.00000	20-8911303				Hospice Inspiris, LLC	TN	NIA	FOR HEALTH OF ARIZONA, INC.	Ownership	100.000	UnitedHealth Group Incorporated	
		.00000	82-0586676				Hygeia Corporation	DE	NIA	UnitedHealth International, Inc.	Ownership	100.000	UnitedHealth Group Incorporated	
		.00000	36-4331825				Hygeia Corporation (Ontario)	CA	NIA	Hygeia Corporation	Ownership	100.000	UnitedHealth Group Incorporated	
		.00000					Independent Physician Management Services, Inc.	DE	NIA	Collaborative Care Holdings, LLC	Ownership	100.000	UnitedHealth Group Incorporated	
		.00000	27-4603968				Information Network Corporation	AZ	NIA	AmeriChoice Corporation	Ownership	100.000	UnitedHealth Group Incorporated	
		.00000	86-0477097				Ingenix Innovus (Netherlands) B.V.	NL	NIA	Optum, Inc.	Ownership	100.000	UnitedHealth Group Incorporated	
		.00000					Ingenix UK Holdings Limited	UK	NIA	Optum, Inc.	Ownership	100.000	UnitedHealth Group Incorporated	
		.00000	62-1641102				Ingram & Associates, LLC	TN	NIA	Payment Resolution Services, LLC	Ownership	100.000	UnitedHealth Group Incorporated	
		.00000	13-4138668				INSPIRIS of New York IPA, Inc.	NY	NIA	Inspiris, Inc.	Ownership	100.000	UnitedHealth Group Incorporated	
							INSPIRIS of New York Management, Inc.							
		.00000	13-4138665				Inspiris of Tennessee, Inc.	NY	NIA	Inspiris, Inc.	Ownership	100.000	UnitedHealth Group Incorporated	
		.00000	20-5355196				INSPIRIS of Texas Physician Group	TN	NIA	Inspiris, Inc.	Ownership	100.000	UnitedHealth Group Incorporated	
		.00000	26-2885572				Inspiris Services Company	TX	NIA	Inspiris Services Company	Ownership	100.000	UnitedHealth Group Incorporated	
		.00000	26-0683057				Inspiris, Inc.	TN	NIA	Inspiris, Inc.	Ownership	100.000	UnitedHealth Group Incorporated	
		.00000	33-0766366				Inspiris, Inc.	DE	NIA	Collaborative Care Holdings, LLC	Ownership	100.000	UnitedHealth Group Incorporated	
							International Psychological Services Pty Limited	AU	NIA	PPC Worldwide Pty Ltd	Ownership	100.000	UnitedHealth Group Incorporated	
		.00000	45-3143218				Lifeprint East, Inc.	DE	NIA	Collaborative Care Holdings, LLC	Ownership	100.000	UnitedHealth Group Incorporated	
		.00000	27-2309024				Lifeprint Health, Inc.	DE	NIA	Collaborative Care Holdings, LLC	Ownership	100.000	UnitedHealth Group Incorporated	
		.00000	05-0471309				LighthouseMD, Inc.	RI	NIA	OptumInsight, Inc.	Ownership	100.000	UnitedHealth Group Incorporated	
		.00000	39-1974851				Logistics Health, Inc.	WI	NIA	OptumHealth Holdings, LLC	Ownership	100.000	UnitedHealth Group Incorporated	
		.00000	91-1263758				Lynx Medical Systems, Inc.	WA	NIA	Picis, Inc.	Ownership	100.000	UnitedHealth Group Incorporated	
		.00000					MAMSI Insurance Resources, LLC	MD	NIA	OneNet PPO, LLC	Ownership	100.000	UnitedHealth Group Incorporated	
...0707	UnitedHealth Group Incorporated	.60321	52-1803283				MAMSI Life and Health Insurance Company	MD	JA	United HealthCare Services, Inc.	Ownership	100.000	UnitedHealth Group Incorporated	
		.00000	14-1782475				Managed Physical Network, Inc.	NY	NIA	OptumHealth Care Solutions, Inc.	Ownership	100.000	UnitedHealth Group Incorporated	
...0707	UnitedHealth Group Incorporated	.96310	52-1169135				MD-Individual Practice Association, Inc.	MD	JA	United HealthCare Services, Inc.	Ownership	100.000	UnitedHealth Group Incorporated	
		.00000					Medekit.com Limited	UK	NIA	FrontierMEDEX Limited	Ownership	100.000	UnitedHealth Group Incorporated	
		.00000	52-2178531				MEDEX Insurance Services, Inc.	MD	NIA	FrontierMEDEX, Inc.	Ownership	100.000	UnitedHealth Group Incorporated	

SCHEDULE Y
PART 1A - DETAIL OF INSURANCE HOLDING COMPANY SYSTEM

1	2	3	4	5	6	7	8	9	10	11	12	13	14	15
Group Code	Group Name	NAIC Company Code	Federal ID Number	Federal RSSD	CIK	Name of Securities Exchange if Publicly Traded (U.S. or International)	Names of Parent, Subsidiaries Or Affiliates	Domi-ciliary Location	Relationship to Reporting Entity	Directly Controlled by (Name of Entity/Person)	Type of Control (Ownership, Board, Management, Attorney-in-Fact, Influence, Other)	If Control is Owner-ship Provide Percen-tage	Ultimate Controlling Entity(ies)/Person(s)	*
0707	UnitedHealth Group Incorporated	12756	20-3391186				Medica Health Plans of Florida, Inc.	FL	JA	United HealthCare Services, Inc.	Ownership	100.000	UnitedHealth Group Incorporated	
0707	UnitedHealth Group Incorporated	12155	01-0788576				Medica HealthCare Plans, Inc.	FL	JA	United HealthCare Services, Inc.	Ownership	100.000	UnitedHealth Group Incorporated	
		00000	26-4808018				Medical Preparatory School of Allied Health, LLC	TX	NIA	WellMed Medical Management, Inc.	Ownership	100.000	UnitedHealth Group Incorporated	
		00000	32-0037402				Medical Transportation Services, LLC	FL	NIA	United HealthCare Services, Inc.	Ownership	100.000	UnitedHealth Group Incorporated	
0707	UnitedHealth Group Incorporated	79480	35-1279304				Midwest Security Life Insurance Company	WI	JA	UnitedHealthcare, Inc.	Ownership	100.000	UnitedHealth Group Incorporated	
		00000	86-0693199				Mohave Valley Hospital, Inc.	AZ	NIA	Southwest Medical Associates, Inc.	Ownership	100.000	UnitedHealth Group Incorporated	
		00000	45-3142852				Monarch Management Services, Inc.	DE	NIA	Collaborative Care Holdings, LLC	Ownership	100.000	UnitedHealth Group Incorporated	
0707	UnitedHealth Group Incorporated	95251	76-0196559				National Pacific Dental, Inc.	TX	JA	Dental Benefit Providers, Inc.	Ownership	100.000	UnitedHealth Group Incorporated	
							Neighborhood Health Partnership, Inc.							
0707	UnitedHealth Group Incorporated	95123	65-0996107					FL	JA	UnitedHealthcare, Inc.	Ownership	100.000	UnitedHealth Group Incorporated	
		00000	20-4755277				Netwerkes, LLC	TN	NIA	Payment Resolution Services, LLC	Ownership	100.000	UnitedHealth Group Incorporated	
0707	UnitedHealth Group Incorporated	95758	88-0228572				Nevada Pacific Dental	NV	JA	Dental Benefit Providers, Inc.	Ownership	100.000	UnitedHealth Group Incorporated	
		00000	88-0245121				Northern Nevada Health Network, Inc.	NV	NIA	Sierra Health Services, Inc.	Ownership	100.000	UnitedHealth Group Incorporated	
		00000					OneNet PPO, LLC	MD	NIA	UnitedHealthcare Insurance Company	Ownership	100.000	UnitedHealth Group Incorporated	
0707	UnitedHealth Group Incorporated	96940	52-1518174				Optimum Choice, Inc.	MD	JA	United HealthCare Services, Inc.	Ownership	100.000	UnitedHealth Group Incorporated	
		00000					Optum (France) SAS	FR	NIA	Ingenix Innovus (Netherlands) B.V.	Ownership	100.000	UnitedHealth Group Incorporated	
		00000	45-3142512				Optum Clinical Services, Inc.	DE	NIA	Collaborative Care Holdings, LLC	Ownership	100.000	UnitedHealth Group Incorporated	
		00000	04-3574101				Optum Government Solutions, Inc.	DE	NIA	OptumInsight, Inc.	Ownership	100.000	UnitedHealth Group Incorporated	
		00000	20-4581265				Optum Public Sector Solutions, Inc.	DE	NIA	OptumInsight, Inc.	Ownership	100.000	UnitedHealth Group Incorporated	
		00000					Optum Sa de Servi os (Brasil) Ltda	BR	NIA	Ingenix Innovus (Netherlands) B.V.	Ownership	99.000	UnitedHealth Group Incorporated	
		00000					Optum Sa de Servi os (Brasil) Ltda	BR	NIA	OptumInsight, Inc.	Ownership	1.000	UnitedHealth Group Incorporated	
		00000	45-4683454				Optum Services, Inc.	DE	NIA	Optum, Inc.	Ownership	100.000	UnitedHealth Group Incorporated	
		00000	30-0580620	3119994			Optum, Inc.	DE	NIA	United HealthCare Services, Inc.	Ownership	100.000	UnitedHealth Group Incorporated	
		00000	47-0858534	3202702			OptumHealth Bank, Inc.	UT	NIA	OptumHealth Financial Services, Inc.	Ownership	100.000	UnitedHealth Group Incorporated	
		00000	41-1591944				OptumHealth Care Solutions, Inc.	MN	NIA	OptumHealth Holdings, LLC	Ownership	100.000	UnitedHealth Group Incorporated	
		00000	47-0858530				OptumHealth Financial Services, Inc.	DE	NIA	OptumHealth Holdings, LLC	Ownership	100.000	UnitedHealth Group Incorporated	
		00000					OptumHealth Holdings, LLC	DE	NIA	Optum, Inc.	Ownership	100.000	UnitedHealth Group Incorporated	
		00000					OptumHealth International B.V.	NL	NIA	Optum, Inc.	Ownership	100.000	UnitedHealth Group Incorporated	
		00000					OptumInsight (Canada) Inc.	CA	NIA	OptumInsight, Inc.	Ownership	100.000	UnitedHealth Group Incorporated	
		00000					OptumInsight (Deutschland) GmbH	DE	NIA	Ingenix Innovus (Netherlands) B.V.	Ownership	100.000	UnitedHealth Group Incorporated	
		00000					OptumInsight (Singapore) Pte. Ltd.	SG	NIA	OptumInsight, Inc.	Ownership	100.000	UnitedHealth Group Incorporated	
		00000					OptumInsight (Sweden) AB	SE	NIA	Ingenix Innovus (Netherlands) B.V.	Ownership	100.000	UnitedHealth Group Incorporated	
		00000					OptumInsight Holdings, LLC	DE	NIA	Optum, Inc.	Ownership	100.000	UnitedHealth Group Incorporated	
		00000					OptumInsight Italy S.r.l.	IT	NIA	Ingenix Innovus (Netherlands) B.V.	Ownership	100.000	UnitedHealth Group Incorporated	
		00000					OptumInsight Korea LLC	Re	NIA	Optum, Inc.	Ownership	100.000	UnitedHealth Group Incorporated	
		00000	04-3383745				OptumInsight Life Sciences, Inc.	DE	NIA	OptumInsight, Inc.	Ownership	100.000	UnitedHealth Group Incorporated	
		00000					OptumInsight Poland sp. z.o.o.	Po	NIA	Ingenix Innovus (Netherlands) B.V.	Ownership	99.000	UnitedHealth Group Incorporated	
		00000					OptumInsight Poland sp. z.o.o.	Po	NIA	OptumInsight, Inc.	Ownership	1.000	UnitedHealth Group Incorporated	
		00000	41-1858498				OptumInsight, Inc.	DE	NIA	OptumInsight Holdings, LLC	Ownership	100.000	UnitedHealth Group Incorporated	
		00000					OptumRx Holdings, LLC	DE	NIA	Optum, Inc.	Ownership	100.000	UnitedHealth Group Incorporated	
		00000	33-0441200				OptumRx, Inc.	CA	NIA	OptumRx Holdings, LLC	Ownership	100.000	UnitedHealth Group Incorporated	
		00000	41-1921007				Ovations, Inc.	DE	NIA	United HealthCare Services, Inc.	Ownership	100.000	UnitedHealth Group Incorporated	
		00000	06-1587795				Oxford Benefit Management, Inc.	CT	NIA	Oxford Health Plans LLC	Ownership	100.000	UnitedHealth Group Incorporated	
0707	UnitedHealth Group Incorporated	78026	22-2797560				Oxford Health Insurance, Inc.	NY	JA	Oxford Health Plans (NY), Inc.	Ownership	100.000	UnitedHealth Group Incorporated	
0707	UnitedHealth Group Incorporated	96798	06-1181201				Oxford Health Plans (CT), Inc.	CT	JA	Oxford Health Plans LLC	Ownership	100.000	UnitedHealth Group Incorporated	
0707	UnitedHealth Group Incorporated	95506	22-2745725				Oxford Health Plans (NJ), Inc.	NJ	JA	Oxford Health Plans LLC	Ownership	100.000	UnitedHealth Group Incorporated	
0707	UnitedHealth Group Incorporated	95479	06-1181200				Oxford Health Plans (NY), Inc.	NY	JA	Oxford Health Plans LLC	Ownership	100.000	UnitedHealth Group Incorporated	
		00000	52-2443751				Oxford Health Plans LLC	DE	NIA	UnitedHealth Group Incorporated	Ownership	100.000	UnitedHealth Group Incorporated	

SCHEDULE Y
PART 1A - DETAIL OF INSURANCE HOLDING COMPANY SYSTEM

1	2	3	4	5	6	7	8	9	10	11	12	13	14	15
Group Code	Group Name	NAIC Company Code	Federal ID Number	Federal RSSD	CIK	Name of Securities Exchange if Publicly Traded (U.S. or International)	Names of Parent, Subsidiaries Or Affiliates	Domi-ciliary Location	Relationship to Reporting Entity	Directly Controlled by (Name of Entity/Person)	Type of Control (Ownership, Board, Management, Attorney-in-Fact, Influence, Other)	If Control is Owner-ship Provide Percen-tage	Ultimate Controlling Entity(ies)/Person(s)	*
...0707 ...	UnitedHealth Group Incorporated70785	35-1137395	PacifiCare Life and Health Insurance CompanyIN.....	..JA.....	United HealthCare Services, Inc.	Ownership.....	..100.000	UnitedHealth Group Incorporated
...0707 ...	UnitedHealth Group Incorporated84506	95-2829463	PacifiCare Life Assurance CompanyCO.....	..JA.....	United HealthCare Services, Inc.	Ownership.....	..100.000	UnitedHealth Group Incorporated
...0707 ...	UnitedHealth Group Incorporated95617	94-3267522	PacifiCare of Arizona, Inc.AZ.....	..JA.....	United HealthCare Services, Inc.	Ownership.....	..100.000	UnitedHealth Group Incorporated
...0707 ...	UnitedHealth Group Incorporated95434	84-1011378	PacifiCare of Colorado, Inc.CO.....	..JA.....	United HealthCare Services, Inc.	Ownership.....	..100.000	UnitedHealth Group Incorporated
...0707 ...	UnitedHealth Group Incorporated95685	86-0875231	PacifiCare of Nevada, Inc.NV.....	..JA.....	United HealthCare Services, Inc.	Ownership.....	..100.000	UnitedHealth Group Incorporated
.....00000	Passport Coast-to-Coast LLCDE.....	..NIA.....	United HealthCare Services, Inc.	Ownership.....	..100.000	UnitedHealth Group Incorporated
.....00000	33-0861832	Paularino Third Party Administrators, Inc.CA.....	..NIA.....	For Health, Inc.	Ownership.....	..100.000	UnitedHealth Group Incorporated
.....00000	62-1451147	Payment Resolution Services, LLCTN.....	..NIA.....	OptumInsight, Inc.	Ownership.....	..100.000	UnitedHealth Group Incorporated
.....00000	Personal Performance Consultants India Private LimitedIN.....	..NIA.....	OptumHealth International B.V.	Ownership.....	..99.996	UnitedHealth Group Incorporated
.....00000	Personal Performance Consultants India Private LimitedIN.....	..NIA.....	United Behavioral Health	Ownership.....	..0.004	UnitedHealth Group Incorporated
.....00000	Personal Performance Consultants UK LimitedUK.....	..NIA.....	PPC International, L.L.C.	Ownership.....	..100.000	UnitedHealth Group Incorporated
.....00000	80-0506053	PHC Holdings of Florida, Inc.TX.....	..NIA.....	PHC Subsidiary Holdings, LLC	Ownership.....	..100.000	UnitedHealth Group Incorporated
.....00000	35-2288416	PHC Subsidiary Holdings, LLCTX.....	..NIA.....	United HealthCare Services, Inc.	Ownership.....	..100.000	UnitedHealth Group Incorporated
...0707 ...	UnitedHealth Group Incorporated13160	45-0571407	Physicians Health Choice of Arkansas, Inc.AR.....	..JA.....	PHC Subsidiary Holdings, LLC	Ownership.....	..100.000	UnitedHealth Group Incorporated
...0707 ...	UnitedHealth Group Incorporated12977	32-0191973	Physicians Health Choice of New Mexico, Inc.NM.....	..JA.....	PHC Subsidiary Holdings, LLC	Ownership.....	..100.000	UnitedHealth Group Incorporated
...0707 ...	UnitedHealth Group Incorporated11494	04-3677255	Physicians Health Choice of Texas, LLCTX.....	..JA.....	PHC Subsidiary Holdings, LLC	Ownership.....	..100.000	UnitedHealth Group Incorporated
.....00000	52-1162824	Physicians Health Plan of Maryland, Inc.MD.....	..NIA.....	United HealthCare Services, Inc.	Ownership.....	..100.000	UnitedHealth Group Incorporated
.....00000	Picis Research and Development, S.A.U.ES.....	..NIA.....	Ingenix Innovus (Netherlands) B.V.	Ownership.....	..100.000	UnitedHealth Group Incorporated
.....00000	36-4375169	3886791	Picis, Inc.DE.....	..NIA.....	OptumInsight, Inc.	Ownership.....	..100.000	UnitedHealth Group Incorporated
.....00000	Picis, Ltd.UK.....	..NIA.....	Picis, Inc.	Ownership.....	..100.000	UnitedHealth Group Incorporated
.....00000	Positive People CompanyCN.....	..NIA.....	PPC International, L.L.C.	Ownership.....	..100.000	UnitedHealth Group Incorporated
.....00000	20-2149493	PPC International II, LLCMO.....	..NIA.....	United Behavioral Health	Ownership.....	..100.000	UnitedHealth Group Incorporated
.....00000	43-1747235	PPC International, L.L.C.MO.....	..NIA.....	Optum, Inc.	Ownership.....	..100.000	UnitedHealth Group Incorporated
.....00000	PPC Worldwide Canada EAP Services Ltd.CA.....	..NIA.....	PPC International, L.L.C.	Ownership.....	..100.000	UnitedHealth Group Incorporated
.....00000	PPC Worldwide Management Pty LtdAU.....	..NIA.....	PPC Worldwide Pty Ltd	Ownership.....	..100.000	UnitedHealth Group Incorporated
.....00000	International Psychological Services Pty LimitedNIA.....	International Psychological Services Pty Limited	Ownership.....	..100.000	UnitedHealth Group Incorporated
.....00000	PPC Worldwide Pty LtdAU.....	..NIA.....	Personal Performance Consultants UK Limited	Ownership.....	..100.000	UnitedHealth Group Incorporated
.....00000	75-2741619	ppoONE, Inc.DE.....	..NIA.....	United HealthCare Services, Inc.	Ownership.....	..100.000	UnitedHealth Group Incorporated
.....00000	65-0683927	Preferred Care Partners Holding, Corp.FL.....	..NIA.....	United HealthCare Services, Inc.	Ownership.....	..100.000	UnitedHealth Group Incorporated
.....00000	26-1845018	Preferred Care Partners Medical Group, Inc.FL.....	..NIA.....	Preferred Care Partners Holding, Corp.	Ownership.....	..100.000	UnitedHealth Group Incorporated
.....00000	26-1845018	Preferred Care Partners Medical Group, Inc.FL.....	..NIA.....	Preferred Care Partners Holding, Corp.	Ownership.....	..100.000	UnitedHealth Group Incorporated
...0707 ...	UnitedHealth Group Incorporated11176	65-0885893	Preferred Care Partners, Inc.FL.....	..JA.....	Preferred Care Partners Holding, Corp.	Ownership.....	..100.000	UnitedHealth Group Incorporated
.....00000	88-0253112	Prime Health, Inc.NV.....	..NIA.....	Sierra Health Services, Inc.	Ownership.....	..100.000	UnitedHealth Group Incorporated
.....00000	39-1579905	ProcessWorks, Inc.WI.....	..NIA.....	UnitedHealthcare, Inc.	Ownership.....	..100.000	UnitedHealth Group Incorporated

SCHEDULE Y
PART 1A - DETAIL OF INSURANCE HOLDING COMPANY SYSTEM

1	2	3	4	5	6	7	8	9	10	11	12	13	14	15
Group Code	Group Name	NAIC Company Code	Federal ID Number	Federal RSSD	CIK	Name of Securities Exchange if Publicly Traded (U.S. or International)	Names of Parent, Subsidiaries Or Affiliates	Domi-ciliary Location	Relationship to Reporting Entity	Directly Controlled by (Name of Entity/Person)	Type of Control (Ownership, Board, Management, Attorney-in-Fact, Influence, Other)	If Control is Owner-ship Provide Per-centage	Ultimate Controlling Entity(ies)/Person(s)	*
		.00000					QSSI Technologies India Private Limited	IN	NIA	Quality Software Services, Inc.	Ownership	.99.900	UnitedHealth Group Incorporated	1
		.00000	52-2016292				Quality Software Services, Inc.	MD	NIA	OptumInsight, Inc.	Ownership	.100.000	UnitedHealth Group Incorporated	
		.00000	26-3168754				R&H Family Fitness Unlimited LLC	TX	NIA	WellMed Medical Management, Inc.	Ownership	.100.000	UnitedHealth Group Incorporated	
		.00000	20-0151096				Rx Solutions NY IPA, Inc.	NY	NIA	OptumRx, Inc.	Ownership	.100.000	UnitedHealth Group Incorporated	
		.00000					ScriptSwitch Holdings Limited	UK	NIA	Ingenix UK Holdings Limited	Ownership	.100.000	UnitedHealth Group Incorporated	
		.00000					ScriptSwitch Limited	UK	NIA	ScriptSwitch Holdings Limited	Ownership	.100.000	UnitedHealth Group Incorporated	
.0707	UnitedHealth Group Incorporated	.71420	94-0734860				Sierra Health and Life Insurance Company, Inc.	CA	JA	Sierra Health Services, Inc.	Ownership	.100.000	UnitedHealth Group Incorporated	
		.00000	88-0200415				Sierra Health Services, Inc.	NV	NIA	UnitedHealthcare, Inc.	Ownership	.100.000	UnitedHealth Group Incorporated	
		.00000	88-0254322				Sierra Health-Care Options, Inc.	NV	NIA	Sierra Health Services, Inc.	Ownership	.100.000	UnitedHealth Group Incorporated	
		.00000	88-0385705				Sierra Home Medical Products, Inc.	NV	NIA	Sierra Health Services, Inc.	Ownership	.100.000	UnitedHealth Group Incorporated	
		.00000	88-0264562				Sierra Nevada Administrators, Inc.	NV	NIA	Sierra Health Services, Inc.	Ownership	.100.000	UnitedHealth Group Incorporated	
		.00000	88-0201420				Southwest Medical Associates, Inc.	NV	NIA	Sierra Health Services, Inc.	Ownership	.100.000	UnitedHealth Group Incorporated	
		.00000	38-2609888				Southwest Michigan Health Network Inc.	MI	NIA	UnitedHealthcare, Inc.	Ownership	.100.000	UnitedHealth Group Incorporated	
		.00000	41-1921983				Specialty Benefits, LLC	DE	NIA	United HealthCare Services, Inc.	Ownership	.100.000	UnitedHealth Group Incorporated	
		.00000	71-0886811				Spectera of New York, IPA, Inc.	NY	NIA	Spectera, Inc.	Ownership	.100.000	UnitedHealth Group Incorporated	
		.00000	52-1260282				Spectera, Inc.	MD	NIA	Specialty Benefits, LLC	Ownership	.100.000	UnitedHealth Group Incorporated	
		.00000	56-1970224				The Lewin Group, Inc.	NC	NIA	Optum Public Sector Solutions, Inc.	Ownership	.100.000	UnitedHealth Group Incorporated	
		.00000	25-1825549				Three Rivers Holdings, Inc.	DE	UDP	AmeriChoice Corporation	Ownership	.100.000	UnitedHealth Group Incorporated	
		.00000	52-1431155				Travel Express Incorporated	MD	NIA	FrontierMEDEX, Inc.	Ownership	.100.000	UnitedHealth Group Incorporated	
		.00000	94-3077084				U.S. Behavioral Health Plan, California	CA	JA	United Behavioral Health	Ownership	.100.000	UnitedHealth Group Incorporated	
		.00000	41-1913059				UHC International Services, Inc.	DE	NIA	UnitedHealth Group Incorporated	Ownership	.100.000	UnitedHealth Group Incorporated	
		.00000	95-2931460				UHC of California	CA	JA	United HealthCare Services, Inc.	Ownership	.100.000	UnitedHealth Group Incorporated	
		.00000	41-1921008				UHC Holdings, Inc.	DE	NIA	United HealthCare Services, Inc.	Ownership	.100.000	UnitedHealth Group Incorporated	
		.00000	14-1892398				Ultima Rx, LLC	FL	NIA	United HealthCare Services, Inc.	Ownership	.100.000	UnitedHealth Group Incorporated	
		.00000	75-2788811				UMR Care Management, LLLP	DE	NIA	United HealthCare Services, Inc.	Ownership	.99.000	UnitedHealth Group Incorporated	
		.00000	75-2788811				UMR Care Management, LLLP	DE	NIA	UMR, Inc.	Ownership	.1.000	UnitedHealth Group Incorporated	
		.00000	39-1995276				UMR, Inc.	DE	NIA	United HealthCare Services, Inc.	Ownership	.100.000	UnitedHealth Group Incorporated	
.0707	UnitedHealth Group Incorporated	.91529	52-1996029				Unimerica Insurance Company	WI	JA	OptumHealth Holdings, LLC	Ownership	.100.000	UnitedHealth Group Incorporated	
		.11596	01-0637149				Unimerica Life Insurance Company of New York	NY	JA	UnitedHealthcare Insurance Company	Ownership	.100.000	UnitedHealth Group Incorporated	
.0707	UnitedHealth Group Incorporated	.00000	25-1877716				Unison Administrative Services, LLC	PA	NIA	Three Rivers Holdings, Inc.	Ownership	.100.000	UnitedHealth Group Incorporated	
		.00000	20-5917714				Unison Health Plan of Delaware, Inc.	DE	JA	Three Rivers Holdings, Inc.	Ownership	.100.000	UnitedHealth Group Incorporated	
.0707	UnitedHealth Group Incorporated	.13032	26-0651931				Unison Health Plan of the Capital Area, Inc.	DC	JA	Three Rivers Holdings, Inc.	Ownership	.100.000	UnitedHealth Group Incorporated	
		.00000	94-2649097				United Behavioral Health	CA	NIA	OptumHealth Holdings, LLC	Ownership	.100.000	UnitedHealth Group Incorporated	
		.00000	41-1868911				United Behavioral Health of New York, I.P.A., Inc.	NY	NIA	United Behavioral Health	Ownership	.100.000	UnitedHealth Group Incorporated	
		.00000	41-1941615				United Health Foundation	MN	NIA	UnitedHealth Group Incorporated	Ownership	.100.000	UnitedHealth Group Incorporated	
		.00000	41-1289245	3410132			United HealthCare Services, Inc.	MN	NIA	UnitedHealth Group Incorporated	Ownership	.100.000	UnitedHealth Group Incorporated	
		.00000	30-0318238				United Resource Networks IPA of New York, Inc.	NY	NIA	OptumHealth Care Solutions, Inc.	Ownership	.100.000	UnitedHealth Group Incorporated	
		.00000	01-0538317				UnitedHealth Advisors, LLC	ME	NIA	United HealthCare Services, Inc.	Ownership	.100.000	UnitedHealth Group Incorporated	
		.00000					UnitedHealth Group Global Healthcare Services Limited	IE	NIA	United HealthCare Services, Inc.	Ownership	.100.000	UnitedHealth Group Incorporated	
		.00000					UnitedHealth Group Global Services, Inc.	PH	NIA	UnitedHealth Group International B.V.	Ownership	.100.000	UnitedHealth Group Incorporated	
		.00000	41-1321939		0000731766	New York Stock Exchange	UnitedHealth Group Incorporated	MN	UIP					

SCHEDULE Y
PART 1A - DETAIL OF INSURANCE HOLDING COMPANY SYSTEM

1	2	3	4	5	6	7	8	9	10	11	12	13	14	15
Group Code	Group Name	NAIC Company Code	Federal ID Number	Federal RSSD	CIK	Name of Securities Exchange if Publicly Traded (U.S. or International)	Names of Parent, Subsidiaries Or Affiliates	Domi-ciliary Location	Relationship to Reporting Entity	Directly Controlled by (Name of Entity/Person)	Type of Control (Ownership, Board, Management, Attorney-in-Fact, Influence, Other)	If Control is Owner-ship Provide Percen-tage	Ultimate Controlling Entity(ies)/Person(s)	*
		..00000					UnitedHealth Group Information Services Private LimitedIN..	..NIA..	UnitedHealth Group International B.V.	Ownership.....	..99.370	UnitedHealth Group Incorporated	
		..00000					UnitedHealth Group Information Services Private LimitedIN..	..NIA..	UnitedHealth International, Inc.	Ownership.....	..0.630	UnitedHealth Group Incorporated	
		..00000					UnitedHealth Group International B.V.	..NL..	..NIA..	UnitedHealth Group Incorporated	Ownership.....	..100.000	UnitedHealth Group Incorporated	
		..00000	41-1917398				UnitedHealth International, Inc.DE..	..NIA..	UnitedHealth Group Incorporated	Ownership.....	..100.000	UnitedHealth Group Incorporated	
		..00000					UnitedHealth Military & Veterans Services, LLCDE..	..NIA..	United HealthCare Services, Inc.	Ownership.....	..100.000	UnitedHealth Group Incorporated	
		..00000	26-2574977				UnitedHealth UK LimitedUK..	..NIA..	Ingenix UK Holdings Limited	Ownership.....	..100.000	UnitedHealth Group Incorporated	
...0707 ...	UnitedHealth Group Incorporated95174	33-0115163				UnitedHealthcare Benefits of Texas, Inc.TX..	..JA..	United HealthCare Services, Inc.	Ownership.....	..100.000	UnitedHealth Group Incorporated	
...0707 ...	UnitedHealth Group Incorporated12323	56-2451429				UnitedHealthcare Community Plan of Ohio, Inc.OH..		Three Rivers Holdings, Inc.	Ownership.....	..100.000	UnitedHealth Group Incorporated	
...0707 ...	UnitedHealth Group Incorporated11141	91-2008361				UnitedHealthcare Community Plan of Texas, L.L.C.TX..	..JA..	Ovations, Inc.	Ownership.....	..100.000	UnitedHealth Group Incorporated	
...0707 ...	UnitedHealth Group Incorporated95467	38-3204052				UnitedHealthcare Community Plan, Inc.	..MI..	..JA..	AmeriChoice Corporation	Ownership.....	..100.000	UnitedHealth Group Incorporated	
		..00000					UnitedHealthcare India Private LimitedIN..	..NIA..	UnitedHealth Group International B.V.	Ownership.....	..99.995	UnitedHealth Group Incorporated	
		..00000					UnitedHealthcare India Private LimitedIN..	..NIA..	UnitedHealth International, Inc.	Ownership.....	..0.005	UnitedHealth Group Incorporated	
...0707 ...	UnitedHealth Group Incorporated79413	36-2739571				UnitedHealthcare Insurance CompanyCT..	..JA..	UHC Holdings, Inc.	Ownership.....	..100.000	UnitedHealth Group Incorporated	
...0707 ...	UnitedHealth Group Incorporated60318	36-3800349				UnitedHealthcare Insurance Company of IllinoisIL..	..JA..	UnitedHealthcare Insurance Company ...	Ownership.....	..100.000	UnitedHealth Group Incorporated	
...0707 ...	UnitedHealth Group Incorporated60093	11-3283886				UnitedHealthcare Insurance Company of New YorkNY..	..JA..	UnitedHealthcare Insurance Company ...	Ownership.....	..100.000	UnitedHealth Group Incorporated	
...0707 ...	UnitedHealth Group Incorporated12231	20-1902768				UnitedHealthcare Insurance Company of the River ValleyIL..	..JA..	UnitedHealthcare Services Company of the River Valley, Inc.	Ownership.....	..100.000	UnitedHealth Group Incorporated	
		..00000					UnitedHealthcare International Asia, LLCDE..	..NIA..	UnitedHealth Group Incorporated	Ownership.....	..100.000	UnitedHealth Group Incorporated	
...0707 ...	UnitedHealth Group Incorporated95784	63-0899562				UnitedHealthcare of Alabama, Inc.AL..	..JA..	UnitedHealthcare, Inc.	Ownership.....	..100.000	UnitedHealth Group Incorporated	
...0707 ...	UnitedHealth Group Incorporated96016	86-0507074				UnitedHealthcare of Arizona, Inc.AZ..	..JA..	UnitedHealthcare, Inc.	Ownership.....	..100.000	UnitedHealth Group Incorporated	
...0707 ...	UnitedHealth Group Incorporated95446	63-1036819				UnitedHealthcare of Arkansas, Inc.AR..	..JA..	UnitedHealthcare, Inc.	Ownership.....	..100.000	UnitedHealth Group Incorporated	
...0707 ...	UnitedHealth Group Incorporated95090	84-1004639				UnitedHealthcare of Colorado, Inc.CO..	..JA..	UnitedHealthcare, Inc.	Ownership.....	..100.000	UnitedHealth Group Incorporated	
...0707 ...	UnitedHealth Group Incorporated95264	59-1293865				UnitedHealthcare of Florida, Inc.FL..	..JA..	UnitedHealthcare, Inc.	Ownership.....	..100.000	UnitedHealth Group Incorporated	
...0707 ...	UnitedHealth Group Incorporated95850	58-1653544				UnitedHealthcare of Georgia, Inc.GA..	..JA..	UnitedHealthcare, Inc.	Ownership.....	..100.000	UnitedHealth Group Incorporated	
...0707 ...	UnitedHealth Group Incorporated95776	36-3280214				UnitedHealthcare of Illinois, Inc.IL..	..JA..	UnitedHealthcare, Inc.	Ownership.....	..100.000	UnitedHealth Group Incorporated	
...0707 ...	UnitedHealth Group Incorporated96644	62-1240316				UnitedHealthcare of Kentucky, Ltd.KY..	..JA..	United HealthCare Services, Inc.	Ownership.....	..94.180	UnitedHealth Group Incorporated2
...0707 ...	UnitedHealth Group Incorporated96644	62-1240316				UnitedHealthcare of Kentucky, Ltd.KY..	..JA..	UnitedHealthcare, Inc.	Ownership.....	..5.820	UnitedHealth Group Incorporated2
...0707 ...	UnitedHealth Group Incorporated95833	72-1074008				UnitedHealthcare of Louisiana, Inc.LA..	..JA..	UnitedHealthcare, Inc.	Ownership.....	..100.000	UnitedHealth Group Incorporated	
...0707 ...	UnitedHealth Group Incorporated95716	63-1036817				UnitedHealthcare of Mississippi, Inc.	..MS..	..JA..	UnitedHealthcare, Inc.	Ownership.....	..100.000	UnitedHealth Group Incorporated	
							UnitedHealthcare of New England, Inc.							
...0707 ...	UnitedHealth Group Incorporated95149	05-0413469					..RI..	..JA..	United HealthCare Services, Inc.	Ownership.....	..100.000	UnitedHealth Group Incorporated	
...0707 ...	UnitedHealth Group Incorporated13214	26-2697886				UnitedHealthcare of New Mexico, Inc.NM..	..JA..	UnitedHealthcare Insurance Company ...	Ownership.....	..100.000	UnitedHealth Group Incorporated	
...0707 ...	UnitedHealth Group Incorporated95085	06-1172891				UnitedHealthcare of New York, Inc.NY..	..JA..	AmeriChoice Corporation	Ownership.....	..100.000	UnitedHealth Group Incorporated	
							UnitedHealthcare of North Carolina, Inc.NC..	..JA..	UnitedHealthcare, Inc.	Ownership.....	..100.000	UnitedHealth Group Incorporated	
...0707 ...	UnitedHealth Group Incorporated95186	31-1142815				UnitedHealthcare of Ohio, Inc.OH..	..JA..	United HealthCare Services, Inc.	Ownership.....	..100.000	UnitedHealth Group Incorporated	
...0707 ...	UnitedHealth Group Incorporated96903	33-0115166				UnitedHealthcare of Oklahoma, Inc.OK..	..JA..	United HealthCare Services, Inc.	Ownership.....	..100.000	UnitedHealth Group Incorporated	

SCHEDULE Y
PART 1A - DETAIL OF INSURANCE HOLDING COMPANY SYSTEM

1	2	3	4	5	6	7	8	9	10	11	12	13	14	15
Group Code	Group Name	NAIC Company Code	Federal ID Number	Federal RSSD	CIK	Name of Securities Exchange if Publicly Traded (U.S. or International)	Names of Parent, Subsidiaries Or Affiliates	Domi-ciliary Location	Relationship to Reporting Entity	Directly Controlled by (Name of Entity/Person)	Type of Control (Ownership, Board, Management, Attorney-in-Fact, Influence, Other)	If Control is Owner-ship Provide Percen-tage	Ultimate Controlling Entity(ies)/Person(s)	*
..0707	UnitedHealth Group Incorporated	..95893	93-0938819				UnitedHealthcare of Oregon, Inc.	OR	..JA	United HealthCare Services, Inc.	Ownership	..100.000	UnitedHealth Group Incorporated	
..0707	UnitedHealth Group Incorporated	..95220	25-1756858				UnitedHealthcare of Pennsylvania, Inc.	PA	..JA	Three Rivers Holdings, Inc.	Ownership	..100.000	UnitedHealth Group Incorporated	
..0707	UnitedHealth Group Incorporated	..11775	32-0062883				UnitedHealthcare of South Carolina, Inc.	SC	..JA	Three Rivers Holdings, Inc.	Ownership	..100.000	UnitedHealth Group Incorporated	
..0707	UnitedHealth Group Incorporated	..95765	95-3939697				UnitedHealthcare of Texas, Inc.	TX	..JA	UnitedHealthcare, Inc.	Ownership	..100.000	UnitedHealth Group Incorporated	
..0707	UnitedHealth Group Incorporated	..95025	52-1130183				UnitedHealthcare of the Mid-Atlantic, Inc.	MD	..JA	UnitedHealthcare, Inc.	Ownership	..100.000	UnitedHealth Group Incorporated	
..0707	UnitedHealth Group Incorporated	..95591	47-0676824				UnitedHealthcare of the Midlands, Inc.	NE	..JA	UnitedHealthcare, Inc.	Ownership	..100.000	UnitedHealth Group Incorporated	
..0707	UnitedHealth Group Incorporated	..96385	43-1361841				UnitedHealthcare of the Midwest, Inc.	MO	..JA	UnitedHealthcare, Inc.	Ownership	..100.000	UnitedHealth Group Incorporated	
..0707	UnitedHealth Group Incorporated	..95501	41-1488563				UnitedHealthcare of Utah, Inc.	UT	..JA	UnitedHealthcare, Inc.	Ownership	..100.000	UnitedHealth Group Incorporated	
..0707	UnitedHealth Group Incorporated	..48038	91-1312551				UnitedHealthcare of Washington, Inc.	WA	..JA	United HealthCare Services, Inc.	Ownership	..100.000	UnitedHealth Group Incorporated	
..0707	UnitedHealth Group Incorporated	..95710	39-1555888				UnitedHealthcare of Wisconsin, Inc.	WI	..JA	UnitedHealthcare, Inc.	Ownership	..100.000	UnitedHealth Group Incorporated	
..0707	UnitedHealth Group Incorporated	..95378	36-3379945				UnitedHealthcare Plan of the River Valley, Inc.	IL	..JA	UnitedHealthcare Services Company of the River Valley, Inc.	Ownership	..100.000	UnitedHealth Group Incorporated	
		..00000	47-0854646				UnitedHealthcare Service LLC	DE	..NIA	UnitedHealthcare Insurance Company	Ownership	..100.000	UnitedHealth Group Incorporated	
		..00000	36-3355110				UnitedHealthcare Services Company of the River Valley, Inc.	DE	..NIA	UnitedHealthcare, Inc.	Ownership	..100.000	UnitedHealth Group Incorporated	
		..00000	41-1922511				UnitedHealthcare, Inc.	DE	..NIA	United HealthCare Services, Inc.	Ownership	..100.000	UnitedHealth Group Incorporated	
		..00000	37-0920164				UnitedHealthOne Agency, Inc.	IN	..NIA	Golden Rule Financial Corporation	Ownership	..100.000	UnitedHealth Group Incorporated	
		..00000	74-2797745				WellMed Medical Management of Florida, Inc.	FL	..NIA	WellMed Medical Management, Inc.	Ownership	..100.000	UnitedHealth Group Incorporated	
		..00000	74-2786364				WellMed Medical Management, Inc.	TX	..NIA	Collaborative Care Holdings, LLC	Ownership	..80.000	UnitedHealth Group Incorporated	..3
		..00000	36-3437660				Wellness, Inc.	IL	..NIA	OptumHealth Care Solutions, Inc.	Ownership	..100.000	UnitedHealth Group Incorporated	
		..00000	20-0325334				XLHealth BIPA, Inc.	MD	..NIA	XLHealth Corporation	Ownership	..100.000	UnitedHealth Group Incorporated	
		..00000	52-2102846				XLHealth Corporation	MD	..NIA	United HealthCare Services, Inc.	Ownership	..100.000	UnitedHealth Group Incorporated	
		..00000					XLHealth Corporation India Private Limited	IN	..NIA	XLHealth Corporation	Ownership	..100.000	UnitedHealth Group Incorporated	
		..00000	20-2717264				XLHealth Tennessee, LLC	MD	..NIA	XLHealth Corporation	Ownership	..100.000	UnitedHealth Group Incorporated	
		..00000	52-2111342				XLHealth Texas, Inc.	MD	..NIA	XLHealth Corporation	Ownership	..100.000	UnitedHealth Group Incorporated	

Asterisk	Explanation
1	The general partnership interest of 1.0% is held by UMR, Inc. and the limited partnership interest of 99% is held by United HealthCare Services, Inc.
2	The general partnership interest of 89.77% is held by United HealthCare Services, Inc. (UHS) and 10.23% is held by UnitedHealthcare, Inc. (UHC). UHS also holds 100% of the limited partnership interests. When combining general and limited partner interests, UHS owns 94.18% and UHC owns 5.83%
3	The remaining 20% is owned by WMG Healthcare Partners, L.P., a non-affiliated company.

SUPPLEMENTAL EXHIBITS AND SCHEDULES INTERROGATORIES

The following supplemental reports are required to be filed as part of your statement filing. However, in the event that your company does not transact the type of business for which the special report must be filed, your response of NO to the specific interrogatory will be accepted in lieu of filing a "NONE" report and a bar code will be printed below. If the supplement is required of your company but is not being filed for whatever reason enter SEE EXPLANATION and provide an explanation following the interrogatory questions.

Response

1. Will the Medicare Part D Coverage Supplement be filed with the state of domicile and the NAIC with this statement?

NO

Explanation:

1. Not Applicable

Bar Code:

1. Medicare Part D Coverage Supplement [Document Identifier 365]



OVERFLOW PAGE FOR WRITE-INS

SCHEDULE A - VERIFICATION

Real Estate

	1 Year to Date	2 Prior Year Ended December 31
1. Book/adjusted carrying value, December 31 of prior year		
2. Cost of acquired:		
2.1 Actual cost at time of acquisition		
2.2 Additional investment made after acquisition		
3. Current year change in encumbrances		
4. Total gain (loss) on disposals		
5. Deduct amounts received on disposals		
6. Total foreign exchange change in book/adjusted carrying value		
7. Deduct current year's other than temporary impairment recognized		
8. Deduct current year's depreciation		
9. Book/adjusted carrying value at the end of current period (Lines 1+2+3+4-5+6-7-8)		
10. Deduct total nonadmitted amounts		
11. Statement value at end of current period (Line 9 minus Line 10)		

SCHEDULE B - VERIFICATION

Mortgage Loans

	1 Year to Date	2 Prior Year Ended December 31
1. Book value/recorded investment excluding accrued interest, December 31 of prior year		
2. Cost of acquired:		
2.1 Actual cost at time of acquisition		
2.2 Additional investment made after acquisition		
3. Capitalized deferred interest and other		
4. Accrual of discount		
5. Unrealized valuation increase (decrease)		
6. Total gain (loss) on disposals		
7. Deduct amounts received on disposals		
8. Deduct amortization of premium and mortgage interest points and commitment fees		
9. Total foreign exchange change in book value/recorded investment excluding accrued interest		
10. Deduct current year's other than temporary impairment recognized		
11. Book value/recorded investment excluding accrued interest at end of current period (Lines 1+2+3+4+5+6-7-8+9-10)		
12. Total valuation allowance		
13. Subtotal (Line 11 plus Line 12)		
14. Deduct total nonadmitted amounts		
15. Statement value at end of current period (Line 13 minus Line 14)		

SCHEDULE BA - VERIFICATION

Other Long-Term Invested Assets

	1 Year to Date	2 Prior Year Ended December 31
1. Book/adjusted carrying value, December 31 of prior year		
2. Cost of acquired:		
2.1 Actual cost at time of acquisition		
2.2 Additional investment made after acquisition		
3. Capitalized deferred interest and other		
4. Accrual of discount		
5. Unrealized valuation increase (decrease)		
6. Total gain (loss) on disposals		
7. Deduct amounts received on disposals		
8. Deduct amortization of premium and depreciation		
9. Total foreign exchange change in book/adjusted carrying value		
10. Deduct current year's other than temporary impairment recognized		
11. Book/adjusted carrying value at end of current period (Lines 1+2+3+4+5+6-7-8+9-10)		
12. Deduct total nonadmitted amounts		
13. Statement value at end of current period (Line 11 minus Line 12)		

SCHEDULE D - VERIFICATION

Bonds and Stocks

	1 Year to Date	2 Prior Year Ended December 31
1. Book/adjusted carrying value of bonds and stocks, December 31 of prior year	64,031,829	57,741,934
2. Cost of bonds and stocks acquired	7,361,413	13,457,066
3. Accrual of discount	2,147	1,109
4. Unrealized valuation increase (decrease)		0
5. Total gain (loss) on disposals	23,467	9,608
6. Deduct consideration for bonds and stocks disposed of	8,289,393	6,053,886
7. Deduct amortization of premium	890,209	1,115,204
8. Total foreign exchange change in book/adjusted carrying value		0
9. Deduct current year's other than temporary impairment recognized		8,798
10. Book/adjusted carrying value at end of current period (Lines 1+2+3+4+5-6-7+8-9)	62,239,254	64,031,829
11. Deduct total nonadmitted amounts		0
12. Statement value at end of current period (Line 10 minus Line 11)	62,239,254	64,031,829

STATEMENT AS OF SEPTEMBER 30, 2012 OF THE UnitedHealthcare Community Plan of Ohio, Inc.

SCHEDULE D - PART 1B

Showing the Acquisitions, Dispositions and Non-Trading Activity
During the Current Quarter for all Bonds and Preferred Stock by Rating Class

	1 Book/Adjusted Carrying Value Beginning of Current Quarter	2 Acquisitions During Current Quarter	3 Dispositions During Current Quarter	4 Non-Trading Activity During Current Quarter	5 Book/Adjusted Carrying Value End of First Quarter	6 Book/Adjusted Carrying Value End of Second Quarter	7 Book/Adjusted Carrying Value End of Third Quarter	8 Book/Adjusted Carrying Value December 31 Prior Year
BONDS								
1. Class 1 (a)	128,805,121	136,902,735	118,857,853	(588,246)	122,153,649	128,805,121	146,261,757	128,747,625
2. Class 2 (a)	5,043,569	138,240	24,353	288,922	4,959,075	5,043,569	5,446,378	4,720,463
3. Class 3 (a)	0				0	0	0	0
4. Class 4 (a)	0				0	0	0	0
5. Class 5 (a)	0				0	0	0	0
6. Class 6 (a)	0				0	0	0	0
7. Total Bonds	133,848,690	137,040,975	118,882,206	(299,324)	127,112,724	133,848,690	151,708,135	133,468,088
PREFERRED STOCK								
8. Class 1	0				0	0	0	0
9. Class 2	0				0	0	0	0
10. Class 3	0				0	0	0	0
11. Class 4	0				0	0	0	0
12. Class 5	0				0	0	0	0
13. Class 6	0				0	0	0	0
14. Total Preferred Stock	0	0	0	0	0	0	0	0
15. Total Bonds and Preferred Stock	133,848,690	137,040,975	118,882,206	(299,324)	127,112,724	133,848,690	151,708,135	133,468,088

(a) Book/Adjusted Carrying Value column for the end of the current reporting period includes the following amount of non-rated short-term and cash equivalent bonds by NAIC designation: NAIC 1 \$333,026 ; NAIC 2 \$0 ; NAIC 3 \$0 ;
NAIC 4 \$0 ; NAIC 5 \$0 ; NAIC 6 \$0

SCHEDULE DA - PART 1

Short-Term Investments

	1	2	3	4	5
	Book/Adjusted Carrying Value	Par Value	Actual Cost	Interest Collected Year-to-Date	Paid for Accrued Interest Year-to-Date
9199999 Totals	89,468,881	XXX	89,476,176	48,627	5,445

SCHEDULE DA - VERIFICATION

Short-Term Investments

	1	2
	Year To Date	Prior Year Ended December 31
1. Book/adjusted carrying value, December 31 of prior year	69,436,259	45,470,221
2. Cost of short-term investments acquired	389,371,640	431,132,200
3. Accrual of discount		0
4. Unrealized valuation increase (decrease)		0
5. Total gain (loss) on disposals		0
6. Deduct consideration received on disposals	369,331,724	407,166,162
7. Deduct amortization of premium	7,294	0
8. Total foreign exchange change in book/adjusted carrying value		0
9. Deduct current year's other than temporary impairment recognized		0
10. Book/adjusted carrying value at end of current period (Lines 1+2+3+4+5-6-7+8-9)	89,468,881	69,436,259
11. Deduct total nonadmitted amounts		0
12. Statement value at end of current period (Line 10 minus Line 11)	89,468,881	69,436,259

Schedule DB - Part A - Verification - Options, Caps, Floors, Collars, Swaps and Forwards
N O N E

Schedule DB - Part B - Verification - Futures Contracts
N O N E

Schedule DB - Part C - Section 1 - Replication (Synthetic Asset) Transactions (RSATs) Open
N O N E

Schedule DB-Part C-Section 2-Reconciliation of Replication (Synthetic Asset) Transactions Open
N O N E

Schedule DB - Verification - Book/Adjusted Carrying Value, Fair Value and Potential Exposure of
Derivatives
N O N E

SCHEDULE E - VERIFICATION

(Cash Equivalents)

	1	2
	Year To Date	Prior Year Ended December 31
1. Book/adjusted carrying value, December 31 of prior year	0	5,508,841
2. Cost of cash equivalents acquired		999,963
3. Accrual of discount		36
4. Unrealized valuation increase (decrease)		0
5. Total gain (loss) on disposals		0
6. Deduct consideration received on disposals		6,500,000
7. Deduct amortization of premium		8,840
8. Total foreign exchange change in book/adjusted carrying value		0
9. Deduct current year's other than temporary impairment recognized		0
10. Book/adjusted carrying value at end of current period (Lines 1+2+3+4+5-6-7+8-9)	0	0
11. Deduct total nonadmitted amounts		0
12. Statement value at end of current period (Line 10 minus Line 11)	0	0

Schedule A - Part 2 - Real Estate Acquired and Additions Made

N O N E

Schedule A - Part 3 - Real Estate Disposed

N O N E

Schedule B - Part 2 - Mortgage Loans Acquired

N O N E

Schedule B - Part 3 - Mortgage Loans Disposed, Transferred or Repaid

N O N E

Schedule BA - Part 2 - Other Long-Term Invested Assets Acquired

N O N E

Schedule BA - Part 3 - Other Long-Term Invested Assets Disposed, Transferred or Repaid

N O N E

STATEMENT AS OF SEPTEMBER 30, 2012 OF THE UnitedHealthcare Community Plan of Ohio, Inc.

SCHEDULE D - PART 3

Show All Long-Term Bonds and Stock Acquired During the Current Quarter

1	2	3	4	5	6	7	8	9	10
CUSIP Identification	Description	Foreign	Date Acquired	Name of Vendor	Number of Shares of Stock	Actual Cost	Par Value	Paid for Accrued Interest and Dividends	NAIC Desig- nation or Market Indicator (a)
912828-GH-7	US Treasury Note 4.625% 02/15/17		08/15/2012	Bank New York Mellon		469,688	400,000	50	1
0599999. Subtotal - Bonds - U.S. Governments						469,688	400,000	50	XXX
3138LR-Q5-4	FNMA Pool A01375 MBS 3.500% 08/01/42		08/20/2012	Nomura Securities		105,660	99,855	214	1
3138LY-HB-6	FNMA Pool A07425 MBS 3.500% 08/01/42		08/20/2012	JP Morgan Chase		158,660	150,000	321	1
3138M1-JG-4	FNMA Pool A08262 MBS 3.500% 07/01/42		08/20/2012	Goldman Sachs		210,399	199,459	427	1
31417A-AZ-9	FNMA Pool AB4439 MBS 3.500% 02/01/42		08/20/2012	UBS Financial Services		188,422	178,019	381	1
59447P-KR-1	MI St Fin Auth Rev Bond Non Call 5.000% 10/01/20		07/10/2012	Wachovia Bank		619,960	500,000	208	1FE
812643-GR-9	Seattle WA Lt & Pwr Rev Bond Cont Call 5.000% 06/01/23		07/05/2012	JP Morgan Chase		616,615	500,000	0	1FE
3199999. Subtotal - Bonds - U.S. Special Revenues						1,899,716	1,627,333	1,551	XXX
03063X-AF-2	Americredit Auto Rec Tr AMCAR 2012-4 C ABS 1.930% 08/08/18		09/05/2012	Deutsche Bank		199,971	200,000	0	1FE
313747-AS-6	Federal Realty Invs Tr Corp Note Call 3.000% 08/01/22		07/16/2012	Wachovia Bank		138,240	140,000	0	2FE
66989H-AE-8	Novartis Capital Corp Note MW 10BP 2.400% 09/21/22		09/18/2012	JP Morgan Chase		168,683	170,000	0	1FE
909439-AC-5	United Auto Tr UACST 2012-1 A2 ABS Prv Plc 1.100% 03/16/15		09/20/2012	Wachovia Bank		139,988	140,000	0	1FE
3899999. Subtotal - Bonds - Industrial and Miscellaneous (Unaffiliated)						646,882	650,000	0	XXX
8399997. Total - Bonds - Part 3						3,016,286	2,677,333	1,601	XXX
8399998. Total - Bonds - Part 5						XXX	XXX	XXX	XXX
8399999. Total - Bonds						3,016,286	2,677,333	1,601	XXX
8999997. Total - Preferred Stocks - Part 3						0	XXX	0	XXX
8999998. Total - Preferred Stocks - Part 5						XXX	XXX	XXX	XXX
8999999. Total - Preferred Stocks						0	XXX	0	XXX
9799997. Total - Common Stocks - Part 3						0	XXX	0	XXX
9799998. Total - Common Stocks - Part 5						XXX	XXX	XXX	XXX
9799999. Total - Common Stocks						0	XXX	0	XXX
9899999. Total - Preferred and Common Stocks						0	XXX	0	XXX
9999999 - Totals						3,016,286	XXX	1,601	XXX

(a) For all common stock bearing the NAIC market indicator "U" provide: the number of such issues

STATEMENT AS OF SEPTEMBER 30, 2012 OF THE UnitedHealthcare Community Plan of Ohio, Inc.

SCHEDULE D - PART 4

Show All Long-Term Bonds and Stock Sold, Redeemed or Otherwise Disposed of During the Current Quarter

1	2	3	4	5	6	7	8	9	10	Change In Book/Adjusted Carrying Value					16	17	18	19	20	21	22
										11	12	13	14	15							
CUSIP Ident-ification	Description	For-ign	Disposal Date	Name of Purchaser	Number of Shares of Stock	Consid-eration	Par Value	Actual Cost	Prior Year Book/ Adjusted Carrying Value	Unrealized Valuation Increase/ (Decrease)	Current Year's (Amor-tization)/ Accretion	Current Year's Other Than Temporary Impairment Recogn-ized	Total Change in Book/ Adjusted Carrying Value (11 + 12 - 13)	Total Foreign Exchange Change in Book /Adjusted Carrying Value	Book/ Adjusted Carrying Value at Disposal Date	Foreign Exchange Gain (Loss) on Disposal	Realized Gain (Loss) on Disposal	Total Gain (Loss) on Disposal	Bond Interest/ Stock Dividends Received During Year	Stated Con-tractual Maturity Date	NAIC Design-ation or Market In-dicator (a)
3620A5-GC-7	GNMA Pool 719395 MBS 4.000% 07/15/25		07/01/2012	Paydown		4,022	4,022	4,236	4,227	.0	(205)	.0	(205)	.0	4,022	.0	.0	.0	.94	07/15/2025	1.....
3620A5-GC-7	GNMA Pool 719395 MBS 4.000% 07/15/25		08/01/2012	Paydown		3,922	3,922	4,131	4,122	.0	(200)	.0	(200)	.0	3,922	.0	.0	.0	.105	07/15/2025	1.....
3620A5-GC-7	GNMA Pool 719395 MBS 4.000% 07/15/25		09/01/2012	Paydown		4,050	4,050	4,266	4,257	.0	(206)	.0	(206)	.0	4,050	.0	.0	.0	.122	07/15/2025	1.....
3620A5-GD-5	GNMA Pool 719396 MBS 4.500% 07/15/25		07/01/2012	Paydown		3,121	3,121	3,329	3,321	.0	(200)	.0	(200)	.0	3,121	.0	.0	.0	.82	07/15/2025	1.....
3620A5-GD-5	GNMA Pool 719396 MBS 4.500% 07/15/25		08/01/2012	Paydown		3,513	3,513	3,747	3,738	.0	(225)	.0	(225)	.0	3,513	.0	.0	.0	.105	07/15/2025	1.....
3620A5-GD-5	GNMA Pool 719396 MBS 4.500% 07/15/25		09/01/2012	Paydown		3,288	3,288	3,508	3,499	.0	(211)	.0	(211)	.0	3,288	.0	.0	.0	.111	07/15/2025	1.....
912828-AJ-9	US Treasury Note 4.375% 08/15/12		08/15/2012	Maturity		3,400,000	3,400,000	3,702,125	3,459,666	.0	(59,666)	.0	(59,666)	.0	3,400,000	.0	.0	.0	148,750	08/15/2012	1.....
05999999. Subtotal - Bonds - U.S. Governments						3,421,916	3,421,916	3,725,342	3,482,830	.0	(60,913)	.0	(60,913)	.0	3,421,916	.0	.0	.0	149,369	XXX	XXX
3128PQ-LF-6	FHLMC Pool J11226 MBS 5.000% 11/01/24		07/01/2012	Paydown		2,893	2,893	3,085	3,077	.0	(184)	.0	(184)	.0	2,893	.0	.0	.0	.84	11/01/2024	1.....
3128PQ-LF-6	FHLMC Pool J11226 MBS 5.000% 11/01/24		08/01/2012	Paydown		2,891	2,891	3,083	3,075	.0	(184)	.0	(184)	.0	2,891	.0	.0	.0	.96	11/01/2024	1.....
3128PQ-LF-6	FHLMC Pool J11226 MBS 5.000% 11/01/24		09/01/2012	Paydown		60,604	60,604	64,628	64,458	.0	(3,855)	.0	(3,855)	.0	60,604	.0	.0	.0	2,273	11/01/2024	1.....
3128PR-LN-7	FHLMC Pool J12133 MBS 4.000% 05/01/25		07/01/2012	Paydown		8,589	8,589	8,993	8,973	.0	(383)	.0	(383)	.0	8,589	.0	.0	.0	200	05/01/2025	1.....
3128PR-LN-7	FHLMC Pool J12133 MBS 4.000% 05/01/25		08/01/2012	Paydown		9,102	9,102	9,531	9,509	.0	(406)	.0	(406)	.0	9,102	.0	.0	.0	243	05/01/2025	1.....
3128PR-LN-7	FHLMC Pool J12133 MBS 4.000% 05/01/25		09/01/2012	Paydown		7,742	7,742	8,106	8,087	.0	(345)	.0	(345)	.0	7,742	.0	.0	.0	232	05/01/2025	1.....
3128PT-FL-4	FHLMC Pool J13771 MBS 3.500% 12/01/25		07/01/2012	Paydown		541	541	545	544	.0	(4)	.0	(4)	.0	541	.0	.0	.0	.11	12/01/2025	1.....
3128PT-FL-4	FHLMC Pool J13771 MBS 3.500% 12/01/25		08/01/2012	Paydown		537	537	540	540	.0	(4)	.0	(4)	.0	537	.0	.0	.0	.13	12/01/2025	1.....
3128PT-FL-4	FHLMC Pool J13771 MBS 3.500% 12/01/25		09/01/2012	Paydown		649	649	653	653	.0	(4)	.0	(4)	.0	649	.0	.0	.0	.17	12/01/2025	1.....
3128PT-MF-9	FHLMC Pool J13958 MBS 4.000% 12/01/25		07/01/2012	Paydown		2,553	2,553	2,636	2,633	.0	(80)	.0	(80)	.0	2,553	.0	.0	.0	.60	12/01/2025	1.....
3128PT-MF-9	FHLMC Pool J13958 MBS 4.000% 12/01/25		08/01/2012	Paydown		2,227	2,227	2,300	2,297	.0	(70)	.0	(70)	.0	2,227	.0	.0	.0	.59	12/01/2025	1.....
3128PT-MF-9	FHLMC Pool J13958 MBS 4.000% 12/01/25		09/01/2012	Paydown		2,163	2,163	2,234	2,231	.0	(68)	.0	(68)	.0	2,163	.0	.0	.0	.65	12/01/2025	1.....
3128PV-2L-3	FHLMC Pool J16179 MBS 3.500% 07/01/26		07/01/2012	Paydown		1,147	1,147	1,202	1,201	.0	(54)	.0	(54)	.0	1,147	.0	.0	.0	.23	07/01/2026	1.....
3128PV-2L-3	FHLMC Pool J16179 MBS 3.500% 07/01/26		08/01/2012	Paydown		17,510	17,510	18,347	18,334	.0	(823)	.0	(823)	.0	17,510	.0	.0	.0	409	07/01/2026	1.....
3128PV-2L-3	FHLMC Pool J16179 MBS 3.500% 07/01/26		09/01/2012	Paydown		1,152	1,152	1,207	1,206	.0	(54)	.0	(54)	.0	1,152	.0	.0	.0	.30	07/01/2026	1.....
3128PV-QQ-6	FHLMC Pool J15863 MBS 4.000% 06/01/26		07/01/2012	Paydown		1,403	1,403	1,475	1,474	.0	(71)	.0	(71)	.0	1,403	.0	.0	.0	.33	06/01/2026	1.....
3128PV-QQ-6	FHLMC Pool J15863 MBS 4.000% 06/01/26		08/01/2012	Paydown		930	930	978	977	.0	(47)	.0	(47)	.0	930	.0	.0	.0	.25	06/01/2026	1.....
3128PV-QQ-6	FHLMC Pool J15863 MBS 4.000% 06/01/26		09/01/2012	Paydown		630	630	662	661	.0	(32)	.0	(32)	.0	630	.0	.0	.0	.19	06/01/2026	1.....
3128PV-ZN-3	FHLMC Pool J16149 MBS 3.500% 07/01/26		07/01/2012	Paydown		495	495	519	519	.0	(24)	.0	(24)	.0	495	.0	.0	.0	.10	07/01/2026	1.....
3128PV-ZN-3	FHLMC Pool J16149 MBS 3.500% 07/01/26		08/01/2012	Paydown		496	496	521	521	.0	(24)	.0	(24)	.0	496	.0	.0	.0	.12	07/01/2026	1.....
3128PV-ZN-3	FHLMC Pool J16149 MBS 3.500% 07/01/26		09/01/2012	Paydown		477	477	501	500	.0	(23)	.0	(23)	.0	477	.0	.0	.0	.13	07/01/2026	1.....
3138AD-FS-9	FNMA Pool A10176 MBS 4.500% 04/01/26		07/01/2012	Paydown		2,519	2,519	2,650	2,646	.0	(127)	.0	(127)	.0	2,519	.0	.0	.0	.66	04/01/2026	1.....
3138AD-FS-9	FNMA Pool A10176 MBS 4.500% 04/01/26		08/01/2012	Paydown		2,308	2,308	2,428	2,424	.0	(116)	.0	(116)	.0	2,308	.0	.0	.0	.69	04/01/2026	1.....
3138AD-FS-9	FNMA Pool A10176 MBS 4.500% 04/01/26		09/01/2012	Paydown		2,473	2,473	2,601	2,598	.0	(124)	.0	(124)	.0	2,473	.0	.0	.0	.84	04/01/2026	1.....
3138AG-XV-5	FNMA Pool A13391 MBS 4.000% 06/01/26		07/01/2012	Paydown		211	211	221	221	.0	(10)	.0	(10)	.0	211	.0	.0	.0	.5	06/01/2026	1.....
3138AG-XV-5	FNMA Pool A13391 MBS 4.000% 06/01/26		08/01/2012	Paydown		212	212	223	223	.0	(10)	.0	(10)	.0	212	.0	.0	.0	.6	06/01/2026	1.....
3138AG-XV-5	FNMA Pool A13391 MBS 4.000% 06/01/26		09/01/2012	Paydown		2,662	2,662	2,793	2,791	.0	(128)	.0	(128)	.0	2,662	.0	.0	.0	.80	06/01/2026	1.....
3138AH-ZC-3	FNMA Pool A14338 MBS 4.000% 06/01/26		07/01/2012	Paydown		1,981	1,981	2,085	2,083	.0	(102)	.0	(102)	.0	1,981	.0	.0	.0	.46	06/01/2026	1.....
3138AH-ZC-3	FNMA Pool A14338 MBS 4.000% 06/01/26		08/01/2012	Paydown		1,933	1,933	2,032	2,030	.0	(100)	.0	(100)	.0	1,933	.0	.0	.0	.52	06/01/2026	1.....
3138AH-ZC-3	FNMA Pool A14338 MBS 4.000% 06/01/26		09/01/2012	Paydown		5,068	5,068	5,334	5,329	.0	(261)	.0	(261)	.0	5,068	.0	.0	.0	152	06/01/2026	1.....
3138AK-L5-6	FNMA Pool A15747 MBS 4.000% 06/01/26		07/01/2012	Paydown		928	928	975	974	.0	(46)	.0	(46)	.0	928	.0	.0	.0	.22	06/01/2026	1.....
3138AK-L5-6	FNMA Pool A15747 MBS 4.000% 06/01/26		08/01/2012	Paydown		754	754	793	792	.0	(37)	.0	(37)	.0	754	.0	.0	.0	.20	06/01/2026	1.....
3138AK-L5-6	FNMA Pool A15747 MBS 4.000% 06/01/26		09/01/2012	Paydown		4,228	4,228	4,443	4,438	.0	(210)	.0	(210)	.0	4,228	.0	.0	.0	127	06/01/2026	1.....
3138AM-3U-7	FNMA Pool A18010 MBS 3.500% 08/01/26		07/01/2012	Paydown		1,545	1,545	1,629	1,627	.0	(82)	.0	(82)	.0	1,545	.0	.0	.0	.32	08/01/2026	1.....
3138AM-3U-7	FNMA Pool A18010 MBS 3.500% 08/01/26		08/01/2012	Paydown		1,690	1,690	1,782	1,781	.0	(90)	.0									

SCHEDULE D - PART 4

E05.1

CUSIP Ident- ification	Description	3 For- eign	4 Disposal Date	5 Name of Purchaser	6 Number of Shares of Stock	7 Consid- eration	8 Par Value	9 Actual Cost	10 Prior Year Book/ Adjusted Carrying Value	Change In Book/Adjusted Carrying Value					16 Book/ Adjusted Carrying Value at Disposal Date	17 Foreign Exchange Gain (Loss) on Disposal	18 Realized Gain (Loss) on Disposal	19 Total Gain (Loss) on Disposal	20 Bond Interest/ Stock Dividends Received During Year	21 Stated Con- tractual Maturity Date	22 NAIC Desig- nation or Market In- dicator (a)
										11 Unrealized Valuation Increase/ (Decrease)	12 Current Year's (Amor- tization)/ Accretion	13 Current Year's Other Than Temporary Impairment Recogn- ized	14 Total Change in Book/ Adjusted Carrying Value (11 + 12 - 13)	15 Total Foreign Exchange Change in Book /Adjusted Carrying Value							
..31418V-CB-6	FNMA Pool AD7265 MBS 4.000% 07/01/25		..08/01/2012	Paydown		3,484	3,484	3,648	3,640	..0	..(156)	..0	..(156)	..0	3,484	..0	..0	..0	..93	..07/01/2025	1
..31418V-CB-6	FNMA Pool AD7265 MBS 4.000% 07/01/25		..09/01/2012	Paydown		3,313	3,313	3,469	3,461	..0	..(149)	..0	..(149)	..0	3,313	..0	..0	..0	..99	..07/01/2025	1
..31418X-SF-6	FNMA Pool AD9517 MBS 4.000% 07/01/25		..07/01/2012	Paydown		4,328	4,328	4,525	4,516	..0	..(188)	..0	..(188)	..0	4,328	..0	..0	..0	..101	..07/01/2025	1
..31418X-SF-6	FNMA Pool AD9517 MBS 4.000% 07/01/25		..08/01/2012	Paydown		4,147	4,147	4,335	4,327	..0	..(180)	..0	..(180)	..0	4,147	..0	..0	..0	..111	..07/01/2025	1
..31418X-SF-6	FNMA Pool AD9517 MBS 4.000% 07/01/25		..09/01/2012	Paydown		66,462	66,462	69,484	69,346	..0	..(2,884)	..0	..(2,884)	..0	66,462	..0	..0	..0	..1,994	..07/01/2025	1
..31419H-2F-8	FNMA Pool AE7073 MBS 3.500% 12/01/25		..07/01/2012	Paydown		5,899	5,899	5,940	5,937	..0	..(38)	..0	..(38)	..0	5,899	..0	..0	..0	..120	..12/01/2025	1
..31419H-2F-8	FNMA Pool AE7073 MBS 3.500% 12/01/25		..08/01/2012	Paydown		3,279	3,279	3,302	3,301	..0	..(21)	..0	..(21)	..0	3,279	..0	..0	..0	..76	..12/01/2025	1
..31419H-2F-8	FNMA Pool AE7073 MBS 3.500% 12/01/25		..09/01/2012	Paydown		6,171	6,171	6,213	6,211	..0	..(40)	..0	..(40)	..0	6,171	..0	..0	..0	..162	..12/01/2025	1
..31419H-A2-8	FNMA Pool AE6324 MBS 4.000% 11/01/25		..07/01/2012	Paydown		4,599	4,599	4,892	4,878	..0	..(279)	..0	..(279)	..0	4,599	..0	..0	..0	..107	..11/01/2025	1
..31419H-A2-8	FNMA Pool AE6324 MBS 4.000% 11/01/25		..08/01/2012	Paydown		11,017	11,017	11,718	11,686	..0	..(669)	..0	..(669)	..0	11,017	..0	..0	..0	..294	..11/01/2025	1
..31419H-A2-8	FNMA Pool AE6324 MBS 4.000% 11/01/25		..09/01/2012	Paydown		7,287	7,287	7,750	7,729	..0	..(442)	..0	..(442)	..0	7,287	..0	..0	..0	..219	..11/01/2025	1
..57586E-NM-9	MA St Hlth & Ed Rev Bond Non Call 5.000%		..07/01/2012	Maturity		500,000	500,000	528,930	509,442	..0	..(9,442)	..0	..(9,442)	..0	500,000	..0	..0	..0	..25,000	..07/01/2012	1FE
31999999	Subtotal - Bonds - U.S. Special Revenues					894,983	894,983	944,340	917,127	0	(28,994)	0	(28,994)	0	894,983	0	0	0	36,314	XXX	XXX
..02005J-AB-5	Ally Auto Rec Tr ALLYA 2011-3 A2 ABS 0.341% 01/15/14		..07/16/2012	Paydown		24,662	24,662	24,662	24,662	..0	..0	..0	..0	..0	24,662	..0	..0	..0	..55	..01/15/2014	1FE
..02005J-AB-5	Ally Auto Rec Tr ALLYA 2011-3 A2 ABS 0.341% 01/15/14		..08/15/2012	Paydown		24,963	24,963	24,963	24,963	..0	..0	..0	..0	..0	24,963	..0	..0	..0	..63	..01/15/2014	1FE
..02005J-AB-5	Ally Auto Rec Tr ALLYA 2011-3 A2 ABS 0.341% 01/15/14		..09/17/2012	Paydown		26,149	26,149	26,149	26,149	..0	..0	..0	..0	..0	26,149	..0	..0	..0	..75	..01/15/2014	1FE
..10112R-AB-0	Boston Prop Corp Note Cont Call 6.250% 01/15/13		..08/24/2012	Call	102.2452	24,539	24,000	26,201	24,931	..0	..(578)	..0	..(578)	..0	24,353	..0	186	186	1,663	..01/15/2013	2FE
..12557Y-AC-1	CIT Equip Coll CITEC 2010-VT1A A3 ABS Prv Plc 2.410% 05/15/13		..07/15/2012	Paydown		25,746	25,746	25,876	25,874	..0	..(128)	..0	..(128)	..0	25,746	..0	..0	..0	..362	..05/15/2013	1FE
..12557Y-AC-1	CIT Equip Coll CITEC 2010-VT1A A3 ABS Prv Plc 2.410% 05/15/13		..08/15/2012	Paydown		26,056	26,056	26,188	26,185	..0	..(130)	..0	..(130)	..0	26,056	..0	..0	..0	..419	..05/15/2013	1FE
..29372E-AB-4	Enterprise Fleet EFF 2011-2 A2 ABS Prv Plc 1.430% 10/20/16		..07/20/2012	Paydown		14,762	14,762	14,762	14,762	..0	..1	..0	..1	..0	14,762	..0	..0	..0	..123	..10/20/2016	1FE
..29372E-AB-4	Enterprise Fleet EFF 2011-2 A2 ABS Prv Plc 1.430% 10/20/16		..08/20/2012	Paydown		14,392	14,392	14,392	14,392	..0	..1	..0	..1	..0	14,392	..0	..0	..0	..137	..10/20/2016	1FE
..29372E-AB-4	Enterprise Fleet EFF 2011-2 A2 ABS Prv Plc 1.430% 10/20/16		..09/20/2012	Paydown		13,661	13,661	13,660	13,660	..0	..1	..0	..1	..0	13,661	..0	..0	..0	..147	..10/20/2016	1FE
..36161X-AB-2	GE Equip Trans GEET 2011-1 A2 ABS 0.770% 10/21/13		..07/20/2012	Paydown		29,954	29,954	29,953	29,954	..0	..1	..0	..1	..0	29,954	..0	..0	..0	..135	..10/21/2013	1FE
..36161X-AB-2	GE Equip Trans GEET 2011-1 A2 ABS 0.770% 10/21/13		..08/20/2012	Paydown		52,296	52,296	52,294	52,295	..0	..1	..0	..1	..0	52,296	..0	..0	..0	..268	..10/21/2013	1FE
..36161X-AB-2	GE Equip Trans GEET 2011-1 A2 ABS 0.770% 10/21/13		..09/20/2012	Paydown		27,102	27,102	27,102	27,102	..0	..1	..0	..1	..0	27,102	..0	..0	..0	..157	..10/21/2013	1FE
..43814A-AB-9	Honda Auto Rec HAROT 2011-2 A2 ABS 0.570% 07/18/13		..07/18/2012	Paydown		16,314	16,314	16,312	16,313	..0	..1	..0	..1	..0	16,314	..0	..0	..0	..54	..07/18/2013	1FE
..43814A-AB-9	Honda Auto Rec HAROT 2011-2 A2 ABS 0.570% 07/18/13		..08/18/2012	Paydown		15,734	15,734	15,732	15,733	..0	..1	..0	..1	..0	15,734	..0	..0	..0	..60	..07/18/2013	1FE
..43814A-AB-9	Honda Auto Rec HAROT 2011-2 A2 ABS 0.570% 07/18/13		..09/18/2012	Paydown		15,950	15,950	15,948	15,949	..0	..1	..0	..1	..0	15,950	..0	..0	..0	..68	..07/18/2013	1FE
..55313U-AC-3	MMAF Equip Fin MMAF 2009-AA A3 ABS Prv Plc 2.370% 11/15/13		..07/15/2012	Paydown		18,265	18,265	18,356	18,354	..0	..(89)	..0	..(89)	..0	18,265	..0	..0	..0	..252	..11/15/2013	1FE
..55313U-AC-3	MMAF Equip Fin MMAF 2009-AA A3 ABS Prv Plc 2.370% 11/15/13		..08/15/2012	Paydown		15,701	15,701	15,779	15,777	..0	..(76)	..0	..(76)	..0	15,701	..0	..0	..0	..248	..11/15/2013	1FE
..55313U-AC-3	MMAF Equip Fin MMAF 2009-AA A3 ABS Prv Plc 2.370% 11/15/13		..09/15/2012	Paydown		21,233	21,233	21,338	21,336	..0	..(103)	..0	..(103)	..0	21,233	..0	..0	..0	..377	..11/15/2013	1FE
..73328U-AB-1	Porsche Fin Auto PFAST 2011-1 A2 ABS Prv Plc 0.560% 12/16/13		..07/16/2012	Paydown		11,444	11,444	11,443	11,443	..0	..0	..0	..0	..0	11,444	..0	..0	..0	..37	..12/16/2013	1FE
..73328U-AB-1	Porsche Fin Auto PFAST 2011-1 A2 ABS Prv Plc 0.560% 12/16/13		..08/16/2012	Paydown		12,001	12,001	12,001	12,001	..0	..0	..0	..0	..0	12,001	..0	..0	..0	..45	..12/16/2013	1FE
38999999	Subtotal - Bonds - Industrial and Miscellaneous (Unaffiliated)					430,924	430,385	433,111	431,835	0	(1,095)	0	(1,095)	0	430,738	0	186	186	4,745	XXX	XXX
83999997	Total - Bonds - Part 4					4,747,823	4,747,284	5,102,793	4,831,792	0	(91,002)	0	(91,002)	0	4,747,637	0	186	186	190,428	XXX	XXX
83999998	Total - Bonds - Part 5					XXX	XXX	XXX	XXX	XXX	XXX	XXX	XXX	XXX	XXX	XXX	XXX	XXX	XXX	XXX	XXX

SCHEDULE D - PART 4

Show All Long-Term Bonds and Stock Sold, Redeemed or Otherwise Disposed of During the Current Quarter

1	2	3	4	5	6	7	8	9	10	Change In Book/Adjusted Carrying Value					16	17	18	19	20	21	22
										11	12	13	14	15							
CUSIP Ident- ification	Description	For- eign	Disposal Date	Name of Purchaser	Number of Shares of Stock	Consid- eration	Par Value	Actual Cost	Prior Year Book/ Adjusted Carrying Value	Unrealized Valuation Increase/ (Decrease)	Current Year's (Amor- tization)/ Accretion	Current Year's Other Than Temporary Impairment Recog- nized	Total Change in Book/ Adjusted Carrying Value (11 + 12 - 13)	Total Foreign Exchange Change in Book /Adjusted Carrying Value	Book/ Adjusted Carrying Value at Disposal Date	Foreign Exchange Gain (Loss) on Disposal	Realized Gain (Loss) on Disposal	Total Gain (Loss) on Disposal	Bond Interest/ Stock Dividends Received DuringYear	Stated Con- tractual Maturity Date	NAIC Desig- nation or Market In- dicator (a)
8399999. Total - Bonds						4,747,823	4,747,284	5,102,793	4,831,792	0	(91,002)	0	(91,002)	0	4,747,637	0	186	186	190,428	XXX	XXX
8999997. Total - Preferred Stocks - Part 4						0	XXX	0	0	0	0	0	0	0	0	0	0	0	0	XXX	XXX
8999998. Total - Preferred Stocks - Part 5						XXX	XXX	XXX	XXX	XXX	XXX	XXX	XXX	XXX	XXX	XXX	XXX	XXX	XXX	XXX	XXX
8999999. Total - Preferred Stocks						0	XXX	0	0	0	0	0	0	0	0	0	0	0	0	XXX	XXX
9799997. Total - Common Stocks - Part 4						0	XXX	0	0	0	0	0	0	0	0	0	0	0	0	XXX	XXX
9799998. Total - Common Stocks - Part 5						XXX	XXX	XXX	XXX	XXX	XXX	XXX	XXX	XXX	XXX	XXX	XXX	XXX	XXX	XXX	XXX
9799999. Total - Common Stocks						0	XXX	0	0	0	0	0	0	0	0	0	0	0	0	XXX	XXX
9899999. Total - Preferred and Common Stocks						0	XXX	0	0	0	0	0	0	0	0	0	0	0	0	XXX	XXX
9999999 - Totals						4,747,823	XXX	5,102,793	4,831,792	0	(91,002)	0	(91,002)	0	4,747,637	0	186	186	190,428	XXX	XXX

(a) For all common stock bearing the NAIC market indicator "U" provide: the number of such issues.....

Schedule DB - Part A - Section 1 - Options, Caps, Floors, Collars, Swaps and Forwards Open
N O N E

Schedule DB - Part B - Section 1 - Futures Contracts Open
N O N E

Schedule DB - Part B - Section 1B - Brokers with whom cash deposits have been made
N O N E

Schedule DB - Part D - Counterparty Exposure for Derivative Instruments Open
N O N E

Schedule DL - Part 1 - Reinvested Collateral Assets Owned
N O N E

Schedule DL - Part 2 - Reinvested Collateral Assets Owned
N O N E

STATEMENT AS OF SEPTEMBER 30, 2012 OF THE UnitedHealthcare Community Plan of Ohio, Inc.

SCHEDULE E - PART 1 - CASH

Month End Depository Balances

[illegible]

SCHEDULE E - PART 2 - CASH EQUIVALENTS

Show Investments Owned End of Current Quarter

1	2	3	4	5	6	7	8
Description	Code	Date Acquired	Rate of Interest	Maturity Date	Book/Adjusted Carrying Value	Amount of Interest Due and Accrued	Amount Received During Year
NONE							
8699999 - Total Cash Equivalents							