



PROPERTY AND CASUALTY COMPANIES - ASSOCIATION EDITION

QUARTERLY STATEMENT

AS OF SEPTEMBER 30, 2012  
OF THE CONDITION AND AFFAIRS OF THE

Victoria Select Insurance Company

NAIC Group Code	0140 (Current)	0140 (Prior)	NAIC Company Code	10105	Employer's ID Number	34-1777972
Organized under the Laws of	Ohio		State of Domicile or Port of Entry		Ohio	
Country of Domicile	United States of America					
Incorporated/Organized	05/25/1994		Commenced Business		09/01/1995	
Statutory Home Office	One West Nationwide Blvd. (Street and Number)		Columbus , OH 43215-2220 (City or Town, State and Zip Code)			
Main Administrative Office	22901 Millcreek Blvd., Suite 400 (Street and Number)					
	Highland Hills , OH 44122-5724 (City or Town, State and Zip Code)		216-896-7866 (Area Code) (Telephone Number)			
Mail Address	One West Nationwide Blvd., 1-04-701 (Street and Number or P.O. Box)		Columbus , OH 43215-2220 (City or Town, State and Zip Code)			
Primary Location of Books and Records	One West Nationwide Blvd., 1-04-701 (Street and Number)					
	Columbus , OH 43215-2220 (City or Town, State and Zip Code)		614-249-1545 (Area Code) (Telephone Number)			
Internet Web Site Address	www.victoriainsurance.com					
Statutory Statement Contact	Arlene E. Swanson (Name)		614-249-1545 (Area Code) (Telephone Number)			
	FinRpt@nationwide.com (E-mail Address)		866-315-1430 (FAX Number)			

OFFICERS

President & COO	David Gerard Arango	VP & Treasurer	Wendell Paul Crosser
VP & Secretary	Robert William Horner III		

OTHER

Pamela Ann Biesecker	Sr VP-Head of Taxation	
----------------------	------------------------	--

DIRECTORS OR TRUSTEES

David Gerard Arango	Wesley Kim Austen	Martha Lovette Frye
Michael Patrick Leach	Michael Allen Lex	Mark Angelo Pizzi

State of	Ohio	SS:
County of	Franklin	

The officers of this reporting entity being duly sworn, each depose and say that they are the described officers of said reporting entity, and that on the reporting period stated above, all of the herein described assets were the absolute property of the said reporting entity, free and clear from any liens or claims thereon, except as herein stated, and that this statement, together with related exhibits, schedules and explanations therein contained, annexed or referred to, is a full and true statement of all the assets and liabilities and of the condition and affairs of the said reporting entity as of the reporting period stated above, and of its income and deductions therefrom for the period ended, and have been completed in accordance with the NAIC Annual Statement Instructions and Accounting Practices and Procedures manual except to the extent that: (1) state law may differ; or, (2) that state rules or regulations require differences in reporting not related to accounting practices and procedures, according to the best of their information, knowledge and belief, respectively. Furthermore, the scope of this attestation by the described officers also includes the related corresponding electronic filing with the NAIC, when required, that is an exact copy (except for formatting differences due to electronic filing) of the enclosed statement. The electronic filing may be requested by various regulators in lieu of or in addition to the enclosed statement.

David Gerard Arango President & COO	Robert William Horner, III VP & Secretary	Wendell Paul Crosser VP & Treasurer
Subscribed and sworn to before me this		a. Is this an original filing? .....
day of October, 2012		b. If no,
		1. State the amendment number.....
		2. Date filed .....
		3. Number of pages attached.....

ASSETS

	Current Statement Date			4 December 31 Prior Year Net Admitted Assets
	1 Assets	2 Nonadmitted Assets	3 Net Admitted Assets (Cols. 1 - 2)	
1. Bonds .....	3,198,462		3,198,462	3,696,780
2. Stocks:				
2.1 Preferred stocks .....				
2.2 Common stocks .....				
3. Mortgage loans on real estate:				
3.1 First liens .....				
3.2 Other than first liens.....				
4. Real estate:				
4.1 Properties occupied by the company (less \$ ..... encumbrances) .....				
4.2 Properties held for the production of income (less \$ ..... encumbrances) .....				
4.3 Properties held for sale (less \$ ..... encumbrances) .....				
5. Cash (\$ .....1,198 ), cash equivalents (\$ ..... ) and short-term investments (\$ .....5,096,977 ) .....	5,098,175		5,098,175	4,688,256
6. Contract loans (including \$ ..... premium notes) .....				
7. Derivatives .....				
8. Other invested assets .....				
9. Receivables for securities .....				
10. Securities lending reinvested collateral assets .....				
11. Aggregate write-ins for invested assets .....				
12. Subtotals, cash and invested assets (Lines 1 to 11) .....	8,296,637		8,296,637	8,385,036
13. Title plants less \$ ..... charged off (for Title insurers only) .....				
14. Investment income due and accrued .....	44,609		44,609	48,738
15. Premiums and considerations:				
15.1 Uncollected premiums and agents' balances in the course of collection .....	3,664,645		3,664,645	2,865,812
15.2 Deferred premiums, agents' balances and installments booked but deferred and not yet due (including \$ ..... earned but unbilled premiums) .....	18,880,992		18,880,992	12,606,496
15.3 Accrued retrospective premiums .....				
16. Reinsurance:				
16.1 Amounts recoverable from reinsurers .....	4,568,768		4,568,768	4,589,601
16.2 Funds held by or deposited with reinsured companies .....				
16.3 Other amounts receivable under reinsurance contracts .....	1,884,320		1,884,320	1,487,533
17. Amounts receivable relating to uninsured plans .....				
18.1 Current federal and foreign income tax recoverable and interest thereon .....				
18.2 Net deferred tax asset .....	3,935	1,094	2,841	1,751
19. Guaranty funds receivable or on deposit .....				
20. Electronic data processing equipment and software .....				
21. Furniture and equipment, including health care delivery assets (\$ ..... ) .....				
22. Net adjustment in assets and liabilities due to foreign exchange rates .....				
23. Receivables from parent, subsidiaries and affiliates .....	737,133	6,307	730,826	1,188,521
24. Health care (\$ ..... ) and other amounts receivable .....				
25. Aggregate write-ins for other than invested assets .....				
26. Total assets excluding Separate Accounts, Segregated Accounts and Protected Cell Accounts (Lines 12 to 25) .....	38,081,039	7,401	38,073,638	31,173,488
27. From Separate Accounts, Segregated Accounts and Protected Cell Accounts .....				
28. Total (Lines 26 and 27)	38,081,039	7,401	38,073,638	31,173,488
DETAILS OF WRITE-INS				
1101. ....				
1102. ....				
1103. ....				
1198. Summary of remaining write-ins for Line 11 from overflow page .....				
1199. Totals (Lines 1101 through 1103 plus 1198)(Line 11 above)				
2501. ....				
2502. ....				
2503. ....				
2598. Summary of remaining write-ins for Line 25 from overflow page .....				
2599. Totals (Lines 2501 through 2503 plus 2598)(Line 25 above)				

STATEMENT AS OF SEPTEMBER 30, 2012 OF THE VICTORIA SELECT INSURANCE COMPANY

LIABILITIES, SURPLUS AND OTHER FUNDS

	1 Current Statement Date	2 December 31, Prior Year
1. Losses (current accident year \$ ..... ) .....		
2. Reinsurance payable on paid losses and loss adjustment expenses .....		
3. Loss adjustment expenses .....		
4. Commissions payable, contingent commissions and other similar charges .....		
5. Other expenses (excluding taxes, licenses and fees) .....		
6. Taxes, licenses and fees (excluding federal and foreign income taxes) .....		
7.1 Current federal and foreign income taxes (including \$ ..... on realized capital gains (losses)) .....	22,164	34,281
7.2 Net deferred tax liability .....		
8. Borrowed money \$ ..... and interest thereon \$ ..... .....		
9. Unearned premiums (after deducting unearned premiums for ceded reinsurance of \$ .....29,494,300 and including warranty reserves of \$ ..... and accrued accident and health experience rating refunds including \$ ..... for medical loss ratio rebate per the Public Health Service Act) .....		
10. Advance premium .....		
11. Dividends declared and unpaid:		
11.1 Stockholders .....		
11.2 Policyholders .....		
12. Ceded reinsurance premiums payable (net of ceding commissions) .....	26,336,478	20,189,302
13. Funds held by company under reinsurance treaties .....		
14. Amounts withheld or retained by company for account of others .....		
15. Remittances and items not allocated .....	5,130	86,771
16. Provision for reinsurance .....		
17. Net adjustments in assets and liabilities due to foreign exchange rates .....		
18. Drafts outstanding .....		
19. Payable to parent, subsidiaries and affiliates .....	3,654,352	2,796,555
20. Derivatives .....		
21. Payable for securities .....		
22. Payable for securities lending .....		
23. Liability for amounts held under uninsured plans .....		
24. Capital notes \$ ..... and interest thereon \$ ..... .....		
25. Aggregate write-ins for liabilities .....		97,000
26. Total liabilities excluding protected cell liabilities (Lines 1 through 25) .....	30,018,124	23,203,909
27. Protected cell liabilities .....		
28. Total liabilities (Lines 26 and 27) .....	30,018,124	23,203,909
29. Aggregate write-ins for special surplus funds .....		
30. Common capital stock .....	1,000,000	1,000,000
31. Preferred capital stock .....		
32. Aggregate write-ins for other than special surplus funds .....		
33. Surplus notes .....		
34. Gross paid in and contributed surplus .....	4,250,021	4,250,021
35. Unassigned funds (surplus) .....	2,805,493	2,719,558
36. Less treasury stock, at cost:		
36.1 ..... shares common (value included in Line 30 \$ ..... ) .....		
36.2 ..... shares preferred (value included in Line 31 \$ ..... ) .....		
37. Surplus as regards policyholders (Lines 29 to 35, less 36) .....	8,055,514	7,969,579
38. Totals (Page 2, Line 28, Col. 3)	38,073,638	31,173,488
<b>DETAILS OF WRITE-INS</b>		
2501. Escrow liability .....		97,000
2502. ....		
2503. ....		
2598. Summary of remaining write-ins for Line 25 from overflow page .....		
2599. Totals (Lines 2501 through 2503 plus 2598)(Line 25 above)		97,000
2901. ....		
2902. ....		
2903. ....		
2998. Summary of remaining write-ins for Line 29 from overflow page .....		
2999. Totals (Lines 2901 through 2903 plus 2998)(Line 29 above)		
3201. ....		
3202. ....		
3203. ....		
3298. Summary of remaining write-ins for Line 32 from overflow page .....		
3299. Totals (Lines 3201 through 3203 plus 3298)(Line 32 above)		

STATEMENT OF INCOME

	1 Current Year to Date	2 Prior Year to Date	3 Prior Year Ended December 31
UNDERWRITING INCOME			
1. Premiums earned:			
1.1 Direct (written \$ .....67,202,027 ) .....	59,036,932	54,203,604	70,997,743
1.2 Assumed (written \$ ..... ) .....			
1.3 Ceded (written \$ .....67,202,027 ) .....	59,036,932	54,203,604	70,997,743
1.4 Net (written \$ ..... ) .....			
DEDUCTIONS:			
2. Losses incurred (current accident year \$ ..... ):			
2.1 Direct .....	44,128,719	31,919,113	44,661,598
2.2 Assumed .....			
2.3 Ceded .....	44,128,719	31,919,113	44,661,598
2.4 Net .....			
3. Loss adjustment expenses incurred .....			
4. Other underwriting expenses incurred .....			
5. Aggregate write-ins for underwriting deductions .....			
6. Total underwriting deductions (Lines 2 through 5) .....			
7. Net income of protected cells .....			
8. Net underwriting gain or (loss) (Line 1 minus Line 6 + Line 7) .....			
INVESTMENT INCOME			
9. Net investment income earned .....	91,851	113,113	148,776
10. Net realized capital gains (losses) less capital gains tax of \$ .....			
11. Net investment gain (loss) (Lines 9 + 10) .....	91,851	113,113	148,776
OTHER INCOME			
12. Net gain or (loss) from agents' or premium balances charged off (amount recovered \$ ..... amount charged off \$ ..... ) .....			
13. Finance and service charges not included in premiums .....			
14. Aggregate write-ins for miscellaneous income .....			
15. Total other income (Lines 12 through 14) .....			
16. Net income before dividends to policyholders, after capital gains tax and before all other federal and foreign income taxes (Lines 8 + 11 + 15) .....	91,851	113,113	148,776
17. Dividends to policyholders .....			
18. Net income, after dividends to policyholders, after capital gains tax and before all other federal and foreign income taxes (Line 16 minus Line 17) .....	91,851	113,113	148,776
19. Federal and foreign income taxes incurred .....	22,164	26,824	34,315
20. Net income (Line 18 minus Line 19)(to Line 22) .....	69,687	86,289	114,461
CAPITAL AND SURPLUS ACCOUNT			
21. Surplus as regards policyholders, December 31 prior year .....	7,969,579	7,856,381	7,856,381
22. Net income (from Line 20) .....	69,687	86,289	114,461
23. Net transfers (to) from Protected Cell accounts .....			
24. Change in net unrealized capital gains (losses) less capital gains tax of \$ .....			
25. Change in net unrealized foreign exchange capital gain (loss) .....			
26. Change in net deferred income tax .....	(5,617)	(3,532)	(2,603)
27. Change in nonadmitted assets .....	18,362	11,923	1,340
28. Change in provision for reinsurance .....			
29. Change in surplus notes .....			
30. Surplus (contributed to) withdrawn from protected cells .....			
31. Cumulative effect of changes in accounting principles .....	3,503		
32. Capital changes:			
32.1 Paid in .....			
32.2 Transferred from surplus (Stock Dividend) .....			
32.3 Transferred to surplus .....			
33. Surplus adjustments:			
33.1 Paid in .....			
33.2 Transferred to capital (Stock Dividend) .....			
33.3 Transferred from capital .....			
34. Net remittances from or (to) Home Office .....			
35. Dividends to stockholders .....			
36. Change in treasury stock .....			
37. Aggregate write-ins for gains and losses in surplus .....			
38. Change in surplus as regards policyholders (Lines 22 through 37) .....	85,935	94,680	113,198
39. Surplus as regards policyholders, as of statement date (Lines 21 plus 38) .....	8,055,514	7,951,061	7,969,579
DETAILS OF WRITE-INS			
0501. ....			
0502. ....			
0503. ....			
0598. Summary of remaining write-ins for Line 5 from overflow page .....			
0599. Totals (Lines 0501 through 0503 plus 0598)(Line 5 above) .....			
1401. ....			
1402. ....			
1403. ....			
1498. Summary of remaining write-ins for Line 14 from overflow page .....			
1499. Totals (Lines 1401 through 1403 plus 1498)(Line 14 above) .....			
3701. ....			
3702. ....			
3703. ....			
3798. Summary of remaining write-ins for Line 37 from overflow page .....			
3799. Totals (Lines 3701 through 3703 plus 3798)(Line 37 above) .....			

STATEMENT AS OF SEPTEMBER 30, 2012 OF THE VICTORIA SELECT INSURANCE COMPANY

CASH FLOW

	1 Current Year To Date	2 Prior Year To Date	3 Prior Year Ended December 31
Cash from Operations			
1. Premiums collected net of reinsurance .....	(926,151)	786,139	496,100
2. Net investment income .....	119,296	151,059	199,471
3. Miscellaneous income .....	(396,787)	2,109,148	1,641,656
4. Total (Lines 1 to 3) .....	(1,203,642)	3,046,346	2,337,227
5. Benefit and loss related payments .....	(20,833)	184,779	205,973
6. Net transfers to Separate Accounts, Segregated Accounts and Protected Cell Accounts .....			
7. Commissions, expenses paid and aggregate write-ins for deductions .....			
8. Dividends paid to policyholders .....			
9. Federal and foreign income taxes paid (recovered) net of \$ ..... tax on capital gains (losses) .....	34,281	43,963	43,997
10. Total (Lines 5 through 9) .....	13,448	228,742	249,970
11. Net cash from operations (Line 4 minus Line 10) .....	(1,217,090)	2,817,604	2,087,257
Cash from Investments			
12. Proceeds from investments sold, matured or repaid:			
12.1 Bonds .....	475,000	695,000	845,000
12.2 Stocks .....			
12.3 Mortgage loans .....			
12.4 Real estate .....			
12.5 Other invested assets .....			
12.6 Net gains or (losses) on cash, cash equivalents and short-term investments .....			
12.7 Miscellaneous proceeds .....		19,640	19,640
12.8 Total investment proceeds (Lines 12.1 to 12.7) .....	475,000	714,640	864,640
13. Cost of investments acquired (long-term only):			
13.1 Bonds .....			
13.2 Stocks .....			
13.3 Mortgage loans .....			
13.4 Real estate .....			
13.5 Other invested assets .....			
13.6 Miscellaneous applications .....			
13.7 Total investments acquired (Lines 13.1 to 13.6) .....			
14. Net increase (or decrease) in contract loans and premium notes .....			
15. Net cash from investments (Line 12.8 minus Line 13.7 and Line 14) .....	475,000	714,640	864,640
Cash from Financing and Miscellaneous Sources			
16. Cash provided (applied):			
16.1 Surplus notes, capital notes .....			
16.2 Capital and paid in surplus, less treasury stock .....			
16.3 Borrowed funds .....			
16.4 Net deposits on deposit-type contracts and other insurance liabilities .....			
16.5 Dividends to stockholders .....			
16.6 Other cash provided (applied) .....	1,152,009	(2,741,618)	(1,721,153)
17. Net cash from financing and miscellaneous sources (Line 16.1 through Line 16.4 minus Line 16.5 plus Line 16.6) .....	1,152,009	(2,741,618)	(1,721,153)
RECONCILIATION OF CASH, CASH EQUIVALENTS AND SHORT-TERM INVESTMENTS			
18. Net change in cash, cash equivalents and short-term investments (Line 11, plus Lines 15 and 17) ..	409,919	790,626	1,230,744
19. Cash, cash equivalents and short-term investments:			
19.1 Beginning of year .....	4,688,256	3,457,512	3,457,512
19.2 End of period (Line 18 plus Line 19.1) .....	5,098,175	4,248,138	4,688,256

Note: Supplemental disclosures of cash flow information for non-cash transactions:

--	--	--	--

STATEMENT AS OF SEPTEMBER 30, 2012 OF THE VICTORIA SELECT INSURANCE COMPANY

NOTES TO FINANCIAL STATEMENTS

Note 1 - Summary of Significant Accounting Policies

A. Accounting Practices

The accompanying statutory financial statements of Victoria Select Insurance Company (the Company) have been prepared in conformity with accounting practices prescribed or permitted by the National Association of Insurance Commissioners (NAIC) and the State of Ohio.

The Ohio Insurance Department recognizes only statutory accounting practices (SAP) prescribed or permitted by the State of Ohio for determining and reporting the financial condition and results of operations of an insurance company, as well as, determining its solvency under the Ohio Insurance law. The National Association of Insurance Commissioners' (NAIC) *Accounting Practices and Procedures Manual* (NAIC SAP) has been adopted as a component of prescribed or permitted practices by the State of Ohio.

Note 2 - Accounting Changes and Corrections of Errors

On January 1, 2012, the Company adopted a new standard, SSAP No. 101, Income Taxes, which supersedes SSAP No. 10R, Income Taxes Revised - A Temporary Replacement of SSAP No. 10. The standard applies a 'more likely than not' threshold for the recognition of federal and foreign tax loss contingencies and establishes a new framework for determining the admissibility of deferred tax assets (DTA). The difference between the recalculated amounts as of January 1, 2012, and the amount actually reported in the prior year financial statements is treated as a change in accounting principle in accordance with SSAP No. 3, Accounting Changes and Corrections of Errors. The cumulative effect of this change in accounting principle resulted in a \$3,503 increase in unassigned funds as of January 1, 2012.

Note 3 - Business Combinations and Goodwill

No change.

Note 4 - Discontinued Operations

No change.

Note 5 - Investments

A. Mortgage Loans

No change.

B. Troubled Debt Restructuring for Creditors

No change.

C. Reverse Mortgages

No change.

D. Loan-Backed Securities

1. Prepayment assumptions are generally obtained using a model provided by a third-party vendor.
2. The following table summarizes by quarter other-than-temporary impairments for loan-backed securities recorded during the year because the Company had either the intent to sell the securities or the inability or lack of intent to retain as cited in the table:

	(1) Amortized Cost Basis Before Other-than- Temporary Impairment	(2) Other-than- Temporary Impairment Recognized in Loss	(3)  Fair Value 1 - 2
OTTI recognized 1st Quarter			
a. Intent to Sell	\$ -	\$ -	\$ -
b. Inability or lack of intent to retain the investment in the security for a period of time sufficient to recover the amortized cost basis	\$ -	\$ -	\$ -
c. Total 1st Quarter	\$ -	\$ -	\$ -
OTTI recognized 2nd Quarter			
d. Intent to Sell	\$ -	\$ -	\$ -
e. Inability or lack of intent to retain the investment in the security for a period of time sufficient to recover the amortized cost basis	\$ -	\$ -	\$ -
f. Total 2nd Quarter	\$ -	\$ -	\$ -
OTTI recognized 3rd Quarter			
g. Intent to Sell	\$ -	\$ -	\$ -
h. Inability or lack of intent to retain the investment in the security for a period of time sufficient to recover the amortized cost basis	\$ -	\$ -	\$ -
i. Total 3rd Quarter	\$ -	\$ -	\$ -
OTTI recognized 4th Quarter			
j. Intent to Sell	\$ -	\$ -	\$ -
k. Inability or lack of intent to retain the investment in the security for a period of time sufficient to recover the amortized cost basis	\$ -	\$ -	\$ -
l. Total 4th Quarter	\$ -	\$ -	\$ -
m. Annual Aggregate Total		\$ -	

NOTES TO FINANCIAL STATEMENTS

3. The following table summarizes other-than-temporary impairments for loan-backed securities held at the end of the quarter based on the fact that the present value of projected cash flows expected to be collected was less than the amortized cost of the securities:

(1)	(2)	(3)	(4)	(5)	(6)	(7)
CUSIP	Amortized Cost Before Current Period OTTI	Present Value of Projected Cash Flow s	Recognized Other-Than-Temporary Impairment	Amortized Cost After Other-Than-Temporary Impairment	Fair Value at time of OTTI	Date of Financial Statement Where Reported
Total			\$ -			

4. All impaired securities (fair value is less than cost or amortized cost) for which an other-than-temporary impairment has not been recognized in earnings as a realized loss (including securities with a recognized other-than-temporary impairment for non-interest related declines when a non-recognized interest related impairment remains):

a. The aggregate amount of unrealized losses:			
	1. Less than 12 Months	\$	-
	2. 12 Months or Longer	\$	-
b. The aggregate related fair value of securities w ith unrealized losses:			
	1. Less than 12 Months	\$	-
	2. 12 Months or Longer	\$	-

5. The Company reviews all loan-backed and structured securities in which the fair value of the given security is less than the amortized cost to determine if a given security is other-than-temporarily impaired. The Company examines characteristics of the underlying collateral, such as delinquency and default rates, the quality of the underlying borrower, the type of collateral in the pool, the vintage year of the collateral, subordination levels within the structure of the collateral pool, the quality of any credit guarantors, to determine the cash flows expected to be received for the security.

If the severity and duration of the security's unrealized loss indicates a risk of an other-than-temporary impairment, then the Company will evaluate if the amortized cost basis of the security will be recovered by comparing the present value of the cash flows expected to be received for the given security with the amortized cost basis of the security. If the present value of cash flows is greater than the amortized cost basis of a security then the security is deemed not to be other-than-temporarily impaired.

E. Repurchase Agreements and Securities Lending Transactions

No change.

F. Real Estate

No change.

G. Low-Income Housing Tax Credits

No change.

**Note 6 - Joint Ventures, Partnerships and Limited Liability Companies**

No change.

**Note 7 - Investment Income**

No change.

**Note 8 - Derivative Instruments**

No change.

**Note 9 - Income Taxes**

No change.

**Note 10 - Information Concerning Parent, Subsidiaries, Affiliates and Other Related Parties**

No change.

**Note 11 - Debt**

No change.

**Note 12 - Retirement Plans, Deferred Compensation, Postemployment Benefits and Compensated Absences and Other Postretirement Benefit Plans**

No change.

**Note 13 - Capital and Surplus, Dividend Restrictions and Quasi-Reorganizations**

No change.

**Note 14 – Contingencies**

No change.

**Note 15 – Leases**

No change.

NOTES TO FINANCIAL STATEMENTS

**Note 16 - Information About Financial Instruments With Off-Balance Sheet Risk And Financial Instruments With Concentrations of Credit Risk**

No change.

**Note 17 - Sale, Transfer and Servicing of Financial Assets and Extinguishments of Liabilities**

A. Transfers of Receivables Reported as Sales

No change.

B. Transfers and Servicing of Financial Assets

No change.

C. Wash Sales

Not applicable.

**Note 18 - Gain or Loss to the Reporting Entity from Uninsured Plans and the Uninsured Portion of Partially Insured Plans**

No change.

**Note 19 - Direct Premiums Written/Produced by Managing General Agents/Third Party Administrators**

No change.

**Note 20 – Fair Value Measurements**

Fair value is defined as the price that would be received to sell an asset or paid to transfer a liability in an orderly transaction between market participants at the measurement date. Fair value measurements are based upon observable and unobservable inputs. Observable inputs reflect market data obtained from independent sources while unobservable inputs reflect the Company's view of market assumptions in the absence of observable market information. The Company utilizes valuation techniques that maximize the use of observable inputs and minimize the use of unobservable inputs. In determining fair value, the Company uses various methods including market, income and cost approaches.

The Company categorizes its assets and liabilities reported at fair value in the quarterly statement into a three-level hierarchy based on the priority of the inputs to the valuation technique. The fair value hierarchy gives the highest priority to quoted prices in active markets for identical assets or liabilities (Level 1) and the lowest priority to unobservable inputs (Level 3). If the inputs used to measure fair value fall within different levels of the hierarchy, the category level is based on the lowest priority level input that is significant to the fair value measurement of the instrument in its entirety.

The fair value hierarchy levels are as follows:

*Level 1.* Unadjusted quoted prices accessible in active markets for identical assets or liabilities at the measurement date and mutual funds where the value per share (unit) is determined and published daily and is the basis for current transactions.

*Level 2.* Unadjusted quoted prices for similar assets or liabilities in active markets or inputs (other than quoted prices) that are observable or that are derived principally from or corroborated by observable market data through correlation or other means.

*Level 3.* Prices or valuation techniques that require inputs that are both unobservable and significant to the overall fair value measurement. Inputs reflect management's best estimate about the assumptions market participants would use at the measurement date in pricing the asset or liability. Consideration is given to the risk inherent in both the method of valuation and the valuation inputs.

The Company periodically reviews its fair value hierarchy classifications for financial assets and liabilities. Changes in observability of significant valuation inputs identified during these reviews may trigger reclassifications. Reclassifications into/out of the fair value hierarchy levels are reported as transfers at the beginning of the period in which the change occurs.

To determine the fair value of bonds and stocks for which market quotations are available, independent pricing services are most often utilized. For these bonds and stocks, the Company obtains the pricing services' methodologies, inputs and assumptions and classifies the investments accordingly in the fair value hierarchy.

Non-binding broker quotes are also utilized to determine the fair value of certain bonds when quotes are not available from independent pricing services. Broker quotes are considered unobservable inputs, and these bonds are classified accordingly in the fair value hierarchy as only one broker quote is ordinarily obtained, the investment is not traded on an exchange, the pricing is not available to other entities and/or the transaction volume in the same or similar investments has decreased such that generally only one quotation is available. As the brokers often do not provide the necessary transparency into their quotes and methodologies, the Company periodically performs reviews and tests to ensure that quotes are a reasonable estimate of the investments' fair value.

For certain bonds not valued using independent services or broker quotes, a corporate pricing matrix or internally developed pricing model is most often used. The corporate pricing matrix is developed using private spreads for bonds with varying weighted average lives and credit quality ratings. The weighted average life and credit quality rating of a particular bond to be priced using the corporate pricing matrix are important inputs into the model and are used to determine a corresponding spread that is added to the appropriate U.S. Treasury yield to create an estimated market yield for that security. The estimated market yield and other relevant factors are then used to estimate the fair value of the particular bond.

No assets or liabilities were carried at fair value as of September 30, 2012.

The following table summarizes aggregate carrying value and fair value, by level, for all financial instruments, excluding assets and liabilities reported at fair value, as of September 30, 2012:

	Carrying Value	Aggregate Fair Value	Level 1	Level 2	Level 3
Assets					
Bonds	\$ 3,198,462	\$ 3,714,049	\$ 2,705,039	\$ 1,009,010	\$ -
Short-term investments	5,096,977	5,096,977	-	5,096,977	-
Total Assets	<u>\$ 8,295,439</u>	<u>\$ 8,811,026</u>	<u>\$ 2,705,039</u>	<u>\$ 6,105,987</u>	<u>\$ -</u>



# NOTES TO FINANCIAL STATEMENTS

**Note 21 - Other Items**

No change.

**Note 22 - Events Subsequent**

Subsequent events have been considered through November 2, 2012 for these statutory financial statements which are to be issued November 5, 2012. There were no events occurring subsequent to the end of the quarter that merited recognition or disclosure in these statements.

**Note 23 – Reinsurance**

No change.

**Note 24 - Retrospectively Rated Contracts and Contracts Subject to Redetermination**

No change.

**Note 25 - Changes in Incurred Losses and Loss Adjustment Expenses**

The Company is a participant in a 100% pooling reinsurance agreement with Nationwide Mutual Insurance Company, and as such has zero net incurred losses and loss adjustment expenses.

**Note 26 - Intercompany Pooling Arrangements**

No change.

**Note 27 - Structured Settlements**

No change.

**Note 28 - Health Care Receivables**

No change.

**Note 29 - Participating Policies**

No change.

**Note 30 - Premium Deficiency Reserves**

No change.

**Note 31 - High Deductibles**

No change.

**Note 32 - Discounting of Liabilities for Unpaid Losses or Unpaid Loss Adjustment Expenses**

No change.

**Note 33 - Asbestos/Environmental Reserves**

No change.

**Note 34 - Subscriber Savings Accounts**

No change.

**Note 35 - Multiple Peril Crop Insurance**

No change.

**Note 36 – Financial Guaranty Insurance**

A. and B. Not applicable.

STATEMENT AS OF SEPTEMBER 30, 2012 OF THE VICTORIA SELECT INSURANCE COMPANY

GENERAL INTERROGATORIES

PART 1 - COMMON INTERROGATORIES

GENERAL

- 1.1

Did the reporting entity experience any material transactions requiring the filing of Disclosure of Material Transactions with the State of Domicile, as required by the Model Act? .....

Yes [ ☐ ] No [ ☒ ]
- 1.2

If yes, has the report been filed with the domiciliary state? .....

Yes [ ☐ ] No [ ☐ ]
- 2.1

Has any change been made during the year of this statement in the charter, by-laws, articles of incorporation, or deed of settlement of the reporting entity? .....

Yes [ ☐ ] No [ ☒ ]
- 2.2

If yes, date of change: .....
3.

Have there been any substantial changes in the organizational chart since the prior quarter end? .....

Yes [ ☐ ] No [ ☒ ]

If yes, complete the Schedule Y - Part 1 - organizational chart.
- 4.1

Has the reporting entity been a party to a merger or consolidation during the period covered by this statement? .....

Yes [ ☐ ] No [ ☒ ]
- 4.2

If yes, provide the name of the entity, NAIC Company Code, and state of domicile (use two letter state abbreviation) for any entity that has ceased to exist as a result of the merger or consolidation.

1	2	3
Name of Entity	NAIC Company Code	State of Domicile

5.

If the reporting entity is subject to a management agreement, including third-party administrator(s), managing general agent(s), attorney-in-fact, or similar agreement, have there been any significant changes regarding the terms of the agreement or principals involved? .....

Yes [ ☐ ] No [ ☒ ] N/A [ ☐ ]

If yes, attach an explanation.
- 6.1

State as of what date the latest financial examination of the reporting entity was made or is being made. ....

12/31/2011
- 6.2

State the as of date that the latest financial examination report became available from either the state of domicile or the reporting entity. This date should be the date of the examined balance sheet and not the date the report was completed or released. ....

12/31/2006
- 6.3

State as of what date the latest financial examination report became available to other states or the public from either the state of domicile or the reporting entity. This is the release date or completion date of the examination report and not the date of the examination (balance sheet date). ....

03/29/2008
- 6.4

By what department or departments?  
OH
- 6.5

Have all financial statement adjustments within the latest financial examination report been accounted for in a subsequent financial statement filed with Departments? .....

Yes [ ☐ ] No [ ☐ ] N/A [ ☒ ]
- 6.6

Have all of the recommendations within the latest financial examination report been complied with? .....

Yes [ ☐ ] No [ ☐ ] N/A [ ☒ ]
- 7.1

Has this reporting entity had any Certificates of Authority, licenses or registrations (including corporate registration, if applicable) suspended or revoked by any governmental entity during the reporting period? .....

Yes [ ☐ ] No [ ☒ ]
- 7.2

If yes, give full information:
- 8.1

Is the company a subsidiary of a bank holding company regulated by the Federal Reserve Board? .....

Yes [ ☐ ] No [ ☒ ]
- 8.2

If response to 8.1 is yes, please identify the name of the bank holding company.
- 8.3

Is the company affiliated with one or more banks, thrifts or securities firms? .....

Yes [ ☒ ] No [ ☐ ]
- 8.4

If response to 8.3 is yes, please provide below the names and location (city and state of the main office) of any affiliates regulated by a federal regulatory services agency [i.e. the Federal Reserve Board (FRB), the Office of the Comptroller of the Currency (OCC), the Federal Deposit Insurance Corporation (FDIC) and the Securities Exchange Commission (SEC)] and identify the affiliate's primary federal regulator.

1	2	3	4	5	6
Affiliate Name	Location (City, State)	FRB	OCC	FDIC	SEC
Nationwide Bank .....	Columbus, OH .....	NO	YES	NO	NO
Nationwide Investment Services Corp. ....	Columbus, OH .....	NO	NO	NO	YES
Nationwide Securities, LLC .....	Dublin, OH .....	NO	NO	NO	YES
Nationwide Fund Distributors, LLC .....	King of Prussia, PA .....	NO	NO	NO	YES

GENERAL INTERROGATORIES

- 9.1

Are the senior officers (principal executive officer, principal financial officer, principal accounting officer or controller, or persons performing similar functions) of the reporting entity subject to a code of ethics, which includes the following standards? (a) Honest and ethical conduct, including the ethical handling of actual or apparent conflicts of interest between personal and professional relationships; (b) Full, fair, accurate, timely and understandable disclosure in the periodic reports required to be filed by the reporting entity; (c) Compliance with applicable governmental laws, rules and regulations; (d) The prompt internal reporting of violations to an appropriate person or persons identified in the code; and (e) Accountability for adherence to the code.

Yes [ X ] No [ ]
- 9.11

If the response to 9.1 is No, please explain:
- 9.2

Has the code of ethics for senior managers been amended?

Yes [ ] No [ X ]
- 9.21

If the response to 9.2 is Yes, provide information related to amendment(s).
- 9.3

Have any provisions of the code of ethics been waived for any of the specified officers?

Yes [ ] No [ X ]
- 9.31

If the response to 9.3 is Yes, provide the nature of any waiver(s).

FINANCIAL

- 10.1

Does the reporting entity report any amounts due from parent, subsidiaries or affiliates on Page 2 of this statement?

Yes [ X ] No [ ]
- 10.2

If yes, indicate any amounts receivable from parent included in the Page 2 amount:

\$546,785

INVESTMENT

- 11.1

Were any of the stocks, bonds, or other assets of the reporting entity loaned, placed under option agreement, or otherwise made available for use by another person? (Exclude securities under securities lending agreements.)

Yes [ ] No [ X ]
- 11.2

If yes, give full and complete information relating thereto:
12.

Amount of real estate and mortgages held in other invested assets in Schedule BA:

\$
13.

Amount of real estate and mortgages held in short-term investments:

\$
- 14.1

Does the reporting entity have any investments in parent, subsidiaries and affiliates?

Yes [ ] No [ X ]
- 14.2

If yes, please complete the following:
- |   | 1   | 2  |
|---|---|--|
|   | Prior Year-End Book/Adjusted Carrying Value | Current Quarter Book/Adjusted Carrying Value |
| 14.21 Bonds   | \$  | \$   |
| 14.22 Preferred Stock   | \$  | \$   |
| 14.23 Common Stock  | \$  | \$   |
| 14.24 Short-Term Investments  | \$  | \$   |
| 14.25 Mortgage Loans on Real Estate   | \$  | \$   |
| 14.26 All Other   | \$  | \$   |
| 14.27 Total Investment in Parent, Subsidiaries and Affiliates (Subtotal Lines 14.21 to 14.26) | \$  | \$   |
| 14.28 Total Investment in Parent included in Lines 14.21 to 14.26 above                       | \$  | \$   |
- 15.1

Has the reporting entity entered into any hedging transactions reported on Schedule DB?

Yes [ ] No [ X ]
- 15.2

If yes, has a comprehensive description of the hedging program been made available to the domiciliary state?

Yes [ ] No [ ]
- If no, attach a description with this statement.

STATEMENT AS OF SEPTEMBER 30, 2012 OF THE VICTORIA SELECT INSURANCE COMPANY

GENERAL INTERROGATORIES

16. Excluding items in Schedule E - Part 3 - Special Deposits, real estate, mortgage loans and investments held physically in the reporting entity's offices, vaults or safety deposit boxes, were all stocks, bonds and other securities, owned throughout the current year held pursuant to a custodial agreement with a qualified bank or trust company in accordance with Section 1, III - General Examination Considerations, F. Outsourcing of Critical Functions, Custodial or Safekeeping Agreements of the NAIC Financial Condition Examiners Handbook? ..... Yes [ X ] No [ ]
- 16.1 For all agreements that comply with the requirements of the NAIC Financial Condition Examiners Handbook, complete the following:

1 Name of Custodian(s)	2 Custodian Address
The Bank of New York Mellon .....	1 Wall Street, New York, NY 10286 .....

- 16.2 For all agreements that do not comply with the requirements of the NAIC Financial Condition Examiners Handbook, provide the name, location and a complete explanation:

1 Name(s)	2 Location(s)	3 Complete Explanation(s)

- 16.3 Have there been any changes, including name changes, in the custodian(s) identified in 16.1 during the current quarter? ..... Yes [ ] No [ X ]
- 16.4 If yes, give full information relating thereto:

1 Old Custodian	2 New Custodian	3 Date of Change	4 Reason

- 16.5 Identify all investment advisors, brokers/dealers or individuals acting on behalf of broker/dealers that have access to the investment accounts, handle securities and have authority to make investments on behalf of the reporting entity:

1 Central Registration Depository	2 Name(s)	3 Address
N/A .....	Members of the investment staff designated by the Chief Investment Officer as detailed in the Corporate Resolution .....	One Nationwide Blvd., Columbus, OH 43215-2220 .....

- 17.1 Have all the filing requirements of the Purposes and Procedures Manual of the NAIC Securities Valuation Office been followed? ..... Yes [ X ] No [ ]
- 17.2 If no, list exceptions:

GENERAL INTERROGATORIES

PART 2 - PROPERTY & CASUALTY INTERROGATORIES

1. If the reporting entity is a member of a pooling arrangement, did the agreement or the reporting entity's participation change? ..... Yes [ ] No [ X ] N/A [ ]  
If yes, attach an explanation.

2. Has the reporting entity reinsured any risk with any other reporting entity and agreed to release such entity from liability, in whole or in part, from any loss that may occur on the risk, or portion thereof, reinsured? ..... Yes [ ] No [ X ]  
If yes, attach an explanation.

3.1 Have any of the reporting entity's primary reinsurance contracts been canceled? ..... Yes [ ] No [ X ]

3.2 If yes, give full and complete information thereto.

4.1 Are any of the liabilities for unpaid losses and loss adjustment expenses other than certain workers' compensation tabular reserves (see Annual Statement Instructions pertaining to disclosure of discounting for definition of " tabular reserves" ) discounted at a rate of interest greater than zero? ..... Yes [ ] No [ X ]

4.2 If yes, complete the following schedule:

			TOTAL DISCOUNT				DISCOUNT TAKEN DURING PERIOD			
1	2	3	4	5	6	7	8	9	10	11
Line of Business	Maximum Interest	Discount Rate	Unpaid Losses	Unpaid LAE	IBNR	TOTAL	Unpaid Losses	Unpaid LAE	IBNR	TOTAL
TOTAL										

5. Operating Percentages:

5.1 A&H loss percent ..... %

5.2 A&H cost containment percent ..... %

5.3 A&H expense percent excluding cost containment expenses ..... %

6.1 Do you act as a custodian for health savings accounts? ..... Yes [ ] No [ X ]

6.2 If yes, please provide the amount of custodial funds held as of the reporting date .....\$.....

6.3 Do you act as an administrator for health savings accounts? ..... Yes [ ] No [ X ]

6.4 If yes, please provide the balance of the funds administered as of the reporting date .....\$.....

## SCHEDULE F - CEDED REINSURANCE

1 NAIC Company Code	2 Federal ID Number	3 Name of Reinsurer	4 Domiciliary Jurisdiction	5 Is Insurer Authorized? (Yes or No)
		NONE		

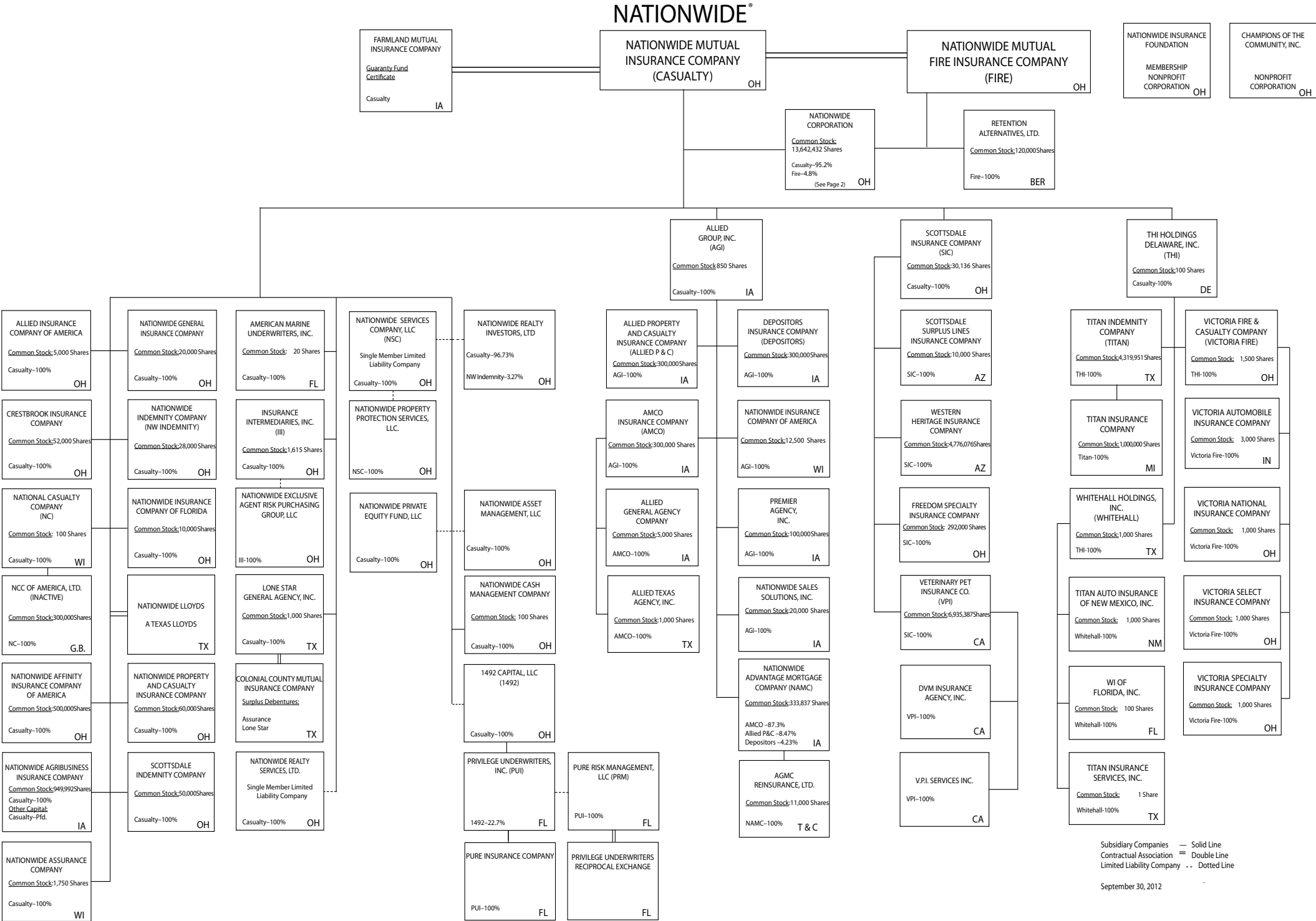
SCHEDULE T - EXHIBIT OF PREMIUMS WRITTEN

Current Year to Date - Allocated by States and Territories

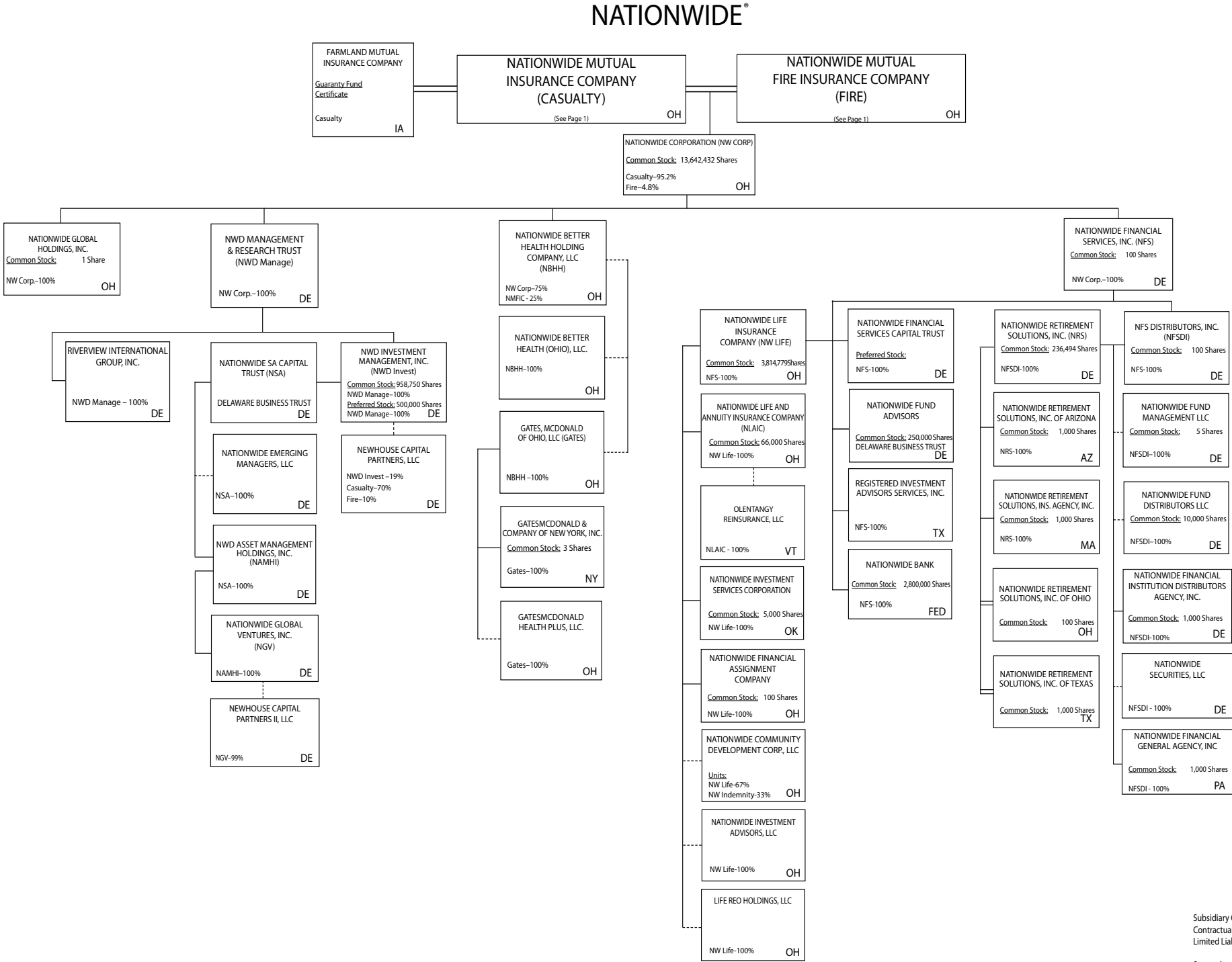
		1 Active Status	Direct Premiums Written		Direct Losses Paid (Deducting Salvage)		Direct Losses Unpaid	
			2 Current Year To Date	3 Prior Year To Date	4 Current Year To Date	5 Prior Year To Date	6 Current Year To Date	7 Prior Year To Date
States, etc.								
1. Alabama	AL	L	4,864,406	5,030,052	2,814,187	3,503,285	2,750,588	2,279,954
2. Alaska	AK	N						
3. Arizona	AZ	L	372,725	503,637	156,325	535,959	97,398	371,001
4. Arkansas	AR	N						
5. California	CA	N						
6. Colorado	CO	L						
7. Connecticut	CT	N						
8. Delaware	DE	N						29,000
9. District of Columbia	DC	N						
10. Florida	FL	L	17,790,438	21,943,099	17,253,675	15,023,418	14,024,232	13,237,618
11. Georgia	GA	L	5,076,877	6,070,139	4,766,170	4,625,296	2,454,386	3,311,731
12. Hawaii	HI	N						
13. Idaho	ID	N						
14. Illinois	IL	L	3,744,701	3,640,694	2,558,598	2,733,813	1,654,789	1,718,461
15. Indiana	IN	L	7,779,175	7,852,616	4,623,879	3,941,121	3,265,032	3,066,754
16. Iowa	IA	N						
17. Kansas	KS	N						
18. Kentucky	KY	L						
19. Louisiana	LA	N						
20. Maine	ME	N						
21. Maryland	MD	N						
22. Massachusetts	MA	N						
23. Michigan	MI	N						
24. Minnesota	MN	L						
25. Mississippi	MS	L	592,787	818,394	445,495	828,794	242,673	428,515
26. Missouri	MO	N						
27. Montana	MT	N						
28. Nebraska	NE	N						
29. Nevada	NV	N						
30. New Hampshire	NH	N						
31. New Jersey	NJ	N						
32. New Mexico	NM	N						
33. New York	NY	L			2,432	3,502		4,671
34. North Carolina	NC	N						
35. North Dakota	ND	N						
36. Ohio	OH	L	356,364	457,170	111,481	275,646	190,314	212,669
37. Oklahoma	OK	N						
38. Oregon	OR	L	1,599,815	1,260,131	1,094,279	998,058	895,211	933,053
39. Pennsylvania	PA	L	48,017	85,152	18,107	76,956	16,981	16,307
40. Rhode Island	RI	N						
41. South Carolina	SC	N						
42. South Dakota	SD	N						
43. Tennessee	TN	L	7,840,104	7,734,400	4,290,000	5,392,622	3,619,215	3,614,313
44. Texas	TX	N						
45. Utah	UT	N						
46. Vermont	VT	N						
47. Virginia	VA	L	17,136,618	5,619	3,305,437	37,499	3,265,201	32,475
48. Washington	WA	N						
49. West Virginia	WV	N						
50. Wisconsin	WI	N						
51. Wyoming	WY	N						
52. American Samoa	AS	N						
53. Guam	GU	N						
54. Puerto Rico	PR	N						
55. U.S. Virgin Islands	VI	N						
56. Northern Mariana Islands	MP	N						
57. Canada	CN	N						
58. Aggregate Other Alien	OT	XXX						
59. Totals	(a) 16		67,202,027	55,401,103	41,440,065	37,975,969	32,476,020	29,256,522
DETAILS OF WRITE-INS								
5801.		XXX						
5802.		XXX						
5803.		XXX						
5898. Summary of remaining write-ins for Line 58 from overflow page		XXX						
5899. Totals (Lines 5801 through 5803 plus 5898)(Line 58 above)		XXX						

(L) Licensed or Chartered - Licensed Insurance Carrier or Domiciled RRG; (R) Registered - Non-domiciled RRGs; (Q) Qualified - Qualified or Accredited Reinsurer; (E) Eligible - Reporting Entities eligible or approved to write Surplus Lines in the state; (N) None of the above - Not allowed to write business in the state.

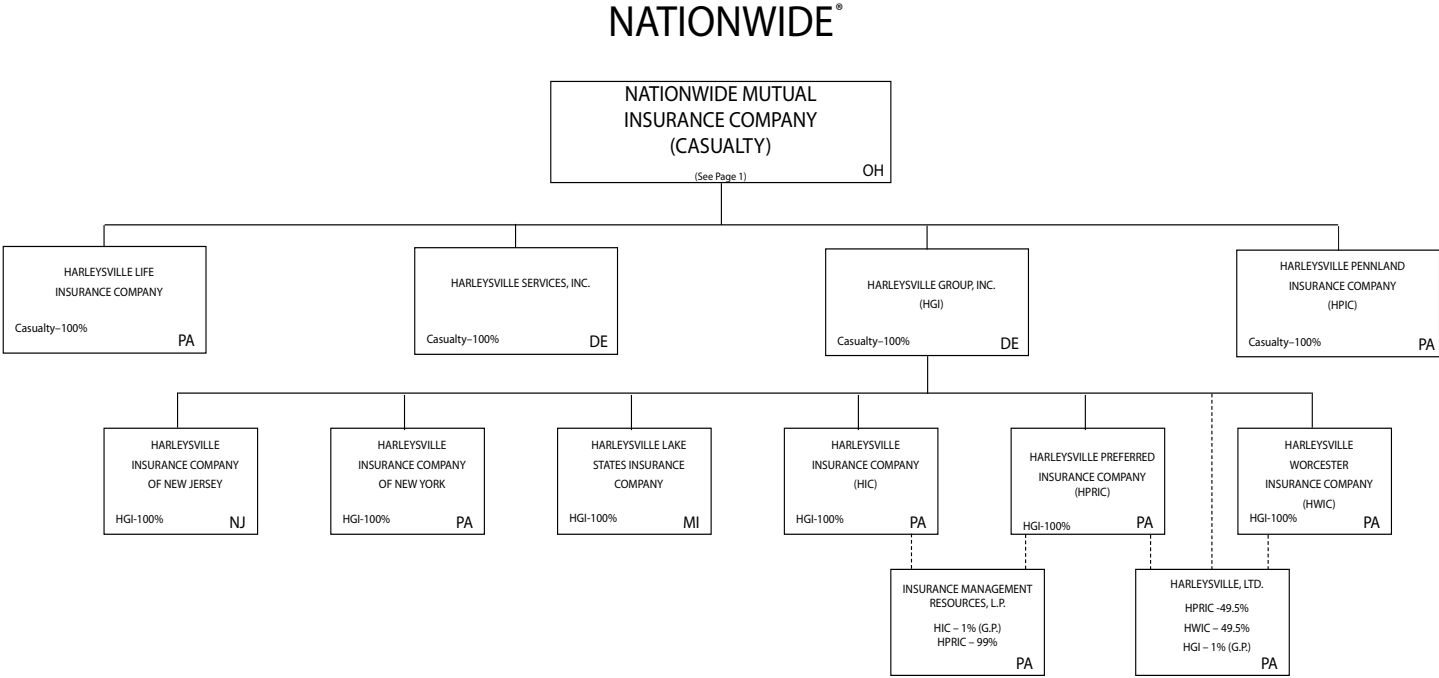
(a) Insert the number of L responses except for Canada and Other Alien.







Subsidiary Companies — Solid Line  
Contractual Association = Double Line  
Limited Liability Company - - Dotted Line



NATIONWIDE INSURANCE COMPANIES

NAIC Group Code	Group Name	NAIC Company Code	State of Domicile	Federal ID Number	Name of Company
0140	Nationwide	10127	OH	27-0114983	Allied Insurance Company of America
0140	Nationwide	42579	IA	42-1201931	Allied Property and Casualty Insurance Company
0140	Nationwide	19100	IA	42-6054959	AMCO Insurance Company
0140	Nationwide	29262	TX	74-1061659	Colonial County Mutual Insurance Company
0140	Nationwide	18961	OH	68-0066866	Crestbrook Insurance Company
0140	Nationwide	42587	IA	42-1207150	Depositors Insurance Company
0140	Nationwide	13838	IA	42-0618271	Farmland Mutual Insurance Company
0140	Nationwide	22209	OH	75-6013587	Freedom Specialty Insurance Company
0140	Nationwide	23582	PA	41-0417250	Harleysville Insurance Company
0140	Nationwide	42900	NJ	23-2253669	Harleysville Insurance Company of New Jersey
0140	Nationwide	10674	PA	23-2864924	Harleysville Insurance Company of New York
0140	Nationwide	14516	MI	38-3198542	Harleysville Lake States Insurance Company
0140	Nationwide	64327	PA	23-1580983	Harleysville Life Insurance Company
0140	Nationwide	40983	PA	23-2612951	Harleysville Pennland Insurance Company
0140	Nationwide	35696	PA	23-2384978	Harleysville Preferred Insurance Company
0140	Nationwide	26182	PA	04-1989660	Harleysville Worcester Insurance Company
0140	Nationwide	11991	WI	38-0865250	National Casualty Company
0140	Nationwide	26093	OH	48-0470690	Nationwide Affinity Insurance Company of America
0140	Nationwide	28223	IA	42-1015537	Nationwide Agribusiness Insurance Company
0140	Nationwide	10723	WI	95-0639970	Nationwide Assurance Company
0140	Nationwide	23760	OH	31-4425763	Nationwide General Insurance Company
0140	Nationwide	10070	OH	31-1399201	Nationwide Indemnity Company
0140	Nationwide	25453	WI	95-2130882	Nationwide Insurance Company of America
0140	Nationwide	10948	OH	31-1613686	Nationwide Insurance Company of Florida
0140	Nationwide	92657	OH	31-1000740	Nationwide Life and Annuity Insurance Company
0140	Nationwide	66869	OH	31-4156830	Nationwide Life Insurance Company
0140	Nationwide	42110	TX	75-1780981	Nationwide Lloyds
0140	Nationwide	23779	OH	31-4177110	Nationwide Mutual Fire Insurance Company
0140	Nationwide	23787	OH	31-4177100	Nationwide Mutual Insurance Company
0140	Nationwide	37877	OH	31-0970750	Nationwide Property & Casualty Insurance Company
0140	Nationwide	13999	VT	27-1712056	Olentangy Reinsurance, LLC
0140	Nationwide	15580	OH	31-1117969	Scottsdale Indemnity Company
0140	Nationwide	41297	OH	31-1024978	Scottsdale Insurance Company
0140	Nationwide	10672	AZ	86-0835870	Scottsdale Surplus Lines Insurance Company
0140	Nationwide	13242	TX	74-2286759	Titan Indemnity Company
0140	Nationwide	36269	MI	86-0619597	Titan Insurance Company
0140	Nationwide	42285	CA	95-3750113	Veterinary Pet Insurance Company
0140	Nationwide	10644	IN	34-1785903	Victoria Automobile Insurance Company
0140	Nationwide	42889	OH	34-1394913	Victoria Fire & Casualty Company
0140	Nationwide	10778	OH	34-1842604	Victoria National Insurance Company
0140	Nationwide	10105	OH	34-1777972	Victoria Select Insurance Company
0140	Nationwide	10777	OH	34-1842602	Victoria Specialty Insurance Company
0140	Nationwide	37150	AZ	86-0561941	Western Heritage Insurance Company
4664	PURE	12873	FL	20-8287105	Privilege Underwriters Reciprocal Exchange
4664	PURE	13204	FL	26-3109178	PURE Insurance Company

STATEMENT AS OF SEPTEMBER 30, 2012 OF THE VICTORIA SELECT INSURANCE COMPANY

SCHEDULE Y

PART 1A - DETAIL OF INSURANCE HOLDING COMPANY SYSTEM

1	2	3	4	5	6	7	8	9	10	11	12	13	14	15
Group Code	Group Name	NAIC Company Code	Federal ID Number	Federal RSSD	CIK	Name of Securities Exchange if Publicly Traded (U.S. or International)	Names of Parent, Subsidiaries Or Affiliates	Domi-ciliary Location	Relationship to Reporting Entity	Directly Controlled by (Name of Entity/Person)	Type of Control (Ownership, Board, Management, Attorney-in-Fact, Influence, Other)	If Control is Owner-ship Provide Percen-tage	Ultimate Controlling Entity(ies)/Person(s)	*
...0140	Nationwide		31-1486309				10 W. Nationwide, LLC	OH	NIA	Nationwide Realty Investors, Ltd.	Ownership	100.000	Nationwide Mutual Insurance Company	
...0140	Nationwide		31-1486309				101 N. Twentieth St, LLC	OH	NIA	Nationwide Realty Investors, Ltd.	Ownership	100.000	Nationwide Mutual Insurance Company	
...0140	Nationwide		31-1733036				120 Acre Partners, LLC	DE	NIA	Nationwide Realty Investors, Ltd.	Ownership	95.000	Nationwide Mutual Insurance Company	
...0140	Nationwide		26-2451988				1492 Capital, LLC	OH	NIA	Nationwide Mutual Insurance Company	Ownership	100.000	Nationwide Mutual Insurance Company	
...0140	Nationwide		20-1347603				180 E. Broad Partners, LLC	OH	NIA	Nationwide Realty Investors, Ltd.	Ownership	33.330	Nationwide Mutual Insurance Company	1
...0140	Nationwide						3Stone Inflection Fund, LLC	DE	OTH	Other non-Nationwide	n/a		Other non-Nationwide	
...0140	Nationwide		31-1580283				400 West Nationwide Boulevard, LLC	OH	NIA	NWD Investments, LLC	Ownership	100.000	Nationwide Mutual Insurance Company	
...0140	Nationwide		31-1580283				425 West Nationwide Boulevard, LLC	OH	NIA	NWD Investments, LLC	Ownership	100.000	Nationwide Mutual Insurance Company	
...0140	Nationwide		31-1486309				44 Chestnut, LLC	OH	NIA	Nationwide Realty Investors, Ltd.	Ownership	100.000	Nationwide Mutual Insurance Company	
...0140	Nationwide		20-4939866				775 Yard Street Restaurant, LLC	OH	NIA	NRI Equity Land Investments, LLC	Ownership	100.000	Nationwide Mutual Insurance Company	
...0140	Nationwide		20-4939866				775 Yard Street, LLC	OH	NIA	NRI Equity Land Investments, LLC	Ownership	100.000	Nationwide Mutual Insurance Company	
...0140	Nationwide		20-4939866				800 Bobcat Avenue, LLC	OH	NIA	NRI Equity Land Investments, LLC	Ownership	100.000	Nationwide Mutual Insurance Company	
...0140	Nationwide		20-4939866				805 Bobcat Avenue, LLC	OH	NIA	NRI Equity Land Investments, LLC	Ownership	100.000	Nationwide Mutual Insurance Company	
...0140	Nationwide		20-4939866				850 Goodale Blvd., LLC	OH	NIA	NRI Equity Land Investments, LLC	Ownership	100.000	Nationwide Mutual Insurance Company	
...0140	Nationwide						925 Burrell Avenue Acquisitions, LLC							
...0140	Nationwide		20-4939866					OH	NIA	NRI Equity Land Investments, LLC	Ownership	100.000	Nationwide Mutual Insurance Company	
...0140	Nationwide		31-1680808				AD Investments, LLC	OH	NIA	Nationwide Realty Investors, Ltd.	Ownership	60.000	Nationwide Mutual Insurance Company	
...0140	Nationwide		31-1580283				ADTV, LLC	OH	NIA	NWD Investments, LLC	Ownership	100.000	Nationwide Mutual Insurance Company	
...0140	Nationwide						Nationwide Advantage Mortgage Company							
...0140	Nationwide		52-2227314				AGMC Reinsurance, Ltd.	Turk/Caic	JA		Ownership	100.000	Nationwide Mutual Insurance Company	
...0140	Nationwide		42-1011300				ALLIED General Agency Company	JA	JA	AMCO Insurance Company	Ownership	100.000	Nationwide Mutual Insurance Company	
...0140	Nationwide		42-0958655				ALLIED Group, Inc.	JA	NIA	Nationwide Mutual Insurance Company	Ownership	100.000	Nationwide Mutual Insurance Company	
...0140	Nationwide						ALLIED Insurance Company of America (fka Atlantic Floridian Insurance Company)	OH	JA	Nationwide Mutual Insurance Company	Ownership	100.000	Nationwide Mutual Insurance Company	
...0140	Nationwide	10127	27-0114983				ALLIED Property and Casualty Insurance Company	JA	JA	ALLIED Group, Inc.	Ownership	100.000	Nationwide Mutual Insurance Company	
...0140	Nationwide	45279	42-1201931				ALLIED Texas Agency, Inc.	TX	JA	AMCO Insurance Company	Ownership	100.000	Nationwide Mutual Insurance Company	
...0140	Nationwide	19100	42-6054959				AMCO Insurance Company	JA	JA	ALLIED Group, Inc.	Ownership	100.000	Nationwide Mutual Insurance Company	
...0140	Nationwide		59-1031596				American Marine Underwriters, Inc.	FL	JA	Nationwide Mutual Insurance Company	Ownership	100.000	Nationwide Mutual Insurance Company	
...0140	Nationwide		31-1486309				Anderson Meadows, LLC	OH	NIA	Nationwide Realty Investors, Ltd.	Ownership	100.000	Nationwide Mutual Insurance Company	
...0140	Nationwide		31-1580283				Arena District CA I, LLC	OH	NIA	NWD Investments, LLC	Ownership	100.000	Nationwide Mutual Insurance Company	
...0140	Nationwide		90-0280710				Arena District Owners Association	OH	OTH	Other non-Nationwide	n/a		Other non-Nationwide	
...0140	Nationwide		31-1580283				Arena Theatres, LLC	OH	NIA	NWD Investments, LLC	Ownership	100.000	Nationwide Mutual Insurance Company	
...0140	Nationwide						Artesa at Quarry Village, LLC	TX	OTH	Other non-Nationwide	n/a		Other non-Nationwide	
...0140	Nationwide						BCCS Investment Fund LLC	DE	OTH	Nationwide Mutual Insurance Company	Ownership	100.000	Nationwide Mutual Insurance Company	
...0140	Nationwide						Boulevard Inn Limited Liability Company	OH	NIA	Nationwide Realty Investors, Ltd.	Ownership	94.800	Nationwide Mutual Insurance Company	
...0140	Nationwide		31-1184438				Broad Street Retail, LLC	DE	NIA	Nationwide Realty Investors, Ltd.	Ownership	60.000	Nationwide Mutual Insurance Company	
...0140	Nationwide		31-1555487				Brooke School Investment Fund, LLC	DE	OTH	Nationwide Mutual Insurance Company	Ownership	100.000	Nationwide Mutual Insurance Company	
...0140	Nationwide						CHP New Markets Investment Fund, LLC				Limited partner /no control	50.000	other non-Nationwide	
...0140	Nationwide							OH	OTH	Nationwide Mutual Insurance Company				
...0140	Nationwide		20-1618232				CNRI-Cannonsport Condominium, LLC	OH	NIA	CNRI-Cannonsport, LLC	Ownership	100.000	Nationwide Mutual Insurance Company	
...0140	Nationwide		20-1618232				CNRI-Cannonsport, LLC	OH	NIA	Nationwide Realty Investors, Ltd.	Ownership	100.000	Nationwide Mutual Insurance Company	
...0140	Nationwide						Co-Investment Fund, L.P.	DE	OTH	Other non-Nationwide	n/a		Other non-Nationwide	
...0140	Nationwide						COLHOC Limited Partnership	OH	NIA	Nationwide Realty Investors, Ltd.	Ownership	30.760	Other non-Nationwide	
...0140	Nationwide	29262	74-1061659				Colonial County Mutual Insurance Company	TX	OTH	Other non-Nationwide	contract		Other non-Nationwide	
...0140	Nationwide		04-3750770				Continental/North Shore I, L.P.	OH	NIA	Continental/NRI North Shore Investments, LLC	Ownership	100.000	Nationwide Mutual Insurance Company	1

STATEMENT AS OF SEPTEMBER 30, 2012 OF THE VICTORIA SELECT INSURANCE COMPANY

SCHEDULE Y

PART 1A - DETAIL OF INSURANCE HOLDING COMPANY SYSTEM

1	2	3	4	5	6	7	8	9	10	11	12	13	14	15
Group Code	Group Name	NAIC Company Code	Federal ID Number	Federal RSSD	CIK	Name of Securities Exchange if Publicly Traded (U.S. or International)	Names of Parent, Subsidiaries Or Affiliates	Domi-ciliary Location	Relationship to Reporting Entity	Directly Controlled by (Name of Entity/Person)	Type of Control (Ownership, Board, Management, Attorney-in-Fact, Influence, Other)	If Control is Owner-ship Provide Percen-tage	Ultimate Controlling Entity(ies)/Person(s)	*
...0140 ...	Nationwide ...		20-0366090 ...				Continental/North Shore II, L.P. ....	OH.....	NIA.....	Continental/NRI North Shore Investments, LLC .....	Ownership.....	100.000 ...	Nationwide Mutual Insurance Company .	....1 .....
...0140 ...	Nationwide ...		20-0142724 ...				Continental/NRI North Shore Investments, LLC .....	OH.....	NIA.....	Nationwide Realty Investors, Ltd. ....	Ownership.....	50.500 ...	Nationwide Mutual Insurance Company .	....1 .....
...0140 ...	Nationwide ...						Cotton Mill Partners, LLC .....	VA.....	OTH.....	Nationwide Mutual Insurance Company .	Limited partner /no control .....	2.000 ...	other non-Nationwide .....	
...0140 ...	Nationwide ...	18961	68-0066866 ...				Crestbrook Insurance Company .....	OH.....	JA.....	Nationwide Mutual Insurance Company .	Ownership.....	100.000 ...	Nationwide Mutual Insurance Company .	
...0140 ...	Nationwide ...		31-1486309 ...				Crewville, Ltd. ....	OH.....	NIA.....	Nationwide Realty Investors, Ltd. ....	Ownership.....	100.000 ...	Nationwide Mutual Insurance Company .	
...0140 ...	Nationwide ...	42587	42-1207150 ...				Depositors Insurance Company .....	JA.....	JA.....	ALLIED Group, Inc. ....	Ownership.....	100.000 ...	Nationwide Mutual Insurance Company .	
...0140 ...	Nationwide ...		33-0096671 ...				DVM Insurance Agency, Inc. ....	CA.....	NIA.....	Veterinary Pet Insurance Company .....	Ownership.....	100.000 ...	Nationwide Mutual Insurance Company .	
...0140 ...	Nationwide ...		20-1945276 ...				East of Madison, LLC .....	DE.....	NIA.....	120 Acre Partners, Ltd. ....	Ownership.....	24.910 ...	Nationwide Mutual Insurance Company .	....1 .....
...0140 ...	Nationwide ...						ELH Investment LLC .....	DE.....	OTH.....	Nationwide Mutual Insurance Company .	Other.....		Nationwide Mutual Insurance Company .	....2 .....
...0140 ...	Nationwide ...	13838	42-0618271 ...				Farmland Mutual Insurance Company .....	JA.....	OTH.....	Other non-Nationwide .....	debt .....		Other non-Nationwide .....	
...0140 ...	Nationwide ...	22209	75-6013587 ...				Freedom Specialty Insurance Company (fka Atlantic Insurance Company) .....	OH.....	JA.....	Scottsdale Insurance Company .....	Ownership.....	100.000 ...	Nationwide Mutual Insurance Company .	
...0140 ...	Nationwide ...		31-4187660 ...				Nationwide Better Health Holding Company, LLC .....	OH.....	NIA.....	Nationwide Better Health Holding Company, LLC .....	Ownership.....	100.000 ...	Nationwide Mutual Insurance Company .	
...0140 ...	Nationwide ...		13-4933584 ...				Gates McDonald of Ohio, LLC .....			Gates McDonald of Ohio, LLC .....	Ownership.....	100.000 ...	Nationwide Mutual Insurance Company .	
...0140 ...	Nationwide ...		76-0810957 ...				Gates, McDonald & Company of New York, Inc. ....	NY.....	NIA.....	Gates McDonald of Ohio, LLC .....	Ownership.....	100.000 ...	Nationwide Mutual Insurance Company .	
...0140 ...	Nationwide ...		76-0810957 ...				GatesMcDonald DTAO, LLC .....	OH.....	NIA.....	Gates McDonald of Ohio, LLC .....	Ownership.....	100.000 ...	Nationwide Mutual Insurance Company .	
...0140 ...	Nationwide ...		76-0810958 ...				GatesMcDonald DTC, LLC .....	OH.....	NIA.....	Gates McDonald of Ohio, LLC .....	Ownership.....	100.000 ...	Nationwide Mutual Insurance Company .	
...0140 ...	Nationwide ...		31-1478706 ...				GatesMcDonald Health Plus, LLC .....	OH.....	NIA.....	Gates McDonald of Ohio, LLC .....	Ownership.....	100.000 ...	Nationwide Mutual Insurance Company .	
...0140 ...	Nationwide ...		20-4939866 ...				Grandview Yard Hotel Holdings, LLC ...	OH.....	NIA.....	NRI Equity Land Investments, LLC .....	Ownership.....	100.000 ...	Nationwide Mutual Insurance Company .	
...0140 ...	Nationwide ...		20-4939866 ...				Grandview Yard Hotel, LLC .....	OH.....	NIA.....	NRI Equity Land Investments, LLC .....	Ownership.....	100.000 ...	Nationwide Mutual Insurance Company .	
...0140 ...	Nationwide ...		51-0241172 ...				Grandview Yard Hotel, LLC .....	OH.....	NIA.....	Grandview Yard Hotel Holdings, LLC ...	Ownership.....	100.000 ...	Nationwide Mutual Insurance Company .	
...0140 ...	Nationwide ...						Harleysville Group, Inc. ....	DE.....	NIA.....	Nationwide Mutual Insurance Company .	Ownership.....	100.000 ...	Nationwide Mutual Insurance Company .	
...0140 ...	Nationwide ...	23582	41-0417250 ...				Harleysville Insurance Company .....	PA.....	JA.....	Nationwide Mutual Insurance Company .	Ownership.....	100.000 ...	Nationwide Mutual Insurance Company .	
...0140 ...	Nationwide ...	33235	16-1075588 ...				Harleysville Insurance Company of New Jersey .....	NJ.....	JA.....	Nationwide Mutual Insurance Company .	Ownership.....	100.000 ...	Nationwide Mutual Insurance Company .	
...0140 ...	Nationwide ...	10674	23-2864924 ...				Harleysville Insurance Company of New York .....	PA.....	JA.....	Harleysville Group, Inc. ....	Ownership.....	100.000 ...	Nationwide Mutual Insurance Company .	
...0140 ...	Nationwide ...	14516	38-3198542 ...				Harleysville Lake States Insurance Company .....	MI.....	JA.....	Harleysville Group, Inc. ....	Ownership.....	100.000 ...	Nationwide Mutual Insurance Company .	
...0140 ...	Nationwide ...	64327	23-1580983 ...				Harleysville Life Insurance Company ..	PA.....	JA.....	Nationwide Mutual Insurance Company .	Ownership.....	100.000 ...	Nationwide Mutual Insurance Company .	
...0140 ...	Nationwide ...	40983	23-2612951 ...				Harleysville Pennland Insurance Company .....	PA.....	JA.....	Nationwide Mutual Insurance Company .	Ownership.....	100.000 ...	Nationwide Mutual Insurance Company .	
...0140 ...	Nationwide ...	35896	23-2384978 ...				Harleysville Preferred Insurance Company .....	PA.....	JA.....	Nationwide Mutual Insurance Company .	Ownership.....	100.000 ...	Nationwide Mutual Insurance Company .	
...0140 ...	Nationwide ...		51-0259283 ...				Harleysville Group, Inc. ....	PA.....	JA.....	Harleysville Group, Inc. ....	Ownership.....	100.000 ...	Nationwide Mutual Insurance Company .	
...0140 ...	Nationwide ...						Harleysville Services, Inc. ....	DE.....	NIA.....	Nationwide Mutual Insurance Company .	Ownership.....	100.000 ...	Nationwide Mutual Insurance Company .	
...0140 ...	Nationwide ...	26182	04-1989660 ...				Harleysville Worcester Insurance Company .....	PA.....	JA.....	Nationwide Mutual Insurance Company .	Ownership.....	100.000 ...	Nationwide Mutual Insurance Company .	
...0140 ...	Nationwide ...		23-2403000 ...				Harleysville Preferred Insurance Company .....	PA.....	JA.....	Harleysville Group, Inc. ....	Ownership.....	100.000 ...	Nationwide Mutual Insurance Company .	
...0140 ...	Nationwide ...						Harleysville, Ltd. ....	PA.....	NIA.....	Harleysville Preferred Insurance Company .....	Ownership.....	49.500 ...	Nationwide Mutual Insurance Company .	
...0140 ...	Nationwide ...		23-2403000 ...				Harleysville, Ltd. ....	PA.....	NIA.....	Harleysville Preferred Insurance Company .....	Ownership.....	49.500 ...	Nationwide Mutual Insurance Company .	
...0140 ...	Nationwide ...		23-2403000 ...				Harleysville, Ltd. ....	PA.....	NIA.....	Harleysville Preferred Insurance Company .....	Ownership.....	49.500 ...	Nationwide Mutual Insurance Company .	
...0140 ...	Nationwide ...		32-0051216 ...				Harleysville Group, Inc. ....	PA.....	NIA.....	Harleysville Group, Inc. ....	Ownership.....	1.000 ...	Nationwide Mutual Insurance Company .	
...0140 ...	Nationwide ...		31-0871532 ...				Hideaway Properties Corp. ....	CA.....	OTH.....	Nationwide Realty Investors, Ltd. ....	Ownership.....	50.000 ...	Nationwide Mutual Insurance Company .	....1 .....
...0140 ...	Nationwide ...		23-2882311 ...				Insurance Intermediaries, Inc. ....	OH.....	JA.....	Nationwide Mutual Insurance Company .	Ownership.....	100.000 ...	Nationwide Mutual Insurance Company .	
...0140 ...	Nationwide ...						Insurance Management Services, L.P. ...	PA.....	NIA.....	Harleysville Insurance Company .....	Ownership.....	1.000 ...	Nationwide Mutual Insurance Company .	
...0140 ...	Nationwide ...		23-2882311 ...				Harleysville Preferred Insurance Company .....	PA.....	NIA.....	Harleysville Preferred Insurance Company .....	Ownership.....	99.000 ...	Nationwide Mutual Insurance Company .	
...0140 ...	Nationwide ...		31-1486309 ...				Insurance Management Services, L.P. ...	PA.....	NIA.....	Company .....	Ownership.....	99.000 ...	Nationwide Mutual Insurance Company .	
...0140 ...	Nationwide ...						Jerome Village Company, LLC .....	OH.....	NIA.....	Nationwide Realty Investors, Ltd. ....	Ownership.....	100.000 ...	Nationwide Mutual Insurance Company .	

SCHEDULE Y

PART 1A - DETAIL OF INSURANCE HOLDING COMPANY SYSTEM

1	2	3	4	5	6	7	8	9	10	11	12	13	14	15
Group Code	Group Name	NAIC Company Code	Federal ID Number	Federal RSSD	CIK	Name of Securities Exchange if Publicly Traded (U.S. or International)	Names of Parent, Subsidiaries Or Affiliates	Domi-ciliary Location	Relationship to Reporting Entity	Directly Controlled by (Name of Entity/Person)	Type of Control (Ownership, Board, Management, Attorney-in-Fact, Influence, Other)	If Control is Owner-ship Provide Percen-tage	Ultimate Controlling Entity(ies)/Person(s)	*
...0140	Nationwide		31-1486309				Jerome Village Master Property Owners Association	OH	NIA	Jerome Village Company, LLC	Ownership	100.000	Nationwide Mutual Insurance Company	
...0140	Nationwide		31-1486309				Jerome Village Residential Property Owners Association, Inc.	OH	NIA	Jerome Village Company, LLC	Ownership	100.000	Nationwide Mutual Insurance Company	
...0140	Nationwide		56-3789189				Leaguers Investment Fund LLC	DE	OTH	Nationwide Mutual Insurance Company	Other	100.000	Nationwide Mutual Insurance Company	2
...0140	Nationwide		56-3789187				Life REO Holdings, LLC	OH	NIA	Nationwide Life Insurance Company	Ownership	100.000	Nationwide Mutual Insurance Company	
...0140	Nationwide		74-1395229				Life REO Holdings, LLC	OH	NIA	Nationwide Life Insurance Company	Ownership	100.000	Nationwide Mutual Insurance Company	
...0140	Nationwide		74-1395229				Lone Star General Agency, Inc.	TX	JA	Nationwide Mutual Insurance Company	Ownership	100.000	Nationwide Mutual Insurance Company	
...0140	Nationwide		38-0865250				Match School Investment Fund, LLC	DE	OTH	Nationwide Mutual Insurance Company	Ownership	100.000	Nationwide Mutual Insurance Company	
...0140	Nationwide	11991	38-0865250				National Casualty Company	WI	JA	Nationwide Mutual Insurance Company	Ownership	100.000	Nationwide Mutual Insurance Company	
...0140							National Casualty Company of America, Ltd.	GB	JA	National Casualty Company	Ownership	100.000	Nationwide Mutual Insurance Company	
...0140	Nationwide		42-1154244				Nationwide Advantage Mortgage Company	JA	NIA	AMCO Insurance Company	Ownership	87.300	Nationwide Mutual Insurance Company	
...0140	Nationwide		42-1154244				Nationwide Advantage Mortgage Company	JA	NIA	ALLIED Property & Casualty Insurance Company	Ownership	8.470	Nationwide Mutual Insurance Company	
...0140	Nationwide		42-1154244				Nationwide Advantage Mortgage Company	JA	NIA	Depositors Insurance Company	Ownership	4.230	Nationwide Mutual Insurance Company	
...0140	Nationwide	26093	48-0470690				Nationwide Affinity Insurance Company of America	OH	JA	Nationwide Mutual Insurance Company	Ownership	100.000	Nationwide Mutual Insurance Company	
...0140	Nationwide	28223	42-1015537				Nationwide Agribusiness Insurance Company	JA	JA	Nationwide Mutual Insurance Company	Ownership	100.000	Nationwide Mutual Insurance Company	
...0140	Nationwide		20-5976272				Nationwide Alternative Investments, LLC	OH	NIA	Nationwide Mutual Insurance Company	Ownership	100.000	Nationwide Mutual Insurance Company	
...0140	Nationwide		31-1578869				Nationwide Arena, LLC	OH	NIA	NRI Arena, LLC	Ownership	90.000	Nationwide Mutual Insurance Company	
...0140	Nationwide		31-1578869				Nationwide Arena, LLC	OH	NIA	Nationwide Realty Investors, LLC	Ownership	90.000	Nationwide Mutual Insurance Company	
...0140	Nationwide		20-8670712				Nationwide Asset Management, LLC	OH	NIA	Nationwide Mutual Insurance Company	Ownership	100.000	Nationwide Mutual Insurance Company	
...0140	Nationwide		20-8670712				Nationwide Asset Management, LLC	OH	DS	Nationwide Mutual Insurance Company	Ownership	100.000	Nationwide Mutual Insurance Company	
...0140	Nationwide	10723	95-0639970				Nationwide Assurance Company	WI	JA	Nationwide Mutual Insurance Company	Ownership	100.000	Nationwide Mutual Insurance Company	
...0140	Nationwide		31-1592130				Nationwide Bank	FED	OTH	Nationwide Financial Services, Inc.	Ownership	100.000	Nationwide Mutual Insurance Company	
...0140	Nationwide		52-1776258				Nationwide Better Health (Ohio), LLC	OH	NIA	Nationwide Better Health Holding Company, LLC	Ownership	100.000	Nationwide Mutual Insurance Company	
...0140	Nationwide		11-3766032				Nationwide Better Health Holding Company, LLC	OH	NIA	Nationwide Corporation	Ownership	75.000	Nationwide Mutual Insurance Company	
...0140	Nationwide		11-3766032				Nationwide Better Health Holding Company, LLC	OH	NIA	Nationwide Mutual Fire Insurance Company	Ownership	25.000	Nationwide Mutual Insurance Company	
...0140	Nationwide		31-1036287				Nationwide Cash Management Company	OH	NIA	Nationwide Mutual Insurance Company	Ownership	100.000	Nationwide Mutual Insurance Company	
...0140	Nationwide		31-1752320				Nationwide Community Development Corporation, LLC	OH	NIA	Nationwide Indemnity Company	Ownership	33.000	Nationwide Mutual Insurance Company	
...0140	Nationwide		31-4416546				Nationwide Corporation	OH	NIA	Nationwide Mutual Insurance Company	Ownership	95.200	Nationwide Mutual Insurance Company	
...0140	Nationwide		31-4416546				Nationwide Corporation	OH	NIA	Nationwide Mutual Fire Insurance Company	Ownership	4.800	Nationwide Mutual Insurance Company	
...0140	Nationwide		04-3679407				Nationwide Emerging Managers, LLC	DE	NIA	Nationwide SA Capital Trust	Ownership	100.000	Nationwide Mutual Insurance Company	
...0140	Nationwide		05-0630007				Nationwide Exclusive Agent Risk Purchasing Group, LLC	OH	NIA	Insurance Intermediaries, Inc.	Ownership	100.000	Nationwide Mutual Insurance Company	
...0140	Nationwide		31-1667326				Nationwide Financial Assignment Company	OH	NIA	Nationwide Life Insurance Company	Ownership	100.000	Nationwide Mutual Insurance Company	
...0140	Nationwide		23-2412039				Nationwide Financial General Agency, Inc.	PA	NIA	NFS Distributors, Inc.	Ownership	100.000	Nationwide Mutual Insurance Company	
...0140	Nationwide		31-1316276				Nationwide Financial Institution Distributors Agency, Inc.	DE	NIA	NFS Distributors, Inc.	Ownership	100.000	Nationwide Mutual Insurance Company	

SCHEDULE Y

PART 1A - DETAIL OF INSURANCE HOLDING COMPANY SYSTEM

1	2	3	4	5	6	7	8	9	10	11	12	13	14	15
Group Code	Group Name	NAIC Company Code	Federal ID Number	Federal RSSD	CIK	Name of Securities Exchange if Publicly Traded (U.S. or International)	Names of Parent, Subsidiaries Or Affiliates	Domi-ciliary Location	Relationship to Reporting Entity	Directly Controlled by (Name of Entity/Person)	Type of Control (Ownership, Board, Management, Attorney-in-Fact, Influence, Other)	If Control is Owner-ship Provide Percen-tage	Ultimate Controlling Entity(ies)/Person(s)	*
...0140 ...	Nationwide .....		31-6554353 .....				Nationwide Financial Services Capital Trust .....	DE .....	NIA .....	Nationwide Financial Services, Inc. ...	Ownership.....	100.000 ...	Nationwide Mutual Insurance Company .	.....
...0140 ...	Nationwide .....		31-1486870 .....				Nationwide Financial Services, Inc. ...	DE .....	NIA .....	Nationwide Corporation .....	Ownership.....	100.000 ...	Nationwide Mutual Insurance Company .	.....
...0140 ...	Nationwide .....		52-6969857 .....				Nationwide Fund Advisors .....	DE .....	NIA .....	Nationwide Financial Services, Inc. ...	Ownership.....	100.000 ...	Nationwide Mutual Insurance Company .	.....
...0140 ...	Nationwide .....		31-1748721 .....				Nationwide Fund Distributors LLC .....	DE .....	NIA .....	NFS Distributors, Inc. ....	Ownership.....	100.000 ...	Nationwide Mutual Insurance Company .	.....
...0140 ...	Nationwide .....		31-0900518 .....				Nationwide Fund Management LLC .....	DE .....	NIA .....	NFS Distributors, Inc. ....	Ownership.....	100.000 ...	Nationwide Mutual Insurance Company .	.....
...0140 ...	Nationwide .....	23760 .....	31-4425763 .....				Nationwide General Insurance Company .....	OH .....	JA .....	Nationwide Mutual Insurance Company .	Ownership.....	100.000 ...	Nationwide Mutual Insurance Company .	.....
...0140 ...	Nationwide .....		31-1570938 .....				Nationwide Global Holdings, Inc. ....	OH .....	NIA .....	Nationwide Corporation .....	Ownership.....	100.000 ...	Nationwide Mutual Insurance Company .	.....
...0140 ...	Nationwide .....		04-3732385 .....				Nationwide Global Ventures, Inc. ....	DE .....	NIA .....	Nationwide Asset Management Holdings, Inc. ....	Ownership.....	100.000 ...	Nationwide Mutual Insurance Company .	.....
...0140 ...	Nationwide .....		31-1399201 .....				Nationwide Indemnity Company .....	OH .....	JA .....	Nationwide Mutual Insurance Company .	Ownership.....	100.000 ...	Nationwide Mutual Insurance Company .	.....
...0140 ...	Nationwide .....	25453 .....	95-2130882 .....				Nationwide Insurance Company of America .....	WI .....	JA .....	ALLIED Group, Inc. ....	Ownership.....	100.000 ...	Nationwide Mutual Insurance Company .	.....
...0140 ...	Nationwide .....	10948 .....	31-1613686 .....				Nationwide Insurance Company of Florida .....	OH .....	JA .....	Nationwide Mutual Insurance Company .	Ownership.....	100.000 ...	Nationwide Mutual Insurance Company .	.....
...0140 ...	Nationwide .....		31-6022301 .....				Nationwide Insurance Foundation .....	OH .....	OTH .....	Other non-Nationwide .....	n/a .....		Other non-Nationwide .....	.....
...0140 ...	Nationwide .....		41-2206199 .....				Nationwide Investment Advisors, LLC ..	OH .....	NIA .....	Nationwide Life Insurance Company ....	Ownership.....	100.000 ...	Nationwide Mutual Insurance Company .	.....
...0140 ...	Nationwide .....		73-0988442 .....				Nationwide Investment Services Corporation .....	OK .....	NIA .....	Nationwide Life Insurance Company ....	Ownership.....	100.000 ...	Nationwide Mutual Insurance Company .	.....
...0140 ...	Nationwide .....	92657 .....	31-1000740 .....				Nationwide Life and Annuity Insurance Company .....	OH .....	JA .....	Nationwide Life Insurance Company ....	Ownership.....	100.000 ...	Nationwide Mutual Insurance Company .	.....
...0140 ...	Nationwide .....	66869 .....	31-4156830 .....				Nationwide Life Insurance Company ....	OH .....	JA .....	Nationwide Financial Services, Inc. ...	Ownership.....	100.000 ...	Nationwide Mutual Insurance Company .	.....
...0140 ...	Nationwide .....		13-4212969 .....				Nationwide Life Tax Credit Partners 2002-A, LLC .....	OH .....	NIA .....	Nationwide Life Insurance Company ....	Other.....		Nationwide Mutual Insurance Company .	.....
...0140 ...	Nationwide .....		01-0749754 .....				Nationwide Life Tax Credit Partners 2002-B, LLC .....	OH .....	NIA .....	Nationwide Life Insurance Company ....	Other.....		Nationwide Mutual Insurance Company .	.....
...0140 ...	Nationwide .....		03-0498148 .....				Nationwide Life Tax Credit Partners 2002-C, LLC .....	OH .....	NIA .....	Nationwide Life Insurance Company ....	Other.....		Nationwide Mutual Insurance Company .	.....
...0140 ...	Nationwide .....		54-2113175 .....				Nationwide Life Tax Credit Partners 2003-A, LLC .....	OH .....	NIA .....	Nationwide Life Insurance Company ....	Other.....		Nationwide Mutual Insurance Company .	.....
...0140 ...	Nationwide .....		58-2672725 .....				Nationwide Life Tax Credit Partners 2003-B, LLC .....	OH .....	NIA .....	Nationwide Life Insurance Company ....	Other.....		Nationwide Mutual Insurance Company .	.....
...0140 ...	Nationwide .....		20-0357951 .....				Nationwide Life Tax Credit Partners 2003-C, LLC .....	OH .....	NIA .....	Nationwide Life Insurance Company ....	Other.....		Nationwide Mutual Insurance Company .	.....
...0140 ...	Nationwide .....		20-0382144 .....				Nationwide Life Tax Credit Partners 2004-A, LLC .....	OH .....	NIA .....	Nationwide Life Insurance Company ....	Other.....		Nationwide Mutual Insurance Company .	.....
...0140 ...	Nationwide .....		20-0745944 .....				Nationwide Life Tax Credit Partners 2004-B, LLC .....	OH .....	NIA .....	Nationwide Life Insurance Company ....	Other.....		Nationwide Mutual Insurance Company .	.....
...0140 ...	Nationwide .....		20-0745965 .....				Nationwide Life Tax Credit Partners 2004-C, LLC .....	OH .....	NIA .....	Nationwide Life Insurance Company ....	Other.....		Nationwide Mutual Insurance Company .	.....
...0140 ...	Nationwide .....		20-1128408 .....				Nationwide Life Tax Credit Partners 2004-D, LLC .....	OH .....	NIA .....	Nationwide Life Insurance Company ....	Other.....		Nationwide Mutual Insurance Company .	.....
...0140 ...	Nationwide .....		20-1128472 .....				Nationwide Life Tax Credit Partners 2004-E, LLC .....	OH .....	NIA .....	Nationwide Life Insurance Company ....	Other.....		Nationwide Mutual Insurance Company .	.....
...0140 ...	Nationwide .....		20-1918935 .....				Nationwide Life Tax Credit Partners 2004-F, LLC .....	OH .....	NIA .....	Nationwide Life Insurance Company ....	Other.....		Nationwide Mutual Insurance Company .	.....
...0140 ...	Nationwide .....		20-2303694 .....				Nationwide Life Tax Credit Partners 2005-A, LLC .....	OH .....	NIA .....	Nationwide Life Insurance Company ....	Other.....		Nationwide Mutual Insurance Company .	.....
...0140 ...	Nationwide .....		20-2303602 .....				Nationwide Life Tax Credit Partners 2005-B, LLC .....	OH .....	NIA .....	Nationwide Life Insurance Company ....	Other.....		Nationwide Mutual Insurance Company .	.....

SCHEDULE Y

PART 1A - DETAIL OF INSURANCE HOLDING COMPANY SYSTEM

1	2	3	4	5	6	7	8	9	10	11	12	13	14	15
Group Code	Group Name	NAIC Company Code	Federal ID Number	Federal RSSD	CIK	Name of Securities Exchange if Publicly Traded (U.S. or International)	Names of Parent, Subsidiaries Or Affiliates	Domi-ciliary Location	Relationship to Reporting Entity	Directly Controlled by (Name of Entity/Person)	Type of Control (Ownership, Board, Management, Attorney-in-Fact, Influence, Other)	If Control is Owner-ship Provide Per-centage	Ultimate Controlling Entity(ies)/Person(s)	*
...0140 ...	Nationwide .....		20-2450960 .....				Nationwide Life Tax Credit Partners 2005-C, LLC .....	OH.....	NIA.....	Nationwide Life Insurance Company .....	Other.....		Nationwide Mutual Insurance Company .....	
...0140 ...	Nationwide .....		20-2451052 .....				Nationwide Life Tax Credit Partners 2005-D, LLC .....	OH.....	NIA.....	Nationwide Life Insurance Company .....	Other.....		Nationwide Mutual Insurance Company .....	
...0140 ...	Nationwide .....		20-2774223 .....				Nationwide Life Tax Credit Partners 2005-E, LLC .....	OH.....	NIA.....	Nationwide Life Insurance Company .....	Other.....		Nationwide Mutual Insurance Company .....	
...0140 ...	Nationwide .....		21-1288836 .....				Nationwide Life Tax Credit Partners 2007-A, LLC .....	OH.....	NIA.....	Nationwide Life Insurance Company .....	Other.....		Nationwide Mutual Insurance Company .....	
...0140 ...	Nationwide .....		26-3427373 .....				Nationwide Life Tax Credit Partners 2009-A, LLC .....	OH.....	NIA.....	Nationwide Life Insurance Company .....	Other.....		Nationwide Mutual Insurance Company .....	
...0140 ...	Nationwide .....		26-3427435 .....				Nationwide Life Tax Credit Partners 2009-B, LLC .....	OH.....	NIA.....	Nationwide Life Insurance Company .....	Other.....		Nationwide Mutual Insurance Company .....	
...0140 ...	Nationwide .....		26-3427479 .....				Nationwide Life Tax Credit Partners 2009-C, LLC .....	OH.....	NIA.....	Nationwide Life Insurance Company .....	Other.....		Nationwide Mutual Insurance Company .....	
...0140 ...	Nationwide .....		26-3427525 .....				Nationwide Life Tax Credit Partners 2009-D, LLC .....	OH.....	NIA.....	Nationwide Life Insurance Company .....	Other.....		Nationwide Mutual Insurance Company .....	
...0140 ...	Nationwide .....		26-4737055 .....				Nationwide Life Tax Credit Partners 2009-E, LLC .....	OH.....	NIA.....	Nationwide Life Insurance Company .....	Other.....		Nationwide Mutual Insurance Company .....	
...0140 ...	Nationwide .....		26-4737157 .....				Nationwide Life Tax Credit Partners 2009-F, LLC .....	OH.....	NIA.....	Nationwide Life Insurance Company .....	Other.....		Nationwide Mutual Insurance Company .....	
...0140 ...	Nationwide .....		27-1362364 .....				Nationwide Life Tax Credit Partners 2009-I, LLC .....	OH.....	NIA.....	Nationwide Life Insurance Company .....	Other.....		Nationwide Mutual Insurance Company .....	
...0140 ...	Nationwide .....						Nationwide Life Tax Credit Partners No. 1, LLC .....	OH.....	NIA.....	Nationwide Life Insurance Company .....	Other.....		Nationwide Mutual Insurance Company .....	
...0140 ...	Nationwide .....	..42110 .....	75-1780981 .....				Nationwide Lloyds .....	TX.....	JA.....	n/a .....	contract .....		Nationwide Mutual Insurance Company .....	
...0140 ...	Nationwide .....						Nationwide Mutual Capital I, LLC .....	DE.....	NIA.....	Nationwide Mutual Capital, LLC .....	Ownership.....	..100.000 .....	Nationwide Mutual Insurance Company .....	
...0140 ...	Nationwide .....		75-3191025 .....				Nationwide Mutual Capital, LLC .....	OH.....	NIA.....	Nationwide Mutual Insurance Company .....	Ownership.....	..100.000 .....	Nationwide Mutual Insurance Company .....	
...0140 ...	Nationwide .....	..23779 .....	82-0549218 .....				Nationwide Mutual Fire Insurance Company .....	OH.....	OTH.....	Other non-Nationwide .....	n/a .....		Other non-Nationwide .....	
...0140 ...	Nationwide .....	..23787 .....	31-4177100 .....				Nationwide Mutual Insurance Company .....	OH.....	UIP.....	Other non-Nationwide .....	n/a .....		Other non-Nationwide .....	
...0140 ...	Nationwide .....		34-2012765 .....				Nationwide Private Equity Fund, LLC .....	OH.....	NIA.....	Nationwide Mutual Insurance Company .....	Ownership.....	..100.000 .....	Nationwide Mutual Insurance Company .....	
...0140 ...	Nationwide .....		34-2012765 .....				Nationwide Private Equity Fund, LLC .....	OH.....	NIA.....	Nationwide Mutual Insurance Company .....	Ownership.....	..100.000 .....	Nationwide Mutual Insurance Company .....	
...0140 ...	Nationwide .....	..37877 .....	31-0970750 .....				Nationwide Property and Casualty Insurance Company .....	OH.....	JA.....	Nationwide Mutual Insurance Company .....	Ownership.....	..100.000 .....	Nationwide Mutual Insurance Company .....	
...0140 ...	Nationwide .....						Nationwide Property Protection Services, LLC .....	OH.....	NIA.....	Nationwide Services Company, LLC .....	Ownership.....	..100.000 .....	Nationwide Mutual Insurance Company .....	
...0140 ...	Nationwide .....		01-0852763 .....				Nationwide Realty Investors, Ltd. ....	OH.....	NIA.....	Nationwide Mutual Insurance Company .....	Ownership.....	..95.790 .....	Nationwide Mutual Insurance Company .....	
...0140 ...	Nationwide .....		31-1486309 .....				Nationwide Realty Investors, Ltd. ....	OH.....	NIA.....	Nationwide Indemnity Company .....	Ownership.....	..4.210 .....	Nationwide Mutual Insurance Company .....	
...0140 ...	Nationwide .....		31-1486309 .....				Nationwide Realty Management, LLC .....	OH.....	NIA.....	Nationwide Realty Investors, Ltd. ....	Ownership.....	..100.000 .....	Nationwide Mutual Insurance Company .....	
...0140 ...	Nationwide .....		04-3833929 .....				Nationwide Realty Management, LLC .....	OH.....	NIA.....	Nationwide Realty Investors, Ltd. ....	Ownership.....	..100.000 .....	Nationwide Mutual Insurance Company .....	
...0140 ...	Nationwide .....						Nationwide Realty Services, Ltd. ....	OH.....	NIA.....	Nationwide Mutual Insurance Company .....	Ownership.....	..100.000 .....	Nationwide Mutual Insurance Company .....	
...0140 ...	Nationwide .....		06-0987812 .....				Nationwide Retirement Solutions Insurance Agency, Inc. ....	MA.....	JA.....	Nationwide Retirement Solutions, Inc. ....	Ownership.....	..100.000 .....	Nationwide Mutual Insurance Company .....	
...0140 ...	Nationwide .....		73-0948330 .....				Nationwide Retirement Solutions, Inc. ....	DE.....	NIA.....	NFS Distributors, Inc. ....	Ownership.....	..100.000 .....	Nationwide Mutual Insurance Company .....	
...0140 ...	Nationwide .....		86-0924069 .....				Nationwide Retirement Solutions, Inc. of Arizona .....	AZ.....	NIA.....	Nationwide Retirement Solutions, Inc. ....	Ownership.....	..100.000 .....	Nationwide Mutual Insurance Company .....	
...0140 ...	Nationwide .....		31-1331479 .....				Nationwide Retirement Solutions, Inc. of Ohio .....	OH.....	NIA.....	Nationwide Retirement Solutions, Inc. ....	contract .....		Nationwide Mutual Insurance Company .....	
...0140 ...	Nationwide .....		74-2200854 .....				Nationwide Retirement Solutions, Inc. of Texas .....	TX.....	NIA.....	Nationwide Retirement Solutions, Inc. ....	contract .....		Nationwide Mutual Insurance Company .....	



**SCHEDULE Y**  
**PART 1A - DETAIL OF INSURANCE HOLDING COMPANY SYSTEM**

1	2	3	4	5	6	7	8	9	10	11	12	13	14	15
Group Code	Group Name	NAIC Company Code	Federal ID Number	Federal RSSD	CIK	Name of Securities Exchange if Publicly Traded (U.S. or International)	Names of Parent, Subsidiaries Or Affiliates	Domi-ciliary Location	Relationship to Reporting Entity	Directly Controlled by (Name of Entity/Person)	Type of Control (Ownership, Board, Management, Attorney-in-Fact, Influence, Other)	If Control is Owner-ship Provide Percen-tage	Ultimate Controlling Entity(ies)/Person(s)	*
0140	Nationwide		52-6969856				Nationwide SA Capital Trust	DE	NIA	NWD Investment Management, Inc.	Ownership	100.000	Nationwide Mutual Insurance Company	
0140	Nationwide		42-1373380				Nationwide Sales Solutions, Inc.	JA	NIA	ALLIED Group, Inc.	Ownership	100.000	Nationwide Mutual Insurance Company	
0140	Nationwide		36-2434406				Nationwide Securities, LLC	OH	NIA	NFS Distributors, Inc.	Ownership	100.000	Nationwide Mutual Insurance Company	
0140	Nationwide		31-4177100				Nationwide Services Company, LLC	OH	NIA	Nationwide Mutual Insurance Company	Ownership	100.000	Nationwide Mutual Insurance Company	
0140	Nationwide		27-0743545				Nationwide Tax Credit Partners 2009-G, LLC	OH	NIA	Nationwide Mutual Insurance Company	Other		Nationwide Mutual Insurance Company	
0140	Nationwide		27-0768791				Nationwide Tax Credit Partners 2009-H, LLC	OH	NIA	Nationwide Mutual Insurance Company	Other		Nationwide Mutual Insurance Company	
0140	Nationwide		11-3651828				ND La Quinta Partners, LLC	DE	NIA	Nationwide Realty Investors, Ltd.	Ownership	94.500	Nationwide Mutual Insurance Company	
0140	Nationwide						Newhouse Capital Partners II, LLC	DE	NIA	Nationwide Global Ventures, Inc.	Ownership	80.000	Nationwide Mutual Insurance Company	
0140	Nationwide						Newhouse Capital Partners II, LLC	DE	NIA	Nationwide Global Ventures, Inc.	Ownership	99.000	Nationwide Mutual Insurance Company	
0140	Nationwide						Newhouse Capital Partners, LLC	DE	NIA	NWD Investment Management, Inc.	Ownership	19.000	Nationwide Mutual Insurance Company	
0140	Nationwide						Newhouse Capital Partners, LLC	DE	NIA	Nationwide Mutual Insurance Company	Ownership	70.000	Nationwide Mutual Insurance Company	
0140	Nationwide						Newhouse Capital Partners, LLC	DE	NIA	Nationwide Mutual Fire Insurance Company	Ownership	10.000	Nationwide Mutual Insurance Company	
0140	Nationwide		31-1630871				NFS Distributors, Inc.	DE	NIA	Nationwide Financial Services, Inc.	Ownership	100.000	Nationwide Mutual Insurance Company	
0140	Nationwide		14-1892640				NHT XII Tax Credit Fund, LLC	DC	NIA	Nationwide Life Insurance Company	Ownership	49.990	Nationwide Mutual Insurance Company	1
0140	Nationwide		14-1892640				NHT XII Tax Credit Fund, LLC	DC	NIA	Nationwide Assurance Company	Ownership	25.000	Nationwide Mutual Insurance Company	1
0140	Nationwide		14-1892640				NHT XII Tax Credit Fund, LLC	DC	NIA	Nationwide Mutual Insurance Company	Ownership	25.000	Nationwide Mutual Insurance Company	1
0140	Nationwide		26-0351004				North Bank Condominium Home Owners Association	OH	OTH	Other non-Nationwide	n/a		Other non-Nationwide	
0140	Nationwide		20-4939866				North of Third, LLC	OH	NIA	NRI Equity Land Investments, LLC		100.000	Nationwide Mutual Insurance Company	
0140	Nationwide		26-4083207				Northstar Commercial Development, LLC	OH	NIA	Nationwide Realty Investors, Ltd.	Ownership	50.000	Nationwide Mutual Insurance Company	1
0140	Nationwide		26-4083354				Northstar Residential Development, LLC	OH	NIA	Nationwide Realty Investors, Ltd.	Ownership	50.000	Nationwide Mutual Insurance Company	1
0140	Nationwide		31-1486309				NRI 12325 Copper Way, LLC	OH	NIA	Nationwide Realty Investors, Ltd.	Ownership	100.000	Nationwide Mutual Insurance Company	
0140	Nationwide		31-1486309				NRI 220 Schrock, LLC	OH	NIA	Nationwide Realty Investors, Ltd.	Ownership	100.000	Nationwide Mutual Insurance Company	
0140	Nationwide		31-1486309				NRI Arena, LLC	OH	NIA	Nationwide Realty Investors, Ltd.	Ownership	100.000	Nationwide Mutual Insurance Company	
0140	Nationwide		31-1486309				NRI Brooksedg, LLC	OH	NIA	Nationwide Realty Investors, Ltd.	Ownership	100.000	Nationwide Mutual Insurance Company	
0140	Nationwide		31-1486309				NRI Builders, LLC	OH	NIA	Nationwide Realty Investors, Ltd.	Ownership	100.000	Nationwide Mutual Insurance Company	
0140	Nationwide		31-1486309				NRI Communities/Charlotte, LLC	OH	NIA	Nationwide Realty Investors, Ltd.	Ownership	100.000	Nationwide Mutual Insurance Company	
0140	Nationwide		31-1486309				NRI Communities/Harris Blvd., LLC	OH	NIA	Nationwide Realty Investors, Ltd.	Ownership	100.000	Nationwide Mutual Insurance Company	
0140	Nationwide		31-1486309				NRI Cramer Creek, LLC	OH	NIA	Nationwide Realty Investors, Ltd.	Ownership	100.000	Nationwide Mutual Insurance Company	
0140	Nationwide		20-4939866				NRI Equity Land Investments, LLC	OH	NIA	Nationwide Realty Investors, Ltd.	Ownership	80.000	Nationwide Mutual Insurance Company	
0140	Nationwide						NRI Equity Tampa, LLC	OH	OTH	Nationwide Realty Investors, Ltd.	Ownership	50.000	Nationwide Mutual Insurance Company	
0140	Nationwide		31-1486309				NRI Maxtown, LLC	OH	OTH	Nationwide Realty Investors, Ltd.	Ownership	100.000	Nationwide Mutual Insurance Company	
0140	Nationwide		30-4939866				NRI Office Ventures, Ltd	OH	NIA	Nationwide Realty Investors, Ltd.	Ownership	100.000	Nationwide Mutual Insurance Company	
0140	Nationwide		31-1486309				NRI Telecom, LLC	OH	NIA	NWD Investments, LLC	Ownership	100.000	Nationwide Mutual Insurance Company	
0140	Nationwide						NTCIF-2011 Georgia State Investor, LLC	OH	NIA	Nationwide Property and Casualty Company	Ownership	100.000	Nationwide Mutual Insurance Company	
0140	Nationwide		45-3123274				NTCIF-2011, LLC	OH	NIA	Nationwide Life Insurance Company	Ownership	100.000	Nationwide Mutual Insurance Company	
0140	Nationwide		90-0729552				NTCP 2011-A, LLC	OH	NIA	Nationwide Life Insurance Company	Ownership	100.000	Nationwide Mutual Insurance Company	
0140	Nationwide		27-4700627				NTCP 2011-B, LLC	OH	NIA	Nationwide Life Insurance Company	Ownership	100.000	Nationwide Mutual Insurance Company	
0140	Nationwide		46-0747898				NTCP 2012-A, LLC	OH	NIA	Nationwide Life Insurance Company	Ownership	100.000	Nationwide Mutual Insurance Company	
0140	Nationwide		46-0741029				NW - Cameron, LLC	OH	NIA	NW-REI, LLC	Ownership	100.000	Nationwide Mutual Insurance Company	
0140	Nationwide		45-2724980				NW-2100 Latham, LLC	DE	NIA	NW-REI, LLC	Ownership	100.000	Nationwide Mutual Insurance Company	
0140	Nationwide		27-2076516				NW-Arvida, LLC	OH	NIA	NW-REI, LLC	Ownership	100.000	Nationwide Mutual Insurance Company	
0140	Nationwide		36-4702264				NW-Bayshore, LLC	OH	NIA	NW-REI, LLC	Ownership	100.000	Nationwide Mutual Insurance Company	
0140	Nationwide		45-5159092				NW-Bencap, LLC	OH	NIA	NW-REI, LLC	Ownership	100.000	Nationwide Mutual Insurance Company	
0140	Nationwide		46-0999932				NW-CNC Coppell, LLC	DE	NIA	Nationwide Mutual Insurance Company	Ownership	100.000	Nationwide Mutual Insurance Company	

**SCHEDULE Y**  
**PART 1A - DETAIL OF INSURANCE HOLDING COMPANY SYSTEM**

1	2	3	4	5	6	7	8	9	10	11	12	13	14	15
Group Code	Group Name	NAIC Company Code	Federal ID Number	Federal RSSD	CIK	Name of Securities Exchange if Publicly Traded (U.S. or International)	Names of Parent, Subsidiaries Or Affiliates	Domi-ciliary Location	Relationship to Reporting Entity	Directly Controlled by (Name of Entity/Person)	Type of Control (Ownership, Board, Management, Attorney-in-Fact, Influence, Other)	If Control is Owner-ship Provide Percen-tage	Ultimate Controlling Entity(ies)/Person(s)	*
0140	Nationwide		27-4431267				NW-Collection, LLC	DE	NIA	NW-REI, LLC	Ownership	100.000	Nationwide Mutual Insurance Company	
0140	Nationwide		27-2764819				NW-Commerce Center, LLC	DE	NIA	NW REI, LLC	Ownership	100.000	Nationwide Mutual Insurance Company	
0140	Nationwide						NW-Corvallis, LLC	OH	NIA	NW-REI, LLC	Ownership	100.000	Nationwide Mutual Insurance Company	
0140	Nationwide		31-1580283				NWD 205 Vine, LLC	OH	NIA	NWD Investments, LLC	Ownership	100.000	Nationwide Mutual Insurance Company	
0140	Nationwide		31-1580283				NWD 225 Nationwide, LLC	OH	NIA	NWD Investments, LLC	Ownership	100.000	Nationwide Mutual Insurance Company	
0140	Nationwide		31-1580283				NWD 230 West, LLC	OH	NIA	NWD Investments, LLC	Ownership	100.000	Nationwide Mutual Insurance Company	
0140	Nationwide		31-1580283				NWD 265 Neil, LLC	OH	NIA	NWD Investments, LLC	Ownership	100.000	Nationwide Mutual Insurance Company	
0140	Nationwide		31-1580283				NWD 275 Marconi, LLC	OH	NIA	NWD Investments, LLC	Ownership	100.000	Nationwide Mutual Insurance Company	
0140	Nationwide		31-1580283				NWD 295 McConnell, LLC	OH	NIA	NWD Investments, LLC	Ownership	100.000	Nationwide Mutual Insurance Company	
0140	Nationwide		31-1580283				NWD 300 Neil, LLC	OH	NIA	NWD Investments, LLC	Ownership	100.000	Nationwide Mutual Insurance Company	
0140	Nationwide		31-1580283				NWD 300 Spring, LLC	OH	NIA	NWD Investments, LLC	Ownership	100.000	Nationwide Mutual Insurance Company	
0140	Nationwide		31-1580283				NWD 355 McConnell, LLC	OH	NIA	NWD Investments, LLC	Ownership	100.000	Nationwide Mutual Insurance Company	
0140	Nationwide		31-1580283				NWD 425 Nationwide, LLC	OH	NIA	NWD Investments, LLC	Ownership	100.000	Nationwide Mutual Insurance Company	
0140	Nationwide		31-1580283				NWD 500 Nationwide, LLC	OH	NIA	NWD Investments, LLC	Ownership	100.000	Nationwide Mutual Insurance Company	
0140	Nationwide		31-1580283				NWD Arena Crossing, LLC	OH	NIA	NWD Investments, LLC	Ownership	100.000	Nationwide Mutual Insurance Company	
0140	Nationwide		31-1580283				NWD Arena District I, LLC	OH	NIA	NWD Investments, LLC	Ownership	100.000	Nationwide Mutual Insurance Company	
0140	Nationwide		31-1580283				NWD Arena District II, LLC	OH	NIA	NWD Investments, LLC	Ownership	100.000	Nationwide Mutual Insurance Company	
0140	Nationwide		31-1580283				NWD Arena District MM, LLC	OH	NIA	NWD Investments, LLC	Ownership	100.000	Nationwide Mutual Insurance Company	
0140	Nationwide		31-1580283				NWD Arena District PW, LLC	OH	NIA	NWD Investments, LLC	Ownership	100.000	Nationwide Mutual Insurance Company	
0140	Nationwide		31-1580283				NWD Arena District V, LLC	OH	NIA	NWD Investments, LLC	Ownership	100.000	Nationwide Mutual Insurance Company	
0140	Nationwide		04-3679396				NWD Asset Management Holdings, Inc.	DE	NIA	Nationwide SA Capital Trust	Ownership	100.000	Nationwide Mutual Insurance Company	
0140	Nationwide		31-1580283				NWD Athletic Club, LLC	OH	NIA	NWD Investments, LLC	Ownership	100.000	Nationwide Mutual Insurance Company	
0140	Nationwide		31-1636299				NWD Investment Management, Inc.	DE	NIA	NWD Management & Research Trust	Ownership	100.000	Nationwide Mutual Insurance Company	
0140	Nationwide		31-1580283				NWD Investments, LLC	OH	NIA	Nationwide Realty Investors, Ltd.	Ownership	80.000	Nationwide Mutual Insurance Company	
0140	Nationwide		25-6711069				NWD Management & Research Trust	DE	NIA	Nationwide Corporation	Ownership	100.000	Nationwide Mutual Insurance Company	
0140	Nationwide		90-0732898				NW-Dulles, LLC	OH	NIA	NW-REI, LLC	Ownership	100.000	Nationwide Mutual Insurance Company	
0140	Nationwide						NW-Eastpark, LLC	OH	NIA	NW-REI, LLC	Ownership	100.000	Nationwide Mutual Insurance Company	
0140	Nationwide		45-2647960				NW-Grapevine, LLC	OH	NIA	NW-REI, LLC	Ownership	100.000	Nationwide Mutual Insurance Company	
0140	Nationwide		27-4750498				NW-Harvard Row, LLC	OH	NIA	NW-REI, LLC	Ownership	100.000	Nationwide Mutual Insurance Company	
0140	Nationwide		26-3336778				NW-Highland Park, LLC	DE	NIA	NW-REI, LLC	Ownership	100.000	Nationwide Mutual Insurance Company	
0140	Nationwide		27-4387718				NW-Highmeadow, LLC	DE	NIA	NW-REI, LLC	Ownership	100.000	Nationwide Mutual Insurance Company	
0140	Nationwide		45-5408178				NW-Kentwood Towne Center, LLC	OH	NIA	NW-REI, LLC	Ownership	100.000	Nationwide Mutual Insurance Company	
0140	Nationwide		27-4749640				NW-Kohls Market, LLC	OH	NIA	NW-REI, LLC	Ownership	100.000	Nationwide Mutual Insurance Company	
0140	Nationwide		45-5314607				NW-Lovers Lane, LLC	OH	NIA	NW-REI, LLC	Ownership	100.000	Nationwide Mutual Insurance Company	
0140	Nationwide		45-4630497				NW-Mueller II, LLC	OH	NIA	NW-REI, LLC	Ownership	100.000	Nationwide Mutual Insurance Company	
0140	Nationwide		27-4749848				NW-Northridge, LLC	OH	NIA	NW-REI, LLC	Ownership	100.000	Nationwide Mutual Insurance Company	
0140	Nationwide		46-1089165				NW-Oakley Station, LLC	OH	NIA	NW-REI, LLC	Ownership	100.000	Nationwide Mutual Insurance Company	
0140	Nationwide		45-5388656				NW-Park Memorial, LLC	OH	NIA	NW-REI, LLC	Ownership	100.000	Nationwide Mutual Insurance Company	
0140	Nationwide		27-4749937				NW-Park Village, LLC	OH	NIA	NW-REI, LLC	Ownership	100.000	Nationwide Mutual Insurance Company	
0140	Nationwide		26-1903919				NW-REI, LLC	DE	NIA	Nationwide Mutual Insurance Company	Ownership	100.000	Nationwide Mutual Insurance Company	
0140	Nationwide		27-4387647				NW-Ross Hall, LLC	DE	NIA	NW-REI, LLC	Ownership	100.000	Nationwide Mutual Insurance Company	
0140	Nationwide		45-4439608				NW-Sanibel Beach Place, LLC	OH	NIA	NW-REI, LLC	Ownership	100.000	Nationwide Mutual Insurance Company	
0140	Nationwide		45-5159117				NW-South Park, LLC	OH	NIA	NW-REI, LLC	Ownership	100.000	Nationwide Mutual Insurance Company	
0140	Nationwide						NW-Southline, LLC	OH	NIA	NW-REI, LLC	Ownership	100.000	Nationwide Mutual Insurance Company	
0140	Nationwide		27-4749587				NW-Taylor Farmer Jack, LLC	OH	NIA	NW-REI, LLC	Ownership	100.000	Nationwide Mutual Insurance Company	
0140	Nationwide		46-1100378				NW-Triangle, LLC	OH	NIA	NW-REI, LLC	Ownership	100.000	Nationwide Mutual Insurance Company	
0140	Nationwide		27-4387563				NW-University, LLC	DE	NIA	NW-REI, LLC	Ownership	100.000	Nationwide Mutual Insurance Company	
0140	Nationwide		46-1077615				NW-West Ave., LLC	OH	NIA	NW-REI, LLC	Ownership	100.000	Nationwide Mutual Insurance Company	
0140	Nationwide		31-0947092				OCH Company, LLC	OH	NIA	Nationwide Realty Investors, Ltd.	Ownership	100.000	Nationwide Mutual Insurance Company	
0140	Nationwide		31-0947092				Ohio Center Hotel Company, Ltd.	OH	NIA	Nationwide Realty Investors, Ltd.	Ownership	56.250	Nationwide Mutual Insurance Company	
0140	Nationwide		26-0263012				Old Track Street Owners Association	OH	OTH	Other non-Nationwide	n/a		Other non-Nationwide	

SCHEDULE Y

PART 1A - DETAIL OF INSURANCE HOLDING COMPANY SYSTEM

1	2	3	4	5	6	7	8	9	10	11	12	13	14	15
Group Code	Group Name	NAIC Company Code	Federal ID Number	Federal RSSD	CIK	Name of Securities Exchange if Publicly Traded (U.S. or International)	Names of Parent, Subsidiaries Or Affiliates	Domi-ciliary Location	Relationship to Reporting Entity	Directly Controlled by (Name of Entity/Person)	Type of Control (Ownership, Board, Management, Attorney-in-Fact, Influence, Other)	If Control is Owner-ship Provide Percen-tage	Ultimate Controlling Entity(ies)/Person(s)	*
...0140 ...	Nationwide .....	...13999	27-1712056 .....	.....	.....	.....	Olentangy Reinsurance, LLC .....	VT.....	..JA.....	Nationwide Life and Annuity Insurance Company .....	Ownership.....	..100.000 ...	Nationwide Mutual Insurance Company .....	.....
...0140 ...	Nationwide .....	.....	.....	.....	.....	.....	OYS Fund, LLC .....	DE.....	...OTH.....	Nationwide Mutual Insurance Company .....	Ownership.....	..100.000 ...	Nationwide Mutual Insurance Company .....	.....
...0140 ...	Nationwide .....	.....	.....	.....	.....	.....	Park 288 Industrial, LLC .....	TX.....	...OTH.....	Nationwide Mutual Insurance Company .....	Investor member / no control .....	..95.000 ...	other non-Nationwide .....	.....
...0140 ...	Nationwide .....	.....	31-1486309 .....	.....	.....	.....	Perimeter A, Ltd .....	OH.....	...NIA.....	Nationwide Realty Investors, Ltd. ....	Ownership.....	..100.000 ...	Nationwide Mutual Insurance Company .....	.....
...0140 ...	Nationwide .....	.....	31-1677602 .....	.....	.....	.....	Pizzuti Properties, LLC .....	OH.....	...NIA.....	Nationwide Realty Investors, Ltd. ....	Ownership.....	..65.000 ...	Nationwide Mutual Insurance Company .....	.....
...0140 ...	Nationwide .....	.....	31-1486309 .....	.....	.....	.....	Polaris A, Ltd. ....	OH.....	...NIA.....	Nationwide Realty Investors, Ltd. ....	Ownership.....	..100.000 ...	Nationwide Mutual Insurance Company .....	.....
...0140 ...	Nationwide .....	.....	39-1907217 .....	.....	.....	.....	Premier Agency, Inc. ....	JA.....	...NIA.....	ALLIED Group, Inc. ....	Ownership.....	..100.000 ...	Nationwide Mutual Insurance Company .....	.....
...4664 ...	Pure .....	...12873	20-8287105 .....	.....	.....	.....	Privilege Underwriters Reciprocal Exchange .....	FL.....	..JA.....	Other non-Nationwide .....	n/a .....	.....	Other non-Nationwide .....	.....
...0140 ...	Pure .....	.....	.....	.....	.....	.....	Privilege Underwriters, Inc. ....	FL.....	..JA.....	Other non-Nationwide .....	n/a .....	.....	Other non-Nationwide .....	.....
...4664 ...	Pure .....	...13204	26-3109178 .....	.....	.....	.....	Pure Insurance Company .....	FL.....	..JA.....	Other non-Nationwide .....	n/a .....	.....	Other non-Nationwide .....	.....
...4664 ...	Pure .....	.....	.....	.....	.....	.....	Pure Risk Management, LLC .....	FL.....	..JA.....	Other non-Nationwide .....	n/a .....	.....	Other non-Nationwide .....	.....
...4664 ...	Nationwide .....	.....	75-2938844 .....	.....	.....	.....	Registered Investment Advisors Services, Inc. ....	TX.....	...NIA.....	Nationwide Financial Services, Inc. ...	Ownership.....	..100.000 ...	Nationwide Mutual Insurance Company .....	.....
...0140 ...	Nationwide .....	.....	82-0549218 .....	.....	.....	.....	Retention Alternatives, Ltd. ....	.Bermuda .....	..JA.....	Nationwide Mutual Fire Insurance Company .....	Ownership.....	..100.000 ...	Nationwide Mutual Insurance Company .....	.....
...0140 ...	Nationwide .....	.....	.....	.....	.....	.....	Riverview Diversified Opportunities Fund, LLC .....	DE.....	...OTH.....	Nationwide Mutual Insurance Company .....	Ownership.....	.....	Nationwide Mutual Insurance Company .....	...1 .....
...0140 ...	Nationwide .....	.....	.....	.....	.....	.....	Riverview Diversified Opportunities Fund, LLC .....	DE.....	...OTH.....	Nationwide Mutual Fire Insurance Company .....	Ownership.....	.....	Nationwide Mutual Insurance Company .....	...1 .....
...0140 ...	Nationwide .....	.....	.....	.....	.....	.....	Riverview Diversified Opportunities Fund, LLC .....	DE.....	...OTH.....	Nationwide Life Insurance Company ....	Ownership.....	.....	Nationwide Mutual Insurance Company .....	...1 .....
...0140 ...	Nationwide .....	.....	22-3655264 .....	.....	.....	.....	Riverview International Group, Inc. ...	DE.....	...NIA.....	NWD Management & Research Trust .....	Ownership.....	..100.000 ...	Nationwide Mutual Insurance Company .....	.....
...0140 ...	Nationwide .....	.....	.....	.....	.....	.....	Riverview Multi Series Fund, LL - Class Event .....	DE.....	...OTH.....	Nationwide Mutual Insurance Company .....	Ownership.....	..100.000 ...	Nationwide Mutual Insurance Company .....	.....
...0140 ...	Nationwide .....	.....	.....	.....	.....	.....	Riverview Multi Series Fund, LL - Class N .....	DE.....	...OTH.....	Nationwide Mutual Insurance Company .....	Ownership.....	..100.000 ...	Nationwide Mutual Insurance Company .....	.....
...0140 ...	Nationwide .....	.....	.....	.....	.....	.....	Riverview Polyphony Fund, LLC .....	DE.....	...OTH.....	Nationwide Mutual Insurance Company .....	Ownership.....	..100.000 ...	Nationwide Mutual Insurance Company .....	.....
...0140 ...	Nationwide .....	...15580	31-1117969 .....	.....	.....	.....	Scottsdale Indemnity Company .....	OH.....	..JA.....	Nationwide Mutual Insurance Company .....	Ownership.....	..100.000 ...	Nationwide Mutual Insurance Company .....	.....
...0140 ...	Nationwide .....	...41297	31-1024978 .....	.....	.....	.....	Scottsdale Insurance Company .....	OH.....	..JA.....	Nationwide Mutual Insurance Company .....	Ownership.....	..100.000 ...	Nationwide Mutual Insurance Company .....	.....
...0140 ...	Nationwide .....	...10672	86-0835870 .....	.....	.....	.....	Scottsdale Surplus Lines Insurance Company .....	AZ.....	...JA.....	Scottsdale Insurance Company .....	Ownership.....	..100.000 ...	Nationwide Mutual Insurance Company .....	.....
...0140 ...	Nationwide .....	.....	31-1486309 .....	.....	.....	.....	Streets of Toringdon, LLC .....	OH.....	...NIA.....	Nationwide Realty Investors, Ltd. ....	Ownership.....	..100.000 ...	Nationwide Mutual Insurance Company .....	.....
...0140 ...	Nationwide .....	.....	.....	.....	.....	.....	The Association for Theater Based Community Development, LLC .....	.....	...OTH.....	Nationwide Mutual Insurance Company .....	Limited partner /no control .....	..50.000 ...	other non-Nationwide .....	.....
...0140 ...	Nationwide .....	.....	91-2158214 .....	.....	.....	.....	The Hideaway Club .....	CA.....	...OTH.....	Other non-Nationwide .....	n/a .....	.....	Other non-Nationwide .....	.....
...0140 ...	Nationwide .....	.....	86-1094799 .....	.....	.....	.....	The Hideaway Owners Association .....	CA.....	...OTH.....	Other non-Nationwide .....	n/a .....	.....	Other non-Nationwide .....	.....
...0140 ...	Nationwide .....	.....	20-3541511 .....	.....	.....	.....	The Madison Club .....	CA.....	...OTH.....	Other non-Nationwide .....	n/a .....	.....	Other non-Nationwide .....	.....
...0140 ...	Nationwide .....	.....	20-3541507 .....	.....	.....	.....	The Madison Club Owners Association ..	CA.....	...OTH.....	Other non-Nationwide .....	n/a .....	.....	Other non-Nationwide .....	.....
...0140 ...	Nationwide .....	.....	31-1610040 .....	.....	.....	.....	The Waterfront Partners, LLC .....	OH.....	...NIA.....	Nationwide Realty Investors, Ltd. ....	Ownership.....	..50.000 ...	Nationwide Mutual Insurance Company .....	...1 .....
...0140 ...	Nationwide .....	.....	52-2031677 .....	.....	.....	.....	THI Holdings (Delaware), Inc. ....	DE.....	...UDP.....	Nationwide Mutual Insurance Company .....	Ownership.....	..100.000 ...	Nationwide Mutual Insurance Company .....	.....
...0140 ...	Nationwide .....	.....	74-2825853 .....	.....	.....	.....	Titan Auto Insurance of New Mexico, Inc. ....	NM.....	...JA.....	Whitehall Holdings, Inc. ....	Ownership.....	..100.000 ...	Nationwide Mutual Insurance Company .....	.....
...0140 ...	Nationwide .....	...13242	74-2286759 .....	.....	.....	.....	Titan Indemnity Company .....	TX.....	..JA.....	THI Holdings (Delaware), Inc. ....	Ownership.....	..100.000 ...	Nationwide Mutual Insurance Company .....	.....
...0140 ...	Nationwide .....	...36269	86-0619597 .....	.....	.....	.....	Titan Insurance Company .....	MI.....	..JA.....	Titan Indemnity Company .....	Ownership.....	..100.000 ...	Nationwide Mutual Insurance Company .....	.....
...0140 ...	Nationwide .....	.....	75-1284530 .....	.....	.....	.....	Titan Insurance Services, Inc. ....	TX.....	...NIA.....	Whitehall Holdings, Inc. ....	Ownership.....	..100.000 ...	Nationwide Mutual Insurance Company .....	.....
...0140 ...	Nationwide .....	.....	33-0160222 .....	.....	.....	.....	V.P.I. Services, Inc. ....	CA.....	...NIA.....	Veterinary Pet Insurance Company .....	Ownership.....	..100.000 ...	Nationwide Mutual Insurance Company .....	.....
...0140 ...	Nationwide .....	...42285	95-3750113 .....	.....	.....	.....	Veterinary Pet Insurance Company .....	CA.....	..JA.....	Scottsdale Insurance Company .....	Ownership.....	..100.000 ...	Nationwide Mutual Insurance Company .....	.....

STATEMENT AS OF SEPTEMBER 30, 2012 OF THE VICTORIA SELECT INSURANCE COMPANY

SCHEDULE Y

PART 1A - DETAIL OF INSURANCE HOLDING COMPANY SYSTEM

1	2	3	4	5	6	7	8	9	10	11	12	13	14	15
Group Code	Group Name	NAIC Company Code	Federal ID Number	Federal RSSD	CIK	Name of Securities Exchange if Publicly Traded (U.S. or International)	Names of Parent, Subsidiaries Or Affiliates	Domi-ciliary Location	Relationship to Reporting Entity	Directly Controlled by (Name of Entity/Person)	Type of Control (Ownership, Board, Management, Attorney-in-Fact, Influence, Other)	If Control is Owner-ship Provide Percen-tage	Ultimate Controlling Entity(ies)/Person(s)	*
...0140 ...	Nationwide .....	...10644 ...	34-1785903 ...	.....	.....	.....	Victoria Automobile Insurance Company	..JN.....	...JA.....	Victoria Fire & Casulaty Insurance Company .....	Ownership.....	..100.000 ....	Nationwide Mutual Insurance Company .	.....
...0140 ...	Nationwide .....	...42889 ...	34-1394913 ...	.....	.....	.....	Victoria Fire & Casualty Company .....	..OH.....	...JA.....	THI Holdings (Delaware), Inc. ....	Ownership.....	..100.000 ....	Nationwide Mutual Insurance Company .	.....
...0140 ...	Nationwide .....	...10778 ...	34-1842604 ...	.....	.....	.....	Victoria National Insurance Company ..	..OH.....	...JA.....	Victoria Fire & Casulaty Insurance Company .....	Ownership.....	..100.000 ....	Nationwide Mutual Insurance Company .	.....
...0140 ...	Nationwide .....	...10105 ...	34-1777972 ...	.....	.....	.....	Victoria Select Insurance Company .....	..OH.....	.....	Victoria Fire & Casulaty Insurance Company .....	Ownership.....	..100.000 ....	Nationwide Mutual Insurance Company .	.....
...0140 ...	Nationwide .....	...10777 ...	34-1842602 ...	.....	.....	.....	Victoria Specialty Insurance Company	..OH.....	...JA.....	Victoria Fire & Casulaty Insurance Company .....	Ownership.....	..100.000 ....	Nationwide Mutual Insurance Company .	.....
...0140 ...	Nationwide .....	...37150 ...	86-0561941 ...	.....	.....	.....	Western Heritage Insurance Company ...	..AZ.....	...JA.....	Scottsdale Insurance Company .....	Ownership.....	..100.000 ....	Nationwide Mutual Insurance Company .	.....
...0140 ...	Nationwide .....	.....	.....	.....	.....	.....	Westport Capital Partners II .....	..CT.....	...OTH.....	Nationwide Mutual Insurance Company	Investor member / no control .....	..71.000 ....	other non-Nationwide .....	.....
...0140 ...	Nationwide .....	.....	74-2767942 .....	.....	.....	.....	Whitehall Holdings, Inc. ....	..TX.....	...NIA.....	THI Holdings (Delaware), Inc. ....	Ownership.....	..100.000 ....	Nationwide Mutual Insurance Company .	.....
...0140 ...	Nationwide .....	.....	59-3471667 .....	.....	.....	.....	WI of Florida, Inc. ....	..FL.....	...NIA.....	Whitehall Holdings, Inc. ....	Ownership.....	..100.000 ....	Nationwide Mutual Insurance Company .	.....
...0140 ...	Nationwide .....	.....	31-1486309 ...	.....	.....	.....	Wilson Road Developers, LLC .....	..OH.....	...NIA.....	Nationwide Realty Investors, Ltd. ....	Ownership.....	..100.000 ....	Nationwide Mutual Insurance Company .	.....
...0140 ...	Nationwide .....	.....	.....	.....	.....	.....	Zais Zephyr A-4, LLC .....	..DE.....	...OTH.....	Nationwide Life Insurance Company ....	limited member / no control .....	..60.000 ....	other non-Nationwide .....	.....

Asterisk	Explanation
1 .....	For the purposes of this schedule, Nationwide presumed control of these entities because they are owned by at least 10% and are not wholly-owned by a Nationwide entity. ....
2 .....	Other ownership indicates a non-ownership circumstance by a Nationwide entity. ....

PART 1 - LOSS EXPERIENCE

Line of Business		Current Year to Date			4 Prior Year to Date Direct Loss Percentage
		1 Direct Premiums Earned	2 Direct Losses Incurred	3 Direct Loss Percentage	
1.	Fire .....				
2.	Allied Lines .....				
3.	Farmowners multiple peril .....				
4.	Homeowners multiple peril .....				
5.	Commercial multiple peril .....				
6.	Mortgage guaranty .....				
8.	Ocean marine .....				
9.	Inland marine .....				
10.	Financial guaranty .....				
11.1	Medical professional liability - occurrence .....				
11.2	Medical professional liability - claims-made .....				
12.	Earthquake .....				
13.	Group accident and health .....				
14.	Credit accident and health .....				
15.	Other accident and health .....				
16.	Workers' compensation .....				
17.1	Other liability - occurrence .....				
17.2	Other liability - claims-made .....				
17.3	Excess workers' compensation .....				
18.1	Products liability - occurrence .....				
18.2	Products liability - claims-made .....				
19.1,19.2	Private passenger auto liability .....	36,642,449	26,089,425	71.2	63.4
19.3,19.4	Commercial auto liability .....	7,455,480	8,691,942	116.6	47.3
21.	Auto physical damage .....	14,939,003	9,347,352	62.6	55.5
22.	Aircraft (all perils) .....				
23.	Fidelity .....				
24.	Surety .....				
26.	Burglary and theft .....				
27.	Boiler and machinery .....				
28.	Credit .....				
29.	International .....				
30.	Warranty .....				
31.	Reinsurance - Nonproportional Assumed Property .....	XXX	XXX	XXX	XXX
32.	Reinsurance - Nonproportional Assumed Liability .....	XXX	XXX	XXX	XXX
33.	Reinsurance - Nonproportional Assumed Financial Lines .....	XXX	XXX	XXX	XXX
34.	Aggregate write-ins for other lines of business .....				
35.	Totals .....	59,036,932	44,128,719	74.7	58.9
DETAILS OF WRITE-INS					
3401.	.....				
3402.	.....				
3403.	.....				
3498.	Summary of remaining write-ins for Line 34 from overflow page .....				
3499.	Totals (Lines 3401 through 3403 plus 3498)(Line 34 above)				

PART 2 - DIRECT PREMIUMS WRITTEN

Line of Business		1	2	3
		Current Quarter	Current Year to Date	Prior Year Year to Date
1.	Fire .....			
2.	Allied Lines .....			
3.	Farmowners multiple peril .....			
4.	Homeowners multiple peril .....			
5.	Commercial multiple peril .....			
6.	Mortgage guaranty .....			
8.	Ocean marine .....			
9.	Inland marine .....			
10.	Financial guaranty .....			
11.1	Medical professional liability - occurrence .....			
11.2	Medical professional liability - claims-made .....			
12.	Earthquake .....			
13.	Group accident and health .....			
14.	Credit accident and health .....			
15.	Other accident and health .....			
16.	Workers' compensation .....			
17.1	Other liability - occurrence .....			
17.2	Other liability - claims-made .....			
17.3	Excess workers' compensation .....			
18.1	Products liability - occurrence .....			
18.2	Products liability - claims-made .....			
19.1,19.2	Private passenger auto liability .....	14,343,092	42,279,219	33,570,659
19.3,19.4	Commercial auto liability .....	2,465,152	7,609,076	8,235,382
21.	Auto physical damage .....	5,938,524	17,313,732	13,595,062
22.	Aircraft (all perils) .....			
23.	Fidelity .....			
24.	Surety .....			
26.	Burglary and theft .....			
27.	Boiler and machinery .....			
28.	Credit .....			
29.	International .....			
30.	Warranty .....			
31.	Reinsurance - Nonproportional Assumed Property .....	XXX	XXX	XXX
32.	Reinsurance - Nonproportional Assumed Liability .....	XXX	XXX	XXX
33.	Reinsurance - Nonproportional Assumed Financial Lines .....	XXX	XXX	XXX
34.	Aggregate write-ins for other lines of business .....			
35.	Totals .....	22,746,768	67,202,027	55,401,103
DETAILS OF WRITE-INS				
3401.	.....			
3402.	.....			
3403.	.....			
3498.	Summary of remaining write-ins for Line 34 from overflow page .....			
3499.	Totals (Lines 3401 through 3403 plus 3498)(Line 34 above)			

STATEMENT AS OF SEPTEMBER 30, 2012 OF THE VICTORIA SELECT INSURANCE COMPANY

PART 3 (000 omitted)

LOSS AND LOSS ADJUSTMENT EXPENSE RESERVES SCHEDULE

	1	2	3	4	5	6	7	8	9	10	11	12	13
Years in Which Losses Occurred	Prior Year-End Known Case Loss and LAE Reserves	Prior Year-End IBNR Loss and LAE Reserves	Total Prior Year-End Loss and LAE Reserves (Cols. 1+2)	2012 Loss and LAE Payments on Claims Reported as of Prior Year-End	2012 Loss and LAE Payments on Claims Unreported as of Prior Year-End	Total 2012 Loss and LAE Payments (Cols. 4+5)	Q.S. Date Known Case Loss and LAE Reserves on Claims Reported and Open as of Prior Year End	Q.S. Date Known Case Loss and LAE Reserves on Claims Reported or Reopened Subsequent to Prior Year End	Q.S. Date IBNR Loss and LAE Reserves	Total Q.S. Loss and LAE Reserves (Cols.7+8+9)	Prior Year-End Known Case Loss and LAE Reserves Developed (Savings)/ Deficiency (Cols.4+7 minus Col. 1)	Prior Year-End IBNR Loss and LAE Reserves Developed (Savings)/ Deficiency (Cols. 5+8+9 minus Col. 2)	Prior Year-End Total Loss and LAE Reserve Developed (Savings)/ Deficiency (Cols. 11+12)
1. 2009 + Prior .....													
2. 2010 .....													
3. Subtotals 2010 + Prior .....													
4. 2011 .....													
5. Subtotals 2011 + Prior .....													
6. 2012 .....	.XXX	.XXX	.XXX	.XXX			.XXX				.XXX	.XXX	.XXX
7. Totals .....													
8. Prior Year-End Surplus As Regards Policyholders											Col. 11, Line 7 As % of Col. 1 Line 7	Col. 12, Line 7 As % of Col. 2 Line 7	Col. 13, Line 7 As % of Col. 3 Line 7
											1.	2.	3.
													Col. 13, Line 7 As a % of Col. 1 Line 8
													4.

STATEMENT AS OF SEPTEMBER 30, 2012 OF THE VICTORIA SELECT INSURANCE COMPANY

SUPPLEMENTAL EXHIBITS AND SCHEDULES INTERROGATORIES

The following supplemental reports are required to be filed as part of your statement filing. However, in the event that your company does not transact the type of business for which the special report must be filed, your response of NO to the specific interrogatory will be accepted in lieu of filing a "NONE" report and a bar code will be printed below. If the supplement is required of your company but is not being filed for whatever reason enter SEE EXPLANATION and provide an explanation following the interrogatory questions.

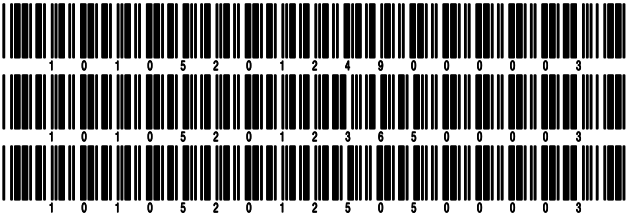
	Response
1. Will the Trusteed Surplus Statement be filed with the state of domicile and the NAIC with this statement? .....	NO
2. Will Supplement A to Schedule T (Medical Professional Liability Supplement) be filed with this statement? .....	YES
3. Will the Medicare Part D Coverage Supplement be filed with the state of domicile and the NAIC with this statement? .....	NO
4. Will the Director and Officer Supplement be filed with the state of domicile and the NAIC with this statement? .....	NO

Explanations:

1.
3.
4.

Bar Codes:

1. Trusteed Surplus Statement [Document Identifier 490]
3. Medicare Part D Coverage Supplement [Document Identifier 365]
4. Director and Officer Supplement [Document Identifier 505]



NONE



SCHEDULE A - VERIFICATION

Real Estate

	1 Year to Date	2 Prior Year Ended December 31
1. Book/adjusted carrying value, December 31 of prior year .....		
2. Cost of acquired:		
2.1 Actual cost at time of acquisition .....		
2.2 Additional investment made after acquisition .....		
3. Current year change in encumbrances .....		
4. Total gain (loss) on disposals .....		
5. Deduct amounts received on disposals .....		
6. Total foreign exchange change in book/adjusted carrying value .....		
7. Deduct current year's other than temporary impairment recognized .....		
8. Deduct current year's depreciation .....		
9. Book/adjusted carrying value at the end of current period (Lines 1+2+3+4-5+6-7-8) .....		
10. Deduct total nonadmitted amounts .....		
11. Statement value at end of current period (Line 9 minus Line 10)		

SCHEDULE B - VERIFICATION

Mortgage Loans

	1 Year to Date	2 Prior Year Ended December 31
1. Book value/recorded investment excluding accrued interest, December 31 of prior year .....		
2. Cost of acquired:		
2.1 Actual cost at time of acquisition .....		
2.2 Additional investment made after acquisition .....		
3. Capitalized deferred interest and other .....		
4. Accrual of discount .....		
5. Unrealized valuation increase (decrease) .....		
6. Total gain (loss) on disposals .....		
7. Deduct amounts received on disposals .....		
8. Deduct amortization of premium and mortgage interest points and commitment fees .....		
9. Total foreign exchange change in book value/recorded investment excluding accrued interest .....		
10. Deduct current year's other than temporary impairment recognized .....		
11. Book value/recorded investment excluding accrued interest at end of current period (Lines 1+2+3+4+5+6-7-8+9-10) .....		
12. Total valuation allowance .....		
13. Subtotal (Line 11 plus Line 12) .....		
14. Deduct total nonadmitted amounts .....		
15. Statement value at end of current period (Line 13 minus Line 14)		

SCHEDULE BA - VERIFICATION

Other Long-Term Invested Assets

	1 Year to Date	2 Prior Year Ended December 31
1. Book/adjusted carrying value, December 31 of prior year .....		
2. Cost of acquired:		
2.1 Actual cost at time of acquisition .....		
2.2 Additional investment made after acquisition .....		
3. Capitalized deferred interest and other .....		
4. Accrual of discount .....		
5. Unrealized valuation increase (decrease) .....		
6. Total gain (loss) on disposals .....		
7. Deduct amounts received on disposals .....		
8. Deduct amortization of premium and depreciation .....		
9. Total foreign exchange change in book/adjusted carrying value .....		
10. Deduct current year's other than temporary impairment recognized .....		
11. Book/adjusted carrying value at end of current period (Lines 1+2+3+4+5+6-7-8+9-10) .....		
12. Deduct total nonadmitted amounts .....		
13. Statement value at end of current period (Line 11 minus Line 12)		

SCHEDULE D - VERIFICATION

Bonds and Stocks

	1 Year to Date	2 Prior Year Ended December 31
1. Book/adjusted carrying value of bonds and stocks, December 31 of prior year .....	3,696,778	4,578,524
2. Cost of bonds and stocks acquired .....		
3. Accrual of discount .....	725	1,005
4. Unrealized valuation increase (decrease) .....		
5. Total gain (loss) on disposals .....		
6. Deduct consideration for bonds and stocks disposed of .....	475,000	845,000
7. Deduct amortization of premium .....	24,041	37,751
8. Total foreign exchange change in book/adjusted carrying value .....		
9. Deduct current year's other than temporary impairment recognized .....		
10. Book/adjusted carrying value at end of current period (Lines 1+2+3+4+5-6-7+8-9) .....	3,198,462	3,696,778
11. Deduct total nonadmitted amounts .....		
12. Statement value at end of current period (Line 10 minus Line 11)	3,198,462	3,696,778

STATEMENT AS OF SEPTEMBER 30, 2012 OF THE VICTORIA SELECT INSURANCE COMPANY

**SCHEDULE D - PART 1B**

Showing the Acquisitions, Dispositions and Non-Trading Activity  
During the Current Quarter for all Bonds and Preferred Stock by Rating Class

	1 Book/Adjusted Carrying Value Beginning of Current Quarter	2 Acquisitions During Current Quarter	3 Dispositions During Current Quarter	4 Non-Trading Activity During Current Quarter	5 Book/Adjusted Carrying Value End of First Quarter	6 Book/Adjusted Carrying Value End of Second Quarter	7 Book/Adjusted Carrying Value End of Third Quarter	8 Book/Adjusted Carrying Value December 31 Prior Year
BONDS								
1. Class 1 (a) .....	3,205,994			(7,532)	3,323,565	3,205,994	3,198,462	3,696,777
2. Class 2 (a) .....								
3. Class 3 (a) .....								
4. Class 4 (a) .....								
5. Class 5 (a) .....								
6. Class 6 (a) .....								
7. Total Bonds	3,205,994			(7,532)	3,323,565	3,205,994	3,198,462	3,696,777
PREFERRED STOCK								
8. Class 1 .....								
9. Class 2 .....								
10. Class 3 .....								
11. Class 4 .....								
12. Class 5 .....								
13. Class 6 .....								
14. Total Preferred Stock .....								
15. Total Bonds and Preferred Stock	3,205,994			(7,532)	3,323,565	3,205,994	3,198,462	3,696,777

(a) Book/Adjusted Carrying Value column for the end of the current reporting period includes the following amount of non-rated short-term and cash equivalent bonds by NAIC designation: NAIC 1 \$ ..... ; NAIC 2 \$ ..... ; NAIC 3 \$ ..... ;  
NAIC 4 \$ ..... ; NAIC 5 \$ ..... ; NAIC 6 \$ .....

SCHEDULE DA - PART 1

Short-Term Investments

	1	2	3	4	5
	Book/Adjusted Carrying Value	Par Value	Actual Cost	Interest Collected Year-to-Date	Paid for Accrued Interest Year-to-Date
9199999 Totals	5,096,977	XXX	5,096,977	40	

SCHEDULE DA - VERIFICATION

Short-Term Investments

	1	2
	Year To Date	Prior Year Ended December 31
1. Book/adjusted carrying value, December 31 of prior year .....	4,462,099	3,457,821
2. Cost of short-term investments acquired .....	56,191,816	143,000,143
3. Accrual of discount .....		
4. Unrealized valuation increase (decrease) .....		
5. Total gain (loss) on disposals .....		
6. Deduct consideration received on disposals .....	55,556,938	141,995,865
7. Deduct amortization of premium .....		
8. Total foreign exchange change in book/adjusted carrying value .....		
9. Deduct current year's other than temporary impairment recognized .....		
10. Book/adjusted carrying value at end of current period (Lines 1+2+3+4+5-6-7+8-9) .....	5,096,977	4,462,099
11. Deduct total nonadmitted amounts .....		
12. Statement value at end of current period (Line 10 minus Line 11)	5,096,977	4,462,099

Schedule DB - Part A - Verification - Options, Caps, Floors, Collars, Swaps and Forwards

N O N E

Schedule DB - Part B - Verification - Futures Contracts

N O N E

Schedule DB - Part C - Section 1 - Replication (Synthetic Asset) Transactions (RSATs) Open

N O N E

Schedule DB-Part C-Section 2-Reconciliation of Replication (Synthetic Asset) Transactions Open

N O N E

Schedule DB - Verification - Book/Adjusted Carrying Value, Fair Value and Potential Exposure of  
Derivatives

N O N E

Schedule E - Verification - Cash Equivalents

N O N E

Schedule A - Part 2 - Real Estate Acquired and Additions Made

N O N E

Schedule A - Part 3 - Real Estate Disposed

N O N E

Schedule B - Part 2 - Mortgage Loans Acquired

N O N E

Schedule B - Part 3 - Mortgage Loans Disposed, Transferred or Repaid

N O N E

Schedule BA - Part 2 - Other Long-Term Invested Assets Acquired

N O N E

Schedule BA - Part 3 - Other Long-Term Invested Assets Disposed, Transferred or Repaid

N O N E

Schedule D - Part 3 - Long-Term Bonds and Stocks Acquired

N O N E

Schedule D - Part 4 - Long-Term Bonds and Stocks Sold, Redeemed or Otherwise Disposed Of

N O N E

Schedule DB - Part A - Section 1 - Options, Caps, Floors, Collars, Swaps and Forwards Open  
**N O N E**

Schedule DB - Part B - Section 1 - Futures Contracts Open  
**N O N E**

Schedule DB - Part B - Section 1B - Brokers with whom cash deposits have been made  
**N O N E**

Schedule DB - Part D - Counterparty Exposure for Derivative Instruments Open  
**N O N E**

Schedule DL - Part 1 - Reinvested Collateral Assets Owned  
**N O N E**

Schedule DL - Part 2 - Reinvested Collateral Assets Owned  
**N O N E**

## SCHEDULE E - PART 1 - CASH

E11

SCHEDULE E - PART 2 - CASH EQUIVALENTS

Show Investments Owned End of Current Quarter

1	2	3	4	5	6	7	8
Description	Code	Date Acquired	Rate of Interest	Maturity Date	Book/Adjusted Carrying Value	Amount of Interest Due and Accrued	Amount Received During Year
NONE							
8699999 - Total Cash Equivalents							



SUPPLEMENT FOR THE QUARTER ENDING SEPTEMBER 30, 2012 OF THE VICTORIA SELECT INSURANCE COMPANY

Designate the type of health care providers reported on this page:  
Physicians, including surgeons and osteopaths

SUPPLEMENT A TO SCHEDULE T  
EXHIBIT OF MEDICAL PROFESSIONAL LIABILITY PREMIUMS WRITTEN  
ALLOCATED BY STATES AND TERRITORIES

States, etc.	1	2	Direct Losses Paid		5	Direct Losses Unpaid		8
	Direct Premiums Written	Direct Premiums Earned	3	4	Direct Losses Incurred	6	7	Direct Losses Incurred But Not Reported
			Amount	No. of Claims		Amount Reported	No. of Claims	
1. Alabama.....AL								
2. Alaska.....AK								
3. Arizona.....AZ								
4. Arkansas.....AR								
5. California.....CA								
6. Colorado.....CO								
7. Connecticut.....CT								
8. Delaware.....DE								
9. District of Columbia.....DC								
10. Florida.....FL								
11. Georgia.....GA								
12. Hawaii.....HI								
13. Idaho.....ID								
14. Illinois.....IL								
15. Indiana.....IN								
16. Iowa.....IA								
17. Kansas.....KS								
18. Kentucky.....KY								
19. Louisiana.....LA								
20. Maine.....ME								
21. Maryland.....MD								
22. Massachusetts.....MA								
23. Michigan.....MI								
24. Minnesota.....MN								
25. Mississippi.....MS								
26. Missouri.....MO								
27. Montana.....MT								
28. Nebraska.....NE								
29. Nevada.....NV								
30. New Hampshire.....NH								
31. New Jersey.....NJ								
32. New Mexico.....NM								
33. New York.....NY								
34. North Carolina.....NC								
35. North Dakota.....ND								
36. Ohio.....OH								
37. Oklahoma.....OK								
38. Oregon.....OR								
39. Pennsylvania.....PA								
40. Rhode Island.....RI								
41. South Carolina.....SC								
42. South Dakota.....SD								
43. Tennessee.....TN								
44. Texas.....TX								
45. Utah.....UT								
46. Vermont.....VT								
47. Virginia.....VA								
48. Washington.....WA								
49. West Virginia.....WV								
50. Wisconsin.....WI								
51. Wyoming.....WY								
52. American Samoa.....AS								
53. Guam.....GU								
54. Puerto Rico.....PR								
55. U.S. Virgin Islands.....VI								
56. Northern Mariana Islands.....MP								
57. Canada.....CN								
58. Aggregate Other Aliens.....OT								
59. Totals								
DETAILS OF WRITE-INS								
5801. ....								
5802. ....								
5803. ....								
5898. Summary of remaining write-ins for Line 58 from overflow page								
5899. Totals (Lines 5801 through 5803 plus 5898)(Line 58 above)								

NONE





SUPPLEMENT FOR THE QUARTER ENDING SEPTEMBER 30, 2012 OF THE VICTORIA SELECT INSURANCE COMPANY

Designate the type of health care providers reported on this page:  
Hospitals

SUPPLEMENT A TO SCHEDULE T  
EXHIBIT OF MEDICAL PROFESSIONAL LIABILITY PREMIUMS WRITTEN  
ALLOCATED BY STATES AND TERRITORIES

	1	2	Direct Losses Paid		5	Direct Losses Unpaid		8
			3	4		6	7	
States, etc.	Direct Premiums Written	Direct Premiums Earned	Amount	No. of Claims	Direct Losses Incurred	Amount Reported	No. of Claims	Direct Losses Incurred But Not Reported
1. Alabama.....AL								
2. Alaska.....AK								
3. Arizona.....AZ								
4. Arkansas.....AR								
5. California.....CA								
6. Colorado.....CO								
7. Connecticut.....CT								
8. Delaware.....DE								
9. District of Columbia.....DC								
10. Florida.....FL								
11. Georgia.....GA								
12. Hawaii.....HI								
13. Idaho.....ID								
14. Illinois.....IL								
15. Indiana.....IN								
16. Iowa.....IA								
17. Kansas.....KS								
18. Kentucky.....KY								
19. Louisiana.....LA								
20. Maine.....ME								
21. Maryland.....MD								
22. Massachusetts.....MA								
23. Michigan.....MI								
24. Minnesota.....MN								
25. Mississippi.....MS								
26. Missouri.....MO								
27. Montana.....MT								
28. Nebraska.....NE								
29. Nevada.....NV								
30. New Hampshire.....NH								
31. New Jersey.....NJ								
32. New Mexico.....NM								
33. New York.....NY								
34. North Carolina.....NC								
35. North Dakota.....ND								
36. Ohio.....OH								
37. Oklahoma.....OK								
38. Oregon.....OR								
39. Pennsylvania.....PA								
40. Rhode Island.....RI								
41. South Carolina.....SC								
42. South Dakota.....SD								
43. Tennessee.....TN								
44. Texas.....TX								
45. Utah.....UT								
46. Vermont.....VT								
47. Virginia.....VA								
48. Washington.....WA								
49. West Virginia.....WV								
50. Wisconsin.....WI								
51. Wyoming.....WY								
52. American Samoa.....AS								
53. Guam.....GU								
54. Puerto Rico.....PR								
55. U.S. Virgin Islands.....VI								
56. Nothern Mariana Islands.....MP								
57. Canada.....CN								
58. Aggregate Other Aliens.....OT								
59. Totals								
DETAILS OF WRITE-INS								
5801. ....								
5802. ....								
5803. ....								
5898. Summary of remaining write-ins for Line 58 from overflow page.....								
5899. Totals (Lines 5801 through 5803 plus 5898)(Line 58 above)								



SUPPLEMENT FOR THE QUARTER ENDING SEPTEMBER 30, 2012 OF THE VICTORIA SELECT INSURANCE COMPANY

Designate the type of health care providers reported on this page:  
Other health care professionals, including dentists, chiropractors, and podiatrists

SUPPLEMENT A TO SCHEDULE T  
EXHIBIT OF MEDICAL PROFESSIONAL LIABILITY PREMIUMS WRITTEN  
ALLOCATED BY STATES AND TERRITORIES

States, etc.	1  Direct Premiums Written	2  Direct Premiums Earned	Direct Losses Paid		5  Direct Losses Incurred	Direct Losses Unpaid		8  Direct Losses Incurred But Not Reported
			3  Amount	4  No. of Claims		6  Amount Reported	7  No. of Claims	
1. Alabama.....AL								
2. Alaska.....AK								
3. Arizona.....AZ								
4. Arkansas.....AR								
5. California.....CA								
6. Colorado.....CO								
7. Connecticut.....CT								
8. Delaware.....DE								
9. District of Columbia.....DC								
10. Florida.....FL								
11. Georgia.....GA								
12. Hawaii.....HI								
13. Idaho.....ID								
14. Illinois.....IL								
15. Indiana.....IN								
16. Iowa.....IA								
17. Kansas.....KS								
18. Kentucky.....KY								
19. Louisiana.....LA								
20. Maine.....ME								
21. Maryland.....MD								
22. Massachusetts.....MA								
23. Michigan.....MI								
24. Minnesota.....MN								
25. Mississippi.....MS								
26. Missouri.....MO								
27. Montana.....MT								
28. Nebraska.....NE								
29. Nevada.....NV								
30. New Hampshire.....NH								
31. New Jersey.....NJ								
32. New Mexico.....NM								
33. New York.....NY								
34. North Carolina.....NC								
35. North Dakota.....ND								
36. Ohio.....OH								
37. Oklahoma.....OK								
38. Oregon.....OR								
39. Pennsylvania.....PA								
40. Rhode Island.....RI								
41. South Carolina.....SC								
42. South Dakota.....SD								
43. Tennessee.....TN								
44. Texas.....TX								
45. Utah.....UT								
46. Vermont.....VT								
47. Virginia.....VA								
48. Washington.....WA								
49. West Virginia.....WV								
50. Wisconsin.....WI								
51. Wyoming.....WY								
52. American Samoa.....AS								
53. Guam.....GU								
54. Puerto Rico.....PR								
55. U.S. Virgin Islands.....VI								
56. Northern Mariana Islands.....MP								
57. Canada.....CN								
58. Aggregate Other Aliens.....OT								
59. Totals								
DETAILS OF WRITE-INS								
5801. ....								
5802. ....								
5803. ....								
5898. Summary of remaining write-ins for Line 58 from overflow page .....								
5899. Totals (Lines 5801 through 5803 plus 5898)(Line 58 above)								

NONE



SUPPLEMENT FOR THE QUARTER ENDING SEPTEMBER 30, 2012 OF THE VICTORIA SELECT INSURANCE COMPANY

Designate the type of health care providers reported on this page:  
Other health care facilities

SUPPLEMENT A TO SCHEDULE T  
EXHIBIT OF MEDICAL PROFESSIONAL LIABILITY PREMIUMS WRITTEN  
ALLOCATED BY STATES AND TERRITORIES

	States, etc.	1 Direct Premiums Written	2 Direct Premiums Earned	Direct Losses Paid		5 Direct Losses Incurred	Direct Losses Unpaid		8 Direct Losses Incurred But Not Reported
				3 Amount	4 No. of Claims		6 Amount Reported	7 No. of Claims	
1.	Alabama .....	AL							
2.	Alaska .....	AK							
3.	Arizona .....	AZ							
4.	Arkansas .....	AR							
5.	California .....	CA							
6.	Colorado .....	CO							
7.	Connecticut .....	CT							
8.	Delaware .....	DE							
9.	District of Columbia .....	DC							
10.	Florida .....	FL							
11.	Georgia .....	GA							
12.	Hawaii .....	HI							
13.	Idaho .....	ID							
14.	Illinois .....	IL							
15.	Indiana .....	IN							
16.	Iowa .....	IA							
17.	Kansas .....	KS							
18.	Kentucky .....	KY							
19.	Louisiana .....	LA							
20.	Maine .....	ME							
21.	Maryland .....	MD							
22.	Massachusetts .....	MA							
23.	Michigan .....	MI							
24.	Minnesota .....	MN							
25.	Mississippi .....	MS							
26.	Missouri .....	MO							
27.	Montana .....	MT							
28.	Nebraska .....	NE							
29.	Nevada .....	NV							
30.	New Hampshire .....	NH							
31.	New Jersey .....	NJ							
32.	New Mexico .....	NM							
33.	New York .....	NY							
34.	North Carolina .....	NC							
35.	North Dakota .....	ND							
36.	Ohio .....	OH							
37.	Oklahoma .....	OK							
38.	Oregon .....	OR							
39.	Pennsylvania .....	PA							
40.	Rhode Island .....	RI							
41.	South Carolina .....	SC							
42.	South Dakota .....	SD							
43.	Tennessee .....	TN							
44.	Texas .....	TX							
45.	Utah .....	UT							
46.	Vermont .....	VT							
47.	Virginia .....	VA							
48.	Washington .....	WA							
49.	West Virginia .....	WV							
50.	Wisconsin .....	WI							
51.	Wyoming .....	WY							
52.	American Samoa .....	AS							
53.	Guam .....	GU							
54.	Puerto Rico .....	PR							
55.	U.S. Virgin Islands .....	VI							
56.	Nothern Mariana Islands .....	MP							
57.	Canada .....	CN							
58.	Aggregate Other Aliens .....	OT							
59.	Totals								
DETAILS OF WRITE-INS									
5801.	.....								
5802.	.....								
5803.	.....								
5898.	Summary of remaining write-ins for Line 58 from overflow page								
5899.	Totals (Lines 5801 through 5803 plus 5898)(Line 58 above)								