



PROPERTY AND CASUALTY COMPANIES - ASSOCIATION EDITION

QUARTERLY STATEMENT

AS OF SEPTEMBER 30, 2012  
OF THE CONDITION AND AFFAIRS OF THE

Nationwide Indemnity Company

NAIC Group Code 0140 (Current) 0140 (Prior) NAIC Company Code 10070 Employer's ID Number 31-1399201

Organized under the Laws of Ohio, State of Domicile or Port of Entry Ohio

Country of Domicile United States of America

Incorporated/Organized 02/16/1994 Commenced Business 04/15/1994

Statutory Home Office One West Nationwide Blvd. (Street and Number) Columbus, OH 43215-2220 (City or Town, State and Zip Code)

Main Administrative Office One West Nationwide Blvd. (Street and Number) Columbus, OH 43215-2220 (City or Town, State and Zip Code) 614-249-7111 (Area Code) (Telephone Number)

Mail Address One West Nationwide Blvd., 1-04-701 (Street and Number or P.O. Box) Columbus, OH 43215-2220 (City or Town, State and Zip Code)

Primary Location of Books and Records One West Nationwide Blvd., 1-04-701 (Street and Number) Columbus, OH 43215-2220 (City or Town, State and Zip Code) 614-249-1545 (Area Code) (Telephone Number)

Internet Web Site Address www.nationwide.com

Statutory Statement Contact Arlene E. Swanson (Name) 614-249-1545 (Area Code) (Telephone Number) FinRpt@nationwide.com (E-mail Address) 866-315-1430 (FAX Number)

OFFICERS

President & COO David Alan Bano VP & Treasurer Carol Lynn Dove

VP & Secretary Robert William Horner III

OTHER

Pamela Ann Biesecker Sr VP-Head of Taxation Harry Hansen Hallowell Sr VP - CIO Mark Raymond Thresher Exec VP - CFO

DIRECTORS OR TRUSTEES

David Alan Bano James David Benson Kevin Thomas Hilyard

Michael Patrick Leach Duane Lee Meyer Mark Raymond Thresher

State of Ohio SS:

County of Franklin

The officers of this reporting entity being duly sworn, each depose and say that they are the described officers of said reporting entity, and that on the reporting period stated above, all of the herein described assets were the absolute property of the said reporting entity, free and clear from any liens or claims thereon, except as herein stated, and that this statement, together with related exhibits, schedules and explanations therein contained, annexed or referred to, is a full and true statement of all the assets and liabilities and of the condition and affairs of the said reporting entity as of the reporting period stated above, and of its income and deductions therefrom for the period ended, and have been completed in accordance with the NAIC Annual Statement Instructions and Accounting Practices and Procedures manual except to the extent that: (1) state law may differ; or, (2) that state rules or regulations require differences in reporting not related to accounting practices and procedures, according to the best of their information, knowledge and belief, respectively. Furthermore, the scope of this attestation by the described officers also includes the related corresponding electronic filing with the NAIC, when required, that is an exact copy (except for formatting differences due to electronic filing) of the enclosed statement. The electronic filing may be requested by various regulators in lieu of or in addition to the enclosed statement.

David Alan Bano President & COO Robert William Horner, III VP & Secretary Carol Lynn Dove VP & Treasurer

Subscribed and sworn to before me this day of October, 2012

a. Is this an original filing? Yes [ X ] No [ ]

b. If no, 1. State the amendment number..... 2. Date filed ..... 3. Number of pages attached.....

STATEMENT AS OF SEPTEMBER 30, 2012 OF THE NATIONWIDE INDEMNITY COMPANY

ASSETS

	Current Statement Date			4 December 31 Prior Year Net Admitted Assets
	1 Assets	2 Nonadmitted Assets	3 Net Admitted Assets (Cols. 1 - 2)	
1. Bonds .....	3,165,734,981		3,165,734,981	3,213,391,193
2. Stocks:				
2.1 Preferred stocks .....				
2.2 Common stocks .....	1,125,718		1,125,718	782,153
3. Mortgage loans on real estate:				
3.1 First liens .....	115,683,398		115,683,398	126,213,620
3.2 Other than first liens .....				
4. Real estate:				
4.1 Properties occupied by the company (less \$ encumbrances) .....				
4.2 Properties held for the production of income (less \$ ..... encumbrances) .....				
4.3 Properties held for sale (less \$ encumbrances) .....				
5. Cash (\$ .....(2,625,108) ), cash equivalents (\$ ..... ) and short-term investments (\$ .....4,506,843 ) .....	1,881,735		1,881,735	1,834,973
6. Contract loans (including \$ ..... premium notes) .....				
7. Derivatives .....				
8. Other invested assets .....	62,994,935	138,667	62,856,268	64,813,743
9. Receivables for securities .....				
10. Securities lending reinvested collateral assets .....	10,641,715	7,172,046	3,469,669	7,729,916
11. Aggregate write-ins for invested assets .....				
12. Subtotals, cash and invested assets (Lines 1 to 11) .....	3,358,062,482	7,310,713	3,350,751,769	3,414,765,598
13. Title plants less \$ ..... charged off (for Title insurers only) .....				
14. Investment income due and accrued .....	34,371,661	2,630	34,369,031	39,223,355
15. Premiums and considerations:				
15.1 Uncollected premiums and agents' balances in the course of collection .....	2,018,231	2,018,231		
15.2 Deferred premiums, agents' balances and installments booked but deferred and not yet due (including \$ ..... earned but unbilled premiums) .....				
15.3 Accrued retrospective premiums .....				
16. Reinsurance:				
16.1 Amounts recoverable from reinsurers .....	(2,943)		(2,943)	
16.2 Funds held by or deposited with reinsured companies .....	9,794,511		9,794,511	8,251,383
16.3 Other amounts receivable under reinsurance contracts .....				
17. Amounts receivable relating to uninsured plans .....				
18.1 Current federal and foreign income tax recoverable and interest thereon .....				
18.2 Net deferred tax asset .....	47,742,518	23,141,519	24,600,999	12,726,906
19. Guaranty funds receivable or on deposit .....	(150)		(150)	
20. Electronic data processing equipment and software .....				
21. Furniture and equipment, including health care delivery assets (\$ ..... ) .....				
22. Net adjustment in assets and liabilities due to foreign exchange rates .....	487,671		487,671	487,671
23. Receivables from parent, subsidiaries and affiliates .....	69,189		69,189	379,412
24. Health care (\$ ..... ) and other amounts receivable .....				
25. Aggregate write-ins for other than invested assets .....	26,061,474	18,360,138	7,701,336	6,477,043
26. Total assets excluding Separate Accounts, Segregated Accounts and Protected Cell Accounts (Lines 12 to 25) .....	3,478,604,644	50,833,231	3,427,771,413	3,482,311,368
27. From Separate Accounts, Segregated Accounts and Protected Cell Accounts .....				
28. Total (Lines 26 and 27)	3,478,604,644	50,833,231	3,427,771,413	3,482,311,368
DETAILS OF WRITE-INS				
1101. ....				
1102. ....				
1103. ....				
1198. Summary of remaining write-ins for Line 11 from overflow page .....				
1199. Totals (Lines 1101 through 1103 plus 1198)(Line 11 above)				
2501. Third party administrative receivables .....	21,744,105	16,140,847	5,603,258	4,321,785
2502. Deposits and prepaid assets .....	1,951,865	1,951,865		
2503. Miscellaneous assets .....	2,353,233	255,155	2,098,078	2,155,258
2598. Summary of remaining write-ins for Line 25 from overflow page .....	12,271	12,271		
2599. Totals (Lines 2501 through 2503 plus 2598)(Line 25 above)	26,061,474	18,360,138	7,701,336	6,477,043

STATEMENT AS OF SEPTEMBER 30, 2012 OF THE NATIONWIDE INDEMNITY COMPANY

LIABILITIES, SURPLUS AND OTHER FUNDS

	1 Current Statement Date	2 December 31, Prior Year
1. Losses (current accident year \$ ..... ) .....	1,345,767,277	1,481,818,735
2. Reinsurance payable on paid losses and loss adjustment expenses .....		2,943
3. Loss adjustment expenses .....	828,396,129	753,581,025
4. Commissions payable, contingent commissions and other similar charges .....		
5. Other expenses (excluding taxes, licenses and fees) .....	54,713	54,713
6. Taxes, licenses and fees (excluding federal and foreign income taxes) .....	3,125	
7.1 Current federal and foreign income taxes (including \$ ..... (1,298,776) on realized capital gains (losses)) .....	742,735	45,379,119
7.2 Net deferred tax liability .....		
8. Borrowed money \$ ..... and interest thereon \$ ..... .....		
9. Unearned premiums (after deducting unearned premiums for ceded reinsurance of \$ ..... and including warranty reserves of \$ ..... and accrued accident and health experience rating refunds including \$ ..... for medical loss ratio rebate per the Public Health Service Act) .....	71,158	62,146
10. Advance premium .....		
11. Dividends declared and unpaid:		
11.1 Stockholders .....		
11.2 Policyholders .....		
12. Ceded reinsurance premiums payable (net of ceding commissions) .....		
13. Funds held by company under reinsurance treaties .....		
14. Amounts withheld or retained by company for account of others .....	2,166,801	3,519,363
15. Remittances and items not allocated .....	687,392	
16. Provision for reinsurance .....		
17. Net adjustments in assets and liabilities due to foreign exchange rates .....		
18. Drafts outstanding .....		
19. Payable to parent, subsidiaries and affiliates .....	1,729,383	
20. Derivatives .....	(10)	(10)
21. Payable for securities .....		1,304,549
22. Payable for securities lending .....	18,128,719	25,021,328
23. Liability for amounts held under uninsured plans .....		
24. Capital notes \$ ..... and interest thereon \$ ..... .....		
25. Aggregate write-ins for liabilities .....	48,778,378	47,982,235
26. Total liabilities excluding protected cell liabilities (Lines 1 through 25) .....	2,246,525,800	2,358,726,146
27. Protected cell liabilities .....		
28. Total liabilities (Lines 26 and 27) .....	2,246,525,800	2,358,726,146
29. Aggregate write-ins for special surplus funds .....	9,619,000	9,894,000
30. Common capital stock .....	3,080,000	3,080,000
31. Preferred capital stock .....		
32. Aggregate write-ins for other than special surplus funds .....		
33. Surplus notes .....		
34. Gross paid in and contributed surplus .....	1,456,449,000	1,456,449,000
35. Unassigned funds (surplus) .....	(287,902,387)	(345,837,778)
36. Less treasury stock, at cost:		
36.1 ..... shares common (value included in Line 30 \$ ..... ) .....		
36.2 ..... shares preferred (value included in Line 31 \$ ..... ) .....		
37. Surplus as regards policyholders (Lines 29 to 35, less 36) .....	1,181,245,613	1,123,585,222
38. Totals (Page 2, Line 28, Col. 3)	3,427,771,413	3,482,311,368
<b>DETAILS OF WRITE-INS</b>		
2501. Assumed reinsurance balances payable .....	48,778,378	47,977,536
2502. Miscellaneous liabilities .....		4,699
2503. ....		
2598. Summary of remaining write-ins for Line 25 from overflow page .....		
2599. Totals (Lines 2501 through 2503 plus 2598)(Line 25 above)	48,778,378	47,982,235
2901. EU solvency directive .....	9,619,000	9,894,000
2902. ....		
2903. ....		
2998. Summary of remaining write-ins for Line 29 from overflow page .....		
2999. Totals (Lines 2901 through 2903 plus 2998)(Line 29 above)	9,619,000	9,894,000
3201. ....		
3202. ....		
3203. ....		
3298. Summary of remaining write-ins for Line 32 from overflow page .....		
3299. Totals (Lines 3201 through 3203 plus 3298)(Line 32 above)		

STATEMENT OF INCOME

	1	2	3
	Current Year to Date	Prior Year to Date	Prior Year Ended December 31
UNDERWRITING INCOME			
1. Premiums earned:			
1.1 Direct (written \$ ..... )			
1.2 Assumed (written \$ ..... 862,074 )	853,061	544,464	1,116,038
1.3 Ceded (written \$ ..... )			
1.4 Net (written \$ ..... 862,074 )	853,061	544,464	1,116,038
DEDUCTIONS:			
2. Losses incurred (current accident year \$ ..... ):			
2.1 Direct .....			
2.2 Assumed .....	(61,577,057)	(52,801,193)	(54,877,676)
2.3 Ceded .....			
2.4 Net .....	(61,577,057)	(52,801,193)	(54,877,676)
3. Loss adjustment expenses incurred .....	144,572,250	59,006,029	59,788,913
4. Other underwriting expenses incurred .....	4,220,078	3,756,058	3,990,732
5. Aggregate write-ins for underwriting deductions .....			
6. Total underwriting deductions (Lines 2 through 5) .....	87,215,271	9,960,894	8,901,969
7. Net income of protected cells .....			
8. Net underwriting gain or (loss) (Line 1 minus Line 6 + Line 7) .....	(86,362,210)	(9,416,430)	(7,785,931)
INVESTMENT INCOME			
9. Net investment income earned .....	106,112,260	111,915,319	147,520,519
10. Net realized capital gains (losses) less capital gains tax of \$ ..... 1,298,776 .....	(3,557,654)	(1,159,374)	(431,959)
11. Net investment gain (loss) (Lines 9 + 10) .....	102,554,606	110,755,945	147,088,560
OTHER INCOME			
12. Net gain or (loss) from agents' or premium balances charged off (amount recovered \$ ..... amount charged off \$ ..... ) .....			
13. Finance and service charges not included in premiums .....			
14. Aggregate write-ins for miscellaneous income .....	(46,020)	(276,438)	(445,828)
15. Total other income (Lines 12 through 14) .....	(46,020)	(276,438)	(445,828)
16. Net income before dividends to policyholders, after capital gains tax and before all other federal and foreign income taxes (Lines 8 + 11 + 15) .....	16,146,376	101,063,077	138,856,801
17. Dividends to policyholders .....			
18. Net income, after dividends to policyholders, after capital gains tax and before all other federal and foreign income taxes (Line 16 minus Line 17) .....	16,146,376	101,063,077	138,856,801
19. Federal and foreign income taxes incurred .....	(3,207,148)	29,759,066	37,830,298
20. Net income (Line 18 minus Line 19)(to Line 22) .....	19,353,524	71,304,011	101,026,503
CAPITAL AND SURPLUS ACCOUNT			
21. Surplus as regards policyholders, December 31 prior year .....	1,123,585,222	1,064,460,567	1,064,460,567
22. Net income (from Line 20) .....	19,353,524	71,304,011	101,026,503
23. Net transfers (to) from Protected Cell accounts .....			
24. Change in net unrealized capital gains (losses) less capital gains tax of \$ ..... 19,510,871 .....	3,171,051	24,781,900	25,877,517
25. Change in net unrealized foreign exchange capital gain (loss) .....	39,767	(630,622)	(302,916)
26. Change in net deferred income tax .....	3,282,741	9,092,562	9,490,196
27. Change in nonadmitted assets .....	16,974,642	(12,559,180)	(16,378,081)
28. Change in provision for reinsurance .....			
29. Change in surplus notes .....			
30. Surplus (contributed to) withdrawn from protected cells .....			
31. Cumulative effect of changes in accounting principles .....	15,231,042		
32. Capital changes:			
32.1 Paid in .....			
32.2 Transferred from surplus (Stock Dividend) .....			
32.3 Transferred to surplus .....			
33. Surplus adjustments:			
33.1 Paid in .....			(60,000,000)
33.2 Transferred to capital (Stock Dividend) .....			
33.3 Transferred from capital .....			
34. Net remittances from or (to) Home Office .....			
35. Dividends to stockholders .....			
36. Change in treasury stock .....			
37. Aggregate write-ins for gains and losses in surplus .....	(392,376)	(441,423)	(588,564)
38. Change in surplus as regards policyholders (Lines 22 through 37) .....	57,660,391	91,547,248	59,124,655
39. Surplus as regards policyholders, as of statement date (Lines 21 plus 38) .....	1,181,245,613	1,156,007,815	1,123,585,222
DETAILS OF WRITE-INS			
0501. ....			
0502. ....			
0503. ....			
0598. Summary of remaining write-ins for Line 5 from overflow page .....			
0599. Totals (Lines 0501 through 0503 plus 0598)(Line 5 above) .....			
1401. Miscellaneous expenses .....	(46,020)	(276,438)	(445,828)
1402. ....			
1403. ....			
1498. Summary of remaining write-ins for Line 14 from overflow page .....			
1499. Totals (Lines 1401 through 1403 plus 1498)(Line 14 above) .....	(46,020)	(276,438)	(445,828)
3701. Goodwill write off .....	(392,376)	(441,423)	(588,564)
3702. ....			
3703. ....			
3798. Summary of remaining write-ins for Line 37 from overflow page .....			
3799. Totals (Lines 3701 through 3703 plus 3798)(Line 37 above) .....	(392,376)	(441,423)	(588,564)

STATEMENT AS OF SEPTEMBER 30, 2012 OF THE NATIONWIDE INDEMNITY COMPANY

CASH FLOW

	1 Current Year To Date	2 Prior Year To Date	3 Prior Year Ended December 31
<b>Cash from Operations</b>			
1. Premiums collected net of reinsurance .....	1,001,301	420,335	800,357
2. Net investment income .....	113,914,600	115,985,042	149,303,632
3. Miscellaneous income .....	(1,589,149)	112,551	(64,609)
4. Total (Lines 1 to 3) .....	113,326,752	116,517,928	150,039,380
5. Benefit and loss related payments .....	74,474,401	86,804,488	109,418,061
6. Net transfers to Separate Accounts, Segregated Accounts and Protected Cell Accounts .....			
7. Commissions, expenses paid and aggregate write-ins for deductions .....	73,973,949	72,830,504	96,379,424
8. Dividends paid to policyholders .....			
9. Federal and foreign income taxes paid (recovered) net of \$ .....3,729,342 tax on capital gains (losses) .....	42,728,012	6,878,716	4,719,112
10. Total (Lines 5 through 9) .....	191,176,362	166,513,708	210,516,597
11. Net cash from operations (Line 4 minus Line 10) .....	(77,849,610)	(49,995,780)	(60,477,217)
<b>Cash from Investments</b>			
12. Proceeds from investments sold, matured or repaid:			
12.1 Bonds .....	128,878,266	247,807,007	311,556,522
12.2 Stocks .....		26,447	26,447
12.3 Mortgage loans .....	10,463,481	28,470,414	36,179,875
12.4 Real estate .....			
12.5 Other invested assets .....	10,874,703	21,034,952	28,878,696
12.6 Net gains or (losses) on cash, cash equivalents and short-term investments .....		114,322	821
12.7 Miscellaneous proceeds .....		7,428,442	1,541,033
12.8 Total investment proceeds (Lines 12.1 to 12.7) .....	150,216,450	304,881,584	378,183,394
13. Cost of investments acquired (long-term only):			
13.1 Bonds .....	67,866,593	286,366,869	313,683,318
13.2 Stocks .....		1,179,486	878,590
13.3 Mortgage loans .....			
13.4 Real estate .....			
13.5 Other invested assets .....		13,729,911	15,747,028
13.6 Miscellaneous applications .....	1,328,539		
13.7 Total investments acquired (Lines 13.1 to 13.6) .....	69,195,132	301,276,266	330,308,936
14. Net increase (or decrease) in contract loans and premium notes .....			
15. Net cash from investments (Line 12.8 minus Line 13.7 and Line 14) .....	81,021,318	3,605,318	47,874,458
<b>Cash from Financing and Miscellaneous Sources</b>			
16. Cash provided (applied):			
16.1 Surplus notes, capital notes .....			
16.2 Capital and paid in surplus, less treasury stock .....			(60,000,000)
16.3 Borrowed funds .....			
16.4 Net deposits on deposit-type contracts and other insurance liabilities .....			
16.5 Dividends to stockholders .....			
16.6 Other cash provided (applied) .....	(3,124,946)	(24,235,213)	(36,574,931)
17. Net cash from financing and miscellaneous sources (Line 16.1 through Line 16.4 minus Line 16.5 plus Line 16.6) .....	(3,124,946)	(24,235,213)	(96,574,931)
<b>RECONCILIATION OF CASH, CASH EQUIVALENTS AND SHORT-TERM INVESTMENTS</b>			
18. Net change in cash, cash equivalents and short-term investments (Line 11, plus Lines 15 and 17) ..	46,762	(70,625,675)	(109,177,690)
19. Cash, cash equivalents and short-term investments:			
19.1 Beginning of year .....	1,834,973	111,012,663	111,012,663
19.2 End of period (Line 18 plus Line 19.1) .....	1,881,735	40,386,988	1,834,973

Note: Supplemental disclosures of cash flow information for non-cash transactions:

--	--	--	--

NOTES TO FINANCIAL STATEMENTS

Note 1 - Summary of Significant Accounting Policies

A. Accounting Practices

The accompanying statutory financial statements of Nationwide Indemnity Company (the Company) have been prepared in conformity with accounting practices prescribed or permitted by the National Association of Insurance Commissioners (NAIC) and the State of Ohio.

The Ohio Insurance Department recognizes only statutory accounting practices (SAP) prescribed or permitted by the State of Ohio for determining and reporting the financial condition and results of operations of an insurance company, as well as, determining its solvency under the Ohio Insurance law. The National Association of Insurance Commissioners' (NAIC) *Accounting Practices and Procedures Manual* (NAIC SAP) has been adopted as a component of prescribed or permitted practices by the State of Ohio.

C. Accounting Policies

7. Investments in subsidiary and affiliated companies are stated as follows:

The admitted investments in all subsidiary, controlled, and affiliated (SCA) entities are valued using an equity method approach. Under this approach, investments in insurance affiliated companies are stated at underlying statutory equity value adjusted for unamortized goodwill. Investments in non-insurance affiliated companies that have no significant ongoing operations other than to hold assets that are primarily for the direct or indirect benefit or use of the reporting entity or its affiliates are stated at audited GAAP equity adjusted to a statutory basis of accounting. Investments in non-insurance affiliated companies that have significant ongoing operations beyond holding assets that are primarily for the direct or indirect benefit or use of the reporting entity or its affiliates are stated at audited GAAP equity. Unaudited affiliated companies of the reporting entity or its affiliates are non-admitted under prescribed SAP accounting practices. Goodwill arising from the acquisition of affiliated companies is amortized over a period of ten years. Goodwill was fully amortized as of September 30, 2012.

Note 2 - Accounting Changes and Corrections of Errors

On January 1, 2012, the Company adopted a new standard, SSAP No. 101, Income Taxes, which supersedes SSAP No. 10R, Income Taxes Revised - A Temporary Replacement of SSAP No. 10. The standard applies a 'more likely than not' threshold for the recognition of federal and foreign tax loss contingencies and establishes a new framework for determining the admissibility of deferred tax assets (DTA). The difference between the recalculated amounts as of January 1, 2012, and the amount actually reported in the prior year financial statements is treated as a change in accounting principle in accordance with SSAP No. 3, Accounting Changes and Corrections of Errors. The cumulative effect of this change in accounting principle resulted in a \$15,231,042 increase in unassigned funds as of January 1, 2012.

Note 3 - Business Combinations and Goodwill

No change.

Note 4 - Discontinued Operations

No change.

Note 5 - Investments

A. Mortgage Loans

No change.

B. Troubled Debt Restructuring for Creditors

No change.

C. Reverse Mortgages

No change.

D. Loan-Backed Securities

1. Prepayment assumptions are generally obtained using a model provided by a third-party vendor.
2. The following table summarizes by quarter other-than-temporary impairments for loan-backed securities recorded during the year because the Company had either the intent to sell the securities or the inability or lack of intent to retain as cited in the table:

(1) Amortized Cost Basis Before Other-than- Temporary Impairment	(2) Other-than- Temporary Impairment Recognized in Loss	(3)  Fair Value 1 - 2
---	--	--------------------------------

OTTI recognized 1st Quarter

- a. Intent to Sell
- b. Inability or lack of intent to retain the investment in the security for a period of time sufficient to recover the amortized cost basis
- c. Total 1st Quarter

\$ -	\$ -	\$ -
\$ -	\$ -	\$ -
\$ -	\$ -	\$ -

OTTI recognized 2nd Quarter

- d. Intent to Sell
- e. Inability or lack of intent to retain the investment in the security for a period of time sufficient to recover the amortized cost basis
- f. Total 2nd Quarter

\$ -	\$ -	\$ -
\$ -	\$ -	\$ -
\$ -	\$ -	\$ -

NOTES TO FINANCIAL STATEMENTS

(1)	(2)	(3)
Amortized Cost Basis Before Other-than- Temporary Impairment	Other-than- Temporary Impairment Recognized in Loss	Fair Value 1 - 2

OTTI recognized 3rd Quarter

g. Intent to Sell	\$ -	\$ -	\$ -
h. Inability or lack of intent to retain the investment in the security for a period of time sufficient to recover the amortized cost basis	\$ -	\$ -	\$ -
i. Total 3rd Quarter	\$ -	\$ -	\$ -

OTTI recognized 4th Quarter

j. Intent to Sell	\$ -	\$ -	\$ -
k. Inability or lack of intent to retain the investment in the security for a period of time sufficient to recover the amortized cost basis	\$ -	\$ -	\$ -
l. Total 4th Quarter	\$ -	\$ -	\$ -

m. Annual Aggregate Total	\$ -
---------------------------	------

3. The following table summarizes other-than-temporary impairments for loan-backed securities held at the end of the quarter based on the fact that the present value of projected cash flows expected to be collected was less than the amortized cost of the securities:

(1)	(2)	(3)	(4)	(5)	(6)	(7)
CUSIP	Amortized Cost Before Current Period OTTI	Present Value of Projected Cash Flow s	Recognized Other-Than- Temporary Impairment	Amortized Cost After Other- Than- Temporary Impairment	Fair Value at time of OTTI	Date of Financial Statement Where Reported
43739EAP2	\$ 4,184,040	\$ 4,024,868	\$ 159,172	\$ 4,024,868	\$ 2,425,577	Q4 '11
12667GAX1	\$ 10,354,862	\$ 10,162,333	\$ 192,529	\$ 10,162,333	\$ 8,177,926	Q2 '11
761118HD3	\$ 4,358,301	\$ 4,012,299	\$ 346,002	\$ 4,012,299	\$ 3,498,380	Q2 '11
86363GAJ3	\$ 2,709,536	\$ 2,627,788	\$ 81,748	\$ 2,627,788	\$ 2,056,382	Q2 '11
43739EAP2	\$ 4,456,318	\$ 4,380,755	\$ 75,563	\$ 4,380,755	\$ 3,447,084	Q1 '11
12667GAX1	\$ 11,489,006	\$ 11,316,152	\$ 172,854	\$ 11,316,152	\$ 8,799,074	Q4 '10
43739EAP2	\$ 4,625,145	\$ 4,521,617	\$ 103,528	\$ 4,521,617	\$ 3,395,115	Q4 '10
74042TAC5	\$ 8,939,392	\$ 8,864,586	\$ 74,806	\$ 8,864,586	\$ 5,424,057	Q3 '10
785778HD6	\$ 1,660,514	\$ 1,608,726	\$ 51,788	\$ 1,608,726	\$ 758,956	Q3 '10
17307GYH5	\$ 6,485,902	\$ 6,032,699	\$ 453,203	\$ 6,032,699	\$ 5,256,058	Q2 '10
12667GXN8	\$ 14,208,403	\$ 13,806,788	\$ 401,615	\$ 13,806,788	\$ 11,325,389	Q1 '10
761118HD3	\$ 4,669,491	\$ 4,482,782	\$ 186,709	\$ 4,482,782	\$ 3,668,275	Q1 '10
12667GXN8	\$ 14,381,599	\$ 14,208,403	\$ 173,196	\$ 14,208,403	\$ 11,250,613	Q4 '09
86363GAJ3	\$ 3,786,928	\$ 3,525,759	\$ 261,169	\$ 3,525,759	\$ 2,359,016	Q4 '09
12667GAX1	\$ 15,611,598	\$ 15,115,896	\$ 495,703	\$ 15,115,896	\$ 10,804,631	Q3 '09
126686AC8	\$ 1,698,091	\$ 2,268,179	\$ (570,088)	\$ 2,268,179	\$ 2,178,721	Q3 '09
59549RAC8	\$ 5,807,307	\$ 5,169,950	\$ 637,357	\$ 5,169,950	\$ 4,995,475	Q3 '09
74042TAC5	\$ 9,499,020	\$ 8,939,392	\$ 559,629	\$ 8,939,392	\$ 4,201,091	Q3 '09
89234NAB6	\$ 1,216,000	\$ 3,068,465	\$ (1,852,465)	\$ 3,068,465	\$ 1,200,778	Q3 '09
144527AB4	\$ 6,205,000	\$ 9,996,975	\$ (3,791,975)	\$ 9,996,975	\$ 4,763,699	Q3 '09
761118HD3	\$ 2,232,500	\$ 4,669,491	\$ (2,436,991)	\$ 4,669,491	\$ 3,635,050	Q3 '09
Total			\$ (4,224,949)			

4. All impaired securities (fair value is less than cost or amortized cost) for which an other-than-temporary impairment has not been recognized in earnings as a realized loss (including securities with a recognized other-than-temporary impairment for non-interest related declines when a non-recognized interest related impairment remains):

a. The aggregate amount of unrealized losses:	1. Less than 12 Months	\$ (121,573)
	2. 12 Months or Longer	\$ (14,564,959)
b. The aggregate related fair value of securities with unrealized losses:	1. Less than 12 Months	\$ 7,884,113
	2. 12 Months or Longer	\$ 81,155,932

5. The Company reviews all loan-backed and structured securities in which the fair value of the given security is less than the amortized cost to determine if a given security is other-than-temporarily impaired. The Company examines characteristics of the underlying collateral, such as delinquency and default rates, the quality of the underlying borrower, the type of collateral in the pool, the vintage year of the collateral, subordination levels within the structure of the collateral pool, the quality of any credit guarantors, to determine the cash flows expected to be received for the security.

If the severity and duration of the security's unrealized loss indicates a risk of an other-than-temporary impairment, then the Company will evaluate if the amortized cost basis of the security will be recovered by comparing the present value of the cash flows expected to be received for the given security with the amortized cost basis of the security. If the present value of cash flows is greater than the amortized cost basis of a security then the security is deemed not to be other-than-temporarily impaired.

## NOTES TO FINANCIAL STATEMENTS

E. Repurchase Agreements and Securities Lending Transactions

No change.

F. Real Estate

No change.

G. Low-Income Housing Tax Credits

No change.

**Note 6 - Joint Ventures, Partnerships and Limited Liability Companies**

No change.

**Note 7 - Investment Income**

No change.

**Note 8 - Derivative Instruments**

No change.

**Note 9 - Income Taxes**

No change.

**Note 10 - Information Concerning Parent, Subsidiaries, Affiliates and Other Related Parties**

No change.

**Note 11 - Debt**

No change.

**Note 12 - Retirement Plans, Deferred Compensation, Postemployment Benefits and Compensated Absences and Other Postretirement Benefit Plans**

No change.

**Note 13 - Capital and Surplus, Dividend Restrictions and Quasi-Reorganizations**

No change.

**Note 14 – Contingencies**

No change.

**Note 15 – Leases**

No change.

**Note 16 - Information About Financial Instruments With Off-Balance Sheet Risk And Financial Instruments With Concentrations of Credit Risk**

No change.

**Note 17 - Sale, Transfer and Servicing of Financial Assets and Extinguishments of Liabilities**

A. Transfers of Receivables Reported as Sales

No change.

B. Transfers and Servicing of Financial Assets

No change.

C. Wash Sales

Not applicable.

**Note 18 - Gain or Loss to the Reporting Entity from Uninsured Plans and the Uninsured Portion of Partially Insured Plans**

No change.

**Note 19 - Direct Premiums Written/Produced by Managing General Agents/Third Party Administrators**

No change.

**Note 20 – Fair Value Measurements**

Fair value is defined as the price that would be received to sell an asset or paid to transfer a liability in an orderly transaction between market participants at the measurement date. Fair value measurements are based upon observable and unobservable inputs. Observable inputs reflect market data obtained from independent sources while unobservable inputs reflect the Company's view of market assumptions in the absence of observable market information. The Company utilizes valuation techniques that maximize the use of observable inputs and minimize the use of unobservable inputs. In determining fair value, the Company uses various methods including market, income and cost approaches.

The Company categorizes its assets and liabilities reported at fair value in the quarterly statement into a three-level hierarchy based on the priority of the inputs to the valuation technique. The fair value hierarchy gives the highest priority to quoted prices in active markets for identical assets or liabilities (Level 1) and the lowest priority to unobservable inputs (Level 3). If the inputs used to measure fair value fall within different levels of the hierarchy, the category level is based on the lowest priority level input that is significant to the fair value measurement of the instrument in its entirety.



STATEMENT AS OF SEPTEMBER 30, 2012 OF THE NATIONWIDE INDEMNITY COMPANY

NOTES TO FINANCIAL STATEMENTS

The fair value hierarchy levels are as follows:

*Level 1.* Unadjusted quoted prices accessible in active markets for identical assets or liabilities at the measurement date and mutual funds where the value per share (unit) is determined and published daily and is the basis for current transactions.

*Level 2.* Unadjusted quoted prices for similar assets or liabilities in active markets or inputs (other than quoted prices) that are observable or that are derived principally from or corroborated by observable market data through correlation or other means.

*Level 3.* Prices or valuation techniques that require inputs that are both unobservable and significant to the overall fair value measurement. Inputs reflect management's best estimate about the assumptions market participants would use at the measurement date in pricing the asset or liability. Consideration is given to the risk inherent in both the method of valuation and the valuation inputs.

The Company periodically reviews its fair value hierarchy classifications for financial assets and liabilities. Changes in observability of significant valuation inputs identified during these reviews may trigger reclassifications. Reclassifications into/out of the fair value hierarchy levels are reported as transfers at the beginning of the period in which the change occurs.

To determine the fair value of bonds and stocks for which market quotations are available, independent pricing services are most often utilized. For these bonds and stocks, the Company obtains the pricing services' methodologies, inputs and assumptions and classifies the investments accordingly in the fair value hierarchy.

Non-binding broker quotes are also utilized to determine the fair value of certain bonds when quotes are not available from independent pricing services. Broker quotes are considered unobservable inputs, and these bonds are classified accordingly in the fair value hierarchy as only one broker quote is ordinarily obtained, the investment is not traded on an exchange, the pricing is not available to other entities and/or the transaction volume in the same or similar investments has decreased such that generally only one quotation is available. As the brokers often do not provide the necessary transparency into their quotes and methodologies, the Company periodically performs reviews and tests to ensure that quotes are a reasonable estimate of the investments' fair value.

For certain bonds not valued using independent services or broker quotes, a corporate pricing matrix or internally developed pricing model is most often used. The corporate pricing matrix is developed using private spreads for bonds with varying weighted average lives and credit quality ratings. The weighted average life and credit quality rating of a particular bond to be priced using the corporate pricing matrix are important inputs into the model and are used to determine a corresponding spread that is added to the appropriate U.S. Treasury yield to create an estimated market yield for that security. The estimated market yield and other relevant factors are then used to estimate the fair value of the particular bond.

The following table summarizes assets and liabilities reported at fair value as of September 30, 2012:

	Level 1	Level 2	Level 3	Total
<b>Assets at Fair Value</b>				
U.S. Government bonds	-	-	-	-
States, Territories and Possessions	-	-	-	-
Political subdivisions	-	-	-	-
Special revenues	-	11,154,348	-	11,154,348
Hybrid Securities	-	-	-	-
Credit tenant loans	-	-	-	-
Industrial & Misc.	-	24,756,125	1,200,000	25,956,125
<b>Total Bonds</b>	<b>\$ -</b>	<b>\$ 35,910,473</b>	<b>\$ 1,200,000</b>	<b>\$ 37,110,473</b>
Sec Lending	-	8,811,788	-	8,811,788
Preferred Stocks	-	-	-	-
Common Stocks	-	-	1,125,718	1,125,718
Loans held for sale	-	-	-	-
Separate Account Assets	-	-	-	-
Derivative Assets	-	-	-	-
<b>Total Assets at Fair Value</b>	<b>\$ -</b>	<b>\$ 44,722,261</b>	<b>\$ 2,325,718</b>	<b>\$ 47,047,979</b>
<b>Liabilities at Fair Value</b>				
Derivatives Liabilities	-	-	-	-
<b>Total Liabilities at Fair Value</b>	<b>\$ -</b>	<b>\$ -</b>	<b>\$ -</b>	<b>\$ -</b>

The following table summarizes changes in fair value measurements for which the Company used significant unobservable inputs (Level 3) to determine fair value for the nine months ended September 30, 2012:

	Net Investment Gain/Loss		Activity During the Period				Transfers Into Level 3	Transfers Out of Level 3	Balance as of 09/30/2012
	Balance as of 12/31/2011	In Earnings	Unrealized in Surplus	Purchases	Issuances	Sales	Settlements		
<b>Assets at Fair Value</b>									
U.S. Government bonds	-	-	-	-	-	-	-	-	-
States, Territories and Possessions	-	-	-	-	-	-	-	-	-
Political subdivisions	-	-	-	-	-	-	-	-	-
Special revenues	-	-	-	-	-	-	-	-	-
Hybrid Securities	-	-	-	-	-	-	-	-	-
Credit tenant loans	-	-	-	-	-	-	-	-	-
Industrial & Misc.	900,000	-	300,000	-	-	-	-	-	1,200,000
<b>Total Bonds</b>	<b>\$ 900,000</b>	<b>\$ -</b>	<b>\$ 300,000</b>	<b>\$ -</b>	<b>\$ -</b>	<b>\$ -</b>	<b>\$ -</b>	<b>\$ -</b>	<b>\$ 1,200,000</b>
Sec Lending	-	-	-	-	-	-	-	-	-
Preferred Stocks	-	-	-	-	-	-	-	-	-
Common Stocks	782,153	-	343,565	-	-	-	-	-	1,125,718
Loans held for sale	-	-	-	-	-	-	-	-	-
Separate Account Assets	-	-	-	-	-	-	-	-	-
Derivative Assets	-	-	-	-	-	-	-	-	-
<b>Total Assets at Fair Value</b>	<b>\$ 1,682,153</b>	<b>\$ -</b>	<b>\$ 643,565</b>	<b>\$ -</b>	<b>\$ -</b>	<b>\$ -</b>	<b>\$ -</b>	<b>\$ -</b>	<b>\$ 2,325,718</b>
<b>Liabilities</b>									
Derivatives Liabilities	-	-	-	-	-	-	-	-	-
<b>Total Liabilities</b>	<b>\$ -</b>	<b>\$ -</b>	<b>\$ -</b>	<b>\$ -</b>	<b>\$ -</b>	<b>\$ -</b>	<b>\$ -</b>	<b>\$ -</b>	<b>\$ -</b>

STATEMENT AS OF SEPTEMBER 30, 2012 OF THE NATIONWIDE INDEMNITY COMPANY

NOTES TO FINANCIAL STATEMENTS

The following table summarizes changes in fair value measurements for which the Company used significant unobservable inputs (Level 3) to determine fair value for the three months ended September 30, 2012:

	Balance as of 6/30/2012	Net Investment Gain/Loss		Activity During the Period				Transfers Into Level 3	Transfers Out of Level 3	Balance as of 09/30/2012
		In Earnings	Unrealized in Surplus	Purchases	Issuances	Sales	Settlements			
<b>Assets at Fair Value</b>										
U.S. Government bonds	-	-	-	-	-	-	-	-	-	-
States, Territories and Possessions	-	-	-	-	-	-	-	-	-	-
Political subdivisions	-	-	-	-	-	-	-	-	-	-
Special revenues	-	-	-	-	-	-	-	-	-	-
Hybrid Securities	-	-	-	-	-	-	-	-	-	-
Credit tenant loans	-	-	-	-	-	-	-	-	-	-
Industrial & Misc.	1,200,000	-	-	-	-	-	-	-	-	1,200,000
<b>Total Bonds</b>	<b>\$ 1,200,000</b>	<b>\$ -</b>	<b>\$ -</b>	<b>\$ -</b>	<b>\$ -</b>	<b>\$ -</b>	<b>\$ -</b>	<b>\$ -</b>	<b>\$ -</b>	<b>\$ 1,200,000</b>
Sec Lending	-	-	-	-	-	-	-	-	-	-
Preferred Stocks	-	-	-	-	-	-	-	-	-	-
Common Stocks	925,047	-	200,671	-	-	-	-	-	-	1,125,718
Loans held for sale	-	-	-	-	-	-	-	-	-	-
Separate Account Assets	-	-	-	-	-	-	-	-	-	-
Derivative Assets	-	-	-	-	-	-	-	-	-	-
<b>Total Assets at Fair Value</b>	<b>\$ 2,125,047</b>	<b>\$ -</b>	<b>\$ 200,671</b>	<b>\$ -</b>	<b>\$ -</b>	<b>\$ -</b>	<b>\$ -</b>	<b>\$ -</b>	<b>\$ -</b>	<b>\$ 2,325,718</b>
<b>Liabilities</b>										
Derivatives Liabilities	-	-	-	-	-	-	-	-	-	-
<b>Total Liabilities</b>	<b>\$ -</b>	<b>\$ -</b>	<b>\$ -</b>	<b>\$ -</b>	<b>\$ -</b>	<b>\$ -</b>	<b>\$ -</b>	<b>\$ -</b>	<b>\$ -</b>	<b>\$ -</b>

The following table summarizes aggregate carrying value and fair value, by level, for all financial instruments, excluding assets and liabilities reported at fair value, as of September 30, 2012:

	Carrying Value	Aggregate Fair Value	Level 1	Level 2	Level 3
<b>Assets</b>					
Bonds	\$ 3,128,624,509	\$ 3,598,553,226	\$ 1,215,396,033	\$ 2,361,912,386	\$ 21,244,808
Stocks	-	-	-	-	-
Mortgage loans	115,683,398	122,650,579	-	-	122,650,579
Short-term investments	4,506,843	4,506,843	-	4,506,843	-
Securities lending collateral assets <sup>1</sup>	1,829,927	1,829,927	-	1,829,927	-
<b>Total Assets</b>	<b>\$ 3,250,644,676</b>	<b>\$ 3,727,540,575</b>	<b>\$ 1,215,396,033</b>	<b>\$ 2,368,249,155</b>	<b>\$ 143,895,387</b>

1 - Includes non-admitted assets

**Note 21 - Other Items**

No change.

**Note 22 - Events Subsequent**

Subsequent events have been considered through November 5, 2012 for these statutory financial statements which are to be issued November 7, 2012. There were no events occurring subsequent to the end of the quarter that merited recognition or disclosure in these statements.

**Note 23 – Reinsurance**

No change.

**Note 24 - Retrospectively Rated Contracts and Contracts Subject to Redetermination**

No change.

**Note 25 - Changes in Incurred Losses and Loss Adjustment Expenses**

The Company strengthened their reserves \$83 million as of September 30, 2012.

**Note 26 - Intercompany Pooling Arrangements**

Not applicable.

**Note 27 - Structured Settlements**

No change.

**Note 28 - Health Care Receivables**

No change.

**Note 29 - Participating Policies**

No change.

**Note 30 - Premium Deficiency Reserves**

No change.

**Note 31 - High Deductibles**

No change.

**Note 32 - Discounting of Liabilities for Unpaid Losses or Unpaid Loss Adjustment Expenses**

No change.

NOTES TO FINANCIAL STATEMENTS

**Note 33 - Asbestos/Environmental Reserves**

No change.

**Note 34 - Subscriber Savings Accounts**

No change.

**Note 35 - Multiple Peril Crop Insurance**

No change.

**Note 36 – Financial Guaranty Insurance**

A. and B. Not applicable.

STATEMENT AS OF SEPTEMBER 30, 2012 OF THE NATIONWIDE INDEMNITY COMPANY

GENERAL INTERROGATORIES

PART 1 - COMMON INTERROGATORIES

GENERAL

- 1.1

Did the reporting entity experience any material transactions requiring the filing of Disclosure of Material Transactions with the State of Domicile, as required by the Model Act? .....

Yes [ ] No [ X ]
- 1.2

If yes, has the report been filed with the domiciliary state? .....

Yes [ ] No [ ]
- 2.1

Has any change been made during the year of this statement in the charter, by-laws, articles of incorporation, or deed of settlement of the reporting entity? .....

Yes [ ] No [ X ]
- 2.2

If yes, date of change: .....
3.

Have there been any substantial changes in the organizational chart since the prior quarter end? .....

Yes [ ] No [ X ]

If yes, complete the Schedule Y - Part 1 - organizational chart.
- 4.1

Has the reporting entity been a party to a merger or consolidation during the period covered by this statement? .....

Yes [ ] No [ X ]
- 4.2

If yes, provide the name of the entity, NAIC Company Code, and state of domicile (use two letter state abbreviation) for any entity that has ceased to exist as a result of the merger or consolidation.

1	2	3
Name of Entity	NAIC Company Code	State of Domicile

5.

If the reporting entity is subject to a management agreement, including third-party administrator(s), managing general agent(s), attorney-in-fact, or similar agreement, have there been any significant changes regarding the terms of the agreement or principals involved? .....

Yes [ ] No [ X ] N/A [ ]

If yes, attach an explanation.
- 6.1

State as of what date the latest financial examination of the reporting entity was made or is being made. ....

12/31/2011
- 6.2

State the as of date that the latest financial examination report became available from either the state of domicile or the reporting entity. This date should be the date of the examined balance sheet and not the date the report was completed or released. ....

12/31/2006
- 6.3

State as of what date the latest financial examination report became available to other states or the public from either the state of domicile or the reporting entity. This is the release date or completion date of the examination report and not the date of the examination (balance sheet date). ....

03/29/2008
- 6.4

By what department or departments?  
OH
- 6.5

Have all financial statement adjustments within the latest financial examination report been accounted for in a subsequent financial statement filed with Departments? .....

Yes [ ] No [ ] N/A [ X ]
- 6.6

Have all of the recommendations within the latest financial examination report been complied with? .....

Yes [ ] No [ ] N/A [ X ]
- 7.1

Has this reporting entity had any Certificates of Authority, licenses or registrations (including corporate registration, if applicable) suspended or revoked by any governmental entity during the reporting period? .....

Yes [ ] No [ X ]
- 7.2

If yes, give full information:
- 8.1

Is the company a subsidiary of a bank holding company regulated by the Federal Reserve Board? .....

Yes [ ] No [ X ]
- 8.2

If response to 8.1 is yes, please identify the name of the bank holding company.
- 8.3

Is the company affiliated with one or more banks, thrifts or securities firms? .....

Yes [ X ] No [ ]
- 8.4

If response to 8.3 is yes, please provide below the names and location (city and state of the main office) of any affiliates regulated by a federal regulatory services agency [i.e. the Federal Reserve Board (FRB), the Office of the Comptroller of the Currency (OCC), the Federal Deposit Insurance Corporation (FDIC) and the Securities Exchange Commission (SEC)] and identify the affiliate's primary federal regulator.

1	2	3	4	5	6
Affiliate Name	Location (City, State)	FRB	OCC	FDIC	SEC
Nationwide Bank .....	Columbus, OH .....	NO	YES	NO	NO
Nationwide Investment Services Corp. ....	Columbus, OH .....	NO	NO	NO	YES
Nationwide Securities, LLC .....	Dublin, OH .....	NO	NO	NO	YES
Nationwide Fund Distributors, LLC .....	King of Prussia, PA .....	NO	NO	NO	YES

STATEMENT AS OF SEPTEMBER 30, 2012 OF THE NATIONWIDE INDEMNITY COMPANY

GENERAL INTERROGATORIES

- 9.1

Are the senior officers (principal executive officer, principal financial officer, principal accounting officer or controller, or persons performing similar functions) of the reporting entity subject to a code of ethics, which includes the following standards? (a) Honest and ethical conduct, including the ethical handling of actual or apparent conflicts of interest between personal and professional relationships; (b) Full, fair, accurate, timely and understandable disclosure in the periodic reports required to be filed by the reporting entity; (c) Compliance with applicable governmental laws, rules and regulations; (d) The prompt internal reporting of violations to an appropriate person or persons identified in the code; and (e) Accountability for adherence to the code.

Yes ☒ No ☐
- 9.11

If the response to 9.1 is No, please explain:
- 9.2

Has the code of ethics for senior managers been amended?

Yes ☐ No ☒
- 9.21

If the response to 9.2 is Yes, provide information related to amendment(s).
- 9.3

Have any provisions of the code of ethics been waived for any of the specified officers?

Yes ☐ No ☒
- 9.31

If the response to 9.3 is Yes, provide the nature of any waiver(s).

FINANCIAL

- 10.1

Does the reporting entity report any amounts due from parent, subsidiaries or affiliates on Page 2 of this statement?

Yes ☒ No ☐
- 10.2

If yes, indicate any amounts receivable from parent included in the Page 2 amount:

\$

INVESTMENT

- 11.1

Were any of the stocks, bonds, or other assets of the reporting entity loaned, placed under option agreement, or otherwise made available for use by another person? (Exclude securities under securities lending agreements.)

Yes ☐ No ☒
- 11.2

If yes, give full and complete information relating thereto:
12.

Amount of real estate and mortgages held in other invested assets in Schedule BA:

\$60,517,130
13.

Amount of real estate and mortgages held in short-term investments:

\$
- 14.1

Does the reporting entity have any investments in parent, subsidiaries and affiliates?

Yes ☒ No ☐
- 14.2

If yes, please complete the following:
- |   | 1   | 2  |
|---|---|--|
|   | Prior Year-End Book/Adjusted Carrying Value | Current Quarter Book/Adjusted Carrying Value |
| 14.21 Bonds   | \$  | \$   |
| 14.22 Preferred Stock   | \$  | \$   |
| 14.23 Common Stock  | \$  | \$   |
| 14.24 Short-Term Investments  | \$  | \$   |
| 14.25 Mortgage Loans on Real Estate   | \$  | \$   |
| 14.26 All Other   | \$21,153,894                                | \$20,040,028                                 |
| 14.27 Total Investment in Parent, Subsidiaries and Affiliates (Subtotal Lines 14.21 to 14.26) | \$21,153,894                                | \$20,040,028                                 |
| 14.28 Total Investment in Parent included in Lines 14.21 to 14.26 above                       | \$  | \$   |
- 15.1

Has the reporting entity entered into any hedging transactions reported on Schedule DB?

Yes ☐ No ☒
- 15.2

If yes, has a comprehensive description of the hedging program been made available to the domiciliary state?

Yes ☐ No ☐
- If no, attach a description with this statement.

STATEMENT AS OF SEPTEMBER 30, 2012 OF THE NATIONWIDE INDEMNITY COMPANY

GENERAL INTERROGATORIES

16. Excluding items in Schedule E - Part 3 - Special Deposits, real estate, mortgage loans and investments held physically in the reporting entity's offices, vaults or safety deposit boxes, were all stocks, bonds and other securities, owned throughout the current year held pursuant to a custodial agreement with a qualified bank or trust company in accordance with Section 1, III - General Examination Considerations, F. Outsourcing of Critical Functions, Custodial or Safekeeping Agreements of the NAIC Financial Condition Examiners Handbook? ..... Yes [ X ] No [ ]
- 16.1 For all agreements that comply with the requirements of the NAIC Financial Condition Examiners Handbook, complete the following:

1 Name of Custodian(s)	2 Custodian Address
The Bank of New York Mellon .....	1 Wall Street, New York, NY 10286 .....

- 16.2 For all agreements that do not comply with the requirements of the NAIC Financial Condition Examiners Handbook, provide the name, location and a complete explanation:

1 Name(s)	2 Location(s)	3 Complete Explanation(s)

- 16.3 Have there been any changes, including name changes, in the custodian(s) identified in 16.1 during the current quarter? ..... Yes [ ] No [ X ]
- 16.4 If yes, give full information relating thereto:

1 Old Custodian	2 New Custodian	3 Date of Change	4 Reason

- 16.5 Identify all investment advisors, brokers/dealers or individuals acting on behalf of broker/dealers that have access to the investment accounts, handle securities and have authority to make investments on behalf of the reporting entity:

1 Central Registration Depository	2 Name(s)	3 Address
N/A .....	Members of the investment staff designated by the Chief Investment Officer as detailed in the Corporate Resolution .....	One West Nationwide Blvd., Columbus, OH 43215 .....

- 17.1 Have all the filing requirements of the Purposes and Procedures Manual of the NAIC Securities Valuation Office been followed? ..... Yes [ X ] No [ ]
- 17.2 If no, list exceptions:

GENERAL INTERROGATORIES

PART 2 - PROPERTY & CASUALTY INTERROGATORIES

1. If the reporting entity is a member of a pooling arrangement, did the agreement or the reporting entity's participation change? ..... Yes [ ] No [ ] N/A [ X ]  
If yes, attach an explanation.

2. Has the reporting entity reinsured any risk with any other reporting entity and agreed to release such entity from liability, in whole or in part, from any loss that may occur on the risk, or portion thereof, reinsured? ..... Yes [ ] No [ X ]  
If yes, attach an explanation.

3.1 Have any of the reporting entity's primary reinsurance contracts been canceled? ..... Yes [ ] No [ X ]

3.2 If yes, give full and complete information thereto.

4.1 Are any of the liabilities for unpaid losses and loss adjustment expenses other than certain workers' compensation tabular reserves (see Annual Statement Instructions pertaining to disclosure of discounting for definition of " tabular reserves" ) discounted at a rate of interest greater than zero? ..... Yes [ ] No [ X ]

4.2 If yes, complete the following schedule:

			TOTAL DISCOUNT				DISCOUNT TAKEN DURING PERIOD			
1	2	3	4	5	6	7	8	9	10	11
Line of Business	Maximum Interest	Discount Rate	Unpaid Losses	Unpaid LAE	IBNR	TOTAL	Unpaid Losses	Unpaid LAE	IBNR	TOTAL
TOTAL										

5. Operating Percentages:

5.1 A&H loss percent ..... 3,579.000 %

5.2 A&H cost containment percent ..... %

5.3 A&H expense percent excluding cost containment expenses ..... %

6.1 Do you act as a custodian for health savings accounts? ..... Yes [ ] No [ X ]

6.2 If yes, please provide the amount of custodial funds held as of the reporting date .....\$.....

6.3 Do you act as an administrator for health savings accounts? ..... Yes [ ] No [ X ]

6.4 If yes, please provide the balance of the funds administered as of the reporting date .....\$.....

## SCHEDULE F - CEDED REINSURANCE

1 NAIC Company Code	2 Federal ID Number	3 Name of Reinsurer	4 Domiciliary Jurisdiction	5 Is Insurer Authorized? (Yes or No)
		NONE		

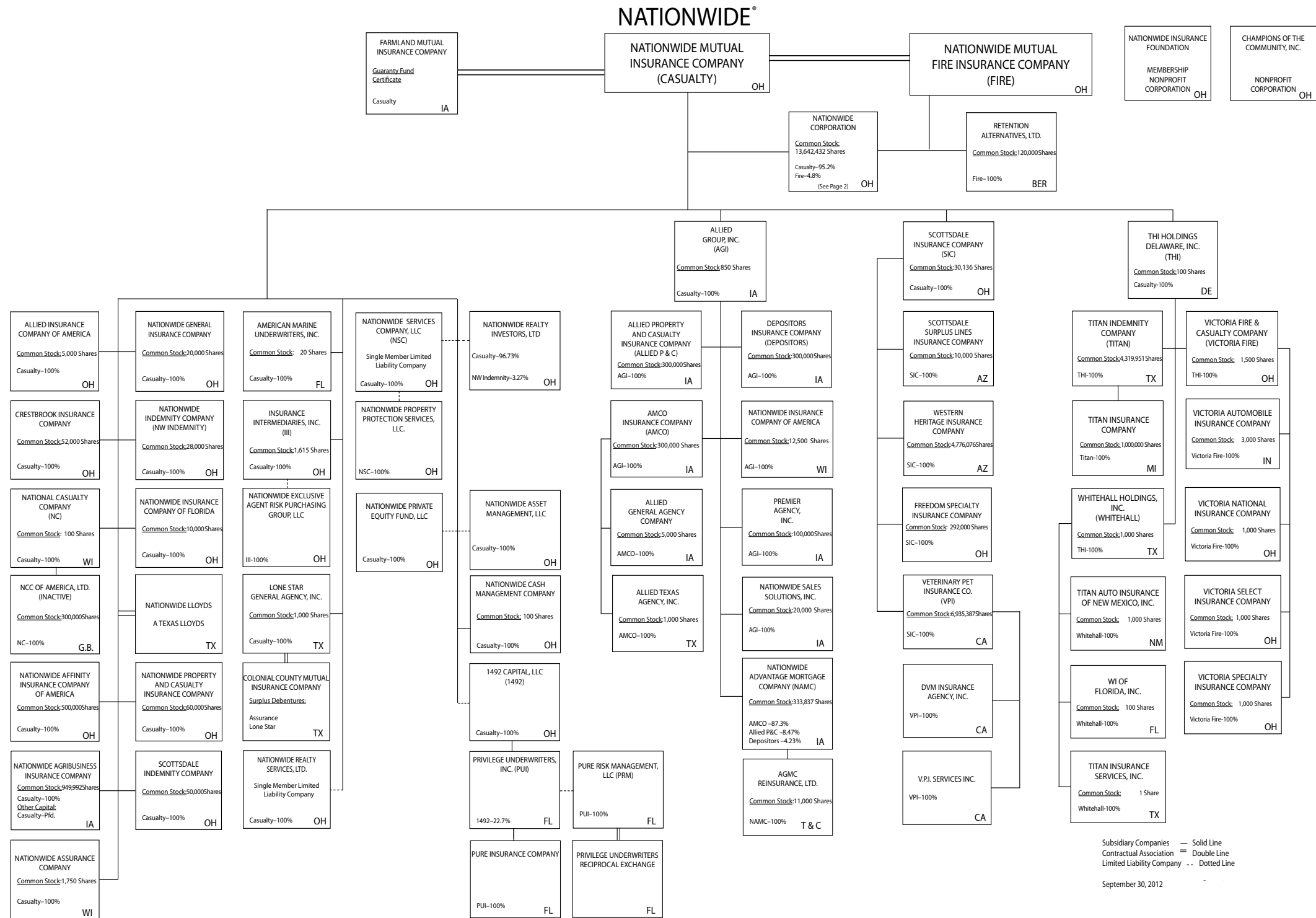


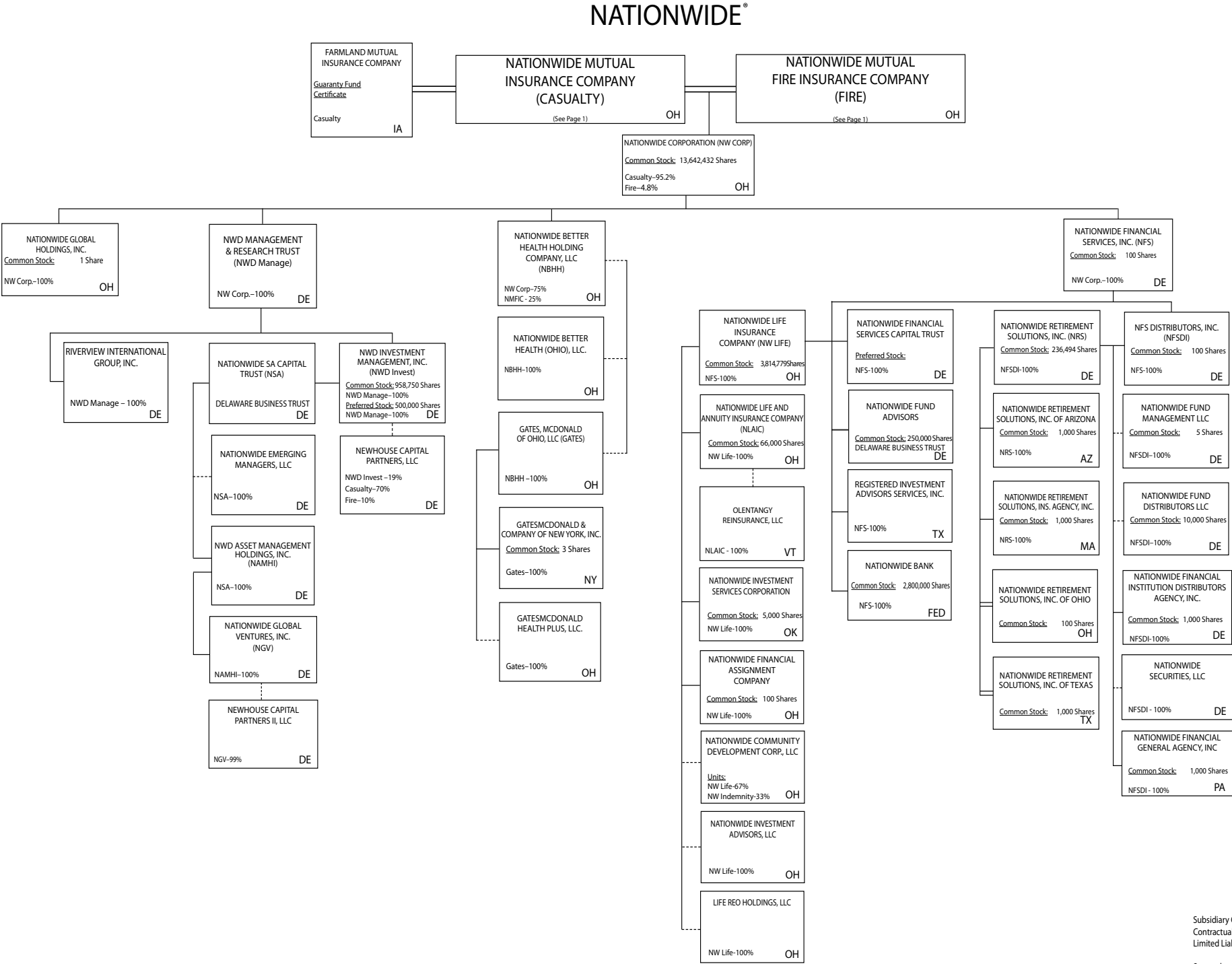
SCHEDULE T - EXHIBIT OF PREMIUMS WRITTEN

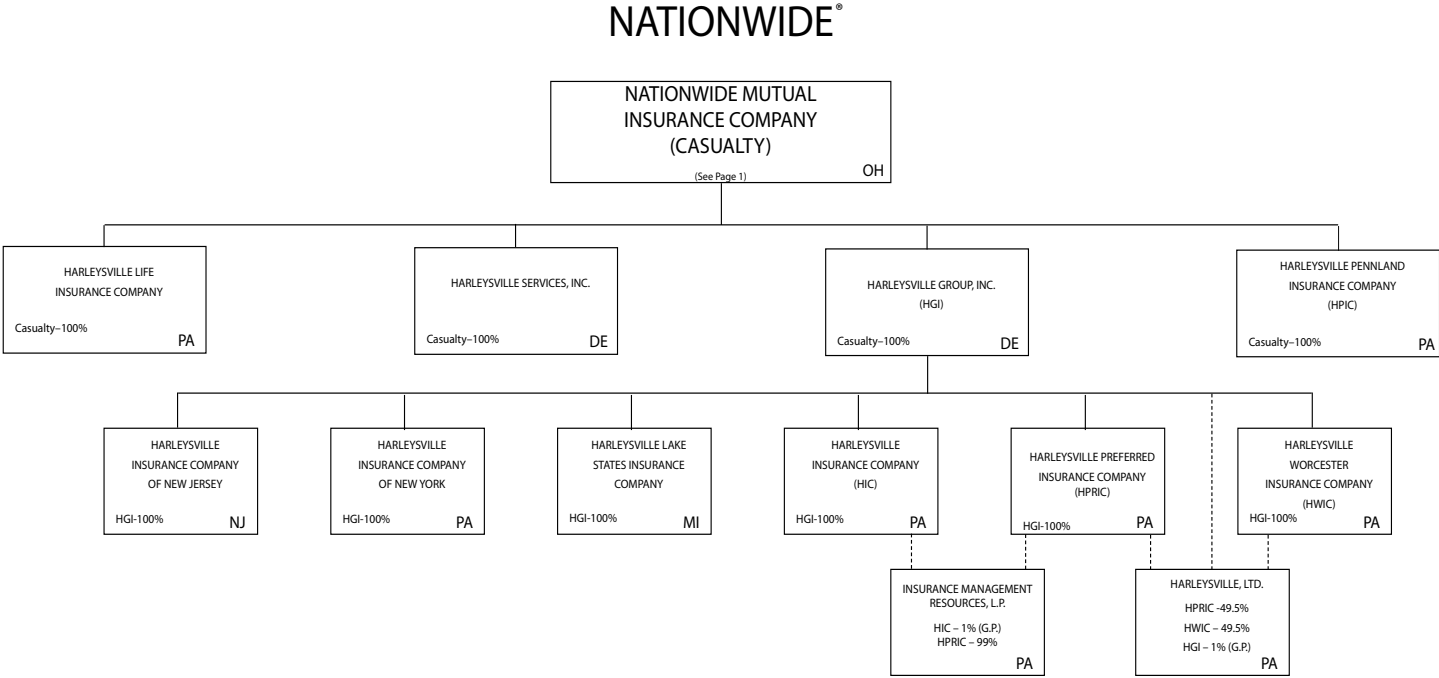
Current Year to Date - Allocated by States and Territories							
States, etc.	1 Active Status	Direct Premiums Written		Direct Losses Paid (Deducting Salvage)		Direct Losses Unpaid	
		2 Current Year To Date	3 Prior Year To Date	4 Current Year To Date	5 Prior Year To Date	6 Current Year To Date	7 Prior Year To Date
1. Alabama.....AL	N						
2. Alaska.....AK	N						
3. Arizona.....AZ	N						
4. Arkansas.....AR	N						
5. California.....CA	N						
6. Colorado.....CO	N						
7. Connecticut.....CT	N						
8. Delaware.....DE	N						
9. District of Columbia.....DC	N						
10. Florida.....FL	N						
11. Georgia.....GA	N						
12. Hawaii.....HI	N						
13. Idaho.....ID	N						
14. Illinois.....IL	L						
15. Indiana.....IN	N						
16. Iowa.....IA	Q						
17. Kansas.....KS	N						
18. Kentucky.....KY	N						
19. Louisiana.....LA	N						
20. Maine.....ME	N						
21. Maryland.....MD	N						
22. Massachusetts.....MA	N						
23. Michigan.....MI	N						
24. Minnesota.....MN	N						
25. Mississippi.....MS	N						
26. Missouri.....MO	N						
27. Montana.....MT	N						
28. Nebraska.....NE	N						
29. Nevada.....NV	N						
30. New Hampshire.....NH	N						
31. New Jersey.....NJ	N						
32. New Mexico.....NM	N						
33. New York.....NY	Q						
34. North Carolina.....NC	N						
35. North Dakota.....ND	N						
36. Ohio.....OH	L						
37. Oklahoma.....OK	N						
38. Oregon.....OR	N						
39. Pennsylvania.....PA	N						
40. Rhode Island.....RI	N						
41. South Carolina.....SC	N						
42. South Dakota.....SD	N						
43. Tennessee.....TN	N						
44. Texas.....TX	N						
45. Utah.....UT	N						
46. Vermont.....VT	N						
47. Virginia.....VA	N						
48. Washington.....WA	N						
49. West Virginia.....WV	N						
50. Wisconsin.....WI	Q						
51. Wyoming.....WY	N						
52. American Samoa.....AS	N						
53. Guam.....GU	N						
54. Puerto Rico.....PR	N						
55. U.S. Virgin Islands.....VI	N						
56. Northern Mariana Islands.....MP	N						
57. Canada.....CN	N						
58. Aggregate Other Alien OT	XXX						
59. Totals	(a) 2						
DETAILS OF WRITE-INS							
5801. ....	XXX						
5802. ....	XXX						
5803. ....	XXX						
5898. Summary of remaining write-ins for Line 58 from overflow page	XXX						
5899. Totals (Lines 5801 through 5803 plus 5898)(Line 58 above)	XXX						

(L) Licensed or Chartered - Licensed Insurance Carrier or Domiciled RRG; (R) Registered - Non-domiciled RRGs; (Q) Qualified - Qualified or Accredited Reinsurer; (E) Eligible - Reporting Entities eligible or approved to write Surplus Lines in the state; (N) None of the above - Not allowed to write business in the state.

(a) Insert the number of L responses except for Canada and Other Alien.







Subsidiary Companies — Solid Line  
Contractual Association = Double Line  
Limited Liability Company - - Dotted Line

NATIONWIDE INSURANCE COMPANIES

NAIC Group Code	Group Name	NAIC Company Code	State of Domicile	Federal ID Number	Name of Company
0140	Nationwide	10127	OH	27-0114983	Allied Insurance Company of America
0140	Nationwide	42579	IA	42-1201931	Allied Property and Casualty Insurance Company
0140	Nationwide	19100	IA	42-6054959	AMCO Insurance Company
0140	Nationwide	29262	TX	74-1061659	Colonial County Mutual Insurance Company
0140	Nationwide	18961	OH	68-0066866	Crestbrook Insurance Company
0140	Nationwide	42587	IA	42-1207150	Depositors Insurance Company
0140	Nationwide	13838	IA	42-0618271	Farmland Mutual Insurance Company
0140	Nationwide	22209	OH	75-6013587	Freedom Specialty Insurance Company
0140	Nationwide	23582	PA	41-0417250	Harleysville Insurance Company
0140	Nationwide	42900	NJ	23-2253669	Harleysville Insurance Company of New Jersey
0140	Nationwide	10674	PA	23-2864924	Harleysville Insurance Company of New York
0140	Nationwide	14516	MI	38-3198542	Harleysville Lake States Insurance Company
0140	Nationwide	64327	PA	23-1580983	Harleysville Life Insurance Company
0140	Nationwide	40983	PA	23-2612951	Harleysville Pennland Insurance Company
0140	Nationwide	35696	PA	23-2384978	Harleysville Preferred Insurance Company
0140	Nationwide	26182	PA	04-1989660	Harleysville Worcester Insurance Company
0140	Nationwide	11991	WI	38-0865250	National Casualty Company
0140	Nationwide	26093	OH	48-0470690	Nationwide Affinity Insurance Company of America
0140	Nationwide	28223	IA	42-1015537	Nationwide Agribusiness Insurance Company
0140	Nationwide	10723	WI	95-0639970	Nationwide Assurance Company
0140	Nationwide	23760	OH	31-4425763	Nationwide General Insurance Company
0140	Nationwide	10070	OH	31-1399201	Nationwide Indemnity Company
0140	Nationwide	25453	WI	95-2130882	Nationwide Insurance Company of America
0140	Nationwide	10948	OH	31-1613686	Nationwide Insurance Company of Florida
0140	Nationwide	92657	OH	31-1000740	Nationwide Life and Annuity Insurance Company
0140	Nationwide	66869	OH	31-4156830	Nationwide Life Insurance Company
0140	Nationwide	42110	TX	75-1780981	Nationwide Lloyds
0140	Nationwide	23779	OH	31-4177110	Nationwide Mutual Fire Insurance Company
0140	Nationwide	23787	OH	31-4177100	Nationwide Mutual Insurance Company
0140	Nationwide	37877	OH	31-0970750	Nationwide Property & Casualty Insurance Company
0140	Nationwide	13999	VT	27-1712056	Olentangy Reinsurance, LLC
0140	Nationwide	15580	OH	31-1117969	Scottsdale Indemnity Company
0140	Nationwide	41297	OH	31-1024978	Scottsdale Insurance Company
0140	Nationwide	10672	AZ	86-0835870	Scottsdale Surplus Lines Insurance Company
0140	Nationwide	13242	TX	74-2286759	Titan Indemnity Company
0140	Nationwide	36269	MI	86-0619597	Titan Insurance Company
0140	Nationwide	42285	CA	95-3750113	Veterinary Pet Insurance Company
0140	Nationwide	10644	IN	34-1785903	Victoria Automobile Insurance Company
0140	Nationwide	42889	OH	34-1394913	Victoria Fire & Casualty Company
0140	Nationwide	10778	OH	34-1842604	Victoria National Insurance Company
0140	Nationwide	10105	OH	34-1777972	Victoria Select Insurance Company
0140	Nationwide	10777	OH	34-1842602	Victoria Specialty Insurance Company
0140	Nationwide	37150	AZ	86-0561941	Western Heritage Insurance Company
4664	PURE	12873	FL	20-8287105	Privilege Underwriters Reciprocal Exchange
4664	PURE	13204	FL	26-3109178	PURE Insurance Company

STATEMENT AS OF SEPTEMBER 30, 2012 OF THE NATIONWIDE INDEMNITY COMPANY

SCHEDULE Y

PART 1A - DETAIL OF INSURANCE HOLDING COMPANY SYSTEM

1	2	3	4	5	6	7	8	9	10	11	12	13	14	15
Group Code	Group Name	NAIC Company Code	Federal ID Number	Federal RSSD	CIK	Name of Securities Exchange if Publicly Traded (U.S. or International)	Names of Parent, Subsidiaries Or Affiliates	Domi-ciliary Location	Relationship to Reporting Entity	Directly Controlled by (Name of Entity/Person)	Type of Control (Ownership, Board, Management, Attorney-in-Fact, Influence, Other)	If Control is Owner-ship Provide Percen-tage	Ultimate Controlling Entity(ies)/Person(s)	*
...0140	Nationwide		31-1486309				10 W. Nationwide, LLC	OH	NIA	Nationwide Realty Investors, Ltd.	Ownership	100.000	Nationwide Mutual Insurance Company	
...0140	Nationwide		31-1486309				101 N. Twentieth St, LLC	OH	NIA	Nationwide Realty Investors, Ltd.	Ownership	100.000	Nationwide Mutual Insurance Company	
...0140	Nationwide		31-1733036				120 Acre Partners, LLC	DE	NIA	Nationwide Realty Investors, Ltd.	Ownership	95.000	Nationwide Mutual Insurance Company	
...0140	Nationwide		26-2451988				1492 Capital, LLC	OH	NIA	Nationwide Mutual Insurance Company	Ownership	100.000	Nationwide Mutual Insurance Company	
...0140	Nationwide		20-1347603				180 E. Broad Partners, LLC	OH	NIA	Nationwide Realty Investors, Ltd.	Ownership	33.330	Nationwide Mutual Insurance Company	1
...0140	Nationwide						3Stone Inflection Fund, LLC	DE	OTH	Other non-Nationwide	n/a		Other non-Nationwide	
...0140	Nationwide		31-1580283				400 West Nationwide Boulevard, LLC	OH	NIA	NWD Investments, LLC	Ownership	100.000	Nationwide Mutual Insurance Company	
...0140	Nationwide		31-1580283				425 West Nationwide Boulevard, LLC	OH	NIA	NWD Investments, LLC	Ownership	100.000	Nationwide Mutual Insurance Company	
...0140	Nationwide		31-1486309				44 Chestnut, LLC	OH	NIA	Nationwide Realty Investors, Ltd.	Ownership	100.000	Nationwide Mutual Insurance Company	
...0140	Nationwide		20-4939866				775 Yard Street Restaurant, LLC	OH	NIA	NRI Equity Land Investments, LLC	Ownership	100.000	Nationwide Mutual Insurance Company	
...0140	Nationwide		20-4939866				775 Yard Street, LLC	OH	NIA	NRI Equity Land Investments, LLC	Ownership	100.000	Nationwide Mutual Insurance Company	
...0140	Nationwide		20-4939866				800 Bobcat Avenue, LLC	OH	NIA	NRI Equity Land Investments, LLC	Ownership	100.000	Nationwide Mutual Insurance Company	
...0140	Nationwide		20-4939866				805 Bobcat Avenue, LLC	OH	NIA	NRI Equity Land Investments, LLC	Ownership	100.000	Nationwide Mutual Insurance Company	
...0140	Nationwide		20-4939866				850 Goodale Blvd., LLC	OH	NIA	NRI Equity Land Investments, LLC	Ownership	100.000	Nationwide Mutual Insurance Company	
...0140	Nationwide						925 Burrell Avenue Acquisitions, LLC							
...0140	Nationwide		20-4939866					OH	NIA	NRI Equity Land Investments, LLC	Ownership	100.000	Nationwide Mutual Insurance Company	
...0140	Nationwide		31-1680808				AD Investments, LLC	OH	NIA	Nationwide Realty Investors, Ltd.	Ownership	60.000	Nationwide Mutual Insurance Company	
...0140	Nationwide		31-1580283				ADTV, LLC	OH	NIA	NWD Investments, LLC	Ownership	100.000	Nationwide Mutual Insurance Company	
...0140	Nationwide						Nationwide Advantage Mortgage Company							
...0140	Nationwide		52-2227314				AGMC Reinsurance, Ltd.	Turk/Caic	JA		Ownership	100.000	Nationwide Mutual Insurance Company	
...0140	Nationwide		42-1011300				ALLIED General Agency Company	JA	JA	AMCO Insurance Company	Ownership	100.000	Nationwide Mutual Insurance Company	
...0140	Nationwide		42-0958655				ALLIED Group, Inc.	JA	NIA	Nationwide Mutual Insurance Company	Ownership	100.000	Nationwide Mutual Insurance Company	
...0140	Nationwide						ALLIED Insurance Company of America (fka Atlantic Floridian Insurance Company)	OH	JA	Nationwide Mutual Insurance Company	Ownership	100.000	Nationwide Mutual Insurance Company	
...0140	Nationwide	10127	27-0114983				ALLIED Property and Casualty Insurance Company	JA	JA	ALLIED Group, Inc.	Ownership	100.000	Nationwide Mutual Insurance Company	
...0140	Nationwide	45279	42-1201931				ALLIED Texas Agency, Inc.	TX	JA	AMCO Insurance Company	Ownership	100.000	Nationwide Mutual Insurance Company	
...0140	Nationwide	19100	42-6054959				AMCO Insurance Company	JA	JA	ALLIED Group, Inc.	Ownership	100.000	Nationwide Mutual Insurance Company	
...0140	Nationwide		59-1031596				American Marine Underwriters, Inc.	FL	JA	Nationwide Mutual Insurance Company	Ownership	100.000	Nationwide Mutual Insurance Company	
...0140	Nationwide		31-1486309				Anderson Meadows, LLC	OH	NIA	Nationwide Realty Investors, Ltd.	Ownership	100.000	Nationwide Mutual Insurance Company	
...0140	Nationwide		31-1580283				Arena District CA I, LLC	OH	NIA	NWD Investments, LLC	Ownership	100.000	Nationwide Mutual Insurance Company	
...0140	Nationwide		90-0280710				Arena District Owners Association	OH	OTH	Other non-Nationwide	n/a		Other non-Nationwide	
...0140	Nationwide		31-1580283				Arena Theatres, LLC	OH	NIA	NWD Investments, LLC	Ownership	100.000	Nationwide Mutual Insurance Company	
...0140	Nationwide						Artesa at Quarry Village, LLC	TX	OTH	Other non-Nationwide	n/a		Other non-Nationwide	
...0140	Nationwide						BCCS Investment Fund LLC	DE	OTH	Nationwide Mutual Insurance Company	Ownership	100.000	Nationwide Mutual Insurance Company	
...0140	Nationwide						Boulevard Inn Limited Liability Company	OH	NIA	Nationwide Realty Investors, Ltd.	Ownership	94.800	Nationwide Mutual Insurance Company	
...0140	Nationwide		31-1184438				Broad Street Retail, LLC	DE	NIA	Nationwide Realty Investors, Ltd.	Ownership	60.000	Nationwide Mutual Insurance Company	
...0140	Nationwide		31-1555487				Brooke School Investment Fund, LLC	DE	OTH	Nationwide Mutual Insurance Company	Ownership	100.000	Nationwide Mutual Insurance Company	
...0140	Nationwide						CHP New Markets Investment Fund, LLC				Limited partner /no control	50.000	other non-Nationwide	
...0140	Nationwide							OH	OTH	Nationwide Mutual Insurance Company				
...0140	Nationwide		20-1618232				CNRI-Cannonsport Condominium, LLC	OH	NIA	CNRI-Cannonsport, LLC	Ownership	100.000	Nationwide Mutual Insurance Company	
...0140	Nationwide		20-1618232				CNRI-Cannonsport, LLC	OH	NIA	Nationwide Realty Investors, Ltd.	Ownership	100.000	Nationwide Mutual Insurance Company	
...0140	Nationwide						Co-Investment Fund, L.P.	DE	OTH	Other non-Nationwide	n/a		Other non-Nationwide	
...0140	Nationwide						COLHOC Limited Partnership	OH	NIA	Nationwide Realty Investors, Ltd.	Ownership	30.760	Other non-Nationwide	
...0140	Nationwide	29262	74-1061659				Colonial County Mutual Insurance Company	TX	OTH	Other non-Nationwide	contract		Other non-Nationwide	
...0140	Nationwide		04-3750770				Continental/North Shore I, L.P.	OH	NIA	Continental/NRI North Shore Investments, LLC	Ownership	100.000	Nationwide Mutual Insurance Company	1

STATEMENT AS OF SEPTEMBER 30, 2012 OF THE NATIONWIDE INDEMNITY COMPANY

SCHEDULE Y

PART 1A - DETAIL OF INSURANCE HOLDING COMPANY SYSTEM

1	2	3	4	5	6	7	8	9	10	11	12	13	14	15
Group Code	Group Name	NAIC Company Code	Federal ID Number	Federal RSSD	CIK	Name of Securities Exchange if Publicly Traded (U.S. or International)	Names of Parent, Subsidiaries Or Affiliates	Domi-ciliary Location	Relationship to Reporting Entity	Directly Controlled by (Name of Entity/Person)	Type of Control (Ownership, Board, Management, Attorney-in-Fact, Influence, Other)	If Control is Owner-ship Provide Percen-tage	Ultimate Controlling Entity(ies)/Person(s)	*
...0140 ...	Nationwide ...		20-0366090 ...				Continental/North Shore II, L.P. ....	OH.....	NIA.....	Continental/NRI North Shore Investments, LLC .....	Ownership.....	100.000 ...	Nationwide Mutual Insurance Company .	...1 ...
...0140 ...	Nationwide ...		20-0142724 ...				Continental/NRI North Shore Investments, LLC .....	OH.....	NIA.....	Nationwide Realty Investors, Ltd. ....	Ownership.....	50.500 ...	Nationwide Mutual Insurance Company .	...1 ...
...0140 ...	Nationwide ...						Cotton Mill Partners, LLC .....	VA.....	OTH.....	Nationwide Mutual Insurance Company .	Limited partner /no control .....	2.000 ...	other non-Nationwide .....	
...0140 ...	Nationwide ...	18961	68-0066866 ...				Crestbrook Insurance Company .....	OH.....	JA.....	Nationwide Mutual Insurance Company .	Ownership.....	100.000 ...	Nationwide Mutual Insurance Company .	
...0140 ...	Nationwide ...		31-1486309 ...				Crewville, Ltd. ....	OH.....	NIA.....	Nationwide Realty Investors, Ltd. ....	Ownership.....	100.000 ...	Nationwide Mutual Insurance Company .	
...0140 ...	Nationwide ...	42587	42-1207150 ...				Depositors Insurance Company .....	JA.....	JA.....	ALLIED Group, Inc. ....	Ownership.....	100.000 ...	Nationwide Mutual Insurance Company .	
...0140 ...	Nationwide ...		33-0096671 ...				DVM Insurance Agency, Inc. ....	CA.....	NIA.....	Veterinary Pet Insurance Company .....	Ownership.....	100.000 ...	Nationwide Mutual Insurance Company .	
...0140 ...	Nationwide ...		20-1945276 ...				East of Madison, LLC .....	DE.....	NIA.....	120 Acre Partners, Ltd. ....	Ownership.....	24.910 ...	Nationwide Mutual Insurance Company .	...1 ...
...0140 ...	Nationwide ...						ELH Investment LLC .....	DE.....	OTH.....	Nationwide Mutual Insurance Company .	Other .....		Nationwide Mutual Insurance Company .	...2 ...
...0140 ...	Nationwide ...	13838	42-0618271 ...				Farmland Mutual Insurance Company .....	JA.....	OTH.....	Other non-Nationwide .....	debt .....		Other non-Nationwide .....	
...0140 ...	Nationwide ...	22209	75-6013587 ...				Freedom Specialty Insurance Company (fka Atlantic Insurance Company) .....	OH.....	JA.....	Scottsdale Insurance Company .....	Ownership.....	100.000 ...	Nationwide Mutual Insurance Company .	
...0140 ...	Nationwide ...		31-4187660 ...				Nationwide Better Health Holding Company, LLC .....	OH.....	NIA.....	Nationwide Better Health Holding Company, LLC .....	Ownership.....	100.000 ...	Nationwide Mutual Insurance Company .	
...0140 ...	Nationwide ...		13-4933584 ...				Gates McDonald of Ohio, LLC .....			Gates McDonald of Ohio, LLC .....	Ownership.....	100.000 ...	Nationwide Mutual Insurance Company .	
...0140 ...	Nationwide ...		76-0810957 ...				Gates, McDonald & Company of New York, Inc. ....	NY.....	NIA.....	Gates McDonald of Ohio, LLC .....	Ownership.....	100.000 ...	Nationwide Mutual Insurance Company .	
...0140 ...	Nationwide ...		76-0810957 ...				GatesMcDonald DTAO, LLC .....	OH.....	NIA.....	Gates McDonald of Ohio, LLC .....	Ownership.....	100.000 ...	Nationwide Mutual Insurance Company .	
...0140 ...	Nationwide ...		76-0810958 ...				GatesMcDonald DTC, LLC .....	OH.....	NIA.....	Gates McDonald of Ohio, LLC .....	Ownership.....	100.000 ...	Nationwide Mutual Insurance Company .	
...0140 ...	Nationwide ...		31-1478706 ...				GatesMcDonald Health Plus, LLC .....	OH.....	NIA.....	Gates McDonald of Ohio, LLC .....	Ownership.....	100.000 ...	Nationwide Mutual Insurance Company .	
...0140 ...	Nationwide ...		20-4939866 ...				Grandview Yard Hotel Holdings, LLC ...	OH.....	NIA.....	NRI Equity Land Investments, LLC .....	Ownership.....	100.000 ...	Nationwide Mutual Insurance Company .	
...0140 ...	Nationwide ...		20-4939866 ...				Grandview Yard Hotel, LLC .....	OH.....	NIA.....	NRI Equity Land Investments, LLC .....	Ownership.....	100.000 ...	Nationwide Mutual Insurance Company .	
...0140 ...	Nationwide ...		51-0241172 ...				Grandview Yard Hotel, LLC .....	OH.....	NIA.....	Grandview Yard Hotel Holdings, LLC ...	Ownership.....	100.000 ...	Nationwide Mutual Insurance Company .	
...0140 ...	Nationwide ...						Harleysville Group, Inc. ....	DE.....	NIA.....	Nationwide Mutual Insurance Company .	Ownership.....	100.000 ...	Nationwide Mutual Insurance Company .	
...0140 ...	Nationwide ...	23582	41-0417250 ...				Harleysville Insurance Company .....	PA.....	JA.....	Nationwide Mutual Insurance Company .	Ownership.....	100.000 ...	Nationwide Mutual Insurance Company .	
...0140 ...	Nationwide ...	33235	16-1075588 ...				Harleysville Insurance Company of New Jersey .....	NJ.....	JA.....	Nationwide Mutual Insurance Company .	Ownership.....	100.000 ...	Nationwide Mutual Insurance Company .	
...0140 ...	Nationwide ...	10674	23-2864924 ...				Harleysville Insurance Company of New York .....	PA.....	JA.....	Harleysville Group, Inc. ....	Ownership.....	100.000 ...	Nationwide Mutual Insurance Company .	
...0140 ...	Nationwide ...	14516	38-3198542 ...				Harleysville Lake States Insurance Company .....	MI.....	JA.....	Harleysville Group, Inc. ....	Ownership.....	100.000 ...	Nationwide Mutual Insurance Company .	
...0140 ...	Nationwide ...	64327	23-1580983 ...				Harleysville Life Insurance Company ..	PA.....	JA.....	Nationwide Mutual Insurance Company .	Ownership.....	100.000 ...	Nationwide Mutual Insurance Company .	
...0140 ...	Nationwide ...	40983	23-2612951 ...				Harleysville Pennland Insurance Company .....	PA.....	JA.....	Nationwide Mutual Insurance Company .	Ownership.....	100.000 ...	Nationwide Mutual Insurance Company .	
...0140 ...	Nationwide ...	35896	23-2384978 ...				Harleysville Preferred Insurance Company .....	PA.....	JA.....	Nationwide Mutual Insurance Company .	Ownership.....	100.000 ...	Nationwide Mutual Insurance Company .	
...0140 ...	Nationwide ...		51-0259283 ...				Harleysville Group, Inc. ....	PA.....	JA.....	Harleysville Group, Inc. ....	Ownership.....	100.000 ...	Nationwide Mutual Insurance Company .	
...0140 ...	Nationwide ...						Harleysville Services, Inc. ....	DE.....	NIA.....	Nationwide Mutual Insurance Company .	Ownership.....	100.000 ...	Nationwide Mutual Insurance Company .	
...0140 ...	Nationwide ...	26182	04-1989660 ...				Harleysville Worcester Insurance Company .....	PA.....	JA.....	Nationwide Mutual Insurance Company .	Ownership.....	100.000 ...	Nationwide Mutual Insurance Company .	
...0140 ...	Nationwide ...		23-2403000 ...				Harleysville Preferred Insurance Company .....	PA.....	JA.....	Harleysville Group, Inc. ....	Ownership.....	100.000 ...	Nationwide Mutual Insurance Company .	
...0140 ...	Nationwide ...		23-2403000 ...				Harleysville, Ltd. ....	PA.....	NIA.....	Harleysville Preferred Insurance Company .....	Ownership.....	49.500 ...	Nationwide Mutual Insurance Company .	
...0140 ...	Nationwide ...		23-2403000 ...				Harleysville, Ltd. ....	PA.....	NIA.....	Harleysville Worcester Insurance Company .....	Ownership.....	49.500 ...	Nationwide Mutual Insurance Company .	
...0140 ...	Nationwide ...		23-2403000 ...				Harleysville, Ltd. ....	PA.....	NIA.....	Harleysville Group, Inc. ....	Ownership.....	1.000 ...	Nationwide Mutual Insurance Company .	
...0140 ...	Nationwide ...		32-0051216 ...				Hideaway Properties Corp. ....	CA.....	OTH.....	Nationwide Realty Investors, Ltd. ....	Ownership.....	50.000 ...	Nationwide Mutual Insurance Company .	...1 ...
...0140 ...	Nationwide ...		31-0871532 ...				Insurance Intermediaries, Inc. ....	OH.....	JA.....	Nationwide Mutual Insurance Company .	Ownership.....	100.000 ...	Nationwide Mutual Insurance Company .	
...0140 ...	Nationwide ...		23-2882311 ...				Insurance Management Services, L.P. ...	PA.....	NIA.....	Harleysville Insurance Company .....	Ownership.....	1.000 ...	Nationwide Mutual Insurance Company .	
...0140 ...	Nationwide ...		23-2882311 ...				Insurance Management Services, L.P. ...	PA.....	NIA.....	Harleysville Preferred Insurance Company .....	Ownership.....	99.000 ...	Nationwide Mutual Insurance Company .	
...0140 ...	Nationwide ...		31-1486309 ...				Jerome Village Company, LLC .....	OH.....	NIA.....	Nationwide Realty Investors, Ltd. ....	Ownership.....	100.000 ...	Nationwide Mutual Insurance Company .	

STATEMENT AS OF SEPTEMBER 30, 2012 OF THE NATIONWIDE INDEMNITY COMPANY

SCHEDULE Y  
PART 1A - DETAIL OF INSURANCE HOLDING COMPANY SYSTEM

1	2	3	4	5	6	7	8	9	10	11	12	13	14	15
Group Code	Group Name	NAIC Company Code	Federal ID Number	Federal RSSD	CIK	Name of Securities Exchange if Publicly Traded (U.S. or International)	Names of Parent, Subsidiaries Or Affiliates	Domi-ciliary Location	Relationship to Reporting Entity	Directly Controlled by (Name of Entity/Person)	Type of Control (Ownership, Board, Management, Attorney-in-Fact, Influence, Other)	If Control is Owner-ship Provide Percen-tage	Ultimate Controlling Entity(ies)/Person(s)	*
...0140	Nationwide		31-1486309				Jerome Village Master Property Owners Association	OH	NIA	Jerome Village Company, LLC	Ownership	100.000	Nationwide Mutual Insurance Company	
...0140	Nationwide		31-1486309				Jerome Village Residential Property Owners Association, Inc.	OH	NIA	Jerome Village Company, LLC	Ownership	100.000	Nationwide Mutual Insurance Company	
...0140	Nationwide		56-3789189				Leaguers Investment Fund LLC	DE	OTH	Nationwide Mutual Insurance Company	Other	100.000	Nationwide Mutual Insurance Company	2
...0140	Nationwide		56-3789187				Life REO Holdings, LLC	OH	NIA	Nationwide Life Insurance Company	Ownership	100.000	Nationwide Mutual Insurance Company	
...0140	Nationwide		74-1395229				Life REO Holdings, LLC	OH	NIA	Nationwide Life Insurance Company	Ownership	100.000	Nationwide Mutual Insurance Company	
...0140	Nationwide		74-1395229				Lone Star General Agency, Inc.	TX	JA	Nationwide Mutual Insurance Company	Ownership	100.000	Nationwide Mutual Insurance Company	
...0140	Nationwide		38-0865250				Match School Investment Fund, LLC	DE	OTH	Nationwide Mutual Insurance Company	Ownership	100.000	Nationwide Mutual Insurance Company	
...0140	Nationwide	11991	38-0865250				National Casualty Company	WI	JA	Nationwide Mutual Insurance Company	Ownership	100.000	Nationwide Mutual Insurance Company	
...0140							National Casualty Company of America, Ltd.	GB	JA	National Casualty Company	Ownership	100.000	Nationwide Mutual Insurance Company	
...0140	Nationwide		42-1154244				Nationwide Advantage Mortgage Company	JA	NIA	AMCO Insurance Company	Ownership	87.300	Nationwide Mutual Insurance Company	
...0140	Nationwide		42-1154244				Nationwide Advantage Mortgage Company	JA	NIA	ALLIED Property & Casualty Insurance Company	Ownership	8.470	Nationwide Mutual Insurance Company	
...0140	Nationwide		42-1154244				Nationwide Advantage Mortgage Company	JA	NIA	Depositors Insurance Company	Ownership	4.230	Nationwide Mutual Insurance Company	
...0140	Nationwide	26093	48-0470690				Nationwide Affinity Insurance Company of America	OH	JA	Nationwide Mutual Insurance Company	Ownership	100.000	Nationwide Mutual Insurance Company	
...0140	Nationwide	28223	42-1015537				Nationwide Agribusiness Insurance Company	JA	JA	Nationwide Mutual Insurance Company	Ownership	100.000	Nationwide Mutual Insurance Company	
...0140	Nationwide		20-5976272				Nationwide Alternative Investments, LLC	OH	NIA	Nationwide Mutual Insurance Company	Ownership	100.000	Nationwide Mutual Insurance Company	
...0140	Nationwide		31-1578869				Nationwide Arena, LLC	OH	NIA	NRI Arena, LLC	Ownership	90.000	Nationwide Mutual Insurance Company	
...0140	Nationwide		31-1578869				Nationwide Arena, LLC	OH	NIA	Nationwide Realty Investors, LLC	Ownership	90.000	Nationwide Mutual Insurance Company	
...0140	Nationwide		20-8670712				Nationwide Asset Management, LLC	OH	NIA	Nationwide Mutual Insurance Company	Ownership	100.000	Nationwide Mutual Insurance Company	
...0140	Nationwide		20-8670712				Nationwide Asset Management, LLC	OH	DS	Nationwide Mutual Insurance Company	Ownership	100.000	Nationwide Mutual Insurance Company	
...0140	Nationwide	10723	95-0639970				Nationwide Assurance Company	WI	JA	Nationwide Mutual Insurance Company	Ownership	100.000	Nationwide Mutual Insurance Company	
...0140	Nationwide		31-1592130				Nationwide Bank	FED	OTH	Nationwide Financial Services, Inc.	Ownership	100.000	Nationwide Mutual Insurance Company	
...0140	Nationwide		52-1776258				Nationwide Better Health (Ohio), LLC	OH	NIA	Nationwide Better Health Holding Company, LLC	Ownership	100.000	Nationwide Mutual Insurance Company	
...0140	Nationwide		11-3766032				Nationwide Better Health Holding Company, LLC	OH	NIA	Nationwide Corporation	Ownership	75.000	Nationwide Mutual Insurance Company	
...0140	Nationwide		11-3766032				Nationwide Better Health Holding Company, LLC	OH	NIA	Nationwide Mutual Fire Insurance Company	Ownership	25.000	Nationwide Mutual Insurance Company	
...0140	Nationwide		31-1036287				Nationwide Cash Management Company	OH	NIA	Nationwide Mutual Insurance Company	Ownership	100.000	Nationwide Mutual Insurance Company	
...0140	Nationwide		31-1752320				Nationwide Community Development Corporation, LLC	OH	NIA	Nationwide Indemnity Company	Ownership	33.000	Nationwide Mutual Insurance Company	
...0140	Nationwide		31-4416546				Nationwide Corporation	OH	NIA	Nationwide Mutual Insurance Company	Ownership	95.200	Nationwide Mutual Insurance Company	
...0140	Nationwide		31-4416546				Nationwide Corporation	OH	NIA	Nationwide Mutual Fire Insurance Company	Ownership	4.800	Nationwide Mutual Insurance Company	
...0140	Nationwide		04-3679407				Nationwide Emerging Managers, LLC	DE	NIA	Nationwide SA Capital Trust	Ownership	100.000	Nationwide Mutual Insurance Company	
...0140	Nationwide		05-0630007				Nationwide Exclusive Agent Risk Purchasing Group, LLC	OH	NIA	Insurance Intermediaries, Inc.	Ownership	100.000	Nationwide Mutual Insurance Company	
...0140	Nationwide		31-1667326				Nationwide Financial Assignment Company	OH	NIA	Nationwide Life Insurance Company	Ownership	100.000	Nationwide Mutual Insurance Company	
...0140	Nationwide		23-2412039				Nationwide Financial General Agency, Inc.	PA	NIA	NFS Distributors, Inc.	Ownership	100.000	Nationwide Mutual Insurance Company	
...0140	Nationwide		31-1316276				Nationwide Financial Institution Distributors Agency, Inc.	DE	NIA	NFS Distributors, Inc.	Ownership	100.000	Nationwide Mutual Insurance Company	



STATEMENT AS OF SEPTEMBER 30, 2012 OF THE NATIONWIDE INDEMNITY COMPANY

SCHEDULE Y

PART 1A - DETAIL OF INSURANCE HOLDING COMPANY SYSTEM

1	2	3	4	5	6	7	8	9	10	11	12	13	14	15
Group Code	Group Name	NAIC Company Code	Federal ID Number	Federal RSSD	CIK	Name of Securities Exchange if Publicly Traded (U.S. or International)	Names of Parent, Subsidiaries Or Affiliates	Domi-ciliary Location	Relationship to Reporting Entity	Directly Controlled by (Name of Entity/Person)	Type of Control (Ownership, Board, Management, Attorney-in-Fact, Influence, Other)	If Control is Owner-ship Provide Percen-tage	Ultimate Controlling Entity(ies)/Person(s)	*
...0140 ...	Nationwide .....		31-6554353 .....				Nationwide Financial Services Capital Trust .....	DE .....	NIA .....	Nationwide Financial Services, Inc. ...	Ownership.....	100.000 ...	Nationwide Mutual Insurance Company .	.....
...0140 ...	Nationwide .....		31-1486870 .....				Nationwide Financial Services, Inc. ...	DE .....	NIA .....	Nationwide Corporation .....	Ownership.....	100.000 ...	Nationwide Mutual Insurance Company .	.....
...0140 ...	Nationwide .....		52-6969857 .....				Nationwide Fund Advisors .....	DE .....	NIA .....	Nationwide Financial Services, Inc. ...	Ownership.....	100.000 ...	Nationwide Mutual Insurance Company .	.....
...0140 ...	Nationwide .....		31-1748721 .....				Nationwide Fund Distributors LLC .....	DE .....	NIA .....	NFS Distributors, Inc. ....	Ownership.....	100.000 ...	Nationwide Mutual Insurance Company .	.....
...0140 ...	Nationwide .....		31-0900518 .....				Nationwide Fund Management LLC .....	DE .....	NIA .....	NFS Distributors, Inc. ....	Ownership.....	100.000 ...	Nationwide Mutual Insurance Company .	.....
...0140 ...	Nationwide .....	23760 .....	31-4425763 .....				Nationwide General Insurance Company .....	OH .....	JA .....	Nationwide Mutual Insurance Company .	Ownership.....	100.000 ...	Nationwide Mutual Insurance Company .	.....
...0140 ...	Nationwide .....		31-1570938 .....				Nationwide Global Holdings, Inc. ....	OH .....	NIA .....	Nationwide Corporation .....	Ownership.....	100.000 ...	Nationwide Mutual Insurance Company .	.....
...0140 ...	Nationwide .....		04-3732385 .....				Nationwide Global Ventures, Inc. ....	DE .....	NIA .....	Nationwide Asset Management Holdings, Inc. ....	Ownership.....	100.000 ...	Nationwide Mutual Insurance Company .	.....
...0140 ...	Nationwide .....		31-1399201 .....				Nationwide Indemnity Company .....	OH .....		Nationwide Mutual Insurance Company .	Ownership.....	100.000 ...	Nationwide Mutual Insurance Company .	.....
...0140 ...	Nationwide .....	25453 .....	95-2130882 .....				Nationwide Insurance Company of America .....	WI .....	JA .....	ALLIED Group, Inc. ....	Ownership.....	100.000 ...	Nationwide Mutual Insurance Company .	.....
...0140 ...	Nationwide .....	10948 .....	31-1613686 .....				Nationwide Insurance Company of Florida .....	OH .....	JA .....	Nationwide Mutual Insurance Company .	Ownership.....	100.000 ...	Nationwide Mutual Insurance Company .	.....
...0140 ...	Nationwide .....		31-6022301 .....				Nationwide Insurance Foundation .....	OH .....	OTH .....	Other non-Nationwide .....	n/a .....		Other non-Nationwide .....	.....
...0140 ...	Nationwide .....		41-2206199 .....				Nationwide Investment Advisors, LLC ..	OH .....	NIA .....	Nationwide Life Insurance Company ....	Ownership.....	100.000 ...	Nationwide Mutual Insurance Company .	.....
...0140 ...	Nationwide .....		73-0988442 .....				Nationwide Investment Services Corporation .....	OK .....	NIA .....	Nationwide Life Insurance Company ....	Ownership.....	100.000 ...	Nationwide Mutual Insurance Company .	.....
...0140 ...	Nationwide .....	92657 .....	31-1000740 .....				Nationwide Life and Annuity Insurance Company .....	OH .....	JA .....	Nationwide Life Insurance Company ....	Ownership.....	100.000 ...	Nationwide Mutual Insurance Company .	.....
...0140 ...	Nationwide .....	66869 .....	31-4156830 .....				Nationwide Life Insurance Company ....	OH .....	JA .....	Nationwide Financial Services, Inc. ...	Ownership.....	100.000 ...	Nationwide Mutual Insurance Company .	.....
...0140 ...	Nationwide .....		13-4212969 .....				Nationwide Life Tax Credit Partners 2002-A, LLC .....	OH .....	NIA .....	Nationwide Life Insurance Company ....	Other.....		Nationwide Mutual Insurance Company .	.....
...0140 ...	Nationwide .....		01-0749754 .....				Nationwide Life Tax Credit Partners 2002-B, LLC .....	OH .....	NIA .....	Nationwide Life Insurance Company ....	Other.....		Nationwide Mutual Insurance Company .	.....
...0140 ...	Nationwide .....		03-0498148 .....				Nationwide Life Tax Credit Partners 2002-C, LLC .....	OH .....	NIA .....	Nationwide Life Insurance Company ....	Other.....		Nationwide Mutual Insurance Company .	.....
...0140 ...	Nationwide .....		54-2113175 .....				Nationwide Life Tax Credit Partners 2003-A, LLC .....	OH .....	NIA .....	Nationwide Life Insurance Company ....	Other.....		Nationwide Mutual Insurance Company .	.....
...0140 ...	Nationwide .....		58-2672725 .....				Nationwide Life Tax Credit Partners 2003-B, LLC .....	OH .....	NIA .....	Nationwide Life Insurance Company ....	Other.....		Nationwide Mutual Insurance Company .	.....
...0140 ...	Nationwide .....		20-0357951 .....				Nationwide Life Tax Credit Partners 2003-C, LLC .....	OH .....	NIA .....	Nationwide Life Insurance Company ....	Other.....		Nationwide Mutual Insurance Company .	.....
...0140 ...	Nationwide .....		20-0382144 .....				Nationwide Life Tax Credit Partners 2004-A, LLC .....	OH .....	NIA .....	Nationwide Life Insurance Company ....	Other.....		Nationwide Mutual Insurance Company .	.....
...0140 ...	Nationwide .....		20-0745944 .....				Nationwide Life Tax Credit Partners 2004-B, LLC .....	OH .....	NIA .....	Nationwide Life Insurance Company ....	Other.....		Nationwide Mutual Insurance Company .	.....
...0140 ...	Nationwide .....		20-0745965 .....				Nationwide Life Tax Credit Partners 2004-C, LLC .....	OH .....	NIA .....	Nationwide Life Insurance Company ....	Other.....		Nationwide Mutual Insurance Company .	.....
...0140 ...	Nationwide .....		20-1128408 .....				Nationwide Life Tax Credit Partners 2004-D, LLC .....	OH .....	NIA .....	Nationwide Life Insurance Company ....	Other.....		Nationwide Mutual Insurance Company .	.....
...0140 ...	Nationwide .....		20-1128472 .....				Nationwide Life Tax Credit Partners 2004-E, LLC .....	OH .....	NIA .....	Nationwide Life Insurance Company ....	Other.....		Nationwide Mutual Insurance Company .	.....
...0140 ...	Nationwide .....		20-1918935 .....				Nationwide Life Tax Credit Partners 2004-F, LLC .....	OH .....	NIA .....	Nationwide Life Insurance Company ....	Other.....		Nationwide Mutual Insurance Company .	.....
...0140 ...	Nationwide .....		20-2303694 .....				Nationwide Life Tax Credit Partners 2005-A, LLC .....	OH .....	NIA .....	Nationwide Life Insurance Company ....	Other.....		Nationwide Mutual Insurance Company .	.....
...0140 ...	Nationwide .....		20-2303602 .....				Nationwide Life Tax Credit Partners 2005-B, LLC .....	OH .....	NIA .....	Nationwide Life Insurance Company ....	Other.....		Nationwide Mutual Insurance Company .	.....

STATEMENT AS OF SEPTEMBER 30, 2012 OF THE NATIONWIDE INDEMNITY COMPANY

SCHEDULE Y  
PART 1A - DETAIL OF INSURANCE HOLDING COMPANY SYSTEM

1	2	3	4	5	6	7	8	9	10	11	12	13	14	15
Group Code	Group Name	NAIC Company Code	Federal ID Number	Federal RSSD	CIK	Name of Securities Exchange if Publicly Traded (U.S. or International)	Names of Parent, Subsidiaries Or Affiliates	Domi-ciliary Location	Relationship to Reporting Entity	Directly Controlled by (Name of Entity/Person)	Type of Control (Ownership, Board, Management, Attorney-in-Fact, Influence, Other)	If Control is Owner-ship Provide Per-cent-age	Ultimate Controlling Entity(ies)/Person(s)	*
...0140 ...	Nationwide .....		20-2450960 .....				Nationwide Life Tax Credit Partners 2005-C, LLC .....	OH.....	NIA.....	Nationwide Life Insurance Company .....	Other.....		Nationwide Mutual Insurance Company .....	
...0140 ...	Nationwide .....		20-2451052 .....				Nationwide Life Tax Credit Partners 2005-D, LLC .....	OH.....	NIA.....	Nationwide Life Insurance Company .....	Other.....		Nationwide Mutual Insurance Company .....	
...0140 ...	Nationwide .....		20-2774223 .....				Nationwide Life Tax Credit Partners 2005-E, LLC .....	OH.....	NIA.....	Nationwide Life Insurance Company .....	Other.....		Nationwide Mutual Insurance Company .....	
...0140 ...	Nationwide .....		21-1288836 .....				Nationwide Life Tax Credit Partners 2007-A, LLC .....	OH.....	NIA.....	Nationwide Life Insurance Company .....	Other.....		Nationwide Mutual Insurance Company .....	
...0140 ...	Nationwide .....		26-3427373 .....				Nationwide Life Tax Credit Partners 2009-A, LLC .....	OH.....	NIA.....	Nationwide Life Insurance Company .....	Other.....		Nationwide Mutual Insurance Company .....	
...0140 ...	Nationwide .....		26-3427435 .....				Nationwide Life Tax Credit Partners 2009-B, LLC .....	OH.....	NIA.....	Nationwide Life Insurance Company .....	Other.....		Nationwide Mutual Insurance Company .....	
...0140 ...	Nationwide .....		26-3427479 .....				Nationwide Life Tax Credit Partners 2009-C, LLC .....	OH.....	NIA.....	Nationwide Life Insurance Company .....	Other.....		Nationwide Mutual Insurance Company .....	
...0140 ...	Nationwide .....		26-3427525 .....				Nationwide Life Tax Credit Partners 2009-D, LLC .....	OH.....	NIA.....	Nationwide Life Insurance Company .....	Other.....		Nationwide Mutual Insurance Company .....	
...0140 ...	Nationwide .....		26-4737055 .....				Nationwide Life Tax Credit Partners 2009-E, LLC .....	OH.....	NIA.....	Nationwide Life Insurance Company .....	Other.....		Nationwide Mutual Insurance Company .....	
...0140 ...	Nationwide .....		26-4737157 .....				Nationwide Life Tax Credit Partners 2009-F, LLC .....	OH.....	NIA.....	Nationwide Life Insurance Company .....	Other.....		Nationwide Mutual Insurance Company .....	
...0140 ...	Nationwide .....		27-1362364 .....				Nationwide Life Tax Credit Partners 2009-I, LLC .....	OH.....	NIA.....	Nationwide Life Insurance Company .....	Other.....		Nationwide Mutual Insurance Company .....	
...0140 ...	Nationwide .....						Nationwide Life Tax Credit Partners No. 1, LLC .....	OH.....	NIA.....	Nationwide Life Insurance Company .....	Other.....		Nationwide Mutual Insurance Company .....	
...0140 ...	Nationwide .....	..42110 .....	75-1780981 .....				Nationwide Lloyds .....	TX.....	JA.....	n/a .....	contract .....		Nationwide Mutual Insurance Company .....	
...0140 ...	Nationwide .....						Nationwide Mutual Capital I, LLC .....	DE.....	NIA.....	Nationwide Mutual Capital, LLC .....	Ownership.....	..100.000 .....	Nationwide Mutual Insurance Company .....	
...0140 ...	Nationwide .....		75-3191025 .....				Nationwide Mutual Capital, LLC .....	OH.....	NIA.....	Nationwide Mutual Insurance Company .....	Ownership.....	..100.000 .....	Nationwide Mutual Insurance Company .....	
...0140 ...	Nationwide .....	..23779 .....	82-0549218 .....				Nationwide Mutual Fire Insurance Company .....	OH.....	OTH.....	Other non-Nationwide .....	n/a .....		Other non-Nationwide .....	
...0140 ...	Nationwide .....	..23787 .....	31-4177100 .....				Nationwide Mutual Insurance Company .....	OH.....	UDP.....	Other non-Nationwide .....	n/a .....		Other non-Nationwide .....	
...0140 ...	Nationwide .....		34-2012765 .....				Nationwide Private Equity Fund, LLC .....	OH.....	NIA.....	Nationwide Mutual Insurance Company .....	Ownership.....	..100.000 .....	Nationwide Mutual Insurance Company .....	
...0140 ...	Nationwide .....		34-2012765 .....				Nationwide Private Equity Fund, LLC .....	OH.....	NIA.....	Nationwide Mutual Insurance Company .....	Ownership.....	..100.000 .....	Nationwide Mutual Insurance Company .....	
...0140 ...	Nationwide .....	..37877 .....	31-0970750 .....				Nationwide Property and Casualty Insurance Company .....	OH.....	JA.....	Nationwide Mutual Insurance Company .....	Ownership.....	..100.000 .....	Nationwide Mutual Insurance Company .....	
...0140 ...	Nationwide .....						Nationwide Property Protection Services, LLC .....	OH.....	NIA.....	Nationwide Services Company, LLC .....	Ownership.....	..100.000 .....	Nationwide Mutual Insurance Company .....	
...0140 ...	Nationwide .....		01-0852763 .....				Nationwide Realty Investors, Ltd. .....	OH.....	NIA.....	Nationwide Mutual Insurance Company .....	Ownership.....	..95.790 .....	Nationwide Mutual Insurance Company .....	
...0140 ...	Nationwide .....		31-1486309 .....				Nationwide Realty Investors, Ltd. .....	OH.....	NIA.....	Nationwide Indemnity Company .....	Ownership.....	..4.210 .....	Nationwide Mutual Insurance Company .....	
...0140 ...	Nationwide .....		31-1486309 .....				Nationwide Realty Management, LLC .....	OH.....	NIA.....	Nationwide Realty Investors, Ltd. ....	Ownership.....	..100.000 .....	Nationwide Mutual Insurance Company .....	
...0140 ...	Nationwide .....		04-3833929 .....				Nationwide Realty Management, LLC .....	OH.....	NIA.....	Nationwide Realty Investors, Ltd. ....	Ownership.....	..100.000 .....	Nationwide Mutual Insurance Company .....	
...0140 ...	Nationwide .....						Nationwide Realty Services, Ltd. ....	OH.....	NIA.....	Nationwide Mutual Insurance Company .....	Ownership.....	..100.000 .....	Nationwide Mutual Insurance Company .....	
...0140 ...	Nationwide .....		06-0987812 .....				Nationwide Retirement Solutions Insurance Agency, Inc. ....	MA.....	JA.....	Nationwide Retirement Solutions, Inc.	Ownership.....	..100.000 .....	Nationwide Mutual Insurance Company .....	
...0140 ...	Nationwide .....		73-0948330 .....				Nationwide Retirement Solutions, Inc.	DE.....	NIA.....	NFS Distributors, Inc. ....	Ownership.....	..100.000 .....	Nationwide Mutual Insurance Company .....	
...0140 ...	Nationwide .....		86-0924069 .....				Nationwide Retirement Solutions, Inc. of Arizona .....	AZ.....	NIA.....	Nationwide Retirement Solutions, Inc.	Ownership.....	..100.000 .....	Nationwide Mutual Insurance Company .....	
...0140 ...	Nationwide .....		31-1331479 .....				Nationwide Retirement Solutions, Inc. of Ohio .....	OH.....	NIA.....	Nationwide Retirement Solutions, Inc.	contract .....		Nationwide Mutual Insurance Company .....	
...0140 ...	Nationwide .....		74-2200854 .....				Nationwide Retirement Solutions, Inc. of Texas .....	TX.....	NIA.....	Nationwide Retirement Solutions, Inc.	contract .....		Nationwide Mutual Insurance Company .....	

STATEMENT AS OF SEPTEMBER 30, 2012 OF THE NATIONWIDE INDEMNITY COMPANY

SCHEDULE Y

PART 1A - DETAIL OF INSURANCE HOLDING COMPANY SYSTEM

1	2	3	4	5	6	7	8	9	10	11	12	13	14	15
Group Code	Group Name	NAIC Company Code	Federal ID Number	Federal RSSD	CIK	Name of Securities Exchange if Publicly Traded (U.S. or International)	Names of Parent, Subsidiaries Or Affiliates	Domi-ciliary Location	Relationship to Reporting Entity	Directly Controlled by (Name of Entity/Person)	Type of Control (Ownership, Board, Management, Attorney-in-Fact, Influence, Other)	If Control is Owner-ship Provide Percen-tage	Ultimate Controlling Entity(ies)/Person(s)	*
0140	Nationwide		52-6969856				Nationwide SA Capital Trust	DE	NIA	NWD Investment Management, Inc.	Ownership	100.000	Nationwide Mutual Insurance Company	
0140	Nationwide		42-1373380				Nationwide Sales Solutions, Inc.	JA	NIA	ALLIED Group, Inc.	Ownership	100.000	Nationwide Mutual Insurance Company	
0140	Nationwide		36-2434406				Nationwide Securities, LLC	OH	NIA	NFS Distributors, Inc.	Ownership	100.000	Nationwide Mutual Insurance Company	
0140	Nationwide		31-4177100				Nationwide Services Company, LLC	OH	NIA	Nationwide Mutual Insurance Company	Ownership	100.000	Nationwide Mutual Insurance Company	
0140	Nationwide		27-0743545				Nationwide Tax Credit Partners 2009-G, LLC	OH	NIA	Nationwide Mutual Insurance Company	Other		Nationwide Mutual Insurance Company	
0140	Nationwide		27-0768791				Nationwide Tax Credit Partners 2009-H, LLC	OH	NIA	Nationwide Mutual Insurance Company	Other		Nationwide Mutual Insurance Company	
0140	Nationwide		11-3651828				ND La Quinta Partners, LLC	DE	NIA	Nationwide Realty Investors, Ltd.	Ownership	94.500	Nationwide Mutual Insurance Company	
0140	Nationwide						Newhouse Capital Partners II, LLC	DE	NIA	Nationwide Global Ventures, Inc.	Ownership	80.000	Nationwide Mutual Insurance Company	
0140	Nationwide						Newhouse Capital Partners II, LLC	DE	NIA	Nationwide Global Ventures, Inc.	Ownership	99.000	Nationwide Mutual Insurance Company	
0140	Nationwide						Newhouse Capital Partners, LLC	DE	NIA	NWD Investment Management, Inc.	Ownership	19.000	Nationwide Mutual Insurance Company	
0140	Nationwide						Newhouse Capital Partners, LLC	DE	NIA	Nationwide Mutual Insurance Company	Ownership	70.000	Nationwide Mutual Insurance Company	
0140	Nationwide						Newhouse Capital Partners, LLC	DE	NIA	Nationwide Mutual Fire Insurance Company	Ownership	10.000	Nationwide Mutual Insurance Company	
0140	Nationwide		31-1630871				NFS Distributors, Inc.	DE	NIA	Nationwide Financial Services, Inc.	Ownership	100.000	Nationwide Mutual Insurance Company	
0140	Nationwide		14-1892640				NHT XII Tax Credit Fund, LLC	DC	NIA	Nationwide Life Insurance Company	Ownership	49.990	Nationwide Mutual Insurance Company	1
0140	Nationwide		14-1892640				NHT XII Tax Credit Fund, LLC	DC	NIA	Nationwide Assurance Company	Ownership	25.000	Nationwide Mutual Insurance Company	1
0140	Nationwide		14-1892640				NHT XII Tax Credit Fund, LLC	DC	NIA	Nationwide Mutual Insurance Company	Ownership	25.000	Nationwide Mutual Insurance Company	1
0140	Nationwide		26-0351004				North Bank Condominium Home Owners Association	OH	OTH	Other non-Nationwide	n/a		Other non-Nationwide	
0140	Nationwide		20-4939866				North of Third, LLC	OH	NIA	NRI Equity Land Investments, LLC		100.000	Nationwide Mutual Insurance Company	
0140	Nationwide		26-4083207				Northstar Commercial Development, LLC	OH	NIA	Nationwide Realty Investors, Ltd.	Ownership	50.000	Nationwide Mutual Insurance Company	1
0140	Nationwide		26-4083354				Northstar Residential Development, LLC	OH	NIA	Nationwide Realty Investors, Ltd.	Ownership	50.000	Nationwide Mutual Insurance Company	1
0140	Nationwide		31-1486309				NRI 12325 Copper Way, LLC	OH	NIA	Nationwide Realty Investors, Ltd.	Ownership	100.000	Nationwide Mutual Insurance Company	
0140	Nationwide		31-1486309				NRI 220 Schrock, LLC	OH	NIA	Nationwide Realty Investors, Ltd.	Ownership	100.000	Nationwide Mutual Insurance Company	
0140	Nationwide		31-1486309				NRI Arena, LLC	OH	NIA	Nationwide Realty Investors, Ltd.	Ownership	100.000	Nationwide Mutual Insurance Company	
0140	Nationwide		31-1486309				NRI Brooksedg, LLC	OH	NIA	Nationwide Realty Investors, Ltd.	Ownership	100.000	Nationwide Mutual Insurance Company	
0140	Nationwide		31-1486309				NRI Builders, LLC	OH	NIA	Nationwide Realty Investors, Ltd.	Ownership	100.000	Nationwide Mutual Insurance Company	
0140	Nationwide		31-1486309				NRI Communities/Charlotte, LLC	OH	NIA	Nationwide Realty Investors, Ltd.	Ownership	100.000	Nationwide Mutual Insurance Company	
0140	Nationwide		31-1486309				NRI Communities/Harris Blvd., LLC	OH	NIA	Nationwide Realty Investors, Ltd.	Ownership	100.000	Nationwide Mutual Insurance Company	
0140	Nationwide		31-1486309				NRI Cramer Creek, LLC	OH	NIA	Nationwide Realty Investors, Ltd.	Ownership	100.000	Nationwide Mutual Insurance Company	
0140	Nationwide		20-4939866				NRI Equity Land Investments, LLC	OH	NIA	Nationwide Realty Investors, Ltd.	Ownership	80.000	Nationwide Mutual Insurance Company	
0140	Nationwide						NRI Equity Tampa, LLC	OH	OTH	Nationwide Realty Investors, Ltd.	Ownership	50.000	Nationwide Mutual Insurance Company	
0140	Nationwide		31-1486309				NRI Maxtown, LLC	OH	OTH	Nationwide Realty Investors, Ltd.	Ownership	100.000	Nationwide Mutual Insurance Company	
0140	Nationwide		30-4939866				NRI Office Ventures, Ltd.	OH	NIA	Nationwide Realty Investors, Ltd.	Ownership	100.000	Nationwide Mutual Insurance Company	
0140	Nationwide		31-1486309				NRI Telecom, LLC	OH	NIA	NWD Investments, LLC	Ownership	100.000	Nationwide Mutual Insurance Company	
0140	Nationwide						NTCIF-2011 Georgia State Investor, LLC	OH	NIA	Nationwide Property and Casualty Company	Ownership	100.000	Nationwide Mutual Insurance Company	
0140	Nationwide		45-3123274				NTCIF-2011, LLC	OH	NIA	Nationwide Life Insurance Company	Ownership	100.000	Nationwide Mutual Insurance Company	
0140	Nationwide		90-0729552				NTCP 2011-A, LLC	OH	NIA	Nationwide Life Insurance Company	Ownership	100.000	Nationwide Mutual Insurance Company	
0140	Nationwide		27-4700627				NTCP 2011-B, LLC	OH	NIA	Nationwide Life Insurance Company	Ownership	100.000	Nationwide Mutual Insurance Company	
0140	Nationwide		46-0747898				NTCP 2012-A, LLC	OH	NIA	Nationwide Life Insurance Company	Ownership	100.000	Nationwide Mutual Insurance Company	
0140	Nationwide		46-0741029				NW - Camerom, LLC	OH	NIA	NW-REI, LLC	Ownership	100.000	Nationwide Mutual Insurance Company	
0140	Nationwide		27-2076516				NW-2100 Latham, LLC	DE	NIA	NW-REI, LLC	Ownership	100.000	Nationwide Mutual Insurance Company	
0140	Nationwide		36-4702264				NW-Arvada, LLC	OH	NIA	NW-REI, LLC	Ownership	100.000	Nationwide Mutual Insurance Company	
0140	Nationwide		45-5159092				NW-Bayshore, LLC	OH	NIA	NW-REI, LLC	Ownership	100.000	Nationwide Mutual Insurance Company	
0140	Nationwide		46-0999932				NW-Bencap, LLC	OH	NIA	NW-REI, LLC	Ownership	100.000	Nationwide Mutual Insurance Company	
0140	Nationwide		26-0901660				NW-CNC Coppell, LLC	DE	NIA	Nationwide Mutual Insurance Company	Ownership	100.000	Nationwide Mutual Insurance Company	

SCHEDULE Y  
PART 1A - DETAIL OF INSURANCE HOLDING COMPANY SYSTEM

1	2	3	4	5	6	7	8	9	10	11	12	13	14	15
Group Code	Group Name	NAIC Company Code	Federal ID Number	Federal RSSD	CIK	Name of Securities Exchange if Publicly Traded (U.S. or International)	Names of Parent, Subsidiaries Or Affiliates	Domi-ciliary Location	Relationship to Reporting Entity	Directly Controlled by (Name of Entity/Person)	Type of Control (Ownership, Board, Management, Attorney-in-Fact, Influence, Other)	If Control is Owner-ship Provide Percen-tage	Ultimate Controlling Entity(ies)/Person(s)	*
0140	Nationwide		27-4431267				NW-Collection, LLC	DE	NIA	NW-REI, LLC	Ownership	100.000	Nationwide Mutual Insurance Company	
0140	Nationwide		27-2764819				NW-Commerce Center, LLC	DE	NIA	NW REI, LLC	Ownership	100.000	Nationwide Mutual Insurance Company	
0140	Nationwide						NW-Corvallis, LLC	OH	NIA	NW-REI, LLC	Ownership	100.000	Nationwide Mutual Insurance Company	
0140	Nationwide		31-1580283				NWD 205 Vine, LLC	OH	NIA	NWD Investments, LLC	Ownership	100.000	Nationwide Mutual Insurance Company	
0140	Nationwide		31-1580283				NWD 225 Nationwide, LLC	OH	NIA	NWD Investments, LLC	Ownership	100.000	Nationwide Mutual Insurance Company	
0140	Nationwide		31-1580283				NWD 230 West, LLC	OH	NIA	NWD Investments, LLC	Ownership	100.000	Nationwide Mutual Insurance Company	
0140	Nationwide		31-1580283				NWD 265 Neil, LLC	OH	NIA	NWD Investments, LLC	Ownership	100.000	Nationwide Mutual Insurance Company	
0140	Nationwide		31-1580283				NWD 275 Marconi, LLC	OH	NIA	NWD Investments, LLC	Ownership	100.000	Nationwide Mutual Insurance Company	
0140	Nationwide		31-1580283				NWD 295 McConnell, LLC	OH	NIA	NWD Investments, LLC	Ownership	100.000	Nationwide Mutual Insurance Company	
0140	Nationwide		31-1580283				NWD 300 Neil, LLC	OH	NIA	NWD Investments, LLC	Ownership	100.000	Nationwide Mutual Insurance Company	
0140	Nationwide		31-1580283				NWD 300 Spring, LLC	OH	NIA	NWD Investments, LLC	Ownership	100.000	Nationwide Mutual Insurance Company	
0140	Nationwide		31-1580283				NWD 355 McConnell, LLC	OH	NIA	NWD Investments, LLC	Ownership	100.000	Nationwide Mutual Insurance Company	
0140	Nationwide		31-1580283				NWD 425 Nationwide, LLC	OH	NIA	NWD Investments, LLC	Ownership	100.000	Nationwide Mutual Insurance Company	
0140	Nationwide		31-1580283				NWD 500 Nationwide, LLC	OH	NIA	NWD Investments, LLC	Ownership	100.000	Nationwide Mutual Insurance Company	
0140	Nationwide		31-1580283				NWD Arena Crossing, LLC	OH	NIA	NWD Investments, LLC	Ownership	100.000	Nationwide Mutual Insurance Company	
0140	Nationwide		31-1580283				NWD Arena District I, LLC	OH	NIA	NWD Investments, LLC	Ownership	100.000	Nationwide Mutual Insurance Company	
0140	Nationwide		31-1580283				NWD Arena District II, LLC	OH	NIA	NWD Investments, LLC	Ownership	100.000	Nationwide Mutual Insurance Company	
0140	Nationwide		31-1580283				NWD Arena District MM, LLC	OH	NIA	NWD Investments, LLC	Ownership	100.000	Nationwide Mutual Insurance Company	
0140	Nationwide		31-1580283				NWD Arena District PW, LLC	OH	NIA	NWD Investments, LLC	Ownership	100.000	Nationwide Mutual Insurance Company	
0140	Nationwide		31-1580283				NWD Arena District V, LLC	OH	NIA	NWD Investments, LLC	Ownership	100.000	Nationwide Mutual Insurance Company	
0140	Nationwide		04-3679396				NWD Asset Management Holdings, Inc.	DE	NIA	Nationwide SA Capital Trust	Ownership	100.000	Nationwide Mutual Insurance Company	
0140	Nationwide		31-1580283				NWD Athletic Club, LLC	OH	NIA	NWD Investments, LLC	Ownership	100.000	Nationwide Mutual Insurance Company	
0140	Nationwide		31-1636299				NWD Investment Management, Inc.	DE	NIA	NWD Management & Research Trust	Ownership	100.000	Nationwide Mutual Insurance Company	
0140	Nationwide		31-1580283				NWD Investments, LLC	OH	NIA	Nationwide Realty Investors, Ltd.	Ownership	80.000	Nationwide Mutual Insurance Company	
0140	Nationwide		25-6711069				NWD Management & Research Trust	DE	NIA	Nationwide Corporation	Ownership	100.000	Nationwide Mutual Insurance Company	
0140	Nationwide		90-0732898				NW-Dulles, LLC	OH	NIA	NW-REI, LLC	Ownership	100.000	Nationwide Mutual Insurance Company	
0140	Nationwide						NW-Eastpark, LLC	OH	NIA	NW-REI, LLC	Ownership	100.000	Nationwide Mutual Insurance Company	
0140	Nationwide		45-2647960				NW-Grapevine, LLC	OH	NIA	NW-REI, LLC	Ownership	100.000	Nationwide Mutual Insurance Company	
0140	Nationwide		27-4750498				NW-Harvard Row, LLC	OH	NIA	NW-REI, LLC	Ownership	100.000	Nationwide Mutual Insurance Company	
0140	Nationwide		26-3336778				NW-Highland Park, LLC	DE	NIA	NW-REI, LLC	Ownership	100.000	Nationwide Mutual Insurance Company	
0140	Nationwide		27-4387718				NW-Highmeadow, LLC	DE	NIA	NW-REI, LLC	Ownership	100.000	Nationwide Mutual Insurance Company	
0140	Nationwide		45-5408178				NW-Kentwood Towne Center, LLC	OH	NIA	NW-REI, LLC	Ownership	100.000	Nationwide Mutual Insurance Company	
0140	Nationwide		27-4749640				NW-Kohls Market, LLC	OH	NIA	NW-REI, LLC	Ownership	100.000	Nationwide Mutual Insurance Company	
0140	Nationwide		45-5314607				NW-Lovers Lane, LLC	OH	NIA	NW-REI, LLC	Ownership	100.000	Nationwide Mutual Insurance Company	
0140	Nationwide		45-4630497				NW-Mueller II, LLC	OH	NIA	NW-REI, LLC	Ownership	100.000	Nationwide Mutual Insurance Company	
0140	Nationwide		27-4749848				NW-Northridge, LLC	OH	NIA	NW-REI, LLC	Ownership	100.000	Nationwide Mutual Insurance Company	
0140	Nationwide		46-1089165				NW-Oakley Station, LLC	OH	NIA	NW-REI, LLC	Ownership	100.000	Nationwide Mutual Insurance Company	
0140	Nationwide		45-5388656				NW-Park Memorial, LLC	OH	NIA	NW-REI, LLC	Ownership	100.000	Nationwide Mutual Insurance Company	
0140	Nationwide		27-4749937				NW-Park Village, LLC	OH	NIA	NW-REI, LLC	Ownership	100.000	Nationwide Mutual Insurance Company	
0140	Nationwide		26-1903919				NW-REI, LLC	DE	NIA	Nationwide Mutual Insurance Company	Ownership	100.000	Nationwide Mutual Insurance Company	
0140	Nationwide		27-4387647				NW-Ross Hall, LLC	DE	NIA	NW-REI, LLC	Ownership	100.000	Nationwide Mutual Insurance Company	
0140	Nationwide		45-4439608				NW-Sanibel Beach Place, LLC	OH	NIA	NW-REI, LLC	Ownership	100.000	Nationwide Mutual Insurance Company	
0140	Nationwide		45-5159117				NW-South Park, LLC	OH	NIA	NW-REI, LLC	Ownership	100.000	Nationwide Mutual Insurance Company	
0140	Nationwide						NW-Southline, LLC	OH	NIA	NW-REI, LLC	Ownership	100.000	Nationwide Mutual Insurance Company	
0140	Nationwide		27-4749587				NW-Taylor Farmer Jack, LLC	OH	NIA	NW-REI, LLC	Ownership	100.000	Nationwide Mutual Insurance Company	
0140	Nationwide		46-1100378				NW-Triangle, LLC	OH	NIA	NW-REI, LLC	Ownership	100.000	Nationwide Mutual Insurance Company	
0140	Nationwide		27-4387563				NW-University, LLC	DE	NIA	NW-REI, LLC	Ownership	100.000	Nationwide Mutual Insurance Company	
0140	Nationwide		46-1077615				NW-West Ave., LLC	OH	NIA	NW-REI, LLC	Ownership	100.000	Nationwide Mutual Insurance Company	
0140	Nationwide		31-0947092				OCH Company, LLC	OH	NIA	Nationwide Realty Investors, Ltd.	Ownership	100.000	Nationwide Mutual Insurance Company	
0140	Nationwide		31-0947092				Ohio Center Hotel Company, Ltd.	OH	NIA	Nationwide Realty Investors, Ltd.	Ownership	56.250	Nationwide Mutual Insurance Company	
0140	Nationwide		26-0263012				Old Track Street Owners Association	OH	OTH	Other non-Nationwide	n/a		Other non-Nationwide	

STATEMENT AS OF SEPTEMBER 30, 2012 OF THE NATIONWIDE INDEMNITY COMPANY

SCHEDULE Y

PART 1A - DETAIL OF INSURANCE HOLDING COMPANY SYSTEM

1	2	3	4	5	6	7	8	9	10	11	12	13	14	15
Group Code	Group Name	NAIC Company Code	Federal ID Number	Federal RSSD	CIK	Name of Securities Exchange if Publicly Traded (U.S. or International)	Names of Parent, Subsidiaries Or Affiliates	Domi-ciliary Location	Relationship to Reporting Entity	Directly Controlled by (Name of Entity/Person)	Type of Control (Ownership, Board, Management, Attorney-in-Fact, Influence, Other)	If Control is Owner-ship Provide Percen-tage	Ultimate Controlling Entity(ies)/Person(s)	*
...0140 ...	Nationwide	...13999	27-1712056	...	...	...	Olentangy Reinsurance, LLC	VT	...JA	Nationwide Life and Annuity Insurance Company	Ownership	...100.000	Nationwide Mutual Insurance Company	...
...0140 ...	Nationwide	...	...	...	...	...	OYS Fund, LLC	DE	...OTH	Nationwide Mutual Insurance Company	Ownership	...100.000	Nationwide Mutual Insurance Company	...
...0140 ...	Nationwide	...	...	...	...	...	Park 288 Industrial, LLC	TX	...OTH	Nationwide Mutual Insurance Company	Investor member / no control	...95.000	other non-Nationwide	...
...0140 ...	Nationwide	...	31-1486309	...	...	...	Perimeter A, Ltd	OH	...NIA	Nationwide Realty Investors, Ltd.	Ownership	...100.000	Nationwide Mutual Insurance Company	...
...0140 ...	Nationwide	...	31-1677602	...	...	...	Pizzuti Properties, LLC	OH	...NIA	Nationwide Realty Investors, Ltd.	Ownership	...65.000	Nationwide Mutual Insurance Company	...
...0140 ...	Nationwide	...	31-1486309	...	...	...	Polaris A, Ltd.	OH	...NIA	Nationwide Realty Investors, Ltd.	Ownership	...100.000	Nationwide Mutual Insurance Company	...
...0140 ...	Nationwide	...	39-1907217	...	...	...	Premier Agency, Inc.	JA	...NIA	ALLIED Group, Inc.	Ownership	...100.000	Nationwide Mutual Insurance Company	...
...4664 ...	Pure	...12873	20-8287105	...	...	...	Privilege Underwriters Reciprocal Exchange	FL	...JA	Other non-Nationwide	n/a	...	Other non-Nationwide	...
...0140 ...	Pure	...	...	...	...	...	Privilege Underwriters, Inc.	FL	...JA	Other non-Nationwide	n/a	...	Other non-Nationwide	...
...4664 ...	Pure	...13204	26-3109178	...	...	...	Pure Insurance Company	FL	...JA	Other non-Nationwide	n/a	...	Other non-Nationwide	...
...4664 ...	Pure	...	...	...	...	...	Pure Risk Management, LLC	FL	...JA	Other non-Nationwide	n/a	...	Other non-Nationwide	...
...4664 ...	Nationwide	...	75-2938844	...	...	...	Registered Investment Advisors Services, Inc.	TX	...NIA	Nationwide Financial Services, Inc.	Ownership	...100.000	Nationwide Mutual Insurance Company	...
...0140 ...	Nationwide	...	82-0549218	...	...	...	Retention Alternatives, Ltd.	Bermuda	...JA	Nationwide Mutual Fire Insurance Company	Ownership	...100.000	Nationwide Mutual Insurance Company	...
...0140 ...	Nationwide	...	...	...	...	...	Riverview Diversified Opportunities Fund, LLC	DE	...OTH	Nationwide Mutual Insurance Company	Ownership	...	Nationwide Mutual Insurance Company	...1
...0140 ...	Nationwide	...	...	...	...	...	Riverview Diversified Opportunities Fund, LLC	DE	...OTH	Nationwide Mutual Fire Insurance Company	Ownership	...	Nationwide Mutual Insurance Company	...1
...0140 ...	Nationwide	...	...	...	...	...	Riverview Diversified Opportunities Fund, LLC	DE	...OTH	Nationwide Life Insurance Company	Ownership	...	Nationwide Mutual Insurance Company	...1
...0140 ...	Nationwide	...	22-3655264	...	...	...	Riverview International Group, Inc.	DE	...NIA	NWD Management & Research Trust	Ownership	...100.000	Nationwide Mutual Insurance Company	...
...0140 ...	Nationwide	...	...	...	...	...	Riverview Multi Series Fund, LL - Class Event	DE	...OTH	Nationwide Mutual Insurance Company	Ownership	...100.000	Nationwide Mutual Insurance Company	...
...0140 ...	Nationwide	...	...	...	...	...	Riverview Multi Series Fund, LL - Class N	DE	...OTH	Nationwide Mutual Insurance Company	Ownership	...100.000	Nationwide Mutual Insurance Company	...
...0140 ...	Nationwide	...	...	...	...	...	Riverview Polyphony Fund, LLC	DE	...OTH	Nationwide Mutual Insurance Company	Ownership	...100.000	Nationwide Mutual Insurance Company	...
...0140 ...	Nationwide	...15580	31-1117969	...	...	...	Scottsdale Indemnity Company	OH	...JA	Nationwide Mutual Insurance Company	Ownership	...100.000	Nationwide Mutual Insurance Company	...
...0140 ...	Nationwide	...41297	31-1024978	...	...	...	Scottsdale Insurance Company	OH	...JA	Nationwide Mutual Insurance Company	Ownership	...100.000	Nationwide Mutual Insurance Company	...
...0140 ...	Nationwide	...10672	86-0835870	...	...	...	Scottsdale Surplus Lines Insurance Company	AZ	...JA	Scottsdale Insurance Company	Ownership	...100.000	Nationwide Mutual Insurance Company	...
...0140 ...	Nationwide	...	31-1486309	...	...	...	Streets of Toringdon, LLC	OH	...NIA	Nationwide Realty Investors, Ltd.	Ownership	...100.000	Nationwide Mutual Insurance Company	...
...0140 ...	Nationwide	...	...	...	...	...	The Association for Theater Based Community Development, LLC	...	...OTH	Nationwide Mutual Insurance Company	Limited partner /no control	...50.000	other non-Nationwide	...
...0140 ...	Nationwide	...	91-2158214	...	...	...	The Hideaway Club	CA	...OTH	Other non-Nationwide	n/a	...	Other non-Nationwide	...
...0140 ...	Nationwide	...	86-1094799	...	...	...	The Hideaway Owners Association	CA	...OTH	Other non-Nationwide	n/a	...	Other non-Nationwide	...
...0140 ...	Nationwide	...	20-3541511	...	...	...	The Madison Club	CA	...OTH	Other non-Nationwide	n/a	...	Other non-Nationwide	...
...0140 ...	Nationwide	...	20-3541507	...	...	...	The Madison Club Owners Association	CA	...OTH	Other non-Nationwide	n/a	...	Other non-Nationwide	...
...0140 ...	Nationwide	...	31-1610040	...	...	...	The Waterfront Partners, LLC	OH	...NIA	Nationwide Realty Investors, Ltd.	Ownership	...50.000	Nationwide Mutual Insurance Company	...1
...0140 ...	Nationwide	...	52-2031677	...	...	...	THI Holdings (Delaware), Inc.	DE	...NIA	Nationwide Mutual Insurance Company	Ownership	...100.000	Nationwide Mutual Insurance Company	...
...0140 ...	Nationwide	...	74-2825853	...	...	...	Titan Auto Insurance of New Mexico, Inc.	NM	...JA	Whitehall Holdings, Inc.	Ownership	...100.000	Nationwide Mutual Insurance Company	...
...0140 ...	Nationwide	...13242	74-2286759	...	...	...	Titan Indemnity Company	TX	...JA	THI Holdings (Delaware), Inc.	Ownership	...100.000	Nationwide Mutual Insurance Company	...
...0140 ...	Nationwide	...36269	86-0619597	...	...	...	Titan Insurance Company	MI	...JA	Titan Indemnity Company	Ownership	...100.000	Nationwide Mutual Insurance Company	...
...0140 ...	Nationwide	...	75-1284530	...	...	...	Titan Insurance Services, Inc.	TX	...NIA	Whitehall Holdings, Inc.	Ownership	...100.000	Nationwide Mutual Insurance Company	...
...0140 ...	Nationwide	...	33-0160222	...	...	...	V.P.I. Services, Inc.	CA	...NIA	Veterinary Pet Insurance Company	Ownership	...100.000	Nationwide Mutual Insurance Company	...
...0140 ...	Nationwide	...42285	95-3750113	...	...	...	Veterinary Pet Insurance Company	CA	...JA	Scottsdale Insurance Company	Ownership	...100.000	Nationwide Mutual Insurance Company	...

STATEMENT AS OF SEPTEMBER 30, 2012 OF THE NATIONWIDE INDEMNITY COMPANY

SCHEDULE Y  
PART 1A - DETAIL OF INSURANCE HOLDING COMPANY SYSTEM

1	2	3	4	5	6	7	8	9	10	11	12	13	14	15
Group Code	Group Name	NAIC Company Code	Federal ID Number	Federal RSSD	CIK	Name of Securities Exchange if Publicly Traded (U.S. or International)	Names of Parent, Subsidiaries Or Affiliates	Domi-ciliary Location	Relationship to Reporting Entity	Directly Controlled by (Name of Entity/Person)	Type of Control (Ownership, Board, Management, Attorney-in-Fact, Influence, Other)	If Control is Owner-ship Provide Percen-tage	Ultimate Controlling Entity(ies)/Person(s)	*
...0140 ...	Nationwide .....	...10644 ...	34-1785903 .....	.....	.....	.....	Victoria Automobile Insurance Company	..JN.....	...JA.....	Victoria Fire & Casulaty Insurance Company .....	Ownership.....	..100.000 ....	Nationwide Mutual Insurance Company .	.....
...0140 ...	Nationwide .....	...42889 ...	34-1394913 .....	.....	.....	.....	Victoria Fire & Casualty Company .....	..OH.....	...JA.....	THI Holdings (Delaware), Inc. ....	Ownership.....	..100.000 ....	Nationwide Mutual Insurance Company .	.....
...0140 ...	Nationwide .....	...10778 ...	34-1842604 .....	.....	.....	.....	Victoria National Insurance Company ..	..OH.....	...JA.....	Victoria Fire & Casulaty Insurance Company .....	Ownership.....	..100.000 ....	Nationwide Mutual Insurance Company .	.....
...0140 ...	Nationwide .....	...10105 ...	34-1777972 .....	.....	.....	.....	Victoria Select Insurance Company .....	..OH.....	...JA.....	Victoria Fire & Casulaty Insurance Company .....	Ownership.....	..100.000 ....	Nationwide Mutual Insurance Company .	.....
...0140 ...	Nationwide .....	...10777 ...	34-1842602 .....	.....	.....	.....	Victoria Specialty Insurance Company	..OH.....	...JA.....	Victoria Fire & Casulaty Insurance Company .....	Ownership.....	..100.000 ....	Nationwide Mutual Insurance Company .	.....
...0140 ...	Nationwide .....	...37150 ...	86-0561941 .....	.....	.....	.....	Western Heritage Insurance Company ...	..AZ.....	...JA.....	Scottsdale Insurance Company .....	Ownership.....	..100.000 ....	Nationwide Mutual Insurance Company .	.....
...0140 ...	Nationwide .....	.....	.....	.....	.....	.....	Westport Capital Partners II .....	..CT.....	...OTH.....	Nationwide Mutual Insurance Company	Investor member / no control .....	..71.000 ....	other non-Nationwide .....	.....
...0140 ...	Nationwide .....	.....	74-2767942 .....	.....	.....	.....	Whitehall Holdings, Inc. ....	..TX.....	...NIA.....	THI Holdings (Delaware), Inc. ....	Ownership.....	..100.000 ....	Nationwide Mutual Insurance Company .	.....
...0140 ...	Nationwide .....	.....	59-3471667 .....	.....	.....	.....	WI of Florida, Inc. ....	..FL.....	...NIA.....	Whitehall Holdings, Inc. ....	Ownership.....	..100.000 ....	Nationwide Mutual Insurance Company .	.....
...0140 ...	Nationwide .....	.....	31-1486309 .....	.....	.....	.....	Wilson Road Developers, LLC .....	..OH.....	...NIA.....	Nationwide Realty Investors, Ltd. ....	Ownership.....	..100.000 ....	Nationwide Mutual Insurance Company .	.....
...0140 ...	Nationwide .....	.....	.....	.....	.....	.....	Zais Zephyr A-4, LLC .....	..DE.....	...OTH.....	Nationwide Life Insurance Company ....	limited member / no control .....	..60.000 ....	other non-Nationwide .....	.....

Asterisk	Explanation
1 .....	For the purposes of this schedule, Nationwide presumed control of these entities because they are owned by at least 10% and are not wholly-owned by a Nationwide entity. ....
2 .....	Other ownership indicates a non-ownership circumstance by a Nationwide entity. ....

Part 1 - Loss Experience  
**N O N E**

Part 2 - Direct Premiums Written  
**N O N E**

STATEMENT AS OF SEPTEMBER 30, 2012 OF THE  NATIONWIDE INDEMNITY COMPANY

PART 3 (000 omitted)

LOSS AND LOSS ADJUSTMENT EXPENSE RESERVES SCHEDULE

	1	2	3	4	5	6	7	8	9	10	11	12	13											
Years in Which Losses Occurred	Prior Year-End Known Case Loss and LAE Reserves	Prior Year-End IBNR Loss and LAE Reserves	Total Prior Year-End Loss and LAE Reserves (Cols. 1+2)	2012 Loss and LAE Payments on Claims Reported as of Prior Year-End	2012 Loss and LAE Payments on Claims Unreported as of Prior Year-End	Total 2012 Loss and LAE Payments (Cols. 4+5)	Q.S. Date Known Case Loss and LAE Reserves on Claims Reported and Open as of Prior Year End	Q.S. Date Known Case Loss and LAE Reserves on Claims Reported or Reopened Subsequent to Prior Year End	Q.S. Date IBNR Loss and LAE Reserves	Total Q.S. Loss and LAE Reserves (Cols.7+8+9)	Prior Year-End Known Case Loss and LAE Reserves Developed (Savings)/ Deficiency (Cols.4+7 minus Col. 1)	Prior Year-End IBNR Loss and LAE Reserves Developed (Savings)/ Deficiency (Cols. 5+8+9 minus Col. 2)	Prior Year-End Total Loss and LAE Reserve Developed (Savings)/ Deficiency (Cols. 11+12)											
1. 2009 + Prior .....	632,033	1,603,367	2,235,400	142,789	1,449	144,238	596,289	23,944	1,553,930	2,174,163	107,045	(24,044)	83,001											
2. 2010 .....																								
3. Subtotals 2010 + Prior .....	632,033	1,603,367	2,235,400	142,789	1,449	144,238	596,289	23,944	1,553,930	2,174,163	107,045	(24,044)	83,001											
4. 2011 .....																								
5. Subtotals 2011 + Prior .....	632,033	1,603,367	2,235,400	142,789	1,449	144,238	596,289	23,944	1,553,930	2,174,163	107,045	(24,044)	83,001											
6. 2012 .....	XXX	XXX	XXX	XXX	(6)	(6)	XXX				XXX	XXX	XXX											
7. Totals .....	632,033	1,603,367	2,235,400	142,789	1,443	144,232	596,289	23,944	1,553,930	2,174,163	107,045	(24,044)	83,001											
8. Prior Year-End Surplus As Regards Policyholders	1,123,585											Col. 11, Line 7 As % of Col. 1 Line 7	Col. 12, Line 7 As % of Col. 2 Line 7	Col. 13, Line 7 As % of Col. 3 Line 7										
												1. 16.9	2. (1.5)	3. 3.7										
													Col. 13, Line 7 As a % of Col. 1 Line 8		4. 7.4									



STATEMENT AS OF SEPTEMBER 30, 2012 OF THE NATIONWIDE INDEMNITY COMPANY

SUPPLEMENTAL EXHIBITS AND SCHEDULES INTERROGATORIES

The following supplemental reports are required to be filed as part of your statement filing. However, in the event that your company does not transact the type of business for which the special report must be filed, your response of NO to the specific interrogatory will be accepted in lieu of filing a "NONE" report and a bar code will be printed below. If the supplement is required of your company but is not being filed for whatever reason enter SEE EXPLANATION and provide an explanation following the interrogatory questions.

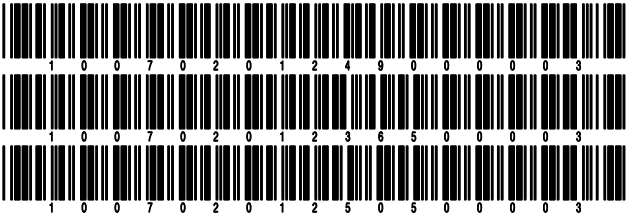
	Response
1. Will the Trusteed Surplus Statement be filed with the state of domicile and the NAIC with this statement? .....	NO
2. Will Supplement A to Schedule T (Medical Professional Liability Supplement) be filed with this statement? .....	YES
3. Will the Medicare Part D Coverage Supplement be filed with the state of domicile and the NAIC with this statement? .....	NO
4. Will the Director and Officer Supplement be filed with the state of domicile and the NAIC with this statement? .....	NO

Explanations:

1.
3.
4.

Bar Codes:

1. Trusteed Surplus Statement [Document Identifier 490]
3. Medicare Part D Coverage Supplement [Document Identifier 365]
4. Director and Officer Supplement [Document Identifier 505]



STATEMENT AS OF SEPTEMBER 30, 2012 OF THE  NATIONWIDE INDEMNITY COMPANY

OVERFLOW PAGE FOR WRITE-INS

Additional Write-ins for Assets Line 25

		Current Statement Date			4 December 31 Prior Year Net Admitted Assets
		1 Assets	2 Nonadmitted Assets	3 Net Admitted Assets (Cols. 1 - 2)	
2504.	Other assets nonadmitted .....	12,271	12,271		
2597.	Summary of remaining write-ins for Line 25 from overflow page	12,271	12,271		

SCHEDULE A - VERIFICATION

Real Estate

	1	2
	Year to Date	Prior Year Ended December 31
1. Book/adjusted carrying value, December 31 of prior year .....		
2. Cost of acquired:		
2.1 Actual cost at time of acquisition .....		
2.2 Additional investment made after acquisition .....		
3. Current year change in encumbrances .....		
4. Total gain (loss) on disposals .....		
5. Deduct amounts received on disposals .....		
6. Total foreign exchange change in book/adjusted carrying value .....		
7. Deduct current year's other than temporary impairment recognized .....		
8. Deduct current year's depreciation .....		
9. Book/adjusted carrying value at the end of current period (Lines 1+2+3+4-5+6-7-8) .....		
10. Deduct total nonadmitted amounts .....		
11. Statement value at end of current period (Line 9 minus Line 10)		

SCHEDULE B - VERIFICATION

Mortgage Loans

	1	2
	Year to Date	Prior Year Ended December 31
1. Book value/recorded investment excluding accrued interest, December 31 of prior year .....	126,711,073	162,373,948
2. Cost of acquired:		
2.1 Actual cost at time of acquisition .....		
2.2 Additional investment made after acquisition .....		
3. Capitalized deferred interest and other .....		
4. Accrual of discount .....		
5. Unrealized valuation increase (decrease) .....		
6. Total gain (loss) on disposals .....		1,099,677
7. Deduct amounts received on disposals .....	10,463,481	36,179,875
8. Deduct amortization of premium and mortgage interest points and commitment fees .....		
9. Total foreign exchange change in book value/recorded investment excluding accrued interest .....		
10. Deduct current year's other than temporary impairment recognized .....		582,677
11. Book value/recorded investment excluding accrued interest at end of current period (Lines 1+2+3+4+5+6-7-8+9-10) .....	116,247,592	126,711,073
12. Total valuation allowance .....	(564,194)	(497,453)
13. Subtotal (Line 11 plus Line 12) .....	115,683,398	126,213,620
14. Deduct total nonadmitted amounts .....		
15. Statement value at end of current period (Line 13 minus Line 14)	115,683,398	126,213,620

SCHEDULE BA - VERIFICATION

Other Long-Term Invested Assets

	1	2
	Year to Date	Prior Year Ended December 31
1. Book/adjusted carrying value, December 31 of prior year .....	64,952,415	48,795,008
2. Cost of acquired:		
2.1 Actual cost at time of acquisition .....		
2.2 Additional investment made after acquisition .....		15,747,028
3. Capitalized deferred interest and other .....	(392,376)	(588,564)
4. Accrual of discount .....		
5. Unrealized valuation increase (decrease) .....	(377,303)	3,481,958
6. Total gain (loss) on disposals .....		
7. Deduct amounts received on disposals .....	466,310	1,020,155
8. Deduct amortization of premium and depreciation .....	721,491	1,462,860
9. Total foreign exchange change in book/adjusted carrying value .....		
10. Deduct current year's other than temporary impairment recognized .....		
11. Book/adjusted carrying value at end of current period (Lines 1+2+3+4+5+6-7-8+9-10) .....	62,994,935	64,952,415
12. Deduct total nonadmitted amounts .....	138,667	138,667
13. Statement value at end of current period (Line 11 minus Line 12)	62,856,268	64,813,748

SCHEDULE D - VERIFICATION

Bonds and Stocks

	1	2
	Year to Date	Prior Year Ended December 31
1. Book/adjusted carrying value of bonds and stocks, December 31 of prior year .....	3,214,173,337	3,183,386,871
2. Cost of bonds and stocks acquired .....	67,866,593	314,561,908
3. Accrual of discount .....	4,387,410	9,506,167
4. Unrealized valuation increase (decrease) .....	18,884,561	25,448,551
5. Total gain (loss) on disposals .....	679,785	3,702,338
6. Deduct consideration for bonds and stocks disposed of .....	131,792,939	312,301,094
7. Deduct amortization of premium .....	7,338,056	9,931,990
8. Total foreign exchange change in book/adjusted carrying value .....		655,600
9. Deduct current year's other than temporary impairment recognized .....		855,014
10. Book/adjusted carrying value at end of current period (Lines 1+2+3+4+5-6-7+8-9) .....	3,166,860,691	3,214,173,337
11. Deduct total nonadmitted amounts .....		
12. Statement value at end of current period (Line 10 minus Line 11)	3,166,860,691	3,214,173,337

STATEMENT AS OF SEPTEMBER 30, 2012 OF THE NATIONWIDE INDEMNITY COMPANY

SCHEDULE D - PART 1B

Showing the Acquisitions, Dispositions and Non-Trading Activity  
During the Current Quarter for all Bonds and Preferred Stock by Rating Class

	1 Book/Adjusted Carrying Value Beginning of Current Quarter	2 Acquisitions During Current Quarter	3 Dispositions During Current Quarter	4 Non-Trading Activity During Current Quarter	5 Book/Adjusted Carrying Value End of First Quarter	6 Book/Adjusted Carrying Value End of Second Quarter	7 Book/Adjusted Carrying Value End of Third Quarter	8 Book/Adjusted Carrying Value December 31 Prior Year
BONDS								
1. Class 1 (a) .....	2,646,770,492	3,377,476	35,916,751	(14,259,816)	2,700,697,422	2,646,770,492	2,599,971,401	2,735,595,478
2. Class 2 (a) .....	493,843,613	9,708,160	7,034,797	(1,298,943)	431,997,955	493,843,613	495,218,033	410,217,877
3. Class 3 (a) .....	23,055,747	289,480	470,499	4,187,704	35,450,399	23,055,747	27,062,432	46,383,309
4. Class 4 (a) .....	15,644,239		278,957	9,858,022	15,781,582	15,644,239	25,223,304	11,617,537
5. Class 5 (a) .....	8,553,741	6,319,688	90,730	2,199,912	8,567,755	8,553,741	16,982,611	8,581,769
6. Class 6 (a) .....	1,281,986		4,554	(234)	1,089,457	1,281,986	1,277,198	995,222
7. Total Bonds	3,189,149,818	19,694,804	43,796,288	686,645	3,193,584,570	3,189,149,818	3,165,734,979	3,213,391,192
PREFERRED STOCK								
8. Class 1 .....								
9. Class 2 .....								
10. Class 3 .....								
11. Class 4 .....								
12. Class 5 .....								
13. Class 6 .....								
14. Total Preferred Stock .....								
15. Total Bonds and Preferred Stock	3,189,149,818	19,694,804	43,796,288	686,645	3,193,584,570	3,189,149,818	3,165,734,979	3,213,391,192

(a) Book/Adjusted Carrying Value column for the end of the current reporting period includes the following amount of non-rated short-term and cash equivalent bonds by NAIC designation: NAIC 1 \$ ..... ; NAIC 2 \$ ..... ; NAIC 3 \$ ..... ;  
NAIC 4 \$ ..... ; NAIC 5 \$ ..... ; NAIC 6 \$ .....

SCHEDULE DA - PART 1

Short-Term Investments

	1	2	3	4	5
	Book/Adjusted Carrying Value	Par Value	Actual Cost	Interest Collected Year-to-Date	Paid for Accrued Interest Year-to-Date
9199999 Totals	4,506,843	XXX	4,506,843	202	

SCHEDULE DA - VERIFICATION

Short-Term Investments

	1	2
	Year To Date	Prior Year Ended December 31
1. Book/adjusted carrying value, December 31 of prior year .....	833,702	110,054,240
2. Cost of short-term investments acquired .....	270,968,997	503,254,747
3. Accrual of discount .....		
4. Unrealized valuation increase (decrease) .....		
5. Total gain (loss) on disposals .....		
6. Deduct consideration received on disposals .....	267,295,856	612,475,285
7. Deduct amortization of premium .....		
8. Total foreign exchange change in book/adjusted carrying value .....		
9. Deduct current year's other than temporary impairment recognized .....		
10. Book/adjusted carrying value at end of current period (Lines 1+2+3+4+5-6-7+8-9) .....	4,506,843	833,702
11. Deduct total nonadmitted amounts .....		
12. Statement value at end of current period (Line 10 minus Line 11)	4,506,843	833,702

Schedule DB - Part A - Verification - Options, Caps, Floors, Collars, Swaps and Forwards  
**N O N E**

Schedule DB - Part B - Verification - Futures Contracts  
**N O N E**

Schedule DB - Part C - Section 1 - Replication (Synthetic Asset) Transactions (RSATs) Open  
**N O N E**

Schedule DB-Part C-Section 2-Reconciliation of Replication (Synthetic Asset) Transactions Open  
**N O N E**

Schedule DB - Verification - Book/Adjusted Carrying Value, Fair Value and Potential Exposure of  
Derivatives  
**N O N E**

Schedule E - Verification - Cash Equivalents  
**N O N E**

Schedule A - Part 2 - Real Estate Acquired and Additions Made  
**N O N E**

Schedule A - Part 3 - Real Estate Disposed  
**N O N E**

## STATEMENT AS OF SEPTEMBER 30, 2012 OF THE NATIONWIDE INDEMNITY COMPANY

## SCHEDULE B - PART 2

Showing All Mortgage Loans ACQUIRED AND ADDITIONS MADE During the Current Quarter

[illegible]

## SCHEDULE B - PART 3

Showing All Mortgage Loans DISPOSED, Transferred or Repaid During the Current Quarter

1  Loan Number	Location		4  Loan Type	5  Date Acquired	6  Disposal Date	7  Book Value/ Recorded Investment Excluding Accrued Interest Prior Year	Change in Book Value/Recorded Investment						14  Book Value/ Recorded Investment Excluding Interest on Disposal	15  Consid- eration	16  Foreign Exchange Gain (Loss) on Disposal	17  Realized Gain (Loss) on Disposal	18  Total Gain (Loss) on Disposal
	2  City	3  State					8  Unrealized Valuation Increase (Decrease)	9  Current Year's (Amortization) /Accretion	10  Current Year's Other Than Temporary Impairment Recognized	11  Capitalized Deferred Interest and Other	12  Total Change in Book Value (8+9-10+11)	13  Total Foreign Exchange Change in Book Value					
00-1000541	COLUMBUS	OH		04/30/2001		3,916,785							74,861	74,861			
00-1000566	TUCSON	AZ		05/10/2001		984,133							18,605	18,605			
00-1000570	WEST PALM BEACH	FL		06/20/2001		1,281,842							61,625	61,625			
00-1000588	CINCINNATI	OH		06/01/2001		801,771							39,556	39,556			
00-1000696	FT. LAUDERDALE	FL		05/08/2002		4,051,440							36,449	36,449			
00-1000701	VILLANOVA	PA		12/17/2001		3,396,073							59,557	59,557			
00-1000714	CLOSTER	NJ		11/08/2001		1,709,621							29,753	29,753			
00-1000774	FLINT	MI		12/20/2001		3,784,348							91,342	91,342			
00-1000789	COOPER CITY	FL		11/30/2001		807,504							19,682	19,682			
00-1000875	SCOTTSDALE	AZ		09/18/2002		2,473,015							37,596	37,596			
00-1000932	HARRISON TOWNSHIP	MI		05/29/2002		4,152,625							34,669	34,669			
00-1000941	SPARTANBURG	SC		05/07/2002		814,352							7,202	7,202			
00-1000949	STOW	OH		05/30/2002		1,537,337							25,090	25,090			
00-1000967	SAN DIEGO	CA		07/10/2002		3,257,172							28,854	28,854			
00-1001152	DALLAS	TX		12/20/2002		2,048,204							15,774	15,774			
00-1001164	CHESTERFIELD	VA		11/20/2002		3,672,115							23,538	23,538			
00-1001203	NILES	IL		12/30/2002		2,572,115							15,989	15,989			
00-1001237	DALLAS	TX		11/20/2002		2,352,987							43,100	43,100			
00-1100032	BLOOMINGTON	IN		08/07/2003		796,128							7,775	7,775			
00-1100074	SAN DIEGO	CA		08/07/2003		801,622							7,674	7,674			
00-1100159	WOODLAWN	MD		02/27/2004		1,231,622							11,027	11,027			
00-1100317	BUFFALO	NY		03/09/2004		1,788,969							25,653	25,653			
00-1100363	LAS VEGAS	NV		04/07/2004		847,445							6,352	6,352			
00-1100741	TOTOWA	NJ		06/02/2005		1,696,308							18,207	18,207			
00-1100762	BEAVERTON	OR		06/21/2005		2,687,671							14,827	14,827			
00-1100768	FRISCO	TX		06/02/2005		1,634,762							10,805	10,805			

STATEMENT AS OF SEPTEMBER 30, 2012 OF THE  NATIONWIDE INDEMNITY COMPANY

SCHEDULE B - PART 3

Showing All Mortgage Loans DISPOSED, Transferred or Repaid During the Current Quarter

1	Location		4	5	6	7	Change in Book Value/Recorded Investment						14	15	16	17	18
	2	3					8	9	10	11	12	13					
Loan Number	City	State	Loan Type	Date Acquired	Disposal Date	Book Value/Recorded Investment Excluding Accrued Interest Prior Year	Unrealized Valuation Increase (Decrease)	Current Year's (Amortization) /Accretion	Current Year's Other Than Temporary Impairment Recognized	Capitalized Deferred Interest and Other	Total Change in Book Value (8+9-10+11)	Total Foreign Exchange Change in Book Value	Book Value/Recorded Investment Excluding Accrued Interest on Disposal	Consid-eration	Foreign Exchange Gain (Loss) on Disposal	Realized Gain (Loss) on Disposal	Total Gain (Loss) on Disposal
00-1100774 .....	SOLANA BEACH .....	CA .....		03/24/2005 .....		2,296,147 .....							43,569 .....	43,569 .....			
00-1100810 .....	ST. CLAIR SHORES .....	MI .....		05/05/2005 .....		2,055,370 .....							9,294 .....	9,294 .....			
00-1100820 .....	LEXINGTON .....	KY .....		05/12/2005 .....		9,146,093 .....							42,547 .....	42,547 .....			
00-1100828 .....	VARIOUS CITIES .....	TN .....		07/08/2005 .....		2,047,229 .....							26,058 .....	26,058 .....			
00-1100844 .....	ORLAND PARK .....	IL .....		07/22/2005 .....		785,504 .....							10,240 .....	10,240 .....			
00-1100865 .....	ANN ARBOR .....	MI .....		07/20/2005 .....		5,129,303 .....							41,760 .....	41,760 .....			
00-1100889 .....	REDWOOD CITY .....	CA .....		06/21/2005 .....		4,484,229 .....							16,395 .....	16,395 .....			
00-1100904 .....	DENVER .....	CO .....		08/29/2005 .....		1,710,177 .....							13,997 .....	13,997 .....			
00-1100905 .....	AUSTIN .....	TX .....		07/07/2005 .....		3,921,075 .....							15,787 .....	15,787 .....			
00-1100927 .....	ANN ARBOR .....	MI .....		08/09/2005 .....		1,251,807 .....							7,114 .....	7,114 .....			
00-1100932 .....	BELLEVUE .....	WA .....		08/30/2005 .....		2,625,505 .....							20,543 .....	20,543 .....			
00-1100947 .....	ELDERSBURG .....	MD .....		08/31/2005 .....		1,714,923 .....							13,836 .....	13,836 .....			
00-1100952 .....	KANSAS CITY .....	KS .....		08/18/2005 .....		2,561,675 .....							21,116 .....	21,116 .....			
03-0307261 .....	GAINESVILLE .....	FL .....		08/11/1995 .....		1,172,640 .....							19,290 .....	19,290 .....			
28-0001469 .....	WASHINGTON TOWNSHIP .....	OH .....		07/07/1999 .....		3,475,135 .....							88,194 .....	88,194 .....			
0299999. Mortgages with partial repayments						99,474,777							1,155,302	1,155,302			
0599999 - Totals						99,474,777							1,155,302	1,155,302			



Schedule BA - Part 2 - Other Long-Term Invested Assets Acquired

N O N E

Schedule BA - Part 3 - Other Long-Term Invested Assets Disposed, Transferred or Repaid

N O N E

STATEMENT AS OF SEPTEMBER 30, 2012 OF THE NATIONWIDE INDEMNITY COMPANY

**SCHEDULE D - PART 3**

Show All Long-Term Bonds and Stock Acquired During the Current Quarter

1	2	3	4	5	6	7	8	9	10
CUSIP Identification	Description	Foreign	Date Acquired	Name of Vendor	Number of Shares of Stock	Actual Cost	Par Value	Paid for Accrued Interest and Dividends	NAIC Designation or Market Indicator (a)
63860H-AC-3	Nationstar Home Equity Loan Tr Ser 2007A		09/13/2012	Citigroup		6,319,687	7,000,000	1,649	5AM
74340X-AN-1	Prologis LP Sr Nt 7.375% 10/30/19		07/13/2012	Wachovia Capital Markets Inc		6,222,650	5,000,000	79,896	2FE
90520G-AA-4	Union Bank of California Sub Bk Nt 5.9		09/10/2012	Blair William & Company		3,377,476	2,955,000	59,584	1FE
952355-BB-3	West Corp Term Ln B-5 Nt 1 5.500% 07/1		08/30/2012	Tax Free Exchange		42,037	53,643	60	3FE
95235L-AE-0	West Corp Term Ln B-5 Nt 1 4.482% 07/1		09/26/2012	Tax Free Exchange		54,620	69,469	308	3FE
95235L-AJ-9	West Corp Term Ln B-4 Nt 2 5.500% 07/1		09/26/2012	Tax Free Exchange		192,824	255,579	498	3FE
292505-AH-7	EnCana Corp Sr Nt 6.500% 05/15/19	A	07/30/2012	UBS Warburg London		3,485,510	2,900,000	40,318	2FE
3899999. Subtotal - Bonds - Industrial and Miscellaneous (Unaffiliated)						19,694,804	18,233,691	182,313	XXX
8399997. Total - Bonds - Part 3						19,694,804	18,233,691	182,313	XXX
8399998. Total - Bonds - Part 5						XXX	XXX	XXX	XXX
8399999. Total - Bonds						19,694,804	18,233,691	182,313	XXX
8999997. Total - Preferred Stocks - Part 3							XXX		XXX
8999998. Total - Preferred Stocks - Part 5						XXX	XXX	XXX	XXX
8999999. Total - Preferred Stocks							XXX		XXX
9799997. Total - Common Stocks - Part 3							XXX		XXX
9799998. Total - Common Stocks - Part 5						XXX	XXX	XXX	XXX
9799999. Total - Common Stocks							XXX		XXX
9899999. Total - Preferred and Common Stocks							XXX		XXX
9999999 - Totals						19,694,804	XXX	182,313	XXX

(a) For all common stock bearing the NAIC market indicator "U" provide: the number of such issues

STATEMENT AS OF SEPTEMBER 30, 2012 OF THE NATIONWIDE INDEMNITY COMPANY

SCHEDULE D - PART 4

Show All Long-Term Bonds and Stock Sold, Redeemed or Otherwise Disposed of During the Current Quarter

1	2	3	4	5	6	7	8	9	10	Change In Book/Adjusted Carrying Value					16	17	18	19	20	21	22
										11	12	13	14	15							
CUSIP Ident- ification	Description	For- eign	Disposal Date	Name of Purchaser	Number of Shares of Stock	Consid- eration	Par Value	Actual Cost	Prior Year Book/ Adjusted Carrying Value	Unrealized Valuation Increase/ (Decrease)	Current Year's (Amor- tization)/ Accretion	Other Than Temporary Impairment Recogn- ized	Total Change in Book/ Adjusted Carrying Value (11 + 12 - 13)	Total Foreign Exchange Change in Book /Adjusted Carrying Value	Book/ Adjusted Carrying Value at Disposal Date	Foreign Exchange Gain (Loss) on Disposal	Realized Gain (Loss) on Disposal	Total Gain (Loss) on Disposal	Bond Interest/ Stock Dividends Received During Year	Stated Con- tractual Maturity Date	NAIC Design- ation or Market In- dicator (a)
34459R-AB-1	Morocco AID Gtd SF Bd 7.550% 07/15/26		07/15/2012	Redemption 100.0000		16,677	16,677	19,971	18,796			(2,119)	(2,119)		16,677				1,259	01/15/2026	1FE
911760-EJ-1	Vendee Mtg Tr REMIC Ser 1994-2 3ZB RMBS		09/01/2012	Paydown		86,850	86,850	84,944	85,633		1,218		1,218		86,850				3,711	06/15/2024	1
911760-HH-2	Vendee Mtg Tr REMIC Ser 1996-2 1Z RMBS		09/01/2012	Paydown		144,541	144,541	143,822	143,887		654		654		144,541				6,650	06/15/2026	1
0599999. Subtotal - Bonds - U.S. Governments						248,068	248,068	248,737	248,316			(247)	(247)		248,068				11,620	XXX	XXX
011832-S3-7	Alaska St Hsg Fin Corp Rev AMT 1st Vets		09/01/2012	Call 100.0000		620,000	620,000	620,000	620,000						620,000				20,034	12/01/2024	1FE
254773-AG-9	District Columbia Hsg Fin Rev Agcy Sgl F		09/01/2012	Call 100.0000		155,000	155,000	155,000	155,000						155,000				5,348	06/01/2020	1FE
312903-HR-1	FHLMC REMIC Ser 113-C 8.500% 05/15/21		09/15/2012	Paydown		3,401	3,401	3,543	3,492		(91)		(91)		3,401				220	05/15/2021	1
312905-YJ-5	FHLMC REMIC Ser 1077-E 9.000% 05/15/21		09/01/2012	Paydown		3,983	3,983	4,150	4,119		(136)		(136)		3,983				239	05/15/2021	1
312906-E5-5	FHLMC REMIC Ser 1116-XA 8.400% 08/15/2		09/01/2012	Paydown		5,292	5,292	5,442	5,408		(116)		(116)		5,292				307	08/15/2021	1
312909-MY-7	FHLMC REMIC Ser 1251-Z 8.000% 04/15/22		09/01/2012	Paydown		31,852	31,852	33,306	32,846		(993)		(993)		31,852				1,730	04/15/2022	1
312915-UF-6	FHLMC REMIC Ser 1504 Z 7.000% 05/15/23		09/01/2012	Paydown		24,051	24,051	24,740	24,466		(415)		(415)		24,051				1,092	05/15/2023	1
313373-X8-6	FHLMC REMIC Ser 1683 Z 6.500% 02/15/24		09/01/2012	Paydown		169,261	169,261	170,302	169,548		(286)		(286)		169,261				7,103	02/15/2024	1
31337A-CQ-3	FHLMC REMIC Ser 1967-BA 7.000% 06/17/2		09/01/2012	Paydown		16,678	16,678	17,067	16,857		(179)		(179)		16,678				793	06/17/2027	1
31340Y-BH-1	FHLMC REMIC Ser 6-C 9.050% 06/15/19		09/15/2012	Paydown		1,918	1,918	2,011	1,962		(44)		(44)		1,918				125	06/15/2019	1
31340Y-DB-2	FHLMC REMIC Ser 12-A 9.250% 11/15/19		09/15/2012	Paydown		711	711	747	727		(17)		(17)		711				49	11/15/2019	1
31340Y-KF-5	FHLMC REMIC Ser 31-E 7.550% 05/15/20		09/15/2012	Paydown		3,551	3,551	3,664	3,627		(76)		(76)		3,551				(113)	05/15/2020	1
31340Y-KX-6	FHLMC REMIC Ser 33-D 8.000% 04/15/20		09/15/2012	Paydown		5,954	5,954	6,166	6,052		(99)		(99)		5,954				348	04/15/2020	1
31340Y-QS-1	FHLMC REMIC Ser 46-B 7.800% 09/15/20		09/15/2012	Paydown		6,661	6,661	6,853	6,749		(88)		(88)		6,661				372	09/15/2020	1
31358E-XG-2	FNMA REMIC Ser 1990-83A 9.250% 07/25/2		09/01/2012	Paydown		1,967	1,967	2,097	2,074		(106)		(106)		1,967				121	07/25/2020	1
31358G-X4-4	FNMA REMIC Ser 1991-56G 8.600% 06/25/2		09/01/2012	Paydown		2,305	2,305	2,414	2,388		(83)		(83)		2,305				137	06/25/2021	1
31359E-YL-9	FNMA REMIC Ser 1993-199PF 6.500% 10/25		09/01/2012	Paydown		83,413	83,413	84,772	83,626		(213)		(213)		83,413				3,557	10/25/2023	1
31359F-DE-5	FNMA REMIC Ser 1993-202M 6.500% 11/25/		09/01/2012	Paydown		269,079	269,079	273,562	269,452		(373)		(373)		269,079				11,612	11/25/2023	1
31359K-2K-2	FNMA REMIC Ser 1996-M7 CI Z 7.151% 05/		09/01/2012	Paydown		353	353	356	356		(2)		(2)		353				17	05/17/2036	1
31359K-ZR-1	FNMA Ser 1996-45 CI K 7.000% 09/25/21		09/01/2012	Paydown		6,643	6,643	6,775	6,743		(100)		(100)		6,643				311	09/25/2021	1
31359P-DJ-2	FNMA ACES Ser 1997-M2 CI Z 7.125% 01/1		09/01/2012	Paydown		2,970	2,970	3,190	3,173		(203)		(203)		2,970				141	01/17/2037	1
313602-GQ-1	FNMA REMIC Ser 1988-25B 9.250% 10/25/1		09/01/2012	Paydown		947	947	1,005	983		(36)		(36)		947				57	10/25/2018	1
313603-2H-4	FNMA REMIC Ser 1990-35E 9.500% 04/25/2		09/01/2012	Paydown		210	210	223	221		(10)		(10)		210				13	04/25/2020	1
313603-5J-7	FNMA REMIC Ser 1990-41D 9.500% 04/25/2		09/01/2012	Paydown		3,952	3,952	4,194	4,142		(190)		(190)		3,952				246	04/25/2020	1
31377R-BH-2	FNMA DUS Pool #384440 6.600% 10/25/26		09/01/2012	Paydown		11,777	11,777	13,044	12,626		(848)		(848)		11,777				519	10/25/2026	1
31381H-TQ-9	FNMA DUS Pool #461459 5.450% 11/25/23		09/01/2012	Paydown		44,053	44,053	45,341	44,829		(776)		(776)		44,053				1,601	11/25/2023	1
31392E-FL-9	FNMA REMIC Ser 2002-55 CI GC 5.500% 09		09/01/2012	Paydown		72,269	72,269	74,641	72,964		(694)		(694)		72,269				2,642	09/25/2017	1
31392E-SX-9	FNMA REMIC Ser 2002-59 CI B 5.500% 09/		09/01/2012	Paydown		26,648	26,648	27,706	27,188		(540)		(540)		26,648				960	09/25/2017	1
31392U-RH-9	FHLMC REMIC Ser 2501 AN 5.500% 09/15/1		09/01/2012	Paydown		130,742	130,742	135,563	132,250		(1,508)		(1,508)		130,742				4,839	09/15/2017	1
31392V-2F-8	FHLMC REMIC Ser 2494 J 5.500% 09/15/17		09/01/2012	Paydown		279,474	279,474	293,851	282,452		(2,978)		(2,978)		279,474				10,264	09/15/2017	1
31392V-SN-3	FHLMC REMIC Ser 2496 BK 5.500% 09/15/1		09/01/2012	Paydown		166,637	166,637	173,366	168,650		(2,013)		(2,013)		166,637				6,048	09/15/2017	1
31393A-2V-8	FNMA REMIC Ser 2003-38 CI MP 5.500% 05		09/01/2012	Paydown		318,019	318,019	325,174	319,564		(1,545)		(1,545)		318,019				11,701	05/25/2023	1
31393D-J6-9	FNMA REMIC Ser 2003-59 CI VJ 5.000% 08		07/01/2012	Paydown		80,584	80,584	81,466	80,558		26		26		80,584				2,350	08/25/2020	1
31394J-KW-6	FHLMC REMIC Ser 2673 CI QL 5.500% 09/1		09/01/2012	Paydown		244,524	244,524	248,498	245,517		(993)		(993)		244,524				8,987	09/15/2023	1
31394W-2P-2	FHLMC REMIC Ser 2770 CI ON 3.750% 06/1		07/01/2012	Paydown		18,337	18,337	18,274	18,308		29		29		18,337				401	06/15/2032	1
454806-BV-1	Indiana St Hsg & Cmnty Dev Rev Auth Sgl		07/01/2012	Call 100.0000		205,000	205,000	205,000	205,000						205,000				9,533	07/01/2021	1FE
454806-BW-9	Indiana St Hsg & Cmnty Dev Rev Auth Sgl		07/01/2012	Call 100.0000		375,000	375,000	375,000	375,000						375,000				18,000	07/01/2027	1FE
60415N-G2-2	Minnesota St Hsg Fin Agcy Rev AMT SF Res		07/01/2012	Call 100.0000		35,000	35,000	35,000	35,000						35,000				1,619	07/01/2021	1FE
63967C-4N-9	Nebraska Invnt Fin Auth Rev Sgl Fam Hsg S		08/01/2012	Call 100.0000		3,750,000	3,750,000	3,750,000	3,750,000						3,750,000				165,000	09/01/2027	1FE
676907-KU-1	Ohio Hsg Fin Agcy Mtg Rev AMT SF Res Mtg		09/01/2012	Call 100.0000		320,000	320,000	320,000	320,000						320,000				15,200	09/01/2026	1FE
677560-HN-0	Ohio St Hsg Fin Agcy Mtg Rev AMT SF Mtg		09/01/2012																		

STATEMENT AS OF SEPTEMBER 30, 2012 OF THE NATIONWIDE INDEMNITY COMPANY

SCHEDULE D - PART 4

Show All Long-Term Bonds and Stock Sold, Redeemed or Otherwise Disposed of During the Current Quarter

1	2	3	4	5	6	7	8	9	10	Change In Book/Adjusted Carrying Value					16	17	18	19	20	21	22
										11	12	13	14	15							
CUSIP Identification	Description	For- eign	Disposal Date	Name of Purchaser	Number of Shares of Stock	Consid- eration	Par Value	Actual Cost	Prior Year Book/ Adjusted Carrying Value	Unrealized Valuation Increase/ (Decrease)	Current Year's (Amor- tization)/ Accretion	Current Year's Other Than Temporary Impairment Recogn- ized	Total Change in Book/ Adjusted Carrying Value (11 + 12 - 13)	Total Foreign Exchange Change in Book /Adjusted Carrying Value	Book/ Adjusted Carrying Value at Disposal Date	Foreign Exchange Gain (Loss) on Disposal	Realized Gain (Loss) on Disposal	Total Gain (Loss) on Disposal	Bond Interest/ Stock Dividends Received During Year	Stated Con- tractual Maturity Date	NAIC Design- ation or Market In- dicator (a)
..05549@-AA-3	BJs Wholesale Club Inc RMBS Ser 2002-2 C		09/15/2012	Redemption 100.0000		24,926	24,926	25,167	25,079		(153)		(153)		24,926				1,155	.05/15/2022	2
..08183*-AA-0	Benenson Parsippany LLC CTL 7.050% 04/		09/10/2012	Redemption 100.0000		77,500	77,500	77,500	77,500						77,500				3,644	.04/10/2016	1
..11448*-BU-0	Brookshire Grocery Co Ser A-1 7.010% 0		09/01/2012	Redemption 100.0000		63,077	63,077	63,077	63,077						63,077				2,949	.09/01/2014	2
..11448*-BV-8	Brookshire Grocery Co Ser A-2 7.010% 0		09/01/2012	Redemption 100.0000		60,760	60,760	60,760	60,760						60,760				2,841	.09/01/2014	2
..117017-AB-9	Brunswick & Glynn Co Dev Auth Rev Lease		08/15/2012	Redemption 100.0000		66,647	66,647	66,647	66,647						66,647				4,172	.02/15/2023	1
..12189P-AH-5	Burlington Northern Santa Fe ETC Ser 200		07/15/2012	Paydown		16,891	16,891	19,126	17,792		(901)		(901)		16,891				1,336	.01/15/2020	1FE
..12644*-AC-1	CTL Cap Tr Ser 2002-3 Anchorage CTL 7		09/15/2012	Redemption 100.0000		41,320	41,320	41,320	41,320						41,320				2,009	.12/15/2026	1
..12644@-AX-3	CTL Cap Tr Lowes CTL 7.070% 08/15/21		08/15/2012	Redemption 100.0000		122,160	122,160	122,160	122,160						122,160				8,637	.08/14/2021	1
..12644@-BR-5	CTL Cap Tr Ser 2002-21Aurora HealthcareCT		09/15/2012	Redemption 100.0000		45,896	45,896	45,896	45,896						45,896				2,036	.10/15/2022	2
..126673-TM-4	CWABS Inc Ser 2004-14 CI A5 RMBS 0.557		09/25/2012	Paydown		28,950	28,950	28,959	28,955		(5)		(5)		28,950				113	.06/25/2035	1FM
..12667G-AX-1	Countrywide Alternative Ln Tr Ser 2005-1		09/25/2012	Paydown		286,439	286,439	268,092	184,751	83,341	18,347		101,688		286,439				1,341	.05/25/2035	1FM
..12667G-XN-8	Countrywide Alternative Ln Tr Ser 2005-3		09/01/2012	Paydown		246,352	246,352	230,599	204,370	26,229	15,753		41,982		246,352				9,199	.08/25/2035	4FM
..126686-AC-8	CWABS Inc Ser 2006-H CI 2A1B RMBS 0.37		09/17/2012	Paydown		83,412	83,412	28,877	28,877		54,535		54,535		83,412				232	.11/15/2036	1FM
..126694-NS-3	CWHL Inc Ser 2005-27 CI 1A3 RMBS 5.500		09/01/2012	Paydown		87,618	87,618	85,277	86,671		947		947		87,618				3,190	.12/25/2035	1FM
..12669C-E4-8	CWABS Inc Ser 2002-8 CI A4 RMBS 6.500%		09/01/2012	Paydown		78,550	78,550	81,397	78,902		(204)		(204)		78,698		(148)	(148)	3,355	.07/25/2032	1FM
..12669F-D2-6	CWHL Inc Ser 2004-10 CI A10 RMBS 5.000		09/01/2012	Paydown		41,561	41,561	38,911	40,623		938		938		41,561				1,349	.07/25/2034	1FM
..12669G-R3-7	Countrywide Home Loans Ser 2005-15 CI A7		09/01/2012	Paydown		133,922	133,922	131,809	125,289	7,809	823		8,632		133,922				5,025	.08/25/2035	4FM
..151895-A*-0	CenterPoint Properties Tr CTL 7.530% 1		09/01/2012	Redemption 100.0000		28,177	28,177	28,177	28,177						28,177				1,415	.10/01/2014	1
..17306U-CE-6	Citifinancial Mtg Sec Inc Ser 2004-1 CI		09/01/2012	Paydown		50,190	50,190	50,187	50,137		53		53		50,190				1,299	.04/25/2034	1FM
..17307G-YH-5	Citigroup Mtg Ln Tr Ser 2005-5 CI 21A5 R		09/01/2012	Paydown		66,649	66,649	61,592	61,592		5,057		5,057		66,649				2,581	.08/25/2035	1FM
..223889-AA-4	Cowperwood McAllen I LP CTL 6.880% 07/		09/15/2012	Redemption 100.0000		61,641	61,641	61,641	61,641						61,641				2,829	.05/15/2022	1
..23321M-AL-9	DLJ Mtg Accept Tr I CMO Ser 89-1-F RMBS		09/01/2012	Paydown		651	651	717	608		44		44		651				101	.08/01/2019	6*
..233851-AP-9	Daimler Fin NA LLC Sr Nt 2.400% 04/10/		07/13/2012	Deutsche Bank Securities		5,107,700	5,000,000	5,061,350			(1,397)		(1,397)		5,059,953		47,747	47,747	32,667	.04/10/2017	1FE
..251563-CB-6	Deutsche Mtg Sec Inc Ser 2004-1 CI A6 RM		09/01/2012	Paydown		133,535	133,535	133,497	133,300		125		125		133,425		110	110	4,381	.12/25/2033	1FM
..251563-DM-1	Deutsche Mtg Sec Inc Ser 2004-2 CI A6 RM		09/01/2012	Paydown		72,969	72,969	72,951	72,860		110		110		72,969				2,438	.01/25/2034	1FM
..29250R-AH-9	Enbridge Energy Partners LP Sr Nt 5.87		07/30/2012	UBS Warburg London		3,475,680	3,000,000	3,469,410		(15,721)			(15,721)		3,453,689		21,991	21,991	111,135	.12/15/2016	2FE
..29273R-AD-1	Energy Transfer Partners Sr Nt 5.650%		08/01/2012	Maturity		2,000,000	2,000,000	1,996,863	1,999,681		319		319		2,000,000				113,000	.08/01/2012	2FE
..320510-IM-2	First Horizon Mtg PT Tr Ser 2003-9 CI 1A		09/01/2012	Paydown		612,856	612,856	606,727	610,110		2,746		2,746		612,856				22,146	.11/25/2033	1FM
..36157R-3X-1	GE Cap Mtg Serv Inc Ser 1999-HE2 CI M RM		09/01/2012	Paydown		27,449	27,449	27,449	27,449						27,449				1,295	.07/25/2029	1FM
..36157R-D8-5	GE Cap Mtg Serv Inc Ser 1999-HE1 CI A7 R		09/01/2012	Paydown		2,384	2,384	2,384	2,384						2,384				(4)	.04/25/2029	1FM
..36242D-70-0	GS Mortgage Securities Corp Ser 2005-5F		09/01/2012	Paydown		82,117	82,117	78,036	79,884		2,233		2,233		82,117				2,810	.06/25/2035	1FM
..36312K-AA-0	Gaithersburg Fin Tr CTL 7.010% 04/11/1		09/11/2012	Redemption 100.0000		131,722	131,722	140,515	133,897		(2,175)		(2,175)		131,722				6,257	.04/11/2014	1
..393513-AC-0	Green Tree Mtg Ln Tr Ser 2005-HE1 A3 RMB		09/25/2012	Paydown		1,169,300	1,169,300	1,169,300	1,169,300						1,169,300				4,737	.12/25/2032	1FM
..400756-BG-6	Guaranteed Mtg Corp III CMO Ser L-5 GNMA		09/20/2012	Paydown		3,903	3,903	4,192	4,051		(148)		(148)		3,903				6*	.07/20/2019	6*
..43739E-AP-2	Homebanc Mortgage Tr Ser 2005-1 CI A1 RM		09/25/2012	Paydown		122,372	122,372	113,131	113,131		9,242		9,242		122,372				414	.03/25/2035	1FM
..45254N-JG-3	IMPAC CMB Tr Ser 2004-5 CI 1A1 RMBS 0		09/25/2012	Paydown		55,166	55,166	55,250	55,250		(83)		(83)		55,166				1,098	.10/25/2034	1FM
..45254N-KX-4	IMPAC CMB Tr Ser 2004-9 CI 1A1 RMBS 0		09/25/2012	Paydown		26,552	26,552	26,618	17,531	9,073	(53)		9,020		26,552				200	.01/25/2035	1FM
..46625Y-GL-1	JP Morgan Chase Comm Mtg Secs Ser 2005-L		09/01/2012	Paydown		1,115,948	1,115,948	1,124,754	1,116,264		(316)		(316)		1,115,948				31,482	.03/15/2046	1FM
..50026*-AA-3	Kohls Corp Shelby MI CTL 7.600% 12/15/		09/15/2012	Redemption 100.0000		22,006	22,006	23,249	22,763		(757)		(757)		22,006				1,116	.12/15/2022	2
..52467@-AA-3	Legg Mason Mtg Cap Corp CTL 7.400% 12/		09/15/2012	Redemption 100.0000		13,428	13,428	14,154	13,816		(387)		(387)		13,428				663	.12/15/2021	1
..52467@-AH-8	Legg Mason Mtg Cap Corp CTL 7.750% 01/		09/15/2012	Redemption 100.0000		19,779	19,779	20,744	20,312		(533)		(533)		19,779				1,022	.01/15/2021	3
..55265W-CA-9	Master Seasoned Securities Tr Ser 2004-2		09/01/2012	Paydown		9,887	9,887	10,215	10,196		(309)		(309)		9,887				436	.08/25/2032	1FM
..59549R-AC-8	Mid State Tr X Ser 10 CI M1 ABS 6.280%		09/15/2012	Paydown		81,893	81,893	68,862	68,862		13,031		13,031		81,893				3,435	.02/15/2036	1AM
..60467M-AA-9	Mirant Mid-Atlantic LLC PTC Ser A ABS		07/01/2012	Paydown		34,922	34,922	37,541	34,922						34,922				3,012	.06/30/2012	3FE

STATEMENT AS OF SEPTEMBER 30, 2012 OF THE NATIONWIDE INDEMNITY COMPANY

**SCHEDULE D - PART 4**

Show All Long-Term Bonds and Stock Sold, Redeemed or Otherwise Disposed of During the Current Quarter

1	2	3	4	5	6	7	8	9	10	Change In Book/Adjusted Carrying Value					16	17	18	19	20	21	22
CUSIP Ident- ification	Description	For- eign	Disposal Date	Name of Purchaser	Number of Shares of Stock	Consid- eration	Par Value	Actual Cost	Prior Year Book/ Adjusted Carrying Value	Unrealized Valuation Increase/ (Decrease)	Current Year's (Amor- tization)/ Accretion	Current Year's Other Than Temporary Impairment Recog- nized	14 Total Change in Book/ Adjusted Carrying Value (11 + 12 - 13)	15 Total Foreign Exchange Change in Book /Adjusted Carrying Value	Book/ Adjusted Carrying Value at Disposal Date	Foreign Exchange Gain (Loss) on Disposal	Realized Gain (Loss) on Disposal	Total Gain (Loss) on Disposal	Bond Interest/ Stock Dividends Received During Year	Stated Con- tractual Maturity Date	NAIC Desig- nation or Market In- dicator (a)
..60467M-AA-9	Mirant Mid-Atlantic LLC PTC Ser A ABS		07/01/2012	Maturity		(34,922)	(34,922)	(37,541)	(34,922)						(34,922)					06/30/2012	3FE
..61745M-SP-4	Morgan Stanley Cap I Ser 2005-T19 CI X2		09/01/2012	Paydown				135,635	21,012		(21,012)		(21,012)						16,484	06/12/2047	1FE
..61745M-N8-2	Morgan Stanley Cap I Ser 2004-108 CI A4		07/01/2012	Paydown		16,149	16,149	16,617	16,138		10		10		16,149			1,627	06/15/2040	1FE	
..61980A-AA-1	Motiva Enterprises LLC Sr Nt 5.200% 09		09/15/2012	Maturity		4,000,000	4,000,000	3,904,000	3,985,403		14,597		14,597		4,000,000				208,000	09/15/2012	1FE
..636516-AB-2	National Inst of Hlth Fishers Pl I Bldg		07/15/2012	Redemption	100.0000		26,341	26,341	26,341						26,341				1,844	01/15/2024	1
..636517-AA-2	National Inst of Hlth Fishers Pl II Bldg		07/15/2012	Redemption	100.0000		125,177	125,177	125,177						125,177				8,850	07/15/2022	1
..64508Q-AA-3	New Haven Fed Office Bldg Ls GSA Gtd Tr		07/15/2012	Redemption	100.0000		63,418	63,418	63,418						63,418				3,742	01/15/2020	1
..653240-AA-9	Newtown Ser 2002 CTL 6.082% 05/15/23		09/15/2012	Redemption	100.0000		53,055	53,055	53,053		1		1		53,055				2,152	05/15/2023	1
..67020B-AA-8	NRRC-D Facilities Corp GSA Rev Bd Ls Ren		09/07/2012	Redemption	100.0000		42,917	42,917	42,917						42,917				1,861	11/07/2023	1
..72153*-AA-2	Pillsbury Winthrop LLP Sr Nt Ser A-1 4		07/18/2012	Redemption	100.0000		111,111	111,111	111,111						111,111				4,567	07/18/2015	2
..73664#-AA-8	Portland Natural Gas Trans Sys Sr Sec Nt		09/30/2012			32,591	32,591	32,591	32,591						32,591				1,442	12/31/2018	2
..742741-AA-9	Procter & Gamble ESOP Deb Ser A 9.360%		07/01/2012	Various		95,270	95,270	129,688	113,047		(17,777)		(17,777)		95,270				8,917	01/01/2021	1FE
..755920-AG-0	Receipts on Corp Sec Tr Coll Tr Ser 1998		08/01/2012			64,150	64,150	70,023	66,614		(2,464)		(2,464)		64,150				4,170	08/01/2017	4AM
..760985-M9-9	Residential Asset Mtg Prod Inc Ser 2004-		08/01/2012	Paydown		44,481	44,481	44,481	44,441		40		40		44,481				1,294	01/25/2034	1FM
..761118-HD-3	Residential Accredit Loans Inc Ser 2005-		09/01/2012	Paydown		179,223	179,223	147,927	147,927		31,296		31,296		179,223				6,873	09/25/2035	2FM
..78402C-AA-1	SC Commercial Mtg Pass Through Ser 2003-		09/01/2012	Redemption	100.0000		8,466	8,466	8,853		(260)		(260)		8,466				391	11/01/2026	1
..78442G-GG-5	SLM Student Loan Tr Ser 2003-4 CI ASD AB		09/17/2012	Paydown		298,544	298,544	300,992	299,981		(1,437)		(1,437)		298,544				2,861	03/15/2033	1FE
..785778-HD-6	SACO I Tr Ser 2005-6 CI A RMBS 0.797%		09/25/2012	Paydown		61,961	61,961	59,838	26,927	32,911	2,123		35,034		61,961				352	09/25/2035	1FM
..79548K-ZJ-0	Salomon Bros Mtg Sec VII Inc Ser 1998-AQ		09/01/2012	Paydown		3,140	3,140	3,167	3,128		12		12		3,140				132	06/25/2028	1FM
..81441P-CE-9	Security Natl Mtg Loan Tr Ser 2005-1A CI		09/01/2012	Paydown		66,835	66,835	66,438	61,898		4,936		4,936		66,835				2,890	02/25/2035	1FM
..85231C-AA-3	St Louis Fed Office Bldg Tr GSA Gtd Ser		07/15/2012			136,986	136,986	136,986	136,986						136,986				9,466	01/15/2019	1
..86363G-AJ-3	Structured Asset Sec Corp Ser 2007-3 CI		09/01/2012	Paydown		178,091	178,091	160,718	142,372	18,346	17,373		35,719		178,091				6,513	04/25/2047	5FM
..89222*-AB-1	Townsend Norwalk LLC CTL 7.100% 03/30/		09/30/2012	Redemption	100.0000		52,646	52,646	52,646						52,646				2,493	03/30/2021	2
..91737#-AA-3	United States Govt SS Ls FinTr GSA Gtd P		09/15/2012	Redemption	100.0000		121,104	120,705	120,897		207		207		121,104				3,799	11/15/2018	1
..92851#-AA-3	Vivendi SPC Tr CTL 6.630% 04/15/22		09/15/2012			18,135	18,135	18,135	18,135						18,135				802	04/15/2022	2
..939348-AE-8	Washington Mutual MSC Mtg PT Ser 2007-HY		09/01/2012	Paydown		93,611	258,652	198,826	133,886	64,939			64,939		198,826		(105,215)	(105,215)	7,427	04/25/2037	3FM
..949760-AP-7	Wells Fargo Mtg Backed Sec Tr Ser 2003-9		09/01/2012	Paydown		90,821	90,821	89,658	90,095		118		118		90,213		608		3,127	08/25/2033	1FM
..94978#-AT-4	Wells Fargo Bank Northwest NA Ser 2002 C		09/01/2012			15,107	15,107	15,107	15,107						15,107				670	08/01/2027	1
..952355-B#-3	West Corp Term Ln B-5 Nt 3 5.500% 07/1		09/26/2012	Tax Free Exchange		96,657	123,112	91,483	52,571		2,049		2,049		96,657				3,140	07/15/2016	3FE
..95235L-AE-0	West Corp Term Ln B-5 Nt 1 4.482% 07/1		09/28/2012	Redemption	100.0000		184	144			40		40		184					07/15/2016	3FE
..95235L-AF-7	West Corp Term Ln B-2 Nt 16 2.592% 10/		08/15/2012	Redemption	100.0000		10,384	7,235	8,418		1,967		1,967		10,384				228	10/24/2013	3FE
..95235L-AF-7	West Corp Term Ln B-2 Nt 13 2.607% 10/		08/15/2012	Redemption	100.0000		13,942	13,942	8,865	11,301	2,641		2,641		13,942				237	10/24/2013	3FE
..95235L-AF-7	West Corp Term Ln B-2 Nt 17 2.836% 10/		08/15/2012	Redemption	100.0000		4,388	2,589	3,556		832		832		4,388				90	10/24/2013	3FE
..95235L-AJ-9	West Corp Term Ln B-4 Nt 2 5.500% 07/1		09/28/2012	Redemption	100.0000		521	394			128		128		521					07/15/2016	3FE
..95235L-AJ-9	West Corp Term Ln B-4 Nt 2 5.500% 07/1		09/26/2012	Tax Free Exchange		192,824	255,579	170,956	143,165		6,099		6,099		192,824				9,094	07/15/2016	3FE
..960413-AE-2	Westlake Chemical Corp Sr Nt 6.625% 01		07/30/2012	Call 102.2080		638,800	625,000	362,500	362,500		276,300		276,300		638,800				43,132	01/15/2016	2FE
..96928#-AC-7	William Blair CTL PTC Ser 2004-1 CTL 7		09/25/2012	Redemption	100.0000		10,093	11,573	9,601		493		493		10,093				516	01/25/2023	2
..740408-AA-7	Preferred Term Sec Ltd Sr Nt PTP ABS 8	R	09/15/2012	Redemption	100.0000		686,396	686,396	686,396						686,396				77,466	09/15/2030	1FE

STATEMENT AS OF SEPTEMBER 30, 2012 OF THE NATIONWIDE INDEMNITY COMPANY

SCHEDULE D - PART 4

Show All Long-Term Bonds and Stock Sold, Redeemed or Otherwise Disposed of During the Current Quarter

1	2	3	4	5	6	7	8	9	10	Change In Book/Adjusted Carrying Value					16	17	18	19	20	21	22
										11	12	13	14	15							
CUSIP Ident- ification	Description	For- eign	Disposal Date	Name of Purchaser	Number of Shares of Stock	Consid- eration	Par Value	Actual Cost	Prior Year Book/ Adjusted Carrying Value	Unrealized Valuation Increase/ (Decrease)	Current Year's (Amor- tization)/ Accretion	Current Year's Other Than Temporary Impairment Recogn- ized	Total Change in Book/ Adjusted Carrying Value (11 + 12 - 13)	Total Foreign Exchange Change in Book /Adjusted Carrying Value	Book/ Adjusted Carrying Value at Disposal Date	Foreign Exchange Gain (Loss) on Disposal	Realized Gain (Loss) on Disposal	Total Gain (Loss) on Disposal	Bond Interest/ Stock Dividends Received During Year	Stated Con- tractual Maturity Date	NAIC Desig- nation or Market In- dicator (a)
..902118-BM-9	Tyco Intl Group SA Co Gtd Nt 4.125% 10 .....	F.....	..08/15/2012 ..	Call 107.6680 .....	.....	.....	.....	.....	.....	.....	.....	.....	.....	.....	.....	.....	.....	.....	.....	.....	.....
..G19810-AA-0	Cayman Turtle Farm Ltd Gtd Sr Nt 4.850 .....	F.....	..09/01/2012 ..	Redemption 100.0000 .....	.....	.....	.....	.....	.....	.....	.....	.....	.....	.....	.....	.....	.....	.....	.....	.....	.....
3899999. Subtotal - Bonds - Industrial and Miscellaneous (Unaffiliated)						35,430,147	34,301,248	34,385,681	25,264,831	423,701	1,159,577		1,583,278		35,465,000		(34,853)	(34,853)	1,202,906	XXX	XXX
8399997. Total - Bonds - Part 4						43,761,431	42,632,532	42,772,921	33,612,064	423,701	1,143,634		1,567,335		43,796,284		(34,853)	(34,853)	1,559,054	XXX	XXX
8399998. Total - Bonds - Part 5						XXX	XXX	XXX	XXX	XXX	XXX	XXX	XXX	XXX	XXX	XXX	XXX	XXX	XXX	XXX	XXX
8399999. Total - Bonds						43,761,431	42,632,532	42,772,921	33,612,064	423,701	1,143,634		1,567,335		43,796,284		(34,853)	(34,853)	1,559,054	XXX	XXX
8999997. Total - Preferred Stocks - Part 4							XXX													XXX	XXX
8999998. Total - Preferred Stocks - Part 5						XXX	XXX	XXX	XXX	XXX	XXX	XXX	XXX	XXX	XXX	XXX	XXX	XXX	XXX	XXX	XXX
8999999. Total - Preferred Stocks							XXX													XXX	XXX
9799997. Total - Common Stocks - Part 4							XXX													XXX	XXX
9799998. Total - Common Stocks - Part 5						XXX	XXX	XXX	XXX	XXX	XXX	XXX	XXX	XXX	XXX	XXX	XXX	XXX	XXX	XXX	XXX
9799999. Total - Common Stocks							XXX													XXX	XXX
9899999. Total - Preferred and Common Stocks							XXX													XXX	XXX
9999999 - Totals						43,761,431	XXX	42,772,921	33,612,064	423,701	1,143,634		1,567,335		43,796,284		(34,853)	(34,853)	1,559,054	XXX	XXX

(a) For all common stock bearing the NAIC market indicator "U" provide: the number of such issues.....

Schedule DB - Part A - Section 1 - Options, Caps, Floors, Collars, Swaps and Forwards Open

N O N E

Schedule DB - Part B - Section 1 - Futures Contracts Open

N O N E

Schedule DB - Part B - Section 1B - Brokers with whom cash deposits have been made

N O N E

Schedule DB - Part D - Counterparty Exposure for Derivative Instruments Open

N O N E

SCHEDULE DL - PART 1  
SECURITIES LENDING COLLATERAL ASSETS

Reinvested Collateral Assets Owned Current Statement Date						
1	2	3	4	5	6	7
CUSIP Identification	Description	Code	NAIC Designation/ Market Indicator	Fair Value	Book/Adjusted Carrying Value	Maturity Date
0599999. Total - U.S. Government Bonds						XXX
1099999. Total - All Other Government Bonds						XXX
1799999. Total - U.S. States, Territories and Possessions Bonds						XXX
2499999. Total - U.S. Political Subdivisions Bonds						XXX
3199999. Total - U.S. Special Revenues Bonds						XXX
04012M-AP-4	RMBS Argent Securities Inc Ser 2006-M1 CI A2B		6FE	193,143	193,143	09/25/2035
14454A-AE-9	RMBS Carrington Mtg Loan Tr Ser 2006-FRE2 CI		1AM	1,749,052	1,800,530	02/25/2013
29445U-AA-3	RMBS Equifirst Mtg Loan Tr Ser 2007-1 CI A2A		5AM	4,082,562	4,082,562	01/25/2013
362351-AA-6	RMBS GSAA Home Equity Tr Ser 2006-20 CI 1A1 R		6FE	792,502	792,502	01/25/2013
617487-AB-9	RMBS Morgan Stanley Mtg Tr Ser 2006-16AX CI 2		6FE	622,189	622,189	11/25/2036
81378E-AA-1	RMBS Securitized AB Receivables LLC Ser 2007-		1FM	3,121,393	3,121,393	01/25/2013
3399999. Subtotal - Bonds - Industrial and Miscellaneous (Unaffiliated) - Residential Mortgage-Backed Securities				10,560,841	10,612,319	XXX
3899999. Total - Industrial and Miscellaneous (Unaffiliated) Bonds				10,560,841	10,612,319	XXX
4899999. Total - Hybrid Securities						XXX
5599999. Total - Parent, Subsidiaries and Affiliates Bonds						XXX
6199999. Total - Issuer Obligations						XXX
6299999. Total - Residential Mortgage-Backed Securities				10,560,841	10,612,319	XXX
6399999. Total - Commercial Mortgage-Backed Securities						XXX
6499999. Total - Other Loan-Backed and Structured Securities						XXX
6599999. Total Bonds				10,560,841	10,612,319	XXX
7099999. Total - Preferred Stocks						XXX
7599999. Total - Common Stocks						XXX
7699999. Total - Preferred and Common Stocks						XXX
	Overnight Repos			29,397	29,397	10/01/2012
8999999. Total - Short-Term Invested Assets (Schedule DA type)				29,397	29,397	XXX
9999999 - Totals				10,590,238	10,641,716	XXX

General Interrogatories:

1. Total activity for the year to date Fair Value \$ (5,496,975) Book/Adjusted Carrying Value \$ (5,445,497)
2. Average balance for the year to date Fair Value \$ 12,960,226 Book/Adjusted Carrying Value \$ 13,265,630
3. Reinvested securities lending collateral assets book/adjusted carrying value included in this schedule by NAIC designation:  
NAIC 1 \$ 4,921,923 NAIC 2 \$ NAIC 3 \$ NAIC 4 \$ NAIC 5 \$ 4,082,562 NAIC 6 \$ 1,607,834



SCHEDULE DL - PART 2  
SECURITIES LENDING COLLATERAL ASSETS

Reinvested Collateral Assets Owned Current Statement Date						
1	2	3	4	5	6	7
CUSIP Identification	Description	Code	NAIC Designation/ Market Indicator	Fair Value	Book/Adjusted Carrying Value	Maturity Date
0599999. Total - U.S. Government Bonds						XXX
1099999. Total - All Other Government Bonds						XXX
1799999. Total - U.S. States, Territories and Possessions Bonds						XXX
2499999. Total - U.S. Political Subdivisions Bonds						XXX
3199999. Total - U.S. Special Revenues Bonds						XXX
3899999. Total - Industrial and Miscellaneous (Unaffiliated) Bonds						XXX
4899999. Total - Hybrid Securities						XXX
5599999. Total - Parent, Subsidiaries and Affiliates Bonds						XXX
6199999. Total - Issuer Obligations						XXX
6299999. Total - Residential Mortgage-Backed Securities						XXX
6399999. Total - Commercial Mortgage-Backed Securities						XXX
6499999. Total - Other Loan-Backed and Structured Securities						XXX
6599999. Total Bonds						XXX
7099999. Total - Preferred Stocks						XXX
7599999. Total - Common Stocks						XXX
7699999. Total - Preferred and Common Stocks						XXX
9999999 - Totals						XXX

General Interrogatories:

1.	Total activity for the year to date	Fair Value \$ .....	Book/Adjusted Carrying Value \$ .....
2.	Average balance for the year to date	Fair Value \$ .....	Book/Adjusted Carrying Value \$ .....
3.	Grand Total Schedule DL Part 1 and Part 2	Fair Value \$ .....10,590,238	Book/Adjusted Carrying Value \$ .....10,641,716

## SCHEDULE E - PART 1 - CASH

E11

STATEMENT AS OF SEPTEMBER 30, 2012 OF THE NATIONWIDE INDEMNITY COMPANY

**SCHEDULE E - PART 2 - CASH EQUIVALENTS**

Show Investments Owned End of Current Quarter

1	2	3	4	5	6	7	8
Description	Code	Date Acquired	Rate of Interest	Maturity Date	Book/Adjusted Carrying Value	Amount of Interest Due and Accrued	Amount Received During Year
NONE							
8699999 - Total Cash Equivalents							



SUPPLEMENT FOR THE QUARTER ENDING SEPTEMBER 30, 2012 OF THE   NATIONWIDE INDEMNITY COMPANY

Designate the type of health care  
providers reported on this page:  
Physicians, including surgeons and  
osteopaths

SUPPLEMENT A TO SCHEDULE T  
EXHIBIT OF MEDICAL PROFESSIONAL LIABILITY PREMIUMS WRITTEN  
ALLOCATED BY STATES AND TERRITORIES

		1	2	Direct Losses Paid		5	Direct Losses Unpaid		8
		Direct Premiums Written	Direct Premiums Earned	3	4	Direct Losses Incurred	6	7	Direct Losses Incurred But Not Reported
States, etc.				Amount	No. of Claims		Amount Reported	No. of Claims	
1.	Alabama .....	AL							
2.	Alaska .....	AK							
3.	Arizona .....	AZ							
4.	Arkansas .....	AR							
5.	California .....	CA							
6.	Colorado .....	CO							
7.	Connecticut .....	CT							
8.	Delaware .....	DE							
9.	District of Columbia .....	DC							
10.	Florida .....	FL							
11.	Georgia .....	GA							
12.	Hawaii .....	HI							
13.	Idaho .....	ID							
14.	Illinois .....	IL							
15.	Indiana .....	IN							
16.	Iowa .....	IA							
17.	Kansas .....	KS							
18.	Kentucky .....	KY							
19.	Louisiana .....	LA							
20.	Maine .....	ME							
21.	Maryland .....	MD							
22.	Massachusetts .....	MA							
23.	Michigan .....	MI							
24.	Minnesota .....	MN							
25.	Mississippi .....	MS							
26.	Missouri .....	MO							
27.	Montana .....	MT							
28.	Nebraska .....	NE							
29.	Nevada .....	NV							
30.	New Hampshire .....	NH							
31.	New Jersey .....	NJ							
32.	New Mexico .....	NM							
33.	New York .....	NY							
34.	North Carolina .....	NC							
35.	North Dakota .....	ND							
36.	Ohio .....	OH							
37.	Oklahoma .....	OK							
38.	Oregon .....	OR							
39.	Pennsylvania .....	PA							
40.	Rhode Island .....	RI							
41.	South Carolina .....	SC							
42.	South Dakota .....	SD							
43.	Tennessee .....	TN							
44.	Texas .....	TX							
45.	Utah .....	UT							
46.	Vermont .....	VT							
47.	Virginia .....	VA							
48.	Washington .....	WA							
49.	West Virginia .....	WV							
50.	Wisconsin .....	WI							
51.	Wyoming .....	WY							
52.	American Samoa .....	AS							
53.	Guam .....	GU							
54.	Puerto Rico .....	PR							
55.	U.S. Virgin Islands .....	VI							
56.	Nothern Mariana Islands .....	MP							
57.	Canada .....	CN							
58.	Aggregate Other Aliens .....	OT							
59.	Totals								
DETAILS OF WRITE-INS									
5801.	.....								
5802.	.....								
5803.	.....								
5898.	Summary of remaining write-ins for Line 58 from overflow page .....								
5899.	Totals (Lines 5801 through 5803 plus 5898)(Line 58 above)								

NONE



Designate the type of health care  
providers reported on this page:  
Hospitals

SUPPLEMENT A TO SCHEDULE T  
EXHIBIT OF MEDICAL PROFESSIONAL LIABILITY PREMIUMS WRITTEN  
ALLOCATED BY STATES AND TERRITORIES

	1	2	Direct Losses Paid		5	Direct Losses Unpaid		8
			3	4		6	7	
States, etc.	Direct Premiums Written	Direct Premiums Earned	Amount	No. of Claims	Direct Losses Incurred	Amount Reported	No. of Claims	Direct Losses Incurred But Not Reported
1. Alabama.....AL								
2. Alaska.....AK								
3. Arizona.....AZ								
4. Arkansas.....AR								
5. California.....CA								
6. Colorado.....CO								
7. Connecticut.....CT								
8. Delaware.....DE								
9. District of Columbia.....DC								
10. Florida.....FL								
11. Georgia.....GA								
12. Hawaii.....HI								
13. Idaho.....ID								
14. Illinois.....IL								
15. Indiana.....IN								
16. Iowa.....IA								
17. Kansas.....KS								
18. Kentucky.....KY								
19. Louisiana.....LA								
20. Maine.....ME								
21. Maryland.....MD								
22. Massachusetts.....MA								
23. Michigan.....MI								
24. Minnesota.....MN								
25. Mississippi.....MS								
26. Missouri.....MO								
27. Montana.....MT								
28. Nebraska.....NE								
29. Nevada.....NV								
30. New Hampshire.....NH								
31. New Jersey.....NJ								
32. New Mexico.....NM								
33. New York.....NY								
34. North Carolina.....NC								
35. North Dakota.....ND								
36. Ohio.....OH								
37. Oklahoma.....OK								
38. Oregon.....OR								
39. Pennsylvania.....PA								
40. Rhode Island.....RI								
41. South Carolina.....SC								
42. South Dakota.....SD								
43. Tennessee.....TN								
44. Texas.....TX								
45. Utah.....UT								
46. Vermont.....VT								
47. Virginia.....VA								
48. Washington.....WA								
49. West Virginia.....WV								
50. Wisconsin.....WI								
51. Wyoming.....WY								
52. American Samoa.....AS								
53. Guam.....GU								
54. Puerto Rico.....PR								
55. U.S. Virgin Islands.....VI								
56. Nothern Mariana Islands.....MP								
57. Canada.....CN								
58. Aggregate Other Aliens.....OT								
59. Totals								
DETAILS OF WRITE-INS								
5801. ....								
5802. ....								
5803. ....								
5898. Summary of remaining write-ins for Line 58 from overflow page .....								
5899. Totals (Lines 5801 through 5803 plus 5898)(Line 58 above)								



SUPPLEMENT FOR THE QUARTER ENDING SEPTEMBER 30, 2012 OF THE NATIONWIDE INDEMNITY COMPANY

Designate the type of health care providers reported on this page:  
Other health care professionals, including dentists, chiropractors, and podiatrists

SUPPLEMENT A TO SCHEDULE T  
EXHIBIT OF MEDICAL PROFESSIONAL LIABILITY PREMIUMS WRITTEN  
ALLOCATED BY STATES AND TERRITORIES

	1	2	Direct Losses Paid		5	Direct Losses Unpaid		8
			3	4		6	7	
States, etc.	Direct Premiums Written	Direct Premiums Earned	Amount	No. of Claims	Direct Losses Incurred	Amount Reported	No. of Claims	Direct Losses Incurred But Not Reported
1. Alabama.....AL								
2. Alaska.....AK								
3. Arizona.....AZ								
4. Arkansas.....AR								
5. California.....CA								
6. Colorado.....CO								
7. Connecticut.....CT								
8. Delaware.....DE								
9. District of Columbia.....DC								
10. Florida.....FL								
11. Georgia.....GA								
12. Hawaii.....HI								
13. Idaho.....ID								
14. Illinois.....IL								
15. Indiana.....IN								
16. Iowa.....IA								
17. Kansas.....KS								
18. Kentucky.....KY								
19. Louisiana.....LA								
20. Maine.....ME								
21. Maryland.....MD								
22. Massachusetts.....MA								
23. Michigan.....MI								
24. Minnesota.....MN								
25. Mississippi.....MS								
26. Missouri.....MO								
27. Montana.....MT								
28. Nebraska.....NE								
29. Nevada.....NV								
30. New Hampshire.....NH								
31. New Jersey.....NJ								
32. New Mexico.....NM								
33. New York.....NY								
34. North Carolina.....NC								
35. North Dakota.....ND								
36. Ohio.....OH								
37. Oklahoma.....OK								
38. Oregon.....OR								
39. Pennsylvania.....PA								
40. Rhode Island.....RI								
41. South Carolina.....SC								
42. South Dakota.....SD								
43. Tennessee.....TN								
44. Texas.....TX								
45. Utah.....UT								
46. Vermont.....VT								
47. Virginia.....VA								
48. Washington.....WA								
49. West Virginia.....WV								
50. Wisconsin.....WI								
51. Wyoming.....WY								
52. American Samoa.....AS								
53. Guam.....GU								
54. Puerto Rico.....PR								
55. U.S. Virgin Islands.....VI								
56. Northern Mariana Islands.....MP								
57. Canada.....CN								
58. Aggregate Other Aliens.....OT								
59. Totals								
DETAILS OF WRITE-INS								
5801. ....								
5802. ....								
5803. ....								
5898. Summary of remaining write-ins for Line 58 from overflow page.....								
5899. Totals (Lines 5801 through 5803 plus 5898)(Line 58 above)								

NONE



Designate the type of health care  
providers reported on this page:  
Other health care facilities

SUPPLEMENT A TO SCHEDULE T  
EXHIBIT OF MEDICAL PROFESSIONAL LIABILITY PREMIUMS WRITTEN  
ALLOCATED BY STATES AND TERRITORIES

	1	2	Direct Losses Paid		5	Direct Losses Unpaid		8
			3	4		6	7	
States, etc.	Direct Premiums Written	Direct Premiums Earned	Amount	No. of Claims	Direct Losses Incurred	Amount Reported	No. of Claims	Direct Losses Incurred But Not Reported
1. Alabama.....AL								
2. Alaska.....AK								
3. Arizona.....AZ								
4. Arkansas.....AR								
5. California.....CA								
6. Colorado.....CO								
7. Connecticut.....CT								
8. Delaware.....DE								
9. District of Columbia.....DC								
10. Florida.....FL								
11. Georgia.....GA								
12. Hawaii.....HI								
13. Idaho.....ID								
14. Illinois.....IL								
15. Indiana.....IN								
16. Iowa.....IA								
17. Kansas.....KS								
18. Kentucky.....KY								
19. Louisiana.....LA								
20. Maine.....ME								
21. Maryland.....MD								
22. Massachusetts.....MA								
23. Michigan.....MI								
24. Minnesota.....MN								
25. Mississippi.....MS								
26. Missouri.....MO								
27. Montana.....MT								
28. Nebraska.....NE								
29. Nevada.....NV								
30. New Hampshire.....NH								
31. New Jersey.....NJ								
32. New Mexico.....NM								
33. New York.....NY								
34. North Carolina.....NC								
35. North Dakota.....ND								
36. Ohio.....OH								
37. Oklahoma.....OK								
38. Oregon.....OR								
39. Pennsylvania.....PA								
40. Rhode Island.....RI								
41. South Carolina.....SC								
42. South Dakota.....SD								
43. Tennessee.....TN								
44. Texas.....TX								
45. Utah.....UT								
46. Vermont.....VT								
47. Virginia.....VA								
48. Washington.....WA								
49. West Virginia.....WV								
50. Wisconsin.....WI								
51. Wyoming.....WY								
52. American Samoa.....AS								
53. Guam.....GU								
54. Puerto Rico.....PR								
55. U.S. Virgin Islands.....VI								
56. Nothern Mariana Islands.....MP								
57. Canada.....CN								
58. Aggregate Other Aliens.....OT								
59. Totals								
DETAILS OF WRITE-INS								
5801. ....								
5802. ....								
5803. ....								
5898. Summary of remaining write-ins for Line 58 from overflow page .....								
5899. Totals (Lines 5801 through 5803 plus 5898)(Line 58 above)								