



PROPERTY AND CASUALTY COMPANIES - ASSOCIATION EDITION

QUARTERLY STATEMENT

AS OF JUNE 30, 2012

OF THE CONDITION AND AFFAIRS OF THE

Nationwide Insurance Company of Florida

NAIC Group Code 0140 0140 NAIC Company Code 10948 Employer's ID Number 31-1613686
(Current) (Prior)

Organized under the Laws of Ohio, State of Domicile or Port of Entry Ohio

Country of Domicile United States of America

Incorporated/Organized 08/18/1998 Commenced Business 08/18/1998

Statutory Home Office One West Nationwide Blvd., Columbus, OH 43215-2220
(Street and Number) (City or Town, State and Zip Code)

Main Administrative Office 1100 Locust Street
(Street and Number)
Des Moines, IA 50391-1100, 614-249-7111
(City or Town, State and Zip Code) (Area Code) (Telephone Number)

Mail Address One West Nationwide Blvd., 1-04-701, Columbus, OH 43215-2220
(Street and Number or P.O. Box) (City or Town, State and Zip Code)

Primary Location of Books and Records One West Nationwide Blvd., 1-04-701
(Street and Number)
Columbus, OH 43215-2220, 614-249-1545
(City or Town, State and Zip Code) (Area Code) (Telephone Number)

Internet Web Site Address www.nationwide.com

Statutory Statement Contact Arlene E. Swanson, 614-249-1545
(Name) (Area Code) (Telephone Number)
FinRpt@nationwide.com, 866-315-1430
(E-mail Address) (FAX Number)

OFFICERS

President Lisa Eden Gobber VP & Treasurer Wendell Paul Crosser
VP & Secretary Robert William Horner III

OTHER

Pamela Ann Biesecker Sr VP-Head of Taxation

DIRECTORS OR TRUSTEES

David Gerard Arango Wesley Kim Austen Mark Allen Berven
Martha Lovette Frye Jeff Millard Rommel

State of Ohio SS:
County of Franklin

The officers of this reporting entity being duly sworn, each depose and say that they are the described officers of said reporting entity, and that on the reporting period stated above, all of the herein described assets were the absolute property of the said reporting entity, free and clear from any liens or claims thereon, except as herein stated, and that this statement, together with related exhibits, schedules and explanations therein contained, annexed or referred to, is a full and true statement of all the assets and liabilities and of the condition and affairs of the said reporting entity as of the reporting period stated above, and of its income and deductions therefrom for the period ended, and have been completed in accordance with the NAIC Annual Statement Instructions and Accounting Practices and Procedures manual except to the extent that: (1) state law may differ; or, (2) that state rules or regulations require differences in reporting not related to accounting practices and procedures, according to the best of their information, knowledge and belief, respectively. Furthermore, the scope of this attestation by the described officers also includes the related corresponding electronic filing with the NAIC, when required, that is an exact copy (except for formatting differences due to electronic filing) of the enclosed statement. The electronic filing may be requested by various regulators in lieu of or in addition to the enclosed statement.

Lisa Eden Gobber
President

Robert William Horner, III
VP & Secretary

Wendell Paul Crosser
VP & Treasurer

Subscribed and sworn to before me this _____ day of _____ July, 2012

- a. Is this an original filing? Yes [X] No []
b. If no,
1. State the amendment number.....
2. Date filed
3. Number of pages attached.....

STATEMENT AS OF JUNE 30, 2012 OF THE NATIONWIDE INSURANCE COMPANY OF FLORIDA

ASSETS

	Current Statement Date			4 December 31 Prior Year Net Admitted Assets
	1 Assets	2 Nonadmitted Assets	3 Net Admitted Assets (Cols. 1 - 2)	
1. Bonds	316,602,398		316,602,398	334,986,767
2. Stocks:				
2.1 Preferred stocks				
2.2 Common stocks				
3. Mortgage loans on real estate:				
3.1 First liens				
3.2 Other than first liens				
4. Real estate:				
4.1 Properties occupied by the company (less \$ encumbrances)				
4.2 Properties held for the production of income (less \$ encumbrances)				
4.3 Properties held for sale (less \$ encumbrances)				
5. Cash (\$1,798), cash equivalents (\$) and short-term investments (\$33)	1,831		1,831	15,847,106
6. Contract loans (including \$ premium notes)				
7. Derivatives				
8. Other invested assets				
9. Receivables for securities				
10. Securities lending reinvested collateral assets				
11. Aggregate write-ins for invested assets				
12. Subtotals, cash and invested assets (Lines 1 to 11)	316,604,229		316,604,229	350,833,873
13. Title plants less \$ charged off (for Title insurers only)				
14. Investment income due and accrued	3,710,693	30,057	3,680,636	3,806,363
15. Premiums and considerations:				
15.1 Uncollected premiums and agents' balances in the course of collection	692,577		692,577	16,340
15.2 Deferred premiums, agents' balances and installments booked but deferred and not yet due (including \$ earned but unbilled premiums)	6,631,053	7,466	6,623,587	654
15.3 Accrued retrospective premiums				
16. Reinsurance:				
16.1 Amounts recoverable from reinsurers				
16.2 Funds held by or deposited with reinsured companies				
16.3 Other amounts receivable under reinsurance contracts				
17. Amounts receivable relating to uninsured plans				
18.1 Current federal and foreign income tax recoverable and interest thereon				
18.2 Net deferred tax asset	4,202,568	3,621,043	581,525	2,753,863
19. Guaranty funds receivable or on deposit				
20. Electronic data processing equipment and software				
21. Furniture and equipment, including health care delivery assets (\$)				
22. Net adjustment in assets and liabilities due to foreign exchange rates				
23. Receivables from parent, subsidiaries and affiliates	10,789,319	87	10,789,232	10,317,542
24. Health care (\$) and other amounts receivable				
25. Aggregate write-ins for other than invested assets				360,376
26. Total assets excluding Separate Accounts, Segregated Accounts and Protected Cell Accounts (Lines 12 to 25)	342,630,439	3,658,653	338,971,786	368,089,011
27. From Separate Accounts, Segregated Accounts and Protected Cell Accounts				
28. Total (Lines 26 and 27)	342,630,439	3,658,653	338,971,786	368,089,011
DETAILS OF WRITE-INS				
1101.				
1102.				
1103.				
1198. Summary of remaining write-ins for Line 11 from overflow page				
1199. Totals (Lines 1101 through 1103 plus 1198)(Line 11 above)				
2501. FL recoupment receivable				360,376
2502.				
2503.				
2598. Summary of remaining write-ins for Line 25 from overflow page				
2599. Totals (Lines 2501 through 2503 plus 2598)(Line 25 above)				360,376

STATEMENT AS OF JUNE 30, 2012 OF THE NATIONWIDE INSURANCE COMPANY OF FLORIDA

LIABILITIES, SURPLUS AND OTHER FUNDS

	1 Current Statement Date	2 December 31, Prior Year
1. Losses (current accident year \$ 8,098,062)	39,056,461	49,212,795
2. Reinsurance payable on paid losses and loss adjustment expenses		
3. Loss adjustment expenses	5,396,770	6,563,478
4. Commissions payable, contingent commissions and other similar charges	84,496	217,751
5. Other expenses (excluding taxes, licenses and fees)		
6. Taxes, licenses and fees (excluding federal and foreign income taxes)		
7.1 Current federal and foreign income taxes (including \$ 706,732 on realized capital gains (losses))	593,841	74,519
7.2 Net deferred tax liability		
8. Borrowed money \$ and interest thereon \$		
9. Unearned premiums (after deducting unearned premiums for ceded reinsurance of \$ 748,603 and including warranty reserves of \$ and accrued accident and health experience rating refunds including \$ for medical loss ratio rebate per the Public Health Service Act)	28,260,988	27,310,008
10. Advance premium	1,249,795	
11. Dividends declared and unpaid:		
11.1 Stockholders		
11.2 Policyholders		
12. Ceded reinsurance premiums payable (net of ceding commissions)	42,563	(975,151)
13. Funds held by company under reinsurance treaties		
14. Amounts withheld or retained by company for account of others	1,813	1,813
15. Remittances and items not allocated	8,387,922	6,787,282
16. Provision for reinsurance	108,000	108,000
17. Net adjustments in assets and liabilities due to foreign exchange rates		
18. Drafts outstanding		
19. Payable to parent, subsidiaries and affiliates	236,780	44,133
20. Derivatives		
21. Payable for securities		
22. Payable for securities lending		
23. Liability for amounts held under uninsured plans		
24. Capital notes \$ and interest thereon \$		
25. Aggregate write-ins for liabilities	512,959	552,810
26. Total liabilities excluding protected cell liabilities (Lines 1 through 25)	83,932,388	89,897,438
27. Protected cell liabilities		
28. Total liabilities (Lines 26 and 27)	83,932,388	89,897,438
29. Aggregate write-ins for special surplus funds		
30. Common capital stock	1,200,000	1,200,000
31. Preferred capital stock		
32. Aggregate write-ins for other than special surplus funds		
33. Surplus notes		
34. Gross paid in and contributed surplus	523,800,000	548,800,000
35. Unassigned funds (surplus)	(269,960,602)	(271,808,427)
36. Less treasury stock, at cost:		
36.1 shares common (value included in Line 30 \$)		
36.2 shares preferred (value included in Line 31 \$)		
37. Surplus as regards policyholders (Lines 29 to 35, less 36)	255,039,398	278,191,573
38. Totals (Page 2, Line 28, Col. 3)	338,971,786	368,089,011
DETAILS OF WRITE-INS		
2501. State surcharge/recoupment payable	323,533	361,215
2502. Escrow liability	181,652	181,652
2503. Contingent suit liabilities	7,774	9,943
2598. Summary of remaining write-ins for Line 25 from overflow page		
2599. Totals (Lines 2501 through 2503 plus 2598)(Line 25 above)	512,959	552,810
2901.		
2902.		
2903.		
2998. Summary of remaining write-ins for Line 29 from overflow page		
2999. Totals (Lines 2901 through 2903 plus 2998)(Line 29 above)		
3201.		
3202.		
3203.		
3298. Summary of remaining write-ins for Line 32 from overflow page		
3299. Totals (Lines 3201 through 3203 plus 3298)(Line 32 above)		

STATEMENT OF INCOME

	1 Current Year to Date	2 Prior Year to Date	3 Prior Year Ended December 31
UNDERWRITING INCOME			
1. Premiums earned:			
1.1 Direct (written \$ 28,984,347)	28,130,444	37,738,656	65,772,367
1.2 Assumed (written \$)			
1.3 Ceded (written \$ 10,792,872)	10,889,949	12,702,829	23,634,062
1.4 Net (written \$ 18,191,475)	17,240,495	25,035,827	42,138,305
DEDUCTIONS:			
2. Losses incurred (current accident year \$ 13,939,100):			
2.1 Direct	11,169,852	16,680,281	24,785,808
2.2 Assumed			
2.3 Ceded		(6,086,735)	(6,156,776)
2.4 Net	11,169,852	22,767,016	30,942,584
3. Loss adjustment expenses incurred	2,283,235	3,961,615	6,534,534
4. Other underwriting expenses incurred	7,811,437	7,602,559	14,684,143
5. Aggregate write-ins for underwriting deductions			
6. Total underwriting deductions (Lines 2 through 5)	21,264,524	34,331,190	52,161,261
7. Net income of protected cells			
8. Net underwriting gain or (loss) (Line 1 minus Line 6 + Line 7)	(4,024,029)	(9,295,363)	(10,022,956)
INVESTMENT INCOME			
9. Net investment income earned	5,929,284	5,797,595	11,922,565
10. Net realized capital gains (losses) less capital gains tax of \$ 706,732	1,468,078	1,887,219	1,939,659
11. Net investment gain (loss) (Lines 9 + 10)	7,397,362	7,684,814	13,862,224
OTHER INCOME			
12. Net gain or (loss) from agents' or premium balances charged off (amount recovered \$ 1,167 amount charged off \$ 36,513)	(35,346)	(31,988)	(63,824)
13. Finance and service charges not included in premiums	218,395	235,787	495,083
14. Aggregate write-ins for miscellaneous income	(361,610)	(511,974)	(434,847)
15. Total other income (Lines 12 through 14)	(178,561)	(308,175)	(3,588)
16. Net income before dividends to policyholders, after capital gains tax and before all other federal and foreign income taxes (Lines 8 + 11 + 15)	3,194,772	(1,918,724)	3,835,680
17. Dividends to policyholders			
18. Net income, after dividends to policyholders, after capital gains tax and before all other federal and foreign income taxes (Line 16 minus Line 17)	3,194,772	(1,918,724)	3,835,680
19. Federal and foreign income taxes incurred	(106,282)	(2,461,902)	(1,243,338)
20. Net income (Line 18 minus Line 19)(to Line 22)	3,301,054	543,178	5,079,018
CAPITAL AND SURPLUS ACCOUNT			
21. Surplus as regards policyholders, December 31 prior year	278,191,573	267,913,629	267,913,629
22. Net income (from Line 20)	3,301,054	543,178	5,079,018
23. Net transfers (to) from Protected Cell accounts			
24. Change in net unrealized capital gains (losses) less capital gains tax of \$ 831,077	(88,771)	1,650,422	1,903,707
25. Change in net unrealized foreign exchange capital gain (loss)			
26. Change in net deferred income tax	318,161	213,088	476,815
27. Change in nonadmitted assets	(2,285,747)	1,320,955	2,616,704
28. Change in provision for reinsurance			201,700
29. Change in surplus notes			
30. Surplus (contributed to) withdrawn from protected cells			
31. Cumulative effect of changes in accounting principles	603,128		
32. Capital changes:			
32.1 Paid in			
32.2 Transferred from surplus (Stock Dividend)			
32.3 Transferred to surplus			
33. Surplus adjustments:			
33.1 Paid in	(25,000,000)		
33.2 Transferred to capital (Stock Dividend)			
33.3 Transferred from capital			
34. Net remittances from or (to) Home Office			
35. Dividends to stockholders			
36. Change in treasury stock			
37. Aggregate write-ins for gains and losses in surplus			
38. Change in surplus as regards policyholders (Lines 22 through 37)	(23,152,175)	3,727,643	10,277,944
39. Surplus as regards policyholders, as of statement date (Lines 21 plus 38)	255,039,398	271,641,272	278,191,573
DETAILS OF WRITE-INS			
0501.			
0502.			
0503.			
0598. Summary of remaining write-ins for Line 5 from overflow page			
0599. Totals (Lines 0501 through 0503 plus 0598)(Line 5 above)			
1401. FL recoupment receivable	3,278	(509,428)	(588,589)
1402. Miscellaneous	(371,551)	71,043	156,396
1403. Change in contingent suit liability	6,663	(73,589)	(2,654)
1498. Summary of remaining write-ins for Line 14 from overflow page			
1499. Totals (Lines 1401 through 1403 plus 1498)(Line 14 above)	(361,610)	(511,974)	(434,847)
3701.			
3702.			
3703.			
3798. Summary of remaining write-ins for Line 37 from overflow page			
3799. Totals (Lines 3701 through 3703 plus 3798)(Line 37 above)			

STATEMENT AS OF JUNE 30, 2012 OF THE NATIONWIDE INSURANCE COMPANY OF FLORIDA

CASH FLOW

	1 Current Year To Date	2 Prior Year To Date	3 Prior Year Ended December 31
Cash from Operations			
1. Premiums collected net of reinsurance	13,152,348	18,830,406	32,987,790
2. Net investment income	6,608,395	7,061,600	13,741,003
3. Miscellaneous income	(178,561)	(308,175)	(3,588)
4. Total (Lines 1 to 3)	19,582,182	25,583,831	46,725,205
5. Benefit and loss related payments	21,326,186	33,677,233	56,613,665
6. Net transfers to Separate Accounts, Segregated Accounts and Protected Cell Accounts			
7. Commissions, expenses paid and aggregate write-ins for deductions	11,394,635	13,741,793	24,572,549
8. Dividends paid to policyholders			
9. Federal and foreign income taxes paid (recovered) net of \$1,318,374 tax on capital gains (losses)	81,128	(7,295,495)	(7,280,789)
10. Total (Lines 5 through 9)	32,801,949	40,123,531	73,905,425
11. Net cash from operations (Line 4 minus Line 10)	(13,219,767)	(14,539,700)	(27,180,220)
Cash from Investments			
12. Proceeds from investments sold, matured or repaid:			
12.1 Bonds	20,718,045	136,247,001	147,811,949
12.2 Stocks			
12.3 Mortgage loans			
12.4 Real estate			
12.5 Other invested assets			
12.6 Net gains or (losses) on cash, cash equivalents and short-term investments			
12.7 Miscellaneous proceeds		45,391,953	13,282
12.8 Total investment proceeds (Lines 12.1 to 12.7)	20,718,045	181,638,954	147,825,231
13. Cost of investments acquired (long-term only):			
13.1 Bonds		104,639,457	111,637,124
13.2 Stocks			
13.3 Mortgage loans			
13.4 Real estate			
13.5 Other invested assets			
13.6 Miscellaneous applications			
13.7 Total investments acquired (Lines 13.1 to 13.6)		104,639,457	111,637,124
14. Net increase (or decrease) in contract loans and premium notes			
15. Net cash from investments (Line 12.8 minus Line 13.7 and Line 14)	20,718,045	76,999,497	36,188,107
Cash from Financing and Miscellaneous Sources			
16. Cash provided (applied):			
16.1 Surplus notes, capital notes			
16.2 Capital and paid in surplus, less treasury stock	(25,000,000)		
16.3 Borrowed funds			
16.4 Net deposits on deposit-type contracts and other insurance liabilities			
16.5 Dividends to stockholders			
16.6 Other cash provided (applied)	1,656,447	(6,796,309)	(15,328)
17. Net cash from financing and miscellaneous sources (Line 16.1 through Line 16.4 minus Line 16.5 plus Line 16.6)	(23,343,553)	(6,796,309)	(15,328)
RECONCILIATION OF CASH, CASH EQUIVALENTS AND SHORT-TERM INVESTMENTS			
18. Net change in cash, cash equivalents and short-term investments (Line 11, plus Lines 15 and 17)	(15,845,275)	55,663,488	8,992,559
19. Cash, cash equivalents and short-term investments:			
19.1 Beginning of year	15,847,106	6,854,547	6,854,547
19.2 End of period (Line 18 plus Line 19.1)	1,831	62,518,035	15,847,106

Note: Supplemental disclosures of cash flow information for non-cash transactions:

--	--	--

NOTES TO FINANCIAL STATEMENTS

Note 1 - Summary of Significant Accounting Policies

A. Accounting Practices

The accompanying statutory financial statements of Nationwide Insurance Company of Florida (the Company) have been prepared in conformity with accounting practices prescribed or permitted by the National Association of Insurance Commissioners (NAIC) and the State of Ohio.

The Ohio Insurance Department recognizes only statutory accounting practices (SAP) prescribed or permitted by the State of Ohio for determining and reporting the financial condition and results of operations of an insurance company, as well as, determining its solvency under the Ohio Insurance law. The National Association of Insurance Commissioners' (NAIC) *Accounting Practices and Procedures Manual* (NAIC SAP) has been adopted as a component of prescribed or permitted practices by the State of Ohio.

Note 2 - Accounting Changes and Corrections of Errors

On January 1, 2012, the Company adopted a new standard, SSAP No. 101, Income Taxes, which supersedes SSAP No. 10R, Income Taxes Revised - A Temporary Replacement of SSAP No. 10. The standard applies a 'more likely than not' threshold for the recognition of federal and foreign tax loss contingencies and establishes a new framework for determining the admissibility of deferred tax assets (DTA). The difference between the recalculated amounts as of January 1, 2012, and the amount actually reported in the prior year financial statements is treated as a change in accounting principle in accordance with SSAP No. 3, Accounting Changes and Corrections of Errors. The cumulative effect of this change in accounting principle resulted in a \$603,128 increase in unassigned funds as of January 1, 2012.

Note 3 - Business Combinations and Goodwill

No change.

Note 4 - Discontinued Operations

No change.

Note 5 - Investments

A. Mortgage Loans

No change.

B. Troubled Debt Restructuring for Creditors

No change.

C. Reverse Mortgages

No change.

D. Loan-Backed Securities

1. Prepayment assumptions are generally obtained using a model provided by a third-party vendor.
2. The following table summarizes by quarter other-than-temporary impairments for loan-backed securities recorded during the year because the Company had either the intent to sell the securities or the inability or lack of intent to retain as cited in the table:

	(1) Amortized Cost Basis Before Other-than- Temporary Impairment	(2) Other-than- Temporary Impairment Recognized in Loss	(3) Fair Value 1 - 2
OTTI recognized 1st Quarter			
a. Intent to Sell	\$ -	\$ -	\$ -
b. Inability or lack of intent to retain the investment in the security for a period of time sufficient to recover the amortized cost basis	\$ -	\$ -	\$ -
c. Total 1st Quarter	\$ -	\$ -	\$ -
OTTI recognized 2nd Quarter			
d. Intent to Sell	\$ -	\$ -	\$ -
e. Inability or lack of intent to retain the investment in the security for a period of time sufficient to recover the amortized cost basis	\$ -	\$ -	\$ -
f. Total 2nd Quarter	\$ -	\$ -	\$ -
OTTI recognized 3rd Quarter			
g. Intent to Sell	\$ -	\$ -	\$ -
h. Inability or lack of intent to retain the investment in the security for a period of time sufficient to recover the amortized cost basis	\$ -	\$ -	\$ -
i. Total 3rd Quarter	\$ -	\$ -	\$ -

NOTES TO FINANCIAL STATEMENTS

OTTI recognized 4th Quarter

j. Intent to Sell	\$	-	\$	-	\$	-
k. Inability or lack of intent to retain the investment in the security for a period of time sufficient to recover the amortized cost basis	\$	-	\$	-	\$	-
l. Total 4th Quarter	\$	-	\$	-	\$	-
m. Annual Aggregate Total			\$	-		

3. The following table summarizes other-than-temporary impairments for loan-backed securities held at the end of the quarter based on the fact that the present value of projected cash flows expected to be collected was less than the amortized cost of the securities:

(1)	(2)	(3)	(4)	(5)	(6)	(7)
CUSIP	Amortized Cost Before Current Period OTTI	Present Value of Projected Cash Flows	Recognized Other-Than-Temporary Impairment	Amortized Cost After Other-Than-Temporary Impairment	Fair Value at time of OTTI	Date of Financial Statement Where Reported
Total			\$ -			

4. All impaired securities (fair value is less than cost or amortized cost) for which an other-than-temporary impairment has not been recognized in earnings as a realized loss (including securities with a recognized other-than-temporary impairment for non-interest related declines when a non-recognized interest related impairment remains):

a. The aggregate amount of unrealized losses:

1. Less than 12 Months	\$	(10,600)
2. 12 Months or Longer	\$	(355,848)

b. The aggregate related fair value of securities with unrealized losses:

1. Less than 12 Months	\$	551,844
2. 12 Months or Longer	\$	2,071,248

5. The Company reviews all loan-backed and structured securities in which the fair value of the given security is less than the amortized cost to determine if a given security is other-than-temporarily impaired. The Company examines characteristics of the underlying collateral, such as delinquency and default rates, the quality of the underlying borrower, the type of collateral in the pool, the vintage year of the collateral, subordination levels within the structure of the collateral pool, the quality of any credit guarantors, to determine the cash flows expected to be received for the security.

If the severity and duration of the security's unrealized loss indicates a risk of an other-than-temporary impairment, then the Company will evaluate if the amortized cost basis of the security will be recovered by comparing the present value of the cash flows expected to be received for the given security with the amortized cost basis of the security. If the present value of cash flows is greater than the amortized cost basis of a security then the security is deemed not to be other-than-temporarily impaired.

E. Repurchase Agreements and Securities Lending Transactions

No change.

F. Real Estate

No change.

G. Low-Income Housing Tax Credits

No change.

Note 6 - Joint Ventures, Partnerships and Limited Liability Companies

No change.

Note 7 - Investment Income

No change.

Note 8 - Derivative Instruments

No change.

Note 9 - Income Taxes

No change.

Note 10 - Information Concerning Parent, Subsidiaries, Affiliates and Other Related Parties

No change.

Note 11 - Debt

No change.

Note 12 - Retirement Plans, Deferred Compensation, Postemployment Benefits and Compensated Absences and Other Postretirement Benefit Plans

No change.

NOTES TO FINANCIAL STATEMENTS

Note 13 - Capital and Surplus, Dividend Restrictions and Quasi-Reorganizations

D. Dividends Paid

On April 27, the Company paid an extraordinary dividend of \$25 million to its parent, Nationwide Mutual Insurance Company.

Note 14 – Contingencies

No change.

Note 15 – Leases

No change.

Note 16 - Information About Financial Instruments With Off-Balance Sheet Risk And Financial Instruments With Concentrations of Credit Risk

No change.

Note 17 - Sale, Transfer and Servicing of Financial Assets and Extinguishments of Liabilities

A. Transfers of Receivables Reported as Sales

No change.

B. Transfers and Servicing of Financial Assets

No change.

C. Wash Sales

Not applicable.

Note 18 - Gain or Loss to the Reporting Entity from Uninsured Plans and the Uninsured Portion of Partially Insured Plans

No change.

Note 19 - Direct Premiums Written/Produced by Managing General Agents/Third Party Administrators

No change.

Note 20 – Fair Value Measurements

Fair value is defined as the price that would be received to sell an asset or paid to transfer a liability in an orderly transaction between market participants at the measurement date. Fair value measurements are based upon observable and unobservable inputs. Observable inputs reflect market data obtained from independent sources while unobservable inputs reflect the Company's view of market assumptions in the absence of observable market information. The Company utilizes valuation techniques that maximize the use of observable inputs and minimize the use of unobservable inputs. In determining fair value, the Company uses various methods including market, income and cost approaches.

The Company categorizes its assets and liabilities reported at fair value in the quarterly statement into a three-level hierarchy based on the priority of the inputs to the valuation technique. The fair value hierarchy gives the highest priority to quoted prices in active markets for identical assets or liabilities (Level 1) and the lowest priority to unobservable inputs (Level 3). If the inputs used to measure fair value fall within different levels of the hierarchy, the category level is based on the lowest priority level input that is significant to the fair value measurement of the instrument in its entirety.

The fair value hierarchy levels are as follows:

Level 1. Unadjusted quoted prices accessible in active markets for identical assets or liabilities at the measurement date and mutual funds where the value per share (unit) is determined and published daily and is the basis for current transactions.

Level 2. Unadjusted quoted prices for similar assets or liabilities in active markets or inputs (other than quoted prices) that are observable or that are derived principally from or corroborated by observable market data through correlation or other means.

Level 3. Prices or valuation techniques that require inputs that are both unobservable and significant to the overall fair value measurement. Inputs reflect management's best estimate about the assumptions market participants would use at the measurement date in pricing the asset or liability. Consideration is given to the risk inherent in both the method of valuation and the valuation inputs.

The Company periodically reviews its fair value hierarchy classifications for financial assets and liabilities. Changes in observability of significant valuation inputs identified during these reviews may trigger reclassifications. Reclassifications into/out of the fair value hierarchy levels are reported as transfers at the beginning of the period in which the change occurs.

To determine the fair value of bonds and stocks for which market quotations are available, independent pricing services are most often utilized. For these bonds and stocks, the Company obtains the pricing services' methodologies, inputs and assumptions and classifies the investments accordingly in the fair value hierarchy.

Non-binding broker quotes are also utilized to determine the fair value of certain bonds when quotes are not available from independent pricing services. Broker quotes are considered unobservable inputs, and these bonds are classified accordingly in the fair value hierarchy as only one broker quote is ordinarily obtained, the investment is not traded on an exchange, the pricing is not available to other entities and/or the transaction volume in the same or similar investments has decreased such that generally only one quotation is available. As the brokers often do not provide the necessary transparency into their quotes and methodologies, the Company periodically performs reviews and tests to ensure that quotes are a reasonable estimate of the investments' fair value.

For certain bonds not valued using independent services or broker quotes, a corporate pricing matrix or internally developed pricing model is most often used. The corporate pricing matrix is developed using private spreads for bonds with varying weighted average lives and credit quality ratings. The weighted average life and credit quality rating of a particular bond to be priced using the corporate pricing matrix are important inputs into the model and are used to determine a corresponding spread that is added to the appropriate U.S. Treasury yield to create an estimated market yield for that security. The estimated market yield and other relevant factors are then used to estimate the fair value of the particular bond.

NOTES TO FINANCIAL STATEMENTS

The following table summarizes assets and liabilities reported at fair value as of June 30, 2012:

	<u>Level 1</u>	<u>Level 2</u>	<u>Level 3</u>	<u>Total</u>
Assets at Fair Value				
U.S. Government bonds	-	-	-	-
States, Territories and Possessions	-	-	-	-
Political subdivisions	-	-	-	-
Special revenues	-	-	-	-
Hybrid Securities	-	-	-	-
Credit tenant loans	-	-	-	-
Industrial & Misc.	-	766,198	-	766,198
Total Bonds	\$ -	\$ 766,198	\$ -	\$ 766,198
Sec Lending	-	-	-	-
Preferred Stocks	-	-	-	-
Common Stocks	-	-	-	-
Loans held for sale	-	-	-	-
Separate Account Assets	-	-	-	-
Derivative Assets	-	-	-	-
Total Assets at Fair Value	\$ -	\$ 766,198	\$ -	\$ 766,198
Liabilities at Fair Value				
Derivatives Liabilities	-	-	-	-
Total Liabilities at Fair Value	\$ -	\$ -	\$ -	\$ -

The following table summarizes aggregate carrying value and fair value, by level, for all financial instruments, excluding assets and liabilities reported at fair value, as of June 30, 2012:

	Carrying Value	Aggregate Fair Value	Level 1	Level 2	Level 3
Assets					
Bonds	\$ 316,602,398	\$ 360,603,874	\$ 148,968,712	\$ 211,635,162	\$ -
Short-term investments	33	33	-	33	-
Total Assets	\$ 316,602,431	\$ 360,603,907	\$ 148,968,712	\$ 211,635,195	\$ -

Note 21 - Other Items

C. Other Disclosures

Effective June 1, 2012, Nationwide Mutual Insurance Company renewed its agreement with the Company for its Property Catastrophe Program as follows: first layer 10% of \$36.4 million excess of \$14.2 million; second layer 100% of \$71.5 million excess of \$50.6 million.

Note 22 - Events Subsequent

Subsequent events have been considered through August 3, 2012 for these statutory financial statements which are to be issued August 6, 2012. There were no events occurring subsequent to the end of the quarter that merited recognition or disclosure in these statements.

Note 23 - Reinsurance

No change.

Note 24 - Retrospectively Rated Contracts and Contracts Subject to Redetermination

No change.

Note 25 - Changes in Incurred Losses and Loss Adjustment Expenses

No change.

Note 26 - Intercompany Pooling Arrangements

No change.

Note 27 - Structured Settlements

No change.

Note 28 - Health Care Receivables

No change.

Note 29 - Participating Policies

No change.

Note 30 - Premium Deficiency Reserves

No change.

Note 31 - High Deductibles

Not applicable.

Note 32 - Discounting of Liabilities for Unpaid Losses or Unpaid Loss Adjustment Expenses

No change.

NOTES TO FINANCIAL STATEMENTS

Note 33 - Asbestos/Environmental Reserves

No change.

Note 34 - Subscriber Savings Accounts

No change.

Note 35 - Multiple Peril Crop Insurance

No change.

Note 36 - Financial Guaranty Insurance

A. and B. Not applicable.

STATEMENT AS OF JUNE 30, 2012 OF THE NATIONWIDE INSURANCE COMPANY OF FLORIDA
GENERAL INTERROGATORIES

PART 1 - COMMON INTERROGATORIES

GENERAL

- 1.1 Did the reporting entity experience any material transactions requiring the filing of Disclosure of Material Transactions with the State of Domicile, as required by the Model Act? Yes [] No [X]
- 1.2 If yes, has the report been filed with the domiciliary state? Yes [] No []
- 2.1 Has any change been made during the year of this statement in the charter, by-laws, articles of incorporation, or deed of settlement of the reporting entity? Yes [] No [X]
- 2.2 If yes, date of change:
3. Have there been any substantial changes in the organizational chart since the prior quarter end? Yes [X] No []
 If yes, complete the Schedule Y - Part 1 - organizational chart.
- 4.1 Has the reporting entity been a party to a merger or consolidation during the period covered by this statement? Yes [] No [X]
- 4.2 If yes, provide the name of the entity, NAIC Company Code, and state of domicile (use two letter state abbreviation) for any entity that has ceased to exist as a result of the merger or consolidation.

1 Name of Entity	2 NAIC Company Code	3 State of Domicile

5. If the reporting entity is subject to a management agreement, including third-party administrator(s), managing general agent(s), attorney-in-fact, or similar agreement, have there been any significant changes regarding the terms of the agreement or principals involved? Yes [] No [X] N/A []
 If yes, attach an explanation.
- 6.1 State as of what date the latest financial examination of the reporting entity was made or is being made. 12/31/2011
- 6.2 State the as of date that the latest financial examination report became available from either the state of domicile or the reporting entity. This date should be the date of the examined balance sheet and not the date the report was completed or released. 12/31/2006
- 6.3 State as of what date the latest financial examination report became available to other states or the public from either the state of domicile or the reporting entity. This is the release date or completion date of the examination report and not the date of the examination (balance sheet date). 03/29/2008
- 6.4 By what department or departments?
 OH
- 6.5 Have all financial statement adjustments within the latest financial examination report been accounted for in a subsequent financial statement filed with Departments? Yes [] No [] N/A [X]
- 6.6 Have all of the recommendations within the latest financial examination report been complied with? Yes [] No [] N/A [X]
- 7.1 Has this reporting entity had any Certificates of Authority, licenses or registrations (including corporate registration, if applicable) suspended or revoked by any governmental entity during the reporting period? Yes [] No [X]
- 7.2 If yes, give full information:
- 8.1 Is the company a subsidiary of a bank holding company regulated by the Federal Reserve Board? Yes [] No [X]
- 8.2 If response to 8.1 is yes, please identify the name of the bank holding company.
- 8.3 Is the company affiliated with one or more banks, thrifts or securities firms? Yes [X] No []
- 8.4 If response to 8.3 is yes, please provide below the names and location (city and state of the main office) of any affiliates regulated by a federal regulatory services agency [i.e. the Federal Reserve Board (FRB), the Office of the Comptroller of the Currency (OCC), the Federal Deposit Insurance Corporation (FDIC) and the Securities Exchange Commission (SEC)] and identify the affiliate's primary federal regulator.

1 Affiliate Name	2 Location (City, State)	3 FRB	4 OCC	5 FDIC	6 SEC
Nationwide Mutual Insurance Company	Columbus, OH	YES	NO	NO	NO
Nationwide Mutual Fire Insurance Company	Columbus, OH	YES	NO	NO	NO
Nationwide Financial Services, Inc.	Columbus, OH	YES	NO	NO	NO
Nationwide Corporation	Columbus, OH	YES	NO	NO	NO
Nationwide Bank	Columbus, OH	NO	YES	NO	NO
Nationwide Investment Services Corp.	Columbus, OH	NO	NO	NO	YES
Nationwide Investment Advisors, LLC	Columbus, OH	NO	NO	NO	YES
Nationwide Securities, LLC	Dublin, OH	NO	NO	NO	YES
Nationwide SA Capital Trust	King of Prussia, PA	NO	NO	NO	YES
Nationwide Fund Advisors	King of Prussia, PA	NO	NO	NO	YES
Nationwide Fund Distributors, LLC	King of Prussia, PA	NO	NO	NO	YES
Nationwide Asset Management, LLC	Columbus, OH	NO	NO	NO	YES

GENERAL INTERROGATORIES

- 9.1 Are the senior officers (principal executive officer, principal financial officer, principal accounting officer or controller, or persons performing similar functions) of the reporting entity subject to a code of ethics, which includes the following standards? Yes No
 (a) Honest and ethical conduct, including the ethical handling of actual or apparent conflicts of interest between personal and professional relationships;
 (b) Full, fair, accurate, timely and understandable disclosure in the periodic reports required to be filed by the reporting entity;
 (c) Compliance with applicable governmental laws, rules and regulations;
 (d) The prompt internal reporting of violations to an appropriate person or persons identified in the code; and
 (e) Accountability for adherence to the code.
- 9.11 If the response to 9.1 is No, please explain:
- 9.2 Has the code of ethics for senior managers been amended? Yes No
- 9.21 If the response to 9.2 is Yes, provide information related to amendment(s).
- 9.3 Have any provisions of the code of ethics been waived for any of the specified officers? Yes No
- 9.31 If the response to 9.3 is Yes, provide the nature of any waiver(s).

FINANCIAL

- 10.1 Does the reporting entity report any amounts due from parent, subsidiaries or affiliates on Page 2 of this statement? Yes No
 10.2 If yes, indicate any amounts receivable from parent included in the Page 2 amount:\$ 7,228,733

INVESTMENT

- 11.1 Were any of the stocks, bonds, or other assets of the reporting entity loaned, placed under option agreement, or otherwise made available for use by another person? (Exclude securities under securities lending agreements.) Yes No
 11.2 If yes, give full and complete information relating thereto:
12. Amount of real estate and mortgages held in other invested assets in Schedule BA:\$
 13. Amount of real estate and mortgages held in short-term investments:\$
- 14.1 Does the reporting entity have any investments in parent, subsidiaries and affiliates? Yes No
 14.2 If yes, please complete the following:

	1 Prior Year-End Book/Adjusted Carrying Value	2 Current Quarter Book/Adjusted Carrying Value
14.21 Bonds	\$	\$
14.22 Preferred Stock	\$	\$
14.23 Common Stock	\$	\$
14.24 Short-Term Investments	\$	\$
14.25 Mortgage Loans on Real Estate	\$	\$
14.26 All Other	\$	\$
14.27 Total Investment in Parent, Subsidiaries and Affiliates (Subtotal Lines 14.21 to 14.26)	\$	\$
14.28 Total Investment in Parent included in Lines 14.21 to 14.26 above	\$	\$

- 15.1 Has the reporting entity entered into any hedging transactions reported on Schedule DB? Yes No
 15.2 If yes, has a comprehensive description of the hedging program been made available to the domiciliary state? Yes No
 If no, attach a description with this statement.

STATEMENT AS OF JUNE 30, 2012 OF THE NATIONWIDE INSURANCE COMPANY OF FLORIDA
GENERAL INTERROGATORIES

16. Excluding items in Schedule E - Part 3 - Special Deposits, real estate, mortgage loans and investments held physically in the reporting entity's offices, vaults or safety deposit boxes, were all stocks, bonds and other securities, owned throughout the current year held pursuant to a custodial agreement with a qualified bank or trust company in accordance with Section 1, III - General Examination Considerations, F. Outsourcing of Critical Functions, Custodial or Safekeeping Agreements of the NAIC Financial Condition Examiners Handbook? Yes [X] No []

16.1 For all agreements that comply with the requirements of the NAIC Financial Condition Examiners Handbook, complete the following:

1 Name of Custodian(s)	2 Custodian Address
The Bank of New York Mellon	1 Wall Street, New York, NY 10286

16.2 For all agreements that do not comply with the requirements of the NAIC Financial Condition Examiners Handbook, provide the name, location and a complete explanation:

1 Name(s)	2 Location(s)	3 Complete Explanation(s)

16.3 Have there been any changes, including name changes, in the custodian(s) identified in 16.1 during the current quarter? Yes [] No [X]

16.4 If yes, give full information relating thereto:

1 Old Custodian	2 New Custodian	3 Date of Change	4 Reason

16.5 Identify all investment advisors, brokers/dealers or individuals acting on behalf of broker/dealers that have access to the investment accounts, handle securities and have authority to make investments on behalf of the reporting entity:

1 Central Registration Depository	2 Name(s)	3 Address
N/A	Members of the investment staff designated by the Chief Investment Officer as detailed in the Corporate Resolution	One Nationwide Blvd., Columbus, OH 43215-2220

17.1 Have all the filing requirements of the Purposes and Procedures Manual of the NAIC Securities Valuation Office been followed? Yes [X] No []

17.2 If no, list exceptions:

GENERAL INTERROGATORIES

PART 2 - PROPERTY & CASUALTY INTERROGATORIES

1. If the reporting entity is a member of a pooling arrangement, did the agreement or the reporting entity's participation change? Yes [] No [] N/A [X]
If yes, attach an explanation.

2. Has the reporting entity reinsured any risk with any other reporting entity and agreed to release such entity from liability, in whole or in part, from any loss that may occur on the risk, or portion thereof, reinsured? Yes [] No [X]
If yes, attach an explanation.

3.1 Have any of the reporting entity's primary reinsurance contracts been canceled? Yes [] No [X]

3.2 If yes, give full and complete information thereto.

4.1 Are any of the liabilities for unpaid losses and loss adjustment expenses other than certain workers' compensation tabular reserves (see Annual Statement Instructions pertaining to disclosure of discounting for definition of "tabular reserves") discounted at a rate of interest greater than zero? Yes [] No [X]

4.2 If yes, complete the following schedule:

1 Line of Business	2 Maximum Interest	3 Discount Rate	TOTAL DISCOUNT				DISCOUNT TAKEN DURING PERIOD			
			4 Unpaid Losses	5 Unpaid LAE	6 IBNR	7 TOTAL	8 Unpaid Losses	9 Unpaid LAE	10 IBNR	11 TOTAL
TOTAL										

5. Operating Percentages:

5.1 A&H loss percent0.000 %

5.2 A&H cost containment percent0.000 %

5.3 A&H expense percent excluding cost containment expenses0.000 %

6.1 Do you act as a custodian for health savings accounts? Yes [] No [X]

6.2 If yes, please provide the amount of custodial funds held as of the reporting date \$.....

6.3 Do you act as an administrator for health savings accounts? Yes [] No [X]

6.4 If yes, please provide the balance of the funds administered as of the reporting date \$.....

SCHEDULE F - CEDED REINSURANCE

Showing All New Reinsurers - Current Year to Date

1 NAIC Company Code	2 Federal ID Number	3 Name of Reinsurer	4 Domiciliary Jurisdiction	5 Is Insurer Authorized? (Yes or No)
NONE				

STATEMENT AS OF JUNE 30, 2012 OF THE NATIONWIDE INSURANCE COMPANY OF FLORIDA

SCHEDULE T - EXHIBIT OF PREMIUMS WRITTEN

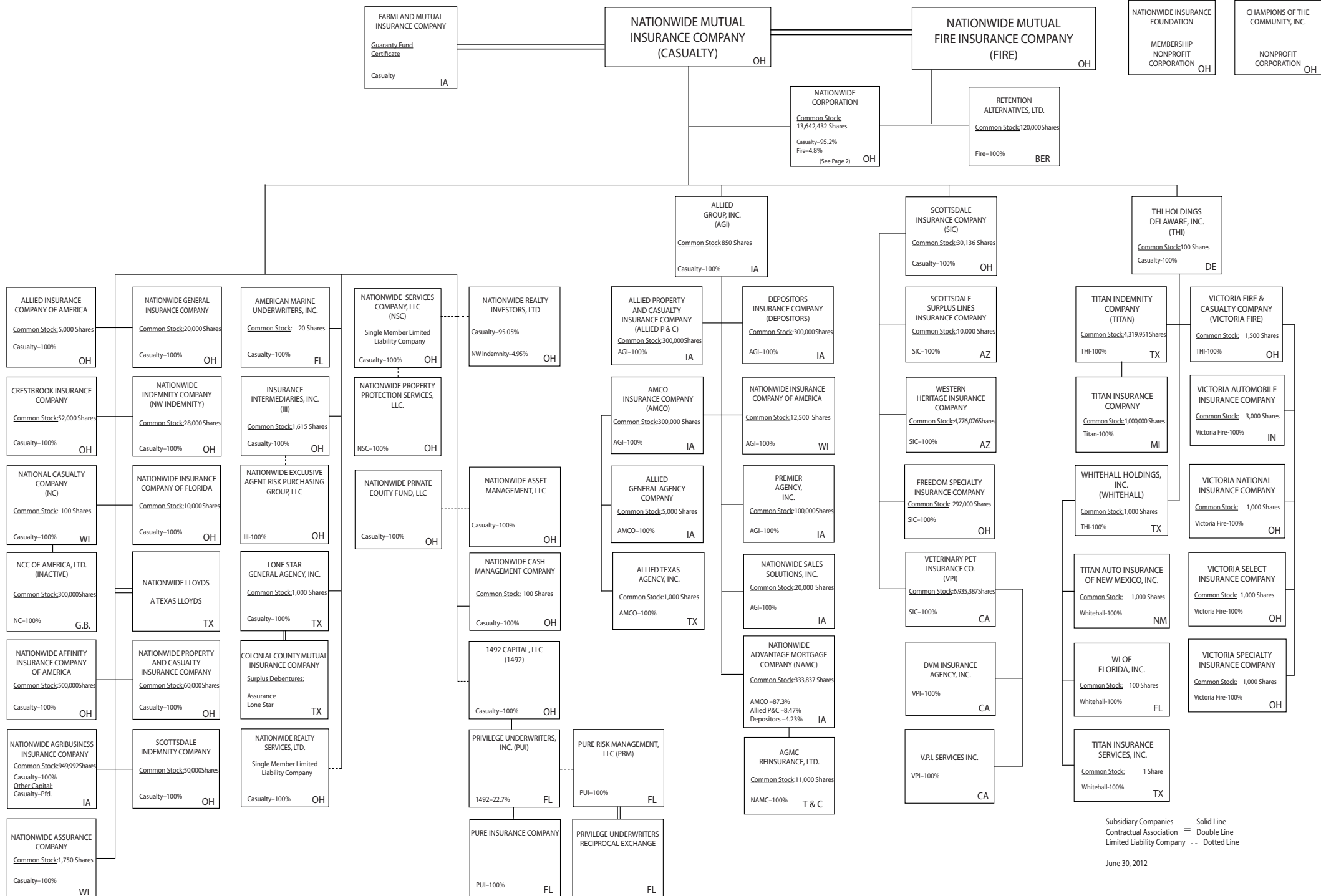
Current Year to Date - Allocated by States and Territories

	1	Direct Premiums Written		Direct Losses Paid (Deducting Salvage)		Direct Losses Unpaid	
		2	3	4	5	6	7
States, etc.	Active Status	Current Year To Date	Prior Year To Date	Current Year To Date	Prior Year To Date	Current Year To Date	Prior Year To Date
1. Alabama AL	N						
2. Alaska AK	N						
3. Arizona AZ	N						
4. Arkansas AR	N						
5. California CA	N						
6. Colorado CO	N						
7. Connecticut CT	N						
8. Delaware DE	N						
9. District of Columbia DC	N						
10. Florida FL	L	28,984,347	29,488,327	21,326,186	35,876,690	39,056,461	65,383,596
11. Georgia GA	N						
12. Hawaii HI	N						
13. Idaho ID	N						
14. Illinois IL	N						
15. Indiana IN	N						
16. Iowa IA	N						
17. Kansas KS	N						
18. Kentucky KY	N						
19. Louisiana LA	N						
20. Maine ME	N						
21. Maryland MD	N						
22. Massachusetts MA	N						
23. Michigan MI	N						
24. Minnesota MN	N						
25. Mississippi MS	N						
26. Missouri MO	N						
27. Montana MT	N						
28. Nebraska NE	N						
29. Nevada NV	N						
30. New Hampshire NH	N						
31. New Jersey NJ	N						
32. New Mexico NM	N						
33. New York NY	N						
34. North Carolina NC	N						
35. North Dakota ND	N						
36. Ohio OH	L						
37. Oklahoma OK	N						
38. Oregon OR	N						
39. Pennsylvania PA	N						
40. Rhode Island RI	N						
41. South Carolina SC	N						
42. South Dakota SD	N						
43. Tennessee TN	N						
44. Texas TX	N						
45. Utah UT	N						
46. Vermont VT	N						
47. Virginia VA	N						
48. Washington WA	N						
49. West Virginia WV	N						
50. Wisconsin WI	N						
51. Wyoming WY	N						
52. American Samoa AS	N						
53. Guam GU	N						
54. Puerto Rico PR	N						
55. U.S. Virgin Islands VI	N						
56. Northern Mariana Islands MP	N						
57. Canada CN	N						
58. Aggregate Other Alien OT	XXX						
59. Totals	(a) 2	28,984,347	29,488,327	21,326,186	35,876,690	39,056,461	65,383,596
DETAILS OF WRITE-INS							
5801.	XXX						
5802.	XXX						
5803.	XXX						
5898. Summary of remaining write-ins for Line 58 from overflow page	XXX						
5899. Totals (Lines 5801 through 5803 plus 5898)(Line 58 above)	XXX						

(L) Licensed or Chartered - Licensed Insurance Carrier or Domiciled RRG; (R) Registered - Non-domiciled RRGs; (Q) Qualified - Qualified or Accredited Reinsurer; (E) Eligible - Reporting Entities eligible or approved to write Surplus Lines in the state; (N) None of the above - Not allowed to write business in the state.

(a) Insert the number of L responses except for Canada and Other Alien.

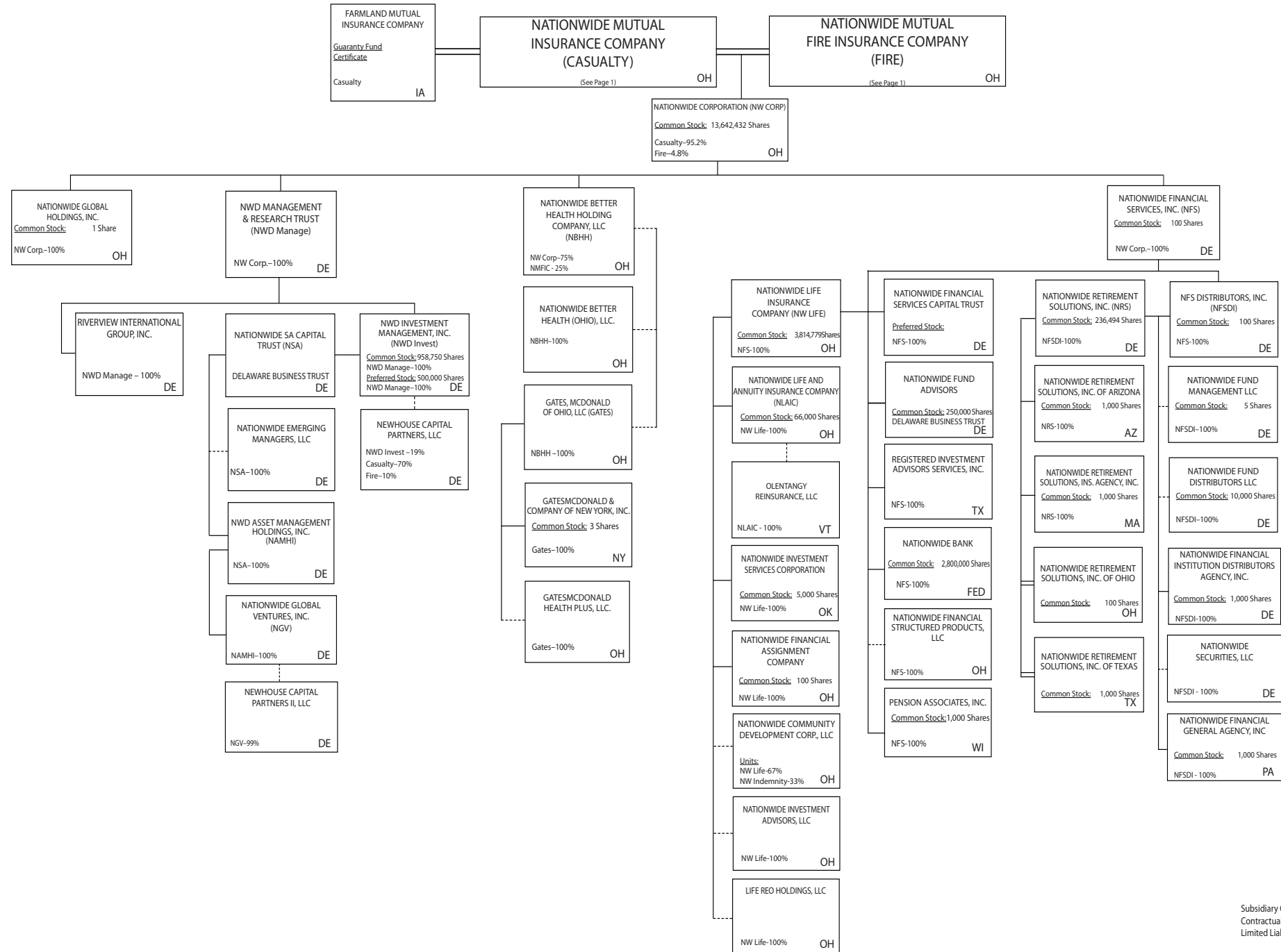
NATIONWIDE®



Subsidiary Companies — Solid Line
Contractual Association = Double Line
Limited Liability Company - - Dotted Line

June 30, 2012

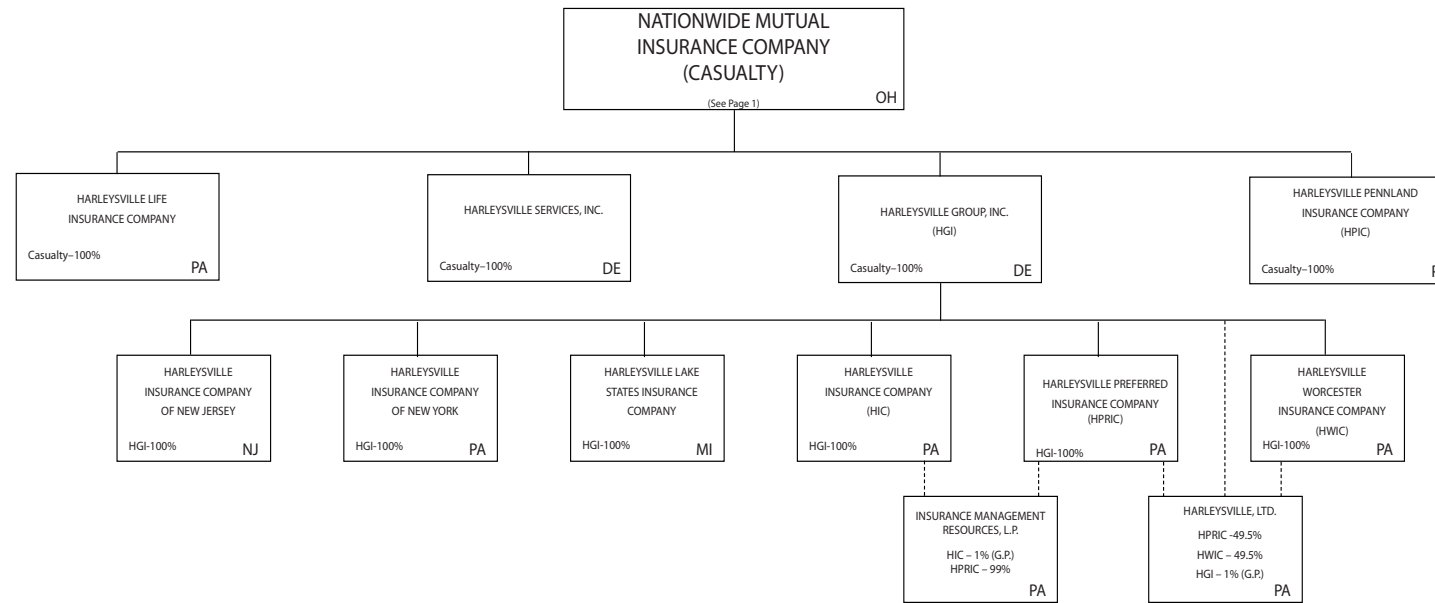
NATIONWIDE®



Subsidiary Companies — Solid Line
 Contractual Association = Double Line
 Limited Liability Company - - Dotted Line

May 1, 2012

NATIONWIDE®



NATIONWIDE INSURANCE COMPANIES

NAIC Group Code	Group Name	NAIC Company Code	State of Domicile	Federal ID Number	Name of Company
0140	Nationwide	42579	IA	42-1201931	Allied Property and Casualty Insurance Company
0140	Nationwide	19100	IA	42-6054959	AMCO Insurance Company
0140	Nationwide	10127	OH	27-0114983	Allied Insurance Company of America
0140	Nationwide	22209	OH	75-6013587	Freedom Specialty Insurance Company
0140	Nationwide	29262	TX	74-1061659	Colonial County Mutual Insurance Company
0140	Nationwide	18961	OH	68-0066866	Crestbrook Insurance Company
0140	Nationwide	42587	IA	42-1207150	Depositors Insurance Company
0140	Nationwide	13838	IA	42-0618271	Farmland Mutual Insurance Company
0140	Nationwide	11991	WI	38-0865250	National Casualty Company
0140	Nationwide	26093	OH	48-0470690	Nationwide Affinity Insurance Company of America
0140	Nationwide	28223	IA	42-1015537	Nationwide Agribusiness Insurance Company
0140	Nationwide	10723	WI	95-0639970	Nationwide Assurance Company
0140	Nationwide	23760	OH	31-4425763	Nationwide General Insurance Company
0140	Nationwide	10070	OH	31-1399201	Nationwide Indemnity Company
0140	Nationwide	25453	WI	95-2130882	Nationwide Insurance Company of America
0140	Nationwide	10948	OH	31-1613686	Nationwide Insurance Company of Florida
0140	Nationwide	92657	OH	31-1000740	Nationwide Life and Annuity Insurance Company
0140	Nationwide	66869	OH	31-4156830	Nationwide Life Insurance Company
0140	Nationwide	42110	TX	75-1780981	Nationwide Lloyds
0140	Nationwide	23779	OH	31-4177110	Nationwide Mutual Fire Insurance Company
0140	Nationwide	23787	OH	31-4177100	Nationwide Mutual Insurance Company
0140	Nationwide	37877	OH	31-0970750	Nationwide Property & Casualty Insurance Company
0140	Nationwide	15580	OH	31-1117969	Scottsdale Indemnity Company
0140	Nationwide	41297	OH	31-1024978	Scottsdale Insurance Company
0140	Nationwide	10672	AZ	86-0835870	Scottsdale Surplus Lines Insurance Company
0140	Nationwide	13242	TX	74-2286759	Titan Indemnity Company
0140	Nationwide	36269	MI	86-0619597	Titan Insurance Company
0140	Nationwide	42285	CA	95-3750113	Veterinary Pet Insurance Company
0140	Nationwide	10644	IN	34-1785903	Victoria Automobile Insurance Company
0140	Nationwide	42889	OH	34-1394913	Victoria Fire & Casualty Company
0140	Nationwide	10778	OH	34-1842604	Victoria National Insurance Company
0140	Nationwide	10105	OH	34-1777972	Victoria Select Insurance Company
0140	Nationwide	10777	OH	34-1842602	Victoria Specialty Insurance Company
0140	Nationwide	37150	AZ	86-0561941	Western Heritage Insurance Company
0140	Nationwide	13999	VT	27-1712056	Olentangy Reinsurance, LLC
4664	PURE	13204	FL	26-3109178	PURE Insurance Company
4664	PURE	12873	FL	20-8287105	Privilege Underwriters Reciprocal Exchange
0253	Harleysville Insurance	23582	PA	41-0417250	Harleysville Insurance Company
0253	Harleysville Insurance	42900	NJ	23-2253669	Harleysville Insurance Company of New Jersey
0253	Harleysville Insurance	10674	PA	23-2864924	Harleysville Insurance Company of New York
0253	Harleysville Insurance	40983	PA	23-2612951	Harleysville Pennland Insurance Company
0253	Harleysville Insurance	35696	PA	23-2384978	Harleysville Preferred Insurance Company
0253	Harleysville Insurance	14516	MI	38-3198542	Harleysville Lake States Insurance Company
0253	Harleysville Insurance	26182	PA	04-1989660	Harleysville Worcester Insurance Company
0253	Harleysville Insurance	64327	PA	23-1580983	Harleysville Life Insurance Company

STATEMENT AS OF JUNE 30, 2012 OF THE NATIONWIDE INSURANCE COMPANY OF FLORIDA

SCHEDULE Y

PART 1A - DETAIL OF INSURANCE HOLDING COMPANY SYSTEM

1	2	3	4	5	6	7	8	9	10	11	12	13	14	15
Group Code	Group Name	NAIC Company Code	Federal ID Number	Federal RSSD	CIK	Name of Securities Exchange if Publicly Traded (U.S. or International)	Names of Parent, Subsidiaries Or Affiliates	Domiciliary Location	Relationship to Reporting Entity	Directly Controlled by (Name of Entity/Person)	Type of Control (Ownership, Board, Management, Attorney-in-Fact, Influence, Other)	If Control is Ownership Provide Percentage	Ultimate Controlling Entity(ies)/Person(s)	*
...0140	Nationwide		31-1486309	2059226			10 W. Nationwide, LLC			Nationwide Realty Investors, Ltd.			Nationwide Mutual Insurance Company	
...0140	Nationwide		31-1486309	1992319			101 N. Twentieth St, LLC	OH	NIA	Nationwide Realty Investors, Ltd.	Ownership	100.000	Nationwide Mutual Insurance Company	
...0140	Nationwide		31-1733036	3298210			120 Acre Partners, LLC	OH	NIA	Nationwide Realty Investors, Ltd.	Ownership	100.000	Nationwide Mutual Insurance Company	
...0140	Nationwide		26-2451988	1774032			1492 Capital, LLC	DE	NIA	Nationwide Realty Investors, Ltd.	Ownership	95.000	Nationwide Mutual Insurance Company	
...0140	Nationwide		20-1347603	1467890			180 E. Broad Partners, LLC	OH	NIA	Nationwide Mutual Insurance Company	Ownership	100.000	Nationwide Mutual Insurance Company	
...0140	Nationwide			4186374			3Stone Inflection Fund, LLC	OH	NIA	Nationwide Realty Investors, Ltd.	Ownership	33.330	Nationwide Mutual Insurance Company	1
...0140	Nationwide		31-1580283	2030884			400 West Nationwide Boulevard, LLC	DE	OTH	Other non-Nationwide	n/a	0.000	Other non-Nationwide	
...0140	Nationwide		31-1580283	2012588			425 West Nationwide Boulevard, LLC	OH	NIA	NWD Investments, LLC	Ownership	100.000	Nationwide Mutual Insurance Company	
...0140	Nationwide		31-1486309	2052244			44 Chestnut, LLC	OH	NIA	NWD Investments, LLC	Ownership	100.000	Nationwide Mutual Insurance Company	
...0140	Nationwide		20-4939866	1953275			775 Yard Street Restaurant, LLC	OH	NIA	Nationwide Realty Investors, Ltd.	Ownership	100.000	Nationwide Mutual Insurance Company	
...0140	Nationwide		20-4939866	1881987			775 Yard Street, LLC	OH	NIA	NRI Equity Land Investments, LLC	Ownership	100.000	Nationwide Mutual Insurance Company	
...0140	Nationwide		20-4939866	1880839			800 Bobcat Avenue, LLC	OH	NIA	NRI Equity Land Investments, LLC	Ownership	100.000	Nationwide Mutual Insurance Company	
...0140	Nationwide		20-4939866	2051266			805 Bobcat Avenue, LLC	OH	NIA	NRI Equity Land Investments, LLC	Ownership	100.000	Nationwide Mutual Insurance Company	
...0140	Nationwide		20-4939866	1881988			850 Goodale Blvd., LLC	OH	NIA	NRI Equity Land Investments, LLC	Ownership	100.000	Nationwide Mutual Insurance Company	
...0140	Nationwide		20-4939866	2116496			925 Burrell Avenue Acquisitions, LLC	OH	NIA	NRI Equity Land Investments, LLC	Ownership	100.000	Nationwide Mutual Insurance Company	
...0140	Nationwide		31-1680808	1107195			AD Investments, LLC	OH	NIA	Nationwide Realty Investors, Ltd.	Ownership	60.000	Nationwide Mutual Insurance Company	
...0140	Nationwide		31-1580283	1203104			ADTV, LLC	OH	NIA	NWD Investments, LLC	Ownership	100.000	Nationwide Mutual Insurance Company	
...0140	Nationwide		52-2227314				AGMC Reinsurance, Ltd.	Turk/Caic	JA	Nationwide Advantage Mortgage Company	Ownership	100.000	Nationwide Mutual Insurance Company	
...0140	Nationwide		42-1011300	1573			ALLIED General Agency Company	JA	JA	AMCO Insurance Company	Ownership	100.000	Nationwide Mutual Insurance Company	
...0140	Nationwide		42-0958655	1575			ALLIED Group, Inc.	JA	JA	Nationwide Mutual Insurance Company	Ownership	100.000	Nationwide Mutual Insurance Company	
...0140	Nationwide	10127	27-0114983	1519361			ALLIED Insurance Company of America (fka Atlantic Floridian Insurance Company)	OH	JA	Nationwide Mutual Insurance Company	Ownership	100.000	Nationwide Mutual Insurance Company	
...0140	Nationwide	45279	42-1201931	89532			ALLIED Property and Casualty Insurance Company	OH	JA	ALLIED Group, Inc.	Ownership	100.000	Nationwide Mutual Insurance Company	
...0140	Nationwide		42-1527863				ALLIED Texas Agency, Inc.	TX	JA	AMCO Insurance Company	Ownership	100.000	Nationwide Mutual Insurance Company	
...0140	Nationwide	19100	42-6054959	69720			AMCO Insurance Company	JA	JA	ALLIED Group, Inc.	Ownership	100.000	Nationwide Mutual Insurance Company	
...0140	Nationwide		59-1031596	248504			American Marine Underwriters, Inc.	FL	JA	Nationwide Mutual Insurance Company	Ownership	100.000	Nationwide Mutual Insurance Company	
...0140	Nationwide		31-1580283	1419007			Arena District CA I, LLC	OH	NIA	NWD Investments, LLC	Ownership	100.000	Nationwide Mutual Insurance Company	
...0140	Nationwide		31-1580283	1144891			Arena Theatres, LLC	OH	NIA	NWD Investments, LLC	Ownership	100.000	Nationwide Mutual Insurance Company	
...0140	Nationwide						Artessa at Quarry Village, LLC	TX	OTH	Other non-Nationwide	n/a	0.000	Other non-Nationwide	
...0140	Nationwide		31-1486309	1691018			Atkins Circle I, LLC	OH	NIA	NRI Communities, Ltd.	Ownership	100.000	Nationwide Mutual Insurance Company	
...0140	Nationwide		31-1486309	1386677			Atkins Circle II, LLC	OH	NIA	NRI Communities, Ltd.	Ownership	100.000	Nationwide Mutual Insurance Company	
...0140	Nationwide			4508087			BCCS Investment Fund LLC	DE	NIA	Nationwide Mutual Insurance Company	Ownership	100.000	Nationwide Mutual Insurance Company	
...0140	Nationwide		31-1486309	1022546			Beckett Ridge Communities, LLC	OH	OTH	NRI Communities, Ltd.	Ownership	100.000	Nationwide Mutual Insurance Company	
...0140	Nationwide		31-1184438	1007292			Boulevard Inn Limited Liability Company	OH	NIA	Nationwide Realty Investors, Ltd.	Ownership	94.800	Nationwide Mutual Insurance Company	
...0140	Nationwide		31-1555487	2782835			Broad Street Retail, LLC	DE	NIA	Nationwide Realty Investors, Ltd.	Ownership	60.000	Nationwide Mutual Insurance Company	

STATEMENT AS OF JUNE 30, 2012 OF THE NATIONWIDE INSURANCE COMPANY OF FLORIDA

SCHEDULE Y

PART 1A - DETAIL OF INSURANCE HOLDING COMPANY SYSTEM

1	2	3	4	5	6	7	8	9	10	11	12	13	14	15
Group Code	Group Name	NAIC Company Code	Federal ID Number	Federal RSSD	CIK	Name of Securities Exchange if Publicly Traded (U.S. or International)	Names of Parent, Subsidiaries Or Affiliates	Domiciliary Location	Relationship to Reporting Entity	Directly Controlled by (Name of Entity/Person)	Type of Control (Ownership, Board, Management, Attorney-in-Fact, Influence, Other)	If Control is Ownership Provide Percentage	Ultimate Controlling Entity(ies)/Person(s)	*
..0140	Nationwide			4061319			Brooke School Investment Fund, LLC	DE	OTH	Nationwide Mutual Insurance Company	Ownership	100.000	Nationwide Mutual Insurance Company	
..0140	Nationwide						CHP New Market Investment Fund, LLC	OH	OTH	Nationwide Mutual Insurance Company	Limited partner /no control	50.000	other non-Nationwide	
..0140	Nationwide		20-1618232	1619986			CNRI-Cannonsport Condominium, LLC	OH	NIA	CNRI-Cannonsport, LLC	Ownership	100.000	Nationwide Mutual Insurance Company	
..0140	Nationwide		20-1618232	1486898			CNRI-Cannonsport, LLC	OH	NIA	Nationwide Realty Investors, Ltd.	Ownership	100.000	Nationwide Mutual Insurance Company	
..0140	Nationwide			3218126			Co-Investment Fund, L.P.	DE	OTH	Other non-Nationwide	n/a	0.000	Other non-Nationwide	
..0140	Nationwide						COLHOC Limited Partnership	OH	NIA	Nationwide Realty Investors, Ltd.	Ownership	31.000	Other non-Nationwide	
..0140	Nationwide	29262	74-1061659	36000			Colonial County Mutual Insurance Company	TX	OTH	Other non-Nationwide	contract	0.000	Other non-Nationwide	
..0140	Nationwide		04-3750770	1379969			Continental/North Shore I, L.P.	OH	NIA	Continental/NRI North Shore Investments, LLC	Ownership	100.000	Nationwide Mutual Insurance Company	1
..0140	Nationwide		20-0366090	1421903			Continental/North Shore II, L.P.	OH	NIA	Continental/NRI North Shore Investments, LLC	Ownership	100.000	Nationwide Mutual Insurance Company	1
..0140	Nationwide		20-0142724	1405651			Continental/NRI North Shore Investments, LLC	OH	NIA	Nationwide Realty Investors, Ltd.	Ownership	50.500	Nationwide Mutual Insurance Company	1
..0140	Nationwide						Cotton Mill Partners, LLC	VA	NIA	Nationwide Mutual Insurance Company	Limited partner /no control	2.000	other non-Nationwide	
..0140	Nationwide	18961	68-0066866	1425788			Crestbrook Insurance Company	OH	JA	Nationwide Mutual Insurance Company	Ownership	100.000	Nationwide Mutual Insurance Company	
..0140	Nationwide		31-1486309	1080734			Crewville, Ltd.	OH	NIA	Nationwide Realty Investors, Ltd.	Ownership	100.000	Nationwide Mutual Insurance Company	
..0140	Nationwide	42587	42-1207150	89535			Depositors Insurance Company	JA	JA	ALLIED Group, Inc.	Ownership	100.000	Nationwide Mutual Insurance Company	
..0140	Nationwide		33-0096671				DVM Insurance Agency, Inc.	CA	NIA	Veterinary Pet Insurance Company	Ownership	100.000	Nationwide Mutual Insurance Company	
..0140	Nationwide		20-1945276	3869407			East of Madison, LLC	DE	NIA	120 Acre Partners, Ltd.	Ownership	24.910	Nationwide Mutual Insurance Company	1
..0140	Nationwide		31-1486309	1374333			Easton Communities II, LLC	OH	NIA	NRI Communities, Ltd.	Ownership	100.000	Nationwide Mutual Insurance Company	
..0140	Nationwide		31-1486309	1008298			Easton Communities, LLC	OH	NIA	NRI Communities, Ltd.	Ownership	100.000	Nationwide Mutual Insurance Company	
..0140	Nationwide						ELH Investment LLC	DE	NIA	Nationwide Mutual Insurance Company	Other	0.000	Nationwide Mutual Insurance Company	
..0140	Nationwide	13838	42-0618271	69573			Farmland Mutual Insurance Company	JA	OTH	Other non-Nationwide	debt	0.000	Other non-Nationwide	
..0140	Nationwide	22209	75-6013587	1874832			Freedom Specialty Insurance Company (fka Atlantic Insurance Company)	OH	JA	Scottsdale Insurance Company	Ownership	100.000	Nationwide Mutual Insurance Company	
..0140	Nationwide		31-4187660	144612			Gates McDonald of Ohio, LLC	OH	NIA	Nationwide Better Health Holding Company, LLC	Ownership	100.000	Nationwide Mutual Insurance Company	
..0140	Nationwide		13-4933584				Gates, McDonald & Company of New York, Inc.	NY	NIA	Gates McDonald of Ohio, LLC	Ownership	100.000	Nationwide Mutual Insurance Company	
..0140	Nationwide		76-0810957	1588883			GatesMcDonald DTAO, LLC	OH	NIA	Gates McDonald of Ohio, LLC	Ownership	100.000	Nationwide Mutual Insurance Company	
..0140	Nationwide		76-0810958	1588884			GatesMcDonald DTC, LLC	OH	NIA	Gates McDonald of Ohio, LLC	Ownership	100.000	Nationwide Mutual Insurance Company	
..0140	Nationwide		31-1478706	950745			GatesMcDonald Health Plus, LLC	OH	NIA	Gates McDonald of Ohio, LLC	Ownership	100.000	Nationwide Mutual Insurance Company	
..0140	Nationwide		20-4939866	1809307			Grandview Yard Hotel Holdings, LLC	OH	NIA	NRI Equity Land Investments, LLC	Ownership	100.000	Nationwide Mutual Insurance Company	
..0140	Nationwide		20-4939866	1808094			Grandview Yard Hotel, LLC	OH	NIA	Grandview Yard Hotel Holdings, LLC	Ownership	100.000	Nationwide Mutual Insurance Company	
..0140	Nationwide		51-0241172	876834			Harleysville Group, Inc.	DE	NIA	Nationwide Mutual Insurance Company	Ownership	100.000	Nationwide Mutual Insurance Company	
..0140	Nationwide	23582	41-0417250	3691381			Harleysville Insurance Company	PA	JA	Harleysville Group, Inc.	Ownership	100.000	Nationwide Mutual Insurance Company	
..0140	Nationwide	33235	16-1075588				Harleysville Insurance Company of New Jersey	NJ	JA	Harleysville Group, Inc.	Ownership	100.000	Nationwide Mutual Insurance Company	
..0140	Nationwide	10674	23-2864924	2719450			Harleysville Insurance Company of New York	PA	JA	Harleysville Group, Inc.	Ownership	100.000	Nationwide Mutual Insurance Company	

STATEMENT AS OF JUNE 30, 2012 OF THE NATIONWIDE INSURANCE COMPANY OF FLORIDA

SCHEDULE Y

PART 1A - DETAIL OF INSURANCE HOLDING COMPANY SYSTEM

1	2	3	4	5	6	7	8	9	10	11	12	13	14	15
Group Code	Group Name	NAIC Company Code	Federal ID Number	Federal RSSD	CIK	Name of Securities Exchange if Publicly Traded (U.S. or International)	Names of Parent, Subsidiaries Or Affiliates	Domi-ciliary Location	Relationship to Reporting Entity	Directly Controlled by (Name of Entity/Person)	Type of Control (Ownership, Board, Management, Attorney-in-Fact, Influence, Other)	If Control is Ownership Provide Percentage	Ultimate Controlling Entity(ies)/Person(s)	*
..0140	Nationwide	14516	38-3198542				Harleysville Lake States Insurance Company	MI	JA	Harleysville Group, Inc.	Ownership	100.000	Nationwide Mutual Insurance Company	
..0140	Nationwide	64327	23-1580983	153756			Harleysville Life Insurance Company	PA	JA	Nationwide Mutual Insurance Company	Ownership	100.000	Nationwide Mutual Insurance Company	
..0140	Nationwide	40983	23-2612951	1596290			Harleysville Pennland Insurance Company	PA	JA	Nationwide Mutual Insurance Company	Ownership	100.000	Nationwide Mutual Insurance Company	
..0140	Nationwide	35896	23-2384978	890691			Harleysville Preferred Insurance Company	PA	JA	Harleysville Group, Inc.	Ownership	100.000	Nationwide Mutual Insurance Company	
..0140	Nationwide		51-0259283	90768			Harleysville Services, Inc.	DE	NIA	Nationwide Mutual Insurance Company	Ownership	100.000	Nationwide Mutual Insurance Company	
..0140	Nationwide	26182	04-1989660	3696747			Harleysville Worcester Insurance Company	PA	JA	Harleysville Group, Inc.	Ownership	100.000	Nationwide Mutual Insurance Company	
..0140	Nationwide		23-2403000	887472			Harleysville, Ltd.	PA	NIA	Harleysville Preferred Insurance Company	Ownership	49.500	Nationwide Mutual Insurance Company	
..0140	Nationwide		23-2403000	887472			Harleysville, Ltd.	PA	NIA	Harleysville Worcester Insurance Company	Ownership	49.500	Nationwide Mutual Insurance Company	
..0140	Nationwide		23-2403000	887472			Harleysville, Ltd.	PA	NIA	Harleysville Group, Inc.	Ownership	1.000	Nationwide Mutual Insurance Company	
..0140	Nationwide		31-1486309	1569099			Harris Blvd. Communities I, LLC	OH	NIA	NRI Communities, Ltd.	Ownership	100.000	Nationwide Mutual Insurance Company	
..0140	Nationwide		32-0051216				Hideaway Properties Corp.	CA	OTH	Nationwide Realty Investors, Ltd.	Ownership	50.000	Nationwide Mutual Insurance Company	1
..0140	Nationwide		31-0871532	474143			Insurance Intermediaries, Inc.	OH	JA	Nationwide Mutual Insurance Company	Ownership	100.000	Nationwide Mutual Insurance Company	
..0140	Nationwide		23-2882311	2738642			Insurance Management Services, L.P.	PA	NIA	Harleysville Insurance Company	Ownership	1.000	Nationwide Mutual Insurance Company	
..0140	Nationwide		23-2882311	2738642			Insurance Management Services, L.P.	PA	NIA	Harleysville Preferred Insurance Company	Ownership	99.000	Nationwide Mutual Insurance Company	
..0140	Nationwide		31-1486309	1592475			Jerome Village Company, LLC	OH	NIA	Nationwide Realty Investors, Ltd.	Ownership	100.000	Nationwide Mutual Insurance Company	
..0140	Nationwide		31-1486309	2004939			Jerome Village Master Property Owners Association	OH	NIA	Jerome Village Company, LLC	Ownership	100.000	Nationwide Mutual Insurance Company	
..0140	Nationwide		31-1486309	2004980			Jerome Village Residential Property Owners Association, Inc.	OH	NIA	Jerome Village Company, LLC	Ownership	100.000	Nationwide Mutual Insurance Company	
..0140	Nationwide			4475300			Leaguers Investment Fund LLC	DE	OTH	Nationwide Mutual Insurance Company	Other	0.000	Nationwide Mutual Insurance Company	
..0140	Nationwide		56-3789189	1500255			Life REO Holdings, LLC	OH	NIA	Nationwide Life Insurance Company	Ownership	100.000	Nationwide Mutual Insurance Company	
..0140	Nationwide		56-3789187	1500255			Life REO Holdings, LLC	OH	NIA	Nationwide Life Insurance Company	Ownership	100.000	Nationwide Mutual Insurance Company	
..0140	Nationwide		74-1395229	17243100			Lone Star General Agency, Inc.	TX	JA	Nationwide Mutual Insurance Company	Ownership	100.000	Nationwide Mutual Insurance Company	
..0140	Nationwide			4006322			Match School Investment Fund, LLC	DE	OTH	Nationwide Mutual Insurance Company	Ownership	100.000	Nationwide Mutual Insurance Company	
..0140	Nationwide		31-1486309	2813559			Maxtown Communities, LLC	DE	NIA	NRI Communities, Ltd.	Ownership	100.000	Nationwide Mutual Insurance Company	
..0140	Nationwide		31-1486309	1001932			Maxtown Retail, LLC	OH	NIA	NRI Communities, Ltd.	Ownership	100.000	Nationwide Mutual Insurance Company	
..0140	Nationwide	11991	38-0865250				National Casualty Company	WI	JA	Nationwide Mutual Insurance Company	Ownership	100.000	Nationwide Mutual Insurance Company	
..0140	Nationwide			837003			National Casualty Company of America, Ltd.	GB	JA	National Casualty Company	Ownership	100.000	Nationwide Mutual Insurance Company	
..0140	Nationwide		42-1154244	1577			Nationwide Advantage Mortgage Company	IA	NIA	AMCO Insurance Company	Ownership	87.300	Nationwide Mutual Insurance Company	
..0140	Nationwide		42-1154244	1577			Nationwide Advantage Mortgage Company	IA	NIA	ALLIED Property & Casualty Insurance Company	Ownership	8.470	Nationwide Mutual Insurance Company	

STATEMENT AS OF JUNE 30, 2012 OF THE NATIONWIDE INSURANCE COMPANY OF FLORIDA

SCHEDULE Y

PART 1A - DETAIL OF INSURANCE HOLDING COMPANY SYSTEM

1	2	3	4	5	6	7	8	9	10	11	12	13	14	15
Group Code	Group Name	NAIC Company Code	Federal ID Number	Federal RSSD	CIK	Name of Securities Exchange if Publicly Traded (U.S. or International)	Names of Parent, Subsidiaries Or Affiliates	Domiciliary Location	Relationship to Reporting Entity	Directly Controlled by (Name of Entity/Person)	Type of Control (Ownership, Board, Management, Attorney-in-Fact, Influence, Other)	If Control is Ownership Provide Percentage	Ultimate Controlling Entity(ies)/Person(s)	*
..0140	Nationwide		42-1154244	1577			Nationwide Advantage Mortgage Company	IA	NIA	Depositors Insurance Company	Ownership	4.230	Nationwide Mutual Insurance Company	
..0140	Nationwide	26093	48-0470690	1590224			Nationwide Affinity Insurance Company of America	OH	JA	Nationwide Mutual Insurance Company	Ownership	100.000	Nationwide Mutual Insurance Company	
..0140	Nationwide	28223	42-1015537	69693			Nationwide Agribusiness Insurance Company	IA	JA	Nationwide Mutual Insurance Company	Ownership	100.000	Nationwide Mutual Insurance Company	
..0140	Nationwide		20-5976272	1662083			Nationwide Alternative Investments, LLC	OH	NIA	Nationwide Mutual Insurance Company	Ownership	100.000	Nationwide Mutual Insurance Company	
..0140	Nationwide		31-1578869	993794			Nationwide Arena, LLC	OH	NIA	Nationwide Realty Investors, LLC	Ownership	90.000	Nationwide Mutual Insurance Company	
..0140	Nationwide		20-8670712	1685468			Nationwide Asset Management, LLC	OH	NIA	Nationwide Mutual Insurance Company	Ownership	100.000	Nationwide Mutual Insurance Company	
..0140	Nationwide		20-8670712	1685468			Nationwide Asset Management, LLC	OH	NIA	Nationwide Mutual Insurance Company	Ownership	100.000	Nationwide Mutual Insurance Company	
..0140	Nationwide	10723	95-0639970				Nationwide Assurance Company	OH	NIA	Nationwide Mutual Insurance Company	Ownership	100.000	Nationwide Mutual Insurance Company	
..0140	Nationwide		31-1592130	2729677			Nationwide Bank	WI	JA	Nationwide Mutual Insurance Company	Ownership	100.000	Nationwide Mutual Insurance Company	
..0140	Nationwide		52-1776258	1994715			Nationwide Better Health (Ohio), LLC	FED	OTH	Nationwide Financial Services, Inc.	Ownership	100.000	Nationwide Mutual Insurance Company	
..0140	Nationwide		11-3766032	1573772			Nationwide Better Health Holding Company, LLC	OH	NIA	Nationwide Better Health Holding Company, LLC	Ownership	100.000	Nationwide Mutual Insurance Company	
..0140	Nationwide		11-3766032	1573772			Nationwide Better Health Holding Company, LLC	OH	NIA	Nationwide Corporation	Ownership	75.000	Nationwide Mutual Insurance Company	
..0140	Nationwide		31-1036287	594869			Nationwide Better Health Holding Company, LLC	OH	NIA	Nationwide Mutual Fire Insurance Company	Ownership	25.000	Nationwide Mutual Insurance Company	
..0140	Nationwide		31-1752320	1189453			Nationwide Cash Management Company	OH	NIA	Nationwide Mutual Insurance Company	Ownership	100.000	Nationwide Mutual Insurance Company	
..0140	Nationwide		31-1752320	1189453			Nationwide Community Development Corporation, LLC	OH	NIA	Nationwide Life Insurance Company	Ownership	67.000	Nationwide Mutual Insurance Company	
..0140	Nationwide		31-1752320	1189453			Nationwide Community Development Corporation, LLC	OH	NIA	Nationwide Indemnity Company	Ownership	33.000	Nationwide Mutual Insurance Company	
..0140	Nationwide		31-1752320	1189453			Nationwide Community Development Corporation, LLC	OH	NIA	Nationwide Life Insurance Company	Ownership	67.000	Nationwide Mutual Insurance Company	
..0140	Nationwide		31-1752320	1189453			Nationwide Community Development Corporation, LLC	OH	NIA	Nationwide Indemnity Company	Ownership	33.000	Nationwide Mutual Insurance Company	
..0140	Nationwide		31-4416546	199852			Nationwide Corporation	OH	NIA	Nationwide Mutual Insurance Company	Ownership	95.200	Nationwide Mutual Insurance Company	
..0140	Nationwide		31-4416546	199852			Nationwide Corporation	OH	NIA	Nationwide Mutual Fire Insurance Company	Ownership	4.800	Nationwide Mutual Insurance Company	
..0140	Nationwide		04-3679407	3526499			Nationwide Emerging Managers, LLC	DE	NIA	Nationwide SA Capital Trust	Ownership	100.000	Nationwide Mutual Insurance Company	
..0140	Nationwide		05-0630007	1586317			Nationwide Exclusive Agent Risk Purchasing Group, LLC	OH	NIA	Insurance Intermediaries, Inc.	Ownership	100.000	Nationwide Mutual Insurance Company	
..0140	Nationwide		31-1667326	1096699			Nationwide Financial Assignment Company	OH	NIA	Nationwide Life Insurance Company	Ownership	100.000	Nationwide Mutual Insurance Company	
..0140	Nationwide		23-2412039	917471			Nationwide Financial General Agency, Inc.	PA	NIA	NFS Distributors, Inc.	Ownership	100.000	Nationwide Mutual Insurance Company	
..0140	Nationwide		31-1316276	2248294			Nationwide Financial Institution Distributors Agency, Inc.	DE	NIA	NFS Distributors, Inc.	Ownership	100.000	Nationwide Mutual Insurance Company	
..0140	Nationwide		31-6554353	2697294			Nationwide Financial Services Capital Trust	DE	NIA	Nationwide Financial Services, Inc.	Ownership	100.000	Nationwide Mutual Insurance Company	
..0140	Nationwide		31-1486870	2685530			Nationwide Financial Services, Inc.	DE	NIA	Nationwide Corporation	Ownership	100.000	Nationwide Mutual Insurance Company	
..0140	Nationwide		52-6969857	2999617			Nationwide Fund Advisors	DE	NIA	Nationwide Financial Services, Inc.	Ownership	100.000	Nationwide Mutual Insurance Company	

STATEMENT AS OF JUNE 30, 2012 OF THE NATIONWIDE INSURANCE COMPANY OF FLORIDA

SCHEDULE Y

PART 1A - DETAIL OF INSURANCE HOLDING COMPANY SYSTEM

1	2	3	4	5	6	7	8	9	10	11	12	13	14	15
Group Code	Group Name	NAIC Company Code	Federal ID Number	Federal RSSD	CIK	Name of Securities Exchange if Publicly Traded (U.S. or International)	Names of Parent, Subsidiaries Or Affiliates	Domiciliary Location	Relationship to Reporting Entity	Directly Controlled by (Name of Entity/Person)	Type of Control (Ownership, Board, Management, Attorney-in-Fact, Influence, Other)	If Control is Ownership Provide Percentage	Ultimate Controlling Entity(ies)/Person(s)	*
...0140	Nationwide		31-1748721	3314331			Nationwide Fund Distributors LLC	DE	NIA	NFS Distributors, Inc.	Ownership	100.000	Nationwide Mutual Insurance Company	
...0140	Nationwide		31-0900518	4334484			Nationwide Fund Management LLC	DE	NIA	NFS Distributors, Inc.	Ownership	100.000	Nationwide Mutual Insurance Company	
...0140	Nationwide	23760	31-4425763	265684			Nationwide General Insurance Company			Nationwide Mutual Insurance Company	Ownership	100.000	Nationwide Mutual Insurance Company	
...0140	Nationwide		31-1570938	985417			Nationwide Global Holdings, Inc.	OH	JA	Nationwide Corporation	Ownership	100.000	Nationwide Mutual Insurance Company	
...0140	Nationwide		04-3732385	3608565			Nationwide Global Ventures, Inc.	OH	NIA	Nationwide Asset Management Holdings, Inc.	Ownership	100.000	Nationwide Mutual Insurance Company	
...0140	Nationwide		31-1399201	864164			Nationwide Indemnity Company	DE	NIA	Nationwide Mutual Insurance Company	Ownership	100.000	Nationwide Mutual Insurance Company	
...0140	Nationwide	25453	95-2130882				Nationwide Insurance Company of America	OH	JA	ALLIED Group, Inc.	Ownership	100.000	Nationwide Mutual Insurance Company	
...0140	Nationwide	10948	31-1613686	1024751			Nationwide Insurance Company of Florida	WI	JA	Nationwide Mutual Insurance Company	Ownership	100.000	Nationwide Mutual Insurance Company	
...0140	Nationwide		31-6022301	281027			Nationwide Insurance Foundation	OH	OTH	Other non-Nationwide	n/a	0.000	Other non-Nationwide	
...0140	Nationwide		41-2206199	162578			Nationwide Investment Advisors, LLC	OH	OTH	Nationwide Life Insurance Company	Ownership	100.000	Nationwide Mutual Insurance Company	
...0140	Nationwide		73-0988442				Nationwide Investment Services Corporation	OH	NIA	Nationwide Life Insurance Company	Ownership	100.000	Nationwide Mutual Insurance Company	
...0140	Nationwide	92657	31-1000740	569000			Nationwide Life and Annuity Insurance Company	OK	NIA	Nationwide Life Insurance Company	Ownership	100.000	Nationwide Mutual Insurance Company	
...0140	Nationwide	66869	31-4156830	135635			Nationwide Life Insurance Company	OH	JA	Nationwide Financial Services, Inc.	Ownership	100.000	Nationwide Mutual Insurance Company	
...0140	Nationwide		13-4212969	1341354			Nationwide Life Tax Credit Partners 2002-A, LLC	OH	JA	Nationwide Life Insurance Company	Ownership	100.000	Nationwide Mutual Insurance Company	
...0140	Nationwide		01-0749754	1348020			Nationwide Life Tax Credit Partners 2002-B, LLC	OH	NIA	Nationwide Life Insurance Company	Other	0.000	Nationwide Mutual Insurance Company	
...0140	Nationwide		03-0498148	1358198			Nationwide Life Tax Credit Partners 2002-C, LLC	OH	NIA	Nationwide Life Insurance Company	Other	0.000	Nationwide Mutual Insurance Company	
...0140	Nationwide		54-2113175	1392627			Nationwide Life Tax Credit Partners 2003-A, LLC	OH	NIA	Nationwide Life Insurance Company	Other	0.000	Nationwide Mutual Insurance Company	
...0140	Nationwide		58-2672725	1392628			Nationwide Life Tax Credit Partners 2003-B, LLC	OH	NIA	Nationwide Life Insurance Company	Other	0.000	Nationwide Mutual Insurance Company	
...0140	Nationwide		20-0357951	1420220			Nationwide Life Tax Credit Partners 2003-C, LLC	OH	NIA	Nationwide Life Insurance Company	Other	0.000	Nationwide Mutual Insurance Company	
...0140	Nationwide		20-0382144	1421592			Nationwide Life Tax Credit Partners 2004-A, LLC	OH	NIA	Nationwide Life Insurance Company	Other	0.000	Nationwide Mutual Insurance Company	
...0140	Nationwide		20-0745944	1440822			Nationwide Life Tax Credit Partners 2004-B, LLC	OH	NIA	Nationwide Life Insurance Company	Other	0.000	Nationwide Mutual Insurance Company	
...0140	Nationwide		20-0745965	1440823			Nationwide Life Tax Credit Partners 2004-C, LLC	OH	NIA	Nationwide Life Insurance Company	Other	0.000	Nationwide Mutual Insurance Company	
...0140	Nationwide		20-1128408	1457085			Nationwide Life Tax Credit Partners 2004-D, LLC	OH	NIA	Nationwide Life Insurance Company	Other	0.000	Nationwide Mutual Insurance Company	
...0140	Nationwide		20-1128472	1457086			Nationwide Life Tax Credit Partners 2004-E, LLC	OH	NIA	Nationwide Life Insurance Company	Other	0.000	Nationwide Mutual Insurance Company	
...0140	Nationwide		20-1918935	1502552			Nationwide Life Tax Credit Partners 2004-F, LLC	OH	NIA	Nationwide Life Insurance Company	Other	0.000	Nationwide Mutual Insurance Company	
...0140	Nationwide		20-2303694	1516155			Nationwide Life Tax Credit Partners 2005-A, LLC	OH	NIA	Nationwide Life Insurance Company	Other	0.000	Nationwide Mutual Insurance Company	
...0140	Nationwide		20-2303602	1516156			Nationwide Life Tax Credit Partners 2005-B, LLC	OH	NIA	Nationwide Life Insurance Company	Other	0.000	Nationwide Mutual Insurance Company	

STATEMENT AS OF JUNE 30, 2012 OF THE NATIONWIDE INSURANCE COMPANY OF FLORIDA

SCHEDULE Y

PART 1A - DETAIL OF INSURANCE HOLDING COMPANY SYSTEM

1	2	3	4	5	6	7	8	9	10	11	12	13	14	15
Group Code	Group Name	NAIC Company Code	Federal ID Number	Federal RSSD	CIK	Name of Securities Exchange if Publicly Traded (U.S. or International)	Names of Parent, Subsidiaries Or Affiliates	Domi-ciliary Location	Relationship to Reporting Entity	Directly Controlled by (Name of Entity/Person)	Type of Control (Ownership, Board, Management, Attorney-in-Fact, Influence, Other)	If Control is Ownership Provide Percentage	Ultimate Controlling Entity(ies)/Person(s)	*
..0140	Nationwide		20-2450960	1523496			Nationwide Life Tax Credit Partners 2005-C, LLC	OH	NIA	Nationwide Life Insurance Company	Other	0.000	Nationwide Mutual Insurance Company	
..0140	Nationwide		20-2451052	1523497			Nationwide Life Tax Credit Partners 2005-D, LLC	OH	NIA	Nationwide Life Insurance Company	Other	0.000	Nationwide Mutual Insurance Company	
..0140	Nationwide		20-2774223	1531819			Nationwide Life Tax Credit Partners 2005-E, LLC	OH	NIA	Nationwide Life Insurance Company	Other	0.000	Nationwide Mutual Insurance Company	
..0140	Nationwide		21-1288836	1735030			Nationwide Life Tax Credit Partners 2007-A, LLC	OH	NIA	Nationwide Life Insurance Company	Other	0.000	Nationwide Mutual Insurance Company	
..0140	Nationwide		26-3427373	1807374			Nationwide Life Tax Credit Partners 2009-A, LLC	OH	NIA	Nationwide Life Insurance Company	Other	0.000	Nationwide Mutual Insurance Company	
..0140	Nationwide		26-3427435	1807375			Nationwide Life Tax Credit Partners 2009-B, LLC	OH	NIA	Nationwide Life Insurance Company	Other	0.000	Nationwide Mutual Insurance Company	
..0140	Nationwide		26-3427479	1807376			Nationwide Life Tax Credit Partners 2009-C, LLC	OH	NIA	Nationwide Life Insurance Company	Other	0.000	Nationwide Mutual Insurance Company	
..0140	Nationwide		26-3427525	1807377			Nationwide Life Tax Credit Partners 2009-D, LLC	OH	NIA	Nationwide Life Insurance Company	Other	0.000	Nationwide Mutual Insurance Company	
..0140	Nationwide		26-4737055	1852582			Nationwide Life Tax Credit Partners 2009-E, LLC	OH	NIA	Nationwide Life Insurance Company	Other	0.000	Nationwide Mutual Insurance Company	
..0140	Nationwide		26-4737157	1852583			Nationwide Life Tax Credit Partners 2009-F, LLC	OH	NIA	Nationwide Life Insurance Company	Other	0.000	Nationwide Mutual Insurance Company	
..0140	Nationwide		27-1362364	1896597			Nationwide Life Tax Credit Partners 2009-I, LLC	OH	NIA	Nationwide Life Insurance Company	Other	0.000	Nationwide Mutual Insurance Company	
..0140	Nationwide			1302988			Nationwide Life Tax Credit Partners No. 1, LLC	OH	NIA	Nationwide Life Insurance Company	Other	0.000	Nationwide Mutual Insurance Company	
..0140	Nationwide	42110	75-1780981	93707			Nationwide Lloyds	TX	JA	n/a	contract	0.000	Nationwide Mutual Insurance Company	
..0140	Nationwide			3943056			Nationwide Mutual Capital I, LLC	DE	NIA	Nationwide Mutual Capital, LLC	Ownership	100.000	Nationwide Mutual Insurance Company	
..0140	Nationwide		75-3191025	1319580			Nationwide Mutual Capital, LLC			Nationwide Mutual Insurance Company	Ownership	100.000	Nationwide Mutual Insurance Company	
..0140	Nationwide	23779	82-0549218	157635			Nationwide Mutual Fire Insurance Company	OH	NIA	Other non-Nationwide	Ownership	100.000	Other non-Nationwide	
..0140	Nationwide	23787	31-4177100	119343			Nationwide Mutual Insurance Company	OH	OTH	Other non-Nationwide	n/a	0.000	Other non-Nationwide	
..0140	Nationwide		34-2012765	1484247			Nationwide Private Equity Fund, LLC	OH	UDP	Other non-Nationwide	n/a	0.000	Other non-Nationwide	
..0140	Nationwide		34-2012765	1484247			Nationwide Private Equity Fund, LLC	OH	NIA	Nationwide Mutual Insurance Company	Ownership	100.000	Nationwide Mutual Insurance Company	
..0140	Nationwide	37877	31-0970750	544821			Nationwide Property and Casualty Insurance Company	OH	NIA	Nationwide Mutual Insurance Company	Ownership	100.000	Nationwide Mutual Insurance Company	
..0140	Nationwide		01-0852763	1580214			Nationwide Property Protection Services, LLC	OH	JA	Nationwide Services Company, LLC	Ownership	100.000	Nationwide Mutual Insurance Company	
..0140	Nationwide		31-1486309	961715			Nationwide Realty Investors, Ltd.	OH	NIA	Nationwide Mutual Insurance Company	Ownership	100.000	Nationwide Mutual Insurance Company	
..0140	Nationwide		31-1486309	961715			Nationwide Realty Investors, Ltd.	OH	NIA	Nationwide Mutual Insurance Company	Ownership	95.790	Nationwide Mutual Insurance Company	
..0140	Nationwide		31-1486309	1172972			Nationwide Realty Management, LLC	OH	NIA	Nationwide Indemnity Company	Ownership	4.210	Nationwide Mutual Insurance Company	
..0140	Nationwide		04-3833929	1172972			Nationwide Realty Management, LLC	OH	NIA	Nationwide Realty Investors, Ltd.	Ownership	100.000	Nationwide Mutual Insurance Company	
..0140	Nationwide						Nationwide Realty Services, Ltd.	OH	NIA	Nationwide Mutual Insurance Company	Ownership	100.000	Nationwide Mutual Insurance Company	
..0140	Nationwide		06-0987812	60987812			Nationwide Retirement Solutions Insurance Agency, Inc.	MA	NIA	Nationwide Retirement Solutions, Inc.	Ownership	100.000	Nationwide Mutual Insurance Company	

125

STATEMENT AS OF JUNE 30, 2012 OF THE NATIONWIDE INSURANCE COMPANY OF FLORIDA

SCHEDULE Y

PART 1A - DETAIL OF INSURANCE HOLDING COMPANY SYSTEM

1	2	3	4	5	6	7	8	9	10	11	12	13	14	15
Group Code	Group Name	NAIC Company Code	Federal ID Number	Federal RSSD	CIK	Name of Securities Exchange if Publicly Traded (U.S. or International)	Names of Parent, Subsidiaries Or Affiliates	Domiciliary Location	Relationship to Reporting Entity	Directly Controlled by (Name of Entity/Person)	Type of Control (Ownership, Board, Management, Attorney-in-Fact, Influence, Other)	If Control is Ownership Provide Percentage	Ultimate Controlling Entity(ies)/Person(s)	*
0140	Nationwide		73-0948330	789729			Nationwide Retirement Solutions, Inc.			NFS Distributors, Inc.			Nationwide Mutual Insurance Company	
0140	Nationwide		86-0924069				Nationwide Retirement Solutions, Inc. of Arizona	DE	NIA	Nationwide Retirement Solutions, Inc.	Ownership	100.000	Nationwide Mutual Insurance Company	
0140	Nationwide		31-1331479	800935			Nationwide Retirement Solutions, Inc. of Ohio	AZ	NIA	Nationwide Retirement Solutions, Inc.	Ownership	100.000	Nationwide Mutual Insurance Company	
0140	Nationwide		74-2200854	58122300			Nationwide Retirement Solutions, Inc. of Texas	OH	NIA	Nationwide Retirement Solutions, Inc.	contract	0.000	Nationwide Mutual Insurance Company	
0140	Nationwide		52-6969856	3006934			Nationwide SA Capital Trust	TX	NIA	Nationwide Retirement Solutions, Inc.	contract	0.000	Nationwide Mutual Insurance Company	
0140	Nationwide		42-1373380	152408			Nationwide Sales Solutions, Inc.	DE	NIA	NWD Investment Management, Inc.	Ownership	100.000	Nationwide Mutual Insurance Company	
0140	Nationwide		36-2434406	4436858			Nationwide Securities, LLC	JA	NIA	ALLIED Group, Inc.	Ownership	100.000	Nationwide Mutual Insurance Company	
0140	Nationwide		31-4177100				Nationwide Services Company, LLC	OH	NIA	NFS Distributors, Inc.	Ownership	100.000	Nationwide Mutual Insurance Company	
0140	Nationwide		27-0743545	1876581			Nationwide Tax Credit Partners 2009-G, LLC	OH	NIA	Nationwide Mutual Insurance Company	Ownership	100.000	Nationwide Mutual Insurance Company	
0140	Nationwide		27-0768791	1876582			Nationwide Tax Credit Partners 2009-H, LLC	OH	NIA	Nationwide Mutual Insurance Company	Other	0.000	Nationwide Mutual Insurance Company	
0140	Nationwide		11-3651828	3546936			ND La Quinta Partners, LLC	OH	NIA	Nationwide Mutual Insurance Company	Other	0.000	Nationwide Mutual Insurance Company	
0140	Nationwide			3726748			Newhouse Capital Partners II, LLC	DE	NIA	Nationwide Realty Investors, Ltd.	Ownership	95.000	Nationwide Mutual Insurance Company	
0140	Nationwide			3726748			Newhouse Capital Partners II, LLC	DE	NIA	Nationwide Global Ventures, Inc.	Ownership	80.000	Nationwide Mutual Insurance Company	
0140	Nationwide			3183115			Newhouse Capital Partners, LLC	DE	NIA	Nationwide Global Ventures, Inc.	Ownership	99.000	Nationwide Mutual Insurance Company	
0140	Nationwide			3183115			Newhouse Capital Partners, LLC	DE	NIA	NWD Investment Management, Inc.	Ownership	19.000	Nationwide Mutual Insurance Company	
0140	Nationwide			3183115			Newhouse Capital Partners, LLC	DE	NIA	Nationwide Mutual Insurance Company	Ownership	70.000	Nationwide Mutual Insurance Company	
0140	Nationwide		31-1630871	2985416			NFS Distributors, Inc.	DE	NIA	Nationwide Mutual Fire Insurance Company	Ownership	10.000	Nationwide Mutual Insurance Company	
0140	Nationwide		14-1892640				NHT XII Tax Credit Fund, LLC	DE	NIA	Nationwide Financial Services, Inc.	Ownership	100.000	Nationwide Mutual Insurance Company	
0140	Nationwide		14-1892640				NHT XII Tax Credit Fund, LLC	DC	NIA	Nationwide Life Insurance Company	Ownership	49.990	Nationwide Mutual Insurance Company	1
0140	Nationwide		14-1892640				NHT XII Tax Credit Fund, LLC	DC	NIA	Nationwide Assurance Company	Ownership	25.000	Nationwide Mutual Insurance Company	1
0140	Nationwide		20-4939866	2055239			North of Third, LLC	DC	NIA	Nationwide Mutual Insurance Company	Ownership	25.000	Nationwide Mutual Insurance Company	1
0140	Nationwide		26-4083207	1830221			Northstar Commercial Development, LLC	OH	NIA	NRI Equity Land Investments, LLC	Ownership	100.000	Nationwide Mutual Insurance Company	
0140	Nationwide		26-4083354	1830220			Northstar Residential Development, LLC	OH	NIA	Nationwide Realty Investors, Ltd.	Ownership	50.000	Nationwide Mutual Insurance Company	1
0140	Nationwide		31-1486309	1858630			NRI 12325 Copper Way, LLC	OH	NIA	Nationwide Realty Investors, Ltd.	Ownership	50.000	Nationwide Mutual Insurance Company	1
0140	Nationwide		31-1486309	1597892			NRI 220 Schrock, LLC	OH	NIA	Nationwide Realty Investors, Ltd.	Ownership	100.000	Nationwide Mutual Insurance Company	
0140	Nationwide		31-1486309	2055238			NRI Arena, LLC	OH	NIA	Nationwide Realty Investors, Ltd.	Ownership	100.000	Nationwide Mutual Insurance Company	
0140	Nationwide		31-1486309	1592013			NRI Brookledge, LLC	OH	NIA	Nationwide Realty Investors, Ltd.	Ownership	100.000	Nationwide Mutual Insurance Company	
0140	Nationwide		31-1486309	1867758			NRI Builders, LLC	OH	NIA	Nationwide Realty Investors, Ltd.	Ownership	100.000	Nationwide Mutual Insurance Company	
0140	Nationwide		31-1486309	971741			NRI Communities, Ltd.	OH	NIA	Nationwide Realty Investors, Ltd.	Ownership	100.000	Nationwide Mutual Insurance Company	
0140	Nationwide		31-1486309	1238758			NRI Communities/Charlotte, LLC	OH	NIA	Nationwide Realty Investors, Ltd.	Ownership	100.000	Nationwide Mutual Insurance Company	

STATEMENT AS OF JUNE 30, 2012 OF THE NATIONWIDE INSURANCE COMPANY OF FLORIDA

SCHEDULE Y

PART 1A - DETAIL OF INSURANCE HOLDING COMPANY SYSTEM

1	2	3	4	5	6	7	8	9	10	11	12	13	14	15
Group Code	Group Name	NAIC Company Code	Federal ID Number	Federal RSSD	CIK	Name of Securities Exchange if Publicly Traded (U.S. or International)	Names of Parent, Subsidiaries Or Affiliates	Domiciliary Location	Relationship to Reporting Entity	Directly Controlled by (Name of Entity/Person)	Type of Control (Ownership, Board, Management, Attorney-in-Fact, Influence, Other)	If Control is Ownership Provide Percentage	Ultimate Controlling Entity(ies)/Person(s)	*
0140	Nationwide		31-1486309	1352285			NRI Communities/Harris Blvd., LLC	OH	NIA	NRI Communities, Ltd.	Ownership	100.000	Nationwide Mutual Insurance Company	
0140	Nationwide		31-1486309	1593046			NRI Cramer Creek, LLC	OH	NIA	Nationwide Realty Investors, Ltd.	Ownership	100.000	Nationwide Mutual Insurance Company	
0140	Nationwide		20-4939866	1625434			NRI Equity Land Investments, LLC	OH	NIA	Nationwide Realty Investors, Ltd.	Ownership	80.000	Nationwide Mutual Insurance Company	
0140	Nationwide			1694382			NRI Equity Tampa, LLC	OH	OTH	Nationwide Realty Investors, Ltd.	Ownership	50.000	Nationwide Mutual Insurance Company	
0140	Nationwide		31-1486309	2089836			NRI Maxtown, LLC	OH	OTH	Nationwide Realty Investors, Ltd.	Ownership	100.000	Nationwide Mutual Insurance Company	
0140	Nationwide		30-4939866	1019147			NRI Office Ventures, Ltd	OH	NIA	Nationwide Realty Investors, Ltd.	Ownership	100.000	Nationwide Mutual Insurance Company	
0140	Nationwide		31-1486309	1073212			NRI Telecom, LLC	OH	NIA	NWD Investments, LLC	Ownership	100.000	Nationwide Mutual Insurance Company	
0140	Nationwide		45-3123274	2044085			NTCIF-2011 Georgia State Investor, LLC	OH	NIA	Nationwide Property and Casualty Company	Ownership	100.000	Nationwide Mutual Insurance Company	
0140	Nationwide		90-0729552	2023000			NTCIF-2011, LLC	OH	NIA	Nationwide Life Insurance Company	Ownership	100.000	Nationwide Mutual Insurance Company	
0140	Nationwide		27-4700627	1984016			NTCP 2011-A, LLC	OH	NIA	Nationwide Life Insurance Company	Ownership	100.000	Nationwide Mutual Insurance Company	
0140	Nationwide		45-2724980	2033323			NW - Cameron, LLC	OH	NIA	NW-REI, LLC	Ownership	100.000	Nationwide Mutual Insurance Company	
0140	Nationwide		27-2076516	4793269			NW-2100 Latham, LLC	DE	NIA	NW-REI, LLC	Ownership	100.000	Nationwide Mutual Insurance Company	
0140	Nationwide		36-4702264	2021396			NW-Arvida, LLC	OH	NIA	NW-REI, LLC	Ownership	100.000	Nationwide Mutual Insurance Company	
0140	Nationwide		45-5159092	2099231			NW-Bayshore, LLC	OH	NIA	NW-REI, LLC	Ownership	100.000	Nationwide Mutual Insurance Company	
0140	Nationwide		26-0901660	4421180			NW-CNC Coppell, LLC	DE	NIA	Nationwide Mutual Insurance Company	Ownership	100.000	Nationwide Mutual Insurance Company	
0140	Nationwide		27-4431267	4920564			NW-Collection, LLC	DE	NIA	NW-REI, LLC	Ownership	100.000	Nationwide Mutual Insurance Company	
0140	Nationwide		27-2764819	4831231			NW-Commerce Center, LLC	DE	NIA	NW REI, LLC	Ownership	100.000	Nationwide Mutual Insurance Company	
0140	Nationwide			2057662			NW-Corvallis, LLC	OH	NIA	NW-REI, LLC	Ownership	100.000	Nationwide Mutual Insurance Company	
0140	Nationwide		31-1580283	1891773			NWD 205 Vine, LLC	OH	NIA	NWD Investments, LLC	Ownership	100.000	Nationwide Mutual Insurance Company	
0140	Nationwide		31-1580283	1405488			NWD 225 Nationwide, LLC	OH	NIA	NWD Investments, LLC	Ownership	100.000	Nationwide Mutual Insurance Company	
0140	Nationwide		31-1580283	1681262			NWD 230 West, LLC	OH	NIA	NWD Investments, LLC	Ownership	100.000	Nationwide Mutual Insurance Company	
0140	Nationwide		31-1580283	1694896			NWD 265 Neil, LLC	OH	NIA	NWD Investments, LLC	Ownership	100.000	Nationwide Mutual Insurance Company	
0140	Nationwide		31-1580283	1563474			NWD 275 Marconi, LLC	OH	NIA	NWD Investments, LLC	Ownership	100.000	Nationwide Mutual Insurance Company	
0140	Nationwide		31-1580283	1459199			NWD 295 McConnell, LLC	OH	NIA	NWD Investments, LLC	Ownership	100.000	Nationwide Mutual Insurance Company	
0140	Nationwide		31-1580283	1407725			NWD 300 Neil, LLC	OH	NIA	NWD Investments, LLC	Ownership	100.000	Nationwide Mutual Insurance Company	
0140	Nationwide		31-1580283	1557704			NWD 300 Spring, LLC	OH	NIA	NWD Investments, LLC	Ownership	100.000	Nationwide Mutual Insurance Company	
0140	Nationwide		31-1580283	2061126			NWD 355 McConnell, LLC	OH	NIA	NWD Investments, LLC	Ownership	100.000	Nationwide Mutual Insurance Company	
0140	Nationwide		31-1580283	2044467			NWD 425 Nationwide, LLC	OH	NIA	NWD Investments, LLC	Ownership	100.000	Nationwide Mutual Insurance Company	
0140	Nationwide		31-1580283	2041938			NWD 500 Nationwide, LLC	OH	NIA	NWD Investments, LLC	Ownership	100.000	Nationwide Mutual Insurance Company	
0140	Nationwide		31-1580283	1340700			NWD Arena Crossing, LLC	OH	NIA	NWD Investments, LLC	Ownership	100.000	Nationwide Mutual Insurance Company	
0140	Nationwide		31-1580283	1146303			NWD Arena District I, LLC	OH	NIA	NWD Investments, LLC	Ownership	100.000	Nationwide Mutual Insurance Company	
0140	Nationwide		31-1580283	1172974			NWD Arena District II, LLC	OH	NIA	NWD Investments, LLC	Ownership	100.000	Nationwide Mutual Insurance Company	
0140	Nationwide		31-1580283	1278786			NWD Arena District MM, LLC	OH	NIA	NWD Investments, LLC	Ownership	100.000	Nationwide Mutual Insurance Company	
0140	Nationwide		31-1580283	1278788			NWD Arena District PW, LLC	OH	NIA	NWD Investments, LLC	Ownership	100.000	Nationwide Mutual Insurance Company	
0140	Nationwide		31-1580283	1195624			NWD Arena District V, LLC	OH	NIA	NWD Investments, LLC	Ownership	100.000	Nationwide Mutual Insurance Company	
0140	Nationwide		04-3679396	3531320			NWD Asset Management Holdings, Inc.	DE	NIA	Nationwide SA Capital Trust	Ownership	100.000	Nationwide Mutual Insurance Company	
0140	Nationwide		31-1580283	1448370			NWD Athletic Club, LLC	OH	NIA	NWD Investments, LLC	Ownership	100.000	Nationwide Mutual Insurance Company	
0140	Nationwide		31-1636299	3003214			NWD Investment Management, Inc.	DE	NIA	NWD Management & Research Trust	Ownership	100.000	Nationwide Mutual Insurance Company	
0140	Nationwide		31-1580283	994899			NWD Investments, LLC	OH	NIA	Nationwide Realty Investors, Ltd.	Ownership	80.000	Nationwide Mutual Insurance Company	
0140	Nationwide		25-6711069	3227468			NWD Management & Research Trust	DE	NIA	Nationwide Corporation	Ownership	100.000	Nationwide Mutual Insurance Company	
0140	Nationwide		90-0732898	2021397			NW-DuIles, LLC	OH	NIA	NW-REI, LLC	Ownership	100.000	Nationwide Mutual Insurance Company	

STATEMENT AS OF JUNE 30, 2012 OF THE NATIONWIDE INSURANCE COMPANY OF FLORIDA

SCHEDULE Y

PART 1A - DETAIL OF INSURANCE HOLDING COMPANY SYSTEM

1	2	3	4	5	6	7	8	9	10	11	12	13	14	15
Group Code	Group Name	NAIC Company Code	Federal ID Number	Federal RSSD	CIK	Name of Securities Exchange if Publicly Traded (U.S. or International)	Names of Parent, Subsidiaries Or Affiliates	Domi-ciliary Location	Relationship to Reporting Entity	Directly Controlled by (Name of Entity/Person)	Type of Control (Ownership, Board, Management, Attorney-in-Fact, Influence, Other)	If Control is Ownership Provide Percentage	Ultimate Controlling Entity(ies)/Person(s)	*
0140	Nationwide			2117501			NW-Eastpark, LLC	OH	NIA	NW-REI, LLC	Ownership	100.000	Nationwide Mutual Insurance Company	
0140	Nationwide		45-2647960	2029200			NW-Grapevine, LLC	OH	NIA	NW-REI, LLC	Ownership	100.000	Nationwide Mutual Insurance Company	
0140	Nationwide		27-4750498	1990538			NW-Harvard Row, LLC	OH	NIA	NW-REI, LLC	Ownership	100.000	Nationwide Mutual Insurance Company	
0140	Nationwide		26-3336778	4598125			NW-Highland Park, LLC	DE	NIA	NW-REI, LLC	Ownership	100.000	Nationwide Mutual Insurance Company	
0140	Nationwide		27-4387718	4918214			NW-Highmeadow, LLC	DE	NIA	NW-REI, LLC	Ownership	100.000	Nationwide Mutual Insurance Company	
0140	Nationwide		45-5408178	2110505			NW-Kentwood Towne Center, LLC	OH	NIA	NW-REI, LLC	Ownership	100.000	Nationwide Mutual Insurance Company	
0140	Nationwide		27-4749640	1990535			NW-Kohls Market, LLC	OH	NIA	NW-REI, LLC	Ownership	100.000	Nationwide Mutual Insurance Company	
0140	Nationwide		45-5314607	2106446			NW-Lovers Lane, LLC	OH	NIA	NW-REI, LLC	Ownership	100.000	Nationwide Mutual Insurance Company	
0140	Nationwide		45-4630497	2084158			NW-Mueller II, LLC	OH	NIA	NW-REI, LLC	Ownership	100.000	Nationwide Mutual Insurance Company	
0140	Nationwide		27-4749848	1994254			NW-Northridge, LLC	OH	NIA	NW-REI, LLC	Ownership	100.000	Nationwide Mutual Insurance Company	
0140	Nationwide		45-5388656	1990540			NW-Park Memorial, LLC	OH	NIA	NW-REI, LLC	Ownership	100.000	Nationwide Mutual Insurance Company	
0140	Nationwide		27-4749937	1990540			NW-Park Village, LLC	OH	NIA	NW-REI, LLC	Ownership	100.000	Nationwide Mutual Insurance Company	
0140	Nationwide		26-1903919	4500117			NW-REI, LLC			Nationwide Mutual Insurance Company	Ownership	100.000	Nationwide Mutual Insurance Company	
0140	Nationwide		27-4387647	4918706			NW-Ross Hall, LLC	DE	NIA	NW-REI, LLC	Ownership	100.000	Nationwide Mutual Insurance Company	
0140	Nationwide		45-4439608	2078682			NW-Sanibel Beach Place, LLC	OH	NIA	NW-REI, LLC	Ownership	100.000	Nationwide Mutual Insurance Company	
0140	Nationwide		45-5159117	2099232			NW-South Park, LLC	OH	NIA	NW-REI, LLC	Ownership	100.000	Nationwide Mutual Insurance Company	
0140	Nationwide			2057663			NW-Southline, LLC	OH	NIA	NW-REI, LLC	Ownership	100.000	Nationwide Mutual Insurance Company	
0140	Nationwide		27-4749587	1990537			NW-Taylor Farmer Jack, LLC	OH	NIA	NW-REI, LLC	Ownership	100.000	Nationwide Mutual Insurance Company	
0140	Nationwide		27-4387563	4918360			NW-University, LLC	DE	NIA	NW-REI, LLC	Ownership	100.000	Nationwide Mutual Insurance Company	
0140	Nationwide		31-0947092				OCH Company, LLC			Nationwide Realty Investors, Ltd.	Ownership	100.000	Nationwide Mutual Insurance Company	
0140	Nationwide		31-0947092	908127			Ohio Center Hotel Company, Ltd.	OH	NIA	Nationwide Realty Investors, Ltd.	Ownership	100.000	Nationwide Mutual Insurance Company	
0140	Nationwide		26-0263012	1702560			Old Track Street Owners Association	OH	OTH	Other non-Nationwide	n/a	0.000	Other non-Nationwide	
0140	Nationwide	13999	27-1712056				Olentangy Reinsurance, LLC			Nationwide Life and Annuity Insurance Company	Ownership	100.000	Nationwide Mutual Insurance Company	
0140	Nationwide			3971381			OYS Fund, LLC	VT	JA	Nationwide Mutual Insurance Company	Ownership	100.000	Nationwide Mutual Insurance Company	
0140	Nationwide						Park 288 Industrial, LLC	DE	OTH	Nationwide Mutual Insurance Company	Ownership	100.000	other non-Nationwide	
0140	Nationwide						Pension Associates, Inc.	TX	OTH	Nationwide Financial Services, Inc.	Investor member / no control	95.000	Nationwide Mutual Insurance Company	
0140	Nationwide		39-1805904				Perimeter A, Ltd	WI	NIA	Nationwide Realty Investors, Ltd.	Ownership	100.000	Nationwide Mutual Insurance Company	
0140	Nationwide		31-1486309	1030050			Pine Communities, LLC	OH	NIA	NRI Communities, Ltd.	Ownership	100.000	Nationwide Mutual Insurance Company	
0140	Nationwide		31-1486309	2807109			Pizzuti Properties, LLC	DE	NIA	Nationwide Realty Investors, Ltd.	Ownership	100.000	Nationwide Mutual Insurance Company	
0140	Nationwide		31-1677602	1113742			Polaris A, Ltd.	OH	NIA	Nationwide Realty Investors, Ltd.	Ownership	65.000	Nationwide Mutual Insurance Company	
0140	Nationwide		31-1486309	1069902			Premier Agency, Inc.	OH	NIA	ALLIED Group, Inc.	Ownership	100.000	Nationwide Mutual Insurance Company	
0140	Nationwide		39-1907217	209310			Privilege Underwriters Reciprocal Exchange	IA	NIA	Other non-Nationwide	Ownership	100.000	Other non-Nationwide	
4664	Pure	12873	20-8287105	12873			Privilege Underwriters, Inc.	FL	JA	Other non-Nationwide	n/a	0.000	Other non-Nationwide	
4664	Pure			4089944			Pure Insurance Company	FL	JA	Other non-Nationwide	n/a	0.000	Other non-Nationwide	
4664	Pure	13204	26-3109178				Pure Risk Management, LLC	FL	JA	Other non-Nationwide	n/a	0.000	Other non-Nationwide	
0140	Nationwide		75-2938844	159615800			Registered Investment Advisors Services, Inc.	FL	JA	Nationwide Financial Services, Inc.	n/a	0.000	Nationwide Mutual Insurance Company	
0140	Nationwide		82-0549218	32219			Retention Alternatives, Ltd.	TX	NIA	Nationwide Mutual Fire Insurance Company	Ownership	100.000	Nationwide Mutual Insurance Company	
0140	Nationwide							Bermuda	JA		Ownership	100.000		

STATEMENT AS OF JUNE 30, 2012 OF THE NATIONWIDE INSURANCE COMPANY OF FLORIDA

SCHEDULE Y

PART 1A - DETAIL OF INSURANCE HOLDING COMPANY SYSTEM

1	2	3	4	5	6	7	8	9	10	11	12	13	14	15
Group Code	Group Name	NAIC Company Code	Federal ID Number	Federal RSSD	CIK	Name of Securities Exchange if Publicly Traded (U.S. or International)	Names of Parent, Subsidiaries Or Affiliates	Domi-ciliary Location	Relationship to Reporting Entity	Directly Controlled by (Name of Entity/Person)	Type of Control (Ownership, Board, Management, Attorney-in-Fact, Influence, Other)	If Control is Ownership Provide Percentage	Ultimate Controlling Entity(ies)/Person(s)	*
...0140	Nationwide			3922674			Riverview Diversified Opportunities Fund, LLC	DE	OTH	Nationwide Mutual Insurance Company	Ownership	0.000	Nationwide Mutual Insurance Company	1
...0140	Nationwide			3922674			Riverview Diversified Opportunities Fund, LLC	DE	OTH	Nationwide Mutual Fire Insurance Company	Ownership	0.000	Nationwide Mutual Insurance Company	1
...0140	Nationwide			3922674			Riverview Diversified Opportunities Fund, LLC	DE	OTH	Nationwide Life Insurance Company	Ownership	0.000	Nationwide Mutual Insurance Company	1
...0140	Nationwide		22-3655264	3043824			Riverview International Group, Inc.	DE	NIA	NWD Management & Research Trust	Ownership	100.000	Nationwide Mutual Insurance Company	
...0140	Nationwide			3394557			Riverview Multi Series Fund, LL - Class Event	DE	OTH	Nationwide Mutual Insurance Company	Ownership	100.000	Nationwide Mutual Insurance Company	
...0140	Nationwide			3394557			Riverview Multi Series Fund, LL - Class N	DE	OTH	Nationwide Mutual Insurance Company	Ownership	100.000	Nationwide Mutual Insurance Company	
...0140	Nationwide			3394557			Riverview Polyphony Fund, LLC	DE	OTH	Nationwide Mutual Insurance Company	Ownership	100.000	Nationwide Mutual Insurance Company	
...0140	Nationwide	15580	31-1117969	643981			Scottsdale Indemnity Company	OH	JA	Nationwide Mutual Insurance Company	Ownership	100.000	Nationwide Mutual Insurance Company	
...0140	Nationwide	41297	31-1024978	704061			Scottsdale Insurance Company	OH	JA	Nationwide Mutual Insurance Company	Ownership	100.000	Nationwide Mutual Insurance Company	
...0140	Nationwide	10672	86-0835870				Scottsdale Surplus Lines Insurance Company	AZ	JA	Scottsdale Insurance Company	Ownership	100.000	Nationwide Mutual Insurance Company	
...0140	Nationwide		31-1486309	1032440			South Pittsburgh, LLC	OH	NIA	NRI Communities, Ltd.	Ownership	100.000	Nationwide Mutual Insurance Company	
...0140	Nationwide		31-1486309	1822953			Streets of Toringdon, LLC	OH	NIA	Nationwide Realty Investors, Ltd.	Ownership	100.000	Nationwide Mutual Insurance Company	
...0140	Nationwide						The Association for Theater Based Community Development, LLC			Nationwide Mutual Insurance Company	Limited partner /no control	50.000	other non-Nationwide	
...0140	Nationwide		91-2158214				The Hideaway Club	CA	OTH	Other non-Nationwide	n/a	0.000	Other non-Nationwide	
...0140	Nationwide		86-1094799				The Hideaway Owners Association	CA	OTH	Other non-Nationwide	n/a	0.000	Other non-Nationwide	
...0140	Nationwide		20-3541511				The Madison Club	CA	OTH	Other non-Nationwide	n/a	0.000	Other non-Nationwide	
...0140	Nationwide		20-3541507				The Madison Club Owners Association	CA	OTH	Other non-Nationwide	n/a	0.000	Other non-Nationwide	
...0140	Nationwide		31-1610040	1017852			The Waterfront Partners, LLC	OH	NIA	Nationwide Realty Investors, Ltd.	Ownership	50.000	Nationwide Mutual Insurance Company	1
...0140	Nationwide		52-2031677	2735015			THI Holdings (Delaware), Inc.	DE	NIA	Nationwide Mutual Insurance Company	Ownership	100.000	Nationwide Mutual Insurance Company	
...0140	Nationwide		74-2825853	1855329			Titan Auto Insurance of New Mexico, Inc.	NM	JA	Whitehall Holdings, Inc.	Ownership	100.000	Nationwide Mutual Insurance Company	
...0140	Nationwide	13242	74-2286759				Titan Indemnity Company	TX	JA	THI Holdings (Delaware), Inc.	Ownership	100.000	Nationwide Mutual Insurance Company	
...0140	Nationwide	36269	86-0619597				Titan Insurance Company	MI	JA	Titan Indemnity Company	Ownership	100.000	Nationwide Mutual Insurance Company	
...0140	Nationwide		75-1284530	23586800			Titan Insurance Services, Inc.	TX	NIA	Whitehall Holdings, Inc.	Ownership	100.000	Nationwide Mutual Insurance Company	
...0140	Nationwide		33-0160222				V.P.I. Services, Inc.	CA	NIA	Veterinary Pet Insurance Company	Ownership	100.000	Nationwide Mutual Insurance Company	
...0140	Nationwide	42285	95-3750113				Veterinary Pet Insurance Company	CA	JA	Scottsdale Insurance Company	Ownership	100.000	Nationwide Mutual Insurance Company	
...0140	Nationwide	10644	34-1785903				Victoria Automobile Insurance Company	IN	JA	Victoria Fire & Casualty Insurance Company	Ownership	100.000	Nationwide Mutual Insurance Company	
...0140	Nationwide	42889	34-1394913	616574			Victoria Fire & Casualty Company	OH	JA	THI Holdings (Delaware), Inc.	Ownership	100.000	Nationwide Mutual Insurance Company	
...0140	Nationwide	10778	34-1842604	930061			Victoria National Insurance Company	OH	JA	Victoria Fire & Casualty Insurance Company	Ownership	100.000	Nationwide Mutual Insurance Company	
...0140	Nationwide	10105	34-1777972	872957			Victoria Select Insurance Company	OH	JA	Victoria Fire & Casualty Insurance Company	Ownership	100.000	Nationwide Mutual Insurance Company	
...0140	Nationwide	10777	34-1842602	937963			Victoria Specialty Insurance Company	OH	JA	Victoria Fire & Casualty Insurance Company	Ownership	100.000	Nationwide Mutual Insurance Company	
...0140	Nationwide		31-1682140	1123485			Waterfront Apartments, LLC	OH	NIA	NRI Communities, Ltd.	Ownership	100.000	Nationwide Mutual Insurance Company	
...0140	Nationwide	37150	86-0561941				Western Heritage Insurance Company	AZ	JA	Scottsdale Insurance Company	Ownership	100.000	Nationwide Mutual Insurance Company	

STATEMENT AS OF JUNE 30, 2012 OF THE NATIONWIDE INSURANCE COMPANY OF FLORIDA

SCHEDULE Y

PART 1A - DETAIL OF INSURANCE HOLDING COMPANY SYSTEM

1	2	3	4	5	6	7	8	9	10	11	12	13	14	15
Group Code	Group Name	NAIC Company Code	Federal ID Number	Federal RSSD	CIK	Name of Securities Exchange if Publicly Traded (U.S. or International)	Names of Parent, Subsidiaries Or Affiliates	Domiciliary Location	Relationship to Reporting Entity	Directly Controlled by (Name of Entity/Person)	Type of Control (Ownership, Board, Management, Attorney-in-Fact, Influence, Other)	If Control is Ownership Provide Percentage	Ultimate Controlling Entity(ies)/Person(s)	*
...0140 ...	Nationwide						Westport Capital Partners II			Nationwide Mutual Insurance Company Nationwide Defined Benefit Master Trust	Investor member / no control71.000	other non-Nationwide	
...0140 ...	Nationwide		74-2767942	138315500			Whitehall Holdings, Inc.CT...	...OTH...	THI Holdings (Delaware), Inc.	Ownership.....	..100.000	Nationwide Mutual Insurance Company	
...0140 ...	Nationwide		59-3471667				WI of Florida, Inc.TX...	...NIA...	Whitehall Holdings, Inc.	Ownership.....	..100.000	Nationwide Mutual Insurance Company	
...0140 ...	Nationwide		31-1486309	1447207			Yacht Club Communities II, LLCOH...	...NIA...	NRI Communities, Ltd.	Ownership.....	..100.000	Nationwide Mutual Insurance Company	
...0140 ...	Nationwide		31-1486309	2813555			Yacht Club Communities, LLCDE...	...NIA...	NRI Communities, Ltd.	Ownership.....	..100.000	Nationwide Mutual Insurance Company	
...0140 ...	Nationwide			4410206			Zais Zephyr A-4, LLCDE...	...OTH...	Nationwide Life Insurance Company	limited member / no control60.000	other non-Nationwide	

Asterisk	Explanation
1	For the purposes of this schedule, Nationwide presumed control of these entities because they are owned by at least 10% and are not wholly-owned by a Nationwide entity.
2	Other ownership indicates a non-ownership circumstance by a Nationwide entity.

STATEMENT AS OF JUNE 30, 2012 OF THE NATIONWIDE INSURANCE COMPANY OF FLORIDA

PART 1 - LOSS EXPERIENCE

Line of Business	Current Year to Date			4 Prior Year to Date Direct Loss Percentage
	1 Direct Premiums Earned	2 Direct Losses Incurred	3 Direct Loss Percentage	
1. Fire		(3,259)		
2. Allied Lines		(14,386)		
3. Farmowners multiple peril				
4. Homeowners multiple peril	27,613,666	11,149,692	40.4	44.9
5. Commercial multiple peril				
6. Mortgage guaranty				
8. Ocean marine				
9. Inland marine	507,941	38,459	7.6	3.5
10. Financial guaranty				
11.1 Medical professional liability - occurrence				
11.2 Medical professional liability - claims-made				
12. Earthquake	8,837	(469)	(5.3)	(20.6)
13. Group accident and health				
14. Credit accident and health				
15. Other accident and health				
16. Workers' compensation				
17.1 Other liability - occurrence		(185)		
17.2 Other liability - claims-made				
17.3 Excess workers' compensation				
18.1 Products liability - occurrence				
18.2 Products liability - claims-made				
19.1,19.2 Private passenger auto liability				
19.3,19.4 Commercial auto liability				
21. Auto physical damage				
22. Aircraft (all perils)				
23. Fidelity				
24. Surety				
26. Burglary and theft				
27. Boiler and machinery				
28. Credit				
29. International				
30. Warranty				
31. Reinsurance - Nonproportional Assumed Property	XXX	XXX	XXX	XXX
32. Reinsurance - Nonproportional Assumed Liability	XXX	XXX	XXX	XXX
33. Reinsurance - Nonproportional Assumed Financial Lines	XXX	XXX	XXX	XXX
34. Aggregate write-ins for other lines of business				
35. Totals	28,130,444	11,169,852	39.7	44.2
DETAILS OF WRITE-INS				
3401.				
3402.				
3403.				
3498. Summary of remaining write-ins for Line 34 from overflow page				
3499. Totals (Lines 3401 through 3403 plus 3498)(Line 34 above)				

PART 2 - DIRECT PREMIUMS WRITTEN

Line of Business	1	2	3
	Current Quarter	Current Year to Date	Prior Year Year to Date
1. Fire			
2. Allied Lines			
3. Farmowners multiple peril			
4. Homeowners multiple peril	16,331,852	28,466,488	28,937,405
5. Commercial multiple peril			
6. Mortgage guaranty			
8. Ocean marine			
9. Inland marine	299,137	509,907	542,578
10. Financial guaranty			
11.1 Medical professional liability - occurrence			
11.2 Medical professional liability - claims-made			
12. Earthquake	4,694	7,952	8,344
13. Group accident and health			
14. Credit accident and health			
15. Other accident and health			
16. Workers' compensation			
17.1 Other liability - occurrence			
17.2 Other liability - claims-made			
17.3 Excess workers' compensation			
18.1 Products liability - occurrence			
18.2 Products liability - claims-made			
19.1,19.2 Private passenger auto liability			
19.3,19.4 Commercial auto liability			
21. Auto physical damage			
22. Aircraft (all perils)			
23. Fidelity			
24. Surety			
26. Burglary and theft			
27. Boiler and machinery			
28. Credit			
29. International			
30. Warranty			
31. Reinsurance - Nonproportional Assumed Property	XXX	XXX	XXX
32. Reinsurance - Nonproportional Assumed Liability	XXX	XXX	XXX
33. Reinsurance - Nonproportional Assumed Financial Lines	XXX	XXX	XXX
34. Aggregate write-ins for other lines of business			
35. Totals	16,635,683	28,984,347	29,488,327
DETAILS OF WRITE-INS			
3401.			
3402.			
3403.			
3498. Summary of remaining write-ins for Line 34 from overflow page			
3499. Totals (Lines 3401 through 3403 plus 3498)(Line 34 above)			

STATEMENT AS OF JUNE 30, 2012 OF THE NATIONWIDE INSURANCE COMPANY OF FLORIDA

PART 3 (000 omitted)

LOSS AND LOSS ADJUSTMENT EXPENSE RESERVES SCHEDULE

	1	2	3	4	5	6	7	8	9	10	11	12	13
Years in Which Losses Occurred	Prior Year-End Known Case Loss and LAE Reserves	Prior Year-End IBNR Loss and LAE Reserves	Total Prior Year-End Loss and LAE Reserves (Cols. 1+2)	2012 Loss and LAE Payments on Claims Reported as of Prior Year-End	2012 Loss and LAE Payments on Claims Unreported as of Prior Year-End	Total 2012 Loss and LAE Payments (Cols. 4+5)	Q.S. Date Known Case Loss and LAE Reserves on Claims Reported and Open as of Prior Year End	Q.S. Date Known Case Loss and LAE Reserves on Claims Reported or Reopened Subsequent to Prior Year End	Q.S. Date IBNR Loss and LAE Reserves	Total Q.S. Loss and LAE Reserves (Cols.7+8+9)	Prior Year-End Known Case Loss and LAE Reserves Developed (Savings)/ Deficiency (Cols.4+7 minus Col. 1)	Prior Year-End IBNR Loss and LAE Reserves Developed (Savings)/ Deficiency (Cols. 5+8+9 minus Col. 2)	Prior Year-End Total Loss and LAE Reserve Developed (Savings)/ Deficiency (Cols. 11+12)
1. 2009 + Prior	17,151	7,333	24,484	5,703	850	6,553	12,113	612	4,642	17,367	665	(1,229)	(564)
2. 2010	9,515	4,604	14,119	3,274	156	3,430	5,972	313	3,783	10,068	(269)	(352)	(621)
3. Subtotals 2010 + Prior	26,666	11,937	38,603	8,977	1,006	9,983	18,085	925	8,425	27,435	396	(1,581)	(1,185)
4. 2011	9,588	7,585	17,173	5,106	2,868	7,974	3,330	1,318	3,635	8,283	(1,152)	236	(916)
5. Subtotals 2011 + Prior	36,254	19,522	55,776	14,083	3,874	17,957	21,415	2,243	12,060	35,718	(756)	(1,345)	(2,101)
6. 2012	XXX	XXX	XXX	XXX	6,819	6,819	XXX	4,358	4,377	8,735	XXX	XXX	XXX
7. Totals	36,254	19,522	55,776	14,083	10,693	24,776	21,415	6,601	16,437	44,453	(756)	(1,345)	(2,101)
8. Prior Year-End Surplus As Regards Policyholders	278,192										Col. 11, Line 7 As % of Col. 1 Line 7	Col. 12, Line 7 As % of Col. 2 Line 7	Col. 13, Line 7 As % of Col. 3 Line 7
											1. (2.1)	2. (6.9)	3. (3.8)
													Col. 13, Line 7 As a % of Col. 1 Line 8
													4. (0.8)

SUPPLEMENTAL EXHIBITS AND SCHEDULES INTERROGATORIES

The following supplemental reports are required to be filed as part of your statement filing. However, in the event that your company does not transact the type of business for which the special report must be filed, your response of NO to the specific interrogatory will be accepted in lieu of filing a "NONE" report and a bar code will be printed below. If the supplement is required of your company but is not being filed for whatever reason enter SEE EXPLANATION and provide an explanation following the interrogatory questions.

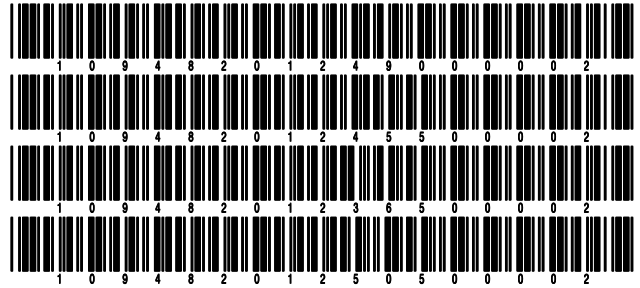
	Response
1. Will the Trusteed Surplus Statement be filed with the state of domicile and the NAIC with this statement?	NO
2. Will Supplement A to Schedule T (Medical Professional Liability Supplement) be filed with this statement?	NO
3. Will the Medicare Part D Coverage Supplement be filed with the state of domicile and the NAIC with this statement?	NO
4. Will the Director and Officer Supplement be filed with the state of domicile and the NAIC with this statement?	NO

Explanations:

- 1.
- 2.
- 3.
- 4.

Bar Codes:

1. Trusteed Surplus Statement [Document Identifier 490]
2. Supplement A to Schedule T [Document Identifier 455]
3. Medicare Part D Coverage Supplement [Document Identifier 365]
4. Director and Officer Supplement [Document Identifier 505]



NONE

SCHEDULE A - VERIFICATION

Real Estate

	1 Year to Date	2 Prior Year Ended December 31
1. Book/adjusted carrying value, December 31 of prior year		
2. Cost of acquired:		
2.1 Actual cost at time of acquisition		
2.2 Additional investment made after acquisition		
3. Current year change in encumbrances		
4. Total gain (loss) on disposals		
5. Deduct amounts received on disposals		
6. Total foreign exchange change in book/adjusted carrying value		
7. Deduct current year's other than temporary impairment recognized		
8. Deduct current year's depreciation		
9. Book/adjusted carrying value at the end of current period (Lines 1+2+3+4-5+6-7-8)		
10. Deduct total nonadmitted amounts		
11. Statement value at end of current period (Line 9 minus Line 10)		

NONE

SCHEDULE B - VERIFICATION

Mortgage Loans

	1 Year to Date	2 Prior Year Ended December 31
1. Book value/recorded investment excluding accrued interest, December 31 of prior year		
2. Cost of acquired:		
2.1 Actual cost at time of acquisition		
2.2 Additional investment made after acquisition		
3. Capitalized deferred interest and other		
4. Accrual of discount		
5. Unrealized valuation increase (decrease)		
6. Total gain (loss) on disposals		
7. Deduct amounts received on disposals		
8. Deduct amortization of premium and mortgage interest points and commitment fees		
9. Total foreign exchange change in book value/recorded investment excluding accrued interest		
10. Deduct current year's other than temporary impairment recognized		
11. Book value/recorded investment excluding accrued interest at end of current period (Lines 1+2+3+4+5+6-7-8+9-10)		
12. Total valuation allowance		
13. Subtotal (Line 11 plus Line 12)		
14. Deduct total nonadmitted amounts		
15. Statement value at end of current period (Line 13 minus Line 14)		

NONE

SCHEDULE BA - VERIFICATION

Other Long-Term Invested Assets

	1 Year to Date	2 Prior Year Ended December 31
1. Book/adjusted carrying value, December 31 of prior year		
2. Cost of acquired:		
2.1 Actual cost at time of acquisition		
2.2 Additional investment made after acquisition		
3. Capitalized deferred interest and other		
4. Accrual of discount		
5. Unrealized valuation increase (decrease)		
6. Total gain (loss) on disposals		
7. Deduct amounts received on disposals		
8. Deduct amortization of premium and depreciation		
9. Total foreign exchange change in book/adjusted carrying value		
10. Deduct current year's other than temporary impairment recognized		
11. Book/adjusted carrying value at end of current period (Lines 1+2+3+4+5+6-7-8+9-10)		
12. Deduct total nonadmitted amounts		
13. Statement value at end of current period (Line 11 minus Line 12)		

NONE

SCHEDULE D - VERIFICATION

Bonds and Stocks

	1 Year to Date	2 Prior Year Ended December 31
1. Book/adjusted carrying value of bonds and stocks, December 31 of prior year	334,986,769	366,885,364
2. Cost of bonds and stocks acquired		111,637,125
3. Accrual of discount	163,257	330,532
4. Unrealized valuation increase (decrease)	742,306	2,257,777
5. Total gain (loss) on disposals	2,174,810	3,250,235
6. Deduct consideration for bonds and stocks disposed of	20,718,045	147,811,949
7. Deduct amortization of premium	746,698	1,562,315
8. Total foreign exchange change in book/adjusted carrying value		
9. Deduct current year's other than temporary impairment recognized		
10. Book/adjusted carrying value at end of current period (Lines 1+2+3+4+5-6-7+8-9)	316,602,399	334,986,769
11. Deduct total nonadmitted amounts		
12. Statement value at end of current period (Line 10 minus Line 11)	316,602,399	334,986,769

STATEMENT AS OF JUNE 30, 2012 OF THE NATIONWIDE INSURANCE COMPANY OF FLORIDA

SCHEDULE D - PART 1B

Showing the Acquisitions, Dispositions and Non-Trading Activity
During the Current Quarter for all Bonds and Preferred Stock by Rating Class

	1 Book/Adjusted Carrying Value Beginning of Current Quarter	2 Acquisitions During Current Quarter	3 Dispositions During Current Quarter	4 Non-Trading Activity During Current Quarter	5 Book/Adjusted Carrying Value End of First Quarter	6 Book/Adjusted Carrying Value End of Second Quarter	7 Book/Adjusted Carrying Value End of Third Quarter	8 Book/Adjusted Carrying Value December 31 Prior Year
BONDS								
1. Class 1 (a)	318,532,070		14,758,843	(681,674)	318,532,070	303,091,553		322,137,305
2. Class 2 (a)	11,830,598			992,078	11,830,598	12,822,676		12,039,068
3. Class 3 (a)								
4. Class 4 (a)								
5. Class 5 (a)	111,738			(7,769)	111,738	103,969		229,616
6. Class 6 (a)	529,886		(77,467)	(23,154)	529,886	584,199		580,780
7. Total Bonds	331,004,292		14,681,376	279,481	331,004,292	316,602,397		334,986,769
PREFERRED STOCK								
8. Class 1								
9. Class 2								
10. Class 3								
11. Class 4								
12. Class 5								
13. Class 6								
14. Total Preferred Stock								
15. Total Bonds and Preferred Stock	331,004,292		14,681,376	279,481	331,004,292	316,602,397		334,986,769

(a) Book/Adjusted Carrying Value column for the end of the current reporting period includes the following amount of non-rated short-term and cash equivalent bonds by NAIC designation: NAIC 1 \$; NAIC 2 \$; NAIC 3 \$; NAIC 4 \$; NAIC 5 \$; NAIC 6 \$

S102

SCHEDULE DA - PART 1

Short-Term Investments

	1 Book/Adjusted Carrying Value	2 Par Value	3 Actual Cost	4 Interest Collected Year-to-Date	5 Paid for Accrued Interest Year-to-Date
9199999 Totals	33	XXX	33	23	

SCHEDULE DA - VERIFICATION

Short-Term Investments

	1 Year To Date	2 Prior Year Ended December 31
1. Book/adjusted carrying value, December 31 of prior year	15,723,402	5,622,044
2. Cost of short-term investments acquired	79,514,923	237,241,668
3. Accrual of discount		
4. Unrealized valuation increase (decrease)		
5. Total gain (loss) on disposals		
6. Deduct consideration received on disposals	95,238,292	227,140,310
7. Deduct amortization of premium		
8. Total foreign exchange change in book/adjusted carrying value		
9. Deduct current year's other than temporary impairment recognized		
10. Book/adjusted carrying value at end of current period (Lines 1+2+3+4+5-6-7+8-9)	33	15,723,402
11. Deduct total nonadmitted amounts		
12. Statement value at end of current period (Line 10 minus Line 11)	33	15,723,402

Schedule DB - Part A - Verification - Options, Caps, Floors, Collars, Swaps and Forwards

N O N E

Schedule DB - Part B - Verification - Futures Contracts

N O N E

Schedule DB - Part C - Section 1 - Replication (Synthetic Asset) Transactions (RSATs) Open

N O N E

Schedule DB-Part C-Section 2-Reconciliation of Replication (Synthetic Asset) Transactions Open

N O N E

Schedule DB - Verification - Book/Adjusted Carrying Value, Fair Value and Potential Exposure of
Derivatives

N O N E

Schedule E - Verification - Cash Equivalents

N O N E

Schedule A - Part 2 - Real Estate Acquired and Additions Made

N O N E

Schedule A - Part 3 - Real Estate Disposed

N O N E

Schedule B - Part 2 - Mortgage Loans Acquired

N O N E

Schedule B - Part 3 - Mortgage Loans Disposed, Transferred or Repaid

N O N E

Schedule BA - Part 2 - Other Long-Term Invested Assets Acquired

N O N E

Schedule BA - Part 3 - Other Long-Term Invested Assets Disposed, Transferred or Repaid

N O N E

Schedule D - Part 3 - Long-Term Bonds and Stocks Acquired

N O N E

STATEMENT AS OF JUNE 30, 2012 OF THE NATIONWIDE INSURANCE COMPANY OF FLORIDA

SCHEDULE D - PART 4

Show All Long-Term Bonds and Stock Sold, Redeemed or Otherwise Disposed of During the Current Quarter

1	2	3	4	5	6	7	8	9	10	Change In Book/Adjusted Carrying Value					16	17	18	19	20	21	22			
										11	12	13	14	15										
CUSIP Identification	Description	For-foreign	Disposal Date	Name of Purchaser	Number of Shares of Stock	Consideration	Par Value	Actual Cost	Prior Year Book/Adjusted Carrying Value	Unrealized Valuation Increase/(Decrease)	Current Year's (Amortization)/Accretion	Current Year's Other Than Temporary Impairment Recognized	Total Change in Book/Adjusted Carrying Value (11 + 12 - 13)	Total Foreign Exchange Change in Book/Adjusted Carrying Value	Book/Adjusted Carrying Value at Disposal Date	Foreign Exchange Gain (Loss) on Disposal	Realized Gain (Loss) on Disposal	Total Gain (Loss) on Disposal	Bond Interest/Stock Dividends Received During Year	Stated Contractual Maturity Date	NAIC Designation or Market Indicator (a)			
29358B-AA-0	EnSCO Offshore Inc Title XI Financing		06/01/2012	Redemption 100.0000		33,332	33,332	33,201	33,282		49		49		33,332				1,060	12/01/2015	1FE			
91282B-MF-4	U S Treasury Inflation Index Nt 1.375%		04/17/2012	Nomura Securities Int'l Inc		12,218,834	10,000,000	10,055,794	10,517,178	(471,493)	(1,563)		(473,056)		10,044,120		2,174,714	2,174,714	109,269	01/15/2020	1			
0599999. Subtotal - Bonds - U.S. Governments						12,252,166	10,033,332	10,088,995	10,550,458	(471,493)	(1,514)		(473,007)		10,077,452		2,174,714	2,174,714	110,329		XXX	XXX		
181054-SE-3	Clark Cnty NV Sch Dist GO Bldg Ser C 5		06/15/2012	Call 100.0000		1,395,000	1,395,000	1,541,294	1,403,966		(8,966)		(8,966)		1,395,000				37,491	06/15/2012	1FE			
2499999. Subtotal - Bonds - U.S. Political Subdivisions of States, Territories and Possessions						1,395,000	1,395,000	1,541,294	1,403,966		(8,966)		(8,966)		1,395,000					37,491		XXX	XXX	
31358T-LB-0	FNMA REMIC Ser 1993-33 ZB 7.500% 03/25		06/01/2012	Paydown		8,389	8,389	8,707	8,589		(201)		(201)		8,389				275	03/25/2023	1			
31359K-2K-2	FNMA REMIC Ser 1996-M7 CI Z 7.15% 05/		06/01/2012	Paydown		289	289	282	282		7		7		289				9	05/17/2036	1			
31359U-TL-9	FNMA REMIC Ser 1998-54C 6.000% 09/18/2		06/01/2012	Paydown		7,408	7,408	7,436	7,415		(7)		(7)		7,408				354	09/18/2028	1			
31359V-BH-5	FNMA Ser 1998-73 CI MZ 6.300% 10/17/38		06/01/2012	Paydown		48,957	48,957	50,243	49,738		(781)		(781)		48,957				1,038	10/17/2038	1			
313770-MJ-8	FNMA DUS Pool #383861 6.890% 07/25/19		06/01/2012	Paydown		19,298	19,298	20,302	19,726		(428)		(428)		19,298				555	07/25/2019	1			
313775-3K-2	FNMA DUS Pool #386102 5.220% 04/25/21		06/01/2012	Paydown		3,447	3,447	3,625	3,540		(93)		(93)		3,447				75	04/25/2021	1			
31384B-F4-3	FNMA Pool #AH6486 4.000% 03/25/41		06/01/2012	Paydown		476,371	476,371	479,832	479,777		(3,405)		(3,405)		476,371				8,026	03/25/2041	1			
31384E-J8-7	FNMA Pool #A11186 4.000% 04/25/41		06/01/2012	Paydown		1,178,484	1,178,484	1,187,042	1,186,910		(8,426)		(8,426)		1,178,484				18,414	04/25/2041	1			
31392E-F5-4	FNMA REMIC Ser 2002-65 CI HC 5.000% 10		06/01/2012	Paydown		34,600	34,600	34,876	34,642		(43)		(43)		34,600				696	10/25/2017	1			
31392V-7G-1	FHLMC REMIC Ser 2498 BM 5.500% 09/15/1		06/01/2012	Paydown		17,927	17,927	18,429	18,066		(139)		(139)		17,927				418	09/15/2017	1			
31393A-2V-8	FNMA REMIC Ser 2003-38 CI MP 5.500% 05		06/01/2012	Paydown		54,837	54,837	56,071	55,104		(266)		(266)		54,837				1,253	05/25/2023	1			
31393B-T4-7	FNMA REMIC Tr Ser 2003-W6 1A41 5.398%		06/01/2012	Paydown		21,254	21,254	21,420	21,309		(54)		(54)		21,254				489	10/25/2042	1			
31393H-6S-6	FHLMC REMIC Ser 2543 CI AN 5.000% 12/1		06/01/2012	Paydown		36,771	36,771	36,450	36,632		140		140		36,771				739	12/15/2017	1			
31394H-2H-3	FHLMC REMIC Ser 2662 CI B 5.000% 09/15		06/01/2012	Paydown		69,997	69,997	71,309	70,231		(234)		(234)		69,997				1,519	09/15/2021	1			
31394W-2P-2	FHLMC REMIC Ser 2770 CI ON 3.750% 06/1		06/01/2012	Paydown		127,761	127,761	127,322	127,560		201		201		127,761				1,903	06/15/2032	1			
31419B-CT-0	FNMA Pool #AED981 3.500% 03/25/41		06/01/2012	Paydown		236,420	236,420	243,771	243,715		(7,295)		(7,295)		236,420				3,377	03/25/2041	1			
60415N-D4-1	Minnesota St Hsg Fin Agy Rev AMT SF Res		06/01/2012	Call 100.0000		70,000	70,000	70,000	70,000						70,000				3,983	07/01/2021	1AM			
92418P-AU-1	Vermont Hsg Fin Agy SF Rev Sgl Fam Ser 2		05/01/2012	Call 100.0000		630,000	630,000	630,000	630,000						630,000				15,908	11/01/2026	1AM			
3199999. Subtotal - Bonds - U.S. Special Revenues						3,042,210	3,042,210	3,067,121	3,063,236		(21,024)		(21,024)		3,042,210					57,931		XXX	XXX	
00253C-GP-6	Aames Mtg Tr Ser 2001-1 CI M1 RMBS 7.6		06/01/2012	Paydown		5,753	5,753	5,753	5,753						5,753				183	06/25/2031	1FM			
02378F-AB-2	American Airlines Inc PTC Ser 1992-A2 AB		04/14/2012	Redemption 100.0000		(77,467)	(77,467)	(48,804)	(62,749)	(14,719)			(14,719)		(77,467)					03/11/2016	6*			
17306U-CE-6	Citifinancial Mtg Sec Inc Ser 2004-1 CI		06/01/2012	Paydown		59,454	59,454	59,450	59,391		63		63		59,454				984	04/25/2034	1FM			
36228F-C5-3	GS Mortgage Securities Corp Ser 2004-NC1		06/01/2012	Paydown		29,702	29,702	29,700	21,479	8,144			8,222		29,702				(818)	11/25/2033	1FM			
65535V-CN-6	Nomura Asset Sec Corp Ser 2004-AP1 CI A6		06/01/2012	Paydown		57,165	57,165	57,164	57,100		66		66		57,165				1,119	03/25/2034	1FM			
667294-AW-2	Northwest Airlines EETC Ser 2001-1 CI A-		04/01/2012	Paydown		27,453	27,453	23,541	23,673		3,779		3,779		27,453				966	10/01/2023	1AM			
78442G-G6-5	SLM Student Loan Tr Ser 2003-4 CI A5D AB		06/15/2012	Paydown		31,161	31,161	31,963	31,631		(470)		(470)		31,161				200	03/15/2033	1AM			
949760-AP-7	Wells Fargo Mtg Backed Sec Tr Ser 2003-9		06/01/2012	Paydown		33,590	33,590	33,160	33,322		172		172		33,493		97	97	714	08/25/2033	1FM			
8999999. Subtotal - Bonds - Industrial and Miscellaneous (Unaffiliated)						166,811	166,811	191,927	169,600	(6,575)	3,688		(2,887)		166,714		97	97	3,348		XXX	XXX		
8399997. Total - Bonds - Part 4						16,856,187	14,637,353	14,889,337	15,187,260	(478,068)	(27,816)		(505,884)		14,681,376		XXX	XXX	2,174,811	2,174,811	209,099	XXX	XXX	
8399998. Total - Bonds - Part 5						XXX	XXX	XXX	XXX	XXX	XXX	XXX	XXX	XXX	XXX	XXX	XXX	XXX	XXX	XXX	XXX	XXX	XXX	
8399999. Total - Bonds						16,856,187	14,637,353	14,889,337	15,187,260	(478,068)	(27,816)		(505,884)		14,681,376		2,174,811	2,174,811	2,174,811	209,099	XXX	XXX		
8999997. Total - Preferred Stocks - Part 4							XXX														XXX	XXX		
8999998. Total - Preferred Stocks - Part 5						XXX	XXX	XXX	XXX	XXX	XXX	XXX	XXX	XXX	XXX	XXX	XXX	XXX	XXX	XXX	XXX	XXX	XXX	
8999999. Total - Preferred Stocks							XXX														XXX	XXX		
9799997. Total - Common Stocks - Part 4							XXX														XXX	XXX		
9799998. Total - Common Stocks - Part 5						XXX	XXX	XXX	XXX	XXX	XXX	XXX	XXX	XXX	XXX	XXX	XXX	XXX	XXX	XXX	XXX	XXX	XXX	
9799999. Total - Common Stocks							XXX														XXX	XXX		
9899999. Total - Preferred and Common Stocks							XXX														XXX	XXX		
9999999 - Totals						16,856,187	XXX		14,889,337	15,187,260	(478,068)	(27,816)		(505,884)		14,681,376				2,174,811	2,174,811	209,099	XXX	XXX

(a) For all common stock bearing the NAIC market indicator "U" provide: the number of such issues.....

Schedule DB - Part A - Section 1 - Options, Caps, Floors, Collars, Swaps and Forwards Open

N O N E

Schedule DB - Part B - Section 1 - Futures Contracts Open

N O N E

Schedule DB - Part B - Section 1B - Brokers with whom cash deposits have been made

N O N E

Schedule DB - Part D - Counterparty Exposure for Derivative Instruments Open

N O N E

Schedule DL - Part 1 - Reinvested Collateral Assets Owned

N O N E

Schedule DL - Part 2 - Reinvested Collateral Assets Owned

N O N E

SCHEDULE E - PART 2 - CASH EQUIVALENTS

Show Investments Owned End of Current Quarter

1 Description	2 Code	3 Date Acquired	4 Rate of Interest	5 Maturity Date	6 Book/Adjusted Carrying Value	7 Amount of Interest Due and Accrued	8 Amount Received During Year
NONE							
8699999 - Total Cash Equivalents							