



PROPERTY AND CASUALTY COMPANIES - ASSOCIATION EDITION

QUARTERLY STATEMENT

AS OF JUNE 30, 2012

OF THE CONDITION AND AFFAIRS OF THE

Ohio Mutual Insurance Company

NAIC Group Code 0963 (Current) 0963 (Prior) NAIC Company Code 10202 Employer's ID Number 34-4320350

Organized under the Laws of OHIO, State of Domicile or Port of Entry OHIO

Country of Domicile United States of America

Incorporated/Organized 03/05/1901 Commenced Business 03/05/1901

Statutory Home Office 1725 Hopley Avenue, Bucyrus, OH 44820-0111

Main Administrative Office 1725 Hopley Avenue, Bucyrus, OH 44820-0111

Mail Address 1725 Hopley Avenue, Bucyrus, OH 44820-0111

Primary Location of Books and Records 1725 Hopley Avenue, Bucyrus, OH 44820-0111

Internet Web Site Address www.omig.com

Statutory Statement Contact Caroline Kay Metcalf Mrs., cmetcalf@omig.com

OFFICERS

President James Joseph Kennedy, Mr. Secretary Susan Porter, Mrs. Treasurer David Gary Hendrix, Mr.

OTHER

Todd Emery Albert, Mr. Vice President Information Systems; Michael Alexander Brogan, Mr. Vice President Claims; Thomas Michael Holtshouse, Mr. Vice President Product Management; Michael Robert Horvath, Mr. Vice President Human Resources; Randy Thomas O'Conner, Mr. Executive Vice President; Kevin David Rall, Mr. Vice President Sales and Personal Lines Underwriting

DIRECTORS OR TRUSTEES

Robert Bruce Albro, Mr.; Susan Porter, Mrs.; Randy Lee Walker, Mr.; Albert Michael Heister, Mr.; John Redon Purse, Mr.; Thomas Eugene Woolley, Mr.; James Joseph Kennedy, Mr.; David Anthony Siebenburgen, Mr.

State of Ohio County of Crawford SS:

The officers of this reporting entity being duly sworn, each depose and say that they are the described officers of said reporting entity, and that on the reporting period stated above, all of the herein described assets were the absolute property of the said reporting entity, free and clear from any liens or claims thereon, except as herein stated, and that this statement, together with related exhibits, schedules and explanations therein contained, annexed or referred to, is a full and true statement of all the assets and liabilities and of the condition and affairs of the said reporting entity as of the reporting period stated above, and of its income and deductions therefrom for the period ended, and have been completed in accordance with the NAIC Annual Statement Instructions and Accounting Practices and Procedures manual except to the extent that: (1) state law may differ; or, (2) that state rules or regulations require differences in reporting not related to accounting practices and procedures, according to the best of their information, knowledge and belief, respectively. Furthermore, the scope of this attestation by the described officers also includes the related corresponding electronic filing with the NAIC, when required, that is an exact copy (except for formatting differences due to electronic filing) of the enclosed statement. The electronic filing may be requested by various regulators in lieu of or in addition to the enclosed statement.

James Joseph Kennedy President and CEO

David Gary Hendrix Treasurer and CFO

Michael Alexander Brogan Assistant Secretary

Subscribed and sworn to before me this day of

- a. Is this an original filing? Yes [ X ] No [ ]
b. If no,
1. State the amendment number.....
2. Date filed .....
3. Number of pages attached.....

STATEMENT AS OF JUNE 30, 2012 OF THE Ohio Mutual Insurance Company

**ASSETS**

	Current Statement Date			4 December 31 Prior Year Net Admitted Assets
	1 Assets	2 Nonadmitted Assets	3 Net Admitted Assets (Cols. 1 - 2)	
1. Bonds .....	54,663,733		54,663,733	52,913,753
2. Stocks:				
2.1 Preferred stocks .....				
2.2 Common stocks .....	126,470,450	26,033	126,444,417	122,974,325
3. Mortgage loans on real estate:				
3.1 First liens .....				
3.2 Other than first liens .....				
4. Real estate:				
4.1 Properties occupied by the company (less \$ encumbrances) .....	4,727,488		4,727,488	4,736,039
4.2 Properties held for the production of income (less \$ ..... encumbrances) .....				
4.3 Properties held for sale (less \$ encumbrances) .....				
5. Cash (\$ .....6,328,205 ), cash equivalents (\$ ..... ) and short-term investments (\$ .....937,039 ) .....	7,265,244		7,265,244	6,179,575
6. Contract loans (including \$ ..... premium notes) .....				
7. Derivatives .....				
8. Other invested assets .....				
9. Receivables for securities .....				
10. Securities lending reinvested collateral assets .....				
11. Aggregate write-ins for invested assets .....				
12. Subtotals, cash and invested assets (Lines 1 to 11) .....	193,126,915	26,033	193,100,882	186,803,692
13. Title plants less \$ ..... charged off (for Title insurers only) .....				
14. Investment income due and accrued .....	431,762		431,762	426,892
15. Premiums and considerations:				
15.1 Uncollected premiums and agents' balances in the course of collection .....	571,280	20,194	551,086	585,248
15.2 Deferred premiums, agents' balances and installments booked but deferred and not yet due (including \$ ..... earned but unbilled premiums) .....	10,280,283		10,280,283	9,634,281
15.3 Accrued retrospective premiums .....				
16. Reinsurance:				
16.1 Amounts recoverable from reinsurers .....	48,360		48,360	166,390
16.2 Funds held by or deposited with reinsured companies .....				
16.3 Other amounts receivable under reinsurance contracts .....				
17. Amounts receivable relating to uninsured plans .....				
18.1 Current federal and foreign income tax recoverable and interest thereon .....	968,287		968,287	1,024,457
18.2 Net deferred tax asset .....	2,371,914		2,371,914	2,239,465
19. Guaranty funds receivable or on deposit .....				
20. Electronic data processing equipment and software .....	527,947	527,947		
21. Furniture and equipment, including health care delivery assets (\$ ..... ) .....	59,682	59,682		
22. Net adjustment in assets and liabilities due to foreign exchange rates .....				
23. Receivables from parent, subsidiaries and affiliates .....	5,873,403		5,873,403	7,784,953
24. Health care (\$ ..... ) and other amounts receivable .....				
25. Aggregate write-ins for other than invested assets .....	1,244,997	359,500	885,498	984,538
26. Total assets excluding Separate Accounts, Segregated Accounts and Protected Cell Accounts (Lines 12 to 25) .....	215,504,830	993,355	214,511,475	209,649,916
27. From Separate Accounts, Segregated Accounts and Protected Cell Accounts .....				
28. Total (Lines 26 and 27)	215,504,830	993,355	214,511,475	209,649,916
<b>DETAILS OF WRITE-INS</b>				
1101. ....				
1102. ....				
1103. ....				
1198. Summary of remaining write-ins for Line 11 from overflow page .....				
1199. Totals (Lines 1101 through 1103 plus 1198)(Line 11 above)				
2501. Goodwill .....	885,498		885,498	984,538
2502. Company Automobiles .....	5,075	5,075		
2503. Prepaid Expenses .....	354,424	354,424		
2598. Summary of remaining write-ins for Line 25 from overflow page .....				
2599. Totals (Lines 2501 through 2503 plus 2598)(Line 25 above)	1,244,997	359,500	885,498	984,538

STATEMENT AS OF JUNE 30, 2012 OF THE Ohio Mutual Insurance Company  
**LIABILITIES, SURPLUS AND OTHER FUNDS**

	1 Current Statement Date	2 December 31, Prior Year
1. Losses (current accident year \$ 8,322,861 )	19,017,220	17,526,020
2. Reinsurance payable on paid losses and loss adjustment expenses		
3. Loss adjustment expenses	4,280,746	3,955,725
4. Commissions payable, contingent commissions and other similar charges	1,020,292	1,063,035
5. Other expenses (excluding taxes, licenses and fees)	63,205	33,787
6. Taxes, licenses and fees (excluding federal and foreign income taxes)	12,181	55,800
7.1 Current federal and foreign income taxes (including \$ on realized capital gains (losses))		
7.2 Net deferred tax liability		
8. Borrowed money \$ and interest thereon \$		
9. Unearned premiums (after deducting unearned premiums for ceded reinsurance of \$ 56,108,066 and including warranty reserves of \$ and accrued accident and health experience rating refunds including \$ for medical loss ratio rebate per the Public Health Service Act)	20,700,129	19,689,266
10. Advance premium	398,862	363,258
11. Dividends declared and unpaid:		
11.1 Stockholders		
11.2 Policyholders		
12. Ceded reinsurance premiums payable (net of ceding commissions)	431,703	139,606
13. Funds held by company under reinsurance treaties	13,137,331	12,302,492
14. Amounts withheld or retained by company for account of others		212
15. Remittances and items not allocated	4,302	1,380
16. Provision for reinsurance	13,243	27,093
17. Net adjustments in assets and liabilities due to foreign exchange rates		
18. Drafts outstanding		
19. Payable to parent, subsidiaries and affiliates		
20. Derivatives		
21. Payable for securities	292,235	278,608
22. Payable for securities lending		
23. Liability for amounts held under uninsured plans		
24. Capital notes \$ and interest thereon \$		
25. Aggregate write-ins for liabilities		
26. Total liabilities excluding protected cell liabilities (Lines 1 through 25)	59,371,451	55,436,281
27. Protected cell liabilities		
28. Total liabilities (Lines 26 and 27)	59,371,451	55,436,281
29. Aggregate write-ins for special surplus funds		
30. Common capital stock		
31. Preferred capital stock		
32. Aggregate write-ins for other than special surplus funds		
33. Surplus notes		
34. Gross paid in and contributed surplus		
35. Unassigned funds (surplus)	155,140,024	154,213,635
36. Less treasury stock, at cost:		
36.1 shares common (value included in Line 30 \$ )		
36.2 shares preferred (value included in Line 31 \$ )		
37. Surplus as regards policyholders (Lines 29 to 35, less 36)	155,140,024	154,213,635
38. Totals (Page 2, Line 28, Col. 3)	214,511,475	209,649,916
<b>DETAILS OF WRITE-INS</b>		
2501. ....		
2502. ....		
2503. ....		
2598. Summary of remaining write-ins for Line 25 from overflow page		
2599. Totals (Lines 2501 through 2503 plus 2598)(Line 25 above)		
2901. ....		
2902. ....		
2903. ....		
2998. Summary of remaining write-ins for Line 29 from overflow page		
2999. Totals (Lines 2901 through 2903 plus 2998)(Line 29 above)		
3201. ....		
3202. ....		
3203. ....		
3298. Summary of remaining write-ins for Line 32 from overflow page		
3299. Totals (Lines 3201 through 3203 plus 3298)(Line 32 above)		

**STATEMENT OF INCOME**

	1 Current Year to Date	2 Prior Year to Date	3 Prior Year Ended December 31
<b>UNDERWRITING INCOME</b>			
1. Premiums earned:			
1.1 Direct (written \$ 25,169,604 )	24,952,288	23,606,034	48,598,633
1.2 Assumed (written \$ 60,574,502 )	57,045,916	60,095,914	120,936,018
1.3 Ceded (written \$ 62,860,343 )	60,125,305	61,308,413	124,131,146
1.4 Net (written \$ 22,883,763 )	21,872,899	22,393,535	45,403,505
<b>DEDUCTIONS:</b>			
2. Losses incurred (current accident year \$ )::			
2.1 Direct	15,756,939	17,901,849	32,789,164
2.2 Assumed	34,836,655	42,340,514	78,789,356
2.3 Ceded	37,414,854	44,407,856	82,306,990
2.4 Net	13,178,740	15,834,507	29,271,530
3. Loss adjustment expenses incurred	2,342,571	1,917,935	4,120,609
4. Other underwriting expenses incurred	7,680,569	7,351,482	14,349,219
5. Aggregate write-ins for underwriting deductions			
6. Total underwriting deductions (Lines 2 through 5)	23,201,881	25,103,924	47,741,358
7. Net income of protected cells			
8. Net underwriting gain or (loss) (Line 1 minus Line 6 + Line 7)	(1,328,981)	(2,710,390)	(2,337,853)
<b>INVESTMENT INCOME</b>			
9. Net investment income earned	647,477	757,680	1,493,219
10. Net realized capital gains (losses) less capital gains tax of \$ 22,833	44,323	50,241	86,106
11. Net investment gain (loss) (Lines 9 + 10)	691,800	807,921	1,579,325
<b>OTHER INCOME</b>			
12. Net gain or (loss) from agents' or premium balances charged off (amount recovered \$ 18,248 amount charged off \$ 58,143 )	(39,895)	(67,062)	(186,139)
13. Finance and service charges not included in premiums	362,137	373,680	755,783
14. Aggregate write-ins for miscellaneous income	150,463	150,281	299,974
15. Total other income (Lines 12 through 14)	472,705	456,899	869,618
16. Net income before dividends to policyholders, after capital gains tax and before all other federal and foreign income taxes (Lines 8 + 11 + 15)	(164,476)	(1,445,569)	111,090
17. Dividends to policyholders			
18. Net income, after dividends to policyholders, after capital gains tax and before all other federal and foreign income taxes (Line 16 minus Line 17)	(164,476)	(1,445,569)	111,090
19. Federal and foreign income taxes incurred	33,337	(156,487)	113,880
20. Net income (Line 18 minus Line 19)(to Line 22)	(197,813)	(1,289,082)	(2,790)
<b>CAPITAL AND SURPLUS ACCOUNT</b>			
21. Surplus as regards policyholders, December 31 prior year	154,213,635	153,422,305	153,422,305
22. Net income (from Line 20)	(197,813)	(1,289,082)	(2,790)
23. Net transfers (to) from Protected Cell accounts			
24. Change in net unrealized capital gains (losses) less capital gains tax of \$	1,153,444	(1,494,301)	(2,126,420)
25. Change in net unrealized foreign exchange capital gain (loss)			
26. Change in net deferred income tax	132,449	535,715	115,132
27. Change in nonadmitted assets	(175,541)	(377,822)	951,733
28. Change in provision for reinsurance	13,850	(12,469,505)	(27,093)
29. Change in surplus notes			
30. Surplus (contributed to) withdrawn from protected cells			
31. Cumulative effect of changes in accounting principles			
32. Capital changes:			
32.1 Paid in			
32.2 Transferred from surplus (Stock Dividend)			
32.3 Transferred to surplus			
33. Surplus adjustments:			
33.1 Paid in			
33.2 Transferred to capital (Stock Dividend)			
33.3 Transferred from capital			
34. Net remittances from or (to) Home Office			
35. Dividends to stockholders			
36. Change in treasury stock			
37. Aggregate write-ins for gains and losses in surplus		1,106	1,880,768
38. Change in surplus as regards policyholders (Lines 22 through 37)	926,388	(15,093,890)	791,330
39. Surplus as regards policyholders, as of statement date (Lines 21 plus 38)	155,140,024	138,328,415	154,213,635
<b>DETAILS OF WRITE-INS</b>			
0501.			
0502.			
0503.			
0598. Summary of remaining write-ins for Line 5 from overflow page			
0599. Totals (Lines 0501 through 0503 plus 0598)(Line 5 above)			
1401. Rental and Other Services	149,370	149,370	298,740
1402. Other Income	1,093	911	1,234
1403.			
1498. Summary of remaining write-ins for Line 14 from overflow page			
1499. Totals (Lines 1401 through 1403 plus 1498)(Line 14 above)	150,463	150,281	299,974
3701. NEC			1,878,949
3702. Other		1,106	1,819
3703.			
3798. Summary of remaining write-ins for Line 37 from overflow page			
3799. Totals (Lines 3701 through 3703 plus 3798)(Line 37 above)		1,106	1,880,768

## STATEMENT AS OF JUNE 30, 2012 OF THE Ohio Mutual Insurance Company

**CASH FLOW**

	1 Current Year To Date	2 Prior Year To Date	3 Prior Year Ended December 31
<b>Cash from Operations</b>			
1. Premiums collected net of reinsurance .....	22,618,749	24,354,615	46,959,793
2. Net investment income .....	873,263	1,021,103	2,102,515
3. Miscellaneous income .....	472,705	456,899	869,618
4. Total (Lines 1 to 3) .....	23,964,717	25,832,617	49,931,926
5. Benefit and loss related payments .....	11,569,510	12,924,095	26,438,798
6. Net transfers to Separate Accounts, Segregated Accounts and Protected Cell Accounts .....			
7. Commissions, expenses paid and aggregate write-ins for deductions .....	9,950,541	10,067,918	17,884,067
8. Dividends paid to policyholders .....			
9. Federal and foreign income taxes paid (recovered) net of \$ ..... tax on capital gains (losses) .....		1,837,835	1,973,045
10. Total (Lines 5 through 9) .....	21,520,051	24,829,848	46,295,910
11. Net cash from operations (Line 4 minus Line 10) .....	2,444,666	1,002,769	3,636,016
<b>Cash from Investments</b>			
12. Proceeds from investments sold, matured or repaid:			
12.1 Bonds .....	5,808,860	6,894,060	13,050,125
12.2 Stocks .....			8,536,420
12.3 Mortgage loans .....			
12.4 Real estate .....			
12.5 Other invested assets .....			
12.6 Net gains or (losses) on cash, cash equivalents and short-term investments .....			
12.7 Miscellaneous proceeds .....	13,627		
12.8 Total investment proceeds (Lines 12.1 to 12.7) .....	5,822,487	6,894,060	21,586,545
13. Cost of investments acquired (long-term only):			
13.1 Bonds .....	7,691,255	10,176,465	14,314,939
13.2 Stocks .....	2,316,656	8,536,420	17,764,390
13.3 Mortgage loans .....			
13.4 Real estate .....	108,135	72,460	1,429,228
13.5 Other invested assets .....			
13.6 Miscellaneous applications .....		96,556	222,526
13.7 Total investments acquired (Lines 13.1 to 13.6) .....	10,116,046	18,881,901	33,731,083
14. Net increase (or decrease) in contract loans and premium notes .....			
15. Net cash from investments (Line 12.8 minus Line 13.7 and Line 14) .....	(4,293,559)	(11,987,841)	(12,144,538)
<b>Cash from Financing and Miscellaneous Sources</b>			
16. Cash provided (applied):			
16.1 Surplus notes, capital notes .....			
16.2 Capital and paid in surplus, less treasury stock .....			
16.3 Borrowed funds .....			
16.4 Net deposits on deposit-type contracts and other insurance liabilities .....			
16.5 Dividends to stockholders .....			
16.6 Other cash provided (applied) .....	2,934,562	2,981,697	2,684,841
17. Net cash from financing and miscellaneous sources (Line 16.1 through Line 16.4 minus Line 16.5 plus Line 16.6) .....	2,934,562	2,981,697	2,684,841
<b>RECONCILIATION OF CASH, CASH EQUIVALENTS AND SHORT-TERM INVESTMENTS</b>			
18. Net change in cash, cash equivalents and short-term investments (Line 11, plus Lines 15 and 17) .....	1,085,669	(8,003,375)	(5,823,681)
19. Cash, cash equivalents and short-term investments:			
19.1 Beginning of year .....	6,179,575	12,003,256	12,003,256
19.2 End of period (Line 18 plus Line 19.1) .....	7,265,244	3,999,881	6,179,575

Note: Supplemental disclosures of cash flow information for non-cash transactions:

--	--	--	--

## NOTES TO FINANCIAL STATEMENTS

### 1. Summary of Significant Accounting Policies

#### A. Accounting Practices

The financial statements of Ohio Mutual Insurance Company are presented on the basis of accounting practices prescribed or permitted by the Ohio Department of Insurance (ODI).

The ODI recognizes only statutory accounting practices prescribed or permitted by the State of Ohio for determining and reporting the financial condition and results of operations of an insurance company. The National Association of Insurance Commissioners' (NAIC) *Accounting Practices and Procedures Manual* has been adopted as a component of prescribed or permitted accounting practices by the State of Ohio.

#### B. Use of Estimates in the Preparation of the Financial Statements – No Change

#### C. Accounting Policy – No Change

### 2. Accounting Changes and Corrections of Errors – No Change

### 3. Business Combinations and Goodwill – No Change

### 4. Discontinued Operations – No Change

### 5. Investments

- A. The Company has no mortgage loans.
- B. The Company has no debt restructuring.
- C. The Company has no reverse mortgages.
- D. Loan-Backed Securities

(1) Prepayment assumptions for Mortgage-backed securities, Asset-backed securities and Collateralized Mortgage Obligations were generated using a purchased prepayment model. The prepayment model uses a number of factors to estimate prepayment activity including the time of year (seasonality), current levels of interest rates (refinancing incentive), economic activity (including housing turnover) and term and age of the underlying collateral (burnout, seasoning).

- (2)
  - a. The Company had no securities it intended to sell for which it recognized other-than-temporary impairment losses.
  - b. The Company had no securities for which it lacked the ability or intent to retain an investment in for a period of time sufficient to recover the amortized cost basis.

(3) The Company had no other-than-temporary impairments for the quarter ended June 30, 2012.

(4) All temporarily impaired securities for which an other-than-temporary impairment has not been recognized in earnings as a realized loss in 2012 are as follows:

a. The aggregate amount of unrealized losses:				
	1. Less than 12 Months	\$	(325)	
	2. 12 Months or Longer	\$	-	
b. The aggregate related fair value of securities with unrealized losses:				
	1. Less than 12 Months	\$	87,664	
	2. 12 Months or Longer	\$	-	

(5) Management regularly reviews the value of the Company's investments. If the value of any investment falls below its cost basis, the decline is analyzed to determine whether it is an other-than-temporary decline in value. To make this determination for each security, the following is considered:

- The length of time and the extent to which the fair value has been below cost;
- The financial condition and near-term prospects of the issuer of the security, including any specific events that may affect its operations or earnings potential;
- Management's intent and ability to hold the security long enough for it to recover its value;

Management concluded that the remaining investments held with unrealized losses were not other-than-temporarily impaired on the basis that the Company had the ability and intent to hold the investments for a period of time sufficient for a forecasted market price recovery up to or beyond the cost of the investment. Also, in management's opinion, evidence indicating the cost of the investment was recoverable within a reasonable period of time outweighed evidence to the

## NOTES TO FINANCIAL STATEMENTS

---

contrary in considering the severity and duration of the impairment in relation to the forecasted market price recovery.

### 6. Joint Ventures, Partnerships and Limited Liability Companies – No Change

### 7. Investment Income – No Change

### 8. Derivative Instruments – No Change

### 9. Income Taxes

Effective January 1, 2012, the ODI and the Maine Bureau of Insurance adopted SSAP 101, Income Taxes. SSAP 101 replaces SSAP 10(R). No significant impact to the Group's accounting for taxes has arisen due to the adoption of SSAP 101.

### 10. Information Concerning Parent, Subsidiaries and Affiliates

- A. The Company is the parent company within the Ohio Mutual Insurance Group. The Company is the sole shareholder and owner of United Ohio Insurance Company, Casco Indemnity Company, United Premium Budget Service Inc., Centurion Financial Inc., and Ohio United Agency Inc.
- B. The Company, Casco Indemnity Company and United Ohio Insurance Company have entered into a reinsurance pooling agreement through which underwriting activities and operating expenses are proportionately allocated. See footnote #26 for additional information on the pooling agreement.
- C. In 2012 the Company reimbursed its subsidiary, United Ohio Insurance Company, \$3,153,723 under the terms of the Reinsurance Pooling Agreement between the entities.
- D. At June 30, 2012, the Company has a receivable from its affiliate, Casco Indemnity, of \$5,531,553 under the terms of the Reinsurance Pooling Agreement and Cost Sharing Agreement. As of June 30, 2012 the Company has a receivable from its affiliate, United Ohio Insurance, \$341,850 under the terms of the Reinsurance Pooling Agreement and Cost Sharing Agreement. The terms of the settlement require that these amounts be settled within 60 days.
- E. The Company has no guarantees or undertakings at June 30, 2012.
- F. The Company and its subsidiaries, United Ohio Insurance Company and Casco Indemnity Company, entered into a Cost Sharing Agreement effective, January 1, 2011, through which certain common costs are shared proportionally between the entities.
- G. All outstanding shares of its subsidiaries, United Ohio Insurance Company, Casco Indemnity Company, United Premium Budget Services Inc., Ohio United Agency Inc. and Centurion Financial Inc. are owned by the Parent Company, Ohio Mutual Insurance Company, an insurance company domiciled in the State of Ohio.
- H. None of the Company's capital stock is owned by downstream subsidiaries.
- I. The Company owns a 100% interest in United Ohio Insurance Company, whose carrying value is equal to or exceeds 10% of the admitted assets of the Company. The Company carries United Ohio at its statutory statement value of \$117,022,964.  
  
Based on the Company's ownership percentage of United Ohio, the statutory statement value of United Ohio assets and liabilities as of June 30, 2012 were \$250,718,575 and \$133,695,611, respectively.
- J. The Company did not recognize any impairment write down for its investments in Subsidiary, Controlled or Affiliated Companies during the statement period.
- K. Not Applicable
- L. Not Applicable

### 11. Debt – No Change

### 12. Retirement Plans, Deferred Compensation, Postemployment Benefits and Compensated Absences and Other Postretirement Benefit Plans – No Change

### 13. Capital and Surplus, Dividend Restrictions and Quasi-reorganizations – No Change

### 14. Contingencies – No Change

### 15. Leases – No Change

## NOTES TO FINANCIAL STATEMENTS

### 16. Information About Financial Instruments With Off-Balance Sheet Risk and Financial Instruments With Concentrations of Credit Risk – No Change

### 17. Sale, Transfer and Servicing of Financial Assets and Extinguishments of Liabilities

The Company has no sale, transfer and servicing of financial assets or extinguishments of liabilities.

### 18. Gain or Loss to the Reporting Entity from Uninsured Plans and the Uninsured Portion of Partially Insured Plans – No Change

### 19. Direct Premium Written/Produced by Managing General Agents/Third Party Administrators – No Change

### 20. Fair Value Measurements

A.

#### 1) Fair Value Measurements at Reporting Date

(1) Description	(2) (Level 1)	(3) (Level 2)	(4) (Level 3)	(5) Total
a. Assets at fair value				
Common Stock				
Industrial and Misc	\$ -	\$ -	\$ 260,031	\$ 260,031
Mutual Funds	3,237,311	-	-	3,237,311
Parent, Subsidiaries and Affiliates	-	-	-	-
Total Common Stock	<u>\$ 3,237,311</u>	<u>\$ -</u>	<u>\$ 260,031</u>	<u>\$ 3,497,342</u>
Derivative assets	-	-	-	-
Total Assets at Fair Value	<u>\$ 3,237,311</u>	<u>\$ -</u>	<u>\$ 260,031</u>	<u>\$ 3,497,342</u>
b. Liabilities at fair value				
Derivative liabilities	\$ -	\$ -	\$ -	\$ -
	-	-	-	-
Total Liabilities at Fair Value	<u>\$ -</u>	<u>\$ -</u>	<u>\$ -</u>	<u>\$ -</u>

#### 2) Fair Value Measurements in (Level 3) of the Fair Value

	(1) Balance at 12/31/2011	(2) Transfers in Level 3	(3) Transfers out Level 3	(4) Total gains and (losses) included in Net Income	(5) Total gains and (losses) included in Surplus	(6) Purchases, issuances, sales and settlements	(7) Balance at 06/30/12
Common Stock - Ind & Misc.	\$ 260,031	\$ -	\$ -	\$ -	\$ -	\$ -	\$ 260,031

### 21. Other Items – No Change

### 22. Events Subsequent – None

### 23. Reinsurance – No Change

### 24. Retrospectively Rated Contracts and Contracts Subject to Redetermination – No Change

### 25. Change in Incurred Losses and Loss Adjustment Expenses

Loss reserves as of December 31, 2011 were \$21.5 million. As of June 30, 2012, \$5.6 million has been paid for incurred claims and claim adjustment expenses attributable to insured events of prior years. Reserves remaining for prior years are now \$11.7 million as a result of re-estimation of unpaid claims and claim adjustment expenses principally on homeowners, farmowners, and personal auto liability lines of insurance. Therefore, there has been a \$4.1 million favorable prior-year development from December 31, 2011 to June 30, 2012. The decrease is primarily the result of ongoing analysis of recent loss development trends. Original estimates are adjusted as additional information becomes known regarding individual claims. The Company does not have any retrospectively rated policies which would be included in the favorable development.

## NOTES TO FINANCIAL STATEMENTS

### 26. Intercompany Pooling Arrangements

Effective January 1, 2011, the Company amended its Intercompany Pooling Agreement with United Ohio Insurance Company (wholly owned subsidiary) to include Casco Indemnity Company. Through the Pooling Agreement, the Company retains 27% of the group's pooled underwriting results and cedes 67% to United Ohio and 8% to Casco. The 8% cession to Casco is ceded on a funds withheld basis so that the Company may record reserve credit for the reinsurance, as Casco is not yet authorized in the state of Ohio, the Company's state of domicile. Casco's license application is currently in process at the Ohio Department of Insurance. The following underwriting results were assumed/ceded between the companies:

	<u>06/30/2012</u>	<u>12/31/2011</u>
Premium earned assumed by Ohio Mutual from United Ohio and Casco Indemnity	\$ 57,028,439	\$ 120,902,234
Premium earned ceded back to United Ohio and Casco Indemnity	\$ (59,137,839)	\$ (122,757,624)
Change in premium earned due to pooling	<u>\$ (2,109,400)</u>	<u>\$ (1,855,390)</u>
Losses incurred assumed by Ohio Mutual from United Ohio and Casco Indemnity	\$ 34,836,655	\$ 78,789,356
Losses incurred ceded back to United Ohio and Casco Indemnity	\$ (35,631,409)	\$ (79,141,544)
Change in losses incurred due to pooling	<u>\$ (794,754)</u>	<u>\$ (352,188)</u>
Net loss adjustment expenses assumed by Ohio Mutual	\$ 1,490,583	\$ 2,090,838
Net other underwriting expenses assumed by Ohio Mutual	\$ 3,635,185	\$ 7,089,645
Change in expenses incurred due to pooling	<u>\$ 5,125,767</u>	<u>\$ 9,180,483</u>
Change in income before taxes due to pooling	<u>\$ (6,440,414)</u>	<u>\$ (10,683,685)</u>

**27. Structured Settlements – No Change**

**28. Health Care Receivables – No Change**

**29. Participating Policies – No Change**

**30. Premium Deficiency Reserves – No Change**

**31. High Deductibles – No Change**

**32. Discounting of Liabilities for Unpaid Losses or Unpaid Loss Adjustment Expenses – No Change**

**33. Asbestos/Environmental Reserves – No Change**

**34. Subscriber Savings Accounts – No Change**

**35. Multiple Peril Crop Insurance – No Change**

**36. Financial Guaranty Insurance – No Change**

# GENERAL INTERROGATORIES

## PART 1 - COMMON INTERROGATORIES

### GENERAL

- 1.1 Did the reporting entity experience any material transactions requiring the filing of Disclosure of Material Transactions with the State of Domicile, as required by the Model Act? ..... Yes [ ] No [ X ]
- 1.2 If yes, has the report been filed with the domiciliary state? ..... Yes [ ] No [ ]
- 2.1 Has any change been made during the year of this statement in the charter, by-laws, articles of incorporation, or deed of settlement of the reporting entity? ..... Yes [ ] No [ X ]
- 2.2 If yes, date of change: .....
3. Have there been any substantial changes in the organizational chart since the prior quarter end? ..... Yes [ ] No [ X ]  
If yes, complete the Schedule Y - Part 1 - organizational chart.
- 4.1 Has the reporting entity been a party to a merger or consolidation during the period covered by this statement? ..... Yes [ ] No [ X ]
- 4.2 If yes, provide the name of the entity, NAIC Company Code, and state of domicile (use two letter state abbreviation) for any entity that has ceased to exist as a result of the merger or consolidation.

1 Name of Entity	2 NAIC Company Code	3 State of Domicile

5. If the reporting entity is subject to a management agreement, including third-party administrator(s), managing general agent(s), attorney-in-fact, or similar agreement, have there been any significant changes regarding the terms of the agreement or principals involved? ..... Yes [ ] No [ X ] N/A [ ]  
If yes, attach an explanation.
- 6.1 State as of what date the latest financial examination of the reporting entity was made or is being made. .... 12/31/2010
- 6.2 State the as of date that the latest financial examination report became available from either the state of domicile or the reporting entity. This date should be the date of the examined balance sheet and not the date the report was completed or released. .... 12/31/2010
- 6.3 State as of what date the latest financial examination report became available to other states or the public from either the state of domicile or the reporting entity. This is the release date or completion date of the examination report and not the date of the examination (balance sheet date). .... 07/26/2011
- 6.4 By what department or departments?  
Ohio Department of Insurance
- 6.5 Have all financial statement adjustments within the latest financial examination report been accounted for in a subsequent financial statement filed with Departments? ..... Yes [ ] No [ ] N/A [ X ]
- 6.6 Have all of the recommendations within the latest financial examination report been complied with? ..... Yes [ X ] No [ ] N/A [ ]
- 7.1 Has this reporting entity had any Certificates of Authority, licenses or registrations (including corporate registration, if applicable) suspended or revoked by any governmental entity during the reporting period? ..... Yes [ ] No [ X ]
- 7.2 If yes, give full information:
- 8.1 Is the company a subsidiary of a bank holding company regulated by the Federal Reserve Board? ..... Yes [ ] No [ X ]
- 8.2 If response to 8.1 is yes, please identify the name of the bank holding company.
- 8.3 Is the company affiliated with one or more banks, thrifts or securities firms? ..... Yes [ ] No [ X ]
- 8.4 If response to 8.3 is yes, please provide below the names and location (city and state of the main office) of any affiliates regulated by a federal regulatory services agency [i.e. the Federal Reserve Board (FRB), the Office of the Comptroller of the Currency (OCC), the Federal Deposit Insurance Corporation (FDIC) and the Securities Exchange Commission (SEC)] and identify the affiliate's primary federal regulator.

1 Affiliate Name	2 Location (City, State)	3 FRB	4 OCC	5 FDIC	6 SEC

**GENERAL INTERROGATORIES**

- 9.1 Are the senior officers (principal executive officer, principal financial officer, principal accounting officer or controller, or persons performing similar functions) of the reporting entity subject to a code of ethics, which includes the following standards? ..... Yes [ X ] No [ ]
- (a) Honest and ethical conduct, including the ethical handling of actual or apparent conflicts of interest between personal and professional relationships;
- (b) Full, fair, accurate, timely and understandable disclosure in the periodic reports required to be filed by the reporting entity;
- (c) Compliance with applicable governmental laws, rules and regulations;
- (d) The prompt internal reporting of violations to an appropriate person or persons identified in the code; and
- (e) Accountability for adherence to the code.
- 9.11 If the response to 9.1 is No, please explain:
- 9.2 Has the code of ethics for senior managers been amended? ..... Yes [ ] No [ X ]
- 9.21 If the response to 9.2 is Yes, provide information related to amendment(s).
- 9.3 Have any provisions of the code of ethics been waived for any of the specified officers? ..... Yes [ ] No [ X ]
- 9.31 If the response to 9.3 is Yes, provide the nature of any waiver(s).

**FINANCIAL**

- 10.1 Does the reporting entity report any amounts due from parent, subsidiaries or affiliates on Page 2 of this statement? ..... Yes [ X ] No [ ]
- 10.2 If yes, indicate any amounts receivable from parent included in the Page 2 amount: ..... \$

**INVESTMENT**

- 11.1 Were any of the stocks, bonds, or other assets of the reporting entity loaned, placed under option agreement, or otherwise made available for use by another person? (Exclude securities under securities lending agreements.) ..... Yes [ ] No [ X ]
- 11.2 If yes, give full and complete information relating thereto:
12. Amount of real estate and mortgages held in other invested assets in Schedule BA: ..... \$
13. Amount of real estate and mortgages held in short-term investments: ..... \$
- 14.1 Does the reporting entity have any investments in parent, subsidiaries and affiliates? ..... Yes [ X ] No [ ]
- 14.2 If yes, please complete the following:
- |   | 1   | 2  |
|---|---|--|
|   | Prior Year-End<br>Book/Adjusted<br>Carrying Value | Current Quarter<br>Book/Adjusted<br>Carrying Value |
| 14.21 Bonds .....   | \$  | \$   |
| 14.22 Preferred Stock .....   | \$  | \$   |
| 14.23 Common Stock .....  | \$ 121,949,430                                    | \$ 122,973,108                                     |
| 14.24 Short-Term Investments .....  | \$  | \$   |
| 14.25 Mortgage Loans on Real Estate .....   | \$  | \$   |
| 14.26 All Other .....   | \$  | \$   |
| 14.27 Total Investment in Parent, Subsidiaries and Affiliates (Subtotal Lines 14.21 to 14.26) ..... | \$ 121,949,430                                    | \$ 122,973,108                                     |
| 14.28 Total Investment in Parent included in Lines 14.21 to 14.26 above .....                       | \$  | \$   |
- 15.1 Has the reporting entity entered into any hedging transactions reported on Schedule DB? ..... Yes [ ] No [ X ]
- 15.2 If yes, has a comprehensive description of the hedging program been made available to the domiciliary state? ..... Yes [ ] No [ ]
- If no, attach a description with this statement.

STATEMENT AS OF JUNE 30, 2012 OF THE Ohio Mutual Insurance Company

**GENERAL INTERROGATORIES**

16. Excluding items in Schedule E - Part 3 - Special Deposits, real estate, mortgage loans and investments held physically in the reporting entity's offices, vaults or safety deposit boxes, were all stocks, bonds and other securities, owned throughout the current year held pursuant to a custodial agreement with a qualified bank or trust company in accordance with Section 1, III - General Examination Considerations, F. Outsourcing of Critical Functions, Custodial or Safekeeping Agreements of the NAIC Financial Condition Examiners Handbook? ..... Yes [ X ] No [ ]

16.1 For all agreements that comply with the requirements of the NAIC Financial Condition Examiners Handbook, complete the following:

1 Name of Custodian(s)	2 Custodian Address
Fifth Third Bank .....	38 Fountain Square Plaza, Cincinnati, OH 45263 .....

16.2 For all agreements that do not comply with the requirements of the NAIC Financial Condition Examiners Handbook, provide the name, location and a complete explanation:

1 Name(s)	2 Location(s)	3 Complete Explanation(s)
.....	.....	.....

16.3 Have there been any changes, including name changes, in the custodian(s) identified in 16.1 during the current quarter? ..... Yes [ ] No [ X ]

16.4 If yes, give full information relating thereto:

1 Old Custodian	2 New Custodian	3 Date of Change	4 Reason
.....	.....	.....	.....

16.5 Identify all investment advisors, brokers/dealers or individuals acting on behalf of broker/dealers that have access to the investment accounts, handle securities and have authority to make investments on behalf of the reporting entity:

1 Central Registration Depository	2 Name(s)	3 Address
SEC File #801-22445 .....	Gen Re / New England Asset Management .....	76 Batterson Park Road Farmington, CT 06032 .....

17.1 Have all the filing requirements of the Purposes and Procedures Manual of the NAIC Securities Valuation Office been followed? ..... Yes [ X ] No [ ]

17.2 If no, list exceptions:

**GENERAL INTERROGATORIES**

**PART 2 - PROPERTY & CASUALTY INTERROGATORIES**

1. If the reporting entity is a member of a pooling arrangement, did the agreement or the reporting entity's participation change? ..... Yes [ ] No [ X ] N/A [ ]  
If yes, attach an explanation.

2. Has the reporting entity reinsured any risk with any other reporting entity and agreed to release such entity from liability, in whole or in part, from any loss that may occur on the risk, or portion thereof, reinsured? ..... Yes [ ] No [ X ]  
If yes, attach an explanation.

3.1 Have any of the reporting entity's primary reinsurance contracts been canceled? ..... Yes [ ] No [ X ]

3.2 If yes, give full and complete information thereto.

4.1 Are any of the liabilities for unpaid losses and loss adjustment expenses other than certain workers' compensation tabular reserves (see Annual Statement Instructions pertaining to disclosure of discounting for definition of "tabular reserves") discounted at a rate of interest greater than zero? ..... Yes [ ] No [ X ]

4.2 If yes, complete the following schedule:

1 Line of Business	2 Maximum Interest	3 Discount Rate	TOTAL DISCOUNT				DISCOUNT TAKEN DURING PERIOD			
			4 Unpaid Losses	5 Unpaid LAE	6 IBNR	7 TOTAL	8 Unpaid Losses	9 Unpaid LAE	10 IBNR	11 TOTAL
TOTAL										

5. Operating Percentages:

5.1 A&H loss percent ..... 119.854 %

5.2 A&H cost containment percent ..... %

5.3 A&H expense percent excluding cost containment expenses ..... 7.198 %

6.1 Do you act as a custodian for health savings accounts? ..... Yes [ ] No [ X ]

6.2 If yes, please provide the amount of custodial funds held as of the reporting date ..... \$.....

6.3 Do you act as an administrator for health savings accounts? ..... Yes [ ] No [ X ]

6.4 If yes, please provide the balance of the funds administered as of the reporting date ..... \$.....

**SCHEDULE F - CEDED REINSURANCE**

Showing All New Reinsurers - Current Year to Date

1 NAIC Company Code	2 Federal ID Number	3 Name of Reinsurer	4 Domiciliary Jurisdiction	5 Is Insurer Authorized? (Yes or No)
<b>NONE</b>				

STATEMENT AS OF JUNE 30, 2012 OF THE Ohio Mutual Insurance Company  
**SCHEDULE T - EXHIBIT OF PREMIUMS WRITTEN**

Current Year to Date - Allocated by States and Territories

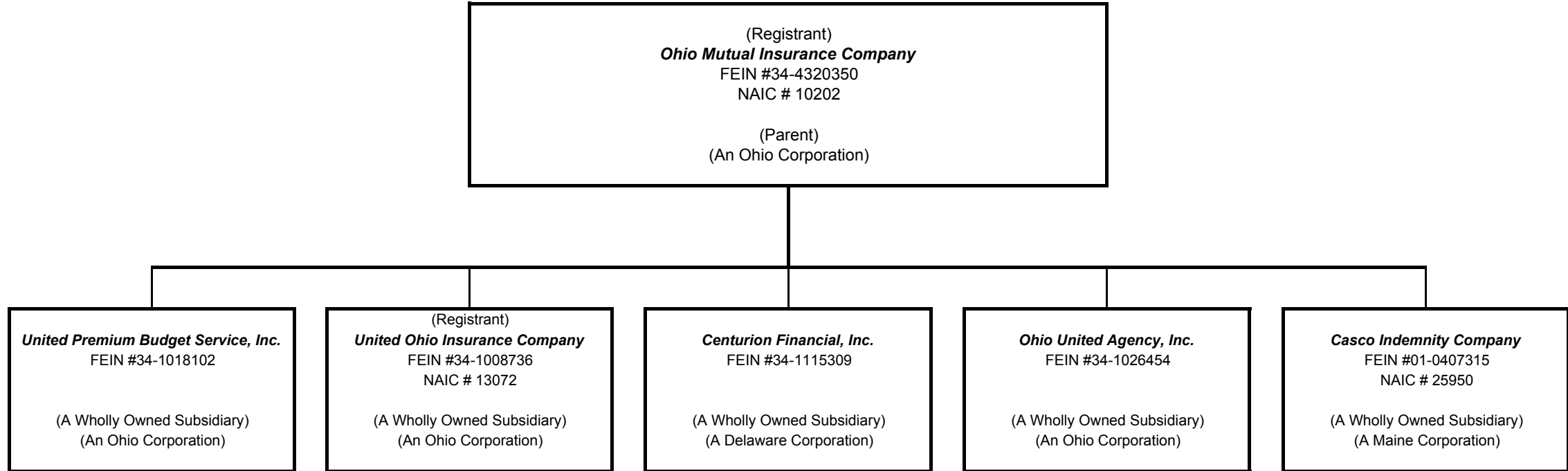
	1	Direct Premiums Written		Direct Losses Paid (Deducting Salvage)		Direct Losses Unpaid	
		2	3	4	5	6	7
States, etc.	Active Status	Current Year To Date	Prior Year To Date	Current Year To Date	Prior Year To Date	Current Year To Date	Prior Year To Date
1. Alabama AL	N						
2. Alaska AK	N						
3. Arizona AZ	N						
4. Arkansas AR	N						
5. California CA	N						
6. Colorado CO	N						
7. Connecticut CT	L						
8. Delaware DE	N						
9. District of Columbia DC	N						
10. Florida FL	N						
11. Georgia GA	N						
12. Hawaii HI	N						
13. Idaho ID	N						
14. Illinois IL	N						
15. Indiana IN	L						
16. Iowa IA	L						
17. Kansas KS	L						
18. Kentucky KY	N						
19. Louisiana LA	N						
20. Maine ME	L						
21. Maryland MD	N						
22. Massachusetts MA	N						
23. Michigan MI	N						
24. Minnesota MN	L						
25. Mississippi MS	N						
26. Missouri MO	N						
27. Montana MT	N						
28. Nebraska NE	L						
29. Nevada NV	N						
30. New Hampshire NH	L						
31. New Jersey NJ	N						
32. New Mexico NM	N						
33. New York NY	N						
34. North Carolina NC	N						
35. North Dakota ND	N						
36. Ohio OH	L	25,169,604	24,629,132	13,054,833	16,114,699	19,673,577	18,868,583
37. Oklahoma OK	N						
38. Oregon OR	L						
39. Pennsylvania PA	N						
40. Rhode Island RI	L						
41. South Carolina SC	N						
42. South Dakota SD	N						
43. Tennessee TN	L						
44. Texas TX	N						
45. Utah UT	N						
46. Vermont VT	L						
47. Virginia VA	L						
48. Washington WA	N						
49. West Virginia WV	N						
50. Wisconsin WI	L						
51. Wyoming WY	N						
52. American Samoa AS	N						
53. Guam GU	N						
54. Puerto Rico PR	N						
55. U.S. Virgin Islands VI	N						
56. Northern Mariana Islands MP	N						
57. Canada CN	N						
58. Aggregate Other Alien OT	XXX						
59. Totals	(a) 15	25,169,604	24,629,132	13,054,833	16,114,699	19,673,577	18,868,583
DETAILS OF WRITE-INS							
5801.	XXX						
5802.	XXX						
5803.	XXX						
5898. Summary of remaining write-ins for Line 58 from overflow page	XXX						
5899. Totals (Lines 5801 through 5803 plus 5898)(Line 58 above)	XXX						

(L) Licensed or Chartered - Licensed Insurance Carrier or Domiciled RRG; (R) Registered - Non-domiciled RRGs; (Q) Qualified - Qualified or Accredited Reinsurer; (E) Eligible - Reporting Entities eligible or approved to write Surplus Lines in the state; (N) None of the above - Not allowed to write business in the state.

(a) Insert the number of L responses except for Canada and Other Alien.

**SCHEDULE Y - INFORMATION CONCERNING ACTIVITIES OF INSURER MEMBERS OF A HOLDING COMPANY GROUP  
PART 1 - ORGANIZATIONAL CHART**

**Ohio Mutual Insurance Group**



STATEMENT AS OF JUNE 30, 2012 OF THE Ohio Mutual Insurance Company

**SCHEDULE Y**

**PART 1A - DETAIL OF INSURANCE HOLDING COMPANY SYSTEM**

1	2	3	4	5	6	7	8	9	10	11	12	13	14	15
Group Code	Group Name	NAIC Company Code	Federal ID Number	Federal RSSD	CIK	Name of Securities Exchange if Publicly Traded (U.S. or International)	Names of Parent, Subsidiaries Or Affiliates	Domi-ciliary Location	Relationship to Reporting Entity	Directly Controlled by (Name of Entity/Person)	Type of Control (Ownership, Board, Management, Attorney-in-Fact, Influence, Other)	If Control is Ownership Provide Percentage	Ultimate Controlling Entity(ies)/Person(s)	*
.0963	Ohio Mutual Insurance Group	10202	34-4320350				Ohio Mutual Insurance Company	OH		Ohio Mutual Insurance Company	Management			
.0963	Ohio Mutual Insurance Group	13072	34-1008736				United Ohio Insurance Company	OH	DS	Ohio Mutual Insurance Company	Ownership	100.000	Ohio Mutual Insurance Company	
.0963	Ohio Mutual Insurance Group		34-1018102				United Premium Budget Service, Inc.	OH	DS	Ohio Mutual Insurance Company	Ownership	100.000	Ohio Mutual Insurance Company	
.0963	Ohio Mutual Insurance Group		34-1115309				Centurion Financial, Inc.	DE	DS	Ohio Mutual Insurance Company	Ownership	100.000	Ohio Mutual Insurance Company	
.0963	Ohio Mutual Insurance Group		34-1026454				Ohio United Agency, Inc.	OH	DS	Ohio Mutual Insurance Company	Ownership	100.000	Ohio Mutual Insurance Company	
.0963	Ohio Mutual Insurance Group	25950	01-0407315				Casco Indemnity Company	ME	DS	Ohio Mutual Insurance Company	Ownership	100.000	Ohio Mutual Insurance Company	

NONE

Asterisk	Explanation

STATEMENT AS OF JUNE 30, 2012 OF THE Ohio Mutual Insurance Company

**PART 1 - LOSS EXPERIENCE**

Line of Business	Current Year to Date			4 Prior Year to Date Direct Loss Percentage
	1 Direct Premiums Earned	2 Direct Losses Incurred	3 Direct Loss Percentage	
1. Fire .....	1,764,645	1,365,663	77.4	71.6
2. Allied Lines .....				
3. Farmowners multiple peril .....	1,077,376	122,429	11.4	66.3
4. Homeowners multiple peril .....	3,392,489	2,952,612	87.0	141.5
5. Commercial multiple peril .....				
6. Mortgage guaranty .....				
8. Ocean marine .....				
9. Inland marine .....	5,836			
10. Financial guaranty .....				
11.1 Medical professional liability - occurrence .....				
11.2 Medical professional liability - claims-made .....				
12. Earthquake .....				
13. Group accident and health .....				
14. Credit accident and health .....				
15. Other accident and health .....				
16. Workers' compensation .....				
17.1 Other liability - occurrence .....	166,922	90,138	54.0	12.4
17.2 Other liability - claims-made .....				
17.3 Excess workers' compensation .....				
18.1 Products liability - occurrence .....				
18.2 Products liability - claims-made .....				
19.1,19.2 Private passenger auto liability .....	10,007,273	5,896,433	58.9	58.0
19.3,19.4 Commercial auto liability .....				
21. Auto physical damage .....	8,468,955	5,309,777	62.7	74.6
22. Aircraft (all perils) .....				
23. Fidelity .....				
24. Surety .....				
26. Burglary and theft .....	68,792	19,887	28.9	24.8
27. Boiler and machinery .....				
28. Credit .....				
29. International .....				
30. Warranty .....				
31. Reinsurance - Nonproportional Assumed Property .....	XXX	XXX	XXX	XXX
32. Reinsurance - Nonproportional Assumed Liability .....	XXX	XXX	XXX	XXX
33. Reinsurance - Nonproportional Assumed Financial Lines .....	XXX	XXX	XXX	XXX
34. Aggregate write-ins for other lines of business .....				
35. Totals .....	24,952,288	15,756,939	63.1	75.8
<b>DETAILS OF WRITE-INS</b>				
3401. ....				
3402. ....				
3403. ....				
3498. Summary of remaining write-ins for Line 34 from overflow page .....				
3499. Totals (Lines 3401 through 3403 plus 3498)(Line 34 above) .....				

**PART 2 - DIRECT PREMIUMS WRITTEN**

Line of Business	1	2	3
	Current Quarter	Current Year to Date	Prior Year Year to Date
1. Fire .....	875,270	1,588,002	1,719,156
2. Allied Lines .....			
3. Farmowners multiple peril .....	637,299	1,221,827	1,244,480
4. Homeowners multiple peril .....	2,035,946	3,376,371	3,330,232
5. Commercial multiple peril .....			
6. Mortgage guaranty .....			
8. Ocean marine .....			
9. Inland marine .....	4,163	8,335	5,684
10. Financial guaranty .....			
11.1 Medical professional liability - occurrence .....			
11.2 Medical professional liability - claims-made .....			
12. Earthquake .....			
13. Group accident and health .....			
14. Credit accident and health .....			
15. Other accident and health .....			
16. Workers' compensation .....			
17.1 Other liability - occurrence .....	86,087	161,981	173,833
17.2 Other liability - claims-made .....			
17.3 Excess workers' compensation .....			
18.1 Products liability - occurrence .....			
18.2 Products liability - claims-made .....			
19.1,19.2 Private passenger auto liability .....	5,258,790	10,090,534	9,757,569
19.3,19.4 Commercial auto liability .....			
21. Auto physical damage .....	4,556,659	8,655,781	8,325,180
22. Aircraft (all perils) .....			
23. Fidelity .....			
24. Surety .....			
26. Burglary and theft .....	36,844	66,773	72,998
27. Boiler and machinery .....			
28. Credit .....			
29. International .....			
30. Warranty .....			
31. Reinsurance - Nonproportional Assumed Property .....	XXX	XXX	XXX
32. Reinsurance - Nonproportional Assumed Liability .....	XXX	XXX	XXX
33. Reinsurance - Nonproportional Assumed Financial Lines .....	XXX	XXX	XXX
34. Aggregate write-ins for other lines of business .....			
35. Totals .....	13,491,058	25,169,604	24,629,132
<b>DETAILS OF WRITE-INS</b>			
3401. ....			
3402. ....			
3403. ....			
3498. Summary of remaining write-ins for Line 34 from overflow page .....			
3499. Totals (Lines 3401 through 3403 plus 3498)(Line 34 above) .....			

STATEMENT AS OF JUNE 30, 2012 OF THE Ohio Mutual Insurance Company

**PART 3 (000 omitted)**

LOSS AND LOSS ADJUSTMENT EXPENSE RESERVES SCHEDULE

	1	2	3	4	5	6	7	8	9	10	11	12	13
Years in Which Losses Occurred	Prior Year-End Known Case Loss and LAE Reserves	Prior Year-End IBNR Loss and LAE Reserves	Total Prior Year-End Loss and LAE Reserves (Cols. 1+2)	2012 Loss and LAE Payments on Claims Reported as of Prior Year-End	2012 Loss and LAE Payments on Claims Unreported as of Prior Year-End	Total 2012 Loss and LAE Payments (Cols. 4+5)	Q.S. Date Known Case Loss and LAE Reserves on Claims Reported and Open as of Prior Year End	Q.S. Date Known Case Loss and LAE Reserves on Claims Reported or Reopened Subsequent to Prior Year End	Q.S. Date IBNR Loss and LAE Reserves	Total Q.S. Loss and LAE Reserves (Cols.7+8+9)	Prior Year-End Known Case Loss and LAE Reserves Developed (Savings)/ Deficiency (Cols.4+7 minus Col. 1)	Prior Year-End IBNR Loss and LAE Reserves Developed (Savings)/ Deficiency (Cols. 5+8+9 minus Col. 2)	Prior Year-End Total Loss and LAE Reserve Developed (Savings)/ Deficiency (Cols. 11+12)
1. 2009 + Prior .....	2,156	1,598	3,754	824		824	1,464	3	692	2,159	132	(903)	(771)
2. 2010 .....	2,695	2,992	5,687	1,189	3	1,192	2,047		1,092	3,139	541	(1,897)	(1,356)
3. Subtotals 2010 + Prior .....	4,851	4,590	9,441	2,013	3	2,016	3,511	3	1,784	5,298	673	(2,800)	(2,127)
4. 2011 .....	5,573	6,468	12,041	3,633	90	3,723	3,226	30	3,110	6,366	1,286	(3,238)	(1,952)
5. Subtotals 2011 + Prior .....	10,424	11,058	21,482	5,646	93	5,739	6,737	33	4,894	11,664	1,959	(6,038)	(4,079)
6. 2012 .....	XXX	XXX	XXX	XXX	7,966	7,966	XXX	3,744	7,890	11,634	XXX	XXX	XXX
7. Totals .....	10,424	11,058	21,482	5,646	8,059	13,705	6,737	3,777	12,784	23,298	1,959	(6,038)	(4,079)
8. Prior Year-End Surplus As Regards Policyholders	154,214										Col. 11, Line 7 As % of Col. 1 Line 7	Col. 12, Line 7 As % of Col. 2 Line 7	Col. 13, Line 7 As % of Col. 3 Line 7
											1. 18.8	2. (54.6)	3. (19.0)
													Col. 13, Line 7 As a % of Col. 1 Line 8
													4. (2.6)

# SUPPLEMENTAL EXHIBITS AND SCHEDULES INTERROGATORIES

The following supplemental reports are required to be filed as part of your statement filing. However, in the event that your company does not transact the type of business for which the special report must be filed, your response of NO to the specific interrogatory will be accepted in lieu of filing a "NONE" report and a bar code will be printed below. If the supplement is required of your company but is not being filed for whatever reason enter SEE EXPLANATION and provide an explanation following the interrogatory questions.

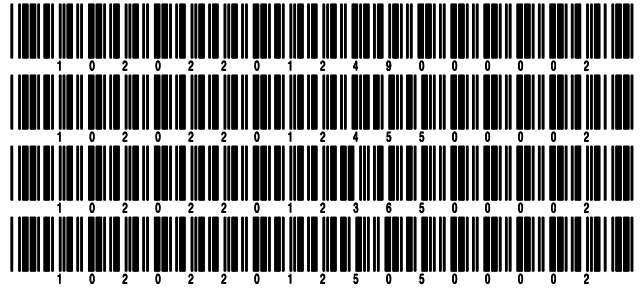
	Response
1. Will the Trusteed Surplus Statement be filed with the state of domicile and the NAIC with this statement? .....	NO
2. Will Supplement A to Schedule T (Medical Professional Liability Supplement) be filed with this statement? .....	NO
3. Will the Medicare Part D Coverage Supplement be filed with the state of domicile and the NAIC with this statement? .....	NO
4. Will the Director and Officer Supplement be filed with the state of domicile and the NAIC with this statement? .....	NO

Explanations:

- 1.
- 2.
- 3.
- 4.

Bar Codes:

1. Trusteed Surplus Statement [Document Identifier 490]
2. Supplement A to Schedule T [Document Identifier 455]
3. Medicare Part D Coverage Supplement [Document Identifier 365]
4. Director and Officer Supplement [Document Identifier 505]



**OVERFLOW PAGE FOR WRITE-INS**

**NONE**

STATEMENT AS OF JUNE 30, 2012 OF THE Ohio Mutual Insurance Company

**SCHEDULE A - VERIFICATION**

Real Estate

	1 Year to Date	2 Prior Year Ended December 31
1. Book/adjusted carrying value, December 31 of prior year .....	4,736,038	3,553,811
2. Cost of acquired:		
2.1 Actual cost at time of acquisition .....	108,135	1,429,228
2.2 Additional investment made after acquisition .....		
3. Current year change in encumbrances .....		
4. Total gain (loss) on disposals .....		
5. Deduct amounts received on disposals .....		
6. Total foreign exchange change in book/adjusted carrying value .....		
7. Deduct current year's other than temporary impairment recognized .....		
8. Deduct current year's depreciation .....	116,686	247,001
9. Book/adjusted carrying value at the end of current period (Lines 1+2+3+4-5+6-7-8) .....	4,727,487	4,736,038
10. Deduct total nonadmitted amounts .....		
11. Statement value at end of current period (Line 9 minus Line 10)	4,727,487	4,736,038

**SCHEDULE B - VERIFICATION**

Mortgage Loans

	1 Year to Date	2 Prior Year Ended December 31
1. Book value/recorded investment excluding accrued interest, December 31 of prior year .....		
2. Cost of acquired:		
2.1 Actual cost at time of acquisition .....		
2.2 Additional investment made after acquisition .....		
3. Capitalized deferred interest and other .....		
4. Accrual of discount .....		
5. Unrealized valuation increase (decrease) .....		
6. Total gain (loss) on disposals .....		
7. Deduct amounts received on disposals .....		
8. Deduct amortization of premium and mortgage interest points and commitment fees .....		
9. Total foreign exchange change in book value/recorded investment excluding accrued interest .....		
10. Deduct current year's other than temporary impairment recognized .....		
11. Book value/recorded investment excluding accrued interest at end of current period (Lines 1+2+3+4+5+6-7-8+9-10) .....		
12. Total valuation allowance .....		
13. Subtotal (Line 11 plus Line 12) .....		
14. Deduct total nonadmitted amounts .....		
15. Statement value at end of current period (Line 13 minus Line 14)		

**NONE**

**SCHEDULE BA - VERIFICATION**

Other Long-Term Invested Assets

	1 Year to Date	2 Prior Year Ended December 31
1. Book/adjusted carrying value, December 31 of prior year .....		
2. Cost of acquired:		
2.1 Actual cost at time of acquisition .....		
2.2 Additional investment made after acquisition .....		
3. Capitalized deferred interest and other .....		
4. Accrual of discount .....		
5. Unrealized valuation increase (decrease) .....		
6. Total gain (loss) on disposals .....		
7. Deduct amounts received on disposals .....		
8. Deduct amortization of premium and depreciation .....		
9. Total foreign exchange change in book/adjusted carrying value .....		
10. Deduct current year's other than temporary impairment recognized .....		
11. Book/adjusted carrying value at end of current period (Lines 1+2+3+4+5+6-7-8+9-10) .....		
12. Deduct total nonadmitted amounts .....		
13. Statement value at end of current period (Line 11 minus Line 12)		

**NONE**

**SCHEDULE D - VERIFICATION**

Bonds and Stocks

	1 Year to Date	2 Prior Year Ended December 31
1. Book/adjusted carrying value of bonds and stocks, December 31 of prior year .....	175,914,104	167,819,855
2. Cost of bonds and stocks acquired .....	10,007,911	32,079,329
3. Accrual of discount .....	5,060	13,544
4. Unrealized valuation increase (decrease) .....	1,153,444	(2,126,420)
5. Total gain (loss) on disposals .....	67,144	130,454
6. Deduct consideration for bonds and stocks disposed of .....	5,808,860	21,586,545
7. Deduct amortization of premium .....	204,620	416,113
8. Total foreign exchange change in book/adjusted carrying value .....		
9. Deduct current year's other than temporary impairment recognized .....		
10. Book/adjusted carrying value at end of current period (Lines 1+2+3+4+5-6-7+8-9) .....	181,134,183	175,914,104
11. Deduct total nonadmitted amounts .....	26,033	26,026
12. Statement value at end of current period (Line 10 minus Line 11)	181,108,150	175,888,078

STATEMENT AS OF JUNE 30, 2012 OF THE Ohio Mutual Insurance Company

**SCHEDULE D - PART 1B**

Showing the Acquisitions, Dispositions and Non-Trading Activity  
During the Current Quarter for all Bonds and Preferred Stock by Rating Class

	1 Book/Adjusted Carrying Value Beginning of Current Quarter	2 Acquisitions During Current Quarter	3 Dispositions During Current Quarter	4 Non-Trading Activity During Current Quarter	5 Book/Adjusted Carrying Value End of First Quarter	6 Book/Adjusted Carrying Value End of Second Quarter	7 Book/Adjusted Carrying Value End of Third Quarter	8 Book/Adjusted Carrying Value December 31 Prior Year
<b>BONDS</b>								
1. Class 1 (a) .....	57,441,596	16,797,572	18,819,587	(102,052)	57,441,596	55,317,529		54,245,555
2. Class 2 (a) .....	285,481			(2,238)	285,481	283,243		287,711
3. Class 3 (a) .....								
4. Class 4 (a) .....								
5. Class 5 (a) .....								
6. Class 6 (a) .....								
7. Total Bonds	57,727,077	16,797,572	18,819,587	(104,290)	57,727,077	55,600,772		54,533,266
<b>PREFERRED STOCK</b>								
8. Class 1 .....								
9. Class 2 .....								
10. Class 3 .....								
11. Class 4 .....								
12. Class 5 .....								
13. Class 6 .....								
14. Total Preferred Stock .....								
15. Total Bonds and Preferred Stock	57,727,077	16,797,572	18,819,587	(104,290)	57,727,077	55,600,772		54,533,266

(a) Book/Adjusted Carrying Value column for the end of the current reporting period includes the following amount of non-rated short-term and cash equivalent bonds by NAIC designation: NAIC 1 \$ ..... ; NAIC 2 \$ ..... ; NAIC 3 \$ ..... ; NAIC 4 \$ ..... ; NAIC 5 \$ ..... ; NAIC 6 \$ .....

S102

**SCHEDULE DA - PART 1**

## Short-Term Investments

	1 Book/Adjusted Carrying Value	2 Par Value	3 Actual Cost	4 Interest Collected Year-to-Date	5 Paid for Accrued Interest Year-to-Date
9199999 Totals	937,039	XXX	937,039	27	

**SCHEDULE DA - VERIFICATION**

## Short-Term Investments

	1 Year To Date	2 Prior Year Ended December 31
1. Book/adjusted carrying value, December 31 of prior year .....	1,619,513	1,113,983
2. Cost of short-term investments acquired .....	10,852,422	11,073,190
3. Accrual of discount .....		
4. Unrealized valuation increase (decrease) .....		
5. Total gain (loss) on disposals .....		
6. Deduct consideration received on disposals .....	11,534,896	10,567,660
7. Deduct amortization of premium .....		
8. Total foreign exchange change in book/adjusted carrying value .....		
9. Deduct current year's other than temporary impairment recognized .....		
10. Book/adjusted carrying value at end of current period (Lines 1+2+3+4+5-6-7+8-9) .....	937,039	1,619,513
11. Deduct total nonadmitted amounts .....		
12. Statement value at end of current period (Line 10 minus Line 11)	937,039	1,619,513

Schedule DB - Part A - Verification - Options, Caps, Floors, Collars, Swaps and Forwards

**N O N E**

Schedule DB - Part B - Verification - Futures Contracts

**N O N E**

Schedule DB - Part C - Section 1 - Replication (Synthetic Asset) Transactions (RSATs) Open

**N O N E**

Schedule DB-Part C-Section 2-Reconciliation of Replication (Synthetic Asset) Transactions Open

**N O N E**

Schedule DB - Verification - Book/Adjusted Carrying Value, Fair Value and Potential Exposure of  
Derivatives

**N O N E**

**SCHEDULE E - VERIFICATION**

(Cash Equivalents)

	1	2
	Year To Date	Prior Year Ended December 31
1. Book/adjusted carrying value, December 31 of prior year .....		
2. Cost of cash equivalents acquired .....	9,499,453	2,499,843
3. Accrual of discount .....	508	140
4. Unrealized valuation increase (decrease) .....		
5. Total gain (loss) on disposals .....	12	10
6. Deduct consideration received on disposals .....	9,499,973	2,499,993
7. Deduct amortization of premium .....		
8. Total foreign exchange change in book/adjusted carrying value .....		
9. Deduct current year's other than temporary impairment recognized .....		
10. Book/adjusted carrying value at end of current period (Lines 1+2+3+4+5-6-7+8-9) .....		
11. Deduct total nonadmitted amounts .....		
12. Statement value at end of current period (Line 10 minus Line 11)		

STATEMENT AS OF JUNE 30, 2012 OF THE Ohio Mutual Insurance Company

**SCHEDULE A - PART 2**

Showing All Real Estate ACQUIRED AND ADDITIONS MADE During the Current Quarter

1 Description of Property	Location		4 Date Acquired	5 Name of Vendor	6 Actual Cost at Time of Acquisition	7 Amount of Encumbrances	8 Book/Adjusted Carrying Value Less Encumbrances	9 Additional Investment Made After Acquisition
	2 City	3 State						
Building	Bucyrus	Ohio	05/17/2012	Mead Electronics	8,465		8,430	
Building	Saco	Maine	06/13/2012	Sign Design, Inc.	4,531		4,512	
Building	Bucyrus	Ohio	06/14/2012	J&F Construction, Inc.	29,500		29,377	
Building	Bucyrus	Ohio	06/15/2012	Grau Electric Ltd.	22,184		22,092	
0199999. Acquired by Purchase					64,680		64,411	
0399999 - Totals					64,680		64,411	

**SCHEDULE A - PART 3**

Showing All Real Estate DISPOSED During the Quarter, Including Payments During the Final Year on "Sales Under Contract"

1 Description of Property	Location		4 Disposal Date	5 Name of Purchaser	6 Actual Cost	7 Expended for Additions, Permanent Improvements and Changes in Encumbrances	8 Book/Adjusted Carrying Value Less Encumbrances Prior Year	Change in Book/Adjusted Carrying Value Less Encumbrances					14 Book/Adjusted Carrying Value Less Encumbrances on Disposal	15 Amounts Received During Year	16 Foreign Exchange Gain (Loss) on Disposal	17 Realized Gain (Loss) on Disposal	18 Total Gain (Loss) on Disposal	19 Gross Income Earned Less Interest Incurred on Encumbrances	20 Taxes, Repairs and Expenses Incurred
	2 City	3 State						9 Current Year's Depreciation	10 Current Year's Other Than Temporary Impairment Recognized	11 Current Year's Change in Encumbrances	12 Total Change in Book/Adjusted Carrying Value (11-9-10)	13 Total Foreign Exchange Change in Book/Adjusted Carrying Value							
<b>NONE</b>																			
0399999 - Totals																			

E01

Schedule B - Part 2 - Mortgage Loans Acquired

**N O N E**

Schedule B - Part 3 - Mortgage Loans Disposed, Transferred or Repaid

**N O N E**

Schedule BA - Part 2 - Other Long-Term Invested Assets Acquired

**N O N E**

Schedule BA - Part 3 - Other Long-Term Invested Assets Disposed, Transferred or Repaid

**N O N E**

STATEMENT AS OF JUNE 30, 2012 OF THE Ohio Mutual Insurance Company

**SCHEDULE D - PART 3**

Show All Long-Term Bonds and Stock Acquired During the Current Quarter

1	2	3	4	5	6	7	8	9	10
CUSIP Identification	Description	Foreign	Date Acquired	Name of Vendor	Number of Shares of Stock	Actual Cost	Par Value	Paid for Accrued Interest and Dividends	NAIC Designation or Market Indicator (a)
035519-TD-9	ANN ARBOR MI SCH DIST		.05/11/2012	MERRILL LYNCH		305,037	250,000	521	1FE
161681-SH-5	CHASKA MN INDEP SCH DIST #112		.05/02/2012	BEAL MR & COMPANY		309,645	250,000	312	1FE
655867-QC-6	NORFOLK VA		.06/13/2012	RAYMOND JAMES		297,808	250,000		1FE
66702R-CN-0	NORTHSIDE TX INDEP SCH DIST		.04/26/2012	STIFEL-HANIFEN DIVIS		293,400	250,000		1FE
76541V-KZ-9	RICHMOND VA		.06/15/2012	SALOMON SMITH BARNEY		297,020	250,000		1FE
<b>2499999. Subtotal - Bonds - U.S. Political Subdivisions of States, Territories and Possessions</b>						<b>1,502,910</b>	<b>1,250,000</b>	<b>833</b>	<b>XXX</b>
04048R-G0-3	ARIZONA ST BRD OF RGTS UNIV SY		.05/03/2012	WELLS FARGO FINANCIAL		299,502	250,000	417	1FE
101029-RK-4	BOSTON MA WTR & SWR COMMISSION		.06/14/2012	JANNEY MONTGOMERY SCOTT		308,815	250,000	451	1FE
167736-ZX-8	CHICAGO IL WTR REVENUE		.05/11/2012	SIEBERT BRANFORD		308,742	250,000		1FE
196711-NV-3	COLORADO ST COPS		.05/10/2012	RBC DAIN RAUSCHER INCORPORATED		302,337	250,000		1FE
254845-HJ-2	DIST OF COLUMBIA WTR & SWR AUT		.04/23/2012	WELLS FARGO FINANCIAL		293,757	250,000	1,181	1FE
3128MJ-RJ-1	FEDERAL HOME LOAN MTG CORP #G08488		.04/03/2012	BANK OF AMERICA		664,422	650,000	695	1
3132GS-GM-5	FEDERAL HOME LOAN MTG CORP #Q07104		.04/03/2012	BANK OF AMERICA		664,422	650,000	695	1
3132GS-K0-1	FEDERAL HOME LOAN MTG CORP #Q07219		.04/03/2012	BANK OF AMERICA		715,531	700,000	749	1
546540-HU-2	LOUISIANA ST UNIV & AGRIC & ME		.06/19/2012	WELLS FARGO FINANCIAL		280,683	250,000	5,937	1FE
59259Y-PM-5	MET TRANSPRTN AUTH NY REVENUE		.05/15/2012	JANNEY MONTGOMERY SCOTT		304,093	250,000	313	1FE
592646-4B-6	MET WASHINGTON DC ARPTS AUTH A		.06/06/2012	APEX PRYOR SECURITIES		292,235	250,000		1FE
79575D-B4-1	SALT RIVER AZ PROJ AGRIC IMPT		.06/14/2012	GOLDMAN SACHS		279,148	250,000	5,833	1FE
914641-X9-1	UNIV OF NEBRASKA NE		.05/17/2012	AMERITAS INVESTMENTS		301,693	250,000		1FE
914729-NK-0	UNIV OF N TEXAS TX		.05/10/2012	JP MORGAN SECURITIES INC.		296,670	250,000		1FE
95639R-EV-7	WEST VIRGINIA ST HGR EDU POLIC		.06/13/2012	SALOMON SMITH BARNEY		280,555	250,000		1FE
<b>3199999. Subtotal - Bonds - U.S. Special Revenues</b>						<b>5,592,605</b>	<b>5,000,000</b>	<b>16,271</b>	<b>XXX</b>
<b>8399997. Total - Bonds - Part 3</b>						<b>7,095,515</b>	<b>6,250,000</b>	<b>17,104</b>	<b>XXX</b>
<b>8399998. Total - Bonds - Part 5</b>						<b>XXX</b>	<b>XXX</b>	<b>XXX</b>	<b>XXX</b>
<b>8399999. Total - Bonds</b>						<b>7,095,515</b>	<b>6,250,000</b>	<b>17,104</b>	<b>XXX</b>
<b>8999997. Total - Preferred Stocks - Part 3</b>							<b>XXX</b>		<b>XXX</b>
<b>8999998. Total - Preferred Stocks - Part 5</b>						<b>XXX</b>	<b>XXX</b>	<b>XXX</b>	<b>XXX</b>
<b>8999999. Total - Preferred Stocks</b>							<b>XXX</b>		<b>XXX</b>
018802-10-8	ALLIANT ENERGY CORP		.06/06/2012	SANFORD BERNSTEIN	3,100,000	136,657			L
025537-10-1	AMERICAN ELECTRIC POWER		.06/06/2012	SANFORD BERNSTEIN	3,500,000	137,915			L
125896-10-0	CMS ENERGY CORP		.06/06/2012	SANFORD BERNSTEIN	5,800,000	135,127			L
20825C-10-4	CONOCOPHILLIPS		.06/25/2012	MERRILL LYNCH	2,600,000	137,462			L
209115-10-4	CONSOLIDATED EDISON INC		.06/06/2012	SANFORD BERNSTEIN	2,200,000	134,279			L
25746U-10-9	DOMINION RESOURCES INC		.06/06/2012	SANFORD BERNSTEIN	2,600,000	135,573			L
29364G-10-3	ENTERGY CORPORATION		.06/06/2012	SANFORD BERNSTEIN	2,100,000	136,571			L
30161N-10-1	EXELON CORPORATION		.06/06/2012	SANFORD BERNSTEIN	3,600,000	134,324			L
478160-10-4	JOHNSON & JOHNSON		.06/06/2012	SANFORD BERNSTEIN	2,200,000	137,734			L
65339F-10-1	NEXTERA ENERGY INC		.06/06/2012	SANFORD BERNSTEIN	2,100,000	138,083			L
69331C-10-8	P G & E CORPORATION		.06/06/2012	SANFORD BERNSTEIN	3,100,000	136,839			L
69351T-10-6	PPL CORPORATION		.06/06/2012	SANFORD BERNSTEIN	4,900,000	134,901			L
723484-10-1	PINNACLE WEST CAPITAL CORP		.06/06/2012	SANFORD BERNSTEIN	2,700,000	137,039			L
744573-10-6	PUBLIC SERVICE ENTERPRISE GROUP INC		.06/06/2012	SANFORD BERNSTEIN	4,300,000	134,599			L
842587-10-7	SOUTHERN COMPANY		.06/06/2012	SANFORD BERNSTEIN	2,900,000	135,652			L
976657-10-6	WISCONSIN ENERGY CORPORATION		.06/06/2012	SANFORD BERNSTEIN	3,600,000	137,329			L
98389B-10-0	XCEL ENERGY INC		.06/06/2012	SANFORD BERNSTEIN	4,800,000	136,572			L
<b>9099999. Subtotal - Common Stocks - Industrial and Miscellaneous (Unaffiliated)</b>						<b>2,316,656</b>	<b>XXX</b>		<b>XXX</b>
<b>9799997. Total - Common Stocks - Part 3</b>						<b>2,316,656</b>	<b>XXX</b>		<b>XXX</b>
<b>9799998. Total - Common Stocks - Part 5</b>						<b>XXX</b>	<b>XXX</b>	<b>XXX</b>	<b>XXX</b>
<b>9799999. Total - Common Stocks</b>						<b>2,316,656</b>	<b>XXX</b>		<b>XXX</b>
<b>9899999. Total - Preferred and Common Stocks</b>						<b>2,316,656</b>	<b>XXX</b>		<b>XXX</b>
<b>9999999 - Totals</b>						<b>9,412,171</b>	<b>XXX</b>	<b>17,104</b>	<b>XXX</b>

(a) For all common stock bearing the NAIC market indicator "U" provide: the number of such issues .....

STATEMENT AS OF JUNE 30, 2012 OF THE Ohio Mutual Insurance Company

**SCHEDULE D - PART 4**

Show All Long-Term Bonds and Stock Sold, Redeemed or Otherwise Disposed of During the Current Quarter

1	2	3	4	5	6	7	8	9	10	Change In Book/Adjusted Carrying Value					16	17	18	19	20	21	22
										11	12	13	14	15							
CUSIP Identification	Description	For-foreign	Disposal Date	Name of Purchaser	Number of Shares of Stock	Consideration	Par Value	Actual Cost	Prior Year Book/Adjusted Carrying Value	Unrealized Valuation Increase/(Decrease)	Current Year's (Amortization)/Accretion	Current Year's Other Than Temporary Impairment Recognized	Total Change in Book/Adjusted Carrying Value (11 + 12 - 13)	Total Foreign Exchange Change in Book /Adjusted Carrying Value	Book/Adjusted Carrying Value at Disposal Date	Foreign Exchange Gain (Loss) on Disposal	Realized Gain (Loss) on Disposal	Total Gain (Loss) on Disposal	Bond Interest/Stock Dividends Received During Year	Stated Contractual Maturity Date	NAIC Designation or Market Indicator (a)
3620AU-TE-4	GOVERNMENT NATL MTG ASSOC #740449		06/01/2012	PAYDOWN		2,468	2,468	2,567	2,471		(4)		(4)		2,468				41	08/01/2040	1
3620AW-TA-8	GOVERNMENT NATL MTG ASSOC #742245		06/01/2012	PAYDOWN		16,481	16,481	16,483	16,481						16,481				227	11/01/2040	1
3620C6-YU-3	GOVERNMENT NATL MTG ASSOC #750523		06/01/2012	PAYDOWN		13,903	13,903	14,464	13,917		(14)		(14)		13,903				304	09/01/2040	1
36241K-V6-2	GOVERNMENT NATL MTG ASSOC #782437		06/01/2012	PAYDOWN		14,965	14,965	14,934	14,961		3		3		14,965				442	05/01/2037	1
36241K-V8-8	GOVERNMENT NATL MTG ASSOC #782439		06/01/2012	PAYDOWN		22,765	22,765	22,719	22,760		5		5		22,765				300	04/01/2038	1
36241K-V9-6	GOVERNMENT NATL MTG ASSOC #782440		06/01/2012	PAYDOWN		14,801	14,801	14,771	14,798		3		3		14,801				362	09/01/2037	1
36241K-WC-8	GOVERNMENT NATL MTG ASSOC #782443		06/01/2012	PAYDOWN		17,603	17,603	17,326	17,575		29		29		17,603				1,078	09/01/2037	1
912828-RJ-1	UNITED STATES TREASURY NOTES		06/18/2012	GOLDMAN SACHS		152,490	150,000	148,987	149,032		93		93		149,124		3,366	3,366	2,967	09/30/2016	XXX
0599999	Subtotal - Bonds - U.S. Governments					255,476	252,986	252,251	251,995		115		115		252,110		3,366	3,366	2,967	XXX	XXX
20772F-D3-1	CONNECTICUT ST		06/15/2012	PREREFUNDED		250,000	250,000	278,993	251,787		(1,787)		(1,787)		250,000				6,875	06/15/2012	1FE
1799999	Subtotal - Bonds - U.S. States, Territories and Possessions					250,000	250,000	278,993	251,787		(1,787)		(1,787)		250,000				6,875	XXX	XXX
3128LX-C3-2	FEDERAL HOME LOAN MTG CORP #G01890		06/01/2012	PAYDOWN		59,297	59,297	62,123	59,755		(458)		(458)		59,297				1,121	11/01/2034	1
3128MJ-0D-5	FEDERAL HOME LOAN MTG CORP #G08451		06/01/2012	PAYDOWN		202,825	202,825	208,941	203,723		(898)		(898)		202,825				3,649	04/01/2041	1
3128MJ-RJ-1	FEDERAL HOME LOAN MTG CORP #G08488		06/01/2012	PAYDOWN		3,249	3,249	3,321			(1)		(1)		3,249				15	04/01/2042	1
3128MI-AS-2	FEDERAL HOME LOAN MTG CORP #G18016		06/01/2012	PAYDOWN		9,812	9,812	10,002	9,823		(11)		(11)		9,812				202	03/01/2019	1
3128MI-LD-3	FEDERAL HOME LOAN MTG CORP #G18323		06/01/2012	PAYDOWN		23,657	23,657	24,352	23,711		(54)		(54)		23,657				441	04/01/2024	1
31294K-YB-5	FEDERAL HOME LOAN MTG CORP #E01606		06/01/2012	PAYDOWN		21,259	21,259	21,598	21,276		(17)		(17)		21,259				395	09/01/2018	1
3132GE-NC-0	FEDERAL HOME LOAN MTG CORP #001287		06/01/2012	PAYDOWN		356,347	356,347	367,093	357,181		(834)		(834)		356,347				7,568	02/01/2041	1
3132GE-LD-0	FEDERAL HOME LOAN MTG CORP #001480		06/01/2012	PAYDOWN		1,383	1,383	1,397	1,382		1		1		1,383				23	06/01/2041	1
3132GE-VY-3	FEDERAL HOME LOAN MTG CORP #001531		06/01/2012	PAYDOWN		80,242	80,242	82,969	80,515		(273)		(273)		80,242				1,483	04/01/2041	1
3132GS-GM-5	FEDERAL HOME LOAN MTG CORP #007104		06/01/2012	PAYDOWN		3,222	3,222	3,293			(1)		(1)		3,222				14	02/01/2042	1
3132GS-K8-1	FEDERAL HOME LOAN MTG CORP #007219		06/01/2012	PAYDOWN		2,710	2,710	2,770			(1)		(1)		2,710				12	12/01/2041	1
3133TD-S7-2	FEDERAL HOME LOAN MTG CORP 2052 PL		06/01/2012	PAYDOWN		1,723	1,723	1,706	1,720		3		3		1,723				43	04/01/2013	1
3133TH-GW-1	FEDERAL HOME LOAN MTG CORP 2102 TC		06/01/2012	PAYDOWN		6,470	6,470	6,470	6,470						6,470				162	12/01/2013	1
31359F-4A-3	FEDERAL NATIONAL MTG ASSOC 94 1 UU		06/01/2012	PAYDOWN		1,000	1,000	990	999		1		1		1,000				32	01/01/2014	1
31376K-GX-8	FEDERAL NATIONAL MTG ASSOC #357614		06/01/2012	PAYDOWN		13,967	13,967	14,227	13,977		(10)		(10)		13,967				292	01/01/2019	1
31376K-LZ-7	FEDERAL NATIONAL MTG ASSOC #357744		06/01/2012	PAYDOWN		26,978	26,978	26,624	26,946		32		32		26,978				488	09/01/2019	1
31393C-SR-0	FANNIE MAE 03-66 MB		06/01/2012	PAYDOWN		12,668	12,668	12,961	12,693		(25)		(25)		12,668				163	10/01/2017	1
31393R-TE-0	FREDDIE MAC -2631 DA		06/01/2012	PAYDOWN		9,957	9,957	9,870	9,952		5		5		9,957				152	06/01/2026	1
31394B-VF-8	FANNIE MAE 04-90 GA		06/01/2012	PAYDOWN		9,095	9,095	9,407	9,108		(14)		(14)		9,095				165	08/01/2015	1
31394R-V6-0	FREDDIE MAC -2761 QB		06/01/2012	PAYDOWN		14,399	14,399	14,740	14,422		(24)		(24)		14,399				236	04/01/2023	1
31396Q-F5-3	FANNIE MAE 09-75 JA		06/01/2012	PAYDOWN		15,262	15,262	15,575	15,306		(44)		(44)		15,262				249	07/01/2014	1
31396Y-SH-6	FANNIE MAE 08-17 DP		06/01/2012	PAYDOWN		9,087	9,087	9,493	9,118		(31)		(31)		9,087				180	09/01/2029	1
31398C-D4-7	FREDDIE MAC -3527 DA		06/01/2012	PAYDOWN		14,111	14,111	14,634	14,165		(54)		(54)		14,111				233	03/01/2023	1
31398C-XK-9	FREDDIE MAC -3534 NA		06/01/2012	PAYDOWN		12,286	12,286	12,582	12,342		(56)		(56)		12,286				203	09/01/2014	1
31398J-AX-1	FREDDIE MAC -3558 JA		06/01/2012	PAYDOWN		14,375	14,375	14,734	14,429		(54)		(54)		14,375				221	12/01/2017	1
31398J-N4-1	FREDDIE MAC -3573 MA		06/01/2012	PAYDOWN		18,544	18,544	19,149	18,626		(82)		(82)		18,544				300	05/01/2015	1
31398M-FS-0	FNR 2010-17 CA		06/01/2012	PAYDOWN		19,944	19,944	20,730	20,077		(134)		(134)		19,944				330	10/01/2016	1
31398M-O9-0	FANNIE MAE 10-36 CA		06/01/2012	PAYDOWN		18,250	18,250	18,689	18,293		(43)		(43)		18,250				304	03/01/2016	1
31398P-4B-2	FANNIE MAE 10 39 TG		06/01/2012	PAYDOWN		17,957	17,957	18,361	17,968		(10)		(10)		17,957				300	05/01/2016	1
31398P-RF-8	FANNIE MAE 10-40 DM		06/01/2012	PAYDOWN		18,630	18,630	19,037	18,660		(30)		(30)		18,630				306	07/01/2016	1
31398S-CH-4	FANNIE MAE 10-122 AC		06/01/2012	PAYDOWN		7,558	7,558	7,910	7,586		(29)		(29)		7,558				110	08/01/2022	1
31398V-XU-5	FHR-3653 EL		06/01/2012	PAYDOWN		13,759	13,759	14,050	13,808		(49)		(49)		13,759				262	11/01/2017	1
31398V-YJ-9	FHR-3653 KN		06/01/2012	PAYDOWN		15,024	15,024	15,422	15,015		9		9		15,024				204	09/01/2017	1
31402C-W7-4	FEDERAL NATIONAL MTG ASSOC #725238		06/01/2012	PAYDOWN		12,295	12,295	11,517	12,251		44		44		12,295				254	10/01/2032	1
31402H-VS-4	FEDERAL NATIONAL MTG ASSOC #740525		06/01/2012	PAYDOWN		10,386	10,386	10,620	10,403		(17)		(17)		10,386				233	03/01/2018	1
31416Q-PS-8	FEDERAL NATIONAL MTG ASSOC #AA6732		06/01/2012	PAYDOWN		22,229	22,229	22,267	22,229						22,229				369	01/01/2024	1
31417S-AP-5	FEDERAL NATIONAL MTG ASSOC #AC5413		06/01/2012	PAYDOWN		50,721	50,721	52,512	50,909		(188)		(188)		50,721				966	05/01/2024	1
31418N-OV-5	FEDERAL NATIONAL MTG ASSOC #AD1367		06/01/2012	PAYDOWN		11,371	11,371	11,865	11,379		(8)		(8)		11,371				210	10/01/2024	1
31418P-GM-2	FEDERAL NATIONAL MTG ASSOC #AD2675		06/01/2012	PAYDOWN		7,371	7,371	7,691	7,392		(21)		(21)		7,371				138	12/01/2024	1
31418P-K7-9	FEDERAL NATIONAL MTG ASSOC #AD2117		06/01/2012	PAYDOWN		71,685	71,685	74,799	72,067		(382)		(382)		71,685				1,219	12/01/2024	1
378352-ME-5	GLENDAL AZ WTR & SWR REVENUE		05/16/2012	RBC DAIN RAUSCHER INCORPORATED		281,980	250,000	258,963	255,419		(342)		(342)		255,077		26,903	26,903	11,111	07/01/2023	1FE
38373A-ZL-4	GNR 2009-72 JA		06/01/2012	PAYDOWN		12,241	12,241	12,532	12,298		(56)		(56)		12,241				200	09/01/2018	1
38373A-GE-0	GNR 2009-72 LA		06/01/2012	PAYDOWN		12,241	12,241	12,410	12,266		(25)		(25)		12,241				100	01/01/2015	1
38373Q-GX-3	GOVERNMENT NATIONAL MORTGAGE A 03-34 PM		06/01/2012	PAYDOWN		8,370	8,370	8,638	8,377		(7)		(7)								

STATEMENT AS OF JUNE 30, 2012 OF THE Ohio Mutual Insurance Company

**SCHEDULE D - PART 4**

Show All Long-Term Bonds and Stock Sold, Redeemed or Otherwise Disposed of During the Current Quarter

1	2	3	4	5	6	7	8	9	10	Change In Book/Adjusted Carrying Value					16	17	18	19	20	21	22			
										11	12	13	14	15										
CUSIP Identification	Description	For- eign	Disposal Date	Name of Purchaser	Number of Shares of Stock	Consid- eration	Par Value	Actual Cost	Prior Year Book/ Adjusted Carrying Value	Unrealized Valuation Increase/ (Decrease)	Current Year's (Amor- tization)/ Accretion	Current Year's Other Than Temporary Impairment Recogn- ized	Total Change in Book/ Adjusted Carrying Value (11 + 12 - 13)	Total Foreign Exchange Change in Book /Adjusted Carrying Value	Book/ Adjusted Carrying Value at Disposal Date	Foreign Exchange Gain (Loss) on Disposal	Realized Gain (Loss) on Disposal	Total Gain (Loss) on Disposal	Bond Interest/ Stock Dividends Received During Year	Stated Con- tractual Maturity Date	NAIC Desig- nation or Market In- dicator (a)			
38376F-LH-3	GOVERNMENT NATIONAL MORTGAGE A 09-86 EJ		06/01/2012	PAYDOWN		12,309	12,309	12,836	12,362		(53)		(53)		12,309				203	03/01/2029	1			
38376T-BF-8	GOVERNMENT NATIONAL MORTGAGE A 10-12 DA		06/01/2012	PAYDOWN		9,226	9,226	9,545	9,228		(1)		(1)		9,226				168	11/01/2032	1			
455141-NT-4	INDIANA ST TRANSPRTN FIN AUTH		06/01/2012	MATURITY		5,000	5,000	5,477	5,027		(27)		(27)		5,000				125	06/01/2012	1FE			
<b>3199999. Subtotal - Bonds - U.S. Special Revenues</b>						1,605,755	1,573,775	1,620,886	1,573,987		(4,319)		(4,319)		1,578,852		26,903	26,903	35,840	XXX	XXX			
466157-AC-8	JG WENTWORTH REC V LLC 01 AA A2		06/15/2012	PAYDOWN		7,908	7,908	7,890	7,889		19		19		7,908				207	01/15/2017	1FE			
61745M-YZ-0	MORGAN STANLEY CAP 1 2004-107 A3		06/01/2012	PAYDOWN		66,858	66,858	65,863	66,738		120		120		66,858				2,517	01/01/2013	1FM			
79548K-UV-8	SALOMON BROS MTG SECS VII 97 HUD1 B3		06/01/2012	PAYDOWN		347	4,340										347	347	198	09/01/2025	1FM			
<b>3899999. Subtotal - Bonds - Industrial and Miscellaneous (Unaffiliated)</b>						75,113	79,106	73,753	74,627		139		139		74,766		347	347	2,922	XXX	XXX			
<b>8399997. Total - Bonds - Part 4</b>						2,186,344	2,155,867	2,225,883	2,152,396		(5,852)		(5,852)		2,155,728		30,616	30,616	48,604	XXX	XXX			
<b>8399998. Total - Bonds - Part 5</b>						XXX	XXX	XXX	XXX	XXX	XXX	XXX	XXX	XXX	XXX	XXX	XXX	XXX	XXX	XXX	XXX	XXX		
<b>8399999. Total - Bonds</b>						2,186,344	2,155,867	2,225,883	2,152,396		(5,852)		(5,852)		2,155,728		30,616	30,616	48,604	XXX	XXX			
<b>8999997. Total - Preferred Stocks - Part 4</b>							XXX														XXX	XXX		
<b>8999998. Total - Preferred Stocks - Part 5</b>						XXX	XXX	XXX	XXX	XXX	XXX	XXX	XXX	XXX	XXX	XXX	XXX	XXX	XXX	XXX	XXX	XXX	XXX	
<b>8999999. Total - Preferred Stocks</b>							XXX															XXX	XXX	
<b>9799997. Total - Common Stocks - Part 4</b>							XXX															XXX	XXX	
<b>9799998. Total - Common Stocks - Part 5</b>						XXX	XXX	XXX	XXX	XXX	XXX	XXX	XXX	XXX	XXX	XXX	XXX	XXX	XXX	XXX	XXX	XXX	XXX	XXX
<b>9799999. Total - Common Stocks</b>							XXX															XXX	XXX	
<b>9899999. Total - Preferred and Common Stocks</b>							XXX															XXX	XXX	
<b>9999999 - Totals</b>						2,186,344	XXX	2,225,883	2,152,396		(5,852)		(5,852)		2,155,728		30,616	30,616	48,604	XXX	XXX			

(a) For all common stock bearing the NAIC market indicator "U" provide: the number of such issues.....

Schedule DB - Part A - Section 1 - Options, Caps, Floors, Collars, Swaps and Forwards Open

**N O N E**

Schedule DB - Part B - Section 1 - Futures Contracts Open

**N O N E**

Schedule DB - Part B - Section 1B - Brokers with whom cash deposits have been made

**N O N E**

Schedule DB - Part D - Counterparty Exposure for Derivative Instruments Open

**N O N E**

Schedule DL - Part 1 - Reinvested Collateral Assets Owned

**N O N E**

Schedule DL - Part 2 - Reinvested Collateral Assets Owned

**N O N E**



**SCHEDULE E - PART 2 - CASH EQUIVALENTS**

Show Investments Owned End of Current Quarter

1 Description	2 Code	3 Date Acquired	4 Rate of Interest	5 Maturity Date	6 Book/Adjusted Carrying Value	7 Amount of Interest Due and Accrued	8 Amount Received During Year
<b>NONE</b>							
8699999 - Total Cash Equivalents							