



Quarterly Statement  
For the Quarter Ended March 31, 2012  
OF THE CONDITION AND AFFAIRS OF THE  
American Standard Insurance Company of Ohio

NAIC Group Code: 0473 (current period), 0473 (prior period)    NAIC Company Code: 10387    Employer's ID Number: 39-1835305

Organized under the Laws of Ohio, State of Domicile or Port of Entry: Ohio, Country of Domicile: U. S.

Incorporated/Organized: November 21, 1995    Commenced Business: January 1, 1996

STATUTORY HOME OFFICE:  
550 Polaris Parkway, Suite 100, Westerville, Ohio 43082

MAIN ADMINISTRATIVE OFFICE, MAILING ADDRESS, AND PRIMARY LOCATION OF BOOKS AND RECORDS:  
6000 American Parkway, Madison, Wisconsin 53783-0001  
Telephone: 608-249-2111  
Internet Website Address: [www.amfam.com](http://www.amfam.com)

STATUTORY STATEMENT CONTACT: Aaron W. Kenseth  
Telephone: 608-249-2111, Ext. 30711; Fax 877-571-4803; E-Mail: [akenseth@amfam.com](mailto:akenseth@amfam.com)

OFFICERS

Name	Title
Jack Charles Salzwedel	Chairman and C.E.O.
Daniel Robert Schultz	President and C.O.O.
Daniel James Kelly	Chief Financial Officer, Treasurer
David Clifford Holman	Chief Legal Officer, Secretary
Peter Chesley Gunder #	Chief Investment Officer #
Kari Elizabeth Grasee	Vice President, Controller
Richard Martin Steffen	Vice President, Agency Sales - East Region
Dean Mario Fiorelli	Assistant Treasurer
Ann Frances Wenzel	Assistant Secretary

DIRECTORS OR TRUSTEES

Gerry William Benusa	Jack Charles Salzwedel
David Clifford Holman	Daniel Robert Schultz
Daniel James Kelly	William Boyd Westrate

State of Wisconsin  
County of Dane

The officers of this reporting entity being duly sworn, each depose and say that they are the described officers of said reporting entity, and that on the reporting period stated above, all of the herein described assets were the absolute property of the said reporting entity, free and clear from any liens or claims thereon, except as herein stated, and that this statement, together with related exhibits, schedules and explanations therein contained, annexed or referred to, is a full and true statement of all the assets and liabilities and of the condition and affairs of the said reporting entity as of the reporting period stated above, and of its income and deductions therefrom for the period ended, and have been completed in accordance with the NAIC *Annual Statement Instructions* and *Accounting Practices and Procedures* manual except to the extent that: (1) state law may differ; or, (2) that state rules or regulations require differences in reporting not related to accounting practices and procedures, according to the best of their information, knowledge and belief, respectively. Furthermore, the scope of this attestation by the described officers also includes the related corresponding electronic filing with the NAIC, when required, that is an exact copy (except for formatting differences due to electronic filing) of the enclosed statement. The electronic filing may be requested by various regulators in lieu of or in addition to the enclosed statement.

Signature	Signature	Signature
Daniel R. Schultz	David C. Holman	Daniel J. Kelly
President and C.O.O.	Chief Legal Officer, Secretary	Chief Financial Officer, Treasurer

Subscribed and sworn to before me this    day of April, 2012

- a. Is this an original filing?    Yes[X]    No [ ]  
b. If no:    1. State the amendment number    \_\_\_\_\_  
              2. Date filed    \_\_\_\_\_  
              3. Number of pages attached    \_\_\_\_\_

ASSETS

		Current Statement Date			4
		1	2	3	
		Assets	Nonadmitted Assets	Net Admitted Assets (Cols. 1 - 2)	December 31 Prior Year Net Admitted Assets
1.	Bonds .....	6,518,514		6,518,514	6,522,921
2.	Stocks:				
2.1	Preferred stocks .....				
2.2	Common stocks .....				
3.	Mortgage loans on real estate:				
3.1	First liens .....				
3.2	Other than first liens .....				
4.	Real estate:				
4.1	Properties occupied by the company (less \$.....0 encumbrances) .....				
4.2	Properties held for the production of income (less \$.....0 encumbrances) .....				
4.3	Properties held for sale (less \$.....0 encumbrances) .....				
5.	Cash (\$.....1,050,730), cash equivalents (\$.....0) and short-term investments (\$.....231,124) .....	1,281,854		1,281,854	873,710
6.	Contract loans (including \$.....0 premium notes) .....				
7.	Derivatives .....				
8.	Other invested assets .....				
9.	Receivables for securities .....				1,806
10.	Securities lending reinvested collateral assets .....				
11.	Aggregate write-ins for invested assets .....				
12.	Subtotals, cash and invested assets (Lines 1 to 11) .....	7,800,368		7,800,368	7,398,437
13.	Title plants less \$.....0 charged off (for Title insurers only) .....				
14.	Investment income due and accrued .....	79,389		79,389	147,796
15.	Premiums and considerations:				
15.1	Uncollected premiums and agents' balances in the course of collection .....				
15.2	Deferred premiums, agents' balances and installments booked but deferred and not yet due (including \$.....0 earned but unbilled premiums) .....				
15.3	Accrued retrospective premiums .....				
16.	Reinsurance:				
16.1	Amounts recoverable from reinsurers .....	1,827,653		1,827,653	310,352
16.2	Funds held by or deposited with reinsured companies .....				
16.3	Other amounts receivable under reinsurance contracts .....				
17.	Amounts receivable relating to uninsured plans .....				
18.1	Current federal and foreign income tax recoverable and interest thereon .....				
18.2	Net deferred tax asset .....	21,256	21,256		
19.	Guaranty funds receivable or on deposit .....				
20.	Electronic data processing equipment and software .....				
21.	Furniture and equipment, including health care delivery assets (\$.....0) .....				
22.	Net adjustments in assets and liabilities due to foreign exchange rates .....				
23.	Receivables from parent, subsidiaries and affiliates .....	2,244,283		2,244,283	63,521
24.	Health care (\$.....0) and other amounts receivable .....				
25.	Aggregate write-ins for other than invested assets .....				
26.	Total assets excluding Separate Accounts, Segregated Accounts and Protected Cell Accounts (Lines 12 to 25) .....	11,972,949	21,256	11,951,693	7,920,106
27.	From Separate Accounts, Segregated Accounts and Protected Cell Accounts .....				
28.	Total (Lines 26 and 27) .....	11,972,949	21,256	11,951,693	7,920,106
DETAILS OF WRITE-INS					
1101.	.....				
1102.	.....				
1103.	.....				
1198.	Summary of remaining write-ins for Line 11 from overflow page .....				
1199.	TOTALS (Lines 1101 through 1103 plus 1198) (Line 11 above) .....				
2501.	.....				
2502.	.....				
2503.	.....				
2598.	Summary of remaining write-ins for Line 25 from overflow page .....				
2599.	TOTALS (Lines 2501 through 2503 plus 2598) (Line 25 above) .....				

LIABILITIES, SURPLUS AND OTHER FUNDS

		1	2
		Current	December 31
		Statement Date	Prior Year
1.	Losses (current accident year \$.....0) .....		
2.	Reinsurance payable on paid losses and loss adjustment expenses .....		
3.	Loss adjustment expenses .....		
4.	Commissions payable, contingent commissions and other similar charges .....		
5.	Other expenses (excluding taxes, licenses and fees) .....		
6.	Taxes, licenses and fees (excluding federal and foreign income taxes) .....		
7.1	Current federal and foreign income taxes (including \$.....0 on realized capital gains (losses)) .....		
7.2	Net deferred tax liability .....		
8.	Borrowed money \$.....0 and interest thereon \$.....0 .....		
9.	Unearned premiums (after deducting unearned premiums for ceded reinsurance of \$.....8,358,501 and including warranty reserves of \$.....0 and accrued accident and health experience rating refunds including \$.....0 for medical loss ratio rebate per the Public Health Service Act) .....		
10.	Advance premium .....	52,678	22,305
11.	Dividends declared and unpaid:		
11.1	Stockholders .....		
11.2	Policyholders .....		
12.	Ceded reinsurance premiums payable (net of ceding commissions) .....	427,454	(142,936)
13.	Funds held by company under reinsurance treaties .....		
14.	Amounts withheld or retained by company for account of others .....	(1,244)	(1,244)
15.	Remittances and items not allocated .....		
16.	Provision for reinsurance .....		
17.	Net adjustments in assets and liabilities due to foreign exchange rates .....		
18.	Drafts outstanding .....	1,312,823	542,791
19.	Payable to parent, subsidiaries and affiliates .....	3,142,248	545,407
20.	Derivatives .....		
21.	Payable for securities .....		
22.	Payable for securities lending .....		
23.	Liability for amounts held under uninsured plans .....		
24.	Capital notes \$.....0 and interest thereon \$.....0 .....		
25.	Aggregate write-ins for liabilities .....	43,869	45,178
26.	Total liabilities excluding protected cell liabilities (Lines 1 through 25) .....	4,977,828	1,011,501
27.	Protected cell liabilities .....		
28.	Total liabilities (Lines 26 and 27) .....	4,977,828	1,011,501
29.	Aggregate write-ins for special surplus funds .....		
30.	Common capital stock .....	1,000,000	1,000,000
31.	Preferred capital stock .....		
32.	Aggregate write-ins for other than special surplus funds .....		
33.	Surplus notes .....		
34.	Gross paid in and contributed surplus .....	1,824,806	1,824,806
35.	Unassigned funds (surplus) .....	4,149,059	4,083,799
36.	Less treasury stock, at cost:		
36.1	.....0 shares common (value included in Line 30 \$.....0) .....		
36.2	.....0 shares preferred (value included in Line 31 \$.....0) .....		
37.	Surplus as regards policyholders (Lines 29 to 35, less 36) .....	6,973,865	6,908,605
38.	Totals (Page 2, Line 28, Col. 3) .....	11,951,693	7,920,106
DETAILS OF WRITE-INS			
2501.	All Other Liabilities .....	43,869	45,178
2502.	.....		
2503.	.....		
2598.	Summary of remaining write-ins for Line 25 from overflow page .....		
2599.	TOTALS (Lines 2501 through 2503 plus 2598) (Line 25 above) .....	43,869	45,178
2901.	.....		
2902.	.....		
2903.	.....		
2998.	Summary of remaining write-ins for Line 29 from overflow page .....		
2999.	TOTALS (Lines 2901 through 2903 plus 2998) (Line 29 above) .....		
3201.	.....		
3202.	.....		
3203.	.....		
3298.	Summary of remaining write-ins for Line 32 from overflow page .....		
3299.	TOTALS (Lines 3201 through 3203 plus 3298) (Line 32 above) .....		

STATEMENT OF INCOME

		1	2	3
		Current Year to Date	Prior Year to Date	Prior Year Ended December 31
UNDERWRITING INCOME				
1.	Premiums earned			
1.1	Direct (written \$.....7,380,287)	6,134,686	4,976,371	21,497,816
1.2	Assumed (written \$.....0)			
1.3	Ceded (written \$.....7,380,287)	6,134,686	4,976,371	21,497,816
1.4	Net (written \$.....0)			
DEDUCTIONS:				
2.	Losses incurred (current accident year \$.....0)			
2.1	Direct	4,405,859	2,797,766	15,062,407
2.2	Assumed			
2.3	Ceded	4,405,859	2,797,766	15,062,407
2.4	Net			
3.	Loss adjustment expenses incurred			
4.	Other underwriting expenses incurred			
5.	Aggregate write-ins for underwriting deductions			
6.	Total underwriting deductions (Lines 2 through 5)			
7.	Net income of protected cells			
8.	Net underwriting gain or (loss) (Line 1 minus Line 6 + Line 7)			
INVESTMENT INCOME				
9.	Net investment income earned	68,570	59,957	234,798
10.	Net realized capital gains (losses) less capital gains tax of \$.....0			
11.	Net investment gain (loss) (Lines 9 + 10)	68,570	59,957	234,798
OTHER INCOME				
12.	Net gain or (loss) from agents' or premium balances charged off (amount recovered \$.....0 amount charged off \$.....0)			
13.	Finance and service charges not included in premiums			
14.	Aggregate write-ins for miscellaneous income			
15.	Total other income (Lines 12 through 14)			
16.	Net income before dividends to policyholders, after capital gains tax and before all other federal and foreign income taxes (Lines 8 + 11 + 15)	68,570	59,957	234,798
17.	Dividends to policyholders			
18.	Net income, after dividends to policyholders, after capital gains tax and before all other federal and foreign income taxes (Line 16 minus Line 17)	68,570	59,957	234,798
19.	Federal and foreign income taxes incurred	3,310	(21,101)	5,999
20.	Net income (Line 18 minus Line 19) (to Line 22)	65,260	81,058	228,799
CAPITAL AND SURPLUS ACCOUNT				
21.	Surplus as regards policyholders, December 31 prior year	6,908,605	6,679,806	6,679,806
22.	Net income (from Line 20)	65,260	81,058	228,799
23.	Net transfers (to) or from Protected Cell accounts			
24.	Change in net unrealized capital gains or (losses) less capital gains tax of \$.....0			
25.	Change in net unrealized foreign exchange capital gain (loss)			
26.	Change in net deferred income tax	152	(24,483)	(3,492)
27.	Change in nonadmitted assets	(152)	24,596	3,492
28.	Change in provision for reinsurance			
29.	Change in surplus notes			
30.	Surplus (contributed to) withdrawn from Protected cells			
31.	Cumulative effect of changes in accounting principles			
32.	Capital changes:			
32.1	Paid in			
32.2	Transferred from surplus (Stock Dividend)			
32.3	Transferred to surplus			
33.	Surplus adjustments:			
33.1	Paid in			
33.2	Transferred to capital (Stock Dividend)			
33.3	Transferred from capital			
34.	Net remittances from or (to) Home Office			
35.	Dividends to stockholders			
36.	Change in treasury stock			
37.	Aggregate write-ins for gains and losses in surplus			
38.	Change in surplus as regards policyholders (Lines 22 through 37)	65,260	81,171	228,799
39.	Surplus as regards policyholders, as of statement date (Lines 21 plus 38)	6,973,865	6,760,977	6,908,605
DETAILS OF WRITE-INS				
0501.				
0502.				
0503.				
0598.	Summary of remaining write-ins for Line 5 from overflow page			
0599.	TOTALS (Lines 0501 through 0503 plus 0598) (Line 5 above)			
1401.				
1402.				
1403.				
1498.	Summary of remaining write-ins for Line 14 from overflow page			
1499.	TOTALS (Lines 1401 through 1403 plus 1498) (Line 14 above)			
3701.				
3702.				
3703.				
3798.	Summary of remaining write-ins for Line 37 from overflow page			
3799.	TOTALS (Lines 3701 through 3703 plus 3798) (Line 37 above)			

CASH FLOW

		1	2	3
		Current	Prior	Prior
		Year	Year	Year Ended
		To Date	To Date	December 31
Cash from Operations				
1.	Premiums collected net of reinsurance .....	600,763	379,982	263,558
2.	Net investment income .....	141,382	120,779	222,704
3.	Miscellaneous income .....			
4.	Total (Lines 1 to 3) .....	742,145	500,761	486,262
5.	Benefit and loss related payments .....	1,517,299	698,251	478,780
6.	Net transfers to Separate Accounts, Segregated Accounts and Protected Cell Accounts .....			
7.	Commissions, expenses paid and aggregate write-ins for deductions .....			
8.	Dividends paid to policyholders .....			
9.	Federal and foreign income taxes paid (recovered) net of \$.....0 tax on capital gains (losses) .....	3,310	(20,988)	5,999
10.	Total (Lines 5 through 9) .....	1,520,609	677,263	484,779
11.	Net cash from operations (Line 4 minus Line 10) .....	(778,464)	(176,502)	1,483
Cash from Investments				
12.	Proceeds from investments sold, matured or repaid:			
12.1	Bonds .....			
12.2	Stocks .....			
12.3	Mortgage loans .....			
12.4	Real estate .....			
12.5	Other invested assets .....			
12.6	Net gains or (losses) on cash, cash equivalents and short-term investments .....			
12.7	Miscellaneous proceeds .....	1,806	1,739	61
12.8	Total investment proceeds (Lines 12.1 to 12.7) .....	1,806	1,739	61
13.	Cost of investments acquired (long-term only):			
13.1	Bonds .....			1,101,400
13.2	Stocks .....			
13.3	Mortgage loans .....			
13.4	Real estate .....			
13.5	Other invested assets .....			
13.6	Miscellaneous applications .....			
13.7	Total investments acquired (Lines 13.1 to 13.6) .....			1,101,400
14.	Net increase (or decrease) in contract loans and premium notes .....			
15.	Net cash from investments (Line 12.8 minus Line 13.7 and Line 14) .....	1,806	1,739	(1,101,339)
Cash from Financing and Miscellaneous Sources				
16.	Cash provided (applied):			
16.1	Surplus notes, capital notes .....			
16.2	Capital and paid in surplus, less treasury stock .....			
16.3	Borrowed funds .....			
16.4	Net deposits on deposit-type contracts and other insurance liabilities .....			
16.5	Dividends to stockholders .....			
16.6	Other cash provided (applied) .....	1,184,802	1,057,632	(203,131)
17.	Net cash from financing and miscellaneous sources (Lines 16.1 through 16.4 minus Line 16.5 plus Line 16.6) .....	1,184,802	1,057,632	(203,131)
RECONCILIATION OF CASH, CASH EQUIVALENTS AND SHORT-TERM INVESTMENTS				
18.	Net change in cash, cash equivalents and short-term investments (Line 11, plus Lines 15 and 17) .....	408,144	882,869	(1,302,987)
19.	Cash, cash equivalents and short-term investments:			
19.1	Beginning of year .....	873,710	2,176,697	2,176,697
19.2	End of period (Line 18 plus Line 19.1) .....	1,281,854	3,059,566	873,710

Note: Supplemental Disclosures of Cash Flow Information for Non-Cash Transactions:

20.0001				
---------	--	--	--	--

# Notes to Financial Statement

## 1. SUMMARY OF SIGNIFICANT ACCOUNTING POLICIES

- A. American Standard Insurance Company of Ohio (the Company) prepares its statutory financial statements in accordance with accounting practices prescribed or permitted by the Office of the Commissioner of Insurance of the State of Ohio (OCI). Prescribed statutory accounting practices include the National Association of Insurance Commissioners' (NAIC) "Accounting Practices and Procedures Manual", version effective March 1, 2012, as well as state laws, regulations, and general administrative rules applicable to all insurance enterprises domiciled in a particular state. In addition, the OCI has a right to permit other specific practices that may deviate from prescribed practices. No permitted differences in statutory accounting practices between the OCI and the NAIC are used in the preparation of these statutory financial statements
- B. The preparation of financial statements in conformity with the Annual Statement Instructions and Accounting Practices and Procedures manual requires management to make estimates and assumptions that affect the reported amounts of assets, liabilities, revenues and expenses. It also requires estimates in the disclosure of contingent assets and liabilities. Actual results could differ from these estimates.
- C. Premiums, reserves and expenses are accounted for in accordance with the NAIC Accounting Practices and Procedures manual, subject to deviations prescribed or permitted by the State of Ohio as described above.

In addition, the Company uses the following accounting policies:

- (1) Investments in short-term bonds rated "1" (highest quality), or "2" (high quality) by the Securities Valuation Office ("SVO") of the NAIC are reported in the financial statements at amortized cost. Bonds rated "3" (medium quality), "4" (low quality), "5" (lower quality), or "6" (lowest quality) by the SVO are reported at the lower of amortized cost or fair value. The interest method is used to amortize any purchase premium or discount, including estimates of future prepayments obtained from independent sources. Money Market Mutual Funds are recorded at amortized cost, which approximates fair market value.
- (2) Investments in bonds rated "1" (highest quality), or "2" (high quality) by the Securities Valuation Office ("SVO") of the NAIC are reported in the financial statements at amortized cost. Bonds rated "3" (medium quality), "4" (low quality), "5" (lower quality), or "6" (lowest quality) by the SVO are reported at the lower of amortized cost or fair value. Investments in commercial mortgage backed securities (CMBS) and non-agency residential mortgage backed securities (RMBS) utilize a two step process to obtain a valuation and rating in accordance with SSAP 43R, *Loan Backed and Structured Securities*. The first step derives a rating for valuation by comparing the current amortized cost to the modeled range of values assigned to the six NAIC designations for each security. This determines whether the securities are stated at the lower of amortized cost or fair value per the above rules. The second step utilizes the same modeled range of values to derive a rating for reporting using the current carrying value as determined in the first step.

Ratings and valuations for investments in asset backed securities that are otherwise rated by an accredited ratings organization (ARO) or the SVO are calculated using a two step process. The first step derives a rating for valuation based on the ARO or SVO rating and the NAIC model valuation table. The second step utilizes the model valuation table to derive a rating for reporting using the current carrying value as determined in the first step. Securities whose initial rating is NAIC 1 or NAIC 6 in step one are not further modified by step two. The interest method is used to amortize any purchase premium or discount, including estimates of future prepayments obtained from independent sources.

- (3) The Company holds no common stocks.
- (4) The Company holds no preferred stocks.
- (5) The Company holds no mortgage loans.
- (6) The Company holds no loan-backed securities.
- (7) Investments in subsidiary, controlled and affiliated companies are stated as follows: The Company is wholly owned by AMFAM Inc., a holding company, which is wholly owned by American Family Mutual Insurance Company (AFMIC).
- (8) The Company has no investments in joint ventures, partnerships and limited liability.
- (9) The Company holds no derivatives.
- (10) The Company does anticipate investment income as a factor in premium deficiency calculations.
- (11) Unpaid losses and loss adjustment expenses include an amount determined from individual case estimates and loss reports and an amount, based on past experience, for losses incurred but not reported. Such liabilities are necessarily based on assumptions and estimates and while management believes the amounts are adequate, the ultimate liability may be in excess of or less than the amount provided. The methods for making such estimates are continually reviewed and any adjustments are reflected in the period determined.
- (12) The Company has not modified its capitalization policy during the current reporting period.
- (13) The Company does not have pharmaceutical rebate receivables.

## 2. ACCOUNTING CHANGES AND CORRECTIONS OF ERRORS

No Change

## 3. BUSINESS COMBINATIONS AND GOODWILL

No Change

4. DISCONTINUED OPERATIONS

No Change

5. INVESTMENTS

A. B. & C. No Change

D Loan-Backed Securities

(1) Not applicable

(2) Not applicable

(3) Not applicable

(4) Not applicable

(5) Not applicable

E. F. & G. No Change

6. JOINT VENTURES, PARTNERSHIPS AND LIMITED LIABILITY COMPANIES

No Change

7. INVESTMENT INCOME

No Change

8. DERIVATIVE INSTRUMENTS

No Change

9. INCOME TAXES

No Change

10. INFORMATION CONCERNING PARENT, SUBSIDIARIES AND AFFILIATES

A. B. & C. No Change

D. As of March 31, 2012, The Company reported \$4,071,936 due from affiliates, and \$3,569,702 due to affiliates. Terms of the settlement require that these amounts be settled within 30 days.

E. – L. No Change

11. DEBT

No Change

12. RETIREMENT PLANS, DEFERRED COMPENSATION, POSTEMPLOYMENT BENEFITS AND COMPENSATED ABSENCES AND OTHER POSTRETIREMENT PLANS

No Change

13. CAPITAL AND SURPLUS, DIVIDEND RESTRICTIONS AND QUASI-REORGANIZATIONS

(1) - (9) No Change

(10) The portion of unassigned funds (surplus) represented or (reduced) by cumulative gross unrealized gains (losses) was \$0.

(11) - (13)No Change

14. CONTINGENCIES

No Change

15. LEASES

No Change

16. INFORMATION ABOUT FINANCIAL INSTRUMENTS WITH OFF-BALANCE SHEET RISK AND FINANCIAL INSTRUMENTS WITH CONCENTRATIONS OF CREDIT RISK

No Change

17. SALE, TRANSFER AND SERVICING OF FINANCIAL ASSETS AND EXTINGUISHMENT OF LIABILITIES

- A. Transfer of Receivables reported as sales – The proceeds from the transfer for the quarter ending 3/31/2012 and 3/31/2011 are \$4,817,291 and \$5,557,818, respectively. There is no gain or loss from this transaction.
- B. Transfer and servicing of Financial Assets-Not Applicable
- C. Wash Sales-Not Applicable

18. GAIN OR LOSS TO THE REPORTING ENTITY FROM UNINSURED A&H PLANS AND THE UNINSURED PORTION OF PARTIALLY INSURED PLANS

No Change

19. DIRECT PREMIUM WRITTEN/PRODUCED BY MANAGING GENERAL AGENTS/THIRD PARTY ADMINISTRATORS

No Change

20. FAIR VALUE MEASUREMENTS

A. Valuation, Techniques, and Inputs

- 1. The following summarizes the Company’s financial assets measured and reported at fair value as of March 31.

	Quoted Prices in Active Markets For Identical Assets (Level 1)	Significant Other Observable Inputs (Level 2)	Significant Unobservable Inputs (Level 3)	Balance as of March 31, 2012
Short-term Investments,	\$ 231,124	\$ 0	\$ 0	\$ 231,124
Total Fair Value Financial Assets	\$ 231,124	\$ 0	\$ 0	\$ 231,124

There were no material transfers between Levels 1 and 2 as of March 31.

- 2. The Company held no Level 3 assets as of March 31.
- 3. There were no material transfers into or out of Level 3 as of March 31.
- 4. The Financial assets and financial liabilities recorded on the Balance Sheet at fair value are categorized based on the reliability of inputs to the valuation techniques as follows:

*Level 1* Financial assets and financial liabilities whose values are based on unadjusted quoted prices for identical assets or liabilities in an active market that the Company can access.

*Level 2* Financial assets and financial liabilities whose values are based on the following:  
Quoted prices for similar assets or liabilities in active markets;  
Quoted prices for identical or similar assets or liabilities in non-active markets; or  
Valuation models whose inputs are observable, directly or indirectly, for substantially the full term of the asset or liability.

*Level 3* Financial assets and financial liabilities whose values are based on prices or valuation techniques that require inputs that are both unobservable and significant to the overall fair value measurement. These inputs may reflect the Company’s estimates of the assumptions that market participants would use in valuing the financial assets and financial liabilities.



The availability of observable inputs varies by instrument. In situations where fair value is based on internally developed pricing models or inputs that are unobservable in the market, the determination of fair value requires more judgment. In many instances, inputs used to measure fair value fall into different levels of the fair value hierarchy. In those instances, for disclosure purposes, the level in the fair value hierarchy within which the fair value measurement is categorized is determined based on the lowest level input that is significant to the fair value measurement in its entirety.

The fair value guidance establishes a hierarchy for inputs used in determining fair value that maximize the use of observable inputs and minimizes the use of unobservable inputs by requiring that observable inputs be used when available.

Fair value is a market-based measure considered from the perspective of a market participant who owns an asset or owes a liability. Accordingly, when market observable data is not readily available, the Company's own assumptions are set to reflect those that market participants would be presumed to use in pricing the asset or liability at the measurement date. The Company uses prices and inputs that are current as of the measurement date, including during periods of market disruption. In periods of market disruption, the ability to observe prices and inputs may be reduced for many instruments. This condition could cause an instrument to be reclassified from Level 1 to Level 2 or from Level 2 to Level 3.

When available, the Company uses the market approach to estimate the fair value of its financial instruments, which is based on quoted prices in active markets that are readily and regularly available. Generally, these are the most liquid of the Company's holdings and valuation of these securities does not involve management judgment. Matrix pricing and other similar techniques are other examples of the market approach.

When quoted prices in active markets are not available, the Company uses the income approach, or a combination of the market and income approaches, to estimate the fair value of its financial instruments. The income approach involves using discounted cash flow and other standard valuation methodologies. The inputs in applying these market standard valuation methodologies include, but are not limited to interest rates, benchmark yields, bid/ask spreads, dealer quotes, liquidity, term to maturity, estimated future cash flows, credit risk and default projections, collateral performance, deal and tranche attributes, and general market data.

The following valuation techniques and inputs were used to estimate the fair value of each class of significant financial instruments:

**Level 1 Measurements**

Short-term Investments: Comprise actively traded money market funds that have daily quoted net asset values for identical assets that the Company can access.

The Company held no Level 2 or Level 3 fair value securities as of March 31, 2012.

B. Not Required

C. Valuation, Methods, and Assumptions

1. The following summarizes the fair value of the Company's financial assets as of March 31.

	Aggregate Fair Value	Admitted Assets	(Level 1)	(Level 2)	(Level 3)
Bonds	\$ 6,937,031	\$ 6,518,514	\$ 407,341	\$ 6,529,690	\$ 0
Short-term Investments	231,124	231,124	231,124	0	0
Total Financial Assets	\$ 7,168,155	\$ 6,749,638	\$ 638,465	\$ 6,529,690	\$ 0

2. The following valuation methods and assumptions were used to measure the fair values of each type of financial asset and financial liability:

**Notes to Financial Statement**

Bonds: The fair value of Level 1 bonds, consisting of U.S. Treasury Notes, is determined using unadjusted quoted prices in an active market. Level 2 bonds are valued using leading, nationally recognized providers of market data and analytics to price the majority of fixed income securities using the market and income approaches. When available, recent trades of identical or similar assets are used to price these securities. However, because many fixed income securities do not actively trade on a daily basis, pricing models are often used to determine security prices. The pricing models discount future cash flows at estimated market interest rates. These rates are derived by calculating the appropriate spreads over comparable U.S. Treasury securities based on credit quality, industry, and structure of the asset. Observable inputs used by the models include benchmark yields, bid/ask spreads, dealer quotes, liquidity, term to maturity, credit risk and default projections, collateral performance, deal and tranche attributes, and general market data. Inputs may vary depending on type of security.

Short-term investments: Valuation methods and assumptions are discussed in Note 20.A.4.

D. Not Applicable

**21. OTHER ITEMS**

A.- B. No Change

C. Other Disclosures

Assets in the amount of \$86,737 and \$86,806 at March 31, 2012 and December 31, 2011, respectively, were on deposit with government authorities or trustees as required by law.

D.- G. No Change

**22. EVENTS SUBSEQUENT**

No Change

**23. REINSURANCE**

A & B. No Change

C. Reinsurance Assumed And Ceded

1. The following table summarizes ceded and assumed unearned premiums and the related commission equity at March 31, 2012:

	ASSUMED		CEDED		ASSUMED LESS CEDED	
	Unearned	Commission	Unearned	Commission	Unearned	Commission
	Premiums	Equity	Premiums	Equity	Premiums	Equity
a. Affiliated	0	0	8,358,501	918,607	(8,358,501)	(918,607)
b. All Other	0	0	0	0	0	0
c. Total	0	0	8,358,501	918,607	(8,358,501)	(918,607)
d. Direct Unearned Premium Reserve			8,358,501			

2. Certain agency agreements and ceded reinsurance contracts provide for additional or return commissions based on the actual loss experience of the produced or reinsured business. Amounts accrued at March 31, 2012 are as follows:

DESCRIPTION	DIRECT	ASSUMED	CEDED	NET
a. Contingent Commissions	0	0	0	0
b. Sliding Scale Adjustments	0	0	0	0
c. Other Profit Commissions	0	0	0	0
d. Totals	0	0	0	0

3. Not Applicable.

D.-H. No Change

**24. RETROSPECTIVELY RATED CONTRACTS & CONTRACTS SUBJECT TO REDETERMINATION**

No Change

**25. CHANGE IN INCURRED LOSSES AND LOSS ADJUSTMENT EXPENSES**

No Change

**26. INTERCOMPANY POOLING ARRANGEMENTS**

No Change

**27. STRUCTURED SETTLEMENTS**

No Change

**28. HEALTH CARE RECEIVABLES**

No Change

**29. PARTICIPATING POLICIES**

No Change

**30. PREMIUM DEFICIENCY RESERVES**

No Change

**31. HIGH DEDUCTIBLES**

No Change

**32. DISCOUNTING OF LIABILITIES FOR UNPAID LOSSES AND UNPAID LOSS ADJUSTMENT EXPENSES**

No Change

**33. ASBESTOS/ENVIRONMENTAL RESERVES**

No Change

**34. SUBSCRIBERS SAVINGS ACCOUNT**

No Change

**35. MULTIPLE PERIL CROP INSURANCE**

No Change

**36. FINANCIAL GUARANTY INSURANCE**

No Change

GENERAL INTERROGATORIES

PART 1 - COMMON INTERROGATORIES  
GENERAL

- 1.1 Did the reporting entity experience any material transactions requiring the filing of Disclosure of Material Transactions with the State of Domicile, as required by the Model Act?

Yes[ ] No[X]
- 1.2 If yes, has the report been filed with the domiciliary state?

Yes[ ] No[ ] N/A[X]
- 2.1 Has any change been made during the year of this statement in the charter, by-laws, articles of incorporation, or deed of settlement of the reporting entity?

Yes[ ] No[X]
- 2.2 If yes, date of change:
3. Have there been any substantial changes in the organizational chart since the prior quarter end?  
If yes, complete the Schedule Y - Part 1 - organizational chart.

Yes[ ] No[X]
- 4.1 Has the reporting entity been a party to a merger or consolidation during the period covered by this statement?

Yes[ ] No[X]
- 4.2 If yes, provide the name of entity, NAIC Company Code, and state of domicile (use two letter state abbreviation) for any entity that has ceased to exist as a result of the merger or consolidation.

1 Name of Entity	2 NAIC Company Code	3 State of Domicile

5. If the reporting entity is subject to a management agreement, including third-party administrator(s), managing general agent(s), attorney-in-fact, or similar agreement, have there been any significant changes regarding the terms of the agreement or principals involved?  
If yes, attach an explanation.

Yes[ ] No[ ] N/A[X]
- 6.1 State as of what date the latest financial examination of the reporting entity was made or is being made.

12/31/2006
- 6.2 State the as of date that the latest financial examination report became available from either the state of domicile or the reporting entity. This date should be the date of the examined balance sheet and not the date the report was completed or released.

12/31/2006
- 6.3 State as of what date the latest financial examination report became available to other states or the public from either the state of domicile or the reporting entity. This is the release date or completion date of the examination report and not the date of the examination (balance sheet date).

01/09/2008
- 6.4 By what department or departments?  
Ohio Department of Insurance
- 6.5 Have all financial statement adjustments within the latest financial examination report been accounted for in a subsequent financial statement filed with Departments?

Yes[ ] No[ ] N/A[X]
- 6.6 Have all of the recommendations within the latest financial examination report been complied with?

Yes[X] No[ ] N/A[ ]
- 7.1 Has this reporting entity had any Certificates of Authority, licenses or registrations (including corporate registration, if applicable) suspended or revoked by any governmental entity during the reporting period?

Yes[ ] No[X]
- 7.2 If yes, give full information
- 8.1 Is the company a subsidiary of a bank holding company regulated by the Federal Reserve Board?

Yes[ ] No[X]
- 8.2 If response to 8.1 is yes, please identify the name of the bank holding company.
- 8.3 Is the company affiliated with one or more banks, thrifts or securities firms?

Yes[ ] No[X]
- 8.4 If response to 8.3 is yes, please provide below the names and location (city and state of the main office) of any affiliates regulated by a federal regulatory services agency [i.e. the Federal Reserve Board (FRB), the Office of the Comptroller of the Currency (OCC), the Federal Deposit Insurance Corporation (FDIC) and the Securities Exchange Commission (SEC)] and identify the affiliate's primary federal regulator.]

1 Affiliate Name	2 Location (City, State)	3 FRB	4 OCC	5 FDIC	6 SEC
		Yes[ ] No[X]	Yes[ ] No[X]	Yes[ ] No[X]	Yes[ ] No[X]

- 9.1 Are the senior officers (principal executive officer, principal financial officer, principal accounting officer or controller, or persons performing similar functions) of the reporting entity subject to a code of ethics, which includes the following standards?  
(a) Honest and ethical conduct, including the ethical handling of actual or apparent conflicts of interest between personal and professional relationships;  
(b) Full, fair, accurate, timely and understandable disclosure in the periodic reports required to be filed by the reporting entity;  
(c) Compliance with applicable governmental laws, rules and regulations;  
(d) The prompt internal reporting of violations to an appropriate person or persons identified in the code; and  
(e) Accountability for adherence to the code.

Yes[X] No[ ]
- 9.11 If the response to 9.1 is No, please explain:
- 9.2 Has the code of ethics for senior managers been amended?

Yes[ ] No[X]
- 9.21 If the response to 9.2 is Yes, provide information related to amendment(s).
- 9.3 Have any provisions of the code of ethics been waived for any of the specified officers?

Yes[ ] No[X]
- 9.31 If the response to 9.3 is Yes, provide the nature of any waiver(s).

FINANCIAL

- 10.1 Does the reporting entity report any amounts due from parent, subsidiaries or affiliates on Page 2 of this statement?

Yes[X] No[ ]
- 10.2 If yes, indicate any amounts receivable from parent included in the Page 2 amount:

\$..... 4,071,936

INVESTMENT

- 11.1 Were any of the stocks, bonds, or other assets of the reporting entity loaned, placed under option agreement, or otherwise made available for use by another person? (Exclude securities under securities lending agreements.)

Yes[ ] No[X]
- 11.2 If yes, give full and complete information relating thereto:
12. Amount of real estate and mortgages held in other invested assets in Schedule BA:

\$..... 0
13. Amount of real estate and mortgages held in short-term investments:

\$..... 0
- 14.1 Does the reporting entity have any investments in parent, subsidiaries and affiliates?

Yes[ ] No[X]
- 14.2 If yes, please complete the following:

**GENERAL INTERROGATORIES (Continued)**

		1	2
		Prior Year-End Book/Adjusted Carrying Value	Current Quarter Book/Adjusted Carrying Value
14.21	Bonds .....		
14.22	Preferred Stock .....		
14.23	Common Stock .....		
14.24	Short-Term Investments .....		
14.25	Mortgages Loans on Real Estate .....		
14.26	All Other .....		
14.27	Total Investment in Parent, Subsidiaries and Affiliates (Subtotal Lines 14.21 to 14.26) .....		
14.28	Total Investment in Parent included in Lines 14.21 to 14.26 above .....		

- 15.1 Has the reporting entity entered into any hedging transactions reported on Schedule DB?

15.2 If yes, has a comprehensive description of the hedging program been made available to the domiciliary state?  
If no, attach a description with this statement.
- Yes[ ] No[X]

Yes[ ] No[ ] N/A[X]
16. Excluding items in Schedule E - Part 3 - Special Deposits, real estate, mortgage loans and investments held physically in the reporting entity's offices, vaults or safety deposit boxes, were all stocks, bonds and other securities, owned throughout the current year held pursuant to a custodial agreement with a qualified bank or trust company in accordance with Section 1, III - General Examination Considerations, F. Outsourcing of Critical Functions, Custodial or Safekeeping Agreements of the NAIC Financial Condition Examiners Handbook?

16.1 For all agreements that comply with the requirements of the NAIC Financial Condition Examiners Handbook, complete the following:
- Yes[X] No[ ]

1	2
Name of Custodian(s)	Custodian Address
US Bank .....	777 E. Wisconsin Ave, Milwaukee, WI 53202 .....

- 16.2 For all agreements that do not comply with the requirements of the NAIC Financial Condition Examiners Handbook, provide the name, location and a complete explanation:

1	2	3
Name(s)	Location(s)	Complete Explanation(s)
.....	.....	.....

- 16.3 Have there been any changes, including name changes, in the custodian(s) identified in 16.1 during the current quarter?

16.4 If yes, give full and complete information relating thereto:
- Yes[ ] No[X]

1	2	3	4
Old Custodian	New Custodian	Date of Change	Reason
.....	.....	.....	.....

- 16.5 Identify all investment advisors, brokers/dealers or individuals acting on behalf of broker/dealers that have access to the investment accounts, handle securities and have authority to make investments on behalf of the reporting entity:

1	2	3
Central Registration Depository	Name(s)	Address
.....	.....	.....

- 17.1 Have all the filing requirements of the Purposes and Procedures Manual of the NAIC Securities Valuation Office been followed?

17.2 If no, list exceptions:
- Yes[X] No[ ]

GENERAL INTERROGATORIES

PART 2 - PROPERTY & CASUALTY INTERROGATORIES

1. If the reporting entity is a member of a pooling arrangement, did the agreement or the reporting entity's participation change?  
If yes, attach an explanation.

Yes[ ] No[ ] N/A[X]
2. Has the reporting entity reinsured any risk with any other reporting entity and agreed to release such entity from liability, in whole or in part, from any loss that may occur on the risk, or portion thereof, reinsured?  
If yes, attach an explanation.

Yes[ ] No[X]
- 3.1 Have any of the reporting entity's primary reinsurance contracts been canceled?

Yes[ ] No[X]
- 3.2 If yes, give full and complete information thereto
- 4.1 Are any of the liabilities for unpaid losses and loss adjustment expenses other than certain workers' compensation tabular reserves (see annual statement instructions pertaining to disclosure of discounting for definition of "tabular reserves"), discounted at a rate of interest greater than zero?

Yes[ ] No[X]
- 4.2 If yes, complete the following schedule:

1  Line of Business	2  Maximum Interest	3  Discount Rate	TOTAL DISCOUNT				DISCOUNT TAKEN DURING PERIOD			
			4  Unpaid Losses	5  Unpaid LAE	6  IBNR	7  TOTAL	8  Unpaid Losses	9  Unpaid LAE	10  IBNR	11  TOTAL
04.2999 Total .....			.....	.....	.....	.....	.....	.....	.....	.....

5. Operating Percentages:

5.1 A&H loss percent

5.2 A&H cost containment percent

5.3 A&H expense percent excluding cost containment expenses

.....0.000%

.....0.000%

.....0.000%
- 6.1 Do you act as a custodian for health savings accounts?

Yes[ ] No[X]
- 6.2 If yes, please provide the amount of custodial funds held as of the reporting date.

\$.....0
- 6.3 Do you act as an administrator for health savings accounts?

Yes[ ] No[X]
- 6.4 If yes, please provide the balance of the funds administered as of the reporting date.

\$.....0

**SCHEDULE F - CEDED REINSURANCE**  
**Showing all new reinsurers - Current Year to Date**

1 NAIC Company Code	2 Federal ID Number	3 Name of Reinsurer	4 Domiciliary Jurisdiction	5 Is Insurer Authorized? (Yes or No)
		N O N E		

**SCHEDULE T - EXHIBIT OF PREMIUMS WRITTEN**  
**Current Year to Date - Allocated by States and Territories**

	1	Direct Premiums Written		Direct Losses Paid (Deducting Salvage)		Direct Losses Unpaid	
		2	3	4	5	6	7
States, Etc.	Active Status	Current Year To Date	Prior Year To Date	Current Year To Date	Prior Year To Date	Current Year To Date	Prior Year To Date
1. Alabama (AL) .....	N						
2. Alaska (AK) .....	N						
3. Arizona (AZ) .....	N						
4. Arkansas (AR) .....	N						
5. California (CA) .....	N						
6. Colorado (CO) .....	N						
7. Connecticut (CT) .....	N						
8. Delaware (DE) .....	N						
9. District of Columbia (DC) .....	N						
10. Florida (FL) .....	N						
11. Georgia (GA) .....	L	2,287,750	1,164,102	1,129,998	423,267	2,616,136	758,048
12. Hawaii (HI) .....	N						
13. Idaho (ID) .....	N						
14. Illinois (IL) .....	N						
15. Indiana (IN) .....	N						
16. Iowa (IA) .....	N						
17. Kansas (KS) .....	N						
18. Kentucky (KY) .....	N						
19. Louisiana (LA) .....	N						
20. Maine (ME) .....	N						
21. Maryland (MD) .....	N						
22. Massachusetts (MA) .....	N						
23. Michigan (MI) .....	N						
24. Minnesota (MN) .....	N						
25. Mississippi (MS) .....	N						
26. Missouri (MO) .....	N						
27. Montana (MT) .....	N						
28. Nebraska (NE) .....	N						
29. Nevada (NV) .....	N						
30. New Hampshire (NH) .....	N						
31. New Jersey (NJ) .....	N						
32. New Mexico (NM) .....	N						
33. New York (NY) .....	N						
34. North Carolina (NC) .....	N						
35. North Dakota (ND) .....	N						
36. Ohio (OH) .....	L	5,092,537	4,654,330	3,153,650	2,746,968	8,088,783	7,339,461
37. Oklahoma (OK) .....	N						
38. Oregon (OR) .....	N						
39. Pennsylvania (PA) .....	N						
40. Rhode Island (RI) .....	N						
41. South Carolina (SC) .....	N						
42. South Dakota (SD) .....	N						
43. Tennessee (TN) .....	N						
44. Texas (TX) .....	N						
45. Utah (UT) .....	N						
46. Vermont (VT) .....	N						
47. Virginia (VA) .....	N						
48. Washington (WA) .....	N						
49. West Virginia (WV) .....	N						
50. Wisconsin (WI) .....	N						
51. Wyoming (WY) .....	N						
52. American Samoa (AS) .....	N						
53. Guam (GU) .....	N						
54. Puerto Rico (PR) .....	N						
55. U.S. Virgin Islands (VI) .....	N						
56. Northern Mariana Islands (MP) .....	N						
57. Canada (CN) .....	N						
58. Aggregate other alien (OT) .....	X X X						
59. Totals .....	(a) 2	7,380,287	5,818,432	4,283,648	3,170,235	10,704,919	8,097,509

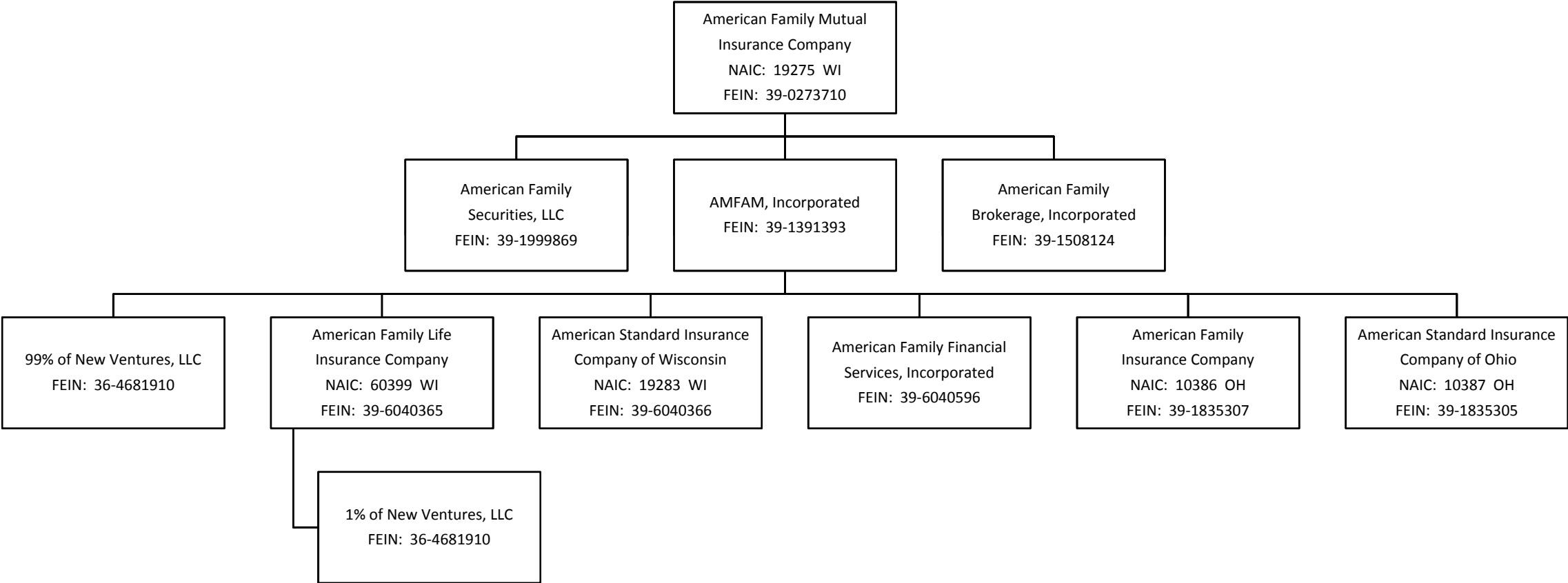
DETAILS OF WRITE-INS							
5801. write-in description 1 for line 58 .....	X X X						
5802. write-in description 2 for line 58 .....	X X X						
5803. write-in description 3 for line 58 .....	X X X						
5898. Summary of remaining write-ins for Line 58 from overflow page .....	X X X						
5899. TOTALS (Lines 5801 through 5803 plus 5898) (Line 58 above) .....	X X X						

(L) Licensed or Chartered - Licensed Insurance Carrier or Domiciled RRG; (R) Registered - Non-domiciled RRGs; (Q) Qualified - Qualified or Accredited Reinsurer; (E) Eligible - Reporting Entities eligible or approved to write Surplus Lines in the state; (N) None of the above - Not allowed to write business in the state.

(a) Insert the number of L responses except for Canada and Other Alien.



**SCHEDULE Y - INFORMATION CONCERNING ACTIVITIES OF INSURER**  
**MEMBERS OF A HOLDING COMPANY GROUP**  
**PART 1 - ORGANIZATIONAL CHART**



**SCHEDULE Y**

**PART 1A - DETAIL OF INSURANCE HOLDING COMPANY SYSTEM**

1	2	3	4	5	6	7	8	9	10	11	12	13	14	15
Group Code	Group Name	NAIC Comp- any Code	Federal ID Number	FEDERAL RSSD	CIK	Name of Securities Exchange if Publicly Traded (U.S. or International)	Name of Parent Subsidiaries or Affiliates	Domic- iliary Loca- tion	Relation- ship to Report- ing Entity	Directly Controlled by (Name of Entity / Person)	Type of Control (Ownership, Board, Management, Attorney-in-Fact, Influence, Other)	If Control is Ownership Provide Percentage	Ultimate Controlling Entity(ies) / Person(s)	*
473 .....	American Family Insurance Group .....	19275	39-0273710 .....	.....	.....	.....	American Family Mutual Insurance Company .....	WI .....	.. UIP ..	American Family Mutual Insurance Company - Board of Directors .....	Board of Directors .....	.....	American Family Mutual Insurance Company - Board of Directors .....	.....
.....	.....	0 .....	39-1999869 .....	.....	.....	.....	American Family Securities, LLC .....	WI .....	.. NIA ..	American Family Mutual Insurance Company .....	Ownership .....	100.0	American Family Mutual Insurance Company .....	.....
.....	.....	0 .....	39-1508124 .....	.....	.....	.....	American Family Brokerage, Inc. ....	WI .....	.. NIA ..	American Family Mutual Insurance Company .....	Ownership .....	100.0	American Family Mutual Insurance Company .....	.....
.....	.....	0 .....	39-1391393 .....	.....	.....	.....	AMFAM, Inc. ....	WI .....	.. UDP ..	American Family Mutual Insurance Company .....	Ownership .....	100.0	American Family Mutual Insurance Company .....	.....
473 .....	American Family Insurance Group .....	19283	39-6040366 .....	.....	.....	.....	American Standard Insurance Co. of WI .....	WI .....	.. IA ...	AMFAM, Inc. ....	Ownership .....	100.0	American Family Mutual Insurance Company .....	.....
473 .....	American Family Insurance Group .....	10386	39-1835307 .....	.....	.....	.....	American Family Insurance Company .....	OH .....	.. IA ...	AMFAM, Inc. ....	Ownership .....	100.0	American Family Mutual Insurance Company .....	.....
473 .....	American Family Insurance Group .....	10387	39-1835305 .....	.....	.....	.....	American Standard Insurance Co. of OH .....	OH .....	.. OTH ..	AMFAM, Inc. ....	Ownership .....	100.0	American Family Mutual Insurance Company .....	.....
473 .....	American Family Insurance Group .....	60399	39-6040365 .....	.....	.....	.....	American Family Life Insurance Co. ....	WI .....	.. IA ...	AMFAM, Inc. ....	Ownership .....	100.0	American Family Mutual Insurance Company .....	.....
.....	.....	0 .....	39-6040596 .....	.....	.....	.....	American Family Financial Services, Inc. ....	WI .....	.. NIA ..	AMFAM, Inc. ....	Ownership .....	100.0	American Family Mutual Insurance Company .....	.....
.....	.....	0 .....	36-4681910 .....	.....	.....	.....	New Ventures, LLC .....	WI .....	.. NIA ..	AMFAM, Inc. ....	Ownership .....	99.0	American Family Mutual Insurance Company .....	.....
.....	.....	0 .....	36-4681910 .....	.....	.....	.....	New Ventures, LLC .....	WI .....	.. NIA ..	American Family Life Insurance Co. ....	Ownership .....	1.0	American Family Mutual Insurance Company .....	.....

Q12

Asterisk	Explanation
0000001	American Standard Insurance Co. of OH is the Reporting Entity .....

Line of Business		Current Year to Date			4 Prior Year to Date Direct Loss Percentage
		1 Direct Premiums Earned	2 Direct Losses Incurred	3 Direct Loss Percentage	
1.	Fire .....				
2.	Allied lines .....				
3.	Farmowners multiple peril .....				
4.	Homeowners multiple peril .....				
5.	Commercial multiple peril .....				
6.	Mortgage guaranty .....				
8.	Ocean marine .....				
9.	Inland marine .....				
10.	Financial guaranty .....				
11.1	Medical professional liability - occurrence .....				
11.2	Medical professional liability - claims made .....				
12.	Earthquake .....				
13.	Group accident and health .....				
14.	Credit accident and health .....				
15.	Other accident and health .....				
16.	Workers' compensation .....				
17.1	Other liability - occurrence .....				
17.2	Other liability - claims made .....				
17.3	Excess Workers' Compensation .....				
18.1	Products liability - occurrence .....				
18.2	Products liability - claims made .....				
19.1	19.2 Private passenger auto liability .....	4,037,159	3,090,879	76.561	57.345
19.3	19.4 Commercial auto liability .....				
21.	Auto physical damage .....	2,097,527	1,314,980	62.692	53.939
22.	Aircraft (all perils) .....				
23.	Fidelity .....				
24.	Surety .....				
26.	Burglary and theft .....				
27.	Boiler and machinery .....				
28.	Credit .....				
29.	International .....				
30.	Warranty .....				
31.	Reinsurance-Nonproportional Assumed Property .....	X X X	X X X	X X X	X X X
32.	Reinsurance-Nonproportional Assumed Liability .....	X X X	X X X	X X X	X X X
33.	Reinsurance-Nonproportional Assumed Financial Lines .....	X X X	X X X	X X X	X X X
34.	Aggregate write-ins for other lines of business .....				
35.	TOTALS .....	6,134,686	4,405,859	71.819	56.221
DETAILS OF WRITE-INS					
3401.	write-in description 1 for line 33 .....				
3402.	write-in description 2 for line 33 .....				
3403.	write-in description 3 for line 33 .....				
3498.	Summary of remaining write-ins for Line 34 from overflow page .....				
3499.	TOTALS (Lines 3401 through 3403 plus 3498) (Line 34 above) .....				

PART 2 - DIRECT PREMIUMS WRITTEN

Line of Business		1 Current Quarter	2 Current Year to Date	3 Prior Year Year to Date
1.	Fire .....			
2.	Allied lines .....			
3.	Farmowners multiple peril .....			
4.	Homeowners multiple peril .....			
5.	Commercial multiple peril .....			
6.	Mortgage guaranty .....			
8.	Ocean marine .....			
9.	Inland marine .....			
10.	Financial guaranty .....			
11.1	Medical professional liability - occurrence .....			
11.2	Medical professional liability - claims made .....			
12.	Earthquake .....			
13.	Group accident and health .....			
14.	Credit accident and health .....			
15.	Other accident and health .....			
16.	Workers' compensation .....			
17.1	Other liability - occurrence .....			
17.2	Other liability - claims made .....			
17.3	Excess Workers' Compensation .....			
18.1	Products liability - occurrence .....			
18.2	Products liability - claims made .....			
19.1	19.2 Private passenger auto liability .....	4,855,688	4,855,688	3,946,728
19.3	19.4 Commercial auto liability .....			
21.	Auto physical damage .....	2,524,599	2,524,599	1,871,704
22.	Aircraft (all perils) .....			
23.	Fidelity .....			
24.	Surety .....			
26.	Burglary and theft .....			
27.	Boiler and machinery .....			
28.	Credit .....			
29.	International .....			
30.	Warranty .....			
31.	Reinsurance-Nonproportional Assumed Property .....	X X X	X X X	X X X
32.	Reinsurance-Nonproportional Assumed Liability .....	X X X	X X X	X X X
33.	Reinsurance-Nonproportional Assumed Financial Lines .....	X X X	X X X	X X X
34.	Aggregate write-ins for other lines of business .....			
35.	TOTALS .....	7,380,287	7,380,287	5,818,432
DETAILS OF WRITE-INS				
3401.	write-in description 1 for line 33 .....			
3402.	write-in description 2 for line 33 .....			
3403.	write-in description 3 for line 33 .....			
3498.	Summary of remaining write-ins for Line 34 from overflow page .....			
3499.	TOTALS (Lines 3401 through 3403 plus 3498) (Line 34 above) .....			

**PART 3 (000 omitted)**  
**LOSS AND LOSS ADJUSTMENT EXPENSE RESERVES SCHEDULE**

		1	2	3	4	5	6	7	8	9	10	11	12	13
Years in Which Losses Occurred		Prior Year-End Known Case Loss and LAE Reserves	Prior Year-End IBNR Loss and LAE Reserves	Total Prior Year-End Loss and LAE Reserves (Cols. 1 + 2)	2012 Loss and LAE Payments on Claims Reported as of Prior Year-End	2012 Loss and LAE Payments on Claims Unreported as of Prior Year-End	Total 2012 Loss and LAE Payments (Cols. 4 + 5)	Q.S. Date Known Case Loss and LAE Reserves on Claims Reported and Open as of Prior Year-End	Q.S. Date Known Case Loss and LAE Reserves on Claims Reported or Reopened Subsequent to Prior Year-End	Q.S. Date IBNR Loss and LAE Reserves	Total Q.S. Loss and LAE Reserves (Cols. 7 + 8 + 9)	Prior Year-End Known Case Loss and LAE Reserves Developed (Savings)/ Deficiency (Cols. 4 + 7 minus Col. 1)	Prior Year-End IBNR Loss and LAE Reserves Developed (Savings)/ Deficiency (Cols. 5 + 8 + 9 minus Col. 2)	Prior Year-End Total Loss and LAE Reserves Developed (Savings)/ Deficiency (Cols. 11 + 12)
1.	2009 + Prior .....	.....	.....	.....	.....	.....	.....	.....	.....	.....	.....	.....	.....	.....
2.	2010 .....	.....	.....	.....	.....	.....	.....	.....	.....	.....	.....	.....	.....	.....
3.	Subtotals 2010 + Prior .....	.....	.....	.....	.....	.....	.....	.....	.....	.....	.....	.....	.....	.....
4.	2011 .....	.....	.....	.....	.....	.....	.....	.....	.....	.....	.....	.....	.....	.....
5.	Subtotals 2011 + Prior .....	.....	.....	.....	.....	.....	.....	.....	.....	.....	.....	.....	.....	.....
6.	2012 .....	..... X X X .....	..... X X X .....	..... X X X .....	..... X X X .....	.....	.....	..... X X X .....	.....	.....	.....	..... X X X .....	..... X X X .....	..... X X X .....
7.	Totals .....	.....	.....	.....	.....	.....	N O N E		.....	.....	.....	.....	.....	.....
8.	Prior Year-End's Surplus As Regards Policyholders .....	.....	.....	.....	.....	.....	.....	.....	.....	.....	.....	Col. 11, Line 7 As % of Col. 1 Line 7 1.....	Col. 12, Line 7 As % of Col. 2 Line 7 2.....	Col. 13, Line 7 As % of Col. 3 Line 7 3.....
		.....	.....	.....	.....	.....	.....	.....	.....	.....	.....	.....	.....	Col. 13, Line 7 Line 8 4.....

# SUPPLEMENTAL EXHIBITS AND SCHEDULES INTERROGATORIES

The following supplemental reports are required to be filed as part of your statement filing. However, in the event that your company does not transact the type of business for which the special report must be filed, your response of NO to the specific interrogatory will be accepted in lieu of filing a "NONE" report and a bar code will be printed below. If the supplement is required of your company but is not being filed for whatever reason enter SEE EXPLANATION and provide an explanation following the interrogatory questions.

	RESPONSES
1. Will the Trusteed Surplus Statement be filed with the state of domicile and the NAIC with this statement?	No
2. Will Supplement A to Schedule T (Medical Professional Liability Supplement) be filed with this statement?	No
3. Will the Medicare Part D Coverage Supplement be filed with the state of domicile and the NAIC with this statement?	No
4. Will the Director and Officer Supplement be filed with the state of domicile and the NAIC with this statement?	No

Explanations:

Bar Codes:

Trusteed Surplus Statement



103872012490000012012Document Code: 490

Supplement A to Schedule T



103872012455000012012Document Code: 455

Medicare Part D Coverage Supplement



103872012365000012012Document Code: 365

Director and Officer Supplement



103872012505000012012Document Code: 505

**OVERFLOW PAGE FOR WRITE-INS**

STATEMENT AS OF **March 31, 2012** OF THE **American Standard Insurance Company of Ohio**

**SCHEDULE A - VERIFICATION**

Real Estate		
	1	2
	Year To Date	Prior Year Ended December 31
1. Book/adjusted carrying value, December 31 of prior year .....		
2. Cost of acquired .....		
2.1 Actual cost at time of acquisition .....		
2.2 Additional investment made after acquisition .....		
3. Current year change in encumbrances .....		
4. Total gain (loss) on disposals .....		
5. Deduct amounts received on disposals .....		
6. Total foreign exchange change in book/adjusted carrying value .....		
7. Deduct current year's other than temporary impairment recognized .....		
8. Deduct current year's depreciation .....		
9. Book/adjusted carrying value at the end of current period (Lines 1 + 2 + 3 + 4 - 5 + 6 - 7 - 8) .....		
10. Deduct total nonadmitted amounts .....		
11. Statement value at end of current period (Line 9 minus Line 10) .....		

**SCHEDULE B - VERIFICATION**

Mortgage Loans

	1	2
	Year To Date	Prior Year Ended December 31
1. Book value/recorded investment excluding accrued interest, December 31 of prior year .....		
2. Cost of acquired: .....		
2.1 Actual cost at time of acquisition .....		
2.2 Additional investment made after acquisition .....		
3. Capitalized deferred interest and other .....		
4. Accrual of discount .....		
5. Unrealized valuation increase (decrease) .....		
6. Total gain (loss) on disposals .....		
7. Deduct amounts received on disposals .....		
8. Deduct amortization of premium and mortgage interest points .....		
9. Total foreign exchange change in book value/recorded investment .....		
10. Deduct current year's other than temporary impairment recognized .....		
11. Book value/recorded investment excluding accrued interest at end of current period (Lines 1 + 2 + 3 + 4 + 5 + 6 - 7 - 8 + 9 - 10) .....		
12. Total valuation allowance .....		
13. Subtotal (Line 11 plus Line 12) .....		
14. Deduct total nonadmitted amounts .....		
15. Statement value at end of current period (Line 13 minus Line 14) .....		

**SCHEDULE BA - VERIFICATION**

Other Long-Term Invested Assets

	1	2
	Year To Date	Prior Year Ended December 31
1. Book/adjusted carrying value, December 31 of prior year .....		
2. Cost of acquired: .....		
2.1 Actual cost at time of acquisition .....		
2.2 Additional investment made after acquisition .....		
3. Capitalized deferred interest and other .....		
4. Accrual of discount .....		
5. Unrealized valuation increase (decrease) .....		
6. Total gain (loss) on disposals .....		
7. Deduct amounts received on disposals .....		
8. Deduct amortization of premium and depreciation .....		
9. Total foreign exchange change in book/adjusted carrying value .....		
10. Deduct current year's other than temporary impairment recognized .....		
11. Book/adjusted carrying value at end of current period (Lines 1 + 2 + 3 + 4 + 5 + 6 - 7 - 8 + 9 - 10) .....		
12. Deduct total nonadmitted amounts .....		
13. Statement value at end of current period (Line 11 minus Line 12) .....		

**SCHEDULE D - VERIFICATION**

Bonds and Stocks

	1	2
	Year To Date	Prior Year Ended December 31
1. Book/adjusted carrying value of bonds and stocks, December 31 of prior year .....	6,522,921	5,430,172
2. Cost of bonds and stocks acquired .....		1,101,400
3. Accrual of discount .....		
4. Unrealized valuation increase (decrease) .....		
5. Total gain (loss) on disposals .....		
6. Deduct consideration for bonds and stocks disposed of .....		
7. Deduct amortization of premium .....	4,407	8,651
8. Total foreign exchange change in book/adjusted carrying value .....		
9. Deduct current year's other than temporary impairment recognized .....		
10. Book/adjusted carrying value at end of current period (Lines 1 + 2 + 3 + 4 + 5 - 6 - 7 + 8 - 9) .....	6,518,514	6,522,921
11. Deduct total nonadmitted amounts .....		
12. Statement value at end of current period (Line 10 minus Line 11) .....	6,518,514	6,522,921

**SCHEDULE D - PART 1B**  
**Showing the Acquisitions, Dispositions and Non-Trading Activity**  
**During the Current Quarter for all Bonds and Preferred Stock by Rating Class**

	1	2	3	4	5	6	7	8
	Book/Adjusted Carrying Value Beginning of Current Quarter	Acquisitions During Current Quarter	Dispositions During Current Quarter	Non-Trading Activity During Current Quarter	Book/Adjusted Carrying Value End of First Quarter	Book/Adjusted Carrying Value End of Second Quarter	Book/Adjusted Carrying Value End of Third Quarter	Book/Adjusted Carrying Value December 31 Prior Year
<b>BONDS</b>								
1. Class 1 (a) .....	6,608,170	145,875		(4,407)	6,749,638			6,608,170
2. Class 2 (a) .....								
3. Class 3 (a) .....								
4. Class 4 (a) .....								
5. Class 5 (a) .....								
6. Class 6 (a) .....								
7. Total Bonds .....	6,608,170	145,875		(4,407)	6,749,638			6,608,170
<b>PREFERRED STOCK</b>								
8. Class 1 .....								
9. Class 2 .....								
10. Class 3 .....								
11. Class 4 .....								
12. Class 5 .....								
13. Class 6 .....								
14. Total Preferred Stock .....								
15. Total Bonds & Preferred Stock .....	6,608,170	145,875		(4,407)	6,749,638			6,608,170

(a) Book/Adjusted Carrying Value column for the end of the current reporting period includes the following amount of non-rated short-term and cash equivalent bonds by NAIC designation: NAIC 1 \$.....231,124; NAIC 2 \$.....0; NAIC 3 \$.....0; NAIC 4 \$.....0; NAIC 5 \$.....0; NAIC 6 \$.....0



**SCHEDULE DA - PART 1**

**Short - Term Investments**

	1 Book/Adjusted Carrying Value	2  Par Value	3  Actual Cost	4  Interest Collected Year To Date	5  Paid for Accrued Interest Year To Date
9199999. Totals .....	231,124	X X X	231,124		

**SCHEDULE DA - Verification**

**Short-Term Investments**

		1  Year To Date	2  Prior Year Ended December 31
1.	Book/adjusted carrying value, December 31 of prior year .....	85,249	2,169,814
2.	Cost of short-term investments acquired .....	145,875	4,816,720
3.	Accrual of discount .....		
4.	Unrealized valuation increase (decrease) .....		
5.	Total gain (loss) on disposals .....		
6.	Deduct consideration received on disposals .....		6,901,285
7.	Deduct amortization of premium .....		
8.	Total foreign exchange change in book/adjusted carrying value .....		
9.	Deduct current year's other than temporary impairment recognized ....		
10.	Book/adjusted carrying value at end of current period (Lines 1 + 2 + 3 + 4 + 5 - 6 - 7 + 8 - 9) .....	231,124	85,249
11.	Deduct total nonadmitted amounts .....		
12.	Statement value at end of current period (Line 10 minus Line 11) .....	231,124	85,249

**SI04      Schedule DB - Part A Verification ..... NONE**

**SI04      Schedule DB - Part B Verification ..... NONE**

**SI05      Schedule DB Part C Section 1 ..... NONE**

**SI06      Schedule DB Part C Section 2 ..... NONE**

**SI07      Schedule DB - Verification ..... NONE**

**SI08      Schedule E - Verification (Cash Equivalents) ..... NONE**

E01	Schedule A Part 2 .....	NONE
E01	Schedule A Part 3 .....	NONE
E02	Schedule B Part 2 .....	NONE
E02	Schedule B Part 3 .....	NONE
E03	Schedule BA Part 2 .....	NONE
E03	Schedule BA Part 3 .....	NONE
E04	Schedule D Part 3 .....	NONE
E05	Schedule D Part 4 .....	NONE
E06	Schedule DB Part A Section 1 .....	NONE
E07	Schedule DB Part B Section 1 .....	NONE
E08	Schedule DB Part D .....	NONE
E09	Schedule DL - Part 1 - Securities Lending Collateral Assets .....	NONE
E10	Schedule DL - Part 2 - Securities Lending Collateral Assets .....	NONE

**SCHEDULE E - PART 1 - CASH**

**Month End Depository Balances**

1			2	3	4	5	Book Balance at End of Each Month During Current Quarter			9
Depository			Code	Rate of Interest	Amount of Interest Received During Current Quarter	Amount of Interest Accrued at Current Statement Date	6	7	8	*
							First Month	Second Month	Third Month	
<b>open depositories</b>										
US Bank .....	Madison, Wisconsin .....						783,552	1,004,685	1,050,730	X X X
0199998 Deposits in .....0 depositories that do not exceed the allowable limit in any one depository - open depositories .....			X X X	X X X						X X X
0199999 Totals - Open Depositories .....			X X X	X X X			783,552	1,004,685	1,050,730	X X X
0299998 Deposits in .....0 depositories that do not exceed the allowable limit in any one depository - suspended depositories .....			X X X	X X X						X X X
0299999 Totals - Suspended Depositories .....			X X X	X X X						X X X
0399999 Total Cash On Deposit .....			X X X	X X X			783,552	1,004,685	1,050,730	X X X
0499999 Cash in Company's Office .....			X X X	X X X	X X X	X X X				X X X
0599999 Total Cash .....			X X X	X X X			783,552	1,004,685	1,050,730	X X X

**SCHEDULE E - PART 2 - CASH EQUIVALENTS**

Show Investments Owned End of Current Quarter

1	2	3	4	5	6	7	8
Description	Code	Date Acquired	Rate of Interest	Maturity Date	Book/Adjusted Carrying Value	Amount of Interest Due & Accrued	Amount Received During Year
<div>NONE</div>							
8699999 Total - Cash Equivalents .....					.....	.....	.....

**INDEX TO PROPERTY & CASUALTY  
QUARTERLY STATEMENT**

Accident and Health Insurance; Q3; Q13
Accounting Changes and Corrections of Errors; Q6, Note 2
Accounting Practices and Policies; Q6, Note 1
Admitted Assets; Q2; QSI01
Affiliated Transactions; Q2; Q3; Q7; Q7.1
Asbestos Losses and Loss Adjustment Expenses; Q6, Note 33
Bonds; Q2; Q5; Q7.1; Q7.2; QSI01; QSI02; QE04; QE05; QSupp2
Business Combinations and Goodwill; Q6, Note 3
Capital Gains (Losses); Q3; Q4; Q5
Capital Stock; Q3; Q4; Q6, Note 13
Capital Notes; Q3; Q5; Q6, Note 11
Caps; QE06; QSI04
Cash; Q2; Q5; QE11; QSupp2
Cash Equivalents; Q2; Q5; QE12
Collars; QE06; QSI04
Commissions; Q3; Q5
Common Stock; Q2; Q7.1; Q7.2; QSI01; QE04; QE05; QSupp2
Counterparty Exposure; Q6, Note 8; QE06; QE08
Contingencies; Q6, Note 14
Debt; Q6, Note 11
Deferred Compensation; Q6, Note 12
Derivative Instruments; Q6, Note 8; QSI04; QSI05; QSI06; QSI07; QE06; QE07; QE08
Director and Officer; QSupp7
Discontinued Operations; Q6, Note 4
Discounting of Liabilities; Q6, Note 32; Q8
Electronic Data Processing Equipment; Q2
Environmental Losses and Loss Adjustment Expenses; Q6, Note 33
Exchange or Counterparty; QE06; QE08
Expenses; Q3; Q4; Q5; Q8; QE01; QSupp3
Extinguishment of Liabilities; Q6, Note 17
Extraordinary Items; Q6, Note 21
Fair Value; Q7, Note 20
Federal ID Number; Q9
Federal Reserve Board; Q7
Finance and Service Charge; Q4
Floors; QE06; QSI04
Foreign Exchange; Q2; Q3; Q4; QSI01; QSI02; QSI03; QE04; QE05
Forwards; QE06; QSI04
Futures Contracts; QE07; QSI04
Guaranty Fund; Q2
Health Care Receivables; Q6, Note 28
Hedging Transactions; Q7.1; QE06; QE07
High Deductible Policies; Q6, Note 31
Holding Company; Q7; Q11; Q12
Income Generation Transactions; QE06;QE07
Income Taxes; Q2; Q3; Q4; Q5; Q6, Note 9
Intercompany Pooling; Q6, Note 26
Investment Income; Q2; Q4; Q5; Q6, Note 7; QSupp2
Investments; Q2; Q4; Q6, Note 5; Q7.1; Q7.2; QSI01; QSI03; QE03; QE04; QE05; QE08; QE12; QSupp2
Joint Venture; Q6, Note 6
Leases; Q6, Note 15
Licensing; Q3; Q7; Q10
Limited Liability Company (LLC); Q6, Note 6
Limited Partnership; Q6, Note 6
Lines of Business; Q8; Q13
Long-Term Invested Assets; QSI01; QE03
Loss Development; Q6
Losses; Q3; Q4; Q5; Q6, Note 25; Q8; Q10; Q13; Q14; QSupp1; QSupp3
Loss Adjustment Expenses; Q3; Q6, Note 26; Q8; Q14; QSupp3
Managing General Agents; Q6, Note 19; Q7
Medical Malpractice Insurance; Q13; Q15; QSupp5
Medicare Part D Coverage; QSupp6
Mortgage Loans; Q2; Q5; Q7.1; QSI01; QE02; QSupp2
Multiple Peril Crop Insurance; Q6, Note 35
Nonadmitted Assets; Q2; Q4; QSI01; QSI03
Non-Tabular Discount; Q6, Note 32
Off-Balance Sheet Risk; Q6, Note 16

**INDEX TO PROPERTY & CASUALTY  
QUARTERLY STATEMENT**

Options; Q7.1; QE06; QSI04

Organizational Chart; Q7; Q11

Other Derivative Transactions; QE06; QE07

Parent, Subsidiaries and Affiliates; Q2; Q3; Q6, Note 10; Q7.1

Participating Policies; Q6, Note 29

Pharmaceutical Rebates; Q6, Note 28

Policyholder Dividends; Q3; Q4; Q5

Postemployment Benefits; Q6, Note 12

Postretirement Benefits; Q6, Note 12

Preferred Stock; Q2; Q7.1; Q7.2; QSI01; QSI02; QE04; QSupp2

Premium Deficiency Reserves; Q6, Note 30

Premium Notes; Q2; Q5

Premiums; Q3; Q5; Qsupp3

    Accrued Retrospective; Q2

    Advance; Q3

    Direct; Q10; Q13

    Earned; Q4; Q10; Q13; QSupp5

    Earned but Unbilled; Q2

    Unearned; Q3

    Written; Q4; Q10; Q13; QSupp5

Quasi Reorganizations; Q6, Note 13

Real Estate; Q2; Q5; Q7.1; QSI01; QE01; QSupp2

Redetermination, Contract Subject to; Q6, Note 24

Reinsurance; Q6, Note 23

    Assumed; Q13

    Ceded; Q3; Q9; QSupp3

    Commutation; Q6, Note 23

    Funds Held; Q2; Q3

    Losses; Q3; Q4; Q8; QSupp3

    Payable; Q3; QSupp3

    Premiums; Q3; QSupp3

    Receivable; Q2; QSupp3

    Unsecured; Q6, Note 23

    Uncollectible; Q6, Note 23

Reserves

    Incurred but Not Reported (IBNR); Q8; Q14

    Unpaid Loss Adjustment Expense (LAE); Q14

Retirement Plans; Q6, Note 12

Retrospectively Rated Contracts; Q6, Note 24

Salvage and Subrogation; Q10

Securities Lending; Q2; Q3; QE9; QE10

Servicing of Financial Assets; Q6, Note 17

Short-Term Investments; Q2; Q5; Q7.1; QSI03; QSupp2

Special Deposits; QSupp2

Stockholder Dividends; Q3; Q4; Q5

Structured Settlements; Q6, Note 27

Subscriber Savings Accounts; Q6, Note 34

Subsequent Events; Q6, Note 22

Surplus; Q3; Q4; Q5; Q6, Note 13; Q14; Q15; QSupp1; QSupp2; QSupp3

Surplus Notes; Q3; Q4; Q5

Swaps; QE07; QSI04

Synthetic Assets; QSI04; QSI05

Tabular Discount; Q6, Note 32

Third Party Administrator; Q6, Note 19; Q7

Treasury Stock; Q3; Q4; Q5

Underwriting Expenses; Q4

Uninsured Accident and Health; Q3; Q6, Note 18

Valuation Allowance; QSI01

Wash Sales; Q6, Note 17