



PROPERTY AND CASUALTY COMPANIES - ASSOCIATION EDITION

QUARTERLY STATEMENT

AS OF MARCH 31, 2012
OF THE CONDITION AND AFFAIRS OF THE

Nationwide Indemnity Company

NAIC Group Code 0140 0140 NAIC Company Code 10070 Employer's ID Number 31-1399201
(Current) (Prior)

Organized under the Laws of Ohio, State of Domicile or Port of Entry Ohio

Country of Domicile United States of America

Incorporated/Organized 02/16/1994 Commenced Business 04/15/1994

Statutory Home Office One West Nationwide Blvd. Columbus, OH 43215-2220
(Street and Number) (City or Town, State and Zip Code)

Main Administrative Office One West Nationwide Blvd. Columbus, OH 43215-2220 614-249-7111
(Street and Number) (City or Town, State and Zip Code) (Area Code) (Telephone Number)

Mail Address One West Nationwide Blvd., 1-04-701 Columbus, OH 43215-2220
(Street and Number or P.O. Box) (City or Town, State and Zip Code)

Primary Location of Books and Records One West Nationwide Blvd., 1-04-701 Columbus, OH 43215-2220 614-249-1545
(Street and Number) (City or Town, State and Zip Code) (Area Code) (Telephone Number)

Internet Web Site Address www.nationwide.com

Statutory Statement Contact Arlene E. Swanson 614-249-1545
(Name) (Area Code) (Telephone Number)
FinRpt@nationwide.com 866-315-1430
(E-mail Address) (FAX Number)

OFFICERS

President & COO David Alan Bano VP & Treasurer Carol Lynn Dove

VP & Secretary Robert William Horner III

OTHER

Pamela Ann Biesecker Sr VP-Head of Taxation Harry Hansen Hallowell Sr VP - CIO Mark Raymond Thresher Exec VP - CFO

DIRECTORS OR TRUSTEES

David Alan Bano James David Benson Kevin Thomas Hilyard

Michael Patrick Leach Duane Lee Meyer Mark Raymond Thresher

State of Ohio SS:

County of Franklin

The officers of this reporting entity being duly sworn, each depose and say that they are the described officers of said reporting entity, and that on the reporting period stated above, all of the herein described assets were the absolute property of the said reporting entity, free and clear from any liens or claims thereon, except as herein stated, and that this statement, together with related exhibits, schedules and explanations therein contained, annexed or referred to, is a full and true statement of all the assets and liabilities and of the condition and affairs of the said reporting entity as of the reporting period stated above, and of its income and deductions therefrom for the period ended, and have been completed in accordance with the NAIC Annual Statement Instructions and Accounting Practices and Procedures manual except to the extent that: (1) state law may differ; or, (2) that state rules or regulations require differences in reporting not related to accounting practices and procedures, according to the best of their information, knowledge and belief, respectively. Furthermore, the scope of this attestation by the described officers also includes the related corresponding electronic filing with the NAIC, when required, that is an exact copy (except for formatting differences due to electronic filing) of the enclosed statement. The electronic filing may be requested by various regulators in lieu of or in addition to the enclosed statement.

David Alan Bano Robert William Horner, III Carol Lynn Dove
President & COO VP & Secretary VP & Treasurer

Subscribed and sworn to before me this April, 2012

a. Is this an original filing? Yes [X] No []
b. If no,
1. State the amendment number.....
2. Date filed
3. Number of pages attached.....

STATEMENT AS OF MARCH 31, 2012 OF THE NATIONWIDE INDEMNITY COMPANY

ASSETS

	Current Statement Date			4 December 31 Prior Year Net Admitted Assets
	1 Assets	2 Nonadmitted Assets	3 Net Admitted Assets (Cols. 1 - 2)	
1. Bonds	3,193,584,568		3,193,584,568	3,213,391,193
2. Stocks:				
2.1 Preferred stocks				
2.2 Common stocks	949,840		949,840	782,153
3. Mortgage loans on real estate:				
3.1 First liens	119,877,994		119,877,994	126,213,620
3.2 Other than first liens.....				
4. Real estate:				
4.1 Properties occupied by the company (less \$ encumbrances)				
4.2 Properties held for the production of income (less \$ encumbrances)				
4.3 Properties held for sale (less \$ encumbrances)				
5. Cash (\$204,011), cash equivalents (\$) and short-term investments (\$9,763,047)	9,967,058		9,967,058	1,834,973
6. Contract loans (including \$ premium notes)				
7. Derivatives				
8. Other invested assets	63,683,279	138,667	63,544,612	64,813,743
9. Receivables for securities				
10. Securities lending reinvested collateral assets	16,087,050	8,204,947	7,882,103	7,729,916
11. Aggregate write-ins for invested assets				
12. Subtotals, cash and invested assets (Lines 1 to 11)	3,404,149,789	8,343,614	3,395,806,175	3,414,765,598
13. Title plants less \$ charged off (for Title insurers only)				
14. Investment income due and accrued	35,025,729	14,410	35,011,319	39,223,355
15. Premiums and considerations:				
15.1 Uncollected premiums and agents' balances in the course of collection	2,309,852	2,309,852		
15.2 Deferred premiums, agents' balances and installments booked but deferred and not yet due (including \$ earned but unbilled premiums)				
15.3 Accrued retrospective premiums				
16. Reinsurance:				
16.1 Amounts recoverable from reinsurers				
16.2 Funds held by or deposited with reinsured companies	7,951,352		7,951,352	8,251,383
16.3 Other amounts receivable under reinsurance contracts				
17. Amounts receivable relating to uninsured plans				
18.1 Current federal and foreign income tax recoverable and interest thereon				
18.2 Net deferred tax asset	65,101,763	36,304,855	28,796,908	12,726,906
19. Guaranty funds receivable or on deposit				
20. Electronic data processing equipment and software				
21. Furniture and equipment, including health care delivery assets (\$)				
22. Net adjustment in assets and liabilities due to foreign exchange rates	487,671		487,671	487,671
23. Receivables from parent, subsidiaries and affiliates	32,877		32,877	379,412
24. Health care (\$) and other amounts receivable				
25. Aggregate write-ins for other than invested assets	37,651,418	19,644,206	18,007,212	6,477,043
26. Total assets excluding Separate Accounts, Segregated Accounts and Protected Cell Accounts (Lines 12 to 25)	3,552,710,451	66,616,937	3,486,093,514	3,482,311,368
27. From Separate Accounts, Segregated Accounts and Protected Cell Accounts				
28. Total (Lines 26 and 27)	3,552,710,451	66,616,937	3,486,093,514	3,482,311,368
DETAILS OF WRITE-INS				
1101.				
1102.				
1103.				
1198. Summary of remaining write-ins for Line 11 from overflow page				
1199. Totals (Lines 1101 through 1103 plus 1198)(Line 11 above)				
2501. Third party administrative receivables	27,967,309	17,499,554	10,467,755	4,321,785
2502. Deposits and prepaid assets	1,951,865	1,951,865		
2503. Miscellaneous assets	7,720,128	180,671	7,539,457	2,155,258
2598. Summary of remaining write-ins for Line 25 from overflow page	12,116	12,116		
2599. Totals (Lines 2501 through 2503 plus 2598)(Line 25 above)	37,651,418	19,644,206	18,007,212	6,477,043

STATEMENT AS OF MARCH 31, 2012 OF THE NATIONWIDE INDEMNITY COMPANY

LIABILITIES, SURPLUS AND OTHER FUNDS

	1 Current Statement Date	2 December 31, Prior Year
1. Losses (current accident year \$)	1,444,837,555	1,481,818,735
2. Reinsurance payable on paid losses and loss adjustment expenses		2,943
3. Loss adjustment expenses	730,121,124	753,581,025
4. Commissions payable, contingent commissions and other similar charges		
5. Other expenses (excluding taxes, licenses and fees)	54,713	54,713
6. Taxes, licenses and fees (excluding federal and foreign income taxes)		
7.1 Current federal and foreign income taxes (including \$125,225 on realized capital gains (losses))	56,285,765	45,379,119
7.2 Net deferred tax liability		
8. Borrowed money \$ and interest thereon \$		
9. Unearned premiums (after deducting unearned premiums for ceded reinsurance of \$ and including warranty reserves of \$ and accrued accident and health experience rating refunds including \$ for medical loss ratio rebate per the Public Health Service Act)	62,307	62,146
10. Advance premium		
11. Dividends declared and unpaid:		
11.1 Stockholders		
11.2 Policyholders		
12. Ceded reinsurance premiums payable (net of ceding commissions)		
13. Funds held by company under reinsurance treaties		
14. Amounts withheld or retained by company for account of others	2,691,559	3,519,363
15. Remittances and items not allocated		
16. Provision for reinsurance		
17. Net adjustments in assets and liabilities due to foreign exchange rates		
18. Drafts outstanding		
19. Payable to parent, subsidiaries and affiliates	473,484	
20. Derivatives	(10)	(10)
21. Payable for securities	1,304,549	1,304,549
22. Payable for securities lending	24,011,050	25,021,328
23. Liability for amounts held under uninsured plans		
24. Capital notes \$ and interest thereon \$		
25. Aggregate write-ins for liabilities	57,366,598	47,982,235
26. Total liabilities excluding protected cell liabilities (Lines 1 through 25)	2,317,208,694	2,358,726,146
27. Protected cell liabilities		
28. Total liabilities (Lines 26 and 27)	2,317,208,694	2,358,726,146
29. Aggregate write-ins for special surplus funds	9,894,000	9,894,000
30. Common capital stock	3,080,000	3,080,000
31. Preferred capital stock		
32. Aggregate write-ins for other than special surplus funds		
33. Surplus notes		
34. Gross paid in and contributed surplus	1,456,449,000	1,456,449,000
35. Unassigned funds (surplus)	(300,538,180)	(345,837,778)
36. Less treasury stock, at cost:		
36.1 shares common (value included in Line 30 \$)		
36.2 shares preferred (value included in Line 31 \$)		
37. Surplus as regards policyholders (Lines 29 to 35, less 36)	1,168,884,820	1,123,585,222
38. Totals (Page 2, Line 28, Col. 3)	3,486,093,514	3,482,311,368
DETAILS OF WRITE-INS		
2501. Assumed reinsurance balances payable	57,361,986	47,977,536
2502. Miscellaneous liabilities	4,612	4,699
2503.		
2598. Summary of remaining write-ins for Line 25 from overflow page		
2599. Totals (Lines 2501 through 2503 plus 2598)(Line 25 above)	57,366,598	47,982,235
2901. EU solvency directive	9,894,000	9,894,000
2902.		
2903.		
2998. Summary of remaining write-ins for Line 29 from overflow page		
2999. Totals (Lines 2901 through 2903 plus 2998)(Line 29 above)	9,894,000	9,894,000
3201.		
3202.		
3203.		
3298. Summary of remaining write-ins for Line 32 from overflow page		
3299. Totals (Lines 3201 through 3203 plus 3298)(Line 32 above)		

STATEMENT OF INCOME

	1	2	3
	Current Year to Date	Prior Year to Date	Prior Year Ended December 31
UNDERWRITING INCOME			
1. Premiums earned:			
1.1 Direct (written \$)			
1.2 Assumed (written \$ 516,384)	516,223	252,055	1,116,038
1.3 Ceded (written \$)			
1.4 Net (written \$ 516,384)	516,223	252,055	1,116,038
DEDUCTIONS:			
2. Losses incurred (current accident year \$):			
2.1 Direct			
2.2 Assumed	(516,804)	(1,158,403)	(54,877,676)
2.3 Ceded			
2.4 Net	(516,804)	(1,158,403)	(54,877,676)
3. Loss adjustment expenses incurred	456,814	1,113,488	59,788,913
4. Other underwriting expenses incurred	1,573,441	1,145,195	3,990,732
5. Aggregate write-ins for underwriting deductions			
6. Total underwriting deductions (Lines 2 through 5)	1,513,451	1,100,280	8,901,969
7. Net income of protected cells			
8. Net underwriting gain or (loss) (Line 1 minus Line 6 + Line 7)	(997,228)	(848,225)	(7,785,931)
INVESTMENT INCOME			
9. Net investment income earned	35,528,325	40,687,230	147,520,519
10. Net realized capital gains (losses) less capital gains tax of \$ 125,225	162,060	(166,657)	(431,959)
11. Net investment gain (loss) (Lines 9 + 10)	35,690,385	40,520,573	147,088,560
OTHER INCOME			
12. Net gain or (loss) from agents' or premium balances charged off (amount recovered \$ amount charged off \$)			
13. Finance and service charges not included in premiums			
14. Aggregate write-ins for miscellaneous income	(35,344)	(53,404)	(445,828)
15. Total other income (Lines 12 through 14)	(35,344)	(53,404)	(445,828)
16. Net income before dividends to policyholders, after capital gains tax and before all other federal and foreign income taxes (Lines 8 + 11 + 15)	34,657,813	39,618,944	138,856,801
17. Dividends to policyholders			
18. Net income, after dividends to policyholders, after capital gains tax and before all other federal and foreign income taxes (Line 16 minus Line 17)	34,657,813	39,618,944	138,856,801
19. Federal and foreign income taxes incurred	10,781,421	9,480,413	37,830,298
20. Net income (Line 18 minus Line 19)(to Line 22)	23,876,392	30,138,531	101,026,503
CAPITAL AND SURPLUS ACCOUNT			
21. Surplus as regards policyholders, December 31 prior year	1,123,585,222	1,064,460,567	1,064,460,567
22. Net income (from Line 20)	23,876,392	30,138,531	101,026,503
23. Net transfers (to) from Protected Cell accounts			
24. Change in net unrealized capital gains (losses) less capital gains tax of \$ (6,171,332)	10,323,123	14,010,463	25,877,517
25. Change in net unrealized foreign exchange capital gain (loss)	(134,537)	308,697	(302,916)
26. Change in net deferred income tax	(5,040,217)	865,512	9,490,196
27. Change in nonadmitted assets	1,190,936	(10,111,260)	(16,378,081)
28. Change in provision for reinsurance			
29. Change in surplus notes			
30. Surplus (contributed to) withdrawn from protected cells			
31. Cumulative effect of changes in accounting principles	15,231,042		
32. Capital changes:			
32.1 Paid in			
32.2 Transferred from surplus (Stock Dividend)			
32.3 Transferred to surplus			
33. Surplus adjustments:			
33.1 Paid in			(60,000,000)
33.2 Transferred to capital (Stock Dividend)			
33.3 Transferred from capital			
34. Net remittances from or (to) Home Office			
35. Dividends to stockholders			
36. Change in treasury stock			
37. Aggregate write-ins for gains and losses in surplus	(147,141)	(147,141)	(588,564)
38. Change in surplus as regards policyholders (Lines 22 through 37)	45,299,598	35,064,802	59,124,655
39. Surplus as regards policyholders, as of statement date (Lines 21 plus 38)	1,168,884,820	1,099,525,369	1,123,585,222
DETAILS OF WRITE-INS			
0501.			
0502.			
0503.			
0598. Summary of remaining write-ins for Line 5 from overflow page			
0599. Totals (Lines 0501 through 0503 plus 0598)(Line 5 above)			
1401. Miscellaneous expenses	(35,344)	(53,404)	(445,828)
1402.			
1403.			
1498. Summary of remaining write-ins for Line 14 from overflow page			
1499. Totals (Lines 1401 through 1403 plus 1498)(Line 14 above)	(35,344)	(53,404)	(445,828)
3701. Goodwill write off	(147,141)	(147,141)	(588,564)
3702.			
3703.			
3798. Summary of remaining write-ins for Line 37 from overflow page			
3799. Totals (Lines 3701 through 3703 plus 3798)(Line 37 above)	(147,141)	(147,141)	(588,564)

STATEMENT AS OF MARCH 31, 2012 OF THE NATIONWIDE INDEMNITY COMPANY

CASH FLOW

	1 Current Year To Date	2 Prior Year To Date	3 Prior Year Ended December 31
Cash from Operations			
1. Premiums collected net of reinsurance	363,991	(130,511)	800,357
2. Net investment income	41,131,561	42,292,753	149,303,632
3. Miscellaneous income	264,687	270,506	(64,609)
4. Total (Lines 1 to 3)	41,760,239	42,432,748	150,039,380
5. Benefit and loss related payments	36,467,318	30,001,443	109,418,061
6. Net transfers to Separate Accounts, Segregated Accounts and Protected Cell Accounts			
7. Commissions, expenses paid and aggregate write-ins for deductions	25,490,155	24,160,751	96,379,424
8. Dividends paid to policyholders			
9. Federal and foreign income taxes paid (recovered) net of \$ tax on capital gains (losses)			4,719,112
10. Total (Lines 5 through 9)	61,957,473	54,162,194	210,516,597
11. Net cash from operations (Line 4 minus Line 10)	(20,197,234)	(11,729,446)	(60,477,217)
Cash from Investments			
12. Proceeds from investments sold, matured or repaid:			
12.1 Bonds	35,567,391	122,938,090	311,556,522
12.2 Stocks			26,447
12.3 Mortgage loans	6,353,558	15,014,054	36,179,875
12.4 Real estate			
12.5 Other invested assets	1,215,202	279,912	28,878,696
12.6 Net gains or (losses) on cash, cash equivalents and short-term investments			821
12.7 Miscellaneous proceeds	(17,531)	7,966,885	1,541,033
12.8 Total investment proceeds (Lines 12.1 to 12.7)	43,118,620	146,198,941	378,183,394
13. Cost of investments acquired (long-term only):			
13.1 Bonds	12,988,440	124,413,705	313,683,318
13.2 Stocks			878,590
13.3 Mortgage loans			
13.4 Real estate			
13.5 Other invested assets		5,356,570	15,747,028
13.6 Miscellaneous applications			
13.7 Total investments acquired (Lines 13.1 to 13.6)	12,988,440	129,770,275	330,308,936
14. Net increase (or decrease) in contract loans and premium notes			
15. Net cash from investments (Line 12.8 minus Line 13.7 and Line 14)	30,130,180	16,428,666	47,874,458
Cash from Financing and Miscellaneous Sources			
16. Cash provided (applied):			
16.1 Surplus notes, capital notes			
16.2 Capital and paid in surplus, less treasury stock			(60,000,000)
16.3 Borrowed funds			
16.4 Net deposits on deposit-type contracts and other insurance liabilities			
16.5 Dividends to stockholders			
16.6 Other cash provided (applied)	(1,800,861)	9,046,639	(36,574,931)
17. Net cash from financing and miscellaneous sources (Line 16.1 through Line 16.4 minus Line 16.5 plus Line 16.6)	(1,800,861)	9,046,639	(96,574,931)
RECONCILIATION OF CASH, CASH EQUIVALENTS AND SHORT-TERM INVESTMENTS			
18. Net change in cash, cash equivalents and short-term investments (Line 11, plus Lines 15 and 17)	8,132,085	13,745,859	(109,177,690)
19. Cash, cash equivalents and short-term investments:			
19.1 Beginning of year	1,834,973	111,012,663	111,012,663
19.2 End of period (Line 18 plus Line 19.1)	9,967,058	124,758,522	1,834,973

Note: Supplemental disclosures of cash flow information for non-cash transactions:

--	--	--	--

NOTES TO FINANCIAL STATEMENTS

Note 1 - Summary of Significant Accounting Policies

A. Accounting Practices

The accompanying statutory financial statements of Nationwide Indemnity Company (the Company) have been prepared in conformity with accounting practices prescribed or permitted by the National Association of Insurance Commissioners (NAIC) and the State of Ohio.

The Ohio Insurance Department recognizes only statutory accounting practices (SAP) prescribed or permitted by the State of Ohio for determining and reporting the financial condition and results of operations of an insurance company, as well as, determining its solvency under the Ohio Insurance law. The National Association of Insurance Commissioners' (NAIC) *Accounting Practices and Procedures Manual* (NAIC SAP) has been adopted as a component of prescribed or permitted practices by the State of Ohio.

C. Accounting Policies

7. Investments in subsidiary and affiliated companies are stated as follows:

The admitted investments in all subsidiary, controlled, and affiliated (SCA) entities are valued using an equity method approach. Under this approach, investments in insurance affiliated companies are stated at underlying statutory equity value adjusted for unamortized goodwill. Investments in non-insurance affiliated companies that have no significant ongoing operations other than to hold assets that are primarily for the direct or indirect benefit or use of the reporting entity or its affiliates are stated at audited GAAP equity adjusted to a statutory basis of accounting. Investments in non-insurance affiliated companies that have significant ongoing operations beyond holding assets that are primarily for the direct or indirect benefit or use of the reporting entity or its affiliates are stated at audited GAAP equity. Unaudited affiliated companies of the reporting entity or its affiliates are non-admitted under prescribed SAP accounting practices. Goodwill arising from the acquisition of affiliated companies is amortized over a period of ten years. Unamortized goodwill at March 31, 2012 was \$147.1 thousand, which was fully admitted based upon adjusted policyholder surplus.

Note 2 - Accounting Changes and Corrections of Errors

On January 1, 2012, the Company adopted a new standard, SSAP No. 101, Income Taxes, which supersedes SSAP No. 10R, Income Taxes Revised - A Temporary Replacement of SSAP No. 10. The standard applies a 'more likely than not' threshold for the recognition of federal and foreign tax loss contingencies and establishes a new framework for determining the admissibility of deferred tax assets (DTA). The difference between the recalculated amounts as of January 1, 2012, and the amount actually reported in the prior year financial statements is treated as a change in accounting principle in accordance with SSAP No. 3, Accounting Changes and Corrections of Errors. The cumulative effect of this change in accounting principle resulted in a \$15,231,042 increase in unassigned funds as of January 1, 2012.

Note 3 - Business Combinations and Goodwill

No change.

Note 4 - Discontinued Operations

No change.

Note 5 - Investments

A. Mortgage Loans

No change.

B. Troubled Debt Restructuring for Creditors

No change.

C. Reverse Mortgages

No change.

D. Loan-Backed Securities

1. Prepayment assumptions are generally obtained using a model provided by a third-party vendor.
2. The following table summarizes by quarter other-than-temporary impairments for loan-backed securities recorded during the year because the Company had either the intent to sell the securities or the inability or lack of intent to retain as cited in the table:

	(1) Amortized Cost Basis Before Other-than- Temporary Impairment	(2) Other-than- Temporary Impairment Recognized in Loss	(3) Fair Value 1 - 2
OTTI recognized 1st Quarter			
a. Intent to Sell	\$ -	\$ -	\$ -
b. Inability or lack of intent to retain the investment in the security for a period of time sufficient to recover the amortized cost basis	\$ -	\$ -	\$ -
c. Total 1st Quarter	\$ -	\$ -	\$ -

NOTES TO FINANCIAL STATEMENTS

OTTI recognized 2nd Quarter

d. Intent to Sell	\$ -	\$ -	\$ -
e. Inability or lack of intent to retain the investment in the security for a period of time sufficient to recover the amortized cost basis	\$ -	\$ -	\$ -
f. Total 2nd Quarter	\$ -	\$ -	\$ -

OTTI recognized 3rd Quarter

g. Intent to Sell	\$ -	\$ -	\$ -
h. Inability or lack of intent to retain the investment in the security for a period of time sufficient to recover the amortized cost basis	\$ -	\$ -	\$ -
i. Total 3rd Quarter	\$ -	\$ -	\$ -

OTTI recognized 4th Quarter

j. Intent to Sell	\$ -	\$ -	\$ -
k. Inability or lack of intent to retain the investment in the security for a period of time sufficient to recover the amortized cost basis	\$ -	\$ -	\$ -
l. Total 4th Quarter	\$ -	\$ -	\$ -

m. Annual Aggregate Total	\$ -
---------------------------	------

3. The following table summarizes other-than-temporary impairments for loan-backed securities held at the end of the quarter based on the fact that the present value of projected cash flows expected to be collected was less than the amortized cost of the securities:

(1) CUSIP	(2) Amortized Cost Before Current Period OTTI	(3) Present Value of Projected Cash Flow s	(4) Recognized Other-Than- Temporary Impairment	(5) Amortized Cost After Other- Than-Temporary Impairment	(6) Fair Value at time of OTTI	(7) Date of Financial Statement Where
43739EAP2	\$ 4,184,040	\$ 4,024,868	\$ 159,172	\$ 4,024,868	\$ 2,425,577	Q4'11
12667GAX1	\$ 10,354,862	\$ 10,162,333	\$ 192,529	\$ 10,162,333	\$ 8,177,926	Q2 '11
761118HD3	\$ 4,358,301	\$ 4,012,299	\$ 346,002	\$ 4,012,299	\$ 3,498,380	Q2 '11
86363GAJ3	\$ 2,709,536	\$ 2,627,788	\$ 81,748	\$ 2,627,788	\$ 2,056,382	Q2 '11
43739EAP2	\$ 4,456,318	\$ 4,380,755	\$ 75,563	\$ 4,380,755	\$ 3,447,084	Q1 '11
12667GAX1	\$ 11,489,006	\$ 11,316,152	\$ 172,854	\$ 11,316,152	\$ 8,799,074	Q4 '10
43739EAP2	\$ 4,625,145	\$ 4,521,617	\$ 103,528	\$ 4,521,617	\$ 3,395,115	Q4 '10
74042TAC5	\$ 8,939,392	\$ 8,864,586	\$ 74,806	\$ 8,864,586	\$ 5,424,057	Q3 '10
785778HD6	\$ 1,660,514	\$ 1,608,726	\$ 51,788	\$ 1,608,726	\$ 758,956	Q3 '10
17307GYH5	\$ 6,485,902	\$ 6,032,699	\$ 453,203	\$ 6,032,699	\$ 5,256,058	Q2 '10
12667GXM8	\$ 14,208,403	\$ 13,806,788	\$ 401,615	\$ 13,806,788	\$ 11,325,389	Q1 '10
761118HD3	\$ 4,669,491	\$ 4,482,782	\$ 186,709	\$ 4,482,782	\$ 3,668,275	Q1 '10
12667GXM8	\$ 14,381,599	\$ 14,208,403	\$ 173,196	\$ 14,208,403	\$ 11,250,613	Q4 '09
86363GAJ3	\$ 3,786,928	\$ 3,525,759	\$ 261,169	\$ 3,525,759	\$ 2,359,016	Q4 '09
12667GAX1	\$ 15,611,598	\$ 15,115,896	\$ 495,703	\$ 15,115,896	\$ 10,804,631	Q3 '09
126686AC8	\$ 1,698,091	\$ 2,268,179	\$ (570,088)	\$ 2,268,179	\$ 2,178,721	Q3 '09
59549RAC8	\$ 5,807,307	\$ 5,169,950	\$ 637,357	\$ 5,169,950	\$ 4,995,475	Q3 '09
74042TAC5	\$ 9,499,020	\$ 8,939,392	\$ 559,629	\$ 8,939,392	\$ 4,201,091	Q3 '09
89234NAB6	\$ 1,216,000	\$ 3,068,465	\$ (1,852,465)	\$ 3,068,465	\$ 1,200,778	Q3 '09
144527AB4	\$ 6,205,000	\$ 9,996,975	\$ (3,791,975)	\$ 9,996,975	\$ 4,763,699	Q3 '09
761118HD3	\$ 2,232,500	\$ 4,669,491	\$ (2,436,991)	\$ 4,669,491	\$ 3,635,050	Q3 '09
Total			\$ (4,224,949)			

4. All impaired securities (fair value is less than cost or amortized cost) for which an other-than-temporary impairment has not been recognized in earnings as a realized loss (including securities with a recognized other-than-temporary impairment for non-interest related declines when a non-recognized interest related impairment remains):

(1)

a. The aggregate amount of unrealized losses:	
1. Less than 12 Months	\$ (496,710)
2. 12 Months or Longer	\$ (23,728,207)
b. The aggregate related fair value of securities w ith unrealized losses:	
1. Less than 12 Months	\$ 3,782,250
2. 12 Months or Longer	\$ 104,901,124

5. The Company reviews all loan-backed and structured securities in which the fair value of the given security is less than the amortized cost to determine if a given security is other-than-temporarily impaired. The Company examines characteristics of the underlying collateral, such as delinquency and default rates, the quality of the underlying borrower, the type of collateral in the pool, the vintage year of the collateral, subordination levels within the structure of the collateral pool, the quality of any credit guarantors, to determine the cash flows expected to be received for the security.

NOTES TO FINANCIAL STATEMENTS

If the severity and duration of the security's unrealized loss indicates a risk of an other-than-temporary impairment, then the Company will evaluate if the amortized cost basis of the security will be recovered by comparing the present value of the cash flows expected to be received for the given security with the amortized cost basis of the security. If the present value of cash flows is greater than the amortized cost basis of a security then the security is deemed not to be other-than-temporarily impaired.

E. Repurchase Agreements and Securities Lending Transactions

No change.

F. Real Estate

No change.

G. Low-Income Housing Tax Credits

No change.

Note 6 - Joint Ventures, Partnerships and Limited Liability Companies

No change.

Note 7 - Investment Income

No change.

Note 8 - Derivative Instruments

No change.

Note 9 - Income Taxes

No change.

Note 10 - Information Concerning Parent, Subsidiaries, Affiliates and Other Related Parties

No change.

Note 11 - Debt

No change.

Note 12 - Retirement Plans, Deferred Compensation, Postemployment Benefits and Compensated Absences and Other Postretirement Benefit Plans

No change.

Note 13 - Capital and Surplus, Dividend Restrictions and Quasi-Reorganizations

No change.

Note 14 – Contingencies

No change.

Note 15 – Leases

No change.

Note 16 - Information About Financial Instruments With Off-Balance Sheet Risk And Financial Instruments With Concentrations of Credit Risk

No change.

Note 17 - Sale, Transfer and Servicing of Financial Assets and Extinguishments of Liabilities

A. Transfers of Receivables Reported as Sales

No change.

B. Transfers and Servicing of Financial Assets

No change.

C. Wash Sales

Not applicable.

Note 18 - Gain or Loss to the Reporting Entity from Uninsured Plans and the Uninsured Portion of Partially Insured Plans

No change.

Note 19 - Direct Premiums Written/Produced by Managing General Agents/Third Party Administrators

No change.

Note 20 – Fair Value Measurements

Fair value is defined as the price that would be received to sell an asset or paid to transfer a liability in an orderly transaction between market participants at the measurement date. Fair value measurements are based upon observable and unobservable inputs. Observable inputs reflect market data obtained from independent sources while unobservable inputs reflect the Company's view of market assumptions in the absence of observable market information. The Company utilizes valuation techniques that maximize the use of observable inputs and minimize the use of unobservable inputs. In determining fair value, the Company uses various methods including market, income and cost approaches.

STATEMENT AS OF MARCH 31, 2012 OF THE NATIONWIDE INDEMNITY COMPANY

NOTES TO FINANCIAL STATEMENTS

The Company categorizes its assets and liabilities reported at fair value in the quarterly statement into a three-level hierarchy based on the priority of the inputs to the valuation technique. The fair value hierarchy gives the highest priority to quoted prices in active markets for identical assets or liabilities (Level 1) and the lowest priority to unobservable inputs (Level 3). If the inputs used to measure fair value fall within different levels of the hierarchy, the category level is based on the lowest priority level input that is significant to the fair value measurement of the instrument in its entirety.

The fair value hierarchy levels are as follows:

Level 1. Unadjusted quoted prices accessible in active markets for identical assets or liabilities at the measurement date and mutual funds where the value per share (unit) is determined and published daily and is the basis for current transactions.

Level 2. Unadjusted quoted prices for similar assets or liabilities in active markets or inputs (other than quoted prices) that are observable or that are derived principally from or corroborated by observable market data through correlation or other means.

Level 3. Prices or valuation techniques that require inputs that are both unobservable and significant to the overall fair value measurement. Inputs reflect management’s best estimate about the assumptions market participants would use at the measurement date in pricing the asset or liability. Consideration is given to the risk inherent in both the method of valuation and the valuation inputs.

The Company periodically reviews its fair value hierarchy classifications for financial assets and liabilities. Changes in observability of significant valuation inputs identified during these reviews may trigger reclassifications. Reclassifications into/out of the fair value hierarchy levels are reported as transfers at the beginning of the period in which the change occurs.

To determine the fair value of bonds and stocks for which market quotations are available, independent pricing services are most often utilized. For these bonds and stocks, the Company obtains the pricing services’ methodologies, inputs and assumptions and classifies the investments accordingly in the fair value hierarchy.

Non-binding broker quotes are also utilized to determine the fair value of certain bonds when quotes are not available from independent pricing services. Broker quotes are considered unobservable inputs, and these bonds are classified accordingly in the fair value hierarchy as only one broker quote is ordinarily obtained, the investment is not traded on an exchange, the pricing is not available to other entities and/or the transaction volume in the same or similar investments has decreased such that generally only one quotation is available. As the brokers often do not provide the necessary transparency into their quotes and methodologies, the Company periodically performs reviews and tests to ensure that quotes are a reasonable estimate of the investments’ fair value.

For certain bonds not valued using independent services or broker quotes, a corporate pricing matrix or internally developed pricing model is most often used. The corporate pricing matrix is developed using private spreads for bonds with varying weighted average lives and credit quality ratings. The weighted average life and credit quality rating of a particular bond to be priced using the corporate pricing matrix are important inputs into the model and are used to determine a corresponding spread that is added to the appropriate U.S. Treasury yield to create an estimated market yield for that security. The estimated market yield and other relevant factors are then used to estimate the fair value of the particular bond.

The following table summarizes assets and liabilities reported at fair value as of March 31, 2012:

	Level 1	Level 2	Level 3	Total
Assets at Fair Value				
U.S. Government bonds	-	-	-	-
States, Territories and Possessions	-	-	-	-
Political subdivisions	-	-	-	-
Special revenues	-	10,536,267	-	10,536,267
Hybrid Securities	-	-	-	-
Credit tenant loans	-	-	-	-
Industrial & Misc.	-	49,071,408	1,000,000	50,071,408
Total Bonds	\$ -	\$ 59,607,675	\$ 1,000,000	\$ 60,607,675
Sec Lending	-	11,193,879	-	11,193,879
Preferred Stocks	-	-	-	-
Common Stocks	-	-	949,840	949,840
Loans held for sale	-	-	-	-
Separate Account Assets	-	-	-	-
Derivative Assets	-	-	-	-
Total Assets at Fair Value	\$ -	\$ 70,801,554	\$ 1,949,840	\$ 72,751,394
Liabilities at Fair Value				
Derivatives Liabilities	-	-	-	-
Total Liabilities at Fair Value	\$ -	\$ -	\$ -	\$ -

The following table summarizes changes in fair value measurements for which the Company used significant unobservable inputs (Level 3) to determine fair value for the three months ended March 31, 2012:

	Balance as of 12/31/2011	Net Investment Gain/Loss		Activity During the Period				Transfers Into Level 3	Transfers Out of Level 3	Balance as of 03/31/2012
		In Earnings	Unrealized in Surplus	Purchases	Issuances	Sales	Settlements			
Assets at Fair Value										
U.S. Government bonds	-	-	-	-	-	-	-	-	-	-
States, Territories and Possessions	-	-	-	-	-	-	-	-	-	-
Political subdivisions	-	-	-	-	-	-	-	-	-	-
Special revenues	-	-	-	-	-	-	-	-	-	-
Hybrid Securities	-	-	-	-	-	-	-	-	-	-
Credit tenant loans	-	-	-	-	-	-	-	-	-	-
Industrial & Misc.	900,000	-	100,000	-	-	-	-	-	-	1,000,000
Total Bonds	\$ 900,000	\$ -	\$ 100,000	\$ -	\$ -	\$ -	\$ -	\$ -	\$ -	\$ 1,000,000
Sec Lending	-	-	-	-	-	-	-	-	-	-
Preferred Stocks	-	-	-	-	-	-	-	-	-	-
Common Stocks	782,153	-	167,687	-	-	-	-	-	-	949,840
Loans held for sale	-	-	-	-	-	-	-	-	-	-
Separate Account Assets	-	-	-	-	-	-	-	-	-	-
Derivative Assets	-	-	-	-	-	-	-	-	-	-
Total Assets at Fair Value	\$ 1,682,153	\$ -	\$ 267,687	\$ -	\$ -	\$ -	\$ -	\$ -	\$ -	\$ 1,949,840
Liabilities										
Derivatives Liabilities	-	-	-	-	-	-	-	-	-	-
Total Liabilities	\$ -	\$ -	\$ -	\$ -	\$ -	\$ -	\$ -	\$ -	\$ -	\$ -

NOTES TO FINANCIAL STATEMENTS

The following table summarizes aggregate carrying value and fair value, by level, for all financial instruments, excluding assets and liabilities reported at fair value, as of March 31, 2012:

	Carrying Value	Aggregate Fair Value	Level 1	Level 2	Level 3
Assets					
Bonds	\$ 3,132,976,893	\$ 3,496,434,747	\$ 1,179,230,324	\$ 2,286,261,836	\$ 30,942,587
Stocks	-	-	-	-	-
Mortgage loans	119,877,994	126,403,026	-	-	126,403,026
Short-term investments	9,763,047	9,763,047	-	9,763,047	-
Securities lending collateral assets ¹	4,893,171	4,893,171	-	4,893,171	-
Total Assets	<u>\$ 3,267,511,105</u>	<u>\$ 3,637,493,991</u>	<u>\$ 1,179,230,324</u>	<u>\$ 2,300,918,054</u>	<u>\$ 157,345,613</u>

1 - Includes non-admitted assets

Note 21 - Other Items

No change.

Note 22 - Events Subsequent

Subsequent events have been considered through May 7, 2012 for these statutory financial statements which are to be issued May 8, 2012. There were no events occurring subsequent to the end of the quarter that merited recognition or disclosure in these statements.

Note 23 – Reinsurance

No change.

Note 24 - Retrospectively Rated Contracts and Contracts Subject to Redetermination

No change.

Note 25 - Changes in Incurred Losses and Loss Adjustment Expenses

No change.

Note 26 - Intercompany Pooling Arrangements

Not applicable.

Note 27 - Structured Settlements

No change.

Note 28 - Health Care Receivables

No change.

Note 29 - Participating Policies

No change.

Note 30 - Premium Deficiency Reserves

No change.

Note 31 - High Deductibles

No change.

Note 32 - Discounting of Liabilities for Unpaid Losses or Unpaid Loss Adjustment Expenses

No change.

Note 33 - Asbestos/Environmental Reserves

No change.

Note 34 - Subscriber Savings Accounts

No change.

Note 35 - Multiple Peril Crop Insurance

No change.

Note 36 – Financial Guaranty Insurance

A. and B. Not applicable.

STATEMENT AS OF MARCH 31, 2012 OF THE NATIONWIDE INDEMNITY COMPANY

GENERAL INTERROGATORIES

PART 1 - COMMON INTERROGATORIES

GENERAL

- 1.1

Did the reporting entity experience any material transactions requiring the filing of Disclosure of Material Transactions with the State of Domicile, as required by the Model Act?

Yes [☐] No [☒]
- 1.2

If yes, has the report been filed with the domiciliary state?

Yes [☐] No [☐]
- 2.1

Has any change been made during the year of this statement in the charter, by-laws, articles of incorporation, or deed of settlement of the reporting entity?

Yes [☐] No [☒]
- 2.2

If yes, date of change:
3.

Have there been any substantial changes in the organizational chart since the prior quarter end?

Yes [☐] No [☒]

If yes, complete the Schedule Y - Part 1 - organizational chart.
- 4.1

Has the reporting entity been a party to a merger or consolidation during the period covered by this statement?

Yes [☐] No [☒]
- 4.2

If yes, provide the name of the entity, NAIC Company Code, and state of domicile (use two letter state abbreviation) for any entity that has ceased to exist as a result of the merger or consolidation.

1	2	3
Name of Entity	NAIC Company Code	State of Domicile

5.

If the reporting entity is subject to a management agreement, including third-party administrator(s), managing general agent(s), attorney-in-fact, or similar agreement, have there been any significant changes regarding the terms of the agreement or principals involved?

Yes [☐] No [☒] N/A [☐]

If yes, attach an explanation.
- 6.1

State as of what date the latest financial examination of the reporting entity was made or is being made.

12/31/2011
- 6.2

State the as of date that the latest financial examination report became available from either the state of domicile or the reporting entity. This date should be the date of the examined balance sheet and not the date the report was completed or released.

12/31/2006
- 6.3

State as of what date the latest financial examination report became available to other states or the public from either the state of domicile or the reporting entity. This is the release date or completion date of the examination report and not the date of the examination (balance sheet date).

03/29/2008
- 6.4

By what department or departments?
OH
- 6.5

Have all financial statement adjustments within the latest financial examination report been accounted for in a subsequent financial statement filed with Departments?

Yes [☐] No [☐] N/A [☒]
- 6.6

Have all of the recommendations within the latest financial examination report been complied with?

Yes [☐] No [☐] N/A [☒]
- 7.1

Has this reporting entity had any Certificates of Authority, licenses or registrations (including corporate registration, if applicable) suspended or revoked by any governmental entity during the reporting period?

Yes [☐] No [☒]
- 7.2

If yes, give full information:
- 8.1

Is the company a subsidiary of a bank holding company regulated by the Federal Reserve Board?

Yes [☐] No [☒]
- 8.2

If response to 8.1 is yes, please identify the name of the bank holding company.
- 8.3

Is the company affiliated with one or more banks, thrifts or securities firms?

Yes [☒] No [☐]
- 8.4

If response to 8.3 is yes, please provide below the names and location (city and state of the main office) of any affiliates regulated by a federal regulatory services agency [i.e. the Federal Reserve Board (FRB), the Office of the Comptroller of the Currency (OCC), the Federal Deposit Insurance Corporation (FDIC) and the Securities Exchange Commission (SEC)] and identify the affiliate's primary federal regulator.

1	2	3	4	5	6
Affiliate Name	Location (City, State)	FRB	OCC	FDIC	SEC
Nationwide Bank	Columbus, OH	NO	YES	NO	NO
Nationwide Mutual Insurance Company	Columbus, OH	YES	NO	NO	NO
Nationwide Mutual Fire Insurance Company	Columbus, OH	YES	NO	NO	NO
Nationwide Corporation	Columbus, OH	YES	NO	NO	NO
Nationwide Financial Services, Inc.	Columbus, OH	YES	NO	NO	NO
Nationwide Investment Services Corp.	Columbus, OH	NO	NO	NO	YES
Nationwide Investment Advisors, LLC	Columbus, OH	NO	NO	NO	YES
Nationwide Securities, LLC	Dublin, OH	NO	NO	NO	YES
Nationwide SA Capital Trust	King of Prussia, PA	NO	NO	NO	YES
Nationwide Fund Advisors	King of Prussia, PA	NO	NO	NO	YES
Nationwide Fund Distributors, LLC	King of Prussia, PA	NO	NO	NO	YES
Nationwide Asset Management, LLC	Columbus, OH	NO	NO	NO	YES

STATEMENT AS OF MARCH 31, 2012 OF THE NATIONWIDE INDEMNITY COMPANY

GENERAL INTERROGATORIES

- 9.1

Are the senior officers (principal executive officer, principal financial officer, principal accounting officer or controller, or persons performing similar functions) of the reporting entity subject to a code of ethics, which includes the following standards? (a) Honest and ethical conduct, including the ethical handling of actual or apparent conflicts of interest between personal and professional relationships; (b) Full, fair, accurate, timely and understandable disclosure in the periodic reports required to be filed by the reporting entity; (c) Compliance with applicable governmental laws, rules and regulations; (d) The prompt internal reporting of violations to an appropriate person or persons identified in the code; and (e) Accountability for adherence to the code.

Yes ☒ No ☐
- 9.11

If the response to 9.1 is No, please explain:
- 9.2

Has the code of ethics for senior managers been amended?

Yes ☐ No ☒
- 9.21

If the response to 9.2 is Yes, provide information related to amendment(s).
- 9.3

Have any provisions of the code of ethics been waived for any of the specified officers?

Yes ☐ No ☒
- 9.31

If the response to 9.3 is Yes, provide the nature of any waiver(s).

FINANCIAL

- 10.1

Does the reporting entity report any amounts due from parent, subsidiaries or affiliates on Page 2 of this statement?

Yes ☒ No ☐
- 10.2

If yes, indicate any amounts receivable from parent included in the Page 2 amount:

\$

INVESTMENT

- 11.1

Were any of the stocks, bonds, or other assets of the reporting entity loaned, placed under option agreement, or otherwise made available for use by another person? (Exclude securities under securities lending agreements.)

Yes ☐ No ☒
- 11.2

If yes, give full and complete information relating thereto:
12.

Amount of real estate and mortgages held in other invested assets in Schedule BA:

\$60,724,486
13.

Amount of real estate and mortgages held in short-term investments:

\$
- 14.1

Does the reporting entity have any investments in parent, subsidiaries and affiliates?

Yes ☒ No ☐
- 14.2

If yes, please complete the following:
- | | 1 | 2 |
|---|---|--|
| | Prior Year-End Book/Adjusted Carrying Value | Current Quarter Book/Adjusted Carrying Value |
| 14.21 Bonds | \$ | \$ |
| 14.22 Preferred Stock | \$ | \$ |
| 14.23 Common Stock | \$ | \$ |
| 14.24 Short-Term Investments | \$ | \$ |
| 14.25 Mortgage Loans on Real Estate | \$ | \$ |
| 14.26 All Other | \$21,153,895 | \$20,766,257 |
| 14.27 Total Investment in Parent, Subsidiaries and Affiliates (Subtotal Lines 14.21 to 14.26) | \$21,153,895 | \$20,766,257 |
| 14.28 Total Investment in Parent included in Lines 14.21 to 14.26 above | \$ | \$ |
- 15.1

Has the reporting entity entered into any hedging transactions reported on Schedule DB?

Yes ☐ No ☒
- 15.2

If yes, has a comprehensive description of the hedging program been made available to the domiciliary state?

Yes ☐ No ☐
- If no, attach a description with this statement.

STATEMENT AS OF MARCH 31, 2012 OF THE NATIONWIDE INDEMNITY COMPANY

GENERAL INTERROGATORIES

16. Excluding items in Schedule E - Part 3 - Special Deposits, real estate, mortgage loans and investments held physically in the reporting entity's offices, vaults or safety deposit boxes, were all stocks, bonds and other securities, owned throughout the current year held pursuant to a custodial agreement with a qualified bank or trust company in accordance with Section 1, III - General Examination Considerations, F. Outsourcing of Critical Functions, Custodial or Safekeeping Agreements of the NAIC Financial Condition Examiners Handbook? Yes [X] No []
- 16.1 For all agreements that comply with the requirements of the NAIC Financial Condition Examiners Handbook, complete the following:

1 Name of Custodian(s)	2 Custodian Address
The Bank of New York Mellon	1 Wall Street, New York, NY 10286

- 16.2 For all agreements that do not comply with the requirements of the NAIC Financial Condition Examiners Handbook, provide the name, location and a complete explanation:

1 Name(s)	2 Location(s)	3 Complete Explanation(s)

- 16.3 Have there been any changes, including name changes, in the custodian(s) identified in 16.1 during the current quarter? Yes [] No [X]
- 16.4 If yes, give full information relating thereto:

1 Old Custodian	2 New Custodian	3 Date of Change	4 Reason

- 16.5 Identify all investment advisors, brokers/dealers or individuals acting on behalf of broker/dealers that have access to the investment accounts, handle securities and have authority to make investments on behalf of the reporting entity:

1 Central Registration Depository	2 Name(s)	3 Address
N/A	Members of the investment staff designated by the Chief Investment Officer as detailed in the Corporate Resolution	One Nationwide Blvd., Columbus, OH 43215

- 17.1 Have all the filing requirements of the Purposes and Procedures Manual of the NAIC Securities Valuation Office been followed? Yes [X] No []
- 17.2 If no, list exceptions:

GENERAL INTERROGATORIES

PART 2 - PROPERTY & CASUALTY INTERROGATORIES

1.

If the reporting entity is a member of a pooling arrangement, did the agreement or the reporting entity's participation change?
If yes, attach an explanation.

Yes [] No [] N/A [X]
2.

Has the reporting entity reinsured any risk with any other reporting entity and agreed to release such entity from liability, in whole or in part, from any loss that may occur on the risk, or portion thereof, reinsured?
If yes, attach an explanation.

Yes [] No [X]
- 3.1

Have any of the reporting entity's primary reinsurance contracts been canceled?

Yes [] No [X]
- 3.2

If yes, give full and complete information thereto.
- 4.1

Are any of the liabilities for unpaid losses and loss adjustment expenses other than certain workers' compensation tabular reserves (see Annual Statement Instructions pertaining to disclosure of discounting for definition of " tabular reserves") discounted at a rate of interest greater than zero?

Yes [] No [X]
- 4.2

If yes, complete the following schedule:

			TOTAL DISCOUNT				DISCOUNT TAKEN DURING PERIOD			
1	2	3	4	5	6	7	8	9	10	11
Line of Business	Maximum Interest	Discount Rate	Unpaid Losses	Unpaid LAE	IBNR	TOTAL	Unpaid Losses	Unpaid LAE	IBNR	TOTAL
TOTAL										

5.

Operating Percentages:
- 5.1

A&H loss percent

%
- 5.2

A&H cost containment percent

%
- 5.3

A&H expense percent excluding cost containment expenses

%
- 6.1

Do you act as a custodian for health savings accounts?

Yes [] No [X]
- 6.2

If yes, please provide the amount of custodial funds held as of the reporting date\$.....
- 6.3

Do you act as an administrator for health savings accounts?

Yes [] No [X]
- 6.4

If yes, please provide the balance of the funds administered as of the reporting date\$.....

SCHEDULE F - CEDED REINSURANCE

1 NAIC Company Code	2 Federal ID Number	3 Name of Reinsurer	4 Domiciliary Jurisdiction	5 Is Insurer Authorized? (Yes or No)
		NONE		

SCHEDULE T - EXHIBIT OF PREMIUMS WRITTEN

Current Year to Date - Allocated by States and Territories

		1 Active Status	Direct Premiums Written		Direct Losses Paid (Deducting Salvage)		Direct Losses Unpaid	
			2 Current Year To Date	3 Prior Year To Date	4 Current Year To Date	5 Prior Year To Date	6 Current Year To Date	7 Prior Year To Date
States, etc.								
1. Alabama	AL	N						
2. Alaska	AK	N						
3. Arizona	AZ	N						
4. Arkansas	AR	N						
5. California	CA	N						
6. Colorado	CO	N						
7. Connecticut	CT	N						
8. Delaware	DE	N						
9. District of Columbia	DC	N						
10. Florida	FL	N						
11. Georgia	GA	N						
12. Hawaii	HI	N						
13. Idaho	ID	N						
14. Illinois	IL	L						
15. Indiana	IN	N						
16. Iowa	IA	L						
17. Kansas	KS	N						
18. Kentucky	KY	N						
19. Louisiana	LA	N						
20. Maine	ME	N						
21. Maryland	MD	N						
22. Massachusetts	MA	N						
23. Michigan	MI	N						
24. Minnesota	MN	N						
25. Mississippi	MS	N						
26. Missouri	MO	N						
27. Montana	MT	N						
28. Nebraska	NE	N						
29. Nevada	NV	N						
30. New Hampshire	NH	N						
31. New Jersey	NJ	N						
32. New Mexico	NM	N						
33. New York	NY	Q						
34. North Carolina	NC	N						
35. North Dakota	ND	N						
36. Ohio	OH	L						
37. Oklahoma	OK	N						
38. Oregon	OR	N						
39. Pennsylvania	PA	N						
40. Rhode Island	RI	N						
41. South Carolina	SC	N						
42. South Dakota	SD	N						
43. Tennessee	TN	N						
44. Texas	TX	N						
45. Utah	UT	N						
46. Vermont	VT	N						
47. Virginia	VA	N						
48. Washington	WA	N						
49. West Virginia	WV	N						
50. Wisconsin	WI	Q						
51. Wyoming	WY	N						
52. American Samoa	AS	N						
53. Guam	GU	N						
54. Puerto Rico	PR	N						
55. U.S. Virgin Islands	VI	N						
56. Northern Mariana Islands	MP	N						
57. Canada	CN	N						
58. Aggregate Other Alien	OT	XXX						
59. Totals	(a) 3							
DETAILS OF WRITE-INS								
5801.		XXX						
5802.		XXX						
5803.		XXX						
5898.	Summary of remaining write-ins for Line 58 from overflow page	XXX						
5899.	Totals (Lines 5801 through 5803 plus 5898)(Line 58 above)	XXX						

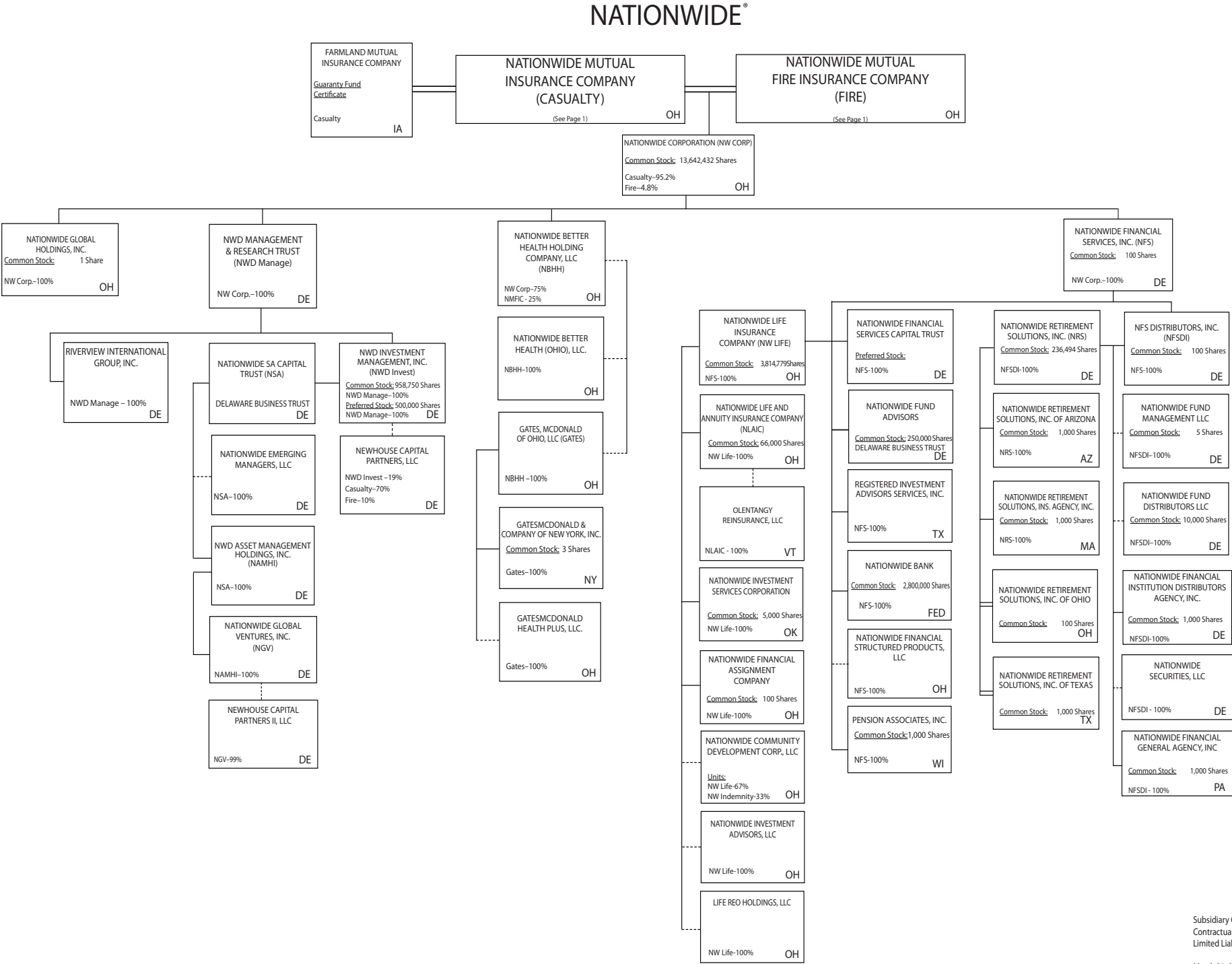
(L) Licensed or Chartered - Licensed Insurance Carrier or Domiciled RRG; (R) Registered - Non-domiciled RRGs; (Q) Qualified - Qualified or Accredited Reinsurer; (E) Eligible - Reporting Entities eligible or approved to write Surplus Lines in the state; (N) None of the above - Not allowed to write business in the state.

(a) Insert the number of L responses except for Canada and Other Alien.

STATEMENT AS OF MARCH 31, 2012 OF THE NATIONWIDE INDEMNITY COMPANY



二



NATIONWIDE INSURANCE COMPANIES

NAIC Group Code	Group Name	NAIC Company Code	State of Domicile	Federal ID Number	Name of Company
0140	Nationwide	42579	IA	42-1201931	Allied Property and Casualty Insurance Company
0140	Nationwide	19100	IA	42-6054959	AMCO Insurance Company
0140	Nationwide	10127	OH	27-0114983	Allied Insurance Company of America
0140	Nationwide	22209	OH	75-6013587	Freedom Specialty Insurance Company
0140	Nationwide	29262	TX	74-1061659	Colonial County Mutual Insurance Company
0140	Nationwide	18961	OH	68-0066866	Crestbrook Insurance Company
0140	Nationwide	42587	IA	42-1207150	Depositors Insurance Company
0140	Nationwide	13838	IA	42-0618271	Farmland Mutual Insurance Company
0140	Nationwide	11991	WI	38-0865250	National Casualty Company
0140	Nationwide	26093	OH	48-0470690	Nationwide Affinity Insurance Company of America
0140	Nationwide	28223	IA	42-1015537	Nationwide Agribusiness Insurance Company
0140	Nationwide	10723	WI	95-0639970	Nationwide Assurance Company
0140	Nationwide	23760	OH	31-4425763	Nationwide General Insurance Company
0140	Nationwide	10070	OH	31-1399201	Nationwide Indemnity Company
0140	Nationwide	25453	WI	95-2130882	Nationwide Insurance Company of America
0140	Nationwide	10948	OH	31-1613686	Nationwide Insurance Company of Florida
0140	Nationwide	92657	OH	31-1000740	Nationwide Life and Annuity Insurance Company
0140	Nationwide	66869	OH	31-4156830	Nationwide Life Insurance Company
0140	Nationwide	42110	TX	75-1780981	Nationwide Lloyds
0140	Nationwide	23779	OH	31-4177110	Nationwide Mutual Fire Insurance Company
0140	Nationwide	23787	OH	31-4177100	Nationwide Mutual Insurance Company
0140	Nationwide	37877	OH	31-0970750	Nationwide Property & Casualty Insurance Company
0140	Nationwide	15580	OH	31-1117969	Scottsdale Indemnity Company
0140	Nationwide	41297	OH	31-1024978	Scottsdale Insurance Company
0140	Nationwide	10672	AZ	86-0835870	Scottsdale Surplus Lines Insurance Company
0140	Nationwide	13242	TX	74-2286759	Titan Indemnity Company
0140	Nationwide	36269	MI	86-0619597	Titan Insurance Company
0140	Nationwide	42285	CA	95-3750113	Veterinary Pet Insurance Company
0140	Nationwide	10644	IN	34-1785903	Victoria Automobile Insurance Company
0140	Nationwide	42889	OH	34-1394913	Victoria Fire & Casualty Company
0140	Nationwide	10778	OH	34-1842604	Victoria National Insurance Company
0140	Nationwide	10105	OH	34-1777972	Victoria Select Insurance Company
0140	Nationwide	10777	OH	34-1842602	Victoria Specialty Insurance Company
0140	Nationwide	37150	AZ	86-0561941	Western Heritage Insurance Company
0140	Nationwide	13999	VT	27-1712056	Olentangy Reinsurance, LLC
4664	PURE	13204	FL	26-3109178	PURE Insurance Company
4664	PURE	12873	FL	20-8287105	Privilege Underwriters Reciprocal Exchange

STATEMENT AS OF MARCH 31, 2012 OF THE NATIONWIDE INDEMNITY COMPANY

STATEMENT AS OF MARCH 31, 2012 OF THE NATIONWIDE INDEMNITY COMPANY

SCHEDULE Y

PART 1A - DETAIL OF INSURANCE HOLDING COMPANY SYSTEM

1	2	3	4	5	6	7	8	9	10	11	12	13	14	15
Group Code	Group Name	NAIC Company Code	Federal ID Number	Federal RSSD	CIK	Name of Securities Exchange if Publicly Traded (U.S. or International)	Names of Parent, Subsidiaries Or Affiliates	Domi-ciliary Location	Relationship to Reporting Entity	Directly Controlled by (Name of Entity/Person)	Type of Control (Ownership, Board, Management, Attorney-in-Fact, Influence, Other)	If Control is Owner-ship Provide Percen-tage	Ultimate Controlling Entity(ies)/Person(s)	*
..0140	Nationwide		31-1486309				10 W. Nationwide, LLC	..OH	..NIA	Nationwide Realty Investors, Ltd.	Ownership	..100.000	Nationwide Mutual Insurance Company	
..0140	Nationwide		31-1486309				101 N. Twentieth St, LLC	..OH	..NIA	Nationwide Realty Investors, Ltd.	Ownership	..100.000	Nationwide Mutual Insurance Company	
..0140	Nationwide		31-1733036				120 Acre Partners, LLC	..DE	..NIA	Nationwide Realty Investors, Ltd.	Ownership	..95.000	Nationwide Mutual Insurance Company	
..0140	Nationwide		26-2451988				1492 Capital, LLC	..OH	..NIA	Nationwide Mutual Insurance Company	Ownership	..100.000	Nationwide Mutual Insurance Company	
..0140	Nationwide		20-1347603				180 E. Broad Partners, LLC	..OH	..NIA	Nationwide Realty Investors, Ltd.	Ownership	..33.330	Nationwide Mutual Insurance Company	..1
..0140	Nationwide						3Stone Inflection Fund, LLC	..DE	..OTH	Other non-Nationwide	n/a	..0.000	Other non-Nationwide	
..0140	Nationwide		31-1580283				400 West Nationwide Boulevard, LLC	..OH	..NIA	NWD Investments, LLC	Ownership	..100.000	Nationwide Mutual Insurance Company	
..0140	Nationwide		31-1580283				425 West Nationwide Boulevard, LLC	..OH	..NIA	NWD Investments, LLC	Ownership	..100.000	Nationwide Mutual Insurance Company	
..0140	Nationwide		31-1486309				44 Chestnut, LLC	..OH	..NIA	Nationwide Realty Investors, Ltd.	Ownership	..100.000	Nationwide Mutual Insurance Company	
..0140	Nationwide		20-4939866				775 Yard Street Restaurant, LLC	..OH	..NIA	NRI Equity Land Investments, LLC	Ownership	..100.000	Nationwide Mutual Insurance Company	
..0140	Nationwide		20-4939866				775 Yard Street, LLC	..OH	..NIA	NRI Equity Land Investments, LLC	Ownership	..100.000	Nationwide Mutual Insurance Company	
..0140	Nationwide		20-4939866				800 Bobcat Avenue, LLC	..OH	..NIA	NRI Equity Land Investments, LLC	Ownership	..100.000	Nationwide Mutual Insurance Company	
..0140	Nationwide		20-4939866				805 Bobcat Avenue, LLC	..OH	..NIA	NRI Equity Land Investments, LLC	Ownership	..100.000	Nationwide Mutual Insurance Company	
..0140	Nationwide		20-4939866				850 Goodale Blvd., LLC	..OH	..NIA	NRI Equity Land Investments, LLC	Ownership	..100.000	Nationwide Mutual Insurance Company	
..0140	Nationwide		31-1680808				AD Investments, LLC	..OH	..NIA	Nationwide Realty Investors, Ltd.	Ownership	..60.000	Nationwide Mutual Insurance Company	..1
..0140	Nationwide		31-1580283				ADTV, LLC	..OH	..NIA	NWD Investments, LLC	Ownership	..100.000	Nationwide Mutual Insurance Company	
..0140	Nationwide		52-2227314				AGMC Reinsurance, Ltd.	..Turk/Caic	..JA	Nationwide Advantage Mortgage Company	Ownership	..100.000	Nationwide Mutual Insurance Company	
..0140	Nationwide		42-1011300				ALLIED General Agency Company	..JA	..JA	AMCO Insurance Company	Ownership	..100.000	Nationwide Mutual Insurance Company	
..0140	Nationwide		42-0958655				ALLIED Group, Inc.	..JA	..NIA	Nationwide Mutual Insurance Company	Ownership	..100.000	Nationwide Mutual Insurance Company	
..0140	Nationwide	..10127	27-0114983				ALLIED Insurance Company of America (fka Atlantic Floridian Insurance Company)	..OH	..JA	Nationwide Mutual Insurance Company	Ownership	..100.000	Nationwide Mutual Insurance Company	
..0140	Nationwide	..45279	42-1201931				ALLIED Property and Casualty Insurance Company	..JA	..JA	ALLIED Group, Inc.	Ownership	..100.000	Nationwide Mutual Insurance Company	
..0140	Nationwide		42-1527863				ALLIED Texas Agency, Inc.	..TX	..JA	AMCO Insurance Company	Ownership	..100.000	Nationwide Mutual Insurance Company	
..0140	Nationwide	..19100	42-6054959				AMCO Insurance Company	..JA	..JA	ALLIED Group, Inc.	Ownership	..100.000	Nationwide Mutual Insurance Company	
..0140	Nationwide		59-1031596				American Marine Underwriters, Inc.	..FL	..JA	Nationwide Mutual Insurance Company	Ownership	..100.000	Nationwide Mutual Insurance Company	
..0140	Nationwide		31-1580283				Arena District CA I, LLC	..OH	..NIA	NWD Investments, LLC	Ownership	..100.000	Nationwide Mutual Insurance Company	
..0140	Nationwide		90-0280710				Arena District Owners Association	..OH	..OTH	Other non-Nationwide	n/a	..0.000	Other non-Nationwide	
..0140	Nationwide		31-1580283				Arena Theatres, LLC	..OH	..NIA	NWD Investments, LLC	Ownership	..100.000	Nationwide Mutual Insurance Company	
..0140	Nationwide		31-1486309				Atkins Circle I, LLC	..OH	..NIA	NRI Communities, Ltd.	Ownership	..100.000	Nationwide Mutual Insurance Company	
..0140	Nationwide		31-1486309				Atkins Circle II, LLC	..OH	..NIA	NRI Communities, Ltd.	Ownership	..100.000	Nationwide Mutual Insurance Company	
..0140	Nationwide						BCCS Investment Fund LLC	..DE	..OTH	Nationwide Mutual Insurance Company	Ownership	..100.000	Nationwide Mutual Insurance Company	
..0140	Nationwide		31-1486309				Beckett Ridge Communities, LLC	..OH	..NIA	NRI Communities, Ltd.	Ownership	..100.000	Nationwide Mutual Insurance Company	
..0140	Nationwide		31-1184438				Boulevard Inn Limited Liability Company	..OH	..NIA	Nationwide Realty Investors, Ltd.	Ownership	..94.800	Nationwide Mutual Insurance Company	
..0140	Nationwide		31-1555487				Broad Street Retail, LLC	..DE	..NIA	Nationwide Realty Investors, Ltd.	Ownership	..60.000	Nationwide Mutual Insurance Company	
..0140	Nationwide						Brooke School Investment Fund, LLC	..DE	..OTH	Nationwide Mutual Insurance Company	Ownership	..100.000	Nationwide Mutual Insurance Company	

STATEMENT AS OF MARCH 31, 2012 OF THE NATIONWIDE INDEMNITY COMPANY

SCHEDULE Y

PART 1A - DETAIL OF INSURANCE HOLDING COMPANY SYSTEM

1	2	3	4	5	6	7	8	9	10	11	12 Type of Control (Ownership, Board, Management, Attorney-in-Fact, Influence, Other)	13 If Control is Owner- ship Provide Percent- age	14 Ultimate Controlling Entity(ies)/Person(s)	15
Group Code	Group Name	NAIC Company Code	Federal ID Number	Federal RSSD	CIK	Name of Securities Exchange if Publicly Traded (U.S. or International)	Names of Parent, Subsidiaries Or Affiliates	Domi- ciliary Location	Relationship to Reporting Entity	Directly Controlled by (Name of Entity/Person)				*
...0140 ...	Nationwide						CHP New Market Investment Fund, LLC	...OHOTH ...	Nationwide Mutual Insurance Company	Limited partner /no control	...50.000 ...	other non-Nationwide	
...0140 ...	Nationwide		20-1618232				CNRI-Cannonsport Condominium, LLC	...OHNIA ...	CNRI-Cannonsport, LLC	Ownership	...100.000 ...	Nationwide Mutual Insurance Company	
...0140 ...	Nationwide		20-1618232				CNRI-Cannonsport, LLC	...OHNIA ...	Nationwide Realty Investors, Ltd.	Ownership	...100.000 ...	Nationwide Mutual Insurance Company	
...0140 ...	Nationwide						Co-investment Fund, LLC	...DEOTH ...	Other non-Nationwide	n/a	...0.000 ...	Other non-Nationwide	
...0140 ...	Nationwide						COLHOC Limited Partnership	...OHNIA ...	Nationwide Realty Investors, Ltd.	Ownership	...31.000 ...	Other non-Nationwide	
...0140 ...	Nationwide	...29262	74-1061659				Colonial County Mutual Insurance Company	...TXJA ...	Other non-Nationwide	contract	...0.000 ...	Other non-Nationwide	
...0140 ...	Nationwide		04-3750770				Continental/North Shore I, L.P.	...OHNIA ...	Continental/NRI North Shore Investments, LLC	Ownership	...100.000 ...	Nationwide Mutual Insurance Company	...1
...0140 ...	Nationwide		20-0366090				Continental/North Shore II, L.P.	...OHNIA ...	Continental/NRI North Shore Investments, LLC	Ownership	...100.000 ...	Nationwide Mutual Insurance Company	...1
...0140 ...	Nationwide		20-0142724				Continental/NRI North Shore Investments, LLC	...OHNIA ...	Nationwide Realty Investors, Ltd.	Ownership	...50.500 ...	Nationwide Mutual Insurance Company	...1
...0140 ...	Nationwide						Cotton Mill Partners, LLC	...VAOTH ...	Nationwide Mutual Insurance Company	Limited partner /no control	...2.000 ...	other non-Nationwide	
...0140 ...	Nationwide	...18961	68-0066866				Crestbrook Insurance Company	...OHJA ...	Nationwide Mutual Insurance Company	Ownership	...100.000 ...	Nationwide Mutual Insurance Company	
...0140 ...	Nationwide		31-1486309				Crewville, Ltd.	...OHNIA ...	Nationwide Realty Investors, Ltd.	Ownership	...100.000 ...	Nationwide Mutual Insurance Company	
...0140 ...	Nationwide	...42587	42-1207150				Depositors Insurance Company	...IAJA ...	ALL IED Group, Inc.	Ownership	...100.000 ...	Nationwide Mutual Insurance Company	
...0140 ...	Nationwide		33-0096671				DVM Insurance Agency, Inc.	...CANIA ...	Veterinary Pet Insurance Company	Ownership	...100.000 ...	Nationwide Mutual Insurance Company	
...0140 ...	Nationwide		20-1945276				East of Madison, LLC	...DENIA ...	120 Acre Partners, Ltd.	Ownership	...24.910 ...	Nationwide Mutual Insurance Company	...1
...0140 ...	Nationwide		31-1486309				Easton Communities II, LLC	...OHNIA ...	NRI Communities, Ltd.	Ownership	...100.000 ...	Nationwide Mutual Insurance Company	
...0140 ...	Nationwide		31-1486309				Easton Communities, LLC	...OHNIA ...	NRI Communities, Ltd.	Ownership	...100.000 ...	Nationwide Mutual Insurance Company	
...0140 ...	Nationwide						ELH Investment LLC	...DEOTH ...	Nationwide Mutual Insurance Company	Other	...0.000 ...	Other non-Nationwide	
...0140 ...	Nationwide	...13838	42-0618271				Farmland Mutual Insurance Company	...IAJA ...	Other non-Nationwide	debt	...0.000 ...	Other non-Nationwide	
...0140 ...	Nationwide	...22209	75-6013587				Freedom Specialty Insurance Company (fka Atlantic Insurance Company)	...OHJA ...	Scottsdale Insurance Company	Ownership	...100.000 ...	Nationwide Mutual Insurance Company	
...0140 ...	Nationwide						Gartmore Riverview Diversified Opportunities, LLC	...DEOTH ...	Nationwide Mutual Insurance Company	Ownership	...0.000 ...	Nationwide Mutual Insurance Company	...1
...0140 ...	Nationwide						Gartmore Riverview Diversified Opportunities, LLC	...DEOTH ...	Nationwide Mutual Fire Insurance Company	Ownership	...0.000 ...	Nationwide Mutual Insurance Company	...1
...0140 ...	Nationwide						Gartmore Riverview Diversified Opportunities, LLC	...DEOTH ...	Nationwide Life Insurance Company	Ownership	...0.000 ...	Nationwide Mutual Insurance Company	...1
...0140 ...	Nationwide		31-4187660				Gates McDonald of Ohio, LLC	...OHNIA ...	Nationwide Better Health Holding Company, LLC	Ownership	...100.000 ...	Nationwide Mutual Insurance Company	
...0140 ...	Nationwide		13-4933584				Gates, McDonald & Company of New York, Inc.	...NYNIA ...	Gates McDonald of Ohio, LLC	Ownership	...100.000 ...	Nationwide Mutual Insurance Company	
...0140 ...	Nationwide		76-0810957				GatesMcDonald DTAO, LLC	...OHNIA ...	Gates McDonald of Ohio, LLC	Ownership	...100.000 ...	Nationwide Mutual Insurance Company	
...0140 ...	Nationwide		76-0810958				GatesMcDonald DTC, LLC	...OHNIA ...	Gates McDonald of Ohio, LLC	Ownership	...100.000 ...	Nationwide Mutual Insurance Company	
...0140 ...	Nationwide		31-1478706				GatesMcDonald Health Plus, LLC	...OHNIA ...	Gates McDonald of Ohio, LLC	Ownership	...100.000 ...	Nationwide Mutual Insurance Company	
...0140 ...	Nationwide		20-4939866				Grandview Yard Hotel Holdings, LLC	...OHNIA ...	NRI Equity Land Investments, LLC	Ownership	...100.000 ...	Nationwide Mutual Insurance Company	
...0140 ...	Nationwide		20-4939866				Grandview Yard Hotel, LLC	...OHNIA ...	Grandview Yard Hotel Holdings, LLC	Ownership	...100.000 ...	Nationwide Mutual Insurance Company	
...0140 ...	Nationwide		31-1486309				Harris Blvd. Communities I, LLC	...OHNIA ...	NRI Communities, Ltd.	Ownership	...100.000 ...	Nationwide Mutual Insurance Company	
...0140 ...	Nationwide		32-0051216				Hideaway Properties Corp.	...CAOTH ...	Nationwide Realty Investors, Ltd.	Ownership	...50.000 ...	Nationwide Mutual Insurance Company	...1

STATEMENT AS OF MARCH 31, 2012 OF THE NATIONWIDE INDEMNITY COMPANY

SCHEDULE Y

PART 1A - DETAIL OF INSURANCE HOLDING COMPANY SYSTEM

1	2	3	4	5	6	7	8	9	10	11	12	13	14	15
Group Code	Group Name	NAIC Company Code	Federal ID Number	Federal RSSD	CIK	Name of Securities Exchange if Publicly Traded (U.S. or International)	Names of Parent, Subsidiaries Or Affiliates	Domi-ciliary Location	Relationship to Reporting Entity	Directly Controlled by (Name of Entity/Person)	Type of Control (Ownership, Board, Management, Attorney-in-Fact, Influence, Other)	If Control is Owner-ship Provide Percen-tage	Ultimate Controlling Entity(ies)/Person(s)	*
...0140 ...	Nationwide		31-0871532				Insurance Intermediaries, Inc.OH.....JA.....	Nationwide Mutual Insurance Company	Ownership.....	..100.000	Nationwide Mutual Insurance Company	
...0140 ...	Nationwide		31-1486309				Jerome Village Company, LLCOH.....NIA.....	Nationwide Realty Investors, Ltd.	Ownership.....	..100.000	Nationwide Mutual Insurance Company	
...0140 ...	Nationwide		31-1486309				Jerome Village Master Property Owners AssociationOH.....NIA.....	Jerome Village Company, LLC	Ownership.....	..100.000	Nationwide Mutual Insurance Company	
...0140 ...	Nationwide		31-1486309				Jerome Village Residential Property Owners Association, Inc.OH.....NIA.....	Jerome Village Company, LLC	Ownership.....	..100.000	Nationwide Mutual Insurance Company	
...0140 ...	Nationwide						Leaguers Investment Fund LLCDE.....OTH.....	Nationwide Mutual Insurance Company	Other.....	..0.000	Nationwide Mutual Insurance Company	
...0140 ...	Nationwide		56-3789189				Life REO Holdings, LLCOH.....NIA.....	Nationwide Life Insurance Company	Ownership.....	..100.000	Nationwide Mutual Insurance Company	
...0140 ...	Nationwide		56-3789187				Life REO Holdings, LLCOH.....NIA.....	Nationwide Life Insurance Company	Ownership.....	..100.000	Nationwide Mutual Insurance Company	
...0140 ...	Nationwide		74-1395229				Lone Star General Agency, Inc.TX.....JA.....	Nationwide Mutual Insurance Company	Ownership.....	..100.000	Nationwide Mutual Insurance Company	
...0140 ...	Nationwide						Match School Investment Fund, LLCDE.....OTH.....	Nationwide Mutual Insurance Company	Ownership.....	..100.000	Nationwide Mutual Insurance Company	
...0140 ...	Nationwide		31-1486309				Maxtown Communities, LLCDE.....NIA.....	NRI Communities, Ltd.	Ownership.....	..100.000	Nationwide Mutual Insurance Company	
...0140 ...	Nationwide		31-1486309				Maxtown Retail, LLCOH.....NIA.....	NRI Communities, Ltd.	Ownership.....	..100.000	Nationwide Mutual Insurance Company	
...0140 ...	Nationwide11991	38-0865250				National Casualty CompanyWI.....JA.....	Nationwide Mutual Insurance Company	Ownership.....	..100.000	Nationwide Mutual Insurance Company	
							National Casualty Company of America, Ltd.GB.....JA.....	National Casualty Company	Ownership.....	..100.000	Nationwide Mutual Insurance Company	
...0140 ...	Nationwide		42-1154244				Nationwide Advantage Mortgage CompanyIA.....NIA.....	AMCO Insurance Company	Ownership.....	..87.300	Nationwide Mutual Insurance Company	
...0140 ...	Nationwide		42-1154244				Nationwide Advantage Mortgage CompanyIA.....NIA.....	ALLIED Property & Casualty Insurance Company	Ownership.....	..8.470	Nationwide Mutual Insurance Company	
...0140 ...	Nationwide		42-1154244				Nationwide Advantage Mortgage CompanyIA.....NIA.....	Depositors Insurance Company	Ownership.....	..4.230	Nationwide Mutual Insurance Company	
...0140 ...	Nationwide26093	48-0470690				Nationwide Affinity Insurance Company of AmericaOH.....JA.....	Nationwide Mutual Insurance Company	Ownership.....	..100.000	Nationwide Mutual Insurance Company	
...0140 ...	Nationwide28223	42-1015537				Nationwide Agribusiness Insurance CompanyIA.....JA.....	Nationwide Mutual Insurance Company	Ownership.....	..100.000	Nationwide Mutual Insurance Company	
...0140 ...	Nationwide		20-5976272				Nationwide Alternative Investments, LLCOH.....NIA.....	Nationwide Mutual Insurance Company	Ownership.....	..100.000	Nationwide Mutual Insurance Company	
...0140 ...	Nationwide		31-1578869				Nationwide Arena, LLCOH.....NIA.....	Nationwide Realty Investors, LLC	Ownership.....	..90.000	Nationwide Mutual Insurance Company	
...0140 ...	Nationwide		20-8670712				Nationwide Asset Management, LLCOH.....NIA.....	Nationwide Mutual Insurance Company	Ownership.....	..100.000	Nationwide Mutual Insurance Company	
...0140 ...	Nationwide		20-8670712				Nationwide Asset Management, LLCOH.....DS.....	Nationwide Mutual Insurance Company	Ownership.....	..100.000	Nationwide Mutual Insurance Company	
...0140 ...	Nationwide10723	95-0639970				Nationwide Assurance CompanyWI.....JA.....	Nationwide Mutual Insurance Company	Ownership.....	..100.000	Nationwide Mutual Insurance Company	
...0140 ...	Nationwide		31-1592130	2729677			Nationwide BankFED.....OTH.....	Nationwide Financial Services, Inc.	Ownership.....	..100.000	Nationwide Mutual Insurance Company	
...0140 ...	Nationwide		52-1776258				Nationwide Better Health (Ohio), LLCOH.....NIA.....	Nationwide Better Health Holding Company, LLC	Ownership.....	..100.000	Nationwide Mutual Insurance Company	
...0140 ...	Nationwide		11-3766032				Nationwide Better Health Holding Company, LLCOH.....NIA.....	Nationwide Corporation	Ownership.....	..75.000	Nationwide Mutual Insurance Company	
...0140 ...	Nationwide		11-3766032				Nationwide Better Health Holding Company, LLCOH.....NIA.....	Nationwide Mutual Fire Insurance Company	Ownership.....	..25.000	Nationwide Mutual Insurance Company	

STATEMENT AS OF MARCH 31, 2012 OF THE NATIONWIDE INDEMNITY COMPANY

SCHEDULE Y

PART 1A - DETAIL OF INSURANCE HOLDING COMPANY SYSTEM

1	2	3	4	5	6	7	8	9	10	11	12	13	14	15
Group Code	Group Name	NAIC Company Code	Federal ID Number	Federal RSSD	CIK	Name of Securities Exchange if Publicly Traded (U.S. or International)	Names of Parent, Subsidiaries Or Affiliates	Domi-ciliary Location	Relationship to Reporting Entity	Directly Controlled by (Name of Entity/Person)	Type of Control (Ownership, Board, Management, Attorney-in-Fact, Influence, Other)	If Control is Owner-ship Provide Percen-tage	Ultimate Controlling Entity(ies)/Person(s)	*
...0140 ...	Nationwide		31-1036287				Nationwide Cash Management Company	...OH...	NIA	Nationwide Mutual Insurance Company	Ownership	100.000	Nationwide Mutual Insurance Company	
...0140 ...	Nationwide		31-1752320				Nationwide Community Development Corporation, LLC	...OH...	NIA	Nationwide Life Insurance Company	Ownership	67.000	Nationwide Mutual Insurance Company	
...0140 ...	Nationwide		31-1752320				Nationwide Community Development Corporation, LLC	...OH...	NIA	Nationwide Indemnity Company	Ownership	33.000	Nationwide Mutual Insurance Company	
...0140 ...	Nationwide		31-1752320				Nationwide Community Development Corporation, LLC	...OH...	NIA	Nationwide Life Insurance Company,	Ownership	67.000	Nationwide Mutual Insurance Company	
...0140 ...	Nationwide		31-1752320				Nationwide Community Development Corporation, LLC	...OH...	NIA	Nationwide Indemnity Company	Ownership	33.000	Nationwide Mutual Insurance Company	
...0140 ...	Nationwide		31-4416546				Nationwide Corporation	...OH...	NIA	Nationwide Mutual Insurance Company	Ownership	95.200	Nationwide Mutual Insurance Company	
...0140 ...	Nationwide		31-4416546				Nationwide Corporation	...OH...	NIA	Nationwide Mutual Fire Insurance Company	Ownership	4.800	Nationwide Mutual Insurance Company	
...0140 ...	Nationwide		04-3679407				Nationwide Emerging Managers, LLC	...DE...	NIA	Nationwide SA Capital Trust	Ownership	100.000	Nationwide Mutual Insurance Company	
...0140 ...	Nationwide		05-0630007				Nationwide Exclusive Agent Risk Purchasing Group, LLC	...OH...	NIA	Insurance Intermediaries, Inc.	Ownership	100.000	Nationwide Mutual Insurance Company	
...0140 ...	Nationwide		31-1667326				Nationwide Financial Assignment Company	...OH...	NIA	Nationwide Life Insurance Company	Ownership	100.000	Nationwide Mutual Insurance Company	
...0140 ...	Nationwide		23-2412039				Nationwide Financial General Agency, Inc.	...PA...	NIA	NFS Distributors, Inc.	Ownership	100.000	Nationwide Mutual Insurance Company	
...0140 ...	Nationwide		31-1316276				Nationwide Financial Institution Distributors Agency, Inc.	...DE...	NIA	NFS Distributors, Inc.	Ownership	100.000	Nationwide Mutual Insurance Company	
...0140 ...	Nationwide		31-6554353				Nationwide Financial Services Capital Trust	...DE...	NIA	Nationwide Financial Services, Inc.	Ownership	100.000	Nationwide Mutual Insurance Company	
...0140 ...	Nationwide		31-1486870				Nationwide Financial Services, Inc.	...DE...	NIA	Nationwide Corporation	Ownership	100.000	Nationwide Mutual Insurance Company	
...0140 ...	Nationwide		80-0081970				Nationwide Financial Structured Products, LLC	...OH...	NIA	Nationwide Financial Services, Inc.	Ownership	100.000	Nationwide Mutual Insurance Company	
...0140 ...	Nationwide		52-6969857				Nationwide Fund Advisors	...DE...	NIA	Nationwide Financial Services, Inc.	Ownership	100.000	Nationwide Mutual Insurance Company	
...0140 ...	Nationwide		31-1748721				Nationwide Fund Distributors LLC	...DE...	NIA	NFS Distributors, Inc.	Ownership	100.000	Nationwide Mutual Insurance Company	
...0140 ...	Nationwide		31-0900518				Nationwide Fund Management LLC	...DE...	NIA	NFS Distributors, Inc.	Ownership	100.000	Nationwide Mutual Insurance Company	
...0140 ...	Nationwide	23760	31-4425763				Nationwide General Insurance Company	...OH...	JA	Nationwide Mutual Insurance Company	Ownership	100.000	Nationwide Mutual Insurance Company	
...0140 ...	Nationwide		31-1570938				Nationwide Global Holdings, Inc.	...OH...	NIA	Nationwide Corporation	Ownership	100.000	Nationwide Mutual Insurance Company	
...0140 ...	Nationwide		04-3732385				Nationwide Global Ventures, Inc.	...DE...	NIA	Nationwide Asset Management Holdings, Inc.	Ownership	100.000	Nationwide Mutual Insurance Company	
...0140 ...	Nationwide		31-1399201				Nationwide Indemnity Company	...OH...		Nationwide Mutual Insurance Company	Ownership	100.000	Nationwide Mutual Insurance Company	
...0140 ...	Nationwide	25453	95-2130882				Nationwide Insurance Company of America	...WI...	JA	ALLIED Group, Inc.	Ownership	100.000	Nationwide Mutual Insurance Company	
...0140 ...	Nationwide	10948	31-1613686				Nationwide Insurance Company of Florida	...OH...	JA	Nationwide Mutual Insurance Company	Ownership	100.000	Nationwide Mutual Insurance Company	
...0140 ...	Nationwide		31-6022301				Nationwide Insurance Foundation	...OH...	OTH	Other non-Nationwide	n/a	0.000	Other non-Nationwide	
...0140 ...	Nationwide		41-2206199				Nationwide Investment Advisors, LLC	...OH...	NIA	Nationwide Life Insurance Company	Ownership	100.000	Nationwide Mutual Insurance Company	
...0140 ...	Nationwide		73-0988442				Nationwide Investment Services Corporation	...OK...	NIA	Nationwide Life Insurance Company	Ownership	100.000	Nationwide Mutual Insurance Company	
...0140 ...	Nationwide	92657	31-1000740				Nationwide Life and Annuity Insurance Company	...OH...	JA	Nationwide Life Insurance Company	Ownership	100.000	Nationwide Mutual Insurance Company	

STATEMENT AS OF MARCH 31, 2012 OF THE NATIONWIDE INDEMNITY COMPANY

SCHEDULE Y

PART 1A - DETAIL OF INSURANCE HOLDING COMPANY SYSTEM

1	2	3	4	5	6	7	8	9	10	11	12	13	14	15
Group Code	Group Name	NAIC Company Code	Federal ID Number	Federal RSSD	CIK	Name of Securities Exchange if Publicly Traded (U.S. or International)	Names of Parent, Subsidiaries Or Affiliates	Domi-ciliary Location	Relationship to Reporting Entity	Directly Controlled by (Name of Entity/Person)	Type of Control (Ownership, Board, Management, Attorney-in-Fact, Influence, Other)	If Control is Owner-ship Provide Perce-ntage	Ultimate Controlling Entity(ies)/Person(s)	*
...0140 ...	Nationwide66869 ...	31-4156830	Nationwide Life Insurance CompanyOH.....	...JA.....	Nationwide Financial Services, Inc.	Ownership.....	...100.000 ...	Nationwide Mutual Insurance Company
...0140 ...	Nationwide	13-4212969	Nationwide Life Tax Credit Partners 2002-A, LLCOH.....	...NIA.....	Nationwide Life Insurance Company	Other.....	...0.000 ...	Nationwide Mutual Insurance Company
...0140 ...	Nationwide	01-0749754	Nationwide Life Tax Credit Partners 2002-B, LLCOH.....	...NIA.....	Nationwide Life Insurance Company	Other.....	...0.000 ...	Nationwide Mutual Insurance Company
...0140 ...	Nationwide	03-0498148	Nationwide Life Tax Credit Partners 2002-C, LLCOH.....	...NIA.....	Nationwide Life Insurance Company	Other.....	...0.000 ...	Nationwide Mutual Insurance Company
...0140 ...	Nationwide	54-2113175	Nationwide Life Tax Credit Partners 2003-A, LLCOH.....	...NIA.....	Nationwide Life Insurance Company	Other.....	...0.000 ...	Nationwide Mutual Insurance Company
...0140 ...	Nationwide	58-2672725	Nationwide Life Tax Credit Partners 2003-B, LLCOH.....	...NIA.....	Nationwide Life Insurance Company	Other.....	...0.000 ...	Nationwide Mutual Insurance Company
...0140 ...	Nationwide	20-0357951	Nationwide Life Tax Credit Partners 2003-C, LLCOH.....	...NIA.....	Nationwide Life Insurance Company	Other.....	...0.000 ...	Nationwide Mutual Insurance Company
...0140 ...	Nationwide	20-0382144	Nationwide Life Tax Credit Partners 2004-A, LLCOH.....	...NIA.....	Nationwide Life Insurance Company	Other.....	...0.000 ...	Nationwide Mutual Insurance Company
...0140 ...	Nationwide	20-0745944	Nationwide Life Tax Credit Partners 2004-B, LLCOH.....	...NIA.....	Nationwide Life Insurance Company	Other.....	...0.000 ...	Nationwide Mutual Insurance Company
...0140 ...	Nationwide	20-0745965	Nationwide Life Tax Credit Partners 2004-C, LLCOH.....	...NIA.....	Nationwide Life Insurance Company	Other.....	...0.000 ...	Nationwide Mutual Insurance Company
...0140 ...	Nationwide	20-1128408	Nationwide Life Tax Credit Partners 2004-D, LLCOH.....	...NIA.....	Nationwide Life Insurance Company	Other.....	...0.000 ...	Nationwide Mutual Insurance Company
...0140 ...	Nationwide	20-1128472	Nationwide Life Tax Credit Partners 2004-E, LLCOH.....	...NIA.....	Nationwide Life Insurance Company	Other.....	...0.000 ...	Nationwide Mutual Insurance Company
...0140 ...	Nationwide	20-1918935	Nationwide Life Tax Credit Partners 2004-F, LLCOH.....	...NIA.....	Nationwide Life Insurance Company	Other.....	...0.000 ...	Nationwide Mutual Insurance Company
...0140 ...	Nationwide	20-2303694	Nationwide Life Tax Credit Partners 2005-A, LLCOH.....	...NIA.....	Nationwide Life Insurance Company	Other.....	...0.000 ...	Nationwide Mutual Insurance Company
...0140 ...	Nationwide	20-2303602	Nationwide Life Tax Credit Partners 2005-B, LLCOH.....	...NIA.....	Nationwide Life Insurance Company	Other.....	...0.000 ...	Nationwide Mutual Insurance Company
...0140 ...	Nationwide	20-2450960	Nationwide Life Tax Credit Partners 2005-C, LLCOH.....	...NIA.....	Nationwide Life Insurance Company	Other.....	...0.000 ...	Nationwide Mutual Insurance Company
...0140 ...	Nationwide	20-2451052	Nationwide Life Tax Credit Partners 2005-D, LLCOH.....	...NIA.....	Nationwide Life Insurance Company	Other.....	...0.000 ...	Nationwide Mutual Insurance Company
...0140 ...	Nationwide	20-2774223	Nationwide Life Tax Credit Partners 2005-E, LLCOH.....	...NIA.....	Nationwide Life Insurance Company	Other.....	...0.000 ...	Nationwide Mutual Insurance Company
...0140 ...	Nationwide	21-1288836	Nationwide Life Tax Credit Partners 2007-A, LLCOH.....	...NIA.....	Nationwide Life Insurance Company	Other.....	...0.000 ...	Nationwide Mutual Insurance Company
...0140 ...	Nationwide	26-3427373	Nationwide Life Tax Credit Partners 2009-A, LLCOH.....	...NIA.....	Nationwide Life Insurance Company	Other.....	...0.000 ...	Nationwide Mutual Insurance Company
...0140 ...	Nationwide	26-3427435	Nationwide Life Tax Credit Partners 2009-B, LLCOH.....	...NIA.....	Nationwide Life Insurance Company	Other.....	...0.000 ...	Nationwide Mutual Insurance Company
...0140 ...	Nationwide	26-3427479	Nationwide Life Tax Credit Partners 2009-C, LLCOH.....	...NIA.....	Nationwide Life Insurance Company	Other.....	...0.000 ...	Nationwide Mutual Insurance Company
...0140 ...	Nationwide	26-3427525	Nationwide Life Tax Credit Partners 2009-D, LLCOH.....	...NIA.....	Nationwide Life Insurance Company	Other.....	...0.000 ...	Nationwide Mutual Insurance Company
...0140 ...	Nationwide	26-4737055	Nationwide Life Tax Credit Partners 2009-E, LLCOH.....	...NIA.....	Nationwide Life Insurance Company	Other.....	...0.000 ...	Nationwide Mutual Insurance Company
...0140 ...	Nationwide	26-4737157	Nationwide Life Tax Credit Partners 2009-F, LLCOH.....	...NIA.....	Nationwide Life Insurance Company	Other.....	...0.000 ...	Nationwide Mutual Insurance Company

STATEMENT AS OF MARCH 31, 2012 OF THE NATIONWIDE INDEMNITY COMPANY

SCHEDULE Y

PART 1A - DETAIL OF INSURANCE HOLDING COMPANY SYSTEM

1	2	3	4	5	6	7	8	9	10	11	12	13	14	15
Group Code	Group Name	NAIC Company Code	Federal ID Number	Federal RSSD	CIK	Name of Securities Exchange if Publicly Traded (U.S. or International)	Names of Parent, Subsidiaries Or Affiliates	Domi-ciliary Location	Relationship to Reporting Entity	Directly Controlled by (Name of Entity/Person)	Type of Control (Ownership, Board, Management, Attorney-in-Fact, Influence, Other)	If Control is Owner-ship Provide Percen-tage	Ultimate Controlling Entity(ies)/Person(s)	*
...0140 ...	Nationwide		27-1362364				Nationwide Life Tax Credit Partners 2009-I, LLCOH...	NIA.....	Nationwide Life Insurance Company	Other.....	...0.000	Nationwide Mutual Insurance Company	
...0140 ...	Nationwide						Nationwide Life Tax Credit Partners No. 1, LLCOH...	NIA.....	Nationwide Life Insurance Company	Other.....	...0.000	Nationwide Mutual Insurance Company	
...0140 ...	Nationwide42110	75-1780981				Nationwide LloydsTX...	JA.....	n/a	contract0.000	Nationwide Mutual Insurance Company	
...0140 ...	Nationwide						Nationwide Mutual Capital I, LLCDE...	NIA.....	Nationwide Mutual Capital, LLC	Ownership.....	...100.000	Nationwide Mutual Insurance Company	
...0140 ...	Nationwide		75-3191025				Nationwide Mutual Capital, LLCOH...	NIA.....	Nationwide Mutual Insurance Company	Ownership.....	...100.000	Nationwide Mutual Insurance Company	
...0140 ...	Nationwide23779	82-0549218				Nationwide Mutual Fire Insurance CompanyOH...	OTH.....	Other non-Nationwide	n/a0.000	Other non-Nationwide	
...0140 ...	Nationwide23787	31-4177100				Nationwide Mutual Insurance CompanyOH...	UDP.....	Other non-Nationwide	n/a0.000	Other non-Nationwide	
...0140 ...	Nationwide		34-2012765				Nationwide Private Equity Fund, LLCOH...	NIA.....	Nationwide Mutual Insurance Company	Ownership.....	...100.000	Nationwide Mutual Insurance Company	
...0140 ...	Nationwide		34-2012765				Nationwide Private Equity Fund, LLCOH...	NIA.....	Nationwide Mutual Insurance Company	Ownership.....	...100.000	Nationwide Mutual Insurance Company	
...0140 ...	Nationwide37877	31-0970750				Nationwide Property and Casualty Insurance CompanyOH...	JA.....	Nationwide Mutual Insurance Company	Ownership.....	...100.000	Nationwide Mutual Insurance Company	
...0140 ...	Nationwide		01-0852763				Nationwide Property Protection Services, LLCOH...	NIA.....	Nationwide Services Company, LLC	Ownership.....	...100.000	Nationwide Mutual Insurance Company	
...0140 ...	Nationwide		31-1486309				Nationwide Realty Investors, Ltd.OH...	NIA.....	Nationwide Mutual Insurance Company	Ownership.....	...95.790	Nationwide Mutual Insurance Company	
...0140 ...	Nationwide		31-1486309				Nationwide Realty Investors, Ltd.OH...	NIA.....	Nationwide Indemnity Company	Ownership.....	...4.210	Nationwide Mutual Insurance Company	
...0140 ...	Nationwide		31-1486309				Nationwide Realty Management, LLCOH...	NIA.....	Nationwide Realty Investors, Ltd.	Ownership.....	...100.000	Nationwide Mutual Insurance Company	
...0140 ...	Nationwide		04-3833929				Nationwide Realty Management, LLCOH...	NIA.....	Nationwide Realty Investors, Ltd.	Ownership.....	...100.000	Nationwide Mutual Insurance Company	
...0140 ...	Nationwide						Nationwide Realty Services, Ltd.OH...	NIA.....	Nationwide Mutual Insurance Company	Ownership.....	...100.000	Nationwide Mutual Insurance Company	
...0140 ...	Nationwide		06-0987812				Nationwide Retirement Solutions Insurance Agency, Inc.MA...	JA.....	Nationwide Retirement Solutions, Inc.	Ownership.....	...100.000	Nationwide Mutual Insurance Company	
...0140 ...	Nationwide		73-0948330				Nationwide Retirement Solutions, Inc.DE...	NIA.....	NFS Distributors, Inc.	Ownership.....	...100.000	Nationwide Mutual Insurance Company	
...0140 ...	Nationwide		86-0924069				Nationwide Retirement Solutions, Inc. of ArizonaAZ...	NIA.....	Nationwide Retirement Solutions, Inc.	Ownership.....	...100.000	Nationwide Mutual Insurance Company	
...0140 ...	Nationwide		31-1331479				Nationwide Retirement Solutions, Inc. of OhioOH...	NIA.....	Nationwide Retirement Solutions, Inc.	contract0.000	Nationwide Mutual Insurance Company	
...0140 ...	Nationwide		74-2200854				Nationwide Retirement Solutions, Inc. of TexasTX...	NIA.....	Nationwide Retirement Solutions, Inc.	contract0.000	Nationwide Mutual Insurance Company	
...0140 ...	Nationwide		52-6969856				Nationwide SA Capital TrustDE...	NIA.....	NWD Investment Management, Inc.	Ownership.....	...100.000	Nationwide Mutual Insurance Company	
...0140 ...	Nationwide		42-1373380				Nationwide Sales Solutions, Inc.JA...	NIA.....	ALLIED Group, Inc.	Ownership.....	...100.000	Nationwide Mutual Insurance Company	
...0140 ...	Nationwide		36-2434406				Nationwide Securities, LLCOH...	NIA.....	NFS Distributors, Inc.	Ownership.....	...100.000	Nationwide Mutual Insurance Company	
...0140 ...	Nationwide		31-4177100				Nationwide Services Company, LLCOH...	NIA.....	Nationwide Mutual Insurance Company	Ownership.....	...100.000	Nationwide Mutual Insurance Company	
...0140 ...	Nationwide		27-0743545				Nationwide Tax Credit Partners 2009-G, LLCOH...	NIA.....	Nationwide Mutual Insurance Company	Other.....	...0.000	Nationwide Mutual Insurance Company	
...0140 ...	Nationwide		27-0768791				Nationwide Tax Credit Partners 2009-H, LLCOH...	NIA.....	Nationwide Mutual Insurance Company	Other.....	...0.000	Nationwide Mutual Insurance Company	
...0140 ...	Nationwide		11-3651828				ND La Quinta Partners, LLCDE...	NIA.....	Nationwide Realty Investors, Ltd.	Ownership.....	...95.000	Nationwide Mutual Insurance Company	
...0140 ...	Nationwide						Newhouse Capital Partners II, LLCDE...	NIA.....	Nationwide Global Ventures, Inc.	Ownership.....	...80.000	Nationwide Mutual Insurance Company	
...0140 ...	Nationwide						Newhouse Capital Partners II, LLCDE...	NIA.....	Nationwide Global Ventures, Inc.	Ownership.....	...99.000	Nationwide Mutual Insurance Company	

STATEMENT AS OF MARCH 31, 2012 OF THE NATIONWIDE INDEMNITY COMPANY

SCHEDULE Y

PART 1A - DETAIL OF INSURANCE HOLDING COMPANY SYSTEM

1	2	3	4	5	6	7	8	9	10	11	12	13	14	15
Group Code	Group Name	NAIC Company Code	Federal ID Number	Federal RSSD	CIK	Name of Securities Exchange if Publicly Traded (U.S. or International)	Names of Parent, Subsidiaries Or Affiliates	Domi-ciliary Location	Relationship to Reporting Entity	Directly Controlled by (Name of Entity/Person)	Type of Control (Ownership, Board, Management, Attorney-in-Fact, Influence, Other)	If Control is Owner-ship Provide Percen-tage	Ultimate Controlling Entity(ies)/Person(s)	*
...0140 ...	Nationwide						Newhouse Capital Partners, LLC	DE	NIA	NWD Investment Management, Inc.	Ownership	19.000	Nationwide Mutual Insurance Company	
...0140 ...	Nationwide						Newhouse Capital Partners, LLC	DE	NIA	Nationwide Mutual Insurance Company	Ownership	70.000	Nationwide Mutual Insurance Company	
...0140 ...	Nationwide						Newhouse Capital Partners, LLC	DE	NIA	Nationwide Mutual Fire Insurance Company	Ownership	10.000	Nationwide Mutual Insurance Company	
...0140 ...	Nationwide		31-1630871				NFS Distributors, Inc.	DE	NIA	Nationwide Financial Services, Inc.	Ownership	100.000	Nationwide Mutual Insurance Company	
...0140 ...	Nationwide		14-1892640				NHT XII Tax Credit Fund, LLC	DC	NIA	Nationwide Life Insurance Company	Ownership	49.990	Nationwide Mutual Insurance Company	1
...0140 ...	Nationwide		14-1892640				NHT XII Tax Credit Fund, LLC	DC	NIA	Nationwide Assurance Company	Ownership	25.000	Nationwide Mutual Insurance Company	1
...0140 ...	Nationwide		14-1892640				NHT XII Tax Credit Fund, LLC	DC	NIA	Nationwide Mutual Insurance Company	Ownership	25.000	Nationwide Mutual Insurance Company	1
...0140 ...	Nationwide		26-0351004				North Bank Condominium Home Owners Association	OH	OTH	Other non-Nationwide	n/a	0.000	Other non-Nationwide	
...0140 ...	Nationwide		20-4939866				North of Third, LLC	OH	NIA	NRI Equity Land Investments, LLC	Ownership	100.000	Nationwide Mutual Insurance Company	
...0140 ...	Nationwide		26-4083207				Northstar Commercial Development, LLC	OH	NIA	Nationwide Realty Investors, Ltd.	Ownership	50.000	Nationwide Mutual Insurance Company	1
...0140 ...	Nationwide		26-4083354				Northstar Residential Developments, LLC	OH	NIA	Nationwide Realty Investors, Ltd.	Ownership	50.000	Nationwide Mutual Insurance Company	1
...0140 ...	Nationwide		31-1486309				NRI 12325 Copper Way, LLC	OH	NIA	Nationwide Realty Investors, Ltd.	Ownership	100.000	Nationwide Mutual Insurance Company	
...0140 ...	Nationwide		31-1486309				NRI 220 Schrock, LLC	OH	NIA	Nationwide Realty Investors, Ltd.	Ownership	100.000	Nationwide Mutual Insurance Company	
...0140 ...	Nationwide		31-1486309				NRI Arena, LLC	OH	NIA	Nationwide Realty Investors, Ltd.	Ownership	100.000	Nationwide Mutual Insurance Company	
...0140 ...	Nationwide		31-1486309				NRI Brooksedg	OH	NIA	Nationwide Realty Investors, Ltd.	Ownership	100.000	Nationwide Mutual Insurance Company	
...0140 ...	Nationwide		31-1486309				NRI Builders, LLC	OH	NIA	Nationwide Realty Investors, Ltd.	Ownership	100.000	Nationwide Mutual Insurance Company	
...0140 ...	Nationwide		31-1486309				NRI Communities, Ltd.	OH	NIA	Nationwide Realty Investors, Ltd.	Ownership	100.000	Nationwide Mutual Insurance Company	
...0140 ...	Nationwide		31-1486309				NRI Communities/Charlotte, LLC	OH	NIA	NRI Communities, Ltd.	Ownership	100.000	Nationwide Mutual Insurance Company	
...0140 ...	Nationwide		31-1486309				NRI Communities/Harris Blvd., LLC	OH	NIA	NRI Communities, Ltd.	Ownership	100.000	Nationwide Mutual Insurance Company	
...0140 ...	Nationwide		31-1486309				NRI Cramer Creek, LLC	OH	NIA	Nationwide Realty Investors, Ltd.	Ownership	100.000	Nationwide Mutual Insurance Company	
...0140 ...	Nationwide		20-4939866				NRI Equity Land Investments, LLC	OH	NIA	Nationwide Realty Investors, Ltd.	Ownership	80.000	Nationwide Mutual Insurance Company	
...0140 ...	Nationwide						NRI Equity Tampa, LLC	OH	OTH	Nationwide Realty Investors, Ltd.	Ownership	50.000	Nationwide Mutual Insurance Company	
...0140 ...	Nationwide		31-1486309				NRI Maxtown, LLC	OH	OTH	Nationwide Realty Investors, Ltd.	Ownership	100.000	Nationwide Mutual Insurance Company	
...0140 ...	Nationwide		30-4939866				NRI Office Ventures, Ltd	OH	NIA	Nationwide Realty Investors, Ltd.	Ownership	100.000	Nationwide Mutual Insurance Company	
...0140 ...	Nationwide		31-1486309				NRI Telecom, LLC	OH	NIA	NWD Investments, LLC	Ownership	100.000	Nationwide Mutual Insurance Company	
...0140 ...	Nationwide		45-3123274				NTC1F-2011 Georgia State Investor, LLC	OH	NIA	Nationwide Property and Casualty Company	Ownership	100.000	Nationwide Mutual Insurance Company	
...0140 ...	Nationwide		90-0729552				NTC1F-2011, LLC	OH	NIA	Nationwide Life Insurance Company	Ownership	100.000	Nationwide Mutual Insurance Company	
...0140 ...	Nationwide		27-4700627				NTCP 2011-A, LLC	OH	NIA	Nationwide Life Insurance Company	Ownership	100.000	Nationwide Mutual Insurance Company	
...0140 ...	Nationwide		27-2076516				NW-2100 Latham, LLC	DE	NIA	NW-REI, LLC	Ownership	100.000	Nationwide Mutual Insurance Company	

STATEMENT AS OF MARCH 31, 2012 OF THE NATIONWIDE INDEMNITY COMPANY

SCHEDULE Y

PART 1A - DETAIL OF INSURANCE HOLDING COMPANY SYSTEM

1	2	3	4	5	6	7	8	9	10	11	12	13	14	15
Group Code	Group Name	NAIC Company Code	Federal ID Number	Federal RSSD	CIK	Name of Securities Exchange if Publicly Traded (U.S. or International)	Names of Parent, Subsidiaries Or Affiliates	Domi-ciliary Location	Relationship to Reporting Entity	Directly Controlled by (Name of Entity/Person)	Type of Control (Ownership, Board, Management, Attorney-in-Fact, Influence, Other)	If Control is Owner-ship Provide Percen-tage	Ultimate Controlling Entity(ies)/Person(s)	*
0140	Nationwide		36-4702264				NW-Arvada, LLC	OH	NIA	NW-REI, LLC	Ownership	100.000	Nationwide Mutual Insurance Company	
0140	Nationwide		45-2724980				NW-Cameron, LLC	OH	NIA	NW-REI, LLC	Ownership	100.000	Nationwide Mutual Insurance Company	
0140	Nationwide		26-0901660				NW-CNC CoppelI, LLC			Nationwide Mutual Insurance			Nationwide Mutual Insurance Company	
0140	Nationwide		27-4431267				NW-Collection, LLC	DE	NIA	NW-REI, LLC	Ownership	100.000	Nationwide Mutual Insurance Company	
0140	Nationwide		27-2764819				NW-Commerce Center, LLC	DE	NIA	NW REI, LLC	Ownership	100.000	Nationwide Mutual Insurance Company	
0140	Nationwide						NW-Corvallis, LLC	OH	NIA	NW-REI, LLC	Ownership	100.000	Nationwide Mutual Insurance Company	
0140	Nationwide		31-1580283				NWD 205 Vine, LLC	OH	NIA	NWD Investments, LLC	Ownership	100.000	Nationwide Mutual Insurance Company	
0140	Nationwide		31-1580283				NWD 225 Nationwide, LLC	OH	NIA	NWD Investments, LLC	Ownership	100.000	Nationwide Mutual Insurance Company	
0140	Nationwide		31-1580283				NWD 230 West, LLC	OH	NIA	NWD Investments, LLC	Ownership	100.000	Nationwide Mutual Insurance Company	
0140	Nationwide		31-1580283				NWD 265 Neil, LLC	OH	NIA	NWD Investments, LLC	Ownership	100.000	Nationwide Mutual Insurance Company	
0140	Nationwide		31-1580283				NWD 275 Marconi, LLC	OH	NIA	NWD Investments, LLC	Ownership	100.000	Nationwide Mutual Insurance Company	
0140	Nationwide		31-1580283				NWD 295 McConnell, LLC	OH	NIA	NWD Investments, LLC	Ownership	100.000	Nationwide Mutual Insurance Company	
0140	Nationwide		31-1580283				NWD 300 Neil, LLC	OH	NIA	NWD Investments, LLC	Ownership	100.000	Nationwide Mutual Insurance Company	
0140	Nationwide		31-1580283				NWD 300 Spring, LLC	OH	NIA	NWD Investments, LLC	Ownership	100.000	Nationwide Mutual Insurance Company	
0140	Nationwide		31-1580283				NWD 355 McConnell, LLC	OH	NIA	NWD Investments, LLC	Ownership	100.000	Nationwide Mutual Insurance Company	
0140	Nationwide		31-1580283				NWD 425 Nationwide, LLC	OH	NIA	NWD Investments, LLC	Ownership	100.000	Nationwide Mutual Insurance Company	
0140	Nationwide		31-1580283				NWD 500 Nationwide, LLC	OH	NIA	NWD Investments, LLC	Ownership	100.000	Nationwide Mutual Insurance Company	
0140	Nationwide		31-1580283				NWD Arena Crossing, LLC	OH	NIA	NWD Investments, LLC	Ownership	100.000	Nationwide Mutual Insurance Company	
0140	Nationwide		31-1580283				NWD Arena District I, LLC	OH	NIA	NWD Investments, LLC	Ownership	100.000	Nationwide Mutual Insurance Company	
0140	Nationwide		31-1580283				NWD Arena District II, LLC	OH	NIA	NWD Investments, LLC	Ownership	100.000	Nationwide Mutual Insurance Company	
0140	Nationwide		31-1580283				NWD Arena District MM, LLC	OH	NIA	NWD Investments, LLC	Ownership	100.000	Nationwide Mutual Insurance Company	
0140	Nationwide		31-1580283				NWD Arena District PW, LLC	OH	NIA	NWD Investments, LLC	Ownership	100.000	Nationwide Mutual Insurance Company	
0140	Nationwide		31-1580283				NWD Arena District V, LLC	OH	NIA	NWD Investments, LLC	Ownership	100.000	Nationwide Mutual Insurance Company	
0140	Nationwide		04-3679396				NWD Asset Management Holdings, Inc.	DE	NIA	Nationwide SA Capital Trust	Ownership	100.000	Nationwide Mutual Insurance Company	
0140	Nationwide		31-1580283				NWD Athletic Club, LLC	OH	NIA	NWD Investments, LLC	Ownership	100.000	Nationwide Mutual Insurance Company	
0140	Nationwide		31-1636299				NWD Investment Management, Inc.	DE	NIA	NWD Management & Research Trust	Ownership	100.000	Nationwide Mutual Insurance Company	
0140	Nationwide		31-1580283				NWD Investments, LLC			Nationwide Realty Investors, Ltd.			Nationwide Mutual Insurance Company	
0140	Nationwide		25-6711069				NWD Management & Research Trust	DE	NIA	Nationwide Corporation	Ownership	80.000	Nationwide Mutual Insurance Company	
0140	Nationwide		90-0732898				NW-Dulles, LLC	OH	NIA	NW-REI, LLC	Ownership	100.000	Nationwide Mutual Insurance Company	
0140	Nationwide		27-1711211				NW-Foxwood Place, LLC	DE	NIA	NW-REI, LLC	Ownership	100.000	Nationwide Mutual Insurance Company	
0140	Nationwide		45-2647960				NW-Grapevine, LLC	OH	NIA	NW-REI, LLC	Ownership	100.000	Nationwide Mutual Insurance Company	
0140	Nationwide		27-4750498				NW-Harvard Row, LLC	OH	NIA	NW-REI, LLC	Ownership	100.000	Nationwide Mutual Insurance Company	
0140	Nationwide		26-3336778				NW-Highland Park, LLC	DE	NIA	NW-REI, LLC	Ownership	100.000	Nationwide Mutual Insurance Company	
0140	Nationwide		27-4749640				NW-Kohls Market, LLC	OH	NIA	NW-REI, LLC	Ownership	100.000	Nationwide Mutual Insurance Company	
0140	Nationwide		45-4630497				NW-Mueller II, LLC	OH	NIA	NW-REI, LLC	Ownership	100.000	Nationwide Mutual Insurance Company	
0140	Nationwide		27-4749848				NW-Northridge, LLC	OH	NIA	NW-REI, LLC	Ownership	100.000	Nationwide Mutual Insurance Company	
0140	Nationwide		26-1903919				NW-REI, LLC			Nationwide Mutual Insurance			Nationwide Mutual Insurance Company	
0140	Nationwide		27-4387647				NW-Ross Hall, LLC	DE	NIA	NW-REI, LLC	Ownership	100.000	Nationwide Mutual Insurance Company	
0140	Nationwide		45-4439608				NW-Sanibel Beach Place, LLC	OH	NIA	NW-REI, LLC	Ownership	100.000	Nationwide Mutual Insurance Company	
0140	Nationwide						NW-Southline, LLC	OH	NIA	NW-REI, LLC	Ownership	100.000	Nationwide Mutual Insurance Company	
0140	Nationwide		27-4749587				NW-Taylor Farmer Jack, LLC	OH	NIA	NW-REI, LLC	Ownership	100.000	Nationwide Mutual Insurance Company	
0140	Nationwide		27-4387563				NW-University, LLC	DE	NIA	NW-REI, LLC	Ownership	100.000	Nationwide Mutual Insurance Company	
0140	Nationwide		31-0947092				OCH Company, LLC			Nationwide Realty Investors, Ltd.			Nationwide Mutual Insurance Company	
0140	Nationwide		31-0947092				Ohio Center Hotel Company, Ltd.	OH	NIA	Nationwide Realty Investors, Ltd.	Ownership	100.000	Nationwide Mutual Insurance Company	
0140	Nationwide		26-0263012				Old Track Street Owners Association	OH	OTH	Other non-Nationwide	n/a	0.000	Other non-Nationwide	

STATEMENT AS OF MARCH 31, 2012 OF THE NATIONWIDE INDEMNITY COMPANY

SCHEDULE Y

PART 1A - DETAIL OF INSURANCE HOLDING COMPANY SYSTEM

1	2	3	4	5	6	7	8	9	10	11	12	13	14	15
Group Code	Group Name	NAIC Company Code	Federal ID Number	Federal RSSD	CIK	Name of Securities Exchange if Publicly Traded (U.S. or International)	Names of Parent, Subsidiaries Or Affiliates	Domi-ciliary Location	Relationship to Reporting Entity	Directly Controlled by (Name of Entity/Person)	Type of Control (Ownership, Board, Management, Attorney-in-Fact, Influence, Other)	If Control is Owner-ship Provide Percen-tage	Ultimate Controlling Entity(ies)/Person(s)	*
0140	Nationwide	13999	27-1712056				Olentangy Reinsurance, LLC	VT	JA	Nationwide Life and Annuity Insurance Company	Ownership	100.000	Nationwide Mutual Insurance Company	
0140	Nationwide						OYS Fund, LLC	DE	OTH	Nationwide Mutual Insurance Company	Ownership	100.000	Nationwide Mutual Insurance Company	
0140	Nationwide						Park 288 Industrial, LLC	TX	OTH	Nationwide Mutual Insurance Company	Investor member / no control	95.000	other non-Nationwide	
0140	Nationwide		39-1805904				Pension Associates, Inc.	WI	NIA	Nationwide Financial Services, Inc.	Ownership	100.000	Nationwide Mutual Insurance Company	
0140	Nationwide		31-1486309				Perimeter A, Ltd	OH	NIA	Nationwide Realty Investors, Ltd.	Ownership	100.000	Nationwide Mutual Insurance Company	
0140	Nationwide		31-1486309				Pine Communities, LLC	DE	NIA	NRI Communities, Ltd.	Ownership	100.000	Nationwide Mutual Insurance Company	
0140	Nationwide		31-1677602				Pizzuti Properties, LLC	OH	NIA	Nationwide Realty Investors, Ltd.	Ownership	65.000	Nationwide Mutual Insurance Company	
0140	Nationwide		31-1486309				Polaris A, Ltd.	OH	NIA	Nationwide Realty Investors, Ltd.	Ownership	100.000	Nationwide Mutual Insurance Company	
0140	Nationwide		39-1907217				Premier Agency, Inc.	JA	NIA	ALLIED Group, Inc.	Ownership	100.000	Nationwide Mutual Insurance Company	
4664	Pure	12873	20-8287105				Privilege Underwriters Reciprocal Exchange	FL	JA	Other non-Nationwide	n/a	0.000	Other non-Nationwide	
4664	Pure						Privilege Underwriters, Inc.	FL	JA	Other non-Nationwide	n/a	0.000	Other non-Nationwide	
4664	Pure	13204	26-3109178				Pure Insurance Company	FL	JA	Other non-Nationwide	n/a	0.000	Other non-Nationwide	
4664	Pure						Pure Risk Management, LLC	FL	JA	Other non-Nationwide	n/a	0.000	Other non-Nationwide	
0140	Nationwide		75-2938844				Registered Investment Advisors Services, Inc.	TX	NIA	Nationwide Financial Services, Inc.	Ownership	100.000	Nationwide Mutual Insurance Company	
0140	Nationwide		82-0549218				Retention Alternatives, Ltd.	Bermuda	JA	Nationwide Mutual Fire Insurance Company	Ownership	100.000	Nationwide Mutual Insurance Company	
0140	Nationwide		22-3655264				Riverview International Group, Inc.	DE	NIA	NWD Management & Research Trust	Ownership	100.000	Nationwide Mutual Insurance Company	
0140	Nationwide						Riverview Multi Series Fund, LL - Class Event	DE	OTH	Nationwide Mutual Insurance Company	Ownership	100.000	Nationwide Mutual Insurance Company	
0140	Nationwide						Riverview Multi Series Fund, LL - Class N	DE	OTH	Nationwide Mutual Insurance Company	Ownership	100.000	Nationwide Mutual Insurance Company	
0140	Nationwide						Riverview Polyphony Fund, LLC	DE	OTH	Nationwide Mutual Insurance Company	Ownership	100.000	Nationwide Mutual Insurance Company	
0140	Nationwide	15580	31-1117969				Scottsdale Indemnity Company	OH	JA	Nationwide Mutual Insurance Company	Ownership	100.000	Nationwide Mutual Insurance Company	
0140	Nationwide	41297	31-1024978				Scottsdale Insurance Company	OH	JA	Nationwide Mutual Insurance Company	Ownership	100.000	Nationwide Mutual Insurance Company	
0140	Nationwide	10672	86-0835870				Scottsdale Surplus Lines Insurance Company	AZ	JA	Scottsdale Insurance Company	Ownership	100.000	Nationwide Mutual Insurance Company	
0140	Nationwide		31-1486309				South Pittsburgh, LLC	OH	NIA	NRI Communities, Ltd.	Ownership	100.000	Nationwide Mutual Insurance Company	
0140	Nationwide		31-1486309				Streets of Toringdon, LLC	OH	NIA	Nationwide Realty Investors, Ltd.	Ownership	100.000	Nationwide Mutual Insurance Company	
0140	Nationwide						The Association for Theater Based Community Development, LLC		OTH	Nationwide Mutual Insurance Company	Limited partner /no control	50.000	other non-Nationwide	
0140	Nationwide		91-2158214				The Hideaway Club	CA	OTH	Other non-Nationwide	n/a	0.000	Other non-Nationwide	
0140	Nationwide		86-1094799				The Hideaway Owners Association	CA	OTH	Other non-Nationwide	n/a	0.000	Other non-Nationwide	
0140	Nationwide		20-3541511				The Madison Club	CA	OTH	Other non-Nationwide	n/a	0.000	Other non-Nationwide	
0140	Nationwide		20-3541507				The Madison Club Owners Association	CA	OTH	Other non-Nationwide	n/a	0.000	Other non-Nationwide	
0140	Nationwide		31-1610040				The Waterfront Partners, LLC			Nationwide Realty Investors, Ltd.			Nationwide Mutual Insurance Company	
0140	Nationwide		52-2031677				THI Holdings (Delaware), Inc.	OH	NIA		Ownership	50.000		1
0140	Nationwide							DE	NIA	Nationwide Mutual Insurance Company	Ownership	100.000	Nationwide Mutual Insurance Company	

STATEMENT AS OF MARCH 31, 2012 OF THE NATIONWIDE INDEMNITY COMPANY

SCHEDULE Y
PART 1A - DETAIL OF INSURANCE HOLDING COMPANY SYSTEM

1	2	3	4	5	6	7	8	9	10	11	12	13	14	15
Group Code	Group Name	NAIC Company Code	Federal ID Number	Federal RSSD	CIK	Name of Securities Exchange if Publicly Traded (U.S. or International)	Names of Parent, Subsidiaries Or Affiliates	Domi-ciliary Location	Relationship to Reporting Entity	Directly Controlled by (Name of Entity/Person)	Type of Control (Ownership, Board, Management, Attorney-in-Fact, Influence, Other)	If Control is Owner-ship Provide Percen-tage	Ultimate Controlling Entity(ies)/Person(s)	*
...0140 ...	Nationwide		74-2825853				Titan Auto Insurance of New Mexico, Inc.NM.....JA.....	Whitehall Holdings, Inc.	Ownership.....	..100.000	Nationwide Mutual Insurance Company	
...0140 ...	Nationwide13242	74-2286759				Titan Indemnity CompanyTX.....JA.....	THI Holdings (Delaware), Inc.	Ownership.....	..100.000	Nationwide Mutual Insurance Company	
...0140 ...	Nationwide36269	86-0619597				Titan Insurance CompanyMI.....JA.....	Titan Indemnity Company	Ownership.....	..100.000	Nationwide Mutual Insurance Company	
...0140 ...	Nationwide		75-1284530				Titan Insurance Services, Inc.TX.....NIA.....	Whitehall Holdings, Inc.	Ownership.....	..100.000	Nationwide Mutual Insurance Company	
...0140 ...	Nationwide		33-0160222				V.P.I. Services, Inc.CA.....JA.....	Veterinary Pet Insurance Company	Ownership.....	..100.000	Nationwide Mutual Insurance Company	
...0140 ...	Nationwide42285	95-3750113				Veterinary Pet Insurance CompanyCA.....NIA.....	Scottsdale Insurance Company	Ownership.....	..100.000	Nationwide Mutual Insurance Company	
...0140 ...	Nationwide10644	34-1785903				Victoria Automobile Insurance Company			Victoria Fire & Casulaty Insurance Company	Ownership.....	..100.000	Nationwide Mutual Insurance Company	
...0140 ...	Nationwide42889	34-1394913				Victoria Fire & Casualty CompanyIN.....JA.....	THI Holdings (Delaware), Inc.	Ownership.....	..100.000	Nationwide Mutual Insurance Company	
...0140 ...	Nationwide10778	34-1842604				Victoria National Insurance CompanyOH.....JA.....	Victoria Fire & Casulaty Insurance Company	Ownership.....	..100.000	Nationwide Mutual Insurance Company	
...0140 ...	Nationwide10105	34-1777972				Victoria Select Insurance CompanyOH.....JA.....	Victoria Fire & Casulaty Insurance Company	Ownership.....	..100.000	Nationwide Mutual Insurance Company	
...0140 ...	Nationwide10777	34-1842602				Victoria Specialty Insurance CompanyOH.....JA.....	Victoria Fire & Casulaty Insurance Company	Ownership.....	..100.000	Nationwide Mutual Insurance Company	
...0140 ...	Nationwide		31-1682140				Waterfront Apartments, LLCOH.....NIA.....	NRI Communities, Ltd.	Ownership.....	..100.000	Nationwide Mutual Insurance Company	
...0140 ...	Nationwide37150	86-0561941				Western Heritage Insurance CompanyAZ.....JA.....	Scottsdale Insurance Company	Ownership.....	..100.000	Nationwide Mutual Insurance Company	
...0140 ...	Nationwide						Westport Capital Partners II			Nationwide Mutual Insurance Company Nationwide Defined Benefit Master Trust	Investor member / no control71.000	other non-Nationwide	
...0140 ...	Nationwide		74-2767942				Whitehall Holdings, Inc.CT.....OTH.....	THI Holdings (Delaware), Inc.	Ownership.....	..100.000	Nationwide Mutual Insurance Company	
...0140 ...	Nationwide		59-3471667				WI of Florida, Inc.TX.....NIA.....	Whitehall Holdings, Inc.	Ownership.....	..100.000	Nationwide Mutual Insurance Company	
...0140 ...	Nationwide		31-1486309				Yacht Club Communities II, LLCFL.....NIA.....	NRI Communities, Ltd.	Ownership.....	..100.000	Nationwide Mutual Insurance Company	
...0140 ...	Nationwide		31-1486309				Yacht Club Communities, LLCOH.....NIA.....	NRI Communities, Ltd.	Ownership.....	..100.000	Nationwide Mutual Insurance Company	
...0140 ...	Nationwide						Zais Zephyr A4, LLCDE.....NIA.....	Nationwide Life Insurance Company	Ownership.....	..100.000	Nationwide Mutual Insurance Company	
...0140 ...	NationwideDE.....OTH.....	limited member / no control60.000	other non-Nationwide		

Asterisk	Explanation
1	For the purposes of this schedule, Nationwide presumed control of these entities because they are owned by at least 10% and are not wholly-owned by a Nationwide entity.

Part 1 - Loss Experience

N O N E

Part 2 - Direct Premiums Written

N O N E

STATEMENT AS OF MARCH 31, 2012 OF THE NATIONWIDE INDEMNITY COMPANY

PART 3 (000 omitted)

LOSS AND LOSS ADJUSTMENT EXPENSE RESERVES SCHEDULE

	1	2	3	4	5	6	7	8	9	10	11	12	13	
Years in Which Losses Occurred	Prior Year-End Known Case Loss and LAE Reserves	Prior Year-End IBNR Loss and LAE Reserves	Total Prior Year-End Loss and LAE Reserves (Cols. 1+2)	2012 Loss and LAE Payments on Claims Reported as of Prior Year-End	2012 Loss and LAE Payments on Claims Unreported as of Prior Year-End	Total 2012 Loss and LAE Payments (Cols. 4+5)	Q.S. Date Known Case Loss and LAE Reserves on Claims Reported and Open as of Prior Year End	Q.S. Date Known Case Loss and LAE Reserves on Claims Reported or Reopened Subsequent to Prior Year End	Q.S. Date IBNR Loss and LAE Reserves	Total Q.S. Loss and LAE Reserves (Cols.7+8+9)	Prior Year-End Known Case Loss and LAE Reserves Developed (Savings)/ Deficiency (Cols.4+7 minus Col. 1)	Prior Year-End IBNR Loss and LAE Reserves Developed (Savings)/ Deficiency (Cols. 5+8+9 minus Col. 2)	Prior Year-End Total Loss and LAE Reserve Developed (Savings)/ Deficiency (Cols. 11+12)	
1. 2009 + Prior	632,033	1,603,367	2,235,400	60,381		60,381	640,707		1,534,252	2,174,959	69,055	(69,115)	(60)	
2. 2010														
3. Subtotals 2010 + Prior	632,033	1,603,367	2,235,400	60,381		60,381	640,707		1,534,252	2,174,959	69,055	(69,115)	(60)	
4. 2011														
5. Subtotals 2011 + Prior	632,033	1,603,367	2,235,400	60,381		60,381	640,707		1,534,252	2,174,959	69,055	(69,115)	(60)	
6. 2012	XXX	XXX	XXX	XXX			XXX				XXX	XXX	XXX	
7. Totals	632,033	1,603,367	2,235,400	60,381		60,381	640,707		1,534,252	2,174,959	69,055	(69,115)	(60)	
8. Prior Year-End Surplus As Regards Policyholders	1,123,585											Col. 11, Line 7 As % of Col. 1 Line 7	Col. 12, Line 7 As % of Col. 2 Line 7	Col. 13, Line 7 As % of Col. 3 Line 7
												1. 10.9	2. (4.3)	3. 0.0
												Col. 13, Line 7 As a % of Col. 1 Line 8 4. 0.0		

STATEMENT AS OF MARCH 31, 2012 OF THE NATIONWIDE INDEMNITY COMPANY

SUPPLEMENTAL EXHIBITS AND SCHEDULES INTERROGATORIES

The following supplemental reports are required to be filed as part of your statement filing. However, in the event that your company does not transact the type of business for which the special report must be filed, your response of NO to the specific interrogatory will be accepted in lieu of filing a "NONE" report and a bar code will be printed below. If the supplement is required of your company but is not being filed for whatever reason enter SEE EXPLANATION and provide an explanation following the interrogatory questions.

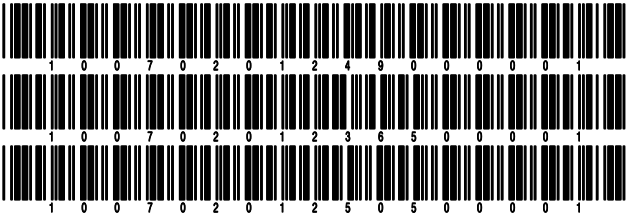
	Response
1. Will the Trusteed Surplus Statement be filed with the state of domicile and the NAIC with this statement?	NO
2. Will Supplement A to Schedule T (Medical Professional Liability Supplement) be filed with this statement?	YES
3. Will the Medicare Part D Coverage Supplement be filed with the state of domicile and the NAIC with this statement?	NO
4. Will the Director and Officer Supplement be filed with the state of domicile and the NAIC with this statement?	NO

Explanations:

1.
3.
4.

Bar Codes:

1. Trusteed Surplus Statement [Document Identifier 490]
3. Medicare Part D Coverage Supplement [Document Identifier 365]
4. Director and Officer Supplement [Document Identifier 505]



STATEMENT AS OF MARCH 31, 2012 OF THE NATIONWIDE INDEMNITY COMPANY

OVERFLOW PAGE FOR WRITE-INS

Additional Write-ins for Assets Line 25

		Current Statement Date			4 December 31 Prior Year Net Admitted Assets
		1 Assets	2 Nonadmitted Assets	3 Net Admitted Assets (Cols. 1 - 2)	
2504.	Other assets nonadmitted	12, 116	12, 116		
2597.	Summary of remaining write-ins for Line 25 from overflow page	12, 116	12, 116		

SCHEDULE A - VERIFICATION

Real Estate

	1	2
	Year to Date	Prior Year Ended December 31
1. Book/adjusted carrying value, December 31 of prior year		
2. Cost of acquired:		
2.1 Actual cost at time of acquisition		
2.2 Additional investment made after acquisition		
3. Current year change in encumbrances		
4. Total gain (loss) on disposals		
5. Deduct amounts received on disposals		
6. Total foreign exchange change in book/adjusted carrying value		
7. Deduct current year's other than temporary impairment recognized		
8. Deduct current year's depreciation		
9. Book/adjusted carrying value at the end of current period (Lines 1+2+3+4-5+6-7-8)		
10. Deduct total nonadmitted amounts		
11. Statement value at end of current period (Line 9 minus Line 10)		

SCHEDULE B - VERIFICATION

Mortgage Loans

	1	2
	Year to Date	Prior Year Ended December 31
1. Book value/recorded investment excluding accrued interest, December 31 of prior year	126,711,073	162,373,948
2. Cost of acquired:		
2.1 Actual cost at time of acquisition		
2.2 Additional investment made after acquisition		
3. Capitalized deferred interest and other		
4. Accrual of discount		
5. Unrealized valuation increase (decrease)		
6. Total gain (loss) on disposals		1,099,677
7. Deduct amounts received on disposals	6,353,558	36,179,875
8. Deduct amortization of premium and mortgage interest points and commitment fees		
9. Total foreign exchange change in book value/recorded investment excluding accrued interest		
10. Deduct current year's other than temporary impairment recognized		582,677
11. Book value/recorded investment excluding accrued interest at end of current period (Lines 1+2+3+4+5+6-7-8+9-10)	120,357,515	126,711,073
12. Total valuation allowance	(479,521)	(497,453)
13. Subtotal (Line 11 plus Line 12)	119,877,994	126,213,620
14. Deduct total nonadmitted amounts		
15. Statement value at end of current period (Line 13 minus Line 14)	119,877,994	126,213,620

SCHEDULE BA - VERIFICATION

Other Long-Term Invested Assets

	1	2
	Year to Date	Prior Year Ended December 31
1. Book/adjusted carrying value, December 31 of prior year	64,952,415	48,795,008
2. Cost of acquired:		
2.1 Actual cost at time of acquisition		
2.2 Additional investment made after acquisition		15,747,028
3. Capitalized deferred interest and other	(147,141)	(588,564)
4. Accrual of discount		
5. Unrealized valuation increase (decrease)	(881,493)	3,481,958
6. Total gain (loss) on disposals		
7. Deduct amounts received on disposals		1,020,155
8. Deduct amortization of premium and depreciation	240,497	1,462,860
9. Total foreign exchange change in book/adjusted carrying value		
10. Deduct current year's other than temporary impairment recognized		
11. Book/adjusted carrying value at end of current period (Lines 1+2+3+4+5+6-7-8+9-10)	63,683,284	64,952,415
12. Deduct total nonadmitted amounts	138,667	138,667
13. Statement value at end of current period (Line 11 minus Line 12)	63,544,617	64,813,748

SCHEDULE D - VERIFICATION

Bonds and Stocks

	1	2
	Year to Date	Prior Year Ended December 31
1. Book/adjusted carrying value of bonds and stocks, December 31 of prior year	3,214,173,337	3,183,386,871
2. Cost of bonds and stocks acquired	12,988,440	314,561,908
3. Accrual of discount	1,033,065	9,506,167
4. Unrealized valuation increase (decrease)	4,040,808	25,448,551
5. Total gain (loss) on disposals	304,816	3,702,338
6. Deduct consideration for bonds and stocks disposed of	35,567,391	312,301,094
7. Deduct amortization of premium	2,438,676	9,931,990
8. Total foreign exchange change in book/adjusted carrying value		655,600
9. Deduct current year's other than temporary impairment recognized		855,014
10. Book/adjusted carrying value at end of current period (Lines 1+2+3+4+5-6-7+8-9)	3,194,534,399	3,214,173,337
11. Deduct total nonadmitted amounts		
12. Statement value at end of current period (Line 10 minus Line 11)	3,194,534,399	3,214,173,337

STATEMENT AS OF MARCH 31, 2012 OF THE NATIONWIDE INDEMNITY COMPANY

SCHEDULE D - PART 1B

Showing the Acquisitions, Dispositions and Non-Trading Activity
During the Current Quarter for all Bonds and Preferred Stock by Rating Class

	1 Book/Adjusted Carrying Value Beginning of Current Quarter	2 Acquisitions During Current Quarter	3 Dispositions During Current Quarter	4 Non-Trading Activity During Current Quarter	5 Book/Adjusted Carrying Value End of First Quarter	6 Book/Adjusted Carrying Value End of Second Quarter	7 Book/Adjusted Carrying Value End of Third Quarter	8 Book/Adjusted Carrying Value December 31 Prior Year
BONDS								
1. Class 1 (a)	2,735,595,478	9,597,390	26,272,059	(18,223,387)	2,700,697,422			2,735,595,478
2. Class 2 (a)	410,217,877	3,391,050	8,005,477	26,394,505	431,997,955			410,217,877
3. Class 3 (a)	46,383,309		870,269	(10,062,641)	35,450,399			46,383,309
4. Class 4 (a)	11,617,537		109,280	4,273,325	15,781,582			11,617,537
5. Class 5 (a)	8,581,769			(14,014)	8,567,755			8,581,769
6. Class 6 (a)	995,222		5,488	99,723	1,089,457			995,222
7. Total Bonds	3,213,391,192	12,988,440	35,262,573	2,467,511	3,193,584,570			3,213,391,192
PREFERRED STOCK								
8. Class 1								
9. Class 2								
10. Class 3								
11. Class 4								
12. Class 5								
13. Class 6								
14. Total Preferred Stock								
15. Total Bonds and Preferred Stock	3,213,391,192	12,988,440	35,262,573	2,467,511	3,193,584,570			3,213,391,192

(a) Book/Adjusted Carrying Value column for the end of the current reporting period includes the following amount of non-rated short-term and cash equivalent bonds by NAIC designation: NAIC 1 \$; NAIC 2 \$; NAIC 3 \$;
NAIC 4 \$; NAIC 5 \$; NAIC 6 \$

SCHEDULE DA - PART 1

Short-Term Investments

	1	2	3	4	5
	Book/Adjusted Carrying Value	Par Value	Actual Cost	Interest Collected Year-to-Date	Paid for Accrued Interest Year-to-Date
9199999 Totals	9,763,047	xxx	9,763,047	115	

SCHEDULE DA - VERIFICATION

Short-Term Investments

	1	2
	Year To Date	Prior Year Ended December 31
1. Book/adjusted carrying value, December 31 of prior year	833,702	110,054,240
2. Cost of short-term investments acquired	85,800,623	503,254,747
3. Accrual of discount		
4. Unrealized valuation increase (decrease)		
5. Total gain (loss) on disposals		
6. Deduct consideration received on disposals	76,871,278	612,475,285
7. Deduct amortization of premium		
8. Total foreign exchange change in book/adjusted carrying value		
9. Deduct current year's other than temporary impairment recognized		
10. Book/adjusted carrying value at end of current period (Lines 1+2+3+4+5-6-7+8-9)	9,763,047	833,702
11. Deduct total nonadmitted amounts		
12. Statement value at end of current period (Line 10 minus Line 11)	9,763,047	833,702

Schedule DB - Part A - Verification - Options, Caps, Floors, Collars, Swaps and Forwards
N O N E

Schedule DB - Part B - Verification - Futures Contracts
N O N E

Schedule DB - Part C - Section 1 - Replication (Synthetic Asset) Transactions (RSATs) Open
N O N E

Schedule DB-Part C-Section 2-Reconciliation of Replication (Synthetic Asset) Transactions Open
N O N E

Schedule DB - Verification - Book/Adjusted Carrying Value, Fair Value and Potential Exposure of
Derivatives
N O N E

Schedule E - Verification - Cash Equivalents
N O N E

Schedule A - Part 2 - Real Estate Acquired and Additions Made
N O N E

Schedule A - Part 3 - Real Estate Disposed
N O N E

STATEMENT AS OF MARCH 31, 2012 OF THE NATIONWIDE INDEMNITY COMPANY

SCHEDULE B - PART 2

Showing All Mortgage Loans ACQUIRED AND ADDITIONS MADE During the Current Quarter

[illegible]

SCHEDULE B - PART 3

Showing All Mortgage Loans DISPOSED, Transferred or Repaid During the Current Quarter

1 Loan Number	Location		4 Loan Type	5 Date Acquired	6 Disposal Date	7 Book Value/ Recorded Investment Excluding Accrued Interest Prior Year	Change in Book Value/Recorded Investment						14 Book Value/ Recorded Investment Excluding Accrued Interest on Disposal	15 Consid- eration	16 Foreign Exchange Gain (Loss) on Disposal	17 Realized Gain (Loss) on Disposal	18 Total Gain (Loss) on Disposal
	2 City	3 State					8 Unrealized Valuation Increase (Decrease)	9 Current Year's (Amortization) /Accretion	10 Current Year's Other Than Temporary Impairment Recognized	11 Capitalized Deferred Interest and Other	12 Total Change in Book Value (8+9-10+11)	13 Total Foreign Exchange Change in Book Value					
00-1100783	AUSTIN	TX		04/14/2005	03/30/2012	5,000,000							5,000,000	5,000,000			
00-9000136	TIGARD	OR		05/01/2002	02/01/2012	205,769							205,769	205,769			
0199999. Mortgages closed by repayment						5,205,769							5,205,769	5,205,769			
00-1000541	COLUMBUS	OH		04/30/2001		3,916,785							72,093	72,093			
00-1000566	TUCSON	AZ		05/10/2001		984,133							17,920	17,920			
00-1000570	WEST PALM BEACH	FL		06/20/2001		1,281,842							59,416	59,416			
00-1000588	CINCINNATI	OH		06/01/2001		801,771							38,186	38,186			
00-1000696	FT. LAUDERDALE	FL		05/08/2002		4,051,440							35,120	35,120			
00-1000701	VILLANOVA	PA		12/17/2001		3,396,073							57,414	57,414			
00-1000714	CLOSTER	NJ		11/08/2001		1,709,621							28,628	28,628			
00-1000774	FLINT	MI		12/20/2001		3,784,348							88,253	88,253			
00-1000789	COOPER CITY	FL		11/30/2001		807,504							19,007	19,007			
00-1000875	SCOTTSDALE	AZ		09/18/2002		2,473,015							36,113	36,113			
00-1000932	HARRISON TOWNSHIP	MI		05/29/2002		4,152,625							33,464	33,464			
00-1000941	SPARTANBURG	SC		05/07/2002		814,352							6,933	6,933			
00-1000949	STON	OH		05/30/2002		1,537,337							24,155	24,155			
00-1000967	SAN DIEGO	CA		07/10/2002		3,257,172							27,806	27,806			
00-1000969	NORTH BERGEN	NJ		05/31/2002		1,829,563							15,660	15,660			
00-1001152	DALLAS	TX		12/20/2002		2,048,204							15,283	15,283			
00-1001164	CHESTERFIELD	VA		11/20/2002		3,672,115							22,880	22,880			
00-1001203	NILES	IL		12/30/2002		2,572,115							15,526	15,526			
00-1001237	DALLAS	TX		11/20/2002		2,352,987							41,635	41,635			
00-1100032	BLOOMINGTON	IN		08/07/2003		796,128							7,577	7,577			
00-1100074	SAN DIEGO	CA		08/07/2003		801,622							7,473	7,473			
00-1100159	WOODLAWN	MD		02/27/2004		1,231,622							10,725	10,725			
00-1100248	OCEANSIDE	CA		02/05/2004		820,506							4,746	4,746			

STATEMENT AS OF MARCH 31, 2012 OF THE NATIONWIDE INDEMNITY COMPANY

SCHEDULE B - PART 3

Showing All Mortgage Loans DISPOSED, Transferred or Repaid During the Current Quarter

1	Location		4	5	6	7	Change in Book Value/Recorded Investment						14	15	16	17	18
	2	3					8	9	10	11	12	13					
Loan Number	City	State	Loan Type	Date Acquired	Disposal Date	Book Value/Recorded Investment Excluding Accrued Interest Prior Year	Unrealized Valuation Increase (Decrease)	Current Year's (Amortization) /Accretion	Current Year's Other Than Temporary Impairment Recognized	Capitalized Deferred Interest and Other	Total Change in Book Value (8+9-10+11)	Total Foreign Exchange Change in Book Value	Book Value/Recorded Investment Excluding Accrued Interest on Disposal	Consid-eration	Foreign Exchange Gain (Loss) on Disposal	Realized Gain (Loss) on Disposal	Total Gain (Loss) on Disposal
00-1100317	BUFFALO	NY		03/09/2004		1,788,969							24,913	24,913			
00-1100363	LAS VEGAS	NV		04/07/2004		847,445							6,181	6,181			
00-1100741	TOTOIA	NJ		06/02/2005		1,696,308							17,675	17,675			
00-1100762	BEAVERTON	OR		06/21/2005		2,687,671							14,441	14,441			
00-1100768	FRISCO	TX		06/02/2005		1,634,762							10,498	10,498			
00-1100774	SOLANA BEACH	CA		03/24/2005		2,296,147							42,632	42,632			
00-1100810	ST. CLAIR SHORES	MI		05/05/2005		2,055,370							9,032	9,032			
00-1100820	LEXINGTON	KY		05/12/2005		9,146,093							42,732	42,732			
00-1100828	VARIOUS CITIES	TN		07/08/2005		2,047,229							25,287	25,287			
00-1100844	ORLAND PARK	IL		07/22/2005		785,504							9,980	9,980			
00-1100865	ANN ARBOR	MI		07/20/2005		5,129,303							40,677	40,677			
00-1100889	REDWOOD CITY	CA		06/21/2005		4,484,229							23,892	23,892			
00-1100904	DENVER	CO		08/29/2005		1,710,177							13,642	13,642			
00-1100905	AUSTIN	TX		07/07/2005		3,921,075							15,396	15,396			
00-1100927	ANN ARBOR	MI		08/09/2005		1,251,807							6,939	6,939			
00-1100932	BELLEVUE	WA		08/30/2005		2,625,505							20,049	20,049			
00-1100947	ELDERSBURG	MD		08/31/2005		1,714,923							13,476	13,476			
00-1100952	KANSAS CITY	KS		08/18/2005		2,561,675							20,587	20,587			
03-0307261	GAINESVILLE	FL		08/11/1995		1,172,640							18,755	18,755			
28-0001469	WASHINGTON TOWNSHIP	OH		07/07/1999		3,475,135							84,991	84,991			
0299999. Mortgages with partial repayments						102,124,845							1,147,789	1,147,789			
0599999 - Totals						107,330,615							6,353,558	6,353,558			

Schedule BA - Part 2 - Other Long-Term Invested Assets Acquired

N O N E

Schedule BA - Part 3 - Other Long-Term Invested Assets Disposed, Transferred or Repaid

N O N E

STATEMENT AS OF MARCH 31, 2012 OF THE NATIONWIDE INDEMNITY COMPANY

SCHEDULE D - PART 3

Show All Long-Term Bonds and Stock Acquired During the Current Quarter

1	2	3	4	5	6	7	8	9	10
CUSIP Identification	Description	Foreign	Date Acquired	Name of Vendor	Number of Shares of Stock	Actual Cost	Par Value	Paid for Accrued Interest and Dividends	NAIC Designation or Market Indicator (a)
06050T-JZ-6	Bank of America NA Sub Bk Nt 6.000% 1002/29/2012	Various9,597,39010,000,000227,500	1FE
893830-AZ-2	Transocean Sedco Forex Inc Co Gtd Nt 7	F01/25/2012	Morgan Stanley & Co Inc3,391,0503,000,00033,688	2FE
3899999. Subtotal - Bonds - Industrial and Miscellaneous (Unaffiliated)						12,988,440	13,000,000	261,188	XXX
8399997. Total - Bonds - Part 3						12,988,440	13,000,000	261,188	XXX
8399998. Total - Bonds - Part 5						XXX	XXX	XXX	XXX
8399999. Total - Bonds						12,988,440	13,000,000	261,188	XXX
8999997. Total - Preferred Stocks - Part 3							XXX		XXX
8999998. Total - Preferred Stocks - Part 5						XXX	XXX	XXX	XXX
8999999. Total - Preferred Stocks							XXX		XXX
9799997. Total - Common Stocks - Part 3							XXX		XXX
9799998. Total - Common Stocks - Part 5						XXX	XXX	XXX	XXX
9799999. Total - Common Stocks							XXX		XXX
9899999. Total - Preferred and Common Stocks							XXX		XXX
9999999 - Totals						12,988,440	XXX	261,188	XXX

(a) For all common stock bearing the NAIC market indicator "U" provide: the number of such issues

STATEMENT AS OF MARCH 31, 2012 OF THE NATIONWIDE INDEMNITY COMPANY

SCHEDULE D - PART 4

Show All Long-Term Bonds and Stock Sold, Redeemed or Otherwise Disposed of During the Current Quarter

1	2	3	4	5	6	7	8	9	10	Change In Book/Adjusted Carrying Value					16	17	18	19	20	21	22
										11	12	13	14	15							
CUSIP Identification	Description	For- eign	Disposal Date	Name of Purchaser	Number of Shares of Stock	Consid- eration	Par Value	Actual Cost	Prior Year Book/ Adjusted Carrying Value	Unrealized Valuation Increase/ (Decrease)	Current Year's (Amor- tization)/ Accretion	Current Year's Other Than Temporary Impairment Recogn- ized	Total Change in Book/ Adjusted Carrying Value (11 + 12 - 13)	Total Foreign Exchange Change in Book /Adjusted Carrying Value	Book/ Adjusted Carrying Value at Disposal Date	Foreign Exchange Gain (Loss) on Disposal	Realized Gain (Loss) on Disposal	Total Gain (Loss) on Disposal	Bond Interest/ Stock Dividends Received During Year	Stated Con- tractual Maturity Date	NAIC Desig- nation or Market In- dicator (a)
34459R-AB-1	Morocco AID Gtd SF Bd 7.500% 07/15/26		01/15/2012	Redemption 100.0000		16,071	16,071	19,245	18,113		(2,042)		(2,042)		16,071				.607	01/15/2026	1FE
0599999	Subtotal - Bonds - U.S. Governments					16,071	16,071	19,245	18,113		(2,042)		(2,042)		16,071				.607	XXX	XXX
254773-AG-9	District Columbia Hsg Fin Rev Agcy Sgl F		03/01/2012	Call 100.0000		20,000	20,000	20,000	20,000						20,000				.230	06/01/2020	1FE
312903-HR-1	FHLMC REMIC Ser 113-C 8.500% 05/15/21		02/15/2012	Paydown		4,029	4,029	4,198	4,137		(108)		(108)		4,029				.57	05/15/2021	1
312905-YJ-5	FHLMC REMIC Ser 1077-E 9.000% 05/15/21		03/01/2012	Paydown		22,400	22,400	23,335	23,164		(764)		(764)		22,400				.467	05/15/2021	1
312906-E5-5	FHLMC REMIC Ser 1116-XA 8.400% 08/15/22		03/01/2012	Paydown		2,473	2,473	2,543	2,527		(54)		(54)		2,473				.34	08/15/2021	1
312909-MY-7	FHLMC REMIC Ser 1251-Z 8.000% 04/15/22		03/01/2012	Paydown		23,464	23,464	24,535	24,196		(732)		(732)		23,464				.264	04/15/2022	1
312915-UF-6	FHLMC REMIC Ser 1504 Z 7.000% 05/15/23		03/01/2012	Paydown		27,489	27,489	28,276	27,963		(474)		(474)		27,489				.330	05/15/2023	1
313373-X8-6	FHLMC REMIC Ser 1683 Z 6.500% 02/15/24		03/01/2012	Paydown		215,459	215,459	216,784	215,824		(365)		(365)		215,459				2,177	02/15/2024	1
31337A-CQ-3	FHLMC REMIC Ser 1967-BA 7.000% 06/17/22		03/01/2012	Paydown		16,593	16,593	16,980	16,771		(178)		(178)		16,593				.218	06/17/2027	1
31340Y-BH-1	FHLMC REMIC Ser 6-C 9.050% 06/15/19		02/15/2012	Paydown		1,029	1,029	1,079	1,053		(23)		(23)		1,029				.15	06/15/2019	1
31340Y-DB-2	FHLMC REMIC Ser 12-A 9.250% 11/15/19		02/15/2012	Paydown		1,754	1,754	1,843	1,795		(42)		(42)		1,754				.27	11/15/2019	1
31340Y-KF-5	FHLMC REMIC Ser 31-E 7.550% 05/15/20		03/15/2012	Paydown		10,365	10,365	10,695	10,470		(105)		(105)		10,365				.158	05/15/2020	1
31340Y-KX-6	FHLMC REMIC Ser 33-D 8.000% 04/15/20		03/15/2012	Paydown		11,955	11,955	12,380	12,153		(198)		(198)		11,955				.178	04/15/2020	1
31340Y-QS-1	FHLMC REMIC Ser 46-B 7.800% 09/15/20		02/15/2012	Paydown		9,439	9,439	9,712	9,564		(125)		(125)		9,439				.131	09/15/2020	1
31358E-XG-2	FNMA REMIC Ser 1990-83A 9.250% 07/25/22		03/01/2012	Paydown		1,862	1,862	1,985	1,963		(100)		(100)		1,862				.29	07/25/2020	1
31358G-X4-4	FNMA REMIC Ser 1991-56G 8.600% 06/25/22		03/01/2012	Paydown		2,168	2,168	2,270	2,246		(78)		(78)		2,168				.31	06/25/2021	1
31359E-AT-8	FNMA REMIC Ser 1993-167GA 7.000% 09/25		03/01/2012	Paydown		132,507	132,507	135,013	132,041		466		466		132,507				1,469	09/25/2023	1
31359E-VL-9	FNMA REMIC Ser 1993-199PF 6.500% 10/25		03/01/2012	Paydown		60,994	60,994	61,988	61,150		(156)		(156)		60,994				.620	10/25/2023	1
31359F-DE-5	FNMA REMIC Ser 1993-202M 6.500% 11/25/		03/01/2012	Paydown		286,260	286,260	291,029	286,657		(397)		(397)		286,260				2,943	11/25/2023	1
31359K-ZK-2	FNMA REMIC Ser 1996-M7 CI Z 7.151% 05/		03/01/2012	Paydown		339	339	342	341		(2)		(2)		339				.4	05/17/2036	1
31359K-ZR-1	FNMA Ser 1996-45 CI K 7.000% 09/25/21		03/01/2012	Paydown		9,118	9,118	9,300	9,255		(138)		(138)		9,118				.94	09/25/2021	1
31359P-DJ-2	FNMA ACES Ser 1997-M2 CI Z 7.125% 01/1		03/01/2012	Paydown		2,860	2,860	3,072	3,056		(196)		(196)		2,860				.34	01/17/2037	1
313602-GQ-1	FNMA REMIC Ser 1988-25B 9.250% 10/25/1		03/01/2012	Paydown		791	791	840	821		(30)		(30)		791				.12	10/25/2018	1
313603-2H-4	FNMA REMIC Ser 1990-35E 9.500% 04/25/2		03/01/2012	Paydown		356	356	378	374		(18)		(18)		356				.6	04/25/2020	1
313603-5J-7	FNMA REMIC Ser 1990-41D 9.500% 04/25/2		03/01/2012	Paydown		9,651	9,651	10,242	10,113		(463)		(463)		9,651				.174	04/25/2020	1
31377R-BH-2	FNMA DUS Pool #384440 6.600% 10/25/26		03/01/2012	Paydown		11,340	11,340	12,559	12,156		(817)		(817)		11,340				.125	10/25/2026	1
31381H-TQ-9	FNMA DUS Pool #461459 5.450% 11/25/23		03/01/2012	Paydown		42,760	42,760	44,010	43,513		(753)		(753)		42,760				.389	11/25/2023	1
31392E-FL-9	FNMA REMIC Ser 2002-55 CI GC 5.500% 09		03/01/2012	Paydown		69,308	69,308	71,582	69,973		(666)		(666)		69,308				.598	09/25/2017	1
31392E-HX-1	FNMA REMIC Ser 2002-53 CI PD 6.000% 01		03/01/2012	Paydown		22,987	22,987	23,361	22,938		50		50		22,987				.217	01/25/2032	1
31392E-SX-9	FNMA REMIC Ser 2002-59 CI B 5.500% 09/		03/01/2012	Paydown		26,433	26,433	27,482	26,968		(535)		(535)		26,433				.241	09/25/2017	1
31392U-RH-9	FHLMC REMIC Ser 2501 AN 5.500% 09/15/1		03/01/2012	Paydown		164,204	164,204	170,259	166,097		(1,893)		(1,893)		164,204				1,477	09/15/2017	1
31392V-2F-8	FHLMC REMIC Ser 2494 J 5.500% 09/15/17		03/01/2012	Paydown		371,923	371,923	391,055	375,886		(3,963)		(3,963)		371,923				3,218	09/15/2017	1
31392V-SN-3	FHLMC REMIC Ser 2496 BK 5.500% 09/15/1		03/01/2012	Paydown		185,604	185,604	193,099	187,846		(2,242)		(2,242)		185,604				1,700	09/15/2017	1
31393A-2V-8	FNMA REMIC Ser 2003-38 CI MP 5.500% 05		03/01/2012	Paydown		369,925	369,925	378,248	371,722		(1,797)		(1,797)		369,925				3,280	05/25/2023	1
31393D-J6-9	FNMA REMIC Ser 2003-59 CI VJ 5.000% 08		03/01/2012	Paydown		303,382	303,382	306,700	303,284		98		98		303,382				2,483	08/25/2020	1
31393T-MX-1	FNMA REMIC Ser 2003-97 CI DE 5.000% 11		03/01/2012	Paydown		173,621	173,621	176,062	173,129		491		491		173,621				1,448	11/25/2016	1
31394J-KW-6	FHLMC REMIC Ser 2673 CI QL 5.500% 09/1		03/01/2012	Paydown		325,966	325,966	331,263	327,290		(1,323)		(1,323)		325,966				2,934	09/15/2023	1
31394W-2P-2	FHLMC REMIC Ser 2770 CI ON 3.750% 06/1		03/01/2012	Paydown		166,132	166,132	165,561	165,871		262		262		166,132				1,009	06/15/2032	1
454806-BV-1	Indiana St Hsg & Cmnty Dev Rev Auth Sgl		01/01/2012	Call 100.0000		130,000	130,000	130,000	130,000						130,000				3,023	07/01/2021	1FE
454806-BW-9	Indiana St Hsg & Cmnty Dev Rev Auth Sgl		01/01/2012	Call 100.0000		245,000	245,000	245,000	245,000						245,000				5,880	07/01/2027	1FE
676907-KU-1	Ohio Hsg Fin Agcy Mtg Rev AMT SF Res Mtg		03/01/2012	Call 100.0000		235,000	235,000	235,000	235,000						235,000				5,581	09/01/2026	1FE
67756Q-HN-0	Ohio St Hsg Fin Agcy Mtg Rev AMT SF Mtg		03/01/2012	Call 100.0000		575,000	575,000	575,000	575,000						575,000				15,238	09/01/2028	1FE
911760-EJ-1	Vendee Mtg Tr REMIC Ser 1994-2 3ZB RMBS		03/01/2012	Paydown		71,247	71,247	69,684	70,249		.999		.999		71,247				.718	06/15/2024	1
911760-HH-2	Vendee Mtg Tr REMIC Ser 1996-2 1Z RMBS		03/01/2012	Paydown		127,333	127,333	126,700	126,757		.576		.576		127,333				1,438	06/15/2026	1
3199999	Subtotal - Bonds - U.S. Special Revenues					4,490,520	4,490,520	4,561,444	4,506,313		(15,793)		(15,793)		4,490,520				60,699	XXX	XXX
01082#-AA-3	Alameda Cnty CA Ser 2002-A CTL 7.500%		03/15/2012	Redemption 100.0000		30,244	30,244	32,059	31,346		(1,101)		(1,101)		30,244				.379	06/15/2021	1
01877K-AB-9	Alliance Pipeline LP Sr Nt 6.996% 12/3		01/21/2012	Redemption 100.0000		35,714	35,714	38,167	40,177		(4,463)		(4,463)		35,714					12/31/2019	2FE
02150W-AB-9	Countrywide Alternative Ln Tr Ser 2007-H		03/01/2012	Paydown		151,880	151,880	151,210	107,022	44,244	.614		44,858		151,880				.795	03/25/2047	1FHL
03215P-CD-9	Amresco Resdtl Sec Mtg Loan Ser 1997-2 C		03/01/2012	Paydown		17,612	17,612	17,854	17,537		.75		.75		17,612				.171	06/25/2027	1FHL
03334@-AA-7	AnchoragePermit Ctr Bldg Ls Tr CTL 6.3		03/15/2012	Redemption 100.0000		18,767	18,767	18,767	18,767						18,767				.199	02/15/2025	1
04626R-AA-4	Astoria Power Project PTC Ser A ABS 5.		03/01/2012	Redemption 100.0000		226,611	226,611	226,611	226,611						226,611				2,147	05/01/2016	2AM

STATEMENT AS OF MARCH 31, 2012 OF THE NATIONWIDE INDEMNITY COMPANY

SCHEDULE D - PART 4

Show All Long-Term Bonds and Stock Sold, Redeemed or Otherwise Disposed of During the Current Quarter

1	2	3	4	5	6	7	8	9	10	Change In Book/Adjusted Carrying Value					16	17	18	19	20	21	22
										11	12	13	14	15							
CUSIP Ident-ification	Description	For-eign	Disposal Date	Name of Purchaser	Number of Shares of Stock	Consid-eration	Par Value	Actual Cost	Prior Year Book/ Adjusted Carrying Value	Unrealized Valuation Increase/(Decrease)	Current Year's (Amor-tization)/ Accretion	Current Year's Other Than Temporary Impairment Recogn-ized	Total Change in Book/ Adjusted Carrying Value (11 + 12 - 13)	Total Foreign Exchange Change in Book /Adjusted Carrying Value	Book/ Adjusted Carrying Value at Disposal Date	Foreign Exchange Gain (Loss) on Disposal	Realized Gain (Loss) on Disposal	Total Gain (Loss) on Disposal	Bond Interest/ Stock Dividends Received During Year	Stated Con-tractual Maturity Date	NAIC Desig-nation or Market In-dicator (a)
..05549@-AA-3	BJs Wholesale Club Inc (HG Bowie Realty)		03/15/2012	Redemption 100.0000		24,077	24,077	24,310	24,225		(147)		(147)		24,077				279	05/15/2022	2
..07383F-5H-7	Bear Stearns Comm Mtg Sec Ser 2005-T18 C		01/01/2012	Paydown		971,834	971,834	977,128	970,327		1,507		1,507		971,834				3,861	02/13/2042	1FM
..08183*-AA-0	Benenson Parsippany LLC CTL 7.050% 04/		03/10/2012	Redemption 100.0000		75,101	75,101	75,101	75,101						75,101				884	04/10/2016	1
..09536#-AA-8	Blue Cross and Blue Shield/NC PTC Lease		03/15/2012	Redemption 100.0000		153,520	153,520	153,902	153,683		(163)		(163)		153,520				1,820	10/15/2016	1
..11448*-BU-0	Brookshire Grocery Co Ser A-1 7.010% 0		03/01/2012	Redemption 100.0000		60,911	60,911	60,911	60,911						60,911				713	09/01/2014	2
..11448*-BV-8	Brookshire Grocery Co Ser A-2 7.010% 0		03/01/2012	Redemption 100.0000		58,673	58,673	58,673	58,673						58,673				687	09/01/2014	2
..117017-AB-9	Brunswick & Glynn Co Dev Auth Rev Lease		02/15/2012	Redemption 100.0000		64,884	64,884	64,884	64,884						64,884				2,031	02/15/2023	1
..12189@-AH-5	Burlington Northern Santa Fe ETC Ser 200		01/15/2012	Paydown		60,882	60,882	68,939	64,130		(3,248)		(3,248)		60,882				2,407	01/15/2020	1FE
..12644*-AC-1	CTL Cap Tr Ser 2002-3 Anchorage CTL 7.		03/15/2012	Redemption 100.0000		39,845	39,845	39,845	39,845						39,845				485	12/15/2026	1
..12644@-AX-3	CTL Cap Tr Lowes CTL 7.070% 08/15/21		02/15/2012	Redemption 100.0000		117,989	117,989	117,989	117,989						117,989				4,171	08/14/2021	1
..12644@-BR-5	CTL Cap Tr Ser 2002-21Aurora HeathcareCT		03/15/2012	Redemption 100.0000		44,366	44,366	44,366	44,366						44,366				493	10/15/2022	2
..126673-TM-4	CWABS Inc Ser 2004-14 CI A5 RMBS 0.582		03/26/2012	Paydown		29,499	29,499	29,509	29,505		(5)		(5)		29,499				30	06/25/2035	1FM
..12667G-AX-1	Countrywide Alternative Ln Tr Ser 2005-1		03/25/2012	Paydown		447,861	447,861	419,175	288,868	130,307	28,686		158,993		447,861				525	05/25/2035	1FM
..12667G-XN-8	Countrywide Alternative Ln Tr Ser 2005-3		03/01/2012	Paydown		179,549	179,549	168,068	148,951	19,116	11,482		30,598		179,549				1,687	08/25/2035	1FM
..12668@-AC-8	CWABS Inc Ser 2006-H CI 2A1B RMBS 0.39		03/15/2012	Paydown		64,583	64,583	22,359	22,359		42,225		42,225		64,583				49	11/15/2036	1FM
..12669@-NS-3	CWHL Inc Ser 2005-27 CI 1A3 RMBS 5.500		03/01/2012	Paydown		81,033	81,033	78,868	80,157		876		876		81,033				809	12/25/2035	1FM
..12669C-E@-8	CWABS Inc Ser 2002-8 CI A4 RMBS 6.500%		03/01/2012	Paydown		96,030	96,030	99,511	96,460		(430)		(430)		96,030				895	07/25/2032	1FM
..12669F-D2-6	CWHL Inc Ser 2004-10 CI A10 RMBS 5.000		03/01/2012	Paydown		13,809	13,809	12,928	13,497		312		312		13,809				117	07/25/2034	1FM
..12669G-R3-7	Countrywide Home Loans Ser 2005-15 CI A7		03/01/2012	Paydown		83,607	83,607	82,287	78,217	4,875	514		5,389		83,607				823	08/25/2035	1FM
..15189@-A*-0	CenterPoint Properties Tr CTL 7.530% 1		03/01/2012	Redemption 100.0000		27,139	27,139	27,139	27,139						27,139				341	10/01/2014	1
..16675H-AL-6	Chevron Corp Trust Fund Gtd Amortizing N		01/01/2012	Redemption 100.0000		208,112	208,112	208,112	208,112						208,112				7,624	01/01/2013	1FE
..17126@-AD-3	Chugach Electric Association Sr Nt 2002		02/01/2012	Various		2,500,000	2,500,000	2,590,414	2,501,260		(1,260)		(1,260)		2,500,000				77,500	02/01/2012	1FE
..17306U-CE-6	Citifinancial Mtg Sec Inc Ser 2004-1 CI		03/01/2012	Paydown		43,425	43,425	43,422	43,379		46		46		43,425				265	04/25/2034	1FM
..17307G-YH-5	Citigroup Mtg Ln Tr Ser 2005-5 CI 21A5 R		03/01/2012	Paydown		38,383	38,383	35,470	35,470		2,912		2,912		38,383				305	08/25/2035	1FM
..22388@-AA-4	Cowperwood McAllen I LP CTL 6.880% 07/		03/15/2012	Redemption 100.0000		59,562	59,562	59,562	59,562						59,562				684	05/15/2022	1
..23321M-AL-9	DLJ Mtg Accept Tr I CMO Ser 89-1-F RMBS		02/25/2012	Paydown		514	514	566	636		(122)		(122)		514				(831)	08/01/2019	6*
..2515@-CB-6	Deutsche Mtg Sec Inc Ser 2004-1 CI A6 RM		03/01/2012	Paydown		119,944	119,944	119,910	119,733		211		211		119,944				861	12/25/2033	1FM
..2515@-DM-1	Deutsche Mtg Sec Inc Ser 2004-2 CI A6 RM		03/01/2012	Paydown		31,402	31,402	31,394	31,355		47		47		31,402				207	01/25/2034	1FM
..32051@-NB-2	First Horizon Mtg PT Tr Ser 2003-9 CI 1A		03/01/2012	Paydown		910,572	910,572	901,466	906,492		4,080		4,080		910,572				8,881	11/25/2033	1FM
..36157R-SX-1	GE Cap Mtg Serv Inc Ser 1999-HE2 CI M RM		03/01/2012	Paydown		14,510	14,510	14,510	14,510						14,510				202	07/25/2029	1FM
..36157R-D@-5	GE Cap Mtg Serv Inc Ser 1999-HE1 CI A7 R		03/01/2012	Paydown		3,136	3,136	3,136	3,136						3,136				31	04/25/2029	1FM
..36242D-TQ-0	GS Mortgage Securities Corp Ser 2005-5F		03/01/2012	Paydown		61,936	61,936	58,859	60,252		1,684		1,684		61,936				486	06/25/2035	1FM
..36312K-AA-0	Gaithersburg Fin Tr CTL 7.010% 04/11/1		03/11/2012	Redemption 100.0000		123,051	123,051	131,265	125,083		(2,032)		(2,032)		123,051				1,482	04/11/2014	1
..393513-AC-0	Green Tree Mtg Ln Tr Ser 2005-HE1 A3 RMB		03/26/2012	Paydown		1,502,369	1,502,369	1,502,369	1,502,369						1,502,369				1,644	12/25/2032	1FM
..40075@-BG-6	Guaranteed Mtg Corp III CMO Ser L-5 GNMA		03/20/2012	Paydown		4,974	4,974	5,343	5,121		(147)		(147)		4,974				68	07/20/2019	6*
..43739E-AP-2	Homebanc Mortgage Tr Ser 2005-1 CI A1 RM		03/26/2012	Paydown		71,310	71,310	65,924	65,924		5,385		5,385		71,310				56	03/25/2035	1FM
..44569*-BC-4	Hunt Oil Co Sr Nt 4.730% 03/27/12		03/27/2012	Maturity		1,000,000	1,000,000	1,000,000	1,000,000						1,000,000				23,650	03/27/2012	2
..45254N-J@-3	IMPAC CMB Tr Ser 2004-5 CI 1A1 RMBS 0.		03/26/2012	Paydown		67,446	67,446	67,569	67,547		(102)		(102)		67,446				143	10/25/2034	1FM
..45254N-KX-4	IMPAC CMB Tr Ser 2004-9 CI 1A1 RMBS 1.		03/26/2012	Paydown		62,194	62,194	62,349	41,064	21,253	(124)		21,129		62,194				122	01/25/2035	1FM
..46625Y-GL-1	JP Morgan Chase Comm Mtg Secs Ser 2005-L		03/01/2012	Paydown		449,751	449,751	453,300	449,878		(127)		(127)		449,751				2,494	03/15/2046	1FM
..46629@-AD-0	JP Morgan Chase Comm Mtg Secs Ser 2006-C		03/01/2012	Paydown		3,812,472	3,812,472	3,831,210	3,809,837		2,636		2,636		3,812,472				35,459	05/12/2045	1FM
..50026*-AA-3	Kohls Corp Shelby MI CTL 7.600% 12/15/		03/15/2012	Redemption 100.0000		21,188	21,188	22,385	21,916		(728)		(728)		21,188				269	12/15/2022	2
..52467@-AA-3	Legg Mason Mtg Cap Corp CTL 7.400% 12/		03/15/2012	Redemption 100.0000		12,105	12,105	12,759	12,454		(349)		(349)		12,105				155	12/15/2021	1

STATEMENT AS OF MARCH 31, 2012 OF THE NATIONWIDE INDEMNITY COMPANY

SCHEDULE D - PART 4

Show All Long-Term Bonds and Stock Sold, Redeemed or Otherwise Disposed of During the Current Quarter

1	2	3	4	5	6	7	8	9	10	Change In Book/Adjusted Carrying Value					16	17	18	19	20	21	22
										11	12	13	14	15							
CUSIP Ident- ification	Description	For- eign	Disposal Date	Name of Purchaser	Number of Shares of Stock	Consid- eration	Par Value	Actual Cost	Prior Year Book/ Adjusted Carrying Value	Unrealized Valuation Increase/ (Decrease)	Current Year's (Amor- tization)/ Accretion	Current Year's Other Than Temporary Impairment Recogn- ized	Total Change in Book/ Adjusted Carrying Value (11 + 12 - 13)	Total Foreign Exchange Change in Book /Adjusted Carrying Value	Book/ Adjusted Carrying Value at Disposal Date	Foreign Exchange Gain (Loss) on Disposal	Realized Gain (Loss) on Disposal	Total Gain (Loss) on Disposal	Bond Interest/ Stock Dividends Received During Year	Stated Con- tractual Maturity Date	NAIC Desig- nation or Market In- dicator (a)
..52467@-AH-8	Legg Mason Mtg Cap Corp CTL 7.750% 01/		03/15/2012	Redemption 100.0000		19,029	19,029	19,958	19,542		(513)		(513)		19,029				246	01/15/2021	3
..55265W-CA-9	Master Seasoned Securities Tr Ser 2004-2		03/01/2012	Paydown		7,789	7,789	8,047	8,047		(243)		(243)		7,789				63	08/25/2032	1FM
..59549R-AC-8	Mid State Tr X Ser 10 CI M1 ABS 6.280%		03/15/2012	Paydown		78,242	78,242	65,792	65,792		12,450		12,450		78,242				772	02/15/2036	1AM
..60467M-AA-9	Mirant Mid-Atlantic LLC PTC Ser A ABS		01/01/2012	Paydown		116	116	124	117		(1)		(1)		116				5	06/30/2012	4AM
..61745M-NB-2	Morgan Stanley Cap I Ser 2004-IQ8 CI A4		03/01/2012	Paydown		3,863,124	3,863,124	3,975,094	3,860,657		2,467		2,467		3,863,124				47,225	06/15/2040	1FMI
..61747W-AF-6	Morgan Stanley Sr Nt 5.750% 01/25/21		02/29/2012	Bank of America BISD Dealer		3,468,360	3,500,000	3,506,585	3,506,112		(93)		(93)		3,506,020		(37,660)	(37,660)	122,986	01/25/2021	1FE
..636516-AB-2	National Inst of Hlth Fishers PI I Bldg		01/15/2012	Redemption 100.0000		23,446	23,446	23,446	23,446						23,446				821	01/15/2024	1
..636517-AA-2	National Inst of Hlth Fishers PI II Bldg		01/15/2012	Redemption 100.0000		105,077	105,077	105,077	105,077						105,077				3,714	07/15/2022	1
..64508Q-AA-3	New Haven Fed Office Bldg Ls GSA Gtd Tr		01/15/2012	Redemption 100.0000		61,601	61,601	61,601	61,601						61,601				1,817	01/15/2020	1
..65324Q-AA-9	Newtown Ser 2002 CTL 6.082% 05/15/23		03/15/2012	Redemption 100.0000		51,470	51,470	51,468	51,469		1		1		51,470				523	05/15/2023	1
..67020B-AA-8	NRRC-D Facilities Corp GSA Rev Bd Ls Ren		03/07/2012	Redemption 100.0000		41,549	41,549	41,549	41,549						41,549				451	11/07/2023	1
..73664#-AA-8	Portland Natural Gas Trans Sys Sr Sec Nt		03/31/2012	Redemption 100.0000		32,591	32,591	32,591	32,591						32,591				481	12/31/2018	2
..742741-AA-9	Procter & Gamble ESOP Deb Ser A 9.360%		01/01/2012	Various		90,860	90,860	123,685	107,814		(16,954)		(16,954)		90,860				4,252	01/01/2021	1FE
..75592Q-AG-0	Receipts on Corp Sec Tr Coll Tr Ser 1998		02/01/2012	Redemption 100.0000		62,131	62,131	67,819	64,517		(2,387)		(2,387)		62,131				2,019	08/01/2017	4AM
..760985-M9-9	Residential Asset Mtg Prod Inc Ser 2004-		03/01/2012	Paydown		82,284	82,284	82,283	82,209		74		74		82,284			1FM	597	01/25/2034	1FM
..761118-HD-3	Residential Accredit Loans Inc Ser 2005-		03/01/2012	Paydown		22,750	22,750	18,778	18,778		3,973		3,973		22,750				242	09/25/2035	2FMI
..78402C-AA-1	SC Commercial Mtg Pass Through Ser 2003-		03/01/2012	Redemption 100.0000		8,322	8,322	8,702	8,577		(255)		(255)		8,322				99	11/01/2026	1
..78442G-GG-5	SLM Student Loan Tr Ser 2003-4 CI ASD AB		03/15/2012	Paydown		224,528	224,528	226,369	225,609		(1,081)		(1,081)		224,528				736	03/15/2033	1FE
..785778-HD-6	SACO I Tr Ser 2005-6 CI A RMBS 0.822%		03/26/2012	Paydown		74,095	74,095	71,556	32,200	39,356			41,894		74,095			1FM	92	09/25/2035	1FM
..79548K-ZJ-0	Salomon Bros Mtg Sec VII Inc Ser 1998-AQ		03/01/2012	Paydown		6,550	6,550	6,608	6,525		26		26		6,550				68	06/25/2028	1FM
..81441P-CE-9	Security Natl Mtg Loan Tr Ser 2005-1A CI		03/01/2012	Paydown		58,141	58,141	57,796	57,768		373		373		58,141				(5,661)	02/25/2035	1FMI
..85231C-AA-3	St Louis Fed Office Bldg Tr GSA Gtd Ser		01/15/2012	Redemption 100.0000		132,736	132,736	132,736	132,736						132,736				4,586	01/15/2019	1
..86363G-AJ-3	Structured Asset Sec Corp Ser 2007-3 CI		03/01/2012	Paydown		92,201	92,201	83,207	73,709	9,498	8,994		18,492		92,201				711	04/25/2047	4FMI
..86765B-AB-5	Sunoco Logistics Ptnrs Op LP Nt 7.250%		02/15/2012	Various		3,000,000	3,000,000	3,124,018	3,002,549		(2,549)		(2,549)		3,000,000				108,750	02/15/2012	2FE
..89222*-AB-1	Townsend Norwalk LLC CTL 7.100% 03/30/		03/30/2012	Redemption 100.0000		50,815	50,815	50,815	50,815						50,815				502	03/30/2021	2
..89655M-AA-0	Trinity Rail Leasing I LLC ETC ABS 6.7		02/20/2012	Redemption 100.0000		5,830	5,830	5,830	5,830						5,830				65	04/20/2020	1FE
..91737#-AA-3	United States Govt SS Ls FinTr GSA Gtd P		03/15/2012	Redemption 100.0000		118,294	118,294	117,905	118,092		202		202		118,294				929	11/15/2018	1
..92851@-AA-3	Vivendi SPC Tr CTL 6.630% 04/15/22		03/15/2012	Redemption 100.0000		17,545	17,545	17,545	17,545						17,545				194	04/15/2022	2
..939348-AE-8	Washington Mutual MSC Mtg PT Ser 2007-HY		03/01/2012	Paydown		100,163	219,301	168,577	113,517	55,060			55,060		168,577		(68,414)	(68,414)	1,522	04/25/2037	1FMI
..94976Q-AP-7	Wells Fargo Mtg Backed Sec Tr Ser 2003-9		03/01/2012	Paydown		96,398	96,398	95,163	95,627		771		771		96,398				751	08/25/2033	1FMI
..94978#-AT-4	Wells Fargo Bank Northwest NA Ser 2002 C		03/01/2012	Redemption 100.0000		14,615	14,615	14,615	14,615						14,615				162	08/01/2027	1
..952355-B@-3	West Corp Term Ln B-5 Nt 3 4.494% 07/1		03/30/2012	Redemption 100.0000		184	184	130	139		45		45		184				2	07/15/2016	3FE
..95235L-AJ-9	West Corp Term Ln B-4 Nt 3 4.119% 07/1		03/30/2012	Redemption 100.0000		521	521	331	378		143		143		521				6	07/15/2016	3FE
..96928#-AC-7	William Blair CTL PTC Ser 2004-1 CTL 7		03/25/2012	Redemption -230.5351		9,715	(4,214)	(4,832)	352		9,363		9,363		9,715				124	01/25/2023	2
..74040@-AA-7	Preferred Term Sec Ltd Sr Nt PTP ABS 8	R	03/15/2012	Redemption 100.0000		850,535	850,535	850,535	850,535						850,535				47,793	09/15/2030	4AM
..902133-AG-2	Tyco Electronics Group Co Gtd Nt 7.125	F	01/25/2012	Morgan Stanley & Co Inc		3,811,410	3,000,000	3,406,320	3,401,037		(517)		(517)		3,400,520		410,890	410,890	70,656	10/01/2037	2FE

STATEMENT AS OF MARCH 31, 2012 OF THE NATIONWIDE INDEMNITY COMPANY

SCHEDULE D - PART 4

Show All Long-Term Bonds and Stock Sold, Redeemed or Otherwise Disposed of During the Current Quarter

1	2	3	4	5	6	7	8	9	10	Change In Book/Adjusted Carrying Value					16	17	18	19	20	21	22
										11	12	13	14	15							
CUSIP Ident- ification	Description	For- eign	Disposal Date	Name of Purchaser	Number of Shares of Stock	Consid- eration	Par Value	Actual Cost	Prior Year Book/ Adjusted Carrying Value	Unrealized Valuation Increase/ (Decrease)	Current Year's (Amor- tization)/ Accretion	Current Year's Other Than Temporary Impairment Recog- nized	Total Change in Book/ Adjusted Carrying Value (11 + 12 - 13)	Total Foreign Exchange Change in Book /Adjusted Carrying Value	Book/ Adjusted Carrying Value at Disposal Date	Foreign Exchange Gain (Loss) on Disposal	Realized Gain (Loss) on Disposal	Total Gain (Loss) on Disposal	Bond Interest/ Stock Dividends Received DuringYear	Stated Con- tractual Maturity Date	NAIC Desig- nation or Market In- dicator (a)
.G1981@-AA-0	Cayman Turtle Farm Ltd Gtd Sr Nt 4.850	F.....	03/01/2012 ..	Redemption 100.0000		.83,408	.83,408	.83,408	.83,408						.83,408				1,011	03/01/2019 ..	1.....
38999999.	Subtotal - Bonds - Industrial and Miscellaneous (Unaffiliated)					31,060,801	30,386,240	31,033,085	30,326,703	323,709	105,571		429,280		30,755,985		304,816	304,816	607,867	XXX	XXX
83999997.	Total - Bonds - Part 4					35,567,392	34,892,831	35,613,774	34,851,129	323,709	87,736		411,445		35,262,576		304,816	304,816	669,173	XXX	XXX
83999998.	Total - Bonds - Part 5					XXX	XXX	XXX	XXX	XXX	XXX	XXX	XXX	XXX	XXX	XXX	XXX	XXX	XXX	XXX	XXX
83999999.	Total - Bonds					35,567,392	34,892,831	35,613,774	34,851,129	323,709	87,736		411,445		35,262,576		304,816	304,816	669,173	XXX	XXX
89999997.	Total - Preferred Stocks - Part 4						XXX													XXX	XXX
89999998.	Total - Preferred Stocks - Part 5					XXX	XXX	XXX	XXX	XXX	XXX	XXX	XXX	XXX	XXX	XXX	XXX	XXX	XXX	XXX	XXX
89999999.	Total - Preferred Stocks						XXX													XXX	XXX
97999997.	Total - Common Stocks - Part 4						XXX													XXX	XXX
97999998.	Total - Common Stocks - Part 5					XXX	XXX	XXX	XXX	XXX	XXX	XXX	XXX	XXX	XXX	XXX	XXX	XXX	XXX	XXX	XXX
97999999.	Total - Common Stocks						XXX													XXX	XXX
98999999.	Total - Preferred and Common Stocks						XXX													XXX	XXX
99999999.	Totals					35,567,392	XXX	35,613,774	34,851,129	323,709	87,736		411,445		35,262,576		304,816	304,816	669,173	XXX	XXX

(a) For all common stock bearing the NAIC market indicator "U" provide: the number of such issues.....

Schedule DB - Part A - Section 1 - Options, Caps, Floors, Collars, Swaps and Forwards Open

N O N E

Schedule DB - Part B - Section 1 - Futures Contracts Open

N O N E

Schedule DB - Part B - Section 1B - Brokers with whom cash deposits have been made

N O N E

Schedule DB - Part D - Counterparty Exposure for Derivative Instruments Open

N O N E

SCHEDULE DL - PART 1
SECURITIES LENDING COLLATERAL ASSETS

Reinvested Collateral Assets Owned Current Statement Date						
1	2	3	4	5	6	7
CUSIP Identification	Description	Code	NAIC Designation/ Market Indicator	Fair Value	Book/Adjusted Carrying Value	Maturity Date
0599999. Total - U.S. Government Bonds						XXX
1099999. Total - All Other Government Bonds						XXX
1799999. Total - U.S. States, Territories and Possessions Bonds						XXX
2499999. Total - U.S. Political Subdivisions Bonds						XXX
3199999. Total - U.S. Special Revenues Bonds						XXX
04012M-AP-4	RMBS Argent Securities Inc Ser 2006-M1 CI A2B		6FE	187,720	187,720	09/25/2035
14454A-AE-9	RMBS Carrington Mtg Loan Tr Ser 2006-FRE2 CI		1AM	1,772,569	1,772,569	08/27/2012
29445U-AA-3	RMBS Equifirst Mtg Loan Tr Ser 2007-1 CI A2A		5AM	5,156,310	5,156,310	07/25/2012
362351-AA-6	RMBS GSAA Home Equity Tr Ser 2006-20 CI 1A1 R		6FE	822,925	1,326,580	07/25/2012
617487-AB-9	RMBS Morgan Stanley Mtg Tr Ser 2006-16AX CI 2		6FE	527,184	852,053	11/25/2036
81378E-AA-1	RMBS Securitized AB Receivables LLC Ser 2007-		1FM	2,727,171	2,727,171	01/25/2013
3399999. Subtotal - Bonds - Industrial and Miscellaneous (Unaffiliated) - Residential Mortgage-Backed Securities				11,193,879	12,022,403	XXX
3899999. Total - Industrial and Miscellaneous (Unaffiliated) Bonds				11,193,879	12,022,403	XXX
4899999. Total - Hybrid Securities						XXX
5599999. Total - Parent, Subsidiaries and Affiliates Bonds						XXX
6199999. Total - Issuer Obligations						XXX
6299999. Total - Residential Mortgage-Backed Securities				11,193,879	12,022,403	XXX
6399999. Total - Commercial Mortgage-Backed Securities						XXX
6499999. Total - Other Loan-Backed and Structured Securities						XXX
6599999. Total Bonds				11,193,879	12,022,403	XXX
7099999. Total - Preferred Stocks						XXX
7599999. Total - Common Stocks						XXX
7699999. Total - Preferred and Common Stocks						XXX
	Overnight Repos			4,064,647	4,064,647	04/02/2012
8999999. Total - Short-Term Invested Assets (Schedule DA type)				4,064,647	4,064,647	XXX
9999999 - Totals				15,258,526	16,087,050	XXX

General Interrogatories:

1. Total activity for the year to date Fair Value \$(828,685) Book/Adjusted Carrying Value \$(161)
2. Average balance for the year to date Fair Value \$13,798,743 Book/Adjusted Carrying Value \$14,697,796
3. Reinvested securities lending collateral assets book/adjusted carrying value included in this schedule by NAIC designation:
NAIC 1 \$4,499,740 NAIC 2 \$ NAIC 3 \$ NAIC 4 \$ NAIC 5 \$5,156,310 NAIC 6 \$2,366,353

SCHEDULE DL - PART 2
SECURITIES LENDING COLLATERAL ASSETS

Reinvested Collateral Assets Owned Current Statement Date						
1	2	3	4	5	6	7
CUSIP Identification	Description	Code	NAIC Designation/ Market Indicator	Fair Value	Book/Adjusted Carrying Value	Maturity Date
0599999. Total - U.S. Government Bonds						XXX
1099999. Total - All Other Government Bonds						XXX
1799999. Total - U.S. States, Territories and Possessions Bonds						XXX
2499999. Total - U.S. Political Subdivisions Bonds						XXX
3199999. Total - U.S. Special Revenues Bonds						XXX
3899999. Total - Industrial and Miscellaneous (Unaffiliated) Bonds						XXX
4899999. Total - Hybrid Securities						XXX
5599999. Total - Parent, Subsidiaries and Affiliates Bonds						XXX
6199999. Total - Issuer Obligations						XXX
6299999. Total - Residential Mortgage-Backed Securities						XXX
6399999. Total - Commercial Mortgage-Backed Securities						XXX
6499999. Total - Other Loan-Backed and Structured Securities						XXX
6599999. Total Bonds						XXX
7099999. Total - Preferred Stocks						XXX
7599999. Total - Common Stocks						XXX
7699999. Total - Preferred and Common Stocks						XXX
9999999 - Totals						XXX

General Interrogatories:

1.	Total activity for the year to date	Fair Value \$	Book/Adjusted Carrying Value \$
2.	Average balance for the year to date	Fair Value \$	Book/Adjusted Carrying Value \$
3.	Grand Total Schedule DL Part 1 and Part 2	Fair Value \$15,258,526	Book/Adjusted Carrying Value \$16,087,050

SCHEDULE E - PART 1 - CASH

[illegible]

STATEMENT AS OF MARCH 31, 2012 OF THE NATIONWIDE INDEMNITY COMPANY

SCHEDULE E - PART 2 - CASH EQUIVALENTS

Show Investments Owned End of Current Quarter

1	2	3	4	5	6	7	8
Description	Code	Date Acquired	Rate of Interest	Maturity Date	Book/Adjusted Carrying Value	Amount of Interest Due and Accrued	Amount Received During Year
NONE							
8699999 - Total Cash Equivalents							



SUPPLEMENT FOR THE QUARTER ENDING MARCH 31, 2012 OF THE NATIONWIDE INDEMNITY COMPANY

Designate the type of health care
providers reported on this page:

SUPPLEMENT A TO SCHEDULE T
EXHIBIT OF MEDICAL PROFESSIONAL LIABILITY PREMIUMS WRITTEN
ALLOCATED BY STATES AND TERRITORIES

	1	2	Direct Losses Paid		5	Direct Losses Unpaid		8
			3	4		6	7	
States, etc.	Direct Premiums Written	Direct Premiums Earned	Amount	No. of Claims	Direct Losses Incurred	Amount Reported	No. of Claims	Direct Losses Incurred But Not Reported
1. Alabama.....AL								
2. Alaska.....AK								
3. Arizona.....AZ								
4. Arkansas.....AR								
5. California.....CA								
6. Colorado.....CO								
7. Connecticut.....CT								
8. Delaware.....DE								
9. District of Columbia.....DC								
10. Florida.....FL								
11. Georgia.....GA								
12. Hawaii.....HI								
13. Idaho.....ID								
14. Illinois.....IL								
15. Indiana.....IN								
16. Iowa.....IA								
17. Kansas.....KS								
18. Kentucky.....KY								
19. Louisiana.....LA								
20. Maine.....ME								
21. Maryland.....MD								
22. Massachusetts.....MA								
23. Michigan.....MI								
24. Minnesota.....MN								
25. Mississippi.....MS								
26. Missouri.....MO								
27. Montana.....MT								
28. Nebraska.....NE								
29. Nevada.....NV								
30. New Hampshire.....NH								
31. New Jersey.....NJ								
32. New Mexico.....NM								
33. New York.....NY								
34. North Carolina.....NC								
35. North Dakota.....ND								
36. Ohio.....OH								
37. Oklahoma.....OK								
38. Oregon.....OR								
39. Pennsylvania.....PA								
40. Rhode Island.....RI								
41. South Carolina.....SC								
42. South Dakota.....SD								
43. Tennessee.....TN								
44. Texas.....TX								
45. Utah.....UT								
46. Vermont.....VT								
47. Virginia.....VA								
48. Washington.....WA								
49. West Virginia.....WV								
50. Wisconsin.....WI								
51. Wyoming.....WY								
52. American Samoa.....AS								
53. Guam.....GU								
54. Puerto Rico.....PR								
55. U.S. Virgin Islands.....VI								
56. Northern Mariana Islands.....MP								
57. Canada.....CN								
58. Aggregate Other Aliens.....OT								
59. Totals								
DETAILS OF WRITE-INS								
5801.								
5802.								
5803.								
5898. Summary of remaining write-ins for Line 58 from overflow page								
5899. Totals (Lines 5801 through 5803 plus 5898)(Line 58 above)								