



ANNUAL STATEMENT
For the Year Ended December 31, 2011
OF THE CONDITION AND AFFAIRS OF THE
Plans' Liability Insurance Company

NAIC Group Code 00023, 00023 NAIC Company Code 26794 Employer's ID Number 36-3503382
Organized under the Laws of Ohio, State of Domicile or Port of Entry Ohio
Country of Domicile United States
Incorporated/Organized 05/15/1986 Commenced Business 06/17/1986
Statutory Home Office 6740 North High Street, Worthington, OH 43085
Main Administrative Office 2 Mid America Plaza, Suite 200 Oakbrook Terrace, IL 60181 630-472-7700
Mail Address 2 Mid America Plaza, Suite 200 Oakbrook Terrace, IL 60181
Primary Location of Books and Records 2 Mid America Plaza, Suite 200 Oakbrook Terrace, IL 60181 630-472-7700
Internet Web Site Address N/A
Statutory Statement Contact Elias Georgopoulos 630-472-7749
lgeorgo@bcsgroup.com 630-472-7837

OFFICERS

Table with 4 columns: Name, Title, Name, Title. Officers include Howard Francis Beacham III (President & CEO), Susan Ann Pickar (Treasurer & Senior Vice President), Henry Alan Carpenter (Secretary, General Counsel & SVP), and Thomas Ellis Bowser (Chairman of the Board).

OTHER OFFICERS

Table with 4 columns: Name, Title, Name, Title. Other officers include Matthew Thomas Brannigan (Senior Vice President), David John Jacobs (Senior Vice President), Sharon Jane Dold (Vice President), and Dale Edward Palka (Senior Vice President).

DIRECTORS OR TRUSTEES

Table with 4 columns: Name, Title, Name, Title. Directors/Trustees include Howard Francis Beacham III, James Edward Purcell, Thomas Ellis Bowser, Scott Phillip Serota #, Terry Dee Kellogg, Paul Mark White, and Steven Scott Martin #.

State of Illinois

ss

County of Du Page

The officers of this reporting entity, being duly sworn, each depose and say that they are the described officers of said reporting entity, and that on the reporting period stated above, all of the herein described assets were the absolute property of the said reporting entity, free and clear from any liens or claims thereon, except as herein stated, and that this statement, together with related exhibits, schedules and explanations therein contained, annexed or referred to, is a full and true statement of all the assets and liabilities and of the condition and affairs of the said reporting entity as of the reporting period stated above, and of its income and deductions therefrom for the period ended, and have been completed in accordance with the NAIC Annual Statement Instructions and Accounting Practices and Procedures manual except to the extent that: (1) state law may differ; or, (2) that state rules or regulations require differences in reporting not related to accounting practices and procedures, according to the best of their information, knowledge and belief, respectively. Furthermore, the scope of this attestation by the described officers also includes the related corresponding electronic filing with the NAIC, when required, that is an exact copy (except for formatting differences due to electronic filing) of the enclosed statement. The electronic filing may be requested by various regulators in lieu of or in addition to the enclosed statement.

Howard Francis Beacham III
President & CEO

Henry Alan Carpenter
Secretary, General Counsel & SVP

Susan Ann Pickar
Treasurer & Senior Vice President

Subscribed and sworn to before me this
26th day of January, 2012

- a. Is this an original filing? Yes [X] No []
b. If no:
1. State the amendment number
2. Date filed
3. Number of pages attached

Lisa Fath, Notary Public
May 05, 2014

ANNUAL STATEMENT FOR THE YEAR 2011 OF THE Plans' Liability Insurance Company

ASSETS

	Current Year			Prior Year
	1 Assets	2 Nonadmitted Assets	3 Net Admitted Assets (Cols. 1 - 2)	4 Net Admitted Assets
1. Bonds (Schedule D).....	80,158,329		80,158,329	79,723,982
2. Stocks (Schedule D):				
2.1 Preferred stocks	0		0	0
2.2 Common stocks	177,800		177,800	170,800
3. Mortgage loans on real estate (Schedule B):				
3.1 First liens			0	0
3.2 Other than first liens			0	0
4. Real estate (Schedule A):				
4.1 Properties occupied by the company (less \$ encumbrances).....			0	0
4.2 Properties held for the production of income (less \$ encumbrances)			0	0
4.3 Properties held for sale (less \$ encumbrances)			0	0
5. Cash (\$126,351 , Schedule E-Part 1), cash equivalents (\$0 , Schedule E-Part 2) and short-term investments (\$2,048,201 , Schedule DA).....	2,174,552		2,174,552	3,084,717
6. Contract loans (including \$ premium notes).....			0	0
7. Derivatives (Schedule DB).....			0	0
8. Other invested assets (Schedule BA)	0		0	0
9. Receivables for securities			0	0
10. Securities lending reinvested collateral assets (Schedule DL).....			0	0
11. Aggregate write-ins for invested assets	0	0	0	0
12. Subtotals, cash and invested assets (Lines 1 to 11)	82,510,681	0	82,510,681	82,979,499
13. Title plants less \$ charged off (for Title insurers only).....			0	0
14. Investment income due and accrued	653,083		653,083	653,459
15. Premiums and considerations:				
15.1 Uncollected premiums and agents' balances in the course of collection	168,374		168,374	63,456
15.2 Deferred premiums, agents' balances and installments booked but deferred and not yet due (including \$ earned but unbilled premiums).....			0	0
15.3 Accrued retrospective premiums.....			0	0
16. Reinsurance:				
16.1 Amounts recoverable from reinsurers			0	0
16.2 Funds held by or deposited with reinsured companies			0	0
16.3 Other amounts receivable under reinsurance contracts			0	0
17. Amounts receivable relating to uninsured plans			0	0
18.1 Current federal and foreign income tax recoverable and interest thereon	708,000		708,000	64,103
18.2 Net deferred tax asset.....	1,304,007	1,110,574	193,433	287,201
19. Guaranty funds receivable or on deposit			0	0
20. Electronic data processing equipment and software.....			0	0
21. Furniture and equipment, including health care delivery assets (\$)			0	0
22. Net adjustment in assets and liabilities due to foreign exchange rates			0	0
23. Receivables from parent, subsidiaries and affiliates			0	0
24. Health care (\$) and other amounts receivable.....			0	0
25. Aggregate write-ins for other than invested assets	86,466	0	86,466	0
26. Total assets excluding Separate Accounts, Segregated Accounts and Protected Cell Accounts (Lines 12 to 25).....	85,430,611	1,110,574	84,320,037	84,047,718
27. From Separate Accounts, Segregated Accounts and Protected Cell Accounts.....			0	0
28. Total (Lines 26 and 27)	85,430,611	1,110,574	84,320,037	84,047,718
DETAILS OF WRITE-INS				
1101.			0	0
1102.			0	0
1103.			0	0
1198. Summary of remaining write-ins for Line 11 from overflow page	0	0	0	0
1199. Totals (Lines 1101 through 1103 plus 1198) (Line 11 above)	0	0	0	0
2501. Miscellaneous Accounts Receivable.....	86,466		86,466	0
2502.			0	0
2503.			0	0
2598. Summary of remaining write-ins for Line 25 from overflow page	0	0	0	0
2599. Totals (Lines 2501 through 2503 plus 2598) (Line 25 above)	86,466	0	86,466	0

ANNUAL STATEMENT FOR THE YEAR 2011 OF THE Plans' Liability Insurance Company

LIABILITIES, SURPLUS AND OTHER FUNDS

	1 Current Year	2 Prior Year
1. Losses (Part 2A, Line 35, Column 8)	19,184,869	21,517,475
2. Reinsurance payable on paid losses and loss adjustment expenses (Schedule F, Part 1, Column 6)	1,513,737	68,207
3. Loss adjustment expenses (Part 2A, Line 35, Column 9)	5,085,210	6,027,948
4. Commissions payable, contingent commissions and other similar charges	0	0
5. Other expenses (excluding taxes, licenses and fees)	106,010	118,593
6. Taxes, licenses and fees (excluding federal and foreign income taxes)	60,000	40,000
7.1 Current federal and foreign income taxes (including \$ on realized capital gains (losses)).....	0	0
7.2 Net deferred tax liability.....	0	0
8. Borrowed money \$2,400,000 and interest thereon \$321	2,400,321	2,000,460
9. Unearned premiums (Part 1A, Line 38, Column 5) (after deducting unearned premiums for ceded reinsurance of \$0 and including warranty reserves of \$0 and accrued accident and health experience rating refunds including \$0 for medical loss ratio rebate per the Public Health Service Act)	460,618	544,953
10. Advance premium	0	0
11. Dividends declared and unpaid:		
11.1 Stockholders	0	0
11.2 Policyholders	0	0
12. Ceded reinsurance premiums payable (net of ceding commissions)	0	0
13. Funds held by company under reinsurance treaties (Schedule F, Part 3, Column 19)	0	0
14. Amounts withheld or retained by company for account of others	0	0
15. Remittances and items not allocated.....	0	0
16. Provision for reinsurance (Schedule F, Part 7)	0	0
17. Net adjustments in assets and liabilities due to foreign exchange rates	0	0
18. Drafts outstanding	0	0
19. Payable to parent, subsidiaries and affiliates	492,989	592,918
20. Derivatives	0	0
21. Payable for securities	0	0
22. Payable for securities lending	0	0
23. Liability for amounts held under uninsured plans	0	0
24. Capital notes \$and interest thereon \$	0	0
25. Aggregate write-ins for liabilities	1,286,748	176,920
26. Total liabilities excluding protected cell liabilities (Lines 1 through 25)	30,590,502	31,087,474
27. Protected cell liabilities	0	0
28. Total liabilities (Lines 26 and 27)	30,590,502	31,087,474
29. Aggregate write-ins for special surplus funds	0	0
30. Common capital stock	2,942,436	2,942,436
31. Preferred capital stock	0	0
32. Aggregate write-ins for other than special surplus funds	0	0
33. Surplus notes	0	0
34. Gross paid in and contributed surplus	23,180,772	23,180,772
35. Unassigned funds (surplus)	27,606,327	26,837,036
36. Less treasury stock, at cost:		
36.1 shares common (value included in Line 30 \$)	0	0
36.2 shares preferred (value included in Line 31 \$)	0	0
37. Surplus as regards policyholders (Lines 29 to 35, less 36) (Page 4, Line 39)	53,729,535	52,960,244
38. Totals (Page 2, Line 28, Col. 3)	84,320,037	84,047,718
DETAILS OF WRITE-INS		
2501. Assumed Reinsurance Liability.....	1,174,829	
2502. Retroactive Reinsurance Reserve Assumed.....	111,919	176,920
2503.		
2598. Summary of remaining write-ins for Line 25 from overflow page	0	0
2599. Totals (Lines 2501 through 2503 plus 2598) (Line 25 above)	1,286,748	176,920
2901.	0	0
2902.	0	0
2903.	0	0
2998. Summary of remaining write-ins for Line 29 from overflow page	0	0
2999. Totals (Lines 2901 through 2903 plus 2998) (Line 29 above)	0	0
3201.	0	0
3202.	0	0
3203.	0	0
3298. Summary of remaining write-ins for Line 32 from overflow page	0	0
3299. Totals (Lines 3201 through 3203 plus 3298) (Line 32 above)	0	0

ANNUAL STATEMENT FOR THE YEAR 2011 OF THE Plans' Liability Insurance Company

STATEMENT OF INCOME

	1 Current Year	2 Prior Year
UNDERWRITING INCOME		
1. Premiums earned (Part 1, Line 35, Column 4)	3,004,226	4,905,268
DEDUCTIONS:		
2. Losses incurred (Part 2, Line 35, Column 7)	1,328,735	(478,147)
3. Loss adjustment expenses incurred (Part 3, Line 25, Column 1)	1,049,838	2,368,857
4. Other underwriting expenses incurred (Part 3, Line 25, Column 2)	3,666,283	4,340,358
5. Aggregate write-ins for underwriting deductions	0	0
6. Total underwriting deductions (Lines 2 through 5)	6,044,856	6,231,068
7. Net income of protected cells	0	0
8. Net underwriting gain (loss) (Line 1 minus Line 6 plus Line 7)	(3,040,630)	(1,325,800)
INVESTMENT INCOME		
9. Net investment income earned (Exhibit of Net Investment Income, Line 17)	3,326,456	3,529,836
10. Net realized capital gains (losses) less capital gains tax of \$ 50,986 (Exhibit of Capital Gains (Losses))	409,335	32,000
11. Net investment gain (loss) (Lines 9 + 10)	3,735,791	3,561,836
OTHER INCOME		
12. Net gain (loss) from agents' or premium balances charged off (amount recovered \$ amount charged off \$)		0
13. Finance and service charges not included in premiums		0
14. Aggregate write-ins for miscellaneous income	78,184	127,415
15. Total other income (Lines 12 through 14)	78,184	127,415
16. Net income before dividends to policyholders, after capital gains tax and before all other federal and foreign income taxes (Lines 8 + 11 + 15)	773,345	2,363,451
17. Dividends to policyholders		0
18. Net income, after dividends to policyholders, after capital gains tax and before all other federal and foreign income taxes (Line 16 minus Line 17)	773,345	2,363,451
19. Federal and foreign income taxes incurred	(55,912)	603,506
20. Net income (Line 18 minus Line 19) (to Line 22)	829,257	1,759,945
CAPITAL AND SURPLUS ACCOUNT		
21. Surplus as regards policyholders, December 31 prior year (Page 4, Line 39, Column 2)	52,960,244	50,835,063
22. Net income (from Line 20)	829,257	1,759,945
23. Net transfers (to) from Protected Cell accounts		0
24. Change in net unrealized capital gains or (losses) less capital gains tax of \$ 10,311	20,016	204,219
25. Change in net unrealized foreign exchange capital gain (loss)		0
26. Change in net deferred income tax	(245,470)	228,598
27. Change in nonadmitted assets (Exhibit of Nonadmitted Assets, Line 28, Col. 3)	165,488	(67,581)
28. Change in provision for reinsurance (Page 3, Line 16, Column 2 minus Column 1)	0	0
29. Change in surplus notes		0
30. Surplus (contributed to) withdrawn from protected cells		0
31. Cumulative effect of changes in accounting principles		0
32. Capital changes:		
32.1. Paid in		0
32.2. Transferred from surplus (Stock Dividend)		0
32.3. Transferred to surplus		0
33. Surplus adjustments:		
33.1. Paid in		0
33.2. Transferred to capital (Stock Dividend)		0
33.3. Transferred from capital		0
34. Net remittances from or (to) Home Office		0
35. Dividends to stockholders		0
36. Change in treasury stock (Page 3, Lines 36.1 and 36.2, Column 2 minus Column 1)	0	0
37. Aggregate write-ins for gains and losses in surplus	0	0
38. Change in surplus as regards policyholders for the year (Lines 22 through 37)	769,291	2,125,181
39. Surplus as regards policyholders, December 31 current year (Line 21 plus Line 38) (Page 3, Line 37)	53,729,535	52,960,244
DETAILS OF WRITE-INS		
0501.		0
0502.		0
0503.		0
0598. Summary of remaining write-ins for Line 5 from overflow page	0	0
0599. Totals (Lines 0501 through 0503 plus 0598) (Line 5 above)	0	0
1401. Retroactive Reinsurance Gain Assumed	65,001	128,776
1402. Miscellaneous Income (Expense)	13,183	(1,361)
1403.		0
1498. Summary of remaining write-ins for Line 14 from overflow page	0	0
1499. Totals (Lines 1401 through 1403 plus 1498) (Line 14 above)	78,184	127,415
3701.		0
3702.		0
3703.		0
3798. Summary of remaining write-ins for Line 37 from overflow page	0	0
3799. Totals (Lines 3701 through 3703 plus 3798) (Line 37 above)	0	0

CASH FLOW

	1 Current Year	2 Prior Year
Cash from Operations		
1. Premiums collected net of reinsurance.....	2,814,973	5,074,780
2. Net investment income.....	3,547,518	3,718,528
3. Miscellaneous income.....	78,184	127,415
4. Total (Lines 1 through 3).....	6,440,675	8,920,723
5. Benefit and loss related payments.....	2,742,510	1,170,274
6. Net transfers to Separate Accounts, Segregated Accounts and Protected Cell Accounts.....	0	0
7. Commissions, expenses paid and aggregate write-ins for deductions.....	5,109,147	6,354,387
8. Dividends paid to policyholders.....	0	0
9. Federal and foreign income taxes paid (recovered) net of \$..... tax on capital gains (losses).....	638,970	(10,054)
10. Total (Lines 5 through 9).....	8,490,627	7,514,607
11. Net cash from operations (Line 4 minus Line 10).....	(2,049,952)	1,406,116
Cash from Investments		
12. Proceeds from investments sold, matured or repaid:		
12.1 Bonds.....	22,131,273	21,126,984
12.2 Stocks.....	0	0
12.3 Mortgage loans.....	0	0
12.4 Real estate.....	0	0
12.5 Other invested assets.....	0	0
12.6 Net gains or (losses) on cash, cash equivalents and short-term investments.....	0	0
12.7 Miscellaneous proceeds.....	0	0
12.8 Total investment proceeds (Lines 12.1 to 12.7).....	22,131,273	21,126,984
13. Cost of investments acquired (long-term only):		
13.1 Bonds.....	22,311,269	26,690,911
13.2 Stocks.....	7,000	170,800
13.3 Mortgage loans.....	0	0
13.4 Real estate.....	0	0
13.5 Other invested assets.....	0	0
13.6 Miscellaneous applications.....	0	0
13.7 Total investments acquired (Lines 13.1 to 13.6).....	22,318,269	26,861,711
14. Net increase (decrease) in contract loans and premium notes.....	0	0
15. Net cash from investments (Line 12.8 minus Line 13.7 minus Line 14).....	(186,996)	(5,734,727)
Cash from Financing and Miscellaneous Sources		
16. Cash provided (applied):		
16.1 Surplus notes, capital notes.....	0	0
16.2 Capital and paid in surplus, less treasury stock.....	0	0
16.3 Borrowed funds.....	399,861	2,000,460
16.4 Net deposits on deposit-type contracts and other insurance liabilities.....	0	0
16.5 Dividends to stockholders.....	0	0
16.6 Other cash provided (applied).....	926,922	81,558
17. Net cash from financing and miscellaneous sources (Lines 16.1 to 16.4 minus Line 16.5 plus Line 16.6).....	1,326,783	2,082,018
RECONCILIATION OF CASH, CASH EQUIVALENTS AND SHORT-TERM INVESTMENTS		
18. Net change in cash, cash equivalents and short-term investments (Line 11, plus Lines 15 and 17).....	(910,165)	(2,246,593)
19. Cash, cash equivalents and short-term investments:		
19.1 Beginning of year.....	3,084,717	5,331,310
19.2 End of year (Line 18 plus Line 19.1).....	2,174,552	3,084,717

ANNUAL STATEMENT FOR THE YEAR 2011 OF THE Plans' Liability Insurance Company

UNDERWRITING AND INVESTMENT EXHIBIT

PART 1 - PREMIUMS EARNED

Line of Business		1	2	3	4
		Net Premiums Written per Column 6, Part 1B	Unearned Premiums Dec. 31 Prior Year - per Col. 3, Last Year's Part 1	Unearned Premiums Dec. 31 Current Year - per Col. 5 Part 1A	Premiums Earned During Year (Cols. 1 + 2 - 3)
1.	Fire	0	0	0	0
2.	Allied lines	0	0	0	0
3.	Farmowners multiple peril	0	0	0	0
4.	Homeowners multiple peril	0	0	0	0
5.	Commercial multiple peril	0	0	0	0
6.	Mortgage guaranty	0	0	0	0
8.	Ocean marine	0	0	0	0
9.	Inland marine	0	0	0	0
10.	Financial guaranty	0	0	0	0
11.1	Medical professional liability-occurrence	0	0	0	0
11.2	Medical professional liability-claims-made	0	0	0	0
12.	Earthquake	0	0	0	0
13.	Group accident and health	0	0	0	0
14.	Credit accident and health (group and individual)	0	0	0	0
15.	Other accident and health	0	0	0	0
16.	Workers' compensation	0	0	0	0
17.1	Other liability - occurrence	0	0	0	0
17.2	Other liability - claims-made	2,839,683	534,993	450,596	2,924,080
17.3	Excess workers' compensation	0	0	0	0
18.1	Products liability-occurrence	0	0	0	0
18.2	Products liability-claims-made	0	0	0	0
19.1,19.2	Private passenger auto liability	0	0	0	0
19.3,19.4	Commercial auto liability	0	0	0	0
21.	Auto physical damage	0	0	0	0
22.	Aircraft (all perils)	0	0	0	0
23.	Fidelity	80,208	9,960	10,022	80,146
24.	Surety	0	0	0	0
26.	Burglary and theft	0	0	0	0
27.	Boiler and machinery	0	0	0	0
28.	Credit	0	0	0	0
29.	International	0	0	0	0
30.	Warranty	0	0	0	0
31.	Reinsurance-nonproportional assumed property	0	0	0	0
32.	Reinsurance-nonproportional assumed liability	0	0	0	0
33.	Reinsurance-nonproportional assumed financial lines	0	0	0	0
34.	Aggregate write-ins for other lines of business	0	0	0	0
35.	TOTALS	2,919,891	544,953	460,618	3,004,226
DETAILS OF WRITE-INS					
3401.	0	0	0	0
3402.	0	0	0	0
3403.	0	0	0	0
3498.	Sum. of remaining write-ins for Line 34 from overflow page	0	0	0	0
3499.	Totals (Lines 3401 through 3403 plus 3498) (Line 34 above)	0	0	0	0

ANNUAL STATEMENT FOR THE YEAR 2011 OF THE Plans' Liability Insurance Company

UNDERWRITING AND INVESTMENT EXHIBIT

PART 1A - RECAPITULATION OF ALL PREMIUMS

Line of Business		1 Amount Unearned (Running One Year or Less from Date of Policy) (a)	2 Amount Unearned (Running More Than One Year from Date of Policy) (a)	3 Earned but Unbilled Premium	4 Reserve for Rate Credits and Retrospective Adjustments Based on Experience	5 Total Reserve for Unearned Premiums Cols. 1 + 2 + 3 + 4
1.	Fire0
2.	Allied lines0
3.	Farmowners multiple peril0
4.	Homeowners multiple peril0
5.	Commercial multiple peril0
6.	Mortgage guaranty0
8.	Ocean marine0
9.	Inland marine0
10.	Financial guaranty0
11.1	Medical professional liability-occurrence0
11.2	Medical professional liability-claims-made0
12.	Earthquake0
13.	Group accident and health0
14.	Credit accident and health (group and individual)0
15.	Other accident and health0
16.	Workers' compensation0
17.1	Other liability-occurrence0
17.2	Other liability-claims-made	450,596				450,596
17.3	Excess workers' compensation0
18.1	Products liability-occurrence0
18.2	Products liability-claims-made0
19.1,19.2	Private passenger auto liability0
19.3,19.4	Commercial auto liability0
21.	Auto physical damage0
22.	Aircraft (all perils)0
23.	Fidelity	10,022				10,022
24.	Surety0
26.	Burglary and theft0
27.	Boiler and machinery0
28.	Credit0
29.	International0
30.	Warranty0
31.	Reinsurance-nonproportional assumed property0
32.	Reinsurance-nonproportional assumed liability0
33.	Reinsurance-nonproportional assumed financial lines0
34.	Aggregate write-ins for other lines of business	0	0	0	0	0
35.	TOTALS	460,618	0	0	0	460,618
36.	Accrued retrospective premiums based on experience					
37.	Earned but unbilled premiums					
38.	Balance (Sum of Lines 35 through 37)					460,618
DETAILS OF WRITE-INS						
3401.0
3402.0
3403.0
3498.	Sum. of remaining write-ins for Line 34 from overflow page0	.0	.0	.0	.0
3499.	Totals (Lines 3401 through 3403 plus 3498) (Line 34 above)	0	0	0	0	0

(a) State here basis of computation used in each case. Pro-rata basis.

ANNUAL STATEMENT FOR THE YEAR 2011 OF THE Plans' Liability Insurance Company

UNDERWRITING AND INVESTMENT EXHIBIT

PART 1B - PREMIUMS WRITTEN

Line of Business	1 Direct Business (a)	Reinsurance Assumed		Reinsurance Ceded		6 Net Premiums Written Cols. 1 + 2 + 3 - 4 - 5
		2 From Affiliates	3 From Non-Affiliates	4 To Affiliates	5 To Non-Affiliates	
1. Fire						0
2. Allied lines						0
3. Farmowners multiple peril						0
4. Homeowners multiple peril						0
5. Commercial multiple peril						0
6. Mortgage guaranty						0
8. Ocean marine						0
9. Inland marine						0
10. Financial guaranty						0
11.1 Medical professional liability-occurrence						0
11.2 Medical professional liability-claims-made						0
12. Earthquake						0
13. Group accident and health						0
14. Credit accident and health (group and individual)						0
15. Other accident and health						0
16. Workers' compensation						0
17.1 Other liability-occurrence						0
17.2 Other liability-claims-made		2,839,683				2,839,683
17.3 Excess workers' compensation						0
18.1 Products liability-occurrence						0
18.2 Products liability-claims-made						0
19.1,19.2 Private passenger auto liability						0
19.3,19.4 Commercial auto liability						0
21. Auto physical damage						0
22. Aircraft (all perils)						0
23. Fidelity		80,208				80,208
24. Surety						0
26. Burglary and theft						0
27. Boiler and machinery						0
28. Credit						0
29. International						0
30. Warranty						0
31. Reinsurance-nonproportional assumed property	XXX					0
32. Reinsurance-nonproportional assumed liability	XXX					0
33. Reinsurance-nonproportional assumed financial lines	XXX					0
34. Aggregate write-ins for other lines of business	0	0	0	0	0	0
35. TOTALS	0	2,919,891	0	0	0	2,919,891
DETAILS OF WRITE-INS						
3401.						0
3402.						0
3403.						0
3498. Sum. of remaining write-ins for Line 34 from overflow page	0	0	0	0	0	0
3499. Totals (Lines 3401 through 3403 plus 3498) (Line 34 above)	0	0	0	0	0	0

(a) Does the company's direct premiums written include premiums recorded on an installment basis? Yes [] No [X]

If yes: 1. The amount of such installment premiums \$0

2. Amount at which such installment premiums would have been reported had they been recorded on an annualized basis \$0

ANNUAL STATEMENT FOR THE YEAR 2011 OF THE Plans' Liability Insurance Company

UNDERWRITING AND INVESTMENT EXHIBIT

PART 2 - LOSSES PAID AND INCURRED

Line of Business	Losses Paid Less Salvage				5 Net Losses Unpaid Current Year (Part 2A, Col. 8)	6 Net Losses Unpaid Prior Year	7 Losses Incurred Current Year (Cols. 4 + 5 - 6)	8 Percentage of Losses Incurred (Col. 7, Part 2) to Premiums Earned (Col. 4, Part 1)
	1 Direct Business	2 Reinsurance Assumed	3 Reinsurance Recovered	4 Net Payments (Cols. 1 + 2 - 3)				
1. Fire				.0	.0	.0	.0	.0
2. Allied lines				.0	.0	.0	.0	.0
3. Farmowners multiple peril				.0	.0	.0	.0	.0
4. Homeowners multiple peril				.0	.0	.0	.0	.0
5. Commercial multiple peril				.0	.0	.0	.0	.0
6. Mortgage guaranty				.0	.0	.0	.0	.0
8. Ocean marine				.0	.0	.0	.0	.0
9. Inland marine				.0	.0	.0	.0	.0
10. Financial guaranty				.0	.0	.0	.0	.0
11.1 Medical professional liability-occurrence				.0	.0	.0	.0	.0
11.2 Medical professional liability-claims-made				.0	.0	.0	.0	.0
12. Earthquake				.0	.0	.0	.0	.0
13. Group accident and health				.0	.0	.0	.0	.0
14. Credit accident and health (group and individual)				.0	.0	.0	.0	.0
15. Other accident and health				.0	.0	.0	.0	.0
16. Workers' compensation				.0	.0	.0	.0	.0
17.1 Other liability-occurrence				.0	.0	.0	.0	.0
17.2 Other liability-claims-made		3,661,341		3,661,341	19,132,378	21,331,753	1,461,966	50.0
17.3 Excess workers' compensation				.0	.0	.0	.0	.0
18.1 Products liability-occurrence				.0	.0	.0	.0	.0
18.2 Products liability-claims-made				.0	.0	.0	.0	.0
19.1,19.2 Private passenger auto liability				.0	.0	.0	.0	.0
19.3,19.4 Commercial auto liability				.0	.0	.0	.0	.0
21. Auto physical damage				.0	.0	.0	.0	.0
22. Aircraft (all perils)				.0	.0	.0	.0	.0
23. Fidelity				.0	52,491	185,722	(133,231)	(166.2)
24. Surety				.0	.0	.0	.0	.0
26. Burglary and theft				.0	.0	.0	.0	.0
27. Boiler and machinery				.0	.0	.0	.0	.0
28. Credit				.0	.0	.0	.0	.0
29. International				.0	.0	.0	.0	.0
30. Warranty				.0	.0	.0	.0	.0
31. Reinsurance-nonproportional assumed property	XXX			.0	.0	.0	.0	.0
32. Reinsurance-nonproportional assumed liability	XXX			.0	.0	.0	.0	.0
33. Reinsurance-nonproportional assumed financial lines	XXX			.0	.0	.0	.0	.0
34. Aggregate write-ins for other lines of business	0	0	0	0	0	0	0	0.0
35. TOTALS	0	3,661,341	0	3,661,341	19,184,869	21,517,475	1,328,735	44.2
DETAILS OF WRITE-INS								
3401.				.0	.0	.0	.0	.0
3402.				.0	.0	.0	.0	.0
3403.				.0	.0	.0	.0	.0
3498. Sum. of remaining write-ins for Line 34 from overflow page	.0	.0	.0	.0	.0	.0	.0	.0
3499. Totals (Lines 3401 through 3403 + 3498) (Line 34 above)	0	0	0	0	0	0	0	0.0

ANNUAL STATEMENT FOR THE YEAR 2011 OF THE Plans' Liability Insurance Company

UNDERWRITING AND INVESTMENT EXHIBIT
PART 2A - UNPAID LOSSES AND LOSS ADJUSTMENT EXPENSES

Line of Business	Reported Losses				Incurred But Not Reported			8 Net Losses Unpaid (Cols. 4 + 5 + 6 - 7)	9 Net Unpaid Loss Adjustment Expenses
	1 Direct	2 Reinsurance Assumed	3 Deduct Reinsurance Recoverable from Authorized and Unauthorized Companies	4 Net Losses Excl. Incurred But Not Reported (Cols. 1 + 2 - 3)	5 Direct	6 Reinsurance Assumed	7 Reinsurance Ceded		
1. Fire				.0				.0	
2. Allied lines				.0				.0	
3. Farmowners multiple peril				.0				.0	
4. Homeowners multiple peril				.0				.0	
5. Commercial multiple peril				.0				.0	
6. Mortgage guaranty				.0				.0	
8. Ocean marine				.0				.0	
9. Inland marine				.0				.0	
10. Financial guaranty				.0				.0	
11.1 Medical professional liability-occurrence				.0				.0	
11.2 Medical professional liability-claims-made				.0				.0	
12. Earthquake				.0				.0	
13. Group accident and health				.0			(a)	.0	
14. Credit accident and health (group and individual)				.0			(a)	.0	
15. Other accident and health				.0			(a)	.0	
16. Workers' compensation				.0				.0	
17.1 Other liability-occurrence				.0				.0	
17.2 Other liability-claims-made		14,363,420		14,363,420		4,768,958		19,132,378	5,075,225
17.3 Excess workers' compensation				.0				.0	
18.1 Products liability-occurrence				.0				.0	
18.2 Products liability-claims-made				.0				.0	
19.1,19.2 Private passenger auto liability				.0				.0	
19.3,19.4 Commercial auto liability				.0				.0	
21. Auto physical damage				.0				.0	
22. Aircraft (all perils)				.0				.0	
23. Fidelity				.0		52,491		52,491	9,985
24. Surety				.0				.0	
26. Burglary and theft				.0				.0	
27. Boiler and machinery				.0				.0	
28. Credit				.0				.0	
29. International				.0				.0	
30. Warranty				.0				.0	
31. Reinsurance-nonproportional assumed property	XXX			.0	XXX			.0	
32. Reinsurance-nonproportional assumed liability	XXX			.0	XXX			.0	
33. Reinsurance-nonproportional assumed financial lines	XXX			.0	XXX			.0	
34. Aggregate write-ins for other lines of business	.0	.0	.0	.0	.0	.0	.0	.0	.0
35. TOTALS	0	14,363,420	0	14,363,420	0	4,821,449	0	19,184,869	5,085,210
DETAILS OF WRITE-INS									
3401.				.0				.0	
3402.				.0				.0	
3403.				.0				.0	
3498. Sum. of remaining write-ins for Line 34 from overflow page	.0	.0	.0	.0	.0	.0	.0	.0	.0
3499. Totals (Lines 3401 through 3403 + 3498) (Line 34 above)	0	0	0	0	0	0	0	0	0

(a) Including \$0 for present value of life indemnity claims.

ANNUAL STATEMENT FOR THE YEAR 2011 OF THE Plans' Liability Insurance Company

UNDERWRITING AND INVESTMENT EXHIBIT

PART 3 - EXPENSES

	1 Loss Adjustment Expenses	2 Other Underwriting Expenses	3 Investment Expenses	4 Total
1. Claim adjustment services:				
1.1 Direct				0
1.2 Reinsurance assumed	903,703			903,703
1.3 Reinsurance ceded				0
1.4 Net claim adjustment services (1.1 + 1.2 - 1.3)	903,703	0	0	903,703
2. Commission and brokerage:				
2.1 Direct, excluding contingent				0
2.2 Reinsurance assumed, excluding contingent		1,587,241		1,587,241
2.3 Reinsurance ceded, excluding contingent				0
2.4 Contingent-direct				0
2.5 Contingent-reinsurance assumed				0
2.6 Contingent-reinsurance ceded				0
2.7 Policy and membership fees				0
2.8 Net commission and brokerage (2.1 + 2.2 - 2.3 + 2.4 + 2.5 - 2.6 + 2.7)	0	1,587,241	0	1,587,241
3. Allowances to manager and agents				0
4. Advertising	400	81,542	529	82,471
5. Boards, bureaus and associations	17	192	23	232
6. Surveys and underwriting reports				0
7. Audit of assureds' records				0
8. Salary and related items:				
8.1 Salaries	76,485	853,299	101,260	1,031,044
8.2 Payroll taxes	4,158	46,393	5,505	56,056
9. Employee relations and welfare	35,082	391,465	47,938	474,485
10. Insurance	375	4,188	497	5,060
11. Directors' fees		15,626		15,626
12. Travel and travel items	5,041	111,913	6,674	123,628
13. Rent and rent items	7,649	85,339	10,127	103,115
14. Equipment	534	5,953	706	7,193
15. Cost or depreciation of EDP equipment and software	3,986	47,058	5,277	56,321
16. Printing and stationery	1,079	31,095	7,951	40,125
17. Postage, telephone and telegraph, exchange and express	984	14,125	1,302	16,411
18. Legal and auditing	10,027	278,249	190,984	479,260
19. Totals (Lines 3 to 18)	145,817	1,966,437	378,773	2,491,027
20. Taxes, licenses and fees:				
20.1 State and local insurance taxes deducting guaranty association credits of \$	0	8,261		8,261
20.2 Insurance department licenses and fees		90,265		90,265
20.3 Gross guaranty association assessments		700		700
20.4 All other (excluding federal and foreign income and real estate)		9,530		9,530
20.5 Total taxes, licenses and fees (20.1 + 20.2 + 20.3 + 20.4)	0	108,756	0	108,756
21. Real estate expenses				0
22. Real estate taxes				0
23. Reimbursements by uninsured plans				0
24. Aggregate write-ins for miscellaneous expenses	318	3,849	421	4,588
25. Total expenses incurred	1,049,838	3,666,283	379,194	5,095,315
26. Less unpaid expenses-current year	5,085,210	139,650	26,360	5,251,220
27. Add unpaid expenses-prior year	6,027,948	116,633	41,960	6,186,541
28. Amounts receivable relating to uninsured plans, prior year	0	0	0	0
29. Amounts receivable relating to uninsured plans, current year				0
30. TOTAL EXPENSES PAID (Lines 25 - 26 + 27 - 28 + 29)	1,992,576	3,643,266	394,794	6,030,636
DETAILS OF WRITE-INS				
2401. Donations	318	3,849	421	4,588
2402.				0
2403.				0
2498. Summary of remaining write-ins for Line 24 from overflow page	0	0	0	0
2499. Totals (Lines 2401 through 2403 plus 2498) (Line 24 above)	318	3,849	421	4,588

(a) Includes management fees of \$ 1,969,952 to affiliates and \$to non-affiliates.

EXHIBIT OF NET INVESTMENT INCOME

	1 Collected During Year	2 Earned During Year
1. U.S. Government bonds	(a).....366,910372,936
1.1 Bonds exempt from U.S. tax	(a).....133,331154,068
1.2 Other bonds (unaffiliated)	(a).....3,200,0883,172,950
1.3 Bonds of affiliates	(a).....00
2.1 Preferred stocks (unaffiliated)	(b).....00
2.11 Preferred stocks of affiliates	(b).....00
2.2 Common stocks (unaffiliated)5,6205,620
2.21 Common stocks of affiliates00
3. Mortgage loans	(c).....
4. Real estate	(d).....
5. Contract loans
6. Cash, cash equivalents and short-term investments	(e).....7777
7. Derivative instruments	(f).....
8. Other invested assets
9. Aggregate write-ins for investment income00
10. Total gross investment income	3,706,026	3,705,651
11. Investment expenses		(g).....379,195
12. Investment taxes, licenses and fees, excluding federal income taxes		(g).....
13. Interest expense		(h).....
14. Depreciation on real estate and other invested assets		(i).....
15. Aggregate write-ins for deductions from investment income	0
16. Total deductions (Lines 11 through 15)	379,195
17. Net investment income (Line 10 minus Line 16)		3,326,456
DETAILS OF WRITE-INS		
0901.		
0902.		
0903.		
0998. Summary of remaining write-ins for Line 9 from overflow page00
0999. Totals (Lines 0901 through 0903) plus 0998 (Line 9 above)	0	0
1501.		
1502.		
1503.		
1598. Summary of remaining write-ins for Line 15 from overflow page	0
1599. Totals (Lines 1501 through 1503) plus 1598 (Line 15 above)		0

- (a) Includes \$168,044 accrual of discount less \$404,330 amortization of premium and less \$64,351 paid for accrued interest on purchases.
- (b) Includes \$ accrual of discount less \$ amortization of premium and less \$0 paid for accrued dividends on purchases.
- (c) Includes \$0 accrual of discount less \$0 amortization of premium and less \$ paid for accrued interest on purchases.
- (d) Includes \$ for company's occupancy of its own buildings; and excludes \$ interest on encumbrances.
- (e) Includes \$ accrual of discount less \$ amortization of premium and less \$ paid for accrued interest on purchases.
- (f) Includes \$ accrual of discount less \$ amortization of premium.
- (g) Includes \$ investment expenses and \$ investment taxes, licenses and fees, excluding federal income taxes, attributable to segregated and Separate Accounts.
- (h) Includes \$ interest on surplus notes and \$ interest on capital notes.
- (i) Includes \$ depreciation on real estate and \$ depreciation on other invested assets.

EXHIBIT OF CAPITAL GAINS (LOSSES)

	1 Realized Gain (Loss) On Sales or Maturity	2 Other Realized Adjustments	3 Total Realized Capital Gain (Loss) (Columns 1 + 2)	4 Change in Unrealized Capital Gain (Loss)	5 Change in Unrealized Foreign Exchange Capital Gain (Loss)
1. U.S. Government bonds	29,127		29,127		
1.1 Bonds exempt from U.S. tax	29,535		29,535		
1.2 Other bonds (unaffiliated)	496,943	(95,285)	401,658	30,327	
1.3 Bonds of affiliates	0	0	0	0	0
2.1 Preferred stocks (unaffiliated)	0	0	0	0	0
2.11 Preferred stocks of affiliates	0	0	0	0	0
2.2 Common stocks (unaffiliated)	0	0	0	0	0
2.21 Common stocks of affiliates	0	0	0	0	0
3. Mortgage loans	0	0	0	0	0
4. Real estate	0	0	0	0	0
5. Contract loans	0	0	0	0	0
6. Cash, cash equivalents and short-term investments	0	0	0	0	0
7. Derivative instruments	0	0	0	0	0
8. Other invested assets	0	0	0	0	0
9. Aggregate write-ins for capital gains (losses)	0	0	0	0	0
10. Total capital gains (losses)	555,605	(95,285)	460,320	30,327	0
DETAILS OF WRITE-INS					
0901.			0		
0902.			0		
0903.			0		
0998. Summary of remaining write-ins for Line 9 from overflow page	0	0	0	0	0
0999. Totals (Lines 0901 through 0903) plus 0998 (Line 9 above)	0	0	0	0	0

EXHIBIT OF NONADMITTED ASSETS

	1	2	3
	Current Year Total Nonadmitted Assets	Prior Year Total Nonadmitted Assets	Change in Total Nonadmitted Assets (Col. 2 - Col. 1)
1. Bonds (Schedule D).....	.0	.0	.0
2. Stocks (Schedule D):			
2.1 Preferred stocks0	.0	.0
2.2 Common stocks0	.0	.0
3. Mortgage loans on real estate (Schedule B):			
3.1 First liens0	.0	.0
3.2 Other than first liens0	.0	.0
4. Real estate (Schedule A):			
4.1 Properties occupied by the company0	.0	.0
4.2 Properties held for the production of income.....	.0	.0	.0
4.3 Properties held for sale0	.0	.0
5. Cash (Schedule E-Part 1), cash equivalents (Schedule E-Part 2) and short-term investments (Schedule DA).....	.0	.0	.0
6. Contract loans0	.0	.0
7. Derivatives (Schedule DB).....	.0	.0	.0
8. Other invested assets (Schedule BA)0	.0	.0
9. Receivables for securities0	.0	.0
10. Securities lending reinvested collateral assets (Schedule DL).....	.0	.0	.0
11. Aggregate write-ins for invested assets0	.0	.0
12. Subtotals, cash and invested assets (Lines 1 to 11)0	.0	.0
13. Title plants (for Title insurers only).....	.0	.0	.0
14. Investment income due and accrued0	.0	.0
15. Premiums and considerations:			
15.1 Uncollected premiums and agents' balances in the course of collection0	.0	.0
15.2 Deferred premiums, agents' balances and installments booked but deferred and not yet due.0	.0	.0
15.3 Accrued retrospective premiums.....	.0	.0	.0
16. Reinsurance:			
16.1 Amounts recoverable from reinsurers0	.0	.0
16.2 Funds held by or deposited with reinsured companies0	.0	.0
16.3 Other amounts receivable under reinsurance contracts0	.0	.0
17. Amounts receivable relating to uninsured plans0	.0	.0
18.1 Current federal and foreign income tax recoverable and interest thereon0	.0	.0
18.2 Net deferred tax asset.....	1,110,574	1,272,587	162,013
19. Guaranty funds receivable or on deposit0	.0	.0
20. Electronic data processing equipment and software.....	.0	.0	.0
21. Furniture and equipment, including health care delivery assets0	.0	.0
22. Net adjustment in assets and liabilities due to foreign exchange rates0	.0	.0
23. Receivables from parent, subsidiaries and affiliates0	.0	.0
24. Health care and other amounts receivable.....	.0	.0	.0
25. Aggregate write-ins for other than invested assets0	3,475	3,475
26. Total assets excluding Separate Accounts, Segregated Accounts and Protected Cell Accounts (Lines 12 to 25).....	1,110,574	1,276,062	165,488
27. From Separate Accounts, Segregated Accounts and Protected Cell Accounts.....	0	0	0
28. Total (Lines 26 and 27)	1,110,574	1,276,062	165,488
DETAILS OF WRITE-INS			
1101.0	.0	.0
1102.0	.0	.0
1103.0	.0	.0
1198. Summary of remaining write-ins for Line 11 from overflow page0	.0	.0
1199. Totals (Lines 1101 through 1103 plus 1198) (Line 11 above)	0	0	0
2501. Miscellaneous Accounts Receivable.....	.0	3,475	3,475
2502.0	.0	.0
2503.0	.0	.0
2598. Summary of remaining write-ins for Line 25 from overflow page0	.0	.0
2599. Totals (Lines 2501 through 2503 plus 2598) (Line 25 above)	0	3,475	3,475

NOTES TO FINANCIAL STATEMENTS

1. Summary of Significant Accounting Policies

a. Accounting Practices

The accompanying financial statements of the Company have been prepared on the basis of accounting procedures prescribed or permitted by the Ohio Insurance Department. The state of Ohio requires insurance companies domiciled in the state of Ohio to prepare their statutory financial statements in accordance with the National Association of Insurance Commissioners' (NAIC) Accounting Practices and Procedures Manual subject to any deviations prescribed or permitted by the Ohio Insurance Department.

b. Use of Estimates in the Preparation of the Financial Statements

The preparation of financial statements requires management to make estimates and assumptions that affect the reported amounts of assets, liabilities, revenues, and expenses. Such estimates and assumptions could change in the future as more information becomes known, which could impact the amounts reported and disclosed herein.

c. Accounting Policies

Premiums are earned over the terms of the related policies and reinsurance contracts. Unearned premium is assumed from BCS Insurance Company (BCSIC) and is established to cover the unexpired portion of premiums written. Such reserves are computed by the pro rata method. Expenses incurred in connection with acquiring new insurance business (acquisition costs) are charged to operations as incurred. Net investment income earned consists primarily of interest. Net realized capital gains (losses) are recognized on a specific identification basis when securities are sold, redeemed or otherwise disposed. Short-term investments are stated at cost. Long-term bonds are generally stated at their amortized value. Non-investment grade securities with NAIC designations of 3 through 6 are stated at the lower of amortized value or fair value. If a security is deemed to be other than temporarily impaired, it is written down to its fair value through a charge to earnings. Unpaid losses and loss adjustment expenses include an amount based upon individual case estimates and loss reports and an amount, based on past experience, for losses incurred but not reported.

2. Accounting Changes and Corrections of Errors

Not Applicable

3. Business Combinations and Goodwill

a. Statutory Purchase Method

None

b. Statutory Merger

None

c. Writedowns for Impairment of Investments in Affiliates

None

4. Discontinued Operations

Not Applicable

5. Investments

a. Mortgage Loans

None

b. Troubled Debt Restructuring for Creditors

None

c. Reverse Mortgages

None

d. Loan Backed Securities

1. Anticipated prepayments for loan-backed and structured securities are used to determine the effective yield of an issue at purchase. Changes in the estimated cash flows of the issue are incorporated when determining the statement value at the end of each quarter and year-end. Prepayments for loan-backed and structured securities were obtained from the broker dealer survey or Bloomberg Systems. These assumptions are consistent with the current interest rate and economic environment. The retrospective scientific method is used to value most loan-backed and structured securities. For structured securities deemed to be high-risk, meaning the Company might not recover substantially all of its recorded investment due to unanticipated prepayment events, changes in investment yields due to changes in estimated future cash flows are accounted for on a prospective basis.

NOTES TO FINANCIAL STATEMENTS

2. The Company has the following recognized other-than-temporary impairments on loan-backed securities:

	Amortized Cost Basis Before Other-than- Temporary Impairment	Other-than-Temporary Impairment Recognized in Loss		Fair Value C1-(C2a + C2b)
		2a Interest	2b Non-interest	
Aggregate intent to sell	\$ -	\$ -	\$ -	\$ -
Aggregate intent & ability	-	-	-	-

3. The Company has the following information about recognized other-than-temporary impairments currently held:

CUSIP	Book/Adj Carrying Value Amortized cost before current period OTTI	Projected Cash flows	Recognized other-than- temporary impairment	Amortized cost after other-than temporary impairment	Fair Value	Date of Financial Statement Reported
Impaired assets at Adoption of SAP 43R						
02149v-ag-4	142,835	132,822	10,013	132,822	72,562	Adoption SAP 43R
02151n-bp-6	84,357	3,581	80,776	3,581	9,337	Adoption SAP 43R
07387a-aw-5	166,665	163,101	3,564	163,101	104,463	Adoption SAP 43R
1248mg-ap-9	205,840	168,335	37,505	168,335	65,857	Adoption SAP 43R
12544l-aa-9	166,425	160,216	6,209	160,216	112,050	Adoption SAP 43R
126670-cm-8	204,995	201,094	3,901	201,094	246,863	Adoption SAP 43R
12668b-eg-4	319,897	295,294	24,603	295,294	50,069	Adoption SAP 43R
126673-we-8	449,448	437,319	12,129	437,319	128,875	Adoption SAP 43R
126683-ab-7	218,748	150,947	67,801	150,947	128,875	Adoption SAP 43R
17307g-6k-9	191,036	184,683	6,353	184,683	121,570	Adoption SAP 43R
74958t-ab-9	246,726	234,296	12,430	234,296	146,846	Adoption SAP 43R
94983r-ad-6	185,011	182,130	2,881	182,130	119,629	Adoption SAP 43R
Total	\$ 2,581,983	\$ 2,313,818	\$ 268,165	\$ 2,313,818	\$ 1,306,996	

CUSIP	Book/Adj Carrying Value Amortized cost before current period OTTI	Projected Cash flows	Recognized other-than- temporary impairment	Amortized cost after other-than temporary impairment	Fair Value	Date of Financial Statement Reported
Impaired assets booked at December 31, 2010						
02149v-ag-4	90,844	85,844	5,000	85,844	71,173	December 2010
1248mg-ap-9	133,977	131,322	2,655	131,322	91,004	December 2010
126670-cm-8	70,447	44,579	25,868	44,579	73,272	December 2010
12669g-k7-5	197,923	188,669	9,254	188,669	164,212	December 2010
32051g-rd-9	285,072	284,915	157	284,915	186,649	December 2010
94984g-ad-9	134,355	132,900	1,455	132,900	136,325	December 2010
Total	\$ 912,618	\$ 868,229	\$ 44,389	\$ 868,229	\$ 722,635	

CUSIP	Book/Adj Carrying Value Amortized cost before current period OTTI	Projected Cash flows	Recognized other-than- temporary impairment	Amortized cost after other-than temporary impairment	Fair Value	Date of Financial Statement Reported
Impaired assets booked at December 31, 2011						
1248mg-ap-9	127,319	118,569	8,750	118,569	69,807	December 2011
126673-we-8	425,549	410,757	14,791	410,757	211,399	December 2011
225458-ez-7	171,177	167,209	3,968	167,209	133,472	December 2011
74958t-ab-9	137,018	126,865	10,153	126,865	102,802	December 2011
12544l-aa-9	103,472	102,753	720	102,753	95,009	December 2011
949834-aa-3	118,832	118,010	822	118,010	109,970	December 2011
12668b-eg-4	106,366	91,565	14,801	91,565	82,924	December 2011
Total	\$ 1,189,733	\$ 1,135,729	\$ 54,004	\$ 1,135,728	\$ 805,383	

NOTES TO FINANCIAL STATEMENTS

4. All impaired securities (fair value is less than cost or amortized cost) for which an other-than-temporary impairment has not been recognized in earnings as a realized loss (including securities with a recognized other-than-temporary impairment for non-interest related declines when a non-recognized interest related impairment remains):
- a. The aggregate amount of unrealized losses:
- | | |
|------------------------|-------------|
| a. Less than 12 months | \$31,092 |
| b. 12 Months or Longer | \$1,003,367 |
- b. The aggregate related fair value of securities with unrealized losses was
- | | |
|------------------------|-------------|
| a. Less than 12 months | \$1,595,340 |
| b. 12 Months or Longer | \$3,876,868 |
5. The Company periodically reviews its fixed maturity securities on a case-by-case basis to determine if any decline in fair value below amortized cost is other-than-temporary. Factors considered when determining whether a decline is other-than-temporary include the length of time a security has been in an unrealized loss position, reasons for the decline in value, expectations for the amount and timing of a recovery in fair value, and the Company's intent to sell and whether the Company is more likely than not will be required to sell the security. When the Company intends to sell an impaired security or more likely than not will be required to sell an impaired security before recovery of its amortized cost basis, an other than temporary impairment is recognized in earnings. If the Company does not expect to recover the entire amortized cost basis of an impaired debt security, even if it does not intend to sell the security and it is not more likely than not that it will not be required to sell the security before recovery of its amortized cost basis, the entity must consider, based upon an estimate of the present value of cash flows expected to be collected on the debt security as compared to its amortized cost basis, whether a credit loss exists. The portion of the total other than temporary impairment related to a credit loss is recognized in the statement of income. For structured securities the difference between amortized cost and net present value of future cash flows is considered to be a credit loss. For all other securities, the difference between fair market value and amortized cost is considered to be a credit loss. If it is determined that a decline in fair value of an investment is temporary, an other-than-temporary impairment loss is not recorded.

Generally, securities with fair values that are less than 80% of cost and other securities the Company determines are underperforming or potential problem securities are subject to regular review. To facilitate the review, securities with significant declines in value, or where objective criteria evidencing credit deterioration have been met, are included on a watch list. Among the criteria for securities to be included on a watch list are: credit deterioration which has led to a significant decline in value of the security; a significant covenant related to the security has been breached; and an issuer has filed or indicated a possibility of filing for bankruptcy, has missed or announced it intends to miss a scheduled interest or principal payment, or has experienced a specific material adverse change that may impair its creditworthiness.

When performing these reviews, the Company considers the relevant facts and circumstances relating to each investment and exercises considerable judgment in determining whether a security is other-than-temporarily impaired. Assessment factors include judgments about an obligor's current and projected financial position, an issuer's current and projected ability to service and repay its debt obligations, the existence of, and realizable value of, any collateral backing the obligations, the macro-economic and the micro-economic outlooks for specific industries and issuers. Assessing the duration of asset-backed securities can also involve assumptions regarding underlying collateral such as prepayment rates, default and recovery rates, and third-party servicing capabilities.

Among the factors considered is whether the decline in fair value results from a change in the quality of the security itself, or from a downward movement in the market as a whole, the likelihood of recovering the carrying value based on the current and short-term prospects of the issuer, and the Company's ability and intent to hold the security until such a recovery may occur. Unrealized losses that are considered to be primarily the result of market conditions, such as increasing interest rates, unusual market volatility, or industry-related events, and where the Company also believes there exists a reasonable expectation for recovery and, furthermore, has the intent and ability to hold the investment until maturity or the market recovery, are usually determined to be temporary. To the extent factors contributing to recognize other-than-temporary impairment losses affected other investments, such investments were reviewed for other-than-temporary impairment and losses were recorded when appropriate.

In addition to the review procedures described above, investment in structured securities where market prices are depressed are subject to a review of their future estimated cash flows, including expected and stress case scenarios, to identify potential shortfalls in contractual payments. Even in the case of severely depressed market values on structured securities, the Company places significant importance on the results of its cash flow testing and its ability and intent to hold these securities until their fair values recover when reaching other-than-temporary impairment conclusions. If there has been an adverse change in estimated cash flows which results in negative yield, an other-than-temporary impairment is recognized in the consolidated statements of income.

There are inherent uncertainties in assessing the fair values assigned to the Company's investments and in determining whether a decline in fair value is other-than-temporary. The Company's review of fair value involves several criteria including economic conditions, credit loss experience, other issuer-specific developments and future cash flows. These assessments are based on the best available information at the time. Factors such as market liquidity, the widening of bid/ask spreads and a change in the cash flow assumptions can contribute to future price volatility. If actual experience differs negatively from the assumptions and other consideration, realized losses may be recognized in the consolidated statements of income in future periods.

The Company currently does not have the intent to sell securities with unrealized losses not considered other-than-temporary until they mature or recover in value. However, if the specific facts and circumstances surrounding a security or the outlook for its industry sector change, the Company may sell the security and realize a loss.

NOTES TO FINANCIAL STATEMENTS

e. Repurchase Agreements

None

f. Real Estate

None

g. Low Income Housing Tax Credits

None

6. Joint Ventures, Partnerships and Limited Liability Companies

a. Detail for Those Greater than 10 % of Admitted Assets

Not Applicable

b. Write-downs for Impairments

Not Applicable

7. Investment Income

a. Accrued Investment Income

The Company non-admits investment income due and accrued if amounts are over 90 days past due.

b. Amounts Nonadmitted

The total amount excluded was \$0.

8. Derivative Instruments

a. The Company does not have positions in derivative instruments.

9. Income Taxes

The December 31, 2011 and December 31, 2010 balances and related disclosures are calculated and presented pursuant to SSAP 10R.

a. The net deferred tax asset at December 31, 2011 and the change from the prior year are comprised of the following components:

	December 31, 2011			December 31, 2010			Change		
	Ordinary	Capital	Total	Ordinary	Capital	Total	Ordinary	Capital	Total
Total gross deferred tax assets	843,121	474,423	1,317,544	977,679	590,260	1,567,939	(134,558)	(115,837)	(250,395)
Total gross deferred tax liabilities	<u>13,537</u>	<u>-</u>	<u>13,537</u>	<u>8,151</u>	<u>-</u>	<u>8,151</u>	<u>5,386</u>	<u>-</u>	<u>5,386</u>
Net deferred tax assets	829,584	474,423	1,304,007	969,528	590,260	1,559,788	(139,944)	(115,837)	(255,781)
Nonadmitted deferred tax assets	<u>636,151</u>	<u>474,423</u>	<u>1,110,574</u>	<u>745,348</u>	<u>527,239</u>	<u>1,272,587</u>	<u>(109,197)</u>	<u>(52,816)</u>	<u>(162,013)</u>
Net admitted deferred tax assets	<u>193,433</u>	<u>-</u>	<u>193,433</u>	<u>224,180</u>	<u>63,021</u>	<u>287,201</u>	<u>(30,747)</u>	<u>(63,021)</u>	<u>(93,768)</u>

The Company has not elected to admit deferred tax assets pursuant to paragraph 10.e. which allows for expanded admittance testing, for the years ended December 31, 2011 and December 31, 2010.

NOTES TO FINANCIAL STATEMENTS

The amount of admitted adjusted gross deferred tax assets admitted under each component of SSAP 10R:

	December 31, 2011			December 31, 2010			Change		
	Ordinary	Capital	Total	Ordinary	Capital	Total	Ordinary	Capital	Total
Admitted under paragraph 10.a.	193,433	-	193,433	224,180	63,021	287,201	(30,747)	(63,021)	(93,768)
Paragraph 10.b., lesser of:									
Admitted under paragraph 10.b.i	-	-	-	-	-	-	-	-	-
Admitted under paragraph 10.b.ii	-	-	-	-	-	-	-	-	-
Admitted under paragraph 10.b. (lesser of b.i. or b.ii)	-	-	-	-	-	-	-	-	-
Admitted under paragraph 10.c.	13,537	-	13,537	8,151	-	8,151	5,386	-	5,386
Total admitted gross deferred tax assets	<u>206,970</u>	<u>-</u>	<u>206,970</u>	<u>232,331</u>	<u>63,021</u>	<u>295,352</u>	<u>(25,361)</u>	<u>(63,021)</u>	<u>(88,382)</u>

The Company's risk-based capital level used for purposes of paragraph 10.d. is based on the following:

	December 31, 2011	December 31, 2010	Change
Used in SSAP 10R, Paragraph 10.d			
Total Adjusted Capital	53,729,535	52,960,244	769,291
Authorized Control Level	3,824,058	4,344,463	(520,405)

	December 31, 2011			December 31, 2010			Change		
	Ordinary	Capital	Total	Ordinary	Capital	Total	Ordinary	Capital	Total
Admitted Deferred Tax Assets	\$ 193,433	-	193,433	\$ 224,180	63,021	287,201	\$ (30,747)	(63,021)	(93,768)
Admitted Assets	XXX	XXX	84,320,037	XXX	XXX	84,047,718	XXX	XXX	272,319
Adjusted Statutory Surplus	XXX	XXX	53,729,535	XXX	XXX	52,960,244	XXX	XXX	769,291
Total Adjusted Capital from DTA's	XXX	XXX	193,433	XXX	XXX	287,201	XXX	XXX	(93,768)

December 31, 2011		
Ordinary	Capital	Total %

Impact of Tax Planning Strategies

Adjusted Gross DTAs (% of Total Adjusted Gross DTAs)	0%	36%	36%
Net Admitted Adjusted Gross DTAs (% of Total Net Admitted Adjusted Gross DTAs)	0%	0%	0%

b. Unrecognized DTL's

Not Applicable

c. Current Tax and Change in Deferred Tax

Income tax expense for the years ended December 31, 2011 and December 31, 2010 is comprised of the following components:

	December 31, 2011	December 31, 2010
Current tax expense on realized capital gains	50,986	99,129
Current tax (benefit) expense - all other	<u>(55,912)</u>	<u>603,506</u>
Federal income taxes incurred	<u>(4,926)</u>	<u>702,635</u>

NOTES TO FINANCIAL STATEMENTS

The main components of deferred income tax assets and liabilities and the changes therein are as follows:

	December 31, 2011	December 31, 2010	Change
Deferred Tax Assets			
<u>Ordinary</u>			
Discounting of unpaid losses and LAE	811,799	939,441	(127,642)
Change in unearned premium reserve	31,322	37,057	(5,735)
Nonadmitted deferred tax assets	-	1,181	(1,181)
Subtotal	843,121	977,679	(134,558)
Nonadmitted deferred tax assets	636,151	745,348	(109,197)
Admitted ordinary deferred tax assets	206,970	232,331	(25,361)
<u>Capital</u>			
Unrealized losses on bonds	235,334	245,645	(10,311)
Other than temporary impairment	239,062	344,588	(105,526)
Tax free exchanges on securities	27	27	-
Subtotal	474,423	590,260	(115,837)
Nonadmitted deferred tax assets	474,423	527,239	(52,816)
Admitted capital deferred tax assets	-	63,021	(63,021)
Admitted deferred tax assets	206,970	295,352	(88,382)
Deferred Tax Liabilities			
<u>Ordinary</u>			
Bond discount accrual	13,537	8,151	5,386
Total ordinary deferred tax liabilities	13,537	8,151	5,386
Net admitted deferred tax assets	193,433	287,201	(93,768)

The change in net deferred income taxes reported in surplus before consideration of nonadmitted assets is comprised of the following components:

	December 31, 2011	December 31, 2010	Change
Total adjusted gross deferred tax assets	1,317,544	1,567,939	(250,395)
Total gross deferred tax liabilities	13,537	8,151	5,386
Net deferred tax assets	1,304,007	1,559,788	(255,781)
Deferred tax on change in net unrealized capital gains			10,311
Change in net deferred income tax			(245,470)

d. Reconciliation of Federal Income Tax Rate to Actual Effective Rate

The Company's income tax incurred and change in deferred income tax differs from the amount obtained by applying the federal statutory rate of 34% to income before income taxes in 2011 as follows:

	December 31, 2011
Current income taxes incurred	(4,926)
Change in net deferred income tax	245,470
Total income tax reported	240,544
Income before taxes	824,331
Expected income tax expense at 34% statutory rate	280,273
Increase (decrease) in actual tax reported resulting from:	
Non deductible expense for meals, entertainment, lobbying, and penalties	975
Tax exempt interest	(44,525)
Statutory nonadmitted assets	1,182
Provision to actual adjustment	2,639
Total income tax	240,544

NOTES TO FINANCIAL STATEMENTS

e. Operating Loss and Tax Credit Carryforwards

As of December 31, 2011 and December 31, 2010, the Company had an income tax benefit of \$2,180 and \$0, respectively, which will be realized through carry back of losses against prior year taxable income.

As of December 31, 2011 and December 31, 2010, income tax expense available for recoupment in the event of future net losses was \$0 and \$731,768, respectively. The reporting entity has a total of \$0 protective deposits which are on deposit with the Internal Revenue Service under Section 6603 of the Internal Revenue Service Code.

f. Consolidated Federal Income Tax Return

The Company's federal income tax return is not consolidated.

10. Information Concerning Parent, Subsidiaries, Affiliates and Other Related Parties

a. Nature of Relationships

Outstanding stock of PLIC is distributed among fifty-one corporate shareholders, with no shareholder owning greater than 6.64%. PLIC reinsures directors' and officers' professional liability insurance and fidelity insurance on a claims-made basis for certain Blue Cross Blue Shield Plans (Plans) and their affiliates written through BCS Insurance Company (BCSIC). The Plans purchasing liability insurance through BCSIC are required to purchase a proportionate share of PLIC's common stock. PLIC is under common management with BCSIC and BCSIC's parent, BCS Financial Corporation (BCSF).

b. Detail of Transactions Greater than 1/2% of Admitted Assets

None

c. Change in Intercompany Arrangements

None

d. Amounts Due to or from Related Parties

At December 31, 2011, the Company reported \$492,989 payable to affiliates. The balance is comprised of \$492,989 payable to BCS Financial Corporation.

e. Guarantees or Contingencies for Related Parties

None

f. Management or Service Contracts and Cost Sharing Arrangements

The Company has a management agreement with BCSIC whereby BCSIC provides all insurance management, administrative and advisory services as well as investment management and general office administrative services.

g. Nature of Control Relationship Disclosure

Not Applicable

h. Amount Deducted for Investment in Upstream Company

Not Applicable

i. Investments in SCA Entity that Exceeds 10% of Admitted Assets

Not Applicable

j. Investments in Impaired SCA Entities

Not Applicable

k. Foreign Insurance Subsidiary

Not Applicable

l. Downstream Holding Company Valued Using Look-Through Method

Not Applicable

11. Debt

a. Capital Notes

Not Applicable

NOTES TO FINANCIAL STATEMENTS

b. All Other Debt

In the second quarter of 2010, the Company became a member of the Federal Home Loan Bank of Cincinnati (FHLBC) which provides the Company access to collateralized advances, collateralized funding agreement, and other FHLBC products. The Company's membership in FHLBC requires the ownership of member stock, and borrowing from FHLBC required the purchase of FHLBC activity based stock in an amount equal to .15 of 1 percent of total assets.

In 2010, the Company purchased \$170,800 of common stock in the FHLBC. In 2011, it purchased an additional \$7,000 of common stock and currently maintains an investment of \$177,800 in the FHLBC.

The Company, as a member of the FHLBC, currently has borrowings outstanding of \$2,400,000 with a corresponding interest payable of \$321 at December 31, 2011. The Company has placed \$4,401,799 on deposit with FHLBC to secure borrowings.

12. Retirement Plans, Deferred Compensation, Postemployment Benefits and Compensated Absences and Other Postretirement Benefit Plans.

a. Defined Benefit Plan

None

b. Defined Contribution Plans

None

c. Multiemployer Plans

None

d. Consolidated/Holding Company Plans

BCSF sponsors a defined benefit pension plan, a postretirement healthcare benefit plan and a 401(k) Plan covering substantially all of its employees as well as a deferred compensation plan for select employees. The expenses of these plans are charged in accordance with the management service agreement. The Company incurred expenses of \$414,102 in 2011, relating to these plans. The Company has no legal obligation for benefits under these plans.

e. Postemployment Benefits and Compensated Absences

None

f. Impact of Medicare Modernization Act on Postretirement Benefits

Not Applicable

13. Capital and Surplus, Shareholders' Dividend Restrictions and Quasi-Reorganizations

a. Outstanding Shares

The Company has 1,000 shares of \$6,000 par value common stock authorized and 490.4 shares issued and outstanding. The Company has no preferred stock authorized, issued or outstanding.

b. Dividend Rate of Preferred Stock

Not Applicable

c. d. and e. Dividend Restrictions

All dividends require notification to the Director of the Ohio Department of Insurance. The amount of dividends that can be paid by insurance companies domiciled in Ohio without prior approval of the Director of the Ohio Department of Insurance is subject to restriction and cannot exceed the greater of ten percent of the prior year end surplus or the prior year's net income. The amount of dividends that could be paid during 2011 without prior approval was \$5,296,024. The Company did not pay dividends to its stockholders during 2011.

f. Restrictions on Unassigned Funds

Not Applicable

g. Mutual Surplus Advances

Not Applicable

h. Company Stock Held for Special Purposes

Not Applicable

i. Changes in Special Surplus Funds

Not Applicable

NOTES TO FINANCIAL STATEMENTS

j. Changes in Unassigned Funds

The portion of unassigned funds represented or reduced by each item below is as follows:

Description	<u>(Decrease) in Surplus</u>
1. Unrealized gains (losses)	(456,826)

k. Surplus Notes

Not Applicable

l. and m. Quasi Reorganizations

Not Applicable

14. Contingencies

a. Contingent Commitments

None

b. Guaranty Fund and Other Assessments

None

c. Gain Contingencies

None

d. Extra Contractual Obligation and Bad Faith Losses

None

e. All Other Contingencies

None

15. Leases

a. and b. Disclosures Related to Lessee and Lessor Leasing Arrangements

None

16. Information About Financial Instruments with Off-Balance Sheet Risk

a. Face or Contract Amounts

None

b. Nature and Terms

Not Applicable

c. Exposure to credit-related losses

Not Applicable

d. Collateral Policy

Not Applicable

17. Sale, Transfer and Servicing of Financial Assets and Extinguishment of Liabilities

a. Transfer of Receivables Reported as Sales

Not Applicable

b. Transfer and Servicing of Financial Assets

Not Applicable

c. Wash Sales

The Company historically has not acquired securities with a NAIC designation of 3 or below. Nor has the Company sold and reacquired a security within a 30-day period of its original sale.

18. Gain or Loss to the Reporting Entity from Uninsured A & H Plans and the Uninsured Portion of Partially Insured Plans

a. Administrative Services Only (ASO) Plans

Not Applicable

NOTES TO FINANCIAL STATEMENTS

- b. Administrative Services Contract (ASC) Plans

Not Applicable

- c. Medicare or Similarly Structured Cost Based Reimbursement Contracts

Not Applicable

- 19. Direct Premium Written/Produced by Managing General Agents/Third Party Administrators

None

- 20. Fair Value Measurements

The Company does not have any assets measured and reported at fair value on a recurring basis.

- 21. Other Items

- a. Extraordinary Items

None

- b. Troubled Debt Restructuring Debtors

None

- c. Other Disclosures

None

- d. Balances Uncollectible for Assets

None

- e. Business Interruption Insurance Recoveries

None

- f. State Transferable Tax Credits

None

- g. Subprime Mortgage Related Risk Exposure

- 1. The Company has identified securities with the following characteristics as having subprime mortgage risk:

- a. First lien mortgages where borrowers have a FICO scores less than 650
- b. First lien mortgages with loan-to-value ratios greater than 95%
- c. Second lien mortgages where borrowers have FICO scores less than 675
- d. Borrowers with less than conventional documentation of their income and/or net assets and FICO scores less than 650

- 2. Direct exposure through investments in subprime mortgage loans

None

- 3. The following summarizes the Company's investments in securities with underlying subprime exposure at December 31, 2011:

Investment type	Actual Cost	Book Adjusted Carrying Value	Fair Value	Other-than- Temporary Impairment Losses recognized to date
Residential mortgaged backed securities	1,264,026	1,091,838	929,401	271,657
Commercial mortgage backed securities	-	-	-	-
Collateralized debt obligations	-	-	-	-
Structured securities	-	-	-	-
Equity investments in subsidiaries	-	-	-	-
Other assets	-	-	-	-

- 4. Underwriting exposure to subprime mortgage risk through Mortgage Guaranty of Financial Guaranty insurance coverage

None

NOTES TO FINANCIAL STATEMENTS

22. Events Subsequent

- a. Subsequent events have been considered through February 20, 2012 for these statutory financial statements which are to be issued February 21, 2012. There were no events occurring subsequent to the end of the year that merited recognition or disclosure in these statements.

23. Reinsurance

- a. Unsecured Reinsurance Recoverable

None

- b. Reinsurance Recoverable in Dispute

None

- c. Reinsurance Assumed and Ceded

The following table summarizes ceded and assumed unearned premiums and the related commission equity at December 31, 2011:

	Assumed Premium Reserve	Reinsurance Commission Equity	Ceded Premium Reserve	Reinsurance Commission Equity	Net Premium Reserve	Reinsurance Commission Equity
a. Affiliates	460,618	56,978	-	-	460,618	56,978
b. All Other	-	-	-	-	-	-
c. Totals	460,618	56,978	-	-	460,618	56,978

- d. Uncollectible Reinsurance

None

- e. Commutation of Ceded Reinsurance

None

- f. Retroactive Reinsurance

	<u>Assumed</u>
Reserves Transferred:	
Initial Reserves	(2,488,504)
Adjustments - Prior Year(s)	2,311,584
Adjustments - Current Year	<u>65,001</u>
Current Total Asset (Liability)	<u>(111,919)</u>
Consideration (Paid) or Received:	
Initial Consideration	2,488,504
Adjustments - Prior Year(s)	-
Adjustments - Current Year	<u>-</u>
Current Total	<u>2,488,504</u>
Paid Losses (Reimbursed) or Recovered:	
Prior Year(s)	(1,941,184)
Current Year	<u>-</u>
Current Total	<u>(1,941,184)</u>
Cumulative Total Transferred to Unassigned Funds	<u>435,401</u>

- g. Reinsurance Accounted for as a Deposit

None

24. Retrospectively Rated Contracts and Contracts Subject to Redetermination

- a. Methods Used to Estimate

None

- b. Method Used to Record

None

- c. Amount and Percent of Net Retrospective Premiums

None

NOTES TO FINANCIAL STATEMENTS

d. Calculation of Nonadmitted Accrued Retrospective Premiums

None

25. Changes in Incurred Losses and Loss Adjustment Expenses

The estimated cost on the loss and loss adjustment expenses attributable to insured events of prior years decreased by \$1,029,000 during 2011. The decrease is due to favorable development on the Other Liability-claims made line of business of \$832,000 and \$197,000 of favorable development on the Fidelity line of business. Increases or decreases of this nature occur as the result of claim settlements during the current year and as information is received regarding individual claims, causing changes from the original estimates of the cost of these claims.

26. Intercompany Pooling Arrangements

Not Applicable

27. Structured Settlements

a. Reserves Released Due to Purchase of Annuities

Not Applicable

b. Annuity Insurers with Balances Due Greater than 1% of Policyholders' Surplus

Not Applicable

28. Health Care Receivables

Not Applicable

29. Participating Policies

Not Applicable

30. Premium Deficiency Reserves

The Company evaluated the need to record a premium deficiency reserve as of the end of the current year and determined a reserve was not necessary. This evaluation was completed on February 20, 2012. The Company does anticipate investment income when evaluating the need for a premium deficiency reserve.

31. High Deductibles

Not Applicable

32. Discounting of Liabilities for Unpaid Losses and Loss Adjustment Expenses

a. Tabular Discounts

Not Applicable

b. Non-Tabular Discounts

Not Applicable

c. Changes in Discount Assumptions

Not Applicable

33. Asbestos/ Environmental Reserves

Not Applicable

34. Subscriber Savings Accounts

Not Applicable

35. Multiple Peril Crop Insurance

Not Applicable

36. Financial Guaranty Insurance

Not Applicable

GENERAL INTERROGATORIES

PART 1 - COMMON INTERROGATORIES

GENERAL

- 1.1 Is the reporting entity a member of an Insurance Holding Company System consisting of two or more affiliated persons, one or more of which is an insurer? Yes No
- 1.2 If yes, did the reporting entity register and file with its domiciliary State Insurance Commissioner, Director or Superintendent or with such regulatory official of the state of domicile of the principal insurer in the Holding Company System, a registration statement providing disclosure substantially similar to the standards adopted by the National Association of Insurance Commissioners (NAIC) in its Model Insurance Holding Company System Regulatory Act and model regulations pertaining thereto, or is the reporting entity subject to standards and disclosure requirements substantially similar to those required by such Act and regulations? Yes No N/A
- 1.3 State Regulating? Ohio.....
- 2.1 Has any change been made during the year of this statement in the charter, by-laws, articles of incorporation, or deed of settlement of the reporting entity? Yes No
- 2.2 If yes, date of change:
- 3.1 State as of what date the latest financial examination of the reporting entity was made or is being made.12/31/2008
- 3.2 State the as of date that the latest financial examination report became available from either the state of domicile or the reporting entity. This date should be the date of the examined balance sheet and not the date the report was completed or released.12/31/2008
- 3.3 State as of what date the latest financial examination report became available to other states or the public from either the state of domicile or the reporting entity. This is the release date or completion date of the examination report and not the date of the examination (balance sheet date).05/07/2010
- 3.4 By what department or departments? Ohio.....
- 3.5 Have all financial statement adjustments within the latest financial examination report been accounted for in a subsequent financial statement filed with Departments? Yes No N/A
- 3.6 Have all of the recommendations within the latest financial examination report been complied with? Yes No N/A
- 4.1 During the period covered by this statement, did any agent, broker, sales representative, non-affiliated sales/service organization or any combination thereof under common control (other than salaried employees of the reporting entity) receive credit or commissions for or control a substantial part (more than 20 percent of any major line of business measured on direct premiums) of:
- 4.11 sales of new business? Yes No
- 4.12 renewals? Yes No
- 4.2 During the period covered by this statement, did any sales/service organization owned in whole or in part by the reporting entity or an affiliate, receive credit or commissions for or control a substantial part (more than 20 percent of any major line of business measured on direct premiums) of:
- 4.21 sales of new business? Yes No
- 4.22 renewals? Yes No
- 5.1 Has the reporting entity been a party to a merger or consolidation during the period covered by this statement? Yes No
- 5.2 If yes, provide the name of the entity, NAIC company code, and state of domicile (use two letter state abbreviation) for any entity that has ceased to exist as a result of the merger or consolidation.

1 Name of Entity	2 NAIC Company Code	3 State of Domicile

- 6.1 Has the reporting entity had any Certificates of Authority, licenses or registrations (including corporate registration, if applicable) suspended or revoked by any governmental entity during the reporting period? Yes No
- 6.2 If yes, give full information
- 7.1 Does any foreign (non-United States) person or entity directly or indirectly control 10% or more of the reporting entity? Yes No
- 7.2 If yes,
- 7.21 State the percentage of foreign control0.0
- 7.22 State the nationality(s) of the foreign person(s) or entity(s); or if the entity is a mutual or reciprocal, the nationality of its manager or attorney-in-fact and identify the type of entity(s) (e.g., individual, corporation, government, manager or attorney-in-fact).

1 Nationality	2 Type of Entity

GENERAL INTERROGATORIES

- 8.1 Is the company a subsidiary of a bank holding company regulated by the Federal Reserve Board? Yes [] No [X]
 8.2 If response to 8.1 is yes, please identify the name of the bank holding company.

- 8.3 Is the company affiliated with one or more banks, thrifts or securities firms? Yes [] No [X]
 8.4 If response to 8.3 is yes, please provide the names and locations (city and state of the main office) of any affiliates regulated by a federal financial regulatory services agency [i.e. the Federal Reserve Board (FRB), the Office of the Comptroller of the Currency (OCC), the Office of Thrift Supervision (OTS), the Federal Deposit Insurance Corporation (FDIC) and the Securities Exchange Commission (SEC)] and identify the affiliate's primary federal regulator.

1 Affiliate Name	2 Location (City, State)	3 FRB	4 OCC	5 OTS	6 FDIC	7 SEC

9. What is the name and address of the independent certified public accountant or accounting firm retained to conduct the annual audit?
 KPMG LLP, 303 East Wacker Drive, Chicago, IL 60601.....
 10.1 Has the insurer been granted any exemptions to the prohibited non-audit services provided by the certified independent public accountant requirements as allowed in Section 7H of the Annual Financial Reporting Model Regulation (Model Audit Rule), or substantially similar state law or regulation? Yes [] No [X]
 10.2 If the response to 10.1 is yes, provide information related to this exemption:
 10.3 Has the insurer been granted any exemptions related to the other requirements of the Annual Financial Reporting Model Regulation as allowed for in Section 17A of the Model Regulation, or substantially similar state law or regulation? Yes [] No [X]
 10.4 If the response to 10.3 is yes, provide information related to this exemption:
 10.5 Has the reporting entity established an Audit Committee in compliance with the domiciliary state insurance laws? Yes [X] No [] N/A []
 10.6 If the response to 10.5 is no or n/a, please explain

11. What is the name, address and affiliation (officer/employee of the reporting entity or actuary/consultant associated with an actuarial consulting firm) of the individual providing the statement of actuarial opinion/certification?
 Charles C. Emma, EVP Streff, 514 W. State Street, Suite 210, Geneva, IL 60134.....
 12.1 Does the reporting entity own any securities of a real estate holding company or otherwise hold real estate indirectly? Yes [] No [X]
 12.11 Name of real estate holding company
 12.12 Number of parcels involved0
 12.13 Total book/adjusted carrying value \$0
 12.2 If yes, provide explanation

13. FOR UNITED STATES BRANCHES OF ALIEN REPORTING ENTITIES ONLY:
 13.1 What changes have been made during the year in the United States manager or the United States trustees of the reporting entity?
 13.2 Does this statement contain all business transacted for the reporting entity through its United States Branch on risks wherever located? Yes [] No []
 13.3 Have there been any changes made to any of the trust indentures during the year? Yes [] No []
 13.4 If answer to (13.3) is yes, has the domiciliary or entry state approved the changes? Yes [] No [] N/A []
 14.1 Are the senior officers (principal executive officer, principal financial officer, principal accounting officer or controller, or persons performing similar functions) of the reporting entity subject to a code of ethics, which includes the following standards? Yes [X] No []
 a. Honest and ethical conduct, including the ethical handling of actual or apparent conflicts of interest between personal and professional relationships;
 b. Full, fair, accurate, timely and understandable disclosure in the periodic reports required to be filed by the reporting entity;
 c. Compliance with applicable governmental laws, rules and regulations;
 d. The prompt internal reporting of violations to an appropriate person or persons identified in the code; and
 e. Accountability for adherence to the code.
 14.11 If the response to 14.1 is no, please explain:
 14.2 Has the code of ethics for senior managers been amended? Yes [] No [X]
 14.21 If the response to 14.2 is yes, provide information related to amendment(s)
 14.3 Have any provisions of the code of ethics been waived for any of the specified officers? Yes [] No [X]
 14.31 If the response to 14.3 is yes, provide the nature of any waiver(s).

GENERAL INTERROGATORIES

- 15.1 Is the reporting entity the beneficiary of a Letter of Credit that is unrelated to reinsurance with a NAIC rating of 3 or below? Yes [] No [X]
- 15.2 If the response to 15.1 is yes, indicate the American Bankers Association (ABA) Routing Number and the name of the issuing or confirming bank of the Letter of Credit and describe the circumstances in which the Letter of Credit is triggered.

1 American Bankers Association (ABA) Routing Number	2 Issuing or Confirming Bank Name	3 Circumstances That Can Trigger the Letter of Credit	4 Amount

BOARD OF DIRECTORS

16. Is the purchase or sale of all investments of the reporting entity passed upon either by the board of directors or a subordinate committee thereof? Yes [X] No []
17. Does the reporting entity keep a complete permanent record of the proceedings of its board of directors and all subordinate committees thereof? Yes [X] No []
18. Has the reporting entity an established procedure for disclosure to its board of directors or trustees of any material interest or affiliation on the part of any of its officers, directors, trustees or responsible employees that is in conflict or is likely to conflict with the official duties of such person? Yes [X] No []

FINANCIAL

19. Has this statement been prepared using a basis of accounting other than Statutory Accounting Principles (e.g., Generally Accepted Accounting Principles)? Yes [] No [X]
- 20.1 Total amount loaned during the year (inclusive of Separate Accounts, exclusive of policy loans):
- 20.11 To directors or other officers \$.....0
 - 20.12 To stockholders not officers \$.....0
 - 20.13 Trustees, supreme or grand (Fraternal only) \$.....0
- 20.2 Total amount of loans outstanding at the end of year (inclusive of Separate Accounts, exclusive of policy loans):
- 20.21 To directors or other officers \$.....0
 - 20.22 To stockholders not officers \$.....0
 - 20.23 Trustees, supreme or grand (Fraternal only) \$.....0
- 21.1 Were any assets reported in this statement subject to a contractual obligation to transfer to another party without the liability for such obligation being reported in the statement? Yes [] No [X]
- 21.2 If yes, state the amount thereof at December 31 of the current year:
- 21.21 Rented from others \$.....0
 - 21.22 Borrowed from others \$.....0
 - 21.23 Leased from others \$.....0
 - 21.24 Other \$.....0
- 22.1 Does this statement include payments for assessments as described in the *Annual Statement Instructions* other than guaranty fund or guaranty association assessments? Yes [] No [X]
- 22.2 If answer is yes:
- 22.21 Amount paid as losses or risk adjustment \$.....0
 - 22.22 Amount paid as expenses \$.....0
 - 22.23 Other amounts paid \$.....0
- 23.1 Does the reporting entity report any amounts due from parent, subsidiaries or affiliates on Page 2 of this statement? Yes [] No [X]
- 23.2 If yes, indicate any amounts receivable from parent included in the Page 2 amount: \$.....0

INVESTMENT

- 24.1 Were all the stocks, bonds and other securities owned December 31 of current year, over which the reporting entity has exclusive control, in the actual possession of the reporting entity on said date? (other than securities lending programs addressed in 24.3) Yes [] No [X]
- 24.2 If no, give full and complete information, relating thereto
The Company has securities on deposit with Federal Home Loan Bank to secure a line of credit.....
- 24.3 For security lending programs, provide a description of the program including value for collateral and amount of loaned securities, and whether collateral is carried on or off-balance sheet. (an alternative is to reference Note 17 where this information is also provided)
- 24.4 Does the company's security lending program meet the requirements for a conforming program as outlined in the Risk-Based Capital Instructions? Yes [] No [] NA [X]
- 24.5 If answer to 24.4 is yes, report amount of collateral for conforming programs. \$.....
- 24.6 If answer to 24.4 is no, report amount of collateral for other programs. \$.....
- 24.7 Does your securities lending program require 102% (domestic securities) and 105% (foreign securities) from the counterparty at the outset of the contract? Yes [] No [] NA [X]
- 24.8 Does the reporting entity non-admit when the collateral received from the counterparty falls below 100%? Yes [] No [] NA [X]
- 24.9 Does the reporting entity or the reporting entity's securities lending agent utilize the Master Securities Lending Agreement (MSLA) to conduct securities lending? Yes [] No [] NA [X]

GENERAL INTERROGATORIES

25.1 Were any of the stocks, bonds or other assets of the reporting entity owned at December 31 of the current year not exclusively under the control of the reporting entity or has the reporting entity sold or transferred any assets subject to a put option contract that is currently in force? (Exclude securities subject to Interrogatory 21.1 and 24.3). Yes No

25.2 If yes, state the amount thereof at December 31 of the current year:

25.21	Subject to repurchase agreements	\$	0
25.22	Subject to reverse repurchase agreements	\$	0
25.23	Subject to dollar repurchase agreements	\$	0
25.24	Subject to reverse dollar repurchase agreements	\$	0
25.25	Pledged as collateral	\$	4,401,799
25.26	Placed under option agreements	\$	0
25.27	Letter stock or securities restricted as to sale	\$	0
25.28	On deposit with state or other regulatory body	\$	8,996,022
25.29	Other	\$	0

25.3 For category (25.27) provide the following:

1 Nature of Restriction	2 Description	3 Amount

26.1 Does the reporting entity have any hedging transactions reported on Schedule DB? Yes No

26.2 If yes, has a comprehensive description of the hedging program been made available to the domiciliary state? Yes No N/A
If no, attach a description with this statement.

27.1 Were any preferred stocks or bonds owned as of December 31 of the current year mandatorily convertible into equity, or, at the option of the issuer, convertible into equity? Yes No

27.2 If yes, state the amount thereof at December 31 of the current year. \$

28. Excluding items in Schedule E – Part 3 – Special Deposits, real estate, mortgage loans and investments held physically in the reporting entity's offices, vaults or safety deposit boxes, were all stocks, bonds and other securities, owned throughout the current year held pursuant to a custodial agreement with a qualified bank or trust company in accordance with Section 1, III – General Examination Considerations, F. Outsourcing of Critical Functions, Custodial or Safekeeping agreements of the NAIC *Financial Condition Examiners Handbook*? Yes No

28.01 For agreements that comply with the requirements of the NAIC *Financial Condition Examiners Handbook*, complete the following:

1 Name of Custodian(s)	2 Custodian's Address
State Street Bank and Trust Co. Boston.....	One Lincoln Street, Boston, MA 02111.....

28.02 For all agreements that do not comply with the requirements of the NAIC *Financial Condition Examiners Handbook*, provide the name, location and a complete explanation:

1 Name(s)	2 Location(s)	3 Complete Explanation(s)

28.03 Have there been any changes, including name changes, in the custodian(s) identified in 28.01 during the current year? Yes No

28.04 If yes, give full and complete information relating thereto:

1 Old Custodian	2 New Custodian	3 Date of Change	4 Reason

28.05 Identify all investment advisors, brokers/dealers or individuals acting on behalf of broker/dealers that have access to the investment accounts, handle securities and have authority to make investments on behalf of the reporting entity:

1 Central Registration Depository Number(s)	2 Name	3 Address
109875.....	Asset Allocation Management Company, LLP.....	30 North LaSalle Street, 35th Floor, Chicago, IL 60602.....
106595.....	Wellington Management Company, LLP.....	75 State Street, Boston, MA 02109.....

GENERAL INTERROGATORIES

- 29.1 Does the reporting entity have any diversified mutual funds reported in Schedule D - Part 2 (diversified according to the Securities and Exchange Commission (SEC) in the Investment Company Act of 1940 [Section 5 (b) (1)])? Yes [] No []
- 29.2 If yes, complete the following schedule:

1 CUSIP #	2 Name of Mutual Fund	3 Book/Adjusted Carrying Value
29.2999 TOTAL		0

- 29.3 For each mutual fund listed in the table above, complete the following schedule:

1 Name of Mutual Fund (from above table)	2 Name of Significant Holding of the Mutual Fund	3 Amount of Mutual Fund's Book/Adjusted Carrying Value Attributable to the Holding	4 Date of Valuation

30. Provide the following information for all short-term and long-term bonds and all preferred stocks. Do not substitute amortized value or statement value for fair value.

	1 Statement (Admitted) Value	2 Fair Value	3 Excess of Statement over Fair Value (-), or Fair Value over Statement (+)
30.1 Bonds.....	82,206,539	86,847,736	4,641,197
30.2 Preferred Stocks.....	0	0	0
30.3 Totals	82,206,539	86,847,736	4,641,197

- 30.4 Describe the sources or methods utilized in determining the fair values:
See Attachment.....
- 31.1 Was the rate used to calculate fair value determined by a broker or custodian for any of the securities in Schedule D? Yes [] No []
- 31.2 If the answer to 31.1 is yes, does the reporting entity have a copy of the broker's or custodian's pricing policy (hard copy or electronic copy) for all brokers or custodians used as a pricing source? Yes [] No []
- 31.3 If the answer to 31.2 is no, describe the reporting entity's process for determining a reliable pricing source for purposes of disclosure of fair value for Schedule D:
- 32.1 Have all the filing requirements of the *Purposes and Procedures Manual* of the NAIC Securities Valuation Office been followed? Yes [] No []
- 32.2 If no, list exceptions:

GENERAL INTERROGATORIES

OTHER

33.1 Amount of payments to Trade associations, service organizations and statistical or rating bureaus, if any? \$0

33.2 List the name of the organization and the amount paid if any such payment represented 25% or more of the total payments to trade associations, service organizations and statistical or rating bureaus during the period covered by this statement.

1 Name	2 Amount Paid
.....	\$.....
.....	\$.....
.....	\$.....

34.1 Amount of payments for legal expenses, if any? \$0

34.2 List the name of the firm and the amount paid if any such payment represented 25% or more of the total payments for legal expenses during the period covered by this statement.

1 Name	2 Amount Paid
.....	\$.....

35.1 Amount of payments for expenditures in connection with matters before legislative bodies, officers or departments of government, if any? \$0

35.2 List the name of the firm and the amount paid if any such payment represented 25% or more of the total payment expenditures in connection with matters before legislative bodies, officers or departments of government during the period covered by this statement.

1 Name	2 Amount Paid
.....	\$.....
.....	\$.....
.....	\$.....

ANNUAL STATEMENT FOR THE YEAR 2011 OF THE Plans' Liability Insurance Company

GENINTPT1 - Attachment

30.4 The Company's custodial bank provides the Company with the fair market value of the securities. A description of its methods follows: Interactive Data Services, JP Morgan Pricing Direct, Barclays Capital are all sources for U.S. Treasuries, Corporates, Governments, and Collateralized Mortgage Obligations; Interactive Data Services and Bloomberg are the primary sources for Municipals; manual pricing is provided by Bloomberg.

GENERAL INTERROGATORIES
PART 2 - PROPERTY & CASUALTY INTERROGATORIES

1.1 Does the reporting entity have any direct Medicare Supplement Insurance in force? Yes [] No [X]
 1.2 If yes, indicate premium earned on U. S. business only \$0
 1.3 What portion of Item (1.2) is not reported on the Medicare Supplement Insurance Experience Exhibit? \$0

1.3.1 Reason for excluding

1.4 Indicate amount of earned premium attributable to Canadian and/or Other Alien not included in Item (1.2) above. \$0
 1.5 Indicate total incurred claims on all Medicare Supplement insurance. \$0

1.6 Individual policies:

Most current three years:

1.6.1 Total premium earned \$0
 1.6.2 Total incurred claims \$0
 1.6.3 Number of covered lives 0

All years prior to most current three years:

1.6.4 Total premium earned \$0
 1.6.5 Total incurred claims \$0
 1.6.6 Number of covered lives 0

1.7 Group policies:

Most current three years:

1.7.1 Total premium earned \$0
 1.7.2 Total incurred claims \$0
 1.7.3 Number of covered lives 0

All years prior to most current three years:

1.7.4 Total premium earned \$0
 1.7.5 Total incurred claims \$0
 1.7.6 Number of covered lives 0

2. Health Test:

	1 Current Year		2 Prior Year	
2.1 Premium Numerator	\$	0	\$	0
2.2 Premium Denominator	\$	3,004,226	\$	4,905,268
2.3 Premium Ratio (2.1/2.2)		0.000		0.000
2.4 Reserve Numerator	\$	0	\$	0
2.5 Reserve Denominator	\$	26,244,434	\$	28,158,583
2.6 Reserve Ratio (2.4/2.5)		0.000		0.000

3.1 Does the reporting entity issue both participating and non-participating policies? Yes [] No [X]

3.2 If yes, state the amount of calendar year premiums written on:

3.2.1 Participating policies \$0
 3.2.2 Non-participating policies \$0

4. For Mutual reporting entities and Reciprocal Exchanges only:

4.1 Does the reporting entity issue assessable policies? Yes [] No []
 4.2 Does the reporting entity issue non-assessable policies? Yes [] No []
 4.3 If assessable policies are issued, what is the extent of the contingent liability of the policyholders? 0.0 %
 4.4 Total amount of assessments paid or ordered to be paid during the year on deposit notes or contingent premiums. \$0

5. For Reciprocal Exchanges Only:

5.1 Does the exchange appoint local agents? Yes [] No []

5.2 If yes, is the commission paid:

5.2.1 Out of Attorney's-in-fact compensation Yes [] No [] N/A [X]
 5.2.2 As a direct expense of the exchange Yes [] No [] N/A [X]

5.3 What expenses of the Exchange are not paid out of the compensation of the Attorney-in-fact?

5.4 Has any Attorney-in-fact compensation, contingent on fulfillment of certain conditions, been deferred? Yes [] No [X]

5.5 If yes, give full information

GENERAL INTERROGATORIES
PART 2 - PROPERTY & CASUALTY INTERROGATORIES

- 6.1 What provision has this reporting entity made to protect itself from an excessive loss in the event of a catastrophe under a workers' compensation contract issued without limit of loss.....
 No workers' compensation contracts were written.....
- 6.2 Describe the method used to estimate this reporting entity's probable maximum insurance loss, and identify the type of insured exposures comprising that probable maximum loss, the locations of concentrations of those exposures and the external resources (such as consulting firms or computer software models), if any, used in the estimation process:
 N/A.....
- 6.3 What provision has this reporting entity made (such as a catastrophic reinsurance program) to protect itself from an excessive loss arising from the types and concentrations of insured exposures comprising its probable maximum property insurance loss?.....
 N/A.....
- 6.4 Does the reporting entity carry catastrophe reinsurance protection for at least one reinstatement, in an amount sufficient to cover its estimated probable maximum loss attributable to a single loss event or occurrence?..... Yes [] No [X]
- 6.5 If no, describe any arrangements or mechanisms employed by the reporting entity to supplement its catastrophe reinsurance program or to hedge its exposure to uninsured catastrophic loss
 The Company assumes premium from an affiliate that carries reinsurance up to \$40 million with multiple reinstatements.....
- 7.1 Has the reporting entity reinsured any risk with any other entity under a quota share reinsurance contract that includes a provision that would limit the reinsurer's losses below the stated quota share percentage (e.g., a deductible, a loss ratio corridor, a loss cap, an aggregate limit or any similar provisions)?..... Yes [] No [X]
- 7.2 If yes, indicate the number of reinsurance contracts containing such provisions.....0
- 7.3 If yes, does the amount of reinsurance credit taken reflect the reduction in quota share coverage caused by any applicable limiting provision(s)?..... Yes [] No []
- 8.1 Has this reporting entity reinsured any risk with any other entity and agreed to release such entity from liability, in whole or in part, from any loss that may occur on this risk, or portion thereof, reinsured?..... Yes [] No [X]
- 8.2 If yes, give full information.....
- 9.1 Has the reporting entity ceded any risk under any reinsurance contract (or under multiple contracts with the same reinsurer or its affiliates) for which during the period covered by the statement: (i) it recorded a positive or negative underwriting result greater than 5% of prior year-end surplus as regards policyholders or it reported calendar year written premium ceded or year-end loss and loss expense reserves ceded greater than 5% of prior year-end surplus as regards policyholders; (ii) it accounted for that contract as reinsurance and not as a deposit; and (iii) the contract(s) contain one or more of the following features or other features that would have similar results:
 (a) A contract term longer than two years and the contract is noncancellable by the reporting entity during the contract term;
 (b) A limited or conditional cancellation provision under which cancellation triggers an obligation by the reporting entity, or an affiliate of the reporting entity, to enter into a new reinsurance contract with the reinsurer, or an affiliate of the reinsurer;
 (c) Aggregate stop loss reinsurance coverage;
 (d) A unilateral right by either party (or both parties) to commute the reinsurance contract, whether conditional or not, except for such provisions which are only triggered by a decline in the credit status of the other party;
 (e) A provision permitting reporting of losses, or payment of losses, less frequently than on a quarterly basis (unless there is no activity during the period); or
 (f) Payment schedule, accumulating retentions from multiple years or any features inherently designed to delay timing of the reimbursement to the ceding entity..... Yes [] No [X]
- 9.2 Has the reporting entity during the period covered by the statement ceded any risk under any reinsurance contract (or under multiple contracts with the same reinsurer or its affiliates), for which, during the period covered by the statement, it recorded a positive or negative underwriting result greater than 5% of prior year-end surplus as regards policyholders or it reported calendar year written premium ceded or year-end loss and loss expense reserves ceded greater than 5% of prior year-end surplus as regards policyholders; excluding cessions to approved pooling arrangements or to captive insurance companies that are directly or indirectly controlling, controlled by, or under common control with (i) one or more unaffiliated policyholders of the reporting entity, or (ii) an association of which one or more unaffiliated policyholders of the reporting entity is a member where:
 (a) The written premium ceded to the reinsurer by the reporting entity or its affiliates represents fifty percent (50%) or more of the entire direct and assumed premium written by the reinsurer based on its most recently available financial statement; or
 (b) Twenty-five percent (25%) or more of the written premium ceded to the reinsurer has been retroceded back to the reporting entity or its affiliates in a separate reinsurance contract..... Yes [] No [X]
- 9.3 If yes to 9.1 or 9.2, please provide the following information in the Reinsurance Summary Supplemental Filing for General Interrogatory 9:
 (a) The aggregate financial statement impact gross of all such ceded reinsurance contracts on the balance sheet and statement of income;
 (b) A summary of the reinsurance contract terms and indicate whether it applies to the contracts meeting the criteria in 9.1 or 9.2; and
 (c) A brief discussion of management's principle objectives in entering into the reinsurance contract including the economic purpose to be achieved.
- 9.4 Except for transactions meeting the requirements of paragraph 31 of SSAP No. 62R, Property and Casualty Reinsurance, has the reporting entity ceded any risk under any reinsurance contract (or multiple contracts with the same reinsurer or its affiliates) during the period covered by the financial statement, and either:
 (a) Accounted for that contract as reinsurance (either prospective or retroactive) under statutory accounting principles ("SAP") and as a deposit under generally accepted accounting principles ("GAAP"); or
 (b) Accounted for that contract as reinsurance under GAAP and as a deposit under SAP?..... Yes [] No [X]
- 9.5 If yes to 9.4, explain in the Reinsurance Summary Supplemental Filing for General Interrogatory 9 (Section D) why the contract(s) is treated differently for GAAP and SAP.
- 9.6 The reporting entity is exempt from the Reinsurance Attestation Supplement under one or more of the following criteria:
 (a) The entity does not utilize reinsurance; or, Yes [X] No []
 (b) The entity only engages in a 100% quota share contract with an affiliate and the affiliated or lead company has filed an attestation supplement; or Yes [] No [X]
 (c) The entity has no external cessions and only participates in an intercompany pool and the affiliated or lead company has filed an attestation supplement. Yes [] No [X]
10. If the reporting entity has assumed risks from another entity, there should be charged on account of such reinsurances a reserve equal to that which the original entity would have been required to charge had it retained the risks. Has this been done? Yes [X] No [] N/A []

GENERAL INTERROGATORIES
PART 2 - PROPERTY & CASUALTY INTERROGATORIES

- 11.1 Has the reporting entity guaranteed policies issued by any other entity and now in force:..... Yes [] No [X]
- 11.2 If yes, give full information
-
- 12.1 If the reporting entity recorded accrued retrospective premiums on insurance contracts on Line 15.3 of the asset schedule, Page 2, state the amount of corresponding liabilities recorded for:
- 12.11 Unpaid losses..... \$0
- 12.12 Unpaid underwriting expenses (including loss adjustment expenses)..... \$0
- 12.2 Of the amount on Line 15.3, Page 2, state the amount that is secured by letters of credit, collateral and other funds?..... \$0
- 12.3 If the reporting entity underwrites commercial insurance risks, such as workers' compensation, are premium notes or promissory notes accepted from its insureds covering unpaid premiums and/or unpaid losses? Yes [] No [] N/A [X]
- 12.4 If yes, provide the range of interest rates charged under such notes during the period covered by this statement:
- 12.41 From..... 0.0 %
- 12.42 To..... 0.0 %
- 12.5 Are letters of credit or collateral and other funds received from insureds being utilized by the reporting entity to secure premium notes or promissory notes taken by a reporting entity, or to secure any of the reporting entity's reported direct unpaid loss reserves, including unpaid losses under loss deductible features of commercial policies? Yes [] No [X]
- 12.6 If yes, state the amount thereof at December 31 of current year:
- 12.61 Letters of Credit..... \$0
- 12.62 Collateral and other funds..... \$0
- 13.1 Largest net aggregate amount insured in any one risk (excluding workers' compensation): \$1,200,000
- 13.2 Does any reinsurance contract considered in the calculation of this amount include an aggregate limit of recovery without also including a reinstatement provision? Yes [] No [X]
- 13.3 State the number of reinsurance contracts (excluding individual facultative risk certificates, but including facultative programs, automatic facilities or facultative obligatory contracts) considered in the calculation of the amount. 2
- 14.1 Is the company a cedant in a multiple cedant reinsurance contract?..... Yes [] No [X]
- 14.2 If yes, please describe the method of allocating and recording reinsurance among the cedants:
-
- 14.3 If the answer to 14.1 is yes, are the methods described in item 14.2 entirely contained in the respective multiple cedant reinsurance contracts?..... Yes [] No []
- 14.4 If the answer to 14.3 is no, are all the methods described in 14.2 entirely contained in written agreements?..... Yes [] No []
- 14.5 If the answer to 14.4 is no, please explain:
-
- 15.1 Has the reporting entity guaranteed any financed premium accounts?..... Yes [] No [X]
- 15.2 If yes, give full information
-
- 16.1 Does the reporting entity write any warranty business? Yes [] No [X]
- If yes, disclose the following information for each of the following types of warranty coverage:

	1 Direct Losses Incurred	2 Direct Losses Unpaid	3 Direct Written Premium	4 Direct Premium Unearned	5 Direct Premium Earned
16.11 Home	\$0	\$0	\$0	\$0	\$0
16.12 Products	\$0	\$0	\$0	\$0	\$0
16.13 Automobile	\$0	\$0	\$0	\$0	\$0
16.14 Other*	\$0	\$0	\$0	\$0	\$0

* Disclose type of coverage:

GENERAL INTERROGATORIES
PART 2 - PROPERTY & CASUALTY INTERROGATORIES

17.1 Does the reporting entity include amounts recoverable on unauthorized reinsurance in Schedule F – Part 3 that it excludes from Schedule F – Part 5. Yes [] No [X]

Incurred but not reported losses on contracts in force prior to July 1, 1984, and not subsequently renewed are exempt from inclusion in Schedule F – Part 5. Provide the following information for this exemption:

17.11	Gross amount of unauthorized reinsurance in Schedule F – Part 3 excluded from Schedule F – Part 5.....	\$.....0
17.12	Unfunded portion of Interrogatory 17.11.....	\$.....0
17.13	Paid losses and loss adjustment expenses portion of Interrogatory 17.11.....	\$.....0
17.14	Case reserves portion of Interrogatory 17.11.....	\$.....0
17.15	Incurred but not reported portion of Interrogatory 17.11.....	\$.....0
17.16	Unearned premium portion of Interrogatory 17.11.....	\$.....0
17.17	Contingent commission portion of Interrogatory 17.11.....	\$.....0

Provide the following information for all other amounts included in Schedule F – Part 3 and excluded from Schedule F – Part 5, not included above.

17.18	Gross amount of unauthorized reinsurance in Schedule F – Part 3 excluded from Schedule F – Part 5.....	\$.....0
17.19	Unfunded portion of Interrogatory 17.18.....	\$.....0
17.20	Paid losses and loss adjustment expenses portion of Interrogatory 17.18.....	\$.....0
17.21	Case reserves portion of Interrogatory 17.18.....	\$.....0
17.22	Incurred but not reported portion of Interrogatory 17.18.....	\$.....0
17.23	Unearned premium portion of Interrogatory 17.18.....	\$.....0
17.24	Contingent commission portion of Interrogatory 17.18.....	\$.....0

18.1 Do you act as a custodian for health savings accounts? Yes [] No [X]
 18.2 If yes, please provide the amount of custodial funds held as of the reporting date. \$.....
 18.3 Do you act as an administrator for health savings accounts? Yes [] No [X]
 18.4 If yes, please provide the balance of the funds administered as of the reporting date. \$.....0

ANNUAL STATEMENT FOR THE YEAR 2011 OF THE Plans' Liability Insurance Company

FIVE-YEAR HISTORICAL DATA

Show amounts in whole dollars only, no cents; show percentages to one decimal place, i.e., 17.6.

	1 2011	2 2010	3 2009	4 2008	5 2007
Gross Premiums Written (Page 8, Part 1B, Cols. 1, 2 & 3)					
1. Liability lines (Lines 11.1, 11.2, 16, 17.1, 17.2, 17.3, 18.1, 18.2, 19.1, 19.2 & 19.3, 19.4)	2,839,683	5,063,604	5,014,684	5,280,536	10,142,969
2. Property lines (Lines 1, 2, 9, 12, 21 & 26)	0	0	0	0	0
3. Property and liability combined lines (Lines 3, 4, 5, 8, 22 & 27)	0	0	0	0	0
4. All other lines (Lines 6, 10, 13, 14, 15, 23, 24, 28, 29, 30 & 34)	80,208	74,632	84,118	90,935	246,753
5. Nonproportional reinsurance lines (Lines 31, 32 & 33)	0	0	0	0	0
6. Total (Line 35)	2,919,891	5,138,236	5,098,802	5,371,471	10,389,722
Net Premiums Written (Page 8, Part 1B, Col. 6)					
7. Liability lines (Lines 11.1, 11.2, 16, 17.1, 17.2, 17.3, 18.1, 18.2, 19.1, 19.2 & 19.3, 19.4)	2,839,683	5,063,604	5,014,684	5,280,536	10,142,969
8. Property lines (Lines 1, 2, 9, 12, 21 & 26)	0	0	0	0	0
9. Property and liability combined lines (Lines 3, 4, 5, 8, 22 & 27)	0	0	0	0	0
10. All other lines (Lines 6, 10, 13, 14, 15, 23, 24, 28, 29, 30 & 34)	80,208	74,632	84,118	90,935	246,753
11. Nonproportional reinsurance lines (Lines 31, 32 & 33)	0	0	0	0	0
12. Total (Line 35)	2,919,891	5,138,236	5,098,802	5,371,471	10,389,722
Statement of Income (Page 4)					
13. Net underwriting gain (loss) (Line 8)	(3,040,630)	(1,325,800)	(4,831,141)	121,492	(3,956,206)
14. Net investment gain (loss) (Line 11)	3,735,791	3,561,836	4,239,333	2,155,376	4,333,623
15. Total other income (Line 15)	78,184	127,415	37,983	(291,149)	(52,378)
16. Dividends to policyholders (Line 17)	0	0	0	0	0
17. Federal and foreign income taxes incurred (Line 19)	(55,912)	603,506	(509,497)	1,259,322	31,250
18. Net income (Line 20)	829,257	1,759,945	(44,328)	726,397	293,789
Balance Sheet Lines (Pages 2 and 3)					
19. Total admitted assets excluding protected cell business (Page 2, Line 26, Col. 3)	84,320,037	84,047,718	80,916,689	87,739,182	88,838,160
20. Premiums and considerations (Page 2, Col. 3)					
20.1 In course of collection (Line 15.1)	168,374	63,456	0	0	0
20.2 Deferred and not yet due (Line 15.2)	0	0	0	0	0
20.3 Accrued retrospective premiums (Line 15.3)	0	0	0	0	0
21. Total liabilities excluding protected cell business (Page 3, Line 26)	30,590,502	31,087,474	30,081,626	37,149,809	38,904,818
22. Losses (Page 3, Line 1)	19,184,869	21,517,475	23,011,266	29,209,242	33,324,927
23. Loss adjustment expenses (Page 3, Line 3)	5,085,210	6,027,948	5,733,456	5,425,248	4,316,578
24. Unearned premiums (Page 3, Line 9)	460,618	544,953	311,985	171,871	323,100
25. Capital paid up (Page 3, Lines 30 & 31)	2,942,436	2,942,436	2,942,436	2,942,436	2,942,436
26. Surplus as regards policyholders (Page 3, Line 37)	53,729,535	52,960,244	50,835,063	50,589,373	49,933,342
Cash Flow (Page 5)					
27. Net cash from operations (Line 11)	(2,049,952)	1,406,116	(6,963,207)	1,059,132	824,144
Risk-Based Capital Analysis					
28. Total adjusted capital	53,729,535	52,960,244	50,835,063	50,589,373	49,933,342
29. Authorized control level risk-based capital	3,824,058	4,344,463	4,582,176	4,960,729	5,043,146
Percentage Distribution of Cash, Cash Equivalents and Invested Assets (Page 2, Col. 3)(Item divided by Page 2, Line 12, Col. 3) x 100.0					
30. Bonds (Line 1)	97.1	96.1	93.3	93.8	91.2
31. Stocks (Lines 2.1 & 2.2)	0.2	0.2	0.0	0.0	0.0
32. Mortgage loans on real estate (Lines 3.1 and 3.2)	0.0	0.0	0.0	0.0	0.0
33. Real estate (Lines 4.1, 4.2 & 4.3)	0.0	0.0	0.0	0.0	0.0
34. Cash, cash equivalents and short-term investments (Line 5)	2.6	3.7	6.7	6.2	8.8
35. Contract loans (Line 6)	0.0	0.0	0.0	0.0	0.0
36. Derivatives (Line 7)	0.0	0.0	XXX	XXX	XXX
37. Other invested assets (Line 8)	0.0	0.0	0.0	0.0	0.0
38. Receivables for securities (Line 9)	0.0	0.0	0.0	0.0	0.0
39. Securities lending reinvested collateral assets (Line 10)	0.0	0.0	XXX	XXX	XXX
40. Aggregate write-ins for invested assets (Line 11)	0.0	0.0	0.0	0.0	0.0
41. Cash, cash equivalents and invested assets (Line 12)	100.0	100.0	100.0	100.0	100.0
Investments in Parent, Subsidiaries and Affiliates					
42. Affiliated bonds, (Sch. D, Summary, Line 12, Col. 1)	0	0	0	0	0
43. Affiliated preferred stocks (Sch. D, Summary, Line 18, Col. 1)	0	0	0	0	0
44. Affiliated common stocks (Sch. D, Summary, Line 24, Col. 1)	0	0	0	0	0
45. Affiliated short-term investments (subtotals included in Schedule DA Verification, Col. 5, Line 10)	6,643	6,643	106,446	1,878,522	2,519,511
46. Affiliated mortgage loans on real estate	0	0	0	0	0
47. All other affiliated	0	0	0	0	0
48. Total of above Lines 42 to 47	6,643	6,643	106,446	1,878,522	2,519,511
49. Percentage of investments in parent, subsidiaries and affiliates to surplus as regards policyholders (Line 48 above divided by Page 3, Col. 1, Line 37 x 100.0)	0.0	0.0	0.2	3.7	5.0

ANNUAL STATEMENT FOR THE YEAR 2011 OF THE Plans' Liability Insurance Company

FIVE-YEAR HISTORICAL DATA

(Continued)

	1 2011	2 2010	3 2009	4 2008	5 2007
Capital and Surplus Accounts (Page 4)					
50. Net unrealized capital gains (losses) (Line 24)	20,016	204,219	(149,493)	(20,738)	(19,365)
51. Dividends to stockholders (Line 35)	0	0	0	0	0
52. Change in surplus as regards policyholders for the year (Line 38)	769,291	2,125,181	245,690	656,031	201,553
Gross Losses Paid (Page 9, Part 2, Cols. 1 & 2)					
53. Liability lines (Lines 11.1, 11.2, 16, 17.1, 17.2, 17.3, 18.1, 18.2, 19.1, 19.2 & 19.3, 19.4)	3,661,341	1,015,644	8,576,129	1,187,132	4,096,765
54. Property lines (Lines 1, 2, 9, 12, 21 & 26)	0	0	0	0	0
55. Property and liability combined lines (Lines 3, 4, 5, 8, 22 & 27)	0	0	0	0	0
56. All other lines (Lines 6, 10, 13, 14, 15, 23, 24, 28, 29, 30 & 34)	0	0	0	0	0
57. Nonproportional reinsurance lines (Lines 31, 32 & 33)	0	0	0	0	0
58. Total (Line 35)	3,661,341	1,015,644	8,576,129	1,187,132	4,096,765
Net Losses Paid (Page 9, Part 2, Col. 4)					
59. Liability lines (Lines 11.1, 11.2, 16, 17.1, 17.2, 17.3, 18.1, 18.2, 19.1, 19.2 & 19.3, 19.4)	3,661,341	1,015,644	8,576,129	1,187,132	4,096,765
60. Property lines (Lines 1, 2, 9, 12, 21 & 26)	0	0	0	0	0
61. Property and liability combined lines (Lines 3, 4, 5, 8, 22 & 27)	0	0	0	0	0
62. All other lines (Lines 6, 10, 13, 14, 15, 23, 24, 28, 29, 30 & 34)	0	0	0	0	0
63. Nonproportional reinsurance lines (Lines 31, 32 & 33)	0	0	0	0	0
64. Total (Line 35)	3,661,341	1,015,644	8,576,129	1,187,132	4,096,765
Operating Percentages (Page 4) (Item divided by Page 4, Line 1) x 100.0					
65. Premiums earned (Line 1)	100.0	100.0	100.0	100.0	100.0
66. Losses incurred (Line 2)	44.2	(9.7)	48.0	(53.0)	52.8
67. Loss expenses incurred (Line 3)	34.9	48.3	53.0	61.5	28.9
68. Other underwriting expenses incurred (Line 4)	122.0	88.5	96.5	89.3	53.7
69. Net underwriting gain (loss) (Line 8)	(101.2)	(27.0)	(97.4)	2.2	(35.3)
Other Percentages					
70. Other underwriting expenses to net premiums written (Page 4, Lines 4 + 5 - 15 divided by Page 8, Part 1B, Col. 6, Line 35 x 100.0)	122.9	82.0	93.1	97.2	58.3
71. Losses and loss expenses incurred to premiums earned (Page 4, Lines 2 + 3 divided by Page 4, Line 1 x 100.0)	79.2	38.5	101.0	8.5	81.7
72. Net premiums written to policyholders' surplus (Page 8, Part 1B, Col. 6, Line 35 divided by Page 3, Line 37, Col. 1 x 100.0)	5.4	9.7	10.0	10.6	20.8
One Year Loss Development (000 omitted)					
73. Development in estimated losses and loss expenses incurred prior to current year (Schedule P, Part 2-Summary, Line 12, Col. 11)	(1,029)	(1,926)	1,276	(3,890)	3,405
74. Percent of development of losses and loss expenses incurred to policyholders' surplus of prior year end (Line 73 above divided by Page 4, Line 21, Col. 1 x 100.0)	(1.9)	(3.8)	2.5	(7.8)	6.8
Two Year Loss Development (000 omitted)					
75. Development in estimated losses and loss expenses incurred 2 years before the current year and prior year (Schedule P, Part 2 - Summary, Line 12, Col. 12)	(3,307)	(465)	(3,366)	(264)	1,755
76. Percent of development of losses and loss expenses incurred to reported policyholders' surplus of second prior year end (Line 75 above divided by Page 4, Line 21, Col. 2 x 100.0)	(6.5)	(0.9)	(6.7)	(0.5)	3.8

NOTE: If a party to a merger, have the two most recent years of this exhibit been restated due to a merger in compliance with the disclosure requirements of SSAP No. 3, Accounting Changes and Correction of Errors? Yes [] No []

If no, please explain

ANNUAL STATEMENT FOR THE YEAR 2011 OF THE Plans' Liability Insurance Company

**SCHEDULE P - ANALYSIS OF LOSSES AND LOSS EXPENSES
SCHEDULE P - PART 1 - SUMMARY**

(\$000 Omitted)

Years in Which Premiums Were Earned and Losses Were Incurred	Premiums Earned			Loss and Loss Expense Payments							12 Number of Claims Reported Direct and Assumed	
	1 Direct and Assumed	2 Ceded	3 Net (Cols. 1 - 2)	Loss Payments		Defense and Cost Containment Payments		Adjusting and Other Payments		10 Salvage and Subrogation Received		11 Total Net Paid (Cols. 4 - 5 + 6 - 7 + 8 - 9)
				4 Direct and Assumed	5 Ceded	6 Direct and Assumed	7 Ceded	8 Direct and Assumed	9 Ceded			
1. Prior	XXX	XXX	XXX	178	0	13	0	0	0	0	191	XXX
2. 2002	11,822	0	11,822	6,159	0	1,245	0	417	0	0	7,821	XXX
3. 2003	15,156	0	15,156	6,140	0	2,620	0	900	0	0	9,660	XXX
4. 2004	16,397	0	16,397	2,155	0	100	0	749	0	0	3,005	XXX
5. 2005	11,408	0	11,408	2,207	0	590	0	748	0	0	3,545	XXX
6. 2006	16,011	0	16,011	5,812	0	1,424	0	780	0	0	8,016	XXX
7. 2007	11,192	0	11,192	1,400	0	594	0	852	0	0	2,846	XXX
8. 2008	5,523	0	5,523	0	0	462	0	536	0	0	998	XXX
9. 2009	4,959	0	4,959	0	0	167	0	525	0	0	692	XXX
10. 2010	4,905	0	4,905	0	0	115	0	636	0	0	751	XXX
11. 2011	3,004	0	3,004	0	0	4	0	448	0	0	452	XXX
12. Totals	XXX	XXX	XXX	24,051	0	7,335	0	6,591	0	0	37,977	XXX

	Losses Unpaid				Defense and Cost Containment Unpaid				Adjusting and Other Unpaid		23 Salvage and Subrogation Anticipated	24 Total Net Losses and Expenses Unpaid	25 Number of Claims Outstanding Direct and Assumed
	Case Basis		Bulk + IBNR		Case Basis		Bulk + IBNR		21 Direct and Assumed	22 Ceded			
	13	14	15	16	17	18	19	20					
	Direct and Assumed	Ceded	Direct and Assumed	Ceded	Direct and Assumed	Ceded	Direct and Assumed	Ceded					
1.	985	0	0	0	58	0	0	0	0	0	0	1,043	XXX
2.	890	0	0	0	44	0	0	0	0	0	0	934	XXX
3.	1,589	0	0	0	2,444	0	0	0	0	0	0	4,033	XXX
4.	380	0	0	0	40	0	0	0	0	0	0	420	XXX
5.	565	0	0	0	52	0	0	0	0	0	0	617	XXX
6.	2,480	0	0	0	126	0	0	0	0	0	0	2,606	XXX
7.	804	0	0	0	55	0	0	0	4	0	0	863	XXX
8.	2,482	0	1,300	0	331	0	0	0	123	0	0	4,236	XXX
9.	1,357	0	1,200	0	102	0	200	0	246	0	0	3,105	XXX
10.	1,960	0	922	0	79	0	117	0	379	0	0	3,457	XXX
11.	871	0	1,400	0	11	0	227	0	448	0	0	2,957	XXX
12.	14,363	0	4,822	0	3,342	0	544	0	1,200	0	0	24,271	XXX

	Total Losses and Loss Expenses Incurred			Loss and Loss Expense Percentage (Incurred/Premiums Earned)			Nontabular Discount		34 Inter-Company Pooling Participation Percentage	Net Balance Sheet Reserves After Discount							
	26 Direct and Assumed	27 Ceded	28 Net	29 Direct and Assumed	30 Ceded	31 Net	32 Loss	33 Loss Expense		35 Losses Unpaid	36 Loss Expenses Unpaid						
1.	XXX	XXX	XXX	XXX	XXX	XXX	0	0	XXX	985	58						
2.	8,755	0	8,755	74.1	0.0	74.1	0	0		890	44						
3.	13,693	0	13,693	90.3	0.0	90.3	0	0		1,589	2,444						
4.	3,425	0	3,425	20.9	0.0	20.9	0	0		380	40						
5.	4,162	0	4,162	36.5	0.0	36.5	0	0		565	52						
6.	10,622	0	10,622	66.3	0.0	66.3	0	0		2,480	126						
7.	3,709	0	3,709	33.1	0.0	33.1	0	0		804	59						
8.	5,234	0	5,234	94.8	0.0	94.8	0	0		3,782	454						
9.	3,797	0	3,797	76.6	0.0	76.6	0	0		2,557	548						
10.	4,208	0	4,208	85.8	0.0	85.8	0	0		2,882	575						
11.	3,409	0	3,409	113.5	0.0	113.5	0	0		2,271	686						
12.	XXX	XXX	XXX	XXX	XXX	XXX	0	0	XXX	19,185	5,086						

Note: Parts 2 and 4 are gross of all discounting, including tabular discounting. Part 1 is gross of only nontabular discounting, which is reported in Columns 32 and 33 of Part 1. The tabular discount, if any, is reported in the Notes to Financial Statements, which will reconcile Part 1 with Parts 2 and 4.

ANNUAL STATEMENT FOR THE YEAR 2011 OF THE Plans' Liability Insurance Company

SCHEDULE P - PART 2 - SUMMARY

Years in Which Losses Were Incurred	INCURRED NET LOSSES AND DEFENSE AND COST CONTAINMENT EXPENSES REPORTED AT YEAR END (\$000 OMITTED)										DEVELOPMENT		
	1	2	3	4	5	6	7	8	9	10	11	12	
	2002	2003	2004	2005	2006	2007	2008	2009	2010	2011	One Year	Two Year	
1. Prior	14,542	15,331	15,798	15,044	14,699	15,419	13,205	12,997	13,421	12,001	(1,420)	(996)	
2. 2002	10,078	8,681	6,193	6,777	6,837	7,221	8,405	8,961	9,116	8,338	(778)	(623)	
3. 2003	XXX	8,012	8,179	8,334	8,573	10,104	11,176	13,131	12,976	12,793	(183)	(338)	
4. 2004	XXX	XXX	10,425	6,089	3,448	3,255	2,926	2,725	2,698	2,676	(22)	(49)	
5. 2005	XXX	XXX	XXX	5,905	8,814	7,906	5,981	5,409	5,182	3,414	(1,768)	(1,995)	
6. 2006	XXX	XXX	XXX	XXX	8,084	9,955	8,498	8,782	8,340	9,842	1,502	1,060	
7. 2007	XXX	XXX	XXX	XXX	XXX	4,987	4,766	3,476	2,681	2,853	172	(623)	
8. 2008	XXX	XXX	XXX	XXX	XXX	XXX	3,609	4,361	3,687	4,575	888	214	
9. 2009	XXX	XXX	XXX	XXX	XXX	XXX	XXX	2,983	2,798	3,026	228	43	
10. 2010	XXX	XXX	XXX	XXX	XXX	XXX	XXX	XXX	2,841	3,193	352	XXX	
11. 2011	XXX	XXX	XXX	XXX	XXX	XXX	XXX	XXX	XXX	2,513	XXX	XXX	
											12. Totals	(1,029)	(3,307)

SCHEDULE P - PART 3 - SUMMARY

Years in Which Losses Were Incurred	CUMULATIVE PAID NET LOSSES AND DEFENSE AND COST CONTAINMENT EXPENSES REPORTED AT YEAR END (\$000 OMITTED)										11	12
	1	2	3	4	5	6	7	8	9	10	Number of Claims Closed With Loss Payment	Number of Claims Closed Without Loss Payment
	2002	2003	2004	2005	2006	2007	2008	2009	2010	2011		
1. Prior	.000	3,618	4,845	5,477	5,965	9,171	9,880	10,462	10,767	10,958	XXX	XXX
2. 2002	2,110	2,110	2,805	3,063	3,518	4,274	4,400	7,225	7,251	7,404	XXX	XXX
3. 2003	XXX	2	1,660	3,071	3,882	5,085	5,405	7,539	8,289	8,760	XXX	XXX
4. 2004	XXX	XXX	520	1,017	2,022	2,083	2,141	2,220	2,246	2,256	XXX	XXX
5. 2005	XXX	XXX	XXX	1	1,273	1,547	2,164	2,707	2,786	2,797	XXX	XXX
6. 2006	XXX	XXX	XXX	XXX	11	142	647	3,389	3,633	7,236	XXX	XXX
7. 2007	XXX	XXX	XXX	XXX	XXX	103	488	1,587	1,946	1,994	XXX	XXX
8. 2008	XXX	XXX	XXX	XXX	XXX	XXX	7	149	329	462	XXX	XXX
9. 2009	XXX	XXX	XXX	XXX	XXX	XXX	XXX	0	148	167	XXX	XXX
10. 2010	XXX	XXX	XXX	XXX	XXX	XXX	XXX	XXX	0	115	XXX	XXX
11. 2011	XXX	XXX	XXX	XXX	XXX	XXX	XXX	XXX	XXX	4	XXX	XXX

SCHEDULE P - PART 4 - SUMMARY

Years in Which Losses Were Incurred	BULK AND IBNR RESERVES ON NET LOSSES AND DEFENSE AND COST CONTAINMENT EXPENSES REPORTED AT YEAR END (\$000 OMITTED)											
	1	2	3	4	5	6	7	8	9	10		
	2002	2003	2004	2005	2006	2007	2008	2009	2010	2011		
1. Prior	600	50	300	0	0	0	0	0	0	0	0	0
2. 2002	6,000	3,280	450	0	0	0	0	0	0	0	0	0
3. 2003	XXX	5,210	2,250	800	0	0	0	0	0	0	0	0
4. 2004	XXX	XXX	7,840	3,253	300	450	110	0	0	0	0	0
5. 2005	XXX	XXX	XXX	3,544	3,335	1,661	300	0	0	0	0	0
6. 2006	XXX	XXX	XXX	XXX	2,853	960	628	442	45	0	0	0
7. 2007	XXX	XXX	XXX	XXX	XXX	2,416	879	505	45	0	0	0
8. 2008	XXX	XXX	XXX	XXX	XXX	XXX	938	196	590	1,300	1,300	1,300
9. 2009	XXX	XXX	XXX	XXX	XXX	XXX	XXX	1,794	1,045	1,400	1,400	1,400
10. 2010	XXX	XXX	XXX	XXX	XXX	XXX	XXX	XXX	1,883	1,039	1,039	1,039
11. 2011	XXX	XXX	XXX	XXX	XXX	XXX	XXX	XXX	XXX	1,627	1,627	1,627

ANNUAL STATEMENT FOR THE YEAR 2011 OF THE Plans' Liability Insurance Company

SCHEDULE T - EXHIBIT OF PREMIUMS WRITTEN

Allocated By States And Territories

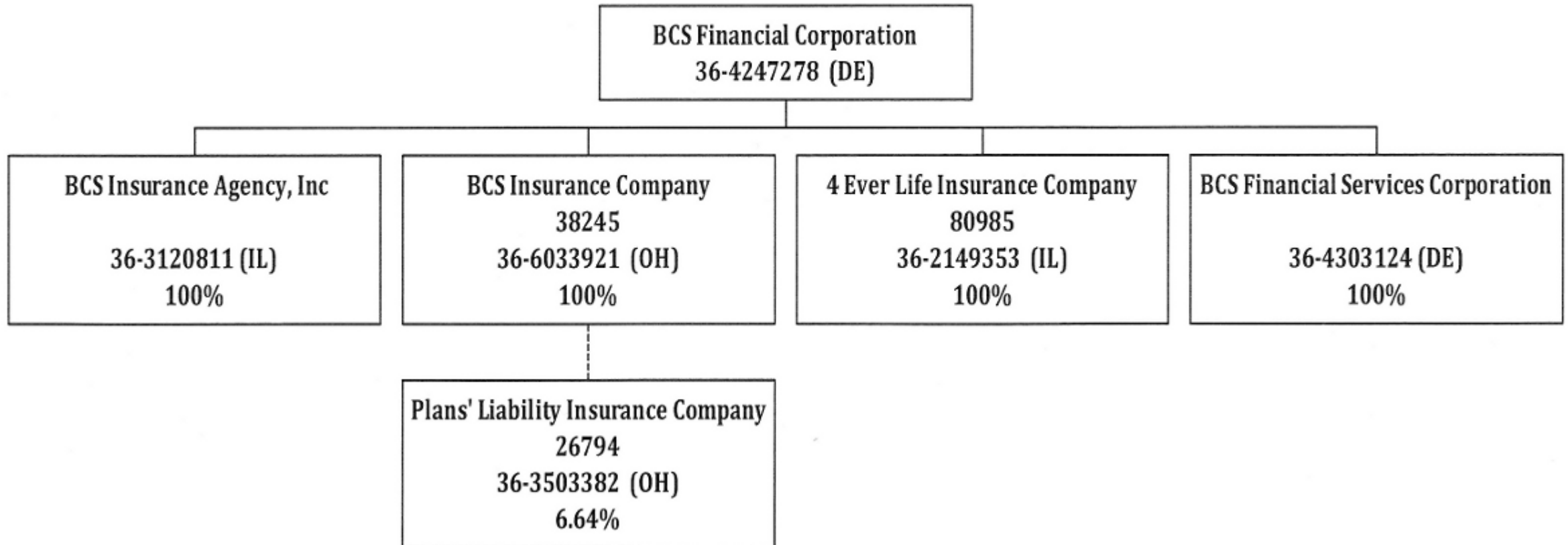
States, etc.	1 Active Status	Gross Premiums, Including Policy and Membership Fees Less Return Premiums and Premiums on Policies Not Taken		4 Dividends Paid or Credited to Policyholders on Direct Business	5 Direct Losses Paid (Deducting Salvage)	6 Direct Losses Incurred	7 Direct Losses Unpaid	8 Finance and Service Charges Not Included in Premiums	9 Direct Premium Written for Federal Purchasing Groups (Included in Col. 2)
		2 Direct Premiums Written	3 Direct Premiums Earned						
1. Alabama	AL	L	0	0	0	0	0	0	0
2. Alaska	AK	L	0	0	0	0	0	0	0
3. Arizona	AZ	L	0	0	0	0	0	0	0
4. Arkansas	AR	L	0	0	0	0	0	0	0
5. California	CA	N	0	0	0	0	0	0	0
6. Colorado	CO	L	0	0	0	0	0	0	0
7. Connecticut	CT	L	0	0	0	0	0	0	0
8. Delaware	DE	L	0	0	0	0	0	0	0
9. District of Columbia	DC	L	0	0	0	0	0	0	0
10. Florida	FL	L	0	0	0	0	0	0	0
11. Georgia	GA	L	0	0	0	0	0	0	0
12. Hawaii	HI	N	0	0	0	0	0	0	0
13. Idaho	ID	L	0	0	0	0	0	0	0
14. Illinois	IL	L	0	0	0	0	0	0	0
15. Indiana	IN	L	0	0	0	0	0	0	0
16. Iowa	IA	L	0	0	0	0	0	0	0
17. Kansas	KS	L	0	0	0	0	0	0	0
18. Kentucky	KY	L	0	0	0	0	0	0	0
19. Louisiana	LA	L	0	0	0	0	0	0	0
20. Maine	ME	L	0	0	0	0	0	0	0
21. Maryland	MD	L	0	0	0	0	0	0	0
22. Massachusetts	MA	L	0	0	0	0	0	0	0
23. Michigan	MI	L	0	0	0	0	0	0	0
24. Minnesota	MN	L	0	0	0	0	0	0	0
25. Mississippi	MS	L	0	0	0	0	0	0	0
26. Missouri	MO	L	0	0	0	0	0	0	0
27. Montana	MT	L	0	0	0	0	0	0	0
28. Nebraska	NE	L	0	0	0	0	0	0	0
29. Nevada	NV	L	0	0	0	0	0	0	0
30. New Hampshire	NH	L	0	0	0	0	0	0	0
31. New Jersey	NJ	L	0	0	0	0	0	0	0
32. New Mexico	NM	L	0	0	0	0	0	0	0
33. New York	NY	L	0	0	0	0	0	0	0
34. North Carolina	NC	L	0	0	0	0	0	0	0
35. North Dakota	ND	L	0	0	0	0	0	0	0
36. Ohio	OH	L	0	0	0	0	0	0	0
37. Oklahoma	OK	L	0	0	0	0	0	0	0
38. Oregon	OR	L	0	0	0	0	0	0	0
39. Pennsylvania	PA	L	0	0	0	0	0	0	0
40. Rhode Island	RI	L	0	0	0	0	0	0	0
41. South Carolina	SC	L	0	0	0	0	0	0	0
42. South Dakota	SD	L	0	0	0	0	0	0	0
43. Tennessee	TN	L	0	0	0	0	0	0	0
44. Texas	TX	L	0	0	0	0	0	0	0
45. Utah	UT	L	0	0	0	0	0	0	0
46. Vermont	VT	L	0	0	0	0	0	0	0
47. Virginia	VA	L	0	0	0	0	0	0	0
48. Washington	WA	L	0	0	0	0	0	0	0
49. West Virginia	WV	L	0	0	0	0	0	0	0
50. Wisconsin	WI	L	0	0	0	0	0	0	0
51. Wyoming	WY	L	0	0	0	0	0	0	0
52. American Samoa	AS	N	0	0	0	0	0	0	0
53. Guam	GU	N	0	0	0	0	0	0	0
54. Puerto Rico	PR	N	0	0	0	0	0	0	0
55. U.S. Virgin Islands	VI	N	0	0	0	0	0	0	0
56. Northern Mariana Islands	MP	N	0	0	0	0	0	0	0
57. Canada	CN	N	0	0	0	0	0	0	0
58. Aggregate other alien	OT	XXX	0	0	0	0	0	0	0
59. Totals	(a) 49		0	0	0	0	0	0	0
DETAILS OF WRITE-INS									
5801.		XXX	0	0	0	0	0	0	0
5802.		XXX	0	0	0	0	0	0	0
5803.		XXX	0	0	0	0	0	0	0
5898. Sum. of remaining write-ins for Line 58 from overflow page		XXX	0	0	0	0	0	0	0
5899. Totals (Lines 5801 through 5803 + 5898) (Line 58 above)		XXX	0	0	0	0	0	0	0

(L) Licensed or Chartered - Licensed Insurance Carrier or Domiciled RRG; (R) Registered - Non-domiciled RRGs; (Q) Qualified - Qualified or Accredited Reinsurer; (E) Eligible - Reporting Entities eligible or approved to write Surplus Lines in the state; (N) None of the above - Not allowed to write business in the state.

Explanation of basis of allocation of premiums by states, etc.

(a) Insert the number of L responses except for Canada and Other Alien

SCHEDULE Y - INFORMATION CONCERNING ACTIVITIES OF INSURER MEMBERS OF A HOLDING COMPANY GROUP
PART 1 - ORGANIZATIONAL CHART



ALPHABETICAL INDEX

ANNUAL STATEMENT BLANK

Assets	2
Cash Flow	5
Exhibit of Capital Gains (Losses)	12
Exhibit of Net Investment Income	12
Exhibit of Nonadmitted Assets	13
Exhibit of Premiums and Losses (State Page)	19
Five-Year Historical Data	17
General Interrogatories	15
Jurat Page	1
Liabilities, Surplus and Other Funds	3
Notes To Financial Statements	14
Overflow Page For Write-Ins	98
Schedule A – Part 1	E01
Schedule A – Part 2	E02
Schedule A – Part 3	E03
Schedule A – Verification Between Years	SI02
Schedule B – Part 1	E04
Schedule B – Part 2	E05
Schedule B – Part 3	E06
Schedule B – Verification Between Years	SI02
Schedule BA – Part 1	E07
Schedule BA – Part 2	E08
Schedule BA – Part 3	E09
Schedule BA – Verification Between Years	SI03
Schedule D – Part 1	E10
Schedule D – Part 1A – Section 1	SI05
Schedule D – Part 1A – Section 2	SI08
Schedule D – Part 2 – Section 1	E11
Schedule D – Part 2 – Section 2	E12
Schedule D – Part 3	E13
Schedule D – Part 4	E14
Schedule D – Part 5	E15
Schedule D – Part 6 – Section 1	E16
Schedule D – Part 6 – Section 2	E16
Schedule D – Summary By Country	SI04
Schedule D – Verification Between Years	SI03
Schedule DA – Part 1	E17

ALPHABETICAL INDEX

ANNUAL STATEMENT BLANK (Continued)

Schedule DA – Verification Between Years	SI10
Schedule DB – Part A – Section 1	E18
Schedule DB – Part A – Section 2	E19
Schedule DB – Part A – Verification Between Years	SI11
Schedule DB – Part B – Section 1	E20
Schedule DB – Part B – Section 2	E21
Schedule DB – Part B – Verification Between Years	SI11
Schedule DB – Part C – Section 1	SI12
Schedule DB – Part C – Section 2	SI13
Schedule DB – Part D	E22
Schedule DB – Verification	SI14
Schedule DL – Part 1	E23
Schedule DL – Part 2	E24
Schedule E – Part 1 – Cash	E25
Schedule E – Part 2 – Cash Equivalents	E26
Schedule E – Part 3 – Special Deposits	E27
Schedule E – Verification Between Years	SI15
Schedule F – Part 1	20
Schedule F – Part 2	21
Schedule F – Part 3	22
Schedule F – Part 4	23
Schedule F – Part 5	24
Schedule F – Part 6	25
Schedule F – Part 7	26
Schedule F – Part 8	27
Schedule H – Accident and Health Exhibit – Part 1	28
Schedule H – Part 2, Part 3, and Part 4	29
Schedule H – Part 5 – Health Claims	30
Schedule P – Part 1 – Summary	31
Schedule P – Part 1A – Homeowners/Farmowners	33
Schedule P – Part 1B – Private Passenger Auto Liability/Medical	34
Schedule P – Part 1C – Commercial Auto/Truck Liability/Medical	35
Schedule P – Part 1D – Workers' Compensation (Excluding Excess Workers' Compensation)	36

ALPHABETICAL INDEX

ANNUAL STATEMENT BLANK (Continued)

Schedule P – Part 1E – Commercial Multiple Peril	37
Schedule P – Part 1F – Section 1 – Medical Professional Liability – Occurrence	38
Schedule P – Part 1F – Section 2 – Medical Professional Liability – Claims-Made	39
Schedule P – Part 1G – Special Liability (Ocean, Marine, Aircraft (All Perils), Boiler and Machinery)	40
Schedule P – Part 1H – Section 1 – Other Liability–Occurrence	41
Schedule P – Part 1H – Section 2 – Other Liability – Claims-Made	42
Schedule P – Part 1I – Special Property (Fire, Allied Lines, Inland Marine, Earthquake, Burglary & Theft)	43
Schedule P – Part 1J – Auto Physical Damage	44
Schedule P – Part 1K – Fidelity/Surety	45
Schedule P – Part 1L – Other (Including Credit, Accident and Health)	46
Schedule P – Part 1M – International	47
Schedule P – Part 1N – Reinsurance – Nonproportional Assumed Property	48
Schedule P – Part 1O – Reinsurance – Nonproportional Assumed Liability	49
Schedule P – Part 1P – Reinsurance – Nonproportional Assumed Financial Lines	50
Schedule P – Part 1R – Section 1 – Products Liability – Occurrence	51
Schedule P – Part 1R – Section 2 – Products Liability – Claims – Made	52
Schedule P – Part 1S – Financial Guaranty/Mortgage Guaranty	53
Schedule P – Part 1T – Warranty	54
Schedule P – Part 2, Part 3 and Part 4 – Summary	32
Schedule P – Part 2A – Homeowners/Farmowners	55
Schedule P – Part 2B – Private Passenger Auto Liability/Medical	55
Schedule P – Part 2C – Commercial Auto/Truck Liability/Medical	55
Schedule P – Part 2D – Workers' Compensation (Excluding Excess Workers' Compensation)	55
Schedule P – Part 2E – Commercial Multiple Peril	55
Schedule P – Part 2F – Section 1 – Medical Professional Liability – Occurrence	56
Schedule P – Part 2F – Section 2 – Medical Professional Liability – Claims – Made	56
Schedule P – Part 2G – Special Liability (Ocean Marine, Aircraft (All Perils), Boiler and Machinery)	56
Schedule P – Part 2H – Section 1 – Other Liability – Occurrence	56
Schedule P – Part 2H – Section 2 – Other Liability – Claims – Made	56
Schedule P – Part 2I – Special Property (Fire, Allied Lines, Inland Marine, Earthquake, Burglary, and Theft)	57
Schedule P – Part 2J – Auto Physical Damage	57
Schedule P – Part 2K – Fidelity, Surety	57
Schedule P – Part 2L – Other (Including Credit, Accident and Health)	57
Schedule P – Part 2M – International	57
Schedule P – Part 2N – Reinsurance – Nonproportional Assumed Property	58
Schedule P – Part 2O – Reinsurance – Nonproportional Assumed Liability	58
Schedule P – Part 2P – Reinsurance – Nonproportional Assumed Financial Lines	58
Schedule P – Part 2R – Section 1 – Products Liability – Occurrence	59
Schedule P – Part 2R – Section 2 – Products Liability – Claims-Made	59
Schedule P – Part 2S – Financial Guaranty/Mortgage Guaranty	59
Schedule P – Part 2T – Warranty	59
Schedule P – Part 3A – Homeowners/Farmowners	60

ALPHABETICAL INDEX

ANNUAL STATEMENT BLANK (Continued)

Schedule P – Part 3B – Private Passenger Auto Liability/Medical	60
Schedule P – Part 3C – Commercial Auto/Truck Liability/Medical	60
Schedule P – Part 3D – Workers’ Compensation (Excluding Excess Workers’ Compensation)	60
Schedule P – Part 3E – Commercial Multiple Peril	60
Schedule P – Part 3F – Section 1 – Medical Professional Liability – Occurrence	61
Schedule P – Part 3F – Section 2 – Medical Professional Liability – Claims-Made	61
Schedule P – Part 3G – Special Liability (Ocean Marine, Aircraft (All Perils), Boiler and Machinery)	61
Schedule P – Part 3H – Section 1 – Other Liability – Occurrence	61
Schedule P – Part 3H – Section 2 – Other Liability – Claims-Made	61
Schedule P – Part 3I – Special Property (Fire, Allied Lines, Inland Marine, Earthquake, Burglary, and Theft)	62
Schedule P – Part 3J – Auto Physical Damage	62
Schedule P – Part 3K – Fidelity/Surety	62
Schedule P – Part 3L – Other (Including Credit, Accident and Health)	62
Schedule P – Part 3M – International	62
Schedule P – Part 3N – Reinsurance – Nonproportional Assumed Property	63
Schedule P – Part 3O – Reinsurance – Nonproportional Assumed Liability	63
Schedule P – Part 3P – Reinsurance – Nonproportional Assumed Financial Lines	63
Schedule P – Part 3R – Section 1 – Products Liability – Occurrence	64
Schedule P – Part 3R – Section 2 – Products Liability – Claims-Made	64
Schedule P – Part 3S – Financial Guaranty/Mortgage Guaranty	64
Schedule P – Part 3T – Warranty	64
Schedule P – Part 4A – Homeowners/Farmowners	65
Schedule P – Part 4B – Private Passenger Auto Liability/Medical	65
Schedule P – Part 4C – Commercial Auto/Truck Liability/Medical	65
Schedule P – Part 4D – Workers’ Compensation (Excluding Excess Workers’ Compensation)	65
Schedule P – Part 4E – Commercial Multiple Peril	65
Schedule P – Part 4F – Section 1 – Medical Professional Liability – Occurrence	66
Schedule P – Part 4F – Section 2 – Medical Professional Liability – Claims-Made	66
Schedule P – Part 4G – Special Liability (Ocean Marine, Aircraft (All Perils), Boiler and Machinery)	66
Schedule P – Part 4H – Section 1 – Other Liability – Occurrence	66
Schedule P – Part 4H – Section 2 – Other Liability – Claims-Made	66
Schedule P – Part 4I – Special Property (Fire, Allied Lines, Inland Marine, Earthquake, Burglary and Theft)	67
Schedule P – Part 4J – Auto Physical Damage	67
Schedule P – Part 4K – Fidelity/Surety	67
Schedule P – Part 4L – Other (Including Credit, Accident and Health)	67
Schedule P – Part 4M – International	67
Schedule P – Part 4N – Reinsurance – Nonproportional Assumed Property	68
Schedule P – Part 4O – Reinsurance – Nonproportional Assumed Liability	68
Schedule P – Part 4P – Reinsurance – Nonproportional Assumed Financial Lines	68
Schedule P – Part 4R – Section 1 – Products Liability – Occurrence	69
Schedule P – Part 4R – Section 2 – Products Liability – Claims-Made	69

ALPHABETICAL INDEX

ANNUAL STATEMENT BLANK (Continued)

Schedule P – Part 4S – Financial Guaranty/Mortgage Guaranty	69
Schedule P – Part 4T – Warranty	69
Schedule P – Part 5A – Homeowners/Farmowners	70
Schedule P – Part 5B – Private Passenger Auto Liability/Medical	71
Schedule P – Part 5C – Commercial Auto/Truck Liability/Medical	72
Schedule P – Part 5D – Workers’ Compensation (Excluding Excess Workers’ Compensation)	73
Schedule P – Part 5E – Commercial Multiple Peril	74
Schedule P – Part 5F – Medical Professional Liability – Claims-Made	76
Schedule P – Part 5F – Medical Professional Liability – Occurrence	75
Schedule P – Part 5H – Other Liability – Claims-Made	78
Schedule P – Part 5H – Other Liability – Occurrence	77
Schedule P – Part 5R – Products Liability – Claims-Made	80
Schedule P – Part 5R – Products Liability – Occurrence	79
Schedule P – Part 5T – Warranty	81
Schedule P – Part 6C – Commercial Auto/Truck Liability/Medical	82
Schedule P – Part 6D – Workers’ Compensation (Excluding Excess Workers’ Compensation)	82
Schedule P – Part 6E – Commercial Multiple Peril	83
Schedule P – Part 6H – Other Liability – Claims-Made	84
Schedule P – Part 6H – Other Liability – Occurrence	83
Schedule P – Part 6M – International	84
Schedule P – Part 6N – Reinsurance – Nonproportional Assumed Property	85
Schedule P – Part 6O – Reinsurance – Nonproportional Assumed Liability	85
Schedule P – Part 6R – Products Liability – Claims-Made	86
Schedule P – Part 6R – Products Liability – Occurrence	86
Schedule P – Part 7A – Primary Loss Sensitive Contracts	87
Schedule P – Part 7B – Reinsurance Loss Sensitive Contracts	89
Schedule P Interrogatories	91
Schedule T – Exhibit of Premiums Written	92
Schedule T – Part 2 – Interstate Compact	93
Schedule Y – Information Concerning Activities of Insurer Members of a Holding Company Group	94
Schedule Y - Detail of Insurance Holding Company System	95
Schedule Y – Part 2 – Summary of Insurer’s Transactions With Any Affiliates	96
Statement of Income	4
Summary Investment Schedule	SI01
Supplemental Exhibits and Schedules Interrogatories	97
Underwriting and Investment Exhibit Part 1	6
Underwriting and Investment Exhibit Part 1A	7
Underwriting and Investment Exhibit Part 1B	8
Underwriting and Investment Exhibit Part 2	9
Underwriting and Investment Exhibit Part 2A	10
Underwriting and Investment Exhibit Part 3	11

