



PROPERTY AND CASUALTY COMPANIES - ASSOCIATION EDITION

ANNUAL STATEMENT  
FOR THE YEAR ENDED DECEMBER 31, 2011  
OF THE CONDITION AND AFFAIRS OF THE

Allied Insurance Company of America

NAIC Group Code	0140 (Current)	0140 (Prior)	NAIC Company Code	10127	Employer's ID Number	27-0114983
Organized under the Laws of	Ohio			State of Domicile or Port of Entry	Ohio	
Country of Domicile	United States of America					
Incorporated/Organized	02/16/2005			Commenced Business		
Statutory Home Office	One West Nationwide Blvd. (Street and Number)			Columbus , OH 43215-2220 (City or Town, State and Zip Code)		
Main Administrative Office	One West Nationwide Blvd. (Street and Number)					
	Columbus , OH 43215-2220 (City or Town, State and Zip Code)			614-249-7111 (Area Code) (Telephone Number)		
Mail Address	One West Nationwide Blvd., 1-04-701 (Street and Number or P.O. Box)			Columbus , OH 43215-2220 (City or Town, State and Zip Code)		
Primary Location of Books and Records	One West Nationwide Blvd., 1-04-701 (Street and Number)					
	Columbus , OH 43215-2220 (City or Town, State and Zip Code)			614-249-1545 (Area Code) (Telephone Number)		
Internet Website Address	www.nationwide.com					
Statutory Statement Contact	Arlene E. Swanson (Name)			614-249-1545 (Area Code) (Telephone Number)		
	FinRpt@nationwide.com (E-mail Address)			866-315-1430 (FAX Number)		

OFFICERS

President & COO	Wesley Kim Austen	VP & Treasurer	Carol Lynn Dove
VP & Secretary	Robert William Horner III		

OTHER

Pamela Ann Biesecker	Sr VP-Head of Taxation	
----------------------	------------------------	--

DIRECTORS OR TRUSTEES

David Gerard Arango	Wesley Kim Austen	Mark Allen Berven
Martha Lovette Frye	Jeff Millard Rommel	

State of	Ohio	SS:
County of	Franklin	

The officers of this reporting entity being duly sworn, each depose and say that they are the described officers of said reporting entity, and that on the reporting period stated above, all of the herein described assets were the absolute property of the said reporting entity, free and clear from any liens or claims thereon, except as herein stated, and that this statement, together with related exhibits, schedules and explanations therein contained, annexed or referred to, is a full and true statement of all the assets and liabilities and of the condition and affairs of the said reporting entity as of the reporting period stated above, and of its income and deductions therefrom for the period ended, and have been completed in accordance with the NAIC Annual Statement Instructions and Accounting Practices and Procedures manual except to the extent that: (1) state law may differ; or, (2) that state rules or regulations require differences in reporting not related to accounting practices and procedures, according to the best of their information, knowledge and belief, respectively. Furthermore, the scope of this attestation by the described officers also includes the related corresponding electronic filing with the NAIC, when required, that is an exact copy (except for formatting differences due to electronic filing) of the enclosed statement. The electronic filing may be requested by various regulators in lieu of or in addition to the enclosed statement.

Wesley Kim Austen President & COO	Robert William Horner III VP & Secretary	Carol Lynn Dove VP & Treasurer
Subscribed and sworn to before me this		a. Is this an original filing? .....
day of January , 2012		b. If no,
		1. State the amendment number.....
		2. Date filed .....
		3. Number of pages attached.....

ANNUAL STATEMENT FOR THE YEAR 2011 OF THE ALLIED INSURANCE COMPANY OF AMERICA

ASSETS

	Current Year			Prior Year
	1 Assets	2 Nonadmitted Assets	3 Net Admitted Assets (Cols. 1 - 2)	4 Net Admitted Assets
1. Bonds (Schedule D) .....	248,240		248,240	
2. Stocks (Schedule D):				
2.1 Preferred stocks .....				
2.2 Common stocks .....				
3. Mortgage loans on real estate (Schedule B):				
3.1 First liens .....				
3.2 Other than first liens .....				
4. Real estate (Schedule A):				
4.1 Properties occupied by the company (less \$ ..... encumbrances) .....				
4.2 Properties held for the production of income (less \$ ..... encumbrances) .....				
4.3 Properties held for sale (less \$ ..... encumbrances) .....				
5. Cash (\$ ..... , Schedule E - Part 1), cash equivalents (\$ ..... , Schedule E - Part 2) and short-term investments (\$ ..... 5,524,587 , Schedule DA) .....	5,524,587		5,524,587	5,774,074
6. Contract loans (including \$ ..... premium notes) .....				
7. Derivatives (Schedule DB) .....				
8. Other invested assets (Schedule BA) .....				
9. Receivable for securities .....				
10. Securities lending reinvested collateral assets (Schedule DL) .....				
11. Aggregate write-ins for invested assets .....				
12. Subtotals, cash and invested assets (Lines 1 to 11) .....	5,772,827		5,772,827	5,774,074
13. Title plants less \$ ..... charged off (for Title insurers only) .....				
14. Investment income due and accrued .....	301		301	
15. Premiums and considerations:				
15.1 Uncollected premiums and agents' balances in the course of collection .....				
15.2 Deferred premiums, agents' balances and installments booked but deferred and not yet due (including \$ ..... earned but unbilled premiums) .....				
15.3 Accrued retrospective premiums .....				
16. Reinsurance:				
16.1 Amounts recoverable from reinsurers .....				
16.2 Funds held by or deposited with reinsured companies .....				
16.3 Other amounts receivable under reinsurance contracts .....	130		130	
17. Amounts receivable relating to uninsured plans .....				
18.1 Current federal and foreign income tax recoverable and interest thereon .....	87		87	
18.2 Net deferred tax asset .....				
19. Guaranty funds receivable or on deposit .....				
20. Electronic data processing equipment and software .....				
21. Furniture and equipment, including health care delivery assets (\$ ..... ) .....				
22. Net adjustment in assets and liabilities due to foreign exchange rates .....				
23. Receivables from parent, subsidiaries and affiliates .....				
24. Health care (\$ ..... ) and other amounts receivable .....				
25. Aggregate write-ins for other than invested assets .....	1,905		1,905	6
26. Total assets excluding Separate Accounts, Segregated Accounts and Protected Cell Accounts (Lines 12 to 25) .....	5,775,250		5,775,250	5,774,080
27. From Separate Accounts, Segregated Accounts and Protected Cell Accounts .....				
28. Total (Lines 26 and 27) .....	5,775,250		5,775,250	5,774,080
DETAILS OF WRITE-INS				
1101. ....				
1102. ....				
1103. ....				
1198. Summary of remaining write-ins for Line 11 from overflow page .....				
1199. Totals (Lines 1101 thru 1103 plus 1198)(Line 11 above)				
2501. Miscellaneous .....	1,905		1,905	6
2502. ....				
2503. ....				
2598. Summary of remaining write-ins for Line 25 from overflow page .....				
2599. Totals (Lines 2501 thru 2503 plus 2598)(Line 25 above)	1,905		1,905	6

LIABILITIES, SURPLUS AND OTHER FUNDS

	1 Current Year	2 Prior Year
1. Losses (Part 2A, Line 35, Column 8) .....		
2. Reinsurance payable on paid losses and loss adjustment expenses (Schedule F, Part 1, Column 6) .....		
3. Loss adjustment expenses (Part 2A, Line 35, Column 9) .....		
4. Commissions payable, contingent commissions and other similar charges .....		
5. Other expenses (excluding taxes, licenses and fees) .....		
6. Taxes, licenses and fees (excluding federal and foreign income taxes) .....		
7.1 Current federal and foreign income taxes (including \$ ..... on realized capital gains (losses)) .....		1,144
7.2 Net deferred tax liability .....	6	
8. Borrowed money \$ ..... and interest thereon \$ .....		
9. Unearned premiums (Part 1A, Line 38, Column 5) (after deducting unearned premiums for ceded reinsurance of \$ ..... and including warranty reserves of \$ ..... and accrued accident and health experience rating refunds including \$ ..... for medical loss ratio rebate per the Public Health Service Act) .....		
10. Advance premium .....		
11. Dividends declared and unpaid:		
11.1 Stockholders .....		
11.2 Policyholders .....		
12. Ceded reinsurance premiums payable (net of ceding commissions) .....		
13. Funds held by company under reinsurance treaties (Schedule F, Part 3, Column 19) .....		
14. Amounts withheld or retained by company for account of others .....		
15. Remittances and items not allocated .....		
16. Provision for reinsurance (Schedule F, Part 7) .....		
17. Net adjustments in assets and liabilities due to foreign exchange rates .....		
18. Drafts outstanding .....		
19. Payable to parent, subsidiaries and affiliates .....	3,164	703
20. Derivatives .....		
21. Payable for securities .....		
22. Payable for securities lending .....		
23. Liability for amounts held under uninsured plans .....		
24. Capital notes \$ ..... and interest thereon \$ .....		
25. Aggregate write-ins for liabilities .....		
26. Total liabilities excluding protected cell liabilities (Lines 1 through 25) .....	3,170	1,847
27. Protected cell liabilities .....		
28. Total liabilities (Lines 26 and 27) .....	3,170	1,847
29. Aggregate write-ins for special surplus funds .....		
30. Common capital stock .....	1,000,000	1,000,000
31. Preferred capital stock .....		
32. Aggregate write-ins for other than special surplus funds .....		
33. Surplus notes .....		
34. Gross paid in and contributed surplus .....	4,000,000	4,000,000
35. Unassigned funds (surplus) .....	772,080	772,233
36. Less treasury stock, at cost:		
36.1 ..... shares common (value included in Line 30 \$ ..... ) .....		
36.2 ..... shares preferred (value included in Line 31 \$ ..... ) .....		
37. Surplus as regards policyholders (Lines 29 to 35, less 36) (Page 4, Line 39) .....	5,772,080	5,772,233
38. TOTALS (Page 2, Line 28, Col. 3) .....	5,775,250	5,774,080
DETAILS OF WRITE-INS		
2501. ....		
2502. ....		
2503. ....		
2598. Summary of remaining write-ins for Line 25 from overflow page .....		
2599. Totals (Lines 2501 thru 2503 plus 2598)(Line 25 above)		
2901. ....		
2902. ....		
2903. ....		
2998. Summary of remaining write-ins for Line 29 from overflow page .....		
2999. Totals (Lines 2901 thru 2903 plus 2998)(Line 29 above)		
3201. ....		
3202. ....		
3203. ....		
3298. Summary of remaining write-ins for Line 32 from overflow page .....		
3299. Totals (Lines 3201 thru 3203 plus 3298)(Line 32 above)		

STATEMENT OF INCOME

	1 Current Year	2 Prior Year
UNDERWRITING INCOME		
1. Premiums earned (Part 1, Line 35, Column 4)		
DEDUCTIONS:		
2. Losses incurred (Part 2, Line 35, Column 7)		
3. Loss adjustment expenses incurred (Part 3, Line 25, Column 1)		
4. Other underwriting expenses incurred (Part 3, Line 25, Column 2)		1,156
5. Aggregate write-ins for underwriting deductions		
6. Total underwriting deductions (Lines 2 through 5)		1,156
7. Net income of protected cells		
8. Net underwriting gain or (loss) (Line 1 minus Line 6 plus Line 7)		(1,156)
INVESTMENT INCOME		
9. Net investment income earned (Exhibit of Net Investment Income, Line 17)	(233)	4,429
10. Net realized capital gains or (losses) less capital gains tax of \$ (Exhibit of Capital Gains (Losses) )		
11. Net investment gain (loss) (Lines 9 + 10)	(233)	4,429
OTHER INCOME		
12. Net gain (loss) from agents' or premium balances charged off (amount recovered \$ amount charged off \$ )		
13. Finance and service charges not included in premiums		
14. Aggregate write-ins for miscellaneous income		
15. Total other income (Lines 12 through 14)		
16. Net income before dividends to policyholders, after capital gains tax and before all other federal and foreign income taxes (Lines 8 + 11 + 15)	(233)	3,273
17. Dividends to policyholders		
18. Net income, after dividends to policyholders, after capital gains tax and before all other federal and foreign income taxes (Line 16 minus Line 17)	(233)	3,273
19. Federal and foreign income taxes incurred	(87)	1,144
20. Net income (Line 18 minus Line 19)(to Line 22)	(146)	2,129
CAPITAL AND SURPLUS ACCOUNT		
21. Surplus as regards policyholders, December 31 prior year (Page 4, Line 39, Column 2)	5,772,233	5,770,104
22. Net income (from Line 20)	(146)	2,129
23. Net transfers (to) from Protected Cell accounts		
24. Change in net unrealized capital gains or (losses) less capital gains tax of \$		
25. Change in net unrealized foreign exchange capital gain (loss)		
26. Change in net deferred income tax	(7)	
27. Change in nonadmitted assets (Exhibit of Nonadmitted Assets, Line 28, Col. 3)		
28. Change in provision for reinsurance (Page 3, Line 16, Column 2 minus Column 1)		
29. Change in surplus notes		
30. Surplus (contributed to) withdrawn from protected cells		
31. Cumulative effect of changes in accounting principles		
32. Capital changes:		
32.1 Paid in		
32.2 Transferred from surplus (Stock Dividend)		
32.3 Transferred to surplus		
33. Surplus adjustments:		
33.1 Paid in		
33.2 Transferred to capital (Stock Dividend)		
33.3 Transferred from capital		
34. Net remittances from or (to) Home Office		
35. Dividends to stockholders		
36. Change in treasury stock (Page 3, Lines 36.1 and 36.2, Column 2 minus Column 1)		
37. Aggregate write-ins for gains and losses in surplus		
38. Change in surplus as regards policyholders for the year (Lines 22 through 37)	(153)	2,129
39. Surplus as regards policyholders, December 31 current year (Line 21 plus Line 38) (Page 3, Line 37)	5,772,080	5,772,233
DETAILS OF WRITE-INS		
0501.		
0502.		
0503.		
0598. Summary of remaining write-ins for Line 5 from overflow page		
0599. Totals (Lines 0501 thru 0503 plus 0598)(Line 5 above)		
1401.		
1402.		
1403.		
1498. Summary of remaining write-ins for Line 14 from overflow page		
1499. Totals (Lines 1401 thru 1403 plus 1498)(Line 14 above)		
3701.		
3702.		
3703.		
3798. Summary of remaining write-ins for Line 37 from overflow page		
3799. Totals (Lines 3701 thru 3703 plus 3798)(Line 37 above)		

CASH FLOW

	1	2
	Current Year	Prior Year
Cash from Operations		
1. Premiums collected net of reinsurance .....		
2. Net investment income .....	(551)	4,429
3. Miscellaneous income .....	(130)	
4. Total (Lines 1 through 3) .....	(681)	4,429
5. Benefit and loss related payments .....		
6. Net transfers to Separate Accounts, Segregated Accounts and Protected Cell Accounts .....		
7. Commissions, expenses paid and aggregate write-ins for deductions .....		1,156
8. Dividends paid to policyholders .....		
9. Federal and foreign income taxes paid (recovered) net of \$ ..... tax on capital gains (losses) .....	1,145	164,337
10. Total (Lines 5 through 9) .....	1,145	165,493
11. Net cash from operations (Line 4 minus Line 10) .....	(1,826)	(161,064)
Cash from Investments		
12. Proceeds from investments sold, matured or repaid:		
12.1 Bonds .....		
12.2 Stocks .....		
12.3 Mortgage loans .....		
12.4 Real estate .....		
12.5 Other invested assets .....		
12.6 Net gains or (losses) on cash, cash equivalents and short-term investments .....		
12.7 Miscellaneous proceeds .....		
12.8 Total investment proceeds (Lines 12.1 to 12.7) .....		
13. Cost of investments acquired (long-term only):		
13.1 Bonds .....	248,223	
13.2 Stocks .....		
13.3 Mortgage loans .....		
13.4 Real estate .....		
13.5 Other invested assets .....		
13.6 Miscellaneous applications .....		
13.7 Total investments acquired (Lines 13.1 to 13.6) .....	248,223	
14. Net increase (decrease) in contract loans and premium notes .....		
15. Net cash from investments (Line 12.8 minus Line 13.7 minus Line 14) .....	(248,223)	
Cash from Financing and Miscellaneous Sources		
16. Cash provided (applied):		
16.1 Surplus notes, capital notes .....		
16.2 Capital and paid in surplus, less treasury stock .....		
16.3 Borrowed funds .....		
16.4 Net deposits on deposit-type contracts and other insurance liabilities .....		
16.5 Dividends to stockholders .....		
16.6 Other cash provided (applied) .....	562	211
17. Net cash from financing and miscellaneous sources (Lines 16.1 to 16.4 minus Line 16.5 plus Line 16.6) .....	562	211
RECONCILIATION OF CASH, CASH EQUIVALENTS AND SHORT-TERM INVESTMENTS		
18. Net change in cash, cash equivalents and short-term investments (Line 11, plus Lines 15 and 17) .....	(249,487)	(160,853)
19. Cash, cash equivalents and short-term investments:		
19.1 Beginning of year .....	5,774,074	5,934,927
19.2 End of period (Line 18 plus Line 19.1) .....	5,524,587	5,774,074

Note: Supplemental disclosures of cash flow information for non-cash transactions:

--	--	--

Underwriting and Investment Exhibit - Part 1 - Premiums Earned

**N O N E**

Underwriting and Investment Exhibit - Part 1A - Recapitulation of all Premiums

**N O N E**

Underwriting and Investment Exhibit - Part 1B - Premiums Written

**N O N E**

Underwriting and Investment Exhibit - Part 2 - Losses Paid and Incurred

**N O N E**

Underwriting and Investment Exhibit - Part 2A - Unpaid Losses and Loss Adjustment Expenses

**N O N E**

UNDERWRITING AND INVESTMENT EXHIBIT

PART 3 - EXPENSES

	1	2	3	4
	Loss Adjustment Expenses	Other Underwriting Expenses	Investment Expenses	Total
1. Claim adjustment services:				
1.1 Direct .....				
1.2 Reinsurance assumed .....				
1.3 Reinsurance ceded .....				
1.4 Net claim adjustment service (1.1 + 1.2 - 1.3) .....				
2. Commission and brokerage:				
2.1 Direct excluding contingent .....				
2.2 Reinsurance assumed, excluding contingent .....				
2.3 Reinsurance ceded, excluding contingent .....				
2.4 Contingent - direct .....				
2.5 Contingent - reinsurance assumed .....				
2.6 Contingent - reinsurance ceded .....				
2.7 Policy and membership fees .....				
2.8 Net commission and brokerage (2.1 + 2.2 - 2.3 + 2.4 + 2.5 - 2.6 + 2.7) .....				
3. Allowances to managers and agents .....				
4. Advertising .....			1	1
5. Boards, bureaus and associations .....				
6. Surveys and underwriting reports .....				
7. Audit of assureds' records .....				
8. Salary and related items:				
8.1 Salaries .....			3,088	3,088
8.2 Payroll taxes .....				
9. Employee relations and welfare .....			504	504
10. Insurance .....				
11. Directors' fees .....			15	15
12. Travel and travel items .....			78	78
13. Rent and rent items .....			181	181
14. Equipment .....			324	324
15. Cost or depreciation of EDP equipment and software .....			28	28
16. Printing and stationery .....			2	2
17. Postage, telephone and telegraph, exchange and express .....			6	6
18. Legal and auditing .....			81	81
19. Totals (Lines 3 to 18) .....			4,308	4,308
20. Taxes, licenses and fees:				
20.1 State and local insurance taxes deducting guaranty association credits of \$ .....				
20.2 Insurance department licenses and fees .....				
20.3 Gross guaranty association assessments .....				
20.4 All other (excluding federal and foreign income and real estate) .....				
20.5 Total taxes, licenses and fees (20.1 + 20.2 + 20.3 + 20.4) .....				
21. Real estate expenses .....				
22. Real estate taxes .....				
23. Reimbursements by uninsured plans .....				
24. Aggregate write-ins for miscellaneous expenses .....			48	48
25. Total expenses incurred .....			4,356	4,356
26. Less unpaid expenses - current year .....				
27. Add unpaid expenses - prior year .....				
28. Amounts receivable relating to uninsured plans, prior year .....				
29. Amounts receivable relating to uninsured plans, current year .....				
30. TOTAL EXPENSES PAID (Lines 25 - 26 + 27 - 28 + 29) .....			4,356	4,356
DETAILS OF WRITE-INS				
2401. Other expenses .....			48	48
2402. ....				
2403. ....				
2498. Summary of remaining write-ins for Line 24 from overflow page .....				
2499. Totals (Lines 2401 thru 2403 plus 2498)(Line 24 above) .....			48	48

(a) Includes management fees of \$ ..... to affiliates and \$ ..... to non-affiliates.

ANNUAL STATEMENT FOR THE YEAR 2011 OF THE ALLIED INSURANCE COMPANY OF AMERICA

EXHIBIT OF NET INVESTMENT INCOME

		1	2
		Collected During Year	Earned During Year
1.	U.S. Government bonds .....	(a) .....(39)	.....261
1.1	Bonds exempt from U.S. tax .....	(a) .....	.....
1.2	Other bonds (unaffiliated) .....	(a) .....	.....
1.3	Bonds of affiliates .....	(a) .....	.....
2.1	Preferred stocks (unaffiliated) .....	(b) .....	.....
2.11	Preferred stocks of affiliates .....	(b) .....	.....
2.2	Common stocks (unaffiliated) .....	.....	.....
2.21	Common stocks of affiliates .....	.....	.....
3.	Mortgage loans .....	(c) .....	.....
4.	Real estate .....	(d) .....	.....
5.	Contract loans .....	.....	.....
6.	Cash, cash equivalents and short-term investments .....	(e) .....4,214	.....4,214
7.	Derivative instruments .....	(f) .....	.....
8.	Other invested assets .....	.....	.....
9.	Aggregate write-ins for investment income .....	.....	.....
10.	Total gross investment income .....	4,175	4,475
11.	Investment expenses .....	.....	(g) .....4,356
12.	Investment taxes, licenses and fees, excluding federal income taxes .....	.....	(g) .....
13.	Interest expense .....	.....	(h) .....352
14.	Depreciation on real estate and other invested assets .....	.....	(i) .....
15.	Aggregate write-ins for deductions from investment income .....	.....	.....
16.	Total deductions (Lines 11 through 15) .....	.....	4,708
17.	Net investment income (Line 10 minus Line 16) .....	.....	(233)
DETAILS OF WRITE-INS			
0901.	.....		
0902.	.....		
0903.	.....		
0998.	Summary of remaining write-ins for Line 9 from overflow page .....		
0999.	Totals (Lines 0901 thru 0903 plus 0998) (Line 9, above) .....		
1501.	.....		
1502.	.....		
1503.	.....		
1598.	Summary of remaining write-ins for Line 15 from overflow page .....		
1599.	Totals (Lines 1501 thru 1503 plus 1598) (Line 15, above) .....		

- (a) Includes \$ .....17 accrual of discount less \$ ..... amortization of premium and less \$ .....56 paid for accrued interest on purchases.
- (b) Includes \$ ..... accrual of discount less \$ ..... amortization of premium and less \$ ..... paid for accrued dividends on purchases.
- (c) Includes \$ ..... accrual of discount less \$ ..... amortization of premium and less \$ ..... paid for accrued interest on purchases.
- (d) Includes \$ ..... for company's occupancy of its own buildings; and excludes \$ ..... interest on encumbrances.
- (e) Includes \$ ..... accrual of discount less \$ ..... amortization of premium and less \$ ..... paid for accrued interest on purchases.
- (f) Includes \$ ..... accrual of discount less \$ ..... amortization of premium.
- (g) Includes \$ ..... investment expenses and \$ ..... investment taxes, licenses and fees, excluding federal income taxes, attributable to segregated and Separate Accounts.
- (h) Includes \$ ..... interest on surplus notes and \$ ..... interest on capital notes.
- (i) Includes \$ ..... depreciation on real estate and \$ ..... depreciation on other invested assets.

EXHIBIT OF CAPITAL GAINS (LOSSES)

		1	2	3	4	5
		Realized Gain (Loss) On Sales or Maturity	Other Realized Adjustments	Total Realized Capital Gain (Loss) (Columns 1 + 2)	Change in Unrealized Capital Gain (Loss)	Change in Unrealized Foreign Exchange Capital Gain (Loss)
1.	U.S. Government bonds .....					
1.1	Bonds exempt from U.S. tax .....					
1.2	Other bonds (unaffiliated) .....					
1.3	Bonds of affiliates .....					
2.1	Preferred stocks (unaffiliated) .....					
2.11	Preferred stocks of affiliates .....					
2.2	Common stocks (unaffiliated) .....					
2.21	Common stocks of affiliates .....					
3.	Mortgage loans .....					
4.	Real estate .....					
5.	Contract loans .....					
6.	Cash, cash equivalents and short-term investments .....					
7.	Derivative instruments .....					
8.	Other invested assets .....					
9.	Aggregate write-ins for capital gains (losses) .....					
10.	Total capital gains (losses) .....					
DETAILS OF WRITE-INS						
0901.	.....					
0902.	.....					
0903.	.....					
0998.	Summary of remaining write-ins for Line 9 from overflow page .....					
0999.	Totals (Lines 0901 thru 0903 plus 0998) (Line 9, above) .....					



Exhibit 1 - Analysis of Non-Admitted Assets and Related Items

N O N E

## NOTES TO FINANCIAL STATEMENTS

### Note 1 - Summary of Significant Accounting Policies

#### A. Accounting Practices

The accompanying statutory financial statements of Allied Insurance Company of America (the Company) have been prepared in conformity with accounting practices prescribed or permitted by the National Association of Insurance Commissioners (NAIC) and the State of Ohio.

The Ohio Insurance Department recognizes only statutory accounting practices (SAP) prescribed or permitted by the State of Ohio for determining and reporting the financial condition and results of operations of an insurance company, as well as, determining its solvency under the Ohio Insurance law. The National Association of Insurance Commissioners' (NAIC) *Accounting Practices and Procedures Manual* (NAIC SAP) has been adopted as a component of prescribed or permitted practices by the State of Ohio.

#### B. Use of Estimates in the Preparation of the Financial Statements

The preparation of financial statements in conformity with Statutory Accounting Principles requires management to make estimates and assumptions that affect the reported amounts of assets and liabilities. It also requires disclosure of contingent assets and liabilities at the date of the financial statements and the reported amounts of revenue and expenses during the period. Actual results could differ from those estimates.

#### C. Accounting Policies

**Federal Income Taxes.** The Company's parent, Nationwide Mutual Insurance Company (Mutual), files a consolidated federal income tax return, which includes all eligible U.S. affiliates. In this regard, the included subsidiaries pay to Mutual, the amount which would have been payable on a separate return basis without regard to the alternative minimum tax. Mutual pays tax due on a consolidated basis.

The Company provides for federal income taxes based on amounts the Company believes it will ultimately owe. Inherent in the provision for federal income taxes are estimates regarding the deductibility of certain expenses and the realization of certain tax credits. In the event the ultimate deductibility of certain expenses or the realization of certain tax credits differs from estimates, the Company may be required to change the provision for federal income taxes recorded in the financial statements which could be significant. Management has used best estimates to establish reserves based on current facts and circumstances regarding tax exposure items where the ultimate deductibility is open to interpretation.

In accordance with guidance specified in the NAIC SAP, the Company utilizes the asset and liability method of accounting for taxes. Under this method, deferred tax assets, net of any non-admitted portion, and deferred tax liabilities are recognized for the future tax consequences attributable to differences between the financial statement carrying amounts of existing assets and liabilities and their respective tax basis. Deferred tax assets and liabilities are measured using enacted tax rates expected to apply to taxable income in the years in which those temporary differences are expected to be recovered or settled. The change in deferred taxes is charged directly to surplus.

**Reinsurance Recoverables.** In the normal course of business, the Company reinsures, or cedes, a portion of its insurance risks with other companies in order to reduce net liability on individual risks, to provide protection against the potential impact of large losses, and to obtain greater diversification of risks. The ceding of risk, however, does not discharge the Company from its primary obligation to the policyholder. Reinsurance recoverables include amounts billed to reinsurers on losses paid. Estimates of amounts expected to be recovered from reinsurers that have not yet been paid on unpaid losses are estimated in a manner consistent with the claim liability associated with the underlying policy and are recorded as reductions in total loss and loss adjustment expense (LAE) reserves. Such reinsurance recoverables and reserve reductions partially offset claim costs in the Company's statutory statements of operations and are included as an offset to losses and LAE's in the accompanying statutory statements of admitted assets, liabilities and surplus. The Company regularly evaluates and monitors the financial condition of its reinsurers under voluntary reinsurance arrangements to minimize its exposure to significant losses from reinsurer insolvencies. There are no contracts using deposit accounting as of December 31, 2011 and 2010.

Statutory accounting principles require recognition of a minimum liability for certain unsecured or overdue reinsurance recoverables (100% for unsecured unauthorized reinsurance and up to 20% recoverables from certain reinsurers more than 90 days overdue on their payments). As of December 31, 2011 and 2010, the Company had no provision related to conditional reinsurance recoverables.

In addition, the Company uses the following accounting policies:

1. Short-term investments are carried at amortized cost, which approximates fair value. Short-term investment transactions are recorded on trade date. Interest income is recognized when earned.
2. Bonds, excluding loan-backed and structured securities, are stated at amortized cost except those with a NAIC designation of "3" or below which are stated at the lower of amortized cost or fair value. Bond transactions are recorded on trade date, with the exception of private placement bonds, which are recorded on settlement date. Amortization of purchase premiums and discounts is calculated using the effective yield method. Realized gains and losses are determined on a specific identification basis. For bonds for which active market quotations are available, the Company generally uses independent pricing services to assist in determining the fair value.

Management regularly reviews its bond portfolio to evaluate the necessity of recording impairment losses for other-than-temporary declines in fair value. Many criteria may be considered in this review process including, but not limited to, the timing and amount of cash flows, the ability of the issuer to meet its obligations, financial prospects of the issuer, quality of any underlying collateral, current relevant economic conditions that may impact issuers, severity of the decline in fair value, the Company's intent to sell or the intent and ability to hold the security until its value recovers. For bonds (excluding loan-backed and structured securities) determined to be other-than-temporarily impaired, the cost basis is written down to fair value and the amount of the write-down is recorded as a realized loss.

3. Common stocks, other than investments in stocks of subsidiaries and affiliates (see Note C. 7 below), are stated at fair value. Common stock transactions are recorded on trade date. Realized gains and losses are determined on a specific identification basis. Dividends are recognized when declared. For marketable stocks for which active market quotations are available, the Company generally uses independent pricing services to assist in determining the fair value.

## NOTES TO FINANCIAL STATEMENTS

4. Preferred stocks redeemable at par and rated investment grade are stated at amortized cost. Perpetual preferred stocks rated investment grade are stated at fair value. Non-investment grade preferred stocks are stated at the lower of amortized value or fair value. Preferred stock transactions are recorded on trade date. Realized gains and losses are determined on a specific identification basis. Interest income is recognized when earned while dividends are recognized when declared. Preferred stocks not carried at fair value, which are in an unrealized loss position, are evaluated for impairment based on the timing of any anticipated recovery in value and the length of time in a loss position. For declines in value considered to be other-than-temporary, a realized loss to fair value is recorded. For marketable preferred stocks, for which active market quotations are available, the Company generally uses independent pricing services to assist in determining the fair value.
5. Mortgage loans are carried at the unpaid principal balance adjusted for premiums, discounts and certain deferred loan origination and commitment fees, less a valuation allowance. The valuation allowance for mortgage loans reflects management's best estimate of probable credit losses. Management's periodic evaluation of the adequacy of the valuation allowance for losses is based on past loan loss experience, known and inherent risks in the portfolio, adverse situations that may affect the borrower's ability to repay, the estimated value of the underlying collateral, current economic conditions, composition of the loan portfolio and other relevant factors. The Company maintains a valuation allowance for estimated credit losses on mortgage loans which is comprised of specific and non-specific reserves.

Specific reserves for impaired mortgage loans established based on a review by portfolio managers. Mortgage loans are considered impaired when, based on current information and events, it is probable that the Company will be unable to collect all amounts due according to the contractual terms of the loan agreement. When management determines that a loan is impaired, a provision for loss is established equal to either the difference between the carrying value and the present value of expected future cash flows discounted at the loan's effective interest rate or the fair value of the collateral if the loan is collateral dependent.

The non-specific reserve is established for probable losses inherent in the mortgage loan portfolio as of the balance sheet date but not yet specifically identified. The non-specific reserve is based on past loan loss experience, inherent risks in the portfolio, current economic conditions, composition of the loan portfolio and other relevant factors.

Changes in the non-specific reserve are recorded directly in surplus, while changes in the specific reserves are recorded in realized losses.

6. Loan-backed and structured securities (collectively, loan-backed securities) are stated at amortized cost except those with an initial NAIC designation of "3" or below which are stated at the lower of amortized cost or fair value. Amortization of purchase premiums and discounts is calculated using the effective yield method. The Company periodically updates its estimates of cash flows, including new prepayment assumptions, for loan-backed securities. The retrospective adjustment method is used to value loan-backed securities where the collection of all contractual cash flows is probable. For loan-backed securities where the collection of all contractual cash flows is not probable, the Company, (a) recognizes the accretable yield over the life of the loan backed security as determined at the acquisition or transaction date, (b) continues to estimate cash flows expected to be collected at least quarterly, and (c) recognizes an other-than-temporary impairment loss if the loan-backed security is impaired (i.e., the fair value is less than the amortized cost basis) and there is a decrease in the cash flows expected to be collected. If the Company intends to sell an impaired loan-backed security or does not have the intent and ability to retain the impaired loan-backed security for a period of time sufficient to recover the amortized cost basis, an other-than-temporary impairment has occurred. In these situations, the other-than-temporary impairment loss recognized is the difference between the amortized cost basis and fair value. If the Company does not expect to recover the entire amortized cost basis when compared to the present value of cash flows expected to be collected, it cannot assert that it has the ability to recover the loan-backed security's amortized cost basis even though it has no intention to sell and has the intent and ability to retain the loan-backed security. Therefore an other-than-temporary impairment has occurred and a realized loss is recognized for the non-interest related decline, which is calculated as the difference between the loan-backed security's amortized cost basis and the present value of cash flows expected to be collected.

For situations where an other-than-temporary impairment is recognized, the previous amortized cost basis less the other-than-temporary impairment recognized as a realized loss becomes the new cost basis.

Loan-backed security transactions are recorded on the trade date. Realized gains and losses are determined on a specific identification basis. For loan-backed securities for which active market quotations are available, the Company generally uses independent pricing services to assist in determining the fair value.

7. Investments in subsidiary and affiliated companies are stated as follows:  
  
Not applicable.
8. Investments in joint ventures and partnerships are accounted for using the equity method of accounting. Changes in carrying value as a result of the equity method are reflected as net unrealized capital gains and losses as a direct adjustment to surplus. Realized gains and losses are generally recognized through income at the time of disposal or when operating distributions are received. Management reviews the portfolio for the need to record impairments based on the expected ability to recover unrealized losses and the intent to hold the investment until recovery. The reviews include evaluating the current and expected earnings of the individual investments. Other-than-temporary impairment losses are recorded on other invested assets when indicators of impairment are present and are charged to net realized gains and losses.
9. Accounting for derivatives  
  
Not applicable.
10. Insurance premiums are generally earned ratably over the policy term. The liability for unearned premiums represents the portion of premiums written relating to the unexpired terms of coverage. Such reserves are computed by pro rata methods for direct business and are based on reports received from ceding companies for reinsurance assumed. Premiums in course of collection represent agent balances and uncollected premiums from policyholders for current policies in force and policy premiums assumed from others, including amounts placed with affiliates. As of December 31, 2011 and 2010, the Company had no liabilities related to premium deficiency reserves. The Company includes anticipated investment income when calculating its premium deficiency reserves, in accordance with SSAP No. 53, Property-Casualty Contracts – Premiums.

## NOTES TO FINANCIAL STATEMENTS

11. The Company establishes losses and loss expense reserves for reported claims and claims incurred but not yet reported. Estimating the liability for losses and loss expense reserves involves significant judgment and multiple assumptions. Management considers the Company's experience with similar claims, historical trends, economic factors and judicial, legislative and regulatory changes in establishing reserves. The Company's losses and loss expense reserves are recorded net of reinsurance and amounts expected to be received from salvage (the amount recovered from property after the Company pays for a total loss) and subrogation (the right to recover payments from third parties).

Assumptions and estimates for losses and loss expense reserves are updated as new information becomes available. Due to the inherent uncertainty in estimating losses and loss expense reserves, the actual cost of settling claims may differ materially from recorded amounts. Changes in losses and loss expense reserve estimates are included in results of operations in the period the estimates are revised.

12. The Company has a written capitalization policy for prepaid expenses and purchases of items such as electronic data processing equipment, software, furniture, vehicles, other equipment and leasehold improvements. The Company has not modified its capitalization policy from the prior period.
13. The Company does not write major medical insurance with prescription drug coverage.

### **Note 2 - Accounting Changes and Corrections of Errors**

#### A. Accounting Changes

##### **Adopted Accounting Standards**

On December 31, 2011, the Company adopted revisions to SSAP No. 5, *Liabilities, Contingencies and Impairments of Assets* (SSAP No. 5R) which require insurance entities to recognize, at inception of a guarantee, a liability for the obligations it has undertaken in issuing the guarantee, even if the likelihood of having to make payments under the guarantee is remote. The revised guidance does not require liability recognition for guarantees made to or on behalf of direct or indirect wholly-owned insurance and non-insurance subsidiaries or for guarantees considered unlimited. The Company also adopted additional revisions related to disclosure requirements of SSAP No. 25, *Accounting for and Disclosures about Transactions with Affiliated and Other Related Parties* to correspond with SSAP No. 5R. The guidance is effective for all guarantees issued or outstanding as of December 31, 2011, and disclosure of all guarantees must be reported annually. Refer to Note 14 for the required disclosures and financial impact of this guidance.

On January 1, 2011, the Company adopted changes to the definition of loan-backed and structured securities within SSAP No. 43R, *Loan-backed and Structured Securities*. These changes required certain securities to be reclassified into the loan-backed and structured securities classification and resulted in an immaterial impact to the Company upon adoption. Refer to Note 5 for required disclosures and financial impact.

On December 31, 2009, the Company adopted temporary guidance in SSAP No. 10R, *Income Taxes Revised – A Temporary Replacement of SSAP No. 10*, that requires additional disclosures related to tax planning strategies and provides an election for a qualifying life insurance company to increase within its deferred tax asset admissibility calculation the reversal period from one to three years and its limitation from 10% of statutory capital and surplus to 15%. This guidance is effective for interim and annual reporting periods through December 31, 2011, and will be replaced with the adoption of SSAP No. 101, *Income Taxes*. Refer to Note 9 for the required disclosures and financial impact.

##### **Pending Accounting Standards**

On January 1, 2012, the Company adopted a new standard, SSAP No. 101, *Income Taxes*, which supersedes SSAP No. 10R, *Income Taxes Revised – A Temporary Replacement of SSAP No. 10*. The standard applies a 'more likely than not' threshold for the recognition of federal and foreign tax loss contingencies and establishes a new framework for determining the admissibility of deferred tax assets (DTA). The framework sets a three year limit on loss carryback provisions, introduces guardrails for determining the realization period and percentage of capital and surplus companies may use to determine DTA admissibility, and establishes parameters around offsetting DTAs against deferred tax liabilities (DTL) as it relates to the admissibility of a DTA. The standard also adopts new disclosure requirements related to tax planning strategies, the amounts and components used to determine admissible DTA amounts, and information about reasonably possible increases in the total liability for any federal or foreign income tax loss contingencies within twelve months of the reporting date. The Company is currently in the process of determining the impact of adoption of this standard.

Correction of Error

Not applicable.

### **Note 3 - Business Combinations and Goodwill**

Not applicable.

### **Note 4 - Discontinued Operations**

Not applicable.

### **Note 5 - Investments**

#### A. Mortgage Loans

Not applicable.

#### B. Troubled Debt Restructuring for Creditors

Not applicable.

#### C. Reverse Mortgages

Not applicable.

#### D. Loan-Backed Securities

1. Prepayment assumptions are generally obtained using a model provided by a third-party vendor.

NOTES TO FINANCIAL STATEMENTS

2. The following table summarizes by quarter other-than-temporary impairments for loan-backed securities recorded during the year because the Company had either the intent to sell the securities or the inability or lack of intent to retain as cited in the table:

	(1) Amortized Cost Basis Before Other-than- Temporary Impairment	(2) Other-than- Temporary Impairment Recognized in Loss	(3)  Fair Value 1 - 2
OTTI recognized 1st Quarter			
a. Intent to Sell	\$ -	\$ -	\$ -
b. Inability or lack of intent to retain the investment in the security for a period of time sufficient to recover the amortized cost basis	\$ -	\$ -	\$ -
c. Total 1st Quarter	\$ -	\$ -	\$ -
OTTI recognized 2nd Quarter			
d. Intent to Sell	\$ -	\$ -	\$ -
e. Inability or lack of intent to retain the investment in the security for a period of time sufficient to recover the amortized cost basis	\$ -	\$ -	\$ -
f. Total 2nd Quarter	\$ -	\$ -	\$ -
OTTI recognized 3rd Quarter			
g. Intent to Sell	\$ -	\$ -	\$ -
h. Inability or lack of intent to retain the investment in the security for a period of time sufficient to recover the amortized cost basis	\$ -	\$ -	\$ -
i. Total 3rd Quarter	\$ -	\$ -	\$ -
OTTI recognized 4th Quarter			
j. Intent to Sell	\$ -	\$ -	\$ -
k. Inability or lack of intent to retain the investment in the security for a period of time sufficient to recover the amortized cost basis	\$ -	\$ -	\$ -
l. Total 4th Quarter	\$ -	\$ -	\$ -
m. Annual Aggregate Total		\$ -	

3. The following table summarizes other-than-temporary impairments for loan-backed securities held at the end of the quarter based on the fact that the present value of projected cash flows expected to be collected was less than the amortized cost of the securities:

(1)	(2)	(3)	(4)	(5)	(6)	(7)
CUSIP	Amortized Cost Before Current Period OTTI	Present Value of Projected Cash Flows	Recognized Other-Than-Temporary Impairment	Amortized Cost After Other-Than-Temporary Impairment	Fair Value at time of OTTI	Date of Financial Statement Where Reported
Total			\$ -			

4. All impaired securities (fair value is less than cost or amortized cost) for which an other-than-temporary impairment has not been recognized in earnings as a realized loss (including securities with a recognized other-than-temporary impairment for non-interest related declines when a non-recognized interest related impairment remains):

a. The aggregate amount of unrealized losses:		
	1. Less than 12 Months	\$ -
	2. 12 Months or Longer	\$ -
b. The aggregate related fair value of securities with unrealized losses:		
	1. Less than 12 Months	\$ -
	2. 12 Months or Longer	\$ -

5. The Company reviews all loan-backed and structured securities in which the fair value of the given security is less than the amortized cost to determine if a given security is other-than-temporarily impaired. The Company examines characteristics of the underlying collateral, such as delinquency and default rates, the quality of the underlying borrower, the type of collateral in the pool, the vintage year of the collateral, subordination levels within the structure of the collateral pool, the quality of any credit guarantors, to determine the cash flows expected to be received for the security.

NOTES TO FINANCIAL STATEMENTS

If the severity and duration of the security's unrealized loss indicates a risk of an other-than-temporary impairment, then the Company will evaluate if the amortized cost basis of the security will be recovered by comparing the present value of the cash flows expected to be received for the given security with the amortized cost basis of the security. If the present value of cash flows is greater than the amortized cost basis of a security then the security is deemed not to be other-than-temporarily impaired.

- E. Repurchase Agreements and Securities Lending Transactions
1. For repurchase agreements, Company policy requires a minimum of 102% of the fair value of securities purchased under repurchase agreements to be maintained as collateral. Cash collateral received is invested in short-term investments and the offsetting collateral liability is included in aggregate write-ins for liabilities. There were no open repurchase agreements as of year-end. The Company does not participate in securities lending.

2. No assets were pledged as collateral as of year-end.

3. The Company has not accepted collateral as of year-end.

4. Not applicable.

5. Not applicable.
- F. Real Estate
- Not applicable.
- G. Low-Income Housing Tax Credits
- Not applicable.

Note 6 - Joint Ventures, Partnerships and Limited Liability Companies

- A. Detail for Those Greater than 10% of Admitted Assets
- Not applicable.
- B. Write-downs for Impairments
- Not applicable.

Note 7 - Investment Income

- A. Accrued Investment Income
- The Company nonadmits investment income due and accrued if amounts are over 90 days past due with the exception of mortgage loans in default which are nonadmitted if amounts are over 180 days past due.
- B. Amounts Nonadmitted
- The total amount of investment income nonadmitted at December 31, 2011 is \$0.

Note 8 - Derivative Instruments

Not applicable.

Note 9 - Income Taxes

A. The net deferred tax asset/(liability) at December 31 and the change from the prior year are comprised of the following components:

	12/31/2011			12/31/2010			Change		
	Ordinary	Capital	Total	Ordinary	Capital	Total	Ordinary	Capital	Total
(1a) Gross deferred tax assets	-	-	-	-	-	-	-	-	-
(1b) Statutory valuation allowance adjustment	-	-	-	-	-	-	-	-	-
(1c) Adjusted gross deferred tax assets	-	-	-	-	-	-	-	-	-
(2) Total deferred tax liabilities	-	6	6	-	-	-	-	6	6
(3) Net deferred tax asset (liability)	-	(6)	(6)	-	-	-	-	(6)	(6)
(4) Deferred tax assets nonadmitted	-	-	-	-	-	-	-	-	-
(5) Net admitted deferred tax asset (liability)	-	(6)	(6)	-	-	-	-	(6)	(6)

The change in deferred income taxes reported in surplus before consideration of nonadmitted assets is comprised of the following components:

	12/31/2011			12/31/2010			Change		
	Ordinary	Capital	Total	Ordinary	Capital	Total	Ordinary	Capital	Total
(6) Net deferred tax asset (liability)	-	(6)	(6)	-	-	-	-	(6)	(6)
(7) Tax-effect of unrealized gains and losses	-	-	-	-	-	-	-	-	-
(8) Prior period adjustment	-	-	-	-	-	-	-	-	-
(9) Net tax effect without unrealized gains and losses and prior period adjustment	-	(6)	(6)	-	-	-	-	(6)	(6)
(10) Change in deferred income tax									(6)

(11) The Company has not elected to admit deferred tax assets pursuant to SSAP No. 10R, paragraph 10e for the reporting period 2011 and 2010.

(12) Admission Calculation Components - SSAP No. 10R, Paragraphs 10.a., 10.b., and 10.c.:

	12/31/2011			12/31/2010			Change		
	Ordinary	Capital	Total	Ordinary	Capital	Total	Ordinary	Capital	Total
SSAP No. 10R, Paragraph 10.a.	-	-	-	-	-	-	-	-	-
SSAP No. 10R, Paragraph 10.b.	-	-	-	-	-	-	-	-	-
(the lesser of paragraph 10.b.i. and 10.b.ii. below)									
SSAP No. 10R, Paragraph 10.b.i.	-	-	-	-	-	-	-	-	-
SSAP No. 10R, Paragraph 10.b.ii.	-	-	-	-	-	-	-	-	-
Paragraph 10.c	-	-	-	-	-	-	-	-	-
Total	\$ -	\$ -	\$ -	\$ -	\$ -	\$ -	\$ -	\$ -	\$ -

Admission Calculation Components - SSAP No. 10R, Paragraph 10.e.:

SSAP No. 10R, Paragraph 10.e.i.	-	-	-	-	-	-	-	-	-
SSAP No. 10R, Paragraph 10.e.ii.	-	-	-	-	-	-	-	-	-
(the lesser of paragraph 10.e.ii.a. and 10.e.ii.b. below)									
SSAP No. 10R, Paragraph 10.e.ii.a.	-	-	-	-	-	-	-	-	-
SSAP No. 10R, Paragraph 10.e.ii.b.	-	-	-	-	-	-	-	-	-
Paragraph 10.e.iii.	-	-	-	-	-	-	-	-	-
Total	\$ -	\$ -	\$ -	\$ -	\$ -	\$ -	\$ -	\$ -	\$ -

ANNUAL STATEMENT FOR THE YEAR 2011 OF THE ALLIED INSURANCE COMPANY OF AMERICA

NOTES TO FINANCIAL STATEMENTS

Used in SSAP No. 10R, Paragraph 10.d.

Total Adjusted Capital	\$	-	\$	-	\$	-
Authorized Control Level	\$	-	\$	-	\$	-

(13)	Ordinary Percent	12/31/2011 Capital Percent	Total Percent	Ordinary Percent	12/31/2010 Capital Percent	Total Percent	Ordinary Percent	Change Capital Percent	Total Percent
Impact of Tax Planning Strategies									
Adjusted Gross DTAs	0.00%	0.00%	0.00%	0.00%	0.00%	0.00%	0.00%	0.00%	0.00%
Net Admitted Adjusted Gross DTAs	0.00%	0.00%	0.00%	0.00%	0.00%	0.00%	0.00%	0.00%	0.00%

(14) Risk Based Capital Summary	Ordinary	12/31/2011 Capital	Total	Ordinary	12/31/2010 Capital	Total	Ordinary	Change Capital	Total
SSAP No. 10R, Paragraphs 10.a., 10.b., and 10.c.:									
Admitted DTAs	-	-	-	-	-	-	-	-	-
Admitted assets			-			-			-
Adjusted Statutory surplus			-			-			-
Total adjusted capital from DTAs			-			-			-
Increases due to SSAP No. 10R, Paragraph 10e.:									
Admitted DTAs	-	-	-	-	-	-	-	-	-
Admitted assets	-	-	-	-	-	-	-	-	-
Statutory surplus	-	-	-	-	-	-	-	-	-

B. Unrecognized deferred tax liabilities

(1) There are no temporary differences for which deferred tax liabilities are not recognized.

C. Current income tax incurred consist of the following major components:

	12/31/2011	12/31/2010	Change
(1) Federal	(87)	1,144	(1,231)
(2) Foreign Tax	-	-	-
Subtotal	(87)	1,144	(1,231)
(3) Federal income tax on net capital gains	-	-	-
(4) Utilization of capital loss carry-forwards	-	-	-
(5) Other	-	-	-
(6) Federal and foreign income taxes incurred	(87)	1,144	(1,231)

Deferred income tax assets and liabilities consist of the following major components:

	12/31/2011	12/31/2010	Change
Deferred Tax Assets			
a) Ordinary			
1) Discounting of unpaid losses	-	-	-
2) Unearned premium reserve	-	-	-
3) Policyholder reserves	-	-	-
4) Investments	-	-	-
5) Deferred acquisition costs	-	-	-
6) Policyholder dividends accrual	-	-	-
7) Fixed assets	-	-	-
8) Compensation and benefits accrual	-	-	-
9) Pension accrual	-	-	-
10) Receivables - nonadmitted	-	-	-
11) Net operating loss carry-forward	-	-	-
12) Tax credit carry-forward	-	-	-
13) Non-admitted miscellaneous	-	-	-
14) Other liabilities	-	-	-
15) Intangibles	-	-	-
16) Non-admitted premiums and agent bal	-	-	-
17) Other	-	-	-
Subtotal	-	-	-
b) Statutory valuation allowance adjustment	-	-	-
c) Nonadmitted	-	-	-
d) Admitted ordinary deferred tax assets	-	-	-
e) Capital			
1) Investments	-	-	-
2) Net capital loss carry-forward	-	-	-
3) Real estate	-	-	-
4) Other	-	-	-
Subtotal	-	-	-
f) Statutory valuation allowance adjustment	-	-	-
g) Nonadmitted	-	-	-
h) Admitted capital deferred tax assets	-	-	-
i) Admitted deferred tax assets	-	-	-
Deferred Tax Liabilities			
a) Ordinary			
1) Investments	-	-	-
2) Fixed assets	-	-	-
3) Deferred and uncollected premiums	-	-	-
4) Policyholder reserves	-	-	-
5) Pension accrual	-	-	-
6) Guaranty assessments	-	-	-
7) Unearned surcharge income	-	-	-
8) Prepaid expenses	-	-	-
9) Surplus note interest accrual	-	-	-
10) Section 338 gain	-	-	-
11) Unrealized miscellaneous	-	-	-
12) Compensation and benefits accrual	-	-	-
13) Other	-	-	-
Subtotal	\$ -	\$ -	\$ -
b) Capital			
1) Investments	6	-	6
2) Real estate	-	-	-
3) Other	-	-	-
Subtotal	\$ 6	\$ -	\$ 6
c) Deferred tax liabilities	\$ 6	\$ -	\$ 6
Net deferred tax assets/liabilities	\$ (6)	\$ -	\$ (6)

ANNUAL STATEMENT FOR THE YEAR 2011 OF THE ALLIED INSURANCE COMPANY OF AMERICA

NOTES TO FINANCIAL STATEMENTS

The Company's gross deferred tax assets based on the weight of available evidence are more likely than not to be realized (a likelihood of more than 50 percent)

D. The income tax incurred and change in deferred income tax differs from the amount obtained by applying the federal statutory rate of 35% to income before tax as follows:

	12/31/2011	12/31/2010
(1) Current income taxes incurred	(87)	1,144
(2) Change in deferred income tax (without tax on unrealized gains and losses)	6	-
(3) Total income tax reported	<u>\$ (81)</u>	<u>\$ 1,144</u>
(4) Income before taxes	\$ (234)	\$ 3,273
(5) Expected income tax expense (benefit) at 35% statutory rate	<u>35%</u>	<u>35%</u>
	\$ (81)	\$ 1,144
(6) Increase (decrease) in actual tax reported resulting from:		
a. Dividends received deduction	-	-
b. Nondeductible expenses for meals, penalties, and lobbying	-	-
c. Tax-exempt income	-	-
d. Deferred tax benefit on nonadmitted assets	-	-
e. Change in Statutory valuation allowance adjustment	-	-
f. Change in tax reserves	-	-
g. Intangibles	-	-
h. Tax credits	-	-
i. Other	-	-
(7) Total income tax reported	<u>\$ (81)</u>	<u>\$ 1,144</u>

E. Operating loss carryforward

(1) As of December 31, operating loss or tax credit carryforwards are available as follows:

	Amount	Origination	Expiration
Operating loss carryforwards			
Amount of AMT tax credits			
Business credits			

(2) The amount of Federal income taxes incurred that are available for recoupment in the event of future net losses are:

2011	\$ -
2010	<u>\$ -</u>

F. Consolidated federal income tax return

(1) The Company's federal income tax return is consolidated with the following entities:

AGMC Reinsurance, Ltd.	Nationwide Retirement Solutions, Inc. of Ohio
Allied General Agency Company	Nationwide Retirement Solutions, Inc. of Texas
Allied Group, Inc.	Nationwide Retirement Solutions Insurance Agency, Inc.
Allied Insurance Company of America	Nationwide SA Capital Trust
Allied Property and Casualty Insurance Company	Nationwide Sales Solutions, Inc.
Allied Texas Agency, Inc.	NFS Distributors, Inc.
AMCO Insurance Company	NWD Asset Management Holdings, Inc.
American Marine Underwriters, Inc.	NWD Investment Management, Inc.
Crestbrook Insurance Company	NWD Management & Research Trust
Depositors Insurance Company	Pension Associates, Inc.
DVM Insurance Agency, Inc.	Pet Healthcare Services, Inc.
Freedom Specialty Insurance Company	Premier Agency, Inc.
Insurance Intermediaries, Inc.	Provfirst America Corporation
Lone Star General Agency, Inc.	Provident Mutual Holding Company
National Casualty Company	Registered Investment Advisors Services, Inc.
Nationwide Advantage Mortgage Company	Riverview International Group, Inc.
Nationwide Affinity Insurance Company of America	Scottsdale Indemnity Company
Nationwide Agribusiness Insurance Company	Scottsdale Insurance Company
Nationwide Assurance Company	Scottsdale Surplus Lines Insurance Company
Nationwide Bank	THI Holdings (Delaware), Inc.
Nationwide Cash Management Company	Titan Auto Insurance of New Mexico, Inc.
Nationwide Corporation	Titan Indemnity Company
Nationwide Financial General Agency, Inc.	Titan Insurance Company
Nationwide Financial Institution Distribution Agency, Inc.	Titan Insurance Services, Inc.
Nationwide Financial Services, Inc.	V.P.I. Services, Inc.
Nationwide General Insurance Company	Veterinary Pet Insurance Company
Nationwide Global Holdings, Inc.	Veterinary Pet Insurance Services, Inc.
Nationwide Global Ventures, Inc.	Victoria Automobile Insurance Company
Nationwide Indemnity Company	Victoria Fire & Casualty Company
Nationwide Insurance Company of America	Victoria National Insurance Company
Nationwide Insurance Company of Florida	Victoria Select Insurance Company
Nationwide Lloyds	Victoria Specialty Insurance Company
Nationwide Mutual Insurance Company	WI of Florida, Inc.
Nationwide Property and Casualty Ins. Company	Western Heritage Insurance Company
Nationwide Retirement Solutions, Inc.	Whitehall Holdings, Inc.
Nationwide Retirement Solutions, Inc. of Arizona	

2. The method of allocation among the companies is subject to the resolution approved by the Board of Directors. Allocation is based upon separate return or sub-group aggregated separate return calculations with the company being reimbursed for the actual Federal income tax benefit of its net operating losses which are actually used to reduce the taxable income of other companies in the consolidated return.

3. The Company did not have any protective tax deposits under Section 6603 of the Internal Revenue Code.



## NOTES TO FINANCIAL STATEMENTS

### **Note 10 - Information Concerning Parent, Subsidiaries, Affiliates and Other Related Parties**

#### A. Nature of Relationships

The Company was capitalized as Nationwide Atlantic Insurance Company on May 5, 2005 by Mutual. On February 21, 2006, the name was changed to Atlantic Floridian Insurance Company. On July 13, 2011, the name was changed to Allied Insurance Company of America. All outstanding shares of the Company are owned by Mutual, domiciled in the state of Ohio.

Bonds and stocks, if any owned, acquired or disposed of in any year by the Company in any subsidiary or affiliate are set forth in Schedule D of either this statement or those of prior years. Intercompany relationships and specific holdings are detailed in the Nationwide Corporate Organizational Chart, which appears as Schedule Y of this statement.

The Company is a party to various reinsurance agreements including a pooling agreement with several affiliated companies. See Note 26.

The Company and various affiliates have entered into agreements with Nationwide Cash Management Company (NCMC) a subsidiary of the Company, under which NCMC acts as a common agent in handling the purchases and sales of short-term securities for the respective accounts of the participants. Amounts on deposit with NCMC were \$5.5 million and \$5.8 million as of December 31, 2011 and 2010, respectively, and are included in short-term investments on the accompanying statutory statements of admitted assets, liabilities, capital and surplus.

#### B. Detail of Transactions Greater than ½ % of Admitted Assets

Not applicable.

#### C. Change in Terms of Intercompany Arrangements

There were no changes to the intercompany arrangements in 2011 or 2010.

#### D. Amounts Due to or from Related Parties

Affiliate receivables and payables are the result of cost sharing and intercompany service agreements between the Company and its parent and affiliates in which settlement has not yet occurred. Affiliate receivables are presented gross of affiliate payables when the Company has the right to offset. The Company reported \$3 thousand and \$702 due to parent at December 31, 2011 and 2010, respectively. These arrangements are subject to written agreements which require that intercompany balances be settled within 30 days.

#### E. Guarantees or Undertakings for Related Parties

There have been no guarantees or undertakings for the benefit of an affiliate.

#### F. Management, Service Contracts, Cost Sharing Arrangements

The Company shares its home office, other facilities, equipment, and common management and administrative services with its subsidiaries and affiliates. Pursuant to a cost sharing agreement between the companies, the amounts associated with these services are subject to allocation based on standard allocation techniques and procedures acceptable under general cost accounting techniques and procedures in conformity with the NAIC's statutory accounting practices and procedures. Measures used to determine the allocation among companies includes individual employee estimates of time spent, special cost studies, the number of full-time employees, and other methods agreed to by the participating companies. The Company does not believe amounts recognized under the intercompany agreement are materially different than what would have been recognized had the Company operated on a stand-alone basis.

#### G. Nature of Relationships that Could Affect Operations

Not applicable.

#### H. Amount Deducted for Investment in Upstream Company

Not applicable.

#### I. Detail of Investment in Affiliates Greater than 10% of Admitted Assets

The Company does not hold any investments in affiliates.

#### J. Write-down for Impairments of Investments in Subsidiary, Controlled or Affiliated Companies

Not applicable.

#### K. Investment in a foreign insurance subsidiary

Not applicable.

#### L. Downstream Holding Company

Not applicable.

### **Note 11 - Debt**

#### A. All Other Debt

Not applicable.

#### B. Funding Agreements with Federal Home Loan Bank (FHLB)

Not applicable.

### **Note 12 - Retirement Plans, Deferred Compensation, Postemployment Benefits and Compensated Absences and Other Postretirement Benefit Plans**

#### A. Defined Benefit Plans

Not applicable.

## NOTES TO FINANCIAL STATEMENTS

B. Defined Contribution Plans

Not applicable.

C. Multiemployer Plans

Not applicable.

D. Consolidated/Holding Company Plans

Not applicable.

E. Postemployment Benefits and Compensated Absences

Not applicable.

F. Impact of Medicare Modernization Act on Postretirement Benefits

Not applicable.

**Note 13 - Capital and Surplus, Dividend Restrictions and Quasi-Reorganizations**

A. Outstanding Shares

The Company has 5,000 shares of \$200 par value stock authorized and 5,000 shares issued and outstanding. The Company has no preferred stock authorized, issued or outstanding.

B. Dividend Rate of Preferred Stock

Not applicable.

C. Dividend Restrictions

The maximum amount of dividends which can be paid to shareholders by a State of Ohio domiciled insurance company without prior approval of the Director of Insurance is limited to, together with that of other dividends or distributions made within the preceding 12 months, the greater of either 10% of surplus as regards policyholders as of the preceding December 31, or the net income of the previous calendar year. Additionally, any dividend or distribution paid from other than earned surplus shall require prior approval of the Director of Insurance. Subject to applicable regulatory approval(s), dividends are paid as determined by the insurer's board of directors.

D. Dividends Paid

No dividends were paid by the Company during 2011 and 2010.

E. Profits Available for Ordinary Dividends

Within the limitations of (C) above, there are no restrictions placed on the portion of Company profits that may be paid as ordinary dividends to shareholders.

F. Restrictions on Surplus

Not applicable.

G. Advances to Surplus Not Repaid

Not applicable.

H. Stock Held by Company for Special Purposes

Not applicable.

I. Changes in Special Surplus Funds

Not applicable.

J. Changes in Unassigned Funds

The portion of unassigned funds (surplus) represented by cumulative unrealized capital gains/losses less applicable deferred is \$0.

K. Surplus Notes

Not applicable.

L. and M. Quasi Reorganizations

Not applicable.

**Note 14 – Contingencies**

A. Contingent Commitments

The Company has no commitments or contingent commitment to affiliates or other entities. As indicated in Note 10 E, the Company has made no guarantees on behalf of affiliates.

B. Guaranty Fund and Other Assessments

The Company is subject to guaranty fund and other assessments by the states in which it writes business. Guaranty fund assessments should be accrued at the time of insolvencies. Other assessments should be accrued either at the time of assessments or in the case of premium based assessments, at the time the premiums are written. In the case of loss-based assessments, the assessments should be accrued at the time the losses are incurred.

## NOTES TO FINANCIAL STATEMENTS

C. Gain Contingencies

Not applicable.

D. Claims Related Extra Contractual Obligations and bad Faith Losses Stemming From Lawsuits

Not applicable.

E. Product Warranties

Not applicable.

F. All Other Contingencies

Various lawsuits arise against the Company in the normal course of the Company's business. Contingent liabilities arising from litigation and other matters are not considered material in relation to the financial position of the Company.

### **Note 15 – Leases**

A. Lessee Leasing Arrangements

Not applicable.

B. Lessor Leasing Arrangements

Not applicable.

### **Note 16 - Information About Financial Instruments With Off-Balance Sheet Risk And Financial Instruments With Concentrations of Credit Risk**

A. Financial Instruments with Off-Balance Sheet Risk.

Not applicable.

B. Financial Instruments with Concentrations of Credit Risk

Not applicable.

C. Exposure to Credit-Related Losses

Not applicable.

D. Collateral Policy

Not applicable.

### **Note 17 - Sale, Transfer and Servicing of Financial Assets and Extinguishments of Liabilities**

A. Transfers of Receivables Reported as Sales

Not applicable.

B. Transfers and Servicing of Financial Assets

1. There were no assets or liabilities obtained in transfers of financial assets where it was not practicable to estimate their fair value.
2. The Company does not participate in securities lending.
3. No servicing assets or liabilities were recognized during the period.
4. There were no assets securitized during the period.
5. There were no retained interests since there were no securitized financial assets.
6. There were no transfers of receivables with recourse.

C. Wash Sales

Not applicable.

### **Note 18 - Gain or Loss to the Reporting Entity from Uninsured Plans and the Uninsured Portion of Partially Insured Plans**

A. Administrative Services Only (ASO) Plans

Not applicable.

B. Administrative Services Contract (ASC) Plans

Not applicable.

C. Medicare or Other Similarly Structured Cost Based Reimbursement Contracts

Not applicable.

### **Note 19 - Direct Premiums Written/Produced by Managing General Agents/Third Party Administrators**

Not applicable.

## NOTES TO FINANCIAL STATEMENTS

### **Note 20 – Fair Value Measurements**

Fair value is defined as the price that would be received to sell an asset or paid to transfer a liability in an orderly transaction between market participants at the measurement date. Fair value measurements are based upon observable and unobservable inputs. Observable inputs reflect market data obtained from independent sources while unobservable inputs reflect the Company's view of market assumptions in the absence of observable market information. The Company utilizes valuation techniques that maximize the use of observable inputs and minimize the use of unobservable inputs. In determining fair value, the Company uses various methods including market, income and cost approaches.

The Company categorizes its assets and liabilities measured and reported at fair value in the quarterly statement into a three-level hierarchy based on the priority of the inputs to the valuation technique. The fair value hierarchy gives the highest priority to quoted prices in active markets for identical assets or liabilities (Level 1) and the lowest priority to unobservable inputs (Level 3). If the inputs used to measure fair value fall within different levels of the hierarchy, the category level is based on the lowest priority level input that is significant to the fair value measurement of the instrument in its entirety.

The fair value hierarchy levels are as follows:

*Level 1.* Unadjusted quoted prices accessible in active markets for identical assets or liabilities at the measurement date.

*Level 2.* Unadjusted quoted prices for similar assets or liabilities in active markets or inputs (other than quoted prices) that are observable or that are derived principally from or corroborated by observable market data through correlation or other means.

*Level 3.* Prices or valuation techniques that require inputs that are both unobservable and significant to the overall fair value measurement. Inputs reflect management's best estimate about the assumptions market participants would use at the measurement date in pricing the asset or liability. Consideration is given to the risk inherent in both the method of valuation and the valuation inputs.

The Company periodically reviews its fair value hierarchy classifications for financial assets and liabilities. Changes in observability of significant valuation inputs identified during these reviews may trigger reclassifications. Reclassifications into/out of the fair value hierarchy levels are reported as transfers at the beginning of the period in which the change occurs.

For bonds and marketable stocks for which market quotations are available, the Company generally uses independent pricing services to assist in determining the fair value measurement.

The Company's investments in corporate debt securities, mortgage-backed securities and other asset-backed securities are valued with the assistance of independent pricing services and non-binding broker quotes. The Company's policy is to give priority to pricing obtained from our primary independent pricing service. In the event that pricing information is not available from an independent pricing service, non-binding broker quotes are used to assist in the valuation of the investments. In many cases, only one broker quote is available. The Company's policy is generally not to adjust the values obtained from brokers.

Broker quotes are considered unobservable inputs as only one broker quote is ordinarily obtained, the investment is not traded on an exchange, the pricing is not available to other entities and/or the transaction volume in the same or similar investments has decreased such that generally only one quotation is available. As the brokers often do not provide the necessary transparency into their quotes and methodologies, the Company periodically performs reviews and tests to ensure that quotes are a reasonable estimate of the investments fair value.

For investments valued with the assistance of independent pricing services, the Company obtains the pricing services' methodologies, inputs and assumptions and classifies these investments accordingly in the fair value hierarchy. The Company periodically reviews and tests the pricing and related methodologies obtained from these independent pricing services against secondary sources to ensure that management can validate the investment's fair value and related fair value hierarchy categorization. If large variances are observed between the price obtained from the independent pricing services and secondary sources, the Company analyzes the causes driving the variance.

For certain bonds not priced by independent services (e.g., private placement securities without quoted market prices) a corporate pricing matrix or internally developed pricing model is most often used. The corporate pricing matrix is developed using private spreads for corporate securities with varying weighted average lives and credit quality ratings. The weighted average life and credit quality rating of a bond to be priced using the corporate pricing matrix are important inputs into the model and are used to determine a corresponding spread that is added to the appropriate U.S. Treasury yield to create an estimated market yield for that security. The estimated market yield and other relevant factors are then used to estimate the fair value of the particular bond.

No assets or liabilities were carried at fair value as of December 31, 2011.

### **Note 21 - Other Items**

A. Extraordinary Items

Not applicable.

B. Troubled Debt Restructuring for Debtors

Not applicable.

C. Other Disclosures

Not applicable.

D. Uncollectible Premiums Receivable

Not applicable.

E. Business Interruption Insurance Recoveries

Not applicable.

F. State Transferable and Non-Transferable Tax Credits

Not applicable.

G. Subprime Mortgage Related Risk Exposure

In general, recent market activity has negatively impacted the valuation of securities containing sub-prime collateral, which are classifications of investments in which the Company invests. The Company evaluates many characteristics when classifying collateral as sub-prime, including the credit quality of the borrower as defined by Fair Isaac Credit Organization (FICO) scores, as well as other factors, such as loan-to-value ratios and type of real estate.

## NOTES TO FINANCIAL STATEMENTS

As of December 31, 2011, all of the Company's exposure to investments containing sub-prime collateral is isolated to the mortgage-backed and asset-backed securities. When making investments in mortgage-backed or asset-backed securities, the Company evaluates the quality of the underlying collateral, the structure of the transaction (which dictates how losses in the underlying collateral will be distributed) and prepayment risks.

As of December 31, 2011, the Company has no exposure to investments containing sub-prime collateral in any asset categorization.

### **Note 22 - Events Subsequent**

Subsequent events have been considered through February 7, 2012 for these statutory financial statements which are to be issued February 10, 2012. There were no events occurring subsequent to the end of the year that merited recognition or disclosure in these statements.

### **Note 23 – Reinsurance**

#### A. Unsecured Reinsurance Recoverables

The Company does not have an unsecured aggregate recoverable for paid and unpaid losses, loss adjustment expenses and unearned premiums from any individual reinsurer, authorized or unauthorized, that exceeds 3% of policyholders' surplus.

#### B. Reinsurance Recoverable in Dispute

The Company does not have reinsurance recoverables in dispute for paid losses and loss adjustment expenses that exceed 5% of policyholders' surplus from an individual reinsurer or exceed 10% of policyholders' surplus in aggregate.

#### C. Reinsurance Assumed and Ceded

Not applicable.

#### D. Uncollectible Reinsurance

No reinsurance recoverables were written off during 2011.

#### E. Commutation of Ceded Reinsurance

The Company did not enter into any commutation during 2011.

#### F. Retroactive Reinsurance

There was no retroactive reinsurance affected during 2011.

#### G. Reinsurance Accounted for as a Deposit

There were no reinsurance agreements that were accounted for as deposits during 2011.

#### H. There was no transfer of any property and casualty run-off agreements requiring approval of regulators and qualifying under SSAP No. 62R, Property and Casualty Reinsurance, to receive property & casualty run-off accounting treatment.

### **Note 24 - Retrospectively Rated Contracts and Contracts Subject to Redetermination**

Not applicable.

### **Note 25 - Changes in Incurred Losses and Loss Adjustment Expenses**

The Company is a participant in a 100% pooling reinsurance agreement with Mutual (as disclosed in Note 26), and as such has zero net incurred losses and loss adjustment expenses.

### **Note 26 - Intercompany Pooling Arrangements**

Effective January 1, 2011 the following companies became participants in a pooling reinsurance agreement with Mutual (NAIC # 23787) whereby Mutual retains 83.7% of the pool results: Nationwide Mutual Fire Insurance Company (NAIC # 23779), Scottsdale Insurance Company (NAIC # 41297), Farmland Mutual Insurance Company (NAIC # 13838), Nationwide General Insurance Company (NAIC # 23760), Nationwide Property & Casualty Insurance Company (NAIC # 37877), Nationwide Affinity Insurance Company of America (NAIC # 26093), Crestbrook Insurance Company (NAIC # 18961), Allied Insurance Company of America (NAIC # 10127), AMCO Insurance Company (NAIC # 19100), Allied Property & Casualty Insurance Company (NAIC # 42579), Depositors Insurance Company (NAIC # 42587), Nationwide Agribusiness Insurance Company (NAIC # 28223), Victoria Fire & Casualty Insurance Company (NAIC # 42889), Victoria Automobile Insurance Company (NAIC # 10644), Victoria Specialty Insurance Company (NAIC # 10777), Victoria Select Insurance Company (NAIC # 10105), and Victoria National Insurance Company (NAIC # 10778).

All lines of business are subject to the pooling agreement.

There are no discrepancies related to the pooled business between the assumed and ceded reinsurance schedules of the pool participants.

The following companies are covered under a 100% quota share reinsurance agreement with Mutual: Nationwide Assurance Company, Titan Insurance Company, Titan Indemnity Company, Nationwide Lloyds Insurance Company, Nationwide Insurance Company of America, National Casualty Company, and Colonial County Mutual Insurance Company. Mutual then cedes this business into the Nationwide Pool.

Scottsdale Surplus Lines Insurance Company, Western Heritage Insurance Company, Scottsdale Indemnity Company and Freedom Specialty Insurance Company are covered under a 100% quota share reinsurance agreement with Scottsdale Insurance Company. Scottsdale Insurance Company then cedes this business to Mutual.

NOTES TO FINANCIAL STATEMENTS

Mutual is the lead company in the Nationwide Pool. The companies receiving business from the Nationwide Pool are:

	NAIC #	POOL
Nationwide Mutual Insurance Company (Lead Insurer)	23787	83.7%
Nationwide Mutual Fire Insurance Company	23779	11.3%
Scottsdale Insurance Company	41297	4.0%
Farmland Mutual Insurance Company	13838	1.0%

Amounts due to/from the lead entity and pool participants as of December 31, 2011:

Name of Insurer	Amounts Receivable	Amounts Payable
Nationwide Mutual Insurance Company (Lead Insurer)	905,336,376	31,254,615
Nationwide Mutual Fire Insurance Company	6,905,610	313,043,439
Scottsdale Insurance Company	28,343,668	-
Farmland Mutual Insurance Company	36,457,203	15,973,668
Nationwide General Insurance Company	297	118,678,238
Nationwide Property & Casualty Insurance Company	5,419,953	265,047,950
Nationwide Affinity Insurance Company of America	2,259,935	147,848,288
Crestbrook Insurance Company	62,589	27,853
Allied Insurance Company of America	-	3,164
AMCO Insurance Company	9,141,273	128,654,533
Allied Property & Casualty Insurance Company	1,054,719	7,806,700
Depositors Insurance Company	527,922	1,168,163
Nationwide Agribusiness Insurance Company	60,588,552	1,821,314
Victoria Fire & Casualty Insurance Company	5,220,175	21,549,997
Victoria Automobile Insurance Company	640,653	824,508
Victoria Specialty Insurance Company	1,427,466	3,668,438
Victoria Select Insurance Company	1,188,464	2,365,167
Victoria National Insurance Company	1,979	360

**Note 27 - Structured Settlements**

- A. Reserves Released due to Purchases of Annuities  
Not applicable.
- B. Annuity Insurers with Balances due Greater than 1% of Policyholders' Surplus  
Not applicable.

**Note 28 - Health Care Receivables**

- A. Pharmaceutical Rebate Receivables  
Not applicable.
- B. Risk Sharing Receivables  
Not applicable.

**Note 29 - Participating Policies**

Not applicable.

**Note 30 - Premium Deficiency Reserves**

The Company evaluated the need to record a premium deficiency reserve as of December 31, 2011 and determined there was no premium deficiency. This evaluation was completed on January 9, 2012. The Company does anticipate investment income when evaluating the need for premium deficiency reserves.

**Note 31 - High Deductibles**

Not applicable.

**Note 32 - Discounting of Liabilities for Unpaid Losses or Unpaid Loss Adjustment Expenses**

- A. Tabular Discounts  
Not applicable.
- B. Non-Tabular Discounts  
Not applicable.
- C. Changes in Discount Assumptions  
Not applicable.

**Note 33 - Asbestos/Environmental Reserves**

Not applicable.

**Note 34 - Subscriber Savings Accounts**

Not applicable.

## NOTES TO FINANCIAL STATEMENTS

### **Note 35 - Multiple Peril Crop Insurance**

Not applicable.

### **Note 36 – Financial Guaranty Insurance**

A. and B. Not applicable.

GENERAL INTERROGATORIES

PART 1 - COMMON INTERROGATORIES  
GENERAL

1.1

Is the reporting entity a member of an Insurance Holding Company System consisting of two or more affiliated persons, one or more of which is an insurer?

Yes ☒ No ☐

1.2

If yes, did the reporting entity register and file with its domiciliary State Insurance Commissioner, Director or Superintendent, or with such regulatory official of the state of domicile of the principal insurer in the Holding Company System, a registration statement providing disclosure substantially similar to the standards adopted by the National Association of Insurance Commissioners (NAIC) in its Model Insurance Holding Company System Regulatory Act and model regulations pertaining thereto, or is the reporting entity subject to standards and disclosure requirements substantially similar to those required by such Act and regulations?

Yes ☒ No ☐ N/A ☐

1.3

State Regulating?

OH

2.1

Has any change been made during the year of this statement in the charter, by-laws, articles of incorporation, or deed of settlement of the reporting entity?

Yes ☐ No ☒

2.2

If yes, date of change:

3.1

State as of what date the latest financial examination of the reporting entity was made or is being made.

12/31/2011

3.2

State the as of date that the latest financial examination report became available from either the state of domicile or the reporting entity. This date should be the date of the examined balance sheet and not the date the report was completed or released.

12/31/2006

3.3

State as of what date the latest financial examination report became available to other states or the public from either the state of domicile or the reporting entity. This is the release date or completion date of the examination report and not the date of the examination (balance sheet date).

03/29/2008

3.4

By what department or departments?  
OH

3.5

Have all financial statement adjustments within the latest financial examination report been accounted for in a subsequent financial statement filed with Departments?

Yes ☐ No ☐ N/A ☒

3.6

Have all of the recommendations within the latest financial examination report been complied with?

Yes ☐ No ☐ N/A ☒

4.1

During the period covered by this statement, did any agent, broker, sales representative, non-affiliated sales/service organization or any combination thereof under common control (other than salaried employees of the reporting entity), receive credit or commissions for or control a substantial part (more than 20 percent of any major line of business measured on direct premiums) of:

4.11 sales of new business?

Yes ☐ No ☒

4.12 renewals?

Yes ☐ No ☒

4.2

During the period covered by this statement, did any sales/service organization owned in whole or in part by the reporting entity or an affiliate, receive credit or commissions for or control a substantial part (more than 20 percent of any major line of business measured on direct premiums) of:

4.21 sales of new business?

Yes ☐ No ☒

4.22 renewals?

Yes ☐ No ☒

5.1

Has the reporting entity been a party to a merger or consolidation during the period covered by this statement?

Yes ☐ No ☒

5.2

If yes, provide the name of the entity, NAIC Company Code, and state of domicile (use two letter state abbreviation) for any entity that has ceased to exist as a result of the merger or consolidation.

1	2	3
Name of Entity	NAIC Company Code	State of Domicile

6.1

Has the reporting entity had any Certificates of Authority, licenses or registrations (including corporate registration, if applicable) suspended or revoked by any governmental entity during the reporting period?

Yes ☐ No ☒

6.2

If yes, give full information:

7.1

Does any foreign (non-United States) person or entity directly or indirectly control 10% or more of the reporting entity?

Yes ☐ No ☒

7.2

If yes,

7.21 State the percentage of foreign control;

7.22 State the nationality(s) of the foreign person(s) or entity(s) or if the entity is a mutual or reciprocal, the nationality of its manager or attorney-in-fact; and identify the type of entity(s) (e.g., individual, corporation or government, manager or attorney in fact).

1	2
Nationality	Type of Entity



ANNUAL STATEMENT FOR THE YEAR 2011 OF THE ALLIED INSURANCE COMPANY OF AMERICA

GENERAL INTERROGATORIES

- 8.1 Is the company a subsidiary of a bank holding company regulated by the Federal Reserve Board? ..... Yes [ ] No [ X ]
- 8.2 If response to 8.1 is yes, please identify the name of the bank holding company.  
.....
- 8.3 Is the company affiliated with one or more banks, thrifts or securities firms? ..... Yes [ X ] No [ ]
- 8.4 If response to 8.3 is yes, please provide the names and locations (city and state of the main office) of any affiliates regulated by a federal financial regulatory services agency [i.e. the Federal Reserve Board (FRB), the Office of the Comptroller of the Currency (OCC), the Office of Thrift Supervision (OTS), the Federal Deposit Insurance Corporation (FDIC) and the Securities Exchange Commission (SEC)] and identify the affiliate's primary federal regulator.

1 Affiliate Name	2 Location (City, State)	3 FRB	4 OCC	5 OTS	6 FDIC	7 SEC
Nationwide Mutual Insurance Company .....	Columbus, OH .....	YES	NO	NO	NO	NO
Nationwide Mutual Fire Insurance Company .....	Columbus, OH .....	YES	NO	NO	NO	NO
Nationwide Financial Services, Inc. ....	Columbus, OH .....	YES	NO	NO	NO	NO
Nationwide Corporation .....	Columbus, OH .....	YES	NO	NO	NO	NO
Nationwide Bank .....	Columbus, OH .....	NO	YES	NO	NO	NO
Nationwide Investment Services Corp. ....	Columbus, OH .....	NO	NO	NO	NO	YES
Nationwide Investment Advisors, LLC .....	Columbus, OH .....	NO	NO	NO	NO	YES
Nationwide Securities, LLC .....	Dublin, OH .....	NO	NO	NO	NO	YES
Nationwide SA Capital Trust .....	King of Prussia, PA .....	NO	NO	NO	NO	YES
Nationwide Fund Advisors .....	King of Prussia, PA .....	NO	NO	NO	NO	YES
Nationwide Fund Distributors, LLC .....	King of Prussia, PA .....	NO	NO	NO	NO	YES
Nationwide Asset Management, LLC .....	Columbus, OH .....	NO	NO	NO	NO	YES

9. What is the name and address of the independent certified public accountant or accounting firm retained to conduct the annual audit?  
KPMG LLP, 191 W. Nationwide Blvd., Suite 500, Columbus, OH 43215
- 10.1 Has the insurer been granted any exemptions to the prohibited non-audit services provided by the certified independent public accountant requirements as allowed in Section 7H of the Annual Financial Reporting Model Regulation (Model Audit Rule), or substantially similar state law or regulation? ..... Yes [ ] No [ X ]
- 10.2 If the response to 10.1 is yes, provide information related to this exemption:  
.....
- 10.3 Has the insurer been granted any exemptions related to the other requirements of the Annual Financial Reporting Model Regulation as allowed for in Section 17A of the Model Regulation, or substantially similar state law or regulation? ..... Yes [ ] No [ X ]
- 10.4 If the response to 10.3 is yes, provide information related to this exemption:  
.....
- 10.5 Has the reporting entity established an Audit Committee in compliance with the domiciliary state insurance laws? ..... Yes [ X ] No [ ] N/A [ ]
- 10.6 If the response to 10.5 is no or n/a, please explain  
.....
11. What is the name, address and affiliation (officer/employee of the reporting entity or actuary/consultant associated with an actuarial consulting firm) of the individual providing the statement of actuarial opinion/certification?  
Leslie R. Marlo, FCAS, MAAA, KPMG LLP, 100 Matsonford Road, Radnor, PA 19087, Managing Director .....
- 12.1 Does the reporting entity own any securities of a real estate holding company or otherwise hold real estate indirectly? ..... Yes [ ] No [ X ]
- 12.11 Name of real estate holding company .....
- 12.12 Number of parcels involved .....
- 12.13 Total book/adjusted carrying value ..... \$ .....
- 12.2 If, yes provide explanation:  
.....
13. **FOR UNITED STATES BRANCHES OF ALIEN REPORTING ENTITIES ONLY:**
- 13.1 What changes have been made during the year in the United States manager or the United States trustees of the reporting entity?  
.....
- 13.2 Does this statement contain all business transacted for the reporting entity through its United States Branch on risks wherever located? ..... Yes [ ] No [ ]
- 13.3 Have there been any changes made to any of the trust indentures during the year? ..... Yes [ ] No [ ]
- 13.4 If answer to (13.3) is yes, has the domiciliary or entry state approved the changes? ..... Yes [ ] No [ ] N/A [ ]
- 14.1 Are the senior officers (principal executive officer, principal financial officer, principal accounting officer or controller, or persons performing similar functions) of the reporting entity subject to a code of ethics, which includes the following standards? ..... Yes [ X ] No [ ]
- (a) Honest and ethical conduct, including the ethical handling of actual or apparent conflicts of interest between personal and professional relationships;
- (b) Full, fair, accurate, timely and understandable disclosure in the periodic reports required to be filed by the reporting entity;
- (c) Compliance with applicable governmental laws, rules and regulations;
- (d) The prompt internal reporting of violations to an appropriate person or persons identified in the code; and
- (e) Accountability for adherence to the code.
- 14.11 If the response to 14.1 is No, please explain:  
.....
- 14.2 Has the code of ethics for senior managers been amended? ..... Yes [ ] No [ X ]
- 14.21 If the response to 14.2 is yes, provide information related to amendment(s).  
.....
- 14.3 Have any provisions of the code of ethics been waived for any of the specified officers? ..... Yes [ ] No [ X ]
- 14.31 If the response to 14.3 is yes, provide the nature of any waiver(s).  
.....

ANNUAL STATEMENT FOR THE YEAR 2011 OF THE ALLIED INSURANCE COMPANY OF AMERICA

GENERAL INTERROGATORIES

- 15.1 Is the reporting entity the beneficiary of a Letter of Credit that is unrelated to reinsurance with a NAIC rating of 3 or below? Yes ☐ No ☒
- 15.2 If the response to 15.1 is yes, indicate the American Bankers Association (ABA) Routing Number and the name of the issuing or confirming bank of the Letter of Credit and describe the circumstances in which the Letter of Credit is triggered.

1 American Bankers Association (ABA) Routing Number	2	3	4
	Issuing or Confirming Bank Name	Circumstances That Can Trigger the Letter of Credit	Amount

BOARD OF DIRECTORS

16. Is the purchase or sale of all investments of the reporting entity passed upon either by the board of directors or a subordinate committee thereof? Yes ☒ No ☐
17. Does the reporting entity keep a complete permanent record of the proceedings of its board of directors and all subordinate committees thereof? Yes ☒ No ☐
18. Has the reporting entity an established procedure for disclosure to its board of directors or trustees of any material interest or affiliation on the part of any of its officers, directors, trustees or responsible employees that is in conflict with the official duties of such person? Yes ☒ No ☐

FINANCIAL

19. Has this statement been prepared using a basis of accounting other than Statutory Accounting Principles (e.g., Generally Accepted Accounting Principles)? Yes ☐ No ☒
- 20.1 Total amount loaned during the year (inclusive of Separate Accounts, exclusive of policy loans):

20.11 To directors or other officers\$

20.12 To stockholders not officers\$

20.13 Trustees, supreme or grand (Fraternal Only)\$
- 20.2 Total amount of loans outstanding at the end of year (inclusive of Separate Accounts, exclusive of policy loans):

20.21 To directors or other officers\$

20.22 To stockholders not officers\$

20.23 Trustees, supreme or grand (Fraternal Only)\$
- 21.1 Were any assets reported in this statement subject to a contractual obligation to transfer to another party without the liability for such obligation being reported in the statement? Yes ☐ No ☒
- 21.2 If yes, state the amount thereof at December 31 of the current year:

21.21 Rented from others\$

21.22 Borrowed from others\$

21.23 Leased from others\$

21.24 Other\$
- 22.1 Does this statement include payments for assessments as described in the Annual Statement Instructions other than guaranty fund or guaranty association assessments? Yes ☐ No ☒
- 22.2 If answer is yes:

22.21 Amount paid as losses or risk adjustment\$

22.22 Amount paid as expenses\$

22.23 Other amounts paid\$
- 23.1 Does the reporting entity report any amounts due from parent, subsidiaries or affiliates on Page 2 of this statement? Yes ☐ No ☒
- 23.2 If yes, indicate any amounts receivable from parent included in the Page 2 amount:\$

INVESTMENT

- 24.1 Were all the stocks, bonds and other securities owned December 31 of current year, over which the reporting entity has exclusive control, in the actual possession of the reporting entity on said date? (other than securities lending programs addressed in 24.3) Yes ☒ No ☐
- 24.2 If no, give full and complete information relating thereto
- 24.3 For security lending programs, provide a description of the program including value for collateral and amount of loaned securities, and whether collateral is carried on or off-balance sheet. (an alternative is to reference Note 17 where this information is also provided) N/A
- 24.4 Does the Company's security lending program meet the requirements for a conforming program as outlined in the Risk-Based Capital Instructions? Yes ☐ No ☐ N/A ☒
- 24.5 If answer to 24.4 is yes, report amount of collateral for conforming programs.\$
- 24.6 If answer to 24.4 is no, report amount of collateral for other programs.\$
- 24.7 Does your securities lending program require 102% (domestic securities) and 105% (foreign securities) from the counterparty at the outset of the contract? Yes ☐ No ☐ N/A ☒
- 24.8 Does the reporting entity non-admit when the collateral received from the counterparty falls below 100%? Yes ☐ No ☐ N/A ☒
- 24.9 Does the reporting entity or the reporting entity 's securities lending agent utilize the Master Securities lending Agreement (MSLA) to conduct securities lending? Yes ☐ No ☐ N/A ☒

ANNUAL STATEMENT FOR THE YEAR 2011 OF THE ALLIED INSURANCE COMPANY OF AMERICA

GENERAL INTERROGATORIES

25.1 Were any of the stocks, bonds or other assets of the reporting entity owned at December 31 of the current year not exclusively under the control of the reporting entity, or has the reporting entity sold or transferred any assets subject to a put option contract that is currently in force? (Exclude securities subject to Interrogatory 21.1 and 24.3). Yes [ ] No [ X ]

25.2 If yes, state the amount thereof at December 31 of the current year:

25.21 Subject to repurchase agreements \$

25.22 Subject to reverse repurchase agreements \$

25.23 Subject to dollar repurchase agreements \$

25.24 Subject to reverse dollar repurchase agreements \$

25.25 Pledged as collateral \$

25.26 Placed under option agreements \$

25.27 Letter stock or other securities restricted as to sale \$

25.28 On deposit with state or other regulatory body \$

25.29 Other \$

25.3 For category (25.27) provide the following:

1 Nature of Restriction	2 Description	3 Amount

26.1 Does the reporting entity have any hedging transactions reported on Schedule DB? Yes [ ] No [ X ]

26.2 If yes, has a comprehensive description of the hedging program been made available to the domiciliary state? Yes [ ] No [ ] N/A [ ]  
If no, attach a description with this statement.

27.1 Were any preferred stocks or bonds owned as of December 31 of the current year mandatorily convertible into equity, or, at the option of the issuer, convertible into equity? Yes [ ] No [ X ]

27.2 If yes, state the amount thereof at December 31 of the current year. \$

28. Excluding items in Schedule E - Part 3 - Special Deposits, real estate, mortgage loans and investments held physically in the reporting entity's offices, vaults or safety deposit boxes, were all stocks, bonds and other securities, owned throughout the current year held pursuant to a custodial agreement with a qualified bank or trust company in accordance with Section 1, III - General Examination Considerations, F. Outsourcing of Critical Functions, Custodial or Safekeeping Agreements of the NAIC Financial Condition Examiners Handbook? Yes [ X ] No [ ]

28.01 For agreements that comply with the requirements of the NAIC Financial Condition Examiners Handbook, complete the following:

1 Name of Custodian(s)	2 Custodian's Address
The Bank of New York Mellon	1 Wall Street, New York, NY 10286

28.02 For all agreements that do not comply with the requirements of the NAIC Financial Condition Examiners Handbook, provide the name, location and a complete explanation:

1 Name(s)	2 Location(s)	3 Complete Explanation(s)

28.03 Have there been any changes, including name changes, in the custodian(s) identified in 28.01 during the current year? Yes [ ] No [ X ]

28.04 If yes, give full and complete information relating thereto:

1 Old Custodian	2 New Custodian	3 Date of Change	4 Reason

28.05 Identify all investment advisors, brokers/dealers or individuals acting on behalf of brokers/dealers that have access to the investment accounts, handle securities and have authority to make investments on behalf of the reporting entity:

1 Central Registration Depository Number(s)	2 Name	3 Address
N/A	Members of the investment staff designated by the Chief Investment Officer as detailed in the Corporate Resolution.	One Nationwide Blvd., Columbus, Ohio 43215-2220

ANNUAL STATEMENT FOR THE YEAR 2011 OF THE ALLIED INSURANCE COMPANY OF AMERICA

GENERAL INTERROGATORIES

- 29.1 Does the reporting entity have any diversified mutual funds reported in Schedule D, Part 2 (diversified according to the Securities and Exchange Commission (SEC) in the Investment Company Act of 1940 [Section 5(b)(1)])?
- Yes [ ] No [ X ]
- 29.2 If yes, complete the following schedule:

1	2	3
CUSIP #	Name of Mutual Fund	Book/Adjusted Carrying Value
29.2999 - Total		

- 29.3 For each mutual fund listed in the table above, complete the following schedule:

1	2	3	4
Name of Mutual Fund (from above table)	Name of Significant Holding of the Mutual Fund	Amount of Mutual Fund's Book/Adjusted Carrying Value Attributable to the Holding	Date of Valuation

30. Provide the following information for all short-term and long-term bonds and all preferred stocks. Do not substitute amortized value or statement value for fair value.

	1	2	3
	Statement (Admitted) Value	Fair Value	Excess of Statement over Fair Value (-), or Fair Value over Statement (+)
30.1 Bonds .....	248,240	250,860	2,620
30.2 Preferred stocks .....			
30.3 Totals	248,240	250,860	2,620

- 30.4 Describe the sources or methods utilized in determining the fair values:
- For fixed maturity and marketable equity securities for which market quotations generally are available, Nationwide generally uses independent pricing services to assist in determining the fair value measurement. For certain fixed maturity securities not priced by independent services (generally private placement securities without quoted market prices), an internally developed pricing model or "corporate pricing matrix" is most often used. The corporate pricing matrix is developed by obtaining private spreads versus the U.S. Treasury yield for corporate securities with varying weighted average lives and bond ratings. The weighted average life and bond rating of a particular fixed maturity security to be priced using the corporate matrix are important inputs into the model and are used to determine a corresponding spread that is added to the U.S. Treasury yield to create an estimated market yield for that bond. The estimated market yield and other relevant factors are then used to estimate the fair value of the particular fixed maturity security. Nationwide also utilized broker quotes to assist in pricing securities or to validate modeled prices. ....

- 31.1 Was the rate used to calculate fair value determined by a broker or custodian for any of the securities in Schedule D? .....
- Yes [ X ] No [ ]
- 31.2 If the answer to 31.1 is yes, does the reporting entity have a copy of the broker's or custodian's pricing policy (hard copy or electronic copy) for all brokers or custodians used as a pricing source? .....
- Yes [ ] No [ X ]
- 31.3 If the answer to 31.2 is no, describe the reporting entity's process for determining a reliable pricing source for purposes of disclosure of fair value for Schedule D:
- Nationwide relies on broker valuations only when an approved third party vendor evaluation is not available. Any exceptions are approved by Risk Management and the Middle Office and reviewed by the Investments Pricing Committee. The brokers used to value securities are deemed to be main market makers for each individual security and therefore have in depth knowledge of the particular issue. ....
- 32.1 Have all the filing requirements of the Purposes and Procedures Manual of the NAIC Securities Valuation Office been followed? .....
- Yes [ X ] No [ ]
- 32.2 If no, list exceptions:
- .....

ANNUAL STATEMENT FOR THE YEAR 2011 OF THE ALLIED INSURANCE COMPANY OF AMERICA

GENERAL INTERROGATORIES

OTHER

33.1 Amount of payments to trade associations, service organizations and statistical or rating bureaus, if any? .....\$ .....

33.2 List the name of the organization and the amount paid if any such payment represented 25% or more of the total payments to trade associations, service organizations and statistical or rating bureaus during the period covered by this statement.

1 Name	2 Amount Paid
All payments are made by Nationwide Mutual Insurance Company and are reported in its Annual Statement.	

34.1 Amount of payments for legal expenses, if any? .....\$ .....

34.2 List the name of the firm and the amount paid if any such payment represented 25% or more of the total payments for legal expenses during the period covered by this statement.

1 Name	2 Amount Paid
All payments are made by Nationwide Mutual Insurance Company and are reported in its Annual Statement.	

35.1 Amount of payments for expenditures in connection with matters before legislative bodies, officers or departments of government, if any? .....\$ .....

35.2 List the name of the firm and the amount paid if any such payment represented 25% or more of the total payment expenditures in connection with matters before legislative bodies, officers or departments of government during the period covered by this statement.

1 Name	2 Amount Paid
All payments are made by Nationwide Mutual Insurance Company and are reported in its Annual Statement.	

GENERAL INTERROGATORIES

PART 2 - PROPERTY AND CASUALTY INTERROGATORIES

1.1

Does the reporting entity have any direct Medicare Supplement Insurance in force? .....

Yes [ ] No [ X ]

1.2

If yes, indicate premium earned on U. S. business only. ....

\$ \_\_\_\_\_

1.3

What portion of Item (1.2) is not reported on the Medicare Supplement Insurance Experience Exhibit? .....

\$ \_\_\_\_\_

1.31

Reason for excluding .....

.....

1.4

Indicate amount of earned premium attributable to Canadian and/or Other Alien not included in Item (1.2) above. ....

\$ \_\_\_\_\_

1.5

Indicate total incurred claims on all Medicare Supplement Insurance. ....

\$ \_\_\_\_\_

1.6

Individual policies:

Most current three years:

1.61

Total premium earned .....

\$ .....

1.62

Total incurred claims .....

\$ .....

1.63

Number of covered lives .....

.....

All years prior to most current three years

1.64

Total premium earned .....

\$ .....

1.65

Total incurred claims .....

\$ .....

1.66

Number of covered lives .....

.....

1.7

Group policies:

Most current three years:

1.71

Total premium earned .....

\$ .....

1.72

Total incurred claims .....

\$ .....

1.73

Number of covered lives .....

.....

All years prior to most current three years

1.74

Total premium earned .....

\$ .....

1.75

Total incurred claims .....

\$ .....

1.76

Number of covered lives .....

.....

2.

Health Test:

1

Current Year

2

Prior Year

2.1

Premium Numerator .....

.....

2.2

Premium Denominator .....

.....

2.3

Premium Ratio (2.1/2.2) .....

0.000

0.000

2.4

Reserve Numerator .....

.....

2.5

Reserve Denominator .....

.....

2.6

Reserve Ratio (2.4/2.5) .....

0.000

0.000

3.1

Does the reporting entity issue both participating and non-participating policies? .....

Yes [ ] No [ X ]

3.2

If yes, state the amount of calendar year premiums written on:

3.21

Participating policies .....

\$ .....

3.22

Non-participating policies .....

\$ .....

4.

For mutual reporting Entities and Reciprocal Exchanges Only:

4.1

Does the reporting entity issue assessable policies? .....

Yes [ ] No [ ]

4.2

Does the reporting entity issue non-assessable policies? .....

Yes [ ] No [ ]

4.3

If assessable policies are issued, what is the extent of the contingent liability of the policyholders? .....

%

4.4

Total amount of assessments paid or ordered to be paid during the year on deposit notes or contingent premiums. ....

\$ \_\_\_\_\_

5.

For Reciprocal Exchanges Only:

5.1

Does the Exchange appoint local agents? .....

Yes [ ] No [ ]

5.2

If yes, is the commission paid:

5.21

Out of Attorney's-in-fact compensation.....

Yes [ ] No [ ] N/A [ ]

5.22

As a direct expense of the exchange.....

Yes [ ] No [ ] N/A [ ]

5.3

What expenses of the Exchange are not paid out of the compensation of the Attorney-in-fact? .....

.....

5.4

Has any Attorney-in-fact compensation, contingent on fulfillment of certain conditions, been deferred? .....

Yes [ ] No [ ]

5.5

If yes, give full information .....

.....

ANNUAL STATEMENT FOR THE YEAR 2011 OF THE ALLIED INSURANCE COMPANY OF AMERICA

GENERAL INTERROGATORIES

PART 2 - PROPERTY AND CASUALTY INTERROGATORIES

6.1

What provision has this reporting entity made to protect itself from an excessive loss in the event of a catastrophe under a workers' compensation contract issued without limit of loss?  
The Company's net exposure, if any, ultimately is 100% ceded to the Nationwide Mutual Insurance Company Pool under a quota share reinsurance agreement. No retained exposure. ....

6.2

Describe the method used to estimate this reporting entity's probable maximum insurance loss, and identify the type of insured exposures comprising that probable maximum loss, the locations of concentrations of those exposures and the external resources (such as consulting firms or computer software models), if any, used in the estimation process.  
The Company's net exposure, if any, ultimately is 100% ceded to the Nationwide Mutual Insurance Company Pool under a quota share reinsurance agreement. The company's property exposures are aggregated with the other Nationwide companies and modeled using Applied Insurance Research (AIR) CLASIC/2. ....

6.3

What provision has this reporting entity made (such as a catastrophic reinsurance program) to protect itself from an excessive loss arising from the types and concentrations of insured exposures comprising its probable maximum property insurance loss?  
The Company's net property-catastrophe exposures, if any, are mitigated through managed coastal growth, purchase of excess of loss reinsurance, policy provisions such as higher deductibles, and enforcement of underwriting guidelines related to building construction, etc. ....

6.4

Does the reporting entity carry catastrophe reinsurance protection for at least one reinstatement, in an amount sufficient to cover its estimated probable maximum loss attributable to a single loss event or occurrence? .....

Yes [ X ] No [ ]

6.5

If no, describe any arrangements or mechanisms employed by the reporting entity to supplement its catastrophe reinsurance program or to hedge its exposure to uninsured catastrophic loss.  
.....

7.1

Has this reporting entity reinsured any risk with any other entity under a quota share reinsurance contract that includes a provision that would limit the reinsurer's losses below the stated quota share percentage (e.g., a deductible, a loss ratio corridor, a loss ratio cap, an aggregate limit or any similar provisions)?.....

Yes [ ] No [ X ]

7.2

If yes, indicate the number of reinsurance contracts containing such provisions: .....

7.3

If yes, does the amount of reinsurance credit taken reflect the reduction in quota share coverage caused by any applicable limiting provision(s)?.....

Yes [ ] No [ ]

8.1

Has this reporting entity reinsured any risk with any other entity and agreed to release such entity from liability, in whole or in part, from any loss that may occur on this risk, or portion thereof, reinsured? .....

Yes [ ] No [ X ]

8.2

If yes, give full information  
.....

9.1

Has the reporting entity ceded any risk under any reinsurance contract (or under multiple contracts with the same reinsurer or its affiliates) for which during the period covered by the statement: (i) it recorded a positive or negative underwriting result greater than 5% of prior year-end surplus as regards policyholders or it reported calendar year written premium ceded or year-end loss and loss expense reserves ceded greater than 5% of prior year-end surplus as regards policyholders; (ii) it accounted for that contract as reinsurance and not as a deposit; and (iii) the contract(s) contain one or more of the following features or other features that would have similar results:  
(a) A contract term longer than two years and the contract is noncancellable by the reporting entity during the contract term;  
(b) A limited or conditional cancellation provision under which cancellation triggers an obligation by the reporting entity, or an affiliate of the reporting entity, to enter into a new reinsurance contract with the reinsurer, or an affiliate of the reinsurer;  
(c) Aggregate stop loss reinsurance coverage;  
(d) A unilateral right by either party (or both parties) to commute the reinsurance contract, whether conditional or not, except for such provisions which are only triggered by a decline in the credit status of the other party;  
(e) A provision permitting reporting of losses, or payment of losses, less frequently than on a quarterly basis (unless there is no activity during the period); or  
(f) Payment schedule, accumulating retentions from multiple years or any features inherently designed to delay timing of the reimbursement to the ceding entity. ....

Yes [ ] No [ X ]

9.2

Has the reporting entity during the period covered by the statement ceded any risk under any reinsurance contract (or under multiple contracts with the same reinsurer or its affiliates), for which, during the period covered by the statement, it recorded a positive or negative underwriting result greater than 5% of prior year-end surplus as regards policyholders or it reported calendar year written premium ceded or year-end loss and loss expense reserves ceded greater than 5% of prior year-end surplus as regards policyholders; excluding cessions to approved pooling arrangements or to captive insurance companies that are directly or indirectly controlling, controlled by, or under common control with (i) one or more unaffiliated policyholders of the reporting entity, or (ii) an association of which one or more unaffiliated policyholders of the reporting entity is a member where:  
(a) The written premium ceded to the reinsurer by the reporting entity or its affiliates represents fifty percent (50%) or more of the entire direct and assumed premium written by the reinsurer based on its most recently available financial statement; or  
(b) Twenty-five percent (25%) or more of the written premium ceded to the reinsurer has been retroceded back to the reporting entity or its affiliates in a separate reinsurance contract. ....

Yes [ ] No [ X ]

9.3

If yes to 9.1 or 9.2, please provide the following information in the Reinsurance Summary Supplemental Filing for General Interrogatory 9:  
(a) The aggregate financial statement impact gross of all such ceded reinsurance contracts on the balance sheet and statement of income;  
(b) A summary of the reinsurance contract terms and indicate whether it applies to the contracts meeting the criteria in 9.1 or 9.2; and  
(c) A brief discussion of management's principle objectives in entering into the reinsurance contract including the economic purpose to be achieved.

9.4

Except for transactions meeting the requirements of paragraph 32 of SSAP No. 62R, Property and Casualty Reinsurance, has the reporting entity ceded any risk under any reinsurance contract (or multiple contracts with the same reinsurer or its affiliates) during the period covered by the financial statement, and either:  
(a) Accounted for that contract as reinsurance (either prospective or retroactive) under statutory accounting principles ("SAP") and as a deposit under generally accepted accounting principles ("GAAP"); or  
(b) Accounted for that contract as reinsurance under GAAP and as a deposit under SAP? .....

Yes [ ] No [ X ]

9.5

If yes to 9.4, explain in the Reinsurance Summary Supplemental Filing for General Interrogatory 9 (Section D) why the contract(s) is treated differently for GAAP and SAP.

9.6

The reporting entity is exempt from the Reinsurance Attestation Supplement under one or more of the following criteria:  
(a) The entity does not utilize reinsurance; or, .....  
(b) The entity only engages in a 100% quota share contract with an affiliate and the affiliated or lead company has filed an attestation supplement; or .....  
(c) The entity has no external cessions and only participates in an intercompany pool and the affiliated or lead company has filed an attestation supplement. ....

Yes [ ] No [ X ]  
Yes [ X ] No [ ]  
Yes [ ] No [ X ]

10.

If the reporting entity has assumed risks from another entity, there should be charged on account of such reinsurances a reserve equal to that which the original entity would have been required to charge had it retained the risks. Has this been done? .....

Yes [ ] No [ ] N/A [ X ]

ANNUAL STATEMENT FOR THE YEAR 2011 OF THE ALLIED INSURANCE COMPANY OF AMERICA

GENERAL INTERROGATORIES

PART 2 - PROPERTY AND CASUALTY INTERROGATORIES

11.1 Has the reporting entity guaranteed policies issued by any other entity and now in force? ..... Yes [ ] No [ X ]

11.2 If yes, give full information  
.....

12.1 If the reporting entity recorded accrued retrospective premiums on insurance contracts on Line 15.3 of the asset schedule, Page 2, state the amount of corresponding liabilities recorded for:

12.11 Unpaid losses .....\$ .....

12.12 Unpaid underwriting expenses (including loss adjustment expenses) .....\$ .....

12.2 Of the amount on Line 15.3, Page 2, state the amount which is secured by letters of credit, collateral, and other funds .....\$ .....

12.3 If the reporting entity underwrites commercial insurance risks, such as workers' compensation, are premium notes or promissory notes accepted from its insureds covering unpaid premiums and/or unpaid losses? ..... Yes [ ] No [ ] N/A [ X ]

12.4 If yes, provide the range of interest rates charged under such notes during the period covered by this statement:

12.41 From ..... %

12.42 To ..... %

12.5 Are letters of credit or collateral and other funds received from insureds being utilized by the reporting entity to secure premium notes or promissory notes taken by a reporting entity, or to secure any of the reporting entity's reported direct unpaid loss reserves , including unpaid losses under loss deductible features of commercial policies? ..... Yes [ ] No [ X ]

12.6 If yes, state the amount thereof at December 31 of the current year:

12.61 Letters of credit .....\$ .....

12.62 Collateral and other funds.....\$ .....

13.1 Largest net aggregate amount insured in any one risk (excluding workers' compensation): .....\$ .....

13.2 Does any reinsurance contract considered in the calculation of this amount include an aggregate limit of recovery without also including a reinstatement provision? ..... Yes [ ] No [ X ]

13.3 State the number of reinsurance contracts (excluding individual facultative risk certificates, but including facultative programs, automatic facilities or facultative obligatory contracts) considered in the calculation of the amount. ....

14.1 Is the company a cedant in a multiple cedant reinsurance contract? ..... Yes [ X ] No [ ]

14.2 If yes, please describe the method of allocating and recording reinsurance among the cedants:  
Companies that are not part of the Nationwide Mutual Insurance Company Pooling and Quota Share Arrangements receive a fair and equitable allocation of ceded premium and loss. The terms of the Nationwide Pooling and Quota Share Agreements govern the allocation and recording of ceded premium and loss for the participating companies. ....

14.3 If the answer to 14.1 is yes, are the methods described in item 14.2 entirely contained in the respective multiple cedant reinsurance contracts? ..... Yes [ ] No [ X ]

14.4 If the answer to 14.3 is no, are all the methods described in 14.2 entirely contained in written agreements? ..... Yes [ ] No [ X ]

14.5 If the answer to 14.4 is no, please explain:  
Written agreements are in place for all multi-cedent reinsurance treaties that cover any company that does not participate in the Nationwide Mutual Insurance Company Pooling and Quota Share Arrangements. ....

15.1 Has the reporting entity guaranteed any financed premium accounts? ..... Yes [ ] No [ X ]

15.2 If yes, give full information  
.....

16.1 Does the reporting entity write any warranty business? ..... Yes [ ] No [ X ]  
If yes, disclose the following information for each of the following types of warranty coverage:

	1 Direct Losses Incurred	2 Direct Losses Unpaid	3 Direct Written Premium	4 Direct Premium Unearned	5 Direct Premium Earned
16.11 Home .....					
16.12 Products .....					
16.13 Automobile .....					
16.14 Other*					

\* Disclose type of coverage:  
.....



ANNUAL STATEMENT FOR THE YEAR 2011 OF THE ALLIED INSURANCE COMPANY OF AMERICA

GENERAL INTERROGATORIES

PART 2 - PROPERTY AND CASUALTY INTERROGATORIES

17.1 Does the reporting entity include amounts recoverable on unauthorized reinsurance in Schedule F - Part 3 that it excludes from Schedule F - Part 5? Yes [ ] No [ X ]

Included but not reported losses on contracts in force prior to July 1, 1984, and not subsequently renewed are exempt from inclusion in Schedule F - Part 5. Provide the following information for this exemption:

17.11 Gross amount of unauthorized reinsurance in Schedule F - Part 3 excluded from Schedule F - Part 5 \$

17.12 Unfunded portion of Interrogatory 17.11 \$

17.13 Paid losses and loss adjustment expenses portion of Interrogatory 17.11 \$

17.14 Case reserves portion of Interrogatory 17.11 \$

17.15 Incurred but not reported portion of Interrogatory 17.11 \$

17.16 Unearned premium portion of Interrogatory 17.11 \$

17.17 Contingent commission portion of Interrogatory 17.11 \$

Provide the following information for all other amounts included in Schedule F - P art 3 and excluded from Schedule F - Part 5, not included above.

17.18 Gross amount of unauthorized reinsurance in Schedule F - Part 3 excluded from Schedule F - Part 5 \$

17.19 Unfunded portion of Interrogatory 17.18 \$

17.20 Paid losses and loss adjustment expenses portion of Interrogatory 17.18 \$

17.21 Case reserves portion of Interrogatory 17.18 \$

17.22 Incurred but not reported portion of Interrogatory 17.18 \$

17.23 Unearned premium portion of Interrogatory 17.18 \$

17.24 Contingent commission portion of Interrogatory 17.18 \$

18.1 Do you act as a custodian for health savings accounts? Yes [ ] No [ X ]

18.2 If yes, please provide the amount of custodial funds held as of the reporting date. \$

18.3 Do you act as an administrator for health savings accounts? Yes [ ] No [ X ]

18.4 If yes, please provide the balance of funds administered as of the reporting date. \$

ANNUAL STATEMENT FOR THE YEAR 2011 OF THE ALLIED INSURANCE COMPANY OF AMERICA

FIVE-YEAR HISTORICAL DATA

Show amounts in whole dollars only, no cents; show percentages to one decimal place, i.e. 17.6.

	1 2011	2 2010	3 2009	4 2008	5 2007
<b>Gross Premiums Written (Page 8, Part 1B Cols. 1, 2 &amp; 3)</b>					
1. Liability lines (Lines 11.1, 11.2, 16, 17.1, 17.2, 17.3, 18.1, 18.2, 19.1, 19.2 & 19.3, 19.4) .....					
2. Property lines (Lines 1, 2, 9, 12, 21 & 26) .....					
3. Property and liability combined lines (Lines 3, 4, 5, 8, 22 & 27) .....					
4. All other lines (Lines 6, 10, 13, 14, 15, 23, 24, 28, 29, 30 & 34) .....					
5. Nonproportional reinsurance lines (Lines 31, 32 & 33) .....					
6. Total (Line 35) .....					
<b>Net Premiums Written (Page 8, Part 1B, Col. 6)</b>					
7. Liability lines (Lines 11.1, 11.2, 16, 17.1, 17.2, 17.3, 18.1, 18.2, 19.1, 19.2 & 19.3, 19.4) .....					
8. Property lines (Lines 1, 2, 9, 12, 21 & 26) .....					
9. Property and liability combined lines (Lines 3, 4, 5, 8, 22 & 27) .....					
10. All other lines (Lines 6, 10, 13, 14, 15, 23, 24, 28, 29, 30 & 34) .....					
11. Nonproportional reinsurance lines (Lines 31, 32 & 33) .....					
12. Total (Line 35) .....					
<b>Statement of Income (Page 4)</b>					
13. Net underwriting gain (loss) (Line 8) .....		( 1,156)	(600)		
14. Net investment gain or (loss) (Line 11) .....	(233)	4,429	329,178	166,872	217,850
15. Total other income (Line 15) .....			(1,526)		268
16. Dividends to policyholders (Line 17) .....					
17. Federal and foreign income taxes incurred (Line 19) .....	(87)	1,144	21,856	58,406	76,341
18. Net income (Line 20) .....	(146)	2,129	305,196	108,466	141,777
<b>Balance Sheet Lines (Pages 2 and 3)</b>					
19. Total admitted assets excluding protected cell business (Page 2, Line 26, Col. 3) .....	5,775,250	5,774,080	5,934,927	5,520,480	5,433,345
20. Premiums and considerations (Page 2, Col. 3)					
20.1 In course of collection (Line 15.1) .....					
20.2 Deferred and not yet due (Line 15.2) .....					
20.3 Accrued retrospective premiums (Line 15.3) .....					
21. Total liabilities excluding protected cell business (Page 3, Line 26) .....	3,170	1,847	164,823	58,406	76,904
22. Losses (Page 3, Line 1) .....					
23. Loss adjustment expenses (Page 3, Line 3) .....					
24. Unearned premiums (Page 3, Line 9) .....					
25. Capital paid up (Page 3, Lines 30 & 31) .....	1,000,000	1,000,000	1,000,000	1,000,000	1,000,000
26. Surplus as regards policyholders (Page 3, Line 37) .....	5,772,080	5,772,233	5,770,104	5,462,074	5,356,441
<b>Cash Flow (Page 5)</b>					
27. Net cash from operations (Line 11) .....	(1,826)	(161,064)	44,978	112,549	147,624
<b>Risk-Based Capital Analysis</b>					
28. Total adjusted capital .....	5,772,080	5,772,233	5,770,104	5,462,074	5,356,441
29. Authorized control level risk-based capital .....	8,287	8,666	8,907	2,190	2,058
<b>Percentage Distribution of Cash, Cash Equivalents and Invested Assets (Page 2, Col. 3) (Line divided by Page 2, Line 12, Col. 3) x100.0</b>					
30. Bonds (Line 1) .....	4.3			73.5	74.8
31. Stocks (Lines 2.1 & 2.2) .....					
32. Mortgage loans on real estate (Lines 3.1 and 3.2) .....					
33. Real estate (Lines 4.1, 4.2 & 4.3) .....					
34. Cash, cash equivalents and short-term investments (Line 5) .....	95.7	100.0	100.0	26.5	25.2
35. Contract loans (Line 6) .....					
36. Derivatives (Line 7) .....			XXX	XXX	XXX
37. Other invested assets (Line 8) .....					
38. Receivables for securities (Line 9) .....					
39. Securities lending reinvested collateral assets (Line 10) .....			XXX	XXX	XXX
40. Aggregate write-ins for invested assets (Line 11) .....					
41. Cash, cash equivalents and invested assets (Line 12) .....	100.0	100.0	100.0	100.0	100.0
<b>Investments in Parent, Subsidiaries and Affiliates</b>					
42. Affiliated bonds (Schedule D, Summary, Line 12, Col. 1) .....					
43. Affiliated preferred stocks (Schedule D, Summary, Line 18, Col. 1) .....					
44. Affiliated common stocks (Schedule D, Summary, Line 24, Col. 1) .....					
45. Affiliated short-term investments (subtotals included in Schedule DA Verification, Col. 5, Line 10) .....					
46. Affiliated mortgage loans on real estate .....					
47. All other affiliated .....					
48. Total of above Lines 42 to 47 .....					
49. Percentage of investments in parent, subsidiaries and affiliates to surplus as regards policyholders (Line 48 above divided by Page 3, Col. 1, Line 37 x 100.0)					

FIVE-YEAR HISTORICAL DATA

(Continued)

	1 2011	2 2010	3 2009	4 2008	5 2007
<b>Capital and Surplus Accounts (Page 4)</b>					
50. Net unrealized capital gains (losses) (Line 24) .....					
51. Dividends to stockholders (Line 35) .....					
52. Change in surplus as regards policyholders for the year (Line 38) .....	( 153)	2, 129	308, 030	105, 633	141, 777
<b>Gross Losses Paid (Page 9, Part 2, Cols. 1 &amp; 2)</b>					
53. Liability lines (Lines 11.1, 11.2, 16, 17.1, 17.2, 17.3, 18.1, 18.2, 19.1, 19.2 & 19.3, 19.4) .....					
54. Property lines (Lines 1, 2, 9, 12, 21 & 26) .....					
55. Property and liability combined lines (Lines 3, 4, 5, 8, 22 & 27) .....					
56. All other lines (Lines 6, 10, 13, 14, 15, 23, 24, 28, 29, 30 & 34) .....					
57. Nonproportional reinsurance lines (Lines 31, 32 & 33) .....					
58. Total (Line 35) .....					
<b>Net Losses Paid (Page 9, Part 2, Col. 4)</b>					
59. Liability lines (Lines 11.1, 11.2, 16, 17.1, 17.2, 17.3, 18.1, 18.2, 19.1, 19.2 & 19.3, 19.4) .....					
60. Property lines (Lines 1, 2, 9, 12, 21 & 26) .....					
61. Property and liability combined lines (Lines 3, 4, 5, 8, 22 & 27) .....					
62. All other lines (Lines 6, 10, 13, 14, 15, 23, 24, 28, 29, 30 & 34) .....					
63. Nonproportional reinsurance lines (Lines 31, 32 & 33) .....					
64. Total (Line 35) .....					
<b>Operating Percentages (Page 4) (Line divided by Page 4, Line 1) x 100.0</b>					
65. Premiums earned (Line 1) .....	100.0	100.0	100.0	100.0	100.0
66. Losses incurred (Line 2) .....					
67. Loss expenses incurred (Line 3) .....					
68. Other underwriting expenses incurred (Line 4) .....					
69. Net underwriting gain (loss) (Line 8) .....					
<b>Other Percentages</b>					
70. Other underwriting expenses to net premiums written (Page 4, Lines 4 + 5 - 15 divided by Page 8, Part 1B, Col. 6, Line 35 x 100.0) .....					
71. Losses and loss expenses incurred to premiums earned (Page 4, Lines 2 + 3 divided by Page 4, Line 1 x 100.0) .....					
72. Net premiums written to policyholders' surplus (Page 8, Part 1B, Col. 6, Line 35 divided by Page 3, Line 37, Col. 1 x 100.0) .....					
<b>One Year Loss Development (000 omitted)</b>					
73. Development in estimated losses and loss expenses incurred prior to current year (Schedule P - Part 2 - Summary, Line 12, Col. 11) .....					
74. Percent of development of losses and loss expenses incurred to policyholders' surplus of prior year end (Line 73 above divided by Page 4, Line 21, Col. 1 x 100.0).....					
<b>Two Year Loss Development (000 omitted)</b>					
75. Development in estimated losses and loss expenses incurred two years before the current year and prior year (Schedule P, Part 2 - Summary, Line 12, Col. 12) .....					
76. Percent of development of losses and loss expenses incurred to reported policyholders' surplus of second prior year end (Line 75 above divided by Page 4, Line 21, Col. 2 x 100.0) .....					

NOTE: If a party to a merger, have the two most recent years of this exhibit been restated due to a merger in compliance with the disclosure requirements of SSAP No. 3, Accounting Changes and Correction of Errors? .....

Yes [     ] No [     ]

If no, please explain: .....

Schedule P - Part 1 - Summary

**N O N E**

Schedule P - Part 2 - Summary

**N O N E**

Schedule P - Part 3 - Summary

**N O N E**

Schedule P - Part 4 - Summary

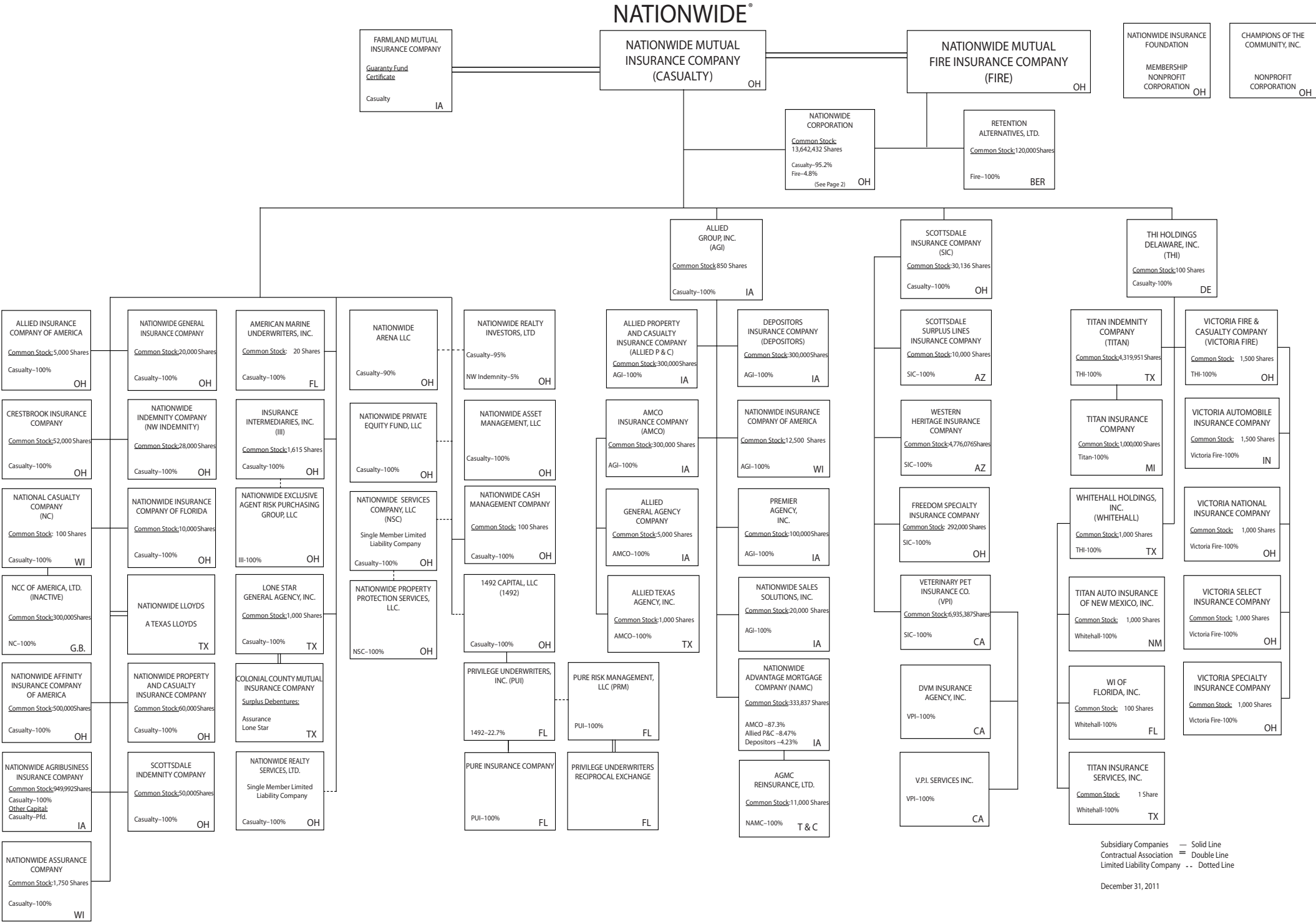
**N O N E**

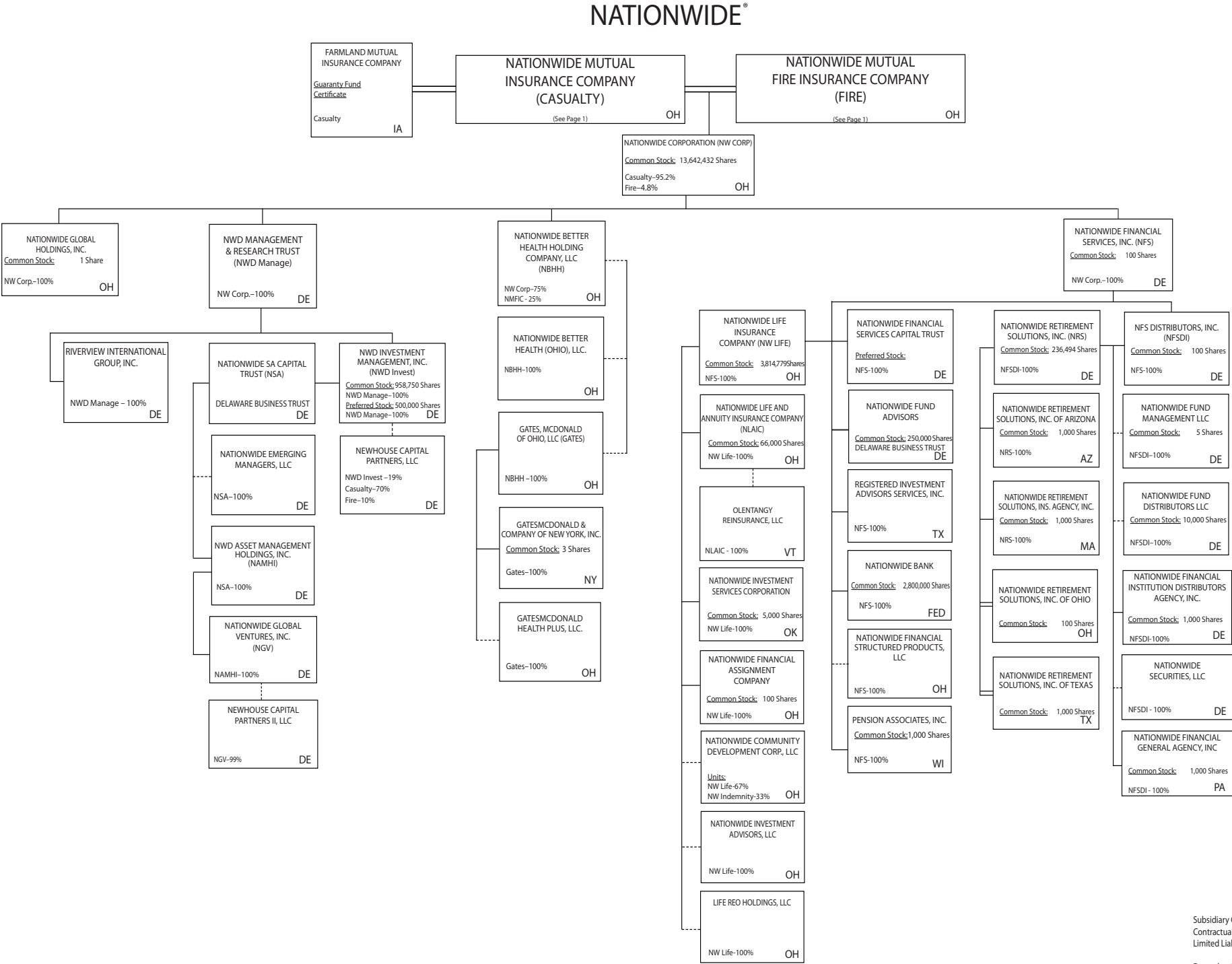
SCHEDULE T - EXHIBIT OF PREMIUMS WRITTEN

Allocated by States and Territories									
States, Etc.	1  Active Status	Gross Premiums, Including Policy and Membership Fees, Less Return Premiums and Premiums on Policies Not Taken		4  Dividends Paid or Credited to Policyholders on Direct Business	5  Direct Losses Paid (Deducting Salvage)	6  Direct Losses Incurred	7  Direct Losses Unpaid	8  Finance and Service Charges Not Included in Premiums	9  Direct Premiums Written for Federal Purchasing Groups (Included in Column 2)
		2  Direct Premiums Written	3  Direct Premiums Earned						
1. Alabama .....	AL	N							
2. Alaska .....	AK	N							
3. Arizona .....	AZ	N							
4. Arkansas .....	AR	N							
5. California .....	CA	N							
6. Colorado .....	CO	N							
7. Connecticut .....	CT	N							
8. Delaware .....	DE	N							
9. District of Columbia .....	DC	N							
10. Florida .....	FL	N							
11. Georgia .....	GA	N							
12. Hawaii .....	HI	N							
13. Idaho .....	ID	N							
14. Illinois .....	IL	N							
15. Indiana .....	IN	N							
16. Iowa .....	IA	N							
17. Kansas .....	KS	N							
18. Kentucky .....	KY	N							
19. Louisiana .....	LA	N							
20. Maine .....	ME	N							
21. Maryland .....	MD	N							
22. Massachusetts .....	MA	N							
23. Michigan .....	MI	N							
24. Minnesota .....	MN	N							
25. Mississippi .....	MS	N							
26. Missouri .....	MO	N							
27. Montana .....	MT	N							
28. Nebraska .....	NE	N							
29. Nevada .....	NV	N							
30. New Hampshire .....	NH	N							
31. New Jersey .....	NJ	N							
32. New Mexico .....	NM	N							
33. New York .....	NY	N							
34. North Carolina .....	NC	N							
35. North Dakota .....	ND	N							
36. Ohio .....	OH	L							
37. Oklahoma .....	OK	N							
38. Oregon .....	OR	N							
39. Pennsylvania .....	PA	N							
40. Rhode Island .....	RI	N							
41. South Carolina .....	SC	N							
42. South Dakota .....	SD	N							
43. Tennessee .....	TN	N							
44. Texas .....	TX	N							
45. Utah .....	UT	N							
46. Vermont .....	VT	N							
47. Virginia .....	VA	N							
48. Washington .....	WA	N							
49. West Virginia .....	WV	N							
50. Wisconsin .....	WI	N							
51. Wyoming .....	WY	N							
52. American Samoa .....	AS	N							
53. Guam .....	GU	N							
54. Puerto Rico .....	PR	N							
55. U.S. Virgin Islands .....	VI	N							
56. Northern Mariana Islands .....	MP	N							
57. Canada .....	CN	N							
58. Aggregate other alien ..	OT	XXX							
59. Totals	(a) 1								
DETAILS OF WRITE-INS									
5801. ....	XXX								
5802. ....	XXX								
5803. ....	XXX								
5898. Summary of remaining write-ins for Line 58 from overflow page	XXX								
5899. Totals (Lines 5801 through 5803 plus 5898)(Line 58 above)	XXX								

(L) Licensed or Chartered - Licensed Insurance Carrier or Domiciled RRG; (R) Registered - Non-domiciled RRGs; (Q) Qualified - Qualified or Accredited Reinsurer; (E) Eligible - Reporting Entities eligible or approved to write Surplus Lines in the state; (N) None of the above - Not allowed to write business in the state.

Explanation of basis of allocation of premiums by states, etc.  
Premiums are allocated to those states where the insured risks are located: principle garage for automobile, physical address for homeowners, commercial multiple peril and other liability and main place of work for workers' compensation. Allocation of premiums for individual and group health insurance is based on the situs of the contract.  
(a) Insert the number of L responses except for Canada and Other Alien.





NATIONWIDE INSURANCE COMPANIES

NAIC Group Code	Group Name	NAIC Company Code	State of Domicile	Federal ID Number	Name of Company
0140	Nationwide	42579	IA	42-1201931	Allied Property and Casualty Insurance Company
0140	Nationwide	19100	IA	42-6054959	AMCO Insurance Company
0140	Nationwide	10127	OH	27-0114983	Allied Insurance Company of America
0140	Nationwide	22209	OH	75-6013587	Freedom Specialty Insurance Company
0140	Nationwide	29262	TX	74-1061659	Colonial County Mutual Insurance Company
0140	Nationwide	18961	OH	68-0066866	Crestbrook Insurance Company
0140	Nationwide	42587	IA	42-1207150	Depositors Insurance Company
0140	Nationwide	13838	IA	42-0618271	Farmland Mutual Insurance Company
0140	Nationwide	11991	WI	38-0865250	National Casualty Company
0140	Nationwide	26093	OH	48-0470690	Nationwide Affinity Insurance Company of America
0140	Nationwide	28223	IA	42-1015537	Nationwide Agribusiness Insurance Company
0140	Nationwide	10723	WI	95-0639970	Nationwide Assurance Company
0140	Nationwide	23760	OH	31-4425763	Nationwide General Insurance Company
0140	Nationwide	10070	OH	31-1399201	Nationwide Indemnity Company
0140	Nationwide	25453	WI	95-2130882	Nationwide Insurance Company of America
0140	Nationwide	10948	OH	31-1613686	Nationwide Insurance Company of Florida
0140	Nationwide	92657	OH	31-1000740	Nationwide Life and Annuity Insurance Company
0140	Nationwide	66869	OH	31-4156830	Nationwide Life Insurance Company
0140	Nationwide	42110	TX	75-1780981	Nationwide Lloyds
0140	Nationwide	23779	OH	31-4177110	Nationwide Mutual Fire Insurance Company
0140	Nationwide	23787	OH	31-4177100	Nationwide Mutual Insurance Company
0140	Nationwide	37877	OH	31-0970750	Nationwide Property & Casualty Insurance Company
0140	Nationwide	15580	OH	31-1117969	Scottsdale Indemnity Company
0140	Nationwide	41297	OH	31-1024978	Scottsdale Insurance Company
0140	Nationwide	10672	AZ	86-0835870	Scottsdale Surplus Lines Insurance Company
0140	Nationwide	13242	TX	74-2286759	Titan Indemnity Company
0140	Nationwide	36269	MI	86-0619597	Titan Insurance Company
0140	Nationwide	42285	CA	95-3750113	Veterinary Pet Insurance Company
0140	Nationwide	10644	IN	34-1785903	Victoria Automobile Insurance Company
0140	Nationwide	42889	OH	34-1394913	Victoria Fire & Casualty Company
0140	Nationwide	10778	OH	34-1842604	Victoria National Insurance Company
0140	Nationwide	10105	OH	34-1777972	Victoria Select Insurance Company
0140	Nationwide	10777	OH	34-1842602	Victoria Specialty Insurance Company
0140	Nationwide	37150	AZ	86-0561941	Western Heritage Insurance Company
0140	Nationwide	13999	VT	27-1712056	Olentangy Reinsurance, LLC
4664	PURE	13204	FL	26-3109178	PURE Insurance Company
4664	PURE	12873	FL	20-8287105	Privilege Underwriters Reciprocal Exchange



**NONE**

ANNUAL STATEMENT BLANK

ALPHABETICAL INDEX

Assets .....	2
Cash Flow .....	5
Exhibit of Capital Gains (Losses) .....	12
Exhibit of Net Investment Income .....	12
Exhibit of Nonadmitted Assets .....	13
Exhibit of Premiums and Losses (State Page) .....	19
Five-Year Historical Data .....	17
General Interrogatories .....	15
Jurat Page .....	1
Liabilities, Surplus and Other Funds .....	3
Notes To Financial Statements .....	14
Overflow Page For Write-ins .....	98
Schedule A - Part 1 .....	E01
Schedule A - Part 2 .....	E02
Schedule A - Part 3 .....	E03
Schedule A - Verification Between Years .....	SI02
Schedule B - Part 1 .....	E04
Schedule B - Part 2 .....	E05
Schedule B - Part 3 .....	E06
Schedule B - Verification Between Years .....	SI02
Schedule BA - Part 1 .....	E07
Schedule BA - Part 2 .....	E08
Schedule BA - Part 3 .....	E09
Schedule BA - Verification Between Years .....	SI03
Schedule D - Part 1 .....	E10
Schedule D - Part 1A - Section 1 .....	SI05
Schedule D - Part 1A - Section 2 .....	SI08
Schedule D - Part 2 - Section 1 .....	E11
Schedule D - Part 2 - Section 2 .....	E12
Schedule D - Part 3 .....	E13
Schedule D - Part 4 .....	E14
Schedule D - Part 5 .....	E15
Schedule D - Part 6 - Section 1 .....	E16
Schedule D - Part 6 - Section 2 .....	E16
Schedule D - Summary By Country .....	SI04
Schedule D - Verification Between Years .....	SI03
Schedule DA - Part 1 .....	E17
Schedule DA - Verification Between Years .....	SI10
Schedule DB - Part A - Section 1 .....	E18
Schedule DB - Part A - Section 2 .....	E19
Schedule DB - Part A - Verification Between Years .....	SI11
Schedule DB - Part B - Section 1 .....	E20
Schedule DB - Part B - Section 2 .....	E21
Schedule DB - Part B - Verification Between Years .....	SI11
Schedule DB - Part C - Section 1 .....	SI12
Schedule DB - Part C - Section 2 .....	SI13
Schedule DB - Part D .....	E22
Schedule DB - Verification .....	SI14
Schedule DL - Part 1 .....	E23
Schedule DL - Part 2 .....	E24
Schedule E - Part 1 - Cash .....	E25
Schedule E - Part 2 - Cash Equivalents .....	E26
Schedule E - Part 3 - Special Deposits .....	E27
Schedule E - Verification Between Years .....	SI15
Schedule F - Part 1 .....	20
Schedule F - Part 2 .....	21
Schedule F - Part 3 .....	22
Schedule F - Part 4 .....	23
Schedule F - Part 5 .....	24
Schedule F - Part 6 .....	25
Schedule F - Part 7 .....	26
Schedule F - Part 8 .....	27

ANNUAL STATEMENT BLANK (Continued)

Schedule H - Accident and Health Exhibit - Part 1 .....	28
Schedule H - Part 2, Part 3 and 4 .....	29
Schedule H - Part 5 - Health Claims .....	30
Schedule P - Part 1 - Summary .....	31
Schedule P - Part 1A - Homeowners/Farmowners .....	33
Schedule P - Part 1B - Private Passenger Auto Liability/Medical .....	34
Schedule P - Part 1C - Commercial Auto/Truck Liability/Medical .....	35
Schedule P - Part 1D - Workers' Compensation (Excluding Excess Workers' Compensation) .....	36
Schedule P - Part 1E - Commercial Multiple Peril .....	37
Schedule P - Part 1F - Section 1 - Medical Professional Liability - Occurrence .....	38
Schedule P - Part 1F - Section 2 - Medical Professional Liability - Claims-Made .....	39
Schedule P - Part 1G - Special Liability (Ocean, Marine, Aircraft (All Perils), Boiler and Machinery) .....	40
Schedule P - Part 1H - Section 1 - Other Liability - Occurrence .....	41
Schedule P - Part 1H - Section 2 - Other Liability - Claims-Made .....	42
Schedule P - Part 1I - Special Property (Fire, Allied Lines, Inland Marine, Earthquake, Burglary & Theft) .....	43
Schedule P - Part 1J - Auto Physical Damage .....	44
Schedule P - Part 1K - Fidelity/Surety .....	45
Schedule P - Part 1L - Other (Including Credit, Accident and Health) .....	46
Schedule P - Part 1M - International .....	47
Schedule P - Part 1N - Reinsurance - Nonproportional Assumed Property .....	48
Schedule P - Part 1O - Reinsurance - Nonproportional Assumed Liability .....	49
Schedule P - Part 1P - Reinsurance - Nonproportional Assumed Financial Lines .....	50
Schedule P - Part 1R - Section 1 - Products Liability - Occurrence .....	51
Schedule P - Part 1R - Section 2 - Products Liability - Claims-Made .....	52
Schedule P - Part 1S - Financial Guaranty/Mortgage Guaranty .....	53
Schedule P - Part 1T - Warranty .....	54
Schedule P - Part 2, Part 3 and Part 4 - Summary .....	32
Schedule P - Part 2A - Homeowners/Farmowners .....	55
Schedule P - Part 2B - Private Passenger Auto Liability/Medical .....	55
Schedule P - Part 2C - Commercial Auto/Truck Liability/Medical .....	55
Schedule P - Part 2D - Workers' Compensation (Excluding Excess Workers' Compensation) .....	55
Schedule P - Part 2E - Commercial Multiple Peril .....	55
Schedule P - Part 2F - Section 1 - Medical Professional Liability - Occurrence .....	56
Schedule P - Part 2F - Section 2 - Medical Professional Liability - Claims-Made .....	56
Schedule P - Part 2G - Special Liability (Ocean Marine, Aircraft (All Perils), Boiler and Machinery) .....	56
Schedule P - Part 2H - Section 1 - Other Liability - Occurrence .....	56
Schedule P - Part 2H - Section 2 - Other Liability - Claims-Made .....	56
Schedule P - Part 2I - Special Property (Fire, Allied Lines, Inland Marine, Earthquake, Burglary, and Theft) .....	57
Schedule P - Part 2J - Auto Physical Damage .....	57
Schedule P - Part 2K - Fidelity, Surety .....	57
Schedule P - Part 2L - Other (Including Credit, Accident and Health) .....	57
Schedule P - Part 2M - International .....	57
Schedule P - Part 2N - Reinsurance - Nonproportional Assumed Property .....	58
Schedule P - Part 2O - Reinsurance - Nonproportional Assumed Liability .....	58
Schedule P - Part 2P - Reinsurance - Nonproportional Assumed Financial Lines .....	58
Schedule P - Part 2R - Section 1 - Products Liability - Occurrence .....	59
Schedule P - Part 2R - Section 2 - Products Liability - Claims-Made .....	59
Schedule P - Part 2S - Financial Guaranty/Mortgage Guaranty .....	59
Schedule P - Part 2T - Warranty .....	59
Schedule P - Part 3A - Homeowners/Farmowners .....	60
Schedule P - Part 3B - Private Passenger Auto Liability/Medical .....	60
Schedule P - Part 3C - Commercial Auto/Truck Liability/Medical .....	60
Schedule P - Part 3D - Workers' Compensation (Excluding Excess Workers' Compensation) .....	60
Schedule P - Part 3E - Commercial Multiple Peril .....	60
Schedule P - Part 3F - Section 1 - Medical Professional Liability - Occurrence .....	61
Schedule P - Part 3F - Section 2 - Medical Professional Liability - Claims-Made .....	61
Schedule P - Part 3G - Special Liability (Ocean Marine, Aircraft (All Perils), Boiler and Machinery) .....	61
Schedule P - Part 3H - Section 1 - Other Liability - Occurrence .....	61
Schedule P - Part 3H - Section 2 - Other Liability - Claims-Made .....	61
Schedule P - Part 3I - Special Property (Fire, Allied Lines, Inland Marine, Earthquake, Burglary, and Theft) .....	62
Schedule P - Part 3J - Auto Physical Damage .....	62
Schedule P - Part 3K - Fidelity/Surety .....	62
Schedule P - Part 3L - Other (Including Credit, Accident and Health) .....	62
Schedule P - Part 3M - International .....	62
Schedule P - Part 3N - Reinsurance - Nonproportional Assumed Property .....	63
Schedule P - Part 3O - Reinsurance - Nonproportional Assumed Liability .....	63
Schedule P - Part 3P - Reinsurance - Nonproportional Assumed Financial Lines .....	63
Schedule P - Part 3R - Section 1 - Products Liability - Occurrence .....	64
Schedule P - Part 3R - Section 2 - Products Liability - Claims-Made .....	64
Schedule P - Part 3S - Financial Guaranty/Mortgage Guaranty .....	64
Schedule P - Part 3T - Warranty .....	64

ANNUAL STATEMENT BLANK (Continued)

Schedule P - Part 4A - Homeowners/Farmowners .....	65
Schedule P - Part 4B - Private Passenger Auto Liability/Medical .....	65
Schedule P - Part 4C - Commercial Auto/Truck Liability/Medical .....	65
Schedule P - Part 4D - Workers' Compensation (Excluding Excess Workers' Compensation) .....	65
Schedule P - Part 4E - Commercial Multiple Peril .....	65
Schedule P - Part 4F - Section 1 - Medical Professional Liability - Occurrence .....	66
Schedule P - Part 4F - Section 2 - Medical Professional Liability - Claims-Made .....	66
Schedule P - Part 4G - Special Liability (Ocean Marine, Aircraft (All Perils), Boiler and Machinery) .....	66
Schedule P - Part 4H - Section 1 - Other Liability - Occurrence .....	66
Schedule P - Part 4H - Section 2 - Other Liability - Claims-Made .....	66
Schedule P - Part 4I - Special Property (Fire, Allied Lines, Inland Marine, Earthquake, Burglary and Theft) .....	67
Schedule P - Part 4J - Auto Physical Damage .....	67
Schedule P - Part 4K - Fidelity/Surety .....	67
Schedule P - Part 4L - Other (Including Credit, Accident and Health) .....	67
Schedule P - Part 4M - International .....	67
Schedule P - Part 4N - Reinsurance - Nonproportional Assumed Property .....	68
Schedule P - Part 4O - Reinsurance - Nonproportional Assumed Liability .....	68
Schedule P - Part 4P - Reinsurance - Nonproportional Assumed Financial Lines .....	68
Schedule P - Part 4R - Section 1 - Products Liability - Occurrence .....	69
Schedule P - Part 4R - Section 2 - Products Liability - Claims-Made .....	69
Schedule P - Part 4S - Financial Guaranty/Mortgage Guaranty .....	69
Schedule P - Part 4T - Warranty .....	69
Schedule P - Part 5A - Homeowners/Farmowners .....	70
Schedule P - Part 5B - Private Passenger Auto Liability/Medical .....	71
Schedule P - Part 5C - Commercial Auto/Truck Liability/Medical .....	72
Schedule P - Part 5D - Workers' Compensation (Excluding Excess Workers' Compensation) .....	73
Schedule P - Part 5E - Commercial Multiple Peril .....	74
Schedule P - Part 5F - Medical Professional Liability - Claims-Made .....	76
Schedule P - Part 5F - Medical Professional Liability - Occurrence .....	75
Schedule P - Part 5H - Other Liability - Claims-Made .....	78
Schedule P - Part 5H - Other Liability - Occurrence .....	77
Schedule P - Part 5R - Products Liability - Claims-Made .....	80
Schedule P - Part 5R - Products Liability - Occurrence .....	79
Schedule P - Part 5T - Warranty .....	81
Schedule P - Part 6C - Commercial Auto/Truck Liability/Medical .....	82
Schedule P - Part 6D - Workers' Compensation (Excluding Excess Workers' Compensation) .....	82
Schedule P - Part 6E - Commercial Multiple Peril .....	83
Schedule P - Part 6H - Other Liability - Claims-Made .....	84
Schedule P - Part 6H - Other Liability - Occurrence .....	83
Schedule P - Part 6M - International .....	84
Schedule P - Part 6N - Reinsurance - Nonproportional Assumed Property .....	85
Schedule P - Part 6O - Reinsurance - Nonproportional Assumed Liability .....	85
Schedule P - Part 6R - Products Liability - Claims-Made .....	86
Schedule P - Part 6R - Products Liability - Occurrence .....	86
Schedule P - Part 7A - Primary Loss Sensitive Contracts .....	87
Schedule P - Part 7B - Reinsurance Loss Sensitive Contracts .....	89
Schedule P Interrogatories .....	91
Schedule T - Exhibit of Premiums Written .....	92
Schedule T - Part 2 - Interstate Compact .....	93
Schedule Y - Information Concerning Activities of Insurer Members of a Holding Company Group .....	94
Schedule Y - Part 1A - Detail of Insurance Holding Company System .....	95
Schedule Y - Part 2 - Summary of Insurer's Transactions With Any Affiliates .....	96
Statement of Income .....	4
Summary Investment Schedule .....	SI01
Supplemental Exhibits and Schedules Interrogatories .....	97
Underwriting and Investment Exhibit Part 1 .....	6
Underwriting and Investment Exhibit Part 1A .....	7
Underwriting and Investment Exhibit Part 1B .....	8
Underwriting and Investment Exhibit Part 2 .....	9
Underwriting and Investment Exhibit Part 2A .....	10
Underwriting and Investment Exhibit Part 3 .....	11